

REAL "MIRZAPUR" CARPETS AND RUGS OF EXCEPTIONAL QUALITY

These Carpets have been specially selected in Mirzapur and are the finest made in the world. The quality is good—quite different from the cheaper grades and imitation carpets made for export. They are good to look at and good to feel and will outlast any cheaper carpets. You could not choose a better or more an acceptable gift for Christmas.



AS THESE CARPETS WILL BE SOLD QUICKLY IT IS ADVISABLE TO MAKE A SECOND CHOICE WHILE ORDERING.

No.	Size	Colours	Price
5642	6 x 9	Blue ground with dark blue borders	Shs. 59
5515	6 x 9	Blue with gold and fawn design	Shs. 99/6
5594	7 x 9	Dark blue ground with design and border in rose and gold	Shs. 105
5643	7 x 4	Black ground with design in blue and fawn	Shs. 78/6
5607	9 x 5	Green ground with blue border with design in pink and blue	Shs. 350
5608	9 x 9	Light cream ground, design in blue and pink	Shs. 320
5609	9 x 9	Blue ground with fawn border	Shs. 320
5610	10 1/2 x 9	Canot fawn ground, design and border in brown and blue	Shs. 360
5611	12 x 9	Fawn ground design in brown and blue	Shs. 360
5612	12 x 9	Green ground border blue and fawn	Shs. 400
5613	12 x 11	Reddish brown ground with design and border in black-blue	Shs. 400
5614	12 x 11	Dark blue ground with rose design and border	Shs. 550
5615	15 x 11	Old gold ground with design in blue	Shs. 600

These prices are subject to 5 per cent cash discount.



P.O. Box 255, "Phena 138," Nairobi.

MOTORING TOPICS

THE BUICK 1926 MODELS.

Latest Designs Embody Most Advanced Improvements.

INCREASED POWER IN ENGINES.

Details of the Most Recent Features in Motor Car Construction.

(Continued from yesterday)

The method of fit has been adopted and Motor Heads have been made for the purpose of increasing power. The heads have been designed to take the valves in a more compact and efficient manner, thus increasing the compression ratio and the volume of air entering the cylinder.

The upper crank case has been changed from aluminum to cast iron with detachable oil sump housing. The cast iron sump now gives a much more rigid support for the crank shaft and is less subject to distortion and therefore gives smoother engine performance.

The detachable oil sump housing with integral motor sump is a marked improvement from the standpoint of service, and is necessary only to replace the oil which has been used. The motor shafts are now constructed entirely of steel, which is a marked improvement over the previous practice of using brass or bronze for the crank pin and connecting rod ends.

The valve lifters are now ground to provide better lubrication and prevent scoring. Balances have been added to give more lasting service.

Each engine has been made in the most modern system of the best modern design which we

have particular pains to think of the utmost benefit of it, and the most perfect of the engine is to separate the fine particles of dust from the air before it enters the combustion chamber.

It is a great deal of work to do in a small space, and the engine is designed to do it in a most efficient manner. The engine is designed to do it in a most efficient manner. The engine is designed to do it in a most efficient manner.

The motor sump has been designed to take the valves in a more compact and efficient manner, thus increasing the compression ratio and the volume of air entering the cylinder.

The upper crank case has been changed from aluminum to cast iron with detachable oil sump housing. The cast iron sump now gives a much more rigid support for the crank shaft and is less subject to distortion and therefore gives smoother engine performance.

The detachable oil sump housing with integral motor sump is a marked improvement from the standpoint of service, and is necessary only to replace the oil which has been used. The motor shafts are now constructed entirely of steel, which is a marked improvement over the previous practice of using brass or bronze for the crank pin and connecting rod ends.

The valve lifters are now ground to provide better lubrication and prevent scoring. Balances have been added to give more lasting service.

Each engine has been made in the most modern system of the best modern design which we

have particular pains to think of the utmost benefit of it, and the most perfect of the engine is to separate the fine particles of dust from the air before it enters the combustion chamber.

It is a great deal of work to do in a small space, and the engine is designed to do it in a most efficient manner. The engine is designed to do it in a most efficient manner. The engine is designed to do it in a most efficient manner.

Special...
To Readers of East African Standard.

We are constantly...
What are our...
We are constantly...
What are our...
We are constantly...
What are our...

TO INTENDING PURCHASERS

We invite you to...
consult us before...
We are also...
For our services...
charge you nothing...
TO THOSE WHO WISH TO DISPOSE OF PROPERTY

We are constantly...
What are our...
We are constantly...
What are our...
We are constantly...
What are our...

TO THOSE WHO WISH TO DISPOSE OF PROPERTY

We are constantly...
What are our...
We are constantly...
What are our...
We are constantly...
What are our...

TO THOSE WHO WISH TO DISPOSE OF PROPERTY

We are constantly...
What are our...
We are constantly...
What are our...
We are constantly...
What are our...

TO THOSE WHO WISH TO DISPOSE OF PROPERTY

We are constantly...
What are our...
We are constantly...
What are our...
We are constantly...
What are our...

TO THOSE WHO WISH TO DISPOSE OF PROPERTY

We are constantly...
What are our...
We are constantly...
What are our...
We are constantly...
What are our...

TO THOSE WHO WISH TO DISPOSE OF PROPERTY

We are constantly...
What are our...
We are constantly...
What are our...
We are constantly...
What are our...

TO THOSE WHO WISH TO DISPOSE OF PROPERTY

We are constantly...
What are our...
We are constantly...
What are our...
We are constantly...
What are our...

TO THOSE WHO WISH TO DISPOSE OF PROPERTY

We are constantly...
What are our...
We are constantly...
What are our...
We are constantly...
What are our...

Clean Sparkling Oil All the Time



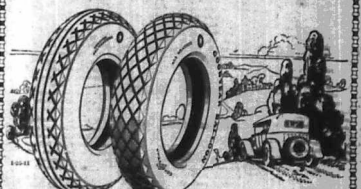
Oil filter

BUICK'S Oil Filter removes all carbon, grit and foreign particles by microscopic filtration. All oil is passed through the filter 5 times each 20 miles of running and is returned to the engine pure and clean.

Think what this means to the life of the Buick motor. Consider the saving in oil.

BUICK

Giffillan & Company, Ltd.
DISTRIBUTORS



Fit Your Ford or Durant with Goodyear Balloons

The day of pleasant light car motoring is here. Ford and Durant owners can now enjoy utmost motoring comfort with balloon tyres.

Maximum cushioning and mileage are now possible with Goodyear Balloon Tyres, for they are built with SUPER-TWIST.

SUPER-TWIST is a new word material with greater elasticity and flexibility, developed expressly to cushion and insulate from ball-bounces, ruts and bumps. Goodyear Balloon Tyres reduce vibration and increase the life of your car. Next time buy Goodyear's and enjoy every balloon tyre advantage.

For Better Motoring
GOODYEAR
BALLOON TYRES
Made With SUPER-TWIST

THIS IS YOUR WHEEL TO BEAR IN MIND

You may wish to...
own property in...
Agent's Commission...
intending buyers...
to buy from...
direct with a view...
the property...
to be...
2020

2020

2020

2020

2020

2020

2020

2020

2020

STANDARD PAPER EDITION.
Situations wanted.
Moses in Sinai.
The Most Question.
ONE OF MILLERS.

SITUATIONS WANTED.
Moses in Sinai.
The Most Question.
ONE OF MILLERS.

THE EAST AFRICAN STANDARD.
EQUATOR SAW MILLS.
PODD - CEDAR - HARDWOODS.
Nairobi or Maji Mazuri.
Aak for Price List.

EQUATOR SAW MILLS.
PODD - CEDAR - HARDWOODS.
Nairobi or Maji Mazuri.
Aak for Price List.
SOLE AGENTS IN KENYA FOR Silvertown (Oak) Wood Preservative.

BOARD RESIDENCES.
CHAPOARD HOUSE.
BOARD RESIDENCES available.

TO LET.
MAGAZINES.
MAGAZINES for sale.

THE EAST AFRICAN STANDARD.
EQUATOR SAW MILLS.
PODD - CEDAR - HARDWOODS.
Nairobi or Maji Mazuri.
Aak for Price List.

BRITISH INDIA STEAM NAVIGATION COMPANY, LTD.
AND PENINSULAR AND ORIENTAL STEAM NAVIGATION CO.
LONDON AND SAN FRANCISCO.
SINGAPORE AND SUEZ.

Y.M.C.A. Residential Club.
An ideal residence for men.
Large extending and improving.

TO LET.
MAGAZINES.
MAGAZINES for sale.

THE EAST AFRICAN STANDARD.
EQUATOR SAW MILLS.
PODD - CEDAR - HARDWOODS.
Nairobi or Maji Mazuri.
Aak for Price List.

GOWNES.
FOR ALL OCCASIONS.
"Jeannet" NAIROBI.
SPECIAL DEPARTMENT FOR CHILDREN.
"Avenue House" Sixth Avenue.
P. O. Box 227.

WANTED.
MEDICAL STATIONERY.
JOHN RIFKIN.
WAGON BUILDER.

THE VERY LATEST!!!
THE BESTWAY.
Cookery Gift Books.
This book tells you all those important details...

THE EAST AFRICAN STANDARD.
EQUATOR SAW MILLS.
PODD - CEDAR - HARDWOODS.
Nairobi or Maji Mazuri.
Aak for Price List.

Useful and Interesting Gifts.
At TAWS Government Road Nairobi.
A FEW SUGGESTIONS CHOSEN FROM THE BEST MANUFACTURERS.
LEATHER GOODS, SILVERWARE, BRASSWARE, GIFT STATIONERY.

WANTED.
MEDICAL STATIONERY.
JOHN RIFKIN.
WAGON BUILDER.

THE VERY LATEST!!!
THE BESTWAY.
Cookery Gift Books.
This book tells you all those important details...

THE EAST AFRICAN STANDARD.
EQUATOR SAW MILLS.
PODD - CEDAR - HARDWOODS.
Nairobi or Maji Mazuri.
Aak for Price List.

DO NOT FORGET!
"GET IT AT JACOBS" if you want value for your money.
Our Xmas Bazaar is now in full swing. Don't let the children miss the Preliminary on Saturday mornings at 11 o'clock.

THE COST OF LIVING.

Bacon Costs and Production.
WHEAT IN THE PRICE PAID TO THE FARMER.

Need for Scientific Breeding.

WOMEN STRUGGLE THROUGH THE ATTRACTIVE OFFERS OF MAIZE AND WHEAT.

The argument might be advanced that the...
The maize industry...
The wheat industry...

A SIDE-LINE.

PRICES.

Table with 2 columns: Item and Price. Includes items like Flour, Beans, and various oils.

A DEFINITE SHORTAGE.

A TRAGIC HISTORY.

Of course there is a risk of over-production...
The maize industry...
The wheat industry...

Bring the Cinema to Your Home for Xmas

Let us demonstrate this wonderful achievement...
The House for Quality

HOMEWARD BOUND.

Managers Marriages.
The Week's Big Lyric Film.

The fact that Mr. W. Whitcomb...
The Lyric cinema...
The week's big lyric film...

THE 'MORNING GALLERY.'

The 'Morning Gallery'...
The Lyric cinema...
The week's big lyric film...

Dr. Andrew Day.

Physically Laid.

The Lyric cinema...
The week's big lyric film...
Physically laid...

FACTORY COSTS.

Completed factory orders...
The Lyric cinema...
The week's big lyric film...

Smash Wheat.

Smashing in Durban.

Smashing in Durban.

Smashing in Durban.

Smashing in Durban.

Smashing in Durban.

Smashing in Durban.

Smashing in Durban.

Smashing in Durban.

THE EAST AFRICAN STANDARD

DR. LIVINGSTONE.

CORRESPONDENCE

THE OPINION.

THE OPINION.

THE OPINION.

THE OPINION.

THE OPINION.

THE OPINION.

THE OPINION.

THE OPINION.

THE OPINION.

THE OPINION.

THE OPINION.

THE OPINION.

THE OPINION.

THE OPINION.

THE OPINION.

THE OPINION.

THE OPINION.

THE OPINION.

THE OPINION.

THE OPINION.

THE OPINION.

THE OPINION.

THE OPINION.

THE OPINION.

THE OPINION.

THE OPINION.

THE OPINION.

THE OPINION.

THE OPINION.

LYRIC HALL
TO-NIGHT at 8-45.
Mr. A. WETHERELL
Presents
'LIVINGSTONE'
The Great Film production of the Life of the famous Explorer.

DON'T RISK WET FEET
No. 1081. 1183 Goldstead.
Water Proof Zinc Dials. Without Cap.
The Tramp Boot. No. 1082. No. 424 Field Boot.
Eadles Footwear, Ltd.
No. 140 NAIROBI. Phone 428.

THEATRE ROYAL Saturday at 8-30.
TO-NIGHT
FRIDAY and SATURDAY,
November 20th, 21th, 22th.
STELLA MARIS
THE STORY IS BY
W. J. Locke
An American production featuring
MARY PICKFORD
And the prices only
One shilling, 2/-, 3/-, 4/-.

WARINGS
Expiration of Lease.
ANOTHER MARVELLOUS OPPORTUNITY
BUT YOU MUST BUY NOW IF YOU
WANT TO MAKE USE OF IT.
Made Fresh Vell Fricks up to 28 inch length.
Original Price 8/6. Now 7/6.
Made Tinsley Fricks up to 28 inch length.
Original Price 8/6. Now 7/6.
Ladies First Hand Made Night Dresses
Original Price 10/6. Now 9/6.

R. E. A. A. A.
METAL DANGER SIGNS
Required as soon as possible quotations for
6000 metal signs.
Further information regarding price,
delivery, etc., can be obtained from
R. E. A. A. A.
L. D. GALTON-YEMM,
Hon. Secretary.

THE COST OF LIVING.

Recent Costs and Production.

SHARP RISE IN THE PRICE PAID TO THE FARMER.

Need for Scientific Breeding.

FARMER SUFFERS THROUGH THE ATTRACTIVE PRIZES OF HAIR AND WHEAT.

The greatest need to be addressed in the present time is the need for scientific breeding. It is the only way to increase the productivity of our farms and to ensure that the farmer receives a fair price for his produce. The Government should take steps to encourage scientific breeding and to provide the farmer with the necessary facilities and information.

HOMEWARD BOUND.

Managers Marries.

CARDER'S "GALLERY"

The late Mr. A. W. Gardner, who was married to the late Mrs. A. W. Gardner, is the subject of a notice in the "Gallery" of the Homeward Bound. The notice mentions the date of the wedding and the names of the witnesses.

THE EAST AFRICAN STANDARD

Dr. LIVINGSTONE.

The Week's Big Lyrical Film.

The fact that Dr. A. Livingstone is the subject of a notice in the "Gallery" of the East African Standard is a matter of interest to many of our readers. The notice mentions the date of his arrival in the country and the work he has done since then.

CORRESPONDENCE

THE OFFICIAL.

TO THE EDITOR, "THE STANDARD."

I am writing to you to express my appreciation for the article you published in your issue of the 25th inst. regarding the work of the Government. I am sure that your readers will be interested to hear what I have to say on this subject.

LYRIC HALL

TO-NIGHT at 8-45.
Mr. A. WETHERELL
Presents
"LIVINGSTONE"
The Great Film production of the Life of the famous Explorer.
Plan of Booking at the Lyric.
Book Early
Matinee this Saturday at 3 p.m.
Children half price

DON'T RISK WET FEET

No. 333 1189 Coloured 35/

Water proof Ziegler Without Cap

The Tramp Boot No. 1291. No. 423. Field Boot.

Eadles Footwear, Ltd.
Box 148. NAIROBI. Phone 482

THEATRE ROYAL MATINEE

8-45 Sat. at 3-30

BEST PROGRAMME SHOWING IN NAIROBI

TO-NIGHT

FRIDAY and SATURDAY, November 26th, 27th, 28th

MATINEE Saturday, Nov. 28th at 3-30 p.m.

STELLA MARIS

The Story by W. J. Locke

AN AMERICAN PRODUCTION BY

ART CRAFT PICTURES

THE STAR IS

MARY PICKFORD

AND THE PRICE IS ONLY

Circle Shs. 3-00, Stalls Shs. 2-00, Pitt Sh. 1-00

THE EAST AFRICAN STANDARD

TO-NIGHT

STELLA MARIS

THE STORY IS BY

W. J. Locke

MARY PICKFORD

AN AMERICAN PRODUCTION BY

ART CRAFT PICTURES

THE STAR IS

MARY PICKFORD

AND THE PRICE IS ONLY

Circle Shs. 3-00, Stalls Shs. 2-00, Pitt Sh. 1-00

THEATRE ROYAL

TO-NIGHT

STELLA MARIS

THE STORY IS BY

W. J. Locke

MARY PICKFORD

AN AMERICAN PRODUCTION BY

ART CRAFT PICTURES

THE STAR IS

MARY PICKFORD

AND THE PRICE IS ONLY

Circle Shs. 3-00, Stalls Shs. 2-00, Pitt Sh. 1-00

THEATRE ROYAL

TO-NIGHT

STELLA MARIS

THE STORY IS BY

W. J. Locke

MARY PICKFORD

AN AMERICAN PRODUCTION BY

ART CRAFT PICTURES

THE STAR IS

MARY PICKFORD

AND THE PRICE IS ONLY

Circle Shs. 3-00, Stalls Shs. 2-00, Pitt Sh. 1-00

Bring the Cinema to Your Home for Xmas

Let us demonstrate this wonderful achievement to you, in our store at any time that suits you. Make permanent and living records of your happy hours. Live them again when ever you feel like it with the help of THE BABY PATHE CINEMA.

The House for Quality

R. E. A. A.

METAL DANGER SIGNS.

Required as soon as possible quotations for 6000 metal danger signs in various sizes, material, painted black.

Further information regarding price, size, delivery, etc. can be obtained from R. E. A. A. Office.

L. D. GALTON-YEHL
Hon. Secretary

WARINGS

Expiration of Lease.

ANOTHER MARVELLOUS OPPORTUNITY BUT YOU MUST BEY NOW IF YOU WANT TO MAKE USE OF IT.

Maid's French Walls Frises up to 48 inch length. Shs. 79/6W All one Price Shs. 15/-

Maid's Tonnies Fricks up to 36 inch length. Original Price Shs. 67/- All one Price Shs. 15/-

Ladies Fine Head Made Night Dresses Original Price - Shs. 90/- All one Price. Shs. 15/-

Africa House, Government Road, NAIROBI.

Leadership and why

Business Men require leadership in order to be successful. It is the man who leads who makes the difference between a failure and a success. It is the man who leads who makes the difference between a loss and a gain. It is the man who leads who makes the difference between a defeat and a victory. It is the man who leads who makes the difference between a disappointment and a triumph. It is the man who leads who makes the difference between a failure and a success. It is the man who leads who makes the difference between a loss and a gain. It is the man who leads who makes the difference between a defeat and a victory. It is the man who leads who makes the difference between a disappointment and a triumph.

PHYSICIAN **DR. J. H. SIMMONS, (E.A.) Ltd**
 NAIROBI.
 Telephone: 322. 323. 324. 325. 326. 327. 328. 329. 330. 331. 332. 333. 334. 335. 336. 337. 338. 339. 340. 341. 342. 343. 344. 345. 346. 347. 348. 349. 350. 351. 352. 353. 354. 355. 356. 357. 358. 359. 360. 361. 362. 363. 364. 365. 366. 367. 368. 369. 370. 371. 372. 373. 374. 375. 376. 377. 378. 379. 380. 381. 382. 383. 384. 385. 386. 387. 388. 389. 390. 391. 392. 393. 394. 395. 396. 397. 398. 399. 400. 401. 402. 403. 404. 405. 406. 407. 408. 409. 410. 411. 412. 413. 414. 415. 416. 417. 418. 419. 420. 421. 422. 423. 424. 425. 426. 427. 428. 429. 430. 431. 432. 433. 434. 435. 436. 437. 438. 439. 440. 441. 442. 443. 444. 445. 446. 447. 448. 449. 450. 451. 452. 453. 454. 455. 456. 457. 458. 459. 460. 461. 462. 463. 464. 465. 466. 467. 468. 469. 470. 471. 472. 473. 474. 475. 476. 477. 478. 479. 480. 481. 482. 483. 484. 485. 486. 487. 488. 489. 490. 491. 492. 493. 494. 495. 496. 497. 498. 499. 500. 501. 502. 503. 504. 505. 506. 507. 508. 509. 510. 511. 512. 513. 514. 515. 516. 517. 518. 519. 520. 521. 522. 523. 524. 525. 526. 527. 528. 529. 530. 531. 532. 533. 534. 535. 536. 537. 538. 539. 540. 541. 542. 543. 544. 545. 546. 547. 548. 549. 550. 551. 552. 553. 554. 555. 556. 557. 558. 559. 560. 561. 562. 563. 564. 565. 566. 567. 568. 569. 570. 571. 572. 573. 574. 575. 576. 577. 578. 579. 580. 581. 582. 583. 584. 585. 586. 587. 588. 589. 590. 591. 592. 593. 594. 595. 596. 597. 598. 599. 600. 601. 602. 603. 604. 605. 606. 607. 608. 609. 610. 611. 612. 613. 614. 615. 616. 617. 618. 619. 620. 621. 622. 623. 624. 625. 626. 627. 628. 629. 630. 631. 632. 633. 634. 635. 636. 637. 638. 639. 640. 641. 642. 643. 644. 645. 646. 647. 648. 649. 650. 651. 652. 653. 654. 655. 656. 657. 658. 659. 660. 661. 662. 663. 664. 665. 666. 667. 668. 669. 670. 671. 672. 673. 674. 675. 676. 677. 678. 679. 680. 681. 682. 683. 684. 685. 686. 687. 688. 689. 690. 691. 692. 693. 694. 695. 696. 697. 698. 699. 700. 701. 702. 703. 704. 705. 706. 707. 708. 709. 710. 711. 712. 713. 714. 715. 716. 717. 718. 719. 720. 721. 722. 723. 724. 725. 726. 727. 728. 729. 730. 731. 732. 733. 734. 735. 736. 737. 738. 739. 740. 741. 742. 743. 744. 745. 746. 747. 748. 749. 750. 751. 752. 753. 754. 755. 756. 757. 758. 759. 760. 761. 762. 763. 764. 765. 766. 767. 768. 769. 770. 771. 772. 773. 774. 775. 776. 777. 778. 779. 780. 781. 782. 783. 784. 785. 786. 787. 788. 789. 790. 791. 792. 793. 794. 795. 796. 797. 798. 799. 800. 801. 802. 803. 804. 805. 806. 807. 808. 809. 810. 811. 812. 813. 814. 815. 816. 817. 818. 819. 820. 821. 822. 823. 824. 825. 826. 827. 828. 829. 830. 831. 832. 833. 834. 835. 836. 837. 838. 839. 840. 841. 842. 843. 844. 845. 846. 847. 848. 849. 850. 851. 852. 853. 854. 855. 856. 857. 858. 859. 860. 861. 862. 863. 864. 865. 866. 867. 868. 869. 870. 871. 872. 873. 874. 875. 876. 877. 878. 879. 880. 881. 882. 883. 884. 885. 886. 887. 888. 889. 890. 891. 892. 893. 894. 895. 896. 897. 898. 899. 900. 901. 902. 903. 904. 905. 906. 907. 908. 909. 910. 911. 912. 913. 914. 915. 916. 917. 918. 919. 920. 921. 922. 923. 924. 925. 926. 927. 928. 929. 930. 931. 932. 933. 934. 935. 936. 937. 938. 939. 940. 941. 942. 943. 944. 945. 946. 947. 948. 949. 950. 951. 952. 953. 954. 955. 956. 957. 958. 959. 960. 961. 962. 963. 964. 965. 966. 967. 968. 969. 970. 971. 972. 973. 974. 975. 976. 977. 978. 979. 980. 981. 982. 983. 984. 985. 986. 987. 988. 989. 990. 991. 992. 993. 994. 995. 996. 997. 998. 999. 1000.

CRUDEN'S Historical Crudeums No. 1.
 Made in Kenya.
ESCOFFIER
 SAUCE ROBERT, SAUCE MELBA, SALAD DRESSING, SAUCE FAVORITE, PICKLES.
R. P. DUNCAN'S Stores of Quality, NAIROBI.
MISS KATHLEEN BATES ARCH
 FASHIONING, SEWING, BASKETRY, THEORY OF MUSIC, AND AURAL CULTURE.
 Agency: HUGHES'S BUILDINGS, SIXTH AVENUE, P.O. BOX 114, NAIROBI.

DRINK & ENJOY VOONIA GARDEN CEYLON TEA
 Delicious Flavour Refreshing and Invigorating
 Send for Free Tasting Sample
MACKINNON BROTHERS
 2-3, NAIROBI. P.O. Box 114. Established 1868.
Past, Present and Future
 In the past gathering its age in the cellars of Scotland. At present gathering its prestige among the connoisseurs of the world, and in future to be known as the Best Whisky produced in Scotland. This is
"LONG JOHN" SPECIAL RESERVE SCOTCH WHISKY.
 Wholesale Distributors: **D. EPSTEIN & Co.** P.O. Box 112, NAIROBI. Phone 64.

MUNICIPAL COUNCIL

The Mayor, Mr. J. H. Simmons, presided at the meeting of the Council held on Monday evening, 25th inst.

WALLS SHOWING SIGNS OF COLLAPSE.
 A General Meeting of the Health Committee, Council, took place on Monday afternoon, at which the report of the Council was read and approved. The Mayor, before proceeding to the business of the evening, made a brief reference to the walls of the Council Chamber, which were being repaired by the contractor, and he stated that the walls were showing signs of collapse.

WATER.
 After the Mayor had read the Report of the Water Committee, he stated that the Council had decided to purchase the water supply from the Government.

IMPROVED DRAINAGE.
 The Municipal Engineer submitted a plan for the improvement of the drainage of the town, and the Council decided to purchase the plan from the Engineer.

PARISH NEW AREA.
 A scheme of paving to be carried out in the Parish of St. John's, and the Council decided to purchase the plan from the Engineer.

WATER SUPPLY.
 The Council decided to purchase the water supply from the Government.

WATER SUPPLY.
 The Council decided to purchase the water supply from the Government.

WATER SUPPLY.
 The Council decided to purchase the water supply from the Government.

WATER SUPPLY.
 The Council decided to purchase the water supply from the Government.

WATER SUPPLY.
 The Council decided to purchase the water supply from the Government.

WATER SUPPLY.
 The Council decided to purchase the water supply from the Government.

WATER SUPPLY.
 The Council decided to purchase the water supply from the Government.

WATER SUPPLY.
 The Council decided to purchase the water supply from the Government.

WATER SUPPLY.
 The Council decided to purchase the water supply from the Government.

WATER SUPPLY.
 The Council decided to purchase the water supply from the Government.

WATER SUPPLY.
 The Council decided to purchase the water supply from the Government.

WATER SUPPLY.
 The Council decided to purchase the water supply from the Government.

WATER SUPPLY.
 The Council decided to purchase the water supply from the Government.

WATER SUPPLY.
 The Council decided to purchase the water supply from the Government.

WATER SUPPLY.
 The Council decided to purchase the water supply from the Government.

WATER SUPPLY.
 The Council decided to purchase the water supply from the Government.

WATER SUPPLY.
 The Council decided to purchase the water supply from the Government.

WATER SUPPLY.
 The Council decided to purchase the water supply from the Government.

WATER SUPPLY.
 The Council decided to purchase the water supply from the Government.

WATER SUPPLY.
 The Council decided to purchase the water supply from the Government.

WATER SUPPLY.
 The Council decided to purchase the water supply from the Government.

WATER SUPPLY.
 The Council decided to purchase the water supply from the Government.

WATER SUPPLY.
 The Council decided to purchase the water supply from the Government.

WATER SUPPLY.
 The Council decided to purchase the water supply from the Government.

WATER SUPPLY.
 The Council decided to purchase the water supply from the Government.

WATER SUPPLY.
 The Council decided to purchase the water supply from the Government.

WATER SUPPLY.
 The Council decided to purchase the water supply from the Government.

WATER SUPPLY.
 The Council decided to purchase the water supply from the Government.

WATER SUPPLY.
 The Council decided to purchase the water supply from the Government.

WATER SUPPLY.
 The Council decided to purchase the water supply from the Government.

had been approved with a view to the purchase of the water supply from the Government.

MEMORIAL HALL.
 The Mayor, Mr. J. H. Simmons, presided at the meeting of the Council held on Monday evening, 25th inst.

MEMORIAL HALL.
 The Mayor, Mr. J. H. Simmons, presided at the meeting of the Council held on Monday evening, 25th inst.

MEMORIAL HALL.
 The Mayor, Mr. J. H. Simmons, presided at the meeting of the Council held on Monday evening, 25th inst.

MEMORIAL HALL.
 The Mayor, Mr. J. H. Simmons, presided at the meeting of the Council held on Monday evening, 25th inst.

MEMORIAL HALL.
 The Mayor, Mr. J. H. Simmons, presided at the meeting of the Council held on Monday evening, 25th inst.

MEMORIAL HALL.
 The Mayor, Mr. J. H. Simmons, presided at the meeting of the Council held on Monday evening, 25th inst.

MEMORIAL HALL.
 The Mayor, Mr. J. H. Simmons, presided at the meeting of the Council held on Monday evening, 25th inst.

MEMORIAL HALL.
 The Mayor, Mr. J. H. Simmons, presided at the meeting of the Council held on Monday evening, 25th inst.

MEMORIAL HALL.
 The Mayor, Mr. J. H. Simmons, presided at the meeting of the Council held on Monday evening, 25th inst.

MEMORIAL HALL.
 The Mayor, Mr. J. H. Simmons, presided at the meeting of the Council held on Monday evening, 25th inst.

MEMORIAL HALL.
 The Mayor, Mr. J. H. Simmons, presided at the meeting of the Council held on Monday evening, 25th inst.

MEMORIAL HALL.
 The Mayor, Mr. J. H. Simmons, presided at the meeting of the Council held on Monday evening, 25th inst.

MEMORIAL HALL.
 The Mayor, Mr. J. H. Simmons, presided at the meeting of the Council held on Monday evening, 25th inst.

MEMORIAL HALL.
 The Mayor, Mr. J. H. Simmons, presided at the meeting of the Council held on Monday evening, 25th inst.

MEMORIAL HALL.
 The Mayor, Mr. J. H. Simmons, presided at the meeting of the Council held on Monday evening, 25th inst.

MEMORIAL HALL.
 The Mayor, Mr. J. H. Simmons, presided at the meeting of the Council held on Monday evening, 25th inst.

MEMORIAL HALL.
 The Mayor, Mr. J. H. Simmons, presided at the meeting of the Council held on Monday evening, 25th inst.

Our Latest Invention

HANDBLESCHROEIMER, MAJORS & B.A. RUFER.
 In Pat. No. 7, 8, 9, 10, 11, 12, 13, 14, 15, 16, 17, 18, 19, 20, 21, 22, 23, 24, 25, 26, 27, 28, 29, 30, 31, 32, 33, 34, 35, 36, 37, 38, 39, 40, 41, 42, 43, 44, 45, 46, 47, 48, 49, 50, 51, 52, 53, 54, 55, 56, 57, 58, 59, 60, 61, 62, 63, 64, 65, 66, 67, 68, 69, 70, 71, 72, 73, 74, 75, 76, 77, 78, 79, 80, 81, 82, 83, 84, 85, 86, 87, 88, 89, 90, 91, 92, 93, 94, 95, 96, 97, 98, 99, 100.

MAJORS & B.A. RUFER.
 In Pat. No. 7, 8, 9, 10, 11, 12, 13, 14, 15, 16, 17, 18, 19, 20, 21, 22, 23, 24, 25, 26, 27, 28, 29, 30, 31, 32, 33, 34, 35, 36, 37, 38, 39, 40, 41, 42, 43, 44, 45, 46, 47, 48, 49, 50, 51, 52, 53, 54, 55, 56, 57, 58, 59, 60, 61, 62, 63, 64, 65, 66, 67, 68, 69, 70, 71, 72, 73, 74, 75, 76, 77, 78, 79, 80, 81, 82, 83, 84, 85, 86, 87, 88, 89, 90, 91, 92, 93, 94, 95, 96, 97, 98, 99, 100.

MAJORS & B.A. RUFER.
 In Pat. No. 7, 8, 9, 10, 11, 12, 13, 14, 15, 16, 17, 18, 19, 20, 21, 22, 23, 24, 25, 26, 27, 28, 29, 30, 31, 32, 33, 34, 35, 36, 37, 38, 39, 40, 41, 42, 43, 44, 45, 46, 47, 48, 49, 50, 51, 52, 53, 54, 55, 56, 57, 58, 59, 60, 61, 62, 63, 64, 65, 66, 67, 68, 69, 70, 71, 72, 73, 74, 75, 76, 77, 78, 79, 80, 81, 82, 83, 84, 85, 86, 87, 88, 89, 90, 91, 92, 93, 94, 95, 96, 97, 98, 99, 100.

MAJORS & B.A. RUFER.
 In Pat. No. 7, 8, 9, 10, 11, 12, 13, 14, 15, 16, 17, 18, 19, 20, 21, 22, 23, 24, 25, 26, 27, 28, 29, 30, 31, 32, 33, 34, 35, 36, 37, 38, 39, 40, 41, 42, 43, 44, 45, 46, 47, 48, 49, 50, 51, 52, 53, 54, 55, 56, 57, 58, 59, 60, 61, 62, 63, 64, 65, 66, 67, 68, 69, 70, 71, 72, 73, 74, 75, 76, 77, 78, 79, 80, 81, 82, 83, 84, 85, 86, 87, 88, 89, 90, 91, 92, 93, 94, 95, 96, 97, 98, 99, 100.

MAJORS & B.A. RUFER.
 In Pat. No. 7, 8, 9, 10, 11, 12, 13, 14, 15, 16, 17, 18, 19, 20, 21, 22, 23, 24, 25, 26, 27, 28, 29, 30, 31, 32, 33, 34, 35, 36, 37, 38, 39, 40, 41, 42, 43, 44, 45, 46, 47, 48, 49, 50, 51, 52, 53, 54, 55, 56, 57, 58, 59, 60, 61, 62, 63, 64, 65, 66, 67, 68, 69, 70, 71, 72, 73, 74, 75, 76, 77, 78, 79, 80, 81, 82, 83, 84, 85, 86, 87, 88, 89, 90, 91, 92, 93, 94, 95, 96, 97, 98, 99, 100.

MAJORS & B.A. RUFER.
 In Pat. No. 7, 8, 9, 10, 11, 12, 13, 14, 15, 16, 17, 18, 19, 20, 21, 22, 23, 24, 25, 26, 27, 28, 29, 30, 31, 32, 33, 34, 35, 36, 37, 38, 39, 40, 41, 42, 43, 44, 45, 46, 47, 48, 49, 50, 51, 52, 53, 54, 55, 56, 57, 58, 59, 60, 61, 62, 63, 64, 65, 66, 67, 68, 69, 70, 71, 72, 73, 74, 75, 76, 77, 78, 79, 80, 81, 82, 83, 84, 85, 86, 87, 88, 89, 90, 91, 92, 93, 94, 95, 96, 97, 98, 99, 100.

MAJORS & B.A. RUFER.
 In Pat. No. 7, 8, 9, 10, 11, 12, 13, 14, 15, 16, 17, 18, 19, 20, 21, 22, 23, 24, 25, 26, 27, 28, 29, 30, 31, 32, 33, 34, 35, 36, 37, 38, 39, 40, 41, 42, 43, 44, 45, 46, 47, 48, 49, 50, 51, 52, 53, 54, 55, 56, 57, 58, 59, 60, 61, 62, 63, 64, 65, 66, 67, 68, 69, 70, 71, 72, 73, 74, 75, 76, 77, 78, 79, 80, 81, 82, 83, 84, 85, 86, 87, 88, 89, 90, 91, 92, 93, 94, 95, 96, 97, 98, 99, 100.

MAJORS & B.A. RUFER.
 In Pat. No. 7, 8, 9, 10, 11, 12, 13, 14, 15, 16, 17, 18, 19, 20, 21, 22, 23, 24, 25, 26, 27, 28, 29, 30, 31, 32, 33, 34, 35, 36, 37, 38, 39, 40, 41, 42, 43, 44, 45, 46, 47, 48, 49, 50, 51, 52, 53, 54, 55, 56, 57, 58, 59, 60, 61, 62, 63, 64, 65, 66, 67, 68, 69, 70, 71, 72, 73, 74, 75, 76, 77, 78, 79, 80, 81, 82, 83, 84, 85, 86, 87, 88, 89, 90, 91, 92, 93, 94, 95, 96, 97, 98, 99, 100.

MAJORS & B.A. RUFER.
 In Pat. No. 7, 8, 9, 10, 11, 12, 13, 14, 15, 16, 17, 18, 19, 20, 21, 22, 23, 24, 25, 26, 27, 28, 29, 30, 31, 32, 33, 34, 35, 36, 37, 38, 39, 40, 41, 42, 43, 44, 45, 46, 47, 48, 49, 50, 51, 52, 53, 54, 55, 56, 57, 58, 59, 60, 61, 62, 63, 64, 65, 66, 67, 68, 69, 70, 71, 72, 73, 74, 75, 76, 77, 78, 79, 80, 81, 82, 83, 84, 85, 86, 87, 88, 89, 90, 91, 92, 93, 94, 95, 96, 97, 98, 99, 100.

MAJORS & B.A. RUFER.
 In Pat. No. 7, 8, 9, 10, 11, 12, 13, 14, 15, 16, 17, 18, 19, 20, 21, 22, 23, 24, 25, 26, 27, 28, 29, 30, 31, 32, 33, 34, 35, 36, 37, 38, 39, 40, 41, 42, 43, 44, 45, 46, 47, 48, 49, 50, 51, 52, 53, 54, 55, 56, 57, 58, 59, 60, 61, 62, 63, 64, 65, 66, 67, 68, 69, 70, 71, 72, 73, 74, 75, 76, 77, 78, 79, 80, 81, 82, 83, 84, 85, 86, 87, 88, 89, 90, 91, 92, 93, 94, 95, 96, 97, 98, 99, 100.

ARMS & AMMUNITION
LARGE STOCKS AVAILABLE ON HAND AND
WHOLESALE SUPPLIES AVAILABLE BY SPECIAL
SHAW & HUNTER
GUN & RIFLE SPECIALISTS
SOLE-LEASERS SAFARI OUTFITTERS,
207 North Avenue, NAIROBI.

THE SPORTS PAGE

EVERYTHING FOR THE ANGLER
We have over a complete stock of fishing tackle...
NATROBI

The World at Your Command
If you are prepared to be guided by the World's leading manufacturers of Rifle Apparatus...
Callia "Boncelle"
The Toilet Requisite Co.

SPORT AT KURU.
Two Cricket Matches on One Day.

AUSTRALIAN CRICKET.
South State Easily Beats the West.

A FOOTBALL PROBLEM.
Should Substitutes be Allowed?

A DIFFICULT QUESTION.
The Football Association came to a decision to allow substitutes to be used in football matches.

A BURY WEEK.
The first match of the season...
The second match...
The third match...

South State Easily Beats the West.
The match was played at Kuru...
The South State team...
The West team...

Should Substitutes be Allowed?
The Football Association...
The question of substitutes...
The decision was made...

A DIFFICULT QUESTION.
The Football Association...
The question of substitutes...
The decision was made...

FRED RAPER
GENT'S MOTOR
CITY COMMISSION AGENT.

Suits - Suits - Suits
ALIBHAI & Co.
GENTS' OUTFITTERS.

Callia "Boncelle"
The Toilet Requisite Co.
GOVERNMENT ROAD, NAIROBI.

Matches for the Coming Week.
The following matches are scheduled for the coming week...

Keays Cricket.
The Keays cricket team...
The match was played at Kuru...

Keays Cricket.
The Keays cricket team...
The match was played at Kuru...

Keays Cricket.
The Keays cricket team...
The match was played at Kuru...

ALIBHAI & Co.
GENTS' OUTFITTERS.

ALIBHAI & Co.
GENTS' OUTFITTERS.

J. R. STEPHENS & Co. Ltd
Tailors & Outfitters.
GOVERNMENT ROAD, NAIROBI.

Special Meeting.
The following special meeting was held...

Local Believers.
The following local believers were mentioned...

Local Believers.
The following local believers were mentioned...

Local Believers.
The following local believers were mentioned...

Get It From Ma
What More Acceptable
What More Certain to Please

ALIBHAI & Co.
GENTS' OUTFITTERS.

Provide Against the Rainy Weather
By giving the hood of your car a coat of water proof Hood Paint.

Local Believers.
The following local believers were mentioned...

Local Believers.
The following local believers were mentioned...

Local Believers.
The following local believers were mentioned...

Local Believers.
The following local believers were mentioned...

MAY & Co. The Sports Hut

AHAMED BROS
NAIROBI.
GENTS' OUTFITTERS.

Charles W are
The name that stands for integrity
PREFERRED TYPE ACCOUNTANT.
INCORPORATED IN ENGLAND.

Local Believers.
The following local believers were mentioned...

Local Believers.
The following local believers were mentioned...

Local Believers.
The following local believers were mentioned...

Local Believers.
The following local believers were mentioned...

AHAMED BROS
NAIROBI.
GENTS' OUTFITTERS.

AHAMED BROS
NAIROBI.
GENTS' OUTFITTERS.

NORTON
QUALITY
ARE SYNTHETIC
AND
NORTON MOTOR CYCLES
ARE AVAILABLE AT
Brimelow's Garage
P.O. Box 646, HARDINGE STREET, NAIROBI.

Local Believers.
The following local believers were mentioned...

Local Believers.
The following local believers were mentioned...

Local Believers.
The following local believers were mentioned...

Local Believers.
The following local believers were mentioned...

CENTRAL LOUNGE
RESTAURANT AND BAR.

CENTRAL LOUNGE
RESTAURANT AND BAR.

HARLEY-DAVIDSON
MOTOR CYCLES.

HARLEY-DAVIDSON
MOTOR CYCLES.

REAL "MIRZAPUR" CARPETS AND RUGS OF EXCEPTIONAL QUALITY

These Carpets have been specially selected in Mirzapur and are the finest range we have ever seen outside India. The quality is good—quite different to the cheaper grades and imitations, carpets made for export. They are good to look at and good to feel, and will outlast many cheaper carpets. You could not choose a better or more acceptable gift for Christmas.



AS THESE CARPETS WILL SELL QUICKLY IT IS ADVISABLE TO MAKE A SECOND CHOICE WHEN ORDERING.

Table with columns: No., Size, Colors, Price. Lists various carpet sizes and colors like 'Rose ground with dark blue borders' and 'Dark blue ground with design and border in rose and blue'.

These prices are subject to 5 per cent cash discount.



F.O. Box 355, Phone 218, Telegrams: "Advralorm," NAIROBI.

The East African RE BOOK 1925-1926

Handbook and Directory of Kenya, Uganda, Tanganyika and Zanzibar.

700 Pages of Useful Information.

Price Shs. 20. Posted Shs. 22.

Standard Stationery Stores

P.O. Box 380 NAIROBI

REPUTATION MAINTAINED THE EXPRESS TRANSPORT COY. Carriage Contractors to Uganda Railway. COFFEE CARTERS Clearing, Storage, and Transport Agents. Fuel Suppliers.

P. STEWART. CASHIERS. PAINTERS & DECORATORS. BATHING STAIRS. Age, Color, and Condition. BATHING, GOLFING, and more. Coach & Motor Repairing. P.O. Box 261, NAIROBI.

MOTORING TOPICS

THE BUICK 1926 MODELS.

Latest Designs Embody Most Advanced Improvements.

INCREASED POWER IN ENGINES.

Details of the Most Recent Features in Motor Car Construction.

(Continued from yesterday)

CLUTCHES The clutch has been re-designed by attaching the "friction" compound directly to the shaft of the shaft drum, thus to apply the friction instead of engaging them. The adjustment of these levers is completely automatic and they are very sensitive.

LIGHTING The new head lights for the 1926 models have considerable light bearing and are the most substantial improvement in details our lighting needs to date. The volume of light was easily controlled by a switch mounted conveniently at the center of the steering wheel instead of directing the light forward. The light beams are deflected downwards in front of the car, thus directing the beam of light on the high way.

STEERING The steering mechanism and without any moving parts, with no springs, but with special control of light lights and an automatic clutch. The clutch mechanism has been improved by cable-actuated. A foot is provided to operate the clutch without the necessity of any other device.

BRAKES Gently applied braking with lighter pedal pressure has been secured.

When the top is down and the springs come into operation. When the top is down and the springs come into operation. When the top is down and the springs come into operation.

Another big improvement is the rigid steel rear suspension side-rod which has been changed to a solid rod. This side-rod has been made of steel and is very strong.

ADJUSTABLE FRONT SEATS The front seats are adjustable in all directions with the hand-lever. The front seats are adjustable in all directions with the hand-lever.

TIRES The Standard Buick five passenger touring car is equipped with 31 x 2.25 Heavy Duty tires. The Standard Buick five passenger touring car is equipped with 31 x 2.25 Heavy Duty tires.

THE SPORTS MODEL The Sports Model Buick is obtained in the Standard model only, but in two different body types.

TO BE OBTAINED ONLY BY ORDERING FROM THE STANDARD BUICK MOTOR CAR CO., LIAISON, 400 N. 1ST ST., PHOENIX, ARIZONA.

Pathe Baby Cinema

FREE DEMONSTRATIONS AT THE GRAFTON STUDIOS, TRUFF CHAMBERS, GOVERNMENT ROAD, NAIROBI.

Take living pictures of your own children, your sport and pleasure trips, and secure a permanent living record of your stay in Kenya.

KENYA ANGLING ASSOCIATION

An Extraordinary General Meeting of the Kenya Angling Association is called for Saturday 25 November at 10-30 a.m. To be held at the Offices of Messrs. Beales and Smithson, Avenue House, Nairobi.

AGENDA To discuss the future constitution and activities of the Association in the event of Government taking over complete control of the fishing in the Colony.

TENDERS

Invited for transport of fuel from KARURA FOREST to THE NAIROBI BRICK TILE & PIPE WORKS LTD. Distance approximately one mile

Excavation at Works of Brickmaking materials, approximate quantity required is 750 tons per week.

BEALES & SMITHSON, NAIROBI.

LIVINGSTONE

NOW SHOWING ZEBRUGGE THE GREAT NAVAL EPIC.

H.R.H. The Prince of Wales, IN WEST AFRICA. Advertisement Official Film.

Book early at the Booking Office, Lyric Hall, Seaside, 5/6c.

Cruden's Historical Crudeuns No. 2

Henry the 1st was expelling a succession of CRUDEN'S SOAN to the "White Ship," she stranded at sea. No traces appear to be left but "White Ship," Henry, it is said, "never sailed again."

CRUDEN'S

THE SOUTH AFRICAN INSURANCE CO. LTD.

Advertisement for insurance services.

To Residents of East Africa Standing

We are prepared to intend... We are also prepared to intend... We are also prepared to intend...

TO INTEND PURCHASE

We invite you to intend... We are also prepared to intend... We are also prepared to intend...

TO THOSE WHO WISH TO BE OF PROFIT

We ask you to intend... We are also prepared to intend... We are also prepared to intend...

ATKINSON'S Celebrated Californian

Poppy

ATKINSON'S Celebrated Californian Poppy. To be obtained only by ordering from THE STANDARD BUICK MOTOR CAR CO., LIAISON, 400 N. 1ST ST., PHOENIX, ARIZONA.

THIS IS YOUR WEALTH

YOUR WEALTH BEAR IN MIND

You may wish to own property in Kenya. You may wish to own property in Kenya. You may wish to own property in Kenya.

JEZEEVE AGENCY

With property in Kenya. You may wish to own property in Kenya. You may wish to own property in Kenya.

GET A SQUARE WITH REWARD MORTGAGE

Due to the position in Kenya. You may wish to own property in Kenya. You may wish to own property in Kenya.

ARE YOU SURE OF YOUR PROPERTY?

THE SOUTH AFRICAN INSURANCE CO. LTD.

THE SOUTH AFRICAN INSURANCE CO. LTD.

THE SOUTH AFRICAN INSURANCE CO. LTD.

THE SOUTH AFRICAN INSURANCE CO. LTD.

THE SOUTH AFRICAN INSURANCE CO. LTD.

HEAVY DUTY



GOODYEAR has produced a new Tyre in addition to its regular line of Balloon and High Pressure Tyres—a massive, Heavy Duty Cord.

Made heavier and stronger than is necessary for ordinary service.

It fills the need of those who drive fast and hard, who require tyres that will stand the severe grind of rough, unimproved roads, rocks, thorns, ruts, heavy loads, etc.

Thicker in the side walls, heavier and stronger in carcass construction, thicker in the tread, they give extra security, and will deliver longer mileages. And the cost is only a little above that of regular tyres.

Goodyear Heavy Duty Tyres are obtainable in the following sizes—

32 x 4

32 x 4

32 x 5

34 x 5

34 x 5

34 x 6

36 x 5

36 x 6

GOOD YEAR



Goodyear & Company, Ltd.
Wholesale Dealers
Central Eastern Africa.

1 COTTON—Tyre performance starts with raw materials. In the tyre "Cotton is King," and this Goodyear Heavy Duty Cord is built up of the finest selected "Sakeleries" Egyptian long staple cotton, the best grade money can buy.

2 CORD FABRIC—Good cotton makes good fabric, but Goodyear fabric engineers were not satisfied with that. By a secret method they developed the Goodyear Superwrist Cord—a fabric with greater elasticity and greater shock resisting strength than any other fabric yet devised. Superwrist Cord is used only in Goodyear tyres.

3 HANDBUILT CONSTRUCTION—The method of building a tyre is second in importance to the quality of the materials used. Goodyear Superwrist Cord service. Goodyear Superwrist Cord service. Superwrist and the hand built method create a combination which can be found in no other tyre. Hand built—the cord fabric is laid up into bands in which every cord is kept taut, causing every individual cord to carry exactly the same load. No weak spots.

4 GROUP PLY ASSEMBLY—When these bands are ready for the tyre (each cord under equal tension and insulated by a film of rubber) they are assembled in the carcass by Goodyear's exclusive plying. One band—two plies—with the cords in this / direction. The

next band—two plies—in the \ direction followed by the third band the plies of which alternate like this / \. Six plies with just three crossing points and the friction at these three points reduced to an absolute minimum by heavy layers of rubber.

5 THE BEAD—A strong carcass must have a firm foundation. The Goodyear braided wire bead is the most successful tyre. It is made up of FLAT strands of braided wire—21 wires tilt or wobble. It anchors the tyre to the rim. It PREVENTS tube pinching. It never breaks.

6 THE TREAD—Heavier than the tread on standard Goodyear tyres, the All-Weather tread of the Goodyear Heavy Duty Cord will protect the carcass on rough roads, over stones, or in ruts. It makes it, and twists the endless grind of the road. Its traction properties also are greater. Many-Weather-tread have left it virtually unchanged—the toughest wear-to-day.

7 THE REBBED SIDE WALLS—Made of the same stock as the All-Weather tread. These three heavy ribs, raised above the smooth level of the sidewall and carried around the tyre, offset the grinding action of curbs and ruts. They save the carcass of the tyre, and add mile on mile to its life.

OVERLAND

A COMPLETE CAR
Metal Safari Body
3 Ply Sun Proof Top
5 Tyres & Tubes
Magneto Ignition

£195

THE OVERLAND
Service Station
Sixth Avenue NAIROBI.

Count Them on the Road! The DURANT RUGBY

Just a real good car
With a sound service organisation behind it.

SIXTH AVENUE,
NAIROBI.

CARR, LAWSON & Co., Ltd.

P.O. BOX 200,
Nairobi 100.

A GOOD FOUR-CYLINDER CAR
IS UNDENIABLY BETTER THAN A CHEAP SIX
AND IMMEASURABLY THE BEST AMONG FOURS
IS THE

CHRYSLER FOUR

Magneto Ignition—Hydraulic Four-wheel Brakes 2500.

DISTRIBUTORS
YORK GARAGES, LTD. NAIROBI.

H. F. WARD & COMPANY

ESTABLISHED 1907
P.O. BOX 124

NAIROBI HOUSE
CORNER BROADWAY
NAIROBI-KENYA COLONY

Charming double storied house, standing in garden of about 8 acres. Two reception rooms, four or five bedrooms, sunny office, boys' quarters, garage, swimming, modern sanitation, water if C. 25,000, or near car. Terms of sale can be arranged.
THIS IS ONE OF MANY DELIGHTFUL NAIROBI PROPERTIES READY FOR SALE.
Nairobi District—Approximately 1,100 acres, best type material, highly developed, over 300 acres, best under cultivation. Property is equipped with buildings, plant, 100 trained oxen, etc. etc. 27,000 as a guide concern on very favourable terms.
AN EXAMPLE OF A SELECTION OF HIGHEST QUALITY MAIZE FARMS ALL IN HEAVILY PRODUCTIVE DISTRICTS.
We can offer a genuine opportunity to those anxious to secure first class farming land DIRECT FROM GOVERNMENT, and a real opening for building up substantial and valuable holding.

Ford Value For The Money



THE TOURING—£180, Nairobi. THE TUDOR SEDAN—£245, Nairobi.

THE FORD CAR IS UNIVERSALLY KNOWN TO BE RELIABLE, ECONOMICAL, CONVENIENT—EASY TO BUY.

Ford economy is not only a matter of low price and upkeep; it is a question of the saving you will enjoy in time, energy and health.

The Service Company Limited.

NAIROBI—MOMBASA—MORRI. Importing Dealers and Distributors.

Protect Your Eyes FROM Sun, Glare & Dust BY USING

CHANCE'S PATENT CROOKE'S LENSES

OBTAINABLE FROM
A. H. WARDLE & Co., Ltd.
P.O. Box 100, Phone 06.



FOR THE MOST HORSE POWER SHELL
SHELL
The WELL-BALANCED Petrol.
Buy from the CERTIFIED dealer.
Saves on the SHELLLED Road Costs.
BETTER IMPERIAL OIL CO. (S.A.) Ltd.
Agents: SMITH MACKENZIE & Co.

NOTICE

Enquiry into Cost of Building

A Committee has been appointed by Government to enquire into the position generally in regard to the cost of building in the Colony and to make recommendations with a view to reducing this cost.
2. The Committee invites evidence from Builders, Architects and other interested in this question.
3. A brief memorandum stating the main points on which a witness is prepared to give evidence should be addressed to the Secretary of Postmaster General's Office, Nairobi.

ALWAYS USE



For cleaning the polished side surfaces and wood veneers of your car.
Trade Agents to the Agents.
T. O. HAMILTON, Ltd.
Phone 282 NAIROBI. Box 202

B.S.A.

The Undisputed Leader

B.S.A. stands for what YOU want in a MOTOR CYCLE—Unsurpassed Reliability at popular prices, backed by real and adequate service.



THE MOST POPULAR MOTOR CYCLE IN THE WORLD TO-BUY.

Quality Makes Our Sales

NOTE
Nairobi, Oct. 25th 1925.
Dear Sir, wife of W. Appleton, of Mombasa, a daughter of Mombasa.

WIFE
Mrs. S. Donnelly wishes to thank all her friends for their kind expressions of sympathy and for the pleasure in her recent and recovery.

THE RUBY
AFRICAN CAR STANDARD
Standard Time & Signal Agency
FRIDAY, NOV. 27, 1925.

TRUCK TOWN
"Three Permanent Residents" of this Township divided their attention to a letter published the week last in the health conditions of the workmen in this township.

THE RUBY
The township is a link between the two main roads of the colony and it is a link between the two main roads of the colony and it is a link between the two main roads of the colony.

THE RUBY
The township is a link between the two main roads of the colony and it is a link between the two main roads of the colony and it is a link between the two main roads of the colony.

THE RUBY
The township is a link between the two main roads of the colony and it is a link between the two main roads of the colony and it is a link between the two main roads of the colony.

THE RUBY
The township is a link between the two main roads of the colony and it is a link between the two main roads of the colony and it is a link between the two main roads of the colony.

at the junction with the old line, and already they are being taken to demolish some of the present buildings and station equipment.

The same year there has been a suggestion that the new line should be properly established; the completion of the railway extension might be determined approximately, the date upon which such a step should be taken. There will be some opposition to the removal of the line which will be based upon the existence of certain interests in the area and property not so persons who have had the doubtful pleasure of visiting the station and immediately on a date when the present manager is absent.

We believe it would be inadvisable to proceed that the recent outbreak of disease in Nairobi, and the fact that there has been no improvement in the past few weeks, and the fact that the present manager is absent.

The township is a link between the two main roads of the colony and it is a link between the two main roads of the colony and it is a link between the two main roads of the colony.

The township is a link between the two main roads of the colony and it is a link between the two main roads of the colony and it is a link between the two main roads of the colony.

The township is a link between the two main roads of the colony and it is a link between the two main roads of the colony and it is a link between the two main roads of the colony.

The township is a link between the two main roads of the colony and it is a link between the two main roads of the colony and it is a link between the two main roads of the colony.

The township is a link between the two main roads of the colony and it is a link between the two main roads of the colony and it is a link between the two main roads of the colony.

young child was born here only five days—beginning his life in the midst of a rabid fever. Nearly every week and the new Anglo population had shelter for the night in the houses of their neighbours, and overcrowding, the contagion of disease, and the overcrowding of the township, the township is a link between the two main roads of the colony and it is a link between the two main roads of the colony.

Government, at this time, has been included for over twelve years. We suggest that the township is a link between the two main roads of the colony and it is a link between the two main roads of the colony.

The township is a link between the two main roads of the colony and it is a link between the two main roads of the colony and it is a link between the two main roads of the colony.

The township is a link between the two main roads of the colony and it is a link between the two main roads of the colony and it is a link between the two main roads of the colony.

The township is a link between the two main roads of the colony and it is a link between the two main roads of the colony and it is a link between the two main roads of the colony.

The township is a link between the two main roads of the colony and it is a link between the two main roads of the colony and it is a link between the two main roads of the colony.

The township is a link between the two main roads of the colony and it is a link between the two main roads of the colony and it is a link between the two main roads of the colony.

The township is a link between the two main roads of the colony and it is a link between the two main roads of the colony and it is a link between the two main roads of the colony.

Small notices and advertisements on the right margin, including mentions of 'The Standard', 'The Kenya Colony', and various local news items.

THIKA TOWNSHIP

A Government Cinderella Thirty Miles from Nairobi.

STAGNATION AND FILTH.

"Horrible Example" of the Early Days of Settlement.

A FINE THIRTEEN YEAR.

(Now a Permanent Resident.)

...in Thika Township... applied to make the... Thika Township... the Thika Township... the Thika Township...

A GOVERNMENT CINDERELLA.

...settlement... Thika Township... the Thika Township... the Thika Township... the Thika Township...

APPROACH.

...Thika Township... the Thika Township... the Thika Township... the Thika Township... the Thika Township...

A RUBBER DUMP.

...Thika Township... the Thika Township... the Thika Township... the Thika Township... the Thika Township...

COMPLAINTE ASSAULT.

...Thika Township... the Thika Township... the Thika Township... the Thika Township... the Thika Township...

THE PARKING GROUNDS.

...Thika Township... the Thika Township... the Thika Township... the Thika Township... the Thika Township...

THE HORRY MARKET.

...Thika Township... the Thika Township... the Thika Township... the Thika Township... the Thika Township...

NAIROBI TRAFFIC.

New Parking Ground.

APPEAL FOR COOPERATION AND TO THE MUNICIPALITY.

...Nairobi Traffic... the Nairobi Traffic... the Nairobi Traffic... the Nairobi Traffic... the Nairobi Traffic...

THE STATE OF THE BARR.

...The Barr... the Barr... the Barr... the Barr... the Barr...

MANY MORE CASES.

...Many More Cases... the Many More Cases... the Many More Cases... the Many More Cases... the Many More Cases...

DETERMINATION.

...Determination... the Determination... the Determination... the Determination... the Determination...

A SHIP FROD.

...Ship Frod... the Ship Frod... the Ship Frod... the Ship Frod... the Ship Frod...

THE PARKING GROUNDS.

...The Parking Grounds... the Parking Grounds... the Parking Grounds... the Parking Grounds... the Parking Grounds...

TO-DAY'S CASE LIST.

...Today's Case List... the Today's Case List... the Today's Case List... the Today's Case List... the Today's Case List...

RE.E.A.A.

METAL DANGER SIGNS.

...Metal Danger Signs... the Metal Danger Signs... the Metal Danger Signs... the Metal Danger Signs... the Metal Danger Signs...

DRINKING POSTCARDS.

Indians Caught.

MEMORABLE PRODUCTIONS.

...Indians Caught... the Indians Caught... the Indians Caught... the Indians Caught... the Indians Caught...

THE PARKING GROUNDS.

...The Parking Grounds... the Parking Grounds... the Parking Grounds... the Parking Grounds... the Parking Grounds...

IMPROVE THE APPROACHES.

...Improve the Approaches... the Improve the Approaches... the Improve the Approaches... the Improve the Approaches... the Improve the Approaches...

THE TRAMP BOOTS.

...The Tramp Boots... the Tramp Boots... the Tramp Boots... the Tramp Boots... the Tramp Boots...

THE PARKING GROUNDS.

...The Parking Grounds... the Parking Grounds... the Parking Grounds... the Parking Grounds... the Parking Grounds...

THE PARKING GROUNDS.

...The Parking Grounds... the Parking Grounds... the Parking Grounds... the Parking Grounds... the Parking Grounds...

THE PARKING GROUNDS.

...The Parking Grounds... the Parking Grounds... the Parking Grounds... the Parking Grounds... the Parking Grounds...

THE PARKING GROUNDS.

...The Parking Grounds... the Parking Grounds... the Parking Grounds... the Parking Grounds... the Parking Grounds...

DRINKING POSTCARDS.

Indians Caught.

MEMORABLE PRODUCTIONS.

...Indians Caught... the Indians Caught... the Indians Caught... the Indians Caught... the Indians Caught...

THE PARKING GROUNDS.

...The Parking Grounds... the Parking Grounds... the Parking Grounds... the Parking Grounds... the Parking Grounds...

IMPROVE THE APPROACHES.

...Improve the Approaches... the Improve the Approaches... the Improve the Approaches... the Improve the Approaches... the Improve the Approaches...

THE TRAMP BOOTS.

...The Tramp Boots... the Tramp Boots... the Tramp Boots... the Tramp Boots... the Tramp Boots...

THE PARKING GROUNDS.

...The Parking Grounds... the Parking Grounds... the Parking Grounds... the Parking Grounds... the Parking Grounds...

THE PARKING GROUNDS.

...The Parking Grounds... the Parking Grounds... the Parking Grounds... the Parking Grounds... the Parking Grounds...

THE PARKING GROUNDS.

...The Parking Grounds... the Parking Grounds... the Parking Grounds... the Parking Grounds... the Parking Grounds...

THE PARKING GROUNDS.

...The Parking Grounds... the Parking Grounds... the Parking Grounds... the Parking Grounds... the Parking Grounds...

LYRIC HALL TO-NIGHT (at 8-45. Mr. A. WETHERELL Presents "LIVINGSTONE" The Great Film production of the Life of the Famous Explorer. Plan of Booking at the Lyric. Sh. 8. and Shs. 5. BOOK EARLY Matinee this Saturday at 3 p.m. Children half price.

DO NOT RISK WET FEET. No. 588 1110 Goldstrand 35/- Water proof Zag Delta. Without Cap. The Tramp Boot No. 1291. No. 628 Field Boot. Eadie's Footwear, Ltd. 1110 Goldstrand, Nairobi. Phone 421.

THEATRE ROYAL IN MEMORY OF THE LATE Queen Mother THE THEATRE ROYAL Will be CLOSED Tonight

WARINGS Expiration of Lease. ANOTHER MARVELLOUS OPPORTUNITY BUT YOU MUST BUY IF YOU WANT TO MAKE USE OF IT. Mails French Vette Frocks up to 28 inch length. Original Price Shs. 79/50 All one Price Shs. 15/- Mails Down Frocks up to 28 inch length. Original Price Shs. 62/- All one Price Shs. 15/- Ladies Fine Hand Made Night Dresses. Original Price Shs. 60/- All one Price Shs. 15/- Africa House, Government Road, NAIROBI.

Bring the Cinema to Your Home for Xmas. This film is unexcused, indeed... The House for Quality

L. D. GALTON-FEEL, Ken Secretary

THE COST OF LIVING.

Work of the Food Council in England.

"MEASUREMENT AND PURITY."

Reasons for High Prices Never Abated.

Nothing more interesting or more important has happened since the outbreak of the war than the... The problem in England that it keeps on being... These differences have been... The Food Council has been... The Food Council has been... The Food Council has been...

PORT CONTROL.

A Questionnaire.

TO NOMBASA CHAMBER.

The following questionnaire of a subcommittee of the Port Control Commission... The following questionnaire of a subcommittee of the Port Control Commission... The following questionnaire of a subcommittee of the Port Control Commission...

Feats on a Farm.

When We See a Dog.

When we see a dog... This is a good story... This is a good story... This is a good story... This is a good story... This is a good story...

A Polar Bear.

Unusual Animal.

I think there is no... This is a very interesting... This is a very interesting... This is a very interesting... This is a very interesting... This is a very interesting...



Plans for a building, including floor plans and elevations.

Beauty Depends on Sparkling Teeth.

Perfect teeth, gleaming bright, are the essential factor of facial beauty... They focus attention and admiration before any other feature... They constitute the charm of the smile.

Gilb's Dentifrice.

BUY A TIN FROM YOUR CHEMIST TO-DAY.

TRUCKS TRUCKS TRUCKS.

THE FIRST CONSIGNMENT OF THE CELEBRATED Brockway 1 1/2 ton Lorries... THE "ROLLS ROYCE" OF MOTOR TRUCKS... Has arrived Mombasa and is being dispatched at once to Nairobi... CHASSIS £495... FIRST CONSIGNMENT ARRIVED MOMBASA... GRAY TRUCKS... THE "MILES PER GALLON" TRUCK... Orders executed in rotation 2 book now to avoid disappointment... K. MALVOIR & Co., SOLE IMPORTERS, NAIROBI.

Smithfield Butchery.

(The oldest established European Butchery in Town) A JOINT FROM OUR COLD STORE... WILL GIVE YOU SATISFACTION... Try our prime beef, mutton and dressed lard pork and veal... Fully ready dressed in stock... Lake Fish, Monday, Tuesday and Friday... Box A. Phone 418.

Madame Leon.

Just out from Paris, Gowns and Hats of exquisite design... Ladies Milk Supply... P.O. Box 330... NAIROBI.

NEED FOR COMPLETION AND IMPROVEMENT.

The following article which appeared in "The New Statesman" on October 17th under the heading "The Food Council" is... The Food Council has been... The Food Council has been... The Food Council has been...

THE CURSE OF HIGH PRICES.

The cause of high prices in a problem which we are all familiar with... The Food Council has been... The Food Council has been... The Food Council has been...

WILFRED HERIAND.

As one of the members of the Food Council... The Food Council has been... The Food Council has been... The Food Council has been...

Removal Notice.

WE REG TO INFORM OUR CUSTOMERS THAT FROM 1st DECEMBER 1918... P.O. Box 330... NAIROBI.

THE HOMESTEAD.

(Lots Three Gables) Facing Sports Club, Parklands... Tel. 277.

Notice re Wood F.

It is notified by the undersigned that the Wood F. has been... KERR & Co., NAIROBI.

WILFRED HERIAND.

As one of the members of the Food Council... The Food Council has been... The Food Council has been...

P. GETHIN.

DAY & NIGHT... FISHING TACKLE... S.P.C.A. (Society for the Prevention of Cruelty to Animals) A COMPLAINT BOOK is now at the office of THE "E.A. STANDARD" 65 Avenue, NAIROBI.

Removal Notice.

WE REG TO INFORM OUR CUSTOMERS THAT FROM 1st DECEMBER 1918... P.O. Box 330... NAIROBI.

THE HOMESTEAD.

(Lots Three Gables) Facing Sports Club, Parklands... Tel. 277.

Castle Line

London, East, South and West African Ports and Mauritius... S.S. SUDAN, S.S. FOM, S.S. MAID, S.S. GIBRA, S.S. HAMBURG...

THE SOUTH AFRICAN

THE SOUTH AFRICAN... S.S. SUDAN, S.S. FOM, S.S. MAID, S.S. GIBRA, S.S. HAMBURG...

THE EAST AFRICAN

THE EAST AFRICAN... S.S. SUDAN, S.S. FOM, S.S. MAID, S.S. GIBRA, S.S. HAMBURG...

HOLLAND AFRIKA LIJN

HOLLAND AFRIKA LIJN... S.S. SUDAN, S.S. FOM, S.S. MAID, S.S. GIBRA, S.S. HAMBURG...

THE FINEST MOTOR CYCLE PROPOSITION EVER OFFERED TO THE PUBLIC... RAILEIGH... THE Gold Medal Motor Cycle... 2-48 - Stirrup Archer 3 speed - chain drive - Independent internal expanding brakes - Dualop tyres - Dualop Front Forks - 5-1/2 inch Starter

SOLE AGENTS... Kettles-Roy, Ltd., NAIROBI... Box 120, 21 Nelson House, 11 Government Road.

THE FINEST MOTOR CYCLE PROPOSITION EVER OFFERED TO THE PUBLIC... RAILEIGH... THE Gold Medal Motor Cycle... 2-48 - Stirrup Archer 3 speed - chain drive - Independent internal expanding brakes - Dualop tyres - Dualop Front Forks - 5-1/2 inch Starter

THE FINEST MOTOR CYCLE PROPOSITION EVER OFFERED TO THE PUBLIC... RAILEIGH... THE Gold Medal Motor Cycle... 2-48 - Stirrup Archer 3 speed - chain drive - Independent internal expanding brakes - Dualop tyres - Dualop Front Forks - 5-1/2 inch Starter

THE FINEST MOTOR CYCLE PROPOSITION EVER OFFERED TO THE PUBLIC... RAILEIGH... THE Gold Medal Motor Cycle... 2-48 - Stirrup Archer 3 speed - chain drive - Independent internal expanding brakes - Dualop tyres - Dualop Front Forks - 5-1/2 inch Starter

THE FINEST MOTOR CYCLE PROPOSITION EVER OFFERED TO THE PUBLIC... RAILEIGH... THE Gold Medal Motor Cycle... 2-48 - Stirrup Archer 3 speed - chain drive - Independent internal expanding brakes - Dualop tyres - Dualop Front Forks - 5-1/2 inch Starter

THE FINEST MOTOR CYCLE PROPOSITION EVER OFFERED TO THE PUBLIC... RAILEIGH... THE Gold Medal Motor Cycle... 2-48 - Stirrup Archer 3 speed - chain drive - Independent internal expanding brakes - Dualop tyres - Dualop Front Forks - 5-1/2 inch Starter

THE FINEST MOTOR CYCLE PROPOSITION EVER OFFERED TO THE PUBLIC... RAILEIGH... THE Gold Medal Motor Cycle... 2-48 - Stirrup Archer 3 speed - chain drive - Independent internal expanding brakes - Dualop tyres - Dualop Front Forks - 5-1/2 inch Starter

THE FINEST MOTOR CYCLE PROPOSITION EVER OFFERED TO THE PUBLIC... RAILEIGH... THE Gold Medal Motor Cycle... 2-48 - Stirrup Archer 3 speed - chain drive - Independent internal expanding brakes - Dualop tyres - Dualop Front Forks - 5-1/2 inch Starter

THE FINEST MOTOR CYCLE PROPOSITION EVER OFFERED TO THE PUBLIC... RAILEIGH... THE Gold Medal Motor Cycle... 2-48 - Stirrup Archer 3 speed - chain drive - Independent internal expanding brakes - Dualop tyres - Dualop Front Forks - 5-1/2 inch Starter

"STANDARD" FEATURE PAGE

THE KING'S AFRICAN RIFLES.

What Colonisation by Great Britain Has Done.

ITS WORK ON THE NORTHERN FRONTIER.

The Pride of the Native in Belonging to Such a Regiment.

Stationed for duty in the north... The King's African Rifles... The King's African Rifles... The King's African Rifles...

A DANGEROUS TREE.

Somebody thinking for days on end... A dangerous tree... A dangerous tree... A dangerous tree...

THE WAGON ON THE MOUNTAIN.

The wagon on the mountain... The wagon on the mountain... The wagon on the mountain...

NAIDERS DEFEATED.

When they came up with the... Naiders defeated... Naiders defeated... Naiders defeated...

A RECENT RAID.

Both a reader had seen that... A recent raid... A recent raid... A recent raid...

THE MARRIED QUARTERS.

His strange wife, back in the... Married quarters... Married quarters... Married quarters...

IF YOU COMPLETELY PURCHASING AN ENGINE.

BE SURE... THE PETTEN'S TYPING MACHINE... THE PETTEN'S TYPING MACHINE... THE PETTEN'S TYPING MACHINE...

THE PETTEN'S TYPING MACHINE... THE PETTEN'S TYPING MACHINE... THE PETTEN'S TYPING MACHINE...

THE PETTEN'S TYPING MACHINE... THE PETTEN'S TYPING MACHINE... THE PETTEN'S TYPING MACHINE...

TOYS. TOYS. TOYS.

Just unpacked a large selection of... Toys. Toys. Toys... Toys. Toys. Toys... Toys. Toys. Toys...

Price very Moderate. A visit will pay you... Toys. Toys. Toys... Toys. Toys. Toys... Toys. Toys. Toys...

M. R. de SOUZA & Co. P. O. Box 126, Great Road, Phone 78.

THE FINEST MOTOR CYCLE PROPOSITION EVER OFFERED TO THE PUBLIC... RAILEIGH... THE Gold Medal Motor Cycle... 2-48 - Stirrup Archer 3 speed - chain drive - Independent internal expanding brakes - Dualop tyres - Dualop Front Forks - 5-1/2 inch Starter

SOLE AGENTS... Kettles-Roy, Ltd., NAIROBI... Box 120, 21 Nelson House, 11 Government Road.

THE FINEST MOTOR CYCLE PROPOSITION EVER OFFERED TO THE PUBLIC... RAILEIGH... THE Gold Medal Motor Cycle... 2-48 - Stirrup Archer 3 speed - chain drive - Independent internal expanding brakes - Dualop tyres - Dualop Front Forks - 5-1/2 inch Starter

THE FINEST MOTOR CYCLE PROPOSITION EVER OFFERED TO THE PUBLIC... RAILEIGH... THE Gold Medal Motor Cycle... 2-48 - Stirrup Archer 3 speed - chain drive - Independent internal expanding brakes - Dualop tyres - Dualop Front Forks - 5-1/2 inch Starter

For Quick Sale MAIZE LAND

1,000 acres of excellent maize land in the Ngora Valley... For Quick Sale... For Quick Sale... For Quick Sale...

By NOW and get return within Twelve months. Apply W. G. Hunter & Co., Sixth Avenue, P.O. Box 88.

THE EUROPEAN AND AFRICAN TRADES ORGANISATION

Telephone 1111, 1112, 1113, 1114, 1115, 1116, 1117, 1118, 1119, 1120, 1121, 1122, 1123, 1124, 1125, 1126, 1127, 1128, 1129, 1130, 1131, 1132, 1133, 1134, 1135, 1136, 1137, 1138, 1139, 1140, 1141, 1142, 1143, 1144, 1145, 1146, 1147, 1148, 1149, 1150, 1151, 1152, 1153, 1154, 1155, 1156, 1157, 1158, 1159, 1160, 1161, 1162, 1163, 1164, 1165, 1166, 1167, 1168, 1169, 1170, 1171, 1172, 1173, 1174, 1175, 1176, 1177, 1178, 1179, 1180, 1181, 1182, 1183, 1184, 1185, 1186, 1187, 1188, 1189, 1190, 1191, 1192, 1193, 1194, 1195, 1196, 1197, 1198, 1199, 1200, 1201, 1202, 1203, 1204, 1205, 1206, 1207, 1208, 1209, 1210, 1211, 1212, 1213, 1214, 1215, 1216, 1217, 1218, 1219, 1220, 1221, 1222, 1223, 1224, 1225, 1226, 1227, 1228, 1229, 1230, 1231, 1232, 1233, 1234, 1235, 1236, 1237, 1238, 1239, 1240, 1241, 1242, 1243, 1244, 1245, 1246, 1247, 1248, 1249, 1250, 1251, 1252, 1253, 1254, 1255, 1256, 1257, 1258, 1259, 1260, 1261, 1262, 1263, 1264, 1265, 1266, 1267, 1268, 1269, 1270, 1271, 1272, 1273, 1274, 1275, 1276, 1277, 1278, 1279, 1280, 1281, 1282, 1283, 1284, 1285, 1286, 1287, 1288, 1289, 1290, 1291, 1292, 1293, 1294, 1295, 1296, 1297, 1298, 1299, 1300, 1301, 1302, 1303, 1304, 1305, 1306, 1307, 1308, 1309, 1310, 1311, 1312, 1313, 1314, 1315, 1316, 1317, 1318, 1319, 1320, 1321, 1322, 1323, 1324, 1325, 1326, 1327, 1328, 1329, 1330, 1331, 1332, 1333, 1334, 1335, 1336, 1337, 1338, 1339, 1340, 1341, 1342, 1343, 1344, 1345, 1346, 1347, 1348, 1349, 1350, 1351, 1352, 1353, 1354, 1355, 1356, 1357, 1358, 1359, 1360, 1361, 1362, 1363, 1364, 1365, 1366, 1367, 1368, 1369, 1370, 1371, 1372, 1373, 1374, 1375, 1376, 1377, 1378, 1379, 1380, 1381, 1382, 1383, 1384, 1385, 1386, 1387, 1388, 1389, 1390, 1391, 1392, 1393, 1394, 1395, 1396, 1397, 1398, 1399, 1400, 1401, 1402, 1403, 1404, 1405, 1406, 1407, 1408, 1409, 1410, 1411, 1412, 1413, 1414, 1415, 1416, 1417, 1418, 1419, 1420, 1421, 1422, 1423, 1424, 1425, 1426, 1427, 1428, 1429, 1430, 1431, 1432, 1433, 1434, 1435, 1436, 1437, 1438, 1439, 1440, 1441, 1442, 1443, 1444, 1445, 1446, 1447, 1448, 1449, 1450, 1451, 1452, 1453, 1454, 1455, 1456, 1457, 1458, 1459, 1460, 1461, 1462, 1463, 1464, 1465, 1466, 1467, 1468, 1469, 1470, 1471, 1472, 1473, 1474, 1475, 1476, 1477, 1478, 1479, 1480, 1481, 1482, 1483, 1484, 1485, 1486, 1487, 1488, 1489, 1490, 1491, 1492, 1493, 1494, 1495, 1496, 1497, 1498, 1499, 1500, 1501, 1502, 1503, 1504, 1505, 1506, 1507, 1508, 1509, 1510, 1511, 1512, 1513, 1514, 1515, 1516, 1517, 1518, 1519, 1520, 1521, 1522, 1523, 1524, 1525, 1526, 1527, 1528, 1529, 1530, 1531, 1532, 1533, 1534, 1535, 1536, 1537, 1538, 1539, 1540, 1541, 1542, 1543, 1544, 1545, 1546, 1547, 1548, 1549, 1550, 1551, 1552, 1553, 1554, 1555, 1556, 1557, 1558, 1559, 1560, 1561, 1562, 1563, 1564, 1565, 1566, 1567, 1568, 1569, 1570, 1571, 1572, 1573, 1574, 1575, 1576, 1577, 1578, 1579, 1580, 1581, 1582, 1583, 1584, 1585, 1586, 1587, 1588, 1589, 1590, 1591, 1592, 1593, 1594, 1595, 1596, 1597, 1598, 1599, 1600, 1601, 1602, 1603, 1604, 1605, 1606, 1607, 1608, 1609, 1610, 1611, 1612, 1613, 1614, 1615, 1616, 1617, 1618, 1619, 1620, 1621, 1622, 1623, 1624, 1625, 1626, 1627, 1628, 1629, 1630, 1631, 1632, 1633, 1634, 1635, 1636, 1637, 1638, 1639, 1640, 1641, 1642, 1643, 1644, 1645, 1646, 1647, 1648, 1649, 1650, 1651, 1652, 1653, 1654, 1655, 1656, 1657, 1658, 1659, 1660, 1661, 1662, 1663, 1664, 1665, 1666, 1667, 1668, 1669, 1670, 1671, 1672, 1673, 1674, 1675, 1676, 1677, 1678, 1679, 1680, 1681, 1682, 1683, 1684, 1685, 1686, 1687, 1688, 1689, 1690, 1691, 1692, 1693, 1694, 1695, 1696, 1697, 1698, 1699, 1700, 1701, 1702, 1703, 1704, 1705, 1706, 1707, 1708, 1709, 1710, 1711, 1712, 1713, 1714, 1715, 1716, 1717, 1718, 1719, 1720, 1721, 1722, 1723, 1724, 1725, 1726, 1727, 1728, 1729, 1730, 1731, 1732, 1733, 1734, 1735, 1736, 1737, 1738, 1739, 1740, 1741, 1742, 1743, 1744, 1745, 1746, 1747, 1748, 1749, 1750, 1751, 1752, 1753, 1754, 1755, 1756, 1757, 1758, 1759, 1760, 1761, 1762, 1763, 1764, 1765, 1766, 1767, 1768, 1769, 1770, 1771, 1772, 1773, 1774, 1775, 1776, 1777, 1778, 1779, 1780, 1781, 1782, 1783, 1784, 1785, 1786, 1787, 1788, 1789, 1790, 1791, 1792, 1793, 1794, 1795, 1796, 1797, 1798, 1799, 1800, 1801, 1802, 1803, 1804, 1805, 1806, 1807, 1808, 1809, 1810, 1811, 1812, 1813, 1814, 1815, 1816, 1817, 1818, 1819, 1820, 1821, 1822, 1823, 1824, 1825, 1826, 1827, 1828, 1829, 1830, 1831, 1832, 1833, 1834, 1835, 1836, 1837, 1838, 1839, 1840, 1841, 1842, 1843, 1844, 1845, 1846, 1847, 1848, 1849, 1850, 1851, 1852, 1853, 1854, 1855, 1856, 1857, 1858, 1859, 1860, 1861, 1862, 1863, 1864, 1865, 1866, 1867, 1868, 1869, 1870, 1871, 1872, 1873, 1874, 1875, 1876, 1877, 1878, 1879, 1880, 1881, 1882, 1883, 1884, 1885, 1886, 1887, 1888, 1889, 1890, 1891, 1892, 1893, 1894, 1895, 1896, 1897, 1898, 1899, 1900, 1901, 1902, 1903, 1904, 1905, 1906, 1907, 1908, 1909, 1910, 1911, 1912, 1913, 1914, 1915, 1916, 1917, 1918, 1919, 1920, 1921, 1922, 1923, 1924, 1925, 1926, 1927, 1928, 1929, 1930, 1931, 1932, 1933, 1934, 1935, 1936, 1937, 1938, 1939, 1940, 1941, 1942, 1943, 1944, 1945, 1946, 1947, 1948, 1949, 1950, 1951, 1952, 1953, 1954, 1955, 1956, 1957, 1958, 1959, 1960, 1961, 1962, 1963, 1964, 1965, 1966, 1967, 1968, 1969, 1970, 1971, 1972, 1973, 1974, 1975, 1976, 1977, 1978, 1979, 1980, 1981, 1982, 1983, 1984, 1985, 1986, 1987, 1988, 1989, 1990, 1991, 1992, 1993, 1994, 1995, 1996, 1997, 1998, 1999, 2000, 2001, 2002, 2003, 2004, 2005, 2006, 2007, 2008, 2009, 2010, 2011, 2012, 2013, 2014, 2015, 2016, 2017, 2018, 2019, 2020, 2021, 2022, 2023, 2024, 2025, 2026, 2027, 2028, 2029, 2030, 2031, 2032, 2033, 2034, 2035, 2036, 2037, 2038, 2039, 2040, 2041, 2042, 2043, 2044, 2045, 2046, 2047, 2048, 2049, 2050, 2051, 2052, 2053, 2054, 2055, 2056, 2057, 2058, 2059, 2060, 2061, 2062, 2063, 2064, 2065, 2066, 2067, 2068, 2069, 2070, 2071, 2072, 2073, 2074, 2075, 2076, 2077, 2078, 2079, 2080, 2081, 2082, 2083, 2084, 2085, 2086, 2087, 2088, 2089, 2090, 2091, 2092, 2093, 2094, 2095, 2096, 2097, 2098, 2099, 2100, 2101, 2102, 2103, 2104, 2105, 2106, 2107, 2108, 2109, 2110, 2111, 2112, 2113, 2114, 2115, 2116, 2117, 2118, 2119, 2120, 2121, 2122, 2123, 2124, 2125, 2126, 2127, 2128, 2129, 2130, 2131, 2132, 2133, 2134, 2135, 2136, 2137, 2138, 2139, 2140, 2141, 2142, 2143, 2144, 2145, 2146, 2147, 2148, 2149, 2150, 2151, 2152, 2153, 2154, 2155, 2156, 2157, 2158, 2159, 2160, 2161, 2162, 2163, 2164, 2165, 2166, 2167, 2168, 2169, 2170, 2171, 2172, 2173, 2174, 2175, 2176, 2177, 2178, 2179, 2180, 2181, 2182, 2183, 2184, 2185, 2186, 2187, 2188, 2189, 2190, 2191, 2192, 2193, 2194, 2195, 2196, 2197, 2198, 2199, 2200, 2201, 2202, 2203, 2204, 2205, 2206, 2207, 2208, 2209, 2210, 2211, 2212, 2213, 2214, 2215, 2216, 2217, 2218, 2219, 2220, 2221, 2222, 2223, 2224, 2225, 2226, 2227, 2228, 2229, 2230, 2231, 2232, 2233, 2234, 2235, 2236, 2237, 2238, 2239, 2240, 2241, 2242, 2243, 2244, 2245, 2246, 2247, 2248, 2249, 2250, 2251, 2252, 2253, 2254, 2255, 2256, 2257, 2258, 2259, 2260, 2261, 2262, 2263, 2264, 2265, 2266, 2267, 2268, 2269, 2270, 2271, 2272, 2273, 2274, 2275, 2276, 2277, 2278, 2279, 2280, 2281, 2282, 2283, 2284, 2285, 2286, 2287, 2288, 2289, 2290, 2291, 2292, 2293, 2294, 2295, 2296, 2297, 2298, 2299, 2300, 2301, 2302, 2303, 2304, 2305, 2306, 2307, 2308, 2309, 2310, 2311, 2312, 2313, 2314, 2315, 2316, 2317, 2318, 2319, 2320, 2321, 2322, 2323, 2324, 2325, 2326, 2327, 2328, 2329, 2330, 2331, 2332, 2333, 2334, 2335, 2336, 2337, 2338, 2339, 2340, 2341, 2342, 2343, 2344, 2345, 2346, 2347, 2348, 2349, 2350, 2351, 2352, 2353, 2354, 2355, 2356, 2357, 2358, 2359, 2360, 2361, 2362, 2363, 2364, 2365, 2366, 2367, 2368, 2369, 2370, 2371, 2372, 2373, 2374, 2375, 2376, 2377, 2378, 2379, 2380, 2381, 2382, 2383, 2384, 2385, 2386, 2387, 2388, 2389, 2390, 2391, 2392, 2393, 2394, 2395, 2396, 2397, 2398, 2399, 2400, 2401, 2402, 2403, 2404, 2405, 2406, 2407, 2408, 2409, 2410, 2411, 2412, 2413, 2414, 2415, 2416, 2417, 2418, 2419, 2420, 2421, 2422, 2423, 2424, 2425, 2426, 2427, 2428, 2429, 2430, 2431, 2432, 2433, 2434, 2435, 2436, 2437, 2438, 2439, 2440, 2441, 2442, 2443, 2444, 2445, 2446, 2447, 2448, 2449, 2450, 2451, 2452, 2453, 2454, 2455, 2456, 2457, 2458, 2459, 2460, 2461, 2462, 2463, 2464, 2465, 2466, 2467, 2468, 2469, 2470, 2471, 2472, 2473, 2474, 2475, 2476, 2477, 2478, 2479, 2480, 2481, 2482, 2483, 2484, 2485, 2486, 2487, 2488, 2489, 2490, 2491, 2492, 2493, 2494, 2495, 2496, 2497, 2498, 2499, 2500, 2501, 2502, 2503, 2504, 2505, 2506, 2507, 2508, 2509, 2510, 2511, 2512, 2513, 2514, 2515, 2516, 2517, 2518, 2519, 2520, 2521, 2522, 2523, 2524, 2525, 2526, 2527, 2528, 2529, 2530, 2531, 2532, 2533, 2534, 2535, 2536, 2537, 2538, 2539, 2540, 2541, 2542, 2543, 2544, 2545, 2546, 2547, 2548, 2549, 2550, 2551, 2552, 2553, 2554, 2555, 2556, 2557, 2558, 2559, 2560, 2561, 2562, 2563, 2564, 2565, 2566, 2567, 2568, 2569, 2570, 2571, 2572, 2573, 2574, 2575, 2576, 2577, 2578, 2579, 2580, 2581, 2582, 2583, 2584, 2585, 2586, 2587, 2588, 2589, 2590, 2591, 2592, 2593, 2594, 2595, 2596, 2597, 2598, 2599, 2600, 2601, 2602, 2603, 2604, 2605, 2606, 2607, 2608, 2609, 2610, 2611, 2612, 2613, 2614, 2615, 2616, 2617, 2618, 2619, 2620, 2621, 2622, 2623, 2624, 2625, 2626, 2627, 2628,

REAL "MIRAZPUR" CARPETS AND RUGS OF EXCEPTIONAL QUALITY

These Carpets have been specially selected in Mirazpur and are the finest range we have ever seen outside India. The quality is good—quite different to the cheaper grades and imitation "carpets made for export." They are good to look at and good to feel and will outlast many cheaper carpets. You could not choose a better or more acceptable gift for Christmas.



ALL THESE CARPETS WILL SELL QUICKLY IT IS ADVISABLE TO MAKE A CHOICE BEFORE ORDERING.

No.	Size	Colours.	Price.
5048	9 x 3'	Brown ground with dark blue borders	Shs. 95/-
5049	6 x 3'	Blue with gold and fawn design	Shs. 95/00
5050	7 x 4'	Dark blue ground with design and border in rose blue	Shs. 105/-
5051	7 x 4'	Black ground with design in blue and fawn. Fawn border	Shs. 75/-
5052	9 x 9'	Green ground with blue border with design in pink and blue	Shs. 200/-
5053	9 x 9'	Light cream ground, design in blue and pink. Rose border	Shs. 225/-
5054	9' x 9'	Blue ground with fawn border	Shs. 200/-
5055	10'11" x 9'11"	Canal fawn ground, design and border in brown and blue	Shs. 295/-
5056	15 x 9'	Fawn ground design in brown and blue	Shs. 285/-
5057	12 x 9'	Cream ground border blue and fawn	Shs. 400/-
5058	17' x 10'11"	Reddish Brown ground with design and border in dark blue	Shs. 465/-
5059	12 x 11'	Dark blue ground with rose design and border	Shs. 400/-
5060	15 x 11'	Olive gold ground with design in blue	Shs. 350/-

These prices are subject to your cost discount.

JACOBS

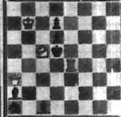
P.O. Box 355.
Phone 126.
Telegrams: "Advairam."
HAIBERI.

CHESS PROBLEMS



By Mr. H. G. Brown, P.O. Box 770, Haiberi, and all Chess correspondents should be addressed to "The Chess Editor, P.O. Box 770, Haiberi."

PROBLEM No. 770.
By the late Mr. Lewis.
Black to play and win.
St. 42, B. 24, 41, 42, 43, 44, 45, 46, 47, 48, 49, 50, 51, 52, 53, 54, 55, 56, 57, 58, 59, 60, 61, 62, 63, 64, 65, 66, 67, 68, 69, 70, 71, 72, 73, 74, 75, 76, 77, 78, 79, 80, 81, 82, 83, 84, 85, 86, 87, 88, 89, 90, 91, 92, 93, 94, 95, 96, 97, 98, 99, 100.



PROBLEM No. 771.
By "Korson." Key.
(Original in "The Chess Editor," Vol. 1, No. 1, p. 10.)
White to play and win.
St. 42, B. 24, 41, 42, 43, 44, 45, 46, 47, 48, 49, 50, 51, 52, 53, 54, 55, 56, 57, 58, 59, 60, 61, 62, 63, 64, 65, 66, 67, 68, 69, 70, 71, 72, 73, 74, 75, 76, 77, 78, 79, 80, 81, 82, 83, 84, 85, 86, 87, 88, 89, 90, 91, 92, 93, 94, 95, 96, 97, 98, 99, 100.



White to play and win.
St. 42, B. 24, 41, 42, 43, 44, 45, 46, 47, 48, 49, 50, 51, 52, 53, 54, 55, 56, 57, 58, 59, 60, 61, 62, 63, 64, 65, 66, 67, 68, 69, 70, 71, 72, 73, 74, 75, 76, 77, 78, 79, 80, 81, 82, 83, 84, 85, 86, 87, 88, 89, 90, 91, 92, 93, 94, 95, 96, 97, 98, 99, 100.

your board. It will be glad to give you solutions in due course.

CHESS IN INDIA.
(Continued from p. 10.)
(Original in "The Chess Editor," Vol. 1, No. 1, p. 10.)

The board of the All-India Chess Federation, which was set up in 1925, has been very active in the promotion of chess in India. It has organized many chess tournaments, and has also been successful in securing the services of some of the best chess players in the world. The All-India Chess Federation has also been successful in securing the services of some of the best chess players in the world.

Name	Times Played	Record	No. of Accidents
Kennell (Motor)	1st: 1914-18, 21st: 1920-21, 11th: 25th: 1924-25.	1st: 1914-18, 21st: 1920-21, 11th: 25th: 1924-25.	1st: 1914-18, 21st: 1920-21, 11th: 25th: 1924-25.
H. D. Dutt (Cal.)	Four	7th: 1st: 1914.	Once
H. B. Ghosh (Cal.)	Three	1st: 1922.	Once
H. B. Mahabadi (Hajipur)	Two	1st: 1920 & 1916.	Twice
P. B. Datta (Hajipur)	Eight	1st: 1912 & 1916.	Twice
N. R. Joshi (Poona)	Four	1st: 1910.	Once
V. N. Ghosh (Hajipur)	Four	1st: 1910.	Once
V. S. Khadhar (Hajipur)	Eight	1st: 1912 & 1912. 1921 & 1922.	Four

Besides these names the players have won other local chess tournaments, and have won other high places in the All-India chess tournaments.

There are not many well organized chess clubs in India. The All-India Chess Federation, which was set up in 1925, has been very active in the promotion of chess in India. It has organized many chess tournaments, and has also been successful in securing the services of some of the best chess players in the world.

TO INTERESTING PURCHASERS

We invite you to further consult us before making any purchase for real estate. We are also successful in advertising their properties for sale. We have better connections here to make you better acquainted with the real estate market.

TO THOSE WHO WISH TO DISPOSE OF PROPERTY

We ask you to send us particulars of any property you wish to dispose of. We will give you the best price for your property.

MAY & Co. stock FISHING TACKLE

Picking a Winner at a Race Meeting has nothing on the usual gamble of selecting a good used car

Used car buying under the usual conditions is certainly a great game, and if you like a gamble, we recommend it.

However, if you don't feel like taking a long chance—if you want to be absolutely certain that the used car you buy is in good mechanical condition, is good value and will give you satisfactory service—we can help you.

The technical staff of our Service Department carefully inspects every used car offered for sale through us by our customers.

If a car is not in perfect running order or in good, sound condition, we do not recommend it.

If the figure placed on the car by the owner is higher than we value it, the car is not recommended by us.

When we do endorse a car you may place full reliance on our opinion and recommendation.

We Recommend and offer to-day

AC 1 PASSENGER TOURING CAR, 1925 Model.
The acknowledged Aristocrat of Light Cars. Complete with Hartford Shock Absorbers, Spotlight, Disc Wheel, Radiator Valve, Electric Starting and Lighting, Adjustable Front Seats, Small Amortized Springs, 6,400. In perfect running order. Cost 2569 new—2280

WILLYS-KNIGHT, 6 PASSENGER TOURING CAR.
Luggage Rack on right running board. Grayton Steel Covert. Recently Reupholstered. In excellent running order. Ideal car for safety. Cost 2569 new—2280

BUICK SPECIAL STANDARD SIX TOURING, 1925 Model.
Trunk Rack, Front Bumpers, Wire Wheel, Four-Wheel Brakes. Price will include optional for valve grinding. Ideal car for safety. Cost 2569 new—2280

DODGE 5 PASSENGER TOURING, 1926 Model.
Dumpegs, Spot Lights, Special Type of Plate Glass Side in place of usual Side. Curved running car to be converted into a virtually a closed type. In perfect running order. 2555

Giffillan & Company, Ltd. SIXTH AVENUE, NAIROBI.

SEND FOR FREE CATALOGUE

TO READERS OF THE East African Standard.

We are constantly adding to our interesting and valuable stock of goods. We are also successful in advertising their properties for sale. We have better connections here to make you better acquainted with the real estate market.

TO INTERESTING PURCHASERS

We invite you to further consult us before making any purchase for real estate. We are also successful in advertising their properties for sale. We have better connections here to make you better acquainted with the real estate market.

TO THOSE WHO WISH TO DISPOSE OF PROPERTY

We ask you to send us particulars of any property you wish to dispose of. We will give you the best price for your property.

WE ARE INTERESTED IN YOUR PROPERTY

We are constantly adding to our interesting and valuable stock of goods. We are also successful in advertising their properties for sale. We have better connections here to make you better acquainted with the real estate market.

GET A SQUARE DEAL WITH REAL ESTATE MORTGAGES

We are constantly adding to our interesting and valuable stock of goods. We are also successful in advertising their properties for sale. We have better connections here to make you better acquainted with the real estate market.

WE ARE INTERESTED IN YOUR PROPERTY

We are constantly adding to our interesting and valuable stock of goods. We are also successful in advertising their properties for sale. We have better connections here to make you better acquainted with the real estate market.

OVERLAND

A COMPLETE CAR
Metal Safari Body
3 Ply Sun Proof Top
5 Tyres & Tubes
Magneto Ignition

£195

THE OVERLAND
Service Station
Sixth Avenue NAIROBI.



The Utility Car & Truck

NOWHERE is the Ford more enjoyed and appreciated than in this country.

It has brought to the settler a constant means of saving the money of farm life. It has enabled him to add to the benefits of farm life the advantage of being always within easy reach of his market.

For the most important feature of having a Ford that anyone can handle it is in the safest and easiest of all cars to drive.

The Service Company Limited

IMPORTING DEALERS AND DISTRIBUTORS
NAIROBI - NAKURUA - MOMBASA

Count Them on the Road! The DURANT

Just a real good year
With a sound service organisation behind it.

SIXTH AVENUE,
NAIROBI.

CARR, LAWSON & Co., Ltd.

P. O. BOX 300.
PHONE 103.

A GOOD FOUR-CYLINDER CAR.
IS UNDENIABLY BETTER THAN A CHEAP SIX
AND IMMEASURABLY THE BEST AMONG FOURS

IS THE

CHRYSLER FOUR

Magneto Ignition—Hydraulic Four-wheel Brakes 1935.

DISTRIBUTORS
YORK GARAGES, LTD. NAIROBI



H. F. WARD & COMPANY

TELEPHONE 300
P. O. BOX 100

CABLE ADDRESS
WARDYAK

NAIROBI HOUSE
NAIROBI-KENYA COLONY

Charming double storied house, standing in gardens of about 1/2 acre. Two reception rooms, four or five bedrooms, usual offices, boys' quarters, garage, road, etc. Terms highly desirable. For particulars apply to H. F. WARD & COMPANY, NAIROBI. THIS IS ONE OF MANY DELICIOUS NAIROBI PROPERTIES REGISTERED FOR SALE.

NJORO DISTRICT—Approximately 1100 acres, best type maize land, highly developed, over 200 acres under cultivation. Property is complete with buildings, plant, 100 trained cows, etc. etc. **TERMS**—An EXAMPLE OF A SELECTION OF THE HIGHEST QUALITY MAIZE FARMS ALL HEAVILY PRODUCTIVE DISTRICTS.

We can offer a genuine opportunity to those anxious to secure first class farming land DIRECT FROM GOVERNMENT and a real opening for building up an substantial and valuable holding.

Protect Your Eyes FROM Sun, Glare & Dust

BY USING
**CHANGE'S PATENT
CROOK'S LENSES**

OBTAINABLE FROM
A. H. WARDLE & Co., Ltd.
P. O. Box 103. Phone 56.

ALWAYS USE



For cleaning the polished side curtains and wood trimmings of your car

Trade Enquiries to the Agents,
H. O. HAMILTON, Ltd. Box 302
NAIROBI

ENGAGEMENT.

MARIE-MILLET—An engagement is announced between Captain R. E. Major, eldest son of the Rev. Dr. and Mrs. Major, of North Wiltshire, and Miss Mabel, second daughter of Major and Mrs. O'Connor Milnes of Nairobi.

IN MEMORIAM.

ROOPE—Inherited by his parents the late Mr. and Mrs. Frank Roope who died at Nairobi on 29th November, 1932.

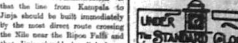
THE EAST

AFRICAN EAST STANDARD
Mombasa Times & Uganda Standard
SATURDAY, NOV. 26, 1932.

RAILWAYS IN UGANDA.

It has been announced that the Uganda Railway Estimates for 1932-33 have been approved by the Government. It is being made on railway construction work in Kenya and Uganda and in reference to the main line extension in Uganda it is stated that the work was progressing favourably and that it was hoped to complete the line as far as Mukamba early in 1932. Work is being done near Tororo and Mbita and extensions from both end and carry parties are being made from Tororo to Mbita and beyond. A committee to consider the best line for railway development in Uganda has been set up and has now given a preliminary report in which the recommendation is made that the line be extended from Tororo to Mbita and beyond. A committee to consider the best line for railway development in Uganda has been set up and has now given a preliminary report in which the recommendation is made that the line be extended from Tororo to Mbita and beyond. A committee to consider the best line for railway development in Uganda has been set up and has now given a preliminary report in which the recommendation is made that the line be extended from Tororo to Mbita and beyond.

system and it must be admitted that Kenya, as the main capital of Uganda has a very strong claim to a primary attention in the construction of the main line. The line which is in course of construction to Mbita will get both Tororo and Mbita into direct railway communication with Mombasa and will to the extent relieve traffic as well as providing for the whole of the produce grown in the rich area surrounding Lake Kioga. So much so that it is the intention of the most urgent and the most suitable work for further extension that the main line to Mukamba is within the contention now. The proposed line through Tororo to Mbita is capable of great development. It appears to offer a suitable alignment for extension, and the system northwards and westwards towards the Belgian Congo to become, in fact, the main line from the Coast to the far interior. On the other hand, it is obvious that the development of Kampala to the main commercial centre of the Protectorate must be regarded as a matter of the main importance. The Government's recommendation is that the line from Kampala to Tororo should be built immediately by the main direct route from the Nile near the Ripon Falls and that Tororo should be linked up with the new railway extension from Kampala. The advantage of this extension is that it would be a direct line through Tororo to the whole of the country and it would be a line which would be a great benefit to a large population. It is a line which would be a great benefit to a large population. It is a line which would be a great benefit to a large population.



IN MEMORY OF THE QUEEN MOTHER.
The Queen Mother died on 20th November 1932. Her Majesty was born on 21st April 1844. Her Majesty was married to the late King George V. Her Majesty was the mother of King George VI. Her Majesty was the grandmother of King Edward VIII. Her Majesty was the great-grandmother of King George VI. Her Majesty was the great-great-grandmother of King George VI.

THE MOST POPULAR MOTOR CAR IN THE WORLD TODAY.
Quality Makes Our Sales

St. Andrew's Day Dinner.
The annual St. Andrew's Day Dinner was held at the Nairobian Club on Monday evening last. The dinner was given by the Nairobian Club and was attended by a large number of guests. The dinner was a success and the proceeds were for the benefit of the Nairobian Club.

The Picture Page.
The picture page of the Standard is a weekly column of photographs. The pictures are selected from the Standard's files and are of interest to the general public. The pictures are of various subjects and are of high quality.

An Unknown Subject.
An unknown subject was mentioned in the Standard. The subject was a person who had been mentioned in the Standard. The subject was a person who had been mentioned in the Standard.

Unfinished Gun.
An unfinished gun was mentioned in the Standard. The gun was a rifle and was of the type used by the British Army. The gun was unfinished and was of the type used by the British Army.

Local Progress.
Local progress was mentioned in the Standard. The progress was in the form of a report on the state of the local economy. The report was a success and the progress was in the form of a report on the state of the local economy.

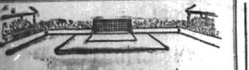
Keys, Arts and Crafts.
Keys, Arts and Crafts were mentioned in the Standard. The arts and crafts were of the type used by the British Army. The arts and crafts were of the type used by the British Army.

Art and Crafts.
Art and Crafts were mentioned in the Standard. The arts and crafts were of the type used by the British Army. The arts and crafts were of the type used by the British Army.

Art and Crafts.
Art and Crafts were mentioned in the Standard. The arts and crafts were of the type used by the British Army. The arts and crafts were of the type used by the British Army.

STANDARD.
The Standard is a newspaper published in Nairobi. The Standard is a newspaper published in Nairobi. The Standard is a newspaper published in Nairobi.

THE EAST AFRICAN EAST STANDARD.
The East African East Standard is a newspaper published in Mombasa. The East African East Standard is a newspaper published in Mombasa. The East African East Standard is a newspaper published in Mombasa.



If a football team were composed entirely of forwards, it would certainly have a hard time against a well-balanced opposing team. A petrol, well-balanced team, representing the spirit of the game, is the only team that can win. The Shell, which contains just enough of the lightest to make it a well-balanced team, just enough to make it a well-balanced team, just enough to make it a well-balanced team.

BUT YOUR SHELL FROM THE OBTAINED SHELL PUMP OR IN SEALED BURN CANS.

SHELL

THE WELL-BALANCED PETROL
BRITISH IMPERIAL OIL CO. (S.A.) LTD.
AGENTS—Smith, Macdonald & Co.

NOTICE

Enquiry into Cost of Building
A Committee has been appointed by Government to enquire into the position generally in regard to the cost of building in the Colony and to make recommendations with a view to reducing this cost.

2. The Committee invites evidence from Builders, Architects and others interested in this question.

3. A brief memorandum stating the main points on which a witness is prepared to give evidence should be addressed to the Secretary, c/o Postmaster General, Office, Nairobi.

TRADE & EXPORTS.

Imports and Exports. The following table shows the value of imports and exports for the month of November, 1922...

RAILWAYS IN UGANDA.

Suggested Extension. The Uganda Railway Commission has issued a report on the proposed extension of the railway from Kampala to Kumi...

KAMPALA-MULIAMIUTI ROUTE.

On the Kampala-Jinja route the Uganda Railway Commission has issued a report on the proposed extension of the railway from Kampala to Muliamiuti...

DISARMAMENT.

Mr. E. A. Blandford. The League of Nations has issued a report on the proposed disarmament of the East African States...

CONSPICUOUS.

Mr. E. A. Blandford. The Uganda Railway Commission has issued a report on the proposed extension of the railway from Kampala to Kumi...

POST CONTROL.

Mr. E. A. Blandford. The Uganda Railway Commission has issued a report on the proposed extension of the railway from Kampala to Kumi...

LYRIC HALL TO-NIGHT (at 8-45). Mr. A. WETHERELL Presents "LIVINGSTONE" The Great Film Production of the Life of the famous Explorer.

THE ENDING NOV. 21.

Shipping News. The following table shows the arrival and departure of ships for the month of November, 1922...

POPULATION.

The Provincial Commissioner has issued a report on the population of the East African States...

KAMPALA-JINJA ROUTE.

The Uganda Railway Commission has issued a report on the proposed extension of the railway from Kampala to Jinja...

REPAIRING MONEY.

A Bank Official. The Uganda Railway Commission has issued a report on the proposed extension of the railway from Kampala to Kumi...

ENTERTAINMENT.

"ZEBIBOKE." The Uganda Railway Commission has issued a report on the proposed extension of the railway from Kampala to Kumi...

TO-DAY'S CAUSE LIST.

Mr. E. A. Blandford. The Uganda Railway Commission has issued a report on the proposed extension of the railway from Kampala to Kumi...

DON'T RISK WET FEET. Water proof Zog Delta. Without Cap. The Tramp Boot No. 1241. No. 423 Field Boot.

PASSENGER LISTS.

Departures and Arrivals. The following table shows the arrival and departure of passengers for the month of November, 1922...

LEGISLATION.

There has been long sitting in Uganda's Commission appointed to inquire into the proposed extension of the railway from Kampala to Kumi...

THE MALDEN FERRY AND THE BAGO.

The Uganda Railway Commission has issued a report on the proposed extension of the railway from Kampala to Kumi...

POPULATION.

The Provincial Commissioner has issued a report on the population of the East African States...

THE BAPTIST ARMY.

LYRIC HALL. On Sunday evening, November 19th, 1922, the Baptist Army held a concert at the Lyric Hall...

WEATHER REPORT.

For the week ending November 21st, at certain stations in the British and Protectorates of East Africa...

THEATRE ROYAL Malindi, Saturday at 8.30. TO-NIGHT November 20th. STELLA MARIS THE STORY IS BY W. J. Locke An American production featuring MARY PICKFORD AND HAROLD LLOYD In a Scramming Comedy "Over the Fence"

RAILWAY TO KAMPALA.

There is no doubt that the proposed extension of the railway from Kampala to Kumi is a project of great importance...

RAILWAY TO KAMPALA.

There is no doubt that the proposed extension of the railway from Kampala to Kumi is a project of great importance...

RAILWAY TO KAMPALA.

There is no doubt that the proposed extension of the railway from Kampala to Kumi is a project of great importance...

RAILWAY TO KAMPALA.

There is no doubt that the proposed extension of the railway from Kampala to Kumi is a project of great importance...

RAILWAY TO KAMPALA.

There is no doubt that the proposed extension of the railway from Kampala to Kumi is a project of great importance...

RAILWAY TO KAMPALA.

There is no doubt that the proposed extension of the railway from Kampala to Kumi is a project of great importance...

WARINGS Expiration of Lease. Another Marvellous Opportunity BUT YOU MUST BUY NOW IF YOU WANT TO MAKE USE OF IT. Made in French Voile Frocks up to 28 inch length. Original Price 7s. 7/6 All our Price 5s. 1s.

PUNCH AND JUDY Entertainment For Kiddies ON OUR SECOND FLOOR AT 11 AM TO-DAY. BABY PETER GEMMA. Debutante from 10 to 11 a.m. and from 11.30 to 12 noon.

THE PREMIER TOY HOUSE. The best selection of toys for your children. THE PREMIER TOY HOUSE.

Jockey Club Dance Under the distinguished Patronage of His Excellency the Governor and Lady Grigg. A DANCE WILL BE HELD AT THE NEW STANLEY HOTEL. THURSDAY 31st. December 1922. 9 P.M. At the Secretary. The E. A. Standard. The River Stanley Hotel.

AUCTION SALES.

Auction Diary

Wednesday, 28th November at 10 a.m. Sale of Pencil Case. (Auctioneer's Office)
Wednesday, 2nd December at 10 a.m. Sale of Furniture (Office and Parlour).

ARCHIBALD HOGG

Hardinge Street, Nairobi.

Arms, Ammunition, Etc., Etc.

RIFLES all sizes 25 to .375 including Vickers, Blakely and High Capacity. AMMUNITION double and single barrel 410, 30, 16, 12 and 10 bore, REVOLVERS 25 to 460, AUTOMATIC PISTOLS 25 to 46, 35 SEMI AUTOMATIC PISTOLS, 25 AMMUNITION TUBES for 450 & 455 Revolvers, AIRGUNS and AIR PISTOLS 177 and 22 bore, 303 B.M.A. RIFLE BARRELS for mark VI and H.V. AMMUNITION all sizes, CARTRIDGE BAGS, belts, rifle cleaning and other accessories, 21818 primas etc. Sold glasses all sizes. GUN CASES, etc. "LIFE-SIZES" for night shooting, HORNHORN cloths & wipers, "MUTAK" dry cleaning brushes, "FLUXIN" soldering sets, "Kenya" Self filling FOUNTAIN PENS, "Teraco" Magazine VERNEER PENKINS, "MATTAMAO" Storm-proof, Home "BATS" BOOTS, Hunting and Skinning KNIVES, GAMPION DRY Dipping sets and chemicals, MOTOYLES, Havanna and Holland CIGARS, Burred and Planes OROLOGES, "Victoria" Magalshberg, Kenya and Rhodesia TOBACCO, Havana Algeria GARANITER, "LOVEY", "ORLITE" and other cigar pipes; TOBACCO POUCHES, OPTICIAN FRAMES, SKINS and CURIOS, etc., etc.

Prices and terms on application.

Muter and Oswald's Sales.

Catalogue Sale of Furniture and Effects

Daily instructed by several parties, we shall sell, by Catalogue, at our Salesrooms, Mutua Buildings, Nairobi, by Public Auction, without reserve, unless otherwise stated on

WEDNESDAY, 2nd Dec. at 10 a. m.
SHERWOODS IN TWO SUITES of DINING CHAIRS. PALM STAND, TWO SMALL GLOUSHIRE VASES. PEARL DINER SERVICE, in Gold and white.
No. 3 "Dove" Sofa, with piping, Kitchens Tables. Galvanised Iron Bath, Child's Cycle. Hydro-mat, with Rubber, Single Spring mattress. Oil mattress, Electric Table Lamp, and Kettle. Brass work Transmitter.
LARGE OVAL DINING TABLES in teak, and camphorwood.
"WADROBIL" in teak, with 3 bevelled mirrors (reserve) huge, DINER WARDEN in teak.
SHERWOODS in teak, DRESSING TABLES, bevelled mirror.
"DUCHESS" DRESSING TABLE in Teak, with bevelled mirror.
WARDROBES in teak, and camphorwood, WRITING DESK.
TEAK DINING TABLE, oval, with one leaf; castors; by LASBURY.
TWO GENT'S TOILET, MESSAGER, MORRIS CHAIRS
SINGLE IRON BEDSTEAD, BENTWOOD CHAIRS. CHAIRS of DRAWER, WRITING SUBRRA, in c.w. OCCASIONAL TABLE in teak and camphorwood, **TELER FINE CHESTNUT SUITE, GLASS LAMPS.**
"CLIFFTOPHORE" GRAMOPHONE—lamb model.
"DUCO" GRAMOPHONE, "PATER" GRAMOPHONE.
GRAMOPHONE RECORDS CHILD'S OOT with HIGH, and LOW CHAIRS.
GO-CART, THREE BURNER OIL STOVE and OVEN SERVICE.
SINGLE BEDSTEAD in Teak, with spring mattress. **R.S.A. MOTOR CYCLE, 2 1/2 h.p.** (reserve model).

CATALOGUE SALE. CATALOGUE SALE.

Muter and Oswald, Nairobi.

Austin's Auctions.

Unreserved Sale of Indian Teak Furniture Etc.

Daily instructed by a Gentleman leaving the Country

Austin & Co.

Will sell WITHOUT RESERVE at THE MART Government Road.

TO-DAY Nov. 28th at 10 Sharp

TEAK DOUBLE BED with 3 ply Spring Mattress and Imported Cot Overlay.
TEAK WARDROBE 5' 6" with MIRROR 4' 11" 4" and Drawers below.
TEAK DOUBLE WARDENHART MARBLE TOP and TILED BACK.
TEAK SHERWOOD 9' long with OVAL MIRROR 5' x 8' drawers and cupboard.
TEAK GUN CASE COVERED TAPESTRY.
TEAK DINING TABLE WITH TURNED LEGS, size 6' 6" x 6' 6".
The above Furniture is **TEAK ABSOLUTELY FIRST THROUGHOUT** and was made by the late JAMES LALANUS.
2 OCCASIONAL TABLES, BENTWOOD COFFERBOARD, 4 GLASS FLOWER VASES.
LARGE METAL FOOD BIN 5' 6" long in 3 compartments, lock and key.
2 BRONZED BRASS FRAMES and GLAZED.
"Tales of the Deep" and "The Pool" 32" x 24"
3 BOTTLE STANDS in OAK FRAME as new.
Single IRON BED COMPLETE WITH OVERLAY, VALUABLE DUNNETT COVER.
LARGE FOUR FOOT SQUARE 5' Covered with Cloth. Deal Table with Drawers.
SMALL TABLE BORN GRAMOPHORE and GIVE.
SALE RECORDS, QUANTITY GOOD TOOLS.
ENAMELLED WASH BASIN FAUCET COMPLETE.
SALE RECORDS, QUANTITY COMPLETE.
SADDLE in EXCELLENT CONDITION, complete with GINSTER STRIPES, etc.
LARDER 4' 6" HIGHER OVER IN GOOD CONDITION, PAIR FAIRLY FINE CIGARETTES.
ALUMINUM CASEKIT, Nice design, has had hardly any use, about 100 rounds.
HARDWOOD BLACK CHINA BOWL STAND and FLOWER HOLDER.
No. 3 "DOVE" Sofa in good condition.
54 pieces CHINA DINNER SERVICE pattern Gold and Black Green.
SET OF FIVE GOLF CLUBS IN CANVAS BAG.
STEWART SPEEDOMETER, FAMILY SCALE weighing up to 14 lb.
PART OILY TRAY, GLASS and PLATED FLOWER VASES.
THREE FINE CHESTNUTFIELD SUITE WELL SERVED COVERED TAPESTRY.
The following will be offered subject to low reserves.
"HOPKINSON" UPRIGHT PIANO in solid WELNUT CASE, IRON FRAME.
This Piano is in splendid condition and is a very fine sound instrument.
American Buggy in Excellent condition with complete set of Harness in nearly new condition.
"JAMES" 4 1/2 h.p. MOTORCYCLE, Splendid "Mag. New Back Cover. Duster Cover, nearly new, Lamp and Motor, etc. In Perfect Running Order.
This Motorcycle is in a nearly new condition. The above will be on view in our MART on FRIDAY NOVEMBER 27th.

AUSTIN & Co., Auctioneers,

Austin's Auctions

Absolutely Without Reserve Ford Boxbody

Daily instructed

Austin & Co.

Will sell WITHOUT RESERVE behind the MART on

TO-DAY Nov. 28th at 10 Sharp

FORD BOX BODY in GOOD RUNNING ORDER and good condition.
LEVIN TWO STROKE MOTORCYCLE in RUNNING ORDER.
DOUGLAS MOTORCYCLE in GOOD RUNNING ORDER. TYRES and COMPLETE WAGON.

Thackrah's

NAKURU.

TOYS! TOYS! TOYS!!!

A large selection of Toys just unpacked including numerous SMALL TOYS for stockings, TINNED and GLASS ORNAMENTS for Xmas Trees, etc.

Popular Prices from 25 cents up.

N.B. Selections will be sent on approval against particulars of requirements and deposit to cover cost.

XMAS FESTIVITIES

Dressing Cases. Washes.
Manicure Sets. Clocks.
Catheter Sets. Cigar & Cigarette Cases.
Baby Dolls Sets. Snooker's Regalia.
Owl Glass. Playing Cards.
Hot Bowls. Sports Goods.
Yates. Calendars.
Tea & Luncheon Baskets. Fancy Stationery.
etc. etc.

Extensive new stocks of CARPETS, GLASS and CHINAWARE and SILVERWARE EFFECTS are also to hand.

WRITE or CALL it will SAY YOU.

C. DENOVAN.

Land and Estate Agent.

Properties of all descriptions on hand

For Sale.

ENQUIRIES INVITED.

City House

NAIROBI

Monthly Boarders.

WITH OR WITHOUT RESIDENCE.

Torr's Restaurant

St. Andrews Bazaar & Garden Fete.

(Under the Patronage of Their Excellencies Sir Edward and Lady Grigg)

Saturday December 5th 1925.

The Banquet and Fete will be held in the grounds of Dr. and Mrs. Van Someren (post of Aliswara Hill) and will be opened at 8 p.m. by Her Excellency The Hon. Lady Grigg.

Numerous stalls will be well stocked with goods to be sold at reasonable prices. Games, Sports, Entertainment in great variety including Selection by the K.A.R. Band by kind permission of Officer Commanding.

Concessions, Classes, etc., etc., Refreshments, Tea, Suppers. Provided in the Grounds. For Details see Banner Hand-Book. Admission 1/- each; Children 50c.

CHIEF AGENCY

NAIROBI

Special terms will be offered to all well established firms or individuals in a position to contract or undertake a large quantity of business. Apply Voucher No. 2200, "East African Standard," Nairobi.

Xmas Festivities

There will be a Xmas Tree for the Children of Thika at the Thika Sports Club on December 22nd, Friday Night.

Sands & Co.

Xmas Fat Stock Show and Sales

Good Prices for the best pens in

SHEEP, CATTLE and PIGS

Naivasha

At our Yards.

MONDAY DECEMBER 7th

16 Grade Shorthorn Cows in Calf.
100 Native Ewes.
100 Grade Wethers.
40 Fat Slaughter Cattle.
10 Pigs.
1 Pure Bred Imported Ayrshire Bull, Just calving from S. Africa.
1 Bannockry King Conqueror 3 Dine Plough.
1 P.O. 2 Dine Plough.
1 Single F. M. Board.
1 Bannockry King Dine. St. Harrow.
1 Dose Separator.

GIL GIL.

TUESDAY 8th December.

200 Grade and Native Cows.
100 Grade Wethers.
100 Fat Slaughter Cattle.
40 Grade Heifers Shorthorn.
3 Grade Shorthorn Bulls.
10 Pigs.

SANDS & Co. Auctioneers

WHEAT GROWERS

Now following in the interest of the Manufacturers, Dealers and Exporters of all kinds, in one respect, the Government of the Republic with a View to the sale of wheat to the Government of the Republic of "East" in view of the high price of wheat. It is the intention of the Government to sell wheat at the rate of 20 per cent. Supply of wheat available from the B.O. Agents.

J. C. Axtens, (P. O. Box 468, Nairobi)

MISS KATHLEEN BATES A.L.M.

Office Lessons in PIANO, VOICE, SINGING, HARMONY, THEORY OF MUSIC, and ALL CULINARY ARTS.
Apply STUDIO, CHIEF'S BUILDINGS, KILN STREET, NAIROBI. (Post Office Box 41, Nairobi).

Notice of Removal

As from 1st December the Offices, Showrooms and Garage of HERRIS & FISHER AND HERRIS (S.A.) Ltd., will be transferred from Home Buildings, Government Road to more commodious premises in VICTORIA STREET, NAIROBI, (previously occupied Messrs G. North & Son Ltd's premises) on which from which date all enquiries should be made there for.

Dodge Bros Cars & Vans

Graham Bros Trucks

Accessories Petrol & Oil

P.O. Box 466. Telephone 2200.



HOLEPROOF

Large quantities received, can be seen in the following Price Sheet.

BROWN, PEACH, SUNBURN CHAMPAGNE WINE, GRAM, CHAM, FAWN NEW WHITE AND BLACK.

Hutchings, Biemer & Co.

Box 466. NAIROBI. 5 PER CENT DISCOUNT ALLOWED on Monthly Accounts with Approved cheques.

THE PORT COMMISSION.
Mombasa Chamber of Commerce.

MEMBERS TO QUESTIONNAIRE.
Chamber Favours Principle of Part Self-Supporting.

APPROPRIATE APPOINTMENT OF RESPONSIBLE HARBOUR BOARD.

[From Our Own Correspondent.]
Mombasa, Nov. 25. Further deep water works for the benefit of the port...

THE PORT COMMISSION.
Mombasa Chamber of Commerce.

MEMBERS TO QUESTIONNAIRE.
Chamber Favours Principle of Part Self-Supporting.

APPROPRIATE APPOINTMENT OF RESPONSIBLE HARBOUR BOARD.

[From Our Own Correspondent.]
Mombasa, Nov. 25. Further deep water works for the benefit of the port...

THE PORT COMMISSION.
Mombasa Chamber of Commerce.

MEMBERS TO QUESTIONNAIRE.
Chamber Favours Principle of Part Self-Supporting.

APPROPRIATE APPOINTMENT OF RESPONSIBLE HARBOUR BOARD.

[From Our Own Correspondent.]
Mombasa, Nov. 25. Further deep water works for the benefit of the port...

THE PORT COMMISSION.
Mombasa Chamber of Commerce.

MEMBERS TO QUESTIONNAIRE.
Chamber Favours Principle of Part Self-Supporting.

APPROPRIATE APPOINTMENT OF RESPONSIBLE HARBOUR BOARD.

[From Our Own Correspondent.]
Mombasa, Nov. 25. Further deep water works for the benefit of the port...

THE PORT COMMISSION.
Mombasa Chamber of Commerce.

MEMBERS TO QUESTIONNAIRE.
Chamber Favours Principle of Part Self-Supporting.

APPROPRIATE APPOINTMENT OF RESPONSIBLE HARBOUR BOARD.

[From Our Own Correspondent.]
Mombasa, Nov. 25. Further deep water works for the benefit of the port...

THE PORT COMMISSION.
Mombasa Chamber of Commerce.

MEMBERS TO QUESTIONNAIRE.
Chamber Favours Principle of Part Self-Supporting.

APPROPRIATE APPOINTMENT OF RESPONSIBLE HARBOUR BOARD.

[From Our Own Correspondent.]
Mombasa, Nov. 25. Further deep water works for the benefit of the port...

QUEEN ALEXANDRA.
KIVU LAND.

Special Service.
Petition to Government.

IN MOZAMBIQUE CATHEDRAL.
FRESH UNDERTAKINGS.

[From Our Own Correspondent.]
Mombasa, Nov. 25. Further deep water works for the benefit of the port...

MEMBERS TO QUESTIONNAIRE.
Chamber Favours Principle of Part Self-Supporting.

APPROPRIATE APPOINTMENT OF RESPONSIBLE HARBOUR BOARD.

[From Our Own Correspondent.]
Mombasa, Nov. 25. Further deep water works for the benefit of the port...

THE PORT COMMISSION.
Mombasa Chamber of Commerce.

MEMBERS TO QUESTIONNAIRE.
Chamber Favours Principle of Part Self-Supporting.

APPROPRIATE APPOINTMENT OF RESPONSIBLE HARBOUR BOARD.

[From Our Own Correspondent.]
Mombasa, Nov. 25. Further deep water works for the benefit of the port...

THE PORT COMMISSION.
Mombasa Chamber of Commerce.

MEMBERS TO QUESTIONNAIRE.
Chamber Favours Principle of Part Self-Supporting.

APPROPRIATE APPOINTMENT OF RESPONSIBLE HARBOUR BOARD.

[From Our Own Correspondent.]
Mombasa, Nov. 25. Further deep water works for the benefit of the port...

THE PORT COMMISSION.
Mombasa Chamber of Commerce.

MEMBERS TO QUESTIONNAIRE.
Chamber Favours Principle of Part Self-Supporting.

APPROPRIATE APPOINTMENT OF RESPONSIBLE HARBOUR BOARD.

[From Our Own Correspondent.]
Mombasa, Nov. 25. Further deep water works for the benefit of the port...

THE PORT COMMISSION.
Mombasa Chamber of Commerce.

MEMBERS TO QUESTIONNAIRE.
Chamber Favours Principle of Part Self-Supporting.

APPROPRIATE APPOINTMENT OF RESPONSIBLE HARBOUR BOARD.

[From Our Own Correspondent.]
Mombasa, Nov. 25. Further deep water works for the benefit of the port...

THE PORT COMMISSION.
Mombasa Chamber of Commerce.

MEMBERS TO QUESTIONNAIRE.
Chamber Favours Principle of Part Self-Supporting.

ROUND AFRICA QUEST.
Folk Lore & Tribal Songs.

LINKING UP RECORDS.

[From Our Own Correspondent.]
Mombasa, Nov. 25. Further deep water works for the benefit of the port...

MEMBERS TO QUESTIONNAIRE.
Chamber Favours Principle of Part Self-Supporting.

APPROPRIATE APPOINTMENT OF RESPONSIBLE HARBOUR BOARD.

[From Our Own Correspondent.]
Mombasa, Nov. 25. Further deep water works for the benefit of the port...

THE PORT COMMISSION.
Mombasa Chamber of Commerce.

MEMBERS TO QUESTIONNAIRE.
Chamber Favours Principle of Part Self-Supporting.

APPROPRIATE APPOINTMENT OF RESPONSIBLE HARBOUR BOARD.

[From Our Own Correspondent.]
Mombasa, Nov. 25. Further deep water works for the benefit of the port...

THE PORT COMMISSION.
Mombasa Chamber of Commerce.

MEMBERS TO QUESTIONNAIRE.
Chamber Favours Principle of Part Self-Supporting.

APPROPRIATE APPOINTMENT OF RESPONSIBLE HARBOUR BOARD.

[From Our Own Correspondent.]
Mombasa, Nov. 25. Further deep water works for the benefit of the port...

THE PORT COMMISSION.
Mombasa Chamber of Commerce.

MEMBERS TO QUESTIONNAIRE.
Chamber Favours Principle of Part Self-Supporting.

APPROPRIATE APPOINTMENT OF RESPONSIBLE HARBOUR BOARD.

[From Our Own Correspondent.]
Mombasa, Nov. 25. Further deep water works for the benefit of the port...

THE PORT COMMISSION.
Mombasa Chamber of Commerce.

MEMBERS TO QUESTIONNAIRE.
Chamber Favours Principle of Part Self-Supporting.

APPROPRIATE APPOINTMENT OF RESPONSIBLE HARBOUR BOARD.

[From Our Own Correspondent.]
Mombasa, Nov. 25. Further deep water works for the benefit of the port...

THE PORT COMMISSION.
Mombasa Chamber of Commerce.

MEMBERS TO QUESTIONNAIRE.
Chamber Favours Principle of Part Self-Supporting.

APPROPRIATE APPOINTMENT OF RESPONSIBLE HARBOUR BOARD.

LYRIC HALL.
TO-NIGHT.
NIGHTLY THIS WEEK AT 8-45.

THE WOLF FAMOUS FILM.
ZEEB RUGGE.

Under the direction of the Admiralty.
THE PRINCE OF PELES TOUR IN WEST AFRICA.

Admission Official Film.
Plans Now Open for Booking.

Reserved Seats 5/- Unreserved Seats 2/-

[From Our Own Correspondent.]
Mombasa, Nov. 25. Further deep water works for the benefit of the port...

DO NOT RISK WET FEET.

No. 528. 1110 Gaitolied. 28/.

Water proof Zeeb Rubber Without Cap.

[From Our Own Correspondent.]
Mombasa, Nov. 25. Further deep water works for the benefit of the port...

MAGIC AND MYSTERY.

The Tramp Foot No. 1291. No. 428. 1110 Gaitolied. 28/.

Water proof Zeeb Rubber Without Cap.

[From Our Own Correspondent.]
Mombasa, Nov. 25. Further deep water works for the benefit of the port...

EADLES FOOTWEAR, LTD.

Box 140, NAIROBI. Phone 424.

THEATRE ROYAL.
TO-NIGHT, WEDNESDAY.
A SUPER-FEATURE COMEDY PROGRAMME.

Wesley Barry. Affectionately known as 'Freckles' in the humorous story of a spirited youth.

'SCHOOL DAYS' AND 'HARD LLOYD' IN A SCREAMING COMEDY 'Over the Fence'.

FULL ORCHESTRA ENSEMBLE.

WARINGS.

Expiration of Lease. THE GREATEST BARGAIN OFFER YET MADE.

'YOU taking advantage of it!'

Leader's Afternoon and Evening Dresses. Leader's Cost Frocks. Leader's Evening Gowns. Artificial Flowers.

The above Models range in price from Shs. 60/- to Shs. 200/-, many of them having been reduced from Shs. 250/-.

Africa House, Government Road, NAIROBI.

Bring the Cinema to Your Home for Xmas.

The House for Quality.

LETTERS AND ANSWERS.
A letter has been asking the representatives of the Chamber of Commerce before the Port Commission...

REPRESENTATIVES OF THE CHAMBER OF COMMERCE.
It was proposed that the President should attend and give evidence before the Port Commission...

CHAMBER OF COMMERCE.
Mr. J. H. Clark was this day appointed as the Chamber's representative before the Port Commission...

LETTERS AND ANSWERS.
A letter has been asking the representatives of the Chamber of Commerce before the Port Commission...

REPRESENTATIVES OF THE CHAMBER OF COMMERCE.
It was proposed that the President should attend and give evidence before the Port Commission...

CHAMBER OF COMMERCE.
Mr. J. H. Clark was this day appointed as the Chamber's representative before the Port Commission...

LETTERS AND ANSWERS.
A letter has been asking the representatives of the Chamber of Commerce before the Port Commission...

REPRESENTATIVES OF THE CHAMBER OF COMMERCE.
It was proposed that the President should attend and give evidence before the Port Commission...

CHAMBER OF COMMERCE.
Mr. J. H. Clark was this day appointed as the Chamber's representative before the Port Commission...

KENYA NATIONAL ARCHIVES
PHOTOGRAPHIC SERVICE

Description of Document..... **THE EAST AFRICAN STANDARD (MOMBASA TIMES & UGANDA ARGUS)**
.....
..... **(Daily Edition) 2nd to 30th November, 1925.**.....

Reference No..... **From E.A.S. Library.**.....

END