



# "His Master's Voice" GRAMOPHONES and RECORDS

## The Perfect Xmas Gift The Best Reproduction

**A Selection from the latest arrivals of "HIS MASTER'S VOICE" RECORDS**

**DANCE RECORDS**—10" Double Grooved  
 Phon. Label. Price 5/6 each

**Look at these gramophones**  
 No. 1000  
 No. 1001  
 No. 1002  
 No. 1003  
 No. 1004  
 No. 1005  
 No. 1006  
 No. 1007  
 No. 1008  
 No. 1009  
 No. 1010  
 No. 1011  
 No. 1012  
 No. 1013  
 No. 1014  
 No. 1015  
 No. 1016  
 No. 1017  
 No. 1018  
 No. 1019  
 No. 1020

**Gramophone No. 1000**  
 Complete with all the latest records, including the new gramophone, 10" double grooved records, and a complete set of records, all at a special price of 10/6.

**Gramophone No. 1001**  
 Complete with all the latest records, including the new gramophone, 10" double grooved records, and a complete set of records, all at a special price of 10/6.

**Gramophone No. 1002**  
 Complete with all the latest records, including the new gramophone, 10" double grooved records, and a complete set of records, all at a special price of 10/6.

**Gramophone No. 1003**  
 Complete with all the latest records, including the new gramophone, 10" double grooved records, and a complete set of records, all at a special price of 10/6.

**Gramophone No. 1004**  
 Complete with all the latest records, including the new gramophone, 10" double grooved records, and a complete set of records, all at a special price of 10/6.

**Gramophone No. 1005**  
 Complete with all the latest records, including the new gramophone, 10" double grooved records, and a complete set of records, all at a special price of 10/6.

**Gramophone No. 1006**  
 Complete with all the latest records, including the new gramophone, 10" double grooved records, and a complete set of records, all at a special price of 10/6.

**Gramophone No. 1007**  
 Complete with all the latest records, including the new gramophone, 10" double grooved records, and a complete set of records, all at a special price of 10/6.

**Gramophone No. 1008**  
 Complete with all the latest records, including the new gramophone, 10" double grooved records, and a complete set of records, all at a special price of 10/6.

**Gramophone No. 1009**  
 Complete with all the latest records, including the new gramophone, 10" double grooved records, and a complete set of records, all at a special price of 10/6.

**Gramophone No. 1010**  
 Complete with all the latest records, including the new gramophone, 10" double grooved records, and a complete set of records, all at a special price of 10/6.

**Gramophone No. 1011**  
 Complete with all the latest records, including the new gramophone, 10" double grooved records, and a complete set of records, all at a special price of 10/6.

**Gramophone No. 1012**  
 Complete with all the latest records, including the new gramophone, 10" double grooved records, and a complete set of records, all at a special price of 10/6.

**Gramophone No. 1013**  
 Complete with all the latest records, including the new gramophone, 10" double grooved records, and a complete set of records, all at a special price of 10/6.

**Gramophone No. 1014**  
 Complete with all the latest records, including the new gramophone, 10" double grooved records, and a complete set of records, all at a special price of 10/6.

**Gramophone No. 1015**  
 Complete with all the latest records, including the new gramophone, 10" double grooved records, and a complete set of records, all at a special price of 10/6.

**Gramophone No. 1016**  
 Complete with all the latest records, including the new gramophone, 10" double grooved records, and a complete set of records, all at a special price of 10/6.

**Gramophone No. 1017**  
 Complete with all the latest records, including the new gramophone, 10" double grooved records, and a complete set of records, all at a special price of 10/6.

**Gramophone No. 1018**  
 Complete with all the latest records, including the new gramophone, 10" double grooved records, and a complete set of records, all at a special price of 10/6.

**Gramophone No. 1019**  
 Complete with all the latest records, including the new gramophone, 10" double grooved records, and a complete set of records, all at a special price of 10/6.

**Gramophone No. 1020**  
 Complete with all the latest records, including the new gramophone, 10" double grooved records, and a complete set of records, all at a special price of 10/6.



Sole Distributors for Kenya.

P.O. Box No. 120 Telephone "Admiral" Phone No. 225. NAIROBI.

# MOTURING TOPICS

## CAR CAUSERS.

(Continued from yesterday)

**Using the Clutch.**  
 Many people say you can't slip the clutch, particularly when attempting to climb a steep hill on top gear. This practice should be avoided as much as possible because it promotes rapid wear of the clutch lining and causes them to become hard and glazed, resulting eventually in a harsh clutch. The danger point in poor driving, better ball stalling and improved control through softness in the various gears. Lacking the practice of riding the clutch—riding with the foot resting on the clutch pedal—is equally bad, as it has often pointed out.

## Stopping.

It is worth while to suggest one or two points in connection with stopping the car. Normally the car is stopped by application of the brakes, but if it is possible to stop it, or at least to decrease its speed, by other means. The foot brake is most frequently used in driving, the hand brake is generally applied only when it is desired to hold the car for a brief period at a standstill. It is best to use the hand brake as little as possible in order to reduce the wear to a minimum. In making any such emergency stop, such as the clutch, disengage the clutch and let the car coast and then stop using either the foot or the hand brake by bringing it to a halt only if necessary. This practice is most advantageous as that it reduces wear of the tyre and the brake linings, as well as reduces the danger of the car's coming to a stop. The quicker stop can be made by disengaging the clutch and pressing the foot brake, raising the leg of the foot and using the toe.

## Braking.

Never bring the car to a stand still as quickly as possible except in an emergency.

in an emergency, as this practice is very apt to be dangerous. Because of the very powerful action of the clutch, it is in fact one of the four wheel types, it is necessary to stop it in a controlled manner. It is best to slip the clutch and let the car coast and then stop using either the foot or the hand brake by bringing it to a halt only if necessary. This practice is most advantageous as that it reduces wear of the tyre and the brake linings, as well as reduces the danger of the car's coming to a stop. The quicker stop can be made by disengaging the clutch and pressing the foot brake, raising the leg of the foot and using the toe.

## Counting in Neutral.

It is in the best interest of the car to count in neutral when the car is stopped. This practice is most advantageous as that it reduces wear of the tyre and the brake linings, as well as reduces the danger of the car's coming to a stop. The quicker stop can be made by disengaging the clutch and pressing the foot brake, raising the leg of the foot and using the toe.

## Down Hill.

It is not good driving to let the car coast down a hill.

It is in the best interest of the car to count in neutral when the car is stopped. This practice is most advantageous as that it reduces wear of the tyre and the brake linings, as well as reduces the danger of the car's coming to a stop. The quicker stop can be made by disengaging the clutch and pressing the foot brake, raising the leg of the foot and using the toe.

## Coasting in Neutral.

It is in the best interest of the car to count in neutral when the car is stopped. This practice is most advantageous as that it reduces wear of the tyre and the brake linings, as well as reduces the danger of the car's coming to a stop. The quicker stop can be made by disengaging the clutch and pressing the foot brake, raising the leg of the foot and using the toe.

## Car at a Standstill.

It is in the best interest of the car to count in neutral when the car is stopped.

It is in the best interest of the car to count in neutral when the car is stopped. This practice is most advantageous as that it reduces wear of the tyre and the brake linings, as well as reduces the danger of the car's coming to a stop. The quicker stop can be made by disengaging the clutch and pressing the foot brake, raising the leg of the foot and using the toe.

## Starting the Car.

It is in the best interest of the car to count in neutral when the car is stopped. This practice is most advantageous as that it reduces wear of the tyre and the brake linings, as well as reduces the danger of the car's coming to a stop. The quicker stop can be made by disengaging the clutch and pressing the foot brake, raising the leg of the foot and using the toe.

## When you require your shoe repairs.

When you require your shoe repairs, the best place to go is to the shoe repairer.

**RESIDENTIAL**

**FOR SALE**

**Properties**

A comfortable house in Invermay, near Tennis Court, Garden, and other conveniences. A cash payment of £1000 and you become your own home.

A Stone House with garden and tennis court. A cash payment of £1000 and you become your own home.

A Stone House with garden and tennis court. A cash payment of £1000 and you become your own home.

# Picking a Winner as a rule, a safe feeling has nothing on the usual gamble of selecting a good used car

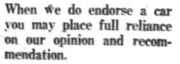
Used car buying under the usual conditions is certainly a great game, and if you like a gamble, we recommend it.

However, if you don't feel like taking a long chance—if you want to be absolutely certain that the used car you buy is in good mechanical condition, is good value and will give you satisfactory service—we can help you.

The technical staff of our Service Department carefully inspects every used car offered for sale through us by our customers.

If a car is not in perfect running order or in good, sound condition, we do not recommend it.

If the figure placed on the car by the owner is higher than we value it, the car is not recommended by us.



When we do endorse a car you may place full reliance on our opinion and recommendation.

# We Recommend and offer to-day

**AC 8 PASSENGER TOURING CAR 1925 Model.**  
 The acknowledged Aristocrat of Light Cars. Complete with Hartford Glass, Headlights, Spotlight, Discs, Wheels, Balloon Tyres, Electric Starting, Motor, Adjustable Front Seats, Small Assembling Rooms. Mileage 8,600. In perfect running order. Cost—£250.

**LARGE DURANT SPORTS TOURING 1926 Model.**  
 Mileage 9,600. In most excellent condition. Complete with full set of Houdaille Hydraulic Shock Absorbers, W.E.P. Spring Gullies to adjust at rear with Trunk, spare Petrol Tank, Tyres in first-class shape, two spare; Bosch Headlights fitted in place of regular type, extra lights on front mudguards, 2 spare springs, spare spark-plug, spare bulbs for all lights, 3 spare valves, spare carburettor, spare set of coil springs.

**DODGE BOY BODY 1924 Model.** Mileage 2,500. One of the best Safaris Cars we have ever seen. Remarkably fine condition and unusually complete. Fitted with two Spot Lights, Special Safari Tent with all fittings included. Tyres flat. Cost—£225.

**DODGE 8 PASSENGER TOURING 1924 Model.** Mileage 9,600. Complete with Front and Rear Bumpers, Spot Light. Special Type of Pale Glass Sides in place of usual Side Curtains, enabling car to convert into virtually a closed type. In perfect running order and condition. Cost—£235.

**Giffillan & Company, Ltd.** SIXTH AVENUE, NAIROBI.

**RESIDENTIAL**

**FOR SALE**

**Properties**

A comfortable house in Invermay, near Tennis Court, Garden, and other conveniences. A cash payment of £1000 and you become your own home.

A Stone House with garden and tennis court. A cash payment of £1000 and you become your own home.

A Stone House with garden and tennis court. A cash payment of £1000 and you become your own home.

Well-appointed House on 6 acres with Tennis Court, well-kept Garden, Garage, etc. Suitable terms arranged. Ref. H.P.

In these days of expensive building the best value as well as many other features we have in our systems are worth the dependent consideration member rents are increasing, increasing safeguard yourself by purchasing your own property you will probably pay something for the cost but you will pay less long; therefore, write you to consult us with every confidence.

We are holding a very attractive property next month and intend to sell in parcels of 1000 yds for individual sale.



Cutler, Palmer & Co.

The Wine Merchants of the East

PALL MALL WHISKY NAPIER-JOHNSTONE WHISKY DINNER SHERRY DESERT PORT INVALIDS PORT

Stocks Carried by Smith Mackenzie & Co., NAIROBI

N E W

Never before has it been possible to have dependable DELOZ LAMP... The new DELOZ lamp... Model 205...

LOCHHEAD & MOORE, Nairobi

J. H. ENGELBRECHT, Nyeri

Irishette Passenger Service, Royal Mail & Heavy Motor Transport... I have my own vans... I have a fleet of cars...

OUR LONDON LETTER

Progress of Labour in the Annual Budget... Brighter Outlook in British Trade and Industry.

LESS SELF DEPRECIATION.

TARIFF FLOOD IN WALLS.

London Our Correspondent

THE HOUSE OF COMMONS... The House of Commons...

THE HOUSE OF COMMONS... The House of Commons...

THE HOUSE OF COMMONS... The House of Commons...

THE HOUSE OF COMMONS... The House of Commons...

THE HOUSE OF COMMONS... The House of Commons...

THE HOUSE OF COMMONS... The House of Commons...

THE HOUSE OF COMMONS... The House of Commons...

THE HOUSE OF COMMONS... The House of Commons...

THE HOUSE OF COMMONS... The House of Commons...

THE HOUSE OF COMMONS... The House of Commons...

THE HOUSE OF COMMONS... The House of Commons...

THE HOUSE OF COMMONS... The House of Commons...

THE HOUSE OF COMMONS... The House of Commons...

THE HOUSE OF COMMONS... The House of Commons...

THE HOUSE OF COMMONS... The House of Commons...

THE HOUSE OF COMMONS... The House of Commons...

THE HOUSE OF COMMONS... The House of Commons...

THE HOUSE OF COMMONS... The House of Commons...

£52-10-0

THE FINEST MOTOR CYCLE PROPOSITION OFFERED TO THE PUBLIC

RALEIGH

The Gold Medal Motor Cycle... 248 - Sturmy Archer's speed - chain drive... Independent internal expanding brakes - Dunlop tyres - Brampton Fork Forks - 21" Sprocket

Sole Agents Kettles-Roy & Co., NAIROBI... ("Zebra House" Government Road.)

REMOVALS

We have received a consignment of Imported... and on Cut.

Parsons on Cut... Edmunds in the Red Tin... St. Ivel in Small Tins... Dulc' Cream Cheese in Tins.

On Sale at R. B. DUNHAM... "The Grocer."



WITH REMINGTON YOU GET RUBBER KEYS SERVICE WITH GUARANTEE

FULL SUPPLY OF PARTS. ALL REPAIRS UNDERTAKEN... REMINGTON TYPEWRITER AGENCY... Government Road, NAIROBI.

THE HOUSE OF COMMONS

THE HOUSE OF COMMONS... The House of Commons...

THE HOUSE OF COMMONS... The House of Commons...

THE HOUSE OF COMMONS... The House of Commons...

THE HOUSE OF COMMONS... The House of Commons...

THE HOUSE OF COMMONS... The House of Commons...

THE HOUSE OF COMMONS... The House of Commons...

THE HOUSE OF COMMONS... The House of Commons...

THE HOUSE OF COMMONS... The House of Commons...

THE HOUSE OF COMMONS... The House of Commons...

THE HOUSE OF COMMONS... The House of Commons...

THE HOUSE OF COMMONS... The House of Commons...

THEATRE ROYAL

Full Orchestra Every Night.

Nightly at 8-45 Matinees Sats. at 3-30

ARRIVING MOMBASA DEC. 17TH DIRECT FROM THEIR SOUTH AFRICAN SUCCESSORS

THE VAUDEVILLIANS

Including the well known act of THE RICHARD SISTERS - MYRTLE KINSALE

PARKES AND ROSS

Accompanied by their SYNCOPATED JAZZ BAND

showing DEC. 21ST TO DEC. 29TH

TWELVE ARTISTES IN A FAST LIGHT PROGRAMME OF MUSIC, SONG & DANCE

CHANGE OF PROGRAMME ALTERNATE NIGHTS

PRICES: 4/6 & 2/6 RESERVED SEATS 2/6 & 1/6 ALL SEATS

TO-NIGHT & WEDNESDAY

JESSIE L. LASKY PRESENTS

WALLACE REID AND BEBE DANIELS

Two Renowned Masters of Jazz, Figs and Joy With Beautiful Dances (2 acts)

The Dancin' Fool

AND

BUSTER KEATON

IN HIS FASTEST COMEDY

The Blacksmith

NEXT SUPER FEATURE PICTURE

SHOWING THURSDAY - FRIDAY - SATURDAY, DECEMBER 10th, 11th & 12th, THIS WEEK

LAURETTE TAYLOR

IN

Peg O' My Heart

A PHOTO PLAY OF JOY YOUTH & LOVE

WELCOME RE-APPEARANCE OF KENYA'S POPULAR ARTISTS.

THIKA PLAYERS

IN THE SERIO-COMEDY MYSTERY PLAY

"THE BAT"

Showing DECEMBER 31ST TO JANUARY 6TH

NIGHTLY EXCEPTING JAN 1st

A MODERN PLOT SEATED IN NEW SETTINGS.

PRICES: 4/6 & 2/6 RESERVED SEATS 2/6 & 1/6 ALL SEATS

THE NAIROBI EUROPEAN SCHOOL CONCERT & PRIZE GIVING.

Monday, December 14th at 5 p.m.

R.E. LA Ode, MR EDWARD GIBBS & THE HOW LADY GREGO HAVE KINDLY CONSENTED TO DISTRIBUTE THE PRIZES.

PRICES: Adults 3/-, Children 2/-, Reserved Seats.

PARKLANDS SPORTS CLUB GRAND AMATEUR BOXING TOURNAMENT

By invitation of THE NAIROBI AMATEUR BOXING ASSN.

ON FRIDAY, JANUARY 1st.

CONTESTS FOR ALL WEIGHTS INCLUDING BOVINE COMPETITION.

BOOKING OFFICE: REMINGTON TYPEWRITER AGENCY, GOVERNMENT ROAD, PHONE 25; P.O. BOX 67.

PLANS OPEN FOR ALL SHOWS and DANCES

NATIONAL BANK OF INDIA CO-OPERATION IN AGRICULTURE. LIMITED.

(Incorporated in the United Kingdom)
Branches in the Colony and Protectorates of Kenya and Uganda...
Head Office: 24, Abchurch Lane, London, E.C. 4

Efficient Farming.
"BETTER FARMING, BETTER BUSINESS, BETTER LIVING."
Initiative must be with the Farmers.

THE FUTURE OF SOUTH AFRICA
The future of South Africa is being given priority to all who are keen to see the country develop into a modern state...

THE FUTURE OF SOUTH AFRICA (continued)
The future of South Africa is being given priority to all who are keen to see the country develop into a modern state...

P. STEWART
GLASS CUTTER
PAINTER & DECORATOR
Harding Street,
Durban, Natal.

CEDAR POSTS
Pine, Fir, Spruce, Larch, etc.
All sizes and all lengths.

GLADES ESTATE MOLO.
JOHN RIFKIN
South African
P.O. Box 118, NAIROBI.

WAGON BUILDER
ELPHINSTON PARKER
Builders of ALL KINDS OF WAGON
TRADE & ALL WAGONS
PARKER

DE LUXE BOOT CO.
(Imported by)
Perkins & Co.,
GOVERNMENT ROAD, NAIROBI.

W. J. BROWN & SONS
W. J. BROWN & SONS
W. J. BROWN & SONS

256
A new shipment of Munzer and Mansel Schwaner's Rules of our latest invention...
MAUNTLICHER SHOES
AUER in Calvert 6, 5, 8, and 2 1/2 with 25 and 25 1/2 in barrells.

Chas. A. Heyer & Co.
Government Road,
P.O. Box 117,
Nairobi, Kenya.

MINISTERS' RESOLUTIONS
There is no need for an agricultural survey of the country's agriculture...

AN AGRICULTURAL POLICY
The agricultural policy of the Government is to encourage the development of agriculture...

AGRICULTURAL ORGANIZATION
The agricultural organization of the country is to be based on the principle of co-operation...

AGRICULTURAL ORGANIZATION (continued)
The agricultural organization of the country is to be based on the principle of co-operation...

AGRICULTURAL ORGANIZATION (continued)
The agricultural organization of the country is to be based on the principle of co-operation...

AGRICULTURAL ORGANIZATION (continued)
The agricultural organization of the country is to be based on the principle of co-operation...

OVERSEAS MAILS
Table with columns: STRAITS, INDIA, Ceylon, Malaya, etc. and rows: Date, Mails, etc.

Table with columns: STRAITS, INDIA, Ceylon, Malaya, etc. and rows: Date, Mails, etc.

PORK SAUSAGES
THE PERFECT TYP OPENER

AGRICULTURAL ORGANIZATION (continued)
The agricultural organization of the country is to be based on the principle of co-operation...

AGRICULTURAL ORGANIZATION (continued)
The agricultural organization of the country is to be based on the principle of co-operation...

AGRICULTURAL ORGANIZATION (continued)
The agricultural organization of the country is to be based on the principle of co-operation...

AGRICULTURAL ORGANIZATION (continued)
The agricultural organization of the country is to be based on the principle of co-operation...

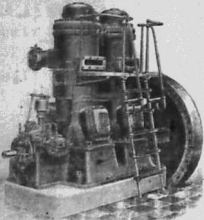




VICKERS-PETTER CRUDE OIL ENGINES



COMPLETELY COOLED COMBUSTION CHAMBER.



AGENTS—J. W. MILLIGAN & Co. NAIROBI.

WHEAT GROWERS USE ETHOS AND THE FREE OF ROBY.

The following is an extract of the Manufacturer's Report: 'Ethos gives vitality to plant life, enabling it to reach more abundantly the maximum of all things...'

J. G. Aronson, P. O. Box 458, Nairobi

UGANDA RAILWAY. Uganda Extension.

The Resident Engineer, Turbo, is prepared to let Contracts for twenty miles of Railworks, in Sections of about five miles, on the above Construction, at schedule rates, to suitable Contractors.

Particulars and Schedule of Rates may be obtained from the Resident Engineer, Turbo, or from the under signatory.

G. D. RHODES, CHIEF ENGINEER, UGANDA RAILWAY.

NAIROBI, 9th December, 1925.

OUR PARIS LETTER.

Financial Proposals.

AMBITIOUS DAY SCENES.

[How One Day Controversy Transpired.]

Paris, Nov. 11. On the morning of the 11th of the 11th... the day's work was arranged in advance... the day's work was arranged in advance...

THE SILENCE.

Use of the word 'silence'... the President of the Senate... the President of the Senate...

THE NEW TAX.

Like most projects that come to be rapidly forgotten... the law has been passed... the law has been passed...

NO MORE APPEALS.

Good news for all Parliament... the Government... the Government...

Deceptive Arts on Saturday last... the law has been passed... the law has been passed...

THE PATERNAL ROLE.

A young child of seventeen months... the law has been passed... the law has been passed...

FEMALE TOWN COUNCIL.

Norwegian Humour.

During the session... the law has been passed... the law has been passed...

RAGS AND BONES.

New Health Bill.

The new British Health Bill... the law has been passed... the law has been passed...

A New Operation.

A new operation by Franz Leber... the law has been passed... the law has been passed...

Maori School of Dancing.

NOTICE.

EDYTHE OTEAH will receive all calls as usual at the LYVED HALL from November 2nd. Apply Box 506 NAIROBI.

BLUE POSTS HOTEL. THIKIA A UNIQUE AND HEALTHY SPOT THAT ALWAYS ENSURES A GOOD APPETITE.

E. DOBRIE OPTICIAN GOVERNMENT OPTICIAN. No connection with any other of the same name.

BE IN TIME Xmas Specialties.

XMAS CRACKERS XMAS STOCKINGS, CRYSTALLINE FRUITS, DRIED FRUITS, CONFECTIONERY, ETC., ETC.

SPECIAL XMAS LIST kindly send for one now.

MACKINNON BROTHERS. Tel. No. 31. NAIROBI. Established 1904. P. O. Box 50.

MAY & Co. stock FISHING TACKLE.

For all makes of Cars. SHOCK ABSORBERS 'MAKE EVERY ROAD A BOULEVARD'. Ready for Immediate Delivery. Morris Cowley 4 Seater £275. Arriving this Week. Morris One Ton Truck Chassis With Self-Starter £270 Without Self-Starter £260. BOOK YOURS AT ONCE. Carr, Lawson & Co., Ltd. NAIROBI. Phone 103.

Hartford SHOCK ABSORBERS 'MAKE EVERY ROAD A BOULEVARD'. Ready for Immediate Delivery. Morris Cowley 4 Seater £275. Arriving this Week. Morris One Ton Truck Chassis With Self-Starter £270 Without Self-Starter £260. BOOK YOURS AT ONCE. Carr, Lawson & Co., Ltd. NAIROBI. Phone 103.

ALEMITE. We are sole agents for Alemite equipment. Special Sets of 17 fittings for Ford's 12-50 per set. Steel Tool Boxes for running boards, 25/-.

WILLARD BATTERIES. 12 volt wood case and separators 190/- 6 volt wood case and separators 105/- 6 volt rubber case wood separators 115/- 6 volt rubber case and separators 115/-

WILLARD RUBBER INSULATION. Our electrical department is now fully equipped to give efficient service to all types of batteries.

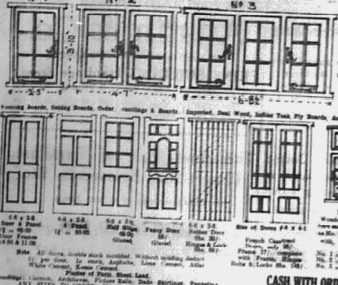
WILLARD. Our electrical department is now fully equipped to give efficient service to all types of batteries.



P.O. Box 20 NAIROBI.

Geo. BLOWERS

General Contractor, Builders, Plasterers, Painters, etc.



Vertical text listing services and contact information for Geo. Blowers.

OUR LONDON LETTER

(Continued from page 4)

Mr. Edward Wood M.P. to the House of Commons... The Government... The Opposition...

THE WELSH HYDRO

During the present week... The Welsh Hydro... The Government...

CASH WITH ORDER

Mr. J. G. Jones... Cash with order... The Government...

FIRST EDITIONS

A. A. Mize Book.

Books for sale... First editions... The Government...

WEEKLY SERVICES

Weekly services... The Government... The Opposition...

WEEKLY SERVICES

Weekly services... The Government... The Opposition...

FIRST EDITIONS

A. A. Mize Book.

Books for sale... First editions... The Government...

WEEKLY SERVICES

Weekly services... The Government... The Opposition...

WEEKLY SERVICES

Weekly services... The Government... The Opposition...

Give Her the Best.

TORR'S CHOCOLATES ARE SUPREME.

NEW STOCKS

Silks, Jewellery, Ivory Carvings, Brassware, Capotes, Laces and Gents Hosiery, hand made lace, etc.

B. CHOITRAM, GOVERNMENT ROAD, NAIROBI.

Notice of Removal

As from 1st December the Offices, Showroom and Garage of MESSRS. B. CHOITRAM AND SIMMONS (E.A.) LTD., will be transferred from Bona Buildings, Government Road, to three commodious premises in VICTORIA STREET, NAIROBI.

Dodge Bros Cars & Vans, Graham Bros Trucks, Accessories Petrol & Oils

P.O. Box 406 Telephone No. 302

THE EUROPEAN AND AFRICAN TRADES UNION

Headquarters: 1, Tudor Organisation, 519 P.O. Box 88, Nairobi, Kenya Colony.

PLEASE NOTE THAT FROM THE BEGINNING OF SEPTEMBER, 1936, THE FULL-TIME FEES WILL BE CHARGED BY THIS ORGANIZATION TO ALL THOSE WHO MAKE USE OF THIS ORGANIZATION AND WHO ARE NOT REGULAR CONTRIBUTORS TO THE FUNDS OF THE ORGANIZATION.

Madame Leon

First cost from Paris, Gowns and Hats of exclusive designs. Lovely Mink-colored Fur and Goggles - Trunks with silk stockettes slip. Shs. 125/6/0.

NOTICE OF REMOVAL, JOANS & BROS.

Our office has been removed to the premises of the late Mr. J. G. Jones, 11, Victoria Street, Nairobi.

AN IDEAL XMAS PRESENT.

COVERED BY PATENT GUARANTEE



The DUNHILL BRUYERE PIPE. OBTAINABLE FROM HIGH CLASS TOBACONISTS

ECONOMY STRENGTH SPEED.

The GRAY 1 ton Trucks.

The following contract was signed in the Cape Argus of September 17, 1935. The dominant slogan designated to the Gray (ton trucks) is 'Economy, Strength and Speed'.

Magneto Ignition Large Brake Drums. GRAY (ton) Nairobi.

K. McIVOR & Co., SOLE IMPORTERS, NAIROBI.

You Know the Name: REZIN. It is a Shorter Way of Spelling CLOTHES

The House of Rezin, Government Road, Nairobi.

THE 'GARDEN' BEAUTIFUL

For Flowering Shrubs, Plants, Bulbs & Trees. For Rooms, Conservatories & Climbers.

R. S. RANDALL, P.O. Box 177, Nairobi. A visit to his Nursery 7 miles from Nairobi will interest you.

Advertisement for ENLARGEMENTS and MARTIN, featuring a portrait of a man and technical details.

THE FILM INDUSTRY. The British Film Industry is steadily determined to put a strong emphasis on the American market.

P. GETHIN, HUSON SUPER SIX CARS FOR HIRE, DAY & NIGHT.

Telephone 240, NAIROBI.

Typewriting, All Classes of Typewriting, Modernized Letters, Shorthand, etc.

M. P. de Melio



SAM RIFKIN WAGON BUILDER, BLACKSMITH, FARRIER.

P.O. Box 478, Nairobi, Kenya Colony.

NAIROBI MILK SUPPLY S. Andersen & Co.

P.O. Box 330, NAIROBI.

S.P.C.A.

Society for the Prevention of Cruelty to Animals. A COMPLAINT BOOK is now at the office of the S.P.C.A., 60 AVONDA, NAIROBI.





SUTTON'S SEEDS.

When requiring seeds for the garden, buy SUTTON'S.

SHAW & HUNTER

(Sole Proprietor: R. M. SHAW) Box 70, Sixth Avenue, Nairobi.

The World at Your Command

If you are prepared to be guided by the World's leading manufacturers of Radio Apparatus...

Callia "Boncelle"

PERMANENTLY SAFE! As used extensively by EMILIE of London and Paris. The Toilet Regenerant Co.

J. R. STEPHENS & Co. Ltd.

Tailors & Outfitters

GOVERNMENT ROAD, NAIROBI. Phone 271

Provide Against the Rainy Weather

By giving the hood of your car a coat of water proof flood paint.



Khaki and Black. Sh. 6/6 per tin.

Charles Ware

The name that stands for integrity. PROVERBIAL ASSURANCE. ESTABLISHED 20 YEARS.

THE MOTOR MARI & EXCHANGE, LTD. NAIROBI.

THE NORTON POLICY

IS NOT Mass Production. THIS IS EVIDENT ON INSPECTION OF THE Norton Motor Cycles AT BRIMELOWS GARAGE, HARDING ST. NAIROBI.

MATCH AT PARELARA. A very interesting match was played at Parelara on Sunday.

Printed and Published by EAST AFRICAN STANDARD Ltd., Sixth Avenue, Nairobi, Kenya Colony.

THE SPORTS PAGE

KENYA LAWN TENNIS. SPORT AT RURU. KENYA CRICKET. THE BLAISISTON INCIDENT.

Annual Meeting of the Association.

Hunt, Polo, and Christmas Arrangements.

Suggested Match for the New Year.

Player to appeal in Rugby Union.

THE NEW COUNCIL.

ATTRACTIVE PROGRAMME.

AN INTERESTING SCHEME.

EXCEPTIONAL COURSE.

The fourth annual conference of the Kenya Tennis Association was held at the Club on Tuesday evening...

[From Our Own Correspondent] A match of the highest quality was played on Sunday last...

A proposed match was suggested by the Kenya Cricket Club...

A F. Blaisiston, the famous player who was referred to as the 'Blaisiston Incident'...

CHRISTMAS DANCE.

Arrangements are well advanced for the Christmas dance...

The West of Essex F.C. will play the Kenya F.C. on Saturday...

THE BOYS' HILL. The boys' hill race will be held on Saturday...

OFFICE REOPENED.

The following officers and members of the Kenya Tennis Association...

THE YOUNG MEN'S CHRISTIAN ASSOCIATION. The Young Men's Christian Association...

THE INDIANS. The Indian community in Kenya...

PROFESSOR OF THE YEAR.

The following officers and members of the Kenya Tennis Association...

THE YOUNG MEN'S CHRISTIAN ASSOCIATION. The Young Men's Christian Association...

THE INDIANS. The Indian community in Kenya...

PROFESSOR OF THE YEAR.

The following officers and members of the Kenya Tennis Association...

THE YOUNG MEN'S CHRISTIAN ASSOCIATION. The Young Men's Christian Association...

THE INDIANS. The Indian community in Kenya...

PROFESSOR OF THE YEAR.

The following officers and members of the Kenya Tennis Association...

THE YOUNG MEN'S CHRISTIAN ASSOCIATION. The Young Men's Christian Association...

THE INDIANS. The Indian community in Kenya...

PROFESSOR OF THE YEAR.

The following officers and members of the Kenya Tennis Association...

THE YOUNG MEN'S CHRISTIAN ASSOCIATION. The Young Men's Christian Association...

THE INDIANS. The Indian community in Kenya...

PROFESSOR OF THE YEAR.

The following officers and members of the Kenya Tennis Association...

THE YOUNG MEN'S CHRISTIAN ASSOCIATION. The Young Men's Christian Association...

THE INDIANS. The Indian community in Kenya...

PROFESSOR OF THE YEAR.

The following officers and members of the Kenya Tennis Association...

THE YOUNG MEN'S CHRISTIAN ASSOCIATION. The Young Men's Christian Association...

THE INDIANS. The Indian community in Kenya...

PROFESSOR OF THE YEAR.

The following officers and members of the Kenya Tennis Association...

THE YOUNG MEN'S CHRISTIAN ASSOCIATION. The Young Men's Christian Association...

THE INDIANS. The Indian community in Kenya...

PROFESSOR OF THE YEAR.

The following officers and members of the Kenya Tennis Association...

THE YOUNG MEN'S CHRISTIAN ASSOCIATION. The Young Men's Christian Association...

THE INDIANS. The Indian community in Kenya...

PROFESSOR OF THE YEAR.

The following officers and members of the Kenya Tennis Association...

THE YOUNG MEN'S CHRISTIAN ASSOCIATION. The Young Men's Christian Association...

THE INDIANS. The Indian community in Kenya...

PROFESSOR OF THE YEAR.

The following officers and members of the Kenya Tennis Association...

THE YOUNG MEN'S CHRISTIAN ASSOCIATION. The Young Men's Christian Association...

THE INDIANS. The Indian community in Kenya...

PROFESSOR OF THE YEAR.

The following officers and members of the Kenya Tennis Association...

THE YOUNG MEN'S CHRISTIAN ASSOCIATION. The Young Men's Christian Association...

THE INDIANS. The Indian community in Kenya...

PROFESSOR OF THE YEAR.

The following officers and members of the Kenya Tennis Association...

THE YOUNG MEN'S CHRISTIAN ASSOCIATION. The Young Men's Christian Association...

THE INDIANS. The Indian community in Kenya...

PROFESSOR OF THE YEAR.

The following officers and members of the Kenya Tennis Association...

THE YOUNG MEN'S CHRISTIAN ASSOCIATION. The Young Men's Christian Association...

THE INDIANS. The Indian community in Kenya...

PROFESSOR OF THE YEAR.

The following officers and members of the Kenya Tennis Association...

THE YOUNG MEN'S CHRISTIAN ASSOCIATION. The Young Men's Christian Association...

THE INDIANS. The Indian community in Kenya...

PROFESSOR OF THE YEAR.

The following officers and members of the Kenya Tennis Association...

THE YOUNG MEN'S CHRISTIAN ASSOCIATION. The Young Men's Christian Association...

THE INDIANS. The Indian community in Kenya...

PROFESSOR OF THE YEAR.

The following officers and members of the Kenya Tennis Association...

THE YOUNG MEN'S CHRISTIAN ASSOCIATION. The Young Men's Christian Association...

THE INDIANS. The Indian community in Kenya...

PROFESSOR OF THE YEAR.

The following officers and members of the Kenya Tennis Association...

THE YOUNG MEN'S CHRISTIAN ASSOCIATION. The Young Men's Christian Association...

THE INDIANS. The Indian community in Kenya...

PROFESSOR OF THE YEAR.

The following officers and members of the Kenya Tennis Association...

THE YOUNG MEN'S CHRISTIAN ASSOCIATION. The Young Men's Christian Association...

THE INDIANS. The Indian community in Kenya...

PROFESSOR OF THE YEAR.

The following officers and members of the Kenya Tennis Association...

THE YOUNG MEN'S CHRISTIAN ASSOCIATION. The Young Men's Christian Association...

THE INDIANS. The Indian community in Kenya...

PROFESSOR OF THE YEAR.

The following officers and members of the Kenya Tennis Association...

THE YOUNG MEN'S CHRISTIAN ASSOCIATION. The Young Men's Christian Association...

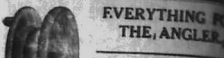
THE INDIANS. The Indian community in Kenya...

PROFESSOR OF THE YEAR.

The following officers and members of the Kenya Tennis Association...

THE YOUNG MEN'S CHRISTIAN ASSOCIATION. The Young Men's Christian Association...

THE INDIANS. The Indian community in Kenya...



EVERYTHING FROM THE ANGLER

We have now a complete range of angling requisites for the Lake Fishing Rods, Hooks, Lines, Bait, etc. These are all by the makers and thoroughly tested...

FRED RAPER

Box 641. CITY MOVERS GENERAL COMMISSION AGENT. BOILER SUITS WATER PROOF CAPS MANCHESTER FELTS, ETC.

JUST RECEIVED A CONSignment OF TYPING MACHINES

PERMANENTLY SAFE! As used extensively by EMILIE of London and Paris.

ALIBHAI & Co. Gents Outfitters

Phone 212. NAIRAL, NAIROBI.

Get It From May

What More, Acceptable? What More, Certain to Please?

COULD YOU POSSIBLY GIVE A Christmas Present THAN SOMETHING FOR HIS OR HER PAPER?

FOR THE CHILDREN: Scout's 10/6, 5/0; Doll's 10/6, 5/0; Tennis Rackets 1/0; Footballs 6/6, 10/6; Electric Trenches 4/6, 6/6, 10/6, 20/6.

FOR THE OTHERS: We have everything for Tennis, Golf, etc. Badminton, Shooting, Fishing, etc.

MAY & Co. The Sports House

Phone 201. Bazaar, Nairobi. Telegraph: 'Gaiting'.

AHAMED BROS

Nairobi Leading Ladies' and Gents' Tailors and Hat Makers and Safari Outfits.

CENTRAL LOUNGE

Phone 206. Junction of Upper Road and Victoria Street.

HARLEY-DAVIDSON

THE MOTORCYCLE MANUFACTURER. Completely equipped with Lamp, Horn, Head and...

TOUR

Official Service Station for the whole Kenya Territory.











LEGISLATIVE COUNCIL.

(Continued from page 1.)

Some of the standard was passed... The Bill is to be introduced...

It is a very important Bill... It will be of great benefit to the country...

OFFICIAL SALARIES

I should like to say the most... The salaries of the various officials...

PERIOD WORKS

It is a very important Bill... It will be of great benefit to the country...

AIMS OF POLICY

Having said that in passing... The aims of the policy are...

NATIVE PROGRESS

The main object of the Bill... It is to improve the condition of the natives...

NATIVE EDUCATION

There is no question of... The education of the natives is...

PUBLIC BUILDINGS

With regard to housing... The public buildings are...

Some of the standard was passed... The Bill is to be introduced...

It is a very important Bill... It will be of great benefit to the country...

The main object of the Bill... It is to improve the condition of the natives...

There is no question of... The education of the natives is...

Some of the standard was passed... The Bill is to be introduced...

It is a very important Bill... It will be of great benefit to the country...

The main object of the Bill... It is to improve the condition of the natives...

There is no question of... The education of the natives is...

256

A new shipment of Manner... and Manner's Shovel... All Rights Reserved.



Sole Agent for Original... Manner's Shovel... Chas. A. Hever & Co.

UGANDA RAILWAY... Uganda Extension.

VICKERS-PETTER GRUDE OIL ENGINES... COMPLETELY COOLED COMBUSTION CHAMBER.

AGENTS - J. W. MILLIGAN & Co. NAIROBI.



THE EAST AFRICAN STANDARD... 256

UGANDA RAILWAY... Uganda Extension.

VICKERS-PETTER GRUDE OIL ENGINES... COMPLETELY COOLED COMBUSTION CHAMBER.

AGENTS - J. W. MILLIGAN & Co. NAIROBI.

OVERSEAS MAILS

The service is provided... The rates are as follows...

Table with columns: FROM, TO, RATE. Lists various destinations and their corresponding rates.

REPARTURES

Table with columns: FROM, TO, RATE. Lists various destinations and their corresponding rates.



Obtainable from all... Tins of 12 and 24.

NOTICE OF REMOVAL

JOHN & BECOM... Ladies Dressmakers, Gents Tailors & Outfitters.

Advertisement for E. DOBBIE, Jeweller. Includes text: 'SEE OUR BEAUTIFUL DISPLAY OF CHRISTMAS GIFTS', 'GOLD WATCH', 'SILVER AND OIL GLASS POWDER BOWLS', 'GOLD CHAIN', 'GOLD RINGS', 'GOLD BRACELETS', 'GOLD BANGLES', 'GOLD EARRINGS', 'GOLD NECKLACES', 'GOLD PENDANTS', 'GOLD BROOCHES', 'GOLD PINNACLES', 'GOLD BROOCHES', 'GOLD PINNACLES', 'GOLD BROOCHES', 'GOLD PINNACLES'.

# OVERLAND

## A COMPLETE CAR

- Metal Safari Body
- 3 Ply Sun Proof Top
- 5 Tyres & Tubes
- Magneto Ignition

# £195

**THE OVERLAND**  
Service Station  
Sixth Avenue NAIROBI.

# Ford

## The Touring Car

WITH ROOMY accommodations for five passengers, the Ford Touring Car is undoubtedly the most practical general utility car on the market.

Seats and seat backs are set at a useful angle. Ample leg room has been provided by moving the front seat slightly to the rear and understeering it on the back and enlarging the foot steering pad, raised to the instrument panel, reduces the possibility of vibration and contributes to the comfort of the driver.

The modern one-man top with gypsy curtains and large square window at the rear present a pleasing appearance, while snug fitting side curtains ensure passengers thorough protection in all weathers.

Remountable tires are furnished as standard equipment.



£170. Delivered Mombasa or Tanganyika.  
£180. Delivered Nairobi or Mombasa.  
£186. Delivered Nakuru.

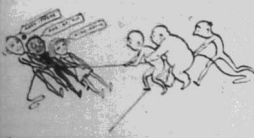
# The Service Company Limited

IMPORTING DEALERS AND DISTRIBUTORS  
NAIROBI, MOMBASA, MOSHI

**THE BEST**  
**AFRICAN OIL STANDARD**  
Mombasa Times & Uganda Agents

**ABDULLA**  
THE BELL MARK OF QUALITY

Agents:  
**R. O. HAMILTON, Ltd.**  
NAIROBI. Tel. 202



Blood pulling from petrol, like good pulling in a tug-of-war team, depends upon good balance. In Shell, the hydrocarbon which governs miles per gallon, is mixed in balance with the other elements which govern power on hills and under starting, are well balanced in use. Hydrocarbon predominates at the expense of the others. Whenever your car, Shell will get the utmost horse power out of it, always.

Buy your Shell from the certified Shell pump, or in the sealed red cans.

# SHELL

## THE WELL-BALANCED PETROL

BRITISH IMPERIAL OIL CO. (S.A.) Ltd.  
Agents: SMITH MACKENZIE & Co.

# E. Nicholas

## WATCHMAKER & JEWELLER

City House, Nairobi.

All classes of Watches, Clocks, Jewellery, Scientific Instruments, Sewing machines, Gramophones, Cameras, Services, Instruments, Spectacles, etc., repaired.

WEDDING RINGS AND JEWELLERY Made to Order.

ALL WORK GUARANTEED & PROMPTLY EXECUTED.

# WEEK By WEEK

# B.S.A.

The Undisputed Leader



Quality Makes Our Sales

The value of B.S.A. Motor Bicycles is being made more apparent. The right machine for the right person for every class of motor-cycling is being made more apparent.

The value of the B.S.A. Motor Bicycles is being made more apparent. The right machine for the right person for every class of motor-cycling is being made more apparent.

# Count Them on the Road!

# The DURANT RUGBY

Just a real good car  
With a sound service organisation behind it.

SIXTH AVENUE,  
NAIROBI.

**CARR, LAWSON & Co. Ltd.**

P.O. BOX 200,  
NAIROBI.

A GOOD FOUR-CYLINDER CAR  
IS UNDENIABLY BETTER THAN A CHEAP SIX  
AND IMMEASURABLY THE BEST AMONG FOURS  
IS THE

# CHRYSLER FOUR

Magneto Ignition—Hydraulic Four-wheel Brakes 2355.

DISTRIBUTORS  
**YORK GARAGES, LTD.** NAIROBI

# H. F. WARD & COMPANY

NAIROBI HOUSE  
NAIROBI KENYA COLONY

# BATHS.

H. F. WARD & CO. beg to announce the arrival of a Consignment of BATHS manufactured by the celebrated firm of

# SHANKS & CO.

Barrhead Scotland.

Trade Enquires to  
**H. A. WARD & CO.**



Large selection  
From 15/6 to 250/-

Call and see them  
at

**A. H. Wardle & Co.,**  
Limited  
NAIROBI.

# Christmas Gifts.

A Christmas is more suitable presents for young or old.



Fort Hall Road, Nairobi.

SELECTED MEMBERS AND MORE POLICE CASES

THE ASSOCIATION OF LIFE AND PROPERTY

THE ASSOCIATION OF LIFE AND PROPERTY

THE ASSOCIATION OF LIFE AND PROPERTY

THE ASSOCIATION OF LIFE AND PROPERTY

THE ASSOCIATION OF LIFE AND PROPERTY

THE ASSOCIATION OF LIFE AND PROPERTY

THE ASSOCIATION OF LIFE AND PROPERTY

THE ASSOCIATION OF LIFE AND PROPERTY

THE ASSOCIATION OF LIFE AND PROPERTY

THE ASSOCIATION OF LIFE AND PROPERTY

THE ASSOCIATION OF LIFE AND PROPERTY

THE ASSOCIATION OF LIFE AND PROPERTY

THE ASSOCIATION OF LIFE AND PROPERTY

THE ASSOCIATION OF LIFE AND PROPERTY

THE ASSOCIATION OF LIFE AND PROPERTY

THE ASSOCIATION OF LIFE AND PROPERTY

THE ASSOCIATION OF LIFE AND PROPERTY

THE ASSOCIATION OF LIFE AND PROPERTY

THE ASSOCIATION OF LIFE AND PROPERTY

THE ASSOCIATION OF LIFE AND PROPERTY

THE ASSOCIATION OF LIFE AND PROPERTY

THE ASSOCIATION OF LIFE AND PROPERTY

THE ASSOCIATION OF LIFE AND PROPERTY

THE ASSOCIATION OF LIFE AND PROPERTY

THE ASSOCIATION OF LIFE AND PROPERTY

THE ASSOCIATION OF LIFE AND PROPERTY

THE ASSOCIATION OF LIFE AND PROPERTY

**Expatriate Council Proposed.**  
The following proposal for the formation of an expatriate council in Kenya has been submitted to the Government by the British Chamber of Commerce in Kenya. The council is to be known as the Expatriate Council of Kenya and its members are to be appointed by the British Chamber of Commerce in Kenya. The council is to be known as the Expatriate Council of Kenya and its members are to be appointed by the British Chamber of Commerce in Kenya.

**Queen Alexandra.**  
MOTORS OF EMERGENCY LEGISLATIVE COMMISSION

**Fort Hall Road, Nairobi.**  
SELECTED MEMBERS AND MORE POLICE CASES

**"STANDARD" BUILT**  
Meeting of Chamber of Commerce Nairobi, 14th Dec. 1933

# UNDER THE STANDARD CLOCK

Registration.

Mr. A. H. Wardle has been registered as a member of the Standard Clock Association.

Enquiry Office.

Mr. A. H. Wardle has been registered as a member of the Standard Clock Association.

Mr. A. H. Wardle has been registered as a member of the Standard Clock Association.

Mr. A. H. Wardle has been registered as a member of the Standard Clock Association.

Mr. A. H. Wardle has been registered as a member of the Standard Clock Association.

Mr. A. H. Wardle has been registered as a member of the Standard Clock Association.

Mr. A. H. Wardle has been registered as a member of the Standard Clock Association.

Mr. A. H. Wardle has been registered as a member of the Standard Clock Association.

Mr. A. H. Wardle has been registered as a member of the Standard Clock Association.

Mr. A. H. Wardle has been registered as a member of the Standard Clock Association.

Mr. A. H. Wardle has been registered as a member of the Standard Clock Association.

Mr. A. H. Wardle has been registered as a member of the Standard Clock Association.

Mr. A. H. Wardle has been registered as a member of the Standard Clock Association.

Mr. A. H. Wardle has been registered as a member of the Standard Clock Association.

Mr. A. H. Wardle has been registered as a member of the Standard Clock Association.

Mr. A. H. Wardle has been registered as a member of the Standard Clock Association.

Mr. A. H. Wardle has been registered as a member of the Standard Clock Association.

Mr. A. H. Wardle has been registered as a member of the Standard Clock Association.

Mr. A. H. Wardle has been registered as a member of the Standard Clock Association.

Mr. A. H. Wardle has been registered as a member of the Standard Clock Association.

Mr. A. H. Wardle has been registered as a member of the Standard Clock Association.

Mr. A. H. Wardle has been registered as a member of the Standard Clock Association.

Mr. A. H. Wardle has been registered as a member of the Standard Clock Association.

Mr. A. H. Wardle has been registered as a member of the Standard Clock Association.

Mr. A. H. Wardle has been registered as a member of the Standard Clock Association.

Mr. A. H. Wardle has been registered as a member of the Standard Clock Association.





**Geo. BLOWERS,**  
BUILDING CONTRACTOR, MANUFACTURER, DECORATOR, ETC.

NO. 1  
NO. 2  
NO. 3

Various styles of windows and doors are shown with detailed drawings and descriptions.

**CASH WITH ORDER.**

**PORT COLLEGE COMMISSION.**  
(Continued from page 6)

The Commission has been appointed to investigate the financial and administrative condition of the Port College and to report thereon to the Government.

The Commission consists of the following members: ...

The Commission has held several public hearings and has received many suggestions from the public.

The Commission has also conducted extensive research into the various problems facing the Port College.

The Commission's report will be submitted to the Government shortly.

**Give Her the Best.**

**TORR'S CHOCOLATES**  
ARE SUPREME.

**NEW STOCKS**

Silas, Jewellery, Ivory Carols, Brassware, Carpets, Lardies and Gen's History, hand made loaves, etc.

**B. CHITRAM,**  
GOVERNMENT ROAD,  
P.O. Box 248, NAIROBI.

**Jacksons Oil Varnish Stain**

Stains Floors and Furniture

Manufactured by THE N. JACKSONS & SONS, Ltd., London, England.

**Future Extension**  
**TWO MORE BERTHS**

The Government has announced plans to extend the Port of Mombasa by two more berths.

The extension will be located at the end of the existing pier.

The estimated cost of the extension is £100,000.

The extension is expected to be completed within 18 months.

**Notice of Removal**

As from 1st December the Office, Showroom and Garage of **MEERS, S. FERBER AND SIMMONS (E.A.) Ltd.**, will be transferred from Boma Buildings, Government Road, to more commodious premises in **VICTORIA STREET, NAIROBI**, (nearly opposite Messrs. G. North & Son Ltd's premises), on and from which date all enquiries should be made there.

**B. CHITRAM,**  
GOVERNMENT ROAD,  
P.O. Box 248, NAIROBI.

**ECONOMY STRENGTH SPEED.**

**The GRAY**  
**1 ton Trucks.**

The following comment appeared in the Cape Argus of September 17, 1922: "The dominant slogan designated to the Gray 1-ton truck is, I believe, 'Economy, Strength and Speed.' Having studied its possibilities with an open mind I find that the claim is justified."

**Magno Ignition Large Brake Drums.**

**K. McIVOR & Co.,**  
SOLE IMPORTERS, NAIROBI.

**OP. FINANCE**

The Commission has been asked to investigate the financial condition of the Port of Mombasa.

The Commission has held several public hearings and has received many suggestions from the public.

The Commission has also conducted extensive research into the various problems facing the Port of Mombasa.

The Commission's report will be submitted to the Government shortly.

**THE EUROPEAN AND AFRICAN TRADES ORGANISATION**

PLEASE NOTE THAT FROM THE BEGINNING OF SEPTEMBER, 1922, THE FOLLOWING FEES WILL BE CHARGED BY THE ORGANISATION TO ALL THOSE WHO MAKE USE OF THE ORGANISATION AND WHO ARE NOT REGULAR CONTRIBUTORS TO THE FUNDS OF THE ORGANISATION:

For each European Member supplied - £10/-  
For each African Member supplied - £5/-  
For each African Member supplied - £2/-

**Pathe Baby Cinema**

FREE DEMONSTRATIONS AT THE GRAFTON STUDIOS, TRUST CHAMBERS, GOVERNMENT ROAD, NAIROBI.

**£52-10-0**

THE FINEST MOTOR CYCLE PROPOSITION EVER OFFERED TO THE PUBLIC

**RALEIGH**

The Gold Medal Motor Cycle

248-cc. Six-Speed, Kick-Start, Chain Drive - Independent Internal Expanding Brakes - Dualign Type - Brampton Front Forks - Kick Starters

**Kettles-Roy, J. Gd., Ltd.,** NAIROBI ("Zebra House" Government Buildings)

**CHEESE.**

We have received a consignment of Imported Cheese - Gruyere, 8 portions in box, and on Cart.

**THE GARDEN BEAUTIFUL**

For Flowering Shrubs, Plants, Bulbs & Trees For Roses, Carnations & Climbers For Imported and Tropical Fruit Trees For Shade, Forest and Hedge Trees All the Best Varieties Wholesale or Retail

**R. E. RANDALL,** P.O. Box 177, NAIROBI.

A visit to our Nurseries 7 miles from Nairobi will interest you.

**Pathe Baby Cinema**

FREE DEMONSTRATIONS AT THE GRAFTON STUDIOS, TRUST CHAMBERS, GOVERNMENT ROAD, NAIROBI.

Take living pictures of your own children, your sport and pleasure trips, and secure a permanent living record of your stay in Kenya.

**PROFANAL**  
**MISS H. JOAN LINDSEY**

Stylish, Modern and Economical

**MEDICAL CHEMISTS**  
Cannon House, Tel. 23, Princes Street, NAIROBI.

**OP. FINANCE**

The Commission has been asked to investigate the financial condition of the Port of Mombasa.

The Commission has held several public hearings and has received many suggestions from the public.

The Commission has also conducted extensive research into the various problems facing the Port of Mombasa.

The Commission's report will be submitted to the Government shortly.

**For TENNIS, BALLS, RACKETS AND NETS.**  
**MAY & Co.**

**Notice.**

**JOHN O'NEILL** will be in charge of the **LYDIA** films from November 22nd to 29th.

Join the Grafton Film Library. 700 different films to choose from, changed as often as you like.

# AUCTION SALES.

**Auction Diary**  
 Wednesday, Dec. 9, at 10 a.m. Sale of Furniture (Major and General).  
 Thursday, 10th, December, at 10 a.m. Furniture Sale (Austin & Co.).  
 Friday, 11th, December, at 10 a.m. Sale of Remnants (Major and General).  
 Monday, 14th, December, at 2.30 p.m. Sale of Lottery Pans (Major and General).

## ARCHIBALD HOGG

Hardinge Street, Nairobi

Arms, Ammunition, Etc., Etc.

RIFLES all sizes 27 to 307 including Westley Richards and Ripley makes, SPORTING double and single barrel 410, 303, 28, 16 and 10 horns, REVOLVERS 32 to 465, AUTOMATIC PISTOLS 35 to 46, 32 SEMI AUTOMATIC TARGET PISTOLS, 32 AIMING TUBES for 450 & 455 Revolvers, AIRBURNS and AIR PISTOLS 177 and 22 bore, 303 R.M.S. RIFLE BARRELS for mark VI and H.V. AMMUNITION all sizes, CARTRIDGE PAPER, both white cleaning and other accessories, FEINER prima site field glasses all sizes 6 x 21 to 8 x 40, ALTIMETERS and BAROMETERS, COMPASSES, etc., "LITE-SITES" for night shooting, INGERSOLL clocks & watches, "MUTAX" dry clean ing brushes, "FLUXIM" soldering sets, "Kenya" Self-filling FOUNTAIN PENS, "Eaton" Magazine EVERHART PENCILS, "MATTAMAO" Storm-proof, Hogg's "Fife" BOOTS, Hunting and Skinning KNIVES, CHAMFRO DIP testing sets and shambala, BICYCLES, Hawaiian and Holland GIANS, Burma, and Planes, CHEROQUIS, Hartley's Magalshburg, Kenya and Rhodesia TOBACCOS, Basteo Algerian OIGARETTES, "LOWEY" "ORILE" and other finer pipes, TOBACCO POUCHES, OYSTER FEATHERS, SKINS and CURIOS, etc., etc.  
 Prices and terms on application.

## Muter and Oswald's Sales.

### Catalogue Sale of Teak Furniture Etc.

Duly instructed by Mrs. A. G. Birhanan, and other parties we shall sell, by Public Auction, without reserve unless otherwise stated, at our Salerooms, Mutuo Build ing, Hardinge Street, Nairobi, on

TO-DAY, 9th Dec. at 10 a.m.

- CHESTERFIELD SUITE, loose covers.
- FIVE CHAIRS, loose covers.
- SUITE OF 4 DINING CHAIRS in teak
- CIRCULAR DINING TABLE in solid teak (reparable top). MIREPOUX CARPET, RUGS.
- SIDEBOARD in teak, with mirror, drawers & cupboard.
- OCCASIONAL TABLES in teak and camphorwood.
- REVOLVING BOOKCASE in teak.
- WRITING DESK in teak.
- FIGURES, ELECTRIC HEATING LAMPS.
- FOUR BASKET WORK CHAIRS.
- VEHICULAR SEAT, GUERAZATI CHAIR.
- CAMP TABLES, CUSHIONS, LINES CUPBOARD.
- SINGLE WARDROBE in camphorwood, mirror.
- No. 8 "DOVER" STOVE and piping, METALSAFE.
- KITCHEN CUPBOARD, TEAK SINGLE BED.
- SINGLE IRON BEDSTEADS.
- WASHSTANDS in teak and c.w.
- DRESSING TABLE in teak, with bevelled mirror.
- PALMSTANDS, WICKER TABLE (round).
- IMPORTED OAK CUT, large size, folding front, with spring and cast mattress.
- DINING TABLE, WICKER CHAIRS in camphorwood.
- SIDEBOARD in camphorwood, bevelled mirror, cupboards, PERAMBULATOR.
- OCCASIONAL TABLE, M'Wharag.
- GRAMOPHONE, TABLE M'Wharag.
- CRIST OF DRAWERS, MORRIS CHAIRS.
- SET OF NEW AXMINSTER CARPET, size 12 x 10, and three rug to match, size 5 ft x 2 ft 6 in.

TEA AND BREAKFAST SETS (new).  
 "DECCA" GRAMOPHONE.  
 Etc., Etc., Etc.  
 CATALOGUE SALE, CATALOGUE SALE.

Muter and Oswald, Nairobi.

## Muter & Oswald's Sales

Notice of Forthcoming Sales.

WEDNESDAY, 10 DECEMBER, 10 a.m., at our Salerooms, Chakaba Place of FURNITURE and EFFECTS from the residence of Mrs. A. W. Whelan.  
 FRIDAY, 11 DECEMBER, 10 a.m., at our Salerooms, 200 pieces of PERFECT COTTON BERNETT.  
 MONDAY, 14th DECEMBER, 10 a.m., at our Salerooms, MIREPOUX CARPETING.  
 2.30 p.m. Sale of Lottery Pans (see separate advertisement).  
 WEDNESDAY, 16th DECEMBER, 10 a.m., at our Salerooms, Chakaba Place, 40 "PLATE," JEWELLERY and WATCHES.  
 2.30 p.m. Sale of STORE RESIDENCE 2 Acres on Ngara Road, Nairobi.  
 THURSDAY, 17 DECEMBER, 10 a.m., at the residence of Mr. Knowlton, on Belmont Place, Nairobi. Various large quantities of POT PLANTS, FERNS, GARDEN BOLLERS, etc., etc.  
 4.30 p.m., at our Salerooms, SALE OF PRHLETT'S FURNITURE COLLECTING.  
 FRIDAY, 18th DECEMBER, 10 a.m., at our Salerooms, FURNITURE and EFFECTS.  
 MONDAY, 22 DECEMBER, 10 a.m., at St. Helena, Grade Road, Nairobi. HOUSEHOLD and RAILWAY LOST PROPERTY.  
 TUESDAY, 23rd DECEMBER, 5.15 p.m., at our Salerooms, COFFEES and SUNN SALT.  
 Note.—The Auctioneers beg to announce that they have had the goods for absolute buyers at their own price.

Muter and Oswald, Valuers, Auctioneers, Nairobi.

## Muter and Oswald's Sales.

### Sale of Large Range of Remnants

Duly instructed, we shall sell, by Public Auction, without reserve, at our Salerooms, Mutuo Buildings, Hardinge Street, Nairobi, on

FRIDAY, 11th December at 10 a.m.

500 Pieces of Printed Cotton Remnants in Varied Designs; and in Lengths of from six to fifteen yards  
 MUTER and OSWALD, Auctioneers, Etc., Nairobi.

## Muter and Oswald's Sales

### SALE OF LIMURU FARM by PUBLIC AUCTION

On 10th Dec. 1925, at 10 a.m.  
 In the matter of a dissolution of Partnership, being duly authorized under an Order of the High Court of Kenya, at Nairobi, dated 26th November, 1925.  
 WE SHALL SELL BY PUBLIC AUCTION (subject to an Order of the High Court of Kenya, at Nairobi, dated 26th November, 1925).

At our Salerooms, Mutuo Buildings, Hardinge Street, Nairobi, on  
 MONDAY 14th DECEMBER, 1925  
 At 1.30 p.m. precisely

FARM LARD OFFICE (100/100) containing a house, 210 acres, leasehold, together with all improvements, buildings, etc.  
 THIS PROPERTY is situated only 1 1/2 miles from Nairobi and commands an excellent view of the surrounding country.  
 THE IMPROVEMENTS consist of a masonry wall, with one end, and about TWO THOUSAND FIVE HUNDRED FEET TREES, including Palm, Apple, Plum, Peach, Pear, etc., and of a well being.
 A NUMBER of lovely beds of fruit are established.  
 THERE are ABOUT FORTY HEAD of CATTLE and SEVERAL FINE OF BEEF POULTRY, plus the Implements, Fencing, etc., etc., etc.  
 A small area of WATTLE contains AMPLE FEEL.  
 THIS FARM has had large sums expended on the development, and presents a splendid opportunity to acquire a COMPLETED FRUIT and DAIRY FARMING PROPERTY.  
 For further particulars regarding the above property, apply to  
 DALY & FIDGEL, Solicitors, F. MERRILL, Esq., Auctioneer, Nairobi.

Muter and Oswald, Auctioneers, Nairobi.

## Grand Opening Dance

ON SATURDAY, DEC. 12th.

AT  
**CLAIRMONT**  
 10 p.m.  
 Music By  
 Head's Syncopated Orchestra  
 TICKETS: SINGLE 7-50 DOUBLE 12-50

## Muter and Oswald's Property List

### Excellent Maize Proposition

SITUATE in the beautiful WESTERN TRANS NIOBA district about 10 miles from Kiara Station and consisting of 500 acres, probably all arable land.  
 The soil is rich and well adapted for a fall in WALK-OUT SYSTEM.  
 120 acres are under very best planting and a further  
 25 TRAINED OXEN 11 COWS and CALVES FORDSON TRACTOR, with one plough for sale.  
 NEW WAGON with bushland 12 FLOWERS 10 DISC HARROW POWER SHELLER (new six tons) and NORTHERN SHELLETS  
 3 CULTIVATORS TRUCK DEAL TWO BOW PLANTER, "METRO" PLANTER FOUR MAJOR CANS "WATTLE" and FULL TIE.  
 WATTLE and DAVID DOVE, complete, with all house effects.  
 PRESENT SELF cultivated to produce 4000 bush.  
 PRICE FOR QUICK SALE, £2,500.  
 For further particulars apply to

Muter and OSWALD, ESTATE AGENTS, VALUERS, NAIROBI

## BIO-DANCE

AT THE  
**LYRIC**  
 at the Evening Performance  
**TO-NIGHT**  
 Music: Head & Synopated Orchestra

## Short Loans Granted

£1 to £1000  
 CALL OR WRITE TO THE  
**Kenya Loan & Discount Co., Ltd.**  
 Court Chambers, (1st Floor)  
 Box 646, NAIROBI.  
 Bills Discounted. Strictest Confidence

## SALISBURY, Family and Residential HOTEL

Phone 66 Nairobi Box 64

## Past Present and Future

In the past getting the age in the cellars of Scotland. At present gathering the reputation among the connoisseurs of the world and in future to be known as the most Whisky produced in Scotland. This is  
 "LONG JOHN" SPECIAL RESERVE SCOTCH WHISKY.  
 Wholesale Distributors:  
**D.JEPPSTEIN & Co.**  
 P. O. Box 176, NAIROBI. Phone 64.

## "IT PAYS TO TILE"

**BROSELEY**  
 Pattern TILES from our MUTHAIGA WORKS  
 The Nairobi Brick Tile & Pipe Works, Ltd.  
 Phone 174 to 182, Nairobi.  
**BEALLES & SMITHSON**  
 11th Avenue, Margate, Durban.

## Notice of Removal

As from JANUARY 1st 1926

# Austin & Co.

Will carry on their AUCTION MARY FEINS BUILDING, HARDINGE STREET (next to Messrs. Galley & Roberts).  
 The extensive Floor Space will greatly add to the comfort of our Clients.

## Unreserved Sale of Furniture, Tussore Silk, Bedspreads, Etc.

Duly instructed by several Clients  
**Austin & Co.**

Will sell WITHOUT RESERVE at the MARY FEINS BUILDING, HARDINGE STREET, NAIROBI.

On Thursday Dec. 10th at 10 sharp

- TEAK WARDROBE with 3 long Mirrors, MORRIS CHAIRS.
- TEAK OVAL DINING TABLE 5' 3" x 3' 3" with Turned Legs.
- FANCY OCCASIONAL TABLE, MEAT SAFES, Camphor Wood Oval DINING TABLE 5' 2" x 3' 2" SINGLE WARDEN.
- SET OF SIX FANCY DINING CHAIRS stained Black LARGE TEAK DINNER WAGON 3' with Drawers and Cupboards.
- G.W. DRESSING CHEST with Bevelled Mirror, PALM STANDS.
- CLUB EASY with loose Cover, CHESTERFIELD SUITE covered American.
- SET OF SIX TEAK DINING CHAIRS case sold, QUANTITY GOOD MOVING.
- TWO AXMINSTER CARPETS 12' x 12' and 12' x 12'. Several Dresden DOLLS, LENGTHS TUSSORE SILK, BLOUSES.
- BLANKETS, CHILDREN'S PROCS, OAK BOXES, BATHING TRUNKS, etc., etc.
- LEATHER SUIT CASES all sizes, BUCKLE HOLS. all sizes.
- Lengths GREEK CLOTH all colours, COUNTER PANES.
- The following will be sold subject to low reserve: INDIAN TEAK SIDEBOARD, Panelled, with 1 Drawers & 2 Cupboards.
- TABLES 20' x 14" in good condition, DHUMRI 12' x 12', ETC., ETC., ETC., ETC.

AUSTIN & Co., Auctioneers,

## A BARGAIN

### Splendid Wheat Proposition

3100 acres leasehold Burnt Forest, 14 Miles from Eldoret.  
 Soil: 2000 Black loam to light sandy loam.  
 Watered by two rivers and springs.  
 Stock: 1000 and 1000, number of trees planted. Station near line 6 miles.

The property is being sold owing to the death of the owner, at the very low price of 25/- shillings per acre. Enquire to  
**C. DENOVAN,**  
 Land Agent, City Road, NAIROBI.

## SEASONABLE PRESENTS

AT REASONABLE PRICES

- GORETS SILK BANDEROLLES, M. ASSORTED DESIGNS AND COLOURS.
  - OURING SIZE 18" x 2 1/2".
  - SHAWLS 12" x 16", 24" x 24" AT 9/75
  - BLAZES CHESE DE CHINE HAND-KERCHIEFS 2/30
  - ARTIFICIAL SILK SCARVES, BATHING DESIGN.
  - 3/50
  - CRETONNE, GREEN LACE 17/50
  - FRANCY SUEMERS, COVERED 25/50
  - ORIENTAL AND SILKS 15/75 to 65/-
  - BLAZES, HANDKERCHIEFS, CHERISHING CASES, ETC., IN A LARGE VARIETY OF COLOURS AND COLOURS AT 24/50, 27/50, 42/50, 57/50, and 58/-
- Hutchings, Biemer & Co., Ltd.**  
 100, BOX 406, NAIROBI. Phone 406.  
 5 PER CENT DISCOUNT ALLOWED FOR CASH Monthly Accounts with Approved Customers.

Union-Castle Line

Services to England, East, South and West Africa Ports and Home.

Table with shipping schedules for Union-Castle Line, listing ship names, destinations, and departure dates.

Agents and shipping information for the Union-Castle Line, including contact details for Nairobi.

OUR WOMEN'S PAGE

A Letter from Paris

(Five Fashion Columns.)

Main text of the fashion columns, discussing trends in hats, coats, dresses, and accessories.



Caption for the first illustration: 'Jade green crepe de chine is used for an elegant afternoon dress...'

Caption for the second illustration: 'A smart velvet and black dress is also in fashion...'

Additional fashion commentary and descriptions of various styles.



Advertisement for Sam Rifkin, Lacksmith and Hammer, listing services and contact information.

Advertisement for National Milk Supply, listing products and contact details.

Advertisement for S. Anderson & Co., listing services and contact information.

Advertisement for P. Gethin, listing services and contact details.

Advertisement for Hudson Super Six Cars for Hire, listing specifications and contact information.

Advertisement for National Bank of India, listing services and contact details.

Advertisement for Branches in various locations, listing addresses.

Advertisement for Fixed Deposits, listing terms and conditions.

Advertisement for Egg and Bartlett Barbery, listing services and contact information.

Advertisement for Superior Hudson, listing specifications and contact details.

Advertisement for Arthur A. Leat, listing services and contact information.

Advertisement for Mechanical and other toys, listing products and contact details.

Large advertisement for Peter & Son, featuring the text 'REPUTATION, Toys, Toys, Toys.' and 'MAINTAINED THE EXPRESS TRANSPORT COY.'

Advertisement for Elliot's Chocolates, Crackers, and Xmas Novelties, featuring the text 'ELLIOT'S' and 'Phone 60, Box 176, NAIROBI.'

Small text at the bottom of the page, likely containing publication or printing details.

SUTTON'S SEEDS.

Wheat requiring seeds for the garden, buy SUTTON'S.

SHAW & HUNTER

(Sole Proprietor: R. M. SHAW.) Box 70. Sixth Avenue, Nairobi.

The World at Your Command

If you are prepared to be guided by the Worlds leading manufacturers of Radio Apparatus take advantage of our Stocks of complete sets, and component parts Call at K. McIVOR & Co. and see everything for wireless.

Callia "Boncelle"

PERMANENT HAIR-RINGING SYSTEM. As used exclusively by LEMAS of London and Paris.

The Toilet Requisite Co.

HAVE NOW INSTALLED IN THEIR SALOONS THE NEWEST MACHINES OF THIS TYPE AND CAN FURNISH INSTANTLY HAVE HAIR IN HALF THE TIME TAKEN HERETOFORE.

BOOK YOUR APPOINTMENTS NOW FOR THE CHRISTMAS SEASON.

Phone 549. P.O. Box 240.

J. R. STEPHENS & Co. Ltd.

Tailors & Outfitters.

GOVERNMENT ROAD NAIROBI. Phone 271.

Provide Against the Rainy Weather

By giving the hood of your car a coat of water proof Hood Paint.



Khaki and Black 8/6 (1/6) per tin.

Charles Ware

The man that stands for integrity FOSTER TRUMP ACCOUNTANT.

ESTABLISHED 25 YEARS.

Tele. No. 422. Telegrams: Sportsmen. P.O. Box 178.

TRUST CHAMBERS, GOVERNMENT ROAD.

NOTE CHANGE OF ADDRESS.

THE NORTON POLICY IS NOT Mass Production

THIS IS EVIDENT ON INSPECTION OF THE Norton Motor Cycles AT BRIMELOWS GARAGE, HARDINGE ST. NAIROBI

THE SPORTS PAGE

HOME FOOTBALL.

League Tables Compiled up to Date.

BIO CHANGES.

The following are the tables of the English and Scottish leagues compiled and revised from the latest match papers, up to and including matches played on Saturday, December 31.

ENGLISH LEAGUE.

Table with columns for Division, Club, and various statistics like Goals, Points, etc.

Second Division.

Table with columns for Club and various statistics like Goals, Points, etc.

Third Division.

Table with columns for Club and various statistics like Goals, Points, etc.

FOURTH DIVISION.

Table with columns for Club and various statistics like Goals, Points, etc.

SCOTTISH LEAGUE.

Table with columns for Club and various statistics like Goals, Points, etc.

RUGBY DIFFICULTIES.

Great Variety of Referees' Ratings.

KEEP FOR ACTION.

There are no urgent matters of the widest interest in Rugby today.

ENGLISH LEAGUE.

There was a total absence of rain during the afternoon.

SCOTTISH LEAGUE.

There was a total absence of rain during the afternoon.

FOURTH DIVISION.

There was a total absence of rain during the afternoon.

SCOTTISH LEAGUE.

There was a total absence of rain during the afternoon.

SCOTTISH LEAGUE.

There was a total absence of rain during the afternoon.

THE ENGLISH TURF.

French Breeding on Some Lines.

THE NEW RACES.

Being drawn tomorrow will be the appearance of the first race of the season.

ENGLISH BREEDING.

On January 1, the President of the Turf Club will be inaugurating the new year.

THE NEW RACES.

Being drawn tomorrow will be the appearance of the first race of the season.

ENGLISH BREEDING.

On January 1, the President of the Turf Club will be inaugurating the new year.

THE NEW RACES.

Being drawn tomorrow will be the appearance of the first race of the season.

ENGLISH BREEDING.

On January 1, the President of the Turf Club will be inaugurating the new year.

Just two two-pool clubs are mentioned here, and one of them is the 'Penny Club'...

The race in that the physical powers are overtaxed, and much more is required than the ordinary...

STARTING PRICES.

There has been much discussion recently about the method of determining the starting prices...

TWO YEAR OLD.

There is a general feeling that the two-year-old season is the best of the year...

FORGET DATES.

The racing programme for the year 1921 has been published...

FAMOUS 'TIE' AMATEUR GOES OVER.

The Rugby League National Cup has been awarded to the 'Tie'...

Officials v. Unofficials.

There has been a great deal of discussion recently about the method of determining the starting prices...



EVERYTHING FOR THE ANGLER.

We have now a complete range of angling requisites for River or Lake Fishing...

FRED RAPER

City House, General Commission Agent, Boiler Suits, Water Proof Cases, Manchester Fents, Etc.

JUST RECEIVED A CONSIGNMENT OF A UN-PAID ROBBER.

ALIBHAI & Co. Gents Outfitters. Bazaar, Nairobi.

Get It From Mays

What More Acceptable? What More Certain to Please?

COULD YOU POSSIBLY GIVE us a Christmas Present THAN SOMETHING FOR HIS OR HER FAVORITE SPORT OR PASTIME.

FOR THE CHILDREN—

Soccers 1/6, 2/6, 3/6, Doll's Prisms 1/6, Tennis Baskets 1/7, Footballs 6/6, 10/6, 15/6, Airguns 2/5, Boxing Gloves 1/7, 2/6, 3/6, Electric Toys 1/6, 2/6, 3/6, 4/6, 5/6, 6/6, 7/6, 8/6, 9/6, 10/6, 11/6, 12/6, 13/6, 14/6, 15/6, 16/6, 17/6, 18/6, 19/6, 20/6, 21/6, 22/6, 23/6, 24/6, 25/6, 26/6, 27/6, 28/6, 29/6, 30/6, 31/6, 32/6, 33/6, 34/6, 35/6, 36/6, 37/6, 38/6, 39/6, 40/6, 41/6, 42/6, 43/6, 44/6, 45/6, 46/6, 47/6, 48/6, 49/6, 50/6, 51/6, 52/6, 53/6, 54/6, 55/6, 56/6, 57/6, 58/6, 59/6, 60/6, 61/6, 62/6, 63/6, 64/6, 65/6, 66/6, 67/6, 68/6, 69/6, 70/6, 71/6, 72/6, 73/6, 74/6, 75/6, 76/6, 77/6, 78/6, 79/6, 80/6, 81/6, 82/6, 83/6, 84/6, 85/6, 86/6, 87/6, 88/6, 89/6, 90/6, 91/6, 92/6, 93/6, 94/6, 95/6, 96/6, 97/6, 98/6, 99/6, 100/6.

WE Have everything for Tennis, Golf, Croquet, Badminton, Shooting, Fishing, etc.

MAY & Co. The Sports House

AHAMED BROS

Phone 291. Bazaar, Nairobi. 'Outfitting' Nairobi Leather Goods, Tailors, Tent and Sail Makers and Saver, Outfitters, TARPULINS OF EVERY DESCRIPTION.

By the Last Mail, Large Consignment of Special Quality Gents' Suits, and Ladies' and Gents' Double Breasted Suits.

CENTRAL LOUNGE

FUNCTION OF RIVER ROAD AND VICTORIA AVENUE. CATERERS TO THE JOCKEY CLUB.

HARLEY-DAVIDSON

'The Motorcycle Magnificence.' Complete outfit with Lamp, Horn, Head Lamp, etc. Also 'The Motor Cycle' by the author of 'The Motor Cycle'.



GUARANTEED THE LARGEST CIRCULATION OF ANY NEWSPAPER.  
IN KENYA, UGANDA, TANGANYIKA AND ZANZIBAR.

DAILY EDITION

THE EAST AFRICAN 14 PAGES.

# Africa Star

MOMBASA TIMES & UGANDA ARGUS. With which is incorporated THE LEADER.

NAIROBI, THURSDAY, DECEMBER 10, 1926.

MORNING AND AFTER-NOON TEAS  
SERVED IN THE Lounge at REASONABLE PRICES

Price 20 CENTS.

**Drink Kenya Beer**

EMPIRE EXHIBITION DEFICIT.

Liquidators Hurry Up the Guarantors.

THE GOVERNMENT'S SHARE.

EMPIRE EXHIBITION DEFICIT.

Liquidators Hurry Up the Guarantors.

THE GOVERNMENT'S SHARE.

**HOME BYE-ELECTION.**

**Liberal Contest Ripens Seat.**

CONSERVATIVE VICTORY.

**"EAST AFRICAN MEDICAL SERVICE"**

Step Taken by Secretary of State Without Notice.

A CONSTITUTIONAL ISSUE.

**AMAN INSTITUTE TO BE REOPENED.**

Proposals Made by Colonial Office.

£150 FROM KENYA.

**ALLEGATIONS AGAINST ADVISORY BODY.**

THE GOVERNMENT'S SHARE.

**FRANCIS'S SEVEN BILLS.**

CABINET REPEAL OF NEW FINANCE.

PARLIAMENTS TO BE NEW FINANCE.

**AMAN INSTITUTE TO BE REOPENED.**

Proposals Made by Colonial Office.

£150 FROM KENYA.

**AMAN INSTITUTE TO BE REOPENED.**

Proposals Made by Colonial Office.

£150 FROM KENYA.

**ALLEGATIONS AGAINST ADVISORY BODY.**

THE GOVERNMENT'S SHARE.

**FRANCIS'S SEVEN BILLS.**

CABINET REPEAL OF NEW FINANCE.

PARLIAMENTS TO BE NEW FINANCE.

**AMAN INSTITUTE TO BE REOPENED.**

Proposals Made by Colonial Office.

£150 FROM KENYA.

**AMAN INSTITUTE TO BE REOPENED.**

Proposals Made by Colonial Office.

£150 FROM KENYA.

**ALLEGATIONS AGAINST ADVISORY BODY.**

THE GOVERNMENT'S SHARE.

**FRANCIS'S SEVEN BILLS.**

CABINET REPEAL OF NEW FINANCE.

PARLIAMENTS TO BE NEW FINANCE.

**AMAN INSTITUTE TO BE REOPENED.**

Proposals Made by Colonial Office.

£150 FROM KENYA.

**AMAN INSTITUTE TO BE REOPENED.**

Proposals Made by Colonial Office.

£150 FROM KENYA.

**ALLEGATIONS AGAINST ADVISORY BODY.**

THE GOVERNMENT'S SHARE.

**A GREAT WINDOW DISPLAY**

Whiteway's Windows are a reflection of the best of good things inside the store. A special feature this week is the great Toy Display.

**MUSICAL PONY ROLL**

**CHILD'S COUNTESS FRAME**

**TOY WOODEN ENGINE**

**DOLLS KITCHEN SET**

**"DASHY" AIR POP GUN**

**"DASHY" AIR GUN**

**FOND ACTION "DASHY" AIR GUN**

**"DASHY" AIR GUN**

**POIS TROUSERS**

**WHITE FLEURS, TEDDY BEARS**

**"AUTOMATIC" WATER TROUSERS**

**Whiteway, Laidlaw & Co., Ltd. NAIROBI.**

**Here is the Proof**

**GRAY TOURING CAR**

£250

P. O. BOX NAIROBI

**Gray Motor & Co. Ltd.**

**Gray Motor & Co. Ltd.**

**AMAN INSTITUTE TO BE REOPENED.**

Proposals Made by Colonial Office.

£150 FROM KENYA.

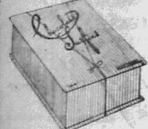
**AMAN INSTITUTE TO BE REOPENED.**

Proposals Made by Colonial Office.

£150 FROM KENYA.

**Whiteway, Laidlaw & Co., Ltd. NAIROBI.**

Delicious Chocolates in Dainty Presentation Packings



We are now displaying in our store one of the finest selections of chocolates that has ever been offered to the Nairobi public. These are absolutely fresh stocks having just been received from England. The packings are entirely original and beautifully designed and the contents by Fry's and Cadbury's are of the most delicious favoring.

CADBURY'S CHOCOLATES

Table listing Cadbury's chocolates: Cream Assortment, Royal Assortment, Dairy Assortment, Poly Freshen Assortment, Biscuit Assortment, Toffee Assortment, King George Assortment, Princes of Wales Assortment, Princes Mary Assortment.

FRY'S CHOCOLATES

Table listing Fry's chocolates: Contents about 1 lb., Contents about 2 lb., Contents about 3 lb., Contents about 5 lb., Contents about 7 1/2 lb., Contents about 10 lb., Contents about 15 lb., Contents about 20 lb., Contents about 25 lb., Contents about 30 lb., Contents about 35 lb., Contents about 40 lb., Contents about 45 lb., Contents about 50 lb., Contents about 55 lb., Contents about 60 lb., Contents about 65 lb., Contents about 70 lb., Contents about 75 lb., Contents about 80 lb., Contents about 85 lb., Contents about 90 lb., Contents about 95 lb., Contents about 100 lb.



Table listing other chocolates: PANGLOSS SWEETS, Maple Heathle Cafe Nuts, Palmie Mints - Biscuits, Mints, Valentine Almonds, Mrs. J. G. Assortment, Marmalade Cherries.

WE ALLOW 5 per cent discount.



P.O. Box 266, Phone 12M, Telegrams: 'Advacadm', NAIROBI.

MOTURING TOPICS

CARBURETTOR ADJUSTMENTS

How to Obtain the Greatest Mileage.

MAXIMUM ECONOMY AND MAXIMUM POWER.

After the engine of a new car has been started and warmed up, the driver should get acquainted with the carburettor. The carburettor is the organ which supplies the engine with the fuel. It is the carburettor which determines the mixture of fuel and air which enters the cylinders. The carburettor is the organ which determines the mixture of fuel and air which enters the cylinders. The carburettor is the organ which determines the mixture of fuel and air which enters the cylinders.

It is not in this way, as we often imagine, that the carburettor is adjusted. The carburettor is adjusted by the driver. The carburettor is adjusted by the driver. The carburettor is adjusted by the driver.

It is not in this way, as we often imagine, that the carburettor is adjusted. The carburettor is adjusted by the driver. The carburettor is adjusted by the driver. The carburettor is adjusted by the driver.

It is not in this way, as we often imagine, that the carburettor is adjusted. The carburettor is adjusted by the driver. The carburettor is adjusted by the driver. The carburettor is adjusted by the driver.

It is not in this way, as we often imagine, that the carburettor is adjusted. The carburettor is adjusted by the driver. The carburettor is adjusted by the driver. The carburettor is adjusted by the driver.

It is not in this way, as we often imagine, that the carburettor is adjusted. The carburettor is adjusted by the driver. The carburettor is adjusted by the driver. The carburettor is adjusted by the driver.

It is not in this way, as we often imagine, that the carburettor is adjusted. The carburettor is adjusted by the driver. The carburettor is adjusted by the driver. The carburettor is adjusted by the driver.

It is not in this way, as we often imagine, that the carburettor is adjusted. The carburettor is adjusted by the driver. The carburettor is adjusted by the driver. The carburettor is adjusted by the driver.

THE CORRECT MIXTURE

In the design of a carburettor the chemist has to lay down the preliminary conditions. These are that a certain amount of fuel has to be mixed with a certain quantity of air. It is at this point that the carburettor is designed. It is at this point that the carburettor is designed.

In the design of a carburettor the chemist has to lay down the preliminary conditions. These are that a certain amount of fuel has to be mixed with a certain quantity of air. It is at this point that the carburettor is designed. It is at this point that the carburettor is designed.

In the design of a carburettor the chemist has to lay down the preliminary conditions. These are that a certain amount of fuel has to be mixed with a certain quantity of air. It is at this point that the carburettor is designed. It is at this point that the carburettor is designed.

In the design of a carburettor the chemist has to lay down the preliminary conditions. These are that a certain amount of fuel has to be mixed with a certain quantity of air. It is at this point that the carburettor is designed. It is at this point that the carburettor is designed.

In the design of a carburettor the chemist has to lay down the preliminary conditions. These are that a certain amount of fuel has to be mixed with a certain quantity of air. It is at this point that the carburettor is designed. It is at this point that the carburettor is designed.

MILES PER GALLON

It is not in this way, as we often imagine, that the carburettor is adjusted. The carburettor is adjusted by the driver. The carburettor is adjusted by the driver. The carburettor is adjusted by the driver.

It is not in this way, as we often imagine, that the carburettor is adjusted. The carburettor is adjusted by the driver. The carburettor is adjusted by the driver. The carburettor is adjusted by the driver.

It is not in this way, as we often imagine, that the carburettor is adjusted. The carburettor is adjusted by the driver. The carburettor is adjusted by the driver. The carburettor is adjusted by the driver.

It is not in this way, as we often imagine, that the carburettor is adjusted. The carburettor is adjusted by the driver. The carburettor is adjusted by the driver. The carburettor is adjusted by the driver.

It is not in this way, as we often imagine, that the carburettor is adjusted. The carburettor is adjusted by the driver. The carburettor is adjusted by the driver. The carburettor is adjusted by the driver.

It is not in this way, as we often imagine, that the carburettor is adjusted. The carburettor is adjusted by the driver. The carburettor is adjusted by the driver. The carburettor is adjusted by the driver.

It is not in this way, as we often imagine, that the carburettor is adjusted. The carburettor is adjusted by the driver. The carburettor is adjusted by the driver. The carburettor is adjusted by the driver.

DESIGN CONDITIONS

Many attempts have been made to design a carburettor which will give both maximum economy and maximum power. But so far the best results have been obtained by the carburettor which is designed to give the best results. It is at this point that the carburettor is designed.

Many attempts have been made to design a carburettor which will give both maximum economy and maximum power. But so far the best results have been obtained by the carburettor which is designed to give the best results. It is at this point that the carburettor is designed.

Many attempts have been made to design a carburettor which will give both maximum economy and maximum power. But so far the best results have been obtained by the carburettor which is designed to give the best results. It is at this point that the carburettor is designed.

Many attempts have been made to design a carburettor which will give both maximum economy and maximum power. But so far the best results have been obtained by the carburettor which is designed to give the best results. It is at this point that the carburettor is designed.

Many attempts have been made to design a carburettor which will give both maximum economy and maximum power. But so far the best results have been obtained by the carburettor which is designed to give the best results. It is at this point that the carburettor is designed.

Many attempts have been made to design a carburettor which will give both maximum economy and maximum power. But so far the best results have been obtained by the carburettor which is designed to give the best results. It is at this point that the carburettor is designed.

Many attempts have been made to design a carburettor which will give both maximum economy and maximum power. But so far the best results have been obtained by the carburettor which is designed to give the best results. It is at this point that the carburettor is designed.

Many attempts have been made to design a carburettor which will give both maximum economy and maximum power. But so far the best results have been obtained by the carburettor which is designed to give the best results. It is at this point that the carburettor is designed.

Many attempts have been made to design a carburettor which will give both maximum economy and maximum power. But so far the best results have been obtained by the carburettor which is designed to give the best results. It is at this point that the carburettor is designed.

Many attempts have been made to design a carburettor which will give both maximum economy and maximum power. But so far the best results have been obtained by the carburettor which is designed to give the best results. It is at this point that the carburettor is designed.

Many attempts have been made to design a carburettor which will give both maximum economy and maximum power. But so far the best results have been obtained by the carburettor which is designed to give the best results. It is at this point that the carburettor is designed.

Many attempts have been made to design a carburettor which will give both maximum economy and maximum power. But so far the best results have been obtained by the carburettor which is designed to give the best results. It is at this point that the carburettor is designed.

Many attempts have been made to design a carburettor which will give both maximum economy and maximum power. But so far the best results have been obtained by the carburettor which is designed to give the best results. It is at this point that the carburettor is designed.

Many attempts have been made to design a carburettor which will give both maximum economy and maximum power. But so far the best results have been obtained by the carburettor which is designed to give the best results. It is at this point that the carburettor is designed.

METHOD OF TESTING

The first step in the design of a carburettor is to test it. The carburettor is tested by the driver. The carburettor is tested by the driver. The carburettor is tested by the driver.

The first step in the design of a carburettor is to test it. The carburettor is tested by the driver. The carburettor is tested by the driver. The carburettor is tested by the driver.

The first step in the design of a carburettor is to test it. The carburettor is tested by the driver. The carburettor is tested by the driver. The carburettor is tested by the driver.

The first step in the design of a carburettor is to test it. The carburettor is tested by the driver. The carburettor is tested by the driver. The carburettor is tested by the driver.

The first step in the design of a carburettor is to test it. The carburettor is tested by the driver. The carburettor is tested by the driver. The carburettor is tested by the driver.

The first step in the design of a carburettor is to test it. The carburettor is tested by the driver. The carburettor is tested by the driver. The carburettor is tested by the driver.

The first step in the design of a carburettor is to test it. The carburettor is tested by the driver. The carburettor is tested by the driver. The carburettor is tested by the driver.

The first step in the design of a carburettor is to test it. The carburettor is tested by the driver. The carburettor is tested by the driver. The carburettor is tested by the driver.

The first step in the design of a carburettor is to test it. The carburettor is tested by the driver. The carburettor is tested by the driver. The carburettor is tested by the driver.

The first step in the design of a carburettor is to test it. The carburettor is tested by the driver. The carburettor is tested by the driver. The carburettor is tested by the driver.

The first step in the design of a carburettor is to test it. The carburettor is tested by the driver. The carburettor is tested by the driver. The carburettor is tested by the driver.

The first step in the design of a carburettor is to test it. The carburettor is tested by the driver. The carburettor is tested by the driver. The carburettor is tested by the driver.

The first step in the design of a carburettor is to test it. The carburettor is tested by the driver. The carburettor is tested by the driver. The carburettor is tested by the driver.

The first step in the design of a carburettor is to test it. The carburettor is tested by the driver. The carburettor is tested by the driver. The carburettor is tested by the driver.

Large advertisement for Buick De Luxe Touring. Features include: 'The Most Talked-of Car in The World To-day!', 'The new British made BUICK SPECIAL DE LUXE TOURING has been instantly recognized as one of the most outstanding accomplishments in motor car history—regardless of price.', 'DE LUXE TOURING \$445 Complete.', 'Self Elevating Buick Top', 'Trunk', 'Rigid Type Buick De Luxe Touring car', 'Front Seats', 'Adjustable', 'WE OFFER AN INTERESTING PLAN OF FINANCING YOUR BUICK.' Includes an illustration of a Buick De Luxe Touring car.

Residential Property FOR SALE

A comfortable 4 room bungalow on 1/2 acre. Terms Cash, Goodly. Suitable for investment. A cash payment of one year's income plus your own bonus. Ref. 1.

2370 will secure roomed cottage. Ideal conveniences. Purchase price, £700. Ref. 1.

A Stone House of 4 with garden and 1/2 acre. Ideal for investment. Ref. 1.

The owner will accept small cash deposit and the balance to be repaid in 12 months at 7 per cent. The light of the property is a bargain. This is an excellent offer. Ref. 1.

A Stone House of 4 with garden and 1/2 acre. Ideal for investment. Ref. 1.

Wood and Iron convenient to town for over which terms arranged. At Bank interest your monthly would only be Shs. 4/6. Ref. 1.

We have another 2 1/2 acre plot, 2400, situated near the station. Only Shs. 350/- per acre. Is this not utopian? Ref. 1.

Tronated well-planned 1 1/2 acre plot. Home with modern conveniences. Terms Cash. Large Garden. 2200/- which is a substantial price. Ref. 1.

Well appointed 4 room House on 4 acres of Tennis Court, well-planned Garden, Garage, etc. Suitable terms arranged. Ref. 1.

In these days of active building the best way to invest is with many other parties we have an excellent opportunity to invest in a property which will give a good return. Ref. 1.

We are holding a number of attractive properties. Some are ready to build. Some are under construction. Some are in the process of being sold. Ref. 1.

Giffillan & Company, Ltd. DISTRIBUTORS

Small text at the bottom right corner.





NATIONAL BANK OF INDIA LIMITED. (Incorporated in the United Kingdom)
Head Office: 28, Abchurch Lane, London, E.C. 4

PROPOSAL FOR ADVISORY BOARD. To Sit Applications for Government Answer in Council.

RUPEE NOT TO BE ALLOWED IN. FUEL SUPPLIES. NEW REPORT BY AGRICULTURAL DEPARTMENT.

256. A new shipment of Maunier and Manohar Schneider Rifles of our latest invention...

OVERSEAS MAILS. The notice is based upon the address from the Shipping Commission...

HEAD OFFICE: 28, Abchurch Lane, London, E.C. 4. BRANCHES: Madras, Bombay, Calcutta, etc.

LAND OFFICE: STATUTE OF AFRICAN STATES. The Commission of Enquiry into the Land Office...

STATUTE OF AFRICAN STATES. The Commission of Enquiry into the Land Office...

AGRICULTURAL DEPARTMENT. The Commission of Enquiry into the Land Office...

Table with columns: FROM, TO, MAILS, DATE OF DEPARTURE. Lists various shipping routes and schedules.

7 FEBRUARY 1927. The Commission of Enquiry into the Land Office...

LAND OFFICE. The Commission of Enquiry into the Land Office...

STATUTE OF AFRICAN STATES. The Commission of Enquiry into the Land Office...

AGRICULTURAL DEPARTMENT. The Commission of Enquiry into the Land Office...

Table with columns: FROM, TO, MAILS, DATE OF DEPARTURE. Lists various shipping routes and schedules.

SUPER SIX HUDSON. Super Six Hudson. The New Day of High Speed...

LAND OFFICE. The Commission of Enquiry into the Land Office...

STATUTE OF AFRICAN STATES. The Commission of Enquiry into the Land Office...

AGRICULTURAL DEPARTMENT. The Commission of Enquiry into the Land Office...

COFFE MACHINERY. SOFT & DAVIDSON. The Agents for Kenya for Wm. Mackinnon & Co. Ltd.

SAM RIFKIN WAGON BUILDER, BLACKSMITH, FARRIER. NAIROBI, P.O. Box 142, Duke Street.

LAND OFFICE. The Commission of Enquiry into the Land Office...

STATUTE OF AFRICAN STATES. The Commission of Enquiry into the Land Office...

AGRICULTURAL DEPARTMENT. The Commission of Enquiry into the Land Office...

PORK SAUSAGES. THE PERFECT TIN OPENER. Kenya Horticultural Society.

P. GETHIN, FINEST DAY & NIGHT. NAIROBI, P.O. Box 330.

LAND OFFICE. The Commission of Enquiry into the Land Office...

STATUTE OF AFRICAN STATES. The Commission of Enquiry into the Land Office...

AGRICULTURAL DEPARTMENT. The Commission of Enquiry into the Land Office...

Kenya Horticultural Society. Flower Show, Thursday 31st December. Don't forget to send in your entries.

NAIROBI MILK SUPPLY. S. Andersen & Co. P.O. Box 330, NAIROBI.

LAND OFFICE. The Commission of Enquiry into the Land Office...

STATUTE OF AFRICAN STATES. The Commission of Enquiry into the Land Office...

AGRICULTURAL DEPARTMENT. The Commission of Enquiry into the Land Office...

COFFEE FARMS FOR SALE. Really Excellent Coffee Farm Propositions. Sisal Limited.

ADVISORY BOARD. As appears the various interests...

LAND OFFICE. The Commission of Enquiry into the Land Office...

STATUTE OF AFRICAN STATES. The Commission of Enquiry into the Land Office...

AGRICULTURAL DEPARTMENT. The Commission of Enquiry into the Land Office...

COFFEE FARMS FOR SALE. Really Excellent Coffee Farm Propositions. Sisal Limited.

ADVISORY BOARD. As appears the various interests...

LAND OFFICE. The Commission of Enquiry into the Land Office...

STATUTE OF AFRICAN STATES. The Commission of Enquiry into the Land Office...

AGRICULTURAL DEPARTMENT. The Commission of Enquiry into the Land Office...

COFFEE FARMS FOR SALE. Really Excellent Coffee Farm Propositions. Sisal Limited.



THE POLICY OF PROTECTION.

Move to Abolish the Wheat Flour Duty.

EFFECTS OF THE TARIFF.

Industry is Still an Experiment unable to Stand Alone.

IMPORTATION OF WHEAT BOOSTED

Another report was made in the House of Commons regarding the effects of the tariff on the wheat industry...

had gone when the whole matter should be reconsidered and the industry should be able to stand alone...

AMPSA TIME

The industry had sought some three years to establish itself... The industry had sought some three years to establish itself...

It is indicated that the Defence Force Bill will give the Government a very strong case...

RESERVY OF OFFICERS

Mr. J. C. O'Connell asked whether the Government had ever considered the possibility of reserving officers...

THE GREENS POSITION

Mr. J. E. Keating suggested that the Government should consider the position of the Green Party...

100 LOUISIANA

It is estimated that the present total supply of baby shoes in the country is about 100 million...

XMAS GIFTS SUGGESTIONS

Christmas is approaching and suggestions for gifts are being made...

DEFENCE FORCE BILL APPROVED. Now on Way Out from House.

OFFICERS RESERVE WHERE?

It is indicated that the Defence Force Bill will give the Government a very strong case...

In the Legislature a motion was made by Mr. J. C. O'Connell...

The industry had sought some three years to establish itself... The industry had sought some three years to establish itself...

RESERVY OF OFFICERS

Mr. J. C. O'Connell asked whether the Government had ever considered the possibility of reserving officers...

THE GREENS POSITION

Mr. J. E. Keating suggested that the Government should consider the position of the Green Party...

100 LOUISIANA

It is estimated that the present total supply of baby shoes in the country is about 100 million...

XMAS GIFTS SUGGESTIONS

Christmas is approaching and suggestions for gifts are being made...

LEGISLATIVE COUNCIL.

537 COMPENSATION FOR DEAD MALAR.

Business to be Done Today.

MOTION FOR DEBATE

Vote of Profranchise

The Bill for the Compensation of the 537 Malar was discussed...

MOTION

The motion was made by Mr. J. C. O'Connell regarding the compensation of the 537 Malar...

RESERVY OF OFFICERS

Mr. J. C. O'Connell asked whether the Government had ever considered the possibility of reserving officers...

THE GREENS POSITION

Mr. J. E. Keating suggested that the Government should consider the position of the Green Party...

100 LOUISIANA

It is estimated that the present total supply of baby shoes in the country is about 100 million...

XMAS GIFTS SUGGESTIONS

Christmas is approaching and suggestions for gifts are being made...

FARMER AND HIS LABOUR RETURNS.

Sequel to An Official's Mistake.

PRINCIPAL REASONS.

A MISTAKE'S TREAD

The principal reasons for the farmer's and his labour's returns are discussed...

MOTION

The motion was made by Mr. J. C. O'Connell regarding the compensation of the 537 Malar...

RESERVY OF OFFICERS

Mr. J. C. O'Connell asked whether the Government had ever considered the possibility of reserving officers...

THE GREENS POSITION

Mr. J. E. Keating suggested that the Government should consider the position of the Green Party...

100 LOUISIANA

It is estimated that the present total supply of baby shoes in the country is about 100 million...

XMAS GIFTS SUGGESTIONS

Christmas is approaching and suggestions for gifts are being made...

THE POLICY OF PROTECTION.

Move to Abolish the Wheat Flour Duty.

EFFECTS OF THE TARIFF.

Industry is Still an Experiment unable to Stand Alone.

IMPORTATION OF WHEAT BOOSTED

Another report was made in the House of Commons regarding the effects of the tariff on the wheat industry...

AMPSA TIME

The industry had sought some three years to establish itself... The industry had sought some three years to establish itself...

RESERVY OF OFFICERS

Mr. J. C. O'Connell asked whether the Government had ever considered the possibility of reserving officers...

THE GREENS POSITION

Mr. J. E. Keating suggested that the Government should consider the position of the Green Party...

100 LOUISIANA

It is estimated that the present total supply of baby shoes in the country is about 100 million...

XMAS GIFTS SUGGESTIONS

Christmas is approaching and suggestions for gifts are being made...

LYRIC HALL

TO-NIGHT AT 8-45 Mr. J. BARRIE'S Famous Play

THE WILL

Starting Monday

TRAVELAUGHS London,

TOPICAL BUDGET THE Latest News, received by the Last Mail

Price 2d. 3. 8d. 1

Useful & Acceptable Presents



Pat Dress O/S Sh. 20/-

Sh. 45/- & 47/50

Medium Sizing from Sh. 12/50

White Canvas Bar Sh. 17/50

White Buck Bar Sh. 35/-

Evening and Show

Gold

from Sh. 32/50

EDDIES FOOTWEAR LTD.

Box 149 NAIROBI Phone 432.

THEATRE ROYAL

TO-NIGHT, 7.15 & 8.45, Dec. 10th, 11th, and 12th.

3 Hartley Mansions Charming Story

PEG O' MY HEART

The most beloved play of a generation

starring the actress who made pop famous

LAURETTE TAYLOR

and all her Star Cast

WARINGS

Last Two Weeks of Sale

YOUR FINAL CHANCE OF OBTAINING THESE BARGAINS.

- Madam Grey's Navy & Black Patterned Skirts Sh. 20/- each
Ladies Vests Sh. 4/- each
J. B. Corset Sh. 8/- each
Conductor's Hats Sh. 10/- each
Children's Night Dresses Sh. 4/- each
Silk Net Sh. 7/- per yd
Ladies Fine Line Hose (Brown & Grey) Sh. 3/- per yd
Ladies Evening Dress Gossamer Body.

Large Selection of Romanesque Swiss Embroideries and Insertions and French Blouses.

Africa House, Government Road, NAIROBI.

FORBES GROUP UNDER CERTIFY.

[UNQUOTE] STATEMENT

London O. London O. London O.

London O. London O. London O.

London O. London O. London O.

London O. London O. London O.

London O. London O. London O.

London O. London O. London O.

London O. London O. London O.

London O. London O. London O.

London O. London O. London O.

London O. London O. London O.

London O. London O. London O.

London O. London O. London O.

PROTECTION BILL

RESULT OF DISCUSSION ON HOME INDUSTRIES

London, Dec. 9.

The House on the report of the

Committee on the Protection of

Home Industries, held a

discussion on the subject

of the Bill on the

subject of the

protection of

home industries

and the

protection of

home industries

PROTECTION BILL

RESULT OF DISCUSSION ON HOME INDUSTRIES

London, Dec. 9.

The House on the report of the

Committee on the Protection of

Home Industries, held a

discussion on the subject

of the Bill on the

subject of the

protection of

home industries

and the

protection of

home industries

PROTECTION BILL

RESULT OF DISCUSSION ON HOME INDUSTRIES

London, Dec. 9.

The House on the report of the

Committee on the Protection of

Home Industries, held a

discussion on the subject

of the Bill on the

subject of the

protection of

home industries

and the

protection of

home industries

PROTECTION BILL

RESULT OF DISCUSSION ON HOME INDUSTRIES

London, Dec. 9.

The House on the report of the

Committee on the Protection of

Home Industries, held a

discussion on the subject

of the Bill on the

subject of the

protection of

home industries

and the

protection of

home industries

PROTECTION BILL

RESULT OF DISCUSSION ON HOME INDUSTRIES

London, Dec. 9.

The House on the report of the

Committee on the Protection of

Home Industries, held a

discussion on the subject

of the Bill on the

subject of the

protection of

home industries

and the

protection of

home industries

PROTECTION BILL

RESULT OF DISCUSSION ON HOME INDUSTRIES

London, Dec. 9.

The House on the report of the

Committee on the Protection of

Home Industries, held a

discussion on the subject

of the Bill on the

subject of the

protection of

home industries

and the

protection of

home industries

PROTECTION BILL

RESULT OF DISCUSSION ON HOME INDUSTRIES

London, Dec. 9.

The House on the report of the

Committee on the Protection of

Home Industries, held a

discussion on the subject

of the Bill on the

subject of the

protection of

home industries

and the

protection of

home industries

PROTECTION BILL

RESULT OF DISCUSSION ON HOME INDUSTRIES

London, Dec. 9.

The House on the report of the

Committee on the Protection of

Home Industries, held a

discussion on the subject

of the Bill on the

subject of the

protection of

home industries

and the

protection of

home industries

PROTECTION BILL

RESULT OF DISCUSSION ON HOME INDUSTRIES

London, Dec. 9.

The House on the report of the

Committee on the Protection of

Home Industries, held a

discussion on the subject

of the Bill on the

subject of the

protection of

home industries

and the

protection of

home industries

PROTECTION BILL

RESULT OF DISCUSSION ON HOME INDUSTRIES

London, Dec. 9.

The House on the report of the

Committee on the Protection of

Home Industries, held a

discussion on the subject

of the Bill on the

subject of the

protection of

home industries

and the

protection of

home industries

PROTECTION BILL

RESULT OF DISCUSSION ON HOME INDUSTRIES

London, Dec. 9.

The House on the report of the

Committee on the Protection of

Home Industries, held a

discussion on the subject

of the Bill on the

subject of the

protection of

home industries

and the

protection of

home industries

PROTECTION BILL

RESULT OF DISCUSSION ON HOME INDUSTRIES

London, Dec. 9.

The House on the report of the

Committee on the Protection of

Home Industries, held a

discussion on the subject

of the Bill on the

subject of the

protection of

home industries

and the

protection of

home industries

PROTECTION BILL

RESULT OF DISCUSSION ON HOME INDUSTRIES









PORT CONTROL COMMISSION.

THE ADMIRALTY... THE PORT CONTROL COMMISSION... THE ADMIRALTY... THE PORT CONTROL COMMISSION...

THE ADMIRALTY... THE PORT CONTROL COMMISSION... THE ADMIRALTY... THE PORT CONTROL COMMISSION...

Geo. BLOWERS... ARCHITECTS CONTRACTORS... DRAWINGS... SPECIFICATIONS... ARCHITECTS CONTRACTORS...

JACKSONS OIL VARNISH STAIN... JACKSONS OIL VARNISH STAIN... JACKSONS OIL VARNISH STAIN... JACKSONS OIL VARNISH STAIN...

ECONOMY STRENGTH SPEED. The GRAY 1 ton Trucks... The following comment appeared in the Cape Argus of September 17, 1928... MAGNETO IGNITION... K. McIVOR & Co., SOLE IMPORTERS, NAIROBI.

CASH WITH ORDER... THE ADMIRALTY... THE PORT CONTROL COMMISSION... THE ADMIRALTY... THE PORT CONTROL COMMISSION...

Give Her the Best. TORR'S CHOCOLATES ARE SUPREME. NEW STOCKS... Sika, Jeweller, Ivory Carvers, Broadways, Carpets, Lamps and Goods History, hand made in India... B. CHOITRAM. GOVERNMENT ROAD. P.O. Box 948. NAIROBI.

Notice of Removal... As from 1st December the Offices, Showroom and Garage of MESSRS. S. FRISKE and SIMMONS (E.A.) Ltd., will be transferred from Boma Buildings, Government Road, to new accommodations in VICTORIA STREET, NAIROBI... THE EUROPEAN AND AFRICAN TRADES ORGANISATION... PLEASE NOTE THAT FROM THE BEGINNING OF SEPTEMBER, 1928...

£52-10-0 THE FINEST MOTOR CYCLE PROPOSITION EVER OFFERED TO THE PUBLIC. RALEIGH The Old Metal Motor-Cycle... Sole Agents Kettles-Roy, Ltd., NAIROBI.

THE GARDEN BEAUTIFUL For Flowering shrubs, Plants, Bulbs & Trees... R. E. RANDALL, P.O. Box 177, Nairobi.

Toys. Toys. Toys. Unsuspected a large selection of MECHANICAL and OTHER TOYS, DOLLS, XMAS NOVELTIES, PAPER LANTERNS, STREAMERS, COMETS, XMAS CRACKERS & XMAS TREE DECORATIONS... M. B. DE SOUZA & Co.

ENLARGEMENTS 2' x 2' MARTIN... THE ADMIRALTY... THE PORT CONTROL COMMISSION... THE ADMIRALTY... THE PORT CONTROL COMMISSION...

Smithfield Butchery. P.O. Box 6. Telephone 411. Book Your XMAS TURKEY and JOINTS NOW. A limited number of Mild Home-Cured Hams available. MEAT KEPT IN OLD STORE... Smithfield Butchery.

# AUCTION SALES.

**Auction Diary**  
 (See page 10) Commencing at 10 o'clock tomorrow (Friday) at 10 o'clock.  
 (See page 10) Commencing at 10 o'clock tomorrow (Friday) at 10 o'clock.  
 (See page 10) Commencing at 10 o'clock tomorrow (Friday) at 10 o'clock.

## ARCHIBALD HOGG

Harding Street, Nairobi.

Arms, Ammunition, Etc., Etc.

REPAIRS TO 35007 including Weekly Accounts and Highy makes. **REPAIRS** Double and single cars. 100, 200, 300, 400, 500, 600, 700, 800, 900, 1000, 1100, 1200, 1300, 1400, 1500, 1600, 1700, 1800, 1900, 2000, 2100, 2200, 2300, 2400, 2500, 2600, 2700, 2800, 2900, 3000, 3100, 3200, 3300, 3400, 3500, 3600, 3700, 3800, 3900, 4000, 4100, 4200, 4300, 4400, 4500, 4600, 4700, 4800, 4900, 5000, 5100, 5200, 5300, 5400, 5500, 5600, 5700, 5800, 5900, 6000, 6100, 6200, 6300, 6400, 6500, 6600, 6700, 6800, 6900, 7000, 7100, 7200, 7300, 7400, 7500, 7600, 7700, 7800, 7900, 8000, 8100, 8200, 8300, 8400, 8500, 8600, 8700, 8800, 8900, 9000, 9100, 9200, 9300, 9400, 9500, 9600, 9700, 9800, 9900, 10000.

## Mutter and Oswald's Sales

SALES OF MILKING FRAM by PUBLIC AUCTION

MONDAY 14th DECEMBER 1925  
 10.00 AM  
 11.00 AM  
 12.00 PM

**WHEAT GRINDERS**  
 1. A 1000 lb. capacity  
 2. A 1500 lb. capacity  
 3. A 2000 lb. capacity  
 4. A 2500 lb. capacity  
 5. A 3000 lb. capacity  
 6. A 3500 lb. capacity  
 7. A 4000 lb. capacity  
 8. A 4500 lb. capacity  
 9. A 5000 lb. capacity  
 10. A 5500 lb. capacity  
 11. A 6000 lb. capacity  
 12. A 6500 lb. capacity  
 13. A 7000 lb. capacity  
 14. A 7500 lb. capacity  
 15. A 8000 lb. capacity  
 16. A 8500 lb. capacity  
 17. A 9000 lb. capacity  
 18. A 9500 lb. capacity  
 19. A 10000 lb. capacity

## Mutter and Oswald's Property List

**Excellent Maize Proposition**  
 1. 1000 bushels  
 2. 1500 bushels  
 3. 2000 bushels  
 4. 2500 bushels  
 5. 3000 bushels  
 6. 3500 bushels  
 7. 4000 bushels  
 8. 4500 bushels  
 9. 5000 bushels  
 10. 5500 bushels  
 11. 6000 bushels  
 12. 6500 bushels  
 13. 7000 bushels  
 14. 7500 bushels  
 15. 8000 bushels  
 16. 8500 bushels  
 17. 9000 bushels  
 18. 9500 bushels  
 19. 10000 bushels

## Mutter and Oswald's Sales

10.00 AM  
 11.00 AM  
 12.00 PM

## Mutter and Oswald's Sales

10.00 AM  
 11.00 AM  
 12.00 PM

## Mutter and Oswald's Sales

10.00 AM  
 11.00 AM  
 12.00 PM

## WHEAT GRINDERS

10.00 AM  
 11.00 AM  
 12.00 PM

## Notice of Removal

As from JANUARY 1st 1926  
**Austin & Co.**  
 10, HARDING STREET, NAIROBI.

## Unreserved Sale of Furniture, Textures, Silks, Bedspreads, Etc.

**Austin & Co.**  
 10, HARDING STREET, NAIROBI.

## TO-DAY Dec. 10th at 10 o'clock

1. A 1000 lb. capacity  
 2. A 1500 lb. capacity  
 3. A 2000 lb. capacity  
 4. A 2500 lb. capacity  
 5. A 3000 lb. capacity  
 6. A 3500 lb. capacity  
 7. A 4000 lb. capacity  
 8. A 4500 lb. capacity  
 9. A 5000 lb. capacity  
 10. A 5500 lb. capacity  
 11. A 6000 lb. capacity  
 12. A 6500 lb. capacity  
 13. A 7000 lb. capacity  
 14. A 7500 lb. capacity  
 15. A 8000 lb. capacity  
 16. A 8500 lb. capacity  
 17. A 9000 lb. capacity  
 18. A 9500 lb. capacity  
 19. A 10000 lb. capacity

## A BARGAIN

1. 1000 bushels  
 2. 1500 bushels  
 3. 2000 bushels  
 4. 2500 bushels  
 5. 3000 bushels  
 6. 3500 bushels  
 7. 4000 bushels  
 8. 4500 bushels  
 9. 5000 bushels  
 10. 5500 bushels  
 11. 6000 bushels  
 12. 6500 bushels  
 13. 7000 bushels  
 14. 7500 bushels  
 15. 8000 bushels  
 16. 8500 bushels  
 17. 9000 bushels  
 18. 9500 bushels  
 19. 10000 bushels

## THE HOMBETTED.

1. 1000 bushels  
 2. 1500 bushels  
 3. 2000 bushels  
 4. 2500 bushels  
 5. 3000 bushels  
 6. 3500 bushels  
 7. 4000 bushels  
 8. 4500 bushels  
 9. 5000 bushels  
 10. 5500 bushels  
 11. 6000 bushels  
 12. 6500 bushels  
 13. 7000 bushels  
 14. 7500 bushels  
 15. 8000 bushels  
 16. 8500 bushels  
 17. 9000 bushels  
 18. 9500 bushels  
 19. 10000 bushels

## Grand Opening Dance

**SAURDAY, DEC. 12th**  
**CLAIMONT**  
 10.00 AM  
 11.00 AM  
 12.00 PM

## Notice of Removal

10.00 AM  
 11.00 AM  
 12.00 PM

## Hutchings, Biemer & Co.

10.00 AM  
 11.00 AM  
 12.00 PM

## UGANDA RAILWAY

1. 1000 bushels  
 2. 1500 bushels  
 3. 2000 bushels  
 4. 2500 bushels  
 5. 3000 bushels  
 6. 3500 bushels  
 7. 4000 bushels  
 8. 4500 bushels  
 9. 5000 bushels  
 10. 5500 bushels  
 11. 6000 bushels  
 12. 6500 bushels  
 13. 7000 bushels  
 14. 7500 bushels  
 15. 8000 bushels  
 16. 8500 bushels  
 17. 9000 bushels  
 18. 9500 bushels  
 19. 10000 bushels

## !!! JAZZ BAND !!!

1. 1000 bushels  
 2. 1500 bushels  
 3. 2000 bushels  
 4. 2500 bushels  
 5. 3000 bushels  
 6. 3500 bushels  
 7. 4000 bushels  
 8. 4500 bushels  
 9. 5000 bushels  
 10. 5500 bushels  
 11. 6000 bushels  
 12. 6500 bushels  
 13. 7000 bushels  
 14. 7500 bushels  
 15. 8000 bushels  
 16. 8500 bushels  
 17. 9000 bushels  
 18. 9500 bushels  
 19. 10000 bushels

## LYRIC LOUNGE

1. 1000 bushels  
 2. 1500 bushels  
 3. 2000 bushels  
 4. 2500 bushels  
 5. 3000 bushels  
 6. 3500 bushels  
 7. 4000 bushels  
 8. 4500 bushels  
 9. 5000 bushels  
 10. 5500 bushels  
 11. 6000 bushels  
 12. 6500 bushels  
 13. 7000 bushels  
 14. 7500 bushels  
 15. 8000 bushels  
 16. 8500 bushels  
 17. 9000 bushels  
 18. 9500 bushels  
 19. 10000 bushels

## THE HOMBETTED.

1. 1000 bushels  
 2. 1500 bushels  
 3. 2000 bushels  
 4. 2500 bushels  
 5. 3000 bushels  
 6. 3500 bushels  
 7. 4000 bushels  
 8. 4500 bushels  
 9. 5000 bushels  
 10. 5500 bushels  
 11. 6000 bushels  
 12. 6500 bushels  
 13. 7000 bushels  
 14. 7500 bushels  
 15. 8000 bushels  
 16. 8500 bushels  
 17. 9000 bushels  
 18. 9500 bushels  
 19. 10000 bushels

## Grand Opening Dance

**SAURDAY, DEC. 12th**  
**CLAIMONT**  
 10.00 AM  
 11.00 AM  
 12.00 PM

## Notice of Removal

10.00 AM  
 11.00 AM  
 12.00 PM

## Hutchings, Biemer & Co.

10.00 AM  
 11.00 AM  
 12.00 PM

## Mutter and Oswald's Sales

10.00 AM  
 11.00 AM  
 12.00 PM

## Mutter and Oswald's Sales

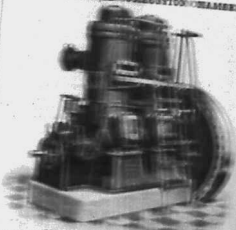
10.00 AM  
 11.00 AM  
 12.00 PM

## Mutter and Oswald's Sales

10.00 AM  
 11.00 AM  
 12.00 PM

## Mutter and Oswald's Sales

10.00 AM  
 11.00 AM  
 12.00 PM



AGENTS - J. W. MILLIGAN & Co.

Call and

Phone 6

OAKLEY



SUTTON'S SEEDS.

When requiring seeds for the garden, try SUTTON'S.

SHAW & HUNTER

(Sole Proprietor: R. M. SHAW.) Box 70, Sixth Avenue, Nairobi.

The World at Your Command. If you are prepared to be guided by the World's leading manufacturers of Radio Apparatus...

Callia "Boncelle". PERMANENT RAILWAYING SYSTEM. As used exclusively by EMILE in London and Paris. The Toilet Requisite Co.

J. R. STEPHENS & Co. Ltd. Tailors & Outfitters. GOVERNMENT ROAD NAIROBI. Phone 271.

MICHELINS FOR MILEAGE. The following year's results of a long commercial trial on a Kaimosi road...

The Motor Mart & Exchange, Ltd. NAIROBI.

Charles Ware. The man that stands for integrity. THORNTON TY ACCOUNTANT. ESTABLISHED 37 YEARS.

THE NORTON POLICY IS NOT Mass Production. THIS IS EVIDENT ON INSPECTION OF THE Norton Motor Cycles AT BRIMELOWS GARAGE, HARDINGE ST. NAIROBI.

THE SPORTS PAGE

KENYA POLO. THE RIGHT GOLF SWING. AUSTRALIAN CRICKET. PROFESSIONAL FOOTBALL.

Nairobi Tournament on New Year.

THREE TROPHIES.

A polo tournament, under the auspices of the Kenya Polo Association, will be held over the New Year holidays...

THE RIGHT GOLF SWING.

Changes in the Methods of Teaching.

A COMFORTABLE POSITION.

"It takes the player about ten minutes to get into the swing of the club, and then he is ready to play..."

CONVICTS UP.

December 30, at 2.30 p.m. (A) Fitchburg vs. Makeni (B) December 31, at 2.30 p.m. (A) Fitchburg vs. Makeni (B) January 1, at 11 a.m. (A) Makeni vs. Makeni (B) January 2, at 2.30 p.m. (A) Makeni vs. Makeni (B) January 3, at 4.15 p.m. (A) Makeni vs. Makeni (B)

PARLIAMENTARY GOLF.

THE FINAL ORDEAL.

The final ordeal of the year for the members of the Kenya Polo Association will be the polo tournament...

TEAMS AND SQUADS.

The Kenya Polo Association has announced the following teams and squads for the New Year tournament...

PRIZE OF WALES ENTER FOR CONTESTING.

The Prince of Wales has announced that he will accept the trophy which will be presented to the winner of the Rugby Football Union's Championship Cup...

Further Scores in Your Trial Match.

THE BOWLER'S SECRET.

The secret of this success in the trial match was the bowler's secret. It was the bowler's secret that made the difference between a good and a bad bowler...

DEMOY AND AN Idd.

Demoy and an Idd. The Idd was a very good player and he was very popular with the crowd...

Unique Horse Race.

A COURSE OF 1.26 MILES IN INDIVIDUAL. In a horse race which took place at the Kenya Polo Association...

WOMEN OCCUPATIONS.

It is significant of the nature of the work of women in the world that the number of women who are engaged in professional occupations is increasing...

PROFESSIONAL FOOTBALL.

HAS ITS PLACE.

Many years ago, when professional football was seeking to establish itself as a serious sport...

ALIBHAI & Co. Gent Outfitters.

ALIBHAI & Co. Gent Outfitters. Phone 214, RAHAR, NAIROBI.

Get It From May.

What More Acceptable? What More Certain to Please? COULD YOU POSSIBLY GIVE AS A Christmas Present...

MAY & Co. The Sports House.

MAY & Co. The Sports House. Phone 201. Bazaar, Nairobi. P.O. Box 100.

AHAMED BROS.

Ahamed Bros. Nairobi. Phone 201. Bazaar, Nairobi. P.O. Box 100. Always in Stock.

CENTRAL LOUNGE.

CENTRAL LOUNGE. Phone 201. Bazaar, Nairobi. P.O. Box 100. Always in Stock.

HARLEY-DAVIDSON.

HARLEY-DAVIDSON. The Motorcycles Magazine. Phone 201. Bazaar, Nairobi. P.O. Box 100.

EVERYTHING ON THE ANGLER. We have now a complete angling requisites for the Lake Fishing, River Fishing, etc. These are all by makers and thoroughly tested...

FRED RAPER. Box 641. CITY MOORE. GENERAL COMMISSION AGENT. BOILER SUITS. WATER PROOF CAPS. MANCHESTER TENTS, ETC.

ALIBHAI & Co. Gent Outfitters. Phone 214, RAHAR, NAIROBI.

MAY & Co. The Sports House. Phone 201. Bazaar, Nairobi. P.O. Box 100.

AHAMED BROS. Phone 201. Bazaar, Nairobi. P.O. Box 100.

CENTRAL LOUNGE. Phone 201. Bazaar, Nairobi. P.O. Box 100.

HARLEY-DAVIDSON. The Motorcycles Magazine. Phone 201. Bazaar, Nairobi. P.O. Box 100.

THE MOTORCYCLE MAGAZINE. Phone 201. Bazaar, Nairobi. P.O. Box 100.