

Kenya Beer
 IS
 THE MOST WHOLESOME ALE
 BREWED IN KENYA.
 FROM CHOICEST KENT HOPS
 AND ENGLISH MALT
Kenya Stout
 IS DELICIOUS & APPETISING
 AND WILL KEEP YOU FIT.
XXXX
Sunderland Ale
 IS THE MOST SUPERLATIVE BEER.

GUARANTEED THE BEST CIRCULATION OF ANY NEWSPAPER
 IN KENYA, UGANDA, TANGANYIKA AND ZANZIBAR.
THE EAST AFRICAN STANDARD
 6 PAGES.

THE
LOUNGE
 FOR
 COCKTAILS
 AND
 TEAS
 THE
DINING ROOM
 FOR
 BREAK FASTS,
 LUNCHEONS, and
 DINNERS.
THE NEW STANLEY HOTEL
 Price 30 CENTS.

MOMBASA TIMES & UGANDA ARGUS.
 THE OLDEST ESTABLISHED NEWSPAPER PUBLISHED IN KENYA AND UGANDA.
 NAIROBI, THURSDAY, JULY 8, 1926

UNEXPECTED SEQUEL TO A
BAG-SNATCHING CASE.

Two Perjury Charges
IRISH LADY AND WHITE CONSTABLE FOR THE HIGH COURT.

Identification Allegations.
ACCUSED WOMAN TELLS STORY OF RESULT OF "WORKS UP THE FRONT."

...of the recent bag-snatching case in Nairobi, as a result of which a woman named Mrs. Doherty was committed to prison for four days. The magistrate, Mr. Doherty, who was the only one present, had to be satisfied by the evidence of the woman and the constable that the woman was in possession of the bag at the time of the snatching. The woman, who is now in prison, has given a statement which she says is the true story of what happened. She says that she was in the company of a man named Mr. Doherty, who she says is the man who was charged with the snatching. She says that she saw the man take the bag from the woman and run away with it. She says that she saw the man take the bag to a house in the city, and that she saw the man take the bag to a woman named Mrs. Doherty. She says that she saw the man take the bag to Mrs. Doherty, and that she saw the man take the bag to Mrs. Doherty. She says that she saw the man take the bag to Mrs. Doherty, and that she saw the man take the bag to Mrs. Doherty.

SIR GEOFFREY ARCHER RESIGNS
 Ordered Long Rest from Work in Tropics.

GOVERNMENT RESIGNS
 Wandering Arab's Bullet when Frying to Bullets.

DEATH IN BASRA HOSPITAL
 Rescued Story.

CHILD WELFARE IN BRITAIN.
 Proposals by the Ministry of Health.

GERMANY AND AFRICAN MANDATES.
 Question in the House of Commons.

MR. BALDWIN EXPLAINS
 The Minister's Answer.

THE PANORAMA BRAND
 A New and Attractive TAN WILLOW GOLF BROGUE SHOE.

WHITEWAYS' SHIS 37/50
 GOLF SHOE.

WHITEWAYS' NEW AND ALUMINUM ADJUSTABLE IMPROVED FOOT AND SHOE TREE.

WHITEWAYS' SHIS 7/50
 PER PAIR.

LAIDES BASK RATH GOLF SHOE.

Keenest Value Always
Whiteaway, Laird & Co., Ltd.
 NAIROBI.

THE PARADE.
 Charles Ward West, the Inspector in charge of the Nairobi Police Station, said that on June 28 he was present at an identification parade in the presence of the Superintendent and his husband. There were ten men on the parade, and Mr. Doherty picked out the man who he believed was the man who had snatched the bag from him.

German Bank Rate.
 The Reichsbank has reduced the discount rate to 7 per cent.

Court.
 She then recalled that she had made a statement that she was the boy's mother, but that she was not the boy's mother, but that she was the boy's mother. She said that she was the boy's mother, but that she was not the boy's mother, but that she was the boy's mother.

FOR TRIAL.
 Mr. Schwartz said the basic feature of the case was the presence of Mrs. Doherty in the company of the man who was charged with the snatching. She said that she was the man's wife, and that she was the man's wife.

A CONFESION.
 A right confession over Mrs. Doherty's statement that she had seen the man who was charged with the snatching. She said that she was the man's wife, and that she was the man's wife.

AMOUNT DAMAGE.
 The amount of damage done by the man who was charged with the snatching. He said that he was the man's wife, and that he was the man's wife.

THE R.P.C.
 Immediately after the conclusion of the above proceedings John Linton Carter, a European member of the Nairobi Municipal Council, was placed in the dock on a charge of being drunk.

THE R.P.C.
 Mr. F. C. Gamble said in the record of the bag-snatching case that he was the man's wife, and that he was the man's wife.

THE R.P.C.
 Mr. F. C. Gamble said in the record of the bag-snatching case that he was the man's wife, and that he was the man's wife.

POSHO

We supply finely ground
Hickory King Maize Meal

Our price is competitive
and our quality always the best

UNGA Ltd. Njoro.

FOR QUICK SALE
GOING CONCERN IN
TRANS-NZOLA

Coffee and Maize
Farm of 600 acres.

Exceptional Opportunity

Bargain Price
and easy terms

TALBOT & MASSY E. A. Ltd.

Chester House, NAIROBI P.O. Box 603.

MOTOR CYCLES

We have the following new Motor Cycles and Side Cars in Stock at prices as under:-

79 Harley-Davidson	Shs. 1200
79 Raleigh with side-car	2720
79 Harley-Davidson with side-car	2600
79 Raleigh with side-car and electric light	1800
79 O.H.V. Sports	1417
79 (60 cc. Bial) ladies' machines	1000
79 Side with electric light	1300

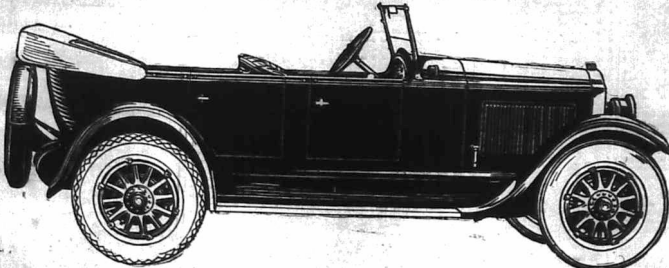
We have also Stewart Case 'Ten Trip' complete with Body for Shs. 700/0.

CAPITAL GARAGE.

opposite Fire Station, Victoria Street.

The finest car and equipment
for touring ever
offered in Kenya Colony

Its Performance
Is Little Short of Amazing



BUICK

Gilfillan & Company, Ltd.
DISTRIBUTORS

As soon as you take the wheel of
the new 1926 Standard Buick Six
—you feel its amazing performance.

The way it accelerates—a new nimbleness—silent speed on the open road—a resistless power on hills.

You will delight in the instantaneous but velvet action of Buick's four wheel brakes—and take comfort in their dependability and the extra safety they provide.

A petrol consumption from 22 to 25 miles per gallon—unparalleled economy in a motor developing more than 50 actual h.p.

This great car has written a wholly new page in motor car achievement. It has taken every motoring country in the world by storm.

Come in and we will let you drive this remarkable car. Come in with an open mind and the performance of this car in your hands will convince you that you cannot begin to buy its equal anywhere else.

The
Standard
Canadian Buick

£445

complete with
trunk rack

Standard Buick's
Master Buick's
Master Buick Sports Touring
Standard Buick's
Standard's Buick Sedan

4455
4465
4465
4465
4465

MOTERING TOPICS

THE WILKEY'S LIGHT-SIX

A New Model Arrives in Nairobi.

SLIDE VALVE ENGINE.

Except with regard to engine principles, the new Model Co. is cylinder Willy-Knight, which is seen on view in the premises of Messrs. Mathew and Morrison Ltd., Nairobi, has been entirely redesigned on a smaller and lighter scale as a powerful five-cylinder car, embodying all those refinements and conveniences which are demanded by the present-day purchaser.

An important feature of the new-designed engine is that it is one of the lightest slide-valve engines yet produced. Cylinder bore has been reduced to 4 1/2 inches, the stroke remaining practically unchanged at 4 1/2 inches. The H. P. O. and N.A.C.O. ratings are the 20 1/2 H.P., although in actual practice the motor will give 100 per cent more power than this if it is left open to do so.

The six cylinders are on the bore, the cylinder heads being cast as one piece. In conformity with regular Knight practice the detachable heads extend into the top of the cylinders for a considerable distance, the extensions into the cylinders being turned to the same diameter as the pistons (so as to leave a gap between them) and the cylinder walls into which the sliding sleeves extend) and provide gas and oil leakage.

POSITIVE VALVE ACTION.

In the Willy-Knight engine there are two sleeves which are inserted between the piston and the cylinder wall. These sleeves are recognized by short connecting rods from an overhead shaft which takes the place of the cam shaft of the poppet-valve engine. Near its upper end, an opposite rod guides each cylinder valve, providing with rectangular gear which is held in contact. The two

sleeves are provided with corresponding parts, and when the piston is in both sleeves and is the cylinder wall, the water jackets extend from the combustion chamber to the exhaust manifold. Each of the sleeves has a stroke of about as much as the other, and they revolve at their low speed, which is one of the reasons for their low wear and freedom from trouble. The vertical movement of the sleeves is approximately as much as, or more than, that of the pistons.

The motor moves up and down once for every two up-and-down motions of the piston. It has already been mentioned that the piston travel is 4 1/2 inches and from this one has deduced that the sleeves travel at only approximately one-half the piston speed.

With this design the valve motion is entirely mechanical, so that it differs from the poppet-valve motor in that the valves are bound to close absolutely as they are set to close, instead of being dependent on a spring, the temper of which may vary, and that other conditions. One of the main claims of advantage of the Knight engine is based on this fact. No matter what the speed, the valves will close, and the mixture gas can always be obtained in the cylinder, and the engine will always be in complete synchronism with the piston speed.

OTHER ADVANTAGES.

Amongst the other advantages claimed for the Knight engine are absolute silence in operation and the fact that it improves with use. The driver estimates the second and third years of operation to be better than the first. The slide-valve engine makes remarkably few demands upon the fuel, and its small amount of carbon that does give a beneficial effect, serving to give the sliding surfaces a film of oil.

Naturally the engine is of very close cut appearance, and not noticeably different from one of the latest type poppet-valve engines. The cooling water is pumped directly under thermostat control. A large-diameter shaft-bearing fastens the piston in the disposition of the heat.

In connection with the cooling system, the separate admission plate, which covers the top of the cylinder block and forms part of the water jacket, is a notable piece

of ingenious construction; by means of which it is possible to leave the water jackets open and the cylinders communicating directly with the cylinder heads, while the water jackets are closed and the cooling water round the plug and the cylinder head. The cylinders are completely separated from the water jacket by spring throughout their entire length.

CHASSIS DETAILS.

The motor is in a specially adapted Tilston, with an enclosed transmission, petrol feed being on the vacuum-comparative system. Lubrication is under pressure to all main bearings. The action of the sleeves is such that when the oil spray from the connecting rod bearings is thrown on to them it is carried up and distributed in perfection by precooling action and suction effect.

Oiling grooves are cut on the outside of each of the sleeves. By interlocking the oil control valves with the throttle valve, the motor is regulated by the throttle valve and by a timing of the valves. Following standard practice, the electrical system is of the single dry-battery type, notably smooth and efficient in operation and easy of adjustment.

Although distinctive in detail, transmission and final drive follow the standard practice. Four-wheel brakes are standard of course. Wheel base is 110 1/2 inches.

The Triumph in Australia.

GOOD PERFORMANCES IN THE TRIALS.

The recent success of the 8th motor by the Motor Cycle Club of New South Wales, was particularly noteworthy. The trials were won and accounted for many points and procedure. Great public interest and every country motorist regards enthusiastically welcomed the rider. Every Palmer riding a Triumph, had a bad spell at Dunlopville on the same day, but finished on time, although in a state of collapse.

Squealing Brakes.

HOW TO AVOID NOISE ANNOYANCE.

Many a pedestrian would shrug his shoulders when he hears the scream of brakes loudly applied in his vicinity, and the driver of the car finds the noise anything but pleasant to his ears.

This squeak may generally be avoided by treating the brake linings in the following manner: Remove all brake shoes and clean them thoroughly with petrol, afterwards lightly sandpaper the working surfaces of the linings with a fine or a piece of glass to remove the glaze. It is advisable, also, to make sure that all steel bands are concentric below the surface of the fabric.

Shut the shoes to a temperature approaching the boiling point of water, and apply a coating of paraffin oil to the surface of the linings. It should be given when the shoes are at a normal temperature. The shoes should be kept the normal temperature, and the oil should be applied when the shoes are applied. When the shoes are applied the squeak has entirely disappeared.

The cure will remain effective throughout the active life of the linings, their working quality being in no way impaired, and if anything somewhat increased.

Of the thirty-one starters, twenty completed the course, and without loss of time. The only three Triumph starters, ridden by R. H. Moore, P. Palmer and G. Goodwin, were again successful in winning the Team Prize. The first of the four, with a total of four points.

Of the three Triumph starters, the riders of the 4th, 5th, 6th, 7th and 8th, 9th, 10th, 11th, 12th, 13th, 14th, 15th, 16th, 17th, 18th, 19th, 20th, 21st, 22nd, 23rd, 24th, 25th, 26th, 27th, 28th, 29th, 30th, 31st, 32nd, 33rd, 34th, 35th, 36th, 37th, 38th, 39th, 40th, 41st, 42nd, 43rd, 44th, 45th, 46th, 47th, 48th, 49th, 50th, 51st, 52nd, 53rd, 54th, 55th, 56th, 57th, 58th, 59th, 60th, 61st, 62nd, 63rd, 64th, 65th, 66th, 67th, 68th, 69th, 70th, 71st, 72nd, 73rd, 74th, 75th, 76th, 77th, 78th, 79th, 80th, 81st, 82nd, 83rd, 84th, 85th, 86th, 87th, 88th, 89th, 90th, 91st, 92nd, 93rd, 94th, 95th, 96th, 97th, 98th, 99th, 100th.

The Kenya Farmers' Association Limited.

DEPOT TO ANNOUNCE THEY HAVE NOW OPENED A DEPOT IN VICTORIA STREET, NAIROBI, WHERE SWEET MAIZE, CRUETTED MAIZE, AND MAIZE GRAY MAY BE OBTAINED IN ANY QUANTITIES LAID OUT ON SMALL AT LOWEST PRICES.

FOR QUOTATIONS APPLY TO OUR NAIROBI AGENT.

SHAMS-UD-DEEN,
P.O. Box 676. (Opp. Fire Station) NAIROBI.

Just Received

"MELVILLE" and "REF" SEA BEAN COCOA SHIRAZI, PIVAKA SUPER CRUETTED MILK TEA and HAZELNUT CHOCOLATES TO MATCH IN ALL VARIETIES.

ALIBHAI & Co.
GENEVE OFFITZBERG
Box 201. Bazaar, NAIROBI. Phone 212.

Meghji Ahamed & Co.
(The oldest Tent-makers in the Colony.)

Ready made tents and tarpaulins of different sizes, Mosquito nets, best woven undercar, well-known pullovers and Hosiery of all kinds, always in stock.

We can supply you with waterproof motor boots complete for the box body car at the 40/- each.

Ladies' and gents' tailors and complete outfit outfitters.
Phone 184. Telapur, Nararhatia. P.O. Box 118.
INDIAN BAZAAR, NAIROBI.

F. A. Head
Pianoforte Tuner and Repaireur
Five years with Messrs. Chappell & Co., London.
Seven years experience in Kenya Colony.
Send all orders to P. O. Box 676.

DISTRICT NOTES.

Reva.

ILLNESS EPIDEMIC AND THE BURNING OF THE HILL.

[From Our Own Correspondent.] NAIROBI, July 5. There are ominous rumours in this district. During the last few days many have left the Colony and have returned to their homes in the interior. Amongst them may be mentioned Mr. J. Wood, Mr. B. K. Rappard, Mr. and Mrs. J. J. Edwards.

Amongst the rumors current in Kenya we are very glad to welcome one. Major W. Kirton, who has returned to his home at Kellingham, his sister, Miss Kirton, has arrived during the last few weeks on one first visit to the Colony and is staying with her brother in Reva.

Other old friends who are visiting another visit to Kenya and who have recently been staying in this district, are Mr. and Mrs. P. Macdonald. It is understood that their stay is only to be a short one on the occasion and they are returning to England almost immediately.

ILLNESS.

There is a great deal of illness among the natives both in European farms and in the reserves. From many farms one hears reports of the sickle staff being rotted by fifty per cent. on account of sickness. For the most part, the illness which is causing so much trouble appears to be something between malaria and influenza. A lot of the men imagine that it is similar to the epidemic of "Spanish Flu" which caused such havoc about eight years ago. And although it is not so bad as that, yet it is bad enough to give rise to serious mortality. In only one instance had been completely recovered to bury the body. These natives would be in the pay of the Medical Department, and would only be attached to the Police for the sake of convenience.

There may be difficulties in the way of this scheme, but it does appear that some such action must be taken, and that is the only solution which I can offer.

always pending through, it is indeed curious to find that, in no case, duty to bury a native who dies. If a native dies on a European farm, it is the custom for the owner or manager to make the necessary arrangements. But he may be faced with enormous difficulties. It is well known that the local tribes will not touch a dead body. If there are Europeans on the farm there is no difficulty, but if there are not, there may be very great trouble. A European is placed in the position of having a body of which he must dispose unassailably—and of having one of his ablest laborers who will refuse to help him. The only course is to have the body buried by the native himself, and this I think is the only way in which the matter can be dealt with on such a case.

But opposing a native passing the main Furt Hill Road.

It is understood that this actually happened last week. So far as I can understand, it is apparently the duty of no one to bury that native. That is a truly terrible state of affairs, and one which should not be allowed to continue any longer. It is conceivable that the native may have died from some such disease as plague, in which case the burial is attended with considerable risk. In any case the task is an unpleasant one, and will be avoided by every one who can manage to do so. The usual course nowadays appears to be to inform the Police and to leave the matter in their hands. The Police already have too much to do and they cannot be expected to spend their leisure time acting as a Burial Corps.

A SUGGESTION.

I am writing this from the point of view of Reva, but I am sure that every town in the country must be in the same position. The solution, as I see it, would be found by having five members of the Medical Department attached to the Police. When the Police go out to examine a body, they take two medical officers, who need not be skilled men, would accompany them, and after the examination had been completed would proceed to bury the body. These natives would be in the pay of the Medical Department, and would only be attached to the Police for the sake of convenience.

There may be difficulties in the way of this scheme, but it does appear that some such action must be taken, and that is the only solution which I can offer.

THE MISSIONS.

Whether the Mission might

July 5 do not know. For although it is generally believed that when a native becomes a Christian he will then be willing to touch a body, this does not always appear to be the case in actual practice. Presumably I have had cases of a Mission Hospital, and have then received a report from the native in a local party down amongst the laborers, who was one of the missionaries. It certainly does not seem that the native ever asks himself whether the mission which sends the Mission is instituting the native really goes home, and so on. For a Mission Station to confine that they have a native who will touch a body some year, in my opinion, is confounding "faith" in its least sense direction.

COFFEE.

On most estates a certain amount of coffee is being picked now. The main crop will not ripen for some months yet, but small quantities are being obtained all over the district, and one or two shambas possessed of profitable trees have picked a very fair quantity.

Once more the question of the payment of this labor for picking is being discussed. The general tendency seems to favour the payment of twenty cents for a shilling for a tin of coffee. If only every acre of coffee in this district and not water when labour becomes scarce, it is in my opinion, that there will not be unusual difficulty.

ROADS.

We are indeed glad to see that the F.W.D. are making an effort to improve the Fort Hill Road. A large quantity of murrum is being laid on the road between Reva and Nairobi, and we hope that when this is put on the road it will temporarily improve it. Of course we all realize that filling in holes with dry murrum cannot effect any permanent improvement, though the one or two pieces of road which have recently been resurfaced are better than they were.

If I may interest other users of the main road to hear that once again recently I passed a large and heavy road roller being dragged by a team of oxen. Presumably it belonged to the F.W.D. for I should doubt whether anyone else in this neighbourhood possesses an article of such size and weight. There were several boys in attendance, but they carried no light or any sort, either in front or behind the roller. A nasty thing for a car or a motorcycle to be on a dark night!



To Members of the Kenya Horticultural Society.

Support the K.H.S. stall with contributions of Flowers, cut and potted plants, cuttings, seeds, bulbs.


Up country members should put their contributions on Rail addressed to

CHILD WELFARE FUND, Government House, Nairobi.

The receiving committee will be the rev.

Nairobi members are asked to arrange to deliver their contributions at Government House.

Cut flowers should be received on Sunday 1st August. Other contributions, less likely to fade and wither, should be deposited at road Nairobi on Monday 2nd or Tuesday, 3rd August.

E. DOBBER
Optical Optician.
Watchmakers and Jewellers.
Government Road. Nairobi.

OUR OPTICAL DEPARTMENT

is equipped with the newest
Optical instruments for sight
testing, and is in charge of a fully
qualified Optician who has a
thorough knowledge of the sub-
jects pertaining to ocular optics,
and who examines the eyes and
if necessary prescribes glasses.



LONG JOHN
Special Reserve
Scotch Whisky

Wholesale Distributors:—
D. Epstein & Co., NAIROBI.

ESSEX SIX

World's Greatest Value

Coach
£300
Wire Wheels
£10 Extra.



Essex is nimble of action. It is easily handled in traffic, responsive to every call for power or speed.

The Essex Coach is very completely equipped with bumper bars front and rear, electric screen wiper, rear vision mirror, sun visor, stop light, Boyce motorometer radiator shutters, etc. The interior is luxuriously upholstered and is fitted with adjustable seats, etc.

Today's Essex is the finest ever built. It is the smoothest, most reliable Essex ever built. It is the best looking, most comfortably riding Essex ever built and the price, because of volume, is little more than low-priced "Tours".

And with its low first cost and operating economies, you get the long-lasting, reliable performance, smoothness and riding ease of the most wanted "Six" type in the world.



Touring,
£280
Wire Wheels
£10 Extra.

P.O. Box 203.
Phone 103.

Carr, Lawson & Co., Ltd.

Tele: "CARLAW"
NAIROBI.

THE SALISBURY HOTEL

Phone 100. NAIROBI. P. O. Box 909.

FAMILY & RESIDENTIAL.

VIP CLASS ACCOMMODATION AND CUISINE. Recently opened. Spacious lounge and open air dining room.

Joanes & Bros., NAIROBI. Govt. Road. P.O. Box 265. BAYNES BUILDING.

New attractive bargain in Check Spun Silk plain and coloured. Moroccan figured and plain. Crepe of different qualities, just unpacked.

The Remington Typewriter

"QUIET NO. 12"

Universally recognized as the most efficient typewriter on the market with its variable speed governor.



All Papers and European Mechanisms. THE REMINGTON TYPEWRITER AGENCY. Phone 25. NAIROBI. P.O. Box 67.

A VISIT TO THE SCOTT LABORATORIES.

Legislative Councils spend an interesting time.

WHEAT EXPERIMENTS.

Members of the Legislative Council along with several other notable visitors had an interesting and instructive visit to the laboratories of the Director of Agriculture, Mr. Alex. Hohn.



A New Map.

COMPREHENSIVE ROAD GUIDE TO EAST AFRICA.

The new map of East Africa prepared for the Royal East African Association and which has recently arrived in Kenya is a most useful production.

Decon Norman Lays and his Book.

A FURTHER REPLY TO LORD GRANVILLE.

The following letter containing the views of Decon Norman Lays, corresponding member of the Executive Council of the Kenya Association, is published in the Merchants' Guardian.

"Lord Granville's statement in the House of Commons is most interesting to me. I have ever believed my fellow-countrymen in Kenya to be a highly intelligent and progressive people.

It is an irony of fate, and I am sure it is printed in seven columns. All water on the motor traffic in the country is shown in red.

This may which has taken much work and time to produce and to which Mr. G. H. G. O. B. E., the Secretary of the B.E.A., devoted a fair portion of his spare time, is the only up-to-date map of East Africa in existence.

The Church in East Africa. The Bishop of East Africa, (Dr. Charles Faber), writing in The Daily Telegraph, writes in his address, refers to the preparation of a constitution for the Church in East Africa.

The Director showed the various methods which are being used for selecting material of a high standard and good quality. The original idea was to select material from the various sources which were available for the purpose.

NATIONAL BANK OF INDIA LIMITED.

Incorporated in the United Kingdom. Bankers in the Colony and Protectorate of Kenya. Uganda Protectorate. Branches: Bombay, Calcutta, Madras, Rangoon, etc.

Geo. BLOWERS.

Advertisement for Geo. Blowers, featuring illustrations of various window and door styles with descriptive text and prices.

DANCING NAIROBI SCHOOL OF DANCING.

CHILDREN AND ADULTS. Classes and Private Lessons. Daily at the Lyric Ball Room. Instructors: Miss Ostrin and Miss Marie Albery.

AT NAKURU

Miss Ostrin will be visiting Nakuru from July 21st to July 28th and is prepared to give a small private ball room dancing class or private lessons in the day or evening at the NAKURU HOTEL.

P. STEWART, PAINTER & DECORATOR.

Sign Painting, Graining, Marbling, Gilding, etc. Estimates and quotations free. P.O. Box 204, NAIROBI.

NOTICE

The head "K" on a Gibson is all that is needed to identify the car. The only reliable method of identification is the head "K" on the Gibson.

Your Daily Bread

We supply the Best at a minimum competitive price. We endeavor to deliver it at your place.

J. PLUM, REFRIG. REPAIRS.

Expert repairs on all makes of machines. Home Appliances. Refrigerators, Washers, etc. Satisfactory Guarantees. "AVENUE HOUSE", P.O. Box 707, 4th Avenue, Nairobi.

FIXED DEPOSITS

Deposits are received for fixed periods on terms which may be varied on application. EXCHANGE—The Bank grants Drafts on the Head Office, and handles all foreign exchange business.

ARTHUR A. LEGAT, Manager, Nairobi Branch.

ANY LIGHT OR HEAVY METAL WORK

ANY LIGHT OR HEAVY METAL WORK. ANY LIGHT OR HEAVY METAL WORK. ANY LIGHT OR HEAVY METAL WORK.

THE CONCRETE BLOCKS ARE A GUARANTEED BETTER BUILDING MATERIAL

THE CONCRETE BLOCKS ARE A GUARANTEED BETTER BUILDING MATERIAL. THE CONCRETE BLOCKS ARE A GUARANTEED BETTER BUILDING MATERIAL.

Advertisement for concrete blocks, showing illustrations of different block sizes and prices: \$1.50, \$1.00, 80¢, 60¢.

£2,000-0-0

in RALEIGH SPARE PARTS always in stock, ensuring prompt attention to all repairs work. There is NO BETTER SERVICE and NO BETTER MACHINE. See the 2.48 h.p. Solo all chain... 1,400/- and the 3.99 h.p. solo all chain... 1,400/- CAPITAL GARAGE, VICTORIA ST., NAIROBI.

Advertisement for K. SHOE MEAN? AN EXTRA YEAR TO THE WEARER AND AT THE PRICE OF AN ORDINARY MAKE SHOE! From 37/50. GOLTSMAN'S. THE K AGENTS (adjoining "TROCADO")

"STANDARD" FEATURE PAGE

FARMING NOTES.

A Resume of Current Topics.

THE BATHON PROBLEM.

[The "Bathon" is a...]

In last week's Farming Notes... the writer remembers rightly this process after comparing the oil-presses from which...

THE PERFECT BATHON.

Now it is most desirable, if the problem of supplying a perfect bathon is to be really solved... It is a question ready for the solution of the chemist...

At the best of it it is necessary to the production of a... the production of a... the production of a...

There is still one other source of energy which has not been referred to by the writer and it is... which is in quite possibly very undesirable for employment in human industry...

For its richness in this particular respect, and in U.S.A. large numbers of milk make a variety of products it into flour which is presumably used for cattle food.

Another point about locusts is that the rich vegetable manures probably abundant in those many factories which modern research is claiming to be necessary to healthy life.

Reference to vitamins A, B and C, of which Dr. Fisher has spoken in his latest article, it is interesting to see a definite link for the writer if he is expected to keep up those abstract statements for the workers.

MACTIACON SHOW.

The agricultural event of the week has been the Mactiacon Show at Mading with the purpose of our part, considerable display of the various...

Sturdy native babies were shown in quantities sufficient to delight the best eyes of Lady Grigg and the Wakebush adults, many of whom, presumably, the native depicted costumes seemed in excellent preserved condition.

The ploughing competition was probably due to the employment of teams which had never worked together before and eventually had never been through a ploughing contest together with their drivers.

Until the native is taught to work in pairs in the workmanlike fashion, with full and steady work, as in addition to the various types of sports such as running and football, he will never appreciate in any way the value of energy in the process of a white oxen.

Agriculturally speaking the present state of the native is a... the native is a... the native is a...

Sturdy native babies were shown in quantities sufficient to delight the best eyes of Lady Grigg and the Wakebush adults, many of whom, presumably, the native depicted costumes seemed in excellent preserved condition.

The ploughing competition was probably due to the employment of teams which had never worked together before and eventually had never been through a ploughing contest together with their drivers.

Until the native is taught to work in pairs in the workmanlike fashion, with full and steady work, as in addition to the various types of sports such as running and football, he will never appreciate in any way the value of energy in the process of a white oxen.

Agriculturally speaking the present state of the native is a... the native is a... the native is a...

THE LOUNGE FOR COCKTAILS AND TRAYS THE NEW STANLEY HOTEL. THE DINING ROOM FOR BREAK FASTS, LUNCHEONS, and DINNERS. Price 30 CENTS.

GET DOTWEAR recharacter Comfort & Quality. TAN WILLOW OAK DERRY HOOD. THE "INTEGRATOR" BRAND. FORD CAR PAINTING. Smith, Mackenzie & Co. MAILBOI.

BARCLAYS BANK (DOMINION, COLONIAL AND OVERSEAS) FORMERLY THE COLONIAL BANK. THE ANGLO-EGYPTIAN BANK LIMITED.

WE ALL KNOW JACOB & Co's. Cream Crackers. HAVE YOU TRIED THEIR ASSORTMENTS? Royal Afternoon Tea, Assorted Creams, Selected Cheese, etc.

We will Tell You From Time to Time the Advantages of the Studebaker. Studebaker saves you clutch-makers' profits. Studebaker saves you gear-set makers' profits. Studebaker saves you steering-gear makers' profits. Studebaker saves you gray-iron casting makers' profits. BUY A STUDEBAKER.

Vertical text on the far left edge of the page, including 'ate', 'h', 'meets', 'BEL', 'RS', 'ER', 'ld.', 'alue', '1/20', '2/20', '3/20', '4/20', '5/20', '6/20', '7/20', '8/20', '9/20', '10/20', '11/20', '12/20', '13/20', '14/20', '15/20', '16/20', '17/20', '18/20', '19/20', '20/20'.

THE SPORTS PAGE

AUCTION SALES

Muter and Oswald's Sales

Sale of "Buick" Touring Six

On behalf of the Parties concerned... Public Auctioneer

Friday 9th July, at 9.30 a.m.

A BUICK TOURING CAR, 1925 Model, 6 cylinders... excellent type

Muter and Oswald, Auctioneers, Etc.

Sale of Assorted... without reserve, at our Salerooms

Friday 9th July... Large Range of Motor Cars for Sale

Price £350... Dodge Touring Car 1925 Model

The Motor Mart & Exchange Limited

NAIROBI, NAKURU

MAY & Co. KENYA'S ONLY Sports Specialists

Stock, all Requisites for all Sports

THE SPORTS HOUSE, NAIROBI

J. R. Stephens & Co. Ltd. THE TAILORS & OUTFITTERS

Official Outfitters to Kenton College

IN STOCK GOVERNMENT ROAD

P. O. Box 233 NAIROBI

UNTY CRICKET.

Interfers With Last Day's Play.

MATCHES ABANDONED.

[Thomas Harris's Account] The following was the score at the close of play of county cricket matches, commenced on June 8.

KENT vs. YORKS

Yorkshire (1st innings) 289; Kent (1st) 102; Yorkshire (2nd) 150; Kent (2nd) 147.

HANTS vs. SURREY

Surrey (1st) 126; Hampshire (1st) 228; Surrey (2nd) 102.

LANCS. vs. SURREY

Lancashire (1st) 219; Surrey (1st) 228; Lancashire (2nd) 109; Surrey (2nd) 109.

LEICESTER vs. GLOUCESTER

Leicester (1st) 160; Gloucester (1st) 120; Leicester (2nd) 120; Gloucester (2nd) 120.

LEICESTER vs. GLOUCESTER

Leicester (1st) 160; Gloucester (1st) 120; Leicester (2nd) 120; Gloucester (2nd) 120.

NORTHANTS vs. WORCESTER

Northamptonshire (1st) 270; Worcester (1st) 190; Northamptonshire (2nd) 190; Worcester (2nd) 190.

WARRICK vs. SOMERSET

Warwickshire (1st) 200; Somerset (1st) 160; Warwickshire (2nd) 160; Somerset (2nd) 160.

WARRICK vs. SOMERSET

Warwickshire (1st) 200; Somerset (1st) 160; Warwickshire (2nd) 160; Somerset (2nd) 160.

WARRICK vs. SOMERSET

Warwickshire (1st) 200; Somerset (1st) 160; Warwickshire (2nd) 160; Somerset (2nd) 160.

THE AUSTRALIANS.

Not Defeated by an Innings.

MAILED TAKES 16 WICKETS.

[Thomas Harris's Account] The Australian cricket team left Sydney for Nottingham on June 22.

THE AUSTRALIANS

The Australians went into the field on the first day of the match at Nottingham and scored 200 runs.

THE AUSTRALIANS

The Australians continued their innings and were eventually all out for 200.

THE AUSTRALIANS

The Australians were eventually all out for 200.

THE AUSTRALIANS

The Australians were eventually all out for 200.

THE AUSTRALIANS

The Australians were eventually all out for 200.

THE AUSTRALIANS

The Australians were eventually all out for 200.

THE AUSTRALIANS

The Australians were eventually all out for 200.

THE AUSTRALIANS

The Australians were eventually all out for 200.

THE AUSTRALIANS

The Australians were eventually all out for 200.

BRITISH GOLF.

Americans in the Amateur Championship.

DIFFERENT METHODS.

[Frank O'Byrne Correspondent] The Amateur Golf Championship of 1925 at Westwood Hill...

THE AMATEUR GOLF CHAMPIONSHIP

The Amateur Golf Championship of 1925 at Westwood Hill...

THE AMATEUR GOLF CHAMPIONSHIP

The Amateur Golf Championship of 1925 at Westwood Hill...

THE AMATEUR GOLF CHAMPIONSHIP

The Amateur Golf Championship of 1925 at Westwood Hill...

THE AMATEUR GOLF CHAMPIONSHIP

The Amateur Golf Championship of 1925 at Westwood Hill...

THE AMATEUR GOLF CHAMPIONSHIP

The Amateur Golf Championship of 1925 at Westwood Hill...

THE AMATEUR GOLF CHAMPIONSHIP

The Amateur Golf Championship of 1925 at Westwood Hill...

THE AMATEUR GOLF CHAMPIONSHIP

The Amateur Golf Championship of 1925 at Westwood Hill...

THE AMATEUR GOLF CHAMPIONSHIP

The Amateur Golf Championship of 1925 at Westwood Hill...

THE AMATEUR GOLF CHAMPIONSHIP

The Amateur Golf Championship of 1925 at Westwood Hill...

TENNIS IN ENGLAND.

The Inter-Varsity Match at Cambridge.

OTHER CHAMPIONSHIPS.

[Frank O'Byrne Correspondent] The Inter-Varsity tennis match...

THE INTER-VARSITY MATCH

The Inter-Varsity tennis match...

THE INTER-VARSITY MATCH

The Inter-Varsity tennis match...

THE INTER-VARSITY MATCH

The Inter-Varsity tennis match...

THE INTER-VARSITY MATCH

The Inter-Varsity tennis match...

THE INTER-VARSITY MATCH

The Inter-Varsity tennis match...

THE INTER-VARSITY MATCH

The Inter-Varsity tennis match...

THE INTER-VARSITY MATCH

The Inter-Varsity tennis match...

THE INTER-VARSITY MATCH

The Inter-Varsity tennis match...

THE INTER-VARSITY MATCH

The Inter-Varsity tennis match...



QUALITY SHIRTS

CAREFUL DESIGN, PERFECT CUT, AND SOFT WEAVING MATERIALS FOR EVERY OCCASION.

THE "ECONOMY" SHIRT. Made from good quality fabric...

THE "FAVOURITE" SHIRT. Light weight but with wave stripes...

THE "IDEAL" SHIRT. Floating from collar and cuffs...

THE "NEVELL" SHIRT. Bill finished Sea Island cotton...

THE "JAMES" SHIRT. A smart shirt in bold stripes...

THE "OFFICE" SHIRT. A plain white shirt of about 100 yards...

THE "OOSTAFTA" SHIRT. A plain cream shirt made of best quality cotton...

THE "FARNO" DRESS SHIRT. A smart elegant evening shirt...

THE "PALACE" DRESS SHIRT. A pure frontal shirt with pleats...

THE "EMPIRE" TENNIS SHIRT. The Colony's star value in shirts...

THE "SPORTS" COMBINATION. A smart shirt and trouser dress...

THE "PRINCE" SPORTS SHIRT. A cream woven tulle shirt...

THE "OTTOLINI" KEMO JUMPER. Made from the finest material...

THE "BETTEL" SHIRT. A light weight Khaki shirt...

THE "CLYDE" SHIRT. Made from the finest material...

WE ALLOW 5 per cent Cash Discount. 5

Kentitas THE QUALITY HOUSE

Phone No. 125. P. O. Box No. 255. NAIROBI

THE QUALITY HOUSE

Phone No. 125. P. O. Box No. 255. NAIROBI

AN ATHLETIC FEAT.

German Does Half-mile in Record Time.

[At Naini] The German athlete...

German Does Half-mile in Record Time.

[At Naini] The German athlete...

German Does Half-mile in Record Time.

[At Naini] The German athlete...

German Does Half-mile in Record Time.

[At Naini] The German athlete...

German Does Half-mile in Record Time.

AMERICAN'S ADVANTAGE.

This is the great secret of American's policy regarding it.

AMERICAN'S ADVANTAGE.

This is the great secret of American's policy regarding it.

AMERICAN'S ADVANTAGE.

This is the great secret of American's policy regarding it.

AMERICAN'S ADVANTAGE.

This is the great secret of American's policy regarding it.

AMERICAN'S ADVANTAGE.

This is the great secret of American's policy regarding it.

SLACKNESS.

These are some of the reasons why British industry is not so successful as it should be.

SLACKNESS.

These are some of the reasons why British industry is not so successful as it should be.

SLACKNESS.

These are some of the reasons why British industry is not so successful as it should be.

SLACKNESS.

These are some of the reasons why British industry is not so successful as it should be.

SLACKNESS.

These are some of the reasons why British industry is not so successful as it should be.

Kanya Beer
IS
THE WHOLESOME ALE
BREWED IN KENYA
FROM CHOICEST KENT HOPS
AND ENGLISH MALT

Kanya Stout
DELICIOUS & APPETISING
AND WILL KEEP YOU FIT.

**XXXX
Gunderover Ale**
THE SUPERLATIVE BEER

GUARANTEED THE LARGEST CIRCULATION OF ANY NEWSPAPER
IN KENYA, UGANDA, TANGANYIKA AND ZANZIBAR.

DAILY EVENING.

THE EAST AFRICAN STANDARD

12 PAGES.

MOMBASA TIMES & UGANDA ARGUS.
THE OLDEST ESTABLISHED NEWSPAPER PUBLISHED IN KENYA AND UGANDA.

WITH WHICH IS INCORPORATED
THE LEADER.

THE
LOUNGE
FOR
COCKTAILS
AND
TEA

THE
DINING ROOM
FOR
BREAKFASTS,
LUNCHEONS, AND
DINNERS.

THE NEW STANLEY HOTEL.

Price 30 CENTS.

THE FIRE COMMISSIONER'S REPORT.

Unable to Trace Origins of Big Outbreaks.

ELECTRICAL DANGERS.

The Systematic Inspection of Internal Installations.

THE FIRE BRIGADE.

The fire-brigade report of the Fire Commissioner was issued to the public on Monday.

The Commissioner is unable to state the origins of the fire which broke out at the premises of the Fire Commissioner's office on Monday.

The Commissioner is unable to state the origins of the fire which broke out at the premises of the Fire Commissioner's office on Monday.

The Commissioner is unable to state the origins of the fire which broke out at the premises of the Fire Commissioner's office on Monday.

The Commissioner is unable to state the origins of the fire which broke out at the premises of the Fire Commissioner's office on Monday.

The Commissioner is unable to state the origins of the fire which broke out at the premises of the Fire Commissioner's office on Monday.

The Commissioner is unable to state the origins of the fire which broke out at the premises of the Fire Commissioner's office on Monday.

The Commissioner is unable to state the origins of the fire which broke out at the premises of the Fire Commissioner's office on Monday.

The Commissioner is unable to state the origins of the fire which broke out at the premises of the Fire Commissioner's office on Monday.

The Commissioner is unable to state the origins of the fire which broke out at the premises of the Fire Commissioner's office on Monday.

The Commissioner is unable to state the origins of the fire which broke out at the premises of the Fire Commissioner's office on Monday.

The Commissioner is unable to state the origins of the fire which broke out at the premises of the Fire Commissioner's office on Monday.

The Commissioner is unable to state the origins of the fire which broke out at the premises of the Fire Commissioner's office on Monday.

The Commissioner is unable to state the origins of the fire which broke out at the premises of the Fire Commissioner's office on Monday.

SCHOOL FOR TROPICAL MEDICINE.

Opening by Minister of Health.

MR. OMSBY-GOBE'S VIEW.

On the Proposed Bill in the House of Representatives.

Mr. Omsby-Gobe, Minister of Health, in the House of Representatives, today announced that the Government had decided to open a school for tropical medicine in Kenya.

The school would offer ample opportunity for the research and the training of students in tropical diseases.

The school would offer ample opportunity for the research and the training of students in tropical diseases.

The school would offer ample opportunity for the research and the training of students in tropical diseases.

The school would offer ample opportunity for the research and the training of students in tropical diseases.

The school would offer ample opportunity for the research and the training of students in tropical diseases.

The school would offer ample opportunity for the research and the training of students in tropical diseases.

The school would offer ample opportunity for the research and the training of students in tropical diseases.

The school would offer ample opportunity for the research and the training of students in tropical diseases.

The school would offer ample opportunity for the research and the training of students in tropical diseases.

The school would offer ample opportunity for the research and the training of students in tropical diseases.

The school would offer ample opportunity for the research and the training of students in tropical diseases.

The school would offer ample opportunity for the research and the training of students in tropical diseases.

The school would offer ample opportunity for the research and the training of students in tropical diseases.

The school would offer ample opportunity for the research and the training of students in tropical diseases.

GOVERNMENT WARY OF MINEROWNERS.

Dramatic Intervention in Lords Debate.

HOUSERS' BILL DELAYED.

Proposals in a Mines Act Profoundly Un satisfactory.

The Government is wary of the proposals in the Mines Act which would give the miners a right to elect representatives to the Board of Mines.

The Government is wary of the proposals in the Mines Act which would give the miners a right to elect representatives to the Board of Mines.

The Government is wary of the proposals in the Mines Act which would give the miners a right to elect representatives to the Board of Mines.

The Government is wary of the proposals in the Mines Act which would give the miners a right to elect representatives to the Board of Mines.

The Government is wary of the proposals in the Mines Act which would give the miners a right to elect representatives to the Board of Mines.

The Government is wary of the proposals in the Mines Act which would give the miners a right to elect representatives to the Board of Mines.

The Government is wary of the proposals in the Mines Act which would give the miners a right to elect representatives to the Board of Mines.

The Government is wary of the proposals in the Mines Act which would give the miners a right to elect representatives to the Board of Mines.

The Government is wary of the proposals in the Mines Act which would give the miners a right to elect representatives to the Board of Mines.

The Government is wary of the proposals in the Mines Act which would give the miners a right to elect representatives to the Board of Mines.

The Government is wary of the proposals in the Mines Act which would give the miners a right to elect representatives to the Board of Mines.

The Government is wary of the proposals in the Mines Act which would give the miners a right to elect representatives to the Board of Mines.

The Government is wary of the proposals in the Mines Act which would give the miners a right to elect representatives to the Board of Mines.

The Government is wary of the proposals in the Mines Act which would give the miners a right to elect representatives to the Board of Mines.

The Government is wary of the proposals in the Mines Act which would give the miners a right to elect representatives to the Board of Mines.

RAILWAYS' LEADER TRUMPHS.

Only Six Conference Votes for Dismissal.

PEACE WITH THE PRESS.

Pressman Refused to Sign the Preamble of the Railwaymen's Conference.

The pressman refused to sign the preamble of the Railwaymen's conference because it contained a statement that the railwaymen were prepared to accept a 10 per cent wage increase.

The pressman refused to sign the preamble of the Railwaymen's conference because it contained a statement that the railwaymen were prepared to accept a 10 per cent wage increase.

The pressman refused to sign the preamble of the Railwaymen's conference because it contained a statement that the railwaymen were prepared to accept a 10 per cent wage increase.

The pressman refused to sign the preamble of the Railwaymen's conference because it contained a statement that the railwaymen were prepared to accept a 10 per cent wage increase.

The pressman refused to sign the preamble of the Railwaymen's conference because it contained a statement that the railwaymen were prepared to accept a 10 per cent wage increase.

The pressman refused to sign the preamble of the Railwaymen's conference because it contained a statement that the railwaymen were prepared to accept a 10 per cent wage increase.

The pressman refused to sign the preamble of the Railwaymen's conference because it contained a statement that the railwaymen were prepared to accept a 10 per cent wage increase.

The pressman refused to sign the preamble of the Railwaymen's conference because it contained a statement that the railwaymen were prepared to accept a 10 per cent wage increase.

The pressman refused to sign the preamble of the Railwaymen's conference because it contained a statement that the railwaymen were prepared to accept a 10 per cent wage increase.

The pressman refused to sign the preamble of the Railwaymen's conference because it contained a statement that the railwaymen were prepared to accept a 10 per cent wage increase.

The pressman refused to sign the preamble of the Railwaymen's conference because it contained a statement that the railwaymen were prepared to accept a 10 per cent wage increase.

The pressman refused to sign the preamble of the Railwaymen's conference because it contained a statement that the railwaymen were prepared to accept a 10 per cent wage increase.

The pressman refused to sign the preamble of the Railwaymen's conference because it contained a statement that the railwaymen were prepared to accept a 10 per cent wage increase.

The pressman refused to sign the preamble of the Railwaymen's conference because it contained a statement that the railwaymen were prepared to accept a 10 per cent wage increase.

The pressman refused to sign the preamble of the Railwaymen's conference because it contained a statement that the railwaymen were prepared to accept a 10 per cent wage increase.

General Strike Cast.

Government Coal Needs 25,000,000.

The White Paper mentioned that the Government would need 25,000,000 tons of coal for the year 1952-53.

The White Paper mentioned that the Government would need 25,000,000 tons of coal for the year 1952-53.

The White Paper mentioned that the Government would need 25,000,000 tons of coal for the year 1952-53.

The White Paper mentioned that the Government would need 25,000,000 tons of coal for the year 1952-53.

The White Paper mentioned that the Government would need 25,000,000 tons of coal for the year 1952-53.

The White Paper mentioned that the Government would need 25,000,000 tons of coal for the year 1952-53.

The White Paper mentioned that the Government would need 25,000,000 tons of coal for the year 1952-53.

Victimisation by RAILWAYS.

Peace Agreements Broken Flagrantly.

The National Union of Railwaymen has accused the railway companies of victimising its members.

The National Union of Railwaymen has accused the railway companies of victimising its members.

The National Union of Railwaymen has accused the railway companies of victimising its members.

The National Union of Railwaymen has accused the railway companies of victimising its members.

The National Union of Railwaymen has accused the railway companies of victimising its members.

The National Union of Railwaymen has accused the railway companies of victimising its members.

The National Union of Railwaymen has accused the railway companies of victimising its members.

U.K.A. Standard Special (Coke Service).

Published in Support of Union Jack.

CHILD WELFARE.

A VAUDEVILLE CONCERT IN AID OF THE FUNDS.

The concert will be held at the Grand Theatre on Monday.

The concert will be held at the Grand Theatre on Monday.

The concert will be held at the Grand Theatre on Monday.

The concert will be held at the Grand Theatre on Monday.

The concert will be held at the Grand Theatre on Monday.

The concert will be held at the Grand Theatre on Monday.

The concert will be held at the Grand Theatre on Monday.

The concert will be held at the Grand Theatre on Monday.

The concert will be held at the Grand Theatre on Monday.

The concert will be held at the Grand Theatre on Monday.

The concert will be held at the Grand Theatre on Monday.

The concert will be held at the Grand Theatre on Monday.

The concert will be held at the Grand Theatre on Monday.

The concert will be held at the Grand Theatre on Monday.

The concert will be held at the Grand Theatre on Monday.

The concert will be held at the Grand Theatre on Monday.

Oxford Honours Alfonso.

The degree of Doctor of Civil Law by diploma was conferred on Alfonso XIII of Spain.

The degree of Doctor of Civil Law by diploma was conferred on Alfonso XIII of Spain.

The degree of Doctor of Civil Law by diploma was conferred on Alfonso XIII of Spain.

The degree of Doctor of Civil Law by diploma was conferred on Alfonso XIII of Spain.

The degree of Doctor of Civil Law by diploma was conferred on Alfonso XIII of Spain.

The degree of Doctor of Civil Law by diploma was conferred on Alfonso XIII of Spain.

The degree of Doctor of Civil Law by diploma was conferred on Alfonso XIII of Spain.

The degree of Doctor of Civil Law by diploma was conferred on Alfonso XIII of Spain.

The degree of Doctor of Civil Law by diploma was conferred on Alfonso XIII of Spain.

The degree of Doctor of Civil Law by diploma was conferred on Alfonso XIII of Spain.

Owners Climb Down.

YORKS MAGNETS EXPOSED AS DELINQUENTS.

The Yorkshire Magnet Works has been exposed as a delinquent.

The Yorkshire Magnet Works has been exposed as a delinquent.

The Yorkshire Magnet Works has been exposed as a delinquent.

The Yorkshire Magnet Works has been exposed as a delinquent.

The Yorkshire Magnet Works has been exposed as a delinquent.

The Yorkshire Magnet Works has been exposed as a delinquent.

The Yorkshire Magnet Works has been exposed as a delinquent.

The Yorkshire Magnet Works has been exposed as a delinquent.

FOOTWEAR
Character, Comfort & Quality

TAN WILLOW GAIT DERBY BOOT.
This smart boot is mild leather and suitable for wear for all occasions.

THE "IMPERATOR" BRAND.
All sizes.
Shs. 47/50 PER PAIR.

CLEAN NEW STOCK OF TAN WILLOW AND BLACK BOX GAIT SHOES.
Have just arrived from our Northern Factory.

THE "COMET" BRAND.
All sizes. The Lowest Priced Quality Shoe in Kenya.
Shs. 19/50 PER PAIR.

THE FAMOUS REX BRAND.
A New and Attractive TAN WILLOW GAIT BROUZE SHOE.
An ideal shoe for present walking conditions.

WHITWAY'S SHS. 37/50
CASH PRICE.

WHITWAY'S NEW AND ALUMINIUM ADJUSTABLE IMPROVED BOOT AND SHOE TRADE.

WHITWAY'S SHS. 7/50 PER PAIR.

YOUTH SERVICEABLE BOOTS.
For school or country wear. Made of selected Tan Hide upper material.

SHS. 9/6 PER PAIR.

LADIES BLACK BATH COUDED SHOES.
For evening wear. Made on the latest Continental shape.

SHS. 19/50 PER PAIR.

Keenest Value Always at
Whiteaway, Laird & Co., Ltd.
NAIROBI.

POSHO

We supply finely ground Hickory King Maize Meal

Our price is competitive and our quality always the best

UNGA Ltd. Njoro.

FOR QUICK SALE GOING CONCERN IN TRANS-SOZIA
Coffee and Maize Farm of 600 acres.

Exceptional Opportunity
Bargain Price and easy terms
TALBOT & MASSY E. A. Ltd.
Cedar House, NAIROBI P.O. Box 203.

MOTOR CYCLES

We have the following new Motor Cycles and Side Cars in Stock at prices as under—

7.5 Harley-Davidson	...	Shs. 1220
7.5 " " with side-car	...	2720
7.5 " " with side-car and electric light	...	2800
8 " " " " " " " "	...	1200
8 " " " " " " " "	...	1417
8 " " " " " " " "	...	1200
8 " " " " " " " "	...	1200

We also have Stewart Case 750 Truck—complete with body for Shs. 7000.

CAPITAL GARAGE.

opposite Fire Station, Victoria Street.

MOTURING TOPICS

MOTOR CAR METALS

Process of Preparing Steels.

THE CARBON STEEL.

As has been stated, there are a large number of steels which are called steels. Of these the most important group are the carbon steels, which may be divided into four main classes—

- (1) Soft or low carbon steel which contains from 0.05 to 0.25 per cent. of carbon. This is the "mild steel" of commerce, and is used for thousands of different purposes including bridge building, rivets, boiler stays, plates and girders, including heavy building.
- (2) Medium carbon steel, containing 0.15 to 0.45 per cent. of carbon. This is used for general purposes such as shafts, tubes, gears and their shafts, drop forgings, springs, etc. It is slightly harder than mild steel.
- (3) Hard carbon steel, having from 0.4 to 0.7 per cent. of carbon. It is not so readily hardened, and when the carbon content, as in the case of 0.6 to 0.8 per cent. is used, a great deal of austenitizing is necessary.
- (4) Very hard carbon steel, which contains 0.7 to 1.5 per cent. of carbon. It is capable of being hardened for special uses, such as tools, drills, dies, punches, etc. In the other alloy steels, although not called carbon steels, carbon is still an important constituent of the metal.

HEAT TREATMENT.

In order to get the best out of any carbon steel, except those of the low carbon variety, it is necessary that it should be subjected to the correct heat treatment. (On the use of a more expensive alloy of another type can be applied for a skilled and careful manipulation of this treatment. Probably the most important effect that can be obtained by heat treatment is hardening of the metal.

THE PROCESS OF HARDENING.

The process of hardening consists in slowly and uniformly heating the parts to a temperature above what is called the critical point, after which it is cooled at a more or less rapid rate to a given temperature.

STRENGTH OF CARBON

Strength of metals can be measured in a number of ways. Probably the most important is that in which the maximum pull the piece will stand before breaking is measured. This is called the tensile strength. The following table gives some values for carbon steels:

For per cent. of Carbon:	Strength:
0.40	30,000 lbs.
0.71	42,500 "
0.80	44,400 "
1.00	48,000 "

It should be noted that as the carbon content becomes greater the steel becomes more brittle and less able to stand shock. When the above steels are hardened in oil their tensile strengths are increased to roughly fifty per cent. in such cases, and so might be expected, their brittleness is also increased. So that, in order to obtain extra strength by the increase in carbon content, by hardening, toughness has to be sacrificed.

ANOTHER POINT OF VIEW.

Another point of view is the importance as the degree of its hardness. This gives more ideas as to how it is likely to wear when used in bearings, etc., and also the tensile strength, the hardness increases with the carbon content. To a certain extent the hardness is a measure of the strength, though the proportion is not a direct one.

HARDNESS AS A MEASURE OF STRENGTH.

Hardness is now usually measured by the Brinell method, which a hardened steel ball of standard size is pressed into the metal to be tested under certain pressure and the relative indentation of the surface indicates their relative hardness. These indentations give Brinell numbers of about 60 to 100 for tool steel up to 500 to 700 for tool steel.

ANNEALING.

The process of annealing is usually undertaken to ease the reheating of a steel after mechanical treatment to a temperature depending upon the nature of the steel, followed by a slow cooling in free air. Annealing usually occupies a fairly long period, and is quite an elaborate process. Its purpose is to remove stresses

after working or to induce brittleness and for the crystalline structure of the material.

Annealing should be carried out on all metal parts which have been subjected to forging, stamping, rolling or similar treatment. Annealing operations are often used in the production of motor-car parts. Hardening may be carried out in the following way: The treatment will result in a very hard metal, having an even fine structure.

Normalizing consists of a similar process, but the temperature to which the parts are heated is higher. It refines the structure, removes internal strains and makes the material suitable for machining and hardening. (Prof. Duncan McMillan in the Cape Times.)

British Cycles.

OVERSEAS TRADE INCREASING.

The "get-together" principle for the purpose of securing better foreign trade is a well defined policy of the British Cycle Industry. While the ramifications of many of its member British firms are worldwide, the importance of overseas trade is recognized by none so clearly as the Triumvirate of Coventry, England, manufacturing motor cycles bearing the time-honoured name for reliability, Mr. S. Bettinson the Managing Director of this famous concern, has recently completed another portion of the world tour by visiting that land abounding in the "Jewel of the East"—the Great India Empire. His itinerary also included Burma and Ceylon. Wherever he went he was accorded a most cordial greeting and was naturally encouraged by the increasing call for British-made cycles and motor cycles, and particularly those of "Triumph" manufacture.

Now that the tour is ended Mr. Bettinson is more than ever impressed by the almost limitless possibilities of Empire trade. He is of the opinion that any one who enters the production of overseas equipment, and further encourages commercial intercourse between the "Britches" at home and the "Britches" abroad, will make stronger the bonds which bind together the free nations of the British Commonwealth.

The Kenya Farmers' Association Limited.

REG TO ANNOUNCE THEY HAVE OPENED A DEPOT IN VICTORIA STREET, NAIROBI, WHERE MAIZE MEAL, CRACKED MAIZE, AND MAIZE GRADY MEAL OBTAINED IN ANY QUANTITIES FOR QUOTATIONS APPLY TO THE NAIROBI AGENTS.

SHAMS-UD-DEEN
P.O. Box 674 (Opp. Fire Station) NAIROBI

Just Received
"MELVILLE" and "REX"
SEA LEAD COTTON
SHIRTS, PJAMA SUITS,
IS all shades to suit all tastes.
GRAYS BELL TIE and HANDKER.
OBLIVIOUS TO MATCH IN ALL VARIETIES.

ALIBHAI & Co.
GENTS' OUTFITTERS,
BARRA, NAIROBI. Phone No. 201.

Meghji Ahamed & Co.

(The oldest Test-makers in Colony).
Ready made tents and tarpaulins of different sizes. Meghji's best water proof underwear, sun pullovers and Hosiery of all kinds always in stock.

We can supply you with waterproof motor boots and rubber boots etc. at Shs. 50/- only.

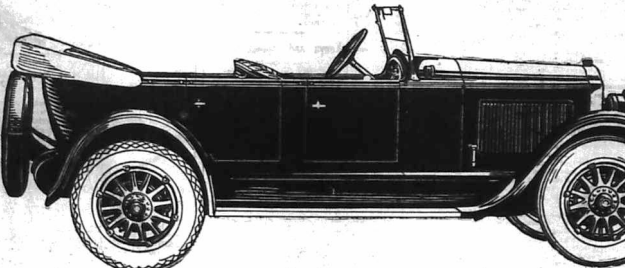
Ladies' and gents' tailors and complete outfit outfitmen. Phone 184. Telephone "Telephone" P.O. INDIAN BAZAAR, NAIROBI.

F. A. Head

Pianoforte Tuner and Repairer
Five years with Messrs. Chappell & Co., London
Seven years experience in Kenya Colony.
Send all orders to P. O. Box 674.

The finest car and equipment for touring ever offered in Kenya Colony

Its Performance Is Little Short of Amazing



BUICK
Gilfillan & Company, Ltd.
D I S T R I B U T O R S

AS soon as you take the wheel of the new 1926 Standard Buick Six—you feel its amazing performance.

The way it accelerates—a new nimbleness—a silent speed on the open road—a resistless power on hills.

You will delight in the instantaneous but velvet action of Buick four wheel brakes—and take comfort in their dependability and the extra safety they provide.

A petrol consumption from 22 to 25 miles per gallon—unparalleled economy in a motor developing more than 50 actual h.p.

This great car has written a wholly new page in motor car achievement. It has taken every motoring country in the world by storm.

Come in and we will let you drive this remarkable car. Come in with an open mind and the performance of this car in your hands will convince you that you cannot begin to buy its equal anywhere else.

The Standard Canadian Buick

£445
complete with trunk rack

Standard Buick—4450
Master Buick 6 passenger—4650
Master Buick 6 passenger—4650
Standard Buick 6 Seater—4650
Standard—6 Seater Sedan—4650

STANDARD EDITION.

STANDARD EDITION. ...

ANNOUNCEMENTS ...

MEMORANDUM ...

MEMORANDUM ...

MEMORANDUM ...

MEMORANDUM ...

MEMORANDUM ...

MEMORANDUM ...

MEMORANDUM ...

MEMORANDUM ...

MEMORANDUM ...

MEMORANDUM ...

MEMORANDUM ...

MEMORANDUM ...

MEMORANDUM ...

MEMORANDUM ...

MEMORANDUM ...

MEMORANDUM ...

MEMORANDUM ...

MEMORANDUM ...

MEMORANDUM ...

MEMORANDUM ...

MEMORANDUM ...

MEMORANDUM ...

MEMORANDUM ...

MEMORANDUM ...

MEMORANDUM ...

MEMORANDUM ...

MISCELLANEOUS.

THESE ...

MEMORANDUM ...

MEMORANDUM ...

MEMORANDUM ...

MEMORANDUM ...

MEMORANDUM ...

MEMORANDUM ...

MEMORANDUM ...

MEMORANDUM ...

MEMORANDUM ...

MEMORANDUM ...

MEMORANDUM ...

MEMORANDUM ...

MEMORANDUM ...

MEMORANDUM ...

MEMORANDUM ...

MEMORANDUM ...

MEMORANDUM ...

MEMORANDUM ...

MEMORANDUM ...

MEMORANDUM ...

MEMORANDUM ...

MEMORANDUM ...

MEMORANDUM ...

MEMORANDUM ...

MEMORANDUM ...

MEMORANDUM ...

MEMORANDUM ...

MEMORANDUM ...

CORRESPONDENCE.

THESE ...

MEMORANDUM ...

MEMORANDUM ...

MEMORANDUM ...

MEMORANDUM ...

MEMORANDUM ...

MEMORANDUM ...

MEMORANDUM ...

MEMORANDUM ...

MEMORANDUM ...

MEMORANDUM ...

MEMORANDUM ...

MEMORANDUM ...

MEMORANDUM ...

MEMORANDUM ...

MEMORANDUM ...

MEMORANDUM ...

MEMORANDUM ...

MEMORANDUM ...

MEMORANDUM ...

MEMORANDUM ...

MEMORANDUM ...

MEMORANDUM ...

MEMORANDUM ...

MEMORANDUM ...

MEMORANDUM ...

MEMORANDUM ...

MEMORANDUM ...

MEMORANDUM ...

NATIVE EMPLOYERS.

THESE ...

MEMORANDUM ...

MEMORANDUM ...

MEMORANDUM ...

MEMORANDUM ...

MEMORANDUM ...

MEMORANDUM ...

MEMORANDUM ...

MEMORANDUM ...

MEMORANDUM ...

MEMORANDUM ...

MEMORANDUM ...

MEMORANDUM ...

MEMORANDUM ...

MEMORANDUM ...

MEMORANDUM ...

MEMORANDUM ...

MEMORANDUM ...

MEMORANDUM ...

MEMORANDUM ...

MEMORANDUM ...

MEMORANDUM ...

MEMORANDUM ...

MEMORANDUM ...

MEMORANDUM ...

MEMORANDUM ...

MEMORANDUM ...

MEMORANDUM ...

MEMORANDUM ...

TO THE EDITOR.

THESE ...

MEMORANDUM ...

MEMORANDUM ...

MEMORANDUM ...

MEMORANDUM ...

MEMORANDUM ...

MEMORANDUM ...

MEMORANDUM ...

MEMORANDUM ...

MEMORANDUM ...

MEMORANDUM ...

MEMORANDUM ...

MEMORANDUM ...

MEMORANDUM ...

MEMORANDUM ...

MEMORANDUM ...

MEMORANDUM ...

MEMORANDUM ...

MEMORANDUM ...

MEMORANDUM ...

MEMORANDUM ...

MEMORANDUM ...

MEMORANDUM ...

MEMORANDUM ...

MEMORANDUM ...

MEMORANDUM ...

MEMORANDUM ...

MEMORANDUM ...

MEMORANDUM ...

OUR SPECIALITY IN SAW TIMBER. EQUATOR SAW MILLS. TO SETTLERS. TO BUILDERS. TO EVERY BODY.

BRITISH INDIA STEAM NAVIGATION COMPANY, LTD. LONDON AND EAST AFRICA LINE. LONDON TO BEIRA, VIA Mozambique, Port Said, Port Sudan and Aden, Guevada and Lawrence.

Tea HAULAGE

HAULAGE AND GENERAL ...

MEMBERS ...

TELEPHONING ...

SHORTHAND ...

INDIVIDUAL ...

ALSO ...

NOTICE ...

FUEL AND TRANSPORT ...

WE ...

THINK ...

THAT ...

MONTHLY ...

PHONE ...

TELEPHONING ...

TELEPHONING ...

TELEPHONING ...

TELEPHONING ...

NOTICE

MEMBERS ...

TELEPHONING ...

SHORTHAND ...

INDIVIDUAL ...

ALSO ...

NOTICE ...

FUEL AND TRANSPORT ...

WE ...

THINK ...

THAT ...

MONTHLY ...

PHONE ...

TELEPHONING ...

TELEPHONING ...

TELEPHONING ...

TELEPHONING ...

TELEPHONING ...

PLAYING CARDS

Goodall's "Linette" Shs. 2-50 WELL WORTH THE EXTRA FIFTY CENTS.

TAWS

Phone 141. NAIROBI. P.O. Box 611.

KENYA AND UGANDA RAILWAY.

OPENING OF STATIONS.

IT IS ...

NOTE ...

NOTE ...

NOTE ...

NOTE ...

NOTE ...

NOTE ...

ONOTO PEN

The Self Filling Safety

Price Shs. 17-50. Posted Shs. 18-50

STANDARD STATIONERY STORES

SIXTH AVENUE NAIROBI

LIFE POLICIES

WE CAN SHOW YOU THE MOST FAVORABLE ENDOWMENT POLICY OFFERED IN THIS COUNTRY

NATIONAL LIFE ASSOCIATION OF AUSTRALIA LTD.

Apply KETTLES BROS LTD NAIROBI

Y.M.C.A. Industrial Club

AN IDEAL RECREATION CLUB

Large ...

PLEASE ...

INSURE

AFRICAN GUARANTEE & INDemnITY Co. Ltd.

Just Arrived

Wireless

F. A. Standard

AN INTERESTING SHIPPING JUDGMENT.

12 Days' Hearing of Mombasa Case.

WHARFHOUSES' LIABILITY.

A shipping case has just been decided before Judge Mr. Justice Sheridan in Mombasa, which is of much interest to wharf-houses. The Plaintiff was the E. O. Lushmore & Co., Ltd. They claimed from the Kenya and Uganda Railway a sum of Sh. 47,750 for damage, interest and salvage, in connection with the loss of one of their lighters. The Plaintiff alleged that the Railway had allowed two sails to protrude from the bottom of the new Mamba Jolly at Kilindini, with the result that they pierced the bottom of the lighter which became a total loss. The case occupied twelve days in the hearing, and numerous witnesses were called. Mr. Justice Sheridan appeared as Counsel for the Plaintiff, while Mr. Bowditch, Solicitor General, appeared for the Railway Administration, at the conclusion of the evidence the Judge's address occupied a day and a half.

On June 20, Mr. Justice Sheridan delivered a very long judgment, of which we have space for a summary. A preliminary point was taken that action for tort did not lie against the Railway, but was created, the learned Judge holding that such action was competent. In the course of the judgment Mr. Sheridan said: "The action is of a double-barrelled nature. In the first place the defendant's servants are alleged to have allowed to remain in the berth in which the accident occurred two sails being part of a lighter, which had been in use some time previously and which, in common cases, would be considered to have been removed. In the second place, the Defendants are alleged to have incurred a liability as wharf-houses in providing vessels to approach a wharf which was therefor the medical benefit of wharf-houses and allowed without taking reasonable care to ensure the safety of the berth or without knowledge of a danger which they must be deemed to have had knowledge. Lighter No. 11, a vessel belonging to the Plaintiff, was being loaded with manure at what is known as the northern berth of the new Mamba Jolly on the 8th April 1932. On the even-

ing of that day she was towed away and on the following evening was once more loaded back by the crew of the "Grey" for the purpose of loading. At this time she had about 50 tons of manure in her hold and her draught was about 4 feet. She was a heavy iron sea-going lighter of 120 tons and at the time she was towed up to the berth on the 9th April, i.e. at 4.30 a.m., it was within half an hour of low water. The tide was a spring tide and low water was the spot where the accident occurred was 2 feet. The evidence of Drummond Hay the Plaintiff's witness is to the effect that her destination was the wharf berth and that that should have been noted by the wharf-houses there she was loading the previous day. There was no intention of grounding her.

WHAT SHOULD HAVE HAPPENED:

What would have happened, had everything worked according to programme was this—The Plaintiff should have noted her berth as well as to the wharf-keeping her draft. Checks were in readiness for the purpose of loading the lighter, measuring from 20 to 25 feet. What actually happened appears from the evidence of the only expert witness, Mr. Hay. The lighter was brought up quickly towards the Southern Pier, the tug disconnected and it was known to both parties. It is on this bank that the Plaintiff's by the foundation of their case. Nowhere in the Finding is there any hint of the careless navigation that led to the lighter being placed on the bank. Merely a line that it was not connected to ground lighter at the wharf was conveyed. Head through the Plaintiff and one comes to the conclusion that the lighter was using the berth in the most ordinary manner that is, that she grounded in the berth, as lighters are used to do so. The Plaintiff's evidence showed a lighter correctly navigated the berth for which she was destined, coming along the pier, leading and during that process taking the ground quietly and naturally as the tide ebbed—no reflection on the tide raising. Drummond Hay's evidence showed a different picture. Country to instructions "No. 4" arrived at the Southern berth where she straddled on the bank as a result of a careless navigation. Drawing 4 feet of water—nearly half of a sea-going type she makes her connection with the pier and the bank, on there the difference between the Plaintiff and the evidence. The former speaks of an approved lighter

navigated with ordinary care (by implication) that failure of the Plaintiff to note the bank is a result of negligent navigation. It is necessary to ascertain orders, and what was wanted. On the bank there was a line, the bar bottom pierced by two rails for which the Plaintiff charged, and was supported by a number lighter and provided with a loaded rail. He stated himself that all the rails had been removed at this time when he had removed 2 feet of 10 feet in length—30 feet of which appeared above the bottom of the sea.

The evidence to the effect appeared on 9th April 1932. On the 10th November 1934, The District Engineer, Mr. Macdonald, supervised the removal of the remaining portion of the old wharf formed by a number lighter and provided with a loaded rail. He stated himself that all the rails had been removed at this time when he had removed 2 feet of 10 feet in length—30 feet of which appeared above the bottom of the sea. In my opinion under a careful consideration of the evidence, he took reasonable care to ensure that the berth was free from the rails. That I shall not pass from this point until I have returned the finding in the light of other facts. The Plaintiff made up their minds that the damage to the lighter had been caused by the lighter and such was their conviction that they were prepared to maintain their point of view—regardless of actual distances. Instead of the evidence on this point was in the words of Lord Esher, "I am in the case of the 'Metan'." "A. J. (1925), a case of a lighter."

A QUESTION OF MEASURE. MENTS.

One more turn to the Plaintiff and the allegation is found to be that the lighter grounded on the lower rails at a distance of 12 feet from the wharf. Once the case develops and it is proved that the line on the old lighter was 8 feet from the wharf, the measurement is directed to showing that the measurement of 12 feet from the wharf was such a distance as would fit in with the position of the old lighter, the finding, as to a distance of 12 feet being allowed. In fact, the actual measurements made by Mr. Macdonald on the 10th April established that the lighter could not have rested on any rails being part of the old lighter Mr. Morrison said in the opinion of the case that he had all the measurements he found necessary. On this I will say the Plaintiff took no measurements—his attitude being to entrench themselves in the belief that the lighter path must have done the

(Continued on page 15)




CHILD WELFARE FETE

Dancing in Government House Ballroom
AUGUST 2nd
 8-30 p.m. to 10 p.m.


Evening Dress (dinner jackets) compulsory.
 Tickets (including special supper, 50/-, obtainable from the Remington Typewriter Agency, Government Road.

FRENCH FIVE.....Ostinuous Music.....**KITALE**
ORCHESTRA



H. DOBIE
 Ophthalmic Opticians
 Watchmakers and Jewellers
 Government Road, Nairobi.

OUR OPTICAL DEPARTMENT
 is equipped with the newest Ophthalmic instruments for right testing, and is in charge of a fully qualified Optician who has a 'thorough knowledge' of the subjects pertaining to ocular optics; and who examines the eyes and if necessary prescribes glasses.

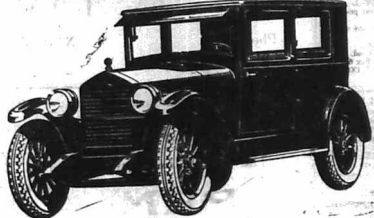


"LONG JOHN"
 Special Reserve
 Scotch Whisky

Wholesale Distributors:-
D. Epstein & Co., NAIROBI.

ESSEX - 1933
World's Greatest Value

Coach
£300
Wire Wheels
£10 Extra.

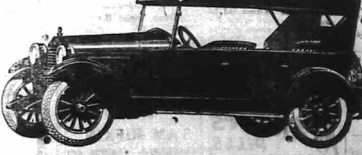


Essex is nimble of action. It is easily handled in traffic, responsive to every call for power or speed.

The Essex Coach is very completely equipped with bumper bars front and rear, electric screen wiper, rear vision mirror, sun visor, top light, Boyce motor-driven radiator shutters, etc. The interior is luxuriously upholstered and is fitted with adjustable seats, etc.

To-day's Essex is the finest ever built. It is the smoothest, most reliable Essex ever built. It is the best looking, most comfortably riding Essex ever built and the price, because of volume, is little more than low-priced "Fours."

And with its low first cost and operating economies, you get the long-lasting, reliable performance, smoothness and riding ease of the most wanted "Six" type in the world.



Touring
£280
Wire Wheels
£10 Extra.

P.O. Box 203.
 Phone 103.

Carr, Lawson & Co., Ltd.

Tele: "CABLE" NAIROBI.

Union - Castle Line

Prospectus for the following dates: ...

Destination	Prospectus	Arrive London
London	July 10	July 10
London	July 17	July 17
London	July 24	July 24
London	July 31	July 31

Prospectus for the following dates: ...

HOLLAND AFRIKA LIJN

Prospectus for the following dates: ...

Destination	Prospectus	Arrive London
London	July 10	July 10
London	July 17	July 17
London	July 24	July 24
London	July 31	July 31

Prospectus for the following dates: ...

MESSAGERIES MARITIMES

Prospectus for the following dates: ...

THEO. SCOUTEN

Prospectus for the following dates: ...

INSIST ON HAVING VOONIA GARDEN TEA

Prospectus for the following dates: ...

Blacklows & Brown

Prospectus for the following dates: ...

NATIVE AGRICULTURE DURING 1925.

A System of Seed Farms in the Reserves.

Where Africans are too Prosperous for Industry.

Dealing with native agriculture in the course of the annual report...

After protracted discussion and the introduction of a bill...

Through its cultural methods... the working of land here...

It is the object of writing the bill has been passed by the Legislative Council.

ISSUE OF SEEDS.

An horticultural issue of seeds has been issued...

At the beginning of the system of seed farms...

At the end of the issue of implements for demonstration purposes...

At the end of the issue of implements for demonstration purposes...

At the end of the issue of implements for demonstration purposes...

This beats everything!



So says the man who has just used Gillette Shaving Cream for the first time...

KIRKWOOD & Co., KITALA.

LAND AGENTS, MANAGING AGENTS, VALUERS, COMMISSION AND INSURANCE AGENTS, TRANSPORT AND PLOUGHING CONTRACTORS.

Reliance Transport Co.

The Largest Motor Transport Co. in the Colony. If you are requiring RELIABLE & Expeditious Transport...

OVERSEAS MAILS.

STAMPER	FROM	Due at Mombasa	Mails to
Chicago Maru	South	July 9	July 10
Feda	Europe	" 11	" 12
Khandala	South	" 12	" 14
Mandla	South	" 13	" 14
Karaga	South	" 15	" 16
Karaga	South	" 16	" 17
A. R. Gama	Manilla	" 17	" 18
Gloverston Castle	South	" 27	" 29

LARGE ASSORTMENT, GODILLOT'S

French Table Delicacies. Famous "A.G." Brand: Sardines, Anchovies in Oil, Hors D'Oeuvres, French Mustard, Paste-de-Foie Gras.

"A.G." Brand Mushrooms in Bottles

FOR QUALITY ECONOMY. BEALES & SMITHSON, AVENUE HOUSE, NAIROBI.

Gun Repairs

We hereby beg to announce that our European Gunsmith has just arrived from home with the most up to date Machinery and Implements...

Chas. A. Heyer & Co.

Established 1903. GUN & RIFLE MAKERS. thestre Royal Buildings, Box 587, Nairobi.



THE WINE GROWERS WILL STOCK THEIR BRANDS. THE DISSEMINATING SOCIETY WILL USE OUR BEST IN THE UPTANDS BACON FACTORY.

...and we do not intend to...
...the Commission...
...the report...

ELECTRICAL INSTALLATIONS.
In regard to the...
...the Commission...
...the report...

...the Commission...
...the report...
...the findings...

...the Commission...
...the report...
...the findings...

...the Commission...
...the report...
...the findings...

...the Commission...
...the report...
...the findings...

...the Commission...
...the report...
...the findings...

...the Commission...
...the report...
...the findings...

CORRESPONDENCE

The Editor does not accept...
...the report...
...the findings...

THE NEW CONSTITUTION...
...the Commission...
...the report...

LYRIC HALL.
At the Lyric where the film...
...the Commission...
...the report...

Music in the Park.
Programs of music by the...
...the Commission...
...the report...

INTERVAL.
One Stop: Barcelona.—Nuest...
...the Commission...
...the report...

TO-DAY'S CAUSE LIST.
Before Mr. Justice Stephen...
...the Commission...
...the report...

OPTIONAL MEMOIR.
Mr. Granville Barker, speaking...
...the Commission...
...the report...

DINNER DISCIPLINE.
Children should be made to eat...
...the Commission...
...the report...

DUPLICATORS.
A small consignment of GEBETNER...
...the Commission...
...the report...

E. A. Standard Ltd.
Africa House, Government Road...
...the Commission...
...the report...

...the Commission...
...the report...
...the findings...

...the Commission...
...the report...
...the findings...

...the Commission...
...the report...
...the findings...

Twenty Years Ago

...the Commission...
...the report...
...the findings...

THE DEATH PENALTY BILL.
To the Editor, "E. A. Standard"...
...the Commission...
...the report...

...the Commission...
...the report...
...the findings...

...the Commission...
...the report...
...the findings...

...the Commission...
...the report...
...the findings...

...the Commission...
...the report...
...the findings...

...the Commission...
...the report...
...the findings...

...the Commission...
...the report...
...the findings...

...the Commission...
...the report...
...the findings...

...the Commission...
...the report...
...the findings...

...the Commission...
...the report...
...the findings...

...the Commission...
...the report...
...the findings...

...the Commission...
...the report...
...the findings...

LYRIC HALL 8-45 TO-NIGHT

and at BIO-TEA THIS AFTERNOON 4-15.

Love in a Whirlwind The Great British Masterpiece.

LATEST NEWS OF THE Strike

LATEST FASHION SHOES Newest Colours & Styles

The Sahara Sandal Shoe Just arrived

All goods less 5 per cent for Cash

Eadies Footwear, Ltd.

Highly THEATRE ROYAL Matinees 8-45. 8-50.

Rodolph Valentino Lila Lee Nita Naldi

BLOOD AND SAND

TO-NIGHT Saturday

Kaiser Full Fashioned

Warings NAIROBI'S FASHION CENTRE

...the Commission...
...the report...
...the findings...

...the Commission...
...the report...
...the findings...

...the Commission...
...the report...
...the findings...

...the Commission...
...the report...
...the findings...

...the Commission...
...the report...
...the findings...

...the Commission...
...the report...
...the findings...

...the Commission...
...the report...
...the findings...

...the Commission...
...the report...
...the findings...

...the Commission...
...the report...
...the findings...

...the Commission...
...the report...
...the findings...

...the Commission...
...the report...
...the findings...

...the Commission...
...the report...
...the findings...

...the Commission...
...the report...
...the findings...

...the Commission...
...the report...
...the findings...

...the Commission...
...the report...
...the findings...

...the Commission...
...the report...
...the findings...

...the Commission...
...the report...
...the findings...

...the Commission...
...the report...
...the findings...

...the Commission...
...the report...
...the findings...

...the Commission...
...the report...
...the findings...

...the Commission...
...the report...
...the findings...

...the Commission...
...the report...
...the findings...

...the Commission...
...the report...
...the findings...

...the Commission...
...the report...
...the findings...

...the Commission...
...the report...
...the findings...

...the Commission...
...the report...
...the findings...

...the Commission...
...the report...
...the findings...

...the Commission...
...the report...
...the findings...

...the Commission...
...the report...
...the findings...

...the Commission...
...the report...
...the findings...

...the Commission...
...the report...
...the findings...

...the Commission...
...the report...
...the findings...

...the Commission...
...the report...
...the findings...

...the Commission...
...the report...
...the findings...

...the Commission...
...the report...
...the findings...

...the Commission...
...the report...
...the findings...

...the Commission...
...the report...
...the findings...

...the Commission...
...the report...
...the findings...

...the Commission...
...the report...
...the findings...

AUCTION SALES

Muter and Oswald's Sales

Sale of "Buick" Touring Six

On behalf of the Parties concerned. Duly instructed, we shall sell, by Public Auction, without reserve, at our Salerooms, Mutos Building, Harding Street, Nairobi

To-day 9th July, at 9.30 a.m.

A BUICK TOURING CAR, 1925 Model, 6 Cylinder, with accessories and excellent Tyres. This car is damaged but provides a good opportunity for the purchase of spares.

MUTER and OSWALD, Auctioneers, Etc., Nairobi.

Muter and Oswald's Sales

Sale of Assorted Sauces

Duly instructed we shall sell, by Public Auction, without reserve, at our Salerooms, Mutos Building, Harding Street, Nairobi

To-day 9th July, at 9.30 a.m.

LARGE RANGE of ASSORTED SAUCES, including Anchovy, Cayenne, Tomato, Oriental, Mustard, Ketchup, etc., in 4 pint, 1 pint, and 1/2 pint Bottles. These Sauces will be sold in one dozen lots or by the complete case.

MUTER and OSWALD, Auctioneers, Etc., Nairobi.

Muter and Oswald's Sales.

Miscellaneous Goods

Duly instructed we shall sell by Public Auction, without reserve, at our Salerooms, Mutos Building, Harding Street, Nairobi on

Monday 12th July at 9.30 a.m.

TWO BOLLS BOOTING YELL, NOVEL CARPENTERS TOOLS, GRAMOPHONE RECORDS, KAPPERTWALE FILTER, SECOND HAND CLOTHING, BOOT POLISH, Black and Brown, G. I. GUTTERING, SCALE and weights, UNIFORM CASES, TABLE LAMPS, KERSHIE NAPOLEONS, PLATFORM SCALES with weights by Rogers and Loach Ltd., to weigh up to 15 cwt. On behalf of the Public Trustee:- COLOURS MONEY BELT, AUTOMATICO PISTOL, 12 BORE Double Barrelled SHOT GUN, .32 Remington Repeater Rifle. 9.6 m.m. Rifle.

MUTER and OSWALD, Auctioneers, Etc., Nairobi.

FOR SALE

BY Public Auction

(Subject to not being sold previously) Under instructions from the Owners we will sell the following Property, at our Office at Kileleshwa

Thursday, July 22nd at 11.30 a.m.

L.O. 3013 comprising 1174 acres, of which 775 are arable. The Property is situated in the Changanji 15 miles East of Kileleshwa, and 11 miles from Changanji Store. Doctor on adjoining farm. It is well-watered and is suitable for Maize, Wheat and Coffee. There are 180 acres under Maize. Other improvements include an Orchard, with 150 fruit trees, Maize Crib, Hut, etc.

This Property is exceptionally well situated for labour. Subject to a low reserve

MESGON & FEARLATH, Kileleshwa. A. D. S. DAVIES, Auctioneer.

CATALOGUE SALE

Furniture, Motor Cycles, Camera, Aluminium Ware, General Effects and Double Pram.

Instructed by various parties. Austin & Co., will sell WITHOUT RESERVE

ON SATURDAY, July 10th at 10 sharp

One HARRY DAVIDSON TWIN CYL. MOTOR CYCLE, GOOD TYRES. ONE EDGEMUL MOTOR CYCLE. ONE FINE ENGLISH DOUBLE TEAM complete with Sunshade well sprung on boat springs new condition.

Also the following furniture and effects: Three Useful Chests of Drawers, Handsome Oval Dining Table. Three Washstands various, Two Superior Palm Stands, Two Handsome Polished Occasional Tables. One Fine Teak Dressing Chest with swing Bed'd Mirror. One Dressing Chest in Damper Wood. Fumed Oak Color Plain Single Wardrobe. SPLENDID BLACK INDIAN TEAK DOUBLE WARDROBE with Full Length Bevelled Over Mirror in Centre.

Cam. Wd. Swing Frame Mirror, Three Good Mast Sates. 2 Scroll Back Imp'd. Chairs, cane seats. Plain Jacobean Style Sideboard. Very Lge. Mast Bed. ONE SEMI ROLL TOP OFFICE DESK. Set Bookshelves, Two Oblong Shaped Occasional Tables. Lot Gramophone Records, HANGING ART FLG. PENDANT 3 Lights. White wood cycle stand, SET OF FINE FUMED OAK COLOR DINING CHAIRS.

ONE CARBINE; PLATE CAMERA Dble. extension perfect condition. BEAUTIFUL SHADED GLASS FLOWER BOWL with 2 Centre pieces. INDIAN HARDWOOD and EBONY SIDEBOARD. One Light color Sideboard. A practically new CROQUET SET in BOX. QUANTITY of NEW ALUMINIUM KETTLES and TRAYS. FINE PETROL TABLE LAMP. Imp'd. Pine Wood Sideboard.

Etc., etc., Etc. Instructed by E. George Esq., of the following Furniture, etc. Occasional Table with cabriole Legs. 3 Office Chairs, 1 Elbow Chair, Typewriting Table. Morris Chair, Mat, Oak Box, 2 Large Sample Tables and many various Miscellaneous.

SALE of two Rickschas, Stove, Set Golf Clubs & Tennis Racquets AUSTIN & CO.

WILL SELL WITHOUT RESERVE on SATURDAY July 10th at 10 sharp. One Rickscha complete with lamps good wheels. One Imported ditto, one tyre requires fixing. A complete set of Golf Clubs in Bag and 12 Balls. Two English Tennis Racquets one as new. One No. 8 Diver Stove in fair order. One Baker's Boat Pram with hood in good order. Set of White Wood Kitchen Shelves.

AUCTION SALES

AT NAKURU Absolutely without reserve SATURDAY, 10th JULY at 10.30 a.m.

(In new premises between Stag's Head Hotel and Hartington Gужbaha)

FURNITURE and MISCELLANEOUS GOODS.

A really fine selection, including large office table, teak office chair, washstand, teak occasional table, carved chair, morris chair, 4 occasional chairs, most safe, suite of 6 chairs, 2 occasional tables, 2 cushions, 2 arm chair and 2 ordinary chairs and 2 Petrol lamps. 150 quite new Handkerchiefs, parasols, enamelled metal socks, provision, hardware, etc., etc.

A. C. PATEL, AUCTIONEER.

COFFEE MACHINERY NEW SHOWROOM AND OFFICE

Above MAY & Co, GOVERNMENT ROAD SCOTT & DAVIDSON. Sole Agents in Kenya for Wm. Mackenzie & Co., Ltd., 60, QUEEN VICTORIA TERRACE, SAN FRANCISCO, U.S.A.

Sands & Co.

AT OUR SALEYARDS Naivasha Monday 12th July

On account of the estate of the late Mr. F. Pollard. 40 Good Milking Cows with calves at foot. 1 Dining Room Table. 1 Ransome King Disc Harrow. 1 Alpha Lavi Separator Colvite IV nearly new. On account various clients. 30 Cows in Calf and Calves at foot. 30 Young Steers. 50 Wethers.

GI-GII Tuesday 13th July

60 Grade and Native Cows in Calf and Calves at foot. 50 Wethers. 30 Steers. 1 Fordson Tractor, New; a/c of Capt. Millville who has left for England. 500 First Class High Grade Young Merino Ewes. 500 High Grade Merino Rams.

SANDS & CO., AUCTIONEERS.

PRACTICAL COFFEE PLANTING.

With Special Reference to Eastern Africa BY F. H. SPROTT. A most useful and up-to-date publication illustrated with diagrams and sketches. Shs. 10/- Posted 10-80 Standard Stationery Stores NAIROBI.

K. G. A. KENYA GENERAL AGENTS.

For HOUSES AND FARMS, ARTISANS AND CLERKS, LIFE AND FIRE INSURANCE, FORD CARS, LORRIES, TRACTORS AND "JAY BEE" GRINDERS.

On Hire a Motor Lorry for Transport Work.

For Further Particulars Apply to SHAMS-UD-DEEN

Victoria Street (Opposite Fire Station) P. O. Box 676. Telephone 459. Telegraphic Address: "Purchasing."

IMPORTANT TO Farmers & Employers of Natives.

LABOUR CARDS: 4 x 5 1/2 Shs. 6/- per 100 2 1/2 x 3 1/2 Shs. 7/50 per 100

MUSTER ROLLS: 8 x 5 50 openings Shs. 3/00 each 13 x 8 50 openings Shs. 6/- each 12 x 8 100 openings Shs. 9/- each 13 x 8 200 openings Shs. 12/- each

SQUATTERS: Forms Labour Register Shs. 5/- per 100 Shs. Register Shs. 2/50 each

LABOUR ALLOCATION BOOKS: 15 x 9 50 in duplicate Shs. 9/- each LABOUR RETURN FORMS IN BOOKS: Of 50 with Blank Duplicate Shs. 5/- each

Standard Stationery Store P.O. Box 300. 5th Avenue, NAIROBI.

Used Cars For Sale

BY PRIVATE DEBT. Instructed thereby by various clients, we offer the following: 1924 Buick 4 cylinder car in perfect mechanical condition. 1924 Buick 4 cylinder car in perfect mechanical condition. 1924 Buick 4 cylinder car in perfect mechanical condition. 1924 Buick 4 cylinder car in perfect mechanical condition. 1924 Buick 4 cylinder car in perfect mechanical condition. 1924 Buick 4 cylinder car in perfect mechanical condition. 1924 Buick 4 cylinder car in perfect mechanical condition. 1924 Buick 4 cylinder car in perfect mechanical condition. 1924 Buick 4 cylinder car in perfect mechanical condition. 1924 Buick 4 cylinder car in perfect mechanical condition.

A CAR FOR EVERY PURPOSE. A CAR FOR EVERY PURPOSE. COME IN AND SEE THEM. The Service Company, Ltd. NAIROBI.

ESSJAY LTD

S. JACOB, MANAGING DIRECTOR. TRADING HOUSE BUILDINGS. P. O. Box 84 Nairobi. Phone 871. STAFFS GENERAL & FINANCIAL AGENTS

FOR SALE

Coffee Estate of 330 acres - 100 acres full grown Coffee. £1000 cash. Balance of £3,700 on acceptable terms. Well situated - a decision opportunity.

"FIBRENT" ASBESTOS SHEETS FOR YOUR HOME.

Use them for the ceilings. COOL, DAMP PROOF, FIRE PROOF.

DENOVAN & DIEBEL CITY HOUSE.

ASK FOR JACOB'S BISCUITS AND INSIST ON HAVING THEM

Made by W. and R. Jacob & Co. Ltd.

Dublin. Sold in tins and half pound packets. Local Representative, J. H. CLARK, AFRICA HOUSE, Government Road.

Maximum Towel Value

WHITE TOWELS TO WASH 12 1/2 x 20 1/2 ... 2/60 12 1/2 x 20 1/2 ... 2/60 Do. Do. 12 1/2 x 20 1/2 ... 2/60 Do. Do. 12 1/2 x 20 1/2 ... 2/60 COLOURED TOWELS 12 1/2 x 20 1/2 ... 2/60 WHITE TERRY TOWEL, HEMMED 27 x 42 ... 2/60 OCEAN WHITE TOWEL ... 2/60 HEAVY QUALITY WHITE TERRY TOWELS WITH HEMMED EDGES, SIZES AS UNDER 27 x 42 ... 2/60 27 x 42 ... 2/60 27 x 42 ... 2/60 WHITE TERRY BATH SHEETS 42 x 72 ... 2/60 PURE GREEN, BLUE AND RED BATHS AT REGD. 6/78, 7/50 and ... 2/60

HUTCHINGS, BIEMER & Co. Ltd. NAIROBI. Phone 400. 5/- per cent. Discount Allowed for Cash. MONTHLY ACCOUNTS WITH ASSOCIATED OFFICES.

Express Transport Co.
 Contractors to Uganda Railway
 Government Road, Nairobi.
 Phones: 333 and 55
**Shipping and Forwarding
 Contractors.**

General and General Goods removed,
 and despatched to any part of the
 world. Or stored.
TRUCK MOTOR CARRIAGE FACILITIES
 for transport of all classes of Pro-
 perty or Heavy Material to and from long
 distances, quotations on application.

F. Montague,
 (In Liquidation)

Underwritten is prepared to consider offers up
 including Saturday 10th July, to purchase Plot
 100/100/100, Parklands, with all buildings,
 Area, Acreage, 1.5 acres. The highest, or any
 offer not necessarily be accepted.

J. G. MATHISON,

RECEIVER,

P.O. Box No. 154,

Phone No. 210,

or at NAIROBI EMPORIUM

**THE EUROPEAN AND AFRICAN
 TRADES ORGANISATION**

10, Victoria Square, London, E.C. 4.
 P.O. Box 624,
 Memorial Hall,
 Nairobi.
 Kenya Colony.

Communications to be addressed to **THE SECRETARY,
 DISSEMINATION DEPARTMENT,**
 10, Victoria Square, London, E.C. 4.

It is to be noted that in future the following Fees will be
 paid in advance by all those who make use of the
 Organisation and who are not regular subscribers to its
 publications.

MEMBERS SEEKING EMPLOYMENT will be
 required to pay a Registration Fee of Shs. 5/- before
 giving his or her name on the Organisation's
 publications.
MEMBERS SEEKING EMPLOYERS will be required
 to pay in advance the following Fees:—
THE EAST AFRICAN REQUIRED Shs. 5/-
THE EUROPEAN REQUIRED Shs. 10/-
THE EUROPEAN AND AFRICAN REQUIRED Shs. 20/-
REGULAR SUBSCRIBERS will continue to receive the
 publications of the Organisation FREE OF CHARGE.

"STANDARD" FEATURE PAGE

(Special to "E. A. Standard")
 (By ALICE BROWN)

AUCTION BRIDGE MADE EASY.

No. 8.

Some Obvious Rules.

(By FRANK)

And here is one thing to be made clear. Reasonable proficiency at auction bridge, which makes the game more fascinating to the player concerned as well as the same enjoyable for his associates. It is a simple accomplishment, merely by following the rules of play, unless at the same time the underlying reasons for those rules is fully comprehended.

Why must you lead the highest of your partner's suit? Because otherwise, of course the wretched man will have not the faintest notion where the cards lie. If you lead your best suit in his suit, he knows instantly, looking at dummy's hand and his own, what the enemy's concealed hand holds in that suit. The art of good auction bridge is to be constantly giving your partner all the information possible about your hand.

Observe two contracted situations. You are on the player's side, about to open with a lead through dummy, and you hold seven, jack ten and one or two small cards of one suit. If you lead the lowest of your sequence, the ten, your partner will assume that his own hand holds three or four cards, as neither dummy's nor his own hand holds there has the queen jack. Therefore, you must lead the highest of the suit you are going to open. The line which, as an indication from your partner, that would make quite a sound lead.

is he going by leading out his two low honors to present a perfectly gratuitous trick to the foe? The problem he has to solve is whether his opponent will solve a weather his opponent, the player of the hand, or his partner, the charming friend opposite, will be short or will be long, and in a sudden and perhaps crucial triumph from his own hand. It is a matter of fact, as it were, that the player who is to be led is to be led from the former. This is just where "Partner" is to be led, and it is to be led by your partner, or, at any rate, one for whom you hold only two small cards, that will be the lead. The player who is to be led, always leads the higher fine. The partner who leads the ten, your own little sequence, as it is, occupies the player to take the lead either with the ace of the king, it is as one whose partner where the intermediate honors are.

Presumably the same rule, obviously dictated by common prudence, would apply whatever your were the king and queen, or jack ten and one. There is another handy little Auction Bridge convention, from which the writer has borrowed his name: playing more as "Partner." How often it happens that the enemy having won the auction, the player who opens the lead has a fairly long suit with the ace and king. It is the same thing often enough if he has an ace and king topped a four suit. He leads the king and, from his own hand and that of dummy, knows that either his partner or his opponent has only two cards in that suit. It follows that someone will, therefore, be able to ruff the suit. But there is a dummy in the game and two others who will be playing. The line which, as it is, will be about the third lead?

Of course, if you hold two suits, only of which one is a king as queen, you do not "Partner." That would be throwing away a perfectly good trick. This, it is plain how important it is to watch the fall of every card in a hand at Auction Bridge. If you see your partner "Partner" on the lead, what you know on or the lead, what you know that he has drawn, and that he has not drawn, that you know that by leading that will give your partner a chance to make a small trump safely on a good card, or, if you happen to be the holder of that good card, to discard some other card, which may enable him to trounce the ruff. So one of the good cards in another suit held by the opponent.

If the position of the play of your partner's trumps, make a ruff inevitable, he can easily avoid the necessity by refraining from "Partner." That is a plain little convention, played by everybody anywhere, in a sign that the "Partner" want another lead, and he could wait if only in order to ruff the ace and five of many a hard-gamed rubber have been, generally, swayed by an adroit "Partner."

And let us turn back another point clear. There are players who will lead the king and ten against leading a suit that the player of the hand is trump from either his own or that of dummy's—one of the most es-

South African Railways.

If you want a real change of climate

GO SOUTH

During July August and September

AND GET BRACED UP

ready for the next Hot Weather.

For Particulars apply—
TRADE COMMISSIONER FOR THE UNION OF SOUTH AFRICA,
 P. O. Box 624, - Memorial Hall, NAIROBI.



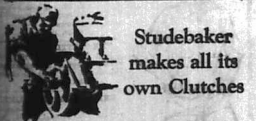
FORD CAR PAINTING OUTFITS



To meet the needs of the hundreds of thousands of Ford Car owners a special Robbialac Ford Painting outfit is now available (as illustrated). Obtainable in Special Ford Blue, New Empire Grey and Whisky Black. Obtainable from the Service Co., Ltd., Nairobi and Branches. **Smith, Mackenzie & Co.** NAIROBI. P.O. Box 800.

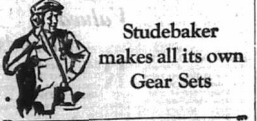
We will Tell you From Time to Time the Advantages of the Studebaker

Studebaker
 saves you
 clutch-makers' profits



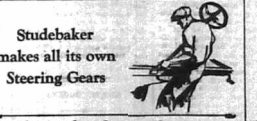
That's what One-Profit means

Studebaker
 saves you
 gear-set makers' profits



That's what One-Profit means

Studebaker
 saves you
 steering-gear makers' profits



That's what One-Profit means

Studebaker
 saves you
 gray-iron casting makers' profits



That's what One-Profit means

Studebaker makes all its own Clutches

Studebaker makes all its own Gear Sets

Studebaker makes all its own Steering Gears

Studebaker makes all its own Gray-iron Castings

Sole Importers: **K. McIVOR & CO.,** Nairobi. Phone 97. Box 97.

Sole Importers: **K. McIVOR & CO.,** Nairobi. Phone 97. Box 97.

Sole Importers: **K. McIVOR & CO.,** Nairobi. Phone 97. Box 97.

Sole Importers: **K. McIVOR & CO.,** Nairobi. Phone 97. Box 97.

BUY A STUDEBAKER

THE SPORTS PAGE

WE NOW HAVE A COMPREHENSIVE STOCK OF RACKETS. Recently arrived and in fine time for tournament practice. THE RACKETS INCLUDE:-

FRED RAPER GENERAL COMMISSION AGENT. CITY HOUSE, Phone 146.

LARGE STOCKS SADDLERY. Gold Medal.

BUY BRITISH GOODS. BUY BRITISH AMMUNITION. BUY BRITISH GUNS & RIFLES.

The following used Cars are for Sale

B4414. Hupmobile Touring Car 4 Cylinder has done 4000 miles only. Price £350. B3586. Dodge Touring Car 1925 Model in Splendid Condition. Price £230.

The Motor Mart & Exchange. LIMITED. NAIROBI. NAKURU.

MAY & Co. KENYA'S ONLY Sports Specialists

Stock all Requisites for all Sports. :: ::

THE SPORTS HOUSE, NAIROBI.

J. R. Stephens & Co. Ltd.

THE TAILORS & OUTFITTERS Official Outfitters to Kenton College. All requirements for boys returning to school

IN STOCK GOVERNMENT BOND. P. O. Box 253 NAIROBI Phone 271

Cricket in the U.K. Preliminaries of the M.C.C. Tour Settled. FOUR DAY TESTS.

The South African Cricket Board of Control, at a meeting at London today, settled the preliminaries for the forthcoming tour of the M.C.C.

Double Collapse in Match at Worcester. The Australian. The Australian opened their season against Worcestershire at Worcester today before 8,000 spectators. The weather was dull but the cricket was excellent.

Mixed Doubles. The final in 1925 of the Mixed Doubles was between Harris and Lambson and Fines and Mrs. Lewis.

LADIES DOUBLES. Last year's winner, Mrs. Lewis and Miss Fines, who met in the final, after a very close match.

LADIES SINGLES. Mrs. Gray was declared the winner of the Ladies Singles in 1925, she and her sister, Mrs. Fines, were the only women to play in the final.

THE SWIMMING WORLD. BOYR UNIVERSITIES IN CONTESTS. Oxford University appear to be very strong in swimming.

THE SWIMMING WORLD. BOYR UNIVERSITIES IN CONTESTS. Oxford University appear to be very strong in swimming.

ASIATIC HOCKEY. Entries are called for Sindhi, Kutchhahi Hockey Cup competition, which is open to all Indian teams of Kenya and Uganda.

YESTERDAY'S FOOTBALL. In a highly football match played on the Calcuttan ground yesterday, the Calcuttan team beat the Madras team by 10 goals to 2.

YESTERDAY'S FOOTBALL. In a highly football match played on the Calcuttan ground yesterday, the Calcuttan team beat the Madras team by 10 goals to 2.

HOME ATHLETICS. Cambridge Defeat Oxford in 100 Yds. In the second innings Cambridge defeated Oxford by 100 yds.

Good Performance by a New Zealander. Cambridge Defeat Oxford in 100 Yds.

INTER-VARSITY CRICKET. [FROM OUR OVERSEAS CORRESPONDENT.] London, July 1. Cambridge defeated Oxford to-day, by 100 yds.

British Polo. GREAT EXHIBITION AT BANGALORE. [FROM OUR OVERSEAS CORRESPONDENT.] London, July 10.

A DOMINION ATHLETE. The appearance of the Australian and New Zealand Commonwealth and New Zealand Commonwealth and New Zealand Commonwealth.

THE 'MOONING' SEERIE. Light weight shirt with woven stripes. The 'FAVOURITE' SEERIE. Light weight shirt with woven stripes.

THE 'IDEAL' SEERIE. The 'MILVINE' SEERIE. THE 'JAMES' SEERIE. Complete with two collars. THE 'OFFICE' SEERIE. A plain white shirt of stout fabric.

THE 'PALACE' DRESS SEERIE. A gown finished with pleats at the waist in a variety of design. THE 'EMERALD' SEERIE. Made from strong fabric with pleats at the waist.

THE 'EMERALD' SEERIE. Made from strong fabric with pleats at the waist. THE 'EMERALD' SEERIE. Made from strong fabric with pleats at the waist.

THE 'EMERALD' SEERIE. Made from strong fabric with pleats at the waist. THE 'EMERALD' SEERIE. Made from strong fabric with pleats at the waist.

THE 'EMERALD' SEERIE. Made from strong fabric with pleats at the waist. THE 'EMERALD' SEERIE. Made from strong fabric with pleats at the waist.

THE 'EMERALD' SEERIE. Made from strong fabric with pleats at the waist. THE 'EMERALD' SEERIE. Made from strong fabric with pleats at the waist.

THE 'EMERALD' SEERIE. Made from strong fabric with pleats at the waist. THE 'EMERALD' SEERIE. Made from strong fabric with pleats at the waist.

THE 'EMERALD' SEERIE. Made from strong fabric with pleats at the waist. THE 'EMERALD' SEERIE. Made from strong fabric with pleats at the waist.



QUALITY SHIRTS

MADE FROM GOOD QUALITY SHIRTING IN A RANGE OF COLOUR STRIPES, WITH ONE COLLAR TO MATCH. THE 'MOONING' SEERIE. Light weight shirt with woven stripes.

THE 'FAVOURITE' SEERIE. Light weight shirt with woven stripes. THE 'IDEAL' SEERIE. The 'MILVINE' SEERIE. THE 'JAMES' SEERIE.

THE 'OFFICE' SEERIE. A plain white shirt of stout fabric. THE 'PALACE' DRESS SEERIE. A gown finished with pleats at the waist.

THE 'EMERALD' SEERIE. Made from strong fabric with pleats at the waist. THE 'EMERALD' SEERIE. Made from strong fabric with pleats at the waist.

THE 'EMERALD' SEERIE. Made from strong fabric with pleats at the waist. THE 'EMERALD' SEERIE. Made from strong fabric with pleats at the waist.

THE 'EMERALD' SEERIE. Made from strong fabric with pleats at the waist. THE 'EMERALD' SEERIE. Made from strong fabric with pleats at the waist.

THE 'EMERALD' SEERIE. Made from strong fabric with pleats at the waist. THE 'EMERALD' SEERIE. Made from strong fabric with pleats at the waist.

THE 'EMERALD' SEERIE. Made from strong fabric with pleats at the waist. THE 'EMERALD' SEERIE. Made from strong fabric with pleats at the waist.

ya Beer
IS
WHOLE SOME ALE
BREWED IN KENYA
FINEST KENT HOPS
ENGLISH MALT

ya Stout
TENDERS & APPETISING
WILL KEEP YOU FIT.
XXXX
downer Ale
SUPERLATIVE BEER.

DAILY EDITION.

African Standard

MOMBASA TIMES & UGANDA ARGUS.

THE OLDEST ESTABLISHED NEWSPAPER PUBLISHED IN KENYA AND UGANDA.

NAIROBI, SATURDAY, JULY 10, 1926.

12 PAGES.

With which is incorporated
THE LEADER.

THE
LOUNGE
FOR
COCKTAILS
AND
TEA

THE
DINING ROOM
FOR
BREAK FASTS,
LUNCHEONS, and
DINNERS.

The NEW STANLEY HOTEL

Price 30 CENTS.

MAN'S STORY MURDER.

...Message
...Milit.

HEATED THIRD READING OF MINES BILL.

Conservative and Opponent
Come to Blows.

GREAT AIR RACE FOR KING'S CUP.

New High Speed Plane
Needs Mask for Pilot.

STABBING AFFRAY IN THE NAIROBI PRISON.

Hairer Warden's Weak Spot
Found.

POLITICAL SITUATION AND 'CHANGE.'

Franc at its Lowest in
London.

MUNICIPAL COUNCIL TO COLLECT RATES ARREARS.

Court Sale of Plot in
Parkside.

ROYAL ABSENT RECEIVED.

...

Points on Problem Whether Miners will go in.

...

SIXTEEN COMPETITORS.

...

A VIOLENT CONVICT.

...

LATEST DEVELOPMENT.

...

ELUSIVE OWNERS.

...

THE YORKSHIRE OWNERS.

...

Three new further develop-

...

Another prisoner gave over-

...

Another prisoner gave over-

...

Another prisoner gave over-

...

Another prisoner gave over-

...

Another prisoner gave over-

...

Another prisoner gave over-

...

Another prisoner gave over-

...

Another prisoner gave over-

...

Another prisoner gave over-

...

Another prisoner gave over-

...

Another prisoner gave over-

...

Another prisoner gave over-

...

Another prisoner gave over-

...

Another prisoner gave over-

...

Another prisoner gave over-

...

Another prisoner gave over-

...

Another prisoner gave over-

...

Another prisoner gave over-

...

Another prisoner gave over-

...

Another prisoner gave over-

...

Another prisoner gave over-

...

Another prisoner gave over-

...

Another prisoner gave over-

...

Another prisoner gave over-

...

Another prisoner gave over-

...

Another prisoner gave over-

...

Another prisoner gave over-

...

Another prisoner gave over-

...

Another prisoner gave over-

...

Another prisoner gave over-

...

Another prisoner gave over-

...

Another prisoner gave over-

...

Another prisoner gave over-

...

Another prisoner gave over-

...

"LORI"



"LORI"

GRAMOPHONES

Whiteaway-Laidlaws.
SIXTH AVENUE

Just Arrived

New consignment of "Lori" Gramophones,
at prices to melt all pockets.
Full range of Mott in stock.

This well known Continental machine is
considered by connoisseurs of music to be
one of the finest. Gramophones yet man-
ufactured.

In order to fully realize the beauty of tone
and finish of these instruments, it is necessary
that you come and hear them.

You will be under no Obligation

The "Lori" Junior

SOLID OAK MODEL, HORNLESS.

14ins. square by 12ins. high. Swing doors
fully sprung. Venetian Front. Polished
dual tropical finish. "Lori" perfectly
balanced silent motor, full size tone
arm, "Lori" G. soundbox.

THE BEST & CHEAPEST IN KENYA

95/-

"LORI" Venetian

BEAUTIFULLY CARVED IN SOLID
OAK.

14ins. square by 12ins. deep. Six Venetian
screen on all sides, giving purity
and evenness in tone. 12 inch. turntable, speed
indicator, "Lori" double spring silenced
motor; massive tone arm, fitted with the
new "LORI" SUPER SOUNDBOX.
A wonderful instrument, and a beautiful
piece of furniture.

300/-

FULL RANGE OF "LORI" TABLE
GRANDS AND CABINETS UP TO 650/-

POSHO

We supply finely ground
Hickory King Maize Meal

Our price is competitive
and our quality always the best

UNGA Ltd. Njoro.

FOR QUICK SALE
GOING CONCERN IN
TRANS-NOZIA

Coffee and Maize
Farm of 600 acres.

Exceptional Opportunity

Bargain Price
and easy terms

TALBOT & MASSY E. A. Ltd.
Corner House, NAIROBI P.O. Box 603.

MOTOR CYCLES

We have the following new Motor Cycles and Side Cars in Stock at prices as under—

75 Harley Davidson	Shs. 1920
75 Harley with side-car	2720
75 Harley with side-car and electric light	2850
80 O.V.V. Sports	1437
80 " (an Ideal ladies' machine)	1890
80 " Side with electric light	1950

We have also Street One Foot Trucks complete with Body for Shs. 7000/.

CAPITAL GARAGE.

opposite Fire Station, Victoria Street.



By A. H. SPENCER PALMER.
Solutions and all Chess
problems should be sent to
him. Answers should be mailed
"Chess" and addressed only to
him, P.O. Nairobi.

A FRESH TABLE.
The following position occurred
in a bout game with "Relayville"
"Relayville" (Black) 10-0.

PROBLEM No. 829

"U" in the Companion.
Black to move. (Black, Kt4, Bc4, Kt5, Bc5, Kt6, Pk4, Bc6, Qc6.)



White to move. (Black, Kt4, Bc4, Kt5, Bc5, Kt6, Pk4, Bc6, Qc6.)

PROBLEM No. 830

"V" in the Companion.
Black to move. (Black, Kt4, Bc4, Kt5, Bc5, Kt6, Pk4, Bc6, Qc6.)



Solutions to "U" and "V"
must reach us by the 24th of July.



SOLUTIONS

Problem No. 829 (P). Keymove.
1. Bc4-c5! The feelings of
passion caused by the shock
of this discovery are useful
guides to the right light, but will
lead to error, unless the
essential conditions are used
before the search begins.
Composing such as Sun Loy and
St. N. Kappas have always been
superior to any bounds, which
others would set. Their games
will not be stopped.

Problem No. 830 (P). Keymove.
1. Bc4-c5! The feelings of
passion caused by the shock
of this discovery are useful
guides to the right light, but will
lead to error, unless the
essential conditions are used
before the search begins.
Composing such as Sun Loy and
St. N. Kappas have always been
superior to any bounds, which
others would set. Their games
will not be stopped.

DONATIONS TO PRIZE FUND.

Third list.

Professors acknowledged 165
"H. E. P." 20
A. B. Heller 20
Shs. 195

White 8 Kt4, Bc4, Kt5, Bc5, Kt6, Pk4, Bc6, Qc6
White makes in three moves

M. L. A. Johnson has very
kindly sent a copy of Columbia's
"Chess Fundamentals" for a
fourth prize in the general survey.
Mrs. Dinshaw's special note of
Pest 10-10 is for the best con-

in three moves only. In spite of
or perhaps because of, the British
we have this year a record amount
for the prize submitted, and by
our readers. A very great
number of solutions were received
from Chess Clubmen. It is not
likely that any of the solutions
submitted will be selected for
prizes for the general survey,
but second prizes for best
solutions and copies, and a special
prize for the best one.

"The chessing king is almost
disappointed after the beautiful
1. Bc4-c5! (Black), delayed by 1
move to the position 1. Pk4-c5!
However, obviously, he will
not be so easily deceived. I
found it fairly difficult."
(W. McDonald)

"I feared this problem had
been solved, but I succeeded after
23 days' hard trying." ("Albatross")

"The compositions are very
difficult. Both the Bishop of the
White are playing their parts most
skillfully. This problem will, I
think, knock some many."
("P.L.")

WEEKLY SCORE LIST.

NAME	P	T	O	F	C	E
Maximum	80	4	0	0	0	0
K. C. Ashby	80	4	0	0	0	0
"Admiral"	80	4	0	0	0	0
F. J. Briggs	80	4	0	0	0	0
J. K. Fiolet	80	4	0	0	0	0
"Gears"	80	4	0	0	0	0
"P.L."	80	4	0	0	0	0
W. R. N. Fowler	75	4	0	0	0	0
Mrs. Dinshaw	66	4	0	0	0	0
S. G. Hassan	61	4	0	0	0	0
P. H. Williams	56	4	0	0	0	0
A. V. Kocbel	52	4	0	0	0	0
"Oasis"	49	4	0	0	0	0
P. Alexander	45	0	0	0	0	0
A. B. Heller	39	4	0	0	0	0
G. Tanner	28	4	0	0	0	0
L. A. Johnson	25	4	0	0	0	0
R. D. Karve	16	0	0	0	0	0
"H.L.P."	5	0	0	0	0	0
"P.V.O."	0	0	0	0	0	0
F. Hermann	-2	1	0	0	0	0

The Kenya Farmers' Association Limited.

REG TO ANNOUNCE THEY HAVE NOW OPENED A DEPOT IN VICTORIA STREET, NAIROBI, WHERE MAIZE MEAL, CRACKED MAIZE, AND MAIZE GRAH MAY BE OBTAINED IN ANY QUANTITIES. LARGE ORDERS SMALL AT LOWEST PRICES. FOR QUOTATIONS APPLY TO GEN. MANAGER, NAIROBI.

SHAMS-UD-DEEN, NAIROBI.

P.O. Box 676. (Opp. Fire Station). NAIROBI.

Just Received

"MELVILLE" and "REX"
SEA BLEND COTTON
SHIRTS, PEZAMA SUITS,
IN all shades to suit all tastes.
GREY BLUE TIES and HANDKER-
CHIEFS TO MATCH IN
ALL VARIETIES.

ALIBHAI & Co.

GENTS OUTFITTERS
BARRACK, NAIROBI.

Meghji Ahamed &

(The Oldest Tailors in
Colony).

Ready made suits and
different sizes, Machine
made woollen underwear,
pullovers and History of
clothes in stock.

We can supply you with waterproof motor boots
and boots in all shades.

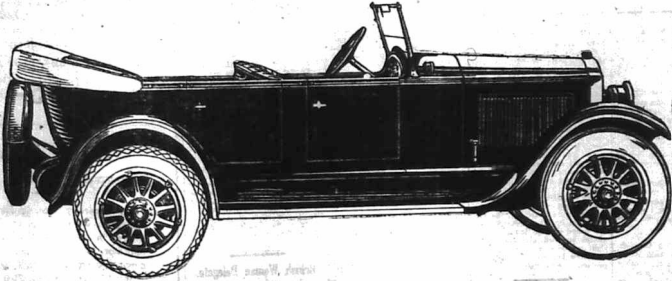
Ladies' and gents' tailors and complete safari outfits.
Trousers 18/6. "Tarpaulin" P.O. 18/6.
INDIAN BAZAAR, NAIROBI.

F. A. Head

Pianoforte Tuner and Repairer
Five years with Messrs. Chappell & Co.
Seven years experience in Kenya Colony.
Send all orders to P. O. Box 674.

The finest car and equip-
ment for touring ever
offered in Kenya Colony

Its Performance
Is Little Short of Amazing



BUICK

Gilfillan & Company, Ltd.
D I S T R I B U T O R S

As soon as you take the wheel of
the new 1926 Standard Buick Six
—you feel its amazing performance.

The way it accelerates—a new milder-
ness—a silent speed on the open road—
—a resilient power on hills.

You will delight in the instantaneous but velvet action
of Buick four wheel brakes—and take comfort in their
dependability and the extra safety they provide.

A petrol consumption from 22 to 25 miles per gallon—
unparalleled economy in a motor developing more than
50 actual h.p.

This great car has written a wholly new page in motor
car achievement. It has taken every motoring country
in the world by storm.

Come in and we will let you drive this remarkable car.
Come in with an open mind and the performance of
this car in your hands will convince you that you can-
not begin to buy its equal anywhere else.

The
Standard
Canadian Buick

£445

complete with
trunk rack

Standard Buick 4500 2435
Master Buick 4500 2465
Master Buick Sports Touring 2545
Standard Buick 6 Buick 2425
Standard—3 Buick Sedan 2464

TRAINING THE AFRICAN IN AGRICULTURE.

Proposed Development of Existing System.

NEED FOR NATIVE TEACHERS.

The Educational Value of Shows.

The two training institutions, **Native and Boy Agricultural Laboratories**, have been developed during the year (says the Director of Agriculture in his report for 1925).

At the **Eastern Farms** much progress towards the equipping of the property has been made, and it is hoped to develop until one hundred pupils may be accommodated. The scope of the **Scott Agricultural Laboratories** has also been suggested.

Proposals under consideration for the development of native agricultural education include re-establishment of a training institution in the **North Nyiro** area, large enough to provide for a "seed farm" to serve the needs of the **Kikuyu, Embu and Meru** tribes. Another should be opened to meet the needs of the **Coast** area. A further proposal is that the special facilities available at the **Scott Agricultural Laboratories** with its experimental grounds, should be used for more advanced instruction in selected pupils who have received a preliminary training at the other schools.

Apart from the requirements of the Department of Agriculture in respect of well trained native agricultural instructors a great need exists for native teachers in Agricultural schools and in **Native and Boy Agricultural Laboratories**, and it is considered that a scheme of the kind outlined above would, in time, meet the demand, but being closely to the backward state of even elementary education among the natives there is at present a fundamental difficulty in procuring native pupils for agricultural training who have had over the most elementary education.

The system of agricultural work is now taking the following shape which it is hoped will not be altered in principle for many years, as it is important that there should be continuity of

today. The **Agricultural Training School** of the Province in the centre from which agricultural educational work is carried to the various locations. The Inspector in charge, with his assistants, are responsible for the production of seed for issue in the province. As seed production increases, the practice of purchase of seeds for issue will gradually be discontinued.

In the various districts demonstration plots in charge of trained **Native Agricultural Instructors** are established, on which the cultivation and preparation of land, planting and harvesting of crops are demonstrated. Each demonstration plot is supervised once a month by the Supervisor when on safari and where possible, and when visitors in charge of training are stationed in the district. All demonstration stations and native instructors in the **Kisumu and Embu** districts are linked to the **Central Training Station**. On the **Coast** and those areas in which no seed farm is established a modified system is followed.

NATIVE AGRICULTURAL SHOWS.

Native Agricultural Shows were first held in **1911**, at **Maseno**, **1912**, at **Malindi**, **1913**, at **Malindi**, **1914**, at **Malindi**, **1915**, at **Malindi**, **1916**, at **Malindi**, **1917**, at **Malindi**, **1918**, at **Malindi**, **1919**, at **Malindi**, **1920**, at **Malindi**, **1921**, at **Malindi**, **1922**, at **Malindi**, **1923**, at **Malindi**, **1924**, at **Malindi**, **1925**, at **Malindi**.

The educational value of these Shows is increasing yearly, and where Shows have been held for the last two or three years the improvement in quality of agricultural production is marked.

The gatherings offer an opportunity for the Administrative and Agricultural Officers to stress more prominently for natives and better production and they also serve as

an index of progress in the province generally.

These **Native Agricultural Shows** are usually small affairs, but the attention is to present first and second prize winners with some small implements, the use of which is desired to introduce in the Province.

The organization of these Shows is very simple but the preparation of the ground each year is a business Annual events were arrangements in construction should be given, and the planting of trees and general preparation of the Show grounds should be improved each year. It is proposed that the Province should have a central meeting point for the tribe. Thus the Showground of the district should have more than a passing utility.

NATIVE LIVESTOCK.

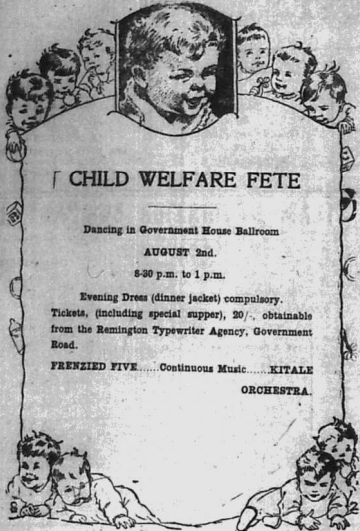
The estimated stock in the possession of Natives, other than those on European Holdings, is as follows:

Cattle	3,200,000
Sheep	2,500,000
Goats	3,300,000
Horses	200
Mules	200
Donkeys	35,000
Camels	125,000

There is evidence to show that cattle, sheep and goats show a steady if small annual increase, but in the circumstances it is possible only to quote approximate figures. These estimates are, however, believed to be on a conservative basis.

The prices realized by natives for their stock have advanced considerably, indeed meat prices for local consumption are higher than in stock-raising countries throughout the world where the quality of the meat is much higher than here. One of the few persons have also received a price for above their proper value. A peculiar position exists inasmuch as higher prices do not tend to increase supply, on the contrary the greater the supply the lower the price to the native owner. For his stock the smaller the number which he sells, so he is disposed to sell a sufficient number of animals to make a certain sum of money. This is one explanation of the overstocking of some pastoral areas through the "Crop Production and Livestock Control, 1925" previously referred to, it is believed to be a serious cause.

(Continued on page 18.)



CHILD WELFARE FETE

Dancing in Government House Ballroom


AUGUST 2nd.

8-30 p.m. to 1 p.m.

Evening Dress (dinner jacket) compulsory.

Tickets, (including special supper), 20/-, obtainable from the Remington Typewriter Agency, Government Road.


FRENZIED FIVE.....Continuous Music.....KITHALE ORCHESTRA.



S. JOBBE
Ophthalmic Optician.
Watchmakers and Jewellers
Government Road, Nairobi.

OUR OPTICAL DEPARTMENT

is equipped with the newest Ophthalmic instruments for sight testing, and is in charge of a fully qualified Optician who has thorough knowledge of the subjects pertaining to ocular optician, and who examines the eyes and if necessary prescribes glasses.

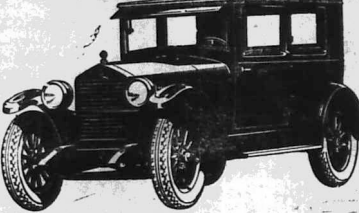


"LONG JOHN"
Special Blend Scotch Whisky

Wholesale Distributors - **D. Epstein & Co.**

ESSEX
World's Greatest Value

Coach
£300
Wire Wheels
£10 Extra.



Essex is nimble of action. It is easily handled in traffic, responsive to every call for power or speed.

The Essex Coach is very completely equipped with bumper, brass front and rear, electric screen wiper, rear vision mirror, sun visor, stop light, Boyce motorometer radiator shutters, etc. The interior is luxuriously upholstered and is fitted with adjustable seats, etc.

Today's Essex is the finest ever built. It is the smoothest, most reliable Essex ever built. It is the best looking, most comfortably riding Essex ever built and the price, because of volume, is little more than low-priced "Fours."

And with its low first cost and operating economies, you get the long-lasting, reliable performance, smoothness and riding ease of the most wanted "six" type in the world.



Touring
£280
Wire Wheels
£10 Extra.

P.O. Box 203.
Phone 103.

Carr, Lawson & Co., Ltd.

Tele: "CARLAW"
NAIROBI.

Castle Line

London - Castle Line... Agents: Messrs. Guthrie & Co., Ltd., 10, Abchurch Lane, London, E.C. 4.

South Africa... Agents: Messrs. Guthrie & Co., Ltd., 10, Abchurch Lane, London, E.C. 4.

South America... Agents: Messrs. Guthrie & Co., Ltd., 10, Abchurch Lane, London, E.C. 4.

South America... Agents: Messrs. Guthrie & Co., Ltd., 10, Abchurch Lane, London, E.C. 4.

South America... Agents: Messrs. Guthrie & Co., Ltd., 10, Abchurch Lane, London, E.C. 4.

South America... Agents: Messrs. Guthrie & Co., Ltd., 10, Abchurch Lane, London, E.C. 4.

South America... Agents: Messrs. Guthrie & Co., Ltd., 10, Abchurch Lane, London, E.C. 4.

South America... Agents: Messrs. Guthrie & Co., Ltd., 10, Abchurch Lane, London, E.C. 4.

South America... Agents: Messrs. Guthrie & Co., Ltd., 10, Abchurch Lane, London, E.C. 4.

South America... Agents: Messrs. Guthrie & Co., Ltd., 10, Abchurch Lane, London, E.C. 4.

South America... Agents: Messrs. Guthrie & Co., Ltd., 10, Abchurch Lane, London, E.C. 4.

South America... Agents: Messrs. Guthrie & Co., Ltd., 10, Abchurch Lane, London, E.C. 4.

South America... Agents: Messrs. Guthrie & Co., Ltd., 10, Abchurch Lane, London, E.C. 4.

South America... Agents: Messrs. Guthrie & Co., Ltd., 10, Abchurch Lane, London, E.C. 4.

South America... Agents: Messrs. Guthrie & Co., Ltd., 10, Abchurch Lane, London, E.C. 4.

South America... Agents: Messrs. Guthrie & Co., Ltd., 10, Abchurch Lane, London, E.C. 4.

South America... Agents: Messrs. Guthrie & Co., Ltd., 10, Abchurch Lane, London, E.C. 4.

South America... Agents: Messrs. Guthrie & Co., Ltd., 10, Abchurch Lane, London, E.C. 4.

South America... Agents: Messrs. Guthrie & Co., Ltd., 10, Abchurch Lane, London, E.C. 4.

South America... Agents: Messrs. Guthrie & Co., Ltd., 10, Abchurch Lane, London, E.C. 4.

South America... Agents: Messrs. Guthrie & Co., Ltd., 10, Abchurch Lane, London, E.C. 4.

South America... Agents: Messrs. Guthrie & Co., Ltd., 10, Abchurch Lane, London, E.C. 4.

South America... Agents: Messrs. Guthrie & Co., Ltd., 10, Abchurch Lane, London, E.C. 4.

MUTHAGA RATES.

Arbitrary Tax on Residents.

SUPREME COURT JUDGMENT

THE EAST AFRICAN STANDARD

THE EAST AFRICAN STANDARD

THE EAST AFRICAN STANDARD

THE EAST AFRICAN STANDARD

THE EAST AFRICAN STANDARD

THE EAST AFRICAN STANDARD

THE EAST AFRICAN STANDARD

THE EAST AFRICAN STANDARD

THE EAST AFRICAN STANDARD

THE EAST AFRICAN STANDARD

THE EAST AFRICAN STANDARD

THE EAST AFRICAN STANDARD

THE EAST AFRICAN STANDARD

THE EAST AFRICAN STANDARD

THE EAST AFRICAN STANDARD

THE EAST AFRICAN STANDARD

THE EAST AFRICAN STANDARD

THE EAST AFRICAN STANDARD

THE EAST AFRICAN STANDARD

THE EAST AFRICAN STANDARD

THE EAST AFRICAN STANDARD

THE EAST AFRICAN STANDARD

THE EAST AFRICAN STANDARD

THE EAST AFRICAN STANDARD

THE EAST AFRICAN STANDARD

THE EAST AFRICAN STANDARD

THE EAST AFRICAN STANDARD

THE EAST AFRICAN STANDARD

THE EAST AFRICAN STANDARD

THE EAST AFRICAN STANDARD

THE EAST AFRICAN STANDARD

THE EAST AFRICAN STANDARD

THE EAST AFRICAN STANDARD

THE EAST AFRICAN STANDARD

THE EAST AFRICAN STANDARD

THE EAST AFRICAN STANDARD

THE EAST AFRICAN STANDARD

THE EAST AFRICAN STANDARD

THE EAST AFRICAN STANDARD

THE EAST AFRICAN STANDARD

THE EAST AFRICAN STANDARD

THE EAST AFRICAN STANDARD

THE EAST AFRICAN STANDARD

THE EAST AFRICAN STANDARD

import and any definition in the... further rise. The tax lodged was...

On the 5th inst. Mr. Justice... The Town Clerk applied, and was represented by Mr. H. E. Holm...

The Magistrate held that the... The Town Clerk applied, and was represented by Mr. H. E. Holm...

The Magistrate held that the... The Town Clerk applied, and was represented by Mr. H. E. Holm...

The Magistrate held that the... The Town Clerk applied, and was represented by Mr. H. E. Holm...

The Magistrate held that the... The Town Clerk applied, and was represented by Mr. H. E. Holm...

The Magistrate held that the... The Town Clerk applied, and was represented by Mr. H. E. Holm...

The Magistrate held that the... The Town Clerk applied, and was represented by Mr. H. E. Holm...

The Magistrate held that the... The Town Clerk applied, and was represented by Mr. H. E. Holm...

The Magistrate held that the... The Town Clerk applied, and was represented by Mr. H. E. Holm...

The Magistrate held that the... The Town Clerk applied, and was represented by Mr. H. E. Holm...

The Magistrate held that the... The Town Clerk applied, and was represented by Mr. H. E. Holm...

The Magistrate held that the... The Town Clerk applied, and was represented by Mr. H. E. Holm...

The Magistrate held that the... The Town Clerk applied, and was represented by Mr. H. E. Holm...

The Magistrate held that the... The Town Clerk applied, and was represented by Mr. H. E. Holm...

The Magistrate held that the... The Town Clerk applied, and was represented by Mr. H. E. Holm...

The Magistrate held that the... The Town Clerk applied, and was represented by Mr. H. E. Holm...

The Magistrate held that the... The Town Clerk applied, and was represented by Mr. H. E. Holm...

The Magistrate held that the... The Town Clerk applied, and was represented by Mr. H. E. Holm...

The Magistrate held that the... The Town Clerk applied, and was represented by Mr. H. E. Holm...

The Magistrate held that the... The Town Clerk applied, and was represented by Mr. H. E. Holm...

The Magistrate held that the... The Town Clerk applied, and was represented by Mr. H. E. Holm...

The Magistrate held that the... The Town Clerk applied, and was represented by Mr. H. E. Holm...

The Magistrate held that the... The Town Clerk applied, and was represented by Mr. H. E. Holm...

Further rise. The tax lodged was... The Town Clerk applied, and was represented by Mr. H. E. Holm...

The Town Clerk applied, and was represented by Mr. H. E. Holm... The Magistrate held that the...

The Town Clerk applied, and was represented by Mr. H. E. Holm... The Magistrate held that the...

The Town Clerk applied, and was represented by Mr. H. E. Holm... The Magistrate held that the...

The Town Clerk applied, and was represented by Mr. H. E. Holm... The Magistrate held that the...

The Town Clerk applied, and was represented by Mr. H. E. Holm... The Magistrate held that the...

The Town Clerk applied, and was represented by Mr. H. E. Holm... The Magistrate held that the...

The Town Clerk applied, and was represented by Mr. H. E. Holm... The Magistrate held that the...

The Town Clerk applied, and was represented by Mr. H. E. Holm... The Magistrate held that the...

The Town Clerk applied, and was represented by Mr. H. E. Holm... The Magistrate held that the...

The Town Clerk applied, and was represented by Mr. H. E. Holm... The Magistrate held that the...

The Town Clerk applied, and was represented by Mr. H. E. Holm... The Magistrate held that the...

The Town Clerk applied, and was represented by Mr. H. E. Holm... The Magistrate held that the...

The Town Clerk applied, and was represented by Mr. H. E. Holm... The Magistrate held that the...

The Town Clerk applied, and was represented by Mr. H. E. Holm... The Magistrate held that the...

The Town Clerk applied, and was represented by Mr. H. E. Holm... The Magistrate held that the...

The Town Clerk applied, and was represented by Mr. H. E. Holm... The Magistrate held that the...

The Town Clerk applied, and was represented by Mr. H. E. Holm... The Magistrate held that the...

The Town Clerk applied, and was represented by Mr. H. E. Holm... The Magistrate held that the...

The Town Clerk applied, and was represented by Mr. H. E. Holm... The Magistrate held that the...

The Town Clerk applied, and was represented by Mr. H. E. Holm... The Magistrate held that the...

The Town Clerk applied, and was represented by Mr. H. E. Holm... The Magistrate held that the...

The Town Clerk applied, and was represented by Mr. H. E. Holm... The Magistrate held that the...

The Town Clerk applied, and was represented by Mr. H. E. Holm... The Magistrate held that the...

Further rise. The tax lodged was... The Town Clerk applied, and was represented by Mr. H. E. Holm...

The Town Clerk applied, and was represented by Mr. H. E. Holm... The Magistrate held that the...

The Town Clerk applied, and was represented by Mr. H. E. Holm... The Magistrate held that the...

The Town Clerk applied, and was represented by Mr. H. E. Holm... The Magistrate held that the...

The Town Clerk applied, and was represented by Mr. H. E. Holm... The Magistrate held that the...

The Town Clerk applied, and was represented by Mr. H. E. Holm... The Magistrate held that the...

The Town Clerk applied, and was represented by Mr. H. E. Holm... The Magistrate held that the...

The Town Clerk applied, and was represented by Mr. H. E. Holm... The Magistrate held that the...

The Town Clerk applied, and was represented by Mr. H. E. Holm... The Magistrate held that the...

The Town Clerk applied, and was represented by Mr. H. E. Holm... The Magistrate held that the...

The Town Clerk applied, and was represented by Mr. H. E. Holm... The Magistrate held that the...

The Town Clerk applied, and was represented by Mr. H. E. Holm... The Magistrate held that the...

The Town Clerk applied, and was represented by Mr. H. E. Holm... The Magistrate held that the...

The Town Clerk applied, and was represented by Mr. H. E. Holm... The Magistrate held that the...

The Town Clerk applied, and was represented by Mr. H. E. Holm... The Magistrate held that the...

The Town Clerk applied, and was represented by Mr. H. E. Holm... The Magistrate held that the...

The Town Clerk applied, and was represented by Mr. H. E. Holm... The Magistrate held that the...

The Town Clerk applied, and was represented by Mr. H. E. Holm... The Magistrate held that the...

The Town Clerk applied, and was represented by Mr. H. E. Holm... The Magistrate held that the...

The Town Clerk applied, and was represented by Mr. H. E. Holm... The Magistrate held that the...

The Town Clerk applied, and was represented by Mr. H. E. Holm... The Magistrate held that the...

The Town Clerk applied, and was represented by Mr. H. E. Holm... The Magistrate held that the...

The Town Clerk applied, and was represented by Mr. H. E. Holm... The Magistrate held that the...

The Town Clerk applied, and was represented by Mr. H. E. Holm... The Magistrate held that the...

It beats everything!



So save the time which has just... Gillette shaving cream is the best... It is the best shaving cream...

KIRKWOOD & Co., KITALE.

AND AGENTS, MANAGING AGENTS, VALUERS, COMMISSION AND INSURANCE AGENTS, TRANSPORT AND PLOUGHING CONTRACTORS.

Re F. Montague, (In Liquidation)

The undersigned is prepared to consider offer up to and including Saturday 10th July, to purchase Plot No. 733 Salisbury Road, Parklands, with all buildings, etc. (herein, Acreage, 7.5 acres. The highest, or any offer will not necessarily be accepted.)

OVERSEAS MAILS.

Table with columns: STRAMER, FROM, ARRIVAL, DEPARTURE, MAILS TO BE SENT AT, DATE OF DEPARTURE, DATE OF ARRIVAL.

DEPARTURES.

Table with columns: STRAMER, FROM, ARRIVAL, DEPARTURE, MAILS TO BE SENT AT, DATE OF DEPARTURE, DATE OF ARRIVAL.

UPLANDS BACON FACTORY.



THE WIRE CROCKER WILL STOCK THIS BRAND... THE DISINFECTANTS HOURWIFE WILL SEE GETS IN...

HOLLAND AFRIKA LIJN

JOINT SERVICES... HOLLAND AFRIKA LIJN A HOLLAND OOST-AFRIKA LIJN.

Ships will load at Kilindi on or about the following dates: 'Hilbert', 'Hilbert', 'Hilbert'.

For further information apply to the Agents: NETHERLANDS OVERSEAS TRADING CO. LTD.

Agents: Messrs. Guthrie & Co., Ltd., 10, Abchurch Lane, London, E.C. 4.

Agents: Messrs. Guthrie & Co., Ltd., 10, Abchurch Lane, London, E.C. 4.

Agents: Messrs. Guthrie & Co., Ltd., 10, Abchurch Lane, London, E.C. 4.

Agents: Messrs. Guthrie & Co., Ltd., 10, Abchurch Lane, London, E.C. 4.

Agents: Messrs. Guthrie & Co., Ltd., 10, Abchurch Lane, London, E.C. 4.

Agents: Messrs. Guthrie & Co., Ltd., 10, Abchurch Lane, London, E.C. 4.

Agents: Messrs. Guthrie & Co., Ltd., 10, Abchurch Lane, London, E.C. 4.

Agents: Messrs. Guthrie & Co., Ltd., 10, Abchurch Lane, London, E.C. 4.

Agents: Messrs. Guthrie & Co., Ltd., 10, Abchurch Lane, London, E.C. 4.

Agents: Messrs. Guthrie & Co., Ltd., 10, Abchurch Lane, London, E.C. 4.

Agents: Messrs. Guthrie & Co., Ltd., 10, Abchurch Lane, London, E.C. 4.

Agents: Messrs. Guthrie & Co., Ltd., 10, Abchurch Lane, London, E.C. 4.

Agents: Messrs. Guthrie & Co., Ltd., 10, Abchurch Lane, London, E.C. 4.

LARGE ASSORTMENT, GODILLOT'S

French Table Delicacies... Famous "A.G." Brand: Sardines.

And Something New: "A.G." Brand Mushrooms in Bottles.

ELLIOT'S

FOR QUALITY... ECONOMY HENRY HOPE & SONS, LTD.

STEEL WINDOWS... BEALES & SMITHSON.

"AVENUE HOUSE" NAIROBI.

BEALES & SMITHSON, "AVENUE HOUSE" NAIROBI.

BEALES & SMITHSON, "AVENUE HOUSE" NAIROBI.

BEALES & SMITHSON, "AVENUE HOUSE" NAIROBI.

BEALES & SMITHSON, "AVENUE HOUSE" NAIROBI.

BEALES & SMITHSON, "AVENUE HOUSE" NAIROBI.

Gun Repairs

We have just to announce that our European Gunsmith has just arrived from home with the most up to date Machinery and Implements (now lying in Mombasa) which will enable us to take any kind of repairs from a Spring to a new Stock or the fitting of a new Telescope Sight.

ALL REPAIRS WILL BE TAKEN IN ROTATION. RIFLES, SHOT GUNS, FISTOLS & BINOCULARS.

Our new Stocks have arrived from home about 600 Weapons by all Makers and in all calibres including our well known EXTRA LONG BARREL 28" Mauser and Manlicher Schmeisser Rifles, also 350 B.V.R. 318 Westly Richards, Holland and Holland, Cogswell and Harrison, B.S.A. and others as well as a full range of Ammunition, Goaz and Zeiss Binoculars, etc.

600 WEAPONS TO SELECT FROM. Chas. A. Heyer & Co. Established 1903. GUN & RIFLE MAKERS.

Theatre Royal Buildings, Box 387, Nairobi.

SAVOY HOTEL.

Caledonian Road, the Hill, NAIROBI. P.O. Box 20. Tel. "Savoy"

POTATOES WANTED

GROWERS ARE INVITED TO WRITE TO THE VARIETIES, UNDESIGNED, STATING QUANTITIES. DATE OF DELIVERY. J. G. ARBONSON, P.O. Box 581, NAIROBI.

MODEL 70 THE NEW

Willys-Knight SIX CYLINDER £420/-

CALL FOR A DEMONSTRATION

The engine you will never wear out and which develops more horse power for its size than any American Stock Car on the market.

Moulton & Morrison Ltd., NAIROBI.

The Ideal Car for Kenya must Excel in the Following Attributes.

- 1. Power- 2. Acceleration- 3. Economy- 4. Braking- 5. Springing- 6. Ability to maintain high average speeds on up-country roads in real comfort- 7. High power to weight ratio for pulling through mud and sand- 8. Quality construction throughout-

THE CHRYSLER SIX

LEADS THE FIELD IN EACH AND EVERY POINT

Distributors:- YORK GARAGES, LTD., NAIROBI

THE Ford One Ton Truck



Stands out Pre-Eminently as the World's Greatest Utility Transport Vehicle.

Of sturdy yet light construction it has proved itself throughout the world as the farm utility truck for hard work and economical transport... A MODERN FARMER CANNOT AFFORD TO BE WITHOUT MECHANICAL TRANSPORT AND A PRUDENT FARMER HAS A F.O.D.

The Service Company Limited Ford Sales and Service

CANADA HOUSE, SIXTH AVENUE, NAIROBI AND CLUB STREET, NAKURU.

THEY A "PATHÉ" FILM. In your "KODAK" and you will be surprised WE STOCK ALL SIZES. R. A. STANDARD, LTD. NAIROBI. P.O. Box 800.

H.F. WARD & COMPANY

TELEPHONE 180 200-1000 1924 MARKING AGENTS NAIROBI HONOLULU GENERAL MANAGERS NAIROBI KENYA COLONY

For Sale.

AT LIMORI: about 800 acres fringed, containing 200 acres of wattle, 24 acres coffee in bearing, well-developed orchard, houses, stables, etc. A going concern as a very reasonable gain. Also 647 acres fringed, containing 100 acres wattle with magnificent yield of fruit, house on property, also about 200 acres wattle. An excellent investment. Both farms can be subdivided. A WEAVER BUILDING FACTORY is also in the same neighbourhood, standing in its own grounds of 27 acres, containing an excellent engine and boiler, good water supply, would make an excellent path mill. Offer at a bargain price. AT NYERI: We can offer for sale about 5,000 acres of excellent land in this neighbourhood, very suitable for wheat, good grazing land, well watered. For full particulars apply to the above.

ANNOUNCEMENT



An up-to-date Optical Dept. has been opened AND is managed by Mr. Victor Browne, Fellow of the Worshipful Company of Spectacle Makers and Fellow of the Institute of Opticians, London. It is advisable to book appointments early.

A. H. Wardle & Co. Limited. Gramins & Musical Sight-Tuning Opticians. (Optical Manager) VICTOR BROWNE, F.R.S.M., F.R.O., F.R.S. Telephone 218. NAIROBI. P.O. Box 101



THE LOCKED PUMP IS A SEALED CONTAINER

You use Shell Petrol because it is well-balanced, combining all the power virtues a spirit can have with chemical cleansings that prevent gumming and corrosion. By your Shell now from the pump marked with the Shell certificate and "sealed globe." It is locked, for your protection, every time fresh supplies are put in—and the key retained by the Shell representative.

SHELL THE WELL-BALANCED PETROL

EMILE JARDIN & Co.

CEBRAN'S BUILDINGS NAIROBI. Box 20. FULL RANGE OF WINES & SPIRITS NOW IN STOCK WE SELL BY BOTTLE & by CASE

THE YORKSHIRE INSURANCE COMPANY LTD. ESTABLISHED A.D. 1804. MOMBASA SUB-AGENCY: Messrs. LESLIE & ANDERSON Marine Risk also Undertaken. PRINCIPAL AGENTS: R.O. Hamilton Ltd. NAIROBI. Telephone: 855. Box 855.

£10 DOWN GETS YOU DELIVERED OF THIS WONDERFULLY EFFICIENT MOTOR CYCLE. The B.S.A. 2 1/2 H.P. 100 Miles per gallon.

We Want to Give You a Trial Run K. McIVOR & Co.

THE EAST AFRICAN STANDARD

Verbatim Times & Signals Agency SATURDAY, JULY 10, 1920.

The Fire Commission Report. It was not to be anticipated that the complete investigation of the outbreak of fire would be effected by the mere appointment of a Commission of Enquiry, neither may it be expected that the Report which we published yesterday will bring over the risk of disaster to an end. Fire fighting entails investigation of each case which is a matter of fact, not of opinion, but the examination of the facts in each case is not a matter of fact, but of opinion, and it is not to be expected that the Report which we published yesterday will bring over the risk of disaster to an end. Fire fighting entails investigation of each case which is a matter of fact, not of opinion, but the examination of the facts in each case is not a matter of fact, but of opinion, and it is not to be expected that the Report which we published yesterday will bring over the risk of disaster to an end.

the outbreak and the disposal of property. By this means we shall avoid the loss of the most important recommendation, one, however, that has already been given, close attention, in the type of building most liable to require the spread of the fire, and with the experience of older countries from which to draw, there is to be no difficulty as to securing a very considerable improvement in the construction arrived at by the Commission upon the potential cause of danger presented by electric installations. The law as it stands at present places the responsibility upon the contractor to maintain the installation in the proper condition, and the Company shouid be held in default in respect of an entirely satisfactory situation. The contractor is, in a position to discover weakness in the installation in the absence of expert knowledge and if it does attempt to keep it in repair he is liable, if his work is unsatisfactory, to have his services discontinued. It is obvious that the responsibility must be placed directly upon the Electric Light and Power Company and any appointed Inspector under the Ordinance to see that the whole installation in the town is kept in proper repair and that the potential source of danger is removed as far as possible. The Ordinance, which is the protection of property, is not going to be satisfied by making the contractor with the final responsibility. It is in our view that the whole law is probably largely for loss of repair, but that it is necessary to place the responsibility of experts. We believe that in the interests of the country it would be well to have the Commission itself and the inspectors, and in the interests of the public it would be generally, there should be established by legislation, a system of periodic inspection by the Company of all installations. There are very obvious reasons why this should be done. There are very obvious reasons why this should be done. There are very obvious reasons why this should be done.

Under the Standard

The Vanderlip Commission... The Bishop of... The Hon. Mr. Justice... The Hon. Mr. Justice... The Hon. Mr. Justice...

The Bishop of... The Hon. Mr. Justice... The Hon. Mr. Justice... The Hon. Mr. Justice...

The Hon. Mr. Justice... The Hon. Mr. Justice... The Hon. Mr. Justice... The Hon. Mr. Justice...

The Hon. Mr. Justice... The Hon. Mr. Justice... The Hon. Mr. Justice... The Hon. Mr. Justice...

The Hon. Mr. Justice... The Hon. Mr. Justice... The Hon. Mr. Justice... The Hon. Mr. Justice...

The Hon. Mr. Justice... The Hon. Mr. Justice... The Hon. Mr. Justice... The Hon. Mr. Justice...

The Hon. Mr. Justice... The Hon. Mr. Justice... The Hon. Mr. Justice... The Hon. Mr. Justice...

The Hon. Mr. Justice... The Hon. Mr. Justice... The Hon. Mr. Justice... The Hon. Mr. Justice...

The Hon. Mr. Justice... The Hon. Mr. Justice... The Hon. Mr. Justice... The Hon. Mr. Justice...

The Hon. Mr. Justice... The Hon. Mr. Justice... The Hon. Mr. Justice... The Hon. Mr. Justice...

The Hon. Mr. Justice... The Hon. Mr. Justice... The Hon. Mr. Justice... The Hon. Mr. Justice...

The Hon. Mr. Justice... The Hon. Mr. Justice... The Hon. Mr. Justice... The Hon. Mr. Justice...

WAGES WITHHELD FROM NATIVE LABOURERS.

DISTRICT NOTES. THE EAST AFRICAN STANDARD.

Indian Question to the Government.

FIRMAH SALES.

The following notice is given to attention by a Legislative Council member...

THE REPLY.

The answer is in the negative. Information in this kind can only be obtained by searching the records and relevant records of each Court.

FIRMAH SALES.

THE REPLY.

Tangier Police Scandal.

BRITISH FERRARIES FOR PULP ENQUIRY.

OPEN TOURNAMENT AT THE MEMORIAL HALL.

Of late the game of Ballroom has become popular in Nairobi...

THE PRIZE STALL.

The League of Henry and the Lovett Clubs will meet here on the 10th of the month...

CHILDREN'S CLOTHING.

The proposition of the 1927 Bill which is to be read at Cecil House on February 21st...

A DANCE WILL BE HELD AT THE NEW STANLEY HOTEL.

MUSIC BY KENYA JAZZ BAND.

Tickets 10/- each.

The "E. A. Standard."

The New Stanley Hotel.

LYRIC HALL 8-45 TO-NIGHT

and at BIO-TEA THIS AFTERNOON 4-13.

Love in a Whirlwind

The Great British Masterpiece.

TORTIAL BUDGET ALL THE LATEST NEWS OF THE Strike

PRICES AS USUAL 5s. 8/- and 1/-.

FOOT HALL ROAD DANZERS.

To the Editor "E. A. Standard" Sir - Your notice of the...

LATEST FASHION SHOES

Newest Colours & Styles

Stocked No. 31131 12/-

in Ruby Ring Grey Glace Phoenix

Fawn Glace Keystone

Tan Glace Hoso

White Buck 35/- to Match.

The Sabara Sandal Shoe

Just arrived Tan 27/50, Beige 31/50, White 35/-, Beige and Brown 30/-

All goods less 5 per cent for Cash

Fawn Glace 69/4As Oak Glace 31-50

Eadies Footwear Ltd. Phone: 423 HAIBORI, P.O. Box 148.

Nightly THEATRE ROYAL at 8.45.

To-Day at 3.30 & 8.45

Rodolph Valentino

Lila Lee Nita Naldi

IN IBANEZ THRILLING BULFIGHTERS ROMANCE

BLOOD AND SAND

Full-Padded Full-Fashioned GIEE BOWLING WHISKEY GARRY TALKS...

WHY? Is Garry talks...

NOW IN STOCK THE CELEBRATED ALA GAUDET PURE BLEND BOTTLED FOR HYGIENE VALUE, IN ALL THE NEWEST SHAPES WITH ARTISTIC GLASS.

Waring's THE "Marvel-Bottle" is very exclusive...

Waring's NAIROBI'S FASHION CENTRE

Africa House, Government Road NAIROBI

MOORE ABOUT THE STALLS AT THE PETE.

More controversy over its Wonders of the Green and Yellow Market.

DRAPERY PENALTIES.

BEWILDERING VARIETY.

On our copy of living by the...

On the 21st of the month...

On the 21st of the month...

On the 21st of the month...

On the 21st of the month...

On the 21st of the month...

On the 21st of the month...

On the 21st of the month...

On the 21st of the month...

On the 21st of the month...

On the 21st of the month...

On the 21st of the month...

On the 21st of the month...

On the 21st of the month...

On the 21st of the month...

On the 21st of the month...

On the 21st of the month...

On the 21st of the month...

On the 21st of the month...

On the 21st of the month...

On the 21st of the month...

On the 21st of the month...

On the 21st of the month...

On the 21st of the month...

On the 21st of the month...

On the 21st of the month...

On the 21st of the month...

On the 21st of the month...

On the 21st of the month...

THE HONORABLE MEMBERS WILL PASSED.

More controversy over its Wonders of the Green and Yellow Market.

DRAPERY PENALTIES.

BEWILDERING VARIETY.

On our copy of living by the...

On the 21st of the month...

On the 21st of the month...

On the 21st of the month...

On the 21st of the month...

On the 21st of the month...

On the 21st of the month...

On the 21st of the month...

On the 21st of the month...

On the 21st of the month...

On the 21st of the month...

On the 21st of the month...

On the 21st of the month...

On the 21st of the month...

On the 21st of the month...

On the 21st of the month...

On the 21st of the month...

On the 21st of the month...

On the 21st of the month...

On the 21st of the month...

On the 21st of the month...

On the 21st of the month...

On the 21st of the month...

On the 21st of the month...

On the 21st of the month...

On the 21st of the month...

On the 21st of the month...

On the 21st of the month...

THE HONORABLE MEMBERS WILL PASSED.

More controversy over its Wonders of the Green and Yellow Market.

DRAPERY PENALTIES.

BEWILDERING VARIETY.

On our copy of living by the...

On the 21st of the month...

On the 21st of the month...

On the 21st of the month...

On the 21st of the month...

On the 21st of the month...

On the 21st of the month...

On the 21st of the month...

On the 21st of the month...

On the 21st of the month...

On the 21st of the month...

On the 21st of the month...

On the 21st of the month...

On the 21st of the month...

On the 21st of the month...

On the 21st of the month...

On the 21st of the month...

On the 21st of the month...

On the 21st of the month...

On the 21st of the month...

On the 21st of the month...

On the 21st of the month...

On the 21st of the month...

On the 21st of the month...

On the 21st of the month...

On the 21st of the month...

On the 21st of the month...

On the 21st of the month...

THE HONORABLE MEMBERS WILL PASSED.

More controversy over its Wonders of the Green and Yellow Market.

DRAPERY PENALTIES.

BEWILDERING VARIETY.

On our copy of living by the...

On the 21st of the month...

On the 21st of the month...

On the 21st of the month...

On the 21st of the month...

On the 21st of the month...

On the 21st of the month...

On the 21st of the month...

On the 21st of the month...

On the 21st of the month...

On the 21st of the month...

On the 21st of the month...

On the 21st of the month...

On the 21st of the month...

On the 21st of the month...

On the 21st of the month...

On the 21st of the month...

On the 21st of the month...

On the 21st of the month...

On the 21st of the month...

On the 21st of the month...

On the 21st of the month...

On the 21st of the month...

On the 21st of the month...

On the 21st of the month...

On the 21st of the month...

On the 21st of the month...

On the 21st of the month...

THE HONORABLE MEMBERS WILL PASSED.

More controversy over its Wonders of the Green and Yellow Market.

DRAPERY PENALTIES.

BEWILDERING VARIETY.

On our copy of living by the...

On the 21st of the month...

On the 21st of the month...

On the 21st of the month...

On the 21st of the month...

On the 21st of the month...

On the 21st of the month...

On the 21st of the month...

On the 21st of the month...

On the 21st of the month...

On the 21st of the month...

On the 21st of the month...

On the 21st of the month...

On the 21st of the month...

On the 21st of the month...

On the 21st of the month...

On the 21st of the month...

On the 21st of the month...

On the 21st of the month...

On the 21st of the month...

On the 21st of the month...

On the 21st of the month...

On the 21st of the month...

On the 21st of the month...

On the 21st of the month...

On the 21st of the month...

On the 21st of the month...

On the 21st of the month...

THE HONORABLE MEMBERS WILL PASSED.

More controversy over its Wonders of the Green and Yellow Market.

DRAPERY PENALTIES.

BEWILDERING VARIETY.

On our copy of living by the...

On the 21st of the month...

On the 21st of the month...

On the 21st of the month...

On the 21st of the month...

On the 21st of the month...

On the 21st of the month...

On the 21st of the month...

On the 21st of the month...

On the 21st of the month...

On the 21st of the month...

On the 21st of the month...

On the 21st of the month...

On the 21st of the month...

On the 21st of the month...

On the 21st of the month...

On the 21st of the month...

On the 21st of the month...

On the 21st of the month...

On the 21st of the month...

On the 21st of the month...

On the 21st of the month...

On the 21st of the month...

On the 21st of the month...

On the 21st of the month...

On the 21st of the month...

On the 21st of the month...

On the 21st of the month...

THE HONORABLE MEMBERS WILL PASSED.

More controversy over its Wonders of the Green and Yellow Market.

DRAPERY PENALTIES.

BEWILDERING VARIETY.

On our copy of living by the...

On the 21st of the month...

On the 21st of the month...

On the 21st of the month...

On the 21st of the month...

On the 21st of the month...

On the 21st of the month...

On the 21st of the month...

On the 21st of the month...

On the 21st of the month...

On the 21st of the month...

On the 21st of the month...

On the 21st of the month...

On the 21st of the month...

On the 21st of the month...

On the 21st of the month...

On the 21st of the month...

On the 21st of the month...

On the 21st of the month...

On the 21st of the month...

On the 21st of the month...

On the 21st of the month...

On the 21st of the month...

On the 21st of the month...

On the 21st of the month...

On the 21st of the month...

On the 21st of the month...

On the 21st of the month...

THE HONORABLE MEMBERS WILL PASSED.

More controversy over its Wonders of the Green and Yellow Market.

DRAPERY PENALTIES.

BEWILDERING VARIETY.

On our copy of living by the...

On the 21st of the month...

On the 21st of the month...

On the 21st of the month...

On the 21st of the month...

On the 21st of the month...

On the 21st of the month...

THE SALISBURY HOTEL

Phone 166. NAIROBI. P. O. Box 509. FAMILY & RESIDENTIAL. FIRST CLASS ACCOMMODATION AND CURRIE.

THE TAILORING HOUSE

Joanes & Bros., NAIROBI. Govt. Road. P.O. Box 355. BAYNES BUILDING.

The Remington Typewriter

23 Years of "QUIET NO. 12"



Universally recognized as the most efficient typewriter on the market with 12 months long guarantee.

CORRESPONDENCE

The Editor does not accept responsibility for the views expressed by his correspondents in this column, and is not answerable for any address of the writer...

THE S.A. FLAG BILL.

To the Editor, "E. A. Standard."—The bill regarding the flagging of the South African flag is a matter of great importance...

I think the above ought to be considered as the flag of the white race, and it is not a matter of nationality...

It is the British Parliament which granted the Constitution to the Union of South Africa, and it is up to them to see that they do not allow the will of the majority to become the will of the minority...

Kenya Finance. To the Editor, "E. A. Standard."—I see from your daily edition of July 6 that the Government are to issue a new currency...

The country is over-populated for the whole and it is time all the land and water resources were put to use...

Unless, and only if we get such a bill as the one mentioned in the past, we shall go on miserably muddling to the past.

Medical attention, such as having accommodation, essential vitamin condition of the body, and so on, are necessary for the native at work...

Kenya Finance. To the Editor, "E. A. Standard."—I see from your daily edition of July 6 that the Government are to issue a new currency...

The country is over-populated for the whole and it is time all the land and water resources were put to use...

Unless, and only if we get such a bill as the one mentioned in the past, we shall go on miserably muddling to the past.

Medical attention, such as having accommodation, essential vitamin condition of the body, and so on, are necessary for the native at work...

Film Reviews.

To the Editor, "E. A. Standard."—I see from your daily edition of July 6 that the Government are to issue a new currency...

The country is over-populated for the whole and it is time all the land and water resources were put to use...

Unless, and only if we get such a bill as the one mentioned in the past, we shall go on miserably muddling to the past.

Medical attention, such as having accommodation, essential vitamin condition of the body, and so on, are necessary for the native at work...

Charles W. Telford Accountant. Telephone 421. Telford Accountant. Telegrams: "Sportman".

Terms Strictly Cash or Deposit Accounts. No Reply Distinctly Means no BUSINESS. WIRE, WRITE, CALL OR PHONE.

M. R. de Souza & Co.

Direct Importers of Groceries, Wines, Spirits, Tobacco, Cigars, Cigarettes, Hardware, Crockery, Glassware, Etc.

If You Want Good Bread Buy Torr's. IT IS THE BEST.

Mrs. Kathleen Bates, Piano and Vocal Tutor. Classes for Young Children on Special Method.

DANCING. KARIBO SCHOOL OF DANCING. CHILDREN AND ADULTS. Classes and Private Lessons.

AT NAKURU. Miss O'Brien will be visiting Nakuru from July 24th and is prepared to give lessons in the latest ballroom dancing...

P. STEWART, C.A.S. S.E.D. PAINTER & DECORATOR. House, Shop, and Office.

NOTICE. The brand "E" on a Shoe is all the Guarantee you require—obtain it at the local Agents—Goltmans Cash Shoe Store (Adjoining "Trocadero") Govt. Road.

J. PLUM. SEWING MACHINE & TYPEREPAIRER. Repairs to all makes of machines undertaken and executed by experienced workmen.

NATIONAL BANK OF INDIA LIMITED. (Incorporated in the United Kingdom). Bankers to the Colony and Protectorates of Kenya and Uganda.

HEAD OFFICE: 20, MARK LANE, LONDON E.C.3. BRANCHES: Bombay, Calcutta, Madras, Rangoon, Singapore, etc.

P. GETHIN, PHONE: 157. HUDSON SUPER-SIX CARS FOR HIRE DAY AND NIGHT.

B. CHOFRAM, Government Road, Nairobi. Received all kinds of Crepe de Chine & Stockings.

Geo. BLOWERS. BUILDING CONTRACTOR, MANUFACTURER, AND SHEDDING DEPOT. CARE WITH RESULTS.

Illustrations of various window and door styles with dimensions and descriptions.

ASK FOR JACOB'S BISCUITS AND INSIST ON HAVING THEM. Made by W. and B. Jacob & Co. Ltd., Dublin.

ENLARGEMENT. J. WILSON. All classes of work undertaken by experienced workmen.



Dodge Cars Preferred by Great Commercial Houses

One of the best proofs of what the world thinks of Dodge Brothers Motor Car is its widespread use—in large fleets—by great International Commercial Houses.

DODGE BROTHERS MOTOR CARS. S. Fisher & Simmons (E. A.) Ltd., Victoria Street, NAIROBI.

WHAT DOES A K SHOE MEAN? AN EXTRA YEAR TO THE WEARER AND AT THE PRICE OF AN ORDINARY MAKE SHOE! From 37/50. GOLTSMAN'S. THE K AGENTS (adjoining "TROCADERO")

D. & J. McCALLUM'S PERFECTION

WHISKY.

USHEE'S

O. V. G.

SPECIAL RESERVE WHISKY.

CUTLER, PALMER & CO'S

PALL MALL

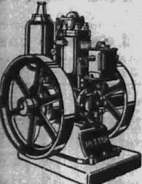
WHISKY.

With Mackenzie & Co. NAIROBI. Box 390.

DAKLEIGH PRIVATE HOTEL.

Comfortable and up-to-date in every way. Under the personal supervision of MRS. H. JARRETT, NAIROBI. P. O. Box 183.

Potter & Sons' Type. SIMPLE RELIABLE AND ECONOMICAL.



INFANT COLD STARTING.

P. & S. MILLIGAN & CO. NAIROBI.

Training the African in Agriculture.

(Continued from page 4.)

pressure upon natives whereby they may come to realize the constant value of their cattle, and when they should be instructed in order to avoid depreciation in value and losses from poverty, old age, etc. Particularly during these two years natives have come to realize the value of potatoes...

The improvement of agriculture is one to which attention should be given, but it should be realized that progress in any circumstances, only be slow. The importance of the East Coast Fever in the Reserve is being dealt with through the adoption of the various methods of improvement through the introduction of improved breeds...

The time is opportune for the establishment of a herd of native cattle outside to demonstrate how they may be improved and for the introduction of native sows through the introduction of e.g. Karamba. As a stock item maintained for the purpose facilities should be obtained for the inspection of potential tribes as usual. In some districts other tribes are large and numerous.

HIDES AND SKINS.

Instruction in the better preparation of hides is being given chiefly through the Veterinary staff. Facilities have also been made for the guidance of administrative officers, and these courses in the trade. Some of the Hides and Skins firms are also encouraging the native to give greater attention to the matter, but it presents some difficulties at this stage. A large part of the hides in the country is so inadequately handled and damaged that the undressed hides that he gets no better price for the well prepared hide sold by a really efficient one owing to the lower weight. The hides have passed out of the hands of the original buyer. Slow as it is, there is, however, steady improvement, and in time the result of the efforts being made will become more apparent.

Produce Prices.

DEPRESSION IN OIL SEED DEMAND.

Market Report from Messrs. Arthur, Latham & Co., Ltd., Nairobi.

COFFEE.

Offerings under this heading have shown a decrease in quantity and an increase in quality.

The highest price paid for bulk lots at the Public Auction during the week ended Tuesday last, was Shs. 144, as against 145 for the corresponding week in 1925.

FLAX.

Demanded has slackened somewhat on the Continent for raw material, although demand remains fairly steady for today's crop for East African grades 4 and 5 remaining at 155 per ton in store London terms.

TOW.

Continental demand continues fairly steady for demerit tow of 100 tons of East African would possibly obtain a bid of 135 per ton c.i.f. U.K. ports.

LINSEED.

The market is quiet with a slight lower sale. A parcel of 100 tons of East African would possibly obtain a bid of 135 per ton c.i.f. U.K. ports.

CASTOR-OIL.

Weakness in other Oil Seeds has had no effect in East African Castor-oil, and it is to be held a fairly large parcel would obtain a bid of 145.

SIRAL.

There is no change to report. The tone is steady but quiet. Supplies are not easy to obtain in the more distant positions, for which the demand at the present is mostly confined, the price being nominally K43 per ton c.i.f. Continent for No. 2 of good marks.

MAIZE.

The market remains steady with a firm tone at 31/- per quarter c.i.f. Continent, July/August shipment.

Produce Prices.

DEPRESSION IN OIL SEED DEMAND.

Market Report from Messrs. Arthur, Latham & Co., Ltd., Nairobi.

COFFEE.

Offerings under this heading have shown a decrease in quantity and an increase in quality.

The highest price paid for bulk lots at the Public Auction during the week ended Tuesday last, was Shs. 144, as against 145 for the corresponding week in 1925.

FLAX.

Demanded has slackened somewhat on the Continent for raw material, although demand remains fairly steady for today's crop for East African grades 4 and 5 remaining at 155 per ton in store London terms.

TOW.

Continental demand continues fairly steady for demerit tow of 100 tons of East African would possibly obtain a bid of 135 per ton c.i.f. U.K. ports.

LINSEED.

The market is quiet with a slight lower sale. A parcel of 100 tons of East African would possibly obtain a bid of 135 per ton c.i.f. U.K. ports.

CASTOR-OIL.

Weakness in other Oil Seeds has had no effect in East African Castor-oil, and it is to be held a fairly large parcel would obtain a bid of 145.

SIRAL.

There is no change to report. The tone is steady but quiet. Supplies are not easy to obtain in the more distant positions, for which the demand at the present is mostly confined, the price being nominally K43 per ton c.i.f. Continent for No. 2 of good marks.

MAIZE.

The market remains steady with a firm tone at 31/- per quarter c.i.f. Continent, July/August shipment.

J. H. ENGELBRECHT

WYRI - NANYUKI - BLDPORT - NAIROBI. Invincible Passenger and Motor Transport Service. ROYAL MAIL SERVICE. Motorist meet all Passenger trains at Bagana Station.

ALTIATION OF SERVICE TIME-TABLE BETWEEN NAIROBI-NYERI. NAIROBI

Leave Tuesday, about 9 a.m. Arrive Tuesday, about 3 p.m. Arrive Wednesday, about 7 p.m. Leave Wednesday, about 10 a.m. (For the time being the Friday-Saturday Service is cancelled.) Cars of all makes efficiently and expeditiously repaired by SKILLED MECHANIC.

Will Office in Nanyuki, kindly arrange all heavy Goods to C/O J. H. ENGELBRECHT, BAGANA STATION, THIKA (NYERI) RAILWAY.

For all particulars apply to— J. H. ENGELBRECHT, NYERI.

MADAME LEON.

The model gowns now on view at Madame Leon embody all the newest notes of Fashion.

AFRICA HOUSE GOVT. ROAD.

Short Loans Granted

£1 to £1000 CALL OR WRITE TO THE

Kenya Loan & Discount Co., Ltd. Court Chambers, (1st Floor) Bills Discounted. Strictly Confidential.

Colonial General Stores

GOVERNMENT ROAD. NAIROBI.

High Class Groceries, Provision, Wine and Spirit Merchants.

Fresh stocks arriving by every mail.

GIVE US A TRIAL YOU WILL NOT BE DISAPPOINTED.

Phone 226. P. O. Box 436.

Hupmobile SIX CYLINDERS

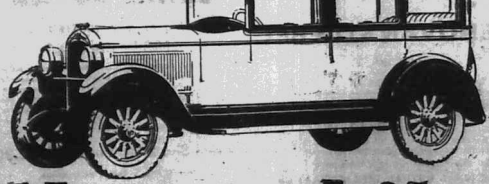
THE Motor Mart & Exchange, Ltd. NAIROBI.

Desires to Announce

— that out of a seventeen-year experience of the designing and building of fine motor cars has come an entirely new six cylinder motor car — a Hupmobile.

For they have awaited a Six built with all the natural mechanical attributes of the six cylinder engine, fully and completely developed and perfected by the brilliant engineering that has ever been exemplified in all Hupmobile motor cars.

We predict great and immediate popularity for this new Six — and we urge you to inspect it soon.



THE Motor Mart & Exchange, Ltd. Hupmobile SIX CYLINDERS NAKURU.

BARCLAYS BANK (DOMINION, COLONIAL AND OVERSEAS)

FORMERLY THE COLONIAL BANK.

Incorporated in the United Kingdom by Royal Charter 1908. with which is amalgamated THE NATIONAL BANK OF SOUTH AFRICA LIMITED.

THE ANGLO-EGYPTIAN BANK LIMITED. Capital Authorized £1,000,000. Capital Subscribed £675,000. Reserve Funds £1,000,000. Deposits £2,000,000.

HEAD OFFICE: 40 Lombard Street, London, E.C. 4. LONDON OFFICE: 22 Grosvenor Street, E.C. 4. BRANCHES: King William Street, E.C. 4. Cross Street, London, W. 1. 111 St. Martin's Lane, Trafalgar Square, W.C. 2.

The Bank is represented in: British East Africa, Union of South Africa, Rhodesia, South West Africa, British West Africa, Egypt and the Sudan, West Indies, Mauritius, etc. OVER FOUR HUNDRED BRANCHES.

AGENTS IN ALL PRINCIPAL CITIES OF THE WORLD. All Classes of Banking business undertaken. The Bank also acts as Trustees and Auctioneers.

THE EUROPEAN AND AFRICAN TRADES ORGANISATION

Telephone: 124. (In P.O. Box 92). Telegrams: "TUDAS Organisations".

All Communications to be addressed to THE SECRETARY, BOSTEATON STREET. Please note that in future the following Fees will be payable in advance by all those who make use of the Organisation and who are not regular subscribers to its Funds.

EUROPEANS SEEKING EMPLOYMENT will be required to pay a Registration Fee of £25, 5/- before placing his or her name on the Organisation's Registers.

EUROPEANS SEEKING EMPLOYERS will be required to pay in advance the following Fees: FOR EACH RECOMMENDATION REQUIRED £25, 5/- FOR EACH RECOMMENDATION REQUIRED £25, 5/- FOR EACH EUROPEAN REQUIRED £25, 5/-

REGULAR SUBSCRIBERS will continue to receive the full services of the Organisation FREE OF CHARGE.

"STANDARD" FEATURE PAGE

BIRD MIGRATION.

Wonder Flights of More than 30,000 Miles.

The early classical writers mention enormous distances over land and sea made on the flights of birds in Egypt, Arabia, Greece, and Rome.

They pointed out very recently identified the actual path of a large flock of birds along the banks of the river of Asia preparatory to their migration to Europe, Asia, and Africa.

They also pointed out the fact that the birds of Asia and the West will winter in Italy and the birds of the East in the Indian Ocean.

There are, as well as day migrations, although some birds do not migrate at night. Ducks, geese, herons, swallows, and terns are chiefly day migrants.

The length of the migration flights varies with the species. The Arctic terns and some of the North Sea terns migrate in the autumn, a distance of more than 11,000 miles.

There are direct migratory routes as well as oceanic, circum-polar, wide and narrow routes. These are dictated by the habits and conditions in the various regions. Cliff swallows, for example, migrate in Africa from the Rocky Mountains and winter in Brazil.

Some birds migrate in the Gulf of Mexico from the coast of the Gulf of Mexico to the coast of the Gulf of Mexico.

Some birds migrate in the Gulf of Mexico from the coast of the Gulf of Mexico to the coast of the Gulf of Mexico.

Some birds migrate in the Gulf of Mexico from the coast of the Gulf of Mexico to the coast of the Gulf of Mexico.

and thoughtless about flying across distances over land and sea. They have advanced many theories as to why. The general opinion today is that the chief special sense of direction, coupled with the quick eye of sight.

It is found that the flocking instinct is not well developed in every instance of a given species. Some birds fly to an extraordinary degree, while in others it is barely developed. It is thought that the instinct is developed in those species developed markedly.

These birds prevent the poorer instincts from deviating to either side of a planned course.

The best leaders have their feet in led weather, and their eyes are keen as well as their wings. It is the need for keeping formation that causes birds to assume various formations when migrating in flocks.

Many such formations are made by different birds for special reasons, such as protecting every bird in the flock in very difficult conditions.

It is also found that birds are very alert to the sound of their own wings. They are also very alert to the sound of their own wings.

It is also found that birds are very alert to the sound of their own wings. They are also very alert to the sound of their own wings.

It is also found that birds are very alert to the sound of their own wings. They are also very alert to the sound of their own wings.

It is also found that birds are very alert to the sound of their own wings. They are also very alert to the sound of their own wings.

It is also found that birds are very alert to the sound of their own wings. They are also very alert to the sound of their own wings.

Poultry Notes.

CROP BINDING. Anybody who has ever tried to crop a bird will know that it is a very difficult thing to do.

It is a very difficult thing to do. It is a very difficult thing to do. It is a very difficult thing to do.

It is a very difficult thing to do. It is a very difficult thing to do. It is a very difficult thing to do.

It is a very difficult thing to do. It is a very difficult thing to do. It is a very difficult thing to do.

It is a very difficult thing to do. It is a very difficult thing to do. It is a very difficult thing to do.

It is a very difficult thing to do. It is a very difficult thing to do. It is a very difficult thing to do.

It is a very difficult thing to do. It is a very difficult thing to do. It is a very difficult thing to do.

It is a very difficult thing to do. It is a very difficult thing to do. It is a very difficult thing to do.

It is a very difficult thing to do. It is a very difficult thing to do. It is a very difficult thing to do.

It is a very difficult thing to do. It is a very difficult thing to do. It is a very difficult thing to do.

POULTRY NOTES.

CROP BINDING. Anybody who has ever tried to crop a bird will know that it is a very difficult thing to do.

It is a very difficult thing to do. It is a very difficult thing to do. It is a very difficult thing to do.

It is a very difficult thing to do. It is a very difficult thing to do. It is a very difficult thing to do.

It is a very difficult thing to do. It is a very difficult thing to do. It is a very difficult thing to do.

It is a very difficult thing to do. It is a very difficult thing to do. It is a very difficult thing to do.

It is a very difficult thing to do. It is a very difficult thing to do. It is a very difficult thing to do.

It is a very difficult thing to do. It is a very difficult thing to do. It is a very difficult thing to do.

It is a very difficult thing to do. It is a very difficult thing to do. It is a very difficult thing to do.

It is a very difficult thing to do. It is a very difficult thing to do. It is a very difficult thing to do.

It is a very difficult thing to do. It is a very difficult thing to do. It is a very difficult thing to do.

It is a very difficult thing to do. It is a very difficult thing to do. It is a very difficult thing to do.

It is a very difficult thing to do. It is a very difficult thing to do. It is a very difficult thing to do.

It is a very difficult thing to do. It is a very difficult thing to do. It is a very difficult thing to do.

It is a very difficult thing to do. It is a very difficult thing to do. It is a very difficult thing to do.

It is a very difficult thing to do. It is a very difficult thing to do. It is a very difficult thing to do.

It is a very difficult thing to do. It is a very difficult thing to do. It is a very difficult thing to do.

It is a very difficult thing to do. It is a very difficult thing to do. It is a very difficult thing to do.

It is a very difficult thing to do. It is a very difficult thing to do. It is a very difficult thing to do.

It is a very difficult thing to do. It is a very difficult thing to do. It is a very difficult thing to do.

It is a very difficult thing to do. It is a very difficult thing to do. It is a very difficult thing to do.

South African Railways.

If you want a real change of climate

GO SOUTH

During July August and September

AND GO BRACED UP ready for the next Hot Weather.

For Particulars apply: TRADE COMMISSIONER FOR THE UNION OF SOUTH AFRICA, P. O. Box 624, Memorial Hall, NAIROBI.

ROBBIALAC FORD CAR PAINTING OUTFITS



To meet the needs of the hundreds of thousands of Ford cars... South, Mackenzie & Co. NAIROBI.

We will Tell you From Time to Time the Advantages of the Studebaker

Studebaker saves you clutch-makers' profits. Studebaker makes all its own Clutches. That's what One-Profit means. Sole Importers: K. McIVOR & CO., Nairobi.

Studebaker saves you gear-set makers' profits. Studebaker makes all its own Gear Sets. That's what One-Profit means. Sole Importers: K. McIVOR & CO., Nairobi.

Studebaker saves you steering-gear makers' profits. Studebaker makes all its own Steering Gears. That's what One-Profit means. Sole Importers: K. McIVOR & CO., Nairobi.

Studebaker saves you gray-iron casting makers' profits. Studebaker makes all its own Gray-iron Castings. That's what One-Profit means. Sole Importers: K. McIVOR & CO., Nairobi.

BUY A STUDEBAKER

