

KENYA NATIONAL ARCHIVES

PHOTOGRAPHIC SERVICE

Description of Document THE EAST AFRICAN STANDARD (MOMBASA TIMES & UGANDA ARGUS)

(Daily Edition)

Covering Dates 1st to 30th September, 1926

Reference No. From E.A.S. Library.

The following reproduction(s) of document(s), the property of THE KENYA GOVERNMENT have been made by the Photographic Service of the Kenya National Archives solely for the purposes of research, and must not be quoted or otherwise reproduced by any means, either in whole or in part, without the express permission of the Chief Archivist, Office of the Vice-President, P.O. Box 30520, Nairobi, Kenya, to whom all communications respecting this film should be addressed.

Date of Production 14th February 1968

Book Open on St. Ledger

TERMS STRICTLY CASH ON DELIVERY.
No Exchanges. No Returns.
WIRE, WHITE, GALL OR PHONE.

FRED RAPER
GENERAL COMMISSIONER AGENT.
R.O. Box 541. CITY HOUSE. Phone 148.

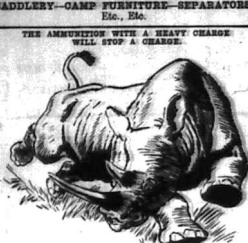
New Military Tarponas 12 x 12 and 10 x 12.
New Military Enfranchising tool.
New Military Best Collars for oxen.

FRED RAPER

GENERAL COMMISSIONER AGENT.
R.O. Box 541. CITY HOUSE. Phone 148.

SADDLERY-CAMP FURNITURE-SEPARATORS

THE ASSOCIATION WITH A HEAVY GRADE WILL STOP A GRADE.



THEATRE ROYAL

Nightly 6th to 11th Sept. at 8:45

"THE YEOMEN OF THE GUARD"

Cast of 50 Artists in 18 Players.

Cheap Tennis Rackets.

TO MAKE ROOM FOR NEW STOCKS AND ALSO TO KEEP OUR STOCKS FRESH WE ARE OFFERING THE FOLLOWING LAST SEASON'S RACKETS AT BARGAIN PRICES

1 Slagmore's, Patterson	..	Shs. 65/	ea.
2 Slagmore's, Doberty	..	50/	
1 Frosser, Phenomenon	..	50/	
1 Frosser, Corona	..	55/	
1 Frosser, Harcourt	..	55/	
2 Frosser, R.A.F.	..	55/	
1 Frosser's Ruby	..	55/	
2 Williams, Irvys	..	50/	
3 Greys, Cambridge	..	40/	
1 Skaris, Doo, Nonpareil	..	55/	
1 Skaris Doo, Standard	..	55/	

MAY & Co.
THE SPORTS HOUSE
Box 47. Phone 22

Cheap Tennis Rackets.

TO MAKE ROOM FOR NEW STOCKS AND ALSO TO KEEP OUR STOCKS FRESH WE ARE OFFERING THE FOLLOWING LAST SEASON'S RACKETS AT BARGAIN PRICES

J. R. Stephens & Co. Ltd.
THE TAILORS AND OUTFITTERS
Official Outfitters to Kenia College
All requirements for boys returning to school
IN STOCK
Government Road.
P.O. Box 233. NAIROBI. Phone 271.

THE SPORTS PAGE

THE RUGBY WEEK-END.

Arrangements, Teams and Fixtures.

WEEK-END CHERRY.

European's Badminton.

PARKLANDS AND THIKA.

Results of the First League.

Results of the First League.

ENGLISH FOOTBALL OPENING.

THE 1926/27 FOOTBALL SEASON.

The 1926/27 football season opened on Saturday night with the match between the Parklands and Thika. The result was a draw, 1-1.

THE ASSOCIATION WITH A HEAVY GRADE WILL STOP A GRADE.

THE ASSOCIATION WITH A HEAVY GRADE WILL STOP A GRADE.

The Association with a heavy grade will stop a grade. This is a warning to all players to be on their best behavior.

THE ASSOCIATION WITH A HEAVY GRADE WILL STOP A GRADE.

THE ASSOCIATION WITH A HEAVY GRADE WILL STOP A GRADE.

The Association with a heavy grade will stop a grade. This is a warning to all players to be on their best behavior.

THE ASSOCIATION WITH A HEAVY GRADE WILL STOP A GRADE.

THE ASSOCIATION WITH A HEAVY GRADE WILL STOP A GRADE.

The Association with a heavy grade will stop a grade. This is a warning to all players to be on their best behavior.

THE ASSOCIATION WITH A HEAVY GRADE WILL STOP A GRADE.

THE ASSOCIATION WITH A HEAVY GRADE WILL STOP A GRADE.

The Association with a heavy grade will stop a grade. This is a warning to all players to be on their best behavior.

THE ASSOCIATION WITH A HEAVY GRADE WILL STOP A GRADE.

THE ASSOCIATION WITH A HEAVY GRADE WILL STOP A GRADE.

The Association with a heavy grade will stop a grade. This is a warning to all players to be on their best behavior.

THE ASSOCIATION WITH A HEAVY GRADE WILL STOP A GRADE.

THE ASSOCIATION WITH A HEAVY GRADE WILL STOP A GRADE.

The Association with a heavy grade will stop a grade. This is a warning to all players to be on their best behavior.

THE ASSOCIATION WITH A HEAVY GRADE WILL STOP A GRADE.

THE ASSOCIATION WITH A HEAVY GRADE WILL STOP A GRADE.

The Association with a heavy grade will stop a grade. This is a warning to all players to be on their best behavior.

THE ASSOCIATION WITH A HEAVY GRADE WILL STOP A GRADE.

THE ASSOCIATION WITH A HEAVY GRADE WILL STOP A GRADE.

The Association with a heavy grade will stop a grade. This is a warning to all players to be on their best behavior.

THE ASSOCIATION WITH A HEAVY GRADE WILL STOP A GRADE.

THE ASSOCIATION WITH A HEAVY GRADE WILL STOP A GRADE.

The Association with a heavy grade will stop a grade. This is a warning to all players to be on their best behavior.

THE ASSOCIATION WITH A HEAVY GRADE WILL STOP A GRADE.

THE ASSOCIATION WITH A HEAVY GRADE WILL STOP A GRADE.

The Association with a heavy grade will stop a grade. This is a warning to all players to be on their best behavior.

THE ASSOCIATION WITH A HEAVY GRADE WILL STOP A GRADE.

THE ASSOCIATION WITH A HEAVY GRADE WILL STOP A GRADE.

The Association with a heavy grade will stop a grade. This is a warning to all players to be on their best behavior.

THE ASSOCIATION WITH A HEAVY GRADE WILL STOP A GRADE.

THE ASSOCIATION WITH A HEAVY GRADE WILL STOP A GRADE.

The Association with a heavy grade will stop a grade. This is a warning to all players to be on their best behavior.

THE ASSOCIATION WITH A HEAVY GRADE WILL STOP A GRADE.

Sports Goods

Reputation

THE ASSOCIATION WITH A HEAVY GRADE WILL STOP A GRADE.

THE ASSOCIATION WITH A HEAVY GRADE WILL STOP A GRADE.

THE ASSOCIATION WITH A HEAVY GRADE WILL STOP A GRADE.

THE ASSOCIATION WITH A HEAVY GRADE WILL STOP A GRADE.

THE ASSOCIATION WITH A HEAVY GRADE WILL STOP A GRADE.

THE ASSOCIATION WITH A HEAVY GRADE WILL STOP A GRADE.

THE ASSOCIATION WITH A HEAVY GRADE WILL STOP A GRADE.

THE ASSOCIATION WITH A HEAVY GRADE WILL STOP A GRADE.

THE ASSOCIATION WITH A HEAVY GRADE WILL STOP A GRADE.

THE ASSOCIATION WITH A HEAVY GRADE WILL STOP A GRADE.

THE ASSOCIATION WITH A HEAVY GRADE WILL STOP A GRADE.

THE ASSOCIATION WITH A HEAVY GRADE WILL STOP A GRADE.

The Association with a heavy grade will stop a grade. This is a warning to all players to be on their best behavior.

THE ASSOCIATION WITH A HEAVY GRADE WILL STOP A GRADE.

THE ASSOCIATION WITH A HEAVY GRADE WILL STOP A GRADE.

The Association with a heavy grade will stop a grade. This is a warning to all players to be on their best behavior.

THE ASSOCIATION WITH A HEAVY GRADE WILL STOP A GRADE.

THE ASSOCIATION WITH A HEAVY GRADE WILL STOP A GRADE.

The Association with a heavy grade will stop a grade. This is a warning to all players to be on their best behavior.

THE ASSOCIATION WITH A HEAVY GRADE WILL STOP A GRADE.

THE ASSOCIATION WITH A HEAVY GRADE WILL STOP A GRADE.

The Association with a heavy grade will stop a grade. This is a warning to all players to be on their best behavior.

THE ASSOCIATION WITH A HEAVY GRADE WILL STOP A GRADE.

THE ASSOCIATION WITH A HEAVY GRADE WILL STOP A GRADE.

The Association with a heavy grade will stop a grade. This is a warning to all players to be on their best behavior.

THE ASSOCIATION WITH A HEAVY GRADE WILL STOP A GRADE.

THE ASSOCIATION WITH A HEAVY GRADE WILL STOP A GRADE.

The Association with a heavy grade will stop a grade. This is a warning to all players to be on their best behavior.

THE ASSOCIATION WITH A HEAVY GRADE WILL STOP A GRADE.

THE ASSOCIATION WITH A HEAVY GRADE WILL STOP A GRADE.

The Association with a heavy grade will stop a grade. This is a warning to all players to be on their best behavior.

THE ASSOCIATION WITH A HEAVY GRADE WILL STOP A GRADE.

THE ASSOCIATION WITH A HEAVY GRADE WILL STOP A GRADE.

THE ASSOCIATION WITH A HEAVY GRADE WILL STOP A GRADE.

THE ASSOCIATION WITH A HEAVY GRADE WILL STOP A GRADE.

THE ASSOCIATION WITH A HEAVY GRADE WILL STOP A GRADE.

THE ASSOCIATION WITH A HEAVY GRADE WILL STOP A GRADE.

THE ASSOCIATION WITH A HEAVY GRADE WILL STOP A GRADE.

THE ASSOCIATION WITH A HEAVY GRADE WILL STOP A GRADE.

THE ASSOCIATION WITH A HEAVY GRADE WILL STOP A GRADE.

THE ASSOCIATION WITH A HEAVY GRADE WILL STOP A GRADE.

THE ASSOCIATION WITH A HEAVY GRADE WILL STOP A GRADE.

DAILY EDITION.

THE EAST AFRICAN

MOMBASA TIMES & UGANDA ARGUS. THE GREATEST ESTABLISHED NEWSPAPER PUBLISHED IN KENYA AND UGANDA.

NAIROBI, THURSDAY, SEPTEMBER 2, 1929.

LOUNGE FOR GOKKTALES AND TEA... DINING ROOM FOR BREAK, DINNER, LUNCHEONS, and SUPPERS.

Kenya Stout IS THE BEST FLAVOURED AND MOST NUTRISHING STOUT OBTAINABLE IN THE COUNTRY. NOT TREATED WITH ANY DANGEROUS PRESERVATIVE. WHOLESOME AND APPEITISING. HEALTH-GIVING AND INVIGORATING. RECOMMENDED BY DOCTORS.

No. 2056. SUBSCRIBED AT THE GENERAL POST OFFICE AS A NEWSPAPER.

THE PROPOSED SALE OF SEVERE EARTHQUAKE IN AZORES.

Government Reply to Town Council.

FULL CONSULTATION.

Conditions and Ann. First Received by Meeting. At the Town Council Meeting on Tuesday afternoon... The Committee Clerk read a letter from the Government... The Council agreed to refer the matter to the Town Council.

At the Council's meeting on the 29th... The Council has decided to refer the matter to the Town Council. The Council has also decided to refer the matter to the Town Council.

OLD HISTORY. The original plan for the... The Council has decided to refer the matter to the Town Council. The Council has also decided to refer the matter to the Town Council.

THE MERRY MARKET.

London, Sept. 1. Silver, 20 1/16. Gold, 100. D.T., 100 1/2. D.L., 100 1/2.

FIXED THE PRICE.

Since then the only outstanding questions have been those of... The Council has decided to refer the matter to the Town Council.

SEVERE EARTHQUAKE IN AZORES.

Island Capital Much Damaged.

FORTUNE TELLER.

[TERROUR BEYOND'S AGENT]. London, Aug. 31. Bester is informed that a severe earthquake in the Azores has considerably damaged the city of Ponta Delgada... The earthquake occurred on August 28, 1929.

FLYING TRIPS TO THE HIGHLANDS.

Railway Publicity for Visitors.

The Kenya Uganda Railways has taken another step along the path of publicity and has prepared an illustrated brochure for the use of those people who are stranded in Mombasa for a few days... The brochure is available at the railway stations.

GOVERNMENT APPROVES SPEED LIMIT.

To Be Applied to Towns.

NEW REGULATION.

A proposal of the Town Council took place on Tuesday afternoon at which all the Council members were present... The Council has approved a speed limit of 20 miles per hour in towns.

140 PEOPLE DROWNED.

THE GOVERNOR VISITS KWALE.

The Hon. the Governor, Sir Philip G. H. Strickland, arrived at 11 o'clock and was received by Mr. Mariani, the Acting District Commissioner, and Mr. Young, the Assistant District Commissioner... The Governor visited the Kwale Prison and the Government Hospital.

TRAGEDY OF CAPTAIN AND FAMILY.

Heroic Russian Sailor in Hole Disaster.

140 PEOPLE DROWNED.

[FROM OUR OWN CORRESPONDENT]. Moscow, Aug. 31. The cost in life of the sinking of the passenger steamer 'Borysthenes' was 140 lives... The ship was wrecked on the coast of Norway on August 28, 1929.

CAR TURNS A DOUBLE SOMERSAULT.

Well-known Ruru Man Injured.

THIKA ROAD SMASH.

[FROM OUR OWN CORRESPONDENT]. Ruiru, August 31. A serious accident, which resulted in the death of Ruru on Sunday night when returning home after the conclusion of his racing... The car turned a double somersault and landed on its wheels.

MR. RAINSBY MACDONALD ON COAL.

Never Such an Orderly and Quiet Struggle.

FRESH CONFERENCE.

[By Wireless]. Rugby, Aug. 30. Referring to the discussion before the House of Commons Mr. Ramsay MacDonald suggested that instead of proceeding to discuss the general situation in the coal dispute before discussion on the removal of restrictions a general debate should be held... The conference was held in London on August 30, 1929.

THIKA ROAD SMASH.

140 PEOPLE DROWNED.

THE GOVERNOR VISITS KWALE.

[FROM OUR OWN CORRESPONDENT]. Ruiru, August 31. A serious accident, which resulted in the death of Ruru on Sunday night when returning home after the conclusion of his racing... The car turned a double somersault and landed on its wheels.

THE REVOLUTION IN GOA.

CIRCUMSTANCES WHICH LED TO DISCONTENT.

The short-lived military 'revolution' in Goa was quite a good illustration of the conditions which led to the revolution in Goa... The revolution was led by the Goan people against the Portuguese government.

RED CHINA ARMY CLAIMS VICTORY.

Cantonese Capture Two Cities.

[FROM OUR OWN CORRESPONDENT]. Canton, August 31. The Chinese National Revolutionary Army has captured two cities in the Canton province... The cities are Shaozhou and Hengshui.

WORLD MONEY MARKET.

TODAY'S CATTLE LIST.

London, Sept. 1. Silver, 20 1/16. Gold, 100. D.T., 100 1/2. D.L., 100 1/2. Today's Cattle List: 1000 head, 1000 head, 1000 head.



Look Down This List and See What Shs. 2-50 Will Buy at Whiteways' Half-Crown Bazaar.

- Flower Vases, Hand Bags, Glass Brushes, Children's Biscuits, Water Jugs, Dressing Cases, Creaming Cases, Tooth Brushes, Shaving Mirrors, Men's Braces, Men's Belts, Ladies Slippers, Blaclava Caps, Men's Bow Ties, Coat Hangers, Ladies Laces, Dress Linen, and Park, Wash Basins, Children's Frocks, Calf Stands, Solid Bowls, Spirit Stoves, Croquet Sets, Garden Trivets, Scrub Brushes, Brown Blankets, Cament Cloth, Towel, Face Towels, Pillow Cases, Spunge Cloth, Val Lace 2 doz. for 2/50. Jam Pats.

WHITEWAY, LAIDLAW & CO., LTD., NAIROBI.

BETTER FLOUR

When better flour is made it will still be "Keaya's Mill."

Messrs Thomas Robinson & Son Ltd., of Rochdale, one of the leading Milling Engineers of the world and the largest in the British Empire, are erecting an entirely new flour mill for us at Njoro, which is now nearing completion. It will be the largest mill in the country, and the last word in economy and efficiency.

UNGA Ltd., Njoro.

BRICKMAKING Machinery

Built in Kenya Plants.

BRADLEY & CRAVEN, Ltd.

Waleside.

Beales & Smithson

Agents Nairobi.

Short Loans Granted

£1 to £1000

CALL OR WRITE TO THE

Kenya Loan & Discount Co., Ltd

107 Market Street, Nairobi.

Bills Discounted. Strictly Confidential.

MOTURING TOPICS

Car Lubrication. The Novice Driver. The New Car. Car Stability.

CORRECT OIL MEANS LONG LIFE

All automobile owners... The oil is the lifeblood of the engine... It is a condition that should be found in all automobile engines.

COMMON MISTAKES OF BEGINNERS

Anyone who has taught people... The most common mistake is to start the engine with the clutch depressed.

THINGS THAT NEED SOME ATTENTION

Things we may disregard... Tightening of the fan belt... Drawing up on spring side bolts.

THE "SATURATION POINT" POINT

One of the most important factors... The car has passed the worth.

BRICKMAKING Machinery

Built in Kenya Plants.

BRADLEY & CRAVEN, Ltd.

Waleside.

Beales & Smithson

Agents Nairobi.

Short Loans Granted

£1 to £1000

CALL OR WRITE TO THE

Kenya Loan & Discount Co., Ltd

107 Market Street, Nairobi.

Bills Discounted. Strictly Confidential.

KIRKWOOD & Co.

KITALE. LAND AGENTS, MARSHING AGENTS, VALUERS, COMMISSION AND INSURANCE AGENTS, TRANSPORT AND PLOUGHING CONTRACTORS. We invite inquiries for

LAND In the TRANS NZOIA, EASTERN DISTRICT and TURBO VALLEY.

SAVOY HOTEL

The most comfortable place situated in the healthiest part of Nairobi. CAIROPTAN ROAD, FIVE HILLS. Close to Government House. Beautiful Garden, Lawn, Garage, Hot and Cold Water Installation, etc. EXCELLENT TABLE. Extension of building with Wash Lavatories, Tennis Court and Palm Court in construction. Monthly Terms from 24/-.

Proprietor: J. B. LANBOURN. Tel. "Savoy". P.O. Box 20.

Colonial General Stores

GOVERNMENT ROAD, NAIROBI. High Class Groceries, Provision, Wine and Spirit Merchants. Fresh stocks arriving by every mail. GIVE US A TRIAL YOU WILL NOT BE DISAPPOINTED.

Phone 228 P.O. Box 458

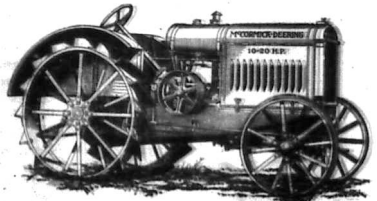
LIFE POLICIES

We can show you the most favourable endowment policy offered in this country. Rigorous—non-forfeitable policy. NATIONAL MUTUAL LIFE ASSOCIATION OF AUSTRALASIA LTD. Apply KETTLERS ROY LTD. Nairobi. P.O. Box 100.

Power for Business-Like Farming

Only recently a century the builders of this country's line have been called in the pursuit of happiness on the farms developing the machines that are lifting the millions of too hard labour out of the shadows of men and women. We wish to announce that we are the proud agents of the most advanced and powerful of these machines, the McCormick-Deering Tractor. Years of grinding work in steel and orchard sections have proved every fact. Such dependability plus the narrow tread makes this new tractor extremely desirable.

McCormick-Deering TRACTORS



Some Reasons Why Practical Men Select McCormick-Deering Tractors

- Powerful Engine.** These tractors have valve-in-head, heavy-duty engines. They are built to deliver an abundance of power over a long period of years. Working parts are thoroughly protected from dust and dirt.
- Removable Cylinders.** Each cylinder is cast separately and fitted into the engine block which makes it possible to place a worn cylinder easily and economically. New cylinders can be practically a new engine.
- Crankshaft.** The heavy-duty two-bearing crankshaft runs in large ball bearings.
- Throttle Governor.** The throttle governor regulates the fuel to the tank and keeps the speed practically uniform.
- Patents.** The pistons are close-fitting and have four rings which insure the good compression and most power from the cylinder.
- Gear Drive.** The power is transmitted to the drive wheels through high-grade gears that run in oil.
- High-Tension Magnets.** The high-tension magnets supply a hot spark for starting and running. Engineers consider this the best type of ignition for a farm tractor.
- Oil-Pump.** The oil is kept in circulation by a gear oil pump which assures proper lubrication of gears, ball-balls, etc.
- Fronters.** Strong durable front-end protect the tractor and operator from dust and dirt.
- Platform.** The platform adds to the ease of the operator and provides carrying space.
- Oil Air Cleaner.** Air that reaches the cylinders must pass through the oil air cleaner which removes the dust and dirt.
- Five-Over Main Frame.** The main frame is a simple casting. There are no weak points and no loose joints.
- High-Grade Bearings.** An unusually large number of ball and roller bearings are used which are easily lubricated, polished, fitted, and save power for production work.
- Cooling System.** The thermo-siphon system cooling maintains uniform engine temperature.
- Accessibility.** Inquire working parts are readily accessible by removing handholds covers and plates.
- Clutch.** The multiple-plate clutch is large and carries proper transmission of the power.
- IRC Service.** International Harvester service is the country, and it is easy to get extra parts or assistance wherever necessary.

10-20 £268 f.o.r. Nairobi.
15-30 £368 f.o.r. Nairobi.

Gilfillan & Company, Ltd. Distributors for Kenya, Uganda and Tanganyika.

WANTED.
OUR best...
MISCELLANEOUS
FOR SALE
FOR SALE
FOR SALE

WANTED.
OUR best...
MISCELLANEOUS
FOR SALE
FOR SALE
FOR SALE

OUR SPECIALTY IN SAW TIMBER.
TO SETTLERS.
TO BUILDERS.
TO EVERY BODY.

BRITISH INDIA STEAM NAVIGATION COMPANY, LTD.
LONDON AND HART AFRICA LINE.
POMBAI-DURBAN MAIL SERVICE.

FOR SALE.
CHILHART'S...
S. S. M. IMPROVED...
BUCK STANDARD...
100 ACRES...

TO LET.
LORIST and spacious office...
SMALL house...
TWO large Wagon...
BOARD & RESIDENCE.

REGINA BROS.
J. PLUM.
EXCITE EUROPEAN...
SATISFACTION GUARANTEED...
"AVENUE HOUSE"

FORCED FARM SALE.
3,101 acre Farm...
FINE MESS...
FINE MESS...
FINE MESS...

GOOD riding stock...
GLAZELWELL...
WIRE NETTING...
"CHEVROLET...
SHEPHERD...
SHEPHERD...
SHEPHERD...

SITUATIONS VACANT.
COMPETENT Lady...
COMPETENT Indian...
MANAGER...
SITUATIONS WANTED.
YOUNG man...
DYPHEMINE...
LOST.

P. STEWART,
PAINTER & DECORATOR.
H. T. REYNOLDS,
A.C.C. Dr. of Optics.
DANCING.
HAULAGE AND GENERAL...
P. GETHIN,
PHONE: 158.

GLOBE-WERNICKE
STEEL FILING EQUIPMENT.
CABINETS WITH AND WITHOUT AUTOMATIC LOCKING DEVICE.
INEXPENSIVE CARD RECORD TRAYS AND DRAWERS.

FOUND.
BY a settler in Africa...
A. GAVANIS...
E.A.A.A.
MAY & Co.

THE HILL PREPARATORY SCHOOL.
FOR BOYERS AND DAY SCHOLARS.
New Term Begins TUESDAY, Sept 7th.
Qualified Optician in attendance.

Y.M.C.A.
Residential Club.
An IDEAL RESIDENCE FOR MEN.
Ladies Underclothing.
Special Items.

LADIES MERCERISED COTTON VESTS
LADIES OXFORD TOP COTTON VESTS
LADIES WOOL AND COTTON VESTS
LADIES BONDUR CAPS
LADIES STOCKINETTE KNICKERS
ASSORTED SHADES ELASTIC KNEES
STRIPED SILK STOCKINETTE DO.
GAMI ENKICKERS IN STRIPED SILK
STOCKINETTE ASSORTED SHADES
STRIPED SILK STOCKINETTE PETTI-COATS
JAP SILK PRINCESS PETTICOATS
WITH HEMSTITCHED DOUBLE SKIRT

FOUND.
BY a settler in Africa...
A. GAVANIS...
E.A.A.A.
MAY & Co.

THE HILL PREPARATORY SCHOOL.
FOR BOYERS AND DAY SCHOLARS.
New Term Begins TUESDAY, Sept 7th.
Qualified Optician in attendance.

Y.M.C.A.
Residential Club.
An IDEAL RESIDENCE FOR MEN.
Ladies Underclothing.
Special Items.

Ladies Underclothing.
Special Items.
Gentlemen's Contaynal Wardrobe.
PLAIN FANLIED EXTERIOR INTERIOR
FITTED WITH SHAVING MIRROR
ROD, TROUGH RAIL, TROUSER SACK,
SEWING MACHINERY, HANGING STAGE,
TWO DRAWERS AND TWO COMPARTMENTS
SIZE 6' 6" x 4' PRICE 33/0

Let your Jeweller Be Your Gift Adviser.

FINE QUALITY WATCHES.

Solid gold Case. Mass fine steel. Fine quality Lever Movement. Sh. 55/-

Silver Watch. 15 Jewel Lever Movement. Sh. 27/-

3 Stone Diamond Ring. Sh. 105/-

Single end 12 Diamond. Sh. 127/-

NEVER WEAR WATCHES!
Ladies Chain. Patent Buckle. Sh. 15/-

H. DOBBIE!
Watchmaker, Jeweller, & Optician.
Government Road, NAIROBI.

WHY PAY 4/- lb. For IMPORTED TEA?

When you can Buy **LOCALLY GROWN TEA OF SUPERIOR QUALITY** at **2-50 lb.**

From **TORR'S,** GOVERNMENT ROAD, P. O. Box 418.

TANGANYIKA GOVERNOR MEETS THE MOSHI SETTLERS.

A Candid Discussion.

"FRANKE" TAKES ABOUT THE LOCAL ASPECTS OF CONTENTION.

Following the completion of the official report prepared by a committee of the Governor of Tanganyika and the settlers of Moshi, the late portion of the report was published recently.

Mr. Franke had been seen one like this morning. The £20,000 which was one of the proceeds of the Moshi Settlement Trust through one of the £100,000 was to be spent in making a proper road in place of the present road which is half native and half European. The Moshi Settlement Trust has a total of £200,000. It is not that we are spending the money in the wrong way, but that we are not spending it in the right way. We want to make a road which will be of use to the people of Moshi, not only to the people of Moshi, but to the people of the whole of Tanganyika. We want to make a road which will be of use to the people of Moshi, not only to the people of Moshi, but to the people of the whole of Tanganyika. We want to make a road which will be of use to the people of Moshi, not only to the people of Moshi, but to the people of the whole of Tanganyika.

LEGISLATIVE COUNCIL.

Mr. Franke had been seen one like this morning. The £20,000 which was one of the proceeds of the Moshi Settlement Trust through one of the £100,000 was to be spent in making a proper road in place of the present road which is half native and half European. The Moshi Settlement Trust has a total of £200,000. It is not that we are spending the money in the wrong way, but that we are not spending it in the right way. We want to make a road which will be of use to the people of Moshi, not only to the people of Moshi, but to the people of the whole of Tanganyika. We want to make a road which will be of use to the people of Moshi, not only to the people of Moshi, but to the people of the whole of Tanganyika.

My Department on the subject of the Moshi Settlement. The Governor had been seen one like this morning. The £20,000 which was one of the proceeds of the Moshi Settlement Trust through one of the £100,000 was to be spent in making a proper road in place of the present road which is half native and half European. The Moshi Settlement Trust has a total of £200,000. It is not that we are spending the money in the wrong way, but that we are not spending it in the right way. We want to make a road which will be of use to the people of Moshi, not only to the people of Moshi, but to the people of the whole of Tanganyika. We want to make a road which will be of use to the people of Moshi, not only to the people of Moshi, but to the people of the whole of Tanganyika.

LAND TITLES.

Mr. Franke had been seen one like this morning. The £20,000 which was one of the proceeds of the Moshi Settlement Trust through one of the £100,000 was to be spent in making a proper road in place of the present road which is half native and half European. The Moshi Settlement Trust has a total of £200,000. It is not that we are spending the money in the wrong way, but that we are not spending it in the right way. We want to make a road which will be of use to the people of Moshi, not only to the people of Moshi, but to the people of the whole of Tanganyika. We want to make a road which will be of use to the people of Moshi, not only to the people of Moshi, but to the people of the whole of Tanganyika.

Essjay Ltd.

A. JAMES, MANAGING DIRECTOR.
P. J. BULLOCK, GENERAL MANAGER.
25, ABchurch Lane, LONDON, E.C. 4.

OPENING OF OUR LONDON OFFICE.

We have pleasure in announcing the opening of our new London Office at Fishmongers' Court, Fishmongers' Court, E.C. 4. P. J. Bullock, who has had 14 years' experience in the East African trade.

ACTIVITIES.

1. Representing East African business houses in London.
2. The purchase of special lines for all classes of trade.
3. Attending to the wants of East Africans visiting home.
4. The purchase of individual requirements.
5. Engaging of staff in England for local business.
6. Securing accommodation for East Africans visiting home.
7. Sale of East African Estates.
8. Financial proposals generally.

With offices on both sides of the water in our experienced hands, we have all the facilities for seeing all wants efficiently.

THE EUROPEAN AND AFRICAN TRADES ORGANISATION

Telephone: 188. 10, Park Street, London, W. 1.

IT IS YOURS FOR £5,000

STONE HOUSE
On Hill with all conveniences and Outhouses
P. O. Box 111. Apply to
Lodge Buildings, **CAMPOS ROAD.**

A. J. S.

SUPREME IN SPEED AND IN RELIABILITY

Model G.8. H.P. 4.98. O.H.V. **£90**

Model G.5. H.P. 3.49 **£70**

WITH TERRY SADDLES SHOCK ABSORBERS -ETC-

B. S. A.

2.49 H.P. De Luxe 3-speed **£62.10.0**

2.49 H.P. Doped. **£57.10.0**

3.49 H.P. side valve. **£67.10.0**

3.49 H.P. O.H.V. **£77.10.0**

4.98 H.P. Standard. **£70**

5.57 H.P. De Luxe. **£100**

Box 205. **CARR, LAWSON & Co. Ltd.** NAIROBI. Phone 103.



BRITISH PORTLAND CEMENT.

THE "J. B. WHITE & SONS" BRAND.
 Manufactured to give all the requirements of the British Standard Specification.

This brand of Portland Cement was the first to be exported and has always enjoyed a premier position in all markets for the

**GREAT STRENGTH
 EXTREME FINENESS
 UNIFORM STRENGTH
 AND ROUNDNESS.**

**STOCKS CARRIED BY
 Smith, Mackenzie & Co.,
 NAIROBI.**

HAIRDRESSER in Kenya

The oldest established Ladies and Gents.

Theo. Schouten.

Phone 245. Roma Building. Box 194.
 Government Road.

Be permanently waved by the only Expert in Kenya. Trained at, and by, Eugene, the famous inventor of the permanent wave. B. M. Machines used, "Galla Bonolla" and "Eugene." All the latest appliances used.

OAKLEIGH PRIVATE HOTEL.

Comfortable and up-to-date in every way
 Under personal supervision of
MRS. H. JARRETT.
 Phone 159. NAIROBI. P. O. Box 158.

TANZANIA SETTLES.

had another year with the Government. The present year was the last year of the old system. The new system would be introduced in 1951. The Government had to make a decision on whether to continue the old system or to introduce a new one. The Government decided to continue the old system for one more year. This was done to give the Government time to prepare for the new system. The Government also decided to continue the old system for one more year to give the Government time to prepare for the new system.

The Government also decided to continue the old system for one more year to give the Government time to prepare for the new system. The Government also decided to continue the old system for one more year to give the Government time to prepare for the new system.

The Government also decided to continue the old system for one more year to give the Government time to prepare for the new system. The Government also decided to continue the old system for one more year to give the Government time to prepare for the new system.

The Government also decided to continue the old system for one more year to give the Government time to prepare for the new system. The Government also decided to continue the old system for one more year to give the Government time to prepare for the new system.

The Government also decided to continue the old system for one more year to give the Government time to prepare for the new system. The Government also decided to continue the old system for one more year to give the Government time to prepare for the new system.

The Government also decided to continue the old system for one more year to give the Government time to prepare for the new system. The Government also decided to continue the old system for one more year to give the Government time to prepare for the new system.

The Government also decided to continue the old system for one more year to give the Government time to prepare for the new system. The Government also decided to continue the old system for one more year to give the Government time to prepare for the new system.

The Government also decided to continue the old system for one more year to give the Government time to prepare for the new system. The Government also decided to continue the old system for one more year to give the Government time to prepare for the new system.

The Government also decided to continue the old system for one more year to give the Government time to prepare for the new system. The Government also decided to continue the old system for one more year to give the Government time to prepare for the new system.

The Government also decided to continue the old system for one more year to give the Government time to prepare for the new system. The Government also decided to continue the old system for one more year to give the Government time to prepare for the new system.

The Government also decided to continue the old system for one more year to give the Government time to prepare for the new system. The Government also decided to continue the old system for one more year to give the Government time to prepare for the new system.

The Government also decided to continue the old system for one more year to give the Government time to prepare for the new system. The Government also decided to continue the old system for one more year to give the Government time to prepare for the new system.

The Government also decided to continue the old system for one more year to give the Government time to prepare for the new system. The Government also decided to continue the old system for one more year to give the Government time to prepare for the new system.

The Government also decided to continue the old system for one more year to give the Government time to prepare for the new system. The Government also decided to continue the old system for one more year to give the Government time to prepare for the new system.

The Government also decided to continue the old system for one more year to give the Government time to prepare for the new system. The Government also decided to continue the old system for one more year to give the Government time to prepare for the new system.

DIACLA YS BANK (COMMON COLONIAL AND OVERSEAS)

THE NATIONAL BANK OF SOUTH AFRICA LIMITED

THE ANGLO-SOUTH AFRICAN BANK LIMITED

HEAD OFFICE: 10, Lombard Street, London, E.C.4
 NAIROBI OFFICE: 10, Market Street, Nairobi, Kenya

Branches in: London, Edinburgh, Glasgow, Liverpool, Manchester, Birmingham, Cardiff, Bristol, Exeter, Plymouth, Southampton, London, E.C.4, 10, Lombard Street, London, E.C.4, 10, Market Street, Nairobi, Kenya

Branches in: London, Edinburgh, Glasgow, Liverpool, Manchester, Birmingham, Cardiff, Bristol, Exeter, Plymouth, Southampton, London, E.C.4, 10, Lombard Street, London, E.C.4, 10, Market Street, Nairobi, Kenya

Branches in: London, Edinburgh, Glasgow, Liverpool, Manchester, Birmingham, Cardiff, Bristol, Exeter, Plymouth, Southampton, London, E.C.4, 10, Lombard Street, London, E.C.4, 10, Market Street, Nairobi, Kenya

Branches in: London, Edinburgh, Glasgow, Liverpool, Manchester, Birmingham, Cardiff, Bristol, Exeter, Plymouth, Southampton, London, E.C.4, 10, Lombard Street, London, E.C.4, 10, Market Street, Nairobi, Kenya

Branches in: London, Edinburgh, Glasgow, Liverpool, Manchester, Birmingham, Cardiff, Bristol, Exeter, Plymouth, Southampton, London, E.C.4, 10, Lombard Street, London, E.C.4, 10, Market Street, Nairobi, Kenya

Branches in: London, Edinburgh, Glasgow, Liverpool, Manchester, Birmingham, Cardiff, Bristol, Exeter, Plymouth, Southampton, London, E.C.4, 10, Lombard Street, London, E.C.4, 10, Market Street, Nairobi, Kenya

Branches in: London, Edinburgh, Glasgow, Liverpool, Manchester, Birmingham, Cardiff, Bristol, Exeter, Plymouth, Southampton, London, E.C.4, 10, Lombard Street, London, E.C.4, 10, Market Street, Nairobi, Kenya

Branches in: London, Edinburgh, Glasgow, Liverpool, Manchester, Birmingham, Cardiff, Bristol, Exeter, Plymouth, Southampton, London, E.C.4, 10, Lombard Street, London, E.C.4, 10, Market Street, Nairobi, Kenya

Branches in: London, Edinburgh, Glasgow, Liverpool, Manchester, Birmingham, Cardiff, Bristol, Exeter, Plymouth, Southampton, London, E.C.4, 10, Lombard Street, London, E.C.4, 10, Market Street, Nairobi, Kenya

Branches in: London, Edinburgh, Glasgow, Liverpool, Manchester, Birmingham, Cardiff, Bristol, Exeter, Plymouth, Southampton, London, E.C.4, 10, Lombard Street, London, E.C.4, 10, Market Street, Nairobi, Kenya

Branches in: London, Edinburgh, Glasgow, Liverpool, Manchester, Birmingham, Cardiff, Bristol, Exeter, Plymouth, Southampton, London, E.C.4, 10, Lombard Street, London, E.C.4, 10, Market Street, Nairobi, Kenya

Branches in: London, Edinburgh, Glasgow, Liverpool, Manchester, Birmingham, Cardiff, Bristol, Exeter, Plymouth, Southampton, London, E.C.4, 10, Lombard Street, London, E.C.4, 10, Market Street, Nairobi, Kenya

Branches in: London, Edinburgh, Glasgow, Liverpool, Manchester, Birmingham, Cardiff, Bristol, Exeter, Plymouth, Southampton, London, E.C.4, 10, Lombard Street, London, E.C.4, 10, Market Street, Nairobi, Kenya

Branches in: London, Edinburgh, Glasgow, Liverpool, Manchester, Birmingham, Cardiff, Bristol, Exeter, Plymouth, Southampton, London, E.C.4, 10, Lombard Street, London, E.C.4, 10, Market Street, Nairobi, Kenya

Branches in: London, Edinburgh, Glasgow, Liverpool, Manchester, Birmingham, Cardiff, Bristol, Exeter, Plymouth, Southampton, London, E.C.4, 10, Lombard Street, London, E.C.4, 10, Market Street, Nairobi, Kenya

Branches in: London, Edinburgh, Glasgow, Liverpool, Manchester, Birmingham, Cardiff, Bristol, Exeter, Plymouth, Southampton, London, E.C.4, 10, Lombard Street, London, E.C.4, 10, Market Street, Nairobi, Kenya

Branches in: London, Edinburgh, Glasgow, Liverpool, Manchester, Birmingham, Cardiff, Bristol, Exeter, Plymouth, Southampton, London, E.C.4, 10, Lombard Street, London, E.C.4, 10, Market Street, Nairobi, Kenya

Branches in: London, Edinburgh, Glasgow, Liverpool, Manchester, Birmingham, Cardiff, Bristol, Exeter, Plymouth, Southampton, London, E.C.4, 10, Lombard Street, London, E.C.4, 10, Market Street, Nairobi, Kenya

Branches in: London, Edinburgh, Glasgow, Liverpool, Manchester, Birmingham, Cardiff, Bristol, Exeter, Plymouth, Southampton, London, E.C.4, 10, Lombard Street, London, E.C.4, 10, Market Street, Nairobi, Kenya

TANZANIA SETTLES.

The Government also decided to continue the old system for one more year to give the Government time to prepare for the new system. The Government also decided to continue the old system for one more year to give the Government time to prepare for the new system.

The Government also decided to continue the old system for one more year to give the Government time to prepare for the new system. The Government also decided to continue the old system for one more year to give the Government time to prepare for the new system.

The Government also decided to continue the old system for one more year to give the Government time to prepare for the new system. The Government also decided to continue the old system for one more year to give the Government time to prepare for the new system.

The Government also decided to continue the old system for one more year to give the Government time to prepare for the new system. The Government also decided to continue the old system for one more year to give the Government time to prepare for the new system.

The Government also decided to continue the old system for one more year to give the Government time to prepare for the new system. The Government also decided to continue the old system for one more year to give the Government time to prepare for the new system.

The Government also decided to continue the old system for one more year to give the Government time to prepare for the new system. The Government also decided to continue the old system for one more year to give the Government time to prepare for the new system.

The Government also decided to continue the old system for one more year to give the Government time to prepare for the new system. The Government also decided to continue the old system for one more year to give the Government time to prepare for the new system.

Just Received
"JONES PATENT"
 STEEL TRUNKS & UNIFORM CASES.
 CANVAS COVERED CABIN TRUNKS.
 LEATHER SUIT CASES & ATTACHED CASES.
 IN VARIETIES AT VERY LOW PRICES.

ALIBHAI & Co.
 TAILORS AND
 GENERAL OUTFITTERS.
 Box 201. Bazaar, NAIROBI. Phone 213.

HUPMOBILE SIX



Get behind the wheel of this big, roomy, New Hupmobile Six. Reared the spark and throttle it down to snail's pace. Then shoot it up to sixty. Not a trace of vibration all the way! That is Hupmobile's idea of smooth, shockless power.

Argonome Hupmobile, this Six—
 —with greater performance and longer life than you will find in any car anywhere at less its low price.

PRICES:
 Standard Chassis - £375
 " Box/Body - £409
 " Touring Car - £435
 Magneto Ignition extra £10.

- BRIEF SPECIFICATION:**
1. H.P. £23-6
 2. Oil Filter
 3. Air Cleaner
 4. Petrol Filter
 5. Thermostat Water Regulator
 6. 4 Wheel Brakes
 7. Rear Vision Mirror
 8. Automatic Screen Wiper.

Hupmobile
 SIX CYLINDERS

NAIROBI

The Motor Mart & Exchange, Ltd.

NAKURU

SALES

Public Sale of Exquisite Furniture

Electric Fittings and Miscellaneous Goods

Friday, 3rd Sept. at 9-30 a.m.

- SUNDAY CROCKERY, KITCHEN UTENSILS, and GLASSWARE.
- SECOND HAND CLOTHING, NOVELS.
- Gramophone Records, Rickshaw Axle, Wheels, etc.
- Large Range of Electrical Fittings; including side brackets, reading lamps etc.
- ONE ROLL GALVANIZED WIRE, small mesh.
- SET OF SINGLE HARNESS.

Catalogue Sale OF

Furniture, China, Carpets, Sewing Machine, Gents Cycle and Brick-making Machine also Valuable Medical Books

AUSTIN & Co.

Will sell by Public Auction at the mart Fans Buildings Hardings St. (next Galley & Roberts)

Saturday September 4th at 9-30 sharp

- HAND POWER CEMENT BRICK MAKING MACHINE, PERFORM; for making two bricks at a time 10 1/2 x 5 1/2 x 3".
- Teas 25, 3 Galv's Bath, Quantity Old China.
- Kitchen Ware, Several Oil Lamps, 3 Deck Chairs.
- 3 Rolls Cocoa Matting, 2 Camp Beds, 1 Iron ditto.
- 2st Book Shelves, Laminating Writing Desk, 2 Chests of Drawers.
- Pair Stands, Two Superior Meat Saws, Gents Saddle and Bridle.
- One Fine Gents Pash Coat with 3 Speed Gear.
- One Chest of MURITE Water Paint, Fines Tick Dinner Wagon.
- Three Superior Tick Dressing Chests with Bevelled Mirrors.
- Four Tick Bridge Tables with Pegamot Tops.
- Number of Occasional Tables various sizes and designs.
- 4ft. TEAK BED with 3 ply Wire spring mattress.
- 4 Morris Chairs in Cretonna, Campher Wood Dining Table Oval.
- FINE TEAK DINING OVAL TABLE 6 ft. x 4 ft. x 4 ft. LAZARUS.
- POLISHED OVAL Campher Wood Dining Table small.
- FINE TEAK DOUBLE DOOR WARDROBE with CARVED PANELLED FRONT.
- CHARMING TEAK BACON WARDROBE with long Oval Mirror and Circular Mirror well arranged.
- Teak and Campher wood Fall Front Writing Bureaux, Pair Fine Desks.
- Four Dainty Flyer Clocks, E.P. Cake Stand.
- Several Lamps and China Dress Lengths.
- Set of DINING CHAIRS with Canvas Seats.
- Two New Single Iron Beds copper wire springs.
- Wood Single Bed with 3 ply Wire spring mattress.
- 2 Scroll Back Gents Seat Chairs, Imported, Net Travelling Typewriter.
- Two Draw Writing Desk with Pegamot top, Mizarope Carpet 12 1/2 x 10, Axminster Carpet 10 x 9, Fine Top, Baby Chair, TEAK OTT with top extension.
- Various Chair Covers, Oliver Typewriter.
- WIRE and GREEN SEWING MACHINE in WOOD METAL BOUND BOX, complete with accessories in leather case.
- THE FOLLOWING VALUABLE MEDICAL WORKS:
 - ANATOMY FOLLOWING VALUABLE MEDICAL WORKS:
 - ANATOMY OF THE HUMAN BODY with Coloured plates Set of 4 Vols.
 - Principles and Practice of Medicine.
 - Practical Anatomy, Gray Anatomy.
 - YEARS SURGICAL ANATOMY with plates in 3 Vols Diseases of Infancy and Childhood, and Scientific Dictionary by Goodrich.
 - BRIEF SYSTEM of ANATOMY.
 - TELESTUDIES in TROPICAL MEDICINE.
 - DICTIONARY OF MEDICAL OFFICERS.
 - THE ELEMENTS of MODERN CHEMISTRY, etc., etc.

Road—The Hill

Public Sale of Exquisite Furniture

By order of the Portuguese Consul General, Sao Paulo de Luena who is leaving Kenya.

Austin & Co.

Monday, Sept. 6th at 10 sharp.

- At the residence of the Lusitano at above (right opposite the Top of Crawford Rd.) THE MARQUETTES FURNITURE and APPOINTMENTS.
- Charming Tanga Mahogany Writing Desk on 4 legs with leather top.
- DELIGHTFUL CHESTFIELD SUITE of Fine Quality upholstered in Red Satin Stripes, top.
- Set of Four Charming Mahogany Drawing Room Chairs inlaid with Tanga Mahogany.
- STANDARD WOOD TABLE LAMP with yellow silk shade.
- Brilliant CARVED TABLE on Queen Anne Style Leg.
- TWO HANDSOME SETS of TANGA MAHOAGNY BOOK CASES with adjustable shelves.
- FINEST QUALITY MIZARPOE CARPET 12 1/2 x 12. 3 Tier Axminster Tiles, Charming Pedestal Coffee Table.
- Mahogany Reading Lamp with flowered Shade. Curtains as hung, etc., etc.

FINE MIZARPOE RUG 9 x 6, Tanga Mahogany Hall Seat. Charming Hall Table fitted drawer.

- LOVELY MIZARPOE CHAIRS 12 x 12.
- The EXQUISITE TANGA MAHOAGNY DINING ROOM SUITE in PICKED WOOD and of Delightful design comprising:
 - SET of DINING CHAIRS with GRAINED LEATHER SEATS.
 - CIRCULAR EXTENDING DINING 4 3/4 TABLE with EXTRA LEAF extends 6 feet.
 - CHARMING 5 1/2' BOW FRONT SIDEBORD on Chisel feet with Glass Topped Drawers.
 - Handsoms 3 1/2' DINNER WAGON on suite base lined drawers.
 - Three Chairing, Engravings framed and Glass. Curtains as hung.
- PERFECT BEDROOM.
- FINE QUALITY MIZARPOE CARPET with SHAPED BEVELLED MIRROR 10 1/2' x 2 1/2'.
- 6' CHEST of DRAWERS on suite 4 feet on Chisel's supports.
- CHARMING CARVED and PANELLED DOUBLE BED with SUPERIOR WIRE SPRING MATTRESS and OVERMATT.
- TWO FINEST OTTOMAN'S on suite.
- BOW FRONTED DRESSING CHEST fitted large Mirror.
- 2 Charming Bed, Bedroom Camer Seat Chair.
- FINE WIRE SPECIALLY DESIGNED and BUILT TWO Mosquito Nets and Curtains as hung.
- THREE CHARMING COPPIN'S OLD PRINTS tastefully framed.

- NURSERY.
- BROWN LINOLEUM as Laid, TWO FIGURED NURSERY BURN.
- DAINTY TANGA MAHOAGNY 3 ft. CHEST OF DRAWERS.
- CHARMING BED with suite CHAIRS with WIRE SPRING etc.
- USEFUL IMPORTED SETTEE BED convertible. Includes Dining Table and two ditto. Dining Chairs, Mosquito Net, etc., etc.

- CHINA, KITCHEN, and MISCELLANEOUS ABOUT 26 feet BLUE striped Cocoa Matting.
- About 18 feet Brown ditto, Brown Lin as laid in Study.
- Two Grass Mats, Chairs and 2 Cane Seat ditto.
- Charming Fender, Pair Showers Curriers, 3 Cocoa Door Mats.

- FINE OAK "ALASKA" REFRIGERATOR 3' 6" x 3' 0".
- Kitchen Table with Wood Chair. Kitchen Table with CHARMING BURNING DINNER SERVICE of about 60 pieces.
- DAINTY BLUE and GILT CHINA TEA SERVICE of about 21 pieces.
- Set of IMPROVED GLASS WARE, CHELSEA COFFEE CUPS and SAUCERS, VERANDAH FLOWERS CUPS and SAUCERS, VERANDAH CHINA SERVICE.
- 4 New Bookish Cane, French Wicker Table, Garden Tools.
- QUANTITY of Almost New ALUMINIUM KITCHEN WARE.
- DELIGHTFUL IMPORTED GARDEN HAMMOCK on METAL TUBE STAND SHED CANOPY and can be taken down and folded in small bag. Etc., etc., etc.

ON VIEW SATURDAY and SUNDAY, SEPTEMBER 4th and 5th from 9 to 5.

Austin & Co.

NOTE.—ALL THIS FURNITURE IS PRACTICALLY NEW and IS MADE of SPECIALLY SELECTED TIMBER REGARDLESS OF COST.

Sands & Co.

LONDIANI Monday, 6th Sept 10-30 a.m.

Acting on instructions from various clients we will offer for sale as under:
80 Trained Oxen in teams of 16 with Yokes, Chains Skeys, etc.
All matched teams
10 Kamada Cows with calves at foot or in calf.
11 Cattle Oxen.
40 Good Bag Oxen AM & TP & just received from.
A large assortment of sundries and drapery, etc.
Further notices being received.

SANDS & Co., AUCTIONEERS

Muter and Oswald's Property

Two FREEHOLD KILIMATI PLOTS for SALE 6.64 and 6.32 ACRES or thereabouts, as separate PLOTS or in ONE BLOCK.

For further particulars apply to MUTER and OSWALD, Auctioneers, Nairobi.

The Remington Typewriter

“QUIET NO. 12”



All Spares and European Mechanisms. THE REMINGTON TYPEWRITER AGENCY, Phone 25, NAIROBI. P.O. Box 67.

NOTICE.

FUEL and TRANSPORT. We beg to announce to our numerous clients that we have now completely reorganised our business from our own stock. We will supply make transport as well as the best and FINEST WAGON IS UNDER SUPERVISION EUROPEAN SUPERIOR. This also includes to you a FURNITURE REMOVAL SERVICE. FUEL applied at lowest prices and FREE PACKING. Monthly contracts of 1 ton and over at special prices. CAMELION & CO., ROBINSON ROAD, Phone 120, P. O. Box 69, KENYA TRANSPORT CO.

MR. STEPHEN'S VERY CLEAN and DYING WORKS. J. K. STEPHEN, Ltd., Town, Telephone Office.

LADIES and GENTLEMEN Replenish your wardrobe and Save Five Shillings in the Pound. The Bradford Mill Co., Ltd.

BRADFORD, ENGLAND are displaying a comprehensive and ample range of their best quality comprising Ladies' and Gents' outdoor clothing, made in London, etc. Patterns of Ladies' and Gents' clothing, in all the latest styles and latest designs. ANY LENGTH CUT Tailored Garments to Measure or Specialty. All goods are dispatched promptly from our Factory in Bradford or parcel post as the C.O.D. System. Sample Book. Theatre Royal Buildings 4th Floor (Ground Floor) adjoining Palace Ltd.

TYPEWRITING HEAD Room 16 & 19 1/2 Bha Buildings. (MRS. FREEDY) All classes of work undertaken and Rewriting & Typing Lessons for Individual Attention. Also Circulating Library.

Used Cars For Sale

BY PRIVATE TREATY. Increased thrice by various... 1910 Ford Model T... 1912 Ford Model T... 1914 Ford Model T... 1915 Ford Model T... 1916 Ford Model T... 1917 Ford Model T... 1918 Ford Model T... 1919 Ford Model T... 1920 Ford Model T... 1921 Ford Model T... 1922 Ford Model T... 1923 Ford Model T... 1924 Ford Model T... 1925 Ford Model T... 1926 Ford Model T... 1927 Ford Model T... 1928 Ford Model T... 1929 Ford Model T... 1930 Ford Model T... 1931 Ford Model T... 1932 Ford Model T... 1933 Ford Model T... 1934 Ford Model T... 1935 Ford Model T... 1936 Ford Model T... 1937 Ford Model T... 1938 Ford Model T... 1939 Ford Model T... 1940 Ford Model T... 1941 Ford Model T... 1942 Ford Model T... 1943 Ford Model T... 1944 Ford Model T... 1945 Ford Model T... 1946 Ford Model T... 1947 Ford Model T... 1948 Ford Model T... 1949 Ford Model T... 1950 Ford Model T... 1951 Ford Model T... 1952 Ford Model T... 1953 Ford Model T... 1954 Ford Model T... 1955 Ford Model T... 1956 Ford Model T... 1957 Ford Model T... 1958 Ford Model T... 1959 Ford Model T... 1960 Ford Model T... 1961 Ford Model T... 1962 Ford Model T... 1963 Ford Model T... 1964 Ford Model T... 1965 Ford Model T... 1966 Ford Model T... 1967 Ford Model T... 1968 Ford Model T... 1969 Ford Model T... 1970 Ford Model T... 1971 Ford Model T... 1972 Ford Model T... 1973 Ford Model T... 1974 Ford Model T... 1975 Ford Model T... 1976 Ford Model T... 1977 Ford Model T... 1978 Ford Model T... 1979 Ford Model T... 1980 Ford Model T... 1981 Ford Model T... 1982 Ford Model T... 1983 Ford Model T... 1984 Ford Model T... 1985 Ford Model T... 1986 Ford Model T... 1987 Ford Model T... 1988 Ford Model T... 1989 Ford Model T... 1990 Ford Model T... 1991 Ford Model T... 1992 Ford Model T... 1993 Ford Model T... 1994 Ford Model T... 1995 Ford Model T... 1996 Ford Model T... 1997 Ford Model T... 1998 Ford Model T... 1999 Ford Model T... 2000 Ford Model T... 2001 Ford Model T... 2002 Ford Model T... 2003 Ford Model T... 2004 Ford Model T... 2005 Ford Model T... 2006 Ford Model T... 2007 Ford Model T... 2008 Ford Model T... 2009 Ford Model T... 2010 Ford Model T... 2011 Ford Model T... 2012 Ford Model T... 2013 Ford Model T... 2014 Ford Model T... 2015 Ford Model T... 2016 Ford Model T... 2017 Ford Model T... 2018 Ford Model T... 2019 Ford Model T... 2020 Ford Model T... 2021 Ford Model T... 2022 Ford Model T... 2023 Ford Model T... 2024 Ford Model T... 2025 Ford Model T... 2026 Ford Model T... 2027 Ford Model T... 2028 Ford Model T... 2029 Ford Model T... 2030 Ford Model T...

New Zealand

Insurance Co. Ltd. HAVE YOU EVER BEEN BURNT-OUT. If not do not take the risk any longer. We cover you for Fire, Motor or Marine. Principal Agents: DENOVAN & DIEBEL CITY HOUSE.

Now in Stock.

Grease Proof Paper. E. A. Standard Ltd., NAIROBI

We have the Courage of our convictions

We know that once you try Gibbs Shaving Cream or Cold Cream Shaving Stick, you will realise your shaving ideals. Both have that rich, creamy, water-laden lather that softens every hair.

Gibbs SHAVING CREAM The Cream of Shaves

GIBBS COLD CREAM SHAVING STICK. If you have not a Shaving Cream, you can buy a Shaving Stick from Gibbs Cold Cream Shaving Stick from the purest cream-gum foundation that you can buy. It is in the shape of a stick and it is in the shape of a stick.

BRITISH MADE

SAY "GIBBS" and you are bound to be right

RALEIGH

7 1/2 p Combination with electric light... 1,800/-

7 1/2 p Combination without... 1,650/-

7 1/2 p Solo with electric light... 1,850/-

7 1/2 p Solo without... 1,650/-

Please do not include wireless accessories

ALSO RALEIGH ELECTRICAL SERVICE SPARES

CAPITAL GEAR CO. LTD.

Victoria St. Opp. Film Station. KETTLES-BOY LTD., NAIROBI Manufacturers' Representatives.

South African Railways and Harbours

During the slack time
Take a holiday
in
Sunny South Africa
and
Return Refreshed
in
Mind and Body

Travel in South Africa is
inexpensive and facilities are
of high standard.

For particulars apply to:
TRADE COMMISSIONER FOR THE UNION OF SOUTH AFRICA,
P. O. Box 824, MEMORIAL HALL, NAIROBI.

Madame Leon.

Arrived last mail new and exclusive
Gowns from Paris.

First Floor: AFRICA HOUSE. Above Waring's: GOVERNMENT ROAD.

KENYA HOUSE

P. O. Box 113, NAIROBI Tel. Kenya House

HIGHLY RECOMMENDED RESIDENTIAL HOTEL.
BUNGALOW FOR CATERING, COMFORT AND RELAXATION.
UNDER PERSONAL SUPERVISION AND CONTROL
OF THE PROPRIETRESS.
Terms Moderate.

STANDARD FEATURE PAGE

REZIN
TAILOR OF QUALITY

THE NAME THAT
INSPIRES CONFIDENCE

**GENTLEMEN'S
TAILORING**

IN ALL ITS BRANCHES

House of Rezin.

SALE

Special Clearance Sale
To make Room for Xmas Goods
arriving shortly.

Genuine Bargains offered in all lines.
Be sure and visit us for best bargains.

JOANES & Bros.,
Govt. Road.

**The Perfect
Car Enamel**

Robbialac is a rich genuine Enamel that dries
with a glass like surface. It is as easy to use
as the standard you can repair your own vehicle
and make it look like new. Leadless and colour
card line.

SMITH, MAOKENZIE & CO.,
BOX 200 NAIROBI

ROBBIALAC

FAMING ATTITUDE

Reams of Current Topics

REZAVAL

[By "REZAVAL"]

It is necessary to distinguish
with fitting basing the individual
fact that one or two cases of
illness were made in the African
headed "Reza" Living. These
illness appearing as the variety
of 1918 August, and to
think. These contraindications
have been found similar to all
cases.

The appearance of
"illness" is well definitely
known these errors. It is not
the same object of them, which
which were to give guidance to
the remarkable policy in contrast
of India which has been adopted
generally on both sides of the
fronter in the Mass Enzyme and
to stand for these. Infection
prevents contraindications in
contraindications and insect traffic
Major Montgomery points out
that the position of insect officers
about the West African. In part
of East Africa has been
selected for comparative purposes
of some one about to have
uncovered this. But either
the lines of cooperation were
led while the position stated
concerns naturally for any nation
conclusion that the policy of
control measures for such and
prohibition of general. Making
from Kenya to Transvaal has
not been detailed by insect
Major Montgomery says
"It is in my opinion that the
lines of cooperation about
Mexico as a Government official
and gives the information that
a private concern operated by
the Mass Enzyme. It is
which he appears to be the
principal.

In proceeding for this
is permitted to point out
that the only information
of his own recommendation
of this concern and this
rather inevitably tended to
mislead one. It was not
Major Montgomery had
referred to from the Kenyan
view and was working for
hand. The writer ventures to
congratulate him on his entrance

...and as a result of the
work every day. It is
and persons within the
the public. It is
which is not a
which is not a
which is not a

In continuation of the
will that that one
the result of the
the public. It is
the result of the
the public. It is

It is always
the public. It is
the result of the
the public. It is

There is always
the public. It is
the result of the
the public. It is

MASS EDUCATION

The very remarkable
the development of the
Africa. In fact, the
the public. It is
the result of the
the public. It is

The very remarkable
the development of the
Africa. In fact, the
the public. It is
the result of the
the public. It is

...and as a result of the
work every day. It is
and persons within the
the public. It is
which is not a
which is not a
which is not a

In continuation of the
will that that one
the result of the
the public. It is
the result of the
the public. It is

THE NEED OF DISCIPLINE

In the writer's suggestions
for improving industrial
for natives but work a
of organization or the
of discipline was stated
to be a necessary.

There is the Mass Enzyme
in experiment in the
of discipline was stated
to be a necessary.

...and as a result of the
work every day. It is
and persons within the
the public. It is
which is not a
which is not a
which is not a

In continuation of the
will that that one
the result of the
the public. It is
the result of the
the public. It is

THE RIGHT AND NATURAL WAY

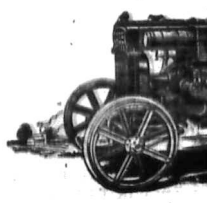
The right and natural way
of making the Mass
of discipline was stated
to be a necessary.

The right and natural way
of making the Mass
of discipline was stated
to be a necessary.

Studebaker, Brockway, Case.

CASE TRACTOR

Has These Advantages :



Modest Cost. Nothing to be added. All models are equipped as standard with belt pulley, fenders, governor, magnet ignition, air-cleaner, and radiator temperature control

Advanced Design. Apart from completeness of equipment Case Tractors are commensurate by reason of their compactness with a minimum of frictional loss through spin gears running in oil

Reserve Power over its rating prevents overtaxing the engine on recommended loads, and ensures steadiness of operation at trawler and belt.

Usefulness. Proper weight distribution, wide tyres, effective spare legs, proper location of belt pulley, wide front, unusual flexibility, and ample reserve power are big factors in its all round usefulness.

12/20 £290
18/32 £395
25/45 £700

Sole Importers
K. McIVOR & Co.
Sixth Avenue,
NAIROBI.

P. O. Box 97,
Phone 97.

Telegrams:
"Afford".

THE SPORTS PAGE

MAKING CYCLING THE AUSTRALIANS

Visitors Led on First Innings at Drigheton.

UPPER UPPER STAKES - A survey on all polo grounds...

SECOND RACE - KIMBA SANA STAKES - A new open to all...

THIRD RACE - SHEKA CHINI STAKES - A Point to Point open to all...

FOURTH RACE - HAYA ANOKUA STAKES - Point to Point open to all...

FIFTH RACE - YEEI - A Point to Point open to all...

SIXTH RACE - HINGI STAKES - A Point to Point open to all...

SEVENTH RACE - KITANGOLA STAKES - A Distance Handicap open to all...

EIGHTH RACE - BUNGU NA KODE STAKES - A Distance Handicap open to all...

NINTH RACE - HINGI STAKES - A Point to Point open to all...

TENTH RACE - HINGI STAKES - A Point to Point open to all...

Revised Prices

GROCERIES & PROVISIONS FOR

In the past we have offered a discount of 20% for Cash payment on all purchases of Groceries and Provision...

We invite every housekeeper to send for a copy. It will be a useful reference when making up a grocery order...

Save Time & Money BY OUR FREE DELIVERY

It takes less time to make up one order for your weekly supplies than to make one up daily...

HERE ARE A FEW PRICES FOR YOUR COMPARISON:

Table listing various grocery items and their prices, including Royal Baking Powder, Jaked Beans, Corn Meal, etc.



DUTY

"Why do you always tell every one about Kenitas?" he says - "Because I consider it my duty. It is the substance over the English language..."

Advertisement for Kenitas Standard Size Virginia Cigarettes, featuring the brand name and 'STACOB'S' logo.

Book Open on St. Ledger

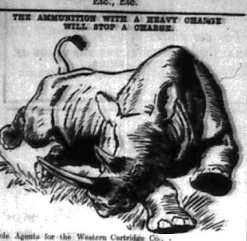
General Comptroller's Office, City House, Phone 148.

FRED RAPER GENERAL COMPTROLLER AGENT

New Military Tarpaulin 24 x 12 and 10 x 12. New Military Entrenching tools.

SADDLERY - OAKS FURNITURE - SEPARATORS

THE AMMUNITION WITH A HEAVY GRADE WILL STOP A CHARGE.



THEATRE ROYAL

Nightly 6th to 11th Sept. at 8-45

"THE YEOMEN OF THE GUARD"

Cast of 50 Artists! Orchestra of 18 Players.



Cheap Tennis Rackets.

TO MAKE ROOM FOR NEW STOCKS AND ALSO TO KEEP OUR STOCKS FRESH WE ARE OFFERING THE FOLLOWING LAST SEASON'S RACKETS AT BARGAIN PRICES.

Table listing various tennis racket models and their prices, such as Slazenger's, Prosser, etc.

MAY & Co. THE SPORTS HOUSE

R. Stephens & Co. Ltd. THE TAILORS AND OUTFITTERS

Official Outfitters to Keston College. All requirements for boys returning to school IN STOCK Government Hosiery.

Further also 250-250 a Standard and Weekly Star 2500.

Playing on the ground for Friday night 20th inst.

Playing for 20 minutes on the 20th inst.

Playing for 20 minutes on the 20th inst.

Playing for 20 minutes on the 20th inst.

Playing for 20 minutes on the 20th inst.

Playing for 20 minutes on the 20th inst.

Playing for 20 minutes on the 20th inst.

Playing for 20 minutes on the 20th inst.

Playing for 20 minutes on the 20th inst.

Playing for 20 minutes on the 20th inst.

Playing for 20 minutes on the 20th inst.

Playing for 20 minutes on the 20th inst.

Playing for 20 minutes on the 20th inst.

Playing for 20 minutes on the 20th inst.

Playing for 20 minutes on the 20th inst.

Playing for 20 minutes on the 20th inst.

Playing for 20 minutes on the 20th inst.

Playing for 20 minutes on the 20th inst.

Playing for 20 minutes on the 20th inst.

Playing for 20 minutes on the 20th inst.

Playing for 20 minutes on the 20th inst.

Playing for 20 minutes on the 20th inst.

Playing for 20 minutes on the 20th inst.

Playing for 20 minutes on the 20th inst.

Playing for 20 minutes on the 20th inst.

Kenya Stout
IS THE BEST FLAVOURED
AND MOST NOURISHING
STOUT OBTAINABLE IN
THE COUNTRY.
NOT TREATED WITH ANY
DANGEROUS PRESERVA-
TIVE. WHOLESOME AND
APPETISING. HEALTH-
GIVING AND INVIGORAT-
ING. RECOMMENDED BY
DOCTORS.

THE
LOUNGE
FOR
COCKTAILS
AND
TRAP
THE
LIZING ROOM
FOR
BREAK, FARE,
LUNCHEONS, and
DINNERS.

The NEW STANLEY HOTEL

Price 20 CENTS.

No. 3057. ESTABLISHED AS THE GENERAL POST OFFICE AS A NEWSPAPER.

NEW HOPE OF PEACE IN COAL INDUSTRY.

Mr. Churchill's Hint of Government Intervention.

PLEA FOR REASONABLENESS.

Chancellor's Remarks Cheered by Labour Members.

COMMONS PROPOSALS.

London, September 1.—The House of Commons today supported the Government's proposals for the settlement of the coal dispute.

THE MIDDLE EAST TALKS.
The talks between the British and French Governments regarding the settlement of the coal dispute have been held in London.

EX-SULTAN'S WIFE NOW DESTITUTE.

Attempted Suicide in the Nile at Cairo.

Spanish Railway Smash.
A collision between two trains on the Madrid-Barcelona railway resulted in the death of several people.

RESULT OF RAIN AND FATAL FLOODS.

Balkan Lawlessness.
The Balkan States are suffering from lawlessness and disorder.

Bulgaria Efforts to Halt Nihilists.

Balkan Lawlessness.

Alan Cobham's Hiding.

D.C. ATTACKED BY N. ION.

Kajinda Strick Ends in Hospital.

A PLUCKY NATIVE.

What Mr. E. P. Poldosky, Acting District Commissioner at Kajinda was not willing to concede was that a tribal rebellion last night, in the opinion of this paper, was a plucky native.

MANY DEAD IN AFRICA: EARTHQUAKE.

Population Camping in the Squares.

Population camping in the squares of the African continent has become a common sight.

INDIA STATE COUNCIL BILLS.

Lively Debate upon New Bar Councils.

Foreign Secretary Leaves.

Balkan Lawlessness.

Bulgaria Efforts to Halt Nihilists.

LEAGUE OF NATIONS SESSION.

Germany Alone Secures a Permanent Seat.

POLISH CLAIM WAIVED.

[BRUSSELS NEWS] The League of Nations Commission to regulate the future composition of the Council discussed at length yesterday the French amendment to Article 2 of the statute approved last May regarding the nomination of non-permanent members of the Council.

SMUTS CONDENSERS PARTY IN POWER.

Appeal to Europeans on Colour Bar Bill.

UNWANTED UNION FLAG.

INGOMBO IN SOUTH AFRICA.

Treaty of Algiers.

SATIVE WITH IT.

PIETROVAI AND HIS.

SATIVE WITH IT.

THE MONEY MARKET.

THE MONEY MARKET.

THE MONEY MARKET.

THE MONEY MARKET.

Last Two Days of Whiteaways Half-Crown Bargain Week.

The tremendous success of this innovation lies in the paramount values offered for Shs. 2-50.

Several new items have arrived during the week and are now showing on the Bargain floor.

- RIMMELS PERFUMES Shs. 2/50
- BIG HONEYCOMB MOTOR SPONGES Shs. 2/50
- BREAD KNIVES Shs. 2/50
- PLATE & KNIFE TRAYS Shs. 2/50
- WIRE MEAT COVERS Shs. 2/50
- PUDING BASINS Shs. 2/50
- CANE CARPET BEATERS Shs. 2/50
- KELLY NIGHT LARNS Shs. 2/50
- MIXING BOWLS Shs. 2/50
- SPIRIT KETTLES Shs. 2/50
- JELLY MOULDS 2 for Shs. 2/50
- LARGE KITCHEN SCOOPS Shs. 2/50
- PAST PANNS Shs. 2/50
- FLOUR SIFTERS Shs. 2/50
- EGG BEATERS 2 for Shs. 2/50
- NURSERY CUPS AND SAUCERS Shs. 2/50
- BREAD TINS, 2 for Shs. 2/50
- WIRE LETTER BASKETS Shs. 2/50

Whiteaway, Laidlaw & Co. Ltd., NAIROBI.

BETTER FLOUR

When better flour is made it will still be "Kibira's Milk"

Messrs Thomas Robinson & Son Ltd., of Mochale, one of the leading Milling Engineers of the world and the largest in the British Empire, are erecting an entirely new flour mill for us at Njoro, which is now nearing completion. It will be the largest mill in the country, and the best word in economy and efficiency.

Crankshaft Bearings.

CRANKSHAFT BEARINGS ARE A SPECIALTY.

The principle of a bearing is to support a shaft and to prevent it from rotating. The bearing must be of such a design that it will support the shaft and prevent it from rotating. The bearing must be of such a design that it will support the shaft and prevent it from rotating.

Today, we take the majority of heavy bearings right out of the shop. We shall find that they are of a high standard of efficiency.

In the early days we used to believe that a crankshaft which would not rotate would be a crankshaft which would not rotate.

Today America has the problem from the other end, but in Europe, the small high efficiency engine is a prominent feature of the motor industry.

During the last year or two well-developed engineering methods have given us little trouble that the job of engineering as to what

MOTORING TOPICS

Car Selection.

The selection of a car is a very different one from the purchase of many commodities. The car is a very different one from the purchase of many commodities. The car is a very different one from the purchase of many commodities.

No intelligent purchaser, however, sets out to buy a motor car by the manufacturer or by the color of the car. The motor car is purchased as a means to an end, rather than as an end in itself.

What one wants, in fact, is a car that is good value for money, that is reliable, that is economical and therefore frequently, but not necessarily, the most desired of things.

While on the subject one cannot overlook the fact that additional bearings should be provided in addition to the extra power required to move a larger engine unit.

Some of the most highly efficient engines in four-cylinder units are now fitted with only two bearings. The engine develops from ten to twenty horse power, and runs over long distances with complete freedom in the matter of absolute efficiency.

Most of the success of this type is due to advanced production and tolerance. The quality of the steel is of the highest order, and the use of the governing factor, is of the highest order.

During the last year or two well-developed engineering methods have given us little trouble that the job of engineering as to what

Points Which the Buyer Notices.

The selection of a car is a very different one from the purchase of many commodities. The car is a very different one from the purchase of many commodities. The car is a very different one from the purchase of many commodities.

No intelligent purchaser, however, sets out to buy a motor car by the manufacturer or by the color of the car. The motor car is purchased as a means to an end, rather than as an end in itself.

What one wants, in fact, is a car that is good value for money, that is reliable, that is economical and therefore frequently, but not necessarily, the most desired of things.

While on the subject one cannot overlook the fact that additional bearings should be provided in addition to the extra power required to move a larger engine unit.

Some of the most highly efficient engines in four-cylinder units are now fitted with only two bearings. The engine develops from ten to twenty horse power, and runs over long distances with complete freedom in the matter of absolute efficiency.

Most of the success of this type is due to advanced production and tolerance. The quality of the steel is of the highest order, and the use of the governing factor, is of the highest order.

During the last year or two well-developed engineering methods have given us little trouble that the job of engineering as to what

UNGA Ltd., Njoro.

BRICKMAKING Machinery

Small or Large Plants.

BRADLEY & CRAVEN, Ltd. Nairobi.

Sole Agents in E.A.:-

Beales & Smithson, Nairobi.

P.O. Box 320. "Access House"

Short Loans Granted

£1 to £1000

CALL OR WRITE TO THE

Kenya Loan & Discount Co., Ltd

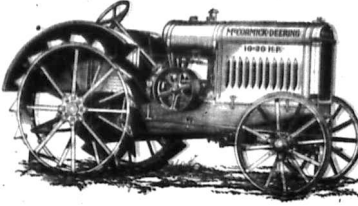
Court Chambers (1st Floor) Box 648, NAIROBI.

Bills Discounted. Strictest Confidence.

Power for Business-like Farming

FOR nearly a century the builders of this Company's lines have been engaged in the pursuit of happiness on the Plains deriving the machines that are lifting the millions of too hard labourer's shoulders of men and women. We wish to announce that we expect the arrival shortly of our newest development of the new McCormick Deering Narrow tread Sinal and Coffee Tractors. Absolutely the latest word in Sinal and Coffee Tractor construction. Its tractor extremely durable.

McCormick-Deering TRACTORS



10-20 £268 f.o.r. Nairobi.
15-30 £368 f.o.r. Nairobi.

Some Reasons Why Practical Men Select McCormick-Deering Tractors

- Powerful Engines** These tractors have built-in rollers an abundance of power over a wide range of years. Working parts are completely protected from dirt and dust.
- Removable Cylinders** Each cylinder is cast separately and fitted into the engine block which makes it possible to give a worn cylinder easily and economically. New cylinders make practically a new engine.
- Crankshaft** The heavy duty crankshaft runs in large ball bearings.
- Throttle Governor** The throttle governor controls full throttle and keeps the speed practically uniform.
- Pistons** The pistons are rib-fitting and last four times longer than good compression and more power from the fuel.
- Gear Drive** The power is transmitted to the drive wheels through high grade gears that run in oil.
- High Tension Magnets** The high tension magnets supplies a hot spark for starting and running. Builders consider this the best type of ignition for a farm tractor.
- Oil Pump** The oil is kept in circulation by a gear oil pump which assures proper lubrication on gears, ball-beds, etc.
- Fenders** Strong durable fenders protect the tractor and operator from dust and dirt.
- Platform** The platform adds to the comfort of the operator and protects carrying gear.
- Air Oil Cleaner** Air that reaches the cylinders must pass through the oil air cleaner which removes the dust and dirt.
- One-Piece Main Frame** The main frame is a single casting. There are no weak joints bolted together. It is dustproof and oil-tight.
- One's Own Oil** All gears run in a bath of oil.
- High-Grade Bearings** An unusually large number of ball and roller bearings are used which are easily lubricated, reduce friction, and save power for productive work.
- Cooling System** The thermosiphon system of cooling maintains uniform engine temperature.
- Accessibility** Keys for working parts are readily accessible by removing hand-hole covers and plates.
- Quiet** The built-in clutch is large and assures proper transmission of the power.
- INC Service** International Harvester service covers the country, and it is easy to get extra parts or assistance whenever necessary.

KIRKWOOD & Co. KITALA.

"LAND AGENTS, MANAGING AGENTS, VALUERS, COMMISSION AND INSURANCE AGENTS, TRANSPORT AND FLOORING CONTRACTORS."

LAND

In the TRANS NUDO, UASIN GIBCH and TURBO VALLEY.

SAVOY HOTEL.

The most comfortable place situated in the healthiest part of Nairobi. CALDENHAM ROAD, THE HILL. Close to Government House. Beautiful Garden, Lawns, Garage, Hot and Cold Water Installation, etc. EXCELLENT TABLE. Extension of building with Flush Lavatories, Tennis Court and Palm Court in construction. Monthly Terms from 25/-.

Colonial General Stores

GOVERNMENT ROAD, NAIROBI. High Class Groceries, Provision, Wine and Spirit Merchants.

Fresh stocks arriving by every mail.

GIVE US A TRIAL YOU WILL NOT BE DISAPPOINTED. PHONE 226. P. O. Box 358.

F. A. Head.

Pianoforte Tuner and Repairer. Five years with Messrs. Chappell & Co., London. Seven years experience in Kenya Colony. Send all orders to P. O. Box 678.

Gillilan & Company, Ltd. Distributors for Kenya, Uganda and Tanganyika.

Let your Jeweller Be Your Gift Advisor.

Handmade Gold. 1 Stone Diamond. 1 Stone Diamond. 1 Stone Diamond. 1 Stone Diamond.



1 Stone Diamond. 1 Stone Diamond. 1 Stone Diamond. 1 Stone Diamond. 1 Stone Diamond. 1 Stone Diamond.

SILVER WALLET WATCH. Leather Strap. Perfect Timekeeper. E. L. DOBBIE Watchmaker, Jeweller, & Optician. Government Road, MALDEN.

WHY PAY 4/- lb. For IMPORTED TEA? When you can Buy LOCALLY GROWN TEA OF SUPERIOR QUALITY at 2/6 0 lb. From TORR'S, GOVERNMENT ROAD, P. O. Box 419.

THEIR OWN PRISONERS

University of Natal. Mrs. H. J. ...

WOMEN IN THE BALANCE

From the News Correspondent: It is reported to be a common-sense view ...

THREE POINTS

Current points on which Mr. Wilson would like to see the Government ...

FOUR WHITES DANGERS

If the education of European children was neglected, there would be ...

small school, so an experiment would be justified ...

The speaker concluded his remarks by stating that he still ...

It was not possible to make the school free of the Government ...

It is not so far from the truth to say that the ...

At last he expressed an opinion in favour of the ...

of the Government would be to have a school ...

Mr. Phipps, who stated that he represented some ...

TRANSPORT QUESTION

Mr. Phipps, who stated that he represented some ...

Mr. Phipps stated that he had ...

Mr. Wilson then explained that ...

apparently intended to get the ...

At this point Mr. Harvey put ...

LOCAL EDUCATION VIEW

Mr. Wilson then explained that ...

Mr. Wilson then explained that ...

Mr. Wilson then explained that ...

Essjay Ltd.

A. JARVIS, MANAGING DIRECTOR. TELETYPE: 100/101. P. O. Box 224, Durban. Phone 27. BEIRN CROSSING, 101, FRANKLIN AVENUE

OPENING OF OUR LONDON OFFICE.

- We have pleasure in announcing the opening of our new London Office at Fitzroy Square, Fitzroy Square, W.1. In charge of Mr. R. V. Moshoni who has had 16 years East African experience. ACTIVITIES. 1. Recruiting East African business houses in London. 2. The purchase of special lines for all classes of trade. 3. Attending to the wants of East Africans visiting home. 4. The purchase of individual requirements. 5. Engaging of staff in England for local business. 6. Securing accommodation for East Africans visiting home. 7. Sale of East African Estates. 8. Financial proposals generally. With offices on both sides of the water in our experienced hands, we have all the facilities for meeting all wants efficiently.



THE story of Bird's Custard is the story of tens of thousands of sturdy children, growing in health and happiness—thriving on this great Bird's Custard Food!

BIRD'S CUSTARD

combines all the advantages for a perfect wheat and corn. It looks so appetizing. It tastes so good. It is made so quickly. Bird's Custard is sold in wet and dry form.



SUPREME IN SPEED AND IN RELIABILITY

- Model G.3, H.P. 4.98. O.H.V. £90 WITH TERRY SADDLES SHOCK ABSORBERS -Etc- Model G.5, H.P. 3.49, £70
- 2.00 H.P. De Luxe Doped. £82.10.0
- 2.50 H.P. Doped. £57.10.0
- 3.00 H.P. Side Valve. £87.10.0
- 3.50 H.P. O.H.V. £77.10.0
- 4.00 H.P. Standard. £70
- 5.00 H.P. De Luxe. £100

Box 205.

CARR, LAWSON & Co. Ltd. NAIROBI.

Phone 103.

Union-Castle Line

Services to England, West Africa and India. Through Services to Australia, New Zealand, West Africa, and India.

PROPOSED SCHEDULE

Leave Cape Town	Arrive London
1. "Admiral" (1st class)	10th Oct.
2. "Admiral" (2nd class)	17th Oct.
3. "Admiral" (3rd class)	24th Oct.
4. "Admiral" (4th class)	31st Oct.
5. "Admiral" (5th class)	7th Nov.
6. "Admiral" (6th class)	14th Nov.
7. "Admiral" (7th class)	21st Nov.
8. "Admiral" (8th class)	28th Nov.
9. "Admiral" (9th class)	5th Dec.
10. "Admiral" (10th class)	12th Dec.

CHARTER TRAVEL

THE UNITED TRAVEL AGENCY

Specialist in all matters relating to the East, South Africa, and India.

THE UNITED TRAVEL AGENCY

Specialist in all matters relating to the East, South Africa, and India.

THE DODGE BROTHERS

THE DODGE BROTHERS

Specialist in all matters relating to the East, South Africa, and India.



Explorers Use This Car Because It is Dependable

Pioneers and explorers, whose lives depend upon the reliability of the transportation they use, employ Dodge Brothers Motor Cars almost exclusively. Stefanson used Dodge Brothers Cars through the uncharted deserts of Central Australia. Dr. Roy Chapman Andrews, and other noted explorers, employed Dodge Brothers Cars through the uncharted wastes of Mongolia in a Dodge Brothers Car.

The car's dependability is proverbial; and its exceptional riding comfort permits long travel over bad roads without fatigue.

Tracing Car 1200
Sales Special 1200
Sales Commercial Car 1200
Sales 1200

Delivered Nairobi
S. FISHER & SIMMONS (S.A.) LTD.
Victoria Street, Nairobi.

DODGE BROTHERS MOTOR CARS

J. PLUM
EXPERT EUROPEAN
TYPEWRITER REPAIRER
(Home Experiences)
Repairs in all makes of machines
underwritten and executed by
European Workmanship
at Moderate Charges.
SATISFACTION GUARANTEED
"AVENUE HOUSE."
P.O. Box 177, 6th Avenue, Nairobi.

MISS KATHLEEN BATES, A.R.C.M.
First lessons in
PIANO, VIOLIN, SCARVOY, TERRYAU and
ARIAL CULTURE
at her Studio, 14th, Victoria Building, South Avenue.
MISS MAIR JONES, I.R.A.S.
Mesa Soprano
is open to receive engagements for Operatic, Art, Harp, etc. and
also to give lessons in voice, Piano, and Violin and Extension of the voice
Postal Address: Box 417.

THE UNION-CASTLE MAIL STEAMSHIP CO., LTD.
MEMBERSHIP

THE COMPANY'S AGENTS
THE BRITISH EAST AFRICA CORPORATION, LTD.

HOLLAND AFRIKA LIJN

JOINT SERVICE
(HOLLAND ZUID AFRIKA LIJN & HOLLAND OOSTAFRIKA LIJN)

Steamers will load at Kilindini on or about the following dates:

HOMEROW via SOEAI:

R.S. "MELIKER" (1st class) Dep. 12th
R.S. "BILLYT" (2nd class) Dep. 19th
R.S. "HELMER" (3rd class) Dep. 26th

HOMEROW via CAPE:

R.S. "MANFRED" (1st class) Dep. 12th
R.S. "SPROUTEN" (2nd class) Dep. 19th

PASSENGER FARES:

To MANDELING (1st class) 100-150
To LONDON (1st class) 150-200
To THE CAPE (LONDON) (1st class) 200-250

TWENTY OVERSEAS TRADING CO. LTD.
HONGKONG, SHANGHAI, KAMPALA
P.O. Box 1124 Telephone: PHOENIX 74119

Sole Agents:
NAIROBI: J. Thabane Ltd. and Estate Agent
PIETERMARITZBURG: Roy Estate.

MOTOR CYCLES

We have the following new Motor Cycles and side cars in stock of various makes under **HIRE PURCHASE ARRANGEMENTS.**

7.9 Harley Davidson	1,900/-
7.9 Harley Davidson with Sidecar	2,700/-
7.9 Raleigh with Sidecar and Electric light	1,800/-
7.9 Raleigh with Sidecar	1,600/-
7.9 Raleigh with Solo and electric light	1,550/-
7.9 Raleigh with Solo	1,450/-
7.9 Raleigh O.H.V. Sports	1,417/-
2.48 Raleigh All chain 3 speed	1,000/-
3.96 Raleigh All chain, 3 speed	1,450/-

Capital Carriage

APPLY FOR

Large Stocks of Best Kig Sharp Clean Building Sand

and

ATHI RIVER LIME.

As used by all Government Departments and

Indian and European Contractors.

Prices very moderate.

Churanji Lal & Co.

Phone 327. White House Road, Box 503. NAIROBI.

Notice of Removal

Arthur A. White, Ltd.

CASH CHEMISTS

have removed their business to larger and more convenient premises in

Boma Buildings

(recently occupied by the MEDICAL SUPPLY CO.)

Note the Address—
Next to STEPHEN ELLIS & Co.
P.O. Box 618. Telephone 194.

THIRD MEETING OF AGENTS

THE UNITED TRAVEL AGENCY

Specialist in all matters relating to the East, South Africa, and India.

THE CLATCH

Specialist in all matters relating to the East, South Africa, and India.

THE CLATCH

Specialist in all matters relating to the East, South Africa, and India.

HEINZ
Celebrated Varieties.

Baked Beans
Cooked Spaghetti
Tomato Soup
Sweet Pickle
Stem Ginger
Ideal Sauce

ELLIOT'S

P.O. Box 178. Phone 60.

All Gold & I. X. L. Jams:

The above Jams are manufactured from the finest South African Fruit together with the purest white sugar and are guaranteed to be second to none on the market.

Manufactured by **J. JONES & CO. (S.A.) LTD.**,
PAARL, Cape Province.

Obtainable from all Grocers.
J. G. AROHONDI, Distributing Agent, Nairobi.

COFFEE MACHINERY
"E" PULPERS
IN STOCK
SCOTT'S
Sole Agents in Kenya for Wm. McKinnon & Co. Ltd.
Office, National Bldg. Government Road. Box 449, Tel. "Pulpers."

HEINZ
Celebrated Varieties.

Fire Arms
Quality!!! Variety. Price.

Nearly 1000 Weapons by the best known makers of the world to select from, such as Mauser, Manlicher, Schoenauer, B.S.A. Holland & Holland, Rigby, Westley Richards, etc. in all forms

Largest Stock in East Africa at lowest possible prices.
Write for our illustrated Catalogue.

Gun repairs of every description by our European Gunsmith.

CHAS. A. HEYER & Co.
P.O.B. 587.

Gunmakers Established 1903

Telegrams: "Elephant" NAIROBI.

INSIST ON HAVING VOONIA GARDEN TEA
That delicious blend from CEYLON
which is both fragrant and invigorating
Used by Hotels and Tea Rooms Throughout Kenya & Uganda

Even the most fastidious will tell you it is by far the best.

Sole Agents
Blacklaws & Brown
LATE RACHESTER BROTHERS, NAIROBI.
Tel. No. 21. Box No. 66.

OVERSEAS MAILS.

ARRIVALS.

STEAMER	FROM	Day of Month	Make arrival Nairobi.
Crown Hall	Europe	Sept 2	Sept. 2
Melton	Europe	6	6
Guy. Victoria	Europe	6	6
Tulliver	Europe	12	12
Kenya	Europe	19	19
Guilford Castle	Europe	26	26
SF Worcester	Europe	26	26
Kamukaha	Europe	26	26
Kenya	Europe	26	26
Crown Hall	Europe	26	26

DEPARTURES.

STEAMER	FOR	Day of Month	Date of departure from Nairobi.
A. R. Gordon	Marseilles	Sept 2	Sept. 2
Tulliver	London	7	7
Kenya	London	14	14
Guilford Castle	Europe	17	17
Uronomo	Europe	17	17
Ad. Westerman	South	17	17
Et. Greenhalgh	Europe	17	17
A. Perry	Marseilles	17	17
Kamukaha	South	23	23
Kenya	South	23	23

UPLANDS BACON

EVERY SIDE IS BRANDIED THIS AND CONSUMERS ARE URGED TO SEE THE BRAND

UPLANDS

NOW ON SALE AT ALL THE LEADING STORES
Insist Upon Getting "UPLANDS"

The Overland "Whippet"

THE NEW OVERLAND WITH CONVENTIONAL TYPE SPRINGERS FOUR WHEEL BRAKES.

LOW FUELS CONSUMPTION

THIS CAR EMBODIES THE LATEST BRITISH AND EUROPEAN IDEAS

£250

104hp. ENGINE DEVELOPS 20-25hp 3 BALLOON TYRES AND TUBES.

CALL FOR A DEMONSTRATION RUN.

Moulton & Morrison Ltd.,

NAIROBI P.O. Box 484

Telegram: "Overland"

CHRYSLER FORD OWNERS

ARE INCREASING AT THE RATE OF 10,000 A MONTH

Let us demonstrate the reason to you.

Distributors
YORK GARAGES, LTD.,
NAIROBI.

TWO INDISPENSABLE UNITS FOR ECONOMIC EFFICIENT TRANSPORT

THE FORD CAR
1926 Colored Model
£191
Delivered Nairobi.

THE FORD TRUCK
Ford One-Ton Truck Chassis
£322
STANDARD EQUIPMENT INCLUDES DUAL IGNITION - PLANETARY TRANSMISSION - CRANK STARTER.

The Service Company Limited
NAIROBI NAKURU

Are Your Eyes "Tired"??
Do they look any differently since? If not - search.

A. H. WARDLE & Co. Ltd.
(V. M. Brown, F.R.S.C., F.I.C. (Eng.) Mem. Soc.)
All consultation and eye-glass fitting FREE.

SCOTLANDS BEST WHISKY

The increasing demand for
Queen Anne Whisky
is evidence of its popularity.

It is now acknowledged that
QUEEN ANNE
possides
The Perfect Pag

Ask for it when next ordering
H. F. WARD & Co.
Stockists & Distributors: NAIROBI HOUSE.

Time stands still for a
"Kodak"

HAPPY times like the minutes of the hour fast. There is no need to let your happiness fade completely. There is a way of saving it. That way is the "Kodak" way. Do yourself a good turn. Call round today and choose a "Kodak". We will show you how to make good pictures from the start.

A. H. WARDLE & Co. Ltd.,
Photographic Chemists.
P.O. Box 108. NAIROBI. Phone 96.

THE FORD CAR
1926 Colored Model
£191

COMPLETE WITH 3 BALLOON TYRES
Fitted with black or Spanish Grey leather. Artillery wheel, demountable rims. Dual ignition. Electric starter Planetary Transmission.

MOBASASA NAIROBI

Lubricating Oils

A complete range of oils for all purposes at the lowest prices.

STEAM CYLINDER OILS.
MOTOR CYLINDER OILS.
GAS ENGINE OILS.
ENGINE OILS FOR BEARINGS of all kinds.
AXLE OILS.

The British Imperial Oil Co. (S.A.) Ltd.
Agents: **SMITH, MACKENZIE & Co.**

Ask your Storekeeper for

WIGGINS' WHITE DRESSING
Ideal for Trench Shoes, Sun Helmets, etc.

AFRICAN SOAP STANDARD
Manufactured in Kenya and Uganda
PATEL'S DEPOT, N. 100.

Victoria Falls.

The second Conference of representatives of the non-official communities in Eastern Africa, comprising White, Indian, Arab, Zulu and the "Nika", will be opened at Livingstone today and thereafter the discussion will be completed at Victoria Falls in Southern Rhodesia... (text continues)

Grant's

Best Procurable WHISKY de LUXE.

"None but itself can be its parallel"

Sole Agents:
EMILE JARDIN & Co.
Central Buildings, NAIROBI.
We sell by BOTTLE and by CASE.

DOUGLAS

THE NEW "E.W." MODEL

£67-10-00

COMPLETE WITH LAMP AND HORN

SOLE IMPORTERS
Garr, Lawson and Co. Ltd.
NAIROBI.
Box 303. Phone 103

Under the Standard Clock

The K.A.R. Band
The K.A.R. Band having gone to Mombasa, there will be no band performance in the City Park on Sunday.

Priest for Monkshair
The new priest for Monkshair, Rev. Fr. C. C. Gable, probably the first to be appointed to the post.

Reformatory Failure
A young native who had just completed his term in the Reformatory, was charged before the court of an attack on the Government.

September 4:
Highly Union dance, Nanyuki Hotel.
Opening of Puckham's City Tavern.
Bicycle races, Nanyuki Hotel.
September 5, 6 and 7:
Performance of "The Merry Widow", Grand Theatre.
September 8 to 11:
Performance of "The Merry Widow", Grand Theatre.
September 12:
Grand concert for Nairobi, same evening.
September 13:
Lodge Social, Lodge.
October 7 and 8:
Performance of "The Merry Widow", Grand Theatre.
October 9 and 10:
Opera House.

...the public will be asked to contribute to the relief of the famine in the East. The British Government has announced that it will contribute £100,000 towards the relief of the famine in the East. The British Government has announced that it will contribute £100,000 towards the relief of the famine in the East. The British Government has announced that it will contribute £100,000 towards the relief of the famine in the East.

...the public will be asked to contribute to the relief of the famine in the East. The British Government has announced that it will contribute £100,000 towards the relief of the famine in the East. The British Government has announced that it will contribute £100,000 towards the relief of the famine in the East.

...the public will be asked to contribute to the relief of the famine in the East. The British Government has announced that it will contribute £100,000 towards the relief of the famine in the East. The British Government has announced that it will contribute £100,000 towards the relief of the famine in the East.

LOCAL GOVERNMENT

COMMISSIONERS

How to Govern the Municipal Council

The Local Government Commission has issued a report on the manner in which the Municipal Council should be governed. The report is a valuable contribution to the literature on local government and is well worth a study by all those who are interested in the subject.

THE LOCAL GOVERNMENT COMMISSION'S REPORT

The Commission has found that the Municipal Council is the most important body in the local government system. It is the body which makes the decisions which affect the lives of the people in the area. It is therefore essential that it should be governed in the most efficient manner possible.

THE COMMISSION'S RECOMMENDATIONS

The Commission has made a number of recommendations which are designed to improve the manner in which the Municipal Council is governed. These recommendations are set out in the report and are of great importance.

THE COMMISSION'S CONCLUSIONS

The Commission has concluded that the Municipal Council is the most important body in the local government system. It is the body which makes the decisions which affect the lives of the people in the area. It is therefore essential that it should be governed in the most efficient manner possible.

THE COMMISSION'S RECOMMENDATIONS

The Commission has made a number of recommendations which are designed to improve the manner in which the Municipal Council is governed. These recommendations are set out in the report and are of great importance.

THE COMMISSION'S CONCLUSIONS

The Commission has concluded that the Municipal Council is the most important body in the local government system. It is the body which makes the decisions which affect the lives of the people in the area. It is therefore essential that it should be governed in the most efficient manner possible.

THE COMMISSION'S RECOMMENDATIONS

The Commission has made a number of recommendations which are designed to improve the manner in which the Municipal Council is governed. These recommendations are set out in the report and are of great importance.

THE COMMISSION'S CONCLUSIONS

The Commission has concluded that the Municipal Council is the most important body in the local government system. It is the body which makes the decisions which affect the lives of the people in the area. It is therefore essential that it should be governed in the most efficient manner possible.

THE COMMISSION'S RECOMMENDATIONS

The Commission has made a number of recommendations which are designed to improve the manner in which the Municipal Council is governed. These recommendations are set out in the report and are of great importance.

LOCAL GOVERNMENT

COMMISSIONERS

How to Govern the Municipal Council

The Local Government Commission has issued a report on the manner in which the Municipal Council should be governed. The report is a valuable contribution to the literature on local government and is well worth a study by all those who are interested in the subject.

THE LOCAL GOVERNMENT COMMISSION'S REPORT

The Commission has found that the Municipal Council is the most important body in the local government system. It is the body which makes the decisions which affect the lives of the people in the area. It is therefore essential that it should be governed in the most efficient manner possible.

THE COMMISSION'S RECOMMENDATIONS

The Commission has made a number of recommendations which are designed to improve the manner in which the Municipal Council is governed. These recommendations are set out in the report and are of great importance.

THE COMMISSION'S CONCLUSIONS

The Commission has concluded that the Municipal Council is the most important body in the local government system. It is the body which makes the decisions which affect the lives of the people in the area. It is therefore essential that it should be governed in the most efficient manner possible.

THE COMMISSION'S RECOMMENDATIONS

The Commission has made a number of recommendations which are designed to improve the manner in which the Municipal Council is governed. These recommendations are set out in the report and are of great importance.

THE COMMISSION'S CONCLUSIONS

The Commission has concluded that the Municipal Council is the most important body in the local government system. It is the body which makes the decisions which affect the lives of the people in the area. It is therefore essential that it should be governed in the most efficient manner possible.

THE COMMISSION'S RECOMMENDATIONS

The Commission has made a number of recommendations which are designed to improve the manner in which the Municipal Council is governed. These recommendations are set out in the report and are of great importance.

THE COMMISSION'S CONCLUSIONS

The Commission has concluded that the Municipal Council is the most important body in the local government system. It is the body which makes the decisions which affect the lives of the people in the area. It is therefore essential that it should be governed in the most efficient manner possible.

THE COMMISSION'S RECOMMENDATIONS

The Commission has made a number of recommendations which are designed to improve the manner in which the Municipal Council is governed. These recommendations are set out in the report and are of great importance.

LOCAL GOVERNMENT

COMMISSIONERS

How to Govern the Municipal Council

The Local Government Commission has issued a report on the manner in which the Municipal Council should be governed. The report is a valuable contribution to the literature on local government and is well worth a study by all those who are interested in the subject.

THE LOCAL GOVERNMENT COMMISSION'S REPORT

The Commission has found that the Municipal Council is the most important body in the local government system. It is the body which makes the decisions which affect the lives of the people in the area. It is therefore essential that it should be governed in the most efficient manner possible.

THE COMMISSION'S RECOMMENDATIONS

The Commission has made a number of recommendations which are designed to improve the manner in which the Municipal Council is governed. These recommendations are set out in the report and are of great importance.

THE COMMISSION'S CONCLUSIONS

The Commission has concluded that the Municipal Council is the most important body in the local government system. It is the body which makes the decisions which affect the lives of the people in the area. It is therefore essential that it should be governed in the most efficient manner possible.

THE COMMISSION'S RECOMMENDATIONS

The Commission has made a number of recommendations which are designed to improve the manner in which the Municipal Council is governed. These recommendations are set out in the report and are of great importance.

THE COMMISSION'S CONCLUSIONS

The Commission has concluded that the Municipal Council is the most important body in the local government system. It is the body which makes the decisions which affect the lives of the people in the area. It is therefore essential that it should be governed in the most efficient manner possible.

THE COMMISSION'S RECOMMENDATIONS

The Commission has made a number of recommendations which are designed to improve the manner in which the Municipal Council is governed. These recommendations are set out in the report and are of great importance.

THE COMMISSION'S CONCLUSIONS

The Commission has concluded that the Municipal Council is the most important body in the local government system. It is the body which makes the decisions which affect the lives of the people in the area. It is therefore essential that it should be governed in the most efficient manner possible.

THE COMMISSION'S RECOMMENDATIONS

The Commission has made a number of recommendations which are designed to improve the manner in which the Municipal Council is governed. These recommendations are set out in the report and are of great importance.

LOCAL GOVERNMENT

COMMISSIONERS

How to Govern the Municipal Council

The Local Government Commission has issued a report on the manner in which the Municipal Council should be governed. The report is a valuable contribution to the literature on local government and is well worth a study by all those who are interested in the subject.

THE LOCAL GOVERNMENT COMMISSION'S REPORT

The Commission has found that the Municipal Council is the most important body in the local government system. It is the body which makes the decisions which affect the lives of the people in the area. It is therefore essential that it should be governed in the most efficient manner possible.

THE COMMISSION'S RECOMMENDATIONS

The Commission has made a number of recommendations which are designed to improve the manner in which the Municipal Council is governed. These recommendations are set out in the report and are of great importance.

THE COMMISSION'S CONCLUSIONS

The Commission has concluded that the Municipal Council is the most important body in the local government system. It is the body which makes the decisions which affect the lives of the people in the area. It is therefore essential that it should be governed in the most efficient manner possible.

THE COMMISSION'S RECOMMENDATIONS

The Commission has made a number of recommendations which are designed to improve the manner in which the Municipal Council is governed. These recommendations are set out in the report and are of great importance.

THE COMMISSION'S CONCLUSIONS

The Commission has concluded that the Municipal Council is the most important body in the local government system. It is the body which makes the decisions which affect the lives of the people in the area. It is therefore essential that it should be governed in the most efficient manner possible.

THE COMMISSION'S RECOMMENDATIONS

The Commission has made a number of recommendations which are designed to improve the manner in which the Municipal Council is governed. These recommendations are set out in the report and are of great importance.

THE COMMISSION'S CONCLUSIONS

The Commission has concluded that the Municipal Council is the most important body in the local government system. It is the body which makes the decisions which affect the lives of the people in the area. It is therefore essential that it should be governed in the most efficient manner possible.

THE COMMISSION'S RECOMMENDATIONS

The Commission has made a number of recommendations which are designed to improve the manner in which the Municipal Council is governed. These recommendations are set out in the report and are of great importance.

LYRIC HALL
BIO-DANCE
T-O-N-I-G-H-T
GREAT BEYOND
BERT LYTELL
INTERVAL FOR DANCING
Comedy & Topical Budget

Rugby Club Week
FAMOUS LONDON EXPORT
Rugby Club
35/-
Edles Footwear Ltd.
P.O. Box 149.
NAIROBI

THEATRE ROYAL Nightly
8.30.
T-O-N-I-G-H-T & SATURDAY
THE WORLD'S MOST BEAUTIFUL CINEMA ARTISTE
JUSTINE JOHNSTONE
IN A TENSELY GRIPPING STORY
OF THE UNDERWORLD OF A GREAT CITY
Sheltered Daughters
THIS WILL HOLD YOU SPELLBOUND
IN ITS TRUTH TO NATURE

SALE
TODAY
The Sale You Have
Wanted For
OUR ENTIRE STOCKS AT WONDERFULLY
REDUCED PRICES
AUGUST 30th to SEPTEMBER 11th.
Waring's Africa House
Government Road
Nairobi.

Stocks and Shares

NEW COMPANY FORMED IN NAIROBI

An important addition has been made to local companies, an addition which is of the utmost importance to the business community of Nairobi. The Kenya Stock and Share Company (Limited) has been formed in Nairobi. The company is a public company and is registered in Kenya and is a member of the Public Company Registrar in Kenya and a member of the Public Company Registrar in Kenya.

WIRE WOOD REMOVED

The removal of the wire wood from the premises of the Kenya Stock and Share Company (Limited) has been completed. The wire wood has been removed from the premises of the company and the premises are now available for use by the company. The removal of the wire wood has been completed and the premises are now available for use by the company.

35/-
35/-
35/-

Geo. BLOWERS

BRICKS, CONCRETE, MANUFACTURES AND BUILDINGS

MOMBASA CORAL LIME

Plastering, Whitewashing, and Agricultural Purposes. The Maximum of Production with the Minimum of Pretension.

NO RESIDUE. MORE DURABLE.

Easy of application, Cheaper, Better and Dependable. THE CHEAPEST LIME IN THE COUNTRY.

MOTOR CAR WINDSCREEN GLASSES.

POLISHED EDGE. CUT TO ANY PATTERN. OUR SIGN WRITING AND DECORATING DEPARTMENT IS AT YOUR DISPOSAL.

ALL CLASSES OF WORK UNDERTAKEN.

ESTABLISHED 1882. Customers will be glad that our responsibility towards all goods made from this moment the goods leave our works and so assurance can be made for any claim afterwards. Cash with Order.

LIFE POLICIES. We can show you the most favourable endowment policy offered in this country. Big bonuses—unfavourable policy. NATIONAL MUTUAL LIFE ASSOCIATION OF AUSTRALASIA LTD.

P. STEWART. CARPENTER & DECORATOR. BUILDING CONTRACTOR. Sign Painting, Framing, Kitchens, Paving, etc.

RALEIGH. The cheapest and most ECONOMICAL PLOUGHING TRACTOR in the Country. No complicated and trouble some wearing parts, such as valves, Carburetors, magnets and sparking plugs.

Another Good Thing AND Maxwell, Brady & Co. CAN SELL YOU ONE The "ALLEGRO" HOME & SHOPPING MACHINE.

Goltman's Cash Boot Stores. SALE of Superior Footwear Oddsends For 10 DAYS from Saturday Aug 28th until Monday Sept. 6th.

REVEL RECORDS OF WATER DRINKING. It is interesting to find that water drinking is not a universal habit.

THE TELL-TALE EAR. When a person is out of sorts a familiar sign of proving it is by looking at his ear.

RELIABLE. FUEL MERCHANTS. Large stocks always on hand ready for immediate delivery.

AGENTS FOR THE EAST AFRICA

AGENTS IN NEW YORK AND THROUGHOUT U.S.A.: Empire, Canada, South Africa, and Australasia.

Your Day's Bread

We supply the best at a minimum cost. We undertake to deliver it at your place.

Reliance Transport Co. THE LARGEST MOTOR TRANSPORT CO. IN THIS COLONY.

"JOHN" Special Reserve SCOTCH WHISKY. Wholesale Distributors: D. HESTER & CO., NAIROBI.

Express Transport Co. Cartage Contractors to Uganda Railway Government Road, Nairobi. P.O. Box 422. Phone: 233 and 234.

Reliance Transport Co. THE LARGEST MOTOR TRANSPORT CO. IN THIS COLONY.

FUEL MERCHANTS. Large stocks always on hand ready for immediate delivery.

38 B.H.P. Crude Oil "LANZ" Ploughing Tractor. The cheapest and most ECONOMICAL PLOUGHING TRACTOR in the Country. No complicated and trouble some wearing parts, such as valves, Carburetors, magnets and sparking plugs.

THE SALISBURY HOTEL. FAMILY & RESIDENTIAL. FIRST CLASS ACCOMMODATION AND CUISINE.

AFRIKAN GARANTEED & ROBUSTY Co., Ltd. M. D. KAMFF, CHIEF AGENT.

Just Received "JONES PATENT" STEEL TRUNKS & UNIFORM CASES, CANVAS COVERED CARBON TRUNKS, LEATHER SUIT CASES & ATTACHE CASES.



BRITISH PORTLAND CEMENT.

"J. B. WHITE & SONS" BRAND.
Guaranteed to meet all the requirements of the British Standard Specification.

This brand of Portland Cement was the first to be exported and has always enjoyed a premier position in all markets for its

**GREAT STRENGTH
EXTREME FINENESS
UNIFORM STRENGTH
AND SOUNDNESS.**

STOCKS CARRIED BY

Smith, Mackenzie & Co.,
NAIROBI.

HAIRDRESSER in Kenya

Theo. Schouten

Phone 946. Boma Building. Box 384. Government Road.

Be permanently waved by the only Expert in Kenya. Trained at, and by, Eugene, the famous inventor of the permanent wave B. M. Machines used. "Galifa Bonolis" and "Eugene's." All the latest appliances used.

OAKLEIGH PRIVATE HOTEL.

Comfortable and up-to-date in every way. Up country visitors specially catered for. Under the personal supervision of

MR. H. JARRETT,
Phone 180. NAIROBI. P. O. Box 183.

THE CHAIRMAN OF THE FREE STATE RAILWAYS.

THE PRIVATE BILL STOPS.
The House passed on Tuesday evening a motion of Mr. Deane regarding the Private Bill which would amend the Statute in relation to the Free State Railways. The Bill was introduced by Mr. Deane and was supported by Mr. Deane and Mr. Deane. The Bill was supported by Mr. Deane and Mr. Deane. The Bill was supported by Mr. Deane and Mr. Deane.

A PETROL PUMP.
Messrs Smith Mackenzie and Co., are shortly to install a petrol pump of the "Shell" variety at the end of the old Tika road, where the road turns down the hill towards the Blue Pines. No motorist will be able to complain that they lack conveniently.

SURENESS ABATING.
The waves of violence which have been so often a feature in our State since the late rains, seem to be abating, and those who have been so often a feature in our State since the late rains, seem to be abating, and those who have been so often a feature in our State since the late rains, seem to be abating.

CLARENCE COOKING.
Mr. Clarence Cook, who was recently in the East Coast, has been invited to give a lecture on the subject of "Clarence Cooking" at the N. E. Hall, N. E. Hall, N. E. Hall, N. E. Hall.

Miss's Mission Pre-1.

January, 1928. It was proposed, in the course of a meeting, that a mission should be organized in the East Coast. The mission was organized in the East Coast. The mission was organized in the East Coast.

MISS'S MISSION PRE-1.
The mission was organized in the East Coast. The mission was organized in the East Coast. The mission was organized in the East Coast.

MISS'S MISSION PRE-1.
The mission was organized in the East Coast. The mission was organized in the East Coast. The mission was organized in the East Coast.

MISS'S MISSION PRE-1.
The mission was organized in the East Coast. The mission was organized in the East Coast. The mission was organized in the East Coast.

We have the Courage of our convictions

We know that once you try **Gilbe Shaving Cream** or **Cold Cream Shaving Stick**, you will realize your shaving habits. You will have that soft, creamy, water-white lather that softens every hair.



Gilbe SHAVING CREAM
The Cream of Cream

BRITISH MADE

SAY "GIBBS" and you are bound to be right

Received all kinds of best
Crope de Chine & Steadings.

B. CHOITRAM,
Government Road, NAIROBI.

KENYA JAZZ BAND.
Bill Gilling Shows OPEN FOR ENGAGEMENTS All engagements - **MAX LAZARUS** Box 187, Nairobi.

TYPENITING.
All Classes of Typewriting undertaken at **MIDDEBART BAYES,** Jersey Confidential.

J. WILCOX,
City House, NAIROBI.

It is Yours for Sh. 25,000

A newly built **STONE HOUSE** On Hill with all conveniences and Outhouses P. O. 358. Apply to **LEADER BUILDINGS, CAMPOS BROS.**

HIPMOBILE SIX



PRICES:

Standard Chassis - £375
" Box Body - £409
" Touring Car - £435
" Magneto Ignition extra £10.

THIS New Hippomobile Six Tourer is adaptable in all occasions and to all models. You can spring on a meditative three miles per hour to the exhilaration of stacy. You can sweep on and on smoothly, swiftly, without strain to the driver or to the car—for smoothness, speed, and dependability are inherent qualities of the New Hippomobile Six.

- BRIEF SPECIFICATION:**
1. H.P. 23/6
 2. Oil Filter
 3. Air Cleaner
 4. Petrol Filter
 5. Thermostat Water Regulator
 6. 4 Wheel Brakes
 7. Rear Vision Mirror
 8. Automatic Screen Wiper.

Hippomobile

SIX CYCLINDERS

The Motor Mart & Exchange, Ltd.

NAIROBI

NAKURU

The Remington Typewriter

"QUIET NO. 12"

Universally recognized as the most efficient typewriter on the market with 12 models



All Spares and European Machines, THE REMINGTON TYPEWRITER AGENCY, P.O. Box 67, NAIROBI.

SALE

Special Clearance Sales To make Room for Xmas Goods arriving shortly. Genuine Bargains offered in all lines. Be sure and visit us for Real Bargains. **JOANES & Bros.,** Govt. Road.

The Perfect Car Enamel

Available in a rich gloss finish that does with a glass-like surface. It is so easy to use that anybody you can repaint your own vehicle and make it look like new. Enamel sets cheaply and fast. **SMITH, MAURINER & CO.,** BOX 99, NAIROBI. **ROBBIALAC**

"STANDARD" FEATURE PAGE

WHEN YOU GO TO LONDON

No. 5.

WHERE JUSTICE IS DONE

(By FRANK E. FRANKS)

The famous site of buildings in the Strand houses the Law Courts; the Old Bailey, on the Strand; Criminal Court is in the Strand; Bow Street and other police courts, great an edifying spectacle for the visitor who can be found in the process of Justice.

A visitor proceeding Eastward on the Strand from Charing Cross cannot fail to be struck with the high pile of buildings in the Strand, which are the seat of the law. The Law Courts is the most important of these buildings, the seat of the law.

STATUTE JUSTICE

Statute Justice is a term used in England to describe a judge who sits in a court of law and hears cases.

great sense of importance to be given to Westminster Hall was the Tribunal which justice to the present the holder of the seat, as alleged by the "Champion" to be by law.

The Court of Chancery, which with other courts, is a court of equity, and the various departments which are between the courts and other people.

The Lord Chief Justice of England has a Court of his own, and is the most important of all the judges in the country.

DRAMA OF THE LAW

The centre of attraction in great London is the Law Courts, which are the seat of justice. The buildings are of the highest quality and are a credit to the city.

THE COMMON SENSE OF THE LAW

The present building is a fine example of the art of the architect, and is a credit to the city. It is a fine example of the art of the architect, and is a credit to the city.

Of all police courts, and London, has nearly one hundred in the Metropolitan area, Bow Street is really the best known. Indeed it has a world-wide fame.

It is the chief police court of the country and its name is Magistrate's Court. There are three attached to Bow Street.

DRAMA OF THE LAW

The centre of attraction in great London is the Law Courts, which are the seat of justice. The buildings are of the highest quality and are a credit to the city.

THE COMMON SENSE OF THE LAW

The present building is a fine example of the art of the architect, and is a credit to the city. It is a fine example of the art of the architect, and is a credit to the city.

Of all police courts, and London, has nearly one hundred in the Metropolitan area, Bow Street is really the best known. Indeed it has a world-wide fame.

It is the chief police court of the country and its name is Magistrate's Court. There are three attached to Bow Street.

DRAMA OF THE LAW

The centre of attraction in great London is the Law Courts, which are the seat of justice. The buildings are of the highest quality and are a credit to the city.

THE COMMON SENSE OF THE LAW

The present building is a fine example of the art of the architect, and is a credit to the city. It is a fine example of the art of the architect, and is a credit to the city.

Of all police courts, and London, has nearly one hundred in the Metropolitan area, Bow Street is really the best known. Indeed it has a world-wide fame.

It is the chief police court of the country and its name is Magistrate's Court. There are three attached to Bow Street.

DRAMA OF THE LAW

The centre of attraction in great London is the Law Courts, which are the seat of justice. The buildings are of the highest quality and are a credit to the city.

South African Railways and Harbours

During the slack time Take a holiday in Sunny South Africa and Return Refreshed in Mind and Body

Travel in South Africa is inexpensive and facilities are of high standard.

For particulars apply to: TRADE COMMISSIONER FOR THE UNION OF SOUTH AFRICA, NAIROBI, P. O. Box 624, Memorial Hall.

Madame Leon.

Arrived last night new and exclusive Gowns from Paris.

First Floor, AFRICA HOUSE, Above Watling, GOVERNMENT HOUSE.

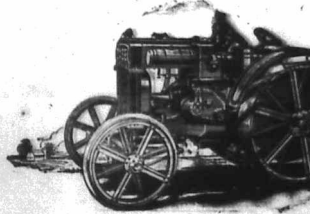
KENYA HOUSE

Highly recommended residential hotel. BROWNED FOR CATERING, COMFORT AND SERVICE UNDER PERSONAL SUPERVISION AND CONTROL OF THE PROPRIETRESS. Terms Moderate.

Studebaker. Brockway. Case.

CASE TRACTOR

Has These Advantages:



Moderate Cost. Nothing to be added. All models are equipped as standard with belt pulley, fenders, governor, magnet ignition, air-cleaner, and radiator temperature control.

Advanced Design. Apart from completeness of equipment Case Tractors are economical by reason of the valve in head motor from which the power is transmitted with a minimum of frictional loss through spur gears running in oil.

Reserve Power over its rating prevents overtaxing the engine on recommended loads, and assures steadiness of operation at drawbar and belt.

Usefulness. Proper weight distribution, wide tires, effective spare lugs, proper location of belt pulley, width of tractor, unusual flexibility, and ample reserve power are big factors in its almost countless uses.

I2/20 £290

18/32 £395

25/45 £700

Sole Importers **K. McIVOR & Co.** Sixth Avenue, NAIROBI.

Telegrams: "Afford".

P. O. Box 97. Phone 97.

THE SPORTS PAGE

Charles Ware

Book Open on St. Lager... Fred Raper... General Commission Agent...

FRED RAPER

GENERAL COMMISSION AGENT... P.O. Box 411, CITY HOUSE, Phone 144.

New Military Tarpsails 4 x 12 and 10 x 12... SADDLE-CAMP FURNITURE-SEPARATORS

THE ARMOURER WITH A HEAVY GRANGE WILL STOP A CRABBE.



Book Agents for the Western Courier Co. SHAW & HUGHES, NAIROBI.

THEATRE ROYAL

Nightly 6 1/2 to 11 1/2 Sept. at 8:45

THE YODMEN OF THE GUARD

Cast of 50 Artists Orchestra of 18 Players.

Produced by A. HINDS... PRICES OF ADMISSION: Boxes 2/6 & 3/6... SATURDAY: Boxes 1/6 & 1/3...

Cheap Tennis Rackets.

Table listing various tennis rackets with prices and specifications, including brands like Slazenger's and Doherty.

MAY & Co. THE SPORTS HOUSE

J. R. Stephens & Co. Ltd. THE TAILORS AND OUTFITTERS

Government Road, NAIROBI. Phone 271.

COUNTY CHERRY

Match against... The Australian... Why Americans Win the Championship...

Tennis at Nairobi

THE SPORTS CLUB WINS THE HERRING CUP.

THE NEW ZEALAND CRICKETERS

THE NEW ZEALAND CRICKET TEAM'S COMPLAINTS OF THE H.A.C.C.

BOOTS OF THREE PUTTING

The team played a match which... The result was a draw.

HOME RACING

ACCEPTANCES FOR PRINCE A HERALD RACE

MISS WHITEHEAD

The young player... The result was a win.

Rifle Shooting

FRANCE FOR NAIROBI CLUB MEMBERS

THE TAILORS AND OUTFITTERS

Government Road, NAIROBI.

THE YODMEN OF THE GUARD

Cast of 50 Artists Orchestra of 18 Players.

Cheap Tennis Rackets.

Table listing various tennis rackets with prices and specifications.

MAY & Co. THE SPORTS HOUSE

J. R. Stephens & Co. Ltd.

Government Road, NAIROBI. Phone 271.

THE AUSTRALIAN

Match against... Why Americans Win the Championship...

Tennis at Nairobi

THE SPORTS CLUB WINS THE HERRING CUP.

THE NEW ZEALAND CRICKETERS

THE NEW ZEALAND CRICKET TEAM'S COMPLAINTS OF THE H.A.C.C.

BOOTS OF THREE PUTTING

The team played a match which... The result was a draw.

HOME RACING

ACCEPTANCES FOR PRINCE A HERALD RACE

MISS WHITEHEAD

The young player... The result was a win.

Rifle Shooting

FRANCE FOR NAIROBI CLUB MEMBERS

THE TAILORS AND OUTFITTERS

Government Road, NAIROBI.

THE YODMEN OF THE GUARD

Cast of 50 Artists Orchestra of 18 Players.

Cheap Tennis Rackets.

Table listing various tennis rackets with prices and specifications.

MAY & Co. THE SPORTS HOUSE

J. R. Stephens & Co. Ltd.

Government Road, NAIROBI. Phone 271.

Revised Prices

FOR Groceries & Provisions

We invite every housekeeper to send for a copy... We will send you a copy of our revised list...

Save Time & Money

BY OUR FREE DELIVERY

It takes less time to make up one order for your weekly supplies than to make one by daily orders.

HERE ARE A FEW PRICES FOR YOUR COMPARISON:

Table listing various grocery items and their prices, including flour, sugar, and various oils.

DUTY

"Why do you always tell me to go to the States?"

"Duty is the sublime word for the most common sense."

Let yourself, sir, be a smoker of Kenia's himself.

Let yourself, sir, be a smoker of Kenia's himself.

Let yourself, sir, be a smoker of Kenia's himself.

Let yourself, sir, be a smoker of Kenia's himself.

OUR LATEST LIST OF WINES & SPIRITS IS ALSO READY

Kenia's STANFORD SIZE VIRGINIA

ALL STORES in Kenya at Sh. 2/6 per lb. of 10.

Phone: Nairobi P.O. Box No. 126 Nairobi P.O. Box No. 255

Wholesale Distributors.

Kenya Stout

IS THE BEST FLAVOURED
AND MOST NOURISHING
STOUT OBTAINABLE IN
THE COUNTRY.
NOT TREATED WITH ANY
DANGEROUS PRESERVA-
TIVE. WHOLESOME AND
APPETISING HEALTH-
GIVING AND INVIGORAT-
ING. RECOMMENDED BY
DOCTORS.

PREPARED AT THE BREWERY
No. 3809
SERVICE AS A BEVERAGE.

GUARANTEED THE LARGEST CIRCULATION OF ANY NEWSPAPER
IN KENYA, UGANDA, TANGANYIKA AND ZANZIBAR.

THE EAST AFRICAN

PAGES.

WOMEN'S TIMES & UGANDA ARGUS.

THE ONLY ESTABLISHED NEWSPAPER PUBLISHED IN KENYA AND UGANDA.

TANGANYIKA, MONDAY, SEPTEMBER 6, 1955.

WITH SPECIALS IN TANGANYIKA
THE LEADER.

LOUNGE

COCKTAILS
AND
TEAS
DINING ROOM
AND
BREAKFAST
LUNcheon, and
DINING.

THE NEW STYLE SHIRT

P. O. BOX 9075.

CONFERENCE REPORTS

SAVING EIGHT DAYS TO INDIA.

Imperial Airways: Cairo-Harar: Route.

STARTING IN JANUARY.

Dr Whelan:
Good progress is being made in the negotiations for the acquisition of the fortnightly air service which will be operated by Imperial Airways between Harar and Nairobi in the interest of the Government.

Mr. Whelan:
The proposed service will be a most important one as it will reduce the time taken to travel between Harar and Nairobi to one hour and ten minutes. It will also reduce the cost of transport to one-third of the present cost.

Mr. Whelan:
The proposed service will be a most important one as it will reduce the time taken to travel between Harar and Nairobi to one hour and ten minutes. It will also reduce the cost of transport to one-third of the present cost.

ILLNESS OF H.E. THE GOVERNOR.

Ordered a Rest Cure at Mombasa.

LADY OROGO'S HEALTH.

Dr Whelan:
The Governor's illness is reported to be serious. He is at present resting at Mombasa.

Lady Orogogo:
Lady Orogogo is reported to be recovering from her illness.

MINERS' LEADERS ASK FOR ANOTHER CONFERENCE.

Peace Pourparlers.

"PREPARED TO NEGOTIATE A NEW NATIONAL WAGE SETTLEMENT."

Owners' Unhelpful Attitude.

LONDON, Sept. 5.

Following the receipt of a letter from the Executive of the Miners' Federation the Government has requested the Mine Owners Association to resume negotiations.

The letter which is addressed to the Chairman of the Executive and signed by Mr. A. J. Cook states that the Miners' Executive and the Delegates Conference request the Association to convene and attend a conference between the Mining Association and the Miners' Federation. The letter also requests the Association to accept a national settlement with a view to reducing labour costs to meet the immediate necessities of the industry—Rusher.

THE "Magic Portal" to Self-Government.

LORD DELAMARE OPENS THE POSITION OF A CROWN COLONY GOVERNOR.

The Second Conference of representatives of the United Kingdom in Eastern Africa was opened at Livingston on 2nd instant.

The opening speech was delivered by the Governor of Northern Rhodesia, Lord Delamere.

In his reply Lord Delamere outlined his conception of the constitutional development of a Crown Colony Governor.

THE TRADE UNION CONGRESS.

ADAMS OPENS REFERENCE TO RUSSIAN.

THE FAITH OF THE NATION.

THE GOVERNOR'S POSITION.

THE TRADE UNION CONGRESS:
The Congress opened with a session on the Russian situation.

ADAMS OPENS REFERENCE TO RUSSIAN:
Mr. Adams made a reference to the Russian situation.

THE FAITH OF THE NATION:
A speech was made on the faith of the nation.

THE GOVERNOR'S POSITION:
The Governor's position was discussed.

THE NEW PACT.

MINERS' LEADERS ASK FOR ANOTHER CONFERENCE.

Peace Pourparlers.

"PREPARED TO NEGOTIATE A NEW NATIONAL WAGE SETTLEMENT."

Owners' Unhelpful Attitude.

LONDON, Sept. 5.

Following the receipt of a letter from the Executive of the Miners' Federation the Government has requested the Mine Owners Association to resume negotiations.

FOOTWEAR

Character Comfort Quality

A HEAVY FARM BOOT.

Of special value. Rubber from an outer sole. Will be found of special value. The leather with most solid, wide straps, and will prove equal to any boot.

Shs. 20/- per pair.

THE HAMAHA BOOT.

This is a new boot, specially made to our order. Will be found of special value. The leather with most solid, wide straps, and will prove equal to any boot.

Shs. 27/50 per pair.

A BIRKENHEAD FARM BOOT.

This is a high class boot, made to order. Will be found of special value. The leather with most solid, wide straps, and will prove equal to any boot.

Shs. 35/- per pair.

A SMART FARM BOOT.

A high-class boot with brown, leather grain upper, strong with wide rubber strap, will give comfort and wear.

Shs. 50/- per pair.

THE "ORIENT" BOOT.

The sale of the Orient boot throughout the world is a good testimony to the good value you get for your money. A solid, comfortable, well-made boot, most attractive. Black. Medium weight.

Shs. 30/- per pair.

"ORIENT"

The Willow Calf Boot smart toe. A boot for every occasion and for service. All sizes.

Shs. 30/- per pair.

THE "KIK" BOOT.

A better style of Kik boot, made to order. Will be found of special value. The leather with most solid, wide straps, and will prove equal to any boot.

Shs. 40/- per pair.

NOT AN AUTHORITY.

All with the Conference which had been held last year in Takis, the second, was again entirely successful though somewhat less so would it be self-sufficient. The Government and the people, he said, "have not been able to secure the necessary cooperation between the Government and the people."

THE GOVERNOR'S POSITION.
The Governor's position was discussed.

THE TRADE UNION CONGRESS.

ADAMS OPENS REFERENCE TO RUSSIAN.

THE FAITH OF THE NATION.

THE GOVERNOR'S POSITION.

THE TRADE UNION CONGRESS:
The Congress opened with a session on the Russian situation.

ADAMS OPENS REFERENCE TO RUSSIAN:
Mr. Adams made a reference to the Russian situation.

THE FAITH OF THE NATION:
A speech was made on the faith of the nation.

THE GOVERNOR'S POSITION:
The Governor's position was discussed.

THE NEW PACT.

MINERS' LEADERS ASK FOR ANOTHER CONFERENCE.

Peace Pourparlers.

"PREPARED TO NEGOTIATE A NEW NATIONAL WAGE SETTLEMENT."

Owners' Unhelpful Attitude.

LONDON, Sept. 5.

Following the receipt of a letter from the Executive of the Miners' Federation the Government has requested the Mine Owners Association to resume negotiations.

GERMAN INDUSTRIAL DEPRESSION.

Magnate's Review of the Situation.

LONDON, Sept. 5.

The German industrial depression is being reviewed by Magnate's Review.

TODAY'S CAUSE LIST.

THE DEBATE WHY.

Dr Whelan:
The debate will be held on the 10th instant.

TODAY'S CAUSE LIST.

THE DEBATE WHY.

Dr Whelan:
The debate will be held on the 10th instant.

TODAY'S CAUSE LIST.

THE DEBATE WHY.

Dr Whelan:
The debate will be held on the 10th instant.

WHITEWAYS

Character Comfort Quality

THE "KIK" BOOT.

A better style of Kik boot, made to order. Will be found of special value. The leather with most solid, wide straps, and will prove equal to any boot.

Shs. 40/- per pair.

THE "ORIENT" BOOT.

The sale of the Orient boot throughout the world is a good testimony to the good value you get for your money. A solid, comfortable, well-made boot, most attractive. Black. Medium weight.

Shs. 30/- per pair.

THE "HEAVY" BOOT.

Of special value. Rubber from an outer sole. Will be found of special value. The leather with most solid, wide straps, and will prove equal to any boot.

Shs. 20/- per pair.

THE "SMART" BOOT.

A high-class boot with brown, leather grain upper, strong with wide rubber strap, will give comfort and wear.

Shs. 50/- per pair.

THE "HAMAHA" BOOT.

This is a new boot, specially made to our order. Will be found of special value. The leather with most solid, wide straps, and will prove equal to any boot.

Shs. 27/50 per pair.

THE "BIRKENHEAD" BOOT.

This is a high class boot, made to order. Will be found of special value. The leather with most solid, wide straps, and will prove equal to any boot.

Shs. 35/- per pair.

THE "WILLOW" BOOT.

The Willow Calf Boot smart toe. A boot for every occasion and for service. All sizes.

Shs. 30/- per pair.

WHITEWAYS

P. O. BOX 7 NAIROBI.

MOTURING TOPICS

NOTICE.

The rough temporary bridges erected by the Public Works Department for reconnaissance purposes over the Kiunga River between Makindu and Simba and over the Taveira River are unsafe and not intended for public use.

By order, EXECUTIVE ENGINEER, in charge, Roads Service.

NOTICE. NAIROBI WATER SUPPLY.

The attention of the public is drawn to the fact that the above supply is liable to contamination and that the consumption of unboiled water may be dangerous. It is therefore recommended that all water should be boiled before use.

MEDICAL OFFICER OF HEALTH.

BRICKMAKING Machinery

BRADLEY & CRAVEN, Ltd. Sole Agents in E.A.— Bessemer & Smithson P.O. Box 620. NAIROBI.

Short Loans Granted

£1 to £1000 CALL OR WRITE TO THE Kenya Loan & Discount Co., Ltd. Court Chambers, (1st Floor) Box 666, NAIROBI. Bills Discounted. Strictest Confidence.

Their Effect upon Motor Production.

CARE HANSEN TO HANSEN.

These are many reasons why the motorist should be careful in his selection of a motor car. The motorist should be careful in his selection of a motor car. The motorist should be careful in his selection of a motor car.

AN OBLIGATION.

The motorist should be careful in his selection of a motor car. The motorist should be careful in his selection of a motor car. The motorist should be careful in his selection of a motor car.

DISSENT IN CHOSING.

Another public source of annoyance on the part of the woman motorist is the fact that she is not always met with the same consideration as the man motorist.

A NEW IDEA.

As already suggested, nothing is so common as to see a motorist who is not satisfied with his car, and who is looking for a new one.

A MATTER OF TEMPERAMENT.

There are many reasons why the motorist should be careful in his selection of a motor car. The motorist should be careful in his selection of a motor car. The motorist should be careful in his selection of a motor car.

THE MOTORIST'S DUTY.

The motorist should be careful in his selection of a motor car. The motorist should be careful in his selection of a motor car. The motorist should be careful in his selection of a motor car.

THE MOTORIST'S DUTY.

The motorist should be careful in his selection of a motor car. The motorist should be careful in his selection of a motor car. The motorist should be careful in his selection of a motor car.

THE MOTORIST'S DUTY.

The motorist should be careful in his selection of a motor car. The motorist should be careful in his selection of a motor car. The motorist should be careful in his selection of a motor car.

THE MOTORIST'S DUTY.

The motorist should be careful in his selection of a motor car. The motorist should be careful in his selection of a motor car. The motorist should be careful in his selection of a motor car.

THE MOTORIST'S DUTY.

The motorist should be careful in his selection of a motor car. The motorist should be careful in his selection of a motor car. The motorist should be careful in his selection of a motor car.

THE MOTORIST'S DUTY.

The motorist should be careful in his selection of a motor car. The motorist should be careful in his selection of a motor car. The motorist should be careful in his selection of a motor car.

THE MOTORIST'S DUTY.

The motorist should be careful in his selection of a motor car. The motorist should be careful in his selection of a motor car. The motorist should be careful in his selection of a motor car.

THE MOTORIST'S DUTY.

The motorist should be careful in his selection of a motor car. The motorist should be careful in his selection of a motor car. The motorist should be careful in his selection of a motor car.

THE MOTORIST'S DUTY.

The motorist should be careful in his selection of a motor car. The motorist should be careful in his selection of a motor car. The motorist should be careful in his selection of a motor car.

THE MOTORIST'S DUTY.

The motorist should be careful in his selection of a motor car. The motorist should be careful in his selection of a motor car. The motorist should be careful in his selection of a motor car.

THE MOTORIST'S DUTY.

The motorist should be careful in his selection of a motor car. The motorist should be careful in his selection of a motor car. The motorist should be careful in his selection of a motor car.

THE MOTORIST'S DUTY.

The motorist should be careful in his selection of a motor car. The motorist should be careful in his selection of a motor car. The motorist should be careful in his selection of a motor car.

THE MOTORIST'S DUTY.

The motorist should be careful in his selection of a motor car. The motorist should be careful in his selection of a motor car. The motorist should be careful in his selection of a motor car.

THE MOTORIST'S DUTY.

The motorist should be careful in his selection of a motor car. The motorist should be careful in his selection of a motor car. The motorist should be careful in his selection of a motor car.

THIS WEEK'S BARGAIN KIRKWOOD & Co.

LARD AGENTS, KITALA. For immediate sale a highly productive FARM of about 100 acres in the Transvaal, Over 200 acres of motor maize and wheat, brick houses, outbuildings. PRICE £10 0 0 per acre, which INCLUDES every means of access, ploughs and other farming equipment. We can highly recommend this property as the land of excellent fertility. It is quite close to rail and it crops are showing well.

SAVOY HOTEL.

The most comfortable place situated in the heart of Nairobi. CALDONIA ROAD, THE HILL. Close to Government House. Beautiful Garden, Lawn, Garage, Hot and Cold Water, Telephone, etc. EXCELLENT TABLE. Extension of building with Flush Lavatories, Tennis Court and Court in construction. Monthly Terms from \$60. Proprietor— L. R. LAMBOURNE. P.O. Box 20. Tel. 'Savoy'.

Colonial General Stores

GOVERNMENT ROAD, NAIROBI. High Class Grocers, Provision, Wine and Spirit Merchants. Fresh stocks arriving by every mail. DISCOUNT.

GIVE US A TRIAL

YOU WILL NOT BE DISAPPOINTED. Phone 228. P. O. Box 298.

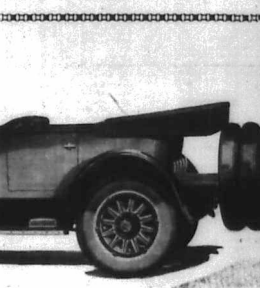
F. A. Head.

Pianoforte Tuner and Repairer Five years with Messrs. Chappell & Co., London. Seven years experience in Kenya Colony. Send all orders to P. O. Box 678.

Table with 2 columns: Model and Price. Standard Touring £389, Standard De Luxe Touring £498, Standard 2 Door Saloon £450.

TO-DAY is one of motorized living. The movement of increased accomplishment. The problem, squarely up to motorcar designers, engineers and manufacturers, has been the construction of a type of engine and motorcar to meet the vital and urgent needs of this new day. Such a motorcar is now here. Certainly no modern development in motor car design so completely answers the needs and requirements of the new-day driver as the new Buick. Decide now to see and drive this epochal motorcar at the very earliest opportunity. Nothing will so surely emphasize the vast difference between ordinary motorcars and the new Buick Six as the new daylight you, yourself, feel the first time you drive a Buick.

The new Buick has a flashing pickup, which no other car can equal. Its driver will enjoy a new mastery of the road. Its responsiveness to the lightest touch is amazing. The magical ease with which the new Buick is handled will impress one at once. You may expect much from the new Buick, you will not be disappointed, for the new Buick is the result of 25 years' careful and painstaking development. The new motor Buick has swept past all the inefficiencies and limitations of the motorcar as we have known it before. For economy, speed, power, hills, rough roads, capacity for heavy loads, ease of control, and the new Buick is the motorcar of the future. No other car in the world offers all these important advantages.



- Four-wheel Brakes, Oil Filter, Air Filter, Petrol Filter, Completely Sealed Chassis, Cantilever Springing, Dipping Head Lights, 72 Horse Power, Finger-hill Steering, Light Pressure Clutch, Valve-in-Head Engine, Remarkable Fuel Economy.

There are more Buicks registered throughout the world than any other cars except Chevrolet and Ford. Buick pre-eminence in registrations means extra miles turned in by old cars that would not be running at all if they were not Buicks— built as only Buick builds. The oldest cars in regular operation in East Africa are Buicks. Buick engineering has accomplished this by thinking always of superior stamina and placing it in every Buick part, and then, by placing around that stamina such protection as the famous "Headed Chassis" and the "Triple Sealed Engine." All Buick operating parts are hardened from dirt and wear to insure longer life with less upkeep.

Gillilan & Company, Ltd. Distributors for Kenya, Uganda and Tanganyika.

THE EAST AFRICAN STANDARD DAILY EDITION. PUBLISHED FOR THE PROPRIETOR BY THE MANAGER, EAST AFRICAN STANDARD, NAIROBI.

TO LET. A well-furnished house to let in the city. Apply to the Manager, East African Standard, Nairobi.

THE UNIVERSITY OF THE SOUTH PACIFIC. The University of the South Pacific, established in 1920, is now open for the admission of students for the first year of the Bachelor of Science degree.

OUR SPECIALITY IN SAW TIMBER. EQUATOR SAW MILLS. TO SETTLERS. TO BUILDERS. TO EVERY BODY.

FOR SALE. WINDSORBERRY. 1000000. 1000000. 1000000. 1000000. 1000000. 1000000. 1000000. 1000000. 1000000. 1000000.

SITUATIONS VACANT. MANAGER for upcountry. The Manager of the East African Standard, Nairobi, is seeking a manager for an upcountry station.

REPORTS FROM THE PORTS. The following reports were received from the ports of the East African Standard, Nairobi, on the 21st inst.

BRITISH INDIA STEAM NAVIGATION COMPANY, LTD. AND PENINSULAR AND ORIENTAL STEAM NAVIGATION CO. LONDON AND EAST AFRICA LINE. ROMANY-DURBAN MAIL SERVICE.

FOUND. A watch with a chain and a ring. Found in the city. Reward offered for its return.

SITUATIONS VACANT. MANAGER for upcountry. The Manager of the East African Standard, Nairobi, is seeking a manager for an upcountry station.

REPORTS FROM THE PORTS. The following reports were received from the ports of the East African Standard, Nairobi, on the 21st inst.

GLOBE-WERNICKE STEEL FILING EQUIPMENT. CABINETS WITH AND WITHOUT AUTOMATIC LOCKING DEVICE. INEXPENSIVE CARD RECORD TRAYS AND DRAWERS.

WANTED. A person to take charge of the printing press. Apply to the Manager, East African Standard, Nairobi.

NOTICE. The East African Standard, Nairobi, is seeking a person to take charge of the printing press.

REPORTS FROM THE PORTS. The following reports were received from the ports of the East African Standard, Nairobi, on the 21st inst.

Ladies Underclothing. Ladies Contaynal Wardrobe. MADE IN SHANGHAI TAIWANIA HARD WOOD WITH BRASS PATENTED CUP.

MISCELLANEOUS. QUALIFIED Teacher for an upcountry station. Apply to the Manager, East African Standard, Nairobi.

Residential Club. AN IDEAL RESIDENCE FOR MEN. Large extensive and improved modern building.

New in Stock. Grease Proof Paper. E. A. Standard Ltd., NAIROBI.

HUTCHINGS, BIEMER & Co. Ltd. 5% DISCOUNT ALLOWED FOR CASH. NAIROBI. Phone 408.

Let Your Jeweller Be Your Gift Adviser.



FINE QUALITY WATCHES. Silver Watch with 12 Jewel Lever Movement. £3. 7/6.



SILVER WRIST WATCH. Leather Strap. Perfect Timekeeper. £3. 7/6.

H. DOBBS, Watchmaker, Jeweller, & Optician, Government Road, NAIROBI.

Special Terms For Monthly Boarders, With or Without Residence

AT Torr's GOVERNMENT ROAD

OPINIONS

The Editor, "E. A. Standard." Sir—If I may be permitted to say a few words on the subject of the... (text continues)

ALTERATION OF LAW.

To the Editor, "E. A. Standard." Sir—The Editor's notice of the proposed... (text continues)

THE LABOUR PROBLEM.

To the Editor, "E. A. Standard." Sir—If you consider it of sufficient... (text continues)

KENYA FINANCE.

To the Editor, "E. A. Standard." Sir—Minerva is rather a weak... (text continues)

THE LABOUR PROBLEM.

To the Editor, "E. A. Standard." Sir—If you consider it of sufficient... (text continues)

KENYA FINANCE.

To the Editor, "E. A. Standard." Sir—Minerva is rather a weak... (text continues)

...the... (text continues)

TRACTOR TRIAL.

To the Editor, "E. A. Standard." Sir—Would you be good enough to publish the... (text continues)

TRACTOR TRIAL.

To the Editor, "E. A. Standard." Sir—Would you be good enough to publish the... (text continues)

TRACTOR TRIAL.

To the Editor, "E. A. Standard." Sir—Would you be good enough to publish the... (text continues)

TRACTOR TRIAL.

To the Editor, "E. A. Standard." Sir—Would you be good enough to publish the... (text continues)

TRACTOR TRIAL.

To the Editor, "E. A. Standard." Sir—Would you be good enough to publish the... (text continues)

TRACTOR TRIAL.

To the Editor, "E. A. Standard." Sir—Would you be good enough to publish the... (text continues)

TRACTOR TRIAL.

To the Editor, "E. A. Standard." Sir—Would you be good enough to publish the... (text continues)

Bssjay Ltd. A LONDON MANUFACTURING CORPORATION. OPENING OF OUR LONDON OFFICE. We have pleasure in announcing the opening of our own London Office at Trinity Church, Fenchurch Lane, E.C.3.

- 1. Representing East African business houses in London. 2. The purchase of special lines for all classes of trade. 3. Attending to the wants of East African visiting homes. 4. The purchase of individual requirements. 5. Engaging of staff in England for local businesses. 6. Securing accommodation for East Africans visiting home. 7. Sale of East African Estates. 8. Financial proposals generally. With offices on both sides of the water in our experienced hands, we have all the facilities for meeting all wants efficiently.

GUNNY BAGS. We Have Just Received a Large Shipment of ALL SIZES 14 lb. 21 lb. 24 lb. & 28 lb.

J. W. MILLIGAN & Co. NAIROBI. P.O. Box 148. It is Yours for Sh. 25000. A newly built STONE HOUSE. On Hill with all conveniences and Outhouses P.O. 258. Apply to Leader Buildings. CAMPOS BROS.

HUDSON



HUDSON TOURING £425

ESSEX COACH £300



HUDSON ALL METAL BOX BODY £390

Box 205.

CARR, LAWSON & Co. Ltd. NAIROBI.

Phone 103.

Union-Castle Line

Services to East Africa, East India and West Africa.
SCHEDULES FOR THE WEST COAST.

Table with columns: Line, Destination, Date, Agent.

Head Office: THE UNION-CASTLE MAIL STEAMSHIP CO., LTD.
Bombay.

THE BRITISH EAST AFRICA CORPORATION, LTD.
Sole Agents.

THE UNION-CASTLE MAIL STEAMSHIP CO., LTD.
Bombay.

THE BRITISH EAST AFRICA CORPORATION, LTD.
Sole Agents.

THE UNION-CASTLE MAIL STEAMSHIP CO., LTD.
Bombay.

THE BRITISH EAST AFRICA CORPORATION, LTD.
Sole Agents.

THE UNION-CASTLE MAIL STEAMSHIP CO., LTD.
Bombay.

THE BRITISH EAST AFRICA CORPORATION, LTD.
Sole Agents.

THE UNION-CASTLE MAIL STEAMSHIP CO., LTD.
Bombay.

THE BRITISH EAST AFRICA CORPORATION, LTD.
Sole Agents.

THE UNION-CASTLE MAIL STEAMSHIP CO., LTD.
Bombay.

THE BRITISH EAST AFRICA CORPORATION, LTD.
Sole Agents.

THE UNION-CASTLE MAIL STEAMSHIP CO., LTD.
Bombay.

THE BRITISH EAST AFRICA CORPORATION, LTD.
Sole Agents.

THE UNION-CASTLE MAIL STEAMSHIP CO., LTD.
Bombay.

THE BRITISH EAST AFRICA CORPORATION, LTD.
Sole Agents.

THE UNION-CASTLE MAIL STEAMSHIP CO., LTD.
Bombay.

THE BRITISH EAST AFRICA CORPORATION, LTD.
Sole Agents.

THE UNION-CASTLE MAIL STEAMSHIP CO., LTD.
Bombay.

THE BRITISH EAST AFRICA CORPORATION, LTD.
Sole Agents.

THE UNION-CASTLE MAIL STEAMSHIP CO., LTD.
Bombay.

THE BRITISH EAST AFRICA CORPORATION, LTD.
Sole Agents.

THE UNION-CASTLE MAIL STEAMSHIP CO., LTD.
Bombay.

THE BRITISH EAST AFRICA CORPORATION, LTD.
Sole Agents.

THE UNION-CASTLE MAIL STEAMSHIP CO., LTD.
Bombay.

THE BRITISH EAST AFRICA CORPORATION, LTD.
Sole Agents.

THE UNION-CASTLE MAIL STEAMSHIP CO., LTD.
Bombay.

THE BRITISH EAST AFRICA CORPORATION, LTD.
Sole Agents.

THE UNION-CASTLE MAIL STEAMSHIP CO., LTD.
Bombay.

A CUSTOMS UNION.

Memorandum from Association of East African Chambers.

DELEGATION TO SIR E. GAGGE.

Continued Endeavour being made by the Kenya Government.

THE PROTECTION POLICY.

The following memorandum on the desirability of a complete Customs Union between Kenya and Tanganyika Territory.

The Association felt that such a union was unattainable in practice.

The Association felt that such a union was unattainable in practice.

The Association felt that such a union was unattainable in practice.

The Association felt that such a union was unattainable in practice.

The Association felt that such a union was unattainable in practice.

The Association felt that such a union was unattainable in practice.

The Association felt that such a union was unattainable in practice.

The Association felt that such a union was unattainable in practice.

The Association felt that such a union was unattainable in practice.

The Association felt that such a union was unattainable in practice.

The Association felt that such a union was unattainable in practice.

The Association felt that such a union was unattainable in practice.

The Association felt that such a union was unattainable in practice.

The Association felt that such a union was unattainable in practice.

The Association felt that such a union was unattainable in practice.

The Association felt that such a union was unattainable in practice.

The Association felt that such a union was unattainable in practice.

The Association felt that such a union was unattainable in practice.

The Association felt that such a union was unattainable in practice.

The Association felt that such a union was unattainable in practice.

The Association felt that such a union was unattainable in practice.

The Association felt that such a union was unattainable in practice.

The Association felt that such a union was unattainable in practice.

The Association felt that such a union was unattainable in practice.

The Association felt that such a union was unattainable in practice.

The Association felt that such a union was unattainable in practice.

The one of principal business interests in Kenya...

The one of principal business interests in Kenya...

The one of principal business interests in Kenya...

The one of principal business interests in Kenya...

The one of principal business interests in Kenya...

The one of principal business interests in Kenya...

The one of principal business interests in Kenya...

The one of principal business interests in Kenya...

The one of principal business interests in Kenya...

The one of principal business interests in Kenya...

The one of principal business interests in Kenya...

The one of principal business interests in Kenya...

The one of principal business interests in Kenya...

The one of principal business interests in Kenya...

The one of principal business interests in Kenya...

The one of principal business interests in Kenya...

The one of principal business interests in Kenya...

The one of principal business interests in Kenya...

The one of principal business interests in Kenya...

The one of principal business interests in Kenya...

The one of principal business interests in Kenya...

The one of principal business interests in Kenya...

The one of principal business interests in Kenya...

The one of principal business interests in Kenya...

The one of principal business interests in Kenya...

The one of principal business interests in Kenya...

The one of principal business interests in Kenya...

The one of principal business interests in Kenya...

The one of principal business interests in Kenya...

The one of principal business interests in Kenya...

The one of principal business interests in Kenya...

Veterinary Department.

RINDERPEST.

Rinderpest is active in the NAIROBI and KVAMBU AREAS.

Rinderpest is active in the NAIROBI and KVAMBU AREAS.

Rinderpest is active in the NAIROBI and KVAMBU AREAS.

Rinderpest is active in the NAIROBI and KVAMBU AREAS.

Rinderpest is active in the NAIROBI and KVAMBU AREAS.

Rinderpest is active in the NAIROBI and KVAMBU AREAS.

Rinderpest is active in the NAIROBI and KVAMBU AREAS.

Rinderpest is active in the NAIROBI and KVAMBU AREAS.

Rinderpest is active in the NAIROBI and KVAMBU AREAS.

Rinderpest is active in the NAIROBI and KVAMBU AREAS.

Rinderpest is active in the NAIROBI and KVAMBU AREAS.

Rinderpest is active in the NAIROBI and KVAMBU AREAS.

Rinderpest is active in the NAIROBI and KVAMBU AREAS.

Rinderpest is active in the NAIROBI and KVAMBU AREAS.

Rinderpest is active in the NAIROBI and KVAMBU AREAS.

Rinderpest is active in the NAIROBI and KVAMBU AREAS.

Rinderpest is active in the NAIROBI and KVAMBU AREAS.

Rinderpest is active in the NAIROBI and KVAMBU AREAS.

Rinderpest is active in the NAIROBI and KVAMBU AREAS.

Rinderpest is active in the NAIROBI and KVAMBU AREAS.

Rinderpest is active in the NAIROBI and KVAMBU AREAS.

Rinderpest is active in the NAIROBI and KVAMBU AREAS.

Rinderpest is active in the NAIROBI and KVAMBU AREAS.

Rinderpest is active in the NAIROBI and KVAMBU AREAS.

Rinderpest is active in the NAIROBI and KVAMBU AREAS.

Rinderpest is active in the NAIROBI and KVAMBU AREAS.

Rinderpest is active in the NAIROBI and KVAMBU AREAS.

Rinderpest is active in the NAIROBI and KVAMBU AREAS.

Rinderpest is active in the NAIROBI and KVAMBU AREAS.



Just Arrived
X* Patent Camp Furniture all description.

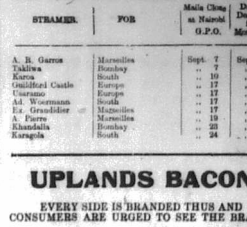


Overseas Mail. ARRIVAL. DEPARTURE.

Table with columns: STRAMER, FROM, Day at Mombasa, Date of Departure, Mails arrive by Steamship.

Table with columns: STRAMER, FOR, Date of Departure, Mails arrive by Steamship.

UPLANDS BACON. EVERY SIDE IS BRANDED THUS AND CONSUMERS ARE URGED TO BUY THE BRAND.



NOW ON SALE AT ALL THE LEADING STORES. Insist Upon Getting 'UPLANDS'

BISCUITS. Fire Arms

Quality!!! Variety. Price.

Nearly 1000 Weapons by the best known makers of the world to select from, such as Mauser, Manlicher

Schoenauer, B.S.A. Holland & Holland, Bigly Westley Richards, etc. in all bores

Largest Stock in East Africa at lowest possible prices. Write for our illustrated Catalogue.

Gun repairs of every description by our European Gunsmith.

CHAS A HEYER & Co. P.O.B. 587. GUNSMITHS. Established 1903. NAIROBI.

INSIST ON HAVING VOONIA GARDEN TEA

CEYLON. Used by Hotels and Tea Rooms throughout Kenya & Uganda

Even the most fastidious will tell you it is by far the best.

Blacklaxs & Brown. Sole Agents. LATE MACARTHUR, NAIROBI. Box No. 495.

COFFEE MACHINERY. "B" PULPERS IN STOCK. SCOTT & WATSON.

Sole Agents for Kenya for Messrs. McKinnon & Co. Ltd. (Incorporated in England) 10, Colverton Road, Government Road, Box 446, Tel. "Pulpers."

MOTOR CYCLES

We have the following new Motor Cycles and side cars in stock at prices as follows:

- 10 Harley Davidson 1,200/-
10 Harley Davidson with Sidecar 2,100/-
10 Harley with Sidecar and Electric light 1,800/-
10 Harley with Sidecar 1,450/-
10 Harley with Sidecar, with electric light 1,450/-
10 Harley with Solo 1,450/-
10 Harley O.H.V. Sport 1,417/-
2-48 Harley All chain, 3 speed 1,000/-
3-50 Harley All chain, 3 speed 1,420/-

Price as marked. These machines All repairs executed by Europeans only. ALSO STEWART one ton Trucks complete with body for 7,000/-

Capital Garage Opposite Fire Station, Victoria St.

APPLY FOR Large Stocks of Best Kin Sharp Clean Building Sand, and

ATVI RIVER LIMES, As used by all Government Departments and Indian and European Contractors. Prices very moderate.

Churanji Lal & Co. White House Road, Box 503. NAIROBI.

THERE ARE BISCUITS AND BISCUITS BUT THERE IS ONLY ONE QUALITY MADE BY

W. and R. Jacob & Co. Ltd., of Dublin, and that is the best

THEREFORE, INSIST ON GETTING Jacob's Biscuits

AND OBTAIN SATISFACTION. Sold in Tins and half pound packets. Local Representative: J. H. ELAKETI, Africa House, Government Road.

CONFERENCE OF THE OFFICIALS. What Has Transpired Since Then. RELATIONSHIPS TO FOREIGN...

The Committee of representatives from North, Young, Kennedy, Northern Rhodesia, together with a representative of the League of Nations...

Who Attends the valuable work for the League of Nations... The Committee of Representatives...

PLACING SPAIN IN [Lima, Peru]... The Committee of Representatives...

IGNITY AND SECURITY... The revolution will first in order to give their work...

MENTARY... The demand and price for the...

MARKETS... The demand and price for the...

World Money Exchange... Supply, September 4. New York 4.84...

THE DO-WELL COOKING MEASURE. A convenient measure of accuracy... Back RUBBER STAMPS at the STANDARD OFFICE.

CONFERENCE OF THE OFFICIALS. What Has Transpired Since Then. RELATIONSHIPS TO FOREIGN...

The Committee of representatives from North, Young, Kennedy, Northern Rhodesia, together with a representative of the League of Nations...

Who Attends the valuable work for the League of Nations... The Committee of Representatives...

PLACING SPAIN IN [Lima, Peru]... The Committee of Representatives...

IGNITY AND SECURITY... The revolution will first in order to give their work...

MENTARY... The demand and price for the...

MARKETS... The demand and price for the...

World Money Exchange... Supply, September 4. New York 4.84...

THE DO-WELL COOKING MEASURE. A convenient measure of accuracy... Back RUBBER STAMPS at the STANDARD OFFICE.

CONFERENCE OF THE OFFICIALS. What Has Transpired Since Then. RELATIONSHIPS TO FOREIGN...

The Committee of representatives from North, Young, Kennedy, Northern Rhodesia, together with a representative of the League of Nations...

Who Attends the valuable work for the League of Nations... The Committee of Representatives...

PLACING SPAIN IN [Lima, Peru]... The Committee of Representatives...

IGNITY AND SECURITY... The revolution will first in order to give their work...

MENTARY... The demand and price for the...

MARKETS... The demand and price for the...

World Money Exchange... Supply, September 4. New York 4.84...

THE DO-WELL COOKING MEASURE. A convenient measure of accuracy... Back RUBBER STAMPS at the STANDARD OFFICE.

LYRIC HALL. TO-NIGHT at 8-45 SPECIAL REPEAT PERFORMANCE Betty Balfour Nothing Else Matters

Rugby Gala Week in stock this FAMOUS OXFORD Rugby Boat. 35/-

Eadles Footwear Ltd. NAIROBI. The All Black, Rugby Filer. Spanish Crisis. NATIONAL PLUMBING TO DISCOVER OPINION.

THEATRE ROYAL. TO-NIGHT & NIGHTLY IN 11th SEPT at 8-45 "The Yeomen of the Guard" 50 ARTISTS, 50 SCENES IN 15 PLAYS

SALE TO-DAY The Sale You Have Waited For. OUR ENTIRE STOCKS AT WONDERFULLY REDUCED PRICES AUGUST 30th to SEPTEMBER 11th. Africa House Government Road, NAIROBI. Warings

COMMISSION OF THE IMPERIAL CONFERENCE

(Continued from page 7)

At the same time the Commission has also been asked to consider the possibility of a scheme for the improvement of the roads in the territories...

No progress has yet been made in the improvement of the roads in the territories...

In regard to the details of the proposed scheme of financing a commission of the territories...

ing. No active work will be done from his building on an advisory basis...

ing. In regard to the education of the natives...

ing. In regard to the education of the natives...

ing. In regard to the education of the natives...

ing. In regard to the education of the natives...

ing. In regard to the education of the natives...

ing. In regard to the education of the natives...

ing. In regard to the education of the natives...

ing. In regard to the education of the natives...

JOHN'S Special Reserve Scotch Whisky. Wholesale Distributors: D. REITH & CO., NAIROBI.

THE SALISBURY HOTEL

Phone 169. NAIROBI P.O. Box 509

FAMILY & RESIDENTIAL.

FIRST CLASS ACCOMMODATION AND CUISINE. Recently opened, spacious, airy and bright.

Just Received "JONES PATENT" STEEL TRUNKS & UNIFORM CASES.

ALIBHAI & Co. TAILORS AND GENERAL OUTFITTERS. Box 201. NAIROBI. Phone 212.

Public Works Department, Uganda.

TENDERS FOR SUPPLY OF TIMBER.

Tenders are invited for the supply of approximately 1,600 tons of podocarpus timber...

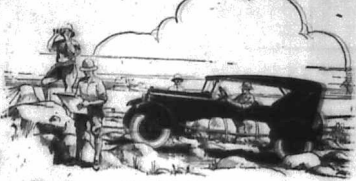
- 1. All timber to be of best quality and seasoned. 2. Each piece of timber to be plainly stenciled with address and destination.

Table with 2 columns: Quantity (Tons) and Size. Includes items like 200 tons of 9' x 2", 400 tons of 4' x 3", etc.

7. All tenders must reach the undersigned on or before the 13th of September, 1923.

8. The lowest or any tender will not necessarily be accepted.

Sd/- A. C. WILLIAMS, O.P.S., Ag. Director of Public Works.



Explorers Use This Car Because It is Dependable

Pioneers and explorers, whose lives depend upon the reliability of the transportation they use...

DODGE BROTHERS MOTOR CARS. S. FISHER & SIMMONS (E.A.) LTD., Victoria Street, Nairobi.

Goltman's Sale of Superior Footwear Oddments. For 10 DAYS from Saturday Aug. 28th until Monday Sept. 6th.

NATIONAL BANK OF INDIA LIMITED. (Incorporated in the United Kingdom.)

HEAD OFFICE: 1, LEICESTER SQUARE, LONDON, W.1. BRANCHES: Bombay, Calcutta, Madras, etc.

FIXED DEPOSITS - Deposits are accepted for fixed periods on terms which may be learned on application.

TOUR MOTOR CARS AND TRUCKS with AFRICAN GUARANTEES & INDUSTRY CO., Ltd. M. D. KAMPP, CHIEF AGENT.

J. PLUM. TYPEWRITER REPAIRER. (Home Repaired) Supplies all makes of machines.

JOHN RIFKIN, 8th Avenue, NAIROBI. WAGON BUILDER, REPAIRER, FARRIER.

NOTICE. ALL KINDS OF WAGONS made to order.

FUEL AND TRANSPORT. We are in possession of the most numerous fleets that we have ever completely reorganized.

DANCING. NAIROBI SCHOOL OF DANCING. CHILDREN AND ADULTS Classes Private and Public.

P. GETHIN, PHONE 158. HUDSON REPAIRING CARS FOR HIRE DAY AND NIGHT.

Geo. BLOWERS BUILDING CONTRACTOR, MANUFACTURER, AND DIRECT EXPORTER. P.O. Box 250, Sadler Street, NAIROBI.

MOMBASA CORAL LIME FOR Plastering, Whitewashing, and Agricultural Purposes.

The Maximum of Production with the Minimum of Pretension. NO RESIDUE. MORE ENDURABLE.

MOTOR CAR WINDSCREEN GLASSES. POLISHED EDGE. CUT TO ANY PATTERN.

OUR SIGN WRITING AND DECORATING DEPARTMENT IS AT YOUR DISPOSAL. ALL CLASSES OF WORK UNDERTAKEN.

RALEIGH. 7 h.p. Combination with electric light... 1,800/- 7 h.p. Combination without... 1,650/-

AUCTION SALES

Muter and Oswald's Sales

Sale by Catalogue of Furniture and Effects.

Daily instructed, we shall sell, by Public Auction, without reserve, at our Salesrooms, Mutes Building, (entrance by Lane) on

WEDNESDAY, 6th September at 9:30 am.

- IMPORTED WARDROBE, 3 doors; bevilled mirror drawers
- MORNING CHAIRS, WAINFORD. TOILET SEAT, SEAFORTH. OCCASIONAL TABLES
- CHILD'S BED. PALMSTANDS in m'chairs.
- THREE PILOCH CHESTERFIELD SUITE, cretonne covered.
- OVAL DINING TABLE in camphorwood.
- SINGLE WARDROBE in camphorwood, bevilled mirror.
- SUITE OF SIX DINING CHAIRS in M'CHAGAGI.
- TOWER RAIL in m'chairs. MUSIC STOOL in m'chairs.
- SIDEBOARD in teak, bevilled mirror.
- SINGLE IRON BEDSTADS. CHESTERFIELD.
- WOMAN'S CHAIR. SUITE OF SIX DINING CHAIRS in teak.
- GUJERATI CHAIR. SINGLE AND DOUBLE MAT-CHAIRS.
- DOUBLE BEDSTADS in cedar and teak.
- No. 8 "DOVE" STOVE and piping. REVOLVING BOOK CASE.
- WRITING DESK in m'velli with pegboard top (Hutchings Bismar).
- OFFICE CHAIR in m'velli. CHEST OF DRAWERS.
- BOOK SHELF. "DECCA" PORTABLE GRAMMOPHONE, black case.
- "ANGELUS" PIANO PLAYER with records.
- PETROL LAMP. TWO BRONZE FIGURES.

Etc., Etc., Etc.

MUTER and OSWALD, Auctioneers, Etc. Nairobi.

Muter and Oswald's Property List.

- TWO FRESHLOD KILIMANI PLOTS for SALE 6.64 and 6.82 ACRES or thereabouts, as separate PLOTS or in ONE BLOCK.

For further particulars apply to

MUTER and OSWALD, Auctioneers, Telephone 4/12, Nairobi.

Express Transport Co.

Carriage Contractors to Uganda Railway Government Road, Nairobi.

P.O. Box 485. (Phone 328 and 53) Transport Shipping and Forwarding Contractors.

Furniture and General Goods removed, packed and dispatched to any part of the world. Or stored. SPECIAL MOTOR CARRIAGE FACILITIES for transport of all classes of Produce or Heavy Material to and from long distances, quotations on application.



H. T. REYNOLDS

A.O.C. DIST. OF OFFICES. Nairobi House, Nairobi.

General Road-The Hill

House Sale of Exquisite Furniture

Introduced by The Portuguese Consul General. Senhor Amalry de Lemos who is leaving Kenya.

Austin & Co.

Will sell by Public Auction WITHOUT RESERVE.

TODAY, Sept. 6th at 10 sharp.

At the residence of Senhor A. de Lemos at above address (about the Top of Crawford Rd.) THIS MAGNIFICENT FURNITURE and EFFECTS.

- All by Messrs. Jacobs and Hutchings and Bismar.
- DRAWING ROOM. Charming Tanga Mahogany Writing Desk on 4 legs with bevilled top.
- DIGNIFIED CHESTERFIELD SUITE of Five Queen Size in Teak with Striped Uphol.
- Small Square Charming Mahogany Drawing Room Chairs in suite in Tanga Mahogany.
- STANDARD WOOD PILLAR LAMP with yellow silk shades.
- BEAUTIFUL CARVED TABLE on Queen Anne Style Legs.
- TWO HANDSOME SETS of TANGA MAROOGIYI. BOOK CASES with adjustable shelves.
- FINE QUALITY MIRA JORE CARPET 18 x 12.
- The Afternoon Tea Stand, Charming Federal Office Table.
- Mahony Bedding Lamp with flowered Shade. Curtains as hung, etc.

- HALL. FINE MIRAPORE HUG 9 x 6, Tanga Mahogany Hall Stand. Charming Hall Table fitted drawer.
- DINING ROOM. LOVELY MIRAPORE CARPET 15 x 12.
- THE EXQUISITE TANGA MAROOGIYI DINING ROOM SUITE in PICKED WOOD and of Delightful Design consisting of
- SET OF SIX DINING CHAIRS with GRAINED LEATHER SEAT.
- CIRCULAR EXTENDING DINING 4' 3" TABLE with EXTRA LEAFS extends 6 feet.
- CHAMBERING IN TANGA Mahogany SIDEBOARD on Obsolete feet Balsa Laminated.
- HANDSOME "G" DINNER WAGON on suite balsa lined drawers.
- Three Charming Drawings framed and Glazed. Curtains as hung.

- PRINCIPAL BEDROOM. Fine Quality MIRAPORE CARPET 10 x 10. MAGNIFICENT TANGA MAROOGIYI BEDROOM SUITE consisting of
- 6" Double WARDROBE with SHAPED BEVELLED MIRROR 6" x 2' 6".
- LARGE CHERRY CHAIRS in suite 4 feet on Cast-iron supports.
- CHAMBERING GLAZED and PANELLED DOUBLE BED with BEVELLED WIRE SPRING MATTRESS and OILY LAMP.
- TWO FURNISHED CHAIRS in suite.
- BOW FRONTED DRESSING CHEST fitted large Mirror.
- 2 Cast-iron Bedsteads Cast Steel Chairs.
- THE WOOD SPECIALLY DESIGNED and BUILT TWO Bedstead with Curtains as hung.
- THREE CHARMING OILY OLD PRINTS tastefully framed.

NURSERY.

- BROWN INGOLITH as LADY. TWO FIGURED NURSERY RUGS.
- Dainty TANGA MAROOGIYI 3 ft. CHEST of DRAWERS.
- CHAMBERING END-SUITE CHILDS SIZE with WIRE SPRING SEAT.
- USEFUL IMPORTED SETTEE BED convertible. Bedside Drawing Table and two Draw. Dining Chairs. Mosquito Net, etc. etc.
- CHINA, KITCHEN, and MISCELLANEOUS ABOUT 10 feet BLUE striped Coosa Matting.
- Almost 10 feet BLUE Brown ditto. Brown Lamp at laid in Study.
- Two Green and Gold Chairs and 3 Glass Seat ditto.
- Oval Chair, Pair, Four Posters, Chambering, 3 Doors Door Mass.

- FINE OAK "ALABAMA" REFRIGERATOR 5' 6" x 3' 0".
- KITCHEN Table with Wood Chair, Kitchen Table with Cupboard under.
- CHAMBERING BURELIM DINNER SERVICE of about 60 pieces.
- DAIRY, MILK and GLASS CHINA TEA SERVICE about 21 pieces.
- Set of ENGRAVED and OILY WARE, CHELSEA COFFEE CUPS and SAUCERS.
- FLOWERS CUPS and SAUCERS, VERANDA CHINA MATTING 10 x 2.
- 4 New Bookish Chairs, French Wicker Table, Garden Table.
- QUANTITY of Almost New ALUMINIUM KITCHEN WARE.
- DELICIOUS IMPORTED GARDEN HAMMOCK on METAL TUBE STAND with CANOPY and can be taken down and folded in small bag.

ON VIEW SATURDAY and SUNDAY, SEPTEMBER 5th and 6th from 9 to 5. CATALOGUES at RESIDENCE VIEW DAYS.

Austin & Co.

BOX 558. PHONE 190. NAIROBI.

NOTE.—ALL THIS FURNITURE IS PRACTICALLY NEW and IS MADE of SPECIALLY SELECTED THICK RECARDED COPPER.

Reliance Transport Co.

Phone 221. SAILERS, NAIROBI. P.O. Box 47. The Largest Motor Transport Co. in the Colony. If you are requiring RELIABLE & Expeditionary Transport at reasonable charge, you can count on better than send your enquiries to us. "It's short" as the long run you will find we give you the cheapest and best service.

FUEL MERCHANTS. Large stocks always on hand ready for immediate delivery. S. E. C. 202.

NOTICE.

Boarders return Tuesday 7th September. Pupils entering or returning after holidays are requested to bring a Doctor's certificate or other guarantee that they are free from infection or do not have been in contact with infectious diseases.

LORNGO CONVEYER, NAIROBI.

LIFE POLICIES

We can show you the most favourable endorsement policy offered in this country. Big bonus—most favourable policy.

NATIONAL MUTUAL LIFE ASSOCIATION OF AUSTRALASIA LTD.

Apply KETTLES ROY LTD Nairobi

For Sale From Monday the 6th Instant. ITALIA

Model 61, 2-litre, 8-cylinder car, running speed 100 miles per hour, 25 H.P., essentially a most perfect modern Car. Please call and see at the New Premises of Swiss Press, 6th Avenue, Nairobi.

MARTIN'S PILL

ADVICE & STEEL. Sufferers from Leishman's complaints. Every lady should have a box in the bathroom—most comfortable and effective. Keeps skin clean from the world.

SALES: Oud. Nairobi, Kenya.

Your Daily Bread

We apply the Best at a minimum cost. We undertake to deliver it at your place. We, in addition, allow special discount on large orders.

We solicit a trial from

THE BAKERS BAKERY, Police Street.

P. STEWART,

O.A.B. S.B.D. ADVERTS & PRINTS. Hairdressing, Shaving, Manicuring.

5/45, Park Road, Nairobi.

REGINA BRIEF

Ngara Road. P.O. Box 642.

MAY & Co.

Repair GOLF CLUBS.

Have Your Films

DEVELOPED and PRINTED at the best prices.

THE E. A. STANDARD LIMITED.

PHOTOGRAPHIC DEPT

NAIROBI. Phone 338.

Used Cars For Sale

BY PRIVATE DEPART. Intentional choice by motorists, we offer the following cars for sale. A very fine 1916 Buick. A very fine 1920 Buick. A very fine 1921 Buick. A very fine 1922 Buick. A very fine 1923 Buick. A very fine 1924 Buick. A very fine 1925 Buick. A very fine 1926 Buick. A very fine 1927 Buick. A very fine 1928 Buick. A very fine 1929 Buick. A very fine 1930 Buick. A very fine 1931 Buick. A very fine 1932 Buick. A very fine 1933 Buick. A very fine 1934 Buick. A very fine 1935 Buick. A very fine 1936 Buick. A very fine 1937 Buick. A very fine 1938 Buick. A very fine 1939 Buick. A very fine 1940 Buick.

COME IN AND SEE THEM. The Service Company, NAIROBI.

New Zealand Insurance Co. Ltd.

HAVE YOU EVER BEEN BURNT OUT? If not—do not take the risk any longer. We cover you for Fire, Motor or Marine. Principal Agents—

DENOVAN & DICE CITY HOUSE.

AMERICAN and INDIAN LINE

ELLERMAN and BUCKNALL STEAMSHIP COMPANY

Direct Service from America VIA SUEZ CANAL Passage 35 Days

Regular Monthly Sailings of Fast Steamers

From NEW YORK and SPOHNS, N.E. to MOMBASA.

S.S. "CITY OF MILAN" leaves New York 20th Sept.

This service has been specially inaugurated to meet the wishes of East African Merchants who wish to have their supplies brought from America by direct steamers, the avoiding risk of damage through additional handling at ports of transhipment.

Instruct Your American Suppliers to ship by the only direct line of steamers.

PREMIER, ETC FROM—

The African Mercantile Company, Ltd., (Incorporated in England) Mombasa

TANGA, SANITARI, DABE

The Combined Suit Hanger & Trouser Stretcher

The "RODYTYDE"

The Ideal Hanger for the Wardrobe or Corner Cupboard. Your suit will be always smart and unshrunken at the knee of the Trouser by using the "Rodtyde." You will always remember with pleasure the day you purchased one.

Price Complete. 17/-

The Remington Typewriter

QUINT NO. 12



Universally recognized as the most advanced typewriter on the market with 23 models - total production

All Spares and European Mechanisms. THE REMINGTON TYPEWRITER AGENCY. PHOENIX 25. NAIROBI. P.O. Box 27.

SALE

Special Clearance Sale To make Room for Xmas Goods arriving shortly. Genuine Hosiery offered in all lines. Be sure and visit us for Real Bargains. **JOANES & Bros.,** Govt. Road.

Jenson & Nicholson's PAINTS & VARNISHES

The other evening I had the pleasure of seeing Capt. Waller's newly acquired motor launch. This was hardly breaking new ground, as her beauty was expected to attract my eyes. A beautifully completed launch and a lovely sturdy boat on her. Also made in high quality and material. Lenses and white in the colour of her cabin and she should be a valuable addition to the motor family in Kenya. I do not hope all will be well and that Capt. Waller gets a little of the same joy, as I have seen from her. One really does need lots of nerve and the spirit of a gambler.

STANDARD FEATURE PAGE



Kenia Colony, 1912. In the spirit of the Standard, I have had the pleasure of seeing the dog which was the subject of the Standard feature. I have had the pleasure of seeing the dog which was the subject of the Standard feature. I have had the pleasure of seeing the dog which was the subject of the Standard feature.

I have had the pleasure of seeing the dog which was the subject of the Standard feature. I have had the pleasure of seeing the dog which was the subject of the Standard feature. I have had the pleasure of seeing the dog which was the subject of the Standard feature. I have had the pleasure of seeing the dog which was the subject of the Standard feature.

I have had the pleasure of seeing the dog which was the subject of the Standard feature. I have had the pleasure of seeing the dog which was the subject of the Standard feature. I have had the pleasure of seeing the dog which was the subject of the Standard feature. I have had the pleasure of seeing the dog which was the subject of the Standard feature.

I have had the pleasure of seeing the dog which was the subject of the Standard feature. I have had the pleasure of seeing the dog which was the subject of the Standard feature. I have had the pleasure of seeing the dog which was the subject of the Standard feature. I have had the pleasure of seeing the dog which was the subject of the Standard feature.

South African Railways and Harbours

During the slack time Take a holiday in Sunny South Africa and Return Refreshed in Mind and Body. Travel in South Africa is inexpensive and facilities are of high standard.

For particulars apply to: TRADE COMMISSIONER FOR THE UNION OF SOUTH AFRICA. P.O. Box 604, Memorial Hall, NAIROBI.

A frock that will please you.

Tunics Frocks in heavy weighing silk, lined, finished in shades of khaki priced most moderately. First Floor, Above Waring's. **MADAME LEON.**

KENYA HOUSE

Highly recommended Residential Hotel, renowned for catering, comfort and service. Under personal supervision and control of the proprietress. Terms Moderate.

BROCKWAY TRUCK

Model E 'Highway Express'

- Chassis Load 3000 lbs.
- Wheelbase 135 and 145 lbs.
- Motor, valve in head; monobloc.
- Oranokraft, three bearing.
- Heavy-duty 29/50.
- Lubrication, pressure feed.
- Spring semi-elliptic front and rear 28 x 2" & 44 x 2 1/2"
- Drive by two piece tubular propeller shaft with dust proof and oil tight universal joints, supported in centre on S.K.F. self aligning bearing.
- Ignition, magneto.
- Wheelbase 135 and 145 lbs.
- Wheels, all steel, artillery type.
- Tyres, 32 x 6 cord on demountable rims.
- Fuel tank holds 16 Imperial gallons.
- Vacuum feed.



Chassis Price f.o.r. Nairobi, including driver's Cab and spring cushions.

£450

Sole Importers **K. McIVOR & Co.** Sixth Avenue, NAIROBI.

P.O. Box 97. Phone 97.

Telegrams: "Afford".

Charles Ware NEW ASSISTANT... Book Open on St. Leger

THE SPORTS PAGE

Revised Prices FOR Groceries & Provisions

FRED RAPER GENERAL COMMISSION AGENT... CITY HOUSE, Phone 148

THE ST. LEGER THE ROKEY WEX-END THE AUSTRALIANS

Probable Starters and Jockeys Several Chancers Match Against an English XI Draw

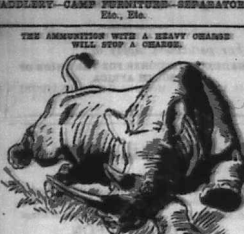
For the past we have offered a discount of 5% for each payment on all purchases of Groceries and Provisions...

FRED RAPER GENERAL COMMISSION AGENT... CITY HOUSE, Phone 148

A SMALL LIST "SATURDAY"—AND "TODAY."

Probable Starters to the Derby Chase of Kenya outside Nairobi, for Nairobi was unable to bring down the race...

How Military Troopers 24 x 12 and 10 x 12... JADDELEY-CAME FURNITURE-SEPARATORS



SOLE AGENTS FOR THE WESTERN PROVINCES... SHAW & HUNTER

COUNTY CRICKET The Last of the Matches Unfinished

The following are the scores at the close of the play of cricket matches...

(Nairobi News's Report) There was some 200 spectators at the... Match Ag... XI Draw

The match was draw. Price Edward Handicap. MARKET BASKET WING FROM SMALL PITY

London, Sept. 4. The following is the result of the Price Edward Handicap...

BETTER FLOUR

When better flour is made it will still be "Keany's Mist"... Messrs Thomas Robinson & Son Ltd., of Montreal...

UNGA Ltd., Njoro

Cheap Tennis Rackets.

Table listing tennis racket prices for various brands like Champion, Davenport, etc.

MAY & Co. THE SPORTS HOUSE

J R. Stephens & Co. Ltd. THE TAILORS AND OUTFITTERS

Government Road, NAIROBI. Phone 271.

Parkland Tennis.

There was a play in the second set... Parkland Tennis. The following are the results of matches...

The following are the teams: Kenya, Nyeri, Havelock, etc.



Smiles There are different kinds of smiles, but the smile of impudence is superior...

Kenisitas STANDARD STAR VIRGINIA CIGARETTES

Save Time & Money BY OUR FREE DELIVERY

It takes less time to make up one order for your weekly supplies than to make up ten daily. Orders for shopping 30c and over will be delivered free in Nairobi within 24 hours...

HERE ARE A FEW PRICES FOR YOUR COMPARISON:

Table listing various grocery items and their prices, such as Royal Baking Powder, Baked Beans, etc.

OUR LATEST LIST OF WINES & SPIRITS IS ALSO READY... JACOBS

Phone No. 126 Nairobi P.O. Box No. 255