



White Horse stands out

WHITE HORSE Scotch Whisky

Tea

Even if Brooke Bond Red Label tea is the vacuum tin cost a lot more than any other it would be worth it. As it doesn't, why add to life's trials by unpleasant experiment.

Brooke Bond Tea

BEST LABEL BEST GRADE BROOKE BOND EAR AVENA LTD.

ALL YOU NEED

To give Self-Healing-Anaesthetic Treatment to Burns, Scalds, Wounds

To Alleviate Pain and Reduce the Swelling of Sprains and Swells

CHAMBERLAIN'S PAIN-BALM

Trade Enquiries to Messrs. SHAW & BUCKLEMAN, LTD.

HISTORIC SCENE AT THE HORSE CHAIRS. Another Pen-Picture of the Handsome Endowments to University.

[By Wm. J. ...] The Inspector-General of the ...

MISAP ON VICTOR'S VISIT. Firework Bomb Explodes at Lahore.

[Special Report ...] Five people were killed and 50 ...

A Noble Professor. DEATH OF HERBI NAVILLAK, VIOLOGICALIST.

General, Feb 218. ...

Honor to Ex-Ambassador. [By Wm. J. ...]

ASTHMA Cured!

POTTER'S ASTHMA CURE

NOTICE. No smoking is allowed ...



Let Your Child Run First. Some children lack 'grip' ...

VIOLIN FOR SALE. ...

GENERAL Feb 218. ...

A GENTLEMAN OF FEARFUL 4 years old. ...

His son, Student, had in ...

BRACKEN HILL FARM, ...

SEMI-DETACHED. ...

REVEREND STATIONER. ...

KLARE HOTEL, KLARE.



Maturity Home Stone. THE LIVING ANNOUNCED AT ...

Help the kidneys! What a lot of trouble is caused by diseased kidneys ...

HYRAX FURS. ...

EDGAR B. BEECH. ...

THE SECRETARY OF THE AGRICULTURE AND HORTICULTURAL SOCIETY OF KENYA ...

Light Locomotives. ...

Light Locomotives. ...

Light Locomotives. ...

Light Locomotives. ...

Light Locomotives. ...

Light Locomotives. ...

Light Locomotives. ...

Light Locomotives. ...

Light Locomotives. ...

Light Locomotives. ...



Maturity Home Stone. THE LIVING ANNOUNCED AT ...

Help the kidneys! What a lot of trouble is caused by diseased kidneys ...

HYRAX FURS. ...

EDGAR B. BEECH. ...

THE SECRETARY OF THE AGRICULTURE AND HORTICULTURAL SOCIETY OF KENYA ...

Light Locomotives. ...

Light Locomotives. ...

Light Locomotives. ...

Light Locomotives. ...

Light Locomotives. ...

Light Locomotives. ...

Light Locomotives. ...

Light Locomotives. ...

Light Locomotives. ...

Light Locomotives. ...



Maturity Home Stone. THE LIVING ANNOUNCED AT ...

Help the kidneys! What a lot of trouble is caused by diseased kidneys ...

HYRAX FURS. ...

EDGAR B. BEECH. ...

THE SECRETARY OF THE AGRICULTURE AND HORTICULTURAL SOCIETY OF KENYA ...

Light Locomotives. ...

Light Locomotives. ...

Light Locomotives. ...

Light Locomotives. ...

Light Locomotives. ...

Light Locomotives. ...

Light Locomotives. ...

Light Locomotives. ...

Light Locomotives. ...

Light Locomotives. ...



Maturity Home Stone. THE LIVING ANNOUNCED AT ...

Help the kidneys! What a lot of trouble is caused by diseased kidneys ...

HYRAX FURS. ...

EDGAR B. BEECH. ...

THE SECRETARY OF THE AGRICULTURE AND HORTICULTURAL SOCIETY OF KENYA ...

Light Locomotives. ...

Light Locomotives. ...

Light Locomotives. ...

Light Locomotives. ...

Light Locomotives. ...

Light Locomotives. ...

Light Locomotives. ...

Light Locomotives. ...

Light Locomotives. ...

Light Locomotives. ...



Maturity Home Stone. THE LIVING ANNOUNCED AT ...

Help the kidneys! What a lot of trouble is caused by diseased kidneys ...

HYRAX FURS. ...

EDGAR B. BEECH. ...

THE SECRETARY OF THE AGRICULTURE AND HORTICULTURAL SOCIETY OF KENYA ...

Light Locomotives. ...

Light Locomotives. ...

Light Locomotives. ...

Light Locomotives. ...

Light Locomotives. ...

Light Locomotives. ...

Light Locomotives. ...

Light Locomotives. ...

Light Locomotives. ...

Light Locomotives. ...



GENERAL AGENTS, LTD. P.O. Box 24, NAIROBI

The "Eighth Wonder" of the World.

Without doubt the finest value in Gramophones ever offered

discount only 100/-

Just arrived 3,000 new records, also a quantity of cheap tunes to clear at 2/6 each.

THE B.E.A. MUSIC STORES CO., LTD. Tel. 330. NAIROBI. Box No. 14

J.R. COX & Co

Telegrams "Bulox" ELDORET and at Kampala & Jinja.



Down!

This is one side of the story... The other side is the story... The story is the story...

SANATOGEN The True Tonic Food. Consists of 24 Chemicals and 1000...

Estate in Tanganyika for Sale. Three Estates for sale, adjacent to the Railway Line in the UZAMBARA PROVINCE. Most suitable for SIKALI cultivation, good building, water, etc.

ZANZIBAR GHOST STORIES. No. 2. Following is the second of the series of ghost stories appearing in the above supplement to the Zanzibar Official Gazette...

He was a young man, and his name was... He was a young man, and his name was... He was a young man, and his name was...

his hair and moustache as it afterwards to him that it was mostly owing to the fact that he was a young man...

There is nothing more to be said... There is nothing more to be said... There is nothing more to be said...

THE SCARCITY OF BACON. A year ago the largest produce of bacon in Kenya arrived in its entirety with a series of articles...

Under the auspices of the East African Women's Club, a series of lectures for the month of November 11, may be given by the Hon. Secretary of the League...

HEALTHY AND GREAT TALK. A British professional man, who has been in the country for some time, has been in the country for some time...

THE SCARCITY OF BACON. A year ago the largest produce of bacon in Kenya arrived in its entirety with a series of articles...

"RUBEROID" Roofing, Pluvex Roofing, Dampcourse, Ruberine Paints, Giant Building Paper, Coffee Tree Protectors, Booklets, Samples and Prices on Application To the Sole Agents: Boustead & Clarke Ltd., FENCING WIRE IN STOCK

Under the auspices of the East African Women's Club, a series of lectures for the month of November 11, may be given by the Hon. Secretary of the League...

THE SCARCITY OF BACON. A year ago the largest produce of bacon in Kenya arrived in its entirety with a series of articles...

Another Land Bargain KIRKWOOD & Co. LAND AGENTS, KITALE. We are situated within a few miles of two main railway stations, a FARM (65,000 acres) with a large maize, wheat and coffee. A very large area can be purchased for £100 per acre.

IMPORTANT ANNOUNCEMENT

— TO —

FORD AND FORDSON OWNERS

WITH

The Inauguration of a Cash Sales Policy

YET FURTHER PRICE REDUCTIONS

Effective from 23rd Oct. 1926

It has ever been the FORD policy to manufacture at lowest cost consistent with quality and efficiency, to market FORD, FORDSON and allied products throughout the world with utmost economy, and to restrict intermediate profits, so that the purchasing public shall buy at lowest price, with confidence that they are obtaining the utmost value for their money.

It has been the custom in this Colony to extend credit terms for motor supplies, a system which is uneconomic and is not in vogue elsewhere. This policy with its attendant increased charges and overhead costs, has long been at war with FORD policy of lowest possible prices.

In order to conform with FORD policy and in the interests of the large and ever increasing body of FORD and FORDSON owners, it has been decided to establish prices of all products on a strict cash basis of trading and to transact business on a cash basis only, at all the branches of the undersigned Companies, with special arrangements for Hire Purchase sales.

We believe that we may count on the hearty support and co-operation of all FORD and FORDSON owners interested in securing for themselves the full benefit of the FORD "GREATEST VALUE FOR MONEY" policy and of FORD efficiency.

On FORD CARS and TRUCKS Price Reductions will be from £9 to £11.

On Ford and Fordson PARTS 10 per cent.

Ford and Fordson Importing Dealers and Distributors

- THE UGANDA COMPANY LIMITED, — UGANDA.
- THE SERVICE COMPANY LIMITED, — KENYA.
- THOS. J. O'SHEA & COMPANY LIMITED, — PLATAUA.
- THE SERVICE COMPANY (TANGA) LIMITED, — TANGANYIKA.

FRIDAY, OCT. 22, 1926.

The Chief Native Commissioner's Speech.

We are glad indeed that Government is so kindly agreed to the request made by the English Members for an early statement upon the second time made by the Chief Native Commissioner in connection with the Labour problem. We had expressed the hope previously that some statement upon this contentious subject would be forthcoming in time to afford a guide to the Convention of Associations and there is no room for doubt that the speech which has been delivered to the Legislative Council—the proceedings—will have a very great influence in reducing the potency of the "straw wine" which the Convention will brew an labour; the will to work the Government. It is gratifying to see in the conversations which English Members offered to the Chief Native Commissioner upon his explanation of the position, the policy of course is that of the Government and the Chief Native Commissioner is merely an agent, responsible to Government, in carrying out the details. The constitutional position has not been very clearly understood in the country and has tended to complicate public thought. The point to consider is whether the Government policy is sufficiently interpreted properly by the Native Affairs Department, development policy is certainly more definite today than it has been in past years. The declaration of the Government's confidence that every able bodied native is capable to work either for himself in the reserves or outside, but he must work—is, the best possible attempt within the limitations imposed by the Colonial Office and national majority to define a policy. By itself it is a very good policy it means nothing; it is a personal ambition. The main consideration of the native who stops takes to make it effective. It is quite impossible, as we have frequently stated, to write a labour policy on paper and read it aloud. It is equally absurd to expect the native to demand that Government solve the problem and provide labour. The only really helpful advice is for Government and the settler to co-operate in the removal of every difficulty and every restriction of the natural law of industry labour. Some such steps were indicated by the Chief Native Commissioner in his speech. There is one matter open to Government and to the individual employer of encouraging and conserving labour, means which have been suggested at intervals for a decade, and no revolutionary methods are either necessary or desirable in dealing with the labour shortage. The fact must be recognised that the present generation of Africans are unaccustomed to regular labour; they have not had the routine of economic work which demands discipline and will require years of patient study and encouragement on the part of the Western Government and workers who people themselves in the African character and an outlook in the field of continuous and unbroken work as a part of the daily life will form a natural activity; man will find a natural activity; man will find, the slow day, in time to do the nature of the work.

FRIDAY, OCT. 22, 1926.

FRIDAY, OCT. 22, 1926.

INDIAN PRINCES DEBT FILM SCREEN.

They Did not Offer to Pay up £1,000,000.

(London News's Account.) London, October 20.—The Indian Princes' Debt Film Screen, which was shown at the Majestic Theatre, London, last night, was a most interesting and instructive one. It dealt with the financial position of the Indian Princes, and the extent of their indebtedness to the British Government. The film was shown in the presence of a large number of the Indian Princes, who were all present to see the film. The film was a most interesting and instructive one, and it was well received by the audience.

The British Government has been successful in its efforts to secure the repayment of the Indian Princes' debt. The film was a most interesting and instructive one, and it was well received by the audience. The British Government has been successful in its efforts to secure the repayment of the Indian Princes' debt.

FOREIGN RELATIONS AT THE CONFERENCE.

Secret Review by Sir Austen Chamberlain.

(London, October 20.) The Imperial Conference was opened by Downing Street last night, and the first business was the review of the work of the Secret Review by Sir Austen Chamberlain. The review was a most interesting and instructive one, and it was well received by the audience. The review dealt with the work of the Secret Review, and the progress of the conference.

King Franch.

His Majesty replied to the Congratulatory message of the French Government, and the King's speech was a most interesting and instructive one. The King's speech dealt with the work of the conference, and the progress of the conference.

King Franch.

His Majesty replied to the Congratulatory message of the French Government, and the King's speech was a most interesting and instructive one. The King's speech dealt with the work of the conference, and the progress of the conference.

King Franch.

His Majesty replied to the Congratulatory message of the French Government, and the King's speech was a most interesting and instructive one. The King's speech dealt with the work of the conference, and the progress of the conference.



Dorothy
Virginia
CIGARETTES

Made solely from
Fine Virginia Leaf,
Dorothy Cigarettes
are of superior
quality. They have a
smooth, luscious
mouth, and a
satisfying flavor
which does not
affect the throat or lungs.

Made in London by
Rothmans, Ltd., London.

Excursions

TO
SOUTH AFRICA

December, January & February

Union-Castle & British-India Lines

FARES TO DURBAN:

1st Class Return	Shs. 700/-
2nd Class Return	Shs. 520/-

Commencing with "Karspara," 4th December.

Apply to the UNION-CASTLE & C. Co., Ltd.,
MESSRS. SMITH, MAOKENZIE & O. S. O.,
KILINDINI.

AT STUD

The Winning Airedale Dog
Thelma Prince

Winner of 3 Challenge Certificates and many prizes in England. Est. Shs. 100/- prop. Bitches to NIGRO Station, 7 days notice required.

Apply
LORD HUGH KENNEDY
Njoro.

DUNTIL'S

(SUIVEE BROTHERS BUILDING CHEMISTS)

Strength, durability, light weight, the appearance and economy, obtained by the application of a scientific principle in the manufacture of Duntil's. It is the only material which is not affected by moisture, and is not affected by fire.

"WHY PROBLEMS SOLVED?"
The answer is simple. Duntil's is the only material which is not affected by moisture, and is not affected by fire.

"WHY PROBLEMS SOLVED?"
The answer is simple. Duntil's is the only material which is not affected by moisture, and is not affected by fire.

"WHY PROBLEMS SOLVED?"
The answer is simple. Duntil's is the only material which is not affected by moisture, and is not affected by fire.

**MORRIS
COWLEY
BATTERIES**
TYPE 8M6A 12 Volt LUCAS
CASH 150/60 each
Billing and charging extra.

Capital Garage

Opp. Fire Station, Nairobi.

FERROCRETE

SUPERCEDES CEMENT

Compression Tests—24 hours at lbs. per square inch.
ORDINARY CEMENT ... 450 lbs. **FERROCRETE** ... 1,750 lbs.
At 7 days as above
ORDINARY CEMENT ... 2,960 lbs. **FERROCRETE** ... 5,590 lbs.

These are actual tests by

RILEY, HARBORD & LAW
LONDON.

The Manufacturers Representatives

KETTLES-ROY LTD.

will supply any further information.

NAIROBI. P.O. Box 100.

**Lucas
Horns**

QUITE DIFFERENT FROM THE ORDINARY HORN



20/-

No. 63 as above (shorter)



13/-



30/-

CAPITAL GARAGE.

LIFE ASSURANCE

practically a 100% INVESTMENT

Example: Age 30. Annual Premium Annual Bonus allotted ... £2 8s ... £2 0s (increasing with age of policy)

Similar favourable rates for endorsement assurance.

NATIONAL MUTUAL LIFE ASSOCIATION OF AUSTRALASIA LTD.

Agents: **STEWART & CO., LTD.**

101, RIVER STREET, NAIROBI.

M.L.C. Married.

WEDDING ANNOUNCED OF CAPT. J. S. COOKE

The marriage has taken place on September 11 in the Town of September 13, at the Church of St. John the Baptist, East London, of Capt. John Robert Cooke, Captain of the 1st Battalion, The Buffs, and Miss Elizabeth Louise, daughter of Mr. and Mrs. J. S. Cooke, of the 1st Battalion, The Buffs.

Capt. Cooke, who has formerly been in the 1st Battalion, The Buffs, is now in the 1st Battalion, The Buffs, and is a member of the 1st Battalion, The Buffs.

The bride is the daughter of Mr. and Mrs. J. S. Cooke, of the 1st Battalion, The Buffs.

The ceremony was performed by the Rev. Canon J. S. Cooke, of the 1st Battalion, The Buffs.

The bride and groom were accompanied by their parents and other relatives.

The reception was held at the residence of the bride's parents.

The bride and groom were accompanied by their parents and other relatives.

The ceremony was performed by the Rev. Canon J. S. Cooke, of the 1st Battalion, The Buffs.

The bride is the daughter of Mr. and Mrs. J. S. Cooke, of the 1st Battalion, The Buffs.

The ceremony was performed by the Rev. Canon J. S. Cooke, of the 1st Battalion, The Buffs.

The bride and groom were accompanied by their parents and other relatives.

The reception was held at the residence of the bride's parents.

The bride and groom were accompanied by their parents and other relatives.

The ceremony was performed by the Rev. Canon J. S. Cooke, of the 1st Battalion, The Buffs.

The bride is the daughter of Mr. and Mrs. J. S. Cooke, of the 1st Battalion, The Buffs.

The ceremony was performed by the Rev. Canon J. S. Cooke, of the 1st Battalion, The Buffs.

The bride and groom were accompanied by their parents and other relatives.

The reception was held at the residence of the bride's parents.

The bride and groom were accompanied by their parents and other relatives.

The ceremony was performed by the Rev. Canon J. S. Cooke, of the 1st Battalion, The Buffs.

The bride is the daughter of Mr. and Mrs. J. S. Cooke, of the 1st Battalion, The Buffs.

The ceremony was performed by the Rev. Canon J. S. Cooke, of the 1st Battalion, The Buffs.

The bride and groom were accompanied by their parents and other relatives.

The reception was held at the residence of the bride's parents.

The bride and groom were accompanied by their parents and other relatives.

The ceremony was performed by the Rev. Canon J. S. Cooke, of the 1st Battalion, The Buffs.

The bride is the daughter of Mr. and Mrs. J. S. Cooke, of the 1st Battalion, The Buffs.

The ceremony was performed by the Rev. Canon J. S. Cooke, of the 1st Battalion, The Buffs.

The bride and groom were accompanied by their parents and other relatives.

The reception was held at the residence of the bride's parents.

The bride and groom were accompanied by their parents and other relatives.

The ceremony was performed by the Rev. Canon J. S. Cooke, of the 1st Battalion, The Buffs.

The bride is the daughter of Mr. and Mrs. J. S. Cooke, of the 1st Battalion, The Buffs.

The ceremony was performed by the Rev. Canon J. S. Cooke, of the 1st Battalion, The Buffs.

The bride and groom were accompanied by their parents and other relatives.

The reception was held at the residence of the bride's parents.

The bride and groom were accompanied by their parents and other relatives.

The ceremony was performed by the Rev. Canon J. S. Cooke, of the 1st Battalion, The Buffs.

The bride is the daughter of Mr. and Mrs. J. S. Cooke, of the 1st Battalion, The Buffs.

The ceremony was performed by the Rev. Canon J. S. Cooke, of the 1st Battalion, The Buffs.

The bride and groom were accompanied by their parents and other relatives.

The reception was held at the residence of the bride's parents.

The bride and groom were accompanied by their parents and other relatives.

The ceremony was performed by the Rev. Canon J. S. Cooke, of the 1st Battalion, The Buffs.

The bride is the daughter of Mr. and Mrs. J. S. Cooke, of the 1st Battalion, The Buffs.

The ceremony was performed by the Rev. Canon J. S. Cooke, of the 1st Battalion, The Buffs.

The bride and groom were accompanied by their parents and other relatives.

The reception was held at the residence of the bride's parents.

The bride and groom were accompanied by their parents and other relatives.

The ceremony was performed by the Rev. Canon J. S. Cooke, of the 1st Battalion, The Buffs.

The bride is the daughter of Mr. and Mrs. J. S. Cooke, of the 1st Battalion, The Buffs.

The ceremony was performed by the Rev. Canon J. S. Cooke, of the 1st Battalion, The Buffs.

BRADES CO.

**BRITISH AXES.
BRITISH PANGAS.
BUTT JEMIES.
BRITISH SHOVELS.
COST MORE BET LAST LOGS**

Kettles-Roy, Ltd.
Representatives

SERVICE



STATION

**2.49 Solo air chain ... 1,990/-
2.59 Solo air chain ... 1,600/-
7 h.p. Combination ... 1,600/-
7 h.p. Solo with electric light ... 1,600/-
7 h.p. Solo without electric light ... 1,500/-**
Price do not include delivery charges.

Capital Garage

**VICTORIA ST. NAIROBI
KETTLES-ROY, NAIROBI
Manufacturers' Representatives**

STOCKS

OF **LOGS**

SPARKING PLUGS

WHOLESALE PRICES

ON APPLICATION

Retail prices 1/4

for ALL makes of motor cars and cycles

Weatherproof models, sports and special car model 4/50 and 5/-

The new C.B.3 Morris 4/-

Capital Garage

VICTORIA ST. NAIROBI.

For "Raleighability"

RALEIGH

THE ALL-STEEL CYCLE

Kettles-Roy, Ltd.

THE EAST AFRICAN STANDARD



Motor and MAGAZINE SUPPLEMENT



SUPPLEMENT No. 156

SATURDAY, OCT. 31, 1926

NAIROBI.

HIGH-SPEED RELIABILITY TEST PROVES THE SUPERIORITY OF SHELL OIL AND SHELL PETROL.

For the first time, a London-Cairo flight has been accomplished in 50 hours (clapped time).

The pilot, Colonel Minchin, C.B.E., D.S.O., M.C., flying a Bristol Bloodhound biplane with Bristol Jupiter air-cooled engine, set up this new air record on July 30/26.

The distance of the air route is 2,200 miles, which 400 are over the sea. It was an arduous task for any engine. Shell Oil was used exclusively and gave dependable, unflinching lubrication throughout the flight.

Shell Aviation Spirit was also used exclusively. This another air record was made on this invincible combination Shell Oil and Shell Petrol.

MOTOR ACCIDENTS.

Conditions and Times of Occurrence.

AMERICAN STATISTICS.

United States conditions are not too far removed from those of this country. As a matter of fact, the majority of motor accidents occur at night and on wet roads. The statistics show that 70 per cent of the accidents occurred on wet roads, and 40 per cent occurred at night. The majority of accidents occurred on roads which were not well maintained. The majority of accidents occurred on roads which were not well maintained. The majority of accidents occurred on roads which were not well maintained.

JOURNEY ACCOMPLISHED BY CHEVROLET

The Chevrolets were written as follows: "The journey from Tanga to Nairobi was accomplished in 48 hours and 48 minutes. The journey from Tanga to Nairobi was accomplished in 48 hours and 48 minutes. The journey from Tanga to Nairobi was accomplished in 48 hours and 48 minutes."

Tanga to Nairobi.

The journey from Tanga to Nairobi was accomplished in 48 hours and 48 minutes. The journey from Tanga to Nairobi was accomplished in 48 hours and 48 minutes. The journey from Tanga to Nairobi was accomplished in 48 hours and 48 minutes.

The journey from Tanga to Nairobi was accomplished in 48 hours and 48 minutes. The journey from Tanga to Nairobi was accomplished in 48 hours and 48 minutes. The journey from Tanga to Nairobi was accomplished in 48 hours and 48 minutes.

The journey from Tanga to Nairobi was accomplished in 48 hours and 48 minutes. The journey from Tanga to Nairobi was accomplished in 48 hours and 48 minutes. The journey from Tanga to Nairobi was accomplished in 48 hours and 48 minutes.

The journey from Tanga to Nairobi was accomplished in 48 hours and 48 minutes. The journey from Tanga to Nairobi was accomplished in 48 hours and 48 minutes. The journey from Tanga to Nairobi was accomplished in 48 hours and 48 minutes.

THE SHELL COMPANY OF EAST AFRICA LTD.

Sole Representatives: **Smith Mackenzie & Co.**

Agents.

1926 Moting in England

Any make of car ready for you on arrival.

We operate in outline cars with details guaranteed.

REPAIRS PRICE.

We then operate that heavy vehicle by Orders on Department for home-visit power as

COSTLY

This enables you to know exactly what your MOTORING will cost you.

HIRE DEPT.

NEW AUSTIN DRIVE YOURSELF.

Includes make of Car, American and English at monthly instalment rates for hire by day, week, or month, or on long term.

On the other hand, although the majority of accidents occurred at night and on wet roads, the statistics show that 70 per cent of the accidents occurred on wet roads, and 40 per cent occurred at night.

The majority of accidents occurred on roads which were not well maintained. The majority of accidents occurred on roads which were not well maintained. The majority of accidents occurred on roads which were not well maintained.

The majority of accidents occurred on roads which were not well maintained. The majority of accidents occurred on roads which were not well maintained. The majority of accidents occurred on roads which were not well maintained.

The majority of accidents occurred on roads which were not well maintained. The majority of accidents occurred on roads which were not well maintained. The majority of accidents occurred on roads which were not well maintained.

The majority of accidents occurred on roads which were not well maintained. The majority of accidents occurred on roads which were not well maintained. The majority of accidents occurred on roads which were not well maintained.

The majority of accidents occurred on roads which were not well maintained. The majority of accidents occurred on roads which were not well maintained. The majority of accidents occurred on roads which were not well maintained.

TO WHOM ANY WHY

Collisions with pedestrians and crashes into other automobiles are the most common causes of motor accidents. The majority of accidents occurred on roads which were not well maintained. The majority of accidents occurred on roads which were not well maintained. The majority of accidents occurred on roads which were not well maintained.

The majority of accidents occurred on roads which were not well maintained. The majority of accidents occurred on roads which were not well maintained. The majority of accidents occurred on roads which were not well maintained.

The majority of accidents occurred on roads which were not well maintained. The majority of accidents occurred on roads which were not well maintained. The majority of accidents occurred on roads which were not well maintained.

The majority of accidents occurred on roads which were not well maintained. The majority of accidents occurred on roads which were not well maintained. The majority of accidents occurred on roads which were not well maintained.

The majority of accidents occurred on roads which were not well maintained. The majority of accidents occurred on roads which were not well maintained. The majority of accidents occurred on roads which were not well maintained.

The majority of accidents occurred on roads which were not well maintained. The majority of accidents occurred on roads which were not well maintained. The majority of accidents occurred on roads which were not well maintained.

The majority of accidents occurred on roads which were not well maintained. The majority of accidents occurred on roads which were not well maintained. The majority of accidents occurred on roads which were not well maintained.

The majority of accidents occurred on roads which were not well maintained. The majority of accidents occurred on roads which were not well maintained. The majority of accidents occurred on roads which were not well maintained.

The majority of accidents occurred on roads which were not well maintained. The majority of accidents occurred on roads which were not well maintained. The majority of accidents occurred on roads which were not well maintained.

The majority of accidents occurred on roads which were not well maintained. The majority of accidents occurred on roads which were not well maintained. The majority of accidents occurred on roads which were not well maintained.

The majority of accidents occurred on roads which were not well maintained. The majority of accidents occurred on roads which were not well maintained. The majority of accidents occurred on roads which were not well maintained.

The majority of accidents occurred on roads which were not well maintained. The majority of accidents occurred on roads which were not well maintained. The majority of accidents occurred on roads which were not well maintained.

The majority of accidents occurred on roads which were not well maintained. The majority of accidents occurred on roads which were not well maintained. The majority of accidents occurred on roads which were not well maintained.

The majority of accidents occurred on roads which were not well maintained. The majority of accidents occurred on roads which were not well maintained. The majority of accidents occurred on roads which were not well maintained.

The majority of accidents occurred on roads which were not well maintained. The majority of accidents occurred on roads which were not well maintained. The majority of accidents occurred on roads which were not well maintained.

The majority of accidents occurred on roads which were not well maintained. The majority of accidents occurred on roads which were not well maintained. The majority of accidents occurred on roads which were not well maintained.

The majority of accidents occurred on roads which were not well maintained. The majority of accidents occurred on roads which were not well maintained. The majority of accidents occurred on roads which were not well maintained.

The majority of accidents occurred on roads which were not well maintained. The majority of accidents occurred on roads which were not well maintained. The majority of accidents occurred on roads which were not well maintained.

The majority of accidents occurred on roads which were not well maintained. The majority of accidents occurred on roads which were not well maintained. The majority of accidents occurred on roads which were not well maintained.

YOU CAN'T GO WRONG WHICHEVER YOU BUY

THE NEW "E.W."

Douglas Complete with Lamp and Horn and all tools \$67-10-00

SOLE IMPORTERS: CARR, LAWSON & CO. LTD.

B.S.A.

- M.30 2.40 H.P. 2 Speed £87-10
- B.30 De Lutz 2.40 H.P. 3 Speed £82-10
- M.30 2.40 H.P. 3 Speed £87-10
- L.30 De Lutz 3.40 H.P. O.H.V. £77-10
- M.30 4.90 H.P. £70-00
- H.30 De Lutz 5.97 H.P. £100-00
- E.30 7.10 H.P. £113-10

SOLE IMPORTERS: CARR, LAWSON & CO. LTD.

A.J.S.

- Model G.5 3.49 H.P. £70
- Model G.8 4.98 H.P. £90

SOLE IMPORTERS: CARR, LAWSON & CO. LTD.

THE SPORTS MODEL

Advantages and Disadvantages.

GROWING POPULARITY.

Amongst many motorists, a sports model is a driver's car for a considerable time, because of its speed, its ease of control, its sports model is also a racing car, which with a few extra modifications, such as a light and horn, and a steering wheel, can be converted into a racing car. A sports model is also a car which is very easy to drive, and is very easy to maintain, and is very easy to repair.

As to the manner in which it is driven, it is very easy to drive, and is very easy to maintain, and is very easy to repair. It is a car which is very easy to drive, and is very easy to maintain, and is very easy to repair. It is a car which is very easy to drive, and is very easy to maintain, and is very easy to repair.

It is a car which is very easy to drive, and is very easy to maintain, and is very easy to repair. It is a car which is very easy to drive, and is very easy to maintain, and is very easy to repair. It is a car which is very easy to drive, and is very easy to maintain, and is very easy to repair.

It is a car which is very easy to drive, and is very easy to maintain, and is very easy to repair. It is a car which is very easy to drive, and is very easy to maintain, and is very easy to repair. It is a car which is very easy to drive, and is very easy to maintain, and is very easy to repair.

It is a car which is very easy to drive, and is very easy to maintain, and is very easy to repair. It is a car which is very easy to drive, and is very easy to maintain, and is very easy to repair. It is a car which is very easy to drive, and is very easy to maintain, and is very easy to repair.

It is a car which is very easy to drive, and is very easy to maintain, and is very easy to repair. It is a car which is very easy to drive, and is very easy to maintain, and is very easy to repair. It is a car which is very easy to drive, and is very easy to maintain, and is very easy to repair.

It is a car which is very easy to drive, and is very easy to maintain, and is very easy to repair. It is a car which is very easy to drive, and is very easy to maintain, and is very easy to repair. It is a car which is very easy to drive, and is very easy to maintain, and is very easy to repair.

instead of solid rails when going on a long journey, the question of maintaining a high average speed is important.

With a sports car, the question of maintaining a high average speed is important. It is a car which is very easy to drive, and is very easy to maintain, and is very easy to repair.

It is a car which is very easy to drive, and is very easy to maintain, and is very easy to repair. It is a car which is very easy to drive, and is very easy to maintain, and is very easy to repair.

It is a car which is very easy to drive, and is very easy to maintain, and is very easy to repair. It is a car which is very easy to drive, and is very easy to maintain, and is very easy to repair.

It is a car which is very easy to drive, and is very easy to maintain, and is very easy to repair. It is a car which is very easy to drive, and is very easy to maintain, and is very easy to repair.

It is a car which is very easy to drive, and is very easy to maintain, and is very easy to repair. It is a car which is very easy to drive, and is very easy to maintain, and is very easy to repair.

It is a car which is very easy to drive, and is very easy to maintain, and is very easy to repair. It is a car which is very easy to drive, and is very easy to maintain, and is very easy to repair.

It is a car which is very easy to drive, and is very easy to maintain, and is very easy to repair. It is a car which is very easy to drive, and is very easy to maintain, and is very easy to repair.

It is a car which is very easy to drive, and is very easy to maintain, and is very easy to repair. It is a car which is very easy to drive, and is very easy to maintain, and is very easy to repair.

It is a car which is very easy to drive, and is very easy to maintain, and is very easy to repair. It is a car which is very easy to drive, and is very easy to maintain, and is very easy to repair.

The Norton Cycle.

INTRODUCTION OF A NEW MODEL.

Several modifications of some importance have been made to Norton models, those of which there is little that differs from the old model.

Perhaps the most important item is the introduction of a four-valve overhead valve 490 c.c. engine. This is now the standard engine, and is available with the larger capacity 500 c.c. type.

Other new handling a simple one will operate on a standard engine. It is a car which is very easy to drive, and is very easy to maintain, and is very easy to repair.

It is a car which is very easy to drive, and is very easy to maintain, and is very easy to repair. It is a car which is very easy to drive, and is very easy to maintain, and is very easy to repair.

It is a car which is very easy to drive, and is very easy to maintain, and is very easy to repair. It is a car which is very easy to drive, and is very easy to maintain, and is very easy to repair.

It is a car which is very easy to drive, and is very easy to maintain, and is very easy to repair. It is a car which is very easy to drive, and is very easy to maintain, and is very easy to repair.

It is a car which is very easy to drive, and is very easy to maintain, and is very easy to repair. It is a car which is very easy to drive, and is very easy to maintain, and is very easy to repair.

It is a car which is very easy to drive, and is very easy to maintain, and is very easy to repair. It is a car which is very easy to drive, and is very easy to maintain, and is very easy to repair.

It is a car which is very easy to drive, and is very easy to maintain, and is very easy to repair. It is a car which is very easy to drive, and is very easy to maintain, and is very easy to repair.

Five Models for the Coming Year.

STRAIGHT TWIN.

For next year there will be three distinct models of Douglas straight-twin models, those of which there is little that differs from the old model.

Perhaps the most important item is the introduction of a four-valve overhead valve 490 c.c. engine. This is now the standard engine, and is available with the larger capacity 500 c.c. type.

Other new handling a simple one will operate on a standard engine. It is a car which is very easy to drive, and is very easy to maintain, and is very easy to repair.

It is a car which is very easy to drive, and is very easy to maintain, and is very easy to repair. It is a car which is very easy to drive, and is very easy to maintain, and is very easy to repair.

It is a car which is very easy to drive, and is very easy to maintain, and is very easy to repair. It is a car which is very easy to drive, and is very easy to maintain, and is very easy to repair.

It is a car which is very easy to drive, and is very easy to maintain, and is very easy to repair. It is a car which is very easy to drive, and is very easy to maintain, and is very easy to repair.

It is a car which is very easy to drive, and is very easy to maintain, and is very easy to repair. It is a car which is very easy to drive, and is very easy to maintain, and is very easy to repair.

It is a car which is very easy to drive, and is very easy to maintain, and is very easy to repair. It is a car which is very easy to drive, and is very easy to maintain, and is very easy to repair.

It is a car which is very easy to drive, and is very easy to maintain, and is very easy to repair. It is a car which is very easy to drive, and is very easy to maintain, and is very easy to repair.

NEW DOUGLAS

Three Models for the Coming Year.

For next year there will be three distinct models of Douglas straight-twin models, those of which there is little that differs from the old model.

Perhaps the most important item is the introduction of a four-valve overhead valve 490 c.c. engine. This is now the standard engine, and is available with the larger capacity 500 c.c. type.

Other new handling a simple one will operate on a standard engine. It is a car which is very easy to drive, and is very easy to maintain, and is very easy to repair.

It is a car which is very easy to drive, and is very easy to maintain, and is very easy to repair. It is a car which is very easy to drive, and is very easy to maintain, and is very easy to repair.

It is a car which is very easy to drive, and is very easy to maintain, and is very easy to repair. It is a car which is very easy to drive, and is very easy to maintain, and is very easy to repair.

It is a car which is very easy to drive, and is very easy to maintain, and is very easy to repair. It is a car which is very easy to drive, and is very easy to maintain, and is very easy to repair.

It is a car which is very easy to drive, and is very easy to maintain, and is very easy to repair. It is a car which is very easy to drive, and is very easy to maintain, and is very easy to repair.

It is a car which is very easy to drive, and is very easy to maintain, and is very easy to repair. It is a car which is very easy to drive, and is very easy to maintain, and is very easy to repair.

It is a car which is very easy to drive, and is very easy to maintain, and is very easy to repair. It is a car which is very easy to drive, and is very easy to maintain, and is very easy to repair.

New British Motor Cycle.

WORLD'S MOST ADVANCED MODEL.

In view of the new approach of the British Motor Cycle Co. (B.M.C.) to the design of their motorcycles, it is interesting to note that the new model is a very advanced one.

Perhaps the most important item is the introduction of a four-valve overhead valve 490 c.c. engine. This is now the standard engine, and is available with the larger capacity 500 c.c. type.

Other new handling a simple one will operate on a standard engine. It is a car which is very easy to drive, and is very easy to maintain, and is very easy to repair.

It is a car which is very easy to drive, and is very easy to maintain, and is very easy to repair. It is a car which is very easy to drive, and is very easy to maintain, and is very easy to repair.

It is a car which is very easy to drive, and is very easy to maintain, and is very easy to repair. It is a car which is very easy to drive, and is very easy to maintain, and is very easy to repair.

It is a car which is very easy to drive, and is very easy to maintain, and is very easy to repair. It is a car which is very easy to drive, and is very easy to maintain, and is very easy to repair.

It is a car which is very easy to drive, and is very easy to maintain, and is very easy to repair. It is a car which is very easy to drive, and is very easy to maintain, and is very easy to repair.

It is a car which is very easy to drive, and is very easy to maintain, and is very easy to repair. It is a car which is very easy to drive, and is very easy to maintain, and is very easy to repair.

It is a car which is very easy to drive, and is very easy to maintain, and is very easy to repair. It is a car which is very easy to drive, and is very easy to maintain, and is very easy to repair.

WATERBURY BATTERIES

TYPE C.W. 3.

6 volts Price Shgs. 105/- Filling and charging 18/- extra

SOLE IMPORTERS: CARR, LAWSON & CO. LTD.

WAKEFIELD Castrol MOTOR OIL

Obtainable all over the Country

It is a common fallacy that "Castrol" cannot be mixed with any other oil. This is entirely erroneous. "Castrol" will mix perfectly with any mineral lubricating oil, so you can commence using "Castrol" in your engine at any time.

SOLE IMPORTERS: CARR, LAWSON & CO. LTD.

CHAMPION

There's a Type for Every Engine

SOLE IMPORTERS: CARR, LAWSON & CO. LTD.

TAKE IT FROM ME—

that the way to obtain maximum power and speed from your car is to fit the Zenith Carburettor. Years of careful research and experiment have made the

ZENITH CARBURETTOR

THE ZENITH OF POWER AND RELIABILITY.
Write for Free Booklet and see the "Why's" and "Where's" of the Zenith Carburettor. It is the best carburettor in the world.
The Zenith Carburettor Co., Ltd., 40 Haverhill Street, London W.1., England.



Some

1926

successes
on



DUNLOP

HARTFORD CUP

1st and 2nd places

RUBER WELTWOORTH CUP

(all runs run.)
1st, 2nd and 3rd places

J.O.C. PRODUCTION OIL RACE

1,500 c.c. Class - 1st and 2nd
1,100 c.c. Class - 1st and 2nd
700 c.c. Class - 1st and 2nd

SAN FRANCISCO GRAND PRIX

1st and 2nd places.

TARGO FLORIO

4th and 5th places
One First, Three Seconds
in Three classes.

BELGIUM 24 HOURS RACE

July 26
First place in Three
Categories.

N.A.C. GRAND PRIX

1st and 2nd places.

The Moral is:

fit
DUNLOP
and BE SATISFIED

THE DUNLOP RUBBER CO. LTD

Box 718. DEPOINTEVILLE. NAIROBI.

The African Mercantile Co., Ltd.

Agents - Mombasa - Kilindi - Tanga - Zanzibar - Dar-es-Salaam.

BRITISH MOTOR TRADE.

Recent General Export Improvement.

FUTURE PROSPECTS.

(By a London Correspondent.)

The record that British motor manufacturers are presenting is not clear indication that they have been able to sell to the overseas markets as well as indicated by the fact that in 1925 above 20 per cent of the total production of the industry was exported, whereas in 1925 only about 7 per cent of the total production was shipped overseas.

Moreover, in the two years, the total British production supplied to the home and overseas markets increased very largely, with the result that the exports for 1925 were equivalent to something like 34 per cent of the total production of the industry in 1926. Consequently, the improvement is shown by the fact that, for the first 10 months of 1926, the export figures were some 20 per cent higher than for the corresponding four months of 1925.

INCREASE IN WORLD TRADE.

The general improvement is limited by the figure shown as a result from an increased demand in the home general improvement, and this, with practically no exception, the exports to every one of the principal countries in 1925 against 1924, and again in 1925 against 1924.

Figures of export of British motor vehicles, mandally compiled by the statistical department of the British Motor Manufacturers' Association, Ltd. have been available for the first time. The figures are found to be a full 100 per cent higher than the figures of 1924, and the other countries of the Empire markets in order which stands with the number of vehicles that they have taken during the year 1925.

Australia. The improvement in 1925 as against 1924 was 100 per cent in the number of vehicles exported. In 1925 as against 1924, the improvement was no less than 80 per cent.

New Zealand. The increase in 1925 as against 1924 was about 17 per cent, and in 1925 as against 1924 it was 75 per cent.

India. Exports to India during 1925 showed an improvement of 150 per cent over 1924, and in 1925 the increase was 200 per cent as compared with the same year.

South Africa. How the increase in 1925 as against 1924 was 140 per cent in 1924, and 540 per cent in 1925.

South Africa. The corresponding figures in this case showed an 200 per cent increase for 1925 and an increase of nearly 1,000 per cent for 1926.

Canada. How the figures of increase as against 1924 were 140 per cent in 1924, and 540 per cent in 1925 as against the same year 1924.

Other miscellaneous. English manufacturers showed a very marked improvement, and the same applies to the other countries of the Empire. These were rather more marked in 1925 as against 1924, and again very nearly double in 1926 as against 1925.

assigned with those of 1923 showed an increase of 800 per cent.

AUSTRALASIAN POSITION AND PROSPECTS.

The extraordinary growth of British motor export business in the past few years has been a source of pride to the British motor industry.

The writer has before him a copy of the report of the British Motor Manufacturers' Association to the United States, the result of an investigation conducted in Australia by a very experienced number of that Association.

The conclusions pointed out that the United States market opportunities were not holding their own in the Australian market.

The figures regarding the importation of cars into Australia from various sources during the first six months of 1924 and 1925. These figures showed an increase of 130 per cent in British imports and an increase of only 11 per cent in United States imports.

Imports from Canada, actually showed a decrease of about 40 per cent, and imports from European countries an increase of the same percentage.

He attributes the remarkable increase in the sale of British cars in Australia to the fact that the high efficiency of the export sales representatives of British concerns.

These men, he says, are more very carefully selected when they arrive, they settle down in the country for a number of years and play their part in the social and economic development of their adopted country. It is points out, moreover that the European type of light car appears very strongly in the Australian market.

As a whole, it is said of the population of Australia, it will be found that 25,000 people or over, who are not yet fully developed, are naturally, to attract this percentage of the total, considerable market.

It is a sign of the times that it has recently been decided to appoint a committee of the Australian Government to investigate the position of the British motor industry in Australia.

The committee will be composed of the Secretary of the Australian Government, the Secretary of the British Motor Manufacturers' Association, and the Secretary of the Australian Motor Manufacturers' Association.

The committee will be asked to report on the position of the British motor industry in Australia, and to recommend measures for its improvement.

The committee will also be asked to report on the position of the British motor industry in New Zealand, and to recommend measures for its improvement.



The Improved Rugby Four

TOURING

With Blue Duco Finish
Five Cord Tyres on Demountable Steel Rims
Magneto Ignition

£230

All Aluminium Box Body with Imported Spring Seats

£215

The New Rugby Six

With Blue Duco Finish
Five Balloon Cord Tyres on Demountable Rims

£280

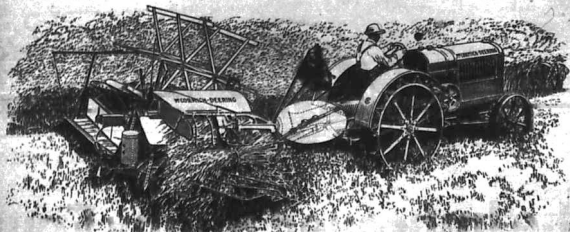
The New Rugby Six will run from 3 to 60 miles per hour and has climbed the Escarpment on top gear.

CARR, LAWSON & Co., Ltd.

Sixth Avenue, NAIROBI.

Box 203.

Phone 103.



A 40-horsepower shown here, the mechanism being operated by the power take-off of the McCormick-Deering Tractor.

Do You Know About the McCormick-Deering Power Take-Off?

Besides the belt and drawbar McCormick-Deering Tractors have a third power source—the power take-off, for running the mechanism of binders, maize-pickers, harvester-threshers, etc., direct from the tractor engine. This handy properly located, properly protected, power take-off always runs at the same speed whether the tractor is in high or low. It can be operated when the tractor is standing still, also a pulled machine can be cleared if clogged. It is gear driven. It runs at a uniform speed. The McCormick-Deering is the original triple-power tractor.

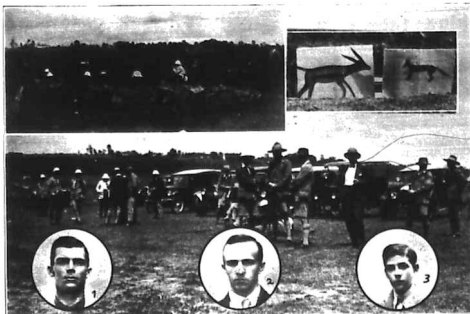
McCormick-Deering tractors are specially designed to operate by means of their power take-off the following equipment

- 12-24 tractor 225
- 15-30 tractor 250
- 18-36 tractor (with motor) for ploughing and harrowing 300
- 24-42 tractor (with motor) for ploughing and harrowing 350

- McCormick-Deering Tractor
- McCormick-Deering Harvester-Thresher
- McCormick-Deering Maize Picker

If you are farming in maize or wheat the McCormick-Deering tractor is indispensable to you.

Gilman & Company, Ltd.
D I S T R I B U T O R S .



Scene on the North Side Range at the Kenya Bisley held on October 15 and 16. Top right, the largest of the seven Bucks Shooting Competition. Top left, shooting for the E. A. Bisley Cup. Middle right, the Land Ranges for Kenya Openers. In D. H. Cox, the runner-up for the championship. In H. Pender, winner of the Junior Championship for the second time in succession.



Dr. Herbert Lee (left), Mr. E. E. Unwin, District Secretary of Kenya and Dr. James Jones, Director of the Kenya Forest Range Commission, who attended the Livingstone Conference at Nairobi Conference of African Foresters at Dr. Louis Rogier's invitation.

THE LIVINGSTONE CONFERENCE



The Victoria Park Hotel, where the Livingstone Conference of African Foresters met in Nairobi, Kenya, was held.



R. B. Rowena, the new Kenya and Uganda Railway for the Victoria Lake Service, awaiting trial runs by Douglas M. Rowena. The vessel was repaired in various ways. Rowena will be employed in the Kenya Railway service. It is named after one of the boats in the Lake.

PROTESTANT MISSIONARY ALLIANCE HIGH SCHOOL, KIKUYU



A schoolroom. A scene of the school.

Scene of the Puffin. The Principal Dr. G. J. Grove and Mrs. Grove. A group looking with the opening of the new Missionary enterprise appears in the scene.

19 people all of whom apparently... The House on the Thursday...

ation would be made into the... The Acting Colonial Secretary...

but he would point out that all... Captain Kennedy was not here...

Muter and Oswald's Sales Miscellaneous Goods.

Duly instructed, we shall sell, by Public Auction, without reserve, at our Salesrooms, Matos Building, Hartings Street (entrance by Lane) on

MONDAY 25th October at 9.30 am

- GARNS TRUNKS SADDLE. REMNANTS. NOVELS. CROCKERY. SPOON HEAD CLOTHES. TOILET SET. KITCHEN UTENSILS. ENAMELWARE. RUBS. BATH ENAMEL FILTER. NATIVE DRUM and STOOLS. Etc.

MUTER and OSWALD, Auctioneers, etc., NAIROBI.

SALE WITHOUT RESERVE OF IMPORTANT COFFEE ESTATE AS A GOING CONCERN. In the matter of SAMURU ESTATES LTD. (in Liquidation)

Favoured with instructions from the Liquidator.

AUSTIN & CO.

Will sell by AUCTION WITHOUT RESERVE at THE NEW STANLEY HOTEL, (Drawing Room) ON THURSDAY, OCTOBER 26th at 11 o'clock sharp.

THE VERY VALUABLE COFFEE ESTE of APPROX. 600 acres L.O. of 48, 9 of which about 300 acres under coffee and at a rough estimate 200 bearing.

NEAR STONY BUILDING FACTORY FITTED WITH UP-TO-DATE PLANT & MACHINERY built and

FINE STONE BUILD RESIDENCE standing in charming Orangerai District.

The Machinery plant, and equipment recently valued at £5,500.

SPLENDIDLY SITUATED about 5 Miles from this Station and close to Main Fort and Thika Road

About 10 ACRES USEFUL TIMBER WATTLE and GUM.

The Property being close to the Native Reserve the supply of Labour is PLENTIFUL.

Full Details, Inventories, Plans, etc., to be seen at the OFFICE OF THE AUCTIONEER, AUSTIN & CO. P.O. Box 614, Hartings St., Box 596, Phone 190.

TITLE DEEDS and PLANS at the SOLICITORS for the Vendor Messrs Hartings and Oswald, corner Swamp Road, Nairobi.

GUNNERS

At a meeting of Gunners held on the 18th inst. it was decided to hold a dinner at the New Stanley Hotel on Thursday, December 30th.

To enable the Committee to make the necessary arrangements it is requested that all Gunners, who desire to be present should notify the undersigned not later than 15th November next.

E. L. LESTER, Capt. Hon. Secretary, P.O. Box 661, NAIROBI

Usin Gishu Gymkhana Club. ELDERST MEETING OCTOBER 28th & 29th.

Second Day The race for October 28th is cancelled owing to lack of entrants and the following race is substituted:

A race for the progeny of Somali mares. Weight for age, inches and sex. Horses five years old and over 12 1/2 lbs. Penalties 14 lb. 5 yrs and over and first 7 lbs; Values 20 of which 15 to the second. Distance 5 furlongs. Entries fee 5s.

Entries for this race close soon October 27th to the Secretary Gymkhana Club, Box 50 Eldoret.

NEVILL HILL, Hon. Secretary, Usin Gishu Gymkhana Club.



Home Football. (Is a Standard Speech) Cable Notes of Last Week's Matches.

LEAGUE TABLE. The following are the tables of the English and Scottish Leagues compiled up to and including matches played on Saturday, October 16.

Table with columns for League, Club, and Points. Includes sections for English League and Scottish League.

First Division. Second Division. Third Division. Southern Division.

Table with columns for Club, P, W, D, L, Goals For, Goals Against. Includes sections for First and Second Divisions.

Table with columns for Club, P, W, D, L, Goals For, Goals Against. Includes sections for First and Second Divisions.

Table with columns for Club, P, W, D, L, Goals For, Goals Against. Includes sections for First and Second Divisions.

Table with columns for Club, P, W, D, L, Goals For, Goals Against. Includes sections for First and Second Divisions.

Table with columns for Club, P, W, D, L, Goals For, Goals Against. Includes sections for First and Second Divisions.

Table with columns for Club, P, W, D, L, Goals For, Goals Against. Includes sections for First and Second Divisions.

Table with columns for Club, P, W, D, L, Goals For, Goals Against. Includes sections for First and Second Divisions.

Table with columns for Club, P, W, D, L, Goals For, Goals Against. Includes sections for First and Second Divisions.

Table with columns for Club, P, W, D, L, Goals For, Goals Against. Includes sections for First and Second Divisions.

Table with columns for Club, P, W, D, L, Goals For, Goals Against. Includes sections for First and Second Divisions.

Table with columns for Club, P, W, D, L, Goals For, Goals Against. Includes sections for First and Second Divisions.



Trout Fishing in South Africa.

In the past ten years Trout culture has made considerable headway in South Africa. Many mountain streams, ideally situated, offer sport of the highest class to followers of the gentle art.

The open season extends from October to April. Railway travel in South Africa is inexpensive and facilities are of high standard. Accommodation is good.

For particulars apply to— TRADE COMMISSIONER FOR THE UNION OF SOUTH AFRICA. Memorial Hall, NAIROBI.

6-HUPMOBILE-8

Everyone does not drive a Hupmobile—but everyone who chooses drives one.

Write me. Write me with a hand with a short hand between second and third fingers. 772 Call Box 20, Saks, 1011 Highgate.

INTERNATIONAL SOCCER. London, Oct 21. At Liverpool today, the first of the 1000 football matches of the 1922-23 season, when England and Ireland drew, each scoring three goals.

At Liverpool today, the first of the 1000 football matches of the 1922-23 season, when England and Ireland drew, each scoring three goals.

At Liverpool today, the first of the 1000 football matches of the 1922-23 season, when England and Ireland drew, each scoring three goals.

At Liverpool today, the first of the 1000 football matches of the 1922-23 season, when England and Ireland drew, each scoring three goals.

At Liverpool today, the first of the 1000 football matches of the 1922-23 season, when England and Ireland drew, each scoring three goals.

At Liverpool today, the first of the 1000 football matches of the 1922-23 season, when England and Ireland drew, each scoring three goals.

At Liverpool today, the first of the 1000 football matches of the 1922-23 season, when England and Ireland drew, each scoring three goals.

At Liverpool today, the first of the 1000 football matches of the 1922-23 season, when England and Ireland drew, each scoring three goals.

At Liverpool today, the first of the 1000 football matches of the 1922-23 season, when England and Ireland drew, each scoring three goals.

At Liverpool today, the first of the 1000 football matches of the 1922-23 season, when England and Ireland drew, each scoring three goals.

At Liverpool today, the first of the 1000 football matches of the 1922-23 season, when England and Ireland drew, each scoring three goals.

At Liverpool today, the first of the 1000 football matches of the 1922-23 season, when England and Ireland drew, each scoring three goals.

At Liverpool today, the first of the 1000 football matches of the 1922-23 season, when England and Ireland drew, each scoring three goals.

At Liverpool today, the first of the 1000 football matches of the 1922-23 season, when England and Ireland drew, each scoring three goals.

South African Railways and Harbours

TROUT FISHING IN SOUTH AFRICA

In the past ten years Trout culture has made considerable headway in South Africa. Many mountain streams, ideally situated, offer sport of the highest class to followers of the gentle art.

The open season extends from October to April. Railway travel in South Africa is inexpensive and facilities are of high standard. Accommodation is good.

For particulars apply to— TRADE COMMISSIONER FOR THE UNION OF SOUTH AFRICA. Memorial Hall, NAIROBI.

6-HUPMOBILE-8

Everyone does not drive a Hupmobile—but everyone who chooses drives one.

Write me. Write me with a hand with a short hand between second and third fingers. 772 Call Box 20, Saks, 1011 Highgate.

INTERNATIONAL SOCCER. London, Oct 21. At Liverpool today, the first of the 1000 football matches of the 1922-23 season, when England and Ireland drew, each scoring three goals.

At Liverpool today, the first of the 1000 football matches of the 1922-23 season, when England and Ireland drew, each scoring three goals.

At Liverpool today, the first of the 1000 football matches of the 1922-23 season, when England and Ireland drew, each scoring three goals.

At Liverpool today, the first of the 1000 football matches of the 1922-23 season, when England and Ireland drew, each scoring three goals.

At Liverpool today, the first of the 1000 football matches of the 1922-23 season, when England and Ireland drew, each scoring three goals.

At Liverpool today, the first of the 1000 football matches of the 1922-23 season, when England and Ireland drew, each scoring three goals.

At Liverpool today, the first of the 1000 football matches of the 1922-23 season, when England and Ireland drew, each scoring three goals.

At Liverpool today, the first of the 1000 football matches of the 1922-23 season, when England and Ireland drew, each scoring three goals.

At Liverpool today, the first of the 1000 football matches of the 1922-23 season, when England and Ireland drew, each scoring three goals.

At Liverpool today, the first of the 1000 football matches of the 1922-23 season, when England and Ireland drew, each scoring three goals.

At Liverpool today, the first of the 1000 football matches of the 1922-23 season, when England and Ireland drew, each scoring three goals.

At Liverpool today, the first of the 1000 football matches of the 1922-23 season, when England and Ireland drew, each scoring three goals.

At Liverpool today, the first of the 1000 football matches of the 1922-23 season, when England and Ireland drew, each scoring three goals.

At Liverpool today, the first of the 1000 football matches of the 1922-23 season, when England and Ireland drew, each scoring three goals.

At Liverpool today, the first of the 1000 football matches of the 1922-23 season, when England and Ireland drew, each scoring three goals.

THURSDAY.

The Council resumed at 10 am on Thursday.

THE N.A.D.

The Registrar of the Administration of the Northern Provinces has made arrangements for the holding of a meeting of the N.A.D. in connection with the holding of the 1922-23 session of the Legislative Council.

PROVINCE.

On Monday evening the 17th inst. the Government of the Northern Provinces held a meeting at the residence of the Governor.

THE N.A.D.

The Registrar of the Administration of the Northern Provinces has made arrangements for the holding of a meeting of the N.A.D. in connection with the holding of the 1922-23 session of the Legislative Council.

PROVINCE.

On Monday evening the 17th inst. the Government of the Northern Provinces held a meeting at the residence of the Governor.

THE N.A.D.

The Registrar of the Administration of the Northern Provinces has made arrangements for the holding of a meeting of the N.A.D. in connection with the holding of the 1922-23 session of the Legislative Council.

PROVINCE.

On Monday evening the 17th inst. the Government of the Northern Provinces held a meeting at the residence of the Governor.

THE N.A.D.

The Registrar of the Administration of the Northern Provinces has made arrangements for the holding of a meeting of the N.A.D. in connection with the holding of the 1922-23 session of the Legislative Council.

PROVINCE.

On Monday evening the 17th inst. the Government of the Northern Provinces held a meeting at the residence of the Governor.

THE N.A.D.

The Registrar of the Administration of the Northern Provinces has made arrangements for the holding of a meeting of the N.A.D. in connection with the holding of the 1922-23 session of the Legislative Council.

THURSDAY.

The Council resumed at 10 am on Thursday.

THE N.A.D.

The Registrar of the Administration of the Northern Provinces has made arrangements for the holding of a meeting of the N.A.D. in connection with the holding of the 1922-23 session of the Legislative Council.

PROVINCE.

On Monday evening the 17th inst. the Government of the Northern Provinces held a meeting at the residence of the Governor.

THE N.A.D.

The Registrar of the Administration of the Northern Provinces has made arrangements for the holding of a meeting of the N.A.D. in connection with the holding of the 1922-23 session of the Legislative Council.

PROVINCE.

On Monday evening the 17th inst. the Government of the Northern Provinces held a meeting at the residence of the Governor.

THE N.A.D.

The Registrar of the Administration of the Northern Provinces has made arrangements for the holding of a meeting of the N.A.D. in connection with the holding of the 1922-23 session of the Legislative Council.

PROVINCE.

On Monday evening the 17th inst. the Government of the Northern Provinces held a meeting at the residence of the Governor.

THE N.A.D.

The Registrar of the Administration of the Northern Provinces has made arrangements for the holding of a meeting of the N.A.D. in connection with the holding of the 1922-23 session of the Legislative Council.

PROVINCE.

On Monday evening the 17th inst. the Government of the Northern Provinces held a meeting at the residence of the Governor.

THE N.A.D.

The Registrar of the Administration of the Northern Provinces has made arrangements for the holding of a meeting of the N.A.D. in connection with the holding of the 1922-23 session of the Legislative Council.

MARTIN'S ANTI-RUSTING. A product for preventing rust on iron and steel.

M.P.O. DE MELLO. A portrait of a man with a mustache.

BEAR IN MIND. A notice regarding a bear in the area.

Have Your Films. A notice for a film processing service.

THE N.A. STANDARD LIMITED. PHOTOGRAPHIC DEPT. A notice for a photography department.

Sands & Co.

AT OUR YARDS, NAIVASHA

MONDAY, 15th November.

- 1 High Grade Shorthorn Bull. 40 Grade and Native Cows in Calf and Calves at foot. 30 Good Young Steers. 40 Sheep.

GIL GIL

TUESDAY, 16th November.

- 40 Good Grade Steers. 40 Good Grade Shorthorn Cows. 70 Grade and Native Cows in Calf and Calves at foot.

SANDS & Co. AUCTIONEERS

SELLING A GUN

No better value no larger selection no sounder advice than from MAY & Co. The Sports House NAIROBI

RIFLES, SHOTGUNS, REVOLVERS, MATCHES, MANLICHERS, SCORPIONS, etc. (List of various firearms and accessories)

WHEATLEY RICHARDS, HORSE AND CARRIAGE, JOHN RIBBY, B.S.A. CO. DISTRIBUTOR

ENGLISH CRICKET.

The Final Match of the Season.

LANCASHIRE FAIRLY HEAVEN

[From Our Own Correspondent]
London, September 22.—The great majority of all lovers of the game, first-class cricket in England is as well as for the season as a whole, but the Lancashire team has been provided with a very good batting line-up...

BRITISH RUGBY.

Yorkshire County Goes on Tour.

MAIL WEEK REVIEW

[From Our Own Correspondent]
London, September 22.—The day which was the English football season's first-class cricket in England is as well as for the season as a whole, but the Lancashire team has been provided with a very good batting line-up...

THE BOXING RING.

Eloofskild Disqualified in London.

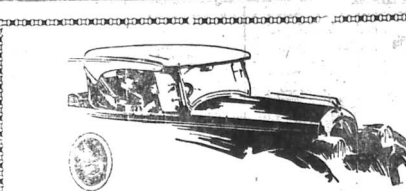
HITTING LOW

[From Our Own Correspondent]
London, September 22.—The day which was the English football season's first-class cricket in England is as well as for the season as a whole, but the Lancashire team has been provided with a very good batting line-up...

Match on Sunday against Legislative Council.

COMING FEATILES

[From Our Own Correspondent]
London, September 22.—The day which was the English football season's first-class cricket in England is as well as for the season as a whole, but the Lancashire team has been provided with a very good batting line-up...



Supreme in Value

Today Chrysler continues to be more emphatically than ever in its record-making history, the car of undoubted preference. Every where it is acclaimed the greatest of six-cylinder vehicles. Case-hardened motorists—men and women who have been really enthusiastic about a motor car in years—now eagerly tell about the performance and the long life of their Chrysler Six (Model "G").

They are eager that you experience these revolutionary results delivered by the Chrysler— to show you why it is so far ahead of contemporary achievement. Call for a demonstration— without feeling obligated in the least.

CHRYSLER DISTRIBUTORS— YORK GARAGES Ltd., Nairobi.

THE EAST AFRICAN STANDARD

When on Saturday the Lancashire team had secured the wickets of the first and second innings of the match before a gallery...

THE EAST AFRICAN STANDARD

When on Saturday the Lancashire team had secured the wickets of the first and second innings of the match before a gallery...

THE EAST AFRICAN STANDARD

When on Saturday the Lancashire team had secured the wickets of the first and second innings of the match before a gallery...

THE EAST AFRICAN STANDARD

When on Saturday the Lancashire team had secured the wickets of the first and second innings of the match before a gallery...

THE EAST AFRICAN STANDARD

When on Saturday the Lancashire team had secured the wickets of the first and second innings of the match before a gallery...

THE EAST AFRICAN STANDARD

When on Saturday the Lancashire team had secured the wickets of the first and second innings of the match before a gallery...

THE CAREWRIGHT WINNER. WINS ONE SMALL RACE OUT OF TEN AT AFRICA RACES. A winner of the year's Carewright "Merry Grey" has been the winner of the Africa Races...

THE EAST AFRICAN STANDARD

When on Saturday the Lancashire team had secured the wickets of the first and second innings of the match before a gallery...

THE EAST AFRICAN STANDARD

When on Saturday the Lancashire team had secured the wickets of the first and second innings of the match before a gallery...

THE EAST AFRICAN STANDARD

When on Saturday the Lancashire team had secured the wickets of the first and second innings of the match before a gallery...

THE EAST AFRICAN STANDARD

When on Saturday the Lancashire team had secured the wickets of the first and second innings of the match before a gallery...

THE EAST AFRICAN STANDARD

When on Saturday the Lancashire team had secured the wickets of the first and second innings of the match before a gallery...

THE EAST AFRICAN STANDARD

When on Saturday the Lancashire team had secured the wickets of the first and second innings of the match before a gallery...

THE EAST AFRICAN STANDARD

When on Saturday the Lancashire team had secured the wickets of the first and second innings of the match before a gallery...

THE EAST AFRICAN STANDARD

When on Saturday the Lancashire team had secured the wickets of the first and second innings of the match before a gallery...

THE EAST AFRICAN STANDARD

When on Saturday the Lancashire team had secured the wickets of the first and second innings of the match before a gallery...

THE EAST AFRICAN STANDARD

When on Saturday the Lancashire team had secured the wickets of the first and second innings of the match before a gallery...

THE EAST AFRICAN STANDARD

When on Saturday the Lancashire team had secured the wickets of the first and second innings of the match before a gallery...

THE EAST AFRICAN STANDARD

When on Saturday the Lancashire team had secured the wickets of the first and second innings of the match before a gallery...

THE EAST AFRICAN STANDARD

Moulton & Morrison, Ltd. 6th Avenue, NAIROBI. Phone: 104. P.O. Box 484. The following information has been furnished by the Motor Club of Kenya in the classification of horses...

Crossley Six-Cylinder. A Wonderful New Six. This is a car that will satisfy you in every respect. The astonishing fact of power, speed and performance gives security and peace of mind. A good range of sizes, to suit all requirements, with an abundance of vibration free accessories. The price is moderate and the car is a real bargain. See the wonderful new Six-Cylinder, most handling, low maintenance and delightfully easy steering. Do not be deterred and contact the nearest dealer for an inspection. Fulfill details from CROSSLEY MOTORS LIMITED. Representative: 40-H, Condon Street, London, W.1, England.



WEEK-END CRICKET.

Parklands Park on a Big Score.

MATCH ON THE HILL.

At the cricket ground, the hill was the scene of a very interesting match...

Table with 2 columns: Player Name and Score. Includes names like J. B. Williams, J. B. Williams, etc.

Table with 2 columns: Player Name and Score. Includes names like H. B. Williams, J. B. Williams, etc.

Table with 2 columns: Player Name and Score. Includes names like THE FIRST, F. L. Impey, etc.

Table with 2 columns: Player Name and Score. Includes names like M. J. M. M., M. J. M. M., etc.

Table with 2 columns: Player Name and Score. Includes names like M. J. M. M., M. J. M. M., etc.

Table with 2 columns: Player Name and Score. Includes names like M. J. M. M., M. J. M. M., etc.

Table with 2 columns: Player Name and Score. Includes names like M. J. M. M., M. J. M. M., etc.

Table with 2 columns: Player Name and Score. Includes names like M. J. M. M., M. J. M. M., etc.

Table with 2 columns: Player Name and Score. Includes names like M. J. M. M., M. J. M. M., etc.

Table with 2 columns: Player Name and Score. Includes names like M. J. M. M., M. J. M. M., etc.



Consider one day's Production By Dodge Brothers, Inc!

Did you ever see 1500 automobiles in one time? Parked in one place they cover more than 2,577,140 square feet...

S. FISHER & SIMMONS (E.A.) LTD. VICTORIA STREET, NAIROBI.

DODGE BROTHERS MOTOR CARS

THE KENYA BISLEY.

Championship Won by K.A.R. Officer.

GOOD SHOOTING BY YOUNG COMPETITOR.

Military Snaps the Team Competition and Snipers Challenge Cup.

The officers of the shooting club which obtained the morning and afternoon of the day...

Table with 2 columns: Player Name and Score. Includes names like S. J. H. H., S. J. H. H., etc.

Table with 2 columns: Player Name and Score. Includes names like S. J. H. H., S. J. H. H., etc.

Table with 2 columns: Player Name and Score. Includes names like S. J. H. H., S. J. H. H., etc.

Table with 2 columns: Player Name and Score. Includes names like S. J. H. H., S. J. H. H., etc.

Table with 2 columns: Player Name and Score. Includes names like S. J. H. H., S. J. H. H., etc.

Table with 2 columns: Player Name and Score. Includes names like S. J. H. H., S. J. H. H., etc.

Table with 2 columns: Player Name and Score. Includes names like S. J. H. H., S. J. H. H., etc.

Table with 2 columns: Player Name and Score. Includes names like S. J. H. H., S. J. H. H., etc.

Table with 2 columns: Player Name and Score. Includes names like S. J. H. H., S. J. H. H., etc.

Table with 2 columns: Player Name and Score. Includes names like S. J. H. H., S. J. H. H., etc.

Table with 2 columns: Player Name and Score. Includes names like S. J. H. H., S. J. H. H., etc.

Table with 2 columns: Player Name and Score. Includes names like S. J. H. H., S. J. H. H., etc.

Table with 2 columns: Player Name and Score. Includes names like S. J. H. H., S. J. H. H., etc.

Table with 2 columns: Player Name and Score. Includes names like S. J. H. H., S. J. H. H., etc.

Table with 2 columns: Player Name and Score. Includes names like S. J. H. H., S. J. H. H., etc.

Table with 2 columns: Player Name and Score. Includes names like S. J. H. H., S. J. H. H., etc.

Table with 2 columns: Player Name and Score. Includes names like S. J. H. H., S. J. H. H., etc.

Table with 2 columns: Player Name and Score. Includes names like S. J. H. H., S. J. H. H., etc.

Table with 2 columns: Player Name and Score. Includes names like S. J. H. H., S. J. H. H., etc.

Table with 2 columns: Player Name and Score. Includes names like S. J. H. H., S. J. H. H., etc.

Table with 2 columns: Player Name and Score. Includes names like S. J. H. H., S. J. H. H., etc.

Table with 2 columns: Player Name and Score. Includes names like S. J. H. H., S. J. H. H., etc.

Table with 2 columns: Player Name and Score. Includes names like S. J. H. H., S. J. H. H., etc.

Table with 2 columns: Player Name and Score. Includes names like S. J. H. H., S. J. H. H., etc.

Table with 2 columns: Player Name and Score. Includes names like S. J. H. H., S. J. H. H., etc.

Table with 2 columns: Player Name and Score. Includes names like S. J. H. H., S. J. H. H., etc.

Table with 2 columns: Player Name and Score. Includes names like S. J. H. H., S. J. H. H., etc.

Table with 2 columns: Player Name and Score. Includes names like S. J. H. H., S. J. H. H., etc.

Table with 2 columns: Player Name and Score. Includes names like S. J. H. H., S. J. H. H., etc.

Table with 2 columns: Player Name and Score. Includes names like S. J. H. H., S. J. H. H., etc.

Table with 2 columns: Player Name and Score. Includes names like S. J. H. H., S. J. H. H., etc.

Table with 2 columns: Player Name and Score. Includes names like S. J. H. H., S. J. H. H., etc.

Table with 2 columns: Player Name and Score. Includes names like S. J. H. H., S. J. H. H., etc.

Table with 2 columns: Player Name and Score. Includes names like S. J. H. H., S. J. H. H., etc.

Table with 2 columns: Player Name and Score. Includes names like S. J. H. H., S. J. H. H., etc.

Table with 2 columns: Player Name and Score. Includes names like S. J. H. H., S. J. H. H., etc.

Table with 2 columns: Player Name and Score. Includes names like S. J. H. H., S. J. H. H., etc.

Table with 2 columns: Player Name and Score. Includes names like S. J. H. H., S. J. H. H., etc.

Table with 2 columns: Player Name and Score. Includes names like S. J. H. H., S. J. H. H., etc.

Table with 2 columns: Player Name and Score. Includes names like S. J. H. H., S. J. H. H., etc.

Table with 2 columns: Player Name and Score. Includes names like S. J. H. H., S. J. H. H., etc.

Table with 2 columns: Player Name and Score. Includes names like S. J. H. H., S. J. H. H., etc.

Table with 2 columns: Player Name and Score. Includes names like S. J. H. H., S. J. H. H., etc.

Table with 2 columns: Player Name and Score. Includes names like S. J. H. H., S. J. H. H., etc.

Table with 2 columns: Player Name and Score. Includes names like M. J. M. M., M. J. M. M., etc.

Table with 2 columns: Player Name and Score. Includes names like M. J. M. M., M. J. M. M., etc.

Table with 2 columns: Player Name and Score. Includes names like M. J. M. M., M. J. M. M., etc.

Table with 2 columns: Player Name and Score. Includes names like M. J. M. M., M. J. M. M., etc.

Table with 2 columns: Player Name and Score. Includes names like M. J. M. M., M. J. M. M., etc.

Table with 2 columns: Player Name and Score. Includes names like M. J. M. M., M. J. M. M., etc.

Table with 2 columns: Player Name and Score. Includes names like M. J. M. M., M. J. M. M., etc.

Table with 2 columns: Player Name and Score. Includes names like M. J. M. M., M. J. M. M., etc.

Table with 2 columns: Player Name and Score. Includes names like M. J. M. M., M. J. M. M., etc.

Table with 2 columns: Player Name and Score. Includes names like M. J. M. M., M. J. M. M., etc.

Table with 2 columns: Player Name and Score. Includes names like M. J. M. M., M. J. M. M., etc.

Table with 2 columns: Player Name and Score. Includes names like M. J. M. M., M. J. M. M., etc.

Table with 2 columns: Player Name and Score. Includes names like M. J. M. M., M. J. M. M., etc.

Table with 2 columns: Player Name and Score. Includes names like M. J. M. M., M. J. M. M., etc.

Table with 2 columns: Player Name and Score. Includes names like M. J. M. M., M. J. M. M., etc.

Table with 2 columns: Player Name and Score. Includes names like M. J. M. M., M. J. M. M., etc.

Table with 2 columns: Player Name and Score. Includes names like M. J. M. M., M. J. M. M., etc.

Table with 2 columns: Player Name and Score. Includes names like M. J. M. M., M. J. M. M., etc.

Table with 2 columns: Player Name and Score. Includes names like M. J. M. M., M. J. M. M., etc.

Table with 2 columns: Player Name and Score. Includes names like M. J. M. M., M. J. M. M., etc.

Table with 2 columns: Player Name and Score. Includes names like M. J. M. M., M. J. M. M., etc.

Table with 2 columns: Player Name and Score. Includes names like M. J. M. M., M. J. M. M., etc.

Table with 2 columns: Player Name and Score. Includes names like M. J. M. M., M. J. M. M., etc.

Table with 2 columns: Player Name and Score. Includes names like M. J. M. M., M. J. M. M., etc.

Table with 2 columns: Player Name and Score. Includes names like M. J. M. M., M. J. M. M., etc.

Table with 2 columns: Player Name and Score. Includes names like M. J. M. M., M. J. M. M., etc.

Table with 2 columns: Player Name and Score. Includes names like M. J. M. M., M. J. M. M., etc.

Table with 2 columns: Player Name and Score. Includes names like M. J. M. M., M. J. M. M., etc.

Table with 2 columns: Player Name and Score. Includes names like M. J. M. M., M. J. M. M., etc.

Table with 2 columns: Player Name and Score. Includes names like M. J. M. M., M. J. M. M., etc.

Table with 2 columns: Player Name and Score. Includes names like M. J. M. M., M. J. M. M., etc.

Table with 2 columns: Player Name and Score. Includes names like M. J. M. M., M. J. M. M., etc.

Table with 2 columns: Player Name and Score. Includes names like M. J. M. M., M. J. M. M., etc.



"It's Deadly Accurate"

Can you say as much of your lubrication?

It is necessary for the man who builds his engines and prime movers to be accurate to within a thousandth of an inch...

OLD MILLERS

When you use a high grade of oil it is positively correct for its purpose...

GOOD PERFORMANCE.

As is only natural, most lubricants in use today are of a high grade...

OTHER COMPETITION.

The better competition was held at 200 yards and the competitors reaching the...

The competition was held at 200 yards and the competitors reaching the...

THE CHAMPIONSHIP.

PRIZE WINNERS.

SWIFTERS' CHALLENGE CUP.

CHATTIE ENOKE-OUT.

FINAL.

GAME SHOOTING.

THE PRIZE-WINNERS.

LAURENCE COMPETITION.

TEAM COMPETITION.

PRESENTATION OF PRIZES.

THE PRIZE-WINNERS.

LAURENCE COMPETITION.

TEAM COMPETITION.

PRESENTATION OF PRIZES.

The prize winners were presented to the...

Sunday's Shooting.

The Sunday range was a very interesting one...

The outstanding feature of the day was the performance of the...

The prize winners were presented to the...

The prize winners were presented to the...

LAURENCE COMPETITION.

The Laurence competition was held at 200 yards...

The team competition was held at 200 yards...

The presentation of prizes was held at 200 yards...

The prize winners were presented to the...

Advertisement for VACUUM OIL COMPANY OF SOUTH AFRICA LTD. featuring 'GAROLINE' and 'OLD MILLERS'.

Advertisement for 'THE EAST AFRICAN STANDARD' magazine, listing subscription rates and contact information.

COVERED COURT TENNIS.

British Championship Finals.

[REDACTED] At Queen's Club today the following were the scheduled...

The following were the results of the finals for the British Cover Court Lawn Tennis Championships...

London, October 24. The following were the results of the finals for the British Cover Court Lawn Tennis Championships...

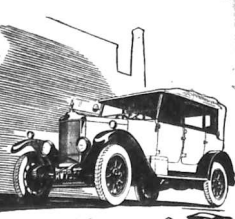
London, October 24. The following were the results of the finals for the British Cover Court Lawn Tennis Championships...

London, October 24. The following were the results of the finals for the British Cover Court Lawn Tennis Championships...

London, October 24. The following were the results of the finals for the British Cover Court Lawn Tennis Championships...

London, October 24. The following were the results of the finals for the British Cover Court Lawn Tennis Championships...

London, October 24. The following were the results of the finals for the British Cover Court Lawn Tennis Championships...



See a Standard first! — and first of all the Standard Models, ask to have a trial run in the STANDARD 14/28 h.p. OVERSEAS MODEL.



Standard Motor Co. Ltd., Coventry, Eng.

Advertisement for Bullows & Roy Ltd. featuring a motorcycle and text: Bullows & Roy Ltd. Nairobi, Kenya Colony, B.E.A.

Twenty Years Ago

Extracts from the East African Standard, October 25, 1906.

Mr. Lind (former member of Council) was the first to move for the abolition of the Chamber of Commerce...

The (present) list of general duties of the Chamber of Commerce...

The (present) list of general duties of the Chamber of Commerce...

The (present) list of general duties of the Chamber of Commerce...

The (present) list of general duties of the Chamber of Commerce...

The (present) list of general duties of the Chamber of Commerce...

The (present) list of general duties of the Chamber of Commerce...

The (present) list of general duties of the Chamber of Commerce...

NAKURU CHAPLAINRY.

October 24. 10.00 Malvern and Holy Communion at 10.30.

10.00 Malvern and Holy Communion at 10.30. 7.30 Holy Communion at Nairobi.

CATHOLIC CHURCH SERVICES. 11.00 Mass at Nairobi.

CHURCH NOTICES. ALL BAPTIST, NAIROBI. 5.30 Holy Communion.

CHURCH OF SCOTLAND. 10.00 Holy Communion.

THE SALVATION ARMY. 8.00 a.m. Morning Prayer.

TO-DAY'S FOOTBALL. Ground Cup Semi-Final on Caledonian Ground.

TO-DAY'S FOOTBALL. Ground Cup Semi-Final on Caledonian Ground.

TO-DAY'S FOOTBALL. Ground Cup Semi-Final on Caledonian Ground.

Advertisement for Kenya Colony Cedar Pencils: KENYA COLONY CEDAR Pencils MADE FROM SHILLINGS 4/- per Doz. STANDARD STATIONERY STORES NAIROBI.

Advertisement for Onoto Pen: ONOTO The Self Filling Safety PEN Price Shs. 17.50. Posted Shs. 18.50.

Advertisement for Polygon Indelible Ink: POLYGON INDELIBLE INK Superior Writing and an Ideal Fountain Pen Ink.

Advertisement for Corona Four typewriter: The "CORONA" Four. 10 Inch. CARRIAGE. 12 Yard RIBBON. THE NEW PORTABLE OFFICE TYPEWRITER.

Advertisement for Kennel Notes: KENNEL NOTES Margaret Clither.

My Sister, Olga, to whom I correspond in connection with 'Kennel Notes'...

My Sister, Olga, to whom I correspond in connection with 'Kennel Notes'...

My Sister, Olga, to whom I correspond in connection with 'Kennel Notes'...

Advertisement for Triumph motorcycle: Triumph motorcycle illustration and text.

(Special to "E. A. Standard")
[AN HUNTER'S STORY]

A NEW MOTORIST'S PROBLEM
Keeping a Car and Keeping His Friends

SOCIAL SUFFICIENTER THROUGH WITH THE "HUB"

By Major F. C. W. ...
One day, he found some letters ...
the hub of the motorist's ...
to keep his car and his friends ...

Gold in Britain

AIR FORCE CHAMPIONSHIP WON BY MAX WARD

[FROM OUR LONDON CORRESPONDENT]
London, September 30.
The brilliant success of aviation ...
gold in Britain ...

THE RALEIGH CYCLE

A New Departure for Next Year

INTERNAL WHEELS
The Raleigh Cycle ...
new departure for next year ...

25 YEARS IN AIROBI

experience as Gunmakers and Sole Agents of the Largest and Best Manufacturers of the World, has taught us to stock the most modern and effective Weapons which science has produced.

MANAGER RIFES IN CAL
6.5 m m 7 m m 8 m m 9 m m 9.3 m m 10 75 m m 318 W.R. 350 and 404.
MANLICHER SCHONAUER RIFES IN CAL
6.5 m m 8 m m 9 m m and 9.5 m m
with short, long and extra long 28" barrels.
Our 28" Barrels give a 20% higher striking force!!!
more accuracy and better balance.
Send for free illustrated catalogue.

£5,500 RAISED BY THE REEF FEE

MAILED WELFARE MOVEMENT

The Reef Fee ...
£5,500 raised by the Reef Fee ...
welfare movement ...

CHAS. A. HEYER & CO.

Established 1903. NAIROBI.

Coffee Market.
The coffee market ...
prices ...

WILTSHIRE HAMS

Equal in Flavour to the Best English.

Wiltshire Hams ...
equal in flavour to the best English ...

MEAT AND FISH PASTES

Obtainable from ALL THE LEADING STORES

Meat and Fish Pastes ...
obtainable from all leading stores ...

RUBBER STAMPS

Standard Stationery Stores NAIROBI

Rubber Stamps ...
Standard Stationery Stores ...

REDUCTION IN PRICE

The Largest Selection of Novels in Kenya

All 7/6 Novels
Sh. 5/00
Including the latest novels arriving by every mail
Standard Book Stores
Sixth Avenue, NAIROBI.

RAILWAY CRICKET

TRANSITIVE PLAYERS

Transitive Players ...
Railway Cricket ...

"STANDARD" DIARY

Advertisement of associations open at Memorial Hall

"Standard" Diary ...
Advertisement of associations ...

Music in the Park

Concerts of the E. A. B. Band in the City Park to-morrow

Music in the Park ...
Concerts of the E. A. B. Band ...

TO BE RELIED UPON

TO-DAY

To be Relied Upon ...
To-day ...

TO BE RELIED UPON

TO-DAY

To be Relied Upon ...
To-day ...

TO BE RELIED UPON

TO-DAY

To be Relied Upon ...
To-day ...

TO BE RELIED UPON

TO-DAY

To be Relied Upon ...
To-day ...

TO BE RELIED UPON

TO-DAY

To be Relied Upon ...
To-day ...

Second Hand Books Bought

Second Hand Books Bought ...
books ...

Second Hand Books Bought

Second Hand Books Bought ...
books ...

Second Hand Books Bought

Second Hand Books Bought ...
books ...

Second Hand Books Bought

Second Hand Books Bought ...
books ...

Second Hand Books Bought

Second Hand Books Bought ...
books ...

Second Hand Books Bought

Second Hand Books Bought ...
books ...

Second Hand Books Bought

Second Hand Books Bought ...
books ...

Second Hand Books Bought

Second Hand Books Bought ...
books ...

Second Hand Books Bought

Second Hand Books Bought ...
books ...

Second Hand Books Bought

Second Hand Books Bought ...
books ...

Second Hand Books Bought

Second Hand Books Bought ...
books ...

Second Hand Books Bought

Second Hand Books Bought ...
books ...

Second Hand Books Bought

Second Hand Books Bought ...
books ...

Second Hand Books Bought

Second Hand Books Bought ...
books ...

Second Hand Books Bought

Second Hand Books Bought ...
books ...

Second Hand Books Bought

Second Hand Books Bought ...
books ...

Second Hand Books Bought

Second Hand Books Bought ...
books ...

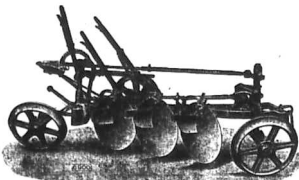
Second Hand Books Bought

Second Hand Books Bought ...
books ...

For The Coming Season, BUY

RANSOMES' "ALL-CONQUEROR" DISC PLOUGHS.

Patented Union of South Africa No. 655-1923. Southern Rhodesia No. 1824-1923.



A series of All-Steel Disc Ploughs of great strength, designed for strenuous work.

PARTICULARLY THE CONDITIONS MET WITH IN KENYA COLONY.

3-Furrow Plough 800 Shillings Less 10 per cent. Cash Discount F.O.R. Nairobi.

Low Initial Cost. Low Upkeep. Unequaled Service of Spares.

Gailey & Roberts, Limited.

LONDON, NAIROBI, NAKURU, ELDORET, JINJA, DAR-ES-SALAAM.

CORRESPONDENCE

The Editor sees a *conspicuous* responsibility for the views expressed in his correspondence in these columns, and in all cases the views and address of the writer should be given, either in full or in part, so that the Editor may be able to contact the writer if necessary.

IMPORTED LABOUR.

To the Editor, "E.A. Standard."—The "Vote" correspondent A. A. M. of Nairobi wants an answer to two questions: (1) Is it really clear that colonial markets have been exhausted? (2) What is the letting on the part of England to such a policy?

However, it is not my province to discuss any taxation, or unemployment, or any other financial or economic question, but I will try to answer the question as far as I can.

The Editor, "E.A. Standard."—The "Vote" correspondent A. A. M. of Nairobi wants an answer to two questions: (1) Is it really clear that colonial markets have been exhausted? (2) What is the letting on the part of England to such a policy?

The Editor, "E.A. Standard."—The "Vote" correspondent A. A. M. of Nairobi wants an answer to two questions: (1) Is it really clear that colonial markets have been exhausted? (2) What is the letting on the part of England to such a policy?

The Editor, "E.A. Standard."—The "Vote" correspondent A. A. M. of Nairobi wants an answer to two questions: (1) Is it really clear that colonial markets have been exhausted? (2) What is the letting on the part of England to such a policy?

The Editor, "E.A. Standard."—The "Vote" correspondent A. A. M. of Nairobi wants an answer to two questions: (1) Is it really clear that colonial markets have been exhausted? (2) What is the letting on the part of England to such a policy?

The Editor, "E.A. Standard."—The "Vote" correspondent A. A. M. of Nairobi wants an answer to two questions: (1) Is it really clear that colonial markets have been exhausted? (2) What is the letting on the part of England to such a policy?

The Editor, "E.A. Standard."—The "Vote" correspondent A. A. M. of Nairobi wants an answer to two questions: (1) Is it really clear that colonial markets have been exhausted? (2) What is the letting on the part of England to such a policy?

The Editor, "E.A. Standard."—The "Vote" correspondent A. A. M. of Nairobi wants an answer to two questions: (1) Is it really clear that colonial markets have been exhausted? (2) What is the letting on the part of England to such a policy?

Probably only a few small and unimportant imported labour market surplus of it, it would have a great effect on the rest of the native. We all know that the native is not a very good worker on the big game-bush way and we also know that he has been on a white man's farm. The only trouble is that he is being kept instead of coming out to better himself, he is doing you a favour which he will withdraw if you are not appreciative enough. At present, he is in a far too strong position which does not suit him very much. He is in a very strong position to his employer.

I think that the pro and con of imported labour should be very much more thoroughly discussed than they have had in the past. I am afraid I must think about the proposal of the Government's new form of colonial taxation which is being proposed.

Perhaps a good start should be made on the "Vote" column with your friend.

Yours faithfully,
H. H. HOLE.

THE LABOUR PROBLEM.—UNEMPLOYED SQUATTERS.

To the Editor, "E.A. Standard."—The "Vote" correspondent A. A. M. of Nairobi wants an answer to two questions: (1) Is it really clear that colonial markets have been exhausted? (2) What is the letting on the part of England to such a policy?

The Editor, "E.A. Standard."—The "Vote" correspondent A. A. M. of Nairobi wants an answer to two questions: (1) Is it really clear that colonial markets have been exhausted? (2) What is the letting on the part of England to such a policy?

The Editor, "E.A. Standard."—The "Vote" correspondent A. A. M. of Nairobi wants an answer to two questions: (1) Is it really clear that colonial markets have been exhausted? (2) What is the letting on the part of England to such a policy?

The Editor, "E.A. Standard."—The "Vote" correspondent A. A. M. of Nairobi wants an answer to two questions: (1) Is it really clear that colonial markets have been exhausted? (2) What is the letting on the part of England to such a policy?

The Editor, "E.A. Standard."—The "Vote" correspondent A. A. M. of Nairobi wants an answer to two questions: (1) Is it really clear that colonial markets have been exhausted? (2) What is the letting on the part of England to such a policy?

The Editor, "E.A. Standard."—The "Vote" correspondent A. A. M. of Nairobi wants an answer to two questions: (1) Is it really clear that colonial markets have been exhausted? (2) What is the letting on the part of England to such a policy?

not on being also a sportsman (the same can be said for some money) will continue to prosper. I am sure that the game-bush way will continue to be the best way for the native. The game-bush way will continue to be the best way for the native. The game-bush way will continue to be the best way for the native.

Yours, etc.,
W. H. HOLE.

UNEMPLOYED LABOUR TAX.

To the Editor, "E.A. Standard."—The "Vote" correspondent A. A. M. of Nairobi wants an answer to two questions: (1) Is it really clear that colonial markets have been exhausted? (2) What is the letting on the part of England to such a policy?

The Editor, "E.A. Standard."—The "Vote" correspondent A. A. M. of Nairobi wants an answer to two questions: (1) Is it really clear that colonial markets have been exhausted? (2) What is the letting on the part of England to such a policy?

The Editor, "E.A. Standard."—The "Vote" correspondent A. A. M. of Nairobi wants an answer to two questions: (1) Is it really clear that colonial markets have been exhausted? (2) What is the letting on the part of England to such a policy?

The Editor, "E.A. Standard."—The "Vote" correspondent A. A. M. of Nairobi wants an answer to two questions: (1) Is it really clear that colonial markets have been exhausted? (2) What is the letting on the part of England to such a policy?

The Editor, "E.A. Standard."—The "Vote" correspondent A. A. M. of Nairobi wants an answer to two questions: (1) Is it really clear that colonial markets have been exhausted? (2) What is the letting on the part of England to such a policy?

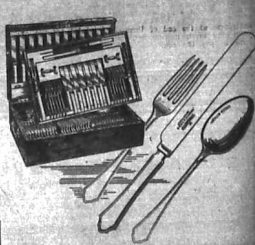
The Editor, "E.A. Standard."—The "Vote" correspondent A. A. M. of Nairobi wants an answer to two questions: (1) Is it really clear that colonial markets have been exhausted? (2) What is the letting on the part of England to such a policy?

The Editor, "E.A. Standard."—The "Vote" correspondent A. A. M. of Nairobi wants an answer to two questions: (1) Is it really clear that colonial markets have been exhausted? (2) What is the letting on the part of England to such a policy?

The Editor, "E.A. Standard."—The "Vote" correspondent A. A. M. of Nairobi wants an answer to two questions: (1) Is it really clear that colonial markets have been exhausted? (2) What is the letting on the part of England to such a policy?

Prince's Plate

SPoons & Forks Last a Life-Long



THIS polished silver cutlery is completely fitted with Prince's Patent Safety Lock. It is the only silver cutlery that will not rust. It is the only silver cutlery that will not tarnish. It is the only silver cutlery that will not lose its lustre.

MADE IN ENGLAND.

MAPPIN & WEBB

120, 122, Colindale Street, W. 1, Queen Victoria Street, E.C. 4, 17, Regent Street, W. 1, LONDON, ENGLAND.



He who runs may read the secret of LIPTON'S TEA

In world-wide popularity and STRENGTH, FLAVOUR & AROMA are not obtained by ordinary methods of production but preserved to fall in heretofore unobtainable which retains the Oxygen necessary to enable the contents to preserve its nature.

Be careful it's Lipton's you buy

Sole Agents for LIPTON'S TEA in East Africa, DAWOOD ELAHE HANSA, REES & Co., Bombay, Zanzibar, Dar-es-Salaam & Lamu.

Try Dawson's

London Exporters, Shippers, Commission and Forwarding Agents.

FOR ALL KINDS OF Cotton, Woollen, Art Silk and Lace Goods. Laid experts visit West End stores and warehouses. Prompt and careful attention given to domestic orders. Address: SOLEMARTIN HOUSE (13), BROADWAY, LONDON, W. 1.

AFRICAN EDUCATION.

The First High School in Kenya: KENYA.

OPENING CEREMONY AT KIKUYU BY HIS EXCELLENCY.

The Aims and Objects Explained by Mr. Arthur.

Just over a mile from Kikuyu on the Dipoyet Road, stands a school which is the first of its kind in Kenya. It is the first high school in Kenya. It is the first high school in Kenya. It is the first high school in Kenya.

The school was opened on the 23rd of October, 1938. It is the first high school in Kenya. It is the first high school in Kenya. It is the first high school in Kenya.

The school was opened on the 23rd of October, 1938. It is the first high school in Kenya. It is the first high school in Kenya. It is the first high school in Kenya.

The school was opened on the 23rd of October, 1938. It is the first high school in Kenya. It is the first high school in Kenya. It is the first high school in Kenya.

The school was opened on the 23rd of October, 1938. It is the first high school in Kenya. It is the first high school in Kenya. It is the first high school in Kenya.

The school was opened on the 23rd of October, 1938. It is the first high school in Kenya. It is the first high school in Kenya. It is the first high school in Kenya.

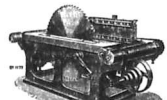
The school was opened on the 23rd of October, 1938. It is the first high school in Kenya. It is the first high school in Kenya. It is the first high school in Kenya.

will form a bank for any higher education. The school was opened on the 23rd of October, 1938. It is the first high school in Kenya.

with water laid on all sides of the building. The school was opened on the 23rd of October, 1938. It is the first high school in Kenya.

follow the recommendations of the Medical Department. The school was opened on the 23rd of October, 1938. It is the first high school in Kenya.

JOHN ELSWORTH & SONS LTD. 211 BOTTLEW STREET, GLASGOW, SCOTLAND.



ALL CLASSES OF WOOD WORKING MACHINERY. CIRCULAR SAWS, FRAME SAWS, BAND SAWS, MACHINE KNIVES.

Ready Shortly A LIMITED NUMBER ONLY The 'East African Standard' Kenya Diary 1927

Containing FRUITFUL SUGGESTIONS TO THE SETTLER. Price 3/- 6d. Posted 4-00. ORDERS WILL BE EXECUTED IN STRICT ROTATION AND SHOULD BE SENT TO East African Standard Ltd. P.O. Box 380 NAIROBI

AT STVD LAMBAU (1913). Street, Box 112, h. h. By Lambau, Nairobi, Kenya. Every one taken but no responsibility for accidents or death.

LIQUEURS, GENIEVE, DE SCHIEM, Focink. Representative in E. E. African Territories, P.O. Box 542, NAIROBI.

Safety First! Instal "Minimax" and sleep Easy! LAMBERTS Ltd, NAIROBI.



AFTER THE STORM!

After the storm of belting troubles—RAINBOW Rubber Impregnated Belting! When you've begun to think that all belts are alike; that you can't prevent 'em from slipping that you can't distinguish on a fast drive and wear 'em out too quick; that they're all inefficient—Then try a RAINBOW Rubber Impregnated Belt, and what a difference it does make!

LAMBERTS Ltd. Nairobi.

"Tanganyika Times" THE ONLY ENGLISH NEWSPAPER IN THE TANGANYIKA TERRITORY.

Order from the Whole Country, affording a UNIQUE medium for Advertising. Send for Specimen Copy and Advertising Terms to Proprietors and Publishers— THE DAR-ES-SALAAM PRINTING & PUBLISHING WORKS Dar-es-Salaam. Telegrams: "Publishing," Dar-es-Salaam.

THE WORLD REVERED makes and distillers of: IRON DRUMS

Particulars either direct from the above or B.C. Siqueira, Representative in E. E. African Territories, P.O. Box 542, NAIROBI.

The Standard Bank of South Africa Ltd

(INCORPORATED IN THE UNITED KINGDOM). HEAD OFFICE: 54, MARK LANE, LONDON, E.C. 3. BRANCHES: CAIRO, COLON, DURBAN, JOHANNESBURG, NAIROBI, PORT LOUIS, SYDNEY, TANGANYIKA TERRITORY, ZIMBABWE.

HEAD OFFICE: 10 CLERMONT STREET, 27 COLLEGE STREET, NAIROBI. MANAGER: BERNARD LOWNDRY. WEST INDIA BRANCH: 9 Northchapel Avenue, N.O. 8.

BRANCHES IN EAST AFRICA: Uganda, Protectorate, Jinja, Malindi, Kisumu, Dar-es-Salaam, Mombasa, Tanga, Zanzibar, Nairobi, Aden, Br. Araba Agency, Addis Ababa, Addis Ababa, Addis Ababa, Addis Ababa.

NEW YORK: JOHNSON & CO. 100 Wall Street. SAN FRANCISCO: BANCROFT & JOHNSON, 400 Market Street. THE BANK HAS OVER 500 BRANCHES IN AFRICA AND AGENTS AND CORRESPONDENTS THROUGHOUT THE WORLD.

VALUE FOR MONEY

Try the new WESTERN (Shell's) famous Super X 5% "caterpillar" Every mile a bit. Every mile a bit. Every mile a bit. Every mile a bit.

African World A WEEKLY PAPER DEVOTED TO AFRICAN AFFAIRS

J.H. ENGELBRECHT NYERI INCORPORATED A MOTOR TRANSPORT SERVICE

Fertilise with Ephos. Fertilise the whole of the soil in Kenya. It is the best fertilizer in the world. It is the best fertilizer in the world. It is the best fertilizer in the world.

GUARANTEED THE LARGEST CIRCULATION OF ANY NEWSPAPER IN KENYA, UGANDA, TANGANYIKA AND ZANZIBAR.

£1,000 FREE INSURANCE
WITH THE AFRICAN GUARANTEE AND INDemnITY 500, Ltd.—(See Advertisement on page 9).

KENYA'S NEWSPAPER.

THE EAST

Price 50 Cents.

African Standard

MOMBASA TIMES & UGANDA ARGUS.

With which THE LEADER is incorporated.

The Oldest Established Newspaper Published in Kenya and Uganda.

Official Organ of the Royal C. A. Automobile Association, International Society of Kenya, Etc.

No. 1067

NAIROBI, SATURDAY, OCTOBER 30, 1926

Price 25c per annum, Postal Order, 25/-

THE UNION-CASTLE LINE

HOMEWARDS via EASTERN or WESTERN

Steamers will leave at Kilindiini on or about the following dates:

VIA SUZ CANAL.

VIA SOUTH AFRICA

Calling at A. Vn. Fort Sudan, Suar, Port Said, Genoa and Marseilles Homewards.

Calling at Tanga, Zanzibar, Dar-es-Salaam, Port Amelia, Mossambique, Beira, Delagoa Bay, S.A. Union Ports, and Canary Islands.

Leave England about	From Mombasa about	Arrive London about
25th Sept. "Glasgow Castle"	15th Nov.	11th Dec.
25th Sept. "Glasgow Castle"	15th Nov.	11th Dec.
25th Sept. "Glasgow Castle"	15th Nov.	11th Dec.
25th Sept. "Glasgow Castle"	15th Nov.	11th Dec.
25th Sept. "Glasgow Castle"	15th Nov.	11th Dec.

Leave England about	From Mombasa about	Arrive London about
14th Oct. "Glasgow"	25th Nov.	10th Jan. 1927
11th Nov. "Mombasa Castle"	11th Dec.	25th Jan.
10th Dec. "Mombasa Castle" (except only)	10th Jan.	10th March
10th Feb. "Gauge Steamer"	10th Feb.	25th March
		11th May

Taking cargo for Aden, Port Sudan, Genoa, Marseilles, London, Antwerp also for Amsterdam, Rotterdam, Hamburg, and Bremen, with transshipment, and New York and Boston via Port Said.

Taking cargo for Coast ports as far as Capetown and for London and Antwerp, also for Amsterdam, Rotterdam, Bremen, and Hamburg, with transshipment, and for New York, Philadelphia, and Baltimore via India.

All mail, telegrams subject to attention subsequent notice.

Up-country shipments cannot be sent unless ordered by local bank.

Visitors to Union-Castle steamers are required, in Kenya, to be in possession of permits obtainable at the Company's Office.

P. O. Box 86. Tel. Add. "UNICASTE" Tel. No. 107.
The Union-Castle Mail Steamship Co., Ltd.,
MOMBASA.

THE UNION-CASTLE STEAMSHIP CO., LTD.
THE UNION-CASTLE MAIL STEAMSHIP CO., LTD.

Osaka Shosen Kaisha

ART & REGULAR DIRECT SERVICE TO AND FROM JAPAN
MAILS FOR DURBAN FROM KILINDINI

Leaving Mombasa from Japan November 11 a.s. Pacific, Maru also for Durban November 11.
Leaving Mombasa from Japan December 7 a.s. Canada Maru also for Durban December 9

MAILS FOR JAPAN FROM KILINDINI
a.s. "Chicago Maru" sails from Mombasa November 16th
a.s. "Frisland Maru" sails from Mombasa November 22nd.

MEMBERSHIP, SALES AND AGENTS
SINGAPORE, BANGKOK, AND SOLE AGENTS
SINGAPORE, BANGKOK, AND SOLE AGENTS

Regular and frequent connections at ports as follows:
New York, San Francisco, Tacoma.

Agents for the ONKAWA SHIPING KAISHA LIMITED.
MOMBASA, TANGA, ZANZIBAR, DAR-ES-SALAAM.

LAND

Uasin Gishu & Trans'Nzoin

Can offer you some of the best Maize, Wheat and Coffee propositions in these progressive districts.

INSPECTION INVITED.

THOS. J. O'SHEA & Co. Ltd.

Land Agents & Valuers,
ELDORET & KITALE

RELIABLE AGENTS IN LONDON.

Agents for the ONKAWA SHIPING KAISHA LIMITED.
MOMBASA, TANGA, ZANZIBAR, DAR-ES-SALAAM.

KEYMER SON & CO.

10, Abchurch Lane, London, E.C. 4.

MT. BLACKETT SAW MILLS.

LONDONIAN

AFRICAN INDUSTRIES

THE ONLY FACTORY IN GREAT BRITAIN

Equator Saw Mills

NAIROBI



Head Office
Sunder Street,
Box 291, NAIROBI
and
Naji Mazuri.

To Settlers -
There are always certain things to be done to buildings.

SPECIAL OFFER.
Ten and half-ton lots of sheet-iron, mixed dimensions. Shs. 15/6 per ton f.a.s. 100 Casks.

To Builders -
SELF-HEATING REPAIRED METAL
For concrete and building.
From 25 tons per sq. ft. to 100 tons.

To Everybody -
SILVERTOWN
protects your outside woodwork and iron that beautifies
the house and adds to your health.

Shs. 25/6 per 6 gal. drum. 10/- discount for cash with order.

Equator Saw Mills

NAIROBI

JACOBS

The Quality House
P.O. Box 255.
NAIROBI.

Dainty and Smart Footwear

For Ladies Evening Wear
THE NEWEST DESIGNS AND COLORINGS ARE ALL FEATURED IN THE RANGES WE HAVE JUST RECEIVED.

We allow 5 per cent Cash Discount.

