

NOTICE A.O.F.B. DAILY EDITION. Order For Blowing & Blasting Kenya Beer, Stout or XXXX Good Froth Guaranteed.

Kenya's Standard

MORNING EDITIONS & UGANDA EDITIONS. PUBLISHED IN NAIROBI AND KAMPALA.

NAIROBI, WEDNESDAY, JUNE 29, 1949.

RESULTS OF COFFEE CONFERENCE.

All Proposals for Financial Help from Industry Rejected.

EXPERIMENTAL STATIONS PROPOSED.

Government Held Responsible of Diseases and Pests.

Outline of the work of the Coffee Conference is contained in the following summarized Report obtained in an interview with the Acting Director of Agriculture.

No Native-Grown Coffee.

would prevent the money lost in the reduction of freight by means of the increased yields of crops which would be investigated after the application of the means.

PESTS

With regard to insectivorous work on pests and diseases, their treatment, the Conference was very strong of the opinion that it was the duty of Government to investigate actively all pests and diseases which were likely to become a menace to the industry.

UNDESIRABLE INSECTS.

Regarding Hessian fly, the Conference was of the opinion that the Government should take place in the investigation of this pest and that it should be inspected at least once a year.

ATTEMPTED MURDER.

Mr. O'Leary, the chairman of the Revenue Department Military Tribunal has been wounded by a revolver bullet fired during a riot.

NAVAL VISITORS DUE IN NAIROBI TO-DAY.

Arrival of Rear-Admiral Eklart in Victoria.

A MAJORAL LUNCH.

R. E. Rear-Admiral W. M. Eklart, C. B., Commander-in-Chief of the East Indian Station, arrived in Nairobi by special train yesterday morning.

Home Eye-Action.

CONSERVATIVES BELAIN BRITAIN.

Home Eye-Action.

CONSERVATIVES BELAIN BRITAIN.

UNSUCCESSFUL SHOT AT RUSSIAN MILITARY CHIEF.

Mr. O'Leary, the chairman of the Revenue Department Military Tribunal has been wounded by a revolver bullet fired during a riot.

ATTEMPTED MURDER.

Mr. O'Leary, the chairman of the Revenue Department Military Tribunal has been wounded by a revolver bullet fired during a riot.

RETURN OF DUKE AND DUCHESS OF YORK.

King Storm Reception in London.

GOING TO A NEW HOME.

The Duke and Duchess of York returned to London yesterday morning after a tour of the West Indies.

PESTS WELCOME.

The newspapers in long leading articles welcome the homecoming of the Royal Maatons, who in the words of one writer epitomizing the views of all, "represented with charm and dignity the common link of the Crown which was now the bond of unity in the new order of the British Commonwealth, and led behind not merely lasting personal memories, but a still stronger spirit of devotion to the Sovereign and Throne."

Home Eye-Action.

CONSERVATIVES BELAIN BRITAIN.

UNSUCCESSFUL SHOT AT RUSSIAN MILITARY CHIEF.

Mr. O'Leary, the chairman of the Revenue Department Military Tribunal has been wounded by a revolver bullet fired during a riot.

ATTEMPTED MURDER.

Mr. O'Leary, the chairman of the Revenue Department Military Tribunal has been wounded by a revolver bullet fired during a riot.

S.A. SENATE REJECTS THE FLAG BILL.

Premier Refuses New Design Proposed.

STARTING OVER AGAIN.

The Cape Senate has rejected the Bill for the third time after the Premier had refused to accept a new design proposed as a substitute for the Government's design.

KING OF EGYPT TO VISIT BRITAIN.

Special Interest in Lancashire Cotton.

Most interest is being expressed in the visit of the King of Egypt to Lancashire, where he will be accompanied by his consort.

Home Eye-Action.

CONSERVATIVES BELAIN BRITAIN.

UNSUCCESSFUL SHOT AT RUSSIAN MILITARY CHIEF.

Mr. O'Leary, the chairman of the Revenue Department Military Tribunal has been wounded by a revolver bullet fired during a riot.

ATTEMPTED MURDER.

Mr. O'Leary, the chairman of the Revenue Department Military Tribunal has been wounded by a revolver bullet fired during a riot.

AMERICAN "BIG HAWK" INFLUENCE AT WORK.

Want Some Strength as Britain.

AMERICAN "BIG HAWK" INFLUENCE AT WORK.

The main difference in the British and American methods of Government is that the British are more conservative and the Americans are more progressive.

FACTORY PROGRESS.

The industrial programme held a three hours conference at the end of which the American and British delegates agreed to meet again.

Home Eye-Action.

CONSERVATIVES BELAIN BRITAIN.

UNSUCCESSFUL SHOT AT RUSSIAN MILITARY CHIEF.

Mr. O'Leary, the chairman of the Revenue Department Military Tribunal has been wounded by a revolver bullet fired during a riot.

ATTEMPTED MURDER.

Mr. O'Leary, the chairman of the Revenue Department Military Tribunal has been wounded by a revolver bullet fired during a riot.

WL BRANDS are the Best Possible Value for Money.

WINDSOR CLUB PLAYING CARDS. THE GUINEA HAND BAG. MARVEL WRITING PAD.

GLAREGARD. JUNOTS BATH SOAP. The Orient Writing Pad.

Workmen's Compensation. The KLIPTEX HAIR CLIPPERS.

White ways NAIROBI. THE MONEY MARKET.

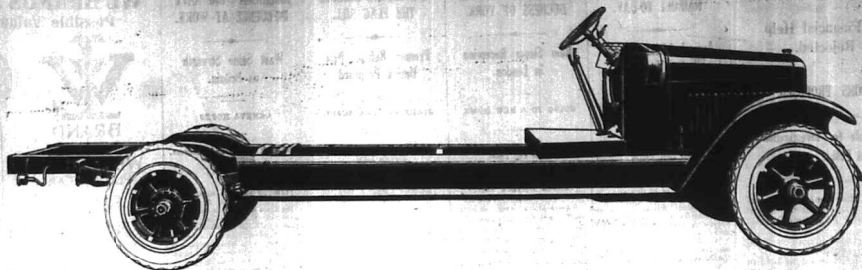
White ways NAIROBI. THE MONEY MARKET.

LOUNGE THE RESTING ROOM FOR GUESTS AND THE LEADER.

Price 20 CENTS.

Just the Truck

for Fast, Low-Cost Hauling



Model SL 2 Ton Speed Truck

£448

Chassis complete with windshield.

THIS long, powerful truck has several features of special interest to every transportation buyer. For example: the wheelbase of 160 inches provides long loading space. A capacity load of 4000 lbs. can be hauled without piling to an inconvenient height.

It is equipped with auxiliary rear springs (making four rear springs in all, an exclusive

feature of all International trucks) insuring easy riding for varying loads. Power tyre pump driven from the transmission, steel wheels, heavy-duty truck tyres are also standard.

This sturdy truck is suitable for any body from the simple platform type to an enclosed bus body for carrying passengers.

The complete range of International Truck chassis include the Special Delivery for loadings up to 1 ton; Speed Trucks for 1, 1½, 2 ton, and Heavy Duty Trucks up to 5 ton capacities.

Write for literature.



1½ ton Chassis complete with windshield £348.



Giffillan & Company, Ltd.
D I S T R I B U T O R S

INTERNATIONAL MOTOR TRUCKS

WEST AFRICAN STANDARD
DAILY EDITION.
 THE PUBLISHERS HAVE
 accepted only
 the following
 advertisements
 for sale at six
 pence per line
 per week of
 10 lines.

ADVERTISEMENTS
 at 6 pence per line
 and 10 pence per line
 for the first
 week of 10 lines
 and 10 pence per line
 for the second
 week of 10 lines
 and 10 pence per line
 for the third
 week of 10 lines
 and 10 pence per line
 for the fourth
 week of 10 lines
 and 10 pence per line
 for the fifth
 week of 10 lines
 and 10 pence per line
 for the sixth
 week of 10 lines
 and 10 pence per line
 for the seventh
 week of 10 lines
 and 10 pence per line
 for the eighth
 week of 10 lines
 and 10 pence per line
 for the ninth
 week of 10 lines
 and 10 pence per line
 for the tenth
 week of 10 lines

THE SUBSCRIPTION RATES
 DAILY.
 1/6 yearly Shs. 20.00
 1/3 yearly Shs. 11.00
 1/12 yearly Shs. 5.00
 1/24 yearly Shs. 2.50
 1/48 yearly Shs. 1.25
 1/96 yearly Shs. 0.625

FOR SALE.
 This charge for advertisements
 in these columns is Shs. 1/- for
 the first week, and a fraction
 of a line, with a minimum of Shs.
 10/- thereafter half price on con-
 secutive days only.

TRIGGEN Express Tractor in
 good condition, cylinder
 work. Will travel over roads,
 mud, rocky, etc. 1000 lbs.
 net weight, 2000 lbs. gross
 weight. Price Shs. 1100/-

TRIGGEN Express Tractor in
 good condition, cylinder
 work. Will travel over roads,
 mud, rocky, etc. 1000 lbs.
 net weight, 2000 lbs. gross
 weight. Price Shs. 1100/-

TRIGGEN Express Tractor in
 good condition, cylinder
 work. Will travel over roads,
 mud, rocky, etc. 1000 lbs.
 net weight, 2000 lbs. gross
 weight. Price Shs. 1100/-

TRIGGEN Express Tractor in
 good condition, cylinder
 work. Will travel over roads,
 mud, rocky, etc. 1000 lbs.
 net weight, 2000 lbs. gross
 weight. Price Shs. 1100/-

TRIGGEN Express Tractor in
 good condition, cylinder
 work. Will travel over roads,
 mud, rocky, etc. 1000 lbs.
 net weight, 2000 lbs. gross
 weight. Price Shs. 1100/-

TRIGGEN Express Tractor in
 good condition, cylinder
 work. Will travel over roads,
 mud, rocky, etc. 1000 lbs.
 net weight, 2000 lbs. gross
 weight. Price Shs. 1100/-

TRIGGEN Express Tractor in
 good condition, cylinder
 work. Will travel over roads,
 mud, rocky, etc. 1000 lbs.
 net weight, 2000 lbs. gross
 weight. Price Shs. 1100/-

TRIGGEN Express Tractor in
 good condition, cylinder
 work. Will travel over roads,
 mud, rocky, etc. 1000 lbs.
 net weight, 2000 lbs. gross
 weight. Price Shs. 1100/-

TO LET.
 This house is situated in
 the heart of the city, and is
 a fine specimen of modern
 architecture. It has a
 large garden, and is
 surrounded by trees and
 shrubs. The house is
 in excellent condition,
 and is ready for
 occupation at any time.
 Apply to the
 Estate Agent, 100
 Broad Street, Nairobi.

TO LET.
 This house is situated in
 the heart of the city, and is
 a fine specimen of modern
 architecture. It has a
 large garden, and is
 surrounded by trees and
 shrubs. The house is
 in excellent condition,
 and is ready for
 occupation at any time.
 Apply to the
 Estate Agent, 100
 Broad Street, Nairobi.

TO LET.
 This house is situated in
 the heart of the city, and is
 a fine specimen of modern
 architecture. It has a
 large garden, and is
 surrounded by trees and
 shrubs. The house is
 in excellent condition,
 and is ready for
 occupation at any time.
 Apply to the
 Estate Agent, 100
 Broad Street, Nairobi.

TO LET.
 This house is situated in
 the heart of the city, and is
 a fine specimen of modern
 architecture. It has a
 large garden, and is
 surrounded by trees and
 shrubs. The house is
 in excellent condition,
 and is ready for
 occupation at any time.
 Apply to the
 Estate Agent, 100
 Broad Street, Nairobi.

TO LET.
 This house is situated in
 the heart of the city, and is
 a fine specimen of modern
 architecture. It has a
 large garden, and is
 surrounded by trees and
 shrubs. The house is
 in excellent condition,
 and is ready for
 occupation at any time.
 Apply to the
 Estate Agent, 100
 Broad Street, Nairobi.

TO LET.
 This house is situated in
 the heart of the city, and is
 a fine specimen of modern
 architecture. It has a
 large garden, and is
 surrounded by trees and
 shrubs. The house is
 in excellent condition,
 and is ready for
 occupation at any time.
 Apply to the
 Estate Agent, 100
 Broad Street, Nairobi.

TO LET.
 This house is situated in
 the heart of the city, and is
 a fine specimen of modern
 architecture. It has a
 large garden, and is
 surrounded by trees and
 shrubs. The house is
 in excellent condition,
 and is ready for
 occupation at any time.
 Apply to the
 Estate Agent, 100
 Broad Street, Nairobi.

TO LET.
 This house is situated in
 the heart of the city, and is
 a fine specimen of modern
 architecture. It has a
 large garden, and is
 surrounded by trees and
 shrubs. The house is
 in excellent condition,
 and is ready for
 occupation at any time.
 Apply to the
 Estate Agent, 100
 Broad Street, Nairobi.

TO LET.
 This house is situated in
 the heart of the city, and is
 a fine specimen of modern
 architecture. It has a
 large garden, and is
 surrounded by trees and
 shrubs. The house is
 in excellent condition,
 and is ready for
 occupation at any time.
 Apply to the
 Estate Agent, 100
 Broad Street, Nairobi.

TO LET.
 This house is situated in
 the heart of the city, and is
 a fine specimen of modern
 architecture. It has a
 large garden, and is
 surrounded by trees and
 shrubs. The house is
 in excellent condition,
 and is ready for
 occupation at any time.
 Apply to the
 Estate Agent, 100
 Broad Street, Nairobi.

TO LET.
 This house is situated in
 the heart of the city, and is
 a fine specimen of modern
 architecture. It has a
 large garden, and is
 surrounded by trees and
 shrubs. The house is
 in excellent condition,
 and is ready for
 occupation at any time.
 Apply to the
 Estate Agent, 100
 Broad Street, Nairobi.

TO LET.
 This house is situated in
 the heart of the city, and is
 a fine specimen of modern
 architecture. It has a
 large garden, and is
 surrounded by trees and
 shrubs. The house is
 in excellent condition,
 and is ready for
 occupation at any time.
 Apply to the
 Estate Agent, 100
 Broad Street, Nairobi.

TO LET.
 This house is situated in
 the heart of the city, and is
 a fine specimen of modern
 architecture. It has a
 large garden, and is
 surrounded by trees and
 shrubs. The house is
 in excellent condition,
 and is ready for
 occupation at any time.
 Apply to the
 Estate Agent, 100
 Broad Street, Nairobi.

TO LET.
 This house is situated in
 the heart of the city, and is
 a fine specimen of modern
 architecture. It has a
 large garden, and is
 surrounded by trees and
 shrubs. The house is
 in excellent condition,
 and is ready for
 occupation at any time.
 Apply to the
 Estate Agent, 100
 Broad Street, Nairobi.

TO LET.
 This house is situated in
 the heart of the city, and is
 a fine specimen of modern
 architecture. It has a
 large garden, and is
 surrounded by trees and
 shrubs. The house is
 in excellent condition,
 and is ready for
 occupation at any time.
 Apply to the
 Estate Agent, 100
 Broad Street, Nairobi.

EQUATOR SAW MILLS
 P.O. Plateau, P.O. Maji-Mamari, P.O. Box 251, Nairobi.
IN STOCK 4,000 TONS
 Podo, Cedar, Hardwoods and Uganda Nyute.
 Price List on Application.
ALSO IN STOCK

Five-ton Oak	Color Resistor	Self-lubricating	Hot's Head	Sheet Length Metal
Red Wood	Single	Resistor Metal	Washers and Discs	Plate for
Preservative	720 will cover	All dimensions and	Complete price on	specification for
Self. Drums 250 lbs.	100 sq. ft.	spec.	application.	specify on your
Imp. Drums 250 lbs.	100 sq. ft.	per dozen		order. Price per
F.O.R. Nairobi.	F.O.R. Nairobi.	F.O.R. Nairobi.		1000. 1000. 1000.

NOTE THE PRICE!

10/50

10/50

Heavy Pressed Glass with one Red and one Black
 Vulcanite Cap

Substantial reduction for lots of one dozen.

T.A.W.S., LTD., NAIROBI.
 Phone 141. Box 611.

SITUATIONS VACANT.

THE charge for advertisements
 in these columns is Shs. 1/- for
 the first week, and a fraction
 of a line, with a minimum of Shs.
 10/- thereafter half price on con-
 secutive days only.

TO LET.
 This house is situated in
 the heart of the city, and is
 a fine specimen of modern
 architecture. It has a
 large garden, and is
 surrounded by trees and
 shrubs. The house is
 in excellent condition,
 and is ready for
 occupation at any time.
 Apply to the
 Estate Agent, 100
 Broad Street, Nairobi.

TO LET.
 This house is situated in
 the heart of the city, and is
 a fine specimen of modern
 architecture. It has a
 large garden, and is
 surrounded by trees and
 shrubs. The house is
 in excellent condition,
 and is ready for
 occupation at any time.
 Apply to the
 Estate Agent, 100
 Broad Street, Nairobi.

TO LET.
 This house is situated in
 the heart of the city, and is
 a fine specimen of modern
 architecture. It has a
 large garden, and is
 surrounded by trees and
 shrubs. The house is
 in excellent condition,
 and is ready for
 occupation at any time.
 Apply to the
 Estate Agent, 100
 Broad Street, Nairobi.

TO LET.
 This house is situated in
 the heart of the city, and is
 a fine specimen of modern
 architecture. It has a
 large garden, and is
 surrounded by trees and
 shrubs. The house is
 in excellent condition,
 and is ready for
 occupation at any time.
 Apply to the
 Estate Agent, 100
 Broad Street, Nairobi.

TO LET.
 This house is situated in
 the heart of the city, and is
 a fine specimen of modern
 architecture. It has a
 large garden, and is
 surrounded by trees and
 shrubs. The house is
 in excellent condition,
 and is ready for
 occupation at any time.
 Apply to the
 Estate Agent, 100
 Broad Street, Nairobi.

TO LET.
 This house is situated in
 the heart of the city, and is
 a fine specimen of modern
 architecture. It has a
 large garden, and is
 surrounded by trees and
 shrubs. The house is
 in excellent condition,
 and is ready for
 occupation at any time.
 Apply to the
 Estate Agent, 100
 Broad Street, Nairobi.

TO LET.
 This house is situated in
 the heart of the city, and is
 a fine specimen of modern
 architecture. It has a
 large garden, and is
 surrounded by trees and
 shrubs. The house is
 in excellent condition,
 and is ready for
 occupation at any time.
 Apply to the
 Estate Agent, 100
 Broad Street, Nairobi.

TO LET.
 This house is situated in
 the heart of the city, and is
 a fine specimen of modern
 architecture. It has a
 large garden, and is
 surrounded by trees and
 shrubs. The house is
 in excellent condition,
 and is ready for
 occupation at any time.
 Apply to the
 Estate Agent, 100
 Broad Street, Nairobi.

TO LET.
 This house is situated in
 the heart of the city, and is
 a fine specimen of modern
 architecture. It has a
 large garden, and is
 surrounded by trees and
 shrubs. The house is
 in excellent condition,
 and is ready for
 occupation at any time.
 Apply to the
 Estate Agent, 100
 Broad Street, Nairobi.

TO LET.
 This house is situated in
 the heart of the city, and is
 a fine specimen of modern
 architecture. It has a
 large garden, and is
 surrounded by trees and
 shrubs. The house is
 in excellent condition,
 and is ready for
 occupation at any time.
 Apply to the
 Estate Agent, 100
 Broad Street, Nairobi.

TO LET.
 This house is situated in
 the heart of the city, and is
 a fine specimen of modern
 architecture. It has a
 large garden, and is
 surrounded by trees and
 shrubs. The house is
 in excellent condition,
 and is ready for
 occupation at any time.
 Apply to the
 Estate Agent, 100
 Broad Street, Nairobi.

OSTERREITH & Co. Ltd.
 (with whom is associated Mr. G. L. Graham)
PRODUCE MERCHANTS.
 IMPERIAL CHAMBERS, GOVERNMENT ROAD, NAIROBI
 (Next to Bullows and Roy).
COFFEE BAGS
 Having secured large quantities at exceptionally favourable prices, we are selling very cheaply
 Prices upon application.
 P. O. Box 667. Telegrams: "OSTERREITH" Nairobi
 Kenya Manager: Capt. E. A. MARTIN
 London Office: Central Office
 44, Old Broad St., E. C. 2. 15, Rue des Champs, Antwerp, Belgium.

ONOTO
The PEN
 OPENS PARTS ALWAYS
 IN STOCK
 Price
 Shs. 17.-50.
 STANDARD PATENT
 LOCKS

A 100% Investment
NATIONAL MUTUAL
LIFE ASSOCIATION
 of Australasia Limited
 Funds exceed £25,000,000
 Whole Life Assurance for £1,000 at age 20
 Annual Premium £25-0-0
 Five Annual Bonus £25-0-0
 (Bonus increase annually with age of policy.)
 ENDOWMENT RATES SIMILARLY
 ATTRACTIVE.
 Apply to agents—
 KETTERIDGE & CO.
 Box 140, NAIROBI.

Hutchings, Biemer & Co. Ltd.
 Box 408. Govt. Road, Nairobi. Factory Badli St. Phone 408.
Special Outfitting for Sportsmen. The Beautiful Home Suite.
 NOW IS THE TIME TO EQUIP YOURSELF WITH A
 NEW SUITE AT THE LOWEST PRICES:
WIFE TROUSERS. Best 2 to 7. Made in cotton
 gaberdine of excellent quality, specially
 made for hard wear. Shgs. 5/-
WIFE TROUSERS. All sizes. Made in Wool Gaber-
 dine of very fine texture. A garment with a good cut
 and smart appearance. Shgs. 4/-
WIFE TROUSERS. All sizes. In shades of dark or
 light grey. Shgs. 5/- to 5/6
PAWN GABERDINE TROUSERS. Shgs. 4/-
NAVY BLUE SPORTS BLOUSERS. Good quality
 fabric. All sizes. Shgs. 5/- and 5/6
TWEED SPORTS COATS. Assorted shades, all sizes
 Shgs. 5/- to 5/6
PURE WOOL GOLF ROBE. Shgs. 5/- and 5/6
TWEED COATS. Shgs. 7/6, 11/6, and 15/6
"VIVELLA" UNSHINEABLE WHITE COATS. Shgs. 4/6
**"OLDELLA" UNSHINEABLE WHITE TRENCH
 SHIRTS.** Shgs. 2/6
HEAVY WHITE TWILL TENNIS SHIRTS. Shgs. 1/6

Price Complete
 895/-

Good Furniture
 at Moderate
 Prices.

This is a luxurious suite, made from thoroughly
 seasoned country timber. Only the best craftsmen, under
 expert European supervision, are employed. Every
 detail of manufacture is supervised by the directors
 themselves.

INCLUDES THE FOLLOWING:
WARDROBE. Fitted with hanging garments, with large
 drawer at base. Full length bevel mirror, W.L.B.
DRESSING CASE. Fitted with two large drawers and
 two half width drawers. Landscape mirror D11-15.
WASHING TUB. Fitted with large cupboard, towel rails,
 built-in shelf. Tiled top and splasher.
W.C.
DOUBLE BEDSTEAD. Fitted with best 3 ply spring
 mattress, best padded head and foot. Patent
 bracket fittings.

Nikaya Hotel
 (Opp. Comfortable, Healthy, and Electric Light)
 Suburban atmosphere in
 convenient location from Nairobi.
 Moderate charges and special quotations for families.

Union-Castle Lines

SAILINGS FOR KILINDINI VIA SUVAZ.

Agents: Messrs. Messageries Maritimes.

Steamer "Glasgow" (cargo only) 2nd July
 "Glasgow" (passenger) 15th Oct.
 "Glasgow" (passenger) 15th Dec.

This steamer will call at Aden, Port Sudan, Suez, and Marseilles.

VIA SOUTH AFRICA:

Steamer "Glasgow" (cargo only) 2nd July
 "Glasgow" (passenger) 15th Oct.
 "Glasgow" (passenger) 15th Dec.

For Rates of Freight and Passage Money Apply to: **The Union-Castle Mail Steamship Company Limited.**

Or the Company's Agents: **The British East Africa Corporation, Ltd.**

STEAM

Shipping Schedule for East Africa, East India, and other ports.

Agents: Messrs. Messageries Maritimes.

Steamer "Glasgow" (cargo only) 2nd July
 "Glasgow" (passenger) 15th Oct.
 "Glasgow" (passenger) 15th Dec.

For Rates of Freight and Passage Money Apply to: **The Union-Castle Mail Steamship Company Limited.**

Or the Company's Agents: **The British East Africa Corporation, Ltd.**

Chivers' Jams

Wholesale and Retail Agents: Messrs. Messageries Maritimes.

Agents: Messrs. Messageries Maritimes.

Steamer "Glasgow" (cargo only) 2nd July
 "Glasgow" (passenger) 15th Oct.
 "Glasgow" (passenger) 15th Dec.

HOLLAND AFRIKA LIJN

JOBY SERVICE.

HOLLAND ZUID-AFRIKA LIJN and HOLLAND OOST AFRIKA LIJN.

Steamers will load at Kilindini on or about the following dates:

ROSEWARD VIA SUVAZ.

Steamer "Dillon" (D) June 29th
 "Dillon" (D) July 13th
 "Dillon" (D) July 27th

ROSEWARD VIA TEE GAPE.

Steamer "Sylph" (S) July 7th
 "Sylph" (S) July 21st
 "Sylph" (S) July 25th

PASSENGER FARES:

MARSHALLS (A) 45-10-0 (B) 42-10-0
 (C) 40-0-0 (D) 35-0-0
 (E) 30-0-0 (F) 25-0-0

For further information apply to the Agents: **FRYTSCHKE OVERSEA TRADING CO. LTD.**

Shell

Shell Lubricants advertisement featuring a large illustration of a Shell logo.

Shell Lubricants advertisement featuring a large illustration of a Shell logo.

J. E. TORR

BUY TORR'S CHOCOLATES

THEY ARE SURE TO BE APPRECIATED FRESHLY MADE ON THE PREMISES.

J. E. TORR

Govt. ROAD, NAIROBI. P.O. Box 412

The Kenya Vulcanizing Works

K. McIVOR'S Garage.

Notice to Motorists

WE have now installed the very latest electrical Vulcanizer and am in a position to repair covers within 24 hours. Prices from Shgs. 10/- to 25/- according to size and condition.

NOW IN STOCK.

"BRADEN" JERSEY 5/6, 8/6, 11/6, and 12/6
 "MATCHLESS" 1/6, 1/8, 1/10, 1/12, 1/14, 1/16, 1/18, 1/20, 1/22, 1/24, 1/26, 1/28, 1/30, 1/32, 1/34, 1/36, 1/38, 1/40, 1/42, 1/44, 1/46, 1/48, 1/50, 1/52, 1/54, 1/56, 1/58, 1/60, 1/62, 1/64, 1/66, 1/68, 1/70, 1/72, 1/74, 1/76, 1/78, 1/80, 1/82, 1/84, 1/86, 1/88, 1/90, 1/92, 1/94, 1/96, 1/98, 1/100

DEUTSCHE OST-AFRIKA-LINIE

GERMAN AFRICAN SERVICE.

Service of Turbo Steamers from Bombay- Southampton round Africa, using Fast, Speedy and Efficient Passenger, and also Cargo Steamers.

VIA SUVAZ CASAB.

Callings at Aden, Suez, Port Said, Genoa, Marseille, Naples, London, Southampton, and Rotterdam.

VIA TEE GAPE.

Callings at Tanganyika, Zanzibar, Dar-es-Salaam, Port Anson, Mozambique, Beira, Lourenco Marques, Union, Port, Lourenco, Walvis Bay, Capry Islands, Lisbon, Southampton, and Antwerp.

LEAVING MONTHS:

18th Sept. a.s. TANGANIKA ... 29th June
 19th Sept. a.s. USBARUM ... 29th July
 14th Sept. a.s. SULTAN (cargo steamer) ... 11th Aug.
 20th Sept. a.s. USUKUMA ... 10th Sept.
 20th Oct. a.s. TANGANIKA ... 8th Oct.
 21st Nov. a.s. USBARUM ... 8th Nov.
 21st Dec. a.s. NIARA ... 2nd Dec.
 11th Jan. 1925 a.s. USSUKUMA ... 20th Dec.
 18th Feb. a.s. TANGANIKA ... 8th Feb.

For further information apply to the Agents: **W. C. Hunter & Co., Eldoret.**

OUR GUNS HAVE PROVED THEMSELVES!!!

Based on the following unadorned Testimonials.

I have shot over 40 Elephants with your G.S. Rifle. I consider it the best rifle on this continent. Animals and superior to 318 or 303 Magnum. Your 30" Barrel is the best gun on the Market.

(Sd.) F. E. VIVIAN, Game Department, Tanganyika.

I have been the killing of 6 big Elephants and 2 Rhinos during the past month. 1 consider your D.W.M. ammunition "The Best" and would use no others.

(Sd.) A. H. HEYER.

EVERY WEAPON TESTED IN YOUR PRESENCE.

2,000 Gms. of every description in all boxes by only best Mauser loaded.

See reports of every description by our European Gamebirds.

CHAS. A. HEYER & Co.

SOLE AGENTS: Messrs. Messageries Maritimes.

OVERSEAS MAILS.

ARRIVALS.

STEAMER	FROM	Due at Mombasa	Mail opens in Mombasa
Gen. Voyon	Marseilles	June 25	June 25
Shandala	South	July 1	July 1
Kerogala	Punjab	July 1	July 1

Gen. Voyon carries 220 bags.

DEPARTURES.

STEAMER	FOR	Mail Close at Mombasa	Departure on Monday
Rhinoceros	Switzerland	June 30	July 1
Kerogala	South	July 1	July 1

Compagnia Italiana Transatlantica.

NEW EAST AFRICA-ITALY FAST DE-LUXE PASSENGER SERVICE.

Callings from Kilindini for Genoa

S.S. O. MARENGO 6th July
 S.S. F. CRISPI 8th Aug.

Apply to: **M. D. KEMPF-Nairobi Agent.**

SOCIETA COLONIALE ITALIANA
 Mombasa Agents

JOHN RIFKIN

WAGON BUILDER, BLACKSMITH, FARRIER.

STOCK OF AXLES, BRAKES, WAGON, AND ALL WAGON PARTS.

Wonderful Reduction on OUR HORSERY

M. Chabron
 NAIROBI

Compagnie Africaine de Navigation.

Belgian Line.

OF FAST CARGO STEAMERS.

REGULAR AND DIRECT MONTHLY SERVICE FROM ANTWERP TO KILINDINI-DAR-ES-SALAM

MITCHELL COTTS & Co.

AGENTS.

P.O. Box No. 141, MOMBASA. P.O. Box No. 664, NAIROBI.

DANCING.

The Nairobi School of Dancing and Physical Training.

Private and class lessons for adults and children.

Dancing lessons in the Lyric Hall every 1st and 3rd Thursdays.

Gymnastic class (ladies) at the Lyric Hall every Friday.

BROWN

REDUCTION IN PRICE.

No. 1 size has been reduced by 10 pds. No. 2 size has been reduced by 5 pds.

Ask your Grocer for his present Retail Price. This Brown may be depended upon to turn out the tin in very fine condition.

It provides an extremely economical and delicious source for any need.



Explorers Use This Car Because It is Dependable

Pioneers and explorers, whose lives depend upon the reliability of the transportation they use, employ Dodge Brothers Motor Cars almost exclusively.

Refugees used Dodge Brothers Cars through the uncharted forests of Central Australia. Sir Roy Chapman Andrews, on three different occasions, penetrated the innermost wastes of Mongolia in a Dodge Brothers Car.

The car's dependability is proverbial, and its exceptional riding comfort permits long travel over bad roads without fatigue.

Touring Car	£210
Special Touring Car	£230
Aluminium Box Body	£205

The Olived Forest Garage, Nakuru, Watt & Co., Ltd., Mombasa and Arusha, KASRAM BIKHIM, KAMPALA and BUROKA, D. FISHER & SIMMONS (E.A.), Ltd., Victoria Street, Nairobi.

DODGE BROTHERS MOTOR CARS

F. A. HEAD,
PIANOFOUR, TUNER AND REPAIRER
Five years with Messrs. Chappell & Co., London,
Seven years experience in Kenya Colony.
Send all orders to P.O. Box 576.



A MAN'S DRINK
OHLSSON'S
LION LAGER
DISTRIBUTED BY DENOVAN & DIESEL
City House, NAIROBI, Box 77, MOMBASA

SWAHILI BOOKS

- EVERYDAY SWAHILI PHRASES and VOCABULARY
12th Edition, by F. A. S. Ltd.
Price, Shgs. 2/-. Posted 2/1s.
- ENGLISH SWAHILI VOCABULARY, by A. C. Maitan
Price, Shgs. 2/-. Posted 2/2s.
- SWAHILI EXERCISES, by Edward Steere LL.D.
Price, Shgs. 3/-. Posted 3/3s.
- A HANDBOOK OF THE SWAHILI LANGUAGE
by Bishop Steere, LL.D. Revised by A. C. Maitan
Price, Shgs. 4/6s. Posted 5/10.
- SWAHILI TALES WITH ENGLISH TRANSLATION
by Bishop Steere, LL.D. Revised by Alice Werner.
Price, Shgs. 4/6s. Posted 5/6s.
- SWAHILI GRAMMAR and VOCABULARY
by Mrs. F. Burt.
Price, Shgs. 4/6s. Posted 5/6s.
- ENGLISH-SWAHILI DICTIONARY
SWAHILI-ENGLISH DICTIONARY
by A. C. Maitan.
Price, Shgs. 12/- EACH. Posted Shgs. 12/6s.

Standard Stationery Store
NAIROBI.

MOTOR TOPICS

SECOND-HAND CAR.

Suggestions Which May Save Money.

POINTS TO OBSERVE.

There is much to be said for buying a car second-hand, and the hints here are intended to help the buyer to choose a car that will give him the most pleasure and the least trouble.

The first fact that he should bear in mind is that a car should be bought for a purpose, and a considerable amount of thought should be given to the way in which the car will be used. It is not a good idea to buy a car that is only suitable for a particular purpose, and then to use it for a different purpose.

Next, the buyer should consider the car's condition. It is not a good idea to buy a car that is in a poor state of repair, and it is not a good idea to buy a car that is too old.

The car should be in good condition, and it should be able to run on a good road. It should be able to run on a good road, and it should be able to run on a good road.

Next, the buyer should consider the car's price. It is not a good idea to buy a car that is too expensive, and it is not a good idea to buy a car that is too cheap.

The car should be priced at a reasonable level, and it should be able to run on a good road. It should be able to run on a good road, and it should be able to run on a good road.

Next, the buyer should consider the car's reliability. It is not a good idea to buy a car that is unreliable, and it is not a good idea to buy a car that is too old.

The car should be reliable, and it should be able to run on a good road. It should be able to run on a good road, and it should be able to run on a good road.

and should probably be given for a further period of six months.

It is not a good idea to buy a car that is too old, and it is not a good idea to buy a car that is too cheap.

Next, the buyer should consider the car's condition. It is not a good idea to buy a car that is in a poor state of repair, and it is not a good idea to buy a car that is too old.

The car should be in good condition, and it should be able to run on a good road. It should be able to run on a good road, and it should be able to run on a good road.

Next, the buyer should consider the car's price. It is not a good idea to buy a car that is too expensive, and it is not a good idea to buy a car that is too cheap.

The car should be priced at a reasonable level, and it should be able to run on a good road. It should be able to run on a good road, and it should be able to run on a good road.

Next, the buyer should consider the car's reliability. It is not a good idea to buy a car that is unreliable, and it is not a good idea to buy a car that is too old.

The car should be reliable, and it should be able to run on a good road. It should be able to run on a good road, and it should be able to run on a good road.

Next, the buyer should consider the car's condition. It is not a good idea to buy a car that is in a poor state of repair, and it is not a good idea to buy a car that is too old.

The car should be in good condition, and it should be able to run on a good road. It should be able to run on a good road, and it should be able to run on a good road.

Next, the buyer should consider the car's price. It is not a good idea to buy a car that is too expensive, and it is not a good idea to buy a car that is too cheap.

The car should be priced at a reasonable level, and it should be able to run on a good road. It should be able to run on a good road, and it should be able to run on a good road.

Next, the buyer should consider the car's reliability. It is not a good idea to buy a car that is unreliable, and it is not a good idea to buy a car that is too old.

The car should be reliable, and it should be able to run on a good road. It should be able to run on a good road, and it should be able to run on a good road.

Next, the buyer should consider the car's condition. It is not a good idea to buy a car that is in a poor state of repair, and it is not a good idea to buy a car that is too old.

The car should be in good condition, and it should be able to run on a good road. It should be able to run on a good road, and it should be able to run on a good road.

Next, the buyer should consider the car's price. It is not a good idea to buy a car that is too expensive, and it is not a good idea to buy a car that is too cheap.

The car should be priced at a reasonable level, and it should be able to run on a good road. It should be able to run on a good road, and it should be able to run on a good road.

Next, the buyer should consider the car's reliability. It is not a good idea to buy a car that is unreliable, and it is not a good idea to buy a car that is too old.

The car should be reliable, and it should be able to run on a good road. It should be able to run on a good road, and it should be able to run on a good road.

NATIONAL BANK OF ENGLAND

(Incorporated in the United Kingdom)

Head Office: 1, Abchurch Lane, London, E.C. 4.

Branches: London, E.C. 4; London, E.C. 2; London, E.C. 1; London, E.C. 3; London, E.C. 4; London, E.C. 5; London, E.C. 6; London, E.C. 7; London, E.C. 8; London, E.C. 9; London, E.C. 10; London, E.C. 11; London, E.C. 12; London, E.C. 13; London, E.C. 14; London, E.C. 15; London, E.C. 16; London, E.C. 17; London, E.C. 18; London, E.C. 19; London, E.C. 20; London, E.C. 21; London, E.C. 22; London, E.C. 23; London, E.C. 24; London, E.C. 25; London, E.C. 26; London, E.C. 27; London, E.C. 28; London, E.C. 29; London, E.C. 30; London, E.C. 31; London, E.C. 32; London, E.C. 33; London, E.C. 34; London, E.C. 35; London, E.C. 36; London, E.C. 37; London, E.C. 38; London, E.C. 39; London, E.C. 40; London, E.C. 41; London, E.C. 42; London, E.C. 43; London, E.C. 44; London, E.C. 45; London, E.C. 46; London, E.C. 47; London, E.C. 48; London, E.C. 49; London, E.C. 50; London, E.C. 51; London, E.C. 52; London, E.C. 53; London, E.C. 54; London, E.C. 55; London, E.C. 56; London, E.C. 57; London, E.C. 58; London, E.C. 59; London, E.C. 60; London, E.C. 61; London, E.C. 62; London, E.C. 63; London, E.C. 64; London, E.C. 65; London, E.C. 66; London, E.C. 67; London, E.C. 68; London, E.C. 69; London, E.C. 70; London, E.C. 71; London, E.C. 72; London, E.C. 73; London, E.C. 74; London, E.C. 75; London, E.C. 76; London, E.C. 77; London, E.C. 78; London, E.C. 79; London, E.C. 80; London, E.C. 81; London, E.C. 82; London, E.C. 83; London, E.C. 84; London, E.C. 85; London, E.C. 86; London, E.C. 87; London, E.C. 88; London, E.C. 89; London, E.C. 90; London, E.C. 91; London, E.C. 92; London, E.C. 93; London, E.C. 94; London, E.C. 95; London, E.C. 96; London, E.C. 97; London, E.C. 98; London, E.C. 99; London, E.C. 100.

FRANZ'S THE HAIRDRESSER

10, Victoria Street, Nairobi.

MARTIN'S PILLS

ANOL & STEEL

A readjuster for all Female complaints. Every lady should keep a box in the house.

Chemists and Druggists sell them throughout the world.

Prepared by: **Dr. Geo. Steinhilber, England.**

Can be obtained at **Mrs. STEVENSON,** Box 25, NAKURU. (late Lodge Hotel).

ALM TREE KEROSENE

FOR LIGHT, FOR CLEAN, BRIGHT AND MORE POWER.

FOR QUIET, BURNING STABLE AND ALL-ROUNDER QUALITY. ECONOMY IN FUEL, TUBES AND ENGINEERS.

SOLE AGENTS: **ELDMORE, KITALE.**

AGENTS: **NAKURU, KISUMU, KAMPALA, MOMBASA, BUROKA, THIKA, NAIROBI.**

GIBSON & CO., Ltd., MOMBASA.
SOLE IMPORTERS AGENTS—**ANGLO-PERSIAN OIL CO. (KENYA), Ltd.**

BARGAINS!!!

Native Singlets at from 1/6, 9/6 per dozen.
Kilts, Shirts at from 2/6, 27/- per dozen.

Other prices too numerous to mention on application. Including

M. ROSENBLUM & Co. Ltd.
HARDING STREET,
Telegrams: "Rosenblum."
Tel. No. 15. NAIROBI. P.O. Box 531.

USED CARS FOR SALE

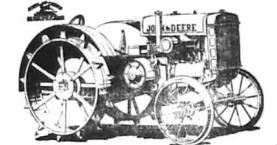
In Order to Dispose of Several Used Car's we are Offering the Undermentioned at the Figures Stated

- Hupp, 8 cyl Touring £275
- Hupp, 4 cyl " £220
- Chrysler, 70 " £200
- Hupp, 6 Box-Body £185
- Oakland Touring £150
- Studebaker, Box Body £150
- Hupp, Touring £90
- Rugby Box-Body £90
- Chev Truck £70
- Hupp, Touring £70

ALL IN PERFECT ORDER.
Minute Inspection Invited

The Motor Mart and Exchange Ltd.
NAIROBI. NAKURU.

POWER JOHN DEERE FARM TRACTOR



DEPT. TABLE, ECONOMICAL, DURABLE.

Price £315
PANDA, FENNER, ARKS, etc.

We have large stocks of John Deere Tractors, Lawn Tractors, Carts, Wagons, Ploughs, Harrows, Cultivators, Wheel Drills, and Shovelers.

LADHAM'S ALL SIZES IN STOCK
H. W. SEAR (S.E.A. Wagon Works) Ltd.
Victoria Street,
Phone 154. NAIROBI. P.O. Box 478.

Worth While Your Visit
JUST UNPACKED **GRIGUE RANGE.**
Crops de Chine, Fine Silk,
Six Dress Length in Fascinating Designs,
Hosiery, Fancy Goods, Hats, and
Cotton Material in every economical lot.

LADHAM STORES,
Govt. Road,
P.O. Box 216. NAIROBI. Govt. Road

MORRIS SERVICE.

MORRIS CARS & COMMERCIAL VEHICLES

The new 1927 cars are second to none in value, comfort and design.

The new 25 cwt and 30 cwt. Trucks are exactly what you want, strong, powerful, efficient and sound British workmanship, economical to run.

Catalogues and particulars from:—
SOLE AGENTS—
Mitchell Cotts & Co.
P.O. Box No. 564. NAIROBI. Theatre Royal Arcade.

FIAT

MODEL 509 MODEL

S. H. P.
 THE LITTLE GIANT
 The Engine that Ignores Hills.
 Call for a Demonstration.

Overhead Valves—Overhead Camshaft
 40 Miles Per Gallon
 45/50 Miles Per Hour.
FOUR SEATER MODEL £217
 Roomy and Comfortable.
TWO SEATER MODEL £197.

Moulton & Morrison Ltd.
NAIROBI.

Distributors: YORK GARAGES, LIMITED.
 SIXTH AVENUE, NAIROBI.



7-bearing Crankshaft—Chrysler was first in the popular-priced field to use a crankshaft of this type, properly co-ordinated with the parts with which it functions. Here, again, is evidence of the benefits to the motor car buyer of Chrysler's plan of Standardized Quality.

Ford Facts
Latest News

Telegram just received from Eldoret on Petrol Tests with the **Ford** New Type Carburettor.

Yesterday's trial 22 FORDS ran.
FIRST 49.90 MILES TO ONE GALLON.
SECOND 47.14 MILES TO ONE GALLON.
 Kitale full details not yet available
 At least 7 averaged over 40 miles to one gallon
 Average over all roughly 35 miles to one gallon

The Service Company Limited.
 MOMBASA. NAIROBI. NAKURU.

Do You Find Reading At Night Difficult?
 IF YOU FACE THE PROBLEM DON'T BOUIC YOUR EYES.
A. H. WARDLE & CO. LTD.
 ALL OPTICORERS & STAINED-GLASS PAINTERS

R. G. VERNON & Co.
 Announce the arrival of
STEEL CASEMENTS
 IN VARIOUS SIZES
 Manufactured by the renowned firm of James Gibbon's of Wolverhampton who represent in East Africa.
 ORDERS CAN NOW BE PLACED FOR **IMMEDIATE DELIVERY**
 Prices Very Moderate. Best Quality.
 Showrooms and Stocks: NAIROBI HOUSE, BOX 194. Phone 190.

Arts & Crafts Photographic Exhibition.
 If you are anticipating a prize at the above Exhibition insist that your exhibit is made up of
A. H. Wardle Co. Ltd.
 Photographic Dept. Manager S H Coulson
 SPECIALISTS IN ARTISTIC ENLARGING, MOUNTING AND FRAMING, ETC

TO DESTROY ALL PESTS

The quicker, deadlier insect killer! Not a single pest escapes the fatal secret ingredient!

Use **BLACK FLAG** and have a pest free home. It acts every fly, every mosquito, every moth, every ant, every single household bug. They merely breathe in secret ingredient and die. Not one escapes. The surest killer you ever tried. The quickest, too. The other form—liquid or powder. Harmless to humans and animals.

LIQUID Four tin	Shs. 3/-
Quart tin	Shs. 2/-
POWDER Quart tin	Shs. 4/0
Four tin	Shs. 3/-
Four tin	Shs. 2/6

BLACK FLAG
 OBTAINABLE ONLY AT
HOWSE & McGEORGE, LTD.
 NAIROBI & BRANCHES

SILVO
 LIQUID SILVER POLISH

These Silver Cloths which I recommend by cleaning them condition by polishing the silver pieces. One can only use SILVO in a quick and safe and easy to use cloth of silver and electro plate.

Use an old soft cloth

R. HAMILTON LTD.
 NAIROBI

BIRTH
 GORDON At Nairobi on June 22 (Sun) at 10.15. His father G. B. Gordon.

THE EAST
AFRICAN STANDARD
 Mombasa Times & Uganda Argus
 WEDNESDAY, JUNE 29, 1927

A Naval Occasion.
 Little notice has been given to the part of the people of Eastern Africa to realize the dependence which has been placed, consequently but unaccommodatingly, by the great empire of the latter states, on the development of the sea. This permitted to take place in the related port of the Empire have been largely due to the will of foreign officers of the guard and progress. These, whose apprehensions have been the position of the East African Empire, have been the result of the fact that the great powers have been largely due to the will of foreign officers of the guard and progress. These, whose apprehensions have been the position of the East African Empire, have been the result of the fact that the great powers have been largely due to the will of foreign officers of the guard and progress.

B.S.A. Motor Bicycles
OF THE
Stock Machine Trial
4 B.S.A.'S ENTERED
COMPLETED TRIAL
WITHOUT LOSS OF A SINGLE MEDAL.
WINNING
4 GOLD MEDALS
AND
TEAM AWARD

The first Motor Bicycles which were entered in the world's greatest trial were shown by A.C.T. officials from a stock of 20 machines.

They had standard performance. These machines which they did not lose a single medal, either in climbing time checks, or in condition at end of trial.

The above showed the greatest reliability and speed characteristic of B.S.A. Motor cycle.

MURDER CHARGE
 The active wife of a bank official in London is charged with the murder of a native girl.

MURDER CHARGE
 The active wife of a bank official in London is charged with the murder of a native girl.

THE PROTEM PHOTOGRAPH
 The winner of the prize in the competition at the Photographic Exhibition on June 27, for the 'Mammoth Hill' was Mrs. Maud Hill of Nairobi.

JOHN BROWN IN LONDON
 The British member of the League of Nations has returned to London.

where they are unable to do more than wait, or in the case of the great powers of the world, to wait until they can be made to do so. It is not only the fact that the great powers of the world are unable to do more than wait, or in the case of the great powers of the world, to wait until they can be made to do so.

MURDER CHARGE
 The active wife of a bank official in London is charged with the murder of a native girl.

THE PROTEM PHOTOGRAPH
 The winner of the prize in the competition at the Photographic Exhibition on June 27, for the 'Mammoth Hill' was Mrs. Maud Hill of Nairobi.

Under the Standard Clock.

Motor Accident
 A minor accident occurred about four and a half miles out on the Nairobi Road yesterday.

John Brown in London
 The British member of the League of Nations has returned to London.

TO DAY'S AGING LIST

A Coming Engagement
 Miss Elizabeth Byng, daughter of the late Lord Byng, is engaged in marriage with Lord Kintore.

Under the Standard Clock
 A minor accident occurred about four and a half miles out on the Nairobi Road yesterday.

Emile Jardin & Cie.
Cearn's Building Facing
The COURT HOUSE

"STANDARD" DIARY
 For 1928. Available from Nairobian.

July 1: Easter Sunday at Nairobi 8:30.
 July 8: Meeting to Organize Kenya Youth Federation.
 Stanley Edeci, 2 P.M.

BISHOPS VISIT AIRBORL

Mainings of Movement for an East African Province

HOPE OF THE COMING CONFERENCE

Church Follows the Movement Towards Co-ordination and Co-operation.

As already announced an important Conference of Church authorities will be held in Nairobi on July 8. The main purpose of the Conference is to discuss the formation of an East African Province.

The Bishops who will attend are: Mombasa, Uganda, Zanzibar, Southern Sudan, Malawi and Nyasaland. The Bishop of Nyasaland, Senior Anglican Bishop in East Africa outlines in the following article the purposes of the Conference and the reasons for the delay since 1920—delay chiefly due to opposition by the Uganda Diocese.

(By the BISHOP OF NYASALAND)

In travelling about the East African continent I am really interested in people who are really interested in the Church of the East African Province. I have met many such people in the past and I am sure that the position actually is that a large number of people are giving the matter up for lost. It is the hope of those who are interested that the East African Province will be established. It is the hope of those who are interested that the East African Province will be established.

We are all, however, that we ought to carry out and propose we are in progress for a meeting of the East African Province. We are all, however, that we ought to carry out and propose we are in progress for a meeting of the East African Province.

THE CONFERENCE

Uganda Synod agreed to this and the Bishop of Nyasaland, Senior Anglican Bishop in East Africa, arranged a meeting of the East African Province in Nairobi in 1920. The Bishop of Nyasaland, Senior Anglican Bishop in East Africa, arranged a meeting of the East African Province in Nairobi in 1920.

THE UGANDA JUDGMENT

It is fortunate coincidence that Uganda Judgments in this year, and the Bishop of Uganda has most kindly asked who will be the committee to be set up for the purpose of the East African Province. It is fortunate coincidence that Uganda Judgments in this year, and the Bishop of Uganda has most kindly asked who will be the committee to be set up for the purpose of the East African Province.

PROPOSAL OUTLINED

The following extracts from a letter to the Bishop of Uganda outline the proposal to the Conference. It is in consideration of the possibility of the East African Province being set up as a province of the Anglican Church of the East African Province. It is in consideration of the possibility of the East African Province being set up as a province of the Anglican Church of the East African Province.

S. JACOBS, Ltd.

SUPERIOR QUALITY Toilet Sets

Decorated Enamel in a large variety of designs and colourings.

5 pieces sets 37/60 to 47/60
6 pieces Toilet 47/60 to 60/60

WHOLESALE DEALERS OF GARDEN BAY IN THE KENYA HIGH COURT.

Wholesale Dealers of Garden Bay in the Kenya High Court.

WIDOW'S BENEFIT
A widow's benefit of £100 per week has been granted to the widow of a deceased soldier who served in the East African Expeditionary Force.

REPT CARE
A brilliant record has been achieved by the reptiles of the East African Expeditionary Force.

A BRILLIANT RECORD
The Brumanshaw Whaler has achieved a brilliant record in the East African Expeditionary Force.

THE BURNINGHAM WHALER
The Burningham Whaler has achieved a brilliant record in the East African Expeditionary Force.

A LORRY FULL
A lorry full of goods has been delivered to the East African Expeditionary Force.

ALLEGED ABETTING
An alleged abetting of a crime has been proven in the East African Expeditionary Force.

THE COMMITTEE
A committee has been formed to deal with the East African Expeditionary Force.

ALLEGED LIABILITIES
Alleged liabilities of a firm have been established in the East African Expeditionary Force.

ALLEGED LIABILITIES
Alleged liabilities of a firm have been established in the East African Expeditionary Force.

ALLEGED LIABILITIES
Alleged liabilities of a firm have been established in the East African Expeditionary Force.

ALLEGED LIABILITIES
Alleged liabilities of a firm have been established in the East African Expeditionary Force.

ALLEGED LIABILITIES
Alleged liabilities of a firm have been established in the East African Expeditionary Force.

ALLEGED LIABILITIES
Alleged liabilities of a firm have been established in the East African Expeditionary Force.

ALLEGED LIABILITIES
Alleged liabilities of a firm have been established in the East African Expeditionary Force.

ALLEGED LIABILITIES
Alleged liabilities of a firm have been established in the East African Expeditionary Force.

ALLEGED LIABILITIES
Alleged liabilities of a firm have been established in the East African Expeditionary Force.

ALLEGED LIABILITIES
Alleged liabilities of a firm have been established in the East African Expeditionary Force.

ALLEGED LIABILITIES
Alleged liabilities of a firm have been established in the East African Expeditionary Force.

ALLEGED LIABILITIES
Alleged liabilities of a firm have been established in the East African Expeditionary Force.

WHITMAN LIVES A PIONEER

Whitman lives a pioneer in the East African Expeditionary Force.

WHITMAN LIVES A PIONEER
Whitman lives a pioneer in the East African Expeditionary Force.

WHITMAN LIVES A PIONEER
Whitman lives a pioneer in the East African Expeditionary Force.

WHITMAN LIVES A PIONEER
Whitman lives a pioneer in the East African Expeditionary Force.

WHITMAN LIVES A PIONEER
Whitman lives a pioneer in the East African Expeditionary Force.

WHITMAN LIVES A PIONEER
Whitman lives a pioneer in the East African Expeditionary Force.

WHITMAN LIVES A PIONEER
Whitman lives a pioneer in the East African Expeditionary Force.

WHITMAN LIVES A PIONEER
Whitman lives a pioneer in the East African Expeditionary Force.

WHITMAN LIVES A PIONEER
Whitman lives a pioneer in the East African Expeditionary Force.

WHITMAN LIVES A PIONEER
Whitman lives a pioneer in the East African Expeditionary Force.

WHITMAN LIVES A PIONEER
Whitman lives a pioneer in the East African Expeditionary Force.

WHITMAN LIVES A PIONEER
Whitman lives a pioneer in the East African Expeditionary Force.

WHITMAN LIVES A PIONEER
Whitman lives a pioneer in the East African Expeditionary Force.

WHITMAN LIVES A PIONEER
Whitman lives a pioneer in the East African Expeditionary Force.

WHITMAN LIVES A PIONEER
Whitman lives a pioneer in the East African Expeditionary Force.

WHITMAN LIVES A PIONEER
Whitman lives a pioneer in the East African Expeditionary Force.

WHITMAN LIVES A PIONEER
Whitman lives a pioneer in the East African Expeditionary Force.

LYRIC HALL

TONIGHT

NORMA TALMAGE

LAW OF COMPENSATION

BONZO CARTOON

Alladine Wonderful Lamp

COMEDY: MEET THE DOCTOR.

See Our Windows

FOR THE NEWEST DESIGN

CHARLESTONS

London's Fashion.

COME EARLY

COLOURS

FAWN From 19.00

WHITE, Less 5 per cent.

SAND, Blue for Cash

RED, Ladies Footwear Limited.

SILVER

GOLD

THEATRE ROYAL

Matinee, Saturdays at 3-30

TONIGHT

MATINEE SATURDAY

GLORIA SWANSON

IN A UNIQUE SPANISH ROMANCE SET IN BUENOS AIRES

"MY AMERICAN WIFE"

FELIX WARES UP!—PATHE GAZETTE.

ERSKINE 6

Studebaker's latest achievement

"The Little Aristocrat"

Complete with 4-wheel Brakes, Oil and Air Filters, Bumpers front and rear

Combines the most advanced motor engineering features of the world with the greatest value in the world

A SIX CYLINDER ENGINE DOING 30.35 M.P.G.

MODELS ON VIEW IN OUR SHOWROOMS.

K. McIvor's Garage

SIXTH AVENUE, NAIROBI.

WINGET

OPEN DRUM CONCRETE MIXER THE GUARANTEED MIXER WITH THE GUARANTEED MIX

These are the only open drum type mixers on the market which mix instead of separating. This is due to the patent BURN-LANCASTER drum with the SEMI HELICAL BASE. "WINGET" mixers have other overwhelming advantages over any others on the market. Come and see a 31-6 in stock, or write for literature.

A Size for Every Job

J. R. COX & Co.

P. O. Box 91,
ELDORET.

P. O. Box 676,
NAIROBI.

P. O. Box 263,
KAMPALA.

B. E. A. Saw Mills

MILLS: Factory Sites, Nairobi
Pasi River, Uplands
Katumany

P. O. Box 221,
Nairobi.

Telegrams: Beams.

Office No. 83.

CAMPEOR, FODD, MWERI and

BOXWOOD.

Prompt Delivery.
A GOOD CEDAR FLOORING.

HAULAGE and TRANSPORT

STANDARD BUILDINGS.
ANY WEIGHT ANY DISTANCE
HAULAGE & GENERAL TRANSPORT Co.
6th Avenue Phone 85. P. O. Box 359

REGINA BRIEF

Dressmaking and Tailoring.
Smart, elegant tailoring
and perfect fitting for ladies
and gentlemen by expert
European tailor.
No. 5, Tavara Royal
Avenue, P. O. BOX 402, NAIROBI

RAILWAY NOTES. Approach Towards an Agreement.

Committing upon the recent speech made in London by the General Manager of the S. A. R. and particularly upon the reference to the terminal notes which had been submitted, was particularly favourable towards the British and South African Export Guarantees system.

The committee, said, no system of negotiable promissory notes would be introduced locally in the Uganda Railway, and he questioned the continuing feasibility of the suggestion.

Referring to the proposal of Mr. C. E. P. Jones, General Manager, members of the Executive Committee, the London Chamber of Commerce, The Department, and various bodies have put forward the request that the actual railway would should proceed as noticable. To this suggestion the London Chamber of Commerce in their support, and it is therefore difficult to explain of the proposals which will be introduced. Mr. P. Jones proposed that the railway should be extended to the port of Mombasa. The difficulties of this suggestion are noticable. It is impossible to repudiate such a proposal, and the railway men will be all the more anxious to accept Mr. P. Jones' proposal in view of his obvious intention to find a practicable solution to the problem.

A FINAL SYSTEM PROPOSED. Immediately on his return from the East Africa Conference, Mr. P. Jones, General Manager, said that he would be in a position to state the results of the conference. He said that he would be in a position to state the results of the conference. He said that he would be in a position to state the results of the conference.

There is a large-minded objection...

It is a step on the ground, but it would result in a strategic gain. It is a step on the ground, but it would result in a strategic gain. It is a step on the ground, but it would result in a strategic gain.

Locally, the provision of...
It is a step on the ground, but it would result in a strategic gain.

There is a large-minded objection...

ALL GRADERS OF STREET & HALLWAY DANCING

taught by
Miss Adrienne Ray
Member of
S.A. Dancing Teachers Society,
Principal of the Adelaide Ballroom,
Kilmadock Street, London.
Trot, Waltz, Foxtrot,
Varsity, Tango, American,
FRANK LEBRON gives in
his PLAT CLASS every
WEDNESDAY EVENING.
Modern Ballroom
Dancing and Best Music.
Daily 7:30 P.M. NAIROBI,
Empire Hotel Bldg.
P. O. Box 260.

P. STEWART, C.A.S. E.E.D.

PAINTER & DECORATOR.
Kilindini Street, Nairobi.
P. O. Box 225.

PAINTS, OILS, ETC., SPECIALIST IN PAINTING WORKS OF ALL KINDS AND ALL QUANTITIES.

CARS FOR HIRE

BEST KENYA IS COMFORT.
HUBBARD SUPER SIX CARS
FOR
HIRE DAY OR NIGHT.
Long Trip a Specialty.
F. GETHIN,
Phone 158, Box 82,
Kilindini "Gethin," Nairobi.

CARS FOR SALE

Hubbard Super Six, excellent condition...
Overland Four Tourer...
Good condition...
Dodge Sports (5,000 miles)...
New condition...
Merz Couveler...
Standard Duplex 5,000...
4 1/2 good tyres...
Standard Duplex 6,000...
5 good tyres...
IF YOU WANT TO
HIRE
BUY
SELL
A CAR
Ring GETHIN.

OF INTEREST TO SPORTSMEN Silver & E.P. Cups And Minutaries.



WE HOLD A LARGE STOCK OF CUPS AND GIFTS A LIBERAL DISCOUNT TO ALL GENTS.
Dobbies Ltd.
Wholesale Manufacturing Jewellers & Goldsmiths.
NAIROBI.

"KLEANBORE."

A Scientific Discovery of Great Importance to Owners of 22 Rifles.

A new discovery made in the Laboratories of THE REMINGTON ARMS COMPANY has resulted in the production of a 22 cartridge that completely eliminates the cleaning rod. The secret is a new priming mixture which cannot corrode the barrel, and which actually lubricates it.

STARTING WITH A CLEAN BARREL AND USING "KLEANBORE" CARTRIDGES YOU NEED NEVER CLEAN YOUR RIFLE AGAIN.

GET THEM FROM KENYA'S LEADING AMMUNITION STORE,
MAY & Co., Ltd.
THE SPORTS HOUSE
NAIROBI.

Until Further Notice

MADAME ROWE ET CIE

WILL SHOW

AT THE

NORFOLK HOTEL

Model Gowns,
Juniper Suits,
Ladies Silk Hose, etc.

New Models by the Incoming Mails

CLAIMRON

OUR NEXT DANCE ON
SATURDAY, July 2nd.
Musio by Paul Robbins
New Bohemian Dance Band.
TICKETS 12 50 Double, 7 50 Single.
(Including Refreshments)

Colonial General Stores

Government Road.

THE EAST AFRICAN STANDARD

KENYA DIARY

1928

The Leading Provision House in Nairobi and Direct Importers of High Class Confectionery, Wine Merchants and Buyers of Local Produce, Fine Meats, and Groceries, Promptitude, and Quality, if you want to buy any of these goods, call on our shopping with us—we are the best of our kind. You will not get wrong follow these instructions. You will not get wrong follow these instructions.

Call of WHITE Box 436, PHONE 226

Geo. BLOWERS

BUILDING CONTRACTOR, MANUFACTURER AND DIRECT IMPORTER.
P. O. Box 256
Sadler Street, NAIROBI

CASH WITH ORDER.
Phone: Work 599.
Home 425.

NOTE: We have made our own Portland Cement, and our own Portland Cement, and our own Portland Cement.



Building Stone
Machine Broken Stone
Ballast for PATHWAYS FOR FLOORS.
WITH ALL DUST SCREENED OUT.
In the following sizes:—

- 3 in Ballast.
- 1 in do.
- 2 in do.
- 3 in do.

Supplied at my Quarry, Three Miles from Nairobi House.
SEND ME YOUR ENQUIRIES AND LET ME QUOTE YOU.
GEO. BLOWERS, NAIROBI.

WE STOCK

Always big stock of Provisions, Wines, Liqueurs, Best Quality of Dutch and Indian Cigars, Cigarettes, Sweets, Chocolates, Biscuits, Delmonico Brand Dried Fruits, in tins and Fruits in Syrup.
Also for Farmers: Rough Salt, Rock Salt, Dairy Salt, and Epsom Salt, Lincseed oil, Methyated Spirit and Turpentine.

Ask for our retail price list, by telegraph to
KANJEE NARANJEE
14/15/16, 14/15/16, 14/15/16, Govt. Road.

D. D. Costa & Sons.

LADIES', GENTS' AND CHILDREN'S
TAILORS AND OUTFITTERS.
HATS AND SHOE MAKERS
FOR YOUR REQUIREMENTS.
SPECIAL CUTTERS AND TAILORS HAVE ARRIVED FROM MONDAY.

Donald Costa, P. O. Box No. 30, KAMPALA.

ADVERTISEMENT SPACE MAY BE BOOKED NOW
R. A. STANFARD Ltd. P. O. Box 260, NAIROBI.

OAKLEIGH PRISIDE HOTEL.

Comfortable and up-to-date in every way.
Up-country visitors especially catered for.
Special Monthly Terms for Permanents.
MRS. H. JARRETT, Manageress. Daily 10/-
Phone 180, NAIROBI. P. O. Box 180.

TYPEWRITERS
AND
PRINTERS
under the
supervision of
MURPHY BATES
Steady Correspondence
J. WILLCOX,
NAIROBI.

POUDRE

DUBARRY

The Choice of Great Women.

WHERE TO STAY

SAVOY HOTEL

Dalcianon Road,
FIRE HILL.

Phone No. 420.
P.O. Box 50. Tel. "Savoy."

F. M. BHAIJEE.

HARDWARE MERCHANTS.

AGENTS FOR:
WILLIAM GOSSAGE & SONS, Ltd.
SOAP MANUFACTURERS,
NEW CONSIGNMENT OF NAVY BLUE.
KENYA FARMERS' ASSOCIATION Ltd.
Fresh Stocks of MAIZE and MAIZE MEAL.

P.O. Box 113. Phone 858. Tel. HARDWARE.
INDIAN BAZAR. NAIROBI.

SISAL

Cormorant Decorticator.

RESULT OF COMPARATIVE TEST.

The following is the result of an INDEPENDENT TEST, conducted by a well-known Sisal Planter in KENYA, showing yields of Fibre from the CORMORANT PORTABLE DE-CORTICATOR, compared with yields of a Standard Machine in general use in Kenya.

The Tests were carried out under precisely similar conditions, the same weight and quality of leaves being used.

	Cormorant.	Other machine.
Number of leaves	1,000	1,000
Weight of leaves	85 lbs.	60 lbs.
Weight of fibre before breaking	28 lbs.	20 lbs.
... .. after breaking	22 lbs.	20 lbs.
Weight of Tow	22 lbs.	17 lbs.
Percentage extracted,	25.4%	24%

In addition to the Fibre and Tow extracted by the Cormorant, as stated above, 1 lb. of Tow (which represents the total waste), was recovered from the mugs.

After washing the Fibre, with the Machine in correct adjustment, the Fibre from this Machine can be cleaned as No. 1 Kenya quality.

The above Test proves conclusively that the yield from the Cormorant exceeds that of other machines by 50% (50%); in other words, the Cormorant will give 150 tons as against 100 tons.

J. G. Aronson Ltd.
Court Chambers. P.O. Box 681. NAIROBI.

De Luxe "Boot Cow."
Box 67. Trust Chambers, Court Road, Nairobi.
Specialists in Boot and Shoe Making.
Recently arrived Snares, Lizard, Crocodile Skins, and Coloured Kide.

SATISFACTION GUARANTEED.

The Commission then discussed the question of the "B" and "C" grades of coffee, and the Commission decided to refer the question to the Government for their consideration.

The Commission then discussed the question of the "B" and "C" grades of coffee, and the Commission decided to refer the question to the Government for their consideration.

CONSTITUTIONAL COMMITTEE.

At the close of the meeting a Committee of three members was appointed to consider the question of the "B" and "C" grades of coffee, and the Commission decided to refer the question to the Government for their consideration.

FINANCE AND SERVICE.

The Commission then discussed the question of the "B" and "C" grades of coffee, and the Commission decided to refer the question to the Government for their consideration.

RESOLUTIONS.

Following is the text of the resolutions adopted by the Commission:

1. That the Commission recommend the establishment by Government of a Coffee Board in the various areas in the Colony under the control of the Government.
2. That the Commission recommend the Government to take steps to ensure that the coffee industry in the Colony is not overburdened by taxation.
3. That the Commission recommend the Government to take steps to ensure that the coffee industry in the Colony is not overburdened by taxation.

ESSJAY LIMITED

(S. Jacobs—Managing Director),
No. 5 Theatre Royal Arcade, NAIROBI.

Box 684—Phone 377.

Financial and Property Agents
Business Consultants

Mortgages specialised in,
Town Properties negotiated,
Partnerships arranged,
Investments advised on,
ANY REALISABLE ASSET NEGOTIATED FOR CASH.

Miss KATHLEEN BATES A.R.C.M.
RECEIVES PUPILS FOR
PIANO-FORTE—SINGING—HARMONY.
Given to Singers and Instrumentalists.
STUDDING SIXTH AVENUE,
Postal Address, Box 417.

SALE

Commencing Tuesday June 16th
For 14 Days Only

MARGARET WALLACE,
NAKURU.

Motor Cycles

Harley Davidson 7/0 Electric Model 1,900/-
Harley Davidson 2 1/2 Magneto Ignition 1,400/-
Raleigh 3.69 All Chain Magneto Ignition 1,420/-
Raleigh 7 Shop Sooled All Chain Magneto Ignition 1,450/-
Raleigh 1.74 All Chain Magneto Ignition 650/-
Zenith 175 c.c. J.A.P. Engine Lamplough Mechanic 1,150/-
Zenith 300 c.c. J.A.P. Engine equipped as above 1,350/-
Service 8 a.m. to 7 p.m. daily all repairs executed by European only under supervision of Mr. Benson.

CAPITAL GARAGE.
Victoria St. Opp. Fire Station.

Just Arrived

A DESCRIPTIVE CATALOGUE OF SOME OF THE
Common Trees and Woody Plants
OF
Kenya Colony.

By
E. BATTISCOMBE, F.R.S.

(With 44 illustrations.) PRICE: 10/- (Posted) 10/7 1/2
Standard Stationery Stores
NAIROBI.

Reduction in Price
But Better Value Than Ever

THE CORONA FOUR

Standard Key Board
Complete Visibility
Automatic Ribbon Change

12 yard Ribbon
10 inch Carriage
Variable Line Spacer

in strong new shape case

Shgs. 315- Price

Standard Stationery Stores, Nairobi.

BUY YOUR

Wines & Spirits
[PROVISIONS & GROCERIES

Wholesale or Retail:
From
Beliram Parimal & Co.
(Established 1900.)
Corner Swamp Road and Government Road,
Phone 98. **NAIROBI.** P.O. Box 28.
Also P.O. Box 47, MOMBASA.

Notice

Barclays Bank (Dominion, Colonial and Overseas.)

A Branch of this Bank will be opened at KITELE on 1st JULY, 1927, for the conduct of General Banking Business.

O. N. LEWIS,
CHIEF AGENT.

THE **PREMIER BEVERAGES**

VOONIA GARDEN
CEYLON TEA
AND
BROWNS "FOUR CROWN
SCOTCH WHISKY

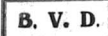
Your enquiries are solicited.

Blackleys & Brown

(Melbourn, Brothers).
No. 16. **NAIROBI.** Box No. 628.

MAXWELL BRADY & Co.,
COLONIAL OUTFITTING and FOOTWEAR SPECIALISTS.

ARE PLEASSED TO ANNOUNCE
THE ARRIVAL OF



B. V. D.

UNDERWEAR
MADE FROM
GENUINE HAMBROOK IN
WHITE



VESTS
Size 34 to 46
6-00 EACH
KNEE DRAWERS
Size 34 to 46
6-00 EACH
VEST SUITS
Size 32 to 44
11-50
*CASH ON DELIVERY

GOVERNMENT ROAD **P. O. Box 50 NAIROBI.**
GOVERNMENT ROAD **P. O. Box 107 ELDORET**

NOTICE OF REMOVAL

As and from **30th JUNE** we will occupy more commodious premises, with show-room facilities, in **Theatre Royal Buildings, Nairobi**

where our numerous clients can be assured of prompt and efficient service at all times.

British East Africa Corporation Ltd.
(Incorporated in England.)
P. O. Box 182. Tele. add. "Increase" Phone 208.

THE DROALED WOMAN

This is a story which is very strange and is also very sad. It is the story of a woman who has been suffering from a very curious disease for many years. The doctor has tried everything, but she has not improved. She is now in a very poor state of health and she is very weak. She has lost a great deal of weight and she is very thin. She is now in a very poor state of health and she is very weak. She has lost a great deal of weight and she is very thin.

THE WHITE WOMAN

She came to me one day in the early part of the year. She was a white woman, and she was very young. She had a very beautiful face, and she was very intelligent. She was a very good person, and she was very kind. She was a very good person, and she was very kind. She was a very good person, and she was very kind.

THE MALE MARKET

It was a very busy day in the market. There were many people, and there was a great deal of business. The market was very lively, and it was very interesting. There were many people, and there was a great deal of business. The market was very lively, and it was very interesting.

DEPARTMENT OF AGRICULTURE

Return of Maize Graded during week ended June 25:

Table with columns for Grade, Quantity, and Remarks. Includes rows for No. 1, No. 2, and No. 3 maize grades.

From Station. No. of Bags Wt. Averages Moisture Content.

FARMS FOR SALE.

FREEDHOE FARM: 1886 acres 11 miles from Gligi Station, specially suited for Dairy Farming. Water, Maize and Dairy Cattle. 2 permanent rivers and springs. Exceptionally cheap for cash.
KIPKAREN: 840 acres - 20 years bearing Coffee. All land arable, no clearing, small brick house, cheap for cash.
NAUYU: 4400 acres - 12 miles from Nairobi Township - excellent for Stock and Cattle. Wheat - offering at Sh. 12 per acre.
RUGSE PROPERTY FOR SALE.
MUTHIGA: Stone House with 2 bed rooms, 2 1/2 bath, 10 acres, well situated. H. & C. Water. Stone Boys' quarters. 2 acres of beautiful land can be garden. Cheap and liberal terms offered.
SOLAIERS ROAD. Large 2 bed rooms, 2 1/2 bath, 10 acres, well situated. H. & C. Water. Stone Boys' quarters. 2 acres of beautiful land can be garden. Cheap and liberal terms offered.
M. DOUGLAS BROWN
Box 537, NAIROBI
Office: (near Bridge, Govt. Bldg.)

MOMBASA P.O. Box 18.
Express Transport Co.
Shipping
Satisfaction
Clearing
Nairobi
Phone 333 and 55.
"Bonded Warehouseman"

THE HILL Private Hotel
Phone 380.
INSURE YOUR MOTOR CARS AND MOTOR CYCLES
with the **African Guarantee & Indemnity Co., Ltd.**
M. D. KAMFP,
CHIEF AGENT
COURT CHAMBERS, NAIROBI.

NEW SYSTEMS OF All-Block-Energy
FUJI
ALSO **TRICOLINE**
A VARIED RANGE OF CHEAPEST SEAMERS TO SELECT FROM
COME & INSPECT, COMPARE PRICES AT
SHAMED Bros.
DRAPEES-OUTFITTERS
P.O. Box 384. **NAIROBI.** Phone 911.

TO MOTORISTS
Try "The BELL INN"
Naivasha.
ON MAIN ROAD.
SATISFACTION GUARANTEED.
Under personal supervision of management.
"KIA ORA STORES"

Kitale and Trans Nzola FARMS & PROPERTIES
Kirkwood & Co., Land Agents,
Kitele.
AN EXCELLENT FARM FOR SALE: 1400 acres, 200 acres under maize, 75 acres coffee in bearing, ample farm buildings, brick houses, electric clinic in Kitale in a picturesque and healthy area. At Sh. 50,000 this is most desirable farm in the fertile Trans Nzoia.

TO LET 1st August
11 WELL VENTILATED ROOMS
SUITABLE FOR OFFICES and SHOW ROOMS.
ON FIRST FLOOR IN
MADATALLY BUILDING, Govt. Road,
FOR SALE
1,000 ENTRENCHING TOOLS with handles at 7/50 a dozen.
Apply:
MADATALLY SOLEMAN VERJEE & Sons,
Indian Bazaar,
P.O. Box 12. Phone 54. Tel. 199.

KOMO KILLS FLIES AND MOSQUITOES
Spray your Bedroom shortly before retiring with
KOMO
to ensure a good night's rest free from MOSQUITOES.
GET THE KOMO HABIT!
NON-POISONOUS. WILL NOT STAIN.
KOMO
The American Insecticide.
PRICES: Bps. 4/6 & 5/6, 10/- and 21/- each. Small: 4/50 each.
Obtainable:-
Standard Stationery Stores,
NAIROBI

DOBBIES LTD.
OPTICAL OPTICIANS.
NAIROBI.
Glasses and Goggles in Crookes, Bessie (Pines) and Antine.
The Nairobi Building & Development Co., Ltd.
Telephone 204. OFFICE: COURT CHAMBERS
To Residents in Naivasha and District.
Gentlemen:
Why waste your time doing Building and Construction work **FREE OF CHARGE?** We can do your work **QUICKLY EFFICIENTLY AND CHEAPLY.** We are organized for work in this district. Please address your communications to: P.O. Box 446, NAIROBI.

Theo Schouten

Phone 540. Rev. 266. Inviting you to visit his most up-to-date Hairdressing Establishment in Government Road where you will find a complete hairdressing service provided for Ladies, Gentlemen, and Children, including Permanent Waves, Hair Treatment, Hair Dressing, Manicure, etc. by the aid of experts.

Large stock of Toilet Requisites.
Mr. Schouten is the holder of two Diplomas recently awarded to him in London for PERMANENT WAVING.

Nairobi Vulcanising Company.

The above Company beg to notify the public that all work is done by a staff of European Experts. The work is therefore of the highest quality. The management can guarantee that there will be no delay in completion and delivery of repairs.

P.O. Box 817. NAIROBI. Victoria Street.

NOTICE.

Everyone will now have the chance of seeing that wonderful New Film "Hills the Mighty" in its first feature "Capt. Elmo Armstrong" of the American Navy.

This was undoubtedly staged in East this year. Not only was he equipped in THREE SHOWS ONLY, depicting 12 parts each time of this new HEROIC FILM.
Don't miss it—Commuting To-day—Popular Prices. Etc. 2 & 1.

To-Night-To-Night

TWO SHOWS DAILY. 6 P.M. AND 7.30 P.M.
Capt. ELMO ARMSTRONG
OF THE AMERICAN NAVY
ELMO THE MIGHTY
FIRST IS KEELS—SHOW EXCLUSIVELY
At the Majestic Cinema

REMOVAL NOTICE.


Mr. P. Alexander, Ladies & Gents Hairdresser, has removed to

Mutos Building,

(Facing New Stanley Hotel),
where he has secured very comfortable and more spacious premises.
P. Alexander
Mutos Building, Hardinge Street.

FOR
RONEO
IN


DUPLICATORS

AND


FILING SYSTEMS
CONSULT
Standard Stationery Stores

AFRICAN TAXPAYERS' WELFARE ASSOCIATION

Crimes of Violence and Tax Collection.

[Continued.]

AFRICAN GRIEVANCES

[Continued.]

LANDS IN ISRAEL

Arriving with the same message as before, the General Committee of the Government of Palestine has been informed that the Government of Palestine is not prepared to accept the terms proposed by the Government of Palestine.

It was decided to ask the Hon. Mr. J. H. K. [Name] to attend in connection with the crimes of violence in Palestine. The Hon. Mr. J. H. K. [Name] was accordingly summoned to attend in connection with the crimes of violence in Palestine.

That it is desired that the Government of Palestine should be informed of the results of the meeting of the L.C.C. [Name] and that the Government of Palestine should be informed of the results of the meeting of the L.C.C. [Name].

CRIMES OF VIOLENCE

There was no evidence that a single copy of the Government of Palestine Manifesto had been distributed by the Hon. Mr. J. H. K. [Name] to any Native. Enquiry gathered round four points:

1. What was understood the new law said with regard to an African who violated a white woman. There was a unanimous statement that it was understood that the penalty was death.
2. What was the position which a white man violated a Native girl? Here there was wide assent of opinion that it had not been understood that the penalty applied to the white man which applied to the first point.
3. What was the position which a Native violated a Native girl? From North Gate (the only town) it was reported that the Manifesto of the L.C.C. which informed the Elders in their Barras

That Government be requested to make such change in the

THE NAIROBI HOSPITAL

The Director does not accept responsibility for the committee to be formed for the purpose of the hospital, and will be glad to assist in the work of the committee.

THE NAIROBI HOSPITAL

The Director does not accept responsibility for the committee to be formed for the purpose of the hospital, and will be glad to assist in the work of the committee.

There is no doubt that the Indian Government and the Government of the Indian Government are in a state of confusion and confusion.

There is a great danger being posed and if the Indian Government is not prepared to accept the terms proposed by the Government of Palestine, the Government of Palestine will be forced to accept the terms proposed by the Government of Palestine.

WAGES OF FARM LABOUR

It was reported that the report of the Committee on the Wages of Farm Labour had been sent to the Hon. Mr. J. H. K. [Name] for his consideration.

Tree Planting

There has been reported considerable progress with tree planting. It was decided to obtain additional funds to assist in the work.

THE FUTURE OF THE VILLAGE

The Committee on the Future of the Village of Nairobi has been formed. It will be glad to accept the terms proposed by the Government of Palestine.



Your friend in the Manne-

might believe you but you can't tell a man who uses

ERASMIC

Shaving Stick

there's better shaving soap!

B. H. Myers & Co. Ltd.

Box 461. NAIROBI. Phone 463.

	Single
DIWING TABLES FROM	Shgs. 75/-
SEED BOARDS FROM	Shgs. 80/-
DOUBLE SEEDS FROM	Shgs. 100/-
SINGLE SEEDS FROM	Shgs. 100/-
WARDROBES FROM	Shgs. 200/-
DRESSING TABLES FROM	Shgs. 185/-
WASHING STANDS FROM	Shgs. 62/50
MR. SETTLE AND 3 GLOBE EASY CHAIRS FROM	Shgs. 400/-

WE GUARANTEE THAT OUR FURNITURE IS MADE FROM SEASONED WOOD ONLY.

SINGLES

Dry Cleaning & Dyeing Works.

Town Receiving Office, No. 8, Theatre Royal Arcade.

Just Arrived

IN
In Splendid Condition


PEEK FREAN'S

Afternoon Tea Biscuits
Rich Assorted and Cheeselets

AT
ELLIOTS
NAIROBI.

MONEY TO LEND

SHORT PERIOD LOANS GRANTED.
RILLS DISCOUNTED.
STRICTEST CONFIDENCE.
Call or Write to:—
Kenya Loan & Discount Co. Ltd.
1st Floor, Court Chambers, Nairobi. Box 546.
Established 1921.



Caterpillars

pay dividends to farmers

- Caterpillar power means more land worked.
- Caterpillar economy means less cost—money saved is money earned.
- Caterpillar traction means ability to keep at work early and late in the season.
- Caterpillar quality of design and materials means uninterrupted service.
- Caterpillar means bigger profits and greater convenience.

SOLE AGENTS:
GAILLY & ROBERTS, Ltd.
KENYA HEADQUARTERS
TANGANYIKA

1ST	£475-00
MODEL 30	
2ND	£775-00

CATERPILLAR

ACQUISITION



SALE of CANTEN of CUTLERY, SILVER TRAY and MISCELLANEOUS GOODS.

Duly instructed, we shall sell by Public Auction, Without Reserve, unless otherwise stated, at our Salerooms, Motue Building, Hardings Street

To Day, 29th June at 10 a.m.

OK CANTEN of CUTLERY containing 15 dinner knives, 11 silver knives, 8 table spoons, 20 dessert knives, 15 dessert spoons, 15 dessert forks, 12 small knives and spoons, 12 small knives and forks, and most cutlery, tea and coffee spoons, knives, etc.

TWO TRAYS in Silver, BRASS TRAY, Oval.

TRAY BRASS, SOLID SILVER TRAY (2000000)

CRABAPPLE BASKET.

SIX CASES, CARVED and IVORY INLAIN BOWLS, TWO COFFEE TRAYS, CARVED TRAY STANDBY, GOOD SPOONS.

FOUR DOZEN GRAMOPHONE RECORDS, DUBBLES.

JAPANESE PARASOLS, SILK SHAWLS, CASHMERE SHAWLS.

COFFIN CASES, DRESS LINNETS, SUIT LINNETS, TRUNKS, LUGGERS, BASKETS, BAGS and DRESS LINNETS.

TWENTY-NINE MOSQUITO NETS, EASTERN-WARE FURNITURE.

NIGHT ENAMEL FILTERS, COMMODIES, ENAMEL WARE.

NINE SINGLE COIL MATTRESSES, FIVE DOUBLE COIL MATTRESSES.

CARIN TRUNKS, "AKRON" PETROL LAMP, TERRIS MARQUETS.

CEILING COUNTER, CEDAR DOOR.

GRUWIE DOGAL COFFEE SET.

On behalf of the parties concerned—

"POLARIS" SIMPLEX ICE GENERATOR (damaged in transit).

ENAMEL BUQUETS and ENAMEL SAUCIERS (damaged in transit).

GRUWIE DOGAL COFFEE SET.

SADDLE and BRIDLE (reserve).

TWO BALLEE OIL MATTING, 4ft. wide, 150 Feet of "B" RUBBER TYRES.

OVERLAND RADIATOR (damaged in transit).

McC. Etc. Etc.

JUST ARRIVED

Fresh stock of selected suit lengths of pure woolens (Cashmere, Worsted, Garb dines, Flannels, Soleroes, etc.)

Suits of latest styles made to measure at a short notice.

PRICES TO SUIT ALL.

Tusoor, Khaki and Cotton Suits at quite moderate Prices.

Meghji Ahamed & Co.
P.O. Box 313 Phone 184.
Telegrams: Tarpualla, NAIROBI.

Esmail & Ramjee

Phone 492. Royal Exchange Building, Government Road, NAIROBI.
SEE THE ATTRACTIVE SETS OF
CUT & CRYSTAL GLASSES
IN OUR WINDOW
of which we hold large stock.
(For 12 persons, including Decanter & Jug.)

Phone 166. P.O. Box 509.
DANCE
AT THE
Salsbury Hotel
NAIROBI
SATURDAY NEXT JULY 2nd.
KENYA JAZZ BAND
A Limited Number of Tickets are available.
SINGLE 7/6. DOUBLE 12/6.
Including Refreshments.

AUCTION SALE OF GOOD FURNITURE & EFFECTS

Daily instructed by W. McHardy Esq., who is proceeding to England, will sell by Public Auction at his Residence, Ngung Road, The Hill, on
Monday, July 4th
Commencing at 10 a.m. precisely.
(View days—Previous Saturday and Sunday at reasonable hours.)

ALL THE EXCELLENT FURNITURE AND EFFECTS COMPRISING

FRONT VERANDAH:
FIVE LARGE TUBS of FINEST BERRIES, etc.
FOUR LARGE BASKET FRAMED BERRIES, etc.

ENTRANCE HALL:
LARGE PERSIAN MAT, LARGE OCTAGONAL TABLE IN TEAK TREE TRAPEZOID TABLE, QUARTZ CHAIRS, TEAK FRAMED
LARGE BRASS BELL, BICYCLE ELECTRIC LIGHT STAND
TEAK FRAMED OVAL TABLE, made from dark teak. "Gomesi" style.
OAK CABINET TABLE MODEL, THE MASTER'S VICE, GRAMOPHONE (3 horn) and QUARTZ CHAIRS, GRAMOPHONE TABLE, QUANTITY of GRAMOPHONE RECORDS, TWO FRAMED SPORTING PICTURES.

DRAWING ROOM:
PAVY AKHMINSTER CARPET, size 12'x15'. PAVY AKHMINSTER MAT, BEST of THREE OCCASIONAL TABLE, LARGE TEA TABLE, CHESTERFIELD will sprang with tapestry covering, by McOwen, size 12'x15'. Best of three best ottoman covers, two TUBS, large lamp, SIXTEEN EASY chairs with ottoman covers, OCCASIONAL TABLE in Teak, COUCHES, TEAK TRAPEZOID TABLE and 2'x4' Walnut leg, SHELVED BOOKCASE, in Teak, PHOTOGRAPH FRAMES, FURNITURE and DOWN CURTAINS.

BED ROOM:
GRASS BOWLS, VASES, JEWELS and ORNAMENTS, COLOURED PICTS, JAPANESE FIGURES, ENGRAVING etc.

DINING ROOM:
MODERN DINING TABLE in Teak, with two extra leaves, SUITS of SIX AND CHAIRS in Teak, with loose leather cushions, HOBBIEST TYPENBERG, and 1 polished COMMODOR, fitted with cupboard and drawers, and lock and key.

SUITS of SIX DINING CHAIRS, METALTOP CABINET, GRAMOPHONE, FOUR SPORTING PICTURES, CHAIRS DINING TABLE, HANDSOME BRASS STAND, LAMP, on heavy base, fitted for electricity, etc.

BED ROOM:
LARGE DEEK in Teak, six drawers, with stationary cabinet top, LARGE OAK LOCKUP ROLL TOP STATIONERY CABINET, BICYCLE CHAIRS.

SHOWER AND PASSENGE:
TWO TRIO ENGLISH WILTON FILM, Persian Type 27' and 33' wide.
GARDEN BENCHES, partially new (reserve).

FIRST BEDROOM:
TWO BIRDSTOCKS in Camphorwood, with good spring and mattress.
LARGE MIREAPU CARPET, size 12'x15'. MIREAPU RUG size 6'x2'.
DOUGHES DRESSING TABLE in Teak with large bevelled mirror and side drawers, TERRAZZO SHIRAZI TABLE in Camphorwood.
LARGE PLAIN WARDROBE in Camphorwood, very deep and convenient.
CHEST of DRAWERS in Teak.

DRESSING ROOM:
MIREAPU RUG, size 7'x4'. LARGE CHEST of DRAWERS in solid Teak.
FRAMED MIRROR on Brass Wall Attachment. OLD TEAK CUPBOARD, Brass, Reserve.

SECOND BEDROOM:
TEAK FRAMED DOUBLE BEDSTEAD, with strong spring mattress and practically new Horse Hair Mattress.
BEST SLEEPER SET.
BIRDSTOCK TABLE in Teak, with two extra leaves.
DRESSING TABLE in Camphorwood with bevelled mirror, WARDROBE and TUBS, BICYCLE, AKHMINSTER RUG, fans.

SUNDRIES:
BATH MAT, TOWEL, LAMP, MIREAPU RUG, BRASSWOOD CHAIRS, OCCASIONAL TABLES, CAMP BED, WOODEN CHAIRS, BASKETS, LARGE TRINLED TRUNKS, SAFARI TABLE, MEDICINE OUTFIT, and sundry medicines, SPORTS GEAR, MATTING, TWO BOTTLE TAPSTAND, Oak frame.
CAMP of TWENTY FIVE KNIVES and FORKS
LIQUOR DECANTER.
FOUR DECANTERS, ENGLISH FINGER BOWLE PAIR of STERL SILVER, etc.

CROCKERY, GLASSWARE, etc.:
COMPLETE "ANSON" CHINA TEA SET for Twelve, 40 pieces.
"WINDWIND" GOLD and WHITE DESSERT SERVICE, etc. 16 pieces.
"KIMBLEY" BLUE and WHITE DINNER SET of 24 pieces.
COFFEE CUPS and SUNDREY CROCKERY.
BROOKED GLASSWARE.
Also 11 BOWLS DE. HANDKERSCHE, EJECTOR SEAT OUN, by Fraser, Edinburgh, in good service case (Reserve).

LINEN:
TWO PAIRS DOUBLE and EIGHT PAIRS SINGLE WITNEY BLANKETS.
SIX SAFARI BANNERS, TAPERED SHEEPING BLANKETS, etc. CUTLERY in silver cases, etc. in good service case (Reserve).
N.B.—The Auctioneer can recommend purchasers of Good Furniture to attend the Hill.

MUTER and OSWALD, Auctioneers, etc., Nairobi.

Austin's Auctions

New Evening and Afternoon Frocks.
Standard Portable Typewriter.
Thermostats, Flasks - Dried Fruit.
Sloop Pails, Deck Chairs Etc.
Daily instructed by several Clients.

AUSTIN & Co.
will sell Without Reserve, at The Mart, on
Thursday June 30th at 10 sharp
The following new goods.

BLACK SILKON EVENING DRESS Silver Beaded, MAIVE DITTO.
GRAYS GRIPS DE GRAYS FROCK BEADED, FAWN GLOSETTIE FROCK.
BOBS GORROETTE AFTERNOON FROCK, FINE BEADED EVENING FROCK.
BROWN STROKINGMANS COSTUME, BLACK BEADED SLIP COVER.
SELETS, TROUSERS, BOYS SUITS, VESTETS, YAC CAPS.
SOCKETS, HANDEKERSCHE, BATH TOWELS, 5 MIRRORS in FRAMES.
TYPENBERG CLEANING SETS in BOXES, DECK CHAIRS.
ENHALL SLOP LIME, THERMOS FLASKS, BROWNE'S LIME JUICE, CORDIAL, DRIED FRUITS.
PIECE of ORTOWNE 1/2 yard, CABIN TRUNKS, OOTON BERRYING in about 40 yard Pieces, CUPS and SAUCERS, GLASS MUGS, 2 doz. CHAIRS.

The following secondhand goods.
STANDARD PORTABLE TYPENBERG in EXCELLENT CONDITION.
GOOD RUGGED SHOES.
Etc. Etc. Etc.

Registered **PUDLO** Trade Mark
IS SAFE and PERMANENT—It cannot fall to waterproof cement. Tested by the most eminent authorities. The face of Cement work is made brighter and it can never become dirty. There is no odor, and it is not injurious to health. It is the setting of Cement is not affected by the heat of the sun. No special knowledge is required to use it. It sets in under 24 hours when the Powder is added. It is the best concrete plastic.

Sole Agents: D. ANOVAN & DIEBEL
P.O. Box 106, NAIROBI

Bennett & Blackshire

Estate Department:
FOR SALE
Magnificent Stone Built Residence
New town on Kiboko Road 2 1/2 acres, beautifully laid out grounds including Tennis Court. All modern conveniences, large garage and outbuildings, 12,000. A Mansion at Matunga, in course of construction 2 1/2 acres, plans and specifications of this really magnificent property can be inspected at our office. The building will be a Double Storey Residence built on most modern and up-to-date lines including a Marble Hall, fine modern kitchen, hot and cold water on each floor. We have also a number of very fine building plots.
SEVERAL EXCELLENT FARMING PROPOSITIONS.
BENNETT & BLACKSHIRE,
Auctioneers and Estate Agents,
Office: Hardings St.

Bennett & Blackshire

At the Mart
Without Reserve.
Sale by Public Auction
At 10 a.m. on
Thursday, 30th June
Comprising—4 Chesterfield Suites, Another Large New Safe, China and Glassware, Chairs, Morris Chairs, Washstands, Tables of Various Designs, Books, Motor Cycle, Single and Double Beds, Sideboards, Wardrobes Single and Double, Office Desk, Chests of Drawers, Screen, Settees, Miscellaneous and Soft Goods.
Etc. Etc. Etc.

Used Cars For Sale

FEATURES:
All makes new, five and seven seater, five speed, automatic. With a guarantee or our personal approval. Motor Cycles of All Descriptions.
CARS FOR HIRE DRIVE YOURSELF or our DRIVER.
DAY & NIGHT Storage, Repairs, Paint, Oil, Tyres, etc.

PETROL PUMP INSTALLED
LEND US YOUR OLD CAR FOR A FEW DAYS
We will spray it with NITRO-VULCAN (The most Perfect Lacquer Finish) and return it to you looking the same as it did the first day you allowed it to your friends. This department is under the management of an expert (Mr. W. H. Johnston) direct from Valparaiso, New York, Car Sprayed from 200 upwards.

Bennett & Blackshires Sales

Unreserved Sale by Public Auction,
HOUSEHOLD FURNITURE AND EFFECTS
and A.L.B. SERVICE CYCLES.
At the Residence, Kikuyu Road, near Parklands Police Station, Behind Mr. J. S. Clarke's House, on
On FRIDAY, July 1st at 10 a.m.

DINING ROOM:
Tables, 2 Drawers, Tanganyika Mahogany Table, Revolving Bookstand, Suite Dining Chairs in Camphorwood, Chesterfield Couch, Japanese Screen, 2 Occasional Tables, Lino, 50 Books by well known Authors, Groceries, Cutlery, Glassware, Brassware, Teal Antique Brassware, Brass Bowls, Pictures.

LOUNGE:
Chesterfield Suite, Coffee Tables, Palm Stands, Chairs, Lino, Pictures, Bowls, Larders, Writing Bureau, Ornaments, etc. Morris Chairs, Lamp Shades, Italian Ware.

BEDROOM No. 1:
Two Bed Mattress in Teak, 2 Chest of Drawers in Camphorwood, and Teak, Exceptionally fine 2 1/2 Beds made up by hand in Birchwood, Washstand, Lino, Bedside Tables, Toilet Set, 1 Double Bed, 4 Mattresses, Occasional Table, 1 Morris Chair, Lamp Shades, Curtains, Linoleum 12 x 9.

No. 2 BEDROOM:
1 Bedroom suite complete comprising—1 Chest of Drawers, 2 Toilet Sets, Washstand, Bed with Mattress and Pillows, Chairs, Curtains, 1 Towel Rail, Bookcase, etc., etc.

BAKED VENDORAH:
1 Very Fine Antique Cupboard from Zambari taken from the Sultan's Palace after the bombardment in the latter part of last century.

KITCHEN and PANTRY:
Tables, 2 Drawers, Occasional Table, Saucepans, Minceps, Frying Pans, Meat Dish, Patty Pan, Jelly Moulds, Aluminium Pails, Graters, Basters, Strainers, Meat Dish, Irons, Chair, Verandah Blinds, Electric Light Chandelier, Garden Tools, Kitchen Table, Good Stove, Kettles, Mugs and one case chair.
Etc. Etc. Etc.

NOW ON VIEW AT THE SELLERS RESIDENCE. JUST OFF KIKUYU ROAD (SEE BOARD AT CORNER)

Intending Purchasers will be conveyed by Motor Car (Free of Charge) from our Offices at 9-30 a.m. ON DAY OF SALE.

CLOVES OF COMMERCE

INCLUDING
Cost and Charges
by W. GRAZERBROOK.
Contain Four and Charges Calculator in Rupees and Pence and of a Pound Sterling in Rupees and Pence of an American Dollar. Notes on Handling Charges, Freight Tables, Arbitration Tables, etc. 64c.
PRICE Shgs. 4/60, Postd Shgs. 4/60.

Standard Stationery Stores

NAIROBI.

Crawford's
SPECIAL RESERVE
SCOTCH WHISKY

When you see the label
look for Special Reserve on the label
because it is a guaranteed Scotch
Whisky. There's a difference in Scotch
Whisky.

The Whisky on which
the Sun never sets!

ESTABLISHED SINCE 1860

"STANDARD" FEATURE PAGE

KENNEL NOTES

Margaret Collyer

Miss Collyer writes to whom all correspondence in connection with "Ken" should be addressed, since she is not responsible for accuracy of statements made by her which, on the way, lead to information supplied by her correspondents.

South African Railways and Harbours

GO SOUTH
In your next
HOLIDAY

The coastal and inland resorts of South Africa assure an inexpensive holiday, and rest in surroundings that will gain unanimous approval.

REJUVENATE MIDST
COOLING SEA BREEZES
and
ENTRANCING SCENERY

Comfortable travel and modern accommodation.

For information apply to—
TRADE COMMISSIONER FOR THE UNION OF SOUTH AFRICA,
Metropolitan Hall,
P.O. Box 624,
NAIROBI.

Typewriters

Due to stocks arriving we are selling this month, until June 30th, all models of our

Remingtons

AT GREATLY REDUCED PRICES.

Model	Present Price	Special Price
Model 12A 104	£50/-	700/-
12C 144	800/-	700/-
12E 244	850/-	850/-
12E 244	850/-	850/-
12E 244	850/-	850/-

Useless Machines a little extra.

ALL LATEST MODELS GUARANTEED AND MAINTAINED FOR TWELVE MONTHS—BEST SERVICE.

Remington Typewriter Agency
Government Road, NAIROBI

WE SELL AT RIGHT PRICES

Wines & Spirits of the Best Quality
Sherry's Ports and Bristol Cream and Bristol Milk Sherries, Grand Marnier, Curacao, Conitroun, Kummel, Chartreuse, Clumpagnac, Martell, Whiskies, Brandy, White and Red Wines, &c.

Also provisions from the best Manufacturers.

M. R. D'Souza & Co.
10, Box 185, York House, Govt. Road, Phone 70.

I have been deeply thinking since I last wrote. "Dick" is very much like me, and I have been wondering whether the very simple operation of tracheotomy would have saved him. It still hurts to write of his sad and painful end, but for the sake of my dog I must write my own story to you to try and help. When a dog gets bitten by a snake, the bite is usually on the nose or head. I have had two dogs bitten by the snake, and both recovered. "Dick" got bitten right through the mouth when he was about a year old, and I had to operate very far back, and was very much surprised to find that the snake had bitten the back of his neck. Being so far back it was very difficult to get at the place to cut, and I got in enough pain to make me cry. All this meant that the dog was in a very bad way, and I had to operate very far back, and was very much surprised to find that the snake had bitten the back of his neck. Being so far back it was very difficult to get at the place to cut, and I got in enough pain to make me cry. All this meant that the dog was in a very bad way, and I had to operate very far back, and was very much surprised to find that the snake had bitten the back of his neck.

Reliance Transport Co.

A Sound Commercial Proposition

You cannot afford to take risks and delays. We will transport your goods over good or rough roads to all parts of the Colony, and adjacent territories, under the direct control of members of our firm.

We guarantee PROMPT and EFFICIENT SERVICE.

Partners: J. J. Ker, J. K. Ker, A. S. Ker.

London Agents T. P. Horne & Co. Dalewood Ho: London, E.C. 3.

Tel. No. 331, Tel. Address: Reliance, P.O. Box 452, SADDLER STREET, NAIROBI.

Make Your Wife Independent

Buy Her an Austin Seven

The most economical car in the world to run—45 to 50 miles per gallon.
Detachable wheels—four wheel brakes—Magneto Ignition—Electric Lights and Self-starter Speedometer and Full Kit of Tools.

TOURING £213

The Austin Twelve
Colonial Model Fully equipped £380

SALOON £240

CARR, LAWSON & Co., Ltd.
Kampala Nairobi Eldoret

KENYA NATIONAL ARCHIVES
PHOTOGRAPHIC SERVICE

Description of Document THE EAST AFRICAN STANDARD (MOMBASA TIMES & UGANDA ARGUS)
(Daily Edition) 1st to 29th June, 1927.

Reference No. From E.A.S. Library.

END