

# KENYA NATIONAL ARCHIVES

## PHOTOGRAPHIC SERVICE

Description of Document THE EAST AFRICAN STANDARD (MOMBASA TIMES & UGANDA ARGUS)

(Daily Edition)

Covering Dates 1st to 31st August, 1927.

Reference No. From E.A.S. Library,

The following reproduction(s) of document(s), the property of THE KENYA GOVERNMENT have been made by the Photographic Service of the Kenya National Archives solely for the purposes of research, and must not be quoted or otherwise reproduced by any means, either in whole or in part, without the express permission of the Chief Archivist, Office of the Vice-President, P.O. Box 30520, Nairobi, Kenya, to whom all communications respecting this film should be addressed.

Date of Production 21<sup>st</sup> August 1968





# It outperformed them all

**F**OR months the hard-driven cars of the Goodyear test fleet had been roaring night and day.

Eighty new treads—eighty separate and individual designs—were being put through their paces on the superb Goodyear SUPERTWIST casing.

Surely the story was being told; surely and unmistakably one tread was steadily outperforming all the other seventy-nine.

That great tread was the sure-footed, long-wearing, quiet-running new-type Goodyear All-Weather pictured here.

Just look at it: see the big, deep-cut, diamond-shaped blocks in the tread's centre, put there for traction and safety.

*Fit these new tyres now, for by reason of certain revolutionary developments in tread design and construction, you will secure vastly greater mileage.*

**Gilfillan & Company, Ltd.**  
D I S T R I B U T O R S

**GOOD YEAR**









# SOME SHOW IMPLEMENT DISPLAYS

## TRAFFIC MANAGEMENT.

### Police Instructions on Car Parking and Camping Provision.



The following Police arrangements have been made for the motor show...

A special Police force will be provided for the motor show...

The Police Department will be notified of the motor show...

Police will be stationed at various points along the motor show...

Police will be stationed at various points along the motor show...

Police will be stationed at various points along the motor show...

Police will be stationed at various points along the motor show...

Police will be stationed at various points along the motor show...

Police will be stationed at various points along the motor show...

Police will be stationed at various points along the motor show...

Police will be stationed at various points along the motor show...

Police will be stationed at various points along the motor show...

Police will be stationed at various points along the motor show...

Police will be stationed at various points along the motor show...

Police will be stationed at various points along the motor show...

Police will be stationed at various points along the motor show...

Police will be stationed at various points along the motor show...

Police will be stationed at various points along the motor show...

Police will be stationed at various points along the motor show...

Police will be stationed at various points along the motor show...

Police will be stationed at various points along the motor show...

Police will be stationed at various points along the motor show...

Police will be stationed at various points along the motor show...

Police will be stationed at various points along the motor show...

Police will be stationed at various points along the motor show...

Police will be stationed at various points along the motor show...

## OPENING SPEECHES.

### Formal Ceremony at Two O'clock.

THE PROCEEDINGS OF THE ANNUAL MEETING OF THE ASSOCIATION OF THE EAST AFRICAN CULTURAL AND INDUSTRIAL SOCIETY OF NERVA WILL BE OPENED AT TWO O'CLOCK...

### Road Making

ARRANGEMENTS FOR THE ROAD MAKING AT THE ANNUAL MEETING OF THE ASSOCIATION OF THE EAST AFRICAN CULTURAL AND INDUSTRIAL SOCIETY OF NERVA...

### Camping Ground.

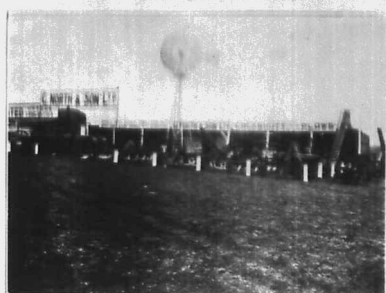
THE CAMPING GROUND AT THE ANNUAL MEETING OF THE ASSOCIATION OF THE EAST AFRICAN CULTURAL AND INDUSTRIAL SOCIETY OF NERVA...

### A.H.B. Newsletter

THE ASSOCIATION OF THE EAST AFRICAN CULTURAL AND INDUSTRIAL SOCIETY OF NERVA HAS PUBLISHED A NEWSLETTER...

## Messrs. G. NORTH & SONS.

### Cockshutt Ploughs, Twin City Tractors and Working Model Dairy.



The factory of Messrs. G. North & Sons, showing the entrance and main building.

The factory of Messrs. G. North & Sons, showing the entrance and main building.

The factory of Messrs. G. North & Sons, showing the entrance and main building.

The factory of Messrs. G. North & Sons, showing the entrance and main building.

The factory of Messrs. G. North & Sons, showing the entrance and main building.

The factory of Messrs. G. North & Sons, showing the entrance and main building.

The factory of Messrs. G. North & Sons, showing the entrance and main building.

The factory of Messrs. G. North & Sons, showing the entrance and main building.

The factory of Messrs. G. North & Sons, showing the entrance and main building.

The factory of Messrs. G. North & Sons, showing the entrance and main building.

The factory of Messrs. G. North & Sons, showing the entrance and main building.

The factory of Messrs. G. North & Sons, showing the entrance and main building.

The factory of Messrs. G. North & Sons, showing the entrance and main building.

The factory of Messrs. G. North & Sons, showing the entrance and main building.

The factory of Messrs. G. North & Sons, showing the entrance and main building.

The factory of Messrs. G. North & Sons, showing the entrance and main building.

The factory of Messrs. G. North & Sons, showing the entrance and main building.

The factory of Messrs. G. North & Sons, showing the entrance and main building.

The factory of Messrs. G. North & Sons, showing the entrance and main building.

The factory of Messrs. G. North & Sons, showing the entrance and main building.

The factory of Messrs. G. North & Sons, showing the entrance and main building.

The factory of Messrs. G. North & Sons, showing the entrance and main building.

The factory of Messrs. G. North & Sons, showing the entrance and main building.

The factory of Messrs. G. North & Sons, showing the entrance and main building.

The factory of Messrs. G. North & Sons, showing the entrance and main building.

The factory of Messrs. G. North & Sons, showing the entrance and main building.

The factory of Messrs. G. North & Sons, showing the entrance and main building.

The factory of Messrs. G. North & Sons, showing the entrance and main building.

The factory of Messrs. G. North & Sons, showing the entrance and main building.

The factory of Messrs. G. North & Sons, showing the entrance and main building.

The factory of Messrs. G. North & Sons, showing the entrance and main building.

### Litigation and Damages

AN INTERESTING LITIGATION CASE HAS BEEN BRINGING UP FOR CONSIDERATION...

### The River Model

THE RIVER MODEL IS A NEW TYPE OF MODEL WHICH IS BEING USED...

### Cockshutt Ploughs

THE COCKSHUTT PLOUGH IS A NEW TYPE OF PLOUGH WHICH IS BEING USED...

### The Firm's Aim

THE FIRM'S AIM IS TO PROVIDE THE BEST QUALITY OF GOODS AT THE LOWEST PRICE...

### Small Goods

SMALL GOODS ARE BEING PRODUCED IN LARGE QUANTITIES...

### Portable Engines

PORTABLE ENGINES ARE BEING PRODUCED IN LARGE QUANTITIES...

### Wares Production

WARES PRODUCTION IS BEING INCREASED TO MEET THE DEMAND...

### Barley Production

BARLEY PRODUCTION IS BEING INCREASED TO MEET THE DEMAND...

### Barley Production

BARLEY PRODUCTION IS BEING INCREASED TO MEET THE DEMAND...

### Barley Production

BARLEY PRODUCTION IS BEING INCREASED TO MEET THE DEMAND...

### Barley Production

BARLEY PRODUCTION IS BEING INCREASED TO MEET THE DEMAND...

### Barley Production

BARLEY PRODUCTION IS BEING INCREASED TO MEET THE DEMAND...

### Barley Production

BARLEY PRODUCTION IS BEING INCREASED TO MEET THE DEMAND...

BARLEY PRODUCTION IS BEING INCREASED TO MEET THE DEMAND...

## Messrs. GAILEY & ROBERTS Ltd.

### Ransomes Ploughs, Holt Tractors and Ruston Crude Oil Engines.



The factory of Messrs. Gailey & Roberts, showing the entrance and main building.

The factory of Messrs. Gailey & Roberts, showing the entrance and main building.

The factory of Messrs. Gailey & Roberts, showing the entrance and main building.

The factory of Messrs. Gailey & Roberts, showing the entrance and main building.

The factory of Messrs. Gailey & Roberts, showing the entrance and main building.

## Messrs. J. R. COX & Co.

### Lanz Tractors, Sentinel Steam Wagons and Winget Productions.



The factory of Messrs. J. R. Cox & Co., showing the entrance and main building.

The factory of Messrs. J. R. Cox & Co., showing the entrance and main building.

The factory of Messrs. J. R. Cox & Co., showing the entrance and main building.

The factory of Messrs. J. R. Cox & Co., showing the entrance and main building.

The factory of Messrs. J. R. Cox & Co., showing the entrance and main building.





# MOTOR TOPICS

## The Aerial Cycle.

### IMPORTANT CHANGES IN NEW MODEL.

Though the most radical alteration in the latest models of the Ariel machines lies in an entirely redesigned frame, yet the whole machine has been improved considerably, both in appearance and performance.

The new frame, which will be used in all models, is of the duplex aerial type, two parallel tubes extending from the base of the front down tube to the rear axle. A single upright leg tube is employed, both the front down tube and the handle side are curved, while the seat stays are of one inch diameter tubing. This frame, the engine tubes are attached at two points, in front and at one point in the rear. Behind the saddle tube is a bridge of box formation which unites the cranks and serves as a gear box mounting.

Four widely spaced studs on the under side of the gear box pass through the bridge, and are secured into the frame by means of bolts. The bolt itself is a special type built by Bunnell and Sons, Ltd. strengthened to withstand the heavy stresses imposed by the engine, high-speed engine, shafts, gear, and bearings at 20 per cent. increase in speed, and the increased chassis surface has been increased by 50 per cent. This increase reduces the resistance of the delightfully smooth over seat chassis, but eliminates the risk of mechanical slip of bearing. In principle, the leg follows standard Bunnell practice, the bars being located by an internal cant and spring plunger, but the springing lever on the side of the box and lies in the same plane as that of the gear lever, combining the use of a straight spring and. Though these improvements to be a considerable advantage for the clutch and driving sprocket, this is compensated by special bearings to.

Another excellent feature of the new box is the provision of

a swinging suspension lid and the mounting box to the side. It is claimed that the new box is much stronger and that in actual practice, it is possible to make a perfectly smooth change at speeds of above a mile a

A rubber block shock absorber is employed in the clutch master, and this, in conjunction with a new cam engine-shaft shock absorber, should provide a very smooth drive.

Transmission is of the pin chain in front and pin & pin back chain, while the addition of four teeth to the rear wheel sprocket allows of a considerable increase in front sprocket diameter. The number of teeth actually employed on the engine sprocket is 17 for eleven inch and 18 for twelve inch models. The front chain should provide greater chain and sprocket life.

The front chain is lubricated from a crank case leather and a lead from the timing gear issues to the rear chain.

Reversing by one-inch levers are fitted to both wheels, and the adjustment is made by means of a screw, brought to the front end of the rod and adjusted in operation; it is even possible to effect an adjustment while the machine is in motion.

Both hubs run on taper roller bearings adjusted by double lock nuts, but the inner cones are a special form of the roller set nut screw in and join of the adjustment to lower.

Upper and lower fork tubes are fixed to a common sleeve, so that starting motion is applied through both sets of fork. These two bottom discasters are held by a single nut, and a single nut is used to adjust the motion.

The seat is now adjustable for angle, and are stamped between saddle and legs, the new Ariel steering handle with friction rollers allow the hand remains unchanged.

Sprockal three-tooth, chain 24. Four to the big end. The engine dimensions of the new frame are as follows: Bore, 50 mm. stroke, 50 mm. (1.97 in.). 22 inch engine have double row roller big ends and ball bearings on the front and fly on the timing side.

A very important feature of 1927 Ariel is the large cylinder which is quite different. It has a capacity approximately eight times that of the cylinder made in a horizontal half. The end of the cylinder is flanged and fitted to the gear end.

A fifth model is in course of production and is intended to be first yet particularly sleek machine.

The local agents for Ariel cycle are Messrs. J. R. Cox & Co., Nairobi.

**CARS for HIRE**  
SEE KENTIA IN COMPANY.  
MURDOCH SUPER SIX CARS FOR HIRE DAILY OR NIGHT.  
Low Price & Speedily.  
**P. GETHIN,**  
Phone: 152. Box 20.  
Office: "Graham," 2, Cox & Co.

**CARS for SALE**  
Hiddebrandt Dealer Import  
1920 Ford model 2800  
Hudson Super Six, four door  
1926 Buick model 1926  
Ford Sports Model, one door  
1926 Morris Gundy, mechanical  
1 good running motor 1100  
1924 Deuce good running  
order 1100  
1926 Hudson Super Six, two door  
1926 Buick new condition 1300.  
1926 Ford new 1300.  
IF YOU WANT TO BUY, RENT, HIRE, BUY, SELL, RING GETHIN.

## Explorers Use This Car Because It is Dependable

Pioneers and explorers, whose lives depend upon the reliability of the transportation they use, employ Dodge Brothers Motor Cars almost exclusively. For example, the 7-1/2 ton Stephenson used Dodge Brothers Cars through the uncharted deserts of Central Australia. Dr. Roy Chapman Andrews, on three different occasions, penetrated the innermost wastes of Mongolia in a Dodge Brothers Car.

The car's dependability is proverbial; and its exceptional riding comfort permits long travel over bad roads without fatigue.

Touring Car ..... £210  
Special Touring Car ..... £230  
Aluminum Box Body ..... £265  
Delivered Nairobi.  
The Omond-Bennie Garage, Nakuru, P. Mch. Kishi, and  
Watt & Co., Ltd., Mombasa and Arusha.  
KASAM BERNINI, KAMPALA and BUKARA.  
S. FISHER & SIMMONS (N.E.A.), Ltd., Victoria House, Nairobi.

## DODGE BROTHERS MOTOR CARS

Miss KATHLEEN BATES A.R.C.M.  
RECEIVES PUPILS FOR  
PIANO-FORTE—SINGING—HARMONY.  
Coaching given to Singers and Instrumentalists.  
STUDIO SIXTH AVENUE.  
Postal Address: Box 417.

**A MAN'S DRINK**  
OHLSONS' LION LAGER  
DISTRIBUTED BY BENOVA & BIRRELL  
THE HOUSE, NAIROBI. BOX 177, MOMBASA.

## CRUSHED MAIZE.

The Municipal Council of Nairobi invite Tenders for the supply of Crushed Maize for the Municipal Ovens during a period of three or alternately six months from 1st September, 1927. The approximate quantity required is 10 tons per month, but the Contractor may be required to supply 20 per cent more or less during the contract period as may be actually required.

## POSHO.

The Municipal Council of Nairobi invite tenders for the supply of Posho for the Municipal Ovens during a period of three or alternately six months from 1st September, 1927. The approximate quantity required is 10 tons per month but the Contractor may be required to supply 25 per cent more or less during the contract period as may be actually required.

**NOT AN APOLOGY—BUT AN EXPLANATION—REGARDING Vauxhall and Pontiac Cars.**

We had intended making a feature of these at the Show, but heavy calls from the territories in which these cars have been marketed has caused the supply to fall short of the demand. The makers have therefore been unable to get our supplies forward in time.

**We undertake however.** to give a special display of these cars when opening our new premises in Sixth Avenue.

**A Car for Every Want and Purse** with skilled service behind them.

**Vauxhall**  
**Oakland**  
**Pontiac**  
**Chevrolet**  
**G.M.C. Trucks**

Prices From £172 f.o.r. Nairobi.

**The Motor Mart & Exchange Ltd.,**  
Nairobi. Nakuru.

**T.V.O. POWER KEROSENE**

**"BP"**

**THE BRITISH PETROL.**

**"Palm Tree" KEROSENE.**

**PREMISES WANTED** BY **The Haulage & General Transport Co.**

**LONDANI HOTEL.** FULLY LICENSED. Station two minutes. Situated in the beautiful part of the highlands under beautiful scenery at 7,500 feet above sea level. 45 bedrooms with private bath and dressing rooms. Large garden, two tennis courts. Trout fishing. Special terms for week ends and families. On the main road near Nairobi to Uganda and the Uasin Gishu.

**POWER JOHN DEERE FARM TRACTOR**  
16-37 H.P.

DEPENDABLE, ECONOMICAL, DURABLE.  
**Price £315**  
We have large stocks of John Deere Tractors, Farm Tractors, Cars, Wagons, Ploughs, Harrows, Cultivators, Wheat Drills and Shellers.  
TARPAULINS—ALL SIZES IN STOCK.  
**H. W. SEAR (S.E.A. Wagon Works) Ltd.**  
Phone 153. NAIROBI. P.O. Box 678.

FOR SERVICE AND SATISFACTION, RIGHT QUALITY RIGHT PRICES  
**TRY**

**M. R. D'Souza & Co.**  
Wines, Spirits, Provisions & General Merchants, Ladies' Gents' and Children's Tailors and Outfitters.  
P.O. Box 165. York House, Govt. Road. Phone 75.  
Ask for our New Price List of Wines and Spirits and be convinced of our low prices.

**An Irrefutable Fact.**  
A car or truck of sound design, built of the best material and by the best craftsmen is the cheapest, EVEN if the initial outlay be higher.  
**WHY?**  
Because that car keeps going without expensive maintenance.  
In your OWN INTERESTS call and see the NEW  
**MORRIS CARS & TRUCKS**  
"at the Show and at  
**MITCHELL COTTS & Co.**  
Glenae Royal Arcade, NAIROBI.



NAIROBI RACES.

Another Successful Day's Meeting.

PROGNY OF WISE DAVE WAS CHIEF EVENTS.

Devorale Wins the St. Ledger in a Great Finish.

The Nairobi racecourse on Monday presented a very attractive spectacle...

At the distance, the distance between second and third was not wide...

First Race. ROMALI HANDICAP (Steeple Chase).

Second Race. KENYA ST. LEDGER (2000 Yards).

Third Race. THE ST. LEGER (1600 Yards).

Fourth Race. KENYA ST. LEGER (2000 Yards).

Fifth Race. THE ST. LEGER (1600 Yards).

Sixth Race. THE ST. LEGER (1600 Yards).

Seventh Race. THE ST. LEGER (1600 Yards).

Eighth Race. THE ST. LEGER (1600 Yards).

Ninth Race. THE ST. LEGER (1600 Yards).

Tenth Race. THE ST. LEGER (1600 Yards).

Eleventh Race. THE ST. LEGER (1600 Yards).

Twelfth Race. THE ST. LEGER (1600 Yards).

Thirteenth Race. THE ST. LEGER (1600 Yards).

Fourteenth Race. THE ST. LEGER (1600 Yards).

Fifteenth Race. THE ST. LEGER (1600 Yards).

Sixteenth Race. THE ST. LEGER (1600 Yards).

Seventeenth Race. THE ST. LEGER (1600 Yards).

Eighteenth Race. THE ST. LEGER (1600 Yards).

S.A. RAILWAY DISASTER.

More Deaths in Holdiberg South.

Monday, July 30. As a result of the railway accident at Holdiberg, Transvaal, more deaths have occurred...

THE LIGHT THAT FAILED IN NAIROBI.

"WHEN IT WAS DARK."

Car Collision with Light Standard.

Pen Query Answer a Picture Taken at the Scene.

A pair of glowing headlights was suddenly the cause of a collision...

The question of the development and construction of the holding is being considered...

At the Theatre. This was promptly done, and the result was that the Theatre Party...

THE WEEK'S PROGRAMME. The Theatre Royal management has arranged a series of attractive work of entertainment...

PLAYS. The Theatre Royal management has arranged a series of attractive work of entertainment...

PICTURES. The Cinema Commissionaire has received a list of the films which will be shown...

THEATRE ROYAL. Nightly at 8-45. TO-NIGHT AT 8-45.

THEATRE ROYAL. Nightly at 8-45. TO-NIGHT AT 8-45.

THEATRE ROYAL. Nightly at 8-45. TO-NIGHT AT 8-45.

THEATRE ROYAL. Nightly at 8-45. TO-NIGHT AT 8-45.

THEATRE ROYAL. Nightly at 8-45. TO-NIGHT AT 8-45.

THEATRE ROYAL. Nightly at 8-45. TO-NIGHT AT 8-45.

THEATRE ROYAL. Nightly at 8-45. TO-NIGHT AT 8-45.

THEATRE ROYAL. Nightly at 8-45. TO-NIGHT AT 8-45.

THEATRE ROYAL. Nightly at 8-45. TO-NIGHT AT 8-45.

THEATRE ROYAL. Nightly at 8-45. TO-NIGHT AT 8-45.

THEATRE ROYAL. Nightly at 8-45. TO-NIGHT AT 8-45.

THEATRE ROYAL. Nightly at 8-45. TO-NIGHT AT 8-45.

THEATRE ROYAL. Nightly at 8-45. TO-NIGHT AT 8-45.

THEATRE ROYAL. Nightly at 8-45. TO-NIGHT AT 8-45.

THEATRE ROYAL. Nightly at 8-45. TO-NIGHT AT 8-45.

THEATRE ROYAL. Nightly at 8-45. TO-NIGHT AT 8-45.

THEATRE ROYAL. Nightly at 8-45. TO-NIGHT AT 8-45.

TRAGIC SHOOTING AFFAIR AT TURK.

Accident Shows Folly of Peating Firearms.

Further information as to the shooting affair at Turk in which a native town was killed is now to hand.

It appears that a Mr. W. Taylor employed at a local saw mill had returned from a shooting trip...

Shortly after two o'clock on Monday morning...

The circumstances have been reported to the District Commissioner.

An inquest will be held shortly.

Entertainments. THE WEEK'S PROGRAMME.

PLAYS. The Theatre Royal management has arranged a series of attractive work of entertainment...

PICTURES. The Cinema Commissionaire has received a list of the films which will be shown...

THEATRE ROYAL. Nightly at 8-45. TO-NIGHT AT 8-45.

THEATRE ROYAL. Nightly at 8-45. TO-NIGHT AT 8-45.

THEATRE ROYAL. Nightly at 8-45. TO-NIGHT AT 8-45.

THEATRE ROYAL. Nightly at 8-45. TO-NIGHT AT 8-45.

THEATRE ROYAL. Nightly at 8-45. TO-NIGHT AT 8-45.

THEATRE ROYAL. Nightly at 8-45. TO-NIGHT AT 8-45.

THEATRE ROYAL. Nightly at 8-45. TO-NIGHT AT 8-45.

THEATRE ROYAL. Nightly at 8-45. TO-NIGHT AT 8-45.

THEATRE ROYAL. Nightly at 8-45. TO-NIGHT AT 8-45.

THEATRE ROYAL. Nightly at 8-45. TO-NIGHT AT 8-45.

THEATRE ROYAL. Nightly at 8-45. TO-NIGHT AT 8-45.

THEATRE ROYAL. Nightly at 8-45. TO-NIGHT AT 8-45.

THEATRE ROYAL. Nightly at 8-45. TO-NIGHT AT 8-45.

THEATRE ROYAL. Nightly at 8-45. TO-NIGHT AT 8-45.

THEATRE ROYAL. Nightly at 8-45. TO-NIGHT AT 8-45.

THEATRE ROYAL. Nightly at 8-45. TO-NIGHT AT 8-45.

THEATRE ROYAL. Nightly at 8-45. TO-NIGHT AT 8-45.

THEATRE ROYAL. Nightly at 8-45. TO-NIGHT AT 8-45.

THEATRE ROYAL. Nightly at 8-45. TO-NIGHT AT 8-45.

THEATRE ROYAL. Nightly at 8-45. TO-NIGHT AT 8-45.

THEATRE ROYAL. Nightly at 8-45. TO-NIGHT AT 8-45.

STATEMENT ON INQUIRY.

Accident Shows Folly of Peating Firearms.

Further information as to the shooting affair at Turk in which a native town was killed is now to hand.

It appears that a Mr. W. Taylor employed at a local saw mill had returned from a shooting trip...

Shortly after two o'clock on Monday morning...

The circumstances have been reported to the District Commissioner.

An inquest will be held shortly.

Entertainments. THE WEEK'S PROGRAMME.

PLAYS. The Theatre Royal management has arranged a series of attractive work of entertainment...

PICTURES. The Cinema Commissionaire has received a list of the films which will be shown...

THEATRE ROYAL. Nightly at 8-45. TO-NIGHT AT 8-45.

THEATRE ROYAL. Nightly at 8-45. TO-NIGHT AT 8-45.

THEATRE ROYAL. Nightly at 8-45. TO-NIGHT AT 8-45.

THEATRE ROYAL. Nightly at 8-45. TO-NIGHT AT 8-45.

THEATRE ROYAL. Nightly at 8-45. TO-NIGHT AT 8-45.

THEATRE ROYAL. Nightly at 8-45. TO-NIGHT AT 8-45.

THEATRE ROYAL. Nightly at 8-45. TO-NIGHT AT 8-45.

THEATRE ROYAL. Nightly at 8-45. TO-NIGHT AT 8-45.

THEATRE ROYAL. Nightly at 8-45. TO-NIGHT AT 8-45.

THEATRE ROYAL. Nightly at 8-45. TO-NIGHT AT 8-45.

THEATRE ROYAL. Nightly at 8-45. TO-NIGHT AT 8-45.

THEATRE ROYAL. Nightly at 8-45. TO-NIGHT AT 8-45.

THEATRE ROYAL. Nightly at 8-45. TO-NIGHT AT 8-45.

THEATRE ROYAL. Nightly at 8-45. TO-NIGHT AT 8-45.

THEATRE ROYAL. Nightly at 8-45. TO-NIGHT AT 8-45.

THEATRE ROYAL. Nightly at 8-45. TO-NIGHT AT 8-45.

THEATRE ROYAL. Nightly at 8-45. TO-NIGHT AT 8-45.

THEATRE ROYAL. Nightly at 8-45. TO-NIGHT AT 8-45.

THEATRE ROYAL. Nightly at 8-45. TO-NIGHT AT 8-45.

THEATRE ROYAL. Nightly at 8-45. TO-NIGHT AT 8-45.

THEATRE ROYAL. Nightly at 8-45. TO-NIGHT AT 8-45.

ADVANTAGES OF JERBA BOUTE.

Accident Shows Folly of Peating Firearms.

Further information as to the shooting affair at Turk in which a native town was killed is now to hand.

It appears that a Mr. W. Taylor employed at a local saw mill had returned from a shooting trip...

Shortly after two o'clock on Monday morning...

The circumstances have been reported to the District Commissioner.

An inquest will be held shortly.

Entertainments. THE WEEK'S PROGRAMME.

PLAYS. The Theatre Royal management has arranged a series of attractive work of entertainment...

PICTURES. The Cinema Commissionaire has received a list of the films which will be shown...

THEATRE ROYAL. Nightly at 8-45. TO-NIGHT AT 8-45.

THEATRE ROYAL. Nightly at 8-45. TO-NIGHT AT 8-45.

THEATRE ROYAL. Nightly at 8-45. TO-NIGHT AT 8-45.

THEATRE ROYAL. Nightly at 8-45. TO-NIGHT AT 8-45.

THEATRE ROYAL. Nightly at 8-45. TO-NIGHT AT 8-45.

THEATRE ROYAL. Nightly at 8-45. TO-NIGHT AT 8-45.

THEATRE ROYAL. Nightly at 8-45. TO-NIGHT AT 8-45.

THEATRE ROYAL. Nightly at 8-45. TO-NIGHT AT 8-45.

THEATRE ROYAL. Nightly at 8-45. TO-NIGHT AT 8-45.

THEATRE ROYAL. Nightly at 8-45. TO-NIGHT AT 8-45.

THEATRE ROYAL. Nightly at 8-45. TO-NIGHT AT 8-45.

THEATRE ROYAL. Nightly at 8-45. TO-NIGHT AT 8-45.

THEATRE ROYAL. Nightly at 8-45. TO-NIGHT AT 8-45.

THEATRE ROYAL. Nightly at 8-45. TO-NIGHT AT 8-45.

THEATRE ROYAL. Nightly at 8-45. TO-NIGHT AT 8-45.

THEATRE ROYAL. Nightly at 8-45. TO-NIGHT AT 8-45.

THEATRE ROYAL. Nightly at 8-45. TO-NIGHT AT 8-45.

THEATRE ROYAL. Nightly at 8-45. TO-NIGHT AT 8-45.

THEATRE ROYAL. Nightly at 8-45. TO-NIGHT AT 8-45.

THEATRE ROYAL. Nightly at 8-45. TO-NIGHT AT 8-45.

THEATRE ROYAL. Nightly at 8-45. TO-NIGHT AT 8-45.

LYRIC HALL.

Picture presented by Theatrical Royal Co., Ltd. TO-NIGHT AT 8-45.

"THE TEN COMMANDMENTS"

WILL BE CONTINUED. Don't Miss this Big Attraction.

THURSDAY, FRIDAY SATURDAY THIS WEEK. GEORGE SWANSON IS "BLUEBEARD'S EIGHTH WIFE."

Special Ten per cent Reduction for Cash.

off all New Goods from 27th July to August 4th.

Also Big Lot of Samples and oddments to Clear.

Special Prices.

See our Windows for all Latest Goods.

Also Stand No. 25 at the Show!

Eadies Footwear Ltd.

THEATRE ROYAL. Nightly at 8-45. TO-NIGHT AT 8-45.

THEATRE ROYAL. Nightly at 8-45. TO-NIGHT AT 8-45.

THEATRE ROYAL. Nightly at 8-45. TO-NIGHT AT 8-45.

THEATRE ROYAL. Nightly at 8-45. TO-NIGHT AT 8-45.

THEATRE ROYAL. Nightly at 8-45. TO-NIGHT AT 8-45.

THEATRE ROYAL. Nightly at 8-45. TO-NIGHT AT 8-45.

THEATRE ROYAL. Nightly at 8-45. TO-NIGHT AT 8-45.

THEATRE ROYAL. Nightly at 8-45. TO-NIGHT AT 8-45.

THEATRE ROYAL. Nightly at 8-45. TO-NIGHT AT 8-45.

THEATRE ROYAL. Nightly at 8-45. TO-NIGHT AT 8-45.

THEATRE ROYAL. Nightly at 8-45. TO-NIGHT AT 8-45.

THEATRE ROYAL. Nightly at 8-45. TO-NIGHT AT 8-45.

THEATRE ROYAL. Nightly at 8-45. TO-NIGHT AT 8-45.

THEATRE ROYAL. Nightly at 8-45. TO-NIGHT AT 8-45.

THEATRE ROYAL. Nightly at 8-45. TO-NIGHT AT 8-45.

THEATRE ROYAL. Nightly at 8-45. TO-NIGHT AT 8-45.

THEATRE ROYAL. Nightly at 8-45. TO-NIGHT AT 8-45.

THEATRE ROYAL. Nightly at 8-45. TO-NIGHT AT 8-45.

THEATRE ROYAL. Nightly at 8-45. TO-NIGHT AT 8-45.

THEATRE ROYAL.

Nightly at 8-45. TO-NIGHT AT 8-45.

THEATRE ROYAL. Nightly at 8-45. TO-NIGHT AT 8-45.

THEATRE ROYAL. Nightly at 8-45. TO-NIGHT AT 8-45.

THEATRE ROYAL. Nightly at 8-45. TO-NIGHT AT 8-45.

THEATRE ROYAL. Nightly at 8-45. TO-NIGHT AT 8-45.

THEATRE ROYAL. Nightly at 8-45. TO-NIGHT AT 8-45.

THEATRE ROYAL. Nightly at 8-45. TO-NIGHT AT 8-45.

THEATRE ROYAL. Nightly at 8-45. TO-NIGHT AT 8-45.

THEATRE ROYAL. Nightly at 8-45. TO-NIGHT AT 8-45.

THEATRE ROYAL. Nightly at 8-45. TO-NIGHT AT 8-45.

THEATRE ROYAL. Nightly at 8-45. TO-NIGHT AT 8-45.

THEATRE ROYAL. Nightly at 8-45. TO-NIGHT AT 8-45.

THEATRE ROYAL. Nightly at 8-45. TO-NIGHT AT 8-45.

THEATRE ROYAL. Nightly at 8-45. TO-NIGHT AT 8-45.

THEATRE ROYAL.

Nightly at 8-45. TO-NIGHT AT 8-45.

THEATRE ROYAL. Nightly at 8-45. TO-NIGHT AT 8-45.

THEATRE ROYAL. Nightly at 8-45. TO-NIGHT AT 8-45.

THEATRE ROYAL. Nightly at 8-45. TO-NIGHT AT 8-45.

THEATRE ROYAL. Nightly at 8-45. TO-NIGHT AT 8-45.

THEATRE ROYAL. Nightly at 8-45. TO-NIGHT AT 8-45.

THEATRE ROYAL. Nightly at 8-45. TO-NIGHT AT 8-45.

THEATRE ROYAL. Nightly at 8-45. TO-NIGHT AT 8-45.

THEATRE ROYAL. Nightly at 8-45. TO-NIGHT AT 8-45.

THEATRE ROYAL. Nightly at 8-45. TO-NIGHT AT 8-45.

THEATRE ROYAL. Nightly at 8-45. TO-NIGHT AT 8-45.

THEATRE ROYAL. Nightly at 8-45. TO-NIGHT AT 8-45.

THEATRE ROYAL. Nightly at 8-45. TO-NIGHT AT 8-45.

THEATRE ROYAL. Nightly at 8-45. TO-NIGHT AT 8-45.

THEATRE ROYAL.

Nightly at 8-45. TO-NIGHT AT 8-45.

THEATRE ROYAL. Nightly at 8-45. TO-NIGHT AT 8-45.

THEATRE ROYAL. Nightly at 8-45. TO-NIGHT AT 8-45.

THEATRE ROYAL. Nightly at 8-45. TO-NIGHT AT 8-45.

THEATRE ROYAL. Nightly at 8-45. TO-NIGHT AT 8-45.

THEATRE ROYAL. Nightly at 8-45. TO-NIGHT AT 8-45.

THEATRE ROYAL. Nightly at 8-45. TO-NIGHT AT 8-45.

THEATRE ROYAL. Nightly at 8-45. TO-NIGHT AT 8-45.

THEATRE ROYAL. Nightly at 8-45. TO-NIGHT AT 8-45.

THEATRE ROYAL. Nightly at 8-45. TO-NIGHT AT 8-45.

THEATRE ROYAL. Nightly at 8-45. TO-NIGHT AT 8-45.

THEATRE ROYAL. Nightly at 8-45. TO-NIGHT AT 8-45.

THEATRE ROYAL. Nightly at 8-45. TO-NIGHT AT 8-45.

THEATRE ROYAL. Nightly at 8-45. TO-NIGHT AT 8-45.

THEATRE ROYAL.

Nightly at 8-45. TO-NIGHT AT 8-45.

THEATRE ROYAL. Nightly at 8-45. TO-NIGHT AT 8-45.

THEATRE ROYAL. Nightly at 8-4

# J. R. Cox & Co.

Hope to have the pleasure of meeting all their friends at the forthcoming show on August 1st, 2nd and 3rd, where we shall be exhibiting the following:

**LANZ**  
The famous 22 and 30 h.p. crude oil tractors, which have proved by far the most economical units in East Africa. Also Lanz cream separators, grinding mills, maize shellers, crude oil engines, all of which offer remarkable value.

**WINGET**  
The "Burn-Lancaster" Open Drum Concrete Mixer, with guaranteed output. Stone crushers, concrete moulding machines etc.

**SENTINEL**  
20-30 B.H.P. Portable Steam Engine which gives 50% greater economy in fuel and water and is 50% lighter than competing types of the same power.  
The 5- & 8-ton "Super Sentinel" three-way tipping steam wagon of which over 6,000 are in use in all parts of the world. By far the most economical heavy transport vehicle.

**B. B. A. Saw Mills**

SAWING, PLANING, SHEDDING, BURNING, DRYING, GRINDING, POLISHING, PAINTING, VARNISHING, STAINING, OILING, BLENDING, MIXING, COLORING, FINISHING, PACKING, DELIVERING, EXPORTING, IMPORTING, WHOLESALE, RETAIL, CASH, CREDIT, ALL KINDS OF SAWMILL MACHINERY, TOOLS, AND SUPPLIES.

**Sensational Drop**  
IN PRICES AT LADHARAM STORES TO GET ALL PACKAGES

We are just received by last mail 10,000 yards of Dress Material in all Shades and Varieties 8/- per yard.  
**Ladharam Stores.**  
Opp Eadies Footwear. Govt. Road.

**REGINA DRIFT**  
Best quality cement  
Manufactured by  
Messrs. Anglo-Siam  
Cement Co. Ltd.  
P.O. Box 62, NAIROBI

**FINANCIAL CRISIS IN UGANDA.**  
Expected Budget Deficit of £340,000.

**STANDARD** (Continued from p. 1).  
Kampala, July 26.  
The Governor's speech in the Legislative Council last week led to some fears that the Government must estimate a great deficit in commencing operations and maintenance of the new roads, and that the Government must find fresh sources, or better still, tighten up the existing ones, if Uganda is to remain in the happy position of being not only solvent but of having something over at the end of each financial year to add to the Reserve Fund.  
There is an unexpected Budget deficit of £200,000 which is a very large amount for so small a country as Uganda. This is mainly due to two factors, the price one being the first is revealed owing to the reduction of the cost of the iron and steel per pound from 1s. 6d. to 1s. 4d. and the loss thereby now estimated at £100,000. The Government will probably be very variable, each week having some new feature which may affect the Budget.

**UGANDA NOTES.**  
Better Prospects for the Cotton Crop.

**STANDARD** (Continued from p. 1).  
Kampala, July 26.  
We have mentioned several very dry weeks in Kampala but, as our rainfall on the aggregate is above its average, we are not worrying for the moment. There is no doubt, however, that we cannot stand a long dry spell.

**STANDARD** (Continued from p. 1).  
Kampala, July 26.  
The case against the driver of the car which remained in a motor cycle and motor road was dismissed last Friday on the grounds that the driver was not a woman and that in the absence of any evidence from the High Court, Kampala, yesterday and today was remanded in custody and sentenced to five years imprisonment. This is a very heavy sentence but there have been a number of fatal accidents here and the Uganda roads and this should be a warning to everyone to use the utmost care. One must recall of this accident is that the road which will cut the best, has already been commenced.

**STANDARD** (Continued from p. 1).  
Kampala, July 26.  
The case against the driver of the car which remained in a motor cycle and motor road was dismissed last Friday on the grounds that the driver was not a woman and that in the absence of any evidence from the High Court, Kampala, yesterday and today was remanded in custody and sentenced to five years imprisonment. This is a very heavy sentence but there have been a number of fatal accidents here and the Uganda roads and this should be a warning to everyone to use the utmost care. One must recall of this accident is that the road which will cut the best, has already been commenced.

**STANDARD** (Continued from p. 1).  
Kampala, July 26.  
The case against the driver of the car which remained in a motor cycle and motor road was dismissed last Friday on the grounds that the driver was not a woman and that in the absence of any evidence from the High Court, Kampala, yesterday and today was remanded in custody and sentenced to five years imprisonment. This is a very heavy sentence but there have been a number of fatal accidents here and the Uganda roads and this should be a warning to everyone to use the utmost care. One must recall of this accident is that the road which will cut the best, has already been commenced.

**AUGUST BANK HOLIDAY**  
This establishment will be open on Monday morning for the Sale of BREAD.

**ELLIOTS**  
NAIROBI  
Phone 60, P.O. Box 175.

**MAV & Co.**  
THE SPORTS HOUSE,  
NAIROBI.

**MADAME ROWE ET CIE**  
ARE SHOWING  
MODEL GOWNS  
MILINERY  
LADIES COATEES, ETC.  
AT THE  
**NORFOLK HOTEL.**

**Theatre. The Show.**  
BUY YOUR  
**CHOCOLATES FRESH FROM TORRS**  
**KIRKWOOD & Co.**  
LAND AGENTS, KITALE.  
EXTRAORDINARY TERMS OF PAYMENT.  
FARM of 700 acres in the Trans Nzoia area, near railway, well developed, brick house, and full farming equipment, for £4,500 payable in 10 years. 600 acres can be put under the plough.  
We have over 30,000 acres of choice agricultural land in the Trans Nzoia for sale in blocks of 1,000 acres or more on exceptionally easy terms at £4 per acre, 25% down balance spread over 10 years.  
Also 5,000 acres undeveloped, within 5 miles of railway station at Shig. 50 per acre payable 25% down balance over 10 years. This property would also be sold in 1,000 acre blocks; rich coffee soil.

**Geo. BLOWERS**  
BUILDING CONTRACTOR, MANUFACTURER AND DIRECT IMPORTER.  
P.O. Box 209, NAIROBI.  
CASH WITH ORDER.  
Tel. Add. "Concrete", Phone: Work 260, Home 425.  
Made of Best Quality Glass and Painted in Various Colors.  
Blowers Glass and Painted in Various Colors. Blowers Glass and Painted in Various Colors. Blowers Glass and Painted in Various Colors.

**WE STOCK**  
Always big stock of Provisions, Wines, Liqueurs, Best Quality of Dutch and Indian Cigars, Cigarettes, Sweets, Chocolates, Biscuits, Delmonico Brand, Dried Fruits, in tins and Fruits in Syrup.  
Also for Farmers Rough Salt, Rock Salt, Dairy Salt, Ekop Salt, Lined oil, Methylated Spirit and Turpentine.  
Ask for our retail price list today.  
**KANJEE NARANJEE**  
P.O. Box 82, NAIROBI. Govt. Road.

**F. P. CONTE**  
Builder and Contractor,  
Box 363, NAIROBI.  
Specialist in Ornamental cement work and Reinforced Concrete Work.  
Plaster of Paris Decorating and Fancy Fin Plaster Work.  
**MORAD PAYING-VENTILAN STYLE**  
Manufacturers of Artistic Pressed Cement Blocks.  
Concrete Pavine Slabs 12" x 12" x 4" and 24" x 24" x 4".  
Sole Agent for Kenya of THE CELEBRATED ROSACOMETTA Cement Pressed Blocks Machine.  
6" x 6" x 12".

**CONCRETE BLOCKS.**  
BUY FROM A LONG ESTABLISHED FIRM. All Blocks of a Guaranteed Standard.  
SIZES—24" x 12" x 8" Shgs. 1/6 each  
24" x 12" x 4" Shgs. 1/- each.  
LESS 10 per cent. for cash with order.  
Special Sizes Made to Order.  
Note—We cast anything in Concrete to order. LET US QUOTE YOU.  
QUARRY OWNERS.  
Ballast, Machine Broken and screened to size, with Dust out.  
SIZES—9" 1/2" x 1" 1/2" x 1" and special hard chippings for Granolithic work.

**MAY & Co.,**  
REPAIR GOLF CLUBS.  
**REMOVAL NOTICE**  
De Luxe Book Co., have been removed opposite to Messrs. S. Jacobs, Ltd. Nairobi, 1st July 1930.



**Just Arrived**  
**Largest Range of Choice**  
**SUITINGS**

ALSO  
**STOCKS OF:**  
**FULLWEBS**  
**AND**  
**CARDIGANS**

**Jaeger**  
**Embassy**  
**Consulate**

SPORTS COATS,  
 ETC.  
 SHIRTS  
 AND  
 PYJAMAS.

AT  
**AHAMED BROS.**  
**Drapers—Outfitters**

P.O. Box 254  
 Nairobi

**Have**  
 you a Royal  
 Cook Book?  
 If not, send  
 for a free copy  
 full of good  
 new baking  
 ideas.

Royal Baking  
 Powder Co.,  
 New York U.S.A.

**Ewer for the King.**

**AN OLD-TIME CEREMONY**  
**AT ROYALTON**

"STANDARD" CORRESPONDENT.  
 London, June 23.  
 The waving of the life of King James V, father of Mary Queen of Scots, at Cranston Bridge, Edinburgh, will be recalled when a banquet and cover are presented to the King and Queen at Royalton on July 15th.

This ceremony was last performed in 1822, and according to the saying of King James V life by John Howard, whose descendant, the public-house "Howard's" will do homage according to a charter granted to his ancestor.

According to Sir Walter Scott the King, while visiting, in 1603, a pretty village on a remote island, was taken to the King's presence. He stood to the right of a table, and a crowd of people gathered round him, and a pipe and tabor were played in the hall.

**Flats the Building Rage at the Coast.**

**MOMBASA SOLVING ITS HOUSING PROBLEM**

"STANDARD" CORRESPONDENT.  
 Mombasa, July 23.  
 Extraordinary building activity is being continued in the small radius of Mombasa, the port of Malindi and Kilindi.

There is now a building boom, and flats are being built in all directions from the town.

Almost opposite the old opposite the town, blocks of flats are being arranged, and it is being expected that the building of flats will be going on for some time.

From the Palace Hotel has been started by one story and another, and it is expected that the new flats, some including will be completed in a few weeks.

As a result of the building boom, the price of flats is rising, and it is expected that the price of flats will be going on for some time.

**NATIONAL BANK OF INDIA LIMITED**

(Incorporated in the United Kingdom.)  
 Bankers to the Colony and Protectorate of Kenya and Uganda Protectorate Government.

Subscribed Capital	£2,000,000
Paid-up Capital	£2,000,000
Reserve Fund	£250,000

Branches: London, E.C. 4; BRANCHES: Mombasa, Nairobi, Kisumu, Kenia, Wajir, Embu, Kericho, Malindi, Taita, Zanzibar, Dar-es-Salaam, and Lagos.

Also at: Calcutta, Bombay, Madras, Karachi, Lahore, American City, Fawcett, Columbia, Rangoon, New York, London, Calcutta, Chittagong, Benares, Madras, Aden and Suez Canal, and other ports.

AGENTS in New York and London: U.S.A., Empire State, South Africa, and Australia.

**FIXED DEPOSITS**—Deposits made for fixed periods on application. The Bank guarantees to pay the full amount on maturity.

**SAVINGS**—The Bank guarantees to pay the full amount on maturity.

**PAVING**—The Bank guarantees to pay the full amount on maturity.

**RENTS**—The Bank guarantees to pay the full amount on maturity.

**INSURANCE**—The Bank guarantees to pay the full amount on maturity.

**AGENTS**—The Bank guarantees to pay the full amount on maturity.

**MANAGER**—The Bank guarantees to pay the full amount on maturity.

**You can go anywhere with Jaeger wear**

There's a Jaeger garment and a Jaeger weight for every place and every occasion. From the tropics to the poles, there is no place where JAEGER is not known—and worn. Comfortable, economical, stylish and perfectly fitting.

**JAEGER**  
 PURE WOOL

**For every kind of Wear**

**Foamite Fire Protection**

2 Gallon Standard  
 10 Gallon Empire

**Springell & Verman, Ltd**  
 Telephone 114/115  
 Nairobi

**Ring No. 430**

**UKAMBA TRANSPORT COY**

For Cheap and Reliable Transport under European supervision for Fiat, Pals, Sand, supplied at comparative prices.

also car fuel.  
**SOUND MULES FOR SALE**

**Ukamba Transport Coy.,**  
 opposite the "Trocadero"  
 Restaurant.  
 P.O. Box 566 Nairobi.

*The*  
**Salisbury Hotel**  
*Nairobi*

Phone 166  
 P.O. Box 509

**MRS I POTTER**  
 REDECORATOR  
 Interior & Exterior

Works in the City, Nairobi and in the Districts. August 2nd and 3rd for the display of her designs. Appointments now being booked.

**P. SHAWARI**  
 PAINTER & DECORATOR  
 Hastings Street, Nairobi  
 P. O. Box 226

**PAINTS, COLOURS, OILS, VARNISHES & DISTEMPERS**  
 Large & small quantities

**H—O.**  
**Quick Cooking Oats**  
**Make Porridge in 2 to 3 minutes**

Obtainable At:  
**Beliram Parimal & Co.**  
 (Established 1900)  
 Corner Swamp Road and Government Road,  
 Phone 26 NAIROBI P.O. Box 29  
 Also P.O. Box 47, MOMBASA

**AGRICULTURAL SHOW**  
**AUG. 1st, 2nd, 3rd.**

**COFFEE MACHINERY**  
 BY  
**Wm. McKinnon & Co. Ltd., Aberdeen.**

will be shown on **STAND 515** Coffee Section  
*and will include,*

DRUM PULPERS.	DISC PULPERS.	JAMAICA PULPERS.	BIJOU PULPERS.	REPASSER PULPERS.	SLICE GATES.
DRAINING FLATES.	WASHERS.	EDUCATORS for wet coffee.	CENTRIFUGAL PUMPS for wet coffee	HULLERS.	HAND SHELLERS.

**Scale Model Dryers**

**Working Scale Model of Complete Coffee Factory.**

**Hulling Demonstrations**

Coffee planters and curers especially from up country are cordially invited to discuss factory matters with Mr. Davidson.

**F. M. BHAIJEE.**  
**HARDWARE MERCHANTS.**

AGENTS FOR  
**WILLIAM GOSWAMI & SONS, Ltd**  
 SOAP MANUFACTURERS  
 NEW CONSIGNMENT OF NAVY BLUE  
 KENYA FARMERS' ASSOCIATION LTD  
 Fresh Stocks of MAIZE and MAIZE MEAL.

P.O. Box 318 Phone 353 Tel. HARDWARE  
 Indian Bazaar NAIROBI

**MONEY TO LEND**

SHORT PERIOD LOANS GRANTED  
 BILLS DISCOUNTED  
 STRICTEST CONFIDENCE.

Call or Write to the—  
**Kenya Loan & Investment Co. Ltd.**  
 1st Floor, Court Chambers, Nairobi Box 546  
 Established 1921

**"LONG JOHN"**

**SUBSTITUTORS**  
**D. EPSTEIN & CO.**

**The "BELL INN"**  
 (on Main Road) **NAIVASHA**

**1ST CLASS ACCOMMODATION.**  
**EVERY COMFORT AND CONVENIENCE**  
**CLEANLINESS STUDIED, CATERING A SPECIALTY**  
**SATISFACTION GUARANTEED.**

**NOTICE**

The proprietor of the French Ladies and Gents Hairdressing Salon, Hastings Street, opposite New Stanley Hotel wishes to announce that his premises are now up to date as any other in East Africa, with five beautiful modern private parlours. New staff just arrived and are now in a position to attend customers. Permanent waving a specialty. Visit Ray's Treatment, Massage, Manicure Pedicure, Tinting by French specialist at very reasonable charges. Inspection is invited.

**P. Alexander**  
 Hairdresser, Hastings Street,  
 NAIROBI

**Provisions, Wines, Confectionery, Etc.**  
**Genuine Tip to Housewives.**

If you want to save **WORRY AND MONEY**—Do your shopping with the well-known and most trusted **DRUMMOND HOUSE** in Nairobi the **COLONIAL GENERAL STORES** in Government Road, city street High Class Provisions, Imported Confectionery, Wines, Spirits, Cigarettes, Fresh Fruits and Vegetables.

Phone 226  
 Write Box 436  
 NAIROBI

**Sole Agent in Kenya.**  
**A. N. DAVIDSON.**  
 National Building,  
 (Box 456) Nairobi.



# Theo Schouten

Phone 245.

Box 394.

Invites you to visit his most up-to-date Hairdressing Establishment in Government Road where you will find a complete hairdressing service provided for Ladies, Gentlemen, and Children including Permanent Wave, Hair Treatment, Hair Tinting, Manicure, etc., by a staff of experts.

Large stock of Toilet Requisites.  
Mr. Schouten is the holder of two Diplomas recently awarded to him in London for PERMANENT WAVING.

## FOR SALE

Small Holdings—Ideal sites for Poultry Farms, etc. A few blocks of about 50 acres each within one mile of Athi River Station: river frontage, ample grit and limestone. Freehold at £5 per acre.  
Concrete Block Cottage, reinforced, with all modern conveniences off Salisbury Road, Nairobi, standing on half an acre of land. £1,000.

R. O. PRESTON,  
NAIROBI.

Box 807.

## The Coffee Planters Union of Kenya and East Africa.

On August 1st, 2nd and 3rd, during the NAIROBI SHOW, my office in The Memorial Hall will be closed. Business can be transacted at my office in the COFFEE SECTION on the SHOW GROUND.  
This Notice also applies to the following Offices—  
The East African Unofficial Conference,  
The Convention of Associations,  
The European & African Trades Organisation, Etc.  
Etc.

CHARLES GATSKELL,  
SECRETARY

## VULCANISING

SEND US YOUR

**TYRES AND TUBES**  
TO BE RE-VULCANISED. ALL WORK GUARANTEED.

DONE BY EUROPEAN EXPERT.

With 14 years' experience. We undertake to repair tyres and tubes and give delivery in the shortest possible time.

NEVER DISCARD YOUR WORN TYRES—HAVE THEM REPAIRED BY THE

**Nairobi Vulcanising Company**  
P.O. Box 217. Victoria Street.

SINGLER'S

Dry Cleaning & Dyeing Works.

Town Receiving Office: No. 8, Theatre Royal Arcade.

### CORRESPONDENCE.

The Editor does not accept responsibility for the views expressed by the correspondents in these columns, and in all cases the names and addresses of the writer must accompany a letter, not necessarily for publication, but as a guarantee of good faith. Brevity is also essential to secure consideration.

#### LIGHT TRAY FAILED.

To The Editor of "E. A. Standard," Sir:—As I wish much to regard that we had preferred to abandon the performance of the show, I was on Friday night and we also regret the great unwillingness of those who attended. We have expressed our willingness to refund the money to those who had purchased tickets in order to maintain industry for a proper performance.

At the same time, we must point out that the Electric Light Company is responsible for the failure of light. This has occurred on a previous occasion when we demanded compensation for our loss. We would obtain no satisfaction except in a promise that we would be placed on a second circuit and that a responsible European electrician would be available at any emergency. Neither of these conditions seem to us to have been observed.

Arrange out of this incident my concern will take every step to secure an independent check for the purpose of lighting the building on an emergency so that the place will not be left in darkness.

Yours, etc.,  
A. DAVIS,  
Managing Director,  
Theatre Royal Ltd.,  
Nairobi, July 30, 1920.

Board and Accommodation.  
CAN BE OBTAINED AT  
Mrs. STEVENSON,  
Box 2, NAIROBI,  
(late Lodge House).

### FOR SALE.

Mangrove Net Shags 20/00  
Mangrove Net Ducks 24/00  
Ladies' Table Tennis 30/00  
per doz.  
Military Boots per pair 5/00  
White Wadon Wilroy  
Blushes 70 to 54 pair 40/00

J. DAREVEY,  
Genl. Mgr. P.O. Box 652,  
NAIROBI.

### Just Arrived

Fresh stock of pure Cashmere, Galuchette Sables, Dress Suit Materials, Hats, Caps, Shirts, Best Materials for Hosiery and Show etc. Prices to suit all. Ties, Khaki and cotton suits at very moderate prices.

Terms: Cash against delivery 10 per cent. discount.  
B. D. COSTA & SONS,  
P.O. Box No. 50, Nakuru,  
Davidson Avenue.

## Do You Use Tools?

Product and Manufacturer are good and abundant, but the quality of the tools is not so good. Buy the tools of the best quality. Buy the tools of the best quality. Buy the tools of the best quality.

**3-in-One**  
LUBRICANT  
FOR ALL PURPOSES

Three-in-One Oil Company  
125 Broadway, New York, U.S.A.



TO THE ENGLISHWOMEN'S COMPLEXION.

ALL THE WORLD'S FAVORITE SOAP.



Light, soft—because it is the clear, fresh complexion that everyone admires—the natural, rosy-pink and white of a healthy skin.

The beauty and texture of the Englishwoman's skin is shown in a good measure, by the superior excellence of the soap and suds. Purest Eucalypti, today, is one of the most-used soaps in the Old Country. Composed of scolding herbs and pure vegetable oils, it nourishes the tissue—helps to preserve the softness and smoothness of the skin. It is delicately perfumed.

Made in England by  
ERASMUS PETERKERE, LONDON and PARIS.

**PEERLESS ERASMIC**  
THE SANITARY SOAP

WHERE TO STAY

## SAVOY HOTEL

Caledonian Road,  
THE HILL.

Phone No. 450.  
P.O. Box 20. Tel: "Savoy."

**DRESS YOUR EYES**

If you wear glasses, why not "look well" in addition to seeing well? Wear rimless glasses. Their lightness makes for comfort and distinctness. The absence of rims gives a wide unobstructed field of clear sight.

Obtain these glasses from:  
**DOBBIES Ltd.**  
GOVERNMENT ROAD, NAIROBI. Box 93



## SAVE with SAFETY

Furniture buyers with a keen, discriminating sense of values will appreciate the quality, beauty in design and excellent finish of our furniture. Whether you buy a Chair or a Complete Suite, we give you sound value and European supervision throughout.

PROMPT DELIVERY—ANY DESIGN.  
The cheapest house for good quality furniture.

## B. H. MYERS & CO. LTD.

MAKERS OF GOOD FURNITURE ONLY.  
Government Road, near National Bank of India.  
Telephone 943 NAIROBI. P.O. Box 461.  
QUOTATIONS FREE.

## AGRICULTURAL SHOW

MESSAGE TO WHEAT FARMERS

# W. C. Hunter & Co's

STAND ON SHOW GROUND

and inspect personally the full range of the various  
**SUNSHINE AUSTRALIAN**

implements and harvesting machinery.  
Expert service and advice.

Agents for  
**DALGETY & COMPANY Ltd.**

Exporters of Coffee, Sugar, Maize, Wool, Barley, Copra, Wattle Bark and other Produce.

Managing Agents.

Agents for:  
**ROBEY & Co., LINCOLN.**  
**FISON'S FERTILISERS.**  
**IMPERIAL TYPEWRITERS.**

# W. C. Hunter & Co.

Eldoret. Nairobi. Mombasa.

SMOKE  
**TEOFANI**  
HIGH CLASS  
**CIGARETTES**

SWAZIKIA, WEST END, GOLDEN MOON  
TROFANI NO. 1, GRAND GORDON  
TRADE ONLY supplied by TREVY KIBIST  
Sole Distributing Agent, City House  
Box 690, NAIROBI



**OAKLEIGH PRIVATE HOTEL**  
COMFORTABLE and UP-TO-DATE in EVERY WAY  
UP-COUNTRY VISITORS SPECIALLY CATERED FOR  
SPECIAL MONTHLY TERMS FOR PERMANENTS.  
MRS. M. JARRETT, Daily: 5/6 to 10/-  
Manageress NAIROBI. P.O. Box 188.

**Express Transport Co.**

MOMBASA and NAIROBI.  
Box 39 Phone Box 433  
Phone 533

CARTAGE CONTRACTORS TO  
KENYA and UGANDA RLY.

**EFFICIENT SERVICE.**

CLEARING and SHIPPING.  
PRODUCE TRANSPORT.  
AT COMPETITIVE PRICES.

NO WEIGHT TOO GREAT  
NO PACKAGE TOO SMALL.

BOND and DUTY PAID.  
**WAREHOUSEMEN**

G.R.

## Two Things to Remember

→ The Show  
→ To-day  
→ Our Invitation

A Cordial Invitation, which is extended to You and to all those interested in Modern Farming Equipment and Engineering Appliances. Expert advice, illustrated and descriptive literature will be at your disposal during the three Exhibition days—August 1, 2, and 3.

**WE ARE EXHIBITING.**  
Caterpillar Tractors; Holt Caterpillar Harvesters; Farmhouse Implements and Machinery; Adams Lancing Wagons; Grinders; Ruston Crude Oil Engines; Alby Crowland Log Wagons; All Steel Farm Wagons; Lister Crossed Laying Lanes; Kielder Deep Village Implements; Alston Patent Tractors; Commercial Tractors, and a host of other interesting items, the whole occupying an area of 5000 square feet.

**Gailey & Roberts, Ltd.**  
P.O. Box 66—NAIROBI—Phone 82  
UGANDA KENYA TANGANYIKA

G.R.

# AUCTION SALES



Catalogue Sale of Furniture and Effects.

Duly instructed, we shall sell by Public Auction, Without Reserve, unless otherwise stated, at our Salerooms, Mates Building, Harding's Street, on

**Thursday, 4th August at 10 a.m.**

Two Double bedded, spring mattresses. **Coin Mattresses** Single bedded in camphorwood, with spring mattresses. **Trade Sewing Machine** Siles of Dining Chair. Dining Table in camphorwood. **Morris Chairs**. Imported Carri Table, brass top. **Chest of Drawers**. Dining Table in Tanganyika Mahogany. **Chamberfield Suite**, extensive covered, castors, Sideboard, bottled mirror, drawers. **Perambulator**. Bureau, in camphorwood (reserved). **Writing Desk**, eight drawers, pegamoni top. "Columbia" Table Model Gramophone. **Carved Tray Stands**. Indian Carved Tables. **Palnastans**. 8 day Travelling Clock. "Baby Triumph" Motorcycle. "Indian" Motorcycle.

WUTER and OSWALD, Auctioneers, etc., Nairobi.

# WARNING

Roads will be **DUTY AND DANGEROUS**. 1st, 2nd, and 3rd August. Therefore **LUNCH** on the

# SHOW GROUND

(CATERING BY THE TROCADERO) AND

# Drink Lion Lager

DISTRIBUTORS: Denovan & Diebel. City House, Nairobi. Box 77, McAlbassa.

# E. Hutchison & Co.

Favoured with instructions by a gentleman going Home we shall sell by Public Auction, without Reserve, unless stated, at our Mart, **Great Road** on **Thursday the 4th inst. at 10 a.m.**

A Selection of **High Class Furniture. Axminster Carpet. H.M.V. Gramophone. D.B. Shot Gun**

Fawn Axminster Carpet 12' x 12 in nearly new condition Reserve. **Tanganyika Mahogany Oval Dining Table** with six dining chairs to match. Full Size **White Enamel Bath**. Full Size **Zinc Bath**. **H.M.V. Gramophone**, with 25 selected records. **2 Steel Cabin Trunks**. 1 **Leather Suit Case**. 2 **Academy Gramophones**, one table model one portable. **Carved Folding Indian Tea Table**. 4 **Kapok Pillows**. **D.B. Shot Gun** in Case with 50 rounds Ammunition Reserve. **Telescope Camp Bed**. 2 **Dhurries**. No 8 **Boyer Stove** in good condition. **Top Indian Brass Carved Ornaments**. **Chest of Drawers** in Camphor. **Several Dressing Gowns**. **Set of Six Volumes** "Modern Mechanical Engineering". **Punch Ball** complete. **Very Good Pram**, with canopy. **Reserve, E.P.N.S. Comfitment**. Small six drawer **Filing Cabinet**. **Double Teak Wardrobe** with three mirrors reserve. **Single Teak Wardrobe**. **Pair Palm Stands**. **Top Crockery**. **Large Kusti Mat** 12' x 12'. 2 **Japanese Sundashes**. **Chest of Drawers**. **Single bed** with 3-ply spring. **Top Crockery**. **Child's Wooden Cot**. **Morris Chairs**. **Chamberfield Suite** in Cretonne well sprung, and many articles too numerous to detail.

# The B.E.A.P. Building Society and Saving Bank, Limited.

DECLARATION OF A SEVEN PER CENT. DIVIDEND. SHAREHOLDERS are notified that at the Annual General Meeting of the Society held this day it was resolved to declare a Dividend of 7 per cent. in respect of the past year's working. Shareholders are requested to call at the offices of the Society in Town Church Lane on the day **WEDNESDAY 28 AUGUST** for payment of the dividend respectively due to them by way of Dividend. By Order. **THE NAIROBI BOARD OF EXECUTORS & TRUST CO. LTD.** per F. W. G. BONFAS, SECRETARIES.

Nairobi, 28th July, 1927.

# Austins Auctions.

**Inlaid Coffee Table. Brassware. Dress Lengths. Typewriters Gramophones. Boys Suits & Overalls Etc. Etc. Etc.**

Duly instructed by Several Clients

# AUSTIN & Co.

will sell Without Reserve, at The Mart, on **Wednesday August 3rd at 10 a.m.**

2 **Table Gramophones** in Working Order. **New Portable Corona Typewriter**. **Fountain Pen**. New "Bing" **Portable Typewriter**. **Gramars**. **Inlaid Ivory Coffee Table**. **Carved Coffee Tables**. **Quantity of Brassware**. **Jap. Sundashes**. **New Durries**. **Suit Cases**. **Suit Lengths**. **Ladies New Pyjama Suits**. **Dress Lengths** in **Crepe**. **Copper Tray Top Carved Table**. **Girls' Frocks**. **Bedspread**. **Girls' Vests**. **Government Silk**. **White Cashmere Dress Lengths**. **Green Mats**. **Jap. Grass Carpet** 11' x 9'. **Ladies Black Silk Stockings**. **Quantity of Advertising Stocks**.

# SANDS & Co.

Show Grounds **TUESDAY, at 10 a.m.**

**HORSES, CATTLE**

Enquiries at the Auctioneers Office on the Show Grounds.

**SANDS & Co.** AUCTIONEERS.

# Sands & Co.

At the Show Ground. **TUESDAY 2nd August 10 a.m.**

A large entry of Horses including Pedigreed Yearling Pedigreed Bulls.

**Wednesday 3rd August 10 a.m.**

**SHEEP, PIGS, POULTRY and DOGS.**

Farmers are advised not to miss these sales. Send your entries to the auctioneers.

**SANDS & Co.** AUCTIONEERS.

# Special Discount 10 per cent.

FOR CASH ONLY ON ALL OUR GOODS CHEAPEST and BEST QUALITY HOUSEHOLD UTENSILES, NAIROBI FROM 1st to 7th.

AT **ESMAIL & RAMJEE**

Phone 482. Royal Exchange Bldg. (Opp. S. Jacobs). Government Road. NAIROBI.

# Bennett & Blackshire

# ESTATE DEPARTMENT.

A very fine Coffee Farm about 200 acres, with 1 house, etc. buildings etc. Amplest profit in 2 years time £1500 on mortgage. **PRICE, ONLY 5000** brick house and waddy 2 acres of land. Owner will accept £500 down and 2000 mortgage for a quick sale. **Also 2 other fine farms** a very nice one and 1 house in 7 1/2 acres of land (banked). Owner will accept £200 down and balance of £700 on mortgage. **On Major Road 6 1/2 acres** land with 2 houses. **PRICE £700**. We have also a number of the building plots and farms at reasonable prices.

DO NOT FORGET OUR GRANTING SALE OF FARMS, etc. AT NYERI ON THE 14th AUGUST NEXT.

# New Consignments

Of **Horrocks' Silk Shirts** in nice small checks. **Heavy Flax Silk** in various colours. **Latest range of Ladies' Dress Materials** and **Best Virella Fabrics** for Pyjamas Suits. **Gingham, Zephyr, Etc., Etc.** Also **Perambulators, Tricycles and Luxurious Baby Motors.**

**JUST OPENED at Meghji Ahamed & Co.**

Telegrams: Tarjapallins NAIROBI Phone 164. P.O. Box 318. INSPECTION COURTESY INVITED.

# New Models, Jumper Suits,

**Day and Evening Frocks.** Arrived this Mail.

**BRADFORD MANUFACTURING CO., LTD.** Local Address and Showrooms:

P.O. Box 810. Government Road. (Above Tava, Ltd. New Premises)

# REMINGTON

Our exhibits at The East Africa Show Aug. 1st, 2nd and 3rd, will include the following—

**Standard—Noiseless Portable and Adding Typewriters**

**G. F. All Steel Office Equipment**

**Gestetner Duplicators**

**REMINGTON SERVICE.**

For the convenience of exhibitors using typewriters at the Showground, we are placing at their disposal, the services of one of our mechanics, who will attend to minor repairs on any make of machine **FREE OF CHARGE.**

**Remington Typewriter Agency.** GOVERNMENT ROAD, NAIROBI.

Box 67. Phone 25.

# STANLEY HOTEL

(John Bennett Sole Proprietor)

**BEVERAGES:** Smart and reliable care for Mrs. with Dinner or Debra Yourself.

**CAR PAINTING:** Have your car spray painted by the Latest Niobe Vulpur Process. Call in and inspect our work. Prices moderate.

# Used Cars For Sale

Some really fine propositions on hand for private sale tourists and box bodies. My reputation for a square deal stands behind every car I sell.

Second-hand spare parts on hand for various makes of cars.

**John Bennett.**

Phone 142. Auctioneer & Motorcar Salesman.

# Display of Millinery

**Newly Arrived, AT THE**

# NEW STANLEY HOTEL

(entrance beside Shaw & Hunter)

**On August 9th. and following days.**

# WARNING

BEWARE OF IMITATIONS. **VOONIA GARDEN TEA (FANNINGS)**

has been specially selected, tested, tried and proved with various waters in this Colony hence its unequalled flavour and luscious qualities.

When ordering please stipulate **VOONIA FANNINGS** Obtainable at all Stores.

Sole Agents: **BLACKLAWS & BROWN** (Late MACKINNON Bros.)

Tel. No. 31. NAIROBI. Box No. 468

**Paul Robins** AND HIS

**New Bohemian Dance Band** PLAYING AT

**CLAIRMONT** SATURDAY AUGUST 6th at 9 p.m.

PRICES AS USUAL.

**TRIEU**

**SPEED POWER COMFORT**

**LOW IN PRICE HIGH IN EFFICIENCY**

On view at our stand at the

## Nairobi Agricultural Show

The Super Sports Model E With two Port Cylinder HEAD

Pased Test to 20 h.p. Capable of 50 to 90 M.P.H. FULL STOCKS SPARES ON HAND.

# J. R. Cox & Co.

P.O. Box 81. ELDORET.

P.O. Box 670. NAIROBI.

P.O. Box 28. NAKURU.

P.O. Box 299. KAMPALA.

# Ideal Memag Mills

LATEST CONSTRUCTION WITH AIR SUCTION PIPE JUST ARRIVED. Owing to lack of space at the Show, these

## POSHO GRINDING MILLS

on for inspection in our Show Room, VICTORIA STREET, Nairobi. We invite Farmers to give us the pleasure of their call at our Office, VICTORIA STREET, Nairobi. Send your own Poshos for your labour and is independent.

Sole Agents:

## The Old East African Trading Company.

P. O. B. 296. NAIROBI

HEAD OFFICE: MOMBASA. Tel. Address: HIBOCHE. IMPORTERS: EXPORTERS.

Established 1900 Branches: Kenya, Uganda, Tanganyika, Zanzibar.



### SALES



**WALTER OSWALD**

Catalogue Sale of Furniture and Effects.

Duly instructed, we shall sell by Public Auction, Without Reserve, unless otherwise stated, at our Salerooms, Mitos Building, Harding Street, on

**Thursday, 4th August 1927 at 10 a.m.**

Double Bedstead, spring mattress. Coir Mattress. Single Bedstead in Camphorwood, with dining mattress. Treadle Sewing Machine. Suites of Spring Chairs. Dining Table in camphorwood. Morris Chairs. Imported Card Table, leather top. Chest of Drawers. Dining Table in Tempanyika Mahogany (reserve). Chesterfield Suite, enclous covered, satons. Schoaled, bevelled mirror, drawers. Perambulator. Bureau, in camphorwood (reserve). Writing Desk, eight drawers, pegamoid top. "Columbia" Table Model Gramophone. Carved Tray stands. Indian Carved Tables. Palmstands. 8-day Travelling Clock. "Baby Triumph" Motorcycle. "Indian" Motorcycle.

Etc. Etc. Etc.

**WALTER and OSWALD, Auctioneers, etc. Nairobi.**

## WARNING

Roads will be **DUSTY and DANGEROUS**, 1st, 2nd, and 3rd August.

Therefore **LARGE** on the

## SHOW GROUND

(CATERING BY THE TROCADERO)

AND

## Drink Lion Lager

DISTRIBUTORS: Denovan & Diebel, City House, Nairobi Box 77, McIlhennan.

## E. Hutchison & Co.

Favoured with instructions by a gentleman going home we shall sell by Public Auction, without Reserve, unless stated, at our Mart, Govt. Road

**On Thursday the 4th Inst. at 10 a.m.**

A Selection of

**High Class Furniture. Axminster Carpet. H.M.V. Gramophone. D.B. Shot Gun**

Fawn Axminster Carpet 12 x 12 in nearly new condition. Reserve. Tempanyika Mahogany Oval Dining Table with six dining chairs to match. Full Size White Enamel Bath. Full Size Zinc Bath. H.M.V. Gramophone, with 20 selected records, 2 steel cabinet Trunks. 1 L.G. Miller Suit Case. 2 Axminster Gramophones, one table model one portable. Carved Folding Indian Tea Table. 4 Kapok Pillows. D.B. Shot Gun in Case with 20 rounds Ammunition Reserve. Telescope. Camp bed. 2 Dharras; one 3-Dover Stove in good condition. Lot Indian Brass Carved Ornaments. Chest of Drawers in Camphor. Several Dressing Chests. Set of six Valmues Modern Mechanical Engineering. Punch Ball complete. Very Good Pram, with canopy. Reserve; E.P.N.S. Locomotive Set. Small six drawer Filing Cabinet. Double Teak Wardrobe with three mirrors reserve. Single Teak Wardrobe. Pair Palm Stands. Lot Crocodile. Large Bush Mat 12 x 12. 2 Japanese Sunshades. Chest of Drawers. Single bed with spring. Lot Crocodile. Child's Wooden Cot. Morris Chairs. Chesterfield Suite in Cretonne well sprung, and many articles too numerous to detail.

**The B.E.A.P. Building Society and Saving Bank, Limited.**

DECLARATION OF A SEVEN PER CENT. DIVIDEND.

SHAREHOLDERS are notified that at the Annual General Meeting of the Society held this day it was resolved to declare a Dividend of 7 per cent. in respect of the past year's working.

Shareholders are requested to call at the Office of the Society in Temu, Changanu, at 10 a.m. on the 3rd WEDNESDAY, 3rd AUGUST for payment of the dividend, which is payable to them by way of dividend.

By Order

**THE NAIROBI BOARD OF DIRECTORS & TRUST CO. LTD.**  
P. O. BOX 77, NAIROBI.  
SECRETARIES.

Nairobi, 28th July, 1927.

## Austins Auctions.

**Inland Office Table. Brassware. Dress Lengths. Typewriters. Gramophones. Boys Suits & Overalls. Etc. Etc. Etc.**

Duly instructed by Several Clients

### AUSTIN & Co.

will sell Without Reserve, at The Mart, on

**Wednesday August 3rd at 10 a.m.**

2 Table Gramophones in Working Order. New Portable Corona Typewriter. Fountain Pen; New "Bliss" Portable Typewriter. Camera; Inland Ivory wavy top. Sunshades; New Dhurra, Suit Cases, Suit Lengths; Ladies New Pyjama Suits. Dress Lengths in Crepe; Copper Tray Top Carved Table Girls' Frocks. Bedspreads. Girls' Vests. Government Silk; White Cashmere Dress Lengths; Grass Mats; Jap. Grass Carpet 12' x 9' Ladies Black Silk Stockings; Quantity of Advertising Blocks.

Etc. Etc. Etc.

## SANDS & Co.

**Show Grounds**

**TUESDAY, at 10 a.m.**

**HORSES, CATTLE**

Enquiries at the Auctioneers Office on the Show Grounds.

**SANDS & Co. AUCTIONEERS.**

## Sands & Co.

**At the Show Ground.**

**TUESDAY 2nd August 10 a.m.**

A large entry of Horses including Pedigreed Yearling Pedigreed Bulls.

**Wednesday 3rd August 10 a.m.**

**SHEEP, PIGS, POULTRY and DOGS.**

Farmers are advised not to miss these sales. Send your entries to the auctioneers.

**SANDS & Co. AUCTIONEERS.**

**Special Discount 10 per cent.**

FOR CASH ONLY ON ALL OUR GOODS CHEAPEST and BEST QUALITY HOUSEHOLD UTENSILS. NAIROBI FROM 1st to 7th.

**ESMAIL & RAMJEE**

Phone 482 Royal Exchange Bldg. (Opp S. Jacobs) Government Road NAIROBI



**HARRIER**

**SPEED POWER COMFORT**

**LOW IN PRICE HIGH IN EFFICIENCY**

On view at our stand at the

## Nairobi Agricultural Show

The Super Sports Model E With two Port Cylinder HEAD

Passed Test to 20 h.p. Capable of 50 to 60 M.P.H. FULL STOCKS SPARES ON HAND.

## J. R. Cox & Co.

P.O. BOX 81, ELDORET. P.O. BOX 670, NAIROBI. P.O. BOX 28, NAKURU. P.O. BOX 250, KAMPALA.

## Bennett & Blackshire

### ESTATE DEPARTMENT.

A very fine Office. Farm about 200 acres from Nairobi. Dairy developed consisting of 200 cows. W. and I. house, out buildings etc. Antiquated property 2 years time £100 per acre.

**PRICE ONLY £2000** Just outside Nairobi a 5-room brick house and nearly 2 acres of land. Offer will accept £200 down and £200 mortgage for a quick sale.

Also 2 miles from Nairobi a very nice W. and I. House on 1/2 acre of land. 1000. Offer will accept £200 down and balance of £200 on mortgage.

On Ngara Road 6 1/2 acres land short distance from Nairobi. **PRICE £2000** — — — — — We have also a number of very fine building plots and farms at reasonable prices.

**DO NOT FORGET OUR GLAMOROUS SALE OF FARMS, etc. AT NYERI ON THE 13th AUGUST NEXT.**

## New Consignments

Of Horrocks' Silk Shirtings in nice small checks. Heavy Fuji Silk in various colours. Latest range of Ladies' Dress Materials and Best Vynilla Fabrics for Dyjama Suits.

(Gingham, Zephyr, Etc. Etc.)

Also Perambulators, Tricycles and Luxurious Baby Motors.

**JUST OPENED at**

## Meghji Ahamed & Co.

Telegrams: Tarputains NAIROBI Phone 164. P.O. BOX 513. INSPECTION CORDIALLY INVITED.

## New Models, Jumper Suits, Day and Evening Frocks.

Arrived this Mail.

**BRADFORD MANUFACTURING CO., LTD.**

Local address and Show rooms: P.O. Box 810. Imperial Chambers. Government Road. (Above Laws, Ltd. New Premises.)

## REMINGTON

Our exhibits at The East Africa Show Aug. 1st, 2nd and 3rd, will include the following—

**Standard—Noiseless Portable and Adding Typewriters**

**G. F. All Steel Office Equipment**

**Gestetner Duplicators**

**REMINGTON SERVICE.**

For the convenience of exhibitors using typewriters at the Showground, we are placing at their disposal, the services of one of our mechanics, who will attend to minor repairs on any make of machine. FREE OF CHARGE.

**Remington Typewriter Agency.**

GOVERNMENT ROAD, NAIROBI. Box 67. Phone 25.

## STANLEY GARAGE

(John Bennett Sole Proprietor)

**REPAIR SERVICE:**

Smart and reliable cars. For Hire with Driver or Drive Yourself.

**GAR PAINTING:**

Have your car spray painted by the Latest Nitro Cellulose Process. Call in and inspect our work. Prices moderate.

## Used Cars For Sale

Some really fine propositions on hand for private sale (courses and box bodies. My reputation for a square deal stands behind every car I sell.

Second-hand spare parts on hand for various makes of cars.

**John Bennett.**

Phone 142. Auctioneer & Motorcar Salesman.

## Display of Millinery

**Newly Arrived,**

AT THE

## NEW STANLEY HOTEL

(entrance beside Shaw & Hunter)

**On August 9th. and following days.**

## WARNING

Beware of Imitations

## VOONIA GARDEN TEA

(FANNINGS)

has been specially selected, tested, dried and proved with various waters in this Colony hence its unequalled flavour and liquoring qualities.

When ordering please stipulate

## VOONIA FANNINGS

Obtainable at all Stores.

Sole Agents:

## BLACKLAWS & BROWN

(Late MACKINNON Bros.)

Tel. No. 31. NAIROBI. Box No. 468.

**Paul Robins**

AND HIS

## New Bohemian Dance Band

PLAYING AT

## CLAIRMONT

SATURDAY AUGUST 6th at 9 p.m.

PRICES AS USUAL.

## Ideal Memag Mills

LATEST CONSTRUCTION WITH AIR SUCTION P.F.P. JUST ARRIVED. Owing to lack of space at the Show, these

## POSHO GRINDING MILLS

are for inspection in our Show Room, VICTORIA STREET, Nairobi. We invite farmers to give us the pleasure of their call at our Office: VICTORIA STREET, Nairobi. Good your own Poshos for your labour and be independent.

Sole Agents:

## The Old East African Trading Company.

P. O. B. 296. NAIROBI.

HEAD OFFICE: MOMBASA. Branches: TEL. ADDRESS: DIBOCHI. MUMBAI. EXPORTS.



# One Swallow Does not Make a Summer?

Believe us the Daily Swallow of **KENYA BEER STOUT** or "XXXX" Makes Life one Perpetual Summer.

**GUARANTEED THE LARGEST CIRCULATION OF ANY NEWSPAPER IN KENYA, UGANDA, TANGANYIKA AND ZANZIBAR.**

# THE EAST AFRICAN

**SPECIAL SHOW EDITION**

## 16 PAGES.

**MOMBASA TIMES & UGANDA ARGUS.**  
THE OLDEST ESTABLISHED NEWSPAPER PUBLISHED IN KENYA AND UGANDA.

Nairobi, Wednesday, August 6, 1927.

With which is incorporated **THE LEADER.**

**LOUNGE**  
FOR **Cocktails** AND **Teas.**

THE **Dining Room** FOR **Breakfasts**  **Luncheons** AND **Dinners.**

**The New Stanley Hotel**

Price 20 CENTS.

# TRIUMPHS OF THE NAIROBI SHOW

## THE 1927 SHOW—A PRACTICAL DEMONSTRATION OF FRIENDSHIP.

### East African Co-operation and Its Responsibilities.

### OPENING SPEECHES AND TRIBUTES TO WORKERS AND VISITORS.

### Evidence of Industry and Energy Being Put into Land Development.

In some directions the 1927 Nairobi Show has exceeded the wildest expectations of the Society and in all directions due to the spirit of co-operation displayed by all sections of the community, marked success has been obtained.

The generous support from other Colonies carries with it an obligation resting on Kenya to support the shows of its neighbours.

It is hoped that the visitors will take back with them an appreciation of the effort, being made in Kenya to stand the ranks of good will and fellowship in East Africa.

### THE FUTURE GENERATIONS.

The 1927 exhibition, it is believed, will have a far-reaching effect on the minds of the people who will see it. It will show them that the future of the East African continent is in their hands, and that it is up to them to make it a better one. It will show them that the future of the East African continent is in their hands, and that it is up to them to make it a better one.

### COOL TUCKER

The 1927 exhibition, it is believed, will have a far-reaching effect on the minds of the people who will see it. It will show them that the future of the East African continent is in their hands, and that it is up to them to make it a better one. It will show them that the future of the East African continent is in their hands, and that it is up to them to make it a better one.

### AN EA Show

The 1927 exhibition, it is believed, will have a far-reaching effect on the minds of the people who will see it. It will show them that the future of the East African continent is in their hands, and that it is up to them to make it a better one. It will show them that the future of the East African continent is in their hands, and that it is up to them to make it a better one.

### CATTLE

The 1927 exhibition, it is believed, will have a far-reaching effect on the minds of the people who will see it. It will show them that the future of the East African continent is in their hands, and that it is up to them to make it a better one. It will show them that the future of the East African continent is in their hands, and that it is up to them to make it a better one.

### SHOW CHAMPIONSHIPS.

#### District Exhibit Cup Goes to Ulu.

The following is a list of the district exhibits that have been awarded the District Exhibit Cup for the best exhibit in their class.

#### THE BEST HORSE.

- 1. The following is a list of the district exhibits that have been awarded the District Exhibit Cup for the best exhibit in their class.
- 2. The following is a list of the district exhibits that have been awarded the District Exhibit Cup for the best exhibit in their class.

### HILL 60 FOR THE BRITISH NATION.

#### War Graves Commission to Take it Over.

The following is a list of the district exhibits that have been awarded the District Exhibit Cup for the best exhibit in their class.

### NOTES ON THE EXHIBITS.

#### Expert's Views on the Classes, Their Good Points and Weaknesses.

#### FINE THOROUGHBRED HORSE CLASSES; DISAPPOINTING SHEEP & WOOL; GOOD GIP ENTRIES.

#### Helpful Comment on the Wheat and Coffee Sections.

The judges' comments on the classes which are embodied in the following notes on the principal exhibits, form a valuable guide to the many good points and the few weaknesses of the Show.

In most cases the judges have made suggestions for improvement in the future and helpful comment by exhibitors and visitors on their show experiences, taken through the courtesies of the Standard, will be of great value to the Committee.

### ENCOURAGING REPORTS.

#### HORSE THOROUGHBREDS.

The horse section of the exhibition was one of the most interesting and successful. The entries were of a high standard and the quality of the animals was generally good. The judges were particularly impressed by the thoroughbred classes, which were well represented by a number of fine specimens.

#### SHEEP.

The sheep section of the exhibition was disappointing. The entries were few and the quality was poor. The judges were particularly disappointed by the lack of interest in the classes.

#### DAIRY PRODUCE.

The dairy produce section of the exhibition was well represented. The entries were of a high standard and the quality was generally good. The judges were particularly impressed by the butter and cheese classes.

#### THE CATTLE.

The cattle section of the exhibition was one of the most interesting and successful. The entries were of a high standard and the quality was generally good. The judges were particularly impressed by the beef and dairy classes.

#### THE GOATS.

The goat section of the exhibition was well represented. The entries were of a high standard and the quality was generally good. The judges were particularly impressed by the dairy classes.

## THE SHOW.

### OWNSHIP to the Immense variety of the Exhibits and the impossibility of anyone being able to see all that is of interest in the show.

We express the hope that Nairobi business men will show for a half holiday this afternoon to permit their staffs going in to see the final stages of the Show Programme and Exhibits.

### NAIROBI AREA COMMITTEE

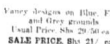
- 1. James Robertson, Secy. for the East Africa Exhibition.
- 2. Lady Milburn's "Just Supper".
- 3. Sir E. D'Almeida's "Just Supper".
- 4. Lady Milburn's "Just Supper".
- 5. Sir E. D'Almeida's "Just Supper".
- 6. Lady Milburn's "Just Supper".
- 7. Sir E. D'Almeida's "Just Supper".
- 8. Lady Milburn's "Just Supper".
- 9. Sir E. D'Almeida's "Just Supper".
- 10. Lady Milburn's "Just Supper".
- 11. Sir E. D'Almeida's "Just Supper".
- 12. Lady Milburn's "Just Supper".
- 13. Sir E. D'Almeida's "Just Supper".
- 14. Lady Milburn's "Just Supper".
- 15. Sir E. D'Almeida's "Just Supper".
- 16. Lady Milburn's "Just Supper".
- 17. Sir E. D'Almeida's "Just Supper".
- 18. Lady Milburn's "Just Supper".
- 19. Sir E. D'Almeida's "Just Supper".
- 20. Lady Milburn's "Just Supper".

## Last Week of Sale.

Further Reductions to make an Outright Clearance.



**FANCY CARDIGANS**  
Vandy Arches on Blue, Pink and other grounds.  
Dress Price, Shs 2/6 each.  
SALE PRICE, Shs 2/1 each.




**MEN'S GOLF HOSE**  
All made in all sizes and colors. Marvellous Value.  
Dress Price, Shs 4/6 each.  
SALE PRICE, Shs 2/9 each.



**MEN'S VESTS**  
White, India Stone, button front, in all sizes.  
Autumning Garments.  
DRESS PRICE, Shs 2/6 each.



**MEN'S TIE**  
Vandy Arches on Blue, Pink and other grounds.  
Dress Price, Shs 2/6 each.  
SALE PRICE, Shs 1/6 each.



**FANVOR BOOTS**  
Pure Wool, Argyle socks.  
Dress Price, Shs 2/6 each.  
SALE PRICE, Shs 1/9 each.



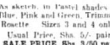
**ROADED MULES**  
As new, in finest shades of Blue, Pink and Green. Trimmed.  
Rear Size 3 and 4 only.  
Dress Price, Shs 2/6 each.  
SALE PRICE, Shs 3/9 each.



**LADIES TENNIS SHOES**  
Specially quality. White Buck, skin Trains Shoe. Oxford with fine canvas sole.  
Dress Price, Shs 1/10 each.  
SALE PRICE, Shs 1/10 each.



**WHITTE CANVAS BAR SHOES**  
White canvas, 4 Bar, Buckskin collar, Fine split sole, with medium-strengthened heel and plain toe.  
Dress Price, Shs 1/10 each.  
SALE PRICE, Shs 1/10 each.



**BLACK GLASS BAR SHOES**  
Split sole, medium height, abraded leather heel.  
Dress Price, Shs 2/6 each.  
SALE PRICE, Shs 1/10 each.



**WHITE CANVAS BAR SHOES**  
White canvas, 4 Bar, Buckskin collar, Fine split sole, with medium-strengthened heel and plain toe.  
Dress Price, Shs 1/10 each.  
SALE PRICE, Shs 1/10 each.



**SPECIAL CLEARING LINE.**  
High Heel, smart pointed toe. Fine top with flared Glass Vamp. Sizes 2 and 4 only.  
ORIGINALLY Shs 6/6 pair.  
TO BE CLEARED AT Shs 2/50 PAIR.

# Whiteaways NAIROBI.

(Continued on page 6).

# It outperformed them all

**F**OR months the hard-driven cars of the Goodyear test fleet had been roaring night and day.

Eighty new treads—eighty separate and individual designs—were being put through their paces on the superb Goodyear SUPERTWIST casing.

Surely the story was being told; surely and unmistakably one tread was steadily outperforming all the other seventy-nine.

That great tread was the sure-footed, long-wearing, quiet-running new-type Goodyear All-Weather pictured here.

Just look at it: see the big, deep-cut, diamond-shaped blocks in the tread's centre, put there for traction and safety.

*Fit these new tyres now, for by reason of certain revolutionary developments in tread design and construction, you will secure vastly greater mileage.*

**Gilfillan & Company, Ltd.**  
DISTRIBUTORS

## GOODYEAR















NOTES ON THE EXHIBITS.

(Continued from page 1.)

The pig class was quite good and... interest is being taken in this class...

The exhibitors were pleased over the amount of damage done to the show...

There was a disappointing small exhibit in the wool class...

There was a disappointing small exhibit in the wool class...

There was a disappointing small exhibit in the wool class...

There was a disappointing small exhibit in the wool class...

There was a disappointing small exhibit in the wool class...

There was a disappointing small exhibit in the wool class...

There was a disappointing small exhibit in the wool class...

Family Responsibilities. The first and second animals were exceptionally fine specimens...

There was a great improvement in the wheat and maize class...

There was a great improvement in the wheat and maize class...

There was a great improvement in the wheat and maize class...

There was a great improvement in the wheat and maize class...

There was a great improvement in the wheat and maize class...

There was a great improvement in the wheat and maize class...

There was a great improvement in the wheat and maize class...

There was a great improvement in the wheat and maize class...

COFFEE. Considering the time of year and season...

COFFEE. Considering the time of year and season...

COFFEE. Considering the time of year and season...

COFFEE. Considering the time of year and season...

COFFEE. Considering the time of year and season...

COFFEE. Considering the time of year and season...

COFFEE. Considering the time of year and season...

COFFEE. Considering the time of year and season...

COFFEE. Considering the time of year and season...

COFFEE. Considering the time of year and season...

COFFEE. Considering the time of year and season...

COFFEE. Considering the time of year and season...

COFFEE. Considering the time of year and season...

COFFEE. Considering the time of year and season...

COFFEE. Considering the time of year and season...

COFFEE. Considering the time of year and season...

COFFEE. Considering the time of year and season...

COFFEE. Considering the time of year and season...

THE 1927 SHOW - A PRACTICAL DEMONSTRATION OF FRIENDSHIP.

(Continued from Page 1.)

Wool. There was a disappointing small exhibit in the wool class...

Wool. There was a disappointing small exhibit in the wool class...

Wool. There was a disappointing small exhibit in the wool class...

Wool. There was a disappointing small exhibit in the wool class...

Wool. There was a disappointing small exhibit in the wool class...

Wool. There was a disappointing small exhibit in the wool class...

Wool. There was a disappointing small exhibit in the wool class...

Wool. There was a disappointing small exhibit in the wool class...

Wool. There was a disappointing small exhibit in the wool class...

Wool. There was a disappointing small exhibit in the wool class...

Wool. There was a disappointing small exhibit in the wool class...

Wool. There was a disappointing small exhibit in the wool class...

Wool. There was a disappointing small exhibit in the wool class...

Wool. There was a disappointing small exhibit in the wool class...

Wool. There was a disappointing small exhibit in the wool class...

Wool. There was a disappointing small exhibit in the wool class...

Wool. There was a disappointing small exhibit in the wool class...

Wool. There was a disappointing small exhibit in the wool class...

Wool. There was a disappointing small exhibit in the wool class...

Wool. There was a disappointing small exhibit in the wool class...

Wool. There was a disappointing small exhibit in the wool class...

Wool. There was a disappointing small exhibit in the wool class...

Wool. There was a disappointing small exhibit in the wool class...

Wool. There was a disappointing small exhibit in the wool class...

Wool. There was a disappointing small exhibit in the wool class...

Wool. There was a disappointing small exhibit in the wool class...

Wool. There was a disappointing small exhibit in the wool class...

Wool. There was a disappointing small exhibit in the wool class...

Wool. There was a disappointing small exhibit in the wool class...

Wool. There was a disappointing small exhibit in the wool class...

AN EXCEPTIONAL BARGAIN. FIRST CLASS COFFEE FARM IN TURBO VALLEY.

20 MILES FROM SOY STATION, AREA 400 ACRES. Excellent stock of farm implements. Machinery cattle, etc.

A Ploughing Demonstration 'Stock Motorplough'

Thursday August 4th. Mr. W. G. Dawson's farm on the main road to Ath-River about 4 miles from Nairobi.

WARNING BEWARE OF IMITATIONS. VOONIA GARDEN TEA (FANNINGS)

When ordering please stipulate FULLY FANNINGS. BLACKLAW & BROWN (Late Mackinnon Bros.)

The B.E.A.P. Building Society and Saving Bank, Limited.

DECLARATION OF A SEVEN PER CENT. DIVIDEND. SHAREHOLDERS are notified that the Annual General Meeting of the Society...

'Sormorant' Portable Cissal Decorator.

This machine is manufactured by Messrs. Richard Garrett & Sons, Limited, Leicester, England. The price of the Decorator with truck is £250. CALL AND SEE THE MACHINE WORKING AT THE SHOW.

NOTICE

The proprietor of the French Ladies and Gents Hairdressing Saloon, Harding Street, opposite the Post Office, has removed to 10, Abchurch Lane, London, E.C. 4.

THE 1927 SHOW - A PRACTICAL DEMONSTRATION OF FRIENDSHIP.

Wool. There was a disappointing small exhibit in the wool class...

Wool. There was a disappointing small exhibit in the wool class...

Wool. There was a disappointing small exhibit in the wool class...

Wool. There was a disappointing small exhibit in the wool class...

Wool. There was a disappointing small exhibit in the wool class...

THE 1927 SHOW - A PRACTICAL DEMONSTRATION OF FRIENDSHIP.

Wool. There was a disappointing small exhibit in the wool class...

Wool. There was a disappointing small exhibit in the wool class...

Wool. There was a disappointing small exhibit in the wool class...

Wool. There was a disappointing small exhibit in the wool class...

Wool. There was a disappointing small exhibit in the wool class...

THE 1927 SHOW - A PRACTICAL DEMONSTRATION OF FRIENDSHIP.

Wool. There was a disappointing small exhibit in the wool class...

Wool. There was a disappointing small exhibit in the wool class...

Wool. There was a disappointing small exhibit in the wool class...

Wool. There was a disappointing small exhibit in the wool class...

Wool. There was a disappointing small exhibit in the wool class...

Special Sedan ... £200
Special Touring ... £250
Standard Touring ... £210
Aluminium Box Body ... £300
Delivered Nairobi.



Progress and Approval

For Dodge Brothers, Inc. 1926 stands as a year of unprecedented progress and success.
In 1925 the sales of Dodge Brothers Motor Vehicles reached the total of 200,000. Yet in 1926, 330,000 were sold—an increase of 70,000 vehicles.

THE OMOND HENRIE (GAAHE), NAIROBI.
F. BUCH, LTD.
KARUM EBRAHIM, KAMPALA and BUROBA

S. FISHER & SIMMONS (E.A.) Ltd.
Victoria Street, NAIROBI.

Miss KATHLEEN BATES A.R.C.M.
RECEIVES PUPILS FOR
PIANO-FORTE—SINGING—HARMONY.
Coaching them as Singers and Instrumentalists.
STUDIO SIXTH AVENUE.
Postal Address, Box 417.

AFRIKAN HANDICRAFT AND ARTISTRY.

GLASS OF CULTURES.
Features of Heire Industries Display.

The Value of Heire Shows To The Masses.

The value of the art and handicraft industries of the African continent is being brought to the attention of the public through the medium of the Heire Industries Display.

The display is a most interesting and instructive one, and it is to be hoped that it will lead to a greater appreciation of the art and handicraft industries of the African continent.

The Heire Industries Display is a most interesting and instructive one, and it is to be hoped that it will lead to a greater appreciation of the art and handicraft industries of the African continent.

The Heire Industries Display is a most interesting and instructive one, and it is to be hoped that it will lead to a greater appreciation of the art and handicraft industries of the African continent.

In regard to currency and power, the paper...
The Treasury...
The Finance...
The Education...
The Health...
The Labour...
The Transport...
The Agriculture...
The Industry...
The Commerce...
The Finance...
The Education...
The Health...
The Labour...
The Transport...
The Agriculture...
The Industry...
The Commerce...

The Treasury...
The Finance...
The Education...
The Health...
The Labour...
The Transport...
The Agriculture...
The Industry...
The Commerce...

The Treasury...
The Finance...
The Education...
The Health...
The Labour...
The Transport...
The Agriculture...
The Industry...
The Commerce...

The Treasury...
The Finance...
The Education...
The Health...
The Labour...
The Transport...
The Agriculture...
The Industry...
The Commerce...

The Treasury...
The Finance...
The Education...
The Health...
The Labour...
The Transport...
The Agriculture...
The Industry...
The Commerce...

T.V.O. POWER KEROSENE.
"BR" THE BRITISH PETROL.

"Palm Tree" KEROSENE.
LONDANI HOTEL.
PREMISES WANTED.
The Haulage & General Transport Co.

OHLSSON'S LION LAGER.
Joyous Sight!
CRUSHED MAIZE.

NOT AN APOLOGY—BUT
AN EXPLANATION—REGARDING
Vauxhall and Pontiac Cars.
We undertake however.
A Car for Every Want and Purse
Vauxhall
Oakland
Pontiac
Chevrolet
G.M.C. Trucks

Prices From £172 f.o.r. Nairobi.
The Motor Mart & Exchange Ltd.,
Nairobi, Nakuru.

POWER JOHN DEERE FARM TRACTOR.
DEPENDABLE. ECONOMICAL. DURABLE.
Price £315
W. H. SEAR (B.E.A. Wagon Works) Ltd.

An Irrefutable Fact.
MORRIS CARS & TRUCKS
MITCHELL COTTS & CO





VISITORS RETURN THANKS.

Appreciation of Efforts Which Have Made the Show a Success.

UGANDA AND KENYA.

Sir W. Gowers on Significance of a New Link.

The significance of the development of the Railway into Uganda and the linking up of the Protectorate with Kenya...

The Governor of Uganda also alluded to the importance of agriculture in the future of East African development...

Disappointed visitors were the guests of the Agricultural and Horticultural Society of Kenya...

After the Local Trade had been opened, Col. Tucker expressed the heart of "The Visitors" with regard to the completed railway...

SIR WILLIAM GOWERS SPEAKS.

"I feel much indebted to you for the opportunity to reply before you in this assembly for the visitors present at the present time...

The announcement of my visit here has a significance apart from a purely personal one...

THIS WEEK SPECIAL SHOW of DRESS MATERIALS.

Silks, Crepes, Marcellinas, Ninons, Tricoline, Georgettes, etc., etc.

AT 15% Reduction off marked prices K. S. Jacobs Ltd.

Entertainments.

The Theatre Royal shows to-night at the Lyric Hall the first of the pictures which have drawn such a large and loyal audience...

PROMENADE CONCERT A BIG SUCCESS.

Varied and Well-balanced Programme.

ORCHESTRA TRIUMPH.

The fine programme composed to-night at the Lyric Hall...

DEADLOCK AT GENEVA NAVAL CONFERENCE.

New British Proposals for Solution of Cruiser Problem.

PROPOSED NEW MAXIMUM OF HALF A MILLION TONS.

Sir A. Chamberlain Believes Disarmament Must Come by Stages.

The British delegates to Geneva have submitted a new and comprehensive scheme of naval restriction...

They suggest a combined total tonnage for cruisers, destroyers and submarines below the age limit for replacement of 500,000 tons...

But the latest reports from Geneva state that a deadlock has occurred.

NO ANGLIO-AMERICAN HOSTILITY.

THE BRITISH DELEGATE'S ASSERTION.

After two hours discussion on the British proposals for the solution of the cruiser problem...

Age Limits. In addition to the main new British proposals for the solution of the cruiser problem...

The following were read down at the conference...

It was further suggested that the following vessels over 600 tons...

British Empire—Four of the "Omaha" type with an armament of 100 tons...

United States—Ten of the "Omaha" type with an armament of 100 tons...

British Empire—Four of the "Omaha" type with an armament of 100 tons...

United States—Ten of the "Omaha" type with an armament of 100 tons...

British Empire—Four of the "Omaha" type with an armament of 100 tons...

United States—Ten of the "Omaha" type with an armament of 100 tons...

British Empire—Four of the "Omaha" type with an armament of 100 tons...

United States—Ten of the "Omaha" type with an armament of 100 tons...

British Empire—Four of the "Omaha" type with an armament of 100 tons...

United States—Ten of the "Omaha" type with an armament of 100 tons...

British Empire—Four of the "Omaha" type with an armament of 100 tons...

United States—Ten of the "Omaha" type with an armament of 100 tons...

British Empire—Four of the "Omaha" type with an armament of 100 tons...

United States—Ten of the "Omaha" type with an armament of 100 tons...

British Empire—Four of the "Omaha" type with an armament of 100 tons...

United States—Ten of the "Omaha" type with an armament of 100 tons...

British Empire—Four of the "Omaha" type with an armament of 100 tons...

ATTENDANCE FIGURES FOR THE FIRST DAY.

Nearly 8,000 People Pass the Barriers.

Table with 2 columns: Category and Attendance. Includes entries for Total attendance at Show on Monday, and sub-categories like ASIAN, NATIVE, and TOTAL.

Just over 1200 motor vehicles (including motor cycles) were counted inside and outside the ground.

It is thought that it may be assumed that the total attendance at the Lyric Hall...

The concert was such a success that the initial venture, should be followed at an early date...

The concert was such a success that the initial venture, should be followed at an early date...

The concert was such a success that the initial venture, should be followed at an early date...

The concert was such a success that the initial venture, should be followed at an early date...

The concert was such a success that the initial venture, should be followed at an early date...

The concert was such a success that the initial venture, should be followed at an early date...

The concert was such a success that the initial venture, should be followed at an early date...

The concert was such a success that the initial venture, should be followed at an early date...

The concert was such a success that the initial venture, should be followed at an early date...

The concert was such a success that the initial venture, should be followed at an early date...

The concert was such a success that the initial venture, should be followed at an early date...

The concert was such a success that the initial venture, should be followed at an early date...

The concert was such a success that the initial venture, should be followed at an early date...

The concert was such a success that the initial venture, should be followed at an early date...

The concert was such a success that the initial venture, should be followed at an early date...

The concert was such a success that the initial venture, should be followed at an early date...

The concert was such a success that the initial venture, should be followed at an early date...

The concert was such a success that the initial venture, should be followed at an early date...

The concert was such a success that the initial venture, should be followed at an early date...

The concert was such a success that the initial venture, should be followed at an early date...

LYRIC HALL

LAST SHOW TO-NIGHT

"The Ten Commandments"

AND FRIDAY, FRIDAY SATURDAY THIS WEEK

Gloria Swanson

"Bluebeard's Eighth Wife"

Special Ten per cent

Reduction for Cash

off all New Goods from 27th July to August 4th

Also Big Lot of Samples and odds to Clear Special Prices

See our Windows for all Latest Goods

Also Stand No. 25 at the Show

Eadies Footwear Ltd.

Matinees: 8-15

Nightly at 8-45

THEATRE ROYAL

TO-NIGHT BOXING AT 8-45

To-Morrow Thursday

Special Repeat Performance of Last Sunday's

Orchestral and Vocal Concert.

NAIROBI SHOW

SAVE TIME & FATIGUE

by coming direct to OUR STAND and seeing ONLY THE BEST.

Studebaker, Erskine Durant A.J.S. B.S.A. Douglas

Brockway Trucks Case Tractors

K. McIvor's Garage Stand No. 8.

THE PRESENTATION OF COUPES WILL TAKE PLACE THIS AFTERNOON AT 4.30 P.M. AND NOT AS PUBLISHED IN THE PROGRAMME.

Several parties have had to be disappointed because it is a pity that the programme is so full...

As a result of the programme, it is a pity that the programme is so full...

As a result of the programme, it is a pity that the programme is so full...

As a result of the programme, it is a pity that the programme is so full...

As a result of the programme, it is a pity that the programme is so full...

As a result of the programme, it is a pity that the programme is so full...

As a result of the programme, it is a pity that the programme is so full...

As a result of the programme, it is a pity that the programme is so full...

As a result of the programme, it is a pity that the programme is so full...

As a result of the programme, it is a pity that the programme is so full...

As a result of the programme, it is a pity that the programme is so full...

As a result of the programme, it is a pity that the programme is so full...

As a result of the programme, it is a pity that the programme is so full...

TUNNEY VS. DEMPSEY.

Return Match for World's Championship.

DATE FIXED.

THE BOXING REVERSAL.

It is announced that Gene Tunney and Jack Dempsey will meet in a return match for the World's Heavyweight Championship...

"Progress of Guardsmen" Class will be judged at 10 a.m. to-day.

seriously. His first note was from Gordon's "Andra Chakra"...

The last item was a selection of jazz by the well-known "Gordon's"...

The greatest credit is due to Mrs. Jones who is producing with far more of the best...

The programme will be held at the Lyric Hall on Friday night...

The very beautiful "Volsa Bona" was entirely marvellous...



# J. R. COX & Co.

Hope to have the pleasure of meeting all their friends at the forthcoming show on August 1st, 2nd and 3rd, where we shall be exhibiting the following:

## LANZ

The famous 22 and 28 h.p. crude oil tractors, which have proved by far the most economical unit in East Africa. Also Lanz cream separators, grinding mills, maize shellers, crude oil engines, all of which offer remarkable value.

## WINGET

The "Bar-Lanchester" Open Drum Concrete Mixer, with guaranteed output. Stone crushers, concrete moulding machines etc.

## SENTINEL

20.50 B.H.P. Portable Steam Engine which gives 50% greater economy in fuel and water and is 50% lighter than competing types of the same power.

The 4-6 ton "Super Sentinel" three-way tipping steam wagon of which over 6,000 are in use in all parts of the world. By far the most economical Heavy transport vehicle.

P.O. Box 81  
ELDORET

P.O. Box 470  
NAIROBI

P.O. Box 28,  
NAKURU

P.O. Box 26,  
KAMPALA

# B. B. A. Saw Mills

MILWA Factory Site: Nairobi  
East River  
Katamaya } Glandis

P.O. Box 321,  
Nairobi

Telephone No. 93

CAMPHOR, FODD, MWANI and BOXWOOD.

Prompt Delivery.  
SPECIAL LARCH CEDAR FLOORING

## Sensational Drop

IN PRICES AT LADHARAM STORES.  
TO SUIT ALL POCKETS

We have just received by last mail 10,000 yards of Dress Material in all Shades and Varieties 7/6 per yard

## Ladharam Stores

Opp Ladies Footwear Govt. Road

## A PLACE OF REFRESHING BEAUTY.

Horticultural Display  
Delight.

### UP-COUNTRY SUCCESSORS

If only for the refreshment and a moment's rest of the exhibitors' activities represented in other parts of the Show, the Horticultural Society was an excellent institution. That there was any such section at all appears to have been a matter of course, and for the same reason undoubtedly there must have appeared in the programme a very good effort. By all the rules of the game it was too much to hope that there would be any spectacular show of flowers; the most remarkable thing (in a material sense) being that the Horticultural Society could have expected without having been led to believe giving a more kindly. This certainly is not the time of the year for flower shows in Kenya and, bearing in mind that fact, the decision in the Horticultural Society was looking ahead of remedying the two months there has been a display of the most beautiful floral material that has ever been shown in the above organization. The Agricultural and Horticultural Society of Kenya already something that has been shown in it and that something in the Horticultural Society quite refreshingly surprising.

### Refreshing Beauty.

No that while the exhibits as a whole were not to be compared with the excellent one thing staged periodically in the Memorial Hall, they did provide quite a fair amount of work for the judges, and, moreover, they afforded a sense of refreshment and rest to the many hundreds of people who were glad to leave their eyes on the floral beauties, after straining those eyes on the more substantial and more material of a purely business character. Most surprising of all in this section, however, was the fact that, before the most interesting display of a very few months ago, the display exhibited by Mr. Durban from Kinangon.

The fruit tree attracted most attention was that on which was

displayed a wonderful variety of flowers, and the Horticultural Society was very good in displaying them in a show. The best of them were also the case with the carter's, caution for up-country.

### Flowering Shrubs.

Lady Ronald Ke-Blair, as President of the Horticultural Society is never tired of urging members to go to some show for flowering shrubs. This is because such plants flourish all the year round, so that, no matter what the season and even if all else fails, something always shows a splash of colour. The President herself is usually best aware of a splash of colour. The shrubs which formed the most noticeable feature of the Horticultural Society were very good for the beginning of August. Christmas trees, arranged in a very good way, and made a very show. There were one or two steady looking acacia trees which were among the best that ever seen in the Horticultural Society. The shrubs of flowers, trees and vegetables were very good. The shrubs were very good for the beginning of August. Christmas trees, arranged in a very good way, and made a very show. There were one or two steady looking acacia trees which were among the best that ever seen in the Horticultural Society.

### Good Vegetables.

It was unusual and refreshing to find in an exhibition staged by the Horticultural Society that the vegetables generally were better than the flowers. This was because vegetables usually are grown in arid land so that it is possible to keep them going long after the flowers are finished. Some of the most interesting were those of the most interesting character. The fruit tree attracted most attention was that on which was

# Latest Arrivals

## Macfarlane Lang's

Assorted Shortbread

## Del Monte

Asparagus Tips (Pine)

## Del Monte

Salmon Steak (1/2 lbs)

# AT

# ELLIOTS

Phone 60. NAIROBI. P.O. Box 174.

## Golfing

KENYA'S MOST POPULAR OUTDOOR GAME IS BEING GROWN IN FAVOR.



OUR STOCKS OF CLUBS AND ALL REQUISITES are reasonable for their comprehensive variety and for the sterling value of every item.

WE HAVE OVER 600 GOLF CLUBS IN STOCK AND THE VARIETY IS INFINITE.

ALSO, BALLS, BALL CLEANERS, TEES, GRIFFPAW, and a special selection of GOLF BAGS.

## MAY & Co.

THE SPORTS HOUSE, NAIROBI.

## Paul Robins

AND HIS New Bohemian Dance Band

PLAYING AT CLAIRMONT

SATURDAY AUGUST 14th AT 9 p.m.

PRICES AS USUAL

# REMINGTON

Our exhibits at The East Africa Show Aug. 1st, 2nd and 3rd, will include the following:

Standard-Noiseless Portable and Adding Typewriters

G. F. All Steel Office Equipment

Gestetner Duplicators

REMINGTON SERVICE.

For the convenience of exhibitors with typewriters at the Showground, we are placing at their disposal, the services of one of our mechanics, who will attend to minor repairs on any make of machine FREE OF CHARGE.

## Remington Typewriter Agency.

GOVERNMENT ROAD, NAIROBI. Phone 25.

Special Discount 10 per cent. FOR CASH ONLY ON ALL OUR GOODS CHEAPEST AND BEST QUALITY HOUSEHOLD UTENSILS, NAIROBI FROM 12.10.26.

## ESMAIL & RAMJEE

Phone 482. Royal Exchange Bldg. (Opp. S. Jacobs) Government Road. NAIROBI.

# MADAME BOWE ET CIE

ARE SHOWING

## MODEL GOWNS

## MILLINERY

## LADIES COATEES, ETC.

AT THE

# NORFOLK HOTEL

## WE STOCK

Always big stock of Provision, Wines, Imported High Quality of Dutch and Indian Cigars, Cigarettes, Sweets, Chocolates, Biscuits, Delicate Bread Dried Fruits in tins and Fruits in Syrup

Also for famous Bouché safe, Rock Salt, Dairy Salt, and Epsom Salt, Linned oil, Methylated Spirit and Turpentine.

Ask for our retail price list to-day.

KANJEE NAR NJEE P.O. Box 307. NAIROBI Govt Road

## LOOK FOR PHUMANSINGH TLOKSINGH

GOVERNMENT ROAD, Box 332, NAIROBI.

During the month of July only, will furnish full double Bedroom Suites

AT 635/- LATER EUROPEAN DECORS

# Theatre. The Show.

BUY YOUR

# CHOCOLATES FRESH

FROM

# TORRES

# KIRKWOOD & Co.

LAND AGENTS, KITALE.

EXTRAORDINARY TERMS OF PAYMENT.

FARM of 700 acres in the Trans Nzoia area, near railway, well developed, brick house, and full farming equipment, for £4,000 payable in 10 years. 600 acres can be put under the plough.

We have over 30,000 acres of choice agricultural land in the Trans Nzoia for sale in blocks of 1,000 acres and more on exceptionally easy terms at £4 per acre, 25% down balance spread over 10 years.

Also 5,000 acres undeveloped, within 5 miles of railway station at Shiga. 50 per acre payable 25% down and balance over 10 years. This property would also be sold in 1,000 acre blocks; rich coffee soil.

## F. P. CONTE

Builder and Contractor, Box 560, NAIROBI.

Specialist in Ornamental concrete work and Reinforced Concrete Work.

Plaster of Paris, Distressing and Mosaic Paving, VENEZIAN STILES

Manufacturer of Artistic Pinned Cement Tiles

Concrete Paving Slabs 18" x 18", 24" x 24"

See Agents for Keys of THE RENOVATED ROSAMETHA former Dressed for Maching. 2' 4" x 8" x 12"

ROSA MATHA

ROSA MATHA

## BIRD'S CUSTARD

For Young of the Field Birds

INSURE

AFRICAN GUARANTEE AND IDENTIFY CO. LTD.

M. D. KAMPE, CHIEF AGENT

Count Chambers, NAIROBI

## MAY & Co.

SPORTS SPECIALISTS.

Ring No. 439:

UKANDA TRANSPORT COY

for Clasp and Bulb Transport under European agreement.

for Post, Pails, Steel, applied as cooperative price

also fuel

SOUND MILES FOR SALE

Ukanda Transport Coy., opposite the "Tombstones"

Restaurant.

P.O. Box 56, Nairobi.

## POSTAGE STAMPS

Purchased for Cash £10.00 to be repaid in 10 years, Postage Stamp. Highest prices paid for all stamps returned mail.

Over thirty years reputation, straightforward dealing. List of prices we pay per post free, no application.

H. ROSS-SHIELDS & Co. 2 Sides Street, London, E.C.2.

**Just Arrived**  
Largest Range of Choice  
**SUITINGS**

ALSO  
STOCKS OF  
**Jaeger**  
**Embassy**  
**Consulate**  
AT  
**AHAMED BROS.**  
Drapers—Outfitters

SPORTS COATS, SHIRTS AND PYJAMAS.  
Hosiery, Scarves, Neckties, Socks, Handkerchiefs, etc.

P.O. Box 254. Bazaar, NAIROBI.  
Phone: 201.

**Foamite Fire Protection**



5 Gallon Model 4  
10 Gallon Engine

**Springett & Overman, Ltd.**  
Telephone: 110/111/112/113  
MOMBASA. Box 100.

**H—O.**  
Quick Cooking Oats  
Make Porridge in  
2 to 3 minutes

Obtainable At:  
**Beliram Parimal & Co.**  
(Established 1900)  
Corner Swamp Road and Government Road,  
Phone 38 NAIROBI P.O. Box 29  
Also P.O. Box 47, MOMBASA

**F. M. BHAIJEE.**  
**HARDWARE MERCHANTS.**

AGENTS FOR:  
WILLIAM GOSSAGE & SONS, Ltd.  
SOAP MANUFACTURERS.  
NEW CONSIGNMENT OF NAVY BLUE  
KENYA FARMERS' ASSOCIATION LTD  
Fresh Stocks of MAIZE and MAIZE MEAL.

P.O. Box 318 Phone 388 Tel. **HARDWARE**  
Indian Bazaar. NAIROBI

**MONEY TO LEND**

SHORT PERIOD LOANS GRANTED.  
BILLS DISCOUNTED  
FINEST CONFIDENCE

Call or Write to the—  
**Kenya Loan & Discount Co. Ltd.**  
1st Floor, Court Chambers, Nairobi. Box 546.  
Established 1921.

**Geo. BLOWERS**  
BUILDING CONTRACTOR, MANUFACTURER AND DIRECT IMPORTER.  
P.O. Box 259, Sadler Street, NAIROBI.  
Tel. Add. "Concrete", Phone: Work 260, House 420.  
CASH WITH ORDER.



Windows, glass and doors, with ironmongery, painted and stained, (Empire) 1/11/11, 1/12/11, 1/13/11, 1/14/11, 1/15/11, 1/16/11, 1/17/11, 1/18/11, 1/19/11, 1/20/11, 1/21/11, 1/22/11, 1/23/11, 1/24/11, 1/25/11, 1/26/11, 1/27/11, 1/28/11, 1/29/11, 1/30/11, 1/31/11, 1/32/11, 1/33/11, 1/34/11, 1/35/11, 1/36/11, 1/37/11, 1/38/11, 1/39/11, 1/40/11, 1/41/11, 1/42/11, 1/43/11, 1/44/11, 1/45/11, 1/46/11, 1/47/11, 1/48/11, 1/49/11, 1/50/11, 1/51/11, 1/52/11, 1/53/11, 1/54/11, 1/55/11, 1/56/11, 1/57/11, 1/58/11, 1/59/11, 1/60/11, 1/61/11, 1/62/11, 1/63/11, 1/64/11, 1/65/11, 1/66/11, 1/67/11, 1/68/11, 1/69/11, 1/70/11, 1/71/11, 1/72/11, 1/73/11, 1/74/11, 1/75/11, 1/76/11, 1/77/11, 1/78/11, 1/79/11, 1/80/11, 1/81/11, 1/82/11, 1/83/11, 1/84/11, 1/85/11, 1/86/11, 1/87/11, 1/88/11, 1/89/11, 1/90/11, 1/91/11, 1/92/11, 1/93/11, 1/94/11, 1/95/11, 1/96/11, 1/97/11, 1/98/11, 1/99/11, 1/100/11.

**CONCRETE BLOCKS.**  
BUY FROM A LONG ESTABLISHED FIRM.  
All Blocks of a Guaranteed Standard

SIZES: 24" x 12" x 6" ..... Shgs. 1/50 each  
24" x 12" x 4" ..... Shgs. 1/- each  
LESS 10 per cent. for cash with order.

Special Sizes Made to Order.

Note.—We cast anything in Concrete to order.  
LET US QUOTE YOU  
QUARRY OWNERS  
Ballast Machine Breakers and screened to size, with Dust out.

SIZES: 8", 10", 12", 14", 16", 18", 20", 22", 24", 26", 28", 30", 32", 34", 36", 38", 40", 42", 44", 46", 48", 50", 52", 54", 56", 58", 60", 62", 64", 66", 68", 70", 72", 74", 76", 78", 80", 82", 84", 86", 88", 90", 92", 94", 96", 98", 100".

and special hard chippings for Granite work

**AGRICULTURAL SHOW**  
AUG. 1st, 2nd, 3rd.

**COFFEE MACHINERY**  
BY  
**Wm. McKinnon & Co. Ltd., Aberdeen.**

will be shown on **STAND 515** Coffee Section  
and will include,

DRUM PULPERS. DISC PULPERS. JAMAICA PULPERS. BIJOU PULPERS. REPASSER PULPERS. SLUICE GATES.

DRAINING PLATES. WASHERS. EJECTORS for wet coffee. CENTRIFUGAL PUMPS for wet coffee. HULLERS. HAND SHELLERS.

Scale Model Dryers  
Working Scale Model of Complete Coffee Factory.  
Hulling Demonstrations

Coffee planters and curers especially from up country are cordially invited to discuss factory matters with Mr. Davidson.

Sole Agent in Kenya.  
**A. N. DAVIDSON.**  
National Building, (Box 456) Nairobi.

**PRICE**

**SPEED POWER COMFORT**



**LOW IN PRICE HIGH IN EFFICIENCY**

On view at our stand at the  
**Nairobi Agricultural Show**  
The Super Sports Model E  
With two Port Cylinder HEAD

Passed Test to 20 h.p. Capable of 40 to 50 M.P.H.  
FULL STOCKS SPARES ON HAND.

**J. R. Cox & Co.**  
P.O. Box 51, ELDORET. P.O. Box 670, NAIROBI. P.O. Box 28, NAKURU. P.O. Box 250, KAMPALA.

**MONO**  
**Jam Containers**  
COMPLETE WITH LIDS.



1 lb. SIZE.  
Shgs. 2/60 per Doz.  
STANDARD STATIONERY STORES, NAIROBI.

**LONG JOHN**



DISTRIBUTORS  
D. KAPTEIN & CO.

The **"BELL INN"**  
(on Main Road) **NAIVASHA**

1ST CLASS ACCOMMODATION.  
EVERY COMFORT AND CONVENIENCE  
CLEANLINESS STUDIED, CATERING A SPECIALITY.  
SATISFACTION GUARANTEED.

The  
**Salisbury Hotel**  
Nairobi

Phone 166. P.O. Box 509.

**Just Arrived**  
A DESCRIPTIVE CATALOGUE OF SOME OF THE  
Common Trees and Woody Plants  
in  
Kenya Colony.

2 BATTISCOMBE, F.L.S.  
(with 44 illustrations.) PRICE: 10/- (Posted) 10/7 1/2

**Standard Stationery Stores**  
Sixth Avenue NAIROBI.









Heston THE WORLD'S CHAMPION AMMUNITION. SHAW & HUNTER. A. HOGG, Mutus Hd'g's, NAIROBI.

1. Cleanliness of the primer... 2. Longer life for the barrel... 3. Better resistance to corrosion... 4. Greater uniformity in operating the rifle.

FOR FARM IMPLEMENTS OF ALL DESCRIPTIONS OF THE BEST BRITISH MAKE.

J. W. Milligan & Co. You need go no further than J. W. Milligan & Co. P. O. Box 148. NAIROBI. Harding St.

Charles Ware. TRUST ACCOUNTANTS. P. O. Box 150. NAIROBI. Please note. Will clients who have not settled kindly do so immediately.

To all Settlers With the advent of coffee planting, TIME IS MONEY TO YOU. HAVE YOURSELF AND YOUR TIME BY BUYING A NEW IMPERIAL MOTOR CYCLE.

Hunter & Simmons. FURTHER ACCOUNTANTS. "Estate" NAIROBI. P. O. Box 65, NAIROBI.

BOOK OPEN ON BRIGHTON CUP (Wednesday) Durban Stirrup Cup (Saturday)

Cricket THE CRICKET SEASON OPENS IN AUGUST. WOODLEY'S SELECTION OF BATS BY THE BEST MAKERS. ALSO BAILS, STUMPS, PADS, BATTING AID, W. G. GLOVES, MATTING WICKETS, PRACTICE NETS, BASH SHIRT, BOOTS.

MAY & Co THE SPORTS HOUSE, NAIROBI.

THE SPORTS PAGE

COUNTY CRICKET. ("E. A. Standard" Special Daily Service) THE ISLET. Mrs. Irvine Obtains Highest Aggregate.

Western Province Wins the Currie Cup. AM UNDEFEATED SIDE. REMAINING REVOLVER. The Kania High meeting closed on Monday afternoon after a most successful week-end.

REMAINING REVOLVER. The Kania High meeting closed on Monday afternoon after a most successful week-end.

Local Rugby. A TRIAL MATCH FOR SATURDAY. The following High team has been selected to play on Saturday.

Local Rugby. A TRIAL MATCH FOR SATURDAY. The following High team has been selected to play on Saturday.

Local Rugby. A TRIAL MATCH FOR SATURDAY. The following High team has been selected to play on Saturday.

Local Rugby. A TRIAL MATCH FOR SATURDAY. The following High team has been selected to play on Saturday.

Local Rugby. A TRIAL MATCH FOR SATURDAY. The following High team has been selected to play on Saturday.

Local Rugby. A TRIAL MATCH FOR SATURDAY. The following High team has been selected to play on Saturday.

Local Rugby. A TRIAL MATCH FOR SATURDAY. The following High team has been selected to play on Saturday.

Local Rugby. A TRIAL MATCH FOR SATURDAY. The following High team has been selected to play on Saturday.

Local Rugby. A TRIAL MATCH FOR SATURDAY. The following High team has been selected to play on Saturday.

Local Rugby. A TRIAL MATCH FOR SATURDAY. The following High team has been selected to play on Saturday.

Local Rugby. A TRIAL MATCH FOR SATURDAY. The following High team has been selected to play on Saturday.

Local Rugby. A TRIAL MATCH FOR SATURDAY. The following High team has been selected to play on Saturday.

Local Rugby. A TRIAL MATCH FOR SATURDAY. The following High team has been selected to play on Saturday.

Local Rugby. A TRIAL MATCH FOR SATURDAY. The following High team has been selected to play on Saturday.

Local Rugby. A TRIAL MATCH FOR SATURDAY. The following High team has been selected to play on Saturday.

Local Rugby. A TRIAL MATCH FOR SATURDAY. The following High team has been selected to play on Saturday.

DO YOU REQUIRE A WATCH? THEN GO TO THE MAN WHO KNOWS HIS BUSINESS. GENT'S SILVER-WRIST WATCH. Silver from 42/6 to 80/6. Gold 100/6 to 200/6.

LADY'S WRIST WATCH. Silver from 42/6 to 80/6. Gold 100/6 to 200/6.

WISE DOVE. By Chaucer, out of Olive Branch, will stand at a few of £10 this season.

Nairobi Polo. RESULTS OF THE CUP FINALS. The following are the results of the finals in the Currie Cup and Currie Cup, played on Sunday.

Kynoch and Eley. A good gun deserves a good cartridge. Kynoch and Eley. A good gun certainly deserves a good cartridge.

Kynoch and Eley. A good gun certainly deserves a good cartridge.

"Fleet Foot" Tennis Shoes. Designed for the strenuous modern game, giving ample protection and support.

Kensitas. Obtainable at every store in Kenya at 2/50 per Tin of 50 or 50 cents per Packet of 10.

THE EASTERN AFRICA SHOW. AT NAIROBI TO-DAY. THE SHOW OF SHOWS. BRING THE CHILDREN TO SEE THE AMUSING EVENTS IN THE MAIN RING EVERY AFTERNOON.