

GUARANTEED THE LARGEST CIRCULATION OF ANY NEWSPAPER IN KENYA, UGANDA, TANGANYIKA AND ZANZIBAR.

£1,000 FREE INSURANCE

WITH THE AFRICAN GUARANTEE AND INDEMNITY Co., Ltd.—(See Advertisement on page 2.)

KENYA'S NEWSPAPER.

THE EAST

Price 50 Cents.

African Standard

MOMBASA TIMES & UGANDA ARGUS.

With which
is incorporated **THE LEADER.**

The Oldest Established Newspaper Published in Kenya and Uganda.

Official Organ of the Royal R. A. Automobile Association, Hertfordshire Society of Kenya, Etc.

Price 50c per annum, Postage Extra, 50c
Printed in KenyaNo. 2037. REGISTERED AT THE GENERAL POST
OFFICE AS A NEWSPAPER.

NAIROBI, SATURDAY, NOVEMBER 5, 1927.

WHAT FORD IS DOING**FORD IS DOUBLING HIS PLANT****To Deal with the most Colossal Production
the World has ever known**

AND

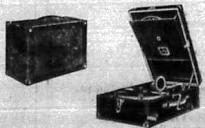
**Spare parts for the present model T will continue to be
manufactured for 10 years***The Service Company Limited.*

NAIROBI and NAKURU.

**"GREATEST
ARTISTES."****"FINEST
RECORDING."****"HIS MASTER'S VOICE."****Against all Comers.**

At the recent International Music Exhibition held at Geneva, "H.M.V." Machines gained the "Hors Concours"—the supreme honour in the Gramophone section.

"H.M.V." Productions—both machines and records, are outstandingly above other makes, and the improvements introduced during the last two years in methods of recording and reproduction has brought the H.M.V. Gramophone from the range of a Talking Machine to that of a musical instrument whose claims are admitted by the greatest modern musical authorities.



Portable Model No. G 101.—Beyond question the finest portable machine on the market in finish, quality of reproduction and convenience. Size when closed 11½ x 5 3/8 x 14½ inches.

Other Table and Cabinet Models in Stock.

STACOBS
LIMITED**The "New" Portable**

"With the new Portable Model you can listen to the world's greatest singers, finest orchestras, newest dances, in your own home or in camp. It takes up less room in a car than a chop box and adds to the enjoyment of a picnic or a wayside lunch. There is a clip or holder for each movable part and no danger from jolting or bumping. The Portable is fitted with the same sound box and tone arm as the most expensive models and will give the same high quality of reproduction.

MOMBASA TIMES & UGANDA ARGUS. THE LEADER. With which it is published. Official Organ of the Royal A. S. Automobile Association, Motorist's Society of Kenya, etc.

No. 2007 REGISTERED AT THE GENERAL POST OFFICE AS A NEWSPAPER. NAIROBI, SATURDAY, NOVEMBER 5, 1927. PAID BY POST OFFICE ORDER NO. 1021 GREENSB. 1927.

MISCELLANEOUS ADVERTISEMENTS

The Clan Line. Limited. The Ellerman Lines, Limited The Harrison Lines.

Corporation & Co., Ltd., The "B" Line Ltd. and The "C" Line Ltd., Liverpool. HOMEWARDS TO LIVERPOOL (AND GLASGOW WHEN SUFFICIENT INDUMENTS OFFER).

THE AFRICAN MERCHANTE CO. LTD.

Reliable Agents in London. LONDON BRITISH EXPORT BUYER with special facilities. Separate Department for buying every class of goods.

Keymer Son & Co. Importers of Goods. 10, Abchurch Lane, London, E.C. 4. Cable: KEYMER LONDON.

FOR SALE. British Warran, each 50/-; Milk Cans, per doz. 10/-; Pulpine Bags, per doz. 10/-; etc.

FOR SALE. 1000 yds. of 1/2 inch galvanized iron sheet. 1000 yds. of 1/4 inch galvanized iron sheet.

DEATHS. CORPE.—On the 29th September in England, Anthea, beloved only daughter of Walter and Barbara West of Hery's Bridge, Tring, Herts.

THANKS. "AUNTIE"—Mr. and Mrs. W. H. E. Hodge beg to thank all their friends who have condescended with them in the great loss they have sustained by the death of their only daughter, Anthea.

NOTICE. ONE Chain Hoop, between 1000 yds. Big size, and 1000 yds. Small size, Collier, G.D. No. 100.

NOTICE. THE PREMIER LADYBEE HOTEL, 10, Abchurch Lane, London, E.C. 4.

MESSAGERIES MARITIMES. FRENCH MAIL STEAMERS. The Quickest Route to London by Mail from Marseilles in 11 1/2 hours.

SAILINGS TO MARSEILLES. On or about: "General Taylor" (R.M.S.) November 13; "General Taylor" (R.M.S.) November 20; "General Taylor" (R.M.S.) November 27.

MESSAGERIES MARITIMES, KILINDINI. Phone 67. Telegraphic Address: "MESSAGERIES". P. O. Box 17, Kampala.

DEUTSCHE OST-AFRIKA LINIE (GERMAN AFRICA SERVICE).

Four Services of Turkish Steamers from Hamburg—Southampton round Africa, taking Port, Swaziland, East Coast, Mozambique, Bechuanaland, Rhodesia and Natal. Attention is specially drawn to the exceptionally good Third Class accommodation.

SAILINGS FROM MOMBASA TO HAMBURG. VIA SEPE CANAL. VIA CAPE.

Table with columns for ship names (e.g., ILANDA, ADOLPH WORMANN), departure dates, and destinations (e.g., 4th Nov., 2nd Dec.).

Cargo Steamers carry a limited number of cabin passengers. (45 2nd class "P" rate). SAILORSHIP TO ALGERIA. 18 days to Genoa. 18 days to Marseilles. 22 days to Southampton.

DALEGY & Co., Ltd., Eldoret. ROUSTEAD & OLARBEK, Ltd. Mombasa, CARL JUSTUS, Njoro, and NAKURU DISTRICT, and Deutsche Ost-Afrika-Linie, General Agency, Cable: OSTAFRIKA, P. O. Box 216, Mombasa.

Compagnia Italiana Transatlantica.

LAST AFRICA PASSENGER SERVICE with vast fleet of burning turbo steamers de luxe. The most elegant and comfortable steamers in the East Africa run 17 to 21 to NAPLES. 19 days to GENOVA.

SAILINGS FROM KILINDINI FOR GENOA: S.S.F. CRISPI 1st Dec. S.S.F. CRISPI 1st March. S.S.F. MAZZINI 1st January. S.S.F. MAZZINI 1st March.

All outside rooms, well appointed cabins, fresh running water in all cabins and bath. Thermomax cooling system throughout the steamer. RADIO loud speakers and perfect high-class GYMNASTICGYM in all classes every evening. Deck Games, Bar, etc.

HAVERI BAGGAGE labelled and booked on board and despatched promptly by sea from Port Said to London, if required. Returns within one year. 20% Reduction. Returns within two years. 15% Reduction. Considerable premium on baggage and other dependants. GENOA TO LONDON BY RAIL & BOAT. Railway Tickets to Paris and London obtainable here.

MOMBASA AGENTS: Messrs. GIBSON & CO., Ltd., 10, Victoria Park, Dec. 20, 1927. KILINDINI AGENTS: Messrs. GIBSON & CO., Ltd., 10, Victoria Park, Dec. 20, 1927.

THE EAST AFRICAN STANDARD WEEKLY EDITION

For sale by the Editor. MOMBASA TIMES & UGANDA ARGUS, 10, NAIROBI, KENYA, U.G.A.

Small Advertisements. Advertisements are accepted only on payment in advance. DOMESTIC ARRANGEMENTS: Births, marriages, and deaths.

FOR SALE. THE change the advertisement in this column is 1s. for a line with 10 words, or a fraction of a line with a minimum of 4.

FOR SALE.

BUYER, especially well equipped for both East African conditions, at wholesale rates to settling in a new country.

BUYER, especially well equipped for both East African conditions, at wholesale rates to settling in a new country.

BUYER, especially well equipped for both East African conditions, at wholesale rates to settling in a new country.

FOR SALE.

BUYER, especially well equipped for both East African conditions, at wholesale rates to settling in a new country.

BUYER, especially well equipped for both East African conditions, at wholesale rates to settling in a new country.

BUYER, especially well equipped for both East African conditions, at wholesale rates to settling in a new country.

FOR SALE.

BUYER, especially well equipped for both East African conditions, at wholesale rates to settling in a new country.

BUYER, especially well equipped for both East African conditions, at wholesale rates to settling in a new country.

BUYER, especially well equipped for both East African conditions, at wholesale rates to settling in a new country.

FOR SALE.

BUYER, especially well equipped for both East African conditions, at wholesale rates to settling in a new country.

BUYER, especially well equipped for both East African conditions, at wholesale rates to settling in a new country.

BUYER, especially well equipped for both East African conditions, at wholesale rates to settling in a new country.

BUYER, especially well equipped for both East African conditions, at wholesale rates to settling in a new country.

BUYER, especially well equipped for both East African conditions, at wholesale rates to settling in a new country.

BUYER, especially well equipped for both East African conditions, at wholesale rates to settling in a new country.

BUYER, especially well equipped for both East African conditions, at wholesale rates to settling in a new country.

BUYER, especially well equipped for both East African conditions, at wholesale rates to settling in a new country.

BUYER, especially well equipped for both East African conditions, at wholesale rates to settling in a new country.

THE "TEAPOT DOME" OIL SCANDAL.

Private Detectives and Jurymen.

(TELEGRAPH SERVICE AGENCY.) Washington, November 4. An American jury is sitting in the breaking out of the "Teapot Dome" oil scandal.

LABOUR PARTY GAINS GROUND.

Success in Municipal Elections.

(TELEGRAPH SERVICE AGENCY.) London, Nov. 4. Big Labour gains are shown as a result of the Municipal elections held yesterday in over 800 cities and boroughs in England and Wales.

CLOSER RELATIONS BEING CONSIDERED.

Four Main Schemes Being Considered.

The Government of Kenya is now considering four main schemes for the settlement of the white settlers in Kenya. A long and explanatory statement was made by the Minister of Lands in the Legislative Council on Tuesday.

NOTICE

At the desire of His Majesty The King a Two Minutes silence will be observed throughout the British Empire commencing at 11 a.m. on November 11th.

- 1. His Majesty The King.
2. His Majesty The Queen.
3. His Majesty The Prince of Wales.
4. His Majesty The Duke of York.
5. His Majesty The Duke of Gloucester.
6. His Majesty The Duke of Kent.
7. His Majesty The Duke of Devonshire.
8. His Majesty The Duke of Cornwall.
9. His Majesty The Duke of Edinburgh.
10. His Majesty The Duke of Windsor.

M. J. O. W. Hope.

A reader of the East African Standard who contributed a personal opinion on the late Mr. J. O. W. Hope, supported a suggestion that the memory of Mr. Hope should be commemorated by a public ceremony at Nairobi or near as possible on the following line in the local African.

- 1. His Majesty The King.
2. His Majesty The Queen.
3. His Majesty The Prince of Wales.
4. His Majesty The Duke of York.
5. His Majesty The Duke of Gloucester.
6. His Majesty The Duke of Kent.
7. His Majesty The Duke of Devonshire.
8. His Majesty The Duke of Cornwall.
9. His Majesty The Duke of Edinburgh.
10. His Majesty The Duke of Windsor.

POLITICAL EXCITEMENT IN MOMBASA.

Nomination of Substitute in Legislative Council.

(STANDARD CORRESPONDENT.) Mombasa, Oct. 22. For a time, because of the possibilities of a by-election in the Legislative Council in Mombasa, the Hon. Mr. O. G. M. Morrison has been a member of this week and, as he was obliged to resign, he was replaced by Mr. Morrison to take his place in the Council.

TO STOP YOUR ACHE & PAINS

SIMPLY USE

SLOAN'S FAMILY LINIMENT advertisement with image of a person and text describing its benefits for various ailments.

The Russian Spy Trials.

EMPLOYMENT BY BRITAIN DENIED.

The death sentence on the Russian spies and their alleged accomplices, Kopylov, Kozlov, and others, has been carried out.

'I' A Standard' Report on Cable Service.

Lord Leverhulme.

(STANDARD CORRESPONDENT.) Marlborough, Nov. 2. Lord Leverhulme is expected to leave today for the Victoria Falls, after which he will proceed to the African and back to London.

Empire Trade.

USE OF AUSTRALIAN GOODS IN BRITAIN.

(BY WIRELESS.) Mr. Ruggly, October 31. Mr. Amery, Secretary of State for the Colonies, has conferred with the Chief Secretary on the subject of the use of Australian goods in Britain.

Ex-Minister on Trial.

PUBLISHED SECRETS OF ETHIOPIA.

(By WIRELESS.) The trial has opened here of Mr. H. H. Johnston, Minister in British, who is charged with disclosing the secrets of Ethiopia by publishing in the interests of his country.

The "Mikado"

SUCCESSFUL END TO WEEK'S RUN.

The "Mikado" concluded a brilliant week on Saturday with a performance which was remarkable for the quality of those taking part in it and the enthusiasm of the audience.

Native Cruelty.

Those who are deeply concerned in the welfare of the African and in his character on which there may be placed a heavy burden.

Those who are deeply concerned in the welfare of the African and in his character on which there may be placed a heavy burden, should be interested in the news that a native woman was reported to have been killed by her husband.

Annual Stocktaking Sale.

Commences October 28th. Closes November 12th.

Table listing various goods for sale including flour, sugar, and other provisions with prices.

Wireless License.

Are Old Dogs.

Returned from Zeas.

Relief Traffic.

Relief Traffic.

Relief Traffic.

Relief Traffic.

Relief Traffic.

Relief Traffic.

Relief Traffic.

Relief Traffic.

Relief Traffic.

Relief Traffic.

Relief Traffic.

Relief Traffic.

Relief Traffic.

Relief Traffic.

Relief Traffic.

Relief Traffic.

Relief Traffic.

Relief Traffic.

Relief Traffic.

Relief Traffic.

Relief Traffic.

Relief Traffic.

Relief Traffic.

Relief Traffic.

Relief Traffic.

Relief Traffic.

Relief Traffic.

Relief Traffic.

Relief Traffic.

Relief Traffic.

Relief Traffic.

Relief Traffic.

Relief Traffic.

Relief Traffic.

Relief Traffic.

Relief Traffic.

Relief Traffic.

Relief Traffic.

Relief Traffic.

Relief Traffic.

Relief Traffic.

Relief Traffic.

Relief Traffic.

Relief Traffic.

Relief Traffic.

Relief Traffic.

Relief Traffic.

Relief Traffic.

Relief Traffic.

Relief Traffic.

Relief Traffic.

Relief Traffic.

Relief Traffic.

Relief Traffic.

Relief Traffic.

Relief Traffic.

Relief Traffic.

Relief Traffic.

Relief Traffic.

Relief Traffic.

SLOAN'S FAMILY LINIMENT advertisement with image of a person and text describing its benefits.

KILLS PAIN advertisement with image of a person and text describing its benefits.

EADIES advertisement for shoe stocktaking sale with list of goods and prices.

EADIES advertisement for shoe stocktaking sale with list of goods and prices.

EADIES advertisement for shoe stocktaking sale with list of goods and prices.

EADIES advertisement for shoe stocktaking sale with list of goods and prices.

RAILWAY FINANCE AND RATE REDUCTIONS.

Members of InterColonial Council Meet Nairobi Chamber.

FUTURE DEFICITS FORECASTED.

Further light was cast on the position of Railway finance and the freight rates of a meeting of the Nairobi Chamber of Commerce which was addressed by the two Kenya unofficial members of the InterColonial Railway Council.

RECLASSIFICATION OF RATES DESIRABLE.

Uganda Railway legislation, which provides for extensions of main line and branch lines in favour of which your local representatives have all others voted, and no objection will question the need for such extensions or otherwise, which so heavy and rapidly increasing traffic conditions stand up in the face of.

The position of the InterColonial Railway Council is the subject of an interesting discussion at the last meeting of the Nairobi Chamber of Commerce which was addressed by the two Kenya unofficial members of the InterColonial Railway Council.

As regards the "enormous increase" in railway rates, the President described them as the most serious and widespread view that the Railway Chamber of Commerce has ever expressed.

As regards the "enormous increase" in railway rates, the President described them as the most serious and widespread view that the Railway Chamber of Commerce has ever expressed.

As regards the "enormous increase" in railway rates, the President described them as the most serious and widespread view that the Railway Chamber of Commerce has ever expressed.

As regards the "enormous increase" in railway rates, the President described them as the most serious and widespread view that the Railway Chamber of Commerce has ever expressed.

Kidney Warnings.

"Beware! A dull, aching pain in the back after any exertion, or a sudden vertigo when straining, possibly, if not the first indication of serious kidney weakness & disease, are warning signs of kidney trouble, and of liver spots."

Always send Dr. J. J. ...

RAILWAY FINANCE AND RATE REDUCTIONS.

(Continued from page 12)

other sources were being imported, and the great saving over the situation in Working Reproduction this year was to some extent anticipated on the expenditure incurred on the railway.

Looking to the Future. Mr. E. H. Clarke anticipated the position of the Nairobi Chamber of Commerce which was addressed by the two Kenya unofficial members of the InterColonial Railway Council.

As regards the "enormous increase" in railway rates, the President described them as the most serious and widespread view that the Railway Chamber of Commerce has ever expressed.

As regards the "enormous increase" in railway rates, the President described them as the most serious and widespread view that the Railway Chamber of Commerce has ever expressed.

As regards the "enormous increase" in railway rates, the President described them as the most serious and widespread view that the Railway Chamber of Commerce has ever expressed.

As regards the "enormous increase" in railway rates, the President described them as the most serious and widespread view that the Railway Chamber of Commerce has ever expressed.

Don't Neglect Your Skin!



Here are some of the many cases which the refined Zam-Buk cream has cured.

SORENESS, spots and chafing are all signs of the skin in losing its invisible oil-bath supplied from glands inside the tissues.

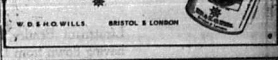
Zam-Buk Reaches The Inner Tissues. Zam-Buk is so highly refined that it is readily absorbed by the pores and is brought to the glands.

The World-Famed Natural Healer



MADE IN ENGLAND

GOLD FLAKE CIGARETTES



GET YOUR BLOOD HEALTHY & IMPROVED. VETARZO BLOOD MEDICINE. VETARZO BRAIN AND NERVE FOOD.

Cooper's Improved Cattle Dip

Stands alone as the one and only PERFECT preparation for ridding CATTLE of

Ticks

killing Lice, eradicated Mange and protecting the herd against other harmful parasites and organisms.

OFFICIALLY APPROVED BY 46 GOVERNMENTS.

PRICES - 1 Quart, 3s. 2/6; 1 Gallon, 5s. 11/6; 5 Gallons, 25s. 0/0.

For hand-dipping COOPER'S CATTLE TICK GREASE

Full information on these two preparations from the Sole Distributors Agents for Kenya and Uganda.

BULLOWS & ROY, Ltd., P.O. Box 2, NAIROBI. Stocks held in all districts.

Geo. BLOWERS

BUILDING CONTRACTOR, MANUFACTURER AND DIRECT IMPORTER.

Phone: 360

CASH WITH ORDER.

100, 200, 300, 400, 500, 600, 700, 800, 900, 1000

100, 200, 300, 400, 500, 600, 700, 800, 900, 1000

100, 200, 300, 400, 500, 600, 700, 800, 900, 1000

100, 200, 300, 400, 500, 600, 700, 800, 900, 1000

100, 200, 300, 400, 500, 600, 700, 800, 900, 1000

100, 200, 300, 400, 500, 600, 700, 800, 900, 1000

100, 200, 300, 400, 500, 600, 700, 800, 900, 1000

100, 200, 300, 400, 500, 600, 700, 800, 900, 1000

100, 200, 300, 400, 500, 600, 700, 800, 900, 1000

100, 200, 300, 400, 500, 600, 700, 800, 900, 1000

100, 200, 300, 400, 500, 600, 700, 800, 900, 1000

100, 200, 300, 400, 500, 600, 700, 800, 900, 1000

100, 200, 300, 400, 500, 600, 700, 800, 900, 1000

100, 200, 300, 400, 500, 600, 700, 800, 900, 1000

100, 200, 300, 400, 500, 600, 700, 800, 900, 1000

100, 200, 300, 400, 500, 600, 700, 800, 900, 1000

100, 200, 300, 400, 500, 600, 700, 800, 900, 1000

100, 200, 300, 400, 500, 600, 700, 800, 900, 1000

100, 200, 300, 400, 500, 600, 700, 800, 900, 1000

100, 200, 300, 400, 500, 600, 700, 800, 900, 1000

100, 200, 300, 400, 500, 600, 700, 800, 900, 1000

100, 200, 300, 400, 500, 600, 700, 800, 900, 1000

100, 200, 300, 400, 500, 600, 700, 800, 900, 1000

100, 200, 300, 400, 500, 600, 700, 800, 900, 1000

100, 200, 300, 400, 500, 600, 700, 800, 900, 1000

100, 200, 300, 400, 500, 600, 700, 800, 900, 1000

FOR CEILINGS & WALLS



"ESEX" BOARD is a strong, rigid, fibre board for ceilings and walls, being quite unaffected by vibration, makes sound uncrackable ceilings and pleasing panelled walls.

ESSEX BOARD

MADE IN BRITAIN

AGENTS FOR KENYA: KETTLES, ROY LIMITED, NAIROBI.

STOCKISTS: F. M. BHAIJE NAIROBI

The "Woods Inn" CAMP, Stone

CONQUER COLDS & CATARRH

NOSTROLINE

MADE IN BRITAIN

AGENTS FOR KENYA: KETTLES, ROY LIMITED, NAIROBI.

STOCKISTS: F. M. BHAIJE NAIROBI

The "Woods Inn" CAMP, Stone

CONQUER COLDS & CATARRH

NOSTROLINE

MADE IN BRITAIN

AGENTS FOR KENYA: KETTLES, ROY LIMITED, NAIROBI.

STOCKISTS: F. M. BHAIJE NAIROBI

HESS'S

Do You Drive WITH CONFIDENCE?

It is only when you drive with confidence that you experience to the full the joys of motoring. Safety in motoring is imperative and depends largely on Tyre Stability.

Stability in tyres is attained only through Standard Quality, such as is built into every ROYAL CORD tyre made by the United States Rubber Company—the world's largest growers and manufacturers of rubber.

ROYAL CORD tyres are built of Latex-treated Web Cord, by the flat band method, and all the great resources of the Company, together with everything engineering skill has been able to devise, have been used to produce a tyre worthy of the Organisation behind it.

Just as the Bridge Engineer builds with a factor of safety over and above the necessary carrying capacity, so do United States Rubber Company tyre Engineers build ROYAL CORDS. The result is a tyre of extreme strength and flexibility, which will properly support and cushion your car and give maximum service at minimum cost.

Put ROYAL CORDS on your car with confidence. THEY WILL SERVE YOU WELL.

Every Royal Cord Tyre bears the warranty of the UNITED STATES RUBBER COMPANY

ROYAL CORD TYRES

SOLE REPRESENTATIVES FOR KENYA AND UGANDA

GARR, LAWSON

& CO.,
NAIROBI
AND
KAMPALA



ANOTHER TRIUMPH



Lieutenant Bentley has reached Cape Town having flown from LONDON via Kisumu in his de HAVILLAND MOTH light plane on ordinary SHELL MOTOR SPIRIT.

The same that you can buy anywhere in Kenya, Uganda and Tanganyika.

RAILWAY FINANCE AND RATE REDUCTIONS.

(Continued from page 11.)

Mr. Clarke replied that the next five years' estimates were based on the previous five years.

Colonel Tucker requested the explanation of the figures which had been so unexpectedly surplus this year. In addition, other rates had been reduced £200,000, compared with £200,000 and any further reduction was not presented. He also explained in detail the effect of the decision regarding Post interest upon the rate of the Railway in 1926. He pointed out that while the Rail-Port could charge fairly by weight and partly on an ad valorem basis.

The Chairman asked for advice as to what the Chamber should do when a strong case for a rate reduction is presented. Mr. Clarke recommended that the Chamber should apply for a reduction, and that the Chamber should apply for a reduction, and that the Chamber should apply for a reduction.

Mr. Clarke stated that the Chamber should apply for a reduction, and that the Chamber should apply for a reduction.

Mr. McGeorge seconded the resolution was carried on a vote.

Mr. Wood then proposed and Mr. Clarke seconded the resolution was carried on a vote.

Mr. Wood then proposed and Mr. Clarke seconded the resolution was carried on a vote.

Mr. Wood then proposed and Mr. Clarke seconded the resolution was carried on a vote.

Mr. Wood then proposed and Mr. Clarke seconded the resolution was carried on a vote.

Mr. Wood then proposed and Mr. Clarke seconded the resolution was carried on a vote.

The Budget.

The 1928 Budget will be discussed in the Legislative Council today and thereafter referred to a Select Committee for consideration in detail.

It is expected that there will be an opportunity afforded by its introduction to have the usual statement made on behalf of the Government in explanation and, we may hope, some criticism of the Budget. The Budget is presented to the Council as a background for the work which will be presented to the Council. The Budget is presented to the Council as a background for the work which will be presented to the Council.

The Budget is presented to the Council as a background for the work which will be presented to the Council.

The Budget is presented to the Council as a background for the work which will be presented to the Council.

The Budget is presented to the Council as a background for the work which will be presented to the Council.

The Budget is presented to the Council as a background for the work which will be presented to the Council.

The Budget is presented to the Council as a background for the work which will be presented to the Council.

The Budget is presented to the Council as a background for the work which will be presented to the Council.

The Budget is presented to the Council as a background for the work which will be presented to the Council.

in pointing, that the Capital figure for 1928 is £1,000,000, which is a record. It is in addition to this margin there is still to be considered the probable profits on the year which may again amount to another £100,000. This is the purpose of the statement of Government to introduce suggestions from time to time for the improvement of the public and that in a principle which requires serious examination.

The Budget is presented to the Council as a background for the work which will be presented to the Council.

The Budget is presented to the Council as a background for the work which will be presented to the Council.

The Budget is presented to the Council as a background for the work which will be presented to the Council.

The Budget is presented to the Council as a background for the work which will be presented to the Council.

The Budget is presented to the Council as a background for the work which will be presented to the Council.

The Budget is presented to the Council as a background for the work which will be presented to the Council.

The Budget is presented to the Council as a background for the work which will be presented to the Council.

The Budget is presented to the Council as a background for the work which will be presented to the Council.

large provision of securities. Finally we would like to point out that while the principle of reducing the Budget is a principle which has many advantages in saving time and facilitating minor economies by amending the method of the House in the security of details of the annual estimate.

The Budget is presented to the Council as a background for the work which will be presented to the Council.

The Budget is presented to the Council as a background for the work which will be presented to the Council.

The Budget is presented to the Council as a background for the work which will be presented to the Council.

The Budget is presented to the Council as a background for the work which will be presented to the Council.

The Budget is presented to the Council as a background for the work which will be presented to the Council.

The Budget is presented to the Council as a background for the work which will be presented to the Council.

The Budget is presented to the Council as a background for the work which will be presented to the Council.

The Budget is presented to the Council as a background for the work which will be presented to the Council.

Another "Hopeless Case" saved by VIROL.

TO-DAY Showing that VIROL is the best remedy for Gonorrhoea.



A SUCCESSFUL TREATMENT BY MAURICE PICKERING, M.D. REMARKABLE LIFE-STORY OF Maurice Pickering.

Here is the exact history, step by step, of Maurice Pickering, who, after being afflicted for 12 months with Gonorrhoea, was cured by VIROL. He writes: "I was cured by VIROL in 12 days. I was cured by VIROL in 12 days. I was cured by VIROL in 12 days."

Permanent Recovery by taking VIROL. VIROL is the best remedy for Gonorrhoea. It is a powerful medicine which acts on the system and cures the disease in a few days.

VIROL THE FOOD OF LIFE. VIROL is the best remedy for Gonorrhoea. It is a powerful medicine which acts on the system and cures the disease in a few days.

VIROL, LTD., HANOVER SQUARE, LONDON, W.1. ENGLAND.

The African Life Assurance Society, Ltd. Court Chambers, Nairobi. Phone 354. P.O. Box 206.

WHEN AN ADULT takes up BONUSES and GUARANTEED ANNUAL BONUS POLICY AND HAVE IT WRITTEN IN HIS ACCOUNT AT THE ANNUAL PREMIUM FOR WHOLE LIFE £100 AT AGE 30, he can get a GUARANTEED ANNUAL BONUS POLICY. THE SOCIETY issues all classes of LIFE ENDOWMENTS and CHILDREN'S POLICIES.

M. D. KAMPF - Manager. Write or call for Specimen Policy, Premium Rates and all particulars. Giving Age, Full Name and Address.

M. D. KAMPF - Manager. Autumn Trade.

BRITISH BUSINESS MEN'S STANDARD OUTLOOK.

THE STANDARD'S OBSERVATIONS. London, Sept. 22. Many leaders of industry have expressed their views on the British autumn trade prospects and while there is a general feeling of optimism, and the hope is expressed that a new era of operation between employers and employees is now being inaugurated.

MEANWHILE, the unemployment figures are encouraging. In the week there were 22,600 less men out of work.

TANGANYIKA Railway. The railway earnings for the month of September, 1927, on the Tanganyika Railway, amount to £260,071, which is above the estimate for the period, by £13,870.

The Schouten

Phone 248. Box 334. Invites you to visit his most up-to-date Hairdressing Establishment in Government Road where you will find a complete hairdressing service provided for Ladies, Gentlemen, and Children including Permanent Waving, Hair Treatment, Hair Tinting, Manicure, etc., by a staff of experts.

Mr. Schouten is the holder of two Diplomas recently awarded to him in London for PERMANENT WAVING.

NAKURU—Our Nakuru branch is now open for Ladies and Gentlemen's Hairdressing. Permanent Waving a speciality.

"SUPER" OIL

All Grades of Lubricating and Engine Oil in Drums of 124 and 46 Gallons. At Lowest Prices. Sole-Proprietors: HARRIS & Co., (P.A.) P.O. Box 222, MOMBASA.

J. J. McBERTY, (P.O.) P.O. Box No. NAIROBI. Z. J. BENTLEY & SONS, Engineers, NAKURU.

Sore Throat?

Then take immediately Formamin...



SCARLET FEVER, INFLUENZA, etc.

FORMAMINT

MAPPIN & WEBB ARE THE ACTUAL MANUFACTURERS



This beautifully made Sterling Silver Tea and Coffee Service...

MAPPIN & WEBB

Advertisement for Savoie Hotel in Nairobi, Kenya, featuring a map and hotel details.

CORRESPONDENCE

The editor does not accept responsibility for views expressed by his correspondents...

THE LADY NORTHEY HOME... VERA FORRESTER...

To the Editor, "E.A. Standard." Sir—My reference to your letter in my column...

To the Editor, "E.A. Standard." Sir—With reference to your letter...

To the Editor, "E.A. Standard." Sir—Major Leonard said at the public meeting...

quickly, but she sees more clearly than the gentlemen who have been...

At the end of 1927 and the beginning of 1928, the minimum charge was 24s. 7s. 6d. per annum...

With regard to the financial basis of the proposed scheme...

On the subject of the removal Home since its inception...

To the Editor, "E.A. Standard." Sir—In your issue of the 27th inst., I published the following report...

(3) The Lady Northey Home has been determined to transfer to the County Council...

CORRESPONDENCE

The editor does not accept responsibility for views expressed by his correspondents...

THE LADY NORTHEY HOME...

To the Editor, "E.A. Standard." Sir—At the risk of repeating what has been said before...

At the end of 1927 and the beginning of 1928, the minimum charge was 24s. 7s. 6d. per annum...

With regard to the financial basis of the proposed scheme...

On the subject of the removal Home since its inception...

To the Editor, "E.A. Standard." Sir—In your issue of the 27th inst., I published the following report...

A MORE HEALTHY BECOMES A MOUNTAIN



A "modest" saving of 1d. per mile in the running cost of a commercial motor...



This diamond is the trade mark of the best razor in the world...



PRICE 2/- LOOK FOR THIS DIAMOND Gillette

HUDSON BRITISH-MILITARY CANE CARS

Advertisement for Hudson British-Military Cane Cars, listing various models and prices.

The facts are that I happened to be engaged to be married...

I notice in your issue of the 23rd inst. a reference by Major Leonard...

Further, if my Government Memorandum is not sufficient...

To the Editor, "E.A. Standard." Sir—With reference to the Catholic Newspaper article...

To the Editor, "E.A. Standard." Sir—My reference to your letter...

The average dose of trout in the Mombasa Fish Works has been found to be about 500...

Published in 4 editions, English, French, Spanish and Portuguese. Press free on request.

GAILEY & ROBERTS, Ltd. GAILEY & ROBERTS, Ltd.

HOLT COMBINED HARVESTER BUILT BETTER to Serve Better

One trip through the field and the entire job of harvesting is done... no wonder the "Combine" way is popular.

A Revolution in Harvesting

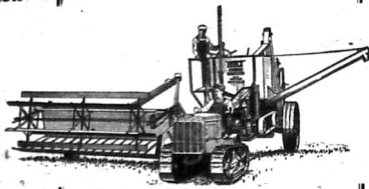
Model 34 — Light Weight Light Draft

Here is a "Holt" Combined Harvester light in weight and draft—a small tractor or a few horses or mules pull it.

The use of a "Holt" Combined Harvester

has the best insurance of profit—equipment that means minimum harvesting costs, maximum margin between production expense and income.

Let us help you in your choice of equipment



The Purchase of a "Holt" Combined Harvester is investment in equipment that is designed and built to give many years of service...

Model 34 Holt

Level Land Combined Harvester, equipped with 12-foot cut Header, tractor Block, Straw Shovel and with any of the following accessories:

Price \$550-0-0

Price \$575-0-0

The "Holt" Combined Harvester is the Lightest Draft Machine, of its size, Ever Offered to Wheat Growers.

Fullest Particulars Gladly Supplied on Application

Gailey & Roberts Ltd.

NAIROBI — P. O. Box 66 — Phone No. 33

For Service and Satisfaction

Also at: London, Nakuru, Eldoret, Jinja, Kampala and Dar-es-Salaam.

Budget Explanations.

The disadvantages of the present system of presenting the Budget to the Legislative Council are well illustrated by the speech delivered by the Colonial Secretary yesterday and published in extenso this morning.

The post of Deputy Chief Native Commissioner is abolished.

The Colonial Secretary on Monday when he delivered a long speech in support of the following motion:

"That this Council refer the draft Estimates of 1929 as printed and laid on the Table to the Select Committee of Council."

It is interesting in past years that the detailed statements of the policy and the administrative and financial details of each departmental chief.

The Government is a respectable and understandable form, and they have an almost equal value outside the boundaries of the Colony.

THE BUDGET EXPLAINED.

Comprehensive Official Statement of 1928 Financial Intentions.

NO NEW TAXATION.

The Colonial Secretary provided a very comprehensive summary of the Budget proposals in a speech before the Legislative Council on Monday.

He said that revenue had been conservatively estimated and Government expected in the absence of any untoward event that it would be exceeded.

The new Secretariat reorganization scheme abolishes Law Office and brings into being Local Government and Land Settlement branches as separate executive organizations of the Secretariat.

Considerable provision is made for extension of native services, including new hospitals, training of African workers in domestic science, a school clinic for Indian and African children, school buildings, extension of veterinary services, improvement of native sheep, reforestation and agriculture.

No new taxes are included in the Budget but the Education Tax will continue as an alternative has been put before Government.

In regard to Civil Service conditions it is proposed that necessary changes involving an increase in the outlay allowances should cause. Additional local holiday facilities are proposed in the form of rest homes at the Coast for Civil Servants.

The grant of passage concessions to wives and families of Asian Civil Servants is also suggested.

A grant-in-aid is included for Indian and African child welfare centres.

Savings have been effected by the reorganization of the K. A. R. transport service.

Introduction of an inland penny post is forecasted for 1929. A telegraph line will be laid from Mombasa to the Tanganyika border to join with the Tanganyika line to Dar-es-Salaam.

A sum has been set aside for the purpose of a geological survey in conjunction with Uganda.

CONTRIBUTION TO LAND SETTLEMENT SCHEME.

It may be the first instance in the history of the Colony that the surplus for 1928 is put at £21,050 which is less than the estimated surplus for 1927, but I submit that the balance as it stands is sufficient and that the Government should avoid setting aside to surplus balances amounts which may occasionally arise in cases of our actual needs for the Reserve.

In your Excellency's speech before this Council last night referred to the salient points in the Estimates for 1929 and pointed out that the Council had the main features of these Estimates in respect of expenditure and revenue.

My Government has been most interesting in past years that the detailed statements of the policy and the administrative and financial details of each departmental chief.

It is interesting in past years that the detailed statements of the policy and the administrative and financial details of each departmental chief.

Advertisement for Dorothy Virginia Cigarettes and Bird's Custard. Includes images of the products and descriptive text.

Advertisement for Crawford's Liqueur Scotch Whisky. Includes images of bottles and descriptive text.

Advertisement for J. R. Farley, Ltd. Motor Engineers. Includes contact information and list of services.

(Continued from page 12)



RUGBY



Four Cylinder

Box Body **£205** Magneto Ignition **£10** extra
 Standard Touring **£220** " " " "
 Canadian Special **£235** " " " "

Six Cylinder

Box Body **£265**
 Standard Touring **£280**
 Canadian Special **£290**
 Landau **£350**
 Sports 2 Seater **£325**

ONE TON LORRY

Has Arrived

Book Early **£200** Book Early

Carr, Lawson & Co. Ltd.

NAIROBI. NAKURU. ELDORET. KAMPALA.

This measure. The actual increase in new pensionable posts amounts to £18,000. A list of such appointments is attached to the memorandum which has been added, from which it will be seen that the increase in salary has to be met by the increase in the number of posts. The increase in the number of posts is met by the increase in the number of posts. The increase in the number of posts is met by the increase in the number of posts.

The Secretary.
 Local Government cannot be introduced without a provision of a certain amount of stipend preparation and the formation of a Branch to assist with the subject. The Secretary has been deeply advised by the school, which is not before you in the Estimated Budget for 1928. The Secretary has been deeply advised by the school, which is not before you in the Estimated Budget for 1928.

Native Services.
 Again, developments in Public Works and the provision of a considerable road programme which is a necessary and important part of the work of the Government. The Secretary has been deeply advised by the school, which is not before you in the Estimated Budget for 1928.

Education.
 It has long been recognized that the Government in this Colony has needed strengthening and the native have been a constant years. The increase in the number of posts is met by the increase in the number of posts.

Native Councils.
 It is hoped shortly to draw up definite proposals with regard to the collection, allocation and use of the Native Councils. The Secretary has been deeply advised by the school, which is not before you in the Estimated Budget for 1928.

Native Services.
 It is hoped that the Government will be able to meet the requirements of the Native Services. The Secretary has been deeply advised by the school, which is not before you in the Estimated Budget for 1928.

For Health and Strength take Hall's Wine

Weakness comes from poor thin blood and general ill-health. Hall's Wine enriches the blood and gives new tone to the entire system. Depression comes when the nerves are starved and tired. Hall's Wine feeds the nerves and gives them new vitality.

Hall's Wine

THE SUPREME TONIC RESTORATIVE

Gives new life and strength in every case of weakness. Recommended by British doctors for over thirty years.

FREE WINGGLASSES
 A special Crystal Wingglass to hold one dose is given FREE with every large bottle of Hall's Wine. Ask for one when making your purchase.

Drilling Machines

No. 25 Hand Drill. No. 25 Brass Drill. No. 25 Brass Drill. No. 25 Brass Drill.

INGRAM'S

THE TOLL HOUSE, NAIROBI.

THE YORKSHIRE INSURANCE COMPANY LIMITED.

ESTABLISHED 1824

Chief Agents: E. O. HAMILTON, Ltd., Phone 852, NAIROBI. Box 852.

THE BUDGET EXPLAINED.

(Continued from page 21.)

maximum salary of which does not exceed £200 per annum, provided with certain exceptions, be entitled to second class travelling privileges only. The immediate financial effect of the innovation is not at all onerous, and the measure will lead ultimately to material economy. The arrangement will have an effect upon holders who have although not granted the class privilege with the exception that officers appointed and occupying posts with a maximum not exceeding £200 will be entitled under the new conditions should they be engaged.

The grant of officers allowance has been the subject of correspondence with the Secretary of State, and a recommendation was made that three should come, the Secretary of State desired that adjoining territories should be considered and a separate report from these the matter is held in abeyance.

The terms of service and facilities to be afforded officers for spending their leave in the country have been the subject of discussion. A step towards providing further holiday facilities in the country has been made by provision in the estimates under Public Works Extraordinary for a great Home for affording holiday accommodation for Government servants and their families at the Coast.

The Atlas Bill.

In respect of the Atlas service, it is proposed to remove two long standing anomalies by the provision of two grants appear at Lines 26 and 25 Miscellaneous sum of £170 has been inserted to cover the cost of proposals to introduce a large grade system into the terms of service of the nine European staff class. The resulting which both other than three years ago was admittedly unsatisfactory in respect of the lack of uniformity among the senior Atlas staff. The scheme now proposed, while it involves immediate increase in expenditure to the amount stated, will result in an ultimate saving.

It is also proposed to grant African civil servants concerned in respect of part of the cost of passages to and from India of their wives and families on lines similar to those for the European Civil Servant.

Housing.

An acute question affecting Government servants and the expenditure of the Colony is that of accommodation. The Colony's increasing rent bill renders it absolutely necessary that housing accommodation should be provided either by a scheme of advances to Government servants or by other means to erect their own houses, or by the provision of other housing accommodation by Government or by other means. Provision has, as yet, been made in the Loan to deal with the problem and the Committee is now sitting to investigate the latest scheme put forward for advances for building, which it is hoped will be the most complete and suitable scheme. The acquisition of present conditions and a reduction in expenditure on Public Works Head XXXI Item 5 amounts to £50,000. Many informants feel that the question of riponably adhering to the 1924 House Allowance and deciding to do more than provide the officer with such a small sum was fully investigated this year, with the result that it appeared that the officers would be the best well paid officers and that 1924 of salary does not represent a present, owing to high rentals, a grant to meet the balance from Government would be well intended to guarantee. The decision of all allowances in 1924 has been at different times been advocated, but to take the ex-

the present base with any resulting economy at the present time.

Land Department Disappears.

I will now deal with special business of interest to an officer in the Estimates. I have already referred to the reorganization of the various offices of Government. The arrangement is one which will have the Native Affairs Department and Local Government and Land Settlement into Agriculture with the Colonial Secretary direct. Had the central office of Government been available a further saving of time and correspondence might be effected by bringing the three Departments under one roof but it is hoped that this may be possible in respect of the Land and Local Government Office. In any case a considerable amount of circumlocution and delay in correspondence will be avoided as all subjects coming under the Head of Native Affairs, Local Government, Land Settlement and Land, will be dealt with by the Department concerned with direct reference if necessary to the Colonial Secretary, without sending correspondence through the Secretary in a way which the instructions of Government on matters of correspondence between these Departments and other Heads of Departments are constantly being in the form of a copy of the Governor or Colonial Secretary's instructions.

Co-ordination between the various departments is being effected under more expedient conditions. This arrangement will be of benefit to the officers from the Secretary to be established in the new Local Government Department with complete responsibility for the work. It will be thought better, but at the start of the work of the officials to be transferred to any other staff.

In making this I should like to express my appreciation of the loyal and excellent work of my associates in the Secretariat — it is due largely to the co-operation of those who have been in them in the past and cheerfully to the staff of the Secretariat who are so conscientious to-day—their help has been invaluable to me.

The Land Department as such, per the land—collection of rents, etc.—will be undertaken in the future. The work of work will be transferred to the head of their staff augmented by the transfer of officers of the Land Department, while the lines of the office or transferred will be devoted only to land work but to assistance in the Bureau which should increase the efficiency of the administration and the collection of rents. It is believed too, that land work can best be done by the staff of the Land Department complete land information can be obtained.

There will also be the advantage that the increasing volume and full knowledge of applications for land will be dealt with by the Survey Office will be left in the hands of the staff of the Department by the appointment of an Assistant Surveyor General.

Native Affairs.

In the Native Affairs Department the first Deputy Chief Native Commissioner is selected from the officers holding the rank of Assistant Commissioner, is absorbed in the Administration, for the time being. In several occasions have strongly urged on Council by the Members, but these have been difficulties which are now removed. The increase and the increase in the present, owing to high rentals, a grant to meet the balance from Government would be well intended to guarantee. The decision of all allowances in 1924 has been at different times been advocated, but to take the ex-

Additional Administration only one additional Deputy Chief Native Commissioner is being added in an extra post, to be taken over by the

stant in the C.N.C. being shown separately and not included in the Administration. It is hoped that the provision will sufficient for the services next year, but it must be recognized that it increases in all branches of Native Affairs. The Chief Quarter, with Local Government, Land Settlement and Land, are increased calls on administration. There is time and it is many districts all these duties are being done by officers who are often single handed.

Travelling Outfits.

The reduction which was made last year in the travelling allowance of the reduced scale for motor cars has been justified by the fact that very few applications have been received for increased provision for travelling although undoubtedly motor cars have been used, especially in districts where communications are difficult and where it is necessary to have effective administration that may require to be made in the rapid form of transport. I find that applications and have received this year for supplementary post and travelling expenses only one-tenth of the amount applied for in 1920, which shows that attention only two applications have been received for increased provision compared with 20 for £5,075 in 1920. This is due to a number of applications in the next two months, but it is clear that the warning given in officers in regard to supplementary provision has had its due effect.

Statistics.

A request was made I believe in Committee on the Estimates last year that the Government should consider the possibilities of reducing the expenditure on statistics. All District Officers were addressed in the Estimates in 1921. It is found that the number of statistics which might otherwise require the engagement of a statistician at station headquarters, but it is clear that the abolition of such posts would be a considerable saving to the maintenance of statistics, under the present conditions.

Your Excellency referred in your speech to Council to the work that is being done by the Statistical Section. A useful report has been compiled by the Statisticians and its publication has only been deferred to the end of the year. The advantage of ensuring a regular issue of the report is a matter which will be introduced at the Session to provide for the Registration of Births and Deaths of Statistics. Some will furnish the statistical section with the necessary information. The work of the Department has necessarily been largely that of organization and preparation of reports.

The items with regard to Native Affairs on the Estimates for 1923 are being compiled by the Statisticians and its publication has only been deferred to the end of the year. The advantage of ensuring a regular issue of the report is a matter which will be introduced at the Session to provide for the Registration of Births and Deaths of Statistics. Some will furnish the statistical section with the necessary information. The work of the Department has necessarily been largely that of organization and preparation of reports.

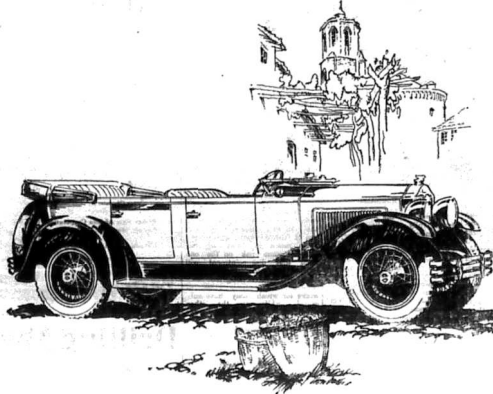
The items with regard to Native Affairs on the Estimates for 1923 are being compiled by the Statisticians and its publication has only been deferred to the end of the year. The advantage of ensuring a regular issue of the report is a matter which will be introduced at the Session to provide for the Registration of Births and Deaths of Statistics. Some will furnish the statistical section with the necessary information. The work of the Department has necessarily been largely that of organization and preparation of reports.

The items with regard to Native Affairs on the Estimates for 1923 are being compiled by the Statisticians and its publication has only been deferred to the end of the year. The advantage of ensuring a regular issue of the report is a matter which will be introduced at the Session to provide for the Registration of Births and Deaths of Statistics. Some will furnish the statistical section with the necessary information. The work of the Department has necessarily been largely that of organization and preparation of reports.

The items with regard to Native Affairs on the Estimates for 1923 are being compiled by the Statisticians and its publication has only been deferred to the end of the year. The advantage of ensuring a regular issue of the report is a matter which will be introduced at the Session to provide for the Registration of Births and Deaths of Statistics. Some will furnish the statistical section with the necessary information. The work of the Department has necessarily been largely that of organization and preparation of reports.

GET AWAY

like an arrow from a bow



BUICK

for 1928

equally adept—in the ease with which it attains, the highest speeds—in the way it breasts the steepest hills—and in the way it ignores sand, deep mud and rough going.

Every day throughout the world Buick for 1928 is demonstrating the superiority of the famous Buick Valve-in-Head engine—the engine that is vibrationless beyond belief.

Watch the Buicks that pass by and you will see how easily they get ahead of other cars.

Truly amazing performance. But amazing only in comparison with other cars. For in every phase of performance Buick for 1928 is

Sports Touring
£380

Gilfillan & Company, Ltd.
 DISTRIBUTORS



Motorists everywhere are trying and buying the new World Morris

THE new Morris "World" models were introduced just twelve months ago. During that short time they have fully proved how well they fitted a long felt need. For this is a car typically British in workmanship, in performance, and in economy. And in its design are embodied those features essential for universal motoring. The "World" radiator covers handsome lines with ample cooling power; the re-designed chassis spans width with comfort; the Dunlop "bultressed" tyres add to that comfort and ensure big mileage.

In the "World" Morris you buy a car that will do 30 miles per gallon of petrol; 1,600 miles per gallon of oil; that will give you ten years honest service, and this year still better bodies, still more models, still greater value. Is it any wonder that motorists everywhere are trying and buying the "World" Morris?

MORRIS

The Wheel of the World

PRICES FROM

MITCHELL, GOTTIS & Co. FOLKES & Co.
 P. O. Box 864. K. P. O. Box 181
 NAIROBI. KAMPALA.

BARGAINS!!

KHAKI FLANNEL SHIRTS, English Made at 2s. 2s. per doz. LARGO SHIRTINGS OF PROVISIONS JUST ARRIVED. Other Goods too numerous to mention on application. Including

—BARBERS—
 NALLA PANJAB, JAMES AKER, Etc.
M. ROSENBLUM & Co. Ltd.

HARDING STREET.
 Tel. No. 18. NAIROBI P. O. Box 981.

Mountain Coffee Soil.

Farms on the Slopes of Mt. Elgon are attracting the attention of Coffee Planters. Yields of over half a ton per acre.

We have a number of blocks of land from 250 acres upwards for coffee, planted and undeveloped. Prices are rising but genuine bargains are to be had from
KIRKWOOD & Co.,

"A Fine Forest in a Bottle"

The importance of Public Works... The remedy you breathe... The powerful germicidal fumes given off by Peps...



Always give a Peps tablet into the mouth whenever you go into the morning toilet... For COUGHS, COLDS & BRONCHITIS

FOR COUGHS, COLDS & BRONCHITIS

FOR SALE

FORMING THE VALDE PROPERTY KNOWN AS KENTON BERARDS... 2150 acres 4000 acres 3000 acres 1874 acres... DALGETY & COMPANY, LIMITED, NAIROBI.

The South African Mutual Life Assurance Society.

ALL Classes of Life Assurances Undertaken... Obtain quotations and get insured with the Society which can give you the best results in life assurance in the world.

THE BUDGET EXPLAINED.

(Continued from page 23)

The importance of providing universal education and of giving the wage of Farm School... Under Indian Education there is considerable increase in staff...

Medical Section... I have already referred to the increase under the Medical Department... They all form part of a programme for Medical Services...

Maternity Section... I have already referred to the increase under the Maternity Section... These institutions have been so successfully inaugurated by the energy and enthusiasm of Lady Ostry...

School Expenditure... I have already referred to the Education Department... under consideration this year the question as to whether the cost of books, stationery, medical treatment, hospital and ambulance should continue to be borne by Government or should be charged against the private.

It is felt that in the present stage of the development of this country every possible economy should be given to parents to send their children to school... Some economies in the Government have been made in respect of teachers in the higher schools and of Farm School teachers...

THE BUDGET EXPLAINED.

(Continued from page 24)

matter by 95 per cent. Enforcements being given for... The provision under Public Works for Extra-ordinaries to deal, at any length with the House which appear under this head, for they will be increased...

As regards the Agricultural Department I have already referred to the provision which has been made in respect of native services. The other additions in the Estimates are principally those which were approved in Supplementary Estimates...

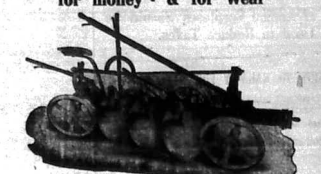
The total recurrent cost in 1928 for the country is estimated at £2,167,000, an increase of £206,000 over that of 1927. The total recurrent cost in 1927 was £1,961,000, an increase of £206,000 over that of 1926...

There are two items which are of very considerable public interest to which I would call special attention. The first is the provision for Geological Survey which is being enlarged to include the whole of the country...

The Post Office... The Post Office is at present a very important public institution and it is hoped that even if it were not a public institution it would be able to do its work in the most economical manner...

TIP-TOP VALUE

for money - & for wear



COCKSHUTT

As well as being reasonably priced this plow as its name denotes is characterized by strength in every detail of its construction. It is made of the best materials only, and the workmanship cannot be bettered.

Write now for further details and latest quotations: G. NORTH & SON, Ltd., NAIROBI.

ENGINEERS TO THE GOVERNMENT

Something more than continued improvement in plant has kept this business growing through changeable years... SEND US THAT NEXT JOB—AND LET US PROVE IT.

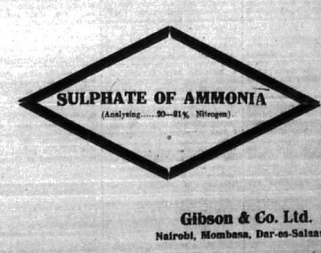
Isherwoods Limited.

"Craftsmen in Metals"

Grants: Barimar, NAIROBI, P.O. Box 78

The Best Nitrogenous Fertiliser

SULPHATE OF AMMONIA (Analysis—50-81, Nitrogen)



Gibson & Co. Ltd., Nairobi, Mombasa, Dar-es-Salaam.

(Continued on page 25)

MARKETPRICES OF AUTOMOBILE CHAMPAINHERRY AT AFRICANIZED LOW PRICES

SAHARU PRICES

Table with 2 columns: Description of vehicles and their prices. Includes items like 500 Chassis—South Carburetor, 500 Two seater, dicky, leather upholstery, etc.

(Continued on page 25)

THE F.W.D.

I now come to the last Head of importance in the Estimates, the Public Works Department. Commencing with the item of expenditure on the improvement of the roads, the number of Road Funds... The F.W.D. is at present a very important public institution...

E.A. CRICKET.

Gymkhana Teams at Kyambu and Thika.

PARKLANDS AT NYERI.

A Gymkhana cricket team journeyed to Kyambu on Saturday and met the... The following were the scorers:

Table with 2 columns: Player Name and Score. Includes names like Sheld, P. Walker, Rogers, B. Walker, etc.

Total (for 5 wickets) 145

Bowling: Leo O'Flaherty, P. Walker, B.M. Hamilton, O'Flaherty, Hamilton, O'Flaherty.

GRABAKA.

Table with 2 columns: Player Name and Score. Includes names like Mahabadi, C. Chelimo, H. Handoo, etc.

GRABAKA OR TRIKA.

Table with 2 columns: Player Name and Score. Includes names like Knowles, M. M. Walker, W. Walker, etc.

GRABAKA OR TRIKA.

Table with 2 columns: Player Name and Score. Includes names like Knowles, M. M. Walker, W. Walker, etc.

PARKLANDS DEFEATED.

Table with 2 columns: Player Name and Score. Includes names like Mahabadi, C. Chelimo, H. Handoo, etc.

NAIROBI GOLF CLUB.

Results of Tournaments Played Last Month.

FORTHCOMING EVENTS.

Table with 2 columns: Event Name and Date. Includes Parklands, Nyeri, and other tournaments.

BYE.

Table with 2 columns: Player Name and Score. Includes names like Perival, A. Danziger, B. Harrison, etc.

Full of Wickets: 1 for 84.2, 2 for 80, 3 for 41, 4 for 63, 5 for 124, 6 for 111, 7 for 100, 8 for 102, 9 for 100.

November Competitions.

This month there are two extra competitions. The annual Danziger Cup is being played for on November 27, the competition for only husbands and wives on November 28.

December Fixtures.

December will be a very busy month for the club. The ordinary competitions the Captain P. M. Danziger has arranged for December 11, the Danziger in connection with the opening of the new Club House.

THE SPOON RACE.

Table with 2 columns: Player Name and Score. Includes names like J. Keys, B. Managhal, J. A. Brown, etc.

HOCKEY AT KISUMU.

Mwani Club Sends in a Team.

STANDARD CORRESPONDENT.

Kisumu, December 2. Mwani Club has certainly set a precedent in Kisumu by sending the first hockey team to meet us on Saturday last and considering that they had had no practice and about seven days had not had a hockey stick in their hands before Saturday they got up a very good goal.

Auction Bridge.

SOLUTION TO BROWNY PROBLEM.

The following is the solution to the bridge problem published in E.A. Standard October 15. The hands were: Z. Spades, 5, 4, 2, 1; Clubs, None; Diamonds, 2; Hearts, A, K, 7, 6.

CRICKET COMMENTS.

To the Sports Editor, "E.A."

The report in your issue of the cricket match between Parklands and Nairobi Indians contains a number of mistakes which are most unfortunate.

Local Golf.

DATE FOR FINAL OF 1927. The semi-final of the Daily Golf Cup was played last week-end. As previously announced the final will be played at the Nairobi Golf Club on December 11.

AUSTRALIAN RACING.

Favourite Wins Victoria Derby.

THROUGH BETTER ADVICE.

Melbourne, Oct. 28. The following is the result of the Victoria Derby: TRIVALE 1, STAFFSMAN 2, AVANT COURIER 3. Seven ran. Won by three lengths with a length between second and third.

MELBOURNE CUP.

Melbourne, Nov. 1. The following is the result of the race for Melbourne Cup run at Flemington today: Trivale 1, Silvius 2, Sonamine 3. Twenty-six ran. Won by a length with 1/2 length between second and third.

Auction Bridge.

SOLUTION TO BROWNY PROBLEM.

The following is the solution to the bridge problem published in E.A. Standard October 15. The hands were: Z. Spades, 5, 4, 2, 1; Clubs, None; Diamonds, 2; Hearts, A, K, 7, 6.

CRICKET COMMENTS.

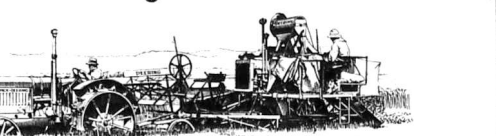
To the Sports Editor, "E.A."

The report in your issue of the cricket match between Parklands and Nairobi Indians contains a number of mistakes which are most unfortunate.

Local Golf.

DATE FOR FINAL OF 1927. The semi-final of the Daily Golf Cup was played last week-end. As previously announced the final will be played at the Nairobi Golf Club on December 11.

Once Over and All Over WHEN YOU USE A McCormick-Deering Harvester Thresher



Grain cut with this Machine is Immediately Threshed, Cleaned and delivered into bags. No Twine is Required. Eliminates Expensive crews and Equipment. Makes Possible Earlier Marketing. Avoids Loss. Puts profit into a Poor crop; increases the gains from a good one.

New Number 11 Harvester Thresher 12ft. Cut with Bagging Platform, Straw Spreading Attachment, Auxiliary Motor, and Tractor Hitch \$500

Number 8 Harvester Thresher 10ft. Cut with Motor, Bagging Platform, Straw Spreading Attachment \$430

Number 8 Harvester Thresher with Power take off, Bagging Platform; Straw Spreading Attachment \$350

Equipped with Ball and Roller Bearings Above Prices L.O.R. Nairobi. and Includes Setting up and Starting

"GOOD EQUIPMENT MAKES A GOOD FARMER BETTER"

INTERNATIONAL HARVESTER EXPORT CO. Hardinge Street, Nairobi. P. O. Box 688. Teleg: Harvester. LOCAL AGENTS: Nakuru: Motor Mart & Exchange. Eldoret: and Kampala: Carr, Lawson & Co.

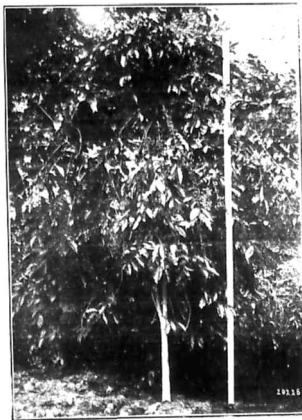
COFFEE IN COSTA RICA.



View of coffee plantation, Costa Rica, from dirt road.



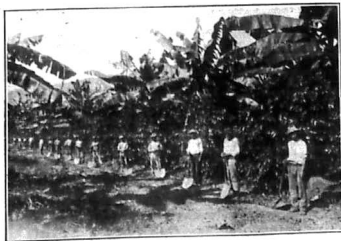
View of coffee plantation, Costa Rica, from dirt road, showing the coffee plants in the foreground and the dirt road in the background.



Tree 11 feet high (2 years). Note height of first crop (left side).



Tree, to easily multiplied to show system of cropping.



A weeding gang.



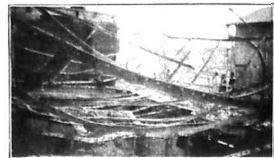
Picking showing type of basket used—capacity about 4 lbs.
Photo: Omer Miralles. S. J. Costa Rica.

NEWS IN PICTURES.



View from the pier showing off shore to the north of state of the Beringe docks.

Photo: F. Eric, London.



View of the Beringe bridge.

Photo: F. Eric, London.

NORTHERN FRONTIER VIEWS.

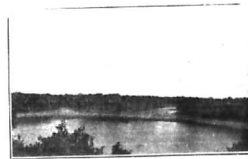


View of the northern frontier.



View of the river at the northern frontier.

Photo: F. Eric, London.



View of the northern frontier.

Photo: F. Eric, London.

CARS FOR KENYA.



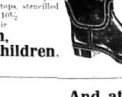
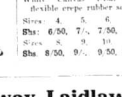
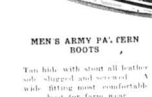
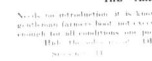
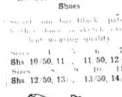
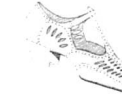
Special train load of cars and trucks for Kenya, being part of a big assignment of English Cars and Trucks, Bost. Locomotives, Nash, Hudson and Essex Cars.

Photo: Peter & Ross, Nairobi.

Whiteaways Footwear for Comfort and Long Wear



The Best Buy... This is a great buy for the lady who wants a stylish, comfortable shoe.



THE CESAREWITCH.

Great Race and Exciting Finish

MAJOR PRIZES GOING ALONG AT THE LAST MOMENT.

Perfect Conditions in Every Way.

["STANDARD" CORRESPONDENT.] London, Oct. 13.

Watching was almost breathless from the moment the start was given in the 20 miles for the Cesarewitch race. Eric Duxon, a favorite from the winning post, after St. Raymond had got the better of his London Art, it looked odds on the face of the matter.

The accent in the steepest part of the race was on the "up" part, which was made more so by a head by Knight's Prize, admirably ridden by Dick.

The "setting." A lot of money was won over the victory, for even so the Newbury Cup race. Eric Duxon had well looked.

He started at 9 to 1, a good price for St. Raymond, whose success implied the greatest confidence, especially as he had been runner-up in the Epsom race. Duxon's success was not surprising, as he had been successful in the London and Liverpool races.

The Champion Stakes was the first race of the season. It was won by the London Art, a favorite of the public in which the favorite was not so much as in the Cesarewitch and Longchamp. A favorite of the public in which the favorite was not so much as in the Cesarewitch and Longchamp.

The Betting. It was more than ten minutes after the scheduled time when a great number of the horses were behind the barrier.

BAR TENNIS SHOES. The favorite in the sport is White Canvas with light blue Rubber Sole. Price, Shs. 11.50 pair.

As for His Majesty. Great was the general excitement over the big happening, much more popular. The success of the race was the result of the success of the race.

THE SMITH-BALDOCK FIGHT.

South African Wins All Along.

NEGOTIATIONS FOR RETURN MATCH.

["STANDARD" CORRESPONDENT.] The Prize of Uplar has been won by South Africa.

South Africa was victorious in the fight between Smith and Baldock. The prize was won by Smith, a favorite of the public.

There can be no doubt if the fight had been fought at the day of the Second October Meeting, it would have been a different matter.

A Destructive Victory. There can be no doubt if the fight had been fought at the day of the Second October Meeting, it would have been a different matter.

It was inevitable that Smith would have won the fight, as he had been successful in the London and Liverpool races.

It was inevitable that Smith would have won the fight, as he had been successful in the London and Liverpool races.

The Betting. It was more than ten minutes after the scheduled time when a great number of the horses were behind the barrier.

BAR TENNIS SHOES. The favorite in the sport is White Canvas with light blue Rubber Sole. Price, Shs. 11.50 pair.

As for His Majesty. Great was the general excitement over the big happening, much more popular. The success of the race was the result of the success of the race.

South African Railways and Harbours.

Cheap Travel Tours

To be Organized in Africa

Can be Obtained During November, December, January & February.

For particulars apply to... TRADE COMMISSIONER FOR UNION OF SOUTH AFRICA, MEMORIAL BUILDING, RIVER ROAD, NAIROBI.

There can be no doubt if the fight had been fought at the day of the Second October Meeting, it would have been a different matter.

A Destructive Victory. There can be no doubt if the fight had been fought at the day of the Second October Meeting, it would have been a different matter.

It was inevitable that Smith would have won the fight, as he had been successful in the London and Liverpool races.

It was inevitable that Smith would have won the fight, as he had been successful in the London and Liverpool races.

The Betting. It was more than ten minutes after the scheduled time when a great number of the horses were behind the barrier.

BAR TENNIS SHOES. The favorite in the sport is White Canvas with light blue Rubber Sole. Price, Shs. 11.50 pair.

As for His Majesty. Great was the general excitement over the big happening, much more popular. The success of the race was the result of the success of the race.

REVELATION

The Suit Case That Adjusts Itself

It will always hold a little more.

We have a large range in various materials, sizes and prices, from Shs. 42-50.

Also CABIN TRUNKS, HAT BOXES, ATTACHE CASES, LUNCH CASES, Etc.

May & Co., Ltd.

The Sports House NAIROBI.

OUR Snapshot Competition WEEKLY PRIZES.

Let Prizes Shgs. 15/-, Extra Prizes Shgs. 10/- (if warranted), Shgs. 5/- for every Picture Published.

The Competition is for Snapshots of EAST AFRICAN INTEREST and must be taken by the Competitor.

THE NAME AND ADDRESS of the Competitor and the SUBJECT of the PHOTOGRAPH should be written on the back of the print.

ANY NUMBER of PRINTS may be sent by THE SAME COMPETITOR.

Envelopes to be addressed to— "THE 'SNAPSHOT' COMPETITION," P.O. Box 380, Nairobi.

If Films or Plates are sent we will make Enlargements for reproduction if desired.

If photos are to be returned A STAMPED ENVELOPE MUST BE ENCLOSED.

The Editor's decision will be final.

And at Nakuru Whiteaway Laidlaw & Co., Ltd. P. O. Box 7, VI. Avenue. Telos: "Warfield" And at Eldoret

THE RUGBY FIELD

New South Wales Team in the Principality.

The leading forwards... (Standard) Correspondent... London, October 9...

Afterwards with the pitch a question and one play out of the question, the same defence of the scrum... (Standard) Correspondent...

Chas. H. Hines... The Harlequins showed some thing like their normal form...

Blackburn again failed two first innings on their own ground... (Standard) Correspondent...

One of the most attractive matches in the London district Saturday was at Honor Oak...

Ladies Golf High Grade Watches... Motre Silk Bands. High grade watches...

18 ct. gold 185/- w. ct. 170/-... 18 ct. gold 180/-...

18 ct. gold 170/-... DOBBIES, Ltd. Watchmakers, Manufacturing Jewellers, and Opticians. NAIROBI.

GOLF IN BRITAIN

George Duncan Wins French Ladies' Open Honors.

Standard Correspondent... London, October 9... (Standard) Correspondent...

For the second time in three years the Midland Open Tournament... (Standard) Correspondent...

It is very odd that this good record... (Standard) Correspondent... London, October 9...

Illness of Captain of the M.C.C. in South Africa... Standard Correspondent... London, October 9...

POULTRY NOTES

The Hens in the Breeding Pen.

The hens in the breeding pen... (Standard) Correspondent... London, Sept. 28...

Any bird fault which was apparent in the breeding pen... (Standard) Correspondent...

It is extremely difficult to prevent... (Standard) Correspondent... London, October 9...

Outstanding birds in order... (Standard) Correspondent... London, October 9...

Mr. W. Bruce of Limuru... (Standard) Correspondent... London, October 9...

DOG SHOWS

Manchester and Liverpool Shows.

Manchester and Liverpool Shows... (Standard) Correspondent... Manchester, Oct. 4...

Manchester and Liverpool Shows... (Standard) Correspondent... Liverpool, Oct. 4...

Manchester and Liverpool Shows... (Standard) Correspondent... Liverpool, Oct. 4...

Manchester and Liverpool Shows... (Standard) Correspondent... Liverpool, Oct. 4...

Manchester and Liverpool Shows... (Standard) Correspondent... Liverpool, Oct. 4...

DOG SHOWS

Manchester and Liverpool Shows.

Manchester and Liverpool Shows... (Standard) Correspondent... Manchester, Oct. 4...

Manchester and Liverpool Shows... (Standard) Correspondent... Liverpool, Oct. 4...

Manchester and Liverpool Shows... (Standard) Correspondent... Liverpool, Oct. 4...

Manchester and Liverpool Shows... (Standard) Correspondent... Liverpool, Oct. 4...

Manchester and Liverpool Shows... (Standard) Correspondent... Liverpool, Oct. 4...

DOG SHOWS

Manchester and Liverpool Shows.

Manchester and Liverpool Shows... (Standard) Correspondent... Manchester, Oct. 4...

Manchester and Liverpool Shows... (Standard) Correspondent... Liverpool, Oct. 4...

Manchester and Liverpool Shows... (Standard) Correspondent... Liverpool, Oct. 4...

Manchester and Liverpool Shows... (Standard) Correspondent... Liverpool, Oct. 4...

Manchester and Liverpool Shows... (Standard) Correspondent... Liverpool, Oct. 4...

DOG SHOWS

Manchester and Liverpool Shows.

Manchester and Liverpool Shows... (Standard) Correspondent... Manchester, Oct. 4...

Manchester and Liverpool Shows... (Standard) Correspondent... Liverpool, Oct. 4...

Manchester and Liverpool Shows... (Standard) Correspondent... Liverpool, Oct. 4...

Manchester and Liverpool Shows... (Standard) Correspondent... Liverpool, Oct. 4...

Manchester and Liverpool Shows... (Standard) Correspondent... Liverpool, Oct. 4...

DOG SHOWS

Manchester and Liverpool Shows.

Manchester and Liverpool Shows... (Standard) Correspondent... Manchester, Oct. 4...

Manchester and Liverpool Shows... (Standard) Correspondent... Liverpool, Oct. 4...

Manchester and Liverpool Shows... (Standard) Correspondent... Liverpool, Oct. 4...

Manchester and Liverpool Shows... (Standard) Correspondent... Liverpool, Oct. 4...

Manchester and Liverpool Shows... (Standard) Correspondent... Liverpool, Oct. 4...

LADIES FASHIONS



A Letter from Paris.

By FRODO BOWEN.

their fill of early-borne models, and the rest are engaging the attention of the French buyers. The models now in vogue are much better made and finished than those that travelled across the Atlantic, and the models are cheap. I have seen a dress made in London that is made here in the same way as the models made in London. It is made in the same way as the models made in London. It is made in the same way as the models made in London.

Economy suggests Cerebos Salt—and taste demands it.

Cerebos SALT

PREPARED BY LONDON HOUSE

Under the distinguished supervision of Dr. Williams, an early Victorian fashions in a patterned, simple dress with a full skirt, a distinct from the present-day. Short bustles are placed upon the full foundation at regular intervals from waist to hem in a decorative width. They are beautifully adjusted that there is not the slightest effect of bulkiness. Bustles on these three sides add to the attractiveness of the bodice in plain and fast, the dresses clinging and narrow.

A rather bizarre footnote is seen in a new dress given graciously, much patronized, some Parisiennes.

The dahlia, the sweetest and most delicate of flowers, is seen in bright red, purple, or yellow.

Very weighty gold necklaces are worn. They might be a trial for the neck.

FRUIT MOODS.

Some of the most popular and sold them for at least twelve months ago. Fruit is now the only water to cover, being in the form of a jelly, and then let them remain until the jelly is completely dry. The fruit is then added to the dress, and the dress is made in the same way as the models made in London.



A French model in brocade, showing the new decorative trimming in the material. The deep crease, wide, and the skirt is made in the same way as the models made in London.

Prepared by London House, Ltd., 10, Abchurch Lane, London, E.C. 4, England.

THE EAST AFRICA IN LONDON

(Continued from page 33.)

Marvelous route to Tanganyika Territory, contemplating taking up the route in the Victoria district.

Mr Sydney Hume's comment upon the morale of Indian troops, which he apparently had met, is not merely by the Indian in East Africa, but also by the Indian in India. The remarks contained in the report, taken out of a much longer speech in the City of London, are not only a warning for publication, but they are a warning for publication, but they are a warning for publication.

Mr. Cobden Ward is nearly 50, and is a member of the House of Representatives. He is a member of the House of Representatives. He is a member of the House of Representatives.

THE BUDGET CRITICISED.

(Continued from page 26.)

has been interpreted in some quarters as meaning that the Government is not prepared to make any further adequate reserves and that the Government is not prepared to make any further adequate reserves.

It is not clear from the Budget that the Government is not prepared to make any further adequate reserves. It is not clear from the Budget that the Government is not prepared to make any further adequate reserves.

It is not clear from the Budget that the Government is not prepared to make any further adequate reserves. It is not clear from the Budget that the Government is not prepared to make any further adequate reserves.

For the Children

WHOLEHOME, nourishing food with fresh air and exercise is nature's own way of making strong, healthy children.

Baked foods made at home with Royal Baking Powder are far more wholesome than foods bought at the baker's shop.

Royal Baking Powder is always dependable—always wholesome—always pure in its unqualified guarantee of goodness and purity. Do not experiment with substitutes.

Captain Ernest Beaumont, a retired Indian Army officer, is a member of the House of Representatives. He is a member of the House of Representatives. He is a member of the House of Representatives.

Mr. Cobden Ward is nearly 50, and is a member of the House of Representatives. He is a member of the House of Representatives. He is a member of the House of Representatives.

WORLD SPEED RECORD

Italian Airman's Feet at Venice.

Mr. Gianni Caproni, an Italian aviator, has set a new world speed record. He is a member of the House of Representatives. He is a member of the House of Representatives. He is a member of the House of Representatives.

Italian Airman's Feet at Venice.

Mr. Gianni Caproni, an Italian aviator, has set a new world speed record. He is a member of the House of Representatives. He is a member of the House of Representatives. He is a member of the House of Representatives.

Italian Airman's Feet at Venice.

Mr. Gianni Caproni, an Italian aviator, has set a new world speed record. He is a member of the House of Representatives. He is a member of the House of Representatives. He is a member of the House of Representatives.

TRY IT IN YOUR BATH

SCRUBB'S AMMONIA

Prepared by London House, Ltd., 10, Abchurch Lane, London, E.C. 4, England.

STONELESS RICE.

Carl Jungluth Rice-Factory Njoro.

STONELESS RICE.

Carl Jungluth Rice-Factory Njoro.

STONELESS RICE.

Carl Jungluth Rice-Factory Njoro.

STONELESS RICE.

Carl Jungluth Rice-Factory Njoro.

STONELESS RICE.

Carl Jungluth Rice-Factory Njoro.

to know what Government had done in that connection.

Too Many Icons.

Another objection he had done was that they were doing things they were unable to do. He was unable to do things they were unable to do. He was unable to do things they were unable to do.

Another objection he had done was that they were doing things they were unable to do. He was unable to do things they were unable to do. He was unable to do things they were unable to do.

Paternal Government.

Mr. T. J. O'Brien, a member of the House of Representatives, is a member of the House of Representatives. He is a member of the House of Representatives.

Paternal Government.

Mr. T. J. O'Brien, a member of the House of Representatives, is a member of the House of Representatives. He is a member of the House of Representatives.

Paternal Government.

Mr. T. J. O'Brien, a member of the House of Representatives, is a member of the House of Representatives. He is a member of the House of Representatives.

Paternal Government.

Mr. T. J. O'Brien, a member of the House of Representatives, is a member of the House of Representatives. He is a member of the House of Representatives.

Paternal Government.

Mr. T. J. O'Brien, a member of the House of Representatives, is a member of the House of Representatives. He is a member of the House of Representatives.

Hats of Character

The Name of STETSON applied to a Hat denotes a Grade "SECOND TO NONE."

Call and Inspect our Shapes.

We hold the largest variety in the whole of Eastern Africa in either the "EXTRA STOCKY SUNPROOF" or the ordinary weight "after 4" Hat.

STABLED PRICES
SUNPROOF QUALITIES 55/-, 60/-, 66/-, 75/- and 96/-.

AFTER "4" QUALITIES 45/- and 48/-.

Sizes up to 7 1/2 always in stock.

Get Your Next From MAXWELL BRADY & Co.

THE PRACTICAL FIRM FOR HEAD GEAR

NAIROBI and ELDORET



THE BUDGET CRITICISED.

(Continued from page 35.)

several. He hoped to go into the subject in greater detail at a later date but when he found that the decision of administration of the Department had gone up from £15,000 to over £15,000 in five years and that at the same time there was a decrease in the number of teachers, he was decidedly interested. He must be forced by the conclusion that something was really wrong. Government expenditure had increased from £12,000 to £18,000 and in 1927 he was suggested that the expenditure on European education should be £20,000 and was a report of that Department they read that in the whole of Europe there were 1,200,000 more teachers than in 1920. He pointed out that the average number of teachers given by each of those countries was not more than 200 per week. The cost of the school for teachers alone was 200 per pupil and yet they were asked to do extra money for the education of European children next year.

Widow Dreading.
In the Medical Department they were attempting all kinds and every kind of medicine activity in the reserves, in his opinion for no other purpose than waste. If they attempted to do anything else they were going to do it wrong. He pointed out that the Government was wholly dependent on the reserves, was attempting to do so everything and doing nothing.

Perhaps in no other department of Government activities was there a better illustration of the ineffectiveness of the policy than in the Veterinary Department. Large sums of money were spent in many directions for the benefit of the natives by the Veterinary service. He pointed out that the Director of Veterinary Services advised them that the money at present being spent in the department had largely been wasted because the present methods did not help to eradicate the more important diseases and that some everything else.

THE ASCENT OF KILIMANJARO.

Who Was First Woman to Reach Summit?

It has been claimed that Miss Sheila Macdonald, the 22-year-old daughter of Mr. Claude A. Macdonald, of Bays-water-road, W., is the first woman to have reached the summit of the highest in the mountains in Africa, Kilimanjaro, 19,710 ft., but it now appears says the Daily Mail that it was not she but one of her two sisters who previously accomplished the remarkable feat. Mrs. N. Kirby, whose husband is Director of Agriculture, Tanganyika Territory, states in a letter to the Daily Mail that Miss Macdonald, the younger daughter of the same family, was the first woman to reach the summit of Kilimanjaro in 1925. She also said she got to the top, but she carried her husband the last few yards, he having insisted on going to the party of the ascent.

Another Claimant.
Mr. S. A. Wain, R.N., writing from The Royal Grammar School, High Wycombe, Buckinghamshire, says:

I have in my hand a personal letter and photographs from Mrs. Alice Louise Wain, then aged 15, describing her own ascent of Kilimanjaro (the highest peak of Africa) last year, when she reached the summit on September 19, after three and a half day's climbing. She lives at Maranga, on the lower slopes of Kilimanjaro, and her widowed mother, who was for 42 years pioneer missionary in East Africa, and who, despite her age, accompanied her as far as the Peter's Hill, 13,500 feet high, where they were surprised to find the first ascent was begun with only a native guide and two native porters.

The natives were recruited at the spot where the crater-mouth is situated of the Fathey deck. The Council adjourned at this stage last Tuesday at 10 a.m. (Continued on page 35.)

EAST AFRICAN IMPORTS.

Cotton Piecegoods Returns.

The following statement shows the quantities and values of cotton piecegoods imported into Kenya and Uganda during the month of August, 1927:

Grey, unbleached	11,000 yds.	from Great Britain valued at Shs. 5,192; 375,382 yds. from India valued at Shs. 120,370; 9,900 yds. from China valued at Shs. 2,700; 20,000 yds. from Japan valued at Shs. 5,670; 780,000 yds. from Belgium valued at Shs. 280,791; 818,000 yds. from the United States of America valued at Shs. 9,962; 5,750 yds. from India valued at Shs. 2,250; 3,277 yds. from Belgium valued at Shs. 9,721; 3,200 yds. from Czechoslovakia valued at Shs. 38,375; 200 yds. from France valued at Shs. 2,064; 2,068 yds. from Belgium valued at Shs. 15,091; 194,677 yds. from Belgium valued at Shs. 191,377; 501 yds. from Italy valued at Shs. 1,662; Total 125,310 yds. valued at Shs. 147,750.
Coloured (Manufactured wholly or in part of dyed yarn)	77,310 yds. from Great Britain valued at Shs. 37,506; 174,670 yds. from India valued at Shs. 10,700; 18,350 yds. from Belgium valued at Shs. 19,221; 13,000 yds. from Germany valued at Shs. 8,282; 144,400 yds. from Holland valued at Shs. 5,700; 174 yds. from Italy valued at Shs. 618; 173 yds. from Belgium from Great Britain valued at Shs. 154,575; Total 684,064 yds. valued at Shs. 121,921.	
Coloured (British valued at the United States of America valued at Shs. 9,962; 5,750 yds. from India valued at Shs. 2,250; 3,277 yds. from Belgium valued at Shs. 9,721; 3,200 yds. from Czechoslovakia valued at Shs. 38,375; 200 yds. from France valued at Shs. 2,064; 2,068 yds. from Belgium valued at Shs. 15,091; 194,677 yds. from Belgium valued at Shs. 191,377; 501 yds. from Italy valued at Shs. 1,662; Total 125,310 yds. valued at Shs. 147,750.)		

THE ASCENT OF KILIMANJARO.

It has been claimed that Miss Sheila Macdonald, the 22-year-old daughter of Mr. Claude A. Macdonald, of Bays-water-road, W., is the first woman to have reached the summit of the highest in the mountains in Africa, Kilimanjaro, 19,710 ft., but it now appears says the Daily Mail that it was not she but one of her two sisters who previously accomplished the remarkable feat. Mrs. N. Kirby, whose husband is Director of Agriculture, Tanganyika Territory, states in a letter to the Daily Mail that Miss Macdonald, the younger daughter of the same family, was the first woman to reach the summit of Kilimanjaro in 1925. She also said she got to the top, but she carried her husband the last few yards, he having insisted on going to the party of the ascent.

Another Claimant.
Mr. S. A. Wain, R.N., writing from The Royal Grammar School, High Wycombe, Buckinghamshire, says:

I have in my hand a personal letter and photographs from Mrs. Alice Louise Wain, then aged 15, describing her own ascent of Kilimanjaro (the highest peak of Africa) last year, when she reached the summit on September 19, after three and a half day's climbing. She lives at Maranga, on the lower slopes of Kilimanjaro, and her widowed mother, who was for 42 years pioneer missionary in East Africa, and who, despite her age, accompanied her as far as the Peter's Hill, 13,500 feet high, where they were surprised to find the first ascent was begun with only a native guide and two native porters.

The natives were recruited at the spot where the crater-mouth is situated of the Fathey deck. The Council adjourned at this stage last Tuesday at 10 a.m. (Continued on page 35.)

invalid diet
Horlick's Malted Milk is available in the sick-room. Ordinary milk is frequently distasteful to the patient and as moreover, hard to digest. In Horlick's, the milk is rendered assimilable by the addition of malt and the patient's strength is built up by the added wheat.

HORLICK'S THE ORIGINAL MALTED MILK

Sole Afr. Agents for Kenya, Uganda, Tanganyika, East Africa, and the East Indies. CAPS TOWN.

You are Invited to Inspect our Stocks of:-

Shanks Sanitaryware BATH ROOM FITTINGS Steel Casements

L.cks: Door and Window, Furnitures. Stoves and Boilers.

R. G. VERNON & Co.

NAIROBI HOUSE.

British India Steam Navigation Company, Ltd.

PENINSULAR AND ORIENTAL STEAM NAVIGATION Co.

LONDON AND EAST AFRICA LINK.

LONDON to BEIRA, via Marseilles, Port Said, Port Sudan and Aden, Outwards as follows. Arrives Kilindiini Sails from London to Kilindiini about 1927.

S.S. "Mascis"	24th November	20th November
S.S. "Medan"	22nd December	24th December
S.S. "Methana"	19th	21st January
S.S. "Mada"	16th January	17th February
S.S. "Mascis"	13th February	15th March
S.S. "Medan"	10th March	12th May
S.S. "Methana"	7th April	9th June
S.S. "Mada"	4th May	7th July
S.S. "Mascis"	1st June	3rd August
S.S. "Medan"	29th August	29th September
S.S. "Methana"	26th September	27th October
S.S. "Mada"	23rd October	24th November
S.S. "Mascis"	20th November	22nd December
S.S. "Medan"	17th December	19th January

Homeward steamers call at Plymouth to disembark passengers. N.B.—All Steamers will call at Marseilles on the Outward and Homeward Voyages.

BOMBAY—DUBAIB MAIL SERVICE.

Calling Kilindiini, Zanibar, Beira, Delagoa Bay fortnightly. Also Seychelles, Dar-es-Salaam and Mozambique monthly. Outwards and Inwards.

S.S. Elora	18th November	To Bombay:
S.S. Karapara	30th November	
S.S. Khandalla	12th December.	
Via Seychelles and Marmagoa.		
Calls at Porebunder.		
S.S. Karapara	8th November	To Durban:
S.S. Khandalla	20th November	
S.S. Karas	3rd December.	
S.S. Karagala	18th December.	

Vessels usually arrive day prior to sailing date. To LONDON and MARSEILLES via BOMBAY. These Steamers are now scheduled to arrive in Bombay on Saturdays so as to connect with the P. & O. Mail Steamer, thus giving passengers alternative route to London and Marseilles, and bringing Mombasa within 24 days of Marseilles.

COASTAL SERVICE.

THIS will appoint Master Vessel "DUMRA" maintains a 14 days service between Kilindiini and Mombasa and a monthly service to Lamu.

BOMBAY-EAST AFRICAN SUBSIDY SERVICE.

S.S. "Karapara" sails Kilindiini 12th November for Bombay, Calls Marmagoa.
S.S. "Elora" sails Kilindiini 10th December for Bombay, Calls Marmagoa.
S.S. "Elora" sails Kilindiini 8th February.
S.S. "Elora" sails Kilindiini 3rd March.
S.S. "Elora" sails Kilindiini 21st March.
S.S. "Elora" sails Kilindiini 20th April.

IMPORTANT

REDUCED PRICES OF ALL "P. O. M. S."

MODELS

4 Door Saloon £325.
2 Seater Roadster £280.

Box Body £283-10.

The Motor Mart and Exchange Ltd.

NAKURU. NAIROBI. DAR-ES-SALAAM.

"THE LITTLE SIX THAT POSSESSES THE POWER AND FEATURES OF A 'BIG SIX'"

All Dates subject to alteration without Notice. Return Tickets issued to two Single Fares Less 15%.

Up-country Cheques not accepted unless endorsed by a local bank.

Smith, Mackenzie & Co. Agents

Kilindiini, Mombasa, Zanibar, Dar-es-Salaam, Traga, Lamu and Lamu. Passenger agencies only Nairobi & Kampala. Also the following Sub-agents: (For passenger only) ELDORET, Mombasa, Mombasa & Co., KITUYA, Kiunga, Lamu, Lamu & Mombasa, SOY, The Soy Estate; WAKURU, The Kenya Farmers Association, Ltd.

The Peril of Skin Infection

It is the disorder of an spreading or infective nature, Germolene immediately gets an end to its ravages, for all germs of this disease can live in its presence. Chronic or long standing cases which have resisted treatment quickly become treatable hundreds of sufferers have testified to Germolene's wonderful efficacy.

Mrs. P. B. Batts, of Bournemouth, writes, "I refer from experience that, although the skin eruption did not clear up in four days, the treatment with Germolene was very successful and very soon the eruption completely disappeared." She says "I can never say that Germolene is an excellent remedy for all kinds of skin, and I don't recommend it to all my friends."



THE REMEDY FOR Eczema, Psoriasis, Itch, Prurigo, Scabies, Ringworm, Dermatitis, Sunburn, Frostbite, Insect bites, and all other skin eruptions.

FREE: Free Sample of Germolene sent on request of the patient stating to whom it should be sent. Write to: The Germolene Co., Ltd., 100, Strand, London, W.C.2, England.

PRICE IN SOUTH AFRICA: 1/6 per tin, 3/6 per tin, 6/6 per tin. Add 1/6 per tin for postage.

Germolene The Aseptic Skin Dressing

WHY!

How many men are diseased with their running shoes? 1 out of every 10!

Why? Because they do not use "Darwin's Safety Razor Blade, Made in Plainville, U.S.A., which gives a cutting efficiency like no other blade. The plain edge of "DARWIN'S" BLADES is better than the beveled edge of any other blade, especially so in a shaving machine. It is the safety of the "DARWIN'S" BLADES, PATENTED, CORNERED, SAFETY RAZOR BLADES which makes an entirely new standard which renders the razor perfectly safe.

Write to the Gillette and Safety Razor Co., Boston, U.S.A.

Packages of 5 blades - - - 1/6
Packages of 10 blades - - - 1/3

USE "DARWIN'S" and be satisfied.

A. H. Wardle & Co. Ltd.
CHEMISTS AND DRUGGISTS. LONDON.
Nairobi Nairobi Telephone 36.
P. O. Box 100

WHITE SETTLEMENT.

Sir Percy Girouard and Lord Olivier.

The following letter written by Sir Percy Girouard in one of the papers of the Press is the first issued by Mr. Elliot Montagu's Government on white settlement in Kenya.

It is in your issue of September 19th that I read of the letter of the Hon. Mr. H. H. Hunt, M.P., in which you announced that the Government had decided to grant the hon. to claim, with some modifications, of former white settlers in Kenya. I am glad to hear that you have done so, and I am glad to hear that you have done so, and I am glad to hear that you have done so.

NATIVE TAXATION.

Labour Party and Former Kenya Governor.

Following a Lord Olivier's reply to the letter of Sir Percy Girouard in which the latter expressed certain statements made by the Labour Party. Sir Percy writes very much that, regarding the Hon. Mr. Hunt's letter of the 19th of September, I am glad to hear that you have done so, and I am glad to hear that you have done so, and I am glad to hear that you have done so.

It is a matter of course that I have not seen a copy of your letter to me, but I am glad to hear that you have done so, and I am glad to hear that you have done so, and I am glad to hear that you have done so.

Old Hall, Rampton, OLIVIER.
Sept. 28.

A Special Organizer. The Executive Committee of the Eastern Africa Indian National Congress announces that it now of the present political situation, necessitating a complete reorganization and strengthening of the Congress machinery, they have appointed Mr. U. O. Ota to be the Local Organizing Officer for a year.

Mr. W. A. M. Sir. The Municipal Sports Club have held a meeting on the 2nd inst. to discuss the work of a local fund for the purpose of raising money for the benefit of the club.

FRUIT DISTRIBUTION. The Nairobi District is appointed a Registrar. Mr. R. B. McCreay, the Secretary for the Nairobi District is appointed a Registrar. Mr. R. B. McCreay, the Secretary for the Nairobi District is appointed a Registrar.

RAILWAY ROLLING STOCK.

Legislative Council Approves Borrowings Amounting to £231,520.

MR. FELLING REPLIES TO CRITICS.

The General Manager of Railways took part in an (expected) busy discussion on railway finance in the Legislative Council on Monday. The subject matter was a motion approving the borrowing of £231,520 in advance of loan expenditure to provide more rolling stock. Criticism was chiefly directed to the wisdom or otherwise of using loan funds for such additions to railway equipment and the General Manager appealed to Elected Members to get the facts before they began to criticise.

THE MAIZE AND COTTON SEASON.

The substance of the motion is that this Council authorize the capital expenditure on locomotives and rolling stock to the extent of £231,520.

In moving this resolution, Mr. Felling said that the Government had passed authorizing the Government to undertake negotiations for obtaining as required loans and funds in pursuance of railway and port development.

Whereas by Resolution dated 5th November 1926, this Council authorized the Government to undertake negotiations for obtaining as required loans and funds in pursuance of railway and port development, and whereas it has become necessary to incur loan expenditure on Railway Locomotives and Rolling Stock to the extent of £231,520 and the Secretary of Crown Agents has indicated that the necessary funds for this purpose are available, Mr. Felling said that the Government had passed authorizing the Government to undertake negotiations for obtaining as required loans and funds in pursuance of railway and port development.

In spite of these orders, on May 16 while I was in London, a cable was received inquiring if immediate payment of notes for £231,520 was this is the order for which authority is asked today.

Reply to Critics. Your Excellency, I think it would be wise if I told Hon. Members the general position in regard to rolling stock, especially in connection with certain criticisms directed against the Railway Administration by this Council quite recently. In passing I would like to say that I welcome criticism but criticism which is not based on facts. I have a lot of figures in my Budget statement and in my Annual Report, which you are not likely to see. Members can always ask questions.

The criticism directed against the Railway Administration was that it spent too much for Renewals and Betterment Funds and too little on capital loan account. Now, Sir, in order to explain the position I would just like to say that from Jan. 1, 1925 up to and including the completion of orders still outstanding, we shall have spent on locomotives and rolling stock over the five years an amount of £1,737,000, the sum of £1,737,000, and against Renewals and Betterment Funds £142,722.

Keep illness at arm's length

BOVRIL

GENERAL AGENCIES, Ltd., P. O. Box 24, NAIROBI.

Outlast 3 Leather Socks

Phillips' Presidential Socks

WORTH REMEMBERING!!!

BLOANS LINTIMENT - 2/6 and 4/6

MIFTON - 1/6 and 2/6

SALFET (The Rat Killer) - 2/6

Surgical dressings at low prices for estates.

Arthur A. White, Ltd.
Cash Chemists, Nairobi.

FIVE REASONS WHY

The "LANZ" 22-28 h.p. "GROSSBULLDOG" is the most popular TRACTOR in Kenya.

Ask a LANZ OWNER and be CONVINCED.



PRICES
Nairobi £423-0-0
Nakuru £428-0-0
Eldoret £432-0-0
For Cash.

IT IS SIMPLE. Anyone can learn to operate the "LANZ" in half an hour. No tuning up of ignition system, etc. simply heat with the blowlamp or charcoal starter and in 5 to 10 minutes you start off.

ECONOMICAL. Starting and running entirely on Diesel Oil, which can be obtained at any of the farming centres at a fraction of the cost of Kerosene. The average consumption of fuel is about 1 1/2 gallons per acre at a cost of .60 Cts. to Sh. 1.- per gallon according to District.

FOOL PROOF. Or as nearly so as a machine can be with native natives. No wiring or electric circuits to go wrong. No plugs to foul up. No radiator to leak. No valves to correct or carburets and loss power.

POWERFUL. The "LANZ" TRACTORS in use in Kenya are drawing from 16 to 18 tons, due to character of soil and ploughs. Road haulage on the level is 15-20 tons. Less according to gradient.

Every part of the engine is easily accessible from a standing position. Every part working part enclosed in dustproof and oil tight casings.

DURABLE. Solidly built of high grade materials under the strictest standards of inspection. The "LANZ" is designed to give the maximum of service over a long period. "Revolving" only 500 per minute with large moving parts. It does not suffer the severe strain of a fast "revving" Kerosene motor.

Sole Agents and Distributors:
J. R. Farley & Co.

Nairobi P.O. Box 670
Nakuru P.O. Box 28
and at Dar-es-Salaam.

Jinja J. R. Farley, Ltd.
Kampala P.O. Box 263.

Head Office: P.O. Box 81, Eldoret.
Branches: Thika & Co. Meru; Messrs. The African Transport Co.

WHEELS AND TRACKS

Economical in First Cost and Upkeep Combined with Efficient Service

Touring £228

Safari £195



Coach £265

Sedan £280

All Four Wheel Brakes Standard Fitting—Magneo Ignition Optional at Extra Cost.

Moulton & Morrison Ltd.

Nairobi. Halls Garage Eldoret. R. S. Campbell & Co. Kampala. Kasim Ebrahim Kampala. (Uganda).

RAILWAY ROLLING STOCK.

(Continued from page 41.)

As the result of the most debate on the Railway Budget

With regard to the suggestion that it is only recently that extended Budget statements had been given. The country has now had more information about the Railway Budget than ever before.

The balance sheet is there; the capital account is there; our revenue account is there; they can see exactly what has been accounted to the various funds and exactly how the money has been spent; and if there will not read that delightful literature, they must not blame me. I have given a lot of time in getting out figures of Mr. Members will only read the annual report they will not get on with one Mr. Member did this morning when he suggested that two and a half millions had gone from revenue to capital expenditure.

The actual amounts by which the annual estimate is exceeded are not so great as one Mr. Member said this morning when he suggested that two and a half millions in the amount of the half contributions to revenue as well as to betterment fund. Honorable members can be regarded as a legitimate charge against revenue.

The actual amounts by which the annual estimate is exceeded are not so great as one Mr. Member said this morning when he suggested that two and a half millions had gone from revenue to capital expenditure.

for short of that I consider it should have been

Loan Policy

A point I wanted to make about that is that the Hon. Members do not seem to realize that concurrently with the proposals for renewals and betterment fund we have been doing full scale against loan expenditure.

The only trouble at present is that we have few new orders which are transmitting on the railway lines. The only trouble at present is that we have few new orders which are transmitting on the railway lines.

Wave Length 33.5. Maroon London, Sunday 6.5 p.m. Wave Length 33.5. Maroon London, Sunday 6.5 p.m. Wave Length 33.5. Maroon London, Sunday 6.5 p.m.

SHORT WAVE WIRELESS.

Stations Which May be Heard in Kenya.

Mr. Graham-Pearce, Hon. Secretary of the E. A. A. writes as follows in an interesting letter of interest to members to bring that the new short wave service now being inaugurated here have greatly stimulated amateur radio and before leaving London I listened in to Sydney, Australia, as clearly as if it were a L.O. in London calling.

The only trouble at present is that we have few new orders which are transmitting on the railway lines. The only trouble at present is that we have few new orders which are transmitting on the railway lines.

Wave Length 33.5. Maroon London, Sunday 6.5 p.m. Wave Length 33.5. Maroon London, Sunday 6.5 p.m. Wave Length 33.5. Maroon London, Sunday 6.5 p.m.

MOMBASA POPULATION.

Misleading Impressions of Last Census.

STANDARD CORRESPONDENT. Mombasa, Oct. 22. The National Bureau of Statistics of the Mombasa Times has been very generous in supplying me with figures of the population of Mombasa for the last census. They certainly do seem to confirm the impression that the population of Mombasa has increased very considerably since the last census.

The facts must, however, be taken into consideration as the first place shows statistics do not refer to the exact boundaries of the true population. Until proper arrangements have been made it will never be on a correct basis of comparison.

Wave Length 33.5. Maroon London, Sunday 6.5 p.m. Wave Length 33.5. Maroon London, Sunday 6.5 p.m. Wave Length 33.5. Maroon London, Sunday 6.5 p.m.

The Wonderful Record of DUNLOP TYRES

In Motoring, Motor Cycling and Cycling races and trials provides abundant proof of Dunlop superiority and endurance. The splendid success story here provides knowledge of tyre behaviour—knowledge of the tyre needs for all classes of events and usage. So—Dunlop quality and design are based on experience, and the valuable lessons gained in racing events and trials are embodied in the "Junior Tyres" you buy.

Table listing various Dunlop tyre models and their specifications, including Grand Prix, Flying Mile, Dayton, and others.

THE DUNLOP RUBBER COMPANY LTD.

Depositories—The African Mercantile Co., Ltd. Nairobi, Mombasa, Kisumu, Tanga, Mwanza, Dar-es-Salaam.



A 1928 Model Ariel Motor Cycle has established new world's record. The Atlantic flight, as a long distance non-stop run has been equipped and the machine is still running perfectly.

J. R. Cox & Co.

Nairobi, Eldoret, Nakuru, Kampala Dar-es-Salaam.

CHRYSLER SUPERIOR

More Firmly Established than Ever!

Capetown

Johannesburg

22 Hours 51 minutes

951 miles at an average speed of 41 m. p. h.

Record

Broken

By 2 hrs. 34 mins.

On Sept. 13th by G. S. Bouwer, driving his famous Chrysler "70"

It takes a CHRYSLER to beat a CHRYSLER!

Distributors:

YORK GARAGES Ltd.

Lady Northey Home and Coryndon Memorial.

PROPOSAL TO RESOLVE THE £5000 REGISTRY.

In the Legislative Council of the Union of South Africa, Cape Town, on the 29th day of October 1927.

The following motion was adopted:— That the view of the undeniability of ownership about the proposed site this hon. Council considers that another plot should be offered to the Coryndon Memorial Fund Committee; that the question of the Lady Northey Home should be left to be decided on its merits in the future between the Committee of Home and the Town Planning Committee in the District of the City of Cape Town.

Laid on the Table.

The following papers were laid on the table of the Legislative Council:— The Monday-Correspondence of the Ministry of Education and the Hon. Member for the Cape of Good Hope in connection with the proposed site of the Lady Northey Home.

The Defence Forces. A special issue of the Official Gazette dated October 20, 1927, containing a proclamation under the Defence Forces Ordinance and the Royal Assent to the Bill.

The Hon. Member for the Cape of Good Hope in connection with the proposed site of the Lady Northey Home.

The Hon. Member for the Cape of Good Hope in connection with the proposed site of the Lady Northey Home.

The Hon. Member for the Cape of Good Hope in connection with the proposed site of the Lady Northey Home.

The Hon. Member for the Cape of Good Hope in connection with the proposed site of the Lady Northey Home.

The Hon. Member for the Cape of Good Hope in connection with the proposed site of the Lady Northey Home.

The Hon. Member for the Cape of Good Hope in connection with the proposed site of the Lady Northey Home.

The Hon. Member for the Cape of Good Hope in connection with the proposed site of the Lady Northey Home.

The Hon. Member for the Cape of Good Hope in connection with the proposed site of the Lady Northey Home.

The Hon. Member for the Cape of Good Hope in connection with the proposed site of the Lady Northey Home.

The Hon. Member for the Cape of Good Hope in connection with the proposed site of the Lady Northey Home.

TANGANYIKA

TWO LECTURES.

Mandate Temporary or Permanent? Psychological Aspects of Life in Kenya.

The view of a section of British people which is opposed to the permanent incorporation of Tanganyika in the British Empire is indicated in the following letter written from the Manchester Guardian...

Excessive perspiration is a sign of weakness

Not, of course, the perspiration due to heavy exertion or heat, but the "Cold perspiration" and night sweats which accompany weakening diseases, such as Tuberculosis. These night sweats are not only a sign of weakness, but they also weaken the body. To counter this weakness you should build up your forces right from the core by strengthening the body cells with calcium, their vital constituent. Kalzana will do this for you.

Kalzana tablets contain calcium in a special chemical combination, which causes the calcium to be readily absorbed by the body and retained. The strengthening influence of Kalzana will be noticed even after a few days of treatment of night sweats.

In Tuberculosis. The strengthening effect of Kalzana is of special importance in Tuberculosis. The ferried cells are more easily able to resist the attacks of the bacilli, which are so dependent on calcium in the organism tissues. Calcium is so essential in and around the tubercular cells that, through its proper use the bacilli are "slain" so that they can do no further harm.

Strengthen your body by strengthening its cells with



Your doctor's health - Kalzana strong force. Made by the Manufacturers of Streng and Co., London. Sold in all chemists and druggists.



No Tea, like LIPTON'S for Quality & Economy

Contentment in every Cup of LIPTON'S TEA

ROUSTEAD & CLARKE, LTD. Mombasa, Nairobi, Kisumu, Kampala, Jinja and Dar-es-Salaam.

Dr. H. L. Gordon of Rome, whose in-coming volume on psychology some months ago was recalled, to the delivery of two papers on Nairobi next month. The first, "Belation of Psychology to Government," will be given in public at the Museum at 6-8 pm on November 11. The second, "Evolution of Psychology to Moral and Religious," will be given at 5:15 pm a week later at the Post Memorial Hall. The second, although a continuation of the first, will be given separately. Publications of the first and second papers are available at the following prices: The first, 2/2; the second, 1/6.

A tooth

Has it been a long time for you but or has it? A tooth being cut your only consolation. Buy a pair of Steedmans Powders. From Nothing to Yours.

STEEDMAN'S POWDERS

From Nothing to Yours. ASTHMA gives way.



THE NEW FRENCH REMEDY THERAPION No. 1 THERAPION No. 2 THERAPION No. 3

ASTHMA gives way. POTTERS ASTHMA CURE.



CASTILLON'S Superior Old Brandy. Can you describe 'The Nandi Beer'?

I wonder who'll catch 'The Nandi Beer'... We are not sure of head has in the... We are not sure of head has in the... We are not sure of head has in the...

I've tried them all - I'd walk a mile for a CRAVEN'S

"THEY NEVER VARY"

CRAVEN'S CORK TIPPED Virginia Cigarettes Made Specially to Prevent Sore Throats

When Baby's food turns sour in the Stomach. ACIDITY, INFLAMMATION, CRAMPING PAIN, INDIGESTION, COLIC, GREEN VOMITING AND IT'S RESULT.

WOODWARD'S "Gripe Water" KEEPS BABY WELL

It's the flavour which is so important! Many a beautiful dish, which is so much cared for, is spoiled because it doesn't taste just right - but there are no mistakes if you use MACONOCHE'S Flavouring Essences

DISTINCTION. Some people look distinctive in dress. This appearance is almost always the result of expertness in fitting.

Why not extract the fullest value from your spectacles by having them expertly and artistically adapted to your face by Dobbies Ltd. OPTHALMIC OPTICIANS. Box 83. NAIROBI. Phone 90.

FRED RAPER. R.F.O. Box 541. CITY HOUSE, NAIROBI. Phone 149

Kenya Agents for Messrs. Reel, Taxidermists and Furriers of Tanga. Stocks of Hyrax Coat, Stoles, always on hand. SADDLERY. Largest Stocks of Saddles and Saddlery in Kenya. Everything for Polo Players, European Stables, and Shams. Repairs Executed by European Saddler.

Exquisite SILK HOSIERY



with Extraordinary Wear. HOPEPROOF HOSIERY clear and lovely, is remarkable for longer wear. The purest silk, specially treated, gives lasting appearance and the fashionable colors will not fade. But of greater importance is the Hopeproof reinforcement at the toes and heels.

At these points of greatest strain, Hopeproof Hosiery is strengthened by wear-resisting threads which prevent the holes and tears common in ordinary hose. So skillfully is this reinforcement woven in that it can not be felt... and is only to be seen on the closest inspection.

No other hose is so perfect for superlative loveliness and extraordinary wear. The exquisite texture, the rich lustrous, will not diminish under constant wear and laundering. Hopeproof Hosiery comes in 31 correct Paris shades and in all weights and styles. The next time you need Hosiery choose Hopeproof... you will prefer their beauty and economy. Kettles Box, Ltd., P.O. Box 1100, NAIROBI. Sold by all High-Class Stores.

Hopeproof Hosiery

Chivers' Jams. Chivers' Old English Marmalade. Chivers' Jellies. Sole Agents: R. O. HAMILTON, Ltd. Phone 352.

Radio - Malt. THE VITAMIN FOOD.

A combination of Malt and Oil in which the Cod Liver Oil has been replaced by tasteless Irradiated Oils possessing a high content of Vitamins "A" and "D". A new reconstructive TONIC FOOD suitable for Adults and Children alike. RESTORES HEALTH, REnews VIGOUR. Price 4/- and 7/60. HOWE & MCGEESE, LTD. NAIROBI and BRANCHES. (Written on page 46.)



ON ALL THE BIG JOBS

FERROCRETE

THE RAPID HARDENING CEMENT Concrete hard and ready in 4 days instead of 28. Stocked by your Hardware House. Particulars from Kettles Roy Ltd., Manufacturers' Representatives, Nairobi and Mombasa.

Fisons' Fertilisers

Specially prepared for Kenya Colony for COFFEE--WHEAT--MAIZE The Fertiliser with Right Analysis. Book your orders now. Stocks on hand.

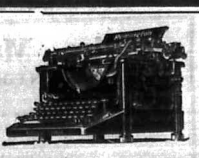
Dalgely & Company, Limited.

Mombasa. Nairobi. Eldoret.

THE NATIONAL MUTUAL LIFE ASSOCIATION OF AUSTRALASIA LTD. COMPARE

OUR PREMIUMS and our BONUSES with those of a NY company. Bonuses range from £2 to £5/14/0 per cent. and are ALLOTTED YEARLY. Annual Premium Whole Life £1,000, age 30 is £23/6/8. Value of this policy at age 90 would be about £2,000.

Endowments on similarly favourable terms. SURPLUS FUNDING £24,582,000. Full particulars from KETTLES-ROY Ltd, Box 100, NAIROBI



Remington Typewriter Agency Government Road, Nairobi. Phone 25.

"KENYA--MOST RESTLESS DEPENDENCY."

show admirable determination in the question of altering the constitution of Kenya Colony... This has happened to justify consideration of policy so soon?

The Governor. The change of policy dates from the appointment of a new Governor... The Governor of Kenya Colony, Sir Edward Grey, K.C.V.O., M.C., D.S.O. With an admirable display of his previous Governor's... in Kenya's history, he has adopted the views of the small business...

Some two thousand or so of the British... The Governor's statement... that the majority of the population is of the native population, and... the majority of the population is of the native population, and...

the Governor... The Governor's statement... that the majority of the population is of the native population, and... the majority of the population is of the native population, and...

THE POSITION OF THE COLONY... The Governor's statement... that the majority of the population is of the native population, and... the majority of the population is of the native population, and...

African's Pay the Piper... The European in Kenya number has been 11,000 men, women and children... The number of the total population 3,500 adult men and...

So no one should give the... The Governor's statement... that the majority of the population is of the native population, and... the majority of the population is of the native population, and...

have paid Customs duties... The total of these is less than £500,000, and Africa has paid more of this than all the other races put together... The native population numbers 12,000,000...

To Empress this subject a... The Governor's statement... that the majority of the population is of the native population, and... the majority of the population is of the native population, and...

Some two thousand or so of the... The Governor's statement... that the majority of the population is of the native population, and... the majority of the population is of the native population, and...

The Governor has also... The Governor's statement... that the majority of the population is of the native population, and... the majority of the population is of the native population, and...

THE POSITION OF THE COLONY... The Governor's statement... that the majority of the population is of the native population, and... the majority of the population is of the native population, and...

African's Pay the Piper... The European in Kenya number has been 11,000 men, women and children... The number of the total population 3,500 adult men and...

So no one should give the... The Governor's statement... that the majority of the population is of the native population, and... the majority of the population is of the native population, and...

Don't Look Dead --Get On The Job

Do you expect to be successful... The Governor's statement... that the majority of the population is of the native population, and... the majority of the population is of the native population, and...



Good Quick Sure... The Governor's statement... that the majority of the population is of the native population, and... the majority of the population is of the native population, and...



Prevents Sore Throat... The Governor's statement... that the majority of the population is of the native population, and... the majority of the population is of the native population, and...

Prevents Sore Throat... The Governor's statement... that the majority of the population is of the native population, and... the majority of the population is of the native population, and...

Prevents Sore Throat... The Governor's statement... that the majority of the population is of the native population, and... the majority of the population is of the native population, and...

Prevents Sore Throat... The Governor's statement... that the majority of the population is of the native population, and... the majority of the population is of the native population, and...

Prevents Sore Throat... The Governor's statement... that the majority of the population is of the native population, and... the majority of the population is of the native population, and...

Prevents Sore Throat... The Governor's statement... that the majority of the population is of the native population, and... the majority of the population is of the native population, and...

Prevents Sore Throat... The Governor's statement... that the majority of the population is of the native population, and... the majority of the population is of the native population, and...

Prevents Sore Throat... The Governor's statement... that the majority of the population is of the native population, and... the majority of the population is of the native population, and...

CORRESPONDENCE

The Editor does not accept... The Governor's statement... that the majority of the population is of the native population, and... the majority of the population is of the native population, and...

FUEL OIL... The Governor's statement... that the majority of the population is of the native population, and... the majority of the population is of the native population, and...

FUEL OIL... The Governor's statement... that the majority of the population is of the native population, and... the majority of the population is of the native population, and...

FUEL OIL... The Governor's statement... that the majority of the population is of the native population, and... the majority of the population is of the native population, and...

FUEL OIL... The Governor's statement... that the majority of the population is of the native population, and... the majority of the population is of the native population, and...

FUEL OIL... The Governor's statement... that the majority of the population is of the native population, and... the majority of the population is of the native population, and...

FUEL OIL... The Governor's statement... that the majority of the population is of the native population, and... the majority of the population is of the native population, and...

FUEL OIL... The Governor's statement... that the majority of the population is of the native population, and... the majority of the population is of the native population, and...

FUEL OIL... The Governor's statement... that the majority of the population is of the native population, and... the majority of the population is of the native population, and...

FUEL OIL... The Governor's statement... that the majority of the population is of the native population, and... the majority of the population is of the native population, and...

FUEL OIL... The Governor's statement... that the majority of the population is of the native population, and... the majority of the population is of the native population, and...

FUEL OIL... The Governor's statement... that the majority of the population is of the native population, and... the majority of the population is of the native population, and...

the benefit of the "booster" every... The Governor's statement... that the majority of the population is of the native population, and... the majority of the population is of the native population, and...

the benefit of the "booster" every... The Governor's statement... that the majority of the population is of the native population, and... the majority of the population is of the native population, and...

the benefit of the "booster" every... The Governor's statement... that the majority of the population is of the native population, and... the majority of the population is of the native population, and...

the benefit of the "booster" every... The Governor's statement... that the majority of the population is of the native population, and... the majority of the population is of the native population, and...

the benefit of the "booster" every... The Governor's statement... that the majority of the population is of the native population, and... the majority of the population is of the native population, and...

the benefit of the "booster" every... The Governor's statement... that the majority of the population is of the native population, and... the majority of the population is of the native population, and...

the benefit of the "booster" every... The Governor's statement... that the majority of the population is of the native population, and... the majority of the population is of the native population, and...

the benefit of the "booster" every... The Governor's statement... that the majority of the population is of the native population, and... the majority of the population is of the native population, and...

the benefit of the "booster" every... The Governor's statement... that the majority of the population is of the native population, and... the majority of the population is of the native population, and...

the benefit of the "booster" every... The Governor's statement... that the majority of the population is of the native population, and... the majority of the population is of the native population, and...

the benefit of the "booster" every... The Governor's statement... that the majority of the population is of the native population, and... the majority of the population is of the native population, and...

the benefit of the "booster" every... The Governor's statement... that the majority of the population is of the native population, and... the majority of the population is of the native population, and...



I want to grow up!

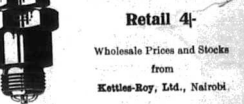
The desire of your children to grow up is simply the inner voice of nature. Help them by proper feeding. Give them Quaker Oats each day. This delicious food, containing protein, mineral salts and vitamins, builds body, bone and muscle. It aids greatly in the proper development of the organism and promotes general good health and strength throughout the entire system.

Quaker Oats.

Also sold in half size tins.

EVERY LODGE PLUGS IS GUARANTEED

A TYPE FOR EVERY CAR OR MOTOR CYCLE. Wholesale Prices and Stocks from Kettles-Roy Ltd., Nairobi.



THE EXPERIMENT... The Governor's statement... that the majority of the population is of the native population, and... the majority of the population is of the native population, and...

THE EXPERIMENT... The Governor's statement... that the majority of the population is of the native population, and... the majority of the population is of the native population, and...

THE EXPERIMENT... The Governor's statement... that the majority of the population is of the native population, and... the majority of the population is of the native population, and...

THE EXPERIMENT... The Governor's statement... that the majority of the population is of the native population, and... the majority of the population is of the native population, and...



Sound, Restful Sleep

Here is the way to enjoy peaceful sleep from which you will wake refreshed and invigorated. Drink a cup of delicious "Ovaltine" regularly before retiring...

Ovaltine Tonic Food Beverage. Builds up Brain, Nerve & Body. Sold by all Chemists and Stores.

King's Mountain Dew Quality. First Since 1797. The Kenya Agency, Ltd. Nairobi.

African Guarantee and Indemnity Co. Ltd. Fire - Marine - Motor Accident - Burglary. M. D. KAMPF, Offices - Dar es Salaam, P. O. Box 5000, Nairobi.

CORRESPONDENCE

The editor does not accept responsibility for the views expressed by correspondents on three columns, and in all cases the names and addresses of the writers must accompany a letter...

THE Nandi BEAR.

To the Editor - "H.A. Standard." Sir - I have read with great interest the Nandi Bear article...

It is an exceptionally large specimen of the bear of this group which is responsible for the cattle-slaughter mentioned in your Nandi Bear article...

At present, I consider it a little unwise to place our Nandi bears in the same category as the Nandi bear...

Many years ago I was once again in the forest of the Nandi country and I found a number of bears...

TUBE BURNING.

October 28, 1927. How does the Commissioner of the Government intend to deal with the tube burning in the Nandi country...

Get another tin of

Leather's Life Guard. KAWI The Quality Boot. KEATING'S POWDER KILLS.

MARTIN'S PILLS. APOL & STEEL. Gilbert Gilkes & Co., Ltd. Manufacturers of the Famous Gilbert Gilkes' Patent...

FRITON WHEEL. The Central and Commercial Bank. Head Office, 31 Broadwood Park, Nairobi, and at Paris 17, Rue St. Joseph.

AT STUD. LANDRAIL (1918). Bay Horse standing 15-2 h. By Lord Leasing, Euxine. Sired by Lord Leasing, Euxine.

BUY DIRECT. BRITISH WEHLEBY BERT. HYRAX FURS. Associated with the best and most reliable of the world's fur producers.

MOTORAX RUBS (Rygar) For the removal of dirt, grease, oil, and other substances from the surface of motor cars.

EDGAR E. BERGER. Sole Importers for East Africa. 10, Market Street, Nairobi.

CATTLE MANNING BY NATIVE WOMAN.

Panga Attack on Trespassing Oxen. A native woman was charged before Mr. Gansell in the Resident Magistrate's Court at Othmanya...

COAST AND CONVENTION. Approachment Being Considered. "STANDARD" Correspondent. Mombasa, Oct. 27. The work has been quiet since the meeting...

UGANDA NEGRO RACE. DISCOVERED BY SWEDISH SCIENTISTS. The Stockholm paper Svenska Dagbladet states that the director of the African Expedition...

MAIVE CRUELTY. A number of Maive women were found a report of a case in which one woman was accused of murdering another woman...

AT STUD. LANDRAIL (1918). Bay Horse standing 15-2 h. By Lord Leasing, Euxine. Sired by Lord Leasing, Euxine.

BUY DIRECT. BRITISH WEHLEBY BERT. HYRAX FURS. Associated with the best and most reliable of the world's fur producers.

MOTORAX RUBS (Rygar) For the removal of dirt, grease, oil, and other substances from the surface of motor cars.

EDGAR E. BERGER. Sole Importers for East Africa. 10, Market Street, Nairobi.



J. MERRYWEATHER & SONS. FARM WAGON. LOW AND EASY LOADING: MADE TO SUIT OXEN OR MULES; BUILT TO LAST. No. 1, 14 feet long, capacity 8,000 lbs.

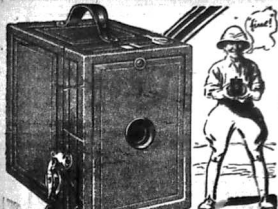


OGDENS' SPORTSWEAR. EACH TIN OF SPORTSMAN CIGARETTES CONTAINS A GIFT COUPON...

The Mild Virginia CIGARETTES. MADE IN ENGLAND. Includes an image of a cigarette pack.

See this new Sports TRIUMPH

Bullows & Roy Ltd. Nairobi, Kenya Colony, E.A.A. Includes an image of a sports car.



THE AFRICAN AS A FACTOR IN CIVILIZATION.

Value and Scope of New Methods in Education.

PROBLEM OF THE TOWN GIRL

The importance of right methods in the education of the African was stressed at a meeting of the Education Society which was held to consider the effect of new educational methods which have been introduced into Kenya.

WORK AND DEMONSTRATION.

There is a considerable interest here in the general public as to the subject of the education of the African. This was evidenced by the large attendance at the meeting of the Education Society held at the St. Mark's House, Parklands, on Wednesday, October 25th. The Rev. James Douglas, Principal of the Victoria School, and Mr. J. M. Madge, Secretary of the C.M.S. Education Department, were the main speakers. The Rev. Mr. Douglas pointed out that the education of the African is a problem which has become more acute in the past few years. He said that the education of the African is a problem which has become more acute in the past few years. He said that the education of the African is a problem which has become more acute in the past few years.

WHEN

When your liver is sluggish, and your bowels constipated, appetite variable, you need a course of Chamberlain's Tablets. Their effect on stomach, liver and bowels is just marvellous.



Trade Enquiries to Messrs. HOWES & MCGEORGE LTD., NAIROBI.

Pepsaidin

The Most Efficient Digestive Aid in the World.

ELECTRIC 'SHOWERS OF LIFE'

ELECTRICITY IS LIFE



Amazing Success in the Cure of Rheumatism and Nervous Disorders.

DEIR J. DONALDSON, DISCOVERER OF THE ELECTRIC SHOWER OF LIFE. BEMBY FOR CONSUMPTION.

THE DRUGS AND TABLETS MANUFACTURERS.

THE DRUGS AND TABLETS MANUFACTURERS. Sole Agents for East Africa, British East Africa, and British East Africa.

LASTING RELIEF FROM SCIATICA

Dr. W. P. P. Smith's Pain Expeller is a powerful relief for sciatica. It is a powerful relief for sciatica. It is a powerful relief for sciatica.

DEWITT'S PILLS

DEWITT'S PILLS. The Best of All.

CONSUMPTION HAS BEEN CURED.

A Remedy for Consumption Has Been Cured.

ABSOLUTELY PURE

ABSOLUTELY PURE. The Best of All.

INSTRUCT YOU TO SEND YOU A PARCEL OF BOOKS

INSTRUCT YOU TO SEND YOU A PARCEL OF BOOKS. The Best of All.

FOYLES

FOYLES. The Best of All.

THE AFRICAN AS A FACTOR IN CIVILIZATION.

The African as a factor in civilization. The African as a factor in civilization. The African as a factor in civilization.

The African as a factor in civilization. The African as a factor in civilization. The African as a factor in civilization.

The African as a factor in civilization. The African as a factor in civilization. The African as a factor in civilization.

The African as a factor in civilization. The African as a factor in civilization. The African as a factor in civilization.

The African as a factor in civilization. The African as a factor in civilization. The African as a factor in civilization.

The African as a factor in civilization. The African as a factor in civilization. The African as a factor in civilization.

The African as a factor in civilization. The African as a factor in civilization. The African as a factor in civilization.

MISS JUSTINE JOHNSTON



THE GREAT factor in the acquisition of beauty is Good Health. Therefore I want to pay my tribute to Phosfocin, for I find that its regular use fortifies me against both mental and physical strain.

PHOSFERINE

The Greatest of all Tonics for the Blood.

Foamite Fire Protection



SPINHOET & OVERMAN LTD. Mumbai.

At Ufela Stud, Elburgon

The Property of The Hon. H. E. Watson. (Winner of the Ascot Gold Cup, Ascot Stakes, Chester Cup, Coarwhing carrying 15 lbs, etc.)

The Property of The Hon. H. E. Watson. (Winner of the Ascot Gold Cup, Ascot Stakes, Chester Cup, Coarwhing carrying 15 lbs, etc.)

Tree! A DAYLIGHT-LOADING ROLL-FILM CAMERA guaranteed Kodak made.

80 Coupons from Podo Molar Cigarettes. REPRESENTATIVE: T. JOHNSON, P.O. BOX 14, NAIROBI, KENYA COLONY.

Molo Timber Company. (Proprietor, W. J. Beaton). Established 1912. Head Office: NJOBO. Telegrams: Loggeries, Njoro, Code: A.B.C. 5th Edition.

CEDAR. PODO, MCKAY, M'ENAGHI, and MOWELI. Lings, Flooring, and Milling a specialty.

NOTICE TO Nakuru, Njoro, Rongai and Solai Farmers. Mr. Isaac Engelbrecht who visits the above districts a short time ago and who undertook approx. ten thousand tons of Wheat and Maize for Transporting by a fleet of fast Motor Lorries, wishes to inform those whom he had the misfortune not to see personally and who may have transport difficulties, to apply to him immediately stating the approx. number of bags for transport and the distance to station.

The ideas and methods about which I would like to speak "concern Mr. Douglas's new offering made to the African people which will affect more and more of them. At the same time I would like to understand in the result of this particular thing and find it in a more general way.

Traditions and Customs. "The next point we have got to consider is the question of traditions and customs of the people from whom the pupil comes. We have to try to understand his way of thinking, his ideas, customs, and concepts, and to see how they fit into his social environment and how they affect his education."

When your liver is sluggish, and your bowels constipated, appetite variable, you need a course of Chamberlain's Tablets. Their effect on stomach, liver and bowels is just marvellous.

It is a powerful relief for sciatica. It is a powerful relief for sciatica. It is a powerful relief for sciatica.

DEWITT'S PILLS. The Best of All. DEWITT'S PILLS. The Best of All.

CONSUMPTION HAS BEEN CURED. A Remedy for Consumption Has Been Cured.

ABSOLUTELY PURE. INSTRUCT YOU TO SEND YOU A PARCEL OF BOOKS. FOYLES.

THE FAMOUS Actress, Film Star & Beauty Specialist writes: "The great factor in the acquisition of beauty is Good Health. Therefore I want to pay my tribute to Phosfocin, for I find that its regular use fortifies me against both mental and physical strain."

PHOSFERINE. The Greatest of all Tonics for the Blood. SPINHOET & OVERMAN LTD. Mumbai.

Foamite Fire Protection. SPINHOET & OVERMAN LTD. Mumbai.

At Ufela Stud, Elburgon. The Property of The Hon. H. E. Watson. (Winner of the Ascot Gold Cup, Ascot Stakes, Chester Cup, Coarwhing carrying 15 lbs, etc.)

THE AFRICAN AS A FACTOR IN CIVILIZATION.



(Continued from page 51)

employed in such a way that... The African as a factor in civilization... The African as a factor in civilization...

Many warnings precede that collapse of the bodily system which we call illness... Andrews eliminates waste matter from the system and stimulates the perfect coordination of all the functions.

Andrews Liver Salt advertisement with text: 'What matters in this condition is the salting component... Andrews Liver Salt... Effortless... Refreshing...'

SPRINGETT & OVERMAN, LMS., P. O. Box 100, MOMBASA.

GRAHAM BROTHERS TRUCKS AND BUSES LOW COSTS advertisement with text: 'Low costs are a feature of Graham Brothers Trucks, Commercial Cars and Buses...'

THE OMOND-NENGE GARAGE, NAKURU, F. WACK, BARNAT GARGAR, KITALE, R. BURT, A. O. ULLI, MOSEI and AURHUA, KARSAN EBRAHIM, KAMPALA and SUKORA.

S. Fisher & Simmons (E. A.) Ltd. Victoria Street, NAIROBI. 1-ton COMMERCIAL CAR, complete 2350... 1-ton CHASSIS only 2050... 1 1/2-ton CHASSIS with driver's cab 2400... 2-ton CHASSIS with driver's cab 2800.

Handed and another teacher had to undergo an experimental course for native teachers and girls at Nairobi... The African as a factor in civilization...

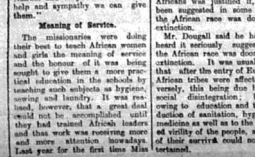
What matters in this condition is the salting component... Andrews Liver Salt... Effortless... Refreshing...'

SPRINGETT & OVERMAN, LMS., P. O. Box 100, MOMBASA.

GRAHAM BROTHERS TRUCKS AND BUSES LOW COSTS advertisement with text: 'Low costs are a feature of Graham Brothers Trucks, Commercial Cars and Buses...'

THE OMOND-NENGE GARAGE, NAKURU, F. WACK, BARNAT GARGAR, KITALE, R. BURT, A. O. ULLI, MOSEI and AURHUA, KARSAN EBRAHIM, KAMPALA and SUKORA.

S. Fisher & Simmons (E. A.) Ltd. Victoria Street, NAIROBI. 1-ton COMMERCIAL CAR, complete 2350... 1-ton CHASSIS only 2050... 1 1/2-ton CHASSIS with driver's cab 2400... 2-ton CHASSIS with driver's cab 2800.



The most questionable asked if it was not a fact that the Digo tribe at the coast was fast approaching extinction... The African as a factor in civilization...

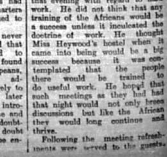
Many warnings precede that collapse of the bodily system which we call illness... Andrews Liver Salt... Effortless... Refreshing...'

SPRINGETT & OVERMAN, LMS., P. O. Box 100, MOMBASA.

GRAHAM BROTHERS TRUCKS AND BUSES LOW COSTS advertisement with text: 'Low costs are a feature of Graham Brothers Trucks, Commercial Cars and Buses...'

THE OMOND-NENGE GARAGE, NAKURU, F. WACK, BARNAT GARGAR, KITALE, R. BURT, A. O. ULLI, MOSEI and AURHUA, KARSAN EBRAHIM, KAMPALA and SUKORA.

S. Fisher & Simmons (E. A.) Ltd. Victoria Street, NAIROBI. 1-ton COMMERCIAL CAR, complete 2350... 1-ton CHASSIS only 2050... 1 1/2-ton CHASSIS with driver's cab 2400... 2-ton CHASSIS with driver's cab 2800.



THE BUDGET CRITICISED.

(Continued from page 36.)

The Veterinary Services. The debate on the Education Bill was resumed in Legislative Council on an Tuesday morning... The African as a factor in civilization...

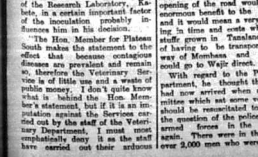
Many warnings precede that collapse of the bodily system which we call illness... Andrews Liver Salt... Effortless... Refreshing...'

SPRINGETT & OVERMAN, LMS., P. O. Box 100, MOMBASA.

GRAHAM BROTHERS TRUCKS AND BUSES LOW COSTS advertisement with text: 'Low costs are a feature of Graham Brothers Trucks, Commercial Cars and Buses...'

THE OMOND-NENGE GARAGE, NAKURU, F. WACK, BARNAT GARGAR, KITALE, R. BURT, A. O. ULLI, MOSEI and AURHUA, KARSAN EBRAHIM, KAMPALA and SUKORA.

S. Fisher & Simmons (E. A.) Ltd. Victoria Street, NAIROBI. 1-ton COMMERCIAL CAR, complete 2350... 1-ton CHASSIS only 2050... 1 1/2-ton CHASSIS with driver's cab 2400... 2-ton CHASSIS with driver's cab 2800.



THE BUDGET CRITICISED.

(Continued from page 36.)

The Veterinary Services. The debate on the Education Bill was resumed in Legislative Council on an Tuesday morning... The African as a factor in civilization...

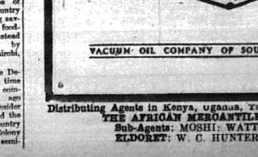
Many warnings precede that collapse of the bodily system which we call illness... Andrews Liver Salt... Effortless... Refreshing...'

SPRINGETT & OVERMAN, LMS., P. O. Box 100, MOMBASA.

GRAHAM BROTHERS TRUCKS AND BUSES LOW COSTS advertisement with text: 'Low costs are a feature of Graham Brothers Trucks, Commercial Cars and Buses...'

THE OMOND-NENGE GARAGE, NAKURU, F. WACK, BARNAT GARGAR, KITALE, R. BURT, A. O. ULLI, MOSEI and AURHUA, KARSAN EBRAHIM, KAMPALA and SUKORA.

S. Fisher & Simmons (E. A.) Ltd. Victoria Street, NAIROBI. 1-ton COMMERCIAL CAR, complete 2350... 1-ton CHASSIS only 2050... 1 1/2-ton CHASSIS with driver's cab 2400... 2-ton CHASSIS with driver's cab 2800.



Latest Edition CAMMALS General Catalogue advertisement with text: 'This Great Volume of Value brings the most interesting story of pictures, 20,000 800 pictures...'

DO IT NOW! NOTICE To all to whom it may concern I Nicolaas Welthout Smith of Eldoret, Contractor, hereby give notice that I will not be responsible for any debts incurred or that may be incurred by my wife Magdalena Pieterella Smith.

Buy tires! The Best Buy you can buy by tires CASSELLS advertisement with text: 'I would further congratulate the Director on having put on a course of £500 for having Government...'

WACUON OIL COMPANY OF SOUTH AFRICA, LIMITED advertisement with text: 'Distributing Agents in Kenya, Uganda, Tanganyika and Zanzibar. THE AFRICAN MERCHANTILE COMPANY, LTD. Sub-Agent: MORSHI, HUNT & COMPANY. ELDORET, W. G. G. WASTLEY & COMPANY.'

Books and Novels.

The Third Miracle... The Missing Brand... The Fruit of Eden... The Day of Wrath...

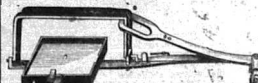
STANDARD STATIONERY STORES, NAIROBI.

Kenya & Uganda Railway

Tenders are invited for 3,000 tons of fine ground and sifted Maize Flour... 1. Delivery to be made at the rate of approximately 100 tons per month...

C. L. N. FELLING, General Manager, Kenya and Uganda Railway.

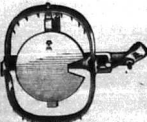
TRAPS!!!



LION TRAPS (Bates Large-Double Spend) at Shgs 110 - each.

LEOPARD TRAPS (as above) at Shgs. 85 - each.

Protect Your Stock and Clear Your Farm of Vermin.



Leopard and Vermin Traps at Shgs. 25 -

CHAS. A. HEYER & Co. Est. 1893. (Gunmakers, etc.) P.O. Box 557. Phone 400. Grams: Elephant. NAIROBI.

Church Notices.

NAKURU AND DISTRICT CHAPLAINSHIP.

FRIDAY, NOV. 4. 7.30 a.m. Holy Communion (Nakuru). SUNDAY, NOV. 6. 7.30 a.m. Holy Communion. 9.30 a.m. Services at Nakuru.

KIAMBU DISTRICT.

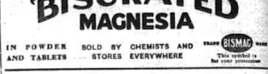
To commence: SUNDAY, NOV. 6. 10.30 a.m. Holy Communion. 10.30 a.m. Matins and Holy Communion.

ELDORET AND TRANS-NEGUA CHAPLAINSHIP.

SUNDAY, NOV. 13. KITALE. 9.30 a.m. Holy Communion. 9.30 a.m. Children's Service (at the school).

For all disorders of the Stomach

"Bisurated" Magnesia gives instant relief in all cases of indigestion, dyspepsia, gastritis and similar troubles arising from the common acid, prevents fermentation, and heals the weakened stomach lining.



Kenya Vulcanizing Works, K. McIVOR'S Garage.

OUR PRICES FOR VULCANIZING TYRES OF THE SMALLER SIZES ARE FROM 10/- TO 20/-. HEAVY VEHICLE TYRES (up to 7 inch) FROM 18/- TO 40/-. ALL WORK GUARANTEED AND COMPLETED WITHIN 4 HOURS.

Uplands Bacon. Reduced Prices

OF FROM 15 TO 20 cents per lb. Have been quoted by The Trade. Ask Your Grocer for his amended prices!

OVERSEAS MAILS.

Table with columns: ARRIVALS, STEAMERS, FROM, Due at Mombasa, Mails arrive in Mombasa.

Table with columns: DEPARTURES, STEAMER, FOR, Mail Close at G.P.O., Date of Departure from Mombasa.

For All Drives, Wet or Dry, Hard or Easy, Install "Rainbow Belting."

Lamberts, Limited. Box 90. Sixth Avenue, Nairobi.

Coffee Trays

Shgs. 16-00 each. Tarpaulins all sizes in Stock. Barbed wire 12 gauge 2 ply (Shgs. 30-00 4 point, 3" apart

Lamberts, Limited.

Box 90. Sixth Avenue, Nairobi.

Hand Power Toggle Lever. Straw Presses "The Little Nipper"



This Press is constructed on the principle of the well-known Perpetual Press, but adapted for hand power. It makes a bale 14 in. by 18 in. by 26 in. long.

J. W. Milligan & Co. P.O. Box 148. Hardinge St. NAIROBI.

The Standard Bank of South Africa Ltd.

(INCORPORATED IN THE UNITED KINGDOM). Bankers to the Government of the Union of South Africa in the Cape Province, to the Imperial Government in South Africa, to the Governments of Northern and Southern Rhodesia, Nyasaland, Protectorate and Tanganyika Territory.

HEAD OFFICE: 10 CLEMENTS LANE, LOMBARD STREET, LONDON, E.C. 4. Manager: BRITISH LAWYERS.

BRANCHES IN EAST AFRICA: Kenya Colony: Tangaika Territory; Zulu Land; Khasia, Nias, Mombasa, Nyeri, Kisumu, Malindi, Mombasa, Nairobi, Mombasa, (New), (Over Sea), (Nyasaland).

NEW YORK AGENCY: 67 Wall Street. HAMBURG AGENCY: Bank of British West Africa Ltd., 40/41 Schussenthorweg, Hamburg.

"Tanganyika Times"

(Incorporating the DAR-ES-SALAAM TIMES. THE ONLY ENGLISH NEWSPAPER.)

TANGANYIKA TERRITORY.

Circulates through the Whole Country, affording a UNIQUE medium for Advertising. Send for Specimen Copy and Advertising Tariff to Proprietors and Publishers.

AFRICAN INDUSTRIES

THE ONLY PAPER PUBLISHED IN GREAT BRITAIN giving The Latest Facts, Figures, etc., as to Settlements, Manufacturers, Industries and Cultivation. It is invaluable to the Farmer, Merchant and Manufacturer.

GROCES OF COMMERCE INCLUDING Cost and Charges

by W. GRAZEBROOK. Contains Cost and Charges Calculator in Rupees and Pence of a Pound Sterling in Rupees and Pence of an American Dollar. Notes on Freight Charges, Freight Tables, Arbitration Tables, etc., etc. PRICE Sheet: 4/50. Packed Sheet: 4/10. STANDARD STATIONERY STORES, NAIROBI.

THE UNION-CASTLE LINE

HOMEWARDS via EASTERN or WESTERN ROUTE

Steamers will lead at Kilindini on or about the following dates.

VIA SUEZ CANAL

Calling at Aden, Port Sudan, Suez, Port Said, Genoa and Marseilles Homewards.

Leave England	From Mombasa	Arrive London
about	about	about
"Gulliford Castle"	10th Dec.	6th Jan. 1928
"Orlov Castle" (Cargo only)	23rd Jan. 1928	20th Feb. 1928
18th Dec.	20th Jan. 1928	15th Feb.
7th Feb. 1928	28th March	25th April
28th April	28th May	21st June
21st May	21st July	18th Aug.

Taking cargo for Aden, Port Sudan, Genoa, Marseilles, London, Antwerp, also for Amsterdam, Hamburg, and Bremen, with trans-shipment, and New York, and Boston via Port Sudan.

All sailing dates are subject to alteration without notice.

VIA SOUTH AFRICA

Calling at Tanga, Zanzibar, Dur-ee-Susam, Port Amelia, Mozambique, Beira, Delagoa Bay, S.A. Union Ports, and Canary Islands.

Leave England	From Mombasa	Arrive London
about	about	about
"Llanthomas Castle"	11th Nov.	27th Dec.
"Thompson Castle"	25th Dec.	20th Feb.
"Landoff Castle" (cargo only)	8th Jan.	12th Feb.
2nd Feb.	14th Feb.	20th April
1st March	25th March	21st April
(Cargo Steamer)	(Cargo Steamer)	(Cargo Steamer)
20th March	30th April	31st May
(Cargo Steamer)	(Cargo Steamer)	(Cargo Steamer)
28th April	28th May	28th June
"Llanthomas Castle"	28th July	28th Oct.
21st June	21st Aug.	

Taking cargo for Coast ports as far as Capetown and for London and Amsterdam, Rotterdam, Bremen and Hamburg, with trans-shipment, and for New York, Philadelphia and Baltimore via Beira.

If sufficient imbursement offered, post-office cheques cannot be accepted unless endorsed by local bank.

Vessels of Union-Castle steamers are required in future, to be in possession of permits obtainable at the Company's Office.
P. O. Box 86. Tel. Add. "UNICASTE"
The Union-Castle Mail Steamship Co., Ltd. Tel. No. 107.

OR THE COMPANY'S AGENTS

R.E.A. Corporation Ltd., Nairobi, Kampala, etc.
 East African Estates, Ltd., Nakuru.

WEEKLY EDITION:
 GUARANTEED THE LARGEST CIRCULATION OF ANY NEWSPAPER IN KENYA, UGANDA, TANGANYIKA AND ZANZIBAR.

£1,000 FREE INSURANCE
 WITH THE AFRICAN OCEANIC AND INDEMNITY Co., Ltd. (See Advertisement on page 5.)

KENYA'S NEWSPAPER. **THE EAST** Price 50 Cents.

African Standard

MOMBASA TIMES & UGANDA ARGUS. With which is incorporated THE LEADER.

The Oldest Established Newspaper Published in Kenya and Uganda. Official Organ of the Royal K. A. Automobile Association, Horticultural Society of Kenya, Etc.

No. 2028. REGISTERED AT THE GENERAL POST OFFICE AS A NEWSPAPER. NAIROBI, SATURDAY, NOVEMBER 12, 1927. Price 25c. per annum, Postage included, 30s. Printed Overseas.

WHAT FORD IS DOING
FORD IS DOUBLING HIS PLANT
 To Deal with the most Colossal Production the World has ever known
 AND
 Spares for the present model T will continue to be manufactured for 10 years

Ford
The Service Company Limited.
 NAIROBI and NAKURU.

Osaka Shosen Kaisha

FAST & REGULAR DIRECT SERVICE TO AND FROM JAPAN

BALINDAO TO DURBAN, FROM KILINDINI.

Arrives from Japan	Sails for Durban.
Nov. 2nd S.S. "PANAMA MARU"	2nd Nov.
Dec. 28th S.S. "CANADA MARU"	27th Dec.
Nov. 28th S.S. "MEXICO MARU"	27th Jan.
Feb. 28th S.S. "CELESTO MARU"	28th Feb.

MEMBERS TO JAPAN FROM KILINDINI.

S.S.	SHINGO MARU	Sails from Mombasa.
Nov. 27th		Nov. 27th
S.S. "PANAMA MARU"		Dec. 8th
S.S. "CANADA MARU"		Nov. 27th
S.S. "MEXICO MARU"		Mar. 6th

MEMBER'S FARES ARE AS FOLLOWS:

Mombasa: Singapore, Kobe, Mani, Durban, Zanzibar, Dur-ee-Susam.
 1st Class 25/0 2nd 20/0 3rd 15/0
 4th Class 12/0 5th 10/0 6th 8/0
 Deck Passage rates on application.
 Regular and frequent connections at Japan ports to New York, San Francisco, Tacoma.

APPLICATION FOR FREIGHT AND PASSENGE TO

The African Mercantile Coy., Ltd.
 Agents for the OSAKA SHOSHEN KAISHA LIMITED.
 MOMBASA, TANGA, ZANZIBAR, DAR-EE-SALAM.

Hartz & Bell, Ltd.

Box 188. Phone 189. Hasldigs Street. NAIROBI.

These Prices will attract you.
 Porcelain Baths with Nickel Plated Fixings 215/-
 Hot Water Boilers with tap and fire box 45/-
 Bonybridge Dover Stoves No. 8 150/-
 Bonybridge Dover Stoves No. 9 210/-
 All Steel Ancla Ranges 600/-
 Specialists in Tankmaking, Hot and Cold Water Installations, Plumbing Work, Supplying and Fitting Gutters, any Sheet Metal Work.
 Stockists of: Tanks, Gutters, Ridging, Dust Bins, G. I. Baths, Sufurias, Pot, Funnels, Pansho, Measuring, Rollers, Cattle Troughs, Etc., Etc.

NATIONAL BANK OF INDIA LIMITED.

(Incorporated in the United Kingdom.)
 Branches in the Colony and Protectorates of Kenya and Uganda

Subscribed Capital ... 40,000,000
 Paid-up Capital ... 40,000,000
 Reserve Fund ... 20,000,000

Head Office, London, E.C. 2
 BRANCHES: Bombay, Madras, Karachi, Lahore, Amritsar, Delhi, Cawnpore, Colombo, Rangoon, Madras, Calcutta, Singapore, Penang, Malacca, Aden and Suez Canal Zone.
 AGENTS in New York and throughout U. S. A., Europe, Canada, South Africa, and Australia.
 FIXED DEPOSITS.—Deposits are received for fixed periods on terms which may be loaned on application.
 EXCHANGE.—The Bank grants Drafts on the Head Office, and Branches at the current rate of Exchange forwarding first copy of the Bill direct to the parer when required.
 Every description of Banking business transacted in all parts of the world.
 A. S. McLENDRICK, Acting Manager, Nairobi Branch.

THE AFRICAN WORLD

A WEEKLY PAPER DEVOTED TO AFRICAN AFFAIRS
 Subscription Rates:
In Africa & Abroad 40/- POST FREE
 801, Salisbury House, LONDON WALL, LONDON, E.C. 3

MT. BLACKETT SAW MILLS, Ltd.

LONDONIAN
 TIMBER OF EVERY DESCRIPTION
 FLOORING AND LINDING OF CHEAL AND POPA
 PRICES ON APPLICATION
 Tel.: "Masfropo, Londonian"

Equator Saw Mills LIMITED.

(Incorporated in the United Kingdom.)
 Managers: Capeal, Phone 118.
 P. O. Masji-Mazuri. P. O. Plateau.
 (Head Office) P.O. Box 291, Nairobi.
 In stock

4,000 tons Seasoned Podo

When building, insist on your contractor using **SEASONED TIMBER**.
 Also in stock 500,000 running feet **ODDAR FLOORING**, all Red, specially selected and **SEASONED**. Large stocks Cedar, Maharagi and **UGANDA MVULLI**.
 Price List on Application.

STOCKISTS OF:

Hope's Steel Windows.
 Silvertown Oak Stain Wood Preservative.
 Self-Setting Expanded Metal.

THE AFRICAN WORLD

A WEEKLY PAPER DEVOTED TO AFRICAN AFFAIRS
 Subscription Rates:
In Africa & Abroad 40/- POST FREE
 801, Salisbury House, LONDON WALL, LONDON, E.C. 3

His Master's Voice
 "GREATEST ARTISTES." "FINEST RECORDING."
"HIS MASTER'S VOICE."

Against all Comers.
 At the recent International Music Exhibition held at Geneva, "H.M.V." Machines gained the "Hors Concours"—the supreme honour in the Gramophone section.
 "H.M.V." Productions—both machines and records, are outstandingly above other makes, and the improvements introduced during the last two years in methods of recording and reproduction has brought the H.M.V. Gramophone from the range of a Talking Machine to that of a musical instrument whose claims are admitted by the greatest modern musical authorities.

The "New" Portable
 With the new Portable Model you can listen to the world's greatest singers, finest orchestras, newest dances, in your own home or in camp. It takes up less room in a car than a chop box and adds to the enjoyment of a picnic or a way-side lunch. There is a clip or holder for each moveable part and no danger from jolting or bumping. The Portable is fitted with the same sound box and tone arm as the most expensive models and will give the same high quality of reproduction.

Ford
 The Service Company Limited.
 NAIROBI and NAKURU.





STACOBS

MESSAGERIES MARITIMES

SERVICES CONTRACTUELS.

FRENCH MAIL STEAMERS.

The Quickest Route to London by Rail from Marseilles in 21/22 hours.

SAILINGS TO MARSEILLES

Via AGEN, DUBOULT and PORT SAID.

Table with 2 columns: Ship Name/Class and Date. Includes S.S. 'General Verone', 'Léon de Laïs', 'Général Gourkoff', 'Bernardin de St. Pierre'.

Table with 3 columns: Passage Money to Marseilles, 1st Class, 2nd Class, 3rd Class. Includes rates for Mail Steamers, Intermediate Steamers, and 1st Class.

25% Reduction for return within one year. 15% Reduction for return within two years. Special concessions to families.

The S.S. 'Léon de Laïs' from Marseilles, Port-Said, Suez, Djibouti, is expected to arrive at Kilindini on or about the 15th October.

No visitors allowed on board M.M. steamers without a permit obtainable from the M.M. Agency.

For particulars of sailings, passing money and freight apply to:-

MESSAGERIES MARITIMES, Kilindini.

Phone 67. Telegraphic Address: 'MESSAGEUR'. P. O. Box 16, Mombasa. R. JARDIN, P. O. Box 26, Nairobi. H. M. SYDICIATE, P. O. Box 77, Kampala.

DEUTSCHE OST-AFRIKA LINE

(GERMAN AFRICAN SERVICE.)

Fast Service of Turbine Steamers from Hamburg-Southampton round Africa, taking First, Second and Third Class Passengers. Excellent Service, Oudine and Music. Attention is specially drawn to the exceptionally good Third Class accommodation.

SAILINGS FROM MOMBASA TO HAMBURG.

VIA SUZEE CANAL. VIA CAPR.

Table with 2 columns: Ship Name/Class and Date. Includes S.S. 'ULANGA', 'ADOLPH WOERMANN', 'USARAMO', 'WARGONO', 'USAMBARA', 'ADOLPH WOERMANN', 'NJASSA', 'USSUKUMA', 'TANGANJIKA', 'USARAMO', 'WARGONO', 'USAMBARA', 'ADOLPH WOERMANN', 'NJASSA'.

Cargo Steamers carry a limited number of cabin passengers (at 2nd class "F" rate). SAILINGS SUBJECT TO ALTERATION.

18 Days to Genoa. 18 days to Marseilles. 22 days to Southampton. Up-country cheques cannot be accepted unless suitably endorsed by Local Bank.

For full particulars of passenger fares and freight rates apply to the Agents:

DALGETY & Co., Ltd., Eldoret. BOUSTEAD & CLARKE, Ltd. Mombasa. CARL JUNGBLUT, Njoro. Nairobi, Kisumu, Jinja and Kampala. and NAKURU DISTRICT. and Deutsche Ost-Afrika-Linie, General Agency. Cable: OSTLINE, P. O. Box 210, Mombasa.

Compagnia Italiana Transatlantica

EAST AFRICAN PASSENGER SERVICE with new fast oil burning turbine steamers de luxe.

The most elegant and comfortable steamers in the East Africa run 17 D vs to NAPLES. 19 Days to GENOA.

SAILINGS from Kilindini for GENOA:

Table with 2 columns: Ship Name/Class and Date. Includes S.S. F. CRISPI, S.S. G. MAZZINI.

All outside, roomy and well appointed cabins; fresh running water in all cabins and baths. Thermotanks cooling system throughout the steamers. RADIO loud speakers and perfect high-class CINEMATOGRAPH in all classes of every evening. Deck Games, Bar, etc.

MEALS:-Tea, Coffee, Fruit, etc. 6 to 8 a.m. Breakfast, 8-30 to 9-30 a.m. Luncheon 12-30. Afternoon Tea 4 p.m. Dinner 7-30 p.m. Sandwiches 9 p.m.

HEAVY BAGGAGE labelled and booked on board and despatched promptly by sea from Port Said to London, if required. Return within one year 30% Reduction. Return within two years 15% Reduction.

Considerable special Reductions to Government's Officials and their Dependents GENOA TO LONDON BY RAIL 28 HOURS. Railway Tickets in Paris and London obtainable here.

MOMBASA AGENTS: Banca Commerciale Italiana, Via 170, Tel. 'CITRA'. LONDON AGENTS: KAMPALA SUB-AGENTS: Nairobi Sub-Agent: Banca Commerciale Italiana, Via 170, Tel. 'WILKINSON'. Kampala Sub-Agent: Banca Commerciale Italiana, Via 170, Tel. 'KAMP'.

The Clan Line Limited. The Ellerman Lines, Limited The Harrison Lines,

Clyde Irvine & Co., Ltd., The "H" Line Ltd., and The "A" J. Co., Ltd., Liverpool.

HOMEWARDS TO LIVERPOOL (AND GLASGOW WHEN SUFFICIENT INDUOEMENT OFFERS).

S.S. "Clan Blainie" expected to arrive at Mombasa Nov. 23. S.S. "Navigator" expected to arrive at Mombasa Dec. 20.

OUTWARDS FROM LIVERPOOL AND GLASGOW: S.S. "Clan Macdonald" expected to arrive at Mombasa Nov. 15. S.S. "Hawthorn" expected to arrive at Mombasa Dec. 8. S.S. "City of Johannesburg" expected to arrive at Mombasa Dec. 8.

The Steamers of the Clan Ellerman-Harrison Lines Joint Service do not carry any passengers.

For particulars of sailing and current rates of freight, apply to the Agents:-

THE AFRICAN MERCANTILE CO. LTD.

Reliable Agents in London

LONDON BUYING AGENTS

Export Buyers with capable Staff Manager. Separate department for buying every class of goods, securing Contract at the advantage of wide experience, the accurate execution of Orders and lower prices. A special Department for buying machinery.

LONDON SELLING AGENTS

Flour, Cotton, Grain, Grain Seeds, Hides, and Glass, Timber, Rubber, Drugs, Wood, Cast, Milk, Gum, Tea, Coffee, Copper, Sugar, etc. are being regularly dealt in. KEYMER, SON & Co., being Sole Agents for Estates, Mills, and Exporters.

Empire Valued. Best Ports for Shipment Indicated.

The Management of Estates Undertaken.

Keymer Son & Co., IMPERIAL HOUSE KINGWAY LONDON W. C. 2. Cable: KEYMER, LONDON. Established 1884.

THE "East African Standard," FREE COUPON INSURANCE TICKET.

(Not to be detached). The African Quarantine and Isolation Co., Ltd. PRINCIPAL OFFICE: MARKET AND KIBUKU STREETS, NAIROBI. Agents, will pay

£1,000 to the legal personal representative of the holder of this Coupon Insurance Ticket if the holder shall be killed by an accident while in Kenya Colony, Kenya Protectorate and in the service of the East African Standard passenger steamer, yacht or motor boat, or the loss of which is being driven by a licensed driver giving proof of his holding a valid holder in travelling as a passenger or as a fare-paying passenger; or

£1,000 to the holder should and accident as above defined be caused by fire or the loss of two limbs by fire or explosion arising from the steam engine or the total and irreparable loss of all eight or ten toes of the holder; or

£500 to the holder should non-fatal accident occur to him as aforesaid of the nature of any one or the loss or forwarding of one limb only or of any other member of the body.

Provided that above underwritten is subject to the following special conditions, which are of the essence of the contract, viz:-

(a) That such death or loss or injury shall occur within thirty days after the date of the accident; (b) That the policy holder shall be alive at the time of the accident; (c) That notice of any injury or loss shall be given to the Principal Office of the East African Standard, or to the principal office, manager of the East African Standard, or to M. D. KEMP, Chief Agent, Cantonment, P. O. Box 278, Nairobi, within seven days after the accident and in case of death within fourteen days after the accident; (d) That the Insurance applies only to persons over twelve and under seventy years of age, is limited to one Coupon Insurance Ticket associated with his life and other publication in seven days from the date of the death or loss.

FOR SALE.

- British Warmers, each 9 00
Military Tunics, with lining, per doz. 66 00
Police Rain Coats, per doz. 108 00
Blue Long Coats, each 18 00
Army Blankets, sound, per score 150 00
Military Boots, per pair 10 00
Accoutrements, each 4 50
Cotton Fancy Cardigans and Pullovers, per doz. from 45/- to 66 00
Blue Hats, per doz. 18 00
Gents' New Suits, per suit, from 25/- to 35 00
Leather Luggage, per pair 12 00
Grey Flannel Trousers, per pair 7 50
Special Quotations for Quantities.

J. DAREVSKY,

P. O. Box 652, Government Road, NAIROBI.

AFRICA HOTEL.

MAIN ROAD, NAIROBI.

THE PREMIER, LARGEST AND ONLY UP-TO-DATE HOTEL ON THE ISLAND.

- Five Airy Bed-rooms.
Best Sanitary Arrangements.
Excellent Cuisine.
Hot and Cold Baths.
Airy Roof Dining-room.
Electric Lights Throughout.
Court Yard Fountain.
Billiards.

P. O. Box 75. Telegraphic Address: 'Africa', Nairobi. Terms: Moderate. All Books Met.

Those who subscribe to the way mentioned below are not required to see the coupon or carry a copy of the publication of the "East African Standard" Publisher and the expiry of the coupon shall be the date of the publication of the "East African Standard" Publisher's acknowledgment.

Readers who wish to become subscribers may do so either by paying their subscription, half yearly, or yearly in advance to the "East African Standard" Office, Park Avenue, Nairobi. Signatures

holder Date of Issue: 12th Nov. 1927. The holder of a pass or other ticket (not involving a loss of ticket-bearing passenger with the exception of the "East African Standard" Office) SUBSCRIBERS NEED NOT BEWARE OF COUPON NOT CARRY PASS.

NOTICE.

No shooting is allowed on the Farm, Nairobi. Transpans will be issued by TYSON BROTHERS, LIMITED, Managing Secretaries.