

FOR Morning AND Afternoon Teas Coffee and Ices

STANDARD

Cocktails A Specialty

No. 6384. PUBLISHED AT THE GENERAL POST OFFICE AS AN EXTRA TO THE STANDARD. NAIROBI, THURSDAY, FEBRUARY 6, 1926. PRICE 20 CENTS.

60% OF NAIROBI WATER WASTED

SERIOUS MENACE TO HEALTH OF KENYA CAPITAL.

Selfish Consumers Neglect Interests of Sufferers.

FACTS ABOUT THE WATER SHORTAGE.

Nairobi is quite definitely threatened with an continuation of the present water supply difficulties.

The increase in the number of consumers is placing a growing strain on the available quantity of water and the solution does not lie in blackening the Corporation staff, however wise and satisfactory that may be.

The position is that the water supply when taken over by the Town Council of Nairobi was a primitive and in many respects antiquated. It was obtained from a reservoir at Kilno which has required constant attention to maintain a steady supply.

The main source of trouble has, however, been the system of distribution of the piping which was old and of a small size. The residential areas of the town have spread and there is a constant demand on the part of new applicants for a supply.

The large building programme now in progress is also a serious drain on the limited resources.

The Town Council, however, has failed to do anything to build an alternative source of water to the Capital although it is well within its power to do so.

It should not be assumed that no steps have been taken to deal with the situation.

The only palliative which the Council here can apply is improvement in the system of distribution. This is not a job that can be performed overnight. For a year the Corporation has been busy installing larger piping and the rest of what work it is doing.

Other experiments are also being undertaken. Last night for instance a wire was introduced with the object of drawing from the Methika supply the quantity to increase the supply to the portion of Parklands most affected. The value of that experiment will be ascertained in a few days.

It is a fact which is not appreciated by the public but that the improvement in the distribution system has been undertaken last year the whole of Parklands today would have been without water.

But the real remedy for the immediate difficulty lies with the consumers. Those who are happy to blame for the suffering are unfortunately too many people are the fortunately situated consumers who are unable or unwilling to think of their indispensable requirements.

Those selfish people water their gardens liberally while some of a store's show room is unable to bath the children or find enough water to seek an ordinary dinner.

Others, particularly those with outside stand pipes, allow every aerial drain, in addition to their own servants, to make free use of the water.

There is far too much waste in Nairobi, particularly in the dry season. Mr. Davidson, the Town Engineer, declares that sixty per cent of the water of Nairobi goes to waste.

It has got to stop in the interests of public health if for no other reason.

When the economy is not practised voluntarily there are labor and less pleasant methods of enforcing it. The householders who are the least conscientious are the most likely to be the first to suffer.

PETROL CARGO EXPLODES ON MAIL STEAMER.

3 Frenchmen and 40 Natives Killed in China.

(THEIR OWNERS' AGENT.) Haio (French Indo-China), February 7. Three Frenchmen and 40 natives were killed as the result of an explosion of a mail steamer on the Mekong River near Thanhkin.

25 Years Private.

CHURCH ASSEMBLY TRIBUTE TO DR DAVIDSON

(BY WILLIAMS.) Rugby, Feb. 6. The Church Assembly met today to consider the tribute to Dr Davidson in an amended form of the High Church Party speech in the House of Commons recently reported.

Eight Hour Convention.

FRENCH ATTITUDE TO BRITISH PROTECTOR.

THEIR OWNERS' AGENT'S

CONTRACT DOUBLE FLIGHT OVER THE ROUTE.

The E.A. Airline.

World Money Exchange.

By WILLIAMS.

Abolition of Submarines.

JAPAN ON THE AMERICAN PROPOSAL.

AN HERO OF ATLANTIC AIR DISASTER.

UGANDA AMUSED THE LEADER.

NAIROBI, THURSDAY, FEBRUARY 6, 1926.

KING'S SPEECH AT THE OPENING OF PARLIAMENT.

BRIGHTER OUTLOOK.

Encouraging Signs of Progress in Industry.

Prime Minister and British's China Policy.

(THEIR OWNERS' AGENT.) London, February 7.

THEIR OWNERS' AGENT'S

THEIR OWNERS' AGENT'S

THEIR OWNERS' AGENT'S

THEIR OWNERS' AGENT'S

THEIR OWNERS' AGENT'S

THEIR OWNERS' AGENT'S

THEIR OWNERS' AGENT'S

THEIR OWNERS' AGENT'S

THEIR OWNERS' AGENT'S

THEIR OWNERS' AGENT'S

THEIR OWNERS' AGENT'S

THEIR OWNERS' AGENT'S

THEIR OWNERS' AGENT'S

THEIR OWNERS' AGENT'S

WHITWAYS' FOR YOUR BOYS CLOTHES Best Selection in Town.

THE 'MAYNUT' This solves the problem for Boys' School. Boys' clothes made from All-wool Tweed, broad with Silk Cord to use in Dry, Levant, Grey and Brown. Price, 25/6 each.

BOYS' DRESSING GOWN. Making widely appreciated made from All-wool Tweed, broad with Silk Cord to use in Dry, Levant, Grey and Brown. Price, 25/6 each.

BOYS' KNICKERS. Of exactly the same pattern as the 'MAYNUT' but can be used for extra pair of knickers for suit, or can be worn with Jersey or Shirt. Size 4 to 12. Price, 25/6 each.

BOYS ELASTIC BELTS. The most comfortable. Boys' dependable Elastic Webbing and unbreakable fastenings in the following colors: stripes, Red/Black, Royal/Black, Red/White, Yellow/Black, Green/White, Tan/Green, Beaver/White. Price, 2/6 each.

JUST IN! FURRY PULLOVER. Fashionable, warm and pleasing 'Fur' like. All designs in a variety of colors. Made in England. Price, 24/6 to 34/6 each.

STANDARD VALUE. 25/6 each.

DOUBLE BROWN. Fine Wool, fine turn-down slitted trim. Price, 25/6 each.

BOYS NAVY KNICKERS. Made from Navy Blue Flannel. Similar to that used for boys' Hosiery, can be worn with any Jersey or Jacket and will always look smart. Size 4 to 10. Price, 25/6 each.

BOYS JERSEYS. Double V-necked Varn Jersey, will not shrink. Front and Polo Collar. Navy, Grey, Green, Blue, White, and 5/75 each.

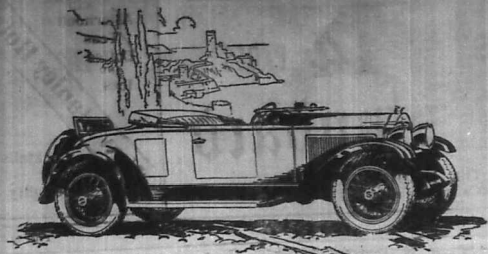
NAVY SLAZERS. Most useful for school or ordinary use. Available in hand weaving. Navy Blue, Green, Grey, and 5/75 each.

BOYS KNITTED TIE. The most popular Tie for Schoolboys. All Silk and Cotton. Colors include: Red and Black, Purple and Black, Blue and Black, and 5/3 each.

BOYS VESTS. Made from a mixture of Wool and Cotton. Hand weaving. Navy Blue, Green, Grey, and 5/75 each.

BOYS TROPIC TIE. In the favorite narrow shape for boys, made in any of the following plain shades: Navy, Tan, Royal, Green, Grey, and 5/75 each.

Whiteaways NAIROBI.



## "DIRECT FIRING"

- a vital reason for Buick's unmatched power

Just as all the force of exploding powder in a cannon is concentrated directly behind the shell—so all the force of the exploding gas in Buick's engine is concentrated, directly, behind the piston.

This is the "direct firing" principle—a vital reason why the famous Buick Valve-in-Head engine develops more power for its size than any other automobile engine.

The result of this direct and efficient application

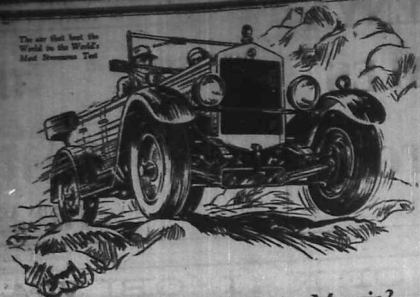
of power is an unmatched brilliancy of performance. Buick for 1928 is off like a flash on the get-away—has power in reserve for the steepest hills—and stamina to survive the roughest going. And because of its superior engine efficiency, Buick for 1928 is a remarkably economical car to operate.

Drive a Buick for 1928 to-day. You'll be quick to acknowledge the advantages of the "direct firing" Valve-in-Head engine.

# BUICK for 1928

**Gilfillan & Company, Ltd.**  
DISTRIBUTORS

The car that beat the World in the World's Most Demanding Test



## Have you tried the Big Morris?

What it does.

**In special purpose.**  
The new 15.9 h.p. Morris Oxford makes an instant appeal to those who motor over rough tracks as well as main roads, for the simple reason that it is specially designed for their particular needs.  
**A chassis of great strength.**—a spade... a wheel... a set of track... exceptional road clearance—these are some of the features of the Big Morris, a car which requires really rough going as a daily routine.

To carry you all day—and every day, if you like—anywhere a vehicle can go in comfort, with speed and without anxiety, under the heaviest work, through deep water, ruts, and yes, to be a thorough deep cover machine, and yet, to be a luxurious to ride in—such was the objective of Morris designers and such is their achievement in the new 15.9 h.p. Morris Oxford, as you can see for yourself.

Why such fine value.

A special design—but a standard model—this new Morris offers typically Morris value for money and because of its special strength in upkeep cost should set a new low standard.

What you can see.

One minute's examination of the chassis and suspension system reveals its special strength; and a moment's study of the engine suffices to discover the designer's special purpose.

What it has done.

This new Morris, which recently beat the World in the World's most strenuous test by defeating a large international field of all types at the famous Swedish Winter Reliability Trials 1927, is available for public inspection.

Where to see it.

See list of addresses at foot of this announcement.

the 15.9 h.p.

# MORRIS

OXFORD

Folkes & Co.,  
P.O. Box 181,  
Kampala.

The Wheel of the World

Price at  
Main Ports  
Tanning Car  
6410,  
Mitchell Guthrie & Co.,  
P.O. Box 604,  
Nairobi.

## The Aristocrat of Fountain Pens



SHEAFFER

FOR DESK

LIFETIME

& POCKET

TAWS LIMITED,  
NAIROBI.

Box 611.

Phone 141.

# RONEO

Model 16

Shgs. 850/-

Self Feeding



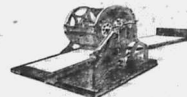
Self Inking

## DUPLICATORS

MAY WE SHOW YOU THE MACHINE ITSELF?

Model 2

Shgs. 350/-



ANY ONE WHO CAN TURN A HANDLE CAN OPERATE  
THE NEW MODEL RONEO DUPLICATOR

STANDARD STATIONERY STORES.

Phone 572.

NAIROBI

P.O. Box 380.

THE EAST AFRICAN STANDARD DAILY EDITION. ADVERTISEMENTS... DOMESTIC ADVERTISEMENTS...

FOR SALE (Contd.). O.P. 914 B.P. for sale... 1200 sq. ft. plot...

SITUATIONS VACANT. WANTED and FURNISHED... HOUSEKEEPER... ASSISTANT...

Equator Saw Mills. Seasoned Timber. Also in Stock 500,000 Boarding Pine CEDAR FLOORING... PRICE LIST ON APPLICATION.

SUBSCRIPTION RATES. DAILY. Locally, yearly... Foreign, yearly... WEEKLY.

WANTED. WANTED at once... WANTED at once... WANTED at once...

SITUATIONS WANTED. ENGLISHMAN desires... FARMER seeks... YOUTH seeks...

INSURE YOUR MOTOR CARS AND MOTOR CYCLES... THE Modern Motor Cycle... J. R. COX & Co.

FOR SALE. THIS charge for advertisement... 1200 sq. ft. plot... 1200 sq. ft. plot...

WILL. WILLIAMS... WILLIAMS... WILLIAMS... WILLIAMS...

REQUIRE. REQUIRED immediately... YOUNG MAN... YOUTH seeks...

Ridgings, Gutters, DOWNPIPES... E. A. TANK & METAL WORKS... Nairobi Water Supply.

DRINKS. WE can give... CROUCH... CALVERTON... DUDLEY... FACTORY...

TO LET. A SUITE of rooms... 1924 Dodge... 1924 Dodge... 1924 Dodge...

FARMS FOR SALE. APPROX 60 acres... COMPENDIOUS ENQUIRIES... PUBLISHING... TYPEWRITING...

ROY HORN... GUNN... KEMPA... ANZ... MORRIS... KIKUYU HOTEL.

DOG'S FOR SALE. CHICKEN... SPALYTERNS... DOGS FOR SALE.

DANCERS! The "PROLIS GLOBE" is LYING ON SATURDAY... DANCERS!

EVERWEAR HOSIERY. It Pays to Buy Good Furniture. Ladies' Contaynal Wardrobe. Hutzings, Biemer & Co., Ltd.

THE UNION-CASTLE LINE.

Table with shipping schedules for the Union-Castle Line, including destinations like London, India, and Australia.

For Rates of Freight and Passages Apply to The Union-Castle Shipping Co., Ltd. MOMBASA.

HOLLAND AFRIKA LIJN. JOINT SERVICE.

Table with shipping schedules for the Holland Afrika Lijn, listing routes to Europe, India, and Australia.

For further information apply to the Agents: TWENTSCHE OVERZEAS TRADING CO., LTD.

Agents: TWENTSCHE OVERZEAS TRADING CO., LTD. NAIROBI.

Deutsche Ost-Afrika-Linie (GERMAN AFRICA SERVICE)

Table with shipping schedules for the Deutsche Ost-Afrika-Linie, listing routes to Europe, India, and Australia.

Compagnia Italiana Transatlantica

Table with shipping schedules for the Compagnia Italiana Transatlantica, listing routes to Europe, India, and Australia.

KENYA INVESTMENT Coy., Ltd. Agents for: Kilimanjaro Saw Mills, Ltd., West Kenya Saw Mills, Ltd., Walumpara Paint & Distemper, Williams & Williams, Ltd.

British India Steam Navigation Company, Ltd.

Table with shipping schedules for the British India Steam Navigation Company, listing routes to Europe, India, and Australia.

ALL DATES SUBJECT TO ALTERATION WITHOUT NOTICE. LETTERS THESE INDICATED BY A LOCAL BANK.

FARMERS! Before purchasing this seasons equipment Consider MASSEY-HARRIS POWER FARMING IMPLEMENTS AND THE WALLIS TRACTOR

Agents: SMITH MACKENZIE & Co., Nairobi.

CHIVERS Old English Marmalade. The Aristocrat of the Breakfast Table. R. O. HAMLTON, Ltd. NAIROBI. Sole Agents. Phone 322.

LAWRIES PHOTOGRAPHIC STUDIO. REOPENED in new premises Cecil Buildings. (next Messrs. Dobbie). Studio portraits and Enlarging a speciality. NAIROBI. Box 534.

Distinction. Some people look dis... Dobbies Ltd. OPTICIAN OPTICIANS. NAIROBI. Phone 60.

NOW IN STOCK ASBESTOS SHEETS. 4' x 4' x 3/16" and 3/32". Special Prices given on application.

Hussell Suleman Verjee & Sons P.O. Box 260. Tel. 22-22-22. Government Road, Nairobi.

OVERSEAS MAILS.

Table with shipping schedules for overseas mails, including arrivals and departures.

GET EXPERT ADVICE FREE!!! Before buying a Rifle, Shotgun or Pistol, call or write to us... INSPECT OUR WORKSHOPS... CHAS. A. HEYER & Co.

Heat The Oven Not The Kitchen. NO CHOPPING. Reliance Transport Coy. LIMITED. P.O. Box 452. Sadler Street. Telephone 331.

Doonholm Dairy. Box 11, Nairobi. Pure Milk and Cream From Farm to Consumer.

Uplands Bacon Factory. Are Buyers of Prime Quality BACON PIGS. At 65 cents per pound dead weight. UPLANDS PAY FREIGHT, CHEQUES POSTED DAY OF KILLING.

P. Stewart. C.A.S., R.E.D. PAINTER & DECORATOR. P.O. Box 226.



# Madame Rowe Et Cie. Ltd.

New Show Rooms

## Millinery, Lingerie, Trousseau.

Queen Building, (Opposite Eldoret).  
P.O. Box 215, Phone 259

# Emerson - Brantingham



Spring Tooth Harrows, Planters, Single & Tandem Disc Harrows, Disc Ploughs, Osborn Binders, Dump rakes, Sulky Ploughs.

Call and Compare our Prices.

## J R. COX & Co.

SIXTH AVENUE

Also at Nakuru, Dar-es-salaam, Eldoret, Kampala, Jinja.

### Animal Essays.

#### INTERESTING CONTEST FOR KENYA CHILDREN.

In order to stimulate interest in the Junior Branch of the East African Society for the Promotion of Credit to Animals, an essay competition has been arranged. The subject for the Essay was the Senior Division (Elementary) only.

On what does the happiness of domestic pets depend and what is the best way to ensure this happiness? Give an account of your favourite with very animal in East Africa.

5 Junior Division (Under 12). How do you love your own pet best? Give a description of any friendship that you have had with an animal in East Africa.

1. This competition is open to all children on Kenya Colony.

2. All members and contributors of change, but non-members may pay an entrance fee of 10/-.

3. The essay will be written under the direction of the Principal of each school at a given time and place.

4. Any Local Member in Nairobi (i.e. a child who does not attend a school which belongs to the Kenya or Kenya Education Board) may send their names in direct to the Hon. Secretary (Junior Division) Nairobi. Due notice of the time and place of the competition will be sent to each member provided an address is given.

### Electric Cooking.

PROVE THAT IT WILL BECOME UNIVERSAL.

Electric cooking will be entirely used in London in twenty-five years time, and nothing else.

The prophecy was made by Mr. J. M. Evans, M.P., who was present when Mrs. Ellen Philippson, M.P., opened the School of Cookery, organized by Messrs. Goss and Brantingham. Mrs. Philippson announced her intention of becoming a student of the school, which is opening there as well as a witness.

Mr. Evans forecast the doom of the old gas cooking and stated that it was only necessary for the electric light companies to reduce their charges to one halfpenny a unit for electric cooking to become universal.

### Outlines of War.

#### DISHFUL CLASSES IN EUROPEAN PEACE.

Further complications have arisen in connection with the outline of war pact, suggested by Mr. Kellogg, between France and America, certain kind other terms were detailed to agree.

The idea that the pact was probably to ensure France more definitely that it does under the new pact, open her mind to the French under the terms of the League Treaty.

The whole question will be finished next month. Meanwhile it has been found that there is reasonable foundation for the criticism, but that the offending clause does not seem to be the article might easily give rise to considerable difficulty and misunderstanding.

The most important point raised is that which concerns armed intervention in any conflict by the parties, who, having signed the League Pact, are pledged to go neutral when a formal violation of the pact of non-interference has been committed. Mr. Kellogg's proposal is quite opposed to this particular clause.

### Fashion Notes.

#### NEW COLOURS FOR THE SPRING.

Paris, Jan. 12.

The colours which the "young women" in Paris will suggest for the coming year of late March and April are already being their way into production.

Women are wearing a great deal of brown and a great deal of gray, which indicates that these colours are likely to be very popular indeed a little later in the year. The green is a very soft tone with a suggestion of olive.

Women are wearing a great deal of blue and a great deal of gray, which indicates that these colours are likely to be very popular indeed a little later in the year. The green is a very soft tone with a suggestion of olive.

### Doctor Must Not Tell.

Judgment against a doctor for divulging professional secrets was given in a Durban police court recently when Dr. Mermond was found fit for receiving medical evidence in a divorce case.

### DEPARTMENT OF AGRICULTURE.

Return of Maize Graded during week ended 19th January 1930

No. of Bales	No. of Bags	No. of Sacks	Total		
			Maize	Wheat	Barley
10	10	10	1000	1000	1000

Particulars of Reported Wild Mice.

From Station	No. of Days' Work	Average Mice per Catch
Nakuru	1641	18.8%
Kilale	927	14.8%
Karungu	237	13.7%
Njoro	282	13.3%
Eldoret	278	12.9%
Hohe's Bridge	271	12.9%
Ng'ombe	26	12.6%
Elburg	26	12.6%
Oldhaji	26	12.6%

## NECTAR!

The Drink of Kings and The King of Drinks

Not a new and not a sensational beverage but an old established vintage which has lived and thrived upon its reputation among connoisseurs.

Representatives: General Agents Ltd. 12th Building, Govt. Rd., NAIROBI.

## We Stock

Always big stock of Provisions, Wines, Liquors, Best Quality of Dutch and Indian Cigars, Cigarettes, Sweets, Chocolates, Biscuits, Delmonico Brand Dried Fruits, in tins and Fruits in Syrup.

Also for Farmers: Rough Salt, Rock Salt, Dairy Salt and Lye-salt, Lined Oil, Methalated Spirit and Turpentine.

Ask for our retail price list to-day.

**KANJEE NARANJEE.**  
P.O. Box 357. NAIROBI. Govt. Road.

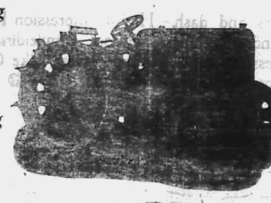
## The Modern School of DANCING

Principal Miss Shirreff (late of Croydon School, London). Opening Classes at the Lyric Hall, on January 22nd. Wednesday Children Class 4-5. Adults Ballroom Class 6 o'clock. Schools visited. Ballroom lessons by arrangement. Apply Box 599.

# Kennick TRACTORS and MOTOR PLOUGHS

RUN ON KEROSENE.

The 50 h. p. Model with Driving Pulley and Winch.  
Price f.o.r. Nairobi.  
**£575**



The 50 h.p. Model can be seen at work daily on the Equator Farm, Njoro.

The 40 h. p. Model with Driving Pulley.  
Price f.o.r. Nairobi.  
**£395**

The Motor Plough is working at Timboroa, Eldoret. It is well worth watching to see how easily ploughing on the hardest soil can be done.

A complete range of Spares stocked. Manufacturers Engineers in attendance at Nairobi.

## Eberhardt Motor-Drawn Trailer Ploughs

WE HAVE A LARGE RANGE OF THESE PLOUGHS AND HARROWS IN STOCK. THESE ARE THE STRONGEST AND MOST UP-TO-DATE FARM IMPLEMENTS YET MARKETED.

Sub-Agent. Eldoret, Fischer & Co.

# AFRICANA Ltd.

Sub-Agent. Nakuru District. C. Jungblut Njoro

MOMBASA.

KAMPALA.

NAIROBI.

DAR-ES-SALAAM.

# MOTURING TOPICS

**Crawford's LIQUEUR**  
SCOTCH WHISKY

Old Scotch Rare in Quality  
ESTD 1860

## SIX-WHEELER CARS.

### Result of Growth of Road Transport.

#### DIFFICULTIES OF DESIGN.

The extraordinary growth of road transport in the last few years has led to a complete revision of ideas. And, as a consequence, it has become necessary to re-examine the design of motor vehicles, in order to meet the requirements of the new conditions.

It is not the purpose of this article to discuss the various technical details of the design of a six-wheeler, but to point out the difficulties which are encountered in the design of such a vehicle.

The first difficulty is the question of the chassis. A six-wheeler chassis is a very complicated affair, and it is not possible to design a chassis which will suit all purposes. It is necessary to design a chassis which will suit the particular conditions of the country in which it is to be used.

The second difficulty is the question of the engine. A six-wheeler engine is a very complicated affair, and it is not possible to design an engine which will suit all purposes. It is necessary to design an engine which will suit the particular conditions of the country in which it is to be used.

The third difficulty is the question of the transmission. A six-wheeler transmission is a very complicated affair, and it is not possible to design a transmission which will suit all purposes. It is necessary to design a transmission which will suit the particular conditions of the country in which it is to be used.

The fourth difficulty is the question of the suspension. A six-wheeler suspension is a very complicated affair, and it is not possible to design a suspension which will suit all purposes. It is necessary to design a suspension which will suit the particular conditions of the country in which it is to be used.

The fifth difficulty is the question of the steering. A six-wheeler steering is a very complicated affair, and it is not possible to design a steering mechanism which will suit all purposes. It is necessary to design a steering mechanism which will suit the particular conditions of the country in which it is to be used.

The sixth difficulty is the question of the brakes. A six-wheeler brake is a very complicated affair, and it is not possible to design a brake which will suit all purposes. It is necessary to design a brake which will suit the particular conditions of the country in which it is to be used.

## GIVE US A CALL

For C. I. Sheets, Plain Sheets, Cement, Asbestos Sheets, 3 Ply Boards, Oil Paints, Varnish, Provisions, Hardware, Stationery, Cycle Accessories, Etc., Etc.

Call or Write to:  
**Madatali Suleman Verjee & Sons**  
P.O. 12, Indian Bazar, Nairobi.  
And at Hassanali Bros.  
P.O. 778, Govt. Road, Nairobi.  
Dealers of Ivory & Rhino Horns.

## A Fresh Consignment of

# 'Tom-Tit' Fruits

IN SYRUP.

PEACHES	2/- per 2 1/2 lb. Tin
PEARS	2/25 .. ..
APRICOTS	2/25 .. ..

DRIED.

PEACHES	8/50 per 5 1/2 lb. Tin
PEARS	9/50 .. ..
APRICOTS	12/- .. ..
APPLE RINGS	8/- .. ..
SEEDLESS RAISINS	6/50 .. ..

**M. S. ELLIOT & Co.**  
P.O. Box 175. Phone 60.

## Startling Announcement

**20% Cash Discount**

Allowed on Cash Sales Only, Commences Monday 6th. Feb. to 28th. Feb. 28.

## An Avalanche of Irristible Bargains.

For Ladies and Gents.  
Up-country cash orders posted within 28th Feb. only will be executed. At Cut Prices.

Wonder Bargains.  
**HUSSEIN & Co.,**  
P.O. Box 201. Opposite Nairobi House, Govt. Road, NAIROBI.

## LETTS' Office and Pocket

### DIARIES 1928. Student Desk Calendar 1928

Complete Shgs. 8/-. Posted 8/50  
Red Ink Shgs. 6/-. Posted Shgs. 5/50.  
**Pilot Desk Calendar 1928.**  
Similar to above, complete with Stand.  
Shgs. 6/50. Posted Shgs. 8/-.  
STANDARD STATIONERY STORES, NAIROBI.

## THE FERTILIZER ROAD.

### The Fert Road in Nairobi.

#### THE REDDING VALLEY.

The fertilizer road in Nairobi is a very important one, and it is necessary to design it in such a way as to suit the particular conditions of the country in which it is to be used.

The first difficulty is the question of the road surface. A fertilizer road surface is a very complicated affair, and it is not possible to design a road surface which will suit all purposes. It is necessary to design a road surface which will suit the particular conditions of the country in which it is to be used.

The second difficulty is the question of the drainage. A fertilizer road drainage is a very complicated affair, and it is not possible to design a drainage system which will suit all purposes. It is necessary to design a drainage system which will suit the particular conditions of the country in which it is to be used.

The third difficulty is the question of the lighting. A fertilizer road lighting is a very complicated affair, and it is not possible to design a lighting system which will suit all purposes. It is necessary to design a lighting system which will suit the particular conditions of the country in which it is to be used.

The fourth difficulty is the question of the safety. A fertilizer road safety is a very complicated affair, and it is not possible to design a safety system which will suit all purposes. It is necessary to design a safety system which will suit the particular conditions of the country in which it is to be used.

## EAST AFRICAN ROADS.

### The Fert Road in Nairobi.

#### THE REDDING VALLEY.

The fertilizer road in Nairobi is a very important one, and it is necessary to design it in such a way as to suit the particular conditions of the country in which it is to be used.

The first difficulty is the question of the road surface. A fertilizer road surface is a very complicated affair, and it is not possible to design a road surface which will suit all purposes. It is necessary to design a road surface which will suit the particular conditions of the country in which it is to be used.

The second difficulty is the question of the drainage. A fertilizer road drainage is a very complicated affair, and it is not possible to design a drainage system which will suit all purposes. It is necessary to design a drainage system which will suit the particular conditions of the country in which it is to be used.

The third difficulty is the question of the lighting. A fertilizer road lighting is a very complicated affair, and it is not possible to design a lighting system which will suit all purposes. It is necessary to design a lighting system which will suit the particular conditions of the country in which it is to be used.

The fourth difficulty is the question of the safety. A fertilizer road safety is a very complicated affair, and it is not possible to design a safety system which will suit all purposes. It is necessary to design a safety system which will suit the particular conditions of the country in which it is to be used.

## FOR SALE.

### FOR SALE.

104 Acres with extensive Limestone Outcrops Sand and Permanent River Frontage. One Mile from Athi River Station.

Also small Farm of 80 Acres. Permanent River Frontage; small Outcrops of Limestone and Sand Available.

**R. O. PRESTON, Nairobi.**  
Box 807.

## FOR SALE.

### FOR SALE.

104 Acres with extensive Limestone Outcrops Sand and Permanent River Frontage. One Mile from Athi River Station.

Also small Farm of 80 Acres. Permanent River Frontage; small Outcrops of Limestone and Sand Available.

**R. O. PRESTON, Nairobi.**  
Box 807.

## FOR SALE.

### FOR SALE.

104 Acres with extensive Limestone Outcrops Sand and Permanent River Frontage. One Mile from Athi River Station.

Also small Farm of 80 Acres. Permanent River Frontage; small Outcrops of Limestone and Sand Available.

**R. O. PRESTON, Nairobi.**  
Box 807.

## T.V.O. POWER K. ROSENE

### "BP" THE BRITISH PETROL



## PALM TREE KEROSENE

### Anglo Persian Oil Co. (Kenya) Ltd.

104 Acres with extensive Limestone Outcrops Sand and Permanent River Frontage. One Mile from Athi River Station.

Also small Farm of 80 Acres. Permanent River Frontage; small Outcrops of Limestone and Sand Available.

**R. O. PRESTON, Nairobi.**  
Box 807.

## FOR SALE.

### FOR SALE.

104 Acres with extensive Limestone Outcrops Sand and Permanent River Frontage. One Mile from Athi River Station.

Also small Farm of 80 Acres. Permanent River Frontage; small Outcrops of Limestone and Sand Available.

**R. O. PRESTON, Nairobi.**  
Box 807.

## FOR SALE.

### FOR SALE.

104 Acres with extensive Limestone Outcrops Sand and Permanent River Frontage. One Mile from Athi River Station.

Also small Farm of 80 Acres. Permanent River Frontage; small Outcrops of Limestone and Sand Available.

**R. O. PRESTON, Nairobi.**  
Box 807.

# Whatever You Do

## DO IT

Buy a Car until you have Tested

**CHEVROLET (Magneto Ignition Optional), PONTIAC, OAKLAND, VAUXHALL**

# It Costs You Nothing

We demonstrate with pleasure at any time:

**THE MOTOR MART and Exchange, Ltd.**

NAKURU. NAIROBI. DAR-ES-SALAAM.

## MISS KATHLEEN BATES A.R.C.M.

PIANO-FORTE - SINGING - HARMONY. Coaching given to Singers and Instrumentalists. STUDIO SIXTH AVENUE. Postal Address: Box 317.



SUPPLIES SERVICE. Remington Typewriter Agency, Ltd. Government Road, NAIROBI. Phone 82. Box 47.

## "IRONITE"

FOR DUSTLESS, WATERPROOF AND GR. FLOORING and P. This range.

IRONITE forms a dense compact floor that fulfills every possible requirement where the heaviest traffic is the hardest. It does not result in a steadily increasing slip, and has a strength and durability of any concrete floor.

WEAR-PROOF & WATER-PROOF. Specified by the World's Leading Manufacturers.

**F. M. BHAIJEE**

## 'ARPA' No Rev. Oats

Playing in Oats. GUY'S Green, HEATHS Road, Vellore. The 'Arpa' Playing Cards. B.B.C. 'Patently True' can be had. The 'Arpa' tables for each set.

Shgs. 3-75 p & Co. STANDARD STATIONERY STORES, NAIROBI.



**INDIAN CONGRESS MEMORANDUM FOR THE COMMISSION.**

**Opposition to Federal Council and European Elected Majority.**

**ALTERNATIVE PROPOSALS FOR CLOSER UNION.**

**Increasing Association of Immigrant Communities in Responsibility for Government.**

The Indian National Congress has submitted a lengthy memorandum to the Upper Union Commission and seeks to justify the claim for a more important voice in political changes by the vast majority of the community in the official, commercial, industrial and professional life of the country.

They are opposed by a Federal Government as promoters and recommenders of the continuation of the system of inter-ethnic conference. They are also opposed to any interference with the Mandate of Tanganyika. They are, however, in sympathy with the present system of the union departmentally in the interests of economy and efficiency.

They are strongly of the opinion that the time has not yet come when the official majority on the Kenya Legislature can safely be abrogated and would view any constitutional change with distrust and with disastrous consequences to the natives and with danger to themselves.

They do not, however, dissent from the principle of increasing association of the immigrant communities in the responsibilities of Government.

Suggestions to this end include, the Indian representation on public bodies, the creation of an advisory board on native affairs, the having of non-official members of the Executive Council of certain Portfolios particularly concerning native welfare; nominees on the Legislative Council, and inclusion of Indian officials on the official staff.

That they maintain their claim to a common role as the only method of bridging the gap between the two communities.

**THE COMMON ROLL CLAIM.**

The Eastern African Indian National Congress has prepared a memorandum on the common roll which has been submitted to the Government. The memorandum is a lengthy document and contains a number of proposals for the improvement of the common roll.

The first chapter under the heading "The Indian view" points out that the geographical situation of East Africa has for centuries made it and will make it a natural area of contact between the Indian and European communities. It is the opinion of the Indian community that the common roll should be based on the principle of equal representation.

Reference is made to the resolution of the Indian community in East Africa that before emigration to East Africa should be undertaken, the prospective immigrant should be the responsibility of the Government. It is the opinion of the Indian community that the common roll should be based on the principle of equal representation.

After referring to the past history of the common roll, it is stated that the Indian community is of the opinion that the common roll should be based on the principle of equal representation. It is the opinion of the Indian community that the common roll should be based on the principle of equal representation.

The development of the common roll is a matter of great importance to the Indian community. It is the opinion of the Indian community that the common roll should be based on the principle of equal representation. It is the opinion of the Indian community that the common roll should be based on the principle of equal representation.

In the sphere of education, the Indian community is of the opinion that the common roll should be based on the principle of equal representation. It is the opinion of the Indian community that the common roll should be based on the principle of equal representation.

The Indian community is of the opinion that the common roll should be based on the principle of equal representation. It is the opinion of the Indian community that the common roll should be based on the principle of equal representation.

The Indian community is of the opinion that the common roll should be based on the principle of equal representation. It is the opinion of the Indian community that the common roll should be based on the principle of equal representation.

The Indian community is of the opinion that the common roll should be based on the principle of equal representation. It is the opinion of the Indian community that the common roll should be based on the principle of equal representation.

**FOR ALAN CHAMBERLAIN THE AIR MARSHAL AT NAIROBI.**

**Considered It Will be a Success.**

**A KENYAN ESTABLISHED.**

**"STANDARD" CORRESPONDENT**

When the flying boat had landed and the air marshal had disembarked, a group of about 200 people gathered to see the air marshal. The air marshal was met by a group of about 200 people. The air marshal was met by a group of about 200 people.

The air marshal was met by a group of about 200 people. The air marshal was met by a group of about 200 people. The air marshal was met by a group of about 200 people.

The air marshal was met by a group of about 200 people. The air marshal was met by a group of about 200 people. The air marshal was met by a group of about 200 people.

The air marshal was met by a group of about 200 people. The air marshal was met by a group of about 200 people. The air marshal was met by a group of about 200 people.

The air marshal was met by a group of about 200 people. The air marshal was met by a group of about 200 people. The air marshal was met by a group of about 200 people.

The air marshal was met by a group of about 200 people. The air marshal was met by a group of about 200 people. The air marshal was met by a group of about 200 people.

The air marshal was met by a group of about 200 people. The air marshal was met by a group of about 200 people. The air marshal was met by a group of about 200 people.

The air marshal was met by a group of about 200 people. The air marshal was met by a group of about 200 people. The air marshal was met by a group of about 200 people.

The air marshal was met by a group of about 200 people. The air marshal was met by a group of about 200 people. The air marshal was met by a group of about 200 people.

The air marshal was met by a group of about 200 people. The air marshal was met by a group of about 200 people. The air marshal was met by a group of about 200 people.

The air marshal was met by a group of about 200 people. The air marshal was met by a group of about 200 people. The air marshal was met by a group of about 200 people.

The air marshal was met by a group of about 200 people. The air marshal was met by a group of about 200 people. The air marshal was met by a group of about 200 people.

The air marshal was met by a group of about 200 people. The air marshal was met by a group of about 200 people. The air marshal was met by a group of about 200 people.

The air marshal was met by a group of about 200 people. The air marshal was met by a group of about 200 people. The air marshal was met by a group of about 200 people.

**WELL KNOWN IN SWALLOWED UP!**

**Earthquake.**

**PLAINTS RECEIVED.**

**"STANDARD" CORRESPONDENT**

A public notice of the recent earthquake in East Africa has been received. The earthquake was felt in East Africa. The earthquake was felt in East Africa.

The earthquake was felt in East Africa. The earthquake was felt in East Africa. The earthquake was felt in East Africa.

The earthquake was felt in East Africa. The earthquake was felt in East Africa. The earthquake was felt in East Africa.

The earthquake was felt in East Africa. The earthquake was felt in East Africa. The earthquake was felt in East Africa.

The earthquake was felt in East Africa. The earthquake was felt in East Africa. The earthquake was felt in East Africa.

The earthquake was felt in East Africa. The earthquake was felt in East Africa. The earthquake was felt in East Africa.

The earthquake was felt in East Africa. The earthquake was felt in East Africa. The earthquake was felt in East Africa.

The earthquake was felt in East Africa. The earthquake was felt in East Africa. The earthquake was felt in East Africa.

The earthquake was felt in East Africa. The earthquake was felt in East Africa. The earthquake was felt in East Africa.

The earthquake was felt in East Africa. The earthquake was felt in East Africa. The earthquake was felt in East Africa.

The earthquake was felt in East Africa. The earthquake was felt in East Africa. The earthquake was felt in East Africa.

The earthquake was felt in East Africa. The earthquake was felt in East Africa. The earthquake was felt in East Africa.

The earthquake was felt in East Africa. The earthquake was felt in East Africa. The earthquake was felt in East Africa.

The earthquake was felt in East Africa. The earthquake was felt in East Africa. The earthquake was felt in East Africa.

**Lyric Hall MATINEE SAT. 3-30**

**"Eyes of Mystery"**

**Warning, Trembling, Rupturing, Unforgettable.**

**COMING MONDAY. Darwins Theory "Evolution"**

**Ladies Shoes of Value AND QUALITY.**

**30- D217 Bois de Rose Calif.**

**30- No. 213 Tan Willow Calf. With Leather Cuban Heel. Not Louis Heel, at sizes in Stock.**

**30- No. 162 Delta, Willow Calf in sizes and widths.**

**35- Lord Aldeby. DUE TO ARRIVE AT THE DOOR TO-DAY.**

**Eadies Footwear Ltd. O. Box 149. NAIROBI.**

**8-15 p.m. THEATRE ROYAL. TO-NIGHT AT 8-45. MATINEE SAT. 3-30**

**RIN - TIN - TIN IN "THE NIGHT CRY"**

**ALL REPAIRS GUARANTEED CAN YOU BEAT THIS? LATEST NEWS ITEMS. PRICES AS USUAL: Stalls 2/-, Circle 5/-.**

**THE COMING! THE WOMAN WHO WENT THE WAR. "Mademoiselle from Armentieres"**

**ALL REPAIRS GUARANTEED CAN YOU BEAT THIS? LATEST NEWS ITEMS. PRICES AS USUAL: Stalls 2/-, Circle 5/-.**

**THE COMING! THE WOMAN WHO WENT THE WAR. "Mademoiselle from Armentieres"**

**ALL REPAIRS GUARANTEED CAN YOU BEAT THIS? LATEST NEWS ITEMS. PRICES AS USUAL: Stalls 2/-, Circle 5/-.**

**THE COMING! THE WOMAN WHO WENT THE WAR. "Mademoiselle from Armentieres"**



INDIAN CONGRESS MEMORANDUM FOR THE COMMISSION.

1937-38. Part 2. Page 23.

could be imposed on these territories... the Commission should be empowered to... the Commission should be empowered to...

Lastly they would draw attention to the... the Commission should be empowered to... the Commission should be empowered to...

the Commission should be empowered to... the Commission should be empowered to... the Commission should be empowered to...

the Commission should be empowered to... the Commission should be empowered to... the Commission should be empowered to...

the Commission should be empowered to... the Commission should be empowered to... the Commission should be empowered to...

the Commission should be empowered to... the Commission should be empowered to... the Commission should be empowered to...

the Commission should be empowered to... the Commission should be empowered to... the Commission should be empowered to...

the Commission should be empowered to... the Commission should be empowered to... the Commission should be empowered to...

the Commission should be empowered to... the Commission should be empowered to... the Commission should be empowered to...

the Commission should be empowered to... the Commission should be empowered to... the Commission should be empowered to...

the Commission should be empowered to... the Commission should be empowered to... the Commission should be empowered to...

the Commission should be empowered to... the Commission should be empowered to... the Commission should be empowered to...

the Commission should be empowered to... the Commission should be empowered to... the Commission should be empowered to...

the Commission should be empowered to... the Commission should be empowered to... the Commission should be empowered to...

the Commission should be empowered to... the Commission should be empowered to... the Commission should be empowered to...

the Commission should be empowered to... the Commission should be empowered to... the Commission should be empowered to...

the Commission should be empowered to... the Commission should be empowered to... the Commission should be empowered to...

the Commission should be empowered to... the Commission should be empowered to... the Commission should be empowered to...

the Commission should be empowered to... the Commission should be empowered to... the Commission should be empowered to...

the Commission should be empowered to... the Commission should be empowered to... the Commission should be empowered to...

the Commission should be empowered to... the Commission should be empowered to... the Commission should be empowered to...

the Commission should be empowered to... the Commission should be empowered to... the Commission should be empowered to...

the Commission should be empowered to... the Commission should be empowered to... the Commission should be empowered to...

the Commission should be empowered to... the Commission should be empowered to... the Commission should be empowered to...

the Commission should be empowered to... the Commission should be empowered to... the Commission should be empowered to...

the Commission should be empowered to... the Commission should be empowered to... the Commission should be empowered to...

the Commission should be empowered to... the Commission should be empowered to... the Commission should be empowered to...

the Commission should be empowered to... the Commission should be empowered to... the Commission should be empowered to...

the Commission should be empowered to... the Commission should be empowered to... the Commission should be empowered to...

the Commission should be empowered to... the Commission should be empowered to... the Commission should be empowered to...

WHERE TO STAY

Town and Country. SALISBURY HOTEL TENNIS CLUB. DANCE 18th FEBRUARY 9-30 till 2. Music by The Folly Jazzers Band.

OAKLEIGH PRIVATE HOTEL. COMFORTABLE and 18-20 SINGLE ROOMS. SPECIAL MONTHLY TERMS FOR PERMANENTS.

Syd Ziegler and his Metronomes PLAYING AT CLAIRMONT Saturday, February 11th AT 8 P.M. Tickets 12/6 double, 7-50 single, including Refreshments.

BELL INN (On Main Road) NAIVASHA. FIRST CLASS ACCOMMODATION. CATERING A SPECIALITY.

For Comfort. Stay at the SAVOY (Licensed Hotel). The Hill, NAIROBI. Hot and Cold Water Installation in the Rooms. Large Dining Room, Lounges, Garages, Etc.

MOORFIELD 3rd. Avenue Parklands. Board Residence, Beautiful Surroundings. Fruit, Tennis Court, Large Garden.

Naivasha Hotel. The finest hotel Country Hotel in Kenya. Our Daily Hot, Fresh Milk and Cream.

HIGH VIEW HOTEL. Fully Licensed. 8 miles from Nairobi. 17 miles from Kisumu.

MOMBASA TIMES. CAN NOW BE OBTAINED AT Standard Stationery Stores.

John Rifkin. 3111 ST. AVENUE. P.O. Box 11, NAIROBI. WAGON RIDER. BLACKMITH FARRIER. STOCKS OF AXLES IRONS HORSES and ALL WAGON PAIRS.

New Racing. J. Mulholland has now taken over the management of the racing track at Naivasha.

Leiss. FINE GLASSES. In Leather Cases. Price Shs 1/10 to Shs 3/6. STANDARD STATIONERY STORES.

BLOTTING PAPER. Shs 6/- per quire. Shs 9/- per ream. STANDARD STATIONERY STORES.

STANDARD STATIONERY STORES. NAIROBI.

the Commission should be empowered to... the Commission should be empowered to... the Commission should be empowered to...

the Commission should be empowered to... the Commission should be empowered to... the Commission should be empowered to...

the Commission should be empowered to... the Commission should be empowered to... the Commission should be empowered to...

the Commission should be empowered to... the Commission should be empowered to... the Commission should be empowered to...

the Commission should be empowered to... the Commission should be empowered to... the Commission should be empowered to...

the Commission should be empowered to... the Commission should be empowered to... the Commission should be empowered to...

the Commission should be empowered to... the Commission should be empowered to... the Commission should be empowered to...

The Green Valley. The best forest coffee soil. Buy on the rising market don't wait until you have to pay 250 for 200 acres.

the Commission should be empowered to... the Commission should be empowered to... the Commission should be empowered to...

the Commission should be empowered to... the Commission should be empowered to... the Commission should be empowered to...

the Commission should be empowered to... the Commission should be empowered to... the Commission should be empowered to...

the Commission should be empowered to... the Commission should be empowered to... the Commission should be empowered to...

the Commission should be empowered to... the Commission should be empowered to... the Commission should be empowered to...

the Commission should be empowered to... the Commission should be empowered to... the Commission should be empowered to...

the Commission should be empowered to... the Commission should be empowered to... the Commission should be empowered to...

Just Arrived. Jute Carpets and Rugs. Framed pictures. Ladies Hair. Feather-Bush material of Silk. Cotton and Art Silk Laces-Design. etc.

the Commission should be empowered to... the Commission should be empowered to... the Commission should be empowered to...

the Commission should be empowered to... the Commission should be empowered to... the Commission should be empowered to...

the Commission should be empowered to... the Commission should be empowered to... the Commission should be empowered to...

the Commission should be empowered to... the Commission should be empowered to... the Commission should be empowered to...

the Commission should be empowered to... the Commission should be empowered to... the Commission should be empowered to...

the Commission should be empowered to... the Commission should be empowered to... the Commission should be empowered to...

the Commission should be empowered to... the Commission should be empowered to... the Commission should be empowered to...

The 1 under Transport Company. Land Department, SUBUKIA.

the Commission should be empowered to... the Commission should be empowered to... the Commission should be empowered to...

the Commission should be empowered to... the Commission should be empowered to... the Commission should be empowered to...

the Commission should be empowered to... the Commission should be empowered to... the Commission should be empowered to...

the Commission should be empowered to... the Commission should be empowered to... the Commission should be empowered to...

the Commission should be empowered to... the Commission should be empowered to... the Commission should be empowered to...

the Commission should be empowered to... the Commission should be empowered to... the Commission should be empowered to...

the Commission should be empowered to... the Commission should be empowered to... the Commission should be empowered to...

Standard Stationery Stores. NAIROBI.

# "VIYELLA"

**UNDEVELOPED PERS TWELVE PLATES.**  
 "Viella" for House Fractions  
 for the Golf Course.  
 for Boating.  
 for Tennis.  
 for Lingerie.

# "VIYELLA"

Every wear for everywhere.  
 New Stocks of beautiful designs of colours well unpacked at

## Ahamed Bros.

Stockists of only the best goods.  
 Basar, Box 254 Nairobi

## Georgian Glass Table Ware

Beer Tumblers	30/-	4/-	18/-
Whisky Tumblers	17/-	8/-	18/60
Claret Glasses	15/-	5/-	12/-
Port Glasses	12/-	2/40	9/60
Liqueur Glasses	12/-	2/40	9/60

Hawley, Cameron & Bennett.

## Save Time Save Money Do better work

by using—

# DISSTON

SAWS TOOLS FILES

FILES FILES FILES  
 "The FILES most Engineers use"



## THE WONDER WATCH!

It occupies the highest rank amongst the most useful watches ever made. It is a perfect time-keeper, and is so constructed that it will run for years without any attention. It is waterproof, and is so constructed that it will run for years without any attention. It is waterproof, and is so constructed that it will run for years without any attention.

## THE ROLEX OYSTER

It is the most perfect time-keeper ever made. It is so constructed that it will run for years without any attention. It is waterproof, and is so constructed that it will run for years without any attention.

## TEOFANI CIGARETTES.

High Class Virginia and Egyptian  
 WHEAT BRAND  
 BULLDOG BRAND  
 PHAROS BRAND  
 TRADE MARK SUPPLIED BY PERCY HEAT, Sole Distributing Agent City House, P.O. Box 68, NAIROBI.

## Caley's Chocolates.

Unobtainable Everywhere  
 Distributing Agent: P.O. Box 68, NAIROBI.

## CORRESPONDENCE

**The Editor, "E.A. Standard"**  
 Sir—I beg to thank you for the copy of your issue of the 1st inst. which I received. I am glad to see that you have published a letter, not necessarily for publication, but as a guarantee of good faith. I am glad to see that you have published a letter, not necessarily for publication, but as a guarantee of good faith.

**OLD UPRISEMAN**  
 To the Editor, "E.A. Standard"  
 Sir—May I beg the courtesy of your columns to invite all old Uprise-men and others interested in carrying on the old Uprise-men traditions to write me?

**KIAMU LABOUR ASSOCIATION.**  
 To the Editor, "E.A. Standard"  
 Sir—Before the last office picking session commenced, Association was formed called the Kiamu Labour Association. Association proposed to recruit Uprisers labour and supply it to the planters as required.

**THE TRUCK SH.**  
 The introduction of the truck sh. into the country is a matter of some importance. It is a matter of some importance. It is a matter of some importance.

**METHOD OF CONSTRUCTION EXPLAINED.**  
 The introduction of the truck sh. into the country is a matter of some importance. It is a matter of some importance. It is a matter of some importance.

**NATIVE DIET AND DISEASE.**  
 To the Editor, "E.A. Standard"  
 Sir—May I again call attention to the negative side of certain theories now being officially bandied on the defunctive colony regarding the diet of the natives with the cause of his lack of children, &c. of general blackness, &c.

**PROPERTY.**  
 To the Editor, "E.A. Standard"  
 Sir—I beg to thank you for the copy of your issue of the 1st inst. which I received. I am glad to see that you have published a letter, not necessarily for publication, but as a guarantee of good faith.

**OBSESSION.**  
 To the Editor, "E.A. Standard"  
 Sir—I beg to thank you for the copy of your issue of the 1st inst. which I received. I am glad to see that you have published a letter, not necessarily for publication, but as a guarantee of good faith.

**CONTRASTION.**  
 The truck sh. is a matter of some importance. It is a matter of some importance. It is a matter of some importance.

**CONTRASTION.**  
 The truck sh. is a matter of some importance. It is a matter of some importance. It is a matter of some importance.

**CONTRASTION.**  
 The truck sh. is a matter of some importance. It is a matter of some importance. It is a matter of some importance.

**CONTRASTION.**  
 The truck sh. is a matter of some importance. It is a matter of some importance. It is a matter of some importance.

**CONTRASTION.**  
 The truck sh. is a matter of some importance. It is a matter of some importance. It is a matter of some importance.

**CONTRASTION.**  
 The truck sh. is a matter of some importance. It is a matter of some importance. It is a matter of some importance.

**CONTRASTION.**  
 The truck sh. is a matter of some importance. It is a matter of some importance. It is a matter of some importance.

**CONTRASTION.**  
 The truck sh. is a matter of some importance. It is a matter of some importance. It is a matter of some importance.

**CONTRASTION.**  
 The truck sh. is a matter of some importance. It is a matter of some importance. It is a matter of some importance.

**CONTRASTION.**  
 The truck sh. is a matter of some importance. It is a matter of some importance. It is a matter of some importance.

**CONTRASTION.**  
 The truck sh. is a matter of some importance. It is a matter of some importance. It is a matter of some importance.

**CONTRASTION.**  
 The truck sh. is a matter of some importance. It is a matter of some importance. It is a matter of some importance.

of color, but those who are not...  
 been known for eight years, and...  
 and one carry, while some...  
 of color, but those who are not...  
 been known for eight years, and...  
 and one carry, while some...

**PROBATION**  
 February 7, 1906.  
 (The editor of a newspaper does not know up to a judge of the truth or untruth of any of the statements of opinion on matters of public interest which are published in his paper.)

**THE TRUCK SH.**  
 The introduction of the truck sh. into the country is a matter of some importance. It is a matter of some importance. It is a matter of some importance.

**METHOD OF CONSTRUCTION EXPLAINED.**  
 The introduction of the truck sh. into the country is a matter of some importance. It is a matter of some importance. It is a matter of some importance.

**NATIVE DIET AND DISEASE.**  
 To the Editor, "E.A. Standard"  
 Sir—May I again call attention to the negative side of certain theories now being officially bandied on the defunctive colony regarding the diet of the natives with the cause of his lack of children, &c. of general blackness, &c.

**PROPERTY.**  
 To the Editor, "E.A. Standard"  
 Sir—I beg to thank you for the copy of your issue of the 1st inst. which I received. I am glad to see that you have published a letter, not necessarily for publication, but as a guarantee of good faith.

**OBSESSION.**  
 To the Editor, "E.A. Standard"  
 Sir—I beg to thank you for the copy of your issue of the 1st inst. which I received. I am glad to see that you have published a letter, not necessarily for publication, but as a guarantee of good faith.

**CONTRASTION.**  
 The truck sh. is a matter of some importance. It is a matter of some importance. It is a matter of some importance.

**CONTRASTION.**  
 The truck sh. is a matter of some importance. It is a matter of some importance. It is a matter of some importance.

**CONTRASTION.**  
 The truck sh. is a matter of some importance. It is a matter of some importance. It is a matter of some importance.

**CONTRASTION.**  
 The truck sh. is a matter of some importance. It is a matter of some importance. It is a matter of some importance.

**CONTRASTION.**  
 The truck sh. is a matter of some importance. It is a matter of some importance. It is a matter of some importance.

**CONTRASTION.**  
 The truck sh. is a matter of some importance. It is a matter of some importance. It is a matter of some importance.

**CONTRASTION.**  
 The truck sh. is a matter of some importance. It is a matter of some importance. It is a matter of some importance.

**CONTRASTION.**  
 The truck sh. is a matter of some importance. It is a matter of some importance. It is a matter of some importance.

**CONTRASTION.**  
 The truck sh. is a matter of some importance. It is a matter of some importance. It is a matter of some importance.



# ERASMIC Shaving Stick

Does not dry on the face. Its rich creamy lather helps the razor to give that close clean shave which is so desired.  
**BRITISH & BEST.**  
 "ERASMIC" Perfumery, London, E.C.

## B. H. MYERS & Co. Ltd.

Government Road, Near National Bank of India, Ltd. Telephone 343. NAIROBI. P.O. Box 461.

## B. H. M. BEDROOM SUITE.

Comprising the following articles:  
**WARDROBE, 3ft. 6in.** wide, neatly paneled doors and front, full length oblong mirror. A ample hanging space and one large drawer.  
**DRESSING TABLE, 3ft. 6in.** wide, one longer and two half drawers. Square level mirror. Straight legs.  
**WARDEN, 3ft. 6in.** wide, large encephaloid, two towel rails, toilet shelf, straight legs.  
**BEDROOM CHAIR, with cane seat.**  
**SINGLE BEDSTEAD, 4ft. wide, panel at head and foot. Legs quality 1/4 spring mattress. Iron Bracket fittings.**

## Price Shs. 630/-

Furniture to any amount may be purchased under our Hire Purchase.  
 Terms can be arranged to suit you.  
 5 per cent. discount for cash.  
 Crating free to our up country customers.



## Will your shirt face the laundry?

If it is a Consulate Shirt, the question does not arise; it is impregnated by the most binding guarantee that has ever been given—that can ever be given—about shirts in the world. Its pattern will stay the same; its colour will stay the same; its length, length in the waist, length in the sleeves, length in the collar—they will all stay the same. If it doesn't— we will replace it.

# Consulate

THE TALLEST SHIRT with the best fit.  
 Consulate

## H-O. Quick Cooking Oats Makes Porridge in 2 to 3 minutes.

Obtainable at **Bellman Parimal & Co.** (Established 1867) Corner Swamy Road, Government Road, Box 80, NAIROBI. P.O. Box 28. Also P.O. Box 47, MOMBASA.









THE SPORTS PAGE

The Reason Why!

All our imports made from only the very best manufacturers in England... SHAW and HUNTER, NAIROBI.

The Genuine OPTIMUS BLOW LAMPS



J. W. MILLIGAN & Co. Hardinge St. NAIROBI.

Charles Ware TIME ACCOUNTANT.

Clients who make it a rule of not settling promptly on settling day are reminded that following Jockey Club Rule without any exceptions.

NOTICE. Clients who make it a rule of not settling promptly on settling day are reminded that following Jockey Club Rule without any exceptions.

Our Stocks are always fresh as we are Direct Importers and draw our Supplies from the world's best markets.

Stock these High Class Provisions, Imported Confectionery, Wines, Spirits, Cigarettes, Tobacco, Fresh Fruits, Local Produce and Vegetables.

Write Book 436 NAIROBI.

J. H. S. TODD & Co. Ltd. General Merchants NAIROBI.



all size Black and galvanneal PIPE FITTINGS.

IF YOU ARE INTERESTED IN SPORT

OF ANY DESCRIPTION YOU WILL BE INTERESTED IN

Our New Catalogue of FIRE ARMS CARTRIDGES FISHING RODS TACKLE AND EVERY REQUISITE FOR EVERY SPORT.

MAY & Co., Ltd. The Sports House NAIROBI.

RHINE FOOTBALL

League Tables Compiled Up-to-Date.

AVERTON DISAPPEAR

The following are the tables of the Football and Football League compiled up to and including matches played on Saturday, February 4.

ENGLAND LEAGUE.

Table with columns for Division, Team, and Points. Includes First Division and Second Division.

THIRD DIVISION.

Table with columns for Team and Points. Includes Southern Section and Northern Section.

THE COUNTRY CUP FINAL.

The following team will represent Oglit in the final for the Country Cup against Kenyatta to be played on Saturday and Sunday next at the Sports ground.

A NAKURU MATCH.

The following were scores in a match played at Nakuru last week and between the Nairobi School and Capt. Ward's XI.

NAKURU SCHOOL.

Table with columns for Player and Score. Includes names like Alexander, c and b, Sutton, c, etc.

SCOTTISH LEAGUE.

Table with columns for Team and Points. Includes Glasgow, Aberdeen, Dundee, etc.

COUNTRY CROCKET.

Naivasha Team Defeats Oglit.

GRAND TEAM FOR THE CUP FINAL.

The Naivasha cricket team led by P. de V. Allen visited Oglit on Sunday and defeated the home team by 80 runs.

ENGLAND LEAGUE.

Table with columns for Team and Points. Includes H. W. Isaac, c Green, b Cobb, etc.

THIRD DIVISION.

Table with columns for Team and Points. Includes P. de V. Allen, c Hunter, b, etc.

THE COUNTRY CUP FINAL.

The following team will represent Oglit in the final for the Country Cup against Kenyatta to be played on Saturday and Sunday next at the Sports ground.

A NAKURU MATCH.

The following were scores in a match played at Nakuru last week and between the Nairobi School and Capt. Ward's XI.

NAKURU SCHOOL.

Table with columns for Player and Score. Includes names like Alexander, c and b, Sutton, c, etc.

SCOTTISH LEAGUE.

Table with columns for Team and Points. Includes Glasgow, Aberdeen, Dundee, etc.

HARBOR GOLF CLUB.

The Committee Defeats 'The Real'.

THE NEW OFFICERS.

My 'Naked' I congratulate the Golf Club in being won a victory...

THE LAST M.C.C. TEST.

On Sunday last on all a great day, when the retiring Committee played the run of the match...

GOLF AT NATHINGA.

On Sunday last on all a great day, when the retiring Committee played the run of the match...

RESULT OF FINAL FOR THE BOOBY COMPETITION.

The final of the Matthews Golf Club annual booby competition was played at Nathinga during last week-end and resulted in a victory for J. J. G. G. G.

RECENT SUCCESS AT THE SCHOOL.

The following team will turn out for Gryllsiana in a booby match today against the Nairobi School...

THE EAST AFRICAN STANDARD.

The following team will represent Oglit in the final for the Country Cup against Kenyatta to be played on Saturday and Sunday next at the Sports ground.

A NAKURU MATCH.

The following were scores in a match played at Nakuru last week and between the Nairobi School and Capt. Ward's XI.

NAKURU SCHOOL.

Table with columns for Player and Score. Includes names like Alexander, c and b, Sutton, c, etc.

SCOTTISH LEAGUE.

Table with columns for Team and Points. Includes Glasgow, Aberdeen, Dundee, etc.

ROYAL ENFIELD

A consignment of the above world famous Motor Cycles has arrived. Prices for cash are—

4.88 H.P. Four speeds 270 0/0  
3.40 H.P. Side Valve 270 0/0  
2.25 H.P. Standard 250 0/0  
2.25 H.P. Sport 230 0/0

The Kenya Motorplough Co.

Hardinge Street. NAIROBI. P.O. Box 216.

A. HOGG, Mutos B'dgs, NAIROBI.

Lincoln—7/1 Orindon, 8/1 Mohawk, 10/1 Prince Park, Fohannan, 14/1 Rob. Vanoc, 18/1 Bar, National—7/1 Billy Barton, 10/1 Spring, Brightline 12/1 Cardiff, Trump Card, 14/1 Bivoli III, Grand White Park, 16/1 Bar, 8.

SCHOUTEN'S The Premier Ladies' Hairdressing and Manicuring in East Africa.

COURTESY Combined with the SKILL of experts from the standard of our success.

Permanent Waving for COMFORT CONVENIENCE CORRECTNESS.

Phone 245. Box 334.



Recent successes at the SCHOOL.

The following team will turn out for Gryllsiana in a booby match today against the Nairobi School...

THE EAST AFRICAN STANDARD.

The following team will represent Oglit in the final for the Country Cup against Kenyatta to be played on Saturday and Sunday next at the Sports ground.

A NAKURU MATCH.

The following were scores in a match played at Nakuru last week and between the Nairobi School and Capt. Ward's XI.

NAKURU SCHOOL.

Table with columns for Player and Score. Includes names like Alexander, c and b, Sutton, c, etc.

SCOTTISH LEAGUE.

Table with columns for Team and Points. Includes Glasgow, Aberdeen, Dundee, etc.

ROYAL ENFIELD

A consignment of the above world famous Motor Cycles has arrived. Prices for cash are—

4.88 H.P. Four speeds 270 0/0  
3.40 H.P. Side Valve 270 0/0  
2.25 H.P. Standard 250 0/0  
2.25 H.P. Sport 230 0/0

The Kenya Motorplough Co.

Hardinge Street. NAIROBI. P.O. Box 216.

A. HOGG, Mutos B'dgs, NAIROBI.

Lincoln—7/1 Orindon, 8/1 Mohawk, 10/1 Prince Park, Fohannan, 14/1 Rob. Vanoc, 18/1 Bar, National—7/1 Billy Barton, 10/1 Spring, Brightline 12/1 Cardiff, Trump Card, 14/1 Bivoli III, Grand White Park, 16/1 Bar, 8.

SCHOUTEN'S The Premier Ladies' Hairdressing and Manicuring in East Africa.

COURTESY Combined with the SKILL of experts from the standard of our success.

Permanent Waving for COMFORT CONVENIENCE CORRECTNESS.

Phone 245. Box 334.



Recent successes at the SCHOOL.

The following team will turn out for Gryllsiana in a booby match today against the Nairobi School...

THE EAST AFRICAN STANDARD.

The following team will represent Oglit in the final for the Country Cup against Kenyatta to be played on Saturday and Sunday next at the Sports ground.

A NAKURU MATCH.

The following were scores in a match played at Nakuru last week and between the Nairobi School and Capt. Ward's XI.

NAKURU SCHOOL.

Table with columns for Player and Score. Includes names like Alexander, c and b, Sutton, c, etc.

SCOTTISH LEAGUE.

Table with columns for Team and Points. Includes Glasgow, Aberdeen, Dundee, etc.

Printed and Published by EAST AFRICAN STANDARD, Ltd., at the 'Standard' Press, Nairobi, Kenya Colony.

FOR Morning AND Afternoon Teas Coffee AND ICES. New Stanley Hotel. Cocktails in Speciality. Price 20 CENTS.

UGANDA ARGUS with which is incorporated THE LEADER. THE GREATEST ESTABLISHED NEWSPAPER PUBLISHED IN KENYA AND UGANDA.

NAIROBI, FRIDAY, FEBRUARY 10, 1928.

THE EAST AFRICAN & SOUTHERN PAGES.

REVIEW OF BRITISH FOREIGN POLICY. CHURCH ASSEMBLY AND PRAYER BOOK MEASURE.

AMERICAS TO BE LINKED BY GREAT ROAD. INTERNATIONAL CONFERENCE APPROVES PROJECT.

INTENTIONS OF THE SIMON COMMISSION. INDIA TO SIT ON ADVISORY COMMITTEE.

NATIONAL MEMORIAL TO EARL HAIG. TRIBUTE TO ILLUSTRIOUS CAREER.

LESSONS TO BE LEARNED FROM GENERA CONFERENCE.

RECALL OF VOTING BY HOUSE OF LORDS. A LOGO DEBATE.

DISCUSSION ON CONGO BASIN TREATIES. WIRELESS AND GABLES.

IF YOU ARE GOING HOME YOU WILL PROBABLY NEED A NEW TRUNK OR SUITCASE. WE CAN SHOW YOU TRAVEL GOODS FOR ALL OCCASIONS.

RECALL OF VOTING BY HOUSE OF LORDS. A LOGO DEBATE.

INTERNATIONAL CONFERENCE APPROVES PROJECT.

DISCUSSION ON CONGO BASIN TREATIES. WIRELESS AND GABLES.

THE EMPIRE SUIT CASE. A very strong travelling chest case of superior quality with lined interior and leather handles. Price, Shs. 35/- each.

RECALL OF VOTING BY HOUSE OF LORDS. A LOGO DEBATE.

INTERNATIONAL CONFERENCE APPROVES PROJECT.

DISCUSSION ON CONGO BASIN TREATIES. WIRELESS AND GABLES.

THE WEMBLE SUIT CASE. A very strong travelling chest case of superior quality with lined interior and leather handles. Price, Shs. 27/50 29/50 31/50.

RECALL OF VOTING BY HOUSE OF LORDS. A LOGO DEBATE.

INTERNATIONAL CONFERENCE APPROVES PROJECT.

DISCUSSION ON CONGO BASIN TREATIES. WIRELESS AND GABLES.

THE HOLIDAY TRUNKETTE. A very strong travelling chest case of superior quality with lined interior and leather handles. Price, Shs. 6/50 7/50 8/50.

RECALL OF VOTING BY HOUSE OF LORDS. A LOGO DEBATE.

INTERNATIONAL CONFERENCE APPROVES PROJECT.

DISCUSSION ON CONGO BASIN TREATIES. WIRELESS AND GABLES.

THE TRAVELLER LEATHER SUIT CASE. A very strong travelling chest case of superior quality with lined interior and leather handles. Price, Shs. 49/50 Shs. 52/50.

RECALL OF VOTING BY HOUSE OF LORDS. A LOGO DEBATE.

INTERNATIONAL CONFERENCE APPROVES PROJECT.

DISCUSSION ON CONGO BASIN TREATIES. WIRELESS AND GABLES.

WHITEWAYS. Made in withstand hard usage. A very strong travelling chest case of superior quality with lined interior and leather handles. Price, Shs. 47/50 52/50 57/50.

RECALL OF VOTING BY HOUSE OF LORDS. A LOGO DEBATE.

INTERNATIONAL CONFERENCE APPROVES PROJECT.

DISCUSSION ON CONGO BASIN TREATIES. WIRELESS AND GABLES.

WHITEWAYS. Made in withstand hard usage. A very strong travelling chest case of superior quality with lined interior and leather handles. Price, Shs. 47/50 52/50 57/50.

RECALL OF VOTING BY HOUSE OF LORDS. A LOGO DEBATE.

INTERNATIONAL CONFERENCE APPROVES PROJECT.

DISCUSSION ON CONGO BASIN TREATIES. WIRELESS AND GABLES.

WHITEWAYS. Made in withstand hard usage. A very strong travelling chest case of superior quality with lined interior and leather handles. Price, Shs. 47/50 52/50 57/50.

RECALL OF VOTING BY HOUSE OF LORDS. A LOGO DEBATE.

INTERNATIONAL CONFERENCE APPROVES PROJECT.

DISCUSSION ON CONGO BASIN TREATIES. WIRELESS AND GABLES.

WHITEWAYS. Made in withstand hard usage. A very strong travelling chest case of superior quality with lined interior and leather handles. Price, Shs. 47/50 52/50 57/50.

RECALL OF VOTING BY HOUSE OF LORDS. A LOGO DEBATE.

INTERNATIONAL CONFERENCE APPROVES PROJECT.

DISCUSSION ON CONGO BASIN TREATIES. WIRELESS AND GABLES.

WHITEWAYS. Made in withstand hard usage. A very strong travelling chest case of superior quality with lined interior and leather handles. Price, Shs. 47/50 52/50 57/50.

RECALL OF VOTING BY HOUSE OF LORDS. A LOGO DEBATE.

INTERNATIONAL CONFERENCE APPROVES PROJECT.

DISCUSSION ON CONGO BASIN TREATIES. WIRELESS AND GABLES.

WHITEWAYS. Made in withstand hard usage. A very strong travelling chest case of superior quality with lined interior and leather handles. Price, Shs. 47/50 52/50 57/50.

RECALL OF VOTING BY HOUSE OF LORDS. A LOGO DEBATE.

INTERNATIONAL CONFERENCE APPROVES PROJECT.

DISCUSSION ON CONGO BASIN TREATIES. WIRELESS AND GABLES.

WHITEWAYS. Made in withstand hard usage. A very strong travelling chest case of superior quality with lined interior and leather handles. Price, Shs. 47/50 52/50 57/50.

RECALL OF VOTING BY HOUSE OF LORDS. A LOGO DEBATE.

INTERNATIONAL CONFERENCE APPROVES PROJECT.

DISCUSSION ON CONGO BASIN TREATIES. WIRELESS AND GABLES.

WHITEWAYS. Made in withstand hard usage. A very strong travelling chest case of superior quality with lined interior and leather handles. Price, Shs. 47/50 52/50 57/50.

### FULL STORY OF THE FLOODING OF THE METROPOLIS.

#### Surge of Waters Which Brought Death and Destruction.

#### FLIGHT OF BASEMENT DWELLERS.

#### Bursting of Crocodile Vat Adds to the Horror.

The full story of the terrible floods which recently swept over the south of England and caused such havoc in London is told graphically below.

The rash of waters in the city came with devastating suddenness and there was no time to warn householders many of whom perished like rats in a trap.

The bursting of a crocodile vat added to the horror of the catastrophe and the damage is estimated at many thousands of pounds.

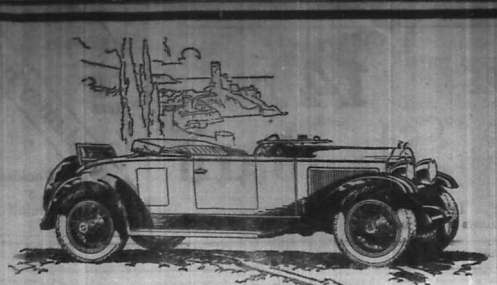
#### RAGING TORRENT IN STREETS.

London, January 31.—England will soon no longer be considered one of the safest places in which to live. This week has occurred, principally in London, one of the most terrible floods ever known, caused by the overflowing of the Thames. The estimated number of 14 in London, as follows:—At Westminster, Thomas Harding, aged 16; Lillian Harding, aged 16; Rose Harding, aged 6; Doris Harding, aged 5; sisters, of 4, Governor Road; Mrs. Quirk, aged 23, of 20, Canton Street; Frank Wilder, aged 22, of 21, Hillsdale Street; Harry Thomas Jones, aged 17, of St. George's Church; Susie, who lodged at 1, Rowery Road; Nellie Hinchley, aged 12, of 22, Governor Road; Jessie Hawley, aged 7, of 18, Victoria Street; Lillian Jones, aged 16, of 20, Governor Road; Al Potney, from Frances Watson, aged 20, of 11, Hammersmith Court; Elizabeth Doris Lillian Watson, aged 21, in company of the above, living at 1, Hammermouth; Evelyn Hyde, aged 21, of Postyping; Anne Martin, aged 20, of St. George's, who lodged at River Court, Upper Mall.

The discharge of the river above would not, however, have caused the floods. They were produced by the meeting of the river discharge, and a very light sea breeze, which was in a strong east wind. Many people knew the rash, yet the story of danger warning was only left to the police late on Friday night, and there is no doubt but for their promptitude many more lives would have been lost.

People are still wondering what was the exact cause. Lord Desborough, the Chairman of the Thames Conservancy Board thinks there was a tidal wave. The fact that several coastal towns were inundated, supports the possibility. Was there any connection between the south of the Thames waters and the severe earthquake shocks reported in various parts of Europe on Friday evening? Sir William Huggins, the eminent astronomer, did not think so. The report view is that a combination of the high spring tide with the strong wind of Friday night and the flooded state of the river was sufficient explanation of the disaster, and of the fact that, down other rivers overflowed, flooding nearly a score of towns in Great Britain.

Great Britain. The flood came with devastating suddenness about one o'clock on Friday evening.



## "DIRECT FIRING"

- a vital reason for Buick's unmatched power

Just as all the force of exploding powder in a cannon is concentrated directly behind the shell—so all of the force of the exploding gas in Buick's engine is concentrated directly behind the piston.

This is the "direct firing" principle—a vital reason why the famous Buick Valve-in-Head engine develops more power for its size than any other automobile engine.

The result of this direct and efficient application

of power is an unmatched brilliancy of performance. Buick for 1928 is off like a flash on the getaway—has power in reserve for the steepest hills—and maintains to survive the roughest going. And because of its superior engine efficiency, Buick for 1928 is a remarkably economical car to operate.

Drive a Buick for 1928 to-day. You'll be quick to acknowledge the advantages of the "direct firing" Valve-in-Head engine.

# BUICK for 1928

### Gilfillan & Company, Ltd. DISTRIBUTORS.



DISTRIBUTORS: D. EPSTEIN & Co.

## UNDERWEAR for MEN

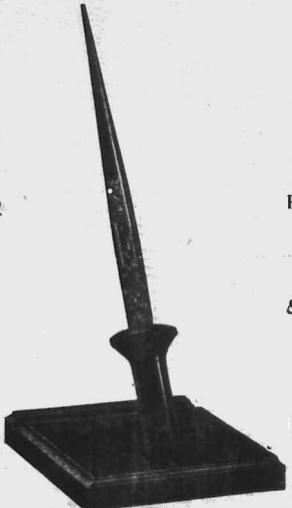


WHICH GIVES A FEELING OF COMFORT TO THE WEARER.

SILK and WOOL. A Texture of Wonderful Comfort. Vests 38" to 44" 16/- to 19/6. Drawers 36" to 42" 15/6 to 18/-. SILK and COTTON. Vests 38" to 44" 15/-. Drawers 34" to 42" 15/-.

Maxwell Brady | OUTFITTING EXPERTS. NAIROBI and ELDORET.

## The Aristocrat of Fountain Pens



SHEAFFER LIFETIME

FOR DESK & POCKET

TAWS LIMITED, NAIROBI.

Box 611.

Phone 141.

## RONEO Filing System

### Ball Bearing Steel Cabinets British Made.

With or without Automatic Lock.

## Prices Right

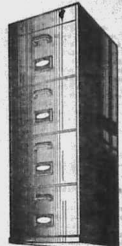
The Filing System is simple, easy to learn AND easy to use.



DISPENSES WITH THE CARD INDEX

## CONSULT US

STANDARD STATIONERY STORES, NAIROBI.



BEST AFRICAN STANDARD DAILY EDITION. ADVERTISING RATES. WANTED: Land, ...

FOR SALE (Contd.). OPEL 1914 2 1/2 seat motor car... WANTED: Land, ...

SITUATIONS VACANT. WANTED: Land, ...

IN THE ORCHARDS OF WEA PARK. The Transformation of Twenty Years. A SURETY TEST.

Equator Saw Mills. Seasoned Timber. Also in Stock 500,000 Running Feet OLD-FASHIONED Red specially selected and SEASONED Large Stocks Cedar, Mahogany and UGANDA MYRTLE. PRICE LIST ON APPLICATION.

THE SUBSCRIPTION RATES. DAILY. Weekly, yearly, ...

WASTE newspapers for wrapping. The Standard Stationery Store, Nairobi.

WANTED. TRACTOR for ploughing, harrowing and planting... WANTED: Land, ...

WANTED. In the orchards. Beautiful as is, the large flower garden... WANTED: Land, ...

AT STUD. ARIEL The Modern Motor Cycle. Has been awarded the Mandes trophy for meritorious performance. Come along and inspect J. R. COX & Co.

FOR SALE. THIS charge for advertisement in these columns... DAUGHTER presents that will delight your friends.

TO LET. A suite of rooms and well furnished offices in Gaitani Chambers... PUNJAB House, 5 rooms, 1 1/2 baths, 21' x 20'.

SITUATIONS WANTED. ENGLISHMAN desires situation as manager of enterprise... YOUTH seeks employment in office or factory.

DISCONTINUED. THE ORCHARD is situated at about 7,000 feet and every plot is surrounded by the most lovely views of mountains and plain.

Standard Stationery Stores. Jockey Club of Kenya. DANCE WILL BE HELD AT THE NEW STANLEY HOTEL On Saturday, Feb. 25th at 9 p.m.

FOR SALE. PONY BREEDERS SOCIETY OF KENYA. The annual general meeting will be held at the new Stanley Hotel at 10 a.m. on THURSDAY, FEBRUARY 25th.

CONFESSIONAL ENQUIRIES. I have a parcel of land, situated in the Nyeri district, containing 100 acres, more or less, and is well watered.

LOST. NAIROBI station or on train. One round ticket (return) containing three parcels, one of which was a book.

CONFESSIONAL ENQUIRIES. I have a parcel of land, situated in the Nyeri district, containing 100 acres, more or less, and is well watered.

For MEN, WOMEN & CHILDREN. FRENCH HAD EMBROIDERED CLOTHES FOR INFANTS. FROCKS, SKIRTS, KNICKERS, BABY COTS, SUPERIOR PURIFIED MATTRESSES FOR COTS, CHILDREN'S PLAYGROUNDS.

Ridgings, Gutters, DOWNPIPES are made a speciality of. IT therefore follows that PRICE AND WORKMANSHIP ARE IN YOUR FAVOUR. Hutchings, Biemer & Co., Ltd. NAIROBI. Phone 408.







Ring No. 439

WAGNER TRANSPORT COY. For Cheap and Reliable Transport under European supervision. For Full Part. Book, apply to our office.

WAGNER TRANSPORT COY. For Cheap and Reliable Transport under European supervision. For Full Part. Book, apply to our office.

WAGNER TRANSPORT COY. For Cheap and Reliable Transport under European supervision. For Full Part. Book, apply to our office.

MARTIN'S BILLS. AHEAD & STRONG. Here and everywhere for 21 years. Complete in every line. Would you be in the line. Customers are here and there throughout the world. Register.

FOR SALE.

British Warbirds 10,000 each. Lusitania 10,000 each. Lusitania 10,000 each. Lusitania 10,000 each.

Special quotations for quantities. J. DARVEY. 2, P.O. Box 402. 2, P.O. Box 402.

INSURE YOUR MOTOR CARS AND MOTOR CYCLES with the AFFIDAVIT GUARANTEE AND LIABILITY CO. LTD. M. D. KAMPE. CHIEF AGENT. COURT CHAMBERS.

BBB, ORLIK, LOEWEL & DUNHILL PIPES. MAY & CO., LTD.

FULL STORY OF THE FLOODING OF THE METROPOLIS.

(Continued from page 3).

London, Sunday, Feb. 20. The flooding of the metropolis is now in its third day. The water is still rising in many places. The water is still rising in many places.

At the same time the water is still rising in many places. The water is still rising in many places.

At the same time the water is still rising in many places. The water is still rising in many places.

At the same time the water is still rising in many places. The water is still rising in many places.

At the same time the water is still rising in many places. The water is still rising in many places.

At the same time the water is still rising in many places. The water is still rising in many places.



Smoke ARMY CLUB Cigarettes. Representatives: GENERAL AGENCIES, Ltd., 1100 Building, NAIROBI. Govt. Road.

We Stock. Always big stock of Provisions, Wines, Liquor, Best Quality of Dutch and Indian Cigars, Cigarettes, Sweets, Chocolates, Biscuits, Delmonico Brand Fruit, in tins and Fruits in Syrup.

KANJEE NARANJEE. P.O. Box 357. NAIROBI. Govt. Road.

The Modern School of DANCING. Principal Miss Shirreff (late of Croydon, Surrey, London). Opening Classes at the Lyric Hall, on Feb. 21st. Wednesday Children Class 4.30. Adults from Class 6 o'clock. Schools visited. Ballroom let by arrangement. Apply Box 106.

WAR A SUIT TAILORED AT C. F. RODRIGUES & BROS. And he Etuded. Protective Co. (Patent) Belg. Pat. No. 211,000. A Trial Order will convince you. C. F. RODRIGUES & BROS. 105, Queen's Promenade, NAIROBI. and Sika Maken. Box 110. NAIROBI.

At the same time the water is still rising in many places. The water is still rising in many places.

At the same time the water is still rising in many places. The water is still rising in many places.

At the same time the water is still rising in many places. The water is still rising in many places.

At the same time the water is still rising in many places. The water is still rising in many places.

At the same time the water is still rising in many places. The water is still rising in many places.

At the same time the water is still rising in many places. The water is still rising in many places.

At the same time the water is still rising in many places. The water is still rising in many places.

TRACTORS and HARROWS RUN ON KEROSENE.

The 50 h. p. Model with Driving Pulley and Winch. Price f.o.r. Nairobi. £575

The 40 h. p. Model with Driving Pulley. Price f.o.r. Nairobi. £395

The 50 h. p. Model can be seen at work daily on the Equator Farm, Njoro. The Motor Plough is working at Timboroa, Eldoret. It is, well worth watching to see how easily ploughing on the hardest soil can be done.

A complete range of Spares stocked. Manufacturers Engineer in attendance at Nairobi.

Eberhardt Motor-Drawn Trailer Ploughs

WE HAVE A LARGE RANGE OF THESE PLOUGHS AND HARROWS IN STOCK. THESE ARE THE STRONGEST AND MOST UP-TO-DATE FARM IMPLEMENTS YET MARKED.

Sub-Agent. Eldoret, Fischer & Co. AFRICANA Ltd. Sub-Agent. Nakuru District. C. Jungblut Njoro. MOMBASA. KAMPALA. NAIROBI. DAR-ES-SALAAM.



POULTRY NOTES

Hot Weather.

It is not a matter of course that a poultry flock should be kept in a cool and shaded place...

The best time to visit the country is during the rainy season...

The egg output is not too high...

It is now that we shall have to watch out for a recurrence of cholera...

Chickens and ducks are laying well and the poultry farmer should be satisfied...

It is not a matter of course that a poultry flock should be kept in a cool and shaded place...

My advice to poultry farmers in the hot districts is to concentrate on the birds that do best...

Answer to Correspondent. I am sorry to hear that you are not satisfied with the results...

Ordinary poultry are not as a rule robust as the birds...

The ducks in question probably find the abundance of water...

Limited. For Chickens Limited would be some time to a job...

Chickens and ducks are laying well and the poultry farmer should be satisfied...

Red Sits

This mysterious part of the body is contained in its habits...

FOR SALE.

1914 Acres with extensive Limestone Outcrops and Permanent River Frontage...

Also small Farm of 80 Acres, Permanent River Frontage...

Box 807. Nairobi.

Crawford's LIQUEUR SCOTCH WHISKY. Old Scotch Rare in Quality ESTD 1860.

GIVE US A CALL. For C. I. Sheela, Plain Sheets, Cement, Abrasives, Stationery, Hardware, Stationery, Cycle Accessories, Etc.

A Fresh Consignment of 'Tom-Tit' Fruits. IN SYRUP. PEACHES 2/3 per 2 1/2 lb Tin. PEARS 2/3. APRICOTS 2/3.

M. S. ELLIOT & Co. P.O. Box 175. Phone 60.

Starting Announcement 20% Cash Discount. Allowed on Cash Sales Only. Commences Monday 6th. Feb. to 28th. Feb. 26. An Avalanche of Irristible Bargains.

LETTS' Office and Pocket DIARIES 1928. System Desk Calendar 1928. Complete Shgs 8/-, Padded 9/6.

AMANT RAIN & CO. P.O. Box 518. Palm Tree Kerosene. 'BP' THE BRITISH PETROL. JOHN RIFKIN. WAGON BULLFINCH. BLACKSMITH FARRIER.

New RACING Stable at Nakuru. P.O. Box 516. Nairobi. Tel No. 15.

Just Arrived. Jute Carpets and Rugs. Framed Pictures, Ladies Hats, Feather Dusters, Dress material of Silk, Cotton and Art Silk in latest Design, etc. Ladharam Stores.

Whatever You Do DON'T. Buy a Car until you have Tested CHEVROLET (Magneto Ignition Optional), PONTIAC, OAKLAND, VAUXHALL.

It Costs You Nothing. We demonstrate with pleasure at any time: THE MOTOR MART and Exchange, Ltd. NAKURU. NAIROBI. DAR-ES-SALAAM.

TVO. POWER KEROSENE. 'BP' THE BRITISH PETROL. PALM TREE KEROSENE. Anglo Persian Oil Co. (Kenya) Ltd.

Miss KATHLEEN BATES A.R.C.M. PIANOFORTE-SINGING-HARMONY. Coaching given to Singers and Instrumentalists.

'IRONITE' FOR DUSTLESS, WATERPROOF AND GREASEPROOF FLOORING AND PAVING. WEAR-PROOF & WATER-PROOF. F. M. BHAIJEE, NAIROBI.

The Green Valley. The best coffee soil. Buy on the rising market don't wait until you have to pay \$20 an acre.

Exchange. The owner of a 2,600 acre farm on the plains wishes to exchange for a plot of coffee land near Nairobi, preferably developed.

The Best. The best optician and the best glasses are not necessarily the most expensive, but they would be vital even if they were. DOBBIES Ltd. Nairobi.







**"The best fruits taste better with Bird's Custard!"**

**BIRD'S CUSTARD**

It brings out the full flavor of every kind of fruit. Whether it be apricots, apples or plums, Bird's Custard with the fruit is always ready when "the day of the day."

Is just what is needed to get your bread, buns or French rolls. It softens the crusty edge of the French loaf. It keeps the fruit in place, gives it its own distinctive taste, and lets it absorb the syrup without loss of color and with every benefit to health.

Bird's Custard is sold in tins and silver tins.

Order your supply made by BIRD'S CUSTARD, Ltd., 10, Abchurch Lane, London, E.C. 4, ENGLAND. Sole Importers for East Africa, Messrs. J. R. COX & Co., Ltd., 6, Market Street, Nairobi, Kenya.

**NAROKI U.W.C.A. EXTENSION SCHEME.**

**Proposal to Add Dining Room and 12 Bedrooms.**

While the report given by Lady Deane of the work of the Narok Club was being discussed during the meeting, it was suggested on the suggestion of the Hon. Mr. J. O. O'Brien that the Club should be extended to include a dining room and 12 bedrooms. The Hon. Mr. J. O. O'Brien stated that the Club was now a very important institution in the district and that it was necessary to provide for the needs of the members and the public. He suggested that the Club should be extended to include a dining room and 12 bedrooms. The Hon. Mr. J. O. O'Brien stated that the Club was now a very important institution in the district and that it was necessary to provide for the needs of the members and the public. He suggested that the Club should be extended to include a dining room and 12 bedrooms.

**THE RIDGE OF THE DEPT VALLEY.**

Every man's name was displayed to the world when the Ridge of the Dept Valley was discovered. The Ridge of the Dept Valley was discovered by the Hon. Mr. J. O. O'Brien. The Ridge of the Dept Valley was discovered by the Hon. Mr. J. O. O'Brien. The Ridge of the Dept Valley was discovered by the Hon. Mr. J. O. O'Brien.

**WHERE TO STAY**  
Town and Country.

**SALISBURY HOTEL TENNIS CLUB.**

**DANCE**

**18th FEBRUARY**

**8-30 till 2**

Music by The Folly Jass Band  
Double Tickets 15-30; Single Tickets 7-50.  
(Including Supper.)  
Tickets obtainable at:  
E. A. Standard, Ltd. May & Co., Ltd.  
M. S. Elliot & Co.  
Secretary, Tennis Club, Salisbury Hotel.

**OAKLEIGH PRIVATE HOTEL**

COMFORTABLE AND UP-TO-DATE IN EVERY WAY.  
FURNITURE, TRIFLES, ESPECIALLY CAREFUL FOR SPECIAL MONTHLY TERMS FOR FURNITURE.  
MRS. M. J. JARRET.  
Nairobi. E.O. Box 10.  
Phone 180.

**Syd Ziegler and his Metronomes**

PLAYING AT  
**CLAJRMONT**

Saturday, February 11th  
AT 9 P.M.

Tickets 12-50 double, 7-50 single, including Refreshments.

**BELL INN**

(On Main Road) **NAIVASHA**

BRKFST	Sh. 20
LUNCH	Sh. 300
DINNER	Sh. 6-30
BREKFAST BED	Sh. 1-00
FULL DAY	Sh. 40

FIRST CLASS ACCOMMODATION  
CATERING A SPECIALTY  
LARGE FRIGIDARE  
UNINSTALLED  
ICE DRINKS, ICE  
CREAMS AVAILABLE  
AT ALL TIMES  
CLEANLINESS AND  
SATISFACTION  
GUARANTEED

**MOORFIELD**

3rd. Avenue Parklands

Board Residence, Beautiful Surroundings  
Fruit, Tennis Court, Large Garden.  
Separate Bungalows, Terms Moderate

**Naivasha Hotel.**

The finest built Country Hotel in Kenya. Own Dairy Herd, Fresh Milk and Cream. Every meal European supervised. Fishing, Golf, Billiards.

**Stag's Head Hotel,**  
**NAKURU**

Residence, Luncheon, Tea, Dinner and Accommodations.

Directed on the main road  
Best boys wear all uniforms

**J. G. HEATH**

**Madame Rowe Et Cie. Ltd.**

New Show Rooms

**Millinery, Lingerie, Trousseau.**

Union Building, (Opposite Dobbie).  
P. O. Box 215. Phone 259

**Emerson - Brantingham**

THE **E-B** LINE

Spring Tooth Harrows, Planters, Single & Tandem Disc Harrows, Disc Ploughs, Osborn Binders, Dump rakes, Sulky Ploughs.

Call and Compare our Prices.

**J. R. COX & Co.**  
SIXTH AVENUE

Also at  
Nakuru, Dar-es-salaam, Eldoret, Kampala, Jinja.

**Proposed East-India Meeting.**

The meeting held to consider the possibility of opening a branch of the East-India Club in Nairobi was held on the 10th inst. The meeting was held in the presence of the Hon. Mr. J. O. O'Brien, the Hon. Mr. J. O. O'Brien, the Hon. Mr. J. O. O'Brien.

**The Financial Statement presented by Mr. Legat.**

The Hon. Mr. J. O. O'Brien presented the financial statement of the East-India Club for the year 1921. The Hon. Mr. J. O. O'Brien presented the financial statement of the East-India Club for the year 1921.

**The Thursday Club.**

The meeting held to consider the possibility of opening a branch of the Thursday Club in Nairobi was held on the 10th inst. The meeting was held in the presence of the Hon. Mr. J. O. O'Brien, the Hon. Mr. J. O. O'Brien, the Hon. Mr. J. O. O'Brien.

**The following ladies were re-elected members of the Committee.**

The following ladies were re-elected members of the Committee of the East-India Club for the year 1922. The following ladies were re-elected members of the Committee of the East-India Club for the year 1922.

Eighteenth Year of Publication.

**British South Africa Annual**

1922

800 illustrated pages, including Mozambique, Kenya, East Africa and Nyaland Systems.  
America's criticism of our last year's Annual  
"One of the World's standard publications"

This Number surpasses all previous issues.

Neto Shs. 5.- Postage Shs. 1.00.  
**NOW ON SALE**  
Order Early to Avoid Disappointment

STANDARD STATIONERY STORES,  
NAIROBI.

**CROWN BOND**

**Kenya's Leading Stationery**

Pads 100 Sheets size 8 1/2 x 5 1/2 Shs. 2/6  
Pads 100 Sheets size 9 x 7 Shs. 3/6  
Pads 100 Sheets size 10 x 8 Shs. 4/6  
Books Note-paper 120 Sheets Shs. 4/6  
and 5/6 per Box  
Envelopes to match 5/- and 5/6 per 100

STANDARD STATIONERY STORES,  
NAIROBI.

**The Ideal Present**

**Dunhill's Lighter.**

3 Miles. Nairobi Station.  
7/6  
Visitors can be met either place by appointment.  
Delightfully designed. Tennis Club, etc.  
Moderate with appeal week-end  
LUNCH  
of New Management Apply  
Kilnwick, Nairobi.

Shs. 25/-, Postage Shs. 2/6.

STANDARD STATIONERY STORES,  
NAIROBI.







# SALES



## Sale by Catalogue of Furniture and Effects

Under instructions received from C. de Miverville, Esq., we shall sell, by Public Auction, Without Reserve, at our Salerooms, Mutes Building, Hardinge Street, on

**Wednesday, 15th February at 9-30 a.m.**

The entire furnishings and effects removed from his residences for convenience of sale, and including:

Mirrored Carpet. Occasional Tables in oak and mahogany. Three Arm Chairs in m'charugi. Buganda Drums. Elier. Pictures. Dining Table. Writing Desk. Suite of Six Dining Chairs—four ordinary and 2 carved-type. Baby Chair. Sideboard. Dinner Wagon. Single Iron Bedsteads and coil mattresses. Hanging Wardrobe. Wardrobe in cedar with bevelled mirror. Double Bedstead and coil mattress. Dressing Chests of Drawers. Two Dressing Tables—oak—bevelled mirrors. Galvanised Iron Bath—wood frame. Towel Rail No. 7 "Dover". Kitchen Cabinets. Bedchamber Wardrobes in m'vuli (reserve). Two Bedsteads in m'charugi. Brass. Eiderdown. Double Bedstead. Brass spring mattress. Revolving Book Case. Dressing Table in cedar. Wardrobe in c. w., bevelled mirror. Suite of Dining Chairs. Dining Table in m'charugi. Standard Lamp. Electric fitting. Clock. Easies. No. 8 "Dover". Stove. Wicker chairs and cushions. Etc. Etc.

Intending purchasers are requested to note that the sale will commence at 9-30 a.m. Catalogue will be available and the goods will be on view on Monday and Tuesday.

MUTTER and OSWALD, Auctioneers, etc. NAIROBI.



## FOR SALE Immediate Occupation.

Forest Road, Commodious Wood and Iron House situate on approximately one half acre, well laid out in flower garden and trees. Accommodation consists of sitting room, Dining Room, Three Bedrooms, Bath-room, Store, Garage, Etc.

Price £700 or Near Offer.

MUTTER and OSWALD, Estate Agents, NAIROBI, Valuers.

## Sands & Co.

AT OUR SALEYARDS, NAIWASHA Monday, 13th February.

- 1 Pareded Shorthorn Bull, 15 months old.
- 20 Figs, Steers and Fat.
- 40 Cows, Native and Grade in Calf and Calves at foot.
- 30 Steers.
- 100 Sheep.
- Sundries, Etc.

SANDS CO. AUCTIONEERS.

## REAL ESTATE.

Attractive farm and house property of very description for sale and to let. Mortgages arranged. Valuations made. Partnerships arranged.

## Brown & Barratt

P. O. Box 637 Nairobi and at Mutha.

**INSURANCE.**  
All classes of Insurance undertaken at lowest rates. Principal Representatives for The Patriotic Assurance Coy., Ltd. and The Car and General Insurance Co., Ltd.

**ZIEGLER'S Dry Cleaning & Dyeing Works,**  
Tues. Evening Office: TYPEWRITING BUREAU, Boma Buildings.

# Austins Auctions.

CATALOGUE SALE OF LADIES and GENTS CLOVES, GEMSTONES, SUITES, BEDS, CARPETS, RAINCOATS, SHOOTING, TENNIS BAGGIES, OUTFITTERY, BEDROOM SUITS, TRAVELLING TRUNKS, HORSEHAR MATRESSES, FURNITURE, Etc.

Daily instructed by several Clients

## AUSTIN & Co.

will sell Without Reserve, unless stated, at The Mart, on

**Saturday, Feb. 11th at 10 a.m.**

Teak Chest of Drawers, 2 Horsehair Single Mattresses. Jacobson Sideboard in mahogany (reserve). Wilton Grey Carpets 14' x 9' and 11' x 9' in new condition. Dining Chairs and Dining Tables. Writing Bureau. Dinner Wagon. Sideboard. Gunts Brand New "Sweet" Cycle (reserve). Morris Chairs. Chest of Drawers full size. Desk with 4 Drawers and Cupboard. New Club Easy covered in Beccos (reserve). 3 Piece Clustered Cycle covered American Ladies "Rudge-Whitworth" Cycle in good condition (reserve). Revolving Bookcase. Bachelors' Teak Wardrobe with mirror. Good Linoleum. 2 Spoons and Forks. Dining Tables. Occasional Tables. Fine Teacup (Banjo in case) (reserve). Small Chest Easies covered cretonne. Oval Dining Table 8' x 4'. New Meat Scales. Round Dining Table 29". New Tennis Rackets in Press. Spirit Laid. Bedroom Suite, complete. 12' x 4' Wardrobe with Mirror. Dressing Table and Double Washbasin (reserve). 2 Single Wood Beds complete. New Folding Pram. 60 pieces good quality Knives, Spoons and Forks in Box New. Pair of Fine Opera Glasses in case. 12 Hors S.B. Shotgun. 4 Wardrobe with mirror.

AUSTIN & Co., Auctioneers, etc., Hardinge St., Nairobi.

## Motorcycles, Ford Touring Car.

## Austin & Co.

Will sell by Public Auction, at The Mart, on

**Saturday, February 11th, at 10 a.m.**

Raleigh 8 1/2 h.p. O.H.V. Model Motorcycle in splendid condition. 1922 model subject to a very low reserve. Zenith 4 h.p. Motorcycle in good running order, subject to a very low reserve. Douglas 4 h.p. Motorcycle in good running order, without reserve. Ford Touring Car in excellent running order and condition. Electric Lights and Self Starter. Tyres in good condition. This car has been recently overhauled and is licensed to June 1926, will be offered subject to a very low reserve.

AUSTIN & Co., Auctioneers etc., Hardinge St., Nairobi

## Velle Touring Motor Car.

## AUSTIN & Co.

will sell subject to a low reserve, on

**Saturday, Feb. 11th at 10 a.m.**

Velle 6 cvl. Touring Car in perfect running order. Electric Lights, Spot Light and Self Starter. 3 New Tyres. This car will be offered subject to a low reserve and a trial can be arranged.

Phone 241 WOCO DOORS P.O. Box 71  
Made of Seasoned Columbian Pine.  
Cheaper than Podo.  
G. J. LAING, The Builder, Importer & Stockist.

## OUR Snapshot Competition

### WEEKLY PRIZES.

1st Prize Shgs. 10/- (if warranted).  
Extra Prize Shgs. 10/- for every Picture Published.  
The Competition is for Snapshots at EAST AFRICAN INTEREST and must be taken by Competitor.  
NAME and ADDRESS of the Competitor and the SUBJECT OF THE PHOTOGRAPHS should be written on the back of the print.  
ANY NUMBER of prints may be sent by the SAME COMPETITOR.  
East African Standard, P.O. Box 280, Nairobi.  
If Prints or Plates are sent we will make Enlargements free reproduction if necessary.  
The prize or plate will be returned after publication.  
All prize winning photographs will be published in the "East African Standard".  
If above conditions are not complied with a STAMPED ENVELOPE MUST BE ENCLOSED.  
The Editor's decision will be final.

## Have You Compared The quality and workmanship in Hopes Steel Doors and Casements

with other makes now on the market? IF NOT Do so before placing your order elsewhere. Sole Agents for Kenya, Uganda & Tanganyika.

## Beales & Smithson.

Box 230, Avenue House, NAIROBI. Telegrams: Phone 192. Adaptable.

**RIFLES**  
By all the best makers, including John Rigby, Holland and Holland, Wesley Richards, Mannlicher Schousser, Mauser.

**SHOTGUNS**  
In all boxes at competitive prices. It would be difficult to find a more varied or better selection in Africa.

**REVOLVERS AUTOMATIC PISTOLS**  
We have a large stock of these in which well known makes such as Colt, Webley and Scott, Harrington and Richardson, Browning, Astra, Etc.

**CARTRIDGES**  
By all the leading makers. We carry very large stocks. We sell very large quantities. Our cartridges are Always Fresh.

## May & Co., Ltd.

The Sports House NAIROBI.

## Order Your Suits NOW

Just opened the heavy consignment of pure Wool suitings. Latest designs and pretty colours: to select from the range of about 100 suit lengths. Style and fitting guaranteed at prices to suit all. Ties and handkerchiefs essent. Aertex clothing: socks, stockings, etc., and each and every article of piece goods always stocked at reasonable prices.

ENQUIRE CORDIALLY INVITED.  
**Meghji Ahamed & Co.**  
THE OLDEST ESTABLISHED VENT. MERCHANTS IN KENYA.  
P.O. Box 161 NAIROBI.  
Telephone: "Parasitica".

## MUTHAIGA.

## Splendid Plot for Sale.

Plot No. 64, comprising 9 Acres 11592 sq. feet on Main Road. Price £100 per acre or near offer.

Denovan & Diebel, Land & Estate Agents. City House.

**Zell's**

FIELD CLASS, 1c. Leather Cases. Price Shs. 1/6 to Shs. 2/0.

STANDARD STORES 215 Avenue Nairobi.

**B. E. A. Saw Mills**

MILLS Factory Site, Nairobi. P.O. Box 931. East River, Uplands, Nairobi.

Telephone Mills No. 93. Office No. 83. Telgrams: BEAMS, and MUTNA. M buildings.

CAMPFORS Floorings. PODO. MWERI. Ceiling. Long length Beams and Campfo r Flooring.

For a Square Deal In

## USED CARS STANLEY GARAGE

TOURING and BOX BODY CARS  
Chevrolet, Buick, Chrysler, Rugby, Citroen, Hudson, Ford, Fiat, Packard, Truck 475, Ford Truck 475, Model 4200, Fiat 460, Rugby Box Model 285, Triump h Essex 1900, B.S.A. 1932, Secondhand Typewriters, Batteries, Springs and all accessories.

If You are Buying or Selling Contact

**JOHN BENNETT,**  
Auctioneer and Motorcar Salesman  
Phone 142.

## Bennett & Blackshire, Estate Department.

Ngara Road—Two nice building plots. Easy terms can be arranged.  
Partnership in Farming Proposition—We have a client who will consider a partnership in a well developed farm near Athi River. Particulars supplied on application.  
Third Avenue—A large wood and iron house erected on three acres of land, with all up to date conveniences, bath and kitchen, etc., and a nicely laid out garden. Price on application. Easy terms.  
We have a large number of houses and farms for the post, call and consult on.

## Bennett & Blackshire, Nairobi Corpora.ion. Water Supply.

Notice is hereby given that the water supply to Parklands and Muthaiga Districts will be cut off from 9 p.m. until 5 a.m. each night until further notice. Householders are requested to take particular care to see that no taps are left open at night.  
M. R. DAVIDSON, Municipal Engineer.

## KOMO The Insecticide

FLIES, BEES, WIGG, ANTS, BEETLES AND MOSQUITOES BRASH WHAT THEY & NEIGHBORS, BEHARRAN (MUTUVA) HAVE TO SAY.  
THE SOUTH AFRICAN INSTITUTE FOR MEDICAL RESEARCH Conducts an Exhaustive Test & PROVES THE VALUE OF KOMO.  
"FOR many years past eminent Medical Authorities have been investigating the matter of spraying fluids as a means for the extermination of flies and other disease-carrying insects. For quite recently the South African Institute for Medical Research conducted a series of experiments in which were used a number of the fluids, and in making this investigation the efficacy of KOMO as an insecticide was taken as the minimum standard to which to refer."  
It was found that some 24 fluid ounces of KOMO—the quantity suggested by the Manufacturers—definitely killed every fly in a box of 1,500 insects, few weeks (less hours) from spraying."  
ALTHOUGH NO LESS THAN THIRTY-TWO LARGE PLAYS WERE USED IN THESE EXPERIMENTS, THE SAME GAVE BY FAR THE MOST SATISFACTORY RESULTS.  
Vide "Journal of the Medical Association of South Africa," 20th May, 1925.

No. 1	500	000	000	Shs. 4/10
No. 2	500	000	000	Shs. 4/10
No. 3	500	000	000	Shs. 4/10
No. 4	500	000	000	Shs. 4/10
No. 5	500	000	000	Shs. 4/10
No. 6	500	000	000	Shs. 4/10
No. 7	500	000	000	Shs. 4/10
No. 8	500	000	000	Shs. 4/10
No. 9	500	000	000	Shs. 4/10
No. 10	500	000	000	Shs. 4/10

STANDARD 'STATIONERY STORES' NAIROBI.













## "DIRECT FIRING"

- a vital reason for Buick's unmatched power

Just as all the force of exploding powder in a cannon is concentrated directly behind the shell—so all of the force of the exploding gas in Buick's engine is concentrated directly behind the piston.

This is the "direct firing" principle—a vital reason why the famous Buick Valve-in-Head engine develops more power for its size than any other automobile engine.

The result of this direct and efficient application

of power is an unmatched brilliancy of performance. Buick for 1928 is off like a flash on the get-away—has power in reserve for the steepest hills—and stamina to survive the roughest going. And because of its superior engine efficiency, Buick for 1928 is a remarkably economical car to operate.

Drive a Buick for 1928 to-day. You'll be quick to acknowledge the advantages of the "direct firing" Valve-in-Head engine.

# BUICK for 1928

Giffillan & Company, Ltd.  
DISTRIBUTORS.

### The Soil and Fertilizers

#### AN INTERESTING REPORT.

The following report of the Soil Survey Commission, which is being published in the *Soil Survey Bulletin*, is of great interest to all those who are concerned with the improvement of the soil.

#### An Important Feature of Soil Survey.

The following report of the Soil Survey Commission, which is being published in the *Soil Survey Bulletin*, is of great interest to all those who are concerned with the improvement of the soil.

#### (1) Organization of Soil Survey.

(1) Organization of soil survey, and systematization of field and laboratory work.

#### (2) Organization of investigations on the maintenance and improvement of soil fertility by scientific methods.

(2) Organization of investigations on the maintenance and improvement of soil fertility by scientific methods.

#### (3) Appraisal, for high efficiency in various branches of agriculture, in connection with, and for interchange of soil workers between different countries of the Empire.

(3) Appraisal, for high efficiency in various branches of agriculture, in connection with, and for interchange of soil workers between different countries of the Empire.

#### (4) Organization of Soil Commissions.

(4) Organization of Soil Commissions.

#### Technical Methods.

(4) Organization of Soil Commissions.

of soil survey, public opinion, and the general public. The report is of great interest to all those who are concerned with the improvement of the soil.

Scottish  
Finest Whisky

Characteristically  
PURE AND MATURE

DISTRIBUTORS  
D. EPSTEIN & CO.

## Footwear

Of Tip Top Value at Prices that will ensure a speedy clearance.

21- 21-

Ladies Imitation Lizard, 1 Bar Shoe, Low Heel.

Maxwell Brady  
NAIROBI and ELDORET.

## BEWARE

OF THE HICHER PRICE OF THE LOWER COST

THE NAMES ARE YOUR GUARANTEE



GLOBE WERNICKE

Steel Office Equipment.



UNDERWOOD

Portable and Standard Typewriters.



KALAMAZOO

Loose-Leaf Books.

WE DO NOT TRY TO CONVINCe OTHERS UNTIL  
WE HAVE CONVINCED OURSELVES

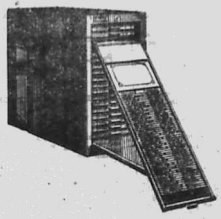
TAWS LIMITED.

# RONEODEX

ALL TITLES ARE VISIBLE AND BERTY AT A GLANCE.

NO LOST CARDS.

UNIQUE RECORDING FEATURES BY VISIBLE "INDICATIONS" ON THE EDGE OF CARDS.



RECORDS CAN BE MADE ON BACK AND FRONT WITH EQUAL EASE.

REQUIRES NO GUIDE CARDS.

RECORDS CAN BE MAINTAINED IN HALF THE TIME REQUIRED BY ORDINARY VERTICAL SYSTEMS.

## System of Visible Card Records

Advice and Demonstrations given by an  
Expert from RONEO Ltd., London.

STANDARD STATIONERY STORES,

P. O. Box 380.

NAIROBI

Phone 572.





**Blends of Rare Quality!**

The new Quality which great ages have not given to these Scotch Whiskies is now being bottled in special bottles for Special Reserves. The new Quality has for every special occasion.

**Crawford's LIQUEUR**  
SCOTCH WHISKY

J. & A. CRAWFORD  
GLASGOW, SCOTLAND

**Only the Best**

Box 93. Phone 60.

The best optician and the best glasses are not necessarily the most expensive, but they would be vital even if they were. You are assured of receiving only the best, in consulting.

**DOBBIES Ltd. Nairobi.**

### Notice.

#### NAIROBI WATER SUPPLY.

The attention of the public is drawn to the fact that the above supply is liable to contamination and that the consumption of unboiled water may be dangerous. It is therefore recommended that all water should be boiled before use.

MEDICAL OFFICER OF HEALTH

### FAMILY CHAMBER OF COMMERCE.

"Swelling Membership and Growth of Agency".

#### THE ANNUAL MEETING.

The following is a summary of the report of the Chairman of the Chamber of Commerce for the year ending 31st December 1921. The Chamber held its annual meeting on the 15th of January 1922 in the Chamber of Commerce building, the first of the series of meetings held in the new premises.

The Chairman (Mr. W. Green) reported that the Chamber had a very successful year. The question of local above all distinction by Government was given into as great length, and a resolution was in due course passed which was presented. This was submitted to Government, and as far as we know the issue will not be presented.

Half-weather and non-weather working days for ships on Charter Party were discussed, and the resolution was passed. The Chamber also discussed the question of the proposed extension of the Charter Party, and the Chamber resolved to continue regarding Lay Days and Holidays for future reference.

The Chamber also discussed the question of the proposed extension of the Charter Party, and the Chamber resolved to continue regarding Lay Days and Holidays for future reference.

#### Survey.

The Chamber also discussed the question of the proposed extension of the Charter Party, and the Chamber resolved to continue regarding Lay Days and Holidays for future reference.

successful import business was secured, and it was decided to send a copy of the one at present in use at Mombasa. The same has been obtained and the matter is ready for further discussion.

The members of Government are permitted to the order of the British Members to the British Chamber in the Legislative Council was duly discussed and approved with a certain addition.

The Chamber also discussed the question of the proposed extension of the Charter Party, and the Chamber resolved to continue regarding Lay Days and Holidays for future reference.

#### Provision.

The question of provision was raised, and it was considered that the Chamber as a body should express any views thereon, but that it should be left to individual members to give any advice. Young Commission was it proved in Session.

#### House of Assembly.

##### Ordinance.

The following terms are proposed to be introduced into the

Form L.O. No. 8428, Major A. Kingdon, Nyeri, South Nyeri District.

Form L.O. No. 8746, Mr. T. Moore, Nyarai, South Nyeri District.

Form L.O. No. 8784, Major Armstrong, Nyarai, North Nyeri District.

#### Outgoing British Firm.

The Chamber also discussed the question of the proposed extension of the Charter Party, and the Chamber resolved to continue regarding Lay Days and Holidays for future reference.

#### Proclamation.

The Chamber also discussed the question of the proposed extension of the Charter Party, and the Chamber resolved to continue regarding Lay Days and Holidays for future reference.

#### By-laws.

The Chamber also discussed the question of the proposed extension of the Charter Party, and the Chamber resolved to continue regarding Lay Days and Holidays for future reference.

#### Form L.O. No. 8126, Indian Mills, East Hill Farm, Nyari.

The Chamber also discussed the question of the proposed extension of the Charter Party, and the Chamber resolved to continue regarding Lay Days and Holidays for future reference.

#### Outgoing British Firm.

The Chamber also discussed the question of the proposed extension of the Charter Party, and the Chamber resolved to continue regarding Lay Days and Holidays for future reference.

#### Proclamation.

The Chamber also discussed the question of the proposed extension of the Charter Party, and the Chamber resolved to continue regarding Lay Days and Holidays for future reference.

#### By-laws.

The Chamber also discussed the question of the proposed extension of the Charter Party, and the Chamber resolved to continue regarding Lay Days and Holidays for future reference.

#### Form L.O. No. 8126, Indian Mills, East Hill Farm, Nyari.

The Chamber also discussed the question of the proposed extension of the Charter Party, and the Chamber resolved to continue regarding Lay Days and Holidays for future reference.

#### Outgoing British Firm.

The Chamber also discussed the question of the proposed extension of the Charter Party, and the Chamber resolved to continue regarding Lay Days and Holidays for future reference.

#### Proclamation.

The Chamber also discussed the question of the proposed extension of the Charter Party, and the Chamber resolved to continue regarding Lay Days and Holidays for future reference.

#### By-laws.

The Chamber also discussed the question of the proposed extension of the Charter Party, and the Chamber resolved to continue regarding Lay Days and Holidays for future reference.

#### Form L.O. No. 8126, Indian Mills, East Hill Farm, Nyari.

The Chamber also discussed the question of the proposed extension of the Charter Party, and the Chamber resolved to continue regarding Lay Days and Holidays for future reference.

### Empire Airways.

The Chamber also discussed the question of the proposed extension of the Charter Party, and the Chamber resolved to continue regarding Lay Days and Holidays for future reference.

#### Form L.O. No. 8126, Indian Mills, East Hill Farm, Nyari.

The Chamber also discussed the question of the proposed extension of the Charter Party, and the Chamber resolved to continue regarding Lay Days and Holidays for future reference.

#### Outgoing British Firm.

The Chamber also discussed the question of the proposed extension of the Charter Party, and the Chamber resolved to continue regarding Lay Days and Holidays for future reference.

#### Proclamation.

The Chamber also discussed the question of the proposed extension of the Charter Party, and the Chamber resolved to continue regarding Lay Days and Holidays for future reference.

#### By-laws.

The Chamber also discussed the question of the proposed extension of the Charter Party, and the Chamber resolved to continue regarding Lay Days and Holidays for future reference.

#### Form L.O. No. 8126, Indian Mills, East Hill Farm, Nyari.

The Chamber also discussed the question of the proposed extension of the Charter Party, and the Chamber resolved to continue regarding Lay Days and Holidays for future reference.

#### Outgoing British Firm.

The Chamber also discussed the question of the proposed extension of the Charter Party, and the Chamber resolved to continue regarding Lay Days and Holidays for future reference.

#### Proclamation.

The Chamber also discussed the question of the proposed extension of the Charter Party, and the Chamber resolved to continue regarding Lay Days and Holidays for future reference.

#### By-laws.

The Chamber also discussed the question of the proposed extension of the Charter Party, and the Chamber resolved to continue regarding Lay Days and Holidays for future reference.

#### Form L.O. No. 8126, Indian Mills, East Hill Farm, Nyari.

The Chamber also discussed the question of the proposed extension of the Charter Party, and the Chamber resolved to continue regarding Lay Days and Holidays for future reference.

#### Outgoing British Firm.

The Chamber also discussed the question of the proposed extension of the Charter Party, and the Chamber resolved to continue regarding Lay Days and Holidays for future reference.

#### Proclamation.

The Chamber also discussed the question of the proposed extension of the Charter Party, and the Chamber resolved to continue regarding Lay Days and Holidays for future reference.

#### By-laws.

The Chamber also discussed the question of the proposed extension of the Charter Party, and the Chamber resolved to continue regarding Lay Days and Holidays for future reference.

#### Form L.O. No. 8126, Indian Mills, East Hill Farm, Nyari.

The Chamber also discussed the question of the proposed extension of the Charter Party, and the Chamber resolved to continue regarding Lay Days and Holidays for future reference.

#### Outgoing British Firm.

The Chamber also discussed the question of the proposed extension of the Charter Party, and the Chamber resolved to continue regarding Lay Days and Holidays for future reference.

#### Proclamation.

The Chamber also discussed the question of the proposed extension of the Charter Party, and the Chamber resolved to continue regarding Lay Days and Holidays for future reference.

#### By-laws.

The Chamber also discussed the question of the proposed extension of the Charter Party, and the Chamber resolved to continue regarding Lay Days and Holidays for future reference.

#### Form L.O. No. 8126, Indian Mills, East Hill Farm, Nyari.

The Chamber also discussed the question of the proposed extension of the Charter Party, and the Chamber resolved to continue regarding Lay Days and Holidays for future reference.

#### Outgoing British Firm.

The Chamber also discussed the question of the proposed extension of the Charter Party, and the Chamber resolved to continue regarding Lay Days and Holidays for future reference.

#### Proclamation.

The Chamber also discussed the question of the proposed extension of the Charter Party, and the Chamber resolved to continue regarding Lay Days and Holidays for future reference.

#### By-laws.

The Chamber also discussed the question of the proposed extension of the Charter Party, and the Chamber resolved to continue regarding Lay Days and Holidays for future reference.

#### Form L.O. No. 8126, Indian Mills, East Hill Farm, Nyari.

The Chamber also discussed the question of the proposed extension of the Charter Party, and the Chamber resolved to continue regarding Lay Days and Holidays for future reference.

### Members of a Network of Routes.

The Chamber also discussed the question of the proposed extension of the Charter Party, and the Chamber resolved to continue regarding Lay Days and Holidays for future reference.

#### Form L.O. No. 8126, Indian Mills, East Hill Farm, Nyari.

The Chamber also discussed the question of the proposed extension of the Charter Party, and the Chamber resolved to continue regarding Lay Days and Holidays for future reference.

#### Outgoing British Firm.

The Chamber also discussed the question of the proposed extension of the Charter Party, and the Chamber resolved to continue regarding Lay Days and Holidays for future reference.

#### Proclamation.

The Chamber also discussed the question of the proposed extension of the Charter Party, and the Chamber resolved to continue regarding Lay Days and Holidays for future reference.

#### By-laws.

The Chamber also discussed the question of the proposed extension of the Charter Party, and the Chamber resolved to continue regarding Lay Days and Holidays for future reference.

#### Form L.O. No. 8126, Indian Mills, East Hill Farm, Nyari.

The Chamber also discussed the question of the proposed extension of the Charter Party, and the Chamber resolved to continue regarding Lay Days and Holidays for future reference.

#### Outgoing British Firm.

The Chamber also discussed the question of the proposed extension of the Charter Party, and the Chamber resolved to continue regarding Lay Days and Holidays for future reference.

#### Proclamation.

The Chamber also discussed the question of the proposed extension of the Charter Party, and the Chamber resolved to continue regarding Lay Days and Holidays for future reference.

#### By-laws.

The Chamber also discussed the question of the proposed extension of the Charter Party, and the Chamber resolved to continue regarding Lay Days and Holidays for future reference.

#### Form L.O. No. 8126, Indian Mills, East Hill Farm, Nyari.

The Chamber also discussed the question of the proposed extension of the Charter Party, and the Chamber resolved to continue regarding Lay Days and Holidays for future reference.

#### Outgoing British Firm.

The Chamber also discussed the question of the proposed extension of the Charter Party, and the Chamber resolved to continue regarding Lay Days and Holidays for future reference.

#### Proclamation.

The Chamber also discussed the question of the proposed extension of the Charter Party, and the Chamber resolved to continue regarding Lay Days and Holidays for future reference.

#### By-laws.

The Chamber also discussed the question of the proposed extension of the Charter Party, and the Chamber resolved to continue regarding Lay Days and Holidays for future reference.

#### Form L.O. No. 8126, Indian Mills, East Hill Farm, Nyari.

The Chamber also discussed the question of the proposed extension of the Charter Party, and the Chamber resolved to continue regarding Lay Days and Holidays for future reference.

#### Outgoing British Firm.

The Chamber also discussed the question of the proposed extension of the Charter Party, and the Chamber resolved to continue regarding Lay Days and Holidays for future reference.

#### Proclamation.

The Chamber also discussed the question of the proposed extension of the Charter Party, and the Chamber resolved to continue regarding Lay Days and Holidays for future reference.

#### By-laws.

The Chamber also discussed the question of the proposed extension of the Charter Party, and the Chamber resolved to continue regarding Lay Days and Holidays for future reference.

#### Form L.O. No. 8126, Indian Mills, East Hill Farm, Nyari.

The Chamber also discussed the question of the proposed extension of the Charter Party, and the Chamber resolved to continue regarding Lay Days and Holidays for future reference.

#### Outgoing British Firm.

The Chamber also discussed the question of the proposed extension of the Charter Party, and the Chamber resolved to continue regarding Lay Days and Holidays for future reference.

#### Proclamation.

The Chamber also discussed the question of the proposed extension of the Charter Party, and the Chamber resolved to continue regarding Lay Days and Holidays for future reference.

#### By-laws.

The Chamber also discussed the question of the proposed extension of the Charter Party, and the Chamber resolved to continue regarding Lay Days and Holidays for future reference.

#### Form L.O. No. 8126, Indian Mills, East Hill Farm, Nyari.

The Chamber also discussed the question of the proposed extension of the Charter Party, and the Chamber resolved to continue regarding Lay Days and Holidays for future reference.

**Smoke ARMY CLUB Cigarettes**

Representatives: GENERAL AGROTES, Ltd., 165A Buildings, NAIROBI. Govt Road.

**We Stock**

Always big stock of Provisions, Wines, Liqueurs, Best Quality of Dutch and Indian Cigars, Cigarettes, Sweets, Chocolates, Biscuits, Delmonico Brand Dried Fruits, in tins and Fruits in Syrup.

Also for farmers: Rough Salt, Rock Salt, Dairy Salt and Epsom Salt, Lined Oil, Methylated Spirit and Turpentine.

Ask for our retail prices list to-day.

**KANJEE NARANJEE**  
P.O. Box 807, NAIROBI Govt. Road.

**The Modern School of DANCING**

Principal Miss Shirreff (late of Crystal Palace, London). Evening Classes at the Lyric Hall, on Junction Road. Wednesday Children Class 4-8. Adults Ballroom Class 8 o'clock. Schools visited. Ballroom lessons by arrangement. Apply Box 164.

**MOMBASA-KAMPALA**

# ZEISS-IKON CAMERAS

SOLE DISTRIBUTORS FOR KENYA · UGANDA · TANGANYIKA · ZANZIBAR.

FOR

## Agfa

Incorporating Goetz, Ica, Contessa-Nettel, and Ernemann.

Prices From 22- to 600-

**Cinematograph Cameras & Projectors.**  
For Schools, Theatres, and Home Use.

**Field Glasses**

**CARL ZEISS JENA**  
Turoi 4 x 20 180/-  
Silvamar 6 x 30 190/-

**CARL ZEISS JENA**  
Deltrentis 8 x 30 220/-  
Binoclar 7 x 50 300/-

**CARL ZEISS JENA**  
Saloon  
7 1/2 x 50 Shgs. 45/- 4 1/2 x 50c. Shgs. 90/-  
5 x 44c. Shgs. 120/- 4 x 44 Shgs. 100/-  
4 x 40 Shgs. 40/-

**Microscopes. Levels, Theodolites.**

**Busch Glasses.**

The most modern in Kenya. Zeiss-Punktal Lenses only fitted. Every lens cut and fitted on the premises. Prescriptions carefully executed. Zeiss-Umbra Lenses specially manufactured to protect the eyes against ultra-violet rays. TRADE ENQUIRIES INVITED. STOCKS CARRIED.

**Retail Department. "THE LENS"**

**"CONTINENTAL HOUSE" HARDINGE, ST. NAIROBI.**



# Heat The Oven Not The Kitchen

By using our 12" or 15" logs your stove does 20% less heat than the maximum of fuel also

## NO CHOPPING

Ant proof poles and fencing posts. These can be supplied in any length up to 20 ft.

## Reliance Transport Co. LIMITED.

P.O. Box 492, Sadler Street, Telephone 231

### A Fresh Consignment of

# 'Tom-Tit' Fruits

IN SYRUP.

PEACHES	2/-	per 24lb. Tin.
PEARS	2/25	" "
APRICOTS	2/25	" "

DRIED.

PEACHES	8/50	per 48lb. Tin.
PEARS	9/50	" "
APRICOTS	10/-	" "
APPLE RINGS	9/50	" "
SEEDLESS RAISINS	9/50	" "

## M. S. ELLIOT & Co.

P.O. Box 175. Phone 60.

## Startling Announcement

# 20% Cash Discount

Allowed on Cash Sales Only, Commences Monday 6th. Feb. to 28th. Feb. 28.

## An Avalanche of Irristible Bargains.

For Ladies and Gents.  
Up-country cash orders posted within 10th Feb. only will be essential. All Cash Fringe.  
Wonder Bargains.  
**HUSSEIN & Co.,**  
P.O. Box 301, Opposite Nairobi House, Govt. Road, NAIROBI.

## The Green Valley.

The best forest coffee soil.  
Buy on the rising market don't wait until you have to pay \$20 an acre.  
Farms from 50 to 2,000 acres. 75 to 95% arable.  
Prices from £5 to £10 an acre. Terms offered.  
Buy 100 acres and let us plant up 50 acres with coffee by contract.  
Rain, rivers, and labour plentiful.  
Will meet prospective buyers Nakuru and arrange accommodation gratis.  
Come and look at the best first.  
**The Thunder Transport Company.**  
Land Department, 80BUKIA

## LETTS' Office and Pocket DIARIES 1928. System Desk Calendar 1928

Complete Sigs. 8/-, Posted 9/60  
Sellsigs 5/-, Posted Sigs. 5/50.  
**Pilot Desk Calendar 1928.**  
Similar to above, complete with Stand.  
Sigs. 6/50. Posted Sigs. 6/50.

STANDARD STATIONERY STORES. NAIROBI.

# MOTOR TOPICS

## THE STARTING SYSTEM.

### Advice by Technical Expert.

EVERETT W. HERRINGTON.

Whoever contrives a petrol engine for the propulsion of a motor-car is bound to be concerned with the starting system. The starting system is the mechanism by which the engine is set in motion. It is a very important part of the engine, and its proper adjustment is essential for the efficient operation of the engine. The starting system consists of a battery, a starter motor, and a starter switch. The battery provides the electrical energy, the starter motor converts this energy into mechanical energy, and the starter switch controls the flow of current from the battery to the starter motor.

### Conditions at Starting.

The conditions that really affect the starting of an engine are the resistance and the amount of fuel. The resistance is the force that opposes the motion of the piston, and the amount of fuel is the quantity of fuel that is injected into the cylinder. The resistance is affected by the temperature of the engine, the viscosity of the oil, and the condition of the piston rings. The amount of fuel is affected by the position of the throttle valve, the position of the carburettor jets, and the condition of the fuel system. The starting of an engine is a complex process, and it is essential to understand the conditions that affect it in order to start the engine successfully.

### The Starting Motor.

The first and most important starting motor gear is the engine. The engine is the power source, and it is essential that it be in good condition. The engine should be checked for oil level, water level, and battery charge. The engine should also be checked for any leaks or unusual noises. The engine should be started by turning the key in the ignition, and it should run smoothly. If the engine does not start, it is essential to check the battery and the starter motor.

### With a Starter Motor.

With a starter motor, the starting process is simplified. The starter motor is connected to the battery, and it is used to turn the engine over. The starter motor is a very important part of the starting system, and it is essential that it be in good condition. The starter motor should be checked for any leaks or unusual noises. The starter motor should be used to start the engine, and it should run smoothly.

### The Battery During Starting.

The battery is the power source for the starting system, and it is essential that it be in good condition. The battery should be checked for any leaks or unusual noises. The battery should be used to start the engine, and it should run smoothly. The battery should be recharged after starting the engine, and it should be checked for any leaks or unusual noises.

### Starting the Battery.

The battery is the power source for the starting system, and it is essential that it be in good condition. The battery should be checked for any leaks or unusual noises. The battery should be used to start the engine, and it should run smoothly. The battery should be recharged after starting the engine, and it should be checked for any leaks or unusual noises.

### With a Starter Motor.

With a starter motor, the starting process is simplified. The starter motor is connected to the battery, and it is used to turn the engine over. The starter motor is a very important part of the starting system, and it is essential that it be in good condition. The starter motor should be checked for any leaks or unusual noises. The starter motor should be used to start the engine, and it should run smoothly.

### The Battery During Starting.

The battery is the power source for the starting system, and it is essential that it be in good condition. The battery should be checked for any leaks or unusual noises. The battery should be used to start the engine, and it should run smoothly. The battery should be recharged after starting the engine, and it should be checked for any leaks or unusual noises.



## Making

foods more palatable—more easily digested—often made by a matter of being sure that you use Royal Baking Powder.



Super Baking Powder Co. 100 East 42nd Street, New York, U.S.A.

## MARTIN'S PILLS

### APIOL & STEEL

Sure and certain for all female complaints. Every lady should keep a box in the box.

Cherish and Store all these throughout the world. Proprietor: MARTIN, Chemist, London, England.



BIRD'S CUSTARD with all Fruit.

# Whatever You Do N'T

## Buy a Car until you have Tested

- CHEVROLET (Magneo Ignition Optional).
- PONTIAC
- OAKLAND
- VAUXHALL

# It Costs You Nothing

We demonstrate with pleasure at any time:

## THE MOTOR MART and Exchange, Ltd.

NAKURU. NAIROBI. DAR-ES-SALAAM.

TWO POWER K. ROSENE

BP

THE BRITISH PETROL

PALM TREE KEROSENE

Anglo Persian Oil Co. (Kenya) Ltd.

## Royal Vulcanizing Works

P.O. Box 690 Government Road, NAIROBI  
New National Bank of India, Ltd.  
Most up-to-date vulcanizing plant in Kenya Colony  
Competitive prices.  
All repairs guaranteed.  
All sizes of tyres and tubes repaired.  
Patrol, Mobiloil, New Tyres, Tubes and accessories stocked.

## Delightful Farm. SOLD

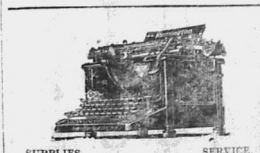
We have a number of small propositions in the Trans Nzoia suitable for coffee, maize and silviculture to meet the requirements of the small capitalist and to give a return for the current year.  
KIRKWOOD & Co., Ltd.  
Laud Agents, NAIROBI.

MISS KATHLEEN BATES AIRMAIL DELIVERED PUPILS FOR PIANOFORTE, VIOLIN, BASSOON, FLUTE, GUITAR, HARMONICA, SINGING, DANCING, GYMNASIUM AND INSTRUCTIONAL STUDIO SIXTH AVENUE, Postal Address: Box 117

## "IRONITE"

FOR DUSTLESS, WATERPROOF AND GREASEPROOF FLOORING AND PAVING  
IRONITE forms a dense compact homogeneous floor that fulfils every possible requirement under conditions where the most arduous traffic predominates. The hardness is a direct result of the use of IRONITE. Its strength increases with age and wear, so that the strength of the floor is not only maintained but increased. An IRONITE TOPPING can be laid on any existing concrete floor.

WEAR-PROOF & WATER-PROOF  
Guaranteed by the World's Leading Architects  
Wholesale Stockists:  
**F. M. BHAIJEE, NAIROBI.**



SUPPLIES SERVICE  
**Remington Typewriter Agency, Ltd.**  
Government Road, NAIROBI.  
Box 67. Phone 25



SECRETS OF THE KENYA EARTHQUAKE

Director of Public Works Conducts a Personal Examination.

NO VOLCANIC ACTIVITY.

Sabaha Valley and Laikipia Equipment the Centre of Strain Fracture.

The Director of Public Works, Mr. H. L. Sikkes, has examined the "focus" of the recent earthquake...

There was no volcanic activity and the earthquake was due to a local fracture of strata accompanied by settling movements...

The fracture of the strata is believed to be due to the gravitational loss of load by a vast mass of volcanic rock...

The centre of the earthquake was the Sabaha Valley and a ten miles crack appears on the face of the equipment overlooking the valley...

The Director of Public Works considers the absence of earthquake having regard to its character of the area.

PURELY A LOCAL FAULT.

The Director of Public Works, Mr. H. L. Sikkes, has carried out an interesting preliminary investigation into the results of the earthquake...

It had been demonstrated that the earthquake was due to a local fault on the portion of the Laikipia equipment...

The Laikipia equipment may be regarded as the main centre of the earthquake...

The Laikipia equipment may be regarded as the main centre of the earthquake...

The Laikipia equipment may be regarded as the main centre of the earthquake...

The Laikipia equipment may be regarded as the main centre of the earthquake...

The Laikipia equipment may be regarded as the main centre of the earthquake...

The Laikipia equipment may be regarded as the main centre of the earthquake...

The Laikipia equipment may be regarded as the main centre of the earthquake...

The Laikipia equipment may be regarded as the main centre of the earthquake...

The Laikipia equipment may be regarded as the main centre of the earthquake...

The Laikipia equipment may be regarded as the main centre of the earthquake...

The Laikipia equipment may be regarded as the main centre of the earthquake...

DOUGLAS HAVES MEMORIAL HOMES.

Appeal to be Launched for Big Housing.

PRISONER'S SUPPORT.

(TENDON BETTERS AGENCY.) London, February 17. (By Radio.)

The Prisoner of War has been visited through a committee to appeal for a memorial to Earl Haig in the form of a new Big Memorial House.

The appeal will be launched at a meeting at the Memorial House, at which it is hoped the Prince of Wales and Mr. Deakin will be present.

The appeal will be launched at a meeting at the Memorial House, at which it is hoped the Prince of Wales and Mr. Deakin will be present.

The appeal will be launched at a meeting at the Memorial House, at which it is hoped the Prince of Wales and Mr. Deakin will be present.

The appeal will be launched at a meeting at the Memorial House, at which it is hoped the Prince of Wales and Mr. Deakin will be present.

The appeal will be launched at a meeting at the Memorial House, at which it is hoped the Prince of Wales and Mr. Deakin will be present.

The appeal will be launched at a meeting at the Memorial House, at which it is hoped the Prince of Wales and Mr. Deakin will be present.

The appeal will be launched at a meeting at the Memorial House, at which it is hoped the Prince of Wales and Mr. Deakin will be present.

The appeal will be launched at a meeting at the Memorial House, at which it is hoped the Prince of Wales and Mr. Deakin will be present.

The appeal will be launched at a meeting at the Memorial House, at which it is hoped the Prince of Wales and Mr. Deakin will be present.

The appeal will be launched at a meeting at the Memorial House, at which it is hoped the Prince of Wales and Mr. Deakin will be present.

The appeal will be launched at a meeting at the Memorial House, at which it is hoped the Prince of Wales and Mr. Deakin will be present.

The appeal will be launched at a meeting at the Memorial House, at which it is hoped the Prince of Wales and Mr. Deakin will be present.

The appeal will be launched at a meeting at the Memorial House, at which it is hoped the Prince of Wales and Mr. Deakin will be present.

The appeal will be launched at a meeting at the Memorial House, at which it is hoped the Prince of Wales and Mr. Deakin will be present.

The appeal will be launched at a meeting at the Memorial House, at which it is hoped the Prince of Wales and Mr. Deakin will be present.

The appeal will be launched at a meeting at the Memorial House, at which it is hoped the Prince of Wales and Mr. Deakin will be present.

The appeal will be launched at a meeting at the Memorial House, at which it is hoped the Prince of Wales and Mr. Deakin will be present.

The appeal will be launched at a meeting at the Memorial House, at which it is hoped the Prince of Wales and Mr. Deakin will be present.

The appeal will be launched at a meeting at the Memorial House, at which it is hoped the Prince of Wales and Mr. Deakin will be present.

The appeal will be launched at a meeting at the Memorial House, at which it is hoped the Prince of Wales and Mr. Deakin will be present.

The appeal will be launched at a meeting at the Memorial House, at which it is hoped the Prince of Wales and Mr. Deakin will be present.

The appeal will be launched at a meeting at the Memorial House, at which it is hoped the Prince of Wales and Mr. Deakin will be present.

The appeal will be launched at a meeting at the Memorial House, at which it is hoped the Prince of Wales and Mr. Deakin will be present.

The appeal will be launched at a meeting at the Memorial House, at which it is hoped the Prince of Wales and Mr. Deakin will be present.

The appeal will be launched at a meeting at the Memorial House, at which it is hoped the Prince of Wales and Mr. Deakin will be present.

THE STRAITS. MANY ACCIDENTS IN NAIROBI.

Motorists and Cyclists. Claims to Crib.

CULBERT CRASHES. LAURENCE CORRUPT.

Many accidents took place in Nairobi on the roads in the last few days...

On Thursday afternoon a heavy rainstorm was followed by a gale...

The consumption of water by the railway in Nairobi for the month of January was 25,000 gallons...

By far the greatest amount is used by the transportation section...

On Friday morning Mr. Muger of the P.W.D. was riding a motor cycle on the bridge on Ramo...

The accident occurred at about 8.30 on Friday when he was riding on the bridge...

The accident occurred at about 8.30 on Friday when he was riding on the bridge...

The accident occurred at about 8.30 on Friday when he was riding on the bridge...

The accident occurred at about 8.30 on Friday when he was riding on the bridge...

The accident occurred at about 8.30 on Friday when he was riding on the bridge...

The accident occurred at about 8.30 on Friday when he was riding on the bridge...

The accident occurred at about 8.30 on Friday when he was riding on the bridge...

The accident occurred at about 8.30 on Friday when he was riding on the bridge...

The accident occurred at about 8.30 on Friday when he was riding on the bridge...

The accident occurred at about 8.30 on Friday when he was riding on the bridge...

The accident occurred at about 8.30 on Friday when he was riding on the bridge...

The accident occurred at about 8.30 on Friday when he was riding on the bridge...

The accident occurred at about 8.30 on Friday when he was riding on the bridge...

The accident occurred at about 8.30 on Friday when he was riding on the bridge...

The accident occurred at about 8.30 on Friday when he was riding on the bridge...

The accident occurred at about 8.30 on Friday when he was riding on the bridge...

The accident occurred at about 8.30 on Friday when he was riding on the bridge...

RAILWAY EFFORTS TO AVOID WATER WASTE.

Various Heads Include Washing of Locomotives.

THE STRAITS. MANY ACCIDENTS IN NAIROBI.

CULBERT CRASHES. LAURENCE CORRUPT.

Many accidents took place in Nairobi on the roads in the last few days...

On Thursday afternoon a heavy rainstorm was followed by a gale...

The consumption of water by the railway in Nairobi for the month of January was 25,000 gallons...

By far the greatest amount is used by the transportation section...

On Friday morning Mr. Muger of the P.W.D. was riding a motor cycle on the bridge on Ramo...

The accident occurred at about 8.30 on Friday when he was riding on the bridge...

The accident occurred at about 8.30 on Friday when he was riding on the bridge...

The accident occurred at about 8.30 on Friday when he was riding on the bridge...

The accident occurred at about 8.30 on Friday when he was riding on the bridge...

The accident occurred at about 8.30 on Friday when he was riding on the bridge...

The accident occurred at about 8.30 on Friday when he was riding on the bridge...

The accident occurred at about 8.30 on Friday when he was riding on the bridge...

The accident occurred at about 8.30 on Friday when he was riding on the bridge...

The accident occurred at about 8.30 on Friday when he was riding on the bridge...

The accident occurred at about 8.30 on Friday when he was riding on the bridge...

The accident occurred at about 8.30 on Friday when he was riding on the bridge...

The accident occurred at about 8.30 on Friday when he was riding on the bridge...

The accident occurred at about 8.30 on Friday when he was riding on the bridge...

The accident occurred at about 8.30 on Friday when he was riding on the bridge...

The accident occurred at about 8.30 on Friday when he was riding on the bridge...

The accident occurred at about 8.30 on Friday when he was riding on the bridge...

NIGHTLY Lyric Hall MATINEE SAT. 3-30

THE ETERNAL QUESTION

Was man created—or did he work his way upward through long and painful struggle from primitive ape-like ancestors?

"EVOLUTION" OR WAS DARWIN RIGHT SAYS—

Did a Hopper descend from a Jelly Fish? Monkeys and men? You're lucky you have the same! don't have fur on your face!

2-PART COMEDY. TOPICAL BUDGET.

EADIE'S

Annual Sale

Commencing the 15th Feb. to Feb. 29th.

We have some wonderful Bargains in LADIES, GENTS, CHILDREN'S BOOTS and SHOES. Big Lot of Travellers Samples, in all Best Makes at wonderful Prices.

Buy Early and Buy Plenty

Latest News from Boot Manufacturers at Home all Leather Goods up to 5 per cent. to 75 per cent. and likely to reach still higher.

We must sacrifice odd sizes: etc. to make room for new Deliveries.

Eadies Footwear Ltd.

P. O. Box 149. NAIROBI.

Board of Trade Returns.

DECREASED IMPORTS: INCREASED EXPORTS.

(TENDON BETTERS AGENCY.) London, February 17. (By Radio.)

Board of Trade figures for January show imports amounting to £12,118,824 and exports totalling £12,747,738...

The Flying Bats. A VERY SATISFYING CHURCH.

(TENDON BETTERS AGENCY.) London, February 17. (By Radio.)

The log of the four Royal Air Force flying boats which are proceeding to the East...

The accident occurred at about 8.30 on Friday when he was riding on the bridge...

The accident occurred at about 8.30 on Friday when he was riding on the bridge...

The accident occurred at about 8.30 on Friday when he was riding on the bridge...

The accident occurred at about 8.30 on Friday when he was riding on the bridge...

The accident occurred at about 8.30 on Friday when he was riding on the bridge...

The accident occurred at about 8.30 on Friday when he was riding on the bridge...

The accident occurred at about 8.30 on Friday when he was riding on the bridge...

The accident occurred at about 8.30 on Friday when he was riding on the bridge...

The accident occurred at about 8.30 on Friday when he was riding on the bridge...

The accident occurred at about 8.30 on Friday when he was riding on the bridge...

The accident occurred at about 8.30 on Friday when he was riding on the bridge...

The accident occurred at about 8.30 on Friday when he was riding on the bridge...

Abolition of Submarines.

BRITISH GOVERNMENT'S VIEW WELL-KNOWN (BY WIRELESS.)

By Radio, Feb. 17. A declaration of the United States Secretary of State, Mr. Clegg...

The accident occurred at about 8.30 on Friday when he was riding on the bridge...

The accident occurred at about 8.30 on Friday when he was riding on the bridge...

The accident occurred at about 8.30 on Friday when he was riding on the bridge...

The accident occurred at about 8.30 on Friday when he was riding on the bridge...

The accident occurred at about 8.30 on Friday when he was riding on the bridge...

The accident occurred at about 8.30 on Friday when he was riding on the bridge...

The accident occurred at about 8.30 on Friday when he was riding on the bridge...

The accident occurred at about 8.30 on Friday when he was riding on the bridge...

The accident occurred at about 8.30 on Friday when he was riding on the bridge...

The accident occurred at about 8.30 on Friday when he was riding on the bridge...

The Rubber Market.

A QUESTION IN THE HOUSE OF COMMONS.

(BY WIRELESS.) By Radio, Feb. 17. The announcement that the Premier has asked the Committee...

The accident occurred at about 8.30 on Friday when he was riding on the bridge...

The accident occurred at about 8.30 on Friday when he was riding on the bridge...

The accident occurred at about 8.30 on Friday when he was riding on the bridge...

The accident occurred at about 8.30 on Friday when he was riding on the bridge...

The accident occurred at about 8.30 on Friday when he was riding on the bridge...

The accident occurred at about 8.30 on Friday when he was riding on the bridge...

The accident occurred at about 8.30 on Friday when he was riding on the bridge...

The accident occurred at about 8.30 on Friday when he was riding on the bridge...

The accident occurred at about 8.30 on Friday when he was riding on the bridge...

The accident occurred at about 8.30 on Friday when he was riding on the bridge...

DOUGLAS FAIRBANKS

IN "Don Q. Son of Zorro" The finest Tale of Adventure ever Screened.

PLAN NOW OPEN.

Prices: Circle 5', Stalls 3'

ALL REPAIRS GUARANTEED

CAN YOU BEAT

We sell All makes of Cars & Trucks. Wireless

A.J.S., B.S.A., Douglas & d Norton Motor Cycles. Wireless

ELECTRICAL REPAIRS OF EVERY DESCRIPTION

OUR ELECTRICAL DEPARTMENT IS THE BEST IN KENYA

VULCANIZING BY THE LATEST ELECTRICAL PROCESS.

K. McIvor's Garage

P. O. Box 97. Phone 87.

"444" FELT HATS FOR LADIES. A popular shape in fine quality felt of good wearing quality...

"A Standee" Special Table Service. Cold Stereos Free. A DISBURSED OUTBREAK IN CAPE TOWN.

REMARKABLE SCENES OF HIS RETURN. (TENDON BETTERS AGENCY.) Dublin, Feb. 17. Mr. C. McGee...

THE RUBBER MARKET. A QUESTION IN THE HOUSE OF COMMONS. (BY WIRELESS.)

ALL REPAIRS GUARANTEED CAN YOU BEAT A.J.S., B.S.A., Douglas & d Norton Motor Cycles. Wireless

THE LADY MOLLIER ANNUAL MEETING

Discussion of Proposed Endowment Scheme.

Thanks to the Work of President and Officers.

The annual meeting of the Lady Mollier Home on Friday the 25th February 1927... The President, Mrs. Lewis, was read and adopted.

Lady Douglas, gave a report of the Committee's work from the last Annual Meeting... The following were elected: Vice-Presidents, Mrs. Millard and Mrs. Gifford.

Improvements. The Committee formed sub-committees to improve the garden and buildings... The House has been repaired and disinfected from floor to ceiling.

Madame Rowe Et Cie. Ltd. Large Selection of Hose Just Arrived. Latest Shades in Cobweb and Heavier Silks, all Sizes.

FOR SALE Good Building Plots of about 1/2 acre each between railway and the Crooked Lane, Parklands, just beyond Salisbury Hotel.

WHERE TO STAY Town and Country.

Salisbury Hotel Tennis Club DANCE AT THE SALISBURY HOTEL Saturday, 18th Feb. at 9-30 Double Tickets 12/6; Single Tickets 7/6

OAKLEIGH PRIVATE HOTEL CONVEENIENT AND UP-TO-DATE IN EVERY WAY SPECIAL MONTHLY TERMS FOR PERMANENT RESIDENTS

Clairmont Residential Hotel FULLY LICENSED. 30 minutes Car run from Nairobi Separate Bungalows. Electric lighting throughout. SWIMMING TENNIS DANCING.

BELL INN (On Main Road) NAIVASHA FIRST CLASS ACCOMMODATION CATERING A SPECIALTY INSTALLED

MOORFIELD 3rd. Avenue Parklands Board Residence, Beautiful Surroundings Fruit, Tennis Court, Large Garden.

Naivasha Hotel The finest built Country Hotel in Kenya. Own Dairy Herd, Fresh Milk and Cream. Every well European standard, Tennis, Golf, Billiards, Fishing.

Stag's Head Hotel, NAKURU FOR Breakfast, Luncheon, Tea, Dinner and Accommodation. Situated on the main road. Hotel boys meet all trains.



Strong, Happy Vigorous Children

Quaker Oats NEVER sell an instance—playing hard and sleeping hard—children grow healthy on this wonderful food.

Emerson - Brantingham THE E-B LINE

Spring Tooth Harrows, Planters, Single & Tandem Disc Harrows, Disc Ploughs, Osborn Binders, Dump rakes, Sulky Ploughs. Call and compare our Prices. J. R. COX & Co. SIXTH AVENUE

B. E. A. Saw Mills P.O. Box 521

MILLS Factory Site, Nairobi P.O. Box 521 Katamayo Uplands Nairobi. Telephone Mills No. 98. Office No. 88. MWERI and MUNA. Mouldings.

Union Building, P.O. Box 215. Phone 360





# AUCTION SALES



**Sale by Catalogue of Furniture and Effects**

Under instructions received from C. de Minville, Esq., we shall sell, by Public Auction, Without Reserve, our own Salerooms, Mutes Building, Harding's Street, on

**Wednesday, 15th February at 9-30 a.m.**

the entire furnishings and effects removed from the residence for convenience of sale, and including

Mitsrapur Carpet. Occasional Tables in teak and camphorwood. Three Arm Chairs in maharagi. Bouganda Drums. Film Pictures. Dining Table. Writing Desk. Six of Six Dining Chairs—four ordinary and two carved type. Baby Chair. Sideboard. Dinner Wagon. Single Iron Bedsteads and six mattresses. Hanging Wardrobe. Wardrobe in cedar with bevelled mirror. Double Bedstead and cot mattresses. Dressing Chests. Drawers. Two Dressing Tables—teak—bevelled of Drawers. Galvanized Iron Bath—wood frame. Towel mirrors. Galvanized Iron Bath—wood frame. Washbasin. No. 7 "Dove" Stove. Kitchen Tables. Bachelor Wardrobe in maharagi. Two Bedsteads in maharagi. Table in cedar. Wardrobe in c.w., bevelled mirror. Spring mattress. Revolving Book Case. Dressing Table in cedar. Wardrobe in c.w., bevelled mirror. Suits of Dining Chairs. Dining Table in maharagi. Standard Lamp, electric fitting. Club Stools. No. 8 "Dove" Stove. Wicker Chairs and Cushions. Child's Tricycle. Perambulator. Reversible Carpet (new). Chesterfield Settee. Wardrobe in maharagi. Single iron bedsteads in teak. Revolving Bookcase. Bookshelf.

On behalf of the parties concerned—Two Porcelain Baths (damaged in transit). Intending purchasers are requested to note that the sale will commence at 9:30 a.m. Catalogues will be available and the goods will be on view on Monday and Tuesday.

MUTER and OSWALD, Auctioneers, etc., NAIROBI.



**FOR SALE Immediate Occupation.**

Forest Road. Commodious Wood and Iron House situated on approximately one half acre, well laid out in flower garden and trees. Accommodation consists of Sitting Room, Dining Room, Three Bedrooms, Bath, room, Store, Garage, etc. Price £700 or Near Offer.

MUTER and OSWALD, Auctioneers, etc., NAIROBI.

## E. Hutchison & Co.

Favoured with instructions we shall sell by Public Auction, Without Reserve (unless stated), at our Mart, Government Road, on

**Tuesday, 14th Inst. at 10 a.m.**

A SELECTION OF HIGH-CLASS FURNITURE. NEW GREYMAN ENCYCLOPEDIA 12 VOLUMES. 100 BERRY TABLE. E.M.V. GRAMPHONE. PERSIAN CARPET.

Teak Parallel Single Wardrobe with full length oval mirror. Perambulator. Teak Double bed with three-spring. Baines topped office table with two drawers. Persian Carpet 9' x 7'6" (Reserve). 3 piece Chesterfield Suite covered in teak, quilted cushions. Teak Bedroom Suite consisting of Single Wardrobe with oval mirror, dressing chest and washstand to which drawers and cupboards. Large Sideboard with oiling mirror. 11' x 7" Grampophone in new condition with 4 chairs to match. Occasional Table. Mahogany Teak Full-length Writing Bureau 3 pairs Bedstead. Teak Timbers Small Bed Table. Dressing Chest. Teak Single bed with spring. 1 Iron Bed. Folding Card Table. Small Porcelain. Large Glass Fronted Cupboard. 1 Book Grampophone Records. Tennis Racquet in press. Morris Chairs & Unframed Mirrors, different sizes. 300 Rugby Rifles (very low reserve). And many other items too numerous to mention.

E. Hutchison & Co. Auctioneers and Estate Agents.

# MUTER & OSWALD

**Lands and Properties FOR SALE.**

Shs. 25/- per acre, or near offer, will purchase an undeveloped farm of approximately 3000 acres in Trans Narina. Altitude about 8000 feet; abundant permanent water from river Nacia; situated about 15 miles from Turbo Station—Shs. 25/- per acre or near offer.

1000 acres in Trans Narina District—Rongai River; good mixed plantation—coffee, maize, etc., for immediate disposal at Shs. 60/- per acre or near offer.

M'bagathi—Only 6 miles from Nairobi—125 acre on 200 years lease—annual rental Shs. 30/4/0. About 50 acres red soil. Five roomed houses and Guest house, and two other farm implements—Bargain at £1,600 including stock and implements.

For further particulars of the above, and other properties, apply to:—

MUTER and OSWALD, Auctioneers, NAIROBI.

## A Game Rangers Notebook

BY A. Raymond Percival Edited by E. D. GUMMING.

With illustrations from photographs by the Author and Martin Johnson.

It is doubtful whether anyone has ever had better opportunities than Mr. Percival for studying big game in his own East African haunts. As a Ranger in the present (now Kenya Colony) for over twenty years, his experiences have been both extensive and varied. Mr. Percival's book is packed with information on the habits of his quarry which will be of interest to the naturalist and the sportsman pure and simple. The photographs by himself and Mr. Martin Johnson, with which the book is illustrated—are unique.

Price Shgs. 21/- Posted Shgs. 22/-

STANDARD STATIONERY STORES, NAIROBI.

# MUTHAIGA.

**Splendid Plot for Sale.**

Plot No. 64, comprising 9 Acres 11592 sq. feet on Main Road. Price £100 per acre or near offer.

Denovan & Diebel, Land & Estate Agents. City House.

Phone 241. WOCO DOORS P.O. Box 71. Made of Seasoned Columbian Pine Cheaper than Fodo. G. J. LAING, The Builder, Importer & Stockist.

## Entirely Without Reserve on FRIDAY, February 17th at 11 a.m. sharp

in the KITALE CINEMA (late BAHATE HOTEL).

FARM No. L.O. 2012, situated in the OBERANGANI AREA of the TRANS NZOIA District, comprising the 174 acres of which 800 are arable, suitable for coffee, maize, and wheat, 200 acres stumped and cleared, 200 acres ploughed, waste and scrub dwelling house with usual out-buildings, including pig-sty and maize crib; small orchard with 100 assorted fruit-trees; permanent streams; 15 miles from Kitala Railway Station, 14 miles from post-office.

ATTRACTIVE TERMS FOR PAYMENT CAN BE ARRANGED.

TERMS, CONDITIONS OF SALE, PLANS and all information can be obtained from LAMINGTON & MARTIN, Solicitors, Kitala, or the Auctioneer.

ARTHUR DAVIS, OFFICIAL COURT BROKER.

P.O. Box 58, Kitala, 241-38.

# REAL ESTATE.

Assessive farms and houses property of every description. Management arranged. Valuations made. Particulars arranged.

**Brown & Barratt** P.O. Box 677. NAIROBI and at Momb.

**INSURANCE.** All classes of Insurance undertaken at lowest rates. The Patriotic Assurance Coy., Ltd. and The Car and General Insurance Co., Ltd.

## Have You Compared the Quality and Workmanship in Hopes Steel Doors and Casements

with other makes now on the market! IF NOT Do so before placing your orders elsewhere.

Sole Agents for Kenya, Uganda & Tanganyika **Beales & Smithson.**

Box 320. Avenue House. Telephone 192. NAIROBI. Telegrams: Adaptable.

**RIFLES** By all the best makers, including John Rigby, Holland and Holland, Westley Richards, Mannlicher Schuessler, Mauser.

**SHOTGUNS** in all holes at competitive prices. It would be difficult to find a more varied or better selection in Africa.

**REVOLVERS AUTOMATIC PISTOLS** We have a large stock of these in which well known brands like Smith & Scott, Harrington and Richardson, Browning, Astra, Etc.

**CARTRIDGES** By all the leading makers. We carry very large stocks of all sizes and quantities. Our cartridges are Always Fresh.

## May & Co., Ltd.

The Sports House NAIROBI.

KIEGLER'S Dry Cleaning & Dyeing Works, Town Receiving Office: TYPEWRITING BUREAU, Home Buildings.

**WEAR A SUIT TAILORED AT C. F. RODRIGUES & Bros.**

And be Satisfied. Distinguishable Cut. Elegant Style. Fit—by the outstanding feature of our tailoring coupled with prices as low as any posted. A Tailor, Order will welcome you. C. F. RODRIGUES & Bros., 10, Upper Street, Nairobi.

## Ring No. 439

**UHAMBA TRAFFIC COY.** for Cheap and Reliable Transport under European supervision. P.O. Post. Road, Mombasa.

complete motor vehicles for sale. 1914-1916. 1917-1918. 1919-1920. 1921-1922. 1923-1924.

**Uhamba Transport Coy., P.O. Box 10, Mombasa.**

**BBB, ORLIK, LOEWE & DUNHILL PIPES** MAY & CO., LTD.

# For a Square Deal in USED CARS

**STANLEY GARAGE**

TOURING and BOX BODY CARS. Chevrolet, Buick, Chrysler, Rugby, Citroen, Hudson, Ford, Fiat, Chevrolet Truck 750, Ford Truck 400, Essex 420 Fiat 285, Rugby Box Body 685, Triumph Model, New 270, B.S.A. 222, Scootboard Type.

Batteries, Springs and all accessories. If You are Buying or Selling Consult **JOHN BENNETT.** Auctioneer and Motorcar Salesman.

Phone 148.

## Bennett & Blackshire, Estate Department.

Ngara Road—Two nice building plots. Easy terms to be arranged. Partnership in Farming Proposition—We have a clean partnership in a farming proposition in a well developed farm near Athi River. Particulars supplied on application.

Third Avenue—A large wood and iron house, extensive garden, hot and cold water, etc., and a nicely laid out garden. Price on application. Easy terms. We have a large number of houses and farms for sale. Call and consult us. Mortgages arranged on town properties only. **Bennett & Blackshire,** Auctioneers and Estate Agents.

## Attractive Farm for Sale

1277 acres in Donyo-Sabuk District. 400 acres of good coffee soil. Altitude 4500. Rainfall about 40 inches. Abundant permanent water from Thika and Athi Rivers. 140 acres stumped and cleared. 40 families of squatters on the farm. House, furniture and farm implements. Thika Kiti Road runs right through the farm. Above is an exceptional bargain at £2,000, cash and balance on mortgage at 5% payable within 5 years. For further particulars apply to:—

**AUSTIN & Co.,** Auctioneers and Estate Agents, Harding's St., Nairobi.

Eighteenth Year of Publication.

# British South Africa Annual

1927-1928.

350 Illustrated pages, including Rhodesian, Kenya, East African and Nyasaland sections. America's criticism of our last year's Annual. "One of the World's standard publications". This Number surpasses all previous issues.

Price Shs. 6/- Postage Shs. 1/6. **NOW ON SALE** Order Early to Avoid Disappointment.

**STANDARD STATIONERY STORES, NAIROBI.**

## Order Your Suits NOW

Just opened the heavy consignment of pure wool suitings. Latest designs and pretty colours to select from the range of about 100 suit lengths. Style and fit guaranteed at prices to suit all.

Try and handle these suits. Artistic cuttings, necks, stockings, and every article of price goods, always stocked at reasonable prices.

**ENQUIRIES ORDIALLY INVITED. Meghji Ahamed & Co.** THE OLDEST ESTABLISHED TENT MAKERS IN INDIA. P.O. Box 112. Telephone: "Tarpaulins".





