

Sensational Reductions

have been made on the latest type **GOODYEAR TYRES**
Ask your dealer for them

Giffilan & Company Ltd.,
DISTRIBUTORS

KING OF BELGIANS TO VISIT AFRICA

Opening of Congo-Katanga Railway.
AN IMPORTANT LINE.

The forthcoming visit of King Albert to the Belgian Congo to attend the opening of the important Lower Congo-Katanga railway, the Cape Argus develops considerable scope and urges closer co-operation between the King Albert and neighbouring African territories.

The means by which King Albert will travel so far south as Elisabethville. The means by which King Albert will travel so far south as Elisabethville. The means by which King Albert will travel so far south as Elisabethville.

Congo Air Service.
King Albert will leave Queen Elisabeth in Belgium, for the tropical journey to the east and river, which he is undertaking, is by no means healthy.

There is, of course, an excellent air service between Boma, near the mouth of the river, and Elisabethville. King Albert may cross hundreds of miles of jungle in one of the three-engine "Hind" by Degebe which are being used there.

The new railway makes possible an unobstructed journey of three

thousand miles from Cape Town to Lubumbashi in the Kasai Province of the Congo. A short extension will bring the line to Fort Frenoy, where river steamers will carry the freight on to Elisabethville.

In the past the Belgian Congo has been handicapped by the fact that it has only one narrow-gauge railway to the sea. Its produce has to be sent out by detour, over the Lobito Bay railway, which is awaiting completion, will have a beneficial effect on the prosperity of the Congo.

Paris and Royalty.

BRITISH KING AND QUEEN'S VISIT DELAYED.

ALTHOUGH there was no official confirmation of the rumour that the King and Queen of England were to return home, it is everybody's guess that it might be true.

The King loves Royalty, and it is a specially warm corner in his heart for the English Royal Family. A visit from King George and Queen Mary would have meant feeling and devotion and admiration and the creation of the kind of atmosphere which the people love. The fact that the visit must be delayed for another year is meant keen disappointment.

Still, the Princess hope that the King of Wales may attend another short holiday in their city directly, and there are a great many of those who feel sure that Princess Mary will visit in Paris, either on her way to Egypt or on the return to look at fashions. The Princess has developed a keen sense of clothes since her marriage, and Princess remember that when she was in Paris on her honeymoon she bought new frocks and hats and the delicate beauty of embroidery and lace.



Expert

There is no better than the distilled. He knows the blending, approval of famous Scotch JOHN'S Scotch is actually pure.

“Long John”

DISTRIBUTORS: D. EPSTEIN & CO.

Maxwell Bra
SALE SPECIAL

IN **Mens Footwear**
Black Box Calf and Tan Willow Calf Gibson shoes in the famous "Der Brand" 34".

As above in Boots 36".

Black Box Calf and Tan Willow Calf Oxford Shoes 30".

As above in Boots 34".

Nairobi and El

STIGLERS' **Dry Cleaning & Dyeing**
Town Receiving Office
Typewriting Bureau, Boma But

The Green Valley

Best Forest Coffee Soil.
Average rainfall 80 inches.
17 miles from Nakuru.
500 acres 100 acres ready to plant.
Four rounded hills. What offers?
Also 100 acres plots 50 per cent. arable. 25 per cent. MUGHOZI.
1,000 acres to rent with option. Sugar and Maize.
Five year contracts can be obtained with milk.
Also 1,000 acre Sugar proposition for sale.
Excellent Dairy and Wheat proposition 800 acre adjoining station. A bargain for quick sale.

TRUENNER TRANSPORT CO. NAIROBI.

IT IS SUFFICIENT FOR DISCRIMINATING BUYERS TO KNOW IT'S AN

UNDERWOOD

380/-



380/-

NEW PORTABLE FOUR BANK

BUILT TO A STANDARD...UNDERWOOD STANDARD... NOT TO A PRICE

T.A.W.S Limited.

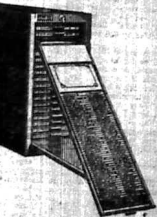
Box 611.

NAIROBI.

Phone 141.

RONEODEX

ALL TITLES ARE VISIBLE AND READ AT A GLANCE.
NO LOST CARDS.
UNIQUE RECORDING FEATURES BY VISIBLE "INDICATIONS" ON THE EDGE OF CARDS.



RECORDS CAN BE READ ON BACK AND WITH EQUAL RAPIDITY.
REQUIRES NO CARDS.
RECORDS CAN BE REPRODUCED IN EXACT TIME REQUIREMENTS BY MEANS OF ORIGINAL SYSTEMS.

System of Visible Card Record

Advice and Demonstrations given by an Expert from RONEO Ltd., London.

STANDARD STATIONERY STORES, NAIROBI.

P. O. Box 380.

NAIROBI.

Phone 2

FOR SALE (Contd.) TO LET. THE charge for advertisements in these columns is Sh. 1/- for a line of ten words, or a fraction of a line, with a minimum of five lines. Half price on consecutive days only.

BOARD & RESIDENCE. "CRAFTED HOMES" for hire. Vacancies for paying board. Terms moderate. Free motor. Apply Manager, Box 274.

Equator Saw Mills. Telegrams: "CAPCAI". P.O. Plateau. P.O. Maji-Manzi. (Head Office) P.O. Box 291, Nairobi. IN STOCK 4,000 Tons Seasoned P.O. When Building, insist on your Contractor using Seasoned Timber.

ROSES. 200 varieties to select from. Requirements should be registered. Also Geraniums and Impatiens. Apply Manager, Box 274.

A SUITE of rooms and well furnished office in Gaiti. Moderate. Immediate occupation. Apply Manager, Box 274.

Dainty Things of Style Importance. KAYSER Italian Silk Underwear AND HOSIERY. Notice: Owing to the retirement of Mr. T. H. Moore...

WILLS Coffee grows kindly here. For more information apply to Messrs. Wills & Co., Nairobi.

URGENT offices in York House, Government Buildings. Three front rooms from June 1st. Apply Box 122, Nairobi.

WARINGS. AFRICA HOUSE, GOVERNMENT ROAD NAIROBI. RUBBER STAMPS AT THE STANDARD OFFICE.

BOOK-KEEPERS for Kenya Farmers Association Ltd. Apply Manager, Nairobi, stating salary scale and qualifications.

URGENT offices in York House, Government Buildings. Three front rooms from June 1st. Apply Box 122, Nairobi.

Just Arrived. STOVES with or without High Pressure Boilers. ORDER NOW E. A. TANK & METAL WORKS, Harding's St.

REQUIRE immediately a thoroughly competent electrical fitter for an Electric Light Plant up country. Apply filling full particulars of experience and copies of testimonials to Mr. W. G. 6673, "Standard", Nairobi.

URGENT offices in York House, Government Buildings. Three front rooms from June 1st. Apply Box 122, Nairobi.

Horrockses World-Renowned Sheets and Pillow Cases. A Sleep-Inducing Mattress at a Rousing Price. The vertical spring principle of Mattress construction always makes a strong appeal to the discriminating customer...

EXPERIENCED English nurse desires post. Apply Voucher No. 6688, "Standard", Nairobi.

Owing to the huge success of the last Syd Ziegler and His Motormen will play at Savoy Hotel for another THE DANSANT On Sunday, 25th March From 4 to 7-30 p.m. Drinks obtainable all afternoon.

Hutchings, Biemer & Co., Ltd. NAIROBI. Box 408. "Worth Saving For." BUY NOW AND ENJOY LIFE. We allow 5% Discount for Cash with Order.

THE UNION-CASTLE LINE.

HOMERWARDS via SUEZ.
 From Mombasa. 28th March. 28th April. 28th May. 28th June. 28th July. 28th August. 28th Sept. 28th Oct. 28th Nov. 28th Dec.

HOMERWARD via SOUTH AFRICA.
 From Mombasa. 28th April. 28th May. 28th June. 28th July. 28th August. 28th Sept. 28th Oct. 28th Nov. 28th Dec.

Agents—
 *R.A. Corporation, Ltd. Nairobi, Kampala, etc.
 East African Steamers, Ltd. Nairobi.
 East African Steels, Ltd. Nairobi.
 T. O'Shea & Co., Ltd. Nairobi and Kitale.

British India Steam Navigation Company, Ltd.
 AND PENINSULAR AND ORIENTAL STEAM NAVIGATION CO.

London to BELRA, Via Mombasa, Port Said, Port Bona and Aden, Omdurman and Ipswich.
 Callings: Mombasa, Port Said, Port Bona, Aden, Omdurman, Ipswich, London.

Bombay-Durban Mail Service.
 Callings: Kilindini, Zanzibar, Durban, Swaziland, Beira, Delagoa Bay, Durban, Natal, Mozambique, monthly Outwards and Inwards.

COASTAL SERVICE.
 M. V. Dumraul will leave Mombasa 28th March, 28th April and 28th May.

1st CLASS EXCURSIONS TO MIKINDANI.
 A Short Recreative Sea Holiday.

During the months of March, April and May, 1st Class Excursion Tickets to Mikindani and return will be available for M.V. DUMRAUL, sailing at Tanganyika, Zanzibar, Pemba, Kiwua, Ruw Bay, Lindi, and Mikindani; the return voyage occupying from 8-12 days.

Fare Shs. 300.
 Sailing 18th March, 28th March, 15th April, 25th April, 11th May, Last Sailing 23rd May.

In connection with these excursions, the K.U.E. will issue return Railway tickets at single fare.

For full particulars of sailing dates, etc. apply **Smith Mackenzie & Co., Agents,** Kilindini, Tanganyika, Zanzibar, Nairobi, etc.

CHIVERS

CUSTARD POWDER
 With Chivers Concentrated Fruits
MADE IN FOUR FLAVOURS
 Sole Agents—
R. O. HAMILTON, Ltd.,
 Box 502 NAIROBI.

Just Arrived

FRESH CONSIGNMENTS OF MILITARY OVERCOATS
 Fungas, Jambies, Karais, Axes, Malacca, Cans, Buckets, Shovels, Spades, etc.
 Most varied assortment of all classes of goods for Leather and Native Trade.
 Prices at lowest rates, an application for Enquiries Solicited.

M. ROSENBLUM & Co., Ltd.
 Haveling Street. Telegrams: "P. O. No. 15." Nairobi.

B. I. S. N. Co. M. V. DUMRAUL.

1st CLASS EXCURSIONS TO MIKINDANI.
 A Short Recreative Sea Holiday.

During the months of March, April and May, 1st Class Excursion Tickets to Mikindani and return will be available for M.V. DUMRAUL, sailing at Tanganyika, Zanzibar, Pemba, Kiwua, Ruw Bay, Lindi, and Mikindani; the return voyage occupying from 8-12 days.

Fare Shs. 300.
 Sailing 18th March, 28th March, 15th April, 25th April, 11th May, Last Sailing 23rd May.

In connection with these excursions, the K.U.E. will issue return Railway tickets at single fare.

For full particulars of sailing dates, etc. apply **Smith Mackenzie & Co., Agents,** Kilindini, Tanganyika, Zanzibar, Nairobi, etc.

ALL DATES SUBJECT TO ALTERATION WITHOUT NOTICE. RETURN TICKETS RETURNED BY A LOCAL RAILWAY.
 *FOURTEEN CROCKETS-WITH SHUTTLES RETURNED BY A LOCAL RAILWAY.
 Terms, Scale of Freight and Passages may be arranged with.
 *SPECIAL DISCOUNTS on Mombasa, Zanzibar, Durban, Natal, Mozambique, monthly Outwards and Inwards.
 Also the following Sub-agents (for passages only):
 The Kenya Farmers Association, Ltd.

The First Flight-From MOMBASA TO NAIROBI

Was done on SHELL Petrol

FROM THE PUMP

The Shell Company of East Africa Ltd.
 AGENTS
SMITH MACKENZIE & Co.

The African Marine & General Engineering

COMPANY, LTD., KILINDINI.
 SHIP REPAIRING. SAIL MAKING & REPAIRING. MOULDING.
OXY - ACETYLENE WELDING & CUTTING.

In their well-equipped Carpenter Shops, all types of House and Office Furniture are made and repaired.

Estimates requiring repairs to machinery, implements, etc., are invited to communicate. ESTIMATES GIVEN. Tel. "Amgeco," Mombasa.

SMITH MACKENZIE & Co., General Managers

Deutsche Ost-Afrika-Linie
 (GERMAN AFRICAN SERVICE)

Homerwards via Suez Canal. Homerwards via Cape.

Leaving Mombasa 1925		Leaving Mombasa 1926	
M. V. NIKARA	28th April	M. V. WANGONI	28th April
M. V. USUKUMBA	28th May	M. V. ISAMBARA	28th May
M. V. PENJANGINA	28th June	M. V. ADOLPH WOERMANN	28th June
M. V. USAMBARA	28th July	M. V. USUKUMBA	28th July
M. V. WANGONI	28th August	M. V. ISAMBARA	28th August
M. V. USAMBARA	28th Sept.	M. V. ADOLPH WOERMANN	28th Sept.
M. V. WANGONI	28th Oct.	M. V. USUKUMBA	28th Oct.
M. V. ADOLPH WOERMANN	28th Nov.		
M. V. USUKUMBA	28th Dec.		

SAILINGS SUBJECT TO ALTERATION
 10 days to Genoa. 18 days to Mombasa. 30 days to Southampton.
 *Country charges cannot be accepted unless specially endorsed by Local Bank.
 The full particulars of ports, rates and freight rates apply to the Agents:
BARRETT & Co., Ltd., Agents.
CALL TOLLERY, Ship and STORES DISTRICT.
and DEUTSCHE OST-AFRIKA-LINIE, GENERAL-AGENCY,
 Cable "OSTLINE" P.O. Box 210; Mombasa.

Compagnia Italiana Transatlantica

The best route to London via Italy. Out-burning Turbine Steamers. Billings from Kilindini to Genoa. Fast to Luxa Passenger Service. Monthly Service—

S.S. F. CHERIFF 1st April.
S.S. G. MAZZINI 1st May.
S.S. F. CHERIFF 1st June.

Sailings to Durban by other steamers.

Apply to:
MALVIN D. KAMPP—Nairobi Agent.
SOCIETA OLIANTALE ITALIANA—Mombasa Agents.

A FEW OF OUR PRICES.

ORIGINAL MAUSER RIFLES, BEST QUALITY STEEL BARRELS, 28 INCH in the following calibres—
 6.5 mm - 256, 7 mm - 275, 8 mm - 316, 9 mm - 355 and 10.75 mm - 370.

ORIGINAL MAUSER RIFLES, as above, in the same bore, with extra long 28" Barrels, which give you a 20% higher velocity more accuracy and a better balance. Six 300/-, 350/- and 400/-.

MANLICHER SCHOENAUER RIFLES
 Calibres 6.5 - 256, 8 mm - 316, 9 mm - 355, 9.55 mm - 370.

With 22" or 24" Barrel Sigs 330/
 With extra long 28" Barrel Sigs 350/
 12 Bore S/B Shotguns (two guaranteed) 80/
 12 Bore D/B Shotguns, Hammer 120/
 12 Bore D/B Shotguns, Hammerless 160/
 12 Bore D/B Shotguns, Hammerless

Ejectors from Shs. 1900/- to 1,300/-
 Pistols and Revolvers from Shs. 45/- upwards
 All weapons guaranteed for 12 months and tested 5 per cent. Discount for Cash with Order.
 Ammunition always fresh by Best Makers only.

Chas. A. Hoyer & Co.
 Box 587, (Gummeters, etc.) Est. 1903

CROWN BOND

Kenya's Leading Stationers

Pads 100 Sheets size 8 x 8 Shgs. 2/6
 Pads 100 Sheets size 9 x 7 Shgs. 3/0
 Pads 100 Sheets size 10 x 8 Shgs. 4/-
 Loose Note-paper 120 sheets. Shgs. 6/-
 Boxes Note-paper 500 sheets. 5/- and 5/60 per 100.

Envelopes to match 5/- and 5/60 per 100.

STANDARD STATIONERY STORES, NAIROBI.

Expert Vulcanizing

HEINTZ
 ELECTRIC WAY
 ALL WORK GUARANTEED

K. McIvor's Garage
 Phone 97. Sixth Ave. at P.O. No. 15.

Husselo Suleman Verjee & Co.
 P.O. Box 266, Tel. Sulversars, Nairobi.
 Government Road.

Corrugated Iron 24 Gauge, Plain Galvalum in 28, 30 and 24 gauge, Cement, Tank Washers, Deal Wood, Paints, Asbestos, Sheets, Wire Netting, Etc.

OVERSEAS MAILS

ARRIVALS		DEPARTURES	
STEAMERS	FROM	FOR	Mail Closes
Kenya	South		Mon. 28
Kenya	South		Tue. 29
Kenya	South		Wed. 30
Kenya	South		Thu. 31
Kenya	South		Fri. 1
Kenya	South		Sat. 2
Kenya	South		Sun. 3
Kenya	South		Mon. 4
Kenya	South		Tue. 5
Kenya	South		Wed. 6
Kenya	South		Thu. 7
Kenya	South		Fri. 8
Kenya	South		Sat. 9
Kenya	South		Sun. 10
Kenya	South		Mon. 11
Kenya	South		Tue. 12
Kenya	South		Wed. 13
Kenya	South		Thu. 14
Kenya	South		Fri. 15
Kenya	South		Sat. 16
Kenya	South		Sun. 17
Kenya	South		Mon. 18
Kenya	South		Tue. 19
Kenya	South		Wed. 20
Kenya	South		Thu. 21
Kenya	South		Fri. 22
Kenya	South		Sat. 23
Kenya	South		Sun. 24
Kenya	South		Mon. 25
Kenya	South		Tue. 26
Kenya	South		Wed. 27
Kenya	South		Thu. 28
Kenya	South		Fri. 29
Kenya	South		Sat. 30
Kenya	South		Sun. 31

Increase in Price of

Owing to the high cost of Maize and the shortage of other feeding materials

Uplands Bacon Factory

are now paying
 76 cents per lb. dead weight, plus freight

In the belief that this advance is only a temporary one they hope to maintain their
Reduced Bacon Prices

The Great Pyramid
 A series of social Articles written for the East African Standard and published in the number 1925 in October and November 1925. Price Sh. 1/6 post paid.

Obtainable at
STANDARD STATIONERY STORES, NAIROBI.
 Sixth Avenue, NAIROBI.

Scotland sends you two of The Best!



James Watson & Co.
SCOTCH WHISKY

Lawford's LIQUEUR
SCOTCH WHISKY

James Watson & Co., Ltd., Glasgow, Scotland.

General Knowledge.

WHAT "ARGAN" IS WORTH OF THE ROOF.

["STANDARD" CORRESPONDENT] Maba, March 6.

Some time ago in Kenya there was a discussion as to the technical classification of a fibre plant called "Argan". No one at that time was able to state definitely what the plant was in its natural state, but it was generally assumed that it was a species of grass. It is three or four feet high.

The Handbook says in reference to this plant:

"The production of silk grass becomes of importance in the undergrowth in certain forest districts, but the commercial possibilities, however, are dependent on suitable machinery for fibre extraction, and likewise a plant for this purpose has not been developed."

Cinnamon Oil.

EFFECT OF A DROP IN THE PRICE.

["STANDARD" CORRESPONDENT] The recent decline in the price of cinnamon oil has been noted in the market. The price has fallen from 100 to 80 cents per cwt. The cause of this is the overproduction of the oil in the East Indies. The price is expected to remain low for some time.

A Fashion Note.

PARIS DRESSMAKERS DISREGARD HATS & SHADOWS.

["STANDARD" CORRESPONDENT] Paris, Feb. 20.

The dressmakers have decided to disregard hats and shadows in their designs. They are concentrating on the dress itself, and are using more and more of the latest styles in fabric and color.

The Palladium.

PROBABLY BE-OPENING AS A THEATRE HOUSE.

["STANDARD" CORRESPONDENT] The Palladium, London, Feb. 20.

The Palladium is closed. It is expected to be reopened as a theatre house. The building is in a very good state of repair, and it is expected that it will be a success.

Cupid's Ambassador.

MAYOR'S ST. VALENTINE DAY PARTY.

["STANDARD" CORRESPONDENT] London, Feb. 20.

The Mayor of London has given a St. Valentine's Day party. The party was a success, and it was a very enjoyable occasion.

Teaching Millers in a Novel Way.

Whether they do "Wet Out" or "Wet In" is the question.

["STANDARD" CORRESPONDENT] London, Feb. 20.

Whether they do "wet out" or "wet in" is the question. The millers are being taught in a novel way, and it is expected that they will be successful.

A Rubber Comedy.

TEACHING MILLERS IN A NOVEL WAY.

["STANDARD" CORRESPONDENT] London, Feb. 20.

A rubber comedy is being shown. The comedy is a very good one, and it is expected that it will be a success.

AFRIKANDER
SMOKING MIXTURE

A PERFECT BLEND
FINEST EMPIRE
TOBACCOS



For a 4oz AIRCRAFT TINS

Souza Junior & Dias

The Pioneer and Leading Stores

Government Road, Nairobi.

We do not cultivate a policy of Rush. Do your shopping with us and save time and money. We wish to make your dealings with us profitable to you.

We Stock Fresh Supplies Only.

Direct Importer of Provisions, Wines, Spirits, Liqueurs, Toilet Requisites, Cigars, Tobacco, Etc., Etc.

Ask for our Price List to-day. P. O. Box 341.

R. O. PRESTON

Salsbury Rd. Box 807. Westlands.

Ladies Dresses
Millinery
Children's Clothing
Hosiery etc.

Houses to let & for Sale for Sale & Large Farms for Sale. Newly Built House - all modern conveniences to let from 1st April.

LOOK-SHARP Sale.

Now the Stock-taking Sale Begins.

Engage Reductions. Specially in Toys and following articles, is sure to complete your bargains here, Hosiery, Perfumery, Wrist Watches, Children's Cycles and Push Chairs, Trays, Fancy Goods, Etc.

Kala Sidi, NAIROBI.

Government Road.

KENYA INVESTMENT Coy. Ltd.

Sadier Street, P. O. Box 809.

Agents for:

- Kenya Saw Mills, Ltd.—Furniture Hardwoods.
- Kenya Saw Mills, Ltd.—Camphor, Podo, and Hardwoods.
- Kenya Paints & Distempers—Used in the decoration of St. James's Palace, London.
- Kenya & Williams, Ltd.—Reliance Steel Windows.
- Kenya Cable about 3 miles from Nairobi, sections complete with Fish Plates, Bolts, and Dogspikes.
- Just arrived Forax Roof and Iron Paint.

CARR, LAWSON & Co., Ltd.,

Have great pleasure in announcing that they are now in a position to offer

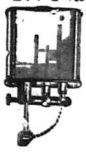
The FAMOUS ROYAL CORD TYRES

at greatly reduced prices.

They are obtainable at all their branches and from every dealer.

ROYAL CORD TYRES ARE GOOD TYRES

CARR, LAWSON & Co., Ltd.
NAIROBI. ELDORET. NAKURU. KAMPALA



Dunhill's Lighter

The Ideal Present

F. M. BHAIJEE, MAHARAJA... WEAR-PROOF & WATER-PROOF... FLOORING and PAINTING... IRONITE

COFFEE, WHEAT, SISAL... FARMS FOR SALE... Business Consultants

ESSAY LIMITED... JOHN & JAMES BUCHANAN... PERFECT QUALITY - REAL ECONOMY

Advertisement for Buchanan's Scotch Whisky, featuring a bottle illustration and text: 'BUCHANAN'S SCOTCH WHISKY', 'BLACK LABEL', 'A BOON TO THE THRIFTY'.

Advertisement for Motor Mart & Exchange Ltd. featuring a large 'THE MOTOR' logo and text: 'Motor Mart & Exchange Ltd.', 'MAHARAJA', 'GENERALIST'.

Advertisement for The Kay African Standard, featuring a large 'THE MOTOR' logo and text: 'THE KAY AFRICAN STANDARD', 'MOTOR TOPICS', 'GRASS LUBRICATION', 'Practical Points to Owners'.

STANDARD STATIONERY STORES... Price Shgs. 2/11... A Game Ranges Notebook... A Bhajney Percival

The Modern School of DANCING... Royal Vulcanizing Works... Blackwax & Brown

Have You Tried St. Ivel... THE VERY BEST... SUPERIOR BIRD CAKES

John Milton... DOBBOLOIN DAILY... RAHIM JIVEL

British Patent for BP British Motorists... THE BIRTH OF 'BP'

TO PLANTERS DEMONSTRATION OF THE SIMAR ROTOTILLER

The Machine which saves labour and makes soil pay
Messrs. J. W. MILLIGAN & Co.
Will Demonstrate To-Day, 8th instant at 10-30 a.m., at Mr. L. H. Davidson's Estate (adj. Major Symes Thompson's at Kyambu).
The Latest Model
SIMAR ROTOTILLER 10
PATENTED MOTOR ROTARY SOIL TILLING MACHINE
THIS DEMONSTRATION SHOULD BE OF GREAT INTEREST TO COFFEE PLANTERS
DEMONSTRATION

B. E. A. Saw Mills

MILLS AND OFFICES, WORKSHOP ROAD, NEAR P.W.D. NAIROBI.
Telephone No. 93. P.O. Box 221. Nairobi. Telegrams: Beams.
JACKIEB. FODO. MWEEI and MUNA.
Flooring. Cutting. Mouldings.
Long length Beams and Camphor Flooring.

To Contractors AND OTHERS

- "WINGET" STONE CRUSHING PLANT.
- "WINGET" OPEN DRUM CONCRETE MIXERS.
- "WINGET" CONCRETE BLOCK AND SLAB MACHINES.
- "WINGET" PORTABLE CONVEYORS

Call or Write to us and place your proposition before us
We will advise and quote you for the plant you require.

J. R. Cox & Co.

SIXTH AVENUE.
Kampala. Eldoret. Nairobi. Nakuru. Dar-es-Salaam.

Only the Best

The best optician and the best glasses are not necessarily the most expensive, but they would be vital ones if they were. You are assured of wearing only the best, in consulting
DOBBIES Ltd. Nairobi.

Kenya Loan & Discount Co. Ltd.

NAIROBI.
OFFICES - 1st Floor, Court Chambers. P.O. Box 548.
FINANCIAL AGENTS.
BILLS DISCOUNTED.
SHORT-TERM LOANS GRANTED.
ANY REALISABLE ASSET NEGOTIATED FOR CASH.
Write or Write, Strictest Confidentiality
Established 1921.
Phone 241 G. J. LAING P.O. Box 71
Builder and Contractor
Estimates Free. Large or Small Jobs.

Colonial General Stores,

NAIROBI
Grocers & Provision Merchants.
Our Stocks are always fresh as we are direct Importers and draw our Supplies from the world's best markets, and are daily receiving the best of everything for the HOUSEWIFE'S use.
We stock High Class Provisions, Imported Confectionery, Wine, Spirits, Cigars, Cigarettes, Tobacco, Fresh Fruits, Local Produce, and Vegetables.
Phone 228. Call Govt. Road. Write Box 438. NAIROBI.

OUR Snapshot Competition

WEEKLY PRIZES.
1st Prize Shgs. 15/-.
Extra Prize Shgs. 10/- (if warranted).
Shgs. 5/- for every Picture Published.
The Competition is for Snapshots of EAST AFRICA (INTERIOR and coast) to be taken by the competitors. THE NAME and ADDRESS of the Competitor and the SUBJECT of THE PHOTOGRAPH should be written on the back of the print.
ANY NUMBER of prints may be sent by THE SAME COMPETITOR.
THE "SNAPSHOT" COMPETITION.
East Africa Standard, P.O. Box 500, Nairobi.
If Films or Plates are sent we will make arrangements for reproduction if necessary.
These films or plates will be returned after publication.
All sets of winning photographs will be published in the "East African Standard".
If desired to be returned a SEAMED ENVELOPE MUST BE ENCLOSED. The Editor's decision was the final.

SEYCHELLES SHIP WHICH SPRUNG A LEAK.

Passengers Called to Help with Pumps.

RUSH FOR PORT.

MR AMERY'S VIEW

STANDARD CORRESPONDENT.
Male, Dec. 10. - Few travellers nowadays venture far for sea in anything but steel ships. The almost forgotten perils of the sea which constantly threatened our forefathers among them was that known as "sprung a leak". The survey has recently been done in the stevedores of the "Ara" a steel liner which some 80 tons of water sprung from the bottom of the hull, to one of the scuttling hatches 200 feet above water.

The ship was carrying 25 passengers, of whom nine were men and children. There were five in the cockpit. The water was the skipper. One of the passengers was Mr. W. A. Trye, appointed by His Honour J. J. Devora as Captain. He and his crew were in the cockpit when the ship left working down, but found an unexpected amount of water, some 15 inches, when she was 40 miles from the coast. The water was not only about 15 inches (15 to 20) but it was rising rapidly, and its level was about 15 inches. They carried seven tons of guns, half-ton and the provisions, made of rice etc., along with the passenger baggage, lay on the top of the stove boiler.

In Danger.
As it soon became evident that the ship had sprung a leak, and that the water was coming in at a rate which was dangerous, the Captain turned on the engine, but not shortly after, he called upon the passengers to leave a hand each. He arranged all hands into watches. Four more pumps for ten minutes, with ten minutes spells in between. They were now about 60 miles from Aldobran Island, which lay to the S.E. but the captain found himself there in a most objectionable by the strong current which there in a most objectionable during December, January and February. The ship was now with a certain amount of "head-way" and he decided to return at once to Male, since for that purpose he had no other alternative.

As the ship was put about and they covered the 200 miles in about two and a half days. On the 10th of February they anchored in the harbour by the light-house, and they entered their way to the safe and sound. If they had but had weather but headwinds and a fishing boat, it is quite possible that they might not have made a haven. They were pumped out and all the time. They could not get out at the last, to stop the water might have been too much for them. They bashed



Where time takes no toll
The difference between youth and age has never been so marked than it is in the woman of today. Women, let the years pass, graciously and gracefully, for life no longer demands of them a distinction of woe or pain with those of their former existence. Among the dancers in the waltzes which are the recreation of most women whose light feet help their eyes, especially good. Last fall, I had a chance to see a woman who had been a dancer in the past, but who was now a housewife. She was a complete radiant, her eyes were as bright as ever, and she was as graceful as ever. It is one of the miseries of modern life that this youth is no longer maintained in the face.

Perfect it is the dearest beauty of their complexion which seems to stay to-day time. They women can come beautiful young until wrinkles come, until the chin falls, and the face loses its firmness. Today, thousands of women look happily young by the regular use of Peppermint Face Soap.

Peppermint Face Soap has for years been known to women of fashion as yielding a vital complexion need. It is a cleanser and a tonic, and its constant use secures perpetual youth for the skin.

The velvety bloom of youth

Few could imagine a more delicate, refreshing perfume than that contained in Peppermint Face Soap. Nothing is more delicious than the subtle fragrance of a wild flower, and in the sweet scent of wild, hedgehog roses that give Peppermint Face Soap its distinctive charm.

Essence of roses—almost as soft—and the rich, creamy lily blossoms and invigorates the skin, drives out dirt, and leaves it with the soft, velvety bloom of youth.

To soothe the heat, improving in making Peppermint Face Soap, may be used the exceptional quality of its lily-like—pleasant healing properties.

PEERLESS ERASMIC SOAP

London, March 19.
Silver 250.
Francs 124.01.
Dollars 4.87.
Mombasa, March 19.
T.T. 1/5 31/2.

GOOD

Storage for all classes merchandise and personal effects to all parts of the world.
Will to all clients.

The Express Transport Coy.

Cartage Contractors to Kenya and Uganda Railway.
NAIROBI
Phones 333 and 55.
MOMBASA
P.O. Box 99.
Transport at Competitive Prices.
Wood at Shgs. 10/- per ton.
And speedy shipping to all parts of the world.

Temis Rackets Restring at MAY & CO., LTD.

By Expert Employees.

MELANY MARKING INK

Shgs. 1-25
STANDARD STATIONERY STORES, NAIROBI.

ERASMIC SOAP

London, March 19.
Silver 250.
Francs 124.01.
Dollars 4.87.
Mombasa, March 19.
T.T. 1/5 31/2.

DIARIES

KENYA AND UGANDA 1928
REDUCED to Shgs. 3-00.
(POSTED SEGS. 3/80).
Diary Size 10 x 8 inches 8 Days to page Contains Labour record, Rainfall Register and information on the following subjects—
Government Departments—Registered Telegraphic Addresses.
Postal Government Departments—P.O. Box Numbers.
Postal Charges (Inland).
Postal Charges (British Empire and Foreign).
Parcel Post (Foreign and Colonial).
Inland Telegrams.
C.O.D. System.
Game Laws.
Measurement of the Quantity of Water Flowing in a Stream.
Number of Plants required to set an Acre of Ground at given distances.
Acceptance of Traffic Days.
Weights and Measures.
Resident Native Labourers' Ordinance, 1926 (Amended Rules).
Percentage of Butter to Milk.
Ready Reckoner for Labour Wages.
Mixing of Mortar and Concrete.
Fungicides Combined with Poisons.
Period of Heat in Farm Animals.
Gestation and Incubation Figures.
Periods of Season.
Analysis of Fodder.
Weight of Dead and Live Cattle.
Speed of Animals, etc.
ONLY A FEW COPIES LEFT!
STANDARD STATIONERY STORES, NAIROBI.

Remington Typewriter Agency, Ltd

Government Road, NAIROBI.
Box 67 Phone 25

SUPPLIES SERVICE

MELANY MARKING INK

Shgs. 1-25
STANDARD STATIONERY STORES, NAIROBI.

OTHER REDUCTIONS IN RAILWAY FREIGHTS. Sequel to Revision of the Port Charges. £65,000 FOR THE PUBLIC. Basis from April 1st Next.

Railway authorities announce that as a result of the Port charges there will come into effect on the 1st of April a further reduction of railway rates. The revised classification which is being made more scientific basis will be effective from the 1st of April. This together with the other reductions made in December makes a total of £65,000 could be kept in mind however, that against the £1,000,000 which the Port authorities expect to obtain as extra revenue from the new classification.

Railway reductions include revision of charges on parcels of tobacco and liquors, forwarding on kerosene, petrol, motor spares, fencing, iron, potatoes, manufacturing material, etc.

EXPORT PRODUCE RATES. Rates will also meet producers of Colonial produce and goods. General classification of goods.

Probably the most important item in the new classification is the general classification of goods. This will be effective from the 1st of April.

Classification of goods. Rates will be reduced for the most important items. This will be effective from the 1st of April.

Classification of goods. Rates will be reduced for the most important items. This will be effective from the 1st of April.

Classification of goods. Rates will be reduced for the most important items. This will be effective from the 1st of April.

Classification of goods. Rates will be reduced for the most important items. This will be effective from the 1st of April.

Classification of goods. Rates will be reduced for the most important items. This will be effective from the 1st of April.

Classification of goods. Rates will be reduced for the most important items. This will be effective from the 1st of April.

Classification of goods. Rates will be reduced for the most important items. This will be effective from the 1st of April.

Classification of goods. Rates will be reduced for the most important items. This will be effective from the 1st of April.

Classification of goods. Rates will be reduced for the most important items. This will be effective from the 1st of April.

Classification of goods. Rates will be reduced for the most important items. This will be effective from the 1st of April.

Classification of goods. Rates will be reduced for the most important items. This will be effective from the 1st of April.

Classification of goods. Rates will be reduced for the most important items. This will be effective from the 1st of April.

ELBORT STILL THIRSTING FOR RAIN. Clouds Which Are Seen But Not Felt. A CAR REPARATOR.

THE STORMS OF A FEWER AGONIES FOR THE MOTORIST. A native was driving in the rain yesterday with a car which was being repaired by a motorist.

THE RAILWAY TIME. The railway time was spent in the morning.

THE RAILWAY TIME. The railway time was spent in the morning.

THE RAILWAY TIME. The railway time was spent in the morning.

THE RAILWAY TIME. The railway time was spent in the morning.

THE RAILWAY TIME. The railway time was spent in the morning.

THE RAILWAY TIME. The railway time was spent in the morning.

THE RAILWAY TIME. The railway time was spent in the morning.

THE RAILWAY TIME. The railway time was spent in the morning.

THE RAILWAY TIME. The railway time was spent in the morning.

THE RAILWAY TIME. The railway time was spent in the morning.

THE RAILWAY TIME. The railway time was spent in the morning.

THE RAILWAY TIME. The railway time was spent in the morning.

THE RAILWAY TIME. The railway time was spent in the morning.

THE RAILWAY TIME. The railway time was spent in the morning.

THE RAILWAY TIME. The railway time was spent in the morning.

KEROSENE, PETROL AND BULE WATER. TO GENTS & GALLONS. Signed to a Storm on Lake Victoria.

THE RAILWAY TIME. The railway time was spent in the morning.

THE RAILWAY TIME. The railway time was spent in the morning.

THE RAILWAY TIME. The railway time was spent in the morning.

THE RAILWAY TIME. The railway time was spent in the morning.

THE RAILWAY TIME. The railway time was spent in the morning.

THE RAILWAY TIME. The railway time was spent in the morning.

THE RAILWAY TIME. The railway time was spent in the morning.

THE RAILWAY TIME. The railway time was spent in the morning.

THE RAILWAY TIME. The railway time was spent in the morning.

THE RAILWAY TIME. The railway time was spent in the morning.

THE RAILWAY TIME. The railway time was spent in the morning.

THE RAILWAY TIME. The railway time was spent in the morning.

THE RAILWAY TIME. The railway time was spent in the morning.

THE RAILWAY TIME. The railway time was spent in the morning.

THE RAILWAY TIME. The railway time was spent in the morning.

THE RAILWAY TIME. The railway time was spent in the morning.

DELAY IN BRINGING MOTOR CASES. Danger of Precipitate the Accused. MAGISTRATE'S COMMENT.

A native was driving in the rain yesterday with a car which was being repaired by a motorist.

THE RAILWAY TIME. The railway time was spent in the morning.

THE RAILWAY TIME. The railway time was spent in the morning.

THE RAILWAY TIME. The railway time was spent in the morning.

THE RAILWAY TIME. The railway time was spent in the morning.

THE RAILWAY TIME. The railway time was spent in the morning.

THE RAILWAY TIME. The railway time was spent in the morning.

THE RAILWAY TIME. The railway time was spent in the morning.

THE RAILWAY TIME. The railway time was spent in the morning.

THE RAILWAY TIME. The railway time was spent in the morning.

THE RAILWAY TIME. The railway time was spent in the morning.

THE RAILWAY TIME. The railway time was spent in the morning.

THE RAILWAY TIME. The railway time was spent in the morning.

THE RAILWAY TIME. The railway time was spent in the morning.

THE RAILWAY TIME. The railway time was spent in the morning.

THE RAILWAY TIME. The railway time was spent in the morning.

CREATION OF A NATIVE LAND TRUST. Labour M.P. Says It Is a Matter of Urgency. MR. ARMY SERVICE.

A native was driving in the rain yesterday with a car which was being repaired by a motorist.

THE RAILWAY TIME. The railway time was spent in the morning.

THE RAILWAY TIME. The railway time was spent in the morning.

THE RAILWAY TIME. The railway time was spent in the morning.

THE RAILWAY TIME. The railway time was spent in the morning.

THE RAILWAY TIME. The railway time was spent in the morning.

THE RAILWAY TIME. The railway time was spent in the morning.

THE RAILWAY TIME. The railway time was spent in the morning.

THE RAILWAY TIME. The railway time was spent in the morning.

THE RAILWAY TIME. The railway time was spent in the morning.

THE RAILWAY TIME. The railway time was spent in the morning.

THE RAILWAY TIME. The railway time was spent in the morning.

THE RAILWAY TIME. The railway time was spent in the morning.

THE RAILWAY TIME. The railway time was spent in the morning.

THE RAILWAY TIME. The railway time was spent in the morning.

THE RAILWAY TIME. The railway time was spent in the morning.

LYRIC HALL. To-Night at 8-45. Matinee Sat. 3-30. Buffalo Bill Junr. "Eager to Work". An exceptionally fast-moving, exciting western drama. Marvelous acting by "Bill" the wonderful horseman.

Topical Comedy - Scenic - 2 part Comedy. "Gold and Grit" ON THURSDAY FEATURING- BUDDY ROOSEVELT.

Shoes & Boots. IMPORTANT to the Public. We have recently been appointed Agents for the celebrated K Boots and Shoes for Ladies, Gentlemen and Young Folks. We hold a select stock of this unrivalled Footwear, and are in constant stock with the K Factory for any other style or size which may be required. K Shoes bear a 30 years' record for excellence, wear and worth. Eades Footwear Co. LIMITED. NAIROBI.

THEATRE ROYAL. Matins at 3-45. Sats. 3-30. To-night "Welcome Stranger". The wonderful Picturisation of the play which created a world wide sensation. MEET HERBERT SLOANON - The quaint philosopher with the big heart and a sense of humour that will keep you in a continual paroxysm of laughter. FRATERNITY Florence Vidor. Doree Davidson Noah Beery. LLOYD HUGHES. NEXT THURSDAY: CAROL DEMPSTER IN "THE LOVE FLOWER". Prices as usual: Circle Shgs. 3.00, Stalls 2.00.

ALL REPAIRS GUARANTEED. CAN YOU BEAT A.J.S., B.S.A. Douglas and Norton Motor Cycles. Wireless. ELECTRICAL REPAIRS OF EVERY DESCRIPTION. OUR ELECTRICAL DEPARTMENT IS THE BEST IN KENYA. VULCANIZING BY THE LATEST ELECTRICAL PROCESS. K. McIvors Garage. P.O. Box 11.

When the Rains Start! YOU WILL NEED COIR DOOR MATS. BRUSH COIR DOOR MATS. This heavy pile for hard wear. Size: 18" x 30" Shgs. 8/5 18" x 42" Shgs. 13/0 18" x 54" Shgs. 15/6 24" x 36" Shgs. 17/0 24" x 48" Shgs. 19/6 30" x 60" Shgs. 24/0 36" x 72" Shgs. 28/0 42" x 84" Shgs. 32/0 48" x 96" Shgs. 36/0 54" x 108" Shgs. 40/0 60" x 120" Shgs. 44/0 66" x 132" Shgs. 48/0 72" x 144" Shgs. 52/0 78" x 156" Shgs. 56/0 84" x 168" Shgs. 60/0 90" x 180" Shgs. 64/0 96" x 192" Shgs. 68/0 102" x 204" Shgs. 72/0 108" x 216" Shgs. 76/0 114" x 228" Shgs. 80/0 120" x 240" Shgs. 84/0 126" x 252" Shgs. 88/0 132" x 264" Shgs. 92/0 138" x 276" Shgs. 96/0 144" x 288" Shgs. 100/0 150" x 300" Shgs. 104/0 156" x 312" Shgs. 108/0 162" x 324" Shgs. 112/0 168" x 336" Shgs. 116/0 174" x 348" Shgs. 120/0 180" x 360" Shgs. 124/0 186" x 372" Shgs. 128/0 192" x 384" Shgs. 132/0 198" x 396" Shgs. 136/0 204" x 408" Shgs. 140/0 210" x 420" Shgs. 144/0 216" x 432" Shgs. 148/0 222" x 444" Shgs. 152/0 228" x 456" Shgs. 156/0 234" x 468" Shgs. 160/0 240" x 480" Shgs. 164/0 246" x 492" Shgs. 168/0 252" x 504" Shgs. 172/0 258" x 516" Shgs. 176/0 264" x 528" Shgs. 180/0 270" x 540" Shgs. 184/0 276" x 552" Shgs. 188/0 282" x 564" Shgs. 192/0 288" x 576" Shgs. 196/0 294" x 588" Shgs. 200/0 300" x 600" Shgs. 204/0 306" x 612" Shgs. 208/0 312" x 624" Shgs. 212/0 318" x 636" Shgs. 216/0 324" x 648" Shgs. 220/0 330" x 660" Shgs. 224/0 336" x 672" Shgs. 228/0 342" x 684" Shgs. 232/0 348" x 696" Shgs. 236/0 354" x 708" Shgs. 240/0 360" x 720" Shgs. 244/0 366" x 732" Shgs. 248/0 372" x 744" Shgs. 252/0 378" x 756" Shgs. 256/0 384" x 768" Shgs. 260/0 390" x 780" Shgs. 264/0 396" x 792" Shgs. 268/0 402" x 804" Shgs. 272/0 408" x 816" Shgs. 276/0 414" x 828" Shgs. 280/0 420" x 840" Shgs. 284/0 426" x 852" Shgs. 288/0 432" x 864" Shgs. 292/0 438" x 876" Shgs. 296/0 444" x 888" Shgs. 300/0 450" x 900" Shgs. 304/0 456" x 912" Shgs. 308/0 462" x 924" Shgs. 312/0 468" x 936" Shgs. 316/0 474" x 948" Shgs. 320/0 480" x 960" Shgs. 324/0 486" x 972" Shgs. 328/0 492" x 984" Shgs. 332/0 498" x 996" Shgs. 336/0 504" x 1008" Shgs. 340/0 510" x 1020" Shgs. 344/0 516" x 1032" Shgs. 348/0 522" x 1044" Shgs. 352/0 528" x 1056" Shgs. 356/0 534" x 1068" Shgs. 360/0 540" x 1080" Shgs. 364/0 546" x 1092" Shgs. 368/0 552" x 1104" Shgs. 372/0 558" x 1116" Shgs. 376/0 564" x 1128" Shgs. 380/0 570" x 1140" Shgs. 384/0 576" x 1152" Shgs. 388/0 582" x 1164" Shgs. 392/0 588" x 1176" Shgs. 396/0 594" x 1188" Shgs. 400/0 600" x 1200" Shgs. 404/0 606" x 1212" Shgs. 408/0 612" x 1224" Shgs. 412/0 618" x 1236" Shgs. 416/0 624" x 1248" Shgs. 420/0 630" x 1260" Shgs. 424/0 636" x 1272" Shgs. 428/0 642" x 1284" Shgs. 432/0 648" x 1296" Shgs. 436/0 654" x 1308" Shgs. 440/0 660" x 1320" Shgs. 444/0 666" x 1332" Shgs. 448/0 672" x 1344" Shgs. 452/0 678" x 1356" Shgs. 456/0 684" x 1368" Shgs. 460/0 690" x 1380" Shgs. 464/0 696" x 1392" Shgs. 468/0 702" x 1404" Shgs. 472/0 708" x 1416" Shgs. 476/0 714" x 1428" Shgs. 480/0 720" x 1440" Shgs. 484/0 726" x 1452" Shgs. 488/0 732" x 1464" Shgs. 492/0 738" x 1476" Shgs. 496/0 744" x 1488" Shgs. 500/0 750" x 1500" Shgs. 504/0 756" x 1512" Shgs. 508/0 762" x 1524" Shgs. 512/0 768" x 1536" Shgs. 516/0 774" x 1548" Shgs. 520/0 780" x 1560" Shgs. 524/0 786" x 1572" Shgs. 528/0 792" x 1584" Shgs. 532/0 798" x 1596" Shgs. 536/0 804" x 1608" Shgs. 540/0 810" x 1620" Shgs. 544/0 816" x 1632" Shgs. 548/0 822" x 1644" Shgs. 552/0 828" x 1656" Shgs. 556/0 834" x 1668" Shgs. 560/0 840" x 1680" Shgs. 564/0 846" x 1692" Shgs. 568/0 852" x 1704" Shgs. 572/0 858" x 1716" Shgs. 576/0 864" x 1728" Shgs. 580/0 870" x 1740" Shgs. 584/0 876" x 1752" Shgs. 588/0 882" x 1764" Shgs. 592/0 888" x 1776" Shgs. 596/0 894" x 1788" Shgs. 600/0 900" x 1800" Shgs. 604/0 906" x 1812" Shgs. 608/0 912" x 1824" Shgs. 612/0 918" x 1836" Shgs. 616/0 924" x 1848" Shgs. 620/0 930" x 1860" Shgs. 624/0 936" x 1872" Shgs. 628/0 942" x 1884" Shgs. 632/0 948" x 1896" Shgs. 636/0 954" x 1908" Shgs. 640/0 960" x 1920" Shgs. 644/0 966" x 1932" Shgs. 648/0 972" x 1944" Shgs. 652/0 978" x 1956" Shgs. 656/0 984" x 1968" Shgs. 660/0 990" x 1980" Shgs. 664/0 996" x 1992" Shgs. 668/0 1002" x 2004" Shgs. 672/0 1008" x 2016" Shgs. 676/0 1014" x 2028" Shgs. 680/0 1020" x 2040" Shgs. 684/0 1026" x 2052" Shgs. 688/0 1032" x 2064" Shgs. 692/0 1038" x 2076" Shgs. 696/0 1044" x 2088" Shgs. 700/0 1050" x 2100" Shgs. 704/0 1056" x 2112" Shgs. 708/0 1062" x 2124" Shgs. 712/0 1068" x 2136" Shgs. 716/0 1074" x 2148" Shgs. 720/0 1080" x 2160" Shgs. 724/0 1086" x 2172" Shgs. 728/0 1092" x 2184" Shgs. 732/0 1098" x 2196" Shgs. 736/0 1104" x 2208" Shgs. 740/0 1110" x 2220" Shgs. 744/0 1116" x 2232" Shgs. 748/0 1122" x 2244" Shgs. 752/0 1128" x 2256" Shgs. 756/0 1134" x 2268" Shgs. 760/0 1140" x 2280" Shgs. 764/0 1146" x 2292" Shgs. 768/0 1152" x 2304" Shgs. 772/0 1158" x 2316" Shgs. 776/0 1164" x 2328" Shgs. 780/0 1170" x 2340" Shgs. 784/0 1176" x 2352" Shgs. 788/0 1182" x 2364" Shgs. 792/0 1188" x 2376" Shgs. 796/0 1194" x 2388" Shgs. 800/0 1200" x 2400" Shgs. 804/0 1206" x 2412" Shgs. 808/0 1212" x 2424" Shgs. 812/0 1218" x 2436" Shgs. 816/0 1224" x 2448" Shgs. 820/0 1230" x 2460" Shgs. 824/0 1236" x 2472" Shgs. 828/0 1242" x 2484" Shgs. 832/0 1248" x 2496" Shgs. 836/0 1254" x 2508" Shgs. 840/0 1260" x 2520" Shgs. 844/0 1266" x 2532" Shgs. 848/0 1272" x 2544" Shgs. 852/0 1278" x 2556" Shgs. 856/0 1284" x 2568" Shgs. 860/0 1290" x 2580" Shgs. 864/0 1296" x 2592" Shgs. 868/0 1302" x 2604" Shgs. 872/0 1308" x 2616" Shgs. 876/0 1314" x 2628" Shgs. 880/0 1320" x 2640" Shgs. 884/0 1326" x 2652" Shgs. 888/0 1332" x 2664" Shgs. 892/0 1338" x 2676" Shgs. 896/0 1344" x 2688" Shgs. 900/0 1350" x 2700" Shgs. 904/0 1356" x 2712" Shgs. 908/0 1362" x 2724" Shgs. 912/0 1368" x 2736" Shgs. 916/0 1374" x 2748" Shgs. 920/0 1380" x 2760" Shgs. 924/0 1386" x 2772" Shgs. 928/0 1392" x 2784" Shgs. 932/0 1398" x 2796" Shgs. 936/0 1404" x 2808" Shgs. 940/0 1410" x 2820" Shgs. 944/0 1416" x 2832" Shgs. 948/0 1422" x 2844" Shgs. 952/0 1428" x 2856" Shgs. 956/0 1434" x 2868" Shgs. 960/0 1440" x 2880" Shgs. 964/0 1446" x 2892" Shgs. 968/0 1452" x 2904" Shgs. 972/0 1458" x 2916" Shgs. 976/0 1464" x 2928" Shgs. 980/0 1470" x 2940" Shgs. 984/0 1476" x 2952" Shgs. 988/0 1482" x 2964" Shgs. 992/0 1488" x 2976" Shgs. 996/0 1494" x 2988" Shgs. 1000/0 1500" x 3000" Shgs. 1004/0 1506" x 3012" Shgs. 1008/0 1512" x 3024" Shgs. 1012/0 1518" x 3036" Shgs. 1016/0 1524" x 3048" Shgs. 1020/0 1530" x 3060" Shgs. 1024/0 1536" x 3072" Shgs. 1028/0 1542" x 3084" Shgs. 1032/0 1548" x 3096" Shgs. 1036/0 1554" x 3108" Shgs. 1040/0 1560" x 3120" Shgs. 1044/0 1566" x 3132" Shgs. 1048/0 1572" x 3144" Shgs. 1052/0 1578" x 3156" Shgs. 1056/0 1584" x 3168" Shgs. 1060/0 1590" x 3180" Shgs. 1064/0 1596" x 3192" Shgs. 1068/0 1602" x 3204" Shgs. 1072/0 1608" x 3216" Shgs. 1076/0 1614" x 3228" Shgs. 1080/0 1620" x 3240" Shgs. 1084/0 1626" x 3252" Shgs. 1088/0 1632" x 3264" Shgs. 1092/0 1638" x 3276" Shgs. 1096/0 1644" x 3288" Shgs. 1100/0 1650" x 3300" Shgs. 1104/0 1656" x 3312" Shgs. 1108/0 1662" x 3324" Shgs. 1112/0 1668" x 3336" Shgs. 1116/0 1674" x 3348" Shgs. 1120/0 1680" x 3360" Shgs. 1124/0 1686" x 3372" Shgs. 1128/0 1692" x 3384" Shgs. 1132/0 1698" x 3396" Shgs. 1136/0 1704" x 3408" Shgs. 1140/0 1710" x 3420" Shgs. 1144/0 1716" x 3432" Shgs. 1148/0 1722" x 3444" Shgs. 1152/0 1728" x 3456" Shgs. 1156/0 1734" x 3468" Shgs. 1160/0 1740" x 3480" Shgs. 1164/0 1746" x 3492" Shgs. 1168/0 1752" x 3504" Shgs. 1172/0 1758" x 3516" Shgs. 1176/0 1764" x 3528" Shgs. 1180/0 1770" x 3540" Shgs. 1184/0 1776" x 3552" Shgs. 1188/0 1782" x 3564" Shgs. 1192/0 1788" x 3576" Shgs. 1196/0 1794" x 3588" Shgs. 1200/0 1800" x 3600" Shgs. 1204/0 1806" x 3612" Shgs. 1208/0 1812" x 3624" Shgs. 1212/0 1818" x 3636" Shgs. 1216/0 1824" x 3648" Shgs. 1220/0 1830" x 3660" Shgs. 1224/0 1836" x 3672" Shgs. 1228/0 1842" x 3684" Shgs. 1232/0 1848" x 3696" Shgs. 1236/0 1854" x 3708" Shgs. 1240/0 1860" x 3720" Shgs. 1244/0 1866" x 3732" Shgs. 1248/0 1872" x 3744" Shgs. 1252/0 1878" x 3756" Shgs. 1256/0 1884" x 3768" Shgs. 1260/0 1890" x 3780" Shgs. 1264/0 1896" x 3792" Shgs. 1268/0 1902" x 3804" Shgs. 1272/0 1908" x 3816" Shgs. 1276/0 1914" x 3828" Shgs. 1280/0 1920" x 3840" Shgs. 1284/0 1926" x 3852" Shgs. 1288/0 1932" x 3864" Shgs. 1292/0 1938" x 3876" Shgs. 1296/0 1944" x 3888" Shgs. 1300/0 1950" x 3900" Shgs. 1304/0 1956" x 3912" Shgs. 1308/0 1962" x 3924" Shgs. 1312/0 1968" x 3936" Shgs. 1316/0 1974" x 3948" Shgs. 1320/0 1980" x 3960" Shgs. 1324/0 1986" x 3972" Shgs. 1328/0 1992" x 3984" Shgs. 1332/0 1998" x 3996" Shgs. 1336/0 2004" x 4008" Shgs. 1340/0 2010" x 4020" Shgs. 1344/0 2016" x 4032" Shgs. 1348/0 2022" x 4044" Shgs. 1352/0 2028" x 4056" Shgs. 1356/0 2034" x 4068" Shgs. 1360/0 2040" x 4080" Shgs

Latest Arrivals!!

Men's D. B. City Chester Overcoats.

The Famous "Steel Guard" Gaberdine Trousers.



Also: A choice range of Consulate Pyjamas and Shirts. Ahamed Bros. (Stockists of only the Best Goods) NAIROBI. Box 254.

Cost of Living

1,000 Customers are Satisfied with our 20% Cash Discount. We give 25/- value for 20/- Hawley, Cameron & Bennett.

The Ideal Coat for outdoor Wear

Zambrene Weatherproofs Impervious to all Weather. And Supreme in Style, Quality, and Value. The Leading Store Carries Stocks.



THE WONDER WATCH!

THE ROLEX OYSTER PERPETUAL. The watch which has revolutionized the watch industry... DOBBIES, Ltd., Jewellers, NAIROBI.

'ARPAK'

No Revoke THE Playing Cards Frolic Club. BLACK BACKGROUND. STANDARD STATIONERY STORES, NAIROBI.

CORRESPONDENCE

The Editor does not accept responsibility for the correspondence in these columns... NAIROBI, March 19, 1926.

If he succeeds in availing the stocks and should the credit... NAIROBI, March 19, 1926.

To the Editor, "E.A. Standard": In your Saturday... NAIROBI, March 19, 1926.

That day I have seen a long line of unemployed... NAIROBI, March 19, 1926.

To the Editor, "E.A. Standard": I have a question... NAIROBI, March 19, 1926.

There is no Factory Act... NAIROBI, March 19, 1926.

To the Editor, "E.A. Standard": My increasing paper... NAIROBI, March 19, 1926.

Should Women Witness Boxing bouts? A Controversy in the Coral Isle.

As far as my knowledge goes... NAIROBI, March 19, 1926.

It is a matter of fact... NAIROBI, March 19, 1926.

Incidentally, I wonder whether... NAIROBI, March 19, 1926.

It is a matter of fact... NAIROBI, March 19, 1926.

As regards the most recent... NAIROBI, March 19, 1926.

It is a matter of fact... NAIROBI, March 19, 1926.

As regards the most recent... NAIROBI, March 19, 1926.

It is a matter of fact... NAIROBI, March 19, 1926.

As regards the most recent... NAIROBI, March 19, 1926.

It is a matter of fact... NAIROBI, March 19, 1926.

As regards the most recent... NAIROBI, March 19, 1926.

It is a matter of fact... NAIROBI, March 19, 1926.

As regards the most recent... NAIROBI, March 19, 1926.

It is a matter of fact... NAIROBI, March 19, 1926.

As regards the most recent... NAIROBI, March 19, 1926.

It is a matter of fact... NAIROBI, March 19, 1926.

As regards the most recent... NAIROBI, March 19, 1926.

It is a matter of fact... NAIROBI, March 19, 1926.

As regards the most recent... NAIROBI, March 19, 1926.

It is a matter of fact... NAIROBI, March 19, 1926.

As regards the most recent... NAIROBI, March 19, 1926.

It is a matter of fact... NAIROBI, March 19, 1926.

Shoppers and some of them... NAIROBI, March 19, 1926.

The year passed a certain... NAIROBI, March 19, 1926.

There is no Factory Act... NAIROBI, March 19, 1926.

Should Women Witness Boxing bouts? A Controversy in the Coral Isle.

It is a matter of fact... NAIROBI, March 19, 1926.

Incidentally, I wonder whether... NAIROBI, March 19, 1926.

As regards the most recent... NAIROBI, March 19, 1926.

As regards the most recent... NAIROBI, March 19, 1926.

As regards the most recent... NAIROBI, March 19, 1926.

As regards the most recent... NAIROBI, March 19, 1926.

As regards the most recent... NAIROBI, March 19, 1926.

As regards the most recent... NAIROBI, March 19, 1926.

As regards the most recent... NAIROBI, March 19, 1926.

As regards the most recent... NAIROBI, March 19, 1926.



"ERASMIC" The Dainty SOAP. Beautifies & Refreshes.

B. H. MYERS & Co., Ltd. Showroom Nairobi House. High Class Furniture at Moderate Prices. Call and Inspect.

"SPARKLETS" THE SODA FOUNTAIN OF 1,000,000 HOMES. ALWAYS READY AND ALWAYS HANDY.



FREE SPECIAL GIFT OF 1 BOTTLE AND STATION. IS PRESENTED TO EACH PURCHASER OF A "C" STATION.

REPRESENTATIVES: GENERAL AGENCIES, LTD., IDEA BUILDINGS, Govt. Rd., NAIROBI.

META INSTANT HEAT INSTANT USE. META HEAT TABLETS. NON EXPLOSIVE. DO NOT MELT.

Keith Timber Co. Ltd.

Sav. Millers and Timber Merchants. P.O. Box 874. First Class CEDAR FOR ALL REQUIREMENTS. MACHINED TIMBER A SPECIALITY.

Kenya & Uganda Railways & Harbour.

Introduction of Revised Language and Parcels Rates, Goods Classification, and Goods Rates. On and from 1st April, 1926...

SUPERIOR HYGIENIC BLEND. Used with Meta Patent Appliances in the Ideal form for the household, hotels, restaurants, etc.

H-O. Quick Cooking Oats Makes Porridge in 2 to 3 minutes. Obtainable at: Bellarm Parimal & Co. (Established 1900.)

Corner Swamp Road and Government Road, P.O. Box 10, NAIROBI. P.O. Box 29. Also P.O. Box 47, MOMBASA.

A Bluff that Works.

No one takes chances against a gun. Safety Revolvers and Automatics... Ladies Protect Yourselves, without risk. SHAW and HUNTER.

Pruning Knives

MADE BY THE HARDY PATENT FISK CO., LTD. OF BEST QUALITY STEEL. BEST QUALITY STEEL. 10/ Blade Sigs. 30/- per doz. 12/ Blade Sigs. 20/60 per doz.

J. W. Milligan & Co.

Stocked by J. W. Milligan & Co. P.O. Box 148 NAIROBI.

Charles Ware

TURTLE ACCOUNTANT. Lincoln Handicap: 5/1 Othello; 8/1 Mahawk, Fohn-nacou; 10/1 Uramick, Fanny Frye, Philamson, Fairy Parc; 12/1 Caustic, Jugo, Adieu; 14/1 to 82/1 others.

J. H. S. TODD & Co., Ltd.



STROGES IN QUALITY depends on your genuine tools and supplies. This advantage of those money-saving plans. Select your genuine supplies today.

SCHOUTEN'S COURTESY

Combined with the SKILL of experts from the standard of success. COOLMENT COMFORT CONVENIENCE CORRECTNESS.

DO YOU USE THE "BIRDIE" GOLF BALL

If you already use it you are getting the best possible. If you have not tried it do it now!

THE LONGEST DRIVING THE STEADIEST IN FLIGHT THE TOUGHEST COVER.

Shs. 2-50 each. From all Professionals and Dealers and from MAY & Co., Ltd. THE SPORTS HOUSE NAIROBI.

THE SPORTS PAGE

THE BOXING WORLD.

British Victories in New York and London.

A CHAMPIONSHIP FIGHT. (THOMAS MULLER'S SPECIAL GABE SERVICE.)

London, March 19. The British Champion, James J. Braddock, defeated the American challenger, Tony Gazzo, in a 20 round contest for the European Championship.

London, March 19. In a 10 round contest held this evening, Phil Scott, the British Champion, beat Ferry Charles, the Belgian Champion, on points.

Muthaga Golf Club.

FAIR AND FORTHRIGHT EVENTS. (By "Clock" was the Muthaga Golf Club Letter for March after being with you.)

The Morning Golf was well attended with a net 71. Durd was 3rd and 774 following it. The following are the entries for the Victoria Cup, to be played on the 23rd of March.

Victoria Cup. The following are the entries for the Victoria Cup, to be played on the 23rd of March.

Victoria Cup. The following are the entries for the Victoria Cup, to be played on the 23rd of March.

Victoria Cup. The following are the entries for the Victoria Cup, to be played on the 23rd of March.

Victoria Cup. The following are the entries for the Victoria Cup, to be played on the 23rd of March.

Victoria Cup. The following are the entries for the Victoria Cup, to be played on the 23rd of March.

Victoria Cup. The following are the entries for the Victoria Cup, to be played on the 23rd of March.

Victoria Cup. The following are the entries for the Victoria Cup, to be played on the 23rd of March.

Victoria Cup. The following are the entries for the Victoria Cup, to be played on the 23rd of March.

THE BOAT RACE.

Fights for Saturday's Event.

NOTE UNIVERSITIES. (In the last mail from Britain the results were announced of the Oxford and Cambridge University regatta to meet in the best row on Saturday next.

RESULTS OF MONDAY'S MATCHES. (STANDARD CORRESPONDENT) London, March 19. The following are the results of the English League football matches played today.

Rifle Shooting. NAIROBI CLUB ROBBERS LAST YEAR. A post held for members of the Nairobi Rifle Club is being held this afternoon at the 400 yards range, and it is anticipated that many more 'buds' will be forthcoming at the range than at the previous post obtained last year.

NAIROBI CLUB ROBBERS LAST YEAR. A post held for members of the Nairobi Rifle Club is being held this afternoon at the 400 yards range, and it is anticipated that many more 'buds' will be forthcoming at the range than at the previous post obtained last year.

NAIROBI CLUB ROBBERS LAST YEAR. A post held for members of the Nairobi Rifle Club is being held this afternoon at the 400 yards range, and it is anticipated that many more 'buds' will be forthcoming at the range than at the previous post obtained last year.

NAIROBI CLUB ROBBERS LAST YEAR. A post held for members of the Nairobi Rifle Club is being held this afternoon at the 400 yards range, and it is anticipated that many more 'buds' will be forthcoming at the range than at the previous post obtained last year.

NAIROBI CLUB ROBBERS LAST YEAR. A post held for members of the Nairobi Rifle Club is being held this afternoon at the 400 yards range, and it is anticipated that many more 'buds' will be forthcoming at the range than at the previous post obtained last year.

NAIROBI CLUB ROBBERS LAST YEAR. A post held for members of the Nairobi Rifle Club is being held this afternoon at the 400 yards range, and it is anticipated that many more 'buds' will be forthcoming at the range than at the previous post obtained last year.

NAIROBI CLUB ROBBERS LAST YEAR. A post held for members of the Nairobi Rifle Club is being held this afternoon at the 400 yards range, and it is anticipated that many more 'buds' will be forthcoming at the range than at the previous post obtained last year.

NAIROBI CLUB ROBBERS LAST YEAR. A post held for members of the Nairobi Rifle Club is being held this afternoon at the 400 yards range, and it is anticipated that many more 'buds' will be forthcoming at the range than at the previous post obtained last year.

NAIROBI CLUB ROBBERS LAST YEAR. A post held for members of the Nairobi Rifle Club is being held this afternoon at the 400 yards range, and it is anticipated that many more 'buds' will be forthcoming at the range than at the previous post obtained last year.

NAIROBI CLUB ROBBERS LAST YEAR. A post held for members of the Nairobi Rifle Club is being held this afternoon at the 400 yards range, and it is anticipated that many more 'buds' will be forthcoming at the range than at the previous post obtained last year.

NAIROBI CLUB ROBBERS LAST YEAR. A post held for members of the Nairobi Rifle Club is being held this afternoon at the 400 yards range, and it is anticipated that many more 'buds' will be forthcoming at the range than at the previous post obtained last year.

KYNOC AMMUNITION. Recent successes at Bulby have resulted in the excellence and accuracy of KYNOC AMMUNITION made in all calibres from .22 to .600.

READY IN STOCK

Corrugated Iron Sheets, 24 Gauge. English Portland Cement. Special Price on Application.

Madately Suleman Verjee & Sons

And at Hassanal Bros. P.O. Box 776. Gory Road, Nairobi.

A. HOGG, Mutos B'g's, NAIROBI

London, 20/2/28—5/1 Othello; 12/1 Mahawk; 10/1 Fanny Frye; 10/1 Uramick; 10/1 Caustic; 10/1 Jugo; 10/1 Adieu; 10/1 to 82/1 others.

Confidence is a Mighty Motive

Here is an opportunity to make real money. For the entire business in East Africa, on a strong franchise basis.

MOOMBASA TIMES.

CAN NOW BE OBTAINED AT Standard Stationery Stores NAIROBI.

J. Jacobs Ltd. Nairobi

Travelling Trunks

STAIN RESISTING WATER. Most light weight, strong, durable, well made and finished, fitted with two good locks, strong lining.

SOLD OVERSEAS BY GALEY

Good quality English made suitcases which will give long service. 24 inches long 18 inches high 10 inches deep.

FLY TRUNKS

Strong, durable, well made, fitted with two good locks, strong lining, and finished in three different qualities.

THE 'MANTON' SPECIAL TRUNKS

An illustrated list of the 'MANTON' Special Trunks, suitcases, and other articles, with prices and descriptions.

WE ALSO HAVE A FULL RANGE OF DISCOUNTS.

African Football.

MEETING OF COUNCIL OF THE ASSOCIATION. The weekly meeting of the Council of the Association of Kenya will be held today.

MEETING OF COUNCIL OF THE ASSOCIATION. The weekly meeting of the Council of the Association of Kenya will be held today.

The Cup Final.

THE BURE FOR SEATS AT WEMBLEY. (STANDARD CORRESPONDENT) London, February 20. It is announced from Wembley Stadium that all tickets for the Cup Final will be held early.

SPORTS DIARY.

March 21. Cricket meeting of African Football Association, D.C. Office, Club p.m. March 22. Meeting of Rugby Football Union, 8.30 p.m. March 23. Meeting of Kenya Football Association, 8 p.m. March 24. Meeting of Kenya Football Association, 8 p.m.

Sensational Reductions

have been made
on the latest type
GOODYEAR TYRES
Ask your dealer for them

Gillfillan & Company Ltd.,
DISTRIBUTORS

MORRIS

Oxford
415 Seaters
£338



Cowley
2' Seater
£24

Wide Track Colonial Models
we will be pleased to give demonstration runs.

DISTRIBUTORS.
Mitchell Cotts & Co., NAIROBI

CAMPAGNE AFRICAINE de NAVIGATION
ANTWERP DIRECT KILINDINI
FAST CARGO STEAMERS VIA SUEZ CANAL
KILINDINI DIRECT ANTWERP

Outwards.	Homewards.
S.S. "Kabinda"	S.S. "Kambove"
Due to arrive from Antwerp on the 14th March will take Cargo for Dar-es-Salaam.	Due to arrive Kilindini 19th March will take Cargo for Port Sudan, Port Said and Aden.

For freight and particulars apply to:
MITCHELL COTTS & Co., Agents, Also Agents for P.O. Nairobi
MOMBASA.

IT IS SUFFICIENT FOR DISCRIMINATING BUYERS
TO KNOW IT'S AN

UNDERWOOD

380/-



380/-

NEW PORTABLE FOUR BANK

BUILT TO A STANDARD...UNDERWOOD STANDARD...
NOT TO A PRICE.

T A W S Limited.

Box 611.

NAIROBI.

Phone 141.



Have You tried the touch
of this latest CORONA?

CORONA has always been famous for its workmanship and durability, but this new model has an added advantage—a wonderfully light touch. You would scarcely have believed it possible to build such a smooth, easy key action in a portable typewriter.

Notice the big machine features throughout—the wide carriage, the full length, heavier, self-reversing ribbon, the variable line standard spacing, improved standard spacing device, the many little refinements which you would not expect to find in a portable typewriter.

YOU CAN BUY A CORONA FOR Shs. 315

STANDARD STATIONERY STORES
P.O. Box 350 Nairobi Phone 572

THE UNION-CASTLE LINE.

HOMEWARDS via SUEZ.
 From Mombasa:
 "Glasgow Castle" 26th March
 "Liverpool Castle" 29th April
 "Oxford Castle" 2nd May
 "Hastings Castle" 15th Sept.
 "Oxford Castle" 15th Nov.

HOMEWARD via SOUTH AFRICA.
 From Mombasa:
 "Dunbar Castle" 8th April
 "Hastings Castle" 27th April
 "Oxford Castle" 4th June
 "Hastings Castle" 22nd June
 "Liverpool Castle" 12th July
 "Oxford Castle" 16th Aug.
 "Hastings Castle" 2nd Sept.
 "Glasgow Castle" 12th Oct.
 "Oxford Castle" 12th Nov.

Agents—
 E.A. Corporation, Ltd.,
 East Africa Estates, Ltd.,
 East Africa Estates, Ltd.,
 V. O'Brien & Co., Ltd.
 Nairobi, Kampala, etc.
 Mombasa, Kisumu, Eldoret and Kitale.

For Rates of Freight and Passage, Money Order to the Union-Castle Mail Steamship Co., Ltd. MOMBASA.

British India Steam Navigation Company, Ltd.
 AND PENINSULAR AND ORIENTAL STEAM NAVIGATION CO.

London and East Africa Line.
 LONDON TO DARIN, Via Marseilles, Port Said, Port Sudan and Aden, Outwards and Inwards.
 Steamers. Arrive Kilindi from London about

14th April. 12th April. 12th May. 12th June. 7th July. 2nd August. 20th August. 24th October. 22nd November. 19th January. 20th Jan.

Bombay-Durban Mail Service.
 Calling Kilmind, Zanzibar, Dar-es-Salaam, Beira, Inhaca Bay, Fortarghy, Also Mozambique (north) Outwards and Inwards.
 To Bombay. 21st March. 16th April.

To Durban. 24th March. 8th April. 21st April.
 To London and Marseilles via Bombay.

Homeward steamers call at Plymouth offering passengers the opportunity of disembarking there. N.B.—All Steamers will call at Marseilles on the Outward and Homeward Voyages.

These Steamers are now scheduled to arrive in Bombay on Saturdays so as to connect with the P. & O. Steamer, thus giving passengers an alternative route to London and Marseilles, and allowing passengers within 24 days of Marseilles.

ALL RATES SUBJECT TO ALTERATION WITHOUT NOTICE. RETURN TICKETS ISSUED AT TWO SINGLE FARES LESS 10% UP-COUNTRY CHECKS NOT ACCEPTED BY US. LOCAL BILLS OF EXCHANGE NOT ACCEPTED BY US. Agents only Nairobi & Kampala.

CHIVERS

CUSTARD POWD
 With Chivers Canned Fruits, MADE IN FOUR FLAVOURS—Solo Agents—
 R. O. HAMILTON, Ltd.,
 Box 302. NAIROBI.

Just Arrived

FRESH CONSIGNMENTS OF MILITARY OVERCOATS
 Pajamas, Jambies, Kermis, Axes, Mattresses, Cans, Buckles, Shovels, Spades, Etc.
 Most varied assortment of all classes of goods for Soldier and Native Trade.
 Prices at lowest rates on application.
 Enquiries Solicited.

M. ROSEBLUM & Co. L
 Havilland Street, Nairobi. Tel. No. 15.

B. I. S. N. Co. M. V. DUMRA.

1st CLASS EXCURSIONS TO MIKINDANI. A Short Recreative Sea Holiday.

During the months of March, April and May, 1st Class Excursion Tickets to Mikindani and return will be available for M.V. DUMRA, calling at Tanga, Zanzibar, Dar-es-Salaam, Kilwa, Ruvo Bay, Lindi, and Mikindani this return voyage occupying from 9-12 days.

Fare Shs. 900. Sailing 16th March, 28th March, 19th April, 29th April, 11th May, Last Sailing 23rd May. In connection with these excursions the K.U.R. will issue return Railway tickets at single fare.

For full particulars of sailing dates, etc., apply **Smith Mackenzie & Co., Agents,** Kilindini, Tanga, Zanzibar, Nairobi, etc.

The First Flight From **MOMBASA TO NAIROBI**
 Was done on **SHELL** Petrol FROM THE PUMP.

The Shell Company of East Africa Ltd. AGENTS **SMITH MACKENZIE & Co.**

The African Marine & General Engineering Company, Ltd., KILINDINI.

SHIP REPAIRING. SALES MAKING & REPAIRING. MOLDING. OXY-ACETYLENE WELDING & CUTTING.

In their well-equipped Carpenters Shops, all types of House and Office Furniture are made and repaired. Estates requiring repairs to machinery, implements etc., are invited to communicate. ESTIMATES GIVEN. Tel. "Amgeco," Mombasa Telephone 86.

SMITH, MACKENZIE & Co., General Managers

Deutsche Ost-Afrika-Linie (GERMAN AFRICAN SERVICE)

Homewards via Suez Canal. Homewards via Cape.

Leaving Mombasa 1922	Leaving Mombasa 1922
** NJASSA ... 28th April ** USAMBARA ... 5th May ** TANZANIA ... 2nd June ** NJASSA ... 1st July ** WANGONI ... 29th July ** USAMBARA ... 26th Aug. ** TANZANIA ... 23rd Sept. ** ADOLPH WOERMANN ... 21st Oct. ** USAMBARA ... 18th Oct.	** WANGONI ... 20th March ** USAMBARA ... 27th April ** ADOLPH WOERMANN ... 25th May ** USAMBARA ... 22nd June ** TANZANIA ... 20th July ** TANZANIA ... 16th Aug. ** ADOLPH WOERMANN ... 13th Sept. ** USAMBARA ... 27th Sept.

10 Days to German. 10 Days to Marseilles. Full particulars of rates and conditions apply to the Agents. DALGETY & Co., Ltd. Agents. ROUSTADT & CLARE, Ltd. Mombasa. GALT, JUBBERT, & Co. Agents. NAIROBI, KILINDINI, ZANZIBAR, DAR-ES-SALAAM, AND DEUTSCHE OST-AFRIKA-LINIE, GENERAL AGENCY. Cable "OSTLINIE" P.O. Box 10, Mombasa.

Compagnia Italiana Transatlantica

The best route to London via Italy. Oil-burning Turbine Steamers. Sailings from Kilindini to Genoa. Monthly Service—

S.S. F. CRISPI ... 1st April.
 S.S. G. MAZZINI ... 1st May.
 S.S. F. CRISPI ... 1st June.

Sailings to Durban by other steamers.
 Apply to: MALVIN D. KAMPP—Nairobi Agent. SOCIETA' COLONIALE ITALIANA.—Mombasa Agents.

A FEW OF OUR PRICES.

ORIGINAL MAUSER RIFLES. BEST QUALITY STEEL BARRELS. 28 CALIBRE in the following calibres: 6.5 mm - 296, 7 mm - 375, 8 mm - 316, 9 mm - 355 and 10.75 mm - 423 and 428, 250.- ORIGINAL MAUSER RIFLES, as above, in the same bore with extra long 28" Barrels, which gives you a 20% higher velocity more accuracy and a better balance. Shs. 260, 250, 400 and 400.- MANNLICHER 8 HORNLAUER RIFLES. Calibres 6.5 - 256, 8 mm - 316, 9 mm - 355, 9.55 mm - 375. With 22 or 24" Barrel. Shgs 330/- With extra long 28" Barrel. Shgs 380/- 12 Bore S. B. Shotgun (not guaranteed) 60/- 12 Bore D. B. Shotgun, Hammer 120/- 12 Bore D. B. Shotgun, Hammerless 160/- 12 Bore D. B. Shotgun, Hammerless 160/- *Letters from Shs. 200/- to 1,200/- Pistols and Revolvers from Shgs. 40/- upwards. All weapons guaranteed for 12 months and tested 1 year's presence. Ammunition always fresh by Best Makers only. Chas. A. Heyer & Co. Box 387 (Gunmakers, etc.) Est 1903

HOLLAND AFRIKA LIJN.

AGENTS SERVICE. HOLLAND ZUID AFRIKA LIJN and HOLLAND OOST AFRIKA LIJN.

Homeward via SUEZ. Homeward via CAPE. Homeward via SUEZ. Homeward via CAPE.

Homeward via THE CAPE. Homeward via THE CAPE. Homeward via THE CAPE.

Homeward via THE CAPE. Homeward via THE CAPE. Homeward via THE CAPE.

Homeward via THE CAPE. Homeward via THE CAPE. Homeward via THE CAPE.

Homeward via THE CAPE. Homeward via THE CAPE. Homeward via THE CAPE.

OVERSEAS MAILS.

ARRIVALS. FROM Mombasa. Kema, Homebank, Eastafrican Castle, Ethen, Dumba, Rhadalla.

DEPARTURES. TO Mombasa. Kema, Faversham, Wagon, Zulu.

DEPARTURES. TO Mombasa. Kema, Faversham, Wagon, Zulu.

Increase in Price of Pig

Owing to the high cost of Maize and the shortage of other feeding materials

Uplands Bacon Factory

are now paying 75 cents per lb. dead weight, plus freight.

The Great Pyramid

A series of American Articles written and published in the Standard and published in the Standard in October and November 1920. Price 5/-, post 5/10.

STANDARD STATIONERY STORES. Sixth Avenue, NAIROBI.

Reduced Bacon Prices

In the belief that this advance is only a temporary one they hope to maintain their

MOTING TOPICS

THE SPARKING PLUG.

Description of Their Manufacture.

DIFFERENT MACHINES.

To the average motorist a sparking plug is a very ordinary part of the equipment of his car and being comparatively cheap to purchase, is not considered to possess anything of a very special nature. In actual fact, the manufacture of a sparking plug requires a number of very light specialized processes in order to ensure that, when in use, a constant performance will be obtained. The plug must, of course, be able to withstand terrific heat and the oil that is accumulated more with design than with the manufacturer. It will not be considered.

Recently speaking, there are two main components in a sparking plug—the body and the central electrode—the latter, of course, containing an insulating material. The main body is manufactured or ground, engineering lines, except that the production and time cost of these individual plug bodies are kept down within very narrow limits. This is realized when it is mentioned that practically all A.C. spark plug are produced in four spindle automatic machines, each of which turns out plus at the rate of two or three per minute, according to type.

There are one or two further operations to the body after it has been turned out by the lathe-

possibility, it has to be lathed as a standard, preferably in the case of a detachable type. One of the most interesting of these additional processes is the firing rod process in the body. A firing rod, having a compartment round its outside diameter—each of which is fed with a plug as the table rotates—passes under a device which cuts off a piece of wire to the correct length, and spot welds it to the body. This machine can keep the whole of the factory going as it has a capacity now that it can cut off wire less than 0.0001 inch per hour.

The plug is then ready for the insulator and the central electrode to be assembled. The method of producing the insulator is probably the most interesting of the whole series; indeed, a special factory has been required to deal with this end of the business. The first operation in the firing of the various minerals and clays in a large rotary kiln, which is allowed to receive a certain number of retorts, each containing being cooled on a counter—order to obtain consistency for various batches. The mixture is then passed through a sieve into a chamber below the level of the ground. As the mixture drops through the sieve it passes through a powerful electric magnet which extracts any fine particles of metal which may be left in it. While in the apparatus, the plug mixture is kept in contact with the insulator in the material to make the consistency equal to that of cream.

The next operation in the extraction of the mixture from the kiln. This is effected by pumping the fluid into what is known as a filter press. The mixture is pumped from the base of the chamber into a filter, which is suspended between corrugated sheets, capable of being pulled up by means of external punch bolts. The entire assembly is worked through the sheet, leaving the clay, which is the insulator, in the centre of the sheet. The clay is then thrown on to a mill, where it is powdered between four steel rollers. The operation, which removes all air and makes the plastic material into a thoroughly homogeneous form.

The clay is then ready for forming into shapes that roughly resemble the finished insulator. It is forced into a cylinder into which a ram is engaged to slide. Now, the relative motion of the ram and the cylinder of clay are carefully controlled at an operator, the clay being forced, as it advances, through an orifice which forms a large hole, that is immediately drilled in an oven to make them sufficiently hard for them to be worked satisfactorily.

A most ingenious machine is used for turning both the interior and the exterior to the finished dimensions. A "grit-tool" having a spherulitic edge, but where the blade is stopped in order to cut the varying diameter of the insulator is brought into contact with the clay in its semi-plastic form (water being dried). Still during the finished insulator is placed on paper on a round turntable, which, as it rotates, turns the insulator in turn in both directions, which is done by hand. Finally, they pass through a glaze.

The final operation is the firing. The insulator is fired in a furnace, which takes them through a furnace, the temperature of which greatly increases throughout its length. The maximum temperature is some 2,000 degrees Centigrade, at which heat the porcelain are so hot that they are transparent. When passing the hottest spot in the furnace they are gradually cooled by passing between water pipes until, when they emerge into the open air again, they are cold, glazed, practically indestructible and possessed of high dielectric properties.

The central electrodes are connected into the sealant, and are baked at a comparatively low temperature for five days. The final operation is assembling, which means making a terminal which seals the joint where a screw is machined in the base of the steel body. The metal here is very much thinner than at any other part. Thus, when the assembled plug is placed in a machine and a high-pressure electric current passed through the body, the metal becomes red-hot at the point where the area of the cross-section is smallest. The units are then compressed mechanically, and the joint is sealed in a way which renders it absolutely leakage-proof.

To ensure a satisfactory degree of consistency every insulator is tested up to 25,000 volts on fewer than three consecutive days. The manufacturer, while every morning a test is taken up to the same voltage when the plug is heated to 600 degrees Centigrade. This, of course, is a very severe test (The Motor).

on plugs to a divergency, which takes them through a furnace, the temperature of which greatly increases throughout its length. The maximum temperature is some 2,000 degrees Centigrade, at which heat the porcelain are so hot that they are transparent. When passing the hottest spot in the furnace they are gradually cooled by passing between water pipes until, when they emerge into the open air again, they are cold, glazed, practically indestructible and possessed of high dielectric properties.

The central electrodes are connected into the sealant, and are baked at a comparatively low temperature for five days. The final operation is assembling, which means making a terminal which seals the joint where a screw is machined in the base of the steel body. The metal here is very much thinner than at any other part. Thus, when the assembled plug is placed in a machine and a high-pressure electric current passed through the body, the metal becomes red-hot at the point where the area of the cross-section is smallest. The units are then compressed mechanically, and the joint is sealed in a way which renders it absolutely leakage-proof.

To ensure a satisfactory degree of consistency every insulator is tested up to 25,000 volts on fewer than three consecutive days. The manufacturer, while every morning a test is taken up to the same voltage when the plug is heated to 600 degrees Centigrade. This, of course, is a very severe test (The Motor).

The final operation is the firing. The insulator is fired in a furnace, which takes them through a furnace, the temperature of which greatly increases throughout its length. The maximum temperature is some 2,000 degrees Centigrade, at which heat the porcelain are so hot that they are transparent. When passing the hottest spot in the furnace they are gradually cooled by passing between water pipes until, when they emerge into the open air again, they are cold, glazed, practically indestructible and possessed of high dielectric properties.



Adjusted in a moment

and what a tremendous saving in time and trouble.
When roads are sandy, wet, soft, muddy or boggy you should get WEED TYRE CHAINS. They provide the traction—"grip on the road"—so imperatively needed, and thus prevent loss of power, delays and possible serious accident from skidding.
Weed Tyre Chains are made for all types. They are easily identified by their brass-plated, hardened steel cross chains—galvanized steel chains—and red level-locking connecting hooks with the name "WEED" stamped on them.



WEED TYRE CHAINS

Standard of quality for over a quarter of a century.
Order from your dealer.
AMERICAN CHAIN COMPANY, Inc.
New York, N.Y., U.S.A.

R. O. PRESTON

Salsbury Rd. Box 807. Westlands.
Ladies Dresses
Millinery
Children's Clothing
Hosiery etc.
Houses to let & for Sale
Small & Large Farms
for Sale.
Newly Built House, all modern conveniences to let from 1st April.

The Advance Modes for the Season are Here!

All New and Authentic
PARIS Shades
Beautiful Copies and adaptation of Evening Frocks, Afternoon Frocks, Etc. That made their appearance at the opening

Paris Fashion Parade.
Every mail will add to our collection of the latest models, all of those that are smartest, fashionable in London and on the Continent.
"THE HOME OF GOOD VALUE"
HUSEIN & Co.,
Phone 689 Govt. Road, Nairobi Box 301

"IRONITE"

FOR
DUSTLESS, WATERPROOF AND GREASEPROOF
FLOORING and PAVING
IRONITE forms a dense compact homogeneous floor that fulfills every possible requirement under conditions where the heaviest traffic predominates.
The hardening effect resulting from the use of IRONITE steadily increases with age, and much surpasses the strength and durability of any other concrete floor.
An IRONITE TOPPING can be laid on any existing concrete floor.

WEAR-PROOF & WATER-PROOF
Specified by the World's Leading Architects
Wholesale Stockists:
F. M. BHAIJEE, NAIROBI

CROWN BOND



Kenya's Leading Stationers
Fads 100 Sheets size 8 x 5 Shgs. 2/3d
Fads 100 Sheets size 7 Shgs. 3/5d
Fads 100 Sheets size 10 x 8 Shgs. 4/-
Staxx Notepaper 120 sheets Shgs 5/-
and 5/5d per Box
Envelopes to match 5/- and 5/5d per 100

STANDARD STATIONERY STORES, NAIROBI.

Phone 241. **WOOO DOORS** P.O. Box 71
Made of Seasoned Columbian Pine
Cheaper than Fodo.
G. J. LAING, The Builder, Importer & Stockist

To Let.

A Wood and Iron House, Caledonia Road, Hill. Apply to CAMPOS BROS., P.O. Box 780, Leader Buildings.

GARLAND



THAT MATTER

Motor Mart & Exchange, Ltd.

NAIROBI.

NAIROBI.

DAER-SALAM

Only the Best



The best optician and the best glasses are not necessarily the most expensive, but they will be vital even if they were. You are assured of receiving only the best, in consulting
DOBBIES Ltd, Nairobi.

For Sale

SEASX Super-Six Four-Door Saloon, practically new, runs less than 2,000 miles. All Standard Fittings and Chains. Excellent Car for Work. Easy to drive. Price Shgs. 5,500 Cash. Delivery given in seven days. Apply Webber No. 6685, "Standard," Nairobi.

DIARIES

KENYA AND UGANDA 1936
REDUCED to Shgs. 3-00.

(POSTED SHGS. 3/60)
Diary size 10 x 8 inches. 8 Days to page. Complete Labour Record, Rainfall Register and information on the following subjects:-
Government Departments—Registered Telegraph Addresses.
Kenya Government Departments—P.O. Numbers.
Postal Charges (Inland).
Postal Charges (British Empire and Foreign).
Parcel Post (Foreign and Colonial).
Inland Telegrams.
C.O.D. System.
Gains Laws.
Measurement of the Quantity of Water Flowing in a Stream.
Number of Plants required to set an Acre of Ground at given distances.
Acceptance of Traffic Days.
Weights and Measures.
Resident Native Labourers' Ordinances, 1936 (Amended Rules).
Percentage of Buter to Milk.
Ready Reckoner for Labour Wages.
Mixing of Mortar and Concrete.
Fungicides Combined with Potatoes.
Period of Heat in Farm Animals.
Gestation and Incubation Figures.
Periods of Season.
Analysis of Fodders.
Weight of Dead and Live Cattle.
Speed of Animals, etc.

ONLY A FEW COPIES LEFT
STANDARD STATIONERY STORES, NAIROBI.

"STANDARD" FEATURE PAGE

For Dinner

...entertain friends...
...in the matter of coffee...
...the light, fluffy, all of them...



...s Bank (Dominion,
...al and Overseas).

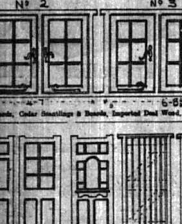
...THE COLONIAL BANK
...The United Kingdom by Royal Charter, 1836...

...BANK OF SOUTH AFRICA LIMITED
...D B D
...LO-EGYPTIAN BANK LIMITED.

...Several Additional Offices
...has been returned to Tanganyika...

...CO. BLOWERS.
...CONTRACTOR, MANUFACTURERS AND DIRECT IMPORTER.

...CASH WITH ORDER.
...No. 2 No. 3



...NOTE
...Windows glazed
...with double panes...

...GOOD CONCRETE REQUIRES
...GOOD BALLAST.

...Well matched CONCRETE BLOCKS
...in stock at SHARP PRICES.

...EAST AFRICA IN LONDON.
...Personal Notes and
...Views of Colonists.

...THE FOLLOWING NOTICE APPEARED
...in The Times, this week—The
...marriage arranged between...

...Among those outward bound
...to East Africa are Colonel M. D. S.

...Several Additional Offices
...has been returned to Tanganyika...

...THE POLITICAL COMMITTEE OF THE
...LONDON EASTERN CHAM. has just...

...F. A. HEAD,
...PIANOFORTE, TUNER AND REPAIRER.

...Miss KATHLEEN BATES A.R.C.M.
...RECEIVES PUPILS FOR
...PIANOFORTE—SINGING—HARMONY.

...arranged a series of lectures,
...which will commence on Tuesday...

...Mr. H. H. M. P. has been
...appointed a member of the Com-

...According to a notice of interest,
...the education of the children of the...

...An appeal is being made by the
...Congregational Church of England...

...A meeting of the Administrative
...Council of the Empire United...

...Some time ago the following
...was published in The Times...

...The Corporation of the Town of
...London, recently sent representatives...

...The following notice appeared
...in The Times, this week—The...

...A meeting of the Administrative
...Council of the Empire United...

...The following notice appeared
...in The Times, this week—The...

...The following notice appeared
...in The Times, this week—The...

...Mr. Hewson, representing the
...London Corporation, has been...

...The following notice appeared
...in The Times, this week—The...

...The following notice appeared
...in The Times, this week—The...

...The following notice appeared
...in The Times, this week—The...

...The following notice appeared
...in The Times, this week—The...

South African Railways and Harbours.
South African Wines Jams Fruits
Are of the Best
ARE AND OBTAINABLE IN MANY OF THE
RETAIL STORES IN KENYA.
Ask for Them.
TRADE COMMISSIONER FOR SOUTH AFRICA.
Box 624, NAIROBI.

IF YOU KNEW
Since everyone cannot be a connoisseur you
must let the connoisseurs guide you.
The world-renowned FERREIRAS, the veterans of
port wine fame, give you their centuries of
experience in every bottle of their PORT WINE.
Always ask for FERREIRAS'S PORT CONDE
when you are getting the BEST. And why should you
not when you know that from the grape to the
bottle, every detail is under the most exacting
supervision? It is their own exclusive speciality!

BUY YOUR
Chocolate FRESH
FROM
TORRES

BRITISH EMPIRE
Standard Typewriter
SIMPLE. STRONG. SPEEDY.
A HIGH GRADE BRITISH
MADE WRITING MACHINE.
THE IDEAL COMBINATOR.
BRITISH BRAINS
EFFICIENT LABOUR
BRITISH MATERIAL.
BRITISH CAPITAL.
10-inch CARRIAGE
Shs. 630
14-inch CARRIAGE
Shs. 700
PLEASE CALL AND LET US DEMONSTRATE.
Phone us and we will bring a Machine
to your office.
Standard Stationery Stores,
NAIROBI.

A Bluff that Works.

No one takes chances against a gun. Safety Revolvers and Automatics No registration required; all the attributes of a lethal weapon without it's deadliness. Blank cartridge only. Ladies Protect Yourself, without risk. **SHAW and HUNTER.** Box .70 NAIROBI.

Pruning Knives

MADE BY THE HARDY PATENT TOOL CO., LTD. OF BEST QUALITY STEEL

3" Blade Blgs. 20/- per doz.
4" Blade Blgs. 32/0 per doz.
LESS 10% FOR CASH.

Stocked by **J. W. Milligan & Co.** NAIROBI. P.O. Box 148.

Charles Ware

TURF ACCOUNTANT.

Lincoln Handicap: 4/1 Orbindo, 7/1 Mahawk, 9/1 Fancy Fern, 10/1 Cramick, Philimon, Priority Park; 19/1 Jugo. Adier: 14/1 Caustic; 18/1 Dark War. 20/1 to 85/1 others.

Grand National: 8/1 Easter Hero, Bovril 11/1, Master Bill; 6/1 Amberware; 10/1 Trump Card; 19/1 Carfax, Brights Boy, Coyote, White Park; 18/1 Great Span, Billie Barton, Maguelonne; 18/1 to 101/1 others.

Derby: 4/1 Fairway; 6/1 Flamingo; 6/1 Buland; 8/1 Gang Wardly, Hermit II; 10/1 Black Wax, Flame; 20/1 to 85/1 others.

J. H. S. TODD & Co., Ltd. General Merchants NAIROBI.

SUCCESS IN GARDENS depends on your gardening tools and supplies. Take advantage of this money-saving bargain. Select your gardening supplies today. We handle everything that will help you make your garden one of the best.

SHOUBTEN'S COURTESY

The Premier Ladies' Handbag Revolution in East Africa.

Combined with the SKILL of experts from the standard of our success.

Permanent Waving for **COLORS COMFORT CONVENIENCE CORRECTNESS**

Phone 845. Box 284.

DO YOU USE THE "BIRDIE" GOLF BALL?

If you already use it you are getting the best possible. If you have not tried it Do it now!

THE LONGEST DRIVING THE STEADDIEST IN FLIGHT THE TOUGHEST COVER.

Shs. 2-50 each. From all Professionals and Dealers and from **MAY & Co., Ltd.** NAIROBI. THE SPORTS HOUSE.

THE SPORTS PAGE

HOME FOOTBALL

League Tables Compiled to Date.

RAZORS DROP DOWN.

The following are the tables of the Football and Football League compiled up to and including matches played on Monday, March 19:

FOOTBALL LEAGUE.

First Division.

Club	P.	W.	D.	L.	F.	A.	P.
Manchester	28	12	7	9	42	32	10
Sheff. Wed.	28	12	7	9	42	32	10
Sheff. Utd.	28	12	7	9	42	32	10
Sheff. F.C.	28	12	7	9	42	32	10
Sheff. B.	28	12	7	9	42	32	10
Sheff. C.	28	12	7	9	42	32	10
Sheff. D.	28	12	7	9	42	32	10
Sheff. E.	28	12	7	9	42	32	10
Sheff. F.	28	12	7	9	42	32	10
Sheff. G.	28	12	7	9	42	32	10
Sheff. H.	28	12	7	9	42	32	10
Sheff. I.	28	12	7	9	42	32	10
Sheff. J.	28	12	7	9	42	32	10
Sheff. K.	28	12	7	9	42	32	10
Sheff. L.	28	12	7	9	42	32	10
Sheff. M.	28	12	7	9	42	32	10
Sheff. N.	28	12	7	9	42	32	10
Sheff. O.	28	12	7	9	42	32	10
Sheff. P.	28	12	7	9	42	32	10
Sheff. Q.	28	12	7	9	42	32	10
Sheff. R.	28	12	7	9	42	32	10
Sheff. S.	28	12	7	9	42	32	10
Sheff. T.	28	12	7	9	42	32	10
Sheff. U.	28	12	7	9	42	32	10
Sheff. V.	28	12	7	9	42	32	10
Sheff. W.	28	12	7	9	42	32	10
Sheff. X.	28	12	7	9	42	32	10
Sheff. Y.	28	12	7	9	42	32	10
Sheff. Z.	28	12	7	9	42	32	10

Second Division.

Club	P.	W.	D.	L.	F.	A.	P.
Sheff. A.	28	12	7	9	42	32	10
Sheff. B.	28	12	7	9	42	32	10
Sheff. C.	28	12	7	9	42	32	10
Sheff. D.	28	12	7	9	42	32	10
Sheff. E.	28	12	7	9	42	32	10
Sheff. F.	28	12	7	9	42	32	10
Sheff. G.	28	12	7	9	42	32	10
Sheff. H.	28	12	7	9	42	32	10
Sheff. I.	28	12	7	9	42	32	10
Sheff. J.	28	12	7	9	42	32	10
Sheff. K.	28	12	7	9	42	32	10
Sheff. L.	28	12	7	9	42	32	10
Sheff. M.	28	12	7	9	42	32	10
Sheff. N.	28	12	7	9	42	32	10
Sheff. O.	28	12	7	9	42	32	10
Sheff. P.	28	12	7	9	42	32	10
Sheff. Q.	28	12	7	9	42	32	10
Sheff. R.	28	12	7	9	42	32	10
Sheff. S.	28	12	7	9	42	32	10
Sheff. T.	28	12	7	9	42	32	10
Sheff. U.	28	12	7	9	42	32	10
Sheff. V.	28	12	7	9	42	32	10
Sheff. W.	28	12	7	9	42	32	10
Sheff. X.	28	12	7	9	42	32	10
Sheff. Y.	28	12	7	9	42	32	10
Sheff. Z.	28	12	7	9	42	32	10

Third Division.

Club	P.	W.	D.	L.	F.	A.	P.
Sheff. A.	28	12	7	9	42	32	10
Sheff. B.	28	12	7	9	42	32	10
Sheff. C.	28	12	7	9	42	32	10
Sheff. D.	28	12	7	9	42	32	10
Sheff. E.	28	12	7	9	42	32	10
Sheff. F.	28	12	7	9	42	32	10
Sheff. G.	28	12	7	9	42	32	10
Sheff. H.	28	12	7	9	42	32	10
Sheff. I.	28	12	7	9	42	32	10
Sheff. J.	28	12	7	9	42	32	10
Sheff. K.	28	12	7	9	42	32	10
Sheff. L.	28	12	7	9	42	32	10
Sheff. M.	28	12	7	9	42	32	10
Sheff. N.	28	12	7	9	42	32	10
Sheff. O.	28	12	7	9	42	32	10
Sheff. P.	28	12	7	9	42	32	10
Sheff. Q.	28	12	7	9	42	32	10
Sheff. R.	28	12	7	9	42	32	10
Sheff. S.	28	12	7	9	42	32	10
Sheff. T.	28	12	7	9	42	32	10
Sheff. U.	28	12	7	9	42	32	10
Sheff. V.	28	12	7	9	42	32	10
Sheff. W.	28	12	7	9	42	32	10
Sheff. X.	28	12	7	9	42	32	10
Sheff. Y.	28	12	7	9	42	32	10
Sheff. Z.	28	12	7	9	42	32	10

FOOTBALL LEAGUE.

Club	P.	W.	D.	L.	F.	A.	P.
Sheff. A.	28	12	7	9	42	32	10
Sheff. B.	28	12	7	9	42	32	10
Sheff. C.	28	12	7	9	42	32	10
Sheff. D.	28	12	7	9	42	32	10
Sheff. E.	28	12	7	9	42	32	10
Sheff. F.	28	12	7	9	42	32	10
Sheff. G.	28	12	7	9	42	32	10
Sheff. H.	28	12	7	9	42	32	10
Sheff. I.	28	12	7	9	42	32	10
Sheff. J.	28	12	7	9	42	32	10
Sheff. K.	28	12	7	9	42	32	10
Sheff. L.	28	12	7	9	42	32	10
Sheff. M.	28	12	7	9	42	32	10
Sheff. N.	28	12	7	9	42	32	10
Sheff. O.	28	12	7	9	42	32	10
Sheff. P.	28	12	7	9	42	32	10
Sheff. Q.	28	12	7	9	42	32	10
Sheff. R.	28	12	7	9	42	32	10
Sheff. S.	28	12	7	9	42	32	10
Sheff. T.	28	12	7	9	42	32	10
Sheff. U.	28	12	7	9	42	32	10
Sheff. V.	28	12	7	9	42	32	10
Sheff. W.	28	12	7	9	42	32	10
Sheff. X.	28	12	7	9	42	32	10
Sheff. Y.	28	12	7	9	42	32	10
Sheff. Z.	28	12	7	9	42	32	10

INDIAN SCHOOL CRICKET.

Close of Successful Season.

THE LAST MATCH.

(By "Bully B.")
On the last day of the Indian School cricket season a match was played between the school and the public XI. The result was a draw. The school XI scored 48 runs and the public XI scored 48 runs. The match was a close one and the school XI were well supported. The public XI were also well supported and the match was a very interesting one. The school XI were well supported and the public XI were also well supported and the match was a very interesting one.

CRICKET LEAGUE.

First Division.

Club	P.	W.	D.	L.	F.	A.	P.
Sheff. A.	28	12	7	9	42	32	10
Sheff. B.	28	12	7	9	42	32	10
Sheff. C.	28	12	7	9	42	32	10
Sheff. D.	28	12	7	9	42	32	10
Sheff. E.	28	12	7	9	42	32	10
Sheff. F.	28	12	7	9	42	32	10
Sheff. G.	28	12	7	9	42	32	10
Sheff. H.	28	12	7	9	42	32	10
Sheff. I.	28	12	7	9	42	32	10
Sheff. J.	28	12	7	9	42	32	10
Sheff. K.	28	12	7	9	42	32	10
Sheff. L.	28	12	7	9	42	32	10
Sheff. M.	28	12	7	9	42	32	10
Sheff. N.	28	12	7	9	42	32	10
Sheff. O.	28	12	7	9	42	32	10
Sheff. P.	28	12	7	9	42	32	10
Sheff. Q.	28	12	7	9	42	32	10
Sheff. R.	28	12	7	9	42	32	10
Sheff. S.	28	12	7	9	42	32	10
Sheff. T.	28	12	7	9	42	32	10
Sheff. U.	28	12	7	9	42	32	10
Sheff. V.	28	12	7	9	42	32	10
Sheff. W.	28	12	7	9	42	32	10
Sheff. X.	28	12	7	9	42	32	10
Sheff. Y.	28	12	7	9	42	32	10
Sheff. Z.	28	12	7	9	42	32	10

Second Division.

Club	P.	W.	D.	L.	F.	A.	P.
Sheff. A.	28	12	7	9	42	32	10
Sheff. B.	28	12	7	9	42	32	10
Sheff. C.	28	12	7	9	42	32	10
Sheff. D.	28	12	7	9	42	32	10
Sheff. E.	28	12	7	9	42	32	10
Sheff. F.	28	12	7	9	42	32	10
Sheff. G.	28	12	7	9	42	32	10
Sheff. H.	28	12	7	9	42	32	10
Sheff. I.	28	12	7	9	42	32	10
Sheff. J.	28	12	7	9	42	32	10
Sheff. K.	28	12	7	9	42	32	10
Sheff. L.	28	12	7	9	42	32	10
Sheff. M.	28	12	7	9	42	32	10
Sheff. N.	28	12	7	9	42	32	10
Sheff. O.	28	12	7	9	42	32	10
Sheff. P.	28	12	7	9	42	32	10
Sheff. Q.	28	12	7	9	42	32	10
Sheff. R.	28	12	7	9	42	32	10
Sheff. S.	28	12	7	9	42	32	10
Sheff. T.	28	12	7	9	42	32	10
Sheff. U.	28	12	7	9	42	32	10
Sheff. V.	28	12	7	9	42	32	10
Sheff. W.	28	12	7	9	42	32	10
Sheff. X.	28	12	7	9	42	32	10
Sheff. Y.	28	12	7	9	42	32	10
Sheff. Z.	28	12	7	9	42	32	10

Indian School Cricket.