

**KENYA GOVERNMENT ARCHIVES**  
**PHOTOGRAPHIC SERVICE**

**REEL No.**

72

# KENYA NATIONAL ARCHIVES

## PHOTOGRAPHIC SERVICE

Description of Document THE EAST AFRICAN STANDARD (MOMBASA TIMES & UGANDA ARGUS)

(Daily Edition)

Covering Dates 1st to 31st December, 1928

Reference No. From E.A.S. Library

The following reproduction(s) of document(s), the property of THE KENYA GOVERNMENT have been made by the Photographic Service of the Kenya National Archives solely for the purposes of research, and must not be quoted or otherwise reproduced by any means, either in whole or in part, without the express permission of the Chief Archivist, Office of the Vice-President, P.O. Box 30520, Nairobi, Kenya, to whom all communications respecting this film should be addressed.

Date of Production 4<sup>th</sup> March 1968



BIRD'S Custard makes the most of Milk and gives you all its Vitamins



Bird's Custard is made in the most advanced manner.

The Poultry World. Colds and Allied Diseases. Methods of Treatment.

A correspondent writes asking for a recipe for colds and allied complaints of fowls. The remedy... The following should be used...

times one eye is completely closed. The use of sulphate of copper... The Jubilee Show of the British Dairy Farmers Association was held at the Agricultural Hall, London...



JOHNNIE WALKER

THE man who says "Thanks, me a 'Joannie Walker' chooses whisky wisely at well.



Born 1830 - Sell going Strong

SUPREME ENJOYMENT TELLS YOU THAT SOMEONE HAS REACHED THE SUMMIT of his life's work. Some-one has found the better soil for the cultivation of his plant...

"SEA LORD" CIGARETTES

THE BEST BLEND FOR THE PRICE ON THE KENYA MARKET. 50 for 1-25 10 for 25c GODEFREY PHILLIPS, Ltd. Distributors: Dalgety & Co., Ltd MOMBASA NAIROBI ELDORET.

Swollen Eyes. A bird will occasionally get a swollen eye and if not attended the bird will lose its sight. Swollen eyes should be well bathed in warm water...

As regards the quality of the exhibits this was quite up to the standard seen at this event, but upon this feature there is no necessity to enlarge here...

awarded to Messrs. Hutchinson and Blum's best cock. The second for best Black Wyandotte Blum was won by Mr. Phillips...

ROUSTABOUT CLARET LTD. Mombasa, Nairobi, Dar-es-Salaam, Zanzibar, London and Liverpool.

NOW OPEN THE Nairobi General Cash Stores Ltd. GOVERNMENT ROAD. (In the Premises lately occupied by Colonial General Stores.)

PROVISION DEALERS and GROCERS TOBACCO, CIGARETTES, and CONFECTIONERY. FRESH FRUIT, CUT FLOWERS and VEGETABLES. SEEDS, FARMS and LOCAL PRODUCE. BOUQUETS and WEATHERS.

THE GIFT SHOP

Always Something New & Interesting.

Taws Limited. NAIROBI

P. STEWART, CIGAR, E.L.D., FAIRFAX & DEBORAH, Harding Street, NAIROBI. P.O. Box 554.

PAINTER, COLOURS, OILS VARNISHES & DISTEMPERS. Large or Small Quantities.

John Rifkin, SIXTH AVENUE, P.O. BOX 218, NAIROBI.

WAGON BUILDER, BLACKSMITH FABRICATOR, SUEK OF ALLES BRAKES, WAGONS, and ALL WAGON PARTS. ALL KINDS OF WAGONS. MADE IN ORDER.

Doonholm Dairy, Box 11, Nairobi. FOR Pure Milk and Cream. From Farms to Consumers. TO LET.

From 1st January 1928, premises now under construction adjoining Central Hotel, Victoria Street, suitable for garage, factory, wholesalers' offices and godowns. Estimates of shop internal arrangements made to suit tenants' requirements. 10 x 100. STANDARD BUILDING CO. LTD. P.O. Box 554.

Not a single sale was effected in the Utility section. In the bedding classes were sold: Mr. J. M. Shotton, and prize Leghorn cockers: 28 10s.; Mr. Ian Gow a 1st prize Leghorn pullet, 20 10s.; Messrs. A. and W. Taylor's 2nd prize Black Wyandotte cocker, 14s.; Mr. W. H. Brewer's White Wyandotte cocker, 14s.; Mr. W. H. Brewer's 1st prize Black Orpington cocker, 14s.; Mr. W. H. Brewer's 2nd prize B. I. Red cocker, 14s.; Mr. W. H. Brewer's 3rd prize B. I. Red pullet, 14s.; Mr. W. H. Brewer's 4th prize B. I. Red pullet, 14s.; Mr. W. H. Brewer's 5th prize B. I. Red pullet, 14s.; Mr. W. H. Brewer's 6th prize B. I. Red pullet, 14s.; Mr. W. H. Brewer's 7th prize B. I. Red pullet, 14s.; Mr. W. H. Brewer's 8th prize B. I. Red pullet, 14s.; Mr. W. H. Brewer's 9th prize B. I. Red pullet, 14s.; Mr. W. H. Brewer's 10th prize B. I. Red pullet, 14s.

Fair Prices.

The following are considered fair retail prices for Superfine Flour "Kenya's Mist," in Nairobi, Nakuru, Njoro, and Molo. PER POUND... PER 10 LB. COTTON BAG... PER 50 LB. COTTON BAG... The undermentioned firms are selling at these prices: NAIROBI: WIMHURST LIMITED, M. S. ELLIOTT & CO. LTD., K. J. NARAJI & CO., COLONIAL GENERAL STORES, LTD., BELFRAM PARIMAL & CO., HANSAKALI BROS. NAKURU: IRRABHI KARIMBUX, H. SPEER, HARSINGH GUJARHALLI, KENYA GROCERIES, LTD. NJORO and MOLO: THE EUROPEAN STORE LTD. RONGAI: BUREN BROTHERS. There is more "Kenya's Mist" sold in Kenya and imported, combined. It is the flour of deplorable high quality.

UNGA Ltd., Njoro.

EAST AFRICAN STANDARD

DAILY EDITION. ADVERTISERS' NOTES. Advertisements are accepted only subject to approval. Domestic Advertisements. Births, Marriages and Deaths. All notices must be sent with a minimum of 5s.

FOR SALE (Contd.)

1928 14-16 40-ton Trucks. For sale in good condition. Apply to Messrs. J. & C. H. B. Ltd., Nairobi.

SITUATIONS VACANT.

THE charge for advertisements in this column is Sh. 1/- for a line of 35 words, or a fraction of a line, with a minimum of Sh. 2/- for a half price on consecutive days only.

SITUATIONS WANTED.

THE charge for advertisements in this column is Sh. 1/- for a line of 35 words, or a fraction of a line, with a minimum of Sh. 2/- for a half price on consecutive days only.

FARMS FOR SALE.

PROSPECTIVE Farms. About 2000 acres. 400 acres, excellent permanent pasture. Packed with improved stock.

EQUATOR SAW MILLS. P.O. Plateau. P.O. Mail-Masuri. Best Office. P.O. Box 281, NAIROBI. Highest Quality. Lowest Prices. Largest Stocks. Smallest Moisture Contents. Quickest Delivery.

THE SUBSCRIPTION RATES.

DAILY. Locally, yearly, Shs. 60.00. Quarterly, Shs. 15.00. Postal, yearly, Shs. 75.00. Quarterly, Shs. 18.75.

FOR SALE.

THE charge for advertisements in this column is Sh. 1/- for a line of 35 words, or a fraction of a line, with a minimum of Sh. 2/- for a half price on consecutive days only.

TO LET.

THE charge for advertisements in this column is Sh. 1/- for a line of 35 words, or a fraction of a line, with a minimum of Sh. 2/- for a half price on consecutive days only.

MISCELLANEOUS.

THE charge for advertisements in this column is Sh. 1/- for a line of 35 words, or a fraction of a line, with a minimum of Sh. 2/- for a half price on consecutive days only.

FARMS FOR SALE.

Doleky & Company, Limited. LAND AGENCY DEPARTMENT. 10, SOUTH AVENUE, NAIROBI.

FARMS FOR SALE.

NEAR NAIROBI: 20 acres excellent soil, river frontage. Near 2/9. £1100.

OF IMPORTANCE TO YOU. We have much pleasure in bringing to the notice of our Clients... Waring's Ltd. Africa House, Government Road, NAIROBI.

FOR SALE.

THE charge for advertisements in this column is Sh. 1/- for a line of 35 words, or a fraction of a line, with a minimum of Sh. 2/- for a half price on consecutive days only.

TO LET.

THE charge for advertisements in this column is Sh. 1/- for a line of 35 words, or a fraction of a line, with a minimum of Sh. 2/- for a half price on consecutive days only.

MISCELLANEOUS.

THE charge for advertisements in this column is Sh. 1/- for a line of 35 words, or a fraction of a line, with a minimum of Sh. 2/- for a half price on consecutive days only.

FARMS FOR SALE.

NEAR NAIROBI: 20 acres excellent soil, river frontage. Near 2/9. £1100.

FARMS FOR SALE.

NEAR NAIROBI: 20 acres excellent soil, river frontage. Near 2/9. £1100.

ARIEL 10,000 MILES. Tuesday, October 23rd, 1928. Two Ariel Motor Cycles, one 250 c.c., one 500 c.c. have to-day completed a reliability test of 10,000 miles, under Auto-Cycle Union observations.

FOR SALE.

THE charge for advertisements in this column is Sh. 1/- for a line of 35 words, or a fraction of a line, with a minimum of Sh. 2/- for a half price on consecutive days only.

TO LET.

THE charge for advertisements in this column is Sh. 1/- for a line of 35 words, or a fraction of a line, with a minimum of Sh. 2/- for a half price on consecutive days only.

MISCELLANEOUS.

THE charge for advertisements in this column is Sh. 1/- for a line of 35 words, or a fraction of a line, with a minimum of Sh. 2/- for a half price on consecutive days only.

FARMS FOR SALE.

NEAR NAIROBI: 20 acres excellent soil, river frontage. Near 2/9. £1100.

FARMS FOR SALE.

NEAR NAIROBI: 20 acres excellent soil, river frontage. Near 2/9. £1100.

J. R. Cox & Co. SIXTH AVENUE. Nakuru, Eldoret, Kampala, Dar-es-Salaam.

FOR SALE.

THE charge for advertisements in this column is Sh. 1/- for a line of 35 words, or a fraction of a line, with a minimum of Sh. 2/- for a half price on consecutive days only.

TO LET.

THE charge for advertisements in this column is Sh. 1/- for a line of 35 words, or a fraction of a line, with a minimum of Sh. 2/- for a half price on consecutive days only.

MISCELLANEOUS.

THE charge for advertisements in this column is Sh. 1/- for a line of 35 words, or a fraction of a line, with a minimum of Sh. 2/- for a half price on consecutive days only.

FARMS FOR SALE.

NEAR NAIROBI: 20 acres excellent soil, river frontage. Near 2/9. £1100.

FARMS FOR SALE.

NEAR NAIROBI: 20 acres excellent soil, river frontage. Near 2/9. £1100.

NOTICE. To meet the growing demand for sanitary and hot and cold water installations the Staff of our Sanitary Engineering Department has been increased by the employment from England of an expert European Plumber. All classes of sanitary work are undertaken and inquiries are invited.

FOR SALE.

THE charge for advertisements in this column is Sh. 1/- for a line of 35 words, or a fraction of a line, with a minimum of Sh. 2/- for a half price on consecutive days only.

TO LET.

THE charge for advertisements in this column is Sh. 1/- for a line of 35 words, or a fraction of a line, with a minimum of Sh. 2/- for a half price on consecutive days only.

MISCELLANEOUS.

THE charge for advertisements in this column is Sh. 1/- for a line of 35 words, or a fraction of a line, with a minimum of Sh. 2/- for a half price on consecutive days only.

FARMS FOR SALE.

NEAR NAIROBI: 20 acres excellent soil, river frontage. Near 2/9. £1100.

FARMS FOR SALE.

NEAR NAIROBI: 20 acres excellent soil, river frontage. Near 2/9. £1100.

FOR SALE.

THE charge for advertisements in this column is Sh. 1/- for a line of 35 words, or a fraction of a line, with a minimum of Sh. 2/- for a half price on consecutive days only.

TO LET.

THE charge for advertisements in this column is Sh. 1/- for a line of 35 words, or a fraction of a line, with a minimum of Sh. 2/- for a half price on consecutive days only.

MISCELLANEOUS.

THE charge for advertisements in this column is Sh. 1/- for a line of 35 words, or a fraction of a line, with a minimum of Sh. 2/- for a half price on consecutive days only.

FARMS FOR SALE.

NEAR NAIROBI: 20 acres excellent soil, river frontage. Near 2/9. £1100.

FARMS FOR SALE.

NEAR NAIROBI: 20 acres excellent soil, river frontage. Near 2/9. £1100.

FOR SALE.

THE charge for advertisements in this column is Sh. 1/- for a line of 35 words, or a fraction of a line, with a minimum of Sh. 2/- for a half price on consecutive days only.

TO LET.

THE charge for advertisements in this column is Sh. 1/- for a line of 35 words, or a fraction of a line, with a minimum of Sh. 2/- for a half price on consecutive days only.

MISCELLANEOUS.

THE charge for advertisements in this column is Sh. 1/- for a line of 35 words, or a fraction of a line, with a minimum of Sh. 2/- for a half price on consecutive days only.

FARMS FOR SALE.

NEAR NAIROBI: 20 acres excellent soil, river frontage. Near 2/9. £1100.

FARMS FOR SALE.

NEAR NAIROBI: 20 acres excellent soil, river frontage. Near 2/9. £1100.

LOCAL FLOUR. DESERVES YOUR SUPPORT BECAUSE... THE quality is excellent. It is invariably packed in 50 lbs. and 25 lbs. bags.

TO LET OR FOR SALE. Two Godowns. With one and a half acres of land. One with one acre and 1/2 of an acre. One with one acre and 1/2 of an acre.

F. H. AYRES LTD. LONDON. All Sorts Goods. Agents on Ayres' Trade Mark. Sole Importers for Kenya Colony.

Kenya & Uganda Railways & Harbours. PORT OF MOMBASA—DESIGNATION. It is hereby notified that the proper designation of the Port of Mombasa consists of: (1) The waterways and wharves at Kilindini Harbour, and (2) The waterways and wharves at the Old Harbours.

Caley's Chocolates. Obtainable Everywhere. Distributing Agent: PEGGY HERRY, City House, P.O. Box 928, NAIROBI.

Hartt & Bell Ltd. TANK MAKERS, SHEET METAL WORKERS, and SANITARY ENGINEERS. Stockists of: Sanitary, Sewer, Independent Bathers (Imported and local), Percolata Bathers, and the following: Shower Bathers, Patent and Percolata, Shower Stamps and Queen Bathers.

UNION CASTLE LINE.

ROSWAY via SUVA. From Mombasa. "Hambury Castle" 20th December. "Oudhina Castle" 2nd March, 1926. "Glenelg Castle" 21st April. "Glenelg Castle" 2nd June.

British India Steam Navigation Company, Ltd. AND PENINSULAR AND ORIENTAL STEAM NAVIGATION CO.

LONDON AND EAST AFRICA LINE. LONDON TO MOMBASA, via Marseilles, Port Said, Port Poucha and Aden, Ostrowski and Iswaraki. Steamers: Arrive Kilindi, Suez, London about. Sails from Kilindi for London about.

HOLLAND AFRIKA LIJN

ROSWAY via SUVA. S.S. "MAREK" (C) ... Arriving Dec 19. S.S. "MAREK" (C) ... Dec 19. S.S. "MAREK" (C) ... Dec 19.

TO DAIRY FARMERS

Cut down heavy and unnecessary labour expense BY USING Wallace Milking Machines. D. L. McWallace of New Zealand. The cleanest, simplest, and most economical machine on the market.

The African Marine & General Engineering COMPANY, LTD. KILIMBERT.

SHIP REPAIRING. GAIL MAKING & REPAIRING. MOUNDING. OXY ACETYLENE WELDING & CUTTING. In their well-equipped carpenter shops, all types of House and Office Furniture are made and repaired.

Deutsche Ost-Afrika-Linie (German African Service.)

COASTWISE EXCURSIONS. (at considerably reduced fares) BELRA, LOURENCO MARQUES and DURBAN and RETURN First and Second Class only available for the following steamers: Voyage No. 387 s.s. "ADOLPH WOERMANN" sailing on 30th December.

Compagnia Italiana Transatlantica.

Monthly Passenger Service to NAPLES and GENOVA by elegant and comfortable Oil-burner turbine steamers. The best route to London, via Italy. MAILING FROM KILIMBERT TO MOMBASA.

Hamilton & Coy. BAKERS AND BUTCHERS.

WESTLANDS BREAD, CAKES, AND BISCUITS. Hotels and Boarding Houses supplied at Wholesale Rates. Top Prices Paid for Primes Slaughter Stock.

Land Sale. PRELIMINARY ANNOUNCEMENT.

A. Davis & Co. ESTATE AGENTS, NAIROBI. Have been instructed to offer for sale by Public Auction or by Private Treaty small agricultural Leasehold (900 years lease) situate 9 miles from Nairobi.

A. Davis & Co. ESTATE AGENTS, NAIROBI.

Have been instructed to offer for sale by Public Auction or by Private Treaty small agricultural Leasehold (900 years lease) situate 9 miles from Nairobi. Permanent water available, good road across Thika Railway on property.

FOR SALE.

Rain Coat ... 20/- each. Rain Coat good but second. Heavy Black Rain Coat 12/- each. Ladies Gum Boots 10/- pair.

NATIONAL BANK OF INDIA LIMITED.

Subscribed Capital ... 25,000,000. Paid-up Capital ... 25,000,000. Reserve Fund ... 25,000,000. Branches in Calcutta, Bombay, Madras, Karachi, Lahore, Singapore, etc.

Chivers' Old English Marmalade. Chivers' Jellies. Sole Agents: R. O. HAMILTON, Ltd., NAIROBI.

Messageries Maritimes (FRENCH MAIL STEAMERS). Regular and fortnightly service from Mombasa to Zanzibar. Sole Agents: R. O. HAMILTON, Ltd., NAIROBI.

EXPERT VULCANIZING THE HEINTZ ELECTRIC WAY. IT'S DIFFERENT. ALL WORK GUARANTEED. K. McIvor's Garage. Phone 97, Sixth Avenue, P.O. Box 97.

F. A. HEAD. PIANOFORTE, TUNER and REPAIRER. Five years with Messrs. Chappell & Co., London. Seven years' experience in Kenya Colony. Send all orders to P.O. Box 67 OVERSEA'S MAILES.

Table with columns: STEAMERS, FROM, TO, DUE, MAILS. Includes routes to Mombasa, Zanzibar, and other ports.

CHRISTMAS OVERSEAS MAILES. According to the latest information supplied by the shipping companies, carried by the following vessels should arrive Mombasa on or before Christmas Day.

MALES FOR SOUTH AFRICA: Mombasa to Cape Town. Mombasa to Durban.

UPLANDS NEWS. HAMS FOR CHRISTMAS: A very large stock of fine quality Kenya Pigs, but from the best consumers are urged to place orders with their grocers as early as possible.

# DESTITUTE

Your first duty surely is to provide so that in the event of your death your dependents will not be left destitute.

Write us and we will show you how this can be done to your best advantage.

Exceptionally low premiums. Liberal conditions. Excellent bonus results declared annually.

**WHOLE LIFE POLICIES:**  
Annual premium for £1,000 (Age 30) ... £24 6 8  
Annual premium for £250 (Age 30) ... £2 6 8  
Annual bonus on above ... £24 6 8  
Similarly favourable terms for ENDOWMENTS. Write for full particulars of these, Joint Lives, or Children's Assurances, to

## National Mutual Life Association of Australasia Ltd.

(FUNDS £28,000,000.)

P.O. Box 684.

Cambridge Building, Government Road, Nairobi.

### Roads and Weather Reports.

#### P.W.D. WORK IN THE KAVIRIO AREA.

Rain is still falling more or less all over East Africa, writes Mr. P.W.D. Edwards, who is mainly employed in undertaking the concreting roads and designing waterfalls. The work during the last few days has been of an extraordinary amount of rain, but the roads have been open the whole time and the weather on the three days fine weather one can always cover the 27 miles in an hour and a half. They are also responsible for getting in most excellent concrete bridge girders where they do not break down or get washed away by flood water and if the present policy is only continued Central Kavirio will have most excellent roads in the near future.

#### Central Kavirio.

I have just been hearing some very interesting particulars regarding Central Kavirio roads, which has been so long in coming there since the month of April to date and the P.W.D. have had a bad time trying to cope with the results of the weather. Another most important factor is that there are over 100 Indian and native drivers and 60 men employed continuously in and out of Kavirio, bringing produce to the Railway. Say a stretch of road has just been done up, it rains steadily for two days and the horses plough their way through. They will not use chains and naturally get stuck on one part of the road, digging their feet in most occasionally. After they are hauled out two big holes remain, which get covered up with water and form a trap for the next vehicle which comes along a great road. When I was last over it in March one could spin along in perfect safety at 40 m.p.h. but unfortunately the mud runs over the black surface and horses immediately get stuck. It is not immediately it rains the water runs off the road and floods the whole country in the only solution is to either align the road or to raise it on top

### Weather Report.

#### HAVERI FALL IN THE KORDAI AREA.

of an embankment like the Railway which of course is impossible. It is not until it rains in the morning which runs along the foot of the South Hills and if this rain is only contracted it will solve the difficulty as it should prove a practically adequate road.

Mr. Campbell, the Executive Engineer, Kavirio, and Mr. P.W.D. Edwards, who is mainly employed in undertaking the concreting roads and designing waterfalls. The work during the last few days has been of an extraordinary amount of rain, but the roads have been open the whole time and the weather on the three days fine weather one can always cover the 27 miles in an hour and a half. They are also responsible for getting in most excellent concrete bridge girders where they do not break down or get washed away by flood water and if the present policy is only continued Central Kavirio will have most excellent roads in the near future.

#### Road Report.

The Hon. Secretary of the R.E.A.A. reports the following conditions on East African roads: Nairobi-Mombasa.—But at Athi River and in the Makindu area four diversions. Makindu, Voi. No rain, but if rain falls at that time, the basic section of 20 miles will be bad. Mombasa-Tanga.—Fair condition. Tanga-Kisumu.—Fair. Kisumu-Hardoi-Kisumu.—Open until 10th December, then closed until December 30th, for bridge repairs. Nairobi-Kajiado-Lengola.—In a poor, but fairly dry state and passable. Lengola-Moi-Angere.—Fair. Good road, but fairly dry now and considerable rain has fallen. Arusha-Dodoma.—Good except for first 20 miles out of Arusha. Dodoma-Matigato-Ayeru o P. Livingston.—Good. No rain. Roads passable without chains. Fort Hall-Nyeri.—Weather fairly good, roads still heavy. Fort Hall-Nyeri.—Weather fairly good, roads still heavy. Nairobi-Nyeri.—Very bad in places. Nairobi-Nakuru.—Fair.

Station	22 Nov. 25.	23 Nov. 25.	24 Nov. 25.
Elldara	21.90	19.28	19.28
Elldara	31.90	0.18	0.18
Fort Hall	33.11	0.88	0.88
Kericho	63.55	1.16	1.16
Laikipia	21.66	0.14	0.14
Kisumu	43.79	0.29	0.29
Nairobi	23.26	0.21	0.21
Lemera	39.84	0.50	0.50
Mombasa	36.90	1.29	1.29
Moi	36.90	1.86	1.86
Nairobi	28.00	0.68	0.68
Nakuru	26.85	0.65	0.65
Njoro	26.85	0.65	0.65
Rongai	25.84	2.14	2.14
Samurai	19.43	0.60	0.60
Sargul	35.41	0.57	0.57
Tika	22.98	0.62	0.62
Voi	26.85	0.21	0.21

The above figures are records taken at certain rain gauges throughout the Colony and recorded by telegraph.

When a month's return is required, then the weather the figures are available if a slight variation from the ordinary is formation is shown.

When no return is received a blank is shown when no rain falls 0.00 is printed.

## TRAP GUN



Will kill Lion, Leopard, Hyena, and any other Vermin. Sigs. 17/50 only. 16 Bore Shot Cartridges Sigs. 6/25 per 25 rounds.

We buy Trap Skins at from Sigs. 40/- to Sigs. 120/- each if in good condition.

## VERMIN TRAP



Hundreds of people are making money out of them by the sale of the skins.

Send for illustrated new Catalogue on Shot Guns, Rifles, Revolvers, and the best class of ammunition.

Vermin Traps will hold Lion, Leopard and all kinds of Vermin. Sigs. 25/- only.

**Chas. A. Heyer & Co. GUNMAKERS** Box 587 NAIROBI.

## Our Hosiery is Unequaled



**FANCY SOCKS FOR ANY DAY WEAR.**

Exceptional Design 3/60 4/50, 5/50, 6/50, 7/50 8/50 and 9/50 pair

The above are made from WOOD and COTTON, WOOL and SILK, SILK and COTTON.

THE "ARMY" GREY SHABRA SOCK. Price 2/- PAIR

A WONDERFUL LINE OF FANCY COTTON with INTERMEDIATE OF SILK in a HOST OF DESIGNS.

PER 2/50 PAIR 6 PAIRS FOR 14/-

## Maxwell Brady & Co.

P.O. NAIROBI and at ELDORET Box 50.

## FOR AN EFFICIENT AND PERMANENT HOT WATER SUPPLY

### INSTALL A Beeston Hot Water Boiler



THE WEBB'S ATTRACTION is the variety of DOUBLE TERRA HATS.

M. P. de Mello, P.O. Box 64 NAIROBI.

STATIONERY AT THE Standard Stationery Stores NAIROBI.

For particulars relating to the size of Boiler required and prices apply to—

**Thornton & Turpin** (Sole Agents)

REGISTERED PLUMBERS AND SANITARY ENGINEERS. NAIROBI and MOMBASA.

Phone 195 and P.O. Box 306, Mombasa.

# JUDGE FOR YOURSELF

## HOW FAR IN ADVANCE OF ALL OTHER CARS IS THE NEW CHRYSLER

### Silver Dome High Compression Engine

Seven-Bearing Counterweighted Crankshaft  
With Impulse Neutralizer

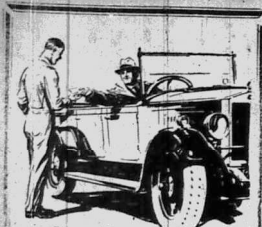
Automatic, Self-Adjusting Hydraulic Brakes  
Unaffected by any Weather Conditions

Engine and Springs Mounted in Rubber

## A TRIAL RUN WILL EASILY CONVINCING YOU

# Carr, Lawson & Co., Ltd.

Nairobi      Nakuru      Eldoret      Kampala.



### Use this old friend for Sprains

To drive out the pain and dispose more effectively than Sloan's Liniment it penetrates and quickly sends a supply of new blood circulating through the painful tissue, carrying away congestion and giving welcome relief and comfort.

For Rheumatism and kindred ailments Sloan's Liniment is the approved treatment. Clean and easy to use—no rubbing.

### Sloan's Liniment KILLS PAIN

RHEUMATISM, NEURALGIA, LUMBAGO, SPRAINING, SORE THROAT, BRUISES, BURNS, SCALDS, WOUNDS.



### Delicious for Breakfast

QUAKER OATS is an ideal breakfast food. It is easily prepared, easily digested and most nutritious. Especially good for children.

### Quaker Oats

SUIT & ATTACHE CASES & TRUNKS MAY & CO., LTD.

### XMAS PRESENTS

SELECT AT LALCHAND MOOLCHAND BROS. Government Road, NAIROBI. P.O. Box 375.

### Raleigh Motor Cycles.

VARIOUS MODELS at Greatly Reduced Prices. H.P. 1450 Shgs. 1,450. 2.90 H.P. Shgs. 1,300. 1.74 H.P. Shgs. 870. Call and inspect at McIvor's Garage, Sixth Avenue or Phone 97, P.O. Box 97, or Write Kettle-Road, P.O. Box 100, Nairobi. Terms Kettle Road.

Advertisement for Dobbies, Ltd. featuring an illustration of a man's face and text: 'Your Efficiency depends upon accurate untriving vision. Good eyesight is the first essential to clarity of thought. Have your eyes tested to-day. Dobbies, Ltd. Optician & Optical Dispensing, Nairobi. Phone 90. Box 90.'

### Topics for Motorists.

### The Six - Wheeler.

### Its Commercial Use in East Africa.

(By "CONVOY.") It is hoped that this type of vehicle may be taken up extensively for transport operations by owners and Companies. The construction is as follows: (a)—Increased flexibility in construction giving ability to traverse rough cross country ground without setting up under stress in the chassis. (b)—Ability to cross country without making the ground too rough for the farmer to be able to use it. (c)—Lower intensity of pressure on the ground. (d)—A satisfactory degree of adhesion to make use of thetractive force available. (e)—High pressure tyre of low resistance and cheap maintenance and simple arrangement. (f)—Economic use of ground economy under all conditions. (g)—Economy in running and maintenance and cheap arrangement. (h)—Reasonable first cost.

It would be unwise to use on heavy machines might be expected for the driver in respect of the physical effort required to apply such a vehicle. The effect on heavy vehicles having great capacity for carrying heavy loads is of considerable importance to the driver. Possibly it will be found that the vehicle will be used in the same way as the motor vehicle. It is not possible to say whether it will be used in the same way as the motor vehicle. It is not possible to say whether it will be used in the same way as the motor vehicle.

There seems to be no reason to doubt that the multi-wheeled motor vehicle will be used in the same way as the motor vehicle. It is not possible to say whether it will be used in the same way as the motor vehicle. It is not possible to say whether it will be used in the same way as the motor vehicle.

### Trans Nozia KIRKWOOD & Co., Kitale.

Main Dealers, Importers and Exporters. All Farming Requirements and Building Materials Stocked. Transport Contractors. Railway Clearing and Forwarding Agents. Distributors of H. P. Petrol, Tractor Kerosenes and other motor oils. Agents for J. NORTE & Son Ltd., Cockshott Implements and Spares. Land Agents.

### Keith Timber Co. Ltd.

CEGAR and PODO of ALL SIZES. MACHINED TIMBER A SPECIALITY. CEDAR FENCING, FENCE, SEASONED FLOOR BLOCKS IN STOCK. SAWS HAMMERED AND REPAIRED BY AN EXPERT.

### THE Bradford Manufacturing CO., LTD.

SUITABLE XMAS GIFTS FOR MEN. LUVISCA ART SILK TUNIC SHIRTS. Newest Stripes, 2 Collars, with Tabs and Stiffeners. With each shirt. Size 35" and 35 1/2" neck. Only Shs. 27/6 each. LUVISCA ART SILK PYJAMAS. Newest Stripes. Sizes 38" and 40". Shs. 35/- per suit. Imperial Chambers, above Tams Ltd., Government Road, Box 810.

(By "CONVOY.") It is hoped that this type of vehicle may be taken up extensively for transport operations by owners and Companies. The construction is as follows: (a)—Increased flexibility in construction giving ability to traverse rough cross country ground without setting up under stress in the chassis. (b)—Ability to cross country without making the ground too rough for the farmer to be able to use it. (c)—Lower intensity of pressure on the ground. (d)—A satisfactory degree of adhesion to make use of thetractive force available. (e)—High pressure tyre of low resistance and cheap maintenance and simple arrangement. (f)—Economic use of ground economy under all conditions. (g)—Economy in running and maintenance and cheap arrangement. (h)—Reasonable first cost.

It would be unwise to use on heavy machines might be expected for the driver in respect of the physical effort required to apply such a vehicle. The effect on heavy vehicles having great capacity for carrying heavy loads is of considerable importance to the driver. Possibly it will be found that the vehicle will be used in the same way as the motor vehicle. It is not possible to say whether it will be used in the same way as the motor vehicle.

There seems to be no reason to doubt that the multi-wheeled motor vehicle will be used in the same way as the motor vehicle. It is not possible to say whether it will be used in the same way as the motor vehicle. It is not possible to say whether it will be used in the same way as the motor vehicle.

### Trans Nozia KIRKWOOD & Co., Kitale.

Main Dealers, Importers and Exporters. All Farming Requirements and Building Materials Stocked. Transport Contractors. Railway Clearing and Forwarding Agents. Distributors of H. P. Petrol, Tractor Kerosenes and other motor oils. Agents for J. NORTE & Son Ltd., Cockshott Implements and Spares. Land Agents.

### Keith Timber Co. Ltd.

CEGAR and PODO of ALL SIZES. MACHINED TIMBER A SPECIALITY. CEDAR FENCING, FENCE, SEASONED FLOOR BLOCKS IN STOCK. SAWS HAMMERED AND REPAIRED BY AN EXPERT.

### THE Bradford Manufacturing CO., LTD.

SUITABLE XMAS GIFTS FOR MEN. LUVISCA ART SILK TUNIC SHIRTS. Newest Stripes, 2 Collars, with Tabs and Stiffeners. With each shirt. Size 35" and 35 1/2" neck. Only Shs. 27/6 each. LUVISCA ART SILK PYJAMAS. Newest Stripes. Sizes 38" and 40". Shs. 35/- per suit. Imperial Chambers, above Tams Ltd., Government Road, Box 810.

roads are bad, and good main roads are few, as a rule, the attention given to the better types of clamping bolts, for instance, is negligible, except with some of the more recent types of clamping bolts. (b)—Increased flexibility in construction giving ability to traverse rough cross country ground without setting up under stress in the chassis. (c)—Ability to cross country without making the ground too rough for the farmer to be able to use it. (d)—Lower intensity of pressure on the ground. (e)—A satisfactory degree of adhesion to make use of thetractive force available. (f)—High pressure tyre of low resistance and cheap maintenance and simple arrangement. (g)—Economic use of ground economy under all conditions. (h)—Economy in running and maintenance and cheap arrangement. (i)—Reasonable first cost.

It would be unwise to use on heavy machines might be expected for the driver in respect of the physical effort required to apply such a vehicle. The effect on heavy vehicles having great capacity for carrying heavy loads is of considerable importance to the driver. Possibly it will be found that the vehicle will be used in the same way as the motor vehicle. It is not possible to say whether it will be used in the same way as the motor vehicle.

There seems to be no reason to doubt that the multi-wheeled motor vehicle will be used in the same way as the motor vehicle. It is not possible to say whether it will be used in the same way as the motor vehicle. It is not possible to say whether it will be used in the same way as the motor vehicle.

There seems to be no reason to doubt that the multi-wheeled motor vehicle will be used in the same way as the motor vehicle. It is not possible to say whether it will be used in the same way as the motor vehicle. It is not possible to say whether it will be used in the same way as the motor vehicle.

### Trans Nozia KIRKWOOD & Co., Kitale.

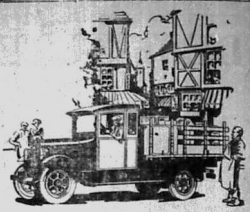
Main Dealers, Importers and Exporters. All Farming Requirements and Building Materials Stocked. Transport Contractors. Railway Clearing and Forwarding Agents. Distributors of H. P. Petrol, Tractor Kerosenes and other motor oils. Agents for J. NORTE & Son Ltd., Cockshott Implements and Spares. Land Agents.

### Keith Timber Co. Ltd.

CEGAR and PODO of ALL SIZES. MACHINED TIMBER A SPECIALITY. CEDAR FENCING, FENCE, SEASONED FLOOR BLOCKS IN STOCK. SAWS HAMMERED AND REPAIRED BY AN EXPERT.

### THE Bradford Manufacturing CO., LTD.

SUITABLE XMAS GIFTS FOR MEN. LUVISCA ART SILK TUNIC SHIRTS. Newest Stripes, 2 Collars, with Tabs and Stiffeners. With each shirt. Size 35" and 35 1/2" neck. Only Shs. 27/6 each. LUVISCA ART SILK PYJAMAS. Newest Stripes. Sizes 38" and 40". Shs. 35/- per suit. Imperial Chambers, above Tams Ltd., Government Road, Box 810.



### Make Profits Sure

An owner can get out of a truck or bus only what the maker builds into it. Owners the world over know the Dodge Brothers reputation for careful and simple design, liberal use of fine steels and honest valuing. And these owners, year after year, get out of Graham Brothers Trucks and Buses the kind of economical, dependable service that makes profits sure.

There is a size and type that will increase profits for you.

S. FISHER & SIMMONS, (E. A.) LTD. VICTORIA STREET, NAIROBI.

### GRAHAM BROTHERS TRUCKS AND BUSES

BUILT BY TRUCK DIVISION OF DODGE BROTHERS, INC. SOLD BY DODGE BROTHERS DEALERS EVERYWHERE.

### BROWNS "Four Crowns"

SCOTCH WHISKY Stands Alone. FINEST VALUE OBTAINABLE. Shgs. 12/6 per Bottle. Shgs. 14/- per Case. AT Blacklacks & Brown (LATE MACKINNON BROS.) Tel. No. 31. NAIROBI. Box No. 468.

### Where to Shop Nairobi Fashion Centre

CHOICEST SELECTION OF LADIES' UNDERWEAR AT SPECIAL PRICES. LADIES' FELT HATS. IN ALL LEADING COLOURS. SIZES TO SUIT ALL.

### Husein & Co.

THE CORNER SHOP. NAIROBI. PHONE 560. BOX 301.

### JUST NOW RECEIVED FOR Christmas

SILKS, BRASSWARE, METALWARE, E.P.N.S. WARE, LADIES' AND GENTS' WEAR, ETC., ETC., ETC. Visit early lest you may be disappointed.

### LADHARAM STORES,

Government Road, NAIROBI.

### IRON BEDSTEADS.

Just received a New Stock of Iron Bedsteads, big size as well as for children. With springs, strong and comfortable. Inquire Prices. Monocore Wools, Sweaters, Cardigans, Pullovers, Blankets, Bed, Shawls, and such other Woolen Goods arrive in this week. BEGIN YOUR BARGAIN HERE. KALA SIDI General Merchant. NAIROBI.

### Nairobi Vulcanizing Co.,

Box 217. Behind Theatre Royal. Damaged Tyres up to 42 x 5 repaired in our Giant Moulds. The largest Vulcanizing Plant in East Africa. Sole Agents—VIX HUMIDIFIER and PETROL SAVER. Guaranteed to save 25 per cent. of your Petrol and Oil Costs.

### MANGALORE DEAL TILES.

TEAK in Long and Scantlings. Swedish Imported Doors all sizes in Stock.

### F. M. BHAIJEE, HARDWARE MERCHANT.

Phone 353. Indian Bazaar, NAIROBI.

### ESSJAY LIMITED.

Bolus House, Government Road. Box 484—Phone 877.

### Financial and Property Agency

Mortgages specialized in. Town Properties negotiated. Partnerships arranged. Investments advised on. We have sound investments for sums from £100 upwards. In this respect we claim to do better for you than anyone else. J. JACOBS, Managing Director.

### Kenya Loan & Discount Co., Ltd. NAIROBI.

OFFICES—P.O. Box 1st Floor, Court Chambers, 648. FINANCIAL AGENTS. BILLS DISCOUNTED. SHORT-TERM LOANS GRANTED. ANY REALISABLE ASSET NEGOTIATED FOR CASH. Call or Write, Strictest Confidence. Established 1921.



# COAL. COKE.

## Stocks Always Carried.

OF

WITBANK

TENDEGA  
BANNOCKBURN.

For Further Particulars and Quotations.

Apply  
**Smith Mackenzie & Co.**

Box 120. KILINDINI.

## Just Arrived.

A nice selection of Children's Shoes Red and Blue Charleston Sandals, Flat Bars, etc.

Prices from Shs. 7/60 pair.

EXPERTS AT RHOE FITTING.

**De Luxe Boot Co.,**

Box 227, NAIROBI.

## Nairobi Corporation.

Notice is hereby given that, to permit of road construction, the section of Salisbury Road from Salisbury Lane to Ainsworth Bridge will be closed to all traffic from Monday next, 3rd December, until further notice. Access will be allowed only to private houses on the above section.

Traffic should proceed via Crooked Lane.

C. R. DAVIDSON, Municipal Engineer.

Municipal Offices, Nairobi, 29th November, 1928.

### NEW CHIEF JUSTICE OF ZANZIBAR.

#### Judge Pickering Asks for Co-operation.

#### HIS PERSONAL AID

His Honor the Chief Justice, Mr. G. H. Pickering, the first to sit on the Bench for the first time on Saturday last, at a sitting of His Honor's Court, High Court for Zanzibar. His Honor was crowded and, with one exception owing to illness, every member of the Zanzibar Bar was present.

The Honorable the Attorney-General, before the commencement of the last, addressed, the new Chief Justice as follows:

It is my privilege as an official leader of the Bar to attend before the Bench, to ask with you many members of the Bar, as it is to be present, to undertake the pleasing duty of welcoming Your Honor to Zanzibar, as her new Chief Justice.

It is not so very long ago that we have thrown to our late Chief Justice, Sir Thomas Tindeman, and now today we are happy in the realization that you have come among us and assumed office as Sir Thomas Tindeman's successor, for it is indeed a matter of pride to the people of the country and to us in particular, who profess to be in the Centre, that you, Sir, who distinguished among His Majesty's Judges, have been selected for His Majesty's appointment to the Chief Justiceship of Zanzibar.

On behalf of myself and the members of the Bar, I extend my very warm and cordial welcome to you, Sir, and hope that you remain assured that the Bar of this country will at all times and in every respect support Your Honor as the full measure of that loyalty and respect which it has been our privilege to render to your predecessors.

High Standard of Justice. His Honor the Chief Justice, in reply, thanked the Honorable the Attorney-General for what he had said, and was grateful for the assurance that the record of his work in Kenya had made his arrival in Zanzibar, to him, as a member of the Bar of Zanzibar. His Honor the Chief Justice had been singularly fortunate in her Chief Justice, and the Protectorate had

### THE GLEN-KIDSON AIR EXPEDITION MISHAP.

#### How Mongalla Crash Ended East African Tour.

#### A LADY'S STORY.

The story of the how the Laverstons three engine Pkiser, crashed over Khartoum recently on the way to Nairobi is told by Mrs. Bentley wife of the S.A. airman in a special story in the "African Star" from Mongalla. She was at the time, accompanied by her husband in his biplane and with the Pkiser and an observer had become a temporary passenger in the bigger machine. Capt. Hulse in another machine was also being the trip to the South.

When in Khartoum, it was suggested by the R.A.F. as a measure of safety that I should fly from Malakal to Mongalla in Commander Kildson's three engine Pkiser. This Commander Kildson kindly offered to do, and I, my baggage and Captain Hulse's propeller were put on board so as to lighten the Star. Mark and thus increase its speed.

Benefited by the services of one of outstanding ability, probably one of the best pilots in the world, the Chief Justice, Sir Thomas Tindeman, had exhibited these qualities perhaps even in a more marked degree than his predecessor.

In assuming the duties of his office, the Chief Justice felt that he was in a position to give his assistance in the administration of the law as far as he was able to do so. He was not short on his part would be necessary. Fortunately, he could only upon the cooperation of a highly trained and capable pilot and of an efficient staff. He knew that the local Bar included men whose erudition and far-reaching views covered the observance of the highest traditions, and he was glad to share responsibility with such a body.

The British could do but little with the whole-minded help of the Bar. The future, His Honor said, lay in the hands of the Bar as in his own and he cordially hoped that while they worked together in the which lay before them, the reputation of the past would not be impaired.

across the Red, Singapore country between Malakal and Mongalla. It was an extremely comfortable and pleasant trip. We saw two bands of giraffe and three bands of elephant. The last band was three miles out of Malakal and two went down to take photographs. The ground was very undulating, as seven miles up a stream and six 5000 high. The three engine biplane of the Pkiser and finally got out, and we were three hours on a strip of grass growing out of sand and water a few yards from the bank of the river.

#### Hit the Ground.

Just before we hit the ground at about 90 miles an hour and the earth was coming toward us at an alarming speed, Captain Hulse in a calm voice shouted: "Hold on, boys, sit as snug as you can." We waited a few seconds and then came a terrific crash and Commander Kildson, Mr. Tindeman, Whitley and myself were thrown headlong into the half front engine, the engine, propeller, ammunition baggage, etc. on top of us. We were terribly shaken and bruised, but otherwise unharmed as the machine did not get over, due to our skilled pilot. In a few minutes the cabin was swarming with dust and water was being in through the fuselage. This rain was expected, and it was a terrific moment waiting to see what attitude they would adopt. Fortunately they were friendly and Commander Kildson and I then did not get down from the machine and then came the heartbreaking wail of five hours of assistance.

Help Coming. At 4 o'clock we spotted our biplane which had gone to Malakal to fill up as his petrol was getting low when he missed us, and he had decided it would be safer to refuel before attempting to locate us. We all stood on the wing of the Pkiser and were waiting. Two hours later we heard the chugging of a motor boat near Ardubani. This had been seen when from Malakal to reach us. Next day we had heard several on board the steamer, which the "Hiver" had kindly sent our assistance. We arrived here last night, and as I sit still rather shaken, we have decided not to go to Japh until Monday. The pilot and mechanic intend to return and wait Commander Kildson's machine.

### Don't Look Dead - Get On The Job

There are many people who are disappointed when you are dragging one leg after the other, your limbs are stiff, your face is pale and your mind is blank. These are the signs of a weak and unbalanced system. It is the result of a poor diet, lack of exercise, and a general lack of vitality. You should be able to do your work with ease and efficiency. You should be able to enjoy life to the full. You should be able to keep your system in good health. You should be able to keep your mind clear and your nerves steady. You should be able to keep your body strong and your spirit high. You should be able to keep your system in good health. You should be able to keep your mind clear and your nerves steady. You should be able to keep your body strong and your spirit high.



#### CARTER'S HEMIPILLS

Trade Register: WARDLE, Wholesale Chemists, Nairobi, Mombasa, and Kilindi.

### P. GETHIN

Phone 155. Box 28.

Office: Gethin, NAIROBI

#### LUXURIOUS TAILORS

#### CARE FOR HIRE

#### DAY & NIGHT

with experienced dressers.

#### Long Trips a Speciality.

### For Sale

MAXWELL 4, Excellent condition, a real bargain.

£120.

### Place Yourself on the Right Side of the Danger Line.

#### INSURE

#### YOUR MOTOR CAR AND MOTOR CYCLES

#### WITH THE

#### AFRICAN GUARANTEE AND LIABILITY CO., LTD.

#### M. D. KAMPP, CHIEF AGENT.

## ENTERTAINMENTS.

### Nairobi Railway Club.

TO-NIGHT at 9 p.m.

1st December, 1928,

## "KURAILIANS"

in a New Programme with DOROTHY SUMMERS and J. G. TAYLOR. (by kind permission of the Theatre Royal)

Following by a Dance until 2 a.m. on both nights.

### THE FOLLIES BAND.

Tickets for Shows and Dance (including Refreshment) Shs. 4/50 per head; obtainable at any Railway Department Office and at the Door.

### Y.W.C.A.

## Garden Fete

CITY PARK

TO-DAY, DEC. 1st 1928

OPENING CEREMONY, 3 p.m.

BY

### The LADY DELAMERE

Special Attractions for Children and Adults, Music, Dancing, Singing, Coconut Shies, Stalls of every description.

Charie Chapin and Mr. Gollivog.

PRIZES GALORE

All proceeds to go to the extension fund, Y.W.C.A.

## Muthaiga Golf Club.

## DANCE

TO-NIGHT at 9 p.m.

ORGANISED BY MUTHAIGA RUGBY CLUB.

TICKETS: 7/50 Single.

10/- Double.

DURING THE EVENING THE CHAMPIONSHIP FLAGS will be presented to the Non-members.



# SERVICE

## that lengthens the life of your Car

The 3 Essentials that will keep your Car in perfect running order are:-

1. Specially designed tools and equipment.
2. Mechanics trained in their use.
3. Genuine parts.

Obtainable only at:-

### Chevrolet Service Stations

## MOTOR MART and EXCHANGE LIMITED.

NAKURU

NAIROBI

DAR-ES-SALAAM.

Telephone No. 219

P.O. Box 518, NAIROBI.

MADAME

Rowe et Cie

NAIROBI

WILL HOLD THEIR

Annual Stocktaking

## SALE

ON

MONDAY Dec. 3rd.

AND

Five Following Days

## CHEESE.

### A Fresh Consignment Just Unpacked

GRUYERE in 1/2b. CARTONS.

DUTCH CREAM CHEESE in 1/2b. TINS.

EDAM CREAM CHEESE in 3/4b. TINS.

GORGONZOLA 1/2b. JARS.

Our Bacon Machine, as having arrived we can now supply afford Bacon, Ham and Cooked Ham, etc.

## Colonial General Stores Ltd.



HOW MOMBASA BECAME A MUNICIPALITY

The Lighter Side of a Serious Business.

MOMBASA FUTURE WITHDRAWAL

Resident Commissioner Revisits Interim Council a Certain Future.

NEW MEN WITH OLD SLOGAN

Members, Mr. St. George... The Government... The Municipal Council...

It is a... The Municipal Council... The Government...

It is a... The Municipal Council... The Government...

It is a... The Municipal Council... The Government...

It is a... The Municipal Council... The Government...

It is a... The Municipal Council... The Government...

It is a... The Municipal Council... The Government...

It is a... The Municipal Council... The Government...

It is a... The Municipal Council... The Government...

CHERRY LEATON AND GAIN 'SLAUGHTER'

Allegation Against Settler and Tourist.

KENYA WARDEN'S VIEW

Mr. Cherry Keeton... The following ladies...

The Name... In the Congo and Tanganyika...

The Name... In the Congo and Tanganyika...

The Name... In the Congo and Tanganyika...

The Name... In the Congo and Tanganyika...

The Name... In the Congo and Tanganyika...

The Name... In the Congo and Tanganyika...

The Name... In the Congo and Tanganyika...

The Name... In the Congo and Tanganyika...

The Name... In the Congo and Tanganyika...

The Name... In the Congo and Tanganyika...

Today's Carnival Frolic

OFF PACE NOVATORS TO BE AT 7 P.M.

The carnival frolic will be given the opportunity of attracting a large...

An Increase in Motor Taxation... The following ladies...

The following ladies... Mrs. J. W. Tatham...

The following ladies... Mrs. J. W. Tatham...

The following ladies... Mrs. J. W. Tatham...

The following ladies... Mrs. J. W. Tatham...

The following ladies... Mrs. J. W. Tatham...

The following ladies... Mrs. J. W. Tatham...

The following ladies... Mrs. J. W. Tatham...

The following ladies... Mrs. J. W. Tatham...

The following ladies... Mrs. J. W. Tatham...

The following ladies... Mrs. J. W. Tatham...

The following ladies... Mrs. J. W. Tatham...

"Win, Write Boy"

Win, Write Boy... The following ladies...

The following ladies... Mrs. J. W. Tatham...

The following ladies... Mrs. J. W. Tatham...

The following ladies... Mrs. J. W. Tatham...

The following ladies... Mrs. J. W. Tatham...

The following ladies... Mrs. J. W. Tatham...

The following ladies... Mrs. J. W. Tatham...

The following ladies... Mrs. J. W. Tatham...

The following ladies... Mrs. J. W. Tatham...

The following ladies... Mrs. J. W. Tatham...

The following ladies... Mrs. J. W. Tatham...

The following ladies... Mrs. J. W. Tatham...

The following ladies... Mrs. J. W. Tatham...

The following ladies... Mrs. J. W. Tatham...

LYRIC HALL TO-NIGHT AT 8-45 Bohemian Love MATINEE THIS AFTERNOON AT 3-30 Golden Clown. PRICES: See 11.

Ruby Ring HOISERY, AN ACCEPTABLE XMAS GIFT. No. 30, 32, 34, 36, 38, 40, 42, 44, 46, 48, 50. Opal, Emerald, Pearl, Ruby, Sapphire, Diamond, Garnet, Tourmaline, Amethyst, Topaz, Onyx, Obsidian, Jet, Shell, Ivory, Bone, Wood, Glass, Plastic, Metal, Leather, Rubber, Paper, Cloth, Silk, Wool, Cotton, Linen, Rayon, Nylon, Spandex, etc.

EADIES The Fashion Shoe Store, Nairobi.

THEATRE ROYAL TO-NIGHT AT 8-45 p.m. SPECIAL ATTRACTION Mary Pickford THE WORLD'S SWEETHEART - IN - "LITTLE ANNIE ROONEY." An appealing story of New York's slums. PRICES: Circle St. 3/6; St. 3/3.

MONDAY NEXT, "CLEAN HEART" featuring Marguerite De La Motte and Perry Marmont.

Bej! Bej!! Bej!!! The Anti Puncture Mixture AS CHOSEN BY H.R.H. The Prince of Wales FOR HIS SAFARI K. McIvors Garage, 6th Avenue.

Today's Train

Trains... Times... Stations...

Today's Finance

Finance... Rates... Markets...

Today's Markets

Markets... Prices... Trends...

Today's News

News... Events... Updates...

Today's Sports

Sports... Results... Scores...

Today's Entertainment

Entertainment... Shows... Performances...

Entertainments

Entertainments... Shows... Performances...

THEATRE ROYAL

THEATRE ROYAL... Shows... Performances...

THEATRE ROYAL

THEATRE ROYAL... Shows... Performances...

THEATRE ROYAL

THEATRE ROYAL... Shows... Performances...

THEATRE ROYAL


THEATRE ROYAL... Shows... Performances...

LADIES: Printed Voile Day Frocks. Shgs 32-50. S. Jacobs Ltd., NAIROBI.

FOR CASH. Each.


(Continued on page 11)

**If You Value Your Teeth - USE**



**Twice a Day**

**Your Chemist Stocks it**



**McEwan's Scotch Whisky**

THE MESSRS. JAMES WATSON & CO., LTD., DISTRICT MANAGERS, NAIROBI.

**ASPECTS OF THE BUDGET FOR 1922.**  
(Continued from page 1)

The Government's intention to raise a loan of £2,000,000, and the proposals to make a loan of £1,000,000, are the main features of the Budget for 1922. The Government's intention to raise a loan of £2,000,000, and the proposals to make a loan of £1,000,000, are the main features of the Budget for 1922.

**TRAFFIC REVENUE.**

The Local Government Commission also recommended the payment to Government of the net proceeds of the sale of the land revenue received from the Municipal Councils in 1922. This proposal is a departure from the usual practice of the Municipal Councils to retain the proceeds of the sale of the land revenue for their own use.

**THE FUTURE.**

Looking to the "retrograde" step and the fact that the Government has not yet introduced any measures to improve the financial position, it is not surprising that the Government has not yet introduced any measures to improve the financial position.

**CAUSES AND CONTROL OF BLACKWATER.**

**Danger or Safety in Living Conditions.**

**EPIDEMIOLOGICAL REVELATIONS.**

**Important Section.**

**BRACKENHURST LIMBING.**

**The Gables.**

**High View Hotel.**

**IF YOU WANT**

**ANNOUNCEMENT.**

**B. E. A. Saw Mills.**

**WHERE TO STAY**  
TOWN & COUNTRY

**THE NAKURU HOTEL.**

**OAKLEIGH PRIVATE HOTEL**  
UNDER PERSONAL SUPERVISION OF  
MR. H. J. JARVIS, Manager.

**Satsbury Hotel**  
Nairobi.

**THE SAVOY HOTEL**

**THE WHITE RHINO HOTEL**  
NYERI


**Stag's Head Hotel, Nakuru**

**B. E. A. Saw Mills**

**Every Day Over 1,000,000**

**Satisfied Customers Buy and Drink LYONS' TEA**

**"The Tea of Teashop Fame."**



**THE VICTORIA NYANZA SUGAR COMPANY, LIMITED.**

**Royal Visit**

**To make it right! Royal we have:**

**Ferrara's Rosewood Portwines - Price of Water 1920. For 12/6 and many other qualities from 18/- to 5/- per bottle.**

**Fookin's World Famous Liqueurs - Liqueur Imported, Maraschino Zaza, Kummel Crystallin, Apricot Brandy, Orange Brandy, Cherry Brandy, Boonjonges, Half an Egg (Bot. and Bitters), etc., etc.**

**B. C. Siqueira, 8th Avenue, Nairobi.**

**ANNOUNCEMENT.**

**THE NGARA BAKERY**

**Swampy Road, P.O. Box 915, NAIROBI.**

**NOTICE.**

**THE VICTORIA NYANZA SUGAR COMPANY, LIMITED.**

**THE VICTORIA NYANZA SUGAR COMPANY, LIMITED.**

**Sale! Sale!! Sale!!!**

**A Huge Reduction ON OUR ENTIRE STOCK For Xmas Presents.**

**AT B. Choitram, NAIROBI.**

**Sale Sale Sale**

**FOR FIVE DAYS ONLY.**

**DATARAM BROS., NAIROBI.**

**ANNOUNCEMENT.**

**THE NGARA BAKERY**

**Swampy Road, P.O. Box 915, NAIROBI.**

**NOTICE.**

**Permanent Waving Whole Head 60/-**

**UNTIL FURTHER NOTICE**

**Theo. SCOUTEN GOVERNMENT ROAD.**

**ANNOUNCEMENT.**

**THE NGARA BAKERY**

**Swampy Road, P.O. Box 915, NAIROBI.**

**ANNOUNCEMENT.**

**THE NGARA BAKERY**

**Swampy Road, P.O. Box 915, NAIROBI.**

**ANNOUNCEMENT.**

**THE NGARA BAKERY**

**Swampy Road, P.O. Box 915, NAIROBI.**

**ANNOUNCEMENT.**

**THE NGARA BAKERY**

**Swampy Road, P.O. Box 915, NAIROBI.**

**ANNOUNCEMENT.**

**THE NGARA BAKERY**

**Swampy Road, P.O. Box 915, NAIROBI.**

### Latest Arrivals.

## Ladies Coloured Fur Double Terals

Complete with LININGS and TRIMMINGS.

LATEST LONDON STYLES.

ASSORTED SIZES AND SHADES.

## AHAMED BROS.

THE HOUSE OF DISTINCTION.

Box 284 RAZAR, NAIROBI.

# HAWKE'S

Cork Helmets



FOREMOST SINCE 1772. Messrs A. & Co., Ltd., 1, Savile Row, London, W.1.

# Everything for Christmas

CRACKERS, NOVELTIES, CHOCOLATES, CONFECTIONERY, XMAS STOCKINGS, CAKE DECORATIONS.

We have a wonderful selection of CHOCOLATES IN ARTISTIC BOXES. OUR XMAS CAKES, PLUM PUDDINGS and MINCEMEAT ARE A SPECIALITY. Shop Early & Avoid Disappointment.

M. S. ELLIOT & Co. Ltd. P.O. Box 173 NAIROBI. Phone 81.

## Monsieur Florens

FRENCH HAIRDRESSER. Ladies—Gents—Children. Specialized for Permanent Waving. Government Road, York Buildings, Box 681. Phone 591.

IT'S THE WAY THEY ARE MADE THAT HAS MADE THEM.

## Torr's Chocolates Are Fresh.

## Just Received.

Ladies' fashion in ready-to-wear dresses for Morning and Afternoon. Beautiful Colors. Also, Ladies' Jumpers in up-to-date styles. Inspection Invited.

## BON MARCHÉ

Opposite Messrs. Hogg & McClellan, Ltd., Government Road—NAIROBI.

### NOW HOWASA BECAME A MUNICIPALITY.

(Continued from page 4)

A. Morrison, of legal education and the usual sprinkling of lawyers, hobs and salms and shoppings. These conditions have been made some good service in the past. The fact that the town of Howasa is on the Indian Ocean was a handsome inducement to the eye of the Government. It was the fact that the Howasa Municipality was an excellent financial proposition to the Government. The fact that the Howasa Municipality was an excellent financial proposition to the Government. The fact that the Howasa Municipality was an excellent financial proposition to the Government.

### LUCKY SWAINS ENTER TANZANIA

Progress Report in the Kenya Campaign.

### THE COAST ATTACKED.

The Deputy Director of Agriculture, who is in charge of the Kenya campaign, issued the following report yesterday. He has been in the Coast area for some time and has been very busy. He has been in the Coast area for some time and has been very busy. He has been in the Coast area for some time and has been very busy.

### THE BERRY STRUCK UP TO THE TOP.

The berry crop in the district is reported to be the best ever. The berry crop in the district is reported to be the best ever. The berry crop in the district is reported to be the best ever.

### THE BERRY STRUCK UP TO THE TOP.

The berry crop in the district is reported to be the best ever. The berry crop in the district is reported to be the best ever. The berry crop in the district is reported to be the best ever.

### THE BERRY STRUCK UP TO THE TOP.

The berry crop in the district is reported to be the best ever. The berry crop in the district is reported to be the best ever. The berry crop in the district is reported to be the best ever.

### THE BERRY STRUCK UP TO THE TOP.

The berry crop in the district is reported to be the best ever. The berry crop in the district is reported to be the best ever. The berry crop in the district is reported to be the best ever.

### THE BERRY STRUCK UP TO THE TOP.

The berry crop in the district is reported to be the best ever. The berry crop in the district is reported to be the best ever. The berry crop in the district is reported to be the best ever.

### THE BERRY STRUCK UP TO THE TOP.

The berry crop in the district is reported to be the best ever. The berry crop in the district is reported to be the best ever. The berry crop in the district is reported to be the best ever.

### EAST AFRICAN SHIPPING COMPETITION.

Latest Developments in Conflict.

### THEIR ACCOMMODATION.

The East African shipping companies are in a state of conflict. The East African shipping companies are in a state of conflict. The East African shipping companies are in a state of conflict.

### THEIR ACCOMMODATION.

The East African shipping companies are in a state of conflict. The East African shipping companies are in a state of conflict. The East African shipping companies are in a state of conflict.

### THEIR ACCOMMODATION.

The East African shipping companies are in a state of conflict. The East African shipping companies are in a state of conflict. The East African shipping companies are in a state of conflict.

### THEIR ACCOMMODATION.

The East African shipping companies are in a state of conflict. The East African shipping companies are in a state of conflict. The East African shipping companies are in a state of conflict.

### THEIR ACCOMMODATION.

The East African shipping companies are in a state of conflict. The East African shipping companies are in a state of conflict. The East African shipping companies are in a state of conflict.

### THEIR ACCOMMODATION.

The East African shipping companies are in a state of conflict. The East African shipping companies are in a state of conflict. The East African shipping companies are in a state of conflict.

### THEIR ACCOMMODATION.

The East African shipping companies are in a state of conflict. The East African shipping companies are in a state of conflict. The East African shipping companies are in a state of conflict.

### CHURCH NOTES.

Services in various churches.

### CHURCH NOTES.

Services in various churches.

### CHURCH NOTES.

Services in various churches.

### CHURCH NOTES.

Services in various churches.

### CHURCH NOTES.

Services in various churches.

### CHURCH NOTES.

Services in various churches.

### CHURCH NOTES.

Services in various churches.

### CHURCH NOTES.

Services in various churches.



## "ERASMIC" Shaving Stick.

Does half the razor's work by swiftly preparing the face for the blade. Leaves the skin soft and smooth. DOES NOT DRY ON THE FACE.

## B. H. Myers & Co., Ltd.

FURNITURE SUPPLIED ON HIRE PURCHASE. NO DEPOSIT. Small Monthly Payments. ALL OUR FURNITURE IS SOLD WITH A GUARANTEE.

## MARTELL'S

Known throughout the World. Martell's for Age and Quality.



Stocked by all High-Class Hotels and Wine & Spirit Merchants.

## CLOCKS

A LARGE CONSIGNMENT OF THE LATEST DESIGNS. JUST ADDED TO STOCK INCLUDING



DOBBIES, Ltd. WATCHMAKERS, JEWELLERS and OPTICIANS. NAIROBI. KENYA'S PREMIER JEWELLERS.

# BULLOWS & ROY

NAIROBI. MOMBASA. KAMPALA.

THE IDEAL MATERIAL FOR CEILINGS AND WALLS.

## UPSON BOARD.

PLAIN AND TILE PATTERNS.

Write for Samples and Price List. Easy to Put Up.

EVERYTHING ELECTRICAL. WIRELESS. Complete Range of Components for Sets.

## Osram Valves

CALL AND INSPECT OUR STOCKS.

AGENTS FOR: GENERAL ELECTRIC CO. LTD.

### WEATHER REPORT.

Following are the results of observations made at the Meteorological Service yesterday.

### WEATHER REPORT.

Following are the results of observations made at the Meteorological Service yesterday.

### WEATHER REPORT.

Following are the results of observations made at the Meteorological Service yesterday.

### WEATHER REPORT.

Following are the results of observations made at the Meteorological Service yesterday.

### WEATHER REPORT.

Following are the results of observations made at the Meteorological Service yesterday.

### WEATHER REPORT.

Following are the results of observations made at the Meteorological Service yesterday.

### WEATHER REPORT.

Following are the results of observations made at the Meteorological Service yesterday.

### WEATHER REPORT.

Following are the results of observations made at the Meteorological Service yesterday.

### WEATHER REPORT.

Following are the results of observations made at the Meteorological Service yesterday.

### WEATHER REPORT.

Following are the results of observations made at the Meteorological Service yesterday.

### WEATHER REPORT.

Following are the results of observations made at the Meteorological Service yesterday.

### WEATHER REPORT.

Following are the results of observations made at the Meteorological Service yesterday.

### WEATHER REPORT.

Following are the results of observations made at the Meteorological Service yesterday.

### WEATHER REPORT.

Following are the results of observations made at the Meteorological Service yesterday.





"X" IS AN UNKNOWN QUANTITY.

"SUPER X" is still an unknown quantity to some shot-gunners, which is surprising, considering most sportsmen's enthusiastic praise of this ammunition.

SHAW AND HUNTER

Sole agents for WESTERN AMMUNITION. Box 70, NAIROBI.

Charles Ware

TURTLE ACCOUNTANT. (Established 25 years.) NAIROBI. Tel. 46. Specialties: "Sportman," East African Derby, 4/5 Dispatch, 2/1 Dithmas, 4/1 Sunbake and Defender, 0/1 Hyperbole and Step Doctor, 6/11 Upwards selected.

IT IS DISTINCTLY UNDERSTOOD THAT NO REPLY MEANS BUSINESS.



To benefit from the latest cultivation is essential. Let us assist by supplying Guaranteed Assurances.



MARGOT

Begs to announce that their Annual Stocktaking SALE

Will Commence on Thursday, Nov. 29.

For Ten Days Only.

PRESENTS PLEASE.

The ideal present is the one that gives continued pleasure long after the first rapture of receipt has faded.

You will more readily realize the need, if you interpret the spirit of the gift by shopping at a Sporting Goods Store.

Let us send you our List of Suggestions.

MAY & Co., Ltd. THE SPORTS HOUSE, NAIROBI.

THE SPORTS PAGE

TENNIS AT NAIROBI. HOME FOOTBALL. NUTHAGA GOLF CLUB. COUNTRY CUP CRICKET.

Inter-Departmental Competition.

Matches Down to be played To-day.

Draw for "Old Members" Prize.

Gilg's Defeat of Civil Service.

WON BY THE MILL TEAM.

The following matches in the Football and Football League are down to be played to-day:

ENGLISH LEAGUE.

First Division. Batai Villa vs. Everton. Bury vs. Huddersfield. Cardiff City vs. Birmingham. Leicester City vs. Sunderland. Liverpool vs. Derby County. Manchester United vs. Bradford.

"MAY BE" CUP FINAL.

The Old Members' Prize will be played this afternoon. This year the competition will take the form of two separate competitions, one for male members and the other for ladies. The competition for both divisions will be over 100 yards, played play in half divided halves.

A CASE OF BAD FIELDING.

The Country Cup cricket match between Gilg and Civil Service last week-end was not only for some good batting by G. Smith, O'Brien and Adams and a magnificent knock for Gilg by H. Isaac, who was successful in bringing victory to his team. Ferguson did not bowl too well in his opening spell, but found a hole in his second attempt. The Civil Service lost the game through dropped catches and bad fielding.

THE MILL (Oxley) Football and Tennis.

The Mill (Oxley) Football and Tennis. H. E. Smith and Brown being the only winning pair, 6/0. They have been generally supposed to be "easy" matches, but actually were far from easy, only losing 6/0.

Second Division.

Hull City vs. Chelsea. Middlesbrough vs. West Bromwich Albion. Millwall vs. Swansea. Tottenham Hotspur vs. Oldham Athletic vs. Clapton Orient. Port Vale vs. Bradford. Preston North End vs. Notts Forest.

Men Starting No. 1.

A. Holmes and Col. Tucker vs. A. L. Kent Linton and H. J. Thompson, at 2.30. C. Hill and G. B. Sandford vs. A. H. Kilgus and J. G. Carr at 2.30. P. A. D. Williams and G. W. Harvey vs. O. Dale and H. W. Graham, at 2.45. W. D. Jones and J. L. Lester vs. H. Enay and W. H. Adams, at 2.45. P. A. D. Williams and G. W. Harvey vs. H. W. Graham and H. W. Adams, at 2.45. I. A. S. V. Nye and G. P. Fender vs. H. W. Adams and N. Tress, at 2.55 p.m.

Men Starting No. 2.

M. H. Allen vs. G. Smith, at 2.30. G. Smith vs. H. W. Adams, at 2.45. H. W. Adams vs. G. Smith, at 2.45. G. Smith vs. H. W. Adams, at 2.45. G. Smith vs. H. W. Adams, at 2.45. G. Smith vs. H. W. Adams, at 2.45.

Third Division.

Reading vs. Bristol City. Southampton vs. Stoke City. Tottenham Hotspur vs. Wanderers. Wolverhampton Wanderers vs. Grimsby Town.

Fourth Division.

Reading vs. Bristol City. Southampton vs. Stoke City. Tottenham Hotspur vs. Wanderers. Wolverhampton Wanderers vs. Grimsby Town.

Women Starting No. 1.

Mrs. Smith and Mrs. Archer vs. Mrs. Linton and Mrs. Thompson, at 2.30. Mrs. Hill and Mrs. Sandford vs. Mrs. Kilgus and Mrs. Carr, at 2.30. Mrs. Williams and Mrs. Harvey vs. Mrs. Dale and Mrs. Graham, at 2.45.

Women Starting No. 2.

Mrs. H. Allen vs. Mrs. G. Smith, at 2.30. Mrs. G. Smith vs. Mrs. H. W. Adams, at 2.45. Mrs. H. W. Adams vs. Mrs. G. Smith, at 2.45. Mrs. G. Smith vs. Mrs. H. W. Adams, at 2.45. Mrs. G. Smith vs. Mrs. H. W. Adams, at 2.45.

THE TENNIS.

The tennis week-end was a success. The tennis week-end was a success. The tennis week-end was a success. The tennis week-end was a success. The tennis week-end was a success.

THE TENNIS.

The tennis week-end was a success. The tennis week-end was a success. The tennis week-end was a success. The tennis week-end was a success. The tennis week-end was a success.

THE TENNIS.

The tennis week-end was a success. The tennis week-end was a success. The tennis week-end was a success. The tennis week-end was a success. The tennis week-end was a success.

THE TENNIS.

The tennis week-end was a success. The tennis week-end was a success. The tennis week-end was a success. The tennis week-end was a success. The tennis week-end was a success.

THE TENNIS.

The tennis week-end was a success. The tennis week-end was a success. The tennis week-end was a success. The tennis week-end was a success. The tennis week-end was a success.

THE TENNIS.

The tennis week-end was a success. The tennis week-end was a success. The tennis week-end was a success. The tennis week-end was a success. The tennis week-end was a success.

THE TENNIS.

The tennis week-end was a success. The tennis week-end was a success. The tennis week-end was a success. The tennis week-end was a success. The tennis week-end was a success.

THE TENNIS.

The tennis week-end was a success. The tennis week-end was a success. The tennis week-end was a success. The tennis week-end was a success. The tennis week-end was a success.

THE TENNIS.

The tennis week-end was a success. The tennis week-end was a success. The tennis week-end was a success. The tennis week-end was a success. The tennis week-end was a success.

THE TENNIS.

The tennis week-end was a success. The tennis week-end was a success. The tennis week-end was a success. The tennis week-end was a success. The tennis week-end was a success.

THE TENNIS.

The tennis week-end was a success. The tennis week-end was a success. The tennis week-end was a success. The tennis week-end was a success. The tennis week-end was a success.

THE TENNIS.

The tennis week-end was a success. The tennis week-end was a success. The tennis week-end was a success. The tennis week-end was a success. The tennis week-end was a success.

KYNOCHE AMMUNITION advertisement with image of a bird and text describing the product's accuracy and quality.

A. HOGG, Mutos B'ggs, NAIROBI advertisement for various sports equipment and services.

Shanky - Sheldon advertisement for a large metal safe, highlighting its security and durability.

S. Jacobs Ltd. advertisement for toys and games, featuring a large illustration of a child playing with a toy.

DEAN'S DANCING DOLLS advertisement for dance lessons and entertainment, featuring an illustration of a woman in a dress.

THE TENNIS.

The tennis week-end was a success. The tennis week-end was a success. The tennis week-end was a success. The tennis week-end was a success. The tennis week-end was a success.

THE TENNIS.

The tennis week-end was a success. The tennis week-end was a success. The tennis week-end was a success. The tennis week-end was a success. The tennis week-end was a success.

THE TENNIS.

The tennis week-end was a success. The tennis week-end was a success. The tennis week-end was a success. The tennis week-end was a success. The tennis week-end was a success.

THE TENNIS.

The tennis week-end was a success. The tennis week-end was a success. The tennis week-end was a success. The tennis week-end was a success. The tennis week-end was a success.

THE TENNIS.

The tennis week-end was a success. The tennis week-end was a success. The tennis week-end was a success. The tennis week-end was a success. The tennis week-end was a success.

THE TENNIS.

The tennis week-end was a success. The tennis week-end was a success. The tennis week-end was a success. The tennis week-end was a success. The tennis week-end was a success.

THE TENNIS.

The tennis week-end was a success. The tennis week-end was a success. The tennis week-end was a success. The tennis week-end was a success. The tennis week-end was a success.

THE TENNIS.

The tennis week-end was a success. The tennis week-end was a success. The tennis week-end was a success. The tennis week-end was a success. The tennis week-end was a success.





**KENYA BREWERIES Ltd.**

There is no beer in Kenya which is made from purer ingredients or constitutes a more WHOLESOME BEVERAGE.



**DRINK KENYA BEER.**

**GUARANTEED THE LARGEST CIRCULATION OF ANY NEWSPAPER IN KENYA, UGANDA, TANGANYIKA AND ZANZIBAR.**

**DAILY EDITION.**

# The EAST African Standard

**UGANDA ARGUS** With which incorporated **THE LEADER.**  
THE OLDEST ESTABLISHED NEWSPAPER PUBLISHED IN KENYA AND UGANDA.

**NAIROBI, MONDAY, DECEMBER 3, 1928.**

**The LOUNGE**  
with Morning and Afternoon TEAS

**The New Stanley Hotel**

Open on Sundays to Non-Residents

PRICE 20 CENTS.

No. 4644. REGISTERED AT THE GENERAL POST OFFICE AS A NEWSPAPER.

## THE PRINCE OF WALES VISITS EAST AFRICA.

**A QUIET DEPARTURE FROM DAR-ES-SALAAM YESTERDAY.**

**Arrangements for Most Rapid Journey Possible.**

### THE KING'S HEALTH.

**Disturbed Day On Saturday After Rise in Temperature.**

**["STANDARD" SPECIAL CORRESPONDENT.]** Zanzibar, Saturday.

The Prince of Wales arrived here yesterday afternoon on the "Anania," the yacht of the Governor of Tanganyika, H. E. Sir Donald Cameron. The visit was entirely informal and came as a pleasant surprise to the people of the island. The Prince dined at the Residency and attended a dance afterwards at the English Club. He left at midnight on his return visit to Dar-es-Salaam.

It is understood here that he is embarking on H.M.S. "Enterprise" on Sunday morning and expects to arrive at Brindisi about eight days later.

### BACK IN DAR-ES-SALAAM.

**["STANDARD" CORRESPONDENT.]** Dar-es-Salaam, Sunday.

H.R.H. the Prince of Wales returned from Zanzibar early yesterday morning. Despite his late night at Zanzibar, which he left at midnight, the Prince was round shopping in the forenoon. He also laid a wreath on the Cenotaph. Later in the day he attended a children's tea party and in the evening danced at the Gymkhana Club. The "Enterprise" arrived at the other anchorage last evening and the Prince is reported to be leaving this morning.

### AN OLD-TIMER.

An amusing incident brightened H.R.H.'s shopping expedition yesterday. A Mr. Butler of the Sakerie Mine, who is well known to Nairobi mining circles, exclaiming "The Prince will not refuse to shake hands with an old fellow like me," pushed through the throng of Indians, natives and Europeans who had gathered outside the shop floor and was rewarded with a hearty handshake by the Prince. Butler left smiling and with a pleasant memory to cherish.

### THE DEPARTURE.

**Dar-es-Salaam, later.** His Royal Highness embarked on a Pinnace from H.M.S. "Enterprise" at the Governor's pier at 9:30 a.m. to-day.

He expressed satisfaction that the public had respected his privacy during his visit to the Capital of Tanganyika and said he had thoroughly enjoyed his holiday in East Africa.

Owing to the fact that no announcement of the time of H.R.H.'s departure had been made, only a few people were at the pier. The Prince greatly enjoyed the dance at the club last night and mixed with those present in the most informal manner.

### THE JOURNEY HOME.

**London, Nov. 30.** The Prince of Wales has anxiety to return to England from Dar-es-Salaam where he is now impatiently waiting for H.M.S. "Enterprise" which is proceeding at full speed from Aden. It is shown in the announcement by the Admiralty to-day that the Prince of Wales has practically decided to delay the "Enterprise" at Suez and to entrain for Alexandria where he will join one of His Majesty's ships, probably the "Frobisher," upon which he will proceed to Brindisi, Naples or Marseilles at His Royal Highness' choice.

### CONSULTATION ON KING'S CONDITION.

**["STANDARD" SPECIAL CORRESPONDENT.]** London, Nov. 30. It was authoritatively stated this morning that the King is in a serious condition. A bulletin will be issued daily at this station owing to the fact

that the doctors are reviewing the King's position.

**Not Yet Out of Danger.** A bulletin issued at 12:45 p.m. states that the infestation of the King and shows some improvement. The temperature has slightly lower. The time of the possible resumption of the medication, it must be noted, has not yet passed and in any case, progress must be slow.

**His Majesty's condition** joined Lord Dawson and Sir Stanley Lloyd after the latter had been with the King for about an hour. The three doctors examined in detail all data and records of the case, the temperature charts, radiographs and the results of the bacteriological examination.

A high authority at the Palace is slightly but distinctly better through as the stage of the illness the possibility of a setback could be averted. It is stated that His Majesty had not yet reached the point when it was possible to say that he was on the high road to recovery.

**London, later.** A bulletin states that His Majesty's condition shows no change this morning.

### A Disturbed Day.

**London, December 1.** A bulletin issued at 10:30 this morning states that despite the fact that the King passed a fair night there has been a slight rise in temperature since yesterday. His general condition however is unchanged.

The evening bulletin states that the King had a disturbed night with short intervals of sleep and that the thermometer registered a slight rise.

The usual morning and evening bulletins will be issued tomorrow.

### BY WIRELESS.

**Bygones, December 1.** Stanley's bulletin was signed by Sir Stanley Lloyd Dawson and Sir Stanley Lloyd Dawson and Sir Stanley Lloyd Dawson. The delay in the issue of the bulletin was explained when it was learned that Sir Humphrey Buller had been called into consultation in order that a third opinion should be obtained with respect to the position.

The three doctors spent a long time examining the King with a view not only to the present but also to the immediate and very distant in connection with His Majesty's illness. It was most carefully examined—British Official's Service.

**["R. A. Standard" Special Cable Service.]** South African Indians.

**IMMIGRATION LAWS TO BE TIGHTENED.** ["STANDARD" CORRESPONDENT.] Johannesburg, Nov. 30. The Immigration Department is taking steps against Indians because of the fact that the country would not be able to handle the influx of immigrants.

**["R. A. Standard" Special Cable Service.]** Native Lands Bill.

**COMMUNAL LABOR TO BE ENFORCED.** ["STANDARD" CORRESPONDENT.] London, Nov. 30. In the House of Commons to-day, Commander Chamberlain (Lab. Bill) called attention to the Native Lands Trust Bill which was proposed in order to demonstrate the necessity of whether compulsory or voluntary labor would be enforced in connection with the proposed legislation.

**["R. A. Standard" Special Cable Service.]** German Metal Strike.

**INTERVENTION BY THE GOVERNMENT.** ["STANDARD" CORRESPONDENT.] London, Nov. 30. The Chancellor has intervened in the proposed metal industry strike. He discussed the matter to-day with the representatives of both sides with a view to the best settlement by submitting the dispute to a special arbitrator proposed by Government who would not be bound to accept the principle but the position would be their decision. The arbitrator will probably be the Minister for the Industry, Mr. Bevington.

**VIOLENT EARTHQUAKE IN CHILE.**

**Eight People Killed in Wreck of Towns.**

**["STANDARD" SPECIAL CORRESPONDENT.]** Santiago, Chile, December 1. At least 22 persons were killed in a very violent earthquake of a minute's duration which struck the town of Talca in Chile. Many buildings were destroyed at Talca and the Chilean town of Santa Cruz and Curico were also damaged.

**New York, Dec. 1.** Eighty persons are reported to have been killed in the Chilean earthquake at Talca. The cathedral, the railway station and hospital were destroyed at Talca.

**Paris Trial Sequel.** **ITALIAN CONDEMNATION OF MILD SENTENCE.** ["STANDARD" CORRESPONDENT.] Paris, Nov. 30. There is indignation in Rome owing to the mildness of the sentence on Marquis who was sentenced to two years imprisonment and a fine of 200,000 francs for his Italian Vice-Consul Sir Narbonne.

The Italian Government has also stated that a certain Italian Consul has refused to give decorations to President Doumergue.

**["R. A. Standard" Special Cable Service.]** American Opinion Does Not Want Seagoat.

**["STANDARD" CORRESPONDENT.]** London, Nov. 30. At the closing session of the "West" conference, organized by the Department of Justice Captain West, who presided, the Officers Federation of England declared its support of the Government. He expressed his satisfaction with Mr. North, British Ambassador, stated that American public opinion would demand a seagoat.

**["R. A. Standard" Special Cable Service.]** World Navies.

**AMERICA HEADS THE POST-WAR INCREASES.** ["STANDARD" CORRESPONDENT.] London, Nov. 30. Mrs. Mary Higgins of Barnstead has been granted 4000 dollars for the purchase of a seagoat in the service of the East African government.

The seagoat was captured in 1917 and in 1923 the engagement was cancelled by Captain Murray.

**["R. A. Standard" Special Cable Service.]** America Heads the Post-War Increases.

**["STANDARD" CORRESPONDENT.]** London, Nov. 30. The Foreign Affairs Committee of the Chamber of Members, Mr. Pender for Boston, stated that the amount of 2,240,000,000 francs, a reduction of 20 per cent, as compared with 1914, while the American Government had paid 165,130 and 115 million francs respectively was compared with 1914. It was in contrast with the American Government which realized would be a reduction of 20 per cent, as compared with 1914. It was in contrast with the American Government which realized would be a reduction of 20 per cent, as compared with 1914. It was in contrast with the American Government which realized would be a reduction of 20 per cent, as compared with 1914.

**["R. A. Standard" Special Cable Service.]** America Heads the Post-War Increases.

**["STANDARD" CORRESPONDENT.]** London, Nov. 30. The Foreign Affairs Committee of the Chamber of Members, Mr. Pender for Boston, stated that the amount of 2,240,000,000 francs, a reduction of 20 per cent, as compared with 1914, while the American Government had paid 165,130 and 115 million francs respectively was compared with 1914. It was in contrast with the American Government which realized would be a reduction of 20 per cent, as compared with 1914. It was in contrast with the American Government which realized would be a reduction of 20 per cent, as compared with 1914.

**["R. A. Standard" Special Cable Service.]** America Heads the Post-War Increases.

**["STANDARD" CORRESPONDENT.]** London, Nov. 30. The Foreign Affairs Committee of the Chamber of Members, Mr. Pender for Boston, stated that the amount of 2,240,000,000 francs, a reduction of 20 per cent, as compared with 1914, while the American Government had paid 165,130 and 115 million francs respectively was compared with 1914. It was in contrast with the American Government which realized would be a reduction of 20 per cent, as compared with 1914. It was in contrast with the American Government which realized would be a reduction of 20 per cent, as compared with 1914.

**["R. A. Standard" Special Cable Service.]** America Heads the Post-War Increases.

**["STANDARD" CORRESPONDENT.]** London, Nov. 30. The Foreign Affairs Committee of the Chamber of Members, Mr. Pender for Boston, stated that the amount of 2,240,000,000 francs, a reduction of 20 per cent, as compared with 1914, while the American Government had paid 165,130 and 115 million francs respectively was compared with 1914. It was in contrast with the American Government which realized would be a reduction of 20 per cent, as compared with 1914. It was in contrast with the American Government which realized would be a reduction of 20 per cent, as compared with 1914.

**["R. A. Standard" Special Cable Service.]** America Heads the Post-War Increases.

**["STANDARD" CORRESPONDENT.]** London, Nov. 30. The Foreign Affairs Committee of the Chamber of Members, Mr. Pender for Boston, stated that the amount of 2,240,000,000 francs, a reduction of 20 per cent, as compared with 1914, while the American Government had paid 165,130 and 115 million francs respectively was compared with 1914. It was in contrast with the American Government which realized would be a reduction of 20 per cent, as compared with 1914. It was in contrast with the American Government which realized would be a reduction of 20 per cent, as compared with 1914.

**["R. A. Standard" Special Cable Service.]** America Heads the Post-War Increases.

**["STANDARD" CORRESPONDENT.]** London, Nov. 30. The Foreign Affairs Committee of the Chamber of Members, Mr. Pender for Boston, stated that the amount of 2,240,000,000 francs, a reduction of 20 per cent, as compared with 1914, while the American Government had paid 165,130 and 115 million francs respectively was compared with 1914. It was in contrast with the American Government which realized would be a reduction of 20 per cent, as compared with 1914. It was in contrast with the American Government which realized would be a reduction of 20 per cent, as compared with 1914.

**["R. A. Standard" Special Cable Service.]** America Heads the Post-War Increases.

**["STANDARD" CORRESPONDENT.]** London, Nov. 30. The Foreign Affairs Committee of the Chamber of Members, Mr. Pender for Boston, stated that the amount of 2,240,000,000 francs, a reduction of 20 per cent, as compared with 1914, while the American Government had paid 165,130 and 115 million francs respectively was compared with 1914. It was in contrast with the American Government which realized would be a reduction of 20 per cent, as compared with 1914. It was in contrast with the American Government which realized would be a reduction of 20 per cent, as compared with 1914.

**["R. A. Standard" Special Cable Service.]** America Heads the Post-War Increases.

**THE NEW POPULAR LATE BEDFORDS.**

**THE NEW AND POPULAR COLOURED JAPAN BEDFORDS, neatly applied, proof and unobtrusive.**

**Price, from 37/6 each.**



**ANY LINEN RUNNER.** Newly substituted, well-cut or hemstitched edge, 44 inches. Price, from 4/6 each. Special value 3/6 each. Price, from 3/0 each.

**HEMSTITCHED SHEETS AND PILLOW CASES TO MATCH.** Linen finished. Sheets, Single bed size. Price, from 1/2 each. H. S. Pillow Cases to match. Size 2'0" x 2'6" each. Double bed Sheets. Price, from 1/6 each.

**COLOURED HEMSTITCHED SHEETS AND PILLOW CASES TO MATCH.** Linen finished. Price, from 1/2 each. H. S. Pillow Cases to match. Size 2'0" x 2'6" each. Double bed Sheets. Price, from 1/6 each.

**ART LINEN YACHT CLOTHES.** Large selection in Hemstitched or scalloped edges, colored, embroidered, blue to 28. Price, from 7/6 each. Large selection of Tea Cloths from 7/6 each in latest novelty designs.

**THE NEW "SILVERTONE" DAMASKS.** Absolutely the latest and distinct in exquisite Blue Damask. Tablecloths from 7/6 to 10/6. Napkins to match. Size 24 x 24 1/2 10/6 per doz.

**REAL MADRIDA DOTTRES SETS.** Dainty designs on real linen. Price, 2/6 per set of 13 pieces, in either green or white linen.

**ORDER EARLY!** Cream Art linen Linen cloth. Price 2/6 per set of 13 pieces all hand embroidered. Price 2/6 per set. Bold Linen Dress. Price 6/0 each. Table Napkins. Splendid value at 6/0 1/2 per doz. 2/6 per doz.

**Whiteaways NAIROBI.**

**SUPREME ENJOYMENT TELLS YOU THAT SOMEONE HAS REACHED THE SUMMIT OF HIS LIFE'S WORK.** Some have found the better soil for the cultivation of the plant—has given us better in the blending of the leaf—has found tasteful paper to ensure your full enjoyment—has made for you and your friends...

# "SEA LORD"

CIGARETTES

THE BEST BLEND FOR THE PRICE ON THE KENYA MARKET.

50 for 1-25

100 for 25 c

GODFREY PHILLIPS, Ltd.

Distributors—  
**Dalgety & Co., Ltd.**  
MOMBASA NAIROBI ELDORET.

# Royal Visit

To make it right Royal we have Ferreira's Renowned Portwines—Prince of Wales 1860, Fort 1875 and many other qualities from 1871 to 1911 per bottle.  
Fockin's World Famous Liqueurs—Liquor Imperial, Maraschino Zira, Kummal Crystalline, Apricot Brandy, Orange Curacao, Cherry Brandy, Lorencjengens, Half an Half (Cur. and Bitters), etc., etc.

**B. C. Siqueira,**  
8th Avenue Nairobi.

**Keith Timber Co. Ltd.**  
R.D. Box 874, Sadler Street, Nairobi.

CEDAR AND PODO OF ALL SIZES.  
MACHINED TIMBER A SPECIALITY.  
CEDAR FENCING POSTS, SEASONED FLOOR BLOCKS IN STOCK.  
SAWS HAMMERED AND REPAIRED BY AN EXPERT.

## RAILWAY DEVELOPMENT IN KILIMANGARU

Request for Another Branch Line.

KILIMANGARU MOUNTAIN VALLEY.

Opinion by the Agricultural Department.

(LOCAL CORRESPONDENT.)  
Northern Tanganyika is well served by the Tanganyika Railway, and the Agricultural Department of the Uganda Railway. The extensive Kili-Mt. Kilimanjaro is a fertile and fertile and a portion of the Kili-Mt. Kilimanjaro is now being cleared as a station for the Uganda Railway. It is now being cleared as a station for the Uganda Railway. It is now being cleared as a station for the Uganda Railway.

The Northern side of Kilimanjaro and Mt. Meru will be well served by the line, and a considerable area of European settlement on the Western slopes of Kilimanjaro and the Eastern slopes of Meru remains to be cleared. A fine position for planting potatoes has been found in the area, and it is now being cleared as a station for the Uganda Railway. It is now being cleared as a station for the Uganda Railway. It is now being cleared as a station for the Uganda Railway.

**Chap. Construction.**  
After a special report to H. H. the Governor a survey was made by a Tanganyika Railway surveyor and it was established that construction would be particularly cheap and easy construction would be simple and there would be no striking of large water courses on the line would cross the water divide. At present the Kili-Mt. Kilimanjaro line is a simple line, which is being cleared as a station for the Uganda Railway. It is now being cleared as a station for the Uganda Railway. It is now being cleared as a station for the Uganda Railway.

The area which would be served by the proposed line comprises three main districts—the Kili-Mt. Kilimanjaro, the Kili-Mt. Meru, and the Kili-Mt. Kilimanjaro. The area which would be served by the proposed line comprises three main districts—the Kili-Mt. Kilimanjaro, the Kili-Mt. Meru, and the Kili-Mt. Kilimanjaro.

## THE BEST METHOD OF IRRIGATION

Water Provision.

The Kenya Office for the other districts in that it helps to avoid the usual and although irrigation water is available, an excellent method is to be used. The main grain crops can be grown on the Kili-Mt. Kilimanjaro and the Kili-Mt. Meru. The main grain crops can be grown on the Kili-Mt. Kilimanjaro and the Kili-Mt. Meru.

There are large deposits of limestone in the Kili-Mt. Kilimanjaro area, and it is now being cleared as a station for the Uganda Railway. It is now being cleared as a station for the Uganda Railway. It is now being cleared as a station for the Uganda Railway.

There is no doubt that in the event of the construction of a branch line the irrigable land would be considered too valuable to devote to maize and would be used for coffee or other high value crops in which case foodstuffs for native labor would be imported by rail from other districts.

Measurements have been made of the flow of water in the principal rivers and taking both facts together (Kenya Nairobi and Nyeri Nyeri) it is estimated that 6,000 ac. can be eventually developed as irrigated land. This estimate is based on the normal flow of rivers and possible conservation of night water by small reservoirs on each farm. Should it eventually prove feasible to conserve flood water this area could be greatly increased. Local men are convinced that there are large supplies of underground water which can be tapped eventually when the problem of conservation has been dealt with.

There remains a very big area over and above the irrigable land. The better portions of this will presumably continue to be devoted to grazing at present. There are in addition big stretches of land which will certainly be developed as small plantations if the proposed line is built. The present distance from rail of about 12 to 25 miles. One company has already commenced a survey and it is estimated that the distance from rail will prove a serious handicap.

Our minor farm enterprises, dairying, pigs, sheep, poultry, fruit, etc., would all be admirably stimulated by the advent of a railway and the resultant traffic would be by no means negligible.

## THE BEST METHOD OF IRRIGATION

Water Provision.

As regards native production there are two possibilities from a railway point of view. Firstly there is the method of irrigation by means of the Kili-Mt. Kilimanjaro and the Kili-Mt. Meru. The main grain crops can be grown on the Kili-Mt. Kilimanjaro and the Kili-Mt. Meru.

There are large deposits of limestone in the Kili-Mt. Kilimanjaro area, and it is now being cleared as a station for the Uganda Railway. It is now being cleared as a station for the Uganda Railway. It is now being cleared as a station for the Uganda Railway.

There is no doubt that in the event of the construction of a branch line the irrigable land would be considered too valuable to devote to maize and would be used for coffee or other high value crops in which case foodstuffs for native labor would be imported by rail from other districts.

Measurements have been made of the flow of water in the principal rivers and taking both facts together (Kenya Nairobi and Nyeri Nyeri) it is estimated that 6,000 ac. can be eventually developed as irrigated land. This estimate is based on the normal flow of rivers and possible conservation of night water by small reservoirs on each farm. Should it eventually prove feasible to conserve flood water this area could be greatly increased. Local men are convinced that there are large supplies of underground water which can be tapped eventually when the problem of conservation has been dealt with.

There remains a very big area over and above the irrigable land. The better portions of this will presumably continue to be devoted to grazing at present. There are in addition big stretches of land which will certainly be developed as small plantations if the proposed line is built. The present distance from rail of about 12 to 25 miles. One company has already commenced a survey and it is estimated that the distance from rail will prove a serious handicap.

Our minor farm enterprises, dairying, pigs, sheep, poultry, fruit, etc., would all be admirably stimulated by the advent of a railway and the resultant traffic would be by no means negligible.

## THE BEST METHOD OF IRRIGATION

Water Provision.

The Kenya Office for the other districts in that it helps to avoid the usual and although irrigation water is available, an excellent method is to be used. The main grain crops can be grown on the Kili-Mt. Kilimanjaro and the Kili-Mt. Meru. The main grain crops can be grown on the Kili-Mt. Kilimanjaro and the Kili-Mt. Meru.

There are large deposits of limestone in the Kili-Mt. Kilimanjaro area, and it is now being cleared as a station for the Uganda Railway. It is now being cleared as a station for the Uganda Railway. It is now being cleared as a station for the Uganda Railway.

There is no doubt that in the event of the construction of a branch line the irrigable land would be considered too valuable to devote to maize and would be used for coffee or other high value crops in which case foodstuffs for native labor would be imported by rail from other districts.

Measurements have been made of the flow of water in the principal rivers and taking both facts together (Kenya Nairobi and Nyeri Nyeri) it is estimated that 6,000 ac. can be eventually developed as irrigated land. This estimate is based on the normal flow of rivers and possible conservation of night water by small reservoirs on each farm. Should it eventually prove feasible to conserve flood water this area could be greatly increased. Local men are convinced that there are large supplies of underground water which can be tapped eventually when the problem of conservation has been dealt with.

There remains a very big area over and above the irrigable land. The better portions of this will presumably continue to be devoted to grazing at present. There are in addition big stretches of land which will certainly be developed as small plantations if the proposed line is built. The present distance from rail of about 12 to 25 miles. One company has already commenced a survey and it is estimated that the distance from rail will prove a serious handicap.

Our minor farm enterprises, dairying, pigs, sheep, poultry, fruit, etc., would all be admirably stimulated by the advent of a railway and the resultant traffic would be by no means negligible.

## NOW OPEN

Nairobi General Cash Store Ltd. GOVERNMENT ROAD.

(In the Premises lately occupied by Messrs. General Store.)

PROVISION DEALERS and GROCERS. TORACCO, CIGARETTES, and CONFECTIONERY. FRESH FRUIT, CUT FLOWERS and VEGETABLES.

SEEDS, FARMS and LOCAL PRODUCE. BOUTQUETS and WINESTOCKS.

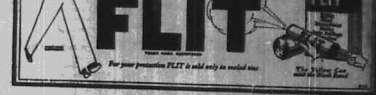


## Symbols of Death!

The fly's life is dedicated to the destruction of insects, bacteria and germs. For the fly is the first-borne agent of pestilence. Destroy germs-biting flies with Fly.

Fit clear the house in a few minutes of disease-bearing flies, mosquitoes, bedbugs, roaches, ants and bees. To maximize the cracks where insects hide and breed, destroying their eggs and larvae, hatching in years. With the Fly.

Do not confuse Fly with ordinary insecticides. Genuine killing power leaves satisfaction with Fly. Made by the largest manufacturers of insecticides in the world. Buy Fly and a Fly Sprayer today.



For your protection FLY is sold only in sealed tins.

# THE GIFT SHOP

Always Something New & Interesting.

# Taws Limited.

NAIROBI.

## Doonholm Dairy

Box 11, Nairobi.  
FOR Pure Milk and Cream.  
From Farm to Consumer.  
**John Rifkin.**

SIXTH AVENUE, P.O. Box 818, NAIROBI.



WAGON BUILDER. BLACKSMITH FARRIERS. Stock of AXLES, BRAKES, WAGONS, and ALL KINDS OF WAGONS MADE TO ORDER.

**P. STEWART,** C.A.S., M.B., PAINTER & DECORATOR, Mowbray House, NAIROBI, P.O. Box 88.

PAINTS, COLOURS, OILS, VARNISHES & DISTEMPERS. Large or Small Quantities.

TO LET.

From 1st January 1921, premises now under construction adjoining Central Hotel, Victoria Street, suitable for garage, factory, wholesale, or other purposes, restaurant or shop. Internal treatment and modern toilet's appointments. Size 60 x 70. SHAKERS BROTHERS, 110, N. B. Rd., NAIROBI.

# Fair Prices.

The following are considered fair retail prices for our Superfine Flour, "Kenya's Mist", in Nairobi, Nakuru, Njoro, and Molo.

PER POUND ... Cents 126  
PER 10LB. COTTON BAG ... Shs. 12/5  
PER 50LB. COTTON BAG ... Shs. 12/75

The undermentioned firms are selling at these prices:

- NAIROBI: WIMHURST LIMITED, M. S. ELLIOTT & CO. LTD., KANUJI NARAYANI & CO., COLONIAL GENERAL STORES, LTD., BELTRAM PHARMA. & CO., KASSANALI BROS.
- NAKURU: IBRAHIM KARIMBUS, S. SPIKE, HARISHING GUJARALI, KENYA GROCERIES, LTD.
- NJORO and MOLO: THE EUROPEAN STORE LTD.
- ROMA: EUBEN BROTHERS.

There is more "Kenya's Mist" sold in Kenya and imported, combined. It is the flour of dependable high quality.

# UNGA Ltd., Njoro.



UNION CASTLE LINE.

FORWARD TO EUROPE. From Mombasa. 20th Dec. 1922. 21st Dec. 1922. 22nd Dec. 1922. 23rd Dec. 1922.

British India Steam Navigation Company, Ltd.

LONDON AND EAST AFRICA LINE. LONDON TO INDIA, via Suez, Port Said, Port Sudan and Aden, Ombayeh and Karachi. DORSET-DORIAN MAIL SERVICE. Calliope, Kilmara, Dun-de-Salmon, Nibou, Delage, Indochine, Alce, Marquis, large monthly. Outwards and Inwards.

Chivers' Canned Fruits



Selected fruit prepared by scientific means in English cooking. Every Chivers' Canned Fruit is a very high quality product.

EXPERIENCED ADVICE.



The Simple way to Satisfactory Service FROM THE EXPRESS TRANSPORT CO. Complete Contractors to Kenya and Uganda Railways.

TO DAIRY FARMERS

Cut down heavy and unnecessary labour expense BY USES Wallace Milking Machines. D. L. McWallace of New Zealand. The cleanest, simplest, and most economical machine on the market.

The African Marine & General Engineering Company, Ltd. - ESTABLISHED.

SHIP REPAIRING. PAINTWORK & REPAIRING. MOULDING. OXY ACETYLENE WELDING & CUTTING. In their well equipped departments Shops, all types of House and Office Appliances are made and repaired.

F. A. HEAD.

PIANOFORE, TUNER AND REPAIRER. Five years with Messrs. Chappell & Co., London. Seven years' experience in Kenya Colony. Send all orders to P. O. Box 675.

FOR SALE.

Rate Cash - - - - - 30/- each. Rate Cash good but second hand - - - - - 15/- each. Heavy Black Iron Case 12/- each.

Deutsche Ost-Afrika-Linie (GERMAN AFRICAN SERVICE)

Table with shipping schedules for Deutsche Ost-Afrika-Linie, including destinations like Swakopmund, Windhoek, and Namibia.

Land Sale.

PRELIMINARY ANNOUNCEMENT. A. Davis & Co. ESTATE AGENTS, NAIROBI. Have been instructed to offer for sale by Public Auction or by Private Treaty small agricultural holdings in lots of 50 acres upwards.

NATIONAL BANK OF INDIA LIMITED.

Branches to the Colony and Protectorate of Kenya and Uganda. Government. Subscribed Capital - Rs. 1,00,00,000. Paid-up Capital - Rs. 25,00,000. Reserve Fund - Rs. 25,00,000.

RAILWAYS SUBJECT TO ALTERATION.

By order of the Director of Railways, the following alterations are proposed to be made in the running of the Mombasa to Malindi Railway.

Compagnia Italiana Transatlantica.

Mail Service to NAPLES and GENOA by elegant and quick-railing Oceanic service steamers. The best route to London, via Italy. MAILING FROM NAIROBI TO GENOA: 1st Dec. 1922. 2nd Dec. 1922. 3rd Dec. 1922.

CHRISTMAS OVERSEA MAILS.

Attention is drawn to the latest list of rates compiled by the British Agents, which is published in the following column, should customers wish to send Christmas Day.

UPLANDS NEWS.

NEWS for CHRISTMAS: A very large stock of fine quality HONEY TRICKETS to avoid disappointment. Many consumers are tired of place orders with their Grocers as early as possible.



"A Stitch in Time — Saves Nine"

and filling your tank WITH "BP" saves a lot of engine trouble Always Use



No trouble to get - No trouble afterwards.

The invariable line in cars is... which is usually light, and... is highly unlikely that...

At the same time, for one reason or another, it is unlikely that... automobile as a whole will get... better for, for the process of getting...

At the present moment, therefore, considerations are devoted... themselves to making bodies that...

Really low bodies become possible... when thoughtful designers arrange...

Headroom in Saloons.

Appearance vs. Comfort.

should be nothing on each side of the propeller shaft, so that... drop walls for the feet of the...

The fitting of seats having... of the front seats has been the... killed at a considerable rate...

Although seats have got over... the body shells have remained...

Apart from the actual loadings... of seats and bodies, an illusion of...

fitting of a big, high truck... them is less risk, therefore, of... the risk of bumping their heads...

A safer method of giving the... appearance of length is to... the seat, and it is possible a...

Getting in and out of a car... with very low seats is often... and, and we are likely there...

The modern low line has been... maintained also by the increasing... use of pneumatic upholstery...

types of a few years ago... there is less risk, therefore, of... the risk of bumping their heads...

With the present chassis layout... the extent to which seats and... consequently, the body can be...

With the present chassis layout... the extent to which seats and... consequently, the body can be...



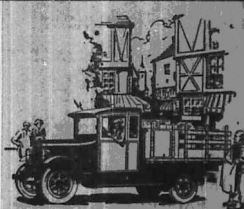
Heavy Duty Vehicles

WEED TYRE CHAINS are an absolute... Trucks, Buses, Motor Lorries... and they tread the most...

Order from your dealer. Standard of quality for over a quarter of a century.

WEED TYRE CHAINS

AMERICAN CHAIN COMPANY, Inc.



Make Profits Sure

An owner can get out of a truck or bus only what the market will...

- 1/4 ton Chassis 6200
1/2 ton Chassis (new) 6200
1/2 ton Chassis 6470
1/2 ton Chassis 6500
All fitted with cab and...

S. FISHER & SIMMONS, (E. A.) LTD. VICTORIA STREET, NAIROBI.

GRAHAM BROTHERS TRUCKS AND BUSES

BUILT BY TRUCK DIVISION OF GENERAL MOTORS. SOLD BY DOGBOE BROTHERS DEALERS EVERYWHERE.

XMAS FAST APPROACHING!

- Gifts for—
Gente, Ladies, Children and Friends.
Government Road. KALA SIDI NAIROBI. Direct Importer.

XMAS PRESENTS

SELECT AT LALCHAND MOOLCHAND BROS. Government Road, NAIROBI. P.O. Box 876.

Nairobi Vulcanizing Co.,

Box 217. Behind Theatre Royal. Damaged Tyres up to 42 x 8 repaired in our Giant Moulds. The largest Vulcanizing Plant in East Africa.

MANGALORE TILES. DEAL all sizes.

TEAK in Long and Lengths. Swedish Imported Doors all sizes in Stock.

F. M. BHAIJEE, HARDWARE MERCHANT. NAIROBI.

ESSJAY LIMITED. Botus House, Government Road. Box 624—Phone 377.

Financial and Property Agent. Town Properties negotiated. Partnerships arranged. Investments advised on. We have sound investments for sums from 2500 upwards. In this respect we claim to do better for you than anyone else.

THE Kenya Loan & Discount Co., Ltd. NAIROBI. P.O. Box 146—Floor, Court Chambers. FINANCIAL AGENTS. BILLS DISCOUNTED. SHORT-TERM LOANS GRANTED. ANY REALISABLE ASSET NEGOTIATED FOR CASH.

R. JACOBS, Managing Director.

Kenya Loan & Discount Co., Ltd. NAIROBI. P.O. Box 146—Floor, Court Chambers. FINANCIAL AGENTS. BILLS DISCOUNTED. SHORT-TERM LOANS GRANTED. ANY REALISABLE ASSET NEGOTIATED FOR CASH.

Kenya Loan & Discount Co., Ltd. NAIROBI. P.O. Box 146—Floor, Court Chambers. FINANCIAL AGENTS. BILLS DISCOUNTED. SHORT-TERM LOANS GRANTED. ANY REALISABLE ASSET NEGOTIATED FOR CASH.

Call or Write, Strictest Confidence. Established 1921.

R.E.A.A.

A Gift of Wireless Sets.

The British East African Broadcasting Company have given the R.E.A.A. as its 100th crystal wireless sets to the Hon. Secretary, Mr. T. D. O'Connell, for the use of the Government of Kenya.

New Year Gift.

The British East African Broadcasting Co., Ltd., are sending a really splendid New Year Gift to members as they have kindly offered to give us 100 Crystal Wireless Receiving Equipments.

It would like to have one of these Wireless Receiving sets, kindly send me his name as soon as possible, and if more than 200 members apply, the first 200 will be able to make full use of your membership.

Trans Nzoiia KIRKWOOD & Co., Kilte.

Main Dealers, Importers and Exporters. All Farming Requirements and Building Materials. Transport Contractors. Railway Clearing and Forwarding Agents. Distributors of B. F. Motor Tractor Kenosene. Crude Oil.

The Bradford Manufacturing Co., Ltd.

SUITABLE XMAS GIFTS FOR MEN. LUVISCA ART SILK TUNG SHIRTS. Newest stripes, 2 Collars, with Tabs and Buttons. With each shirt. Size 18" and 18 1/2" neck. only Shs. 22/6 each.

LUVISCA ART SILK PYJAMAS. Newest Stripes. Size 28" and 29". Shs. 26/- per suit.

ANNOUNCEMENT.

THE NGARA BAKERY has now expert Bakers and Pastry Cooks. New delicacies are the Chocolates and sweets made by them. Catering undertaken at short notice and prices arranged to suit every pocket. Try them today realising their worth and satisfying yourself. Near Sir/Madam's Their Address: THE NGARA BAKERY, P.O. Box 102, NAIROBI.

A Gift of Wireless Sets.

The British East African Broadcasting Company have given the R.E.A.A. as its 100th crystal wireless sets to the Hon. Secretary, Mr. T. D. O'Connell, for the use of the Government of Kenya.

New Year Gift.

The British East African Broadcasting Co., Ltd., are sending a really splendid New Year Gift to members as they have kindly offered to give us 100 Crystal Wireless Receiving Equipments.

It would like to have one of these Wireless Receiving sets, kindly send me his name as soon as possible, and if more than 200 members apply, the first 200 will be able to make full use of your membership.

Trans Nzoiia KIRKWOOD & Co., Kilte.

Main Dealers, Importers and Exporters. All Farming Requirements and Building Materials. Transport Contractors. Railway Clearing and Forwarding Agents. Distributors of B. F. Motor Tractor Kenosene. Crude Oil.

The Bradford Manufacturing Co., Ltd.

SUITABLE XMAS GIFTS FOR MEN. LUVISCA ART SILK TUNG SHIRTS. Newest stripes, 2 Collars, with Tabs and Buttons. With each shirt. Size 18" and 18 1/2" neck. only Shs. 22/6 each.

LUVISCA ART SILK PYJAMAS. Newest Stripes. Size 28" and 29". Shs. 26/- per suit.

ANNOUNCEMENT.

THE NGARA BAKERY has now expert Bakers and Pastry Cooks. New delicacies are the Chocolates and sweets made by them. Catering undertaken at short notice and prices arranged to suit every pocket. Try them today realising their worth and satisfying yourself. Near Sir/Madam's Their Address: THE NGARA BAKERY, P.O. Box 102, NAIROBI.

- 1/4 ton Chassis 6200
1/2 ton Chassis (new) 6200
1/2 ton Chassis 6470
1/2 ton Chassis 6500
All fitted with cab and...

S. FISHER & SIMMONS, (E. A.) LTD. VICTORIA STREET, NAIROBI.

GRAHAM BROTHERS TRUCKS AND BUSES

BUILT BY TRUCK DIVISION OF GENERAL MOTORS. SOLD BY DOGBOE BROTHERS DEALERS EVERYWHERE.

XMAS FAST APPROACHING!

- Gifts for—
Gente, Ladies, Children and Friends.
Government Road. KALA SIDI NAIROBI. Direct Importer.

XMAS PRESENTS

SELECT AT LALCHAND MOOLCHAND BROS. Government Road, NAIROBI. P.O. Box 876.

Raleigh Motor Cycles. VARIOUS MODELS at Greatly Reduced Prices. 2 H.P. ... only Shs. 1,650/- 3 H.P. ... only Shs. 1,950/- 4 H.P. ... only Shs. 2,250/- Call and inspect at Mother's Garage, Sixth Avenue, or Phone 87, P.O. Box 87, or Wylie Kaituma-Road, Ltd. 106, Nairobi, (Phone 87).





# OVERLAND Safari Cars

Fully Equipped  
No Extras  
**£185**

MOULTON & MORRISON Ltd.  
Nairobi.

## THE FOWLER PLANT BRINGS PROFITS.

MINES ALL TYPES  
From  
½ cubic ft. to 2 cubic yards



CONCRETE CARTS,  
WHEEL BARRIERS,  
DRIVE BREAKERS  
and  
CONCRETE BLOCK  
MACHINES.



NAIROBI  
1936

MOSHI  
1936

# J. W. Milligan & Co.

## A. H. Wardle & Co. Ltd Optical Chemists.

Optical Manager:  
V. M. BROWSE, F.S.M.C., F.I.O.

### SCIENTIFIC EYE TESTING.

Testing and Spectacles complete, from 25/-.

## QUEEN ANNE

RARE  
OLD  
SCOTCH  
WHISKY.

THE CHOICE OF THE CONNOISSEUR.

As selected for the Royal Safari.

Distributors—  
R. G. Vernon & Co.,  
UNION BUILDINGS,  
NAIROBI.

For BRIGHT Exposures  
in DULL Weather;

USE

## ILLINGWORTH

ALL BRITISH  
ROLL FILM.

SOLE DISTRIBUTORS:  
A. H. WARDLE & Co., Ltd.  
MOMBASA. NAIROBI. ELDORET.

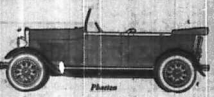
## LIGHTNESS AND POWER.



### THE NEW FORD

ASK A FORD OWNER.  
Delivery from Stock.

THE SERVICE Co., Ltd.



SIXTH AVENUE

NAIROBI.

## QUINACINE

PRICE 2/- and 3/6 per bottle.

THE RELIABLE REMEDY FOR  
Colds & Chills

KODAK (E.A.) LTD. INC.

Howse & McGeorge  
CHEMISTS.

KENYA, UGANDA and TANGANYIKA

### THREE LEADING BRANDS.



Emile Jardin & Cie.

## ABDULLA



CIGARETTES & TOBACCO.

Sole Agents—  
R. O. HAMILTON, Ltd.,  
Phone 302. NAIROBI. P.O. Box 302.

## £62-10-0

Pay as You Ride

There is no need for you to wait for your new B.S.A.—you can come along to us NOW, and for a small deposit take away a 1936 model B.S.A., paying the remainder as you ride.



PERFECT IN EVERY PART

We Want to Give You a Trial Run

CALL AND SEE US TO-DAY

Garr, Lawson & Co. Ltd.  
NAIROBI.

### MEMORANDUM.

In memory of Sergi A. T. Javan, E.A. Prisoner. For King and country he died.

### African Standard

MONDAY, DEC. 8, 1936

### The Spur of Difficulty.

The lead we live in is the subject of an annual review under conditions which impose in limitation upon the character of the service. Twenty times of the Dominion Societies have been noteworthy during a quarter of a century in Kenya for the provision of the opportunity for maintaining activities for property, often for optimism and generally for optimism. As a social occasion, the dinner here a unique place in the life of the Colony. This observance is mixed generally with politics and the dish is not only appetizing but, according to some, delicious. Politics play inevitably a large part in the life of Kenya—the kind of individual who is not only ready to be ready to approach as during the season of the festival of St. Andrew. The festive character of the gathering is a partial explanation of this, although that quality of impetuosity was not wholly absent at least on at least one occasion. Politics in the main proper rather than suffer through the satisfaction of Caledonian. In the Nairobi and Nairobi present a lively and useful contact. We have the conventional and official view of the matter and the spirit and in a kind of body on every day. This year we have the Bill of the Colony, perhaps on the one of today over the same of tomorrow, passing a bill and a steady working through the main and almost of Kenya people and a steady of Kenya people.

the address is referred to (1) a declaration that the Colony must stand slowly—but not too slowly—and yet to be held in the importance and momentum of team work in the last ahead. It is not a softening speech, because he had authority at the moment of speaking, to those the views of Government and, in any event, the present months are not a period of waiting, as far as the community is concerned as a whole. On the other hand, at Nairobi, the proposer of the same toast has a message. It is speaking to men who must not delay action in the things that matter to them. They are faced with political issues as agriculturalists, with the threat of disease, with the concentration of team work with the promise of a year of political and economic development in settlement and agriculture. To them, for the moment, these things are of greater importance than abstract political theories or with intelligent forecasts of coming political changes. They are things of the present and, as such, they break down delay in their treatment. There is no delay in the speaker; "practical optimism," believe that good means are coming—but do not mean content with optimism. Take any message in both hands—analyze your facts with sharp and well-aided eyes, see what you have with common sense. This is a healthy and vigorous doctrine and with faith, Kenya need not fear the apprehensibility of some of the great difficulties. These difficulties are not a spur to greater action, but a spur to the end; and we have a cautious but not too conservative Government policy and, on the other hand, a self-reliant, self-confident and self-helping government, that "unshakable optimism" that will see the Bill of the Colony passed in Nairobi, will be something more than a merely administrative and somewhat characteristic. Optimism in this sense is not a blind faith, but a faith in the development of the branches of the Government of a new country and the optimism of the Minister.

### Under the Standard Clock.

Legislative Council.

Legislative Council resumed the first session in the Memorial Hall, Nairobi, this morning. The bill will be generally formal, but the session will be of importance and of interest.

Kenya Mail.

The mails despatched from Mombasa yesterday 11 by the "East Africa" arrived at Nairobi yesterday.

Winter Market.

The winter market prices have been reviewed by the Kenya Agricultural Union in the Memorial Hall, Nairobi, this morning. The winter market prices are as follows: (1) Kenya "A" Grade No. 1 (average price) 210/00 per ton; (2) Kenya "B" Grade No. 1 (average price) 200/00 per ton; (3) Kenya "C" Grade No. 1 (average price) 190/00 per ton; (4) Kenya "D" Grade No. 1 (average price) 180/00 per ton.

Optical Prices.

Messrs. Dalrymple & Co., Ltd., have been invited to tender for the supply of optical instruments for the Government of Kenya. The tender is to be submitted to the Government of Kenya at Nairobi, on or before the 15th inst. The instruments to be supplied are as follows: (1) 10 pairs of binoculars; (2) 10 pairs of field glasses; (3) 10 pairs of opera glasses; (4) 10 pairs of pocket telescopes; (5) 10 pairs of microscope slides; (6) 10 pairs of microscope objectives; (7) 10 pairs of microscope eyepieces; (8) 10 pairs of microscope bases; (9) 10 pairs of microscope stands; (10) 10 pairs of microscope accessories.

Summary Sheet.

The Magistrate's finding in the case of the death of a woman who was found in the Kenya Colony a short time ago was delivered in the District Magistrate's Court at Nairobi.

Garden Plot Proposed.  
The Government has approved a plan for the development of a garden plot in the City of Nairobi. The plan is to develop a garden plot of about 10 acres in the City of Nairobi. The garden plot will be used for the purpose of growing vegetables and other crops. The garden plot will be developed in the City of Nairobi, near the City Hall.

### The League of Nations.

CHAMBERLAIN VISITS FOR THE LEAGUE OF NATIONS.  
The League of Nations is a permanent organization for the maintenance of international peace and security. It was established in 1920 and has since that time been working for the purpose of preventing war and promoting peace. The League of Nations is a permanent organization for the maintenance of international peace and security. It was established in 1920 and has since that time been working for the purpose of preventing war and promoting peace.

### No Dry No Zealand.

FULLIA WART BEREKUT SYSTEM CONTINUED.  
The Government of New Zealand has decided to continue the fullia wart berekut system. This system is a method of controlling the spread of fullia wart, a disease which is caused by a virus. The fullia wart berekut system involves the use of a special vaccine which is injected into the animals. This vaccine is made from the virus itself and is highly effective in preventing the disease. The Government of New Zealand has decided to continue this system because it has been found to be the most effective method of controlling the disease.

### Queen of Spain.

END OF VISIT TO BRITAIN.  
The Queen of Spain, Victoria Eugenia, has ended her visit to Britain. She arrived in London on December 1st and spent several days in the city. She then travelled to other parts of the United Kingdom and returned to London on December 7th. Her visit to Britain was highly successful and she was well received by the British people.

### STANDARD DIARY.

Today: Legislative Council resumed in the Memorial Hall, 10 a.m. Supreme Court resumed in the Memorial Hall, 10 a.m. December 1: Kenya Finance Committee. December 2: Kenya Finance Committee. December 3: Kenya Finance Committee. December 4: Kenya Finance Committee. December 5: Kenya Finance Committee. December 6: Kenya Finance Committee. December 7: Kenya Finance Committee. December 8: Kenya Finance Committee. December 9: Kenya Finance Committee. December 10: Kenya Finance Committee. December 11: Kenya Finance Committee. December 12: Kenya Finance Committee. December 13: Kenya Finance Committee. December 14: Kenya Finance Committee. December 15: Kenya Finance Committee. December 16: Kenya Finance Committee. December 17: Kenya Finance Committee. December 18: Kenya Finance Committee. December 19: Kenya Finance Committee. December 20: Kenya Finance Committee. December 21: Kenya Finance Committee. December 22: Kenya Finance Committee. December 23: Kenya Finance Committee. December 24: Kenya Finance Committee. December 25: Kenya Finance Committee. December 26: Kenya Finance Committee. December 27: Kenya Finance Committee. December 28: Kenya Finance Committee. December 29: Kenya Finance Committee. December 30: Kenya Finance Committee. December 31: Kenya Finance Committee.

# KEYS CAFE SOCIETIES.

## TWENTY-FIFTH ANNIVERSARY DINNER IN NAIROBI.

### Acting Governor Says Hasten Slowly—But Not Too Slowly.

#### THE DEFENCE FORCE

### Live Amalgam Recalls Best Traditions of the Past.

The Caledonian Society of Kenya held its 25th Annual Dinner in Nairobi on Friday evening when the attendance of H.E. The Governor, who sent a message of regret, the reply to which was made by His Honour the Chief Justice, who is now Acting Governor of Kenya.

#### MAJOR CROGAN ON HIMSELF.

The twenty-fifth anniversary dinner of the Caledonian Society of Kenya held in Nairobi on Friday evening, January 25th, was a most successful one. The dinner was held at the Grosvenor Hotel, Nairobi, and was attended by 170 members and guests. The dinner was most successful and the evening was spent in the most enjoyable manner.

#### The Toast.

##### THE IMPERIAL POLICE.

There is a man here! It is often said that the Imperial Police is the best of its kind in the world. It is a body of men who are trained to the highest standard of efficiency and who are ready to serve wherever they are required. They are a proud and distinguished body of men who are the backbone of the Empire.

##### The Defence Force.

It is a common saying that the defence force is the backbone of a nation. It is a body of men who are trained to the highest standard of efficiency and who are ready to serve wherever they are required. They are a proud and distinguished body of men who are the backbone of the Empire.

During the evening the band of the King's African Rifles rendered a very fine selection of music which was well received by the audience. The programme was most successful and the evening was spent in the most enjoyable manner.

##### Broadcast Speeches.

The toast of Kinging the Loyalty of the Empire and the Duty of the Citizen was given by His Honour the Chief Justice. He spoke of the loyalty of the people of Kenya and the duty of the citizen to the Empire. He said that the people of Kenya were loyal to the Empire and that they were ready to serve wherever they were required.

##### Final Toasts.

Many instances of greeting were received by the Nairobi Society and a large number were present. The dinner was most successful and the evening was spent in the most enjoyable manner.

##### LADIES : Printed Voile Day Frocks.

Start designing, smart colorings and latest styles. Well made from good quality material and a real bargain at this price. Shgs 32-50. LESS 5 per cent. FOR CASH. Each.

#### S. Jacobs Ltd, NAIROBI.

## SUDDEN END TO A MURDER TRIAL.

### Accused Man Shot Dead in Court.

#### JOURNALIST INJURED.

(THROUGH AGENCY'S MISTAKE.) During trial on Friday afternoon, the accused man was shot dead in court. The incident occurred when the accused man, who was being escorted to the court, was shot by a man who was mistaken for him. The man who was shot was a journalist who was reporting on the trial.

#### Earthquake Tremors.

Reports from various parts of the country indicate that there have been several earthquakes in the past few days. The tremors were most felt in the coastal areas and in the interior of the country.

#### REPORTS FROM NAUVEDI AND KENYA EASTERN AREAS.

Reports from various parts of the country indicate that there have been several earthquakes in the past few days. The tremors were most felt in the coastal areas and in the interior of the country.

#### The Defence Force.

It is a common saying that the defence force is the backbone of a nation. It is a body of men who are trained to the highest standard of efficiency and who are ready to serve wherever they are required. They are a proud and distinguished body of men who are the backbone of the Empire.

#### Sea Direction Finders.

##### NEW WIRELESS BEAM FOR SHIPPING.

The wireless beam installation at Great Britain by the Marconi Marine has just been completed. This type of station transmits a signal which can be picked up by ships equipped with wireless direction finders. The installation is a most important one and will greatly assist in the navigation of ships.

##### Native Inhumanity.

A further case of cruelty to animals was reported in the case of a dog which was kept in a cage for several days. The dog was found dead when it was taken out of the cage. The case is a most inhuman one and is a disgrace to the community.

##### ANOTHER CHIEFLY CHARGE AGAINST TOWN FIRM.

The Magistrate in finding the firm guilty of the charge of inhumanity, said that the firm had been found guilty of the charge of inhumanity. The firm had been found guilty of the charge of inhumanity.

##### TEE MORRY MARRIAGE.

The marriage of Tee Morry and his wife was celebrated in a most simple and quiet manner. The ceremony was performed by the Rev. Canon of the Cathedral and was attended by a few friends and relatives.

## ST. ANDREWS NIGHT AT NAKURU.

### Tributes to the Interest of the Prince of Wales.

#### A MOTTO FOR FARMERS.

### 'Take Courage in Both Hands'—1929 An Epoch Making Year.

Optimism and determination were the keynote of the Nakuru speeches at the Annual Dinner of the Scots of the Highlands on Friday evening.

#### 'SALVATION LIES WITH OURSELVES.'

Mr. Stewart, M.P., said that the only way to solve the problems of the country was to rely on ourselves. He said that the Government should not be blamed for the problems of the country, but that the people themselves should be responsible for their own actions. He said that the only way to solve the problems of the country was to rely on ourselves.

#### THE LADY WELLS.

The Lady Wells, who is a well-known actress, is expected to appear in a new play at the Theatre Royal. The play is a most interesting one and is expected to be a great success.

#### THE LADY WELLS.

The Lady Wells, who is a well-known actress, is expected to appear in a new play at the Theatre Royal. The play is a most interesting one and is expected to be a great success.

#### THE LADY WELLS.

The Lady Wells, who is a well-known actress, is expected to appear in a new play at the Theatre Royal. The play is a most interesting one and is expected to be a great success.

#### THE LADY WELLS.

The Lady Wells, who is a well-known actress, is expected to appear in a new play at the Theatre Royal. The play is a most interesting one and is expected to be a great success.

#### THE LADY WELLS.

The Lady Wells, who is a well-known actress, is expected to appear in a new play at the Theatre Royal. The play is a most interesting one and is expected to be a great success.

#### THE LADY WELLS.

The Lady Wells, who is a well-known actress, is expected to appear in a new play at the Theatre Royal. The play is a most interesting one and is expected to be a great success.

# LYRIC HALL.

## TO-NIGHT AND TO-MORROW ONLY.

### Bohemian Love

Featuring LOUISE LAGRANGE. The film that was awarded the gold medal for excellence in France.

### WEDNESDAY, THURSDAY AND FRIDAY, HENRY EDWARDS, IN THE FLAG LIEUTENANT

PRICES: Shs. 3/- and Shs. 2/-.

# Ruby Ring

## HOISERY, AN ACCEPTABLE XMAS GIFT.



New Stocks of Ladies' Hosiery from 25/-

Guests, Ladies Children's Slippers. For Xmas Presents.

# EADIES

## The Fashion Shoe Store, Nairobi.

# THEATRE ROYAL

## TO-NIGHT at 8-45 p.m.

# "The Clean Heart"

From the famous story by A. S. M. Hutcheson, author of "If Winter Comes"

FEATURING PERCY MARMONT and MARGUERITE DE LA MOTTE.

Latest News Items.

PRICES AS USUAL. STALLS 2/-, CIRCLES 3/-.

# Bej! Bej! Bej! The Anti Puncture Mixture

AS CHOSEN BY H.R.H. The Prince of Wales FOR HIS SAFARI

# K. McIvor's Garage.

6th Avenue.

While the past few months had been a period of political tranquility the coming year is expected to be a most interesting one.

The Prince of Wales is expected to visit Kenya in the near future.

The Government is expected to announce a new policy in the near future.

The people of Kenya are expected to be most interested in the new policy.

The Government is expected to announce a new policy in the near future.

The people of Kenya are expected to be most interested in the new policy.

The Government is expected to announce a new policy in the near future.

The people of Kenya are expected to be most interested in the new policy.

The Government is expected to announce a new policy in the near future.

The people of Kenya are expected to be most interested in the new policy.

The Government is expected to announce a new policy in the near future.

**If You Value Your Teeth -**



Twice a Day

Your Chemist Stocks it

**AFRIKANDER**  
SMOKING MIXTURE  
A PERFECT BLEND  
FINEST EMPIRE TOBACCO

4 in. tin  
in 5 sec. 40  
airtight  
tins.

**LADHARAM STORES,**  
Nairobi  
P.O. Box 518, Government Road.

JUST NOW RECEIVED FOR Christmas  
SILKS, BRASSWARE, METALWARE, E.P.N.S. WARE, LADIES' AND GENTS' WEAR, ETC., ETC., ETC.

Visit early lest you may be disappointed.

**NOTICE.**  
NAIROBI WATER SUPPLY.  
The attention of the public is drawn to the fact that the above supply is liable to contamination and that the consumption of unboiled water may be dangerous. It is therefore recommended that all water should be boiled before use.

MEDICAL OFFICER OF HEALTH.

**NOTICE.**  
THE VICTORIA NYANZA SUGAR COMPANY, LIMITED, have arranged with the undermentioned Stores to retail their No. 1 White Crystal Sugar at the following prices:-

Per pound Centa. /33  
Per packet of 56 lbs Pcs. 16/75

Nairobi.  
S. Jacobs, Limited.  
H. B. Duncan, " Nairobi House."  
W. S. Elliot & Company.  
Blackburn & Brown.  
The East African Trading Co., Ltd.  
Wimshurst, Limited.  
Colonial General Stores.

NAKURU.  
S. Jacobs, Limited.  
Eldoret.  
Wm. Dougal.  
RONGAL.  
Ruben Brothman.

**Where to Shop Nairobi Fashion Centre**  
CHOICEST SELECTION OF LADIES UNDERWEAR AT SPECIAL PRICES. Their sorry fate is shared by LADIES' BELT, Hosiery, IN ALL LEADING COLOURS. SIZES TO SUIT ALL.

**Husein & Co.**  
THE CORNER, SHOP.  
BOX 301, NAIROBI. PHONE 668

**If You Require**  
Murrum, Stone, Ballast, Manure, Transport and Daily Labour anywhere. Moderate Rate.  
Apply to  
**M. HAIDER & CO.**  
P.O. Box 920, NAIROBI.  
Also Road and Tennis Court and General Contractor Works Undertaken.

**THE NAIROBI DINNER**  
(Continued from page 9.)  
K.B.I. couple the Carrier Corps through the Council, as found in them in suffering and suffering. (Applause). To all members of the Imperial Force, ask you to turn down an empty glass."

**O. C. Troop.**  
The Officer Commanding Troop, Lt. Col. Williams responded to the toast. He was instructed by his Adjutant, he said, to make a political speech. All good commanding officers do what they can to do what their adjutant tells them. "I think you are a first-class soldier," he said. "I am sure you are a first-class officer." He then said that he was glad to see the O. C. Troop amidst laughter. He said that he was glad to see that all his adjutants have been long for sleep lying across the bed for you will realize as you realize that we have buried the banner on the basket. (Lauch).

"Having dealt with the political aspect," said Col. Williams, "I will now turn and deal with the O. C. Troop." He said that he was glad to see that all his adjutants have been long for sleep lying across the bed for you will realize as you realize that we have buried the banner on the basket. (Lauch).

"I have dealt with the political aspect," said Col. Williams, "I will now turn and deal with the O. C. Troop." He said that he was glad to see that all his adjutants have been long for sleep lying across the bed for you will realize as you realize that we have buried the banner on the basket. (Lauch).

**Individual Opinion.**  
Information obtained in the past few days has been made available in arriving at the fact that a small circle of friends in the Government Commissioner's office and others who may be at the time of the dinner, both officers and contractors, through which these general opinions can be viewed, such as the Government Commissioner and the Chamber of Commerce but there must be many individuals in all sections who do not care to express their views in public but who in the course of private conversation would say that they are in favour of the proposed extension of the O. C. Troop. It is therefore the opinion of these individuals who would give the Government a greater insight into our military situation, that they should be invited to give their views in a meeting.

**The Out of Living.**  
Let us take two examples to illustrate a great serious drawback to the

Let us take two examples to illustrate a great serious drawback to the

Let us take two examples to illustrate a great serious drawback to the

Let us take two examples to illustrate a great serious drawback to the

Let us take two examples to illustrate a great serious drawback to the

Let us take two examples to illustrate a great serious drawback to the

Let us take two examples to illustrate a great serious drawback to the

**WHERE TO STAY**  
TOWN & COUNTRY.  
**THE Nakuru Hotel.**

The NAKURU HOTEL is the largest and best equipped hotel in the Highlands outside Nairobi and is replete with every comfort and convenience. Nairobi is the commercial, travelling and touring centre for the most important and richest trading districts of Kenya.

30 single and double bedrooms—British Electric Installations—Hot and Cold Water at all times—Best Ventilation under skilled management. Outside and inside lounges, reading and writing rooms.

SEPARATE COTTAGE QUARTERS.  
Laundry and Bakery. Ample motor space. Telegrams: "Hotel, Nakuru."

**OAKLEIGH PRIVATE HOTEL**  
UNDER PERSONAL SUPERVISION OF  
MRS. R. JARRETT, Manageress.  
Phone 180 NAIROBI. P.O. Box 188.

**THE White Rhino Hotel**  
NYERI  
FOR BREAKFAST, LUNCHEONS, TEA, DINNERS AND ACCOMMODATION.  
Situated on Main Road,  
Grass—"Whitrhino."

**Stag's Head**  
Hotel, Nakuru  
THE MOST UP TO DATE HOTEL IN THE TOWN.  
ELECTRIC LIGHT.  
HOT AND COLD WATER TO EACH BEDROOM.  
UP-TO-DATE SANITATION.  
COMFORTABLE LOUNGE, EXCELLENT COUQUINE.  
J. G. HEATH.

**The Salisbury Hotel**  
Nairobi,  
Phone 168, P.O. Box 509.

**THE SAVOY HOTEL**  
THE BIRD, NAIROBI.  
BOX 39.  
PHONE: 389.

**BRACKENHURST LIMURU.**  
The most comfortable and inexpensive Country Hotel in Kenya. Terms from 12/ day inclusive.  
HUDDON CANE.  
**High View Hotel.**  
LIMURU (D Route).  
Healthy Situation. Ideal for Holidays, Luncheon, Tea, Tennis, etc. Terms Moderate.

**The Gables.**  
HIGH CLASS ACCOMMODATION.  
Phone 427  
Opposite Parliament Square Ground.

**IF YOU WANT**  
Good and Cheap Meals, you will find them at **PALLADIUM RESTAURANT**, Theatre Royal Building.  
Monthly Boarders catered for at very low price.  
3 Meals a Day 150/-.  
Always fresh Chopsteaks in stock of all best makes.

**B. E. A. Saw Mills**  
MILLS AND OFFICES, WORKSHOP ROAD, NEAR P.W.D. NAIROBI.  
Telephone No. 88. P.O. Box 321, Nairobi.  
Telegrams: BEAMS.  
CAMBER, FODD, MURRY and MUMA.  
Flooring. Cutting. Milling.  
Long length Beams and Campher Flooring.

**THE NAIROBI DINNER**

(Continued from page 10).

the shortage of rails and the fact that we have pulled through in every particular. It is obvious indeed that our independence is a matter of time. The strength and resources of the territory are known to the determination of Kenyas who have their feet on the Land of Cash, merely because of other causes.

**Subsidiaries.**

To look lightly on trade, which affects most of us in this area is to treat it as a very largely thing that has been done. Last year about 80 were found, and this year about 100. But this in itself is not an indication of the growth of the trade. It is only a reflection of the fact that the trade position is giving cause for alarm because the great majority of these positions are those of petty traders who often begin their business concerns in debt, finance their transaction by credit obtained at 20-30 per cent per annum; in such circumstances the East African Court is the almost inevitable aid. With the advent of good rates we may reasonably expect a more thorough improvement in trade such an outlook will engender.

**Cost of Living Report.**

The Cost of Living Inquiry has elicited the fact that whereas the price of imported goods has tended to decrease in conformity with the world's markets, the price of local produce has tended to increase; supply and demand and protective duties and protective railway rates each bear on this phenomenon. Very advance price figures have been collected by Mr. Walter the Statistician of the Government's Conference, figures which will prove most useful for further studies. The report which I have on this subject will be published. The Government will, I am convinced, hasten any steps, that may be possible, to carry into effect any recommendations made; which will be in the opinion reduce the cost of living considerably.

With regard to the case of individuals on their difficulties, let them belong to one or another of the committee, whether as the settler or trader, I would say that it must be difficult for the Government to deal with a barrage of individual and probably opposed opinions. Such opinions, to produce the best effect, should be in my view be

submitted, explored and crystallized by means of the various associations which represent every form of activity. The example of the fact that upon its strength would be afforded, are not entitled tonight to speak for the Government but in my opinion I do not think it is unwise to not always find and applied as quickly as circumstances will. There must however be some work between the Government and all sections of the community. I have not been able to do this in the quickest time.

I think a great deal has been done by His Excellency the Governor with the freely given valuable assistance of the elected members of the Legislature and others to effect this end. It is to suggest that an individual's opinion on any subject should not be given. In fact I feel individual members of the Government should acquire as many views as possible.

**Loans and Markets.**

The main prominent present means for distribution are loans and markets. The former I hope are only temporary vehicles. The regulations which govern them I trust will be successful in success depends on co-operation in these measures which are necessary for dealing with the past. The Government must of course afford every facility to fight the evil.

Mr. A. R. Patterson, is being fought on a more extensive scale than I trust will be successful in success depends on co-operation in these measures which are necessary for dealing with the past. The Government must of course afford every facility to fight the evil.

On the subject of malnutrition, I am informed, is being fought on a more extensive scale than I trust will be successful in success depends on co-operation in these measures which are necessary for dealing with the past. The Government must of course afford every facility to fight the evil.

On the subject of malnutrition, I am informed, is being fought on a more extensive scale than I trust will be successful in success depends on co-operation in these measures which are necessary for dealing with the past. The Government must of course afford every facility to fight the evil.

because so if we do not put our heads in order. With ordinary precautions it is possible to prevent infection and anti-venereal disease an order of prevention is known as a good cure. Meanwhile it is the duty of everyone to assist in the duty pointed out by Dr. Patterson because of the causes of infection. The campaign should never be relaxed.

**Education.**

Everyone will agree with the Premier's advocacy of increased production by extension, instead of nature in their respective fields of education both technical and industrial. It is the duty of everyone to assist in the duty pointed out by Dr. Patterson because of the causes of infection. The campaign should never be relaxed.

The education of European children, instead of all children, is one of the first cares of the State and on the side lands of the new Governor suggested as I have no doubt be both by Government and the Legislature the work already done by the Education Department will be developed and the education of all races will advance along the proper lines. We all know the Government's goal in the cause of great strides, made in the present state of official buildings and staff to endeavor to keep the supply of school staff up to the ever growing demand from all races for more and better education.

From the reference to the Land Bank I suggested that the proposer might be a banker. I am told that he is not yet I have no doubt be both by Government and the Legislature the work already done by the Education Department will be developed and the education of all races will advance along the proper lines. We all know the Government's goal in the cause of great strides, made in the present state of official buildings and staff to endeavor to keep the supply of school staff up to the ever growing demand from all races for more and better education.

It is easy to make promises but difficult to keep them. It is a matter of fact that the Government's goal in the cause of great strides, made in the present state of official buildings and staff to endeavor to keep the supply of school staff up to the ever growing demand from all races for more and better education.

The King's Illness. We are moving to-night under the cloud of the King's illness our (Continued on page 11.)



DISTRIBUTORS:

D. EPSTEIN, & CO.

**BROWNS  
"Four Crowns"  
SCOTCH  
WHISKY  
Stands Alone**

FINEST VALUE OBTAINABLE.

Shgs. 12/60 per Bottle.

Shgs. 14/7 per Case.

AT

**Blackbans & Brown**  
(LATE MACKINNON BROS.)

Tel. No. 81. NAIROBI. Box No. 468.

**Added Energy  
-for mental growth**



STUDY imposes a great strain on the energy of the young; in fact, the whole life of a child, its growth and development, uses up vast vital forces, which only proper food can replenish.

Quaker Oats, abundant in vitamins, carbohydrates, essential vitamins supplies the body with the essential elements for its proper nourishment. This delicious food is ideal for breakfast. It equips the child with the energy to give the best effort of study.

As a builder of health, Quaker Oats is fine as a daily diet for the whole family. It is easy to prepare and very economical.

**Quaker Oats**

**Sir Robert Coryndon  
Memorial Hall.**

BIG VALUE.



Tenders are invited for the erection of a Memorial Hall in Nairobi. Plans and form of Tender may be seen at the offices of the Architects (Messrs. Hoopfer and Jackson) Room No. 7, Motor Mart Buildings, Nairobi. Applications for Bills of Quantities and Forms of Tender should be made to the Architects accompanied by a deposit of Shgs. 100/-. Deposits will be returned provided the tenders shall have been sent in and not withdrawn a bona-fide tender.

The lowest or any Tender will not necessarily be accepted.

IN WRITING PAPER. Shs. 1/50. Standard Stationery Stores, NAIROBI.

**PROPERTY OF INTEREST TO ALL**

**COUNTRY:**

**TOWN:**

**SUBURBS:**

**NANKUYI:**

5,794 acres, 15 miles Nanyuki. River, excellent timber, good rooey stone house and usual outbuildings, shooting and trout-fishing, splendid climate and views. An ideal sheep and cattle proposition, and a bargain at Shs. 15/- per acre.

**LIMORU:**

Up to 200 acres of excellent FREEHOLD soil with two River frontages, near good main road at £28 per acre. Would sub-divide at £35 per acre. A good dairy farm, being near Nairobi. Also 700 acres FREEHOLD with two rivers at £18/10/- per acre. Suitable for dairy farms, or for sub-division into small country Estates on good main road.

**UPPER LIMORU:**

142 acres Leasehold at £12 per acre.

**FORT HALL ROAD (Kisumu District):**

The cheapest office land within easy access of Nairobi on good road, in sub-divisions to suit purchasers, on easy terms.

**RUARAKA:**

The finest small coffee proposition, only 6 miles from Nairobi on good road, with or without a beautiful residence, part cash, part terms.

**SIXTH AVENUE:**

Business Plot, with stone constructed Building. Small ground rent, £5.500. Also one with double-storied stone Building and Godowns, producing good annual rent. Both of the above are well situated. Railway Godowns with siding, constructed of concrete and steel.

TO LET OR FOR SALE. Cash or Terms.

**VICTORIA STREET:**

Double storied Building, leased to good tenants.

**VALLEY/CRAWFORD ROADS:**

Large stone built Residence, with all modern conveniences. Particulars on application.

**SADLER STREET:**

Two stone-built Godowns, also one near Railway, all very well constructed.

**WESTLANDS:**

Good business plot in a rapidly growing suburb.

**MARLBOROUGH ESTATE:**

4 well-planted acres, with good stone house, electric light. Terms could be arranged. Also sub-divisions of this Estate are offered in acres to suit purchasers at £75 per acre on terms.

**MUTHAIGA:**

An unusual opportunity to purchase an excellent Residence, which for a total outlay of £5,000 produces 14 per cent. per annum.

These are but a few of the many properties on our register, enquiries for which are invited.

**BEALES AND SMITHSON**

P.O. Box 320, Avenue House Sixth Avenue, NAIROBI.

**CONSPICUOUS** and solid as a great rock that rears its bulk from the surrounding desert; so are the qualities that lift the new Goodyear Balloon Tyre into supremacy. The millions of people who have already fitted the new Goodyear Balloon know and appreciate its true value. With this knowledge written strictly in terms of satisfactory mileage and gratifying performance, these users of the new Goodyear Balloon also know how valid and well deserved is its popular title "Goodyear's Greatest Tyre."

NOW ON HAND!!



PURE "VIGIL" Silk Frocks and Dresses. At Prices from Shs. 50/-

NEW LADIES' COLOURED FUR-LETT DOUBLE HATS.

Adamed Bros. The House of Distinction. NAIROBI

HAWKES' Helmets

FOREMOST SENSE 171. Messrs G. O., Ltd., 1, Baring Row, London, W. 1.

Everything for Christmas

CRACKERS, NOVELTIES, CHOCOLATES, CONFECTIONERY, XMAS STOCKINGS, CAKE DECORATIONS. We have a wonderful selection of...

M. S. ELLIOT & Co. Ltd. NAIROBI. Phone 26

Monsieur Florens

FRENCH HAIRDRESSER. Ladies—Gents—Children. Specialties for Permanent Waves.

IT'S THE WAY THEY ARE MADE THAT HAS MADE THEM Torr's Chocolates Are Fresh.

Just Received.

Ladies' frocks in ready-to-wear styles. Morning and Afternoon. Beautiful Colors. Also Ladies' Jumpers in up-to-date styles.

BON MARCHE. 10, Market Street, Nairobi. Government Road—NAIROBI

THE NAIROBI DINNER

(Continued from page 25)

...and the dinner was a success. The guests were entertained in the most comfortable manner...

THE LAND OF CAROL. The Christmas Eve... The land of Carol is a beautiful country...

OUR GUESTS. Mr. Tom McLean who spent the last week-end in Nairobi...

...and the dinner was a success. The guests were entertained in the most comfortable manner...

...and the dinner was a success. The guests were entertained in the most comfortable manner...

...and the dinner was a success. The guests were entertained in the most comfortable manner...

...and the dinner was a success. The guests were entertained in the most comfortable manner...

...and the dinner was a success. The guests were entertained in the most comfortable manner...

...and the dinner was a success. The guests were entertained in the most comfortable manner...

...and the dinner was a success. The guests were entertained in the most comfortable manner...

Madison Bentley who was in the camp... The example has been followed by other motorists...

THE BIRTH. Dr. Graham, President of the Irish Society... He had also discussed...

...and the dinner was a success. The guests were entertained in the most comfortable manner...

...and the dinner was a success. The guests were entertained in the most comfortable manner...

...and the dinner was a success. The guests were entertained in the most comfortable manner...

...and the dinner was a success. The guests were entertained in the most comfortable manner...

...and the dinner was a success. The guests were entertained in the most comfortable manner...

...and the dinner was a success. The guests were entertained in the most comfortable manner...

...and the dinner was a success. The guests were entertained in the most comfortable manner...

...and the dinner was a success. The guests were entertained in the most comfortable manner...

...and the dinner was a success. The guests were entertained in the most comfortable manner...

...and the dinner was a success. The guests were entertained in the most comfortable manner...

...and the dinner was a success. The guests were entertained in the most comfortable manner...

NAIROBI SOCIETY

(Continued from page 25)

...and the dinner was a success. The guests were entertained in the most comfortable manner...

...and the dinner was a success. The guests were entertained in the most comfortable manner...

...and the dinner was a success. The guests were entertained in the most comfortable manner...

...and the dinner was a success. The guests were entertained in the most comfortable manner...

...and the dinner was a success. The guests were entertained in the most comfortable manner...

...and the dinner was a success. The guests were entertained in the most comfortable manner...

...and the dinner was a success. The guests were entertained in the most comfortable manner...

...and the dinner was a success. The guests were entertained in the most comfortable manner...

...and the dinner was a success. The guests were entertained in the most comfortable manner...

...and the dinner was a success. The guests were entertained in the most comfortable manner...

...and the dinner was a success. The guests were entertained in the most comfortable manner...

...and the dinner was a success. The guests were entertained in the most comfortable manner...

...and the dinner was a success. The guests were entertained in the most comfortable manner...

Advertisement for 'For Tender Skins' featuring an illustration of a woman's face and text describing the benefits of the product.

Advertisement for 'FEERLESS ERASMIC SOAP' with the tagline 'The Dainty Soap' and an illustration of a soap box.

Advertisement for 'B. H. Myers & Co., Ltd.' listing various furniture and home goods.

Advertisement for 'Martell's for Age and Quality' featuring an illustration of a Martell cognac bottle and text about its reputation.

Advertisement for 'CLOCKS' by 'DOBBIES, Ltd.' listing various clock models and prices.

Large advertisement for 'BULLOVS & RAY LTD.' featuring 'UPSON BOARD' and 'EVERYTHING ELECTRICAL' with various product illustrations.



# OUR WOMEN'S PAGE

A Letter from Paris

(By Yvonne Lefevre)



Need treatment for the back of a plain dress, a large bow of gauze and attached taffety at the neck—a smart dash for the gown cut with black and long, flat skirt.

One sees more short-skirted gowns inside the skirt. These are more attractive when they more suitably combine a masculine simplicity of line with a touch of feminine intimacy, that may take the form of dainty, clinging or light embroidery. White lace is used extensively with black suits. As a novel general rule, however, the blouse is made of a soft—though of a lighter tone—with the suit fabric. The waist is all of the very decorative persuasion, such as a rich satin or one of the lovely new brocades.

Though the green gown is so prevalent, there is also a powerful hot feeling for red. A tremendous lot of red, in fact, is being introduced into clothes this year. Its appearance only in blue and beige or white. Jumpers of light beige are becoming more common, and are said to a depth of about eight to ten inches with narrow stripes of red and blue. As regular intervals a slightly wider stripe is introduced which serves to emphasize the colour. The length of the jumper is the exact length of the dress, so that the stripes round the lower portion of the dress appear to be continuations of those round the jumper proper.

There is a continuous tendency to lighten the weight of frock models. Typical of the new line is a black and tan dress, fully powdered with gold, that attracted much attention at a recent fashion show. The frock faced conspicuously up the neck, and the neck fitted in to a normal waist. An enormous white shawl of heavy fur draped over the shoulders broke the line a little lower to the side. That was a beautiful array of flowing beauty.

Handful rows of delicate arched buttons of the dress show. Black silk-lace was the fabric chosen for a frock which illustrated the new black effect. Battered, but the gown was made up in a manner that did full justice to

the altering pattern of a party, rarely the lion. First, however, and containing the first design, looped into a falling, heavily draped, very elegant line. The skirt made of the lace alone trimmed the gown.

Delightful little "extra's," in the form of matching coats or caps of children and lace, characterize the present treatment of evening frocks. One very striking example in black silk was embellished with a large lacework spot in red and gold. The skirt was fully faced and decorated, so that the addition to the stiff dress; a little touch of a transparent skirt with big lapels above struck a perfect note of balance.

### Prolonging the Life of Your Clothes

Simple Cleaning Methods. Spruce up new-washed clothes—Have ready a supply of absorbent paper, a feminine pin, fifty of a couple of good brushes, a piece of fine diamond leather, a half an oil spot; well-washed clothes containing: pearl, absorbents, ether, ammonia, lime, etc. The best method is to place a pad of absorbent cloth or wool beneath the soiled part; drop the water, or whatever cleaning fluid you are using, on to the spot with the diamond pin first, and then rub the offending mark with the oil spot. Next, scrub the areas of pitted with a soft, clean absorbent leather and finish the work by

brushing the cloth gently. Restorer that must cleaning spots are best applied, and should be used in the open air.

Chloroform is a dry cleaner which is non-inflammatory and best used in the open air by the untrained cleaner. However, because of its volatile nature, volatile solvents should be treated in an unimportant part of the garment by applying the cleaning agent and allowing to dry. If the colour remains fixed, treat soiled parts as instructed.

### Do-it-yourself Receipts

Do-it-yourself Receipts: Wash and marish them. Pour thick of egg and wash with gentle smooth, add two ounces of cornstarch and the whites of two eggs beaten quite stiff. Add vanilla or orange flavour to taste, beat thoroughly, and put small rounds of the mixture on a floured baking sheet. Bake until golden brown in a moderate oven.

### FANCY TWISTS TO GREYS WITH COFFEE.

Current Jelly Tarts. Take 1 lb. cupful of pastry flour, 1 cupful of salt, 1/2 cupful of cold water and pour through jelly or jam. Make pastry of flour, butter, salt and water; roll on a board, roll out thinly, and divide into two. Cut one half

into plain shapes and the other half into fancy designs. Spread the plain pieces with jam or jelly and cover each piece a fancy one. Press the edges gently together and bake in a moderate oven until a delicate brown.

Frost Sandwiches: Mix one cupful each of chopped dates, figs and nuts, with lemon juice. Cut into slices of wholemeal bread and butter them. Make into sandwiches with the fruit mixture, trim, and bake slightly.

Little Fried Omelette: 1 cupful of butter, 1/2 cupful of sugar, 1 teaspoonful of nutmeg, 4 eggs. Cream the butter, add sugar gradually, and the beaten egg whites. Soft flour, baking powder and nutmeg to taste and salt, alternately with the milk, to the first mixture. Roll in one-third of an inch, cut in rounds and bake. Use those if you care to.

Ice-cream: 2 cupful of sugar, 1 cupful of water, 1 cupful of heavy cream, 1 egg white, flavoured. Boil sugar, water and honey until stiff. Pour in the cream, beating constantly, until well enough to spread.

**Ask For**  
**SOUTH AFRICAN**  
Wines, Jams, Fruits, Syrups.  
They are of the Best.  
**All Leading Grocers Stock them.**  
Trade Commissioner for South Africa  
MEMORIAL HALL,  
P.O. Box 824,  
NAIROBI.

**NURSERY RHYMES**  
**NEWLY NARRATED.**  
No. 5.—JACK AND JILL.  
Jack sent Jill up on the Hill  
To tell her married daughter,  
When next she's married,  
To shop in town,  
There's one place where she oughter.

Importers of Provisions, Wines, Spirits, Liquors, Cigars, Tobacco, Toilets, Requisites and Sundries.

Christmas Toys, Crackers and Confectionery  
Now on Sale to Suit All Pockets.

**SOUZA JUNIOR & DIAS.**  
(ESTABLISHED IN 1880)  
P.O. Box 341. NAIROBI. Gent. Road.  
**DISCOUNT GIVEN ON CASE PURCHASES.**

**TIMBER.**  
FOREST DEPARTMENT.  
Order form post 20, 25¢ per 100 (175¢ each at our yard Nairobi) (Glenora 200—200, 41¢ per 100 (Glenora 200—300), 50¢ for 100 P.O. B. First Sitting London. (Other lengths and prices on application to MAULAHAD, Contractor, London. P.O. Box 462, NAIROBI.)

**Old Scotch Pure in Quality**  
**Crawford's LIQUEUR**  
SCOTCH WHISKY  
ESTD 1860

**LUCAS GIRDER SPANNERS.**  
Girder Minor, size 31" Sbs. 4/25 each  
Girder Standard size 41" Sbs. 5/75 each  
Girder Major size 71" Sbs. 10/0 each  
Extra, the Plus Grip Extension,  
31" 11/0; 41" 11/0; 71" 15/0 each  
Also stocked in cheaper quality.  
Copy of spec. German Manufacture.  
41" Sbs. 8/0 each 71" Sbs. 6/0 each

**W.W. INGRAM & Co.**  
**THE TOOL HOUSE**  
Government Road, NAIROBI.  
P.O. Box 163.  
Miss KATHLEEN BATES, A.R.C.M.  
RECRUITER PUBLIC FOR  
PIANOFORTE—SINGING—HARMONY,  
AT THE  
Music Studio, Sixth Avenue.  
POSTAL ADDRESS Box 417.

**Geo. BLOWERS**  
BUILDING CONTRACTOR, MANUFACTURER AND DIRECT IMPORTER.  
Raffles Street, NAIROBI. P.O. Box 350.  
**CASH WITH ORDER.**  
Tel. Add. "Concrete." Phone 500. Boxes 420.  
No. 1, 2, 3  
Made in Omdur, Wholesale placed and Retail. The black iron and steel work is made in England.  
Plumbing, Heating, Cooling, Sanitary, Color Bonding & Heating, Imperial Road, Tiffin, Tully, Fry Street, Adelaide Street.

**NOTE**  
We are prepared to supply all kinds of iron and steel work, including:—  
Structural work, such as girders, beams, columns, and bracing.  
Machinery, such as pumps, engines, and hoists.  
Fencing, such as iron and steel mesh.  
Decorative work, such as gates, railings, and balustrades.  
We also supply all kinds of iron and steel pipes, fittings, and valves.  
Our work is guaranteed to be of the highest quality and to stand up to the most severe tests.  
We are prepared to supply all kinds of iron and steel work, including:—  
Structural work, such as girders, beams, columns, and bracing.  
Machinery, such as pumps, engines, and hoists.  
Fencing, such as iron and steel mesh.  
Decorative work, such as gates, railings, and balustrades.  
We also supply all kinds of iron and steel pipes, fittings, and valves.  
Our work is guaranteed to be of the highest quality and to stand up to the most severe tests.

**QUARRY CHIPS.**  
WE HAVE A LARGE QUANTITY OF BROKEN STONE AND CHIPS—SUITABLE FOR ROAD MAKING, PATHS, ORNAMENTAL GARDEN WORK, Etc., AT OUR MUTHAIGA QUARRY.  
PRICE 3/1- per cart load at the Quarry.

**For Guaranteed Repairs & Service, FOR HIRE CARS**  
AND  
**Reconditioned Second-Hand Cars FOR SATISFACTION**

**Go To**  
**THE SIXTH AVENUE GARAGE.**  
Studebaker Erskine Lancia  
PHONE 560 BOX 533



"X" IS AN UNKNOWN QUANTITY.

"SUPER X" is still an unknown quantity to some shot-gun users, which is surprising considering most sportsmen's enthusiastic praise of this ammunition.

SHAW AND HUNTER

Sole agents for WESTERN AMMUNITION, Box 70, NAIROBI.

Charles Ware

TURF ACCOUNTANT, (Established 26 years) "Sportman," Box 170, NAIROBI. Tel. Address: "Sportman."

East African Derby: 4/5 Depards, 2/1 Dilemma, 4/1 Sunbaker and Defender, 5/1 Hurlingham and Step Dancer, 6/1 Upstairs others.

J.H.S. Todd & Co. Ltd.



J.H.S. Todd & Co. Ltd.

FAITH MOVES MOUNTAINS. WE MOVE ANYTHING

RELIANCE TRANSPORT COMPANY LIMITED. P.O. Box 482, Sadler Street, Telephone 331.

PRESENTS PLEASE.

The ideal present is the one that gives continued pleasure long after the first rapture of reception has faded.

You will more readily realize the ideal, if you interpret the spirit of the age, by shopping at a Sporting Goods Store.

Let us send you our List of Suggestions.

MAY & Co., Ltd. THE SPORTS HOUSE, NAIROBI.

THE SPORTS PAGE

M.C.C. in AUSTRALIA

THE M.C.C. should be commended for the results of football matches played in Britain during the week.

FOOTBALL

Chelsea Draw Again

Chelsea drew again with Tottenham United 3, Gillingham 1.

First Division

London, Dec. 1. Arsenal 2, Tottenham 1. Manchester City 2, Sheffield Wednesday 2.

Second Division

Reading 2, Chelsea 0. Middlebrough 1, West Ham 1. Millwall 1, Swansea Town 0.

Third Division

Crystal Palace 2, Norwich City 0. Crystal Palace 2, Merthyr Tydfil 0.

FOURTH DIVISION

Southampton 2, Northampton 0. Southampton 0, Bishop Cleeve 0.

FIFTH DIVISION

Southampton 2, Northampton 0. Southampton 0, Bishop Cleeve 0.

SIXTH DIVISION

Southampton 2, Northampton 0. Southampton 0, Bishop Cleeve 0.

SEVENTH DIVISION

Southampton 2, Northampton 0. Southampton 0, Bishop Cleeve 0.

EIGHTH DIVISION

Southampton 2, Northampton 0. Southampton 0, Bishop Cleeve 0.

NINTH DIVISION

Southampton 2, Northampton 0. Southampton 0, Bishop Cleeve 0.

TENTH DIVISION

Southampton 2, Northampton 0. Southampton 0, Bishop Cleeve 0.

TOURISTS PUT ON A BIG SCORE

Lawford took three wickets for five runs.

RACING IN SOUTH AFRICA

The following are the entries and weights of the Johannesburg race meeting on December 30, 1929.

THE JOHANNESBURG SUMMER HOLIDAYS

The following are the entries and weights of the Johannesburg race meeting on December 30, 1929.

DUINOUS INCURSION IN LONDON CIRCLES

The following are the entries and weights of the Johannesburg race meeting on December 30, 1929.

THE MOUNTAIN LEAGUE

The following are the entries and weights of the Johannesburg race meeting on December 30, 1929.

THE MOUNTAIN LEAGUE

The following are the entries and weights of the Johannesburg race meeting on December 30, 1929.

THE MOUNTAIN LEAGUE

The following are the entries and weights of the Johannesburg race meeting on December 30, 1929.

THE MOUNTAIN LEAGUE

The following are the entries and weights of the Johannesburg race meeting on December 30, 1929.

THE MOUNTAIN LEAGUE

The following are the entries and weights of the Johannesburg race meeting on December 30, 1929.

M.C.C. in AUSTRALIA

The following are the entries and weights of the Johannesburg race meeting on December 30, 1929.

RACING IN SOUTH AFRICA

The following are the entries and weights of the Johannesburg race meeting on December 30, 1929.

THE JOHANNESBURG SUMMER HOLIDAYS

The following are the entries and weights of the Johannesburg race meeting on December 30, 1929.

DUINOUS INCURSION IN LONDON CIRCLES

The following are the entries and weights of the Johannesburg race meeting on December 30, 1929.

THE MOUNTAIN LEAGUE

The following are the entries and weights of the Johannesburg race meeting on December 30, 1929.

THE MOUNTAIN LEAGUE

The following are the entries and weights of the Johannesburg race meeting on December 30, 1929.

THE MOUNTAIN LEAGUE

The following are the entries and weights of the Johannesburg race meeting on December 30, 1929.

THE MOUNTAIN LEAGUE

The following are the entries and weights of the Johannesburg race meeting on December 30, 1929.

THE MOUNTAIN LEAGUE

The following are the entries and weights of the Johannesburg race meeting on December 30, 1929.

M.C.C. in AUSTRALIA

The following are the entries and weights of the Johannesburg race meeting on December 30, 1929.

RACING IN SOUTH AFRICA

The following are the entries and weights of the Johannesburg race meeting on December 30, 1929.

THE JOHANNESBURG SUMMER HOLIDAYS

The following are the entries and weights of the Johannesburg race meeting on December 30, 1929.

DUINOUS INCURSION IN LONDON CIRCLES

The following are the entries and weights of the Johannesburg race meeting on December 30, 1929.

THE MOUNTAIN LEAGUE

The following are the entries and weights of the Johannesburg race meeting on December 30, 1929.

THE MOUNTAIN LEAGUE

The following are the entries and weights of the Johannesburg race meeting on December 30, 1929.

THE MOUNTAIN LEAGUE

The following are the entries and weights of the Johannesburg race meeting on December 30, 1929.

THE MOUNTAIN LEAGUE

The following are the entries and weights of the Johannesburg race meeting on December 30, 1929.

THE MOUNTAIN LEAGUE

The following are the entries and weights of the Johannesburg race meeting on December 30, 1929.

Advertisement for Kynoch Ammunition, featuring an image of a rifle and text describing the quality and accuracy of the ammunition.

Advertisement for A. Hogg, Mutos B'iggs, NAIROBI, listing various services and products offered.

Advertisement for Sankey-Shaldon, featuring an image of a typewriter and text describing the office furniture.

Advertisement for THIS OFFICE FURNITURE IS: listing various office furniture items and their features.

Advertisement for S. Jacobs Ltd. Our Toy Bazaar IS NOW OPEN, featuring an image of a child and text describing the toy bazaar.

Advertisement for DEAN'S DANCING DOLLS, featuring an image of a doll and text describing the dolls and their uses.

Advertisement for THE AMTREC COURSE, featuring an image of a horse and text describing the course.

Advertisement for FIFTY YEARS AGO TO RACING GAIKERS, featuring an image of a horse and text describing the racing gaikeers.

Advertisement for KENITAS, featuring an image of a horse and text describing the Kenitas brand.