

KENYA BREWERIES LTD.

There is no beer in Kenya which is made from purer ingredients or constitutes a more wholesome beverage.

WHOLESALE BEVERAGE.

DRINK KENYA BEER.

UNBOTTLED AS THE ORIGINAL FORM OF BEVERAGE.

DAILY EDITION.

GUARANTEED THE LARGEST CIRCULATION OF ANY NEWSPAPER IN KENYA, UGANDA, TANGANYIKA AND ZANZIBAR.

THE EAST 14 PAGES

African Standard

UGANDA ARGUS THE LEADER.

THE OLDEST ESTABLISHED NEWSPAPER PUBLISHED IN KENYA AND UGANDA.

NAIROBI, FRIDAY, DECEMBER 25, 1926.

The LOUNGE
FOR
Morning AND Afternoon TEAS
The New Stanley Hotel.
Open on Sundays to Non-Residents

PRICE 20 ORITS.

THE KING CONTINUES TO MAKE SLOW PROGRESS.

In a Better Position than a Week Ago.

DOCTORS SATISFIED WITH IMPROVEMENT.
Queen's Appreciative Reply to the Message From the Canadian Premier.

The bulletin issued during Christmas states that His Majesty continued to make a slight improvement in health. While these officials are satisfactory, it is pointed out that the rate of the progress is slow and tedious, and it is only by taking the cumulative effect of a number of days that it is possible to give any indication of progress. The King is, however, much better than he was a week ago.

The Queen has sent a most appreciative message to Mr. Mackenzie King in reply to the latter's message, on behalf of the people of Canada, expressing his solicitude after the King's health.

The fact that again the day bulletins have been suspended is regarded as a hopeful sign.

THE DUKE REACHES HOME.

GLIOSTER ARRIVES AGENT.
London, Dec. 24. The Duke of Gloucester arrived at Southampton today and reached the Palace at nine o'clock this morning.

The King passed a fair night. A bulletin issued at 11:15 a.m. states that the King passed a quiet night. His local condition continues to show progress while his general condition is unchanged.

Queen's Reply to Canada.
The Queen, in reply to Mr. Mackenzie King's message says that the message will be highly valued by the King who has progressed towards recovery in sufficiently advanced for him to do so personally, and add that the King's condition is satisfactory.

The expression of love and devotion on the part of the people and the sympathy and confidence during the illness has been a great help to the King who has thought much of the people and the Christmas morning no children and I think never in my life. I look forward to the day when the King will be well and again I am glad to see the message that the heart was made with in his final rest.

A Busy Course.
A bulletin issued at 8:15 p.m. states that His Majesty had a quiet day. The slow progress in his health continues to be maintained.

No bulletin will be issued until tomorrow evening. The night bulletin is regarded as a reasonable and reassuring. The fact that the doctors consider that there is little chance of improvement in the King's condition to-morrow is a good sign, and it is understood that this does not mean that the day therapy will cease to be discontinued, but merely that it has been interrupted on the time being.

No Change.
London, Dec. 25. His Majesty was on a high morning but there was no change in the King's condition this morning. The fact that the King passed a quiet night. His local condition continues to show progress while his general condition is unchanged.

RECESSARY FOR CAUTION IN THE FUTURE.
[STANDARD CORRESPONDENT]
Long before this reaches my readers the fact should be known, so there are only one or two comments I

DISTRESS IN MINING AREAS.

Price of Wales Broadcasts Workmen Killed and Injured in France.

THE CHRISTMAS SPIRIT.
[STANDARD NEWS AGENT]
London, Dec. 25. An unseen agent found for the first of Wales in the morning was broadcast by the Prince of Wales from London this evening. His explanation that only were there 250,000 miners instead, but that there were three as many women and children were dependent upon them. The greatest service anyone could render at present was to find employment for as many of these men as possible. He urged the need of the women and children to be properly fed and adequately clothed, and added that Christmas gathering to which he was invited would break up without an effort to master some concrete plan for the future.

The Afghan Rising.
[STANDARD NEWS AGENT]
London, Dec. 25. In response to the Prince of Wales from Kabul, stating that the King's message in the eastern province of Jalalabad, three letters have been handed to the Lord Mayor, Lord and Government with give an equivalent statement with Mr. Mackenzie King's statement.

More Air Recruits.
[STANDARD NEWS AGENT]
London, Dec. 25. The Royal Air Force is recruiting a large number of men for the second year of the Royal Air Force. The number of men who are being recruited is about 10,000. It is expected that the number of men who are being recruited will be about 10,000.

Repairs.
[STANDARD NEWS AGENT]
London, Dec. 25. The British Government is spending a large sum of money on repairs to the Royal Air Force. The amount of money is about £100 million.

AMERICA AGREES TO BE REPRESENTED.
[STANDARD NEWS AGENT]
Washington, Dec. 25. The American Government has agreed to be represented at the Christmas Conference in London.

The South American War.
[STANDARD NEWS AGENT]
Washington, Dec. 25. The American Government has agreed to be represented at the Christmas Conference in London.

JUDICIAL INVESTIGATION INTO DISPUTE.
[STANDARD NEWS AGENT]
Washington, Dec. 25. The American Government has agreed to be represented at the Christmas Conference in London.

THE PRIMATE'S ILLNESS.
Inflation and Pain Subsiding.
Bright Two Days of Lively Enjoyment.

A GAY CHRISTMAS IN NAIROBI.
DANCES AND PARTIES.

WOMEN AND CHILD BURNED TO DEATH.
[STANDARD NEWS AGENT]
London, Dec. 25. Five women and a child were smothered today in a fire which destroyed a hotel at Tidaholm.

Fast Fire in Sweden.
[STANDARD NEWS AGENT]
London, Dec. 25. Five women and a child were smothered today in a fire which destroyed a hotel at Tidaholm.

Easy Time at the Port.
[STANDARD NEWS AGENT]
London, Dec. 25. The port of London is busy with the arrival of ships from all parts of the world.

THE PRIMATE'S ILLNESS.

Inflation and Pain Subsiding.

Bright Two Days of Lively Enjoyment.

A GAY CHRISTMAS IN NAIROBI.

DANCES AND PARTIES.

WOMEN AND CHILD BURNED TO DEATH.

Fast Fire in Sweden.

Easy Time at the Port.

THREE SHIPS BEACHED AT THE DEEP-WATER WHARF.

STANDARD CORRESPONDENT.

Christmas at the port has been extremely busy, owing to the number of vessels calling in the Sunday last it was a record with 17 vessels berthed alongside the deep-water wharves, a portion of the new berth having to be requisitioned for the purpose.

London, Dec. 27. S.S. "Lancaster" (anti-aircraft) arrived in London. All the ships in the harbor were dressed and many boats were held on board.

There has been a small number of passengers on Christmas. The King is very busy, and many of the boats are full. The "Lancaster" is a large and comfortable ship, and is a good passenger ship.

London, Dec. 27. S.S. "Lancaster" (anti-aircraft) arrived in London. All the ships in the harbor were dressed and many boats were held on board.

There has been a small number of passengers on Christmas. The King is very busy, and many of the boats are full. The "Lancaster" is a large and comfortable ship, and is a good passenger ship.

London, Dec. 27. S.S. "Lancaster" (anti-aircraft) arrived in London. All the ships in the harbor were dressed and many boats were held on board.

There has been a small number of passengers on Christmas. The King is very busy, and many of the boats are full. The "Lancaster" is a large and comfortable ship, and is a good passenger ship.

London, Dec. 27. S.S. "Lancaster" (anti-aircraft) arrived in London. All the ships in the harbor were dressed and many boats were held on board.

There has been a small number of passengers on Christmas. The King is very busy, and many of the boats are full. The "Lancaster" is a large and comfortable ship, and is a good passenger ship.

London, Dec. 27. S.S. "Lancaster" (anti-aircraft) arrived in London. All the ships in the harbor were dressed and many boats were held on board.

There has been a small number of passengers on Christmas. The King is very busy, and many of the boats are full. The "Lancaster" is a large and comfortable ship, and is a good passenger ship.

London, Dec. 27. S.S. "Lancaster" (anti-aircraft) arrived in London. All the ships in the harbor were dressed and many boats were held on board.

Charming Linen Frocks

SIX NEW MODELS just received for the hot weather season, there is nothing more suitable for Home and Morning Frocks than these well designed gowns in stylish linen.

London, Dec. 25. The Archbishop of Canterbury has some spare. The pain has increased and the inflammation which is in the region of the throat appears to be subsiding.

London, Dec. 25. The Archbishop of Canterbury has some spare. The pain has increased and the inflammation which is in the region of the throat appears to be subsiding.

London, Dec. 26. The Archbishop of Canterbury's progressive condition. There is now only rest.

London, Dec. 26. The Archbishop of Canterbury's progressive condition. There is now only rest.

London, Dec. 26. The Archbishop of Canterbury's progressive condition. There is now only rest.

London, Dec. 26. The Archbishop of Canterbury's progressive condition. There is now only rest.

London, Dec. 26. The Archbishop of Canterbury's progressive condition. There is now only rest.

London, Dec. 26. The Archbishop of Canterbury's progressive condition. There is now only rest.

London, Dec. 26. The Archbishop of Canterbury's progressive condition. There is now only rest.

London, Dec. 26. The Archbishop of Canterbury's progressive condition. There is now only rest.

London, Dec. 26. The Archbishop of Canterbury's progressive condition. There is now only rest.

London, Dec. 26. The Archbishop of Canterbury's progressive condition. There is now only rest.

London, Dec. 26. The Archbishop of Canterbury's progressive condition. There is now only rest.

London, Dec. 26. The Archbishop of Canterbury's progressive condition. There is now only rest.

London, Dec. 26. The Archbishop of Canterbury's progressive condition. There is now only rest.

London, Dec. 26. The Archbishop of Canterbury's progressive condition. There is now only rest.

London, Dec. 26. The Archbishop of Canterbury's progressive condition. There is now only rest.

London, Dec. 26. The Archbishop of Canterbury's progressive condition. There is now only rest.

London, Dec. 26. The Archbishop of Canterbury's progressive condition. There is now only rest.

London, Dec. 26. The Archbishop of Canterbury's progressive condition. There is now only rest.

WHITWAYS NAIROBI.

ITS STEEL!

Art Metal

Last as long
As your business.

The Letter
File that
Sets a New
Standard.

Come & see it

Art Metal

Sole Agents:
Dalgty & Company Ltd.

Edvard, Nairobi, Mombasa.

WATERPROOF WATCH

We invite your inspection of our beautiful and exclusive presentation articles—Tortoiseshell Mantle, Sea, Smoking Sets, Boudoir Clocks, Waterproof and Fancy Watches, Cigarette Cases, Leather Bags and Wallets, Silver and Electro-Plate Ware, Vases, etc., etc.

S. DIAMANT

Trust Chambers, Govt. Road, NAIROBI.

NURSERY RHYMES

NEWLY NARRATED.

No. 7.—LITTLE JACK HORNER.

Last year Jack Horner was nearly a "goner" Through eating a Christmas pie. This year he'll make sure of his ingredients are pure. From S. J. & D.'s he'll buy.

FRESH STOCKS JUST UNPACKED.—

Large Selection of Huntley and Palmer, Carr's and Jacobs Biscuits, Cakes, Crystallized Fruits, Xmas Trees and variety of Ornaments, Chocolates. Fine Old Port at Lowest Prices.

SOUZA JUNIOR & DIAS.

(ESTABLISHED IN 1880)

P.O. Box 341. NAIROBI. Govt. Road.

DISCOUNT GIVEN ON CASH PURCHASES.

AFRICA'S PREMIER ANNUAL

NINETEENTH YEAR OF PUBLICATION.

THE British South Africa Annual 1928-1929.

Portraying in Pictures and Prose Africa and Its People from the Equator to Cape Point. Artistic Reproductions of Paintings by Well-Known Artists. Read the Thrillingly Enticing Theory of Africa's Ancient History as traced in Native Ritual.

NOW ON SALE.

Price Shgs. 5/-, packed and posted Shgs. 6/60

Standard Stationery Stores.

Box 380. NAIROBI. Phone 572.

"Opulent" Mombasa.

A NOVELIST'S VIEW OF THE CITY.

(STANDARD CORRESPONDENT.)

Mombasa, Dec. 20.

Speaking of the population of this formidable city from below the little casuarina by Marguerite Petersen appearing in the "Mombasa Times" the other day, was a comment of criticism. The Marguerite Petersen referred to was of course the well-known writer of the open letters and the "Mombasa Times" was impressed by the seeming opinion of Marguerite. Quite a few people here read that article with interest. Some of them (after her) have read that article with interest. Some of them (after her) have read that article with interest.

MUNICIPAL GOVERNMENT IN MOMBASA.

Revival of Interest Among Indians.

A MEETING

(STANDARD CORRESPONDENT.)

Mombasa, Dec. 20.

At the moment a correspondence is being carried on between the Municipal Council and the Indian community in Mombasa. The Municipal Council has been very active and the municipal officers are doing their utmost to bring about a revival of interest among the Indians. The Municipal Council has been very active and the municipal officers are doing their utmost to bring about a revival of interest among the Indians.

WELCOME EXTENSION OF ROUTE

(STANDARD CORRESPONDENT.)

Mombasa, Dec. 20.

The Chamber of Commerce met for their monthly meeting on Friday afternoon at 2.30. The Chamber of Commerce met for their monthly meeting on Friday afternoon at 2.30. The Chamber of Commerce met for their monthly meeting on Friday afternoon at 2.30.

Doonholm Dairy.

Box 11, Nairobi.

FOR Pure Milk and Cream.

From Farm to Consumer.

TERRY SPANNERS.

8 size Magneto, Shs. 2/50
4 size Magneto, Shs. 1/25

Med. 2/50 Large 4/25

WINGRAM & Co.

THE TOOL HOUSE

P.O. Box Government Road, NAIROBI. Telephone 162. Forward.

VERMOUTH

at 4/50 per litre bottle

This Vermouth is made from genuine portwine in midway between French and Italian Vermouth in taste—a "mixed vermouth" in fact. Sold cheap to make room for Xmas stock.

MISA'S SHERRY

"Cloron" at 6/50 per qt. bot.

This is the finest wine for the table.

SPECIAL PRICE TO THE TRADE.

To be had from—

B. C. SIQUEIRA,

P.O. Box 642, NAIROBI.

AGENCY MEETING

(STANDARD CORRESPONDENT.)

Mombasa, Dec. 20.

At the moment a correspondence is being carried on between the Municipal Council and the Indian community in Mombasa. The Municipal Council has been very active and the municipal officers are doing their utmost to bring about a revival of interest among the Indians.

WELCOME EXTENSION OF ROUTE

(STANDARD CORRESPONDENT.)

Mombasa, Dec. 20.

The Chamber of Commerce met for their monthly meeting on Friday afternoon at 2.30. The Chamber of Commerce met for their monthly meeting on Friday afternoon at 2.30. The Chamber of Commerce met for their monthly meeting on Friday afternoon at 2.30.

Doonholm Dairy.

Box 11, Nairobi.

FOR Pure Milk and Cream.

From Farm to Consumer.

TERRY SPANNERS.

8 size Magneto, Shs. 2/50
4 size Magneto, Shs. 1/25

Med. 2/50 Large 4/25

WINGRAM & Co.

THE TOOL HOUSE

P.O. Box Government Road, NAIROBI. Telephone 162. Forward.

VERMOUTH

at 4/50 per litre bottle

This Vermouth is made from genuine portwine in midway between French and Italian Vermouth in taste—a "mixed vermouth" in fact. Sold cheap to make room for Xmas stock.

MISA'S SHERRY

"Cloron" at 6/50 per qt. bot.

This is the finest wine for the table.

SPECIAL PRICE TO THE TRADE.

To be had from—

B. C. SIQUEIRA,

P.O. Box 642, NAIROBI.

SPECIAL 'H & S' SCOTCH

'H & S'

The finest obtainable irrespective of price.

The product of an independent firm of Scotch Whisky Distillers.

The whisky of 'Quality.'

WHOLESALE AND RETAIL STOCKISTS.

COLONIAL GENERAL STORES, LTD., NAIROBI.

W. H. Holt & Son, Limited, Abercrombie Street, Stratford, Scotland.

THE Bradford Manufacturing CO., LTD.

We are Displaying a Selected Range of **LADIES UNDERWEAR.**

In Celanese Art Silk, Schappe Silk, and Crepe de Chine. Comprising Night-Dresses, Pinnies, Slips, Tricot Sets, Vests and Knickers.

ALL ARTIFICIAL SILK LADIES DRESSING GOWNS, Shs. 3/5/- each

Inspection Chambers, above Tava Ltd. Government Road, Box 419.

NOW OPEN

THE NAIROBI GENERAL CASH STORES, LTD.,

GOVERNMENT ROAD.

(In the Premises lately occupied by Colonial General Store.)

PROVISION DEALERS AND GROCERS.

TORRACO, CIGARETTES and CONFECTIONERY.

FRESH FRUIT, CUT FLOWERS and VEGETABLES.

SEEDS, FARMS and LOCAL PRODUCE.

BOUQUETS and WREATHS.

Fair Prices.

The following are considered fair retail prices for our Superfine Flour, "Kenya's Mist," in Nairobi, Nakuru, Njoro, and Molo.

PER POUND	Cents /-26
PER 10LB. COTTON BAG	Shs. 2/75
PER 60LB. COTTON BAG	Shs. 12/75

The undermentioned firms are selling at these prices:

NAIROBI:

- WIMHURST LIMITED
- M. S. ELLIOTT & CO., Ltd.
- KANJI NABANI & CO.
- COLONIAL GENERAL STORES, LTD.
- BEIRAM PARIBAL & CO.
- HASANALI BHOS.

NAKURU:

- IBRAHIM KAHIMBUX.
- H. SPEER
- HARISHING GUJARATHI.
- KENYA GROCERIES, LTD.

NJORO and MOLO:

- THE EUROPEAN STORE LTD.

RONGAI:

- RUBEN BROTHERS.

There is more "Kenya's Mist" sold in Kenya and Uganda than all other makes of fine flour, whether local or imported, combined. It is the flour of dependable high quality.

UNGA Ltd., Njoro.

THE EAST AFRICAN STANDARD
DAILY EDITION.
ADVERTISING RATES:
 Advertisements accepted only subject to approval.
Domestic Advertisements:
 Births, Marriages and Deaths, one line per line of six words with a minimum of six.
ADVERTISEMENTS
 such as Married, To Let, For Sale, and Situations Vacant, are charged at a special rate of one line per line of six words with a minimum of six. Repeat on alternate days only Half Price.
 All other Advertisements are charged at a special rate for each insertion, and may be made in this rate.

THE SUBSCRIPTION RATES
DAILY
 Locally, yearly... Shs. 40.00
 1/2 yearly... Shs. 20.00
 Quarterly... Shs. 11.00
 For Sale... Shs. 75.00
 For Sale... Shs. 25.00
 Quarterly... Shs. 12.50
WEEKLY
 Posted to any address in Kenya... 1/2 yearly 14.00
 Printed elsewhere: Yearly, 25.00; 1/2 yearly, 13.00

FOR SALE.

THIS charge for advertisements in these columns is Shs. 1/4 for a line of six words, or a fraction of a line, with a minimum of six. 3/4. Repeats half price on consecutive days only.

YOUNG Man, single, aged 25, with a good education, and a good knowledge of English, seeks a position in a factory and field work. He is a native of Kenya and is a member of the Kenya Club. He is a member of the Kenya Club. He is a member of the Kenya Club.

BOARD & RESIDENCE.

COMFORTABLE furnished room without noise, with or without board, near town. Apply No. 1011, Standard, Nairobi.

COMFORTABLE self, sitting family room, with board, near town. Apply No. 1011, Standard, Nairobi.

DAIRYFIELD - Highway Road, Nairobi. The Hill, Matangi Road, Nairobi. P.O. Box 822, Nairobi.

KILIMANJARO - East Avenue, Nairobi. Double room, with board, near town. Apply No. 1011, Standard, Nairobi.

THE Hill - Matangi Road, Nairobi. P.O. Box 726, Nairobi.

SITUATIONS WANTED.

BATHERS, married, capable, reliable, experienced, and of good character, seeking a position in a hotel, club, or private residence. Write to us in P.O. Box 1011, Standard, Nairobi.

CENTRAL - Married, experienced, and of good character, seeking a position in a hotel, club, or private residence. Write to us in P.O. Box 1011, Standard, Nairobi.

YOUNG Man, single, aged 25, with a good education, and a good knowledge of English, seeks a position in a factory and field work. He is a native of Kenya and is a member of the Kenya Club. He is a member of the Kenya Club.

WANTED.

CONSIDERABLE quantities of fine seed, Marigold, or other plants, for sale. Write to us in P.O. Box 1011, Standard, Nairobi.

FARMS FOR SALE.

Dalgity & Company, Limited, LAND AGENT DEPARTMENT, SIXTH AVENUE, NAIROBI.

KORU: Four miles from Koru station, excellent Coffee Plantation comprising total area of 341/2 acres of which 180 acres of bearing Coffee and further 160 acres under cultivation. Ample water, dwelling, barn, store, maize cobs, nurseries, ploughs, hoes, rollers, mangle, mill, and other necessary implements. Complete with engine, dryer, pulpers, rollers, and all necessary tools. For quick sale £12,000, or near offer.

15/8 MILES from Nairobi - 118 acres, 90 acres full bearing Coffee, 28 acres banana grove, 10 acres rubber, 10 acres fruit, large coffee nursery, timber, fruit, large outcrops, 24,700 lbs. coffee.

GILGIL: 100 acres four miles from Nairobi. Excellent position, 100 acres full bearing Coffee, 28 acres banana grove, 10 acres rubber, 10 acres fruit, large coffee nursery, timber, fruit, large outcrops, 24,700 lbs. coffee.

ELBURGH 204 acres, 7 miles from Nairobi. Excellent position, 100 acres full bearing Coffee, 28 acres banana grove, 10 acres rubber, 10 acres fruit, large coffee nursery, timber, fruit, large outcrops, 24,700 lbs. coffee.

DOGS FOR SALE.

THE charge for advertisements in these columns is Shs. 1/4 for a line of six words, or a fraction of a line, with a minimum of six. 3/4. Repeats half price on consecutive days only.

LOCAL FLOUR

DESERVES YOUR SUPPORT BECAUSE:
 The quality is excellent.
 The price is so attractive.
 It is conveniently packed.
 Obtainable in 100 lb. and 50 lb. bags, and also sold by "KENYA'S PRIDE" MILLER BY KENYA GRAIN MILLS, Ltd.

TO LET.

THIS charge for advertisements in these columns is Shs. 1/4 for a line of six words, or a fraction of a line, with a minimum of six. 3/4. Repeats half price on consecutive days only.

FROM 1st March, 1926. Two large houses of 12 rooms had previously accepted by Oshikoff, Nairobi. Apply J. Pollock, Salford Street, Nairobi.

MODERN House of 10 rooms, with 11/2 bath, to let (refined) near town. Apply J. Pollock, Salford Street, Nairobi.

ONLY large and airy house of 12 rooms, with 11/2 bath, to let (refined) near town. Apply J. Pollock, Salford Street, Nairobi.

MISCELLANEOUS.

THE charge for advertisements in these columns is Shs. 1/4 for a line of six words, or a fraction of a line, with a minimum of six. 3/4. Repeats half price on consecutive days only.

THE Trans Nzola Land Agents
 MBE
MESOGAN & PHARAZYN Ltd.
 1011, Standard, Nairobi.

WILLING to sell or lease a large tract of land in the Trans Nzola District. Write to us in P.O. Box 1011, Standard, Nairobi.

WILLING to sell or lease a large tract of land in the Trans Nzola District. Write to us in P.O. Box 1011, Standard, Nairobi.

SITUATIONS VACANT.

THIS charge for advertisements in these columns is Shs. 1/4 for a line of six words, or a fraction of a line, with a minimum of six. 3/4. Repeats half price on consecutive days only.

EXPERIENCED help required with good knowledge of office routine. Apply No. 1011, Standard, Nairobi.

TWO assistant men required in the Trans Nzola District. Write to us in P.O. Box 1011, Standard, Nairobi.

MISCELLANEOUS.

THE charge for advertisements in these columns is Shs. 1/4 for a line of six words, or a fraction of a line, with a minimum of six. 3/4. Repeats half price on consecutive days only.

THE Trans Nzola Land Agents
 MBE
MESOGAN & PHARAZYN Ltd.
 1011, Standard, Nairobi.

WILLING to sell or lease a large tract of land in the Trans Nzola District. Write to us in P.O. Box 1011, Standard, Nairobi.

WILLING to sell or lease a large tract of land in the Trans Nzola District. Write to us in P.O. Box 1011, Standard, Nairobi.

Nyeri Polo Club.

A SUCCESSFUL JOURNAL
 SALE

STARBUCK (CORPORATION)
 Nyeri, Dec. 28.

A public sale was held on Tuesday in aid of the funds of the Nyeri Polo Club. There were many interesting lots of goods, including a large number of horses and ponies. The sale was successful and the funds of the club were increased.

Photograph Quest.

THE Year Club is preparing for the annual photograph quest. The quest is a competition in which the members of the club are required to take a photograph of a certain subject. The subject is a portrait of a person who has a certain characteristic. The quest is a very interesting and profitable one, and the members of the club are encouraged to take part in it.

EQUATOR SAW MILLS
 P.O. Plateau. P.O. Major Aljunied. Head Office. I.O. Box 291. NAIROBI. Telegrams Capes

Phone Nairobi 113.

Highest Quality
Lowest Prices
Largest Stocks
Smallest Moisture Contents
Quickest Delivery

New Year Gifts of Appreciation.

Kayer-Ly-44 & 48 Gauge Hosiery.

CREPE DE CHINE LINGERIE.

RAFFIA WORK OF EXQUISITE DESIGN IN Work Baskets, Hand Bags, Blotters and Pin Cushions.

NEW CONSIGNMENT OF CHARMING AND EXCLUSIVE DAY AND EVENING GOWNS. TROUSSEAU AND GOWNS MADE TO ORDER.

Waring's Ltd. Africa House, Government Road, NAIROBI

3-in-One in Your Office

HELIO'S
Electric Lighting Sets

Simple Dustproof

J. R. Cox & Co.
 SIXTH AVENUE
 Nakuru, Eldoret, Nairobi, Kampala, Dar-es-Salaam.

3-in-One in Your Office

HELIO'S
Electric Lighting Sets

Simple Dustproof

J. R. Cox & Co.
 SIXTH AVENUE
 Nakuru, Eldoret, Nairobi, Kampala, Dar-es-Salaam.

FREE:
 Send for programme and list of prizes. It is yours for nothing.

THE EAST AFRICAN STANDARD
 London and New York.

Reprinted by
 EDWARD J. THOMPSON
 Nairobi, Kenya Colony, East Africa.

Prince of Wales BOOK.

Containing over 100 Photographs of the Prince's Visit to Kenya.

Second Edition NOW READY

Place Your Order Now !!
SECOND EDITION ALREADY HALF SOLD.

Price Shgs. 7-50. Packed & Posted 8-50.

STANDARD STATIONERY STORES, SIXTH AVENUE, NAIROBI. P.O. Box 860.

LOST.

Policy No. 6470 Charles Perry
 with African Life Assurance Society Ltd.

Apply to
 the Head Office of the Society at Johannesburg for the issue of a duplicate Policy.

FOR OUR MOTOR CAR SERVICE AT INCLUSIVE RATES FROM NAIROBI OR KAMPALA TO THE NILE MOTOR TOURS LTD.

Apply to
 opposite the New Stanley NAIROBI

BOOKING AGENTS TO THE SUDAN GOVERNMENT RAILWAYS & STEAMERS.

Place Yourself on the Right Side of the Danger Line

INSURE
YOUR MOTOR CARS AND MOTOR CYCLES WITH THE AFRICAN GUARANTEE AND DEFERRED PAYMENT.

M. D. KAMFP, CHIEF AGENT.

Land Department Reorganization. PAYMENT OF ACCOUNTS.

It is hereby notified for public information that on and after the 1st of January, 1927, all sums due and payable to the Commissioner of Lands in respect of Crown Land Rents and District Premiums should be paid to the Administrative Officer in whose District the lands concerned is situated, with the following exceptions:

All amounts due in respect of lands situated in the Larkings, North and South Nyeri, Kyambaa, Marichale, Fort Hall, and VU Districts should be paid on Temporary Occupation Licenses, are payable at the office of the District Commissioner, Nairobi.

E. E. MORTIMER,
 Acting Commissioner for Land Government Lands and Settlements, Nairobi, 27th December, 1926.

UNION CASTLE LINE.

Table with shipping schedules for Union Castle Line, including routes to South Africa and East Africa, with ship names and departure dates.

British India Steam Navigation Company, Ltd.

Table with shipping schedules for British India Steam Navigation Company, including routes to East Africa, India, and Europe.

THE ARISTOCRAT OF THE BREAKFAST TABLE HAS ALWAYS BEEN CHIVERS' Old English Marmalade. GIVE HIM A PLACE AT YOUR TABLE. SOLE AGENTS for the trade only - R. O. HAMILTON, LTD., Box 302, NAIROBI. Phone 1532.

Messageries Maritimes. (FRENCH MAIL STEAMERS) Regular and fortnightly service from and to Marseilles THE QUICKEST ROUTE TO LONDON. NEXT SAILING TO Marseilles' 29th Jan. 1929

EXPERIENCED ADVICE. The Simple way to Satisfactory Service THE EXPRESS TRANSPORT CO. Carriage Contractors to Kenya and Uganda Railways.

Massey Harris No. 15 Stiff-Tooth Cultivator. For Shallow or Deep Cultivation. 11 Teeth 14 Inch Wide. AGENTS - P. O. Box 390 Smith, Mackenzie & Co. NAIROBI.

Keith Timber Co. Ltd. CEDAR AND PODO OF ALL SIZES MACHINED TIMBER. FLOORING, FENCING POSTS, SEASONED FLOOR BLOCKS IN STOCK. Phone 289.

F. A. HEAD, PIANO, TUNER AND REPAIRER. Five Years with Messrs. Chappell & Co., London Seven years' experience in Kenya Colony. Send all orders to P. O. Box 675. EXPERT VULCANIZING. THE HEINTZ ELECTRIC WAY, IT'S DIFFERENT. ALL WORK GUARANTEED. K. McIvor's Garage. Phone 97. Sixth Avenue. P. O. Box 97.

The African Marine & General Engineering COMPANY, LTD., KILINDINI. SHIP REPAIRING. SAIL MAKING & REPAIRING. MOULDING. OXY ACETYLENE WELDING & CUTTING. In their well-equipped Carpenters Shops, all types of House and Office Furniture are made and repaired.

Hamilton & Coy. BAKERS AND BUTCHERS. WESTLANDS. BREAD, CAKES, AND BISCUITS. Hotels and Boarding Houses supplied at Wholesale Rates. Prices paid for Prime Slaughter Stock.

OVERSEA'S MAILS. TABLE with columns for STEAMERS, FROM, TO, Date, and Mails arrive at Nairobi.

Deutsche Ost-Afrika-Linie (GERMAN AFRICAN SERVICE). Homeports via Suez Canal. Kilindini to Durban. Leaving Mombasa and Leaving Kilindini. Includes ship names and dates.

A. DAVIS & Co. PROPERTIES AND INTERESTS FOR SALE. PARTNER WANTED in well-developed and equipped farming estate showing good returns. Residential freehold property with 1000 acres, with good road and 2000 ft. frontage on main road.

NATIONAL BANK OF INDIA LIMITED. (Incorporated in United Kingdom). Bankers to the Colony and Protectorates of Kenya and Uganda. PROTECTORATES Governments. FLEXIBLE DEPOSITS - Deposits of £100,000 up to £2,000,000.

"CHRONICLES OF KENYA." By A. Davis and H. Robertson. Some Press Criticisms. The special feature of the above book is that it is written by those who were actually engaged in the work of the Kenya Government at the time it was written.

UPLANDS NEWS! Despite RECORD SALES amounting to 50 per cent. increase over any previous Christmas Trade, we still hold ample stocks of Hams, Bacon and Timed Goods, etc., to meet the New Year's Demands. Our MATURED HAMS (approximately a year old) are most delicious but very few remain unmade!

Compagnia Italiana Transatlantica. Monthly Passenger Service to NAPLES and GENOA by comfortable Oil-burning turbine steamers. THE BEST ROUTE TO LONDON via ITALY. AILINGS from KILINDINI to GENOA on the 1st of February.

UPLANDS BACON FACTORY. TABLE with columns for STEAMERS, FOR, TO, Date, and Mails arrive at Nairobi.

FOR YOUR EYES **CARL ZEISS JENA** **FOR YOUR CAMERA.**

How agreeable to distinct eyes? The eye of your camera is the lens. Just as the full power of the eye comes to its activities, so the camera in what the lens makes it. A better lens yields invariably better pictures, ensures independence of the time of day, season or weather and increases our enjoyment of our photographic work. This is why the big camera works of all countries use the Zeiss lenses, the camera with Zeiss Tessars, the lens and most reliable camera eye in the world.

Specialty ZEISS PUNKAL. **66 THE LENS 77** Specialty ZEISS TESSAR.

PRINCE'S BUILDING, P. O. Box 92, GOVT. ROAD.

Raleigh Motor Cycles.
VARIOUS MODELS at Greatly Reduced Prices.

7 h-p	Shs. 1,450/-
5.00 h-p	Shs. 1,200/-
1.74 h-p	Shs. 870/-

Call and inspect at MAIVOR'S GARAGE, Sixth Avenue or Phone 97, P. O. Box 97 or White KETTLES-ROY, Ltd., Box 100, NAIROBI. TERMS ARRANGED.

We are pleased to publish an explanation regarding the man who was recently heard in Government Road addressing passers-by in Nairobi, and was suspected of being a Communist.

COMMUNIST ARRESTED

Having our Store he was at once arrested.

by the value we offer, and the customer which attracted public attention was the expression of annoyance at having already stopped elsewhere. To avoid you from a similar experience we would repeat that at our Store

In Government Road

are to be had all men's outfitting and footwear needs in the best quality at very reasonable prices.

MAXWELL BRADY & CO., GOVERNMENT ROAD, NAIROBI.

KORU PARTNERS AND THE MOTOR TAX.
Elected Member Taken to Task.

(SPECIAL CORRESPONDENT.)

A meeting of the Koru Partners and Planters Association was held at Koru Club on the afternoon of Monday, December 21, at which all but one member was present. This full attendance was mainly due to the excitement caused by the District through the Government's latest taxation imposition. Special arrangements were made to enable the Hon. Mr. Conway Harvey to this meeting as the District Director is known to be busy for operating the recently passed Traffic Ordinance.

At the commencement of the meeting, the Hon. Mr. Conway Harvey on request explained at some length the details of the Local Government Bill. There was undoubtedly some misunderstanding of feeling of suspicion and doubt as to the advisability of supporting Local Government and the opinion was expressed that it would be wiser to allow some other district to experiment with it first. However, when the matter was put to the meeting, although several members did not vote, the motion that the meeting was in favour of Local Government was carried with one dissenting vote.

The member expressed the opinion that one mistake of the Bill was that it was generally felt that the Government had not and never had had any intention of passing the bill. It was pointed out that the Bill would be a matter of some difficulty to amend or amend the Traffic Act was not the intention of the Government as betrayed by its elected representatives in a highly substantial manner.

Mr. Harvey's attention was drawn to the fact that in connection with the Traffic Ordinance, a statement of the Government had not and never had had any intention of passing the bill. It was pointed out that the Bill would be a matter of some difficulty to amend or amend the Traffic Act was not the intention of the Government as betrayed by its elected representatives in a highly substantial manner.

Replying to a question as to why he had not consulted his constituents before the final passing of a measure which moved the Government, Mr. Harvey referring to this increased traffic by the Government, stated that he had consulted his constituents in the past but that he had not done so in the case of the present taxation proposal.

Mr. Harvey stated that the Special Committee had not reported on the whole matter and had expressed a reservation which he believed to be fair and equitable in its nature, except that it would require further investigation before it could be altered.

An Amendment proposed that the Government had been notified of the proposed taxation proposal, but that the Government had not and never had had any intention of passing the bill. It was pointed out that the Bill would be a matter of some difficulty to amend or amend the Traffic Act was not the intention of the Government as betrayed by its elected representatives in a highly substantial manner.

many questions put to him. After further discussion, the meeting resolved to propose by Mr. Charnington was passed unopposed.

It was the Meeting resolved to propose by Mr. Charnington was passed unopposed.

Resolved that the Government had been notified of the proposed taxation proposal, but that the Government had not and never had had any intention of passing the bill. It was pointed out that the Bill would be a matter of some difficulty to amend or amend the Traffic Act was not the intention of the Government as betrayed by its elected representatives in a highly substantial manner.

Resolved that the Government had been notified of the proposed taxation proposal, but that the Government had not and never had had any intention of passing the bill. It was pointed out that the Bill would be a matter of some difficulty to amend or amend the Traffic Act was not the intention of the Government as betrayed by its elected representatives in a highly substantial manner.

RIFLES OR SHOTGUNS.

Elephant, Antelope or Bird Shooting.

Whatever your requirements are, come to us and inspect our unrivalled stock of nearly 2000 WEAPONS in all forms and for all purposes. The most useful presents for the Xmas holidays. We have all guns in all prices.

Chas. A. Heyer & Co.
THE ONLY EUROPEAN GUNMAKERS IN NAIROBI.
Great Elephant EST 1908

Pepsaleni
The Healthy Quality Drink
Sold in the World's Best Bottles

Agents: Messrs A. H. Ward & Co., Ltd., P. O. Box 108, NAIROBI, Kenya Colony.

MARTIN'S PILLS
APIOL & STEEL

Sure and certain for all Fevers, complaints. Every lady should keep a box in the house. Cleanse and Stomach well then throughout the world.

Thornton & Turpin (Sole Agents)
REGISTERED PLUMBERS AND SANITARY ENGINEERS.
NAIROBI & MOMBASA.
P. O. Box 260, Nairobi, and P. O. Box 886, Mombasa.

EVERYTHING FOR GOLF
AS
MAY & CO., LTD.

EXTRAORDINARY IN EVERY RESPECT

In its vigorous beauty, its eager performance, its visible high-quality and remarkable value the

RAYLER

combines those advantages which make a motor-car thoroughly and permanently satisfying.

We enthusiastically invite your most critical study of this great new car in the belief that you will find it radically in advance of anything ever offered before.

We can supply all models of Chrysler Plymouth and "65" box bodies from stock. All other models sold out and orders are being rapidly booked for the next consignment, arriving shortly.

Carr, Lawson & Co., Ltd.

Nairobi Nakuru Eldoret Kampala

Motoring.

"A Stitch in Time Saves Nine"

and filling your tank WITH "BP" saves a lot of engine trouble

Always Use



No trouble to get - No trouble afterwards.



Heavy Duty Vehicles

find WEED TYRE CHAINS about an absolute necessity. Trucks, Buses, Motor-Lorries, etc., plowing their way through deep mud, treacherous roads or dry sand the safe, positive reaction that Weed Chains afford. Weed Tyre Chains get right down to hard surfaces—they grip and hold.

WEED TYRE CHAINS AMERICAN CHAIN COMPANY, Inc. New York, N.Y., U.S.A.

Luggage Lockers. Sound Accommodation now Being Provided.

It is surprising how rapidly fashion and convention will change, at least, in certain respects. It is only a matter of about two or three years ago that the motorist was content to have a few extra seats or two extra seats to provide a special luggage container on the car. As they departed it would be surprising a certain amount of passenger accommodation. Yet today each provision is made on even the smallest service, and the more powerful models, which will, moreover, house two really good-sized suitcases, enough, in fact, for the average requirements of the touring motorist and his passengers for a fortnight or so.

No interference with Legroom. It is true that there has been a certain intrusion on the passenger's seating accommodation in many cars, but the loss of legroom in the forward direction has been compensated for by the provision of wells so that no cramping whatever is caused. Thus, the passenger still gets his comfortable seating and the knowledge that his new seating position has been a matter of starting speed protection for his luggage. "It is no exaggeration to say that although in quite a number of cases the rear compartment lock extensions cramped at the first glance, it is equally as comfortable as the roomy-looking type, thanks to the well. In this respect the door-coupled cover, which, even the cushion comes well under the door, there is no reason why this position should be less pleasing than the normal armchair type.

The incorporation of luggage-room as a standardized feature on the car represents one of the most useful trends of current design and is one which the motorist, if he does much touring, particularly if he does much touring, will really appreciate. It is pleasing to know that one's luggage is adequately housed, particularly during the winter season. The way in which the luggage containers can be separated under the car is a feature which is particularly attractive. Built-in containers as designed that form a small extension at the back of the car, the fitting of a separate luggage container, another example of the small compartment arrangement for such things as soap, etc.

Essential Features of Luggage Lockers. Before going more fully into the

Malaya Meeting.

INDICATION AT THE MOTOR TAX.

At a committee meeting of the Malaya District Association the question of motor taxation was discussed following on the receipt of the circular from the Secretary of the Royal Automobile Association. The following proposals were discussed: (1) Mr. Galtton-Pearl after each of his suggestions was discussed. (2) Mr. Galtton-Pearl after each of his suggestions was discussed.

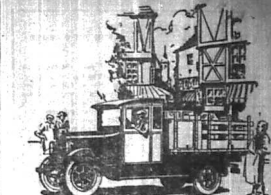
During the discussion the Committee expressed the opinion that in view of the Government's intention of endeavouring to keep down the cost of living the suggested increase in motor tax was entirely unattractive for the Government strongly objected to the proposed increase through taxation of any description without the country having previously been consulted.

Colon Association.

FIRST MEETING HELD AT JIHA.

"STANDARD" CORRESPONDENT. KAMPALA, Dec. 24. The Colon Association held a very successful meeting for the first time in Kampala on December 24. It was unanimously agreed to elect Mr. Galtton-Pearl as President and Mr. Galtton-Pearl as President and Mr. Galtton-Pearl as President.

There are certain instances in this respect where the trunk has been fitted with a slightly less luggage should the necessity arise. One of the most common types of trunk is the one which is built to fit into the interior of the car. This type of trunk is built to fit into the interior of the car. This type of trunk is built to fit into the interior of the car.



Make Profits Sure

An owner can get out of a truck or bus only what the market bears into it.

Owners who would like to know the Dodge Brothers reputation for careful and simple design, liberal use of fine steel and honest values. And those owners, year after year, use of Graham Brothers Trucks and Buses the best of economical, dependable service engines, wheel brakes, etc.

There is a size and type that will increase profits for you.

S. FISHER & SIMMONS, (E. A.) LTD. VICTORIA STREET, NAIROBI.

GRAHAM BROTHERS TRUCKS AND BUSES

BUILT BY TRUCK DIVISION OF DODGE BROTHERS, INC. SOLD BY DODGE BROTHERS DEALERS EVERYWHERE.



SWEET CROP

Particular smokers have proved that it provides a smooth, cool smoke with an extra absence of the one God-blessed with such a mixture, and so Sweet Crop grows in popularity.

Wrighton & Co., Ltd., 10, Abchurch Lane, London, E.C. 4.

KIRKWOOD & Co., LAND AGENTS.

We have inquiries for large Coffee Estates in Kenya. Will sell you full details and acreage for sale and supply good particulars regarding acreage under cultivation and age of plants in bearing and otherwise, yields, disease, rainfall, altitude, labour, description of soil and country. Water, means of transport, Factory buildings, etc.

QUICK PENNY IS BETTER THAN SLOW SHILLING IN PROFIT. SELECT PRESENTS

AT LALCHAND MOOLCHAND BROS. Government Road, P.O. Box 978, NAIROBI.

ESSJAY LIMITED.

BOLLS HOUSE, GOVERNMENT ROAD, Box 634, NAIROBI. Phone 977.

FINANCIAL & PROPERTY AGENT.

Mortgages specialised in. Town Properties Negotiated, Partnerships Arranged, Investments Advised on.

We have sound investments for sums from £100 upwards. In this respect we claim to do better for you than anyone else.

S. JACOBS, Managing Director.

Nairobi Vulcanizing COMPANY.

Additional plant has now arrived All its tyres up to 42 x 9.

Sole Agents: VIX HUMIDIFIER and PETROL SAVER. 20 per cent. increase in your mileage.

NOTICE. Permanent Waving Whole Head 60/-

UNTIL FURTHER NOTICE THEO. SCHOUTEN GOVERNMENT ROAD. Phone 845 P.O. Box 234.

CAKES BY EXPERT BAKERS AND PASTRY COOKS. ALSO DELICIOUS CHOCOLATES & SWEETS.

THE NGARA BAKERY, Swaney Road, Box 974, NAIROBI.

Kenya Loan & Discount Co., Ltd. NAIROBI.

OFFICES:— 1st Floor, Court Chambers, P.O. Box 646. FINANCIAL AGENTS. BILLS DISCOUNTED. SHORT PERIOD LOANS GRANTED. ANY REALISABLE ASSET NEGOTIATED FOR CASH.

Call or Write, Strictest Confidence. Established 1921.

Bargains AT Ladham Stores, GOVERNMENT ROAD.

Gents Pullovers in Assorted Colours from Shugs. 7/- and Woolen Shirts from Shugs. 9/- each. Our window is displayed with the above goods.

Sale! Sale!! Sale!!! A Huge Reduction ON OUR ENTIRE STOCK For Presents. AT B. Choitram, P.O. Box 842, NAIROBI.

MANGALORE TILES. DEAL all sizes.

TEAK in Long and Scantlings. Swedish Imported Doors all sizes in Stock.

F. M. BHAIJEE, HARDWARE MERCHANT. Ethios 888, Indian Bazaar, NAIROBI.

IT'S EVERYBODY'S ANXIETY. Shopping! Harry up your Bargains. Sooner the better.

Perfumes, Scent Sprayers, Milk and Cream, Hairbrushes, Wash and Toilet Soap, Toothbrush, Shaving Soap, Children's Frocks, Washable Cases, Toilet Sets, Artificial Flowers, and many other articles of Household Fancy goods.

KALA SIDI NAIROBI. Direct Importer.

LONG JOHN



DISTRICTORS:

D. EPSTEIN, & CO.

COUNTRY CUP CRICKET.

Nyeri Enter Final at Nyeri's Expense.

A LOW SCORING MATCH.

WARRIORS' CONGRATULATIONS.

On Sunday last Nyeri was at home to Nyeri, when the long deferred Kenya Country Cup match was played.

The play however, was hardly up to Country Cup form and Nyeri were very lucky to win on the first innings, and will have to put up a much better show in the final.

The following are the scores:

Nyeri.

Table with 2 columns: Player Name and Score. Includes J. D. Perival, C. Kirton, F. G. Dorrington, etc.

Extras

Total 67

Bowling Analysis:

Table with 2 columns: Bowler Name and Runs/Wickets. Includes H. G. Dorrington, H. G. Dorrington, etc.

Runs (1st Innings).

Table with 2 columns: Player Name and Score. Includes G. Worsfold-Brown, E. Bohales, etc.

Bowling Analysis:

Table with 2 columns: Bowler Name and Runs/Wickets. Includes H. G. Dorrington, H. G. Dorrington, etc.

Nyeri (2nd Innings).

Table with 2 columns: Player Name and Score. Includes F. H. Gordon, M. Worsfold-Brown, etc.

Extras

Total 165

Bowling Analysis:

Table with 2 columns: Bowler Name and Runs/Wickets. Includes H. G. Dorrington, H. G. Dorrington, etc.

CRICKET.

Kyamba's Moral Victory Over Gynkhana.

A DRAWN GAME.

Kyamba scored a moral victory over Gynkhana at Kyamba last Sunday, when the two teams met in a friendly. With one wicket to fall the visitors were 45 behind.

Kyamba.

Table with 2 columns: Player Name and Score. Includes A. H. Symes Thompson, C. Trenn, etc.

Gynkhana.

Table with 2 columns: Player Name and Score. Includes Rhodes, G. Simpson, G. Harvey, etc.

Extras

Total 213

Bowling Analysis:

Table with 2 columns: Bowler Name and Runs/Wickets. Includes H. G. Dorrington, H. G. Dorrington, etc.

Gynkhana's Second Draw.

MR. WALLER'S CENTURY AGAINST K. KONGORI.

Gynkhana played K. Kongori on Wednesday at Gynkhana, when a slow overcast day, when a shower fell, the latter being 20 runs behind with two wickets to fall.

Gynkhana.

Table with 2 columns: Player Name and Score. Includes F. L. R. Muna, M. Ferguson, etc.

Kongori.

Table with 2 columns: Player Name and Score. Includes Allen, H. Barton, Symes Thompson, etc.

Extras

Total 200

Bowling Analysis:

Table with 2 columns: Bowler Name and Runs/Wickets. Includes H. G. Dorrington, H. G. Dorrington, etc.

ENTERTAINMENTS.

Jockey Club of Kenya New Year's Eve BALL AT THE NEW STANLEY HOTEL

THE Naivasha Hotel. NEW YEAR'S EVE (31st Dec.) DANCE

NAIROBI RAILWAY CLUB NEW YEAR'S EVE DANCE

PANTOMIME AT THEATRE ROYAL. BUY IT AT THE THEATRE BEFORE YOU GO ANYWHERE ELSE SEE US.

Where to Shop Nairobi Fashion Centre CHOICEST SELECTION OF LADIES UNDERWEAR

A Good Selection of Local Hams. BOOK YOUR ORDERS EARLY AND ENSURE A REAL TREAT FOR CHRISTMAS.

B. E. A. Saw Mills

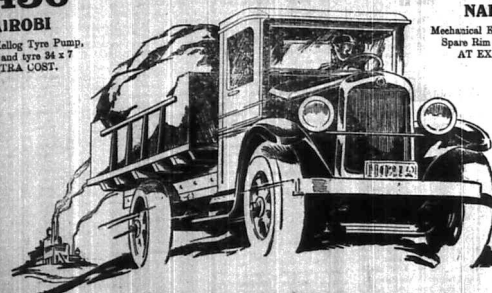
MILLS AND OFFICES, WORKSHOP ROAD, NEAR F.W.D. NAIROBI. Telephone No. 93. P.O. Box 321, Nairobi.

SPARES

General Motors Trucks "BUICK" ENGINES

SERVICE

T. 42 C 3 Tons. 164" wheel base, Chassis with imported Steel Cab.



The Motor Mart and EXCHANGE Ltd., NAIROBI

COMPLEXION IMPROVED



CAPTIN'S SKIN PILLS

WATERBURY, WHOLESALE, CHEMISTS, NAIROBI, MOMBASA, AND ELDERA.

P. GETHIN.

Phone 128. Box 90. Grams: Gethin. NAIROBI. LUXURIOUS TOURING CARS FOR HIRE DAY AND NIGHT.

For Sale

MAXWELL 4, Excellent condition, a real bargain. £120.

For Sale

MAXWELL 4, Excellent condition, a real bargain. £120.

For Sale

MAXWELL 4, Excellent condition, a real bargain. £120.

For Sale

MAXWELL 4, Excellent condition, a real bargain. £120.

For Sale

MAXWELL 4, Excellent condition, a real bargain. £120.

WATERBURY, WHOLESALE, CHEMISTS, NAIROBI, MOMBASA, AND ELDERA.

WATERBURY, WHOLESALE, CHEMISTS, NAIROBI, MOMBASA, AND ELDERA.

WATERBURY, WHOLESALE, CHEMISTS, NAIROBI, MOMBASA, AND ELDERA.

WATERBURY, WHOLESALE, CHEMISTS, NAIROBI, MOMBASA, AND ELDERA.

WATERBURY, WHOLESALE, CHEMISTS, NAIROBI, MOMBASA, AND ELDERA.

WATERBURY, WHOLESALE, CHEMISTS, NAIROBI, MOMBASA, AND ELDERA.

NAKURU

DAR-ES-SALAAM

Colonial General Stores Ltd. Phone 288. P.O. Box 288.

Enjoy Your Yuletide IN AN OVERLAND

Prices from **£180**

Including License Number Plates and Tax Paid for 1928.

MOULTON & MORRISON Ltd.
NAIROBI.

PRODUCE MORE FOOD

THE CHEAPEST WAY OF OBTAINING FLOUR OF ANY SORT IS BY

Use a **BARRON MILL** and **PETTER ENGINE** to make **POSHO**

THE **BARRON MILL** will grind all Cereals and make **FLOUR**

J. W. Milligan & Co.
NAIROBI — and — MOSHI.

A. H. Wardle & Co. Ltd

Optical Chemists.
NAIROBI.

Optical Manager:
V. M. BROWSE, F.S.M.C. F.T.O.

SCIENTIFIC EYE TESTING.

Only the best lenses and frames stocked.
Testing and Spectacles complete, from 25/-.

GIBBONS' STEEL CASEMENTS

LOCKS AND IRONMONGERY

Make their appeal on the basis of **QUALITY AND PRICE.**

Our Present Stock of **STANDARD STEEL CASEMENTS** EMBODY THE LATEST IMPROVEMENTS. **WE CARRY EXTENSIVE STOCKS.**

R. G. Vernon & Co.
UNION BUILDINGS, NAIROBI.
P.O. Box 124.
Phone 120.

THE NEW Ford 30 Cwt. TRUCK

HAS ARRIVED

STRENGTH AND EFFICIENCY

OUTSTANDING PERFORMANCE AT LOW COST.

MANY AMAZING IMPROVEMENTS INCLUDING:
TIMKEN REAR AXLE ASSEMBLY.
EQUALIZING FOUR-WHEEL BRAKES.
STANDARD CHASSIS:

3 SPEEDS FORWARD...
6 SPEEDS FORWARD...
PRICE, £189.
PRICE, £200.

THE SERVICE Co., Ltd.
SIXTH AVENUE NAIROBI.

Gifts

IS NOW ON DISPLAY AT

WARDLE'S

An examination will solve the difficulty of choosing suitable and reliable presents at Prices to suit all Pockets.

A. H. WARDLE & Co. Ltd.
Chemists.
NAIROBI. ELDORET.
MOMBASA.

Seasonable Gifts

In good taste and distinctive for their charm and usefulness.

EXQUISITE BROWN LACQUER PUFF BOWLS, of unusual design.
MODERN PERFUME BURNERS, suitable for Hallroom, Boudoir or Sickroom.
MANICURE SETS, in solid Silver, Mother-of-Pearl, Ebony, etc.
THE LATEST PERFUMES, by Caron, Chanel, Werth, Godet, and other leading makers.
SHINGLE SETS, SILVER MOUNTED, Varied shapes and colours.
POCKET VANITY CASES, Containing Powder Box, Perfume Spray and Lipstick.
BUTTERFLY WING and ENAMEL POWDER CASES, in Silver, E.P.N.S. and Gilt.

There are many qualities of boot polish and the best is known as 'NUGGET'

SOLE AGENTS for the trade only:
R. O. HAMILTON, LTD.
NAIROBI. Phone 332.

KODAK (E.A.) LTD. INC.
Howse & McGeorge
CHEMISTS.
NAIROBI AND ALL BRANCHES.

Reliable Service

When you choose your new Motor Cycle choose the machine that will give you the longest and most reliable service.

Remember that the B.S.A. reputation for reliability has been built on performance, and on the consistent service B.S.A.'s are giving all over the world.

If you are wise you will follow the lead of experienced riders and

Lead the way on a B.S.A.

BRITAIN'S BIGGEST SELLER.
Carr, Lawson & Co. Ltd.
NAIROBI.

THREE LEADING BRANDS.

OBTAINABLE AT
Emile Jardin & Cie.
NAIROBI.

response to be based... (text continues)

Labour Report.
For failing to submit returns... (text continues)

The Library Movement.
There will be a meeting of the Kenya... (text continues)

Police in Transit.
A native employee of the... (text continues)

High View Hotel.
The largest centre of attraction... (text continues)

Dawson's Visit.
On the night of Christmas Eve... (text continues)

Five Road Accident.
Between 10 and 11 p.m. on Christmas... (text continues)

Holiday Housewrecking.
There was a very little rioting... (text continues)

British Legion Meeting.
A public meeting of all... (text continues)

Today's Wireless.
7 to 7:15—Gramophone... (text continues)

MARKET.
MILLS—RIBBELL.—At 80... (text continues)

DEATHS.
JARDIN.—At a Nursing Home... (text continues)

THANKS.
Mr. Emile Jardin wishes to acknowledge... (text continues)

side of 1,830 white out of the whole... (text continues)

to a lesser degree is in the category... (text continues)

to a lesser degree is in the category... (text continues)

to a lesser degree is in the category... (text continues)

to a lesser degree is in the category... (text continues)

to a lesser degree is in the category... (text continues)

PROGRESS OF AGRICULTURE IN 1927-1928.

Decline in Acreage Production of Wheat and Maize.

65 NEW SETTLERS IN A YEAR.

Promising Increases in Areas Under Coffee, Tea and Sugar.

The Department of Agriculture has issued for publication a summary of the Agricultural Census which is now in course of preparation.

The summary shows that the total area under European cultivation increased by nearly 200,000 acres while the increase in the number of settlers during the year was 65. Twelve per cent. of the alienated area is under irrigation.

European-owned cattle increased by over 1,350, and the total stock owned by Europeans, nearly one half as many.

There have been steady increases in the acreage planted under the main crops but, due to drought conditions, the average yield of maize dropped by a bag and a half in 1927, and the average of wheat was also lower than an acre.

Coffee, Sugar and Tea show large increases in planted acreage. The increase in the value of exports coffee balances all the decreases in other exports—principally maize and wheat.

INCREASED AREA UNDER CULTIVATION.

Of 200,000, an average of 2,811 acres were sown compared with 2,560 gals of the previous year. The area under sugar was 39,000 acres in 1928, and 36,000 in 1927. The area under coffee was 50,000 acres in 1928, and 48,000 in 1927. The area under tea was 10,000 acres in 1928, and 9,000 in 1927.

AGRICULTURE AND DEVELOPMENT.

The total area under European cultivation in 1928 is estimated at 6,000,000 acres, an increase of 100,000 acres over 1927. The number of European settlers in 1928 is estimated at 100,000, an increase of 10,000 over 1927.

LABOUR.

The labour force in 1928 is estimated at 1,000,000, an increase of 100,000 over 1927. The number of European settlers in 1928 is estimated at 100,000, an increase of 10,000 over 1927.

AGRICULTURAL EXPORTS.

The value of agricultural exports in 1928 is estimated at 10,000,000, an increase of 1,000,000 over 1927.

INCREASES.

Table with 2 columns: Item and Value. Includes Coffee (600,000), Tea (1,000,000), Sugar (2,000,000), etc.

DECREASES.

Table with 2 columns: Item and Value. Includes Maize (1,000,000), Wheat (2,000,000), etc.

AYRES' CHAMPIONSHIP GOLF BALLS.

THE BEST IN THE BAG. If you have not already tried Ayres' you should give it a trial, you will appreciate its excellence. SPECIAL CASH DISCOUNT SPECIAL QUOTATIONS TO GOLF CLUBS. S. JACOBS LTD. NAIROBI.

THE PANTOMIME SEASON OPENS IN NAIROBI.

"Aladdin" at the Theatre Royal.

NEED FOR PRODUCE.

There is no doubt that it is really very good of the Theatre Royal to give a pantomime. "Aladdin" that it was a play, "Aladdin" that it was a play, "Aladdin" that it was a play. The pantomime will not have been a success if it had not been a success.

Christmas Festivities.

The Christmas festivities in Nairobi were very successful. The children were very happy and the adults were very busy.

GAY TIPS IN THE NATIVE VILLAGES.

Throughout the Christmas holidays the native villages in Nairobi were very busy. The children were very happy and the adults were very busy.

What Happened.

The night of the 27th was a very busy one. The children were very happy and the adults were very busy.

The Principal.

What our principal has to say is that the children were very happy and the adults were very busy.

Nanyali's Future.

The future of Nanyali is very bright. The children were very happy and the adults were very busy.

POSSIBILITIES OF AN AIR PORT.

The possibilities of an air port at Nanyali are very bright. The children were very happy and the adults were very busy.

THE SIGHT OF THE RAINBOW.

The sight of the rainbow at Nanyali was very beautiful. The children were very happy and the adults were very busy.

THE SIGHT OF THE RAINBOW.

The sight of the rainbow at Nanyali was very beautiful. The children were very happy and the adults were very busy.

THE SIGHT OF THE RAINBOW.

The sight of the rainbow at Nanyali was very beautiful. The children were very happy and the adults were very busy.

THE SIGHT OF THE RAINBOW.

The sight of the rainbow at Nanyali was very beautiful. The children were very happy and the adults were very busy.

STEADY PROGRESS OF THE LOCUST CAMPAIGN.

A Timely Warning to the Settled Areas.

WORLDWIDE DESTRUCTION.

The latest report from the locust campaign shows that the locusts are still very much at large. The children were very happy and the adults were very busy.

THE SIGHT OF THE RAINBOW.

The sight of the rainbow at Nanyali was very beautiful. The children were very happy and the adults were very busy.

THE SIGHT OF THE RAINBOW.

The sight of the rainbow at Nanyali was very beautiful. The children were very happy and the adults were very busy.

THE SIGHT OF THE RAINBOW.

The sight of the rainbow at Nanyali was very beautiful. The children were very happy and the adults were very busy.

THE SIGHT OF THE RAINBOW.

The sight of the rainbow at Nanyali was very beautiful. The children were very happy and the adults were very busy.

THE SIGHT OF THE RAINBOW.

The sight of the rainbow at Nanyali was very beautiful. The children were very happy and the adults were very busy.

THE SIGHT OF THE RAINBOW.

The sight of the rainbow at Nanyali was very beautiful. The children were very happy and the adults were very busy.

THE SIGHT OF THE RAINBOW.

The sight of the rainbow at Nanyali was very beautiful. The children were very happy and the adults were very busy.

THE SIGHT OF THE RAINBOW.

The sight of the rainbow at Nanyali was very beautiful. The children were very happy and the adults were very busy.

THE SIGHT OF THE RAINBOW.

The sight of the rainbow at Nanyali was very beautiful. The children were very happy and the adults were very busy.

THE SIGHT OF THE RAINBOW.

The sight of the rainbow at Nanyali was very beautiful. The children were very happy and the adults were very busy.

THE SIGHT OF THE RAINBOW.

The sight of the rainbow at Nanyali was very beautiful. The children were very happy and the adults were very busy.

LYRIC HALL. TO-NIGHT AT 8.45 PM. HARRY PEEL IN "THE PHANTOM OF THE CIRCUS."

An unusual circus picture intermingled with music and mystery of a sinister phantasm.

Showing Saturday, 29th Dec. DOROTHY DREW and GERTRUDE ASTOR in "PURSUED."

A melo-drama of the underworld. PRICES: Sns. 3/- and 2/-.

LATEST RUBY RING HOISERY AND LADIES FASHION EVENING SHOES.

See Our Windows. Point Heels. Pearl Heels. Open Heels. Patent Heels. Fish Heels. Black Satin Heels. Also in Court.



Black Satin Heels. Also in Court. Prices: Sns. 3/- and 2/-.

LADIES FOOTWEAR LTD.

THE FASHION FOOTWEAR LTD. No. 100, NAIROBI.

THEATRE ROYAL.

THE MANAGEMENT OF THE THEATRE ROYAL WISH ALL THEIR PATRONS A MERRY CHRISTMAS. SEE "ALADDIN"

COMMENCING TO-MORROW NIGHT AT 8.45 p.m. Prompt AND BE ASSURED OF REALLY ENJOYING THE FESTIVE SEASON. PRICES: 10/6, 7/6 and 5/-.

NOTE: For the convenience of patrons the THEATRE ROYAL BOX OFFICE WILL BE OPEN TO-DAY from 11 a.m. to 1 p.m.

Indian Scout 45

has arrived

SEE THEM AT K. McIvors Garage.

(Sole Distributors.)

THE SIGHT OF THE RAINBOW.

The sight of the rainbow at Nanyali was very beautiful. The children were very happy and the adults were very busy.

THE SIGHT OF THE RAINBOW.

The sight of the rainbow at Nanyali was very beautiful. The children were very happy and the adults were very busy.

THE SIGHT OF THE RAINBOW.

The sight of the rainbow at Nanyali was very beautiful. The children were very happy and the adults were very busy.

THE SIGHT OF THE RAINBOW.

The sight of the rainbow at Nanyali was very beautiful. The children were very happy and the adults were very busy.

LADIES!

Give him the Shirts and Pyjamas he himself would Choose.



It being but a short while to Christmas, these remnants may prove timely to those thinking upon a present for a man. A man, that is, who works hard by day (as all men do) and as night deserves comfortable sleep.

Whichever Consulate pattern you choose—and there is a wide variety of beautiful designs and colours—it is sure to be of perfect taste and distinctive.



Stocked by The Leading Outfitters.

NOTICE.

THE VICTORIA NYANZA SUGAR COMPANY, LIMITED, have arranged with the undermentioned Stores to retail their No. 1 White Crystal Sugar at the following prices—
Per pound Cents 2/8
Per cask of 50 lbs. Shgs. 10/7 1/2

NAIROBI.
S. Jacobs, Limited, "Nairobi House."
M. H. Elliot & Company, Blackwells & Brown, The Banking House Trading Co., Ltd. Winterson, Limited, Colonial General Stores.

MUKURU.
S. Jacobs, Limited, Eldoret.
Wm. Douglas, BONGAL, Ruben Brothers.

STATIONERY.

AT THE STANDARD STATIONERY STORES, P.O. Box 380. NAIROBI. PHONE 572.

Progress of Agriculture in 1927-28.

(Continued from page 9).

Sisal	£144,871
Cotton	£52,819
Groundnuts	£10,000
Sugar	£7,108

The increase of 1008,876 or 74.5 per cent in coffee is compared with the previous year's uncertainty. The following shows the percentage of the principal products, as compared with the total value of Agricultural export during the year—Coffee, 49.8 per cent; Sisal, 11.5 per cent; Ginn, 10.8 per cent; Hides, 8.1 per cent; Skins, 3.8 per cent; Wool, 2.9 per cent; Wattle Bark and Extract, 1.7 per cent; Wheat and Flour, 1.7 per cent; All other products, 10.9 per cent.

It is estimated that of the total of £2,582,000 (£2,581,000 is derived from European and the balance of £470,000 from Non-European production. On an average each European occupier exported products to the value of £1,150 during the year, as compared with £1,094 in the preceding year.

As already stated, the foregoing are advance figures and are subject to amendment. It is hoped that the final report, which will contain much more detailed information than it is possible to publish in this issue, will be published in the course of the following week.

For failing to display his front number plate on a motor car, Mr. James was fined Shgs. 5/- by the Resident Magistrate yesterday.

Coast Gardens.

VIOLETS AND BONES IN MOMBASA.

Those who have visited up-country, when they come to the Coast miss the beautiful gardens which are the joy of the tourist householder in Nairobi. But Coast residents have to need to despair. Some most lovely flowering shrubs may be cultivated with great success down here and the gorgeous coloration that spring therefrom are a delight to the eye. But short days and hot sun there. There is one garden, at least, that boasts violets. And violet-like shrub, too, if somewhat pure and stamens, with perfume and color all complete. These require very careful morning watering to say, and have to be kept well away from the scorching rays of the sun.

As for roses, very considerable shows of at least half a dozen people who are cultivating these beautiful blooms quite successfully, although the ravages of the white ants make the life of the rose a misery. Cosmos flourish exceedingly, many of the gardens are aglow just now with the gorgeous variegated colorings of these beautiful plants.

Muziki Rainfall.

The rainfall recorded at the Silverhill, Mt. Nairobi during the week ended December 23, was 11.1 inches, the correspondent "Nairobi correspondent."

WEATHER REPORT.

Following are the results of observations made at stations of the East African Meteorological Service for 25th, 26th and 27th December.

Pressure.	Wind Direction & Force.	Temperature.			Weather.
		Max.	Min.	Rainfall.	
29/12/26	WN 7	84	74	Nil	Fair.
30/12/26	W 2	84	74	Nil	Fair.
30/12/26	NNW 7	87	74	Nil	Cloudy, but fine.
31/12/26	NW 7	84	75	Nil	Cloudy, but fine.
31/12/26	N by E 7	78.0	55.2	Nil	Cloudy, but fine.

N.B.—Barometer corrected, but not reduced to Sea Level. N.B.—Pressure is given in in. and is corrected for Temperature and reduced to Sea Level and standard gravity. Temperature is in Fahrenheit degrees. Rainfall is given in the nearest 0.1 in. (=1 mm) Wind force is given in Beaufort scale.

WHERE TO STAY, Town & Country.

SAVOY HOTEL

THE HILL, NAIROBI.

BOX 30. PHONE: 350.

The Gables.

HIGH CLASS ACCOMMODATION. Phone 427. Opposite Parklands Sports Ground.

BRACKENHURST LIMURU.

The most comfortable and yet expensive Country Hotel in Kenya. Terms from 12/- day inclusive. HUDSON GARD.

OKAILEGH PRIVATE HOTEL.

UNDER PERSONAL SUPERVISION OF MRS. H. JARRETT, Manageress. Phone 180. NAIROBI. P.O. Box 188.

Stag's Head Hotel, Nakuru

THE MOST UP-TO-DATE HOTEL IN THE TOWN.

ELECTRIC LIGHT, HOT and COLD WATER TO EACH BEDROOM, UP-TO-DATE SANITATION.

COMFORTABLE LOUNGE, EXCELLENT CUISINE.

J. G. HEATH.

THE Nakuru Hotel.

This well-known hotel (established in 1900) is the largest and best equipped hotel in the Midlands. The Hotel has now undergone extensive additions and alterations, including a FINE SPACIOUS LOUNGE and new entrance to the Hotel.

ELECTRIC LIGHT — LAUNDRY — BILLIARDS

DANCES, ENTERTAINMENTS, PUBLIC MEETINGS.

Manager—Mr. and Mrs. EDGAR ARCTER.

THE White Rhino Hotel Nyeri

FOR BREAKFASTS, LUNCHEONS, TEAS, DINNERS and ACCOMMODATION. Situated on Main Road, Grange.—"Whitrhino."

The **Salisbury Hotel** *Nairobi.*

Phone 166. P.O. Box 500.

THEATRE ROYAL

The London Hippodrome Pantomime

"ALADDIN"

NIGHTLY AT 8-45 Prompt

NIGHTLY AT 8-45 Prompt

OPENING BOXING NIGHT DEC. 26th FOR 10 NIGHTS ONLY; & TWO MATINEES SATURDAY, DEC. 29th AND SATURDAY JAN. 5th.

LADIES OF THE CHORUS:
Dorothy Bird, Hilary Bird, Dolly Condon, Gwen Condon, Ross Dove, Lily Macintyre, Ethel Nieburg, Betty Nys, Eileen Pool, Marjorie Upton.

GENTLEMEN OF THE CHORUS:
A. Anderson, Hubert Condon, Ronald Condon, Jack Grant, F. J. Griffin, Dick Griddle, A. Folland, Rodgers Smith, Bert Twomey, Alec Young.

DANCING GIRLS:
Sheila Hearns, Ida Langman, Violet Langman, Vera Newcome, Connie Springer and Evelyn Wynn.

Principal Dancers—EILEEN GILLESPIE and PEGGY NEWMARK.

CAST:

ALADDIN DOROTHY SUMMERS
PRINCESS CONNIE POOLE
FAIRY QUEEN LAURA KENDALL
SIRIOL CYRIL JAMES
WIDOW TWANKEY A. G. HIGGINS
WIZARD W. H. MARTIN
EMPEROR LEONARD WOOD
LI LI SAM LAZARUS
LILLO F. W. COPE
SLAVE OF LAMP E. A. HARWOOD
SLAVE OF RING B. D. ARMSTRONG
BOO A. CARRILLINE
AMBASSADOR TO ABANAZAR DAY WILLIAMS
AND
ABANAZAR J. G. TAYLOR

SYNOPSIS OF SCENERY:

ACT I

Scene I. The Alchemist's Den.
" II. Market Place of Peking.
" III. Outside the Cave.
" IV. Within the Cave.

ACT II

Scene V. The Widow's Laundry.
" VI. A Street in Peking.
" VII. Emperor's Reception Room.
" VIII. Exterior of Prince's Palace.
" IX. The City Wall.
" X. Aladdin's Palace in China.
" XI. Street in Peking.
" XII. Aladdin's Palace in Africa.

Dances and Ensembles arranged by CYRIL JAMES. — Ballet arranged by EILEEN GILLESPIE — The Music under the Direction of MISS IRENE MASSIAH.

Scenery designed by Wm. H. ROBERTSON, and Painted by J. SELBY PEERS assisted by NELLIE SEYMOUR JAMES.

Dresses by AFRICAN THEATRES LTD. Stage Manager and Electrician—D. C. SHEPHERD.

The whole PRODUCED by J. G. TAYLOR.

Plans Now Open. Prices Shgs. 10-50, 7-50, and 5-00.

Crawford's
LIQUEUR
SCOTCH WHISKY

Whisky, and its quality never
Crawford's "Special Reserve" is
a genuine blend of Old Scotch
Whisky. It is the finest Whisky
to give your friends and yourself
Instant upon Crawford's always!
"True Blue" and a little more
perfection usually does it for
special occasions.

*Two of
The Best!*

J. CRAWFORD &
CO. LTD. GLASGOW

Wireless Components & Sets
IN
STOCK.

DUKE THIS WEEK. H.T. BATTERIES.
LOUD SPEAKERS HAVE NOW ARRIVED.
Lochhead Moore & Roy Ltd.
AVENUE HOUSE. BOX 455. NAIROBI.

B.S.A. "Kone"
Loud Speakers
K. McIvors Garage.
MISS KATHLEEN BATES, A.R.C.M.
REVIEWS TUTTLE FOR
PIANOFORTE - SINGING - HARMONY.
AT THE
Music Studio, Sixth Avenue.
POSTAL ADDRESS BOX 417.

Geo. BLOWERS
BUILDING CONTRACTOR, MANUFACTURER AND DIRECT IMPORTER.

CASH WITH ORDER.
Saddler Street,
P.O. Box 209,
NAIROBI.
Phone: Work 300,
Home 438.

NOTE
We have a large, serial cap-
able of collecting energy from the
sun. This grid cell however is tuned
to the wavelength that it is wished
to receive by the left hand trans-
mittable condenser and it accepts only
the "desired" frequency from the
aerial cell.

Concrete Blocks
ALL SIZES IN STOCK.
QUARRY CHIPS.
BLACK TRAP BALLAST
(Machine broken and screened to any size).
BEST KIMA SAND
IN ANY QUANTITY
(CART, TRUCK or TRAIL LOADS).
DELIVERIES BY LORRIES AT QUOTED RATES.

Wireless Topics.
The Three Valve Set.

A Typical Local Type.

The following is the sketch
of a series of articles contributed by
"Q.R.M." on the maintenance and
care of wireless sets.

It has in front of me a copy of
set such as is commonly used in the
Colony to receive a 500
K.C. P.W. T.L., etc. I pro-
pose to describe this set in detail
concerning the various parts and
their functions. This is a three
valve set consisting of a detector
and two low frequency amplifiers.

On the front panel are two con-
troller dials and a switch—that is
it. At the back and looking at
the back are two terminals on the
right and six terminals on the left.
The two on the right are aerial
and grid terminals and those on
the left are, reading from right
to left, Low Tension, Positive Grid
and High Tension Negative, High Tension
positive No. 1, High Tension
Positive No. 2, and the remaining
two terminals are for the hand-
phones or Loud Speaker.

On opening the lid really very
few wires are seen and these are
comparatively short the only long
lead is the earth lead which is
connected to Low Tension minus
and runs round the whole set. I
intend to follow the wiring of the
set, from the aerial to the con-
denser and then to the grid and
then to the first coil, the Aerial coil
is a very small condenser and this
series with the Aerial coil and the
other end of this coil goes to the
earth terminal which as I
have said before is negative L.T.

Next week I will continue the
description of this set. Before
I use up my allotted space I want
to talk a little about using your
loud speaker as a method of
producing gramophone records or
radio-gramophones. As a method of
wireless reception terms it. With
a good loud speaker, amplifier and
"pick up," a gramophone record
can be played with the greatest
results and in place of the usual
gramophone tone the true music
results and further with a
great deal of "musical variety"
obtainable by its absence.

This is to be understood as
gramophone records, those electro-
magnetic records are made. It is
very much the same way as reproduced
by means of wireless amplifier.
The first manufacturer of a record,
microphone is used connected to
an amplifier on the one end and
which is the opposite of the "pick
up" which is really the same
thing instead the recorder one
end of the tone which "pick
up" are taken recorded in the record.
Now in gramophones we deal
with direct currents and have no
high frequency in the set and
the "pick up" is the important
part for the rest is a part as can
be wireless and that part can be
disconnected. I am pleased to
find that wireless makes of pick
up are obtainable in Nairobi. But
before we get at the outlet, get
good one. They are not very re-
producible but I don't wish to
bother about this copying has
not been.

Union of South Africa
Really Appetising
South African Jams,
Wines, Fruits, Jellies

ARE OBTAINABLE
At All Leading Grocers
Trade Commissioner for South Africa
MEMORIAL HALL,
P.O. BOX 294,
NAIROBI.

Remington Sheath Knives

A keen blade that strips the hide clean

Remington Sheath Knives are ideal for carrying and outdoor use. A diamond sharp blade is ready for any work of the bush.

The specially shaped handle fits your palm like the hand of a friend.

Made in several styles and sizes, with handles of rubber, stag or hard rubber. Blades measure from 3 1/2 to 10 inches in length. A hand-saw, premium pocket sheath with every knife.

Send for descriptive leaflet.

Remington Arms Co., Inc.,
7, LEFFERTS PLACE, MANHATTAN, N.Y.

Remington
FIREARMS AMMUNITION CUTLERY

Novels
AT THE
East African Standard, Nairobi.

GUARANTEED!

All Cars are Good Cars these Days, and some considerably finer than others — A really Good Car, Backed by Service, Guaranteed Service, is Supreme.

We Positively Guarantee Our Service.

Studebaker	Lancia	Erskine	Fiat
From £385	From £550	From £265	From £200

SIXTH AVENUE GARAGE
Reconditioned Second Hand Cars.
Box 533. Tele. Add. BASSO. Phone 560.

A faultless dinner ends with
DE RESZKE
The Aristocrat of Cigarettes
De Reszke
De course

VIENNOISAN 50 for Shs. 2/5
TURKISH 50 for Shs. 2/5
AMERICAN 50 for Shs. 2/5
EGYPTIAN 50 for Shs. 2/5
Distributor: Dalgely & Company Ltd.

VERMOUTH at 4/50 per litre bottle
This Vermouth is made from genuine portwine in mid-way between French and Italian Vermouth in taste—a "mixed Vermouth" in fact. Sold cheap to make room for Xmas stock.

MISA'S SHERRY
"Oltrorosso" at 6/50 per qt. bot.
SPECIAL PRICE TO THE TRADE.
To be had from:—

B. C. SIQUEIRA,
P. O. Box 548, NAIROBI.

CAKES
BY EXPERT BAKERS and PASTRY COOKS,
ALSO DELICIOUS CHOCOLATES & SWEETS.
THE NGARA BAKERY,
Swamp Road. Box 873. NAIROBI.

KENYA: THE LAND OF MYTHS.
Further Impression of an English Visitor.
THE WHITE SETTLES.

Recently the "E. A. Standard" published an article written for the "Daily Mail" by the Frenchman given as representative of the "white settler" in Kenya. The article is not only interesting, but also contains a number of errors. The Frenchman, who is not a visitor, but a resident, writes as one who has seen the country, and his impressions are those of a visitor. He writes:

It is good to see that the white settlers in Kenya are not only interested in the country, but also in the progress of the country. The white settlers in Kenya are not only interested in the country, but also in the progress of the country. The white settlers in Kenya are not only interested in the country, but also in the progress of the country.

There is another delusion that Kenya is a convenient stepping ground for the western side of the continent. It is believed, for example, that most of the wild beasts of Africa roam all will with a strong desire to reach the coast. The fact is that the wild beasts of Africa are not interested in the sea. They are interested in the land.

There is another delusion that Kenya is a convenient stepping ground for the western side of the continent. It is believed, for example, that most of the wild beasts of Africa roam all will with a strong desire to reach the coast. The fact is that the wild beasts of Africa are not interested in the sea. They are interested in the land.

Rates of Exchange.
(BY WIRELESS)
New York: 42 1/2
London: 105
Australia: 10 1/2
Ceylon: 2 1/2
India: 1 1/2
Japan: 1 1/2
Siam: 1 1/2
Sumatra: 1 1/2
Szechwan: 1 1/2
Tientsin: 1 1/2
Yokohama: 1 1/2

Widerness of Argument.
On such a tour in the wilderness of argument you are likely to meet men who know a great deal of things. They are likely to be men who know a great deal of things. They are likely to be men who know a great deal of things.

Wanted! Progress.
And yet she is a colony of amazing progress. You have not to look for the coast of her development when she is in the midst of her development. She is in the midst of her development.

Weather Report.
Following are the results of observations made at stations of the East African Meteorological Service for 24th December, 1929.

Station	Pressure	Direction & Force	Wind	Temp.	Max. Min. Rainfall	Relative Humidity	Cloud	Remarks
Mombasa	29.73	E	8 to 10	Nil.		78	None	
Nairobi	24.200	NNE	7 to 10	22.5 Nil.		75	None	

SPECIAL 'H & S' SCOTCH
'H & S'
'H & S'
The finest obtainable irrespective of price.
The product of an independent firm of Scotch Whisky Distillers.
The whiskey of 'Quality.'
WHOLESALE AND RETAIL STOCKISTS:
COLONIAL GENERAL STORES, LTD., NAIROBI.
W. H. Holt & Sons, Limited, Aberdeen-Glenlivet Distillery, Strathgry, Scotland.

M. COOK AND THE PRESS.
"Throw them out; they are paid to write lies; they were once in a meeting at Jamboia, when Mr. A. C. Cook attached a clause regarding their protest to the chairman, who said he himself was a trade union worker on a Sunday in order to report the proceedings on behalf of laborers." Mr. Cook interposed with an objection regarding the clause, and all the speakers rose and left the room.
by all actions. But of what kind is what numbers, is a middle that is not without a satisfactory answer.
Government is trying to find one, and it is called "the new settlement scheme."

S. DIAMANT
Trust Chambers, Govt. Road, NAIROBI.

RONEO Filing System
Ball Bearing Steel Cabinets
British Made.
With or without Automatic Lock.
Prices Right
The Filing System is simple, easy to learn AND easy to use.
DISPENSES WITH THE CARD INDEX
CONSULT US
Phone 572. STANDARD STATIONERY STORES, P. O. Box 380.

Fair Prices.
The following are considered fair retail prices for our Supreme Flour, "Kenya's Mist," in Nairobi, Nakuru, Njoro, and Molo.
PER POUND Cents / Shs.
PER 10 LB. COTTON BAG Shs. / 7/5
PER 50 LB. COTTON BAG Shs. / 12/75
The undermentioned firms are selling at these prices:
NAIROBI:
WIMBORI LIMITED
M. S. ELLIOTT & CO., Ltd.
KAMJI NARANI & CO.
COLONIAL GENERAL STORES, LTD.
BELTRAM PATRIMAL & CO.
HASSANALI BROS.
NAKURU:
IBRAHIM KARIMBUJ.
E. SPEER.
HARISINGH GUJABHAI.
KENYA GROCERIES, LTD.
NJORO and MOLO:
THE EUROPEAN STORE LTD.
RONGAI:
HUBEN BROTHERS.
There is more "Kenya's Mist" sold in Kenya and Uganda than all other makes of fine flour, whether local or imported, combined. It is the flour of dependable high quality.
UNGA Ltd., Njoro.

Doonholm Dairy.
Box 11, Nairobi.
FOR Pure Milk and Cream.
From Farm to Consumer.
John Rifkin.
SIXTH AVENUE.
P. O. Box 458, NAIROBI.
WAGON BUILDER,
BLACKSMITH, FARRIER,
Stocks,
LIMES, BRAKES, WAGONS,
and ALL WAGON PARTS.
ALL KINDS OF WAGONS
MADE TO ORDER.
P. STEWART,
C.A.S., S.E.D.,
PAINTER & DECORATOR,
Hardings Street, NAIROBI.
P. O. Box 358.
PARTY COLOURS ONLY
PAINTS AND SUPPLIES.
Large or Small Quantities.
HOUSE TO LET.
From 1st January, Large Stone House on New Post Hill Road at present occupied by Mr. R. T. Thabon. Apply
VIAKOR BROTHERS.

British India Steam Navigation Company, Ltd.

UNION CASTLE LINE.

HOWARD VIA SUEZ. Qualified Carls... From Mombasa. 2nd March, 1929... 21st April, 1929... 11th August, 1929.

LONDON AND EAST AFRICA LINE. LONDON TO NAIROBI. Via Mombasa, Port Said, Port Sudan and Aden, Ostende and Liverpool.

ROMBAY-DUBAII MAIL SERVICE. Calling Kilindini, Zanzibar, Dhows-Salomon, Baha, Dabaha, May, fortnightly. Also Mombasa monthly, Ostende and Liverpool.

COASTAL SERVICE. The M.V. "DWARAKA" will arrive at Kilindini from South to arrive in Mombasa the middle of January.

CHIVERS' CUSTARD POWDER. Best with CHIVERS' canned Fruits. In Four Flavours: STANDARD VANILLA, LEMON, ALMOND.

Messageries Maritimes. (PRINCE MAIL STEAMERS) Regular and fortnightly service from and to Mombasa.

THE FIRM WITH TRUTH IN ITS NAME. THE Express Transport Coy. Carriage Contractors to Kenya and Uganda Railways and Harbours.

Massey Harris No. 15 Stiff-Tooth Cultivator. For Stubble or Deep Cultivation. 11 Teeth. 311. Wide. AGENTS— Smith, Mackenzie & Co. NAIROBI.

Keith Timber Co. Ltd. CEDAR AND PODO OF ALL SIZES. MACHINED TIMBER A SPECIALTY.

F. A. HEAD. PIANOFORTS TUNED AND REPAIRED. Five years with Messrs. Chappell & Co., London.

EXPERT VULCANIZING. THE HEINTZ ELECTRIC WAY, IT'S DIFFERENT. ALL WORK GUARANTEED.

OVERSEA SAILS. ARRIVAL. Kabaiba 6th Dec, Piase 10th Dec, Elmadini 12th Dec, Kaca 13th Dec, El Grandier 17th Dec.

The African Marine & General Engineering Company, Ltd., Kilindini. SHIP REPAIRING. SAIL MAKING & REPAIRING. Moulding. OXY-ACETYLENE WELDING & CUTTING.

Hamilton & Co. BAKERS AND BUTCHERS. WESTLANDS. BREAD, CAKES, AND BISCUITS. Hotels and boarding houses supplied.

FOR SALE. Bath Costs 18/- each. Bath Costs good but second-hand 12/- each.

Deutsche Ost-Afrika-Linie (GERMAN AFRICAN SERVICE). Homevards via Socat. Kilindini to Durban. 1st Jan, 15th Jan, 29th Jan, 12th Feb, 26th Feb, 12th March, 26th March, 9th April, 23rd April, 6th May, 20th May, 3rd June, 17th June, 30th June, 14th July.

A. Davis & Co. PROPERTIES AND INTERESTS FOR SALE. PARTNER WANTED in well developed and equipped farming estate showing good returns.

NATIONAL BANK OF INDIA LIMITED. (Incorporated in United Kingdom.) Branches in the Colony and Protectorates: Kenya and Uganda.

SAILINGS SUBJECT TO ALTERATION. 18 days to Mombasa. 28 days to Southampton. Unusually cheap cannot be accepted unless specially endorsed by Local Bank.

"OBEGONES OF KENTA." By A. Davis and E. J. Robertson. This special number of the obegones series contains the whole of the obegones which have been written up to date.

Subscribed Capital—£600,000. Reserve Fund—£100,000. 26, Abchurch Lane, London, E.C. 4.

DEPARTURES. Wabasa Maru 6th Dec, Mombasa 12th Dec, Lamolai Castle 13th Dec, Gondero de Lala 13th Dec, Kabaiba 17th Dec, Mombasa 17th Dec, Kaca 17th Dec, El Grandier 17th Dec.

Compagnia Italiana Transatlantica. Monthly Passenger Service to NAPLES and GENOA by comfortable oil-burning turbine steamers. THE BEST ROUTE TO LONDON VIA ITALY.

THE BEST SPICED BREAD. This special number of the obegones series contains the whole of the obegones which have been written up to date.

AGENTS in the Colony and Protectorates: Kenya and Uganda. Messrs. Smith, Mackenzie & Co., Nairobi.

UPLANDS NEWS! Despite RECORD SALES amounting to 50 per cent. increase over any previous Christmas Trade, we still hold ample stocks.

Topics for Motorists.

Penny Wise— Pound Foolish

Best Petrol costs but a fraction more than inferior spirit with the modern economical engine.

BE WISE AND USE



AND GET A GOOD RUN FOR YOUR MONEY.

Scotland's Finest Whisky



LONG JOHN Characteristically PURE and MATURE

D. EPSTEIN, & CO.

ESSJAY LIMITED.

BOLUS HOUSE, GOVERNMENT ROAD, BOX 634, NAIROBI. Phone 377.

FINANCIAL & PROPERTY AGENT.

Mortgages specialised in. Town Properties Negotiated, Partnerships Arranged, Investments Advised on.

We have sound investments for sums from £100 upwards. In this respect we claim to be better for you than anyone else.

S. JACOBS, Managing Director.

Kenya Bank & Discount Co., Ltd.

NAIROBI. OFFICES: 1st Floor, Court Chambers. FINANCIAL AGENTS. HILLS DISCOUNTED. SHORT PERIOD LOANS GRANTED. ANY REALISABLE ASSET NEGOTIATED FOR CASH.

Banishing Fear in Night Driving.

Safety During the Hours of Darkness.

Many anti-dazzle devices only serve their object by permanently reducing the amount of light available. This, perhaps, does not matter very much to those who drive slowly after nightfall, but for those who wish to maintain even a moderate average speed sufficient light is not produced to ensure absolute safety.

There is a system of focusing light on to the road surface in the form of a spot-light, or searchlight concentrated on the side of the road. This is effective, but only to the same extent as the arrangement we have already discussed, in which one or more headlights are set so as to direct a powerful beam towards the near side of the road. It is subject to the same objection as when 'rounding' the bend, putting out towards the back, and so on.

There are lamps with special features, such as long opaque shades or frosted glasses, which do not dazzle, but at the same time fail to provide sufficient driving light. For those who drive at 40 or 50 m.p.h. or more than 20 m.p.h. on 40 or 50 m.p.h. or more, a more efficient electric foot lamp is suggested in order to make the head lamp shine on to which it is required not to make the head lamp shine.

Protective Device. In another class come what may be called 'protective devices', that is to say, means whereby the driver of one car can approach another vehicle and still see without dazzling the driver of the other approaching vehicle.

available. Certain cars have lamps fitted under the bonnet which can be switched on in the event of engine trouble at night. Lighting trouble could be guarded against by using the same type of lamps as night and that has some accessories, owing to the fact that the output of the dynamo reduces a point at which the fuses are blown. It is best to arrange the dynamo output so that it is only about half an ampere more than the total consumed when all the lamps are in use. In any case, spare fuses or fuses wire should always be carried. It should be remembered that should one of the lamps on the dynamo when the lights are switched on, with many types of lamps, with the filament from the dynamo, with the rest of the wiring system.

A Useful Hint. The risk of driving in very foggy weather is greatly increased by the use of fog lamps. For example, in the foggy weather, it is not possible to see the road ahead, and the driver is provided behind the seat with a certain amount of fog lamp. Provided that the motorist takes care to equip his car as we have suggested in order to make night driving not only safe but enjoyable, he will find the scope of his enjoyment largely increased, and will find that it is a real recreation to make a run in the winter months as he has done in the summer. "The Motor."

Changing Manas.

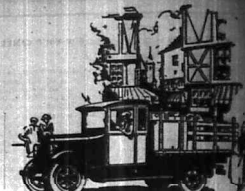
TOWN PLAN GIVEN A FLEET TO BUILDING.

(MARRIAGE CORRESPONDENT)

Mombasa, Dec. 27. The recent passing into law of the Members' Town Planning Scheme has resulted in a very remarkable speeding-up of building on the island. Quite apart from the more obvious and striking features in course of erection, reference to what has been made in these letters on previous occasions, shows that many of the most interesting buildings are now being erected on the island. For example, as one comes from the pier along Kinross Road towards Mombasa, one is struck with the great activity in building going on on the thickly wooded area on the right. This place, long accorded to the mango trees and the land, is now being developed in a remarkable way and buildings are springing up all over the district. For the greater extent these buildings are for public use, built as nearly as possible on the same spot as a number of offices have long been, notably those of the Customs employees. Beyond that again, are the quarters of the Military staff, while further on towards Mombasa, the European hotels are an strikingly dated as well as are those on the island, too.

At the back of the island, too, the signs of the times may be read in stone and mortar, and, with the coming down of the electric light, a big filling in building may be expected. One of the finest houses in this quarter is that of Dr. Grier, the well-known physician, faring residence in Nairobi and widely known in the district.

Dr. Grier, like so many other of our townsmen, has made his mark in the building world. He is satisfied that his new house is a most desirable place in which to live. For any lengths of time, he has not been able to find a suitable building to erect. He has now, however, secured a plot of land on the way to Shimani, a number of acres, and has been authorized for Hides and skins property, although there are other buildings devoted for other purposes. Whether or not it is a real recreation to make a run in the winter months as he has done in the summer. "The Motor."



Make Profits Sure

An owner can get out of a truck or bus only what the market bears. Owners the world over know the Dodge Brothers reputation for careful and sturdy design, liberal use of fine steel and highest value. And these owners, year after year, get out of Graham Brothers Trucks and Buses the kind of economical, dependable service, a whole lot more.

There is a size and type that will increase profits for you.

S. FISHER & SIMMONS, (R. A.) LTD. VICTORIA STREET, NAIROBI.

GRAHAM BROTHERS TRUCKS AND BUSES

BUILT BY TRUCK DIVISION OF DODGE BROTHERS INC. SOLD BY ALL THE BEST DEALERS EVERYWHERE.



To be sure of the original, look for the name WEED on every hook.

Heavy Duty Vehicles

Red WEED TYRE CHAINS absorb an abnormal amount of traction, grip, and safety, allowing their way through deep ruts, mud, sand, and snow, and they need no positive traction that West Chain affect. West Tyre Chains get right down to hand work—they grip and hold.

WEED TYRE CHAINS

AMERICAN CHAIN COMPANY, Inc. NEW YORK, N. Y., U. S. A.

KIRKWOOD & Co., LAND AGENTS.

RITALA. We have inquiries for large Coffee Estates in Kenya. Will sell you full details and acreage for sale and supply general information regarding acreage and under cultivation and age of plants, soil, labour, overheads, yields, disease, rainfall, altitude, labour, description of soil and country. Water, means of transport, Factory buildings, etc.

THE Bradford Manufacturing Co., LTD. We are displaying a Selected Range of LADIES UNDERWEAR. In Coloured Art Silk, Schappe Silk, and Crepe de Chine. Comprising Night-Dresses, Princess Slips, Trinity Straps, Vests and Knickers. Also ARTIFICIAL SILK LADIES DRESSING GOWNS, Sh. 35/- each.

Imperial Chamber, above Taxes Ltd. Government Road, Box 816.

AFRICA'S PREMIER ANNUAL

NINETEENTH YEAR OF PUBLICATION.

THE British South Africa Annual 1928-1929.

Portraying in Pictures and Prose Africa and Her People from the Equator to Cape Point. Artistic Reproductions of Paintings by Well-Known Artists. Read the Thrillingly Enticing Theory of Africa's Ancient History as traced in Native Legends.

NOW ON SALE. Price 5s. 6/-, packed and posted 6s. 0/- Standard Stationery Stores. Box 980. NAIROBI. Phone 673.

NOTICE.

Permanent Waving Whole Head 60/- UNTIL FURTHER NOTICE

Theo. SCOUTEN GOVERNMENT ROAD. Phone 545. P.O. Box 124.

Just Arrived.

A nice selection of Children's Shoes Red and Blue. Children's Shoes, Patent Leather. Prices from Sh. 7/6 up to Sh. 11/6.

EXPERTS AT SHOE FITTING.

De Luxe Boot Co.,

Box 627, NAIROBI.

Once a Visit Solicited

PRICES SUITABLE. One Article are Returnable within 24 hours if not to your taste. PRICES SUITABLE. If articles not suitable.

Government Road. KALA SIDI NAIROBI. Dist. Importer.

Sale Sale Sale

FOR FEW DAYS ONLY. Numerous Reductions throughout the Stock. Desperate Bargains. PRICES FROM 25% TO 50% OFF. Your kind attentions invited to join in the thrills of the Bargains in our store in all branches of goods.

DO NOT MISS THIS GOLDEN OPPORTUNITY. DAYARAM BROS., (next to Electric House), Gert. Road, NAIROBI. P.O. Box 182.

Nairobi Vulcanizing COMPANY.

Additional plant has now arrived

All tyres up to 42 x 9.

Sole Agents: VIX HUMIDIFIER and PETROL SAVER. Box 217. 20 per cent. increase in your mileage.

MANGALORE TILES.

DEAL all sizes.

TEAK in Long and Scantlings.

Swedish Imported Doors all sizes in Stock.

F. M. BHAIJEE, HARDWARE MERCHANT.

Phone 852. Indian Bazaar, NAIROBI.

Believe That Lay, Were Out Half Dead Look

Don't Talk Another Minute... From the 60 minutes... The following are the names of the persons who were taken to the hospital...

TRADE REGISTER: WARDEN'S Warehouse, Chemists, Messrs. Kambau, and Hilland.

P. GETTIN, Phone 123. Best of LUXURIOUS TOURING CARS FOR HIRE DAY and NIGHT.

Long Trips a Specialty. For Sale MAXWELL 4, Excellent condition, a real beauty, 2128

Local Cricket Derby.

PAWNBROKERS DEPARTED BY CIVIL SERVICE. (Silly Sign) Civil Service... The following are the names of the persons who were taken to the hospital...

Table with 2 columns: Name and Score. Includes names like Kruman & Pugh, Flint, & Jones, Clark, & Brown, Harrison, & Pinks, Purves, & White, Miller, van der, Shiley, and Jinks, Sanderson, & Smith, Chivers, & Nolle, & Juma, Chisley, & O'Brien, & Rogers, Craig, not out.

Bowling: 2/19, Paige 2/19, Nolle 2/19, Juma 2/19, Rogers 1/4.

Table with 2 columns: Name and Score. Includes names like Pines, Kruman, & Kruman, Jones, & Purves, Jones, & Kruman, Field, & Clark, Purves 15, O'Brien, not out, Mackay, not out, Smith, Springer, and Freeman, not out.

Total (for 4 wickets) 100

bowling—Purves 3/22, Kruman 3/18.

VOLLEY BALL. Elders' Railway Indians Visit. During Kama Holiday, the Railway Indians Team, Nairobi, had a very enjoyable trip to Elders'...

HOME FOOTBALL.

Results of Saturday's League Matches. NEW SUPERB FOOTBALL. 'STANDARD' CORRESPONDENT: London, Dec. 20. The following are the results of today's football matches.

Table with 2 columns: Team and Score. Includes names like Arsenal & Sheffield Wednesday 2, Aston Villa 1, Leeds United 0, Blackburn Rovers 2, Derby County 1.

Table with 2 columns: Team and Score. Includes names like Bury 2, Liverpool 2, Cardiff City 2, Newcastle United 0, Everton & Bolton Wanderers 0, Huddersfield 1, Portsmouth 1, Leicester City 2, Manchester United 1.

Table with 2 columns: Team and Score. Includes names like Millwall 3, Preston North End 2, Bradford 2, Barnsley 1, Gillingham 1, West Ham United 1, Millwall 0, Reading 0, Southampton 3, Tottenham 1, Charlton Athletic 2, Tottenham 1, Southampton 3, Hull City 2, Stoke City 1, Middlesbrough 1, Swansea Town 0, Chelsea 1, Wolverhampton Wanderers 4, Port Vale 0.

NAIROBI RACE MEETING.

Programme for To-morrow's Gathering. GOOD FIELDS ASSURED. The following are the entries and weights for to-morrow's races.

Table with 2 columns: Race Name and Details. Includes names like 1st Race, 2nd Race, 3rd Race, 4th Race, 5th Race, 6th Race, 7th Race, 8th Race, 9th Race, 10th Race, 11th Race, 12th Race, 13th Race, 14th Race, 15th Race, 16th Race, 17th Race, 18th Race, 19th Race, 20th Race.

East African Stud Book.

A SECOND COMPENDIUM OF PUREBRED STOCK. As well as the meeting of the Committee of the East African Stud Book held on Friday it was decided that publication of the fourth volume of the stud book should be undertaken, and that no meeting would be accepted after the end of January.

Myrtle Thel. Found guilty by the Resident Magistrate on Saturday of the theft of a bicycle, a native against whom there were previous convictions, was sentenced to six months rigorous imprisonment. Another native who was charged in connection with the same offence was acquitted.

NAIROBI RACE MEETING.

Programme for To-morrow's Gathering. GOOD FIELDS ASSURED. The following are the entries and weights for to-morrow's races.

Table with 2 columns: Race Name and Details. Includes names like 1st Race, 2nd Race, 3rd Race, 4th Race, 5th Race, 6th Race, 7th Race, 8th Race, 9th Race, 10th Race, 11th Race, 12th Race, 13th Race, 14th Race, 15th Race, 16th Race, 17th Race, 18th Race, 19th Race, 20th Race.

East African Stud Book.

A SECOND COMPENDIUM OF PUREBRED STOCK. As well as the meeting of the Committee of the East African Stud Book held on Friday it was decided that publication of the fourth volume of the stud book should be undertaken, and that no meeting would be accepted after the end of January.

Myrtle Thel. Found guilty by the Resident Magistrate on Saturday of the theft of a bicycle, a native against whom there were previous convictions, was sentenced to six months rigorous imprisonment. Another native who was charged in connection with the same offence was acquitted.

NAIROBI RACE MEETING.

Programme for To-morrow's Gathering. GOOD FIELDS ASSURED. The following are the entries and weights for to-morrow's races.

Table with 2 columns: Race Name and Details. Includes names like 1st Race, 2nd Race, 3rd Race, 4th Race, 5th Race, 6th Race, 7th Race, 8th Race, 9th Race, 10th Race, 11th Race, 12th Race, 13th Race, 14th Race, 15th Race, 16th Race, 17th Race, 18th Race, 19th Race, 20th Race.

East African Stud Book.

A SECOND COMPENDIUM OF PUREBRED STOCK. As well as the meeting of the Committee of the East African Stud Book held on Friday it was decided that publication of the fourth volume of the stud book should be undertaken, and that no meeting would be accepted after the end of January.

Myrtle Thel. Found guilty by the Resident Magistrate on Saturday of the theft of a bicycle, a native against whom there were previous convictions, was sentenced to six months rigorous imprisonment. Another native who was charged in connection with the same offence was acquitted.

ENTERTAINMENTS.

THE Naivasha Hotel. TO-NIGHT, NEW YEAR'S EVE DANCE. TICKETS Shs. 5/- each including refreshments

NAIROBI RAILWAY CLUB. NEW YEAR'S EVE DANCE. To-Night. 9.30 p.m. to 3.30 a.m. PAUL ROBINS' BAND. Tickets (including Refreshment) Double Shs. 12/50 Single Shs. 7/50. RIGHT OF ADMISSION RESERVED.

DANCE. FANCY DRESS. NEW YEAR'S EVE (Monday, Dec. 31st) SALISBURY HOTEL. SYD. ZEIGLER'S METRONOMES. DOUBLE Shs. 12/50 SINGLE Shs. 7/50. All Resident and Old Residents cordially invited as Guests.

DANCE. FANCY DRESS. NEW YEAR'S EVE (Monday, Dec. 31st) SALISBURY HOTEL. SYD. ZEIGLER'S METRONOMES. DOUBLE Shs. 12/50 SINGLE Shs. 7/50. All Resident and Old Residents cordially invited as Guests.

DANCE. FANCY DRESS. NEW YEAR'S EVE (Monday, Dec. 31st) SALISBURY HOTEL. SYD. ZEIGLER'S METRONOMES. DOUBLE Shs. 12/50 SINGLE Shs. 7/50. All Resident and Old Residents cordially invited as Guests.

DANCE. FANCY DRESS. NEW YEAR'S EVE (Monday, Dec. 31st) SALISBURY HOTEL. SYD. ZEIGLER'S METRONOMES. DOUBLE Shs. 12/50 SINGLE Shs. 7/50. All Resident and Old Residents cordially invited as Guests.

DANCE. FANCY DRESS. NEW YEAR'S EVE (Monday, Dec. 31st) SALISBURY HOTEL. SYD. ZEIGLER'S METRONOMES. DOUBLE Shs. 12/50 SINGLE Shs. 7/50. All Resident and Old Residents cordially invited as Guests.

DANCE. FANCY DRESS. NEW YEAR'S EVE (Monday, Dec. 31st) SALISBURY HOTEL. SYD. ZEIGLER'S METRONOMES. DOUBLE Shs. 12/50 SINGLE Shs. 7/50. All Resident and Old Residents cordially invited as Guests.

A LETTER WHICH SPEAKS FOR ITSELF

TRANSLATION FROM MANZANO HINDO, India, Nov. GENERAL MOTOR EXPORT COMPANY, New York. Gentlemen: We own a fleet of three Chevrolet one-ton trucks used for transportation in this town. About a month ago, we had to make a trip to a town 120 kilometers from here, having to traverse a dangerous road at night, and under poor lighting conditions. The Chevrolet road, at night, and generally adverse conditions required in the driver stalling the truck. It slid backward. Due to the narrowness of the road it was impossible to steer it safely and it went over a cliff. We presumed that the truck would be a total loss. It was loaded, but fortunately had no passengers and you can readily imagine that we were surprised when we found that although the body was smashed when the truck tumbled a triple amount, not even a side was split. After inspecting the motor carefully, we started it and it worked normally. Therefore, except for the body that was demolished, the truck did not suffer in the least, and with the help of some laborers and another car, we were able to pull it out of the chasm in which it had fallen, after which it resumed the trip to its destination with the load. We take great pleasure in advising you of this fact, as a testimony to the unexcelled construction of the Chevrolet. With the sentiments of our esteem, we are, Yours truly, MANZANO HINDO, A. KOTKAR.

A tribute to Chevrolet Truck that briefly confirms our claims. The Motor Mart and Exchange Ltd., Nakuru Nairobi Dar-es-Salaam.

C-FAR FIELD GLASSES. Compact as a Watch, Powerful as Binoculars. See LITTLETON CASE. Price only Shs. 11/50. Postd Shs. 12/-.

STANDARD STATIONERY STORES. NAIROBI. PERCUSSION SHARPENER will sharpen all size pencils. Price only Shs. 1/10. Standard Stationery Stores NAIROBI.

A Matinee Dancesant BY THE PUPILS OF THE Modern School of Dancing (Principal M ss Shirreff) WILL BE HELD AT THE THEATRE ROYAL ON Thursday, January 10th 1929 AT 4.15 Bookings open at the Theatre Royal on Monday Dec. 31st. PRICES: 5/-, 3/- and 2/-

PANTOMIME AT THEATRE ROYAL. If you want to present a really good Box of Chocolates BUY IT AT THE THEATRE. BEFORE YOU GO ANYWHERE ELSE SEE US. Special Reduction for Xmas Week. WE STOCK ONLY THE BEST MARES.

Enjoy a New Year Treat. KIPPERS, HADDOCKS, SMOKED FILLETS, BLADDERS, SMOKED HERRINGS, DOVER SOLES and FRESH SALMON. ALL IN PERFECT CONDITION KEPT IN COLD STORAGE. Colonial General Stores Ltd. P.O. Box 458. Phone 228.

Willys - Knight CARS

WERE PURCHASED BY
H. R. H. The Prince of Wales
AND
H. R. H. The Duke of Gloucester
For their personal use whilst, in Kenya

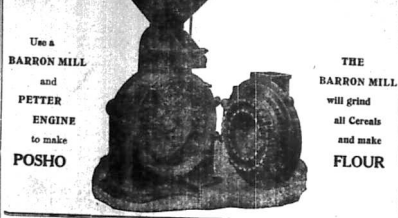
Knight Engine Cars Have Always been Royal Favourites

Complete Cars
From £325

MOULTON & MORRISON Ltd.
NAIROBI.

PRODUCE MORE FOOD

THE CHEAPEST WAY OF OBTAINING FLOUR OF ANY SORT IS BY



J. W. Milligan & Co.,
NAIROBI — and — MOSHI.

A. H. Wardle & Co. Ltd

Optical Chemists.
NAIROBI.
Optical Manager:
V. M. BROWSE, F.S.M.C. F.I.O.

SCIENTIFIC EYE TESTING.
Only the best lenses and frames stocked.
Tinting and Spectacles complete, from 25/-.

GIBBONS' STEEL CASEMENTS LOCKS AND IRONMONGERY

Make their appeal on the basis of **QUALITY AND PRICE.**

Our Present Stock of **STANDARD STEEL CASEMENTS EMBODY THE LATEST IMPROVEMENTS. WE CARRY EXTENSIVE STOCKS.**

R. G. Vernon & Co.,
UNION BUILDINGS,
NAIROBI. P.O. Box 114.
Phone 120.

Under the **Standard Clock.**

Publication Notice
Owing to the New Year holiday the "East African Standard" will not be published on Wednesday morning, January 1st. It is a long acquaintance with the Standard and its publication will be resumed on Thursday, January 2nd.

Convention of Associations
The Kenya Convention of Associations will meet this morning in the Memorial Hall, Nairobi, at 10 o'clock. There is a long acquaintance with the Standard and its publication will be resumed on Thursday, January 2nd.

THE NEW Ford 30 Cwt. TRUCK

HAS ARRIVED.

STRENGTH AND EFFICIENCY OUTSTANDING PERFORMANCE AT LOW COST.

MANY AMAZING IMPROVEMENTS INCLUDING
TIMKEN REAR AXLE ASSEMBLY.
EQUALIZING FOUR-WHEEL BRAKES.

STANDARD CHASSIS:

3 SPEEDS FORWARD	PRICE, £189.
6 SPEEDS FORWARD	PRICE, £200.

THE SERVICE Co., Ltd.
NAIROBI.

Gifts

IS NOW ON DISPLAY AT **WARDLE'S**

An examination will solve the difficulty of choosing suitable and reasonable presents at Prices to suit all Pockets.

A. H. WARDLE & Co., Ltd.
Chemists,
NAIROBI, FLORET.

Seasonable Gifts

In good taste and distinctive for their charm and usefulness.

EXQUISITE FRENCH LAQUER PUFF BOWLS, of unusual design.
MODERN PERFUME BURNERS, suitable for Ballroom, Boudoir or Sixroom.
MANICURE SETS, in solid Silver, Mother-of-Pearl, Ebony, etc.
THE LATEST PERFUMES, by Caron, Chanel, Worth, Godet, and other leading makers.
SHINGLE SHIS, SILVER MOUNTED, in varied shapes and colours.
POCKET VANITY CASES, containing Powder Box, Perfume Spray and Lipstick.
BUTTERFLY WING and ENAMEL POWDER CASES, in Silver, E.P.N.S. and Gilt.

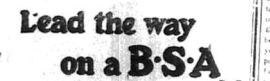
KODAK (E.A.) LTD., INC.
Howse & McGeorge
CHEMISTS,
NAIROBI AND ALL BRANCHES.

CALEDONIAN Insurance Company

Oldest Scottish Insurance Office, Founded 1866.
Principal Agents—
R. G. HAMILTON, Ltd.,
Box 302, NAIROBI. Phone 352.

Reliable Service

When you choose your new Motor Cycle choose the machine that will give you the longest and most reliable service. Remember that the B.S.A. reputation for reliability has been built on performance, and on the consistent service B.S.A.'s are giving all over the world. If you are wise you will follow the lead of experienced riders and



Lead the way on a B.S.A.

BRITAIN'S BIGGEST DEALER.
Carr, Lawson & Co. Ltd.
NAIROBI.

African Standard

UGANDA AGENCIES

The Convention of Associations.

The Kenya Convention of Associations met this morning in the Memorial Hall, Nairobi, at 10 o'clock. There is a long acquaintance with the Standard and its publication will be resumed on Thursday, January 2nd.

It is a long acquaintance with the Standard and its publication will be resumed on Thursday, January 2nd.

It is a long acquaintance with the Standard and its publication will be resumed on Thursday, January 2nd.

It is a long acquaintance with the Standard and its publication will be resumed on Thursday, January 2nd.

Publication Notice
Owing to the New Year holiday the "East African Standard" will not be published on Wednesday morning, January 1st. It is a long acquaintance with the Standard and its publication will be resumed on Thursday, January 2nd.

Convention of Associations
The Kenya Convention of Associations will meet this morning in the Memorial Hall, Nairobi, at 10 o'clock. There is a long acquaintance with the Standard and its publication will be resumed on Thursday, January 2nd.

Butter Prices
The local branch of Messrs. Dalgety and Co., Ltd., have received the following butter quotations from their head office regarding the current Butter Market: "New Zealand Butter" is quoted at 28/- 0/0 to 29/- 0/0 per cwt.

New Year's Eve Dance
A New Year's Eve Fancy Dress Dance will be held at the Statutory Hotel this evening. The programme will be provided by the following: "The Merry Dancers" and "The Merry Dancers".

Blue Note Hotel
The Blue Note Hotel at Takla is now under new management. With the advent of the new management this establishment will be under the control of Mr. W. W. E. P. Film. Important alterations and additions are being made and these changes will result in this hotel being more comfortable and more popular than hitherto.

"Adeola"
The "Adeola" will entertain the personnel of the Royal on Saturday night. This production has undergone changes since its opening night. The production has undergone changes since its opening night.

Play by Children
On January 12, the "Theatre Royal" will be the setting for an entertainment that will be an asset to its character, for the most popular in the revived list of present day Kenya functions. It will be a children day and the entertainment with the aid of the children of the "Theatre Royal" will be the young people of the "Theatre Royal".

A Boks Awakening
A guest in a Nairobi hotel had a very interesting after-Christmas experience. He was awakened by a knock on his door and when he opened it he found a young girl standing in his doorway. She was a young girl and she was a young girl.

STANDARD MARY
The Standard Mary is a young girl who is a young girl. She is a young girl and she is a young girl.

Annual meeting, Kenya Horticultural Society, Nairobi, 11.11.34

THE BRITISH LEGION IN KENYA.

Formation of the British Legion in Kenya.

ENTERTAINING MEETING

A meeting was held in the New Building on Friday evening at which it was decided to form a branch of the British Legion in Kenya.

A Land Governor

There are also soldiers here from the British Army. It was owing to their efforts that the country was saved from a living of a more peaceful life.

The meeting that was held at the new building on Friday evening at which it was decided to form a branch of the British Legion in Kenya.

There are also soldiers here from the British Army. It was owing to their efforts that the country was saved from a living of a more peaceful life.

The meeting that was held at the new building on Friday evening at which it was decided to form a branch of the British Legion in Kenya.

There are also soldiers here from the British Army. It was owing to their efforts that the country was saved from a living of a more peaceful life.

There are also soldiers here from the British Army. It was owing to their efforts that the country was saved from a living of a more peaceful life.

KENYA ANNUAL GOLF TITLE

Ken Lenon Defeats Davidson in Final

VICTORY BY 2 HOLES AND IS TO PLAY

Major Ken Lenon scored an excellent victory over the Kenyan Amateur Golf champion in the final of the Kenya Annual Golf Championship.

Wrestling Announces Short

The winner played a remarkable golf all through. A scandalous look from the fans in the auditor seats.

The End

Only eight holes were required to be played in the afternoon. The first and second were halved, and the third was won by Lenon.

Nyeri Ball

A BRILLIANT SCORE AT THE CLUB. The Fancy Dress Ball at Nyeri was a great success.

STANDARD CORRESPONDENT

The Fancy Dress Ball at Nyeri was a great success. The first and second were halved, and the third was won by Lenon.

300 Yards Drive

Alice into the rough at the third. Davidson's iron was not so good as Lenon's.

second stroke won Davidson's

of the hole, but, as he was to be home eight down.

Davidson's Club Shortening

A pull right over on the second hole showed that the strength of Davidson's long game was not so good as Lenon's.

STANDARD CORRESPONDENT

The Fancy Dress Ball at Nyeri was a great success. The first and second were halved, and the third was won by Lenon.

STANDARD CORRESPONDENT

The Fancy Dress Ball at Nyeri was a great success. The first and second were halved, and the third was won by Lenon.

STANDARD CORRESPONDENT

The Fancy Dress Ball at Nyeri was a great success. The first and second were halved, and the third was won by Lenon.

STANDARD CORRESPONDENT

The Fancy Dress Ball at Nyeri was a great success. The first and second were halved, and the third was won by Lenon.

STANDARD CORRESPONDENT

The Fancy Dress Ball at Nyeri was a great success. The first and second were halved, and the third was won by Lenon.

BOMBASA BOARD.

Compromise Satisfies Indians.

STANDARD CORRESPONDENT

The Indians have adjusted their differences on the question of the proposed extension of the Bombasa Board.

The Schneider Trophy.

FRANCE AND ITALY SEND IN ENTRIES. The Royal Aero Club yesterday received an entry from France.

Match Duty.

A TANGANYIKA FIRM'S PROTEST. Following the Tanganyika Government's proposal to impose an import duty on matches.

STANDARD CORRESPONDENT

The Fancy Dress Ball at Nyeri was a great success. The first and second were halved, and the third was won by Lenon.

STANDARD CORRESPONDENT

The Fancy Dress Ball at Nyeri was a great success. The first and second were halved, and the third was won by Lenon.

STANDARD CORRESPONDENT

The Fancy Dress Ball at Nyeri was a great success. The first and second were halved, and the third was won by Lenon.

THE LABOUR POSITION IN KENYA.

Official Figures for October.

STANDARD CORRESPONDENT

Only 24,600 per cent of the total working population of the native Kenya is employed.

STANDARD CORRESPONDENT

The number of Central Kenyan employees in the Government service is 22,774.

Today's Trains

Trains are due to leave Nairobi today for the under mentioned destinations at the stated times.

STANDARD CORRESPONDENT

The Fancy Dress Ball at Nyeri was a great success. The first and second were halved, and the third was won by Lenon.

STANDARD CORRESPONDENT

The Fancy Dress Ball at Nyeri was a great success. The first and second were halved, and the third was won by Lenon.

STANDARD CORRESPONDENT

The Fancy Dress Ball at Nyeri was a great success. The first and second were halved, and the third was won by Lenon.

On This Day

On this day, December 31, 1929, the Prince of Wales, afterwards George VI, abdicated the throne.

STANDARD CORRESPONDENT

The number of Central Kenyan employees in the Government service is 22,774.

STANDARD CORRESPONDENT

The number of Central Kenyan employees in the Government service is 22,774.

STANDARD CORRESPONDENT

The number of Central Kenyan employees in the Government service is 22,774.

STANDARD CORRESPONDENT

The number of Central Kenyan employees in the Government service is 22,774.

STANDARD CORRESPONDENT

The number of Central Kenyan employees in the Government service is 22,774.

STANDARD CORRESPONDENT

The number of Central Kenyan employees in the Government service is 22,774.

LYRIC HALL.

TONIGHT AT 8.45 P.M. DOROTHY DREW, GERTRUDE ASTOR AND GASTON GLASS IN

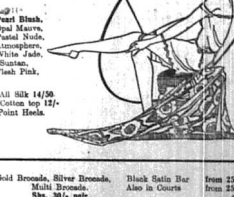
PURSUED

A MELLO-DRAMA OF THE UNDERWORLD SHOWING WEDNESDAY, 2ND JAN., 1929 THE PRIMROSE PATH Featuring CLARA DOW

Prices as usual: Shs. 3/- and Shs. 2/-

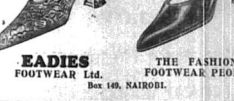
LATEST RUBY RING HOSIERY AND LADIES FASHION EVENING SHOES.

See Our Windows



Gold Brocade, Silver Brocade, Multi Brocade. Shs. 30/- per pair.

FOOTWEAR



THE FASHION FOOTWEAR PEOPLE. Box 16, NAIROBI.

THEATRE ROYAL.

TD-NIGHT AT 8.45 PROMPT

"ALADDIN"

PLANS EARLY FILLING. EARLY BOOKING IS ADVISED.

Please note the curtain will rise sharp at advertised time, and patrons are earnestly requested to be seated by then, as the interest starts with the prologue.

TONIGHT AT 8.45 prompt. (For further particulars see page 10).

WE SELL SERVICE AND REPAIR ALL MAKES OF

CARS & TRUCKS

WE GIVE EXPERT ADVICE TO WIRELESS ENTHUSIASTS.

COMPLETE WIRELESS SETS AND COMPONENT PARTS ALWAYS IN STOCK.

RADIO BATTERIES CHARGED, AND ELECTRICAL WORK OF ALL DESCRIPTION UNDERTAKEN.

CALL AND INSPECT THE LATEST MODEL INDIAN SCOUT 45

ON VIEW AT

K. Melvros Garage.

Phone 97. Sixth Avenue. P.O. Box 97

Island Weather.

Weather Department, 27th November, December 27th.

Coffee Market.

No called report of the London Coffee Market has been received in Nairobi by Messrs Dalrymple & Co., Ltd., on account of the fact that the market is being closed until January 1st.

Yport-Nyruvali—Passable but rough.
Nairobi-Mombasa—Fair to Pleasant.

Country Roads and Weather Report.

WEATHER PATROL IN 7/50 A GAZETTE.

Mr. Dalton-Ford writes as follows:
Dry weather continues all over Kenya in the Northern part of Tanganyika and in Central and Eastern Uganda.

The following is the state of country roads as per Meteorological Intelligence:
Mombasa-Mombasa.—The Tavo bridge is not yet up and I should advise travellers to all their drives from Mombasa to Voi, rather than the shorter distance from Kyre to Tavo as there are four dead-ends on each of the first named stations; the remainder of the road is passable but rough in places.

Parigi-Bukoba-Kilimanjaro.—Good, though not so good as the road from Nairobi to the coast.

Parigi-Bukoba-Kilimanjaro.—Good, though not so good as the road from Nairobi to the coast.

Parigi-Bukoba-Kilimanjaro.—Good, though not so good as the road from Nairobi to the coast.

Parigi-Bukoba-Kilimanjaro.—Good, though not so good as the road from Nairobi to the coast.

Parigi-Bukoba-Kilimanjaro.—Good, though not so good as the road from Nairobi to the coast.

Parigi-Bukoba-Kilimanjaro.—Good, though not so good as the road from Nairobi to the coast.

Parigi-Bukoba-Kilimanjaro.—Good, though not so good as the road from Nairobi to the coast.

Parigi-Bukoba-Kilimanjaro.—Good, though not so good as the road from Nairobi to the coast.

Parigi-Bukoba-Kilimanjaro.—Good, though not so good as the road from Nairobi to the coast.

Parigi-Bukoba-Kilimanjaro.—Good, though not so good as the road from Nairobi to the coast.

Parigi-Bukoba-Kilimanjaro.—Good, though not so good as the road from Nairobi to the coast.

Parigi-Bukoba-Kilimanjaro.—Good, though not so good as the road from Nairobi to the coast.

Parigi-Bukoba-Kilimanjaro.—Good, though not so good as the road from Nairobi to the coast.

Parigi-Bukoba-Kilimanjaro.—Good, though not so good as the road from Nairobi to the coast.

Parigi-Bukoba-Kilimanjaro.—Good, though not so good as the road from Nairobi to the coast.

Parigi-Bukoba-Kilimanjaro.—Good, though not so good as the road from Nairobi to the coast.

Parigi-Bukoba-Kilimanjaro.—Good, though not so good as the road from Nairobi to the coast.

Parigi-Bukoba-Kilimanjaro.—Good, though not so good as the road from Nairobi to the coast.

Parigi-Bukoba-Kilimanjaro.—Good, though not so good as the road from Nairobi to the coast.

Parigi-Bukoba-Kilimanjaro.—Good, though not so good as the road from Nairobi to the coast.

Parigi-Bukoba-Kilimanjaro.—Good, though not so good as the road from Nairobi to the coast.

Parigi-Bukoba-Kilimanjaro.—Good, though not so good as the road from Nairobi to the coast.

Parigi-Bukoba-Kilimanjaro.—Good, though not so good as the road from Nairobi to the coast.

Parigi-Bukoba-Kilimanjaro.—Good, though not so good as the road from Nairobi to the coast.

Parigi-Bukoba-Kilimanjaro.—Good, though not so good as the road from Nairobi to the coast.

Parigi-Bukoba-Kilimanjaro.—Good, though not so good as the road from Nairobi to the coast.

Parigi-Bukoba-Kilimanjaro.—Good, though not so good as the road from Nairobi to the coast.

Parigi-Bukoba-Kilimanjaro.—Good, though not so good as the road from Nairobi to the coast.

Parigi-Bukoba-Kilimanjaro.—Good, though not so good as the road from Nairobi to the coast.

RECORD RUSH AT THE WHARF.

Waterloo Workers' Hectic Yuletide.

A DIFFICULT GARG.

STANDARD CORRESPONDENT:
Mombasa, Dec. 27.
Those of us who have had a very busy Christmas indeed.

These days the wharf here has been a very busy place indeed.

These days the wharf here has been a very busy place indeed.

These days the wharf here has been a very busy place indeed.

These days the wharf here has been a very busy place indeed.

These days the wharf here has been a very busy place indeed.

These days the wharf here has been a very busy place indeed.

These days the wharf here has been a very busy place indeed.

These days the wharf here has been a very busy place indeed.

These days the wharf here has been a very busy place indeed.

These days the wharf here has been a very busy place indeed.

These days the wharf here has been a very busy place indeed.

These days the wharf here has been a very busy place indeed.

These days the wharf here has been a very busy place indeed.

These days the wharf here has been a very busy place indeed.

These days the wharf here has been a very busy place indeed.

These days the wharf here has been a very busy place indeed.

These days the wharf here has been a very busy place indeed.

These days the wharf here has been a very busy place indeed.

These days the wharf here has been a very busy place indeed.

These days the wharf here has been a very busy place indeed.

These days the wharf here has been a very busy place indeed.

These days the wharf here has been a very busy place indeed.

These days the wharf here has been a very busy place indeed.

These days the wharf here has been a very busy place indeed.

These days the wharf here has been a very busy place indeed.

These days the wharf here has been a very busy place indeed.

in the new sheds at berth 3 and it being almost completed.
These present a very attractive appearance with the original efforts at painting and the installation of the new sheds at berth 3.

According to the Chief Engineer, the station was started with the first engine which the K. E. H. Harvey now is known.
These engines are presumed to be the last and in the actual type. They are presumed to be the last and in the actual type.

According to the Chief Engineer, the station was started with the first engine which the K. E. H. Harvey now is known.
These engines are presumed to be the last and in the actual type.

According to the Chief Engineer, the station was started with the first engine which the K. E. H. Harvey now is known.
These engines are presumed to be the last and in the actual type.

According to the Chief Engineer, the station was started with the first engine which the K. E. H. Harvey now is known.
These engines are presumed to be the last and in the actual type.

According to the Chief Engineer, the station was started with the first engine which the K. E. H. Harvey now is known.
These engines are presumed to be the last and in the actual type.

According to the Chief Engineer, the station was started with the first engine which the K. E. H. Harvey now is known.
These engines are presumed to be the last and in the actual type.

According to the Chief Engineer, the station was started with the first engine which the K. E. H. Harvey now is known.
These engines are presumed to be the last and in the actual type.

new berths and pulling them back again were only on small scale of the work was undertaken, placed in position and the locomotives.

According to the Chief Engineer, the station was started with the first engine which the K. E. H. Harvey now is known.
These engines are presumed to be the last and in the actual type.

According to the Chief Engineer, the station was started with the first engine which the K. E. H. Harvey now is known.
These engines are presumed to be the last and in the actual type.

According to the Chief Engineer, the station was started with the first engine which the K. E. H. Harvey now is known.
These engines are presumed to be the last and in the actual type.

According to the Chief Engineer, the station was started with the first engine which the K. E. H. Harvey now is known.
These engines are presumed to be the last and in the actual type.

According to the Chief Engineer, the station was started with the first engine which the K. E. H. Harvey now is known.
These engines are presumed to be the last and in the actual type.

According to the Chief Engineer, the station was started with the first engine which the K. E. H. Harvey now is known.
These engines are presumed to be the last and in the actual type.

According to the Chief Engineer, the station was started with the first engine which the K. E. H. Harvey now is known.
These engines are presumed to be the last and in the actual type.

Crawford's LIQUEUR SCOTTS WHISKY. The best array for the waiter's tray. ESTABLISHED 1860.



Guard Your Family from Insects! No longer need the health of your household fall before the ravages of disease-carrying flies, mosquitoes, cockroaches, bed bugs, ants, and fleas!

FLIT. For your protection FLIT is sold only in sealed tins. Sold by Messrs. J. G. Taylor & Co., Ltd.

THEATRE ROYAL The London Hippodrome Pantomime

NIGHTLY AT 8-45 Prompt

OPENING BOXING NIGHT DEC. 26th FOR 10 NIGHTS ONLY; & TWO MATINEES SATURDAY, DEC. 29th AND SATURDAY JAN. 5th.

LADIES OF THE CHORUS: Dorothy Bird, Hilary Bird, Dolly Condon, Gwen Condon, Rose Dove, Lily Macintyre, Ethel Nibourg, Betty Nye, Eileen Poole, Marjorie Upson.
GENTLEMEN OF THE CHORUS: A. Anderson, Hubert Condon, Ronald Condon, Jack Grant, F. J. Griffin, Dick Griddle, A. Fookes, Rodgers Smith, Bert Twoley, Alec Young.
DANCING GIRLS: Sheila Hoarne, Ida Langman, Violet Langman, Vera Norman, Connie Springer and Evelyn Wyllys.
Principal Dancers—EILEEN GILLESPIE and PEGGY NEWMARK.

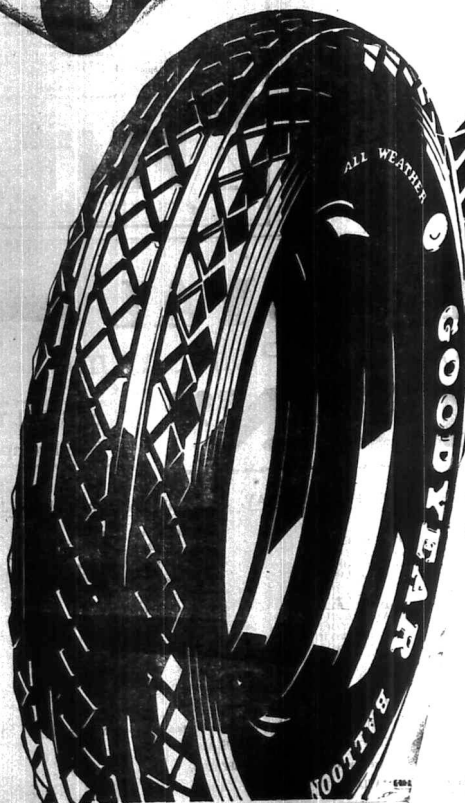
CAST: DOROTHY SUMMERS PRINCESS CONNIE POOLE. FAIRY KENNELL. PERKE CYRIL JAMES. WIDOW TWANKEY A. G. RIGGINS. TIZIER W. H. MARTIN. EMPEROR LEONARD WOOD. LILLO SAM HAZARDUS. SLAVE OF LAMP F. A. HARWOOD. SLAVE OF BINO E. D. ARMSTRONG. ROC A. CARBLINE. AMBASSADOR TO ABANAZAR E. WYLLIAMS. AND J. G. TAYLOR. ABANAZAR

SYNOPSIS OF SCENERY: ACT I. Scene I. The Alchemist's Den. II. Market Place of Peking. III. Outside the Gate. IV. Within the Gate. ACT II. Scene V. The Widow's Laundry. VI. A Street in Peking. VII. Emperor's Reception Room. VIII. Exterior of Princess's Palace. IX. The City Wall. X. Aladdin's Palace in China. XI. Street in Peking. XII. Aladdin's Palace in Afrim.

Ballet arranged by EILEEN GILLESPIE with the Music under the Direction of MISS IRENE MASSIAH. Scenery designed by Wm. M. ROBERTSON, and Painted by J. SELBY PEERS assisted by NELLIE SEYMOUR JAMES. Dresses by AFRICAN THEATRES LTD. Stage Manager and Electrician—D. C. SHEPHERD. The whole PRODUCED by J. G. TAYLOR.

Plans Now Open. Prices Shgs. 10-50, 7-50, and 5-00.

GOOD YEAR



Goodyear Popularity is Backed by Over One Hundred Million Tyres.

So overwhelming is Goodyear popularity that every year Goodyear is called upon to build thousands more tyres than any other maker. This leadership has been won upon the roads of the world with actual performance the deciding factor. It has not been won of late. But rather, years ago—and has for years remained unchallenged. To-day, this supremacy is held by Goodyear—held largely through concentrating Goodyear's resources in a new and vastly superior type of tyre—the new Goodyear Balloon, with the new type All-Weather Tread. This tyre represents the latest, if not greatest reason why more people ride on Goodyear Tyres than on any other make.

Plans Now Open.

Ladies!!

Splendid opportunity for you to enter
"Vigil" and other
Real Silk Dresses
and Frocks,
At very low prices
Hanging from Shs. 10/-



**AHEAD! TREMEND! AND UNMATCHED COLOURED
FELT HATS, IN BRADY, LATEST, COLOURS**
Ahamed Bros.
The House of Distinction,
Box 224, NAIROBI.

IDEAL PRESENTS

JAEGER
Care Wood

Cardigans,
Pullovers,
Jumpers,
Dressing Gowns,
Rugs,
Blankets, etc.

Years of the Gift acknowledged when you give JAEGER
Obtainable from all High-class Outfitters.

M. S. ELLIOT & Co. Ltd

HAVE JUST UNPACKED.

A LARGE ASSORTMENT OF
CONFECTIONERY AND NOVELTIES,
FROM LEADING FIRMS including

PASCALLS.

CADBURY'S.

ROWNTREES.

and **CLARINCO.**

THE WHOLE PRICE HAS BEEN REDUCED.

Wholesale Prices on Application.

P.O. Box 175 NAIROBI. Phone 60.

Monsieur Florens

FRANCE HAIRDRESSER.
PERMANENT WAVING—HEADS.
59-
GOVERNMENT ROAD, YORK BUILDINGS.
P.O. Box 223 Phone 561.

Buy them at Torr's and have no Regrets

- CAKES
- PUDDINGS
- MINCE PIES
- CRACKERS
- CHOCOLATES.

Ladies!!

To make your legs and ankles look shapely, wear this lovely ALLEN-A-Hesley. Beautiful range of colours and styles to select from.

BON MARCHÉ
GOVERNMENT ROAD—NAIROBI.

CONFESSION

The writer does not accept responsibility for the views expressed by the correspondents in the column, and in all cases the name and address of the writer must accompany a letter, not necessarily for publication but as a guarantee of good faith, thereby to avoid all suspicion of a purely sensational character.

KENYA WIRELESS PROGRAMME

To the Editor, "E.A. Standard"—By—
I am glad to see that the views of your paper express my own views on the wireless programme broadcasted in the "Standard".

Simply there is no one of the reasons capable of explaining the daily programme that would cause the approval of most honest listeners before other stations hold up their hands without doing the greatest harm of modern times.

Apparently the programme suffers on the records that is the least like. Take for instance last night (Thursday) I listened at 7 o'clock or just after and it was a bore and a waste of time. This perhaps only 5 per cent of the audience would appreciate any other programme than what was broadcasted in the "Standard".

Without doubt, the programme supplied by the B.E.A. must have on Wednesday evening the most entertaining of its kind at 8 o'clock to late, well behaved with just the right amount of good stuff.

I pride myself on having had a mental abstract and on being capable of appreciating most of the programmes but after having listened to the programmes of the "Standard" I am sure that I do not like it. I do not like it because of the quality of the programmes, the quality of the music, the quality of the programmes, the quality of the programmes, the quality of the programmes.

PUBLIC OPINION

To the Editor, "E.A. Standard"—By—
I was glad to see in your issue of the 10th inst. that your paper had published the views of the "Standard" on the wireless programme broadcasted in the "Standard". I am sure that your paper has done a great deal of good by publishing the views of the "Standard".

will always seem to be a certain amount of apathy, and I do expect that when he says that "the majority and devotion to duty of the British Empire and beyond" question but that that judgment may be at fault at times."

For instance there is in this country a feeling of indignation against the British Government for its attitude towards the "Standard".

It is a pity that the programme is not more varied and more interesting. It is a pity that the programme is not more varied and more interesting.

It is a pity that the programme is not more varied and more interesting. It is a pity that the programme is not more varied and more interesting.

It is a pity that the programme is not more varied and more interesting. It is a pity that the programme is not more varied and more interesting.

It is a pity that the programme is not more varied and more interesting. It is a pity that the programme is not more varied and more interesting.

It is a pity that the programme is not more varied and more interesting. It is a pity that the programme is not more varied and more interesting.

Twenty Years Ago

(Extracts from the "East African Standard" of December 11, 1900.)
The Standard of December 11, 1900, contained an article on the subject of the wireless telegraph. The article was written by Mr. J. M. B. and was entitled "The Wireless Telegraph".

The article discussed the possibilities of the wireless telegraph and the importance of it in the future. It mentioned that the wireless telegraph was a great advance on the ordinary telegraph.

The article also mentioned that the wireless telegraph was being used in many parts of the world. It mentioned that it was being used in Africa, Asia, and Europe.

The article concluded by saying that the wireless telegraph was a great advance and that it would be of great use in the future. It mentioned that it would be of great use in Africa and in the other parts of the world.

The article also mentioned that the wireless telegraph was being used in many parts of the world. It mentioned that it was being used in Africa, Asia, and Europe.

The article concluded by saying that the wireless telegraph was a great advance and that it would be of great use in the future. It mentioned that it would be of great use in Africa and in the other parts of the world.

Cotton Price Goods

IMPORTATION FIGURES FOR SEPTEMBER.

The following statement showing the quantities and values of cotton goods imported into the Colony and Protectorate of Kenya during the month of September 1920 has been supplied by the Director of Customs and Excise:

Great Britain: 1,045,000 yards valued at Shs. 1,045,000. India: 1,045,000 yards valued at Shs. 1,045,000. Ceylon: 1,045,000 yards valued at Shs. 1,045,000. Other countries: 1,045,000 yards valued at Shs. 1,045,000.

Great Britain: 1,045,000 yards valued at Shs. 1,045,000. India: 1,045,000 yards valued at Shs. 1,045,000. Ceylon: 1,045,000 yards valued at Shs. 1,045,000. Other countries: 1,045,000 yards valued at Shs. 1,045,000.

Great Britain: 1,045,000 yards valued at Shs. 1,045,000. India: 1,045,000 yards valued at Shs. 1,045,000. Ceylon: 1,045,000 yards valued at Shs. 1,045,000. Other countries: 1,045,000 yards valued at Shs. 1,045,000.

Great Britain: 1,045,000 yards valued at Shs. 1,045,000. India: 1,045,000 yards valued at Shs. 1,045,000. Ceylon: 1,045,000 yards valued at Shs. 1,045,000. Other countries: 1,045,000 yards valued at Shs. 1,045,000.

For Tender Skins

The rich, gentle lather of Peerless Eramic is so grateful to the tenderness of skin. Its fragrance is like wearing fresh violets every day.

PEERLESS ERAMIC SOAP
The Dainty Soap

B. H. Myers & Co., Ltd.

Phone 343. GOVT. ROAD. Box 461.

FURNITURE SUPPLIED ON HIRE PURCHASE.

NO DEPOSIT

Small Monthly Payments

ALL OUR FURNITURE IS SOLD WITH A GUARANTEE.

J. & F. MARTELL ESTABLISHED 1815

A BRANDY THAT IS HANDY FOR ALL OCCASIONS AND ALL NATIONS.

THE GRAND BRAND OF BRANDY.

MARTELL'S

Martell's for Age and Quality

Known throughout the World

Stocked by all High-Class Hotels and Wine & Spirit Merchants.

REFRESHING, TASTY, AND HEALTHY.

AGENTS: J. & F. MARTELL, LTD., 11, RUA D'ALCAZAR, LISBON, PORTUGAL.

BILLIARDS & ROY LTD.

NAIROBI. MOMBASA. KAMPALA.

New Year Gifts.

HOBBIES FRETWORK OUTFITS.
BATHROOM WEIGHING MACHINES.
GENUINE THERMOS FLASKS.
BATHROOM ACCESSORIES.

COMPLETE WIRELESS COMPONENTS.
CRYSTAL SETS.
ELECTRIC HAIR DRYERS, CURLING TONG HEATERS, BOILING RINGS.
LOUD SPEAKERS.

EtC., EtC., EtC. Manila Cigars. EtC., EtC., EtC.

CLOCKS

A LARGE CONSIGNMENT OF THE LATEST DESIGNS, JUST ADDED TO STOCK INCLUDING

Traveller, Hall and office, Clocks, etc., exceptionally beautiful, Prices.

Goodly Clocks with Warranted Accuracy in Oak and Mahogany Cases.

DOBBIES, Ltd.,
WATCHMAKERS, JEWELLERS and OPTICIANS,
NAIROBI.
KENYA'S PREMIER JEWELLERS.

AUCTION SALES.



CATALOGUE SALE OF FURNITURE and EFFECTS

Duly instructed, we shall sell, by PUBLIC AUCTION, WITHOUT RESERVE, unless stipulated, at our Sale-rooms, Miles Building Nairobi

TODAY, DEC. 31st at 10 a.m.

One Dining Table. Dressing Table, bedvelor Mirror. Chests of Drawers. "Jones" Treadle Sewing Machine. Chesterfield Suits, well sprung, with cretone covers. Fire Side Seat. Parambulator, low set. Writing Tables. "Hodge Whitworth" Cycle—boy's model in good condition. Clock. Wicker Chairs. Dining Chairs, in teak. Single Iron Bedsteads. Palmstands. Bookshelves. Double Beds Bedstead with spring mattress. Bombay Chairs. Double Bedstead with spring mattress. Corr. Mattresses. Double White Enamel Bedstead with Spring Mattress. Mirror on Stand. Mantelpiece. Morris Chairs. Oak and Silver Tea Tray. Ten Service. Mirzapur Carpets. Bed-side Tables. Looking Glass. Occasional Table. Cane seated Chairs. Sideboard in Camphorwood.

"Pathe" Cinema Machine, Camera, Projector and Films. etc. "Boden-Treley" Cycle in good condition. Over-matras in Oak, with bevelled mirror. Lady's Cycle. Pair of fringed coloured patterned. Telescopic Dining Table, in Tanganyika Mahogany (low res.) Writing Table in teak. Commodities. On behalf of the parties concerned—

9 Double Bedsteads with spring mattresses (damaged in transit).

MUTER and OSWALD, Ltd., Auctioneers, NAIROBI.



AUCTION SALE OF IMPORTANT BUSINESS PROPERTIES.

Duly instructed by Messrs. J. Verjee and Sons, We shall offer FOR SALE BY PUBLIC AUCTION at our Sale-rooms, Harding's Street, on

MONDAY, JANUARY 14th, 1929

at 2.30 p.m. precisely. That very substantial property known as NAIR'S BUILDING which carries a double storey building with ornamental clock tower and situated on Plot No. 189, Sixth Avenue Nairobi, which plot is directly opposite the G.P.O.

ALSO The well constructed stone building of 3 Shops situate at PLOT No. 92, INDIAN BAZAAR, (occupied by Messrs. M. J. Patel).

Further particulars may be obtained from the Auctioneers: MUTER and OSWALD, Ltd., P.O. Box 357, NAIROBI.

Farm To be Sold

IMMEDIATELY.

Owing to the sudden death from heart failure of J. L. Melrose, the following farm is offered for sale— NO REASONABLE OFFER REFUSED.

SOY. 2 miles from station on main road adjoining village, 435 acres practically all arable, about 180 acres broken, suitable for maize, wheat and coffee. Good rainfall. Furnished substantial stone house, approached by Greivilles Bobusta drives, guest house, maize crib, workshop, fowl houses, etc. Watle plantation. Cattle, 4 ploughs, 3 cultivators, harrow, tools, etc., wagon. Walk in, walk out.

For further particulars, apply— A. SMITH, Riverside Estate, SOY.

Jam Containers

WITH LIDS

1 lb. Size for CREAM, Etc. Shgs. 2/- per doz. Shgs. 23/- per gross. 1 lb. Size for JAM, Etc. Shgs. 2/6 per doz. Shgs. 29/- per gross.



Fruit baskets

CHIP WOOD WITH METAL HANDLES.

Size 11 x 7 x 8 inches. Shgs. 6/- per doz.

STANDARD STATIONERY STORES NAIROBI.

AUSTIN'S AUCTIONS.

SALE OF NEW ENGLISH SUITS. COATS. TROUSERS. EVENING DRESS SUIT. WHITE SUITS. SUIT LENGTHS, Etc.

AUSTIN & CO. will sell WITHOUT RESERVE, at the MART, on THURSDAY, JAN. 3rd at 10 a.m.

9 Assorted Coats. 8 pairs Trousers. 4 Suits. White Suits. Dinner Jacket. Waistcoats. Mess Jacket. Full Evening Dress Suit.

The above are all good English Cut and make. Several Good Suit Lengths, etc.

AUSTIN & Co., Auctioneers & Estate Agents, Harding's Street, Nairobi.

E. Hutchison & Co.

Favoured with instructions from several clients we shall sell by PUBLIC AUCTION WITHOUT RESERVE (unless indicated)

A SELECTION OF HIGH-CLASS FURNITURE and EFFECTS, also NEW SHEETS and PILLOW CASES, at our Mart, Government Road, on

THURSDAY, JANUARY 3rd at 10 a.m.

Sale comprises the following— Two Double Beds with Three Ply Springs, 2 Single Ward-ropes with full-length mirrors. One Cedar Bachelor Ward-robe. Morris Chairs. Two Chests of Drawers. Lamm Chair (low reserve). New Portable Gramophone. Combination Dressing Chest. Washstand. Pair Sateema Vases. Old Powder Jug. Nanking Plaque (reserve). Teak Washstand, 30 Golf Clubs. Fishing Rod with Reel. Indian Teak Sideboard. Cash Box in Leather Case. Teak Wire Tray. Dinner Wagon. 12 Bone Shot Gun Ammunition. Portable Decca Gramophone. Wine Glasses. Caster Glasses. Tumblers. 6 Coffee Tables. Revolving Bookcase. Princess Dressing Chest. Office Table. 8 Dining Chairs. Oval Dining Table. Cheval Mirror. Lot of Good Books. Baby's Bath on Stand. Small Cinema-projector. Bombay Chair. Single Box Spring and Karyok Mattress almost new (low reserve). Pair Embroidered Curtains. Lot of odd Crockery. Sufferias. Child's Motor Car. Lot of Red Cross Dressings. Hand Sewing Machine. Treadle Sewing Machine. Folding Side Table. Occasional Tables. Pair Bath Sheets. Axminster Carpet 9 x 9 (res.) Chesterfield Suite covered good cretone. 2 Gillette Safety Razors. Two Crusts. On behalf of a Merchant, 50 pairs Single Twilled Sheets, 50 pair Double Twilled Sheets, 12 pairs Single Hemstitched Sheets. 200 Pillow Cases.

E. HUTCHISON & CO., AUCTIONEERS and ESTATE AGENTS.

Bargains

AT Ladham Stores, GOVERNMENT ROAD.

Gents Pullovers in Assorted Colours from Shgs. 7/- and Woollen Shirts from Shgs. 9/- each. Our window is displayed with the above goods.

WINSON & NEWTON'S Artists' Materials.



Large Range of Colours in Stock. Pen-Painting Sets Stenciling Outfits. Poster Colours. Sketh Block Etc.

Standard Stationery Stores, P.O. Box 350, NAIROBI.

SANDS & CO., GIVING UP SALE.

Acting on instructions from the Wakamba Transport Co., who are closing down at the end of the year, we will offer for sale WITHOUT RESERVE.

TODAY, DEC. 31st at 10-15 a.m. at their HALLWAY BUILDING, behind the Nairobi Coffee Ciding Mills

- 5 Ford Lorries, 1 Chev. Lorry, 2 Box Lorries, 3 Galvanized Iron Stores, 1 Crosscut Saw with 2 spare saws, 1 Saw Bench, 1 6-H.-P. Electric Motor, 2 Spring Waggon suitable for male or com. The whole of the above are insured until the end of February 1929.

The sellers are willing to allow hire purchase on the two Box lorries to suitable applicants. Buyers wanting to avail themselves of the hire purchase agreement must make arrangement with the auctioneers before the sale.

SANDS & CO., AUCTIONEERS.

SANDS & Co. AT THE RACE COURSE SALE OF HORSES.

TODAY, DEC. 31st at 12 o'clock. On account of Comdant. Lawford

- 1. Eastern Dancer, 4 yr mare, imp. by Otoman out of Jazz Bell, broken on stick and Ball. Good back ridden regularly by a lady. Will win races. 2. Paulo, 7 yr mare, by Rally, trained polo pony played in tournaments, very fast, kind and good back. 3. The Bova's, Somali gelding, 7 yrs., winner of races played polo, kind and keen. 4. Notice, 4 yrs Somali, one of the best somali ponies in Kenya; played polo. 5. Somali Mare. 6. ... 7. ... 8. ... 9. ... 10. ... 11. Crusader, Colt foaled 1926, by Cerval out of War Baby. 12. Girl Guide, Filly foaled 1926, by Cerval out of War Baby. 13. Sympatica, Filly, foaled 1924, by Prince Pride out of Bicky, and is again in foal to Cerval, served 23rd Sept. 1928. Further entries for this sale being received.

SANDS & Co., AUCTIONEERS.

SANDS & CO., IN

The City Market, SADDLER STREET, Every TUESDAY and FRIDAY at 9 a.m.

FRUIT, VEGETABLES and FARM PRODUCE AT OUR HALLWAY SALEYARDS, NAIROBI, Every WEDNESDAY, at 11 a.m.

LIVE STOCK of ALL DESCRIPTION Entries for the above markets invited.

SANDS & CO., AUCTIONEERS.

Ladies Hairdressing

High-class Workmanship and Attention. Quality and Efficiency in All Branches of HAIRDRESSING, PERMANENT WAVING WITH CARE and COMFORT

C. W. Young, late of Theo. Schouten, TIMBER'S SALOONS, Harding's Street, Box 285.

MELANYL



MARKING INK Large size Shg. 1-75

STANDARD STATIONERY STORES NAIROBI.

Denovan & Diebel

Land & Estate Agents, City House, Tel. 189. Box 109

Farms and Estates of all description in hand.

FOR SALE.

MUTHAIGA PROPERTY FOR SALE.

Very desirable residence with every modern convenience. 4 Acres of FREEHOLD land. Price and terms of sale on application. PLOT of approximately 54 acres of FREEHOLD land, thickly wooded, beautiful soil, suitable for subdivision, in the best and highest part of Muthaiga, within a few minutes walk of the Country Club and golf course. Price is particularly moderate. For particulars of the above and other attractive property apply—

BROWN & BARRATT ESTATE AGENTS. I.B.E.A. BUILDINGS, GOVT. ROAD, Box 657 NAIROBI. Phone 147

BITULAC Ltd.

These well-known manufacturers of Bitumen Iron & Steel Preservative Paints, "Cesarot" Wood Preservative and Stain, Bituminous Oxide Paints, Marine Paints, Glue, Deck Composition, Enamels Roofing Compounds, etc. have appointed

Beales & Smithson, Agents for KENYA, UGANDA & TANGANYIKA.



No. 1 ... Shs. 3/6 No. 2 ... Shs. 6/25 No. 3 ... Shs. 12/- No. 4 ... Shs. 25/- Sprays ... Shs. 2/6

STANDARD STATIONERY STORES, NAIROBI

Well Made Furniture At Very Reasonable Prices.

LADIES' CONTAYNAL WARDROBE. W.L. Width 4ft. Two panel doors, sides paneled, centre divided. One side fitted for hanging garments. Two other rails at base, other side fitted with hat space, 2 shelves and 2 drawers. Inside of door fitted with full length long mirror.

PRICE, £20/7/- GENTLEMEN'S CONTAYNAL WARDROBE.

W.L. Width 4ft. Two panel doors, sides paneled, centre divided. One side fitted for hanging garments. Two other rails at base, other side fitted with hat space, 2 shelves and 2 drawers. Inside of door fitted with bevel mirror, toilet shelf and hat rail.

PRICE, £16/15/- LESS 10 per cent FOR CASH.

Hutchings, Biemer & Co.

FURNITURE SPECIALISTS, NAIROBI. Phone 488

KENYA NATIONAL ARCHIVES
PHOTOGRAPHIC SERVICE

Description of Document THE EAST AFRICAN STANDARD (MOMBASA TIMES & UGANDA ARGUS)
(Daily Edition) 1st to 31st December, 1928,

Reference No. From E.A.S. Library.

END