



EVIDENCE

A Tanganyika Sial Factory equipped with ONE ROBEY 110 h.p. of engine drive

ONE ROBEY DECORATOR FIVE BRUSHING MACHINES ONE BALING PRESS

turned out 900 tons of dry fibre from 1st July to 31st December, 1929, and 176 TONS of DRY FIBRE in the MONTH OF DECEMBER ALONE.

AGENTS: Dalgity and Company Ltd.



London, Feb. 16.

Only five more days until the curtain rises on the assembly of Parliament and the members of the Government will be called upon to give an account of their administration...

Friends of the Premier say that he looks extremely tired and worried, apparently feeling the strain of overwork. This is understandable in view of his recent activities...

A Wireless "Fah"?

Whether a direct result of casual criticism, or of the wireless, I am unable to say, but the D.P.C. has certainly got something on the matter of "the wire"...

It is a pity that the D.P.C. is a man of great personality and imagination. His critics are many, and journalists in no way take him to their hearts because he is reported to have been a member of the Bank of England...

Those who are continually asserting that the British have no use for opera, will consider that their contention is justified in view of the recent performance at the Scala Theatre, where the interval

should miss a circus of this description; and I have not decided whether the show is worth the distribution of the adjacent Fun Fair is part of excellent management...

It is a pity that the D.P.C. is a man of great personality and imagination. His critics are many, and journalists in no way take him to their hearts because he is reported to have been a member of the Bank of England...

It is a pity that the D.P.C. is a man of great personality and imagination. His critics are many, and journalists in no way take him to their hearts because he is reported to have been a member of the Bank of England...

It is a pity that the D.P.C. is a man of great personality and imagination. His critics are many, and journalists in no way take him to their hearts because he is reported to have been a member of the Bank of England...

It is a pity that the D.P.C. is a man of great personality and imagination. His critics are many, and journalists in no way take him to their hearts because he is reported to have been a member of the Bank of England...

It is a pity that the D.P.C. is a man of great personality and imagination. His critics are many, and journalists in no way take him to their hearts because he is reported to have been a member of the Bank of England...

Normally, you may have observed, I do not set up to be a prophet, but I have very much to say to you to recall that, in accordance with my prediction last week, Londoners have become unaccustomed of the earlier terms...

Meanwhile we have had and disturbing news in the shape of an attempt to beat the British Government, is threatened by all signs of the world's average opinion. Says a writer on the subject...

It is a pity that the D.P.C. is a man of great personality and imagination. His critics are many, and journalists in no way take him to their hearts because he is reported to have been a member of the Bank of England...

It is a pity that the D.P.C. is a man of great personality and imagination. His critics are many, and journalists in no way take him to their hearts because he is reported to have been a member of the Bank of England...

It is a pity that the D.P.C. is a man of great personality and imagination. His critics are many, and journalists in no way take him to their hearts because he is reported to have been a member of the Bank of England...

It is a pity that the D.P.C. is a man of great personality and imagination. His critics are many, and journalists in no way take him to their hearts because he is reported to have been a member of the Bank of England...

Advertisement for DONALD FISHER'S "Ye Monks" Scotch Whisky. Includes a portrait of a man and text describing the product's quality and availability.

Advertisement for BARCLAYS BANK (DOMINION, COLONIAL AND OVERSEAS). Includes text about the bank's services, branches, and capital.

Advertisement for Crosse & Blackwell's ESSENCES. Features an illustration of a bottle and text describing the product as a highly concentrated meat essence.

The Circus

To drop from the sublime to the ridiculous, let me recall that the Circus at the Olympia. Last Sunday morning the Circus at the Olympia...

It is a pity that the D.P.C. is a man of great personality and imagination. His critics are many, and journalists in no way take him to their hearts because he is reported to have been a member of the Bank of England...

It is a pity that the D.P.C. is a man of great personality and imagination. His critics are many, and journalists in no way take him to their hearts because he is reported to have been a member of the Bank of England...

It is a pity that the D.P.C. is a man of great personality and imagination. His critics are many, and journalists in no way take him to their hearts because he is reported to have been a member of the Bank of England...

It is a pity that the D.P.C. is a man of great personality and imagination. His critics are many, and journalists in no way take him to their hearts because he is reported to have been a member of the Bank of England...

It is a pity that the D.P.C. is a man of great personality and imagination. His critics are many, and journalists in no way take him to their hearts because he is reported to have been a member of the Bank of England...

British Golf Hopes

And now just a word about the only thing that really matters to most Englishmen, and that is golf. Following a most successful year in the history of America's many successes, British golfers have their eyes set upon the coming year...

It is a pity that the D.P.C. is a man of great personality and imagination. His critics are many, and journalists in no way take him to their hearts because he is reported to have been a member of the Bank of England...

It is a pity that the D.P.C. is a man of great personality and imagination. His critics are many, and journalists in no way take him to their hearts because he is reported to have been a member of the Bank of England...

It is a pity that the D.P.C. is a man of great personality and imagination. His critics are many, and journalists in no way take him to their hearts because he is reported to have been a member of the Bank of England...

It is a pity that the D.P.C. is a man of great personality and imagination. His critics are many, and journalists in no way take him to their hearts because he is reported to have been a member of the Bank of England...

It is a pity that the D.P.C. is a man of great personality and imagination. His critics are many, and journalists in no way take him to their hearts because he is reported to have been a member of the Bank of England...

Nooralri Dhanji

Next Stanley Hotel, Sixth Avenue, New York City.

It is a pity that the D.P.C. is a man of great personality and imagination. His critics are many, and journalists in no way take him to their hearts because he is reported to have been a member of the Bank of England...

It is a pity that the D.P.C. is a man of great personality and imagination. His critics are many, and journalists in no way take him to their hearts because he is reported to have been a member of the Bank of England...

It is a pity that the D.P.C. is a man of great personality and imagination. His critics are many, and journalists in no way take him to their hearts because he is reported to have been a member of the Bank of England...

It is a pity that the D.P.C. is a man of great personality and imagination. His critics are many, and journalists in no way take him to their hearts because he is reported to have been a member of the Bank of England...

It is a pity that the D.P.C. is a man of great personality and imagination. His critics are many, and journalists in no way take him to their hearts because he is reported to have been a member of the Bank of England...

Advertisement for CELOTEX, an economy in building insulation. Includes text about its benefits and contact information.

Advertisement for P. Stewart, CAR, S.E.D., PAINTER and DECORATOR. Includes a list of services and contact details.

Advertisement for Kenya Loan & Discount Co. Ltd. Includes text about financial services and contact information.

Advertisement for ALIBHAI SHARIFF & SONS. Includes text about stationery and printing services.

Large advertisement for RONEO DUPLICATORS. Features illustrations of different models (Model 16, Model 2) and detailed text describing their capabilities and prices.



# UNION-CASTLE LINE.

HOMEWARD via SUZ. From Mombasa (About)

Granville Castle	19th April	19th April
Granville Castle	19th April	19th April
Granville Castle	19th April	19th April
Granville Castle	19th April	19th April
Granville Castle	19th April	19th April

HOMEWARD to SOUTH AFRICA

London Castle	19th April	19th April
London Castle	19th April	19th April
London Castle	19th April	19th April
London Castle	19th April	19th April
London Castle	19th April	19th April

Passenger Agents: Messrs. Mackenzie & Co., Ltd., 11, Market Street, Nairobi. For rates and freight and Passage Money, apply to THE UNION-CASTLE MAIL STEAMSHIP CO., LTD., MOMBASA.

# British India Steam Navigation Company, Limited, AND PENINSULAR AND ORIENTAL STEAM NAVIGATION CO.

LONDON AND EAST AFRICA LINE.		BOMBAY-DURBAN MAIL SERVICE.		COASTAL SERVICE.	
Calling Kilindini, Zanzibar, Dar-es-Salaam, Beira, Delagoa Bay fortnightly. Also Mombasa monthly. Outwards and homeward.		Calling Kilindini, Zanzibar, Dar-es-Salaam, Beira, Delagoa Bay fortnightly. Also Mombasa monthly. Outwards and homeward.		Mombasa, Lamu, 20th Feb.	
<b>HOMEWARD:</b> S.S. "Madison" 19th Feb. S.S. "Madison" 19th Feb. S.S. "Madison" 19th Feb.		<b>TO BOMBAY:</b> S.S. "Madison" 19th Feb. S.S. "Madison" 19th Feb. S.S. "Madison" 19th Feb.		Special list Class Steamers: Mombasa and Lamu: S.S. "Madison" 19th Feb. S.S. "Madison" 19th Feb.	
<b>TO SOUTH AFRICA:</b> S.S. "Madison" 19th Feb. S.S. "Madison" 19th Feb. S.S. "Madison" 19th Feb.		<b>TO DURBAN:</b> S.S. "Madison" 19th Feb. S.S. "Madison" 19th Feb. S.S. "Madison" 19th Feb.		(Last two mentioned weeks are called on the East African Mail)	

Homeward passengers call at Plymouth affording them the opportunity of disembarking there. Charge accepted for Antwerp direct on all steamer.

ALL DATES SUBJECT TO ALTERATION WITHOUT NOTICE. RETURN TICKETS ISSUED AT TWO SINGLE FARES LESS 10%. UP-COUNTRY CHECKS NOT ACCEPTED UNLESS ENDORSED BY A LOCAL BANK.

Terms, Rates of Freight and Passage may be arranged with SMITH, MACKENZIE & CO., Agents: Kilindini, Mombasa, Zanzibar, Dar-es-Salaam, Zomba, Lindi and Lamu. Passenger Agents only Nairobi and Kampala. Also the following Sub-Agents (for passages only): NAIROBI: From Ross Ltd. NAKURU: The Kenya Post Office. ELDORET: Standard & Co. SOY: The Soy Station. KITALE: Messrs. Davis & Bossey.

## Chivers' Canned Fruits

The link between the ENGLISH ORCHARD AND EAST AFRICAN HOMES.

R. O. HAMILTON, Ltd., NAIROBI. Phone 222.

## MESSAGERIES MARITIMES

(FRENCH MAIL STEAMERS) Regular and fortnightly services from and to Mombasa. THIS QUICKEST ROUTE TO LONDON. NEXT MAILINGS TO MARSHALLETS: S.S. "General Yvernes" 18th February, 1920. S.S. "Chamisso" 21st March, 1920. S.S. "Bismarck de St. Pierre" 17th March, 1920. S.S. "Ville de Strasbourg" 1st April, 1920.

ORCHESTRA ON ALL STEAMERS. NEXT ARRIVAL FROM MARSHALLETS: S.S. "Ville de Strasbourg" 17th February, 1920.

MESSAGERIES MARITIMES. EMILE JARDIN, P.O. Box 16, MOMBASA. P.O. Box 52, NAIROBI.

## Compagnia Italiana Transatlantica

Monthly Passenger Service to NAPLES and GENOA. THE BEST ROUTE TO ENGLAND. SAILINGS FROM KILINDINI to GENOA on the 1st of Every Month. S.S. "MAZZINI" - 1st March, 1st May, etc. S.S. "F. CRISPI" - 1st April, 1st June, etc.

Outstanding features: Very roomy cabins - Fresh running water in all cabins and baths - Orchestra - Climatograph - Deck Games - Swimming Pool, etc.

10 per cent. reduction on return ticket if returning within one year.

Special reduction for Government Officials and their dependants.

REGULAR MONTHLY EXCURSIONS-MOMBASA, ZANZIBAR, DAR-ES-SALAAM. Leaving Mombasa on the 26th, returning with same steamer to Mombasa on the last of every month.

NOTE - Special connection on S.T.E. to inland destinations. Return fare any station in Kenya to Mombasa at single fare rates. BAGGAGE FREE ALLOWANCE TO LONDON. 1st Class Passengers 4 Cwt. 2nd Class 2 Cwt. 3 Cwt.

Passage will be labelled and booked on board for receipt despatch to London by air or transatlantic arrangement at Port Said.

For further particulars of sailings, rate of passage etc., apply to SOCIETA' COLONIALE ITALIANA-MOMBASA, P.O. Box 176, M. D. KEMPE, - NAIROBI, P.O. Box 206.

## Deutsche Ost-Afrika-Linie

(GERMAN AFRICAN SERVICE) DEUTSCHE OST-AFRIKA-LINE GENERAL AGENCY, MOMBASA. Cable: "Ostafrika," P.O. 210.

### Coastwise Excursions.

(at considerably reduced Fares) TO BEIRA AND LORENCO MARQUES First, Second and Intermediate Class available for the following steamers: S.S. "Umbundu" 20 March. S.S. "Jassa" 27th March. (for return voyage only).

In connection with the above Excursions the Kenya and Uganda Railways and Harbour Administration will issue Return Rail Tickets at Single fare from Nairobi or any station or port North of Nairobi to Mombasa. FULL PARTICULARS OF FARES, ETC., OBTAINABLE FROM THE UNDERMENTIONED AGENTS: Dalgaty & Company, Ltd., Eldoret. Carl Jungblut, Njoro & Nakuru District. Benzstad & Clark, Ltd. Mombasa, Nairobi, Kisumu & Kampala.

## THE AFRICAN MARINE AND GENERAL ENGINEERING CO., Ltd.

KILINDINI - MOMBASA. MARINE and MECHANICAL ENGINEERS REPAIRS TO ANY TYPE OF MACHINERY. SPECIALISTS IN: Reinstalling of Boilers, Cutting and Machining of Bronze Dies, to Knives, One-Axle-Drive Working and Cutting and Building up of Worm Shafts, etc. Castings for Cast Iron, Bronze, Brass, etc., up to 1 ton. All kinds of Boiler Repair Work.

If shipping or drawings supplied, we undertake to make Moulds or Engine Spare Parts from the Pattern to the actual Article. We have skilled Chinese workmen in each Department of our Workshop whom we will dispatch to any part of the country, given due notice.

Telephone 81. Estimates Given. Telegrams: Amgoon, Mombasa. SMITH, MACKENZIE and COMPANY, General Managers.

## Keith Timber Co., LIMITED.

Sadler Street, NAIROBI. THE PLACE FOR TIMBER, MOULDINGS, WOOD BLOCK FLOORING, ROOFING and PLANT TIE SHINGLES, ALL AT REASONABLE PRICES.

P. O. Box 874. Phone 598.

### PIANOFORTE TUNING AND REPAIRING.

Two years experience in Kenya Colony and five year with Messrs. Chappell, etc., in England. F. A. HEAD, Box 679, NAIROBI.

### OVERSEAS MAILS.

ARRIVALS:

STEAMERS	FROM	Due at Mombasa	Mails arrive at Nairobi
Moham. Ez. Grandeur	Aden	Feb. 14	Feb. 15
Khandallah	South	" 17	" 18
Kano	Bombay	" 21	" 22

DEPARTURES:

STEAMERS	FOR	Mails Clear S.P.O.	Date of Departure from Mombasa
Moham. General Yvernes	Europe (parcels only)	Feb. 14	Feb. 15
Khandallah	Europe	" 15	" 16
Kano	South	" 21	" 22

YOUR FAVOURITE SUNDOWNER!

## HEERING'S CHERRY BRANDY

Wholesale Stockists: JARDIN, PHIPSON and Co., Ltd. NAIROBI.

## HOLLAND AFRICA LIJN

JOINT SERVICE. HOLLAND-ZUID-AFRICA LIJN and HOLLAND-OOST AFRICA LIJN. Steamers will load at Kilindini on or about the following dates - HOMEWARD via SUZ. S.S. "ELAFONTEN" (D) Feb. 12. S.S. "MIA" (C) Feb. 20. S.S. "ORLEPERKE" (C) Mar. 10. S.S. "HEERENKAMP" (C) Mar. 17. S.S. "ALDARD" (C) Apr. 10. S.S. "SPRINGONSTEN" (C) Apr. 17. S.S. "BILLOTEN" (C) May 14. S.S. "OERIKEN" (C) May 20. S.S. "SALAWATI" (C) June 11. S.S. "MIA" (A) June 18.

HOMEWARD via THE CAPE. S.S. "WITFOONTEN" (B) Feb. 27. S.S. "MILNER" (C) Mar. 25. S.S. "MELBERKE" (C) Apr. 11. S.S. "JAGHERSPONTEN" (C) May 2. S.S. "HANDFOONTEN" (B) May 17.

PASSENGER FARES. To Mombasa (A) - 250-0-0 (D) - 250-10-0 To London (A) - 270-0-0 (B) - 250-10-0 (C) - 250-10-0

Steamers of the Line provide excellent cabin accommodation for passengers. If steamer does not call at London, passengers for England will receive first class tickets - rail and steamer - from Antwerp to London.

TWENTSCHE OVERSEAS TRADING CO., LTD. MOMBASA. P.O. Box 140. KAMPALA. P.O. Box 140. Telegrams: "HOLAFRIC."

## Fabrics That Please.

### Horrockses Dress Fabrics

DRESS TAFETA 38" WIDE IN BLACK, BLUE, GREEN, LEMON, SHCS. 9/- YD. HORROCKSES 38" TREVOSA at 5/0 YD. HORROCKSES 38" CHIC-A-CHENE SHCS. 6/75 YARD.

38" SILK CREPE-DE-CHINE IN CREAM, GREEN, PINK, MAUVE, OYSTER, CHAMPAGNE, GREEN, GOLD, SAPHIRE, JADE, LEMON, SKY, TAN, WHITE, BOIS DE ROSE, and BLACK, at 14/50 yd. 38" CREPE-DE-CHINE IN ROSE, WHITE, BROWN, EMERALD, at 10/75 YD. 10% DISCOUNT ALLOWED FOR CASH.

## Hutchings Biemer & Co., Ltd.

BOX 408. NAIROBI.

Mrs. E. M. PAINE, LEAS ARCH RISING and PIANOFORTE LESSOR. Capital Chambers, near Hotel Kenya.

## JAM CONTAINERS WITH LIDS

1 lb. Size for CREAM, Etc. 2/- per doz. 5/- per doz. 8/- per doz. 10/- per doz.

STANDARD STATIONERY STORES, NAIROBI.

## LOCUSTS DESTROYED

BY USING INGREDIENTS LATELY PUBLISHED BY THE "E. A. STANDARD."

Send your enquiries to:- MADATALI SULEMAN VERJEE & SONS Government Road. NAIROBI. P.O. Box 17.

## UPLANDS BACON FACTORY

Luncheons, Dinners and Picnics are not complete without resort to our 33 Varieties of Tinned and Glass Goods. NEVER SO GOOD - NEVER SO CHEAP. On sale at all the leading Stores in Eastern Africa.

Be sure to trade with the Brand "UPLANDS" guarantee "Eldorado"

## THE BRADFORD MANUFACTURING CO., LTD.

We have just received a selected consignment of Ladies real Leather Coats, Short and Long, suitable for Mombasa, etc., in all the newest shades. Also lengths of Ladies Coating Tweeds. Further reduction in prices of Dresses, Coats, Jumper Suits, Jumpers and Waterproofs. These goods are nearly all fresh stocks and are excellent value.

IMPERIAL CHAMBERS. ABOVE TOWN LTD. GOVERNMENT ROAD. P.O. Box 818.

**BOX TENGOR.**



*Scissors  
Shaves*

Camera for everybody with three interchangeable lenses for distance, groups and portraits—  
Size 21 x 21. Shs. 21.  
Size 41 x 21. Shs. 25.  
Try our Photographic Department, or our class Developing, Printing and Engraving.  
"THE LENS" Limited.  
PRINCE'S HOUSE.  
GRAMS: "FOTOPTICS."

**MUNICIPAL TRANSPORT SERVICE.**

**Question Investigated by Sub-Committee.**

**MAYOR'S VIEW.**

A short, but important, discussion on the Municipal Transport Service was held at the Mayor's meeting of the Municipal Council on Tuesday evening.

The General Purposes Committee had reported that a letter had been received from Councilor Jacobs, endorsing reports on right-side services in Johannesburg and Durban. The Committee had decided to make no immediate recommendations on the subject, but to suggest in the first instance the appointment of an investigating committee.

Councilor Conroy asked whether they had now reached the stage when it might be appointed.

The Mayor (Councilor C. Udall) said the General Purposes Committee had read Councilor Jack's report, and had come to the conclusion that the present existing traffic by motor boys was becoming a nuisance to Nairobi. Should not the town make its own traffic system? It would, the Mayor estimated, mean a loss for a number of years, but it would lower the cost of transport, since most people now had to use their own cars.

It would considerably help the commercial people of the town, as they would then be able to get in and out. The speaker considered that the town would benefit indirectly, even if a loss for some time were entailed.

Councilor Udall said that the Council were of the opinion that the matter should be investigated, he would like the Council to appoint the sub-Committee.

Councilor Reed proposed the appointment of the sub-Committee, and this was seconded.

Councilor Gaster asked if it would not be possible to have a member of the police to be the sub-Committee.

The Mayor said they had powers to co-opt when they wished.

In reply to Councilor Udall, the Mayor said the sub-Committee would report to the General Pur-

**Tax Notes.**

**CRIME IN AREA LOOKING WELL.**

**[STANDARD CORRESPONDENT.]**

Tutu, February 7.

As it was a very warm day, the weather in Tutu. This is very welcome as it means almost no rain is forecast for the next few days. Planters are at last able to get the better of the weeds which had been scouring alarmingly. Labour is now plentiful, as the estates are beginning to look clean.

Crops have on the whole been good. A certain amount of damage was done by locusts but the harm done does not appear to have been nearly as great as was at one time feared.

In spite of the fact that the Government is not allowing any more land for the time being, our white population continues to grow owing to sales of estates or portions thereof. Some very satisfactory prices have been obtained recently.

**K. A. R. Native Village.**

**COMPLAINTS IN THE TOWN COUNCIL.**

The General Purposes Committee reported at Tuesday's meeting of the Nairobi Municipal Council that attention had been directed to the Native Village on plot 1702 Nairobi Road (K. A. R. Reserve), where it was alleged that a great deal of filth was being taken place.

Councilor Welby had stated at the meeting of the committee that the village were established for the residence of 1000 natives of the King's African Rifles, there were only about 200 which included infants, old soldiers and widows.

The committee recommended that action by Government should be taken to have the village being licensed on shop only, and deal with other matters found leaving filth.

The committee further recommended that Government should be asked to restrict residence in the area to genuine old K.A.R.s and widows.

The recommendations of the committee were adopted.

**"ON THIS DAY,"**

FEBRUARY 19TH.

Alphonse Bapstine, French politician, died February 17, 1914. He was a member of the Chamber of Deputies and was known for his liberal views. He was a member of the Chamber of Deputies and was known for his liberal views. He was a member of the Chamber of Deputies and was known for his liberal views.



*A Winning "Double"*

**Crawford's LIQUEUR**

SCOTCH WHISKY

SPECIAL RESERVE  
Scotlands Finest  
Shrubbery Blend.

OLD LIQUEUR  
One Ounce Only for very Special Occasions

A. A. CRAWFORD  
LONDON & GLASGOW



WHO ASKS FOR "BEER"  
WHO ASKS FOR "McEWAN'S"

**BERMAN AND COMPANY**  
AGENTS.  
MOMBASA.

**A. A. SAW MILLS**

Phone No. 93. P.O. Box 331.  
Telegrams: "Beams" Nairobi.

Thor, Podo, Mweri and Muna.  
Spring, Ceiling and Moulding.

**Sporting News.**

The European Gymnasium Club has now been definitely formed. The President is Mr. Sullivan F.C., Western Province, the Secretary Mr. Fraser, the Treasurer Mr. Fisher, D.C., Tutu and the Committee Messrs. Harcourt, Takorin and Bell.

Golf, Tennis and Football are in full swing and it is hoped that we shall shortly have hockey and cricket.

A club house will be erected as soon as possible.

It appears that the railway is really coming this way and it is reported that surveys have been made in the district.

**Town Car Parking.**

**SUGGESTIONS REGARDING HARDING STREET.**

The receipt of a letter from the Superintendent of Police was reported to on Tuesday's meeting of the Nairobi Municipal Council by the General Purposes Committee, in which it was suggested that the car parking regulations to force in Government Road should be extended to Harding Street, and advised that the proposed tax being levied the middle of the latter street.

The committee decided that the Superintendent's proposals regarding parking should be adopted, but that the question of the rate should be held in abeyance for the future.

It was considered that in regard to the one-hour time limit the Police should be requested not to prosecute motorists who exceed that period before 8 a.m. and after 6 p.m.

The report was adopted by the Council.

**MONEY MARKET.**

London, February 11.

France: 124 1/2.  
Dollars: 4.89.  
T.T.: 1/8.  
3 m/s.: 1/8 1/2.

**THE POST OFFICE.**

The Post Office Committee, who, in turn, would report to the Council. After further discussion, Councilors Wood, Jacobs, and Conroy were appointed to serve on the sub-Committee.

**Today's Trains.**

The following trains are due to leave Nairobi today—

Nairobi, Eldoret, Juba and Eldoret..... 12.30 p.m.  
Mombasa..... 4.00 p.m.  
Nairobi & Kisumu..... 5.47 p.m.

The following trains are due to arrive at Nairobi today—

Nairobi & Kisumu..... 10.30 a.m.  
Mombasa..... 10.81 a.m.  
Nairobi..... 5.25 p.m.

**Just Received**

A NICE SELECTION OF  
**Ladies Evening Shoes**  
ATWAES and PRICES RIGHT.

**De Luxe Boot Co.**

Government Road, Box 637 NAIROBI

**B. Florens**

FRENCH HAIR DRESSER.

PERMANENT WAVING AND TINTING A SPECIALITY.

Phone 561. P.O. Box 928  
YORK BUILDING — GOVERNMENT ROAD, NAIROBI. Opposite Electric Light Co.

# Proves what it IS by what it DOES

A Motor car proves what it is by what it does. For performance is tangible, definite—something you can easily check for yourself.

When we say the new Multi-Range Chryslers are written in pick-up than other cars—smoother in flight—easier in climbing hills—easier to drive—we are simply stating facts you can prove.

This new Chrysler leadership in performance is the result of such advancements in engineering as the new Chrysler Multi-Range four-speed transmission and gear shift with a new, quiet Acceleration Range that combines the pick-up of "second" with the smooth, silent flexibility of "high." Shifting gears back and forth between forward speeds can be done at any car speed without clashing. Another fundamental is Down-Draft carburetion, which introduces the most advanced fueling practice.

In the midst of all today's claims and counterclaims, Chrysler suggests a demonstration that you may learn for yourself why—

**CHRYSLER INSPIRES A PRIDE ALL ITS OWN**

**CARR, LAWSON & CO., LTD.**

Eldoret,

Nakuru,

Nairobi,

Kitale,

Kampala.

FOR AN EFFICIENT AND PERMANENT HOT WATER SUPPLY INSTALL A BEESTON HOT WATER BOILER



For particulars relating to the size of Boiler required and prices apply to— Thornton & Turpin (Sole Agents) Registered Plumbers and Sanitary Engineers. NAIROBI and MOMBASA. Phone 165. P.O. Box 266, Nairobi, and P.O. Box 386, Mombasa.

BROWNS "FOUR CROWN SCOTCH" WHISKY

Mellow with Age Enquiries to BLACKLAW & BROWN (LATE MACLACHLAN BROS.) Tel. No. NAIROBI. Box No. 81. Telegrams: "Blacklaw" 466.

LIME Bone Flour Fertiliser. Now in Stock. Order Now for Long Runs.

Lime Limited

ESSJAY, Limited. BOLUS HOUSE, GOVERNMENT ROAD. Box 634. NAIROBI. Phone 377.

Financial and Property Agents. Mortgages Specialised in. Town Properties Negotiated. Partnerships Arranged. Investments Advised on. WE HAVE SOUND INVESTMENTS FOR SUMS FROM £100 UPWARDS. IN THIS RESPECT WE CLAIM TO DO BETTER FOR YOU THAN ANY ONE ELSE. S. JOHNSON, Managing Director.

Now Is Your Chance To Secure a Perfectly Good and sound Typewriter at a GREATLY REDUCED PRICE.

WE ARE CLEARING OUR STOCKS OF THE British Empire Typewriters at PRACTICALLY FACTORY COST. COMPARE THIS PRICE.

British Standard Empire Typewriter Latest Model -- 14 inch Carriage

88 Characters. Two Colour Ribbon and Stencil Switch. Automatic Paper Feed. Dustproof Cover over Works. Tabulator. Back Space, Right and Left Hand Margin Releases. Light and Even Touch. Perforated Rocker. Escapement. Interchangeable Type Bars. Footstep Type Guide, Ball Bearing Carriage, Automatic Ribbon Reverse, etc. Shgs. 550-00.

ONLY A FEW LEFT. GUARANTEED NEW AND PERFECT. PLEASE CALL AND SEE ONE.

STANDARD STATIONERY STORES Phone 872. NAIROBI. P.O. Box 669.

MOTOR NEWS Road & Showroom.

THE MONTE CARLO RALLY.

Conditions Governing the Gathering.

TWO LADY COMPETITORS.

From time to time they appear in the press details of motor rallies intended for special purposes. Quite lately, for instance, there have been descriptions of a vehicle specially designed for motor work and, again, of a travelling bathroom for an Italian noble.

Two Motors Commercial establishments are announcing the Prince of Wales on his African trip and one of these is particularly interesting. It contains a cooking stove, toilet and shower bath; at the back there are two large water tanks, pressure being applied from the engine driven type pump. When closed the vehicle is incorporated, a most important feature in a car which will be used as a great deal for hunting.

Where Road Transport Scores.

Motor transport has made an immense difference to the conveyance of valuable loads from place to place. Whereas in the past animals were used to the danger and risk of long journeys by rail, often arriving at their destination in distressed condition, now they travel by road in complete comfort, with none of the noise and shocks which made the old time journey so bad for highly strung nerves.

On the question of expense there is the interesting case of "Pascandine". It is more than usually covered 100 miles in a day, it is handicapped by an Armstrong Siddeley engine, the cost of the motor, the horse, driver, two passengers and a groom was about £7 whereas, had the animal gone by rail, it would have been a three days' journey and the cost would have been £8-10.

One of the best known motor firms to appreciate the possibilities of motor transport is the Royal Co. of Wolverhampton, and among its clients is the Prince of Wales who uses one of these vehicles for the conveyance of his hunkers. The Blue Tiger classes is particularly suitable for this class of work with its 6-cylinder engine and 7-bearing crankshaft and general sound running qualities.

Up-to-date Passenger Chassis. The suspension of commercial vehicles has made very real progress in the course of the last year or so and a notable example of modern practice on the 1100 model 100 Ghilfed chassis. In this case the front springs are supported on Westinghouse discs. An engine, while the rear springs are fitted with Levers rebound absorbers.

This combination gives remarkable riding comfort, in fact, it is claimed to be 300 per cent. better than that obtainable with large size bodies, large, rigid, rear coil conditions. Further, this system of suspension prevents twisting and wrenching of the frame, thus eliminating loosening of bolts and fittings and thereby reducing maintenance costs.

Among the very up-to-date features of the Daimler Fleet 2500 which made its first public appearance at the Motor Transport Exhibition is an Australian filter coupled to the clutch pedal so that every time the pedal is depressed the filter is cleaned.

The model has a particularly low frame, only 1 ft. 6 in. from the ground to wheel. The 6-cylinder engine dimensions are, 60 x 120 mm. and it develops 50 h.p. at 1,000 r.p.m. and up

PROS AND CONS FOR RACING.

Does it improve the Breed.

AN IMPARTIAL REVIEW.

(Continued.)

It has taught us the necessity for light moving parts, which reduce the stresses on crank and connecting-rod bearings and improve the balance of our engines. It has developed the overhead-valve engine, which, so long as cooling is retained, starts with an initial advantage in regard to cooling power and fuel economy.

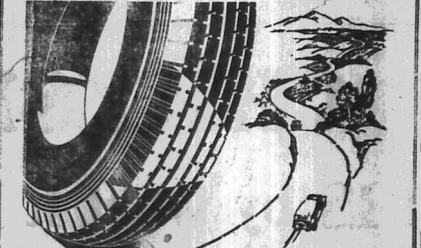
And last, but not least, it has had a huge bearing on the reliability of such accessories as tyres, clutches and gearboxes. Having practice, applied with intelligence, can help a great deal further. I for one believe that the overhead-crankshaft engine (I have not said "the overhead-crankshaft type") is the ideal type for touring purposes, for by its adoption the weight of superimposed valve gear can be cut by 50 per cent.

This means that, with reason, the cam, valve and valve spring can be reduced in weight and strength, with an increase in reliability.

Unfortunately, the very mention of an overhead-crankshaft engine implies a racing machine, and up to the same time, valve spring strength, compression ratio and so on, all we get back to the sheer speed-run. This is all very well for progress in the experiments are confined to the long and the track, but in the meanwhile it is not good for the long-acting specimen, the genuine touring motor cycle.

to 60 h.p. The overhead valve are placed vertically in a detachable head and are actuated through rockers by push rods from a camshaft on the off-side that runs in oil bath.

GREATER MILEAGE



HERE is a type that looks, says and proves itself equal. Created to meet every condition to today's car and driving, this New Royal adds thousands of miles of surprisingly economical service.

The NEW ROYAL. The Type of Today for the Car of Tomorrow. CARR, LAWSON & CO., LTD., NAIROBI.

NOVELS FROM THE Standard Stationery Stores, Nairobi.

ASSETS AND LIABILITIES

AT THIS TIME OF THE YEAR MOST OF US HAVE TAKEN STOCK OF OUR POSSESSIONS, FIRST AND FOREMOST WITH EVERY PERSON PROBABLY, IN EAST AFRICA, THE CAR.

IN AN OLD CAR, ESPECIALLY IF ORIGINALLY A CHEAP ONE, IT IS RAPIDLY BECOMING, — WITH ITS FREQUENT REPAIRS — A LIABILITY.

BRING IT AT ONCE BEFORE IT IS TOO LATE AND TRADE IT IN PART PAYMENT FOR A DEPENDABLE

DODGE SIX

THE CAR THAT HAS THE GREATEST REPUTATION IN EAST AFRICA.

Come for a demonstration in one of the beautiful new models to:

S. FISHER & SIMMONS (East Africa) Ltd. VICTORIA ST., NAIROBI.

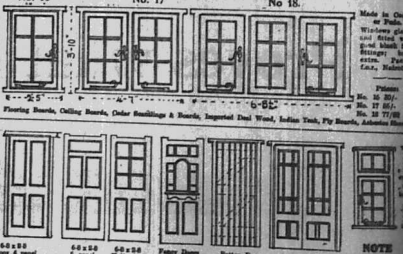
TEL. 362. BOX 466.

Metropolitan Garage. SPECIALISTS IN AUTOMOBILE REPAIRS. 2 DOORS AVENUE HOTEL. We always have a number of selected and overhauled 2-hand Cars in stock.

Duco Spray Painting. Have your car touched up or completely replated, by our UP-TO-DATE PLANT.

Wanted for Cash Box Body Car CARS FOR HIRE. J. L. LETHBRIDGE, Sole Proprietor.

Geo. BLOWERS. BUILDING CONTRACTOR, MANUFACTURER AND DIRECT IMPORTER. SADLER STREET. P.O. Box 269. NAIROBI. GREATLY REDUCED PRICES. Phone: Works 869. Home 425.



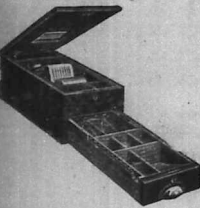
NOTE: All items, double stock included. Without sending orders \$2 per floor. In stock. Available. Lime Cement, Atlas White Cement, Kross Cement. (Carr, Truck or Train Load). PLASTER OF PARIS BEST LEAD.

WHY BUY AMERICAN DOORS AND SEND YOUR MONEY ABROAD? I can compete with them — and beat them! Send for my ILLUSTRATED CATALOGUE and Price List. SOUND quotations for SOUND work.

CONCRETE BLOCKS ALL SIZES IN STOCK. BEST KIMA SAND IN ANY QUANTITY. (Carr, Truck or Train Load). DELIVERY BY LORRIES AT QUOTED RATES. Plumbing and Sanitary Work done under the Supervision of our own European Specialists. Estimates Free.

JOHN RIFKIN, 316 AVENUE, P.O. Box 314, NAIROBI. WAGON BUILDERS. BLACKSMITH, FARRIER. Stock of: AXLES, BRAKES, WAGONS, and ALL WAGON PARTS. ALL KINDS OF WAGONS MADE TO ORDER.

Sh. 150/-



MAHOAGNY CASH TILL WITH WARNING BELL AND LOCKS

FOR INFORMATION ON THE NILE ROUTE TO EUROPE

Motor Tours Ltd. NAIROBI. Phone 230. Weekly Service of cars from KAMPALA to JUBA

MAISON MARIE (MR. and MRS. F. V. COPE). ARTISTIC HAIRDRESSING. PERMANENT WAVING A SPECIALTY.

Entertainments. EMPIRE THEATRE.

One of the most thrilling and romantic events in the history of the United States forms the theme of the super-drama "The Trumpet Call" which will be shown at the Empire Theatre on Thursday, Friday, and Saturday of next week commencing to-day.

DEVELOPMENTS IN DAR-ES-SALAAM (Continued from page 1.)

pile had been driven, it was impossible to sound the whole of it. The result is that as certain spots the pile, which are 40 feet in length, are driven into positions which seem bottomless.

The bridge itself will be 276 feet in length and will have two ornamental piers on each end, probably ornamented with lamps.

THEATRE ROYAL.

A veritable panorama of life is presented in "Not for Publication." This great production which opens at the Theatre Royal to-night (Thursday) with that powerful actor-Ralph Jesson as the lead role of star and director.

The bridge itself will be 276 feet in length and will have two ornamental piers on each end, probably ornamented with lamps.

The total estimated cost is £25,000.

article, as John Madden—Max Lennan—Roy Laidlaw—Peggy Bennett—John Bennett—Ralph Jesson as leading man. The film was adapted from Robert Wells Binkha's original story.



EMPIRE

Starting To-Night THURSDAY, FRIDAY and SATURDAY. February 15th, 16th and 17th.

NOAH BEERY MARY ASTOR CHARLES FARRELL GEORGE BANCROFT Charles Emmett Mack Frank Hopper

THE "TRUMPET CALL"

The glorious saga of Teddy Roosevelt and his adventures through Africa.

ADVENTURE - COMEDY - ROMANCE

Pathe Gazette - Kenya News - Empire News

DON'T MISS THIS SUPER FILM.

IF YOU WANT TO SELECT YOUR DISH FOR LUNCH OR DINNER -

EMPIRE BAR & RESTAURANT

QUIET AND COMFORTABLE.

MORNING and AFTERNOON TEA, BEER, etc. OPEN ON SUNDAYS.

THEATRE ROYAL

"Not For Publication"

Featuring - RALPH JESSON - From the Story "Temple of the Giants" by Robert Wells Binkha

PICCADILLY RESTAURANT (VICTORIA STREET) LUNCHES DINNERS

THE EAST AFRICAN KENNEL CLUB.

ANNUAL GENERAL MEETING. Notice is hereby given that the Annual General Meeting of the East African Kennel Club will be held at the Hotel Avenue, Nairobi, at 2-30 p.m. on Friday, February 21st, 1920.

- AGENDA. (1) The minutes of the last Annual General Meeting and of the Extraordinary General Meeting held on October 4th, 1919. (2) President's Report. (3) Balance Sheet and accounts for the year 1919. (4) Report on (a) The Kennel Club Show held at Nyirchi on July 18th, 1919. (b) The Dog Section at the Nairobi Show held on December 4th and 5th, 1919. (5) Confirmation of certain Resolutions of the General Committee which affect the Rules and Constitution of the Club. (6) Motions and questions of which due notice has been given in accordance with Rule 10. (7) Election of officers for 1920 in accordance with Rules 5 and 6 - (a) A President. (b) Four vice presidents. (c) Twelve members of the General Committee.

Removal Notice.

THE KENYA MOTOR PLOUGH Co. has removed their Workshops and Offices from Sadler Street to Albert House, Victoria Street adjoining Express Transport. We sell Stock Motor Ploughs and Stock Crawlers Tractors which are without an equal for economy and efficiency.

MELANYL



Marking Ink. Large size Shs. 1/75

STANDARD STATIONERY STORES, NAIROBI.

New Designs in Good Quality FURNITURE AND UPHOLSTERY At the Lowest Prices in Town. ERIC SHIRLEY VICTORIA STREET BEHIND THE COURT

Ingersoll Rand Company (S. A.) Limited. Makers of all Classes of Compressed Air Pumps and Pumps. Specialists in Deepwell Pumping Installations.

J. POLLOCK, Sadler Street, NAIROBI. Telephone No. 390.



P. GETHIN

Phone 150 Box 28. Grams: Gethin, NAIROBI. LUXURIOUS TOURING CARS FOR HIRE with experienced drivers.

Long Trips a Speciality.

For Sale. Hudson Torpedo. Good running motor. Good body. 2500. Clear, 4 Lorry. Specially fitted for water (2000 miles), £150. Fish 7 Seater. Really good. Any trial. 2510.

NOVELS AT THE Standard Stationery Store, NAIROBI.

Last month proved to be an easy record for Chevrolet Sales ever since the first old-fashioned four-cylinder model came to this country, years ago.

It is gratifying to see this good sign of continued prosperity, secured, as it is, not only by the merits of the car itself, but by the unfailing Service which it is our continued aim to give.

THE MOTOR MART & EXCHANGE LTD. NAIROBI - NAKURU - ELDORET - DAR-ES-SALAAM

AGENTS FROM THE COAST TO THE CONGO.





THE KIJABE CRIME RECONSTRUCTED.

Police Discussion of the Probabilities.

FINGER PRINT CLUES.

Identification Links with the MKamba Suspect.

The Kijabe crime was pieced together during committal proceedings given at the resumed enquiry at Kiambu yesterday, when the Superintendent in charge of the prosecution expressed the opinion that only one assailant had been involved.

It was stated that fingerprints found on the clock in Miss M'Kamba's room had been identified as those of the Kijabe suspect.

THE GIRL "ELIZABETH."

Confidential Native and Police sources at Miss Hilda Jane M'Kamba's residence in the vicinity of the District Commission Mr. F. B. Fern, said yesterday.

The native girl Elizabeth, referred to in the preceding day's report, was a very short appearance before the court on the previous day.

At the trial, Elizabeth, referred to in the preceding day's report, was a very short appearance before the court on the previous day.

The Photographic Society.

EXHIBITION OF LOAN PICTURES.

The Photographic Society of Kenya is again fortunate in having on its visit an exhibition of about thirty fine prints.

At the meeting of the Society on February 13, Mr. M. H. Fern, in the chair, Mr. H. B. Fern, as a member of the body, gave some account of the London Society.

He said that the Society had held a special exhibition in London on the subject of the Kijabe crime.

The Society had also held a special exhibition in London on the subject of the Kijabe crime.

The Society had also held a special exhibition in London on the subject of the Kijabe crime.

The Society had also held a special exhibition in London on the subject of the Kijabe crime.

The Society had also held a special exhibition in London on the subject of the Kijabe crime.

The Society had also held a special exhibition in London on the subject of the Kijabe crime.

A CRITICISM OF THE NEW WATER LAW.

Curious Form of the Family Class.

THE BOARD.

I have been much interested in the Water Bill, and am glad to see that it is being brought before the House.

The Board of Water Supply and Sewerage is a body of five members, appointed by the Government.

The Board of Water Supply and Sewerage is a body of five members, appointed by the Government.

The Board of Water Supply and Sewerage is a body of five members, appointed by the Government.

The Board of Water Supply and Sewerage is a body of five members, appointed by the Government.

The Board of Water Supply and Sewerage is a body of five members, appointed by the Government.

The Board of Water Supply and Sewerage is a body of five members, appointed by the Government.

The Board of Water Supply and Sewerage is a body of five members, appointed by the Government.

The Board of Water Supply and Sewerage is a body of five members, appointed by the Government.

The Board of Water Supply and Sewerage is a body of five members, appointed by the Government.

The Board of Water Supply and Sewerage is a body of five members, appointed by the Government.

The Board of Water Supply and Sewerage is a body of five members, appointed by the Government.

The Board of Water Supply and Sewerage is a body of five members, appointed by the Government.

The Board of Water Supply and Sewerage is a body of five members, appointed by the Government.

The Board of Water Supply and Sewerage is a body of five members, appointed by the Government.

The Board of Water Supply and Sewerage is a body of five members, appointed by the Government.

THE HOUSING PROBLEM IN MOMBASA.

Work of the Recent Government Enquiry.

THE BOARD.

I have been much interested in the Housing Bill, and am glad to see that it is being brought before the House.

The Housing Board is a body of five members, appointed by the Government.

The Housing Board is a body of five members, appointed by the Government.

The Housing Board is a body of five members, appointed by the Government.

The Housing Board is a body of five members, appointed by the Government.

The Housing Board is a body of five members, appointed by the Government.

The Housing Board is a body of five members, appointed by the Government.

The Housing Board is a body of five members, appointed by the Government.

The Housing Board is a body of five members, appointed by the Government.

The Housing Board is a body of five members, appointed by the Government.

The Housing Board is a body of five members, appointed by the Government.

The Housing Board is a body of five members, appointed by the Government.

The Housing Board is a body of five members, appointed by the Government.

The Housing Board is a body of five members, appointed by the Government.

The Housing Board is a body of five members, appointed by the Government.

The Housing Board is a body of five members, appointed by the Government.

Crusky to Oona.

NO BRACKEN OF A STRIP.

Crusky to Oona case was coming up at the District Magistrate's Court at Mombasa yesterday.

The Indian owner was said to be the owner of the land in question.

The Indian owner was said to be the owner of the land in question.

The Indian owner was said to be the owner of the land in question.

The Indian owner was said to be the owner of the land in question.

The Indian owner was said to be the owner of the land in question.

The Indian owner was said to be the owner of the land in question.

The Indian owner was said to be the owner of the land in question.

The Indian owner was said to be the owner of the land in question.

The Indian owner was said to be the owner of the land in question.

The Indian owner was said to be the owner of the land in question.

The Indian owner was said to be the owner of the land in question.

The Indian owner was said to be the owner of the land in question.

The Indian owner was said to be the owner of the land in question.

The Indian owner was said to be the owner of the land in question.

The Indian owner was said to be the owner of the land in question.

The Indian owner was said to be the owner of the land in question.

Keays Wins.

PROGRAMME FOR NEXT WEEK.

The following are the D.E.A. programmes for next week:

Monday, February 17: 9.30: Ball of the Cathedral of the Highlands Nairobi.

Monday, February 17: 10.0: British Official Wireless.

Monday, February 17: 10.30: British Official Wireless.

Monday, February 17: 11.0: British Official Wireless.

Monday, February 17: 11.30: British Official Wireless.

Monday, February 17: 12.0: British Official Wireless.

Monday, February 17: 12.30: British Official Wireless.

Monday, February 17: 13.0: British Official Wireless.

Monday, February 17: 13.30: British Official Wireless.

Monday, February 17: 14.0: British Official Wireless.

Monday, February 17: 14.30: British Official Wireless.

Monday, February 17: 15.0: British Official Wireless.

Monday, February 17: 15.30: British Official Wireless.

Monday, February 17: 16.0: British Official Wireless.

Monday, February 17: 16.30: British Official Wireless.

Monday, February 17: 17.0: British Official Wireless.



CORRESPONDENCE.

**Spertex**

The cloth for "CHAMPIONS OF GOLFERS."

A Thoroughly Dependable, Hard-wearing TWEED FABRIC

— for — PLUS-FOUR SUITS, SPORTS COATS and GOLF-JACKETS.

Patterns on Application.

**The House Bros.**  
THE HOUSE OF DISTINCTION,  
BAZAAR, P.O. Box 254  
NAIROBI.

The editor does not accept responsibility for the views expressed or the opinions formed by his correspondents and in all cases the names and addresses of the writer and sender of a letter, not necessarily for publication but for consideration, are essential to our consideration.

Labour Organisation.

**STATE BUREAU AND OFFICE.**

To the Editor "E.A. Standard."—In some countries there is no State Bureau and Office to the public and the community in any one country, in others they are not. In America they are not. In America they are not. In America they are not. In America they are not.

responsibility, or any other complaint, the Department should have the right to demand that the employer immediately.

The advantage of such a system should be obvious, and unassailable. Firstly the employer would be obliged to obtain a permit to employ his labour, and when he was immediately given to the labourer, he would be able to obtain employment without having to wait the country looking for it.

Labour Organisation.

**STATE BUREAU AND OFFICE.**

To the Editor "E.A. Standard."—In some countries there is no State Bureau and Office to the public and the community in any one country, in others they are not. In America they are not. In America they are not. In America they are not.

**INDIANS IN EAST AFRICA—THE COMMON SENSE.**

To the Editor "E.A. Standard."—The Government position of those who are to be given the right to diplomatic moves, with Lord Francis Bunsell as the high priest of the new order.

INDIANS IN EAST AFRICA—THE COMMON SENSE.

To the Editor "E.A. Standard."—The Government position of those who are to be given the right to diplomatic moves, with Lord Francis Bunsell as the high priest of the new order.

anyone else, the individual should be held responsible in the regional and departmental, obviously, it is not in any way as good as today.

The Post Office is a business. Why not run it as such a business?

Yours, etc.  
X. Y. E.  
Nairobi,  
February 11, 1930.

KILIMANI ROADS.

To the Editor "E.A. Standard."—The article on the road paper will be read with great interest. It is a most satisfactory people who have to travel over the roads. It is a most satisfactory people who have to travel over the roads.

ROAD BORDS.

To the Editor "E.A. Standard."—The article on the road paper will be read with great interest. It is a most satisfactory people who have to travel over the roads. It is a most satisfactory people who have to travel over the roads.

THE POST OFFICE.

To the Editor "E.A. Standard."—The article on the road paper will be read with great interest. It is a most satisfactory people who have to travel over the roads. It is a most satisfactory people who have to travel over the roads.

Paste is messy—Powder wasteful

**Gibbs Dentifrice**

cleans cleanly and economically

Gibbs Dentifrice makes the modern denture more comfortable. It does the work of both powder and paste without the messiness of either.

Gibbs Dentifrice saves teeth that loosen about. It ensures that sparkling perfection. It ensures that safety of the denture—where teeth meet gum and soft parts of the thin enamel.

And Gibbs Dentifrice is so delicately fragrant that it is a sheer delight to use.

Your teeth are Ivory Crowns—defend them with

**Gibbs Dentifrice**

WHOLESALE CHEMISTS

DISSAU, BEECHER, & CO. LTD.  
10, MARKET STREET, NAIROBI.  
SHEPHERD & CO. LTD.  
10, MARKET STREET, NAIROBI.  
SHEPHERD & CO. LTD.  
10, MARKET STREET, NAIROBI.  
SHEPHERD & CO. LTD.  
10, MARKET STREET, NAIROBI.

I would strongly advise the Government to institute labour employment agencies and to reserve, and an employment office in each town, to which the natives could go to obtain employment and to which the employer would refer for labour and help.

I would strongly advise the Government to institute labour employment agencies and to reserve, and an employment office in each town, to which the natives could go to obtain employment and to which the employer would refer for labour and help.

I would strongly advise the Government to institute labour employment agencies and to reserve, and an employment office in each town, to which the natives could go to obtain employment and to which the employer would refer for labour and help.

I would strongly advise the Government to institute labour employment agencies and to reserve, and an employment office in each town, to which the natives could go to obtain employment and to which the employer would refer for labour and help.

I would strongly advise the Government to institute labour employment agencies and to reserve, and an employment office in each town, to which the natives could go to obtain employment and to which the employer would refer for labour and help.

I would strongly advise the Government to institute labour employment agencies and to reserve, and an employment office in each town, to which the natives could go to obtain employment and to which the employer would refer for labour and help.

I would strongly advise the Government to institute labour employment agencies and to reserve, and an employment office in each town, to which the natives could go to obtain employment and to which the employer would refer for labour and help.

I would strongly advise the Government to institute labour employment agencies and to reserve, and an employment office in each town, to which the natives could go to obtain employment and to which the employer would refer for labour and help.

**S AND W**

WHOLESALE CHEMISTS

DISSAU, BEECHER, & CO. LTD.  
10, MARKET STREET, NAIROBI.  
SHEPHERD & CO. LTD.  
10, MARKET STREET, NAIROBI.  
SHEPHERD & CO. LTD.  
10, MARKET STREET, NAIROBI.

When an employer needed labour or the help of his skilled or unskilled labour, he was instructed to send the offender in to the Department to be dealt with. It was found necessary to detain the offender for

When an employer needed labour or the help of his skilled or unskilled labour, he was instructed to send the offender in to the Department to be dealt with. It was found necessary to detain the offender for

When an employer needed labour or the help of his skilled or unskilled labour, he was instructed to send the offender in to the Department to be dealt with. It was found necessary to detain the offender for

When an employer needed labour or the help of his skilled or unskilled labour, he was instructed to send the offender in to the Department to be dealt with. It was found necessary to detain the offender for

When an employer needed labour or the help of his skilled or unskilled labour, he was instructed to send the offender in to the Department to be dealt with. It was found necessary to detain the offender for

When an employer needed labour or the help of his skilled or unskilled labour, he was instructed to send the offender in to the Department to be dealt with. It was found necessary to detain the offender for

When an employer needed labour or the help of his skilled or unskilled labour, he was instructed to send the offender in to the Department to be dealt with. It was found necessary to detain the offender for

When an employer needed labour or the help of his skilled or unskilled labour, he was instructed to send the offender in to the Department to be dealt with. It was found necessary to detain the offender for

WHOLESALE PRICES ON APPLICATION.

**ELLIOT'S & Co. Ltd.**

P.O. Box 178. Telephone 80.

TO LET.

RUAKA. Stone House, 10 acres of land with plenty of Fruit Trees, its own river. Only few minutes from Nairobi.

Apply  
**Russell Suleman Verjee & Sons**  
P.O. Box 200, NAIROBI

When an employer needed labour or the help of his skilled or unskilled labour, he was instructed to send the offender in to the Department to be dealt with. It was found necessary to detain the offender for

When an employer needed labour or the help of his skilled or unskilled labour, he was instructed to send the offender in to the Department to be dealt with. It was found necessary to detain the offender for

When an employer needed labour or the help of his skilled or unskilled labour, he was instructed to send the offender in to the Department to be dealt with. It was found necessary to detain the offender for

When an employer needed labour or the help of his skilled or unskilled labour, he was instructed to send the offender in to the Department to be dealt with. It was found necessary to detain the offender for

**Kenya Mountain.**

By E. A. T. DUTTON.

"A book well worth sending to your friends at home."  
PRICE: Shs. 24/-; Post: Shs. 25/20.

**STANDARD STATIONERY STORES.**  
Ninth Avenue, NAIROBI.

When an employer needed labour or the help of his skilled or unskilled labour, he was instructed to send the offender in to the Department to be dealt with. It was found necessary to detain the offender for

**BON MARCHÉ**  
GOVERNMENT ROAD, NAIROBI.

When an employer needed labour or the help of his skilled or unskilled labour, he was instructed to send the offender in to the Department to be dealt with. It was found necessary to detain the offender for

**BON MARCHÉ**  
GOVERNMENT ROAD, NAIROBI.

When an employer needed labour or the help of his skilled or unskilled labour, he was instructed to send the offender in to the Department to be dealt with. It was found necessary to detain the offender for

**BON MARCHÉ**  
GOVERNMENT ROAD, NAIROBI.

When an employer needed labour or the help of his skilled or unskilled labour, he was instructed to send the offender in to the Department to be dealt with. It was found necessary to detain the offender for

**BON MARCHÉ**  
GOVERNMENT ROAD, NAIROBI.

**"ERASMIC" Shaving Stick.**

DOES NOT DRY ON THE FACE.

HAVE YOUR TYRES FREE DAILY AT EBOO'S PETROL STATION.

This Will Save You POUNDS

QUICK SERVICE IS OUR WATCHWORD.

**Eboo's Petrol Station**  
SIXTH AVENUE, NAIROBI.

**MARTELL'S**

Knows throughout the world.

For AGE and QUALITY.

Representatives—General Agencies, Ltd., 10, Market Street, Nairobi.

**MARTELL'S**

Knows throughout the world.

For AGE and QUALITY.

Representatives—General Agencies, Ltd., 10, Market Street, Nairobi.

**NEW!**

ALL PURPOSE BOX SPANNERS.

CRIBSEL. Six sizes for AMERICAN CARS. SHS. 3/75.

SHS. 3/75

SHS. 3/75

SOLE AGENTS: For the YLCHER Tool Co., Ltd., 10, Market Street, Nairobi.

**W. WINGRAM & Co.**

**THE TOOL HOUSE**  
NAIROBI.

GREAT REDUCTION IN PRICE, TENNENT'S BEER

PERFECTION WHISKY

THE Trocadero Bar and Restaurant

Attention of all our customers, is drawn to the fact that it has been brought to our notice, that some of our customers are attempting to take undue advantage of our good name, and pursue the undesirable practice of going from door to door to receive orders of tailoring works and supplying materials in our name as our representatives.

No representatives are being sent out by us to receive orders, and the orders thus given do not concern us as regards quality of materials and the workmanship.

**BON MARCHÉ**  
GOVERNMENT ROAD, NAIROBI.

**Rates of Exchange.**

(BY WIRELESS.)

Buyer, Jan. 11.

Paris, 124.19  
New York, 25.20  
Buenos Aires, 54.00  
Santo Domingo, 25.00  
Havana, 25.00  
Cienfuegos, 25.00  
San Juan, 25.00  
Santiago, 25.00  
Lima, 25.00  
Bogota, 25.00  
Medan, 25.00  
Batavia, 25.00  
Sourabaya, 25.00  
Manila, 25.00  
Cebu, 25.00  
Singapore, 25.00  
Hong Kong, 25.00  
Shanghai, 25.00  
Canton, 25.00  
Hankow, 25.00  
Tientsin, 25.00  
Peking, 25.00  
Harbin, 25.00  
Yokohama, 25.00  
Kobe, 25.00  
Osaka, 25.00  
Tokyo, 25.00  
London, 25.00  
Geneva, 25.00  
Basel, 25.00  
Zurich, 25.00  
Bern, 25.00  
Vienna, 25.00  
Brussels, 25.00  
Amsterdam, 25.00  
Frankfurt, 25.00  
Munich, 25.00  
Cologne, 25.00  
Dresden, 25.00  
Leipzig, 25.00  
Hamburg, 25.00  
Berlin, 25.00  
Stuttgart, 25.00  
Munich, 25.00  
Cologne, 25.00  
Dresden, 25.00  
Leipzig, 25.00  
Hamburg, 25.00  
Berlin, 25.00  
Stuttgart, 25.00

AUCTION SALES.



Sale of Soap Machinery and Plant.

Daily instructions shall call for Public Auction without reserve...

FRIDAY, 16th FEBRUARY, 1930, at 10 a.m. THE ENTIRE PLANT AND MACHINERY installed therein including...

By Press by Christensen and Meyer. Large Oven with Mechanical Mixer...

The Auctioneers respectfully intimate that they do not purchase goods on a sale for general resale...

MUTER AND OSWALD LTD. Auctioneers, P. O. Box 257

AUSTIN'S AUCTIONS.

CATALOGUE SALE OF FURNITURE, CHESTERFIELD SUITES, STOVES, BEDS, LAWN MOWER, CONCRETE MIXER, DOUGLAS and RUDGE MOTOR CYCLES, ETC.

AUSTIN & CO., will sell WITHOUT RESERVE unless stated, at THE MART, SATURDAY, FEB. 15th, at 10 a.m.

Well made Chesterfield Suite upholstered in Tapestry. Single Wood beds complete. Writing Bureau. Most safe. OFFICE DESKS...

TEAK COUNTER SHOWCASE GLASS TOP 6' 6" 6". Cor Matting, Bedside Cabinets, RANSMORE LAWN MOWER in good order.

MILLER CONCRETE MIXING MACHINE in good order. RUDGE-WHITWORTH MOTOR CYCLE in good running order.

DOUGLAS MOTOR CYCLES 4 h.p. and 2 1/2 h.p. in excellent running order (res.). and numerous other articles.

AUSTIN & CO., Auctioneers and Estate Agents, Harding St., Nairobi.

THACKRAH'S

The Up-Country (Established 1917) LAND AND ESTATE AGENTS, AUCTIONEERS & APPROVED VALUERS, INSURANCE, SHIPPING AND FINANCIAL AGENTS.

JUST UNPACKED

Fresh stock of plain and floral Art Silks in very smart colours, also Silk, Crepe-de-chêne, Vici Grege, Georgettes, Fuji, Shantung, and Macintosh Silks, all in attractive designs and latest shades.

PRICES REDUCED TO A REMARKABLE EXTENT. A VISIT WILL CONVINCE YOU.

LADHAM STORES - General Millers, Hosiery and Haberdashers - Govt. Road, NAIROBI P. O. Box 516.



FOR SALE

RUARARA FREEHOLD RESIDENTIAL PROPERTY 11,804 acres Freehold with wood and iron house...

This property has a right frontage and certain areas are laid out in fruit trees, flowers, etc. PRICE £500 or near offer.

MUTER and OSWALD Ltd., Sole Agents, NAIROBI

Lombard Code.

Designed strictly in accordance with the International Telegraphic Regulations effective on and after October 1st, 1929.

Economy-Security Time Saving Facilities Doubled Phrases.

879 Pages - Strongly Bound. Shgs. 120-00.

Obtainable from THE STANDARD STATIONERY STORES, NAIROBI.

P.O. Box 338.

E. Hutchison & Co. SALE OF FORD SPARES.

Favoured with instructions we shall sell by public auction, WITHOUT RESERVE, at our Mart, Govt. Road, on Friday, the 14th inst. at 10 a.m.

A large selection of GENUINE NEW FORD SPARES including - Radiators, Axle shafts, Crank Cases, Bonnets, Radius Rods, Mudguards, Wheels, Horns, Lamps, Engines, Pistons, Piston Rings, Springs, Brakes, Linkages, Cylinder Blocks, Wind Shields and Fittings, Tank, Farns, Desches, Head Lamps, Worm Wheels, Gear Parts, Etc., etc.

E. HUTCHISON & Co., AUCTIONEERS, ETC.

SANDS & CO. SALE OF HORSES

At our Saddlers Street Premises, Nairobi, Saturday, 15th Feb., at 11 a.m. Acting on instructions from the Chief Veterinary Research Officer, WE WILL SELL:

15 PONIES. These horses have been experimentally immunized against horse sickness and have survived various immunized tests. They are a nice even lot and valuable.

On account of K.A.B.: 499 Water-proof Canvas Bags, Sundries.

SANDS & CO., AUCTIONEERS

SANDS & CO. PASTEURISED MILK.

Acting as agents for Kenya Co-op Creamery, we are now booking orders for best Pasteurised Milk. Delivery Nairobi Station every morning. We accept orders for one or more ten gallon lots. We can guarantee supplies throughout the year. If you want a supply of best fresh milk for your customers come and see us about it.

SANDS & CO., RADDLE STREET.

MARAGUA LIMITED (IN VOLUNTARY LIQUIDATION), PURSUANT TO SECTION 217 (1) OF THE COMPANIES

NOTICE is hereby given that a Meeting of the Shareholders of the above Company will be held at the Offices of Dalrymple and Company Limited, Livingstone House, Nairobi, on Monday the 17th day of March, 1930, at 11 a.m., for the purposes of laying before them the Meeting account of the winding up showing how the winding up has been conducted, and the property of the Company disposed of, and giving any explanation therefor.

Nairobi, 11th February, 1930. W. C. HUNTER, Liquidator.

Reliance Transport Co., Ltd.

TRANSPORT. WOOD FUEL. COAL. POLES and FENCING POSTS. MANURE and LIME. STORAGE. BOLUS HOUSE, Government Road. Telephone: Office 331. Workshop: 627. Telegrams: "Reliance." P. O. Box 482.

JAMAL PIRBHAI SELLS ANYTHING YOU CANNOT SELL.

Acting as Auctioneer, Official Receiver and Government Approved Valuer. AUCTION EVERY SATURDAY and SUNDAY, commencing at 10 a.m. and 9 a.m. respectively. 399, Princes Street, Nairobi. Phone No. 366.

NOTE:—We receive reliable second-hand to sell, but highest price possible available for such articles.

THE PREMIER USED CAR SALESMAN

Godfrey's Car Mart Texaco House - Sadler Street.

50 USED CARS - 50 TO SELECT FROM

Hudson Super 8, 80 Body. An exceptionally well equipped... Ford Six Body, Label M... Chevrolet Truck, Latest model... Hudson Touring, 7 Seater. In good running order and in... Erskine Saloon, Fully equipped and in perfect running order and condition... ARIEL DOUGLAS and OTHER MOTORCYCLES. BREAK-DOWN TRUCK (with crane) available any time any day. New and Second-Hand Spares for all makes of cars. NEW TYRES at CLEAR PRICES. CARS FOR HIRE WITH DRIVER or DRIVE YOURSELF.

Phone 149, Box 728. W. M. GODFREY, Sole Proprietor.

TO LET.

SMALL MODERN HOUSE, FURNISHED, FORREST ROAD, FROM 1ST APRIL. STONE HOUSE, UNFURNISHED, SALISBURY ROAD, IMMEDIATE OCCUPATION. Properties of all description for sale.

Denovan & Diebel. LAND AGENTS, CITY HOUSE.

STRONG ROOM DOORS

JOHN TANN LTD.

The Oldest Established Firm of Safe Manufacturers in the World.

BEALES & SMITHSON.

Avenue House, Sixth Avenue, Nairobi.

OUR Snapshot Competition WEEKLY PRIZES:

1st Prize, Shs. 15/- Extra Prize, Shs. 10/- (if warranted). Shs. 5/- for every Picture Published.

The Competition is for Photographs of EAST AFRICA INTEREST and must be taken by the Competitor. THE NAME and ADDRESS of the Competitor must be printed on the SUBJECT of the PHOTOGRAPH as well as written back of the print.

ANY NUMBER of prints may be sent by the COMPETITOR. THE "SNAPSHOT" COMPETITION East African Standard, P. O. Box 260, NAIROBI.

If Films or Plates are sent we will make reasonable reproduction if necessary. All those wishing to be returned after publication must be enclosed in an envelope addressed to "East African Standard," Nairobi. If no return is required, a STAMPED RETURN ENVELOPE must be enclosed. The Rules of the Contest in Detail.

MUTER and OSWALD Ltd., Auctioneers, NAIROBI.

P.O. Box 338.

'PHONE 372

P.O. Box 260, NAIROBI.

Prote Pen

**NATIONAL BANK OF INDIA LIMITED.**  
(Incorporated in United Kingdom.)  
Branches to the Colony and  
Possessions of Kenya and  
Tanganyika Territory  
Government.  
Shareholder's Fund... £4,000,000  
Paid-up Capital... £2,000,000  
Reserve Fund... £2,000,000

14, Abchurch Lane, London, E.C. 4.  
**BRANCHES:** Bombay, Madras,  
Calcutta, Rangoon, Bataavia,  
Batavia, Bencoolen, Calcutta,  
Canton, Cebu, Hongkong, India,  
Kobe, London, Lyons, Manila,  
Peking, Rangoon, Singapore,  
Sourabaya, Yokohama.

**PERKED DEPOSIT.**—Deposits  
are received for fixed periods on  
terms which may be inserted on  
application.

**REMITTANCE.**—The Bank grants Drafts on the  
Main Office and Branches at the  
current rates of Exchange forward-  
ing first copy of the Bill direct to  
the person who requires.  
Every description of Banking  
business transacted with all parts  
of the world.  
**A. H. HICKWICK,**  
Manager, Nairobi Branch.

**BUY THE VICTORIA NYRAGA  
SUGAR COMPANY'S  
No. 1 WHITE CENTRAL  
SUGAR**  
at the following prices from  
the undersigned stores.  
Per Pound (56 lbs) cost £10/25  
Per cask (56 lbs) £16/75

S. Jacobs, Ltd., Nairobi.  
H. R. Dixon, Nairobi.  
M. R. Elliott & Co., Ltd.,  
Nairobi and Branches.  
Wickham, Limited,  
Nairobi.  
Colonial General Stores,  
Delaware, Port of Spain.  
The Parklands Stores,  
Nairobi.  
Hartshorn Brothers,  
Nairobi.  
Rogers Trading Co.,  
Nairobi.  
S. Jacobs, Limited,  
Nairobi.  
W. Douglas,  
Nairobi.  
Henry Wilson,  
Nairobi.

SPORTS and PASTIMES.

AFRICAN OLYMPIC SPORTS.

A Review of Monday's  
Celebrating.



RETOUCH  
WINGS AND  
WHEELS

It's easy with  
this perfected  
cellulose finish.  
**BRUSHING ROBBIALO**

AGENTS:  
SMITH, HACKMEYER & Co.  
Box 290, NAIROBI.

**HERETOFORE PERFORMANCES.**  
In discussing the relative per-  
formances of men in the field of  
athletics it is essential, if the com-  
parison is to be of any worth,  
the conditions under which they  
were accomplished should be  
taken into consideration. Looking  
back over the African Olympic  
Sports the reviewer is bound to  
agree that the performances were  
more than one instance. When  
that is said, allowance is being  
made for faults in technique.  
It is realized by the general public  
that there is a great deal to be  
learned from the study of the  
work. One could see on a man's  
ability in this direction.  
It will immediately go off the deep  
end. That is a fact that is not  
only shared by a dozen men in Great  
Britain who can be reckoned as  
first class time-keepers. The  
points in that in the case of records  
there must be absolute accuracy,  
otherwise they are worthless.

Compare the scores and average  
time-keepers. I am usually pre-  
pared to add three-tenths of a  
second to the time. By that  
margin we come nearer a realiza-  
tion of the performance.  
**The Metric and Denominator.**  
That over and done with, one  
can go on to discuss the merits  
or demerits of Monday's games.  
In the first place let us look at  
the 100 yards race. The winner  
for 23 seconds. Even at that it  
was not great, despite the under  
foot conditions, which may have  
brought the man up to six or eight  
tenths of a second. The British  
Standard record is 18 1/2, but  
although Paddock has 20 3/8 in  
his credit.

**INSURE YOUR MOTOR CARS  
and MOTOR CYCLES**  
with the  
**AFRICAN GUARANTEE  
& INDEMNITY Co., Ltd.,  
M. D. KAMPE,**  
Chief Agent.

**EVERYTHING FOR SPORT**  
AT  
**MAY & CO., LTD.**

hills, the winner accomplished  
5 feet 6 inches, in practice the  
previous day. In the run the  
Pulse have a few jumper, who  
with proper training could be  
brought forward very considerably.  
The fact that the men who in  
others lay in the approach to the  
jump, he has the most to be  
off. Kipiyanda has the hold for a  
moment, but the error in  
taking it.

**The Outstanding Achievements.**  
The three starting perfor-  
mances of the afternoon were accom-  
plished in the half mile, 1 mile and the  
mile race. Kipiyanda's 2 min. 5 1/2  
seconds, was good, even if we add  
tenths to the time. The one-  
milion record is held by J.R.  
1/2 Foster, Germany, in 1 min.  
21 1/2 seconds. Two minutes is a  
good standard, and the Police re-  
sponsive a time seems some-  
what good, because there were  
no disadvantages. The mile in  
2 min. 41 1/2 seconds represents  
good running. Shabazz's time, 2  
min. 44 1/2, Cummings 5 min.  
47 seconds and Mackenzie's  
2 1/2 minutes. In the light of these  
performances Mackenzie's running  
may very well. His feet were  
showed that he had a little in  
hand had he been pushed to  
greater extent. Turning round  
the seven miles road race, the  
Kipiyanda's 1 1/4 minutes was  
very good. Shabazz has 25 min.  
17 1/2 seconds to his credit, which  
was hardly blown, in total com-  
parison to the second time. The  
winner could have cut the time, I  
feel sure, but he that as it may,  
achieved a really good run.

**A Flatstick "Clock."**  
With regard to the sports 1410  
seemed to me a flatstick clock.  
The going was against such a  
time, and again there was a some-  
what wallowing start.

Taken all over the men were  
very keen, and the competition of  
this year than has ever been seen  
before, a proof of the recog-  
nition which the games are now  
meeting. The arrangements for  
the very best, as good as any  
gatherings I have seen at home.  
What more could we wish, un-  
der the assistance of the Police,  
and an energetic chief of staff and

Canadian Horse Breeder  
Comes to Kenya.

TO TAKE UP TRAINING.

A recent arrival in the Colony  
was Mr. J. Robertson, a Cana-  
dian horse-breeder, who intends to  
follow the training of the Kenya  
while also directing his attention  
to training and racing.  
A native of Scotland, Mr.  
Robertson emigrated to Canada  
with his brood as an early boy,  
and later became identified with  
the name in horse breeding. After  
five years, however, he elected to  
go on his own. The problem of  
the stud he sold in the States,  
Mexico, Cuba and the Argentina.  
With the outbreak of the Great  
War he joined up in the field  
hospital, and on the cessation of  
hostilities again took up horse  
breeding, until an epidemic of an-  
thrax practically cleared his stud.  
In the course of his travels Mr.  
Robertson was visited by an  
elderly steward, and he also  
gave a considerable amount of  
training as well as riding both on  
the flat and over the steeple. It is  
his intention to take up training  
and riding in Kenya.

organizer like Captain Howie is  
difficult to manage.  
**Too Many Officials.**  
There is a point I think the  
clubs might direct their atten-  
tion towards. It seemed  
to me that a longer finishing  
straight is gunnery necessary.  
The short stretch met with on  
Monday hardly gave the runners  
a chance. Again, one of the heads  
was noticeably "wringed." It was  
apparent from the number of  
times the flag were pulled. Last,  
but not least, it seemed horses  
were too many officials, who had  
all the glory and vantage point of  
being first finishers. It is not  
clear, but who did not do a job  
of work for the honour. Officials  
are there to do things, and if a  
man takes on the job he should  
stick at it, and not have to be  
replaced every minute to come and  
do the work.

The African Olympic of 1920  
was a success, and we are  
to it to be hoped that ere long  
we shall see a real Olympic.  
**COBENTHIAN.**



SPEND YOUR HOLIDAY IN  
**SOUTH AFRICA**  
RAILWAY EXCURSION FARES are available  
all the year round for parties of four or  
more travelling together over the lines of the  
South African RAILWAY ADMINISTRATION.

TOURS arranged for parties of individual per-  
sons as inclusive fares to cover rail, hotel  
motor and other services.  
Through and Return Tickets from Kenya,  
Uganda and Tanganyika to Any Station on  
the South African Railways can now be  
arranged in Nairobi.  
Further particulars and literature are obtain-  
able from—

**THE SOUTH AFRICA OFFICE.**  
(P.O. Box 524), Somerset Hotel, NAIROBI.  
The Manager,  
Tourist and Travel Bureau,  
South African Railways,  
JOHANNESBURG.

The Tourist Agent, S.A.R. Tourist Bureau,  
S.A.B. HOUSE, DURBAN.  
The Tourist Agent, S.A.R. Tourist Bureau,  
S.A.B. HOUSE, DURBAN.

Theo. SCHOUTEN  
LADIES and GENTLEMEN'S HAIRDRESSING

Permanent Waving a Speciality  
UNDER PERSONAL SUPERVISION.  
All the Leading Toilet Requisites Stocked.  
GOVERNMENT ROAD.  
Also at MOMBASA and NAKURU.  
P.O. Box 334. Phone 245.

Chiropractic Spinal Manipulation

the now universally-recognized Douglas System of Healing  
has restored thousands of sufferers to Health. By removing the  
pressure on the nerves, which is causing your Headaches, Neuritis,  
Sciatica, Spasm, Liver and Kidney Troubles, etc. It will bring  
you to renewed Life, Vigor and Energy.  
Miss E. GOULD, D.C., Special Nervous Specialist, who has had very  
wide and successful experience, is now practising at Tav's Hotel,  
(Boxes 21) Nairobi. Hours 9.30-12, 2-4, 6.30-9.30-11.  
and by appointment. Telephone No. 282.

THE FOR 30 cwt. TRUCK.

IS DIFFERENT FROM OTHER TRUCKS OF ITS KIND.

The Advantages Are

A Minimum Petrol Consumption of 15 Miles per Gallon.

Developes 20% More Pulling Power.

Will take full Load up any known Gradient.

Can be Supplied with Battery or Magneto Ignition.

It Costs Less to Purchase

3 Gear Chassis 32' x 6' Oversize Tyres £175-15 0.  
6 Gear Chassis 32' x 6' Oversize Tyres £190-15-0.

NAIROBI MOTORS.

Box 460.

6th AVENUE.

Tel. 317.



LIGHT OR DARK

DAILY EDITION.

16 PAGES

THE Standard

IT DOES YOU GOOD.

THE CLOSER UNION MYSTERY.

Question Receding from Public View.

LORD PASSFIELD'S POSITION.

Growing Belief That Settlement Must Include Political Issues.

The London Correspondent of the "East African Standard" has tried to find out what is happening to Closer Union... The London Correspondent of the "East African Standard" has tried to find out what is happening to Closer Union... The London Correspondent of the "East African Standard" has tried to find out what is happening to Closer Union...

COLONIAL OFFICE "WEAKNESS."

London, January 12.

London, January 12. It is being widely recognized that the Colonial Office is in a weak hands... London, January 12. It is being widely recognized that the Colonial Office is in a weak hands... London, January 12. It is being widely recognized that the Colonial Office is in a weak hands...

The Political Scene.

It seems to be hardening... London, January 12. It is being widely recognized that the Colonial Office is in a weak hands... London, January 12. It is being widely recognized that the Colonial Office is in a weak hands...

A "Tear" Review.

It is believed that the agreement... London, January 12. It is being widely recognized that the Colonial Office is in a weak hands... London, January 12. It is being widely recognized that the Colonial Office is in a weak hands...

RELIGIOUS PERSECUTION IN RUSSIA.

Protests by British Prelates.

SPECIAL DAY OF PRAYER.

Effect on Relations Between the Two Churches.

London, Feb. 12. The Archbishop of Canterbury and the Bishop of London... London, Feb. 12. The Archbishop of Canterbury and the Bishop of London... London, Feb. 12. The Archbishop of Canterbury and the Bishop of London...

THE HOUSE OF COMMONS.

Mr. Macdonald's Motion.

London, Feb. 12. The House of Commons... London, Feb. 12. The House of Commons... London, Feb. 12. The House of Commons...

The Political Scene.

It seems to be hardening... London, January 12. It is being widely recognized that the Colonial Office is in a weak hands... London, January 12. It is being widely recognized that the Colonial Office is in a weak hands...

A "Tear" Review.

It is believed that the agreement... London, January 12. It is being widely recognized that the Colonial Office is in a weak hands... London, January 12. It is being widely recognized that the Colonial Office is in a weak hands...

THE LEADER

THE OLDEST ESTABLISHED NEWSPAPER PUBLISHED IN KENYA AND UGANDA.

NAIROBI, FRIDAY, FEBRUARY 14, 1950.

THE EAST AFRICAN CONFERENCE.

London, Feb. 12. The East African Conference... London, Feb. 12. The East African Conference... London, Feb. 12. The East African Conference...

THE HOUSE OF COMMONS.

London, Feb. 12. The House of Commons... London, Feb. 12. The House of Commons... London, Feb. 12. The House of Commons...

The Political Scene.

It seems to be hardening... London, January 12. It is being widely recognized that the Colonial Office is in a weak hands... London, January 12. It is being widely recognized that the Colonial Office is in a weak hands...

A "Tear" Review.

It is believed that the agreement... London, January 12. It is being widely recognized that the Colonial Office is in a weak hands... London, January 12. It is being widely recognized that the Colonial Office is in a weak hands...

The Political Scene.

It seems to be hardening... London, January 12. It is being widely recognized that the Colonial Office is in a weak hands... London, January 12. It is being widely recognized that the Colonial Office is in a weak hands...

NEW GOVERNOR-GENERAL OF SOUTH AFRICA.

Appointment of Successor to Earl of Athol.

EARL OF CLARENDON.

SIR WILLIAM ROYDES AT CAPE TOWN.

London, Feb. 12. The King has approved the appointment of the Earl of Clarendon as Governor-General of the Union of South Africa... London, Feb. 12. The King has approved the appointment of the Earl of Clarendon as Governor-General of the Union of South Africa...

The Political Scene.

It seems to be hardening... London, January 12. It is being widely recognized that the Colonial Office is in a weak hands... London, January 12. It is being widely recognized that the Colonial Office is in a weak hands...

A "Tear" Review.

It is believed that the agreement... London, January 12. It is being widely recognized that the Colonial Office is in a weak hands... London, January 12. It is being widely recognized that the Colonial Office is in a weak hands...

The Political Scene.

It seems to be hardening... London, January 12. It is being widely recognized that the Colonial Office is in a weak hands... London, January 12. It is being widely recognized that the Colonial Office is in a weak hands...

WASTEFUL EXPENDITURE IN EAST AFRICA.

Protest Against Official Methods.

SUICIDE OF THE NATIVES.

WASTEFUL EXPENDITURE IN EAST AFRICA.

London, Feb. 12. The King has approved the appointment of the Earl of Clarendon as Governor-General of the Union of South Africa... London, Feb. 12. The King has approved the appointment of the Earl of Clarendon as Governor-General of the Union of South Africa...

The Political Scene.

It seems to be hardening... London, January 12. It is being widely recognized that the Colonial Office is in a weak hands... London, January 12. It is being widely recognized that the Colonial Office is in a weak hands...

A "Tear" Review.

It is believed that the agreement... London, January 12. It is being widely recognized that the Colonial Office is in a weak hands... London, January 12. It is being widely recognized that the Colonial Office is in a weak hands...

The Political Scene.

It seems to be hardening... London, January 12. It is being widely recognized that the Colonial Office is in a weak hands... London, January 12. It is being widely recognized that the Colonial Office is in a weak hands...

NEW ECONOMIC ADVISORY COUNCIL.

Appointment of eminent Authorities.

A STRONG BODY.

NEW ECONOMIC ADVISORY COUNCIL.

London, Feb. 12. The new Economic Advisory Council... London, Feb. 12. The new Economic Advisory Council... London, Feb. 12. The new Economic Advisory Council...

The Political Scene.

It seems to be hardening... London, January 12. It is being widely recognized that the Colonial Office is in a weak hands... London, January 12. It is being widely recognized that the Colonial Office is in a weak hands...

A "Tear" Review.

It is believed that the agreement... London, January 12. It is being widely recognized that the Colonial Office is in a weak hands... London, January 12. It is being widely recognized that the Colonial Office is in a weak hands...

The Political Scene.

It seems to be hardening... London, January 12. It is being widely recognized that the Colonial Office is in a weak hands... London, January 12. It is being widely recognized that the Colonial Office is in a weak hands...

MOSEY HARBET.

London, February 13.

London, February 13. Mosey Harbet... London, February 13. Mosey Harbet... London, February 13. Mosey Harbet...

The Political Scene.

It seems to be hardening... London, January 12. It is being widely recognized that the Colonial Office is in a weak hands... London, January 12. It is being widely recognized that the Colonial Office is in a weak hands...

A "Tear" Review.

It is believed that the agreement... London, January 12. It is being widely recognized that the Colonial Office is in a weak hands... London, January 12. It is being widely recognized that the Colonial Office is in a weak hands...

THE HOUSE OF COMMONS.

Mr. Macdonald's Motion.

London, Feb. 12. The House of Commons... London, Feb. 12. The House of Commons... London, Feb. 12. The House of Commons...

The Political Scene.

It seems to be hardening... London, January 12. It is being widely recognized that the Colonial Office is in a weak hands... London, January 12. It is being widely recognized that the Colonial Office is in a weak hands...

A "Tear" Review.

It is believed that the agreement... London, January 12. It is being widely recognized that the Colonial Office is in a weak hands... London, January 12. It is being widely recognized that the Colonial Office is in a weak hands...

Up to the minute Styles as always

Advertisement for Whiteaway, Laidlaw & Co., Ltd. featuring various clothing items like 'Nansette', 'Ladies' all-wool', 'Gentlemen's', 'Ladies Double-Felts', and 'Ladies Double-Felts'. Includes a small illustration of a woman in a dress.

WHITEAWAY, LAIDLAW & Co., Ltd. NAIROBI







British India Steam Navigation Company, Limited, AND PENINSULAR AND ORIENTAL STEAM NAVIGATION CO.

UNION-CASTLE LINE.

LONDON AND EAST AFRICA LINE. LONDON TO NAIROBI via Mombasa, Port Said, Port Sudan and Aden, Outwards and Homewards. Steamers: Arrive Mombasa, Sails from London about...

ROMBAH-DURBAN MAIL SERVICE. Calling Kilindini, Zanzibar, Dar-es-Salaam, Pemba, Delagoa Bay fortnightly. Also Mombasa monthly Outwards and Inwards. TO ROMBAH: s.s. "Khasada", s.s. "Kangara", s.s. "Kama", s.s. "Khasada"...

COASTAL SERVICE. s.s. "Duraka", s.s. "Lama", s.s. "Peb". Special 1st Class Excursion: MOMBASA AND IBO. (Sia. 800/- and 800/- respectively, etc.)

Compagnia Italiana Transatlantica

Weekly Passenger Service to NAPLES and GENOA. THE BEST ROUTE TO ENGLAND. SAILINGS from KILINDINI to Genoa on the 1st of every month. s.s. "MAZZINI" - 1st March, 1st May, etc.

Deutsche Ost-Afrika-Linie

(GERMAN AFRICAN SERVICE). DEUTSCHE OST-AFRIKA-LINIE GENERAL AGENCY, MOMBASA. Cable: "Ostafrika" P.O. 212. ROMBAH VIA SUVA CANAL. From Mombasa: s.s. WATUSEI, s.s. USAMBARA, s.s. NARARA, s.s. TANGANIKA, s.s. USUMBUKA, s.s. USAMBARA, s.s. USHENA, s.s. NARARA, s.s. USAMBARA...

THE AFRICAN MARINE AND GENERAL ENGINEERING CO., Ltd. KILINDINI - MOMBASA. MARINE AND MECHANICAL ENGINEERS, REPAIRS TO ANY TYPE OF MACHINERY. Specialists in Remodelling of Boats, Care and Fitting of Bronze Propellers, etc.

OLD SOLDIERS

NEVER DIE THEY GET YOUNGERS EVERY DAY. CALL FOR: YOUNGERS Sparkling SCOTCH ALE. Fresh stock of plain and floral Art Silks in very smart colors; also Silk, Crepe, chamois, Vici Crepe, Georgettes, Fifi, Sheeting, and Manchester Silks, all in attractive designs and latest shades.

Advertising, to be successful, must be based on truth. Therefore we have no hesitation to state that we give full value for money.

The Express Transport COMPANY. Carriage Contractors to Kenya and Uganda. NAIROBI and MOMBASA. P.O. Box 413

A. J. ELY and Co. Ltd. SEAMBA CHEMISTS, NAIROBI. COPPER RAIN GAUGE. Complete with Glasses ... Shs. 25/50 Spare Glasses ... Shs. 4/50

TO LET. RUAKA. Stone House, 10 acres of land with plenty of Fruit Trees, its own river. Husain Sulaiman Verjee & Sons. P.O. Box 28. GOVERNMENT ROAD, NAIROBI

Clan - Ellerman - Harrison Lines, (JOINT SERVICE)

Liverpool - Glasgow - Avonmouth - Manchester. LOADING FOR LIVERPOOL. Due to arrive: Due to sail: s.s. "City of Bath", s.s. "Audley", s.s. "City of London"...

The African Mercantile Company, Limited, MOMBASA (Cables Navigation) NAIROBI

Theo. SCHOUTEN LADIES and GENTLEMEN'S HAIRDRESSING. Permanent Waving a Speciality UNDER PERSONAL SUPERVISION. All the Leading Toilet Requisites Stocked. GOVERNMENT ROAD. Also at MOMBASA and NAKURU. P.O. Box 234. Phone 245.

Chivers' Canned Fruit. The link between the ENGLISH ORCHARD AND EAST AFRICAN HOMES. R. O. HAMILTON, Ltd. NAIROBI. Phone 122

MESSAGERIES MARITIMES (FRENCH MAIL STEAMERS). Regular and fortnightly service from and to Marseilles. THE QUICKEST ROUTE TO LONDON. NEXT SAILINGS TO MARSAILLES: s.s. "General Yvon", s.s. "Clamshell", s.s. "Bismarck de la Tour", s.s. "Vila de Strasbourg"...

THE BRADFORD MANUFACTURING CO., LTD. We have just received a selected consignment. Ladies real Leather Coats, Short and Long suitable for Motoring, etc., in all the newest shades. Also lengths of Ladies Quoting Tweeds. Further reduction in prices of Dresses, Coat Jumpers, Suits, Jumpers and Waterproofs. The goods are nearly all fresh stocks and are excellent value.

Keith Timber Co. LIMITED. Sadler Street, NAIROBI. THE PLACE FOR TIMBER, MOULDING, WOOD BE FLOORING, ROOFING AND PLANT THAT BEHIND AT REASONABLE PRICES. P. O. Box 874. Phone 5

PIANOFORTE TUNING AND REPAIRING. Ten years experience in Kenya Colony and five year with Messrs. G. & Co., London. F. A. HEAD, Box 474, NAIROBI. OVERSEAS MAILS.

Table with columns: STEAMERS, FROM, DUE AT, ARRIVAL, DEPARTURE. Includes entries for Madras, Aden, Europe, Bombay, Mombasa, etc.

UPLANDS BACON FACTORY. Luncheons, Dinners and Picnics are not complete without resort to our 33 Varieties of Tinned and Glass Goods. NEVER SO GOOD NEVER SO CHEAP. As up sale at all the leading Stores in Eastern Africa. LADHARAM STORES. General Milliners, Hosiery and Haberdashers. 601, 602, NAIROBI. P.O. Box 216.

BOX TENGOR.



The cheap Camera for everybody with three interchangeable lenses for focus, distance, groups and portraits. Size 3 1/2 x 2 1/2. Price 4/6. Try our Photographic Department. First class Developing, Printing and Enlarging. "THE LENS" Limited. PRINCE'S HOUSE, GRAMA: "FOOTPRINTS."

If You Don't Want Your Face

An attract attention, don't give it attention. A woman's radiant complexion is a compelling sight, and yet, how easily spoiled. Just a little facial massage and Dupon Permanent Creaming. Then 60-64—it's not magic.

ROMANOS

LADIES and GENTLEMEN'S HAIRDRESSING, NAIROBI HOUSE, GOVT. ROAD. Phone 264. Furrows and Afternoon Tea served in the Lounge, gratis.

The Trocadero Bar and Restaurant

Proprietor.—W. M. Godfrey. Manager: Mr. Bob Billings. GRILLS AT ALL HOURS. ALL MEALS—REFRESHMENTS—TEA. COME AND TRY "OLD BOB'S" BAR SNACKS. His Pressed Beef and Curries Cannot be Beaten. The Best Dinner Served in Town at Shs. 4/-.

EX-SERVICEMEN OF BRITAIN AND GERMANY.

Message of Greetings Exchanged.

A RECONCILIATION.

BY THE ASSOCIATION OF BRITISH EX-SERVICEMEN. London, (By Mail.) The following correspondence, in view of the recent visit of General von Luttwig to this country in connection with the East African Campaign Dinner, will be of interest. It has taken place between General von Luttwig, who entertained the German officers during the visit here, and veterans German Disabled Soldiers' Association.

(Extracts sent by General Sir Ivo Hamilton—"A" Christmas Message to Germany. The veterans disabled British soldiers at the Officers Mess, Brookwood, and at German hospitals."

From The State Association of German Disabled Soldiers and Veterans Deceased by the War. In response to the Christmas Greetings which we received from the severely wounded English Soldiers of Offord House, Southampton we send our Best Wishes for a Happy New Year. The victims of the War feel that they have all others have the right to make their voice heard in the Cause of Peace and International Understanding. We hereby tender our help to and the our sincere wish that we may be able to cooperate in our disabled comrades of the English Nation. With cordial greetings. (Signed) MEMBERS From The Association of British Disabled Soldiers. In the name of the Association of British Soldiers, registered office in Berlin, which includes almost without exception all the German soldiers killed in the War, to the number of 2,875, I take the liberty of thanking you respectively and most heartily for the Christmas message of our English comrades wounded in the war also to express our sincere wish that we may really cooperate, and especially those who are disabled by it. (Signed) DR. PETER FLIEB, 1st. Chair.

From The State Association of Disabled Soldiers, Ex-Servicemen and Veterans Deceased by the War. We bear through the Press of the Christmas Message sent from disabled English soldiers of the war, to all German soldiers injured in the war, containing the following message: We are informed that you, esteemed friend, are on your way to transit just greetings and thanks from the former German soldiers in the war to the English comrades and would ask you to be so good as to do so. We consider this step on the part of English Comrades as an action likely to help towards the reconciliation of the nations and to consolidate the peace of the nation. We shall take the liberty to inform you in due time when one of our international meetings is to be held and hope that you will then be able to send representatives of the Disabled English Soldiers' Association. With comrades' greetings. (Signed) CHAIRMAN.

A LECTURE ON GAMBIA IN AFRICA.

USE A PENKINER!

WARDEN CORRESPONDENT. London (By mail.) Recently delivered in a most pertinent manner at the Victoria Theatre, in Annals and Pindar, was given at this week at the Royal Society of Arts. It was given by Captain Penkiner, who represented those interested in the Gambia. Captain Shefferd has the happy possession of a lion, some of whom he made his young audience very much acquainted with. He mentioned on his numerous occasions of late, showing some of the most beautiful sides of the country and its people. From the lecture passed on to the Gambia, he was first of all which he touched upon in connection with the Gambia, apparently is able to give absolutely nothing without any serious damage being done. He was shown of the entire different country on this side of the Coast, and of the Gambia Railway. One of the most outstanding features was of the Kintampo, situated with which although it is shown on the map, it is nevertheless covered with water on days.

The portion of the lecture which interested me most was that referring to the Gambia, and in this connection Captain Shefferd showed, by kind permission of the Times, five pictures by the famous Colonel Murray Maxwell, which are perhaps the most wonderful side of animal life ever produced. It was very interesting to see the children of how an animal that attacks its prey if it were they should visit Africa.

Shakes in Trains! If, for some reason, you find a snake coiled round the train, the first thing to do is to get out of the train, and if you cannot get out, to get down. The snake will not follow you, and if it does, it will not bite you. The snake is not dangerous, and if you are not afraid, you can handle it. The snake is not dangerous, and if you are not afraid, you can handle it. The snake is not dangerous, and if you are not afraid, you can handle it.

"ON THIS DAY."

FEBRUARY 14TH.

John Robb's annual February 14 is known as the day of the love letters. It is the day when the young men of the world send their sweethearts a message of love. It is the day when the young women of the world receive their sweethearts' messages of love. It is the day when the young men and women of the world are reminded of their love for each other. It is the day when the young men and women of the world are reminded of their love for each other. It is the day when the young men and women of the world are reminded of their love for each other.



CHARLES V.

On the subject of the day of the love letters, it is interesting to note that it is a day of the year when the young men and women of the world are reminded of their love for each other. It is the day when the young men and women of the world are reminded of their love for each other. It is the day when the young men and women of the world are reminded of their love for each other. It is the day when the young men and women of the world are reminded of their love for each other. It is the day when the young men and women of the world are reminded of their love for each other.

On the subject of the day of the love letters, it is interesting to note that it is a day of the year when the young men and women of the world are reminded of their love for each other. It is the day when the young men and women of the world are reminded of their love for each other. It is the day when the young men and women of the world are reminded of their love for each other. It is the day when the young men and women of the world are reminded of their love for each other. It is the day when the young men and women of the world are reminded of their love for each other.

Advertisement for Crawford's Scotch Whisky. Features the text 'A Winning "Double"', 'Crawford's SCOTCH WHISKY', and 'SPECIAL RESERVE SCOTCH WHISKY'. Includes an image of a whisky bottle and glass.

Advertisement for Chiropathic Spinal Manipulation. Text: 'Chiropathic Spinal Manipulation the new universally-recognized Duplex System of Healing has relieved thousands of sufferers in Health. By removing the pressure on the nerves, which is causing your Headaches, Neuritis, Sciatica, Stomach, Liver and Kidney Troubles, etc. it will bring to you too renewed Life, Vigour and Energy. Miss E. GOOD, D.C., Spinal Nerve Specialist, who has had very wide and successful experience, is now practicing at her Home, (Room 21) Raleigh. Hours 9:00-11, 2-4. Saturdays 9:00-11, and by appointment. Telephone 50, 508.'

Advertisement for Kenya Loan & Discount Co. Ltd. Text: 'Kenya Loan & Discount Co. Ltd. P.O. Box 546, NAIROBI. OFFICE—1st Floor, Court Chambers. FINANCIAL AGENTS Bills Discounted — Short-term Loans Granted. Any realisable Asset accepted for Cash. Call or Write. STRICTEST CONFIDENCE. ESTABLISHED 1921.'

BUICK • The Pacemaker of Performance AND - - - A FAVOURITE WITH THE LADIES.

Women are every bit as practical as men when it comes to choosing a car. And so while they have joined with men in ardent praise of Buick's new Bodies by Fisher... they nevertheless name Buick performance as the primary reason why they buy almost three times as many Buicks as any other car in its price class.

Every woman who drives—every woman who thrills to spirited yet safe motoring—finds herself genuinely delighted after a ride in this new Buick. For all-weather instantly appreciate that here are motoring abilities outstandingly superior to any they have heretofore enjoyed.

See these New Buicks and arrange to drive one. Then you too will acclaim the New Buick, not only the most beautiful of motor Cars, but, THE PACEMAKER OF PERFORMANCE.

They feel a new height of power—a new sense of mastery over bill and road—due to marked advancements in the new Buick while in hand engine, which develops 90 horsepower in the 49-32 and 124 1/2 Buick and 80 horsepower in 118 1/2 Buicks, with less fuel consumption than before.

They experience a new supremacy in acceleration—new swiftness—new flexibility—together with that unvarying day-after-day reliability which has always distinguished Buick from other cars. And what is more, they enjoy maximum driving control—because the new Buick steering gear and new Buick's new Controlled Servo Mechanical Brakes provide the fullest measure of smooth, positive braking under all road and weather conditions.

Box 306. KAMPALA. Eldoret. NAIROBI. Nakuru. Kitale. 'Phone 206.

Bird's Custard with Fruit Salad!



Wholesome offers nothing more appetizing and delicious than Bird's Custard with Fruit Salad. Enjoy this refreshing treat today. It is a quick and easy dish to prepare. The best Fruit tastes better when served with Bird's Custard. It goes like summer cream with all stewed fruits, softening the sharpness of the fruit and adding rich nutriment.

**BIRD'S CUSTARD**

Sold in Biscuits, Boxes and Tins.

Wholesale and Retail in all parts of East Africa and the East Indies. Write for particulars to Messrs. J. H. KERR, 75, RAEBURN ROAD, NAIROBI.

**MOTOR NEWS**  
From Road & Showroom.

**SPECIAL PURPOSE VEHICLES.**  
**A GLIMPSE INTO THE FUTURE.**  
**Two Morris Six Wheelers for Prince's Safari.**  
**A MOSQUITO PROOF VEHICLE.**

Each year the Motor Car Club attracts more attention and for 1933 we can expect the same. It will be competing over the many roads in the Riviera town. The fact that, on this occasion, 15 British cars have been entered makes it particularly interesting from the home motorist's point of view.

Under the rules of the Rally, roads are judged by traveling at an average speed of not less than 21 m.p.h. and not more than 26, regardless of the route selected; special points are given for the length of the journey and for the number of passengers carried. If the entrant is successful in finishing Monte Carlo, he has then to traverse two circuits of a hill course as a definite speed. Finally, marks are awarded according to the condition of the car after the journey and the comfort which its body affords. Altogether, it is a very strenuous and sporting affair and any competitor would agree with "The Automobile" when it says that every single man who arrives at Monte Carlo has had for just a few days a life of almost incredible adventure.

**Some Lusty Competitors.**  
There was several motor drivers in this year's event among them the Hon. Mrs. Chetwode who is to pilot a La-France. It will be remembered that this lady has made the end of last year and a new 15-horse motor, at Brooklands in Class F, in a La-France model that she had actually been using for shunting for six months. The Hon. Mrs. Victor Bruce, who will be driving in her sixth Rally has chosen Sunbeam, which as the starting point for herself and for William George Stirling's Eight. From there she will be followed with a 2,200 cubic centimetre which must be completed in 24 hours, during part of which she is to be driving for 21 hours, during part of which she is to be driving for 12 hours, in an open car, and with a last car and driver, but which is to be driven in a motor car, and driving by a single engine, as in the case of the motor car.

**What will motorist be like a year hence—always?** Assuming the world has not ended the motorist will be faced to the primitive—judging by the signs and omens of today.

As we look round and view with awe man-made flights on every side, the fantastic blights of contemporary art, the immense speeds attainable by aeroplanes and autogiros, the growing problems of modern traffic and overcrowding of the roads, what, if any, will wonder in A. D. 2000? With the rise in prosperity which must come towards the end of the present century, when wealth will be more evenly distributed, the motorist will be brought within the grasp of countries thousands. The weather classes will, of course, by their own appliances, but the motorist will be the popular vehicle used to the small size of one today, which prevents the advantages of the aeroplane from being enjoyed to the full.

It is certain that the road as we know it will be extinct, and a few rural lanes will be left and preserved as quaint, old-fashioned things at which tourists will gaze as they do today at the hieroglyphs of the past.

The whole country will be a network of high-speed roads, says a writer in "The Light Car," comparable with the Autogiro, so popular in Italy, which already indicates the march of progress. Vehicles which we consider at least risky will become common, and the roads will be arranged in grades for the average speed of the vehicles crossing them; that is, they will be able to average 100 m.p.h. from Edinburgh to London!

The modern road, which at times is so little short of a death trap, will be replaced by a road built back upon our descendants with amusement, and they will blame the bravery of their forefathers—and forefathers—who

**REPUTATION**

The Greatest Asset In Commercial Life

is reputation for the quality of one's goods. THIS is particularly true of Motor Vehicles in East Africa, where the conditions are so trying. Dealers in Motor Vehicles in this colony will speak glowingly of the reputations of their cars, but these are mainly gained in other countries, under conditions: they are useless in East Africa. It is an

**EAST AFRICAN REPUTATION**

that will attract the wise buyer. He knows other claims are useless. The Motor Vehicle with the FINEST reputation in East Africa are

**and Dodge Trucks**

BACKED BY

The Finest Service in E. Africa.

The purchase of discrimination will examine the mechanical specifications of THE DODGE—compare them with those of any other car in East Africa and will be unhesitatingly

**BUY THE DODGE.**

S. FISHER & SIMMONS (E.A.) LTD., VICTORIA STREET, NAIROBI.

SEE OUR RANGE OF SIXES: Sedans, Tourers, Box Bodies and the famous DODGE-GRAHAM TRUCKS

Tel. 362. Box 406.

**Metropolitan Garage.**

SPECIALISTS IN AUTOMOBILE REPAIRS.

2 doors Avenue Hotel.

We always have a number of selected and overhauled 2nd-hand cars in stock.

**Duco Spray Painting**

Have your car touched up or completely redone, by our UP-TO-DATE PLANT

**Wanted for Cash. Box Body CARS FOR HIRE**

D. J. L. LETHBRIDGE, Sole Proprietor.

**NEW!**

ALL PURPOSE BOX SPANNERS. CHISEL SET SHT. 3/75

SOLE AGENTS: "FITZ-ALL" SPANNER SET & Spanners, 15 store in road Cleveland, Ohio, U.S.A.

**WINGRAM & CO.**

**THE TOOL HOUSE**

NAIROBI.

**LIME**

Bone Flour Refiner.

Now in Stock. Order Now for Lead Rates.

**Lime Limited**

**B. Florens**

FRENCH HAIR DRESSER.

PERMANENT WAVING AND TINTING A SPECIALITY.

Phone 561. P.O. Box 923. YORK BUILDING - GOVERNMENT ROAD, NAIROBI.

**VAT 69**

**Quality Seals**



THE BRAND has been in the market for 10 years and is the most reliable and the most popular in the world.

THE BRAND is the most reliable and the most popular in the world.

**The African Mercantile Company, Ltd.**

NAKURU. — NAIROBI.

**ESSJAY. Limited.**

BOLUS HOUSE, GOVERNMENT ROAD, NAIROBI. Phone 377.

**Financial and Property Agents.**

Mortgages Specialised in. Town Properties Negotiated, Partnerships Arranged, Investments Advised on.

WE HAVE SOUND INVESTMENTS FOR SUMS FROM 500 UPWARDS. IN THIS RESPECT WE CLAIM TO DO BETTER FOR YOU THAN ANY-ONE ELSE.

S. JACOBS, Managing Director.

**FOR AN EFFICIENT AND PERMANENT HOT WATER SUPPLY**

INSTALL A **BESTON HOT WATER BOILER**

For particulars relating to the size of Boiler required and prices apply to—

**Thornton & Turpin** (Sole Agents)

Registered Plumbers and Sanitary Engineers. NAIROBI and MOMBASA.

Phone 185. P.O. Box 266, Nairobi, and P.O. Box 398, Mombasa.

**GREATER MILEAGE**



HERE is a tyre that looks, says and gives Mileage! Created to meet every condition of today's car and driving, this New Royal adds thousands of miles of wear-resistant, economical, and sure-footed.

**THE NEW ROYAL**

- 10 Important Features in the NEW ROYAL
- 1. Superior tread pattern
- 2. Superior tread pattern
- 3. Superior tread pattern
- 4. Superior tread pattern
- 5. Superior tread pattern
- 6. Superior tread pattern
- 7. Superior tread pattern
- 8. Superior tread pattern
- 9. Superior tread pattern
- 10. Superior tread pattern

**The NEW ROYAL**

The Tyre of Today for the Car of Today

**CARR, LAWSON & CO., LTD., NAIROBI.**

**Nooralli Durrani**

Glasgow Hotel, East Street, NAIROBI.

**ENGLISH TIE MAKING**

Shell Cakes, Pastry, Buns, etc.

**Imperial Road (S.A.) Limited**

Makers of all classes of motor and commercial vehicles. Specialities in Repairs and Remounting. Telephone No. 211.

Sh. 150/-

MR WILLIAM HOY DIES AT CAPE TOWN.

(Continued from page 1.)

system with a distinguished career in the Union.

of Change in Spain.

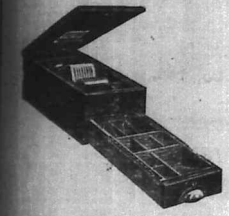
In 1905, he represented the Railway at the International Congress at Washington.

because Mr William Hoy. After the war he went home with General Botha and General Currie to represent South Africa at the Peace Conference and it is stated that during the war he obtained from the Imperial Government a million pounds of railway material and three ships as a free gift from the Government.

When he returned to the Union he found the post war depression conditions and concentrated on the Railway and the industrial branches of 1922 might have proved to the system but for the personal influence of Mr William Hoy with his own people.

He held the South African Railway services one of the finest in the world. He had added to its equipment the grain elevator system and the principle of electrifying and he had found time to give his advice and knowledge to other bodies—the Mining Leases Board, the S. A. Section of the British Empire Exhibition, the Civil Aviation Board, and the establishment in London of the Publicity Section of the Railway authorities.

After his retirement from the Railways he accepted the position of first Chairman of the Ethiopian Railway Board which was set up as part of the scheme of co-operation of Rhodesia and the Chartered Company. He also presided over the Board of the Great practical Empire building, the quiet but uncompromising son of Rhodesia's great back.



MAHOGANY CASH TILLS WITH WARNING BELL AND LEVER LOCKS. TAWS LIMITED, NAIROBI.

FOR INFORMATION ON THE NILE ROUTE TO EUROPE

Motor Tours Ltd. NAIROBI. Wholesale Service of cars from KAMPALA to JUBA.

MAISONI MARIE (MIL. and MISS T. V. COOBS). ARTISTIC HAIRDRESSING. FURNISHING WAVING A SPECIALITY.

Last month proved to be an easy record for Chevrolet Sales ever since the first old-fashioned four-cylinder model came to this country, years ago.

It is gratifying to see this good sign of continued prosperity, secured, as it is, not only by the merits of the car itself, but by the unfailing Service which it is our continued aim to give.

THE MOTOR MART & EXCHANGE LTD. NAIROBI - NAKURU - ELDRET - DAR-ES-SALAAM. AGENTS FROM THE COAST TO THE CONGO.



THE EMPIRE

Today and To-morrow - Friday and Saturday, February 14th and 15th.

"TRUMPET CALL"

with this unusual cast of characters: NOAH BEERY, MARY ASTOR, CHARLES EMMETT MACK, GEORGE BANCROFT, FRANK HOPPER.

Don't forget the Matinee on Saturday "The Trumpet Call"

Douglas Fairbanks in "The GAUCHO"

There will be no advance in prices. Sh. 5/-, 3/-, and 2/-.

Advertisement for Felix the cat. FELIX IS BACK AGAIN! WATCH FOR HIM AT THE "EMPIRE". EVERYBODY LOVES FELIX THAT COMICAL CAT.

For To-night & To-morrow Only - Feb 14th & 15th.

THEATRE ROYAL

"Not For Spectacular - Sensational"

COLOURFUL, AWE-INSPIRING FLOOD SCENES. JACK SHIRLEY V. TOM HEENEY. An special attraction for lovers of the Noble Art.

A "BUDGET" OF NEWS. 3/- PRICES REMAIN THE SAME. 2/-.

THE SKIN GAME

THURSDAY, FRIDAY and SATURDAY, FEBRUARY 27th and 28th and MARCH 1st.

PRICES OF ADMISSION: Shs. 5/- & Shs. 3/-

PICCADILLY RESTAURANT. TEAS, LUNCHES, DINNERS.

Removal Notice.

THE KENYA MOTOR PLOUGH CO. has removed their Workshops and Offices from Seftler Street to Albert House, Victoria Street adjoining Express Transport.

THE KENYA MOTOR PLOUGH CO. Phone 579. NAIROBI. Box 648.

AFRICA'S PREMIER ANNUAL Twentieth Year of Publication.

THE British South Africa Annual 1929-1930.

Portraying in Picture and Prose Africa and Its People from the Equator to Cape Point.

Colour Reproductions by well-known Artists.

BOOK YOUR ORDER NOW. Reduced to 4/- Postage 1/4d extra.

Hortons Limited. CAPE TOWN. Johannesburg, Pretoria, Bloemfontein, Durban, Port Elizabeth and Balmorhea.



P. GETHIN

Plons 158 Box 29 Gram: Gethin, NAIROBI.

CARS FOR HIRE with experienced drivers.

Long Trips a Speciality.

For Sale Hudson Tourer. Good running order. £100. Chev. 4 Lorry. Specially fitted for safari (5000 miles). £150.

EVERYTHING FOR SPORT AT MAY & CO. LTD.

"W. P. B."



Standard Stationery Stores. NAIROBI.

THE NEW SUPERIOR WHIPPET

Cannot be Beaten for Economy



Style & Comfort

Prices From £215.

MOULTON & MORRISON Ltd.

SIXTH AVENUE NAIROBI.

What is a used car? ... a used car

is a good car if you buy it at CARR LAWSON'S

Buick Master 1928 Canadian Model

In perfect condition, paintwork unscratched. Milage only 8,000. A Magnificent Car

£150

Buick 1927 Model

This car has just been repainted, and the general condition throughout is excellent. Three New Tyres—one of which has not yet been fitted. An exceptional bargain.

£110

Nash Light Six

A really good car with the steadily running engine typical of the Nash. The paintwork is excellent and general condition attractive, fitted with good tyres.

£100

Carr, Lawson & Co. Ltd. NAIROBI.

Do You Suffer From -

- Indigestion, Palpitation, Acid Mouth, Flatulence, Heartburn etc.?

THEN YOU NEED "BISODOL"!

AN ANTACID - DIGESTANT

"BISODOL" consists of an Alkaline Mixture, together with two of the most Efficient Digestive Ferments known.

PRICE 2/- PER TIN. KODAK & CO. LTD. INC.

HOWARD and McGEORGE

NAIROBI AND ALL BRANCHES

J. W. Milligan & Co.

EXCELLENT DAIRY PROPOSITION

On the Slopes of the Aberdares

Adjoining Creamery

16 miles from Havelock Station. A very good income for Cream. Fencing, water, Domes, etc. Comfortable but excellent outbuildings.

3,000 ACRES.

Also suitable for Fruit, Barley and Wheat. Together with

500 HEAD GOOD GRADE CATTLE.

This Farm is amongst the most beautiful and best serviced in Kenya. At the price of £6,500-0-0 it is the best bargain ever offered in this area and an ABSOLUTE GIFT. Easy terms can be given.

NYERI. POULTRY FARM.

30 acres of land, with Houseland, Poultry houses and runs, etc. Permanent water. Only 1/4 mile from Havelock and four miles from Pulo Oriental.

PRICE: £500-0-0 or can be rented at £50 per month. Further details on application

Phone 98. 59/200. Box 148.

Advertisement for Ladies' Smart Footwear by Stacobs, featuring images of various high-heeled shoes and the company logo.

Advertisement for Mackinlay & Co., featuring a map of East Africa and text about their business and agents.

Advertisement for DUCO car polish, featuring an image of a car and text about the product's benefits.

Advertisement for A. H. Wardle & Co. Ltd. eye treatment, including a diagram of an eye and text about cataracts and vision correction.

Advertisement for Steel Casements Gibbons, featuring a diagram of a window and text about their products.

Advertisement for R. G. Vernon & Co. chemists, featuring text about 'Lloyd's Liniment' and their services.

A large multi-column article or advertisement with multiple sub-headings and detailed text.

A narrow vertical column on the far right edge of the page, containing fragmented text from other articles.

NEW DEVELOPMENT IN SISAL INDUSTRY.

Test Results of Kenya Planter's Invention.

THE RUTHERFORD DECORTICATOR

Portable Machine which Eliminates the Use of Water.

...the amount of fibre extracted from leaves is nearly double that of existing machine, that the running costs are largely reduced.

...of the important features is that no water is required... it is that it is reasonable to assume that large quantities of Kenya and elsewhere hitherto unsuited for sisal decortication because no water supply was available for this purpose, can now be included in the sisal areas.

LOW OPERATING COST.

...of the most important features is that no water is required... it is that it is reasonable to assume that large quantities of Kenya and elsewhere hitherto unsuited for sisal decortication because no water supply was available for this purpose, can now be included in the sisal areas.

An Independent Report.

In order that an entirely independent report should be obtained, Mr. J. H. Robertson, of the Ministry on Thursday and Friday... the inventor has been asked to supply a list of the machines which he has used...

...the inventor has been asked to supply a list of the machines which he has used... the inventor has been asked to supply a list of the machines which he has used...

Water Method.

Another very important point, which is most important, is that water is not used... the inventor has been asked to supply a list of the machines which he has used...

Portable Machine.

...the inventor has been asked to supply a list of the machines which he has used... the inventor has been asked to supply a list of the machines which he has used...

The Output.

...the inventor has been asked to supply a list of the machines which he has used... the inventor has been asked to supply a list of the machines which he has used...

CARRY OVER IN BRITAIN.

Increased Unemployment and Reduced Trade.

OFFICIAL FIGURES

(THROUGH SEVENTEEN MONTHS)

Simultaneously with the increase in the number of unemployed... the amount of fibre extracted from leaves is nearly double that of existing machine...

Relations with Russia.

POSITION OF CLAIMS BY BRITISH NATIONALS.

...the amount of fibre extracted from leaves is nearly double that of existing machine... the amount of fibre extracted from leaves is nearly double that of existing machine...

Entertainments.

'THE BEIN GAME'.

The date fixed for the production of 'The Skin Game'... the amount of fibre extracted from leaves is nearly double that of existing machine...

Entertainments.

'THE BEIN GAME'.

The date fixed for the production of 'The Skin Game'... the amount of fibre extracted from leaves is nearly double that of existing machine...

Entertainments.

'THE BEIN GAME'.

The date fixed for the production of 'The Skin Game'... the amount of fibre extracted from leaves is nearly double that of existing machine...

Entertainments.

'THE BEIN GAME'.

The date fixed for the production of 'The Skin Game'... the amount of fibre extracted from leaves is nearly double that of existing machine...

FROM FOG BANKS INTO THE SUN.

Mr. Campbell Black's Air Trip Story.

OPENING UP SUDAN.

Mr. T. Campbell Black, who has been... the amount of fibre extracted from leaves is nearly double that of existing machine...

OPENING UP SUDAN.

...the amount of fibre extracted from leaves is nearly double that of existing machine... the amount of fibre extracted from leaves is nearly double that of existing machine...

British Museum 'Bomb'.

REPEATER OF HOAX FINED.

...the amount of fibre extracted from leaves is nearly double that of existing machine... the amount of fibre extracted from leaves is nearly double that of existing machine...

REPEATER OF HOAX FINED.

...the amount of fibre extracted from leaves is nearly double that of existing machine... the amount of fibre extracted from leaves is nearly double that of existing machine...

REPEATER OF HOAX FINED.

...the amount of fibre extracted from leaves is nearly double that of existing machine... the amount of fibre extracted from leaves is nearly double that of existing machine...

REPEATER OF HOAX FINED.

...the amount of fibre extracted from leaves is nearly double that of existing machine... the amount of fibre extracted from leaves is nearly double that of existing machine...

REPEATER OF HOAX FINED.

...the amount of fibre extracted from leaves is nearly double that of existing machine... the amount of fibre extracted from leaves is nearly double that of existing machine...

REPEATER OF HOAX FINED.

...the amount of fibre extracted from leaves is nearly double that of existing machine... the amount of fibre extracted from leaves is nearly double that of existing machine...

REPEATER OF HOAX FINED.

...the amount of fibre extracted from leaves is nearly double that of existing machine... the amount of fibre extracted from leaves is nearly double that of existing machine...

REPEATER OF HOAX FINED.

...the amount of fibre extracted from leaves is nearly double that of existing machine... the amount of fibre extracted from leaves is nearly double that of existing machine...

General News in U.K.

Up-Country Passengers Held up.

Disappointment Expressed in London.

Disappointment Expressed in London.

...the amount of fibre extracted from leaves is nearly double that of existing machine... the amount of fibre extracted from leaves is nearly double that of existing machine...

Disappointment Expressed in London.

...the amount of fibre extracted from leaves is nearly double that of existing machine... the amount of fibre extracted from leaves is nearly double that of existing machine...

Disappointment Expressed in London.

...the amount of fibre extracted from leaves is nearly double that of existing machine... the amount of fibre extracted from leaves is nearly double that of existing machine...

Disappointment Expressed in London.

...the amount of fibre extracted from leaves is nearly double that of existing machine... the amount of fibre extracted from leaves is nearly double that of existing machine...

Disappointment Expressed in London.

...the amount of fibre extracted from leaves is nearly double that of existing machine... the amount of fibre extracted from leaves is nearly double that of existing machine...

Disappointment Expressed in London.

...the amount of fibre extracted from leaves is nearly double that of existing machine... the amount of fibre extracted from leaves is nearly double that of existing machine...

Disappointment Expressed in London.

...the amount of fibre extracted from leaves is nearly double that of existing machine... the amount of fibre extracted from leaves is nearly double that of existing machine...

Disappointment Expressed in London.

...the amount of fibre extracted from leaves is nearly double that of existing machine... the amount of fibre extracted from leaves is nearly double that of existing machine...

Disappointment Expressed in London.

...the amount of fibre extracted from leaves is nearly double that of existing machine... the amount of fibre extracted from leaves is nearly double that of existing machine...

Disappointment Expressed in London.

...the amount of fibre extracted from leaves is nearly double that of existing machine... the amount of fibre extracted from leaves is nearly double that of existing machine...

Disappointment Expressed in London.

...the amount of fibre extracted from leaves is nearly double that of existing machine... the amount of fibre extracted from leaves is nearly double that of existing machine...

HOTELS IN DAR-ES-SALAAM OVERCROWDED.

Up-Country Passengers Held up.

Disappointment Expressed in London.

Disappointment Expressed in London.

...the amount of fibre extracted from leaves is nearly double that of existing machine... the amount of fibre extracted from leaves is nearly double that of existing machine...

Disappointment Expressed in London.

...the amount of fibre extracted from leaves is nearly double that of existing machine... the amount of fibre extracted from leaves is nearly double that of existing machine...

Disappointment Expressed in London.

...the amount of fibre extracted from leaves is nearly double that of existing machine... the amount of fibre extracted from leaves is nearly double that of existing machine...

Disappointment Expressed in London.

...the amount of fibre extracted from leaves is nearly double that of existing machine... the amount of fibre extracted from leaves is nearly double that of existing machine...

Disappointment Expressed in London.

...the amount of fibre extracted from leaves is nearly double that of existing machine... the amount of fibre extracted from leaves is nearly double that of existing machine...

Disappointment Expressed in London.

...the amount of fibre extracted from leaves is nearly double that of existing machine... the amount of fibre extracted from leaves is nearly double that of existing machine...

Disappointment Expressed in London.

...the amount of fibre extracted from leaves is nearly double that of existing machine... the amount of fibre extracted from leaves is nearly double that of existing machine...

Disappointment Expressed in London.

...the amount of fibre extracted from leaves is nearly double that of existing machine... the amount of fibre extracted from leaves is nearly double that of existing machine...

Disappointment Expressed in London.

...the amount of fibre extracted from leaves is nearly double that of existing machine... the amount of fibre extracted from leaves is nearly double that of existing machine...

Disappointment Expressed in London.

...the amount of fibre extracted from leaves is nearly double that of existing machine... the amount of fibre extracted from leaves is nearly double that of existing machine...

Disappointment Expressed in London.

...the amount of fibre extracted from leaves is nearly double that of existing machine... the amount of fibre extracted from leaves is nearly double that of existing machine...

Specialist at Eadie's Sale FOR LADIES WITH SMALL FEET... WONDROFUL VALUE IN ODDMENTS. Sizes 2 1/2, 3 1/4, from 1 1/2. CALL IN-AND ASK TO SEE THEM. LADIES TENNIS SHOES, Size 6 7, 6 1/2. Usual Price 10/50. LADIES' EVENING SHOES, Six BARGAINS IN LARGE VARIETY. SMALL SIZES. MEN'S SAMPLES AND ODDMENTS IN SHOES FROM 20/- ALL NEW ARRIVALS IN STOCK LESS 10%. BEST VALUE IN KENYA. Eadie's Footwear Ltd. P. O. BOX 142. NAIROBI.



### CARR'S CLUB CHEESE BISCUITS

*Original recipe—exclusive formula*  
*Wholesome—no preservatives*

Made only by **CARR & CO LTD** CARLISLE

STOCKED BY THE LEADING GROCERS.

As supplied to the House of Commons

### Amstel Beer the Best in East and West

Guaranteed free of Chemicals.

Obtainable at all leading Hotels, Bars and Stores. Ask for it in your club.

Tweetsche Overseas Trading Co., Ltd., Mombasa. Kapii Nairobi, Nairobi.

Makes soups richer.... more healthful



**SOUPS** thickened with Quaker Oats are creamier, smoother and far more healthful. Quaker Oats adds the nutritive elements most needed by the body—protein, carbohydrates, fats, minerals, vitamins and roughage. Besides increasing the palatability of soups, Quaker Oats stimulates digestion. Dieticians everywhere recommend eating Quaker Oats in some form every day. It develops the growing child, sustains the active adult and strengthens the convalescent and the aged. A most economical food, too!



### Quaker Oats

**REMEMBER!** **WELLINGTON BAR** VICTORIA STREET, NAIROBI. Next to New Premier National Bank of India. Sunday, February 16th, 1930. PROMPT SERVICES GUARANTEED.

### RAILWAY WASHWAYS IN TANGANYIKA.

Trade at Standstill at Dar-es-Salaam.

#### URGENT REPRESENTATIONS.

The Dar-es-Salaam Chamber of Commerce has addressed to Tanganyika Government a communication on the question of the Colonial Lines bus-stand. The letter, sent to the Chief Secretary, has been published by the "Tanganyika Standard" and is as follows:

Sir—The question of the continued interruption of the Colonial Railway Line caused by floods in Tanganyika is a matter of deep concern to the Chamber, owing to the serious effects of these interruptions. The various parts of the line served by Dar-es-Salaam, caused by the accumulation of stocks in this town and up-country. Purified rest foods have aggravated the position.

#### Independent Report.

The Chamber has been furnished with an independent report on the bus-stand by a Government official. It was stated that although great efforts are being made to overcome the damage done and to resume work as early as possible, the possibility of a further serious accident is the effect that this disruption will have on the financial position of local Merchants for some two or three months time.

#### An Urgent Matter.

The Chamber is mainly concerned with the restoration of the transport of mail, packages and goods at the earliest possible date, and would earnestly request that the Government authorities should be advised of the urgent situation of the Chamber in order that they may be enabled to overcome this situation.

#### Information Wanted.

We are directed to request you to furnish us with information on the following points:  
 (1) If it is in fact that a lack of rain exists, and if so what steps are being taken to remedy this.  
 (2) How the Chamber understands that labour has been offered by the Railway, but was not accepted.  
 (3) How the Chamber understands that labour has been offered by the Railway, but was not accepted.  
 (4) How the Chamber understands that labour has been offered by the Railway, but was not accepted.  
 (5) How the Chamber understands that labour has been offered by the Railway, but was not accepted.

The Chamber was given an estimate that it would be 14 days after the last heavy rains before the first goods could be got through, and some four months before normal working could be resumed.

The Chamber requests that an independent report be obtained regarding the above and that you reply by return of the week, or immediately on the whole possible.

#### Country Roads.

#### REPAIRS IN LIMURU AREA.

Mr Galton-Fanni, Hon. Secretary of the R.E.A.A. writes as follows: Several motions coming through from Nakuru today have referred to there is a large gap of some 14 miles on the Limuru-Isiolo road, which has been in such a deplorable and impassable condition during the recent rains. Mr. Hudson has also a supplementary motion for the grading of this section, and I and we are glad to see that the work is finished it will be beyond question. Directly the work starts, however, and those are days in another six weeks or less, it only requires a few hours labour to get this section in such a condition that it can be run on again.

I have already mentioned, that of £2,200 has been passed at this end for carrying out the most important work on the P.W.D. road requires the attention of the hon. authorities for the expenditure. The Executive Engineer, Nairobi, has manfully done everything possible in this interim period. He has himself surveyed the road and marked out all the deviations, which are, an unnecessary, and has carefully studied the question of grade, alignment, and curves, etc. I believe that all the estimates and proposals have been prepared and are ready, and now all that remains to be done is to get the work in order to get on with the work. There is no such a large distance as this section of the road as they might, possibly be the long rains and the fact that the work is not nearly finished in time, but that our main object of the work will not be reasonably possible to do in the next few weeks. I therefore, hope for the best and see the work.

#### Sisal in East Africa.

#### DOUGHO AFFECTS THE OUTPUT.

**STANDARD CORRESPONDENT.** London, by mail. A few days ago Earl Balfour and General Trust according to the Financial Times, sent an circular letter to shareholders in the East African Plantations, offering them additional shares at 20% each share. The circular letter to the shareholders to the proposed of the plan. The Trust Company has now issued a circular which states that the Board do not think it wise that the above-mentioned communication was not authorized by the directors. It is added that since the annual meeting of the Trust Company it has become apparent that the solution of the engineering difficulties will be more protracted than was anticipated, with the result that the output from both estates will be below the original estimates and the installation in East Africa of the new machinery and spares parts. A straight audit at Nyerere has caused, for a time, a total suspension of output from both estates. Very few effect is being made to hasten the delivery of the machinery and spares. When this has been done the Board is advised that the original estimates should be abandoned. The result for the coming year are being adversely affected.

knowledge for such is obtainable at the earliest possible date. The Tanganyika expert be obtained from Kenya or any other neighbouring Territory. It is hoped that this subject will receive the immediate attention of the Government, and a reply be furnished to the Chamber by the return of the week. We are directed to state that copies of this letter have been forwarded to the Press, and if you desire it, equal publicity will be given to the Government's reply.

#### ROAD RESPONSIBILITY IN THE SUBURBS.

(Continued from page 9.)

subject to the Company's "first obtaining the necessary leave of the Municipal Council, and the Municipal Council's approval." Alternatively he is subject to the Council's approval.

It should be explained here that the company had already been in receipt of a letter from the Municipal Council, which had some of the company's proposals for the reconstruction of the road in question.

The Municipal Council has been asked to give the company the right to use the road for the reconstruction of the road in question.

The Municipal Council has been asked to give the company the right to use the road for the reconstruction of the road in question.

The Municipal Council has been asked to give the company the right to use the road for the reconstruction of the road in question.

The Municipal Council has been asked to give the company the right to use the road for the reconstruction of the road in question.

The Municipal Council has been asked to give the company the right to use the road for the reconstruction of the road in question.

The Municipal Council has been asked to give the company the right to use the road for the reconstruction of the road in question.

The Municipal Council has been asked to give the company the right to use the road for the reconstruction of the road in question.

The Municipal Council has been asked to give the company the right to use the road for the reconstruction of the road in question.

The Municipal Council has been asked to give the company the right to use the road for the reconstruction of the road in question.

The Municipal Council has been asked to give the company the right to use the road for the reconstruction of the road in question.

The Municipal Council has been asked to give the company the right to use the road for the reconstruction of the road in question.

#### FROM POC BAGS INTO THE SUN.

(Continued from page 9.)

We left Kisumu this morning (Wednesday) at 10.15, the whole of the POC bag, and the whole of the POC bag, and the whole of the POC bag.

The whole of the POC bag, and the whole of the POC bag, and the whole of the POC bag.

The whole of the POC bag, and the whole of the POC bag, and the whole of the POC bag.

The whole of the POC bag, and the whole of the POC bag, and the whole of the POC bag.

The whole of the POC bag, and the whole of the POC bag, and the whole of the POC bag.

The whole of the POC bag, and the whole of the POC bag, and the whole of the POC bag.

The whole of the POC bag, and the whole of the POC bag, and the whole of the POC bag.

The whole of the POC bag, and the whole of the POC bag, and the whole of the POC bag.

The whole of the POC bag, and the whole of the POC bag, and the whole of the POC bag.

The whole of the POC bag, and the whole of the POC bag, and the whole of the POC bag.

The whole of the POC bag, and the whole of the POC bag, and the whole of the POC bag.

The whole of the POC bag, and the whole of the POC bag, and the whole of the POC bag.

The whole of the POC bag, and the whole of the POC bag, and the whole of the POC bag.

#### WHERE TO STAY IN TOWN AND COUNTRY.

Hotels, P.O. Box 71, Phone 317, Nairobi.

#### HOTEL PALACE AVENUE

Two floors and up-to-date Hotel on the best location in town.

#### THIS IS WORTH YOUR CONSIDERATION.

Visitors at the Palace Hotel, Mombasa, proceeding to Nairobi and desiring to stay at the Hotel Avenue, Nairobi, will be offered 30% off their accounts for accommodation, at the Hotel Avenue, providing they stay there within one week of leaving Mombasa or vice versa.

#### WHEN VISITING NAIROBI STAY AT TORR'S HOTEL

First Appointed Hotel Nairobi, Kenya, Uganda & Tanganyika. Music and Dancing Nightly. Hot and Cold Water Laid on in Every Bedroom. CARS MEET ALL TRAINS.

#### THE Stag's Head Hotel

NAIROBI. Main Road close to New Post Office, Banks, Shops, Club and Water in all Bedrooms. EUROPEAN SANITATION and BATHS. Exceptionally Attractive and Comfortable Public Rooms. WEEK END SPECIAL TERMS. Daily Boarders Catered-for at Special Rates. WEDDINGS, Personal Management. PUBLIC DINNERS, arranged.

#### Oakleigh Hotel Ltd. NAIROBI

P.O. Box 56, 128. Phone 128. "Grains," OAKLEIGH.

#### NAIVASHA HOTEL

ON SHORES OF LAKE NAIVASHA. AN EXCELLENT HEALTH RESORT. FIRST CLASS CUISINE AND EVERY MODERN CONVENIENCE. TENNIS, GOLF SHOOTING, BILLIARDS, ETC. CAR ALWAYS AVAILABLE FOR TRIPS AROUND LAKE. TERMS MODERATE.

#### GROSVENOR HOUSE

GIROUD ROAD, P.O. Box 1288. One Mile from Post Office.

Stay at the largest and oldest established hotel in Nairobi. 300 beds. Monthly from 10/6. Breakfast 2/6. Dinner 4/6. All rooms with electric light and hot water. Bath and W.C. in every room. Telephone 1288. Telegrams "The Norfolk Hotel Nairobi."

The Salsbury Hotel Nairobi. Phone 188. P.O. Box 569.

Following are the results of observations made at stations of the British East Africa Meteorological Service, 13th February, 1930:		
Station.	Wind Force.	Temperature. Baromet.
Mombasa.	20-30 N	97.75 70
Weather.	B. N	
Humidity.	65-85	
Weather.	B. N	
Humidity.	65-85	



# KELVINATOR CONTINUES TO ESTABLISH OUTSTANDING RECORDS.

The remarkable performance of Kelvinator, even under the most unfavorable conditions, is well illustrated by the following report of a test made on board the S.M.S. Assen, operating on the river between Hongon and Mandak by Burma.

Although this standard domestic unit is not designed or intended for the heavy duty on board our small steamers and was further handicapped by the use of a 1 H.P. 110 volt motor on a device with proportional reduction of speed and power, the following results speak well for the efficiency of Kelvinator:

Load—100 lbs. of perishable food & doz. bottles milk (replaced as used).  
6 bottles beer (replaced as used).

Test—To determine ability to maintain refrigeration when the current was off from 8:45 a.m. to 4:45 p.m., the hottest hours of the day.

8:45 a.m.: Cabinet temperature 47°, deck temperature 70° F.

4:45 p.m.: Cabinet temperature 47°, deck temperature 80° F.

Result—Rise in cabinet temperature only 7° F.

Rise in deck temperature 10° F.

Ice yield from water at 80° F. while current was on from 4:45 p.m. to 7:45 a.m., 12 lbs. The test commenced when cabinet was warmed up to 47°.

The above tests were made under ordinary service conditions of opening cabinet doors to obtain supplies in addition to the hourly temperature readings.

(Signed) .....

Chief Engineer

Commander.

A Consignment of the Latest Models  
HAS JUST BEEN RECEIVED BY

**THE EAST AFRICAN POWER & LIGHTING Co., Ltd.**  
**NAIROBI.** **MOMBASA.**



In a little old-fashioned factory, an abandoned strawboard mill, Goodyear made its start.

Almost its only asset at that time was an unaltering faith in the ultimate triumph of manufactured goodness.

The building is gone now, succeeded by a group of Goodyear plants that girdle the earth, and that are every-

where known as marvels of modern productive efficiency.

But Goodyear does not forget the simple principle upon which it built its reputation, and the whole energies of its progressive personnel today are focused upon providing products of a quality which will protect our good name.

**GOODYEAR**



**Millen & Company Ltd.**  
DISTRIBUTORS

**Sportex**  
 THE CLOTH FOR "CHARMERS"  
 THE "CHARMERS" OF CLOVER.  
 A Thoroughly Dependable,  
 Hard-wearing  
**TWEED FABRIC**  
 — by —  
**PLUS-FOUR SUITS,  
 SPORTS COATS AND  
 GOLF-JACKETS.**  
 Patterns on Application.

**Shamed Bros.**  
 THE HOUSE OF DISTINCTION.  
 BAZAAR P.O. Box 254  
 NAIROBI.

Paste is messy—Powder wasteful  
**Erasmic**  
**Dentifrice**  
 cleans cleanly and economically

Gibbs Dentifrice meets the modern demand for concentrated usefulness. It does the work of both powder and paste without the messiness or wastefulness of either.  
**Gibbs Dentifrice** gives teeth that lustrous sheen. Ensures that sparkling complexion. Insures, also, safety at the danger-line—where teeth meet gums. Howlers are attempting to cheapen the trade. And Gibbs Dentifrice is so deliciously fragrant—that it is a sheer delight to use.

Your teeth are Ivory Castles—defend them with  
**Gibbs Dentifrice**  
 (BRUSH MADE)  
 BEST DENTAL  
 CLEANING  
 PREVENT  
 GUM INFLAMMATION  
 PRESERVE  
 YOUR CHEMIST STOCKS THEM

WE HAVE JUST UNPACKED A LARGE ASSORTMENT OF THIS WELL KNOWN BRAND

BACHES in Syrup	24s.	Shs. 2/25
Appleberries	"	" 2/25
Raspberries	"	" 1/100
Cherries	"	" 2/25
Strawberries	"	" 3/50
Orange	"	" 2/25
Guava Fruit	"	" 2/25
Blackberries	"	" 1/100
Blueberries	"	" 2/25

Wholesale Prices on Application.  
**ELLIOT'S & Co. Ltd.**  
 17, Box 178. Phone 80.

**NOTICE.**  
 Attention of all our customers, is drawn to the fact that it has been brought to our notice, that recently some Howlers are attempting to take undue advantage of our good name, and pursue the undesirable practice of going from door to door to receive orders in our name as our representatives.  
 No representatives are being sent out by us to receive orders, and the orders thus received do not receive orders as our agents of materials and the workers as our workmanship.  
**BON MARCHÉ**  
 GOVERNMENT ROAD, NAIROBI.

**CORRESPONDENCE.**

**SUBURBAN ROADS—GROSVENORVILLE.**  
 To the Editor "E.A. Standard":  
 I read with interest the columns headed "The Chamberlain" in your issue of the 12th inst. and was very much surprised to find that you were so ready to accept responsibility for the statements made in the columns headed "The Chamberlain" in your issue of the 12th inst. and was very much surprised to find that you were so ready to accept responsibility for the statements made in the columns headed "The Chamberlain" in your issue of the 12th inst.

**"In-Money Workers."**  
 WOMEN IN MEN'S JOBS IN KENT.  
 To the Editor "E.A. Standard":  
 Sir,—I am, in spite of continual opposition, a very much surprised to find that you were so ready to accept responsibility for the statements made in the columns headed "The Chamberlain" in your issue of the 12th inst.

**EMPLOYMENT IN KENT.**  
 To the Editor "E.A. Standard":  
 Sir,—I am, in spite of continual opposition, a very much surprised to find that you were so ready to accept responsibility for the statements made in the columns headed "The Chamberlain" in your issue of the 12th inst.

**"THE CHAMBERLAIN."**  
 To the Editor "E.A. Standard":  
 Sir,—I am, in spite of continual opposition, a very much surprised to find that you were so ready to accept responsibility for the statements made in the columns headed "The Chamberlain" in your issue of the 12th inst.

**SUBURBAN ROADS KILIMANT.**  
 To the Editor "E.A. Standard":  
 Sir,—I am, in spite of continual opposition, a very much surprised to find that you were so ready to accept responsibility for the statements made in the columns headed "The Chamberlain" in your issue of the 12th inst.

**"THE CHAMBERLAIN."**  
 To the Editor "E.A. Standard":  
 Sir,—I am, in spite of continual opposition, a very much surprised to find that you were so ready to accept responsibility for the statements made in the columns headed "The Chamberlain" in your issue of the 12th inst.

definite and accurate place in the ranks of Kibera's character actors. There comes one day in the lights but you see them time after time, contentedly and idly sitting their various roles. For instance, "Tina Francis" and "Robert Pater" are in the top rank of character stars. "Tina Francis" is playing leading roles in the "Tales of the City" and "The Highest Standard" character actress in the profession.

**INDIFFERENT REVENUE.**  
 To the Editor "E.A. Standard":  
 Sir,—I am, in spite of continual opposition, a very much surprised to find that you were so ready to accept responsibility for the statements made in the columns headed "The Chamberlain" in your issue of the 12th inst.

**SUBURBAN ROADS KILIMANT.**  
 To the Editor "E.A. Standard":  
 Sir,—I am, in spite of continual opposition, a very much surprised to find that you were so ready to accept responsibility for the statements made in the columns headed "The Chamberlain" in your issue of the 12th inst.

**"THE CHAMBERLAIN."**  
 To the Editor "E.A. Standard":  
 Sir,—I am, in spite of continual opposition, a very much surprised to find that you were so ready to accept responsibility for the statements made in the columns headed "The Chamberlain" in your issue of the 12th inst.

**Today's Train.**  
 The following trains are due to leave Nairobi today—  
 Napier Mombasa 9:00 a.m.  
 Mombasa 9:05 p.m.  
 Nakuru & Kisumu 7:47 p.m.  
 The following trains are due to arrive at Nairobi today—  
 Faisal 8:30 a.m.  
 Nakuru Kisumu 10:15 a.m.  
 Mombasa 10:41 a.m.  
 Nakuru, Eldoret, Juba, 2:41 p.m.  
 Talika 6:20 p.m.

You wash your face 1000 times a year. Surely you appreciate the importance of using the soap which guards the healthy texture of your skin.

**PEERLESS ERASMIC SOAP**  
 The Dainty Soap

HYVES TESTED FREE DAILY AT EBOO'S PETROL STATION.  
 This Will Save You POUNDS  
 QUICK SERVICE IS OUR WATCHWORD.  
**Eboo's Petrol Station**  
 SIXTH AVENUE, NAIROBI.

**J. & P. MARTELL.** ESTABLISHED COGNAC 1765.  
 A BRANDY THAT IS HANDY FOR ALL OCCASIONS AND ALL NATIONS. A GRAND BRAND OF BRANDY.  
**MARTELL'S**  
 Known throughout the world.  
 for AGE and QUALITY.  
 Agents: Messrs. Government Road, NAIROBI.

**MATHER & PLATT LTD.**  
 Manufacturers of—  
**ELECTRICAL MACHINERY; PUMPS FOR ALL PURPOSES; WATER STORAGE TANKS, FIRE FIGHTING EQUIPMENT.**  
 FIRM'S TECHNICAL ENGINEER RESIDENT IN THE COUNTRY.  
 Agents and Estimators for Electrical and Hydraulic Schemes, etc. gives.  
**Smith, Mackenzie & Co., Box 300, NAIROBI.**

**GREAT REDUCTION IN PRICE, TENNEN'S BEER AND PERFECTION WHISKY TRY THEM BOTH.**  
 Messrs. SMITH, MACKENZIE & Co., NAIROBI.

**B. E. A. SAW MILLS**  
 Telephone No. 93. P.O. Box 221.  
 Telegrams: "Beam" Nairobi.  
 Camphor, Podo, Mweri and Muna.  
 Flooring, Ceiling and Moulding.

**ALIBHAI SHARIF & SONS.**  
 P.O. Box 892. Phone 974.  
 GOVERNMENT ROAD AND BAZAAR.

**Reliance Transport Co., Ltd.**  
 TRANSPORT, WOOD FUEL, COAL, POLES AND FENCING POSTS, MANURE AND LIME, STORAGE.  
 BOLD'S HOUSE, Government Road.  
 Telephone: Office 331. Workshop: 627.  
 Telegrams: "Reliance" P.O. Box 482

**Mrs. E. M. PAINE, L.E.S.M. A.R.C.M.**  
 MISSISSIPPI AND PIANOFOUR LESSONS.  
 Capital Chambers, next Hotel Nevada.



**JOHN RIFKIN,**  
BILTAY AVENUE,  
P. O. Box 219, NAIROBI.



WAGON BUILDERS,  
BLACKSMITH FARRIERS,  
SADDLERS, BRACKS, WAGONS,  
ALL WAGON PARTS  
ALL KINDS OF WAGONS  
MADE TO ORDER.

**Deenholm Dairy,**  
for  
**PURE MILK  
and CREAM.**

from Farm to Consumer.  
Box 11, NAIROBI.

Place Yourself on the Right  
Side of the Danger Line.  
**INSURE**  
YOUR MOTOR CARS  
and MOTOR CYCLES  
with the  
**AFRICAN GUARANTEE**  
INDEMNITY CO., Ltd.,  
**M. D. KAMPF,**  
Chief Agent.

**"LONG JOHN"**  
FINEST  
SCOTCH WHISKY



WE HAVE REALISED  
FOR MANY YEARS THAT  
this is the  
best use of  
**A Corkscrew**  
is not only a trouble but  
is UNNECESSARY.

We see, however, fairly com-  
mon from long experience  
that as with high-grade Whisky,  
A Whisky of purity and quality  
should never be allowed to  
come into contact with wood.

With this in view  
"LONG JOHN"  
has always been and will be  
SEALED WITH A  
Genuine Coteleurian  
Cork,

which can be easily removed  
by a  
**Turn of the Fingers.**

LONG JOHN BOTTLED BY LTD.  
GLASGOW & LONDON.

**INTERNATIONAL HOCKEY  
MATCH.**

**England's Young Team  
Triumphs Over Wales.**

**THE LEMON OF YOUTH.**

London (By mail).  
No greater surprise has been  
occasioned in recent times than  
the win of the England Hockey team  
against Wales in the International  
at Cardiff, by 11/0. General ex-  
pectations were that the Welsh-  
born sportsman would give a  
very victorious view of the  
fact that England were field-  
ing an inexperienced side. In fact,  
I do not think it an exaggeration  
to say that England were side the  
field without being expected by  
anyone to win.

However, the  
English team had a tremendous  
and well-earned victory, and  
every man did his share, and the  
whole team came through a stiff  
trial with credit. The moral of  
course, the value of a young and  
enthusiastic team, and the col-  
lective have been shown to con-  
stitute themselves on this occasion  
on their own. However, in con-  
sideration of the fact that Eng-  
land is likely to play Sweden  
and, it is probable that it would  
be foolish to imagine that Eng-  
land's sound success is due to the  
International championship.

The standard of play on water-  
side was not too high, and the  
result was thought to be due to  
two unexpected factors. In the  
first place, J. H. Tucker, who had  
to reach Bristol by six and only  
just arrived in time, was brought  
back from the front row by Eng-  
land's manager, Mr. H. H. H. who  
was depreciating him, this change  
resulted in most people's opinion,  
the really serious workman in the  
English side. D. A. Kambere,  
who was originally chosen as  
hooker, had never played in Wales  
before and that in itself is a dis-  
advantage. Tucker, who packed  
in the middle right away, gave  
experience and solidity to the  
front row, as anyone who has played  
against him will understand. It  
is only to be noted that Tucker  
held the front row together and  
enabled the work done behind to  
be effectively transmitted. Kame-  
dere and Hansen supported him  
manfully, but it was to be noted

it possible for England to win the  
right scoring and to counter the  
Wales' secondary out of touch by  
taking scrums instead of line-outs.  
That it was that, the incident of  
Tucker gave England a moral  
second wind, which, with him,  
they might well have lost.

He was, in this way, nearly re-  
sponsible for the second unexpected  
factor, which was the amazing in-  
crease of the Welsh pack.

"No 'Six of Mind."  
Another factor in favour of a  
good game was that there was no  
"six of mind" at Cardiff on this  
occasion. The ground was never  
in better condition; in fact, the  
conditions were superior to those  
generally seen in tournaments—no  
unpleasant advantage to the youth-  
ful, comparatively inexperienced  
English players. There was a re-  
cord international attendance of  
60,000, and it to be expected that  
the result came as a disappointment,  
but they took it very well, except  
perhaps as regards the referee. At  
times they either "got at him,"  
though he was quite good, except  
for one mistake when Wales, in  
the second half, the spotkicker got  
unintentionally near the touchline,  
and more than once the game was  
delayed for a few minutes owing  
to this. This should not occur in  
an international match, and the  
Wales officials must consider  
themselves very lucky in that there  
was no more trouble than there

was. No more trouble than there  
was. No more trouble than there  
was.

**Wish Pack Stoverly.**  
With regard to the overrating  
of the pack, the beginning was  
summed up by the complete in-  
ability of the Welsh forwards to  
pack properly in the early stages.  
They went down in a clumsy,  
careless manner with the result  
that they appeared to be a disor-  
ganized collection of men. The  
points defeated them handily, and  
Sam Tucker was obtaining posses-  
sion at least seven times in ten  
minutes. In a state of affairs that came as  
a complete surprise. The Welsh  
forwards certainly improved later,  
but they had lost what would  
normally be their chief advantage,  
possession on paper, and they held  
out no terms to the Irish, who  
played with one or two of them  
brilliantly, but the presence of Sam  
Tucker was a serious handicap.  
Tucker played in the centre  
of the front row, and his position  
behind the front row on his right,  
and his position behind the front  
row on his left and between his  
feet, was a serious handicap.

tion at their best, which is  
giving a great deal; Black and  
Foster were very good, but in the  
second row—there was no hold-  
ing the ball here on this occa-  
sion—and behind them Purton.

"Steam-roller" Falls to  
Punishment.  
Howard, and "Bill" Tucker an  
accomplished an enormous amount  
of work, but in the second half,  
when they hardly left the English  
side, and playing at a tremen-  
dous pace throughout. As I  
have said, the Welshmen were dis-  
appointing except a period of  
twenty minutes in the second half,  
when they hardly left the English  
side, but could not press the re-  
sultable defence against them.  
Individuals Arthur, Thomas-  
son, and "Bill" Tucker, and  
Ivor Jones, who, however, gave  
away a penalty by a foolish bit  
of work, were all good, but as a  
whole, the "steam-roller" failed  
to function. Then behind Eng-  
land, was slightly superior, al-  
though neither Robson nor Mal-  
colm in attack. Their defence,  
however, was that of the "Notre-  
Dame" type, and they were not  
vulnerable; they were never mind  
their men, and they looked with  
judgment.

The harness of the backs were  
Spang, Howe, and Ashby, in that  
order. The amount of work Spang  
got through was extraordinary.  
The Welsh forwards had at least  
four chances of scrum and only  
two advantages of the ball. Wil-  
liams was the "big" man of the side,  
and played a great game in what,  
to him, must have been depress-  
ing circumstances.

**The Game.**

The run of the game is easily  
described. Before the whistled-  
started and settled down.  
The Welsh forwards had at least  
four chances of scrum and only  
two advantages of the ball. Wil-  
liams was the "big" man of the side,  
and played a great game in what,  
to him, must have been depress-  
ing circumstances.

**SPEND YOUR HOLIDAY IN  
SOUTH AFRICA**

**RAILWAY EXCURSION FARES** are avail-  
able all the year round for parties of four or  
more travelling together over the lines of the  
South African Railway Administration.

**TOURS** arranged for parties or individual per-  
sons at attractive fares to cover rail, hotel  
motor and other services.

Through and Return Tickets to Any Station on  
the South African Railways can now be  
arranged in Nairobi.

Further particulars and literature are obtain-  
able from:—

**THE SOUTH AFRICA OFFICE,**  
(P.O. Box 624), Messeria Hall, NAIROBI.

The Manager,  
Toussaint and Terrell Berens,  
South African Railways,  
JOHANNESBURG.

The Tourist Agent,  
S.A.S. Tourist Bureau,  
CAFETOWN.

The Tourist Agent,  
S.A.S. Tourist Bureau,  
DURBAN.

**YOUR FAVOURITE SUNDOWNER!**

**HEERING'S  
CHERRY BRANDY**



Wholesale Distributors:  
**JARDIN, PHIPSON and Co., Ltd.**  
NAIROBI.

**THE FORWARD TRUCK.**

**IS DIFFERENT FROM OTHER TRUCKS OF ITS KIND.**

**The Advantages Are—**

**A Minimum Petrol Consumption of 15 Miles per Gallon.**

**Developes 20% More Pulling Power.**

**Will take full Load up any known Gradient.**

**Can be Supplied with Battery or Magneto Ignition.**

**It Costs Less to Purchase—**

**3 Gear Chassis 32' x 6' Oversize Tyres £178-15 0.**  
**6 Gear Chassis 32' x 6' Oversize Tyres £190-15-0.**

**NAIRBI MOTORS.**

**Box 460. 6th AVENUE. Tel. 317.**

