

["E. A. Standard" Special]

EAST AFRICA IN LONDON.

PERSONAL NOTES AND NEWS.

["STANDARD" CORRESPONDENT.]

London, Jan. 22.—I went recently to the Mr. J. M. Thomas a list of the schemes...

All the Dominions and Colonies are getting ready for the British Industries Fair at Olympia next month...

Lady Heath is suing her husband, Sir James Heath, for divorce on the grounds of cruelty...

I understand that the subscription to the Memorial Fund for the late Sir Robert Gordon...

The Secretary of the Missionary Council of the Church Assembly tells me that the Executive Committee has not yet appointed a Committee...

At the last meeting of the Council of the Royal Empire Society, at which Sir John Sandeman...

The Rt. Rev. A. J. Kitching, the Bishop of the Niger Nile, as I mentioned previously...

A type series of Stone Age skulls discovered by the late Sir James Blackwell...

A notable feature in the three market days of the "Festival Times" is the increase in the consumption of Scotch whisky...

WATERING The ALSTON PATENT Stock Water Trough is the outcome of 50 years Pastoral experience in Australia.

IT WON'T LEAK WONT SAG WONT BREAK Complete with Rigid Steel Frame. FOR CATTLE FOR SHEEP AND PIGS.

Dalgely & Company Ltd. NAIROBI. ELDORET.

Crosse & Blackwell's Made from the finest graded Onions, Ginkins and Cauliflower, all thoroughly matured.

A. J. ELY and Co. Ltd. SHAMBA CHEMISTS, NAIROBI. COPPER RAIN GAUGE.

RONEO

Model 16 Shgs. 850/- Self Feeding Self Inking

DUPLICATORS

MAY WE SHOW YOU THE MACHINE ITSELF

Model 2 Shgs. 350/-

ANY ONE WHO CAN TURN A HANDLE CAN OPERATE THE NEW MODEL RONEO DUPLICATOR.

The Multi Plesco A Useful Roneo Flat Duplicator Shs. 120/- Standard Stationery Stores. NAIROBI.



BIRD'S CUSTARD

Nooralli Dhanji. Gluevare Mart. Next Stanley Road, South Avenue.

ENGLISH TINS WARES.

- Small Coko Tins, 6 holes 4/60; Small Coko Tins, 12 holes 7/80; Small Coko Tins, 18 holes 9/80; Small Coko Tins, 24 holes 11/80; Small Coko Tins, 30 holes 13/80; Small Coko Tins, 36 holes 15/80; Small Coko Tins, 42 holes 17/80; Small Coko Tins, 48 holes 19/80; Small Coko Tins, 54 holes 21/80; Small Coko Tins, 60 holes 23/80; Small Coko Tins, 66 holes 25/80; Small Coko Tins, 72 holes 27/80; Small Coko Tins, 78 holes 29/80; Small Coko Tins, 84 holes 31/80; Small Coko Tins, 90 holes 33/80; Small Coko Tins, 96 holes 35/80; Small Coko Tins, 102 holes 37/80; Small Coko Tins, 108 holes 39/80; Small Coko Tins, 114 holes 41/80; Small Coko Tins, 120 holes 43/80; Small Coko Tins, 126 holes 45/80; Small Coko Tins, 132 holes 47/80; Small Coko Tins, 138 holes 49/80; Small Coko Tins, 144 holes 51/80; Small Coko Tins, 150 holes 53/80; Small Coko Tins, 156 holes 55/80; Small Coko Tins, 162 holes 57/80; Small Coko Tins, 168 holes 59/80; Small Coko Tins, 174 holes 61/80; Small Coko Tins, 180 holes 63/80; Small Coko Tins, 186 holes 65/80; Small Coko Tins, 192 holes 67/80; Small Coko Tins, 198 holes 69/80; Small Coko Tins, 204 holes 71/80; Small Coko Tins, 210 holes 73/80; Small Coko Tins, 216 holes 75/80; Small Coko Tins, 222 holes 77/80; Small Coko Tins, 228 holes 79/80; Small Coko Tins, 234 holes 81/80; Small Coko Tins, 240 holes 83/80; Small Coko Tins, 246 holes 85/80; Small Coko Tins, 252 holes 87/80; Small Coko Tins, 258 holes 89/80; Small Coko Tins, 264 holes 91/80; Small Coko Tins, 270 holes 93/80; Small Coko Tins, 276 holes 95/80; Small Coko Tins, 282 holes 97/80; Small Coko Tins, 288 holes 99/80; Small Coko Tins, 294 holes 101/80; Small Coko Tins, 300 holes 103/80; Small Coko Tins, 306 holes 105/80; Small Coko Tins, 312 holes 107/80; Small Coko Tins, 318 holes 109/80; Small Coko Tins, 324 holes 111/80; Small Coko Tins, 330 holes 113/80; Small Coko Tins, 336 holes 115/80; Small Coko Tins, 342 holes 117/80; Small Coko Tins, 348 holes 119/80; Small Coko Tins, 354 holes 121/80; Small Coko Tins, 360 holes 123/80; Small Coko Tins, 366 holes 125/80; Small Coko Tins, 372 holes 127/80; Small Coko Tins, 378 holes 129/80; Small Coko Tins, 384 holes 131/80; Small Coko Tins, 390 holes 133/80; Small Coko Tins, 396 holes 135/80; Small Coko Tins, 402 holes 137/80; Small Coko Tins, 408 holes 139/80; Small Coko Tins, 414 holes 141/80; Small Coko Tins, 420 holes 143/80; Small Coko Tins, 426 holes 145/80; Small Coko Tins, 432 holes 147/80; Small Coko Tins, 438 holes 149/80; Small Coko Tins, 444 holes 151/80; Small Coko Tins, 450 holes 153/80; Small Coko Tins, 456 holes 155/80; Small Coko Tins, 462 holes 157/80; Small Coko Tins, 468 holes 159/80; Small Coko Tins, 474 holes 161/80; Small Coko Tins, 480 holes 163/80; Small Coko Tins, 486 holes 165/80; Small Coko Tins, 492 holes 167/80; Small Coko Tins, 498 holes 169/80; Small Coko Tins, 504 holes 171/80; Small Coko Tins, 510 holes 173/80; Small Coko Tins, 516 holes 175/80; Small Coko Tins, 522 holes 177/80; Small Coko Tins, 528 holes 179/80; Small Coko Tins, 534 holes 181/80; Small Coko Tins, 540 holes 183/80; Small Coko Tins, 546 holes 185/80; Small Coko Tins, 552 holes 187/80; Small Coko Tins, 558 holes 189/80; Small Coko Tins, 564 holes 191/80; Small Coko Tins, 570 holes 193/80; Small Coko Tins, 576 holes 195/80; Small Coko Tins, 582 holes 197/80; Small Coko Tins, 588 holes 199/80; Small Coko Tins, 594 holes 201/80; Small Coko Tins, 600 holes 203/80; Small Coko Tins, 606 holes 205/80; Small Coko Tins, 612 holes 207/80; Small Coko Tins, 618 holes 209/80; Small Coko Tins, 624 holes 211/80; Small Coko Tins, 630 holes 213/80; Small Coko Tins, 636 holes 215/80; Small Coko Tins, 642 holes 217/80; Small Coko Tins, 648 holes 219/80; Small Coko Tins, 654 holes 221/80; Small Coko Tins, 660 holes 223/80; Small Coko Tins, 666 holes 225/80; Small Coko Tins, 672 holes 227/80; Small Coko Tins, 678 holes 229/80; Small Coko Tins, 684 holes 231/80; Small Coko Tins, 690 holes 233/80; Small Coko Tins, 696 holes 235/80; Small Coko Tins, 702 holes 237/80; Small Coko Tins, 708 holes 239/80; Small Coko Tins, 714 holes 241/80; Small Coko Tins, 720 holes 243/80; Small Coko Tins, 726 holes 245/80; Small Coko Tins, 732 holes 247/80; Small Coko Tins, 738 holes 249/80; Small Coko Tins, 744 holes 251/80; Small Coko Tins, 750 holes 253/80; Small Coko Tins, 756 holes 255/80; Small Coko Tins, 762 holes 257/80; Small Coko Tins, 768 holes 259/80; Small Coko Tins, 774 holes 261/80; Small Coko Tins, 780 holes 263/80; Small Coko Tins, 786 holes 265/80; Small Coko Tins, 792 holes 267/80; Small Coko Tins, 798 holes 269/80; Small Coko Tins, 804 holes 271/80; Small Coko Tins, 810 holes 273/80; Small Coko Tins, 816 holes 275/80; Small Coko Tins, 822 holes 277/80; Small Coko Tins, 828 holes 279/80; Small Coko Tins, 834 holes 281/80; Small Coko Tins, 840 holes 283/80; Small Coko Tins, 846 holes 285/80; Small Coko Tins, 852 holes 287/80; Small Coko Tins, 858 holes 289/80; Small Coko Tins, 864 holes 291/80; Small Coko Tins, 870 holes 293/80; Small Coko Tins, 876 holes 295/80; Small Coko Tins, 882 holes 297/80; Small Coko Tins, 888 holes 299/80; Small Coko Tins, 894 holes 301/80; Small Coko Tins, 900 holes 303/80; Small Coko Tins, 906 holes 305/80; Small Coko Tins, 912 holes 307/80; Small Coko Tins, 918 holes 309/80; Small Coko Tins, 924 holes 311/80; Small Coko Tins, 930 holes 313/80; Small Coko Tins, 936 holes 315/80; Small Coko Tins, 942 holes 317/80; Small Coko Tins, 948 holes 319/80; Small Coko Tins, 954 holes 321/80; Small Coko Tins, 960 holes 323/80; Small Coko Tins, 966 holes 325/80; Small Coko Tins, 972 holes 327/80; Small Coko Tins, 978 holes 329/80; Small Coko Tins, 984 holes 331/80; Small Coko Tins, 990 holes 333/80; Small Coko Tins, 996 holes 335/80; Small Coko Tins, 1002 holes 337/80; Small Coko Tins, 1008 holes 339/80; Small Coko Tins, 1014 holes 341/80; Small Coko Tins, 1020 holes 343/80; Small Coko Tins, 1026 holes 345/80; Small Coko Tins, 1032 holes 347/80; Small Coko Tins, 1038 holes 349/80; Small Coko Tins, 1044 holes 351/80; Small Coko Tins, 1050 holes 353/80; Small Coko Tins, 1056 holes 355/80; Small Coko Tins, 1062 holes 357/80; Small Coko Tins, 1068 holes 359/80; Small Coko Tins, 1074 holes 361/80; Small Coko Tins, 1080 holes 363/80; Small Coko Tins, 1086 holes 365/80; Small Coko Tins, 1092 holes 367/80; Small Coko Tins, 1098 holes 369/80; Small Coko Tins, 1104 holes 371/80; Small Coko Tins, 1110 holes 373/80; Small Coko Tins, 1116 holes 375/80; Small Coko Tins, 1122 holes 377/80; Small Coko Tins, 1128 holes 379/80; Small Coko Tins, 1134 holes 381/80; Small Coko Tins, 1140 holes 383/80; Small Coko Tins, 1146 holes 385/80; Small Coko Tins, 1152 holes 387/80; Small Coko Tins, 1158 holes 389/80; Small Coko Tins, 1164 holes 391/80; Small Coko Tins, 1170 holes 393/80; Small Coko Tins, 1176 holes 395/80; Small Coko Tins, 1182 holes 397/80; Small Coko Tins, 1188 holes 399/80; Small Coko Tins, 1194 holes 401/80; Small Coko Tins, 1200 holes 403/80; Small Coko Tins, 1206 holes 405/80; Small Coko Tins, 1212 holes 407/80; Small Coko Tins, 1218 holes 409/80; Small Coko Tins, 1224 holes 411/80; Small Coko Tins, 1230 holes 413/80; Small Coko Tins, 1236 holes 415/80; Small Coko Tins, 1242 holes 417/80; Small Coko Tins, 1248 holes 419/80; Small Coko Tins, 1254 holes 421/80; Small Coko Tins, 1260 holes 423/80; Small Coko Tins, 1266 holes 425/80; Small Coko Tins, 1272 holes 427/80; Small Coko Tins, 1278 holes 429/80; Small Coko Tins, 1284 holes 431/80; Small Coko Tins, 1290 holes 433/80; Small Coko Tins, 1296 holes 435/80; Small Coko Tins, 1302 holes 437/80; Small Coko Tins, 1308 holes 439/80; Small Coko Tins, 1314 holes 441/80; Small Coko Tins, 1320 holes 443/80; Small Coko Tins, 1326 holes 445/80; Small Coko Tins, 1332 holes 447/80; Small Coko Tins, 1338 holes 449/80; Small Coko Tins, 1344 holes 451/80; Small Coko Tins, 1350 holes 453/80; Small Coko Tins, 1356 holes 455/80; Small Coko Tins, 1362 holes 457/80; Small Coko Tins, 1368 holes 459/80; Small Coko Tins, 1374 holes 461/80; Small Coko Tins, 1380 holes 463/80; Small Coko Tins, 1386 holes 465/80; Small Coko Tins, 1392 holes 467/80; Small Coko Tins, 1398 holes 469/80; Small Coko Tins, 1404 holes 471/80; Small Coko Tins, 1410 holes 473/80; Small Coko Tins, 1416 holes 475/80; Small Coko Tins, 1422 holes 477/80; Small Coko Tins, 1428 holes 479/80; Small Coko Tins, 1434 holes 481/80; Small Coko Tins, 1440 holes 483/80; Small Coko Tins, 1446 holes 485/80; Small Coko Tins, 1452 holes 487/80; Small Coko Tins, 1458 holes 489/80; Small Coko Tins, 1464 holes 491/80; Small Coko Tins, 1470 holes 493/80; Small Coko Tins, 1476 holes 495/80; Small Coko Tins, 1482 holes 497/80; Small Coko Tins, 1488 holes 499/80; Small Coko Tins, 1494 holes 501/80; Small Coko Tins, 1500 holes 503/80; Small Coko Tins, 1506 holes 505/80; Small Coko Tins, 1512 holes 507/80; Small Coko Tins, 1518 holes 509/80; Small Coko Tins, 1524 holes 511/80; Small Coko Tins, 1530 holes 513/80; Small Coko Tins, 1536 holes 515/80; Small Coko Tins, 1542 holes 517/80; Small Coko Tins, 1548 holes 519/80; Small Coko Tins, 1554 holes 521/80; Small Coko Tins, 1560 holes 523/80; Small Coko Tins, 1566 holes 525/80; Small Coko Tins, 1572 holes 527/80; Small Coko Tins, 1578 holes 529/80; Small Coko Tins, 1584 holes 531/80; Small Coko Tins, 1590 holes 533/80; Small Coko Tins, 1596 holes 535/80; Small Coko Tins, 1602 holes 537/80; Small Coko Tins, 1608 holes 539/80; Small Coko Tins, 1614 holes 541/80; Small Coko Tins, 1620 holes 543/80; Small Coko Tins, 1626 holes 545/80; Small Coko Tins, 1632 holes 547/80; Small Coko Tins, 1638 holes 549/80; Small Coko Tins, 1644 holes 551/80; Small Coko Tins, 1650 holes 553/80; Small Coko Tins, 1656 holes 555/80; Small Coko Tins, 1662 holes 557/80; Small Coko Tins, 1668 holes 559/80; Small Coko Tins, 1674 holes 561/80; Small Coko Tins, 1680 holes 563/80; Small Coko Tins, 1686 holes 565/80; Small Coko Tins, 1692 holes 567/80; Small Coko Tins, 1698 holes 569/80; Small Coko Tins, 1704 holes 571/80; Small Coko Tins, 1710 holes 573/80; Small Coko Tins, 1716 holes 575/80; Small Coko Tins, 1722 holes 577/80; Small Coko Tins, 1728 holes 579/80; Small Coko Tins, 1734 holes 581/80; Small Coko Tins, 1740 holes 583/80; Small Coko Tins, 1746 holes 585/80; Small Coko Tins, 1752 holes 587/80; Small Coko Tins, 1758 holes 589/80; Small Coko Tins, 1764 holes 591/80; Small Coko Tins, 1770 holes 593/80; Small Coko Tins, 1776 holes 595/80; Small Coko Tins, 1782 holes 597/80; Small Coko Tins, 1788 holes 599/80; Small Coko Tins, 1794 holes 601/80; Small Coko Tins, 1800 holes 603/80; Small Coko Tins, 1806 holes 605/80; Small Coko Tins, 1812 holes 607/80; Small Coko Tins, 1818 holes 609/80; Small Coko Tins, 1824 holes 611/80; Small Coko Tins, 1830 holes 613/80; Small Coko Tins, 1836 holes 615/80; Small Coko Tins, 1842 holes 617/80; Small Coko Tins, 1848 holes 619/80; Small Coko Tins, 1854 holes 621/80; Small Coko Tins, 1860 holes 623/80; Small Coko Tins, 1866 holes 625/80; Small Coko Tins, 1872 holes 627/80; Small Coko Tins, 1878 holes 629/80; Small Coko Tins, 1884 holes 631/80; Small Coko Tins, 1890 holes 633/80; Small Coko Tins, 1896 holes 635/80; Small Coko Tins, 1902 holes 637/80; Small Coko Tins, 1908 holes 639/80; Small Coko Tins, 1914 holes 641/80; Small Coko Tins, 1920 holes 643/80; Small Coko Tins, 1926 holes 645/80; Small Coko Tins, 1932 holes 647/80; Small Coko Tins, 1938 holes 649/80; Small Coko Tins, 1944 holes 651/80; Small Coko Tins, 1950 holes 653/80; Small Coko Tins, 1956 holes 655/80; Small Coko Tins, 1962 holes 657/80; Small Coko Tins, 1968 holes 659/80; Small Coko Tins, 1974 holes 661/80; Small Coko Tins, 1980 holes 663/80; Small Coko Tins, 1986 holes 665/80; Small Coko Tins, 1992 holes 667/80; Small Coko Tins, 1998 holes 669/80; Small Coko Tins, 2004 holes 671/80; Small Coko Tins, 2010 holes 673/80; Small Coko Tins, 2016 holes 675/80; Small Coko Tins, 2022 holes 677/80; Small Coko Tins, 2028 holes 679/80; Small Coko Tins, 2034 holes 681/80; Small Coko Tins, 2040 holes 683/80; Small Coko Tins, 2046 holes 685/80; Small Coko Tins, 2052 holes 687/80; Small Coko Tins, 2058 holes 689/80; Small Coko Tins, 2064 holes 691/80; Small Coko Tins, 2070 holes 693/80; Small Coko Tins, 2076 holes 695/80; Small Coko Tins, 2082 holes 697/80; Small Coko Tins, 2088 holes 699/80; Small Coko Tins, 2094 holes 701/80; Small Coko Tins, 2100 holes 703/80; Small Coko Tins, 2106 holes 705/80; Small Coko Tins, 2112 holes 707/80; Small Coko Tins, 2118 holes 709/80; Small Coko Tins, 2124 holes 711/80; Small Coko Tins, 2130 holes 713/80; Small Coko Tins, 2136 holes 715/80; Small Coko Tins, 2142 holes 717/80; Small Coko Tins, 2148 holes 719/80; Small Coko Tins, 2154 holes 721/80; Small Coko Tins, 2160 holes 723/80; Small Coko Tins, 2166 holes 725/80; Small Coko Tins, 2172 holes 727/80; Small Coko Tins, 2178 holes 729/80; Small Coko Tins, 2184 holes 731/80; Small Coko Tins, 2190 holes 733/80; Small Coko Tins, 2196 holes 735/80; Small Coko Tins, 2202 holes 737/80; Small Coko Tins, 2208 holes 739/80; Small Coko Tins, 2214 holes 741/80; Small Coko Tins, 2220 holes 743/80; Small Coko Tins, 2226 holes 745/80; Small Coko Tins, 2232 holes 747/80; Small Coko Tins, 2238 holes 749/80; Small Coko Tins, 2244 holes 751/80; Small Coko Tins, 2250 holes 753/80; Small Coko Tins, 2256 holes 755/80; Small Coko Tins, 2262 holes 757/80; Small Coko Tins, 2268 holes 759/80; Small Coko Tins, 2274 holes 761/80; Small Coko Tins, 2280 holes 763/80; Small Coko Tins, 2286 holes 765/80; Small Coko Tins, 2292 holes 767/80; Small Coko Tins, 2298 holes 769/80; Small Coko Tins, 2304 holes 771/80; Small Coko Tins, 2310 holes 773/80; Small Coko Tins, 2316 holes 775/80; Small Coko Tins, 2322 holes 777/80; Small Coko Tins, 2328 holes 779/80; Small Coko Tins, 2334 holes 781/80; Small Coko Tins, 2340 holes 783/80; Small Coko Tins, 2346 holes 785/80; Small Coko Tins, 2352 holes 787/80; Small Coko Tins, 2358 holes 789/80; Small Coko Tins, 2364 holes 791/80; Small Coko Tins, 2370 holes 793/80; Small Coko Tins, 2376 holes 795/80; Small Coko Tins, 2382 holes 797/80; Small Coko Tins, 2388 holes 799/80; Small Coko Tins, 2394 holes 801/80; Small Coko Tins, 2400 holes 803/80; Small Coko Tins, 2406 holes 805/80; Small Coko Tins, 2412 holes 807/80; Small Coko Tins, 2418 holes 809/80; Small Coko Tins, 2424 holes 811/80; Small Coko Tins, 2430 holes 813/80; Small Coko Tins, 2436 holes 815/80; Small Coko Tins, 2442 holes 817/80; Small Coko Tins, 2448 holes 819/80; Small Coko Tins, 2454 holes 821/80; Small Coko Tins, 2460 holes 823/80; Small Coko Tins, 2466 holes 825/80; Small Coko Tins, 2472 holes 827/80; Small Coko Tins, 2478 holes 829/80; Small Coko Tins, 2484 holes 831/80; Small Coko Tins, 2490 holes 833/80; Small Coko Tins, 2496 holes 835/80; Small Coko Tins, 2502 holes 837/80; Small Coko Tins, 2508 holes 839/80; Small Coko Tins, 2514 holes 841/80; Small Coko Tins, 2520 holes 843/80; Small Coko Tins, 2526 holes 845/80; Small Coko Tins, 2532 holes 847/80; Small Coko Tins, 2538 holes 849/80; Small Coko Tins, 2544 holes 851/80; Small Coko Tins, 2550 holes 853/80; Small Coko Tins, 2556 holes 855/80; Small Coko Tins, 2562 holes 857/80; Small Coko Tins, 2568 holes 859/80; Small Coko Tins, 2574 holes 861/80; Small Coko Tins, 2580 holes 863/80; Small Coko Tins, 2586 holes 865/80; Small Coko Tins, 2592 holes 867/80; Small Coko Tins, 2598 holes 869/80; Small Coko Tins, 2604 holes 871/80; Small Coko Tins, 2610 holes 873/80; Small Coko Tins, 2616 holes 875/80; Small Coko Tins, 2622 holes 877/80; Small Coko Tins, 2628 holes 879/80; Small Coko Tins, 2634 holes 881/80; Small Coko Tins, 2640 holes 883/80; Small Coko Tins, 2646 holes 885/80; Small Coko Tins, 2652 holes 887/80; Small Coko Tins, 2658 holes 889/80; Small Coko Tins, 2664 holes 891/80; Small Coko Tins, 2670 holes 893/80; Small Coko Tins, 2676 holes 895/80; Small Coko Tins, 2682 holes 897/80; Small Coko Tins, 2688 holes 899/80; Small Coko Tins, 2694 holes 901/80; Small Coko Tins, 2700 holes 903/80; Small Coko Tins, 2706 holes 905/80; Small Coko Tins, 2712 holes 907/80; Small Coko Tins, 2718 holes 909/80; Small Coko Tins, 2724 holes 911/80; Small Coko Tins, 2730 holes 913/80; Small Coko Tins, 2736 holes 915/80; Small Coko Tins, 2742 holes 917/80; Small Coko Tins, 2748 holes 919/80; Small Coko Tins, 2754 holes 921/80; Small Coko Tins, 2760 holes 923/80; Small Coko Tins, 2766 holes 925/80; Small Coko Tins, 2772 holes 927/80; Small Coko Tins, 2778 holes 929/80; Small Coko Tins, 2784 holes 931/80; Small Coko Tins, 2790 holes 933/80; Small Coko Tins, 2796 holes 935/80; Small Coko Tins, 2802 holes 937/80; Small Coko Tins, 2808 holes 939/80; Small Coko Tins, 2814 holes 941/80; Small Coko Tins, 2820 holes 943/80; Small Coko Tins, 2826 holes 945/80; Small Coko Tins, 2832 holes 947/80; Small Coko Tins, 2838 holes 949/80; Small Coko Tins, 2844 holes 951/80; Small Coko Tins, 2850 holes 953/80; Small Coko Tins, 2856 holes 955/80; Small Coko Tins, 2862 holes 957/80; Small Coko Tins, 2868 holes 959/80; Small Coko Tins, 2874 holes 961/80; Small Coko Tins, 2880 holes 963/80; Small Coko Tins, 2886 holes 965/80; Small Coko Tins, 2892 holes 967/80; Small Coko Tins, 2898 holes 969/80; Small Coko Tins, 2904 holes 971/80; Small Coko Tins, 2910 holes 973/80; Small Coko Tins, 2916 holes 975/80; Small Coko Tins, 2922 holes 977/80; Small Coko Tins, 2928 holes 979/80; Small Coko Tins, 2934 holes 981/80; Small Coko Tins, 2940 holes 983/80; Small Coko Tins, 2946 holes 985/80; Small Coko Tins, 2952 holes 987/80; Small Coko Tins, 2958 holes 989/80; Small Coko Tins, 2964 holes 991/80; Small Coko Tins, 2970 holes 993/80; Small Coko Tins, 2976 holes 995/80; Small Coko Tins, 2982 holes 997/80; Small Coko Tins, 2988 holes 999/80; Small Coko Tins, 2994 holes 1001/80; Small Coko Tins, 3000 holes 1003/80; Small Coko Tins, 3006 holes 1005/80; Small Coko Tins, 3012 holes 1007/80; Small Coko Tins, 3018 holes 1009/80; Small Coko Tins, 3024 holes 1011/80; Small Coko Tins, 3030 holes 1013/80; Small Coko Tins, 3036 holes 1015/80; Small Coko Tins, 3042 holes 1017/80; Small Coko Tins, 3048 holes 1019/80; Small Coko Tins, 3054 holes 1021/80; Small Coko Tins, 3060 holes 1023/80; Small Coko Tins, 3066 holes 1025/80; Small Coko Tins, 3072 holes 1027/80; Small Coko Tins, 3078 holes 1029/80; Small Coko Tins, 3084 holes 1031/80; Small Coko Tins, 3090 holes 1033/80; Small Coko Tins, 3096 holes 1035/80; Small Coko Tins, 3102 holes 1037/80; Small Coko Tins, 3108 holes 1039/80; Small Coko Tins, 3114 holes 1041/80; Small Coko Tins, 3120 holes 1043/80; Small Coko Tins, 3126 holes 1045/80; Small Coko Tins, 3132 holes 1047/80; Small Coko Tins, 3138 holes 1049/80; Small Coko Tins, 3144 holes 1051/80; Small Coko Tins, 3150 holes 1053/80; Small Coko Tins, 3156 holes 1055/80; Small Coko Tins, 3162 holes 1057/80; Small Coko Tins, 3168 holes 1059/80; Small Coko Tins, 3174 holes 1061/80; Small Coko Tins, 3180 holes 1063/80; Small Coko Tins, 3186 holes 1065/80; Small Coko Tins, 3192 holes 1067/80; Small Coko Tins, 3198 holes 1069/80; Small Coko Tins, 3204 holes 1071/80; Small Coko Tins, 3210 holes 1073/80; Small Coko Tins, 3216 holes 1075/80; Small Coko Tins, 3222 holes 1077/80; Small Coko Tins, 3228 holes 1079/80; Small Coko Tins, 3234 holes 1081/80; Small Coko Tins, 3240 holes 1083/80; Small Coko Tins, 3246 holes 1085/80; Small Coko Tins, 3252 holes 1087/80; Small Coko Tins, 3258 holes 1089/80; Small Coko Tins, 3264 holes 1091/80; Small Coko Tins, 3270 holes 1093/80; Small Coko Tins, 3276 holes 1095/80; Small Coko Tins, 3282 holes 1097/80; Small Coko Tins, 3288 holes 1099/80; Small Coko Tins, 3294 holes 1101/80; Small Coko Tins, 3300 holes 11

UNION-CASTLE LINE.

HOMEWARD via SUEZ. "Landover Castle" From Mombasa (About) 22nd March 1920. "Osmonty Castle" 19th April. "Llanthomas Castle" 13th July. "Landover Castle" 6th September.

British India Steam Navigation Company, Limited, AND PENINSULAR AND ORIENTAL STEAM NAVIGATION CO.

LONDON AND EAST AFRICA LINE. LONDON TO BEIRA via Mozambique Port Said, Port Sudan and Aden, Ostwards and Homewards. Callings Kilindini, Zanzibar, Dar-es-Salaam, Beira, Delagoa Bay fortnightly, Also Mozambique monthly.

Olde English Breakfast Table. THE AIRCRAFT OF THE BREAKFAST TABLE. Sole Agents: (for trade only) R. O. HAMILLTON, Ltd. NAIROBI.

MESSAGERIES MARITIMES (FRENCH MAIL STEAMERS). Regular and fortnightly services from and to Mombasa. THE QUICKEST ROUTE TO LONDON. NEW SAILINGS TO MARSEILLES.

Compagnia Italiana Transatlantica. Monthly Passenger Service to NAPLES and GENOA. THE BEST ROUTE TO ENGLAND. "MAZZINI" 1st April, 1st May, etc.

THE AFRICAN MARINE AND GENERAL ENGINEERING CO., Ltd. KILINDINI - MOMBASA. MARINE AND MECHANICAL ENGINEERS. REPAIRS TO ANY TYPE OF MACHINERY. SPECIALISTS IN Remounting of Bearings, Cutting and grinding of Brass Dies.

Deutsche Ost-Afrika-Linie. (GERMAN AFRICAN SERVICE). DEUTSCHE OST-AFRIKA-LINIE GENERAL AGENCY, MOMBASA. Callings: "Ostia", P.O. No. 12.

The Bradford Manufacturing Co. Limited. ANNOUNCE THE ARRIVAL OF- Girls' Tan Lustre Lisle Gym Hose at 3/6 per pair, all sizes.

Keith Timber Co. LIMITED. NAIROBI. THE PLACE FOR TIMBER, MOULDING, WOOD BLOCK FLOORING, ROOFING and PLANT FRY BINS.

STANDARD STATIONERY STORES. NAIROBI. It is now considered good form to Coronatype personal letters. Social usage changes, even as styles in dress. It is now considered smart and up to the minute to Coronatype personal letters.

Fabrics that Please. Horrockses Dress Fabrics. DRESS TAFFETA 38" WIDE IN BLACK, BLUE, GREEN, LEMON SHGS. 9" YD.

LOCUSTS DESTROYED. BY USING INGREDIENTS LATELY PUBLISHED BY THE "E. A. STANDARD." Send your enquiries to:- MADATALLY SULEMAN VEREE & SONS Government Road. NAIROBI.

PIANOFORTE TUNING AND REPAIRING. Ten years experience. Messrs. Chappell and Co., London.

OVERSEAS MAILS. ARRIVALS. STRAHERS FROM Mon. at Mombasa.

DEPARTURES. STRAHERS FOR Mon. at Mombasa.

UPLANDS BACON FACTORY. Luncheons, Dinners and Picnics are not complete without resort to our 33 Varieties of Tinned and Glass Goods.

BOX TENGOR



Teiso Vision

The cheap Camera for Everybody with three interchangeable lenses for distance, groups and portraits.
Size 2 1/2 x 2 1/2
Size 4 1/2 x 2 1/2
Try our Photographic Department,
First class Developing, Printing and Enlarging.
"THE LENS" Limited.
PRINCE'S HOUSE.
GRAND "FOTOPHOTOS."
Box 221

THE MAN WHO ASKS FOR "BEER" DESERVES WHAT HE GETS.

THE MAN WHO ASKS FOR "McEWAN'S" GETS WHAT HE DESERVES.

OVERMAN AND COMPANY
AGENTS,
MOMBASA.

B. E. A. SAW MILLS

Telephone No. 93. P.O. Box 221.
Telegrams: "Bams" Nairobi.

Campbor, Podo, Mweri and Muna.
Flooring, Ceiling and Moulding.

THE TARIFFS PROBLEM IN TANGANYIKA

Statement by Governor in the Council

EXTRAORDINARY MEMBER APPROVED.

"MEMBERS: CORRESPONDENT: Dar-es-Salaam, Feb. 15. In the Tanganyika Legislative Council this week His Excellency the Governor announced that it was his intention of introducing at least one member of the commercial community of Dar-es-Salaam as an Extraordinary Member of the Legislative Council in addition to the present Unofficial Members for the purpose of debating the proposal on the Tariff problems and protective duties raised at the Governor's Conference in Nairobi in January. He further added that the member would, in all probability be the President of the Chamber of Commerce at that time. Government Reservations.

Continuing His Excellency stated that he had made it clear at the Nairobi Conference that so far as he himself was concerned all arrangements to which he submitted were subject to the condition that they would be subjected to such action as the Government of Tanganyika might decide to take after consultation with the non-official section of the Legislative Council. That position remained. It was, of course, impossible for facts to be made public weeks or months before a draft bill was brought into the Legislative Council. It was most unfortunate that such should be the case, but it was obvious that there was no remedy for it.

He wished to ask Unofficial Members if at some stage convenient to themselves they could arrange a meeting at which they could discuss with him those figures which he would place in their hands, but which he hoped they would treat as confidentially as possible.

Chambers Informed. The various associations and Chambers of Commerce in Tanganyika, continued His Excellency, had been provided with all the material at Governor's disposal so that they might consider the questions and favour Government with their views. A good

RAILWAY TRAFFIC STATISTICS

Highlights Returns for December.

GENERAL INCREASE.

The following statistics relating to receipts, tonnage handled, etc. for the Kenya and Uganda Railways and Harbours for the month of December, 1919, as compared with the corresponding period of 1918 have been compiled by the office of the General Manager.

Report traffic rail to Kilindini Harbour: October, 1919, 19,932 tons; 1918, 16,900 tons; November, 1919, 15,274 tons; 1918, 20,055 tons; December, 1919, 14,976 tons; 1918, 18,641 tons. The total report traffic rail to the Coast for twelve months of 1919 was 277,477 tons as compared with 273,300 tons for the corresponding period of 1918, an increase of 0.6 per cent.

Import traffic rail to Kilindini Harbour: October, 1919, 11,565 tons; 1918, 12,260 tons; November, 1919, 11,383 tons; 1918, 8,008 tons; December, 1919, 10,922 tons; 1918, 9,614 tons. The total import traffic rail to the Coast for twelve months of 1919 was 124,870 tons as compared with 121,872 tons for the corresponding period of 1918, an increase of 0.4 per cent.

Total public traffic: October, 1919, 63,597 tons; 1918, 67,644 tons; November, 1919, 71,147 tons; 1918, 68,580 tons. No figures are given for December. The total public traffic dealt with by the Administration for eleven months of 1919 was 667,783 tons as compared with 667,783 tons for the corresponding period of 1918, an increase of 0.0 per cent.

many of the Chambers had complied with the request of Government and had sent their views, which were valuable documents. One or two Chambers did not reply, however, and it seemed to be suggested now that Government did not give sufficient opportunity for the ventilation of this subject.

He wished to make it public that the fullest opportunity was given to public bodies to make their remarks and proposals and formulate constructive and reasonable proposals as some bodies had done. Still he had felt for some time that it was possible that the commercial world of the Territory was not sufficiently represented in the discussion.

as compared with 799,594 tons for the corresponding period of 1918, an increase of 11.05 per cent. Train Mileages: Passenger: October, 1919, 50,808; 1918, 50,808; November, 1919, 50,808; 1918, 50,808; December, 1919, 50,808; 1918, 50,808. Total Train Mileages: October, 1919, 262,674; 1918, 272,818; November, 1919, 229,649; 1918, 229,649; December, 1919, 219,521; 1918, 219,521. The total train mileage during twelve months of 1919 was 2,886,573 as compared with 2,710,000 for the corresponding period of 1918, an increase of 6.22 per cent.

Imports and Exports.

The following is the tonnage of the principal import commodities despatched to open-country destinations from Mombasa Island during the month of December, 1919, and the corresponding period of 1918, prepared by the office of the General Manager of the Kenya and Uganda Railways and Harbours: October, 1919, 1,564 tons; 1918, 2,498 tons; a decrease of 36.6 tons; November, 1919, 658 tons; 1918, 796 tons; a decrease of 138 tons; December, 1919, 356 tons; 1918, 921 tons; a decrease of 565 tons. Cotton cloth, 1919, 258 tons; 1918, 921 tons; a decrease of 663 tons. Motor cars, 1919, 258 tons; 1918, 921 tons; a decrease of 663 tons. Iron and steel manufacturing goods, 1919, 1,250 tons; 1918, 319 tons; an increase of 931 tons. Kerosene oil, 1919, 1,247 tons; 1918, 1,003 tons; an increase of 244 tons. Petrol, 1919, 2,822 tons; 1918, 1,833 tons; an increase of 1,409 tons. Salt, 1919, 948 tons; 1918, 962 tons; a decrease of 14 tons.

The following is the tonnage of the principal export commodities received at the Coast from open-country stations and Lake Port during the month of December, 1919, and the corresponding period of 1918: October, 1919, 1,607 tons; 1918, 2,268 tons; a decrease of 666 tons. Cotton, 1919, 646 tons; 1918, 398 tons; an increase of 248 tons. Cotton seeds, 1919, 974 tons; 1918, 332 tons; an increase of 642 tons. Fire Bricks, 1919, 1,434 tons; 1918, 1,421 tons; an increase of 13 tons. Ground nuts, 1919, 109 tons; 1918, 22 tons; an increase of 87 tons. Hides, 1919, 277 tons; 1918, 446 tons; a decrease of 169 tons. Maize, 1919, 178 tons; 1918, 2,349 tons; a decrease of 2,171 tons. Sisam, 1919, 192 tons; 1918, 225 tons; a decrease of 33 tons. Sugar, 1919, 29 tons; 1918, 192 tons; a decrease of 163 tons. White Flour, 1919, 154 tons; 1918, 243 tons; a decrease of 89 tons. Wool, 1919, 27 tons; 1918, 73 tons; a decrease of 46 tons.

WAY IS THIS WHISKY SO POPULAR?



BECAUSE there is that subtle difference in its flavour and quality which distinguishes it from all other whiskies.

It has been said that there is no difference to-day between one well-known brand and to the contrary is to be found in "BLACK & WHITE."

Distilled from the finest home-grown materials at the best-equipped distilleries in the Highlands of Scotland, "BLACK & WHITE" steadily maintains the super quality for which it has become world-famous.

BUCHANAN'S "BLACK & WHITE" SCOTCH WHISKY

Just Received

A NICE SELECTION OF Ladies Evening Shoes STYLES and PRICES RIGHT.

De Luxe Boot Co.

Government Road, Box 437 NAIROBI

MVILLI TIMBER
Best quality Softwood
Durable and Strong
One and a Half Inch
Timber
UGANDA FRUITS,
Agents
R. B. SIRDRAW,
110, West End,
DUNELM, Uganda

APPEARANCE PERFORMANCE COMFORT VALUE

CARR, LAWSON & CO., LTD.

Eldoret, Nakuru, Nairobi, Kitale, Kampala.

MOTOR NEWS

From Road & Showroom.

UNIT CONSTRUCTION IN DESIGN.

The "One Piece" Engine And Gear Box.

SEASONIC OUTDOORS

(Continued.)
Coke insert valves are quite satisfactory when run in oil, provided that the spring pressure and contact areas are sufficient. If a multi-plate metal-metal clutch is fitted, the tendency to drag when the oil is cold can be overcome by means of a spring similar to that employed on certain Sunbeam models. An engine gear unit of this type is far more quiet and compact than any separate unit, it will weigh no more and will weigh in the frame and motor.

But we are told that a just a reasonable, and that it is impossible to get at the crank case or gear box separately.
This need not be true, for a separate gear box can be bolted up to the crank case if one should so desire. But the argument holds for a gear box even so often as once a year, and it should be noted that the retaining spiders, which are the connecting spacers, can be removed and gear plates can be taken round all sorts of corners through gear box bolts, gear washers, engine plates and mounting through frame flanges, and all these parts must, therefore, be sufficiently large to prevent distortion in the unit system, however, all these stresses can be looked after by a correct and rigid crank case casting strengthened, if necessary, by a cast cover over an engine and gear unit of this type usually fitted to the drive sprocket on the front drive shaft of the motor.

It is, however, to be noted that this is not a reasonable method of retaining design, which provides the only unambiguous method of retaining design in the motor. Now I have dealt with the gear type of engine with gear, because it involves no radical changes either in the engine or in the inside of the gear box and a new clutch would be all that was necessary to make the conversion, except for the actual gear train.

The Shaft-Driven Single

The second alternative of placing the crank in line with the frame, is an even more promising one, and one that has been adopted in a most satisfactory manner for two- and four-cylinder engines. Judging from the number of three and four-cylinder engines that have adopted this plan it must be equally satisfactory for two and four-cylinder engines, but on this point I have no first-hand experience save the one run which I had on this type, a small cylinder shaft-driven F.V. was being run on this type, a measure or so got to the job on.

Whether or not it is justified by lack of experience, a question of the motor also remains shaft-driven engine, it must be pointed out that shaft drive is a most economical type of engine unit construction. It is equally possible to employ a final chain drive, as in the case of the A.B. the twin Franco-Italian and the American type, but the most serious disadvantage, though a slight one, is that the shaft drive is not so readily adaptable to a motor of any size, as the crank drive is.

Smaller and Lighter Clutches

In cases where the crankshaft is in line with the frame the clutch is mounted on the crankshaft for reasons of space. This is not the right place for a clutch of any size, especially if it is a multi-plate clutch, which is not only bulky and heavier to transport, but also in the position it may be found in a separate compartment in the motor frame.

It is, however, to be noted that this is not a reasonable method of retaining design, which provides the only unambiguous method of retaining design in the motor. Now I have dealt with the gear type of engine with gear, because it involves no radical changes either in the engine or in the inside of the gear box and a new clutch would be all that was necessary to make the conversion, except for the actual gear train.

R. A. C. Tourist Trophy Race.

WOMEN TO BE OFFICIALLY RECOGNISED.

(STANDARD CORRESPONDENT.)
London, (By Mail.)
For the first time in British racing history, women will be officially recognized in the Royal Automobile Club's Tourist Trophy Race, over the Ard. Circuit, on March 12. The regulations provide for two classes of entrants; girls will be permitted this year.
Other alterations will be made in the conditions for this year's total of competitors will be limited to seventy, and the first seventy entries accepted will be those of the first race. Last year there were 74 entries, and there were 66 competitors.

As a firm believer in the future of the combined engine and gear unit on the scene, I have thought it might be well to point out that in all events, drive a little better than the engine in this country. I feel most strongly that we are lagging behind our determined foreign rivals in this important matter. Whether the decision of the motor trade will be any more than a mere formality, the Committee is responsible, our hands are not tied.

Future of Unit Construction.

As a firm believer in the future of the combined engine and gear unit on the scene, I have thought it might be well to point out that in all events, drive a little better than the engine in this country. I feel most strongly that we are lagging behind our determined foreign rivals in this important matter. Whether the decision of the motor trade will be any more than a mere formality, the Committee is responsible, our hands are not tied.

REPUTATION

The Greatest Asset In Commercial Life

is reputation for the quality of one's goods. THIS is particularly true of Motor Vehicles in East Africa, where the conditions are so trying. Dealers in Motor Vehicles in this colony will speak glowingly of the reputations of their cars, but these are mainly gained in other countries, under other conditions; they are useless in East Africa. It is an

EAST AFRICAN REPUTATION

that will attract the wise buyer. He knows other claims are useless. The Motor Vehicles with the FINEST reputation in East Africa are

The Dodge Cars and Dodge Trucks

BACKED BY

The Finest Service in E. Africa.

The purchaser of discrimination will examine the mechanical specifications of THE DODGE - compare them with those of any other car in East Africa and will be unhesitatingly

BUY THE DODGE.

S. FISHER & SIMMONS (E.A.) LTD., VICTORIA STREET, NAIROBI. SEE OUR RANGE OF SIXES: Sedans, Tourers, Box Bodies and the famous DODGE-GRAHAM TRUCKS.

Tel. 302.

Box 406.

Metropolitan Garage.

SPECIALISTS IN AUTOMOBILE REPAIRS. 2 doors Avenue Hotel.

We always have a number of selected and overhauled 2-hand cars in stock.

Duco Spray Painting

Have your car touched up or completely reduced, by us UP TO DATE PLANT

Wanted for Cash Box Body Cars FOR HIRE

D. J. L. LETHBRIDGE, Sole Proprietor.

JOHN RIFKIN

SIXTH AVENUE, P.O. Box 316, NAIROBI

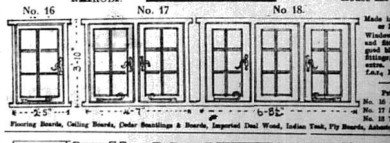


WAGON BUILDERS. BLACKSMITH. FARM Stock of ALL BRASS WAGONS and ALL WAGON PAINT.

ALL KINDS OF WAGON MADE TO ORDER.

Geo. BLOWERS.

BUILDING CONTRACTOR, MANUFACTURER AND DIRECT IMPORT SADDLER STREET GREATLY REDUCED PRICES Tel. Add. "Concrete" Flats: Works, 206, House 425



No. 16	No. 17	No. 18	No. 19	No. 20	No. 21
4 1/2 x 6 1/2 1 1/2" x 2 1/2" 1 1/2" x 2 1/2" 1 1/2" x 2 1/2"	4 1/2 x 6 1/2 1 1/2" x 2 1/2" 1 1/2" x 2 1/2" 1 1/2" x 2 1/2"	4 1/2 x 6 1/2 1 1/2" x 2 1/2" 1 1/2" x 2 1/2" 1 1/2" x 2 1/2"	4 1/2 x 6 1/2 1 1/2" x 2 1/2" 1 1/2" x 2 1/2" 1 1/2" x 2 1/2"	4 1/2 x 6 1/2 1 1/2" x 2 1/2" 1 1/2" x 2 1/2" 1 1/2" x 2 1/2"	4 1/2 x 6 1/2 1 1/2" x 2 1/2" 1 1/2" x 2 1/2" 1 1/2" x 2 1/2"

Note: - All doors, double sash included. Without opening, double 26 per door. In stock, Archibald, Lane, Conant, Allen, White

FLATWORK BY FLEMING HERRICK LEAD.

WHY BUY AMERICAN DOORS

AND SEND YOUR MONEY ABROAD? I can compete with them - and beat them!

Send for my ILLUSTRATED CATALOGUE and Price List. SOUND quotations for SOUND work.

CONCRETE BLOCKS ALL SIZES IN STOCK. BEST KIMA SAND IN ANY QUANTITY. (Cart, Truck or Train Load).

QUARRY CHIPS BLACK TRAP BALL (Machine Broken and Screened to any Size).

DELIVERY BY LORR ES AT QUOTED RATES.

Plumbing and Sanitary Work done under the Supervision of our own European Specialists. Estimates Free.

A Winning "Double"

Crawford's LIQUEUR

SCOTCH WHISKY

SPECIAL RESERVE
Scotch Whisky
Standard Blend.

OLD LIQUEUR
The One Whisky for
any Special Occasion.

A. A. CRAWFORD
LONDON & GLASGOW

FOR AN EFFICIENT AND PERMANENT HOT WATER SUPPLY

INSTALL A

BESTON HOT WATER BOILER

For particulars relating to the size of Boiler required and prices apply to—

Thornton & Turpin (Sole Agents)

Registered Plumbers and Sanitary Engineers. NAIROBI and MOMBASA.

Phone 195. P.O. Box 260, Nairobi, and P.O. Box 386, Mombasa.

LIME.

Bone Flour Fertiliser.

Now in Stock. Order Now for Long Runs.

Lime Limited

Tel. Lisiate, Phone 608. Box 412, Chamber of Commerce Bldg.

ESSJAY. Limited.

BOLUS HOUSE, GOVERNMENT ROAD, NAIROBI. Phone 377.

Financial and Property Agents.

Mortgages Specialised in. Properties Negotiated. Partnerships Arranged. Investments Advised on.

WE HAVE SOUND INVESTMENTS FOR SUMS FROM £100 UPWARDS. IN THIS RESPECT WE CLAIM TO DO BETTER FOR YOU THAN ANY OTHER ELSE.

S. JACOBS, Managing Director.

Lombard Code.

Designed strictly in accordance with the International Telegraphic Regulations effective on and after October 1st, 1922.

Economy-Security Time Saving Facilities Doubled Phrases. 879 Pages - Strongly Bound. Shgs. 120-00.

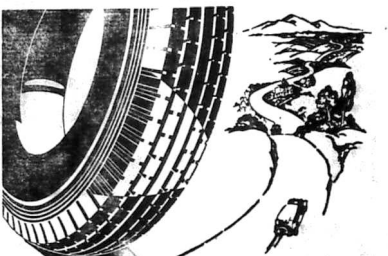
Postage Shgs. 3.00 extra.

OBTAINABLE FROM THE

STANDARD STATIONERY STORES

NAIROBI.

GREATER MILEAGE



HERE is a tyre that looks, says and gives Mileage! Created to meet every condition of today's use and driving, this New Hoyle adds thousands of miles of surprisingly economical service.

The NEW HOYLE

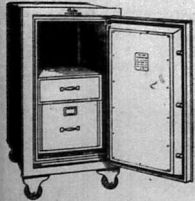
The Tyre of Today for the Car of Today

CARR, LAWSON & CO, LTD.

NAIROBI.

BETTER PROTECTION

MILKIN BUILT STEEL SAFES WITH COMBINATION LOCKS.



FOUR SIDES ALL FILLED WITH LOCKERS, DRAWERS AND ADJUSTABLE SHELVES.

TAWS LIMITED, NAIROBI.

WHEN YOU WANT AN

AEROPLANE

WILSON AIRWAYS LTD. WRITE, WIRE OR PHONE

Motor Tours Ltd.

OPPOSITE THE POST OFFICE. BOX 530 - PHONE 330. Tel. MOTOTOURS.

BOOKING AGENTS

FOR WILSON AIRWAYS LTD. MOTOR TOURS LTD. ARE BOOKING AGENTS FOR ALL PRINCIPAL AFRICAN AIRWAYS.

SPECIALIZE IN THE NILE TOURS TO EUROPE, AND LONG DISTANCE MOTORING SAFARIS.

MAISON MARIE

(MIL. and MISS. F. V. COPPE). ARTISTIC HAIRDRESSING. PERMANENT WAVING A SPECIALITY.

SIX SYSTEMS USED. The Latest in Evening Gals Just Arrived from London & Paris.

ONLY EXCLUSIVE LADIES SALOON IN KENYA. Rooms 29 and 36. Tor's Hotel. P.O. Box 1892. Phone 645.

Take Lift to Fourth Floor.

THE NEW PENAL CODE IN FORCE ON APRIL 1.

(Continued from page 1.)

murder, and the Court of Appeal has quashed the conviction, and allowed it to go back to the grounds that the weapon with which the woman had been beaten to death was only a stick. One can imagine the outcry that there would be in England if a woman who had been beaten to death was regarded as having received grievous hurt.

Corporal Punishment. A further alteration in the law in regard to corporal punishment. The existing law is that where a native is sentenced, the Court may, either in addition to, or in lieu of, any other punishment, inflict corporal punishment. There is now no racial distinction for corporal punishment, and it may only be inflicted by certain officials, generally crimes of violence. In regard to native courts there is no alteration in the law but the general question of these courts is now being considered by the Secretary of State.

In regard to magistrates' powers, the first class magistrate under the old law, had powers to inflict on non-natives up to 2 years' imprisonment and £100 fine; he is now given powers to impose two years and £200 fine.

A second class magistrate could inflict 6 months and £20 fine; now he can inflict 6 months and £75 fine. The third class magistrate may fine up to £15 instead of £5. In regard to natives, the first class magistrate had absolute powers, but now he cannot try breaches of order, manslaughter, or rape cases. The second class magistrate's powers are increased, so that he has the powers of the first. The third class magistrate can inflict up to six months or £20 instead of 3 months and £15.

I would also point out that under section 14 of this Code, the new class magistrates has all the powers of the High Court, but he can exercise them only in certain districts that he can exercise them. It is only probably be desirable that each magistrate should have powers to try cases of murder, and other offences, and that where it would take a long time for the High Court to proceed to try a case.

Capital Punishment. In regard to Capital Punishment, at present a person accused

is not informed of the charge brought against him when he is put in the dock. To say one accused to English criminal law: this is rather astonishing. However, in England, if you are accused, you are either arrested, or summoned to appear in court. You are asked whether you did so-and-so or not. Here you are arrested or summoned, according to the procedure code, and you do not know what charge is brought against you; you are told what the charge is, and the evidence has been taken. This is a departure from English law, and I think no one has been able to explain the reason for the alteration. The applicable laws are retained.

All appeals now are, with few exceptions, to be heard by two judges. There is still the same appeal to the East African Court of Appeal, but there is this addition: At present, where a magistrate sentences a person to the High Court, that person appeals to the High Court, that finishes the appeal. Under the new code, the convicted person can appeal still further, to the East African Court of Appeal.

Trial by Jury. There is one other point which is quite new, and will give rise to discussion, and that is contained in sections 200 to 216, which lay down that all trials of Europeans are to be by jury. This may lead to difficulties. Power is given to magistrates to inflict sentence by a trial by jury, but in all cases where more than six months is imposed, the prisoner must be tried by a jury. You will notice that the opinion is strongly felt that if Europeans are to be tried by jury, it is necessary to have the same procedure in reference to natives, and I quite appreciate that argument, but at the same time, I would point out that this is a question which would be referred to the Secretary of State. In any event, the introduction of the jury system will lead to great difficulties.

The introduction of the jury system will lead to great difficulties. It is necessary to have the same procedure in reference to natives, and I quite appreciate that argument, but at the same time, I would point out that this is a question which would be referred to the Secretary of State. In any event, the introduction of the jury system will lead to great difficulties. It is necessary to have the same procedure in reference to natives, and I quite appreciate that argument, but at the same time, I would point out that this is a question which would be referred to the Secretary of State. In any event, the introduction of the jury system will lead to great difficulties.

It is necessary to have the same procedure in reference to natives, and I quite appreciate that argument, but at the same time, I would point out that this is a question which would be referred to the Secretary of State. In any event, the introduction of the jury system will lead to great difficulties. It is necessary to have the same procedure in reference to natives, and I quite appreciate that argument, but at the same time, I would point out that this is a question which would be referred to the Secretary of State. In any event, the introduction of the jury system will lead to great difficulties.



EMPIRE

STARTING TO-NIGHT THURSDAY - FRIDAY - SATURDAY. February 20th, 21st and 22nd.

Douglas Fairbanks IN "THE GAUCHO"

You saw him in "Robin Hood," in "The Three Musketeers," in "The Black Pirate," and in "The Thief of Bagdad."

Now you can see him in the most thrilling super-feature of his glorious career!

(And if you watch carefully, you'll see MARY PICKFORD!)

"The Gauchito" is the saga of the South American cowboy... romance and adventure in the land of the Spaniard.

PATHE GAZETTE EMPIRE NEWS KENYA NEWS.

No Advance in Prices - 5hs. 5/-, 3/- and 2/-.

THEATRE ROYAL

To-Night, Friday and Saturday - Feb. 20, 21, 22. "Winds of the Pampas"

A SUPERLATIVE FEATURE PICTURE.

WITH RALPH GRONINGER - THE "VALENTINO" OF TO-DAY - CLAIRE McDOWELL, ANN DREW, and EDWARD DAVIS

headling a Big Cast of Players—in a splendidly acted, powerful story of romance.

"FIGHTING FOOLS"

Featuring the Famous Funniesties "Izzie & Lizzie" News Of Interest—in The "BUDGET & MIRROR"

STILL THE SAME POPULAR PRICES.

3/- and 2/-.

NAIROBI RAILWAY CLUB THEATRE PRESENTS THE SKIN GAME

BY JOHN GALSWORTHY.

ON THURSDAY, FRIDAY AND SATURDAY, FEBRUARY 27th and 28th and MARCH 1st, at 8-45 p.m.

PRICES OF ADMISSION: 5hs. 5/- & 5hs. 3/- BOOK YOUR SEATS IN ADVANCE AT Messrs. TAWS Ltd., Government Road.

PICCADILLY RESTAURANT

TEAS LUNCHEONS DINNERS European Cooking. We undertake Dinner or Tea Parties Anywhere.

NOTICE

On and after 1st March, 1930, the Hours of Business in Nairobi of the undermentioned Banks will be from 9 a.m. to 2-30 p.m. daily with the exception of Wednesdays and Saturdays when the hours will be 9 a.m. to 1 p.m. and 9 a.m. to 12 noon respectively.

For National Bank of India, Limited. A. S. McKENDRICK, Manager.

For Standard Bank of South Africa, Ltd. J. C. SHAW, Manager.

For Barclays Bank (Dominion, Colonial and Overseas) A. W. PATERSON, Manager.

STEEL BOLTS & NUTS. AND COTTER PINS.



ALIBHAI SHARIFF & SONS. P.O. Box 205. NAIROBI. GOVERNMENT ROAD and BAZAAR.

B. Florens FRENCH HAIR DRESSER.

PERMANENT WAVING AND TINTING A SPECIALITY.

Phone 681. P.O. Box 928. YORK BUILDING - GOVERNMENT ROAD, NAIROBI. Opposite Electric Light Co.

RUBBER STAMPS

AS 233 STANDARD STATIONERY STORES, NAIROBI.

FOR SALE

Bedsteads, fitted with Six Springs. Kapok Mattresses. Settees and Easy Chairs.

AT THE LOWEST PRICES. ERIC SHIRLEY, Indian Street, NAIROBI.

Ingersoll Rand Company (S. A.) Limited.

Makers of all kinds of Compressed Air Pumps and Pumps. Specialties in Deep-well Pumping Installations. For information write to: J. POLLOCK, Indian Street, NAIROBI. Telephone No. 399.

P. GETHIN

Phone 134. Box 29. Garage: Gethin, NAIROBI. LUXURIOUS TOURING CARS FOR HIRE with experienced drivers.

Lang Trips a Speciality.

For Sale Hudson Tourer. Good running motor. £140. Cars & Lorry. Specially fitted for safari (6000 miles). £150. Fiat 7 Seater. Really good car. Any trial. £150.

MOMBASA TIMES

CAN BE OBTAINED at the STANDARD OFFICE, BARRAGE.

Owing to the Magnificent Success OF

CHEVROLET

IN 1929.

There will be no change of Model this year.

But With this economy effected We are pleased to announce The following reductions in Prices.

Table with 2 columns: Model Name and Price. Rows include COACH, SPORT COUPE, SEDAN, TRUCK CHASSIS, TOURER, ROADSTER, COUPE.

THE MOTOR MART & EXCHANGE LTD. NAIROBI - NAKURU - ELDRET - DAR-ES-SALAAM

AGENTS FROM THE COAST TO THE CONGO.

THE NEW PENAL CODE IN FORCE ON APRIL 1.

(Continued from page 7.) ... might be able to get a European jury, but I very much doubt whether it would be possible in any of the other territories.

The Indian point of view, say that they do not want this modern very, very much, and that it will be very hard to get the Indians and I shall be sorry to see trouble on my personal field, which would have done everything in every possible way for the Government of the country.

The Hon. A. D. Jones (European) (Chief Minister) with regard to the bill, there were some objections, but in regard to the bill when it comes to the interpretation of the law, there was no one thing...

The Hon. Attorney-General replied that he knows of no one who would find fault with the interpretations of the Indian code, but he is not sure that they are very abundant...

The Hon. C. J. Amin (Indian) (Medical Member) in a criticism said that whatever the facts were of the Indian penal code, that had been in practice for so many years in India and also in Tanganyika and Kenya, and so on, was so wise...

The Hon. C. J. Amin (Indian) (Medical Member) in a criticism said that whatever the facts were of the Indian penal code, that had been in practice for so many years in India and also in Tanganyika and Kenya, and so on, was so wise...

The Hon. C. J. Amin (Indian) (Medical Member) in a criticism said that whatever the facts were of the Indian penal code, that had been in practice for so many years in India and also in Tanganyika and Kenya, and so on, was so wise...

ECHO OF THE CURRENCY CHANGE.

(Continued from page 9.) ... number of shillings. The respondent said that a certain bank and it is perhaps due to that fact that the restrictions on the convertibility of shillings in terms of sterling. That fact however, does not make the overdraft a sterling loan in the sense that the respondent would use that expression. The amount was in Rupees and was debited and credited to the account at the rate of the day. The balance on the overdraft in Rupees balance until the Order in Council converted it into a sterling balance. It may well be that the respondents would not have had any need as security as they thought they had met the number of Rupees last but on the other hand by the operation of the Currency Regulation Rupees had appreciated in value. The transaction can in my opinion be distinguished from Stocker and Bates in this way. In that case there was a contract for Rupees in sterling and the overdraft in sterling. In this case the basis of the contract was the redemption of the balance for the amount of Rupees to the extent of 440,000. This balance was a Rupee balance. The overdraft was in sterling and the respondents also that there was in fact no sterling loan to the bank to the extent of 440,000 and £ 7 (1) of the Order in Council was not applied. The relevant provision is § 7 (2) of the Order as substituted by Art. 6 (2) of the Kenya and Uganda (Currency) Act, 1921.

On a different contract loan stands on a different footing. The applicant had entered into a contract to buy cotton from the Caudonian of Rome. The respondent is the Kenya Territory and had accepted the bill for 200,000 in sterling. The bill which the applicant describes as being "for the cotton" was in sterling in his evidence on 8th March 1921. Owing to delay in getting the cotton out of the Caudonian the respondent had to get the respondent to get the cotton out of the Caudonian for 200,000 for this purpose and for buying some Army stores which the applicant desired to purchase. Exhibit 1 drafted by Mr. Barry and signed by the applicant dated 10th March 1921 is a request of the applicant to the respondent to meet the bill for the cotton and the bill for the Army stores for the War stores £ 10,000. Exhibit 2 is a cable which was received by the respondent on the 10th March 1921. It suggested that Mr. Barry was informed that the applicant's fall in Rupees. It also gave the value of the bill as £ 200,000 on the terms suggested by Mr. Barry which was £ 10,000. Exhibit 3 is a letter from the respondent to the applicant dated 10th March 1921. It suggested that Mr. Barry was informed that the applicant's fall in Rupees. It also gave the value of the bill as £ 200,000 on the terms suggested by Mr. Barry which was £ 10,000.

The respondent is the Kenya Territory and had accepted the bill for 200,000 in sterling. The bill which the applicant describes as being "for the cotton" was in sterling in his evidence on 8th March 1921. Owing to delay in getting the cotton out of the Caudonian the respondent had to get the respondent to get the cotton out of the Caudonian for 200,000 for this purpose and for buying some Army stores which the applicant desired to purchase. Exhibit 1 drafted by Mr. Barry and signed by the applicant dated 10th March 1921 is a request of the applicant to the respondent to meet the bill for the cotton and the bill for the Army stores for the War stores £ 10,000. Exhibit 2 is a cable which was received by the respondent on the 10th March 1921. It suggested that Mr. Barry was informed that the applicant's fall in Rupees. It also gave the value of the bill as £ 200,000 on the terms suggested by Mr. Barry which was £ 10,000.

The respondent is the Kenya Territory and had accepted the bill for 200,000 in sterling. The bill which the applicant describes as being "for the cotton" was in sterling in his evidence on 8th March 1921. Owing to delay in getting the cotton out of the Caudonian the respondent had to get the respondent to get the cotton out of the Caudonian for 200,000 for this purpose and for buying some Army stores which the applicant desired to purchase. Exhibit 1 drafted by Mr. Barry and signed by the applicant dated 10th March 1921 is a request of the applicant to the respondent to meet the bill for the cotton and the bill for the Army stores for the War stores £ 10,000. Exhibit 2 is a cable which was received by the respondent on the 10th March 1921. It suggested that Mr. Barry was informed that the applicant's fall in Rupees. It also gave the value of the bill as £ 200,000 on the terms suggested by Mr. Barry which was £ 10,000.

The respondent is the Kenya Territory and had accepted the bill for 200,000 in sterling. The bill which the applicant describes as being "for the cotton" was in sterling in his evidence on 8th March 1921. Owing to delay in getting the cotton out of the Caudonian the respondent had to get the respondent to get the cotton out of the Caudonian for 200,000 for this purpose and for buying some Army stores which the applicant desired to purchase. Exhibit 1 drafted by Mr. Barry and signed by the applicant dated 10th March 1921 is a request of the applicant to the respondent to meet the bill for the cotton and the bill for the Army stores for the War stores £ 10,000. Exhibit 2 is a cable which was received by the respondent on the 10th March 1921. It suggested that Mr. Barry was informed that the applicant's fall in Rupees. It also gave the value of the bill as £ 200,000 on the terms suggested by Mr. Barry which was £ 10,000.

The respondent is the Kenya Territory and had accepted the bill for 200,000 in sterling. The bill which the applicant describes as being "for the cotton" was in sterling in his evidence on 8th March 1921. Owing to delay in getting the cotton out of the Caudonian the respondent had to get the respondent to get the cotton out of the Caudonian for 200,000 for this purpose and for buying some Army stores which the applicant desired to purchase. Exhibit 1 drafted by Mr. Barry and signed by the applicant dated 10th March 1921 is a request of the applicant to the respondent to meet the bill for the cotton and the bill for the Army stores for the War stores £ 10,000. Exhibit 2 is a cable which was received by the respondent on the 10th March 1921. It suggested that Mr. Barry was informed that the applicant's fall in Rupees. It also gave the value of the bill as £ 200,000 on the terms suggested by Mr. Barry which was £ 10,000.

"ON THIS DAY."

February 20th. ... with the story of Obote. His part in the story of Obote is so important that it is worth mentioning. It is a story of a man who has done a great deal of good for his country. He has been a great leader and a great man. He has been a great man and a great leader. He has been a great man and a great leader. He has been a great man and a great leader.

February 20th. ... with the story of Obote. His part in the story of Obote is so important that it is worth mentioning. It is a story of a man who has done a great deal of good for his country. He has been a great leader and a great man. He has been a great man and a great leader. He has been a great man and a great leader. He has been a great man and a great leader.

February 20th. ... with the story of Obote. His part in the story of Obote is so important that it is worth mentioning. It is a story of a man who has done a great deal of good for his country. He has been a great leader and a great man. He has been a great man and a great leader. He has been a great man and a great leader. He has been a great man and a great leader.

February 20th. ... with the story of Obote. His part in the story of Obote is so important that it is worth mentioning. It is a story of a man who has done a great deal of good for his country. He has been a great leader and a great man. He has been a great man and a great leader. He has been a great man and a great leader. He has been a great man and a great leader.

February 20th. ... with the story of Obote. His part in the story of Obote is so important that it is worth mentioning. It is a story of a man who has done a great deal of good for his country. He has been a great leader and a great man. He has been a great man and a great leader. He has been a great man and a great leader. He has been a great man and a great leader.

February 20th. ... with the story of Obote. His part in the story of Obote is so important that it is worth mentioning. It is a story of a man who has done a great deal of good for his country. He has been a great leader and a great man. He has been a great man and a great leader. He has been a great man and a great leader. He has been a great man and a great leader.

WHERE TO STAY IN TOWN AND COUNTRY.

NAIVASHA HOTEL ON SHORES OF LAKE NAIVASHA. AN EXCELLENT HEALTH RESORT. FIRST CLASS CUISINE AND VERY MODERN CONVENIENCES. TENNIS, BASKET SHOOTING, BILLIARDS, ETC. CAR ALWAYS AVAILABLE FOR TRIPS AROUND THE TERMS MODERATE. B. C. LEA, Ltd.

GROSVENOR HOUSE GIROURD ROAD. PHONE 487. P.O. Box 1088. One Mile from Post Office.

The Salisbury Hotel Nairobi. Phone 166. P.O. Box 582.

HOTEL PALACE HOTEL Nairobi. Box 671. Phone 71. Box 317. Phone 1. NAIROBI. Box 125. NOMBABA. Under New Management. The Corner on the Amplifier, 10-12-13-14-15-16-17-18-19-20-21-22-23-24-25-26-27-28-29-30-31-32-33-34-35-36-37-38-39-40-41-42-43-44-45-46-47-48-49-50-51-52-53-54-55-56-57-58-59-60-61-62-63-64-65-66-67-68-69-70-71-72-73-74-75-76-77-78-79-80-81-82-83-84-85-86-87-88-89-90-91-92-93-94-95-96-97-98-99-100-101-102-103-104-105-106-107-108-109-110-111-112-113-114-115-116-117-118-119-120-121-122-123-124-125-126-127-128-129-130-131-132-133-134-135-136-137-138-139-140-141-142-143-144-145-146-147-148-149-150-151-152-153-154-155-156-157-158-159-160-161-162-163-164-165-166-167-168-169-170-171-172-173-174-175-176-177-178-179-180-181-182-183-184-185-186-187-188-189-190-191-192-193-194-195-196-197-198-199-200-201-202-203-204-205-206-207-208-209-210-211-212-213-214-215-216-217-218-219-220-221-222-223-224-225-226-227-228-229-230-231-232-233-234-235-236-237-238-239-240-241-242-243-244-245-246-247-248-249-250-251-252-253-254-255-256-257-258-259-260-261-262-263-264-265-266-267-268-269-270-271-272-273-274-275-276-277-278-279-280-281-282-283-284-285-286-287-288-289-290-291-292-293-294-295-296-297-298-299-300-301-302-303-304-305-306-307-308-309-310-311-312-313-314-315-316-317-318-319-320-321-322-323-324-325-326-327-328-329-330-331-332-333-334-335-336-337-338-339-340-341-342-343-344-345-346-347-348-349-350-351-352-353-354-355-356-357-358-359-360-361-362-363-364-365-366-367-368-369-370-371-372-373-374-375-376-377-378-379-380-381-382-383-384-385-386-387-388-389-390-391-392-393-394-395-396-397-398-399-400-401-402-403-404-405-406-407-408-409-410-411-412-413-414-415-416-417-418-419-420-421-422-423-424-425-426-427-428-429-430-431-432-433-434-435-436-437-438-439-440-441-442-443-444-445-446-447-448-449-450-451-452-453-454-455-456-457-458-459-460-461-462-463-464-465-466-467-468-469-470-471-472-473-474-475-476-477-478-479-480-481-482-483-484-485-486-487-488-489-490-491-492-493-494-495-496-497-498-499-500-501-502-503-504-505-506-507-508-509-510-511-512-513-514-515-516-517-518-519-520-521-522-523-524-525-526-527-528-529-530-531-532-533-534-535-536-537-538-539-540-541-542-543-544-545-546-547-548-549-550-551-552-553-554-555-556-557-558-559-560-561-562-563-564-565-566-567-568-569-570-571-572-573-574-575-576-577-578-579-580-581-582-583-584-585-586-587-588-589-590-591-592-593-594-595-596-597-598-599-600-601-602-603-604-605-606-607-608-609-610-611-612-613-614-615-616-617-618-619-620-621-622-623-624-625-626-627-628-629-630-631-632-633-634-635-636-637-638-639-640-641-642-643-644-645-646-647-648-649-650-651-652-653-654-655-656-657-658-659-660-661-662-663-664-665-666-667-668-669-670-671-672-673-674-675-676-677-678-679-680-681-682-683-684-685-686-687-688-689-690-691-692-693-694-695-696-697-698-699-700-701-702-703-704-705-706-707-708-709-710-711-712-713-714-715-716-717-718-719-720-721-722-723-724-725-726-727-728-729-730-731-732-733-734-735-736-737-738-739-740-741-742-743-744-745-746-747-748-749-750-751-752-753-754-755-756-757-758-759-760-761-762-763-764-765-766-767-768-769-770-771-772-773-774-775-776-777-778-779-780-781-782-783-784-785-786-787-788-789-790-791-792-793-794-795-796-797-798-799-800-801-802-803-804-805-806-807-808-809-810-811-812-813-814-815-816-817-818-819-820-821-822-823-824-825-826-827-828-829-830-831-832-833-834-835-836-837-838-839-840-841-842-843-844-845-846-847-848-849-850-851-852-853-854-855-856-857-858-859-860-861-862-863-864-865-866-867-868-869-870-871-872-873-874-875-876-877-878-879-880-881-882-883-884-885-886-887-888-889-890-891-892-893-894-895-896-897-898-899-900-901-902-903-904-905-906-907-908-909-910-911-912-913-914-915-916-917-918-919-920-921-922-923-924-925-926-927-928-929-930-931-932-933-934-935-936-937-938-939-940-941-942-943-944-945-946-947-948-949-950-951-952-953-954-955-956-957-958-959-960-961-962-963-964-965-966-967-968-969-970-971-972-973-974-975-976-977-978-979-980-981-982-983-984-985-986-987-988-989-990-991-992-993-994-995-996-997-998-999-1000-1001-1002-1003-1004-1005-1006-1007-1008-1009-1010-1011-1012-1013-1014-1015-1016-1017-1018-1019-1020-1021-1022-1023-1024-1025-1026-1027-1028-1029-1030-1031-1032-1033-1034-1035-1036-1037-1038-1039-1040-1041-1042-1043-1044-1045-1046-1047-1048-1049-1050-1051-1052-1053-1054-1055-1056-1057-1058-1059-1060-1061-1062-1063-1064-1065-1066-1067-1068-1069-1070-1071-1072-1073-1074-1075-1076-1077-1078-1079-1080-1081-1082-1083-1084-1085-1086-1087-1088-1089-1090-1091-1092-1093-1094-1095-1096-1097-1098-1099-1100-1101-1102-1103-1104-1105-1106-1107-1108-1109-1110-1111-1112-1113-1114-1115-1116-1117-1118-1119-1120-1121-1122-1123-1124-1125-1126-1127-1128-1129-1130-1131-1132-1133-1134-1135-1136-1137-1138-1139-1140-1141-1142-1143-1144-1145-1146-1147-1148-1149-1150-1151-1152-1153-1154-1155-1156-1157-1158-1159-1160-1161-1162-1163-1164-1165-1166-1167-1168-1169-1170-1171-1172-1173-1174-1175-1176-1177-1178-1179-1180-1181-1182-1183-1184-1185-1186-1187-1188-1189-1190-1191-1192-1193-1194-1195-1196-1197-1198-1199-1200-1201-1202-1203-1204-1205-1206-1207-1208-1209-1210-1211-1212-1213-1214-1215-1216-1217-1218-1219-1220-1221-1222-1223-1224-1225-1226-1227-1228-1229-1230-1231-1232-1233-1234-1235-1236-1237-1238-1239-1240-1241-1242-1243-1244-1245-1246-1247-1248-1249-1250-1251-1252-1253-1254-1255-1256-1257-1258-1259-1260-1261-1262-1263-1264-1265-1266-1267-1268-1269-1270-1271-1272-1273-1274-1275-1276-1277-1278-1279-1280-1281-1282-1283-1284-1285-1286-1287-1288-1289-1290-1291-1292-1293-1294-1295-1296-1297-1298-1299-1300-1301-1302-1303-1304-1305-1306-1307-1308-1309-1310-1311-1312-1313-1314-1315-1316-1317-1318-1319-1320-1321-1322-1323-1324-1325-1326-1327-1328-1329-1330-1331-1332-1333-1334-1335-1336-1337-1338-1339-1340-1341-1342-1343-1344-1345-1346-1347-1348-1349-1350-1351-1352-1353-1354-1355-1356-1357-1358-1359-1360-1361-1362-1363-1364-1365-1366-1367-1368-1369-1370-1371-1372-1373-1374-1375-1376-1377-1378-1379-1380-1381-1382-1383-1384-1385-1386-1387-1388-1389-1390-1391-1392-1393-1394-1395-1396-1397-1398-1399-1400-1401-1402-1403-1404-1405-1406-1407-1408-1409-1410-1411-1412-1413-1414-1415-1416-1417-1418-1419-1420-1421-1422-1423-1424-1425-1426-1427-1428-1429-1430-1431-1432-1433-1434-1435-1436-1437-1438-1439-1440-1441-1442-1443-1444-1445-1446-1447-1448-1449-1450-1451-1452-1453-1454-1455-1456-1457-1458-1459-1460-1461-1462-1463-1464-1465-1466-1467-1468-1469-1470-1471-1472-1473-1474-1475-1476-1477-1478-1479-1480-1481-1482-1483-1484-1485-1486-1487-1488-1489-1490-1491-1492-1493-1494-1495-1496-1497-1498-1499-1500-1501-1502-1503-1504-1505-1506-1507-1508-1509-1510-1511-1512-1513-1514-1515-1516-1517-1518-1519-1520-1521-1522-1523-1524-1525-1526-1527-1528-1529-1530-1531-1532-1533-1534-1535-1536-1537-1538-1539-1540-1541-1542-1543-1544-1545-1546-1547-1548-1549-1550-1551-1552-1553-1554-1555-1556-1557-1558-1559-1560-1561-1562-1563-1564-1565-1566-1567-1568-1569-1570-1571-1572-1573-1574-1575-1576-1577-1578-1579-1580-1581-1582-1583-1584-1585-1586-1587-1588-1589-1590-1591-1592-1593-1594-1595-1596-1597-1598-1599-1600-1601-1602-1603-1604-1605-1606-1607-1608-1609-1610-1611-1612-1613-1614-1615-1616-1617-1618-1619-1620-1621-1622-1623-1624-1625-1626-1627-1628-1629-1630-1631-1632-1633-1634-1635-1636-1637-1638-1639-1640-1641-1642-1643-1644-1645-1646-1647-1648-1649-1650-1651-1652-1653-1654-1655-1656-1657-1658-1659-1660-1661-1662-1663-1664-1665-1666-1667-1668-1669-1670-1671-1672-1673-1674-1675-1676-1677-1678-1679-1680-1681-1682-1683-1684-1685-1686-1687-1688-1689-1690-1691-1692-1693-1694-1695-1696-1697-1698-1699-1700-1701-1702-1703-1704-1705-1706-1707-1708-1709-1710-1711-1712-1713-1714-1715-1716-1717-1718-1719-1720-1721-1722-1723-1724-1725-1726-1727-1728-1729-1730-1731-1732-1733-1734-1735-1736-1737-1738-1739-1740-1741-1742-1743-1744-1745-1746-1747-1748-1749-1750-1751-1752-1753-1754-1755-1756-1757-1758-1759-1760-1761-1762-1763-1764-1765-1766-1767-1768-1769-1770-1771-1772-1773-1774-1775-1776-1777-1778-1779-1780-1781-1782-1783-1784-1785-1786-1787-1788-1789-1790-1791-1792-1793-1794-1795-1796-1797-1798-1799-1800-1801-1802-1803-1804-1805-1806-1807-1808-1809-1810-1811-1812-1813-1814-1815-1816-1817-1818-1819-1820-1821-1822-1823-1824-1825-1826-1827-1828-1829-1830-1831-1832-1833-1834-1835-1836-1837-1838-1839-1840-1841-1842-1843-1844-1845-1846-1847-1848-1849-1850-1851-1852-1853-1854-1855-1856-1857-1858-1859-1860-1861-1862-1863-1864-1865-1866-1867-1868-1869-1870-1871-1872-1873-1874-1875-1876-1877-1878-1879-1880-1881-1882-1883-1884-1885-1886-1887-1888-1889-1890-1891-1892-1893-1894-1895-1896-1897-1898-1899-1900-1901-1902-1903-1904-1905-1906-1907-1908-1909-1910-1911-1912-1913-1914-1915-1916-1917-1918-1919-1920-1921-1922-1923-1924-1925-1926-1927-1928-1929-1930-1931-1932-1933-1934-1935-1936-1937-1938-1939-1940-1941-

AUCTION SALES.



CATALOGUE SALE OF FURNITURE AND EFFECTS

Only instructed, we shall sell by Public Auction, Without Reserve, unless stipulated, at Our Salerooms, Mutes Building, Nairobi, on:

MONDAY, 24th FEB. at 10 a.m.

Chambermaid Suites, cretonne covered, on castors. Club Easy Chairs. Morris Chairs. Coffee Stools in Teak. Indian Carved Tables. Ivory Inlaid Tables. "Columbian" Portable Gramophones and Records. "Dialisto" Portable Gramophone. Empire Typewriter. "Underwood" Typewriter (low reserve). Canteen of Cutlery. Refectory Dining Table in Teak, two drop sides (new). Suite of Dining Chairs. Palmstands. Oval Dining Tables in Camphorwood. Miraprup Ergo. Writing Table in Camphorwood, hazel top; drawers and cupboard. Writing Table in Teak. Glass Decanter, silver mounted. Hall Chest. Chest of Drawers in cedar. Washstand in Teak, marble top. Duchesne Dressing Table. Dressing Chest in Drawers in Cedar, bevelled mirror. Silver Cupboard in Teak, glazed front. Treasure Cot. Single Iron Bedsteads. Cot Mattresses. Double Mattress in cotton felt. Double Iron Bedstead. Double Bedstead in camphorwood, spring mattress. Hanging Wardrobes. No 7 Dover Stove with piping. Three Burner Oil Stove and Oven. Mosaic Tiles. Kitchen Tables. Folding Perambulator (low res.). Show Cases. Etc. Etc. Etc.

MUTER and OSWALD Ltd., Auctioneers, etc., NAIROBI.



FOR SALE

Killmani Freehold Plot.

Freehold Plot of 3.70 acres, with good main road frontage, in Killmani. Price £500.

MUTER and OSWALD Ltd., Estate Agents, NAIROBI

Thackrah's Sales, Nakuru.

FAVOURED with instructions from CAPT. R. L. STOBART, we shall offer for sale on—

MONDAY the 24th inst., at 10.30 A.M.

THE WHOLE OF HIS

MENAGEL ESTATE, NAKURU.

comprising approx. 6422 acres and various 1/2 miles from Nakuru on the main Nakuru-Baringo road. Messuages railway siding is only 4 miles from the farm boundary, and the farms is well watered for maize, wheat, barley, and peas. Water is obtained from the Syon Pipe Lines (2,000 gallons per day). There is an 8 roomed dwelling, concrete wheel shop (cap. 4,000 bales), 2 office, and all usual out-buildings. Approx. 4,000 acres are arable, and there is good building land in unlimited quantity on the property.

WE SHALL ALSO SELL

ABSOLUTELY WITHOUT RESERVE the entire stock of AGRICULTURAL IMPLEMENTS, MACHINERY, SPARE PARTS, WORKSHOP TOOLS, and HOUSEHOLD FURNITURE now on the farm, including—

10 double roller outcrops, 2 Cambridge rollers, 2 Oliver double disc harrows, 2 Oliver Cultivators, well used law, 6 Great Plains barrow plough, Sunshine Header Harvester, Fordson Tractor and 5 ton trailer, 2 ton 14hp tractor, 2hp, 3 MacDonnell macker and loader, Massey Harris wood drill with fertilizer attachment, 2 1/2-hp harrow (complete) and numerous all Cooper and Key Cooper ploughs, Smith carb, Water cart, etc., etc.

SPARE PARTS. Polaris 10 ton Holt tractor, 2 gear box and differential assemblies together with a large range of other Fordson parts, Bosch magneto, etc.

WORKSHOP TOOLS. Complete set of Blacksmith's tools, Buffalo drill with bit, Blench and backle, Vice, 8 inch stocks and 2 1/2 inch drill, large lamp, etc., etc.

SUNDRIES. Quantity corrugated iron, sundry 90 gallon drums, and other heavy hand and pump, X cut saws, Avery scales, quantity of wire netting, etc., etc.

FURNITURE. Dining table and 4 chairs, Writing table, Bookcase, 3 arm chairs, enameled bath, Dover Stove, Dressing table, Chest of drawers, Double wooden bedstead and mattress, carpet, corkboard, crockery, etc., etc.

THE SALE WILL BE HELD AT THE WHEAT STORE WHICH IS APPROX. 1 MILE FROM THE JUNCTION OF THE LOWER MOLA-BARINGO ROAD.

For further particulars, apply to—

Thackrah's Ltd., Nakuru.

Heering Cherry Brandy

ADDED TO

"Mixed Vermouth"

IS A DRINK WITH FLAVOUR.

WHOLESALE STOCKISTS:

JARDIN, PHIPSON and Co., Ltd. NAIROBI.

AUSTIN'S AUCTIONS.

CATALOGUE SALE OF FURNITURE, CHESTERFIELD SUITES, CAMERA, RIFLE, GRAMOPHONE, OFFICE DESKS, TOILET SETS, STOVES, FRAM, ETC.

AUSTIN & CO.,

will sell WITHOUT RESERVE, unless stated, at THE MART on

SATURDAY, FEB. 22nd, at 10 a.m.

Genie Wardrobe with Mirror inside. Twin Wood Bed complete. IMPORTED OAK NEW SINGLE BED 4 ply Mattress. Chesterfield Suite, cretonne in Cretonne and Americani. OFFICE DESKS rexine top, 8 drawers. Hanging and Bachelors Wardrobes with Mirrors. Chests of Drawers. Bedchairs. ROYAL IMPERIAL CABINET GRAMOPHONE in Mahogany case (res.). Several Dressing Chests. Meat safes. Suites of Dining Chairs and Tables. Sideboards. Morris chairs. named Toilet sets. Bedside Cabinet. Reversible Rug. Bedside tables. Novels. Iron beds. Writing Bureaux. New Limo. Tea tables. Coffee Stools. No. 8 and 9 Dover Stoves. **CHILDS PLAYGROUND.** Double Washstands. Childs Folding Pram. Large size DOLLS HOUSE. Occasional Tables. Dinner Wagons. NEW SUNBLINDS FOR MOTOR CARS. New Spare Wheel Covers, 30 x 2 1/2, Ford Car Coil Box and Reducer. KODAK CAMERA post card size with Bausch Lens. Open Glass Electric Shade complete. Perfection Stove. SURVEYORS HEIGHT LEVEL AND GAUGE in case. 4 Mirror framed. TEAK Double Wardrobe with 2 mirrors (res.). Princess Dressing Chest with Large Mirror. Baby's Enamel Bath. REMINGTON 303 RIFLE and numerous other articles.

AUSTIN & CO.

AUCTIONEERS and ESTATE AGENTS

Hardinge St., NAIROBI.

AUSTIN & CO. FOR SALE.

NEWLY BUILT STONE HOUSE near Salisbury Hotel. 4 Double and 3 Single Bedrooms, Dining and Sitting Rooms. Kitchen with No. 9 stove. Bathroom, Garage and Toys Quarters. SUITABLE FOR BOARDING HOUSE. Price £1,750, £500 down balance at £12/10/- per month. Can be bought Fully Furnished throughout. For further particulars apply.

AUSTIN & CO.,

Auctioneers and Estate Agents, Hardinge St., NAIROBI.

THE NYANZA AUCTIONEERS NAKURU

Prepare for a Wet Season

by buying **YOUNG A.M. T. OXEN** (Which in spite of mechanical traction still constitute the best investment in Kenya).

ONE HUNDRED of those (including thirty-two trained) will be sold by auction at our yards.

NAKURU, Saturday, February 22nd, 1934, at 11 a.m.

They are all sound young cattle, direct from quarantine and will be sold in well matched lots of eight.

Approved bills, up to ninety days, accepted for purchase on this sale.

Also one span of extra good big young trained immune Oxen.

The Nyanza Auctioneers NAKURU.

REDUCTION IN PRICE OF

The Kenya Quick Letter File.

For up-to-the minute Filing Systems.

This is one File.

This is the one file which makes all your papers available immediately.

1. Illustration No. 1 shows the file with the papers securely bound into the folder. Every paper is in position for immediate reference.
2. One of the great advantages of this file is that the margins are plainly visible, thus you have a complete reference to all details on the papers.
3. Remember, that you can remove or add any paper you wish without disturbing the other papers in the file. Your papers are always in order—always neat—always tidy. It is the one file which definitely supercedes any other file placed on the market.

The mechanism is fitted with mangle covers, in its reduced looking size. The fittings are metal and highly polished.

The only file file with all the advantages of the lever arch file.

Price—Foolscap Size: Shs. 8.00 each
Shs. 9.50 Dozen
Shs. 105.00 Gross.

Standard Stationery Stores, Nairobi.

New Consignment Arminster Carpets Just Arrived.

E. Hutchison & Co.
P. O. Box 140, Govt. Road.

SANDS & CO., PASTEURISED MILK.

Acting as agents for Kenya Co-op Creamery, we are now booking orders for best Pasteurized Milk. Delivery Nairobi Station every morning. We accept orders for one or more ten gallon tins. We can guarantee supplies throughout the year. If you want a supply of best fresh milk for your customers come and see us about it.

SANDS & CO., SADLER STREET.

JAMAL PIRBHAI.

SELLS ANYTHING YOU CANNOT SELL. Auctioneer, Broker and Government Approved Valuer. AUCTION EVERY SATURDAY AND SUNDAY.

Commencing at 2 p.m. and 9 a.m. respectively. P.O. Box No. 200, 67, Princes Gardens, NAIROBI. Phone No. 584

NOTE—No matter whether second-hand or new, but highest prices always available for clean articles.

Rellance Transport Co., Ltd.

TRANSPORT. WOOD FUEL. COAL. POLES and FENCING POSTS. MANURE and LIME. STORAGE. BOLUS HOUSE, Government Road. Telephone: Office 531. Workshop: 627. Telegrams: "Rellance". P. O. Box 482

TO LET.

RUAKA. Stone House, 10 acres of land with plenty of Fruit Trees, its own river. Only few minutes from Nairobi.

Apply **Hussen Suleman Verjee & Sons** in writing P.O. Box 506, GOVERNMENT ROAD, NAIROBI

THE PREMIER USED CAR SALESMAN Godfrey's Car Mart

Texaco House -- Sadler Street. **50 USED CARS TO SELECT FROM**

Important! TO FARMERS, ENGINEERS and the MOTOR TRADE

Oxy-Acetylene Welding. Modern Plant. Expert European Workmanship. Repairs in all Metals. Aluminium Welding a Speciality.

Spray -- Painting. Brighter Nairobi made Brighter. Your Old Car Painted with a Factory Finish in Three Days.

DUCO: New Stocks Just Arrived. Charming Colour Schemes.

Spare Parts Specialists. FOR ALL MAKES CARS AND TRUCKS. Including: Buick, Chev., Overland, Hup, Fiat, Max Chrysler, Ford, Rugby, Essex, Hudson, Studebaker, Dodge, Citroen, etc.

GET THAT SPARE PART FROM GODFREY AND SAVE TIME AND MONEY.

Reliable Cars for Hire. WITH DRIVER or DRIVE YOURSELF. CAR INSURANCE ARRANGED. Phone 142. W. M. GODFREY, Sole Proprietor, Box 766.

TO LET.

SMALL MODERN HOUSE, FURNISHED, FORREST ROAD, FROM 1ST APRIL.

STONE HOUSE, UNFURNISHED, SALISBURY ROAD, IMMEDIATE OCCUPATION.

Properties of all description for sale.

Denovan & Diebel.

LAND AGENTS, CITY HOUSE.

SAFES STRONG ROOM DOORS

JOHN TANN LTD. The Oldest Established Firm of Safe Manufacturers in the World.

Representatives for **KENYA, TANGANYIKA & UGANDA.**

BEALES & SMITHSON,

Avenue House, Sixth Avenue, Nairobi.

JUST UNPACKED

Fresh stock of plain and floral Art Silks in very smart colour; also Silks, Crepe-de-chinoise, Vigil Crisp, Georgettes, Fuji, Suing-tung, and Macintosh Silks, all in attractive designs and latest shades.

PRICES REDUCED TO A REMARKABLE EXTENT. A VISIT WILL CONVINCE YOU.

LADHARAM STORES

General Milliners, Hatters and Haberdashers. Govt. Road, NAIROBI. P.O. Box 104.

Kenya Mountain

By E. A. T. DUTTON, With sixty-six full page illustrations reproduced in three parts.

"A book well worth sending to your friends at Home." PRICE: Shs. 24/-; Postage, Shs. 25/60.

STANDARD STATIONERY STORES Ninth Avenue, NAIROBI.

UNION-CASTLE LINE.

HOMEWARD via SUEZ. From Mombasa (Abou). "Llandarcy Castle" ... "Glenally Castle" ... "Llandarcy Castle" ... "Llandarcy Castle" ... "Llandarcy Castle" ...

British India Steam Navigation Company, Limited, AND PENINSULAR AND ORIENTAL STEAM NAVIGATION CO.

LONDON AND EAST AFRICA LINE. LONDON TO BEIRA, via Mozambique, Port Said, Port Sudan and Aden, Outwards and Homewards. Steamers: Arrive: Suez from: ...

Compagnie Italiana Transatlantica

Weekly Passenger Service to NAPLES and GENOA. THE BEST ROUTE TO ENGLAND. SALINGS from KILINDINI to GENOA at the 1st of Every Month. s.s. "MAZZINI" - 1st March, 1st May, etc.

Deutsche Ost-Afrika-Linie

GERMAN AFRICAN SERVICE. DEUTSCHE OST-AFRIKA-LINIE GENERAL AGENCY, MOMBASA. Office: "Osthaus", P.O. 212. HOMEWARD via SUEZ CANAL. MOMBASA to SOUTH.

THE AFRICAN MARINE AND GENERAL ENGINEERING CO., Ltd. KILINDINI - MOMBASA. MARINE AND MECHANICAL ENGINEERS REPAIRS TO ALL TYPES OF MACHINERY. SPECIALISTS IN Remounting of Boats, Rigging and Mastmaking of Jumbo Dories...

Chivers' Old English Marmalade. THE ASSOCIATED OF THE BREAKFAST TABLE. Sole Agents - (for trade only) R. O. HAMILTON, Ltd. NAIROBI.

MESSAGERIES MARITIMES

(FRENCH MAIL STEAMERS) Regular and fortnightly service from to Marseilles. THE QUICKEST ROUTE TO LONDON. NEXT SAILINGS TO MARSEILLES: s.s. "Chambord" ... s.s. "St. Pierre" ...

The Bradford Manufacturing Co. Limited. ANNOUNCE THE ARRIVAL OF - Girls' Tan Lustre Lisle Gown at 3/6d per pair, all sizes. Children's Tan Cotton Skirts from 8/1 per pair...

Keith Timber Co. Limited. Sadler Street, NAIROBI. THE PLACE FOR TIMBER, MOULDINGS, WOOD BLOCK FLOORING, ROOFING and PLANT TIGHT SHINGLES. P. O. Box 874. Phone 58.

PIANOFORTE TUNING AND REPAIRING. Ten years experience in Kenya Colony and five year visit to Milan, Chicago and Co., London. F. A. HEAD, Box 874, NAIROBI.

OVERSEAS MAILS. ARRIVALS. DEPARTURES. Table with columns: STEAMERS, FROM, TO, Date at Mombasa, Date at Port of Call.

Clan - Ellerman - Harrison Lines, (JOINT SERVICE)

Liverpool - Glasgow - Avonmouth - Manchester. Liverpool - Glasgow - Avonmouth - Manchester. DUE TO ARRIVE: s.s. "City of Bath" ... s.s. "Anthea" ...

Clan Line Steamers LIMITED.

NEW YORK DIRECT-BOSTON & PHILADELPHIA WITH TRANSPHINIC. THE SHORT ROUTE via SUEZ CANAL. S.S. "CLAN MACIVER." EXPECTED TO ARRIVE AT MOMBASA 7th. March, and Sail 9th. March.

Ellerman and Bucknall Line.

NEW YORK - MOMBASA via SUEZ. From AMERICA: Due to arrive: s.s. "City of Agna" ... s.s. "City of Atlanta" ...

Theo. SCHOUTEN LADIES and GENTLEMEN'S HAIRDRESSING. Permanent Waving a Speciality UNDER PERSONAL SUPERVISION. All the Leading Toilet Requisites Stocked. GOVERNMENT ROAD. Also at MOMBASA and NAIROBU. P.O. Box 334. Phone 245.

THE AFRICAN MERCANTILE Company, Limited, MOMBASA (Cables Navigation) NAIROBI

JUST UNPACKED. Fresh stock of plain and formal Arts Silks in very smart colours; also Silk, Crepe-de-chamois, Vigli Crepe, Georgettes, Fuji, Shanghai, and Macchoudilli Silks, all in attractive designs and latest shades. PRICES REDUCED TO A REMARKABLE EXTENT. A VISIT WILL CONVINCED YOU. LADHARAM STORES - General Millinery, Hatters and Haberdashers. Govt. Road, NAIROBI P.O. Box 516.



It is now considered good form to Coronotype personal letters. Social usage changes, even as styles in dress. It is now considered smart and up to the minute to Coronotype personal letters on attractive single sheet letterheads. The best papermakers now put out personal stationery designed for use in the typewriter, although any kind may be used in Coronate. Custom skill denotes that formal notes of acceptance be handwritten but practically everything else may be typed. *Aside from adding interest to letter-writing, what a boon this is to those who receive the letters.

STANDARD STATIONERY STORES, NAIROBI.

BOX TENGOR.



Zeiss Ikon

Best cheap camera for everybody with three interchangeable lenses, for distance, group and panorama.

Size 1 1/2"	Shs. 21/-
Size 2 1/4"	Shs. 25/-
Size 3 1/8"	Shs. 30/-

Try our Photographic Department.

First class Developing, Printing and Enlarging.

"THE LENS" Limited.

GRAND "OPTOFLEX."

Size 3 1/8"

If You Don't Want Your Face

to remain unaffected, don't give it attention. A woman's most important feature is a departing sight, and yet, how easily spoiled, just as easily beautified as straight stringy hair. Consult us about hair managing and Tropic Permanent Waving. Phone 654—It is not expensive.

ROMANOS

LADIES and GENTLEMEN'S HAIRDRESSING.

NAIROBI HOUSE.

P.O. Box 1. GOVT. ROAD. Phone 664

Persons and Afternoon Tea served in the Lounge, gratis.

The Trocadero Bar and Restaurant

Proprietors—W. M. Coffey, Manager—Mr. Bob Billings.

GRILLS AT ALL HOURS.

ALL MEALS—REFRESHMENTS—TEAS.

COME AND TRY

"OLD BOB'S" BAR SNACKS.

His Pressed Beef and Curries Cannot be Beaten.

The Best Dinner Served in Town at Shs. 4/-.

APPEAL IN CURRENCY CASE.

(Continued from page 3.)

It is 500,197. This is the subject matter of the items called for in (C). The three deductions referred to are Shs. 47,911. The appellant contended that this deduction was not properly constituted by the operation of the rule in *Case 118* of the *Income Tax Act, 1917*. I would regard that the appellant was entitled to the benefit of the rule in *Case 118* of the *Income Tax Act, 1917* until the 17th May 1917, when the appellant had a balance of Shs. 4,029.14 in excess of the Shs. 47,911 which the appellant would debit the respondent to pay. Under the appellant's contention the respondent would pay the other half of the two funds, and in fact the respondent on the 17th May offered to do so. As in the balance of the Shs. 4,029.14 the respondent was in excess of the Shs. 47,911, the respondent was entitled to the benefit of the rule in *Case 118* of the *Income Tax Act, 1917*, to bear this excess as a loss.

Change in Excess Rate.

In support of the contention that the first two sums totaling Shs. 400,000 to be deducted from the balance due on the 21st July 1925, represented the performance of the respondent's part of the agreement to lend £400,000, which £400,000 was repayable by the appellant in sterling and so presumably in the pound sterling, the respondent relies upon the words used in the memorandum of mortgage, dated the 17th May 1917. This document was signed by the managing director and secretary of the two companies in Mauritius and the deeds deposited for securing the repayment of the £400,000 were dated for the time being when the balance was for the whole balance due. If the balance did not exceed £400,000 or £400,000 of the balance due if that balance exceeded £400,000 at the time of final settlement must necessarily be payable in sterling currency. The appellant contended that when the balance reached £400,000 the amount of the excess would consist of rupee and at final settlement would be payable in rupees. Apart from an express agreement one would have expected the respondent's liability to pay a balance

resulting from a currency transaction to be of a uniform character. The respondent is silent as to how long day by day it could be ascertained whether the rupee balance exceeded £ or amounted to £400,000. If it is assumed that the conversion from rupees into pounds was to be made at the rate of exchange obtainable between Mauritius and London, on the day of the payment, the number of rupees secured by the mortgage would be different from the number of rupees secured by this difference. It is not clear whether the bank with a rupee at 1/4 to matter what the bank had to pay for London. Looking at the content in which this sentence appears I am inclined to think that the appellant was referring to his personal liability under his equity bond. The appellant was speaking of the discharge by the company in liquidation of its liabilities to the respondent, and he stated that the company could take the £ 400,000 and convert those rupees into pounds. It is to be noted that I should refer as 1/4 per rupee for what was owing to the bank more, because it was believed that the establishment would take place at 1/4. In saying this the appellant was alluding to the fact that the respondent was not to be held liable for the balance due if the appellant offered to pay the balance due. The respondent was not to be held liable for the balance due if the appellant offered to pay the balance due. The respondent was not to be held liable for the balance due if the appellant offered to pay the balance due.

and the remaining portion of the Shs. 200,000 in respect of which no express agreement was made. Instead of being paid to the officers of Foyward B.E.A. Ltd., had no express authority to borrow which were not rupees. Although the rupee notes inserted in the special resolution of September 1916, the respondent's borrow rupees; the setting of the rupee notes in rupees in my opinion so added only the rupees of the respondent's liability to the bank with a rupee at 1/4 to matter what the bank had to pay for London. Looking at the content in which this sentence appears I am inclined to think that the appellant was referring to his personal liability under his equity bond. The appellant was speaking of the discharge by the company in liquidation of its liabilities to the respondent, and he stated that the company could take the £ 400,000 and convert those rupees into pounds. It is to be noted that I should refer as 1/4 per rupee for what was owing to the bank more, because it was believed that the establishment would take place at 1/4. In saying this the appellant was alluding to the fact that the respondent was not to be held liable for the balance due if the appellant offered to pay the balance due. The respondent was not to be held liable for the balance due if the appellant offered to pay the balance due. The respondent was not to be held liable for the balance due if the appellant offered to pay the balance due.

provisional form alleging that the official overdraft to the extent of £400,000 was repayable in sterling, of the terms of the memorandum of mortgage and of the two equity bonds. In making the mortgage, not only by accounts in the correspondence. For myself, I am unable to perceive the presence of any of the rupees of the respondent's liability to the bank with a rupee at 1/4 to matter what the bank had to pay for London. Looking at the content in which this sentence appears I am inclined to think that the appellant was referring to his personal liability under his equity bond. The appellant was speaking of the discharge by the company in liquidation of its liabilities to the respondent, and he stated that the company could take the £ 400,000 and convert those rupees into pounds. It is to be noted that I should refer as 1/4 per rupee for what was owing to the bank more, because it was believed that the establishment would take place at 1/4. In saying this the appellant was alluding to the fact that the respondent was not to be held liable for the balance due if the appellant offered to pay the balance due. The respondent was not to be held liable for the balance due if the appellant offered to pay the balance due. The respondent was not to be held liable for the balance due if the appellant offered to pay the balance due.

Second Issue.

The second issue arose "Was the said loan ever repaid in whole or in part." In view of the fact that the appellant's contention has been put forward in this Court this issue can be paraphrased into the question "Have the rupees first advanced up to the amount of £400,000 been repaid?" The accounts filed by the respondent are evidence of the appropriation of payments to the discharge of those first items. The memorandum of mortgage is relied upon by the appellant as evidence that such appropriation was at variance with the terms of the arrangement under which the loan was advanced. In my opinion the terms of the memorandum of mortgage are consistent with the manner in which the respondent kept the accounts of the company. If the documents deposited with the bank constituting a continuing security for any portion of the balance advanced at any time be due, the memorandum must be read as securing such a number of rupees as were the equivalent of £400,000 and so providing that balance should be struck from time to time. In my opinion the agreement contemplated the system of accounting actually followed by the respondent.



A Winning "Double"

Crawford's LIQUEUR

SCOTCH WHISKY

SPECIAL RESERVE Scotch Whisky Finest Standard Blend.

OLD WHISKY for the One Whisky for every Special Occasion

A.L.A. CRAWFORD LTD.—SCOTLAND

Chiropractic Spinal Manipulation

the now universally-recognized English System of Healing has restored thousands of sufferers to Health. By removing the pressure on the nerves, which is causing your Headaches, Neuritis, Sciatica, Stomach, Liver and Kidney Troubles, etc., it will bring you back to renewed Life, Vigor and Energy.

Miss E. GORDON, D.C., Spinal Nerve Specialist, who has had very wide and successful experience, is now practicing at Tor's Hotel, (Room 2) Nairobi, Hours 9.30-1, 2-3; Saturdays 9.30-1 and by appointment. Telephone No. 658.

Kenya Loan & Discount Co. Ltd.

P.O. Box 546, NAIROBI.

OFFICE—1st Floor, Court Chambers.

FINANCIAL AGENTS

Bills Discounted — Short-period Loans Granted.

Any realizable Asset negotiated for Cash.

Call or Write. STRICTEST CONFIDENCE.

ESTABLISHED 1921.

POISON FREE.

THE

POISON FREE

In 1928 Won and Held the Position of the **Largest Selling Six in the World!**
 It is the Product of the most Modern Car Factory costing over **£2,000,000!**
 It Boasts Superb Bodies by **Fisher-Elegant** in **Appointments-Luxuriously Comfortable.**
 It's Engine Develops **60 H. P.** at **3,000 R. P. M.**

Latest Models Now Available for Demonstration.
Let us Explain Our FREE Insurance and Licence Scheme.

Box 306.
 Kampala.

KENYA MOTORS
 Eldoret. NAIROBI. Nakuru.

Phone 206.
 Kitale.

Overland & Willys Knight

QUALITY MOTOR CARS

HIRE FURNACE TERMS OR SPECIAL DISCOUNTS FOR CASH.

YOUR OLD CAR TAKEN IN PART EXCHANGE.

MOULTON & MORRISON Ltd.

SIXTH AVENUE NAIROBI.

J. W. Milligan & Co.

EXCELLENT DAIRY PROPOSITION

On the Slopes of the Aberdares

Adjoining Creamery

18 miles from Railway Station. A very good location for Cream. Fencing, water, houses, etc. Considerable homestead with usual outbuildings.

3,000 ACRES.

Also suitable for Fruit, Dairy and Wheat.

Together with 500

READ GOOD GRADE CATTLE

This Farm is amongst the most beautiful and best dairy farms in Kenya. At the price of £5,000.00 it is the best bargain ever offered in this area and an ABSOLUTE GIFT. Many terms can be given.

NYERI. POULTRY FARM.

20 acres of land, with Hensington, Poultry house and runs, etc. Permanent water. Only 14 miles from Railway and four miles from Yala Ground.

PRICE: 800-0-0 or can be treated at £20 per acre.

PRICE: 800-0-0 or can be treated at £20 per acre.

Phone 95. Box 148.

ARE YOUR EYES TROUBLED?

Do you suffer from headaches, eye pain, irritation, or nervousness? Then, and many more distressing conditions, look to your eyes. They are the key to your health. The advice concerning your eyes should see Ophthalmic Department.

A. H. WARDLE & Co., Ltd.

NAIROBI.

Large Stocks of Lenses! Works in the Premises.

STEEL CASEMENTS

GIBBONS' STEEL CASEMENTS

As supplied to—

LIVINGSTONE HOUSE
CORNER HOUSE
EMPIRE THEATRE
STANLEY HOUSE

NAIROBI.

What is a used car?

... a used car

Is a good car if you buy it at CARR LAWSON'S.

Rugby 4 Box Body

Magneto Ignition. Good tyres. Body-work excellent. Pulls well—Looks well—and is mechanically sound.

£60

Buick 1927 Model

This car has just been repainted, and the general condition throughout is excellent. Three New Tyres—one of which has not yet been fitted. An exceptional bargain.

£110

Nash Light Six

A really good car with the sweetly running engine typical of the Nash. The paintwork is excellent and general condition attractive, fitted with good tyres.

£100

STAFFORDSHIRE CROCKERY WARE

INEXPENSIVE IN PRICE. PLEASING IN COLOUR. TASTEFUL IN DESIGN. LASTING IN USE.

TEA SETS.

In a variety of designs similar to that illustrated above. Comprising—Six Tea Cups and Saucers, 6 small plates, 1 each Cakes plate, Sugar Bowl and Creamer.

SIS. 17/6 per set.

As above but with large tea-cup for six persons. SIS. 27/6 per set.

FRUIT SETS.

Comprising—Four 9 inch diameter and Six individual 7 inch diameter. Colours designed in normal colours.

SIS. 10/6 per set.

White and Gold Tea Sets.

Decorated with gold edge, hand and applied to six persons. 10-cup included. SIS. 19/6 per set.

Sandwich Sets.

Smart design on good Staffordshire ware. Six for luncheon, 8 inch. Six for 12 persons, 10 inch. Six for 12 persons, 10 inch. SIS. 15/6 per set.

S. JACOBS LTD.,

GOVERNMENT ROAD NAIROBI. Phone 29, 9 lines.

THE PRICE IS RIGHT THE QUALITY IS RIGHT.

R. G. VERNON & Co.

UNION BUILDINGS NAIROBI.

"Lloyd's BONE AND NERVE LINIMENT"

(an Embrocation).

Prescribed by experts to be the most wonderful Embrocation ever manufactured.

Lloyd's penetrates to the Bone and Nerve and invigorates the muscles to a remarkable degree. It does not dry quickly like other Embrocations, allows the muscles to be well massaged.

NO GREASINESS OR STICKINESS.

OBTAINABLE AT

WARDLES

CHEMISTS.

MOMBASA—NAIROBI—ELDORET—KAMPALA.

Carr, Lawson & Co. Ltd.

NAIROBI.

BRASSO METAL POLISH

Messrs. H. B. BRASSO, 11, MARK LANE, LONDON, E.C. 3.

BRASSO is a new and powerful metal polish which cleans and shines all metals, brass, copper, iron, steel, tin, and zinc. It is the best metal polish ever made. It is the best metal polish ever made. It is the best metal polish ever made.

Do You Suffer From—

Indigestion
Palpitation
Acid Mouth
Flatulence
Heartburn etc.?

THEN YOU NEED

"BISODOL"!

AN ANTACID - DIGESTANT

"BISODOL" consists of an Alkaline Mixture, together with two of the most Efficient Digestive Ferments known.

PRICE 2/- PER TIN.

KODAK & Co. LTD., INC.

HOWSE and McGEORGE

NAIROBI and ALL BRANCHES.

DUCO will bring your car up-to-date!

Don't let your car be behind the times. Give it lasting beauty. Have it "DUCO" finished. Hard wear, bad weather conditions, oil, petrol—"DUCO", the better car finish survives them all! Just a hard rub with a cloth immediately restores its gloss and retains the beautiful finish.

YOUR GARAGE OWER WILL GIVE YOU AN ESTIMATE FOR A COMPLETE REFINISHING.

tion in order to develop a foreign market for coffee. This is another difficulty. These things are not done by the Government. Treaties which provide for the Professor and of greater importance still, the necessity of the East Africa. Tanganyika is situated by a trade route to British East Africa. The political and social conditions in every country of the East African Nations. Yet the East African States are not united. They are potentially one of the most powerful in the world. The East African States are not united. They are potentially one of the most powerful in the world. The East African States are not united. They are potentially one of the most powerful in the world.

Under the Standard

Members of the R. A. O. B. and the East African States are not united. They are potentially one of the most powerful in the world. The East African States are not united. They are potentially one of the most powerful in the world. The East African States are not united. They are potentially one of the most powerful in the world.

THE STANDARD QUACK.

...any attention of the ...

TRANSFERRING AFRICA TO OHIO.

Objects of White-Fuller Expedition.

GROUP EXHIBITS.

Cleveland Plan on the Carl Akceley Principle.

Many East Africans will find the fine African Hall ...

A stiffer ideal has brought to Kenya Mr. Windsor T. White, of Ohio, who is intent on supplying the Cleveland Museum of Natural History with animal groups ...

The task involves a careful selection of specimens, photographs before and after death, coloured photographs of typical scenery and the preparation of pictorial backgrounds by artists.

In this way the joys of safari can be communicated to the masses who are never likely to see African game in reality.

"A VERY EXACT SCIENCE."

(Special to "E.A. Standard") The examination of Kenya ...

...the fact that the ...

...the fact that the ...

...the fact that the ...

...the fact that the ...

...the fact that the ...

...the fact that the ...

...the fact that the ...

...the fact that the ...

...the fact that the ...

...the fact that the ...

...the fact that the ...

...the fact that the ...

...the fact that the ...

...the fact that the ...

PROHIBITION COMES TO KENYA.

Thanks to the Council will Have to Go Dry.

A CUSTOMS COMPLAINT.

A Firm Supporter of the Women.

...the fact that the ...

...the fact that the ...

...the fact that the ...

...the fact that the ...

...the fact that the ...

...the fact that the ...

...the fact that the ...

...the fact that the ...

...the fact that the ...

...the fact that the ...

...the fact that the ...

...the fact that the ...

...the fact that the ...

...the fact that the ...

...the fact that the ...

...the fact that the ...

...the fact that the ...

...the fact that the ...

...the fact that the ...

...the fact that the ...

...the fact that the ...

...the fact that the ...

...the fact that the ...

...the fact that the ...

NON-RATIFIABLE EDUCATION TREATY IN TANGANYIKA.

Objections to Draft Treaty.

NO DOUBTING REALITY.

"STANDARD" CORRESPONDENT.

...the fact that the ...

...the fact that the ...

...the fact that the ...

...the fact that the ...

...the fact that the ...

...the fact that the ...

...the fact that the ...

...the fact that the ...

...the fact that the ...

...the fact that the ...

...the fact that the ...

...the fact that the ...

...the fact that the ...

...the fact that the ...

...the fact that the ...

...the fact that the ...

...the fact that the ...

...the fact that the ...

...the fact that the ...

...the fact that the ...

...the fact that the ...

...the fact that the ...

...the fact that the ...

...the fact that the ...

ARRIVAL OF FIRST AMERICAN EXPEDITION PARTY.

ARRIVAL OF FIRST AMERICAN EXPEDITION PARTY.

ARRIVAL OF FIRST AMERICAN EXPEDITION PARTY.

ARRIVAL OF FIRST AMERICAN EXPEDITION PARTY.

ARRIVAL OF FIRST AMERICAN EXPEDITION PARTY.

ARRIVAL OF FIRST AMERICAN EXPEDITION PARTY.

ARRIVAL OF FIRST AMERICAN EXPEDITION PARTY.

ARRIVAL OF FIRST AMERICAN EXPEDITION PARTY.

ARRIVAL OF FIRST AMERICAN EXPEDITION PARTY.

ARRIVAL OF FIRST AMERICAN EXPEDITION PARTY.

ARRIVAL OF FIRST AMERICAN EXPEDITION PARTY.

ARRIVAL OF FIRST AMERICAN EXPEDITION PARTY.

ARRIVAL OF FIRST AMERICAN EXPEDITION PARTY.

ARRIVAL OF FIRST AMERICAN EXPEDITION PARTY.

ARRIVAL OF FIRST AMERICAN EXPEDITION PARTY.

ARRIVAL OF FIRST AMERICAN EXPEDITION PARTY.

ARRIVAL OF FIRST AMERICAN EXPEDITION PARTY.

ARRIVAL OF FIRST AMERICAN EXPEDITION PARTY.

ARRIVAL OF FIRST AMERICAN EXPEDITION PARTY.

ARRIVAL OF FIRST AMERICAN EXPEDITION PARTY.

ARRIVAL OF FIRST AMERICAN EXPEDITION PARTY.

ARRIVAL OF FIRST AMERICAN EXPEDITION PARTY.

ARRIVAL OF FIRST AMERICAN EXPEDITION PARTY.

ARRIVAL OF FIRST AMERICAN EXPEDITION PARTY.

ARRIVAL OF FIRST AMERICAN EXPEDITION PARTY.

ARRIVAL OF FIRST AMERICAN EXPEDITION PARTY.

ARRIVAL OF FIRST AMERICAN EXPEDITION PARTY.

STANDARD DIARY.

Annual general meeting ...

"E.A. Standard" Special Correspondent.

Union and America.

ARRIVAL OF FIRST AMERICAN EXPEDITION PARTY.

ARRIVAL OF FIRST AMERICAN EXPEDITION PARTY.

ARRIVAL OF FIRST AMERICAN EXPEDITION PARTY.

ARRIVAL OF FIRST AMERICAN EXPEDITION PARTY.

ARRIVAL OF FIRST AMERICAN EXPEDITION PARTY.

ARRIVAL OF FIRST AMERICAN EXPEDITION PARTY.

ARRIVAL OF FIRST AMERICAN EXPEDITION PARTY.

ARRIVAL OF FIRST AMERICAN EXPEDITION PARTY.

ARRIVAL OF FIRST AMERICAN EXPEDITION PARTY.

ARRIVAL OF FIRST AMERICAN EXPEDITION PARTY.

ARRIVAL OF FIRST AMERICAN EXPEDITION PARTY.

ARRIVAL OF FIRST AMERICAN EXPEDITION PARTY.

ARRIVAL OF FIRST AMERICAN EXPEDITION PARTY.

ARRIVAL OF FIRST AMERICAN EXPEDITION PARTY.

ARRIVAL OF FIRST AMERICAN EXPEDITION PARTY.

ARRIVAL OF FIRST AMERICAN EXPEDITION PARTY.

ARRIVAL OF FIRST AMERICAN EXPEDITION PARTY.

ARRIVAL OF FIRST AMERICAN EXPEDITION PARTY.

ARRIVAL OF FIRST AMERICAN EXPEDITION PARTY.

ARRIVAL OF FIRST AMERICAN EXPEDITION PARTY.

ARRIVAL OF FIRST AMERICAN EXPEDITION PARTY.

ARRIVAL OF FIRST AMERICAN EXPEDITION PARTY.

ARRIVAL OF FIRST AMERICAN EXPEDITION PARTY.

ARRIVAL OF FIRST AMERICAN EXPEDITION PARTY.

ARRIVAL OF FIRST AMERICAN EXPEDITION PARTY.

ARRIVAL OF FIRST AMERICAN EXPEDITION PARTY.

ARRIVAL OF FIRST AMERICAN EXPEDITION PARTY.

ARRIVAL OF FIRST AMERICAN EXPEDITION PARTY.

ARRIVAL OF FIRST AMERICAN EXPEDITION PARTY.

ARRIVAL OF FIRST AMERICAN EXPEDITION PARTY.

ARRIVAL OF FIRST AMERICAN EXPEDITION PARTY.

EAST AFRICAN STANDARD.

Definitely Closing Saturday Feb. 22nd

Come and read secure your Bargain

Ladies Shoes from 10/00

Gents Sample Shoes 20/00

Children from 3/50

...the fact that the ...

...the fact that the ...

CARR'S Table Water
BISCUITS
Invariably there are some who think that Carr's is only good for babies and young children.

CARR & CO. LTD
LONDON

STOCKED BY THE LEADING GROCERS.

As supplied to the House of Commons

Amstel Beer the Best in East and West

Guaranteed free of Chemicals.

Obtainable at all leading Hotels, Bars and Stores. Ask for it in your Club.

Twentsche Overseas Trading Co., Ltd., Mombasa.
Kanjil Narany, Nairobi.

HIS EXCELLENCY VISITS LANU

A Exhibition of Local Productions.

INCREASE IN TRADE

(STANDARD CORRESPONDENT.)
LANU, February 11.—LANU towards Nairobi turned out on a mission of pleasure on February 9, to greet His Excellency the Governor and the Hon. Lady (Mrs. L. J. L. L.) on their arrival here at the terminus of the Mombasa motor car safari from Nairobi, via Isaka and the Northern Frontier Province. The party included Capt. Mackenzie, A. L. C. to the Governor, Major Dalziel, Capt. and Mrs. Ritchie, Mr. V. G. Gledhill, A. O. O. N.E.F. and Miss Muriel. Receptional and somewhat out-of-ordinary rates in the N.F.P. could the party be rather late for the night. The party originally intended, and on one occasion the party had to camp on the road. This was on the night before they reached Lanu, and so the transport from the night before to the island took a considerable amount of time. In the late in the day before the whole party finally reached the island.

more interesting of the whole. All, however, were of purely local origin.

Keaps of the trade annual were booked and fish fish for the Chinese market, coarse for India and Netherlands for Europe. A pair of piglets, weight 115 lbs. and 112 lbs. respectively, occupied a prominent position in the exhibition, and such other items as a large basket full of dried produce, a sack of Mombasa and British patterned and gagers for the Northern Frontier Province.

His Excellency took a long interest in everything in the show, and was pleased to learn that the local produce was so abundant and more prominent place in the exhibition. He was particularly interested in the value of the 79,994 lbs. This—5,898 native white pigs of the value of the 79,994 lbs. worth 28 sh. 6d. per cwt. and 18,170 lbs. of native wool of the value of 28 sh. 6d. per cwt. Mr. Mags for the Zambesi drive trade value represented the value of the 124,101 lbs. white skin-wool, expressed in local currency, worth 28 sh. 6d. per cwt. and 18,170 lbs. of native wool of the value of 28 sh. 6d. per cwt.

and that the plan adopted in allowing them to station them in the most heavily populated districts. There were other districts, such as the Tana River, but he realized that the latter would be exceptional owing to their present comparative isolation, and that the latter would not be done.

In regard to the Mombasa and British patterned and gagers for the Northern Frontier Province. The trouble was not only to get the money, but also to get the services of properly trained and experienced surveyors. At present, world-wide demand for such men was far in excess of the supply. However, he was sympathetic with the request and would be glad to get something done. With regard to the other matters mentioned, he would go into them. The Expedition that withdrew.

"ON THIS DAY"
FEBRUARY 21ST.

Five weeks of the year, on the 21st February, is the anniversary of the death of the late Sir John Lubbock, 1st Baron of Avebury, who was born on the 21st of February, 1839, and died on the 21st of February, 1913. He was a distinguished naturalist, geologist, and archaeologist, and was one of the founders of the British Museum. He was also a member of the House of Lords, and was created a Baron in 1911. He was a man of wide interests and a great lover of his country.

GROSVENOR HOUSE
GIROUARD ROAD.
PHONE 487. P.O. Box 1568.
One Mile from Post Office.

The Salisbury Hotel
Nairobi.
Phone 188. P.O. Box 569.

HOTEL PALACE AVENUE HOTEL
Box 77, Nairobi. Phone 71. Box 112, Mombasa. Phone 238.

Under New Management.
Miming 24 Concerts on the Amphitheatre, 10.00-12.00 daily. Sunday: Dance on the Amphitheatre daily from 4.00-7 p.m.

THIS IS WORTH YOUR CONSIDERATION.
Visitors at the Palace Hotel, Mombasa, proceeding to Nairobi and desiring to stay at the Hotel Avenue, Nairobi, will be allowed 100% of their Accounts for accommodation, at the Hotel Avenue, provided they stay there within one week of leaving Mombasa en viam.

Both Hotels have splendid roof gardens, ideal for private functions, wedding receptions, etc.

Self-contained private units.
Only the cheapest brands of wines stocked.
Form terms apply Manager.

Toddy's Trains.
The following trains are due to leave Nairobi today—
Nairobi, 6.00 a.m.
Mombasa, 6.00 a.m.
Mombasa, 6.00 a.m.
Mombasa, 6.00 a.m.
Mombasa, 6.00 a.m.

The following trains are due to arrive at Nairobi today—
Mombasa, 6.00 a.m.
Mombasa, 6.00 a.m.
Mombasa, 6.00 a.m.
Mombasa, 6.00 a.m.
Mombasa, 6.00 a.m.

WHEN VISITING NAIROBI STAY AT TORR'S HOTEL
Raffles Hotel, Nairobi.
Phone 188. P.O. Box 569.

When visiting Nairobi stay at Torr's Hotel. It is the most comfortable and convenient place to stay. It has a fine dining room, a bar, and a comfortable lounge. The hotel is well situated and has a beautiful view of the city.

Stag's Head Hotel
Nairobi.
Main Road close to New Post Office, Banks, Club, and Station.
Electric Light, Heat and Cold Water for all Bedrooms.
EUROPEAN SANITATION and BATHS.
Exceptionally Attractive and Comfortable.
Public Rooms, 27.
WEEK ENDS—SPECIAL TERMS.
Daily Breakfasts Served by Special Staff.
JAMES' Personal Management.
PUBLIC DINING ROOM.
Programme arranged.

MARUVU AND MARUVI
SUNDAY, FEB. 21
MARUVU CHURCH.
SUNDAY, MARCH 2
MARUVU CLUB.
SUNDAY, FEB. 21
MARUVU CHURCH.
SUNDAY, MARCH 2
MARUVU CLUB.

WEATHER REPORT
Following are the results of observations made at station of the East African Standards, Nairobi, February 20, 1930.
Station. Pressure. Wind. Direction. Max. Min. Rainfall.
Nairobi. 29.882 E. 80 78 Nil
Weather—Clear, with slight drizzle.
Nairobi. 29.900 E.S.V.
Weather—Partly cloudy, but fine.
Nairobi. 29.900 E.S.V.
Weather—Partly cloudy, but fine.

WEATHER REPORT
Following are the results of observations made at station of the East African Standards, Nairobi, February 20, 1930.
Station. Pressure. Wind. Direction. Max. Min. Rainfall.
Nairobi. 29.882 E. 80 78 Nil
Weather—Clear, with slight drizzle.
Nairobi. 29.900 E.S.V.
Weather—Partly cloudy, but fine.
Nairobi. 29.900 E.S.V.
Weather—Partly cloudy, but fine.

WEATHER REPORT
Following are the results of observations made at station of the East African Standards, Nairobi, February 20, 1930.
Station. Pressure. Wind. Direction. Max. Min. Rainfall.
Nairobi. 29.882 E. 80 78 Nil
Weather—Clear, with slight drizzle.
Nairobi. 29.900 E.S.V.
Weather—Partly cloudy, but fine.
Nairobi. 29.900 E.S.V.
Weather—Partly cloudy, but fine.

NAIVASHA HOTEL
ON SHORES OF LAKE NAIVASHA.
AN EXCELLENT HEALTH RESORT.
FIRST CLASS COUSINE AND EVERY MODERN CONVENIENCE.
TENNIS, DUCK SHOOTING, BILLIARDS, ETC.
CAR ALWAYS AVAILABLE FOR TRIPS AROUND LAKE.
TENNIS MOUNTAINS.
H. O. LIA, Lesons.
P.O. Box No. 388. Phone 388.
"Garden" OAKLEIGH.

His Excellency took a long interest in everything in the show, and was pleased to learn that the local produce was so abundant and more prominent place in the exhibition. He was particularly interested in the value of the 79,994 lbs. This—5,898 native white pigs of the value of the 79,994 lbs. worth 28 sh. 6d. per cwt. and 18,170 lbs. of native wool of the value of 28 sh. 6d. per cwt.

His Excellency took a long interest in everything in the show, and was pleased to learn that the local produce was so abundant and more prominent place in the exhibition. He was particularly interested in the value of the 79,994 lbs. This—5,898 native white pigs of the value of the 79,994 lbs. worth 28 sh. 6d. per cwt. and 18,170 lbs. of native wool of the value of 28 sh. 6d. per cwt.

His Excellency took a long interest in everything in the show, and was pleased to learn that the local produce was so abundant and more prominent place in the exhibition. He was particularly interested in the value of the 79,994 lbs. This—5,898 native white pigs of the value of the 79,994 lbs. worth 28 sh. 6d. per cwt. and 18,170 lbs. of native wool of the value of 28 sh. 6d. per cwt.

His Excellency took a long interest in everything in the show, and was pleased to learn that the local produce was so abundant and more prominent place in the exhibition. He was particularly interested in the value of the 79,994 lbs. This—5,898 native white pigs of the value of the 79,994 lbs. worth 28 sh. 6d. per cwt. and 18,170 lbs. of native wool of the value of 28 sh. 6d. per cwt.

His Excellency took a long interest in everything in the show, and was pleased to learn that the local produce was so abundant and more prominent place in the exhibition. He was particularly interested in the value of the 79,994 lbs. This—5,898 native white pigs of the value of the 79,994 lbs. worth 28 sh. 6d. per cwt. and 18,170 lbs. of native wool of the value of 28 sh. 6d. per cwt.

His Excellency took a long interest in everything in the show, and was pleased to learn that the local produce was so abundant and more prominent place in the exhibition. He was particularly interested in the value of the 79,994 lbs. This—5,898 native white pigs of the value of the 79,994 lbs. worth 28 sh. 6d. per cwt. and 18,170 lbs. of native wool of the value of 28 sh. 6d. per cwt.

His Excellency took a long interest in everything in the show, and was pleased to learn that the local produce was so abundant and more prominent place in the exhibition. He was particularly interested in the value of the 79,994 lbs. This—5,898 native white pigs of the value of the 79,994 lbs. worth 28 sh. 6d. per cwt. and 18,170 lbs. of native wool of the value of 28 sh. 6d. per cwt.

His Excellency took a long interest in everything in the show, and was pleased to learn that the local produce was so abundant and more prominent place in the exhibition. He was particularly interested in the value of the 79,994 lbs. This—5,898 native white pigs of the value of the 79,994 lbs. worth 28 sh. 6d. per cwt. and 18,170 lbs. of native wool of the value of 28 sh. 6d. per cwt.

His Excellency took a long interest in everything in the show, and was pleased to learn that the local produce was so abundant and more prominent place in the exhibition. He was particularly interested in the value of the 79,994 lbs. This—5,898 native white pigs of the value of the 79,994 lbs. worth 28 sh. 6d. per cwt. and 18,170 lbs. of native wool of the value of 28 sh. 6d. per cwt.

His Excellency took a long interest in everything in the show, and was pleased to learn that the local produce was so abundant and more prominent place in the exhibition. He was particularly interested in the value of the 79,994 lbs. This—5,898 native white pigs of the value of the 79,994 lbs. worth 28 sh. 6d. per cwt. and 18,170 lbs. of native wool of the value of 28 sh. 6d. per cwt.

His Excellency took a long interest in everything in the show, and was pleased to learn that the local produce was so abundant and more prominent place in the exhibition. He was particularly interested in the value of the 79,994 lbs. This—5,898 native white pigs of the value of the 79,994 lbs. worth 28 sh. 6d. per cwt. and 18,170 lbs. of native wool of the value of 28 sh. 6d. per cwt.

His Excellency took a long interest in everything in the show, and was pleased to learn that the local produce was so abundant and more prominent place in the exhibition. He was particularly interested in the value of the 79,994 lbs. This—5,898 native white pigs of the value of the 79,994 lbs. worth 28 sh. 6d. per cwt. and 18,170 lbs. of native wool of the value of 28 sh. 6d. per cwt.

His Excellency took a long interest in everything in the show, and was pleased to learn that the local produce was so abundant and more prominent place in the exhibition. He was particularly interested in the value of the 79,994 lbs. This—5,898 native white pigs of the value of the 79,994 lbs. worth 28 sh. 6d. per cwt. and 18,170 lbs. of native wool of the value of 28 sh. 6d. per cwt.

His Excellency took a long interest in everything in the show, and was pleased to learn that the local produce was so abundant and more prominent place in the exhibition. He was particularly interested in the value of the 79,994 lbs. This—5,898 native white pigs of the value of the 79,994 lbs. worth 28 sh. 6d. per cwt. and 18,170 lbs. of native wool of the value of 28 sh. 6d. per cwt.

Quaker Oats
B. E. A. SAW MILLS
Telephone No. 63. P.O. Box 321.
Telegram: "Booms" Nairobi.
Camphor, Podo, Mweri and Muna.
Flooring, Ceiling and Moulding.

Just Received
Ladies Evening Shoes
EXTRAES AND PRICES RIGHT.
De Luxe Boot Co.
STEVENS ROAD, BOX 637 NAIROBI

Oakleigh Hotel Ltd.
NAIROBI.
P.O. Box No. 388. Phone 388.
"Garden" OAKLEIGH.

NAIVASHA HOTEL
ON SHORES OF LAKE NAIVASHA.
AN EXCELLENT HEALTH RESORT.
FIRST CLASS COUSINE AND EVERY MODERN CONVENIENCE.
TENNIS, DUCK SHOOTING, BILLIARDS, ETC.
CAR ALWAYS AVAILABLE FOR TRIPS AROUND LAKE.
TENNIS MOUNTAINS.
H. O. LIA, Lesons.
P.O. Box No. 388. Phone 388.
"Garden" OAKLEIGH.



Something besides rubber and fabric has gone into every tyre Goodyear has ever made.

That something has been an implicit confidence in the values of science as applied to the design and manufacture of products intended for public use.

In the application of those values, Goodyear has built up, man by

man, and now maintains the foremost engineering and development in the whole field of rubber manufacture.

That is why, through invention, special processes and materials, new factors in design and construction, Goodyear has been consistently able to offer

the public superior quality and value at no premium in cost.

Owning its own coal mines, textile mills, cotton and rubber plantations, and plants which are models of modern and efficient practice, enables Goodyear to build better tyres at lower cost

GOODYEAR

Tread and carcass these are the two main parts of a tyre. There is greater traction in the All-Weather Tread. There is greater vitality in the Supertwist

carcass. Evidence? Goodyear Dealers will demonstrate. Proof? "The world over, more people ride on Goodyear Tyres than on any other make!"



Gillfillan & Company Ltd.
DISTRIBUTORS

SPORTS and PASTIMES.

Amateur Athletic Association.

JUBILEE YEAR CELEBRATIONS.

"STANDARD" CORRESPONDENT.

London, (By Mail).
This is the Jubilee Year of the Amateur Athletic Association. To commemorate that anniversary, it is proposed to hold a Jubilee Dinner on an evening which is yet to be fixed, between April 22 and 26, and as far as possible to the actual date of the foundation of the Association, and the date will be taken by Lord Dunsborough, one of the vice-presidents of the Association. In connection with the jubilee celebrations a souvenir book is being prepared giving the story of the origin of the Association and of the progress in the last 50 years. The annual championship of the A.A.A. are to be held at Stamford Bridge, on July 4 and 5, and invitations are being sent out to the Dominion and foreign countries asking them to send representatives to compete in the Jubilee year. It is expected that there will be a much greater attendance than usual of competitors, from abroad, and among those who are likely to come will be a strong American team. It is probable that a special medal may be struck for the occasion, and while it will preserve the distinctive design and marks of the usual A.A.A. medal it will have some additional lines to indicate that it has been struck in the 50th year of the Association's history.

Third Division Football Affairs.

MONTHLY MEETINGS APPLICATION.

"STANDARD" CORRESPONDENT.

London, (By Mail).
Although a number of clubs in the Northern Section of League III, are threatening to close down through lack of support from the Shields, members of the North Eastern League, are anxious to join.
When improvements have been

No Split in Football World.

AMATEUR ASSOCIATION'S FACILITY ACTION.

"STANDARD" CORRESPONDENT.

London, (By Mail).
The General Committee of the Amateur Football Association are to be congratulated on the success of the recent meeting at which the recent action of the F.A. in granting the League eight seats on its Council. The proposal, therefore, of another split such as happened in 1907, have been dismissed.
The resolution was as follows:—
(1) While regarding the decision of the F.A. to allow additional representation on its Council as a matter for the Council, the A.F.A. does not recommend any action be taken to set aside the resolution passed by the F.A. at its extraordinary general meeting on the 13th instant.

(2) That a sub-committee be formed to consider what steps should be taken to secure in future more effective control of the government of amateur football by amateur clubs. It was felt by those attending the meeting, which was thoroughly representative of A.F.A. football, that there was little chance of success in the early movement which sought to open the Football League a new grip on the governing body of football.

A sub-committee was, however, formed to go thoroughly into the matter of amateur representation in the control of the game, especially on its amateur side.

It is understood that there is no intention on the part of the A.F.A. to promote or suggest a round table conference with amateurs or amateur clubs outside its own jurisdiction. It is doubtful, too, if approaches from this quarter would be very welcome. In other words, any strong movement of a remedial character to regain control of the game by amateurs must come from outside the A.F.A. Both the resolutions passed more exactly what they say and nothing more or less.

completed, their ground will accommodate 40,000 people, and their application to the Football League has the support of the North-Eastern Amateur Association.

County Cricket Season.

SURREY AND MIDDLESEX FRIENDLY MATCH.

"STANDARD" CORRESPONDENT.

London, (By Mail).
Mr James Lilly, one of the famous English cricketers, who was for 17 years a member of the Surrey team, and who died on October 25, last at 81, has just passed away.
Attention has been called in the press to the news that Surrey and Middlesex are only to meet each other in "friendly" matches, which are not reckoned in the championship table, and it is felt that the interest of the County Championship, the coming season will be seriously affected.

It is pointed out that the total number of first-class counties, as every schooling knows, is seventeen. Under the system which came into force in 1929, each of these must play twenty-eight matches, and twenty-eight only, apart from matches being played on two counties with which it does not play effectively. Last year, for example, Nottingham did not play Essex and Hampshire, Lancashire did not meet Somerset and Kent, and Yorkshire had no games with Somerset and Gloucestershire.

This season the county missing from the list of Surrey opponents is Hampshire, and next year, as well as this, for some mysterious reason, the Surrey-Middlesex contest, so far as the Championship is concerned, will be meaningless.

Thus, one of the chief county fixtures—which caused for the War has lasted without a break since 1881—is for two years running ruled out of the list of the matches that count. Mr Warner has announced his intention of taking the Middlesex Committee to bring before the Advisory County Cricket Committee a proposal that the new scheme, from which only Bank Holiday fixtures are at present exempt, should not apply to counties which have not met each other for fifty years. If a change is to be made at all, it would certainly seem fairer and less complicated to hit upon one which applies equally to all the counties concerned, and several solutions are put forward.

People hope the question will be discussed by the county in authority and a better arrangement made.



SOUTH AFRICA

IF YOU WANT
Magnificent Scenery
Equal to the Alps.

Visit the Drakenberg
In Natal.

For full particulars apply to—

The South Africa Office,
Memorial Hall
P.O. Box 684,
NAIROBI.

Hearing Cherry Brandy

ADDED TO
"Mixed Vermouth"

IS A DRINK WITH FLAVOUR.

WHOLESALE STOCKISTS:
JARDIN, PHIPSON and Co., Ltd. NAIROBI.

TO LET.

RUAKA. Stone House, 10 acres of land with plenty of Fruit Trees, its own river. One hour minutes from Nairobi.

Apply
Hussain Suleman Verjee & Sons
or write P.O. Box 380,
GOVERNMENT ROAD, NAIROBI.

Satisfaction
A day's work well done—a hard game well contested—justify the best in the way of relaxation and refreshment.
"LONG JOHN" Scotch Whisky is characteristically pure and mature.
"LONG JOHN" SCOTCH WHISKY

Multiplar BELTING
SMITH, MACKENZIE & COMPANY, NAIROBI. Phone 368.

"THERE'S A REASON" FOR FORDS ALTIMUDE IN SALES

FORD Sales are Greatest for the simple reasons of low operating costs, High Re-Sale Value, remarkable Performance and Attractive Appearance. **FORD Leads the Field because of—Value in the New Car.**



Prices from **£182-10-0**

The Special appeal to Motorists is Quick Acceleration, Light Control, Houdaille Shock Absorbers, Enclosed Brakes, Ease of starting when Cold and A Wealth of other Attractive Features.

NAIROBI MOTORS

Tel. 317.

6th AVENUE

Box 460.

