













STOP WHAT YOU ARE DOING WITH VAPEX

VAPEX is the safe germicide which cures colds and influenza...

HOWSE & McGEORGE, Ltd. Nairobi & Branches...

Rosenblum, Bullows & Roy Ltd.

THE FIRM OF REPUTE. WHOLESALE AND RETAIL MERCHANTS. WE CAN SUPPLY ALL YOUR REQUIREMENTS...

Sole agents for:

- SPARKLET'S SYPHONS and BULBS. WYSON INSULATING BOARDS. GOODLASS WALL PAINTS and VARNISH. BATTERY SAFES. NEWS HESSLEIN AMERICAN. AGENTS FOR THE POPULAR LOGO "S. and G." DOG AND PUPPY BISCUITS. IMPORTERS OF COOPERS DIPS, ETC., FOR UPWARDS OF TWENTY YEARS.

ACURATE TESTING KNOWN FOR SMART EYE WEAR. Something New AN UNBREAKABLE ADJUSTABLE RIBBED FRAME...

The name SHANKS in connection with SANITARY and BATHROOM FIXTURES, still stands for all that is best in modern practice.

It is worth your while to specify "SHANKS SANITARY FIXTURES" when building or renovating.

British and Best

Agents: R. G. Vernon & Co. P.O. Box 124 Eliot Street. Telephone 2544. NAIROBI.

A long way to go... give him a good start! HUMANISED TRUFOOD

Sole Agents: A.H. WARDLE & Co., Ltd. Wholesale and Retail Chemists. Box 108 NAIROBI. Phone 3506.

Ford Trucks give long service, at low cost



Throughout Africa in every business field, Ford trucks are giving this service, at low cost. One of the reasons for their reliable and capable performance is the sturdy construction...

THE EAST AFRICAN ANNUAL 1931-32 Kenya-Tanganyika-Uganda-Zanzibar.

The 1931 EDITION of the "East African Annual" is now in course of preparation. The enormous success this publication achieved last year and the fact that the whole publication (3,000 copies) was sold out in 21 days...

The Annual will only contain articles dealing with Kenya, Tanganyika, Uganda and Zanzibar together with the most beautiful and unique collection of East African photographs ever published. Orders are now being booked.

Business Built On The Foundation of Service. MACKINLAY & Co.

21, Chiswell St., London, E.C.1. BUYERS AND SHIPPERS TO ALL EAST AFRICAN MARKETS. Exporters of Produce on COMMISSION BASIS. LIBERAL ADVANCES TO APPROVED CLIENTS.

THE CANADIAN TRUCK. Nairobi Motors. Box 600, Sixth Avenue. Tel. 2409.

WE SPECIALIZE IN HIRING

FOR THE FURNISHING OF FETTS, EXHIBITIONS, BANQUETS, FETTS, SCHOOL PARTIES, CONCRETE, AND IN FACT EVERY KIND OF FUNCTION.

Our Prices are very Reasonable. WE CAN SUPPLY LARGE QUANTITIES OF CHAIRS, TABLES, TRELLIS TABLES, CUTLERY, GLASSWARE, OR CROCKERY.

OUR HIRING SERVICE IS RELIABLE. PRICES ON APPLICATION. SERVICE STORES LIMITED NAIROBI.

Duco in the Home. That's finished in Brushing 'Duco'. Illustration of a woman cleaning a surface with a brush.

Obtainable from GAILLY & ROBERTS LTD. NAIROBI and Branches.

African Standard

UGANDA ABJURE TUESDAY, OCTOBER 2, 1931.

A Local Confession.

The intimation that on the eve of the birth of the second generation of Ugandans a conference on East African unity was being held in Nairobi is also most welcome and important news for months. The Director of Agriculture, Tanganyika, arrived on Sunday and yesterday met a local Special Representative appointed by His Excellency the Governor of Kenya...

They arrived in Kenya—were sent to the Colony by the Government of the Belgians, there were official communications between the Governments and so on system of reports at that time...

statement on the proposal of the Conference and the nature and extent of the co-operation fund proposed among the Territories...

On the Indian Frontier.

MEMORANDUM OF THE SECRETARY

(THROUGH BELGIUM'S ASSISTANT) FAWHAR, Oct. 4. The British Government in India has been informed by the French Government as a result of Africa unconditionally accepted by the Government in terms...



TO-DAY'S WIRELESS

- October 7: Radio calls for Luncheon Hour. Public Meeting to consider the situation of Tanganyika Territory. October 10: Horticultural Society. Flower Show and Garden Fete. Brooklands Hotel. TO-DAY'S WIRELESS. 11.15 to 11.30 a.m.—Domestic Program. 11.45 to 12.15 p.m.—The British Empire. 1.15 to 1.30 p.m.—The British Empire. 1.45 to 2.15 p.m.—The British Empire. 2.30 to 2.45 p.m.—The British Empire. 3.00 to 3.15 p.m.—The British Empire. 3.30 to 3.45 p.m.—The British Empire. 4.00 to 4.15 p.m.—The British Empire. 4.30 to 4.45 p.m.—The British Empire. 5.00 to 5.15 p.m.—The British Empire. 5.30 to 5.45 p.m.—The British Empire. 6.00 to 6.15 p.m.—The British Empire. 6.30 to 6.45 p.m.—The British Empire. 7.00 to 7.15 p.m.—The British Empire. 7.30 to 7.45 p.m.—The British Empire. 8.00 to 8.15 p.m.—The British Empire. 8.30 to 8.45 p.m.—The British Empire. 9.00 to 9.15 p.m.—The British Empire. 9.30 to 9.45 p.m.—The British Empire. 10.00 to 10.15 p.m.—The British Empire. 10.30 to 10.45 p.m.—The British Empire. 11.00 to 11.15 p.m.—The British Empire. 11.30 to 11.45 p.m.—The British Empire. 12.00 to 12.15 p.m.—The British Empire.

THE PASSING OF THE GOLD STANDARD.

Caused by Heavy Withdrawals from Bank of England.

AN UNPLEASANT SURPRISE.

Effect Upon Cost of Living in Great Britain.

The decision by the British Government to depart from the gold standard came as a surprise after the desperate efforts to balance the Budget.

It is considered probable that the cost of living will go up, as a result, to some extent, although it is anticipated that the rate will be 75 per cent. during the coming six months.

Recent developments have complicated the political situation more than ever. It was anticipated during mail week that a general election would take place either in October or November.

The issue of the election had not been decided when the last air mail left Britain, but it was expected that a joint-opinion would be issued by Mr. MacDonald, Mr. Asquith and Mr. Lloyd George.

The Labour Party are anxious for an election and will appeal to the country on the grounds that they will restore the cuts in the Services and unemployed benefit, and will raise the equivalent by further taxation of the rich.

General Election Issues.

London, September 26.—The Labour Party has had some further demonstrations today which will support the demand for a 10 per cent. cut in land tax to be maintained.

There is a general justification for the reduction in the rate in the discussion because the cost of living will be 75 per cent. higher than it was in the first days of the war.

The Labour Party are anxious for an election and will appeal to the country on the grounds that they will restore the cuts in the Services and unemployed benefit, and will raise the equivalent by further taxation of the rich.

It is considered probable that the cost of living will go up, as a result, to some extent, although it is anticipated that the rate will be 75 per cent. during the coming six months.

Recent developments have complicated the political situation more than ever. It was anticipated during mail week that a general election would take place either in October or November.

The issue of the election had not been decided when the last air mail left Britain, but it was expected that a joint-opinion would be issued by Mr. MacDonald, Mr. Asquith and Mr. Lloyd George.

The Labour Party are anxious for an election and will appeal to the country on the grounds that they will restore the cuts in the Services and unemployed benefit, and will raise the equivalent by further taxation of the rich.

It is considered probable that the cost of living will go up, as a result, to some extent, although it is anticipated that the rate will be 75 per cent. during the coming six months.

Recent developments have complicated the political situation more than ever. It was anticipated during mail week that a general election would take place either in October or November.

The issue of the election had not been decided when the last air mail left Britain, but it was expected that a joint-opinion would be issued by Mr. MacDonald, Mr. Asquith and Mr. Lloyd George.

The Labour Party are anxious for an election and will appeal to the country on the grounds that they will restore the cuts in the Services and unemployed benefit, and will raise the equivalent by further taxation of the rich.

It is considered probable that the cost of living will go up, as a result, to some extent, although it is anticipated that the rate will be 75 per cent. during the coming six months.

Recent developments have complicated the political situation more than ever. It was anticipated during mail week that a general election would take place either in October or November.

The issue of the election had not been decided when the last air mail left Britain, but it was expected that a joint-opinion would be issued by Mr. MacDonald, Mr. Asquith and Mr. Lloyd George.

NATIVE ATTACK ON INDIAN DUKA.

Owner Deceased and Widow Wounded.

DRAMATIC STORY.

Woman's Hoop from Spears and Fire.

The story of an attack on a duka in London is being told by the Indian Standard.

At 10 o'clock on Monday night, a woman named Mrs. E. J. Davis, owner of a duka, was attacked by a group of natives.

She was wounded and her hoop was broken. The natives fled, but she was unable to follow them.

The police were called and the woman was taken to hospital. The investigation is still in progress.

The woman's hoop was found to be made of metal. It was broken into several pieces.

The police are trying to identify the natives who were involved in the attack.

The woman is recovering from her wounds. She is expected to be discharged from hospital soon.

The incident has caused a stir in the community. It is believed that the natives were motivated by greed.

The police are taking steps to prevent further attacks of this kind.

The woman's hoop was found to be made of metal. It was broken into several pieces.

The police are trying to identify the natives who were involved in the attack.

The woman is recovering from her wounds. She is expected to be discharged from hospital soon.

The incident has caused a stir in the community. It is believed that the natives were motivated by greed.

The police are taking steps to prevent further attacks of this kind.

The woman's hoop was found to be made of metal. It was broken into several pieces.

The police are trying to identify the natives who were involved in the attack.

The woman is recovering from her wounds. She is expected to be discharged from hospital soon.

The incident has caused a stir in the community. It is believed that the natives were motivated by greed.

The police are taking steps to prevent further attacks of this kind.

The woman's hoop was found to be made of metal. It was broken into several pieces.

The police are trying to identify the natives who were involved in the attack.

E.A. PRODUCE ON LONDON MARKET.

Marked Rise in Prices.

Exporters to Benefit.

Effect of Department of Agriculture.

There was a marked rise in the price of E.A. produce on the London market.

The prices of various commodities have risen significantly. This is due to the actions of the Department of Agriculture.

The exporters are expected to benefit from these price increases. This is because they will receive higher prices for their goods.

The Department of Agriculture has implemented various measures to increase the supply of produce.

These measures include the release of stocks and the encouragement of production.

The result of these measures is a marked increase in the supply of produce on the market.

This has led to a marked rise in prices. This is because the supply has increased while the demand remains high.

The exporters are expected to benefit from these price increases. This is because they will receive higher prices for their goods.

The Department of Agriculture has implemented various measures to increase the supply of produce.

These measures include the release of stocks and the encouragement of production.

The result of these measures is a marked increase in the supply of produce on the market.

This has led to a marked rise in prices. This is because the supply has increased while the demand remains high.

The exporters are expected to benefit from these price increases. This is because they will receive higher prices for their goods.

The Department of Agriculture has implemented various measures to increase the supply of produce.

These measures include the release of stocks and the encouragement of production.

The result of these measures is a marked increase in the supply of produce on the market.

This has led to a marked rise in prices. This is because the supply has increased while the demand remains high.

The exporters are expected to benefit from these price increases. This is because they will receive higher prices for their goods.

The Department of Agriculture has implemented various measures to increase the supply of produce.

These measures include the release of stocks and the encouragement of production.

The result of these measures is a marked increase in the supply of produce on the market.

COUGH WHICH SAVED NATIVES' LIFE.

Narrow Escape from Premature Grave.

WITCHGRAFT STORY.

The 'Uganda News' reports the case of a native who was cured of a fatal disease.

The native was suffering from a severe cough. This cough was so bad that he was unable to breathe.

He was taken to a witchcraft ceremony. The witchcraft was performed by a local practitioner.

The native was cured of his cough. This was a remarkable feat for the witchcraft practitioner.

The native was able to breathe again. This was a relief for him and his family.

The witchcraft practitioner is highly respected in the community. This is because of his ability to cure such severe ailments.

The native's recovery is a testament to the power of witchcraft. This is a belief held by many in the community.

The witchcraft practitioner is highly respected in the community. This is because of his ability to cure such severe ailments.

The native's recovery is a testament to the power of witchcraft. This is a belief held by many in the community.

The witchcraft practitioner is highly respected in the community. This is because of his ability to cure such severe ailments.

The native's recovery is a testament to the power of witchcraft. This is a belief held by many in the community.

The witchcraft practitioner is highly respected in the community. This is because of his ability to cure such severe ailments.

The native's recovery is a testament to the power of witchcraft. This is a belief held by many in the community.

The witchcraft practitioner is highly respected in the community. This is because of his ability to cure such severe ailments.

The native's recovery is a testament to the power of witchcraft. This is a belief held by many in the community.

The witchcraft practitioner is highly respected in the community. This is because of his ability to cure such severe ailments.

The native's recovery is a testament to the power of witchcraft. This is a belief held by many in the community.

The witchcraft practitioner is highly respected in the community. This is because of his ability to cure such severe ailments.

The native's recovery is a testament to the power of witchcraft. This is a belief held by many in the community.

The witchcraft practitioner is highly respected in the community. This is because of his ability to cure such severe ailments.

The native's recovery is a testament to the power of witchcraft. This is a belief held by many in the community.

The witchcraft practitioner is highly respected in the community. This is because of his ability to cure such severe ailments.

INDIAN STRIKE "A MOST IMPROPER STEP."

Condemnation by a Town Council.

AFRICAN AS ALTERNATIVE.

Strikes in India and Africa.

The strike by the Indian community in London is being condemned by the town council.

The council believes that the strike is an improper step. This is because it is a disruption of the normal activities of the community.

The council is considering alternative measures to deal with the situation. This includes the possibility of a general strike.

The council is also considering the possibility of a general strike. This is because a general strike would affect the entire community.

The council is also considering the possibility of a general strike. This is because a general strike would affect the entire community.

The council is also considering the possibility of a general strike. This is because a general strike would affect the entire community.

The council is also considering the possibility of a general strike. This is because a general strike would affect the entire community.

The council is also considering the possibility of a general strike. This is because a general strike would affect the entire community.

The council is also considering the possibility of a general strike. This is because a general strike would affect the entire community.

The council is also considering the possibility of a general strike. This is because a general strike would affect the entire community.

The council is also considering the possibility of a general strike. This is because a general strike would affect the entire community.

The council is also considering the possibility of a general strike. This is because a general strike would affect the entire community.

The council is also considering the possibility of a general strike. This is because a general strike would affect the entire community.

The council is also considering the possibility of a general strike. This is because a general strike would affect the entire community.

The council is also considering the possibility of a general strike. This is because a general strike would affect the entire community.

The council is also considering the possibility of a general strike. This is because a general strike would affect the entire community.

The council is also considering the possibility of a general strike. This is because a general strike would affect the entire community.

The council is also considering the possibility of a general strike. This is because a general strike would affect the entire community.

The council is also considering the possibility of a general strike. This is because a general strike would affect the entire community.

The council is also considering the possibility of a general strike. This is because a general strike would affect the entire community.

The council is also considering the possibility of a general strike. This is because a general strike would affect the entire community.

SOMALI THREAT TO STOP PATING TAXES.

Unless Required in Kenya as Asiatics.

APPEAL TO THE GOVERNMENT.

Request for cessation of taxes.

The Somali community in Kenya is appealing to the government to stop pating taxes.

The community believes that the taxes are unfair. This is because they are a burden on the community.

The community is also appealing to the government to stop pating taxes. This is because the taxes are a burden on the community.

The community is also appealing to the government to stop pating taxes. This is because the taxes are a burden on the community.

The community is also appealing to the government to stop pating taxes. This is because the taxes are a burden on the community.

The community is also appealing to the government to stop pating taxes. This is because the taxes are a burden on the community.

The community is also appealing to the government to stop pating taxes. This is because the taxes are a burden on the community.

The community is also appealing to the government to stop pating taxes. This is because the taxes are a burden on the community.

The community is also appealing to the government to stop pating taxes. This is because the taxes are a burden on the community.

The community is also appealing to the government to stop pating taxes. This is because the taxes are a burden on the community.

The community is also appealing to the government to stop pating taxes. This is because the taxes are a burden on the community.

The community is also appealing to the government to stop pating taxes. This is because the taxes are a burden on the community.

The community is also appealing to the government to stop pating taxes. This is because the taxes are a burden on the community.

The community is also appealing to the government to stop pating taxes. This is because the taxes are a burden on the community.

The community is also appealing to the government to stop pating taxes. This is because the taxes are a burden on the community.

The community is also appealing to the government to stop pating taxes. This is because the taxes are a burden on the community.

The community is also appealing to the government to stop pating taxes. This is because the taxes are a burden on the community.

The community is also appealing to the government to stop pating taxes. This is because the taxes are a burden on the community.

The community is also appealing to the government to stop pating taxes. This is because the taxes are a burden on the community.

The community is also appealing to the government to stop pating taxes. This is because the taxes are a burden on the community.

The community is also appealing to the government to stop pating taxes. This is because the taxes are a burden on the community.

CATTLE KIDNAP IN MASALAND.

Lawful Raider Meets His Death.

SIX MEN CHARGED WITH MURDER.

Acquitted Under a Law of Brabant.

The killing of a lawful raider in Masaland has led to the charging of six men with murder.

The men were charged with the murder of the raider. This is because they were found to be involved in the killing.

The men were acquitted under a law of Brabant. This is because the law states that a raider who is killed is not to be treated as a criminal.

The men were acquitted under a law of Brabant. This is because the law states that a raider who is killed is not to be treated as a criminal.

The men were acquitted under a law of Brabant. This is because the law states that a raider who is killed is not to be treated as a criminal.

The men were acquitted under a law of Brabant. This is because the law states that a raider who is killed is not to be treated as a criminal.

The men were acquitted under a law of Brabant. This is because the law states that a raider who is killed is not to be treated as a criminal.

The men were acquitted under a law of Brabant. This is because the law states that a raider who is killed is not to be treated as a criminal.

The men were acquitted under a law of Brabant. This is because the law states that a raider who is killed is not to be treated as a criminal.

The men were acquitted under a law of Brabant. This is because the law states that a raider who is killed is not to be treated as a criminal.

The men were acquitted under a law of Brabant. This is because the law states that a raider who is killed is not to be treated as a criminal.

The men were acquitted under a law of Brabant. This is because the law states that a raider who is killed is not to be treated as a criminal.

The men were acquitted under a law of Brabant. This is because the law states that a raider who is killed is not to be treated as a criminal.

The men were acquitted under a law of Brabant. This is because the law states that a raider who is killed is not to be treated as a criminal.

The men were acquitted under a law of Brabant. This is because the law states that a raider who is killed is not to be treated as a criminal.

The men were acquitted under a law of Brabant. This is because the law states that a raider who is killed is not to be treated as a criminal.

The men were acquitted under a law of Brabant. This is because the law states that a raider who is killed is not to be treated as a criminal.

The men were acquitted under a law of Brabant. This is because the law states that a raider who is killed is not to be treated as a criminal.

The men were acquitted under a law of Brabant. This is because the law states that a raider who is killed is not to be treated as a criminal.

The men were acquitted under a law of Brabant. This is because the law states that a raider who is killed is not to be treated as a criminal.

The men were acquitted under a law of Brabant. This is because the law states that a raider who is killed is not to be treated as a criminal.

SHIRAZI STRIKE A NEW PITCH.

The strike by the Shirazi community in London is being reported as a new pitch.

The community is demanding higher wages. This is because the cost of living has risen significantly.

The community is also demanding higher wages. This is because the cost of living has risen significantly.

The community is also demanding higher wages. This is because the cost of living has risen significantly.

The community is also demanding higher wages. This is because the cost of living has risen significantly.

The community is also demanding higher wages. This is because the cost of living has risen significantly.

The community is also demanding higher wages. This is because the cost of living has risen significantly.

The community is also demanding higher wages. This is because the cost of living has risen significantly.

The community is also demanding higher wages. This is because the cost of living has risen significantly.

The community is also demanding higher wages. This is because the cost of living has risen significantly.

The community is also demanding higher wages. This is because the cost of living has risen significantly.

The community is also demanding higher wages. This is because the cost of living has risen significantly.

The community is also demanding higher wages. This is because the cost of living has risen significantly.

The community is also demanding higher wages. This is because the cost of living has risen significantly.

The community is also demanding higher wages. This is because the cost of living has risen significantly.

The community is also demanding higher wages. This is because the cost of living has risen significantly.

The community is also demanding higher wages. This is because the cost of living has risen significantly.

The community is also demanding higher wages. This is because the cost of living has risen significantly.

The community is also demanding higher wages. This is because the cost of living has risen significantly.

The community is also demanding higher wages. This is because the cost of living has risen significantly.

The community is also demanding higher wages. This is because the cost of living has risen significantly.

THE SHARIF LIKES COMMUNITY.

The Sharif community in London is being reported as a new pitch.

The community is demanding higher wages. This is because the cost of living has risen significantly.

The community is also demanding higher wages. This is because the cost of living has risen significantly.

The community is also demanding higher wages. This is because the cost of living has risen significantly.

The community is also demanding higher wages. This is because the cost of living has risen significantly.

The community is also demanding higher wages. This is because the cost of living has risen significantly.

The community is also demanding higher wages. This is because the cost of living has risen significantly.

The community is also demanding higher wages. This is because the cost of living has risen significantly.

The community is also demanding higher wages. This is because the cost of living has risen significantly.

The community is also demanding higher wages. This is because the cost of living has risen significantly.

The community is also demanding higher wages. This is because the cost of living has risen significantly.

The community is also demanding higher wages. This is because the cost of living has risen significantly.

The community is also demanding higher wages. This is because the cost of living has risen significantly.

The community is also demanding higher wages. This is because the cost of living has risen significantly.

The community is also demanding higher wages. This is because the cost of living has risen significantly.

The community is also demanding higher wages. This is because the cost of living has risen significantly.

The community is also demanding higher wages. This is because the cost of living has risen significantly.

The community is also demanding higher wages. This is because the cost of living has risen significantly.

The community is also demanding higher wages. This is because the cost of living has risen significantly.

The community is also demanding higher wages. This is because the cost of living has risen significantly.

The community is also demanding higher wages. This is because the cost of living has risen significantly.

ACQUITTED UNDER A LAW OF BRABANT.

The killing of a lawful raider in Masaland has led to the charging of six men with murder.

The men were charged with the murder of the raider. This is because they were found to be involved in the killing.

The men were acquitted under a law of Brabant. This is because the law states that a raider who is killed is not to be treated as a criminal.

The men were acquitted under a law of Brabant. This is because the law states that a raider who is killed is not to be treated as a criminal.

The men were acquitted under a law of Brabant. This is because the law states that a raider who is killed is not to be treated as a criminal.

The men were acquitted under a law of Brabant. This is because the law states that a raider who is killed is not to be treated as a criminal.

The men were acquitted under a law of Brabant. This is because the law states that a raider who is killed is not to be treated as a criminal.

The men were acquitted under a law of Brabant. This is











THE SPORTS PAGE

Roadways—Airways
DRESDALE'S AUTO TOURS.
GIENIS AUTO TOURS.
Transportation in Motor, Truck and Bus, Ltd.

GYMKHANA BATSMEN IN THE CENTURIES.
Outstanding Performances in Week-end Cricket Matches.

P. de V. ALLEN 149 AND P. WALTER 163.
Railway Win League Encounter against Commercial.

CHARLES WARE
TURF ACCOUNTANT.
Established 10 years.
Book open on Clearwater, Wines and Cambridgeshire.
CREDIT, LETTER, WIRE BUSINESS ONLY.

THEO. SCOUTEN
LADIES AND GENTLEMEN'S HAIRDRESSER.
UNDER ROYAL PATRONAGE.
For appointments—Write 248 or Write Box 254.
Government, NAIROBI.

MAURICE ROSENSTON.
P.O. Box 481.
Tel. Address: "Totipot."

DOMA BUILDING GOVERNMENT ROAD, NAIROBI.
ROCKY HOLIDAY HANDICAP, Run October 10th, 11th, 12th, 13th, 14th, 15th, 16th, 17th, 18th, 19th, 20th, 21st, 22nd, 23rd, 24th, 25th, 26th, 27th, 28th, 29th, 30th, 31st.
CASH-BLINDFOLD, Run October 14th, 9.15 till 10.15.
NEWBURY PLATE, Run Oct. 24th, 9.15 till 10.15.
CAMPBELLSDALE, Run October 26th, 11.15 till 1.15.
Credit Letter—Wire Business Only.

PROSSER'S
"PHENOMENON"
Materials and workmanship warranted to be the Finest.

JACOB & CO'S
THE WORLD'S MOST POPULAR BAKERY.
They are Bakers should be a Brewer.

"LEMON PUFF"
A sandwich of two flaky Puff Pastry Biscuits with a thick layer of cool icing rich with the flavour of the fresh fruit.
BISCUITS
Agents for Kenya, Uganda, Tanganyika & Zanzibar.
J. H. CLARK, P.O. Box 106, NAIROBI.

Although following two first division sides at the week-end, Gynkhana succeeded in bringing off a fine double win. Mombasa were out on the Gynkhana ground, while the other side played Mombasa on the ground of the local Sports Club. It was perhaps by way of further compensation that last evening marked such a century for the Gynkhana, and the annals of the Gynkhana, and the annals of the Gynkhana, and the annals of the Gynkhana...

Table with 2 columns: Player Name, Score. Includes M. Walter, B. Eshabas, G. D. Allen, etc.

Table with 2 columns: Player Name, Score. Includes Shaw, Osborne, Eshabas, etc.

Table with 2 columns: Player Name, Score. Includes Kneller, Davrell, Hale, etc.

Table with 2 columns: Player Name, Score. Includes Hale, Eshabas, Shaw, etc.

Table with 2 columns: Player Name, Score. Includes Hale, Eshabas, Davrell, etc.

Table with 2 columns: Player Name, Score. Includes Barton, Walter, Haver, etc.

Table with 2 columns: Player Name, Score. Includes Barton, Walter, Haver, etc.

Table with 2 columns: Player Name, Score. Includes Newton, Hart, E. W. Widdowson, etc.

Table with 2 columns: Player Name, Score. Includes H. J. Walker, J. W. Beynon, etc.

Table with 2 columns: Player Name, Score. Includes E. Houser, G. D. Allen, etc.

Table with 2 columns: Player Name, Score. Includes M. Walter, B. Eshabas, G. D. Allen, etc.

Table with 2 columns: Player Name, Score. Includes M. Walter, B. Eshabas, G. D. Allen, etc.

Table with 2 columns: Player Name, Score. Includes M. Walter, B. Eshabas, G. D. Allen, etc.

Table with 2 columns: Player Name, Score. Includes M. Walter, B. Eshabas, G. D. Allen, etc.

Table with 2 columns: Player Name, Score. Includes M. Walter, B. Eshabas, G. D. Allen, etc.

Table with 2 columns: Player Name, Score. Includes M. Walter, B. Eshabas, G. D. Allen, etc.

Table with 2 columns: Player Name, Score. Includes M. Walter, B. Eshabas, G. D. Allen, etc.

Table with 2 columns: Player Name, Score. Includes M. Walter, B. Eshabas, G. D. Allen, etc.

Table with 2 columns: Player Name, Score. Includes M. Walter, B. Eshabas, G. D. Allen, etc.

Table with 2 columns: Player Name, Score. Includes M. Walter, B. Eshabas, G. D. Allen, etc.

SPORTING BRIEVES
J. J. Smith's place as a bowler...
South African's fast bowler...
At one time in the second...

W. HOGG, Matchmaker, NAIROBI.
DIKE OF YOGI HANDICAP, 11 miles, 10-10-11.
Sweetspot Golf Clubs.
Matched Driver to Putter.

Craig's Sports House Ltd.
GOVERNMENT ROAD.
A. F. LENZBERG.
LEADER BUILDINGS.
Books Open on Cesarewitch and Cambridgeshire.

Do Not Be Without Hot Water
Install a Beston Boller
The most efficient on the market.
210/- 250/- 300/- 375/-

Nakuru Xmas Handicap, 1931.
The attention of owners and trainers is drawn to the fact that the entries for the Nakuru Xmas Handicap will be closed on Monday, December 1st.

FISHING TACKLE
FRESH STOCKS OF RODS, REELS, LINES, GEAR, TRAP NETS, AND ALL ACCESSORIES FOR TROUT FISHING.
Ghas A. Hoyer & Co., Ltd. NAIROBI.









**HOMeward VIA SUEZ**

Landed Castle	20th November
Departed Castle	20th December
Departed Castle	20th February
Landed Castle	20th March
Departed Castle	20th April
Landed Castle	18th May
Departed Castle	18th June
Landed Castle	18th July
Departed Castle	18th August
Landed Castle	17th September
Departed Castle	17th October
Landed Castle	17th November
Departed Castle	17th December

**HOMeward VIA SOUTH AFRICA**

Landed Castle	7th October
Departed Castle	8th November
Landed Castle	22nd December
Departed Castle	22nd January
Landed Castle	5th February
Departed Castle	5th March
Landed Castle	19th April
Departed Castle	19th May

**Home Return from 22nd Oct 1921 and 22nd Feb 1922**

Passenger Agents: Nairobi, Kampala, etc.  
S.A.S. & S.P.L. Ltd., 2nd Floor, 1st Stage, East Africa Station, Ltd., 1st Floor, 1st Stage, C.I. Office & Co., Ltd., C.I. Mackenzie and Co.

**British India Steam Navigation Company, Limited.**  
& PENINSULAR AND ORIENTAL STEAM NAVIGATION CO.

**EXCURSIONS TO DURBAN.**

In conjunction with the  
**Union Castle Mail Steamship Co.,**

*Excursion Tickets to DURBAN* are now available at the following fares:—

**MOMBASA DURBAN and RETURN**

**1st Class** : : : : £ 32  
**2nd Class** : : : : £ 24

Full particulars obtainable from the Company's Agents.

**UNION CASTLE LINE**  
For Lists of Ports and Passages Money apply to:  
The Union-Castle Mail Steamship Co. Ltd., Mombasa.

**Chivers's Jams**

Made in silver-lined pans at the  
Candover Factory with freshly  
gathered fruit and refined sugar  
only. Every jar carries a guarantee  
of absolute purity.



THE ALSO  
**CHIVERS' English Canned Fruits**  
with  
**Chivers' Custard Powder**  
Ask Agents for each variety.  
**R. O. HAMILTON, LTD.**  
Box 125 NAIROBI  
CHIVERS & SONS LTD., The Candover Factory, BEYTON, CAMBERGEE, ENGLAND.

**Messageries Maritimes**

(FRENCH MAIL STEAMERS)  
Regular and fortnightly service from Aden to Marseilles.  
**THE QUOTIENT ROUTE TO LONDON.**  
Next Sailings to:  
S.S. "Barnabie De St. Pierre" ... 19th October  
S.S. "Gaston Yvonne" ... 24th November  
S.S. "Bachelard Grandjean" ... 30th November  
S.S. "Jean Laborde" ... 5th December  
Next Arrival from Marseilles:  
S.S. "Jean Laborde" ... 20th October  
S.S. "Bachelard Grandjean" ... 25th October  
S.S. "Gaston Yvonne" ... 30th October  
S.S. "Barnabie De St. Pierre" ... 5th November

**MAISON MARIE**

PERMANENT WAVING SPECIALISTS,  
BEG TO INTRODUCE  
**MISS PROCTOR**  
LATE  
CAVENDISH HOTEL, CHELTENHAM  
NOW IN ATTENDANCE.  
THEATRE ROYAL BUILDINGS,  
P.O. Box 1022, Sixth Avenue, Phone 3220.

\*\*\*\*\*  
"They can do everything for me, which I want done."  
\* **SHAW & HUNTER, Ltd.**,  
\* 40, GERRARD  
\* GOSWAMIS  
\* TANDAMITAS  
\* SAIL AND OUTFITTERS  
\* AND BROKER AGENCY.  
\* They sell WESTERN ammunition  
\* (Their's success in every box.)  
\* Their purchases—Everything they sell.  
\*\*\*\*\*

**PIANOFORTE TUNING**

AND REPAIRING.  
Ten years experience in Kenya Colony and five  
years in Messrs. Chappell and Co., London.  
**F. A. HEAD,**  
Box 678 — NAIROBI.

**OVERSEAS AND AIR MAILS.**

ARRIVALS

Steamers or Air Mail	From	Due at Mombasa	Mails arrive at Mombasa
Etta Quantiller	Europe	...	Oct. 19
Umba	Europe	...	Oct. 19
Manda Maru	EUROPE and INDIA	Oct. 9	...
Kenya	India	...	...
Kenya	India	...	...
Karibia	India	...	...
Jean Laborde	Europe	...	...
Umba	Europe	...	...

DEPARTURES

Steamers or Air Mail	For	Mails close at Mombasa (P.O.)	Departure
AIR MAIL	EUROPE and INDIA	Oct. 15 (12-15 P.M.)	Monday
AIR MAIL	EUROPE (Supplementary)	...	...
Kenya	India	...	...
Karibia	India	...	...
Umba	St. Pierre	...	...

**CITRA LINE**

Compagnie Italiana Transatlantica.  
THE BEST ROUTE TO ENGLAND.  
Sailings from KILINDINI to GENOA and NAPLES.  
S.S. "O. MASINI" ... 1st November, 1st January, 1st March, 1st May.  
S.S. "G. GRISPI" ... 1st December, 1st February, 1st April, 1st June.  
... (Detailed shipping schedule and agent information follows)



**DEUTSCHE OST-AFRIKA-LINE**

**HOMeward VIA SUEZ CANAL.**

S.S. Wagon	10th Nov.
S.S. Usambar	14th Nov.
S.S. Adolph Wermann	18th Nov.
S.S. Usama	22nd Nov.
S.S. Taganja	26th Nov.
S.S. Usambar	30th Nov.
S.S. Adolph Wermann	4th Dec.
S.S. Usama	8th Dec.
S.S. Waisani	12th Dec.
S.S. Usambar	16th Dec.
S.S. Usama	20th Dec.
S.S. Usambar	24th Dec.
S.S. Usama	28th Dec.
S.S. Usambar	31st Dec.

**HOMeward via CAPE.**

S.S. Uganda	Oct. 7th
S.S. Taganja	Nov. 5th
S.S. Njasa	Dec. 2nd
S.S. Usama	Dec. 31st
S.S. Waisani	Jan. 28th
S.S. Usambar	Feb. 25th
S.S. Usama	Mar. 22nd
S.S. Usambar	Apr. 19th
S.S. Usama	May 16th
S.S. Waisani	Jun 13th
S.S. Usambar	Jul 10th
S.S. Usama	Aug 7th
S.S. Usambar	Sep 4th
S.S. Usama	Oct 1st

**Clan - Ellerman - Harrison Lines**

(JOINT SERVICE)  
Liverpool - Glasgow - Avonmouth - Manchester  
Due to arrive. Due to sail.  
Kilindini Kilindini  
Leading for Liverpool.  
S.S. "Clan Elton" (proceeding East Oct. Early Nov.  
via the Cape) ...  
A Real Line Steamer (if sufficient tonnage) ...  
Arrivals from Liverpool & Glasgow. Due to arrive Kilindini

**Kenya Without**

**Prejudice**  
A Balanced Critical Review of the Country and its People, by (John Owen Miller, B.Sc., M.L.S., C.A., with a foreword by the Hon. A. Neville Chamberlain M.P.)  
Shgs. 5/60 Pictd. Shgs. 5/80

Standard Stationery Store  
SIXTH AVENUE - NAIROBI

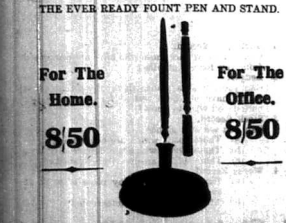
**WINTER EXCURSIONS TO SOUTH AFRICA - JULY TO OCTOBER 1921.**

Passes to D.O.A. Steamers are required to be in possession of permits obtainable at the Office. Sailings subject to alteration.  
For full particulars of passenger fares and freight rates apply to the Agents—  
DEUTSCHE OST-AFRIKA-LINE, Generalagent,  
Mombasa. "Cable" "Outline" P.O. Box 210  
Nairobi and Elmeret  
Njoro and Nakuru District  
Kisumu, Jinja and Kampala  
CARL JUNGBLUTH & CO., LTD., "Dagely",  
"Jungbluth",  
BOULEVARD & CLARKE, Ltd., "Progress".

**Ellerman and Bucknall Line**

NEW YORK - MOMBASA via SUEZ.  
Due to arrive. Due to sail.  
Kilindini Kilindini  
From AMERICA.  
S.S. "City of Elba" ... 2nd Oct. 5th Oct.  
S.S. "City of Genoa" ... 8th Oct. 16th Nov.  
THE AFRICAN MERCANTILE Company, Limited.  
MOMBASA (Cable Navigation) NAIROBI

**THE PLATINUM DESK SET.**



THE EVER READY FOUNT PEN AND STAND.  
For The Home. 8/50  
For The Office. 8/50  
WITH CAP (For Pocket Use) and PRESENTATION BOX. Colors: Red, Blue and Green.  
SPARE NIBS AND INK SAVERS 60 EACH.  
STANDARD STATIONERY STORES  
NAIROBI.

**B.M.C. HOUSE.**

Corner of Government Road and Fifth Avenue, Opposite The New N.B.I. Bank. Box 610.  
**More specials during our GREAT SALE!**  
The Latest in Light Weight Tweeds. **7-50 12-50**  
4/- Per yard. 38 ins. wide. WAS 6/50.  
MORLEY'S LITTLE ROSE. **3/- Pair** WERE 3/50.  
ART SILK DRESS LENGTHS. **55/- Each** WERE 20/-.  
RANGE OF LADIES TWEED COATS. **55/- Each** WERE 15/- and 25/-.  
STILL A QUANTITY OF REMNANTS LEFT. ALL SALE PURCHASES CASH WITH ORDER.  
THE Bradford Manufacturing Co. Ltd. (Incorporated in England).  
COPPER RAIN GAUGES ... Shgs. 25/50  
SPARE GLASSES for do. ... Shgs. 4/50  
We invite your enquiries for shams and Medical Needs. Price List for Shamba and requirements on application.  
**A. J. ELY & CO. LTD.**  
THE CHEMISTS, NAIROBI. P.O. Box 411

**Pocket Knives**



THE HOUSE FOR CUTLERY.  
**INGRAM & Co. Ltd.**  
NAIROBI.

**THE TOOL HOUSE**

NAIROBI.  
**Kenya Loan & Discount Co., Ltd.**  
P.O. Box 648 NAIROBI  
OFFICE: 1st Floor, Court Chambers.  
**Financial Agents.**  
Bills Discounted—Short-term Loans Granted.  
Any Realizable Asset Registered for Cash.  
Call or Write STRICTLY CONFIDENTIAL.  
ESTABLISHED 1921.

**Uplands Tinned Specialties**



Noted for their choiceness and reliability. Obtainable from all High Class Stores.  
**Uplands Bacon Factory**  
ULUWANDA ... Kenya Colony









**Unfading Curtain Net**  
48" WIDE  
SHADES STOCKED ARE  
White, Cream Beige, Mauve, Apricot,  
Green, Light Sage, Dark Sage.

**Shgs. 2/75 YARD**  
Less 10% Discount For  
Cash

**Hutchings Biemer & Co.,  
Limited.**  
NAIROBI Phone 2328  
Box 208

**Coffee Bags  
Hessian Cloth  
Twine.**

**Supplies Are Cheap**

**Now is the Time  
to Buy.**

Apply  
**The African Mercantile Co., Ltd.**  
NAIROBI NAKURU

**The Motor Service Coy., Ltd.**

**TYRES-TYRES TYRES**  
Don't Neglect this Opportunity  
FROM THIS DAY.  
DEATH FURTHER NOTICE

**20%**  
Cash Discount  
ALL STANDARD MAKES STOCKED.  
GUARANTEED FRESH GOODS.

**The Motor Service Coy., Ltd.**

NOW OPEN  
UNDER NEW MANAGEMENT.

**Lakeview Hotel**  
LATE NAIROBI HOTEL.  
REASONABLE TERMS ON APPLICATION.  
Telephone: LAKEVIEW, NAIROBI.

**KIKUYU HOTEL**  
A PLEASANT RUN FROM NAIROBI.

131-1/2, HENRIETTA ST., REFRIGERATORS AT ALL ROOMS.  
DAILY 10/- WEEK DAILY MONTE 15/-  
UNDER THE PERSONAL MANAGEMENT OF THE  
OWNER (MR. HEDGECOCK) AND HIS WIFE.

**JUST PUBLISHED**

**OUR DOGS**  
MOST PREVALENT DISEASES  
AND TREATMENT

BY  
**MARGARET COLLIER.**

Extract from Foreword—  
"My love and appreciation of dogs is very great, many I  
thunder be mentioned, and I hope that those who  
chance may help a few and post those others against  
concomitant suffering."

PRICE: Shgs. 3/60, Post Free Shgs. 3/80.

Publisher:  
**The East African Standard,  
Limited.**  
NAIROBI.

**THE PROPERTY OF THE  
GREAT PYRAMID.**  
(Continued from page 7).

A.D. 671, and 1931, August 23, in each case.

In B.C. 500 God removed the  
Lives of the continuation from  
Israel's place of worship. After  
an interval of 290 years, in  
A.D. 671, He brought into exal-  
ted position the Temple of the  
Lives, of the British Church as  
His Ecclesiastical Temple. The  
witness furnished for another  
1,200 years as proclaimed in  
relation, when the purpose failed  
to exist.

Mr. Gale explained that by  
"witnessment" was meant the  
"word" and "conventional" re-  
cognition of Israel, or British  
"Revelation," he said, "but as  
that they are to be found and re-  
ferred to in the 'street' for 21  
days. The Pyramid explains  
it records the book for a day  
each in 24 years (to year for a day)  
all, June 1932, to the 6th Decem-  
ber 1931. This does not signify  
either the death of the State or of  
the Church, but it does mean the  
revival death of the organism of the  
State or State Law, which is a  
very different matter.

Key to Pyramid's Symbolism.

"For the benefit of those who do  
not know, I must explain that  
the key to the understanding of  
the Pyramid's symbolism lies in its  
Development Factor" concerning  
which Mr. Davidson writes—  
"The occurrence of the Douglas  
Factor is always always re-  
sulting in a displacement from  
the symmetry of God's scheme  
of Creation, or to speak more  
precisely, it is an application  
to break down the barriers that  
prevent the rectification of things  
that are displaced." In "measure-  
ment" the Douglas Factor is  
250,000 Pyramid inches, in time  
it is 250 days or years. Now if  
we calculate the time between  
24th August 1931, (when the two  
witnesses ceased to function) and  
the 6th June 1932 (when the wit-  
nesses are to be re-applied in the  
future) we find it to be precisely  
250 days, which indicates a dis-  
placement from the symmetry of  
God's scheme of Creation.

"Similarly if we take the inter-  
val from the 24th September 1931  
(when Britain's tribulation and  
"trance" of the Constitution  
ceased to end) we also find it to  
be exactly 250 days, which sense-

**SOMALI'S DEATH FROM  
BULLET WOUND.**  
(Continued from page 7).

pena, the police." There was  
no hope of an appeal and so  
many of the wretched offered  
themselves for execution. It  
was stated that there had  
been blood between them.

The wretched, Dr. Tackling,  
large quantities of human  
blood, other articles of  
clothing gave negative results  
except two, where he could not  
say whether the blood was  
human or not.

The district agent at Nakuru,  
Dr. Henderson, told for Crown  
Prosecution a statement as to the  
condition of the body which was  
examined. He then gave his  
opinion as to the cause of death as  
"murder" and authorized his  
burial. After examination he  
found in the brain of the skull  
bullet. The shot which fired this  
was fatal, and was the cause of  
death.

This witness underwent a  
fully comprehensive examination  
by Mr. Shaplin, in which he was asked,  
"Was the bullet fired before or  
after death?" To this his reply  
was that nobody could say, in  
view of the condition of the  
body.

Court said it was a hard  
case yesterday afternoon and the hear-  
ing was fully adjourned until  
morning.

The Ministry of Transport re-  
ported states that there were 2,220  
motor vehicles registered for  
the first time in July this year, as  
compared with the same month,  
last year.

The Ministry of Transport re-  
ports also that there were 2,220  
motor vehicles registered for  
the first time in July this year, as  
compared with the same month,  
last year.

**Native Education.**  
NOT TO BE AFFECTED BY  
REDUCED GRANTS.

In the House of Commons on  
Monday 27th Mr. J. F. Morrison  
(Lab.) asked the Secretary of  
State for the Colonies  
whether the grants for main-  
taining approved schools for  
native education, the training of  
abandoned children, and the  
operation, etc., will be affected by  
the proposed reductions in the  
Colonial Development Fund; and  
whether further grants or loans of  
this kind are to be discontinued?

Mr. Morrison: The answer to the  
first part of the question is in  
the negative. As regards the second  
part, Scheme administered by Col-  
onial Governments will be con-  
tinued as in the past, on their  
individual merits, but report will  
be made in the consideration set  
out on page 8 of the White  
Paper (Cmd. 2502) and to be  
referred to later.

Mr. Morrison: May we have  
the right hon. Gentleman's an-  
swer to such consideration as  
may be given to the question of  
the "Zambesi bridge scheme?"

Mr. Thomas: "That is not a fair  
saying, because the Zambesi  
bridge scheme was dealt with  
and a fund mentioned by the  
right hon. Gentleman with un-  
employment, but I am sure no  
further consideration will be  
given to the importance of the  
Colonial Welfare (Lab. New-  
castle-under-Lyme). Will the right  
hon. Gentleman refer to what is  
mentioned by the Foreign Office  
in the Sudan in this respect and  
bring the Colonial Office up to that  
level?"

Mr. Morrison: I hope that while  
I am thanking the Colonial  
Office for the right hon. Gentleman  
will never have to draw  
comparisons between it and other  
offices.

At a time in connection with  
the grant which he states, a han-  
dful he made. He has seen  
the grant in a mirror, and de-  
clares he constantly finds the  
presence in the room. Some  
time ago he dreamt the grant was  
telling him to get up and work  
it along was this feeling that  
he got up in the middle of the  
night and began working on a  
picture which has proved to be  
beyond from the artist's room  
of the artist's room.

**WHERE TO STAY**  
TOWNS AND COUNTRY.

**The Hill Private Hotel**  
OPPOSITE NAIROBI COLLEGE

Combining an unusually convenient, healthy and central  
position, with a distinctive service—and an exceptionally  
complete in all respects by many discerning visitors.  
Under the personal supervision of Mrs. J. FERRE.  
Tennis Court, Golf Course, Fishing and Shooting, Motor  
arranged.

COMPLETE STAFF.  
DAILY CHARGE 12/60 MONTHLY TERMS MODERATE.  
Under the Personal Management of the Sole Proprietor.  
Phone 2880 P.O. Box 78

**Stag's Head Hotel**  
NAKURU

On Main Road to Kamuru, and to Eldoret, Uganda and the  
White Nile. Close to Post Office, Banks, Shops, Club and Station.  
Electric Light, Hot and Cold Water in all Bedrooms.  
Reasonable terms for Motorists.

Under the personal management of Mrs. J. FERRE.  
Tel. 1/2888, NAKURU. Proprietress.

**SAVOY HOTEL**  
Calabonian Road, THE HILL, NAIROBI.

Moderate Inclusive Terms. Tennis, Golf, Box  
Phone 2800 Fully Licensed. P.O. Box 59

**HILL HOUSE**  
CORNER OF VALLAY AND GIBBOURD ROADS,  
SACREDLY ACCOMMODATION, TERMS MODERATE.  
Box 108 — NAIROBI.

**FAIRVIEW PRIVATE HOTEL**  
BISHOPS ROAD—THE HILL.

Telephone No. 2280. P.O. Box 842.  
Within three-quarters of a mile from  
the Post Office.

**GROSVENOR HOUSE**  
GIBBOURD ROAD

Phone 2840. P.O. Box 1088.  
ONE MILE FROM POST OFFICE.

**The Edward Hotel**  
Fully Licensed, NAIROBI. Proprietor H. G. Cole

**WEY STOP IN TOWN AND PAY 8s. 50/-  
PER DAY**

A FIRST CLASS HOTEL (42 BEDROOMS).  
Daily Rate 5/6s. 12/-

Weekly Shs. 70/-  
Monthly £9 and £10 (Inclusive)  
All double Rooms £18.

**SPLENDID DINING ROOM, LOUNGE AND  
CARD ROOM**

10 PRIVATE GARAGES.  
DAILY WIRELESS NEWS AND CONCERTS,  
ETC. 7—10 p.m.

TERMS: —: PING PONG.

**MANOR HOUSE**  
New Road, 10 minutes walk to Clock Tower, P.O. Box 51  
Daily News and Wireless Concessions: Ping Pong, Table Tennis,  
Week-end Visitors Allowed for 10/- Daily.  
Monthly Boarders from 4s.

**AVONDALE**  
Very comfortable and up-to-date private hotel, established  
Tennis lawns, swimming pool, etc.

Terms from 2/6 to suit departing tourists.  
Telephone No. 2818, according to accommodation.  
P.O. Box 188 NAIROBI.

**The Norfolk Hotel**  
NAIROBI

Every convenience, Tennis Court, open Laundry or  
pressing, spacious parking ground for cars.  
Monthly boarders from 2/6 per month. All terms low  
and well.

Drapery (10s and 6d) in all rooms 11/60 per day.  
Dormitories (10s and 6d) in all rooms 11/60 per day.  
Bath and Shower in all rooms 11/60 per day.  
Well furnished private suites and bungalows by  
arrangement. Manager: G. A. HARRIS.

**City Square Mansions**  
RESIDENTIAL ROOMS AND FLATS.  
PUBLIC RESTAURANT.

DAILY from 18/60 inclusive—SINGLE.  
MONTHLY from 9/60 inclusive—SINGLE.  
MONTHLY from 20/60 inclusive—DOUBLE.  
FOR RATES WITH FULL BREAKFAST ROOMS  
TERMS ON APPLICATION.  
TABLE BOARDERS ESPECIALLY CATERED FOR.

From bead to bead, the  
same rubber  
as the  
**TREAD**



The rubber of the Goodrich Silvertone is so tough  
that it is not worn out by the roughest road  
conditions. It is so strong that it will last  
under the most severe conditions of use.  
It is so strong that it will last under the  
most severe conditions of use.

**THE** tyre you buy - is it strong all over?  
You can be sure, when you order a  
Goodrich Silvertone from your dealer, that  
every part of this tyre is made strong, it  
has no weak spots.

The diagram above shows what a Good-  
rich Silvertone would look like if cut  
across. Notice that the tread rubber, which  
must be tough and resistant, extends from  
bead to bead. The same rubber that meets

the surface of the road protects the rest  
of a Goodrich Silvertone from rotting wear.  
So you get this tyre with the  
tread rubber extending from bead to bead.

**DISTRIBUTORS**  
**Galley & Roberts, Ltd.,**  
Nairobi - 22, Upper Circular Road, Singapore -  
Kempas - 22, de-Salleman.

**Goodrich Silvertone**  
BEST FOUR TYRES EVERY FRIDAY



# AUCTION SALES



MISCELLANEOUS GOODS SALE.  
Duly instructed by various parties, we shall sell, by Public Auction, Without Reserve, unless stipulated, at Our Salerooms, Mutos Building, Harding Street, Nairobi.

**TO-DAY 7th October at 10 a.m.**  
Two Fishing Rods. Nets, Gaff Hook and Fishing Tackle. Two Assorted Broomsticks. Theodolite in Case. Four Tea Glasses in case. Metal Flask. Tennis Balls. Tennis Balls. Gramophone Records. Set of Chessmen. Billiard Balls. Billiard Case. Chessmen. Hoddall Tape Measures. Wovels and Carvers. Crops and Sissors. Etc. Wrist and Pocket Watches. Sovereign Case. Etc., Etc., Etc.

MUTER and OSWALD Ltd., Auctioneers, Etc., NAIROBI



NOTICE OF CATALOGUE SALE OF FURNITURE AND EFFECTS.

at Our Salerooms, Mutos Building, Harding Street, Nairobi, on

**Monday 12th October at 10 a.m.**  
(Full details available in later issues.)

Auctioneers, Etc., NAIROBI MUTER and OSWALD Ltd.

**SANDS & CO.,**  
AT OUR RAILWAY SALIYARDS,  
**TO-DAY, 7th at 11-30.**

- 100 Grade Sheep.
- 30 Grade Steers.
- 9 Native Cows in Calf.
- 20 Pigs.

**SANDS & CO.,**  
AUCTIONEERS.

**Kenya & Uganda Railways & Harbours STORES DEPARTMENT.**

Catering Section.  
Tenders are invited for the supply of general provisions, Tea, Coffee Beans, Sweets, Wine, Spirits, Joints, Imported Mineral Water, Tobacco, Cigarettes, etc., from the 1st January to 31st December, 1920.

1. Only approximate quantities of requirements can be given, as per lists which can be inspected at the Railway Stores Office at Nairobi and Kilindi, where any further information desired can be obtained. The Railway does not undertake to order all the items or quantities shown on such lists.
2. All tenders should be submitted on the official form which can be obtained on application to the above Office.
3. Orders will be placed from time to time during the period stipulated for such articles and for such quantities as may be required. In regard to Beer, Mineral Water, Wine, Spirits, Cigarettes, Tobacco etc., the Railways do not bind themselves to any particular brand, or make, but will sell such brands and quantities as are selected for the year, as required.
4. Quotations should be for delivery either at the Railway Stores, Nairobi or Kilindi. (Depot to be clearly specified in the tender) and should include cost of packing etc.
5. The Brands, makes and sizes of the packing to be specified against each item, and prices to include the full quantity in sound condition.
6. Tenders in sealed envelopes marked "TENDERS FOR CATERING STORES" should be directed to, and reach the Chairman of the Tender Board, Kenya and Uganda Railways and Harbours, (P.O. Box 70) Nairobi, on or before 12 o'clock (noon) of the 24th October. Tenders received after that date will not be considered.
7. The lowest or any tender will not necessarily be accepted.

G. D. RHODES, General Manager.

Kenya and Uganda Railways and Harbours, Nairobi.

October, 1921.

# AUSTIN & CO.,

SALE OF SILK GOODS AND BRASSWARE. Etc.

AUSTIN & CO.,

will sell WITHOUT RESERVE, at THE MART on **Thursday October 8th at 10 a.m.**

Dress Lengths in Assorted Silks and Cottons. Ladies' Jersey, Pyjama Suits, Happy Coats, Silk Stockings, etc. Gents' Shirts, Pyjamas, Blazer Coats, Trousers, Tusore Silk and Woolen Suit Lengths. Brass Flower Vases. Candelsticks. Cigarette Holders. Ashtrays. Powder Boxes. The above are all brand name goods.

AUSTIN & CO.,

AUCTIONEERS and ESTATE AGENTS, Harding St., NAIROBI

# AUSTIN'S AUCTIONS.

CATALOGUE SALE OF GOOD FURNITURE AND EFFECTS.

ON **Saturday October 10th at 10 a.m.**  
FURTHER DETAILS WILL BE ADVERTISED LATER.

AUSTIN & CO.,

AUCTIONEERS and ESTATE AGENTS, Harding Street, NAIROBI

# Kenya Mart

Phone 2980 P.O. Box 518.  
Opposite Empire Theatre.  
Auctioneers, Valuers and Commission Agents, will sell by Public Auction, Without Reserve, unless stated, at Our Mart, Stanley House, Harding Street, Nairobi, on

**Friday, Oct. 9th, at 10 a.m.**  
FURNITURE and EFFECTS including Single Beds, Tables, Chairs, Closets of Drawers, Wardrobes, Dressing Table, Chesterfield Suits, White Woolen Blankets, Toilet Soaps, Bath Towels, Table Cloths, Goshion Covers, Cardigans, Silk Crepe, Jumpers, Hoddalls, Dress Material, Brassware, Sufferans, etc., etc.

KENYA MART,

AUCTIONEERS.

# SANDS & CO.

GHEE

1st Quality Fresh 1/- per lb.  
2nd Quality Ghee 80 cent per lbs.

Don't be led astray  
Creamery Butter  
Purest & Best

ASK YOUR CHOICER FOR IT.

All Orders Executed under Own Personal Supervision.

**JAMES REZIN**

Tailor & Breeches Maker  
CHOICE SELECTION OF LATEST MATERIALS  
Ladies' Buildings ( adjoining De Luxe Book Co.)  
P.O. Box 1162. P.O. Box 1162.  
Government Road, NAIROBI.

**E. S. C. A.**

(HARDING STREET)

Depot for the Fuller Brush Co.'s Agents.  
Depot for the Milkak Vacuum Cleaner Co.'s Agents.  
All Types of Electrical Goods at the Lowest Retail Prices in Nairobi  
AND  
ALL GOODS GUARANTEED!!!

**BEST VALUE IN**  
GIBBERT'S TOWELS,  
RIGGS REDHEADS,  
DURSELY RUBS,  
FROM  
**E. Hutchison & Co.**  
NAIROBI Box 140.



To Prevent Difficulties and Inconveniences DURING PRESENT RAINS

Renew your Motor Car Hoods with best, strong and lasting hood materials.

New sets—on repairs—of side curtains.

Wagon sails in various sizes. Light and heavy weight tents in different sizes.  
Waterproof Canvas and Canvas Rain Capes.

**Meghji Ahamed & Co.,**  
(The Oldest Established Tent-makers in Kenya.)  
P. O. Box 518. Telegrams: "Taparwalli."  
Phone 2980.

# THACKRAH'S Ltd.,

NAIROBI (Established 1917.)  
The Up-country LAND and ESTATE AGENTS, AUCTIONEERS & APPROVED VALUERS, INSURANCE, SHIPPING and FINANCIAL AGENTS.  
Shops, Offices, Godowns, Houses and Farms, TO LET — or — FOR SALE.

**DON'T LOSE TOUCH WITH ENGLAND! BRING IT OLD WORLD CHARM TO THE TROPICS BY BUILDING IN SYNTHETIC BRICKS AND TILES :**

Natural beauty has nothing to fear from competitive art. The delightful lines of curves, the radiant colours of the rainbow defy the artist's ingenuity for all time.

Similarly, INVICTA Handicraft and Multiple Brands and INVICTA Tiles are made with a surface texture of deep beauty, assisted with Nature's colouring, and have nothing to fear from the artificiality of stone and tile.

**INVICTA BRICK & TILE WORKS,**  
BOX 798, NAIROBI.

THE PREMIER USED CAR SALESMAN,  
**Godfrey's Car Mart Ltd.**  
Tetako House Sadler Street.  
**50 USED CARS 50**  
TO SELECT FROM

- Engley 4 Box Body, recently reconditioned and overhauled. 200
- Landia Tourer, recently overhauled. Powerful, Fast and reliable. 200
- Black Tourer (Master) is remarkably good running motor. 200
- Over 4 Box Body 1927, Alluminium Body. In remarkably good condition. 200
- Black Tourer, 1927. Just overhauled and re-tuned. In remarkably good condition. As outstanding bargain. 200
- Armstrong 6 Cylinder. In remarkably good condition. 200
- Armstrong 6 Cylinder. In remarkably good condition. 200
- Overhauled 6 Box Body, a sturdy and reliable car. 200
- Chrysler 70 Tourer. In perfect running order and condition. 200
- Overhauled Tourer in good running order and condition. 200
- Ford Roadster, latest model, does only 2200 miles. Condition as new. 200
- Engley 4 Tourer. Just overhauled and re-tuned. In remarkably good condition. As outstanding bargain. 200
- Black Tourer 6 Box Body, does and reliable. A real buy. 200

**Tyres 10 per cent to 53 per cent Discount for Cash.**

SPARE PARTS FOR ALL MAKES OF CARS. 1911 - ARIEL MOTORCYCLES - 1921. Have a demonstration run on the Square Ford. The sensation of the Motor Cycling World.

**J. Blakeborough & Sons Ltd**  
FOR ALL TYPES OF  
**V ALVES**  
Water Works and Fire Fighting Appliances.

AGENTS—  
**BEALES & Co.**  
AVENUE HOUSE,  
P.O. Box 320 NAIROBI. Phone 2600.

**Metropolitan Garage**  
(OPP. GODFREY'S CAR MART)  
Repairs all makes of Cars, Duco Spray Painting, Overhauls a Specialty. Reconditioning & Restoring. SECONDHAND CARS BOUGHT and SOLD. Our Charges are the most moderate in the country. A personal interest taken in every car.  
This Week's Bargain:  
**MARQUETTE TOURER**, condition perfect 32 x 8.00 TYRES all round spare 2170  
Value 13,500.  
**D. J. Lethbridge,**  
SOLE PROPRIETOR.

**High Class Stationery**  
AT LOW COST

**IN' BLUE AND CREAM**  
NOTE PAPER (FOLDED) AND ENVELOPES BOXED 50 OF EACH.  
Shgs. 4/60, 4/70 and 5/60.  
NOTE PAPER (FLAT) AND ENVELOPES BOXED 50 OF EACH.  
Shgs. 5/- and 6/50.  
IN BLUE ONLY.  
WRITING PADS 80 LEAVES Shgs. 2/- and 3/-  
ENVELOPES TO MATCH, PACKETS Shgs. 1/25  
Boxes 100 Shgs. 4/50.  
**STANDARD STATIONERY STORES, NAIROBI.**

**SERVICE TO MOTORISTS**  
Bring your cars to Victoria Street Depot for oiling and greasing or washing. The effectiveness of the latest method is undoubted, see your Journal.  
All classes of goods can be placed in our bonded warehouses or stored in our godowns.  
We deal with every class of Import or Export goods from and to any part of the world. Send your Bills of Lading or instructions to Members Office.  
Members Office are local agents for Wilson's Airways.  
For Shambas or godowns—quotations according to quantity, best quality only supplied.  
We are noted for quality.  
Any distances, say both per road, rail or sea underwritten.

**Express Transport Co.**  
CERTAINE CONTRACTORS TO KENYA AND UGANDA RAILWAYS AND HARBOURS.  
P.O. Box 423, NAIROBI. P.O. Box 80, MOMBASA.



Pro-phy-lactic

cleans the teeth, protects the gums...
Dentists for many years have advised the use of Pro-phy-lactic...



CHARLES WARE
TOILET ACCOUTREMENT
Established 25 years. Tel. 144. 100.
100, 101, 102, 103, 104, 105, 106, 107, 108, 109, 110, 111, 112, 113, 114, 115, 116, 117, 118, 119, 120, 121, 122, 123, 124, 125, 126, 127, 128, 129, 130, 131, 132, 133, 134, 135, 136, 137, 138, 139, 140, 141, 142, 143, 144, 145, 146, 147, 148, 149, 150, 151, 152, 153, 154, 155, 156, 157, 158, 159, 160, 161, 162, 163, 164, 165, 166, 167, 168, 169, 170, 171, 172, 173, 174, 175, 176, 177, 178, 179, 180, 181, 182, 183, 184, 185, 186, 187, 188, 189, 190, 191, 192, 193, 194, 195, 196, 197, 198, 199, 200, 201, 202, 203, 204, 205, 206, 207, 208, 209, 210, 211, 212, 213, 214, 215, 216, 217, 218, 219, 220, 221, 222, 223, 224, 225, 226, 227, 228, 229, 230, 231, 232, 233, 234, 235, 236, 237, 238, 239, 240, 241, 242, 243, 244, 245, 246, 247, 248, 249, 250, 251, 252, 253, 254, 255, 256, 257, 258, 259, 260, 261, 262, 263, 264, 265, 266, 267, 268, 269, 270, 271, 272, 273, 274, 275, 276, 277, 278, 279, 280, 281, 282, 283, 284, 285, 286, 287, 288, 289, 290, 291, 292, 293, 294, 295, 296, 297, 298, 299, 300, 301, 302, 303, 304, 305, 306, 307, 308, 309, 310, 311, 312, 313, 314, 315, 316, 317, 318, 319, 320, 321, 322, 323, 324, 325, 326, 327, 328, 329, 330, 331, 332, 333, 334, 335, 336, 337, 338, 339, 340, 341, 342, 343, 344, 345, 346, 347, 348, 349, 350, 351, 352, 353, 354, 355, 356, 357, 358, 359, 360, 361, 362, 363, 364, 365, 366, 367, 368, 369, 370, 371, 372, 373, 374, 375, 376, 377, 378, 379, 380, 381, 382, 383, 384, 385, 386, 387, 388, 389, 390, 391, 392, 393, 394, 395, 396, 397, 398, 399, 400, 401, 402, 403, 404, 405, 406, 407, 408, 409, 410, 411, 412, 413, 414, 415, 416, 417, 418, 419, 420, 421, 422, 423, 424, 425, 426, 427, 428, 429, 430, 431, 432, 433, 434, 435, 436, 437, 438, 439, 440, 441, 442, 443, 444, 445, 446, 447, 448, 449, 450, 451, 452, 453, 454, 455, 456, 457, 458, 459, 460, 461, 462, 463, 464, 465, 466, 467, 468, 469, 470, 471, 472, 473, 474, 475, 476, 477, 478, 479, 480, 481, 482, 483, 484, 485, 486, 487, 488, 489, 490, 491, 492, 493, 494, 495, 496, 497, 498, 499, 500, 501, 502, 503, 504, 505, 506, 507, 508, 509, 510, 511, 512, 513, 514, 515, 516, 517, 518, 519, 520, 521, 522, 523, 524, 525, 526, 527, 528, 529, 530, 531, 532, 533, 534, 535, 536, 537, 538, 539, 540, 541, 542, 543, 544, 545, 546, 547, 548, 549, 550, 551, 552, 553, 554, 555, 556, 557, 558, 559, 560, 561, 562, 563, 564, 565, 566, 567, 568, 569, 570, 571, 572, 573, 574, 575, 576, 577, 578, 579, 580, 581, 582, 583, 584, 585, 586, 587, 588, 589, 590, 591, 592, 593, 594, 595, 596, 597, 598, 599, 600, 601, 602, 603, 604, 605, 606, 607, 608, 609, 610, 611, 612, 613, 614, 615, 616, 617, 618, 619, 620, 621, 622, 623, 624, 625, 626, 627, 628, 629, 630, 631, 632, 633, 634, 635, 636, 637, 638, 639, 640, 641, 642, 643, 644, 645, 646, 647, 648, 649, 650, 651, 652, 653, 654, 655, 656, 657, 658, 659, 660, 661, 662, 663, 664, 665, 666, 667, 668, 669, 670, 671, 672, 673, 674, 675, 676, 677, 678, 679, 680, 681, 682, 683, 684, 685, 686, 687, 688, 689, 690, 691, 692, 693, 694, 695, 696, 697, 698, 699, 700, 701, 702, 703, 704, 705, 706, 707, 708, 709, 710, 711, 712, 713, 714, 715, 716, 717, 718, 719, 720, 721, 722, 723, 724, 725, 726, 727, 728, 729, 730, 731, 732, 733, 734, 735, 736, 737, 738, 739, 740, 741, 742, 743, 744, 745, 746, 747, 748, 749, 750, 751, 752, 753, 754, 755, 756, 757, 758, 759, 760, 761, 762, 763, 764, 765, 766, 767, 768, 769, 770, 771, 772, 773, 774, 775, 776, 777, 778, 779, 780, 781, 782, 783, 784, 785, 786, 787, 788, 789, 790, 791, 792, 793, 794, 795, 796, 797, 798, 799, 800, 801, 802, 803, 804, 805, 806, 807, 808, 809, 810, 811, 812, 813, 814, 815, 816, 817, 818, 819, 820, 821, 822, 823, 824, 825, 826, 827, 828, 829, 830, 831, 832, 833, 834, 835, 836, 837, 838, 839, 840, 841, 842, 843, 844, 845, 846, 847, 848, 849, 850, 851, 852, 853, 854, 855, 856, 857, 858, 859, 860, 861, 862, 863, 864, 865, 866, 867, 868, 869, 870, 871, 872, 873, 874, 875, 876, 877, 878, 879, 880, 881, 882, 883, 884, 885, 886, 887, 888, 889, 890, 891, 892, 893, 894, 895, 896, 897, 898, 899, 900, 901, 902, 903, 904, 905, 906, 907, 908, 909, 910, 911, 912, 913, 914, 915, 916, 917, 918, 919, 920, 921, 922, 923, 924, 925, 926, 927, 928, 929, 930, 931, 932, 933, 934, 935, 936, 937, 938, 939, 940, 941, 942, 943, 944, 945, 946, 947, 948, 949, 950, 951, 952, 953, 954, 955, 956, 957, 958, 959, 960, 961, 962, 963, 964, 965, 966, 967, 968, 969, 970, 971, 972, 973, 974, 975, 976, 977, 978, 979, 980, 981, 982, 983, 984, 985, 986, 987, 988, 989, 990, 991, 992, 993, 994, 995, 996, 997, 998, 999, 1000.

SIDEGLINTS ON FAMOUS YACHTSMAN'S STORY

What Sir Thomas Lipton Did for Newspapers.

TRANS-ATLANTIC NEWS

The passing of Sir Thomas Lipton this sport of one of its outstanding figures. It is the glory of yachting that his life will go down in history, and his noble efforts to bring the world back to great Britain the America Cup. It was his great ambition to win this trophy, and he spent several fortunes to this end, but without success. A few months ago he realized an ambition and had that been followed by success in his next attempt for the America Cup, then he would have achieved the culminating end, and what would have had little further attraction for him. It was not a generation ago that great sportsmen entered the arena as a challenger for that Cup. He succeeded after other great sportsmen in the Earl of Drumlanrig. Three other men tried to win the trophy, three years later with Sir Thomas Lipton. He was the only one who succeeded. Three years later in 1892 Lord Drumlanrig was the challenger, and the following year Sir Thomas Lipton challenged the Atlantic to challenge the Vigilant, and successfully in 1895 Lord Drumlanrig made his last attempt with Valkyrie II, but again he was defeated. It was following that attempt that Lord Drumlanrig donated the America Cup to a yacht for the Cup, and four years later Sir Thomas Lipton stepped into the arena.

THE SPORTS PAGE

THE WORLD FAMOUS ROLEX OYSTER Wristlet Watch

The finest watch in the world for the tropics. WATERPROOF—DUSTPROOF—SANDPROOF—PROOF AGAINST ALL ELEMENTS

THE SPORTSMAN'S FRIEND, Fitted with Precision Rolex Movement. Unbreakable Glass.

SILVER - 115/- 9ct. GOLD 210/- 18ct. GOLD 315/-

DOBBIES LTD. Government Road, NAIROBI. Sole Local Agents for East Africa.

MAURICE ROSENTHAL, 100, 101, 102, 103, 104, 105, 106, 107, 108, 109, 110, 111, 112, 113, 114, 115, 116, 117, 118, 119, 120, 121, 122, 123, 124, 125, 126, 127, 128, 129, 130, 131, 132, 133, 134, 135, 136, 137, 138, 139, 140, 141, 142, 143, 144, 145, 146, 147, 148, 149, 150, 151, 152, 153, 154, 155, 156, 157, 158, 159, 160, 161, 162, 163, 164, 165, 166, 167, 168, 169, 170, 171, 172, 173, 174, 175, 176, 177, 178, 179, 180, 181, 182, 183, 184, 185, 186, 187, 188, 189, 190, 191, 192, 193, 194, 195, 196, 197, 198, 199, 200, 201, 202, 203, 204, 205, 206, 207, 208, 209, 210, 211, 212, 213, 214, 215, 216, 217, 218, 219, 220, 221, 222, 223, 224, 225, 226, 227, 228, 229, 230, 231, 232, 233, 234, 235, 236, 237, 238, 239, 240, 241, 242, 243, 244, 245, 246, 247, 248, 249, 250, 251, 252, 253, 254, 255, 256, 257, 258, 259, 260, 261, 262, 263, 264, 265, 266, 267, 268, 269, 270, 271, 272, 273, 274, 275, 276, 277, 278, 279, 280, 281, 282, 283, 284, 285, 286, 287, 288, 289, 290, 291, 292, 293, 294, 295, 296, 297, 298, 299, 300, 301, 302, 303, 304, 305, 306, 307, 308, 309, 310, 311, 312, 313, 314, 315, 316, 317, 318, 319, 320, 321, 322, 323, 324, 325, 326, 327, 328, 329, 330, 331, 332, 333, 334, 335, 336, 337, 338, 339, 340, 341, 342, 343, 344, 345, 346, 347, 348, 349, 350, 351, 352, 353, 354, 355, 356, 357, 358, 359, 360, 361, 362, 363, 364, 365, 366, 367, 368, 369, 370, 371, 372, 373, 374, 375, 376, 377, 378, 379, 380, 381, 382, 383, 384, 385, 386, 387, 388, 389, 390, 391, 392, 393, 394, 395, 396, 397, 398, 399, 400, 401, 402, 403, 404, 405, 406, 407, 408, 409, 410, 411, 412, 413, 414, 415, 416, 417, 418, 419, 420, 421, 422, 423, 424, 425, 426, 427, 428, 429, 430, 431, 432, 433, 434, 435, 436, 437, 438, 439, 440, 441, 442, 443, 444, 445, 446, 447, 448, 449, 450, 451, 452, 453, 454, 455, 456, 457, 458, 459, 460, 461, 462, 463, 464, 465, 466, 467, 468, 469, 470, 471, 472, 473, 474, 475, 476, 477, 478, 479, 480, 481, 482, 483, 484, 485, 486, 487, 488, 489, 490, 491, 492, 493, 494, 495, 496, 497, 498, 499, 500, 501, 502, 503, 504, 505, 506, 507, 508, 509, 510, 511, 512, 513, 514, 515, 516, 517, 518, 519, 520, 521, 522, 523, 524, 525, 526, 527, 528, 529, 530, 531, 532, 533, 534, 535, 536, 537, 538, 539, 540, 541, 542, 543, 544, 545, 546, 547, 548, 549, 550, 551, 552, 553, 554, 555, 556, 557, 558, 559, 560, 561, 562, 563, 564, 565, 566, 567, 568, 569, 570, 571, 572, 573, 574, 575, 576, 577, 578, 579, 580, 581, 582, 583, 584, 585, 586, 587, 588, 589, 590, 591, 592, 593, 594, 595, 596, 597, 598, 599, 600, 601, 602, 603, 604, 605, 606, 607, 608, 609, 610, 611, 612, 613, 614, 615, 616, 617, 618, 619, 620, 621, 622, 623, 624, 625, 626, 627, 628, 629, 630, 631, 632, 633, 634, 635, 636, 637, 638, 639, 640, 641, 642, 643, 644, 645, 646, 647, 648, 649, 650, 651, 652, 653, 654, 655, 656, 657, 658, 659, 660, 661, 662, 663, 664, 665, 666, 667, 668, 669, 670, 671, 672, 673, 674, 675, 676, 677, 678, 679, 680, 681, 682, 683, 684, 685, 686, 687, 688, 689, 690, 691, 692, 693, 694, 695, 696, 697, 698, 699, 700, 701, 702, 703, 704, 705, 706, 707, 708, 709, 710, 711, 712, 713, 714, 715, 716, 717, 718, 719, 720, 721, 722, 723, 724, 725, 726, 727, 728, 729, 730, 731, 732, 733, 734, 735, 736, 737, 738, 739, 740, 741, 742, 743, 744, 745, 746, 747, 748, 749, 750, 751, 752, 753, 754, 755, 756, 757, 758, 759, 760, 761, 762, 763, 764, 765, 766, 767, 768, 769, 770, 771, 772, 773, 774, 775, 776, 777, 778, 779, 780, 781, 782, 783, 784, 785, 786, 787, 788, 789, 790, 791, 792, 793, 794, 795, 796, 797, 798, 799, 800, 801, 802, 803, 804, 805, 806, 807, 808, 809, 810, 811, 812, 813, 814, 815, 816, 817, 818, 819, 820, 821, 822, 823, 824, 825, 826, 827, 828, 829, 830, 831, 832, 833, 834, 835, 836, 837, 838, 839, 840, 841, 842, 843, 844, 845, 846, 847, 848, 849, 850, 851, 852, 853, 854, 855, 856, 857, 858, 859, 860, 861, 862, 863, 864, 865, 866, 867, 868, 869, 870, 871, 872, 873, 874, 875, 876, 877, 878, 879, 880, 881, 882, 883, 884, 885, 886, 887, 888, 889, 890, 891, 892, 893, 894, 895, 896, 897, 898, 899, 900, 901, 902, 903, 904, 905, 906, 907, 908, 909, 910, 911, 912, 913, 914, 915, 916, 917, 918, 919, 920, 921, 922, 923, 924, 925, 926, 927, 928, 929, 930, 931, 932, 933, 934, 935, 936, 937, 938, 939, 940, 941, 942, 943, 944, 945, 946, 947, 948, 949, 950, 951, 952, 953, 954, 955, 956, 957, 958, 959, 960, 961, 962, 963, 964, 965, 966, 967, 968, 969, 970, 971, 972, 973, 974, 975, 976, 977, 978, 979, 980, 981, 982, 983, 984, 985, 986, 987, 988, 989, 990, 991, 992, 993, 994, 995, 996, 997, 998, 999, 1000.

JACOB & CO'S
"LEMON PUFF"
A sandwich of two flaky Puff Pastry filled with a thin layer of cold icing rich with the flavour of the fresh fruit. Try the biscuit to tempt the heating appetite.

BISCUITS
Agent for the Empire, Uganda & Southern...
At the CLARK, P.O. BOX. NAIROBI.

THE WORLD FAMOUS ROLEX OYSTER Wristlet Watch
The finest watch in the world for the tropics. WATERPROOF—DUSTPROOF—SANDPROOF—PROOF AGAINST ALL ELEMENTS

DOBBIES LTD. Government Road, NAIROBI. Sole Local Agents for East Africa.

MAURICE ROSENTHAL, 100, 101, 102, 103, 104, 105, 106, 107, 108, 109, 110, 111, 112, 113, 114, 115, 116, 117, 118, 119, 120, 121, 122, 123, 124, 125, 126, 127, 128, 129, 130, 131, 132, 133, 134, 135, 136, 137, 138, 139, 140, 141, 142, 143, 144, 145, 146, 147, 148, 149, 150, 151, 152, 153, 154, 155, 156, 157, 158, 159, 160, 161, 162, 163, 164, 165, 166, 167, 168, 169, 170, 171, 172, 173, 174, 175, 176, 177, 178, 179, 180, 181, 182, 183, 184, 185, 186, 187, 188, 189, 190, 191, 192, 193, 194, 195, 196, 197, 198, 199, 200, 201, 202, 203, 204, 205, 206, 207, 208, 209, 210, 211, 212, 213, 214, 215, 216, 217, 218, 219, 220, 221, 222, 223, 224, 225, 226, 227, 228, 229, 230, 231, 232, 233, 234, 235, 236, 237, 238, 239, 240, 241, 242, 243, 244, 245, 246, 247, 248, 249, 250, 251, 252, 253, 254, 255, 256, 257, 258, 259, 260, 261, 262, 263, 264, 265, 266, 267, 268, 269, 270, 271, 272, 273, 274, 275, 276, 277, 278, 279, 280, 281, 282, 283, 284, 285, 286, 287, 288, 289, 290, 291, 292, 293, 294, 295, 296, 297, 298, 299, 300, 301, 302, 303, 304, 305, 306, 307, 308, 309, 310, 311, 312, 313, 314, 315, 316, 317, 318, 319, 320, 321, 322, 323, 324, 325, 326, 327, 328, 329, 330, 331, 332, 333, 334, 335, 336, 337, 338, 339, 340, 341, 342, 343, 344, 345, 346, 347, 348, 349, 350, 351, 352, 353, 354, 355, 356, 357, 358, 359, 360, 361, 362, 363, 364, 365, 366, 367, 368, 369, 370, 371, 372, 373, 374, 375, 376, 377, 378, 379, 380, 381, 382, 383, 384, 385, 386, 387, 388, 389, 390, 391, 392, 393, 394, 395, 396, 397, 398, 399, 400, 401, 402, 403, 404, 405, 406, 407, 408, 409, 410, 411, 412, 413, 414, 415, 416, 417, 418, 419, 420, 421, 422, 423, 424, 425, 426, 427, 428, 429, 430, 431, 432, 433, 434, 435, 436, 437, 438, 439, 440, 441, 442, 443, 444, 445, 446, 447, 448, 449, 450, 451, 452, 453, 454, 455, 456, 457, 458, 459, 460, 461, 462, 463, 464, 465, 466, 467, 468, 469, 470, 471, 472, 473, 474, 475, 476, 477, 478, 479, 480, 481, 482, 483, 484, 485, 486, 487, 488, 489,



DAILY EDITION.

THE EAST

12 PAGES

African Standard

NAIROBI, THURSDAY, OCTOBER 8, 1951.

UGANDA ARGUS THE LEADER

THE OLDEST ESTABLISHED NEWSPAPER PUBLISHED IN KENYA AND UGANDA.

NAIROBI, THURSDAY, OCTOBER 8, 1951.

The LOUNGE FOR Morning and Afternoon TEAS THE NEW STANLEY HOTEL OPEN ON SUNDAYS TO Non-Residents.

DRINK 'TUSKER' AND OAT MEAL SMOOTH Made in East Africa From the Finest Ingredients. Kenya Breweries Ltd. Box 181 - NAIROBI.

No. 5600 OFFICE IN THE CENTRAL BUILDING

PARLIAMENT DISSOLVED YESTERDAY

Election Day Fixed for October 27

PARTY BANNERS.

Separate Manifestos To Be Issued.

Parliament was dissolved yesterday. Nomination Day has been fixed for October 16 and the Election will take place on October 27.

It has been decided that candidates will fight their seats under their present party leaders and not as members of a National Party, the manifestoes of which will be issued by Mr. Ramsay MacDonald.

There is some confusion in the Liberal Party, caused by Mr. Lloyd George's opposition to the Election and his criticism of the action of Liberal Ministers in committing themselves to the consideration of a tariff policy.

The announcement of the decision to hold a General Election reacted favorably on the financial markets in London.

Campaign Begun.

Through Reuters Agency. London, Oct. 8. The Prime Minister visited the King at Buckingham Palace at 9.15 this morning in order to tender advice on the Dissolution of the House of Commons. The date of the Dissolution would depend on how long he could get business through. He hoped it would be Wednesday or Friday. It would be October 27.

Details of Campaign. It is now officially announced that Parliament is being dissolved on October 16 and the Election will be held on October 27.

Mr. MacDonald is broadcasting for twenty minutes on all transmitters at 8.30 p.m. tomorrow. He will discuss the election campaign which will be first on Friday evening. Mr. Baldwin addresses a mass meeting at Birmingham Town Hall.

Conservative Planned. A Conservative advertisement with the National Government's election decision was prominently displayed at a meeting at the Conservative Club in London.

Mr. MacDonald is broadcasting for twenty minutes on all transmitters at 8.30 p.m. tomorrow. He will discuss the election campaign which will be first on Friday evening. Mr. Baldwin addresses a mass meeting at Birmingham Town Hall.

Mr. Herbert Samuel addressed the Liberal Parliamentary Party last night. The meeting was held at the National Club. The newly formed party will be known as the National Conservative Party.

Mr. MacDonald is broadcasting for twenty minutes on all transmitters at 8.30 p.m. tomorrow. He will discuss the election campaign which will be first on Friday evening. Mr. Baldwin addresses a mass meeting at Birmingham Town Hall.

It is understood that there will be fewer candidates in the coming election than in the last. The Conservatives will not offer...

CRISIS IN GERMAN GOVERNMENT.

Probable Break-up of Cabinet.

Minister's Resignation.

The first indication of the disintegration of the Brüning Cabinet is afforded by the resignation of Doctor Curtius, the Foreign Minister. This is due to the fact that the party of which he is representative in the Cabinet has withdrawn its support owing to the German-Soviet Customs Union.

Dr. Curtius' withdrawal heralds the probable breaking up of the whole Cabinet but President Hindenburg will probably refuse to accept the resignation of a new one acceptable to the majority of the Reichstag.

Other members of the Cabinet including Dr. Wirth, Minister of the Interior have also lost the support of their parties owing to the Government's drastic financial decrees.

More economies. The latest emergency decree provided that the unemployed may be given so-called "doles" in the form of foodstuffs instead of cash and prohibits the construction of public buildings until April, 1933.

It is reported that it also empowers the Government to reduce salaries and pensions of 15,000 marks a year and that it suppresses the most severe penalties for incitement to political strife.

Spanish Premier.

Mr. Prieto's resignation was announced last night by the National Club. The newly formed party will be known as the National Conservative Party.

Mr. Prieto's resignation was announced last night by the National Club. The newly formed party will be known as the National Conservative Party.

Mr. Prieto's resignation was announced last night by the National Club. The newly formed party will be known as the National Conservative Party.

Mr. Prieto's resignation was announced last night by the National Club. The newly formed party will be known as the National Conservative Party.

Mr. Prieto's resignation was announced last night by the National Club. The newly formed party will be known as the National Conservative Party.

Mr. Prieto's resignation was announced last night by the National Club. The newly formed party will be known as the National Conservative Party.

Mr. Prieto's resignation was announced last night by the National Club. The newly formed party will be known as the National Conservative Party.

Mr. Prieto's resignation was announced last night by the National Club. The newly formed party will be known as the National Conservative Party.

BLOW TO BIG SWEEPSTAKE

Banks Not to Deal with Numbers.

Home Office Request.

The Report of the Joint Committee on East Africa has been printed here. Copies will be sent by air mail to East Africa for simultaneous publication about the beginning of November.

The Report of the Joint Select Committee on East Africa has been laid on the table of both Houses of Parliament. The report is being published simultaneously in East Africa, India and England on November 2.

PRICE OF BAR GOLD. London, Oct. 6. The price of bar gold today (5/8/6) per ounce.

Locusts and Sugar. In a written answer to questions by Sir John Glynne, the Minister of Agriculture, the Government has announced that it is considering the possibility of the creation of a local locusts board.

Government to Watch THE POSITION. In a written answer to questions by Sir John Glynne, the Minister of Agriculture, the Government has announced that it is considering the possibility of the creation of a local locusts board.

Government to Watch THE POSITION. In a written answer to questions by Sir John Glynne, the Minister of Agriculture, the Government has announced that it is considering the possibility of the creation of a local locusts board.

Government to Watch THE POSITION. In a written answer to questions by Sir John Glynne, the Minister of Agriculture, the Government has announced that it is considering the possibility of the creation of a local locusts board.

Government to Watch THE POSITION. In a written answer to questions by Sir John Glynne, the Minister of Agriculture, the Government has announced that it is considering the possibility of the creation of a local locusts board.

Government to Watch THE POSITION. In a written answer to questions by Sir John Glynne, the Minister of Agriculture, the Government has announced that it is considering the possibility of the creation of a local locusts board.

Government to Watch THE POSITION. In a written answer to questions by Sir John Glynne, the Minister of Agriculture, the Government has announced that it is considering the possibility of the creation of a local locusts board.

Government to Watch THE POSITION. In a written answer to questions by Sir John Glynne, the Minister of Agriculture, the Government has announced that it is considering the possibility of the creation of a local locusts board.

Government to Watch THE POSITION. In a written answer to questions by Sir John Glynne, the Minister of Agriculture, the Government has announced that it is considering the possibility of the creation of a local locusts board.

Government to Watch THE POSITION. In a written answer to questions by Sir John Glynne, the Minister of Agriculture, the Government has announced that it is considering the possibility of the creation of a local locusts board.

Government to Watch THE POSITION. In a written answer to questions by Sir John Glynne, the Minister of Agriculture, the Government has announced that it is considering the possibility of the creation of a local locusts board.

NEGLECTED WEALTH OF KENYA'S COAST AREAS.

Agricultural Possibilities Long Ignored.

DEPUTY DIRECTOR EXPANDED.

For many years the potentialities of the Coastal areas of Kenya have been passed upon the attention of the Government and the public about the result, outside Mombasa, port development, has been relatively insignificant.

Quite recently, in connection with the Budget for 1952, the claims of the Coast have been advanced again.

Major the Hon. R. W. B. Robertson-Eustace points out the astonishing fact that through development of Coast fisheries has been talked about for years, it has been left to Japanese to come to East Africa and make a start.

He also maintains that the Coast could supply all the milk, sugar, eggs, fresh fruit, etc., which Kenya now includes in its imports.

Both sea and road communications remain in a relatively primitive state.

Primitive Communications.

At the present time when the most recent and comprehensive statement was made by the Hon. R. W. B. Robertson-Eustace in the form of a speech to the Legislative Council during the debate on the 1952 Budget on August 27.

At the present time when the most recent and comprehensive statement was made by the Hon. R. W. B. Robertson-Eustace in the form of a speech to the Legislative Council during the debate on the 1952 Budget on August 27.

At the present time when the most recent and comprehensive statement was made by the Hon. R. W. B. Robertson-Eustace in the form of a speech to the Legislative Council during the debate on the 1952 Budget on August 27.

At the present time when the most recent and comprehensive statement was made by the Hon. R. W. B. Robertson-Eustace in the form of a speech to the Legislative Council during the debate on the 1952 Budget on August 27.

At the present time when the most recent and comprehensive statement was made by the Hon. R. W. B. Robertson-Eustace in the form of a speech to the Legislative Council during the debate on the 1952 Budget on August 27.

At the present time when the most recent and comprehensive statement was made by the Hon. R. W. B. Robertson-Eustace in the form of a speech to the Legislative Council during the debate on the 1952 Budget on August 27.

At the present time when the most recent and comprehensive statement was made by the Hon. R. W. B. Robertson-Eustace in the form of a speech to the Legislative Council during the debate on the 1952 Budget on August 27.

At the present time when the most recent and comprehensive statement was made by the Hon. R. W. B. Robertson-Eustace in the form of a speech to the Legislative Council during the debate on the 1952 Budget on August 27.

At the present time when the most recent and comprehensive statement was made by the Hon. R. W. B. Robertson-Eustace in the form of a speech to the Legislative Council during the debate on the 1952 Budget on August 27.

JOINT COMMITTEE'S REPORT.

Price of Bar Gold.

Locusts and Sugar.

Government to Watch THE POSITION.

Government to Watch THE POSITION.

Government to Watch THE POSITION.

Government to Watch THE POSITION.

Government to Watch THE POSITION.

Government to Watch THE POSITION.

Government to Watch THE POSITION.

Government to Watch THE POSITION.

Government to Watch THE POSITION.

Government to Watch THE POSITION.

Government to Watch THE POSITION.

Government to Watch THE POSITION.

Government to Watch THE POSITION.

Government to Watch THE POSITION.

Government to Watch THE POSITION.

Government to Watch THE POSITION.

EVERY DAY is...

"an Opening SALE DAY"

DURING THE SALE OF THE CENTURY AT WHITEWAYS

More Typical Bargains Below

Buy Your Gum NOW IS THE TIME TO BUY YOUR PYJAMAS.

Men's Pyjamas, made in finely woven Giza Twill, beautifully soft and good wearing.

Perfectly fitted, a lovely made in narrow stripe effects, in Blue, and Grey and Navy.

Large sizes only. Usually 5/6. SALE PRICE 11-50

CHILDREN'S TAN LEATHER SANDALS. SUPERIOR TAN LEATHER SANDALS.

CHILDREN'S TAN LEATHER SANDALS. SUPERIOR TAN LEATHER SANDALS.

CHILDREN'S TAN LEATHER SANDALS. SUPERIOR TAN LEATHER SANDALS.

CHILDREN'S TAN LEATHER SANDALS. SUPERIOR TAN LEATHER SANDALS.

CHILDREN'S TAN LEATHER SANDALS. SUPERIOR TAN LEATHER SANDALS.

CHILDREN'S TAN LEATHER SANDALS. SUPERIOR TAN LEATHER SANDALS.

CHILDREN'S TAN LEATHER SANDALS. SUPERIOR TAN LEATHER SANDALS.

CHILDREN'S TAN LEATHER SANDALS. SUPERIOR TAN LEATHER SANDALS.

CHILDREN'S TAN LEATHER SANDALS. SUPERIOR TAN LEATHER SANDALS.

CHILDREN'S TAN LEATHER SANDALS. SUPERIOR TAN LEATHER SANDALS.

CHILDREN'S TAN LEATHER SANDALS. SUPERIOR TAN LEATHER SANDALS.

FINAL FIVE-FOLD.

FOODSTUFFS BILL.

FOODSTUFFS BILL.

FOODSTUFFS BILL.

FOODSTUFFS BILL.

FOODSTUFFS BILL.

FOODSTUFFS BILL.

FOODSTUFFS BILL.

FOODSTUFFS BILL.

FOODSTUFFS BILL.

FOODSTUFFS BILL.

FOODSTUFFS BILL.

FOODSTUFFS BILL.

FOODSTUFFS BILL.

FOODSTUFFS BILL.

FOODSTUFFS BILL.

FOODSTUFFS BILL.

FOODSTUFFS BILL.

FOODSTUFFS BILL.

FINAL FIVE-FOLD.

FOODSTUFFS BILL.

FOODSTUFFS BILL.

FOODSTUFFS BILL.

FOODSTUFFS BILL.

FOODSTUFFS BILL.

FOODSTUFFS BILL.

FOODSTUFFS BILL.

FOODSTUFFS BILL.

FOODSTUFFS BILL.

FOODSTUFFS BILL.

FOODSTUFFS BILL.

FOODSTUFFS BILL.

FOODSTUFFS BILL.

FOODSTUFFS BILL.

FOODSTUFFS BILL.

FOODSTUFFS BILL.

FOODSTUFFS BILL.

FOODSTUFFS BILL.

FINAL FIVE-FOLD.

FOODSTUFFS BILL.

FOODSTUFFS BILL.

FOODSTUFFS BILL.

FOODSTUFFS BILL.

FOODSTUFFS BILL.

FOODSTUFFS BILL.

FOODSTUFFS BILL.

FOODSTUFFS BILL.

FOODSTUFFS BILL.

FOODSTUFFS BILL.

FOODSTUFFS BILL.

FOODSTUFFS BILL.

FOODSTUFFS BILL.

FOODSTUFFS BILL.

FOODSTUFFS BILL.

FOODSTUFFS BILL.

FOODSTUFFS BILL.

FOODSTUFFS BILL.

FINAL FIVE-FOLD.

FOODSTUFFS BILL.

FOODSTUFFS BILL.

FOODSTUFFS BILL.

FOODSTUFFS BILL.

FOODSTUFFS BILL.

FOODSTUFFS BILL.

FOODSTUFFS BILL.

FOODSTUFFS BILL.

FOODSTUFFS BILL.

FOODSTUFFS BILL.

FOODSTUFFS BILL.

FOODSTUFFS BILL.

FOODSTUFFS BILL.

FOODSTUFFS BILL.

FOODSTUFFS BILL.

FOODSTUFFS BILL.

FOODSTUFFS BILL.

FOODSTUFFS BILL.

FINAL FIVE-FOLD.

FOODSTUFFS BILL.

FOODSTUFFS BILL.

FOODSTUFFS BILL.

FOODSTUFFS BILL.

FOODSTUFFS BILL.

FOODSTUFFS BILL.

FOODSTUFFS BILL.

FOODSTUFFS BILL.

FOODSTUFFS BILL.

FOODSTUFFS BILL.

FOODSTUFFS BILL.

FOODSTUFFS BILL.

FOODSTUFFS BILL.

FOODSTUFFS BILL.

FOODSTUFFS BILL.

FOODSTUFFS BILL.

FOODSTUFFS BILL.

FOODSTUFFS BILL.

FINAL FIVE-FOLD.

FOODSTUFFS BILL.

FOODSTUFFS BILL.

FOODSTUFFS BILL.

FOODSTUFFS BILL.

FOODSTUFFS BILL.

FOODSTUFFS BILL.

FOODSTUFFS BILL.

FOODSTUFFS BILL.

FOODSTUFFS BILL.

FOODSTUFFS BILL.

FOODSTUFFS BILL.

FOODSTUFFS BILL.

FOODSTUFFS BILL.

FOODSTUFFS BILL.

FOODSTUFFS BILL.

FOODSTUFFS BILL.

FOODSTUFFS BILL.

FOODSTUFFS BILL.

FINAL FIVE-FOLD.

FOODSTUFFS BILL.

FOODSTUFFS BILL.

FOODSTUFFS BILL.

FOODSTUFFS BILL.

FOODSTUFFS BILL.

FOODSTUFFS BILL.

FOODSTUFFS BILL.

FOODSTUFFS BILL.

FOODSTUFFS BILL.

FOODSTUFFS BILL.

FOODSTUFFS BILL.

FOODSTUFFS BILL.

FOODSTUFFS BILL.

FOODSTUFFS BILL.

FOODSTUFFS BILL.

FOODSTUFFS BILL.

FOODSTUFFS BILL.

FOODSTUFFS BILL.

FINAL FIVE-FOLD.

FOODSTUFFS BILL.

FOODSTUFFS BILL.

FOODSTUFFS BILL.

FOODSTUFFS BILL.

FOODSTUFFS BILL.





### Excursions To Durban August to December

The Union-Castle Line

AND

The British-India Line

Available at either Company's Offices on Steamers' Journeys.

#### Fares

1st Class (Union-Castle or British-India)	£25
1st Class "B" grade (British-India)	£20
2nd Class (British-India)	£14

#### Sellings

15th October	.....	"Kanya"	.....
15th November	.....	"Kanyala"	.....
15th December	.....	"Kanyala"	.....
15th January	.....	"Kanyala"	.....
15th February	.....	"Kanyala"	.....
15th March	.....	"Kanyala"	.....
15th April	.....	"Kanyala"	.....
15th May	.....	"Kanyala"	.....
15th June	.....	"Kanyala"	.....
15th July	.....	"Kanyala"	.....
15th August	.....	"Kanyala"	.....
15th September	.....	"Kanyala"	.....
15th October	.....	"Kanyala"	.....

## British India Steam Navigation Company Limited

& PENINSULAR AND ORIENTAL STEAM NAVIGATION CO.

### LONDON & EAST AFRICA LINE.

Passenger Only. NAIROBI. Smith Mackenzie & Co. 7, Queen Victoria St. Agents.

S.S. "MATIANA"	23rd Oct.	24th Oct.
S.S. "MANTOLA"	21st Nov.	21st Nov.
S.S. "MODASA"	20th Nov.	19th Dec.
S.S. "MADURA"	18th Dec.	16th Jan.
S.S. "MATIANA"	15th Jan.	13th Feb.
S.S. "MANTOLA"	14th Feb.	12th Mar.
S.S. "MODASA"	11th Mar.	9th April

M.V. "DUMRA"

First Class excursions by the steamer to Mombasa, and return. Particulars on application. ALL DATES SUBJECT TO ALTERATION WITH OR WITHOUT NOTICE.

### AGENCIES

Passenger Only. NAIROBI. Smith Mackenzie & Co. 7, Queen Victoria St. Agents.

NAIROBI	Keays Farmers' Association
KIDOROT	Oil, Honey & Co.
SOY	The Soy Machine
KITALE	Arthur Davis
KAMPALA	Smith Mackenzie & Co.

### COASTAL SERVICE:

Sails for Mombasa 15th October. Sails for Lamu 24th October.

### BOMBAY/DURBAN LINE

(Mail Contract) TO BOMBAY.

S.S. "KENYA"	16th Oct.
S.S. "KARAOGA"	28th Oct.
S.S. "KARANJA"	19th Nov.
S.S. "KHANDALLA"	26th Nov.
S.S. "KENYA"	11th Dec.

### TO DURBAN.

S.S. "KARANJA"	18th Oct.
S.S. "KHANDALLA"	31st Oct.
S.S. "KENYA"	16th Nov.
S.S. "KARAOGA"	28th Nov.
S.S. "KARANJA"	13th Dec.

## CITRA LINE

Compagnia Italiana Transatlantica. THE BEST ROUTE TO ENGLAND

Sailings from KILIMINDI to GENOA and NAPLES.

S.S. "G. MARCONI" 1st November, 1st January, 1st March, 1st May. S.S. "P. ORFEO" 1st December, 1st February, 1st April, 1st June. Full information on routes, rates, etc., on application to the Agents. Full information on routes, rates, etc., on application to the Agents. Full information on routes, rates, etc., on application to the Agents. Full information on routes, rates, etc., on application to the Agents.

## Holland Afrika Lijn

PASSENGER SERVICES:

To Amsterdam	(A) - 252-256 (B) - 252-256 (C) - 252-256
To London	(A) - 252-256 (B) - 252-256 (C) - 252-256
To Cape Town	(A) - 252-256 (B) - 252-256 (C) - 252-256
To Durban	(A) - 252-256 (B) - 252-256 (C) - 252-256
To Natal	(A) - 252-256 (B) - 252-256 (C) - 252-256
To East Africa	(A) - 252-256 (B) - 252-256 (C) - 252-256
To India	(A) - 252-256 (B) - 252-256 (C) - 252-256
To Australia	(A) - 252-256 (B) - 252-256 (C) - 252-256
To New Zealand	(A) - 252-256 (B) - 252-256 (C) - 252-256
To South America	(A) - 252-256 (B) - 252-256 (C) - 252-256
To Europe	(A) - 252-256 (B) - 252-256 (C) - 252-256

### Kenya Without Prejudice

A National Colonial Service of the Country and its People, by Henry Owen Walker, R.S.O., M.C., etc., with a foreword by the Hon. A. Neville Chamberlain, P.C., M.P.

Price 2/6. Postage 3d. 6/0

### Standard Stationery Store

SIXTH AVENUE, NAIROBI.

## B.M.C. HOUSE.

Corner of Government Road and Fifth Avenue, Opposite The New N.B.I. Bank. Phone 2122. Box 10.

### More specials during our GREAT SALE

The Latest in Light Weight Tweeds. 4/- Per yard. 36 inch wide. WAS 6/6. MORLEY'S LITTLE ROSE. 3/- Pair WERE 3/6. MORLEY'S PURE SILK ROSE. 6-50 Pair WERE 9/6, 9/50 and 7/50. ART SILK DRESS LENGTHS. Nice Range of Designs. 10/- Each 4 yards. WERE 20/- and 25/-.

STILL A QUANTITY OF REMNANTS LEFT. ALL SALE PURCHASES CASH WITH ORDER.

### THE Bradford Manufacturing Co. Ltd.

Incorporated in England.

### Great Bargain Store

TREMENDOUS PRICE REDUCTIONS OFFERED. PAY A VISIT AND YOU WILL BE SATISFIED.

### DAYARAM BROS.

P.O. Box 199. Next to Electric House, NAIROBI.

# DEUTSCHE OST-AFRIKA-LINE

HOMEWARD via SUEZ CANAL.		HOMEWARD via CAPE.	
S.S. Waganat	Nov. 10th	S.S. Ubesa	Oct. 7th
S.S. Adolfa Weermann	Dec. 14th	S.S. Tagragula	Nov. 5th
S.S. Ubesa	Jan. 11th	S.S. Ubesa	Dec. 24th
S.S. Ubesa	Feb. 8th	S.S. Ubesa	Dec. 21st
S.S. Ubesa	Mar. 14th	S.S. Ubesa	Feb. 4th
S.S. Ubesa	Apr. 20th	S.S. Ubesa	Feb. 25th
S.S. Ubesa	May 26th	S.S. Ubesa	Mar. 20th
S.S. Ubesa	June 1st	S.S. Ubesa	Apr. 10th
S.S. Ubesa	June 15th	S.S. Ubesa	May 4th
S.S. Ubesa	July 3rd	S.S. Ubesa	May 25th
S.S. Ubesa	July 25th	S.S. Ubesa	June 18th
S.S. Ubesa	Aug. 16th	S.S. Adolfa Weermann	July 24th

### WINTER EXCURSIONS TO SOUTH AFRICA—JULY TO OCTOBER 1931.

Under the D.O.A.L. Steamers are provided in connection with the following routes. Office: Sailings subject to alteration.

For full particulars of passenger fares and freight rates apply to the Agents—

DEUTSCHE OST-AFRIKA-LINE, Generalmanager, NAIROBI.

Agents: DALOETI & CO., LTD., 10, Dalnyy, "P.O. Box 210, NAIROBI and Nakuru District. CARL JUNGBLUT, Njoro, Kiambu and Kapanga. ROUSTADT & CLARKE, Ltd., "Progress",

## Pocket Knives

A RANGE OF TRAVELLER'S SAMPLES AT UNDER MARKET VALUES.

From 8/6. 2/- to 1/6. 12/- Best Sheffield Make.



THE HOUSE FOR CUTLERY.

### INGRAM & Co. Ltd.

THE TOOL HOUSE, NAIROBI.

### DON'T LOSE TOUCH WITH ENGLAND!

BRING ITS OLD WORLD GLAMOUR TO THE TROPICS BY BUILDING IN RUSTIC BRICKS AND TILES.

Brick has nothing to fear from competitive and the delightful home of sun, the radiant colours of the rainbow defy the artist's ingenuity for all time. Similarly, INVITA Bricks and Tiles and INVITA Tiles are made with a surface texture of deep beauty, unattainable with Italian's encaustic, and are nothing to fear from the artificiality of stone and tile.

### INVITA BRICK & TILE WORKS,

BOX 78, NAIROBI.

## Chivers' Jam

Made in silver-lined pans at the Orchard Farm with freshly gathered fruit and refined sugar only. Every jar carries a guarantee of absolute purity.



THE ALSO CHIVERS' English Candied Fruits with Chivers' Custard Powder. Each quart for sale only. R. O. HAMILTON, LTD., 85, NAIROBI. Wholesaler & Sole Ltd., The Orchard Farm, HITCHIN, CAMBRIDGE, ENGLAND.

## Messageries Maritimes

(FRENCH MAIL STEAMERS). Regular and fortnightly service from and to Marseilles. THE QUICKEST ROUTE TO LONDON. Fast Sailings to Marseilles.

S.S. "Bismarck De St. Pierre" 18th October. S.S. "General Vignon" 1st November. S.S. "Expédition Grandville" 18th November. S.S. "Jean Laboré" 30th November.

ORCHESTRA ON ALL STEAMERS. Fast Arrival from Marseilles.

S.S. "Jean Laboré" 30th October. Managers Maritimes, 25, Rue de Valenciennes, P.O. Box 20, Marseilles.

## MAISON MARIE

PERMANENT WAVING SPECIALISTS. BEG TO INTRODUCE MISS PROCTOR'S LATE CAVDENISH HOUSE, CHELTENHAM NOW IN ATTENDANCE. THEATRE ROYAL BUILDINGS, P.O. Box 1022, Sixth Avenue, Phone 2220.

### SHAW & HUNTER, Ltd.

"If they don't do everything for me, which I want done well."

Agents: DALOETI & CO., LTD., 10, Dalnyy, "P.O. Box 210, NAIROBI and Nakuru District. CARL JUNGBLUT, Njoro, Kiambu and Kapanga. ROUSTADT & CLARKE, Ltd., "Progress",

### PIANOFORTE TUNING AND REPAIRING.

Ten years experience in Kenya Colony and five years with Messrs. Chappell and Co., London.

### F. A. HEAD.

Box 675 - - - NAIROBI.

### OVERSEAS AND AIR MAILS.

#### ARRIVALS.

Steamers or Air Mail. From. Due at Mombasa. Made good at Mombasa.

15th October. 16th October. 17th October. 18th October. 19th October. 20th October. 21st October. 22nd October. 23rd October. 24th October. 25th October. 26th October. 27th October. 28th October. 29th October. 30th October. 31st October.

#### DEPARTURES.

Steamers or Air Mail. For. Date of Departure. Days of Week.

15th October. 16th October. 17th October. 18th October. 19th October. 20th October. 21st October. 22nd October. 23rd October. 24th October. 25th October. 26th October. 27th October. 28th October. 29th October. 30th October. 31st October.

## Muster Rolls

On proof paper. Perfectly printed and ruled. To be bound in a sturdy cloth book. Size 18 inches x 6 inches. 40 pages. 5/6. 1/2 size (padding 40 x 12 inches). 100 pages. 8/6. 4/6 each (padding 10 x 12 inches). Less 10% for quantity of One Dozen.

LARBOUR CARDS. Costs 7s for 100—30s. 6/- for 1,000.

### STANDARD Stationery Stores

NAIROBI.

UNDEVELOPED WEALTH OF KENYA'S COAST AREAS.

(Continued from page 1.)

In the course of his review, 'I am quite sure, Sir, that the present time is a most important one to ask for money grants, but as I have done the best I might reasonably expect, I am sorry to say that we have had to do my duty to ask that their consideration should be given to the Coast area. Our last Government, Sir, once stated that the Coast received its share of all there was to give. I cannot find how those things can be substantiated, but as I can see a great deal of what we have got to see how we can get some more grant a large water supply at Changamwe costing a large sum of money—this was mainly fall down; a large sum of money was spent on the Talamoni Causeway—this unfortunately was washed away. The Public Works Department held a departmental inquiry into this and came to the conclusion that they were not to blame. It was therefore presumably, as the natives would say, 'Akari pi kwana,' which means an act of God. I am of opinion though, Sir, in this matter, that had public inquiry been held into this catastrophe, the Akari pi kwana would have been largely excused from the blame.

**Fisheries.** We have been promised, Sir, in the past, assistance with our fisheries and our agriculture. This assistance has been entirely withdrawn and, Sir, in the present state of the country, I maintain that had these industries been started in the past we would have been able to contribute very largely to the progress of the country. We could have supplied fertilizers to the planters, we could have supplied grain to the farmers, we could have deviated by the loan. In regard to fisheries, we know the interest you have taken in these in the past and I will remember, Sir, the effort that was made to open up a trade in dried fish with the Seychelles in this country. Unfortunately, the method of curing was carried out there would be a large market here for this commodity. At present, a large amount of the fish is taken from the coast and it seems to me an extraordinary thing to ask for money grants, but as I have done the best I might reasonably expect, I am sorry to say that we have had to do my duty to ask that their consideration should be given to the Coast area.

ent, a large amount of the fish is taken from the coast and it seems to me an extraordinary thing to ask for money grants, but as I have done the best I might reasonably expect, I am sorry to say that we have had to do my duty to ask that their consideration should be given to the Coast area.

**Agriculture.** With regard to agriculture, we have been living for many years on the hope that a better thing would be done to assist the agriculture of the country, as we have been. This country then depends entirely upon agriculture, but what has been done at the Coast to help agricultural Marketing of very little. In connection with this, I should like to quote a few figures showing the various imports into this country of which I will mention the majority, if not all, could have been produced on the Coast. Take for instance the import of rice. The total amount of rice imported into Uganda for last year amounted to the enormous sum of £110,000 odd. Every ounce of rice could have been grown on the Coast. There are many areas there very suitable for rice-growing and there is the whole of the Tana River which is equally suitable for wheat, wheat and flour. I will not mention what that Sugar £220,000 worth of sugar was imported but we hope that with the bonus which we may receive this year we may reduce this to £100,000 odd; now, now we are up to £100,000 odd; now we are up to £100,000 odd; now we are up to £100,000 odd.

**Our made still need much more.** I understand now that the porters running from Kisumu north on the Malindi road on which a large sum of new been found not to be a road at all but only a right of way. I trust that the road will be let out to a contractor to be built.

**Sea and Ferry.** Our sea communications are worse than they have ever been and I think in this connection I should like to ask whether some arrangement could not be arrived at with Zanzibar, who only have steamers, to run a monthly service up to Lamu and back. Zanzibar import a large quantity of rice from Lamu. Lamu, sometimes it is cut off from Mombasa for several months. A road built from Lamu to Mombasa would bring Lamu within four days of Mombasa.

epion, because nobody has represented that I cannot see why we should not make use of the money which we have at our disposal. I do not know whether any members of the Government are taking any steps to see what we can do to improve our communications. I am sure that if we had a road from Lamu to Mombasa for £100,000 for one year that could be produced in the country. I am sure that if we had a road from Lamu to Mombasa for £100,000 for one year that could be produced in the country. I am sure that if we had a road from Lamu to Mombasa for £100,000 for one year that could be produced in the country.

**Coast Roads.** This year we were going to have a small sum of money to open up the motor roads for example, the road between Mombasa and Malindi. The estimated revenue from this was put down at £400, but because the cost of the levy amounting to £220 was not expected to be recovered this year this service was not allowed to be started. If we applied for a loan, I think we should probably have got it and it would have cost us a good deal more. I note, though, that it has been found that £120 for sweeping out the rubbish of Mombasa.

**The Weather.** The British East African Meteorological Service in its report on weather conditions as reported from selected stations in East Africa for the 1933-34 season states that the rain has been recorded at Kisumu or Mombasa, though 0.09" fell at Kisumu, and Kampala experienced a very slight fall. Kisumu's temperature was 79 and 87 deg. F, as compared with 85 and 79 deg. F, at the Coast, as recorded at Mombasa. West-north-westerly winds prevail at Kisumu, south-easterly at the Coast.

**Dr. Jean Lohr,** a well-known French specialist in all present cases of breeding a race of apes which are intended to estimate the rate of Havers. His notes will be published in a family of great size against whom the rate will have little chance.



Nightly at 8-10 **EMPIRE** Matinee 2-4.30 p.m. **TO-NIGHT** FRIDAY AND SATURDAY THREE NIGHTS ONLY. **MATINEE SATURDAY AT 3-15** You have seen The King of Jazz. Now see the picture that surpasses it.

**"GLORIFYING THE SHOW GIRL"** The finest, biggest and most beautiful ever staged. Starring Mary Eaton who the world acclaim as the Queen of Beauty, Charm and Loveliness, as depicted by Dan Hasty, Kay Howard, Edward Grandall, Olive Shree, Bill Edwards, Kiddy Garton. In Revue Scenes Nain Morgan, Enoy Vallee **The Million Dollar Production** Wonderful Scenes, Gorgeous Dresses, Girls, Music, Colours, Dancing, Romance. **LAVISH DISPLAY OF FAMOUS STARS.** MONDAY, TUESDAY AND WEDNESDAY. A SENSATIONAL MURDER TRIAL.

**"THRU DIFFERENT EYES"** Grand, Avenue, Nairobi. **HOTEL AVENUE.** THE TWO MOST UP-TO-DATE AND LUXURIOUS HOTELS IN KENYA, BURN IN CONSTRUCTION. **This is Worth Your Consideration** (Next to McMurtry Memorial Library) OPEN NIGHTLY 7 p.m.—1 a.m. SATURDAYS 7 p.m.—3 a.m. Fish and Chips—Supper—Bacon and Eggs—Steak and Kidney Pie—Hot Dogs—Sausage—Rolls—Boll Mops. AT VERY MODERATE PRICES.

**ANNABEL'S** LADIES AND GENTLEMEN'S HAIRDRESSERS WISH TO INTRODUCE **MISS BRIDGES** who holds Both English and American Diplomas for Ladies Hairdressing. During the month of October, Permanent Waving will be done at 40/-, GENTLEMEN'S HAIRDRESSING SALOON IS NOW OPEN. Phone 2243 or Write to Box 661, NAIROBI. Note Address: Sixth Avenue, next to Whiteways.

**Salisbury Hotel** MORE ACCOMMODATION will be available shortly including some particularly attractive single and double rooms which can be booked at REDUCED RATES from 2/11 per month inclusive. **Swimming Bath** (Opening Nov.) Situated 120 feet x 60 feet, glazed tiles throughout. Dressing Rooms—Shower Baths—Tea, Balm and a Pure Water Supply, etc. etc. Head Guests will have the use of the Swimming Bath Free of Charge for several hours daily. SALISBURY HOTEL. Phone 2108

**LUNCH at the EMPIRE RESTAURANT** Popular Prices • Special Terms for Boarders.

BY REQUEST **Concert and Dance** ON Sunday, October, 11th 8-30 pm. at ST. JAMES (in hall of K.D.F. Regimental Institute.) LOCAL ARTISTS IN VARIED TURNS. STAN DALL and HIS SATellites. Single Tickets 2/6 Double 4/6. Tickets Obtainable at St. James' Restaurant.

**GERALD & BANFIELD ACADEMY OF DANCING** Special Open Daily from 10 a.m. to 10 p.m. Private Tuition or Classes in Ballroom, Operetta, Music, Social and Modern, etc. Note—Transport can be arranged for pupils when necessary. Miss Lily Gerald, B.A., O.B., Miss Jean Banfield, B.A., O.B., CERTIFICATED TEACHERS OF DANCING. Empire Theatre Building—NAIROBI—P.O. Box 1180.

**HAVE YOUR TEA AND SUNDOWNER COMFORTABLY WITH MUSIC. HOTEL AVENUE** ENTERTAINMENT PROGRAMME. **SUNDOWNER DANCES** Every Wednesday and Saturday from 8-4 p.m. Music by GARRY COOK and HIS BAND. DAILY MORNING AND AFTERNOON TEA COBERTS, by Phyllis Amphlett. Daily Wireless News and Concerts from 7-11 p.m.

**HOTEL AVENUE.** THE TWO MOST UP-TO-DATE AND LUXURIOUS HOTELS IN KENYA, BURN IN CONSTRUCTION. **This is Worth Your Consideration** (Next to McMurtry Memorial Library) OPEN NIGHTLY 7 p.m.—1 a.m. SATURDAYS 7 p.m.—3 a.m. Fish and Chips—Supper—Bacon and Eggs—Steak and Kidney Pie—Hot Dogs—Sausage—Rolls—Boll Mops. AT VERY MODERATE PRICES.

**FRESH FOR THE BEST CAKES & CHOCOLATES** YOU MUST GO TO **TORR'S HOTEL** Satisfaction Guaranteed. Made on the Premises.

**"SNACKS" COFFEE STAND** ON PARKING GROUND (Next to McMurtry Memorial Library) OPEN NIGHTLY 7 p.m.—1 a.m. SATURDAYS 7 p.m.—3 a.m. Fish and Chips—Supper—Bacon and Eggs—Steak and Kidney Pie—Hot Dogs—Sausage—Rolls—Boll Mops. AT VERY MODERATE PRICES.

**Do You Neglect Your Eyes?** Take care of these two precious organs of yours. They are of more value to you than any other part of your body. Just think what you would miss if you were blind. Be on the safe side and have your eyes examined by **"The Lens Ltd."** OPHTHALMIC OPTICIANS. Box 321 Prince's House, Phone 3388. NAIROBI.

**HAVE YOU HEARD?**

**The Pilot Universal Super-Wasp Wireless Receiver?** If not call at our Showrooms this afternoon between 3-30 and 4 p.m. for a demonstration

**MOTOR MART and Exchange Limited.**

Mombasa Nairobi, Nakuru, Eldoret, Tanga Dar-es-Salaam.





VapeX is the safe germ-killer which cures colds without upsetting the system. It is the most effective remedy for your headache, cough, cold, and influenza. It penetrates all the recesses of your nose and throat, kills germs, and relieves your suffering.

**HOWSE & McGEORGE, Ltd.**  
Wholesale & Branches.—884 All Other Chemists.

# Rosenblum, Bullows & Roy Ltd.

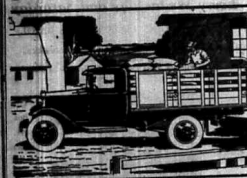
THE FIRM OF REPUTE.  
WHOLESALE and RETAIL MERCHANTS.  
WE CAN SUPPLY ALL YOUR REQUIREMENTS.  
All Lines of Provisions Stocked.  
SOAPS, TOOTH PASTES, Etc., Etc.

## Sole agents for:

- SHANKS'S SYTHONS and BULBS.
- UPSON'S INSULATING BOARDS.
- GOODLASS WALL PAINTS and VARNISHES.
- RATHER SAFES.
- NEUSS HESSLEIN AMERICAIN.
- AGENTS FOR THE POPULAR LOCAL "S. and G."
- DOG and PUPPY BISCUITS.
- IMPORTERS OF COOPERS DIPS, ETC., FOR UPWARDS OF TWENTY YEARS.

## Ford Trucks

Give long service, at low cost



Throughout Africa in every business field, Ford trucks are giving ably service, at low cost.

One of the reasons for their reliable and capable performance is the sturdy heavy-duty design, which permits Ford trucks to handle heavy loads, over good roads and bad, without strain. The three-quarter tonning unit built over rear axle has a sturdy suspension, and the three-quarter tonning unit built over front axle has a sturdy suspension, and the three-quarter tonning unit built over front axle has a sturdy suspension.

Other features of importance are the strong and rigid frame, which has five sturdy cross-members; the spaced transmission, which provides a wide range of gear ratios; the separate drive shafts, which relieve the engine and power; the separate drive shafts, which relieve the engine and power; the separate drive shafts, which relieve the engine and power.

Come in and let us demonstrate a Ford truck of the type designed for your business. There is no one else, and highly economical in service.

## THE EAST AFRICAN ANNUAL 1931-32

Kenya-Tanganyika-Uganda-Zanzibar.

(List of page 18-19 x 11-in.)  
BEAUTIFULLY ILLUSTRATED.

The 1931 EDITION of the "East African Annual" is now in course of preparation. The enormous success this publication achieved last year, and the fact that the whole issue (3,000 copies) was sold out in 21 days, has necessitated this year an increase of the issue to **6,000 COPIES**

The Annual will contain articles dealing with Kenya, Tanganyika, Uganda and Zanzibar together with the most beautiful and unique collection of East African photographs ever published. The cover is designed by an East African artist.

Orders are now being booked.  
Note—This Annual is an East African production. It is compiled and published by the "East African Standard Ltd." in Nairobi, Kenya.

For further details as to Advertising, etc. apply to—**EAST AFRICAN STANDARD LTD.**  
P.O. Box 380. NAIROBI.

## Business Built On The Foundation of Service.

### MACKINIL & Co.

21, Chiswell St., London, E.C.1.

BUYERS AND SHIPPERS TO ALL EAST AFRICAN MARKETS.

Exporters of Produce OF COMMISSION BASIS.

LIBERAL ADVANCES TO APPROVED CLIENTS.

For fullest information communicate with—  
**R. O. HAMILTON, Ltd.**  
Box 302. NAIROBI. Phone 2282.

**Nairobi Motors.**  
Box 680. Sixth Avenue. Tel. 2420.

## WE SPECIALIZE IN HIRING

FOR THE FURNISHING OF JETTS, EXCAVATORS, BARQUETS, PUMPS, BUCKETS, TRISTLE TABLES, CUTLERY, GLASSWARE, OR CROCKERY. All at short notice and if so desired effect delivery to the Nairobi Area.

**OUR PRICES ARE VERY REASONABLE**

WE CAN SUPPLY LARGE QUANTITIES OF CHAIRS, TABLES, TRISTLE TABLES, CUTLERY, GLASSWARE, OR CROCKERY. All at short notice and if so desired effect delivery to the Nairobi Area.

**OUR HIRING SERVICE IS RELIABLE.**  
PRICES ON APPLICATION.

**Service Stores**  
LIMITED  
NAIROBI

(FORMERLY S. JACOBS, LTD.)  
GOVERNMENT ROAD,  
NAIROBI.

**DUCCO**  
POLISH

You paid a good price for your Car—keep it smart and free of Traffic Film, by using "DUCCO" Polish No. 7, it softens Film, Loosens Dirt, Removes Grime, you wipe them away, and look once your radiant car again.

You'll find No. 7 Heavy Polish at good dealers everywhere.

KNOWN FOR ACCURATE TESTING AND SMART WEAR

**Something New**  
AN UNBREAKABLE ADJUSTABLE SPERM FRAME. THE IDEAL FRAME FOR ALL eyeglasses. It will become better as you wear it.

**A. H. WARDLE & Co., Ltd.**  
OPHTHALMIC OPTICIANS.

The name SHANKS in connection with SANITARY and BATHROOM FIXTURES, still stands for all that is best in modern practice.

It is worth your while to specify "SHANKS SANITARY FIXTURES" when building or renovating.

**British and Best**

Agents: **R. G. Vernon & Co.**  
P.O. Box 124 Pilot Street. Telephone 3544. NAIROBI.

A long way to go ... give him a good start!

**HUMANISED TRUFOOD**  
Nearest to Mother Milk

Sole Agents: **A. H. WARDLE & Co., Ltd.**  
Wholesale and Retail Chemists.  
Box 108 NAIROBI. Phone 2066.

take at present but that healthily, the recognition of a humanized food had not been made by the public and the Government. The latter had made of Africa monthly and weekly food and custom to assist, so it often stated, that the Government had not been in the habit of doing this. The Government had not been in the habit of doing this. The Government had not been in the habit of doing this.

**STANDARD DIARY**

Meeting to consider...  
October 12: Kenya Horticultural...  
October 14: Entertainment under...  
October 15: To-day's wireless...







CORRESPONDENCE.

Just Received THE FAMOUS MORLEY'S La Mode PURE SILK ENGLISH STOCKINGS.

Also Other Well-Known Brands SUOFTY, KAYERS, ALKES, A IN THE LATEST PINK SHADES.

Named Bros

THE HOUSE OF DISTINCTION. P.O. Box 254, NAIROBI. Phone 2316

Delicious flavour Clean taste make GIBBS DENTIFRICE Favourite Results prove it best

While pleasing flavor makes Gibbs Dentifrice... GIBBS DENTIFRICE Favourite Results prove it best

Your teeth are Ivory Castles—defend them with

Gibbs Dentifrice

M. S. Elliot & Co., LIMITED.

Are now open at WESTLANDS for the Sale of Bread, Cakes, Confectionery, Groceries, Provisions, Petrol & Oil.

To everyone Professional men, Businessmen, Government Officials, etc. The East African Red Book for 1930 - 31 Handbook and Directory of Kenya, Uganda, Tanganyika and Zanzibar. Shgs. 20/- (posted-21). STANDARD STATIONERY STORES NAIROBI.

The Editor does not accept responsibility for the views expressed by his correspondents...

Blind Africans. NEED FOR A SPECIAL INSTITUTION.

To the Editor, "E. A. Standard": You, in your column of your paper, inform me whether there is any provision...

There is a tragic case in this District at present, a progressive and able-bodied, who after an illness some five years ago lost both eyes completely...

My set is powerful and recent in design, and is independent of Nairobi but it must be very responsive for me...

Yours etc. F. H. KNIGHT. Uganda. Nairobi, 1/1931.

P.B.—A very appreciable fraction of T.L.O.'s gross income is wasted in producing a very strong harmonic on 103 metres...

Y. H. K.

FINANCIAL PRODUCTION.

To the Editor, "E. A. Standard": Sir,—When considering the present financial straits we should get away from the rut of economic thought and try to reorganize our conceptions.

Most men, when they think of money, think of it as a static and not dynamic. But money is a medium of exchange only and performs its proper functions if it is passing from hand to hand.

We should thus try to think of it as a loop, but a stream of specified volume, flowing in one direction...

Yours etc. RUTH PENNATH. Hon. Secretary, Kaimosi Branch, East African Women's League, Nairobi, October 5, 1931.

WIRELESS IN KENYA.

To the Editor, "E. A. Standard": Sir,—As a keen amateur who has studied wireless telegraphy since 1918, I have been interested in the recent letters concerning T.L.O. Not having to pay for a broadcast licence...

I am not growing but it is my honest belief that the present and recent transmissions of T.L.O. on 49.5 metres are doing harm to the advancement of broadcast receiving...

I am quite aware of the phenomenon of "dead spots" and believe I can also state that the H.B.A.C.C. have to put up with wireless telegraphy, but neither of those facts accounts for the present situation...

Most recent transactions have been comparable to listening to the radio. I am sure you will agree with Mr. Tynard that the present wireless news has been quite unsatisfactory. It is rather sad to hear of a wireless operator who has been dependent on Nairobi but it must be very responsive for me...

Yours etc. F. H. KNIGHT. Uganda. Nairobi, 1/1931.

P.B.—A very appreciable fraction of T.L.O.'s gross income is wasted in producing a very strong harmonic on 103 metres...

Y. H. K.

FINANCIAL PRODUCTION.

To the Editor, "E. A. Standard": Sir,—When considering the present financial straits we should get away from the rut of economic thought and try to reorganize our conceptions.

Most men, when they think of money, think of it as a static and not dynamic. But money is a medium of exchange only and performs its proper functions if it is passing from hand to hand.

We should thus try to think of it as a loop, but a stream of specified volume, flowing in one direction...

Yours etc. RUTH PENNATH. Hon. Secretary, Kaimosi Branch, East African Women's League, Nairobi, October 5, 1931.

circulated birds and have retained artificial barriers to restrain the encroachments of the wild between themselves and other countries. The gold, white stork, does them little good as it reflex action due to the check in its way to the continent...

Water flowing over rock is non-productive till it reaches a level; so also money dispersed in facilities is dead for as long as it still sits there and will eventually be lost through productive channels. Except to the individual, the harm done is not at all altogether.

But the doctrine of "equal exchange" or "ill-advised" social services may poison the stream. It is not the quantity of money and flow, lack of confidence and mis-trust do it up to the source. The inflation of public services, induces parasitic activities, which cannot be so profitable an endeavor.

As I have said, money does not produce but it assists and accelerates production by facilitating exchange and exchange. The exchange of money would be more or less unimportant if our medium of exchange were not faulty. If it were sufficiently elastic to respond to the size and direction of production and if its value were not confused by the dearth or scarcity of a previous metal...

Most of the money in circulation is not in the hands of the people but in the hands of the banks. The banks are not in the hands of the people but in the hands of the banks. The banks are not in the hands of the people but in the hands of the banks.

Yours etc. F. H. KNIGHT. Uganda. Nairobi, 1/1931.

P.B.—A very appreciable fraction of T.L.O.'s gross income is wasted in producing a very strong harmonic on 103 metres...

Y. H. K.

FINANCIAL PRODUCTION.

To the Editor, "E. A. Standard": Sir,—When considering the present financial straits we should get away from the rut of economic thought and try to reorganize our conceptions.

Most men, when they think of money, think of it as a static and not dynamic. But money is a medium of exchange only and performs its proper functions if it is passing from hand to hand.

We should thus try to think of it as a loop, but a stream of specified volume, flowing in one direction...

Yours etc. RUTH PENNATH. Hon. Secretary, Kaimosi Branch, East African Women's League, Nairobi, October 5, 1931.



The Allenburys Foods. Made from the purest milk of cows pastured in the home counties, the Allenburys Foods are as easily digested as mother's milk. They are germ free and are simply and quickly made by the addition of boiling water only. MILK FOOD No. 1 MILK FOOD No. 2

Kenya Agency Ltd. P.O. Box 781, NAIROBI.

Gilbey's "Invalid" Port. An exceptionally fine specimen of PORT WINE. A full "plummy" wine suitable for all occasions. As a Librarian of Domes, Desert Wine, there is nothing finer. As a stimulant there is nothing more appropriate.

Representative for: GENSER & AGENTS Ltd. Govt. Road - NAIROBI.

Roadways—Always DRYDALE'S AUTO TOURS. GIBBS AUTO TOURS. Transport Contractors in Messrs. Thomas Cook & Son, Ltd., American Express Co., Bus, etc. Booking Agents for Imperial Airways, Ltd. Road with us for the New West Nile to Entebbe. Big Game Game Reservations with Repet. Fishing, etc. OFFICE: AT MOMBASA: WAIROBO: AT MOMBASA: Phone Nairobi 616, 617, 618, 619, 620, 621, 622, 623, 624, 625, 626, 627, 628, 629, 630, 631, 632, 633, 634, 635, 636, 637, 638, 639, 640, 641, 642, 643, 644, 645, 646, 647, 648, 649, 650, 651, 652, 653, 654, 655, 656, 657, 658, 659, 660, 661, 662, 663, 664, 665, 666, 667, 668, 669, 670, 671, 672, 673, 674, 675, 676, 677, 678, 679, 680, 681, 682, 683, 684, 685, 686, 687, 688, 689, 690, 691, 692, 693, 694, 695, 696, 697, 698, 699, 700, 701, 702, 703, 704, 705, 706, 707, 708, 709, 710, 711, 712, 713, 714, 715, 716, 717, 718, 719, 720, 721, 722, 723, 724, 725, 726, 727, 728, 729, 730, 731, 732, 733, 734, 735, 736, 737, 738, 739, 740, 741, 742, 743, 744, 745, 746, 747, 748, 749, 750, 751, 752, 753, 754, 755, 756, 757, 758, 759, 760, 761, 762, 763, 764, 765, 766, 767, 768, 769, 770, 771, 772, 773, 774, 775, 776, 777, 778, 779, 780, 781, 782, 783, 784, 785, 786, 787, 788, 789, 790, 791, 792, 793, 794, 795, 796, 797, 798, 799, 800, 801, 802, 803, 804, 805, 806, 807, 808, 809, 810, 811, 812, 813, 814, 815, 816, 817, 818, 819, 820, 821, 822, 823, 824, 825, 826, 827, 828, 829, 830, 831, 832, 833, 834, 835, 836, 837, 838, 839, 840, 841, 842, 843, 844, 845, 846, 847, 848, 849, 850, 851, 852, 853, 854, 855, 856, 857, 858, 859, 860, 861, 862, 863, 864, 865, 866, 867, 868, 869, 870, 871, 872, 873, 874, 875, 876, 877, 878, 879, 880, 881, 882, 883, 884, 885, 886, 887, 888, 889, 890, 891, 892, 893, 894, 895, 896, 897, 898, 899, 900, 901, 902, 903, 904, 905, 906, 907, 908, 909, 910, 911, 912, 913, 914, 915, 916, 917, 918, 919, 920, 921, 922, 923, 924, 925, 926, 927, 928, 929, 930, 931, 932, 933, 934, 935, 936, 937, 938, 939, 940, 941, 942, 943, 944, 945, 946, 947, 948, 949, 950, 951, 952, 953, 954, 955, 956, 957, 958, 959, 960, 961, 962, 963, 964, 965, 966, 967, 968, 969, 970, 971, 972, 973, 974, 975, 976, 977, 978, 979, 980, 981, 982, 983, 984, 985, 986, 987, 988, 989, 990, 991, 992, 993, 994, 995, 996, 997, 998, 999, 1000.

Just Arrived. Best Quality Ladies Undergar. Silk Lingerie. Suit Cases in All Sizes. All kinds of SILKS in beautiful colors. New Style Ruby Ring Silk Stockings. ALL AT LOWEST PRICES.

B. CHOITRAM, Government Road - NAIROBI.

B. FLORENS PERMANENT AND TISSUE SPECIALIST. Phone 2688, York Road, P.O. Box 229, Govt. Road, Nairobi.

COPPER RAIN GAUGES. SPARE GLASSES FOR DO. SILK LAMP SHADERS. Medical Needs. Price List for Shambas requirements on application. A. J. ELLI & CO. LTD. TELLE CHEMISTS. Phone 2688 NAIROBI. P.O. Box 441.

MATHER & PLATT Ltd. MANCHESTER

Pumps for all Purposes RAMS, DYNAMOS, ELECTRICAL EQUIPMENT, FIRE EXTINGUISHERS, Etc. STOCKED IN NAIROBI

Fall Particulars and Prices from Sole Agents: SMITH, MACKENZIE & Co. Phone 2655. P.O. Box 390.

Telegrams: MACKENZIES. NAIROBI.





THE SPORTS PAGE



**This Week's Special**

AS TOILET SETS OF ASSORTED COLOURS AND DESIGNS—LESS 5% DISCOUNT.

**CAMERON & Co.**

**CHARLES WARE**

TRUST ACCOUNTANT.

17, First Class, Government Road, NAIROBI.

I have gone to Nanyuki Base. I will be on the spot on Monday morning to lay out prices on Camerawich and Camberidge.

CEBRIT, LETTERS, WIRE BUSINESS ONLY.

**THE WORLD FAMOUS ROLEX OYSTER**

Wristlet Watch

The finest watch in the world for the tropics.

WATERPROOF—DUSTPROOF—SANDPROOF

—PROOF AGAINST ALL THE ELEMENTS—

**DOBBIES LTD.**

Government Road, NAIROBI

Sole Retail Agents for East Africa.

THE LEADING JEWELLERS

The Sportsman's Friend.

Fitted with Precision Roll Movement.

Unbreakable Glass.

SILVER 115/-

9ct. GOLD 210/-

18ct. GOLD 315/-

SOLE IN EAST AFRICA AT THE SAME PRICES AS IN ENGLAND.

**MAURICE ROSENSTON**

17, First Class, Government Road, NAIROBI.

DUKE OF YORK HANDICAP. Run October 14th, 1 mile (1000).

1/4 Mile (250).

1/2 Mile (500).

3/4 Mile (750).

1 Mile (1000).

1 1/4 Mile (1250).

1 1/2 Mile (1500).

1 3/4 Mile (1750).

2 Mile (2000).

2 1/4 Mile (2250).

2 1/2 Mile (2500).

2 3/4 Mile (2750).

3 Mile (3000).

3 1/4 Mile (3250).

3 1/2 Mile (3500).

3 3/4 Mile (3750).

4 Mile (4000).

4 1/4 Mile (4250).

4 1/2 Mile (4500).

4 3/4 Mile (4750).

5 Mile (5000).

5 1/4 Mile (5250).

5 1/2 Mile (5500).

5 3/4 Mile (5750).

6 Mile (6000).

6 1/4 Mile (6250).

6 1/2 Mile (6500).

6 3/4 Mile (6750).

7 Mile (7000).

7 1/4 Mile (7250).

7 1/2 Mile (7500).

7 3/4 Mile (7750).

8 Mile (8000).

8 1/4 Mile (8250).

8 1/2 Mile (8500).

8 3/4 Mile (8750).

9 Mile (9000).

9 1/4 Mile (9250).

9 1/2 Mile (9500).

9 3/4 Mile (9750).

10 Mile (10000).

**JACOB & CO'S**

17, First Class, Government Road, NAIROBI.

DUKE OF YORK HANDICAP. Run October 14th, 1 mile (1000).

1/4 Mile (250).

1/2 Mile (500).

3/4 Mile (750).

1 Mile (1000).

1 1/4 Mile (1250).

1 1/2 Mile (1500).

1 3/4 Mile (1750).

2 Mile (2000).

2 1/4 Mile (2250).

2 1/2 Mile (2500).

2 3/4 Mile (2750).

3 Mile (3000).

3 1/4 Mile (3250).

3 1/2 Mile (3500).

3 3/4 Mile (3750).

4 Mile (4000).

4 1/4 Mile (4250).

4 1/2 Mile (4500).

4 3/4 Mile (4750).

5 Mile (5000).

5 1/4 Mile (5250).

5 1/2 Mile (5500).

5 3/4 Mile (5750).

6 Mile (6000).

6 1/4 Mile (6250).

6 1/2 Mile (6500).

6 3/4 Mile (6750).

7 Mile (7000).

7 1/4 Mile (7250).

7 1/2 Mile (7500).

7 3/4 Mile (7750).

8 Mile (8000).

8 1/4 Mile (8250).

8 1/2 Mile (8500).

8 3/4 Mile (8750).

9 Mile (9000).

9 1/4 Mile (9250).

9 1/2 Mile (9500).

9 3/4 Mile (9750).

10 Mile (10000).

**"LEMON PUFF"**

A sandwich of two flaky Puff Pastry biscuits with a thick layer of cool icing rich with the flavour of the fresh fruit. Just the biscuit to tempt the breakfast appetite.

**BISCUITS**

Agents for Kenya, Uganda, Tanganyika & Malawi.

J. H. CLARKE, P.O. Box 108, NAIROBI

AND AT WILBERFORCE

CUPHOLDERS STILL LEAD.

Shuffled Clubs to the Fore.

KEEN FIGHT IN FOOTBALL

The following are the positions of the clubs in various leagues at the week-end:

ENGLISH LEAGUE

Division I.	Club	Pts.
W. Brom. Ath.	20	12
Sheff. Wed.	19	12
Sheff. Utd.	18	12
Derby	17	12
Nottingham	16	12
Blackburn	15	12
Manchester	14	12
Sheff. F.C.	13	12
Sheff. W. Res.	12	12
Sheff. H.	11	12
Sheff. T.	10	12
Sheff. A.	9	12
Sheff. B.	8	12
Sheff. C.	7	12
Sheff. D.	6	12
Sheff. E.	5	12
Sheff. F.	4	12
Sheff. G.	3	12
Sheff. H.	2	12
Sheff. I.	1	12

NUTRAGA TRENDS NOTES.

Ladies' and Men's Doubles.

PORTHOMING COMPETITION

Congratulations to Leslie Faber and Robert Douglas on pulling off the double in the Ladies' Doubles.

JOINT FAVOURITE FOR OBERKREUTZ.

Indications of Betting Market.

THE AUTUMN DOUBLE

Indications of Betting Market.

THE OBERKREUTZ.

Indications of Betting Market.

Local Cricket Match.

PATHE'S NARROW WIN OVER KEALIA.

RACEDAYS SORTED OUT.

Mr. M. Rosenthal, the Nairobi horse racing official, has announced that racing will be held on Tuesday at Cambridge.

Hecky.

CHANGED VENUE FOR LEAGUE MATCH.

Klambe's Visit to Muthaga.

On Sunday Klambe had a visit to Muthaga and a team match was played.

GROUND CLUBS WIN BY 20 RUNS.

The scores were: Klambe 20, Muthaga 0.

William's Hint

William's Hint: A horse named William has won several races.

BOWLING.

Delial O. M. R. W. 40.0, Delial O. M. R. W. 40.0.

RAILWAY RIFLES CLUB CHAMPIONSHIP.

The shoot for the Great Graham Railway Rifles Club was held on Sunday morning.

SPORTS DIARY.

October (Contd. Week): Football, Cricket, etc.

Railway Club Notes.

INTER-CITY MATCH WITH NUTRAGA.

(Continued): We had a very good match against Nutraga last Sunday.

Indications of Betting Market.

Indications of Betting Market.

Indications of Betting Market.

Indications of Betting Market.

Indications of Betting Market.

Indications of Betting Market.

Indications of Betting Market.

Indications of Betting Market.

Indications of Betting Market.

Indications of Betting Market.

Indications of Betting Market.

Indications of Betting Market.

Indications of Betting Market.

Indications of Betting Market.

Indications of Betting Market.

Indications of Betting Market.

Indications of Betting Market.

Indications of Betting Market.

Indications of Betting Market.

Indications of Betting Market.

Indications of Betting Market.

ALTERATIONS OF DIVISIONS.

FAN FAT AND PANTOMIME First Division to the Second Division.

FRESH STOCKS OF RODS, REELS, LINES, CASTS, TRACERS, FILMS, AND ALL ACCESSORIES FOR TROUT FISHING.

HEVE JUST BREVISED. A BEAUTIFUL SELECTION OF TACKLE WILL WORK A VISIT OF INSPECTION.

Chas A Hayer & Co., Ltd. NAIROBI.

ALTERATIONS OF DIVISIONS.

FAN FAT AND PANTOMIME First Division to the Second Division.

FRESH STOCKS OF RODS, REELS, LINES, CASTS, TRACERS, FILMS, AND ALL ACCESSORIES FOR TROUT FISHING.

HEVE JUST BREVISED. A BEAUTIFUL SELECTION OF TACKLE WILL WORK A VISIT OF INSPECTION.

Chas A Hayer & Co., Ltd. NAIROBI.

ALTERATIONS OF DIVISIONS.

FAN FAT AND PANTOMIME First Division to the Second Division.

FRESH STOCKS OF RODS, REELS, LINES, CASTS, TRACERS, FILMS, AND ALL ACCESSORIES FOR TROUT FISHING.

HEVE JUST BREVISED. A BEAUTIFUL SELECTION OF TACKLE WILL WORK A VISIT OF INSPECTION.

Chas A Hayer & Co., Ltd. NAIROBI.

ALTERATIONS OF DIVISIONS.

FAN FAT AND PANTOMIME First Division to the Second Division.

FRESH STOCKS OF RODS, REELS, LINES, CASTS, TRACERS, FILMS, AND ALL ACCESSORIES FOR TROUT FISHING.

HEVE JUST BREVISED. A BEAUTIFUL SELECTION OF TACKLE WILL WORK A VISIT OF INSPECTION.

Chas A Hayer & Co., Ltd. NAIROBI.

ALTERATIONS OF DIVISIONS.

FAN FAT AND PANTOMIME First Division to the Second Division.

FRESH STOCKS OF RODS, REELS, LINES, CASTS, TRACERS, FILMS, AND ALL ACCESSORIES FOR TROUT FISHING.

HEVE JUST BREVISED. A BEAUTIFUL SELECTION OF TACKLE WILL WORK A VISIT OF INSPECTION.

Chas A Hayer & Co., Ltd. NAIROBI.

ALTERATIONS OF DIVISIONS.

FAN FAT AND PANTOMIME First Division to the Second Division.

FRESH STOCKS OF RODS, REELS, LINES, CASTS, TRACERS, FILMS, AND ALL ACCESSORIES FOR TROUT FISHING.

HEVE JUST BREVISED. A BEAUTIFUL SELECTION OF TACKLE WILL WORK A VISIT OF INSPECTION.

Chas A Hayer & Co., Ltd. NAIROBI.

ALTERATIONS OF DIVISIONS.

FAN FAT AND PANTOMIME First Division to the Second Division.

FRESH STOCKS OF RODS, REELS, LINES, CASTS, TRACERS, FILMS, AND ALL ACCESSORIES FOR TROUT FISHING.

HEVE JUST BREVISED. A BEAUTIFUL SELECTION OF TACKLE WILL WORK A VISIT OF INSPECTION.

Chas A Hayer & Co., Ltd. NAIROBI.

ALTERATIONS OF DIVISIONS.

FAN FAT AND PANTOMIME First Division to the Second Division.

FRESH STOCKS OF RODS, REELS, LINES, CASTS, TRACERS, FILMS, AND ALL ACCESSORIES FOR TROUT FISHING.

HEVE JUST BREVISED. A BEAUTIFUL SELECTION OF TACKLE WILL WORK A VISIT OF INSPECTION.

Chas A Hayer & Co., Ltd. NAIROBI.

ALTERATIONS OF DIVISIONS.

FAN FAT AND PANTOMIME First Division to the Second Division.

FRESH STOCKS OF RODS, REELS, LINES, CASTS, TRACERS, FILMS, AND ALL ACCESSORIES FOR TROUT FISHING.

HEVE JUST BREVISED. A BEAUTIFUL SELECTION OF TACKLE WILL WORK A VISIT OF INSPECTION.

Chas A Hayer & Co., Ltd. NAIROBI.

ALTERATIONS OF DIVISIONS.

FAN FAT AND PANTOMIME First Division to the Second Division.

FRESH STOCKS OF RODS, REELS, LINES, CASTS, TRACERS, FILMS, AND ALL ACCESSORIES FOR TROUT FISHING.

HEVE JUST BREVISED. A BEAUTIFUL SELECTION OF TACKLE WILL WORK A VISIT OF INSPECTION.

Chas A Hayer & Co., Ltd. NAIROBI.

ALTERATIONS OF DIVISIONS.

FAN FAT AND PANTOMIME First Division to the Second Division.

FRESH STOCKS OF RODS, REELS, LINES, CASTS, TRACERS, FILMS, AND ALL ACCESSORIES FOR TROUT FISHING.

HEVE JUST BREVISED. A BEAUTIFUL SELECTION OF TACKLE WILL WORK A VISIT OF INSPECTION.

Chas A Hayer & Co., Ltd. NAIROBI.

ALTERATIONS OF DIVISIONS.

FAN FAT AND PANTOMIME First Division to the Second Division.

FRESH STOCKS OF RODS, REELS, LINES, CASTS, TRACERS, FILMS, AND ALL ACCESSORIES FOR TROUT FISHING.

HEVE JUST BREVISED. A BEAUTIFUL SELECTION OF TACKLE WILL WORK A VISIT OF INSPECTION.

Chas A Hayer & Co., Ltd. NAIROBI.

ALTERATIONS OF DIVISIONS.

FAN FAT AND PANTOMIME First Division to the Second Division.

FRESH STOCKS OF RODS, REELS, LINES, CASTS, TRACERS, FILMS, AND ALL ACCESSORIES FOR TROUT FISHING.

HEVE JUST BREVISED. A BEAUTIFUL SELECTION OF TACKLE WILL WORK A VISIT OF INSPECTION.

Chas A Hayer & Co., Ltd. NAIROBI.

ALTERATIONS OF DIVISIONS.

FAN FAT AND PANTOMIME First Division to the Second Division.

FRESH STOCKS OF RODS, REELS, LINES, CASTS, TRACERS, FILMS, AND ALL ACCESSORIES FOR TROUT FISHING.

HEVE JUST BREVISED. A BEAUTIFUL SELECTION OF TACKLE WILL WORK A VISIT OF INSPECTION.

Chas A Hayer & Co., Ltd. NAIROBI.

ALTERATIONS OF DIVISIONS.

FAN FAT AND PANTOMIME First Division to the Second Division.

FRESH STOCKS OF RODS, REELS, LINES, CASTS, TRACERS, FILMS, AND ALL ACCESSORIES FOR TROUT FISHING.

HEVE JUST BREVISED. A BEAUTIFUL SELECTION OF TACKLE WILL WORK A VISIT OF INSPECTION.

Chas A Hayer & Co., Ltd. NAIROBI.

ALTERATIONS OF DIVISIONS.

FAN FAT AND PANTOMIME First Division to the Second Division.

FRESH STOCKS OF RODS, REELS, LINES, CASTS, TRACERS, FILMS, AND ALL ACCESSORIES FOR TROUT FISHING.

HEVE JUST BREVISED. A BEAUTIFUL SELECTION OF TACKLE WILL WORK A VISIT OF INSPECTION.

Chas A Hayer & Co., Ltd. NAIROBI.

ALTERATIONS OF DIVISIONS.

FAN FAT AND PANTOMIME First Division to the Second Division.

FRESH STOCKS OF RODS, REELS, LINES, CASTS, TRACERS, FILMS, AND ALL ACCESSORIES FOR TROUT FISHING.

HEVE JUST BREVISED. A BEAUTIFUL SELECTION OF TACKLE WILL WORK A VISIT OF INSPECTION.

Chas A Hayer & Co., Ltd. NAIROBI.

ALTERATIONS OF DIVISIONS.

FAN FAT AND PANTOMIME First Division to the Second Division.

FRESH STOCKS OF RODS, REELS, LINES, CASTS, TRACERS, FILMS, AND ALL ACCESSORIES FOR TROUT FISHING.

HEVE JUST BREVISED. A BEAUTIFUL SELECTION OF TACKLE WILL WORK A VISIT OF INSPECTION.

Chas A Hayer & Co., Ltd. NAIROBI.

ALTERATIONS OF DIVISIONS.

FAN FAT AND PANTOMIME First Division to the Second Division.

FRESH STOCKS OF RODS, REELS, LINES, CASTS, TRACERS, FILMS, AND ALL ACCESSORIES FOR TROUT FISHING.

HEVE JUST BREVISED. A BEAUTIFUL SELECTION OF TACKLE WILL WORK A VISIT OF INSPECTION.

Chas A Hayer & Co., Ltd. NAIROBI.

ALTERATIONS OF DIVISIONS.

FAN FAT AND PANTOMIME First Division to the Second Division.

FRESH STOCKS OF RODS, REELS, LINES, CASTS, TRACERS, FILMS, AND ALL ACCESSORIES FOR TROUT FISHING.

HEVE JUST BREVISED. A BEAUTIFUL SELECTION OF TACKLE WILL WORK A VISIT OF INSPECTION.

Chas A Hayer & Co., Ltd. NAIROBI.

ALTERATIONS OF DIVISIONS.

FAN FAT AND PANTOMIME First Division to the Second Division.

FRESH STOCKS OF RODS, REELS, LINES, CASTS, TRACERS, FILMS, AND ALL ACCESSORIES FOR TROUT FISHING.

HEVE JUST BREVISED. A BEAUTIFUL SELECTION OF TACKLE WILL WORK A VISIT OF INSPECTION.

Chas A Hayer & Co., Ltd. NAIROBI.

ALTERATIONS OF DIVISIONS.

FAN FAT AND PANTOMIME First Division to the Second Division.

FRESH STOCKS OF RODS, REELS, LINES, CASTS, TRACERS, FILMS, AND ALL ACCESSORIES FOR TROUT FISHING.

HEVE JUST BREVISED. A BEAUTIFUL SELECTION OF TACKLE WILL WORK A VISIT OF INSPECTION.

Chas A Hayer & Co., Ltd. NAIROBI.

ALTERATIONS OF DIVISIONS.

FAN FAT AND PANTOMIME First Division to the Second Division.

FRESH STOCKS OF RODS, REELS, LINES, CASTS, TRACERS, FILMS, AND ALL ACCESSORIES FOR TROUT FISHING.

HEVE JUST BREVISED. A BEAUTIFUL SELECTION OF TACKLE WILL WORK A VISIT OF INSPECTION.

Chas A Hayer & Co., Ltd. NAIROBI.

ALTERATIONS OF DIVISIONS.

FAN FAT AND PANTOMIME First Division to the Second Division.

FRESH STOCKS OF RODS, REELS, LINES, CASTS, TRACERS, FILMS, AND ALL ACCESSORIES FOR TROUT FISHING.

HEVE JUST BREVISED. A BEAUTIFUL SELECTION OF TACKLE WILL WORK A VISIT OF INSPECTION.

Chas A Hayer & Co., Ltd. NAIROBI.

ALTERATIONS OF DIVISIONS.

FAN FAT AND PANTOMIME First Division to the Second Division.

FRESH STOCKS OF RODS, REELS, LINES, CASTS, TRACERS, FILMS, AND ALL ACCESSORIES FOR TROUT FISHING.

HEVE JUST BREVISED. A BEAUTIFUL SELECTION OF TACKLE WILL WORK A VISIT OF INSPECTION.

Chas A Hayer & Co., Ltd. NAIROBI.

ALTERATIONS OF DIVISIONS.

FAN FAT AND PANTOMIME First Division to the Second Division.

FRESH STOCKS OF RODS, REELS, LINES, CASTS, TRACERS, FILMS, AND ALL ACCESSORIES FOR TROUT FISHING.

HEVE JUST BREVISED. A BEAUTIFUL SELECTION OF TACKLE WILL WORK A VISIT OF INSPECTION.

Chas A Hayer & Co., Ltd. NAIROBI.

ALTERATIONS