

The Lounge for MORNING and AFTERNOON TEA and Refreshments of Every Kind.

OPEN ON SUNDAYS

PRICE 20 CENTS.

Limerick Competition. Get your form for the Limerick Competition from your dealer. First Prize 100 Shillings. Kinca Breweries Ltd.

DAILY EDITION

The East African Standard

UGANDA ARGUS. With which is incorporated THE LEADER.

GUARANTEED THE LARGEST CIRCULATION OF ANY NEWSPAPER IN KENYA, UGANDA, TANGANYIKA AND ZANZIBAR.

NAIROBI, TUESDAY, NOVEMBER 22, 1932

MANCHURIAN PROBLEM.

Dispute Rapidly Nearing a Crisis. Hopes for Bumper Crops. 1,000,000 Acres Planted.

JAPAN REJECTS THE LYTTON REPORT. Pessimism at Geneva.

CHINA PREPARED TO RESIST JAPANESE AGGRESSION.

It is stated from Geneva that the dispute between China and Japan over Manchuria is rapidly moving towards a crisis, in view of Japan's rejection of the report by the Lytton Commission. The subject will be debated by the League on November 21.

The reasons for the Japanese rejection of the Lytton Report are that the demand for self-determination was a spontaneous act by the Manchurians themselves and that Japan's recognition and co-operation with the new regime did not violate any treaty. Further, the Commission are not adapted to relatives in the Far East.

In a statement to the Press, a Chinese representative declared that China was prepared to resist any Japanese aggression, even to the extent of embracing the horrors of militarism.

The possibility of China invoking Article 16 of the League Covenant is also mentioned. Should China take this line the action of the League Council will be postponed and would have no alternative but to refer the Lytton Report to a special commission established by the Assembly.

The League Position.

China would invoke Article 16 of the League Covenant for reasons which are being stated with some probability to prevent the possibility of a compulsory action by the League Council. It is an alternative but to refer the Lytton Report to a special commission, established by the Assembly to deal with the dispute.

Outlook Not Without Hope.

The League Council will be asked to refer the Lytton Commission report to a special commission. It is an alternative but to refer the Lytton Report to a special commission, established by the Assembly to deal with the dispute.

The immediate business of the League Council will be to refer the Lytton Commission report to a special commission. It is an alternative but to refer the Lytton Report to a special commission, established by the Assembly to deal with the dispute.

A Fighting Speech. Geneva, November 20. The League Council will be asked to refer the Lytton Commission report to a special commission. It is an alternative but to refer the Lytton Report to a special commission, established by the Assembly to deal with the dispute.

Mr. de Valera in his opening remarks was unanimously agreed that the League Council will be asked to refer the Lytton Commission report to a special commission. It is an alternative but to refer the Lytton Report to a special commission, established by the Assembly to deal with the dispute.

Mr. de Valera in his opening remarks was unanimously agreed that the League Council will be asked to refer the Lytton Commission report to a special commission. It is an alternative but to refer the Lytton Report to a special commission, established by the Assembly to deal with the dispute.

Mr. de Valera in his opening remarks was unanimously agreed that the League Council will be asked to refer the Lytton Commission report to a special commission. It is an alternative but to refer the Lytton Report to a special commission, established by the Assembly to deal with the dispute.

UGANDA COTTON REPORT. Hopes for Bumper Crops. 1,000,000 Acres Planted.

STATE OPENING OF PARLIAMENT TO-DAY. Heavy Programme of Legislation.

THE KING'S SPEECH. AN ENCOURAGING OUTLOOK.

COMMITTEE REPORT NOT YET COMPLETED.

THE KING'S SPEECH. AN ENCOURAGING OUTLOOK.

COMMITTEE REPORT NOT YET COMPLETED.

COMMITTEE REPORT NOT YET COMPLETED.

COMMITTEE REPORT NOT YET COMPLETED.

COMMITTEE REPORT NOT YET COMPLETED.

COMMITTEE REPORT NOT YET COMPLETED.

COMMITTEE REPORT NOT YET COMPLETED.

COMMITTEE REPORT NOT YET COMPLETED.

COMMITTEE REPORT NOT YET COMPLETED.

COMMITTEE REPORT NOT YET COMPLETED.

COMMITTEE REPORT NOT YET COMPLETED.

COMMITTEE REPORT NOT YET COMPLETED.

OUTRAGE IN FRANCE.

The Budget POSTPONED. Until Early Next Year.

RAILWAY FINANCES IN TANGANYIKA. Revenue Falls by Over 42 Per Cent.

REPRESENTATIVE CASES.

COMMITTEE REPORT NOT YET COMPLETED.

COMMITTEE REPORT NOT YET COMPLETED.

COMMITTEE REPORT NOT YET COMPLETED.

COMMITTEE REPORT NOT YET COMPLETED.

COMMITTEE REPORT NOT YET COMPLETED.

COMMITTEE REPORT NOT YET COMPLETED.

COMMITTEE REPORT NOT YET COMPLETED.

COMMITTEE REPORT NOT YET COMPLETED.

COMMITTEE REPORT NOT YET COMPLETED.

COMMITTEE REPORT NOT YET COMPLETED.

COMMITTEE REPORT NOT YET COMPLETED.

COMMITTEE REPORT NOT YET COMPLETED.

COMMITTEE REPORT NOT YET COMPLETED.

COMMITTEE REPORT NOT YET COMPLETED.

COMMITTEE REPORT NOT YET COMPLETED.

Attempt to Wreck Premier's Train.

RAILS TORN UP BY BOMB EXPLOSION.

REPRESENTATIVE CASES.

COMMITTEE REPORT NOT YET COMPLETED.

COMMITTEE REPORT NOT YET COMPLETED.

COMMITTEE REPORT NOT YET COMPLETED.

COMMITTEE REPORT NOT YET COMPLETED.

COMMITTEE REPORT NOT YET COMPLETED.

COMMITTEE REPORT NOT YET COMPLETED.

COMMITTEE REPORT NOT YET COMPLETED.

COMMITTEE REPORT NOT YET COMPLETED.

COMMITTEE REPORT NOT YET COMPLETED.

COMMITTEE REPORT NOT YET COMPLETED.

COMMITTEE REPORT NOT YET COMPLETED.

COMMITTEE REPORT NOT YET COMPLETED.

COMMITTEE REPORT NOT YET COMPLETED.

COMMITTEE REPORT NOT YET COMPLETED.

COMMITTEE REPORT NOT YET COMPLETED.

COMMITTEE REPORT NOT YET COMPLETED.

Attempt to Wreck Premier's Train.

RAILS TORN UP BY BOMB EXPLOSION.

REPRESENTATIVE CASES.

COMMITTEE REPORT NOT YET COMPLETED.

COMMITTEE REPORT NOT YET COMPLETED.

COMMITTEE REPORT NOT YET COMPLETED.

COMMITTEE REPORT NOT YET COMPLETED.

COMMITTEE REPORT NOT YET COMPLETED.

COMMITTEE REPORT NOT YET COMPLETED.

COMMITTEE REPORT NOT YET COMPLETED.

COMMITTEE REPORT NOT YET COMPLETED.

COMMITTEE REPORT NOT YET COMPLETED.

COMMITTEE REPORT NOT YET COMPLETED.

COMMITTEE REPORT NOT YET COMPLETED.

COMMITTEE REPORT NOT YET COMPLETED.

COMMITTEE REPORT NOT YET COMPLETED.

COMMITTEE REPORT NOT YET COMPLETED.

COMMITTEE REPORT NOT YET COMPLETED.

COMMITTEE REPORT NOT YET COMPLETED.

Attempt to Wreck Premier's Train.

RAILS TORN UP BY BOMB EXPLOSION.

REPRESENTATIVE CASES.

COMMITTEE REPORT NOT YET COMPLETED.

COMMITTEE REPORT NOT YET COMPLETED.

COMMITTEE REPORT NOT YET COMPLETED.

COMMITTEE REPORT NOT YET COMPLETED.

COMMITTEE REPORT NOT YET COMPLETED.

COMMITTEE REPORT NOT YET COMPLETED.

COMMITTEE REPORT NOT YET COMPLETED.

COMMITTEE REPORT NOT YET COMPLETED.

COMMITTEE REPORT NOT YET COMPLETED.

COMMITTEE REPORT NOT YET COMPLETED.

COMMITTEE REPORT NOT YET COMPLETED.

COMMITTEE REPORT NOT YET COMPLETED.

COMMITTEE REPORT NOT YET COMPLETED.

COMMITTEE REPORT NOT YET COMPLETED.

COMMITTEE REPORT NOT YET COMPLETED.

COMMITTEE REPORT NOT YET COMPLETED.

Attempt to Wreck Premier's Train.

RAILS TORN UP BY BOMB EXPLOSION.

REPRESENTATIVE CASES.

COMMITTEE REPORT NOT YET COMPLETED.

COMMITTEE REPORT NOT YET COMPLETED.

COMMITTEE REPORT NOT YET COMPLETED.

COMMITTEE REPORT NOT YET COMPLETED.

COMMITTEE REPORT NOT YET COMPLETED.

COMMITTEE REPORT NOT YET COMPLETED.

COMMITTEE REPORT NOT YET COMPLETED.

COMMITTEE REPORT NOT YET COMPLETED.

COMMITTEE REPORT NOT YET COMPLETED.

COMMITTEE REPORT NOT YET COMPLETED.

COMMITTEE REPORT NOT YET COMPLETED.

COMMITTEE REPORT NOT YET COMPLETED.

COMMITTEE REPORT NOT YET COMPLETED.

COMMITTEE REPORT NOT YET COMPLETED.

COMMITTEE REPORT NOT YET COMPLETED.

COMMITTEE REPORT NOT YET COMPLETED.

Attempt to Wreck Premier's Train.

RAILS TORN UP BY BOMB EXPLOSION.

REPRESENTATIVE CASES.

COMMITTEE REPORT NOT YET COMPLETED.

COMMITTEE REPORT NOT YET COMPLETED.

COMMITTEE REPORT NOT YET COMPLETED.

COMMITTEE REPORT NOT YET COMPLETED.

COMMITTEE REPORT NOT YET COMPLETED.

COMMITTEE REPORT NOT YET COMPLETED.

COMMITTEE REPORT NOT YET COMPLETED.

COMMITTEE REPORT NOT YET COMPLETED.

COMMITTEE REPORT NOT YET COMPLETED.

COMMITTEE REPORT NOT YET COMPLETED.

COMMITTEE REPORT NOT YET COMPLETED.

COMMITTEE REPORT NOT YET COMPLETED.

COMMITTEE REPORT NOT YET COMPLETED.

COMMITTEE REPORT NOT YET COMPLETED.

COMMITTEE REPORT NOT YET COMPLETED.

COMMITTEE REPORT NOT YET COMPLETED.

Attempt to Wreck Premier's Train.

RAILS TORN UP BY BOMB EXPLOSION.

REPRESENTATIVE CASES.

COMMITTEE REPORT NOT YET COMPLETED.

COMMITTEE REPORT NOT YET COMPLETED.

COMMITTEE REPORT NOT YET COMPLETED.

COMMITTEE REPORT NOT YET COMPLETED.

COMMITTEE REPORT NOT YET COMPLETED.

COMMITTEE REPORT NOT YET COMPLETED.

COMMITTEE REPORT NOT YET COMPLETED.

COMMITTEE REPORT NOT YET COMPLETED.

COMMITTEE REPORT NOT YET COMPLETED.

COMMITTEE REPORT NOT YET COMPLETED.

COMMITTEE REPORT NOT YET COMPLETED.

COMMITTEE REPORT NOT YET COMPLETED.

COMMITTEE REPORT NOT YET COMPLETED.

COMMITTEE REPORT NOT YET COMPLETED.

COMMITTEE REPORT NOT YET COMPLETED.

COMMITTEE REPORT NOT YET COMPLETED.

Attempt to Wreck Premier's Train.

RAILS TORN UP BY BOMB EXPLOSION.

REPRESENTATIVE CASES.

COMMITTEE REPORT NOT YET COMPLETED.

COMMITTEE REPORT NOT YET COMPLETED.

COMMITTEE REPORT NOT YET COMPLETED.

COMMITTEE REPORT NOT YET COMPLETED.

COMMITTEE REPORT NOT YET COMPLETED.

COMMITTEE REPORT NOT YET COMPLETED.

COMMITTEE REPORT NOT YET COMPLETED.

COMMITTEE REPORT NOT YET COMPLETED.

COMMITTEE REPORT NOT YET COMPLETED.

COMMITTEE REPORT NOT YET COMPLETED.

COMMITTEE REPORT NOT YET COMPLETED.

COMMITTEE REPORT NOT YET COMPLETED.

COMMITTEE REPORT NOT YET COMPLETED.

COMMITTEE REPORT NOT YET COMPLETED.

COMMITTEE REPORT NOT YET COMPLETED.

COMMITTEE REPORT NOT YET COMPLETED.

Attempt to Wreck Premier's Train.

RAILS TORN UP BY BOMB EXPLOSION.

REPRESENTATIVE CASES.

COMMITTEE REPORT NOT YET COMPLETED.

COMMITTEE REPORT NOT YET COMPLETED.

COMMITTEE REPORT NOT YET COMPLETED.

COMMITTEE REPORT NOT YET COMPLETED.

COMMITTEE REPORT NOT YET COMPLETED.

COMMITTEE REPORT NOT YET COMPLETED.

COMMITTEE REPORT NOT YET COMPLETED.

COMMITTEE REPORT NOT YET COMPLETED.

COMMITTEE REPORT NOT YET COMPLETED.

COMMITTEE REPORT NOT YET COMPLETED.

COMMITTEE REPORT NOT YET COMPLETED.

COMMITTEE REPORT NOT YET COMPLETED.

COMMITTEE REPORT NOT YET COMPLETED.

COMMITTEE REPORT NOT YET COMPLETED.

COMMITTEE REPORT NOT YET COMPLETED.

COMMITTEE REPORT NOT YET COMPLETED.

Attempt to Wreck Premier's Train.

RAILS TORN UP BY BOMB EXPLOSION.

REPRESENTATIVE CASES.

COMMITTEE REPORT NOT YET COMPLETED.

COMMITTEE REPORT NOT YET COMPLETED.

COMMITTEE REPORT NOT YET COMPLETED.

COMMITTEE REPORT NOT YET COMPLETED.

COMMITTEE REPORT NOT YET COMPLETED.

COMMITTEE REPORT NOT YET COMPLETED.

COMMITTEE REPORT NOT YET COMPLETED.

COMMITTEE REPORT NOT YET COMPLETED.

COMMITTEE REPORT NOT YET COMPLETED.

COMMITTEE REPORT NOT YET COMPLETED.

COMMITTEE REPORT NOT YET COMPLETED.

COMMITTEE REPORT NOT YET COMPLETED.

COMMITTEE REPORT NOT YET COMPLETED.

COMMITTEE REPORT NOT YET COMPLETED.

COMMITTEE REPORT NOT YET COMPLETED.

COMMITTEE REPORT NOT YET COMPLETED.

Attempt to Wreck Premier's Train.

RAILS TORN UP BY BOMB EXPLOSION.

REPRESENTATIVE CASES.

COMMITTEE REPORT NOT YET COMPLETED.

COMMITTEE REPORT NOT YET COMPLETED.

COMMITTEE REPORT NOT YET COMPLETED.

COMMITTEE REPORT NOT YET COMPLETED.

COMMITTEE REPORT NOT YET COMPLETED.

COMMITTEE REPORT NOT YET COMPLETED.

COMMITTEE REPORT NOT YET COMPLETED.

COMMITTEE REPORT NOT YET COMPLETED.

COMMITTEE REPORT NOT YET COMPLETED.

COMMITTEE REPORT NOT YET COMPLETED.

COMMITTEE REPORT NOT YET COMPLETED.

COMMITTEE REPORT NOT YET COMPLETED.

COMMITTEE REPORT NOT YET COMPLETED.

COMMITTEE REPORT NOT YET COMPLETED.

COMMITTEE REPORT NOT YET COMPLETED.

COMMITTEE REPORT NOT YET COMPLETED.

Attempt to Wreck Premier's Train.

RAILS TORN UP BY BOMB EXPLOSION.

REPRESENTATIVE CASES.

COMMITTEE REPORT NOT YET COMPLETED.

COMMITTEE REPORT NOT YET COMPLETED.

COMMITTEE REPORT NOT YET COMPLETED.

COMMITTEE REPORT NOT YET COMPLETED.

COMMITTEE REPORT NOT YET COMPLETED.

COMMITTEE REPORT NOT YET COMPLETED.

COMMITTEE REPORT NOT YET COMPLETED.

COMMITTEE REPORT NOT YET COMPLETED.

COMMITTEE REPORT NOT YET COMPLETED.

COMMITTEE REPORT NOT YET COMPLETED.

COMMITTEE REPORT NOT YET COMPLETED.

COMMITTEE REPORT NOT YET COMPLETED.

COMMITTEE REPORT NOT YET COMPLETED.

COMMITTEE REPORT NOT YET COMPLETED.

COMMITTEE REPORT NOT YET COMPLETED.

COMMITTEE REPORT NOT YET COMPLETED.

Attempt to Wreck Premier's Train.

RAILS TORN UP BY BOMB EXPLOSION.

REPRESENTATIVE CASES.





EXCURSIONS

To DURBAN

JUNE to DECEMBER

BY

UNION-CASTLE and BRITISH-INDIA LINES

(Available for three months)

FARES:

1st Class ..... £32  
2nd Class B.I. or 1st Class Lower Grade U.C. .... £24

ALL SAILINGS FROM 1st JUNE to 31st DECEMBER

See ordinary Advertisements and Sailing Lists.

MESSAGERIES MARITIMES

(FRENCH MAIL STEAMERS)

Regular and Fortnightly Services from London to Mombasa.

THE QUICKEST ROUTE TO THE EAST

Next Sailings to Mombasa.

S.S. "CHARENTAIS" ..... B ..... 22nd November  
S.S. "COMPTON" ..... B ..... 7th December  
S.S. "JEAN LABORIE" ..... C ..... 21st December  
S.S. "AZAY LE RIDEAU" ..... B ..... 1st January, 1933.  
ORCHESTRA ON ALL STEAMERS.  
Next Arrival from Mombasa.  
S.S. "AZAY LE RIDEAU" ..... B ..... 20th November.  
MESSAGERIES MARITIMES, P.O. Box 16, MOMBASA.  
JARDON FRETIGNO & Co., Ltd.

HOLLAND AFRIKA LIJN

Steamers will load at Kilindi on or about the following dates—

Homeward via SUEZ:	Arriving
S.S. "Moloch" ..... B	14th December
S.S. "Nijkamp" ..... C	11th January
S.S. "Kluisdijk" ..... A	7th February
S.S. "Kluisdijk" ..... C	11th March
S.S. "Moloch" ..... B	5th April
S.S. "Nijkamp" ..... C	17th May
S.S. "Kluisdijk" ..... A	13th June
S.S. "Moloch" ..... B	10th July
S.S. "Kluisdijk" ..... C	21st August

Homeward via THE CAPE:	Arriving
S.S. "Bontebok" ..... B	22nd December
S.S. "Hemelvaart" ..... C	26th January
S.S. "Nijkamp" ..... A	17th March
S.S. "Bontebok" ..... B	12nd April

Steamers provide excellent Cabin accommodation for passengers. For particulars regarding rates and conditions apply to the Agents.

Twenchte Overseas Trading Co., Ltd. MOMBASA — KAMPALA

MOTOR SERVICE CO., Ltd.

Sixth Avenue — NAIROBI.

FIAT REPAIRS

UNDER THE SUPERVISION OF EXPERIENCED ITALIAN MECHANIC

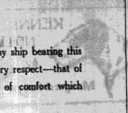
SECOND HAND CARS

A FEW RELIABLE CARS FOR SALE FROM £30

Smart and Attractive EMBOSSED CROWD-CALLING NOTICES, PRICE TICKETS, ETC.

Made to Order: Calligraphic and beautiful. Made in England. Printed on heavy and durable paper. Available in all colors. Price, 1/6 per 100. Postage, 1/6 per 100. Order by cheque or cash.

Standard Stationery Stores

s.s. "Kenya" 

As might be expected in any ship bearing this name, she is modern in every respect—that of course implies a standard of comfort which satisfies the most exacting.

WHY NOT EXPERIENCE IT?

Excursion Fares to Durban are still offering at attractive rates.

Full particulars on application to any agent of

**B. I. S. N. CO., Ltd.**

"TIRRENIA" STEAMSHIP COMPANY

PLOTTE RIUNITE FLORIO-OTTRA. THE BEST ROUTE TO ENGLAND. SAILINGS FROM KILINDI TO GREEK AND NAPLES.

S.S. "E. CRISPI" — 1st Dec. 1st Feb. 1st April. 1st June. 1st Aug., 1st Oct. S.S. "G. MAZZINI" — 1st Jan. 1st March. 1st May. 1st July. 1st Sept. 1st Nov.

Oil burning, luxurious Steamers—romy cabins—Fresh running water in all cabins and baths—Orchestra—Cinematograph—Deck Games—Refrigerated Food, etc.

20% reduction on return portion of the tickets, if returning within one year (to and from Europe only) 15% reduction if returning within five years (to and from Europe only).

Special reductions to Government Officials and their dependents.

Free through-book for any luggage to London with weight-limit of Five-Foot.

1st Class to Naples from £65 to Genoa from £60  
2nd economical to Naples from £38 to Genoa from £30

MONTHLY EXCURSIONS—MOMBASA, ZANZIBAR, DAR ES SALAAM.

Leaving Mombasa on the 20th at 6 p.m., returning by same steamer to Mombasa on the last day of every month.

Rail excursions tickets are now issued in connection with our monthly excursions. Return being the ordinary single fare, plus quarter for the double journey.

For further particulars apply to—SOCIETA' COLONIALE ITALIANA, MOMBASA, P.O. Box 106. MALVINI & KAMPEL, NAIROBI, P.O. Box 207.

**B.M.C. House** Box 818  
Government Road, NAIROBI

Christmas Presents.

SPECIAL WINDOW DISPLAYS OF ALL THE LATEST NOVELTIES. PRICES ARE LOWER THAN EVER.

BRING YOUR CHILDREN ALONG TO SEE OUR WONDERFUL RANGE OF TOYS

Free Slides Down the Chimney. Free Ball-rooms.

Dips for Little Girls, Little Boys and Babies.

SHOP EARLY TO AVOID DISAPPOINTMENT.

The Bradford Manufacturing Co., Ltd. (Incorporated in England)

**WILSON AIRWAYS Ltd.**

WEEKLY COAST SERVICE. Nairobi - Mombasa - Tanga Zanzibar - Dar es Salaam.

Leaving Nairobi every Thursday returning every Saturday.

NAIROBI — MOMBASA — Shs. 120.00  
NAIROBI — TANGA — Shs. 180.00  
NAIROBI — ZANZIBAR — Shs. 240.00  
NAIROBI — DAR ES SALAAM — Shs. 300.00

Further particulars apply to NAIROBI or ANY AGENT. Phone 2255

P.O. Box 1867

— BOOK — ALL WAYS — ROADWAYS — RAILWAYS — with — GIBBS' AUTO TOURS

General Contractors and Booking Agents for— IMPERIAL AIRWAYS LTD. WILSON AIRWAYS LTD. TANGANYIKA FLYING SERVICE. AIR SERVICE CO., LTD.

Care used all Times.

TOURIST BUREAU P.O. Box 1867. Colony "HOTEL". Phone 2754 & 2111. SIXTH AVENUE (next to Wilsons) NAIROBI. HORNBY BY THE NEW NEW HOTEL. A big range of hand-made Cars always available.

CHILDREN'S SHOES.

WILLOW CALF BAR—good strong shoes, full toe.

D.10937. Sizes 6-10 Shs. 6/- 11-1 Shs. 9/- 2-5 Shs. 10/-

PATENT FLEX BAR—D.10954 Sizes 4-6 Shs. 5/6 7-10 Shs. 5/50

STAMP PAPER. Shs. 1/50 and Shs. 2/1.

Government Road

Standard Stationery Stores, 6th AVENUE, NAIROBI.

LEISURE FOOTWEAR.

NEW SPOTTED GREPE-DE-CHINE BRIDGE SLIPPERS. From Shs. 11/50

Large variety of CHILDREN'S SLIPPERS in Green, Red and Blue. From Shs. 5/50

New Stanley Hotel Arcade

EADIE'S FOOTWEAR LTD. NAIROBI.

**DEUTSCHE OST-AFRIKA-LINIEN**

HOMEWARD VIA SUEZ CANAL. HOMEWARD VIA CAPE.

From Mombasa	From Mombasa
S.S. Uthman ..... 20th November	S.S. Wenzel ..... 20th Nov. 1932
S.S. Wenzel ..... 24th December	S.S. Uthman ..... 24th Dec. 1932
S.S. Uthman ..... 19th Jan. 1933	S.S. Wenzel ..... 19th Jan. 1933
S.S. Adolph Wermann ..... 23rd February	S.S. Adolph Wermann ..... 23rd Feb.
S.S. Wenzel ..... 18th March	S.S. Wenzel ..... 18th Mar.
S.S. Uthman ..... 22nd April	S.S. Uthman ..... 22nd Apr.
S.S. Wenzel ..... 17th May	S.S. Wenzel ..... 17th May

SUMMER EXCURSIONS TO SOUTH AFRICA—NOV. 1832 to FEB. 1933. Winter, Spring, Autumn and Capricorn of British origin are supplied on board the Compagnie's vessels at the equivalent to current Steerage prices.

Visitors to D.O.A.L. Steamers are required to be in possession of permits obtainable at the Office. Sailing subject to alteration.

For full particulars of passenger fares and freight rates apply to the Agents: DEUTSCHE OST-AFRIKA-LINIEN GENERALAGENTUR, MOMBASA. Agents: Messrs. DALGETY & Co., Ltd. Cable: "Dalgety". Messrs. JUNGHELL & Co., Ltd. Cable: "Junghell". KISUMU, JINJA & KAMPALA ROUREFAD & CLARKE, Ltd. Cable: "Progress".

Interesting Novels

We have a large stock of novels—you are sure to find the one you want at the

STANDARD STATIONERY STORES

MAISON MARIE KENYA'S SPECIALISTS in PERMANENT WAVING and LADIES HAIRDRESSING. A visit to us will give you every satisfaction. Only address: SIXTH AVENUE. P.O. Box 109 THE ALL-BRITISH FIRM. Phone 2220

PIANOFORTE TUNING and REPAIRING

Ten years' experience in Kenya Colony and five years with Messrs. Chappell and Co., London.

F. A. HEAD NAIROBI.

OVERSEAS MAILS

Steamers—INWARD

From	Arrives	Departs	Mailbox
India	22nd Nov.	23rd Nov.	11 a.m.
Japan	22nd Nov.	23rd Nov.	11 a.m.
Europe	22nd Nov.	23rd Nov.	11 a.m.
Europe	22nd Nov.	23rd Nov.	11 a.m.
Europe	22nd Nov.	23rd Nov.	11 a.m.
Europe	22nd Nov.	23rd Nov.	11 a.m.

For V.P. parcels apply to the Agents: Messrs. Chappell and Co., London.

Steamers—OUTWARD

To	Departs	Mailbox
India	23rd Nov.	11 a.m.
Japan	23rd Nov.	11 a.m.
Europe	23rd Nov.	11 a.m.
Europe	23rd Nov.	11 a.m.
Europe	23rd Nov.	11 a.m.
Europe	23rd Nov.	11 a.m.

For particulars apply to the Agents: Messrs. Chappell and Co., London.

POST OFFICE NOTICE.

Christmas Overseas Mails

According to the latest available information, the following Mails should arrive at destination before Christmas Day—

MAILS FOR GREAT BRITAIN

Class	Mailbox	Arrives	Departs
A.A. Durban Cables	Letters	20. 2.00 p.m.	Dec. 21
A.A. Durban Cables	Parcels	19. 1.00 p.m.	Dec. 21
A.A. Durban Cables	Parcels	19. 4.00 p.m.	Dec. 21

MAILS FOR SOUTH AFRICA

Class	Mailbox	Arrives	Departs
A.A. Kenya	Letters	20. 5.00 p.m.	Dec. 21
A.A. Kenya	Parcels	19. 4.00 p.m.	Dec. 21
A.A. Kenya	Parcels	19. 4.00 p.m.	Dec. 21
A.A. Kenya	Parcels	19. 4.00 p.m.	Dec. 21

MAILS FOR INDIA

Class	Mailbox	Arrives	Departs
A.A. Kenya	Letters	20. 5.00 p.m.	Dec. 21
A.A. Kenya	Parcels	19. 4.00 p.m.	Dec. 21
A.A. Kenya	Parcels	19. 4.00 p.m.	Dec. 21

POST CHRISTMAS MAILS EARLY

THERE IS NO GOLD at 'UPLANDS' but NO PLACE PRODUCES SUCH GOOD PRODUCTS.





Wines Brandy and Liqueurs

INTRODUCE YOURSELF TO "EPHEDROL"

IF YOU SUFFER FROM CATARRH - HAY FEVER or COLDS

The trouble of the colds is difficult to find its source...



HOWSE & McGEORGE NAIROBI AND BRANCHES

GET THE FACTS

and you will

GET A FORD

When it comes to real, deep-down substantial value, the New Ford stands absolutely alone.

Whether you buy the Eight or the Four, you are sure of getting the utmost return for your motor car money.

No other motor car at anywhere near the price of the New Ford is made with such care and materials.

"GET THE FACTS AND YOU'LL GET A FORD."



Nairobi Motors

Sixth Avenue, Box 46 No. 2459

W. H. LEWIS & SONS

PREMIER BUILDERS

OF

EASTERN AFRICA

NAIROBI OFFICES:- RHODES HOUSE,

P.O. Box 992 Telephone 2867

MOMBASA DAR ES SALAAM P.O. Box 278 Telephone 1196

P.O. Box 296 Telephone 1196

Our work speaks for itself.

Produce of the oldest Vineyards in the World.

Famous for 3,000 YEARS

Excellence Guaranteed. Prices Right Competition. Ask everywhere for "CAMEL" BRAND Very Fine Old Port.

Wholesale and Retail. P.O. Box 822

British Made

Modern Design Excellence of finish

LOW COST characterise the good furniture of

William Newman & Sons Ltd. BIRMINGHAM.

THE ANGLO BALTI TIMBER CO., Ltd. NAIROBI.

Manufacturers Representatives:- R. E. ANDERSON & CO., Corner Stone, Harbour Street, Box 135 - NAIROBI - Phone 2194



"Granny Tot Mother - and Mother Tot Me,"

WOODWARD'S 'GRIPPE WATER' Keeps Baby Well

BUCCO will bring your car up-to-date!



A NEW LIFE FOR THE OLD CAR IF YOU HAVE IT

BUCCO Refinished

Go to your GARAGE OWNER to-day and get an estimate for a complete re-finishing.

BEWARE!! OF IMITATIONS. CHANCES CROOKS LENSES, are OPTICALLY PERFECT. OBTAINABLE IN THREE SHADES, either GRIND TO YOUR PRESCRIPTION or IN PLAIN GLASS. CROOKS GLASSES DO NOT ALTER COLOUR VALUE. They are the ideal glass for Sun Glass, Sports, Cinema, Motoring, etc. A. H. WARDLE & CO. LTD. Ophthalmic Opticians - NAIROBI.

LIGHT GAUGE COPPER PIPING

"INSTANTOR" PIPE FITTINGS

For Hot and Cold Water Installations of Every Description.

No screwing of pipes; No special tools; No chiseling of HOT WATER PIPES; No maintenance.

Copper piping constitutes the latest practice for internal and external installations, and ensures permanent freedom from trouble.

VERY SIMPLE TO INSTALL

R. G. VERNON & CO. 51st Street, NAIROBI. P.O. Box 124 Phone 2544

For the Xmas Mail

YOUR FRIENDS AT HOME WILL APPRECIATE SOMETHING OF LOCAL INTEREST.

What could be nicer or more suitable than an album containing beautiful pictures of wild game and native birds.

25 Photographs 14/6 Post Free 50 Photographs 35/- to any address.

All Pictures by Mr. Martin Johnson, NAIROBI.

Obtainable from:- A. H. WARDLE & CO. LTD. Photographs Chemist, P.O. Box 103 NAIROBI Phone 2006

THE EAST African Standard

TUESDAY, NOV. 22, 1932

Kenya Gold.

It is rather less than a month since the publication of the report of the Hon. Mr. Kikuyu on the Kikuyu goldfield, but few who consider the report as a whole would be likely to be surprised to find that the information contained in the report is being used by some of our newspaper writers to make out a case for the abolition of the goldfield.

It is rather less than a month since the publication of the report of the Hon. Mr. Kikuyu on the Kikuyu goldfield, but few who consider the report as a whole would be likely to be surprised to find that the information contained in the report is being used by some of our newspaper writers to make out a case for the abolition of the goldfield.

It is rather less than a month since the publication of the report of the Hon. Mr. Kikuyu on the Kikuyu goldfield, but few who consider the report as a whole would be likely to be surprised to find that the information contained in the report is being used by some of our newspaper writers to make out a case for the abolition of the goldfield.

The Museum. The British East African Museum, which is being built at Nairobi, is now open to the public. It is situated in the grounds of the Government House, and is a fine example of modern architecture. It contains a large collection of African art and history, and is a most interesting place to visit.

Under the Stars. The British East African Meteorological Society, which was founded in 1908, is now celebrating its 25th anniversary. The society has done much to advance the study of meteorology in East Africa, and its members are to be congratulated on their achievements.

The Air Mail. The Post Office announces that the air mail service between Nairobi and London will be suspended from November 17 to 21. This is due to the fact that the air mail service is being suspended for a few days in order to allow the post office to rearrange its services.

Girl Goggles. The annual general meeting of the Girl Goggles Headquarters will be held at Government House on November 22. The meeting will be held at 10.30 a.m., and will be presided over by the Hon. Mr. Kikuyu.

To Be. The weekly meeting of the Nairobi group of the Girl Goggles Headquarters will be held at Government House on November 22. The meeting will be held at 10.30 a.m., and will be presided over by the Hon. Mr. Kikuyu.

MALE TO BRITAIN. The Post Office announces that the air mail service between Nairobi and London will be suspended from November 17 to 21. This is due to the fact that the air mail service is being suspended for a few days in order to allow the post office to rearrange its services.

Colonial Audit Report. A copy of the 1931 annual report of the Colonial Audit Department has been received in the post. The report contains a detailed account of the financial operations of the colonial governments, and is a most interesting document.

Recognition. The Chief Clerk of the Indian Office, Mr. R. H. D. Smith, has been awarded the O.B.E. for his services to the Government. He has been in the service of the Government for many years, and has done much to advance the interests of the Indian community in East Africa.

Nairobi Flower Show. It is announced that owing to the postponement of the Kenya Legislative Council's Memorial Hall, Nairobi, the Nairobi Flower Show will be held at the Government House on November 22. The show will be held from 10.30 a.m. to 5.00 p.m., and will be presided over by the Hon. Mr. Kikuyu.

Two Accidents. Two accidents occurred at Nairobi on Saturday evening. In one of these a motor car driven by a European was involved in a collision with a native palatine. In the other a European was involved in a collision with a native palatine. Both accidents were caused by carelessness on the part of the drivers.

Police Hospital. The Police Hospital, which is situated in the grounds of the Government House, is now open to the public. It is a fine example of modern architecture, and contains a large collection of African art and history. It is a most interesting place to visit.

Police Review. The Police Review, which is published by the Police Department, is now available. It contains a detailed account of the activities of the police force, and is a most interesting document.

South African Society of E.A. The South African Society of East Africa, which was founded in 1908, is now celebrating its 25th anniversary. The society has done much to advance the study of East African history and geography, and its members are to be congratulated on their achievements.

Nairobi Week to 24th. Kenya Flower Show. The Nairobi Flower Show will be held at the Government House on November 22. The show will be held from 10.30 a.m. to 5.00 p.m., and will be presided over by the Hon. Mr. Kikuyu.

TO-DAY'S WIRELESS. 10.30-11.30 a.m. - Administration Conference. 11.30-12.30 p.m. - British Official Wireless Programme. 12.30-1.30 p.m. - British Official Wireless Programme.

1.30-2.30 p.m. - British Official Wireless Programme. 2.30-3.30 p.m. - British Official Wireless Programme. 3.30-4.30 p.m. - British Official Wireless Programme.







**PRACTICAL ECONOMY!**

WHY THROW YOUR OLD HATS AWAY! BRING THEM TO US.

We can renovate them at a low cost for you.

**Ahamed Bros**

THE HOUSE FOR DISTINCTION.

80, Box 254 Bazaar, NAIROBI. / Phone 2201

**GOING TO KAKAMEGA?**

If you are do not forget your

**JAEGER**  
Pure Wool

you will want it after sundown

JAEGER Slipovers, Pullovers and Cardigans are stocked by the Leading Outfitters.

**ARRIVAL**

**New Seasons Specialities**

DATES—Seedless in Cellophane ... 1/- per packet  
 FIGS ... 1/25 per lb.  
 PRUNES ... 1/35 ...  
 CURRANTS ... 1/25 ...  
 SULTANAS ... 1/40 ...  
 RAISINS—Fudding ... 1/25 ...  
 RAISINS—Seedless ... 1/50 ...  
 ALMONDS ... 1/50 ...  
 BRAZIL NUTS ... 1/50 ...  
 BARCELONA ... 1/25 ...  
 CHERRIES—Glace ... 3/- ...  
 CHERRIES—Crystallized ... 3/50 ...  
 GINGER—In Syrup ... 3/50 ...  
 GINGER—Cubes ... 4/- ...

CHOCOLATES—Cadbury, Fry, Rowntree, Pascal. Presentation Boxes 7/- to 15/-.

**M. S. ELLIOT & Co., Ltd.**

P.O. Box 175 Govt. Road Phone 2060  
 Waiatlands ... 206

TO MEET THE HASTY KAKAMEGA SAFARI.

We Equip All Expeditions At the shortest notice!

**MEGHJI AHAMED & Co., Ltd.**

(The oldest Established Tent-Makers in Kenya)

70, Box 313 Bazaar, NAIROBI.

**CORRESPONDENCE.**

The Editor does not accept responsibility for the views expressed by the correspondents in these columns which serve as a useful means and address of the writer must appear in full and necessarily for publication that purpose of need. It is not desirable to insert correspondence unless it is of a nature which is of general interest to our readers.

**THE TEMPERANCE ISSUE.**

The Editor, "E.A. Standard," writes: "I am glad to see that you are not made out as an article on the subject of the temperance issue. You are not made out as a 'Mortimer's' either."

**AN ELORETT FRYE.**

The Editor, "E.A. Standard," writes: "I have just read with some amusement your article on the subject of Elokett. I don't know who your Elokett correspondent was, but I am sure you must have had a very good one. It is a pity that you did not mention the name of the writer. It is a pity that you did not mention the name of the writer. It is a pity that you did not mention the name of the writer."

**THE TEMPERANCE ISSUE.**

The Editor, "E.A. Standard," writes: "I am glad to see that you are not made out as an article on the subject of the temperance issue. You are not made out as a 'Mortimer's' either."

**THE TEMPERANCE ISSUE.**

The Editor, "E.A. Standard," writes: "I am glad to see that you are not made out as an article on the subject of the temperance issue. You are not made out as a 'Mortimer's' either."

**THE NYANDU NURSING ASSOCIATION.**

Activities During the Past Year.

A VALUABLE INSTITUTION.

**THE NYANDU NURSING ASSOCIATION.**

The annual meeting of the Association was held at the Nyandu Hotel on the 12th inst. The meeting was presided over by the Chairman of the Executive Committee, Miss Kiprotich, who reported on the work of the Association during the past year. The meeting was a success and the Association was re-elected for the year 1932-33.

**THE NYANDU NURSING ASSOCIATION.**

The annual meeting of the Association was held at the Nyandu Hotel on the 12th inst. The meeting was presided over by the Chairman of the Executive Committee, Miss Kiprotich, who reported on the work of the Association during the past year. The meeting was a success and the Association was re-elected for the year 1932-33.

**THE NYANDU NURSING ASSOCIATION.**

The annual meeting of the Association was held at the Nyandu Hotel on the 12th inst. The meeting was presided over by the Chairman of the Executive Committee, Miss Kiprotich, who reported on the work of the Association during the past year. The meeting was a success and the Association was re-elected for the year 1932-33.

**THE NYANDU NURSING ASSOCIATION.**

The annual meeting of the Association was held at the Nyandu Hotel on the 12th inst. The meeting was presided over by the Chairman of the Executive Committee, Miss Kiprotich, who reported on the work of the Association during the past year. The meeting was a success and the Association was re-elected for the year 1932-33.

**FILM SUCCESSES IN LONDON.**

A Beautiful Mountain Romance.

GEORGE ROBEY IN MUSICAL COMEDY.

**FILM SUCCESSES IN LONDON.**

The film "A Beautiful Mountain Romance" starring George Robey in musical comedy, has been a great success in London. The film is a charming and romantic story set in the Swiss Alps. George Robey's performance has been particularly praised, and the film has been shown in many of the best London theatres.

**FILM SUCCESSES IN LONDON.**

The film "A Beautiful Mountain Romance" starring George Robey in musical comedy, has been a great success in London. The film is a charming and romantic story set in the Swiss Alps. George Robey's performance has been particularly praised, and the film has been shown in many of the best London theatres.

**FILM SUCCESSES IN LONDON.**

The film "A Beautiful Mountain Romance" starring George Robey in musical comedy, has been a great success in London. The film is a charming and romantic story set in the Swiss Alps. George Robey's performance has been particularly praised, and the film has been shown in many of the best London theatres.

**FILM SUCCESSES IN LONDON.**

The film "A Beautiful Mountain Romance" starring George Robey in musical comedy, has been a great success in London. The film is a charming and romantic story set in the Swiss Alps. George Robey's performance has been particularly praised, and the film has been shown in many of the best London theatres.

**ASK R. E. Anderson & Co.**

TO QUOTE YOU FOR PLYWOOD

BEST QUALITY CHEAPEST PRICES

Corner House, Harding St., Box 135 - NAIROBI - Phone 2194

Sole Agents for—The London Plywood & Timber Co., Ltd. LONDON.

**ASK R. E. Anderson & Co.**

TO QUOTE YOU FOR PLYWOOD

BEST QUALITY CHEAPEST PRICES

Corner House, Harding St., Box 135 - NAIROBI - Phone 2194

Sole Agents for—The London Plywood & Timber Co., Ltd. LONDON.

**ASK R. E. Anderson & Co.**

TO QUOTE YOU FOR PLYWOOD

BEST QUALITY CHEAPEST PRICES

Corner House, Harding St., Box 135 - NAIROBI - Phone 2194

Sole Agents for—The London Plywood & Timber Co., Ltd. LONDON.

**ASK R. E. Anderson & Co.**

TO QUOTE YOU FOR PLYWOOD

BEST QUALITY CHEAPEST PRICES

Corner House, Harding St., Box 135 - NAIROBI - Phone 2194

Sole Agents for—The London Plywood & Timber Co., Ltd. LONDON.

**ASK R. E. Anderson & Co.**

TO QUOTE YOU FOR PLYWOOD

BEST QUALITY CHEAPEST PRICES

Corner House, Harding St., Box 135 - NAIROBI - Phone 2194

Sole Agents for—The London Plywood & Timber Co., Ltd. LONDON.

**WETHER GOLD MINING OR QUARRYING**

WE CAN SUPPLY YOUR NEEDS.

HAMBERS, CROWHAMS, MINING STEEL, SPADERS, GENERAL HARDWARE.

**J.H. TODD & Co. Ltd.**

**WETHER GOLD MINING OR QUARRYING**

WE CAN SUPPLY YOUR NEEDS.

HAMBERS, CROWHAMS, MINING STEEL, SPADERS, GENERAL HARDWARE.

**J.H. TODD & Co. Ltd.**

**WETHER GOLD MINING OR QUARRYING**

WE CAN SUPPLY YOUR NEEDS.

HAMBERS, CROWHAMS, MINING STEEL, SPADERS, GENERAL HARDWARE.

**J.H. TODD & Co. Ltd.**

**WETHER GOLD MINING OR QUARRYING**

WE CAN SUPPLY YOUR NEEDS.

HAMBERS, CROWHAMS, MINING STEEL, SPADERS, GENERAL HARDWARE.

**J.H. TODD & Co. Ltd.**

**WETHER GOLD MINING OR QUARRYING**

WE CAN SUPPLY YOUR NEEDS.

HAMBERS, CROWHAMS, MINING STEEL, SPADERS, GENERAL HARDWARE.

**J.H. TODD & Co. Ltd.**

**Kenya Orchards Limited**

Special Reduction BOTTLED PLUMS

RED or GOLDEN

Cash 1/- per bottle

Retail Cash Price Nairobi.

Trade enquiries—MORTIMORS, NICHOLAS & CO., Ltd., P.O. Box 57 - NAIROBI.

**Kenya Orchards Limited**

Special Reduction BOTTLED PLUMS

RED or GOLDEN

Cash 1/- per bottle

Retail Cash Price Nairobi.

Trade enquiries—MORTIMORS, NICHOLAS & CO., Ltd., P.O. Box 57 - NAIROBI.

**Kenya Orchards Limited**

Special Reduction BOTTLED PLUMS

RED or GOLDEN

Cash 1/- per bottle

Retail Cash Price Nairobi.

Trade enquiries—MORTIMORS, NICHOLAS & CO., Ltd., P.O. Box 57 - NAIROBI.

**Kenya Orchards Limited**

Special Reduction BOTTLED PLUMS

RED or GOLDEN

Cash 1/- per bottle

Retail Cash Price Nairobi.

Trade enquiries—MORTIMORS, NICHOLAS & CO., Ltd., P.O. Box 57 - NAIROBI.

**Kenya Orchards Limited**

Special Reduction BOTTLED PLUMS

RED or GOLDEN

Cash 1/- per bottle

Retail Cash Price Nairobi.

Trade enquiries—MORTIMORS, NICHOLAS & CO., Ltd., P.O. Box 57 - NAIROBI.

**Exide BATTERIES**

Reliance Services Co., P.O. Box 482 Victoria Street, Phone 2331 NAIROBI.

FOR COMPRESSED AIR PLANT AND TOOLS OF ALL DESCRIPTION.

J. POLLOCK, A.M.I.C.E. 10, BAKER STREET, NAIROBI.

MOSES, ENGINEERING AND CONTRACT COMPANY (ROBERT AFRICA) Limited.

**Belting that Lasts**

**"M.C.O.T."**

**Multiplax BELTING**

"SPECIAL LIGHT" and "STANDARD" CAMEL HAIR.

Transmits the Worlds Power With High Efficiency.

PRICES AND SAMPLES FROM—SMITH, MACKENZIE & CO., Nairobi - Mombasa - Kampala - Tanga - Dar es Salaam

70, Box 313 Bazaar, NAIROBI.



An unusual view, but a very useful request!



BE PREPARED

Never was this SOUND ADVICE more applicable than now...

STOCKS

generally being whatever they were last year. XMAS CRACKERS & STOCKINGS...

BLACKLAWS & BROWN

NAIROBI (Grains) Box No. 2631 'Blacklaws' 468

Vital Seconds advertisement featuring an image of a car and text about time-saving products.

OYSTER THE ROLEX WRIST WATCH advertisement with an image of a watch.

STANDARD STATIONERY STORE advertisement for The Roneo Indexed Diary 1933.

Cricket table with columns for 'Cricket at the Week-End', 'Parklands Beat Park', and 'Gymkhana "A" Victory'.

Table for 'Young Indians vs. Kathiawar' showing scores for various players.

Table for 'Parklands "A" vs. Gymkhana "A"' showing scores for various players.

RIFFLE SHOOTING. Tysen Challenge Cup. The Tysen Challenge Cup, presented to Mr. J. Tysen...

YOUNG INDIANS vs. KATHIAWAR. Played on Sunday at Parklands...

RIFFLE SHOOTING. Tysen Challenge Cup. The Tysen Challenge Cup, presented to Mr. J. Tysen...

RYVITA CRISPREAD advertisement with an image of a box and text: 'RYVITA CRISPREAD is a crisp and crumbly bread...'.

RYVITA CRISPREAD advertisement with an image of a box and text: 'RYVITA CRISPREAD is a crisp and crumbly bread...'.

All in! advertisement with an image of a man and text: 'All in! Build up a new physique...'.

NORTH KENYA TENNIS CLUB advertisement with an image of a tennis racket.

EVERY PICTURE A TRIUMPH advertisement for Certotrop Camera with an image of the camera.

SAVE YOUR CLOTHES FROM MOTHS-SPRAY FLIT advertisement with an image of a moth and a bottle of Flit.

BARCLAYS BANK (DOMINION, COLONIAL AND OVERSEAS) advertisement with text about bank services.

If you are going to KAKAMEGA advertisement for tents and equipment.









IRISH STEWS



ARE NOT LITTLE PADDY'S BEST BREAKFAST



Scott's Porridge Oats

Kenya Fete Supply Co., Ltd.

We supply for hire Gold Tables, Marquee, Good Chairs, Tents, etc.

INSURE Your MOTOR CARS & MOTOR CYCLES

P. STEWART, Victoria Street.

CHRISTMAS CARDS in SILHOUETTE

Kenya Silhouettes Book

THIRTY DESIGNS, including six ENTIRELY NEW

Kenya Silhouettes Book

Kenya Silhouettes Book

Standard Stationery Store

National Bank of India Limited.

Incorporated in United Kingdom

Authorized Capital Rs. 10,00,00,000

AGENTS: Messrs. Messers. Messers.

EXCHANGE

Brook & Share Brokers, Etc.

Charles Osterfeld

Williams

To-Day's Train



I.M.S. FLOWER SHOW.

I have only a few more plants to give

Flowers and some good plants

Flowers and some good plants

Flowers and some good plants

Flowers and some good plants

Flowers and some good plants

Flowers and some good plants

Flowers and some good plants

Flowers and some good plants

Consider Problems Affecting the Area.

CHERRANGANI FARMERS.

CHERRANGANI FARMERS.

CHERRANGANI FARMERS.

CHERRANGANI FARMERS.

CHERRANGANI FARMERS.

CHERRANGANI FARMERS.

CHERRANGANI FARMERS.

CHERRANGANI FARMERS.

CHERRANGANI FARMERS.

A 10/- Postal Order

LUSCIOUS SOUTH AFRICAN FRUIT

THE SOUTH AFRICA OFFICE

MOTOR SERVICE CO., Ltd.

FIAT REPAIRS

DOUBLE-HEX BOX SPINNERS

WHITWORTH SET OF 3 SPANNERS

THE TOOL HOUSE

English-Swahili Phrase Book

Standard Stationery Stores

For First Quality Goods.

Doors - Windows

Special Joinery in any Design.

WOOD BLOCK FLOORS in any Timber.

CONCRETE in any Form.

LIME LIME PUTTY for Plaster.

COMPLETE BUILDINGS

Geo. Blowers

Kenya & Uganda Railways & Harbours

Tenders are invited for the purchase of the following

- (a) Tents 11 ft. x 9 ft. Lined Tent with fly...

2. Tenders who are concerned for the whole or part of the above...

G. D. RHODES, General Manager.

WHITWORTH SET OF 3 SPANNERS

DOUBLE-HEX BOX SPINNERS

THE TOOL HOUSE

English-Swahili Phrase Book

Standard Stationery Stores













**PRACTICAL ECONOMY!**

WHY THROW YOUR OLD HATS AWAY I BRING THEM TO US.

We can renovate them at a low cost for you.

**Named Bros**

THE HOUSE FOR DISTINCTION.

P.O. Box 254 Bazar, NAIROBI. Phone 2281

GOING TO **KAKAMEGA?**

If you are do not forget you!

**JAEGER**  
Pure Wool

you will want it after sundown

JAEGER Slippers, Pajamas and Cardigans are stocked by the Leading Outfitters.

**ARRIVAL**  
New Seasons Specialities

DATES—Seedless in Cellophane	1/- per pkt.
FIGS	1/25 per lb.
PRUNES	1/35
CURRANTS	1/25
SULTANAS	1/40
RAISINS—Prudding	1/35
RAISINS—Seedless	1/40
RAISINS	1/35
BRAZIL NUTS	1/40
HAREBELLONA	1/40
ALMONDS	1/50
CHERRIES—Glace	3/-
CHERRIES—Crysalloid	3/50
GINGER—In Syrup	3/50
GINGER—Cubes	4/-

CHOCOLATES—Cahuby, Fry, Rowntree, Pascal, Presentation Boxes 7/- to 15/-.

**M. S. ELLIOT & Co., Ltd.**  
E.O. Box 173 Govt. Road Phone 2600 Westlands to 2904

TO MEET THE HASTY KAKAMEGA SAFARI.  
We Equip All Notices At the Shortest notice.

New and Second-hand Tests, Typewriters, Monotype Houses and all kinds of Camp Equipments available at the most reasonable prices.

**MEGHJI AHAMED T. MOHAMED & Co., Ltd.**  
(The oldest established Tel. Messrs in Kenya.)  
P.O. Box 112 Bazar, NAIROBI. Phone 2281

**CORRESPONDENCE.**

The Editor does not accept responsibility for the views expressed by his correspondents. He is, of course, and in all cases, the most accurate and latest news necessary for a newspaper to give fairly. Briefly is also essential for news consideration.

**THE MAIZE INDUSTRY.**

To the Editor.—With reference to the article on the maize industry, the Editor of the Standard, at the time of the late Mr. Tumbuli's report as having questioned the policy of exportation to this industry at the expense of other struggling industries, it was public as the question which maize farmers and all who are interested in the maize industry, is not satisfied with the present position. It might be better to know whether the post-war world, which has just passed, is not a better world than the one which we are now living in, in fact, the maize industry, which is the most important one in the country, is not a better one than the one which we are now living in. It is a question which is of great importance to the maize industry, and it is one which is of great importance to the maize industry.

**HEATING AND COOKING EQUIPMENT.**

**Interesting Section at R.I. Fair.**

**MODERN METHODS.**

[From a Correspondent's London, Oct. 22.]

Facilities for heating and cooking are becoming widely used in all parts of the world. In fact, the modern methods of heating and cooking are becoming widely used in all parts of the world. In fact, the modern methods of heating and cooking are becoming widely used in all parts of the world. In fact, the modern methods of heating and cooking are becoming widely used in all parts of the world.

**CRITICISM.**

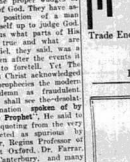
**Who is the Higher Critic, Man or His Maker?**

Critically naive Judge, we teach that God is Judge and all his works. Modern scholars of the higher critical type would like it suggested that they are the proper Judge of the Word of God. They have assumed the position of a man sitting in a high chair, they tell us what parts of the Bible are true and what are false. Daniel, they said, was a fool, and after the crucifixion of Jesus, they said, was a fool. They say that the Bible is a collection of stories, and that the Bible is a collection of stories, and that the Bible is a collection of stories.

**SAFES AND STRONG ROOM DOORS.**

Trade Enquiries to—

**R. E. ANDERSON & Co.,**  
Box 153—NAIROBI—Phone 2194



**WHETHER GOLD MINING OR QUARRYING WE CAN SUPPLY YOUR NEEDS.**

HAMMERS—CROWBARS—MINING STEEL—SPADES—GENERAL HARDWARE.

**J.H.S. TODD & Co. Ltd.**  
LONDON

**THE WORLD'S HIGH CRITIC.**

Modern theologians do not credit the Bible with the same authority as the fathers of the Church. They say that the Bible is a collection of stories, and that the Bible is a collection of stories, and that the Bible is a collection of stories.

**RAFALGARD DAY.**

Celebrations in England.

[By Mr. A.M.]

London, October 22.

Today was the anniversary of the death of Lord Nelson, and the RAFALGARD DAY was celebrated in England.

**BACK-TO-BACK CRISIS.**

Some of the back-to-back crises of the world are becoming more and more acute. The world is becoming more and more acute, and the world is becoming more and more acute.

**THE WORLD'S HIGH CRITIC.**

Modern theologians do not credit the Bible with the same authority as the fathers of the Church. They say that the Bible is a collection of stories, and that the Bible is a collection of stories, and that the Bible is a collection of stories.

**THE MAIZE INDUSTRY.**

To the Editor.—With reference to the article on the maize industry, the Editor of the Standard, at the time of the late Mr. Tumbuli's report as having questioned the policy of exportation to this industry at the expense of other struggling industries, it was public as the question which maize farmers and all who are interested in the maize industry, is not satisfied with the present position. It might be better to know whether the post-war world, which has just passed, is not a better world than the one which we are now living in, in fact, the maize industry, which is the most important one in the country, is not a better one than the one which we are now living in.

**THE MAIZE INDUSTRY.**

To the Editor.—With reference to the article on the maize industry, the Editor of the Standard, at the time of the late Mr. Tumbuli's report as having questioned the policy of exportation to this industry at the expense of other struggling industries, it was public as the question which maize farmers and all who are interested in the maize industry, is not satisfied with the present position. It might be better to know whether the post-war world, which has just passed, is not a better world than the one which we are now living in, in fact, the maize industry, which is the most important one in the country, is not a better one than the one which we are now living in.

**HEATING AND COOKING EQUIPMENT.**

**Interesting Section at R.I. Fair.**

**MODERN METHODS.**

**HEATING AND COOKING EQUIPMENT.**

**Interesting Section at R.I. Fair.**

**MODERN METHODS.**

**CRITICISM.**

**Who is the Higher Critic, Man or His Maker?**

**CRITICISM.**

**Who is the Higher Critic, Man or His Maker?**

**SAFES AND STRONG ROOM DOORS.**

Trade Enquiries to—

**R. E. ANDERSON & Co.,**  
Box 153—NAIROBI—Phone 2194

**WHETHER GOLD MINING OR QUARRYING WE CAN SUPPLY YOUR NEEDS.**

HAMMERS—CROWBARS—MINING STEEL—SPADES—GENERAL HARDWARE.

**J.H.S. TODD & Co. Ltd.**  
LONDON

**Centrifugal Pumps**

— BY —

**MATHER & PLATT LTD.**

LOW ORIGINAL COST. UPKEEP PRACTICALLY NIL. BUILT TO LAST.

**FULL PARTICULARS FROM—**

**SMITH, MACKENZIE & CO.,**  
Nairobi - Mombasa Kampala - Tanganyika - Dar es Salaam.

**THE IDEAL GIFT**

Platinum - Stationery - Cabinet

A beautiful and valuable cabinet with 50 sheets typewriter and 40 sheets of Bickford Bond (cream or black) and stationery and gift set. Pen in blotter and amber and stand block.

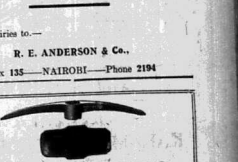
PRICES ——— SHE. 22/90 EACH.

**STANDARD STATIONERY STORES.**

**SAFES AND STRONG ROOM DOORS.**

Trade Enquiries to—

**R. E. ANDERSON & Co.,**  
Box 153—NAIROBI—Phone 2194



**WHETHER GOLD MINING OR QUARRYING WE CAN SUPPLY YOUR NEEDS.**

HAMMERS—CROWBARS—MINING STEEL—SPADES—GENERAL HARDWARE.

**J.H.S. TODD & Co. Ltd.**  
LONDON

**THE WORLD'S HIGH CRITIC.**

Modern theologians do not credit the Bible with the same authority as the fathers of the Church. They say that the Bible is a collection of stories, and that the Bible is a collection of stories, and that the Bible is a collection of stories.

**When you see the trim, modern lines of a Sheaffer Ballpoint or Fountain Pen, you will be perfectly right in assuming that it is a Sheaffer Ballpoint or Fountain Pen. What is it guaranteed for life against everything except change in price, and that is a change in price, and that is a change in price.**

**SHEAFFER'S**  
Fountain Pens, Ballpoint Pens, and Stationery.

**TAWES, Limited.**

**THE HOUSE FOR PERMANENT PAYING**

Have your Office Done Rightly Well with one of our Staff of London Artists.

We are the only Users of the famous **MACDONALD STATIONERY** in the Colony.

**MACDONALD**  
EUGENE and GALLIA

Box 234, GOVT. ROAD, STATION 2245.

**THE IDEAL GIFT**

Platinum - Stationery - Cabinet

A beautiful and valuable cabinet with 50 sheets typewriter and 40 sheets of Bickford Bond (cream or black) and stationery and gift set. Pen in blotter and amber and stand block.

PRICES ——— SHE. 22/90 EACH.

**STANDARD STATIONERY STORES.**



# AUCTION SALES



## SALE OF ENGINES and MISCELLANEOUS GOODS.

Only instructed we shall sell by Public Auction, Without Reserve, unless stipulated at our Salerooms, Motor Building, Harding Street, Nairobi.

**TO-DAY 23rd NOVEMBER, at 10 a.m.**  
Two Three Horse Power International Engines. Suit for Tennis Racquets, Knives, etc. For Aeroplanes, Kitchen Utensils, Crockery, Novels.

Under a Court Warrant of Sale.  
Civil Suit No. 207 of 1922.  
Jagwan Dayashankar Panwalkar against A. E. Shukh.  
Two Showcases, glazed doors. Counter, Cash Box, Desk, Chair, Step Ladder, Electric Bells and connections, to be held of the parties concerned.

Twelve Seven Slabs Milk, Nut and Plain Chocolates (damaged in transit). Six Top Aeroplanes. Two Motors (damaged in transit).

**WALTER and OSWALD Ltd.,**  
Auctioneers, Court Breakers, Etc., NAIROBI.

## FOR SALE

**LOWER KARETE ROAD BRICK HOUSE** consisting of Drawing Room, Dining-room, Two Bedrooms, Bathroom with hot and cold water, Front and Back verandahs, Boys' Quarters and Guest House, the whole on a very rich roadlot. Price Fully Furnished £1,000; Unfurnished £1,500.

**WALTER and OSWALD, LTD.** Estate Agents, Harding Street, P.O. Box No. 237 NAIROBI.

## THE CAR MART

P.O. Box 1040 (Next to Zoo's) Telephone 2142

## Used Car Bargains

- FORD DE LUXE VICTORIA SALOON. 1922 Model, Licensed, Insured, 1900 miles £197/70
- YASH SPECIAL TOURER ..... £ 50
- CHEVROLET TOURER ..... £ 70
- CHEVROLET BOX BODY ..... £ 60
- CHEVROLET BOX BODY ..... £ 45
- CHEVROLET TOURER ..... £ 25
- FORD TRUCK ..... £ 37/10
- FORD LIGHT DELIVERY ..... £ 65/0
- FORD BOX BODY ..... £ 22/0
- ESSEX TOURER ..... £ 22/0
- WHIPPLET BOX BODY ..... £ 22/0

OTHERS FROM £20 UPWARDS.  
REPAIRS A SPECIALITY.  
TIRES, TUBES, SPARES and ACCESSORIES STOCKED.  
INSPECTION AND TRIAL INVITED.

## SANDS & Co.

Live Stock, Land and Farm Produce Auctioneers, NAIROBI.

We hold sales of LIVESTOCK, at our Railway Saleyards, Nairobi, every WEDNESDAY at 11.30 a.m.

We hold sales of FARM PRODUCE and POULTRY, at our Saddle Street Premises, every TUESDAY and FRIDAY, starting 9 a.m. each day.

## Now on Sale

THE "East African Standard" **KENYA & UGANDA DIARY 1933**

CONTAINING FEATURES USEFUL TO THE SETTLER  
Size 10 x 8 inches 3 DAYS TO PAGE.

PRICES—  
Invaluable Hlotting ... Shs. 4/7d. postd/40  
Without Hlotting ... Shs. 3/6d. postd/40

STANDARD STATIONERY STORES NAIROBI.

## AUSTIN'S AUCTIONS.

MISCELLANEOUS SALE OF NEW GOODS.

**AUSTIN & CO.** will sell by Public Auction, WITHOUT RESERVE, at THE MART

On THURSDAY, 24th NOVEMBER at 10 a.m.

Gene Shiraz, Terris, Helms, Golf Hoes, Shoes, Slippers, Handkerchiefs, Mackintoshes, Trainers, Pansies, Ladies Silk Dress Lengths, Aprons, Sheets, Glass Vases, Pyramids, Stockings, Shoes, Slippers, Sandals, Handkerchiefs, Handbags, Towels, Table and Tea Cloth, Pullovers, Bedspreads, Napkins, Sheets, Goshen Covers, Carvers, Witten Bags, Lino Mats, Suit Lengths, Tablecloths, Towels, Glass Vases, Plated Suits, Bathgowns, Knives and Forks, etc., etc.

**AUSTIN & CO.,** Auctioneers and Estate Agents, Harding Street, NAIROBI.

## AUSTIN'S AUCTIONS

CATALOGUE SALE OF GOOD FURNITURE AND EFFECTS.

On SATURDAY, 26th NOVEMBER at 10 a.m.

FURTHER DETAILS WILL BE ADVERTISED LATER.

**AUSTIN & CO.,** AUCTIONEERS and ESTATE AGENTS, Harding Street, NAIROBI.

## KENYA MART.

(opposite Empire Theatre)  
P.O. Box 316 Harding Street, Phone No. 2980

## AUCTION SALE OF IMMOVABLE PROPERTY

IN HIS MAJESTY'S SUPREME COURT OF KENYA at NAIROBI.

Order of Sale No. 183 of 1922.

Mr. MAUREY CHIFF, Plaintiff.  
DAVID PETERSON JONES vs. the  
SHIRAZ BROTHERS, Ltd., Defendants.

WHEREAS the order of the said Court in the above mentioned matter NOW THIS DECRETES TO NOTIFY THAT every conditional borrower WHO THIS DECRETES TO NOTIFY THAT WE SHALL SELL, BY PUBLIC AUCTION, at the following place—  
Stanley House, Harding Street, Nairobi, on

**TO-DAY, 23rd Nov., at 11 a.m.**

ALL That piece or parcel of land comprising 4644 of an acre or thereabouts situated at the Victoria Parklands Estate (Westlands) in the Nairobi District being sub-division No. 2 of Section 2 of Portico No. 1, and which piece or parcel of land is more particularly delineated and described on the plan annexed to an Instrument of Lease and Mortgage of the Crown Lands Property (M.L. No. 104 of 1916, Folio 500/1), and is held by the First Defendant for and on behalf of the said Plaintiff, and the said piece or parcel of land is, on the 14th day of April, 1922, and subject to an Annual Rent of Shs. 20/-, together with all buildings and other improvements on and attached to, being thereon.

THE MAIN DWELLING is well constructed of concrete, exceptionally well decorated and has a corrugated iron roof. The rooms are—  
Living Room 12' x 15'.  
Dining Room 14' x 14'.  
Two Bedrooms, each 12' x 12'.  
Bathroom of 6'0" with Bath and Toilet and Cold Water.  
W.C. Room, Bath, and Dressing Room.  
Kitchen, Dining and Front Verandah with leads, Store and Box Room.  
Outbuildings, concrete Garage with concrete floor, concrete box house.  
Foot shed and small summer house. Well laid out garden.

The terms and conditions of sale as approved by the Court may be inspected at the office of the Registrar of the Supreme Court Nairobi or at the office of Messrs. Shapley, Schwabe & Barrett, Clerk's Chambers, Nairobi.

**KENYA MART,** Auctioneers, Harding Street, Nairobi.

And only instructed, we shall also offer—  
Plot No. 22—Westlands 6060 of an acre. Rent 20/- per annum.  
Plot No. 23—Westlands 4664 of an acre. Rent 20/- per annum.

Plot No. 12—Upper Parklands Estate Groganville 1.08 of an acre. Ground rent 10/- per annum.  
Killarney, Plot 4 622 of an acre. Containing Small Stone Room and Stone Lavatory. Good red soil planted with trees and felled.

**KENYA MART,** Auctioneers, Valuers and Commission Agents, Harding Street, Nairobi.

On FRIDAY, 25th NOVEMBER at 10 a.m.

Chamberlain's Bed, Bay Chair, Settee covered in Blue large single Beds with Box Mattresses, Chest of Drawers, Set of Chairs, Old Chair, Kitchen Table, Metal Sofa, Washstand, Dining Table, Child's Cot, Caspik Mattresses and Pillows, Etc., Etc.

**KENYA MART,** Auctioneers, Valuers and Commission Agents.

## E. Hutchison & Co.

Will sell by Public Auction at their Mart, Govt. Road, On FRIDAY, 25th NOVEMBER at 10 a.m.

A MISCELLANEOUS LOT comprising the following—  
Soap, Pillows, Children's Clothing, Travelling Bags, Linen Lunch Suits, Mougino Nets, Pullovers, Trousers Silk, Electric Iron, Trainers, Tins, Case, Bath Towels, Bed Sheets, Crockery, Men's Socks, 2 Boys Overcoats, etc., etc.

**E. HUTCHISON & Co.,** Incorporated Auctioneers.



Refiance Services Co., P.O. Box 462 Victoria Street, Phone 231 NAIROBI.

## MEALIE BUG

Tanglefoot Banding Grease THE BEST PREVENTATIVE.

Stocks on hand—  
Sole Agents—  
**DENOVAN & CO.,** VICTORIA ST., NAIROBI. Box 150

## Onote the Pen



INK PENCIL Shs. 10/50 Potted 11/15

A nib to suit all hands (Gold Band), Shs. 17/50, boxed 18/15

Standard Stationery Stores, 6th AVENUE, NAIROBI.

## FIAT GARAGES

## USED CARS

FIAT 500. Two motor, fully equipped, 30 H.P. £275  
OAKLAND Tourer. Smart appearance in excellent condition. £435  
WOLSELEY. Small four motor, well reliable and economical. £300  
MORRIS. Two motor. A second and sturdy car. £275

FORD Saloon. Recent model, good mileage, excellent condition. £115  
BUICK Tourer. In very good condition. £255  
MOTORCYCLE. Twin drive valve. Powerful, almost ready for the road. £17

TRAILER. Imported, modern, alloy well built. £15  
SPARE PARTS (second-hand) for all makes of cars. CARS FOR HIRE with Driver or Drive Yourself.

Send in your entries for the next Car Sale by Public Auction on SATURDAY, Dec. 3 at 3 p.m.

JOHN BENNETT, Auctioneer and Motor Car Salesman.

## NOTICE

Until further notice our Fuel will be retailed at the following rates—  
Best Quality Jungle, Short Lengths ... Shs. 22/-  
Long Lengths ... Shs. 19/6  
Best Quality Plantation, Short Lengths ... Shs. 20/-  
Long Lengths ... Shs. 19/6  
Best attention and service FREE.

## The Express Transport Co.

Carriage contractors in Kenya and Uganda (Incorporated).

## The Firm Everybody Trusts

HYDRAULIC CAR GREASERS.

FOR 25 YEARS WE HAVE GIVEN SATISFACTION AGENTS FOR IMPERIAL & NATIONAL AIRWAYS. ALSO AGENTS THROUGHOUT THE WORLD. NAIROBI—MOMBASA.

## THACKRAH'S Ltd.

NAIROBI (Established 1917)

The Up-country Land and Estate Agents, Auctioneers and Approved Valuers, Insurance, Shipping and Financial Agents, SHOPS, OFFICES, GODOWNS, HOUSES and FARMS — TO LET or FOR SALE

## A Golden Opportunity TO SECURE YOUR CLAIM FOR XMAS SHOPPING SPECIAL ANNOUNCEMENT

Owing to Taxation, and the Generally Heavy expenses ordinarily experienced at the end of a year and the incoming New Year, we have decided to place out at the disposal of the Public of Eastern Africa, with a Special Reduction for Cash Only of 20 per cent. (or 4/- in cents 20/-) off marked prices.

MAIL ORDERS MUST CONTAIN CASH REFERENCE.

**MAXWELL BRADY & COMPANY** NAIROBI. Phone 2123

## JUST PUBLISHED

THE EAST AFRICAN ANNUAL 1932 - 1933

A Pictorial Survey of East Africa.

The finest publication ever produced in Kenya. — Over 300 pictures — Only a limited number printed.

Order at once to avoid disappointment. Price 5/- — Packed and postd 6/75

Orders will only be executed if accompanied by cash.

**The E. A. STANDARD, Ltd.** P.O. Box 200 NAIROBI.

Building—Hydraulic—Agential—**LIME** BEST CHEAPEST Lime Laid TO GOVERNMENT





**Limerick Competition.**

Get your form for the Limerick Competition from your dealer.

First Prize **50 Shillings.**

Kenya, Bwana, Ltd.

DAILY EDITION

The East

12 pages

New Stanley Hotel

# African Standard

UGANDA NEWS, with which is incorporated the LEADER.

UNION OF POLICE AND NEWS PAPER IN KENYA, UGANDA, TANGANYIKA AND ZANZIBAR.

NAIROBI, THURSDAY, NOVEMBER 24, 1932.

The Lounge  
for MORNING and  
AFTERNOON TEA  
and Refreshments  
... Every Kind ...  
OPEN on SUNDAYS  
PRICE 20 CENTS.

## POLICE RETRENCHMENTS. SCIENTISTS' QUEST.

**Criticism from Up-country Districts.**

**THE INCREASING DEMANDS OF KAKAMEGA.**

**Menace of Cattle Running.**

**EFFECT OF REDUCTIONS ON MORALE OF FORCE.**

Criticism regarding retrenchments in the Kenya Police Force are made in the following contributions by up-country correspondents of the "East African Standard". It is proposed to close down the Police Posts at Muthira and Bonyo Lassos and to substitute Indian Sub-Inspectors for European Police Constables at Kimini and Cherangani.

It is maintained that as a result some hundreds of square miles will be left without protection, and it is stated that a considerable increase in cattle running may be expected.

It is also suggested that the morale of the Force may be adversely affected by the lack of stability and freedom from uncertainty regarding the position of its personnel. There is said to be a general feeling of dissatisfaction at what is considered to be a false economy.

**A Feeling of Uncertainty.**

It is stated that there will be a corresponding reduction of personnel and a consequent increase in the ratio of the number of posts to the number of personnel. It is suggested that the morale of the Force may be adversely affected by the lack of stability and freedom from uncertainty regarding the position of its personnel. There is said to be a general feeling of dissatisfaction at what is considered to be a false economy.

**Cattle Running.**

It is stated that there will be a corresponding reduction of personnel and a consequent increase in the ratio of the number of posts to the number of personnel. It is suggested that the morale of the Force may be adversely affected by the lack of stability and freedom from uncertainty regarding the position of its personnel. There is said to be a general feeling of dissatisfaction at what is considered to be a false economy.

**Increasing Work.**

It is stated that there will be a corresponding reduction of personnel and a consequent increase in the ratio of the number of posts to the number of personnel. It is suggested that the morale of the Force may be adversely affected by the lack of stability and freedom from uncertainty regarding the position of its personnel. There is said to be a general feeling of dissatisfaction at what is considered to be a false economy.

**CONFERENCE ON WAR DEBTS.**

**Party Leaders Meet at Washington.**

**Pound Still Falling.**

**YOUTHFUL PREMIER TO SELL IN NEW YORK.**

Washington, November 23. The United States War Debt conference opened in a study at White House at 2:30 p.m. today. ...

Mr. Roosevelt will be seen today with Mr. Carter, the Vice-President-elect, at the War Debt conference in the morning. ...

**Progress Evident.**

Washington, later. At the termination of a two and a half hour meeting of the War Debt conference, Mr. Roosevelt and Mr. Carter, the Vice-President-elect, were seen together. ...

**Pound Again Falls.**

New York, November 23. The pound sterling today fell to 127 1/2 and closed at 127 1/2. ...

**The Situation Revisited.**

Reference to the war debt conference in London, England, which has been going on since the 14th of October, has been made in the United States. ...

**German Cabinet Problem.**

Washington, Nov. 23. The German cabinet has been in a state of confusion since the 14th of October. ...

**Defence Conference.**

It is stated that there will be a corresponding reduction of personnel and a consequent increase in the ratio of the number of posts to the number of personnel. It is suggested that the morale of the Force may be adversely affected by the lack of stability and freedom from uncertainty regarding the position of its personnel. There is said to be a general feeling of dissatisfaction at what is considered to be a false economy.

**THE LUPA RIVER GOLDFIELD.**

**Nine Months' Yield Worth 522,000.**

**Promising Future.**

**ANNUAL EXPORTS BY NO MEANS EXHAUSTIVE.**

In introducing a series of bills relating to the mining in the Lupa River goldfield, the Minister of Mines made a statement on gold mining in the Lupa River goldfield. ...

From these figures it will be seen that the Lupa River goldfield is a promising one. ...

**British Silver Coins to be Taxed.**

London, November 23. The British Government has announced that silver coins will be taxed. ...

**BEAUTIFYING FORT HALL.**

Improvements in the townships.

**German Cabinet Problem.**

Washington, Nov. 23. The German cabinet has been in a state of confusion since the 14th of October. ...

**Defence Conference.**

It is stated that there will be a corresponding reduction of personnel and a consequent increase in the ratio of the number of posts to the number of personnel. It is suggested that the morale of the Force may be adversely affected by the lack of stability and freedom from uncertainty regarding the position of its personnel. There is said to be a general feeling of dissatisfaction at what is considered to be a false economy.

**FORCED LANDING IN THE SAHARA.**

**Ship to Young South African Arrives.**

**PETROL FUEL LEAK.**

**WINDY.**

Bligh, Nov. 23. The ship "Young South African" arrived today. ...

From these figures it will be seen that the Lupa River goldfield is a promising one. ...

**British Silver Coins to be Taxed.**

London, November 23. The British Government has announced that silver coins will be taxed. ...

**BEAUTIFYING FORT HALL.**

Improvements in the townships.

**German Cabinet Problem.**

Washington, Nov. 23. The German cabinet has been in a state of confusion since the 14th of October. ...

**Defence Conference.**

It is stated that there will be a corresponding reduction of personnel and a consequent increase in the ratio of the number of posts to the number of personnel. It is suggested that the morale of the Force may be adversely affected by the lack of stability and freedom from uncertainty regarding the position of its personnel. There is said to be a general feeling of dissatisfaction at what is considered to be a false economy.

**A Great Adventure Rejuvenated.**

**EXPEDITION TO THE LAKE RUDOLF AREA.**

**To Search for Fossils.**

**ARE THERE ANY PREHISTORIC ANIMALS ALIVE TODAY?**

A party of scientists from Europe is leaving Nairobi shortly on an expedition to the Lake Rudolf area. ...

In those far-off days a French scientific mission discovered fossils of large prehistoric animals including a kind of crocodile similar to the Gaviol of India.

This is a statement shows the one-time existence of a junction between Asia and Africa—a not too distant past. ...

**A Lost Continent?**

The threads of a great adventure, young men and women, are being woven in the East African continent. ...

**Thursday, Friday & Saturday**

**LAST THREE**

**Sale Days at Whiteways**

**New Bargains for Keen Shoppers.**

**Director's Inspection - Sale Bargains - Study Each Offer.**

**Save Money by spending it now at Our Special - Inspection Sale.**

**Imitation Mopwee Bed Rugs. - In popular Pattern and Color design and bright colorings. Ideal for Bedrooms and Bathrooms. Usualy 7/6d. Now 5/6d. Usualy 8/6d. Now 6/6d.**

**Ang-Singling - In several Fawn, Brown and Grey effects. One and Two piece to measure. Usualy 10/6d. Now 8/6d.**

**Columbia Dress Rugs. - 100" Dark Blue. A real selection of Fawn, Tan and Walnut. Usualy 5/6d. Now 3/6d.**

**Superior Double Damask Fine Irish Linen Table Cloths. Usualy 25/6d. Now 17/6d.**

**Superior Colored Bed Rugs. Usualy 14/6d. Now 10/6d.**

**Superior Colored Bed Rugs. Usualy 14/6d. Now 10/6d.**

Advertisements on the right side of the page, including 'New Stanley Hotel', 'The Lounge', 'A Great Adventure Rejuvenated', 'A Lost Continent?', and 'Whiteways'.







HOMEWARD VIA SUEZ. Durban Castle 2, 19th Dec. 1920. Durban Castle 3, 26th Dec. 1920. Durban Castle 4, 1st Jan. 1921. Durban Castle 5, 8th Jan. 1921. Durban Castle 6, 15th Jan. 1921.

HOMEWARD VIA THE SOUTH AFRICA. Durban Castle 1, 19th Dec. 1920. Durban Castle 2, 26th Dec. 1920. Durban Castle 3, 1st Jan. 1921. Durban Castle 4, 8th Jan. 1921. Durban Castle 5, 15th Jan. 1921.

UNION-CASTLE LINE. For Rates of Freight and Passage Money apply to The Union Castle Mail Steamship Co., Ltd., London.

MESSAGERIES MARITIMES (FRENCH MAIL STEAMERS). Regular and Fortnightly Services from Southampton to London.

Next Sailings to Marseilles. S.S. 'CHARENTAIS', 21st November. S.S. 'COMPTON', 28th November. S.S. 'FRAN LABOURE', 5th December. S.S. 'RAY LE HERVEY', 12th December, 1920.

HOLLAND AFRIKA LIJN. Steamers will sail at Kilindini on or about the following dates: a.s. 'Makaba', 14th December. a.s. 'Nikar', 11th January.

HOMEWARD VIA THE CAPE. a.s. 'Societatis', 22nd December. a.s. 'Hammabur', 29th December. a.s. 'Nikar', 5th January. a.s. 'Societatis', 12th January.

Twentech Overseas Trading Co., Ltd. NOMBASA. - KAMPALA.

BE PREPARED. Never was this SOUND ADVICE more applicable to XMAS.

STOCKS. XMAS CRACKERS & STOCKINGS. FIGS, DATES, MINTS, CANDIES, CURRANTS, RAISINS & SULTANAS. WALNUTS, BRAZILS & BARCELONAS.

Diaries. "LETT'S" - 1923. Pocket and Office Sizes. Standard Stationery Stores.

British India Steam Navigation Co., Ltd. LONDON & EAST AFRICA LINE. Steamers reserved for the service: a.s. 'MALDA', 18th Dec. 1920. a.s. 'MADURA', 25th Dec. 1920. a.s. 'MATIASA', 1st Jan. 1921. a.s. 'MANTOLA', 8th Jan. 1921.

COASTAL SERVICE. The m.v. 'DUMRA' will sail for Southern Ports on the 18th November, 6th December and 17th December next.

'TIRRENIA' STEAMSHIP COMPANY. FLOTTE BIURTE FLORIO-CITRA. THE BEST ROUTE TO ENGLAND. S.S. 'F. CRISPI', 1st Dec. 1st Feb. 1st April, 1st June, 1st Aug. 1st Oct. 1st Nov. S.S. 'G. MAZZINI', 1st Jan. 1st March, 1st May, 1st July, 1st Sept. 1st Nov.

MONTHLY EXCURSIONS-MOMBASA, ZANZIBAR, DAR ES SALAAM. Leaving Mombasa on the 26th at 5 p.m., returning by same steamer to Mombasa on the last day of every month. Ball excursions tickets are now issued in connection with our monthly excursions.

B.M.C. House. Government Road, NAIROBI. Christmas Presents. SPECIAL WINDOW DISPLAYS OF ALL THE LATEST NOVELTIES. PRICES ARE LOWER THAN EVER.

TOYS. Free Slides Down the Chute. Free Balloons. Dips for Little Girls, Little Boys and Babies. SHOP EARLY TO AVOID DISAPPOINTMENT.

The Bradford Manufacturing Co., Ltd. (Incorporated in England). Wire Waste Paper Baskets. CHILDREN'S SHOES. LEISURE FOOTWEAR. NEW SPOTTED CREPE-DE-CHINE BRIDGE SLIPPERS.

WILSON AIRWAYS LTD. WEEKLY COAST SERVICE. Nairobi - Mombasa - Tanga Zanzibar - Dar es Salaam. Leaving Nairobi every Thursday returning every Saturday. NAIROBI - MOMBASA - Shs. 180-00. NAIROBI - TANGA - Shs. 180-00. NAIROBI - ZANZIBAR - Shs. 240-00. NAIROBI - DAR ES SALAAM - Shs. 240-00.



DEUTSCHE OST-AFRIKA-LINIE. SPEND CHRISTMAS AT HOME. S.S. UBENA will leave Mombasa Nov. 26th and will arrive Southampton Dec. 23rd.

MAISON MARIE KENYA'S SPECIALISTS. IN PERMANENT WAVING and LADIES HAIRDRESSING. A visit to us will give you every satisfaction.

PIANOFORTE TUNING and REPAIRING. Ten years' experience in Kenya Colony and five years with Messrs. Chappell and Co., London.

OVERSEAS MAILS. Steamers-INWARD. a.s. 'Triens', Nov. 25, 11 a.m. a.s. 'Tadousa', Nov. 26, 11 a.m. a.s. 'F. Crisp', Nov. 26, 11 a.m. a.s. 'Vindon', Nov. 26, 11 a.m. a.s. 'Any in Rhodes', Nov. 26, 11 a.m. a.s. 'Vindon', Nov. 26, 11 a.m.

POST OFFICE NOTICE. Christmas Overseas Mails. According to the latest available information, the following mails should arrive at destination before Christmas day: MAILS FOR GREAT BRITAIN. a.s. Durban Castle, Letters, Dec. 10 5:00 p.m. a.s. Durban Castle, Letters, Dec. 10 5:00 p.m. a.s. Durban Castle, Letters, Dec. 10 5:00 p.m.

MAILS FOR SOUTH AFRICA. a.s. Kenya, Letters, Dec. 10 5:00 p.m. a.s. Kenya, Letters, Dec. 10 5:00 p.m. a.s. Kenya, Letters, Dec. 10 5:00 p.m. MAILS FOR INDIA. a.s. Durban Castle, Letters, Dec. 9 5:00 p.m. a.s. Durban Castle, Letters, Dec. 9 5:00 p.m. a.s. Durban Castle, Letters, Dec. 9 5:00 p.m.

THERE IS NO GOLD at 'UPLANDS' but NO PLACE PRODUCES SUCH GOOD PRODUCTS. New Stanley Hotel Arcade. Government Road. EADIE'S FOOTWEAR LTD. NAIROBI.

### CABARET DANCE

There will be a special Cabaret Dance in aid of the League of Mercy at the Avenue Hotel on December 3rd.

Tickets will be—Single 10-00, Double 15-00 including a special innovation in the form of a surprise.

### BUFFET SUPPER

Tickets may be obtained from The Avenue Hotel and the B.E.A. Messes Stores Ltd., and tables should be reserved as early as possible.

Clery Cook's band will be in attendance from 8 p.m. till 2 a.m. A further announcement will appear in this space shortly.

### AVENUE HOTEL

#### THE NORFOLK HOTEL

(Phone 2346) NAIROBI. P.O. Box No. 64

Shining in spacious ground, where cars may be parked.

Self-contained Private Suites and Bungalows by arrangement.

Reduced Rates for Monthly Residents. NEWLY RENOVATED.

UP-TO-DATE LAUNDRY on the Premises. DRY CLEANING A SPECIALITY.

Manager—C. A. BLANKER and H. FUCHS, late manager of Hotel Avonlea

#### CALEDONIAN SOCIETY OF KENYA COLONY. ANNUAL DINNER, 1932.

In the NEW STANLEY HOTEL, on St. Andrew's Day, WEDNESDAY, 30th November at 7.30 p.m.

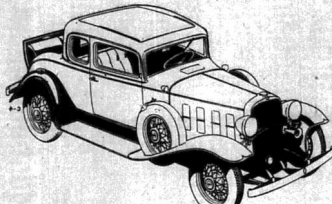
Members of the Society are reminded that names of those who intend being present at their guests, should be sent in immediately to the Hon. Secretary, P.O. Box 125, Nairobi.

No names will be accepted after noon on MONDAY, 28th November.

## What's in a Name?

A great deal when you are buying a car. You want to buy one which has made a name for itself and to be certain that there is service behind it

—buy—  
**CHEVROLET or Vauxhall.**



## The Motor Mart & Exchange Ltd.

Mombasa - Nairobi - Nakuru - Eldoret - Tanga - Dar es Salaam.

### POLICE RETIREMENTS.

(Continued from page 1.)

cannot be filled at a moment's notice in service in the colonies. There seems to be little doubt that the events of the next few months will call for a considerable amount of staff and it is reasonable to suppose that the Government will have to offer additional inducements in order to fill the vacancies as required. This is itself in an added sense of expense rather than an economy.

### Feeling of Discontent.

Furthermore, the uncertainty attached to the position is doubtfully to attract the type of man who has long been entering the Force in ever decreasing numbers. No one who has had any first-hand experience of the Colony during the past twelve years has failed to notice the general improvement in the tone and efficiency of the Kenya Force, and it will not be difficult for more than eight of its untrained officers and sergeants if they are given a chance to be discharged, dismissed.

Taking it on the whole, the general feeling is one of considerable dissatisfaction that such factors as are for such a long time should be allowed to interfere with a Force that has during the past few years, built up for itself such an enviable reputation for efficiency, discipline and hard work as the Police Force of the Colony. The whole country seems to regard it as a pity of the most lamentable nature that there will have to be the most substantial re-organisation.

### Fort Hill View.

["STANDARD" CORRESPONDENT.]  
Nairobi, November 19.

One of the effects of the Government's economy, which is being heavily felt in Fort Hill, is that a very few officials, Mr. N. Blount, the Director of Public Health, and the Director of Prisons, are included in the latest list of police retirements.

It seems a queer thing to suppose when it is thought necessary to disperse with the services of a rich, good and capably good police officer who has spent his entire professional life with the whole of the Government community and supported by the whole of the population of the district. The going will be a sad loss and all wish, even women in whatever new venture he

### A HOLIDAY CAMP.

Scott's Enjoyable Time at Sey.

["STANDARD" CORRESPONDENT.]  
Eldoret, Nov. 21.

A holiday camp for the Eldoret and Khatu troops of Boy Scouts is to be held at Sey on the 25th. The committee in charge of the camp are Mr. J. B. Wilford, Col. G. A. Swainson-Hodge, D.R.O., a large party was placed at the disposal of the two troops and it proved a very successful day.

The country around Sey is of an undulating character and is, in places, fairly heavily wooded and is provided with excellent views for the camp. The boys were covered in soap and bran from the two weeks and some 40 Scouts under the command of Mr. J. B. Wilford, Mr. Blount was conveyed from a motor and 12 from Khatu under Mr. F. L. Morgan. Thanks to a number of generous donations, it was possible to run the whole affair at the minimum of expense and any one who has had experience of the topography of the young, can fully understand the importance of a good commandant.

The bathing pool at Sey was a source of great attraction and both Scoutmasters were kept busy supervising their charges who, by the way, entered a prediction for the longest jump of the pool. The Scoutmaster at this point with small talk and falling parties, signed for the moon part with a rub and a last job did produce a number.

On the Saturday evening a camp fire was held and a number of people from Eldoret were present. The fire lived up to its best traditions and there would have been little difficulty in maintaining it on the shore. The final meeting of all the more popular songs, led to the occasion was given and our wonderful night of the vigor and stamina of the boys.

A collection in aid of the Fund was taken and raised the sum of the 50/- and after a supper of cocoa and bread and butter the two troops were on their way. A large number was a highly successful and enjoyable weekend and there is no doubt that every one of the boys enjoyed every minute of the time between 2.0 p.m. on Friday, November 18 and 7.0 p.m. on Sunday, November 20.

## EMPIRE

Nightly at 8-45 p.m. Matinee: Saturday at 2.15 p.m.

THE SUPER PICTURE HOUSE.

### TO-NIGHT FRIDAY & SATURDAY

### Matinee Saturday at 3-15

### A BRITISH FEATURE

WITH A THOUSAND AND ONE LAUGHS!

London's Famous Comedian

SYDNEY

## HOWARD

YOU HAVE SEEN "UP FOR THE CUP" NOW SEE HIM

in

IAN HAY'S GREAT STAGE SUCCESS

## "TILLY OF BLOOMSBURY"

["TILLY OF BLOOMSBURY" ... How we have a first-class, clean and funny Ian Hay comedy, cleverly produced and masterfully photographed, acted by an all-star cast ... Syd Howard as Mr. Bloomsbury is a screen, Miss Patricia Kinross gives a brilliant performance as Tilly, Evelyn Howard as Tilly's friend, the highlight being the vintage arranged Charles Chaplin in his best ... "DAILY MIRROR."

Supported by a strong programme including Mickey Mouse Cartoon

EXTRA FEATURE FOR SATURDAY MATINEE

CHARLIE CHAPLIN

IN

## A Jitney Elopement

ALSO

MICKY MOUSE CARTOON

Bring the Kiddies for a Treat.

## ANNABEL'S

(DR. H. MYERS & CO., LMS.)  
Ladies and Gentlemen's Dressers are giving a Permanent Wave at 35/-

One free set given within a fortnight of Permanent Wave until December 31st.  
BOOK YOUR APPOINTMENT EARLY.  
Box 461 6th Avenue, Phone 2343

### A HOLIDAY EVERY DAY

By living at the Stanley Hotel you can enjoy the beauty of a real holiday every day of your life. Apart from the extreme comfort and excellent cuisine you may enjoy beautiful parks, swimming, tennis, music and dancing without having to go out.



## THEATRE ROYAL

THE ACoustically PERFECT THEATRE

### LAST TWO NIGHTS THURSDAY & FRIDAY

British International Pictures, Ltd. PRESENT

## "FASCINATION"

with

THE MAGNETIC **Madeleine Carroll**  
Dorothy Bartlam - Carl Harbord  
Kenneth Kove & Kay Hammond

### A FASCINATING RECIPE

Mix Some Salsas. Add the Spice of Madness. Was a Little Dangerous. She with a Touch of Madness. That's Madeleine Carroll in "Fascination."

### IT FASCINATED THE CRITICS.

"A highly mysterious production, must be regarded as one of the most intelligent and sensibly striking pictures yet made in any British studio. It is hampered by a few overtones, presumably in talking pictures." - Daily Mail.  
"The picture's artistic ability, dramatized tale, which held my attention throughout." - Daily Telegraph.

### Owing to the ENORMOUS SUCCESS OF THE RAILWAY PLAYERS

PRESENTATION OF

## "MUSICAL CHAIRS"

there will be a REPEAT PERFORMANCE ON SATURDAY NIGHT (NOVEMBER 26th) AT 8-45 p.m.

### Specially Reduced Prices:

Shs. 3-50 and 2-25 (including tax) BOOKING OFFICE OPEN AT THE THEATRE DAILY from 10 a.m. to 4 p.m.

See what the local critics write—

- A. Standard— "A clever play well presented. A credit to the energies of the producer. A satisfactory production. Conceded to his highly praise."
- A WEEKLY TIMES— "I can genuinely recommend the play, and would like the opportunity of recommending it to the Railway Players and the producer Mr. A. Master, on the presentation of a well-constructed and well-produced performance."

## LANGHAM HOTEL

Phone 2180 (Fully Licensed) P.O. Box 1064

Perfect Cuisine - Excellent Service - Modern Sanitation - 60 Well Lighted Rooms - Spacious Lobbies and Dining Rooms

10 Lock up Garage - Special Circuits - 2 Full Bath Tennis Courts

The whole under the personal supervision of the Proprietors.

SPECIAL-VISITORS and PERMANENT RESIDENTS Terms Reduced - as to the building where to stay, let us show you, and quote you our special terms. You will be greatly surprised.

You Get More Value for Money if You Stay at

## TORR'S HOTEL

NAIROBI.

Popular Cuisine. Excellent Service.



Perfect Cuisine. Extra, Extra.

Dinner and Supper to Delightful Music. Dancing Lessons given daily by Miss Bobe Arnold. OFFICIAL HOTEL FOR IMPERIAL AIRWAYS LTD.



Early Days of White Penetration in Kenya.

KIKUYU AND MASAI COUNTY IN THE NINETIES.

Historical Review.

MEMORANDUM PRESENTED TO THE LAND COMMISSION.

A very valuable memorandum dealing with the early history of white penetration in East Africa, was presented to the Kenya Land Commission yesterday by Dr. H. A. Boodker, settler of Kabete, who was first taken to the country in the nineties and was a medical officer in the service of the old Chartered Company.

The memorandum was in the form of an historical review from 1880 when Fort Mombasa was first established up to 1901 when Nairobi came into being as a township.

Dr. Boodker stated that it was very singular that in Kenya there were no authenticated records left to posterity regarding definite territorial rights of occupation by the native tribes and that there were no definite agreements as to tribal boundaries.

In the early days, he states, the Masai occupied the country for many miles, including the Nairobi township area, the whole of the Tana, the Mt. Kenya, and the south side of the Tana.

The Kikuyu, however, had more or less packed themselves in the Dagoretti area where they were protected by a forest belt from the Masai.

At the present time, states the memorandum, the Wakikuyu are in actual possession of large tracts of land which in the days of the Company were never occupied by them.

Lack of Records.

Dr. H. A. Boodker of Kabete, however, has written up the early history of the Kenya Land Commission. He presented a memorandum, which was accompanied by a number of maps and other evidence. The former, defined the boundaries of the Masai and the Kikuyu, and also the location of the forest belt.

In this memorandum, Dr. Boodker also stated that the Wakikuyu are in actual possession of large tracts of land which in the days of the Company were never occupied by them.

Using a review of the objects of the Commission, Dr. Boodker stated that the Wakikuyu were not in actual possession of large tracts of land which in the days of the Company were never occupied by them.

Dr. Boodker stated that the Wakikuyu were not in actual possession of large tracts of land which in the days of the Company were never occupied by them.

Dr. Boodker stated that the Wakikuyu were not in actual possession of large tracts of land which in the days of the Company were never occupied by them.

Dr. Boodker stated that the Wakikuyu were not in actual possession of large tracts of land which in the days of the Company were never occupied by them.

Dr. Boodker stated that the Wakikuyu were not in actual possession of large tracts of land which in the days of the Company were never occupied by them.

Dr. Boodker stated that the Wakikuyu were not in actual possession of large tracts of land which in the days of the Company were never occupied by them.

Dr. Boodker stated that the Wakikuyu were not in actual possession of large tracts of land which in the days of the Company were never occupied by them.

Dr. Boodker stated that the Wakikuyu were not in actual possession of large tracts of land which in the days of the Company were never occupied by them.

Dr. Boodker stated that the Wakikuyu were not in actual possession of large tracts of land which in the days of the Company were never occupied by them.

Dr. Boodker stated that the Wakikuyu were not in actual possession of large tracts of land which in the days of the Company were never occupied by them.

Dr. Boodker stated that the Wakikuyu were not in actual possession of large tracts of land which in the days of the Company were never occupied by them.

Dr. Boodker stated that the Wakikuyu were not in actual possession of large tracts of land which in the days of the Company were never occupied by them.

Dr. Boodker stated that the Wakikuyu were not in actual possession of large tracts of land which in the days of the Company were never occupied by them.

A CREMATORIO FOR NAIROBI? Suggested Construction in City Park.

MODERN METHODS.

A proposal has been made by the Corporation, that the Municipality should erect a crematorium in the City Park north of the Victoria Park, to be situated at 6,000, with a capacity of 1,000.

A Terrible Epidemic.

During his residence at Fort Smith, from 1880 to 1882, Dr. Boodker stated that he had observed a terrible epidemic of cholera in the district of the Kikuyu, which was caused by the introduction of the disease by the Kikuyu from the coast.

Nairobi Nairobi.

When Nairobi township was first established in 1899, it was situated on the eastern side of the Victoria Park, and was bounded by the Victoria Park to the north and the Victoria Park to the south.

Dr. Boodker stated that the Wakikuyu were not in actual possession of large tracts of land which in the days of the Company were never occupied by them.

Dr. Boodker stated that the Wakikuyu were not in actual possession of large tracts of land which in the days of the Company were never occupied by them.

Dr. Boodker stated that the Wakikuyu were not in actual possession of large tracts of land which in the days of the Company were never occupied by them.

Dr. Boodker stated that the Wakikuyu were not in actual possession of large tracts of land which in the days of the Company were never occupied by them.

Dr. Boodker stated that the Wakikuyu were not in actual possession of large tracts of land which in the days of the Company were never occupied by them.

Dr. Boodker stated that the Wakikuyu were not in actual possession of large tracts of land which in the days of the Company were never occupied by them.

Dr. Boodker stated that the Wakikuyu were not in actual possession of large tracts of land which in the days of the Company were never occupied by them.

Dr. Boodker stated that the Wakikuyu were not in actual possession of large tracts of land which in the days of the Company were never occupied by them.

Dr. Boodker stated that the Wakikuyu were not in actual possession of large tracts of land which in the days of the Company were never occupied by them.

Dr. Boodker stated that the Wakikuyu were not in actual possession of large tracts of land which in the days of the Company were never occupied by them.

Dr. Boodker stated that the Wakikuyu were not in actual possession of large tracts of land which in the days of the Company were never occupied by them.

Dr. Boodker stated that the Wakikuyu were not in actual possession of large tracts of land which in the days of the Company were never occupied by them.

Dr. Boodker stated that the Wakikuyu were not in actual possession of large tracts of land which in the days of the Company were never occupied by them.

Dr. Boodker stated that the Wakikuyu were not in actual possession of large tracts of land which in the days of the Company were never occupied by them.

Dr. Boodker stated that the Wakikuyu were not in actual possession of large tracts of land which in the days of the Company were never occupied by them.

Dr. Boodker stated that the Wakikuyu were not in actual possession of large tracts of land which in the days of the Company were never occupied by them.

Dr. Boodker stated that the Wakikuyu were not in actual possession of large tracts of land which in the days of the Company were never occupied by them.

Dr. Boodker stated that the Wakikuyu were not in actual possession of large tracts of land which in the days of the Company were never occupied by them.

Dr. Boodker stated that the Wakikuyu were not in actual possession of large tracts of land which in the days of the Company were never occupied by them.

Dr. Boodker stated that the Wakikuyu were not in actual possession of large tracts of land which in the days of the Company were never occupied by them.

Dr. Boodker stated that the Wakikuyu were not in actual possession of large tracts of land which in the days of the Company were never occupied by them.

Dr. Boodker stated that the Wakikuyu were not in actual possession of large tracts of land which in the days of the Company were never occupied by them.

Dr. Boodker stated that the Wakikuyu were not in actual possession of large tracts of land which in the days of the Company were never occupied by them.

A 'Fit Man, Mentally and Physically.'

His Physician's Opinion.

NUMEROUS OF ILLEGALS A POLICE MOVE.

CONCILIAR Sir Charles Bowring.

A CHRISTMAS TREE.

FOR TRANS NZIA Children.

FOREIGN BACON Sold in England at One Penny Pound.

NAKURU BUILDINGS.

MARAGUA POWER STATION.

EX-SERVICEMEN'S EXHIBITION.

RATES OF EXCHANGE.

THE RUSH TO KAKAMEGA.

Amazing Yield Reported.

A Great Gamble.

MARKET FOR LOCAL PRODUCE.

A PRESENTATION AT THIKA.

FORBIDDING COMPANY Wedding.

THIS IS A HOT OFFICE.

RAILWAY INCIDENT.

Door Torn from Express Near London.

Kindling Preparing.

THE DOOR OF A PULLMAN-OXFORD TRAIN.

STAINING AND THE DOOR.

LONDON OFFICES TO LET.

TO-DAY'S CAUSE LIST.

HOPE WHICH WAS TOO LONG DEFERRED.

UNPAID LABOURERS at Kakamega.

EUROPEAN RESTORED.

Accused pleading guilty on all counts and to fine amounting to six months and 100 shillings in default.

Accused pleading guilty on all counts and to fine amounting to six months and 100 shillings in default.

Accused pleading guilty on all counts and to fine amounting to six months and 100 shillings in default.

Accused pleading guilty on all counts and to fine amounting to six months and 100 shillings in default.

Accused pleading guilty on all counts and to fine amounting to six months and 100 shillings in default.

Accused pleading guilty on all counts and to fine amounting to six months and 100 shillings in default.

Accused pleading guilty on all counts and to fine amounting to six months and 100 shillings in default.

Accused pleading guilty on all counts and to fine amounting to six months and 100 shillings in default.

Accused pleading guilty on all counts and to fine amounting to six months and 100 shillings in default.

Accused pleading guilty on all counts and to fine amounting to six months and 100 shillings in default.

Accused pleading guilty on all counts and to fine amounting to six months and 100 shillings in default.

Accused pleading guilty on all counts and to fine amounting to six months and 100 shillings in default.

Accused pleading guilty on all counts and to fine amounting to six months and 100 shillings in default.

Accused pleading guilty on all counts and to fine amounting to six months and 100 shillings in default.

Accused pleading guilty on all counts and to fine amounting to six months and 100 shillings in default.

Accused pleading guilty on all counts and to fine amounting to six months and 100 shillings in default.

Accused pleading guilty on all counts and to fine amounting to six months and 100 shillings in default.

Accused pleading guilty on all counts and to fine amounting to six months and 100 shillings in default.

Accused pleading guilty on all counts and to fine amounting to six months and 100 shillings in default.

Accused pleading guilty on all counts and to fine amounting to six months and 100 shillings in default.

Accused pleading guilty on all counts and to fine amounting to six months and 100 shillings in default.

Accused pleading guilty on all counts and to fine amounting to six months and 100 shillings in default.

Accused pleading guilty on all counts and to fine amounting to six months and 100 shillings in default.

Accused pleading guilty on all counts and to fine amounting to six months and 100 shillings in default.

Accused pleading guilty on all counts and to fine amounting to six months and 100 shillings in default.

Accused pleading guilty on all counts and to fine amounting to six months and 100 shillings in default.

Accused pleading guilty on all counts and to fine amounting to six months and 100 shillings in default.

Accused pleading guilty on all counts and to fine amounting to six months and 100 shillings in default.

Accused pleading guilty on all counts and to fine amounting to six months and 100 shillings in default.

Accused pleading guilty on all counts and to fine amounting to six months and 100 shillings in default.











**LOOK HERE!**

IF YOU WANT A GOOD SECOND-HAND CAR, BUT PLEASE DO NOT CONSUME THIS SPACE IF YOU REQUIRE A RAB ONE.

We offer you to-day a  
**FORD CABRIOLET**  
for  
**£135**

A CHANCE THAT MUST NOT BE MISSED.

**CARR, LAWSON & Co., Ltd.**  
F.O. Box 206 (Phone 2021)  
SERVICE—and—SATISFACTION.

**CHARLES WARE**  
TURF ACCOUNTANT  
MANCHESTER NOVEMBER HANDICAP.  
SUNDAY  
Enquire Prices in My Office.  
Office Hours—9 a.m. to 1 p.m. and 2 p.m. to 4 p.m.

**Chivers' Jams**

Made in silver-lined pans at the Orchard Factory with freshly selected fruit and refined sugar only. Every jar carries a guarantee of absolute purity.

TRY ALSO  
**CHIVERS' English Jammed Fruits with Chivers' Custard Powder**

Wholesale Agents: **CHIVERS & BOPPS, The Orchard Factory, Histon, Cambridgeshire.**

FOR COMPRESSED AIR PLANT AND TOOLS OF ALL DESCRIPTIONS  
J. POLLOCK, A.M.I.C.E.  
Buller Street, NAIROBI.  
Representing  
Messrs. INGERSOLL RAND COMPANY (SOUTH AFRICA) Limited.

**MAURICE ROSENSTON,**  
F.O. Box 461 (Phone 596) Tel. Address: TWENTY.  
MANCHESTER NOVEMBER HANDICAP, on November 24th, 1928.

NO ALTERATION IN PRICES.  
WANTED 2 BROTHERS LADS AS APPRENTICES.  
14th PLACE, NAIROBI, on December 10th, 1928.  
JOHNSTONE BUILDING, BARRAGE, VALUE £4,000, FOR SALE.  
FIBRES ON RECEIPT OF CABLE. DAILY INFORMATION.  
LONDON AND GRAND NATIONAL.  
SIX AND UPWARDS THE DOUBLE.  
ENGLISH DERBY, on May 31, 1928.—101 The Field and Upwards.

SUBJECT TO MARKET FLUCTUATIONS.  
PHONE—WRITE OR WIRE.  
CREDIT—LETTER—WIRE BUSINESS ONLY.

**HENNESSY'S**  
BRANDY  
Representatives—W. B. KERB & Co., Box 550, NAIROBI.

And now the NEW  
**Spalding**  
"TOP-FITE"  
PAINLESS  
GOLF BALL.  
CRAIG'S SPORTS HOUSE LTD., NAIROBI.

**Racing**  
**Topics of the Turf.**  
**CLOSE OF THE FLAT RACING SEASON.**

Next Year's Classics.  
REMARKABLE FEATURE OF THIS YEAR'S PERFORMANCES.



(Ampis.)  
It is England's most exciting racing season, and the feature of the flat racing season has been the remarkable performance of the "Champion" in the "Derby" and "St. Leger" races. The "Champion" was trained by Mr. J. P. Mervin, and was owned by Mr. J. P. Mervin. The "Champion" was a bay colt, and was sired by "The Duke" out of "The Duchess". The "Champion" was trained by Mr. J. P. Mervin, and was owned by Mr. J. P. Mervin. The "Champion" was a bay colt, and was sired by "The Duke" out of "The Duchess".

One of the most remarkable features of the past season, has been the great "Champion" by "The Duke" out of "The Duchess". The "Champion" was trained by Mr. J. P. Mervin, and was owned by Mr. J. P. Mervin. The "Champion" was a bay colt, and was sired by "The Duke" out of "The Duchess".

Richard von Bary.  
One of the most remarkable features of the past season, has been the great "Champion" by "The Duke" out of "The Duchess". The "Champion" was trained by Mr. J. P. Mervin, and was owned by Mr. J. P. Mervin. The "Champion" was a bay colt, and was sired by "The Duke" out of "The Duchess".

M. E. F. Watson's Colours.  
Messrs. Watson's Colours will have noted with interest the results of the "Champion" by "The Duke" out of "The Duchess". The "Champion" was trained by Mr. J. P. Mervin, and was owned by Mr. J. P. Mervin. The "Champion" was a bay colt, and was sired by "The Duke" out of "The Duchess".

It may well be that this season's results will show the supremacy of the "Champion" by "The Duke" out of "The Duchess". The "Champion" was trained by Mr. J. P. Mervin, and was owned by Mr. J. P. Mervin. The "Champion" was a bay colt, and was sired by "The Duke" out of "The Duchess".

**PARLEONS SPORTS CLUB.**  
**Its Birth and Progress.**  
**UPS AND DOWNS.**  
**Today an Essentially Modern Footing.**

The opening of the new club house of Parleons Sports Club in the history of the Colony of Victoria is a notable event. The club has been founded by Mr. J. P. Mervin, and was owned by Mr. J. P. Mervin. The club has been founded by Mr. J. P. Mervin, and was owned by Mr. J. P. Mervin.

Founded about twenty-seven years ago, the club has been a success. The club has been founded by Mr. J. P. Mervin, and was owned by Mr. J. P. Mervin. The club has been founded by Mr. J. P. Mervin, and was owned by Mr. J. P. Mervin.

For to the club was the club engaged a resident secretary, and the club has been a success. The club has been founded by Mr. J. P. Mervin, and was owned by Mr. J. P. Mervin. The club has been founded by Mr. J. P. Mervin, and was owned by Mr. J. P. Mervin.

At the end of the year, the club has been a success. The club has been founded by Mr. J. P. Mervin, and was owned by Mr. J. P. Mervin. The club has been founded by Mr. J. P. Mervin, and was owned by Mr. J. P. Mervin.

Just after the war the club had a great success. The club has been founded by Mr. J. P. Mervin, and was owned by Mr. J. P. Mervin. The club has been founded by Mr. J. P. Mervin, and was owned by Mr. J. P. Mervin.

The club has been a success. The club has been founded by Mr. J. P. Mervin, and was owned by Mr. J. P. Mervin. The club has been founded by Mr. J. P. Mervin, and was owned by Mr. J. P. Mervin.

Being a sports club, considerable attention has always been paid to the club's affairs. The club has been founded by Mr. J. P. Mervin, and was owned by Mr. J. P. Mervin. The club has been founded by Mr. J. P. Mervin, and was owned by Mr. J. P. Mervin.

Since the war the club has taken a great interest in the club's affairs. The club has been founded by Mr. J. P. Mervin, and was owned by Mr. J. P. Mervin. The club has been founded by Mr. J. P. Mervin, and was owned by Mr. J. P. Mervin.

**ELEY GRAND PRIZE**  
Do not use inferior cartridges in your gun. Use ELEY—British and Best.

**ELEY GRAND PRIZE**  
loaded with Smokeless or Diamond powder  
the most popular cartridge for all feathered game

ELEY'S GRAND PRIZE  
SMOKELESS POWDER

Eley cartridges are obtainable from all licensed dealers throughout East Africa.

**"A Good Gun deserves a Good Cartridge"**

A. HOGG, Manchester November Handicap, 1 mile 4 furlongs, 26-11/2.  
THE DERBY, 51-53, on Monday, February 19th, 1928, 7 fms., LINCOLN AND NATIONAL—1000 Yds. 1 mile 4 furlongs, 11/2.  
PLACES 1/4, DOUBLES 1/16.  
9 a.m. to 1 p.m. Race Days, All Day

**QUEEN'S HOTEL**  
SELF-CONTAINED FLATS.  
Large well lighted rooms with own bath, verandah, etc.

First Class Cuisine. FULLY LICENCED.  
Central Position Without Noise.

**WIRELESS EACH EVENING.**  
Restaurant and Lounge open to Non-residents.

Breakfast 7/- Dinner 7/6  
Boat 6/4 NAIROBI Phone 7116

**"ECONOMY" is the word to-day**  
Expenditure must go on; but every penny must be justified. Why not return for your outfit one you find here at the

COVENTRY BROS' SILKEN RUBBERS  
which is quick, with a year's license, number plates and a tank full of petrol, for 440.

NEW IMPERIAL "UNIT MOTOR" O.E.P. Model for 444 Speed—45 to 50 m.p.h. Consumption—110 miles per gallon. Call and inspect this very complete range of motorcars at

Telephone 2778. **GASVAGES GARAGE** P.O. Box 1188, NAIROBI.

**A. F. LENZBERG,**  
LEADER BUILDINGS, Government Road, F.O. Box 700 Tel. Address: "Berg" Telephone 719

MANCHESTER NOVEMBER HANDICAP, SUN SATURDAY, 11 miles. STARTING PRICE FOR ANY AMOUNT.

CREDIT—LETTER—PHONE—WIRE BUSINESS ONLY.  
Office Hours 9 to 12 and 2 to 5 Race Days, All Day

FOR RIFLES, SHOT GUNS, REVOLVERS, PISTOLS, FISHING TACKLE, REPAIRS—SIGHTING—RESTOCKING  
GO TO **CHAS. A. HEYER & Co., Ltd.**  
THE GUNSMITHS NAIROBI. (Grams: Elephant Phone 2926)