

Warranted the Largest Circulation of any Newspaper in B.E.A. & Uganda

THE EAST

Weekly Edition

# African Standard



MOMBASA TIMES & UGANDA ARGUS  
The Oldest Established Newspaper published in B. E. Africa and Uganda.

NAIROBI, SATURDAY, APRIL 6, 1919

Price of paper 2d. 6d. per week. Printed weekly at No. 11, Market Street, NAIROBI.

## Novelties in HALF HOSE



Gents Plain Top Khaki Stockings. "The Service" strong & durable in fit and full length at Rs. 6.50 per pair.

Gents Khaki Half Hose very heavy worsted at Rs. 3.00 per pair.

Patented Lisle Thread Half Hose in all shades at Rs. 7.75 per pair. Coloured Cashmere Half Hose with silk embroidered clox at 3-75 per pair. Mixture seamless Half Hose, Cashmere fabric with embroidered silk clox, unbrodered at 2-75 per pair.



Gents Cape Mackintosh with check lining in all sizes from Rs. 19-50 to 37-50.

Gents Riding & Cycling Capes. Rs. 19-50 to 39-00



Gents "Tropical" Helmets, Havelock's Pattern in Khaki and White at Rs. 32-50. We undertake to reconvert old helmets with new khaki or white covers for Rs. 6-50.

Gents Cream Knitted Coat Sweaters as illustrated 25-50. Gents Fawn Camel Hair Cardigan Jacket just arrived at Rs. 37-50.



Whiteaway, Laidlaw & Co., Ltd., The Sixth Avenue Store, NAIROBI.

THE EXQUISITE FLAVOUR OF LIPTON'S TEA

its delicate aroma and its remarkable properties as an effective stimulant have established it as the finest Tea the World Produces.

the Tea Garden to the Teapot

**HAWLEY & Co.,**  
DUKE STREET.  
Cart and Wagon Builders  
Oldest European Wagon Building Firm in E.A.  
20 Years, English Experience.

**NYAMA, Ltd.**  
For PRIME MEAT.  
Half-Bred Mutton.  
A SPECIALITY.  
MEAT DISPATCHED TO ANY STATION.  
3 good Road and Trolley, etc. through our depot.  
**S. McCALL**  
Government Road, NAIROBI.

Spanish Influenza Expert Advice

It is not necessary to drop the Sundowner. You must, however, drink a good whisky and the best "Sundowner" IS "Daniel Crawford's Red Star".

Wholesale Stocks by **H. White Wilson AND COMPANY, NAIROBI.**

**DANIEL CRAWFORD'S RED STAR WHISKY**  
The Universal Favorite

BOUSTEAD & CLARKE, Ltd. SMITH, MACKENZIE & CO., and L. REASON (MOMBASA).

Esamelji Jivanji & Co. (City) Wholesale & Retail. Sole Agents for the Province of Kenya and Uganda. Approved by the Government of Kenya and Uganda. Sole Agents for the Province of Kenya and Uganda. Sole Agents for the Province of Kenya and Uganda.



REVEILLE TOBACCO

The Favourite Smoking Mixture of B.E.A.

Large Stocks

HAVE NOW ARRIVED

Price on application to

Mackinnon Bros.,

P. O. Box No. 33. NAIROBI.

Phone No. 31.

SMITH, MACKENZIE & CO., AGENTS

BRITISH INDIA STEAM NAVIGATION CO., LTD.

Agents for the Indian Ocean Steam Navigation Co., Ltd.

Agents for the East African Steam Navigation Co., Ltd.

Agents for the East African Steam Navigation Co., Ltd.

Agents for the East African Steam Navigation Co., Ltd.

Agents for the East African Steam Navigation Co., Ltd.

Agents for the East African Steam Navigation Co., Ltd.

Agents for the East African Steam Navigation Co., Ltd.

Agents for the East African Steam Navigation Co., Ltd.

Agents for the East African Steam Navigation Co., Ltd.

Agents for the East African Steam Navigation Co., Ltd.

Agents for the East African Steam Navigation Co., Ltd.

Agents for the East African Steam Navigation Co., Ltd.

Agents for the East African Steam Navigation Co., Ltd.

Agents for the East African Steam Navigation Co., Ltd.

Agents for the East African Steam Navigation Co., Ltd.

Agents for the East African Steam Navigation Co., Ltd.

Agents for the East African Steam Navigation Co., Ltd.

Agents for the East African Steam Navigation Co., Ltd.

Agents for the East African Steam Navigation Co., Ltd.

Agents for the East African Steam Navigation Co., Ltd.

Agents for the East African Steam Navigation Co., Ltd.

Agents for the East African Steam Navigation Co., Ltd.

Agents for the East African Steam Navigation Co., Ltd.

Agents for the East African Steam Navigation Co., Ltd.

Agents for the East African Steam Navigation Co., Ltd.

Agents for the East African Steam Navigation Co., Ltd.

Agents for the East African Steam Navigation Co., Ltd.

Agents for the East African Steam Navigation Co., Ltd.

BRITISH EAST AFRICA CORPORATION

London, Manchester, Nairobi, Harare, Johannesburg, Fort Portal, Mombasa, Kisumu, etc.

General Merchants and Shipping Agents

OLDFIELD & FOWLER, EXPORT & IMPORT

AGENTS FOR: LLOYDS ORIENTAL AND THE EAST

The Union-Castle Mail Steamship Co., Ltd., London, Southampton, etc.

GORDON'S COFFEE MACHINERY AND ACCESSORIES

Managers of The East African Lands & Development Co., Ltd.

Managers of The East African Lands & Development Co., Ltd.

Managers of The East African Lands & Development Co., Ltd.

Managers of The East African Lands & Development Co., Ltd.

Managers of The East African Lands & Development Co., Ltd.

Managers of The East African Lands & Development Co., Ltd.

Managers of The East African Lands & Development Co., Ltd.

Managers of The East African Lands & Development Co., Ltd.

Managers of The East African Lands & Development Co., Ltd.

Managers of The East African Lands & Development Co., Ltd.

Managers of The East African Lands & Development Co., Ltd.

Managers of The East African Lands & Development Co., Ltd.

Managers of The East African Lands & Development Co., Ltd.

Managers of The East African Lands & Development Co., Ltd.

Managers of The East African Lands & Development Co., Ltd.

Managers of The East African Lands & Development Co., Ltd.

Managers of The East African Lands & Development Co., Ltd.

Managers of The East African Lands & Development Co., Ltd.

Managers of The East African Lands & Development Co., Ltd.

Managers of The East African Lands & Development Co., Ltd.

Managers of The East African Lands & Development Co., Ltd.

Managers of The East African Lands & Development Co., Ltd.

Managers of The East African Lands & Development Co., Ltd.

Managers of The East African Lands & Development Co., Ltd.

Managers of The East African Lands & Development Co., Ltd.

DAY'S CABLES

ED FUGITIVES

of the Times in

Beau

DITIONARY GOLD

London, March 28

London, March 28

London, March 28

London, March 28

London, March 28

London, March 28

London, March 28

London, March 28

London, March 28

London, March 28

London, March 28

London, March 28

London, March 28

London, March 28

London, March 28

London, March 28

London, March 28

London, March 28

London, March 28

London, March 28

London, March 28

London, March 28

London, March 28

London, March 28

London, March 28

London, March 28

London, March 28

London, March 28

London, March 28

London, March 28

London, March 28

London, March 28

London, March 28

London, March 28

HUNGARY A VOLCANO

Socialists Assuming

Government

BOSHEVIST ALLIANCE

London, March 28

London, March 28

London, March 28

London, March 28

London, March 28

London, March 28

London, March 28

London, March 28

London, March 28

London, March 28

London, March 28

London, March 28

London, March 28

London, March 28

London, March 28

London, March 28

London, March 28

London, March 28

London, March 28

London, March 28

London, March 28

London, March 28

London, March 28

London, March 28

London, March 28

London, March 28

London, March 28

London, March 28

London, March 28

London, March 28

London, March 28

London, March 28

London, March 28

London, March 28

London, March 28

THE EAST

THE EAST

THE EAST

THE EAST

THE EAST

THE EAST

THE EAST

THE EAST

THE EAST

THE EAST

THE EAST

THE EAST

THE EAST

THE EAST

THE EAST

THE EAST

THE EAST

THE EAST

THE EAST

THE EAST

THE EAST

THE EAST

THE EAST

THE EAST

THE EAST

THE EAST

THE EAST

THE EAST

THE EAST

THE EAST

THE EAST

THE EAST

THE EAST

THE EAST

THE EAST

THE EAST

THE EAST

THE EAST

THE EAST

THE EAST

THE EAST

THE EAST

THE EAST

THE EAST

THE EAST

THE EAST

THE EAST

THE EAST

THE EAST

THE EAST

THE EAST

THE EAST

THE EAST

THE EAST

THE EAST

THE EAST

THE EAST

THE EAST

THE EAST

THE EAST

THE EAST

THE EAST

THE EAST

THE EAST

THE EAST

THE EAST

THE EAST

THE EAST

THE EAST

THE EAST

THE EAST

THE EAST

THE EAST

THE EAST

THE EAST

THE EAST

THE EAST

THE EAST

THE EAST

THE EAST

THE EAST

THE EAST

THE EAST

THE EAST

THE EAST

THE EAST

THE EAST

THE EAST

THE EAST

THE EAST

THE EAST

THE EAST

THE EAST

THE EAST

THE EAST

THE EAST

THE EAST

THE EAST

THE EAST

THE EAST

THE EAST

THE EAST

THE EAST

THE EAST

THE EAST

THE EAST

THE EAST

THE EAST

THE EAST

THE EAST

THE EAST

THE EAST

THE EAST

THE EAST

THE EAST

THE EAST

THE EAST



Simpson & Whitelaw, Ltd. NAIROBI.

Large Consignment of Horticultural Sundries.

Greenhouses, Stoves, Artificial manures, etc.

Assorted Goods of the Highest Quality.

RELIABLE AGENTS IN ENGLAND.

LONDON BUYING AGENTS

LONDON SELLING AGENTS

KEYMER, SONS & CO., WHITEFRIARS, LONDON.

EBRAHIM JOOMA, 11, Abchurch Lane, London.

YANDERBERT, Manufacturer of Washing Machines.

Head Office, Nairobi, P.O. Box No. 100.

Head Office, Nairobi, P.O. Box No. 100.

Head Office, Nairobi, P.O. Box No. 100.

Head Office, Nairobi, P.O. Box No. 100.

Head Office, Nairobi, P.O. Box No. 100.

Head Office, Nairobi, P.O. Box No. 100.

Head Office, Nairobi, P.O. Box No. 100.

Head Office, Nairobi, P.O. Box No. 100.

Head Office, Nairobi, P.O. Box No. 100.

Head Office, Nairobi, P.O. Box No. 100.

JUST ARRIVED COOKING STOVE

Nairobi "Dover" "Epicure" "Maasi"

Parlour Heating Stove

BOILERS of all descriptions complete.

J. D. Isherwood & Sons, HARDING STREET, NAIROBI.

RAMRATTAN, SALIGRA, (Proprietor, Mauritius Island).

Wine, Spirit and Provisional General Merchant.

NAIROBI, MOMBASA & M'WANGI.

Head Office, Nairobi, P.O. Box No. 100.

Head Office, Nairobi, P.O. Box No. 100.

Head Office, Nairobi, P.O. Box No. 100.

Head Office, Nairobi, P.O. Box No. 100.

Head Office, Nairobi, P.O. Box No. 100.

DAY'S CABLES

ED FUGITIVES

of the Times in





WHY DID THE LIGHT? Mr. McBlain on Storm Exercises. ELECTRIC HUMBUR.

To the Editor of the Standard: I have been reading in your issue of the 27th inst. an account of a lightning stroke which occurred in the neighbourhood of the hotel Company...

THE NEW MODEL. SELF-STARTING.

Remington Typewriter

Is the Greatest time and Labour-Saving Typewriter Improvement since the invention of the writing machine.

The Self-Starting Remington insures the neat and perfect 'set-up' of all your letters—No misplaced lines, no uneven indentations. You can set the 'Starts' for any 'set-up' you like best and all your letters are bound to be turned out in that form.

THE SELF-STARTING feature is a Remington invention which adds greatly to the value of the Typewriter but nothing to the cost.

THREE SIZES. NOW IN STOCK. Childs & Joseph.

NEWEST DESIGNS IN GEM BROUCHES FROM Rs. 90 to Rs. 700. VELS福德. THE EAST AFRICAN STANDARD. GEM REVIEW. March 21, 1910. The first of the new designs in the series of bouches...

DOBBIE. Jewellers, Silversmiths and Opticians. GOVERNMENT ROAD NAIROBI.

We cannot accept watches or clocks in repair at present.

STANDARD OIL COMPANY OF NEW YORK. SHIELD TRADE MARK. SOCONY PETROLEUM PRODUCTS.

THE PRODUCTS OF QUALITY AND ECONOMY. Engine Oil, Gas Oil, Kerosene, Lamp Oil, Greases.

BRITISH EAST AFRICA CORPORATION. BRITISH EAST AFRICA AND UGANDA.

ARSENITE OF SODA 80% CATTLE DIPPING. DESTROYING LOCUSTS, PRICKLY PEAR.

THE EASTERN BAZAAR. DIRECT IMPORTER OF SILKS & CLOTHES FROM JAPAN, CHINA & INDIA. JUST ARRIVED.

ACME CHEMICAL CO. LTD. Sole Agents for the East African Continent. 11, G. Chichester, City, Nairobi.

Notice. The National Bank of South Africa, Ltd.

Bankers to the Union Government in the Transvaal, the Orange Free State, Natal, and to the Imperial Government and to the British Colonies. Capital Subscribed and Paid up: £2,000,000.

Head Office: LONDON WALL LONDON, E.C.2. London Office: 10, WALL STREET, NEW YORK. The Bank is open for business on all days.

Branches: Cape Town, Durban, Johannesburg, Kimberley, Port Elizabeth, Pietermaritzburg, Stellenbosch, Swakopmund, Windhoek.

Directors: Mr. H. H. CHAMBERLAIN, Mr. J. H. H. CHAMBERLAIN, Mr. J. H. H. CHAMBERLAIN, Mr. J. H. H. CHAMBERLAIN.

Branches: Cape Town, Durban, Johannesburg, Kimberley, Port Elizabeth, Pietermaritzburg, Stellenbosch, Swakopmund, Windhoek.

Directors: Mr. H. H. CHAMBERLAIN, Mr. J. H. H. CHAMBERLAIN, Mr. J. H. H. CHAMBERLAIN, Mr. J. H. H. CHAMBERLAIN.

Branches: Cape Town, Durban, Johannesburg, Kimberley, Port Elizabeth, Pietermaritzburg, Stellenbosch, Swakopmund, Windhoek.

Directors: Mr. H. H. CHAMBERLAIN, Mr. J. H. H. CHAMBERLAIN, Mr. J. H. H. CHAMBERLAIN, Mr. J. H. H. CHAMBERLAIN.

Branches: Cape Town, Durban, Johannesburg, Kimberley, Port Elizabeth, Pietermaritzburg, Stellenbosch, Swakopmund, Windhoek.

Standard Bank of SOUTH AFRICA, Ltd.

Capital Subscribed and Paid up: £2,000,000. Reserve Fund: £2,000,000. Board of Directors: Mr. J. H. H. CHAMBERLAIN, Mr. J. H. H. CHAMBERLAIN.

Head Office: LONDON WALL LONDON, E.C.2. London Office: 10, WALL STREET, NEW YORK. The Bank is open for business on all days.

Branches: Cape Town, Durban, Johannesburg, Kimberley, Port Elizabeth, Pietermaritzburg, Stellenbosch, Swakopmund, Windhoek.

Directors: Mr. H. H. CHAMBERLAIN, Mr. J. H. H. CHAMBERLAIN, Mr. J. H. H. CHAMBERLAIN, Mr. J. H. H. CHAMBERLAIN.

Branches: Cape Town, Durban, Johannesburg, Kimberley, Port Elizabeth, Pietermaritzburg, Stellenbosch, Swakopmund, Windhoek.

Directors: Mr. H. H. CHAMBERLAIN, Mr. J. H. H. CHAMBERLAIN, Mr. J. H. H. CHAMBERLAIN, Mr. J. H. H. CHAMBERLAIN.

Branches: Cape Town, Durban, Johannesburg, Kimberley, Port Elizabeth, Pietermaritzburg, Stellenbosch, Swakopmund, Windhoek.

Directors: Mr. H. H. CHAMBERLAIN, Mr. J. H. H. CHAMBERLAIN, Mr. J. H. H. CHAMBERLAIN, Mr. J. H. H. CHAMBERLAIN.

Branches: Cape Town, Durban, Johannesburg, Kimberley, Port Elizabeth, Pietermaritzburg, Stellenbosch, Swakopmund, Windhoek.

Directors: Mr. H. H. CHAMBERLAIN, Mr. J. H. H. CHAMBERLAIN, Mr. J. H. H. CHAMBERLAIN, Mr. J. H. H. CHAMBERLAIN.

Branches: Cape Town, Durban, Johannesburg, Kimberley, Port Elizabeth, Pietermaritzburg, Stellenbosch, Swakopmund, Windhoek.

Directors: Mr. H. H. CHAMBERLAIN, Mr. J. H. H. CHAMBERLAIN, Mr. J. H. H. CHAMBERLAIN, Mr. J. H. H. CHAMBERLAIN.









B.E.A. PRODUCE AXES TO GRIND Latest London Prices on Market SIAL DECLINING

The National Bank of South Africa... At the last meeting... The decline in the Sial market...

WATTLE AND REDDER... The wattle market... The redder market...

THE EAST AFRICAN... The East African Standard... The East African Standard...

THE EAST AFRICAN... The East African Standard... The East African Standard...

THE EAST AFRICAN... The East African Standard... The East African Standard...

THE EAST AFRICAN... The East African Standard... The East African Standard...

THE EAST AFRICAN... The East African Standard... The East African Standard...

THE EAST AFRICAN... The East African Standard... The East African Standard...

B.E.A. DEVELOPMENT Important Electrical Company SETTLEES CONSULTANT

It has been established by the Government... The future development of B.E.A. is...

OUR REPRESENTATIVE... returned from a tour of inspection... THE EAST AFRICAN...

OUR REPRESENTATIVE... returned from a tour of inspection... THE EAST AFRICAN...

OUR REPRESENTATIVE... returned from a tour of inspection... THE EAST AFRICAN...

OUR REPRESENTATIVE... returned from a tour of inspection... THE EAST AFRICAN...

OUR REPRESENTATIVE... returned from a tour of inspection... THE EAST AFRICAN...

OUR REPRESENTATIVE... returned from a tour of inspection... THE EAST AFRICAN...

BARGAINS IN FLAR WHEAT & MAIZE FARM

Several genuine... included and... of the present... THE EAST AFRICAN...

OUR REPRESENTATIVE... returned from a tour of inspection... THE EAST AFRICAN...

OUR REPRESENTATIVE... returned from a tour of inspection... THE EAST AFRICAN...

OUR REPRESENTATIVE... returned from a tour of inspection... THE EAST AFRICAN...

OUR REPRESENTATIVE... returned from a tour of inspection... THE EAST AFRICAN...

OUR REPRESENTATIVE... returned from a tour of inspection... THE EAST AFRICAN...

OUR REPRESENTATIVE... returned from a tour of inspection... THE EAST AFRICAN...

MEMORIAL GOVERNOR

The following... the late Governor... THE EAST AFRICAN...

THE EAST AFRICAN... The East African Standard... The East African Standard...

THE EAST AFRICAN... The East African Standard... The East African Standard...

THE EAST AFRICAN... The East African Standard... The East African Standard...

THE EAST AFRICAN... The East African Standard... The East African Standard...

THE EAST AFRICAN... The East African Standard... The East African Standard...

THE EAST AFRICAN... The East African Standard... The East African Standard...

THE EMERALD OF THE EMPIRE... THE EAST AFRICAN...

THE EAST AFRICAN... The East African Standard... The East African Standard...

THE EAST AFRICAN... The East African Standard... The East African Standard...

THE EAST AFRICAN... The East African Standard... The East African Standard...

THE EAST AFRICAN... The East African Standard... The East African Standard...

THE EAST AFRICAN... The East African Standard... The East African Standard...

THE EAST AFRICAN... The East African Standard... The East African Standard...

Muir Towels... THE EAST AFRICAN...

THE EAST AFRICAN... The East African Standard... The East African Standard...

THE EAST AFRICAN... The East African Standard... The East African Standard...

THE EAST AFRICAN... The East African Standard... The East African Standard...

THE EAST AFRICAN... The East African Standard... The East African Standard...

THE EAST AFRICAN... The East African Standard... The East African Standard...

THE EAST AFRICAN... The East African Standard... The East African Standard...

COURT INTERPRETERS... THE EAST AFRICAN...

THE EAST AFRICAN... The East African Standard... The East African Standard...

THE EAST AFRICAN... The East African Standard... The East African Standard...

THE EAST AFRICAN... The East African Standard... The East African Standard...

THE EAST AFRICAN... The East African Standard... The East African Standard...

THE EAST AFRICAN... The East African Standard... The East African Standard...

THE EAST AFRICAN... The East African Standard... The East African Standard...

NEWLAND TARTLTON & Co. LAND & ESTATE AGENTS.

DUNLOP TYRE PRICES. MOTOR CAR TYRES. COVERS. TABLE with columns for Size, Grooves, Blended, and Tubes.

MOTOR CYCLE TYRES. ROAD RIDER TYRES only. COVERS. TABLE with columns for Size, Light Heavy, and Heavy.

AMBROS LIMITED. ENGINEERS. LONDON & WEST. TABLE with columns for various services and prices.

GOVLE TYRES. Wheel on Type only. COVERS. TABLE with columns for various sizes and prices.

Newland Tartlton & Co. Ltd. AGENTS OF GARBARO'S INSIST ON DUNLOPS.

STOCK SALE AT GILGIL ON Saturday, 12th April, at 9 a.m. W. B. THOMPSON & Co.

will sell by public auction 700 HEAD of Somali Cattle now at Gilgil.

NOTICE. Tenders Invited To drain level off with murrum the Yard of the Equator Saw Mills, Sadler Street.

lowest or any tender not necessarily accepted. APPLIN'S EQUATOR SAW MILLS, MAIROBI HOUSE.

RAILWAY WORKING Why No "Special" Run from Kisumu.

The proposed... the proposed... THE EAST AFRICAN...

THE EAST AFRICAN... The East African Standard... The East African Standard...

"HULL!" The Trials of Getting the Land Officer TELEPHONE TALKS

(By R.F.D.) I was rather interested in the Land Officer's office...

"Hullo!" masculine voice this time. "Hello!" I see you in the Land Officer's office...

"Hullo!" masculine voice this time. "Hello!" I see you in the Land Officer's office...

"Hullo!" masculine voice this time. "Hello!" I see you in the Land Officer's office...

"Hullo!" masculine voice this time. "Hello!" I see you in the Land Officer's office...

LABOUR RECRUITING CASE Judgment in Boustead & Clarke vs. B.E.A. Fibre and I. Co.

COMMENTS BY MR JUSTICE PICKERING

Mr. Justice Pickering has delivered judgment in favour of the B.E.A. Fibre and I. Co. Ltd. in the remarkable labour recruiting case...

It is a necessary first to ascertain the terms of the contract upon which the labour was engaged...

It is a necessary first to ascertain the terms of the contract upon which the labour was engaged...

It is a necessary first to ascertain the terms of the contract upon which the labour was engaged...

It is a necessary first to ascertain the terms of the contract upon which the labour was engaged...

'E.A. Standard' Weekly Report.

Table with columns: District, Week ending, Weather. Rows include Chantham, Eldama, Kariak, Kibete, Kiunga, London, Lower Limu, Lumba, Mandhari, Masai Reserve, Mombasa, Mt Hilli, Nairobi, Naivasha, Nanyuki, Nyeri, Saguer, Thika, Ulu.

VERNON'S SOLDIER SETTLEMENT SCHEME FIRST LAND PROVISION FOR OVER A THOUSAND MEN.

EASY RESIDENTIAL CONDITIONS. ARMS FOR SELECTED APPLICANTS WITHOUT CAPITAL.

any alien to arrange with any other alien to purchase or lease...

13. The number of farms allotted under this scheme shall not exceed 100...

14. Applicants must apply in person to the Government...

15. The Government may require any applicant to furnish security...

16. Applicants will be charged at the rate of ten cents per acre...

JUST ARRIVED BOCK CIGAR BROADBENT'S Standard Stationery 31, AVENUE.

any alien to arrange with any other alien to purchase or lease...

17. The Government may require any applicant to furnish security...

18. The Government may require any applicant to furnish security...

19. The Government may require any applicant to furnish security...

20. The Government may require any applicant to furnish security...

21. The Government may require any applicant to furnish security...

SHOULD BE... In view of the fact that the... The Government may require any applicant to furnish security...

22. The Government may require any applicant to furnish security... 23. The Government may require any applicant to furnish security...

24. The Government may require any applicant to furnish security... 25. The Government may require any applicant to furnish security...



LANDIARI NOTES
Motor Service to the Plateau
LAND PROSPECTS

(From Our Correspondent)
Recently my ride has taken this route, and everywhere is beautiful green and there is plenty of game more. Doubtless the country may bring us sheepskins.

Why Meat was Late
To the Editor, E.A. Standard:
I am glad to see that you have taken the trouble to mention the late arrival of the various butchers shops in this town people.

DAMN THE CONSEQUENCES
The Editor, E.A. Standard:
I am glad to see that you have taken the trouble to mention the late arrival of the various butchers shops in this town people.

The "East African Standard"
The Editor, E.A. Standard:
I am glad to see that you have taken the trouble to mention the late arrival of the various butchers shops in this town people.

LIQUOR PRICE LIST.
BITTERS
Meridian S. A. at 24 Pils
Bevile

BEER
Chandler's 4 dozen pts.
BRANDY
S. A. Brandy

BURGUNDY
G. B. Pomard plus a 24c
CLARET
G. B. Margat plus.

GIN
S. A. Dry Gin
Singer Brandy

LIQUORS
Singer Brandy
MINERAL WATERS
Schweppe Soda Water

WHISKIES
J. W. Red Label
White Horse Whisky

DELIVERED BOMBABA RAILWAY STATION, 10 PER CENT DISCOUNT FOR CASH WITH ORDER.
BOSTEAD & CLARKE LTD.
P. O. Box 30. BOMBABA.

Wagon is not applicable to this...
The Editor, E.A. Standard:
I am glad to see that you have taken the trouble to mention the late arrival of the various butchers shops in this town people.

Why Meat was Late
The Editor, E.A. Standard:
I am glad to see that you have taken the trouble to mention the late arrival of the various butchers shops in this town people.

DAMN THE CONSEQUENCES
The Editor, E.A. Standard:
I am glad to see that you have taken the trouble to mention the late arrival of the various butchers shops in this town people.

The "East African Standard"
The Editor, E.A. Standard:
I am glad to see that you have taken the trouble to mention the late arrival of the various butchers shops in this town people.

LIQUOR PRICE LIST.
BITTERS
Meridian S. A. at 24 Pils
Bevile

BEER
Chandler's 4 dozen pts.
BRANDY
S. A. Brandy

BURGUNDY
G. B. Pomard plus a 24c
CLARET
G. B. Margat plus.

GIN
S. A. Dry Gin
Singer Brandy

LIQUORS
Singer Brandy
MINERAL WATERS
Schweppe Soda Water

WHISKIES
J. W. Red Label
White Horse Whisky

DELIVERED BOMBABA RAILWAY STATION, 10 PER CENT DISCOUNT FOR CASH WITH ORDER.
BOSTEAD & CLARKE LTD.
P. O. Box 30. BOMBABA.

Holdsforth, Hough
COFFEE CLEANING.
Expert Opinions from London House
EXPERIENCE OF THE PROCESS.

(The Editor)
It is very possible for us when we dry in London...
The Editor, E.A. Standard:
I am glad to see that you have taken the trouble to mention the late arrival of the various butchers shops in this town people.

Manufacturer & No.
Cotton Textiles, Holdsworth, Hough
Dyed Broaden, Velles Gatten
Cripps.

Head Office for all English
Nairn House, for B.E.A.
Nairnbar, Congo Belg.
quired Territory.
THEBARS: RENASCENT. P.

THE Jones Sewing Machine
Company is the largest factory in the world...
H. W. ALLEKIN & CO. LTD.
44, Strand Street, Cape Town.

LIQUOR PRICE LIST.
BITTERS
Meridian S. A. at 24 Pils
Bevile

BEER
Chandler's 4 dozen pts.
BRANDY
S. A. Brandy

BURGUNDY
G. B. Pomard plus a 24c
CLARET
G. B. Margat plus.

GIN
S. A. Dry Gin
Singer Brandy

LIQUORS
Singer Brandy
MINERAL WATERS
Schweppe Soda Water

WHISKIES
J. W. Red Label
White Horse Whisky

DELIVERED BOMBABA RAILWAY STATION, 10 PER CENT DISCOUNT FOR CASH WITH ORDER.
BOSTEAD & CLARKE LTD.
P. O. Box 30. BOMBABA.

B.E.A. EDUCATION
Plans of Parents' Union
Branch at Home
SCHOOLS AT HOME

(The Editor)
I am glad to see that you have taken the trouble to mention the late arrival of the various butchers shops in this town people.

Notice.
MRS FLOBA MELLON.
I am glad to see that you have taken the trouble to mention the late arrival of the various butchers shops in this town people.

LIQUOR PRICE LIST.
BITTERS
Meridian S. A. at 24 Pils
Bevile

BEER
Chandler's 4 dozen pts.
BRANDY
S. A. Brandy

BURGUNDY
G. B. Pomard plus a 24c
CLARET
G. B. Margat plus.

GIN
S. A. Dry Gin
Singer Brandy

LIQUORS
Singer Brandy
MINERAL WATERS
Schweppe Soda Water

WHISKIES
J. W. Red Label
White Horse Whisky

DELIVERED BOMBABA RAILWAY STATION, 10 PER CENT DISCOUNT FOR CASH WITH ORDER.
BOSTEAD & CLARKE LTD.
P. O. Box 30. BOMBABA.

B.E.A. EDUCATION
Plans of Parents' Union
Branch at Home
SCHOOLS AT HOME

(The Editor)
I am glad to see that you have taken the trouble to mention the late arrival of the various butchers shops in this town people.

Notice.
MRS FLOBA MELLON.
I am glad to see that you have taken the trouble to mention the late arrival of the various butchers shops in this town people.

LIQUOR PRICE LIST.
BITTERS
Meridian S. A. at 24 Pils
Bevile

BEER
Chandler's 4 dozen pts.
BRANDY
S. A. Brandy

BURGUNDY
G. B. Pomard plus a 24c
CLARET
G. B. Margat plus.

GIN
S. A. Dry Gin
Singer Brandy

LIQUORS
Singer Brandy
MINERAL WATERS
Schweppe Soda Water

WHISKIES
J. W. Red Label
White Horse Whisky

DELIVERED BOMBABA RAILWAY STATION, 10 PER CENT DISCOUNT FOR CASH WITH ORDER.
BOSTEAD & CLARKE LTD.
P. O. Box 30. BOMBABA.

B.E.A. EDUCATION
Plans of Parents' Union
Branch at Home
SCHOOLS AT HOME

(The Editor)
I am glad to see that you have taken the trouble to mention the late arrival of the various butchers shops in this town people.

Notice.
MRS FLOBA MELLON.
I am glad to see that you have taken the trouble to mention the late arrival of the various butchers shops in this town people.

LIQUOR PRICE LIST.
BITTERS
Meridian S. A. at 24 Pils
Bevile

BEER
Chandler's 4 dozen pts.
BRANDY
S. A. Brandy

BURGUNDY
G. B. Pomard plus a 24c
CLARET
G. B. Margat plus.

GIN
S. A. Dry Gin
Singer Brandy

LIQUORS
Singer Brandy
MINERAL WATERS
Schweppe Soda Water

WHISKIES
J. W. Red Label
White Horse Whisky

DELIVERED BOMBABA RAILWAY STATION, 10 PER CENT DISCOUNT FOR CASH WITH ORDER.
BOSTEAD & CLARKE LTD.
P. O. Box 30. BOMBABA.

SHALL WE HAVE ELECTIONS

Nairobi Municipal Council Discusses Corporations Ordinance.

HOME ASSENT FORMALLY ANNOUNCED.

During the course of the Municipal Council meeting... Mr. HAMILTON: No necessity... Mr. HAMILTON: What is the... Mr. HAMILTON: I have the honor... Mr. HAMILTON: I have the honor...

NAKURU LETTER Settlers on Military Sales THE WAR BONDS

(From Our Own Correspondent) Nakuru, March 30. The Nakuru Settlers' Association...

Under Instructions from the Salvage Commission The final sale by Auction.

cars etc., will be held at M. T. Nairobi, on Monday, April 7th commencing at 10 a.m.

TIMBER FOR EVERY PURPOSE QUATOR SAW MILLS FURNITURE Write, Phone or Call, Sadler St. NAIROBI. GENERAL BLACKSMITHY WORK A SPECIALTY.

ARRIVED. Cement, Bitumen, Lampcourse, Hoop Iron, Coffee Mesh, White and Red Lead, Putty, Fine Wire Screening, Casement Slays, and Fasteners, Rim Locks, Roofing Panel etc. ON THE WATER Rot Roofing, Bokolor Paint, Siderothen Paint, Bicolorum (wood preservative), Carbolicum, Glass, Nails, Distemper etc., etc.

HOGG & MOYNA Military

A sale of Ordnance Material held at Nairobi Depot, at Thursdays, April 10th, 1918, at 10 a.m. Catalogues can be obtained from the Auctioneers, Hotels or Commissioners.

RAIDS BIDE A RIGID, RAPID, RELIABLE THE REAL-SPEED CYCLE KALEIGH RIGID CYCLE CO., LTD. GUARANTEED FOR EVER THE WORLD OVER

BRITISH SOUTH AFRICAN ANNUAL, 1918-19. BRITISH EAST AFRICA & UGANDA SUPPLEMENT. 156 PAGES 156

WANTED. Butter, Eggs, Cheese, Green Peas, Cauliflower, Rhubarb, and any kind of local fruit. Fat Cattle, Sheep, Pigs and Calves. G. Foster & Co., Nairobi

EXCELSIOR. We have the most reliable and the most complete... We have the most reliable and the most complete...

HOGG & MOYNA Civil, Military and Ladies' Tailors. Government's Complete Ordnance Department.

WANTED. Fat Cattle, Sheep, Pigs and Calves. G. Foster & Co., Nairobi. Also, various notices and advertisements.

EXCELSIOR. B.A. AGRICULTURE. Bicycles Progress by New Society. We understand that things are...

EXCELSIOR. READING STANDARDS. We have three Reading Standards... We have three Reading Standards...

Hotel Metropol Mombasa. The Premier and most complete Hotel. Half way between Kilindiini and Mombasa bours.

Evening Hats. IN GREY FAWN & BROWN. 10 percent Box 50. MAXWELL, BRADY & CO., Nairobi.

Anglo-Baltic Timber Co. P. O. Box 200. Tel: "TIMBER". NAIROBI.

Hats. VELOURS IN BROWN & DARK SLATE. Res. 27-50. Cash Discount Nairobi.

# Schweppes

SODA WATER  
DRY GINGER ALE

Supplied at all First Class Hotels Clubs & Stores throughout the World.

### NAIROBI CUT OFF Effect of Big Storms on the Line

#### UNTRAIN DELAYS

(From Our Correspondent.)  
Mombasa, March 31.  
During the last Uganda Railway day the line was washed away between Malindi and Kisumu the train service is suspended indefinitely.

The telegram above from our Mombasa correspondent alerts the situation with regard to the suspended train which the Traffic Manager had arranged should leave Nairobi Tuesday for Malindi in place of the 2:30 noon train which had to be postponed the week-end owing to the havoc of our cyclonic storms and floods.

The Mombasa train very greatly contributes to a number of travellers, notably officers and soldiers, who had to have programmes starting before the expiration of the day to sail for Home tomorrow.

#### LINE STRENGTHENED

Engineers working in official railway quarters revealed that violent storms on Saturday and Sunday brought the line at Malindi (which is mile 207) and in several places between Mile 212 and Mile 215.

Repair gangs were hurried to the scene but the work done was so great that it was impossible to get the single up passenger train through. The train, in fact, had to be washed away at the last turn of bending.

Relief trains and coaching stock were sent down in order that passenger "TANNHALL" a GRANT. NAIROBI, was again transferred over the OLD ROUTE. P. O. BOX 211, near in the line and run up to Nairobi, but it is reported that the work of transferring material of Post to be supplied.

#### EVERY PHOTO GETS A PRIZE!

### EVERY PHOTO GETS A PRIZE!

#### SNAPSHOT COMPETITION.

THE EAST AFRICAN STANDARD LIMITED OFFERS A

### First Prize of Fifteen Rupees

For the best photo sent in by any photographer, amateur or professional. The Editor reserves the right to reproduce any of the competing photographs and will award

### PRIZES OF FIVE RUPEES

FOR EACH PHOTO REPRODUCED

The Editor cannot undertake to return photos sent in for Competition.

Every Photo should bear a title and MUST have the name and address written in pencil on the back.

### EVERY PHOTO GETS A PRIZE.

#### FUEL:

#### TENDERS are required for Wood

Part delivered half at Chumbani Road, and half at Serangoon Road, at alternative, for Kisumu Station, at the rate of 100 tons per week commencing 15th April. Tenders should be closed not later than 12 noon on the 15th of April, 1912. Plans and specifications may be seen at the office of the Engineer, P. O. Box 211, Nairobi, and should state the way of transferring material of Post to be supplied.

### HORLICK'S MALTED MILK

THE IDEAL FOOD DRINK.

### Scandinavian-East-Africa Line

Regular Service from  
NORWEGIAN & SWEDISH PORTS

To Ports in the Red Sea, East Africa and Madagascar carrying cargo to Port Said, Suez, Port Sudan, Aden, Djibouti, Bombay, London, Mombasa, Malindi, Zanzibar, Mozambique, Cuidade, Malaga, Alexandria, Hankow, Mauritius calling also at intermediate ports if required.

Passengers engaged on this line are specially supplied with food and bedding. BRITISH EAST AFRICA CORPORATION LTD., Agents. MOMBASA.



### LATEST MOD

Specialist made of  
**The "DINGO" Cream Soda**

The "DINGO" is superior to the latest best because it is made of the finest material and is completely pure. It is a delicious, refreshing and invigorating beverage. The "DINGO" is superior to any other soda.

"DINGO" is a G.O.  
The "DINGO" Cream Soda is made of the finest material and is completely pure. It is a delicious, refreshing and invigorating beverage. The "DINGO" is superior to any other soda.

Wholesale only.  
SOLE AGENTS:  
**J. MARCUS & CO.**  
GOVT. ROAD, MOMBASA.

# Mombasa Bonded Warehouse Co., Ltd.

## To Up-country Planters.

Insist on your bankers shipping your produce through us.

We will do it better and cheaper than any other firm.

Telegrams: 'Storage' Mombasa. P. O. Box 8

# British India Steam Navigation Co., LIMITED.

## ARRIVALS.

DATE	STEAMER	WHERE FROM.
12th :: ::	s.s. Taroba :: ::	Bombay.
12th :: ::	s.s. Japan :: ::	London.

PROPOSED PROGRAMME OF SAILINGS.

DATE	STEAMER	TONNAGE.	DESTINATION.
14th :: ::	s.s. Taroba :: ::	6,500 tons	Durban.
17th :: ::	s.s. Japan :: ::	6,000 tons	Delagoa Bay

Company have no prospective sailing for England, either via South Africa or the Suez Canal.

# Smith, Mackenzie & Co.

—AGENTS—  
Kilindi, Zanzibar, Nairobi & Kisumu.  
Telegraphic address "Mackenzie." Kilindi, P. O. Box No. 120. Telephone No. 36.

MANUFACTURERS  
**WEY & DAWSON, LTD.,**  
Manufacturers.  
Cotton Piece Goods, in-  
coloured Muslins, Prints, Kan-  
shirts.  
Have in our Showrooms in  
a very extensive range of  
signs for which we are pre-  
sident.  
WHOLESALE ONLY.

**Campano-Birkshaw-King,**  
QUANTAL  
BUSINESS BAROMETER  
AND  
COMMISSION-GOVERNOR.  
Known from the Coast to the Cape.  
Just Arrived: INDIAN, Vermilion  
and French Tinted, Distemper  
'Dyeing Mix' (The Blue)  
The 'Cream of the Barrel'  
Whisky 'Chambard' Brandy  
'Orange' Brandy and 'Ravens'  
Whisky, 'Franklin' Glycerine,  
'Five Star' Glycerine and 'Six  
Gauges' Oil Concentration. Man-  
ufacture which have not been  
to be 274 and 275 Mils.  
Inquiries—Dialy done a Dial  
silver essential to them.  
Try this today, until you are  
convinced.  
Campano-Birkshaw-King,  
KALAMIA,  
Campano-Birkshaw-King,  
Campano-Birkshaw-King,  
Campano-Birkshaw-King.

**The Clan Line Limited**  
The Elderman Lines, Ltd.  
The Harrison Line

Joint Service  
of  
Steamers.

Cargo Inland & Co. Ltd., Agents. The "Hull" Line Limited and  
The "Hull" Line Limited. Liverpool.  
Owing to Unfavorable Situation the dates of arrival and sailing are  
uncertain.  
No claim for damaged goods by Clan Elderman, Harrison Line  
Steamers accepted unless brought to the Agents' Notice within seven  
days after the loading of the cargo has been completed.  
Goods will be inspected on application every day between the  
times of 10 a.m. and 4 p.m. either in Mombasa or Kilindi. Customs  
House up to the expiration of the 7 days allowed.  
The Shippers of the Clan Elderman, Harrison, Lines Joint Service do  
not carry any passengers.  
For particulars of sailings and current rates of freight  
APPLY TO THE AGENTS—

**The African Mercantile Co. Ltd.,**  
P.O. BOX 116 MOMBASA. P.O. BOX 125 NAIROBI

# NOTICE TO MERCHANTS

ing to an extra 50% Whisky allowance for Home consumption, advices state that a rise  
Price is imminent but,

# ANDY MACDONALD WHISKY

It remains at the same f.o.b. prices.  
Agent for the British East African Territories, H. G. Gabriel, P.O. Box 158, City House, Nairobi.

Wanted the Largest Circulation of any Newspaper in B.E.A. & Uganda

THE EAST

Weekly Edition

# African Standard



MOMBASA TIMES & UGANDA ARGUS  
The Oldest Established Newspaper published in E. E. Africa and Uganda.

NAIROBI, SATURDAY, APRIL 12, 1912.

**A. Allidina Visram,**  
Head Office: MOMBASA.  
P. O. BOX 36, NAIROBI. TELEPHONE NO. 82.  
TELEGRAPHIC ADDRESS: "PAQAZI,"  
Importers and Exporters.

ALL SORTS OF:  
**Wines, Liquors, Provisions, etc.**  
can be had in stock

AT MODERATE PRICES.  
White Cosmo Salt @ 7 cents per lb.  
Fin Liverpool " @ 45 " "  
Epsom " @ 45 " "  
10% will be Allowed on Spot Cash for Quantity  
Not less than a Bag of 200 lbs.

LARGE STOCK OF:  
**Barbed wire, Fencing wire, Sisal rope,  
Manilla rope and Coir rope etc. on hand.**  
SPECIAL CONCESSION FOR BIG BUYING.

ENQUIRIES INVITED  
WRITE OR CALL AT:  
Our Store, Government Road, NAIROBI.

**UNION-CASTLE LINE**  
Royal Mail Steamers to England  
SERVICIOS  
South and East African Ports and Mauritius.  
The positions of sailing, rates of freight, and passage money apply to:  
NAIROBI, GIBRALTAR, LONDON, etc., etc.  
or The Union Castle Mail Steamship Co., Ltd.  
P.O. Box 86, Mombasa. Telephone "UNIONCASTLE."

## The Drought Has Broken

Make up for your  
past losses by doubling  
your crops.

**Super-Phosphate**  
FOR THE  
**Super-Farmer.**  
Low in cost, high in  
efficiency.

**Bullocks & Roy Ltd.**  
NAIROBI.

**Jaffer Devjee,**  
MOMBASA, R.E.A.  
General Import & Export Merchants.  
House and Land Owner,  
Estate Agent.  
East Africa, Spanish and Southern  
STAMPS DEALER.  
Old China & Persian (Lama)  
CROCKERY.  
Established in 1880 in  
East Africa.

**Ogdens & Madeley**  
LIMITED  
MOMBASA and ZANZIBAR  
Importers and Importers of goods  
description from Europe and Asia  
MARINE INSURANCE AGENTS  
Head Office: MANCHESTER.

**D. GOLDBERG & CO.**  
WHOLESALE MERCHANTS  
London. NAIROBI. KAMPALA.  
ESTABLISHED 18 YEARS  
An Enormous Variety of New Season  
is All Departments.  
Our traveller has started on his  
fully equipped with a new range of goods  
representing all classes of goods  
FRUIT, CALICO, WINE, OIL,  
PLANNETTES, RUBBER, BLANKETS,  
READY MADE CLOTHING, UNDER  
WEAR, HOSIERY, BOOTS, BAGS, TRUNKS,  
AND GENERAL DEPARTMENT.  
The wide variety of goods to be found in our  
stores will please all buyers who care for the  
our prices being the lowest consistent with  
protection. We are Wholesale Merchants of  
standing and carry actual stocks. We are  
GET IN TOUCH WITH US AT ONCE

## Linoleum, Rugs, Mats, Carpets, etc.

Linoleum, in all Makes  
and Qualities. 200 rolls  
to select from. 6 feet wide  
Rs. 4-87, 5-37 per sq. yd.  
(Rs. 9-75, 10-75 per run-  
ning yard)

Cork Line, from Rs. 7-87  
per square yard.

Passage or Stair Lino,  
3 feet wide Rs. 6-25  
per yard

Gongoleum. Rs. 7-50 per  
running yard

Gongoleum Mats, from Rs.  
6-75 each



Newest Colour  
Designs in every kind  
Carpet, Rug and Lino  
available.

Anglo-Orient reversible  
4'3" Rs. 14-75 each  
4'6" 16-75 " "  
4'9" 18-75 " "  
4'12" 20-75 " "  
5'0" 22-75 " "  
5'3" 24-75 " "  
5'6" 26-75 " "

Boultonia reversible  
Carpet Squares  
Size 9'2" 9'10"  
Rs. 276-00 to Rs. 375-00

Fancy Mats in great  
variety.

Coir Door Mats extra  
strong Rs. 4-50, 5-00,  
6-00, 12-75

NAIROBI'S "CARPET AND LINOLEUM HOUSE"  
**S. Jacobs & Co., (The Dustpan) Nairobi**

### Novelties in HALF HOSE

Gents Plain Top Khaki Stockings. "The Service" strong & durable in 1 and full length at Rs. 6-50 per pair.  
Gents Khaki Half Hose very heavy worked at Rs. 3-00 per pair.  
Gents Cape Makintosh with check lining in all sizes from Rs. 19-50 to Rs. 37-50.  
Gents Riding & Cycling Capes, Rs. 19-50 to 39-00.  
Gents "Tropical" Honey Flower's Pattern in Khaki and White at Rs. 35-00.  
We undertake to recover old harness with new khaki or white covers at Rs. 6-00.

**Whiteaway, Laidlaw & Co., Ltd.**  
The High Avenue Store, NAIROBI.

### THE EXQUISITE FLAVOUR OF LIPSON'S TEA

its delicate aroma and its remarkable properties as an effective stimulant have established it as the finest Tea the World Produces.

### HAWLEY & Co.,

DORE STREET,  
Gard and Wagon Builders  
Oldest Anglo-Indian Wagon Builders  
20 Years' English Experience.

### Spanish Influenza

Expert Advice  
"It is not necessary to drop the 'Sunderner'."  
(Was E. & S. 4-11-11)  
You must, however, drink a good quality and the best "Sunderner".

Everybody takes  
**DANIEL CRAWFORD'S RED STAR WHISKY**  
The Universal Favourite

**NYAMA, Ltd.**  
FOR PRIME MEAT.  
Half-bred Wutton  
A SPECIALITY.  
MEAT DISPATCHED TODAY  
Special Beef and Tongues, etc.  
**S. McCall**  
Government Store, NAIROBI.

BOUSTEAD & CLARKE, L.A.  
SMITH, MACKENZIE & CO., L.A.  
KAMPALA (MOMBASA)

**Esmailji Jivanji & Co.** (Pvt.) LTD. GENERAL MANAGERS,  
Mombasa, Kisumu and other coastal towns. Sole agents for the sale and distribution of all the products of the East African Standard Co. Ltd. in Kenya Colony and Uganda.



REVEILLE TOBACCO

The Favourite Smoking Mixture of B.E.A.

Large Stocks HAVE NOW ARRIVED

Mackinnon Bros.

SMITH, MACKENZIE & CO., AGENTS: BRITISH INDIA STEAM NAVIGATION CO., LTD.

Available Petroleum Co., Ltd. Importers of Kerosine Oil in Bulk and Cases

Norway East Africa Trading Co. IMPORTERS OF BARK AND PLANKED TIMBERS

Our Shipping, Passenger, Lighterage and Insurance Departments of our Firm are transferred to our new premises at Kilindini.



Simpson & Whitelaw, Ltd. NAIROBI.

JUST ARRIVED: Large Consignment of Horticultural Sundries.

BRITISH EAST AFRICA CORPORATION. General Merchants and Shipping and Clearing & Forwarding Agents.

AGENTS FOR: LLOYDS DISCOUNT AND TRADE BANK. The Union-Castle Mail Steamship Co., Ltd.

IMPORTERS of all kinds of Cotton, Glass, Groceries, etc. Carriage and Road, Hardware, Liqueurs and Trade Goods.

JUST ARRIVED COOKING STOVE Nairobi "Dover" "Epicure" "Masai"

Parlour Heating Stoves complete with Stove Pipes, etc.

BOILERS of all descriptions—complete. WRITE or call for PRICES

J. D. Isherwood & Sons. HARGREAVE STREET & N. P. O. Box No. 17.

Wm. R. Parr & Co. Sixth Avenue, NAIROBI.

Massay Harve Agricultural Implements. Sole Agents: Messrs. J. D. Isherwood & Sons.

Naivasha Flour Proprietors: Ismail Janmahomed. ALWAYS LARGE STOCKS. Fine mealie meal on Country orders promptly attended to.

African Standard

MOMBASA TIMES & UGANDA ARGUS. NAIROBI, SATURDAY, APRIL 11, 1919.

AY'S CABLES

General Model is in Africa

SPORT BILL

London, March 17. The House of Commons is to consider the second Sports Bill...

GOVERNMENT AND LABOUR

Nationalised Mines and 7-hour Day Conceded

BONAR LAW WARNS STRIKERS

[Bonar's Call on] The House is to consider the second Sports Bill...

WALTONS.

London, March 21. In his speech before the House of Commons Mr. Bonar Law...

MILNERS' DEMANDS.

London, March 21. The House of Commons is to consider the second Sports Bill...

RAILWAY ESCAPES

The railway escape from the station at Kilindini...

WALTONS.

London, March 21. In his speech before the House of Commons Mr. Bonar Law...

MILNERS' DEMANDS.

London, March 21. The House of Commons is to consider the second Sports Bill...

RAILWAY ESCAPES

The railway escape from the station at Kilindini...

WALTONS.

London, March 21. In his speech before the House of Commons Mr. Bonar Law...

GOVERNMENT AND LABOUR

Nationalised Mines and 7-hour Day Conceded

BONAR LAW WARNS STRIKERS

[Bonar's Call on] The House is to consider the second Sports Bill...

WALTONS.

London, March 21. In his speech before the House of Commons Mr. Bonar Law...

MILNERS' DEMANDS.

London, March 21. The House of Commons is to consider the second Sports Bill...

RAILWAY ESCAPES

The railway escape from the station at Kilindini...

WALTONS.

London, March 21. In his speech before the House of Commons Mr. Bonar Law...

MILNERS' DEMANDS.

London, March 21. The House of Commons is to consider the second Sports Bill...

RAILWAY ESCAPES

The railway escape from the station at Kilindini...

WALTONS.

London, March 21. In his speech before the House of Commons Mr. Bonar Law...

MILNERS' DEMANDS.

London, March 21. The House of Commons is to consider the second Sports Bill...

RAILWAY ESCAPES

The railway escape from the station at Kilindini...

At the conference of miners at London, March 21, the Government has accepted the miners' demands...

The official reports of yesterday's conference of London's strikers...

The House of Commons is to consider the second Sports Bill...

London, March 21. In his speech before the House of Commons Mr. Bonar Law...

London, March 21. The House of Commons is to consider the second Sports Bill...

The railway escape from the station at Kilindini...

London, March 21. In his speech before the House of Commons Mr. Bonar Law...

London, March 21. The House of Commons is to consider the second Sports Bill...

The railway escape from the station at Kilindini...

London, March 21. In his speech before the House of Commons Mr. Bonar Law...

BRITISH AIR FORCE

A wonderful Revolution in War Record

London, March 21. The House of Commons is to consider the second Sports Bill...

London, March 21. The House of Commons is to consider the second Sports Bill...

THE SPINROCKS

Divisional Farewell to S.A. Stripes

London, March 21. The House of Commons is to consider the second Sports Bill...

London, March 21. The House of Commons is to consider the second Sports Bill...

RAILWAY ESCAPES

The railway escape from the station at Kilindini...

London, March 21. In his speech before the House of Commons Mr. Bonar Law...

WALTONS.

London, March 21. In his speech before the House of Commons Mr. Bonar Law...

MILNERS' DEMANDS.

London, March 21. The House of Commons is to consider the second Sports Bill...

The railway escape from the station at Kilindini...



GOVERNORS ELECTIVE BILL. Legislative Council Elects New Ex-Officio Members

ATTORNEY GENERAL'S SPEECH. "It may, Hon. Member, without resting..."

BILLS INTRODUCED. I have the honor to introduce the Attorney General's Bill...

THE LEGISLATIVE COUNCIL. The Legislative Council met this morning at 10 o'clock...

THE LEGISLATIVE COUNCIL. The Legislative Council met this morning at 10 o'clock...

THE LEGISLATIVE COUNCIL. The Legislative Council met this morning at 10 o'clock...

THE LEGISLATIVE COUNCIL. The Legislative Council met this morning at 10 o'clock...

THE LEGISLATIVE COUNCIL. The Legislative Council met this morning at 10 o'clock...

THE LEGISLATIVE COUNCIL. The Legislative Council met this morning at 10 o'clock...

E. A. LEGISLATIVE EUROPEAN SALE AT KISUMU. NEW MEMBERS.

The adjourned meeting of the Legislative Council... Sale by public auction at 10 in the forenoon on the 14th day of 1916...

Lot No. 1 Plot No. 15, Station Kisumu, being a corner plot in the of the main Bassas, with a large iron building on, stone plinth, 100 feet by 100 feet...

Lot No. 2 Plot No. 10, Victoria Kisumu, with a good stone dwelling, main outbuildings etc. Situated in the Kisumu Hotel. (N.B. This plot can only be sold subject to a caveat against Asiatic occupation.)

Lot No. 3 Plot No. 13, Stone Rodona Bay, with small wood and iron shop.

Lot No. 4 Plot No. 2, Section Bay, with small wood and iron shop.

Lot No. 5 Plot No. 14, Kangaship, with small wood and iron shop.

Title Deeds may be inspected at the office of S. Marston, Esq., Agent of the Liquidator, at the Hill, Kisumu.

Auctioneer, J. H. ANDREY Messrs. Boustead & Clarke, Kisumu.

COMPULSORY SALE BY LIQUIDATOR OF THE PROPERTY OF MAX KLEIN'S

Max Klein's Property of Kisumu, Stone Bay, with small wood and iron shop.

Lot No. 1 Plot No. 15, Station Kisumu, being a corner plot in the of the main Bassas, with a large iron building on, stone plinth, 100 feet by 100 feet...

Lot No. 2 Plot No. 10, Victoria Kisumu, with a good stone dwelling, main outbuildings etc. Situated in the Kisumu Hotel. (N.B. This plot can only be sold subject to a caveat against Asiatic occupation.)

Lot No. 3 Plot No. 13, Stone Rodona Bay, with small wood and iron shop.

Lot No. 4 Plot No. 2, Section Bay, with small wood and iron shop.

Lot No. 5 Plot No. 14, Kangaship, with small wood and iron shop.

Title Deeds may be inspected at the office of S. Marston, Esq., Agent of the Liquidator, at the Hill, Kisumu.

Auctioneer, J. H. ANDREY Messrs. Boustead & Clarke, Kisumu.

GOVERNOR'S DECIDING VOTE. TERMS OF EQUALITY WITH MALES.

his mind now would be entirely... The Governor's decision was... Terms of equality with males...

THE SIG PETCHER. Lord Dalmeida thought the matter had been decided... The Sig Petcher...

THE SIG PETCHER. Lord Dalmeida thought the matter had been decided... The Sig Petcher...

THE SIG PETCHER. Lord Dalmeida thought the matter had been decided... The Sig Petcher...

THE SIG PETCHER. Lord Dalmeida thought the matter had been decided... The Sig Petcher...

THE SIG PETCHER. Lord Dalmeida thought the matter had been decided... The Sig Petcher...

THE SIG PETCHER. Lord Dalmeida thought the matter had been decided... The Sig Petcher...

THE SIG PETCHER. Lord Dalmeida thought the matter had been decided... The Sig Petcher...

TELEGRAMS AND CABLES: AGENCIES. J. H. S. TODD & CO., GENERAL MERCHANTS.

WINE & BEER, ETC. French Wines, Port, Brandy, Cognac, Champagne, etc.

WINE & BEER, ETC. French Wines, Port, Brandy, Cognac, Champagne, etc.

WINE & BEER, ETC. French Wines, Port, Brandy, Cognac, Champagne, etc.

WINE & BEER, ETC. French Wines, Port, Brandy, Cognac, Champagne, etc.

WINE & BEER, ETC. French Wines, Port, Brandy, Cognac, Champagne, etc.

WINE & BEER, ETC. French Wines, Port, Brandy, Cognac, Champagne, etc.

WINE & BEER, ETC. French Wines, Port, Brandy, Cognac, Champagne, etc.

WINE & BEER, ETC. French Wines, Port, Brandy, Cognac, Champagne, etc.

TELEGRAMS AND CABLES: AGENCIES. J. H. S. TODD & CO., GENERAL MERCHANTS.

WINE & BEER, ETC. French Wines, Port, Brandy, Cognac, Champagne, etc.

WINE & BEER, ETC. French Wines, Port, Brandy, Cognac, Champagne, etc.

WINE & BEER, ETC. French Wines, Port, Brandy, Cognac, Champagne, etc.

WINE & BEER, ETC. French Wines, Port, Brandy, Cognac, Champagne, etc.

WINE & BEER, ETC. French Wines, Port, Brandy, Cognac, Champagne, etc.

WINE & BEER, ETC. French Wines, Port, Brandy, Cognac, Champagne, etc.

WINE & BEER, ETC. French Wines, Port, Brandy, Cognac, Champagne, etc.

WINE & BEER, ETC. French Wines, Port, Brandy, Cognac, Champagne, etc.

FARMERS' CO-OPERATIVE SOCIETY. B.E.A.

It is proposed to form a Society with the object of supplying our members with... Farmers' Co-operative Society...

It is proposed to form a Society with the object of supplying our members with... Farmers' Co-operative Society...

It is proposed to form a Society with the object of supplying our members with... Farmers' Co-operative Society...

It is proposed to form a Society with the object of supplying our members with... Farmers' Co-operative Society...

NOTICE TO PURCHASERS OF FLAX SEED, RECENTLY IMPORTED BY GOVERNMENT.

It is found that a production of flax seed is allowed of... Notice to purchasers of flax seed...

It is found that a production of flax seed is allowed of... Notice to purchasers of flax seed...

It is found that a production of flax seed is allowed of... Notice to purchasers of flax seed...

It is found that a production of flax seed is allowed of... Notice to purchasers of flax seed...

NOTICE TO PURCHASERS OF FLAX SEED, RECENTLY IMPORTED BY GOVERNMENT.

It is found that a production of flax seed is allowed of... Notice to purchasers of flax seed...

It is found that a production of flax seed is allowed of... Notice to purchasers of flax seed...

It is found that a production of flax seed is allowed of... Notice to purchasers of flax seed...

It is found that a production of flax seed is allowed of... Notice to purchasers of flax seed...

NOTICE TO PURCHASERS OF FLAX SEED, RECENTLY IMPORTED BY GOVERNMENT.

It is found that a production of flax seed is allowed of... Notice to purchasers of flax seed...

It is found that a production of flax seed is allowed of... Notice to purchasers of flax seed...

It is found that a production of flax seed is allowed of... Notice to purchasers of flax seed...

It is found that a production of flax seed is allowed of... Notice to purchasers of flax seed...

Advertisement for Maize, featuring a picture of a man and a woman, and text about the benefits of the product.

Advertisement for HOP BITTERS, featuring a picture of a bottle and text describing its medicinal properties.

Advertisement for a product, possibly a beverage or food item, with a picture of a bottle and descriptive text.

Advertisement for a product, possibly a beverage or food item, with a picture of a bottle and descriptive text.

WAK MEMORIAL PROPOSALS. Committee Invites the Public to Criticise Schemes.

NAIROBI LOGGIA AND DISTRICT HOSPITALS. A meeting of the Wak Memorial Committee was held at the New...

In opening the proceedings, His Excellency said he understood the Wak Memorial was formed to carry out the suspension...

Mr. Hoover suggested that the Wak Memorial was not a memorial for the area had given a very large number of them...

Mr. Hoover said that the whole question was one that would be decided by the Wak Memorial Committee...

Mr. Hoover said that the Wak Memorial was not a memorial for the area had given a very large number of them...

Mr. Hoover said that the Wak Memorial was not a memorial for the area had given a very large number of them...

Mr. Hoover said that the Wak Memorial was not a memorial for the area had given a very large number of them...

Mr. Hoover said that the Wak Memorial was not a memorial for the area had given a very large number of them...

Tea Logic. Pluck a leaf and examine it. There's the leaf stalk, the fibres forming the skeleton...

Only young richly flavoured leaves are the Broads Bonds tea. This explains why Broads tea is so much better than ordinary...

ARRIVED. Cement, Bitumen Dampcours, Iron, Coffee Mesh, White and Red Putty, Fine Wire Screening, Canvas, Slays, and Fasteners, Rim Locks, Lock Pains etc.

ON THE WATER. Rob Rothing, Bokolor Paint, rothen Paint, Siderolium (wood preservative), Carbolium, Glass, Diastemper etc, etc.

THE Anglo-Baltic Timber Co., Ltd. P. O. Box 200. Tel: "TIMBER" NAIROBI.

WANTED. Butter, Eggs, Cheese, Green Peas, Cauliflower, Rhubarb, and any kind of local produce. Fat Cattie, Sheep, Pigs and Poultry. ALSO. G. Foster & Co., Nairobi.

CO-OPERATION. Great Success of Co-operatives in South Africa. Mr. Barron, E. A. Standard.

Mr. Barron, E. A. Standard. Mr. Barron, E. A. Standard. Mr. Barron, E. A. Standard.

STORY OF LES WENMAN. Well-known Boxers Set Off on Safari in the Rains.

MANY RUMOURS IN NAIROBI.

Several days passed before the B.E.A. was able to get any definite news from the doctor in Athi...

Mr. Les Wenman left the B.E.A. on the 12th inst. and was accompanied by a party on a motor safari to the Athi...

Mr. Les Wenman left the B.E.A. on the 12th inst. and was accompanied by a party on a motor safari to the Athi...

Mr. Les Wenman left the B.E.A. on the 12th inst. and was accompanied by a party on a motor safari to the Athi...

Mr. Les Wenman left the B.E.A. on the 12th inst. and was accompanied by a party on a motor safari to the Athi...

Mr. Les Wenman left the B.E.A. on the 12th inst. and was accompanied by a party on a motor safari to the Athi...

Mr. Les Wenman left the B.E.A. on the 12th inst. and was accompanied by a party on a motor safari to the Athi...

Mr. Les Wenman left the B.E.A. on the 12th inst. and was accompanied by a party on a motor safari to the Athi...

Schweppes DRY GINGER ALE SODA WATER TONIC WATER GINGER BEER ETC. AS SUPPLIED AT ALL FIRST-CLASS HOTELS, CLUBS AND RESORTS THROUGHOUT THE WORLD.

EVERY PHOTO GETS A PRIZE! SNAPSHOT COMPETITION. THE EAST AFRICAN STANDARD LIMITED OFFERS A First Prize of Fifteen Rupees.

For the best photo sent in by any photographer, amateur or professional. The Editor reserves the right to reproduce any of the competing photographs and will award PRIZES OF FIVE RUPEES FOR EACH PHOTO REPRODUCED.

EVERY PHOTO SHOULD BE A TITLE AND MUST HAVE THE NAME AND ADDRESS WRITTEN IN PENCIL ON THE BACK. Address: "Snapshots" East African Standard Ltd., NAIROBI.

LATEST MODEL Swedish make of The "DINCO" Cream Separator. The "DINCO" separator is the latest type and of the most modern and most successful construction.

THE EASTERN BAZAAR. DIRECT IMPORTERS OF SILK & CURIOS. Two and a Half Price for SILK & CURIOS. SILK DRESSING GOWNS.

J. MARCUS, GOVT. ROAD, NAIROBI.

L. FRIGERIO & Co. Wholesale Merchants. CINANZO VERMOUTH, CINANZO ASTI SPUMANTE and GRAN SPUMANTE. CHIANTI in Pints and Quarts. GALISSANO Dry White Wine. Telephone 363. P.O. Box 225. Tel. Add: "LEGHORNIAN".



Gents Evening

IN GREY GREEN FAWN & BROWN

Rs. 15-50.

Less 10 per cent P.O. Box 50

MAXWELL, BRADY & CO.,

Hats

VELOURS IN BROWN & DARK SLATE R. Rs. 27-50.

Cash Discounts Nairobi

STANDARD OIL COMPANY OF NEW YORK



THE PRODUCTS OF QUALITY AND ECONOMY. British East Africa Corporation, Ltd. SOLE AGENTS FOR British East Africa and Uganda.

UGANDA HONOURS. British and Belgian Recognition CHEVALIER SISTER.

His Majesty the King has been pleased to approve of the following awards for distinguished services in connection with the war...

Order of the British Empire. Orders of the British Empire. Orders of the British Empire.

Little's Dip

Little's Dip. Invaluable as a disinfectant. CATTLE DIP. Power Form, the very best disinfectant...

Best Distributing Agents for East Africa P. Messrs. Childs and Joseph NAIROBI & KAMPALA

CENTRAL AFRICAN TRADING COMPANY, LIMITED. (LATE D. BISSINGER & Co.) MOMBASA. NOW IN STOCK.

DUTCH CIGARS. Scouts, Panatellas, Aguilas de Guillemin, Sobranos, Senadores, Crema de las Antillas, George, Acacias.

The National Bank of South Africa, Ltd.

Bankers to the Union Government in the Transvaal, Orange Free State, Natal, Rhodesia, Nyasaland, Portuguese Territory, East Africa, and the South West Provinces of Africa... Capital Subscribed and Paid up £3,000,000

REVIEW

April 7, 1913. The review of the week. The review of the week. The review of the week.

NOTICE

COFFEE PLANTERS' CO-OPERATIVE SUPPLY ASSOCIATION. A Meeting of Coffee Planters to discuss the formation of the above Association...

relative of it is desirous of doing so. Unfortunately no agreement can be reached until the necessary of the lobby system...

Standard Bank of South Africa, Ltd.

Subscribed Capital £1,100,000 Reserve Fund £2,000,000. Board of Directors: James F. Fisher, Esq., K.C.S.I., James H. W. Gurney, Esq., K.C.S.I., James H. W. Gurney, Esq., K.C.S.I., James H. W. Gurney, Esq., K.C.S.I.

OVER 250 BRANCHES AND AGENCIES. The Union of South Africa, Rhodesia, Nyasaland, East Africa Protectorate, Uganda, Portuguese East Africa and Protectorate, South West Africa, and the Transvaal.

National Bank of India, Ltd.

Capital £10,000,000. Reserve Fund £1,000,000. Branches: Calcutta, Bombay, Madras, London, etc.

ARSENITE OF SODA 80% OR MORE. CATTLE DIPPING AGAINST EAST COAST FEVER. Destroying locusts, Prickly Pear, etc.

LAMBERTS, LIMITED. "ENGINEERED" LONDON WALLSALL NAIROBI. General Warehouse Merchants.

Mombasa Bonded Warehouse Co., Ltd. To Up-country Planters. Insist on your bankers shipping your produce through us. We will do it better and cheaper than any other firm.

chose. Presuming by this form will be... The National Bank of South Africa, Ltd. Bankers to the Union Government in the Transvaal, Orange Free State, Natal, Rhodesia, Nyasaland, Portuguese Territory, East Africa, and the South West Provinces of Africa...





INDIAN CLAIMS  
Governor Replies to  
Deputation  
PLAIN SPEAKING

ORDNANCE SALE  
Everybody Pleased on  
First Day  
WAGON PRICES

By the Hon. Mr. A. B. Maitland. It is the object of my paper to give you an insight into the proceedings of the deputation on the subject of the Indian Association led by Mr. M. M. Maitland to the Governor on March 27th.

The first day of the big Ordnance sale which has opened since 9 a.m. has been a grand success. There are a large attendance of buyers and many secondary articles being sold for a large price.

Mr. Maitland was the principal speaker and he was very plain in his remarks. He said that the Government was not in a position to meet the demands of the Indian Association, but that he would do his best to meet them.

The Ordnance sale was held at the Government Store, Nairobi, and was a great success. The first day's sales were worth over 100,000 shillings.

WOMEN MYSTERY  
No News of the Missing  
Safari

It is a matter of some interest to the public to know what has happened to the missing safari.

There was a report that the missing safari had been seen in the mountains of East Africa.

GENERAL DISCUSSION  
On the various points, His Excellency made the following remarks:

His Excellency said that the Government was not in a position to meet the demands of the Indian Association.

GRANT AND SALE OF LAND  
His Excellency said that all the available land in the country was reserved for the European settler.

His Excellency said that the Government was not in a position to meet the demands of the Indian Association.

CHARGES  
The Hon. Mr. Maitland said that the Government was not in a position to meet the demands of the Indian Association.

His Excellency said that the Government was not in a position to meet the demands of the Indian Association.

REMARKS  
His Excellency said that the Government was not in a position to meet the demands of the Indian Association.

His Excellency said that the Government was not in a position to meet the demands of the Indian Association.

REMARKS  
His Excellency said that the Government was not in a position to meet the demands of the Indian Association.

His Excellency said that the Government was not in a position to meet the demands of the Indian Association.

REMARKS  
His Excellency said that the Government was not in a position to meet the demands of the Indian Association.

His Excellency said that the Government was not in a position to meet the demands of the Indian Association.

REMARKS  
His Excellency said that the Government was not in a position to meet the demands of the Indian Association.

His Excellency said that the Government was not in a position to meet the demands of the Indian Association.

REMARKS  
His Excellency said that the Government was not in a position to meet the demands of the Indian Association.

His Excellency said that the Government was not in a position to meet the demands of the Indian Association.

REMARKS  
His Excellency said that the Government was not in a position to meet the demands of the Indian Association.

His Excellency said that the Government was not in a position to meet the demands of the Indian Association.

THE LONG RAINS

Don't Worry the Man  
WITH A  
SHINGLE ROOF  
TO HIS HOUSE.  
EQUATOR SHINGLES

ARE  
Cheap,  
Artistic,  
Weatherproof, and  
Easily put on.  
And They Cost  
Only Rs. 34/- per 1000  
to cover 100 square feet.  
SADLER ST.  
NAIROBI.  
TEL. 114  
GRAMS - "SAWYERS"

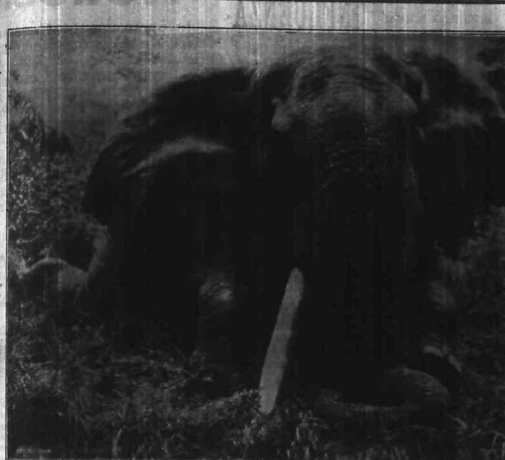
EQUATOR SAW MILLS  
FOR SALE.

COCONUT and RUBBER PLANTATION of 500 acres, on an 80 years' lease, includes 1,000 trees 8 years old, substantial Derringer, Factory and 2 Tractor Oil Engines and Rubber Machinery. 5000 Acres. Also 477 acres on an 88 years' lease, part under rubber.

Final Disposal of  
MILITARY BUILDINGS

Under instructions from the Salvage Commissioners we will offer for sale by Public Auction at the place mentioned and at the times here specified.  
MOMBASA, Tuesday, 24th April, 10 a.m., approximately 200 Warehouses and Iron buildings.  
NAIROBI, Friday, 25th April, 10 a.m., approx. 350 Wood and Iron buildings.  
KISUMU, Wednesday, 30th April, at 10 a.m. approx. 30 buildings.  
Catalogues giving sizes of buildings can be obtained from Auctioneers, the Dist. Commissioners, Banks and Local Press.  
HOGG & MORTIMER  
Military Auctioneers

EAST AFRICAN BIG GAME



DOWN AND OUT!  
A memorable photograph of a wounded lion's head for the first time.



RELIQS OF AN AN IDILUVIAN AGE.  
Hippo killed in East Africa, the Sportsman's Paradise.

G. V. VINTERS, Dist. Commissioner

G. V. VINTERS, Dist. Commissioner

B.E.A. EX-SOLDIERS
Past and Present of
Federation
PUBLIC STATEMENT

(Continued.)
The Committee of the Ex-War Service Federation...
It is a matter of congratulation...
The Federation has taken up...
The Committee of the Federation...
The Federation has made...
The Federation has made...
The Federation has made...

SOLDIER SETTLERS
Arrival of Voluntary
Aid Committee
KITCHENER SCHEME

Lord Kitchener's last settlement...
The Committee of the Federation...
The Federation has made...
The Federation has made...
The Federation has made...

IF YOU SUFFER FROM
INFLUENZA
(SPANISH OR OTHER KIND)
Feverish Colds, Sore
Throat, etc.

GINNAMON &
QUININE
or
GINNAMON &
FORMALIN
TABLETS.

Just Arrived—New Stocks of:
Fellow's
Hypophosphites,
Himrod's
Asthma Remedy,
Chamberlain's
Cough Cure,
Listerine
Antiseptic,
Horlick's
Malted Milk,
Glaxo, Odol,
Woodward's
Gripe Water,
Benger's
Food, etc.

Notice.

In pursuance of Government
Notice No. 112, published in
Official Gazette of 2nd April
1919, appointing a Commission
to inquire into and report on
the recent double inoculation
cattle by Government Veterinary
Officers in the N'gong and St.
Smith districts during the month
of last January, it is HEREBY
NOTIFIED that the said Commission will sit to hear evidence in
Resident Magistrate's Court,
Robi, at 2 p. m. on 14th inst.
Those who wish to
evidence should attend.

C. M. BARTON,
Chairman of Com.

Dissolution of Parliament

NOTICE is hereby given that the
parliamentary session of the
Legislative Assembly of the
Province of Natal, which was
opened on the 14th day of
January 1919, has been
terminated by the
Governor-General in
pursuance of the
provisions of the
Parliamentary
Act, 1919, and
that the
Parliamentary
Session of the
Legislative
Assembly of the
Province of Natal
will be
reopened on
the 14th day of
January 1920.

THE RHEINE IN PAWN

London, April 2.
The Rhine in pawn...
The Rhine in pawn...
The Rhine in pawn...

PEACE TREATY

London, April 2.
The peace treaty...
The peace treaty...
The peace treaty...

SMUTS IN HUNGARY

London, April 2.
The Duke of Devonshire...
The Duke of Devonshire...
The Duke of Devonshire...

FRANCE'S FINANCES

London, April 2.
The House of Commons...
The House of Commons...
The House of Commons...

MORE GAIRI RIOTS

London, April 2.
The Gairi riots...
The Gairi riots...
The Gairi riots...

THE FOODBILLS

London, April 2.
The Food Bills...
The Food Bills...
The Food Bills...

AFRICAN MEMORIAL

London, April 2.
The African Memorial...
The African Memorial...
The African Memorial...

EGYPT

London, April 2.
The Egyptian situation...
The Egyptian situation...
The Egyptian situation...

FINANCIAL

London, April 2.
The financial markets...
The financial markets...
The financial markets...

THE MAIN IN FRANCE

London, April 2.
The main news from France...
The main news from France...
The main news from France...

THE MAIN IN FRANCE

London, April 2.
The main news from France...
The main news from France...
The main news from France...

THE MAIN IN FRANCE

London, April 2.
The main news from France...
The main news from France...
The main news from France...

WARDLE & Co.,
LIMITED.

Wholesale & Retail
Chemists

WARDLE & Co.,
LIMITED.

Wholesale & Retail
Chemists

WARDLE & Co.,
LIMITED.

Wholesale & Retail
Chemists

WARDLE & Co.,
LIMITED.

Wholesale & Retail
Chemists

WARDLE & Co.,
LIMITED.

Wholesale & Retail
Chemists

**BIRTH**  
MILLEDIG wife of D. Gaenger, son of Mrs. A. G. van...  
**DEATH**  
DOTTIE...  
**BURIAL**  
SHELVEN...

**HUNGARY REPUBLIC**  
Measures by Soviet Government  
**FRONTIERS CLOSED**

**RUINED GERMANY**  
Conflict of New Age Parties  
**WURTEMBERG STRIKE**

**MINERS STRIKE**  
Nearly 20,000 Welsh in Rhondda out

**LONGCHAMPS**  
London, March 30  
The French Government has...

**WOMEN ON B.E.A. COUNCIL**  
Legislature Decides on their Admission as Members

**LAND GRANTS**  
Soldier Credit Upon Alienation  
**THE ARMY VIEW**

**WOMEN ON B.E.A. COUNCIL**  
Lady Settler Relates Her Experience as a Soldier's Wife

**NAKURU NOTIONS**  
Heavy Rain or Damage to Roads  
**H.E.'s ADVENTURE**

**THE EAST**  
African Standard  
Wednesday, April 5, 1939

**THE EAST**  
African Standard  
Wednesday, April 5, 1939

**FIGHT IN LONDON**  
American Society Resent Londoner's Way

**FIGHT IN LONDON**  
Standard Note

**STANDARD NOTE**

**STANDARD NOTE**

**STANDARD NOTE**

**STANDARD NOTE**

**STANDARD NOTE**

**THE EAST**  
African Standard  
Saturday, April 15, 1939

**THE EAST**  
African Standard  
Saturday, April 15, 1939

**THE EAST**  
African Standard  
Saturday, April 15, 1939

**THE EAST**  
African Standard  
Saturday, April 15, 1939

**THE EAST**  
African Standard  
Saturday, April 15, 1939

**THE EAST**  
African Standard  
Saturday, April 15, 1939

**THE EAST**  
African Standard  
Saturday, April 15, 1939

**THE EAST**  
African Standard  
Saturday, April 15, 1939

**THE EAST**  
African Standard  
Saturday, April 15, 1939

**THE EAST**  
African Standard  
Saturday, April 15, 1939

**THE EAST**  
African Standard  
Saturday, April 15, 1939

**THE EAST**  
African Standard  
Saturday, April 15, 1939

**THE EAST**  
African Standard  
Saturday, April 15, 1939

**THE EAST**  
African Standard  
Saturday, April 15, 1939

**THE EAST**  
African Standard  
Saturday, April 15, 1939

**THE EAST**  
African Standard  
Saturday, April 15, 1939

**THE EAST**  
African Standard  
Saturday, April 15, 1939

**THE EAST**  
African Standard  
Saturday, April 15, 1939

**THE EAST**  
African Standard  
Saturday, April 15, 1939

**THE EAST**  
African Standard  
Saturday, April 15, 1939

**THE EAST**  
African Standard  
Saturday, April 15, 1939

**THE EAST**  
African Standard  
Saturday, April 15, 1939

**THE EAST**  
African Standard  
Saturday, April 15, 1939

**THE EAST**  
African Standard  
Saturday, April 15, 1939

**THE EAST**  
African Standard  
Saturday, April 15, 1939

**THE EAST**  
African Standard  
Saturday, April 15, 1939

**THE EAST**  
African Standard  
Saturday, April 15, 1939

**THE EAST**  
African Standard  
Saturday, April 15, 1939

**THE EAST**  
African Standard  
Saturday, April 15, 1939

**THE EAST**  
African Standard  
Saturday, April 15, 1939

**THE EAST**  
African Standard  
Saturday, April 15, 1939

**THE EAST**  
African Standard  
Saturday, April 15, 1939

**THE EAST**  
African Standard  
Saturday, April 15, 1939

**THE EAST**  
African Standard  
Saturday, April 15, 1939

**THE EAST**  
African Standard  
Saturday, April 15, 1939

**THE EAST**  
African Standard  
Saturday, April 15, 1939





**UGANDA COFFEE.**  
**Dir. of Agriculture's**  
**Observations**  
**EXPORT FIGURES.**

In the course of his annual report for the year ended March 31, 1918, Mr. S. Simpson, Director of Agriculture, has published the following remarks with reference to coffee in position as regards production and exportation in the principal crop throughout the year. The crop was not so good as last year, but the average yield was not so low as in the previous year. The weather, however, was not so good as last year, but the average yield was not so low as in the previous year. The weather, however, was not so good as last year, but the average yield was not so low as in the previous year.

**B. E. A. SPORT**  
**Uganda and Olympic**  
**Challenge**  
**NAIROBI & F. A.**

We understand that Uganda has accepted the sporting challenge issued by the B. E. A. Sport, Uganda and Olympic Challenge, Nairobi & F. A. We understand that Uganda has accepted the sporting challenge issued by the B. E. A. Sport, Uganda and Olympic Challenge, Nairobi & F. A.

**IMMIGRATION**  
**Amendment Clause**  
**Objected to**  
**BILL DRAFTED**

In introducing a Bill entitled "The Immigration (Amendment) Bill, 1918," the Government has introduced a clause which has been objected to by the Legislative Council. The clause in question relates to the powers of the Government to issue permits for the entry of immigrants.

**THE 3,000 SOLDIERS**  
**TO BE SENT TO**  
**INDIA**

The 3,000 soldiers who are to be sent to India are to be drawn from the ranks of the British Indian Army. The Government has decided to send these soldiers to India to assist in the war against the Germans.

**THE 10,000 SOLDIERS**  
**TO BE SENT TO**  
**INDIA**

The 10,000 soldiers who are to be sent to India are to be drawn from the ranks of the British Indian Army. The Government has decided to send these soldiers to India to assist in the war against the Germans.

**THE 20,000 SOLDIERS**  
**TO BE SENT TO**  
**INDIA**

The 20,000 soldiers who are to be sent to India are to be drawn from the ranks of the British Indian Army. The Government has decided to send these soldiers to India to assist in the war against the Germans.

**THE 30,000 SOLDIERS**  
**TO BE SENT TO**  
**INDIA**

The 30,000 soldiers who are to be sent to India are to be drawn from the ranks of the British Indian Army. The Government has decided to send these soldiers to India to assist in the war against the Germans.

**THE 40,000 SOLDIERS**  
**TO BE SENT TO**  
**INDIA**

The 40,000 soldiers who are to be sent to India are to be drawn from the ranks of the British Indian Army. The Government has decided to send these soldiers to India to assist in the war against the Germans.

**THE E. A. MARBLE AND GRANITE CO.**  
**again firmly request prospective Clients to place orders for**  
**MONUMENTAL WORK WITHOUT DELAY.**  
**on account of the steady stream of orders received for our**  
**Marble & Granite Monuments.**

**WE NOW REQUIRE ORDERS PLACING AT LEAST 2 MONTHS Ahead.**  
**ALL WORK IS BEING EXECUTED IN STRICT ROTATION**  
**ENQUIRIES:**  
**HEAD OFFICE: 24 VAUCCO DE GAMMA STREET, MOMBASA.**  
**D. O. BOX 141, NAIROBI.**  
**and D. NEW MARKET, MOMBASA BUILDINGS, NAIROBI.**

**EDMUND & COMPANY.**  
**Civil, Military and Ladies' Tailors**  
**Gentlemen's Complete Outfitters.**  
**GOVERNMENT ROAD.**

**JUST UNPACKED—A magnificent selection**  
**WORSTEDS, SCOTCH WEEDS, FLANNELS, ETC**  
**Worthy of Inspection.**

**THE HOUSE FOR QUALITY GOODS**

**Hotel Metropole**  
**Mombasa**

**The Premier and most Central**  
**Hotel. Half way between**  
**Kilindiini and Mombasa Har-**  
**bours.**

**COUNTRY TO DECIDE**

The speaker referred to the views of the Government on the subject of the country to be decided. He stated that the Government had decided to send the 3,000 soldiers to India to assist in the war against the Germans.

**LIQUOR PRICE LIST.**

<b>BITTERS</b>	Merridian S. A. ca. 24 Pils	...	...
	Seville	...	...
<b>BEER</b>	Chandler's 4 dozen qts.	...	...
<b>BRANDY</b>	S. A. Brandy	...	...
<b>BURGUNDY</b>	G. B. Pomard pils. a. 24c	...	...
<b>CLARK'S</b>	G. B. Margat qts. ca. 24	...	...
	G. B. Margat pils. ca. 24	...	...
	G. B. Madog pils. ca. 24	...	...
	G. B. Fronsac qts. ca. 24	...	...
<b>GIN</b>	S. A. Dry Gin	...	...
	Seagull Brand Tom Gin	...	...
<b>LIQUEURS</b>	Ginger Brandy	...	...
<b>MINERAL WATERS</b>	Schweppe Soda Water	...	...
	Row's Cordial Lime Juice	...	...
	Schweppe Cordial one, 24 Bottles	...	...
	Schweppe Cordial ca. 24 Bottles	...	...
	Schweppe Cordial ca. 30 Bottles	...	...
<b>WHISKIES</b>	J. W. Red Label	...	...
	J. W. Black Label	...	...
	White Horse Whisky	...	...
	Oak Orgney	...	...
	Jarvis Blend	...	...
	Strathmill	...	...
	White Mackay	...	...
	Watson No. 1	...	...
	King George	...	...

**HALF'S**  
**Sanitary Washable**  
**Distemper**

**SOLE AGENTS:**  
**Stephen Ellis & Company.**  
**NAIROBI.**

**Scandinavian Post-Office Line**

<b>Mombasa 1st Class</b>	Re. 40.00 per Month
<b>2nd Class</b>	40.00
<b>3rd Class</b>	75.00
<b>4th Class</b>	50.00
<b>5th Class</b>	50.00
<b>6th Class</b>	35.00
<b>7th Class</b>	40.00
<b>8th Class</b>	25.00
<b>9th Class</b>	30.00
<b>10th Class</b>	25.00
<b>11th Class</b>	30.00
<b>12th Class</b>	50.00
<b>13th Class</b>	50.00
<b>14th Class</b>	35.00
<b>15th Class</b>	24.00
<b>16th Class</b>	24.00
<b>17th Class</b>	55.00
<b>18th Class</b>	70.00
<b>19th Class</b>	75.00
<b>20th Class</b>	75.00
<b>21st Class</b>	75.00
<b>22nd Class</b>	75.00
<b>23rd Class</b>	75.00
<b>24th Class</b>	75.00

**BRITISH EAST AFRICA CORPORATION LTD.**

**MOMBASA**  
**10 PER CENT DISCOUNT FOR CASH WITH ORDER**  
**DELIVERED MOMBASA RAILWAY STATION.**

**DELIVERED MOMBASA RAILWAY STATION.**

**10 PER CENT DISCOUNT FOR CASH WITH ORDER**

**BOUSTEAD & CLARKE LTD.**

**P. O. Box 30. MOMBASA.**

**Phone No. 102.**

THE LAND SCHEME  
Advice to selection  
Board  
PRICE OF 8 FARMS

Mr. J. W. ... will not ...  
Up to the present, and so far as  
we are judge by the results of the  
... to whole selection is fairly  
satisfactory, though not entirely  
satisfactory to all ranks in the public  
opinion of the selection  
scheme.

So far as the 8 blocks of the  
scheme goes, the most important  
factor is not to ... the purchase  
price per acre.

Don't let our Selection Board be  
carried away by the results of the  
... there are thousands of men only  
wishing to acquire a few acres of  
land, they will find it in a man's  
power to purchase a few acres of  
land.

Let them wait a little longer  
carefully and take all the present  
consideration before they sketch the  
scheme, otherwise they will  
... the good our Government  
... to do for the candidates and  
the country generally.

For every place, such as  
Lushaka and West Keim, the top  
land for grazing areas, the best  
land, should not be less than  
Lushaka and West Keim, the top  
land for grazing areas, the best  
land, should not be less than  
Lushaka and West Keim, the top  
land for grazing areas, the best  
land, should not be less than

If prices are higher than they are  
now for the capital invested in  
... the man with the capital  
... And you will also be  
... the hands of the present  
large bodies of land, inasmuch as  
... will be willing to pay more  
of land up for its ultimate  
... for any reason than the price  
... from the day he is allotted his  
... than they improve.

If prices are higher than they are  
now for the capital invested in  
... the man with the capital  
... And you will also be  
... the hands of the present  
large bodies of land, inasmuch as  
... will be willing to pay more  
of land up for its ultimate  
... for any reason than the price  
... from the day he is allotted his  
... than they improve.

There are a lot of things  
... by one who I think can be  
... of large area of undeveloped  
land, that the purchase price should  
... at present-day values.  
... degree entirely and it such as in  
... these things were, you may  
... will start right now building  
... for these men with only 4000  
... in the land.

It is said that land on the  
... and the 1000 is being sold  
... at 21 to 22 per acre. Good  
... all forms are not plain, and I  
... house of two cases where good  
... has been sold quite recently.  
... and is 7.50 per acre. This  
... of course, the other side of the  
... picture, and the one challenge  
... with an answer, and I think  
... you carefully, as follows telling  
... people.

Thinking you in anticipation,  
Yours etc.,  
Nairobi, April 7.

LAND HOGGING  
The Rev. K. A. ...  
The ... the ...  
... will have a bad effect on  
... the ...

LAND FOR INDIANS  
Africans and Arabs to  
Come First  
GOVERNOR'S RULING

Mr. ... will not ...  
Up to the present, and so far as  
we are judge by the results of the  
... to whole selection is fairly  
satisfactory, though not entirely  
satisfactory to all ranks in the public  
opinion of the selection  
scheme.

So far as the 8 blocks of the  
scheme goes, the most important  
factor is not to ... the purchase  
price per acre.

Don't let our Selection Board be  
carried away by the results of the  
... there are thousands of men only  
wishing to acquire a few acres of  
land, they will find it in a man's  
power to purchase a few acres of  
land.

Let them wait a little longer  
carefully and take all the present  
consideration before they sketch the  
scheme, otherwise they will  
... the good our Government  
... to do for the candidates and  
the country generally.

For every place, such as  
Lushaka and West Keim, the top  
land for grazing areas, the best  
land, should not be less than  
Lushaka and West Keim, the top  
land for grazing areas, the best  
land, should not be less than  
Lushaka and West Keim, the top  
land for grazing areas, the best  
land, should not be less than

If prices are higher than they are  
now for the capital invested in  
... the man with the capital  
... And you will also be  
... the hands of the present  
large bodies of land, inasmuch as  
... will be willing to pay more  
of land up for its ultimate  
... for any reason than the price  
... from the day he is allotted his  
... than they improve.

If prices are higher than they are  
now for the capital invested in  
... the man with the capital  
... And you will also be  
... the hands of the present  
large bodies of land, inasmuch as  
... will be willing to pay more  
of land up for its ultimate  
... for any reason than the price  
... from the day he is allotted his  
... than they improve.

There are a lot of things  
... by one who I think can be  
... of large area of undeveloped  
land, that the purchase price should  
... at present-day values.  
... degree entirely and it such as in  
... these things were, you may  
... will start right now building  
... for these men with only 4000  
... in the land.

It is said that land on the  
... and the 1000 is being sold  
... at 21 to 22 per acre. Good  
... all forms are not plain, and I  
... house of two cases where good  
... has been sold quite recently.  
... and is 7.50 per acre. This  
... of course, the other side of the  
... picture, and the one challenge  
... with an answer, and I think  
... you carefully, as follows telling  
... people.

Thinking you in anticipation,  
Yours etc.,  
Nairobi, April 7.

LAND HOGGING  
The Rev. K. A. ...  
The ... the ...  
... will have a bad effect on  
... the ...

VOTES FOR WOMEN  
Nairobi Meeting in  
Favour  
AMUSING DEBATE

The public meeting organized by  
... was a very interesting one  
... the ...  
... the ...  
... the ...

So far as the 8 blocks of the  
scheme goes, the most important  
factor is not to ... the purchase  
price per acre.

Don't let our Selection Board be  
carried away by the results of the  
... there are thousands of men only  
wishing to acquire a few acres of  
land, they will find it in a man's  
power to purchase a few acres of  
land.

Let them wait a little longer  
carefully and take all the present  
consideration before they sketch the  
scheme, otherwise they will  
... the good our Government  
... to do for the candidates and  
the country generally.

For every place, such as  
Lushaka and West Keim, the top  
land for grazing areas, the best  
land, should not be less than  
Lushaka and West Keim, the top  
land for grazing areas, the best  
land, should not be less than  
Lushaka and West Keim, the top  
land for grazing areas, the best  
land, should not be less than

If prices are higher than they are  
now for the capital invested in  
... the man with the capital  
... And you will also be  
... the hands of the present  
large bodies of land, inasmuch as  
... will be willing to pay more  
of land up for its ultimate  
... for any reason than the price  
... from the day he is allotted his  
... than they improve.

If prices are higher than they are  
now for the capital invested in  
... the man with the capital  
... And you will also be  
... the hands of the present  
large bodies of land, inasmuch as  
... will be willing to pay more  
of land up for its ultimate  
... for any reason than the price  
... from the day he is allotted his  
... than they improve.

There are a lot of things  
... by one who I think can be  
... of large area of undeveloped  
land, that the purchase price should  
... at present-day values.  
... degree entirely and it such as in  
... these things were, you may  
... will start right now building  
... for these men with only 4000  
... in the land.

It is said that land on the  
... and the 1000 is being sold  
... at 21 to 22 per acre. Good  
... all forms are not plain, and I  
... house of two cases where good  
... has been sold quite recently.  
... and is 7.50 per acre. This  
... of course, the other side of the  
... picture, and the one challenge  
... with an answer, and I think  
... you carefully, as follows telling  
... people.

Thinking you in anticipation,  
Yours etc.,  
Nairobi, April 7.

LAND HOGGING  
The Rev. K. A. ...  
The ... the ...  
... will have a bad effect on  
... the ...

ALIENATED B. E. A. LANDS  
Over 300,000 Acres Disposed of  
During War Years  
ANSWERS IN LEGISLATIVE COUNCIL

As the Legislative Council on  
... the ...  
... the ...  
... the ...

So far as the 8 blocks of the  
scheme goes, the most important  
factor is not to ... the purchase  
price per acre.

Don't let our Selection Board be  
carried away by the results of the  
... there are thousands of men only  
wishing to acquire a few acres of  
land, they will find it in a man's  
power to purchase a few acres of  
land.

Let them wait a little longer  
carefully and take all the present  
consideration before they sketch the  
scheme, otherwise they will  
... the good our Government  
... to do for the candidates and  
the country generally.

For every place, such as  
Lushaka and West Keim, the top  
land for grazing areas, the best  
land, should not be less than  
Lushaka and West Keim, the top  
land for grazing areas, the best  
land, should not be less than  
Lushaka and West Keim, the top  
land for grazing areas, the best  
land, should not be less than

If prices are higher than they are  
now for the capital invested in  
... the man with the capital  
... And you will also be  
... the hands of the present  
large bodies of land, inasmuch as  
... will be willing to pay more  
of land up for its ultimate  
... for any reason than the price  
... from the day he is allotted his  
... than they improve.

If prices are higher than they are  
now for the capital invested in  
... the man with the capital  
... And you will also be  
... the hands of the present  
large bodies of land, inasmuch as  
... will be willing to pay more  
of land up for its ultimate  
... for any reason than the price  
... from the day he is allotted his  
... than they improve.

There are a lot of things  
... by one who I think can be  
... of large area of undeveloped  
land, that the purchase price should  
... at present-day values.  
... degree entirely and it such as in  
... these things were, you may  
... will start right now building  
... for these men with only 4000  
... in the land.

It is said that land on the  
... and the 1000 is being sold  
... at 21 to 22 per acre. Good  
... all forms are not plain, and I  
... house of two cases where good  
... has been sold quite recently.  
... and is 7.50 per acre. This  
... of course, the other side of the  
... picture, and the one challenge  
... with an answer, and I think  
... you carefully, as follows telling  
... people.

Thinking you in anticipation,  
Yours etc.,  
Nairobi, April 7.

LAND HOGGING  
The Rev. K. A. ...  
The ... the ...  
... will have a bad effect on  
... the ...

PRICES OF  
Gandy's Red Patent  
AND  
Gandy's Highest Grade  
Baking  
ALL SIZES NOW IN STOCK  
B.E.A. Saw  
Timber Merchants  
Nairobi.  
Phone 83 P.O. Box  
Tel. Add. 'BEAMS'

The public meeting organized by  
... was a very interesting one  
... the ...  
... the ...  
... the ...

So far as the 8 blocks of the  
scheme goes, the most important  
factor is not to ... the purchase  
price per acre.

Don't let our Selection Board be  
carried away by the results of the  
... there are thousands of men only  
wishing to acquire a few acres of  
land, they will find it in a man's  
power to purchase a few acres of  
land.

Let them wait a little longer  
carefully and take all the present  
consideration before they sketch the  
scheme, otherwise they will  
... the good our Government  
... to do for the candidates and  
the country generally.

For every place, such as  
Lushaka and West Keim, the top  
land for grazing areas, the best  
land, should not be less than  
Lushaka and West Keim, the top  
land for grazing areas, the best  
land, should not be less than  
Lushaka and West Keim, the top  
land for grazing areas, the best  
land, should not be less than

If prices are higher than they are  
now for the capital invested in  
... the man with the capital  
... And you will also be  
... the hands of the present  
large bodies of land, inasmuch as  
... will be willing to pay more  
of land up for its ultimate  
... for any reason than the price  
... from the day he is allotted his  
... than they improve.

If prices are higher than they are  
now for the capital invested in  
... the man with the capital  
... And you will also be  
... the hands of the present  
large bodies of land, inasmuch as  
... will be willing to pay more  
of land up for its ultimate  
... for any reason than the price  
... from the day he is allotted his  
... than they improve.

There are a lot of things  
... by one who I think can be  
... of large area of undeveloped  
land, that the purchase price should  
... at present-day values.  
... degree entirely and it such as in  
... these things were, you may  
... will start right now building  
... for these men with only 4000  
... in the land.

It is said that land on the  
... and the 1000 is being sold  
... at 21 to 22 per acre. Good  
... all forms are not plain, and I  
... house of two cases where good  
... has been sold quite recently.  
... and is 7.50 per acre. This  
... of course, the other side of the  
... picture, and the one challenge  
... with an answer, and I think  
... you carefully, as follows telling  
... people.

Thinking you in anticipation,  
Yours etc.,  
Nairobi, April 7.

LAND HOGGING  
The Rev. K. A. ...  
The ... the ...  
... will have a bad effect on  
... the ...

THE SMILE OF  
SATISFACTION  
The look of appreciation—the pleasure, rest—have-over-  
work sort of bearing—all these mark out the man who  
regularly wears the "MUIR" Cotton Twill. You'll be pleased  
and satisfied too when you take to wearing "MUIR". They are  
Cool—Comfortable—Durable—and Have a Wear-Out.



"MUIR" TWILLS

The finest material for Gent's shirts and Suits and  
Ladies' Houses in Khaki, Plain White, and White with  
soft Coloured Stripes.  
SAMPLES FREE ON REQUEST.  
The Muir Mills Co., Ltd. CAWAPOR

When the greatest  
CRISIS  
was

Threatening Paris,  
what was it that gave our  
French Allies Courage  
And Spirit?

It was Medical Reserve Brandy, supplied  
to the French Army by orders of the  
High Command.

CABLE BREAKDOWN

Paris-Salam-Zanzibar  
Line Restored  
(From Our Own Correspondent)  
The ... the ...  
... the ...  
... the ...

Thinking you in anticipation,  
Yours etc.,  
Nairobi, April 7.

LAND HOGGING  
The Rev. K. A. ...  
The ... the ...  
... will have a bad effect on  
... the ...

Thinking you in anticipation,  
Yours etc.,  
Nairobi, April 7.

LAND HOGGING  
The Rev. K. A. ...  
The ... the ...  
... will have a bad effect on  
... the ...

EQUATOR  
CART WAGON  
&  
GENERAL REPAIR  
WORKS  
Stock of Making -  
WOODEN CARTS,  
SCOTCH CARTS,  
NAMALI CARTS,  
- A -  
RICKSHAW REPAIRS,  
SPOKES, FELLOES,  
FITTING WAGON  
WHEELS, (Special)  
PARTING IRON  
TIRE RUB  
SISAL TROLLEY  
POINTS CROSS  
& TRAWL  
SPECIAL CROSS  
SISAL TROLLEY  
WELDED IRON  
SAFETY  
SADLER STREET,  
NAIROBI.  
Phone 339.  
Grains "SAWYERS"

THE SMITHFIELD BUTCHERY  
& O. BOX 6, GOVERNMENT  
NAIROBI.  
Proprietors: THE CENTRAL MEAT  
EVERYTHING OF THE WELLS GATE  
PORK PIES AND SANDWICHES, BEEF BURGERS,  
BALT PORK, SALT AND SPICES, BREAD, PICKLED  
VEGETABLES,  
THE PREMIER OF CEMETARY CEMETRY, GOOD OLD  
WINE, PALETTES, BREAD, SANDWICHES, BEEF  
WAT AND POTATO, SANDWICHES, BEEF, BREAD,  
ALSO, GOOD QUALITY OF

Table with 2 columns: Name and Address. Includes names like M. J. B. B. B., W. A. B., etc.

Table with 2 columns: Name and Address. Includes names like M. J. B. B. B., W. A. B., etc.

THE SMITHFIELD BUTCHERY  
& O. BOX 6, GOVERNMENT  
NAIROBI.

Thinking you in anticipation,  
Yours etc.,  
Nairobi, April 7.

LAND HOGGING  
The Rev. K. A. ...  
The ... the ...  
... will have a bad effect on  
... the ...

Thinking you in anticipation,  
Yours etc.,  
Nairobi, April 7.

When the greatest  
CRISIS  
was

Threatening Paris,  
what was it that gave our  
French Allies Courage  
And Spirit?

It was Medical Reserve Brandy, supplied  
to the French Army by orders of the  
High Command.

CABLE BREAKDOWN

Paris-Salam-Zanzibar  
Line Restored  
(From Our Own Correspondent)  
The ... the ...  
... the ...  
... the ...

Thinking you in anticipation,  
Yours etc.,  
Nairobi, April 7.

LAND HOGGING  
The Rev. K. A. ...  
The ... the ...  
... will have a bad effect on  
... the ...

Thinking you in anticipation,  
Yours etc.,  
Nairobi, April 7.

LAND HOGGING  
The Rev. K. A. ...  
The ... the ...  
... will have a bad effect on  
... the ...

**LIGHT AND POWER**

**Nairobi Company not Doing Its Best**  
**GOVERNOR'S DECISION**

A deputation representing the Nairobi Municipal Council recently waited on His Excellency the Governor to discuss the question of lighting. The deputation consisted of the Water Light and Fire Committee, Messrs. E. J. Wainwright, and Messrs. R. O. Hamilton, A. J. Jones and A. W. White. Following report on the interview was presented by the deputation to the Chairman and members of the Municipal Committee.

It was stated as Government House on the afternoon of March 14, and were received by His Excellency. The Chairman of the Council of the P.W.D., Mr. Udall, Engineer of the Nairobi Electric Power and Light Board, and Mr. Butterfield of South East Africa, Ltd., were also present.

His Excellency, after commenting on the inconvenience caused by lack of light and the heavy commercial losses caused by failure of the municipal street lighting, Mr. Udall, in reply to which the Chairman said that he was satisfied, but stated that he was uncertain that the Company had taken every possible step to carry out the obligation of their contract.

Pressed to explain why he had not yet insisted on the part of Mr. Butterfield on his proposal, Mr. Udall stated that other had not been made to him. He admitted that he had not done so. Mr. Butterfield stated that he had not done so because it was impracticable. He proposed, however, conducted independent investigation of the plant, which he stated could not cost more than three or four thousand pounds. It was proposed to reconstruct the plant, but it was satisfied with the present one.

Mr. Butterfield stated that his plan was made to drive four machines, and was now driving three. In normal times it could supply more than 300 h.p. When the flow was good enough it could supply more than 500 h.p. The flow was not sufficient for the various of Nairobi requirements. His firm was prepared to put that power over from their station to connect with the Company's. The only necessary apparatus, which could not be locally produced in this country.

Mr. Butterfield further stated that he had 18 months of experience. It had been a year since he had been in the country. He had been in the country for a year. He had been in the country for a year. He had been in the country for a year.

His Excellency stated that he had not the authority to make a decision on the matter. He would refer the matter to the Government. He would refer the matter to the Government. He would refer the matter to the Government.

His Excellency stated that he had not the authority to make a decision on the matter. He would refer the matter to the Government. He would refer the matter to the Government. He would refer the matter to the Government.

His Excellency stated that he had not the authority to make a decision on the matter. He would refer the matter to the Government. He would refer the matter to the Government. He would refer the matter to the Government.

His Excellency stated that he had not the authority to make a decision on the matter. He would refer the matter to the Government. He would refer the matter to the Government. He would refer the matter to the Government.

**NATIVE PAY**

**Commissioner on Rise in Wages**  
**COUNCIL QUERIES**

Important questions with regard to the pay of native laborers were put at Monday's sitting of the Legislative Council. Mr. Phelps asked the Chief Native Commissioner: In view of the fact that there is a strong impression that Mr. Almer North has been ordered to increase the wages of native labor, is it not the duty of the Government to take steps to prevent this? Is it not the duty of the Government to take steps to prevent this?

Mr. Phelps asked the Chief Native Commissioner: In view of the fact that there is a strong impression that Mr. Almer North has been ordered to increase the wages of native labor, is it not the duty of the Government to take steps to prevent this? Is it not the duty of the Government to take steps to prevent this?

Mr. Phelps asked the Chief Native Commissioner: In view of the fact that there is a strong impression that Mr. Almer North has been ordered to increase the wages of native labor, is it not the duty of the Government to take steps to prevent this? Is it not the duty of the Government to take steps to prevent this?

Mr. Phelps asked the Chief Native Commissioner: In view of the fact that there is a strong impression that Mr. Almer North has been ordered to increase the wages of native labor, is it not the duty of the Government to take steps to prevent this? Is it not the duty of the Government to take steps to prevent this?

Mr. Phelps asked the Chief Native Commissioner: In view of the fact that there is a strong impression that Mr. Almer North has been ordered to increase the wages of native labor, is it not the duty of the Government to take steps to prevent this? Is it not the duty of the Government to take steps to prevent this?

Mr. Phelps asked the Chief Native Commissioner: In view of the fact that there is a strong impression that Mr. Almer North has been ordered to increase the wages of native labor, is it not the duty of the Government to take steps to prevent this? Is it not the duty of the Government to take steps to prevent this?

Mr. Phelps asked the Chief Native Commissioner: In view of the fact that there is a strong impression that Mr. Almer North has been ordered to increase the wages of native labor, is it not the duty of the Government to take steps to prevent this? Is it not the duty of the Government to take steps to prevent this?

Mr. Phelps asked the Chief Native Commissioner: In view of the fact that there is a strong impression that Mr. Almer North has been ordered to increase the wages of native labor, is it not the duty of the Government to take steps to prevent this? Is it not the duty of the Government to take steps to prevent this?

(6) Have any steps been taken or any measures being considered to correct this position?  
(7) Have any instructions been given to departments as to the wages they should pay for their laborers?  
In reply to these questions Mr. McInnes said:—

Public Works Department labor on the Lusitania-Kentish was paid in the month of March, 1913, at the rate of Rs. 7 a month with poles and 10 paise per day. This was done on an average of Rs. 4 paid per month. This was done on an average of Rs. 4 paid per month. This was done on an average of Rs. 4 paid per month.

Although this rate will prevail for the present, it is not intended to continue until the termination of their period of engagement, it is intended that other natives were employed in December and according to the rate of Rs. 7 a month with poles and 10 paise per day. This was done on an average of Rs. 4 paid per month.

The practice followed by Government labor employing departments until this year was on a fixed scale. This was done on an average of Rs. 4 paid per month. This was done on an average of Rs. 4 paid per month. This was done on an average of Rs. 4 paid per month.

Mr. Phelps asked the Chief Native Commissioner: In view of the fact that there is a strong impression that Mr. Almer North has been ordered to increase the wages of native labor, is it not the duty of the Government to take steps to prevent this? Is it not the duty of the Government to take steps to prevent this?

Mr. Phelps asked the Chief Native Commissioner: In view of the fact that there is a strong impression that Mr. Almer North has been ordered to increase the wages of native labor, is it not the duty of the Government to take steps to prevent this? Is it not the duty of the Government to take steps to prevent this?

Mr. Phelps asked the Chief Native Commissioner: In view of the fact that there is a strong impression that Mr. Almer North has been ordered to increase the wages of native labor, is it not the duty of the Government to take steps to prevent this? Is it not the duty of the Government to take steps to prevent this?

Mr. Phelps asked the Chief Native Commissioner: In view of the fact that there is a strong impression that Mr. Almer North has been ordered to increase the wages of native labor, is it not the duty of the Government to take steps to prevent this? Is it not the duty of the Government to take steps to prevent this?

Mr. Phelps asked the Chief Native Commissioner: In view of the fact that there is a strong impression that Mr. Almer North has been ordered to increase the wages of native labor, is it not the duty of the Government to take steps to prevent this? Is it not the duty of the Government to take steps to prevent this?

**THE NEW MODEL SELF-STARTING**

**Remington Typewriter**

**is the Greatest time and Labor Saving Typewriter Improvement since the invention of the writing machine.**

The Self-Starting Remington is the neat and perfect "set-up" of your letters—No misplaced lines, no uneven indentations. You can "start" for any "set-up" you wish and all your letters are bound to be turned out in that form. The self-starter does all these things for the typist. It relieves her of every task but the simple act of writing.

The SELF-STARTING feature is the REMINGTON invention which is Greatly to the value of the Typewriter but nothing to the cost.

**THREE SIZES NOW IN STOCK.**  
**Childs & Joseph**

**MORDAUNT BROS**  
**1 & 2, HELEN'S PALACE**  
**LONDON, E.C.3.**  
EST. 1857. Telegrams—MORDAUNTS LONDON. CODE, A.B.C. 5TH EDITION.

**GENERAL PRODUCE BROKERS**  
**IMPORTERS & EXPORTERS**  
**OILS, SEEDS, WAX, TALLOW, GREASES**  
**CONSIGNMENTS RECEIVED AND**  
**INDENTS EXECUTED.**

**Branches at:**  
LONDON ... Cape Province  
BRISTOL ... Natal  
MELBOURNE ... East Africa  
SYDNEY ... U.S.A.  
BOMBAY ... Argentine Republic  
RANGOON ... Western Australia

**CONNOISSEURS**  
are emphatic that the **PRODUCE OF FRANCE** is superior to any other.

**WINE**  
**UNBEATABLE**

The best wine makers are **CONNOISSEURS** of the above. The above famous Wines are obtainable through the **Sole Importers** **H. O. GABRIEL, City Market, Nairobi.**

**GUNS AND CARTRIDGE**  
Suits and reliable Double and Single Barrel Shot Guns and Miniature Rifles, Cartridges of every description supplied.

**H. W. ALLKIN & CO., LTD.**  
44, Strand Road, Cape Town.  
Sole Agents for the British East African Territories, H. G. Gabriel, P.O. Box 159, City House, Nairobi.

**British India Steam Navigation Co., LIMITED.**

**ARRIVALS.**

Table with columns: DATE, STEAMER, TONNAGE, DESTINATION. Arrivals from Taroba and Japan.

**PROPOSED PROGRAMME OF SAILINGS.**

Table with columns: DATE, STEAMER, TONNAGE, DESTINATION. Proposed sailings to Durban and Delagoa Bay.

The Company have no prospective sailing for England, either via South Africa or the Suez Canal.

**Smith, Mackenzie & Co.**  
**—AGENTS—**  
**Kilindini, Zanzibar, Nairobi & Kisumu.**

Telegraphic address "Mackenzies," Kilindini, P. O. Box No. 120. Telephone No. 36.

**Cameroon-Rickshaw King**  
**U.G.A.R.A.'S**  
**BUSINESS BARMETER**  
**AND**  
**COMMISSION CONNOISSEUR.**

Knows from the Cause to the Cause. Just Arrived: Palms, Yambou and French Polynesia, Disappearance "Dancing King" (The King of the "Queen of the Bay") "Whisky" "Cassava" "Bread" "Cocoa" "Bananas" "Cocoa" "Soy" "The King of the Bay" Cameroon the Commission Barmeter who knows his business from A. to Z. Try him and Test him. He will not let you down. Before arriving Call him. Cameroon, Harbours, H. G. Gabriel, P.O. Box 159, City House, Nairobi. Your satisfaction is my reputation.

**NOTICE**

TO **MERCHANTS**

allowing to an extra 50% Whisky allowance for Home consumption, advices state that a rise in price is imminent but.

**ANDY MACDONALD WHISKY**

far remains at the same P.O. prices. Sole Agent for the British East African Territories, H. G. Gabriel, P.O. Box 159, City House, Nairobi.

**Allenburys Foods**

The best alternative to Human Milk. Allenburys Foods are the best alternative to human milk. They are easy to digest and contain all the necessary nutrients for infants.

Allenburys Foods are available in all the leading stores. They are the best alternative to human milk. They are easy to digest and contain all the necessary nutrients for infants.

Allenburys Foods are available in all the leading stores. They are the best alternative to human milk. They are easy to digest and contain all the necessary nutrients for infants.

**Pianoforte Tuning.**

We are booking orders for Pianoforte Tuning at our HEAD OFFICE of CHAPMAN & CO., Limited, 10, Market Street, Nairobi. B.E.A. MUSIC STORES. Tel: "Pianoforte," P.O. Box 144.

**A. Allidina Visram,**

Head Office: **MOMBASA.**

P.O. BOX 36. **NAIROBI.** TELEPHONE NO. 62.

TELEGRAPHIC ADDRESS: "FAGAZI,"

Importers and Exporters.

ALL SORTS OF: **Wines, Liquers, Provisions, etc.**

can be had in stock

AT MODERATE PRICES.

White Coarse Salt @ 7 cents per lb.  
Fine Liverpool " @ 10 " "  
Epsom " @ 45 " "

10% will be Allowed on Spot Cash for Quantity Not less than a Bag of 200 lbs.

LARGE STOCK OF:

Parbed wire, Fencing wire, Sisal rope, Manila rope and Coir rope etc. on hand.

SPECIAL CONCESSION FOR BIG BUYING.

ENQUIRIES INVITED

WRITE OR CALL AT:

Our Store, Government Road, **NAIROBI.**

**UNION-CASTLE LINE**

Royal Mail Steamers to England

SERVICE TO  
South and East African Ports and Mauritius.

For particulars of sailings, rates of freight, and passage money apply to:

**British East Africa Corporation, Ltd. Agents.**

NAIROBI, KISUMU, KAMPALA, JINJA, etc., etc.

or The Union Castle Mail Steamship Co., Ltd.

P.O. Box 86, Mombasa. Tel Address "UNIONCASTLE".

**The Drought  
Has Broken**

Make up for your past losses by doubling your crops.

**Super-Phosphate**  
FOR THE  
**Super-Farmer.**

Low in cost, high in efficiency.

**Bullows & Roy Ltd.**  
NAIROBI.

**B. LANGMAN,**  
TINSMITH & PLUMBER.

Sanitary work, Hot water supply, Tanks, Boilers, Gutting, Baths, Sheep Dipping Tanks, etc., etc.

European Workmanship Guaranteed.

VICTORIA ST., NAIROBI.

**Ogdens & Madeley  
LIMITED**  
**MOMBASA and ZANZIBAR**

Indentors and Importers of goods of description from Europe and America

MARINE INSURANCE AGENTS

Head Office: **MANCHESTER.**

**D. GOLDBERG & CO.**  
WHOLESALE MERCHANTS  
London. **NAIROBI.** Kampala  
ESTABLISHED 18 YEARS

An Enormous Variety of New Season's Goods in All Departments.

Our traveller had started on his journey fully equipped with a new range of goods representing all classes of goods available.

PRINTS, CALICOS, FINE GOODS, FLANNELS, RUGS, BLANKETS, READY MADE CLOTHING, UNDERWEAR, HOSIERY, BOOTS, SHOES, DRESS GOODS AND GENERAL DEPARTMENT.

The wide variety of goods to be found in our warehouse stores will please all buyers who cater for the domestic trade. Our prices being the lowest consistent with quality and protection. We are Wholesale Merchants of all standing and carry actual stocks. We are not agents.

GET IN TOUCH WITH US AT ONCE



LONGCLOTH Rs. 1-75, 1-87 and 2-10 per yard.  
MADAPOLAM Rs. 1-95, 2-25 and 2-75 per yard.  
NAINSOOK Rs. 1-87, 2-25 and 2-75 per yard.  
CALICO Rs. 1-25, 1-50 and 1-75 per yard.  
SHEETING Rs. 4-25, 4-95, 5-75 and 7-75.  
SHEETS (Single) Rs. 9-50, 11-75, 16-95, 25-50, and 35-00 per pair.  
SHEETS (Double) 23-50, 28-75 and 39-75 per pair.  
PILLOW CASES Rs. 1-75, 2-25, 2-75, 3-95, 5-25 and 6-25.

OUR GOODS, ARE OUR MOST CONVINCING ARGUMENT

CALL AND INSPECT.

THE RECOGNISED SOURCE OF SUPPLY BY ALL KEEN BUYERS.  
**S. JACOBS & Co., (The Dustpan) Nairobi**  
SUPERIOR TABLE LINEN  
Dusters, Glass cloths, Kitchen cloths, all qualities and prices.  
Turkish Hand Towels.  
TEA CLOTHS Rs. 4-75, 5-95, 6-75, 7-75, 9-75.  
TRAY CLOTHS Rs. 1-75, 2-25, 2-95, 3-75.  
TABLE CLOTHS Rs. 13-75, 16-75, 21-50, and 25-00.  
SERVICTTES Rs. 13-50, 20-50, 27-50, 33-50 (dozen).  
DUCHESS SETS Rs. 2-00, 2-50, 3-75, 4-75, and 7-95.

WHITE, Rs. 1-25, 2-25, 2-95, 3-25, 4-25, 4-95, 5-95, and 6-75.  
COLOURED, 08-87, Re. 1-00, Rs. 1-50, 2-50, 2-87, 3-25, 4-25, 4-75, 5-37 and 5-95.  
LINEN HUCKABUCK TOWELS, Rs. 2-75, 3-95 and 4-95.