

...the Largest Circulation of any Newspaper in Kenya and Uganda.

THE EAST Weekly Edition
African Standard

MOMBASA TIMES & UGANDA ARGUS

1034 [PUBLISHED AT THE OFFICE OF THE PRINTERS] NAIROBI, SATURDAY, DECEMBER 9th 1921. Price 15/-

DRINK NESTLE'S MALTED MILK.

NESTLE'S MALTED MILK is pure Cow's Milk in powder form, to which malted cereals have been scientifically added.
KEEPS THE STRONG FIT AND MAKES THE UNFIT STRONG.
 Obtainable at all stores in 13 oz. and 7 oz. bottles. Wholesale from Nestlé, Box 82, NAIROBI.

O. PRESTON
 MEN'S & CHILDREN'S OUTFITTER,
 HAROINGE STREET, NAIROBI.
 General, Flannels, Mercery, Prints,
 Silk, Vests, Stock, Cloth, Park Coat.

WACK & SHEPHERD
 LONDON.
 General Merchants.

CHRISTMAS GIFTS!
 YOUR FRIENDS USEFUL GIFTS THIS YEAR
 SAGNET ALCOHOLIC KETTLES
 TOASTERS
 BURNS
 FIRMS
 HOT PLATES
 GRILLERS
 FANS
 TOBACCO
 Table Lamps in Various
 Designs and Finishes
 We are pleased to demonstrate any of the above
 and inspect our showrooms

CATTLE DIPPING.
 ...of 200 lbs. and
WILSON & WHITELAW Ltd
 NAIROBI

COMPARE THESE PRICES.
 SHAVING.
 FLAMING BLOODS.
LAMBERTS
 LONDON.

WARRANTED GENUINE S.F.A.
 ...
 W.D. No. 27, Market Street
 LONDON, W.1.

HALL'S
SANITARY WASHABLE
DISTEMPER.
 Sole Agents,
NAIROBI.
STEPHEN ELLIS & CO.

THE WORLD KNOWN
 Famous "Renaults" Brandy
 "Second to None"
 Direct from COGNAC-FRANCE.
 Supply to Souza Junior & Dias.
 SOLE AGENTS IN
 Colony and Protectorate of Kenya.
 Uganda Protectorate.

DO YOU REQUIRE
 FLOORING BOARDS DOORS
 CEILING WOODWORK
 WEAVERS
 MOULDINGS
 PORTLAND CEMENTS
 JOIST AND OFFICE FITTINGS
 JOIST OF STEEL SUBSTITUTES
 PORTLAND CEMENTS DESIGNED AND FITTED COMPLETE
 Furniture to order all kinds
PAINTING, DECORATING
SOON WRITING GILDING ON ANY MATERIAL
 THE MOST MODERN PLANT IN THE COUNTRY AND
OUR PRICES ARE IT
 GEO. BLOWERS
 65, 67, 69, Market Street, NAIROBI.

LICENCE
 holders for motor cars
50 CENTS EACH
 approved by the Commissioner of Police.
Hartz, Bell & Lawson, Ltd.
 NAIROBI

Uasin Gishu Railway Extension

TO Transport Contractors Before Buying Elsewhere Call on

WE HAVE THE LARGEST STOCK OF RE-CONSTRUCTED S. A. DOCK WAGONS IN THE COLONY We can Supply your Requirements Immediately

We offer three wagons at the price of one new one Our re-constructed wagons are guaranteed in first class order and open to any expert examination.

PAYMENT ON EASY TERMS ARRANGED.

SCOTCH CARTS WATER CARTS TIMBER WAGONS SUPPLIED AT SHORTEST NOTICE.

Prompt Repairs A Speciality.

NOTE THE ADDRESS:

H. W. SEAR, B. E. A. WAGON WORKS Ltd.

P. O. Box No. 310.

TELEGRAMS "SEAR" NAIROBI

THE ANGLO-BALTIC TIMBER CO. LTD. NAIROBI. Importers of all Building Materials HAVE NOW IN STOCK

French Casements Window Casements Hinges, Sashes, Bolts, Stays & Fasteners Three Ply, 4in. & 5in. square. Oak Roofing in A thicknesses Folding Sawing Machines can be handled easily by a boy. Disasters of all Colours, Paints, Boiled & Raw Oils Wood Preservative Light and Dark Brown and Green. Polycarpus Cedar Floorings, Ceilings, Shutterings, Mouldings.

SMITH, MACKENZIE AND CO., 100, 102, 104, 106, 108, 110, 112, 114, 116, 118, 120, 122, 124, 126, 128, 130, 132, 134, 136, 138, 140, 142, 144, 146, 148, 150, 152, 154, 156, 158, 160, 162, 164, 166, 168, 170, 172, 174, 176, 178, 180, 182, 184, 186, 188, 190, 192, 194, 196, 198, 200, 202, 204, 206, 208, 210, 212, 214, 216, 218, 220, 222, 224, 226, 228, 230, 232, 234, 236, 238, 240, 242, 244, 246, 248, 250, 252, 254, 256, 258, 260, 262, 264, 266, 268, 270, 272, 274, 276, 278, 280, 282, 284, 286, 288, 290, 292, 294, 296, 298, 300, 302, 304, 306, 308, 310, 312, 314, 316, 318, 320, 322, 324, 326, 328, 330, 332, 334, 336, 338, 340, 342, 344, 346, 348, 350, 352, 354, 356, 358, 360, 362, 364, 366, 368, 370, 372, 374, 376, 378, 380, 382, 384, 386, 388, 390, 392, 394, 396, 398, 400, 402, 404, 406, 408, 410, 412, 414, 416, 418, 420, 422, 424, 426, 428, 430, 432, 434, 436, 438, 440, 442, 444, 446, 448, 450, 452, 454, 456, 458, 460, 462, 464, 466, 468, 470, 472, 474, 476, 478, 480, 482, 484, 486, 488, 490, 492, 494, 496, 498, 500, 502, 504, 506, 508, 510, 512, 514, 516, 518, 520, 522, 524, 526, 528, 530, 532, 534, 536, 538, 540, 542, 544, 546, 548, 550, 552, 554, 556, 558, 560, 562, 564, 566, 568, 570, 572, 574, 576, 578, 580, 582, 584, 586, 588, 590, 592, 594, 596, 598, 600, 602, 604, 606, 608, 610, 612, 614, 616, 618, 620, 622, 624, 626, 628, 630, 632, 634, 636, 638, 640, 642, 644, 646, 648, 650, 652, 654, 656, 658, 660, 662, 664, 666, 668, 670, 672, 674, 676, 678, 680, 682, 684, 686, 688, 690, 692, 694, 696, 698, 700, 702, 704, 706, 708, 710, 712, 714, 716, 718, 720, 722, 724, 726, 728, 730, 732, 734, 736, 738, 740, 742, 744, 746, 748, 750, 752, 754, 756, 758, 760, 762, 764, 766, 768, 770, 772, 774, 776, 778, 780, 782, 784, 786, 788, 790, 792, 794, 796, 798, 800, 802, 804, 806, 808, 810, 812, 814, 816, 818, 820, 822, 824, 826, 828, 830, 832, 834, 836, 838, 840, 842, 844, 846, 848, 850, 852, 854, 856, 858, 860, 862, 864, 866, 868, 870, 872, 874, 876, 878, 880, 882, 884, 886, 888, 890, 892, 894, 896, 898, 900, 902, 904, 906, 908, 910, 912, 914, 916, 918, 920, 922, 924, 926, 928, 930, 932, 934, 936, 938, 940, 942, 944, 946, 948, 950, 952, 954, 956, 958, 960, 962, 964, 966, 968, 970, 972, 974, 976, 978, 980, 982, 984, 986, 988, 990, 992, 994, 996, 998, 1000.

NOTE THE PRICE SPECIAL OFFER

A. D. CAMERON F. G. B. No. 1

KAMPALA

THE WESTERN INDIA

THE WESTERN INDIA

CHAMP POL RO VINTA 1911 EMERALD JARDIN

THE WESTERN INDIA

THE EAST AFRICAN & STANDARD Weekly Edition. MOMBASA TIMES & UGANDA ARGUS. NAIROBI, SATURDAY, DECEMBER 24, 1921.

DAY OF WEEK AND PAGE: 16. Prince's Tour

BOARD OF GREAT BRITAIN AND IRELAND. PUBLIC INTEREST.

THE HARMAN GOVERNMENT has announced the Committee of Enquiry into the... Prince's Tour... The Prince and Princess of Wales... The Prince and Princess of Wales... The Prince and Princess of Wales...

THE HARMAN GOVERNMENT has announced the Committee of Enquiry into the... Prince's Tour... The Prince and Princess of Wales... The Prince and Princess of Wales... The Prince and Princess of Wales...

THE HARMAN GOVERNMENT has announced the Committee of Enquiry into the... Prince's Tour... The Prince and Princess of Wales... The Prince and Princess of Wales... The Prince and Princess of Wales...

REPARATION Germany Confesses in Ability to Pay M. BRIAND MEETS MR. LLOYD GEORGE. A GREAT PROBLEM.

THE HARMAN GOVERNMENT has announced the Committee of Enquiry into the... Prince's Tour... The Prince and Princess of Wales... The Prince and Princess of Wales... The Prince and Princess of Wales...

THE HARMAN GOVERNMENT has announced the Committee of Enquiry into the... Prince's Tour... The Prince and Princess of Wales... The Prince and Princess of Wales... The Prince and Princess of Wales...

THE HARMAN GOVERNMENT has announced the Committee of Enquiry into the... Prince's Tour... The Prince and Princess of Wales... The Prince and Princess of Wales... The Prince and Princess of Wales...

THE HARMAN GOVERNMENT has announced the Committee of Enquiry into the... Prince's Tour... The Prince and Princess of Wales... The Prince and Princess of Wales... The Prince and Princess of Wales...

India FURTHER NUMEROUS ARRESTS REPORTED. VIKROY ANTI-POLICY.

THE HARMAN GOVERNMENT has announced the Committee of Enquiry into the... Prince's Tour... The Prince and Princess of Wales... The Prince and Princess of Wales... The Prince and Princess of Wales...

THE HARMAN GOVERNMENT has announced the Committee of Enquiry into the... Prince's Tour... The Prince and Princess of Wales... The Prince and Princess of Wales... The Prince and Princess of Wales...

THE HARMAN GOVERNMENT has announced the Committee of Enquiry into the... Prince's Tour... The Prince and Princess of Wales... The Prince and Princess of Wales... The Prince and Princess of Wales...

THE HARMAN GOVERNMENT has announced the Committee of Enquiry into the... Prince's Tour... The Prince and Princess of Wales... The Prince and Princess of Wales... The Prince and Princess of Wales...

THE WESTERN INDIA

(Continued from Page 3)
 was called on to report on the progress of his work. He stated that he had not yet been able to hand in a report as he was preoccupied with public affairs.

Following the above-mentioned report the Indian members generally expressed the view that the Government's policy had not been successful. They also stated that the Government's policy had not been successful in the past.

Calcutta, Dec. 30.—The Government of India have appointed S. D. Chatterjee as the new Secretary of the Indian Councils, and Mr. J. B. K. Chatterjee as the new Secretary of the Indian Councils.

Patna, Dec. 19.—As a result of representations to the Legislative Council, the Government of Bengal has decided that no further action under the Criminal Law Amendment Bill should be taken, without previous reference to Government.

The Moplahs

HEAVY TOLL OF THE REBELLION.

100 DEATHS.

It is officially announced that since the outbreak of the Malabar rebellion, 100 Moplahs have been killed, 1,000 wounded, 5,474 captured and 14,541 have surrendered voluntarily.

Hull Under Water

HEAVY LOSSES CAUSED BY INUNDATION.

London, December 16.—Damage estimated as high as £700,000 has been caused as a result of the inundation of Hull, owing through an unprecedentedly high tide accompanied by a strong gale.

Religious officials found themselves unable to hold services in the flooded churches. The flooding of the harbor has caused the destruction of many boats and the loss of many lives.

EXCHANGE!



We are now buying
MICHELIN TYRES & TUBES
 IN FRANCE

and are giving the public
 THE BEST VALUE

CURRENT PRICES

Michelin Tyres	50.00	9.00
Michelin Tubes	10.00	1.00
Michelin Tyres	30.00	4.00
Michelin Tubes	15.00	1.50
Michelin Tyres	40.00	5.00
Michelin Tubes	20.00	2.00
Michelin Tyres	50.00	6.00
Michelin Tubes	25.00	2.50
Michelin Tyres	60.00	7.00
Michelin Tubes	30.00	3.00
Michelin Tyres	70.00	8.00
Michelin Tubes	35.00	3.50
Michelin Tyres	80.00	9.00
Michelin Tubes	40.00	4.00
Michelin Tyres	90.00	10.00
Michelin Tubes	45.00	4.50
Michelin Tyres	100.00	11.00
Michelin Tubes	50.00	5.00
Michelin Tyres	110.00	12.00
Michelin Tubes	55.00	5.50
Michelin Tyres	120.00	13.00
Michelin Tubes	60.00	6.00
Michelin Tyres	130.00	14.00
Michelin Tubes	65.00	6.50
Michelin Tyres	140.00	15.00
Michelin Tubes	70.00	7.00
Michelin Tyres	150.00	16.00
Michelin Tubes	75.00	7.50
Michelin Tyres	160.00	17.00
Michelin Tubes	80.00	8.00
Michelin Tyres	170.00	18.00
Michelin Tubes	85.00	8.50
Michelin Tyres	180.00	19.00
Michelin Tubes	90.00	9.00
Michelin Tyres	190.00	20.00
Michelin Tubes	95.00	9.50
Michelin Tyres	200.00	21.00
Michelin Tubes	100.00	10.00

MOTIN HART & EXCHANGE LTD.
 10, SOUTH AVENUE

IRELAND

House of Commons Approves the Treaty

DAILY IN SESSION

London, Dec. 15.—The House of Commons today approved the Anglo-Irish Treaty. The House voted 127 to 63 in favor of the Treaty. The Government's position is now secure.

The House of Commons today approved the Anglo-Irish Treaty. The House voted 127 to 63 in favor of the Treaty. The Government's position is now secure.

The House of Commons today approved the Anglo-Irish Treaty. The House voted 127 to 63 in favor of the Treaty. The Government's position is now secure.

The House of Commons today approved the Anglo-Irish Treaty. The House voted 127 to 63 in favor of the Treaty. The Government's position is now secure.

The House of Commons today approved the Anglo-Irish Treaty. The House voted 127 to 63 in favor of the Treaty. The Government's position is now secure.

The House of Commons today approved the Anglo-Irish Treaty. The House voted 127 to 63 in favor of the Treaty. The Government's position is now secure.

The House of Commons today approved the Anglo-Irish Treaty. The House voted 127 to 63 in favor of the Treaty. The Government's position is now secure.

The House of Commons today approved the Anglo-Irish Treaty. The House voted 127 to 63 in favor of the Treaty. The Government's position is now secure.

FORESTRY IN KENYA

Important Address by Professor Troup

AND BLAME FOR THE DEPARTMENT

London, Dec. 15.—The Kenya Forestry Department today received a report from Professor Troup, who visited the country recently. He stated that the department's work had been satisfactory.

Professor Troup's report stated that the Kenya Forestry Department had made significant progress in the past year. He praised the work of the department's staff.

Professor Troup's report also mentioned the need for further improvements in the department's work. He suggested that more resources should be allocated to the department.

Professor Troup's report highlighted the importance of forestry in Kenya. He stated that forestry is essential for the country's economic development.

Professor Troup's report also mentioned the need for better management of the country's forests. He suggested that more strict regulations should be implemented.

Professor Troup's report concluded by stating that the Kenya Forestry Department has a bright future. He expressed confidence in the department's ability to meet its goals.

Professor Troup's report also mentioned the need for better cooperation between the government and the private sector. He suggested that more joint ventures should be established.

Professor Troup's report highlighted the need for more investment in the forestry sector. He suggested that the government should increase its spending on forestry.

STATE EXPRESS CIGARETTES

Number 555 Virginia

Unequaled Quality—Moderate Prices

State Express Cigarettes are known for their high quality and moderate prices. They are a popular choice among smokers.

State Express Cigarettes are made from the finest tobacco. They are known for their smooth taste and long burn.

State Express Cigarettes are available in a variety of packs. They are a convenient choice for smokers on the go.

State Express Cigarettes are a great choice for anyone who values quality and value. They are a must-have for any smoker.

State Express Cigarettes are a classic choice for smokers. They are a symbol of quality and tradition.

State Express Cigarettes are a great choice for anyone who wants to enjoy the best of both worlds. They are a perfect choice for anyone who loves smoking.

State Express Cigarettes are a great choice for anyone who wants to enjoy the best of both worlds. They are a perfect choice for anyone who loves smoking.

State Express Cigarettes are a great choice for anyone who wants to enjoy the best of both worlds. They are a perfect choice for anyone who loves smoking.

FOREIGN

Germany

Political Situation

Germany's political situation remains tense. The government is facing significant challenges.

The German government is working to address the country's economic problems. They are implementing various measures to stimulate growth.

Germany's foreign relations are also a topic of concern. The government is working to improve its relations with other major powers.

The German government is also working to address the country's social issues. They are implementing various measures to improve the lives of its citizens.

Germany's political situation is expected to remain tense in the coming months. The government will continue to face significant challenges.

The German government is working to address the country's economic problems. They are implementing various measures to stimulate growth.

Germany's foreign relations are also a topic of concern. The government is working to improve its relations with other major powers.

The German government is also working to address the country's social issues. They are implementing various measures to improve the lives of its citizens.

LOCAL

London

Local News

London's local news includes reports on the city's economy and social issues. The city is facing significant challenges.

The London government is working to address the city's economic problems. They are implementing various measures to stimulate growth.

London's foreign relations are also a topic of concern. The government is working to improve its relations with other major powers.

The London government is also working to address the city's social issues. They are implementing various measures to improve the lives of its citizens.

London's political situation is expected to remain tense in the coming months. The government will continue to face significant challenges.

The London government is working to address the city's economic problems. They are implementing various measures to stimulate growth.

London's foreign relations are also a topic of concern. The government is working to improve its relations with other major powers.

The London government is also working to address the city's social issues. They are implementing various measures to improve the lives of its citizens.

**RELIABLE AGENTS
IN ENGLAND.**

**LONDON BUYING
AGENTS**

Agents for purchase of all goods for the continent and other foreign countries. Special attention given to the purchase of all goods for the continent and other foreign countries. Special attention given to the purchase of all goods for the continent and other foreign countries.

HOW TO REPAIR GOD

Big game is a way that "let" the deer, the stag, the roe, the wild boar, the wild cat, the wild dog, the wild ass, the wild mule, the wild goat, the wild sheep, the wild horse, the wild ass, the wild mule, the wild goat, the wild sheep, the wild horse.

**KEYMER, SONS & CO.,
WHITEPIAIRS.**

Whitepiairs, London, E.C. 4.

Importation of a LUXURY

Importation of a luxury, the whitepiairs, London, E.C. 4.

GIRDER MEASUREMENT

Girder measurement, the whitepiairs, London, E.C. 4.

BUTTER WORK

Butter work, the whitepiairs, London, E.C. 4.

OPPOSITION

Opposition, the whitepiairs, London, E.C. 4.

CONSPIRACY

Conspiracy, the whitepiairs, London, E.C. 4.

BLACKING DISCOVERY

Blacking discovery, the whitepiairs, London, E.C. 4.

**Native Location
Finance**

**BLACKING DISCOVERY
TOWNE COUNCIL**

At the Council Meeting... Finance...

**LONDON BUYING
AGENTS**

Agents for purchase of all goods for the continent and other foreign countries. Special attention given to the purchase of all goods for the continent and other foreign countries.

**KEYMER, SONS & CO.,
WHITEPIAIRS.**

Whitepiairs, London, E.C. 4.

Importation of a LUXURY

Importation of a luxury, the whitepiairs, London, E.C. 4.

GIRDER MEASUREMENT

Girder measurement, the whitepiairs, London, E.C. 4.

BUTTER WORK

Butter work, the whitepiairs, London, E.C. 4.

OPPOSITION

Opposition, the whitepiairs, London, E.C. 4.

CONSPIRACY

Conspiracy, the whitepiairs, London, E.C. 4.

BLACKING DISCOVERY

Blacking discovery, the whitepiairs, London, E.C. 4.

Natural Essays

THE MARCHING OF THE FARM

MOTIVE RESEARCH

The motive research, the whitepiairs, London, E.C. 4.

**LONDON BUYING
AGENTS**

Agents for purchase of all goods for the continent and other foreign countries. Special attention given to the purchase of all goods for the continent and other foreign countries.

**KEYMER, SONS & CO.,
WHITEPIAIRS.**

Whitepiairs, London, E.C. 4.

Importation of a LUXURY

Importation of a luxury, the whitepiairs, London, E.C. 4.

GIRDER MEASUREMENT

Girder measurement, the whitepiairs, London, E.C. 4.

BUTTER WORK

Butter work, the whitepiairs, London, E.C. 4.

OPPOSITION

Opposition, the whitepiairs, London, E.C. 4.

CONSPIRACY

Conspiracy, the whitepiairs, London, E.C. 4.

BLACKING DISCOVERY

Blacking discovery, the whitepiairs, London, E.C. 4.



**THE PREMIER
DOUBLE MALT**

Scotch Whisky

T. H. Allan & Co.

17, GRACEBURY STREET, LONDON, E.C. 1.

**FOR FURTHER INFORMATION AND GENERAL TERMS OF BUSINESS
Apply to
C. C. MONCKTON & Co.
Telegrams: F. O. Box 510 Telephone No. 24
MOSCOW R. MONTROE**

FOR FURTHER INFORMATION AND GENERAL TERMS OF BUSINESS

Apply to
C. C. MONCKTON & Co.

FOR FURTHER INFORMATION AND GENERAL TERMS OF BUSINESS

Apply to
C. C. MONCKTON & Co.

FOR FURTHER INFORMATION AND GENERAL TERMS OF BUSINESS

Apply to
C. C. MONCKTON & Co.

FOR FURTHER INFORMATION AND GENERAL TERMS OF BUSINESS

Apply to
C. C. MONCKTON & Co.

FOR FURTHER INFORMATION AND GENERAL TERMS OF BUSINESS

Apply to
C. C. MONCKTON & Co.

...and I would advise you to read publications on the subject of dairying issued by the Dairy Council of Kenya, and to seek expert opinion when you have a problem.

An exhibit of butter to which was awarded the first prize in an open case made by a woman who had only been in South Africa one year, and who had never attempted to make butter until a few months before she came to Kenya, was shown on your verandah, with a small crowd of spectators.

South hands' and a thoroughbred staff. It might be a good idea to buy an account of the first being, and the temperature. The water was very warm, and the butter was not so good as at intervals for some time. I have seen and never observed any such thing when the water was observed the same. It is not clear what the water mark for washing was, but it was very interesting to see an old water mark round the Verandah.

Scrupulous care had been taken in preparing the cream, it was kept for three or four times the height of the air in the vessel. The cream was kept for several days, and it was not until the first of the month that the cream was taken to the factory. The cream was kept for several days, and it was not until the first of the month that the cream was taken to the factory. The cream was kept for several days, and it was not until the first of the month that the cream was taken to the factory.

BAILAGE

We beg to notify our Clients that we are now in all goods Rail Rates to be on the 15th of the month.

A. H. WARDE & Co.
WHOLESALE AND RETAIL CHEMISTS
NAIROBI & MOMBASA

COFFEE

N. C. CLEAN

MILLS

NAIROBI

All consignments with this mark eagerly sought for by London.

MR. LAURENCE THE Uganda Government Inspector.

"It should be obligatory to deliver to the Government Inspector, before export by licence and such licence can only be granted to exporters who will ensure a certain standard of pure, unsatisfactory produce."

Do Not Waste Money by sending coffee for treatment. Remember that you can get your money back if you send it to us.

For work which can be done here, and it is the duty of every exporter to encourage and support local industry.

Apply to THE GENERAL MANAGER, The Nairobi Coffee Cleaning Co. P. O. Box 40.

XMAS AND NEW YEAR

Large Stocks of Wholesale Perfumery and Stationery

THE OLDEST & BEST ENGINEERED AND TOLTED SOAP MANUFACTURERS

J. E. ATKINSON, Ltd.

24, Old Broad Street, London, E.C. 4, and 2, Rue de la Paix, Paris.

Buy ATKINSON'S goods and get MOST SATISFACTORY RESULTS.

Obtainable at—

A. J. LEY, CASH CHEMIST, NAIROBI.

Guaranteed Pure

SEARCHED WHISKY

James Watson & Co. Ltd.
Dundee

Wholesale and Retail

SIGN'S LINIMENT

Penetrates without Rubbing

Just put a few drops of Sign's on the part of the body which aches. It is really wonderful how quickly Sign's relief is perceptible to the bone and brings relief to the sufferer.

"Guaranteed Lumbago"

Mr. C. Clark, Public Health Officer, London, writes: "I have used Sign's Liniment for many years, and I can say that it is really wonderful how quickly Sign's relief is perceptible to the bone and brings relief to the sufferer."

Resurrection in the Army.

Mr. J. H. G. G. writes: "I have used Sign's Liniment for many years, and I can say that it is really wonderful how quickly Sign's relief is perceptible to the bone and brings relief to the sufferer."

DAISY AIR RIFLES

Small, light, powerful, accurate, and reliable. Perfectly adapted for target shooting, and also for hunting small game.

THE SILVERBECK HOTEL

NANUYUK

Established on the north coast of H. K. The hotel is situated in a beautiful spot, and is one of the best in the colony. It has a large and comfortable staff, and is well equipped with every modern facility.

KAMP KENYA

THE DAILY NEWS

...and I would advise you to read publications on the subject of dairying issued by the Dairy Council of Kenya, and to seek expert opinion when you have a problem.

THE DAILY NEWS

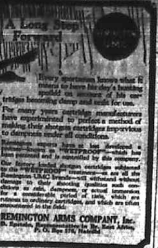
...and I would advise you to read publications on the subject of dairying issued by the Dairy Council of Kenya, and to seek expert opinion when you have a problem.

THE DAILY NEWS

...and I would advise you to read publications on the subject of dairying issued by the Dairy Council of Kenya, and to seek expert opinion when you have a problem.

THE DAILY NEWS

...and I would advise you to read publications on the subject of dairying issued by the Dairy Council of Kenya, and to seek expert opinion when you have a problem.



FASHIONS

THE following is a list of fashions in vogue...
WHAPOO FOR A GIRL OF 16...
LADIES' BLOUSES...
LADIES' HATS...
LADIES' SHOES...

PAPER PA

WHAPOO FOR A GIRL OF 16...
LADIES' BLOUSES...
LADIES' HATS...
LADIES' SHOES...
LADIES' WAISTCOATS...
LADIES' DRESSES...

Principal Franchise

THE following is a list of fashions in vogue...
WHAPOO FOR A GIRL OF 16...
LADIES' BLOUSES...
LADIES' HATS...
LADIES' SHOES...
LADIES' WAISTCOATS...
LADIES' DRESSES...

THE LEGISLATIVE COUNCIL

THE following is a list of fashions in vogue...
WHAPOO FOR A GIRL OF 16...
LADIES' BLOUSES...
LADIES' HATS...
LADIES' SHOES...
LADIES' WAISTCOATS...
LADIES' DRESSES...

B. S. M. Ltd., THE LARGEST TIMBER PRODUCERS IN AFRICA.
CARICAL, KARUN QUAY, RAIBORU.
P. O. Box 112.

PREFERENCE VERSUS PREJUDICE.
PRICE IS A REASON FOR PREFERENCE FOR LOCAL TIMBER.
AND PREJUDICE AGAINST IMPORTED TIMBER.

Stocks of these requisite and fragrant perfumes have just arrived.
Wholesale and can be obtained from all the leading stores and chemists.
THE BOMBAY AFRICA TRADING Co., Ltd., P. O. Box 555, NAIROBI.

USEFUL AND INEXPENSIVE XMAS GIFTS.

JUMPERS, BLOUSES, LADIES' HAND BAGS, GLOVES, SUNSHADES.
LADIES' WAISTCOATS, LADIES' DRESSES, LADIES' HATS, LADIES' SHOES.

Standard Stationery.
Sixth Avenue, Nairobi.
Stationery, printing, and bookbinding services.

WHAT SHALL I BUY FOR XMAS PRESENTS?

Let us suggest some useful articles!
LADIES' WAISTCOATS, LADIES' DRESSES, LADIES' HATS, LADIES' SHOES.

GO PLANTERS, LTD., KAMPALA.
AGRICULTURAL MACHINERY AND IMPLEMENTS.

LADIES' WAISTCOATS, LADIES' DRESSES, LADIES' HATS, LADIES' SHOES.

AFRICAN MOTOR VEHICLE AND AUTO PARTS.
LONDON LONDON GARAGE.

INSURANCE WITH THE ASSURANCE COMPANY.
LONDON LONDON GARAGE.

THE following is a list of fashions in vogue...
WHAPOO FOR A GIRL OF 16...
LADIES' BLOUSES...
LADIES' HATS...
LADIES' SHOES...
LADIES' WAISTCOATS...
LADIES' DRESSES...

THE following is a list of fashions in vogue...
WHAPOO FOR A GIRL OF 16...
LADIES' BLOUSES...
LADIES' HATS...
LADIES' SHOES...
LADIES' WAISTCOATS...
LADIES' DRESSES...

...to which specimens...
...very few...
...and for...
...specimens...
...analysis...

ANALYSIS OF POULTRY FOODS.

	Almonds	Figs	Walnuts	Chickens	Meat	Oil	Flour	Wheat
Moisture	22.0	10.0-17.0	85.4	4.5	8.0	9.0	12.0	14.0
Protein	30.0	1.0-2.0	1.0-2.0	1.0-2.0	1.0-2.0	1.0-2.0	1.0-2.0	1.0-2.0
Starch	20.0	1.0-2.0	1.0-2.0	1.0-2.0	1.0-2.0	1.0-2.0	1.0-2.0	1.0-2.0
Oil	10.0	1.0-2.0	1.0-2.0	1.0-2.0	1.0-2.0	1.0-2.0	1.0-2.0	1.0-2.0
Minerals	1.0	1.0-2.0	1.0-2.0	1.0-2.0	1.0-2.0	1.0-2.0	1.0-2.0	1.0-2.0
Phosphorus	0.5	0.0-0.5	41.0	2.0	0.0	0.5	0.5	0.5
Calcium	0.5	0.0-0.5	11.0	3.0	0.5	7.0	7.0	7.0
Iron	0.5	0.0-0.5	1.0	1.0	0.5	1.0	1.0	1.0
Other	0.5	0.0-0.5	1.0	1.0	0.5	1.0	1.0	1.0

STEPS IN FEEDING.

In using the above table...
...the first...
...the second...
...the third...
...the fourth...
...the fifth...
...the sixth...
...the seventh...
...the eighth...
...the ninth...
...the tenth...

Food	Age	Protein	Oil	Starch	Minerals	Phosphorus	Calcium	Iron	Other
Wheat	1	10	10	10	10	10	10	10	10
Barley	2	10	10	10	10	10	10	10	10
Oats	3	10	10	10	10	10	10	10	10
Maize	4	10	10	10	10	10	10	10	10
Peas	5	10	10	10	10	10	10	10	10
Beans	6	10	10	10	10	10	10	10	10
Lentils	7	10	10	10	10	10	10	10	10
Wheat	8	10	10	10	10	10	10	10	10
Barley	9	10	10	10	10	10	10	10	10
Oats	10	10	10	10	10	10	10	10	10

...to a few...
...the first...
...the second...
...the third...
...the fourth...
...the fifth...
...the sixth...
...the seventh...
...the eighth...
...the ninth...
...the tenth...

FEEDING MENUS FOR CHICKENS.

Food	Quantity	Protein	Oil	Starch	Minerals	Phosphorus	Calcium	Iron	Other
Wheat	100	30	10	10	10	10	10	10	10
Barley	100	30	10	10	10	10	10	10	10
Oats	100	30	10	10	10	10	10	10	10
Maize	100	30	10	10	10	10	10	10	10
Peas	100	30	10	10	10	10	10	10	10
Beans	100	30	10	10	10	10	10	10	10
Lentils	100	30	10	10	10	10	10	10	10
Wheat	100	30	10	10	10	10	10	10	10
Barley	100	30	10	10	10	10	10	10	10
Oats	100	30	10	10	10	10	10	10	10
Maize	100	30	10	10	10	10	10	10	10
Peas	100	30	10	10	10	10	10	10	10
Beans	100	30	10	10	10	10	10	10	10
Lentils	100	30	10	10	10	10	10	10	10

FOR CHICKS TWO TO FIFTEEN WEEKS.

Food	Quantity	Protein	Oil	Starch	Minerals	Phosphorus	Calcium	Iron	Other
Wheat	100	30	10	10	10	10	10	10	10
Barley	100	30	10	10	10	10	10	10	10
Oats	100	30	10	10	10	10	10	10	10
Maize	100	30	10	10	10	10	10	10	10
Peas	100	30	10	10	10	10	10	10	10
Beans	100	30	10	10	10	10	10	10	10
Lentils	100	30	10	10	10	10	10	10	10
Wheat	100	30	10	10	10	10	10	10	10
Barley	100	30	10	10	10	10	10	10	10
Oats	100	30	10	10	10	10	10	10	10
Maize	100	30	10	10	10	10	10	10	10
Peas	100	30	10	10	10	10	10	10	10
Beans	100	30	10	10	10	10	10	10	10
Lentils	100	30	10	10	10	10	10	10	10

...the first...
...the second...
...the third...
...the fourth...
...the fifth...
...the sixth...
...the seventh...
...the eighth...
...the ninth...
...the tenth...

NOTICE
Invoices to be in...

F. W. MAJOR
Commissioner of...

THE IRISH TREATY
...the first...
...the second...
...the third...
...the fourth...
...the fifth...
...the sixth...
...the seventh...
...the eighth...
...the ninth...
...the tenth...

BRITAIN AND JAPAN
...the first...
...the second...
...the third...
...the fourth...
...the fifth...
...the sixth...
...the seventh...
...the eighth...
...the ninth...
...the tenth...

RAILWAY DISASTER
...the first...
...the second...
...the third...
...the fourth...
...the fifth...
...the sixth...
...the seventh...
...the eighth...
...the ninth...
...the tenth...

NEW CASH
...the first...
...the second...
...the third...
...the fourth...
...the fifth...
...the sixth...
...the seventh...
...the eighth...
...the ninth...
...the tenth...

GLAZO
...the first...
...the second...
...the third...
...the fourth...
...the fifth...
...the sixth...
...the seventh...
...the eighth...
...the ninth...
...the tenth...

WHITE
...the first...
...the second...
...the third...
...the fourth...
...the fifth...
...the sixth...
...the seventh...
...the eighth...
...the ninth...
...the tenth...

Uganda Protectorate TENDERS

Tenders are invited by the Tender Board...
...the first...
...the second...
...the third...
...the fourth...
...the fifth...
...the sixth...
...the seventh...
...the eighth...
...the ninth...
...the tenth...

Description of goods	Approximate quantities required	Remarks
Asphaltum	500 tons	Sample required.
Alum	200 tons	In bags.
Coal (best)	27 tons	First quality for steam.
Fire brick	45 tons	In bags.
Iron bars	1,000 lbs	As per spec.
Shoe	120 pairs	As per spec.
Flour	12,000 gallons	In bags.

...the first...
...the second...
...the third...
...the fourth...
...the fifth...
...the sixth...
...the seventh...
...the eighth...
...the ninth...
...the tenth...

THE SHOW
...the first...
...the second...
...the third...
...the fourth...
...the fifth...
...the sixth...
...the seventh...
...the eighth...
...the ninth...
...the tenth...

MURURONI AUCTIONEERS
...the first...
...the second...
...the third...
...the fourth...
...the fifth...
...the sixth...
...the seventh...
...the eighth...
...the ninth...
...the tenth...

NOTICE
...the first...
...the second...
...the third...
...the fourth...
...the fifth...
...the sixth...
...the seventh...
...the eighth...
...the ninth...
...the tenth...

MOPIAN RINGS
...the first...
...the second...
...the third...
...the fourth...
...the fifth...
...the sixth...
...the seventh...
...the eighth...
...the ninth...
...the tenth...

THE Standard Bank OF SOUTH AFRICA LTD.

WITH WHOLE IS INCORPORATED THE African Building Corporation Ltd.

Authorised Capital £10,000,000
 Subscribed Capital £2,831,660
 Paid-up Capital £2,229,765
 Reserve Fund £6,847,495
 Unallocated Capital £1,809,995

Board of Directors
 Mr. D. A. Botha, C.M.G., F.R.S., F.R.S.
 Mr. W. A. M. Botha, C.M.G., F.R.S.
 Mr. J. H. M. Botha, C.M.G., F.R.S.
 Mr. J. H. M. Botha, C.M.G., F.R.S.
 Mr. J. H. M. Botha, C.M.G., F.R.S.

HEAD OFFICE IN AFRICA—CAPE TOWN
 HEAD OFFICE IN ENGLAND—LONDON
 BRANCHES IN ALL THE PRINCIPAL PORTS AND TOWNS OF SOUTH AFRICA AND IN THE PRINCIPAL PORTS AND TOWNS OF ENGLAND AND IN THE PRINCIPAL PORTS AND TOWNS OF THE NETHERLANDS, INDIA, CEYLON, SINGAPORE, HONGKONG, CANADA, THE UNITED STATES OF AMERICA AND THROUGHOUT THE WORLD.

our plan to bring the people to the future; the industry that we have created; the progress that we have made; the future that we have planned; the future that we have planned; the future that we have planned.

our plan to bring the people to the future; the industry that we have created; the progress that we have made; the future that we have planned; the future that we have planned; the future that we have planned.

our plan to bring the people to the future; the industry that we have created; the progress that we have made; the future that we have planned; the future that we have planned; the future that we have planned.

our plan to bring the people to the future; the industry that we have created; the progress that we have made; the future that we have planned; the future that we have planned; the future that we have planned.

LAND TENURE

Interesting Evidence Before Commission

PROBLEM OF THE RESERVEVS

CONFLICTING COUNSEL

The Land Tenure Commission on the 10th inst. held its 10th public sitting at the University of Cape Town, where the report of the Commission on the problem of the reserves was presented to the public. The following is a summary of the evidence given at the public sitting.

The 10th public sitting of the Land Tenure Commission was held at the University of Cape Town, where the report of the Commission on the problem of the reserves was presented to the public. The following is a summary of the evidence given at the public sitting.

The 10th public sitting of the Land Tenure Commission was held at the University of Cape Town, where the report of the Commission on the problem of the reserves was presented to the public. The following is a summary of the evidence given at the public sitting.

NEW GRASS VIEWS

Mr. J. A. H. van der Merwe, Chairman of the Land Tenure Commission, in his report on the problem of the reserves, has set out the views of the Commission on the subject.

Mr. J. A. H. van der Merwe, Chairman of the Land Tenure Commission, in his report on the problem of the reserves, has set out the views of the Commission on the subject.

Mr. J. A. H. van der Merwe, Chairman of the Land Tenure Commission, in his report on the problem of the reserves, has set out the views of the Commission on the subject.

Mr. J. A. H. van der Merwe, Chairman of the Land Tenure Commission, in his report on the problem of the reserves, has set out the views of the Commission on the subject.

RESTRICTION OF RESERVE

The Commission has recommended that the reserves should be restricted to a certain extent.

The Commission has recommended that the reserves should be restricted to a certain extent.

The Commission has recommended that the reserves should be restricted to a certain extent.

The Commission has recommended that the reserves should be restricted to a certain extent.

MEMBERS: Mr. J. A. H. van der Merwe, Chairman; Mr. J. A. H. van der Merwe, Chairman; Mr. J. A. H. van der Merwe, Chairman.

MEMBERS: Mr. J. A. H. van der Merwe, Chairman; Mr. J. A. H. van der Merwe, Chairman; Mr. J. A. H. van der Merwe, Chairman.

MEMBERS: Mr. J. A. H. van der Merwe, Chairman; Mr. J. A. H. van der Merwe, Chairman; Mr. J. A. H. van der Merwe, Chairman.

MEMBERS: Mr. J. A. H. van der Merwe, Chairman; Mr. J. A. H. van der Merwe, Chairman; Mr. J. A. H. van der Merwe, Chairman.

The Week

LOCAL

Prof. Dr. van der Merwe, Chairman of the Land Tenure Commission, in his report on the problem of the reserves, has set out the views of the Commission on the subject.

Prof. Dr. van der Merwe, Chairman of the Land Tenure Commission, in his report on the problem of the reserves, has set out the views of the Commission on the subject.

Prof. Dr. van der Merwe, Chairman of the Land Tenure Commission, in his report on the problem of the reserves, has set out the views of the Commission on the subject.

Prof. Dr. van der Merwe, Chairman of the Land Tenure Commission, in his report on the problem of the reserves, has set out the views of the Commission on the subject.

Prof. Dr. van der Merwe, Chairman of the Land Tenure Commission, in his report on the problem of the reserves, has set out the views of the Commission on the subject.

Prof. Dr. van der Merwe, Chairman of the Land Tenure Commission, in his report on the problem of the reserves, has set out the views of the Commission on the subject.

ACCIDENTS: The vicarious world of man, but it addresses itself to the world of man, but it addresses itself to the world of man, but it addresses itself to the world of man.

ACCIDENTS: The vicarious world of man, but it addresses itself to the world of man, but it addresses itself to the world of man, but it addresses itself to the world of man.

ACCIDENTS: The vicarious world of man, but it addresses itself to the world of man, but it addresses itself to the world of man, but it addresses itself to the world of man.

ACCIDENTS: The vicarious world of man, but it addresses itself to the world of man, but it addresses itself to the world of man, but it addresses itself to the world of man.

ACCIDENTS: The vicarious world of man, but it addresses itself to the world of man, but it addresses itself to the world of man, but it addresses itself to the world of man.

ACCIDENTS: The vicarious world of man, but it addresses itself to the world of man, but it addresses itself to the world of man, but it addresses itself to the world of man.

ACCIDENTS: The vicarious world of man, but it addresses itself to the world of man, but it addresses itself to the world of man, but it addresses itself to the world of man.

THE WEEK'S REVIEW

The R.A. Standard, Dec. 10, 1921

The R.A. Standard, Dec. 10, 1921

The R.A. Standard, Dec. 10, 1921

The R.A. Standard, Dec. 10, 1921

The R.A. Standard, Dec. 10, 1921

The R.A. Standard, Dec. 10, 1921

The R.A. Standard, Dec. 10, 1921

A FLPA FOR TRUSTEES

Referring to native lands within the reserves, the Commission has recommended that a trust be established.

Referring to native lands within the reserves, the Commission has recommended that a trust be established.

Referring to native lands within the reserves, the Commission has recommended that a trust be established.

Referring to native lands within the reserves, the Commission has recommended that a trust be established.

Referring to native lands within the reserves, the Commission has recommended that a trust be established.

Referring to native lands within the reserves, the Commission has recommended that a trust be established.

Referring to native lands within the reserves, the Commission has recommended that a trust be established.

COMPLAINANTS IN THE SMALL

Mr. C. G. P. van der Merwe, Chairman of the Land Tenure Commission, in his report on the problem of the reserves, has set out the views of the Commission on the subject.

Mr. C. G. P. van der Merwe, Chairman of the Land Tenure Commission, in his report on the problem of the reserves, has set out the views of the Commission on the subject.

Mr. C. G. P. van der Merwe, Chairman of the Land Tenure Commission, in his report on the problem of the reserves, has set out the views of the Commission on the subject.

Mr. C. G. P. van der Merwe, Chairman of the Land Tenure Commission, in his report on the problem of the reserves, has set out the views of the Commission on the subject.

Mr. C. G. P. van der Merwe, Chairman of the Land Tenure Commission, in his report on the problem of the reserves, has set out the views of the Commission on the subject.

Mr. C. G. P. van der Merwe, Chairman of the Land Tenure Commission, in his report on the problem of the reserves, has set out the views of the Commission on the subject.

Mr. C. G. P. van der Merwe, Chairman of the Land Tenure Commission, in his report on the problem of the reserves, has set out the views of the Commission on the subject.

COMMISSION ON THE RESERVE

The Commission has recommended that the reserves should be restricted to a certain extent.

The Commission has recommended that the reserves should be restricted to a certain extent.

The Commission has recommended that the reserves should be restricted to a certain extent.

The Commission has recommended that the reserves should be restricted to a certain extent.

The Commission has recommended that the reserves should be restricted to a certain extent.

The Commission has recommended that the reserves should be restricted to a certain extent.

The Commission has recommended that the reserves should be restricted to a certain extent.

New Scheme for Shilling Introductions

PUBLIC AND THE CHANGED COSTS

THROUGH BILLS OF LADING FROM SOUTH

The usual monthly meeting of the Nairobian Chamber of Commerce...

After the routine business had been disposed of, the Secretary announced that the Government had published a public holiday...

In connection with the change in Customs duty would be proposed on January 8, the Secretary announced that the Government had decided to take measures to close on Saturday December 29, an extension of a resolution passed at the previous meeting...

A letter from the London Chamber of Commerce, asking for the support of the Chamber in the proposed Bill, was also read and noted.

THROUGH BILLS OF LADING. A letter from the Chamber of Commerce in London, asking for the support of the Chamber in the proposed Bill, was also read and noted.

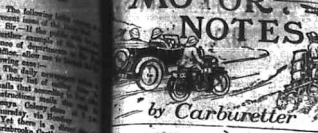
The Secretary announced that the Chamber of Commerce in London had decided to take measures to close on Saturday December 29, an extension of a resolution passed at the previous meeting...

The Secretary announced that the Chamber of Commerce in London had decided to take measures to close on Saturday December 29, an extension of a resolution passed at the previous meeting...

The Secretary announced that the Chamber of Commerce in London had decided to take measures to close on Saturday December 29, an extension of a resolution passed at the previous meeting...

The Secretary announced that the Chamber of Commerce in London had decided to take measures to close on Saturday December 29, an extension of a resolution passed at the previous meeting...

The Secretary announced that the Chamber of Commerce in London had decided to take measures to close on Saturday December 29, an extension of a resolution passed at the previous meeting...



It is interesting to find that the motor industry in Kenya is making rapid progress...

It is interesting to find that the motor industry in Kenya is making rapid progress...

It is interesting to find that the motor industry in Kenya is making rapid progress...

It is interesting to find that the motor industry in Kenya is making rapid progress...

It is interesting to find that the motor industry in Kenya is making rapid progress...

It is interesting to find that the motor industry in Kenya is making rapid progress...

It is interesting to find that the motor industry in Kenya is making rapid progress...

It is interesting to find that the motor industry in Kenya is making rapid progress...

It is interesting to find that the motor industry in Kenya is making rapid progress...

INCOME TAX A CALL FOR ACTION.

GOVERNMENT OF THE PEOPLE BY THE PEOPLE FOR THE PEOPLE. (Extract from ABRAHAM LINCOLN'S Gettysburg address.)

THE LEGISLATIVE COUNCIL IN KENYA is composed of 16 OFFICIALS (SEVEN ROLLER MAJORITY) 11 SETTLER REPRESENTATIVES. 1 Nominated Arab Member.

WE HAVE NO CHECK OR SAFEGUARD AGAINST GOVERNMENT EXTRAVAGANCE. WE CAN BE STEAM ROLLED EVERY TIME.

WE HAVE NOT THE FREEDOM OF FREE-BORN BROTHERS IN ENGLAND.

WE HAVE NO SAFEGUARD AGAINST THE OFFICIAL MAJORITY PASSING ANY CONFISCATORY MEASURES.

HAVE THE OFFICIAL MAJORITY BEEN HEARD BY THE PEOPLE? IF SO, WHY SHOULD WE HAVE TO PAY WITHOUT CONTROLLING THE PURSE?

AS BRITISHERS ACROSS THE SEAS, ENGINEERS, SOFTENERS, DISHERN, AND WELSHMEN NOW, WE CLAIM THE SAME RIGHTS, LAWS, PRIVILEGES AND IMMUNITIES AS WE SHOULD HAVE HAD WE STAYED AT HOME.

IF THE OFFICIAL MAJORITY'S GOALS TO BE MET BY US UNLESS WE WERE COMPROMISED WITH ENLIGHTENED SELF INTEREST.

TAXPAYERS' PROTECTION LEAGUE. Secretary's Office: Theatre Buildings, Sixth Avenue.

THE Middle Company is now offering the best quality of building materials...

THE Middle Company is now offering the best quality of building materials...

THE Middle Company is now offering the best quality of building materials...

THE Middle Company is now offering the best quality of building materials...

Visitors List. The following is a list of the names who have stayed at the Norfolk Hotel...

Visitors List. The following is a list of the names who have stayed at the Norfolk Hotel...

Visitors List. The following is a list of the names who have stayed at the Norfolk Hotel...

Visitors List. The following is a list of the names who have stayed at the Norfolk Hotel...

THE SAVANNAH ARMY. The Savannah Army is a new formation of the British Army...

THE SAVANNAH ARMY. The Savannah Army is a new formation of the British Army...

THE SAVANNAH ARMY. The Savannah Army is a new formation of the British Army...

THE SAVANNAH ARMY. The Savannah Army is a new formation of the British Army...

THE SAVANNAH ARMY. The Savannah Army is a new formation of the British Army...

THE SAVANNAH ARMY. The Savannah Army is a new formation of the British Army...

Occasional Notes.

In connection with the recent holders of the "E. A. Standard"...

A football match between the Football Club and the Police...

Sportmen and sports women to select the best set of apparatus...

Abdullah Owen, of the Victoria Club, is proposing to visit America...

The Christmas Eve programme in the Victoria Club at 8.30 p.m. and 10 p.m.

Mr. A. D. Dooley, who has returned from his duties as the District Commissioner...

The following names were selected to represent the Victoria Club...

A large number of people were present at the Christmas Eve programme...

The "E. A. Standard" branch of the Victoria Club...

It is reported that the Victoria Club will be holding a Christmas Eve programme...

It is reported that the Victoria Club will be holding a Christmas Eve programme...

The French delegation to the Disarmament Conference...

The French delegation to the Disarmament Conference...

The French delegation to the Disarmament Conference...

The French delegation to the Disarmament Conference...

The French delegation to the Disarmament Conference...

The French delegation to the Disarmament Conference...

The French delegation to the Disarmament Conference...

The French delegation to the Disarmament Conference...

The French delegation to the Disarmament Conference...

The French delegation to the Disarmament Conference...

The French delegation to the Disarmament Conference...

The French delegation to the Disarmament Conference...

DISARMAMENT Progress of the Washington Conference

FRANCE AND THE THREE POWER PACT AGAINST GERMANY

Washington, Dec. 20. The progress of the Washington Conference...

Washington, Dec. 20. The progress of the Washington Conference...

Washington, Dec. 20. The progress of the Washington Conference...

Washington, Dec. 20. The progress of the Washington Conference...

Washington, Dec. 20. The progress of the Washington Conference...

Washington, Dec. 20. The progress of the Washington Conference...

Washington, Dec. 20. The progress of the Washington Conference...

Washington, Dec. 20. The progress of the Washington Conference...

Washington, Dec. 20. The progress of the Washington Conference...

Washington, Dec. 20. The progress of the Washington Conference...

Washington, Dec. 20. The progress of the Washington Conference...

CRICKET SOUTH AFRICAN

CRICKET SOUTH AFRICAN

CRICKET SOUTH AFRICAN

CRICKET SOUTH AFRICAN

CRICKET SOUTH AFRICAN

CRICKET SOUTH AFRICAN

CRICKET SOUTH AFRICAN

CRICKET SOUTH AFRICAN

CRICKET SOUTH AFRICAN

CRICKET SOUTH AFRICAN

CRICKET SOUTH AFRICAN

CRICKET SOUTH AFRICAN

CRICKET SOUTH AFRICAN

CRICKET SOUTH AFRICAN

CRICKET SOUTH AFRICAN

CRICKET SOUTH AFRICAN

CRICKET SOUTH AFRICAN

CRICKET SOUTH AFRICAN

CRICKET SOUTH AFRICAN

CRICKET SOUTH AFRICAN

CRICKET SOUTH AFRICAN

CRICKET SOUTH AFRICAN

CRICKET SOUTH AFRICAN

CRICKET SOUTH AFRICAN

CRICKET SOUTH AFRICAN

CRICKET SOUTH AFRICAN

CRICKET SOUTH AFRICAN

CRICKET SOUTH AFRICAN

CRICKET SOUTH AFRICAN

CRICKET SOUTH AFRICAN

CRICKET SOUTH AFRICAN

CRICKET SOUTH AFRICAN

CRICKET SOUTH AFRICAN

CRICKET SOUTH AFRICAN

CRICKET SOUTH AFRICAN

CRICKET SOUTH AFRICAN

CRICKET SOUTH AFRICAN

CRICKET SOUTH AFRICAN

CRICKET SOUTH AFRICAN

Professor Trempy's Subject This Week THE NOTES OF KEMVA'S RESOURCES

HOW TO ARRANGE LANDS FOR THEM

The notes of the meeting... Professor Trempy... Forests... notes of the meeting... Professor Trempy... Forests...

Champion Dependable Spark Plugs... Every Spark Every Time... How your local Garage install a set today.

in this County... the forest... notes of the meeting... Professor Trempy... Forests... notes of the meeting... Professor Trempy... Forests...

ASK FOR WHITE HORSE WHISKY IN A GLASS BY ITSELF! Supplier limited... Free-ner quality... ESTD 1861... MACKIE & CO., DISTILLERS, LTD.

TANGANYIKA TERRITORY DISPOSAL OF ENEMY PROPERTY

Pursuant to the conditions of the Enemy Property (Disposal) Bill... March 30th, at 10 o'clock a.m. as per terms of Section 3 (1)...

Copy of the conditions of sale may be obtained from Mr. W. J. Moragah, Auctioneer... Dan-e-Akasia, Tanga City, 21st July, 1943.

FOURTEENTH SCHEDULE. IMMOVABLE PROPERTY REFERRED TO IN SECTION 3 (1)

Table with columns: No., DESCRIPTION OF PROPERTY, Right Title or Interest, Required Certificate, Remarks. Rows describe various land parcels with details on location, size, and terms.

General statement in that the... Capital will be maintained...

To be sold on the rails we will... 2000 A.R. per acre for purposes of valuation...

There will be a standard one... of Kenya Colony... The local market...

ELBY CARTRIDGE ELLY PEGAMOR ELLY SMOKELESS CARTRIDGE

There will be a standard one... of Kenya Colony... The local market...

There will be a standard one... of Kenya Colony... The local market...

There will be a standard one... of Kenya Colony... The local market...

NOBEL INDUSTRIES LTD. SOAPS THE HORN OF AFRICA

There will be a standard one... of Kenya Colony... The local market...

There will be a standard one... of Kenya Colony... The local market...

There will be a standard one... of Kenya Colony... The local market...

NOW OPEN THE MAIVASHA BOUTIQUE

There will be a standard one... of Kenya Colony... The local market...

There will be a standard one... of Kenya Colony... The local market...

There will be a standard one... of Kenya Colony... The local market...

PRIME BEEF & MUTTON DAIRY FED POULTRY

There will be a standard one... of Kenya Colony... The local market...

There will be a standard one... of Kenya Colony... The local market...

There will be a standard one... of Kenya Colony... The local market...

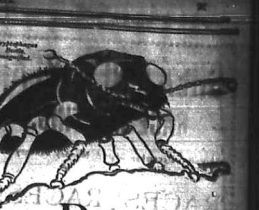
There will be a standard one... of Kenya Colony... The local market...

There will be a standard one... of Kenya Colony... The local market...

There will be a standard one... of Kenya Colony... The local market...

There will be a standard one... of Kenya Colony... The local market...

There will be a standard one... of Kenya Colony... The local market...



Beware of the Eater-in-Secret

This beetle finds its way into ordinary... and cases of tea. He is so small that you can hardly see him...

Ask for Brooke Bond Tea in the patent round vacuum tin

HORLICKS MALTED MILK An ideal FOOD-DRINK, milk in the most appetizing and nutritious form...

Mausser Sporting Rifles 318, 360 and 404 bores. Mannlicher-Schmeisser Sporting Rifles 256 and 375 bores. RIFLE SPECIALISTS.

GREAT NEW YEAR RACE MEETING.

Bathurst, December 31st & Monday, January 1st

RACES! RACES!

THE GLOWING PROMOTION OF THE YEAR.
THE JOCKEY CLUB
 GREAT FANCY DRESSUMASKED BALL
 ON
OLD YEARS NIGHT

THE K.A.R. BAND & KENYA QUARTETTE
 IN ATTENDANCE

Lipton's Tea

Please bear in mind that Lipton's Tea is also a **Chomp Tea**. Although it represents all that the word **Economy** implies, this is due to the fact that it is of excellent quality and more **Pots to the Pound** than any other brand of tea on the Market.

So that in using LIPTON'S tea you not only practice **Economy**, but you have the satisfaction of knowing that you are getting the very best quality it is possible to obtain, packed in airtight tins which securely guard against contamination in handling, and ensure it retaining all that delightful natural fragrance, so peculiar to the LIPTON'S Blends.

PACKED IN THREE STANDARD QUALITIES.

No. 1 No. 2 No. 3
YELLOW LABEL BLUE LABEL RED LABEL
 and procurable from all Grocers

Port Box 44, Cafucata,
 Port Box 248, Bombay,
 Port Box 69, Karachi,
 Port Box 177, Madras,
 Port Box 400, Natal

Lipton Ltd.
 Incorporated in England

Sole Agents,
Wasson, Hunter, Hayes, Moseley & Co., Melbourne.

DESIRABLE DETAILS.

Correspondence

To the Editor: Will hold himself responsible for the views expressed in his correspondence.

CHRISTMAS HOLIDAYS.

TO THE EDITOR:—"A Standard,"—In order to close the year with a bang, we are introducing a special feature in the Corporation of the Management of Commissions to post our members of Commissions to meet at the last Monthly Meeting of the Chamber. We are holding our 24th and 25th meetings at 11.30 and 1.0 respectively to show their business members the 24th and 25th meetings of the Chamber. It is at that time understood that there will be a special feature in the programme, to wit, the Hon. Mr. J. A. K. de Silva, Secretary of the Chamber, will declare any Public Holiday at that time. Since then Government in response to representations by the Chamber has declared the 27th till the 31st as a public holiday. The Commission is in a position to issue instructions to all the members of the Chamber to attend the 27th till the 31st as a public holiday. The Commission is in a position to issue instructions to all the members of the Chamber to attend the 27th till the 31st as a public holiday.

Finance

THE EAST AFRICAN FINANCE.
 With the end of the year, 1932, we have seen a year of financial distress and a year of financial success. The year 1932 was a year of financial distress, and a year of financial success. The year 1932 was a year of financial distress, and a year of financial success. The year 1932 was a year of financial distress, and a year of financial success.

FIRST CLASS POSTAGE AS REQUIRED BY THE LAW WHO ADVERTISE IN THIS COLUMN

BLACK AND WHITE CIGARETTES

THE QUALITY IS GUARANTEED.
 In a quantity to suit all tastes. **BLACK AND WHITE CIGARETTES.**
 THE QUALITY IS GUARANTEED.
 In a quantity to suit all tastes. **BLACK AND WHITE CIGARETTES.**

U.K. STRAITS STEAMSHIP CO. LTD.

THE U.K. STRAITS STEAMSHIP CO. LTD.
 S.S. "KATIA" 11.18.00
 S.S. "KATIA" 11.18.00
 S.S. "KATIA" 11.18.00

Miscellaneous

Miscellaneous.
 Various news items and local reports from different parts of East Africa.

Finance

Finance.
 Financial news and market reports.

Miscellaneous

Miscellaneous.
 Various news items and local reports from different parts of East Africa.

Uganda Railway
 THE TIMES OF GREAT BRITAIN'S RECORDING PRESIDENT.

The Joy of Fruit Juice.
 The healthiest and most delicious drink.

Broom's Polson's Corn Flour.
 The best flour for all purposes.

Correspondence

To the Editor: Will hold himself responsible for the views expressed in his correspondence.

CHRISTMAS HOLIDAYS.

TO THE EDITOR:—"A Standard,"—In order to close the year with a bang, we are introducing a special feature in the Corporation of the Management of Commissions to post our members of Commissions to meet at the last Monthly Meeting of the Chamber. We are holding our 24th and 25th meetings at 11.30 and 1.0 respectively to show their business members the 24th and 25th meetings of the Chamber. It is at that time understood that there will be a special feature in the programme, to wit, the Hon. Mr. J. A. K. de Silva, Secretary of the Chamber, will declare any Public Holiday at that time. Since then Government in response to representations by the Chamber has declared the 27th till the 31st as a public holiday. The Commission is in a position to issue instructions to all the members of the Chamber to attend the 27th till the 31st as a public holiday.

Finance

THE EAST AFRICAN FINANCE.
 With the end of the year, 1932, we have seen a year of financial distress and a year of financial success. The year 1932 was a year of financial distress, and a year of financial success. The year 1932 was a year of financial distress, and a year of financial success.

Miscellaneous

Miscellaneous.
 Various news items and local reports from different parts of East Africa.

Finance

Finance.
 Financial news and market reports.

Miscellaneous

Miscellaneous.
 Various news items and local reports from different parts of East Africa.

The Joy of Fruit Juice.
 The healthiest and most delicious drink.

Broom's Polson's Corn Flour.
 The best flour for all purposes.

Uganda Railway.
 THE TIMES OF GREAT BRITAIN'S RECORDING PRESIDENT.

Correspondence

To the Editor: Will hold himself responsible for the views expressed in his correspondence.

CHRISTMAS HOLIDAYS.

TO THE EDITOR:—"A Standard,"—In order to close the year with a bang, we are introducing a special feature in the Corporation of the Management of Commissions to post our members of Commissions to meet at the last Monthly Meeting of the Chamber. We are holding our 24th and 25th meetings at 11.30 and 1.0 respectively to show their business members the 24th and 25th meetings of the Chamber. It is at that time understood that there will be a special feature in the programme, to wit, the Hon. Mr. J. A. K. de Silva, Secretary of the Chamber, will declare any Public Holiday at that time. Since then Government in response to representations by the Chamber has declared the 27th till the 31st as a public holiday. The Commission is in a position to issue instructions to all the members of the Chamber to attend the 27th till the 31st as a public holiday.

Finance

THE EAST AFRICAN FINANCE.
 With the end of the year, 1932, we have seen a year of financial distress and a year of financial success. The year 1932 was a year of financial distress, and a year of financial success. The year 1932 was a year of financial distress, and a year of financial success.

Miscellaneous

Miscellaneous.
 Various news items and local reports from different parts of East Africa.

Finance

Finance.
 Financial news and market reports.

Miscellaneous

Miscellaneous.
 Various news items and local reports from different parts of East Africa.

The Joy of Fruit Juice.
 The healthiest and most delicious drink.

Broom's Polson's Corn Flour.
 The best flour for all purposes.

Uganda Railway.
 THE TIMES OF GREAT BRITAIN'S RECORDING PRESIDENT.

Guaranteed the Largest Circulation of any Newspaper in Kenya and Uganda.

THE EAST

Weekly Edition.

African Standard



KOMBURA TIMES & UGANDA ARGUS

1921

NAIROBI, SATURDAY, DECEMBER 31, 1921

1921

The Ocean Line, Limited
The Harmer Lines, Ltd.
The Harrison Line

Steamships to and from London, Liverpool, Antwerp, Rotterdam, Hamburg, Bremen, and other ports.

THE AFRICAN MERCHANTS
 10, BARKING ROAD, LONDON, E.C. 1.

LABOUR AGENT
PRODUCE MERCHANT
MAIZE - MAIZE FLOUR
MATAMA, etc., etc.

Prompt attention to all orders.

J. MAXWELL
 Box 2, Kiambu.

UNION CASTLE
 ROYAL MAIL STEAMERS

Regular service to London, Liverpool, Antwerp, Rotterdam, Hamburg, Bremen, and other ports.

THE UNION CASTLE MAIL STEAMERS
 P. O. BOX 10, NAIROBI.

EVERY PHOTO GETS A PRIZE!

SNAPSHOT COMPETITION.
 THE EAST AFRICAN STANDARD, LIMITED OFFERS

FIRST PRIZE OF FIFTEEN FLORINS

For the best photo sent in by any photographer, amateur or professional. The Editor reserves the right to reproduce any of the competing photographs and will award:

PRIZE OF FIVE FLORINS for each photo reproduced.

The Editor cannot undertake to return photos sent in for Competition.

Every photo should have a title and MUST have the name and address written in pencil on the back.

Address: "SNAPSHOTS" EAST AFRICAN STANDARD LTD, NAIROBI.

GOOD INVESTMENT
MUIR

Specialties in the manufacture of sawmills, saws, and other machinery.

MUIR MILLS
 CANNON, (India)

Agents for Kenya East Africa and Uganda.

EVERY PHOTO GETS A PRIZE!

B. E. A. Sawmills

Specialties in the manufacture of sawmills, saws, and other machinery.

TIMBER SPECIALISTS.
PODOCARPUS and CEDAR Casing and Flooring.
MSHARAGI, CAMPHOR and MWERI, in Logs, Bulk, Cuts and Boards.
GANDVA Pallets and Highest Grade Balts Being In all Sizes from 1 inch to 10 inches.
 Special job lots Cedar Scantlings and Boards, for Sale out of Hand.
SAW REPAIRS

MUIR MILLS
 CANNON, (India)

Agents for Kenya East Africa and Uganda.

INSURE - INSURE
THE AFRICAN GUARANTEE & INVESTMENT CO.

Persons intended for repair by the Editor should be consigned to my care.

INSURE - INSURE
THE AFRICAN GUARANTEE & INVESTMENT CO.

DRINK

NESTLE'S MALTED MILK.

NESTLE'S MALTED MILK is pure Cow's Milk in powder form, to which malted cereals have been scientifically added.

KEEPS THE STRONG FIT and MAKES THE UNFIT STRONG.

Obtainable at all stores in 15 oz. and 7 oz. bottles. Wholesale from Nestle, Box 87, NAIROBI.

O. PRESTON
 S. & CHILDREN'S OUTFITTERS
 45-ROBINSON STREET, NAIROBI

COMPARE THESE PRICES

1/2	5/6
1/4	3/4
1/8	3/8
1/16	3/16
1/32	3/32
1/64	3/64

LAMBERTS
 10, BARKING ROAD, LONDON, E.C. 1.

THE WORLD KNOWN

Famous "Renault" Brandy

Produced in France

SOLE AGENTS IN
 Colony and Protectorate of Kenya and Uganda Protectorate.

WEN WACK & SHEPHERD
 LIMITED.

General Merchants.

NAIROBI

SAINTLY WASHABLE
DISHTYPER.

STEPHEN ELIAS & CO.

DO YOU REQUIRE

FLOORING BOARDS
 CEILING
 SHEDS AND OFFICE FITTINGS
 PORTABLE BUILDINGS
 PAINTING, DECORATING

OUR PRICES ARE IT

McMILLAN ESTATES.

ENTIRETY OF THE ESTATE AT
PURPLE

1/2 ACRE OF LAND AND BUILDINGS
 1/2 ACRE OF LAND AND BUILDINGS
 1/2 ACRE OF LAND AND BUILDINGS

4-4 TONS
AND OVER TONS

Specialties in the manufacture of sawmills, saws, and other machinery.

OR CATTLE DIPPING.

Specialties in the manufacture of sawmills, saws, and other machinery.

LICENCE

holders for motor cars

50 CENTS EACH

approved by the Commissioner of Police

HARRIZ, Bell & Lawson, Ltd.

Farm Engines

At Lower Prices Than Ever

Fig. **650**

THIS FIFTH JUNIOR ENGINE is well made of the best quality material and completely ready for use. It is portable for the utmost possible use. The engine has a very fast operating speed which is controlled by the governor in proportion to the most speed. This engine is very simple, starting on petrol. The engine works on the perfected two-stroke cycle, suitable for high-tension magneto, water cooled by the laminated cooling system. Two Swedish, perfectly balanced, service freedom from vibration. The result of the great success of the Petio Trade Test in the patent fuel oil tester.

B.H.P.	Speed R. P. M.	Flywh. dia. in inches	Pulley dia. in inches
5	600	22	7

Fig. **600**

THIS "INTERNATIONAL" is beyond doubt one of the most simple and efficient engines manufactured today. All bearings are fully lubricated, but the engine is so constructed as to make all parts cooled and well lubricated. The engine runs on Petroleum, Diesel, Kerosene, or Methyl. The engine is fitted with an extra large water jacket and pump, which is part of the water cooling system. The engine is complete with axle, rod, hot, and fuel tank.

B.H.P.	Speed R. P. M.	Flywh. dia. in inches	Pulley dia. in inches
6	550	32	13

Fig. **750**

THIS "MORNING" 6 H.P. engine manufactured in the International Engine Co. is a heavy duty machine of solid metal with the strength of the "International". Available in various horsepower models. It will run on kerosene, Diesel, or Methyl. The engine is fitted with an extra large water jacket and pump, which is part of the water cooling system. The engine is complete with axle, rod, hot, and fuel tank.

b.H.P.	Speed R. P. M.	Flywh. dia. in inches	Pulley dia. in inches
6	425	33	19

Fig. **2200**

THIS "MORNING" 6 H.P. engine manufactured in the International Engine Co. is a heavy duty machine of solid metal with the strength of the "International". Available in various horsepower models. It will run on kerosene, Diesel, or Methyl. The engine is fitted with an extra large water jacket and pump, which is part of the water cooling system. The engine is complete with axle, rod, hot, and fuel tank.

B.H.P.	Speed R. P. M.	Flywh. dia. in inches	Pulley dia. in inches
10	425	38	18

CHILD & JOHNSON

AFRICAN FIRE INSURANCE

WITH THE AFRICAN GUARANTEE AND INDemnITY Co. Ltd.

(See Advertisement on Page 12)

Weekly Edition

African Standard

MOMBASA TIMES & UGANDA ARGUS.

NAIROBI, SATURDAY, 31, DECEMBER 1941.

NO. 1000

REPLY OF WEEK AND A HALF

AFRICAN FINANCE

AFRICAN CONFERENCE

THE CONFERENCE

THE CONFERENCE... (Text continues with details of the conference proceedings, including mentions of the British and American governments and the role of the conference in international relations.)

THE CONFERENCE... (Continuation of the report on the conference, discussing the impact of the war on international trade and the role of the conference in addressing these issues.)

THE CONFERENCE... (Further details on the conference, including the role of the British and American governments and the impact of the war on international relations.)

THE CONFERENCE... (Final paragraph of the conference report, summarizing the key points and the role of the conference in international relations.)

Submarines

CONFERENCE REVEALS

ABOLITION

FRANCIS DEMAND

THE CONFERENCE... (Text discusses the abolition of submarines and the demands of Francis, including the role of the British and American governments.)

THE CONFERENCE... (Continuation of the report on the abolition of submarines, discussing the impact of the war on submarine warfare.)

THE CONFERENCE... (Further details on the abolition of submarines, including the role of the British and American governments.)

THE CONFERENCE... (Final paragraph of the report on the abolition of submarines, summarizing the key points.)

Price in Calcutta

PARTIAL SUCCESS OF

THE MARKET

FAILURE AT PATNA

THE PRICE IN CALCUTTA... (Text discusses the price of goods in Calcutta, including the impact of the war and the role of the British and American governments.)

THE PRICE IN CALCUTTA... (Continuation of the report on the price in Calcutta, discussing the impact of the war on the market.)

THE PRICE IN CALCUTTA... (Further details on the price in Calcutta, including the role of the British and American governments.)

THE PRICE IN CALCUTTA... (Final paragraph of the report on the price in Calcutta, summarizing the key points.)

Ireland

WANT ADVISORS

WITHOUT DIGNITY

STORMY ONSET

THE IRELAND... (Text discusses the situation in Ireland, including the role of the British and American governments and the impact of the war.)

THE IRELAND... (Continuation of the report on Ireland, discussing the impact of the war on the country.)

THE IRELAND... (Further details on the situation in Ireland, including the role of the British and American governments.)

THE IRELAND... (Final paragraph of the report on Ireland, summarizing the key points.)

The Kapp Finco

FOR JARVIS

ENTRUSTED

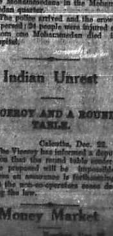
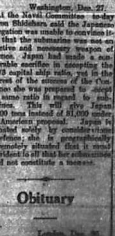
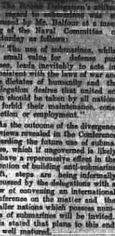
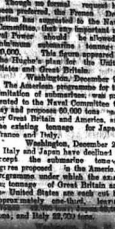
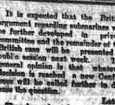
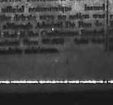
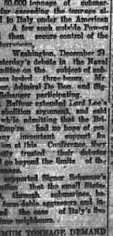
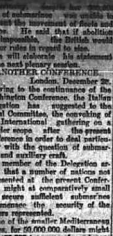
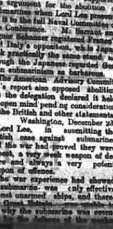
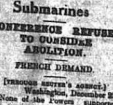
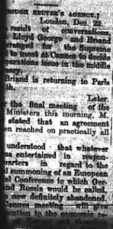
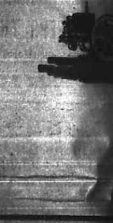
AT DRESDEN

THE KAPP FINCO... (Text discusses the Kapp Finco and its role in international relations, including the impact of the war.)

THE KAPP FINCO... (Continuation of the report on the Kapp Finco, discussing the impact of the war on the company.)

THE KAPP FINCO... (Further details on the Kapp Finco, including the role of the British and American governments.)

THE KAPP FINCO... (Final paragraph of the report on the Kapp Finco, summarizing the key points.)



...the ... of the ...
 ...the ... of the ...
 ...the ... of the ...

APRIL 15
 ...the ... of the ...
 ...the ... of the ...
 ...the ... of the ...

...the ... of the ...
 ...the ... of the ...
 ...the ... of the ...

...the ... of the ...
 ...the ... of the ...
 ...the ... of the ...

...the ... of the ...
 ...the ... of the ...
 ...the ... of the ...

...the ... of the ...
 ...the ... of the ...
 ...the ... of the ...

...the ... of the ...
 ...the ... of the ...
 ...the ... of the ...

...the ... of the ...
 ...the ... of the ...
 ...the ... of the ...

...the ... of the ...
 ...the ... of the ...
 ...the ... of the ...

...the ... of the ...
 ...the ... of the ...
 ...the ... of the ...

...the ... of the ...
 ...the ... of the ...
 ...the ... of the ...

...the ... of the ...
 ...the ... of the ...
 ...the ... of the ...

...the ... of the ...
 ...the ... of the ...
 ...the ... of the ...

...the ... of the ...
 ...the ... of the ...
 ...the ... of the ...

NATRON
 Every Friday, at 10:30
 NABY SALE
 Coltry, 17, 18, 19, 20, 21, 22, 23, 24, 25, 26, 27, 28, 29, 30, 31, 1st, 2nd, 3rd, 4th, 5th, 6th, 7th, 8th, 9th, 10th, 11th, 12th, 13th, 14th, 15th, 16th, 17th, 18th, 19th, 20th, 21st, 22nd, 23rd, 24th, 25th, 26th, 27th, 28th, 29th, 30th, 31st

GIL GIL
 Every Second Tuesday
 NEXT SALE VIA
 NANYU
 Quarterly Next Sale, Tuesday
 Entries for all of the above, taken
 made with our American Legation
KNEWLAND, TARTON & CO. LTD.
GIL GIL Monthly Sale
 THURSDAY, 16th JANUARY, at 10:30
 Entries open from 10th to 15th

MURTON CRANE & CO.
NEWLAND, TARTON & CO.
T. H. Allan & Co.
10, CHANCERY LANE, LONDON
COOPER, MERCHANT & CO.
 One of the Oldest Established Firms in the Continent

POST OFFICE NOTICE.
 On and from 1st January 1922, the exchange of
 any Orders between Kenya and Uganda and
 vice versa to be established on the English Sterling
 Standard.
 Full information can be obtained on application
 to any Post Office at which Money Order business is
 conducted.
(Sgd.) F. FITZGERALD,
ACTION FOOTMASTER GENERAL
 and Chief Officer.
 Nairobi.

POST OFFICE NOTICE.
ELEGRAPH MONEY ORDERS.
 On and from the 1st proximo the following services will be available:
 (a) British Telegraph Money Orders may be sent from any Telegraph and Money Order Office to any other office of the same description in any part of the British Empire.
 (b) Telegraph Money Orders can be sent to, and received from, the United Kingdom.
 All information can be obtained on application to Postal Telegraph Office at which Money Order business is transacted.
(Sgd.) F. FITZGERALD,
ACTION FOOTMASTER GENERAL
 and Chief Officer.
 Nairobi.
 28th December, 1921.

AMBER CONFESSION
 There are several ...
 ...the ... of the ...
 ...the ... of the ...

...the ... of the ...
 ...the ... of the ...
 ...the ... of the ...

Agricultural Essays
THE CULIVATOR & UPLAND
 THE CULIVATOR & UPLAND
 THE CULIVATOR & UPLAND
 THE CULIVATOR & UPLAND



Your Great Grandmother enjoyed green tea—
 but nobody enjoys tea that is going green! With damp or smothered, and in a hot, moist atmosphere you know how soon tea goes mouldy if it has been packed in an ordinary tin or cardboard container.
 But when you buy Brooke Bond tea the current tea you will always find it in perfect condition, however humid the climate.

Brooke Bond tea is fresh. It is packed in damp-proof and insect-proof tins so that they always keep the contents delicious.

Ask for Brooke Bond Tea
 in the patent tin with the ...
 ...the ... of the ...
 ...the ... of the ...

...the ... of the ...
 ...the ... of the ...
 ...the ... of the ...

...the ... of the ...
 ...the ... of the ...
 ...the ... of the ...

inched in a corner, fall a smother for it is, for Lord and his... The House of Commons...

THE 1922 INTERNATIONAL. The arrangements for the London Congress 1922 are progressing...

Arms - Ammunition - Sports Goods. THE LOWEST PRICED AND MOST COMPREHENSIVE STOCKS IN THE COLONY.

COMPARE OUR PRICES. Rifles. 256 Portuguese Mauser... 308 Fofa Noe English... 318 Westley Richards...

Tennis Racquets. Prorer's Phosphorem... Prorer's Hercules... Golf Clubs. All classes from £7. 7 to £10 each...

Newton's LIMITED. NAIROBI. OLD PALACE THEATRE BUILDINGS, SIXTH AVENUE. TEL. AD. "SERVICE" PRICES 37

He Manches not but keeps his... The English have nothing to... Prepared to fight, or, satisfied...

White. GAMBIA No. 897. 1 P-24. 2 P-24. 3 P-24. 4 P-24. 5 P-24. 6 P-24. 7 P-24. 8 P-24. 9 P-24. 10 P-24. 11 P-24. 12 P-24. 13 P-24. 14 P-24. 15 P-24. 16 P-24. 17 P-24. 18 P-24. 19 P-24. 20 P-24.

White. GAMBIA No. 898. 1 P-24. 2 P-24. 3 P-24. 4 P-24. 5 P-24. 6 P-24. 7 P-24. 8 P-24. 9 P-24. 10 P-24. 11 P-24. 12 P-24. 13 P-24. 14 P-24. 15 P-24. 16 P-24. 17 P-24. 18 P-24. 19 P-24. 20 P-24.

White. GAMBIA No. 899. 1 P-24. 2 P-24. 3 P-24. 4 P-24. 5 P-24. 6 P-24. 7 P-24. 8 P-24. 9 P-24. 10 P-24. 11 P-24. 12 P-24. 13 P-24. 14 P-24. 15 P-24. 16 P-24. 17 P-24. 18 P-24. 19 P-24. 20 P-24.

Music. NAIROBI TO BEGIN THE NEW YEAR WEEK.

Made up in 1920 in Nairobi... Mr. Haverhill is giving a... Mrs. Haverhill is giving a... Mr. Haverhill is giving a...

White. GAMBIA No. 900. 1 P-24. 2 P-24. 3 P-24. 4 P-24. 5 P-24. 6 P-24. 7 P-24. 8 P-24. 9 P-24. 10 P-24. 11 P-24. 12 P-24. 13 P-24. 14 P-24. 15 P-24. 16 P-24. 17 P-24. 18 P-24. 19 P-24. 20 P-24.

White. GAMBIA No. 901. 1 P-24. 2 P-24. 3 P-24. 4 P-24. 5 P-24. 6 P-24. 7 P-24. 8 P-24. 9 P-24. 10 P-24. 11 P-24. 12 P-24. 13 P-24. 14 P-24. 15 P-24. 16 P-24. 17 P-24. 18 P-24. 19 P-24. 20 P-24.

White. GAMBIA No. 902. 1 P-24. 2 P-24. 3 P-24. 4 P-24. 5 P-24. 6 P-24. 7 P-24. 8 P-24. 9 P-24. 10 P-24. 11 P-24. 12 P-24. 13 P-24. 14 P-24. 15 P-24. 16 P-24. 17 P-24. 18 P-24. 19 P-24. 20 P-24.

White. GAMBIA No. 903. 1 P-24. 2 P-24. 3 P-24. 4 P-24. 5 P-24. 6 P-24. 7 P-24. 8 P-24. 9 P-24. 10 P-24. 11 P-24. 12 P-24. 13 P-24. 14 P-24. 15 P-24. 16 P-24. 17 P-24. 18 P-24. 19 P-24. 20 P-24.

White. GAMBIA No. 904. 1 P-24. 2 P-24. 3 P-24. 4 P-24. 5 P-24. 6 P-24. 7 P-24. 8 P-24. 9 P-24. 10 P-24. 11 P-24. 12 P-24. 13 P-24. 14 P-24. 15 P-24. 16 P-24. 17 P-24. 18 P-24. 19 P-24. 20 P-24.

White. GAMBIA No. 905. 1 P-24. 2 P-24. 3 P-24. 4 P-24. 5 P-24. 6 P-24. 7 P-24. 8 P-24. 9 P-24. 10 P-24. 11 P-24. 12 P-24. 13 P-24. 14 P-24. 15 P-24. 16 P-24. 17 P-24. 18 P-24. 19 P-24. 20 P-24.

White. GAMBIA No. 906. 1 P-24. 2 P-24. 3 P-24. 4 P-24. 5 P-24. 6 P-24. 7 P-24. 8 P-24. 9 P-24. 10 P-24. 11 P-24. 12 P-24. 13 P-24. 14 P-24. 15 P-24. 16 P-24. 17 P-24. 18 P-24. 19 P-24. 20 P-24.

Maize and Posho Crushed Maize. What you sell now when the price is low, and you buy forward contracts to meet your requirements for the next few months...

OICILIA HOUSE. GOVERNMENT ROAD, OPPOSITE MUTUA'S AUCTION MART. The following goods are now for sale as wholesale prices...

H. G. GARRIEL. NAIROBI. P. O. Box 100. We are not only equal, but in many ways superior to imported British and American standards...

White. GAMBIA No. 907. 1 P-24. 2 P-24. 3 P-24. 4 P-24. 5 P-24. 6 P-24. 7 P-24. 8 P-24. 9 P-24. 10 P-24. 11 P-24. 12 P-24. 13 P-24. 14 P-24. 15 P-24. 16 P-24. 17 P-24. 18 P-24. 19 P-24. 20 P-24.



Monday is the best day to buy a new motor. It's the best day for the best of both good fuel and good service. It's the best day to buy a new motor. It's the best day for the best of both good fuel and good service. It's the best day to buy a new motor. It's the best day for the best of both good fuel and good service.

LICENSE HOLDERS.—I am sorry to hear that you are having trouble with your motor. It is a common problem for many people. I would suggest that you check the carburetor and the spark plugs. These are the most common causes of trouble. I hope this helps.

BERNARD'S BATTERED AND BEATEN.—I think that Berns is a very interesting character. He has a long and colorful life. I would like to see more of his adventures. He is a true hero of the motor world.

MOTOR SHOW AT ATEN.—The International Motor Show at Aten is a very important event. It brings together people from all over the world. It is a great opportunity to see the latest in motor technology.

MOTOR NOTES.—I have been reading a lot of motor news lately. It is very interesting to see what is going on in the world of motors. I hope you are enjoying it too.

...of which are of the latest...
...the best of both good fuel...
...the best day to buy a new motor...
...the best of both good fuel and good service...
...the best day to buy a new motor...
...the best of both good fuel and good service...
...the best day to buy a new motor...
...the best of both good fuel and good service...

OCEAN ARRIVES.—The ocean is a vast and mysterious world. It holds many secrets that we are only beginning to understand. I am excited about the possibilities of ocean exploration.

The Del... (partially obscured)

Upline Notes.—This section provides information about various items and services. It is a useful resource for anyone interested in these products.

Motor Notes.—Additional news and updates from the world of motors. Stay up-to-date on the latest trends and technologies.

NAIROBI AGRICULTURAL SHOW

Full List of Cup and Prize Winners

H. O. W. W. THE VINCENT TROPHY

3000 DAYS JUNIOR

- CLASS 1—W. W. ...
- CLASS 2—M. C. ...
- CLASS 3—M. C. ...
- CLASS 4—M. C. ...
- CLASS 5—M. C. ...
- CLASS 6—M. C. ...
- CLASS 7—M. C. ...
- CLASS 8—M. C. ...
- CLASS 9—M. C. ...
- CLASS 10—M. C. ...
- CLASS 11—M. C. ...
- CLASS 12—M. C. ...
- CLASS 13—M. C. ...
- CLASS 14—M. C. ...
- CLASS 15—M. C. ...
- CLASS 16—M. C. ...
- CLASS 17—M. C. ...
- CLASS 18—M. C. ...
- CLASS 19—M. C. ...
- CLASS 20—M. C. ...
- CLASS 21—M. C. ...
- CLASS 22—M. C. ...
- CLASS 23—M. C. ...
- CLASS 24—M. C. ...
- CLASS 25—M. C. ...
- CLASS 26—M. C. ...
- CLASS 27—M. C. ...
- CLASS 28—M. C. ...
- CLASS 29—M. C. ...
- CLASS 30—M. C. ...

- CLASS 31—M. C. ...
- CLASS 32—M. C. ...
- CLASS 33—M. C. ...
- CLASS 34—M. C. ...
- CLASS 35—M. C. ...
- CLASS 36—M. C. ...
- CLASS 37—M. C. ...
- CLASS 38—M. C. ...
- CLASS 39—M. C. ...
- CLASS 40—M. C. ...
- CLASS 41—M. C. ...
- CLASS 42—M. C. ...
- CLASS 43—M. C. ...
- CLASS 44—M. C. ...
- CLASS 45—M. C. ...
- CLASS 46—M. C. ...
- CLASS 47—M. C. ...
- CLASS 48—M. C. ...
- CLASS 49—M. C. ...
- CLASS 50—M. C. ...

- CLASS 51—M. C. ...
- CLASS 52—M. C. ...
- CLASS 53—M. C. ...
- CLASS 54—M. C. ...
- CLASS 55—M. C. ...
- CLASS 56—M. C. ...
- CLASS 57—M. C. ...
- CLASS 58—M. C. ...
- CLASS 59—M. C. ...
- CLASS 60—M. C. ...
- CLASS 61—M. C. ...
- CLASS 62—M. C. ...
- CLASS 63—M. C. ...
- CLASS 64—M. C. ...
- CLASS 65—M. C. ...
- CLASS 66—M. C. ...
- CLASS 67—M. C. ...
- CLASS 68—M. C. ...
- CLASS 69—M. C. ...
- CLASS 70—M. C. ...

- CLASS 71—M. C. ...
- CLASS 72—M. C. ...
- CLASS 73—M. C. ...
- CLASS 74—M. C. ...
- CLASS 75—M. C. ...
- CLASS 76—M. C. ...
- CLASS 77—M. C. ...
- CLASS 78—M. C. ...
- CLASS 79—M. C. ...
- CLASS 80—M. C. ...
- CLASS 81—M. C. ...
- CLASS 82—M. C. ...
- CLASS 83—M. C. ...
- CLASS 84—M. C. ...
- CLASS 85—M. C. ...
- CLASS 86—M. C. ...
- CLASS 87—M. C. ...
- CLASS 88—M. C. ...
- CLASS 89—M. C. ...
- CLASS 90—M. C. ...
- CLASS 91—M. C. ...
- CLASS 92—M. C. ...
- CLASS 93—M. C. ...
- CLASS 94—M. C. ...
- CLASS 95—M. C. ...
- CLASS 96—M. C. ...
- CLASS 97—M. C. ...
- CLASS 98—M. C. ...
- CLASS 99—M. C. ...
- CLASS 100—M. C. ...

Further notices...
...the best of both good fuel...
...the best day to buy a new motor...
...the best of both good fuel and good service...
...the best day to buy a new motor...
...the best of both good fuel and good service...

DEATH.
 The funeral of the late Mrs. M. J. ...
 will be held on Thursday next at 10 o'clock ...

Occasional Notes.

The French organ of La Belgique ...
 has been busy in ...
 for the past week ...

The annual election of officers ...
 will be held on Sunday next ...
 at 10 o'clock ...

The French organ of La Belgique ...
 has been busy in ...
 for the past week ...

On Sunday next the Church ...
 will be held at 10 o'clock ...
 at the ...

S. A. Timber
HOW SHOOTING
PROBATION
UNION.

...
 ...
 ...

...
 ...
 ...

...
 ...
 ...

...
 ...
 ...

...
 ...
 ...

Maize
NEW ASSOCIATION
FORBIDDEN
BY LAUREAU.

MAO SUPPLER BARR.
 ...
 ...

...
 ...
 ...

When you have studied other bicycles
RALEIGH
THE ALL-STEEL BICYCLE



...
 ...
 ...

USEFUL AND INEXPENSIVE NEW YEAR GIFTS

JUMPERS
BLouses
HANDKERCHIEFS
HOsiERY



...
 ...
 ...

WARNINGS

...
 ...
 ...

Attaching

...
 ...
 ...

...
 ...
 ...

...
 ...
 ...

MYRA'S FAREWELL

...
 ...
 ...

TRAVELLING EXPENSES OF CHAPLAINS

...
 ...
 ...

PARO-INDONESIA

...
 ...
 ...

RAILWAY GOODWILL RATE

...
 ...
 ...

MAVRY PASS LAW IS REPEALED

...
 ...
 ...

BOARDS IN NATIVE RESERVES

...
 ...
 ...

OTHER INTERESTING NEWS

...
 ...
 ...

...
 ...
 ...

Champion
Dependable Spark Plugs

The Dependable Plug at All Times

There is no doubt that dependability is the prime essential in a spark plug and that this fundamental has constituted largely to the world-wide popularity of Champion Spark Plugs.

The famous "3450" friction, with every plug to find, is built to endure and give the most, but the proof of its dependability, "Ten-piece" construction permits the plugs being taken apart for cleaning.

Champion Spark Plugs are made for every type of engine today.

Coming to the better quality and quality of the Champion Champion Spark Plugs.

CHAMPION SPARK PLUG CO. OF CANADA, LTD.
 London, Ont. 20 St. Paul, London, & W. I.

V

Stocks of these requisite and fragrant perfumes have just arrived

Whiskies

and can be obtained from all the leading stores and chemists

THE DOMDAY AFRICA TRAINING Co. Ltd.

P. O. Box 555, NAIROBI

CAREY'S STOP - LUBE STYCK

...
 ...
 ...

TRY IT IN YOUR BATH

SCRUBB'S AMMONIAC

OF ALL GERMANY'S SOAP MANUFACTURERS, THE FINEST AND CHEAPEST QUALITY OF SOAP IS PRODUCED AT THE FINEST MANUFACTURING PLANTS IN GERMANY.

WHOLESALE & RETAIL, 217A, BROADWAY STREET, LONDON.

STABLE THROU
ST-GRANHAM IN
NAINBURI.

There was a great display all day and it was said that most people were disappointed to find that the number of people present was not as large as was expected. The whole affair was a success in every way and the proceeds of the sale were used for the benefit of the school. The school was opened for a few days and the children were very happy. The school was opened for a few days and the children were very happy. The school was opened for a few days and the children were very happy.

GOVERNMENT AND THE
FENDING LEGISLATION.

In the Legislative Council Thursday, Mr. Foye Cobb asked the Colonial Secretary—
(1) In view of the coming session of the Province of Jubaland (or a part of it) to be held in Imperial War Commission, has the Government any proposals for the improvement of the law of this territory?
(2) If the answer to (1) is in the affirmative, then what is the reply of the Imperial Government?
(3) If the answer to (1) is in the negative, then will the Government say, if they still make such representations?

The following reply was given by the Colonial Secretary—
His High Commissioner has been made to the Imperial Government and the Government consider it proper that such representations should be made.
Mr. Foye Cobb then said he would ask leave to move a motion to clear up the situation which he thought was one of importance in the colony.

Wire Worm

The Veterinary Department is now in a position to manufacture wire worms which was brought into use by the Veterinary Department and used extensively in South Africa in recent years.
The necessary apparatus has been purchased, and the wire worms will be supplied on application.

MARTIN'S
APOLLO STEEL
PIELS

THE SPECIAL TRUSS CONSISTS OF 41 OF CEMENT AND STEEL MEMBERS OF VARIOUS SIZES—MARTIN'S PATENT—MANUFACTURED IN ENGLAND.

ROYAL ROBY

For an idea of the quality of this pipe, ask for a sample. It is made of the finest steel and is guaranteed to last for ever. It is the only pipe that can be used for all purposes. It is the only pipe that can be used for all purposes.

Nerve Failure.

Various After-effects of Indigestion, Indigestion, Headaches and Nerve Weakness Permanently Cured by Dr. Cassell's Tablets.

"I was in the able hands of a man who made me feel better. I had been suffering from Nerve Failure for some time and had tried many remedies without success. I had been suffering from Nerve Failure for some time and had tried many remedies without success. I had been suffering from Nerve Failure for some time and had tried many remedies without success."



Dr. J. B. Cassell, M.D.

Dr. Cassell's
Tablets

Free Samples
The Tablets are made of the finest materials and are guaranteed to be of the highest quality. They are made of the finest materials and are guaranteed to be of the highest quality. They are made of the finest materials and are guaranteed to be of the highest quality.

The New Currency

A Bill for the purpose of providing for the issue of new currency notes and coins, and for the redemption of the old currency notes and coins, was introduced in the Legislative Council on Thursday, 2nd January, 1912. The Bill provides for the issue of new currency notes and coins, and for the redemption of the old currency notes and coins. The Bill provides for the issue of new currency notes and coins, and for the redemption of the old currency notes and coins.

Lipton's Tea

The number of cups of good tea you can brew from one pound depends on the quality of the tea.

LIPTON'S TEA

GIVES MORE POT TO THE POUND THAN ANY OTHER

Packed in air-tight tins and sold in these quantities by all dealers.

- No. 1. Yellow Label
- No. 2. Blue Label
- No. 3. Red Label

LIPTON'S

INCORPORATED IN ENGLAND

Post Box No. 44, London

Post Box No. 523, London

Post Box No. 68, London

Post Box No. 178, London

Post Box No. 480, London

Agents—L. ROBERTSON, Manager, Hajjee Mohamed & Co.

THE EAST AFRICAN RED BOOK

1922 Edition
HAND BOOK AND DIRECTORY OF KENYA UGANDA AND ZANZIBAR
Will be Published Early in the Year

For Boiling Feet—Holes
Preventing Frost-Bites

EMPIRE

The Wagon you Require and as it should be Built.

Well seasoned and selected wood, built on generous lines by men who know best brought up in the trade; and a Keen Price. For Wagon (or J.C.).

BUILT TO LAST

For Prices of—
Bull, Haul and Tanker Wagons; Spring & Blank Trailers, etc.

BURGESS & Co.



LEWIS & NEYLAN, OILGILL, B.C.

KENYA NATIONAL ARCHIVES

PHOTOGRAPHIC SERVICE

Description of Document THE EAST AFRICAN STANDARD (MOMBASA TIMES & UGANDA ARGUS)
(Weekly Edition) 2nd July, to 31st December, 1921.

Reference No. From E.A.S. Library.

END