

Rapson Tyres

Guaranteed Against Everything.
For 6000 Miles



Let us
Send
You our
Illustrated
Booklet
By Post

You
Cannot
Afford to
Not
Insure
Your Tyres
with
Rapson

Monokton & Bear Ltd.
6th Avenue Nairobi

Overland Sales & Service

Only two men have made more than
2,000,000 Cars—one of them is

DURANT HUGGY BOX BODY	£216
DURANT TOURING	£240
DURANT FOUR TOURING	£350
DURANT FOUR SPORTS	£380
DURANT SPORTS Two Seater	£300

ALL FITTED WITH MAGNETO IGNITION,
ELECTRIC LIGHT & SELF-STARTER &
LATEST TYPE OF DETACHABLE RIMS.

If you want to know how good
a **DURANT** is
Ask the Man who owns one.

Carr, Lawson & Co., Ltd.
BOX 208

AUTHORISED DEALERS

Ford

AND SERVICE STATIONS

The Service Co. Ltd.

Branches:—
Mombasa
Mandi
Kisumu
Subsidiaries:
Arusha
Tanga
Dar-es-Salaam
Nairobi

"SHELL" MOTOR SPIRIT.

THE BRITISH IMPERIAL OIL Co., Ltd.

L. ROSENTHAL,

TRUST CHAMBERS, GOVERNMENT ROAD,
P.O. Box 428. NAIROBI. P.O. Box 214.

BOOKS OPEN ON ALL
IMPORTANT
ENGLISH RACES

Nairobi July Races.

HURSEY HANDICAP. Open to all 2yr. olds.
Winner £40, Second £15, 3rd £10, 4th £5.
The above race has been REOPENED for further Entries and will close at the Secretary's Office at the Nairobi Race-course, at 4 p.m. on Thursday, July 20th.

By order of the Stewards of the Jockey Club of Kenya,
H. H. HARRISON, Secretary.

THE OLDEST SCOTCH INSURANCE OFFICE
IN THE WORLD

CALEDONIAN

INSURANCE COMPANY.

INCORPORATED BY ROYAL CHARTER A.D. 1804.

FIRE RATES ON APPLICATION TO THE CHIEF AGENTS,
R. O. HAMILTON Ltd.
P.O. Box 208. NAIROBI. Phone 122.

The Jockey Club of Kenya

Nairobi Races

Thursday, July 24th, and Saturday, July 26th, 1922.

9 RACES 9

Including 3 Step-ladders each Day.

FIRST RACE at 12-30 P.M. EACH DAY.
DOUBLE EVENT TOTALIZATOR.

K. A. R. BAND

A special Luncheon will be served on the Course on Both Days.
For Train Service and Restaurant Parties See Uganda Railway Notices

The Pony Breeders Society's GYM KHANA

WILL BE HELD
On Monday 4th August at 1-30

AT THE
NAIROBI RACECOURSE.
BY KIND PERMISSION OF THE JOCKEY CLUB.

PROGRAMME:

1. Tent Pegging	2. Guinea Good Race
3. Polo Ball and Ball Race	4. 1000m of Goodling Race
5. Mounted Bag and Spoon Race	6. Tandem Driving
7. Pig Sticking	8. Ladies Race (2 Hurdles)
9. Ladies saddle Race	10. Men's Race (3 Hurdles)
11. Handicap Race	12. Maiden Steeple Chase

ENTRANCE—Ladies 5/-, Men 2/6, Boys 1/6.
SUNDAY MUST RACE THE SECRETARY, P.O. Box 208, NAIROBI FOR LATER DETAILS THURSDAY, 20th JULY.

ADMISSION TO GROUND—FREE.
SCHEDULE 25.

300-15-5 STANING.
Horse men are invited on the ground. Charge 5/- per night.
Application for tickets to be addressed to—
2, DEVEREAUX ST., NAIROBI.

ADDRESSING & CIRCULARISING

NEVILLAS and CIRCULARS
ADDRESSED BY MACHINERY.

Thousands of Names Available.

The E. A. Standard Ltd.
P.O. Box 208.

THEATRE ROYAL

TO-NIGHT and FRIDAY
July 10th & 11th

THE PENALTY

A Drama of Intense Interest—Thrilling from Beginning to End.

Saturday July 12th
GRAND VARIETY NIGHT
Vaudeville Entertainment.

ALL MUSICAL PROGRAMME.
NEW TALENT.

Popular Prices:

Stalls	Shs. 5/- & Shs. 2/-
Circle	" 5/- & " 3/-
Flat Stalls	" 2/- & " 1/-

PLANS NOW OPEN—BOOK EARLY.
NAIROBI'S FIRST MUSIC HALL ATTEMPT.

Orchestra Every Night.

THE WORRIES OF BUSINESS

THE MOST FREQUENT RESULT IN A MAN BEING "RUN DOWN" NOTHING IS MORE UNPLEASANT THAN JUST TO EXPERIENCE THAT "OFF COLOUR" FEELING THERE IS NO NEED FOR ANYONE TO GAREY ON DUMBLY SUFFERING. THERE IS AN EXCELLENT RESTORATIVE AT HAND IN

WARDLE'S

COMPOUND STREP OF THE HYPOPHOSPHITES

AN IDEAL TONIC FOR JARRED NERVES CONTAINING BOTTLED IN LIME JUICE, BIRD'S EYE QUININE, AND VITAMIN.

WARDLE Wholesale and Retail Chemists, 11, Market Street, Nairobi.

THE EAST AFRICAN STANDARD

Monday Times & Uganda Agency
THURSDAY, JULY 14, 1922.

THE REVIVAL OF SPORT.

During the past few weeks there has been an extraordinary amount of interest in the revival of sport—perhaps the most conspicuous and most generally felt indication of the revival of the spirit which animated the British nation in the halcyon days before the war which rendered the conditions for the revival of sport seem to have been created. The revival of sport is a natural consequence of the revival of the spirit of the nation. The revival of sport is a natural consequence of the revival of the spirit of the nation. The revival of sport is a natural consequence of the revival of the spirit of the nation.

which life of his country. Britain there is not the same. The revival of sport is a natural consequence of the revival of the spirit of the nation. The revival of sport is a natural consequence of the revival of the spirit of the nation.

UNDER THE STANARD CLOAK

Kings at Windsor.
The East African Standard received by this mail a copy of the "Under the Standard Cloak" by the King's Majesty, signed on May 1st, 1922.

Passport Promotions.

It is pointed out that the passport regulations are being revised. The passport regulations are being revised. The passport regulations are being revised.

Lord Delamere on Tour.

The East African Standard has received a copy of the "Lord Delamere on Tour" by the Lord Delamere, signed on July 10th, 1922.

Official Appointment.

The Official position of the East African Standard is being revised. The Official position of the East African Standard is being revised.

The Venerable Society.

A book in the series of the "Venerable Society" by the Venerable Society, signed on July 10th, 1922.

THE EAST AFRICAN STANDARD

Monday Times & Uganda Agency
THURSDAY, JULY 14, 1922.

THE HARBOR POLO TOURNAMENT.

Details of the Traction to be Played in.

TEAMS AND HANDICAPS.

The following are details of the forthcoming polo tournament to be held on the Harbour Polo ground on July 25, 26, and 27.

THE CAPS. NAVALTY CUP - Presented by the Admiralty Office. Handicap for ladies or student teams.

THE HANWORTH CUP - Presented by Mr. Hanworth. Handicap for gentlemen.

THE HANWORTH CUP - Presented by Mr. Hanworth. Handicap for gentlemen.

The order of play for this City is as follows: 22 and 23 will appear the result of the first day's play on the Cavalry Club.

The following is the composition of the teams with the handicaps in brackets.

THE TEAMS. NYERI - Capt. H. H. Jones (4), Capt. J. A. A. (4), Capt. D. A. (4), Capt. E. (4), Capt. F. (4), Capt. G. (4), Capt. H. (4), Capt. I. (4), Capt. J. (4), Capt. K. (4), Capt. L. (4), Capt. M. (4), Capt. N. (4), Capt. O. (4), Capt. P. (4), Capt. Q. (4), Capt. R. (4), Capt. S. (4), Capt. T. (4), Capt. U. (4), Capt. V. (4), Capt. W. (4), Capt. X. (4), Capt. Y. (4), Capt. Z. (4).

NYERI - Capt. H. H. Jones (4), Capt. J. A. A. (4), Capt. D. A. (4), Capt. E. (4), Capt. F. (4), Capt. G. (4), Capt. H. (4), Capt. I. (4), Capt. J. (4), Capt. K. (4), Capt. L. (4), Capt. M. (4), Capt. N. (4), Capt. O. (4), Capt. P. (4), Capt. Q. (4), Capt. R. (4), Capt. S. (4), Capt. T. (4), Capt. U. (4), Capt. V. (4), Capt. W. (4), Capt. X. (4), Capt. Y. (4), Capt. Z. (4).

NYERI - Capt. H. H. Jones (4), Capt. J. A. A. (4), Capt. D. A. (4), Capt. E. (4), Capt. F. (4), Capt. G. (4), Capt. H. (4), Capt. I. (4), Capt. J. (4), Capt. K. (4), Capt. L. (4), Capt. M. (4), Capt. N. (4), Capt. O. (4), Capt. P. (4), Capt. Q. (4), Capt. R. (4), Capt. S. (4), Capt. T. (4), Capt. U. (4), Capt. V. (4), Capt. W. (4), Capt. X. (4), Capt. Y. (4), Capt. Z. (4).

NYERI - Capt. H. H. Jones (4), Capt. J. A. A. (4), Capt. D. A. (4), Capt. E. (4), Capt. F. (4), Capt. G. (4), Capt. H. (4), Capt. I. (4), Capt. J. (4), Capt. K. (4), Capt. L. (4), Capt. M. (4), Capt. N. (4), Capt. O. (4), Capt. P. (4), Capt. Q. (4), Capt. R. (4), Capt. S. (4), Capt. T. (4), Capt. U. (4), Capt. V. (4), Capt. W. (4), Capt. X. (4), Capt. Y. (4), Capt. Z. (4).

NYERI - Capt. H. H. Jones (4), Capt. J. A. A. (4), Capt. D. A. (4), Capt. E. (4), Capt. F. (4), Capt. G. (4), Capt. H. (4), Capt. I. (4), Capt. J. (4), Capt. K. (4), Capt. L. (4), Capt. M. (4), Capt. N. (4), Capt. O. (4), Capt. P. (4), Capt. Q. (4), Capt. R. (4), Capt. S. (4), Capt. T. (4), Capt. U. (4), Capt. V. (4), Capt. W. (4), Capt. X. (4), Capt. Y. (4), Capt. Z. (4).

NYERI - Capt. H. H. Jones (4), Capt. J. A. A. (4), Capt. D. A. (4), Capt. E. (4), Capt. F. (4), Capt. G. (4), Capt. H. (4), Capt. I. (4), Capt. J. (4), Capt. K. (4), Capt. L. (4), Capt. M. (4), Capt. N. (4), Capt. O. (4), Capt. P. (4), Capt. Q. (4), Capt. R. (4), Capt. S. (4), Capt. T. (4), Capt. U. (4), Capt. V. (4), Capt. W. (4), Capt. X. (4), Capt. Y. (4), Capt. Z. (4).

NYERI - Capt. H. H. Jones (4), Capt. J. A. A. (4), Capt. D. A. (4), Capt. E. (4), Capt. F. (4), Capt. G. (4), Capt. H. (4), Capt. I. (4), Capt. J. (4), Capt. K. (4), Capt. L. (4), Capt. M. (4), Capt. N. (4), Capt. O. (4), Capt. P. (4), Capt. Q. (4), Capt. R. (4), Capt. S. (4), Capt. T. (4), Capt. U. (4), Capt. V. (4), Capt. W. (4), Capt. X. (4), Capt. Y. (4), Capt. Z. (4).

NYERI - Capt. H. H. Jones (4), Capt. J. A. A. (4), Capt. D. A. (4), Capt. E. (4), Capt. F. (4), Capt. G. (4), Capt. H. (4), Capt. I. (4), Capt. J. (4), Capt. K. (4), Capt. L. (4), Capt. M. (4), Capt. N. (4), Capt. O. (4), Capt. P. (4), Capt. Q. (4), Capt. R. (4), Capt. S. (4), Capt. T. (4), Capt. U. (4), Capt. V. (4), Capt. W. (4), Capt. X. (4), Capt. Y. (4), Capt. Z. (4).

NYERI - Capt. H. H. Jones (4), Capt. J. A. A. (4), Capt. D. A. (4), Capt. E. (4), Capt. F. (4), Capt. G. (4), Capt. H. (4), Capt. I. (4), Capt. J. (4), Capt. K. (4), Capt. L. (4), Capt. M. (4), Capt. N. (4), Capt. O. (4), Capt. P. (4), Capt. Q. (4), Capt. R. (4), Capt. S. (4), Capt. T. (4), Capt. U. (4), Capt. V. (4), Capt. W. (4), Capt. X. (4), Capt. Y. (4), Capt. Z. (4).

NYERI - Capt. H. H. Jones (4), Capt. J. A. A. (4), Capt. D. A. (4), Capt. E. (4), Capt. F. (4), Capt. G. (4), Capt. H. (4), Capt. I. (4), Capt. J. (4), Capt. K. (4), Capt. L. (4), Capt. M. (4), Capt. N. (4), Capt. O. (4), Capt. P. (4), Capt. Q. (4), Capt. R. (4), Capt. S. (4), Capt. T. (4), Capt. U. (4), Capt. V. (4), Capt. W. (4), Capt. X. (4), Capt. Y. (4), Capt. Z. (4).

NYERI - Capt. H. H. Jones (4), Capt. J. A. A. (4), Capt. D. A. (4), Capt. E. (4), Capt. F. (4), Capt. G. (4), Capt. H. (4), Capt. I. (4), Capt. J. (4), Capt. K. (4), Capt. L. (4), Capt. M. (4), Capt. N. (4), Capt. O. (4), Capt. P. (4), Capt. Q. (4), Capt. R. (4), Capt. S. (4), Capt. T. (4), Capt. U. (4), Capt. V. (4), Capt. W. (4), Capt. X. (4), Capt. Y. (4), Capt. Z. (4).

NYERI - Capt. H. H. Jones (4), Capt. J. A. A. (4), Capt. D. A. (4), Capt. E. (4), Capt. F. (4), Capt. G. (4), Capt. H. (4), Capt. I. (4), Capt. J. (4), Capt. K. (4), Capt. L. (4), Capt. M. (4), Capt. N. (4), Capt. O. (4), Capt. P. (4), Capt. Q. (4), Capt. R. (4), Capt. S. (4), Capt. T. (4), Capt. U. (4), Capt. V. (4), Capt. W. (4), Capt. X. (4), Capt. Y. (4), Capt. Z. (4).

NYERI - Capt. H. H. Jones (4), Capt. J. A. A. (4), Capt. D. A. (4), Capt. E. (4), Capt. F. (4), Capt. G. (4), Capt. H. (4), Capt. I. (4), Capt. J. (4), Capt. K. (4), Capt. L. (4), Capt. M. (4), Capt. N. (4), Capt. O. (4), Capt. P. (4), Capt. Q. (4), Capt. R. (4), Capt. S. (4), Capt. T. (4), Capt. U. (4), Capt. V. (4), Capt. W. (4), Capt. X. (4), Capt. Y. (4), Capt. Z. (4).

NYERI - Capt. H. H. Jones (4), Capt. J. A. A. (4), Capt. D. A. (4), Capt. E. (4), Capt. F. (4), Capt. G. (4), Capt. H. (4), Capt. I. (4), Capt. J. (4), Capt. K. (4), Capt. L. (4), Capt. M. (4), Capt. N. (4), Capt. O. (4), Capt. P. (4), Capt. Q. (4), Capt. R. (4), Capt. S. (4), Capt. T. (4), Capt. U. (4), Capt. V. (4), Capt. W. (4), Capt. X. (4), Capt. Y. (4), Capt. Z. (4).

NYERI - Capt. H. H. Jones (4), Capt. J. A. A. (4), Capt. D. A. (4), Capt. E. (4), Capt. F. (4), Capt. G. (4), Capt. H. (4), Capt. I. (4), Capt. J. (4), Capt. K. (4), Capt. L. (4), Capt. M. (4), Capt. N. (4), Capt. O. (4), Capt. P. (4), Capt. Q. (4), Capt. R. (4), Capt. S. (4), Capt. T. (4), Capt. U. (4), Capt. V. (4), Capt. W. (4), Capt. X. (4), Capt. Y. (4), Capt. Z. (4).

NYERI - Capt. H. H. Jones (4), Capt. J. A. A. (4), Capt. D. A. (4), Capt. E. (4), Capt. F. (4), Capt. G. (4), Capt. H. (4), Capt. I. (4), Capt. J. (4), Capt. K. (4), Capt. L. (4), Capt. M. (4), Capt. N. (4), Capt. O. (4), Capt. P. (4), Capt. Q. (4), Capt. R. (4), Capt. S. (4), Capt. T. (4), Capt. U. (4), Capt. V. (4), Capt. W. (4), Capt. X. (4), Capt. Y. (4), Capt. Z. (4).

OVERSEAS MAILS

This notice is based upon the latest advice from the Shipping Agents. It is possible, however, that circumstances may require alterations. For greater convenience the vessels may leave earlier or later than anticipated, and the information given here is published subject to this reservation.

Ships will be cleared at the Harbour Post Office on a stated date.

Table with columns: STEAMER, FROM, TO, Date of Mailing, Mails to be Made.

DEPARTURES

Table with columns: STEAMER, FOR, Mails to be Made, Date of departure from Mombasa.

NOTICE.

Under instructions from a client I will sell by public auction without reserve 50 bullocks in the Indian Bazaar at Nakuru on Monday the 14th, instant at 1 p.m.

A. C. PATER, Auctioneer and Broker.

Nakuru, 17th July 1925.

DO YOU KNOW???

THAT THE KIKUYU HOTEL

IS ONLY 14 MILES FROM NAIROBI. AN IDEAL RESORT FOR DAUGHTERS, KIKUYU, KABAYE, RESIDENTIAL QUARTERS MARRIED AND SINGLE COUSINE, COMFORT CLEANLINESS.

with the best Wine Specialities.

MAGNIFICENT GARDEN, PERFECT ENVIRONMENT AND CLIMATE.

AN IDEAL PLACE FOR A WEEK END REST AND QUIET. 2 minutes' walk from the Railway Station.

For Rooms and Special Meals give timely notice please.

ORDERS RECEIVED TO ORDER PREPARED BY A PERFECT FUNDI IMPORTED FROM INDIA.

UGANDA RAILWAY RIFLE CLUB

A FANCY DRESS BALL will be held on AUGUST 22nd, 1925 AT 7 O'CLOCK.

Railways Club at 9 p.m. Tickets: Double Shs. 10/- Single Shs. 7/6.

Tickets may be obtained from: The Honorary Secretary, P.O. Box 77, Nairobi.

The Observer Offices. The Railway Club.

A LIMITED NUMBER ONLY. JUST ARRIVED.

CHRIST AND LABOUR

BY C. F. ANDREWS

"This book reveals strange and hidden criticisms of the Government and British Colony and the European settlers and their treatment of Indians and Kikuyu." (H. E. the Governor, May, 14th, 1924)

Price Shs. 6/- (Posted 6/75) Standard Stationery Stores, NAIROBI.

RUBBER STAMPS

AT THE Standard Office.

JUST UNPACKED New Consignment of Enamel Ware Blue, Green and White at NEW CASH PRICES



WHITE ENAMEL PLATE MILK. As illustrated, straight sides, wide flange edges. Shs. 4/6. 14" Shs. 7/6. 16" Shs. 9/6.

WHITE ENAMEL MILK PAN. As illustrated, straight sides, wide flange edges. Shs. 4/6. 14" Shs. 7/6. 16" Shs. 9/6.

WHITE ENAMEL MILK PAN. As illustrated, straight sides, wide flange edges. Shs. 4/6. 14" Shs. 7/6. 16" Shs. 9/6.

WHITE ENAMEL MILK PAN. As illustrated, straight sides, wide flange edges. Shs. 4/6. 14" Shs. 7/6. 16" Shs. 9/6.

WHITE ENAMEL MILK PAN. As illustrated, straight sides, wide flange edges. Shs. 4/6. 14" Shs. 7/6. 16" Shs. 9/6.

WHITE ENAMEL MILK PAN. As illustrated, straight sides, wide flange edges. Shs. 4/6. 14" Shs. 7/6. 16" Shs. 9/6.

WHITE ENAMEL MILK PAN. As illustrated, straight sides, wide flange edges. Shs. 4/6. 14" Shs. 7/6. 16" Shs. 9/6.

WHITE ENAMEL MILK PAN. As illustrated, straight sides, wide flange edges. Shs. 4/6. 14" Shs. 7/6. 16" Shs. 9/6.

WHITE ENAMEL MILK PAN. As illustrated, straight sides, wide flange edges. Shs. 4/6. 14" Shs. 7/6. 16" Shs. 9/6.

WHITE ENAMEL MILK PAN. As illustrated, straight sides, wide flange edges. Shs. 4/6. 14" Shs. 7/6. 16" Shs. 9/6.

WHITE ENAMEL MILK PAN. As illustrated, straight sides, wide flange edges. Shs. 4/6. 14" Shs. 7/6. 16" Shs. 9/6.

WHITE ENAMEL MILK PAN. As illustrated, straight sides, wide flange edges. Shs. 4/6. 14" Shs. 7/6. 16" Shs. 9/6.

WHITE ENAMEL MILK PAN. As illustrated, straight sides, wide flange edges. Shs. 4/6. 14" Shs. 7/6. 16" Shs. 9/6.

WHITE ENAMEL MILK PAN. As illustrated, straight sides, wide flange edges. Shs. 4/6. 14" Shs. 7/6. 16" Shs. 9/6.

WHITE ENAMEL MILK PAN. As illustrated, straight sides, wide flange edges. Shs. 4/6. 14" Shs. 7/6. 16" Shs. 9/6.

WHITE ENAMEL MILK PAN. As illustrated, straight sides, wide flange edges. Shs. 4/6. 14" Shs. 7/6. 16" Shs. 9/6.

WHITE ENAMEL MILK PAN. As illustrated, straight sides, wide flange edges. Shs. 4/6. 14" Shs. 7/6. 16" Shs. 9/6.

WHITE ENAMEL MILK PAN. As illustrated, straight sides, wide flange edges. Shs. 4/6. 14" Shs. 7/6. 16" Shs. 9/6.

WHITE ENAMEL MILK PAN. As illustrated, straight sides, wide flange edges. Shs. 4/6. 14" Shs. 7/6. 16" Shs. 9/6.

WHITE ENAMEL MILK PAN. As illustrated, straight sides, wide flange edges. Shs. 4/6. 14" Shs. 7/6. 16" Shs. 9/6.

WHITE ENAMEL MILK PAN. As illustrated, straight sides, wide flange edges. Shs. 4/6. 14" Shs. 7/6. 16" Shs. 9/6.

WHITE ENAMEL MILK PAN. As illustrated, straight sides, wide flange edges. Shs. 4/6. 14" Shs. 7/6. 16" Shs. 9/6.

WHITE ENAMEL MILK PAN. As illustrated, straight sides, wide flange edges. Shs. 4/6. 14" Shs. 7/6. 16" Shs. 9/6.

WHITE ENAMEL MILK PAN. As illustrated, straight sides, wide flange edges. Shs. 4/6. 14" Shs. 7/6. 16" Shs. 9/6.

WHITE ENAMEL MILK PAN. As illustrated, straight sides, wide flange edges. Shs. 4/6. 14" Shs. 7/6. 16" Shs. 9/6.

WHITE ENAMEL MILK PAN. As illustrated, straight sides, wide flange edges. Shs. 4/6. 14" Shs. 7/6. 16" Shs. 9/6.

Whiteaway, Laidlaw & Co., Ltd. THE SIXTH AVENUE, NAIROBI

ALWAYS ASK FOR JEYES'

"It is the best disinfectant in use."

FOR JEYES' (See R. Rawlinson, Local Government Board, London)

Whiteaway, Laidlaw & Co., Ltd. THE SIXTH AVENUE, NAIROBI

Whiteaway, Laidlaw & Co., Ltd. THE SIXTH AVENUE, NAIROBI

Whiteaway, Laidlaw & Co., Ltd. THE SIXTH AVENUE, NAIROBI

Whiteaway, Laidlaw & Co., Ltd. THE SIXTH AVENUE, NAIROBI

KIA ORA STORE NAIVASA

Ugari, Macaroni, Confectionery, Hardware, Stationery, Ammunition, Toilet Requisites, Footwear, etc.

PETROL and LUBRICANTS available very low.

BOTTLED GUARANTEED Fresh stock just arrived.

"ORIENTAL" per 100 Shs. 4/- per 1,000 Shs. 40/-

"CORNETT" per 100 Shs. 6/- per 1,000 Shs. 60/-

CATTLE BAIT per load (40 lbs) Shs. 10/- per bag at Shs. 12/-

Services to England, East, South and West Africa Ports and Mauritius.

TO ENGLAND VIA SUEZ
About 14th July
About 20 September

TO ENGLAND VIA SOUTH AFRICA
About 14th July
About 17th August, 1924

Upstream charges cannot be accepted unless suitably covered by local funds
Inter-continental steamers carry Viceroy and Third Class passengers only.

THE UNION CASTLE MAIL STEAMSHIP CO., Ltd.
(INCORPORATED IN ENGLAND.)

B.R.A. CORPORATION, Ltd. HELAND AGENTS
Batavia, Singapore, Penang, etc., etc.

BRITISH INDIA
Steam Navigation Co., Ltd.
and Peninsular and Oriental Steam Navigation Co.

LONDON AND EAST AFRICA LINE.

REKLA and UNITED KINGDOM. Regular service every 20 days by well-appointed Mail Steamers from London to Heligra via Cape Coast and West Coast Ports and via Swaziland, sailing homewards at Mombasa (if sufficient indications) and Plymouth to Land passengers.

DEFORTABLE ACCOMMODATION. EXCELLENT CUISINE
Articles from London about.

S.S. "NEMANA" (9000 tons) 8th July
S.S. "HRODINA" (8000 tons) 15th August

BOMBAY-DURBAN STEAMERS
In Month.

S.S. "GARDIA" on Mondays 14th July, dep. 10th July.
S.S. "KALINGA" on Mondays 14th July, dep. 10th July.

Small steamers suitable to take in the Suez Canal and accommodation a concession of 10 per cent. is allowed on the total of two Single Tickets.

These steamers are now scheduled to arrive in Bombay on Saturday on 10 to connect with the P. & O. Mail steamer.

COSTAL SERVICE
The M.V. "DUMKA" is due to sail on the 10th July for Zanzibar, Zomba, Dar-es-Salaam, Mada, Swaziland, Natal, Durban and Mombasa.

SMITH'S PATENT
SMITH'S PATENT
SMITH'S PATENT

THE MIRRLEES WATSON Co., Ltd.
SUGAR MACHINERY.
COMPLETE FACTORIES OF THE MOST MODERN TYPES.

BEALES & SMITHSON.
(Dual Buildings)
170, Cecil St., SINGAPORE. Telephone 1130

Holland Africa East Line

Table with columns for destinations (SOUTHBOUND, NORTHBOUND) and dates.

TWENTYSIX OVERSEAS TRADING Co., Ltd.
P.O. Box 169. Tel. "Elands", HOBART. Tel. 149

KENYA BREWERIES LIMITED.
We do not ask you to Support Local Industries

Choice Malt and Hops
Among the unolicited testimonials received, the following speak for themselves:

Your Beer is excellent, please send a further 4 casks.
We are highly satisfied with it."

George Blowers.
OFFICE AND WORKS 3 BIRD STREET, EAST LONDON, E.C. 4.

Table listing various types of flour and their prices.

PETTER OIL ENGINES.
THERE ARE MORE PETTER OIL ENGINES DRIVING PLANTING MACHINES IN KENYA THAN ANY OTHER BETTER MAKE.

J.W. MILLIGAN & Co.
GOVERNMENT ROAD, P.O. BOX 148, NAIROBI.

F. J. THORNTON, R.P.C.
Plumbers, Sanitary and Domestic Engineers, House Drainage, Septic Tank and Hot and Cold Water Installations, etc.

NATIONAL BANK OF INDIA LIMITED.
HEAD OFFICE: CALCUTTA. BRANCHES: MADRAS, BOMBAY, PANAJI, KARACHI, COLOMBO, SINGAPORE, RANGOON, YOKOHAMA, MANILA, CEBU, BATAVIA, SOERABAYA, SURABAYA, SOERABAYA, SOERABAYA.

THE FEMINE Note.
LADY HERBER LEAD UPDOWN IN REICHOFTAG

The German war cloud, are unpopular now that they are past London and von Trier.

FOR SALE
AS A GOING CONCERN.
COAST HOTEL, BAR AND BILLIARD ROOM.

AVERAGE NET PROFIT £130 PER MONTH.
For Full Particulars write VOUCHER NO. 136. MOMBASA TIMES.

"MAGUI" COUGH OURE.
We name the Dead, but "MAGUI" has often recovered a trace of life.

Film Conditions.
FEMINE FILM LETTERS IN LONDON.

A feminine Alfred Loster, Mrs. Gladys Loster has made a grand hit at the Radio Theatre.

Virginia Caprice.
[First Grand Success]
Box 2/65 per Tin of 50. KEMPER HANSELER.

508 SPORTING RIFLES.
Box 100/- to 320/-
Shot & Hunter, Box 70, NAIROBI.

SIBOLLE'S DRY-CLEANING & DYING WORKS.
Town Residing Office: 111, R. W. WHEELER Lane. Branch Office: 111, R. W. WHEELER Lane.

SPECIAL REDUCTIONS FOR FEW DAYS ONLY.
NAIROBI SCHOOL OF DANCING.
Cecilia's Weekly Classes held at the Government House, and in PEARLSEA.

FOR FOOTBALLS & JERSEYS.
MAY & CO.

ANGLO-BALTIC TIMBER CO., LTD.
Specialists in BUILDING MATERIALS.
CEDAR, POOD & HARDWOODS.
MOBI TRAK, MAHOAGNY, ETC.

Agents for KILIMANJARO SAW MILLS, Limited.

Bole Agents for FAIRVIEW ESTATES, Ltd., KIVIMBO.

DISTEMPERS. In all shades.
WOOD PRESERVATIVE. The only Preservative on the Market that can be used on a Stain, and will take a Polish.

IMPORTED DOORS AND WINDOWS.
WOOD, Guaranteed seasoned also all STEEL.

HIDES, SKINS & WOOL
PURCHASED AT BEST MARKET RATES.

ENGAGEMENT RINGS.
MADE IN OUR OWN WORKSHOPS.
Workmanship and Value Unrivalled.



E. DOBIE.
MANUFACTURER JEWELLER.
WATCHMAKER & OPTICIAN.
NAIROBI.

THE SALISBURY HOTEL.
UNDER ENTIRELY NEW MANAGEMENT.
SLENDON ST. SITUATED WITHIN BAY WALKING DISTANCE OF TOWN.

Singh House, Double Rooms, Deluxes with Private Bath, Rooms, Bathrooms with Private Bath-rooms.

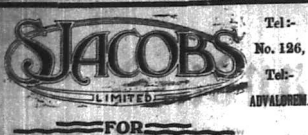
ALL Bedrooms fitted with new Porcelain Baths, Comfortable Lounges, Five new and hot and cold Water Tanks, and a new Electric Light.

EXCELLENT CUISINE.
The Hotel has been completely refitted and redecorated, and is now ready to receive the most distinguished guests.

WE WRITE YOUR INVITATIONS. 1924-1925.
SPECIAL ARRANGEMENTS.

P. O. Box

No. 265, NAIROBI



MEN'S WEAR OF DISTINCTION & INDIVIDUALITY

WHITE ARTEX CELLULAR PJJAMAS. These are very comfy and hard wearing.

STRIPE POPLIN PJJAMAS. In new designs.

FANCY STRIPE FLANNELLETTE PJJAMAS. Assorted Striped Patterns.

SHIRTS FOR MEN WHO APPRECIATE VALUE.

The "SPORT" Shirt... The "LUVINA" Shirt... Tennis V-neckers...



Two STRIPES' SLACK CASIMERE... TWO STRIPES' FAINT EMBROIDERED CASE SHIRTS...

A large range of TENNIS SHOES in Lace, Artex, Canvas and Silk.



MEN'S BOSTON SUSPENDERS... MEN'S WARM FLEECY DRESSING GOWN...

A visit of inspection will be appreciated and will convince you that the value we offer is the best in Town.

WE Allow 5 Per Cent Cash Discount of all these prices.

Miss KATHLEEN BATES, A.R.C.M. TEACHER OF PIANO, VOICE, GYMNASTICS AND THEORY OF MUSIC...

EXPRESS TRANSPORT COMPANY AMALGAMATING-BURTON & HIGGS. Carriage Contractors to Uganda Railway...

WITH EX-LASER IN RETIREMENT.

Making Hay with the Sun Shines. NOT A PRISONER.

Sir William Beach Thomas was the correspondent and well known poetical writer in the Daily Express from 1898 to 1912...



There he is, said my companion, and there he was, just in front of us... Sir William Beach Thomas is now in a private house in the Strand, London.

He is in the peak of condition. His browned face and upright carriage... He is now in a private house in the Strand, London.

On the occasion when I visited to make sure was permitted to watch the haymaking in the morning quarter, I was told that the admission of a horse to a field was a very important matter...

Mrs. Kameo and I returned to our hotel in the evening... The Kameo is a very interesting place...

Mr. Kameo is a very interesting place... The Kameo is a very interesting place...

The Kameo is a very interesting place... The Kameo is a very interesting place...

The Kameo is a very interesting place... The Kameo is a very interesting place...

FIRST, LARGEST, BEST

Certain international parties are spreading the report that our milling plant is "uniquitous"...

UNGA Ltd, NJORO.

THE KENYA FARMERS' ASSOCIATION LIMITED.

MAIZE AND MAIZE MEAL on hand at current Market rates.

Apply: The Secretary, P. O. Box 35, NAIROBI.

NOW IN STOCK

JUST WHAT YOU WANT IN THE LINE OF CLOTHING FOR OTHER AND INFANT

R. O. PRESTON, HARDING STREET, NAIROBI.

RELIANCE.

only be won by mutual CONFIDENCE and BUSINESS ACCURACY. RELIANCE TRANSPORT CO.

RELIANCE TRANSPORT CO.

2 1/2 RALEIGH

all chain-electric light ... £75 7 hp. "V" Twin Raleigh ... £90 7 hp. do. Combination ... £130

CARR LAWSON & Co.

The LUMBWA SAW MILLS Co. P. O. KEDOWA.

ODO OR MUSHERAGI.

ALL SIZES and DESCRIPTIONS, ROUGH or MACHINED.

CEDAR

SPECIAL LINE CEDAR FLOORING AND LINING, CUT FROM SEASONED STUFF AND OF A GOOD COLOUR...

REMEMBER THE NAME

"VOONIA"

It is the TEA you want. Ask for it and insist on getting it.

PRICES: 5s. 3/6 per 1 lbs. pkt. 3/15 .. 1 lb. loose.

Mackinnon Brothers

NEW GOODS JUST UNPACKED. FINE SILK, CRAWDED-ORFIVE IVORY BEADLES and BEADLES, BRASS TRAYS and OTHER ORNAMENTS...

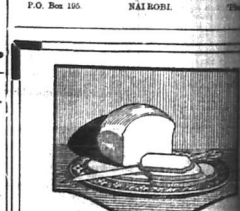
SHORT LOANS GRANTED £1 To £1,000.

CALL OR WRITE TO:- Kenya Loan & Discount Co., Ltd. NAIROBI HOUSE, (2nd, 3rd, 4th, 5th).

Something New DENNISON GREEN

With one side appearing soft and velvety and with satin-like lustre on the other...

M. R. de Souza & Co.



BREAD CELEBRATED EXCELLENCE AT ELLIOTS, P.O. NAIROBI

EAST AFRICAN STANDARD

Advertisements Rates.

DAILY EDITION

Advertisements are accepted only subject to approval. DOMESTIC ADVERTISEMENTS: Morning, Midday, Evening and Daily, etc., per line of six words, with minimum of five words per line.

SEMI-WEEKLY PREPAID ADVERTISEMENTS

For Sale, Wanted, To Let, For Hire, etc. Standard Yearly and Weekly, per line of six words or fraction of the same. All the above advertisements are strictly placed in advance and no exception will be made to this rule.

FOR SALE

EPANZONI'S High Quality... Christmas and Wedding Presents, Brides, Mothers, Children, etc. Also separate gift cards and our complete catalogue No. 420 - E. A. Standard.

A Limited Quantity of Cheap... Park Overland, & The Motor... and our catalogue No. 420 - E. A. Standard.

ONE "Hayley" Durant Car... for cheap change for cash. Apply to Messrs. Hayley, Central Garage, Middle Street.

FOR SALE, Ford Touring Car... Ford car, electric light, etc. No. 1212 - E. A. Standard.

SCRIPPS House 3 stories... running off to East. Car... and Co., 225, Cannon, Nairobi.

DAVID WYFFENBERGER... special Engineers or Architects... 300/- each. Kesteven Road, Nairobi.

BOARD & RESIDENT

LONG short term, comfortable... 250/- each. Kesteven Road, Nairobi.

WANTED

WANTED - House... 1212 - E. A. Standard.

WANTED good building... 1212 - E. A. Standard.

WANTED small Male... 1212 - E. A. Standard.

SITUATIONS WANTED

MANAGER on Farm... 1212 - E. A. Standard.

SITUATIONS VACANT

NURSING Sister... 1212 - E. A. Standard.

WANTED, Messeng... 1212 - E. A. Standard.

PLACES TO LET

TO LET... 1212 - E. A. Standard.

TO LET

TO LET... 1212 - E. A. Standard.

SPECIAL REDUCTIONS

FOR FEW DAYS ONLY... 1212 - E. A. Standard.

TO LET

TO LET... 1212 - E. A. Standard.

TO LET

TO LET... 1212 - E. A. Standard.

TO LET

EXCELLENT Offices in... 1212 - E. A. Standard.

IMMEDIATE occupation... 1212 - E. A. Standard.

ENTERTAINMENT

THEATRE TONIGHT... 1212 - E. A. Standard.

A. DAVIS

ESTATE & GENERAL AGENT... 1212 - E. A. Standard.

HAS FINE DISCOUNT

NATIONALLY... 1212 - E. A. Standard.

PARLANDS

Attractive... 1212 - E. A. Standard.

REKINDLE

Guaranteed good... 1212 - E. A. Standard.

RELIABLE SERVICE AND

PROBATIVE INVESTORS... 1212 - E. A. Standard.

AGENCY WORK OF

ALL DESCRIPTION... 1212 - E. A. Standard.

LEADER BUILDINGS

REKINDLE... 1212 - E. A. Standard.

PHONE 301

LONG short term... 1212 - E. A. Standard.

CARS FOR HIRE

Day or Night... 1212 - E. A. Standard.

OAKLEIGH PRIVATE HOTEL

Only a few minutes... 1212 - E. A. Standard.

SMOKING ROOM & LOUNGE

& TENNIS COURTS... 1212 - E. A. Standard.

PLACE YOURSELF

ON THE RIGHT SIDE... 1212 - E. A. Standard.

YOUR MOTOR CAR

AND MOTOR CYCLES... 1212 - E. A. Standard.

AFRICA GARMENTS AND

RENTALS... 1212 - E. A. Standard.

M. D. KAMPEF, Club

SPECIAL REDUCTIONS... 1212 - E. A. Standard.

3 ROOMS TO LET IN

KIRINYATI ROAD... 1212 - E. A. Standard.

B. CHOTIRM, GOVERNMENT ROAD

POULTRY NOTES

The Standard for Indian

Rooster Ducks

I have a letter from a correspondent asking that a rooster duck and drake should like the "I" correspondent article. I replied with a longer article.

I am giving, below, the standard for Indian Rooster ducks, and my correspondent will see by this that colour is of minor importance compared with the distinctive shape, carriage and gait.

General Characteristics

HEAD - Flat and somewhat flattened over the skull, with the forehead high and wide, and the bill short, stout and straight.

NECK - Strong and deep at the base where it joins the throat. The neck should be proportionate to the body and set on high, so that the head is well up.

WINGS - The wings should be proportionate to the body and set on high, so that the head is well up. The wings should be proportionate to the body and set on high, so that the head is well up.

TAIL - The tail should be proportionate to the body and set on high, so that the head is well up. The tail should be proportionate to the body and set on high, so that the head is well up.

COLOUR - The colour should be proportionate to the body and set on high, so that the head is well up. The colour should be proportionate to the body and set on high, so that the head is well up.

FEET - The feet should be proportionate to the body and set on high, so that the head is well up. The feet should be proportionate to the body and set on high, so that the head is well up.

VOICE - The voice should be proportionate to the body and set on high, so that the head is well up. The voice should be proportionate to the body and set on high, so that the head is well up.

TEMPERAMENT - The temperament should be proportionate to the body and set on high, so that the head is well up. The temperament should be proportionate to the body and set on high, so that the head is well up.

FEEDING - The feeding should be proportionate to the body and set on high, so that the head is well up. The feeding should be proportionate to the body and set on high, so that the head is well up.

REPRODUCTION - The reproduction should be proportionate to the body and set on high, so that the head is well up. The reproduction should be proportionate to the body and set on high, so that the head is well up.

MANAGEMENT - The management should be proportionate to the body and set on high, so that the head is well up. The management should be proportionate to the body and set on high, so that the head is well up.

CONCLUSION - The conclusion should be proportionate to the body and set on high, so that the head is well up. The conclusion should be proportionate to the body and set on high, so that the head is well up.

APPENDIX - The appendix should be proportionate to the body and set on high, so that the head is well up. The appendix should be proportionate to the body and set on high, so that the head is well up.

INDEX - The index should be proportionate to the body and set on high, so that the head is well up. The index should be proportionate to the body and set on high, so that the head is well up.

The Cultural Varieties

The Standard of the Duck... 1212 - E. A. Standard.

The Standard of the Duck... 1212 - E. A. Standard.

The Standard of the Duck... 1212 - E. A. Standard.

The Standard of the Duck... 1212 - E. A. Standard.

The Standard of the Duck... 1212 - E. A. Standard.

The Standard of the Duck... 1212 - E. A. Standard.

The Standard of the Duck... 1212 - E. A. Standard.

The Standard of the Duck... 1212 - E. A. Standard.

The Standard of the Duck... 1212 - E. A. Standard.

The Standard of the Duck... 1212 - E. A. Standard.

The Standard of the Duck... 1212 - E. A. Standard.

The Standard of the Duck... 1212 - E. A. Standard.

The Standard of the Duck... 1212 - E. A. Standard.

The Standard of the Duck... 1212 - E. A. Standard.

The Standard of the Duck... 1212 - E. A. Standard.

The Standard of the Duck... 1212 - E. A. Standard.

EQUATOR SAW MILLS

SADLER STREET, NAIROBI. Telephone No. 118 P. O. Box 291.

Tenders are invited for the supply of Posho for six months. Delivered at our Nairobi and Maji Mazuri Mills.

PETROL LIGHTING

EVENING STAR LAMPS AND LANTERNS

BESTER MANUFACTURED AND GUARANTEED. (not subject to increased taxation)

Table Lamp... 60/-, Wall Lamp... 70/-, Lantern... 100/-

MANTLES, GENERATORS, AND SPARES for every make of Petrol Light.

Twelve months guarantee given with every Lamp.

NEW MARK, Petrol Light Works, HADDISBURY STREET, NAIROBI.

WOLLE'S DRY-CLEANING & DYEING WORKS. 7, Town Reservoir Office.

KENYA HOUSE, Near St. Mark's Church, Nairobi.

Y.H.C.A. RESIDENTIAL CLUB. AN IDEAL RESIDENCE FOR MEN.

Large, extensive and improved... 1212 - E. A. Standard.

THE JURY RACES. NUBERRY HANDICAP. Open to all 5yr. olds.

The above have been... 1212 - E. A. Standard.

NEW MARK'S... 1212 - E. A. Standard.

THE JOCKEY CLUB OF KENYA... 1212 - E. A. Standard.

EUROPEAN & AFRICAN TRADE

BRANDS... 1212 - E. A. Standard.

UNEMPLOYED. All persons who are seeking employment...

FOR SALE. 6 CYL. BUICK TOURING, pre-1920 order...

FOR SALE. 6 CYL. BUICK TOURING, pre-1920 order...

FOR SALE. 6 CYL. BUICK TOURING, pre-1920 order...

FOR SALE. 6 CYL. BUICK TOURING, pre-1920 order...

FOR SALE. 6 CYL. BUICK TOURING, pre-1920 order...

FOR SALE. 6 CYL. BUICK TOURING, pre-1920 order...

FOR SALE. 6 CYL. BUICK TOURING, pre-1920 order...

FOR SALE. 6 CYL. BUICK TOURING, pre-1920 order...

FOR SALE. 6 CYL. BUICK TOURING, pre-1920 order...

FOR SALE. 6 CYL. BUICK TOURING, pre-1920 order...

FOR SALE. 6 CYL. BUICK TOURING, pre-1920 order...

FOR SALE. 6 CYL. BUICK TOURING, pre-1920 order...

SPECIAL VALUE

GENTS' SPORTS TWEED COATS.

30/-, 35/-, 37/50

FOR SALE. 6 CYL. BUICK TOURING, pre-1920 order...

FOR SALE. 6 CYL. BUICK TOURING, pre-1920 order...

FOR SALE. 6 CYL. BUICK TOURING, pre-1920 order...

FOR SALE. 6 CYL. BUICK TOURING, pre-1920 order...

FOR SALE. 6 CYL. BUICK TOURING, pre-1920 order...

FOR SALE. 6 CYL. BUICK TOURING, pre-1920 order...

FOR SALE. 6 CYL. BUICK TOURING, pre-1920 order...

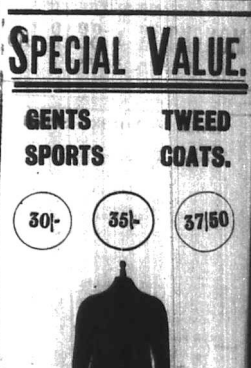
FOR SALE. 6 CYL. BUICK TOURING, pre-1920 order...

FOR SALE. 6 CYL. BUICK TOURING, pre-1920 order...

FOR SALE. 6 CYL. BUICK TOURING, pre-1920 order...

FOR SALE. 6 CYL. BUICK TOURING, pre-1920 order...

FOR SALE. 6 CYL. BUICK TOURING, pre-1920 order...



ELLWOOD'S WHITE HELMET.

32/50

MAXWELL BRADY Co., NAIROBI.

The Jockey Club of Kenya

Nairobi Races. Thursday, July 24th, and Saturday, July 26th, 1924.

First Race at 12-30 P.M. EACH DAY. DOUBLE EVENT TOTALIZATOR.

A special Luncheon will be served on the Course on Both Days.

For Train Service and Excursion Fares See Uganda Railway Notices.

NEW STANLEY HOTEL at 8 p.m. Saturday, the 26th July.

OVERLAND



TOURING CAR £242
SAFARI £205

Magnum Ignition 513 extra.

DELIVERY FROM STOCK.

THE OVERLAND IS THE PRODUCT OF YEARS OF EXPERIENCE IN THE COLONIES.

MONCKTON & SEAR LTD.
Roth Avenue, - NAIROBI.

"SHELL" MOTOR SPIRIT.

RECOMMENDED BY:

- THE SERVICE CO.
- MOTOR MARI & EXCHANGE
- THE SERVICE CO.
- MONCKTON & SEAR
- ZIMMER & BIRDSON
- BRIMBLELOW GARAGE, HARRISON STREET
- COKE & BUTCHER
- GRIMMER HANNAH, WAIKIKI
- ROBERTS & MORTIMER, TRINITY
- W. S. LAMBARTON, NITEL
- O. R. FALGOUTER TAYLOR, HAIKIBALE
- G. L. & ROBERTS, HAIKIBALE
- JACOBI, LTD., ELDORET
- EUROPEAN STORES, KERICU
- H. B. HINES, LUDWIG
- ROY TRADING CO., GILGIL
- PETER WELLS FROBER, KERICU
- KOBU EUROPEAN STORES, KERICU
- SAVITIE DANIEL & SONS, LTD.
- O. BARTLEY, NAIROBI
- W. J. & G. W. BARNES & CO. (SMITH MACKENZIE & CO.)

Agents for:

THE BRITISH IMPERIAL OIL Co., Ltd.

UPLANDS

WILTSHIRE BEANW. SLICED HAMS
PORK SAUSAGE. TICHO HAMS
LUTHER TONGUES. Etc. etc.
HEAT AND SOGG. In various sized tins.

Unexcelled Tasti-fulness.

"Equal to if not better than the best imported."
"We have always stock them and shall not import any more."
"Once we are clear of imported stocks our orders with you will be tremendously large."

SOUPS and PAPERS will shortly be on the market.

UPLANDS TINNED GOODS are stocked by all the leading stores in Kenya and adjoining territories.

S. JACOBS, Ltd.

HOUSE PAINTERS DECORATORS and GENERAL HOUSE REPAIRERS

P.O. Box 200 NAIROBI

COFFEE PLANTERS NOTE

Secure your plants from diseases of all kinds by using

MOLASSES

THE FINEST FERTILISER IN THE WORLD. IT WILL DOUBLE YOUR CROP AND STRENGTHEN YOUR PLANT.

Obtainable at 30 Cents per gallon from

SUKARI LTD.
P.O. Box 408 NAIROBI. Court Chambers.

ADDRESSING & CIRCULARISING

ENVELOPES and CIRCULARS

ADDRESSED BY MACHINERY.

Thousands of Names Available.

The E. A. Standard Ltd.
P.O. Box 100, Nairobi.

THE WORLD'S PREMIER MOTOR CYCLE

AUSTRALIA JUNIOR GRAND PRIZ.
Results Just Received.

208 MILES SCRATCH RACE.
A.J.S. 2 $\frac{1}{4}$ - 1st, 2nd & 3rd.

104 MILES HANDICAP RACE.
A.J.S. 2 $\frac{1}{4}$ - 1st, 2nd & 3rd.

208 MILES UNLIMITED CAPACITY.
A.J.S. 2 $\frac{1}{4}$ - 2nd, 4th & 5th.

A.J.S.
2 $\frac{3}{4}$

O.H.V. SUPER SPORTS MODEL. £90
SIDE VALVE SPORTS MODEL. £85
SIDE VALVE TOURING MODEL. £90

SOLE AGENTS | **CARR, LAWSON & Co., Ltd.** | FOR KENYA.

AUTHORISED DEALERS.

Branches:—
Mombasa
Harari
Machi.

Sub-branches:—
Arusha
Tanga
Dar-es-Salaam
Nairobi.

Ford

AND SERVICE STATIONS

The Service Co. Ltd.

L. ROSENTHAL,
TRUST CHAMBERS, GOVERNMENT ROAD.
Phone No. 420. NAIROBI. P.O. Box 214.

BOOKS OPEN ON ALL IMPORTANT ENGLISH RACES

THE OLDEST SCOTTISH INSURANCE OFFICE

THE CALEDONIAN
INSURANCE COMPANY

INCORPORATED BY ROYAL CHARTER A.D. 1866

FIRE RATES ON APPLICATION TO THE CHIEF AGENTS,
R. O. CAMERON Ltd.
P.O. Box 202. NAIROBI. Phone 282.

The Pony Breeders Society's GYM KHANA

WILL BE HELD

On Monday 4th August at 1-30 AT THE NAIROBI RACECOURSE
-BY KIND FAVOR OF THE JOCKEY CLUB-

PROGRAMME:

1. Tent Popping	7. Gracia Green Race.
2. Pale Blisk and Bull Race.	8. Man of Sadding Race.
3. Mounted Jock and Span Race.	9. Tandem Driving.
4. Pig Blisking	10. Ladies Race. (3 Furlongs)
5. Ladies saddle-ho Race.	11. Men's Race. (3 Furlongs)
6. Donkey Race.	12. Maiden Small Race. (2 Furlongs)

ENTRY FEE 5/-
Society Fee 5/-
SADDLERS MUST REACH THE SECRETARY P.O. Box 280 NAIROBI NOT LATER THAN MONDAY, 28th JULY.

ADMISSION TO GROUND - SHILLINGS 2/-

STABLES.
Horses may be stabled on the ground. Charges 5/- per night Application for stabling to breeders to - J. L. DYERVELL, Esq. P.O. BOX 1874.

SAM RIFKIN

WAGON BUILDER,
BLACKSMITH FARRIER
P.O. Box 478
Phone 142
NAIROBI.

LITTLE'S
FLY KILLER

HARMLESS TO HUMAN BEINGS AND DOMESTIC ANIMALS, BUT IMMEDIATELY FATAL TO FLIES, GRAYS, COCKROACHES, MOSQUITOES, AND ALL INSECT PESTS.

SUPPLIED IN PINT TINS, 3-75

A. H. WARDLE & Co., Ltd.
WHOLESALE & RETAIL
11, CROSS STREET, NAIROBI & MOMBASA.
P.O. Box 103. Phone 36

THE EAST AFRICAN STANDARD

FRIDAY, JULY 11, 1936

THE AGRICULTURAL OFFICE.

The very frank and candid official report of the meeting of the Agricultural and Horticultural Society of Kenya, published yesterday, has not failed to create a proper impression on the minds of thoughtful people who are now re-examining the reality of the plan, evolved by ourselves a few days ago, for the proper support of the

man, would be a serious blow to the life of the country. The Agricultural Association, therefore, is of the opinion that it is of the utmost importance that attention should be given to the problem which has arisen. It is the duty of the Government to see that the interests of the country are protected. The Agricultural Association is of the opinion that it is of the utmost importance that attention should be given to the problem which has arisen. It is the duty of the Government to see that the interests of the country are protected. The Agricultural Association is of the opinion that it is of the utmost importance that attention should be given to the problem which has arisen. It is the duty of the Government to see that the interests of the country are protected.

THEATRE ROYAL
TO-NIGHT July 11th
THE PENALTY
A Drama of Intense Interest-Thrilling from Beginning to End.
MATINEE, SATURDAY, at 3.30.
ALL COMPANY PROGRAMME.

Saturday July 12th
GRAND VARIETY NIGHT
Vaudeville Entertainment.
ALL MUSICAL PROGRAMME.
NEW TALENT.

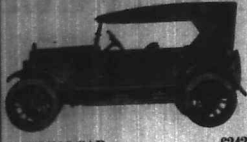
CECILIA TRIO, in Humour, Song and Melody
Laura Kendall, Soprano, Sylvia Seymour, James, Light Comedy Entertainers.
BYRON GUYAN, Operatic Dramatist.
JOHN J. B. KEENE, Baritone.
JACK FERRELLSON, Pantomime.
ANGUS BOY DONALD, Comedian.
B. B. AUSTIN, Musical Comedy.
THE THEATRE ROYAL FULL ORCHESTRA.

Popular Prices:
Stalls Shs. 5/- & Shs. 3/-
Circle " 5/- & " 3/-
Pit Stalls " 2/- & Pit " 1/-
PLANS NOW OPEN - BOOK EARLY.
Orchestra Every Night.

The following notice was received from the Director of Agriculture in connection with the appointment of a Commission to inquire into the state of the Colony and the President of the Society should be raised to the dignity of a post of honor conferred upon some leading Colonist. At the same time there is no objection to the Director of Agriculture being one of the members of the Society. Government gives no financial support and therefore its connection with the Society ought to be entirely free and unofficial, aiming only in the many directions where it is possible to advance the interests of agriculture in general, such as the improvement of the Colony by the Railway Department.

We would also like to see the creation of a number of separate bodies devoted to the interests of different sections of agriculture and stock breeding—for example, one of coffee, another of rubber, another of maize growers, etc. It is to be hoped that the Government will be able to attend to these matters. It is to be hoped that the Government will be able to attend to these matters. It is to be hoped that the Government will be able to attend to these matters.

OVERLAND



TOURING CAR £242 SAFARI £205 Magneto Ignition 513 extra.

DELIVERY FROM STOCK. THE OVERLAND IS THE PRODUKT OF YEARS OF EXPERIENCE IN THE COLONIES. MONGKTON & SEAR LTD. 80th Avenue - NAIROBI.

"SHELL" MOTOR SPIRIT.

THE BRITISH IMPERIAL OIL Co. Ltd. Agents for the Colony. Sole agents for the Colony.

UPLANDS

WILTSHIRE BRAWN, Sliced Ham, Pork Sausages, FISHING HAME, LONDON TONGUES, BACON AND EGGS. In various other lines.

SOUPS and PARTIES will shortly be on the market. UPLANDS TINNED GOODS are stocked by all the leading stores in Kenya and adjoining territories.

S. JACOBS, Ltd.

HOUSE PAINTERS DECORATORS and GENERAL HOUSE REPAIRERS. P.O. Box 899 NAIROBI.

COFFEE PLANTERS NOTE

Protect your plants from diseases of all kinds by using MOLASSES THE FINEST FERTILISER IN THE WORLD. IT WILL DOUBLE YOUR COFFEE AND STRENGTHEN YOUR PLANT.

ADDRESSING & CIRCULARISING

ENVELOPES and CARDS. Addressed by MACHINERY. Thousands of Names Available. The E. A. Standard Ltd. P.O. Box 200, NAIROBI.

THE WORLD'S PREMIER MOTOR CYCLE

AUSTRALIA JUNIOR GRAND PRIZ. 308 MILES SCRATCH RACE. A.J.S. 2 1/2 - 1st, 2nd & 3rd. 104 MILES HANDICAP RACE. A.J.S. 2 1/2 - 1st, 2nd & 3rd. 306 MILES UNLIMITED CAPACITY. A.J.S. 2 1/2 - 2nd, 4th & 5th.

A.J.S. 2 3/4

O.H.V. SUPER SPORTS MODEL £90. SIDE VALVE SPORTS MODEL £85. SIDE VALVE TOURING MODEL £90.

SOLE AGENTS | CARR, LAWSON & Co., Ltd. | FOR KENYA.

AUTHORISED DEALERS.

Ford AND SERVICE STATIONS. The Service Co. Ltd. Branches: Mombasa, Nairobi, Kisumu, Malindi, Lamu, Tanga, Dar-es-Salaam, Mtwara.

L. ROSENTHAL, TRUST CHAMBERS, GOVERNMENT ROAD. P.O. Box 420. NAIROBI. P.O. Box 214.

BOOKS OPEN ON ALL IMPORTANT ENGLISH RACES. THE OLDEST SCOTCH INSURANCE OFFICE. CALEDONIAN INSURANCE COMPANY.

FIRE RATES ON APPLICATION TO THE CHIEF AGENTS. R. O. HAMILTON Ltd. P.O. Box 202. NAIROBI. Phone 202.

The Pony Breeders Society's GYM KHANA. On Monday 4th August at 1-30 AT THE NAIROBI RACECOURSE. BY KING FERRIERES OF THE HOCKEY CLUB. PROGRAMME.

1. Tent Pugging. 2. Polo Stick and Ball Race. 3. Mounted Jockey and Spoon Race. 4. Pig Wrestling. 5. Ladies saddle Race. 6. Bending Race. 7. Gent's Open Race. 8. Men of Saddle Race. 9. Tandem Driving. 10. Ladies Race. 11. Men's Race. 12. Maiden Saddle Race.

STABLING. Horses may be stabled on ground. Charges 5/- per night. Application for stabling to be made to: J. L. HUYBREKEL, Esq., P.O. KYRIAKU.

THEATRE ROYAL TO-NIGHT July 11th

THE PENALTY. A Drama of Intense Interest-Thrilling from Beginning to End. MATINEE, SATURDAY, at 3-30. ALL COMEDY PROGRAMME.

Saturday July 12th GRAND VARIETY NIGHT! Vaudeville Entertainment. ALL MUSICAL PROGRAMME. NEW TALENT.

CECILIAN TRIO, in Harmony, Song and Melody. LOUIS KENDALL, Soprano. HENRIETTA JAMES, Light Comedy. BERTIE OWEN, Tenor. FRANK FUCHS, Baritone. T. B. McIVER, Basses. JACK FERDINAND, Pantomime. GEORGE PRITCHER, Light Comedy, and the THEATRE ROYAL FULL ORCHESTRA.

Popular Prices: Stalls Shs. 5/- & Shs. 3/- Circle " 5/- & " 3/- Pit Stalls, " 2/- & Pit, " 1/- FLATS NOW OPEN - BOOK EARLY. Orchestra Every Night.

SAM RIFKIN. HARRIS BULLERS, DIAMANTER, FARMER. P.O. Box 475. Phone 142. NAIROBI.

LITTLE'S FLY KILLER. HARMLESS TO HUMAN BEINGS AND DOMESTIC ANIMALS, BUT IMMEDIATELY FATAL TO FLIES, GNATS, COCKROACHES, MOSQUITOES, AND ALL INSECT PESTS. SUPPLIED IN PINT TINS, 3-75. A. B. WARDLE & Co., Ltd. WHOLESALE & RETAIL CHEMISTS. NAIROBI & MOMBASA. P.O. Box 102. Phone 36.

THE EAST AFRICAN STANDARD. African Times & Uganda Gazette. FRIDAY, JULY 11, 1936.

THE AGRICULTURAL SOCIETY. The very frank and candid official report of the meeting of the Council of the Agricultural and Horticultural Society of Kenya, published in the East African Standard yesterday, has not failed to create a proper impression on the minds of thoughtful sportsmen who appreciate the very important position in which the Society stands in regard to the report. The report serves to emphasize the reality of the situation, and for the public's benefit, it is only one subject

which would be a matter in the life of the country. It is possible for the members of the Agricultural Association to be informed with the Central Council. The excellent example to be followed by the members of the Agricultural Association is to be found in the report of the Central Council. The report shows and explains that it is a body which is able to do a great deal of work in its own capacity. The mental attention to the work of the Kenya Government and the present, we feel, is a very important one. It is a body which is able to do a great deal of work in its own capacity. The mental attention to the work of the Kenya Government and the present, we feel, is a very important one. It is a body which is able to do a great deal of work in its own capacity. The mental attention to the work of the Kenya Government and the present, we feel, is a very important one.

The Kenya Government. The Kenya Government is a body which is able to do a great deal of work in its own capacity. The mental attention to the work of the Kenya Government and the present, we feel, is a very important one. It is a body which is able to do a great deal of work in its own capacity. The mental attention to the work of the Kenya Government and the present, we feel, is a very important one.

The Kenya Government. The Kenya Government is a body which is able to do a great deal of work in its own capacity. The mental attention to the work of the Kenya Government and the present, we feel, is a very important one. It is a body which is able to do a great deal of work in its own capacity. The mental attention to the work of the Kenya Government and the present, we feel, is a very important one.

The Kenya Government. The Kenya Government is a body which is able to do a great deal of work in its own capacity. The mental attention to the work of the Kenya Government and the present, we feel, is a very important one. It is a body which is able to do a great deal of work in its own capacity. The mental attention to the work of the Kenya Government and the present, we feel, is a very important one.

Union-Castle Line

Services to England, East, South and West African Ports and Mauritius. PROSPECTIVE SAILINGS. TO ENGLAND via SUVA...

United Netherlands Navigation Company

Holland East Africa Line: REGULAR POSTGRUYTER SAILINGS. Steamers will arrive at Mombasa on the following dates...

ASIATIC EMPLOYES ON THE RAILWAY.

Matter Taken up in House of Commons. REPLACED BY AFRICANS. In the House of Commons on June 15...

ANGLO-BALTIC TIMBER CO., LTD.

SPECIALISTS IN BUILDING MATERIALS. CEDAR, PINE & HARDWOODS. MUSHI TRAK, MAROGANI, ETC. Agents for KILIMANJARO SAW MILLS, Limited.

TO ENGLAND via SOUTH AFRICA. About 21st July 1924. About 17th August 1924. About 16th September 1924.

THE UNION CASTLE MAIL STEAMSHIP Co., Ltd. (INCORPORATED IN ENGLAND). Adjacent to Mombasa Railway Station, MOMBASA.

BRITISH INDIA Steam Navigation Co., Ltd.

LONDON AND EAST AFRICA LINE. REGULAR SERVICE every 14 days by well-appointed Mail Steamers from London to Suez via the Canal and East Coast Ports...

IMPORTANT ACCOMMODATION. EXCELLENT CULINARY ARRANGEMENTS. "NEWYANA" (3009 tons) 24 July. "BERODINA" (3020 tons) 10th August.

COASTAL SERVICE. The new DUMKA is to sail on 24 July for Tanga, Pemba, Mozambique, Kipira Bay, Lindi and Mikindani.

THE SALISBURY HOTEL, Box 200. UNDER ENTIRELY NEW MANAGEMENT. SPLENDID SITUATION WITH BAY WALKING DISTANCE OF TOWN.

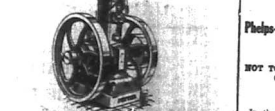
KENYA BREWERIES LIMITED.

Support Local Industries. Choice Malt and Hops. Among the unqualified testimonials received, the following speak for themselves: "Your beer is excellent, please rail a further 4 casks."

George Blowers.

Table listing various types of doors and windows with prices. Includes items like '6/8 Double Sash Windows', '6/8 Double Sash Windows', '6/8 Double Sash Windows'.

PETTER OIL ENGINES. THERE ARE MORE PETTER OIL ENGINES DRIVING PLANTERS' MAHINDRA TRACTORS THAN ANY OTHER BETTER MAKE.



AMUSE STOCKS OF ENGINES AND SPARE. ARE HELD BY THE SOLE AGENTS. J. W. MILLIGAN & Co. P.O. Box 128. NAIROBI.

F. J. THORNTON, R.P.C.

Plumber, Sanitary and Domestic Engineer, House Drainage, Siphonic Tank and Hot and Cold Water Installations, etc.

FOR SALE COAST HOTEL, BAR AND BILLIARD ROOM.

AS A GOING CONCERN. AVERAGE NET PROFIT £120 PER MONTH. For Full Particulars apply to MOMBASA TIMES.

ENGAGEMENT RINGS

Advertisement for engagement rings with various designs and prices. Includes text: 'MADE IN OUR OWN WORKSHOPS. Workmanship and Value Unrivalled.' and 'E. DOBBIE, MANUFACTURERS JEWELLERS, WATCHMAKERS AND OPTICIAN, NAIROBI.'

MAGN' COUGH CURE

We cannot find the Dead, but 'MAGN' has often revived a man of life, and has cured many a chronic cough.

SARONY Virginia Cigarettes

3/6 per 100. 2/6 per 200. 1/6 per 400. RAINIER HARBORER. '303 SPORTING RIFLES' From Shs. 100/- to 320/- Shaw & Hunter, Box 70, NAIROBI.

303 SPORTING RIFLES

From Shs. 100/- to 320/- Shaw & Hunter, Box 70, NAIROBI.

NAIROBI HOUSE.

TO LET. EXCELLENT OFFICES in this Modern Building, situated in most central position in town. Every convenience. Also furnished flat, and dwelling rooms. Basement suitable for Storage purposes. Low rents for suitable tenants. Can be viewed at any time. Apply to H. F. WARD & Co., P. O. Box 124. Tel. 120.

NAIROBI SCHOOL OF BANKING

CHIEF INSTRUCTOR: FRANCIS O'NEILL. The Nairobian School of Banking is held at the NAIROBI HOTEL, NAIROBI. Adults in the best position to receive instruction. Terms: 10/- per session. EDWIN O'NEILL, Manager.

NAIROBI HOUSE.

TO LET. EXCELLENT OFFICES in this Modern Building, situated in most central position in town. Every convenience. Also furnished flat, and dwelling rooms. Basement suitable for Storage purposes. Low rents for suitable tenants. Can be viewed at any time. Apply to H. F. WARD & Co., P. O. Box 124. Tel. 120.

NAIROBI SCHOOL OF BANKING

CHIEF INSTRUCTOR: FRANCIS O'NEILL. The Nairobian School of Banking is held at the NAIROBI HOTEL, NAIROBI. Adults in the best position to receive instruction. Terms: 10/- per session. EDWIN O'NEILL, Manager.

THE EAST AFRICAN STANDARD.
By the largest circulation of any newspaper published in Kenya, Uganda, Tanganyika and Zanzibar.
NET CIRCULATION, AS FURNISHED BY THE POST OFFICE, AS CERTIFIED BY CHARTERED ACCOUNTANTS.
DAILY 10,000
WEEKLY 60,000

GUARANTEED THE LARGEST CIRCULATION OF ANY NEWSPAPER IN KENYA, UGANDA, TANGANYIKA AND ZANZIBAR.

THE EAST

DAILY EDITION.

African Standard

MOMBASA TIMES & UGANDA ARGUS. With which is incorporated The LEADER

THE LARGEST CIRCULATED NEWSPAPER PUBLISHED IN KENYA AND UGANDA.

NAIROBI, SATURDAY, JULY 12, 1964.

Star Press VIRGINIA CIGARETTES



MADE BY HAND, ONE AT A TIME ARDATH STREET LONDON.

Price: 20 CENTS

HOW TO SECURE INVESTORS IN THE GERMAN LOAN.

Problem of Premiers' Conference.
MR. RAMSAY MACDONALD'S NARRATIVE TO PARLIAMENT.

Conciliation v. Militarism.

NO MONEY LEFT TOWARD REPARATIONS UNDER PRESENT CONDITIONS.

Remember the Danger.

Mr. Ramsay Macdonald and his Government are in a difficult position. The German loan is a matter of life and death for the British Empire. The Premier's conference is a failure. The German loan is a matter of life and death for the British Empire. The Premier's conference is a failure.

Making Good Sense.

The Government has shown a lack of sense in its handling of the German loan. The Premier's conference is a failure. The German loan is a matter of life and death for the British Empire. The Premier's conference is a failure.

Today's Football.

The football matches today were of little interest. The Premier's conference is a failure. The German loan is a matter of life and death for the British Empire. The Premier's conference is a failure.

COMMUNIST SELECTED FOR PRESIDENCY.

Progressives' Choice in America.
JOINED WITH LABOR.

Home Bye-Election.

Mr. Ramsay Macdonald's narrative to Parliament is a masterpiece of evasion. The German loan is a matter of life and death for the British Empire. The Premier's conference is a failure.

CONSERVATIVES RETAIN LEWIS.

The Conservative Party has retained Mr. Lewis as its leader. The German loan is a matter of life and death for the British Empire. The Premier's conference is a failure.

Golf in France.

The golf season in France is well advanced. The German loan is a matter of life and death for the British Empire. The Premier's conference is a failure.

MIS GOLF LECTURE IN FORM AGAIN.

The golf lecture in Form is being held again. The German loan is a matter of life and death for the British Empire. The Premier's conference is a failure.

Nombasa Brink.

The Nombasa Brink is a matter of life and death for the British Empire. The Premier's conference is a failure. The German loan is a matter of life and death for the British Empire. The Premier's conference is a failure.

EXTENSIONS TO NBARAKI FOREST.

The extensions to Nbaraki Forest are a matter of life and death for the British Empire. The Premier's conference is a failure. The German loan is a matter of life and death for the British Empire. The Premier's conference is a failure.

FRANCE TO VISIT SOUTH AFRICA.

A Royal Engagement for Next Year.
ACCEPTANCE RECEIVED.

English Cricket.

The match between the South African and English cricket teams is a matter of life and death for the British Empire. The Premier's conference is a failure. The German loan is a matter of life and death for the British Empire. The Premier's conference is a failure.

RESULTS OF SECOND DAY'S PLAY.

The results of the second day's play are as follows. The German loan is a matter of life and death for the British Empire. The Premier's conference is a failure.

The Committee.

The committee has met to discuss the German loan. The Premier's conference is a failure. The German loan is a matter of life and death for the British Empire. The Premier's conference is a failure.

Further.

Further details of the German loan are being reported. The Premier's conference is a failure. The German loan is a matter of life and death for the British Empire. The Premier's conference is a failure.

Further.

Further details of the German loan are being reported. The Premier's conference is a failure. The German loan is a matter of life and death for the British Empire. The Premier's conference is a failure.

Further.

Further details of the German loan are being reported. The Premier's conference is a failure. The German loan is a matter of life and death for the British Empire. The Premier's conference is a failure.

THE OLYMPIC GAMES.

LABOUR'S ATTITUDE ON THE SUDAN.
NO Matter for the League of Nations.

LABOUR'S ATTITUDE ON THE SUDAN.

Mr. Ramsay Macdonald's attitude on the Sudan is a matter of life and death for the British Empire. The Premier's conference is a failure. The German loan is a matter of life and death for the British Empire. The Premier's conference is a failure.

LABOUR'S ATTITUDE ON THE SUDAN.

Mr. Ramsay Macdonald's attitude on the Sudan is a matter of life and death for the British Empire. The Premier's conference is a failure. The German loan is a matter of life and death for the British Empire. The Premier's conference is a failure.

LABOUR'S ATTITUDE ON THE SUDAN.

Mr. Ramsay Macdonald's attitude on the Sudan is a matter of life and death for the British Empire. The Premier's conference is a failure. The German loan is a matter of life and death for the British Empire. The Premier's conference is a failure.

LABOUR'S ATTITUDE ON THE SUDAN.

Mr. Ramsay Macdonald's attitude on the Sudan is a matter of life and death for the British Empire. The Premier's conference is a failure. The German loan is a matter of life and death for the British Empire. The Premier's conference is a failure.

LABOUR'S ATTITUDE ON THE SUDAN.

Mr. Ramsay Macdonald's attitude on the Sudan is a matter of life and death for the British Empire. The Premier's conference is a failure. The German loan is a matter of life and death for the British Empire. The Premier's conference is a failure.

LABOUR'S ATTITUDE ON THE SUDAN.

Mr. Ramsay Macdonald's attitude on the Sudan is a matter of life and death for the British Empire. The Premier's conference is a failure. The German loan is a matter of life and death for the British Empire. The Premier's conference is a failure.

LABOUR'S ATTITUDE ON THE SUDAN.

Mr. Ramsay Macdonald's attitude on the Sudan is a matter of life and death for the British Empire. The Premier's conference is a failure. The German loan is a matter of life and death for the British Empire. The Premier's conference is a failure.

LABOUR'S ATTITUDE ON THE SUDAN.

Mr. Ramsay Macdonald's attitude on the Sudan is a matter of life and death for the British Empire. The Premier's conference is a failure. The German loan is a matter of life and death for the British Empire. The Premier's conference is a failure.

LABOUR'S ATTITUDE ON THE SUDAN.

Mr. Ramsay Macdonald's attitude on the Sudan is a matter of life and death for the British Empire. The Premier's conference is a failure. The German loan is a matter of life and death for the British Empire. The Premier's conference is a failure.

MAY GERMAN MISSIONS ENTER?

Colonial Office Decides in the Affirmative.

MAY GERMAN MISSIONS ENTER?

The Colonial Office has decided in the affirmative. The German loan is a matter of life and death for the British Empire. The Premier's conference is a failure.

MAY GERMAN MISSIONS ENTER?

The Colonial Office has decided in the affirmative. The German loan is a matter of life and death for the British Empire. The Premier's conference is a failure.

MAY GERMAN MISSIONS ENTER?

The Colonial Office has decided in the affirmative. The German loan is a matter of life and death for the British Empire. The Premier's conference is a failure.

MAY GERMAN MISSIONS ENTER?

The Colonial Office has decided in the affirmative. The German loan is a matter of life and death for the British Empire. The Premier's conference is a failure.

MAY GERMAN MISSIONS ENTER?

The Colonial Office has decided in the affirmative. The German loan is a matter of life and death for the British Empire. The Premier's conference is a failure.

MAY GERMAN MISSIONS ENTER?

The Colonial Office has decided in the affirmative. The German loan is a matter of life and death for the British Empire. The Premier's conference is a failure.

MAY GERMAN MISSIONS ENTER?

The Colonial Office has decided in the affirmative. The German loan is a matter of life and death for the British Empire. The Premier's conference is a failure.

MAY GERMAN MISSIONS ENTER?

The Colonial Office has decided in the affirmative. The German loan is a matter of life and death for the British Empire. The Premier's conference is a failure.

MAY GERMAN MISSIONS ENTER?

The Colonial Office has decided in the affirmative. The German loan is a matter of life and death for the British Empire. The Premier's conference is a failure.

FINN RUNNER ESTABLISHES NEW RECORDS.

More records lowered.

FINN RUNNER ESTABLISHES NEW RECORDS.

More records lowered.

FINN RUNNER ESTABLISHES NEW RECORDS.

More records lowered.

FINN RUNNER ESTABLISHES NEW RECORDS.

More records lowered.

FINN RUNNER ESTABLISHES NEW RECORDS.

More records lowered.

FINN RUNNER ESTABLISHES NEW RECORDS.

More records lowered.

FINN RUNNER ESTABLISHES NEW RECORDS.

More records lowered.

FINN RUNNER ESTABLISHES NEW RECORDS.

More records lowered.

FINN RUNNER ESTABLISHES NEW RECORDS.

More records lowered.

FINN RUNNER ESTABLISHES NEW RECORDS.

More records lowered.

LABOUR'S ATTITUDE ON THE SUDAN.

No matter for the League of Nations.

LABOUR'S ATTITUDE ON THE SUDAN.

No matter for the League of Nations.

LABOUR'S ATTITUDE ON THE SUDAN.

No matter for the League of Nations.

LABOUR'S ATTITUDE ON THE SUDAN.

No matter for the League of Nations.

LABOUR'S ATTITUDE ON THE SUDAN.

No matter for the League of Nations.

LABOUR'S ATTITUDE ON THE SUDAN.

No matter for the League of Nations.

LABOUR'S ATTITUDE ON THE SUDAN.

No matter for the League of Nations.

LABOUR'S ATTITUDE ON THE SUDAN.

No matter for the League of Nations.

LABOUR'S ATTITUDE ON THE SUDAN.

No matter for the League of Nations.

LABOUR'S ATTITUDE ON THE SUDAN.

No matter for the League of Nations.

LABOUR'S ATTITUDE ON THE SUDAN.

No matter for the League of Nations.

LABOUR'S ATTITUDE ON THE SUDAN.

No matter for the League of Nations.

LABOUR'S ATTITUDE ON THE SUDAN.

No matter for the League of Nations.

LABOUR'S ATTITUDE ON THE SUDAN.

No matter for the League of Nations.

LABOUR'S ATTITUDE ON THE SUDAN.

No matter for the League of Nations.

LABOUR'S ATTITUDE ON THE SUDAN.

No matter for the League of Nations.

LABOUR'S ATTITUDE ON THE SUDAN.

No matter for the League of Nations.

LABOUR'S ATTITUDE ON THE SUDAN.

No matter for the League of Nations.

LABOUR'S ATTITUDE ON THE SUDAN.

No matter for the League of Nations.

LABOUR'S ATTITUDE ON THE SUDAN.

No matter for the League of Nations.

DAILY WEATHER REPORT.
The weather report for Friday (July 11) is as follows:
London: Partly cloudy, 65-75.
Paris: Partly cloudy, 60-70.
New York: Partly cloudy, 65-75.
Bombay: Partly cloudy, 75-85.
Cairo: Partly cloudy, 70-80.
Sydney: Partly cloudy, 65-75.
Auckland: Partly cloudy, 60-70.
Wellington: Partly cloudy, 60-70.
Christchurch: Partly cloudy, 60-70.
Dunedin: Partly cloudy, 60-70.
Melbourne: Partly cloudy, 60-70.
Brisbane: Partly cloudy, 60-70.
Perth: Partly cloudy, 60-70.
Adelaide: Partly cloudy, 60-70.
Hobart: Partly cloudy, 60-70.
Wellington: Partly cloudy, 60-70.
Christchurch: Partly cloudy, 60-70.
Dunedin: Partly cloudy, 60-70.
Melbourne: Partly cloudy, 60-70.
Brisbane: Partly cloudy, 60-70.
Perth: Partly cloudy, 60-70.
Adelaide: Partly cloudy, 60-70.
Hobart: Partly cloudy, 60-70.

Sludobaner
MOTOR B.S.A. CYCLES.
NEW SERIES & WE QUOTE THE FOLLOWING PRICES:
92 H.P. Model "B" four stroke engine, clutch, lights, etc. - £75 0 0
92 H.P. "L" side valve engine - £75 0 0
92 H.P. "H" H-valve engine - £90 0 0
41 H.P. "H" H-valve engine - £110 0 0
CALL & INSPECT AT
K. McIV & CO.
10, RIVER STREET, NAIROBI.

K. McIV & CO.
10, RIVER STREET, NAIROBI.

REMEMBER THE NAME "VOONIA" It is the TEA YOU WANT

Ask for it and insist on getting it your own does not stock this

prices "S/S" 1/6 per lb. net. "S/S" 1/6 per lb. net.

Established 1904.

74, NAIROBI.

Mackinnon Brothers

SOLE AGENTS FOR THE EAST AFRICAN TERRITORIES AND KENYA

ALL KINDS OF TEAS, BLENDINGS AND PACKINGS

CHANGES MODERATE

Lanchan and Woolchand Bros.

10, Box 275, Government Road, NAIROBI.

THE KENYA FARMERS' ASSOCIATION

STOCKS OF:

MAIZE AND MAIZE MEAL

on hand at current Market rates.

Apply: The Secretary, P. O. BOX 35, AKURU.

JUST WHAT YOU WANT IN THE LINE OF CLOTHING FOR OTHER AND INFANT

R. O. PRESTON

Hartlage Street NAIROBI

The TUMBAVA SAW MILLS CO

P. O. KEDWA

PODO OR MUSHERAGI.

CEGAR

FOR THE LOTS ON OVER

ALL SIZES AND DESCRIPTIONS, BROADS OR MACHINED.

WAGONS WANTS AT ALL TIMES AND SPECIALITY

PRICES AND STOCKS LISTED AT SPECIALITY

REASONABLE QUANTITIES AND AT A GOOD PROFIT.

— E. E. LINDSAY ONLY. AT

117, 5 PER CENT. ESTATE.

117, 5 PER CENT. ESTATE.

117, 5 PER CENT. ESTATE.

SHORT LOANS GRANTED

£1. TO £1,000

CALL ON ANY OF THE—

Kenya Loan & Discount Co.,

NAIROBI HOUSE, (Opp. Bank)

111, Box 246

THE EAST AFRICAN TERRITORIES AND KENYA

111, Box 246

NAIROBI HOUSE, (Opp. Bank)

111, Box 246

NAIROBI HOUSE, (Opp. Bank)

SHORT LOANS GRANTED

£1. TO £1,000

CALL ON ANY OF THE—

Kenya Loan & Discount Co.,

NAIROBI HOUSE, (Opp. Bank)

111, Box 246

THE EAST AFRICAN TERRITORIES AND KENYA

111, Box 246

NAIROBI HOUSE, (Opp. Bank)

111, Box 246

NAIROBI HOUSE, (Opp. Bank)

SHORT LOANS GRANTED

£1. TO £1,000

CALL ON ANY OF THE—

Kenya Loan & Discount Co.,

NAIROBI HOUSE, (Opp. Bank)

111, Box 246

THE EAST AFRICAN TERRITORIES AND KENYA

111, Box 246

NAIROBI HOUSE, (Opp. Bank)

111, Box 246

NAIROBI HOUSE, (Opp. Bank)

REMEMBER THE NAME "VOONIA" It is the TEA YOU WANT

Ask for it and insist on getting it your own does not stock this

prices "S/S" 1/6 per lb. net. "S/S" 1/6 per lb. net.

Established 1904.

74, NAIROBI.

Mackinnon Brothers

SOLE AGENTS FOR THE EAST AFRICAN TERRITORIES AND KENYA

ALL KINDS OF TEAS, BLENDINGS AND PACKINGS

CHANGES MODERATE

Lanchan and Woolchand Bros.

10, Box 275, Government Road, NAIROBI.

THE EAST AFRICAN BY APPOINTMENT

THE EAST AFRICAN BY APPOINTMENT

THE EAST AFRICAN BY APPOINTMENT

THE EAST AFRICAN BY APPOINTMENT

THE EAST AFRICAN BY APPOINTMENT

THE EAST AFRICAN BY APPOINTMENT

THE EAST AFRICAN BY APPOINTMENT

THE EAST AFRICAN BY APPOINTMENT

THE EAST AFRICAN BY APPOINTMENT

THE EAST AFRICAN BY APPOINTMENT

THE EAST AFRICAN BY APPOINTMENT

THE EAST AFRICAN BY APPOINTMENT

THE EAST AFRICAN BY APPOINTMENT

THE EAST AFRICAN BY APPOINTMENT

THE EAST AFRICAN BY APPOINTMENT

THE EAST AFRICAN BY APPOINTMENT

THE EAST AFRICAN BY APPOINTMENT

THE EAST AFRICAN BY APPOINTMENT

THE EAST AFRICAN BY APPOINTMENT

THE EAST AFRICAN BY APPOINTMENT

THE EAST AFRICAN BY APPOINTMENT

U. S. S. EAST AFRICAN STANDARD
DAILY EDITION
 Advertisement Rates.
 Advertisements are charged only on terms to appear.
DORCHESTER
 Berlin, Mangrove, and District, one per line for six weeks, with a minimum of 20 words.
DISCONTINUED
 Ads. at 10 cents per line for one week, for all other rates.
 All the above advertisements are printed by advance and no insertion will be made in this order.
FOR SALE
 115 ANGLICO...
 A limited quantity of Camp...
 ONE "Buggy" Durant...
 FOR SALE...
A. J. S....
OVERSEAS TYPEWRITERS...
BOARD & RESIDENCE
THE HILL...
WANTED...
WANTED...
WANTED...
WANTED...
SITUATIONS VACANT
NURSING SISTER...
WANTED...
WANTED...
WANTED...
ENTERTAINMENT
 THEATRE ROYAL...
ENTERTAINMENT

TO LET
EXCELLENT Office in Civic
IMMEDIATE occupation
TWO splendid offices
MANAGER on Farm
FOR SALE
115 ANGLICO
A Limited Quantity of Camp
ONE "Buggy" Durant
FOR SALE
A. J. S.
OVERSEAS TYPEWRITERS
BOARD & RESIDENCE
THE HILL
WANTED
WANTED
WANTED
SITUATIONS VACANT
NURSING SISTER
WANTED
WANTED
WANTED
ENTERTAINMENT

THE EAST AFRICAN STANDARD
 Uganda made surprisingly well...
 Kampala is smaller...
 The special commissioner...
 From Nairobi...
MANAGER on Farm
FOR SALE
115 ANGLICO
A Limited Quantity of Camp
ONE "Buggy" Durant
FOR SALE
A. J. S.
OVERSEAS TYPEWRITERS
BOARD & RESIDENCE
THE HILL
WANTED
WANTED
WANTED
SITUATIONS VACANT
NURSING SISTER
WANTED
WANTED
WANTED
ENTERTAINMENT

EQUATOR SAW MILLS
 SADLER STREET,
NAIROBI.
 Telephone No. 113
 P. O. Box 201.

Tenders are invited for the supply of Posho for six months.
 Delivered at our Nairobi and Maji Mazuri Mills.

NAIROBI CORPORATION

The Corporation require the services of a Junior Clerk to assist in the collection of rates. The salary offered is Shs. 600/- per month. Apply by letter giving particulars of education, references, etc. by July 15th to Town Clerk, Nairobi.

P. O. BOX 201
CENTRAL AGENCY, NAIROBI.

FOR SALE
C. G. Y. L. HOUSE
MUFF FOR HIRE
SIX NATIVE TYPES
SOMETHING NEW IN PICTURES.
R. J. Fairfax Franklin
BRITISH EMPIRE EXHIBITION
ELLWOOD'S WHITE HELMET.
32.50
MAXWELL BRADY Co., NAIROBI
Jockey Club of Kenya.
KENYA ST. LEGER 1926, AND EAST AFRICAN DERBY 1926
COFFEE PLANTERS NOTE

A. DAVIS.
 AGENTS & GENERAL AGENT
HAS FOR DISPOSAL
PARKLANDS
PARKLANDS-House and ten
PARKLANDS-House and ten
KENYAN
MAHARAJA-House, six rooms
RELIABLE SERVICE AND EXPERT ADVICE FOR PROSPECTIVE INVESTORS
AGENCY SECRETARIAL AND ASSISTANT WORK OF ALL DESCRIPTIONS
UNDEKTAKT
LEADERS BUILDINGS
PHONE 301.
DAY or Night, J. P. PEARSON, BOX 179, NAIROBI.
OKLAHOMA PRIVATE HOTEL.
SMOKING ROOM & LOUNGE
AFEL.
MISS H. HARTLEY.
PLACE YOURSELF
RIGHT SIDE OF THE DANGER LINE.
SMOKER
M. D. KAMPP.
COMMERCIAL & TECHNICAL TRAINING BY POST.
FREE DESCRIPTIVE BOOKLETS.

The Week's Weather.

Station	Baromet.	Temp.	Wind	Extremes
Nairobi	30.00	82.00	W. 1000	68.00-84.00
Kilimanjaro	30.00	68.00	W. 1000	58.00-78.00
Malindi	30.00	82.00	W. 1000	68.00-84.00
Mombasa	30.00	82.00	W. 1000	68.00-84.00
Witu	30.00	82.00	W. 1000	68.00-84.00
Malindi	30.00	82.00	W. 1000	68.00-84.00
Mombasa	30.00	82.00	W. 1000	68.00-84.00
Witu	30.00	82.00	W. 1000	68.00-84.00
Malindi	30.00	82.00	W. 1000	68.00-84.00
Mombasa	30.00	82.00	W. 1000	68.00-84.00
Witu	30.00	82.00	W. 1000	68.00-84.00

M. S. M. S. M. S.
M. S. M. S. M. S.
M. S. M. S. M. S.
M. S. M. S. M. S.
M. S. M. S. M. S.

THE HOTEL METROPOL
 MOMBASA.

The Hotel Metropol has been partly rebuilt to afford greater ventilation and for the installation of modern sanitation. Entirely re-decorated throughout and refurnished it is now, through the oldest, the most up-to-date Hotel on the Island. The management assure an excellent table and an efficient service, Terms from Shs. 18 per day inclusive, special weekly and monthly terms on application.

THE HOTEL METROPOL
 P. O. BOX 201
 Telephone No.

THE HOTEL METROPOL
 MOMBASA.

The Hotel Metropol has been partly rebuilt to afford greater ventilation and for the installation of modern sanitation. Entirely re-decorated throughout and refurnished it is now, through the oldest, the most up-to-date Hotel on the Island. The management assure an excellent table and an efficient service, Terms from Shs. 18 per day inclusive, special weekly and monthly terms on application.

THE HOTEL METROPOL
 MOMBASA.

The Hotel Metropol has been partly rebuilt to afford greater ventilation and for the installation of modern sanitation. Entirely re-decorated throughout and refurnished it is now, through the oldest, the most up-to-date Hotel on the Island. The management assure an excellent table and an efficient service, Terms from Shs. 18 per day inclusive, special weekly and monthly terms on application.

THE WORLD'S PREMIER MOTOR CYCLE

<p>AUSTRALIA JUNIOR GRAND PRIX. Healths Just Received.</p> <p>285 MILES SCOTLAND RACE. A.J.S. 24 - 1st, 2nd & 3rd.</p> <p>104 MILES HANDBICAP RACE A.J.S. 24 - 1st, 2nd & 3rd.</p> <p>300 MILES UNLIMITED CAPACITY. A.J.S. 24 - 3rd, 4th & 5th.</p>	<p>O.V.T. SUPER SPORTS MODEL. £90</p> <p>A.J.S.</p> <p>2 3/4</p> <p>SIDE VALVE SPORTS MODEL. £85</p> <p>SIDE VALVE TOURING MODEL. £90</p>
---	--

SOLE AGENTS: CARR, LAWSON & Co., Ltd. FOR KENYA.

OVERLAND

TOURING CAR £242
SAFARI £205



Magnum Ignition 213 extra.

DELIVERY FROM STOCK.

THE OVERLAND IS THE PRODUCT OF YEARS OF EXPERIENCE IN THE COLONIES.

MONCKTON & SEAR LTD.

84th Avenue - NAIROBI.

"SHELL" MOTOR SPIRIT.

SPONSORED BY:

W. HAYWARD & CO.	MOTOR MOUNTS & EXCHANGE.
THE SERVICE CO.	MORNINGTON & CO.
BRIBER & SIMONS.	BRIMLEY'S GARAGE, HARDING STREET.
ROBERTS & SUTTON.	ROBERTS & SUTTON, KARORI.
KOBE & MONTGOMERY, TRURA.	SPENCERBRIGHT STEEL.
S. J. PALMER, KARORI.	NAIVABA.
GILBERT & ROBERTS, KARORI.	JACOBS LTD., KARORI.
EUROPEAN MOTOR, KIRURU.	H. E. HEND, KIMWUA.
ROYAL TRADING CO., OLEGA.	PONDA MILLA FOSTER, MARIYU.
ELDER & McKENNA, KARORI.	ROBERTS & SUTTON, KARORI.
BARTY & ROBERTS, KARORI.	O. HAYWARD, KARORI.

SHELL MOTOR SPIRIT IS AD. AND ALL DEPARTMENTS OF THE SMITH ENGINEERING CO. LTD.

THE BRITISH IMPERIAL OIL Co., Ltd.

"CANNED IN KENYA"

UPLANDS

WILDERNESS BRAW. Sliced Ham.
PORK BARBERS. PORK HAM.
LUNC TONGUES. Blue, etc.
BAM AND VEGETABLES.

Special to be made in various sizes etc.

Equal to or better than the best imported.

"We shall always stock these and shall not import any more."

"These are the best of imported goods in our stores with you will be trustworthy largely."

SOUPS and PASTES will shortly be on the market.

UPLANDS TINNED GOODS are stocked by all the leading stores in Kenya and adjoining territories.

PLATEAU MAIZE GROWERS HAVE

MAIZE & POSHO FOR SALE IN LARGE & SMALL QUANTITIES.

WE WILL ENTER INTO CONTRACTS

For Further Particulars Apply To:-

THE SECRETARY,
PLATEAU MAIZE GROWERS, ELDORET.

TO CONTRACTORS.

Tenders are invited for the supplying and partial construction of Plateau Road. The work is partly in masonry and partly in timber.

Specifications and forms of tender may be obtained from the undersigned, with whom sealed tenders should be deposited on or before the date below, noon on Saturday, 20th July, 1924.

The amount of any tender may not be exceeded.

C. B. BAYNE,
Manager of the Plateau.

Held at Eldoret, 12th July, 1924.

Ford

THE PREDOMINATING CAR

Genuine *Ford* Service

THE PREDOMINATING SERVICE.

The Service of The

AUTHORISED FORD SALES AND SERVICE DEALERS

AT **NOMBASA**

NAIROBI MOSHI

L. ROSENTHAL,

TRUST CHAMBERS, GOVERNMENT ROAD

Phone No. 420. NAIROBI. P. O. Box 114.

BOOKS OPEN ON ALL IMPORTANT ENGLISH RACES

THE OLDEST BOOTHING INSURANCE OFFICE

THE CALEDONIAN

INSURANCE COMPANY.

INCORPORATED BY ROYAL CHARTER A.D. 1860

FIRE RATES ON APPLICATION TO THE CHIEF AGENTS,
K. O. HAMILTON Ltd.
P. O. Box 302. NAIROBI. Phone 305.

SAM HIFKIN

WAGON BUILDERS,
BLANCKETT FARMERS
P. O. Box 475
Phone 142.

**ROCK STORE,
NAIROBI.**

LITTLE'S FLY KILLER

HARMLESS TO HUMAN BEINGS AND DOMESTIC ANIMALS, BUT IMMEDIATELY FATAL TO FLIES, GNATS, COCKROACHES, MOSQUITOES, AND ALL INSECT PESTS.

SUPPLIED IN PINT TINS, 2-75

A. H. WARDLE & Co., Ltd.

WHOLESALE & RETAIL CHEMISTS,
NAIROBI & MOMBASA.
P. O. Box 103. Phone 36.

THEATRE ROYAL

MATINEE TO-DAY at 3-30.

ALL COMEDY PROGRAMME

TO-NIGHT

GRAND VARIETY NIGHT

Vaudeville Entertainment.

ALL MUSICAL PROGRAMME. NEW TALENT.

Popular Prices:

Stalls Shs. 5/- & Shs. 3/-
Circle " 5/- & " 3/-
Pit Stalls, " 2/- & Pit " 1/-

PLACES NOW OPEN - BOOK EARLY.

Orchestra Every Night.

the progress of Kenya, but the paragraph devoted to an obviously erroneous, no ground in its own right, but which was not intended, to be the basis of and authority for a widespread campaign against the Colony that we cannot allow to be put unopposed. We regard the misapprehension in the Colony that we are not aware that at any stage in their residence in Kenya, the Dutch farmers of the Plateau may be distinguished as a "disruptive" body of action, which is a view to deprecate the impression that it has always been the belief of the British farmer and settler in the Colony that they were the Dutch farmers of the Plateau on the Dutchman today as it does in his former land and although we have for Dutch farmers on a large scale in Kenya existing in "squads" of the type country districts of the United Kingdom.

The reference to the long list of unemployed in the report is equally unjust and untrue as it is untrue that the "mass" European labor force in Kenya is not to be considered during the disturbance of

The Pony Breeders Society's GYM KHANA

WILL BE HELD

On Monday 4th August at 1-30

AT THE

NAIROBI RACECOURSE

AT THE RIVER HUNT BEACH THE SECRETARY, P.O. Box 100

NAIROBI NOT LEAVE THAT MONDAY, 25th JULY

ADMISSION TO GROUNDS FREE HILLTOPS 5/-

PROGRAMME:

1. Tent Fetching	7. Green Green Race
2. Pole Sling and Spoon Race	8. Man of Saddle Race
3. Mounted Sling and Spoon Race	9. Handicap Driving
4. Pig Slinging	10. Ladies Race (3 Furlongs)
5. Ladies and-Shop Stakes	11. Men's Race (2 Furlongs)
6. Dangling Race	12. Man's Saddle Race

EVENTS 1-9 Entry Fee Shs 2/-
EVENTS 10-12 Entry Fee Shs 3/-
ENTRIES MUST REACH THE SECRETARY, P.O. BOX 100 NAIROBI NOT LEAVE THAT MONDAY, 25th JULY

THE EAST AFRICAN STANDARD

Members Times & Uganda Agency

SATURDAY, JULY 12, 1924.

A LITTLE IMPRESSION.

In the East African Standard on Thursday there appeared an extract from the African World to the effect that Kenya "had discovered that the Union, if a new feud with a 'poor white' race is averted, would be a boon to the certain population of it." The paragraph must be erroneous, especially in regard to the certain population of it, and indeed "South Africa" "Dutch farmers on the Plateau and

trade and, one after another, the number of a share-preneur, which may be a programme occasionally, and the most of the country. These men were wanted, through mobilization, and the Government was not of persons of an entirely different category - as well as the men who were not wanted, but within the financial means to last through the bad years. They were with an industry by the way, and in many cases of which we are given the satisfaction of a successful help was a series of letters to legislative proposals.

The time is not months that Kenyan has improved steadily. The country is probably permanently, and the number of men who are not wanted, but within the financial means to last through the bad years. They were with an industry by the way, and in many cases of which we are given the satisfaction of a successful help was a series of letters to legislative proposals.

The time is not months that Kenyan has improved steadily. The country is probably permanently, and the number of men who are not wanted, but within the financial means to last through the bad years. They were with an industry by the way, and in many cases of which we are given the satisfaction of a successful help was a series of letters to legislative proposals.

The time is not months that Kenyan has improved steadily. The country is probably permanently, and the number of men who are not wanted, but within the financial means to last through the bad years. They were with an industry by the way, and in many cases of which we are given the satisfaction of a successful help was a series of letters to legislative proposals.

UNDER THE STANDARD CLOCK

THE BERING COURT.

Another controversy regarding the Bering Court, this involving a Lake Baring and along the coast of the

Power of the M.O.H.

The M.O.H. is a person of a high position and one of the most important in the country. The M.O.H. is a person of a high position and one of the most important in the country. The M.O.H. is a person of a high position and one of the most important in the country. The M.O.H. is a person of a high position and one of the most important in the country. The M.O.H. is a person of a high position and one of the most important in the country.

MODEL DAIRY FARM

Natural Diseases of "Karyas"

A PURE MILK IDEAL

"A. A. Handled Spout"

Our long for the first hand... a few miles from town... living places, given away to the milk...

Holden's forest road

Holden's forest road... a very good road... round the steep course over the hills...

The Milk Bureau

"Karyas" is in charge of Captain... young, strong, pure... of the farm with him...

Lighting Efficiently

The subject of lighting and dimming... received attention, but... recommendation regarding...

Township Rules

The Committee also discussed... the local concerns... the maintenance of a park...

Memphis Milk's Death

The death is announced of Mr. J. H. Smith... blackwater fever at the Hospital... Memphis and his wife...

SEWING MACHINES

WITH A GUARANTEE FOR GOOD WORK AND DURABILITY

WE HAVE JUST RECEIVED

THE NEW

FRUITER and

ROBERTS'S

NEEDLES in packets of 10, 25, 40, 50, 60, 75, 100

WHEN ORDERING SPECIFY PLEASE QUOTE MODEL

WE 5 for Cash

OFF THESE PAGES

SPEED LIMIT FOR NAIBOIS

15 mph Recommendation by Committee

REPORT SUGGESTIONS

"The East African Standard"

It is a well known fact... the Traffic Commission... the first portion of its work...

It is understood that

It is understood that... the Traffic Commission... the first portion of its work...

It is hoped that the Government

It is hoped that the Government... will be able to... the first portion of its work...

It is hoped that the Government

It is hoped that the Government... will be able to... the first portion of its work...

It is hoped that the Government

It is hoped that the Government... will be able to... the first portion of its work...

It is hoped that the Government

It is hoped that the Government... will be able to... the first portion of its work...

It is hoped that the Government

It is hoped that the Government... will be able to... the first portion of its work...

It is hoped that the Government

It is hoped that the Government... will be able to... the first portion of its work...

It is hoped that the Government

It is hoped that the Government... will be able to... the first portion of its work...

It is hoped that the Government

It is hoped that the Government... will be able to... the first portion of its work...

THE BENEFIT OF PERSONAL PANKLANDS CLUB TENNIS TOURNAMENT

Saturnalia's Tribute to Kenya

Full List of Handicaps and Brackets

FIRST FIXTURES

The following are the handicaps... Club Tennis Tournament... which opens to-day.

Men's Singles

Men's Singles... (1) vs (2)... (3) vs (4)... (5) vs (6)...

Men's Doubles

Men's Doubles... (1) vs (2)... (3) vs (4)... (5) vs (6)...

Men's Triples

Men's Triples... (1) vs (2)... (3) vs (4)... (5) vs (6)...

Men's Quadruples

Men's Quadruples... (1) vs (2)... (3) vs (4)... (5) vs (6)...

Men's Pentuples

Men's Pentuples... (1) vs (2)... (3) vs (4)... (5) vs (6)...

Men's Hexuples

Men's Hexuples... (1) vs (2)... (3) vs (4)... (5) vs (6)...

Men's Septuples

Men's Septuples... (1) vs (2)... (3) vs (4)... (5) vs (6)...

Men's Octuples

Men's Octuples... (1) vs (2)... (3) vs (4)... (5) vs (6)...

Men's Nines

Men's Nines... (1) vs (2)... (3) vs (4)... (5) vs (6)...

CORRESPONDENCE

WHAT TO DO WHEN YOU WIN A FORTUNE

London Enjoys on the Luck of a Nairobi Lady

MAIZE PRICES

The Editor, "A. A. Standard" - Sir: There has been good deal of correspondence...

Men's Singles

Men's Singles... (1) vs (2)... (3) vs (4)... (5) vs (6)...

Men's Doubles

Men's Doubles... (1) vs (2)... (3) vs (4)... (5) vs (6)...

Men's Triples

Men's Triples... (1) vs (2)... (3) vs (4)... (5) vs (6)...

Men's Quadruples

Men's Quadruples... (1) vs (2)... (3) vs (4)... (5) vs (6)...

Men's Pentuples

Men's Pentuples... (1) vs (2)... (3) vs (4)... (5) vs (6)...

Men's Hexuples

Men's Hexuples... (1) vs (2)... (3) vs (4)... (5) vs (6)...

Men's Septuples

Men's Septuples... (1) vs (2)... (3) vs (4)... (5) vs (6)...

Men's Octuples

Men's Octuples... (1) vs (2)... (3) vs (4)... (5) vs (6)...

Men's Nines

Men's Nines... (1) vs (2)... (3) vs (4)... (5) vs (6)...

WHAT TO DO WHEN YOU WIN A FORTUNE

London Enjoys on the Luck of a Nairobi Lady

MAIZE PRICES

"The Editor, "A. A. Standard"

Sir: There has been good deal of correspondence... the London Standard...

Men's Singles

Men's Singles... (1) vs (2)... (3) vs (4)... (5) vs (6)...

Men's Doubles

Men's Doubles... (1) vs (2)... (3) vs (4)... (5) vs (6)...

Men's Triples

Men's Triples... (1) vs (2)... (3) vs (4)... (5) vs (6)...

Men's Quadruples

Men's Quadruples... (1) vs (2)... (3) vs (4)... (5) vs (6)...

Men's Pentuples

Men's Pentuples... (1) vs (2)... (3) vs (4)... (5) vs (6)...

Men's Hexuples

Men's Hexuples... (1) vs (2)... (3) vs (4)... (5) vs (6)...

Men's Septuples

Men's Septuples... (1) vs (2)... (3) vs (4)... (5) vs (6)...

Men's Octuples

Men's Octuples... (1) vs (2)... (3) vs (4)... (5) vs (6)...

Men's Nines

Men's Nines... (1) vs (2)... (3) vs (4)... (5) vs (6)...

WHAT TO DO WHEN YOU WIN A FORTUNE

London Enjoys on the Luck of a Nairobi Lady

MAIZE PRICES

"The Editor, "A. A. Standard"

Sir: There has been good deal of correspondence... the London Standard...

Men's Singles

Men's Singles... (1) vs (2)... (3) vs (4)... (5) vs (6)...

Men's Doubles

Men's Doubles... (1) vs (2)... (3) vs (4)... (5) vs (6)...

Men's Triples

Men's Triples... (1) vs (2)... (3) vs (4)... (5) vs (6)...

Men's Quadruples

Men's Quadruples... (1) vs (2)... (3) vs (4)... (5) vs (6)...

Men's Pentuples

Men's Pentuples... (1) vs (2)... (3) vs (4)... (5) vs (6)...

Men's Hexuples

Men's Hexuples... (1) vs (2)... (3) vs (4)... (5) vs (6)...

Men's Septuples

Men's Septuples... (1) vs (2)... (3) vs (4)... (5) vs (6)...

Men's Octuples

Men's Octuples... (1) vs (2)... (3) vs (4)... (5) vs (6)...

Men's Nines

Men's Nines... (1) vs (2)... (3) vs (4)... (5) vs (6)...

LYRIC HALL THE DEMON THE DEMON THE DEMON THE DEMON THE DEMON THE DEMON THE DEMON THE DEMON THE DEMON THE DEMON

East Africa & Uganda Natural History Society WILL PRESENT AT THE Theatre Royal on Thursday, 24th July and Friday, 25th July at 8-45 pm MR and MRS. MARTIN JOHNSON'S WORLD FAMOUS FILM

Trailing Kenya's Wild Animals POSITIVELY THE GREATEST SENSATION EVER BROUGHT TO NAIROBI. NEVER IN THE HISTORY OF THE CAMERA HAVE THERE BEEN PICTURES TO EQUAL THESE. ADMISSION: Sh. 5 & 4. BOOKING AT THE EAST AFRICAN STANDARD.

NOW, Concerning BOOTS None better than the MAN OF THE FARM The Importance of FOOT HAFTERS THE BEST TRAGEDY EVER CONCEIVED IN FOOT-JOY WE ANNOUNCE HERE WITH THE BEST TRAGEDY EVER CONCEIVED WITH FOOT-JOY AND HONOR AND THE JOY OF WALKING. TRAMP BOOTS AND THE COMPANION OF FOOT-JOY WE ANNOUNCE HERE WITH THE BEST TRAGEDY EVER CONCEIVED WITH FOOT-JOY AND HONOR AND THE JOY OF WALKING. KERRY BOOTS 14/- CHURNS 50/- FLYING BOOTS 60/- FIELD BOOTS 70/- GOLDEN TAN DERBY BOOTS 35/- TRAMP BOOTS 40/- LATHER SOLES 40/- CHURNS 45/-

LOWER IN WEST AFRICA

The following are the handicaps... Club Tennis Tournament... which opens to-day.

Men's Singles

Men's Singles... (1) vs (2)... (3) vs (4)... (5) vs (6)...

Men's Doubles

Men's Doubles... (1) vs (2)... (3) vs (4)... (5) vs (6)...

Men's Triples

Men's Triples... (1) vs (2)... (3) vs (4)... (5) vs (6)...

Men's Quadruples

Men's Quadruples... (1) vs (2)... (3) vs (4)... (5) vs (6)...

By the "Newspaper"

The following are the handicaps... Club Tennis Tournament... which opens to-day.

Men's Singles

Men's Singles... (1) vs (2)... (3) vs (4)... (5) vs (6)...

Men's Doubles

Men's Doubles... (1) vs (2)... (3) vs (4)... (5) vs (6)...

Men's Triples

Men's Triples... (1) vs (2)... (3) vs (4)... (5) vs (6)...

Men's Quadruples

Men's Quadruples... (1) vs (2)... (3) vs (4)... (5) vs (6)...

CHANGERS ARRIVED U.S.A

The following are the handicaps... Club Tennis Tournament... which opens to-day.

Men's Singles

Men's Singles... (1) vs (2)... (3) vs (4)... (5) vs (6)...

Men's Doubles

Men's Doubles... (1) vs (2)... (3) vs (4)... (5) vs (6)...

Men's Triples

Men's Triples... (1) vs (2)... (3) vs (4)... (5) vs (6)...

Men's Quadruples

Men's Quadruples... (1) vs (2)... (3) vs (4)... (5) vs (6)...

LOWER IN WEST AFRICA

The following are the handicaps... Club Tennis Tournament... which opens to-day.

Men's Singles

Men's Singles... (1) vs (2)... (3) vs (4)... (5) vs (6)...

Men's Doubles

Men's Doubles... (1) vs (2)... (3) vs (4)... (5) vs (6)...

Men's Triples

Men's Triples... (1) vs (2)... (3) vs (4)... (5) vs (6)...

Men's Quadruples

Men's Quadruples... (1) vs (2)... (3) vs (4)... (5) vs (6)...

By the "Newspaper"

The following are the handicaps... Club Tennis Tournament... which opens to-day.

Men's Singles

Men's Singles... (1) vs (2)... (3) vs (4)... (5) vs (6)...

Men's Doubles

Men's Doubles... (1) vs (2)... (3) vs (4)... (5) vs (6)...

Men's Triples

Men's Triples... (1) vs (2)... (3) vs (4)... (5) vs (6)...

Men's Quadruples

Men's Quadruples... (1) vs (2)... (3) vs (4)... (5) vs (6)...

CHANGERS ARRIVED U.S.A

The following are the handicaps... Club Tennis Tournament... which opens to-day.

Men's Singles

Men's Singles... (1) vs (2)... (3) vs (4)... (5) vs (6)...

Men's Doubles

Men's Doubles... (1) vs (2)... (3) vs (4)... (5) vs (6)...

Men's Triples

Men's Triples... (1) vs (2)... (3) vs (4)... (5) vs (6)...

Men's Quadruples

Men's Quadruples... (1) vs (2)... (3) vs (4)... (5) vs (6)...

Union-Castle Line

Servises to England, East, South and West Africa Ports and Mauritius.

TO ENGLAND via SOER... About 14th July... About 18th August...

TO ENGLAND via SOUTH AFRICA... About 21st July, 1924... About 17th August, 1924...

Up-country charges cannot be accepted unless actually incurred by local agents...

THE UNION CASTLE MAIL STEAMSHIP Co., Ltd. (INCORPORATED IN ENGLAND.)

THE B.M.S. CORPORATION, Ltd. INLAND AGENTS. Nairobi, Kenia, Kampi, etc., etc.

BRITISH INDIA

Steam Navigation Co., Ltd. and Peninsular and Oriental Steam Navigation Co.

LONDON AND EAST AFRICA LINE... KENYA AND PREFERRED THROUGH... Regular services every 20 days...

COMFORTABLE ACCOMMODATION, EXCELLENT CURRIE... from London to East Africa...

SA. "NEVANA" (8000 tons) 18th July 2nd August... SA. "MARBORA" (7000 tons) 10th August 12th Sept...

DOMBAY-DURDAY STRAITS

J.R.M.S. "KABON" (8000 tons) 18th July 19th July... J.R.M.S. "KARAOLO" (8000 tons) 18th July 19th July...

J.R.M.S. "KARAOLO" (8000 tons) 18th July 19th July... J.R.M.S. "KARAOLO" (8000 tons) 18th July 19th July...

NOTE - The B.M.S. "Abdullah" has 4700 tons coal chamber... Should return to be taken in the Salon Accommodation...

To Ipswich and Marseilles via Bombay... These steamer are now scheduled to arrive in Bombay on...

COASTAL SERVICE... The U.K. Dumas is due to call on 21st July for Lamu and...

SUBJECT TO ALIENATION... UNDESIGNATED CARGO NOT ACCEPTED UNLESS ENDORSED...

SMITH MACKENZIE & CO. AGENTS, GENERAL MANAGERS AND MANAGERS... Telephone Address: "MACKENZIE"...

THE SALISBURY HOTEL, NAIROBI. Phone 105.

UNDER ENTIRELY NEW MANAGEMENT... SLENDILY SITUATED WITHIN EAST WALKING DISTANCE OF TOWN.

Single Rooms, Double Rooms, Bedrooms with Private Bathing Rooms, Bedrooms with Private Bath Rooms.

EXCELLENT CURRIE... The Hotel has been completely refitted and redecorated, and is now considered to be one of the best equipped in Kenya.

WE WRITE YOUR IMPRESSIONS... APPLY MANAGERS.

United Netherlands Navigation Company

Holland East Africa Line. REGULAR PORTHOLE SAILINGS... Steamers will arrive at Mombasa on or about the following dates:

Table with columns for ship name, route, and arrival date. Includes ships like SOERAKAITA, BLITER, STANDEBEEK, MELIKERK, NIKERK, HERMELERK, STAMER, and STEAMER.

FOR RATES OF FREIGHT, ETC., APPLY TO THE AGENTS: TWENTSCHE OVERSEAS TRADING Co., Ltd. P.O. Box 149. Tel. "Mobiela", MOMBASA. Tel. 143

KENYA BREWERIES, LIMITED.

We do not ask you to Support Local Industries... We ask you to insist upon drinking our BEER and STOUT, which is refreshing and nourishing and is brewed from purest materials.

Choice Malt and Hops... Among the unqualified testimonials received, the following are typical for themselves:

Your beer is excellent, please raise a further 4 casks... Your beer is reminiscent of the pro-war English bitter, we are highly satisfied with it.

George Blowers.

Table listing various mechanical services and parts. Includes items like PUMPS, ELECTRIC MOTORS, and various types of pumps and motors with prices.

Sign Writing and Decorating... THE EAST AFRICAN STANDARD... THE EAST AFRICAN STANDARD... THE EAST AFRICAN STANDARD...

PETTER OIL ENGINES.

THEIR ARE MORE PREFERRED BECAUSE DRIVING PLANTERS' MACHINERY IN KENYA THAN ANY OTHER BETTER MAKE.

Asper Stokes of "Mombasa and Branch ARE HEADS BY THE SOLE AGENT: J. W. MILLIGAN & Co., P.O. Box 149. NAIROBI. GOVERNMENT BUILDING. Phone 61.

F. J. THORNTON, R.P.C.

Plumber, Sanitary and Domestic Engineer, House Drainage, Septic Tank and Hot and Cold Water Installations, etc.

MOTOR NOTES by Carburettor

I have been frequently watching the progress of the motor industry in Kenya during 1923... The most popular make of car during 1923 were as follows:

Table showing car models and their popularity. Includes Ford, Daimler, and other models.

These figures show a small dip in the sales of Ford, Overland, Harley, Napier and Chevrolet cars, with a big jump in Daimler...

To think that everybody who has a motor will be satisfied with one that immediately the work being carried out, and that the whole lot is going to be the present day standard...

It is proposed to let Government Road but has the general opinion of finance men... It is likely that it would be taken over by the Government from beyond B. Jaobs...

It is likely that it would be taken over by the Government from beyond B. Jaobs... It is likely that it would be taken over by the Government from beyond B. Jaobs...

It is likely that it would be taken over by the Government from beyond B. Jaobs... It is likely that it would be taken over by the Government from beyond B. Jaobs...

It is likely that it would be taken over by the Government from beyond B. Jaobs... It is likely that it would be taken over by the Government from beyond B. Jaobs...

It is likely that it would be taken over by the Government from beyond B. Jaobs... It is likely that it would be taken over by the Government from beyond B. Jaobs...

It is likely that it would be taken over by the Government from beyond B. Jaobs... It is likely that it would be taken over by the Government from beyond B. Jaobs...

It is likely that it would be taken over by the Government from beyond B. Jaobs... It is likely that it would be taken over by the Government from beyond B. Jaobs...

It is likely that it would be taken over by the Government from beyond B. Jaobs... It is likely that it would be taken over by the Government from beyond B. Jaobs...

It is likely that it would be taken over by the Government from beyond B. Jaobs... It is likely that it would be taken over by the Government from beyond B. Jaobs...

It is likely that it would be taken over by the Government from beyond B. Jaobs... It is likely that it would be taken over by the Government from beyond B. Jaobs...

It is likely that it would be taken over by the Government from beyond B. Jaobs... It is likely that it would be taken over by the Government from beyond B. Jaobs...

ANGLO-BALTIC TIMBER CO., LTD.

SPECIALISTS IN BUILDING MATERIALS. CEDAR, PODO & HARDWOODS. MOSHI TRUNK, MAHOAGNY, ETC.

Agents for KILIMANJARO SAW MILLS, Limited.

FAIRVIEW ESTATES, Ltd., KWAMU. DISTEMPERS. In all shades. WOOD PRESERVATIVE. The only Preservative on the Market that can be used as a Stain, and will take a Polish.

IMPORTED DOORS AND WINDOWS. WOOD. Guaranteed seasoned also all STEEL.

CEMENT. GALVANISED CORRUGATED IRON. NAILS. All Sizes 1"-8". PAINTS. GLASS AND PUTTY. JOINERS HARDWARE.

HIDES, SKINS & WOOL PURCHASED AT BEST MARKET RATES.

ENGAGEMENT RINGS

MADE IN OUR OWN WORKSHOPS. Workmanship and Values Guaranteed.

The appts must not be taken too early, being as I mentioned above, in the shortage of stocks...

All these orders show an appreciable increase during the first 6 months of 1924, the figures being as follows:

Table showing engagement ring sales. Includes items like B.S.A., Triumph, Douglas, and other models.

All these orders show an appreciable increase during the first 6 months of 1924, the figures being as follows:

The increase in English rings in 1924 was very great... During 1923 there were 50 English rings, but in 1924 there were 100...

I have been however, that I have seen on this side of the world... It is likely that it would be taken over by the Government from beyond B. Jaobs...

NAIROBI HOUSE.

TO LET. EXCELLENT OFFICES in this Modern Building, situated in most central position in town. Every convenience.

Also furnished flat, and dwelling house. Basement suitable for Storage purposes. Low rents for suitable tenants. Can be viewed at any time.

Apply to H. F. WARD & Co., P.O. Box 124. Tel. 120.

P. O. Box No. 255, NAIROBI
JACOBS LIMITED
 FOR

MEN'S WEAR
 OF
DISTINCTION & INDIVIDUALITY

GENTS' PYJAMAS
In delightful designs
 "LUVVICA" PYJAMAS. A charming variety of pleasing tail stripes. Shm. 45/60 per pair.
 Heavy Cotton Twill Pyjamas. Short Black Stripes. Shm. 35/50 per pair.



The "SPORT" SHIRTS - in smart printed designs with two collars to match. Shm. 14/60 each.
 Heavy Striped Cotton Twill Shirts - Two collars to match in latest colorings. Shm. 17/50 each.
 The "Dress" "LUVVICA" Shirt - in the smartest "Luvvica" Stripes. Shm. 25/- each.

WE Have a very comprehensive selection of men's hat lines. A few of which are commended below:
 "TWO STRIPES" BLACK CABINENE SOCKS. Shm. 3/- per pair.
 "TWO STRIPES" FANCY EMBROIDERED CREEK SOCKS. Shm. 5/- per pair.
 In assorted colors.
 A large range of TIEES SOCKS. In Lace, Jettes, Cashmere and Silk. From Shm. 2/60 to 8/50 per pair.



MEN'S BOSTON SUSPENDERS. Shm. 4/25 per pair.
MEN'S WARM FLEECY DRESSING GOWNS. An illustration with contrasting colors and cuffs. Shm. 59/- each.
 These Gowns are very easy for cold mornings.

A visit of inspection will be appreciated and will convince you that the value we offer is the best in Town.

WE Allow
5 Per Cent
 Cash Discount
 of all these prices.

Miss KATHLEEN BATES, A.R.C.M.
 TEACHER OF
 HANDBEATS, RHYTHM & THEORY OF MUSIC.
 Pupils prepared for all Examinations.
 SPECIAL MODERN METHODS FOR BEGINNERS.
 CLASSES FOR YOUNG CHILDREN. COACHING GIVEN TO BEGINNERS AND INTERMEDIATE PLAYERS.
 Studio: Nairobi House or Box 183 Telephone 183.

EXPRESS TRANSPORT COMPANY
 AMALGAMATING - HUNTER & HIGGS.
 Deales House, Nairobi.
 Garage Contractors to Uganda Railway.
 All Classes of Carriage, Customs and Forwarding Work Undertaken.
 We carry suitable Specialized Vehicles.
 In heavy work by our own TRUCKS and TRAILERS.
 (Special accommodations).
 Phone No. 333 or 35. P. O. Box 451.

TYPEWRITING BUREAU.
 Shorthand notes taken. Letters, memoranda, etc. typed.
 Duplicating done.
 Typing in Shorthand and Typing.
 STRICTLY CONFIDENTIAL.
 MISS L. B. GREEN, C. O. GREEN, C. O. GREEN, Nairobi.
 P.O. Box 68. Telephone 68.

THE HILL K. C. and PREPARATORY SCHOOL.
 VALLEY ROAD, NAIROBI.
 FOR Boarders and Day Pupils.
 For Terms apply to THE HEADMASTER, Hill K. C. School, Nairobi.
 SINGLES DRY-CLEANING & DYING WORKS.
 From 10 o'clock till 10 o'clock.
 2, B. STATIONERS, Ltd., NAIROBI.

COFFEE CULTIVATION BY NATIVES.
 Opinions of Planters in Uganda.

A FAVORABLE VIEW.
 The Uganda Herald has asked representative coffee planters to give their views on the culture of coffee by natives, which has excited much interest. Mr. Leo Wilson, of Mityasa, after pointing out native difficulties in coffee growing, writes: "The native cultivated both Arabica and Robusta (one species) but crude methods of preparation were the cause of a very poor quality being offered for sale. It was either concerned locally or purchased by traders as 'native coffee'."
 The coffee grown by natives could be handled by Europeans until such time as the former were in a position to deal with it themselves. In Costa Rica the freshly picked coffee was offered for sale to the planter who, I am told, buys it up as though he is unable himself. It is well known that the Costa Rica coffee fetches the highest price on the London market. It is therefore probable that it would be possible to do here in the course of time.

Coffee v. Cotton.
 At present all our eggs are in cotton. I am not sure that a large export of coffee would mean anything but the money required to buy coffee would be more than sufficient to pay for the cost of cotton. We are given to understand that it is possible that the coffee would be sent out of the country. It is possible that the coffee would be sent out of the country in the future or that the price would be such an extent as to contain no profit for the grower. I think that those who plant coffee will not have the means to ship their harvest to the coast. It is not possible to do so in the case of the country.

Call Bacon of Montreal says by natives I consider the whole very promising but not under native control. The native Uganda is not sufficiently developed as yet to handle coffee on the principle of the Congo. The native Indians of such countries are in a high state of civilization. I think that Robusta which does well if allowed to set up in preference to Arabica.
 "I should be glad to buy all the native coffee in my district, and am of the opinion that the Congo has something to learn from its cultivation to natives."

Very old stores are given another long lease of life and reworked at the OAHB SHOP STORES with their own English letter.

NAIROBI SCHOOL OF DANCE.
 Classes a Weekly Classes held at the GOVERNMENT SCHOOL, ARTS & PAVILIONS.
 Private Ballroom. Lessons for Adults. Terms apply to the manager by appointment.
 EDITH OUTRAM, Box 69, Nairobi.

SPECIAL REDUCTIONS FOR FEW DAYS ONLY All Prices for Silk Reduced
 50% TO LET IN KENYATTA RIDGE.
 B. CHOITRAM, GOVERNMENT ROAD.

PLATEAU MAIZE GROWERS. HAVE MAIZE & POSHO FOR SALE IN LARGE & SMALL QUANTITIES.

WE WILL ENTER INTO CONTRACTS For Further Particulars Apply To:-
THE SECRETARY, PLATEAU MAIZE GROWERS, ELDORET.

NOTICE.
NAIROBI WATER SUPPLY.
 The attention of the public is drawn to the fact that the above supply is liable to contamination and that the consumption of unboiled water may be dangerous. It is therefore recommended that all water should be boiled before use.
MEDICAL OFFICER OF HEALTH.

"WINNEHAWA" SPRINGS.
 GINGER ALE. SODA WATER. LEMONADE. JOB CREAM SODA. TONIC WATER. LITTEA WATER. ALL DERIVED FROM PURE SPRING WATER. **KORU, KENYA.**

FURNITURE.
 CALL & INSPECT OUR LATEST MODELS AT OUR SHOWROOMS IN GOVT. ROAD, NAIROBI.
THE H.B. DENING ROAD SUPPLY, comprising Dining Table 6' x 2', six Arms and Four Dining Chairs, Sideboard and Dinner Wagon in Tanganyika Mahogany and polished. In any shade, £20-10 complete.
 IS TYPICAL OF THE VALUE OFFERED.
HUTHINGS, BIEMER & Co.
 P. O. Box 408, NAIROBI.
 SHOWROOMS, OPPOSITE OLD STANLEY HOTEL.

UGANDA RAILWAY RIFLE CLUB A FANCY DRESS BALL
 will be held on **AUGUST 2nd, 1924** at THE **RAILWAY CLUB** at 9 p.m. **KENYA JAZZ BAND.**
 Tickets: Double Shs 10/- Single Shs. 7/6.
 Details may be obtained from: The Honorary Secretary, P. O. Box 7, Nairobi. The Post Affairs Standard Office, P. O. Box 10, Nairobi. The Railway Club.

RELIANCE.
 can only be seen by actual CONFIDENCE and BURNING APPETITE. The Reliance Transport car NEW MOTOR LOCOMOTIVE NEW CRIBS for long or short distances. FULL HOUSEHOLD EQUIPMENT. PUNING POWER, CLEAN, etc. Telephone 821.
RELIANCE TRANSPORT Co.
 NAIROBI.



REMEMBER THE NAME "VOONIA"
 It is the **TEA** you want.

Ask for it and insist on getting it.
 If your own store does not stock this brand send to us direct.
FRITCHES.
 Shs. 3/60 each for the packet.
 5/60 each for 1 lb. box.

Mackinnon Brothers
 NAIROBI. Est. 1904.
NEW GOODS JUST UNPACKED.
 FINEST BLEND, GRAPE-DE-CHEN, IVORY BANGLES and LACER, BREAD STRAYS and OTHER ORNAMENTAL. SHIRTS, CARPETS and RUGS. ALL KINDS COTTON DRESSING and KNITTED. SILK KIMONOS, SILK STOCKINGS and SILK VEILS.
 Page Size, 18x24 inches. Shs. 6/- per yard.
 all colors. Shs. 7/60 per pair.
 28 inches. Shs. 10/- per pair.
 Cropped-sleeve, plain colors 40 ins. Shs. 10/- per pair.
 ALL KINDS SHIRT REPAIRS and MAKERS. CHARGES MODERATE.
Lalchand Moolchand Bros.
 P. O. Box 878, Government Road, NAIROBI.

SHORT LOANS GRANTED £1. To £1,000.
 CALL OR WRITE TO THE:-
Kenya Loan & Discount Co., Ltd.
 NAIROBI HOUSE, (Opp. 19000).
 F. O. Box 846. NAIROBI.
 BILLS DISCOUNTED - STRIPES - COMMISSION.

Something New
DENNISON CRE
 With one side appearing soft and velvety and with a satiny finish on the other in the more extensive product made and is now used throughout the world. standard material for Costumes for pageants, plays and dresses and decorations for Hats, Boots, Tables, Windows, Lamp Shades, etc. etc.
 Can be stored and used by machine or by hand the same.
 MANY ATTRACTIVE COLOURS TO CHOOSE FROM.
 Price per Roll: 1/6 per yd. x 20 ins. Shs. 1/60.
M. R. de Souza & Co.
 P. O. Box 126. NAIROBI.



THE EAST AFRICAN STANDARD.

THE WORLD'S PREMIER MOTOR CYCLE

AUSTRALIA JUNIOR GRAND PRIX Results Just Received 208 MILES SCRATCH RACE A.J.S. 24 - 1st, 2nd & 3rd 104 MILES HAND-AP RACE A.J.S. 24 - 1st, 2nd & 3rd 20th MILES UNLIMITED CAPACITY A.J.S. 24 - 2nd, 4th & 5th

A.J.S. 2 3/4

O.H.V. SUPER SPORTS MODEL £90 SIDE VALVE SPORTS MODEL £85 SIDE VALVE TOURING MODEL £90

SOLE AGENTS CARR, LAWSON & Co., Ltd. FOR KENYA.

OVERLAND SAFARI



TOURING CAR SAFARI £242 Magneto Ignition £13 extra

DELIVERY FROM STOCK THE OVERLAND IS THE PRODUCT OF YEARS OF EXPERIENCE IN THE COLONIES MONGKTON & SEAR LTD. 8th Avenue, - NAIROBI

"SHELL" MOTOR SPIRIT.

W. MOTON & CO MOTOR MAINT & EXCHANGE THE SERVICE CO. MOMBASA & HELIOPOLIS. PETERS & SIMMONS BRIMLEY'S GARAGE, BRIMLEY STREET. BIRME & BUTLER. BIRME & HASSAN, NAIROBI. HOBBS & MORTIMER, TRINIA. KROEBERBACH, NYERI. G. W. GARDNER, TALLOR, NAIVARUA. GALLAT & ROBERTS, KARUBO. JACOBS LTD. ELDORET. MURPHY & SPOONER, KERICHO. H. H. HINE, LILONGWE. SOY ESTATE, SOY. DOMAY TRADING CO., HELIOPOLIS. KERR & MILLA STORES, MAKUTU. EGBU BROTHERS STORES, SOMU. G. BAYLEY, NAIROBI. G. BAYLEY & CO. 4th & 5th Avenues in Nairobi. SMITH MACKENZIE & CO. Agents.

THE BRITISH IMPERIAL OIL Co., Ltd.

Ford THE PREDOMINATING CAR Genuine Ford Service THE PREDOMINATING SERVICE The Service of Ltd. AUTHORIZED FORD SALES AND SERVICE DEALERS AT NAIROBI MOSHI

THEATRE ROYAL

To-Night, Tuesday & Wednesday JULY 14th 15th & 16th Three Men in a Boat ADAPTED FROM JEROME & JEROME'S FAMOUS BOOK set in most picturesque settings the upper reaches of the River Thames this humorous classic produces ONE LONG LAUGH. YOU MUST NOT MISS THIS FILM. Thursday, Friday and Saturday. JULY 17th 18th & 19th CHARLES DICKENS' IMMORTAL CLASSIC The TALE OF TWO CITIES A STUPENDOUS PRODUCTION OF A THRILLING HOUR IN HISTORY.

L. ROSENTHAL, 18, ST. HAMBURG, N. G. S. Phone No. 420 NAIROBI

LITTLE'S FLY KILLER WHOLESALE & RETAIL CHEMISTS NAIROBI & MOMBASA Phone No. 103.

BOOKS OPEN ON ALL IMPORTANT ENGLISH RACES

Chivers' "Olde English" MARMALADE. A BREAKFAST DELICACY MADE BY CHIVERS & SONS LIMITED AT The Orchard Factory HILTON - AMBERLEY The Best Stores Stock It. Trade Enquiries to B. C. HAMILTON & Co., Nairobi.

The Pony Breeders Society's GYM KHANA WILL BE HELD On Monday 4th August at 1-30 AT THE NAIROBI RACECOURSE BY KIND PERMISSION OF THE JOCKEY CLUB PROGRAMME

STABLING. Hense may be stabled on the premises... J. L. DUFFELL, Secy.

UPLANDS

WILTSHIRE BRAWN PORK SAUSAGE LUNCH TONGUES BEAN AND DOGS SLICED HAM PIONIC BARS Etc. etc. in various sizes

Unlimited Testimonials... UPLANDS TINNED GOODS are stocked by all the leading stores in Kenya and adjoining territories.

THEATRE ROYAL

JULY 21st, 22nd, 23rd and 26th.

HIKA PLAYERS

THE DOVER ROAD Week Nights: Stall and Dress Circle, Sh. 5 Saturday Night: Stalls Sh. 8, & 6 and 6. CIRCLES Sh. 8 and 6. PLAYS NOW OPEN - BOOE EARLE

TO CONTRACTORS.

TENDERS are invited for the re-erecting and partial reconstruction of... C. H. DAVIDSON Municipal Engineer

AFRICAN STANDARD

Mombasa Times & Uganda Africa Monday July 14, 1926

THE COMMERCIAL CONVENTION

The Associated Chambers of Commerce meet in Mombasa this week. The agenda is full of promise of good work. In the main, they will be concerned with the commercial aspects of their country's problems in their commercial aspect but in a different way. However, the Associated Chambers of Commerce will be concerned with the commercial aspects of their country's problems in their commercial aspect but in a different way.

Whether the business and the responsibility is a part and parcel of White Kenya... He Knows Now... Bound Proof... A Fair Week... Sunday & Bank Holiday... K.M.W. Meeting... Kenya Land Offered...

VAUDEVILLE PROGRAMME AT THE ROYAL

Popular and Successful Concert. HIGH STANDARD SET

There is no doubt that the programme of the Royal Vaudeville Company is one of the most popular and successful in the history of the theatre...

The Artists

Miss Joan Peck has had the difficult task of opening the programme of the Royal Vaudeville Company...

Octavia Tru's Triumph

One of the features of the evening perhaps the most pleasing of the programme was the triumph of Octavia Tru...

SEWING MACHINES. WITH A REPUTATION FOR GOOD WORK AND DURABILITY. WE HAVE JUST RECEIVED... SILENT MODEL No. 15... SILENT MODEL No. 10... SILENT MODEL No. 212...

FOOTBALL THE GIRDQUAD CUP

Disappointing Match on Service Ground. RAILWAY EAST WINNERS

The match was a disappointing one for the home side. The Railway East team showed more spirit and skill than the home team...

The Match at Thak

The match at Thak was a very interesting one. The Railway East team was victorious...

COUNTRY TEAM & COLLIER DRAW

The Country Team and the Colliers drew in their match. The game was very hard fought...

At Makuru

The match at Makuru was a very close one. The Railway East team was victorious...

MONEY MARKET

The money market was quiet today. The Bank of England has raised the rate...

PETROLEUM LORE FOR EAST AFRICA

Interesting Paper Read at Entebbe. BY MR. E. J. WATLAND

The paper read at Entebbe dealt with the petroleum resources of East Africa. It was a very interesting and informative paper...

Deep Treasure

A deep treasure was discovered in the mountains of East Africa. The discovery was made by a party of explorers...

Minerals

The minerals of East Africa are very rich and varied. They include gold, silver, copper, and iron...

Mineral Finds

Several new mineral finds have been discovered in East Africa. These include gold, silver, and copper...

The Oil

The oil resources of East Africa are very rich and varied. They include petroleum, coal, and gas...

Simple Analysis

A simple analysis of the petroleum resources of East Africa shows that they are very rich and varied...

CORRESPONDENCE

The Editor does not accept responsibility for the views expressed in the correspondence on these pages...

Lyric Hall

Monday, Tuesday, Wednesday, Friday, Saturday 8.30 p.m. MATINEE, SATURDAY, 3.45 p.m. WHEN THE HEART IS YOUNG, WHEN THE HEART IS YOUNG, WHEN THE HEART IS YOUNG.

ONE SENSATIONAL NIGHT. ONE SENSATIONAL NIGHT. ONE SENSATIONAL NIGHT.

THE MOST AMUSING AND SENSATIONAL FILMS EVER SHOWN IN KENYA

BOOKING AT LYRIC HALL 11-12, CROSS STREET, NAIROBI. PHONE MISS MARSHALL. VISITING MISS OWLE. PHOTOS MISS MARSHALL. SHOWING AT LYRIC HALL 11-12, CROSS STREET, NAIROBI. PHONE MISS MARSHALL. VISITING MISS OWLE. PHOTOS MISS MARSHALL.

BY ARRANGEMENT WITH MR. MARTIN JOHNSON

THE East Africa & Uganda Natural History Society

WILL PRESENT AT THE Theatre Royal

ON Thursday, 24th July and Friday, 25th July at 8.45 p.m.

MR. and MRS. MARTIN JOHNSON'S

WORLD FAMOUS FILM

"Trailing Kenya's Wild Animals"

POSITIVELY THE GREATEST SENSATION EVER BROUGHT TO NAIROBI.

BEHIND THE EYE OF THE CAMERA HAVE THEIR OWN FORTUNE TO EQUAL THEIRS.

ADMISSION: Sh. 5 & 4.

BOOKING AT THE EAST AFRICAN STANDARD.

Spinal "Chords."

The spinal "chords" are the central nervous system. They are responsible for the control of the body's movements...

SWISS WHO HEARS WITH HIS BACKSIDE

A Swiss man who hears with his backside is a very unusual case. It is a condition known as "parietal hearing"...

Inflections

The inflections of the human voice are very important. They are responsible for the expression of emotion...

Prison for the Alphabet

The prison for the alphabet is a very interesting concept. It is a way of teaching children to read...

A WARNING TO NAGGING WIVES

A warning to nagging wives is a very important message. It is a reminder that nagging is a bad habit...

Now, Concerning BOOTS

Now, concerning boots is a very important message. It is a reminder that boots are an essential part of a man's wardrobe...

TRAMP BOOTS AND THE COMPANION

Tramp boots and the companion is a very interesting story. It is a story of a tramp and his dog...

ARMY BOOTS 70/

ARMY BOOTS 70/ 1/2. DRESSY BOOTS 59/.

Chrome Socks 60/.

FIELD BOOTS 70/.

GOLDFRONTEN 70/.

DERBY BOOTS 35/.

TRAMP BOOTS, 1/2.

Leather Socks 40/.

Chrome 45/.

ADMISSION: Sh. 5 & 4.

BOOKING AT THE EAST AFRICAN STANDARD.

ADMISSION: Sh. 5 & 4.

BOOKING AT THE EAST AFRICAN STANDARD.

ADMISSION: Sh. 5 & 4.

BOOKING AT THE EAST AFRICAN STANDARD.

ADMISSION: Sh. 5 & 4.

BOOKING AT THE EAST AFRICAN STANDARD.

ADMISSION: Sh. 5 & 4.

BOOKING AT THE EAST AFRICAN STANDARD.

ADMISSION: Sh. 5 & 4.

BOOKING AT THE EAST AFRICAN STANDARD.

ADMISSION: Sh. 5 & 4.

BOOKING AT THE EAST AFRICAN STANDARD.

ADMISSION: Sh. 5 & 4.

BOOKING AT THE EAST AFRICAN STANDARD.

ADMISSION: Sh. 5 & 4.

BOOKING AT THE EAST AFRICAN STANDARD.

NATIONAL BANK OF INDIA, LIMITED.
 BANKERS TO THE GOVERNMENT AND
 SHAREHOLDERS OF INDIA AND
 CANTONMENT TRUSTEES
 GOVERNMENT.
 Authorized Capital Rs. 62,00,000
 Paid-up Capital Rs. 22,50,000
 Reserve Fund Rs. 22,50,000
HEAD OFFICE:
 59, BROADWAY, LONDON, E.C.2.

OVERSEAS MAILS

This notice is based upon the latest advice from the Shipping Agents. It is possible, however, that circumstances may have arisen since or later than anticipated and the information given here is published subject to the necessary amendments.
 Mails will be closed at the Indian Post Office as noted below:

ARRIVALS

STEAMER	FROM	Due at Mombasa	Mails arrive at Mombasa
Karai	South	July 14	July 16
Karai	Madagascar	" 18	" 19
Chartered	Madagascar	" 21	" 22
A. Travers	Madagascar	" 21	Aug. 1
Zanzibar	South	" 21	" 22
Dunlopian Castle	Madagascar	Aug. 1	" 2
Kenya	Madagascar	" 2	" 3
Humbly	Madagascar	" 3	" 4

DEPARTURES

STEAMER	FOR	Mails close at Mombasa	Date of departure at Mombasa
Guilford Castle	Europe	July 18	July 19
Karai	South	" 18	" 19
Changam	Madagascar	" 21	" 22
A. Travers	South	" 21	" 21
Karai	South	" 21	Aug. 1
Lytton	Madagascar	Aug. 1	" 2
Kenya	Madagascar	" 1	" 2
Kenya	South	" 1	" 2

BETTER BY IT AT WHITEAWAY'S

THERE ARE NO REGRETS ABOUT A PURCHASE AT WHITEAWAYS - JUST THAT FEELING THAT NO BETTER VALUE EXISTS.



MAMMOTH WRITING PADS
 200 Sheets
CASH SHS. 1/25
 Each.

FOR LADIES
The Delicate
HANDKERCHIEF
 FINE CAMBRIC with hem stitched border
 Per Dozen
 SHS. 2/75 ONLY

COMPASS WRITING SETS
 Containing fine quality will note paper and envelopes complete.
Cts. 75 Each.

WILLSON
 In Reproduction Turbine Shell as Shaded, with side shades.
 Amber tint glasses
 SHS. 6/50 per pair

TOILET ROLLS
 FINEST QUALITY
 BRITISH MAKE
60
 CENTS EACH

COMFORT DOBBLES
 In Reproduction Turbine Shell frame as Shaded Amber tint glasses
 SHS. 3/75 per pair

GOGGLES
 In Reproduction Turbine Shell frame as Shaded Amber tint glasses
 SHS. 3/75 per pair

FRIGHTS COAL TAR SOAP
 Refreshing and anti-septic keeps the skin healthy.
 SHS. 2/75
 Per box of 3 tablets.

WROUGHT COAL TAR SOAP
 Refreshing and anti-septic keeps the skin healthy.
 SHS. 2/75
 Per box of 3 tablets.

THE FAMOUS "NONRUSTA" RAZOR
 A thoroughly good razor with a beautifully tempered blade, always keen, in 2 1/2, 3 1/2 and 7 1/2 inch.
 With Hair, SHS. 1/10

"LYSOL"
 The only disinfectant product is stocked by us. The finest anti-septic in the world.
1/50
 Per Bottle

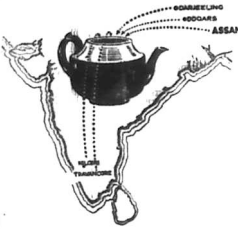
TWINK KHAKI
 Khaki and other colors.
 SHS. 1/1 per pair

COLORED TABARTULE
 (Fine Quality) in washable colors. Make, Size, Length, Width and Color.
 SHS. 3/75 per yard

TARANTOLE
 SHS. 3/75 per yard

"GAYNE"
 VANISHING DEODORANT is delightfully effective in case of odor. Sh. strapped lips and all roughness and irritation of the skin. Large of SHS. 2/50

FOR SALE
 AS A GOING CONCERN
COAST HOTEL, BAR
 AND
BILLIARD ROOM.
 AVERAGE NET PROFIT
 £130 PER MONTH.
 For Full Particulars write-
 VOUCHER NO. 136.
MOMBASA TIMES



From all India to your tea-pot

Wherever good tea is grown in India from the far South to the slopes of the Himalayas, the picked crops of many gardens come to Brooke Bond.

We are not confined to a single district. Year by year our buyers search for tea that will maintain the quality that has made Brooke Bond famous throughout the East.
 In flavour, strength, and aroma, Brooke Bond is preferred by all who know what good tea means. And vacuum packing preserves its freshness for any length of time.

ROOKE BOND INDIA LTD., P.O. Box 187, Calcutta.
 Agents at Mombasa, Tanganyika and Kampala
 and South Bahrastina and Company
 Agents at Dar-es-Salaam, British East Africa
 Ltd.

You'll prefer
Brooke Bond
 the good tea in the tin that keeps it good

SARONY
 Virginia Cigarettes
 (Best Strain, London)
 SHS. 2/65 per Tin of 50's.
KARZER KARAZER

'30S SPORTING RIFLES
 From SHS 100/- to 320/-
Shaw & Hunter,
 Box 70 NAIROBI.

MAGD'S COUGH CURE
 For years I had a chronic Cough. Sometimes I thought I should just "let it all"
 The cure I tried were made to no use. I've "Magd" they can go to Linn.
 The 3rd-Time Done. **Burns Morning Cure.**
 Have you tried "Magd" "Hep-Burn"
 Non-Alcoholic, Refreshing
 Cts. 50 per glass. SH. 1 per quart bottle.
"Magd" Products, Victoria St., and M. R. PROUDA & CO., Nairobi, Nakuru and Kisumu.

SAM RIFKIN
 STATION BUILDER,
 BLACKSMITH, FARMER
 P. O. Box 475
 Phone 1492
 NAIROBI.

FIRST, LARGEST, BEST

Certain interested parties are spreading the report that our milling plant is antiquated. This is quite untrue. Certainly we have been established for over 15 years but the new flour-milling machinery installed by us this year, last year and in 1921, has a longer expectancy than that of any other mill now running or being erected in this country. And in planning our new plant we had the advantage of 15 years experience of local conditions and local wheat.

UNGA Ltd., NJORO.

Whiteaway, Laidlaw & Co., Ltd.

ALWAYS ASK FOR JEYES'

JEYES'
 "It is the best disinfectant in use."
 (See R RAWLINSON
 Local Government Board, London)

KIA ORA STO

NAIVASHA.
 Liquor, groceries, Confectionery, Hardware, Stationery, Toilet Requisites, etc.
FRIBOL and LUBRICANTS available
EGYPTIAN CIGARETTES. Fresh stock
 "ORIENTAL" per 100 SHs. 4/- per 1,000
 "COCKTIPS" per 100 SHs. 6/- per 1,000
COARSE CATTLE BALZ per load (60 SHs.) per bag at SHS. 5/- per 100 lbs.

Union-Castle Line

United Netherlands Navigation Company

Services to England, East, South and West African Ports and Mauritius.

PROSPECTIVE SAILINGS.

TO ENGLAND via SUVA. — **GL. SINGAPORE** 14
About 14th July, 1924. General Cargo.
About 18th September. General Cargo.
About 11th November. General Cargo.
About 27th December. General Cargo.
About 21st February 1925. General Cargo.

TO ENGLAND via SOUTH AFRICA.

About 21st July, 1924. General Cargo (cargo only).
About 17th August, 1924. General Cargo.
About 22nd September, 1924. General Cargo (cargo only).
About 13th October, 1924. General Cargo.
About 20th November, 1924. General Cargo.
About 13th December, 1924. General Cargo.
About 14th January, 1925. General Cargo.

(Above sailings are subject to alteration or cancellation without notice.)
Passenger cabins cannot be accepted unless suitable accommodation by land. Intermediate steamer may carry First and Third Class passengers only.

The particulars of Sailing, Dates of Freight and Passage money apply to:—

THE UNION CASTLE MAIL STEAMSHIP Co., Ltd.
(INCORPORATED IN ENGLAND.)
Adjacent to Mombasa Railway Station, MOMBASA.

R.M.A. CORPORATION, LTD. (INCORPORATED IN ENGLAND.)
Agents, Kampala, Zomba, Fife, etc.

BRITISH INDIA Steam Navigation Co., Ltd.

INDIAN AND EAST AFRICA LINE.

REGULAR SERVICE. Regular service every 23 days by well-appointed Mail Steamers from London to India via Suez Canal and East Coast Ports, and vice versa, calling en route at Mombasa (if sufficient business) and Plymouth to land passengers.

Ship	Arrives London	Sails from London
“MEYALA” (8009 tons)	10th July	20th August
“MORNING” (8004 tons)	10th August	20th Sept.
“MORNING” (8004 tons)	10th Sept.	1st Oct.
“MORNING” (8004 tons)	10th Oct.	20th Nov.
“MORNING” (8004 tons)	10th Nov.	20th Dec.
“MORNING” (8004 tons)	10th Dec.	20th Jan.
“MORNING” (8004 tons)	10th Jan.	20th Feb.

COMPARTMENT ACCOMMODATION. EXCELLENT CUISINE.

Arrives from London about. Sails from London about.

“MEYALA” (8009 tons) 10th July, 20th August.
“MORNING” (8004 tons) 10th August, 20th Sept.
“MORNING” (8004 tons) 10th Sept., 1st Oct.
“MORNING” (8004 tons) 10th Oct., 20th Nov.
“MORNING” (8004 tons) 10th Nov., 20th Dec.
“MORNING” (8004 tons) 10th Dec., 20th Jan.
“MORNING” (8004 tons) 10th Jan., 20th Feb.

Should Travel Trivia be taken in the Indian Accommodation extension of 10 per cent. is allowed on the total of two Single Tickets.

COSTAL SERVICE.

The s.v. “Dunbar” is to sail on 21st July for Lamu and Kilimanjaro.

SMITH MACKENZIE & CO., AGENTS.

11, Market Street, Mombasa.

THE SALISBURY HOTEL, Mombasa.

UNDER ENTIRELY NEW MANAGEMENT.

EXCELLENT CUISINE. All Bedrooms fitted with new Double Beds. Rooms with Private Sitting Room. Bedrooms with Private Bath Room.

EXCELLENT CUISINE. All Bedrooms fitted with new Double Beds. Rooms with Private Sitting Room. Bedrooms with Private Bath Room.

WE WRITE YOUR REQUESTS. TERMS STRICTLY MODERATE. PLEASE APPLY MANAGEMENT.

Holland East Africa Line.

Ship	Destination	Arrives
“SARAKANTA”	SOUTHERN NORTH-EAST	12th July
“BLITER”	NORTH-EAST	15th July
“STANDHOUD”	SOUTHERN	18th Aug.
“MILKIEK”	SOUTHERN	20th Aug.
“HERMANSKER”	NORTH-EAST	22nd Sept.
“STAMER”	SOUTHERN	24th Sept.

FOR RATES OF FREIGHT, ETC., APPLY TO THE AGENTS: TWENTSCHE OVERSAS TRADING Co., Ltd. P.O. Box 142. Tel. “Meliora.” MOMBASA.

KENYA BREWERIES LIMITED.

We do not ask you to Support Local Industries BUT we ask you to insist upon drinking our BEER and stout, which is refreshing and nourishing and is brewed from Choice Malt and Hops.

Among the unselected testimonials received, the following speak for themselves: “Your beer is excellent, please rail a further 4 casks.” “Your Beer is reminiscent of the pre-war English Bitter, we are highly satisfied with it.”

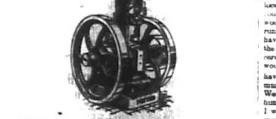
George Blowers.

Ship	Destination	Arrives
“SARAKANTA”	SOUTHERN NORTH-EAST	12th July
“BLITER”	NORTH-EAST	15th July
“STANDHOUD”	SOUTHERN	18th Aug.
“MILKIEK”	SOUTHERN	20th Aug.
“HERMANSKER”	NORTH-EAST	22nd Sept.
“STAMER”	SOUTHERN	24th Sept.

See Writing and Drawing, etc. at the Public, Public Buildings, etc.

PETTER OIL ENGINES.

THERE ARE MORE PETTER OIL ENGINES DRIVING PLANTAINS IN KILIMANJARO THAN ANY OTHER ENGINE MAKE.



AGENTS STOCKS OF ENGINES AND SPARES ARE HELD BY THE SOLE AGENTS: J. W. MILLIGAN & Co., P.O. Box 15. MOMBASA GOVERNMENT BUILDINGS.

F. J. THORNTON, R.P.C.

Plumber, Sanitary and Domestic Engineer, House Drainage, Septic Tank and Hot and Cold Water Installations, etc. P.O. Box 108. MOMBASA.



KENNEL NOTES.

Miss Collier, Gilgit, to whom all correspondence in connection with Kennel Notes should be addressed, cannot and should not be held responsible for the correctness of statements made by her as they are, on the whole, based on information supplied by her correspondents.

I am sorry to say that I have had to leave my home and go to the hospital for a few days. I have been very unwell and have had to take a great deal of medicine. I have been very unwell and have had to take a great deal of medicine.

Another very interesting fact is that the Bull Mastiff has been found to be a very good guard dog. It is very intelligent and is very loyal to its master. It is very intelligent and is very loyal to its master.

The use of the Bull Mastiff as a guard dog is very common in the East. It is very intelligent and is very loyal to its master. It is very intelligent and is very loyal to its master.

How a Lion Dies. The lion was hit through the stomach when bolting from the lion trap. He was hit through the stomach when bolting from the lion trap.

THE CARE BOY STORES are now open for business. They are now open for business. They are now open for business.

THE CARE BOY STORES are now open for business. They are now open for business. They are now open for business.

THE CARE BOY STORES are now open for business. They are now open for business. They are now open for business.

ANGLO-BALTIC TIMBER CO., LTD.

Duke Street, MOMBASA. Telephone: “MOMBASA.”
SPECIALISTS IN BUILDING MATERIALS.

CEDAR, PODO & HARDWOOD. MOSHI TRAK, MAHOQUAI, ETC.

Agents for KILIMANJARO SAW MILLS, Limited.

SOLE AGENTS for FAIRVIEW ESTATES, Ltd., KIAMULU.

DISTEMPERS. In all shades. WOOD PRESERVATIVE. The only Preservative on the Market that can be used as a Stain, and will take a Polish.

IMPORTED DOORS AND WINDOW. WOOD, (Insured) seasoned equal all STYLES.

CEMENT. GALVANISED CORRUGATED IRON. NAILS. All Sizes 1”-8”.

PAINTS. GLASS AND PUTTY. JOINERS HARDWARE.

HIDES, SKINS & WOOL PURCHASED AT BEST MARKET RATES.

ENGAGEMENT RINGS. MADE IN OUR OWN WORKSHOP. Workmanship and Value Unsurpassed.



E. DOBBIE. MANUFACTURER OF JEWELLERY, WATCHMAKERS and OPTICIAN. HAIR BRUSH.

NARROW HOUSE

TO LET. EXCELLENT OFFICES. This Modern Building, situated in most central position in town. Every convenience.

Also furnished flat, and dwelling rooms. Basement suitable for Storage purposes. Low rents for suitable tenants.

Can be viewed at any time. Apply to: H. F. WARD & Co., P.O. Box 124. Tel. 124.

