

A letter from Paris



A black dress is made every day... The most beautiful of black dresses... The black dress is the most beautiful of all dresses... It is the most beautiful of all dresses... It is the most beautiful of all dresses...

be careful, hostesses!



Guests observe details: if the service be quick, the table be neat, the linen white, the knives and spoons gleaming.



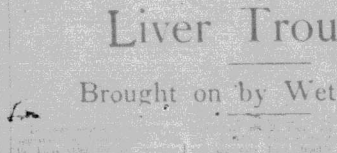
TRY IT IN YOUR BATH... SCRUBB'S AMMONIA... YOU GET BETTER VALUE WHEN YOU BUY SCRUBB'S... SCRUBB & CO., LTD., GLASSBORO ST., LONDON, S.E.11

The black dress is the most beautiful of all dresses... It is the most beautiful of all dresses... It is the most beautiful of all dresses... It is the most beautiful of all dresses... It is the most beautiful of all dresses...

INVALID COOKERY... The most beautiful of all dresses... It is the most beautiful of all dresses... It is the most beautiful of all dresses... It is the most beautiful of all dresses... It is the most beautiful of all dresses...



The Poultry World... Liver Troubles... Brought on by Wet Weather.



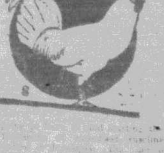
Guests observe details: if the service be quick, the table be neat, the linen white, the knives and spoons gleaming... Cerebos Salt... TRY IT IN YOUR BATH... SCRUBB'S AMMONIA... YOU GET BETTER VALUE WHEN YOU BUY SCRUBB'S... SCRUBB & CO., LTD., GLASSBORO ST., LONDON, S.E.11



The paper for figured chiffon dress is charmingly illustrated in this model for the debutante. A delicate design of tulips is found in the slip-chiffon drills at base and on the deep belt.

The paper for figured chiffon dress is charmingly illustrated in this model for the debutante. A delicate design of tulips is found in the slip-chiffon drills at base and on the deep belt.

The paper for figured chiffon dress is charmingly illustrated in this model for the debutante. A delicate design of tulips is found in the slip-chiffon drills at base and on the deep belt.



The paper for figured chiffon dress is charmingly illustrated in this model for the debutante. A delicate design of tulips is found in the slip-chiffon drills at base and on the deep belt.

African Standard

NAIROBI, SATURDAY, NOVEMBER 24, 1929

Kenya Legislative Council

ELECTED MEMBERS EXPRESS THEIR VIEWS ON THE 1929 PROGRAMME

Generally Regarded as Honest Attempt to Meet the Conditions.

THE DEPARTMENT OF AGRICULTURE.

Director Denies Department is Losing Public Confidence: Reply to His Critics.

Dues and Pests

He thought the year ought to be in the hands of the people... The Department of Agriculture...

Elected Members gave the Budget a fairly cordial reception in the Legislative Council on Thursday... Lord Delamere described it as suitable in conditions...

There were several instances in the Government proposals to reduce living costs... Lord Delamere was not prepared to agree that there was a high cost of living in the country...

The Member for West Kenya charged Government with failing to face the issue of encouraging settlement... He also said the Agricultural Department should "dig more and write less."

The Hon. A. Holm, in reply declared he did not believe it to be the case that his department had lost the confidence of the country and added that he would not remain the Director of a Department of which that could be said.

The Hon. J. Martin, in reply declared he did not believe it to be the case that his department had lost the confidence of the country and added that he would not remain the Director of a Department of which that could be said.

After the speech made by the Hon. J. Martin, the Hon. J. Martin, in reply declared he did not believe it to be the case that his department had lost the confidence of the country and added that he would not remain the Director of a Department of which that could be said.

The Hon. J. Martin, in reply declared he did not believe it to be the case that his department had lost the confidence of the country and added that he would not remain the Director of a Department of which that could be said.

The Hon. J. Martin, in reply declared he did not believe it to be the case that his department had lost the confidence of the country and added that he would not remain the Director of a Department of which that could be said.

SPEED UP PRODUCTION!

Increased Financial Provision The Only Remedy.

The Issue Before The Elected Members.

It is a well-known fact that the production of wheat in Kenya has increased since 1917 to 250 bags although the Director of Agriculture declared a few weeks ago that cultivation which produces less than one bag of wheat is not a net profit proposition.

The importance of the appointment of agricultural officers for the East counties in European areas is stressed in one report after another and it is plain that to meet the need.

The Director frequently expresses his regret that the demonstration and experimental plots of all the important crops in various parts of the country are not being adequately maintained, and he has urged that the Government should be asked to provide the necessary funds to meet this need.

It is a well-known fact that the production of wheat in Kenya has increased since 1917 to 250 bags although the Director of Agriculture declared a few weeks ago that cultivation which produces less than one bag of wheat is not a net profit proposition.

The Director frequently expresses his regret that the demonstration and experimental plots of all the important crops in various parts of the country are not being adequately maintained, and he has urged that the Government should be asked to provide the necessary funds to meet this need.

It is a well-known fact that the production of wheat in Kenya has increased since 1917 to 250 bags although the Director of Agriculture declared a few weeks ago that cultivation which produces less than one bag of wheat is not a net profit proposition.

It is a well-known fact that the production of wheat in Kenya has increased since 1917 to 250 bags although the Director of Agriculture declared a few weeks ago that cultivation which produces less than one bag of wheat is not a net profit proposition.

It is a well-known fact that the production of wheat in Kenya has increased since 1917 to 250 bags although the Director of Agriculture declared a few weeks ago that cultivation which produces less than one bag of wheat is not a net profit proposition.

It is a well-known fact that the production of wheat in Kenya has increased since 1917 to 250 bags although the Director of Agriculture declared a few weeks ago that cultivation which produces less than one bag of wheat is not a net profit proposition.

It is a well-known fact that the production of wheat in Kenya has increased since 1917 to 250 bags although the Director of Agriculture declared a few weeks ago that cultivation which produces less than one bag of wheat is not a net profit proposition.



Wide Awake!


Essential for health and vitality. It is a well-known fact that the production of wheat in Kenya has increased since 1917 to 250 bags although the Director of Agriculture declared a few weeks ago that cultivation which produces less than one bag of wheat is not a net profit proposition.

SANATOGEN

The True Food

CLOCKS

A LARGE CONSIGNMENT OF THE LATEST DESIGNS. Just added to Stock including



Bracket, Hall and office Clocks of exceptional Materials Prices

Grandfather Clocks with Waltham Case in Oak and Mahogany Cases

DOBBIES, Ltd.,

WATCHMAKERS, Jewellers and Opticians. NAIROBI. Kenya's Premier Jewellers.

FIAT

THE NEW SIX CYLINDER

Mod. 520

20 h.p.



embodies all the latest improvements in Motor Car Construction, and it provides ample power combined with the most economic running cost.

Most Elegant Lines.

Agents Nairobi: Messrs. MOULTON & MORRISON Ltd. Telegrams: "Overland."

Agents Mombasa: SOCIETA COLONIALE ITALIANA. Telegrams: "Coloniale."

HALL'S GARAGE, P.O. Box No. 64 ELDORET. AGENTS FOR THE UASIN GISHU AND TRANS NZOIA DISTRICTS.

SALVATION ARMY.

New Hall Opened at Thika.

The new Salvation Army Hall at Thika was opened on the 28th inst. by the Rev. Canon ...

The new Salvation Army Hall at Thika was opened on the 28th inst. by the Rev. Canon ...

The new Salvation Army Hall at Thika was opened on the 28th inst. by the Rev. Canon ...

The new Salvation Army Hall at Thika was opened on the 28th inst. by the Rev. Canon ...

The new Salvation Army Hall at Thika was opened on the 28th inst. by the Rev. Canon ...

The new Salvation Army Hall at Thika was opened on the 28th inst. by the Rev. Canon ...



If you could be out with the Guns at Home—



Tang of autumn in the air . . . sharp sweet smell of fallen leaves . . . a drift of blue wood-smoke streaming thinly over the fields . . . a fine cock-pheasant rocketing up from the edge of the spinney . . . a good bag and a good day — and a good tea to follow.

For a good tea in Kenya, as at home, you can't do better than drink Lipton's Tea. It's a favourite everywhere, because of its perfect flavour and fine refreshing quality. Lipton's are real tea-experts, with tea-gardens of their own, and they use none but the choicest leaf, skilfully blended and packed.

Lipton's Tea is packed in airtight tins which keep the tea fresh and sweet. Look for the L.L. Trade Mark on every tin.

Mansion House.

THE INTERIOR TO BE UNDERSTOOD.

STANDARD CORRESPONDENT. London, Oct. 2. I have this a general remark that the interior of the Mansion House is likely to be completely new in a few years. Some time before the removal of the present interior, the Mansion House will be completely new. The interior of the Mansion House is likely to be completely new in a few years. Some time before the removal of the present interior, the Mansion House will be completely new.

LIPTON'S YELLOW LABEL TEA

WORLD-FAMOUS FOR QUALITY

TWO OTHER STANDARD BLENDS: GREEN LABEL (Special Darjeeling) and RED LABEL.

ON SALE EVERYWHERE

NEVER
CRAVENA
CORN-TIPPED VIRGINIA CIGARETTES
The Cravena Cigarette is made of the finest Virginia tobacco
GARDNER LTD., LONDON, ENGLAND, 140, THE AVENUE, THE CROFTS

DRILLING MACHINES

W. WINGRAM & Co.
P.O. Box 163 THE TOOL HOUSE, NAIROBI. Telegrams 'Ironware'

CORRESPONDENCE

THE SUDAN MILITARY QUESTION

The Sudan is a vast country, and the military question is one of the most important. The Sudanese people are not used to a regular military organization, and the British Government has to take care to maintain a sufficient force to keep the peace. The Sudanese people are not used to a regular military organization, and the British Government has to take care to maintain a sufficient force to keep the peace.

NATIVE EDUCATION AND HEALTH

The Native Education and Health is a subject of great importance. The Sudanese people are not used to a regular military organization, and the British Government has to take care to maintain a sufficient force to keep the peace. The Sudanese people are not used to a regular military organization, and the British Government has to take care to maintain a sufficient force to keep the peace.

Yours etc. DELAMBER, Nairobi, Nov. 20, 1929

SALISBURY ROAD

To the Editor, "E.A. Standard"
—Could you please send me a copy of the paper just above the above road, and if possible, a copy of the paper just above the above road.

Beeswax.

MOST PROFITABLE NATIVE INDUSTRY IN TANGANYIKA

The most profitable native industry in Tanganyika is beeswax. The beeswax industry is one of the most important and profitable industries in the country. The beeswax industry is one of the most important and profitable industries in the country.

Motor Show.

FEWER PEOPLE BUT MORE ORDERS

The Motor Show at Obuvungi was a success. The show was held at Obuvungi and was a success. The show was held at Obuvungi and was a success.

CORRESPONDENCE

CATTLE POISONED BY ANAEMIC

Cattle poisoning by anaemic is a serious problem. The cattle are poisoned by anaemic, and this is a serious problem. The cattle are poisoned by anaemic, and this is a serious problem.

HOUSING OF OFFICIALS

The housing of officials is a problem. The officials are not provided with adequate housing, and this is a problem. The officials are not provided with adequate housing, and this is a problem.

THE CONVENTION OF ASSOCIATION

The Convention of Association is a subject of interest. The Convention of Association is a subject of interest. The Convention of Association is a subject of interest.

ANÆMIC AND RUNDOWN

ANÆMIC AND RUNDOWN
Your nerves may be weak, your energy may be low, and your health may be poor. This is a condition known as anaemic and rundown. It is caused by a lack of iron in the blood, and it can be cured by taking Dr. Cassell's Tablets.

DR. CASSELL'S TABLETS

Dr. Cassell's Tablets
The most effective remedy for anaemic and rundown. It contains iron, which is essential for the production of red blood cells. It is a powerful tonic and restorative.

The POPULAR TONIC

Prices 1/9 and 4/-
The most popular tonic in the world. It is a powerful tonic and restorative. It is the most effective remedy for anaemic and rundown.

COMMERCIAL UNION ASSURANCE COMPANY LIMITED.

INSURANCES OF EVERY DESCRIPTION
Sole Agents: H. ROSENBLUM & Co., Ltd., Mombasa, Nairobi, Kisumu, Kampala & Jinja.
Total Assets exceed - - - £54,000,000
Total Annual Income exceeds - £22,000,000

Just Arrived. Military Overcoats.

Constantly Arriving

FRESH COMMISSIONS
ALL CLASSES OF GOODS
Suitable for Settlers and Native Trade
Including
Pangas, Jambies, Karais, Axes, Mattocks, Waxing Cans, Buckets, Shovels, Spades and other goods in numerous to mention.
PRICES DEFTY COMPETITION.
Enquiries Solicited.
M. ROSENBLUM & Co., Ltd.
Harding Street, Nairobi. Telegrams Rosenblum. Tel. No. 15. P.O. Box 551.

INSTANT HEAT FOR INSTANT USE
META
HEAT TABLETS
NON EXPLOSIVE - DO NOT MELT

SUPERIOR METHYLATED SPIRIT
Sole Agents: H. ROSENBLUM & Co., Nairobi, 104-105, 106-107, Market Street, Nairobi.
Nairobi, November 2, 1929.

UGANDA COTTON

Uganda Cotton
The cotton industry in Uganda is one of the most important. The cotton is produced in the districts of the north and west. The cotton is produced in the districts of the north and west.

GOVERNOR OF UGANDA.

His Excellency the Governor is proceeding to Nairobi next week. He will be accompanied by his wife and children. He will be accompanied by his wife and children.

Do Justice to your Tractor
BY USING
Kerosene Specially
BLENDED TO GIVE
FREEDOM FROM CARBON,
FREEDOM FROM KNOCKING,
MINIMUM OIL DILUTION,
EASY STARTING, AND
LOW CONSUMPTION

CROSS POWER KEROSENE
The Shell Company of East Africa Ltd.
AGENTS:—
Smith Mackenzie & Co.

PRISONERS LEAVE GOAL IN A BODY

The complaints...

THE SUPREME COURT GARAGES

Discussions by Chamber of Commerce.

Don't Suffer Another Minute—Stimulate The Liver—Enjoy Good Health

The liver, perhaps the most important...



Trade Enquiries: WARDLAW, Wholesale Chemists, Nairobi, Mombasa, and Eldoret.

The Prince—a Personality.

By Margaret Peterson, the Reporter.

I suppose to us, in the public...

Imagine if a moment he became...

What a picture of a man...

It is not that he is so much...

It is not that he is so much...

It is not that he is so much...

It is not that he is so much...

It is not that he is so much...

It is not that he is so much...

Advertisement for Johnnie Walker Scotch Whisky, featuring an illustration of the man and the text 'GUARANTEED same Quality all over the World from Manchester to Mombasa.'

Advertisement for Holeproof Hosiery, featuring an illustration of a pair of socks and the text 'Universal Fame for Women'.

Advertisement for Alfred J. P. Baumann, Head Office in London, with a list of agents in various African cities.

Advertisement for OILS, TINS and general PRODUCTS, COFFEY Flasters, etc.

Advertisement for PEECE-GOODS: British and Continental, U.S. PETERS Cement.

Advertisement for ELEPHANT Brand Iron Corrugated Sheets, DEMAND JEFFREYS' PILENDR.

Advertisement for DUAL PURPOSE Bait, featuring an illustration of a rooster and a hen.

Kenya Land Policy.

DR LEYS QUOTES MIBSON CASE OF DISOBEDIENCE

The Naiman Leys, indefeasible...

St. Andrew's Day Services

The Rev. Andrew's Day services...

Populal Lectures

The Rev. Andrew's Day services...

Proposed Quarter.

He suggested that the Nairobi...

Mr. G. A. H. Hamilton thought

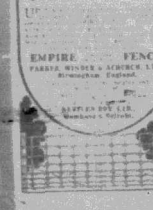
that such a question in the...

INSURE NOW

THE SOUTH AFRICAN MUTUAL LIFE ASSURANCE SOCIETY

The Old Mutual (Incorporated 1845) 1, Colston Mansions, N.A. P.O. General Manager: DR. BONUS RECORD over 65 years.

NOW fencing built for African conditions



EMPIRE FENCE



THE WEEK'S ATTRACTION is the variety of DOUBLE TERAI HATS. M. P. de Mello, P.O. Box 414, NAIROBI.

Traders' Tickets.

PROPOSAL NOT FAVOURED BY NAIROBI CHAMBER.

The proposal for the issue of...

The proposal for the issue of...

The proposal for the issue of...

The proposal for the issue of...

The proposal for the issue of...

The proposal for the issue of...

The proposal for the issue of...

The proposal for the issue of...

The proposal for the issue of...

Advertisement for CHIVERS CUSTARD POWDER, Best with Chivers Canned Fruits, IN STANDARD as well as in VANILLA, LEMON, and ALMOND FLAVOURS.

Advertisement for GERM PROCESS OILS, Are in Daily Use in Over 30 COUNTRIES, World Wide Patents, Best Motor Cars, Tractors and all types of Engines.

Large advertisement for Lifebuoy Soap habit, LEVER BROTHERS LIMITED, PORT SUNLIGHT, ENGLAND, FOR HEALTH.

Kenya and Uganda Trade.

ITEMS IN THE CUSTOMS SHIPPING RETURN

Imports.
222 cases, Val. 1,474,000
2,000 cases, Val. 1,474,000

Exports.
222 cases, Val. 1,474,000
2,000 cases, Val. 1,474,000

Imports.
222 cases, Val. 1,474,000
2,000 cases, Val. 1,474,000

Exports.
222 cases, Val. 1,474,000
2,000 cases, Val. 1,474,000

Imports.
222 cases, Val. 1,474,000
2,000 cases, Val. 1,474,000

Imports.
222 cases, Val. 1,474,000
2,000 cases, Val. 1,474,000

Exports.
222 cases, Val. 1,474,000
2,000 cases, Val. 1,474,000

Imports.
222 cases, Val. 1,474,000
2,000 cases, Val. 1,474,000

Exports.
222 cases, Val. 1,474,000
2,000 cases, Val. 1,474,000

Imports.
222 cases, Val. 1,474,000
2,000 cases, Val. 1,474,000



A Link with Home

Wherever Britishers are... Bird's Custard... makes a most delicious dish.

BIRD'S CUSTARD

It is sold in tin and tinned tins... BIRD'S CUSTARD... makes a most delicious dish.

DISTINCTION.

Some people look distinctive in glasses! This appearance is almost always the result of astigmatism in fitting. Why not extract the fullest value from your spectacles by having them expertly and artistically adapted to your face type.

Dobbies Ltd. OPHTHALMIC OPTICIANS NAIROBI. Phone 80.

PLUVEX FOR OUTHOUSES



EASY TO LAY.

Time and Weatherproof

Send for Samples and Prices to:- Boustead & Clarke Ltd., NAIROBI.

It's Your Blood that must be cleansed

It is the blood that cleanses the body... Clarke's Blood Mixture... best for blood impurities.



ACUTE & CHRONIC BRONCHITIS.

Now successfully treated by PEP'S BREATHABLE CURS... PEP'S BREATHABLE CURS.

Brochitis, acute and chronic... PEP'S BREATHABLE CURS.

We Hear for London

London... We Hear for London... London...

London... We Hear for London... London...

London... We Hear for London... London...

London... We Hear for London... London...

When children play they must be well... Cod Liver Oil with Malt Extract.



Easier Work and Faster Work with a Disston Pit Saw



You cannot tell a good pit saw by looking at it... Disston Pit Saw... HENRY DISSTON & SONS, INC.

DISSTON



Mr. P. Edwards

Learning the Language... Mr. P. Edwards...

Learning the Language... Mr. P. Edwards...

Learning the Language... Mr. P. Edwards...

Learning the Language... Mr. P. Edwards...

KENYA SETTLERS DIARY 1929:

Containing Useful Information to the Settler. Increased Blotting Size 10 x 8 inches. Shgs. 4/-, posted 4/6. Without Blotting 3/6, posted 4/-.

ORDER NOW LETS DIARIES 1929.

POCKET AND OFFICE SYSTEM Desk Calendars

Complete Shgs. 8/-, posted 9/6. Refills Shgs. 5/-, posted 5/6.

PILOT Desk Calendars

Complete Shgs. 6/6, posted 9/-. Refills Shgs. 3/7, posted 4/3.

Kenya Calendar Shgs. 4/-, posted and posted 4/6.

Standard Stationery Stores, NAIROBI.

KEATING'S POWDER KILLS

KEATING'S POWDER KILLS... KEATING'S POWDER KILLS.



Anything that soft water won't harm is safe with LUX

ISN'T it a blessing to know that whatever the fabric be made of... if it's safe in soft water it's safe with LUX.

To use LUX for the whole family wash is a real economy

LEVEN BROTHERS LIMITED, 100, 102, 104, 106, 108, 110, 112, 114, 116, 118, 120, 122, 124, 126, 128, 130, 132, 134, 136, 138, 140, 142, 144, 146, 148, 150, 152, 154, 156, 158, 160, 162, 164, 166, 168, 170, 172, 174, 176, 178, 180, 182, 184, 186, 188, 190, 192, 194, 196, 198, 200, 202, 204, 206, 208, 210, 212, 214, 216, 218, 220, 222, 224, 226, 228, 230, 232, 234, 236, 238, 240, 242, 244, 246, 248, 250, 252, 254, 256, 258, 260, 262, 264, 266, 268, 270, 272, 274, 276, 278, 280, 282, 284, 286, 288, 290, 292, 294, 296, 298, 300, 302, 304, 306, 308, 310, 312, 314, 316, 318, 320, 322, 324, 326, 328, 330, 332, 334, 336, 338, 340, 342, 344, 346, 348, 350, 352, 354, 356, 358, 360, 362, 364, 366, 368, 370, 372, 374, 376, 378, 380, 382, 384, 386, 388, 390, 392, 394, 396, 398, 400, 402, 404, 406, 408, 410, 412, 414, 416, 418, 420, 422, 424, 426, 428, 430, 432, 434, 436, 438, 440, 442, 444, 446, 448, 450, 452, 454, 456, 458, 460, 462, 464, 466, 468, 470, 472, 474, 476, 478, 480, 482, 484, 486, 488, 490, 492, 494, 496, 498, 500, 502, 504, 506, 508, 510, 512, 514, 516, 518, 520, 522, 524, 526, 528, 530, 532, 534, 536, 538, 540, 542, 544, 546, 548, 550, 552, 554, 556, 558, 560, 562, 564, 566, 568, 570, 572, 574, 576, 578, 580, 582, 584, 586, 588, 590, 592, 594, 596, 598, 600, 602, 604, 606, 608, 610, 612, 614, 616, 618, 620, 622, 624, 626, 628, 630, 632, 634, 636, 638, 640, 642, 644, 646, 648, 650, 652, 654, 656, 658, 660, 662, 664, 666, 668, 670, 672, 674, 676, 678, 680, 682, 684, 686, 688, 690, 692, 694, 696, 698, 700, 702, 704, 706, 708, 710, 712, 714, 716, 718, 720, 722, 724, 726, 728, 730, 732, 734, 736, 738, 740, 742, 744, 746, 748, 750, 752, 754, 756, 758, 760, 762, 764, 766, 768, 770, 772, 774, 776, 778, 780, 782, 784, 786, 788, 790, 792, 794, 796, 798, 800, 802, 804, 806, 808, 810, 812, 814, 816, 818, 820, 822, 824, 826, 828, 830, 832, 834, 836, 838, 840, 842, 844, 846, 848, 850, 852, 854, 856, 858, 860, 862, 864, 866, 868, 870, 872, 874, 876, 878, 880, 882, 884, 886, 888, 890, 892, 894, 896, 898, 900, 902, 904, 906, 908, 910, 912, 914, 916, 918, 920, 922, 924, 926, 928, 930, 932, 934, 936, 938, 940, 942, 944, 946, 948, 950, 952, 954, 956, 958, 960, 962, 964, 966, 968, 970, 972, 974, 976, 978, 980, 982, 984, 986, 988, 990, 992, 994, 996, 998, 1000

A Personal Service Bureau for Your Especial Benefit

The Bureau has been established to assist you in all your business and personal requirements...



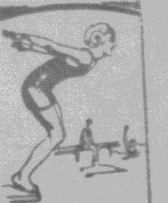
When You've Come... Catalogues... GAMAGES

Holborn, London, Eng. Free Catalogues are also obtainable from our Agent...

COFFEE SHIP YOUR COFFEE TO... MESSRS. T. H. ALLAN & CO. LONDON.

THE SHARPER... The sharper the eye, the more it sees... The sharper the ear, the more it hears...

THE SHARPER... The sharper the eye, the more it sees... The sharper the ear, the more it hears...



Full of Life!

VIROL is the food that gives life and vigor to the body... It contains all the vitamins...

VIROL... The most powerful medicine... It is a complete food...

Agent: General Agents Ltd., The Buildings, Government Road, NAIROBI, Kenya Colony.

THE MAGAD... LTD. LAKE MAGAD... LONDON & KILIFRIN

CARP BRAND MAGAD... Crescent Brand

TRANSPORT... J. B. SINCLAIR... HAVAGE CONTRACTORS... NAIROBI

RELIABLE BUILDING SAND BALLAST... HAVAGE CONTRACTORS... NAIROBI

TRANSPORT... J. B. SINCLAIR... HAVAGE CONTRACTORS... NAIROBI

RELIABLE BUILDING SAND BALLAST... HAVAGE CONTRACTORS... NAIROBI

TRANSPORT... J. B. SINCLAIR... HAVAGE CONTRACTORS... NAIROBI

RELIABLE BUILDING SAND BALLAST... HAVAGE CONTRACTORS... NAIROBI

TRANSPORT... J. B. SINCLAIR... HAVAGE CONTRACTORS... NAIROBI

LOCAL INCIDENTS

THE SHARPER... The sharper the eye, the more it sees... The sharper the ear, the more it hears...

LOCATIONS

THE SHARPER... The sharper the eye, the more it sees... The sharper the ear, the more it hears...

THE SHARPER... The sharper the eye, the more it sees... The sharper the ear, the more it hears...

THE SHARPER... The sharper the eye, the more it sees... The sharper the ear, the more it hears...

THE SHARPER... The sharper the eye, the more it sees... The sharper the ear, the more it hears...

THE SHARPER... The sharper the eye, the more it sees... The sharper the ear, the more it hears...

THE SHARPER... The sharper the eye, the more it sees... The sharper the ear, the more it hears...

THE SHARPER... The sharper the eye, the more it sees... The sharper the ear, the more it hears...

THE SHARPER... The sharper the eye, the more it sees... The sharper the ear, the more it hears...

THE SHARPER... The sharper the eye, the more it sees... The sharper the ear, the more it hears...

THE SHARPER... The sharper the eye, the more it sees... The sharper the ear, the more it hears...

THE SHARPER... The sharper the eye, the more it sees... The sharper the ear, the more it hears...

THE SHARPER... The sharper the eye, the more it sees... The sharper the ear, the more it hears...

THE SHARPER... The sharper the eye, the more it sees... The sharper the ear, the more it hears...

THE SHARPER... The sharper the eye, the more it sees... The sharper the ear, the more it hears...

THE SHARPER... The sharper the eye, the more it sees... The sharper the ear, the more it hears...

THE SHARPER... The sharper the eye, the more it sees... The sharper the ear, the more it hears...

THE SHARPER... The sharper the eye, the more it sees... The sharper the ear, the more it hears...

Fair Prices

The following are estimated fair retail prices for our Superior Flour - Kenya - Mill, at Nairobi, Nakuru, Nyeri and Molo

Table with 3 columns: Price per 100 lb, Price per 50 lb, Price per 25 lb. Items include Cotton Bag and Cotton Bag.

The undermentioned firms are selling at these prices: NAIROBI: WINDMILL LIMITED, KASDI NARANJI & CO, COLONIAL GENERAL STORES LTD, BULHAM PARIMAI & CO, KANANALI BROS.

NAKURU: IBRAHIM KAHUMBI, H. SPIKE, HARISSINGH GUJABHAI, KENYA GROCERIES LTD. NJORO and MOLO: THE EUROPA STORE LTD.

There is more "Kenya's Mill" sold in Kenya and Uganda than all other makes of flour, whether local or imported, combined. It is the flour of dependable high quality.

UNGA Ltd., Njoro.

TRIUMPH

Your next Mount should be one of these World Famous Machines. THESE ARE THE POINTS TO STUDY. ECONOMY. SAFETY. COMFORT. DURABILITY.



COUNT THEM ON THE ROAD. CALL AND SEE THEM.

F. Brimelow's Garage. TRIUMPH SERVICE STATION. HARDINGE ST., NAIROBI.

A NATIVE LOCATION AT MOMBASA

Central Jungle Becomes a Township

THE EAST AFRICAN STANDARD, MOMBASA, KENYA, 1930. The Government has decided to set aside a large area of land in the central part of Mombasa as a native location for the Kikuyu people.

The location is situated in the central part of the city, and is bounded by the sea on the east and the city on the west. It is a very fertile area, and is well suited for agriculture.

The Government has decided to set aside a large area of land in the central part of Mombasa as a native location for the Kikuyu people. This location is situated in the central part of the city, and is bounded by the sea on the east and the city on the west.

The Government has decided to set aside a large area of land in the central part of Mombasa as a native location for the Kikuyu people. This location is situated in the central part of the city, and is bounded by the sea on the east and the city on the west.

The Government has decided to set aside a large area of land in the central part of Mombasa as a native location for the Kikuyu people. This location is situated in the central part of the city, and is bounded by the sea on the east and the city on the west.

The Government has decided to set aside a large area of land in the central part of Mombasa as a native location for the Kikuyu people. This location is situated in the central part of the city, and is bounded by the sea on the east and the city on the west.

The Government has decided to set aside a large area of land in the central part of Mombasa as a native location for the Kikuyu people. This location is situated in the central part of the city, and is bounded by the sea on the east and the city on the west.

The Government has decided to set aside a large area of land in the central part of Mombasa as a native location for the Kikuyu people. This location is situated in the central part of the city, and is bounded by the sea on the east and the city on the west.

The Government has decided to set aside a large area of land in the central part of Mombasa as a native location for the Kikuyu people. This location is situated in the central part of the city, and is bounded by the sea on the east and the city on the west.

The Government has decided to set aside a large area of land in the central part of Mombasa as a native location for the Kikuyu people. This location is situated in the central part of the city, and is bounded by the sea on the east and the city on the west.

The Government has decided to set aside a large area of land in the central part of Mombasa as a native location for the Kikuyu people. This location is situated in the central part of the city, and is bounded by the sea on the east and the city on the west.

The Government has decided to set aside a large area of land in the central part of Mombasa as a native location for the Kikuyu people. This location is situated in the central part of the city, and is bounded by the sea on the east and the city on the west.

The Government has decided to set aside a large area of land in the central part of Mombasa as a native location for the Kikuyu people. This location is situated in the central part of the city, and is bounded by the sea on the east and the city on the west.

The Government has decided to set aside a large area of land in the central part of Mombasa as a native location for the Kikuyu people. This location is situated in the central part of the city, and is bounded by the sea on the east and the city on the west.

The Government has decided to set aside a large area of land in the central part of Mombasa as a native location for the Kikuyu people. This location is situated in the central part of the city, and is bounded by the sea on the east and the city on the west.

The Government has decided to set aside a large area of land in the central part of Mombasa as a native location for the Kikuyu people. This location is situated in the central part of the city, and is bounded by the sea on the east and the city on the west.

The Government has decided to set aside a large area of land in the central part of Mombasa as a native location for the Kikuyu people. This location is situated in the central part of the city, and is bounded by the sea on the east and the city on the west.

The Government has decided to set aside a large area of land in the central part of Mombasa as a native location for the Kikuyu people. This location is situated in the central part of the city, and is bounded by the sea on the east and the city on the west.

The Government has decided to set aside a large area of land in the central part of Mombasa as a native location for the Kikuyu people. This location is situated in the central part of the city, and is bounded by the sea on the east and the city on the west.

The Government has decided to set aside a large area of land in the central part of Mombasa as a native location for the Kikuyu people. This location is situated in the central part of the city, and is bounded by the sea on the east and the city on the west.

The Government has decided to set aside a large area of land in the central part of Mombasa as a native location for the Kikuyu people. This location is situated in the central part of the city, and is bounded by the sea on the east and the city on the west.

The Government has decided to set aside a large area of land in the central part of Mombasa as a native location for the Kikuyu people. This location is situated in the central part of the city, and is bounded by the sea on the east and the city on the west.

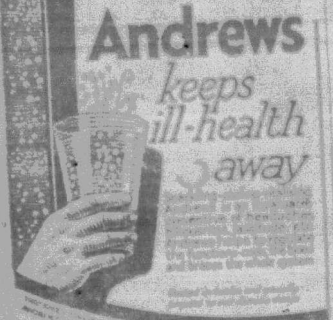
The Government has decided to set aside a large area of land in the central part of Mombasa as a native location for the Kikuyu people. This location is situated in the central part of the city, and is bounded by the sea on the east and the city on the west.

The Government has decided to set aside a large area of land in the central part of Mombasa as a native location for the Kikuyu people. This location is situated in the central part of the city, and is bounded by the sea on the east and the city on the west.

The Government has decided to set aside a large area of land in the central part of Mombasa as a native location for the Kikuyu people. This location is situated in the central part of the city, and is bounded by the sea on the east and the city on the west.

The Government has decided to set aside a large area of land in the central part of Mombasa as a native location for the Kikuyu people. This location is situated in the central part of the city, and is bounded by the sea on the east and the city on the west.

The Government has decided to set aside a large area of land in the central part of Mombasa as a native location for the Kikuyu people. This location is situated in the central part of the city, and is bounded by the sea on the east and the city on the west.

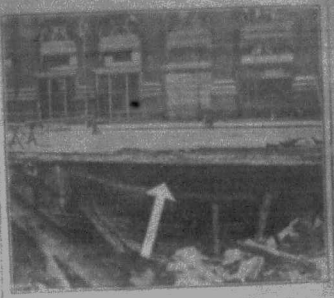


Andrews keeps ill-health away. Andrews' Liver Salt. A NATIVE LOCATION AT MOMBASA.



Andrews' Liver Salt. Heavy Duty Vehicles. WEED THE CHAINS. STANDARD STATIONERY STORES, NAIROBI.

Carbon Paper. Graphia Ltd, London. MADE BY. IN PURPLE AND BLACK. BOXES OF 100 SHEETS. QUARTO SIZE 10 x 8 1/2. 6/- per box. FOLIO SIZE 13 x 9 1/2. 7/- per box. TYPewriter RIBBONS FOR Remington 4 inch, Royal No. 10 4 inch, Oliver 9 1/2 inch, Underwood 4 inch, Black and Red Record and Purple Copy. 8/- each. STANDARD STATIONERY STORES, NAIROBI.



The dramatic collapse of the building in Cornhill revealed the fact that a portion of the roadway had been nothing more than a twelve inch crust of concrete with thin perforations of foundation.

This thin layer of concrete had been carrying some of London's heaviest traffic for a considerable period - that this crust had been laid two years previously with

FERROCRETE The rapid hardening portland cement. For names of stockists apply to the Manufacturers' Representatives: Kottler-Roy, Ltd., Box 100 Nairobi; Box 171, Dar-es-Salaam; Box 188, Kampala; or Box 116, Mombasa.

RIEGLER'S Dry Cleaning & Dyeing Works. 11, Upper Bevington Street, Nairobi. Telephone 1111.

In the Supreme Court of Kenya at Mombasa.

CIVIL CASE No. 115 of 1929. IN THE MATTER of the Companies Ordinance 1921 1925.

AND IN THE MATTER of Polyshand (B.E.A.), Limited. AND IN THE MATTER of a Petition dated the 17th November, 1928, by the Standard Bank of South Africa, Limited.

NOTICE is hereby given that a Petition for the winding up of the above named Company by the Supreme Court of Kenya was on the 17th day of November, 1928, presented to the said Court by the Standard Bank of South Africa, Limited.

AND that the said petition is directed to be heard before the Court sitting at Mombasa on the 11th day of December, 1928, at 10 o'clock in the forenoon and any creditor or contributory of the said Company desirous to support or oppose the making of an order on the said petition may appear at the time of hearing by himself or his counsel for that purpose, and a copy of the petition will be furnished to any creditor or contributory of the said Company requiring the same by the undersigned, on payment of the regulated charge for the same.

(84) MORRISON & ALLAN, ADVOCATES FOR THE PETITIONERS. P.O. Box 11, MOMBASA.

Kenya Crop Prospects. The Government has decided to set aside a large area of land in the central part of Mombasa as a native location for the Kikuyu people. This location is situated in the central part of the city, and is bounded by the sea on the east and the city on the west.

Kenya Crop Prospects. The Government has decided to set aside a large area of land in the central part of Mombasa as a native location for the Kikuyu people. This location is situated in the central part of the city, and is bounded by the sea on the east and the city on the west.

Kenya Crop Prospects. The Government has decided to set aside a large area of land in the central part of Mombasa as a native location for the Kikuyu people. This location is situated in the central part of the city, and is bounded by the sea on the east and the city on the west.

Kenya Crop Prospects. The Government has decided to set aside a large area of land in the central part of Mombasa as a native location for the Kikuyu people. This location is situated in the central part of the city, and is bounded by the sea on the east and the city on the west.

W.C.A. Garden Fete. The Government has decided to set aside a large area of land in the central part of Mombasa as a native location for the Kikuyu people. This location is situated in the central part of the city, and is bounded by the sea on the east and the city on the west.

W.C.A. Garden Fete. The Government has decided to set aside a large area of land in the central part of Mombasa as a native location for the Kikuyu people. This location is situated in the central part of the city, and is bounded by the sea on the east and the city on the west.

W.C.A. Garden Fete. The Government has decided to set aside a large area of land in the central part of Mombasa as a native location for the Kikuyu people. This location is situated in the central part of the city, and is bounded by the sea on the east and the city on the west.

W.C.A. Garden Fete. The Government has decided to set aside a large area of land in the central part of Mombasa as a native location for the Kikuyu people. This location is situated in the central part of the city, and is bounded by the sea on the east and the city on the west.

W.C.A. Garden Fete. The Government has decided to set aside a large area of land in the central part of Mombasa as a native location for the Kikuyu people. This location is situated in the central part of the city, and is bounded by the sea on the east and the city on the west.

W.C.A. Garden Fete. The Government has decided to set aside a large area of land in the central part of Mombasa as a native location for the Kikuyu people. This location is situated in the central part of the city, and is bounded by the sea on the east and the city on the west.

W.C.A. Garden Fete. The Government has decided to set aside a large area of land in the central part of Mombasa as a native location for the Kikuyu people. This location is situated in the central part of the city, and is bounded by the sea on the east and the city on the west.

W.C.A. Garden Fete. The Government has decided to set aside a large area of land in the central part of Mombasa as a native location for the Kikuyu people. This location is situated in the central part of the city, and is bounded by the sea on the east and the city on the west.

W.C.A. Garden Fete. The Government has decided to set aside a large area of land in the central part of Mombasa as a native location for the Kikuyu people. This location is situated in the central part of the city, and is bounded by the sea on the east and the city on the west.

W.C.A. Garden Fete. The Government has decided to set aside a large area of land in the central part of Mombasa as a native location for the Kikuyu people. This location is situated in the central part of the city, and is bounded by the sea on the east and the city on the west.

W.C.A. Garden Fete. The Government has decided to set aside a large area of land in the central part of Mombasa as a native location for the Kikuyu people. This location is situated in the central part of the city, and is bounded by the sea on the east and the city on the west.

W.C.A. Garden Fete. The Government has decided to set aside a large area of land in the central part of Mombasa as a native location for the Kikuyu people. This location is situated in the central part of the city, and is bounded by the sea on the east and the city on the west.

Twenty Years Ago

A NATIVE LOCATION AT MOMBASA

Landed jungle becomes the playground

When the first white man landed on the island of Pemba...

...and there is little doubt that the...

...the following is the history of the...

...the first white man landed on the...

...the first white man landed on the...

...the first white man landed on the...

...the first white man landed on the...

...the first white man landed on the...

...the first white man landed on the...

...the first white man landed on the...

...the first white man landed on the...

...the first white man landed on the...

...the first white man landed on the...

...the first white man landed on the...

...the first white man landed on the...

...the first white man landed on the...

...the first white man landed on the...

...the first white man landed on the...

...the first white man landed on the...

...the first white man landed on the...

...the first white man landed on the...

...the first white man landed on the...

...the first white man landed on the...

...the first white man landed on the...

...the first white man landed on the...

...the first white man landed on the...

...the first white man landed on the...

...the first white man landed on the...

...the first white man landed on the...

...the first white man landed on the...

...the first white man landed on the...

...the first white man landed on the...

...the first white man landed on the...

...the first white man landed on the...

...the first white man landed on the...

...the first white man landed on the...

...the first white man landed on the...

...the first white man landed on the...

...the first white man landed on the...

...the first white man landed on the...

...the first white man landed on the...

...the first white man landed on the...

...the first white man landed on the...

...the first white man landed on the...

...the first white man landed on the...

...the first white man landed on the...

...the first white man landed on the...

...the first white man landed on the...

...the first white man landed on the...

...the first white man landed on the...

...the first white man landed on the...

...the first white man landed on the...

...the first white man landed on the...

...the first white man landed on the...

...the first white man landed on the...

...the first white man landed on the...

...the first white man landed on the...

...the first white man landed on the...

...the first white man landed on the...

...the first white man landed on the...

...the first white man landed on the...

...the first white man landed on the...

...the first white man landed on the...

...the first white man landed on the...

...the first white man landed on the...

...the first white man landed on the...

...the first white man landed on the...

...the first white man landed on the...

...the first white man landed on the...

...the first white man landed on the...

...the first white man landed on the...

...the first white man landed on the...

...the first white man landed on the...

...the first white man landed on the...

...the first white man landed on the...

...the first white man landed on the...

...the first white man landed on the...

...the first white man landed on the...

...the first white man landed on the...

...the first white man landed on the...

...the first white man landed on the...

...the first white man landed on the...

...the first white man landed on the...

...the first white man landed on the...

...the first white man landed on the...

...the first white man landed on the...

...the first white man landed on the...

...the first white man landed on the...

...the first white man landed on the...

...the first white man landed on the...

...the first white man landed on the...

...the first white man landed on the...

...the first white man landed on the...

...the first white man landed on the...

...the first white man landed on the...

...the first white man landed on the...

...the first white man landed on the...

...the first white man landed on the...

...the first white man landed on the...

...the first white man landed on the...

...the first white man landed on the...

...the first white man landed on the...

...the first white man landed on the...

...the first white man landed on the...

...the first white man landed on the...

...the first white man landed on the...

...the first white man landed on the...

...the first white man landed on the...

...the first white man landed on the...

...the first white man landed on the...

...the first white man landed on the...

...the first white man landed on the...

...the first white man landed on the...

...the first white man landed on the...

...the first white man landed on the...

...the first white man landed on the...

...the first white man landed on the...

...the first white man landed on the...

...the first white man landed on the...

Advertisement for Andrews' health pills, featuring an illustration of a hand holding a pill bottle.

Advertisement for Andrews' Liver Salt, with a decorative border.

Advertisement for WEED on every hook, showing a close-up of a tire tread.

Advertisement for Heavy Duty Vehicles and WEED TYRE CHAINS, including technical specifications.

Advertisement for Carbon Paper by Graphia Ltd., London, listing various sizes and types.

Advertisement for a native location at Mombasa, with a decorative border.

Advertisement for WEED on every hook, showing a close-up of a tire tread.

Advertisement for Heavy Duty Vehicles and WEED TYRE CHAINS, including technical specifications.

Advertisement for Carbon Paper by Graphia Ltd., London, listing various sizes and types.

South Kenya Reserve

South Fort Hill and South Mt. Kenya

Work and Central Kavirondo

Kenya Mail

Colonial Service Appointments

Doll Competition

District Councils

Defence Force Commandant

Kenya Mail

Colonial Service Appointments

Doll Competition

District Councils

Defence Force Commandant

Kenya Mail

Colonial Service Appointments

Doll Competition

District Councils

Kenya Mail

Colonial Service Appointments

Doll Competition

District Councils

Defence Force Commandant

Kenya Mail

Colonial Service Appointments

Doll Competition

District Councils

Kenya Mail

Colonial Service Appointments

Doll Competition

District Councils

Defence Force Commandant

Kenya Mail

Colonial Service Appointments

Doll Competition

District Councils

Kenya Mail

Colonial Service Appointments

Doll Competition

District Councils

Defence Force Commandant

Kenya Mail

Colonial Service Appointments

Doll Competition

District Councils

The dramatic collapse of the building in Cornhill revealed the fact that a portion of the roadway had been nothing more than a twelve-inch crust of concrete...

This thin layer of concrete had been carrying some of London's heaviest traffic for a considerable period...

Advertisement for FERROCRETE, a rapid hardening portland cement, with a decorative border.

Advertisement for KIEGLER'S Dry Cleaning & Dyeing Works, including contact information.

In the Supreme Court of Kenya at Mombasa.

CIVIL CASE No. 115 OF 1928. IN THE MATTER OF the Company Ordinances 1921-1923.

AND IN THE MATTER OF Powsland (B.E.A.), Limited.

AND IN THE MATTER of a Petition dated the 24th November, 1928, by the Standard Bank of South Africa, Limited.

NOTICE is hereby given that a Petition for the winding up of the above named Company by the Supreme Court of Kenya was on the 7th day of November, 1928, presented to the said Court by the Standard Bank of South Africa, Limited.

AND that the said petition is directed to be heard before the Court sitting at Mombasa on the 11th day of December, 1928, at 10 o'clock in the forenoon...

(Sd.) MORRISON & ALLAN, ADVOCATES FOR THE PETITIONERS. P.O. Box 11, MOMBASA.

'As good as a DUNLOP is often said but never accomplished.



Consistent excellence has built up for DUNLOP their fine reputation, which is world-wide. 'As good as a DUNLOP' is often said, but never accomplished. It means that DUNLOP is the standard by which all tyres are judged.

'fit

DUNLOP will be SATISFIED'

And now, in addition to the popular Dunlop Tyre of standard construction, there is a "Fort" Dunlop Tyre of specially heavy construction particularly suitable for East African road conditions.

THE DUNLOP RUBBER COMPANY LTD.

BOX NO. 718.

NAIROBI

Representatives—The African Mercantile Co., Ltd.

Church Notices.

ALL SAINTS CATHEDRAL, NAIROBI

7.30 a.m. Morning Prayer.
8.45 a.m. Holy Communion.
10.30 a.m. Morning Prayer.
11.15 a.m. Children's Service.
12.30 p.m. Evensong.
1.30 p.m. Holy Communion.
7.30 p.m. Evening Prayer.

ST MARK'S CHURCH, PARKLANDS

SUNDAY, NOV. 26
10.30 a.m. Holy Communion.
8.15 p.m. Evensong.

KYAMBU CHAPELAINCY

BARSETT

KYAMBU

GIROU, M. G. GARDNER

SHIKA NYERI CHAPELAINCY

ELDORET AND TRANS NJOIA CHAPELAINCY

MILILI

THE NAIROBI DISTRICT

THE NAIROBI DISTRICT

THE NAIROBI DISTRICT

THE NAIROBI DISTRICT

THE NAIROBI DISTRICT

THE NAIROBI DISTRICT

THE NAIROBI DISTRICT

THE NAIROBI DISTRICT

THE NAIROBI DISTRICT

THE NAIROBI DISTRICT

THE NAIROBI DISTRICT

THE NAIROBI DISTRICT

LATEST REPORTS FROM LOCUST AREA.

Large Swarms in Voi and Nyeri Districts.

The Department of Agriculture... The Department of Agriculture... The Department of Agriculture...

Main Swarms... An expected main swarm... The Department of Agriculture...

SEARCHING FOR EGGS... The Department of Agriculture... The Department of Agriculture...

Water Spouts... The Department of Agriculture... The Department of Agriculture...

CHIEF OF SCOTLAND... The Department of Agriculture... The Department of Agriculture...

SEARCHING FOR EGGS... The Department of Agriculture... The Department of Agriculture...

A Talk to Locust Officers.

Campaign Tactics Explained.

An extension of the locust campaign... The Department of Agriculture... The Department of Agriculture...

A Demonstration... The Department of Agriculture... The Department of Agriculture...

The Wind Blows... The Department of Agriculture... The Department of Agriculture...

SEARCHING FOR EGGS... The Department of Agriculture... The Department of Agriculture...

CHIEF OF SCOTLAND... The Department of Agriculture... The Department of Agriculture...

SEARCHING FOR EGGS... The Department of Agriculture... The Department of Agriculture...

It is the way which they... The Department of Agriculture... The Department of Agriculture...

With such groups of locust... The Department of Agriculture... The Department of Agriculture...

A Demonstration... The Department of Agriculture... The Department of Agriculture...

The Wind Blows... The Department of Agriculture... The Department of Agriculture...

SEARCHING FOR EGGS... The Department of Agriculture... The Department of Agriculture...

CHIEF OF SCOTLAND... The Department of Agriculture... The Department of Agriculture...

SEARCHING FOR EGGS... The Department of Agriculture... The Department of Agriculture...

WIRELESS TIPS

Care of Receiving Sets.

HINTS TO BEGINNERS.

When the owner of a receiving set has just received it, he should first of all read the instructions which accompany it. These instructions will tell him the correct method of setting up the set, and the correct method of tuning it. It is very important that the set should be set up correctly, as this will determine the quality of the reception. The first step is to choose a suitable place for the set. It should be placed in a room where it will not be disturbed by other electrical appliances, and where it will be protected from dust and draughts. The next step is to connect the set to the power supply. This should be done in accordance with the instructions, and care should be taken to ensure that the connections are correct. Once the set is set up, the owner should then tune it to the desired station. This is done by adjusting the tuning knob until the desired station is heard. It is important to note that the set should not be left on for long periods of time, as this will cause it to overheat and may damage the components. Finally, the owner should ensure that the set is properly maintained, and that the components are replaced as necessary.

Country Roads and Weather Report

The roads are generally in good condition, but there are some patches of mud in places where it has rained recently. The weather is generally clear and sunny, with a few light showers in the evening. The temperature is in the mid-twenties. There is a slight breeze from the east. The sea is calm. The wind is light and variable. The sky is blue with a few wispy clouds. The sun is shining brightly. The air is fresh and clear. The water is calm and still. The waves are small and gentle. The tide is in. The moon is visible in the sky. The stars are out. The night is clear and bright. The sun sets at 6:30 p.m. and rises at 6:30 a.m. The day is a pleasant surprise. The weather is just what we need. The roads are perfect. The scenery is beautiful. The people are friendly. The food is delicious. The drinks are refreshing. The atmosphere is relaxed. The pace is slow. The time is just what we need. The day is a perfect day. The weather is perfect. The roads are perfect. The scenery is perfect. The people are perfect. The food is perfect. The drinks are perfect. The atmosphere is perfect. The pace is perfect. The time is perfect. The day is perfect. The weather is perfect. The roads are perfect. The scenery is perfect. The people are perfect. The food is perfect. The drinks are perfect. The atmosphere is perfect. The pace is perfect. The time is perfect. The day is perfect.

NANTUKI BUTTER TEMPTS A LION. Possible Change from Diet of Zebra!

WARDEN OVERSEASPORTS... NANTUKI BUTTER TEMPTS A LION. Possible Change from Diet of Zebra! The lion, which has been kept in the Nantuki enclosure since it was captured in the bush, has been seen to eat butter with relish. The warden in charge of the enclosure, Mr. J. H. ...

Reducing the Cost of Living. Some East African Recipes that will help.

No. 5: The Tomato.

BY A KENYA HOUSEWIFE... TOMATO BUTTER. TOMATO SAUCE. TOMATO CHUTNEY. TOMATO RELISH. TOMATO PICKLES. TOMATO CHIPS. TOMATO SOUP. TOMATO CUPCAKES. TOMATO BREAD. TOMATO CAKES. TOMATO COOKIES. TOMATO BISCUITS. TOMATO CRISPS. TOMATO SNACKS. TOMATO TREATS. TOMATO DESSERTS. TOMATO SNACKS. TOMATO TREATS. TOMATO DESSERTS.



A simple remedy for business worries

It is easily understood that business worries are a constant source of stress and strain. The best remedy is to take Phosferine. Phosferine is a powerful tonic that restores vitality and strength. It is made from natural ingredients and is safe for everyone to take. It helps to improve the circulation of the blood, which in turn improves the overall health of the body. Phosferine is available in liquid or tablet form. It is a simple and effective remedy for business worries.

PHOSFERINE

THE GREATEST OF ALL TONICS FOR... Phosferine is a powerful tonic that restores vitality and strength. It is made from natural ingredients and is safe for everyone to take. It helps to improve the circulation of the blood, which in turn improves the overall health of the body. Phosferine is available in liquid or tablet form. It is a simple and effective remedy for business worries.

Department of Agriculture

APPOINTMENT OF INSPECTORS AND ASST. INSPECTORS... The Department of Agriculture has appointed several inspectors and assistant inspectors to oversee the various agricultural activities in the country. These appointments are effective from the 1st of December, 1928. The inspectors will be responsible for ensuring that all agricultural activities are carried out in accordance with the laws and regulations of the Department. They will also be responsible for providing advice and assistance to farmers and other agricultural workers. The appointments are as follows: Inspector: Mr. J. H. ... Assistant Inspectors: Mr. A. B. ...

Public Works Department. TENDERS.

For tenders are invited for the construction of... The Public Works Department is inviting tenders for the construction of a new building in Nairobi. The building is to be used as an office for the Department. The tenders should be submitted to the Director of Public Works, Nairobi, by the 10th of December, 1928. The tenders should be in the form of a sealed envelope, addressed to the Director of Public Works, Nairobi. The envelope should be marked 'Tender for the construction of a new building in Nairobi'. The tenders should include a copy of the tender form, a copy of the specifications, and a copy of the bill of materials. The tenders should be accompanied by a deposit of Shs. 500. The deposit will be returned to the tenderer if the tender is not accepted. The lowest or any tender will not necessarily be accepted.

CHRISTMAS OVERSEAS MAILS.

According to the latest information regarding the Christmas Overseas Mails...

MAILS FOR THE UNITED KINGDOM

Destination	Mail	Arrives	Valued closing date
United Kingdom	1st Class	Nov. 26	9 p.m.

MAILS FOR INDIA

Destination	Mail	Arrives	Valued closing date
India	1st Class	Dec. 14	Dec. 14 9 p.m.

MAILS FOR SOUTH AFRICA

Destination	Mail	Arrives	Valued closing date
South Africa	1st Class	Dec. 20	Dec. 20 9 p.m.

CHRISTIAN SCIENCE

Christmas Science services are held in the Lyric Hall, Nairobi, on Saturdays at 10 a.m. An exposition from the Holy Scriptures is given every Sunday in the Lyric Hall at 11 o'clock.

Legation Court

The Chamber of Commerce and Industry Court will sit at the Railway Station, Nairobi at 10 a.m. on Monday, December 17.

CHRISTIAN SCIENCE

Christmas Science services are held in the Lyric Hall, Nairobi, on Saturdays at 10 a.m. An exposition from the Holy Scriptures is given every Sunday in the Lyric Hall at 11 o'clock.

Legation Court

The Chamber of Commerce and Industry Court will sit at the Railway Station, Nairobi at 10 a.m. on Monday, December 17.

The Bank Note

The Bank Note... The Bank Note is a document issued by the Bank of Kenya. It is used as a means of payment and is accepted by all banks and businesses in the country. The Bank Note is issued in denominations of Shs. 1, 5, 10, 20, 50, and 100. It is a legal tender and is used for all transactions.

The Bank Note

The Bank Note... The Bank Note is a document issued by the Bank of Kenya. It is used as a means of payment and is accepted by all banks and businesses in the country. The Bank Note is issued in denominations of Shs. 1, 5, 10, 20, 50, and 100. It is a legal tender and is used for all transactions.

The Bank Note

The Bank Note... The Bank Note is a document issued by the Bank of Kenya. It is used as a means of payment and is accepted by all banks and businesses in the country. The Bank Note is issued in denominations of Shs. 1, 5, 10, 20, 50, and 100. It is a legal tender and is used for all transactions.

The Bank Note

The Bank Note... The Bank Note is a document issued by the Bank of Kenya. It is used as a means of payment and is accepted by all banks and businesses in the country. The Bank Note is issued in denominations of Shs. 1, 5, 10, 20, 50, and 100. It is a legal tender and is used for all transactions.

The Bank Note

The Bank Note... The Bank Note is a document issued by the Bank of Kenya. It is used as a means of payment and is accepted by all banks and businesses in the country. The Bank Note is issued in denominations of Shs. 1, 5, 10, 20, 50, and 100. It is a legal tender and is used for all transactions.

The Bank Note

The Bank Note... The Bank Note is a document issued by the Bank of Kenya. It is used as a means of payment and is accepted by all banks and businesses in the country. The Bank Note is issued in denominations of Shs. 1, 5, 10, 20, 50, and 100. It is a legal tender and is used for all transactions.

The Bank Note

The Bank Note... The Bank Note is a document issued by the Bank of Kenya. It is used as a means of payment and is accepted by all banks and businesses in the country. The Bank Note is issued in denominations of Shs. 1, 5, 10, 20, 50, and 100. It is a legal tender and is used for all transactions.

The Bank Note

The Bank Note... The Bank Note is a document issued by the Bank of Kenya. It is used as a means of payment and is accepted by all banks and businesses in the country. The Bank Note is issued in denominations of Shs. 1, 5, 10, 20, 50, and 100. It is a legal tender and is used for all transactions.

The Bank Note

The Bank Note... The Bank Note is a document issued by the Bank of Kenya. It is used as a means of payment and is accepted by all banks and businesses in the country. The Bank Note is issued in denominations of Shs. 1, 5, 10, 20, 50, and 100. It is a legal tender and is used for all transactions.

The Bank Note

The Bank Note... The Bank Note is a document issued by the Bank of Kenya. It is used as a means of payment and is accepted by all banks and businesses in the country. The Bank Note is issued in denominations of Shs. 1, 5, 10, 20, 50, and 100. It is a legal tender and is used for all transactions.

The Bank Note

The Bank Note... The Bank Note is a document issued by the Bank of Kenya. It is used as a means of payment and is accepted by all banks and businesses in the country. The Bank Note is issued in denominations of Shs. 1, 5, 10, 20, 50, and 100. It is a legal tender and is used for all transactions.

GUARANTEED THE LARGEST CIRCULATION OF ANY NEWSPAPER IN KENYA, UGANDA, TANGANYIKA AND ZANZIBAR

£1,000 FREE INSURANCE

WITH THE AFRICAN GUARANTEE AND INDemnITY Co. Ltd. (Incorporated in Kenya)

KENYA'S NEWSPAPER, THE EAST

Price 50 Cents

African Standard

UGANDA ARGUS THE LEADER

THE AFRICAN GUARANTEE AND INDemnITY Co. Ltd. (Incorporated in Kenya)

NAIROBI, SATURDAY, DECEMBER 1, 1928

The Rains are upon us.

Have you a rain Storage Tank?

Hartz & Bell Ltd.

THE LEADING TANKMAKERS IN EAST AFRICA

"Tanganyika Times"

THE ONLY ENGLISH NEWSPAPER IN THE TANGANYIKA TERRITORY.

Published through the Whole Country according to the Standard of Advertising

Send for Specimen Copy and Advertising Terms to the Proprietor and Publishers

THE TANZANIA PRINTING & PUBLISHING WORKS

Telegrams: "Publishing," Dar es Salaam

NATIONAL BANK OF INDIA LIMITED.

INCORPORATED IN INDIA

Head Office: Calcutta

Branches: Bombay, Madras, Ceylon, etc.

Capital: Rs. 100,000,000

Reserve: Rs. 10,000,000

Assets: Rs. 10,000,000

Liabilities: Rs. 10,000,000

Branches: Nairobi, etc.

Branches: Nairobi, etc.

Branches: Nairobi, etc.

Branches: Nairobi, etc.

Branches: Nairobi, etc.

Branches: Nairobi, etc.

Branches: Nairobi, etc.

Branches: Nairobi, etc.

Branches: Nairobi, etc.

Branches: Nairobi, etc.

Branches: Nairobi, etc.

Branches: Nairobi, etc.

Branches: Nairobi, etc.

Branches: Nairobi, etc.

Branches: Nairobi, etc.

Branches: Nairobi, etc.

Branches: Nairobi, etc.

Branches: Nairobi, etc.

Branches: Nairobi, etc.

Branches: Nairobi, etc.

Branches: Nairobi, etc.

Branches: Nairobi, etc.

Branches: Nairobi, etc.

Branches: Nairobi, etc.

Branches: Nairobi, etc.

Branches: Nairobi, etc.

Branches: Nairobi, etc.

Branches: Nairobi, etc.

Branches: Nairobi, etc.

Branches: Nairobi, etc.

Branches: Nairobi, etc.

Branches: Nairobi, etc.

Removal Notice

OUR ENGINEERING WORKS HAVE NOW BEEN REMOVED TO

Duke Street

WHERE ALL MACHINE, FOUNDRY AND SMITH WORK WILL BE RECEIVED

Lochhead, Moore & Roy, Ltd

Phone 462 NAIROBI P.O. Box 485

Molo Timber Company

Proprietor: W. J. Brennan

Established 1912

Head Office: NAIROBI

Telegrams: Loggerties, Njoro. Cable: A.B.C. 642 Ed

CEDAR

PODG, M'KAO, M'SHAGI, and MOERI Lining, Floorings, etc. Moulding a speciality

DOORS AND WINDOWS (Made from seasoned timber). Stock size or made to specification

Order Your Coffee Trays and Tanks Now

YOKES, HUBS, FELLOWS, Etc

Keenest Prices on Application.

British Empire Standard Typewriter

SIMPLE. STRONG. SPEEDY.

ABRIDGED SPECIFICATION

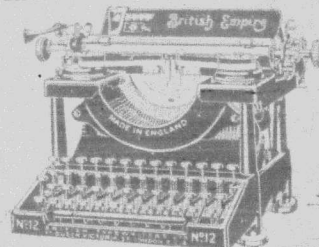
14-inch carriage, 18-inch carriage, 10-inch carriage, 12-inch carriage, 14-inch carriage, 16-inch carriage, 18-inch carriage, 20-inch carriage, 22-inch carriage, 24-inch carriage, 26-inch carriage, 28-inch carriage, 30-inch carriage, 32-inch carriage, 34-inch carriage, 36-inch carriage, 38-inch carriage, 40-inch carriage, 42-inch carriage, 44-inch carriage, 46-inch carriage, 48-inch carriage, 50-inch carriage, 52-inch carriage, 54-inch carriage, 56-inch carriage, 58-inch carriage, 60-inch carriage, 62-inch carriage, 64-inch carriage, 66-inch carriage, 68-inch carriage, 70-inch carriage, 72-inch carriage, 74-inch carriage, 76-inch carriage, 78-inch carriage, 80-inch carriage, 82-inch carriage, 84-inch carriage, 86-inch carriage, 88-inch carriage, 90-inch carriage, 92-inch carriage, 94-inch carriage, 96-inch carriage, 98-inch carriage, 100-inch carriage.

PRICES.

14-inch CARRIAGE Shs. 630
18-inch CARRIAGE Shs. 700

Please Call and let us Demonstrate

British Empire Standard Typewriter



STANDARD STATIONERY STORES, NAIROBI

FORD, CARS and TRUCKS. FORDSON TRACTOR. OLIVER FARM IMPLEMENTS. DIRECT FROM FACTORY. SUPPORTED BY A FIRST-CLASS SPARES and MAINTENANCE SERVICE.

HUGHES & COMPANY,

NAKURU DIRECT AND SOLE IMPORTERS.

OUR SERVICE IS UNEQUALLED.

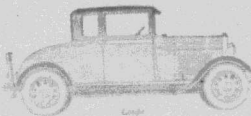
Printed and Published by EAST AFRICAN STANDARD Ltd. 24th Avenue, Nairobi, Kenya Colony.

LIGHTNESS AND POWER.

THE PRESENT RAINY SEASON

THE NEW FORD

in Mud and Wet
its Powerful 24 HP V8
Engine is irresistible



ASK A FORD OWNER.
Delivers from Stock.



Direct Importers

THOS. J. O'SHEA & CO. LTD.
11, DORSET and KITALA

OUR TOY BAZAAR IS OPEN.

IF YOU CANNOT CALL, OUR TOY CATALOGUE WILL BE SENT ON REQUEST.
S. JACOBS, Ltd., P.O. Box 255, NAIROBI.



SKY No. 2

Lightweight toy car with 1/2 hp engine, 12 inch wheels, 12 inch tires, 12 inch seat, 12 inch steering wheel, 12 inch pedals, 12 inch handlebars, 12 inch wheels, 12 inch tires, 12 inch seat, 12 inch steering wheel, 12 inch pedals, 12 inch handlebars.

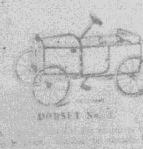
Shs. 10/30 each



THE SEN. No. 2

Lightweight toy car with 1/2 hp engine, 12 inch wheels, 12 inch tires, 12 inch seat, 12 inch steering wheel, 12 inch pedals, 12 inch handlebars.

Shs. 9/30 each



DOCKET No. 2

Lightweight toy car with 1/2 hp engine, 12 inch wheels, 12 inch tires, 12 inch seat, 12 inch steering wheel, 12 inch pedals, 12 inch handlebars.

Shs. 9/30 each



THE "LIZZY" CAR

Lightweight toy car with 1/2 hp engine, 12 inch wheels, 12 inch tires, 12 inch seat, 12 inch steering wheel, 12 inch pedals, 12 inch handlebars.

Shs. 9/30 each

S. JACOBS LTD.

Nairobi.

MONTHLY PAYMENT FOLDING BIKES



KIDDY CYCLES

KIDDY BIKE DE LUXE



Standard Model



DIAMOND FRAME KIDDY BIKE

DOGS FOR SALE

TO... S... W... Various dog breeds for sale, including pointers and setters.

SITUATIONS WANTED

TO... E... F... Various job applications and requests for employment.

FARMS FOR SALE

TO... K... T... Farms for sale in various districts, including agricultural and residential plots.

LOST

TO... S... WHERE TO STAY... Lost items and notices regarding accommodation.

TO LET OR FOR SALE

TO... 800... Rubber Stamps... Stationery items for sale or lease.

SITUATIONS VACANT

TO... WANTED... Various job openings in different sectors.

SITUATIONS WANTED

TO... F... Various job applications and requests for employment.

FARMS FOR SALE

TO... 6000... MISCELLANEOUS... Farms and other property for sale.

WHERE TO STAY

TO... BLACKENHURST... Accommodation and travel services.

Rubber Stamps

TO... Standard Stationery Stamps... Stationery and printing services.

FARMS FOR SALE

TO... DALGY & COMPANY... Farms for sale in various districts.

FARMS FOR SALE

TO... J. W. MILLIGAN & CO... Farms for sale in various districts.

FARMS FOR SALE

TO... 6000... MISCELLANEOUS... Farms and other property for sale.

WHERE TO STAY

TO... BLACKENHURST... Accommodation and travel services.

Rubber Stamps

TO... Standard Stationery Stamps... Stationery and printing services.

FARMS FOR SALE

TO... NAIYASHA... Farms for sale in various districts.

FARMS FOR SALE

TO... K... Farms for sale in various districts.

FARMS FOR SALE

TO... P... Farms for sale in various districts.

WHERE TO STAY

TO... P... Accommodation and travel services.

Rubber Stamps

TO... Standard Stationery Stamps... Stationery and printing services.

FARMS FOR SALE

TO... FORT HALL... Farms for sale in various districts.

FARMS FOR SALE

TO... S... Farms for sale in various districts.

FARMS FOR SALE

TO... N... Farms for sale in various districts.

WHERE TO STAY

TO... A... Accommodation and travel services.

Rubber Stamps

TO... Standard Stationery Stamps... Stationery and printing services.



Under instructions received from the Attorney of the Executor to the Estate of the late Sir Christian Felling... MONDAY, DEC. 10th at 10 a.m.

LOUNGE - Imported Chesterfield Suite by Waring and Gillow Ltd., comprising Chesterfield fitted with one adjustable and two Double Spring Club Easying... MONDAY, DEC. 10th at 10 a.m.

DINING ROOM - Suite of Six Dining Chairs in polished teak, one with oval top type... MONDAY, DEC. 10th at 10-30 a.m.

BEDROOMS - Twin Bedsteads in teak with spring mattress... MONDAY, DEC. 10th at 10-30 a.m.

WANTED - Partner to join in developing... MONDAY, DEC. 10th at 10-30 a.m.

WANTED - Partner to join in developing... MONDAY, DEC. 10th at 10-30 a.m.

WANTED - Partner to join in developing... MONDAY, DEC. 10th at 10-30 a.m.

WANTED - Partner to join in developing... MONDAY, DEC. 10th at 10-30 a.m.

WANTED - Partner to join in developing... MONDAY, DEC. 10th at 10-30 a.m.

WANTED - Partner to join in developing... MONDAY, DEC. 10th at 10-30 a.m.

WANTED - Partner to join in developing... MONDAY, DEC. 10th at 10-30 a.m.

WANTED - Partner to join in developing... MONDAY, DEC. 10th at 10-30 a.m.

WANTED - Partner to join in developing... MONDAY, DEC. 10th at 10-30 a.m.

WANTED - Partner to join in developing... MONDAY, DEC. 10th at 10-30 a.m.

WANTED - Partner to join in developing... MONDAY, DEC. 10th at 10-30 a.m.

Late Advertisements. MISCELLANEOUS

SITUATIONS VACANT. SITUATIONS WANTED. Various job openings and applications.

WANTED - Partner to join in developing... Various business opportunities.

WANTED - Partner to join in developing... Various business opportunities.

WANTED - Partner to join in developing... Various business opportunities.

WANTED - Partner to join in developing... Various business opportunities.

WANTED - Partner to join in developing... Various business opportunities.

WANTED - Partner to join in developing... Various business opportunities.

WANTED - Partner to join in developing... Various business opportunities.

WANTED - Partner to join in developing... Various business opportunities.

WANTED - Partner to join in developing... Various business opportunities.

WANTED - Partner to join in developing... Various business opportunities.

WANTED - Partner to join in developing... Various business opportunities.

WANTED - Partner to join in developing... Various business opportunities.

WANTED - Partner to join in developing... Various business opportunities.

WANTED - Partner to join in developing... Various business opportunities.

WANTED - Partner to join in developing... Various business opportunities.

The Week's News

Table with multiple columns listing news items, dates, and locations. Includes sections like 'LEADING ARTICLES', 'THE WEEK'S NEWS', and 'MONEY MARKET'.

SANDS & CO.,

AT OUR SALEYARDS. Naivasha MONDAY, DEC. 10th at 10-30 a.m.

Acting on instructions from the Managers of Ngoina Ltd., we will sell WITHOUT RESERVE the whole of their Livestock as follows:-

- 60 High Grade Shorthorn Cows in Calf and Calves at foot. 100 Shorthorn Steers. 50 High Grade Shorthorn Heifers. 2 Grade Bulls. 3 Grade Rams.

Also the following implements on which will be placed small reserves:- 2 John Deere Tractors. 1 1/2 Dns. John Deere Tractor. 1 Dlxton Disc Harrow. 1 Cultivator.

An assortment of Dairy Fries including Saigona Milk pans, Churns, Cans etc. AT THE SAME TIME AND PLACE we are holding our annual FAT STOCK SHOW AND SALE.

Good entries in all classes - SHEEP, PIGS, CATTLE. If you have not entered your stock do so at once.

SANDS & CO., AUCTIONEERS

Sands & Co. ANNUAL FAT STOCK SHOW AND SALE.

Gil Gil TUESDAY, DEC. 11th at 10:30 a.m. SANDS & CO., AUCTIONEERS.

FOR SALE IN ARUSHA DISTRICT.

Offers are invited for the purchase of the attractive Estate of Sir Milton Ross, K.C.V.O., situated at Nduruma, Arusha district, consisting of 2560 acres Free hold, of which 275 acres are admirably suited for coffee, the remainder for Maize and Shad.

There are 414 acres of coffee in full bearing. The Estate borders the Reserve. Permanent rivers, the Moshi-Aruscha Railway runs through the land. Very healthy district and an abundance of Game.

A splendid opportunity for a purchaser with capital. Apply to MAJOR PERKINS, Estate Agent - MOSHI.

THE NYANZA AUCTIONEERS & NAKURU

Immune Native Cows. THURSDAY, DEC. 13th 1928

July contracted by Messrs. Guinness & Co. Ltd. we will sell 1000 native immune cows of milk. A number of Young Stock. Several spans of well trained immune oxen, of which further particulars will be advertised.

Immune cows are of great demand and the auctioneers above are particularly interested in the many clients who have for months past enquired anxiously for this class of work. Further particulars will be advertised.

Artistry in Craftsmanship

is almost dead. In an age of machinery and mass production, there is no room for individual expression. Your Benvenuto Cellini and Andrea Ferraras are acting as jewellery salesmen, and razor blade manufacturers, those days, in an age when Stradivarius would be refreshing to find a craft immune from the taint of commercialism. A Gun machine is still an art. The English gunsmith is forced to cater for the cheap market, but he refuses to sell rubbish, any more than Chippendale would have sold deck chairs.

Shaw & Hunter, British Gunsmiths. Box 76, Nairobi.

Standing at Ulu the Thoroughbred Stallion LE MARECHAL by Foeb out of Kittiwak. For 100/- keep of mare 45/- a month. For further particulars apply to F. EIGHTON, Magadi Junction.

Kenya & Uganda Railways & Harbours.

TENDERS FOR THE SUPPLY OF WOODEN KEEPERS. Importers are invited for the supply of Unseasoned Keenwood and Hardwood Sleepers during 1929.

Full particulars of quantities and rates can be obtained on application to the office of the Ag. Chief Engineer, Kenya & Uganda Railways & Harbours, Nairobi.

Tenders in sealed envelopes, marked "Tender for Sleepers" will be received up to, and not later than, noon, 17th December, 1928.

The lowest or any tender will not necessarily be accepted. G. D. RHODES, Ag. GENERAL MANAGER, Kenya & Uganda Railways & Harbours, Nairobi, 28.11.28.

Thackrah's Nakuru. Land and Estate Agents.

Auctioneers & Official Valuers. OPPORTUNITY No. 13. WHAT LAND AT 2500 FEET ABOVE SEA LEVEL, 2000 acres, (of which 2000 acres are suitable for the RUBBER FOREST) DISTRICT, within 6 miles of Elgeyo, Alt. 6000'. Water plentiful and permanent. £12000 cash and balance on 5 year terms to approved buyer.

This is only one of the many attractive propositions which we have for disposal in all parts of Kenya. RESIDENTIAL and BUSINESS properties TO LET AND FOR SALE. RENTS COLLECTED. MORTGAGES NEGOTIATED ON FIRST CLASS SECURITY. SUNSHINE MACHINERY. We are now looking orders for the latest models SUNSHINE MATHS STEEL and IRONWORK, the HEADER HARVESTERS, SUNDREUTE, SUNSHINE PLOWING MACHINES, etc., all of which may be inspected at our Show.

INSURANCE - Fire, Accident, Marine, and Life Assurances transacted. SHIPPING - Local Agents for the British Africa Lines. OYAMAK AND GROMAX for 1929 and 1930. The finest foods of these types in the Country. Ship. 45/- per cwt. Bag. P.O.E. Nairobi. Price 2 per cwt. for 1000 lbs. with order.

Thackrah's Nakuru.

THE KING'S ILLNESS

THE KING'S ILLNESS

THURIST AND LUNG CONGESTION.

Marked Improvement in His Majesty's Condition.

ANXIETY THROUGHOUT THE EMPIRE.

Grave Danger Intense to the Father-in-Law of the Nation.

THURIST AND LUNG CONGESTION.

London, Dec. 22.—It is officially announced that His Majesty is making good progress but is still unable to get up.

London, Dec. 22.—The apparently unimproved condition of His Majesty's health has caused a great deal of anxiety throughout the Empire.

The Queen's illness has been a source of much anxiety to the public, and it is now known that the King's condition is still grave.

THE QUEEN'S ILLNESS.

The Queen's illness has been a source of much anxiety to the public, and it is now known that the King's condition is still grave.

THE KING'S ILLNESS.

The King's illness has been a source of much anxiety to the public, and it is now known that the Queen's condition is still grave.

THE QUEEN'S ILLNESS.

The Queen's illness has been a source of much anxiety to the public, and it is now known that the King's condition is still grave.

THE KING'S ILLNESS.

The King's illness has been a source of much anxiety to the public, and it is now known that the Queen's condition is still grave.

THURIST AND LUNG CONGESTION.

London, Dec. 22.—It is officially announced that His Majesty is making good progress but is still unable to get up.

London, Dec. 22.—The apparently unimproved condition of His Majesty's health has caused a great deal of anxiety throughout the Empire.

THE QUEEN'S ILLNESS.

The Queen's illness has been a source of much anxiety to the public, and it is now known that the King's condition is still grave.

THE KING'S ILLNESS.

The King's illness has been a source of much anxiety to the public, and it is now known that the Queen's condition is still grave.

THE QUEEN'S ILLNESS.

The Queen's illness has been a source of much anxiety to the public, and it is now known that the King's condition is still grave.

THE KING'S ILLNESS.

The King's illness has been a source of much anxiety to the public, and it is now known that the Queen's condition is still grave.

THE QUEEN'S ILLNESS.

The Queen's illness has been a source of much anxiety to the public, and it is now known that the King's condition is still grave.

THURIST AND LUNG CONGESTION.

London, Dec. 22.—It is officially announced that His Majesty is making good progress but is still unable to get up.

London, Dec. 22.—The apparently unimproved condition of His Majesty's health has caused a great deal of anxiety throughout the Empire.

THE QUEEN'S ILLNESS.

The Queen's illness has been a source of much anxiety to the public, and it is now known that the King's condition is still grave.

THE KING'S ILLNESS.

The King's illness has been a source of much anxiety to the public, and it is now known that the Queen's condition is still grave.

THE QUEEN'S ILLNESS.

The Queen's illness has been a source of much anxiety to the public, and it is now known that the King's condition is still grave.

THE KING'S ILLNESS.

The King's illness has been a source of much anxiety to the public, and it is now known that the Queen's condition is still grave.

THE QUEEN'S ILLNESS.

The Queen's illness has been a source of much anxiety to the public, and it is now known that the King's condition is still grave.

THURIST AND LUNG CONGESTION.

London, Dec. 22.—It is officially announced that His Majesty is making good progress but is still unable to get up.

London, Dec. 22.—The apparently unimproved condition of His Majesty's health has caused a great deal of anxiety throughout the Empire.

THE QUEEN'S ILLNESS.

The Queen's illness has been a source of much anxiety to the public, and it is now known that the King's condition is still grave.

THE KING'S ILLNESS.

The King's illness has been a source of much anxiety to the public, and it is now known that the Queen's condition is still grave.

THE QUEEN'S ILLNESS.

The Queen's illness has been a source of much anxiety to the public, and it is now known that the King's condition is still grave.

THE KING'S ILLNESS.

The King's illness has been a source of much anxiety to the public, and it is now known that the Queen's condition is still grave.

THE QUEEN'S ILLNESS.

The Queen's illness has been a source of much anxiety to the public, and it is now known that the King's condition is still grave.

THURIST AND LUNG CONGESTION.

London, Dec. 22.—It is officially announced that His Majesty is making good progress but is still unable to get up.

London, Dec. 22.—The apparently unimproved condition of His Majesty's health has caused a great deal of anxiety throughout the Empire.

THE QUEEN'S ILLNESS.

The Queen's illness has been a source of much anxiety to the public, and it is now known that the King's condition is still grave.

THE KING'S ILLNESS.

The King's illness has been a source of much anxiety to the public, and it is now known that the Queen's condition is still grave.

THE QUEEN'S ILLNESS.

The Queen's illness has been a source of much anxiety to the public, and it is now known that the King's condition is still grave.

THE KING'S ILLNESS.

The King's illness has been a source of much anxiety to the public, and it is now known that the Queen's condition is still grave.

THE QUEEN'S ILLNESS.

The Queen's illness has been a source of much anxiety to the public, and it is now known that the King's condition is still grave.

THURIST AND LUNG CONGESTION.

London, Dec. 22.—It is officially announced that His Majesty is making good progress but is still unable to get up.

London, Dec. 22.—The apparently unimproved condition of His Majesty's health has caused a great deal of anxiety throughout the Empire.

THE QUEEN'S ILLNESS.

The Queen's illness has been a source of much anxiety to the public, and it is now known that the King's condition is still grave.

THE KING'S ILLNESS.

The King's illness has been a source of much anxiety to the public, and it is now known that the Queen's condition is still grave.

THE QUEEN'S ILLNESS.

The Queen's illness has been a source of much anxiety to the public, and it is now known that the King's condition is still grave.

THE KING'S ILLNESS.

The King's illness has been a source of much anxiety to the public, and it is now known that the Queen's condition is still grave.

THE QUEEN'S ILLNESS.

The Queen's illness has been a source of much anxiety to the public, and it is now known that the King's condition is still grave.

THURIST AND LUNG CONGESTION.

London, Dec. 22.—It is officially announced that His Majesty is making good progress but is still unable to get up.

London, Dec. 22.—The apparently unimproved condition of His Majesty's health has caused a great deal of anxiety throughout the Empire.

THE QUEEN'S ILLNESS.

The Queen's illness has been a source of much anxiety to the public, and it is now known that the King's condition is still grave.

THE KING'S ILLNESS.

The King's illness has been a source of much anxiety to the public, and it is now known that the Queen's condition is still grave.

THE QUEEN'S ILLNESS.

The Queen's illness has been a source of much anxiety to the public, and it is now known that the King's condition is still grave.

THE KING'S ILLNESS.

The King's illness has been a source of much anxiety to the public, and it is now known that the Queen's condition is still grave.

THE QUEEN'S ILLNESS.

The Queen's illness has been a source of much anxiety to the public, and it is now known that the King's condition is still grave.

THURIST AND LUNG CONGESTION.

London, Dec. 22.—It is officially announced that His Majesty is making good progress but is still unable to get up.

London, Dec. 22.—The apparently unimproved condition of His Majesty's health has caused a great deal of anxiety throughout the Empire.

THE QUEEN'S ILLNESS.

The Queen's illness has been a source of much anxiety to the public, and it is now known that the King's condition is still grave.

THE KING'S ILLNESS.

The King's illness has been a source of much anxiety to the public, and it is now known that the Queen's condition is still grave.

THE QUEEN'S ILLNESS.

The Queen's illness has been a source of much anxiety to the public, and it is now known that the King's condition is still grave.

THE KING'S ILLNESS.

The King's illness has been a source of much anxiety to the public, and it is now known that the Queen's condition is still grave.

THE QUEEN'S ILLNESS.

The Queen's illness has been a source of much anxiety to the public, and it is now known that the King's condition is still grave.

H.R.H.'S "SENSE OF DUTY AND AFFECTIONATE CONCERN."

H.M.S. Enterprise Awaiting Him at Zanzibar.

HURRIED JOURNEY TO THE COAST.

Royal Train Leaves After the Mail But Overtakes It.

STANDARD SPECIAL CORRESPONDENT.

Dodoma, Saturday. Enquiries made by me to-day reveal that H. R. H. the Prince of Wales is aware of the circumstances of the illness of His Majesty, but the indisposition is not regarded here as serious.

I may say, however, that a fast car is being kept constantly in readiness to take out urgent messages to the Prince's hunting camp at Kondea Inangl. No change in the present plans are contemplated at the moment. (From the Private Secretary to H. R. H. the Prince of Wales.)

Dodoma, Tuesday.

"Standard, Nairobi. In view of serious news of His Majesty's illness, the Prince of Wales has decided to return home as soon as possible.

LASCELLES.

HOW PLANS WERE CHANGED.

STANDARD SPECIAL CORRESPONDENT.

Dodoma, Tuesday. 2.30 p.m. His Royal Highness the Prince of Wales is due to catch the train in Dodoma this evening and to leave for Nairobi at 3.15 in the morning but I am informed that the receipt of a cable from England, which has been sent out to him by special car, may cause change of plan.

THE PRINCE RETURNS.

Dodoma, 9.10 p.m.

The Prince arrived at 9.10 o'clock this afternoon and the special train but at nine o'clock to-night the direction of his future movements was reported to be uncertain. He will possibly leave for Kilgoma at daylight instead of two a.m.

The Departure.

Dodoma, Wednesday, 12.50 a.m.

The Royal train proceeds to Dar-es-Salaam at four o'clock this morning. H. R. H. is understood to be proceeding to England immediately.

I understand that a wire has been despatched that the Prince of Wales and the Duke of Gloucester are returning to England at once.

The train leaves here one hour and forty minutes after the mail but the latter will be expected and the Prince will arrive in Dar-es-Salaam ahead of the mail.

The Enterprise Ready.

Dodoma, Wednesday, 2.15 a.m.

Information has just been received from the Tanganyika Marine Department that H. M. S. Enterprise is standing by at Dar-es-Salaam.

Awaiting Further News.

STANDARD SPECIAL CORRESPONDENT.

Dar-es-Salaam, November 26. I understand the Prince of Wales received at Tumu a personal wire from the Duke of York stating that the King was much better.

Consequently, the Prince will remain at Dar-es-Salaam for three days. If the improvement in His Majesty's health is maintained the Prince's plans indicate that he will proceed to Beira and thence to Livingstone.

H. M. S. "Enterprise" is due here at daylight.

The Prince stopped the Royal train at Tumu and walked three miles with members of his staff for exercise.

Dar-es-Salaam's Welcome.

The Prince of Wales arrived in Dar-es-Salaam at 8 p.m. last night. He was met by His Excellency the Governor and drove to Government House. The townspeople gave a rousing cheer as the Prince drove off and broke through the police cordon in their enthusiasm.

It is understood H. M. S. Enterprise is at present lying in Zanzibar harbour.

At Dar-es-Salaam, the Governor's yacht "Azania" is standing by.

THE KING'S ILLNESS.

STANDARD SPECIAL CORRESPONDENT.

London, Dec. 22.—It is officially announced that His Majesty is making good progress but is still unable to get up.

THE QUEEN'S ILLNESS.

The Queen's illness has been a source of much anxiety to the public, and it is now known that the King's condition is still grave.

THE KING'S ILLNESS.

The King's illness has been a source of much anxiety to the public, and it is now known that the Queen's condition is still grave.

THE QUEEN'S ILLNESS.

The Queen's illness has been a source of much anxiety to the public, and it is now known that the King's condition is still grave.

THE KING'S ILLNESS.

The King's illness has been a source of much anxiety to the public, and it is now known that the Queen's condition is still grave.

THE QUEEN'S ILLNESS.

The Queen's illness has been a source of much anxiety to the public, and it is now known that the King's condition is still grave.

THE KING'S ILLNESS.

The King's illness has been a source of much anxiety to the public, and it is now known that the Queen's condition is still grave.

THE QUEEN'S ILLNESS.

The Queen's illness has been a source of much anxiety to the public, and it is now known that the King's condition is still grave.

THE KING'S ILLNESS.

The King's illness has been a source of much anxiety to the public, and it is now known that the Queen's condition is still grave.

THE QUEEN'S ILLNESS.

The Queen's illness has been a source of much anxiety to the public, and it is now known that the King's condition is still grave.

THE KING'S ILLNESS.

STANDARD SPECIAL CORRESPONDENT.

London, Dec. 22.—It is officially announced that His Majesty is making good progress but is still unable to get up.

THE QUEEN'S ILLNESS.

The Queen's illness has been a source of much anxiety to the public, and it is now known that the King's condition is still grave.

THE KING'S ILLNESS.

The King's illness has been a source of much anxiety to the public, and it is now known that the Queen's condition is still grave.

THE QUEEN'S ILLNESS.

The Queen's illness has been a source of much anxiety to the public, and it is now known that the King's condition is still grave.

THE KING'S ILLNESS.

The King's illness has been a source of much anxiety to the public, and it is now known that the Queen's condition is still grave.

THE QUEEN'S ILLNESS.

The Queen's illness has been a source of much anxiety to the public, and it is now known that the King's condition is still grave.

THE KING'S ILLNESS.

The King's illness has been a source of much anxiety to the public, and it is now known that the Queen's condition is still grave.

THE QUEEN'S ILLNESS.

The Queen's illness has been a source of much anxiety to the public, and it is now known that the King's condition is still grave.

THE KING'S ILLNESS.

The King's illness has been a source of much anxiety to the public, and it is now known that the Queen's condition is still grave.

THE QUEEN'S ILLNESS.

The Queen's illness has been a source of much anxiety to the public, and it is now known that the King's condition is still grave.

THE KING'S ILLNESS.

STANDARD SPECIAL CORRESPONDENT.

London, Dec. 22.—It is officially announced that His Majesty is making good progress but is still unable to get up.

THE QUEEN'S ILLNESS.

The Queen's illness has been a source of much anxiety to the public, and it is now known that the King's condition is still grave.

THE KING'S ILLNESS.

The King's illness has been a source of much anxiety to the public, and it is now known that the Queen's condition is still grave.

THE QUEEN'S ILLNESS.

The Queen's illness has been a source of much anxiety to the public, and it is now known that the King's condition is still grave.

THE KING'S ILLNESS.

The King's illness has been a source of much anxiety to the public, and it is now known that the Queen's condition is still grave.

THE QUEEN'S ILLNESS.

The Queen's illness has been a source of much anxiety to the public, and it is now known that the King's condition is still grave.

THE KING'S ILLNESS.

The King's illness has been a source of much anxiety to the public, and it is now known that the Queen's condition is still grave.

THE QUEEN'S ILLNESS.

The Queen's illness has been a source of much anxiety to the public, and it is now known that the King's condition is still grave.

THE KING'S ILLNESS.

The King's illness has been a source of much anxiety to the public, and it is now known that the Queen's condition is still grave.

THE QUEEN'S ILLNESS.

The Queen's illness has been a source of much anxiety to the public, and it is now known that the King's condition is still grave.

THE KING'S ILLNESS.

STANDARD SPECIAL CORRESPONDENT.

London, Dec. 22.—It is officially announced that His Majesty is making good progress but is still unable to get up.

THE QUEEN'S ILLNESS.

The Queen's illness has been a source of much anxiety to the public, and it is now known that the King's condition is still grave.

THE KING'S ILLNESS.

The King's illness has been a source of much anxiety to the public, and it is now known that the Queen's condition is still grave.

THE QUEEN'S ILLNESS.

The Queen's illness has been a source of much anxiety to the public, and it is now known that the King's condition is still grave.

THE KING'S ILLNESS.

The King's illness has been a source of much anxiety to the public, and it is now known that the Queen's condition is still grave.

THE QUEEN'S ILLNESS.

The Queen's illness has been a source of much anxiety to the public, and it is now known that the King's condition is still grave.

THE KING'S ILLNESS.

The King's illness has been a source of much anxiety to the public, and it is now known that the Queen's condition is still grave.

THE QUEEN'S ILLNESS.

The Queen's illness has been a source of much anxiety to the public, and it is now known that the King's condition is still grave.

THE KING'S ILLNESS.

The King's illness has been a source of much anxiety to the public, and it is now known that the Queen's condition is still grave.

THE QUEEN'S ILLNESS.

The Queen's illness has been a source of much anxiety to the public, and it is now known that the King's condition is still grave.

THE KING'S ILLNESS.

STANDARD SPECIAL CORRESPONDENT.

London, Dec. 22.—It is officially announced that His Majesty is making good progress but is still unable to get up.

THE QUEEN'S ILLNESS.

The Queen's illness has been a

PIERCED STORM SWEEPS COASTS OF EUROPE

Food supplies in a few of the most important...

THROUGH SUTHER'S AGENCY

London, Nov. 29. An attempt to force the...

THROUGH SUTHER'S AGENCY

London, Nov. 29. An attempt to force the...

THROUGH SUTHER'S AGENCY

London, Nov. 29. An attempt to force the...

THROUGH SUTHER'S AGENCY

London, Nov. 29. An attempt to force the...

THROUGH SUTHER'S AGENCY

London, Nov. 29. An attempt to force the...

THROUGH SUTHER'S AGENCY

London, Nov. 29. An attempt to force the...

TRIALS BREWING IN SOUTH AFRICAN POLITICS

General Trevelyan Viewed as Rival to Britton

THROUGH SUTHER'S AGENCY

London, Nov. 29. The political situation in South Africa...

THROUGH SUTHER'S AGENCY

London, Nov. 29. The political situation in South Africa...

THROUGH SUTHER'S AGENCY

London, Nov. 29. The political situation in South Africa...

THROUGH SUTHER'S AGENCY

London, Nov. 29. The political situation in South Africa...

THROUGH SUTHER'S AGENCY

London, Nov. 29. The political situation in South Africa...

THROUGH SUTHER'S AGENCY

London, Nov. 29. The political situation in South Africa...

AN ECHO OF THE BATTLE OF JUTLAND

Death of the German Naval Commander

THROUGH SUTHER'S AGENCY

London, Nov. 29. The death of the German naval commander...

THROUGH SUTHER'S AGENCY

London, Nov. 29. The death of the German naval commander...

THROUGH SUTHER'S AGENCY

London, Nov. 29. The death of the German naval commander...

THROUGH SUTHER'S AGENCY

London, Nov. 29. The death of the German naval commander...

THROUGH SUTHER'S AGENCY

London, Nov. 29. The death of the German naval commander...

THROUGH SUTHER'S AGENCY

London, Nov. 29. The death of the German naval commander...

GOVERNMENT'S HELP FOR BRITISH INDUSTRY

Relief Through Local Government Reform

THROUGH SUTHER'S AGENCY

London, Nov. 29. The Government's help for British industry...

THROUGH SUTHER'S AGENCY

London, Nov. 29. The Government's help for British industry...

THROUGH SUTHER'S AGENCY

London, Nov. 29. The Government's help for British industry...

THROUGH SUTHER'S AGENCY

London, Nov. 29. The Government's help for British industry...

THROUGH SUTHER'S AGENCY

London, Nov. 29. The Government's help for British industry...

THROUGH SUTHER'S AGENCY

London, Nov. 29. The Government's help for British industry...

"YESTER'S" ENQUIRY

Tribute to Bravery of Negro Sailors

THROUGH SUTHER'S AGENCY

London, Nov. 29. A tribute to the bravery of Negro sailors...

THROUGH SUTHER'S AGENCY

London, Nov. 29. A tribute to the bravery of Negro sailors...

THROUGH SUTHER'S AGENCY

London, Nov. 29. A tribute to the bravery of Negro sailors...

THROUGH SUTHER'S AGENCY

London, Nov. 29. A tribute to the bravery of Negro sailors...

THROUGH SUTHER'S AGENCY

London, Nov. 29. A tribute to the bravery of Negro sailors...

THROUGH SUTHER'S AGENCY

London, Nov. 29. A tribute to the bravery of Negro sailors...

FORECASTS OF HILTON-YOUNG REPORT

London Press Discuss Dominion Probabilities

THROUGH SUTHER'S AGENCY

London, Nov. 29. The forecasts of the Hilton-Young report...

THROUGH SUTHER'S AGENCY

London, Nov. 29. The forecasts of the Hilton-Young report...

THROUGH SUTHER'S AGENCY

London, Nov. 29. The forecasts of the Hilton-Young report...

THROUGH SUTHER'S AGENCY

London, Nov. 29. The forecasts of the Hilton-Young report...

THROUGH SUTHER'S AGENCY

London, Nov. 29. The forecasts of the Hilton-Young report...

THROUGH SUTHER'S AGENCY

London, Nov. 29. The forecasts of the Hilton-Young report...

DISTRESS IN MINING AREAS

National Sympathy Takes Practical Form

THROUGH SUTHER'S AGENCY

London, Nov. 29. National sympathy for mining areas...

THROUGH SUTHER'S AGENCY

London, Nov. 29. National sympathy for mining areas...

THROUGH SUTHER'S AGENCY

London, Nov. 29. National sympathy for mining areas...

THROUGH SUTHER'S AGENCY

London, Nov. 29. National sympathy for mining areas...

THROUGH SUTHER'S AGENCY

London, Nov. 29. National sympathy for mining areas...

THROUGH SUTHER'S AGENCY

London, Nov. 29. National sympathy for mining areas...

SAFEGUARDING

GOVERNMENT'S REPLY TO LABOUR CRITICISM

THROUGH SUTHER'S AGENCY

London, Nov. 29. The Government's reply to Labour criticism...

THROUGH SUTHER'S AGENCY

London, Nov. 29. The Government's reply to Labour criticism...

THROUGH SUTHER'S AGENCY

London, Nov. 29. The Government's reply to Labour criticism...

THROUGH SUTHER'S AGENCY

London, Nov. 29. The Government's reply to Labour criticism...

THROUGH SUTHER'S AGENCY

London, Nov. 29. The Government's reply to Labour criticism...

THROUGH SUTHER'S AGENCY

London, Nov. 29. The Government's reply to Labour criticism...

ROLLS RAZOR THE ONE-HEAD SAFETY AUTOMATICALLY STROPPED AND HONED. IMPERIAL MODEL No. 1... 20/- IMPERIAL MODEL No. 2... 20/-

Accurate target and sporting shooting. B.S.A. Air Rifles. You can have fine target sport with a B.S.A. Air Rifle.

TRANS NZOIA. KIRKWOOD & CO., KITALE. Maize Dealers, Importers and Exporters.

OUR MOTTO Speed! Service! Efficiency! J. R. FARLEY, Ltd., Uganda's Premier Service Station.

DEPARTMENT OF AGRICULTURE. APPOINTMENT OF INSPECTORS and ASST. INSPECTORS. Applications are invited for the posts of Inspectors and Assistant Inspectors.

Old Scotch Rare in Quality



ESTD 1860

Crawford's LIQUEUR SCOTS WHISKY

MR. SARA SAMPAHAL
 No. 10, ...
 ...
 ...

PENNY POST REMOUR
 (PREFERRED)
 Announcement by the
 Chancellor
 ...
 ...

WIRELESS OPERATORS
 AT SEA.
 Having Their Chance to
 Save Their Own Lives
 ...
 ...

NOTICE.

TAKE NOTICE that as and from 1st November, 1928 I, the undersigned have given up business as Lessee of the PIONEER HOTEL, ELDORET, but have leased the premises of, and am carrying on business at the ELDORET HOTEL, ELDORET.

Sgd. (Mrs.) D. PEARSON

Over-carried Mail.

A QUESTION IN THE HOUSE OF COMMONS

STANDARD CORRESPONDENT
 ...
 ...

A Record Fortune.

MR. SIMON WATTS LEAVER
 ...
 ...

German Steel Industry

MARKS' FIGHT AGAINST WAGES INCREASE

...
 ...

Naval Supremacy.

Another Suggestion by America

British Unemployment.

Nearly Million and a Half Out of Work.

...
 ...

Australian-Britain Flight

Spirit of Australia

...
 ...

Kenya and Uganda Trade

Kenya and Uganda Trade

British Unemployment.

Nearly Million and a Half Out of Work.

...
 ...

...
 ...

STANDARD CORRESPONDENT

AN AGREEMENT REGARDING ALIENATIONS

...
 ...

Rail Road.

STANDARD CORRESPONDENT

AN AGREEMENT REGARDING ALIENATIONS

...
 ...

Rail Road.

...
 ...

...
 ...

STANDARD CORRESPONDENT

AN AGREEMENT REGARDING ALIENATIONS

...
 ...

Rail Road.

STANDARD CORRESPONDENT

AN AGREEMENT REGARDING ALIENATIONS

...
 ...

Rail Road.

...
 ...




Be Strong!
 Let Wingarnis enrich your blood

Men and women in every walk of life need Wingarnis to overcome body and mind in perfect balance. Mental and physical energy enough to stand as work or play. In fact, life is a splendid game. It helps Nature to do its best. It gives a clear complexion, bright eyes, and alert intelligence. In fact, everything which makes for a good personality. It promotes and builds up the system. It is a delicious preparation containing a keen brain and body tonic.

For your health and to get a life like Wingarnis. The more you take will make its influence felt. Taken regularly, it will make you strong, wise and happy.

WINGARNIS

28 h.p. Stock Crawler Tractor



...
 ...

THE KENYA MOTORPLOUGH Co.
 Hastings Street, Nairobi, P.O. Box 902



14 H. REVERSIBLE TRACTOR TRAILER (WITH SPRINGS)
 Write for Illustrated Catalogue

J. MERRYWEATHER & SONS.
 CHURCH STREET, MARLBOROUGH, WILT.

HELL GEAR OIL AND GREASOYL FOR GEARS AND DIFFERENTIAL AND CUP GREASE

...
 ...

HELL GEAR OIL
 ...
 ...

HELL GREASOYL
 ...
 ...

HELL CUP GREASE
 ...
 ...

American Bank President

...
 ...

For Protection against infection

Lifebuoy Soap

...
 ...

Cooper's Worm Tablets

(IMPROVED) For sheep and goats

The easiest and most thorough remedy for destroying intestinal worms and preventing re-infection.

By White Horse Worm Tablets and Pencils, 10, 11 and 12, Broad Street, London, E.C.4.

Sheep Marking Liquid & Pencils

The easiest, most durable, longest lasting, and most economical method of marking sheep.

By White Horse Worm Tablets and Pencils, 10, 11 and 12, Broad Street, London, E.C.4.

PHAROLIN

A powerful, safe, and effective remedy for all cases of malaria, fever, and chills.

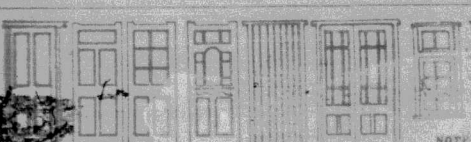
By White Horse Worm Tablets and Pencils, 10, 11 and 12, Broad Street, London, E.C.4.

BULLOWS & ROY, Ltd., P.O. Box 2, NAIROBI.

Stocks held in all Districts.

Geo. BLOWERS.

BUILDING CONTRACTOR, MANUFACTURER AND DIRECT IMPORTER



QUARRY CHIPS.

WE HAVE A LARGE QUANTITY OF BROKEN STONE AND CHIPS—SUITABLE FOR ROAD MAKING, PATHS, ORNAMENTAL GARDEN WORK, Etc., AT OUR MUTUAIGA QUARRY.

PRICE, Sh. 1/- per cart load at the Quarry.

ASPECTS OF THE BUDGET FOR 1939

No. 11 How to Spend it 1938

EXPANSION OF POSTAL WORK AND STAFF ADDITIONS

Veterinary Scheme for a New Native Stock Centre.

The following instalment of the proposed 1939 Budget is devoted to the expansion of postal work and staff additions. The Department of Posts, Telegraphs and Cables is expected to receive a grant of £1,000,000 for the year 1939-40.

LIMITATIONS OF POST OFFICE AFRICANS

The expansion of postal work and staff additions is a necessary consequence of the increasing volume of mail and telegrams. The Department of Posts, Telegraphs and Cables is expected to receive a grant of £1,000,000 for the year 1939-40.

The African

The African is a man of many talents. He is a hard worker, a good organizer, and a natural leader. He is a man of many talents. He is a hard worker, a good organizer, and a natural leader.

The African is a man of many talents. He is a hard worker, a good organizer, and a natural leader. He is a man of many talents. He is a hard worker, a good organizer, and a natural leader.

Native Production

The African is a man of many talents. He is a hard worker, a good organizer, and a natural leader. He is a man of many talents. He is a hard worker, a good organizer, and a natural leader.

The Cost of Living

The cost of living is a problem that affects every man, woman, and child. It is a problem that is caused by many factors, including the price of raw materials, the cost of transport, and the cost of labor.

White Horse Whisky

White Horse Whisky is a fine, pure, and delicious drink. It is a drink that is enjoyed by millions of people all over the world. It is a drink that is a symbol of quality and excellence.

White Horse Whisky

White Horse Whisky is a fine, pure, and delicious drink. It is a drink that is enjoyed by millions of people all over the world. It is a drink that is a symbol of quality and excellence.

White Horse Whisky

White Horse Whisky is a fine, pure, and delicious drink. It is a drink that is enjoyed by millions of people all over the world. It is a drink that is a symbol of quality and excellence.

White Horse Whisky

White Horse Whisky is a fine, pure, and delicious drink. It is a drink that is enjoyed by millions of people all over the world. It is a drink that is a symbol of quality and excellence.

White Horse Whisky

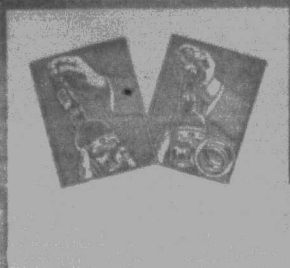
White Horse Whisky is a fine, pure, and delicious drink. It is a drink that is enjoyed by millions of people all over the world. It is a drink that is a symbol of quality and excellence.

White Horse Whisky

White Horse Whisky is a fine, pure, and delicious drink. It is a drink that is enjoyed by millions of people all over the world. It is a drink that is a symbol of quality and excellence.

White Horse Whisky

White Horse Whisky is a fine, pure, and delicious drink. It is a drink that is enjoyed by millions of people all over the world. It is a drink that is a symbol of quality and excellence.



ON SAFARI

The sweeter and cheaperest... Ideal for safari.

THE African Life Assurance Society, Ltd.

Court Chambers, Nairobi.

Phone 954 P.O. Box 204

WHERE AN AGENT sells of BONUSES

GUARANTEED ANNUAL DIVIDEND POLICY

MANAGED BY THE AFRICAN LIFE ASSURANCE SOCIETY, LTD.

M. D. KAMPF, Manager

WHITE HORSE WHISKY

Specialist in Footwear FOR Farm and Safari.

Specialist in Footwear FOR Farm and Safari.

100+ No. 807

Camp Moccasins 25/-

L. Gents 21/1.

Waterproof Moccasin 21/1-05/-

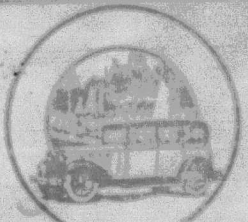
Boys Moccasin, Hala Rubber Sole, 11 to 1 22/50 2 to 5 28/50

Ideal School Boot.

American Moccasin with Hala Rubber Sole. Ideal for safari.

Eadies Footwear Ltd., Nairobi.

HENNESSY'S... BRANDY



Superior Performance Explains The Victory's Success

The Victory excels over other cars in its class. It is faster, smoother, more reliable, and more economical. Its superior performance is due to its advanced design and engineering.

Four door sedan, six seaters, four door box body. The Victory is the only car of its kind in the world that offers such a wide range of body styles.

W. Springett & Co., Managers. Diamond Road, Nairobi. Also agents for various other car models.

S. Fisher & Simmons (E.A.) Ltd. VICTORIA STREET, NAIROBI.

The VICTORY SIX BY BROS. BROTHERS

ASPECTS OF THE BUDGET FOR 1938

By the Hon. Mr. J. H. K. ...

The Budget for 1938 is a landmark document. It shows a clear commitment to economic development and social progress. The Government has taken significant steps to improve the lives of its citizens.

The Budget also addresses the needs of the agricultural sector. It provides incentives for farmers and supports the growth of the rural economy.

Education and health are also key priorities. The Government has allocated funds to improve schools and medical facilities across the country.

The Budget is a testament to the Government's vision for a better future. It shows a commitment to transparency and accountability in the use of public funds.

The Evolution of the African

The evolution of the African is a complex process. It involves the interplay of various factors, including environment, culture, and social structure. Understanding this evolution is crucial for the development of the continent.

The African has a rich and diverse heritage. This heritage is a source of pride and strength. It is essential to preserve and celebrate this heritage as we move forward.

The evolution of the African is not just a historical process. It is an ongoing one. We must continue to work together to shape the future of our continent.

The African is a resilient and adaptable people. We have overcome many challenges in the past. We are confident that we can overcome any challenges that lie ahead.

Montana Town Council

The Montana Town Council has elected a new member. The council is committed to serving the community and improving the quality of life for all residents.

The council has also discussed various issues, including infrastructure and public services. They are working to address the needs of the community as quickly as possible.

The council is pleased with the progress made so far. They are confident that they can continue to make a positive impact on the community.

The council will continue to work hard to ensure the best possible future for Montana. They are grateful for the support of the community.

OGDENS' SPORTSMAN Mild Virginia Cigarettes



EACH TIN OF SPORTSMAN CONTAINS A GIFT COUPON. SAVE THESE COUPONS & EXCHANGE THEM FOR USEFUL & ATTRACTIVE GIFTS AS DESCRIBED ON THE COUPON. MADE IN ENGLAND.



SUNLIGHT washes snowy white!



SUNLIGHT never fails to preserve the natural whiteness and "bloom" of all linen and white cotton fabrics. Sheets, frocks and shirts should always be washed with Sunlight Soap. It keeps them snowy-white and preserves that softness of texture which adds so greatly to bodily comfort. Because Sunlight is supreme in purity it is the best soap for white fabrics.

use **Sunlight Soap**



VOCO SPECIAL The latest Development in POWER KEROSENE

A NEW and better Power Kerosene for your motor or old engine, giving you a marked increase in power and definitely better mileage. The complete answer of the refiner to the problem of the most suitable fuel.

- It is highly reliable
- It is highly resistant to detonation or fuel knock
- It ensures quick start-up over from the starting fuel
- It is completely combustible
- It is most economical in use

See the Mobil Oil Chart of Recommendations for the correct lubricant for your tractor. . . .

Our Books "Petroleum on the Farm" and "Voco Power Paraffin (Special)" are FREE. Write to our nearest branch for copies.

VACUUM OIL COMPANY OF SOUTH AFRICA LTD.

DISTRIBUTING AGENTS IN KENYA, UGANDA, TANGANYIKA AND ZAMBIA. THE AFRICAN MERCANTILE COMPANY, LIMITED. Eldoret, Kisumu, Machakos, Nairobi, Nyeri, Oleng, Pwani & Bay, The Nyasa District, 2 P. Mwanj, Alexander Road, KILALI, MORRI, VANTIKI, THIKA, Trans Nile Transport Co., Uganda Co., Ltd., Gen. L. Hook, Shik Mughl Hill.

Note the tread
of a

ROYAL CORD BALLOON



The Flat Tread

The Flat Tread Balloon Tyre, as compared by the makers of Royal Cord Tyres, from year ago, is today regarded as the flat-tread principle for Balloon Tyres.



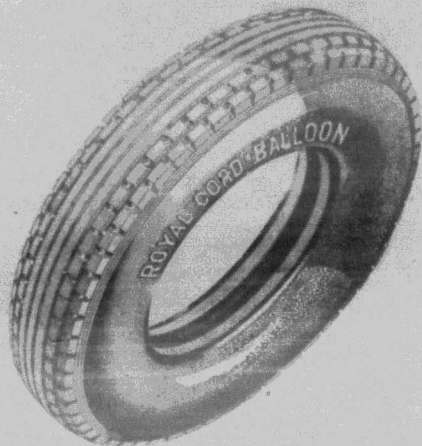
Plantations

The makers of Royal Cord Tyres own and operate extensive Rubber Plantations in Sumatra and Malaya. Here some of the finest rubber trees, all yielding latex, from which the Government produces its Special Rubber and its Extra Treaded Web Cord.



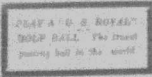
Sprayed Rubber

Of the greatest importance because of the fine quality, and the freedom from dirt and cracks. Finally, the latex is sprayed into a chamber containing hot, dry air, which dries out the liquid from the latex, leaving the even, solid rubber. This done away with the old method of smoking and cold completion.



TWO years ago the makers of Royal Cords developed and announced a Flat Tread Balloon Tyre. Today, tyre engineers acknowledge this to be the correct principle for the modern Balloon tyre and only of late are others beginning to feature it.

It is just as true in many other successful tyre developments, that the Royal Cord user is always a step nearer to true tyre economy and satisfaction.



United States Rubber Co. (S.A.) Ltd.

Sole Distributors in Kenya, Uganda, Tanganyika and Zanzibar.

Carr, Lawson & Co., Ltd.

Nairobi and Kampala

Built by the FLAT BAND METHOD from SPRAYED RUBBER and WEB CORD

THE COST OF LIVING.

Drop in Local Prices Since Last Year.

COFFEE, CHEESE, MEAT AND FISH STILL UP

Interesting statistics reflecting the position of living costs in Kenya were issued by the Statistician to the Conference of the E.A. Governments over the week-end.

The bulletin reads as follows:—
Monthly figures of retail prices of articles of local produce and imported goods corresponding prices in England, New Zealand and South Africa.

ARTICLES	1926			1927			Average 1926
	1926	1926	1926	1927	1927	1927	
Butter	100	100	100	100	100	100	100
...

The following are shown English Prices—Sugar, Cheese, Flour, Milk, Butter, Lard. Meat is below English prices for same cuts. New Zealand prices are below Nairobi with the exception of Coffee, Tea, and—Milk. Prices are taken from "The Index" for Nairobi, Lard, Butter, Cheese and from Ministry of Labour "Gazette" for all other prices.

New Zealand prices are taken from Monthly Abstract of Statistics, 1927.

South African prices are taken from Monthly Bulletin of Statistics, December 1927.

Yearly index of the Nairobi for various articles of local produce compared with the corresponding index for the month of October, 1926.

Articles	1924	1925	1926	1927	1927	1927
Butter	790	842	1012	1012	1012	1012
...

The index of the price of Brown Egg falling to 75.7, or 10.5 per cent. below the index of 1926, but it should be noted that the 1926 index still remains to sell off eggs at a uniform price. Hence the maximum of 2.00 per lb. for the local egg, together with the fact that the index of the price of eggs is 100.00 per 100, while the index of the price of eggs is 100.00 per 100, while the index of the price of eggs is 100.00 per 100.

All essential commodities were higher in 1927, which is the average of the various indices of January, 1927. The Index, Nairobi for the month of January, 1927.

The index, Nairobi, for all essential articles of local produce has fallen from 100.00 in 1927 to 96.8, or a drop of 3.2 per cent. The decrease would have been greater, had it not been for the Meat and Fish and vegetables in May and the following months.

Meat Index.

Month	1926	1927
January	102.8	102.8
February	102.8	102.8
...

Showing a drop of 2 per cent. Below the present year. The grades of the various articles selected for comparison with other countries have been carefully considered and those given for England are as priced for the London market under the best retail prices data of the London Stock.

Kenya Butter was quoted in England with the finest New Zealand Creamery and that the comparison established in the above list. The New Zealand Butter is sold on the London market at 8/ per lb. The same remark applies to Cheese, the "Pineapple Oldenew Zealand" being sold at 7.25 on the London market.

Will Kill Lion, Leopard, Hyena and any other Vermin Shgs 17/00 only.
18 Hole Shot Cartridge Shgs 6.25 per 25 rounds.
We buy Leopard skins at from Shgs. 40 to Shgs. 120—each in good condition.

Hundreds of people are making money out of them by the sale of the skins.

Send for illustrated new Catalogue on shot Guns, Rifles, Revolvers, and the best class of ammunition.

Vermin Traps will hold Lion, Leopard and all kinds of Vermin. Shgs. 25—only.

Chas. A. Heyer & Co. OUNMAKERS. Box 887, NAIROBI.

Art Metal

For Home or Office

- Filing Cabinets,
- Steel Cupboards
- Steel Shelving,
- Caid Cabinets,
- Etc., etc.

Sole Agents:
DALGETY & Co., Ltd.
MOMBASA NAIROBI ELDORET.

Use "BP"

or else start early

Anglo Persian Oil Co. (Kenya) Ltd.
Main Distributing Agents:—
Gibson & Co., Ltd., Mombasa



CRAVEN A
CIGARETTES

META
INSTANT HEAT FOR INSTANT USE
NO ASH NO SMOKE
META
HEAT TABLETS
NON EXPLOSIVE DO NOT MELT

SUPERBOND METHYLATED SPIRIT
and with Meta Tablets Application is the ideal fuel for the household sports activities etc.
Sole Agents: B. AYRES & Co. SALOON, 115-117, N. B. ROAD, NAIROBI.
Sole Agents: Messrs. HUGHES & SONS, 101, MARKET STREET, NAIROBI.

PROHIBITION OF CERTAIN NATIVE DANCES
Official Decree in the Rift Area.

The Hon. the Attorney-General has issued a decree prohibiting certain native dances in the Rift Area. The dances mentioned are those which are considered to be of a lascivious or obscene character and which are likely to lead to the commission of crimes against public morality.

The dances prohibited are those which are performed in a lascivious or obscene manner and which are likely to lead to the commission of crimes against public morality.

East African Coffee.

MARKET QUOTATIONS ON ROYAL MARKET

Keen Coffee

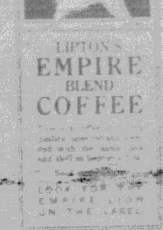
Transvaal Coffee

PROHIBITION OF CERTAIN NATIVE DANCES
Official Decree in the Rift Area.

The Hon. the Attorney-General has issued a decree prohibiting certain native dances in the Rift Area. The dances mentioned are those which are considered to be of a lascivious or obscene character and which are likely to lead to the commission of crimes against public morality.



Why do they drink LIPTON'S TEA at Monte Carlo?



At all the great Continental resorts where the leader of Society foregather, you will find Lipton's Tea on the tables.

Lipton's has the largest sale of any tea in the world. For by its choice quality and fine flavour Lipton's Tea appeals to all who appreciate the best tea. And it is only by buying your tea from Lipton's, who are actual Tea Growers, that you can get this supreme quality for so low a price.

If you insist on Lipton's and make a point of looking for the "LL" Trade Mark on every tin you buy, you will never again have cause to say "How difficult it is to get a really good cup of tea in Kenya."

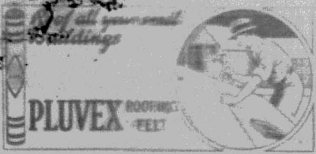
LIPTON'S YELLOW LABEL TEA

WORLD-FAMOUS FOR QUALITY

TWO OTHER STANDARD BLENDS:
GREEN LABEL (Special Darjeeling) and RED LABEL
ON SALE EVERYWHERE

PLUVEX

FOR OUTHOUSES



EASY TO LAY.

Time and Weatherproof

Send for Samples and Prices to

Boustead & Clarke Ltd.,
NAIROBI.

DISGRACEFUL

The Hon. the Attorney-General has issued a decree prohibiting certain native dances in the Rift Area. The dances mentioned are those which are considered to be of a lascivious or obscene character and which are likely to lead to the commission of crimes against public morality.

LEGAL CAMPAIGN

The Hon. the Attorney-General has issued a decree prohibiting certain native dances in the Rift Area. The dances mentioned are those which are considered to be of a lascivious or obscene character and which are likely to lead to the commission of crimes against public morality.

ASPECTS OF THE BUDGET FOR 1930

No. 7. How to Spend B.R.L.M.

THE FURNISHING OF HOUSES AND HOMES FOR NEXT YEAR

£2000 Indebted to Aard Gid Aard's Government.

Following is the memorandum... The Budget Commission has reported... The Commission has reported...

The staff of the Commission... The Commission has reported... The Commission has reported...

New Dispositions

The Commission has reported... The Commission has reported... The Commission has reported...

Devises and Registration

The Commission has reported... The Commission has reported... The Commission has reported...

THE BUDGET FOR 1930

THE FURNISHING OF HOUSES AND HOMES FOR NEXT YEAR

£2000 Indebted to Aard Gid Aard's Government.

Following is the memorandum... The Budget Commission has reported... The Commission has reported...

The staff of the Commission... The Commission has reported... The Commission has reported...

New Dispositions

The Commission has reported... The Commission has reported... The Commission has reported...

Devises and Registration

The Commission has reported... The Commission has reported... The Commission has reported...

THE BUDGET FOR 1930

THE FURNISHING OF HOUSES AND HOMES FOR NEXT YEAR

£2000 Indebted to Aard Gid Aard's Government.

Following is the memorandum... The Budget Commission has reported... The Commission has reported...

The staff of the Commission... The Commission has reported... The Commission has reported...

New Dispositions

The Commission has reported... The Commission has reported... The Commission has reported...

Devises and Registration

The Commission has reported... The Commission has reported... The Commission has reported...

THE R.A.F. ANNUAL FLIGHT TO THE SOUTH

Combined Exercise With Great Force in April

The King's message... The R.A.F. annual flight... The King's message... The R.A.F. annual flight...

The Coffee Crisis

A lack of coffee... The coffee crisis... A lack of coffee... The coffee crisis...

Mombasa Municipality

Indians withdraw from... Mombasa Municipality... Indians withdraw from... Mombasa Municipality...

Indian Withdrawal

Indians withdraw from... Indian withdrawal... Indians withdraw from... Indian withdrawal...

ARIEL 10,000 MILES IN 22 DAYS! RUNNING DAY AND NIGHT Under Official A.C.U. Observation. Includes image of a motorcycle and text about reliability.

Mobiloil 'E' Arctic 'A' 'BB' 'B' 'C' 'CC' 'TT'. THE NAME is important as well as the Grade. YOU ALWAYS GET WHAT YOU MEAN TO ORDER? Includes Mobiloil logo and company information.

CHRYSLER

THE NEW '75'

TO THOSE who are familiar with the remarkable array of engineering and mechanical improvements with which Chrysler has invigorated the whole industry, it may well seem difficult to have added in any great measure, to those remarkable achievements.

Yet the ingenuity, the persistence, and the capacity for infinite detail of the great Chrysler engineering staff have again added to their laurels, and

the new "75" demonstrates so capably and unmistakably.

There can be no doubt that the new 75-horse power "Silver Dome" high-compression engine which powers this car ranks among the leading engineering feats of the decade. With any of the ordinary grades of petrol it yields the snap and power and speed which can only be developed under high compression.



CARR, LAWSON & Co., Ltd.

Nairobi Nakuru Eldoret Kampala.

NAIROBI GOLF CLUB.

A Trophy Presented for Scottish Players

During the past week it has been the privilege of the Nairobian to witness a very interesting and successful competition for a trophy presented by the Nairobian Golf Club for Scottish players. The trophy was presented by the Nairobian Golf Club for Scottish players. The trophy was presented by the Nairobian Golf Club for Scottish players.

Match Against Otago

On Sunday week Otago are paying a visit to Otago. Unfortunately our team is not at all strong, so we shall expect a difficult match. The Otago team is expected to make the match a very interesting one.

The Captain's View

The Captain of the Otago team has made a statement. He says that his team is well prepared for the match. He expects a very interesting and successful match.

Would Be Champions Final Abandoned

The match between the Otago and the Nairobian teams for the title of champions has been abandoned. The match was abandoned due to the illness of one of the players.

Golf at Muthaiga

The Nairobian Golf Club has held a match at Muthaiga. The match was very interesting and successful. The Nairobian team won the match.

KENYA CRICKET.

Country Cup Match at Gilgil

The Country Cup match between the Nairobian and the Gilgil teams was held at Gilgil. The Nairobian team won the match.

Gymkhana Colts vs. Police

The Gymkhana Colts team played a match against the Police team. The Gymkhana Colts team won the match.

Police

The Police team played a match against the Nairobian team. The Police team won the match.

Golf at Muthaiga

The Nairobian Golf Club has held a match at Muthaiga. The match was very interesting and successful. The Nairobian team won the match.


Gymkhana Colts

The Gymkhana Colts team played a match against the Police team. The Gymkhana Colts team won the match.



Ask For
SOUTH AFRICAN
Wines, Jams, Fruits, Spices.
They are of the Best.
All Leading Grocers Stock them.
Trade Commissioner for South Africa
MEMORIAL HALL,
P.O. Box 824,
NAIROBI.

A favorite
tea cake—
no trouble to make with this
reliable baking powder



ALL over the world housewives and cookery experts agree that Royal Baking Powder is the best, because it is always pure, wholesome and utterly dependable. It gives the best results. Use Royal for all your baking. It's a saving in the end.

ROYAL BAKING POWDER

FEATHER COCOANUT CAKE: Sift 1 cup of (1 1/2 cupful) flour, 1/2 cup of (1/2 cupful) sugar and 1 teaspoonful Royal Baking Powder. Add 1/2 cup of (1/2 cupful) melted butter or other cooking fat and 1 egg, whisked to 1 1/2 cupful milk, and add to the mixture. Mix well; add 1 teaspoonful bicarbonate of soda, 1/2 cupful of fresh ground coconut and beat in green and black leaf peas to moderate extent (1/2 cup of 1/2 cup measure). (All measurements level.) Bake 1 hour 15 min. in a 2 1/2 lb. tin.

Arms and Ammunition

OF THE HIGHEST QUALITY



THEY ARE THE BEST MAKERS.

THE SPORTS HOUSE.

WE CAN OFFER YOU A SELECTION SECOND TO NONE IN KENYA.

May & Co., Ltd.
P. O. Box 47. NAIROBI. Phone 32.




LADIES' FASHIONS

A Kettler from Paris



The dress shown is a masterpiece of Parisian fashion, featuring a long, flowing silhouette with a high collar and long sleeves. The fabric appears to be a rich, dark material, possibly silk or velvet, with subtle detailing and a fitted bodice. The overall style is characteristic of the late 1910s or early 1920s, emphasizing elegance and grace.

The fashion of the moment is a departure from the elaborate and voluminous styles of the previous years. It is characterized by a more restrained and elegant approach, with a focus on clean lines and high-quality materials. The 'Kettler' mentioned in the title is a key piece in this new wardrobe, designed for both style and practicality.

Another notable trend is the use of lighter, more delicate fabrics, which allow for a more airy and comfortable feel. This is particularly evident in the designs for the warmer months, which often feature intricate patterns and subtle textures. The overall aesthetic is one of sophisticated simplicity.

The 'Kettler' is a versatile piece that can be styled in various ways, making it a valuable addition to any wardrobe. Its design is both timeless and contemporary, reflecting the enduring appeal of Parisian fashion. The attention to detail in the construction and the choice of materials are hallmarks of this style.



This dress is a classic example of the 'Kettler' style, featuring a light-colored fabric and a high collar. The design is simple yet elegant, with a focus on the quality of the materials and the precision of the tailoring. It is a piece that can be worn in a variety of settings, from formal occasions to more casual outings.

The 'Kettler' is a key piece in the new wardrobe, designed for both style and practicality. Its design is both timeless and contemporary, reflecting the enduring appeal of Parisian fashion. The attention to detail in the construction and the choice of materials are hallmarks of this style.

Another notable trend is the use of lighter, more delicate fabrics, which allow for a more airy and comfortable feel. This is particularly evident in the designs for the warmer months, which often feature intricate patterns and subtle textures. The overall aesthetic is one of sophisticated simplicity.

The 'Kettler' is a versatile piece that can be styled in various ways, making it a valuable addition to any wardrobe. Its design is both timeless and contemporary, reflecting the enduring appeal of Parisian fashion. The attention to detail in the construction and the choice of materials are hallmarks of this style.

Tables that say 'welcome'



Freshest flowers from the garden, lots of cream, napkins nicely folded, hot pipes, in the table touches of perfection, including the best table white.

ferbos Salt

TRY IT IN YOUR BATH
SCRUBB'S GLOBY AMMONIA
MARVELLOUS PREPARATION
Invaluable for LAUNDRY and DOMESTIC PURPOSES.
Of all chemists, Druggists, etc.

The 'Kettler' is a key piece in the new wardrobe, designed for both style and practicality. Its design is both timeless and contemporary, reflecting the enduring appeal of Parisian fashion. The attention to detail in the construction and the choice of materials are hallmarks of this style.

Another notable trend is the use of lighter, more delicate fabrics, which allow for a more airy and comfortable feel. This is particularly evident in the designs for the warmer months, which often feature intricate patterns and subtle textures. The overall aesthetic is one of sophisticated simplicity.

The 'Kettler' is a versatile piece that can be styled in various ways, making it a valuable addition to any wardrobe. Its design is both timeless and contemporary, reflecting the enduring appeal of Parisian fashion. The attention to detail in the construction and the choice of materials are hallmarks of this style.

The Poultry World

An Interesting Experiment

Importing Utility Eggs

The experiment of importing utility eggs is a novel one, aimed at improving the quality and quantity of poultry products. The results of the experiment are promising, showing that imported eggs can be a valuable addition to the local market. This approach could be adopted by other regions to enhance their agricultural output.

The 'Kettler' is a versatile piece that can be styled in various ways, making it a valuable addition to any wardrobe. Its design is both timeless and contemporary, reflecting the enduring appeal of Parisian fashion. The attention to detail in the construction and the choice of materials are hallmarks of this style.

The 'Kettler' is a versatile piece that can be styled in various ways, making it a valuable addition to any wardrobe. Its design is both timeless and contemporary, reflecting the enduring appeal of Parisian fashion. The attention to detail in the construction and the choice of materials are hallmarks of this style.

WOLBOME HOME MADE SWEETS

Wolbome's home-made sweets are a delightful treat, known for their quality and variety. The recipes are simple and easy to follow, making them a popular choice for home cooks. The sweets are a testament to the art of home baking and the joy of sharing homemade treats.

The 'Kettler' is a versatile piece that can be styled in various ways, making it a valuable addition to any wardrobe. Its design is both timeless and contemporary, reflecting the enduring appeal of Parisian fashion. The attention to detail in the construction and the choice of materials are hallmarks of this style.

EAST AFRICAN PUBLICITY IN LONDON.

The largest audience of ever recorded to suggest that in some instances the impression conveyed by the official propaganda may be additional successful publicity may be undertaken without such extra cost of transport by the public use of wireless telegrams. A public notice in the interests of the office of the East African Publicity Commission is a study of the subject and suggests that the public use of wireless telegrams is a most effective means of advertising. The Commission is now doing so much for East African publicity in London and abroad, in a most effective manner.

Spring Gardens.

The largest audience of ever recorded to suggest that in some instances the impression conveyed by the official propaganda may be additional successful publicity may be undertaken without such extra cost of transport by the public use of wireless telegrams. A public notice in the interests of the office of the East African Publicity Commission is a study of the subject and suggests that the public use of wireless telegrams is a most effective means of advertising. The Commission is now doing so much for East African publicity in London and abroad, in a most effective manner.

Tororo Notes.

THE TORORO INDUSTRY ON THE UGANDA BORDER.

The Tororo industry on the Uganda border is a significant one, contributing to the local economy and providing employment for many people. The industry is primarily based on the production of goods and services, which are then traded across the border. The success of this industry is a testament to the entrepreneurial spirit of the people of Tororo.

The 'Kettler' is a versatile piece that can be styled in various ways, making it a valuable addition to any wardrobe. Its design is both timeless and contemporary, reflecting the enduring appeal of Parisian fashion. The attention to detail in the construction and the choice of materials are hallmarks of this style.

INDIAN POLITICS.

Anti-Congress Movement at Bombay.

The anti-Congress movement at Bombay is a significant development in Indian politics, reflecting the growing dissatisfaction with the Congress party's leadership. The movement is based on the belief that the Congress party is not adequately representing the interests of the Indian people. This movement could have far-reaching implications for the future of the Indian National Congress.

Standard Correspondent.

The Standard correspondent reports on the latest developments in Indian politics, including the anti-Congress movement at Bombay. The correspondent provides a detailed analysis of the situation and its potential consequences. The report highlights the growing divide within the Indian political landscape and the challenges facing the Congress party.

LAKHNAO NOTES.

Standard Correspondent.

The Standard correspondent reports on the latest developments in Lakhnao, including the activities of the Indian National Congress and the local political scene. The report provides a detailed account of the events and the opinions of the local population. The correspondent also discusses the impact of the anti-Congress movement on the political climate in Lakhnao.

The 'Kettler' is a versatile piece that can be styled in various ways, making it a valuable addition to any wardrobe. Its design is both timeless and contemporary, reflecting the enduring appeal of Parisian fashion. The attention to detail in the construction and the choice of materials are hallmarks of this style.

LAKHNAO NOTES.

Farewell Dinner to the Resident Commissioner.

The farewell dinner to the Resident Commissioner is a significant event, marking the end of his tenure in Lakhnao. The dinner is attended by a large number of guests, including members of the local government and the community. The occasion is a celebration of the Commissioner's service and a chance for him to bid adieu to his colleagues and friends.

Standard Correspondent.

The Standard correspondent reports on the farewell dinner to the Resident Commissioner, providing a detailed account of the event and the speeches made. The report highlights the Commissioner's contributions to the region and the well-wishes of the guests. The correspondent also discusses the future of the region and the role of the local government.

Standard Correspondent.

The Standard correspondent reports on the latest developments in Lakhnao, including the activities of the Indian National Congress and the local political scene. The report provides a detailed account of the events and the opinions of the local population. The correspondent also discusses the impact of the anti-Congress movement on the political climate in Lakhnao.

The 'Kettler' is a versatile piece that can be styled in various ways, making it a valuable addition to any wardrobe. Its design is both timeless and contemporary, reflecting the enduring appeal of Parisian fashion. The attention to detail in the construction and the choice of materials are hallmarks of this style.

Ashes of Roses AND Ashes of Violets TOILET PREPARATIONS

To make a series of toilet preparations distinguished by the utmost refinement and captivating charm has been the aim of Mmes. Hourst, the famous Parisian perfumers. Subtly and skilfully perfumed with choice Ashes of Roses or Ashes of Violets, these preparations not only enhance the beauty, but preserve it.

Paris at Chamber, Perfumers and Soap-makers.
A. BOUTANGES et CIE, LTD.,
4, Water Lane, London, E.C. 4.

Ashes of Roses Ashes of Violets

REFINED CIGARETTES made from specially selected Virginia tobacco, now obtainable everywhere.

J. GRAHAM DAWSON,
P.O. Box 215, Nairobi, and at Mombasa, P.O. Box 218

BATHS.

Your Opportunity.

We have a number of SHANKS' PORCELAIN BATHS with the enamel slightly damaged in transit, for sale at VERY REDUCED PRICES.

Call and inspect them.

R. G. Vernon & Co.,
UNION BUILDINGS, NAIROBI

MULLARD

THE MASTER VALVE FOR BETTER RADIO

FOR SALE AT THE KENTA RADIO & ELECTRICAL CO. Government Road, NAIROBI.

Write for lists and free booklet on "HOW TO GET BETTER RADIO" SOLE IMPORTERS—

W. G. R. I. D.

Representing: CHALMERS & GUTHRIE (MERCHANTS) LTD., P.O. Box 962, MOMBASA.

The Tribes of Kenya.

Origin of the Nandi and the Mystery of the Sinkwa.

By the Rev. A. A. Standen, F.R.A. 15

It is a well-known fact that the Nandi are the most numerous of the tribes of Kenya...

It is a well-known fact that the Nandi are the most numerous of the tribes of Kenya...

It is a well-known fact that the Nandi are the most numerous of the tribes of Kenya...

It is a well-known fact that the Nandi are the most numerous of the tribes of Kenya...

It is a well-known fact that the Nandi are the most numerous of the tribes of Kenya...

It is a well-known fact that the Nandi are the most numerous of the tribes of Kenya...

It is a well-known fact that the Nandi are the most numerous of the tribes of Kenya...

It is a well-known fact that the Nandi are the most numerous of the tribes of Kenya...

It is a well-known fact that the Nandi are the most numerous of the tribes of Kenya...

It is a well-known fact that the Nandi are the most numerous of the tribes of Kenya...

By the Rev. A. A. Standen, F.R.A. 15

It is a well-known fact that the Nandi are the most numerous of the tribes of Kenya...

It is a well-known fact that the Nandi are the most numerous of the tribes of Kenya...

It is a well-known fact that the Nandi are the most numerous of the tribes of Kenya...

It is a well-known fact that the Nandi are the most numerous of the tribes of Kenya...

It is a well-known fact that the Nandi are the most numerous of the tribes of Kenya...

It is a well-known fact that the Nandi are the most numerous of the tribes of Kenya...

It is a well-known fact that the Nandi are the most numerous of the tribes of Kenya...

It is a well-known fact that the Nandi are the most numerous of the tribes of Kenya...

It is a well-known fact that the Nandi are the most numerous of the tribes of Kenya...

It is a well-known fact that the Nandi are the most numerous of the tribes of Kenya...

By the Rev. A. A. Standen, F.R.A. 15

It is a well-known fact that the Nandi are the most numerous of the tribes of Kenya...

It is a well-known fact that the Nandi are the most numerous of the tribes of Kenya...

It is a well-known fact that the Nandi are the most numerous of the tribes of Kenya...

It is a well-known fact that the Nandi are the most numerous of the tribes of Kenya...

It is a well-known fact that the Nandi are the most numerous of the tribes of Kenya...

It is a well-known fact that the Nandi are the most numerous of the tribes of Kenya...

It is a well-known fact that the Nandi are the most numerous of the tribes of Kenya...

It is a well-known fact that the Nandi are the most numerous of the tribes of Kenya...

It is a well-known fact that the Nandi are the most numerous of the tribes of Kenya...

It is a well-known fact that the Nandi are the most numerous of the tribes of Kenya...

EAST AFRICAN PUBLICITY IN LONDON.

No. 2. The Railway Side.

TOURIST TRAFFIC BEING NURSED WITH CARE AND CAUTION.

Satisfied Visitors the Best Publicity Agents for the Dependencies.

One of the most successful sides of East African publicity work in London is carried out by the Railways.

Railway work in London generally, comes under the duties of the Special Railway Officer but he is spending much time and trouble in the organisation of tourist traffic.

That side of publicity is done with caution. A few satisfied tourists are regarded as preferable to a crowd of tourists who find difficulty in obtaining up-country accommodation.

A LAST WORD ON THE QUESTION OF SITE.

Questions of site and the salary of external publicity are among the problems, as indicated in the first article of this series, which will have to be solved...

STONE KINGS.

It is a well-known fact that the Nandi are the most numerous of the tribes of Kenya...

Doll Competition Result.

The result of the doll-competition competition was announced by the I.W.O.A. Hotel Empire...

It is a well-known fact that the Nandi are the most numerous of the tribes of Kenya...

It is a well-known fact that the Nandi are the most numerous of the tribes of Kenya...

"Publicity Agent".

"So long as they come in small parties," he continued, "we can do them quite well. I have had some fairly good results of late."

Railway Work.

The last word on the question of site with reference to the railway work...

Tourist Handicaps.

It was explained by the guide clearly that the East African Tourist Information Bureau is not out of the tourist traffic in East Africa on a large scale.

QUINACINE. PRICE 2/- and 3/6 per bottle. THE RELIABLE REMEDY FOR Colds & Chills. KODAK (E.A.) LTD., INC. Howse & McGeorge CHEMISTS. KENYA, UGANDA AND TANGANYIKA.

Scotland's Finest Whisky. LONG JOHN. Characteristically PURE AND MATURE. D. EPSTEIN & CO.

WINSOR & NEWTON'S Artists' Materials. Large Range of Colours in Stock. Pen Painting Sets Stenciling Outfits. Poster Colours. Sketh Block Etc. Standard Stationery Stores. P.O. Box 380. NAIROBI.

Be sure of the original look for the name WEED on every hook. Heavy Duty Vehicles. WEED TYRE CHAINS. AMERICAN CHAIN COMPANY, INC. New York, N. Y., U.S.A.

WEED TYRE CHAINS. AMERICAN CHAIN COMPANY, INC. New York, N. Y., U.S.A.

Will It Turn To ECZEMA? DON'T neglect any skin trouble! Unless attended to right away that pimply rash, sore spot or persistent irritation may easily develop into heavy eczema or other disfigurement more difficult to overcome.

Will It Turn To ECZEMA? DON'T neglect any skin trouble! Unless attended to right away that pimply rash, sore spot or persistent irritation may easily develop into heavy eczema or other disfigurement more difficult to overcome.

Zam-Buk. Grows New Healthy Skin. RANK-DUN is obtainable in handy size. Boxes of medicine dispense cream and ointment. Full directions for using Zam-Buk are enclosed on every package.

BAD LEGS & ULCERS



Germolene

ASEPTIC SKIN OINTMENT

Alfred J. P. Baumann.
Head Office—4 Lloyd's Avenue, LONDON E.C.4
MOMBASA—Bauermann Building, Kilindini Road
P.O. Box 325, Telephone 167.
Telegraphic Address in all branches "Schwederas."
Dar-es-Salaam, Kampala, Kisumu, Kitale,
Ghose Building, P.O. 335, P.O. 37 P.O. 42

OILSEEDS and general PRODUCE.
HIDES and SKINS.
COFFEE Planters specially catered for. Consignments cleared by our Mombasa office at cost. Best accounts solicited. Prompt account sales. Moderate charges.
MAIZE: We pay cash at railhead—Wheat for cash terms.

CONSULT US if you desire to realize the highest market value for the produce of your farms.
PIECE-GOODS: British and Continental
Use **PETERS' Constant** and avoid disappointments.

IRON on the renowned ELEPHANT
Diamond Corrugated Sheet
DIAMOND JEFFREYS PILSNER

DISTINCTION.
Some people look distinctive in glasses. This spectacle is always the result of experience in state. We are proud to have the best of the world's opticians and opticians who are usually adapted to your needs.
Dobbies Ltd.
OPHTHALMIC OPTICIANS,
NAIROBI. Phone 241

MOMBASA CHIEF OF THE ROYAL YOUTH

Chamber of Commerce
Ladies' Club and the Women's League
The Mombasa Chamber of Commerce has elected Mr. J. P. Baumann as its President for the year 1930-31. The Chamber also elected Mr. J. P. Baumann as its Vice-President and Mr. J. P. Baumann as its Treasurer.

COAST NATIVE WAGES

Ladies' Club and the Women's League
The Mombasa Chamber of Commerce has elected Mr. J. P. Baumann as its President for the year 1930-31. The Chamber also elected Mr. J. P. Baumann as its Vice-President and Mr. J. P. Baumann as its Treasurer.

COMPLEXION IMPROVED BY BIRDS' CUSTARD

CHARLES' EMULSION
The Mombasa Chamber of Commerce has elected Mr. J. P. Baumann as its President for the year 1930-31. The Chamber also elected Mr. J. P. Baumann as its Vice-President and Mr. J. P. Baumann as its Treasurer.

FRUIT SALAD

BIRDS' CUSTARD
The Mombasa Chamber of Commerce has elected Mr. J. P. Baumann as its President for the year 1930-31. The Chamber also elected Mr. J. P. Baumann as its Vice-President and Mr. J. P. Baumann as its Treasurer.

FORD CARS doing 45 Miles on One Gallon

"THE SUPER"
The best of the Ford Motor Co. cars are the Ford Model A cars. They are the most economical and most reliable cars in the world. They are the most popular cars in the world.

Irish Innovations.

APPOINTMENT OF BOARD OF ROOK CORPSE
STANDARD CORPSE
The Mombasa Chamber of Commerce has elected Mr. J. P. Baumann as its President for the year 1930-31. The Chamber also elected Mr. J. P. Baumann as its Vice-President and Mr. J. P. Baumann as its Treasurer.

LINKING UP EAST AFRICA BY TELEPHONE

Schemes of Development for Kenya.
TRUNK LINES.
Nairobi-Nakuru Cable to be Commenced in January. Coast-Capital in 1930.
The Mombasa Chamber of Commerce has elected Mr. J. P. Baumann as its President for the year 1930-31. The Chamber also elected Mr. J. P. Baumann as its Vice-President and Mr. J. P. Baumann as its Treasurer.

It is understood that the Government is planning to link up East Africa by telephone. The first trunk line will be between Nairobi and Nakuru. This line is to be completed in January 1931. A second trunk line will be between Nairobi and Mombasa. This line is to be completed in 1932.

The Mombasa Chamber of Commerce has elected Mr. J. P. Baumann as its President for the year 1930-31. The Chamber also elected Mr. J. P. Baumann as its Vice-President and Mr. J. P. Baumann as its Treasurer.

Rural Telephone.
The Mombasa Chamber of Commerce has elected Mr. J. P. Baumann as its President for the year 1930-31. The Chamber also elected Mr. J. P. Baumann as its Vice-President and Mr. J. P. Baumann as its Treasurer.

Free Wineglasses

to hold one dose of the Tonic of Tonics

A Special Crystal Wineglass to hold one dose in glass free with every large size bottle of Hall's Wine. Get yours today and start a course of this renowned Tonic from which will quickly restore you to health, vigor and lasting health.

Hall's Wine purifies the blood, feeds the system, and restores the entire system. It is the only wineglass you take you will be able to use with any other wine.

Hall's Wine

THE SUPREME TONIC RESTORATIVE

From every British doctor has been given a certificate of approval. It is the only wineglass you take you will be able to use with any other wine.

The Finest Razor that money can buy

A genuine KROPP razor will give you the most comfortable shave for a life time. It is an all British razor, manufactured in Sheffield, England, by the World's most expert craftsmen.

The **KROPP** razor is the finest razor in the world. It is the only razor that will give you the most comfortable shave for a life time.

Rubber Stamps

STANDARD STATIONERY STORES, NAIROBI.

DEERE TRACTOR

The Tractor that has earned a reputation for reliability.

Increased Power. Many Improvements.

Reduced Price

£295

H. W. SEAR LTD.

NAIROBI.

Sore Throat?

Then take immediately **Formamint**

Formamint soothes the inflamed throat, relieves the pain, and kills the germs which cause the infection. It is a powerful antiseptic and is safe for the whole family.

FORMAMINT
The Great Killing Throat Pill
Sold at all chemists.

GOVERNMENT OFFICE ASSOCIATION
The Official Agents for the Sale of the Shares of the Association of the Government Office Association.

K. M. Q. Co.

AGRICULTURAL LIME!

IMMEDIATE DELIVERY
PRICES 5/6 to 10/6 per ton

Kenya Lime Quarries Company

Home via The Nile

Teso General Agency
(SOROTI and LIRA)

Caterers for the Best Camps of **MOTOR TOURS, LTD.**

AT SOROTI and LIRA M both of which are open to the Public.

Direct Importers of Wines & Spirits and Provisions, etc., etc. Up to date STORES for all Requirements with **FIRST CLASS BARS.**

Break Butter, Bacon and Cheese Bread Daily

SHELL PETROL supplied both in Tins and Through Pumps

LET US HAVE YOURS

...the most reliable and most popular of all the ...

PUBLIC OPINION

...the most reliable and most popular of all the ...

Kenya Appointments

...the most reliable and most popular of all the ...

Kenya Appointments

...the most reliable and most popular of all the ...

Delicious for Breakfast

QUAKER OATS is an ideal breakfast food. It is easily prepared, easily digested and most nutritious. Especially good for children.

Quaker Oats

INSURE NOW

THE SOUTH AFRICAN MUTUAL LIFE ASSURANCE CO.
"The Old Mutual"

INCORPORATED IN SOUTH AFRICA
10, DE WET STREET, JOHANNESBURG

EDU SOMER EDWARDS
Executive Director, Johannesburg

TRANSPORT

J. E. SNICLAR
RELIABLE TRANSPORT

KAKIRO RELIABLE
RELIABLE TRANSPORT

QUOTATIONS GIVEN

A BROKEN DOWN SYSTEM

THERAPION NO. 9
THE EXHIBING LIGHT OF LIFE

...the most reliable and most popular of all the ...

Rid Yourself of Uric Acid!

...the most reliable and most popular of all the ...

THE MAGADI SODA CO. LTD.

LAKE MAGADI
LONDON & BIRMINGHAM

CARP BRAND

...the most reliable and most popular of all the ...

Crescent Brand

...the most reliable and most popular of all the ...

KEATING'S POWDER KILLS

...the most reliable and most popular of all the ...

A TOUGH CHAIN LINK FENCE THAT SAYS "NO TRESPASSING"

...the most reliable and most popular of all the ...

CORRESPONDENCE

BOUSING OF OFFICIALS
...the most reliable and most popular of all the ...

PROTECTION AND THE

...the most reliable and most popular of all the ...

PROTECTION AND THE

...the most reliable and most popular of all the ...

PROTECTION AND THE

...the most reliable and most popular of all the ...

PROTECTION AND THE

...the most reliable and most popular of all the ...

PROTECTION AND THE

...the most reliable and most popular of all the ...

EVENING Dress Wear

Ready for Wear Dinner Jacket Suits

Made from Superior Fabrics
Inexpensive Tailor made. The Cut and Finish is all that can be desired.

Shgs. 189/-
FULL DRESS COAT
In same cloth as above Shgs. 120/6

Equator Saw Mills.

Telegrams: Capet, Phone 118
P.O. Mail-Mombasa
(Head Office) P.O. Box 291, Nairobi.
In Stock

4,000 tons Seasoned Podo

When building, insist on your contractor using SEASONED TIMBER.

Also in stock, 200,000 centimetres CEDAR FLOORING, all Best, specially selected and SEASONED. Large stocks Cedar and **UGANDA NYULI**

Price List on Application

STOCKISTS OF:

Best Steel Windows.
Crown Oak Stain Wood Preservative.
Soft Sentering Expanded Metal.

CLOCKS

A LARGE CONSIGNMENT OF THE LATEST DESIGNS just added to Stock including

Free! Mail and office clocks at exceptionally Moderate Prices.

DOBBIES, Ltd.
WATCHMAKERS
Jewellers and Opticians
NAIROBI
Kenya's Premier Jewellers.

THE SPIRIT OF QUALITY

DEWAR'S

WHITE LABEL

NOVELS

STANDARD STATIONERY STORES, NAIROBI.

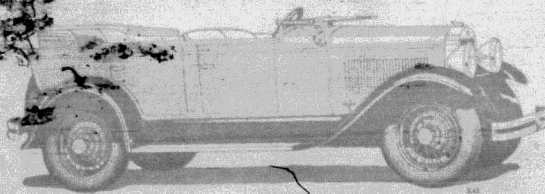
RARE BEAUTY MATCHED BY CHAMPIONSHIP PERFORMANCE

THE rare new beauty of this new DeSoto Tourer will win you admirers—and Studebaker's championship performance will make you a safe long Road. 5,000 miles in 4,251 minutes is the official record of this extraordinary Studebaker.

Even in 5,000 cars you cannot find a more beautiful Studebaker's amazing riding comfort for the driver. Studebaker's new built-in steering wheel—its greatest improvement since 1910—turns those painful hand-lever springs into a free-rotating roller and equally regular suspension and vibration only every 30,000 miles.

This new Studebaker DeSoto offers everything you want at a price you are willing to pay. Come and see it today!

A Car for Every Place and Every Taste



Sixth Avenue Garage,
Nairobi, Kenya Colony.

STUDEBAKER

CORRESPONDENCE

THE NEW LAW
The new law will be a great boon to the people of Kenya. It will give them a voice in the government and will help to build up the country.

THE NEW LAW

The new law will be a great boon to the people of Kenya. It will give them a voice in the government and will help to build up the country.

The new law will be a great boon to the people of Kenya. It will give them a voice in the government and will help to build up the country.

Local Government

The new law will be a great boon to the people of Kenya. It will give them a voice in the government and will help to build up the country.

Local Government

The new law will be a great boon to the people of Kenya. It will give them a voice in the government and will help to build up the country.

Local Government

The new law will be a great boon to the people of Kenya. It will give them a voice in the government and will help to build up the country.

Local Government

The new law will be a great boon to the people of Kenya. It will give them a voice in the government and will help to build up the country.

Local Government

The new law will be a great boon to the people of Kenya. It will give them a voice in the government and will help to build up the country.

Local Government

The new law will be a great boon to the people of Kenya. It will give them a voice in the government and will help to build up the country.

Over the tea cups

Oh what do women talk! Mothers, children, the latest fashions, clothes, and especially the care of their complexion. It is then that the woman who knows will recommend to her friends

HAZELINE SNOW

A pure, non-greasy preparation which protects and preserves the delicate texture of the skin.

BURBANK'S WELLCOME & CO. LONDON

TENDERS

FOR THE PURCHASE OF GOVERNMENT STORES.

TENDERS are invited for the purchase of the undermentioned Government Stores—

SHIGEMAKERS
25,000 leather hand-soles.
7,000 pairs leather lace.
25,000 tips, iron, heel and toe.
2,500 lbs. rivets.
1,000 lbs. nails (brads).

The stores may be seen at the Office of the Pay and Quartermaster, 3rd Battalion, The King's African Rifles. Tenders will be received up to noon on December 20th, 1928, and should be addressed to the Pay and Quartermaster, 3rd Battalion, The King's African Rifles. Tenders may be submitted for the purchase of these stores either in full or in part quantities. The highest or any tender will not necessarily be accepted.

S. F. BAGLEY, Captain,
Pay and Quartermaster,
3rd Battalion, The King's African Rifles.

AFRICA'S PREMIER ANNUAL

NINETEENTH YEAR OF PUBLICATION

THE
British South Africa
Annual 1928-1929.

Portraying in Pictures and Prose Africa and its People from the Equator to Cape Point. Artistic Reproductions of Paintings by West-African Artists.

Read the Thoroughly Enfranchising Theory of Africa's Ancient History as traced in Native History.

NOW ON SALE.
Price Shgs. 5/-, packed and posted Shgs. 6/60

Standard Stationery Stores,
Box 850, NAIROBI. Phone 572.

Just Arrived. Military Overcoats.

Constantly Arriving

FRESH CONSIGNMENTS OF ALL CLASSES OF GOODS Suitable for Settlers and Native Trade

Panama, Tumbler, Koraks, Axes, Mattocks, Watering Cans, Buckets, Shovels, Spades and other goods too numerous to mention.

PRICES VERY COMPETITIVE.

Enquiries Solicited.

M. ROSEN J. UM & Co., Ltd.,
Harding Street, Nairobi.
Tel. No. 15. Telegrams: Rosenbium. P.O. Box 551.

Local Government

The new law will be a great boon to the people of Kenya. It will give them a voice in the government and will help to build up the country.

Local Government

The new law will be a great boon to the people of Kenya. It will give them a voice in the government and will help to build up the country.

Local Government

The new law will be a great boon to the people of Kenya. It will give them a voice in the government and will help to build up the country.

Local Government

The new law will be a great boon to the people of Kenya. It will give them a voice in the government and will help to build up the country.

Local Government

The new law will be a great boon to the people of Kenya. It will give them a voice in the government and will help to build up the country.

Local Government

The new law will be a great boon to the people of Kenya. It will give them a voice in the government and will help to build up the country.

Local Government

The new law will be a great boon to the people of Kenya. It will give them a voice in the government and will help to build up the country.

Local Government

The new law will be a great boon to the people of Kenya. It will give them a voice in the government and will help to build up the country.

Local Government

The new law will be a great boon to the people of Kenya. It will give them a voice in the government and will help to build up the country.

Local Government

The new law will be a great boon to the people of Kenya. It will give them a voice in the government and will help to build up the country.

Local Government

The new law will be a great boon to the people of Kenya. It will give them a voice in the government and will help to build up the country.

Local Government

The new law will be a great boon to the people of Kenya. It will give them a voice in the government and will help to build up the country.

Local Government

The new law will be a great boon to the people of Kenya. It will give them a voice in the government and will help to build up the country.

Local Government

The new law will be a great boon to the people of Kenya. It will give them a voice in the government and will help to build up the country.

Local Government

The new law will be a great boon to the people of Kenya. It will give them a voice in the government and will help to build up the country.

Local Government

The new law will be a great boon to the people of Kenya. It will give them a voice in the government and will help to build up the country.

Local Government

The new law will be a great boon to the people of Kenya. It will give them a voice in the government and will help to build up the country.

Local Government

The new law will be a great boon to the people of Kenya. It will give them a voice in the government and will help to build up the country.

Local Government

The new law will be a great boon to the people of Kenya. It will give them a voice in the government and will help to build up the country.

Local Government

The new law will be a great boon to the people of Kenya. It will give them a voice in the government and will help to build up the country.

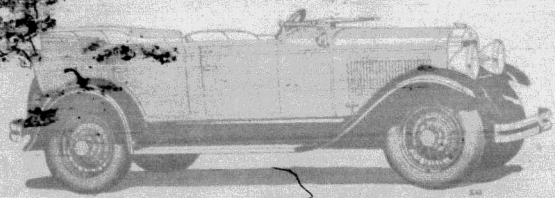


NOVELS

STANDARD STATIONERY STORES, NAIROBI.



THE new new beauty of this new Director Tourer will win you instantly... 5,000 miles in the official record of this economical 70 horsepower Studebaker...



Sixth Avenue Garage, Nairobi, Kenya Colony.

STUDEBAKER

CORRESPONDENCE

KENYA VILLAGES: SPERS OF PRODUCTION
The Government are to be congratulated on their...
The Government are to be congratulated on their...
The Government are to be congratulated on their...

THE EAST AFRICAN STANDARD
The Government are to be congratulated on their...
The Government are to be congratulated on their...
The Government are to be congratulated on their...

LOCAL GOVERNMENT

THE EAST AFRICAN STANDARD
The Government are to be congratulated on their...
The Government are to be congratulated on their...
The Government are to be congratulated on their...

GENERAL

THE EAST AFRICAN STANDARD
The Government are to be congratulated on their...
The Government are to be congratulated on their...
The Government are to be congratulated on their...

AFRICA

THE EAST AFRICAN STANDARD
The Government are to be congratulated on their...
The Government are to be congratulated on their...
The Government are to be congratulated on their...

Over the tea cups... **HAZELINE 'SNOW'**... A pure, non-greasy preparation which protects and preserves the delicate texture of the skin.

TENDERS
FOR THE PURCHASE OF GOVERNMENT STORES... SHOEMAKERS... 25,000 leather half-soles... 7,000 pairs leather laces... 25,000 tips, iron, heel and toe... 2,500 lbs. rivets... 1,000 lbs. nails (brads)

AFRICA'S PREMIER ANNUAL
NINETEENTH YEAR OF PUBLICATION
THE British South Africa Annual 1928-1929.
Portraying in Picture and Prose Africa and its People from the equator to Cape Point... **NOW ON SALE**
Price Shgs. 5/-, packed and post. Shgs. 6/6
Standard Stationery Stores, Box 380 NAIROBI. Phone 572.

Just Arrived. Military Overcoats.
Constantly Arriving
FRESH CONSIGNMENTS OF ALL CLASSES OF GOODS Suitable for Settlers and Native Trade Including Pangas, Jambies, Karais, Axes, Mattocks, Watering Cans, Buckets, Shovels, Spades and other goods for numerous to mention.
PRICES DEFY COMPETITION.
Enquiries Solicited.
M. ROSEN 1 UM & Co., Ltd., Hardings Street, Tel. No. 15. Telegrams: P.O. Box 331.

GENERAL

THE EAST AFRICAN STANDARD
The Government are to be congratulated on their...
The Government are to be congratulated on their...
The Government are to be congratulated on their...

AFRICA

THE EAST AFRICAN STANDARD
The Government are to be congratulated on their...
The Government are to be congratulated on their...
The Government are to be congratulated on their...

AFRICA

THE EAST AFRICAN STANDARD
The Government are to be congratulated on their...
The Government are to be congratulated on their...
The Government are to be congratulated on their...

AFRICA

THE EAST AFRICAN STANDARD
The Government are to be congratulated on their...
The Government are to be congratulated on their...
The Government are to be congratulated on their...

GENERAL

THE EAST AFRICAN STANDARD
The Government are to be congratulated on their...
The Government are to be congratulated on their...
The Government are to be congratulated on their...

AFRICA

THE EAST AFRICAN STANDARD
The Government are to be congratulated on their...
The Government are to be congratulated on their...
The Government are to be congratulated on their...

AFRICA

THE EAST AFRICAN STANDARD
The Government are to be congratulated on their...
The Government are to be congratulated on their...
The Government are to be congratulated on their...

AFRICA

THE EAST AFRICAN STANDARD
The Government are to be congratulated on their...
The Government are to be congratulated on their...
The Government are to be congratulated on their...

GENERAL

THE EAST AFRICAN STANDARD
The Government are to be congratulated on their...
The Government are to be congratulated on their...
The Government are to be congratulated on their...

AFRICA

THE EAST AFRICAN STANDARD
The Government are to be congratulated on their...
The Government are to be congratulated on their...
The Government are to be congratulated on their...

AFRICA

THE EAST AFRICAN STANDARD
The Government are to be congratulated on their...
The Government are to be congratulated on their...
The Government are to be congratulated on their...

AFRICA

THE EAST AFRICAN STANDARD
The Government are to be congratulated on their...
The Government are to be congratulated on their...
The Government are to be congratulated on their...

GENERAL

THE EAST AFRICAN STANDARD
The Government are to be congratulated on their...
The Government are to be congratulated on their...
The Government are to be congratulated on their...

AFRICA

THE EAST AFRICAN STANDARD
The Government are to be congratulated on their...
The Government are to be congratulated on their...
The Government are to be congratulated on their...

AFRICA

THE EAST AFRICAN STANDARD
The Government are to be congratulated on their...
The Government are to be congratulated on their...
The Government are to be congratulated on their...

AFRICA

THE EAST AFRICAN STANDARD
The Government are to be congratulated on their...
The Government are to be congratulated on their...
The Government are to be congratulated on their...

GENERAL

THE EAST AFRICAN STANDARD
The Government are to be congratulated on their...
The Government are to be congratulated on their...
The Government are to be congratulated on their...

AFRICA

THE EAST AFRICAN STANDARD
The Government are to be congratulated on their...
The Government are to be congratulated on their...
The Government are to be congratulated on their...

AFRICA

THE EAST AFRICAN STANDARD
The Government are to be congratulated on their...
The Government are to be congratulated on their...
The Government are to be congratulated on their...

AFRICA

THE EAST AFRICAN STANDARD
The Government are to be congratulated on their...
The Government are to be congratulated on their...
The Government are to be congratulated on their...

THE SIX LIBERTY MASTER

Responsibility of the Initiative

BY WIRELESS
The Government of Kenya has been asked to take the initiative in the proposed new constitution. The Government has agreed to do so, and the initiative is now in the hands of the Government. The Government has agreed to do so, and the initiative is now in the hands of the Government.

The New Private

EMERGENCY DEPARTMENT AT CAPEHURST

BY WIRELESS
A new hospital has been opened at Capehurst. The hospital is a modern building and is well equipped. It will be a great benefit to the community.

Britain's Overseas Trade

EXTENSION OF THE EXPORT GUARANTEE SCHEME

BY WIRELESS
The Government has announced that the export guarantee scheme will be extended. This will provide more security for exporters and encourage trade.

Price of Wheat

REVENUE DEPARTMENT

BY WIRELESS

The Revenue Department has announced that the price of wheat will be fixed. This will ensure a steady supply and fair prices for consumers.

Naval Increase

BY WIRELESS

The Government has announced that the Royal Navy will be increased. This will strengthen our maritime power and ensure the safety of our shipping lanes.

DEPARTING PROBLEM

Attempts to Find a Solution

BY WIRELESS
The Government is trying to find a solution to the departing problem. This involves finding ways to attract investment and create jobs to reduce the number of people leaving the country.

STANDARD REPRESENTATIVE

BY WIRELESS
The Standard representative has been appointed. This person will be responsible for reporting on the activities of the Standard and its impact on the community.

A Final Attempt

BY WIRELESS
A final attempt is being made to resolve the issue. This involves a last-ditch effort to reach a compromise and settle the matter once and for all.

No Indication of First Night

BY WIRELESS
There is no indication of a first night. This suggests that the situation remains stable and there are no immediate concerns about the future.

Price of Wheat

REVENUE DEPARTMENT

The Revenue Department has announced that the price of wheat will be fixed. This will ensure a steady supply and fair prices for consumers.

Naval Increase

BY WIRELESS

The Government has announced that the Royal Navy will be increased. This will strengthen our maritime power and ensure the safety of our shipping lanes.

BRITAIN'S EXAMPLE IN DEPARTMENT

Does It Have any Other Value?

BY WIRELESS
The example of Britain's department is being studied. It is being evaluated to see if it has any other value beyond what is currently known.

'E.A. Standard' Special

Algerian Cooperation

COLONIAL OFFICE DISCUSSIONS WITH KENYA

BY WIRELESS
Discussions are taking place between the Colonial Office and Kenya. These discussions are aimed at resolving outstanding issues and improving relations.

'E.A. Standard' Special

Native Land Bill

LEGISLATIVE QUESTIONS IN HOUSE OF COMMONS

BY WIRELESS
Legislative questions are being asked in the House of Commons. These questions relate to the Native Land Bill and other important issues.

'E.A. Standard' Special

The Japanese Throne

CONSECRATION CEREMONIES COMPLETED

BY WIRELESS
The consecration ceremonies have been completed. This marks a significant milestone in the process and is a cause for celebration.

Highland Holiday for Union Castle Manager

BY WIRELESS
The manager of Union Castle is taking a holiday in the Highlands. This is a well-deserved break after a busy period.

H.E. SIR EDWARD GRICE LEAVES NAIROBI

Departure for London to Attend E. D. Conference

BY WIRELESS
H.E. Sir Edward Grice has left Nairobi for London. He is attending a conference of the E. D. Conference, which is an important event in the region.

'E.A. Standard' Special

Algerian Cooperation

COLONIAL OFFICE DISCUSSIONS WITH KENYA

BY WIRELESS
Discussions are taking place between the Colonial Office and Kenya. These discussions are aimed at resolving outstanding issues and improving relations.

'E.A. Standard' Special

Native Land Bill

LEGISLATIVE QUESTIONS IN HOUSE OF COMMONS

BY WIRELESS
Legislative questions are being asked in the House of Commons. These questions relate to the Native Land Bill and other important issues.

'E.A. Standard' Special

The Japanese Throne

CONSECRATION CEREMONIES COMPLETED

BY WIRELESS
The consecration ceremonies have been completed. This marks a significant milestone in the process and is a cause for celebration.

Highland Holiday for Union Castle Manager

BY WIRELESS
The manager of Union Castle is taking a holiday in the Highlands. This is a well-deserved break after a busy period.

FIRST STEP IN LOCAL GOVERNMENT REFORM

New Act Has Come Into Force

BY WIRELESS
The first step in local government reform has been taken. A new Act has come into force, which will bring about significant changes to the way local government is run.

'E.A. Standard' Special

Algerian Cooperation

COLONIAL OFFICE DISCUSSIONS WITH KENYA

BY WIRELESS
Discussions are taking place between the Colonial Office and Kenya. These discussions are aimed at resolving outstanding issues and improving relations.

'E.A. Standard' Special

Native Land Bill

LEGISLATIVE QUESTIONS IN HOUSE OF COMMONS

BY WIRELESS
Legislative questions are being asked in the House of Commons. These questions relate to the Native Land Bill and other important issues.

'E.A. Standard' Special

The Japanese Throne

CONSECRATION CEREMONIES COMPLETED

BY WIRELESS
The consecration ceremonies have been completed. This marks a significant milestone in the process and is a cause for celebration.

Highland Holiday for Union Castle Manager

BY WIRELESS
The manager of Union Castle is taking a holiday in the Highlands. This is a well-deserved break after a busy period.

NEW ZEALAND ELECTIONS

GOVERNMENT OPENS ITS MINDS

BY WIRELESS
The Government in New Zealand has opened its minds. This indicates a willingness to listen to different perspectives and make necessary changes.

'E.A. Standard' Special

Algerian Cooperation

COLONIAL OFFICE DISCUSSIONS WITH KENYA

BY WIRELESS
Discussions are taking place between the Colonial Office and Kenya. These discussions are aimed at resolving outstanding issues and improving relations.

'E.A. Standard' Special

Native Land Bill

LEGISLATIVE QUESTIONS IN HOUSE OF COMMONS

BY WIRELESS
Legislative questions are being asked in the House of Commons. These questions relate to the Native Land Bill and other important issues.

'E.A. Standard' Special

The Japanese Throne

CONSECRATION CEREMONIES COMPLETED

BY WIRELESS
The consecration ceremonies have been completed. This marks a significant milestone in the process and is a cause for celebration.

Highland Holiday for Union Castle Manager

BY WIRELESS
The manager of Union Castle is taking a holiday in the Highlands. This is a well-deserved break after a busy period.

OBITUARY

MAJOR W. H. WILSON, D.B.E.

BY WIRELESS
Major W. H. Wilson, D.B.E., has passed away. He was a distinguished soldier and a member of the House of Commons. His death is a great loss to the community.

'E.A. Standard' Special

Algerian Cooperation

COLONIAL OFFICE DISCUSSIONS WITH KENYA

BY WIRELESS
Discussions are taking place between the Colonial Office and Kenya. These discussions are aimed at resolving outstanding issues and improving relations.

'E.A. Standard' Special

Native Land Bill

LEGISLATIVE QUESTIONS IN HOUSE OF COMMONS

BY WIRELESS
Legislative questions are being asked in the House of Commons. These questions relate to the Native Land Bill and other important issues.

'E.A. Standard' Special

The Japanese Throne

CONSECRATION CEREMONIES COMPLETED

BY WIRELESS
The consecration ceremonies have been completed. This marks a significant milestone in the process and is a cause for celebration.

Highland Holiday for Union Castle Manager

BY WIRELESS
The manager of Union Castle is taking a holiday in the Highlands. This is a well-deserved break after a busy period.

OBITUARY

MAJOR W. H. WILSON, D.B.E.

BY WIRELESS
Major W. H. Wilson, D.B.E., has passed away. He was a distinguished soldier and a member of the House of Commons. His death is a great loss to the community.

'E.A. Standard' Special

Algerian Cooperation

COLONIAL OFFICE DISCUSSIONS WITH KENYA

BY WIRELESS
Discussions are taking place between the Colonial Office and Kenya. These discussions are aimed at resolving outstanding issues and improving relations.

'E.A. Standard' Special

Native Land Bill

LEGISLATIVE QUESTIONS IN HOUSE OF COMMONS

BY WIRELESS
Legislative questions are being asked in the House of Commons. These questions relate to the Native Land Bill and other important issues.

'E.A. Standard' Special

The Japanese Throne

CONSECRATION CEREMONIES COMPLETED

BY WIRELESS
The consecration ceremonies have been completed. This marks a significant milestone in the process and is a cause for celebration.

Highland Holiday for Union Castle Manager

BY WIRELESS
The manager of Union Castle is taking a holiday in the Highlands. This is a well-deserved break after a busy period.

OBITUARY

MAJOR W. H. WILSON, D.B.E.

BY WIRELESS
Major W. H. Wilson, D.B.E., has passed away. He was a distinguished soldier and a member of the House of Commons. His death is a great loss to the community.

'E.A. Standard' Special

Algerian Cooperation

COLONIAL OFFICE DISCUSSIONS WITH KENYA

BY WIRELESS
Discussions are taking place between the Colonial Office and Kenya. These discussions are aimed at resolving outstanding issues and improving relations.

'E.A. Standard' Special

Native Land Bill

LEGISLATIVE QUESTIONS IN HOUSE OF COMMONS

BY WIRELESS
Legislative questions are being asked in the House of Commons. These questions relate to the Native Land Bill and other important issues.

'E.A. Standard' Special

The Japanese Throne

CONSECRATION CEREMONIES COMPLETED

BY WIRELESS
The consecration ceremonies have been completed. This marks a significant milestone in the process and is a cause for celebration.

Highland Holiday for Union Castle Manager

BY WIRELESS
The manager of Union Castle is taking a holiday in the Highlands. This is a well-deserved break after a busy period.

As good as a DUNLOP is often said but never accomplished.



Consistent excellence has built up for DUNLOP their fine reputation, which is world-wide. As good as a DUNLOP is often said, but never accomplished. It means that DUNLOP is the standard by which all tyres are judged.

fit DUNLOP and be SATISFIED

X And now, in addition to the popular Dunlop Tyre of standard construction, there is a "Fort" Dunlop Tyre of specially heavy construction particularly suitable for East African road conditions. X

THE DUNLOP RUBBER COMPANY LTD.

BOX NO. 716. HAIKORI. Depots in - The African Mercantile Co. Ltd.

With the approval of the Governor, the Executive Director of the Kenya Government has appointed a number of officers of whom the following are the names of those who are to be appointed to the office of the Secretary to the Government.

DUKE OF GLOUCESTERS SAFARI WIVES

Five Wives Arrive in Nairobi

The Duke of Gloucester's safari wives arrived in Nairobi on Saturday...

The First Trophy

The Duke got his first taste of the African hunting in the Arabi District...

Bar Expenditure

Bar expenditure in Nairobi has risen to a record level...

The Bag in Market

The bag in market is a popular item among the public...

Parliamentary Session

Parliamentary session is expected to start in the near future...

Paroli Birds

Paroli birds are known for their beautiful plumage...

REINVESTMENT PROGRAMME FOR NEXT WEEK

The investment programme for next week includes several key areas...

Monday, December 3

Monday, December 3: Various news items and reports from the field...

Tuesday, December 4

Tuesday, December 4: Updates on local and international events...

Thursday, December 6

Thursday, December 6: News reports and commentary...

Friday, December 7

Friday, December 7: Further news and analysis...

Saturday, December 8

Saturday, December 8: Weekend news and events...

REINVESTMENT PROGRAMME FOR NEXT WEEK

The investment programme for next week includes several key areas...

Monday, December 3

Monday, December 3: Various news items and reports from the field...

Tuesday, December 4

Tuesday, December 4: Updates on local and international events...

REINVESTMENT PROGRAMME FOR NEXT WEEK

The investment programme for next week includes several key areas...

Monday, December 3

Monday, December 3: Various news items and reports from the field...

Tuesday, December 4

Tuesday, December 4: Updates on local and international events...

NAIROBI RACES

New Year Second Day Entries

Entries for the New Year Second Day races at Nairobi...

THE HIMALAYAN HAWK

Details about the Himalayan Hawk and its characteristics...

THE HIMALAYAN HAWK

Further details about the Himalayan Hawk...

THE HIMALAYAN HAWK

Additional information about the Himalayan Hawk...

THE HIMALAYAN HAWK

More details about the Himalayan Hawk...

THE HIMALAYAN HAWK

Final details about the Himalayan Hawk...

THE HIMALAYAN HAWK

Concluding information about the Himalayan Hawk...

THE HIMALAYAN HAWK

Details about the Himalayan Hawk and its characteristics...

THE HIMALAYAN HAWK

Further details about the Himalayan Hawk...

THE HIMALAYAN HAWK

Additional information about the Himalayan Hawk...

THE HIMALAYAN HAWK

More details about the Himalayan Hawk...

THE HIMALAYAN HAWK

Final details about the Himalayan Hawk...

THE HIMALAYAN HAWK

Concluding information about the Himalayan Hawk...

THE HIMALAYAN HAWK

Additional information about the Himalayan Hawk...

THE HIMALAYAN HAWK

More details about the Himalayan Hawk...

THE HIMALAYAN HAWK

Final details about the Himalayan Hawk...

THE HIMALAYAN HAWK

Concluding information about the Himalayan Hawk...

THE HIMALAYAN HAWK

Additional information about the Himalayan Hawk...

THE HIMALAYAN HAWK

More details about the Himalayan Hawk...

THE HIMALAYAN HAWK

Final details about the Himalayan Hawk...

THE HIMALAYAN HAWK

Details about the Himalayan Hawk and its characteristics...

THE HIMALAYAN HAWK

Further details about the Himalayan Hawk...

THE HIMALAYAN HAWK

Additional information about the Himalayan Hawk...

THE HIMALAYAN HAWK

More details about the Himalayan Hawk...

THE HIMALAYAN HAWK

Final details about the Himalayan Hawk...

THE HIMALAYAN HAWK

Concluding information about the Himalayan Hawk...

THE HIMALAYAN HAWK

Additional information about the Himalayan Hawk...

THE HIMALAYAN HAWK

More details about the Himalayan Hawk...

THE HIMALAYAN HAWK

Final details about the Himalayan Hawk...

THE HIMALAYAN HAWK

Concluding information about the Himalayan Hawk...

THE HIMALAYAN HAWK

Additional information about the Himalayan Hawk...

THE HIMALAYAN HAWK

More details about the Himalayan Hawk...

THE HIMALAYAN HAWK

Final details about the Himalayan Hawk...

THE HIMALAYAN HAWK

Details about the Himalayan Hawk and its characteristics...

THE HIMALAYAN HAWK

Further details about the Himalayan Hawk...

THE HIMALAYAN HAWK

Additional information about the Himalayan Hawk...

THE HIMALAYAN HAWK

More details about the Himalayan Hawk...

THE HIMALAYAN HAWK

Final details about the Himalayan Hawk...

THE HIMALAYAN HAWK

Concluding information about the Himalayan Hawk...

THE HIMALAYAN HAWK

Additional information about the Himalayan Hawk...

THE HIMALAYAN HAWK

More details about the Himalayan Hawk...

THE HIMALAYAN HAWK

Final details about the Himalayan Hawk...

THE HIMALAYAN HAWK

Concluding information about the Himalayan Hawk...

THE HIMALAYAN HAWK

Additional information about the Himalayan Hawk...

THE HIMALAYAN HAWK

More details about the Himalayan Hawk...

THE HIMALAYAN HAWK

Final details about the Himalayan Hawk...

VIM advertisement featuring a teapot and cups, with the slogan 'Puts a lasting shine on - Pots, pans, cutlery, glass, tiles, crockery.'

SPECIAL 'H & S' SCOTCH advertisement featuring a portrait of a man in a suit and the text 'The finest obtainable... Scotch Whisky Distillers.'

DOBBIES, Limited. THE FINEST AND LARGEST SELECTION OF CHRISTMAS AND NEW YEAR GIFTS IN B.E.A. Advertisement showing various gift items like watches, pens, and boxes.

DOBBIES, Limited. WATCHMAKERS, MANUFACTURING JEWELLERS & OPTICIANS. NAIROBI.



The Beauty Men Admire

A natural beauty which is thousands of years old and guarded in this simple way

NATURE has bestowed on the face of the woman the most attractive a gift... The skin is the most important part of the woman's appearance...

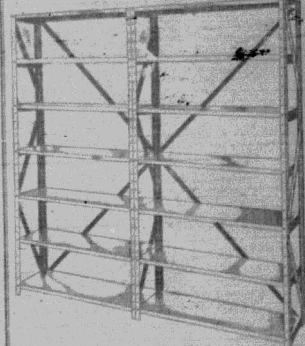
Do not use ordinary soap in the bathroom shower. Do not think any more soap is so represented as of skin and palm oil... The rule to follow if guarding a good complexion is now given...

PALMOLIVE SOAP



Sankey Sheldon

SWISS MADE STEEL PUMPHOUSE



Sankey Sheldon... Made in Switzerland... KENYA AGENCY LTD., UNION BUILDERS, P.O. BOX 721, NAIROBI

Wireless Topics

Care of Receiving Sets.

The Component Parts

The following is the record of a series of wireless receiving sets...

The general production of high frequency waves... The antenna is the most important part of the receiving set...

Delighting... The pleasure of listening to the music of the air is a most delightful one...

The Government... The Government has taken steps to regulate the wireless industry...

The Pumphouse... The Pumphouse is a most important part of the wireless receiving set...

Charging... The charging of the battery is a most important part of the wireless receiving set...

Peppy Day Fun... The Peppy Day Fun is a most important part of the wireless receiving set...

Uganda... The Government of Uganda has taken steps to regulate the wireless industry...

LAND BOARD TO ADVISE THE GOVERNMENT

Two Officials and Two Settlers

The Land Board has advised the Government on the matter of land settlement in the district...

Church Notices

St. James' Cathedral, Nairobi

St. James' Cathedral, Nairobi. Services on Sunday, Dec. 1st, 1934.

CATHOLIC CHURCH

Catholic Church. Services on Sunday, Dec. 1st, 1934.

CHRISTIAN SCIENCE

Christian Science. Services on Sunday, Dec. 1st, 1934.

Weather Report

Weather Report. Forecast for Nairobi and surrounding districts.

HEAVY FLOOD IN THE BOMBAI AREA

Heavy flood in the Bombay area. The city is under water and many lives are in danger.

The R.A.W.

The R.A.W. (Royal Air Force) has received orders to be ready for service at any moment.

Peppy Day Fun

Peppy Day Fun. A most enjoyable day for all who took part in the various games and sports.

Uganda

Uganda. The Government of Uganda has taken steps to regulate the wireless industry.

LOCUST SWARMS ENTER TANZANIA

Progress Report on the Kenya Campaign

Progress Report on the Kenya Campaign. The locusts have been successfully driven from the area.

Kenya

Kenya. The Government of Kenya has taken steps to regulate the wireless industry.

Moro and Northern Frontier Provinces

Moro and Northern Frontier Provinces. The Government has taken steps to regulate the wireless industry.

Foot Ball

Foot Ball. The football match between the two teams was a most exciting one.

Notes

Notes. Various news items and short stories.

Notes

Notes. Various news items and short stories.

Notes

Notes. Various news items and short stories.

Notes

Notes. Various news items and short stories.

Road Report

Road Report. The roads in the district are in a most satisfactory state.

Notes

Notes. Various news items and short stories.

Notes

Notes. Various news items and short stories.

Notes

Notes. Various news items and short stories.

Notes

Notes. Various news items and short stories.

Notes

Notes. Various news items and short stories.

Notes

Notes. Various news items and short stories.

Notes

Notes. Various news items and short stories.



Black Label Liqueur Scotch Whisky. The finest Scotch Whisky in the world. Available in all good liquor stores.

Advertisement for Black Label Liqueur Scotch Whisky, featuring the iconic logo and text: "BLACK LABEL LIQUEUR SCOTCH WHISKY".

Advertisement for Sober Judgment British Portland Cement, featuring the text: "SOBER JUDGMENT BRITISH PORTLAND CEMENT".

CARE OF RECEIVING SETS

(Continued from page 2)

If the receiver is to be used for the reception of signals from the receiving station, the receiver should be set to receive the signals from the receiving station.

NANYEKI COURTS UPON LOCAL GOVERNMENT

Disfranchising Residents in Small Townships.

The Nanyeki people are very angry with the local government because of the disfranchising of the residents in the small townships.

NYERKI COMEDY OF A MISSING SETTLER

Police Drag Rivers and Scour the Country.

The Nyerki people are very angry with the local government because of the disappearance of a settler.

PEARSONS PALUM PRESERVATIVE

Has no preservative added as this would spoil its efficacy. It is a natural coloured stain, 100% efficient. Try some and let RESULTS SPEAK FOR THEMSELVES.

The Kenya Agency Ltd. Box 751, NAIROBI.

Expert Vulcanizing

THE HEINTZ ELECTRIC WAY IT'S DIFFERENT ALL WORK GUARANTEED K. McIvor's Garage

Phone 97 Sixth Avenue. P. O. Box 97

The Burnt Forest.

PROGRESS OF WHEAT CULTIVATION

STANDARD CORRESPONDENT

The progress of wheat cultivation in the burnt forest is very slow.

UPLANDS NEWS

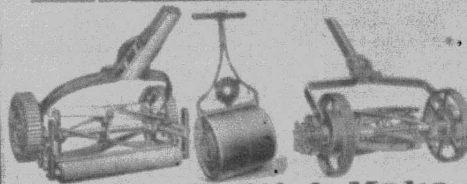
HAMS FOR CHRISTMAS: A very large stock is in course of preparation.

PICNIC HAMS: In the line. These are now in good supply.

OVERSEAS, MAILS.

Table with columns: STEAMERS, FROM, TO, ARRIVALS, DEPARTURES.

Lawn Mowers and Garden Roller



Shanks British Make

Lamberts Ltd., Nairobi.

"Full Steam Ahead"

No danger of breakdowns and loss of time if you use

"RAINBOW"

Rubber Impregnated Belting.

Lamberts Ltd.,

NAIROBI.

THE PETTER WINS

BUY ONE TO DAY



J. W. Milligan & Co.

The Standard Bank of South Africa Ltd

(INCORPORATED IN THE UNITED KINGDOM.)

Table with columns: Authorized Capital, Subscribed Capital, Paid up Capital, Reserve Fund, Undivided Profits.

HEAD OFFICE:

40, CLEMENTS LANE, LOMBARD STREET, LONDON, E.C. 3.

BRANCHES IN EAST AFRICA:

Table listing branches in East Africa: Kenya Colony, Uganda, Protectorate, etc.

NEW YORK AGENCY: 67 Wall Street. HAMBURG AGENCY: 110, 111, 112, 113, 114, 115, 116, 117, 118, 119, 120, 121, 122, 123, 124, 125, 126, 127, 128, 129, 130, 131, 132, 133, 134, 135, 136, 137, 138, 139, 140, 141, 142, 143, 144, 145, 146, 147, 148, 149, 150, 151, 152, 153, 154, 155, 156, 157, 158, 159, 160, 161, 162, 163, 164, 165, 166, 167, 168, 169, 170, 171, 172, 173, 174, 175, 176, 177, 178, 179, 180, 181, 182, 183, 184, 185, 186, 187, 188, 189, 190, 191, 192, 193, 194, 195, 196, 197, 198, 199, 200.

The Bank has over 250 Branches in Africa and Agents and Correspondents throughout the world.

THE African World

A WEEKLY PAPER DEVOTED TO AFRICAN AFFAIRS

Subscription Rates: In Africa & Abroad 40/- POST FREE.

African Industries

THE ONLY PAPER PUBLISHED IN GREAT BRITAIN.

The Latest Facts, Figures, etc. as to Settlement, Manufacturers, Industries and Cultivation.

Rates of Subscription: 26/- per annum. Office: 8 Philip Lane, London, E.C.3.

MELANYL



MARKING INK Large size Shg. 1-75 STANDARD STATIONERY STORES, NAIROBI.