

KENYA BREWERIES Ltd.

THE BEER WITH THE BRITISH FLAVOUR

ALES and STOUT.

GUARANTEED THE LARGEST CIRCULATION OF ANY NEWSPAPER IN KENYA, UGANDA, TANGANYIKA AND ZANZIBAR.

DAILY EDITION.

THE EAST 16 PAGES

African Standard

UGANDA ARGUS THE LEADER.

THE OLDEST ESTABLISHED NEWSPAPER PUBLISHED IN KENYA AND UGANDA.

The LOUNGE FOR Morning AND Afternoon TEAS The New Stanile Label Open on Sundays To Non-Residents.

No. 4086. PRINTED AT THE GENERAL PRESS, 201/24 AS A NEWSPAPER. NAIROBI, THURSDAY, JANUARY 24, 1922. PRICE: 10 CENTS.

GRATIFYING NEWS OF THE KING'S HEALTH.

Reaching the Convalescent Stage.

TO BE REMOVED TO SEA AIR.

House at Bogner Placed at His Majesty's Disposal.

The latest bulletin issued from Buckingham Palace, signed by five doctors, is a most gratifying one. It indicates a general improvement in the King's condition, and states that His Majesty's temperature has remained at normal for many days.

The doctors also express the opinion that the time is approaching when His Majesty's removal to the sea air would be advantageous in order to aid him in his struggle against weakness.

Sir Arthur du Cros, Bart., has placed at the King's disposal, his seaside residence near Bogner, Sussex, which house is situated almost on the shore with a private promenade. This offer has been accepted, and the King is expected to travel to Bogner by road early in February.

FEWER BULLETINS TO BE ISSUED.

THROUGH BRITISH AGENCY, London, Jan. 22. Following a consultation held here, five doctors, Sir Dr. Stanley Huxley, Sir Hugh Kelly, Lord Dawson, Sir Humphrey Rolleston, and Sir H. Frazer Bellenden, a bulletin was issued of much interest.

The King had a quiet night. His temperature is now remaining normal for many days, and the condition of his bowels is satisfactory. The amount of food taken is a small one, but steadily rising. With the remaining progress, the amount of medication, both adequate and includes mild. Although the amount of strength shows improvement there is not as yet any appreciable increase in weight. We feel the time is approaching when His Majesty's removal to the sea air will be advantageous.

It is already stated that the King will go to Bogner and will remain at the "Cragcroft" House, near Brighton, until Sir Arthur du Cros, Bart. has his own house there.

The time of the last bulletin has not yet been ascertained. It is stated that if the King's condition continues to be satisfactory the bulletin may be few and far between.

There is reason to believe that His Majesty will travel to Bogner by road early in February.

Overhaulment at Bogner.

THROUGH BRITISH AGENCY, London, Jan. 22. Shortly after the close of this morning's session, bulletin re-

A TALK KNOWN GOVERNMENT OFFICE.

The Mines Department of Kenya.

THE COUNTRY'S MINERALS

[BY WIRELESS.] In a room with the help of an African translation, Kenya has the Mines Department, and the Secretary of Mines (Department) of the Kenya Government. The Secretary of Mines was speaking to the public through the medium of the radio, and was discussing the minerals of the country. He said that the Government was very anxious to see that the country's minerals were properly developed, and that the Government was very anxious to see that the country's minerals were properly developed.

A Scientific study of the minerals of the country is being made, and it is expected that the results will be published in the near future.

It is also stated that the Government is very anxious to see that the country's minerals are properly developed, and that the Government is very anxious to see that the country's minerals are properly developed.

The Government is also very anxious to see that the country's minerals are properly developed, and that the Government is very anxious to see that the country's minerals are properly developed.

The Government is also very anxious to see that the country's minerals are properly developed, and that the Government is very anxious to see that the country's minerals are properly developed.

The Government is also very anxious to see that the country's minerals are properly developed, and that the Government is very anxious to see that the country's minerals are properly developed.

The Government is also very anxious to see that the country's minerals are properly developed, and that the Government is very anxious to see that the country's minerals are properly developed.

The Government is also very anxious to see that the country's minerals are properly developed, and that the Government is very anxious to see that the country's minerals are properly developed.

The Government is also very anxious to see that the country's minerals are properly developed, and that the Government is very anxious to see that the country's minerals are properly developed.

The Government is also very anxious to see that the country's minerals are properly developed, and that the Government is very anxious to see that the country's minerals are properly developed.

The Government is also very anxious to see that the country's minerals are properly developed, and that the Government is very anxious to see that the country's minerals are properly developed.

THE CHANNEL TUNNEL SCHEME.

Government to Re-examine the Question.

ON NON-PARTY LINES.

[BY WIRELESS.] It was announced today that the Government is to re-examine the question of the Channel Tunnel. The Government is to re-examine the question of the Channel Tunnel. The Government is to re-examine the question of the Channel Tunnel.

The Government is also very anxious to see that the country's minerals are properly developed, and that the Government is very anxious to see that the country's minerals are properly developed.

The Government is also very anxious to see that the country's minerals are properly developed, and that the Government is very anxious to see that the country's minerals are properly developed.

The Government is also very anxious to see that the country's minerals are properly developed, and that the Government is very anxious to see that the country's minerals are properly developed.

The Government is also very anxious to see that the country's minerals are properly developed, and that the Government is very anxious to see that the country's minerals are properly developed.

The Government is also very anxious to see that the country's minerals are properly developed, and that the Government is very anxious to see that the country's minerals are properly developed.

The Government is also very anxious to see that the country's minerals are properly developed, and that the Government is very anxious to see that the country's minerals are properly developed.

The Government is also very anxious to see that the country's minerals are properly developed, and that the Government is very anxious to see that the country's minerals are properly developed.

The Government is also very anxious to see that the country's minerals are properly developed, and that the Government is very anxious to see that the country's minerals are properly developed.

The Government is also very anxious to see that the country's minerals are properly developed, and that the Government is very anxious to see that the country's minerals are properly developed.

The Government is also very anxious to see that the country's minerals are properly developed, and that the Government is very anxious to see that the country's minerals are properly developed.

THE NAIROBI NORTH BY-ELECTION.

Public Meeting to be Held To-morrow.

THE WORKERS' VIEWPOINT.

A meeting is intended to be held in the Nairobi North area to discuss the by-election. The meeting is to be held in the Nairobi North area to discuss the by-election. The meeting is to be held in the Nairobi North area to discuss the by-election.

The meeting is also very anxious to see that the country's minerals are properly developed, and that the Government is very anxious to see that the country's minerals are properly developed.

The meeting is also very anxious to see that the country's minerals are properly developed, and that the Government is very anxious to see that the country's minerals are properly developed.

The meeting is also very anxious to see that the country's minerals are properly developed, and that the Government is very anxious to see that the country's minerals are properly developed.

The meeting is also very anxious to see that the country's minerals are properly developed, and that the Government is very anxious to see that the country's minerals are properly developed.

The meeting is also very anxious to see that the country's minerals are properly developed, and that the Government is very anxious to see that the country's minerals are properly developed.

The meeting is also very anxious to see that the country's minerals are properly developed, and that the Government is very anxious to see that the country's minerals are properly developed.

The meeting is also very anxious to see that the country's minerals are properly developed, and that the Government is very anxious to see that the country's minerals are properly developed.

The meeting is also very anxious to see that the country's minerals are properly developed, and that the Government is very anxious to see that the country's minerals are properly developed.

The meeting is also very anxious to see that the country's minerals are properly developed, and that the Government is very anxious to see that the country's minerals are properly developed.

The meeting is also very anxious to see that the country's minerals are properly developed, and that the Government is very anxious to see that the country's minerals are properly developed.

EVACUATION OF THE RHINELAND.

No Change in Present Situation.

COMMONS QUESTION.

[BY WIRELESS.] In the House of Commons today, a question was asked regarding the evacuation of the Rhineland. The Government has replied that there is no change in the present situation.

The Government is also very anxious to see that the country's minerals are properly developed, and that the Government is very anxious to see that the country's minerals are properly developed.

The Government is also very anxious to see that the country's minerals are properly developed, and that the Government is very anxious to see that the country's minerals are properly developed.

The Government is also very anxious to see that the country's minerals are properly developed, and that the Government is very anxious to see that the country's minerals are properly developed.

The Government is also very anxious to see that the country's minerals are properly developed, and that the Government is very anxious to see that the country's minerals are properly developed.

The Government is also very anxious to see that the country's minerals are properly developed, and that the Government is very anxious to see that the country's minerals are properly developed.

The Government is also very anxious to see that the country's minerals are properly developed, and that the Government is very anxious to see that the country's minerals are properly developed.

The Government is also very anxious to see that the country's minerals are properly developed, and that the Government is very anxious to see that the country's minerals are properly developed.

The Government is also very anxious to see that the country's minerals are properly developed, and that the Government is very anxious to see that the country's minerals are properly developed.

The Government is also very anxious to see that the country's minerals are properly developed, and that the Government is very anxious to see that the country's minerals are properly developed.

The Government is also very anxious to see that the country's minerals are properly developed, and that the Government is very anxious to see that the country's minerals are properly developed.

PROGRESS OF CIVIL AVIATION IN EAST AFRICA.

New Aerodrome and Landing Grounds Being Prepared.

A GENEROUS GIFT.

Sir Charles Wakefield to Present a Light Aeroplane to the Aero Club. At the annual general meeting of the Aero Club of East Africa last night it was stated that Sir Charles Wakefield had offered to present a light aeroplane to the Aero Club.

The new Nairobi Aerodrome has now been approved by the Civil Aviation Authority. The new Nairobi Aerodrome has now been approved by the Civil Aviation Authority.

The appointment of the Aero Club as an Advisory Committee to the Civil Aviation Authority has been announced.

The appointment of the Aero Club as an Advisory Committee to the Civil Aviation Authority has been announced.

The appointment of the Aero Club as an Advisory Committee to the Civil Aviation Authority has been announced.

The appointment of the Aero Club as an Advisory Committee to the Civil Aviation Authority has been announced.

The appointment of the Aero Club as an Advisory Committee to the Civil Aviation Authority has been announced.

The appointment of the Aero Club as an Advisory Committee to the Civil Aviation Authority has been announced.

The appointment of the Aero Club as an Advisory Committee to the Civil Aviation Authority has been announced.

The appointment of the Aero Club as an Advisory Committee to the Civil Aviation Authority has been announced.

The appointment of the Aero Club as an Advisory Committee to the Civil Aviation Authority has been announced.

MS.

The

MS.

The

MS.

The

MS.

The

MS.

The

MS.

The

MS.

The

MS.

The

MS.

The

MS.

The

MS.

The

MS.

The

MS.

The

MS.

The

MS.

The

MS.

The

MS.

The

MS.

The

MS.

The

MS.

The

MS.

The

MS.

The

MS.

The

MS.

The

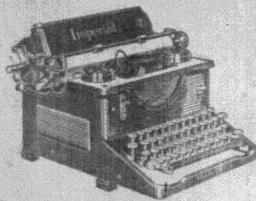
MS.

The

MS.

The

The hundred per cent. BRITISH TYPEWRITER.



IMPERIAL TYPEWRITERS

12-inch Model No. 625. FREE SERVICE FOR 12 MONTHS. HAVE ONE ON TRIAL.

Dalgely & Co., Ltd. MOMBASA, NAIROBI, ELDORET

VERMOUTH

at 4/60 per litre bottle

This Vermouth is made from genuine portwine in midway between French and Italian Vermouth in taste—a "mixed vermouth" in fact. Sold cheap to make room for this year.

MISA'S SHERRY

Obtained at 6/50 per qt. but this is the finest wine for the table. SPECIAL PRICE TO THE TRADE. To be had from—

B. C. SIQUEIRA, P. O. Box 542, NAIROBI.

CAKES

BY EXPERT BAKERS AND PASTRY COOKS, ALSO DELICIOUS

CHOCOLATES & SWEETS

THE NGARA BAKERY, Senary Road, Box 975, NAIROBI.

PLAQUE OF EXILED WASTERS.

People Kenya Does Not Want.

THE TRUE PICTURE.

Kenya suffers unjustly from the presence of a colony of westerners. The population which Kenya has acquired in some quarters is being treated as an enemy for the sake of the few who have come to the country to make their homes. The people of Kenya do not want them.

There must also be a better deal for the light-skinned types of the population and for the natives of the country. They must be treated as equals and not as subjects.

Shook for Fugitives.

One who recedes from the sea of matrimony, singly or in ill-fated pairs, thinking that Kenya is his by a right of conquest from the part of a mission and occupation work. All these varied opinions of the land have been happily shown a more life of exile and adversity.

Arrived here they make various observations of a surprising and discouraging nature. The first thing they notice is that the people who are here are not the people who are here.

The present position with regard to the population of Kenya is such that it is not possible to have a better deal for the light-skinned types of the population and for the natives of the country.

people find that the work of looking after life is very routine. Unless he can refuse to be a house of laborer, that there will be no other way of making a living. The work is very routine and the people do not want it.

They are not willing to be treated as a colony of westerners. They want to be treated as equals and not as subjects.

PROTEST AGAINST ALTERED MAINS.

Uganda Requests for a Reversion.

HANDICAP TO BUSINESS.

STANDARD, January 21. The alteration of the down main from 2 1/2 to 3 inches on Thursday, 19th, will only be a temporary measure. The railway authorities in Uganda have received and despatched three main weekly trains and to Kenya. The alteration of the down main from 2 1/2 to 3 inches on Thursday, 19th, will only be a temporary measure.

The alteration of the down main from 2 1/2 to 3 inches on Thursday, 19th, will only be a temporary measure. The railway authorities in Uganda have received and despatched three main weekly trains and to Kenya.

Had to Pounce Pariaze.

The police in Kenya have had to pounce on a man who was found with a gun. The man was found with a gun and was shot. The police in Kenya have had to pounce on a man who was found with a gun.

The police in Kenya have had to pounce on a man who was found with a gun. The man was found with a gun and was shot. The police in Kenya have had to pounce on a man who was found with a gun.

throughout the Coast than they were on the Wednesday night. The weather was very hot and dry. The weather was very hot and dry.

The weather was very hot and dry. The weather was very hot and dry.

OPENING ANNOUNCEMENT.

D. LYALL, 11, Lake of Dubois, Ltd. 11, Lake of Dubois, Ltd.

DOONHOF DAIRY.

Box 11, Nairobi. FOR Pure Milk and Cream. From Farm to Condenser.

JOHN RIFKIN.

SIXTH AVENUE, P. O. Box 81, NAIROBI.

WAGON BUILDER.

BLAISESMITH PATENT. Stock of AXLES, BRAKES, WHEELS, and ALL WAGON PARTS.

P. STEWART.

CAS. SEB. PAINTER & DECORATOR, Harding Street, NAIROBI.

PAINTS, OILS, ETC.

PAINTS, OILS, ETC. Large or Small Quantities.

STANDARD, January 21. The alteration of the down main from 2 1/2 to 3 inches on Thursday, 19th, will only be a temporary measure. The railway authorities in Uganda have received and despatched three main weekly trains and to Kenya.

OPENING ANNOUNCEMENT.

D. LYALL, 11, Lake of Dubois, Ltd. 11, Lake of Dubois, Ltd.

DOONHOF DAIRY.

Box 11, Nairobi. FOR Pure Milk and Cream. From Farm to Condenser.

JOHN RIFKIN.

SIXTH AVENUE, P. O. Box 81, NAIROBI.

WAGON BUILDER.

BLAISESMITH PATENT. Stock of AXLES, BRAKES, WHEELS, and ALL WAGON PARTS.

P. STEWART.

CAS. SEB. PAINTER & DECORATOR, Harding Street, NAIROBI.

PAINTS, OILS, ETC.

PAINTS, OILS, ETC. Large or Small Quantities.

BARCLAYS BANK (DOMINION, COLONIAL AND OVERSEAS) ANNUALLY INCORPORATED BY ROYAL CHARTER 1826. THE COLONIAL BANK with which are amalgamated.

THE NATIONAL BANK OF SOUTH AFRICA, LTD.

THE ANGLO-EGYPTIAN BANK, LTD.

Capital Authorized £10,000,000. Capital Subscribed £6,927,200. Capital Paid up £4,973,500. Reserve Fund £1,600,000.

OVER 400 BRANCHES IN THE Union of South Africa, Rhodesia, South West Africa, British West Africa, West India, Egypt, Palestine and the Sudan, Mauritania, etc.

THE BANK UNDERTAKES ALL CLASSES OF BANKING BUSINESS AND ALSO ACTS AS TRUSTEE AND EXECUTOR.

BRANCHES IN EAST AFRICA: Nairobi, Mombasa, Nakuru, Eldoret, Kisumu, Kampala, Jinja, Tanganyika and Dar-es-Salaam.

HEAD OFFICE: 54, Lombard Street, London, E.C. 3. LONDON OFFICE: 27, King William Street, E.C. 4. Ceylon Office: 1, Market Street, Colombo. West Africa Office: 111, St. Martin Lane, Trafalgar Square, London, W.C. 2.

OFFICES IN Liverpool, Manchester, Hamburg, New York, etc.

Correspondents in all the Principal Cities and Towns of the World.

Correspondents in all the Principal Cities and Towns of the World.

Correspondents in all the Principal Cities and Towns of the World.

Correspondents in all the Principal Cities and Towns of the World.

Correspondents in all the Principal Cities and Towns of the World.

Correspondents in all the Principal Cities and Towns of the World.

Correspondents in all the Principal Cities and Towns of the World.

Correspondents in all the Principal Cities and Towns of the World.

Correspondents in all the Principal Cities and Towns of the World.

Correspondents in all the Principal Cities and Towns of the World.

Correspondents in all the Principal Cities and Towns of the World.

Correspondents in all the Principal Cities and Towns of the World.

Correspondents in all the Principal Cities and Towns of the World.

Correspondents in all the Principal Cities and Towns of the World.

Correspondents in all the Principal Cities and Towns of the World.

Correspondents in all the Principal Cities and Towns of the World.

Correspondents in all the Principal Cities and Towns of the World.

Correspondents in all the Principal Cities and Towns of the World.

Correspondents in all the Principal Cities and Towns of the World.

Correspondents in all the Principal Cities and Towns of the World.

Correspondents in all the Principal Cities and Towns of the World.

Correspondents in all the Principal Cities and Towns of the World.

Correspondents in all the Principal Cities and Towns of the World.

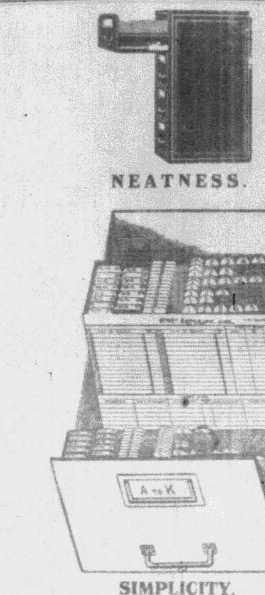
Correspondents in all the Principal Cities and Towns of the World.

Correspondents in all the Principal Cities and Towns of the World.

Correspondents in all the Principal Cities and Towns of the World.

Correspondents in all the Principal Cities and Towns of the World.

Correspondents in all the Principal Cities and Towns of the World.



THE RONEO System of Filing. How a Letter is Found. THE alphabetical division of the Guide gives the first key. Is the name you are looking for here? Yes! Then you at once see the number of the folder which contains the correspondence, and your hand goes straight to it. Not. Then if you have had any correspondence at all. It must be in the "Miscellaneous" Folder under the same Alphabetical Division. Simple, isn't it? And much easier than referring to a more or less accurate Card Index for the number of the folder or to a more or less correctly-kept collection of folders in what should be strictly alphabetical order. Thus it will be seen that the Roneo Numeralpha System calls for three operations only: 1. Open the Drawer. 2. Glance at the Guide. 3. Take out the Folder.

Standard Stationery Stores. Sixth Avenue, Nairobi.

Advertisement for LOMO disinfectant. Don't forget that Tin LOMO disinfectant positively kills flies, fleas, bugs, ants, roaches, & mosquitoes. THEO. SCHOUTEN GOVERNMENT ROAD. Phone 145. P. O. Box 124.

Its a Long Lane that has no Turning

BUY EVEN THE LOWEST LAST IS NEVER MORE WISE WHEN TRAVELING WITH THE RIGHT SPIRIT USE



The Esprit de Cars.

NOW OPEN

THE NAIROBI GENERAL CASH STORES, LTD., GOVERNMENT ROAD.

115 the Premises lately occupied by Colonial General Store.

PROVISION DEALERS and GROCERS. TOBACCO, CIGARETTES and CONFECTIONERY. FRESH FRUIT, CUT FLOWERS and VEGETABLES.

SEEDS, FARMS and LOCAL PRODUCE. BOUQUETS and WREATHS.

ESSJAY LIMITED.

BOLUS HOUSE, GOVERNMENT ROAD, NAIROBI. Phone 377.

FINANCIAL & PROPERTY AGENT

Mortgages specialised in. Terms Negotiated. Partnerships Arranged. Investments Advised on.

We have sound investments for sums from £100 upwards. In this respect we claim to do better for you than anyone else.

S. JACOBS, Managing Director.

Once a Visit Solicited

Our Articles are Better than 24 hours in the Market. Prices low and service good. All articles not available.

KALA SIDI

NAIROBI

Kenya Loan & Discount Co., Ltd

NAIROBI

OFFICES—1st Floor, Capt Chambers, P.O. Box 346.

FINANCIAL AGENTS.

BILLS DISCOUNTED. SHORT-TERM LOANS GRANTED. ANY RESERVABLE ASSET NEGOTIATED FOR CASH.

Call or Write, Strictest Confidence. Established 1921.

“Defective” Tyres.

Points About Mileage.

work, speed and economy. (Continued from page 1.)

Explaining Further.

Of course, it can hardly be denied that the tyre manufacturer's responsibility is to produce a tyre that will last for a certain number of miles and every failure on the part of the driver is the fault of the manufacturer or his design.

The trouble is that the manufacturer's responsibility is to produce a tyre that will last for a certain number of miles and every failure on the part of the driver is the fault of the manufacturer or his design.

A Road Defect.

It is a well known fact that the road surface is a very important factor in the life of a tyre.

A Road Defect.

It is a well known fact that the road surface is a very important factor in the life of a tyre.

Periodical Lubrication.

Ensuring Motoring Comfort.

periodical maintenance is essential for the life of a motor car.

periodical maintenance is essential for the life of a motor car.

periodical maintenance is essential for the life of a motor car.

periodical maintenance is essential for the life of a motor car.

periodical maintenance is essential for the life of a motor car.

periodical maintenance is essential for the life of a motor car.

periodical maintenance is essential for the life of a motor car.

periodical maintenance is essential for the life of a motor car.

periodical maintenance is essential for the life of a motor car.

periodical maintenance is essential for the life of a motor car.

periodical maintenance is essential for the life of a motor car.

periodical maintenance is essential for the life of a motor car.

periodical maintenance is essential for the life of a motor car.

periodical maintenance is essential for the life of a motor car.

periodical maintenance is essential for the life of a motor car.

periodical maintenance is essential for the life of a motor car.

periodical maintenance is essential for the life of a motor car.

periodical maintenance is essential for the life of a motor car.

periodical maintenance is essential for the life of a motor car.

“Defective” Tyres.

Points About Mileage.

work, speed and economy. (Continued from page 1.)

Explaining Further.

Of course, it can hardly be denied that the tyre manufacturer's responsibility is to produce a tyre that will last for a certain number of miles and every failure on the part of the driver is the fault of the manufacturer or his design.

The trouble is that the manufacturer's responsibility is to produce a tyre that will last for a certain number of miles and every failure on the part of the driver is the fault of the manufacturer or his design.

A Road Defect.

It is a well known fact that the road surface is a very important factor in the life of a tyre.

A Road Defect.

It is a well known fact that the road surface is a very important factor in the life of a tyre.

Periodical Lubrication.

Ensuring Motoring Comfort.

periodical maintenance is essential for the life of a motor car.

periodical maintenance is essential for the life of a motor car.

periodical maintenance is essential for the life of a motor car.

periodical maintenance is essential for the life of a motor car.

periodical maintenance is essential for the life of a motor car.

periodical maintenance is essential for the life of a motor car.

periodical maintenance is essential for the life of a motor car.

periodical maintenance is essential for the life of a motor car.

periodical maintenance is essential for the life of a motor car.

periodical maintenance is essential for the life of a motor car.

periodical maintenance is essential for the life of a motor car.

periodical maintenance is essential for the life of a motor car.

periodical maintenance is essential for the life of a motor car.

periodical maintenance is essential for the life of a motor car.

periodical maintenance is essential for the life of a motor car.

periodical maintenance is essential for the life of a motor car.

periodical maintenance is essential for the life of a motor car.

periodical maintenance is essential for the life of a motor car.

periodical maintenance is essential for the life of a motor car.



Engineering Victory of the Decade

Dodge Brothers Victory Six is the only car of its kind in the world.

Its chassis frame is the full width of the body—for the first time in motor car history! And the body has only 8 major parts!

A car that is lighter yet sturdier—another year's idea—5 major car better in the steel design—the most remarkable engineering Victory of the Decade!

FOUR-DOOR SEDAN 5-SEATER TOURING CAR BOX BODY

W. Spryngell and Co., Limited—Rearse Garage, Keston, Epsom, Surrey, Kenton & Co., MOMBASA, NAIROBI, KAMPALA, MWANZA & BUROBO.

S. FISHER & SIMMONS (E.A.) Ltd., Victoria Street, NAIROBI.

DODGE BROTHERS MOTOR CARS

Nairobi Vulcanizing COMPANY

Additional plant has now arrived. All tyres up to 42 x 9

Sole Agents—VIX HUMIDIFIER and PETROL SAVER. Box 217. 20 per cent. increase in your mileage.

Sale! Sale!! Sale!!!

Commencing from 25th January ENORMOUS REDUCTION THROUGHOUT THE STOCK. FOR FORTNIGHT ONLY. AT LADHARAM STORES, GOVERNMENT ROAD, NAIROBI.

MARDIGS and BRIEF

Mrs. Mardigs, nee Regina Hoff, begs to announce that she has returned to her business and undertakes DRESSMAKING OF EVERY DESCRIPTION. HIGH-CLASS GENTS' and LADIES' TAILORING. UP-TO-DATE FITTING ROOM. THEATRE ROYAL BUILDINGS, Salisbury 7, P.O. Box 642.

AFRICA'S PREMIER ANNUAL NINETEENTH YEAR OF PUBLICATION.

THE British South Africa Annual 1928-1929.

Portraying in Pictures and Prose Africa and Its People from the Equator to Cape Point. Artistic Reproductions of Paintings by Well Known Artists. Read the Thrillingly Enticing Theory of Africa's Ancient History as traced in Native Ritual. NOW ON SALE. Price Shgs. 6/-, packed and posted Shgs. 6/6. Standard Stationery Stores, Box 300, NAIROBI. Phone 879.

Just Arrived

A nice selection of Children's Shoes. Red and Blue Character Sandals. Pair Boys, etc. Prices from Shs. 7/50 pair. EXPERTS AT SHOE FITTING.

De Luxe Boot Co.,

Box 67, NAIROBI.

JUST ARRIVED FRESH CONSIGNMENT OF NEW SEASON GOODS.

PRICES TO PLEASE YOU.

DAYARAM Bros.,

(next to Electro House) GENERAL DRAPERS and OUTFITTERS. Govt. Road, NAIROBI. P.O. Box 199

The House in the Cloud

BY Mrs. Malcolm Mason

A DELIGHTFUL BOOK OF POEMS FOR CHILDREN. Shg. 4/ Ported 4-30.

TANDARD STATIONERY STORES, NAIROBI.

THE Bradford Manufacturing CO. LTD.

Special Display in our Gentlemen's Department of SHIRTS and PYJAMAS in Lattice, Tricelene, Tatters, and Silky Poplins. Latest Colorings and Stripes. All garments tailored at our Factory in Bradford and made with the usual B.M.C. Guarantee. Imperial Chambers, Government Buildings, next Town Hall, Box 816.

FAITH MOVES MOUNTAINS, WE MOVE ANYTHING.

RELIANCE TRANSPORT COMPANY LIMITED.

P.O. Box 462, Seller Street, Telephone 331

HEADACHE

RELIEVED QUICKLY... CARRIE'S TABLETS... WARDLE, Wholesale Chemist

AGRICULTURE

Continued from page 3

Stiff Aching Muscles

Kill Pain with Sloan's... Sloan's Liniment... Sloan's Liniment

FRUIT SALAD

FRUIT SALAD... BIRD'S Custard... Sloan's Liniment

Sloan's Liniment

KILLS PAIN... Sloan's Liniment... Sloan's Liniment

FRUIT SALAD

FRUIT SALAD... BIRD'S Custard... Sloan's Liniment

available for export will be made... The Government will be available for export...

estimated total yield of... The Government will be available for export...

of the crop is estimated... The Government will be available for export...

of the crop is estimated... The Government will be available for export...

of the crop is estimated... The Government will be available for export...

of the crop is estimated... The Government will be available for export...

of the crop is estimated... The Government will be available for export...

of the crop is estimated... The Government will be available for export...

of the crop is estimated... The Government will be available for export...

PROGRESS OF CIVIL AVIATION IN EAST AFRICA

Continued from page 1

of the progress of civil aviation in East Africa... The Government will be available for export...

of the progress of civil aviation in East Africa... The Government will be available for export...

of the progress of civil aviation in East Africa... The Government will be available for export...

of the progress of civil aviation in East Africa... The Government will be available for export...

of the progress of civil aviation in East Africa... The Government will be available for export...

of the progress of civil aviation in East Africa... The Government will be available for export...

of the progress of civil aviation in East Africa... The Government will be available for export...

of the progress of civil aviation in East Africa... The Government will be available for export...

ENTERTAINMENTS

Kikuyu Hotel... The new management has to announce that there will be an opening

DANCE... On Saturday 26th at 9.30 pm... TICKETS: Shs. 12.50 Double, Shs. 7.50 Single

THEATRE ROYAL... January 30th to February 2nd... "To Have the Honour"

THEATRE ROYAL... January 30th to February 2nd... "To Have the Honour"

THEATRE ROYAL... January 30th to February 2nd... "To Have the Honour"

THEATRE ROYAL... January 30th to February 2nd... "To Have the Honour"

THEATRE ROYAL... January 30th to February 2nd... "To Have the Honour"

THEATRE ROYAL... January 30th to February 2nd... "To Have the Honour"

THEATRE ROYAL... January 30th to February 2nd... "To Have the Honour"

THE DUKE OF GLOUCESTER

of the Duke of Gloucester... The Government will be available for export...

of the Duke of Gloucester... The Government will be available for export...

of the Duke of Gloucester... The Government will be available for export...

of the Duke of Gloucester... The Government will be available for export...

of the Duke of Gloucester... The Government will be available for export...

of the Duke of Gloucester... The Government will be available for export...

of the Duke of Gloucester... The Government will be available for export...

of the Duke of Gloucester... The Government will be available for export...

of the Duke of Gloucester... The Government will be available for export...

of the Duke of Gloucester... The Government will be available for export...

THE DUKES OF GLOUCESTER

of the Dukes of Gloucester... The Government will be available for export...

of the Dukes of Gloucester... The Government will be available for export...

of the Dukes of Gloucester... The Government will be available for export...

of the Dukes of Gloucester... The Government will be available for export...

of the Dukes of Gloucester... The Government will be available for export...

of the Dukes of Gloucester... The Government will be available for export...

of the Dukes of Gloucester... The Government will be available for export...

of the Dukes of Gloucester... The Government will be available for export...

of the Dukes of Gloucester... The Government will be available for export...

of the Dukes of Gloucester... The Government will be available for export...

THE DUKES OF GLOUCESTER

of the Dukes of Gloucester... The Government will be available for export...

of the Dukes of Gloucester... The Government will be available for export...

of the Dukes of Gloucester... The Government will be available for export...

of the Dukes of Gloucester... The Government will be available for export...

of the Dukes of Gloucester... The Government will be available for export...

of the Dukes of Gloucester... The Government will be available for export...

of the Dukes of Gloucester... The Government will be available for export...

of the Dukes of Gloucester... The Government will be available for export...

of the Dukes of Gloucester... The Government will be available for export...

of the Dukes of Gloucester... The Government will be available for export...

Chevrolet advertisement featuring a car illustration and text: 'The Proof is in the Driving - come take a ride in the New Chevrolet!'

Advertisement for 'The Duke of Gloucester' featuring a portrait of a man and text: 'THE DUKES OF GLOUCESTER'.

Advertisement for 'The Duke of Gloucester' featuring a portrait of a man and text: 'THE DUKES OF GLOUCESTER'.

Advertisement for 'The Duke of Gloucester' featuring a portrait of a man and text: 'THE DUKES OF GLOUCESTER'.

Advertisement for 'The Motor Mart and Exchange, Ltd.' featuring text: 'THE MOTOR MART and Exchange, Ltd. Phone 226 P.O. Box 436'.

THE OVERLAND WHIPPET

14 to 1500 miles—Never a single mechanical breakdown and still using 3 of the original tyres.

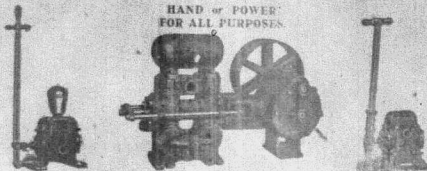
OVERLAND

Quality is in the Engine
Prices From **£180**
COMPLETE CARS NO EXTRAS

MOULTON & MORRISON Ltd.
NAIROBI

GOULDS PUMPS

HAND OR POWER FOR ALL PURPOSES



SPECIFICATIONS FOR ALL CLASSES OF PUMPING PLANTS GIVEN.

J. W. Milligan & Co.,
NAIROBI
Box 10.
MOSHI
Box 10.

A. H. Wardle & Co. Ltd.

Optical Chemists
NAIROBI

Optical Manager
V. M. BROWSE, F.S.M.C., F.I.O.

SCIENTIFIC EYE TESTING.

Only the best lenses and frames stocked.
Testing and spectacles complete, from 25/-

QUEEN ANNE

RARE
OLD
SCOTCH
WHISKY

The Choice of the Connoisseur

As selected for the Royal Safari.

Distributors—
R. G. Vernon & Co.,
UNION BUILDINGS,
NAIROBI.
R.O. 104

Post Cards

OF
WONDERFUL VIEWS OF
Mount Kenya

Shs. 5/- per doz. associated Post Free
ON SALE AT

A. H. Wardle & Co. Ltd.
NAIROBI MOMBASA ELDORET
CHEMISTS



THE CAR OF OUTSTANDING VALUE
COMPREHENSIVE RANGE OF MODELS AVAILABLE FOR IMMEDIATE DELIVERY

PHAETON, £184 — SEDAN, £230 — LIGHT DELIVERY (1500lbs.), £200 — ROADSTER, £170

4-wheel brakes, 4 shock absorbers, spare wheel and tools, all steel bodies, rear vision mirror, triple windscreen, speed flexibility, economy and unparalleled riding comfort.

The Service Company Ltd.
SIXTH AVENUE
NAIROBI

TOILET GAL SOAP.

An exquisite soap, long famous among the noted beauties of the Spanish Court and used by the Queen of Spain.

GAL TOILET SOAP IS MADE WITH THE FINEST SPANISH OLIVE OIL. IT'S PERFUME IS EXCLUSIVE—AN EXOTIC SUBTLE FRAGRANCE WHICH LIVES IN THE HEART OF THE SOAP AND ENDURES FOR THE LIFE OF THE TABLET.

A BEAUTIFUL SOAP
per box 4/- of three tablets.

A BEAUTIFUL SOAP AT A POPULAR PRICE.

KODAK (E.A.) LTD., INC.
Howse & McGeorge
CHEMISTS.
NAIROBI AND ALL BRANCHES.

RECKITT'S CROWN BLUE



The snow-white freshness of lines is a result of using Reckitt's Crown Blue in the washing water. Make sure that all your lines are cleaned the whites of things by using Reckitt's Crown Blue.

RECKITT AND SONS LTD.
MULL AND LONDON
Agents
R. O. HAMILTON LTD.
NAIROBI

Lead the way on a B-S-A



BRITAIN'S BIGGEST SELLER.
LET US GIVE YOU A TRIAL RUN
Carr, Lawson & Co. Ltd.
NAIROBI.

THREE LEADING BRANDS.



OBTAINABLE AT
EMILE JARDIN & Cie.
NAIROBI.

African Standard

BRANDS ADVERTISED
THURSDAY, JAN. 24, 1920.

Aviation in Kenya.

As yet in the midst of the period of general aviation, Kenya has not yet seen the beginning of the aviation industry. Reports are in circulation that the Government is considering the purchase of a few aircraft for the purpose of aerial photography, and it is generally expected that the Government will purchase a few aircraft for the purpose of aerial photography, and it is generally expected that the Government will purchase a few aircraft for the purpose of aerial photography.

England in the Cape.

London Leader on 14th Nov. The former Secretary of State for Africa, who is under a flag in the Cape, has been reported to have arrived in the Cape on 14th Nov. The former Secretary of State for Africa, who is under a flag in the Cape, has been reported to have arrived in the Cape on 14th Nov.

Shipping Movements.

The S.S. "Kilindi" left Mombasa on 14th Nov. for East Africa ports. The S.S. "Mombasa" which sailed from Kilindi on 14th Nov. arrived at East Africa ports on 14th Nov.

Under the Standard Diary.

Shipping Movements. The S.S. "Kilindi" left Mombasa on 14th Nov. for East Africa ports. The S.S. "Mombasa" which sailed from Kilindi on 14th Nov. arrived at East Africa ports on 14th Nov.

Dangerous Driving.

An 18-year-old woman, Miss M. M. M., was charged with dangerous driving on 14th Nov. She was driving a motor car on the main road near the station when she was seen to be driving at a dangerous speed.

The Choice of the Connoisseur.

The choice of the connoisseur is the choice of the best. The choice of the connoisseur is the choice of the best. The choice of the connoisseur is the choice of the best.

Queen Anne Whisky.

Queen Anne Whisky is the choice of the connoisseur. Queen Anne Whisky is the choice of the connoisseur. Queen Anne Whisky is the choice of the connoisseur.

Post Cards of Mount Kenya.

Post cards of Mount Kenya are available. Post cards of Mount Kenya are available. Post cards of Mount Kenya are available.

Standard Diary.

The Standard Diary is a useful and convenient diary. The Standard Diary is a useful and convenient diary. The Standard Diary is a useful and convenient diary.

NOTICE.

THE VICTORIA NYANZA SUGAR CO. PAINT LIMITED, have arranged with the undersigned...

THE STREET NOISE NUISANCE.

Doctors Approach Health Minister.

VERTABLE DIN

The British Medical Association, which issued a resolution...

These men, according to the manufacturers, have taken up the question...

Presentable Noise. The noise of the motor car is a nuisance...

It is a nuisance, however, which is not a nuisance...

THE H.M.S. "Enterprise" OFFICERS AND CREW TO HAVE EXTRA LEAVE.

THE H.M.S. "Enterprise" OFFICERS AND CREW TO HAVE EXTRA LEAVE.

THE H.M.S. "Enterprise" OFFICERS AND CREW TO HAVE EXTRA LEAVE.

THE H.M.S. "Enterprise" OFFICERS AND CREW TO HAVE EXTRA LEAVE.

THE H.M.S. "Enterprise" OFFICERS AND CREW TO HAVE EXTRA LEAVE.

THE H.M.S. "Enterprise" OFFICERS AND CREW TO HAVE EXTRA LEAVE.



Insects—The Seed of Death

What danger spreading insects abroad—these Death they are a powerful enemy...



FLIT. The most powerful FLY and MOSQUITO repellent.

Special Bargains FOR A FORTNIGHT ONLY.

DRASTIC REDUCTIONS IN EVERY DESCRIPTION OF DRESS MATERIAL.

LALCHAND MOOLCHAND BROS. GOVERNMENT ROAD NAIROBI.

S. P. Q. R. Small Profit Quick Return NEW YEAR NEW GOODS

AT LALCHAND MOOLCHAND BROS. Government Road NAIROBI. P.O. Box 278

B. E. A. Saw Mills

MILLS AND OFFICES, WORKSHOP ROAD, NEAR P.W.D. NAIROBI. Telephone No. 93 P.O. Box 261, Nairobi.

WHITEAWAY'S For Men's Wear

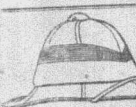
THE MAN'S SHOP with an Unrivalled Selection of MEN'S WEAR.

IT HAS BEEN A GREAT SALE TIME IN THE MEN'S SECTION THIS WEEK... EVERY DAY HAS BEEN A RECORD DAY...

BUY AT THESE PRICES FOR YOUR FUTURE NEEDS.



Men's Striped T-shirt. Sale Price, Shs. 7/50



Regulation Service Helmets. Sale Price Shs. 22/50 ea.



White Lawn Handkerchiefs. Sale Price, Shs. 3/25 + 1/10



Men's Cardigans. Sale Price, Shs. 24/50



Men's Fallows. Sale Price, Shs. 19/50



Men's Heaters. Sale Price, Shs. 2/50



Orange Cell Suit Vests. Sale Price, Shs. 7/50



Crane Taffets Ties. Sale Price, Shs. 11/50



Men's Khaki Shirts. Sale Price Shs. 7/50



Men's Gaiters. Sale Price, Shs. 2/50 ea.



Men's Sports Coats. Sale Price, Shs. 17/50



Men's Felt Hats. Sale Price, Shs. 53/50



Men's Felt Hats. Sale Price, Shs. 7/50



Men's Felt Hats. Sale Price, Shs. 7/50



Men's Felt Hats. Sale Price, Shs. 7/50



Men's Felt Hats. Sale Price, Shs. 7/50



Men's Felt Hats. Sale Price, Shs. 7/50



Men's Felt Hats. Sale Price, Shs. 25/50



Men's Felt Hats. Sale Price, Shs. 18/50



Men's Felt Hats. Sale Price, Shs. 2/75 pr.



Men's Felt Hats. Sale Price, Shs. 2/50 ea.



Men's Felt Hats. Sale Price, Shs. 2/50 ea.



Men's Felt Hats. Sale Price, Shs. 2/50 ea.



Men's Felt Hats. Sale Price, Shs. 2/50 ea.



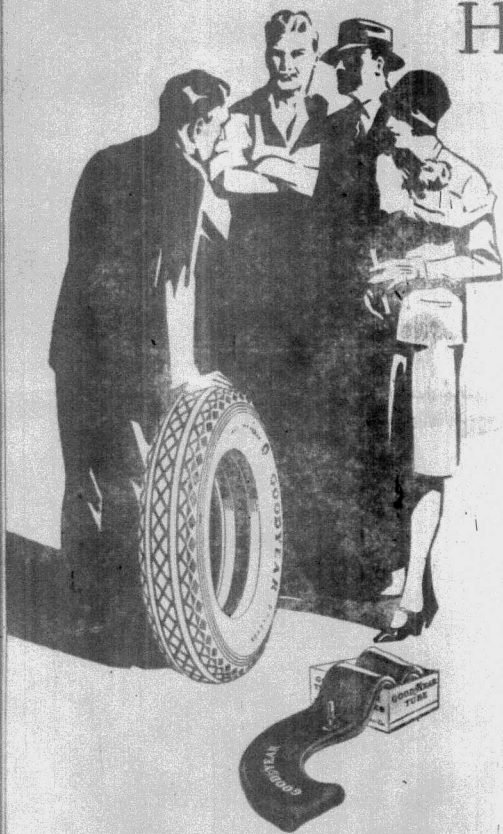
Men's Felt Hats. Sale Price, Shs. 17/50



Men's Felt Hats. Sale Price, Shs. 3/75

Whiteaway Laidlaw & Co. Ltd. NAIROBI.

UNRIVALED for Heavy Duty Service



For rough and rugged service, the Goodyear Heavy Tyre combines traction and long wear.

Its live, resilient rubber, expertly compounded, affords far longer wear.

Its famous All-Weather Tread provides maximum driving power and safety.

Its tremendous capacity for long, slow, even wear, of both body and tread, is your final assurance of lowest cost per tyre mile.

Where heavy loads must be carried and where rough, rugged service is necessarily encountered, your car or lorry will do its best on Goodyear Heavy Duty Tyres.

Fit Goodyear Tyres.

Gilfillan & Company, Ltd.,
DISTRIBUTORS.

GOODYEAR

SOMETHING NEW!!
IN STYLE AND QUALITY

LADIES' WOOLLEN JUMPER COATS, WAIST COATS, FROCKS, etc., etc.

Made by The JEAUER Co., Ltd.

Just Unpacked

Ahamed Bros.

THE HOUSE OF DISTINCTION.

P.O. Box 254 BAZAAR NAIROBI. Phone 201.

CORRESPONDENCE.

THE EDITOR, "THE STANDARD"
Sir—The article in your issue regarding the...
I am a...
I am a...
I am a...

LADY HILTON YOUNG.
To the Editor, "The Standard"
I am a...
I am a...
I am a...

LEGAL GOVERNMENT—THE INDIAN POSITION.
To the Editor, "The Standard"
I am a...
I am a...
I am a...

LEGAL GOVERNMENT—THE INDIAN POSITION.
To the Editor, "The Standard"
I am a...
I am a...
I am a...

LEGAL GOVERNMENT—THE INDIAN POSITION.
To the Editor, "The Standard"
I am a...
I am a...
I am a...

LEGAL GOVERNMENT—THE INDIAN POSITION.
To the Editor, "The Standard"
I am a...
I am a...
I am a...

LEGAL GOVERNMENT—THE INDIAN POSITION.
To the Editor, "The Standard"
I am a...
I am a...
I am a...

LEGAL GOVERNMENT—THE INDIAN POSITION.
To the Editor, "The Standard"
I am a...
I am a...
I am a...

HAWKE'S

Cork Helmets

FOREMOST SINCE 1871.
Hawkes & Co., Ltd., 1, Savile Row, London, W.1.
STOCKED BY HIGH-CLASS OUTFITTERS.

FORCE.

The Ideal Breakfast Food.

Per Shs. 150 Pkt.

ELLIOTS

175, Phone 60.

Monsieur Florens

FRENCH HAIRDRESSER.

PERMANENT WAVING—WHOLE HEAD.

59-
GOVERNMENT ROAD, YORK BUILDINGS.
P.O. Box 923 Phone 561.

TORR'S

Fresh Chocolates.

Take a Box Home with You.

JUST UNPACKED VIYELLA.

Unrinkable like wax
durable, too lovely
permanent in latest
designs of
shades, stripes and
plaid colors.

Wears well, is easily
washed and keeps in a
permanent
Government Road
NAIROBI

VIYELLA

BON MARCHÉ

LEGAL GOVERNMENT—THE INDIAN POSITION.
To the Editor, "The Standard"
I am a...
I am a...
I am a...

LEGAL GOVERNMENT—THE INDIAN POSITION.
To the Editor, "The Standard"
I am a...
I am a...
I am a...

LEGAL GOVERNMENT—THE INDIAN POSITION.
To the Editor, "The Standard"
I am a...
I am a...
I am a...

LEGAL GOVERNMENT—THE INDIAN POSITION.
To the Editor, "The Standard"
I am a...
I am a...
I am a...

LEGAL GOVERNMENT—THE INDIAN POSITION.
To the Editor, "The Standard"
I am a...
I am a...
I am a...

BULLS & RY LTD.

NAIROBI BOX 2. MOMBASA BOX 32.

KAMPALA BOX 212.

PAINTS and DISTEMPERS

SUITABLE FOR EXTERIOR AND INTERIOR WORK.

LARGE RANGE ASSORTED COLORS.

NEROLAC ENAMEL FOR MOTOR CARS AND CYCLES.

VARNISH STAIN AND WOOD PRES.

LEGAL GOVERNMENT—THE INDIAN POSITION.
To the Editor, "The Standard"
I am a...
I am a...
I am a...

For Tender Skins

The rich, gentle lather of **Parfums Eclair** is so grateful to the delicate skin of your face that it wears fresh with every day.

PEERLESS ERASMIC SOAP

The Dainty Soap

B. H. Myers & Co., Ltd.

Phone 348 GOVT. ROAD. Box 461.

FURNITURE SUPPLIED ON HIRE PURCHASE.

NO DEPOSIT

Small Monthly Payments

ALL OUR FURNITURE IS SOLD WITH A GUARANTEE.

LETTE SODA BOY!

And the Boy makes no mistake about it, either! He has

A SPARKLET

Ready and in a second, a supply of the Best, Building, Refreshing Soda-water is produced.

General Agencies, Ltd.

188A BUILDING, GOVT. ROAD, NAIROBI.

WATER KANSTONER

Representative—

City House, DENOVAN & DIEBEL, NAIROBI.

TRV PETERS UNION TYRES and TUBES

for greater mileage and efficiency.

Sole Importers—
HANSING & Co. (East Africa)
P.O. Box 122, MOMBASA

Representative—
City House, DENOVAN & DIEBEL, NAIROBI.

PLASMOQUIN COMB

The new effective ANTI-MALARIAL remedy manufactured by T. G. Farberindustria

Pharmaceutical Department.

Boyer's Malaria Tablets

Obtainable through all Leading Chemists.

Sole Agents—
HANSING & Co. (East Africa)
P.O. Box 122, MOMBASA

Representative—
City House, DENOVAN & DIEBEL, NAIROBI.

HE-MEN AND HEE-HAW MEN.
To which classification do the "Foliculins" who are trying to open up our Game Reserves belong? Without the game laws will be no more attractive than the Free State, the thought of which makes slavery seem so desirable. Get together you sportsmen who prefer danger to dollars—your last stronghold is being taken from you. Let us preserve Kenya as a land for MEN to live in.

SHAW AND HUNTER
Stock everything for the game sport except Poison Gun
P.O. Box 70, NAIROBI

Charles Ware
TUESDAY ACCOUNTANT
(Established 25 years)
Box 120, NAIROBI. Tel. Address "Sportman."
WILL CLIENTS PLEASE NOTE THAT DURING MY ABSENCE IN ENGLAND MR. P. A. THOMAS WILL ACT AS MY SOLE REPRESENTATIVE IN KENYA COLONY.
IT IS DISTINCTLY UNDERSTOOD THAT NO REPLY MEANS NO BUSINESS.

WE DESIRE THIS TO BE READ BY THOSE MINDFUL OF EXISTING ECONOMIC CONDITIONS.
OUR PRICES AND SERVICES COMMENSURATE WITH HIGH QUALITY HELP CONSIDERABLY TIME OUR PRESENT DIFFICULTIES.
From the Statement.

WE DESIRE THIS TO BE READ BY THOSE MINDFUL OF EXISTING ECONOMIC CONDITIONS.
OUR PRICES AND SERVICES COMMENSURATE WITH HIGH QUALITY HELP CONSIDERABLY TIME OUR PRESENT DIFFICULTIES.
From the Statement.

J.H.S. Todd & Co. Ltd.

HAVE YOU SEEN THE "ZERO-COOL" Cold Storage Box
THE SIMPLEST FORM OF COLD STORAGE imaginable AT INITIAL COST ONLY. NO UPKEEP.
CALL AND INSPECT THEM AT BLACKLAWS & BROWN, (LATE MACKINNON BROS.)
Tel. No. 31 NAIROBI Box No. 468
Telegram: "BLACKLAWS"

Golf Clubs
By MASTER CRAFTSMEN
Having such names as TAYLOR, YARDON, CONYER, PATRICK, WHITE, ACHTERLOSI
From She. (17) to She. 50/-

THE "BIRDIE" GOLF BALL
Produces all the virtues of the perfect ball.
100 each. 50/- per doz.

THE "LET" GOLF BALL
Does everything a ball ever intended to do.
50/- a 100 each.

May & Co. Ltd.
THE SPORTS HOUSE
NAIROBI.

THE SPORTS PAGE

CRICKET IN NAIROBI
Kyamba Team Beaten by Police.

CRICKET IN NAIROBI
The Police cricket team, captained by Mr. J. W. G. ...
The Police team, captained by Mr. J. W. G. ...
The Police team, captained by Mr. J. W. G. ...

CRICKET IN NAIROBI
The Police team, captained by Mr. J. W. G. ...
The Police team, captained by Mr. J. W. G. ...
The Police team, captained by Mr. J. W. G. ...

CRICKET IN NAIROBI
The Police team, captained by Mr. J. W. G. ...
The Police team, captained by Mr. J. W. G. ...
The Police team, captained by Mr. J. W. G. ...

CRICKET IN NAIROBI
The Police team, captained by Mr. J. W. G. ...
The Police team, captained by Mr. J. W. G. ...
The Police team, captained by Mr. J. W. G. ...

CRICKET IN NAIROBI
The Police team, captained by Mr. J. W. G. ...
The Police team, captained by Mr. J. W. G. ...
The Police team, captained by Mr. J. W. G. ...

GOLF AT NAKURU.
Local Club Revived and Play Restarted.

GOLF AT NAKURU.
The Nakuru Golf Club, which was ...
The Nakuru Golf Club, which was ...
The Nakuru Golf Club, which was ...

GOLF AT NAKURU.
The Nakuru Golf Club, which was ...
The Nakuru Golf Club, which was ...
The Nakuru Golf Club, which was ...

GOLF AT NAKURU.
The Nakuru Golf Club, which was ...
The Nakuru Golf Club, which was ...
The Nakuru Golf Club, which was ...

GOLF AT NAKURU.
The Nakuru Golf Club, which was ...
The Nakuru Golf Club, which was ...
The Nakuru Golf Club, which was ...

GOLF AT NAKURU.
The Nakuru Golf Club, which was ...
The Nakuru Golf Club, which was ...
The Nakuru Golf Club, which was ...

CRICKET AT LONDON.
An Easy Victory for Eldoret.

CRICKET AT LONDON.
The Eldoret cricket team, captained by ...
The Eldoret cricket team, captained by ...
The Eldoret cricket team, captained by ...

CRICKET AT LONDON.
The Eldoret cricket team, captained by ...
The Eldoret cricket team, captained by ...
The Eldoret cricket team, captained by ...

CRICKET AT LONDON.
The Eldoret cricket team, captained by ...
The Eldoret cricket team, captained by ...
The Eldoret cricket team, captained by ...

CRICKET AT LONDON.
The Eldoret cricket team, captained by ...
The Eldoret cricket team, captained by ...
The Eldoret cricket team, captained by ...

CRICKET AT LONDON.
The Eldoret cricket team, captained by ...
The Eldoret cricket team, captained by ...
The Eldoret cricket team, captained by ...

THE BOXING RING.
Foreign Boxers in Britain.

THE BOXING RING.
The arrival of foreign boxers in Britain ...
The arrival of foreign boxers in Britain ...
The arrival of foreign boxers in Britain ...

THE BOXING RING.
The arrival of foreign boxers in Britain ...
The arrival of foreign boxers in Britain ...
The arrival of foreign boxers in Britain ...

THE BOXING RING.
The arrival of foreign boxers in Britain ...
The arrival of foreign boxers in Britain ...
The arrival of foreign boxers in Britain ...

THE BOXING RING.
The arrival of foreign boxers in Britain ...
The arrival of foreign boxers in Britain ...
The arrival of foreign boxers in Britain ...

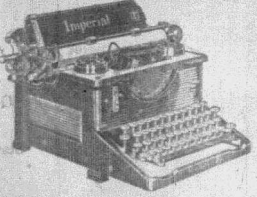
THE BOXING RING.
The arrival of foreign boxers in Britain ...
The arrival of foreign boxers in Britain ...
The arrival of foreign boxers in Britain ...



Good! It's British!
If the name Eley or Kynoch is stamped on the Head of a cartridge you may be sure that it will fill in the best and most comfortable in use, will eject easily and will not damage your gun. In a word Eley and Kynoch cartridges are dependable.
The "Good Fire" is loaded with Soudanite or Elongated the most powerful propellant in the world.
Don't use inferior cartridges by any means.
Use ELEY OR KYNOCHE. BRITISH and BEST CARTRIDGES FROM ALL COUNTRIES.
ELEY GRAND PRIZE

A. HOGG, NAIROBI.
English Derby 5-6-29, 11 miles. 6-1 Costaki Pasha, Mr. Jinks; 4-1 Roadman; 2-1 Gray Day; 12-1 Brims; Crayford; 14-1 Hattin; the Rooster; Redstone; the Black Abbot; 16-1 Waverley; 17-1 Lincoln; 18-1 Lincoln; 19-1 Lincoln; 20-1 Lincoln; 21-1 Lincoln; 22-1 Lincoln; 23-1 Lincoln; 24-1 Lincoln; 25-1 Lincoln; 26-1 Lincoln; 27-1 Lincoln; 28-1 Lincoln; 29-1 Lincoln; 30-1 Lincoln; 31-1 Lincoln; 32-1 Lincoln; 33-1 Lincoln; 34-1 Lincoln; 35-1 Lincoln; 36-1 Lincoln; 37-1 Lincoln; 38-1 Lincoln; 39-1 Lincoln; 40-1 Lincoln; 41-1 Lincoln; 42-1 Lincoln; 43-1 Lincoln; 44-1 Lincoln; 45-1 Lincoln; 46-1 Lincoln; 47-1 Lincoln; 48-1 Lincoln; 49-1 Lincoln; 50-1 Lincoln; 51-1 Lincoln; 52-1 Lincoln; 53-1 Lincoln; 54-1 Lincoln; 55-1 Lincoln; 56-1 Lincoln; 57-1 Lincoln; 58-1 Lincoln; 59-1 Lincoln; 60-1 Lincoln; 61-1 Lincoln; 62-1 Lincoln; 63-1 Lincoln; 64-1 Lincoln; 65-1 Lincoln; 66-1 Lincoln; 67-1 Lincoln; 68-1 Lincoln; 69-1 Lincoln; 70-1 Lincoln; 71-1 Lincoln; 72-1 Lincoln; 73-1 Lincoln; 74-1 Lincoln; 75-1 Lincoln; 76-1 Lincoln; 77-1 Lincoln; 78-1 Lincoln; 79-1 Lincoln; 80-1 Lincoln; 81-1 Lincoln; 82-1 Lincoln; 83-1 Lincoln; 84-1 Lincoln; 85-1 Lincoln; 86-1 Lincoln; 87-1 Lincoln; 88-1 Lincoln; 89-1 Lincoln; 90-1 Lincoln; 91-1 Lincoln; 92-1 Lincoln; 93-1 Lincoln; 94-1 Lincoln; 95-1 Lincoln; 96-1 Lincoln; 97-1 Lincoln; 98-1 Lincoln; 99-1 Lincoln; 100-1 Lincoln; 101-1 Lincoln; 102-1 Lincoln; 103-1 Lincoln; 104-1 Lincoln; 105-1 Lincoln; 106-1 Lincoln; 107-1 Lincoln; 108-1 Lincoln; 109-1 Lincoln; 110-1 Lincoln; 111-1 Lincoln; 112-1 Lincoln; 113-1 Lincoln; 114-1 Lincoln; 115-1 Lincoln; 116-1 Lincoln; 117-1 Lincoln; 118-1 Lincoln; 119-1 Lincoln; 120-1 Lincoln; 121-1 Lincoln; 122-1 Lincoln; 123-1 Lincoln; 124-1 Lincoln; 125-1 Lincoln; 126-1 Lincoln; 127-1 Lincoln; 128-1 Lincoln; 129-1 Lincoln; 130-1 Lincoln; 131-1 Lincoln; 132-1 Lincoln; 133-1 Lincoln; 134-1 Lincoln; 135-1 Lincoln; 136-1 Lincoln; 137-1 Lincoln; 138-1 Lincoln; 139-1 Lincoln; 140-1 Lincoln; 141-1 Lincoln; 142-1 Lincoln; 143-1 Lincoln; 144-1 Lincoln; 145-1 Lincoln; 146-1 Lincoln; 147-1 Lincoln; 148-1 Lincoln; 149-1 Lincoln; 150-1 Lincoln; 151-1 Lincoln; 152-1 Lincoln; 153-1 Lincoln; 154-1 Lincoln; 155-1 Lincoln; 156-1 Lincoln; 157-1 Lincoln; 158-1 Lincoln; 159-1 Lincoln; 160-1 Lincoln; 161-1 Lincoln; 162-1 Lincoln; 163-1 Lincoln; 164-1 Lincoln; 165-1 Lincoln; 166-1 Lincoln; 167-1 Lincoln; 168-1 Lincoln; 169-1 Lincoln; 170-1 Lincoln; 171-1 Lincoln; 172-1 Lincoln; 173-1 Lincoln; 174-1 Lincoln; 175-1 Lincoln; 176-1 Lincoln; 177-1 Lincoln; 178-1 Lincoln; 179-1 Lincoln; 180-1 Lincoln; 181-1 Lincoln; 182-1 Lincoln; 183-1 Lincoln; 184-1 Lincoln; 185-1 Lincoln; 186-1 Lincoln; 187-1 Lincoln; 188-1 Lincoln; 189-1 Lincoln; 190-1 Lincoln; 191-1 Lincoln; 192-1 Lincoln; 193-1 Lincoln; 194-1 Lincoln; 195-1 Lincoln; 196-1 Lincoln; 197-1 Lincoln; 198-1 Lincoln; 199-1 Lincoln; 200-1 Lincoln; 201-1 Lincoln; 202-1 Lincoln; 203-1 Lincoln; 204-1 Lincoln; 205-1 Lincoln; 206-1 Lincoln; 207-1 Lincoln; 208-1 Lincoln; 209-1 Lincoln; 210-1 Lincoln; 211-1 Lincoln; 212-1 Lincoln; 213-1 Lincoln; 214-1 Lincoln; 215-1 Lincoln; 216-1 Lincoln; 217-1 Lincoln; 218-1 Lincoln; 219-1 Lincoln; 220-1 Lincoln; 221-1 Lincoln; 222-1 Lincoln; 223-1 Lincoln; 224-1 Lincoln; 225-1 Lincoln; 226-1 Lincoln; 227-1 Lincoln; 228-1 Lincoln; 229-1 Lincoln; 230-1 Lincoln; 231-1 Lincoln; 232-1 Lincoln; 233-1 Lincoln; 234-1 Lincoln; 235-1 Lincoln; 236-1 Lincoln; 237-1 Lincoln; 238-1 Lincoln; 239-1 Lincoln; 240-1 Lincoln; 241-1 Lincoln; 242-1 Lincoln; 243-1 Lincoln; 244-1 Lincoln; 245-1 Lincoln; 246-1 Lincoln; 247-1 Lincoln; 248-1 Lincoln; 249-1 Lincoln; 250-1 Lincoln; 251-1 Lincoln; 252-1 Lincoln; 253-1 Lincoln; 254-1 Lincoln; 255-1 Lincoln; 256-1 Lincoln; 257-1 Lincoln; 258-1 Lincoln; 259-1 Lincoln; 260-1 Lincoln; 261-1 Lincoln; 262-1 Lincoln; 263-1 Lincoln; 264-1 Lincoln; 265-1 Lincoln; 266-1 Lincoln; 267-1 Lincoln; 268-1 Lincoln; 269-1 Lincoln; 270-1 Lincoln; 271-1 Lincoln; 272-1 Lincoln; 273-1 Lincoln; 274-1 Lincoln; 275-1 Lincoln; 276-1 Lincoln; 277-1 Lincoln; 278-1 Lincoln; 279-1 Lincoln; 280-1 Lincoln; 281-1 Lincoln; 282-1 Lincoln; 283-1 Lincoln; 284-1 Lincoln; 285-1 Lincoln; 286-1 Lincoln; 287-1 Lincoln; 288-1 Lincoln; 289-1 Lincoln; 290-1 Lincoln; 291-1 Lincoln; 292-1 Lincoln; 293-1 Lincoln; 294-1 Lincoln; 295-1 Lincoln; 296-1 Lincoln; 297-1 Lincoln; 298-1 Lincoln; 299-1 Lincoln; 300-1 Lincoln; 301-1 Lincoln; 302-1 Lincoln; 303-1 Lincoln; 304-1 Lincoln; 305-1 Lincoln; 306-1 Lincoln; 307-1 Lincoln; 308-1 Lincoln; 309-1 Lincoln; 310-1 Lincoln; 311-1 Lincoln; 312-1 Lincoln; 313-1 Lincoln; 314-1 Lincoln; 315-1 Lincoln; 316-1 Lincoln; 317-1 Lincoln; 318-1 Lincoln; 319-1 Lincoln; 320-1 Lincoln; 321-1 Lincoln; 322-1 Lincoln; 323-1 Lincoln; 324-1 Lincoln; 325-1 Lincoln; 326-1 Lincoln; 327-1 Lincoln; 328-1 Lincoln; 329-1 Lincoln; 330-1 Lincoln; 331-1 Lincoln; 332-1 Lincoln; 333-1 Lincoln; 334-1 Lincoln; 335-1 Lincoln; 336-1 Lincoln; 337-1 Lincoln; 338-1 Lincoln; 339-1 Lincoln; 340-1 Lincoln; 341-1 Lincoln; 342-1 Lincoln; 343-1 Lincoln; 344-1 Lincoln; 345-1 Lincoln; 346-1 Lincoln; 347-1 Lincoln; 348-1 Lincoln; 349-1 Lincoln; 350-1 Lincoln; 351-1 Lincoln; 352-1 Lincoln; 353-1 Lincoln; 354-1 Lincoln; 355-1 Lincoln; 356-1 Lincoln; 357-1 Lincoln; 358-1 Lincoln; 359-1 Lincoln; 360-1 Lincoln; 361-1 Lincoln; 362-1 Lincoln; 363-1 Lincoln; 364-1 Lincoln; 365-1 Lincoln; 366-1 Lincoln; 367-1 Lincoln; 368-1 Lincoln; 369-1 Lincoln; 370-1 Lincoln; 371-1 Lincoln; 372-1 Lincoln; 373-1 Lincoln; 374-1 Lincoln; 375-1 Lincoln; 376-1 Lincoln; 377-1 Lincoln; 378-1 Lincoln; 379-1 Lincoln; 380-1 Lincoln; 381-1 Lincoln; 382-1 Lincoln; 383-1 Lincoln; 384-1 Lincoln; 385-1 Lincoln; 386-1 Lincoln; 387-1 Lincoln; 388-1 Lincoln; 389-1 Lincoln; 390-1 Lincoln; 391-1 Lincoln; 392-1 Lincoln; 393-1 Lincoln; 394-1 Lincoln; 395-1 Lincoln; 396-1 Lincoln; 397-1 Lincoln; 398-1 Lincoln; 399-1 Lincoln; 400-1 Lincoln; 401-1 Lincoln; 402-1 Lincoln; 403-1 Lincoln; 404-1 Lincoln; 405-1 Lincoln; 406-1 Lincoln; 407-1 Lincoln; 408-1 Lincoln; 409-1 Lincoln; 410-1 Lincoln; 411-1 Lincoln; 412-1 Lincoln; 413-1 Lincoln; 414-1 Lincoln; 415-1 Lincoln; 416-1 Lincoln; 417-1 Lincoln; 418-1 Lincoln; 419-1 Lincoln; 420-1 Lincoln; 421-1 Lincoln; 422-1 Lincoln; 423-1 Lincoln; 424-1 Lincoln; 425-1 Lincoln; 426-1 Lincoln; 427-1 Lincoln; 428-1 Lincoln; 429-1 Lincoln; 430-1 Lincoln; 431-1 Lincoln; 432-1 Lincoln; 433-1 Lincoln; 434-1 Lincoln; 435-1 Lincoln; 436-1 Lincoln; 437-1 Lincoln; 438-1 Lincoln; 439-1 Lincoln; 440-1 Lincoln; 441-1 Lincoln; 442-1 Lincoln; 443-1 Lincoln; 444-1 Lincoln; 445-1 Lincoln; 446-1 Lincoln; 447-1 Lincoln; 448-1 Lincoln; 449-1 Lincoln; 450-1 Lincoln; 451-1 Lincoln; 452-1 Lincoln; 453-1 Lincoln; 454-1 Lincoln; 455-1 Lincoln; 456-1 Lincoln; 457-1 Lincoln; 458-1 Lincoln; 459-1 Lincoln; 460-1 Lincoln; 461-1 Lincoln; 462-1 Lincoln; 463-1 Lincoln; 464-1 Lincoln; 465-1 Lincoln; 466-1 Lincoln; 467-1 Lincoln; 468-1 Lincoln; 469-1 Lincoln; 470-1 Lincoln; 471-1 Lincoln; 472-1 Lincoln; 473-1 Lincoln; 474-1 Lincoln; 475-1 Lincoln; 476-1 Lincoln; 477-1 Lincoln; 478-1 Lincoln; 479-1 Lincoln; 480-1 Lincoln; 481-1 Lincoln; 482-1 Lincoln; 483-1 Lincoln; 484-1 Lincoln; 485-1 Lincoln; 486-1 Lincoln; 487-1 Lincoln; 488-1 Lincoln; 489-1 Lincoln; 490-1 Lincoln; 491-1 Lincoln; 492-1 Lincoln; 493-1 Lincoln; 494-1 Lincoln; 495-1 Lincoln; 496-1 Lincoln; 497-1 Lincoln; 498-1 Lincoln; 499-1 Lincoln; 500-1 Lincoln; 501-1 Lincoln; 502-1 Lincoln; 503-1 Lincoln; 504-1 Lincoln; 505-1 Lincoln; 506-1 Lincoln; 507-1 Lincoln; 508-1 Lincoln; 509-1 Lincoln; 510-1 Lincoln; 511-1 Lincoln; 512-1 Lincoln; 513-1 Lincoln; 514-1 Lincoln; 515-1 Lincoln; 516-1 Lincoln; 517-1 Lincoln; 518-1 Lincoln; 519-1 Lincoln; 520-1 Lincoln; 521-1 Lincoln; 522-1 Lincoln; 523-1 Lincoln; 524-1 Lincoln; 525-1 Lincoln; 526-1 Lincoln; 527-1 Lincoln; 528-1 Lincoln; 529-1 Lincoln; 530-1 Lincoln; 531-1 Lincoln; 532-1 Lincoln; 533-1 Lincoln; 534-1 Lincoln; 535-1 Lincoln; 536-1 Lincoln; 537-1 Lincoln; 538-1 Lincoln; 539-1 Lincoln; 540-1 Lincoln; 541-1 Lincoln; 542-1 Lincoln; 543-1 Lincoln; 544-1 Lincoln; 545-1 Lincoln; 546-1 Lincoln; 547-1 Lincoln; 548-1 Lincoln; 549-1 Lincoln; 550-1 Lincoln; 551-1 Lincoln; 552-1 Lincoln; 553-1 Lincoln; 554-1 Lincoln; 555-1 Lincoln; 556-1 Lincoln; 557-1 Lincoln; 558-1 Lincoln; 559-1 Lincoln; 560-1 Lincoln; 561-1 Lincoln; 562-1 Lincoln; 563-1 Lincoln; 564-1 Lincoln; 565-1 Lincoln; 566-1 Lincoln; 567-1 Lincoln; 568-1 Lincoln; 569-1 Lincoln; 570-1 Lincoln; 571-1 Lincoln; 572-1 Lincoln; 573-1 Lincoln; 574-1 Lincoln; 575-1 Lincoln; 576-1 Lincoln; 577-1 Lincoln; 578-1 Lincoln; 579-1 Lincoln; 580-1 Lincoln; 581-1 Lincoln; 582-1 Lincoln; 583-1 Lincoln; 584-1 Lincoln; 585-1 Lincoln; 586-1 Lincoln; 587-1 Lincoln; 588-1 Lincoln; 589-1 Lincoln; 590-1 Lincoln; 591-1 Lincoln; 592-1 Lincoln; 593-1 Lincoln; 594-1 Lincoln; 595-1 Lincoln; 596-1 Lincoln; 597-1 Lincoln; 598-1 Lincoln; 599-1 Lincoln; 600-1 Lincoln; 601-1 Lincoln; 602-1 Lincoln; 603-1 Lincoln; 604-1 Lincoln; 605-1 Lincoln; 606-1 Lincoln; 607-1 Lincoln; 608-1 Lincoln; 609-1 Lincoln; 610-1 Lincoln; 611-1 Lincoln; 612-1 Lincoln; 613-1 Lincoln; 614-1 Lincoln; 615-1 Lincoln; 616-1 Lincoln; 617-1 Lincoln; 618-1 Lincoln; 619-1 Lincoln; 620-1 Lincoln; 621-1 Lincoln; 622-1 Lincoln; 623-1 Lincoln; 624-1 Lincoln; 625-1 Lincoln; 626-1 Lincoln; 627-1 Lincoln; 628-1 Lincoln; 629-1 Lincoln; 630-1 Lincoln; 631-1 Lincoln; 632-1 Lincoln; 633-1 Lincoln; 634-1 Lincoln; 635-1 Lincoln; 636-1 Lincoln; 637-1 Lincoln; 638-1 Lincoln; 639-1 Lincoln; 640-1 Lincoln; 641-1 Lincoln; 642-1 Lincoln; 643-1 Lincoln; 644-1 Lincoln; 645-1 Lincoln; 646-1 Lincoln; 647-1 Lincoln; 648-1 Lincoln; 649-1 Lincoln; 650-1 Lincoln; 651-1 Lincoln; 652-1 Lincoln; 653-1 Lincoln; 654-1 Lincoln; 655-1 Lincoln; 656-1 Lincoln; 657-1 Lincoln; 658-1 Lincoln; 659-1 Lincoln; 660-1 Lincoln; 661-1 Lincoln; 662-1 Lincoln; 663-1 Lincoln; 664-1 Lincoln; 665-1 Lincoln; 666-1 Lincoln; 667-1 Lincoln; 668-1 Lincoln; 669-1 Lincoln; 670-1 Lincoln; 671-1 Lincoln; 672-1 Lincoln; 673-1 Lincoln; 674-1 Lincoln; 675-1 Lincoln; 676-1 Lincoln; 677-1 Lincoln; 678-1 Lincoln; 679-1 Lincoln; 680-1 Lincoln; 681-1 Lincoln; 682-1 Lincoln; 683-1 Lincoln; 684-1 Lincoln; 685-1 Lincoln; 686-1 Lincoln; 687-1 Lincoln; 688-1 Lincoln; 689-1 Lincoln; 690-1 Lincoln; 691-1 Lincoln; 692-1 Lincoln; 693-1 Lincoln; 694-1 Lincoln; 695-1 Lincoln; 696-1 Lincoln; 697-1 Lincoln; 698-1 Lincoln; 699-1 Lincoln; 700-1 Lincoln; 701-1 Lincoln; 702-1 Lincoln; 703-1 Lincoln; 704-1 Lincoln; 705-1 Lincoln; 706-1 Lincoln; 707-1 Lincoln; 708-1 Lincoln; 709-1 Lincoln; 710-1 Lincoln; 711-1 Lincoln; 712-1 Lincoln; 713-1 Lincoln; 714-1 Lincoln; 715-1 Lincoln; 716-1 Lincoln; 717-1 Lincoln; 718-1 Lincoln; 719-1 Lincoln; 720-1 Lincoln; 721-1 Lincoln; 722-1 Lincoln; 723-1 Lincoln; 724-1 Lincoln; 725-1 Lincoln; 726-1 Lincoln; 727-1 Lincoln; 728-1 Lincoln; 729-1 Lincoln; 730-1 Lincoln; 731-1 Lincoln; 732-1 Lincoln; 733-1 Lincoln; 734-1 Lincoln; 735-1 Lincoln; 736-1 Lincoln; 737-1 Lincoln; 738-1 Lincoln; 739-1 Lincoln; 740-1 Lincoln; 741-1 Lincoln; 742-1 Lincoln; 743-1 Lincoln; 744-1 Lincoln; 745-1 Lincoln; 746-1 Lincoln; 747-1 Lincoln; 748-1 Lincoln; 749-1 Lincoln; 750-1 Lincoln; 751-1 Lincoln; 752-1 Lincoln; 753-1 Lincoln; 754-1 Lincoln; 755-1 Lincoln; 756-1 Lincoln; 757-1 Lincoln; 758-1 Lincoln; 759-1 Lincoln; 760-1 Lincoln; 761-1 Lincoln; 762-1 Lincoln; 763-1 Lincoln; 764-1 Lincoln; 765-1 Lincoln; 766-1 Lincoln; 767-1 Lincoln; 768-1 Lincoln; 769-1 Lincoln; 770-1 Lincoln; 771-1 Lincoln; 772-1 Lincoln; 773-1 Lincoln; 774-1 Lincoln; 775-1 Lincoln; 776-1 Lincoln; 777-1 Lincoln; 778-1 Lincoln; 779-1 Lincoln; 780-1 Lincoln; 781-1 Lincoln; 782-1 Lincoln; 783-1 Lincoln; 784-1 Lincoln; 785-1 Lincoln; 786-1 Lincoln; 787-1 Lincoln; 788-1 Lincoln; 789-1 Lincoln; 790-1 Lincoln; 791-1 Lincoln; 792-1 Lincoln; 793-1 Lincoln; 794-1 Lincoln; 795-1 Lincoln; 796-1 Lincoln; 797-1 Lincoln; 798-1 Lincoln; 799-1 Lincoln; 800-1 Lincoln; 801-1 Lincoln; 802-1 Lincoln; 803-1 Lincoln; 804-1 Lincoln; 805-1 Lincoln; 806-1 Lincoln; 807-1 Lincoln; 808-1 Lincoln; 809-1 Lincoln; 810-1 Lincoln; 811-1 Lincoln; 812-1 Lincoln; 813-1 Lincoln; 814-1 Lincoln; 815-1 Lincoln; 816-1 Lincoln; 817-1 Lincoln; 818-1 Lincoln; 819-1 Lincoln; 820-1 Lincoln; 821-1 Lincoln; 822-1 Lincoln; 823-1 Lincoln; 824-1 Lincoln; 825-1 Lincoln; 826-1 Lincoln; 827-1 Lincoln; 828-1 Lincoln; 829-1 Lincoln; 830-1 Lincoln; 831-1 Lincoln; 832-1 Lincoln; 833-1 Lincoln; 834-1 Lincoln; 835-1 Lincoln; 836-1 Lincoln; 837-1 Lincoln; 838-1 Lincoln; 839-1 Lincoln; 840-1 Lincoln; 841-1 Lincoln; 842-1 Lincoln; 843-1 Lincoln; 844-1 Lincoln; 845-1 Lincoln; 846-1 Lincoln; 847-1 Lincoln; 848-1 Lincoln; 849-1 Lincoln; 850-1 Lincoln; 851-1 Lincoln; 852-1 Lincoln; 853-1 Lincoln; 854-1 Lincoln; 855-1 Lincoln; 856-1 Lincoln; 857-1 Lincoln; 858-1 Lincoln; 859-1 Lincoln; 860-1 Lincoln; 861-1 Lincoln; 862-1 Lincoln; 863-1 Lincoln; 864-1 Lincoln; 865-1 Lincoln; 866-1 Lincoln; 867-1 Lincoln; 868-1 Lincoln; 869-1 Lincoln; 870-1 Lincoln; 871-1 Lincoln; 872-1 Lincoln; 873-1 Lincoln; 874-1 Lincoln; 875-1 Lincoln; 876-1 Lincoln; 877-1 Lincoln; 878-1 Lincoln; 879-1 Lincoln; 880-1 Lincoln; 881-1 Lincoln; 882-1 Lincoln; 883-1 Lincoln; 884-1 Lincoln; 885-1 Lincoln; 886-1 Lincoln; 887-1 Lincoln; 888-1 Lincoln; 889-1 Lincoln; 890-1 Lincoln; 891-1 Lincoln; 892-1 Lincoln; 893-1 Lincoln; 894-1 Lincoln; 895-1 Lincoln; 896-1 Lincoln; 897-1 Lincoln; 898-1 Lincoln; 899-1 Lincoln; 900-1 Lincoln; 901-1 Lincoln; 902-1 Lincoln; 903-1 Lincoln; 904-1 Lincoln; 905-1 Lincoln; 906-1 Lincoln; 907-1 Lincoln; 908-1 Lincoln; 909-1 Lincoln; 910-1 Lincoln; 911-1 Lincoln; 912-1 Lincoln; 913-1 Lincoln; 914-1 Lincoln; 915-1 Lincoln; 916-1 Lincoln; 917-1 Lincoln; 918-1 Lincoln; 919-1 Lincoln; 920-1 Lincoln; 921-1 Lincoln; 922-1 Lincoln; 923-1 Lincoln; 924-1 Lincoln; 925-1 Lincoln; 926-1 Lincoln; 927-1 Lincoln; 928-1 Lincoln; 929-1 Lincoln; 930-1 Lincoln; 931-1 Lincoln; 932-1 Lincoln; 933-1 Lincoln; 934-1 Lincoln; 935-1 Lincoln; 936-1 Lincoln; 937-1 Lincoln; 938-1 Lincoln; 939-1 Lincoln; 940-1 Lincoln; 941-1 Lincoln; 942-1 Lincoln; 943-1 Lincoln; 944-1 Lincoln; 945-1 Lincoln; 946-1 Lincoln; 947-1 Lincoln; 948-1 Lincoln; 949-1 Lincoln; 950-1 Lincoln; 951-1 Lincoln; 952-1 Lincoln; 953-1 Lincoln; 954-1 Lincoln; 955-1 Lincoln; 956-1 Lincoln; 957-1 Lincoln; 958-1 Lincoln; 959-1 Lincoln; 960-1 Lincoln; 961-1 Lincoln; 962-1 Lincoln; 963-1 Lincoln; 964-1 Lincoln; 965-1 Lincoln; 966-1 Lincoln; 967-1 Lincoln; 968-1 Lincoln; 969-1 Lincoln; 970-1 Lincoln; 971-1 Lincoln; 972-1 Lincoln; 973-1 Lincoln; 974-1 Lincoln; 975-1 Lincoln; 976-1 Lincoln; 977-1 Lincoln; 978-1 Lincoln; 979-1 Lincoln; 980-1 Lincoln; 981-1 Lincoln; 982-1 Lincoln; 983-1 Lincoln; 984-1 Lincoln; 985-1 Lincoln; 986-1 Lincoln; 987-1 Lincoln; 988-1 Lincoln; 989-1 Lincoln; 990-1 Lincoln; 991-1 Lincoln; 992-1 Lincoln; 993-1 Lincoln; 994-1 Lincoln; 995-1 Lincoln; 996-1 Lincoln; 997-1 Lincoln; 998-1 Lincoln; 999-1 Lincoln; 1000-1 Lincoln; 1001-1 Lincoln; 1002-1 Lincoln; 1003-1 Lincoln; 1004-1 Lincoln; 1005-1 Lincoln; 1006-1 Lincoln; 1007-1 Lincoln; 1008-1 Lincoln; 1009-1 Lincoln; 1010-1 Lincoln; 1011-1 Lincoln; 1012-1 Lincoln; 1013-1 Lincoln; 1014-1 Lincoln; 1015-1 Lincoln; 1016-1 Lincoln; 1017-1 Lincoln; 1018-1 Lincoln; 1019-1 Lincoln; 1020-1 Lincoln; 1021-1 Lincoln; 1022-1 Lincoln; 1023-1 Lincoln; 1024-1 Lincoln; 1025-1 Lincoln; 1026-1 Lincoln; 1027-1 Lincoln; 1028-1 Lincoln; 1029-1 Lincoln; 1030-1 Lincoln; 1031-1 Lincoln; 1032-1 Lincoln; 1033-1 Lincoln; 1034-1 Lincoln; 1035-1 Lincoln; 1036-1 Lincoln; 1037-1 Lincoln; 1038-1 Lincoln; 1039-1 Lincoln; 1040-1 Lincoln; 1041-1 Lincoln; 1042-1 Lincoln; 1043-1 Lincoln; 1044-1 Lincoln; 1045-1 Lincoln; 1046-1 Lincoln; 1047-1 Lincoln; 1048-1 Lincoln; 1049-1 Lincoln; 1050-1 Lincoln; 1051-1 Lincoln; 1052-1 Lincoln; 1053-1 Lincoln; 1054-1 Lincoln; 1055-1 Lincoln; 1056-1 Lincoln; 1057-1 Lincoln; 1058-1 Lincoln; 1059-1 Lincoln; 1060-1 Lincoln; 1061-1 Lincoln; 1062-1 Lincoln; 1063-1 Lincoln; 1064-1 Lincoln; 1065-1 Lincoln; 1066-1 Lincoln; 1067-1 Lincoln; 1068-1 Lincoln; 1069-1 Lincoln; 1070-1 Lincoln; 1071-1 Lincoln; 1072-1 Lincoln; 1073-1 Lincoln; 1074-1 Lincoln; 1075-1 Lincoln; 1076-1 Lincoln; 1077-1 Lincoln; 1078-1 Lincoln; 1079-1 Lincoln; 1080-1 Lincoln; 1081-1 Lincoln; 1082-1 Lincoln; 1083-1 Lincoln; 1084-1 Lincoln; 1085-1 Lincoln; 1086-1 Lincoln; 1087-1 Lincoln; 1088-1 Lincoln; 1089-1 Lincoln; 1090-1 Lincoln; 1091-1 Lincoln; 1092-1 Lincoln; 1093-1 Lincoln; 1094-1 Lincoln; 1095-1 Lincoln; 1096-1 Lincoln; 1097-1 Lincoln; 1098-1 Lincoln; 1099-1 Lincoln; 1100-1 Lincoln; 1101-1 Lincoln; 1102-1 Lincoln; 1103-1 Lincoln; 1104-1 Lincoln; 1105-1 Lincoln; 1106-1 Lincoln; 1107-1 Lincoln; 1108-1 Lincoln; 1109-1 Lincoln; 1110-1 Lincoln; 1111-1 Lincoln; 1112-1 Lincoln; 1113-1 Lincoln; 1114-1 Lincoln; 1115-1 Lincoln; 1116-1 Lincoln; 1117-1 Lincoln; 1118-1 Lincoln; 1119-1 Lincoln; 1120-1 Lincoln; 1121-1 Lincoln; 1122-1 Lincoln; 1123-1 Lincoln; 1124-1 Lincoln; 1125-1 Lincoln; 1126-1 Lincoln; 1127-1 Lincoln; 1128-1 Lincoln; 1129-1 Lincoln; 1130-1 Lincoln; 1131-1 Lincoln; 1132-

The hundred per cent. BRITISH TYPEWRITER.



IMPERIAL TYPEWRITERS.

12 inch Model. Shs. 62/-. FREE SERVICE FOR 12 MONTHS. HAVE ONE ON TRIAL.

Dalgety & Co., Ltd. MOMBASA, NAIROBI, EL DORET

PROSPECTY OF RUHR DISTRICT.

Huge Increase in Acreage Under Cultivation.

EXTENSIVE DEVELOPMENT.

STANDARD GOSWORTHY LAY. (By Mr. J. J. ...)

The year 1933 was a period of extensive development in the Ruhr area, the chief products of which were iron and steel, and were rapidly turning to the south and leading to the new State of Westphalia, which is now a separate administrative unit...

THE FIVE LOCAL MEMBERS OF THE BOARD.

The five local members of the Board, who are to be elected to the Board, are: Mr. J. J. ...

New Sugar Factory.

The sugar estate in growth will be worked and located in the new factory of ...

THE FIVE LOCAL MEMBERS OF THE BOARD.

The five local members of the Board, who are to be elected to the Board, are: Mr. J. J. ...

New Sugar Factory.

The sugar estate in growth will be worked and located in the new factory of ...

THE FIVE LOCAL MEMBERS OF THE BOARD.

The five local members of the Board, who are to be elected to the Board, are: Mr. J. J. ...

New Sugar Factory.

The sugar estate in growth will be worked and located in the new factory of ...

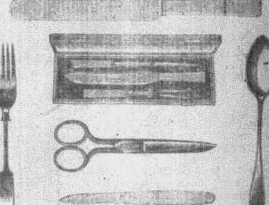
SPECIAL 'H & S' SCOTCH



The finest obtainable irrespective of price. The product of an independent firm of Scotch Whisky Distillers. The whisky of 'Quality'.

WHOLESALE AND RETAIL STOCKISTS. COLONIAL GENERAL STORES, LTD., NAIROBI. W. H. Holt & Sons, Limited, Aberdeen-Glasgow-Dunfermline-Strathgry, Scotland.

CUTLERY



LARGE SELECTION. FOUR QUALITIES. Prices to suit All.

W. WINGRAM & Co.

THE TOOL HOUSE. O. Box 9, NAIROBI. Telegrams: 'Ironware'.

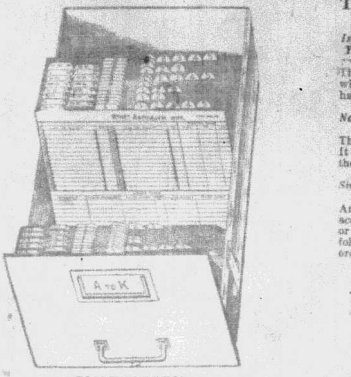
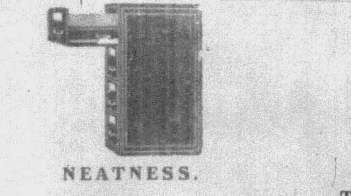
NURSERY RHYMES NEWLY NARRATED.

No. 11 - SIMPLE SIMON. Simple Simon, you'll find the man living on such fare. Said Simple Simon, 'I would buy, man, Elsehow if I did. Just you try, man - listen, Simon. At St. J.'s, old gony, If you buy, man, it's no lie, man. You'll find you save money'.

Fresh stocks always arriving of Provisions, Wines, Spices, Liquors, Cigars, Tobaccos, Toilet Requisites and Sundries.

SOUZA JUNIOR & DIAS. (ESTABLISHED IN 1880) P.O. Box 341, NAIROBI. DISCOUNT GIVEN ON CASH PURCHASES.

THE RONEO System of Filing How a Letter is Found



THE alphabetical division on the Guide gives the first key! Is the name you are looking for here? Then you at once see the number of the folder which contains the correspondence, and your hand goes straight to it. Then if you have had any correspondence at all, it must be in the "Miscellaneous" Folder under the same Alphabetical Division. And much easier than referring to a name or less accurate Card Index for the number of the folder, or to a more or less correctly-kept collection of folders in what should be strictly alphabetical order.

Roneo Numeralpha System

calls for three operations only. 1. Open the Drawer 2. Glance at the Guide 3. Take out the Folder

Standard Stationery Stores. Sixth Avenue, Nairobi.

Opening Announcement. D. V. LALL, Sole of Dublin Ltd. Watch, Clock and Jewellery Repairs of all kinds. Address: BRIDGE HOUSE, GOVERNMENT ROAD, P.O. Box 168, NAIROBI.

Doonholm Dairy.

Box 11, Nairobi. FOR Pure Milk and Cream. From Farm to Consumer.

John Rifkin.

SIXTH AVENUE, P.O. Box 318, NAIROBI.

WAGON BUILDERS, BLACKSMITH FARMERS. Stock of AXLES, BRAKES, WAGGERS and AWLS. ALL KINDS OF WAGGERS MADE TO ORDER.

P. STEWART, 1, CAR, ROAD, FAIRHART & DEERHART, Harding Street, NAIROBI, P.O. Box 224.

PAINTS, COLOURS, OILS, VARNISHES & DISTEMPERS. Large or Small Quantities.

THE Bradford Manufacturing CO., LTD.

Special Display in our Gentlemen's Department of SHIRTS and PYJAMAS in Linens, Tricoline, Talfeta, and Silky Poplins. Latest Colourings and Stripes. All garments tailored at our Factory in Bradford and sold with the usual B.M.C. Guarantee. Imperial Chambers, Government Road, above Tava Ltd. Box 110.

Just Arrived.

A nice selection of Children's Shoes Red and Blue Charleston Sandals, Pat. Bern, etc. Prices from Shs. 7/50 pair EXPERTS AT SHOE FITTING.

De Luxe Boot Co.

Box 67, NAIROBI.

VERMOUTH

at 4/50 per litre bottle. This Vermouth is made from genuine portwine in midway between French and Italian Vermouth in taste - a "mixed vermouth" in fact. Sold cheap to make room for the year.

MISA'S SHERRY

"Oloroso" at 6/50 per qt. bottle. This is the finest wine for the table. SPECIAL PRICE TO THE TRADE. To be had from -

B. C. SIQUEIRA, P. O. Box 542, NAIROBI.

BRITISH INDIA STEAM NAVIGATION COMPANY, LTD.

BRITISH INDIA STEAM NAVIGATION COMPANY, LTD.

FORWARD TO SEEL

From Mombasa

| | |
|----------------|----------------|
| Standard Class | 2nd March 1928 |
| Standard Class | 21st April |
| Standard Class | 22nd June |
| Standard Class | 18th August |

REARWARD TO SOUTH AFRICA

From Mombasa

| | |
|---------------------------|---------------|
| Empire Castle (open only) | 11th February |
| Empire Castle | 14th March |
| Empire Castle | 19th March |
| Empire Castle | 21st May |
| Empire Castle | 24th May |
| Empire Castle | 28th June |
| Empire Castle | 28th July |
| Empire Castle | 30th August |

Three times from 4th to 14th and 24th Oct also

R.M.S. Corporation Ltd., Nairobi, Kenya, etc.
 Messageries Maritimes, Marseilles, France
 P. O. Box 100, Mombasa

LONDON AND EAST AFRICA LINE

LONDON TO MOMBASA, via Marseilles, Port Said, Port Sudan and Aden, Outwards and Homewards.

Shippers Arrive Kilindi Sail from London about

| | | |
|--------------|------------|------------|
| R.M.S. Maids | 16th Feb | 16th Feb |
| R.E. Madras | 15th Feb | 15th March |
| R.E. Madras | 15th March | 15th April |
| R.E. Madras | 12th April | 11th May |
| R.E. Madras | 10th May | 8th June |
| R.E. Madras | 7th June | 5th July |
| R.E. Madras | 4th July | 2nd Aug |
| R.E. Madras | 3rd Aug | 31st Aug |
| R.E. Madras | 31st Aug | 28th Sept |
| R.E. Madras | 28th Sept | 26th Oct |

Homeward steamers call at Plymouth affording passengers the opportunity of disembarking there. Cargo accepted for Antwerp direct on all steamers.

AND PENINSULAR AND ORIENTAL STEAM NAVIGATION CO. BOMBAY - DURBAN MAIL SERVICE.

Callings: Kilindi, Zanzibar, Dar-es-Salaam, Beira, Delagoa Bay, Durban. Also Mombasa weekly, Outwards and Inwards.

TO BOMBAY:

| | |
|--------------|---------------|
| R.M.S. Karoo | 8th February |
| R.M.S. Karoo | 20th February |
| R.M.S. Karoo | 8th March |
| R.M.S. Karoo | 20th March |

TO DURBAN:

| | |
|--------------|---------------|
| R.M.S. Karoo | 30th January |
| R.M.S. Karoo | 10th February |
| R.M.S. Karoo | 23rd February |
| R.M.S. Karoo | 8th March |
| R.M.S. Karoo | 22nd March |
| R.M.S. Karoo | 5th April |

COASTAL SERVICE

THE M.V. "DWARA" sails for Southern Port on the 11th June.

TO MOMBASA:

On 11th February, 1928, the M.V. "DWARA" will sail from Mombasa to Durban, calling at Mombasa.

TO LONDON & MARSHELLES via MOMBASA:

The Bombay-Durban Mail Steamers are now scheduled to arrive & depart on Saturdays & Mondays with the P. & O. Mail Steamers, thus giving passengers an alternative route to London & Marseilles and bringing Mombasa within 30 days of Marseilles.

CHIVERS' PATENT HYGIENIC COVER

Keeps contents of jar or vessel in perfect condition of sterility. Ensures cleanliness and prevents contamination from dust, insects, etc. It is easily removed and so placed at will.



Chivers' Jams

Prepared on the best modern scientific basis and selected from the finest fruit in the Empire. Contains a most luscious, natural, delicious jam.

Sole Agents (for trade only): R. C. HAMILTON, Ltd., Box 302, NAIROBI. Phone 352.

Messageries Maritimes

(FRENCH MAIL STEAMERS)

Regular and fortnightly service to and from

THE QUICKEST ROUTE TO LONDON

NEXT SAILINGS TO LONDON

| | |
|-----------------------------|---------------|
| "L'Amiral" | 21st February |
| "Bismarck de St. Pierre" | 17th February |
| "Exploitation Grandville" | 3rd March |
| "Avalon" (R.M.T. "Gironde") | 17th February |

ORIENTAL AND ALL-ASIA SERVICE

NEXT ARRIVAL FROM MARSHELLES

| | |
|---------------------------|--------------|
| "Exploitation Grandville" | 28th January |
| "Bismarck de St. Pierre" | 24th January |

SMITH, MACKENZIE & CO., P.O. Box 16, MOMBASA. P.O. Box 28, NAIROBI.

Keith Timber Co. Ltd.

P.O. Box 874, Sadler Street, Nairobi.

CEDAR AND PODO OF ALL SIZES. MACHINED TIMBER A SPECIALITY. CEDAR FENCING POSTS, SEASONED FLOOR BLOCKS IN STOCK.

Phone 289.

F. A. HEAD,

PLANOPORT TUNER AND REPAIRER

Five years with Messrs. Chappell & Co., London. Seven years' experience in Kenya Colony.

Send all orders to P. O. Box 675

EXPERT VULCANIZING

THE HEINTZ ELECTRIC WAY, IT'S DIFFERENT.

ALL WORK GUARANTEED

K. McIvor's Garage.

Phone 97, Sixth Avenue, P.O. Box 97.

OVERSEA'S MAILS.

| STEAMSHIP | FROM | Days of Month | Days of Month |
|---------------|---------------|---------------|---------------|
| Canada Maru | South America | Feb 22 | Feb 2 |
| Kanaka | Europe | Feb 23 | Feb 3 |
| Chongqing | Europe | Feb 24 | Feb 4 |
| A. R. Gironde | Europe | Feb 25 | Feb 5 |

| STEAMSHIP | TO | Days of Month | Days of Month |
|---------------|---------------|---------------|---------------|
| Kanaka | South America | Feb 28 | Feb 8 |
| Chongqing | Europe | Feb 29 | Feb 9 |
| A. R. Gironde | Europe | Feb 30 | Feb 10 |

UPLANDS NEWS!

A recent unique and uncollected testimonial.

Lady... would like to remark that the goods taken on safari remained in excellent condition during 6 weeks on the road and a portion of the side of Eruwa has been in perfect condition, which surprised the cook, a period of almost 6 months.

UPLANDS' PRODUCTS

are regularly stocked by all the leading Stores throughout EASTERN AFRICA.

TRUTH

IN ITS NAME

THE

Express Transport Coy.

Garage Contractors to Kenya and Uganda Railways and Harbours.

SAISFACTION GUARANTEED At Competitive Prices.

GENERAL TRANSPORT, STORAGE and FUEL CONTRACTORS.

NAIROBI and MOMBASA

Phone: Town Office—333 Station Office—55

MASSEY - HARRIS

No. 5. DISC HARROW.



Alumina Lamination. Improved bearings. Family transportable. Handy for carting.

MADE IN ENGLAND. S.S. 40 and 40 1/2 inch.

SMITH MACKENZIE & Co. NAIROBI.

The African Marine & General Engineering COMPANY LTD. KILINDINI

SHIP REPAIRING. SAIL MAKING & REPAIRING. MOULDING.

OXY ACETYLENE WELDING & CUTTING

In their well-equipped Carpenters Shops, all types of House and Office Furniture are made and repaired.

Estimates requiring repairs to machinery, implements, etc., are invited to communicate.

ESTIMATES GIVEN. Tel. "Angico", Mombasa.

SMITH, MACKENZIE & Co., General Managers.

Mrs. E. M. PAINE, L.L.M., A.B.C.M.

ASSISTANT GIVING INSTRUCTIONS TO SINGING AND PIANOFORTE STUDIOS - Capital Chambers, 101-102, South Avenue, Nairobi.

DAVIS & Co.

LAND DEPARTMENT.

HERE IS YOUR chance.

WHY PAY BEST? The best value for the money is obtained by purchasing a plot of land with a building on it. The building can be used for a variety of purposes and the land can be used for a variety of purposes. The building can be used for a variety of purposes and the land can be used for a variety of purposes.

SOAP FACTORY - The factory is situated in a healthy and fertile area. The factory is situated in a healthy and fertile area. The factory is situated in a healthy and fertile area.

UNDEVELOPED FARMS - The farms are situated in a healthy and fertile area. The farms are situated in a healthy and fertile area. The farms are situated in a healthy and fertile area.

COFFEE ORCHARD - The orchard is situated in a healthy and fertile area. The orchard is situated in a healthy and fertile area. The orchard is situated in a healthy and fertile area.

COUNTRY ESTATE - The estate is situated in a healthy and fertile area. The estate is situated in a healthy and fertile area. The estate is situated in a healthy and fertile area.

NATIONAL BANK OF INDIA LIMITED.

Incorporated in India (Kingdom).

Bankers to the Colony and Protectorate of Kenya and Protectorate of Tanganyika.

Capital - £2,000,000

Reserve Fund - £2,000,000

25, Hatfield-gate, London, E.C. 1.

Branches: Mombasa, Nairobi, Nakuru, Kisumu, Malindi, Lamu, Taita, Zanzibar, Dar-es-Salaam, Aden, Bombay, Calcutta, Madras, Karachi, Lahore, Amritsar, Delhi, Cawnpore, Colombo, Rangoon, Singapore, Hong Kong, Canton, Shanghai, Peking, Hankow, Tientsin, Harbin, Moscow, London, New York, San Francisco, San Pedro de Macoris, Havana, Santiago de Cuba, Matanzas, Pinar del Rio, Remedios, Sancti Spiritus, Sagua la Grande, Sancti Spiritus, Sancti Spiritus, Sancti Spiritus.

Deutsche Ost-Afrika-Linie (GERMAN AFRICAN SERVICE)

Homewards via Suez Canal. Kilindi to Durban.

| Leaving Mombasa | Leaving Mombasa |
|-----------------|-----------------|
| 12th Feb | 7th Feb |
| 19th March | 14th Mar |
| 16th April | 11th Apr |
| 13th May | 8th May |
| 10th June | 5th June |
| 7th July | 2nd July |
| 4th Aug | 1st Aug |
| 1st Sept | 29th July |

SAISFACTION SUBJECT TO ALIENATION 14 days in Southampton.

ESTIMATES GIVEN. Tel. "Angico", Mombasa.

SMITH, MACKENZIE & Co., General Managers.

Compagnia Italiana Transatlantica.

Monthly Passenger Service to NAPLES and GENOA.

THE BEST ROUTE TO ENGLAND.

SAISFACTION SUBJECT TO ALIENATION 14 days in Southampton.

ESTIMATES GIVEN. Tel. "Angico", Mombasa.

SMITH, MACKENZIE & Co., General Managers.

Topics for Motorists.

It's a Long Lane that has no Turning

BUT EVEN THE LOWEST LAKE IS NEVER SHALLOWER WHEN TRAVELLING WITH THE RIGHT SHIRT



The Esprit de Cars.

Scotland's Finest Whisky



LONG JOHN

Characteristically PURE AND MATURE

DISTRIBUTORS: B. EPSTEIN & CO.

Nairobi Vulcanizing COMPANY

Additional plant has now arrived All tyres up to 42 x 9

Sole Agents: VIX HUMIDIFIER and PETROL SAVER

ESSJAY LIMITED. BOLLUS HOUSE, GOVERNMENT ROAD, NAIROBI.

FINANCIAL & PROPERTY AGENT. We have sound investments for sums from £100 upwards.

Anti-Dazzle Headlights.

A Difficult Problem.

Motorists have wondered why sometimes they seem to be working on a very long lane... Topics for Motorists.

Experimental Research. In the General Motors Research Laboratories this problem is receiving its full share of attention.

A long wide road is the ideal for a driver. Along the side of the road signs and road markings are placed to guide the driver.

As the high road is a pattern, and on the low road is a pattern, it is not in itself a problem.

A favorite method of developing a new lamp is to put four small reflectors in a row.

Chromium Plating. Its Uses in Manufacturing of Cars. BRILLIANT REFLECTOR.

When a small amount of chromium is added to the surface of a metal, it forms a thin, hard, and lustrous film.

Notice. Permanent Waving Whole Head 60- UNTIL 31st JANUARY Theo. SCHOUTEN GOVERNMENT ROAD.

S. P. Q. R. Small Profit Quick Return NEW YEAR NEW GOODS

LALCHAND MOOLCHAND BROS. Government Road, NAIROBI.

The conditions on which it is developed... The weight of metal used is an actual fact of the raw material.

Chromium compound favorably with nickel, used in various forms... Chromium plating is a process of depositing a thin layer of chromium on the surface of a metal.

Chromium plating is a process of depositing a thin layer of chromium on the surface of a metal... The production of 1,000,000 cars in less than eight months is the achievement of the Chrysler Corporation.

Chromium plating is a process of depositing a thin layer of chromium on the surface of a metal... The production of 1,000,000 cars in less than eight months is the achievement of the Chrysler Corporation.

Chromium plating is a process of depositing a thin layer of chromium on the surface of a metal... The production of 1,000,000 cars in less than eight months is the achievement of the Chrysler Corporation.

Chromium plating is a process of depositing a thin layer of chromium on the surface of a metal... The production of 1,000,000 cars in less than eight months is the achievement of the Chrysler Corporation.

Chromium plating is a process of depositing a thin layer of chromium on the surface of a metal... The production of 1,000,000 cars in less than eight months is the achievement of the Chrysler Corporation.

Chromium plating is a process of depositing a thin layer of chromium on the surface of a metal... The production of 1,000,000 cars in less than eight months is the achievement of the Chrysler Corporation.

Chromium plating is a process of depositing a thin layer of chromium on the surface of a metal... The production of 1,000,000 cars in less than eight months is the achievement of the Chrysler Corporation.

Once a Visit Solicited. Prices suitable. Our articles are better than those of any other firm.

The VICTORY SIX



Engineering Victory of the Decade

Dodge Brothers Victory Six is the only car of its kind in the world. It is a masterpiece of engineering.

Four-door sedan, six-cylinder touring car, box body. Price £250 to £350.

S. FISHER & SIMMONS (E.A.) Ltd., Victoria Street, NAIROBI.

DODGE BROTHERS MOTOR CARS

KIRKWOOD & Co. LAND AGENTS

We have inquiries for large office Estates in Kenya. Will sell on full details and arrange for sale.

Sale! Sale!! Sale!!!

Commencing from 25th January ENORMOUS REDUCTION THROUGHOUT THE STOCK.

Special Bargains FOR A FORTNIGHT ONLY.

DRASTIC REDUCTIONS IN EVERY DESCRIPTION OF DRESS MATERIAL. CORNER HUSEIN'S GOVERNMENT ROAD.

To the punctilious housewife who is exacting in her choice and looks for economy as a matter of course, we can offer SERVICE SECOND TO NONE.

Nairobi General Cash Stores, Ltd. Government Road, NAIROBI.

Kenya Loan & Discount Co., Ltd NAIROBI.

OFFICES— 1st Floor, Court Chambers, P.O. Box 646. FINANCIAL AGENTS. BILLS DISCOUNTED. SHORT PERIOD LOANS GRANTED.

Once a Visit Solicited

Prices suitable. Our articles are better than those of any other firm. KALA SIDI NAIROBI.

THE OVERLAND WHIPPET

Mr. E. J. Gilgill writes—
"I have a 1100 cc. Overland single mechanical
Whippet and still using 3 of the
original tyres."

OVERLAND

Quality is in the Engine
Prices From
£180
COMPLETE CARS NO EXTRAS

MOULTON & MORRISON Ltd
NAIROBI

GOULDS PUMPS

HAND or POWER
FOR ALL PURPOSES



SPECIFICATIONS FOR ALL CLASSES OF PUMPING PLANTS GIVEN

J. W. Milligan & Co.,

MOSHU
Box 10.
NAIROBI
Box 148.

A. H. Wardle & Co. Ltd.

50 Optical Chemists
NAIROBI.

Optical Manager.
V. M. BROWSE, F.S.M.C. F.I.O.

SCIENTIFIC EYE TESTING.

Only the best lenses and frames stocked
Testing and Spectacles complete, from 2/6.

QUEEN ANNE

RARE
OLD
SCOTCH
WHISKY

The Choice of the Connoisseurs

As selected for the Royal Safari.

Distributors—

R. G. Vernon & Co.,

TRADING BUILDINGS
NAIROBI
2, 3 & 4, 5, 6, 7, 8, 9, 10, 11, 12, 13, 14, 15, 16, 17, 18, 19, 20, 21, 22, 23, 24, 25, 26, 27, 28, 29, 30, 31, 32, 33, 34, 35, 36, 37, 38, 39, 40, 41, 42, 43, 44, 45, 46, 47, 48, 49, 50, 51, 52, 53, 54, 55, 56, 57, 58, 59, 60, 61, 62, 63, 64, 65, 66, 67, 68, 69, 70, 71, 72, 73, 74, 75, 76, 77, 78, 79, 80, 81, 82, 83, 84, 85, 86, 87, 88, 89, 90, 91, 92, 93, 94, 95, 96, 97, 98, 99, 100

Price 1/6

Post Cards

OF
WONDERFUL VIEWS OF

Mount Kenya

Shs. 1/6 per doz. assorted Post Free

ON SALE AT

A. H. Wardle & Co. Ltd.

CHEMISTS
NAIROBI. MOMBASA. MUMBAI.

Advertisements
Rates of Exchange
BY WIRELESS
FRIDAY, JAN. 25, 1909
London 100
Paris 100
New York 100
Bombay 100
Calcutta 100
Canton 100
Hankow 100
Harbin 100
Hongkong 100
Kobe 100
Lyons 100
Manila 100
Peking 100
Rangoon 100
San Francisco 100
Shanghai 100
Singapore 100
Tientsin 100
Yokohama 100

Ford
THE CAR OF OUTSTANDING VALUE
COMPREHENSIVE RANGE OF MODELS AVAILABLE
FOR IMMEDIATE DELIVERY

SEDAN £230
LIGHT LIGHTLY EQUIPPED (1500 lbs.) £200
PHATTON £194 ROADSTER £199

4-wheel brakes, 4 shock absorbers, spare wheel and
all steel bodies, rear vision mirror, triple windscreen,
speed, fertility, economy and unparalleled
riding comfort.

The Service Company Ltd.

SIXTH AVENUE

NAIROBI

TOILET GAL SOAP

An exquisite soap, long famous among the
Lords of the Spanish Court and used
by the Queen of Spain.

GAL TOILET SOAP IS MADE WITH THE
FINEST STAMBE OILS, OILS OF PERFUM
IS EXCLUSIVE—AN EXOTIC SUBTLE FRAGR-
ANCE WHICH LIVES IN THE HEART OF THE
SOAP AND ENDURES FOR THE LIFE OF THE
TABLET—A BEAUTIFUL SOAP

per box 40 of three tablets.
A BEAUTIFUL SOAP AT A POPULAR PRICE.

KODAK (E.A.) LTD., INC.
Howse & McGeorge
CHEMISTS.
NAIROBI AND ALL BRANCHES

RECKITT'S CROWN BLUE



The white-cream
of lines in a mass of soap
Reckitt's Crown Blue is the
cleaning water. Make sure
that all your lines to emerge
the white of things by
using Reckitt's Crown Blue.
RECKITT AND SONS LTD
HULL AND LONDON

Lead the way on a B.S.A.



BRITAIN'S BIGGEST SELLER
LET US GIVE YOU A TRIAL
Carr, Lawson & Co. Ltd.
NAIROBI

THREE LEADING BRANDS.



EMILE JARDIN & Cie.
NAIROBI

ENGAGEMENT

MR. ROBERT DUNBAR
has been engaged to be married
to Miss Mary Elizabeth
daughter of Mr. and Mrs.
R. G. Vernon, of the
"Ring Road."

African Standard
KISumu
FRIDAY, JAN. 25, 1909

The King's Health

The greatest cause that
the nation will have to
face is the health of the
King. His Majesty the King
has been engaged to be married
to Miss Mary Elizabeth
daughter of Mr. and Mrs.
R. G. Vernon, of the
"Ring Road."

of the King's health is a subject
of the greatest importance
to the nation. The King's
health is the foundation
of the nation's strength.
It is the duty of the
people to do all in their
power to maintain the
King's health.

Stocks
The London Stock Exchange
closed today with a
slight advance. The
market was quiet and
the volume of business
was small.

January 27
The London Stock Exchange
closed today with a
slight advance. The
market was quiet and
the volume of business
was small.

January 28
The London Stock Exchange
closed today with a
slight advance. The
market was quiet and
the volume of business
was small.

January 29
The London Stock Exchange
closed today with a
slight advance. The
market was quiet and
the volume of business
was small.

January 30
The London Stock Exchange
closed today with a
slight advance. The
market was quiet and
the volume of business
was small.

February 1
The London Stock Exchange
closed today with a
slight advance. The
market was quiet and
the volume of business
was small.

February 2
The London Stock Exchange
closed today with a
slight advance. The
market was quiet and
the volume of business
was small.

Rates of Exchange

London 100
Paris 100
New York 100
Bombay 100
Calcutta 100
Canton 100
Hankow 100
Harbin 100
Hongkong 100
Kobe 100
Lyons 100
Manila 100
Peking 100
Rangoon 100
San Francisco 100
Shanghai 100
Singapore 100
Tientsin 100
Yokohama 100

STANDARD 1909

January 27
The London Stock Exchange
closed today with a
slight advance. The
market was quiet and
the volume of business
was small.

January 28
The London Stock Exchange
closed today with a
slight advance. The
market was quiet and
the volume of business
was small.

January 29
The London Stock Exchange
closed today with a
slight advance. The
market was quiet and
the volume of business
was small.

January 30
The London Stock Exchange
closed today with a
slight advance. The
market was quiet and
the volume of business
was small.

February 1
The London Stock Exchange
closed today with a
slight advance. The
market was quiet and
the volume of business
was small.

February 2
The London Stock Exchange
closed today with a
slight advance. The
market was quiet and
the volume of business
was small.

Under the Standard Clock.

The Standard Clock
is the most accurate
and reliable clock
in the world. It is
made of the finest
materials and is
designed to last
for ever. It is the
best clock you can
buy.

EIGHT NIGHTS AT THE FROZEN POND.

Rebuilding of a Hut at 16,000 Feet.

ARDUOUS WORK.

THE NANO BEAR AGAIN REVIVED.

A CLEVER PLAY BY EVER PLAYERS.

Mole Amateurs Seek a Striking Success.

AYE FEVE.

THE EAST WIND STANDARD.

ALBO CLUB'S WORK DURING 1928.

PROGRESS REPORTED AT ANNUAL MEETING.

THE EAST WIND STANDARD.

ALBO CLUB'S WORK DURING 1928.

PROGRESS REPORTED AT ANNUAL MEETING.

THE EAST WIND STANDARD.

ALBO CLUB'S WORK DURING 1928.

PROGRESS REPORTED AT ANNUAL MEETING.

THE EAST WIND STANDARD.

ALBO CLUB'S WORK DURING 1928.

PROGRESS REPORTED AT ANNUAL MEETING.

THE EAST WIND STANDARD.

ALBO CLUB'S WORK DURING 1928.

PROGRESS REPORTED AT ANNUAL MEETING.

THE EAST WIND STANDARD.

ALBO CLUB'S WORK DURING 1928.

PROGRESS REPORTED AT ANNUAL MEETING.

THE EAST WIND STANDARD.

ALBO CLUB'S WORK DURING 1928.

PROGRESS REPORTED AT ANNUAL MEETING.

THE EAST WIND STANDARD.

ALBO CLUB'S WORK DURING 1928.

PROGRESS REPORTED AT ANNUAL MEETING.

Man in Flames.

WINDY WEATHER AT PRESENT IN K.

THE NANO BEAR AGAIN REVIVED.

A CLEVER PLAY BY EVER PLAYERS.

Mole Amateurs Seek a Striking Success.

AYE FEVE.

THE EAST WIND STANDARD.

ALBO CLUB'S WORK DURING 1928.

PROGRESS REPORTED AT ANNUAL MEETING.

THE EAST WIND STANDARD.

ALBO CLUB'S WORK DURING 1928.

PROGRESS REPORTED AT ANNUAL MEETING.

THE EAST WIND STANDARD.

ALBO CLUB'S WORK DURING 1928.

PROGRESS REPORTED AT ANNUAL MEETING.

THE EAST WIND STANDARD.

ALBO CLUB'S WORK DURING 1928.

PROGRESS REPORTED AT ANNUAL MEETING.

THE EAST WIND STANDARD.

ALBO CLUB'S WORK DURING 1928.

PROGRESS REPORTED AT ANNUAL MEETING.

THE EAST WIND STANDARD.

ALBO CLUB'S WORK DURING 1928.

PROGRESS REPORTED AT ANNUAL MEETING.

THE EAST WIND STANDARD.

ALBO CLUB'S WORK DURING 1928.

PROGRESS REPORTED AT ANNUAL MEETING.

THE EAST WIND STANDARD.

ALBO CLUB'S WORK DURING 1928.

PROGRESS REPORTED AT ANNUAL MEETING.

THE EAST WIND STANDARD.

Man in Flames.

WINDY WEATHER AT PRESENT IN K.

THE NANO BEAR AGAIN REVIVED.

A CLEVER PLAY BY EVER PLAYERS.

Mole Amateurs Seek a Striking Success.

AYE FEVE.

THE EAST WIND STANDARD.

ALBO CLUB'S WORK DURING 1928.

PROGRESS REPORTED AT ANNUAL MEETING.

THE EAST WIND STANDARD.

ALBO CLUB'S WORK DURING 1928.

PROGRESS REPORTED AT ANNUAL MEETING.

THE EAST WIND STANDARD.

ALBO CLUB'S WORK DURING 1928.

PROGRESS REPORTED AT ANNUAL MEETING.

THE EAST WIND STANDARD.

ALBO CLUB'S WORK DURING 1928.

PROGRESS REPORTED AT ANNUAL MEETING.

THE EAST WIND STANDARD.

ALBO CLUB'S WORK DURING 1928.

PROGRESS REPORTED AT ANNUAL MEETING.

THE EAST WIND STANDARD.

ALBO CLUB'S WORK DURING 1928.

PROGRESS REPORTED AT ANNUAL MEETING.

THE EAST WIND STANDARD.

ALBO CLUB'S WORK DURING 1928.

PROGRESS REPORTED AT ANNUAL MEETING.

THE EAST WIND STANDARD.

ALBO CLUB'S WORK DURING 1928.

PROGRESS REPORTED AT ANNUAL MEETING.

THE EAST WIND STANDARD.

Man in Flames.

WINDY WEATHER AT PRESENT IN K.

THE NANO BEAR AGAIN REVIVED.

A CLEVER PLAY BY EVER PLAYERS.

Mole Amateurs Seek a Striking Success.

AYE FEVE.

THE EAST WIND STANDARD.

ALBO CLUB'S WORK DURING 1928.

PROGRESS REPORTED AT ANNUAL MEETING.

THE EAST WIND STANDARD.

ALBO CLUB'S WORK DURING 1928.

PROGRESS REPORTED AT ANNUAL MEETING.

THE EAST WIND STANDARD.

ALBO CLUB'S WORK DURING 1928.

PROGRESS REPORTED AT ANNUAL MEETING.

THE EAST WIND STANDARD.

ALBO CLUB'S WORK DURING 1928.

PROGRESS REPORTED AT ANNUAL MEETING.

THE EAST WIND STANDARD.

ALBO CLUB'S WORK DURING 1928.

PROGRESS REPORTED AT ANNUAL MEETING.

THE EAST WIND STANDARD.

ALBO CLUB'S WORK DURING 1928.

PROGRESS REPORTED AT ANNUAL MEETING.

THE EAST WIND STANDARD.

ALBO CLUB'S WORK DURING 1928.

PROGRESS REPORTED AT ANNUAL MEETING.

THE EAST WIND STANDARD.

ALBO CLUB'S WORK DURING 1928.

PROGRESS REPORTED AT ANNUAL MEETING.

THE EAST WIND STANDARD.

Man in Flames.

WINDY WEATHER AT PRESENT IN K.

THE NANO BEAR AGAIN REVIVED.

A CLEVER PLAY BY EVER PLAYERS.

Mole Amateurs Seek a Striking Success.

AYE FEVE.

THE EAST WIND STANDARD.

ALBO CLUB'S WORK DURING 1928.

PROGRESS REPORTED AT ANNUAL MEETING.

THE EAST WIND STANDARD.

ALBO CLUB'S WORK DURING 1928.

PROGRESS REPORTED AT ANNUAL MEETING.

THE EAST WIND STANDARD.

ALBO CLUB'S WORK DURING 1928.

PROGRESS REPORTED AT ANNUAL MEETING.

THE EAST WIND STANDARD.

ALBO CLUB'S WORK DURING 1928.

PROGRESS REPORTED AT ANNUAL MEETING.

THE EAST WIND STANDARD.

ALBO CLUB'S WORK DURING 1928.

PROGRESS REPORTED AT ANNUAL MEETING.

THE EAST WIND STANDARD.

ALBO CLUB'S WORK DURING 1928.

PROGRESS REPORTED AT ANNUAL MEETING.

THE EAST WIND STANDARD.

ALBO CLUB'S WORK DURING 1928.

PROGRESS REPORTED AT ANNUAL MEETING.

THE EAST WIND STANDARD.

ALBO CLUB'S WORK DURING 1928.

PROGRESS REPORTED AT ANNUAL MEETING.

THE EAST WIND STANDARD.

Man in Flames.

WINDY WEATHER AT PRESENT IN K.

THE NANO BEAR AGAIN REVIVED.

A CLEVER PLAY BY EVER PLAYERS.

Mole Amateurs Seek a Striking Success.

AYE FEVE.

THE EAST WIND STANDARD.

ALBO CLUB'S WORK DURING 1928.

PROGRESS REPORTED AT ANNUAL MEETING.

THE EAST WIND STANDARD.

ALBO CLUB'S WORK DURING 1928.

PROGRESS REPORTED AT ANNUAL MEETING.

THE EAST WIND STANDARD.

ALBO CLUB'S WORK DURING 1928.

PROGRESS REPORTED AT ANNUAL MEETING.

THE EAST WIND STANDARD.

ALBO CLUB'S WORK DURING 1928.

PROGRESS REPORTED AT ANNUAL MEETING.

THE EAST WIND STANDARD.

ALBO CLUB'S WORK DURING 1928.

PROGRESS REPORTED AT ANNUAL MEETING.

THE EAST WIND STANDARD.

ALBO CLUB'S WORK DURING 1928.

PROGRESS REPORTED AT ANNUAL MEETING.

THE EAST WIND STANDARD.

ALBO CLUB'S WORK DURING 1928.

PROGRESS REPORTED AT ANNUAL MEETING.

THE EAST WIND STANDARD.

ALBO CLUB'S WORK DURING 1928.

PROGRESS REPORTED AT ANNUAL MEETING.

THE EAST WIND STANDARD.

LYRIC HALL.
To-Night at 8.45 p.m.
TALES OF A THOUSAND AND ONE NIGHTS.
ARRANGED BY ANTHONY BELLINI
DIRECTED BY H. B. HARRIS

SHOWING SATURDAY 23RD JANUARY
THE AIR MAIL PILOT
A MARVELOUS STORY OF
ADVENTURE
DIRECTED BY EARL METCALF
FRIDAY 22ND JAN 8.45

Fashionable Footwear of Quality.

MADE IN ENGLAND

White Buckram
Tan, Blue and Black
with fine leather
and
lace

Stock in Stock

No. 4416
Five Buckram
Tan, Brown and Blue

EADIES
THE QUALITY SHOE SHOP, NAIROBI.

France Village Singing

900 PEOPLE LEAVE THEIR HOMES

The village of France, singing school by the 1000 inhabitants, is a village of the north and the south of the English Channel, in the "Dixie" area.

The village of France is a village of the north and the south of the English Channel, in the "Dixie" area.

THEATRE ROYAL

COMMENCING SATURDAY AT 8.45

"Hay Fever"

By Noel Coward.

Don't miss seeing this delightful comedy - delightfully played

PRICES: 10/6, 7/6, 5/- Book Early.

WE SELL SERVICE AND REPAIR ALL MAKES OF CARS & TRUCKS

WE GIVE EXPERT ADVICE TO WIRELESS ENTHUSIASTS.

COMPLETE WIRELESS SETS AND COMPONENT PARTS ALWAYS IN STOCK.

RADIO BATTERIES CHARGED, AND ELECTRICAL WORK OF ALL DESCRIPTION TAKEN.

CALL AND INSPECT THE LATEST MODEL INDIAN SCOT 45 ON VIEW AT

K. McIvor's Garage.

Phone 97. Sixth Avenue. P.O. Box 97

Just Arrived

SELECTED SCOTCH KIPPERS AND HADDOCKS

DELICIOUS FRESH SOLES

Sho. 1/- per lb.

S. Jacobs Ltd., Nairobi

THE MONEY HUNT

Share 2/- London, Jan. 23
Price 12/6
Dividend 1/6
Thursday, Jan. 23

WITNESS ACROSS THE RAPIDS

A Member of the East Africa Mounted Police, who was on duty at the time of the accident, has been called upon to give evidence at the trial of the man who was charged with the murder of a woman who was drowned in the river.

THE NANO BEAR AGAIN REVIVED.

The Nani bear, which was shot by a party of hunters in the mountains of the East African highlands, has been revived after being kept in a state of suspended animation for several months.

THE EAST WIND STANDARD.

The East Wind Standard, a weekly publication, has been launched in Nairobi, and is expected to be a success.

ALBO CLUB'S WORK DURING 1928.

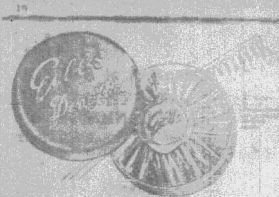
The Albo Club, which was formed in 1927, has held its annual meeting in Nairobi, and has reported a successful year's work.

PROGRESS REPORTED AT ANNUAL MEETING.

The progress of the club's work during the year 1928 has been reported at the annual meeting, which was held in Nairobi.

THE EAST WIND STANDARD.

The East Wind Standard, a weekly publication, has been launched in Nairobi, and is expected to be a success.



Gilb's Dentifrice
keeps gums firm and rosy

Manufactured by Gilb's Dental Preparation Co. Ltd. London, England.

It contains the latest scientific formulae for the treatment of all dental troubles. It is the only dentifrice that cleanses the teeth and gums without causing any irritation.

For Sale by all Chemists and Grocers.

YOUR CHEMIST STOCKS IT.

NOTICE.

THE VICTORIA NYANZA SUGAR COMPANY, LIMITED, have arranged with the Agricultural Bank to retail their No. 1 White Crystal Sugar at the following prices:

For 100 lbs. 1/10
For 50 lbs. 1/5

At all Chemists and Grocers.

RAIROBI.
J. J. Jones, Manager.

NAKURU.
J. J. Jones, Manager.

ELDERET.
J. J. Jones, Manager.

KONDAI.
J. J. Jones, Manager.

CAKES
BY EXPERT BAKERS AND PASTRY COOKS
ALSO DELICIOUS
CHOCOLATES & SWEETS.
THE NGARA BAKERY,
Nairobi, Kenya.

To The Thrifty Housewife

THE SITTNER SUPPLY STORE
Nairobi, Kenya.

GIVE A SAISON OF
Settler Supply Store,
Government Road, opposite Teachers' Hall.

JUST UNPACKED
FRESH CONSIGNMENT OF
NEW SEASON GOODS.

Phone 610 or call before making your purchases.
PRICES TO PLEASE YOU.

DAYARAM Bros.,
(next to Electric House)
GENERAL DRAPERS and OUTFITTERS.
Nairobi, P.O. Box 100

MARDIGS and BRIEF.
Mr. Mardigs, one Ngora Street, hopes to announce that he has been appointed to be the first and last of the first-class gent's and ladies' tailoring in the Maridigs UP-TO-DATE FITTING ROOM THEATRE ROYAL BUILDINGS, Nairobi 7, P.O. Box 642.

B. E. A. Saw Mills
MILLS AND OFFICE, WORKERS ROAD, NEAR P.O. NAIROBI.

Telephone No. 85 P.O. Box 371, Nairobi.
Telegrams: Beama.
CAMPHOR, POZO, MWERT and KUSA
Flooring. Cutting. Mouldings.

Long length Beams and Camphor Flooring

NOVELS
FROM THE
STANDARD STATIONERY STORES,
NAIROBI.

THE POSITION OF THE NATIVE AS A LABOURER.

(Continued from page 7.)

Having accepted the position of the labourer, the Government has set itself to ensure that the position of the native as a labourer is not one of disadvantage. It has endeavoured to bring about a fair and equitable system of labour, and to ensure that the native is not treated as a mere commodity, but as a human being with rights and responsibilities.

The Government has endeavoured to bring about a fair and equitable system of labour, and to ensure that the native is not treated as a mere commodity, but as a human being with rights and responsibilities.

Second Day of the Session.

The second day of the session was spent in the consideration of the report of the Commission on the position of the native as a labourer. The Commission's report was a comprehensive one, and dealt with many of the important aspects of the problem.

The Commission has recommended that the Government should take steps to ensure that the native is not treated as a mere commodity, but as a human being with rights and responsibilities. It has also recommended that the Government should take steps to improve the conditions of labour for the native, and to ensure that the native is not exploited.

Ministerial Statement.

The Minister of Labour has made a statement in the House of Representatives regarding the position of the native as a labourer. He has stated that the Government is committed to the principles of justice and equity, and that it will take all necessary steps to ensure that the native is not treated as a mere commodity, but as a human being with rights and responsibilities.

The Minister has also stated that the Government is committed to the improvement of the conditions of labour for the native, and to the elimination of all forms of discrimination and exploitation.

Speeches.

Several speeches were made in the House of Representatives regarding the position of the native as a labourer. The speeches were generally in support of the Commission's report, and called for the Government to take prompt action to implement the recommendations.

The speeches also called for the Government to take steps to improve the conditions of labour for the native, and to ensure that the native is not exploited.

THE SUGAR ACT.

The Sugar Act, which was passed by the Government in 1920, has been a subject of much discussion and controversy. The Act was designed to regulate the sugar industry, and to ensure that the Government received a fair share of the profits.

The Act has been criticized by some as being too restrictive, and as being a burden on the industry. However, it has also been praised by others as being a necessary measure to ensure the stability of the industry, and to protect the interests of the Government.

Ministerial Statement.

The Minister of Finance has made a statement in the House of Representatives regarding the Sugar Act. He has stated that the Act is a necessary measure to ensure the stability of the sugar industry, and to protect the interests of the Government.

The Minister has also stated that the Government is committed to the improvement of the conditions of labour for the native, and to the elimination of all forms of discrimination and exploitation.

Speeches.

Several speeches were made in the House of Representatives regarding the Sugar Act. The speeches were generally in support of the Act, and called for the Government to take prompt action to implement the provisions of the Act.

The speeches also called for the Government to take steps to improve the conditions of labour for the native, and to ensure that the native is not exploited.

Speeches.

Several speeches were made in the House of Representatives regarding the position of the native as a labourer. The speeches were generally in support of the Commission's report, and called for the Government to take prompt action to implement the recommendations.

The speeches also called for the Government to take steps to improve the conditions of labour for the native, and to ensure that the native is not exploited.

WHERE TO STAY
TOWN & COUNTRY.

THE Nakuru Hotel.

This well-known hotel (established in 1900) is the largest and best equipped hotel in the Midlands. The Hotel has every modern convenience and alterations, including a FINE SPACIOUS LOUNGE and new entrance to the Hotel.

ELECTRIC LIGHT - LAUNDRY - BILLIARDS.

DANCES, ENTERTAINMENTS, PUBLIC MEETINGS.
Managers - Mr. and Mrs. EDGAR ARCHER.

OAKLEIGH PRIVATE HOTEL
UNDER PERSONAL SUPERVISION OF
MRS. E. JARRETT, Manageress.
Phone 150. NAIROBI. P.O. Box 182

THE White Rhino Hotel
NYERI

FOR BREAKFASTS, LUNCHES, TEAS, DINNERS AND ACCOMMODATION.
Sited on Main Road, (from "Whitrhino").

Stag's Head Hotel, Nakuru

THE MOST UP-TO-DATE HOTEL IN THE TOWN

ELECTRIC LIGHT, HOT and COLD WATER TO EACH ROOM, UP-TO-DATE SANITATION.

COMFORTABLE TOWN, EXCELLENT COOKING.
J. G. HEATH.

BRACKENHURST LILWU.
The most comfortable and up-to-date Country Hotel in Kenya. Terms from 10/- to 20/- per week.
WIDSON CAMP

SAVOY HOTEL

THE HILL, NAIROBI.

BOX 80. PHONE 800.

THE Naivasha Hotel.

UNDER ENTIRELY NEW MANAGEMENT. EUROPEAN SUPERVISION, ELECTRIC LIGHT, HOT and COLD WATER INSTALLATION. SPECIAL WEEK-END TERMS.

THE Blue Post Hotel
THIKA
NOW UNDER NEW MANAGEMENT.

The Salisbury Hotel
Nairobi.

Phone 100. P.O. Box 800.

28-MAR-1925

Large Postals
STAMP PAID
No. 15 and 16

Standard Stationery Stores
NAIROBI.

THE LOUNGE Morning and Afternoon TEAS The New Stanley Hotel Open on Sundays to Non-Residents.

THE DRINK WITH THE BRITISH FLAVOUR. ALES and STOUT.

DAILY EDITION THE EAST 14 PAGES African Standard UGANDA ARGUS THE LEADER THE OLDEST ESTABLISHED NEWSPAPER PUBLISHED IN KENYA AND UGANDA.

PRICE 26 CENTS.

COMMISSION REJECTS THE SELF-GOVERNMENT IDEAL. Until Africans Can Themselves Share In It.

NO. 6 THE NATIVE'S POLITICAL FUTURE.

Racial Segregation With Maintenance of the Imperial Control.

The Hilton Young Commission formed definite views on the political future of the African. In general they followed the principle of the Tanganyika Native Policy, based on existing native institutions.

The "Dual Policy" is logically interpreted, that it is only a question of time before the natives are admitted to a share in the whole government which fairly balances the scale according to other communities.

IDEAL OF A MERGER OF INTERESTS.

In his concluding article on the Hilton Young Commission report, the "African Standard" writes: "Native interests, when taken into consideration, are not a community concern already dealt with."

Higher Education.

The question of making the education of Africans so advanced that they should be able to take a share in the government, and that those who can see the advantages of higher education should have the means to obtain it.

THE ABSENCE OF THE NATIVE'S POLITICAL FUTURE.

The absence of the native's political future is a matter of the greatest importance to the African people, and it is one which should be of the greatest concern to the British Government.

THE KING'S "WONDERFUL RECOVERY."

Optimistic References in Medical Press.

THE QUEEN'S CONSTANT ASSISTANCE.

Honouring that Monarch's aid was Taken.

THE KING'S "WONDERFUL RECOVERY."

Optimistic References in Medical Press.

THE QUEEN'S CONSTANT ASSISTANCE.

Honouring that Monarch's aid was Taken.

THE KING'S "WONDERFUL RECOVERY."

Optimistic References in Medical Press.

THE QUEEN'S CONSTANT ASSISTANCE.

Honouring that Monarch's aid was Taken.

THE KING'S "WONDERFUL RECOVERY."

Optimistic References in Medical Press.

THE QUEEN'S CONSTANT ASSISTANCE.

Honouring that Monarch's aid was Taken.

THE KING'S "WONDERFUL RECOVERY."

Optimistic References in Medical Press.

THE QUEEN'S CONSTANT ASSISTANCE.

Honouring that Monarch's aid was Taken.

THE KING'S "WONDERFUL RECOVERY."

Optimistic References in Medical Press.

LATEST NEWS OF LOCUST POSITION.

Very Big Swarm Making for Machakos.

REPARATIONS PROBLEM.

Effect Upon Occupation of the RHINE.

REPARATIONS PROBLEM.

Effect Upon Occupation of the RHINE.

REPARATIONS PROBLEM.

Effect Upon Occupation of the RHINE.

REPARATIONS PROBLEM.

Effect Upon Occupation of the RHINE.

REPARATIONS PROBLEM.

Effect Upon Occupation of the RHINE.

REPARATIONS PROBLEM.

Effect Upon Occupation of the RHINE.

REPARATIONS PROBLEM.

Effect Upon Occupation of the RHINE.

REPARATIONS PROBLEM.

Effect Upon Occupation of the RHINE.

REPARATIONS PROBLEM.

Effect Upon Occupation of the RHINE.

REPARATIONS PROBLEM.

Effect Upon Occupation of the RHINE.

PREPARING FOR GENERAL ELECTION.

Mr. Baldwin Opens His Campaign.

REPARATIONS PROBLEM.

Effect Upon Occupation of the RHINE.

REPARATIONS PROBLEM.

Effect Upon Occupation of the RHINE.

REPARATIONS PROBLEM.

Effect Upon Occupation of the RHINE.

REPARATIONS PROBLEM.

Effect Upon Occupation of the RHINE.

REPARATIONS PROBLEM.

Effect Upon Occupation of the RHINE.

REPARATIONS PROBLEM.

Effect Upon Occupation of the RHINE.

REPARATIONS PROBLEM.

Effect Upon Occupation of the RHINE.

REPARATIONS PROBLEM.

Effect Upon Occupation of the RHINE.

REPARATIONS PROBLEM.

Effect Upon Occupation of the RHINE.

REPARATIONS PROBLEM.

Effect Upon Occupation of the RHINE.

AIR CATASTROPHE IN INDIA.

White Helmets of Troops Mistaken for Targets.

REPARATIONS PROBLEM.

Effect Upon Occupation of the RHINE.

REPARATIONS PROBLEM.

Effect Upon Occupation of the RHINE.

REPARATIONS PROBLEM.

Effect Upon Occupation of the RHINE.

REPARATIONS PROBLEM.

Effect Upon Occupation of the RHINE.

REPARATIONS PROBLEM.

Effect Upon Occupation of the RHINE.

REPARATIONS PROBLEM.

Effect Upon Occupation of the RHINE.

REPARATIONS PROBLEM.

Effect Upon Occupation of the RHINE.

REPARATIONS PROBLEM.

Effect Upon Occupation of the RHINE.

REPARATIONS PROBLEM.

Effect Upon Occupation of the RHINE.

REPARATIONS PROBLEM.

Effect Upon Occupation of the RHINE.

ROMAN CATHOLIC JUBILEE IN UGANDA.

Amazing Scenes of African Religious Fervour.

THE MEMORY OF A MARTYR.

Thousands Kneel Round Altar in Historic Village.

REPARATIONS PROBLEM.

Effect Upon Occupation of the RHINE.

REPARATIONS PROBLEM.

Effect Upon Occupation of the RHINE.

REPARATIONS PROBLEM.

Effect Upon Occupation of the RHINE.

REPARATIONS PROBLEM.

Effect Upon Occupation of the RHINE.

REPARATIONS PROBLEM.

Effect Upon Occupation of the RHINE.

REPARATIONS PROBLEM.

Effect Upon Occupation of the RHINE.

REPARATIONS PROBLEM.

Effect Upon Occupation of the RHINE.

REPARATIONS PROBLEM.

Effect Upon Occupation of the RHINE.

REPARATIONS PROBLEM.

Effect Upon Occupation of the RHINE.

Ussis in Irak.

Disagreement Over Local Forces.

REPARATIONS PROBLEM.

Effect Upon Occupation of the RHINE.

REPARATIONS PROBLEM.

Effect Upon Occupation of the RHINE.

REPARATIONS PROBLEM.

Effect Upon Occupation of the RHINE.

REPARATIONS PROBLEM.

Effect Upon Occupation of the RHINE.

REPARATIONS PROBLEM.

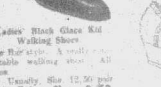
Effect Upon Occupation of the RHINE.

REPARATIONS PROBLEM.

Effect Upon Occupation of the RHINE.

SHOE SPECIALS

DON'T BE SHY OF NEW SHOES. We can give you expert fitting and a chance to realize comfort in a satisfactory way. Just say there is a great opportunity for securing our best quality at tempting SALE PRICES.



Ladies' High Black Kid Walking Shoes. One Hour's a Walk - Comfortable, Durable, All Season.



Ladies' White Canvas Shoes. One Hour's a Walk - Comfortable, Durable, All Season.



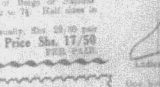
Ladies' White Canvas Shoes. One Hour's a Walk - Comfortable, Durable, All Season.



Ladies' White Canvas Shoes. One Hour's a Walk - Comfortable, Durable, All Season.



Ladies' White Canvas Shoes. One Hour's a Walk - Comfortable, Durable, All Season.



Ladies' White Canvas Shoes. One Hour's a Walk - Comfortable, Durable, All Season.



Ladies' White Canvas Shoes. One Hour's a Walk - Comfortable, Durable, All Season.

LADIES!! YOUR OPPORTUNITY

Shoes, Hats, Suits and more. Don't miss this chance to buy at special prices. Just say there is a great opportunity for securing our best quality at tempting SALE PRICES.

TO CLEAR. Shs. 1950 PER PAIR.

Ladies' White Canvas Shoes. One Hour's a Walk - Comfortable, Durable, All Season.

Ladies' White Canvas Shoes. One Hour's a Walk - Comfortable, Durable, All Season.

Whiteways Laidlaw & Co., Ltd. NAIROBI.



DeReszke
—of course!

VIRGINIAN 50 for Shs. 2/25
TURKISH 50 for Shs. 2/50
AMERICAN 50 for Shs. 3/50
TENOR TURKISH 50 for Shs. 5/50

Distributors—
Dalgely & Company Ltd.

VERMOUTH at 4/50 per litre bottle

This Vermouth is made from genuine portwine in mid-way between French and Italian Vermouth in taste—a "mixed vermouth" in fact. Sold cheap to make room for this year.

MISA'S SHERRY "Oloroso" at 6/50 per bot. doz.

This is the finest wine for the table.
SPECIAL PRICE TO THE TRADE.

To be had from—
B. C. SIQUEIRA,
P. O. Box 542, NAIROBI.

CONVENTION

The annual general meeting of the Lushaka Farmers Association was held on Sunday January 12, at Homerton. After the reading of previous minutes had been read, the correspondence was dealt with. This principally concerned the proposed merger with the Colonial Farmers Association, which to the regret of all our members has fallen through.

The Treasurer reported a balance in the Bank of £50, which was considered satisfactory.

The following new members were then elected—E. J. A. Grimwood, Hon. B. J. and Mrs. Wood, Arnold and E. A. Cunningham.

Officers for the ensuing year were then elected—
President: L. F. King
Vice-President: E. J. Bamford
Hon. Secretary and Treasurer: Commander F. G. Aggett, Col. Arbutnot and Major White.

Veterinary Subjects.

To avoid inconvenience of the Acting Deputy Chief Veterinary Officer, Mr. Mulligan, veterinary matters were taken last night. The question of squatter stock was raised and we were informed that arrangements for the removal of these from various farms to the grazing work.

Mr. Beale mentioned the case of a Somali on Lord Delamere's station. The Post, who owned hundreds of cattle. He asked the Association to take steps to get those removed and it was decided to write to Lord Delamere's manager.

The movements of certain herds of cattle in the Thomson Falls area and OI Arabel valley brought up the question of veterinary staff. The Deputy C.V.O. gave us a definite promise that either a permanent officer or a Stock Inspector should be resident in Homerton. This has been asked for for some years and we are relieved to feel that our position as one of the largest stock districts in the Colony is now to have recognition.

Slaughter Cattle.

The next item on the agenda was the important question of

The Question.

It was decided that in view of the Convention of Amelioration now requiring his shillings per acre from District Agents, that we should go longer and show the value of the land and representative ability in a number of places. This was not done.

District Committee.

The question of the powers of the District Committee was next discussed. Major White spoke in his opinion that when the private affairs of any individual were referred by Government to the District Committee that such individuals have the right to appear before it and state his own case.

Finally a resolution was adopted that the members recommended by the Association should inform their neighbours when there is any matter to be discussed that Government be requested to inform the agents of a notice of £2,000 per annum from the allotment it was felt that we were not asking too much.

A committee consisting of Messrs. Bamford, Armstrong and Dykes was appointed to deal with the matter.

Stock Conference.

The meeting was in favour of a Stock Conference being called in the near future and the Hon. Secretary was instructed to call the attention of the Director of Agriculture to this.

The recent Public Inauguration for Hindustan were then gone over. Mr. Butterfield and that it is a pity the Veterinary Department had shown a negligence in dealing with certain premises in connection with it, including attention to herds which are in quarantine. A letter is to be written to the C.V.O. to get him definite attention in regard to the matter now in question, which Mr. Mulligan proposed to do.

Loucas.

A Loucas Committee was appointed consisting of the Council and the President.



Johnnie Walker
—Still going Strong

Born 1820

Agents—
HOUSTADT & CLARKE, Ltd.
Manchester, London, Cape Town, Durban, Johannesburg, Harare, and Kampala.

THE Bradford Manufacturing Co., Ltd.

Special Display in our Gentlemen's Department of SHIRTS and PYJAMAS in Lavica, Tricolour, Taffeta, and Silky Poplins.

Latest Colourings and Stripes All garments tailored at our business premises and sold with the B.M.C. Guarantee.

Imperial Chambers, Government above Town Ltd.

WHITEAWAY'S

THE MAN'S SHOP with an Unrivalled Selection of MEN'S WEAR.

IT HAS BEEN A GREAT SALE TIME IN THE MEN'S SECTION THIS WEEK—EVERY DAY HAS BEEN A RECORD DAY. THIS IS CONCLUSIVELY A SUCCESS DUE TO THE VALUES GIVEN, FOR THE MAN LOOKS UPON A SALE BARGAIN AS A PROFIT MADE. IN THIS ADVERTISEMENT EVERY LINE ADVERTISED SHOWS AN APPRECIABLE SAVING ON ORDINARY PRICES, INDICATING CLEARLY THE ADVANTAGES OF SALE BUYING.

BUY AT THESE PRICES FOR YOUR FUTURE NEEDS.

Men's Striped Egyptian Shirts.
Made from a fine quality Egyptian with 2 coloured collars to match. An ideal office shirt.
Sale Price, Shs. 7 50 EACH

Men's Smart Day Shirts.
In a good hand wearing with smart fancy stripes.
Sale Price, Shs. 10 50 EACH

Men's Khaki Shirts.
Made from a hardwearing heavy weight Khaki Twill with patch pocket will give splendid service and stand for the summer months.
Sale Price, Shs. 7 50

Regulation Service Helmets.
Made from a cork composition covered stout Khaki drill. Both sun and waterproof.
Sale Price, Shs. 22 50 ea.

White Lawn Handkerchiefs.
The famous White Lawn Handkerchiefs, hemstitched, large size.
Sale Price, Shs. 3 25 1-DOZ.

Art. Silk Scarves.
Fancy designs well made and finished A. A. variety line.
Sale Price, Shs. 2 50 ea.

Men's Cardigans.
All wool, medium to heavy weight, buttoned down, 2 pockets. These are a really special bargain and worth a try.
Sale Price, Shs. 24 50 EACH

Men's Sports Coats.
A few only in Fawn and Grey Herringbone designs.
Sale Price, Shs. 17 50

Men's Fur Felt Hats.
Made by domestic light weight.
Sale Price, Shs. 59 50 ea.

Grey Flannel Trousers.
Medium weight, easy cut Grey Flannel Trousers, a really good wearing article.
Sale Price, Shs. 15/- pair

Men's All-Wool Dressing Gowns.
Medium weight, heavy edged. These are a selection of sample bats which must be cleared and sold at a special price.
Sale Price, Shs. 55 ea.

Men's Felt Hats.
In 10 styles and Fawn and Grey designs. These are a selection of sample bats which must be cleared and sold at a special price.
Sale Price, Shs. 7 50 + EACH

The Doom Dooms Teepee.
Large size, extra thick pile, topes very light weight.
Sale Price, Shs. 14 50 ea.

Men's Flannel & Hose.
Heavy weight, all wool, made for shabaz or sailor wear, Dark or Medium weight.
Sale Price, Shs. 2 50

Men's Felt Hats.
In 10 styles and Fawn and Grey designs. These are a selection of sample bats which must be cleared and sold at a special price.
Sale Price, Shs. 7 50 + EACH

Men's All-Wool Vests.
Light weight, fine quality, buttoned down, a really bargain.
Sale Price, Shs. 9

Orange Cell Net Vests.
A useful protection for the neck, will wear well, finished.
Sale Price, Shs. 7

Men's Felt Hats.
In 10 styles and Fawn and Grey designs. These are a selection of sample bats which must be cleared and sold at a special price.
Sale Price, Shs. 7 50 + EACH

Men's Felt Hats.
In 10 styles and Fawn and Grey designs. These are a selection of sample bats which must be cleared and sold at a special price.
Sale Price, Shs. 7 50 + EACH

Men's Felt Hats.
In 10 styles and Fawn and Grey designs. These are a selection of sample bats which must be cleared and sold at a special price.
Sale Price, Shs. 7 50 + EACH

Men's Felt Hats.
In 10 styles and Fawn and Grey designs. These are a selection of sample bats which must be cleared and sold at a special price.
Sale Price, Shs. 7 50 + EACH

Whiteaway Laidlaw & Co. Ltd.
NAIROBI.

Post Box No. 7. Phone 150.

Islands of Rare Quality!

The rare Quality which great age alone can give is found in generous measure in every bottle of Crawford's Whisky. "Special Reserve" is daily one of the "Fine" ones for a special occasion.

Crawford's LIQUEUR SCOTCH WHISKY

A & A CRAWFORD DISTILLERS SCOTLAND

CUTLERY

LARGE SELECTION. FOUR QUALITIES. Prices to suit All.

W. WINGRAM & Co.
THE TOOL HOUSE
P.O. Box 53, NAIROBI. Telegrams: Ironwar.

Miss KATHLEEN BATES, A.R.C.M.
RECEIVER PUPILS FOR
PIANOFORTE - SINGING - HARMONY.
Music Studio, Sixth Avenue.
PORTAL ADDRESS Box 417

Geo. BLOWERS
BUILDING CONTRACTOR, MANUFACTURER AND DIRECT IMPORTER.
Sadler Street P.O. Box 256 NAIROBI

CASH WITH ORDER.
Tel. Ad. "Concrete." Phone: Work 580. House 426

NOTE: Windows shown in drawings are of No. 1, 2 and 3. Complete with Frames, Jambes, Sills, and Casings with No. 1, 2 and 3. No. 1, 2 and 3. No. 1, 2 and 3.

Concrete Blocks.
ALL SIZES IN STOCK.
Quarry Chips - Black Trap Ballast.
(Machine broken and screened to any size)
Best Kima Sand
IN ANY QUANTITY
(CART, TRUCK OR TRAIN LOADS).
DELIVERIES BY LORRIES AT QUOTED RATES.

Chess

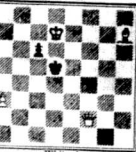
By A. R. Spencer Palmer, Solutions and all Chess Envelopes should be sent to the Editor. Envelopes should be marked "CHESS" and addressed to P.O. Box 75, Nairobi.

PROBLEM No. 975.
By C. Marshall.
First Prize, "Austral" Merit Black 5.



White to move in three moves.

PROBLEM No. 976.
By the late H. P. Le Meyer. Third Prize, "Westminster" (London) "Tourney" Black 2.



White to move in three moves.

SOLUTIONS.
Problem No. 966 (Hordern)
Key: 1. K1-Q7 2. Q-Q8 3. B-Q4 4. K-Q5 5. Q-Q6 6. B-Q6 7. K-Q4 8. K-Q5 9. K-Q4 10. B-Q4 11. P-Q2. Pawn mate.
With the exception of the 8th, Black's moves are forced. If 8. P-Q4, 9. B-Q5, etc., with the same result on the 11th move, the order of Black's moves merely being varied. This is a very ingenious and pleasing solution, the chief difficulty being in retaining Black's move order to one and preventing a stalemate. It does not appear possible at first sight to play White King into a position to get mated.
Solved by G. Tanner only. Captain Tanner enjoyed the distinction of making Mr. Hordern's Xmas Problem a year ago. This one is "Tannered".

By L. H. Hordern, writing from London. This is a beautiful chess problem. It is very difficult, but I don't feel ashamed to say so. It is a very good one. W. R. M. Fowler didn't get a few lines in a special column, but he was sent on a trip to Tanganyika. In one column he also had the repeat the position here, so that they could challenge the method of solving. White moves: White 15: Red, Qx3, Bx4, R5, K6, K7, K8, K9, K10, K11, K12, K13, K14, K15, K16, K17, K18, K19, K20, K21, K22, K23, K24, K25, K26, K27, K28, K29, K30, K31, K32, K33, K34, K35, K36, K37, K38, K39, K40, K41, K42, K43, K44, K45, K46, K47, K48, K49, K50, K51, K52, K53, K54, K55, K56, K57, K58, K59, K60, K61, K62, K63, K64, K65, K66, K67, K68, K69, K70, K71, K72, K73, K74, K75, K76, K77, K78, K79, K80, K81, K82, K83, K84, K85, K86, K87, K88, K89, K90, K91, K92, K93, K94, K95, K96, K97, K98, K99, K100, K101, K102, K103, K104, K105, K106, K107, K108, K109, K110, K111, K112, K113, K114, K115, K116, K117, K118, K119, K120, K121, K122, K123, K124, K125, K126, K127, K128, K129, K130, K131, K132, K133, K134, K135, K136, K137, K138, K139, K140, K141, K142, K143, K144, K145, K146, K147, K148, K149, K150, K151, K152, K153, K154, K155, K156, K157, K158, K159, K160, K161, K162, K163, K164, K165, K166, K167, K168, K169, K170, K171, K172, K173, K174, K175, K176, K177, K178, K179, K180, K181, K182, K183, K184, K185, K186, K187, K188, K189, K190, K191, K192, K193, K194, K195, K196, K197, K198, K199, K200, K201, K202, K203, K204, K205, K206, K207, K208, K209, K210, K211, K212, K213, K214, K215, K216, K217, K218, K219, K220, K221, K222, K223, K224, K225, K226, K227, K228, K229, K230, K231, K232, K233, K234, K235, K236, K237, K238, K239, K240, K241, K242, K243, K244, K245, K246, K247, K248, K249, K250, K251, K252, K253, K254, K255, K256, K257, K258, K259, K260, K261, K262, K263, K264, K265, K266, K267, K268, K269, K270, K271, K272, K273, K274, K275, K276, K277, K278, K279, K280, K281, K282, K283, K284, K285, K286, K287, K288, K289, K290, K291, K292, K293, K294, K295, K296, K297, K298, K299, K300, K301, K302, K303, K304, K305, K306, K307, K308, K309, K310, K311, K312, K313, K314, K315, K316, K317, K318, K319, K320, K321, K322, K323, K324, K325, K326, K327, K328, K329, K330, K331, K332, K333, K334, K335, K336, K337, K338, K339, K340, K341, K342, K343, K344, K345, K346, K347, K348, K349, K350, K351, K352, K353, K354, K355, K356, K357, K358, K359, K360, K361, K362, K363, K364, K365, K366, K367, K368, K369, K370, K371, K372, K373, K374, K375, K376, K377, K378, K379, K380, K381, K382, K383, K384, K385, K386, K387, K388, K389, K390, K391, K392, K393, K394, K395, K396, K397, K398, K399, K400, K401, K402, K403, K404, K405, K406, K407, K408, K409, K410, K411, K412, K413, K414, K415, K416, K417, K418, K419, K420, K421, K422, K423, K424, K425, K426, K427, K428, K429, K430, K431, K432, K433, K434, K435, K436, K437, K438, K439, K440, K441, K442, K443, K444, K445, K446, K447, K448, K449, K450, K451, K452, K453, K454, K455, K456, K457, K458, K459, K460, K461, K462, K463, K464, K465, K466, K467, K468, K469, K470, K471, K472, K473, K474, K475, K476, K477, K478, K479, K480, K481, K482, K483, K484, K485, K486, K487, K488, K489, K490, K491, K492, K493, K494, K495, K496, K497, K498, K499, K500, K501, K502, K503, K504, K505, K506, K507, K508, K509, K510, K511, K512, K513, K514, K515, K516, K517, K518, K519, K520, K521, K522, K523, K524, K525, K526, K527, K528, K529, K530, K531, K532, K533, K534, K535, K536, K537, K538, K539, K540, K541, K542, K543, K544, K545, K546, K547, K548, K549, K550, K551, K552, K553, K554, K555, K556, K557, K558, K559, K560, K561, K562, K563, K564, K565, K566, K567, K568, K569, K570, K571, K572, K573, K574, K575, K576, K577, K578, K579, K580, K581, K582, K583, K584, K585, K586, K587, K588, K589, K590, K591, K592, K593, K594, K595, K596, K597, K598, K599, K600, K601, K602, K603, K604, K605, K606, K607, K608, K609, K610, K611, K612, K613, K614, K615, K616, K617, K618, K619, K620, K621, K622, K623, K624, K625, K626, K627, K628, K629, K630, K631, K632, K633, K634, K635, K636, K637, K638, K639, K640, K641, K642, K643, K644, K645, K646, K647, K648, K649, K650, K651, K652, K653, K654, K655, K656, K657, K658, K659, K660, K661, K662, K663, K664, K665, K666, K667, K668, K669, K670, K671, K672, K673, K674, K675, K676, K677, K678, K679, K680, K681, K682, K683, K684, K685, K686, K687, K688, K689, K690, K691, K692, K693, K694, K695, K696, K697, K698, K699, K700, K701, K702, K703, K704, K705, K706, K707, K708, K709, K710, K711, K712, K713, K714, K715, K716, K717, K718, K719, K720, K721, K722, K723, K724, K725, K726, K727, K728, K729, K730, K731, K732, K733, K734, K735, K736, K737, K738, K739, K740, K741, K742, K743, K744, K745, K746, K747, K748, K749, K750, K751, K752, K753, K754, K755, K756, K757, K758, K759, K760, K761, K762, K763, K764, K765, K766, K767, K768, K769, K770, K771, K772, K773, K774, K775, K776, K777, K778, K779, K780, K781, K782, K783, K784, K785, K786, K787, K788, K789, K790, K791, K792, K793, K794, K795, K796, K797, K798, K799, K800, K801, K802, K803, K804, K805, K806, K807, K808, K809, K810, K811, K812, K813, K814, K815, K816, K817, K818, K819, K820, K821, K822, K823, K824, K825, K826, K827, K828, K829, K830, K831, K832, K833, K834, K835, K836, K837, K838, K839, K840, K841, K842, K843, K844, K845, K846, K847, K848, K849, K850, K851, K852, K853, K854, K855, K856, K857, K858, K859, K860, K861, K862, K863, K864, K865, K866, K867, K868, K869, K870, K871, K872, K873, K874, K875, K876, K877, K878, K879, K880, K881, K882, K883, K884, K885, K886, K887, K888, K889, K890, K891, K892, K893, K894, K895, K896, K897, K898, K899, K900, K901, K902, K903, K904, K905, K906, K907, K908, K909, K910, K911, K912, K913, K914, K915, K916, K917, K918, K919, K920, K921, K922, K923, K924, K925, K926, K927, K928, K929, K930, K931, K932, K933, K934, K935, K936, K937, K938, K939, K940, K941, K942, K943, K944, K945, K946, K947, K948, K949, K950, K951, K952, K953, K954, K955, K956, K957, K958, K959, K960, K961, K962, K963, K964, K965, K966, K967, K968, K969, K970, K971, K972, K973, K974, K975, K976, K977, K978, K979, K980, K981, K982, K983, K984, K985, K986, K987, K988, K989, K990, K991, K992, K993, K994, K995, K996, K997, K998, K999, K1000.

PROBLEM No. 977 (Anderson).
Key: 1. K-Q4 2. P-K3 3. Q-Q4 4. P-Q3 5. B-Q4 6. P-Q3 7. P-Q3 8. P-Q3 9. P-Q3 10. P-Q3 11. P-Q3 12. P-Q3 13. P-Q3 14. P-Q3 15. P-Q3 16. P-Q3 17. P-Q3 18. P-Q3 19. P-Q3 20. P-Q3 21. P-Q3 22. P-Q3 23. P-Q3 24. P-Q3 25. P-Q3 26. P-Q3 27. P-Q3 28. P-Q3 29. P-Q3 30. P-Q3 31. P-Q3 32. P-Q3 33. P-Q3 34. P-Q3 35. P-Q3 36. P-Q3 37. P-Q3 38. P-Q3 39. P-Q3 40. P-Q3 41. P-Q3 42. P-Q3 43. P-Q3 44. P-Q3 45. P-Q3 46. P-Q3 47. P-Q3 48. P-Q3 49. P-Q3 50. P-Q3 51. P-Q3 52. P-Q3 53. P-Q3 54. P-Q3 55. P-Q3 56. P-Q3 57. P-Q3 58. P-Q3 59. P-Q3 60. P-Q3 61. P-Q3 62. P-Q3 63. P-Q3 64. P-Q3 65. P-Q3 66. P-Q3 67. P-Q3 68. P-Q3 69. P-Q3 70. P-Q3 71. P-Q3 72. P-Q3 73. P-Q3 74. P-Q3 75. P-Q3 76. P-Q3 77. P-Q3 78. P-Q3 79. P-Q3 80. P-Q3 81. P-Q3 82. P-Q3 83. P-Q3 84. P-Q3 85. P-Q3 86. P-Q3 87. P-Q3 88. P-Q3 89. P-Q3 90. P-Q3 91. P-Q3 92. P-Q3 93. P-Q3 94. P-Q3 95. P-Q3 96. P-Q3 97. P-Q3 98. P-Q3 99. P-Q3 100. P-Q3 101. P-Q3 102. P-Q3 103. P-Q3 104. P-Q3 105. P-Q3 106. P-Q3 107. P-Q3 108. P-Q3 109. P-Q3 110. P-Q3 111. P-Q3 112. P-Q3 113. P-Q3 114. P-Q3 115. P-Q3 116. P-Q3 117. P-Q3 118. P-Q3 119. P-Q3 120. P-Q3 121. P-Q3 122. P-Q3 123. P-Q3 124. P-Q3 125. P-Q3 126. P-Q3 127. P-Q3 128. P-Q3 129. P-Q3 130. P-Q3 131. P-Q3 132. P-Q3 133. P-Q3 134. P-Q3 135. P-Q3 136. P-Q3 137. P-Q3 138. P-Q3 139. P-Q3 140. P-Q3 141. P-Q3 142. P-Q3 143. P-Q3 144. P-Q3 145. P-Q3 146. P-Q3 147. P-Q3 148. P-Q3 149. P-Q3 150. P-Q3 151. P-Q3 152. P-Q3 153. P-Q3 154. P-Q3 155. P-Q3 156. P-Q3 157. P-Q3 158. P-Q3 159. P-Q3 160. P-Q3 161. P-Q3 162. P-Q3 163. P-Q3 164. P-Q3 165. P-Q3 166. P-Q3 167. P-Q3 168. P-Q3 169. P-Q3 170. P-Q3 171. P-Q3 172. P-Q3 173. P-Q3 174. P-Q3 175. P-Q3 176. P-Q3 177. P-Q3 178. P-Q3 179. P-Q3 180. P-Q3 181. P-Q3 182. P-Q3 183. P-Q3 184. P-Q3 185. P-Q3 186. P-Q3 187. P-Q3 188. P-Q3 189. P-Q3 190. P-Q3 191. P-Q3 192. P-Q3 193. P-Q3 194. P-Q3 195. P-Q3 196. P-Q3 197. P-Q3 198. P-Q3 199. P-Q3 200. P-Q3 201. P-Q3 202. P-Q3 203. P-Q3 204. P-Q3 205. P-Q3 206. P-Q3 207. P-Q3 208. P-Q3 209. P-Q3 210. P-Q3 211. P-Q3 212. P-Q3 213. P-Q3 214. P-Q3 215. P-Q3 216. P-Q3 217. P-Q3 218. P-Q3 219. P-Q3 220. P-Q3 221. P-Q3 222. P-Q3 223. P-Q3 224. P-Q3 225. P-Q3 226. P-Q3 227. P-Q3 228. P-Q3 229. P-Q3 230. P-Q3 231. P-Q3 232. P-Q3 233. P-Q3 234. P-Q3 235. P-Q3 236. P-Q3 237. P-Q3 238. P-Q3 239. P-Q3 240. P-Q3 241. P-Q3 242. P-Q3 243. P-Q3 244. P-Q3 245. P-Q3 246. P-Q3 247. P-Q3 248. P-Q3 249. P-Q3 250. P-Q3 251. P-Q3 252. P-Q3 253. P-Q3 254. P-Q3 255. P-Q3 256. P-Q3 257. P-Q3 258. P-Q3 259. P-Q3 260. P-Q3 261. P-Q3 262. P-Q3 263. P-Q3 264. P-Q3 265. P-Q3 266. P-Q3 267. P-Q3 268. P-Q3 269. P-Q3 270. P-Q3 271. P-Q3 272. P-Q3 273. P-Q3 274. P-Q3 275. P-Q3 276. P-Q3 277. P-Q3 278. P-Q3 279. P-Q3 280. P-Q3 281. P-Q3 282. P-Q3 283. P-Q3 284. P-Q3 285. P-Q3 286. P-Q3 287. P-Q3 288. P-Q3 289. P-Q3 290. P-Q3 291. P-Q3 292. P-Q3 293. P-Q3 294. P-Q3 295. P-Q3 296. P-Q3 297. P-Q3 298. P-Q3 299. P-Q3 300. P-Q3 301. P-Q3 302. P-Q3 303. P-Q3 304. P-Q3 305. P-Q3 306. P-Q3 307. P-Q3 308. P-Q3 309. P-Q3 310. P-Q3 311. P-Q3 312. P-Q3 313. P-Q3 314. P-Q3 315. P-Q3 316. P-Q3 317. P-Q3 318. P-Q3 319. P-Q3 320. P-Q3 321. P-Q3 322. P-Q3 323. P-Q3 324. P-Q3 325. P-Q3 326. P-Q3 327. P-Q3 328. P-Q3 329. P-Q3 330. P-Q3 331. P-Q3 332. P-Q3 333. P-Q3 334. P-Q3 335. P-Q3 336. P-Q3 337. P-Q3 338. P-Q3 339. P-Q3 340. P-Q3 341. P-Q3 342. P-Q3 343. P-Q3 344. P-Q3 345. P-Q3 346. P-Q3 347. P-Q3 348. P-Q3 349. P-Q3 350. P-Q3 351. P-Q3 352. P-Q3 353. P-Q3 354. P-Q3 355. P-Q3 356. P-Q3 357. P-Q3 358. P-Q3 359. P-Q3 360. P-Q3 361. P-Q3 362. P-Q3 363. P-Q3 364. P-Q3 365. P-Q3 366. P-Q3 367. P-Q3 368. P-Q3 369. P-Q3 370. P-Q3 371. P-Q3 372. P-Q3 373. P-Q3 374. P-Q3 375. P-Q3 376. P-Q3 377. P-Q3 378. P-Q3 379. P-Q3 380. P-Q3 381. P-Q3 382. P-Q3 383. P-Q3 384. P-Q3 385. P-Q3 386. P-Q3 387. P-Q3 388. P-Q3 389. P-Q3 390. P-Q3 391. P-Q3 392. P-Q3 393. P-Q3 394. P-Q3 395. P-Q3 396. P-Q3 397. P-Q3 398. P-Q3 399. P-Q3 400. P-Q3 401. P-Q3 402. P-Q3 403. P-Q3 404. P-Q3 405. P-Q3 406. P-Q3 407. P-Q3 408. P-Q3 409. P-Q3 410. P-Q3 411. P-Q3 412. P-Q3 413. P-Q3 414. P-Q3 415. P-Q3 416. P-Q3 417. P-Q3 418. P-Q3 419. P-Q3 420. P-Q3 421. P-Q3 422. P-Q3 423. P-Q3 424. P-Q3 425. P-Q3 426. P-Q3 427. P-Q3 428. P-Q3 429. P-Q3 430. P-Q3 431. P-Q3 432. P-Q3 433. P-Q3 434. P-Q3 435. P-Q3 436. P-Q3 437. P-Q3 438. P-Q3 439. P-Q3 440. P-Q3 441. P-Q3 442. P-Q3 443. P-Q3 444. P-Q3 445. P-Q3 446. P-Q3 447. P-Q3 448. P-Q3 449. P-Q3 450. P-Q3 451. P-Q3 452. P-Q3 453. P-Q3 454. P-Q3 455. P-Q3 456. P-Q3 457. P-Q3 458. P-Q3 459. P-Q3 460. P-Q3 461. P-Q3 462. P-Q3 463. P-Q3 464. P-Q3 465. P-Q3 466. P-Q3 467. P-Q3 468. P-Q3 469. P-Q3 470. P-Q3 471. P-Q3 472. P-Q3 473. P-Q3 474. P-Q3 475. P-Q3 476. P-Q3 477. P-Q3 478. P-Q3 479. P-Q3 480. P-Q3 481. P-Q3 482. P-Q3 483. P-Q3 484. P-Q3 485. P-Q3 486. P-Q3 487. P-Q3 488. P-Q3 489. P-Q3 490. P-Q3 491. P-Q3 492. P-Q3 493. P-Q3 494. P-Q3 495. P-Q3 496. P-Q3 497. P-Q3 498. P-Q3 499. P-Q3 500. P-Q3 501. P-Q3 502. P-Q3 503. P-Q3 504. P-Q3 505. P-Q3 506. P-Q3 507. P-Q3 508. P-Q3 509. P-Q3 510. P-Q3 511. P-Q3 512. P-Q3 513. P-Q3 514. P-Q3 515. P-Q3 516. P-Q3 517. P-Q3 518. P-Q3 519. P-Q3 520. P-Q3 521. P-Q3 522. P-Q3 523. P-Q3 524. P-Q3 525. P-Q3 526. P-Q3 527. P-Q3 528. P-Q3 529. P-Q3 530. P-Q3 531. P-Q3 532. P-Q3 533. P-Q3 534. P-Q3 535. P-Q3 536. P-Q3 537. P-Q3 538. P-Q3 539. P-Q3 540. P-Q3 541. P-Q3 542. P-Q3 543. P-Q3 544. P-Q3 545. P-Q3 546. P-Q3 547. P-Q3 548. P-Q3 549. P-Q3 550. P-Q3 551. P-Q3 552. P-Q3 553. P-Q3 554. P-Q3 555. P-Q3 556. P-Q3 557. P-Q3 558. P-Q3 559. P-Q3 560. P-Q3 561. P-Q3 562. P-Q3 563. P-Q3 564. P-Q3 565. P-Q3 566. P-Q3 567. P-Q3 568. P-Q3 569. P-Q3 570. P-Q3 571. P-Q3 572. P-Q3 573. P-Q3 574. P-Q3 575. P-Q3 576. P-Q3 577. P-Q3 578. P-Q3 579. P-Q3 580. P-Q3 581. P-Q3 582. P-Q3 583. P-Q3 584. P-Q3 585. P-Q3 586. P-Q3 587. P-Q3 588. P-Q3 589. P-Q3 590. P-Q3 591. P-Q3 592. P-Q3 593. P-Q3 594. P-Q3 595. P-Q3 596. P-Q3 597. P-Q3 598. P-Q3 599. P-Q3 600. P-Q3 601. P-Q3 602. P-Q3 603. P-Q3 604. P-Q3 605. P-Q3 606. P-Q3 607. P-Q3 608. P-Q3 609. P-Q3 610. P-Q3 611. P-Q3 612. P-Q3 613. P-Q3 614. P-Q3 615. P-Q3 616. P-Q3 617. P-Q3 618. P-Q3 619. P-Q3 620. P-Q3 621. P-Q3 622. P-Q3 623. P-Q3 624. P-Q3 625. P-Q3 626. P-Q3 627. P-Q3 628. P-Q3 629. P-Q3 630. P-Q3 631. P-Q3 632. P-Q3 633. P-Q3 634. P-Q3 635. P-Q3 636. P-Q3 637. P-Q3 638. P-Q3 639. P-Q3 640. P-Q3 641. P-Q3 642. P-Q3 643. P-Q3 644. P-Q3 645. P-Q3 646. P-Q3 647. P-Q3 648. P-Q3 649. P-Q3 650. P-Q3 651. P-Q3 652. P-Q3 653. P-Q3 654. P-Q3 655. P-Q3 656. P-Q3 657. P-Q3 658. P-Q3 659. P-Q3 660. P-Q3 661. P-Q3 662. P-Q3 663. P-Q3 664. P-Q3 665. P-Q3 666. P-Q3 667. P-Q3 668. P-Q3 669. P-Q3 670. P-Q3 671. P-Q3 672. P-Q3 673. P-Q3 674. P-Q3 675. P-Q3 676. P-Q3 677. P-Q3 678. P-Q3 679. P-Q3 680. P-Q3 681. P-Q3 682. P-Q3 683. P-Q3 684. P-Q3 685. P-Q3 686. P-Q3 687. P-Q3 688. P-Q3 689. P-Q3 690. P-Q3 691. P-Q3 692. P-Q3 693. P-Q3 694. P-Q3 695. P-Q3 696. P-Q3 697. P-Q3 698. P-Q3 699. P-Q3 700. P-Q3 701. P-Q3 702. P-Q3 703. P-Q3 704. P-Q3 705. P-Q3 706. P-Q3 707. P-Q3 708. P-Q3 709. P-Q3 710. P-Q3 711. P-Q3 712. P-Q3 713. P-Q3 714. P-Q3 715. P-Q3 716. P-Q3 717. P-Q3 718. P-Q3 719. P-Q3 720. P-Q3 721. P-Q3 722. P-Q3 723. P-Q3 724. P-Q3 725. P-Q3 726. P-Q3 727. P-Q3 728. P-Q3 729. P-Q3 730. P-Q3 731. P-Q3 732. P-Q3 733. P-Q3 734. P-Q3 735. P-Q3 736. P-Q3 737. P-Q3 738. P-Q3 739. P-Q3 740. P-Q3 741. P-Q3 742. P-Q3 743. P-Q3 744. P-Q3 745. P-Q3 746. P-Q3 747. P-Q3 748. P-Q3 749. P-Q3 750. P-Q3 751. P-Q3 752. P-Q3 7

...the "Patrolmen" who are
open up our Game Reserve today! Why
...Kanya will be no more than a
...State, the "Patrolmen" who are
...together you are again who
...to dollars—your best strength is being
...you. Let us preserve Kanya as a land for
...live in.

SHAW AND HUNTER
...for the game gutter except Police Gen.
P.O. Box 70, NAIROBI.

Charles Ware
...TURY ACCOUNTANT,
(Established 25 years.)
NAIROBI. Tel. Address: "Sportman."

CLIENTS PLEASE NOTE THAT DURING MY
...IN ENGLAND MR. F. A. THOMAS WILL BE
...MY SOLE REPRESENTATIVE IN KENYA

IT IS TOTALLY UNDERSTOOD THAT NO
...REPLY MEANS NO BUSINESS.

WE DESIRE THIS TO BE
...OF EXISTING ECONOMIC
...CONDITIONS.
...OUR PRICES AND SERVICE
...COMMENSURATE WITH A
...QUALITY HELP CONSIDER-
...ABLY TIME OVER PRE-
...SENT DIFFICULTIES.
...Thank Our Statement.

AFRICAN ATHLETIC
...Today's Olympic Meeting
...at Police Ground.

PROMISING RESULTS

The annual African Olympic Sports meeting opened by the African Athletic Association at the Kenya Police ground commencing at 3 p.m. These meetings which are being held for the first time at all parts of the Colony have always resulted in some excellent performances in the way of athletic prowess, and today should be no exception to the rule.

From a small beginning in 1925, interest in these meetings has steadily increased. In the past, the number of districts taking part in the Olympics has been greater each year, while the actual standard of athletics has been higher as time has progressed. Today's gathering therefore should provide a lot of outstanding interest.

It is understood that His Excellency the Acting Governor and Lady Baring will be present.

Local Tennis.

TEAMS FOR TODAY'S LEAGUE MATCHES.

| |
|--------------------------------|
| ... (List of names and scores) |
|--------------------------------|

The following teams will represent the Civil Service in the East-King Tennis League today.

Against Muthiga on Civil Serv Courts at 3.30 p.m. Eastland and Ellis. Porter and Ayr. Post and Dewar.

Against Railway on Railway Courts at 3.30 p.m. Shearman and Wilson. Congrove and Norman. Harrison and Kemp.

Parklands Team.

The following teams will represent Parklands Sports Club v. Kabete in the East-King League today.

A at Parklands at 3.30 p.m. ...

Local School Cricket.

A RETURN MATCH WITH THE TREASURY.

The following were the scores in a cricket match between the Nairobi Purupuan School and the Treasury played on the School ground on Wednesday and Thursday last.

The Treasury.

| | |
|----------------------|-----|
| Page Walter | 80 |
| Oliver C. Nicholson | 6 |
| Spicer B. Thomas | 8 |
| Hirt A. Nicholson | 8 |
| Jackson B. Green | 15 |
| Hammond A. Nicholson | 15 |
| Greys & Lorty | 8 |
| Walter C. Nicholson | 15 |
| Clode | 8 |
| Wade & Clode | 8 |
| Extras | 10 |
| Total | 178 |

The School.

| |
|--------------------------------|
| ... (List of names and scores) |
|--------------------------------|

Cricket at Nakuru.

RAILWAY INDIAN TEAMS TO MEET.

TODAY'S MATCH

The following team will represent Parklands Sports Club in a cricket match against the School ground today at 2.15 p.m. Miller, Phil. Kraus. Purver, Harrison, Newton, Haines, O'Connell, Shirley, and O'Connell.

THE MAN WHO WON
...The following is the history of the 1929 Team...

SELECTIONS FAVOUR YOUTH

...The following is the history of the 1929 Team...

The 1929 Team.

The following is the South African 1929 team. The age and birth place appear in parentheses.

SPORTS DIARY.

Today:

Cricket at Nakuru.

KENSITAS

D. EPSTEIN & CO., NAIROBI.



HOGG'S WHISKY
...The following is the history of the 1929 Team...



A HOGG.
...The following is the history of the 1929 Team...

The Most Discussed Whisky in Nairobi.

Important Announcement
Craig's Sports House
DEALERS IN
A. G. Spalding's Athletic Goods
HAS OPENED BUSINESS PREMISES IN
COWIE'S BUILDINGS.
(NEXT DOOR TO DOBBIES, LTD.)
EVERY DESCRIPTION OF SPORTS GEAR
IN STOCK.

Write or Call P.O. Box 837, Phone 147.



HAVE A PICNIC BASKET FOR THAT Next Week-End Motor Run.

A Stout Canvas Cover Renders Them Dustproof.

S. JACOBS LTD.
P.O. Box 255 NAIROBI. Phone 25

& Co. Ltd.
SPORTS HOUSE
NAIROBI.

Printed and Published by HARRY BERMAN STAMPAID, Ltd., 10th Floor, Nairobi, Kenya Colony.

Printed and Published by HARRY BERMAN STAMPAID, Ltd., 10th Floor, Nairobi, Kenya Colony.

KENYA NATIONAL ARCHIVES

PHOTOGRAPHIC SERVICE

SECTION 8

CONTINUED ON

REEL No.

75

KENYA NATIONAL ARCHIVES
PHOTOGRAPHIC SERVICE

SECTION 8

END

OF REEL NO......

74