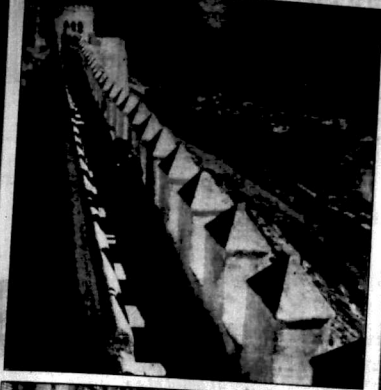


Before disasters struck



A GENERAL view of Port Louis, capital of the island of Mauritius, which was devastated by the 150 m.p.h. winds of a Cyclone "Cora" last weekend. Thirty-one people are known to have lost their lives and about 68,000 made homeless.

Left: From the ramparts of the old Portuguese fort on the hill above Agadir, the Moroccan city—which was almost entirely destroyed by the severe earthquake on Monday night—is seen spread out in panoramic fashion. This view looking towards the beach near where several luxury hotels, crowded with European tourists, were shattered into rubble.



The man held chiefly responsible for Germany's under-coverage move to bypass Hitler and make a separate military agreement with Spain—an attempt which has shocked the West—is Herr Joseph Strauss, the West German Defense Minister.

Only the strict practice of Democratic equality, the map who gave over to street-keepers the police, owned by fascist archduke, had sufficient sense to meet their first duty should be a specially set for their duty. Now the original condition and will be kept in the Latin Museum, Moscow. On the right is No. 20, London Road, London, with the headlines set against the program met at Brussels, Margaret and Mr. Astor, American John. It was here, in a studio flanked by a bank and an art shop, and started on his business as a photographer.



TURI CANNED
 Chicken and Ham Roll
 KENYA'S BEST LUNCHEON MEAT
 Why pay more for imports?
 TRY IT TODAY
 TURI BUTCHERY LTD.
 WHOLESALE KENTUZ AGENCIES

READ ABOUT
 KENYA'S
 TOM MBROYA
TIME
 The Weekly Newsmagazine
 ON SALE TODAY AT LEADING NEWSSTANDS

CITY LAGER

LAGER IS GOOD...

CITY IS BEST

ALL THE BEST

1. FINEST-PILSNER TYPE MALT
2. CHOICEST HOPS
3. TRADITIONAL BREWING
4. HONEST TO-GOODNESS VALUE

E. Africa to aid A-dust investigation

RAIN SAMPLES TO BE SENT TO SWEDISH EXPERTS

Over a month for the next year three scientific parties will be sent by air from the East African Protectorate to Sweden to collect rain samples in various parts of the country in order to help Swedish experts in their research into the amount of rain which falls in the Protectorate during the next year.

The Swedish expedition is being organized by the Swedish University of Agricultural Sciences, Uppsala. The expedition will consist of a party of five, including a meteorologist, a physicist, a chemist, and a biologist. They will be equipped with instruments for measuring the amount of rain which falls in various parts of the Protectorate, and will also be carrying out other scientific work.

148 USE NAKURU'S YOUTH CLUB

Nakuru Youth Club, which was started about a month ago, now has 148 members, including 12 girls. The club is providing a means of amusement for its members, and is also engaged in social work, such as the training of young women in domestic science, and the training of young men in agriculture.

English lessons

Two instructors are teaching English in the Protectorate. They are teaching in the primary schools, and are also giving private lessons. The instructors are Mr. J. H. Smith and Mr. J. H. Smith.

Cosmic rays

It is said that "rain washing out" the atmosphere will be a relief to the people of the Protectorate. It is said that the rain will wash out the cosmic rays which are believed to be causing the disease known as "radiation sickness".

Influence for the minority

The steady exercise of influence by the majority, but for the majority could be made to care for the interests of the minority, the African District Commissioner, Mr. H. L. Smith, told the Chamber of Commerce at a dinner.

TANU SEEKS SELF RULE NEXT YEAR

Tanania is seeking self-rule next year, according to the African District Commissioner, Mr. H. L. Smith. He said that the people of Tanania are ready to accept self-rule, and that the Government should grant them self-rule next year.

Lord Kitchener's papers public

Lord Kitchener's papers public, according to the African District Commissioner, Mr. H. L. Smith. He said that the papers of Lord Kitchener, which were recently discovered, will be made public, and that the people of the Protectorate will be able to see them.

UGANDA BAR ON K.E.M.

Uganda has put a bar on the entry of Kikuyu, Embu and Meru into Kenya, and any member of these tribes who enters Kenya without permission. This is the result of a decision made by the Government of Kenya.

AFRICAN FARMERS' ENTRIES IN SHOW FOR FIRST TIME

FOR the first time, the Western Kenya branch of the Agricultural Society of Kenya has received entries from African farmers for its annual show at Eldoret on March 12. There are three African entries from the Nandi district.

More patrols to end Lake poaching

A decision that a unit should be sent to Lake Naivasha to end poaching in Uganda territory, was made by the Uganda Legislative Council. The Minister of Natural Resources, Mr. A. H. Killick, proposed that a unit of 100 men should be sent to Lake Naivasha, and that the unit should be under the command of Mr. J. H. Smith.

Railways cut transit time for cattle

The railway department has cut the transit time for cattle from Nairobi to Eldoret from 10 days to 5 days. This is the result of a decision made by the railway department.

Lord Kitchener's papers public

Lord Kitchener's papers public, according to the African District Commissioner, Mr. H. L. Smith. He said that the papers of Lord Kitchener, which were recently discovered, will be made public, and that the people of the Protectorate will be able to see them.

UGANDA BAR ON K.E.M.

Uganda has put a bar on the entry of Kikuyu, Embu and Meru into Kenya, and any member of these tribes who enters Kenya without permission. This is the result of a decision made by the Government of Kenya.

U.N. team for tour of Tanganyika

A United Nations team is to be sent to Tanganyika to investigate the situation in the country. The team will be led by Mr. J. H. Smith.

PUPILS WELCOME TO VISITOR

The pupils of the primary school at Eldoret were very friendly to a visitor from the United Nations. The visitor was Mr. J. H. Smith.

Lord Kitchener's papers public

Lord Kitchener's papers public, according to the African District Commissioner, Mr. H. L. Smith. He said that the papers of Lord Kitchener, which were recently discovered, will be made public, and that the people of the Protectorate will be able to see them.

UGANDA BAR ON K.E.M.

Uganda has put a bar on the entry of Kikuyu, Embu and Meru into Kenya, and any member of these tribes who enters Kenya without permission. This is the result of a decision made by the Government of Kenya.

UGANDA BAR ON K.E.M.

Uganda has put a bar on the entry of Kikuyu, Embu and Meru into Kenya, and any member of these tribes who enters Kenya without permission. This is the result of a decision made by the Government of Kenya.

CAMPAIGN FOR NEW CROPS SUCCEEDS

The campaign for new crops in the Protectorate has been successful. The people of the Protectorate are now growing a variety of new crops, and the yield is increasing.

Market price up

The market price of coffee in the Protectorate has risen. This is the result of a decision made by the Government of Kenya.

U.N. team for tour of Tanganyika

A United Nations team is to be sent to Tanganyika to investigate the situation in the country. The team will be led by Mr. J. H. Smith.

Lord Kitchener's papers public

Lord Kitchener's papers public, according to the African District Commissioner, Mr. H. L. Smith. He said that the papers of Lord Kitchener, which were recently discovered, will be made public, and that the people of the Protectorate will be able to see them.

UGANDA BAR ON K.E.M.

Uganda has put a bar on the entry of Kikuyu, Embu and Meru into Kenya, and any member of these tribes who enters Kenya without permission. This is the result of a decision made by the Government of Kenya.

This Book is FREE!

90% SUCCESS AT EXAMINATIONS! WE GUARANTEE: NO PAIN, NO FEEL!

POST COUPON NOW!

BRITISH TUTORIAL COLLEGE B.T.C. AFRICA'S MOST SUCCESSFUL COLLEGE

DHARAMSHI & CO. P.O. Box 1822 NAIROBI Telephone 23670

RATTAN BASKET CHAIRS

A new arrangement has just arrived. Selection of attractive colours.

Lightweight folding chairs, stools and camp beds, etc.

DHARAMSHI & CO. P.O. Box 1822 NAIROBI Telephone 23670

FREE

THIS ATTRACTIVE PLASTIC CONTAINER FOR DELICIOUS AROMA COFFEE

Arma is the good, pure coffee that is the favourite drink because of its delicious taste and reasonable price. And now, just by enjoying Arma coffee, you can obtain this attractive, hygienic container and beautiful message booklet!

THIS IS ALL YOU HAVE TO DO!

Just save your empty 1 lb. packet from Arma coffee. When you have three of these, take them to any good grocer. You will be entitled to buy a plastic container, ready-packed in the Arma coffee, at the normal price. You pay no extra for the container!

THIS OFFER LASTS FOR A LIMITED PERIOD ONLY—ASK YOUR GROCER FOR DETAILS TODAY!

The Old East African Trading Company Limited

Voigtländer PRESENT THE

BESSAMATIC 35 mm.

THE LATEST AND BEST

Yes, the Bessamatic is the latest in Modern REFLEX Camera Design.

- Interchangeable lenses with fly-back iris — fully open for accurate focusing on the spot opening before exposure.
- The auto light meter — is coupled to all lenses.
- Wide-Angle, Tele and Zoom lenses, which had no previous equivalent.
- The Standard lens is an F2.8 Color-Correction lens.
- Ask to handle it — it has to be seen, to be believed.
- YOU JUST CAN'T GO WRONG

Price with pre-ordered case Shs. 1,390/-

E. ROBSON LTD P.O. BOX 20077 NAIROBI TEL. 25355 NOW IN KHARTOUM

See at your nearest dealer or call at—

20th CENTURY
(In the heart of the city)
Tel: 2111

NATIONAL AND
GENSLADES BANK
(LIMITED)
Incorporated in Kenya

East African Standard
TAKING STOCK IN KENYA

PEOPLE of all races in Kenya have been taking stock
of the country since the constitutional
reform.

Lancaster House in retrospect-1
TALKS ONLY 'FACADE' SAYS
UNITED PARTY

The Lancaster House
conference was not
a success in the
eyes of the United
Party.

THEY WOULD PRODUCE
A NEW
COUNTRY

THE LONG, HOT
SUMMER
PAUL NEWMAN
JOANNE WOODWARD

BONOVAN MAULE
THEATRE
UNTIL MARCH 12
THE PLEASURE OF
HIS COMPANY

SAHARU TAYLORS
witty sophisticated comedy
now playing its second
year in New York;

PERFORMANCES
Tuesday to Friday at 8
Boxing Friday at 5.5
Saturday at 5.5 and 8.50

COME
RACING
TOMORROW!
Main Race at the Day's

THE CIVIL SERVICE
GOLD CUP
Members' Enclosure 10/

FIRST RACE AT 2.30
Nairobi Races

ANNUAL AIR
RALLY
When Aerodrome
Sunday, March 6

FLYING DISPLAY
Aerobatics, Air Races
Crazy Flying

THE DIARY OF
ANNE FRANK
Opening Tonight

VASDEV SINGH
Watchmaker and Jeweller

MOVIED
HOWSE & McGEORGE
General Road

EAST AFRICAN
SCHOOL OF MOTORING
HAVE PLEASED
IN ANNOUNCING

APPOINTMENT
C.M.E.
THE INSTRUCTOR THAT

DAVID NIVEN
S.M. SHELTON
M.G. presents the author,
international and provocative

ASK ANY
GIRL
Come to the
Metropolitan

EMPIRE
(New Theatre Limited)
Today at 8.15 and 9

COME
RACING
TOMORROW!
Main Race at the Day's

THE CIVIL SERVICE
GOLD CUP
Members' Enclosure 10/

FIRST RACE AT 2.30
Nairobi Races

ANNUAL AIR
RALLY
When Aerodrome
Sunday, March 6

FLYING DISPLAY
Aerobatics, Air Races
Crazy Flying

THE DIARY OF
ANNE FRANK
Opening Tonight

VASDEV SINGH
Watchmaker and Jeweller

MOVIED
HOWSE & McGEORGE
General Road

EAST AFRICAN
SCHOOL OF MOTORING
HAVE PLEASED
IN ANNOUNCING

APPOINTMENT
C.M.E.
THE INSTRUCTOR THAT

PHILIPS
RECORDS
Principal partners wanted for
a plant for the production of
records in Kenya.

PHILIPS
RECORDS
Principal partners wanted for
a plant for the production of
records in Kenya.

THE PROPOSED land development bill is a stabilising factor
in the country's economic life. It is a necessary
measure for the Government to take
in order to ensure that the country's
resources are used to the best advantage.

Sign of co-operative mood required
In these times of doubt and uncertainty, the country has looked
for a leader who would give a sense of direction to the
people.

THE PROPOSED land development bill is a stabilising factor
in the country's economic life. It is a necessary
measure for the Government to take
in order to ensure that the country's
resources are used to the best advantage.

THE PROPOSED land development bill is a stabilising factor
in the country's economic life. It is a necessary
measure for the Government to take
in order to ensure that the country's
resources are used to the best advantage.

THE PROPOSED land development bill is a stabilising factor
in the country's economic life. It is a necessary
measure for the Government to take
in order to ensure that the country's
resources are used to the best advantage.

THE PROPOSED land development bill is a stabilising factor
in the country's economic life. It is a necessary
measure for the Government to take
in order to ensure that the country's
resources are used to the best advantage.

THE PROPOSED land development bill is a stabilising factor
in the country's economic life. It is a necessary
measure for the Government to take
in order to ensure that the country's
resources are used to the best advantage.

THE PROPOSED land development bill is a stabilising factor
in the country's economic life. It is a necessary
measure for the Government to take
in order to ensure that the country's
resources are used to the best advantage.

THE PROPOSED land development bill is a stabilising factor
in the country's economic life. It is a necessary
measure for the Government to take
in order to ensure that the country's
resources are used to the best advantage.

THE PROPOSED land development bill is a stabilising factor
in the country's economic life. It is a necessary
measure for the Government to take
in order to ensure that the country's
resources are used to the best advantage.

THE PROPOSED land development bill is a stabilising factor
in the country's economic life. It is a necessary
measure for the Government to take
in order to ensure that the country's
resources are used to the best advantage.

THE PROPOSED land development bill is a stabilising factor
in the country's economic life. It is a necessary
measure for the Government to take
in order to ensure that the country's
resources are used to the best advantage.

THE PROPOSED land development bill is a stabilising factor
in the country's economic life. It is a necessary
measure for the Government to take
in order to ensure that the country's
resources are used to the best advantage.

THE PROPOSED land development bill is a stabilising factor
in the country's economic life. It is a necessary
measure for the Government to take
in order to ensure that the country's
resources are used to the best advantage.

THE PROPOSED land development bill is a stabilising factor
in the country's economic life. It is a necessary
measure for the Government to take
in order to ensure that the country's
resources are used to the best advantage.

THE PROPOSED land development bill is a stabilising factor
in the country's economic life. It is a necessary
measure for the Government to take
in order to ensure that the country's
resources are used to the best advantage.

THE PROPOSED land development bill is a stabilising factor
in the country's economic life. It is a necessary
measure for the Government to take
in order to ensure that the country's
resources are used to the best advantage.

THE PROPOSED land development bill is a stabilising factor
in the country's economic life. It is a necessary
measure for the Government to take
in order to ensure that the country's
resources are used to the best advantage.

THE PROPOSED land development bill is a stabilising factor
in the country's economic life. It is a necessary
measure for the Government to take
in order to ensure that the country's
resources are used to the best advantage.

THE PROPOSED land development bill is a stabilising factor
in the country's economic life. It is a necessary
measure for the Government to take
in order to ensure that the country's
resources are used to the best advantage.

THE PROPOSED land development bill is a stabilising factor
in the country's economic life. It is a necessary
measure for the Government to take
in order to ensure that the country's
resources are used to the best advantage.

THE PROPOSED land development bill is a stabilising factor
in the country's economic life. It is a necessary
measure for the Government to take
in order to ensure that the country's
resources are used to the best advantage.

THE PROPOSED land development bill is a stabilising factor
in the country's economic life. It is a necessary
measure for the Government to take
in order to ensure that the country's
resources are used to the best advantage.

THE PROPOSED land development bill is a stabilising factor
in the country's economic life. It is a necessary
measure for the Government to take
in order to ensure that the country's
resources are used to the best advantage.

THE PROPOSED land development bill is a stabilising factor
in the country's economic life. It is a necessary
measure for the Government to take
in order to ensure that the country's
resources are used to the best advantage.

THE PROPOSED land development bill is a stabilising factor
in the country's economic life. It is a necessary
measure for the Government to take
in order to ensure that the country's
resources are used to the best advantage.

THE PROPOSED land development bill is a stabilising factor
in the country's economic life. It is a necessary
measure for the Government to take
in order to ensure that the country's
resources are used to the best advantage.

THE PROPOSED land development bill is a stabilising factor
in the country's economic life. It is a necessary
measure for the Government to take
in order to ensure that the country's
resources are used to the best advantage.

THE PROPOSED land development bill is a stabilising factor
in the country's economic life. It is a necessary
measure for the Government to take
in order to ensure that the country's
resources are used to the best advantage.

THE PROPOSED land development bill is a stabilising factor
in the country's economic life. It is a necessary
measure for the Government to take
in order to ensure that the country's
resources are used to the best advantage.

DRIVE-IN
7 TONIGHT 9.30
THE MASTER OF SUSPENSE
ALFRED HITCHCOCK
WEAVES HIS GREATEST
M.G.M. presents

CARY GRANT
EVA MARIE SAINT
JAMES MASON
in a picture of brilliant
entertainment

NORTH BY
WEST
It's really NICHOLSON'S
ALAN TUDY AND JERRY
SCOTT

EMBASSY
American International Pictures
with
STEVE REEVES
and
THE GIANT OF GIANT
SPRINGS

GOLIATH
with
BARBARIANS
See the miracle of strength
with GARY BRANT
11.00 AM, 8.00 PM
(Adults only)

LIMURU THEATRE
LIMURU THEATRE
Presented First Notice
NOTICE is hereby given that
at a Meeting of the Board held
on March 1, 1963, it was resolved
to recommend to the Members
of the said company that a Final
Dividend of 20 per cent (Twenty
per cent) be paid on the basis
of the year ended December 31,
1962, to the Members of the
said company who are entitled
to receive the same.

CITY COUNCIL OF NAIROBI
CITY COUNCIL OF NAIROBI
CITY COUNCIL OF NAIROBI
CITY COUNCIL OF NAIROBI

EMPLOYERS
Continued from page 1.
Kenya, available immediately
for the following positions:
General Manager, P.O. Box
100, Nairobi, Kenya.
Responsible for the overall
responsibility. Interview now
open on the 6th/3/63.

LIBERTY
(PANGANI)
Today at 8 and 9
London Film present
KENNEDY
with
RONALD SCOTT
BRIAN WILSON

RAISING A RIOT
A laugh riot... A laugh riot...
The whole Nation will live this
It is a comedy for everyone
It's a riot of entertainment
(Color by Technicolor)

PHAGUN
MADRASALA
SHANTHI SUDHAN
SERVAI - DRUMAL
KANNAN - SHANTHI
Made up by P. Meyer
8.00 pm. Don't miss

THE NIGHT OWLS
BAND
with
THE NIGHT OWLS
BAND
Admission: Double 7/50
Single 5/0

UNITED PARTY
OFFICE OPEN FOR
INQUIRIES
9 to 11.30
DURING THE WEEK
9 to 11.30
SATURDAY MORNINGS
9 to 11.30

WILLYS GARAGE
WILLYS GARAGE
WILLYS GARAGE
WILLYS GARAGE

MINK FARMING
IN GREAT BRITAIN
Does this profitable occupation
interest you? Established in 1952
(30 years) E.A. experience.
Offers advice and guidance.
Write to: Mink Farming,
East Africa House,
64 St. Marys Ave
London, E.C.1.

WILCOX & CO. (AFRICA) LTD.
WILCOX & CO. (AFRICA) LTD.
WILCOX & CO. (AFRICA) LTD.
WILCOX & CO. (AFRICA) LTD.

ROYAL SHAN
(Now Theatres Limited)
Today at 8.15 and 9
Out of the greatest dramatic
films of the world
ELIZABETH TAYLOR
MONTY PYTHON
SHELLEY WINTERS
An Academy Award-winner
GARY BRANT
in a picture of brilliant
entertainment

APLACE IN
THE SUN
(Unsuitable for children
under 10)
with
KEEFE BRASSELE
The preliminary meeting of
an estate but it takes time
returns to the scene

SHAN
Saturday at 8, 6 and 9
Sunday at 10, 8, and 9
Monday at 6 and 9
GRAND ATTRACTION
A Silver Jubilee Hit
GARY SANSAR
winner of international awards

HEAR
lovely singing star
ANNE
SHELTON
in person

THE EQUATOR
CLUB, Nairobi
on record
anytime - she thanks
Philips! Anne Shelton
records exclusively

PHILIPS
RECORDS
Principal partners wanted for
a plant for the production of
records in Kenya.

BUILDING INDUSTRY
Principal partners wanted for
a plant for the production of
records in Kenya.

PHILIPS
RECORDS
Principal partners wanted for
a plant for the production of
records in Kenya.

ODEON
SHOW-PLACE OF THE TOWN
FROM TOMORROW
BASANT PRITHEEP
with
ZIMBO
AZAD - SMITRA
PEDRO THE APE

RAMONA
with
KANNI KAUSHAL
KISHORE KUMAR

BORDER INN
SATURDAY, MARCH 5
9.0 pm. to 2.0 am.

WHITE ROSE
with
THE NIGHT OWLS
BAND
Admission: Double 7/50
Single 5/0

UNITED PARTY
OFFICE OPEN FOR
INQUIRIES
9 to 11.30
DURING THE WEEK
9 to 11.30
SATURDAY MORNINGS
9 to 11.30

WILLYS GARAGE
WILLYS GARAGE
WILLYS GARAGE
WILLYS GARAGE

MINK FARMING
IN GREAT BRITAIN
Does this profitable occupation
interest you? Established in 1952
(30 years) E.A. experience.
Offers advice and guidance.
Write to: Mink Farming,
East Africa House,
64 St. Marys Ave
London, E.C.1.

WILCOX & CO. (AFRICA) LTD.
WILCOX & CO. (AFRICA) LTD.
WILCOX & CO. (AFRICA) LTD.
WILCOX & CO. (AFRICA) LTD.

Illness, pain, discomfort—how often they can be prevented. If apparently harmless little hurts are dealt with wisely and promptly.



Every family needs this "treble-action" against the dangers of germ infection

- A modern medical treatment that: 1. Kills germs... 2. Soothes pain... 3. Actively helps healing...

Cuts, bruises and grazes are more likely to turn "sticky" than ordinary cuts and scratches...

Your body is fighting millions of germs every minute—it needs this vital whenever germs gain entry

Use safely, soothing, healing T.C.P. ointment and use for skin irritation and infections...

Wherever germs gain entry T.C.P. ointment stands sentry

simply, smother the bloodstreams. Five T.C.P.'s usually are enough...

Use safely, soothing, healing T.C.P. ointment and use for skin irritation and infections...

Wherever germs gain entry T.C.P. ointment stands sentry

Public mood familiar with Kenya Council of State

U.S. TOLD CARS TOO DEAR IN E. AFRICA

AMERICAN car manufacturers have been told that the United States is a "hot market" for cars...

Kenya Council of State and its activities were very familiar to the public...

The Council had four public meetings... The Council had four public meetings...

Committee formed for bee research

African committee of the Bee Research Association has been set up in Kenya...

Library research

A branch of the library has been set up in Kenya... The branch of the library has been set up in Kenya...

Expenses item

The new expenditure account for the Council for East Africa...



Mr. A. H. Hume... The new expenditure account for the Council for East Africa...

Mr. A. H. Hume... The new expenditure account for the Council for East Africa...

While in Detroit... The new expenditure account for the Council for East Africa...

Ministry to advise on housing

"Standard" Correspondent... The Ministry of Housing and Local Government...

TAX CUTS IN S. AFRICA'S BUDGET

Tax concessions amounting to R2,000,000... The South African Government...

SECT FOR CRUSADE IN FEDERATION

"Standard" Correspondent... The South African Federation...

Five killed in Montreal blaze

Five firemen died in a temporary structure... Montreal, Quebec...

Pakistan office

Mr. M. A. Jafri, Pakistan's Secretary of State... Karachi, Pakistan...

FREE FLIGHT PRIZE AT KENYA PEARL DANCE

More than 300 prizes have been donated to the Kenya Pearl Dance... Nairobi, Kenya...

THE WEEK'S RINKS

Barclay's Ice Rink... The week's rink events...

Electrical and Musical Industries

Electrical and Musical Industries have made a £150,000 bid... London, UK...

Make your talent pay EARN BIG MONEY THE L.O.S. WAY

Learn the world's largest Continuous... The L.O.S. Way...

INTERNATIONAL CORRESPONDENCE SERVICE... The L.O.S. Way...

KENYA CANNING FACTORY Closing-down Sale

Modern and Fully Equipped TENDERS ARE INVITED FOR... The Kenya Canning Factory...

Important announcement THE EUROPEAN MENDING CENTRE

has engaged a FIRST-CLASS LADIES' TAILOR... The European Mending Centre...

Advertisement for Nylex fabric, featuring a hand holding a piece of fabric and the text 'Now for you! NYLEX'.

Advertisement for Nylex fabric, featuring a woman in a dress and the text 'Modern Living and Good Fashion... through NYLEX'.

Advertisement for Pearl Dry Cleaners Ltd., featuring a woman in a dress and the text 'Do you always look your best? Pearl Dry Cleaners Ltd.'.

Advertisement for Pearl Dry Cleaners Ltd., featuring a woman in a dress and the text 'Do you always look your best? Pearl Dry Cleaners Ltd.'.

San Antonio Standard, L.A.
RECEIVED AT THE NEW YORK OFFICE OF THE POST OFFICE AT NEW YORK, N.Y.
MARCH 10, 1956

BIRTHS
MAYOR: Robert F. Wagner, Jr.
MAYOR: Robert F. Wagner, Jr.

ENGAGEMENTS
MARRIAGES
MARRIAGES

DEATHS
THANKS
IN MEMORIAM

BUSINESS FOR SALE
BUSINESS WANTED
SECRETARIAL SERVICES

WANTED KNOWN
SITUATIONS VACANT
Men

WANTED KNOWN
SITUATIONS VACANT
Men

SITUATIONS VACANT
Men

SITUATIONS VACANT
Men

SITUATIONS VACANT
Men

SITUATIONS VACANT
Men

SITUATIONS VACANT
Men

SITUATIONS VACANT
Men

SITUATIONS VACANT
Men

SITUATIONS VACANT
Men

SITUATIONS VACANT
Men

SITUATIONS VACANT
Men

SITUATIONS VACANT
Men

SITUATIONS VACANT
Men

SITUATIONS VACANT
Men

SITUATIONS VACANT
Men

SITUATIONS VACANT
Men

SITUATIONS VACANT
Men

SITUATIONS VACANT
Men

SITUATIONS VACANT
Men

SITUATIONS VACANT
Men

SITUATIONS VACANT
Men

SITUATIONS VACANT
Men

SITUATIONS VACANT
Men

SITUATIONS VACANT
Men

SITUATIONS VACANT
Men

SITUATIONS VACANT
Men

SITUATIONS VACANT
Men

SITUATIONS VACANT
Men

SITUATIONS VACANT
Men

SITUATIONS VACANT
Men

SITUATIONS VACANT
Men

SITUATIONS VACANT
Men

SITUATIONS VACANT
Men

SITUATIONS VACANT
Men

SITUATIONS VACANT
Men

SITUATIONS VACANT
Men

Remember These Facts!
These facts may be to your financial advantage at a later date, so please remember them.
1. The first non-stop crossing of the Atlantic by air was made in 1919 by the Airship 'R38' using Castrol.
2. The first double crossing of the Atlantic by air was also made in 1919 by the Airship 'R38' using Castrol.
3. The first synthetic jet engine lubricant - Castrol 'J-1' - is approved by Rolls-Royce for the gas turbine engines.
WE CHALLENGE ANYBODY TO REFUTE THESE FACTS
ASK FOR CASTROL BY NAME
WIGGLESWORTH & CO. (AFRICA) LTD.

REPAIRS AND MENDING
BUILDING REPAIRS
DECORATING
PIANOS
TRAVEL
PACKING
REMOVALS
FLATS TO LET
FLATS FOR SALE
HOUSES FOR SALE



To those who are
—or may become—

Trustees We are often asked to explain in greater detail the services we can offer as Trustees, as opposed to our regular Executor services which are now widely known and increasingly used by our customers.

To meet this demand we have prepared the booklet illustrated above which sets out in non-technical language the ways in which the bank can help you in your ordinary day-to-day matters.

Please ask for a copy in any branch.

BARCLAYS BANK D.C.O.
(Incorporated in the United Kingdom)
THIRTYEIGHT BRANCH, BOUTRY STREET, NAIROBI

THE UNITED AFRICA COMPANY LIMITED
Higher Education Scholarship Scheme, 1960

In 1959 the United Africa Company Limited successfully introduced a new Comprehensive Scheme for Higher Education under which ten "U.A.C. Scholars" received awards.

Applications are invited from members of all races for Higher Education Scholarships to be awarded by the United Africa Company Limited for the University year beginning in October, 1960.

The greater number of scholarship awards are likely to be given at African institutions of University standing in higher education. Applications for those intending to take a conventional Degree course in Engineering or Economics, with a conventional University.

Applicants must not be more than 25 years of age on March 31, 1960. They must have secured entry to, or be able to show that they possess the necessary qualifications to secure entry to, a University.

Members of the Company's staff are eligible to apply. Further information on the application is available in March 20, 1960. Further information may be obtained on request by post from: The Secretary to the Scholarship Board, P.O. Box 2067, Nairobi.

NATAL SOUTH COAST
AMANZIMTOTI
ENDEE ESTATE AGENCY
HAS MANY BUSINESSES, ETC. FOR SALE
SUCH AS:-

Garage and service station, Freshford, £38,000 turnover, £1,000 G.P. per month. Bond available.

Tea room with lunch facility and dance floor. Turnover approx. £24,000. Very well equipped.

Electrician with Restricted Gen. Dealer's licence. £300 for general sales.

Smithing shop. Poultry, vegetables, fruit, etc.

Home, 3 1/2 acres or adjacent to 12 acres.

HOUSES AND FLATS TO LET

Accommodation arranged for prospective buyers.

May the ENDEE ESTATE AGENCY help you?
P.O. BOX 56, AMANZIMTOTI, NATAL, S. AFRICA

Bill seeks £5,500,000 loan for railway works

DEVELOPMENT TO EQUAL DEMAND

Better tone in London

Consolidated (C.A.), Ltd. THERE was a much better feeling on the London Stock Market yesterday after the coverage on the West African and the encouraging record of the production of steel.

QUESTIONS WERE ANSWERED

YESTERDAY (MARCH 20)

At 10.15 a.m. the market opened on a note of optimism. The main reason for this was the news that the Government had agreed to a £5,500,000 loan for railway works. This was seen as a sign of confidence in the country's economic future.

The market was buoyant throughout the day, with the main index rising by 1.5 points to 2,100. The London Stock Exchange closed at 2,100.50.

The following table shows the closing prices of the main indices and the top 100 shares:

Index	Close
London	2,100.50
Industrial	1,850.00
Foreign	1,200.00
Government	1,100.00
Commodities	1,000.00

Field Marshal Slim joins Budgetary board

Field Marshal Slim, who has just returned from his tour of duty in the Middle East, has been appointed to the Budgetary Board. This is a significant appointment, as it shows the Government's confidence in his leadership and his ability to manage the country's resources.

The Budgetary Board is responsible for advising the Government on the most efficient use of public funds. Slim's appointment is seen as a vote of confidence in his ability to bring a fresh perspective to the board.

OUTPUT OF GOLD KEPT UP

GOLD production figures for Kenya during January were maintained at a level of 1.2 million ounces. This is a record for the country and shows the success of the mining industry in Kenya.

The output of gold is a key indicator of the country's economic health. The fact that production has remained so high despite the challenges of the current year is a positive sign for the future.

CLOSING PRICES ON THE RAN

March 20

Anglo-American	100	100.00
Anglo-Siam	100	100.00
Anglo-Siam	100	100.00
Anglo-Siam	100	100.00
Anglo-Siam	100	100.00
Anglo-Siam	100	100.00
Anglo-Siam	100	100.00
Anglo-Siam	100	100.00
Anglo-Siam	100	100.00
Anglo-Siam	100	100.00

Politics cast shadow over dealings

POLITICAL uncertainties dominated dealings on the Nairobi Stock Exchange yesterday. The market was volatile, with prices fluctuating significantly throughout the day.

The main reason for this was the uncertainty surrounding the Government's policies on taxation and trade. Investors were cautious, and the overall tone of the market was pessimistic.

NEW DIFFERENT and so much better

ALL THESE EXTRA FEATURES TOO!

Light-bearing bearings and rollers. Light and easy to carry. Light and easy to carry. Light and easy to carry.

Ransomes CONQUEST 14 CUT

Price shs 145/- P.O. Box 145, Nairobi

MOMBASA SHIPPING

Accommodation and cargo space available for all types of vessels. Regular services to the East African coast and the Indian Ocean.

For more information, contact the shipping agents in Mombasa.

Coffee auction details

REPORT ON AUCTION SALE IN MOMBASA ON MARCH 19, 1960

Grade	Area offered	Area sold	Maximal Price	Lowest Price	Address
A	100	100	100.00	100.00	100
B	100	100	100.00	100.00	100
C	100	100	100.00	100.00	100
D	100	100	100.00	100.00	100
E	100	100	100.00	100.00	100
F	100	100	100.00	100.00	100
G	100	100	100.00	100.00	100
H	100	100	100.00	100.00	100
I	100	100	100.00	100.00	100
J	100	100	100.00	100.00	100
K	100	100	100.00	100.00	100
L	100	100	100.00	100.00	100
M	100	100	100.00	100.00	100
N	100	100	100.00	100.00	100
O	100	100	100.00	100.00	100
P	100	100	100.00	100.00	100
Q	100	100	100.00	100.00	100
R	100	100	100.00	100.00	100
S	100	100	100.00	100.00	100
T	100	100	100.00	100.00	100
U	100	100	100.00	100.00	100
V	100	100	100.00	100.00	100
W	100	100	100.00	100.00	100
X	100	100	100.00	100.00	100
Y	100	100	100.00	100.00	100
Z	100	100	100.00	100.00	100

Shell Afrigas makes life easy!

AND THE SHELL AFRIGAS H.P. SERVICE MAINTAINS SO MUCH EASIER

What is the initial cost layout which has been keeping you from proudly owning Afrigas equipment in your home? Then you will be happy to know that the new Shell Afrigas Hire Purchase plan has solved this problem.

You can now receive immediate delivery of any Afrigas appliance upon a down payment of 25% of the total cost of the appliance and installation.

The New World Specialties Sales Office Show-room (Shutterstock) gives the fastest form of obtaining hire purchase terms. You can have your new Shell Afrigas appliance in your home today!

The Specialties is beautifully designed for easy cleaning, has the very latest automatic controls, and a safety cut-off device. This wonderfully modern water heater can be yours for \$1,000 deposit (in Nairobi) and the balance over 12 months.

Just turn the tap for an instant supply of piping hot water—when you have Shell Afrigas in the home!

For further information write to your nearest Afrigas Show-room: Head Office Show-room—Exchange Building, Delamare Avenue, Nairobi. Telephone 22821.

GREAT MINDS THINK ALIKE
ADVICE IS UNANIMOUS
MAXIMUM SECURITY

OPEN A

52

BANK DEPOSIT ACCOUNT WITH LOMBARD BANKING

Write today to the General Manager for your copy of "Bank Deposit Accounts" booklet. It tells you all you need to know about the advantages of a Bank Deposit Account.

LOMBARD BANKING LIMITED
100, Market Street, Nairobi
TELEPHONE 22821

NEW DIFFERENT and so much better

ALL THESE EXTRA FEATURES TOO!

Light-bearing bearings and rollers. Light and easy to carry. Light and easy to carry. Light and easy to carry.

Ransomes CONQUEST 14 CUT

Price shs 145/- P.O. Box 145, Nairobi

MACHINERY DIVISION
GAILLY & ROBERTS LTD



Shell Afrigas makes life easy!

AND THE SHELL AFRIGAS H.P. SERVICE MAINTAINS SO MUCH EASIER

What is the initial cost layout which has been keeping you from proudly owning Afrigas equipment in your home? Then you will be happy to know that the new Shell Afrigas Hire Purchase plan has solved this problem.

You can now receive immediate delivery of any Afrigas appliance upon a down payment of 25% of the total cost of the appliance and installation.

The New World Specialties Sales Office Show-room (Shutterstock) gives the fastest form of obtaining hire purchase terms. You can have your new Shell Afrigas appliance in your home today!

The Specialties is beautifully designed for easy cleaning, has the very latest automatic controls, and a safety cut-off device. This wonderfully modern water heater can be yours for \$1,000 deposit (in Nairobi) and the balance over 12 months.

Just turn the tap for an instant supply of piping hot water—when you have Shell Afrigas in the home!

For further information write to your nearest Afrigas Show-room: Head Office Show-room—Exchange Building, Delamare Avenue, Nairobi. Telephone 22821.

Make your money work for you
Along the lines you want it to!

Come and see us at Citibank Corporation Ltd. Invest your money at 5 1/2% for Savings Accounts and 6% for Fixed Deposits.

If you have time to spare, invest your money in the Citibank Savings Plan. It's a simple way to build up your money.

Credit Finance Corporation INDUSTRIAL BANKING

100, Market Street, Nairobi
TELEPHONE 22821

AFRIGAS THE MODERN FUEL FOR ALL DOMESTIC NEEDS

SHELL AFRIGAS

STATEMENT TO UNEMPLOYMENT ON THE FARMS

The thousands of Africans who come to write to my farm every day looking for work are the African Black.

The thousands of Africans who come to write to my farm every day looking for work are the African Black. The thousands of Africans who come to write to my farm every day looking for work are the African Black. The thousands of Africans who come to write to my farm every day looking for work are the African Black.

The Friday page of letters to the Editor

...the speaker...
...the speaker...
...the speaker...

Unemployment
...the speaker...
...the speaker...
...the speaker...

FIVE SAFEGUARDS FOR ADOPTION

MR. BIRBA has said that, in order, States...
...the speaker...
...the speaker...

Unemployment
...the speaker...
...the speaker...
...the speaker...

Whispering Giant?



...the speaker...
...the speaker...
...the speaker...

In praise of famous monkeys for their sense of humour

IET us emulate the monkeys in their sense of humour. I let us emulate the monkeys in their sense of humour. I let us emulate the monkeys in their sense of humour.

Wahehe chief

I mention his name in the paper recently also some years ago, which resulted in one skull that was the Wahehe Chief's name.

Whispering Giant?

...the speaker...
...the speaker...
...the speaker...

Whispering Giant?

...the speaker...
...the speaker...
...the speaker...

Give us the tools

QUEST, before the...
...the speaker...
...the speaker...

Whispering Giant?

...the speaker...
...the speaker...
...the speaker...

Whispering Giant?

...the speaker...
...the speaker...
...the speaker...

Whispering Giant?

...the speaker...
...the speaker...
...the speaker...

ANNOUNCEMENT

Change of address
...the speaker...
...the speaker...

ANNOUNCEMENT

Change of address
...the speaker...
...the speaker...

ANNOUNCEMENT

Change of address
...the speaker...
...the speaker...

ANNOUNCEMENT

Change of address
...the speaker...
...the speaker...

ANNOUNCEMENT
Change of address
Camping Bros. & Vanderwal Ltd.
MOMBASA NAIROBI DAR ES SALAAM

ANNOUNCEMENT
Change of address
Camping Bros. & Vanderwal Ltd.
MOMBASA NAIROBI DAR ES SALAAM

ANNOUNCEMENT
Change of address
Camping Bros. & Vanderwal Ltd.
MOMBASA NAIROBI DAR ES SALAAM

ANNOUNCEMENT
Change of address
Camping Bros. & Vanderwal Ltd.
MOMBASA NAIROBI DAR ES SALAAM

Unicef aid for E. Africa

COUNTRIES PLEDGED \$55,000 IN GRANTS

DECLARATED in the annual meeting of the United Nations Economic and Social Commission for Africa (Unicef) will on Monday announce plans to grant \$55,000 in special aid to 10 countries and \$7,000 to 10 others.

The grants—to be given in the form of teaching and training equipment—will be used for social services for children who are not being properly home or school care.

The grants will be given to 10 countries and 10 others. The countries are: Algeria, Benin, Cameroon, Congo, Guinea, Ivory Coast, Liberia, Mali, Mauritania and Senegal.

Self-help projects—The grants will be related to self-help projects designed to help the children of the countries to help themselves.

The grants will be given to 10 countries and 10 others. The countries are: Algeria, Benin, Cameroon, Congo, Guinea, Ivory Coast, Liberia, Mali, Mauritania and Senegal.

Talks on aid to developing countries

ROBERT HALL, secretary of the United Nations Economic and Social Commission for Africa, will on Monday announce plans to grant \$55,000 in special aid to 10 countries and \$7,000 to 10 others.

The grants—to be given in the form of teaching and training equipment—will be used for social services for children who are not being properly home or school care.

The grants will be given to 10 countries and 10 others. The countries are: Algeria, Benin, Cameroon, Congo, Guinea, Ivory Coast, Liberia, Mali, Mauritania and Senegal.

100 m.p.h. sub.

The Boeing Aircraft Co. has announced the development of a subsonic aircraft capable of reaching a speed of 1,000 m.p.h. in 10 minutes.



A Highland Bag in the South of France. Pictured in this "Dusty" Miller, Steve Jones, Paddy Purman, Michael Tomlinson, Peter Stock and Doug Brown.

ARUSHA GROUP IN BEST FORM WITH RATTIGAN COMEDY

"Standard" Correspondent, Arusha. Society and a play by the Arusha Amateur Arts virtually a foregone conclusion that French Without Tears, the society's latest production, would be successful. But even their staunchest supporters could not have foreseen the outstanding success which this comedy enjoyed.

With those first notices for two nights of the three-act run, they were requests for an extra performance, but this was not possible.

If any of the cast desire to be singled out, it must be the part of Jacqueline Maitland for her anatomy, realistic imitation of Lindy Combs, Rogers, particularly in the drunk scene.

The action takes place at the home of Mrs. Maitland, a school to teach French to her friends and others. There, Diana, the well-to-do one of the students, says to the students, "Diana was attractively and temperately played by Rosemary James, a newcomer to the Arusha stage."

Most difficult role. The most difficult role, the Hon. Alan Howard, was played by his usual polished performance.

Undoubtedly the most difficult role was that of "Diana" and no fault could be found with the performance of Rosemary James in the part of "Diana".

Others in the cast were Peter Stock, Doug French, Paddy Purman and Steve Jones. Jean Miller, the producer, and her team of backstage workers deserve the highest praise for the smoothness of the production.

Waarusha's first priest ordained

"Standard" Correspondent, Arusha.

The first member of the Waarusha tribe to become a Roman Catholic priest has been ordained at Arusha.

The Rev. Simon Sitwaka, 36, started his education at St. Theresa's Mission School at Arusha and then went to St. James' Junior Seminary at Kilimanjaro, near Moshi.

After Standard 12 he studied philosophy for three years but he still has one more year to go in his subject.

He is one of a family of nine and has a father and sister who are teachers at the mission.

4,000 watch. The ceremony, at the King George VI Memorial Stadium, Arusha, was watched by a crowd of over 4,000.

An ordaining prelate was the Auxiliary Bishop of Kilimanjaro, the presiding priest was Monsignor Delgado. Many priests were present, including the vicar, John Kilian, Bishop of Moshi.

Father Sitwaka gave his first Mass in his cathedral and after that he will be in his family who were present.

CHIEF JUSTICE OF MAURITIUS

An Honorable Newington, Attorney-General of Mauritius, has been appointed Chief Justice of Mauritius. It was officially announced in London.

Born on the island and called to the bar in 1910, he has been successively an magistrate of the Indian and Chinese courts and an Advocate-Generals. He was appointed Attorney-General in 1954.

This is IT!

The beer that you produced!



2,700 Best Tasters have given their views on their ideal beer

Thousands of knowledgeable beer drinkers have been wanting a different beer

Our thanks to all BEER TASTERS who helped us to design a remarkably fine new brew

This is it! This is it! This is it!

The standard of quality and performance the world over



ENGLISH ELECTRIC
h.r.c. fuse links

Listed Fuse Links available as stock in East Africa

Agents
ROUSTEAD & CLARKE LTD.
Members - Nairobi - Kisumu - Dar-es-Salaam - Zanzibar

BE SUCCESSFUL!



These amazing new pep-up tablets give you

- MORE POWER TO THINK!
- MORE ENERGY FOR WORK!
- MORE VIGOR FOR SPORT AND PLEASURE!
- MORE VITALITY, CONFIDENCE, PERSONALITY!

You are ambitious, you want a better life—more money—more enthusiasm—more energy. Now with wonderful Pro-Plus tablets you can be at your very best when it counts in every success. Pro-Plus gives you greater vigour and thought, more intelligence and natural balance and self-confidence. It gives you more energy and performance... sharper, clearer speech and wit... greater capacity for enjoyment. So, be fit with these new wonderful—completely safe—pep-up tablets.

PRO-PLUS
- puts you on top

Made for Pro-Plus at your local store today
LAK BY ANGLO-LABORATORIES LTD., MANCHESTER, ENGLAND
AGENTS FOR EAST AFRICA: ROUSTEAD & CO. LTD., P.O. BOX 101, NAIROBI

ALLSOPPS Pilsner LAGER

is now on sale everywhere - Look for the White Label

THE BEER OF YOUR CHOICE

JOHNSON'S
cleans and wax polishes in
one-step



GILL PLYWOOD

of all types
BLOCKBOARDS AND
TEA CHESTS



UGANDA
TAINTLESS
PLYWOOD
SHOOKS
from
Mumps
Havola
Mauuli

WHITEWOOD
BATTERS
with all fittings

Manufactured by
SIKH SAW MILLS
AND GINNERS LTD.
P.O. Box 215 — JINJA — Uganda

**Kenya awaits African decision
on Ministries**

PROPOSALS for African participation in the Government of Kenya, put forward by the African Elected Members of the Government, during the week, and it seems possible that these Ministers will act as Ministers on the Government's first Bench when the Legislative Council meets on March 22.

The first decision was taken, however, and it is unlikely that the Government will be able to announce the names of the Ministers until the next session of the Legislative Council, which will meet on March 11. The Minister for Agriculture, Mr. A. G. O. Oduor, said that the Government is anxious to see the African Ministers in office as soon as possible.

He said that the Government is anxious to see the African Ministers in office as soon as possible. He said that the Government is anxious to see the African Ministers in office as soon as possible.

He said that the Government is anxious to see the African Ministers in office as soon as possible. He said that the Government is anxious to see the African Ministers in office as soon as possible.

Hard work needed

Mr. McKean, speaking at a meeting of the Legislative Council, said that the Government is anxious to see the African Ministers in office as soon as possible.

Full explanation

Mr. McKean, speaking at a meeting of the Legislative Council, said that the Government is anxious to see the African Ministers in office as soon as possible.

Economic reactions

Mr. McKean, speaking at a meeting of the Legislative Council, said that the Government is anxious to see the African Ministers in office as soon as possible.

Group's welcome

Mr. McKean, speaking at a meeting of the Legislative Council, said that the Government is anxious to see the African Ministers in office as soon as possible.

UGANDA REPORT DEBATED

Minutes of the meeting of the Legislative Council, held on March 11, were debated. The minutes were read and approved.

Wild report

A report of the Uganda Police Commissioner, Mr. G. G. Oduor, was read and approved.

ARUSHI'S NEW POST OFFICE

The new Post Office at Arushi, which was opened on March 11, is a fine example of modern architecture.

Time for reflection

It is time for reflection on the progress made in the past year. The Government has achieved many successes.

N.F.U. MUTUAL

The National Farmers Union Mutual Insurance Society Ltd. is a leading insurance company in Kenya.

SAILEY & ROBERTS (Insurance) LTD.

Ask your nearest branch of G & R for details. They will be pleased to help you.

Feeling stale at Sandown?

Get everything fresh again with Radox. It's the new car wash that's the talk of the town.

RADOX

Great new advance in
10-Key adding!



**NOW SIMPLE SETTING
GIVES AUTOMATIC
MULTIPLICATION**

LOOK! A stick of the Ring sets the dial at the number of times you wish to multiply. Multiplication takes place automatically, as you depress the repeat key.



... and you enjoy these other 10-Key advantages

EASIER TO ADD

Adding and listing control keys will allow you to perform any of the balanced total function.

THE NON-ADD KEY

The non-add key is a figure indicator and identifies a with the non-add symbol.

KEYBOARD ERRORS

are easily checked by simply depressing the error correction key which is touch-forgiving units to the key.

TO SUBTRACT

As a touch the subtract key gives the subtracted amount and identifies it with the minus symbol.

TO TOTAL

From the total key—the total key is easily checked by simply depressing the error correction key which is touch-forgiving units to the key.

TO MOVE

The clear-cut, detachable dial makes the light, compact Burroughs even easier to handle, since there is no trailing cord to hamper movement.

Burroughs

WORLD LEADING IN ELECTRONIC AND MECHANICAL ADDITION LOGIC

Telephone for a Demonstration or pass this coupon to any of these Burroughs addresses

Mainland: Cecil Princess Elizabeth Way and Buckley Road, Box 578, The 500's.

Memoranda: Motor Mail Building, Victoria Road, P.O. Box 100, The 400's.

Kenya: Uganda Company H.Q., P.O. Box 200, The 300's.

"I am interested in the Burroughs 10-Key Adding Machine and would like you to arrange a demonstration without obligation."

NAME: _____

ADDRESS: _____

TELEPHONE: _____

DATE: _____

MAIL TO: BURROUGHS CORPORATION, 1000 BROADWAY, NEW YORK 10, N.Y.



Flexible
farming
with the
FIAT
four-eleven R

£856

Yes, that's the ex Nairobi price of this latest Fiat 40 h.p. diesel tractor which includes an standard optional extra most of other tractors of the same class.

Differential lock, ensuring a clean getaway in muddy conditions; live PTO; ground speed PTO; belt pulley; electric lighting and spotlight; wheel weights and draft points; hand controlled hydraulic lift (no draft-hood required on implements) — all these features are **included**.

Add them to Fiat reliability and economy, you have the most attractive proposition seen for a long time in East Africa.

BLAKE-MACKAY - A full 3-plough tractor

ENGINEERING CO. LIMITED
P.O. BOX 2012 TORONTO (211)

See us in Johannesburg, Phone 63474. Kampala, Phone 2081. Nairobi, Phone 2002.

PALM DISEASE CONTROLLED

One island almost freed in Seychelles

That Maldivian Islands, which for years have been almost free of the pest, has been freed in Praslin Island.

A team of experts, led by Dr. W. J. Brown, an entomologist, will next month start a campaign which will begin in Mahé May.

In spite of heavy infestation, which causes the palm to rot and drop its fruit, one of these islands has now been almost completely freed of the pest, which rapidly eradicates the insect.

A scene from the Nakuru Players' production of "The House of David". The players from left to right are Peter Lavelle, Harold Thomson, Peter Chiswick and John Sharp.

Convincing drama upholds reputation of Nakuru Players

Nakuru Players return to drama with their current production of Norman King's "The House of David". There can be little doubt that the play has held the attention of the audience as firmly as this did on the first night, and it seems a pity that the play was allotted only four instead of five performances.

The play rises on the stage and absolute unity of the actors, but there is little doubt that the dialogue is important, but the Nakuru cast carried it along with hardly a falter.

Peter Chiswick is convincing in the part of the aborigine try, whose sword is broken, but to start a new life and find the extremely difficult in his life.

For high school (which would contrast in Harold Thomson's part as an M.I.S. clerk).

Peter Lavelle enhances his reputation of being at home in every type of play with the King, Cliff, Philip, Talbot, Madge and Cynthia Webster.

Perhaps the only illustration of a first-night performance was the heavy hand of the manager, Charles Madge, had gone so far as to say that it would be as if he had been seen with artificial snow, which Cynthia Webster answered with two black eyes.

£1,000,000 COST OF SPREADING GOSPEL

At least £1,000,000 is needed by the Anglican Church to meet the cost of supplying Bibles to a survey of the needs of the population of the world.

This is the estimate contained in a survey published last year by the Society for Promoting Christian Knowledge.

The survey, which is published in a report of the Society, estimates the cost of supplying Bibles to the population of the world, but it does not claim to be part of the world.

At present the society is able to spend an average of £250,000 a year on literature work overseas.

12 miles a year

If the rate of improvement, the amount of road built in the last 12 months is maintained, the total mileage of 4,600 miles of roads in the country will be increased by 12 miles in the next 12 months.

The survey also estimates that the cost of maintaining the roads will be £1,000,000 a year.

Housing at Gilgil and Naivasha

The Great District Council, Naivasha, has approved a scheme of 18 houses at Gilgil. The houses will be built on a site of 12 acres, and will be built in the next 12 months.

The council also approved a scheme of 12 houses at Naivasha, which will be built in the next 12 months.

HOLD-UP GANG

After stopping a bus on the road between Naivasha and Gilgil, a gang of five men looted a bus of £1,000. The gang consisted of a driver and four passengers.

The bus was carrying a large amount of money, and the gang was armed with revolvers.

This Book is FREE!



90% SUCCESS AT EXAMINATIONS! WE GUARANTEE: NO PASS, NO FEE!

Free copies of all syllabuses in English, Mathematics, Science, History, Geography, and other subjects.

BRITISH TUTORIAL COLLEGE B.T.C.
AFRICA'S MOST SUCCESSFUL COLLEGE

Post and we free your book 'Application through Education'.

Don't Suffer ACHING BACK PAINFUL JOINTS

Life is hard when you suffer with backache, rheumatism, pain, stiff aching muscles and joints, or common urinary disorders due to sluggish kidney action.

Who is this pain and discomfort all free for in living when you might get help only by using Doan's Backache Kidney Pills.

Doan's Backache Kidney Pills are a natural, scientific preparation which cleanses the blood of harmful impurities, stimulates sluggish kidneys, and so relieves the most distressing conditions which pain has given you back and joints. Let this little box of Doan's Backache Kidney Pills do the work for you.

DOAN'S

Drinking In tonight?

TASBEER CHLOROTROPICEN

It is the only which is used in the treatment of all cases of cholera, typhoid, and other acute infections.

It is a Blue Water type and should be used only in the most serious cases.

LITMIA ATTACKS

Light and Easy Way

It is the only which is used in the treatment of all cases of litmia, typhoid, and other acute infections.

It is a Blue Water type and should be used only in the most serious cases.

Get these cakes must be made with BLUE BAND

A plate of these cakes and pastries will disappear in no time at all. That's because they're made specially with Blue Band Margarine. Blue Band is better for all cooking.

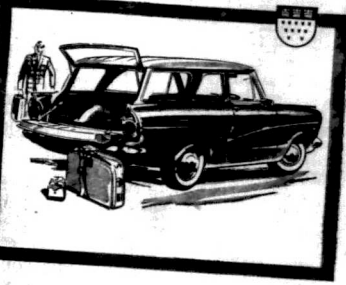
It makes deliciously crisp, golden pastry and feathery light muffs, in-the-mouth puddings.

Make sure you always have plenty of Blue Band in your refrigerator.

BLUE BAND MARGARINE

LOAD UP AND GO!

the ruggedly built Taurus



- * A four-speed, full synchromesh gear-box.
- * Common provision engineering.
- * A 1000 c.c. engine design and more powerful than any in its class.
- * Outstanding road-holding and handling qualities.
- * FORD spare and service throughout E. Africa.

TAURUS 17M
BY **FORD** OF GERMANY

Distributors for East Africa: **S.A.R.A.G. (E.A.) LTD.**

P.O. Box 5100 Phone 58/27/5821
Enterprise Road, Industrial Area, Nairobi
also at Kampala and Dar es Salaam

Bake with

2-door and 4-door Sedan Commercial Van Pickup and Ten-seater Bus

20th CENTURY HOUSE IN RETROSPECT - GROUP ACHIEVES FOUR MAJOR ARMS

By Michael Blundell

Fast African Standard

UNCERTAINTY OVER LAND

HAVING had to digest the constitutional reforms in Kenya has crystallized into a more definite opinion regarding the future of land and property in the event of displacement on account of political shifts, the press...

House in Retrospect - Group Achieves Four Major Arms

By Michael Blundell

STOPOVER TOKYO

ROBERT WAGNER JOAN COLLINS

BONOVAN MAULE THEATRE

ENDS TOMORROW THE PLEASURE OF HIS COMPANY

RAMUEL TAYLOR

HAIROBI CITY PLAYERS

ROBERT BEALMONT'S THE DIARY OF ANNE FRANK

NATIONAL THEATRE THE CROSS AND THE SWORD

FRANCISCO RABAL SYLVIA COSCINA

THE WINTER'S TALE

CAXTON BOOKS

DIANA salon

CARPENTERS

SOMERSET WEST

PIANOS

HOME A CATERING EXHIBITION

PHILIPS RECORDS

KENYA

GREEN MANSIONS

EMPIRE

THE CROSS AND THE SWORD

FRANCISCO RABAL SYLVIA COSCINA

THE WINTER'S TALE

CAXTON BOOKS

DIANA salon

CARPENTERS

SOMERSET WEST

PIANOS

HOME A CATERING EXHIBITION

PHILIPS RECORDS

The British Government's duty

There is reason to believe the Government is becoming worried over the possibility of a... The British Government's duty...

BLUNDELL LEADER OF THE NEW KENYA GROUP CONTINUES OUR SERIES IN WHICH WE SPEAK WITH THE SPEAKERS AT MANCHESTER HOUSE TALKS SUR UP THEIR IMPRESSIONS OF THE CONFERENCE

At the beginning of the conference... The British Government's duty... The New Kenya Group...

ROYAL SHAN DRIVE-IN

7 TONIGHT 9.30 First time showing in Nairobi for one week only! SIGN OF THE GLADIATOR

SHAN

Saturday at 3, 6 and 9 Sunday at 10, 3, 6 and 9

DO PHOOL

Directed by A. R. Kardav

THE ASSOCIATION OF ACCOUNTANTS IN EAST AFRICA

The best examination for the Association's Diploma in Book-keeping and General Commercial Knowledge will be held on...

PHILIPS RECORDS

DO YOU WISH TO know the prospects of setting in Kenya...

LIBERTY ODEON

7 TONIGHT 9.30 Anglo-American Films present Terrifying suspense Super dramatic plot Thrilling and gripping story! FLESH AND THE SWORD

COMMANDER

ASIAN PROGRAMME Saturday at 3, 6 and 9 Sunday at 10, 3, 6 and 9

GEORGE HOTEL LANGATA

TOMHOLA EVERY DAY FROM 12.00 WEDNESDAY DANCING on Saturdays, March 12

FOR SALE

Small town business firm for sale... 2000 sq. ft. building...

SITUATION WANTED

Forceful manager of a public company with extensive experience...

RENTAL

Does this profitable occupation interest you? Established former...

Only two... The British Government's duty... The New Kenya Group... LIBERTY ODEON... SHEG GOS... EMPIRE... DELHI KA... MADRAS... KALAPA... SITUATION... RENTAL

Don't be vague
Ask for

Haig

Such a
warm-hearted
whisky—
and so smooth



THE OLDEST SCOTCH WHISKY
DISTILLERS IN THE WORLD
Sole Distributors for Kenya, Uganda, Tanganyika
HELMAN PARMEAL & CO. NAIROBI AND MOMBASA

DIGESTION OR

INDIGESTION?

When you suffer from indigestion, heartburn, flatulence or stomach ache, your stomach needs that quick relief from pain and discomfort which only a reliable and well-balanced remedy such as "Bicola," can bring you. Bicola is an effective "Bicola," because it acts like the stomach fluids in the digestive process. Bicola includes the scientific

ingredients, Bicola, which represents the peptic enzymes of the animal juices helping to break down heavy or sticky food, which also relaxes and soothes the stomach. Bicola can bring you prompt relief from the following ailments: Indigestion, heartburn, flatulence, stomach ache, and all other ailments connected with the digestive process.

BiSoDoL

Antacid Digestant
Foster & Tolson



**GIANT BOTTLE
FREE**



Try JIK
the gentle, effective bleach
at our
expense

So convinced are the makers of Jik that there is nothing better than Jik for making linen SNOWWHITER, clean and fresh, that for a limited period only you are invited to try JIK FREE!

Not only on washday but on every day of the week you will find Jik useful for so many cleaning jobs around the house. That's why Jik is called THE BOTTLE OF A THOUSAND USES. Accept this FREE GIANT BOTTLE of Jik with our compliments—and prove it for yourself.



This is what you do:
Send card-sticker with your name and address (clearly printed) and stating purchase price; Jik, Dept. K, P.O. Box 2266, Nairobi. Your money will be returned to you in full. This offer closes 31st March, 1936.

JIK—THE WORLD'S WHITEST WASHER

**British classics remain
best sellers
around world**

HUGH CAVENTISH, author and journalist, describes the world's taste for authors in his second article on the continued popularity of British literature.

MORE than 60 countries are publishing books today, and some 1,000,000 volumes come off the world's presses every year. This means, of course, that the classics of English literature have intense competition in the class of selling overseas. They stand up as well to fact as in selling overseas. They stand up as well to fact as in selling overseas. They stand up as well to fact as in selling overseas.

It is not too fanciful to say that the world regards Britain as a library—just one that is prolific in scope and content. Millions of copies of British scientific works and textbooks are sold throughout the world every year, as are millions of British classics. And there is plenty of lighter material available, too.

The Scandinavian countries have a particular fondness of romantic English fiction, such as the stories of Eliza F. Delv. While Thailand has a leaning towards the historical romances by Sir Arthur Conan Doyle by Sir Arthur Conan Doyle by Sir Arthur Conan Doyle.

UNDER THE VOI

by John Braine
(Type and Spelling, 1935)
Advice and Comment by Alan Drew
(Collier, 1935)
Harvest of Journeys by Hammett Westbrook
(Collier, 1935)

REVIEW

Doyle—British bookshelves have something that is forgotten every late year—over. Not should it be forgotten that with the famous Penguin pocket-size book first published in 1933, Britain led the way towards the present-day paperback book. It was the first of its kind, and it was the first of its kind, and it was the first of its kind.

NO SHORTAGE OF SUSPECTS

A breezy whodunit, Dead Opposite the Club has made a master of a provincial wicket setting for Francis Vinton's story. There is an air of mystery about the killer who has been described as a "man in a white suit" who has been described as a "man in a white suit" who has been described as a "man in a white suit."

Low-priced editions introduced for highbrows

The publication in two forms of the Cambridge University Press began as an experiment intended to bring serious and scholarly books within the reach of a greatly increased public. The books have already found a considerable following, and it is expected that the series will continue to grow.

**Mr. Braine says course
ROOM IN THE DEPTHS**

READERS who are expecting in the Voi a reprint performance of John Braine's universally-entitled first novel will have a shock—but nevertheless a pleasant surprise at the Voi. The Voi is not only a new theme for a true novelist, refusing to take the form of a novel, but it is also a new theme for a true novelist, refusing to take the form of a novel.

The Voi is a shabby copy of the White House and the South. The Voi is a shabby copy of the White House and the South. The Voi is a shabby copy of the White House and the South. The Voi is a shabby copy of the White House and the South.

Of hotben track

It is not just the fact that the hotben track has been established in the Voi, but the fact that the hotben track has been established in the Voi, but the fact that the hotben track has been established in the Voi.

Royal life in pictures

THE QUEEN AND PRINCE OF WALES have been seen in the Voi. The Queen and Prince of Wales have been seen in the Voi. The Queen and Prince of Wales have been seen in the Voi.

Political scene

MOVING of the Atlantic... The Atlantic is moving. The Atlantic is moving. The Atlantic is moving. The Atlantic is moving. The Atlantic is moving.

SOME USEFUL BOOKS

- The Oxford Companion to English Literature
- Whakara's Almanack
- Hamley's Reference Atlas of the World
- Stanley's Grammar of English
- Butcher, Lee & Butler (Africa) Ltd.
- Volckmans' Teaching Series Manual on all parts up to 1937
- Home Grammar in South Africa (Macmillan & Simpson)
- New Veterinary Handbook (Macmillan & Simpson)
- The Correct Guide to Letter Writing (Macmillan & Simpson)
- The Book of Etiquette (Lyle & Co. Ltd.)
- The Macmillan's Handbook (Macmillan & Simpson)
- Justo's Grammar in Black Book (Lyle & Co. Ltd.)

**BEST
IN
THE
WORLD**

PERFECTLY PURE & UNADULTERATED. (Lyle & Co. Ltd.)

MARY BRADSHAW... (Lyle & Co. Ltd.)

SPRING CAMP... (Lyle & Co. Ltd.)

WE, THE ACCIDENT... (Lyle & Co. Ltd.)

**Journeymen
and mud
skyscrapers**

LABOURER or visited the mud skyscrapers... (Lyle & Co. Ltd.)

Royal life in pictures

THE QUEEN AND PRINCE OF WALES... (Lyle & Co. Ltd.)

SOME USEFUL BOOKS

- The Oxford Companion to English Literature
- Whakara's Almanack
- Hamley's Reference Atlas of the World
- Stanley's Grammar of English
- Butcher, Lee & Butler (Africa) Ltd.
- Volckmans' Teaching Series Manual on all parts up to 1937
- Home Grammar in South Africa (Macmillan & Simpson)
- New Veterinary Handbook (Macmillan & Simpson)
- The Correct Guide to Letter Writing (Macmillan & Simpson)
- The Book of Etiquette (Lyle & Co. Ltd.)
- The Macmillan's Handbook (Macmillan & Simpson)
- Justo's Grammar in Black Book (Lyle & Co. Ltd.)

EAST AFRICAN STANDARD
Government Road P.O. Box 3088
NAIROBI

'Waters of death' quench Mombasa thirst



WHEN the world's supplies of surface waters were apportioned Nature was most kind to Mombasa. The main water supply in the interior is very plentiful and such small quantities as exist are usually highly charged with salts in solution.

Apertures from numerous springs in the vicinity of the city supply the water used here. In the past, however, the water used here had become so brackish that it was necessary to import water from the coast in this otherwise fertile area. The position must now be reversed.

In 1936 the British Government had granted to the Municipal Corporation of Mombasa a concession to supply water to the city. The concession was for a period of 25 years, and the position must now be reversed.

Col. Mudge proposed a scheme for the supply of 1,000,000 gallons a day from a spring in the Shikha Hills, some 20 miles to the south of the city.

The estimated cost was £100,000. For financial reasons the scheme was never carried out, which is perhaps as well since it was never done.

Further investigations were made in 1932 with the result that water from the Mzee River in the Shikha Hills was considered as a source of supply. It is revealed that the water was much decayed by malaria and dysentery which had a heavy toll of about 200 deaths.

LARGE DEMAND
The capacity of this system is as suggested from 1,000,000 gallons a day, but by 1950 this had increased to 2,000,000 gallons a day.

By 1952 the position was becoming acute and projects for increasing the supply to 1,100,000 gallons a day from the Shikha Hills were being seriously examined.

The rapid growth of Mombasa, however, overtook the plans and before the job of their construction was completed the water was no longer fit to be used with safety. The project which was combined with the Shikha Hills was put in operation in 1952.

The years from 1928 until completion of the scheme in 1954 were years of great anxiety for Mombasa as the city grew and the possibility of utilizing the water of the Shikha River was being examined. It was now realized, however, that such a scheme would be a disaster for the city.

VICTOR G. MATTHEWS
FIRST CHAIRMAN OF THE MOMBASA PIPE-LINE BOARD AND, FORMERLY, MEMBER FOR FINANCE IN THE KENYA GOVERNMENT AND FOR SIX YEARS COMMISSIONER FOR EAST AFRICA IN LONDON, GIVES A BRIEF HISTORY OF THE EARLY VICISSITUDES OF THE MOMBASA WATER SUPPLY AND SHOWS HOW THE NEMA SPRINGS ENGINEERING HAS SOLVED THE PROBLEM FOR THIS CENTURY.

DISGORGED IRON
The water from the Shikha Hills was so brackish that it was necessary to import water from the coast in this otherwise fertile area. The position must now be reversed.

Although the distance is an appreciable one, the Shikha River project would have involved considerable expenditure. The estimated cost was £100,000.

The estimated cost was £100,000. For financial reasons the scheme was never carried out, which is perhaps as well since it was never done.

ASH MOUNDS
The water from the Shikha Hills was so brackish that it was necessary to import water from the coast in this otherwise fertile area. The position must now be reversed.

The water from the Shikha Hills was so brackish that it was necessary to import water from the coast in this otherwise fertile area. The position must now be reversed.

The water from the Shikha Hills was so brackish that it was necessary to import water from the coast in this otherwise fertile area. The position must now be reversed.

The water from the Shikha Hills was so brackish that it was necessary to import water from the coast in this otherwise fertile area. The position must now be reversed.

ASH MOUNDS
The water from the Shikha Hills was so brackish that it was necessary to import water from the coast in this otherwise fertile area. The position must now be reversed.

The water from the Shikha Hills was so brackish that it was necessary to import water from the coast in this otherwise fertile area. The position must now be reversed.

The water from the Shikha Hills was so brackish that it was necessary to import water from the coast in this otherwise fertile area. The position must now be reversed.

ASH MOUNDS
The water from the Shikha Hills was so brackish that it was necessary to import water from the coast in this otherwise fertile area. The position must now be reversed.

The water from the Shikha Hills was so brackish that it was necessary to import water from the coast in this otherwise fertile area. The position must now be reversed.

The water from the Shikha Hills was so brackish that it was necessary to import water from the coast in this otherwise fertile area. The position must now be reversed.

The water from the Shikha Hills was so brackish that it was necessary to import water from the coast in this otherwise fertile area. The position must now be reversed.

ASH MOUNDS
The water from the Shikha Hills was so brackish that it was necessary to import water from the coast in this otherwise fertile area. The position must now be reversed.

The water from the Shikha Hills was so brackish that it was necessary to import water from the coast in this otherwise fertile area. The position must now be reversed.

The water from the Shikha Hills was so brackish that it was necessary to import water from the coast in this otherwise fertile area. The position must now be reversed.

ASH MOUNDS
The water from the Shikha Hills was so brackish that it was necessary to import water from the coast in this otherwise fertile area. The position must now be reversed.

The water from the Shikha Hills was so brackish that it was necessary to import water from the coast in this otherwise fertile area. The position must now be reversed.

The water from the Shikha Hills was so brackish that it was necessary to import water from the coast in this otherwise fertile area. The position must now be reversed.

The water from the Shikha Hills was so brackish that it was necessary to import water from the coast in this otherwise fertile area. The position must now be reversed.

WATER SUPPLY
The water from the Shikha Hills was so brackish that it was necessary to import water from the coast in this otherwise fertile area. The position must now be reversed.

BEST METHOD
The water from the Shikha Hills was so brackish that it was necessary to import water from the coast in this otherwise fertile area. The position must now be reversed.

NOT REVEALS
The water from the Shikha Hills was so brackish that it was necessary to import water from the coast in this otherwise fertile area. The position must now be reversed.

SHIP CHARTERS
The water from the Shikha Hills was so brackish that it was necessary to import water from the coast in this otherwise fertile area. The position must now be reversed.

SOAP SAVING
The water from the Shikha Hills was so brackish that it was necessary to import water from the coast in this otherwise fertile area. The position must now be reversed.

MAKING HAY
The water from the Shikha Hills was so brackish that it was necessary to import water from the coast in this otherwise fertile area. The position must now be reversed.

SEA PEARLITY
The water from the Shikha Hills was so brackish that it was necessary to import water from the coast in this otherwise fertile area. The position must now be reversed.

STORAGE RESERVOIRS
The water from the Shikha Hills was so brackish that it was necessary to import water from the coast in this otherwise fertile area. The position must now be reversed.

DEEP TRENCH
The water from the Shikha Hills was so brackish that it was necessary to import water from the coast in this otherwise fertile area. The position must now be reversed.

STORAGE RESERVOIRS
The water from the Shikha Hills was so brackish that it was necessary to import water from the coast in this otherwise fertile area. The position must now be reversed.

DEEP TRENCH
The water from the Shikha Hills was so brackish that it was necessary to import water from the coast in this otherwise fertile area. The position must now be reversed.

STORAGE RESERVOIRS
The water from the Shikha Hills was so brackish that it was necessary to import water from the coast in this otherwise fertile area. The position must now be reversed.

DEEP TRENCH
The water from the Shikha Hills was so brackish that it was necessary to import water from the coast in this otherwise fertile area. The position must now be reversed.

STORAGE RESERVOIRS
The water from the Shikha Hills was so brackish that it was necessary to import water from the coast in this otherwise fertile area. The position must now be reversed.

DEEP TRENCH
The water from the Shikha Hills was so brackish that it was necessary to import water from the coast in this otherwise fertile area. The position must now be reversed.

ENJOY LIFE

Something NEW to come home to!



TAKE our advice NOT just another set

With Telefunken you CAN record on TAPE, play all RECORDS, listen to the WORLD on shortwave. Go "STEREO" and "HI-FI" AT VERY LOW COSTS! Combinations to suit all budgets.



TELEFUNKEN

CAMPLING PRESS & VANDERWALD LTD
P.O. Box 1931, Plain House, Broadmarsh Way, St. 5/191
Mainline House, Watlington - Mombasa Dar es Salaam

100% Pure Coffee made instantly in the cup



When time is short, when you want a cup of coffee in a hurry...
MAXWELL HOUSE
Makes delicious coffee instantly



DEEP TRENCH
Across this valley and at right angles to the water the engineers cut a deep trench and installed a concrete pipe and collecting the flow in the surface of the valley. The water can be stored in the trench and the regulation or arduous of the water can be done at the valley.

STORAGE RESERVOIRS
Part of the Mima project is the construction of large storage reservoirs at various points in the valley. These in turn are each an individual capacity of 500,000 gallons.

DEEP TRENCH
Across this valley and at right angles to the water the engineers cut a deep trench and installed a concrete pipe and collecting the flow in the surface of the valley. The water can be stored in the trench and the regulation or arduous of the water can be done at the valley.

STORAGE RESERVOIRS
Part of the Mima project is the construction of large storage reservoirs at various points in the valley. These in turn are each an individual capacity of 500,000 gallons.

DEEP TRENCH
Across this valley and at right angles to the water the engineers cut a deep trench and installed a concrete pipe and collecting the flow in the surface of the valley. The water can be stored in the trench and the regulation or arduous of the water can be done at the valley.

KEEP OUT THE GLARE - LET IN THE AIR!
GAILEY & ROBERTS LTD.

**Kings
the
back**



...having the Catho-
lic of the Catholic, Myer,
...wedding at the
...Norman
...the former
...Linda
...the eldest
...of Mr. and Mrs.
...C. A. Jones, of Nairobi.
...was a gown of
...French nylon lace and
...a bouquet of mix-
...of white flowers.

The bridegroom is the
son of Mr. and Mrs.
... (P.O. Box 1000,
...).

The Cathedral of the
Holy Spirit, Dodoma,
was the scene of the wed-
ding between Mr. Geoffrey
Pole, Birmingham, elder
son of Mr. J. W. Ebering-
ton, of South Kisanago,
and Miss Gillian
Mary Hale, elder daughter
of Mr. and Mrs. H. W.
Hale of Geological Sur-
vey Department, Dodoma,
Tanganyika.

The fair-haired bride
wore a full-length
inglaved princess-line
gown of French bridal
gilt-threaded brocade,
and short nylon net veil
held in place by a wreath
of small white flowers and
ribbons. She carried a
white bible and an orchid
spray.

The bridegroom was her
elder, Miss Margaret
Fair, who wore an
elegant short-length
gown of turquoise green
satin cut princess style
with short sleeves.

Several of the bride-
groom's relations had
traveled from Kenya for
the wedding. He is a
member of the fourth
generation of a Kenya
family, his grandparents
being Mr. and Mrs. Max
Kipling, of the Kisanago.
His bride has com-
pleted her training as a
nurse at the Nairobi Euro-
pean Hospital.



THE wedding of Mr.
and Mrs. Vincent
Herbert Harding, (left)
took place at the Church
of the Holy Family,
Nairobi.

The bridegroom is the
son of the late Mr. and
Mrs. C. V. Harding, and
his bride, the former Miss
Veronica Ann Davies, is
the youngest daughter of
Mr. and Mrs. D. B. Davies,
of St. Anne's-on-Sea,
Lancashire.

She wore a ballroom-
length dress of white lace
and tulle and carried a
bouquet of white roses
and lilies of the valley.
(Photo: Elite)

MR. and Mrs. Nis
Andersson (below),
after their wedding at
St. Christopher's Church,
Turbo.

The bride, the former
Miss Caroline Russell, is
the younger daughter of
Mr. and Mrs. D. O. Russell,
of Kipkaren.

The bridegroom, the
only son of Mr. and Mrs.
W. Andersson, farms on
the South Kisanago.



MR. and Mrs. Michael
Bassett Laurence at
their wedding which took
place at St. Peter's
Church, Lumwa.

The bride, the former
Miss Elizabeth Ann
Hamilton, is the elder
daughter of the late Mr.
George Moore Hamilton
and Mrs. Ruth E. Hamil-
ton.

The bridegroom is the
only son of Mr. and Mrs.
Leslie K. Laurence, of
Halfham, Sussex. (Photo:
Kaylor, Nakuru.)



THE marriage of Mr.
and Mrs. Robert H.
Price took place at St.
Austin's Church, Nairobi.
With the bride and
groom are the chief
bridesmaid, Miss Teasa
Radcliffe, Miss Pamela
Smith and Miss Anna
Kwaczewska. Mr. Richard
Hoare was the best man.

The bride, the former
Miss Maureen June Rad-
cliffe, is the eldest daugh-
ter of Mr. and Mrs.
R. S. Radcliffe, of
Nairobi. The bridegroom
is the elder son of Mr. and
Mrs. N. Price, of Addo,
Port Elizabeth.



On your **AUSTIN or MORRIS**

you too can enjoy
extra **SAFETY**
extra **TYRE MILEAGE**
extra **COMFORT**
by fitting

MICHELIN

X TYRES



you too can enjoy
extra **SAFETY**
extra **TYRE MILEAGE**
extra **COMFORT**
by fitting

MICHELIN

X TYRES

On your **FORD**



you too can enjoy
extra **SAFETY**
extra **TYRE MILEAGE**
extra **COMFORT**
by fitting

MICHELIN

X TYRES

On your **VOLKSWAGEN**



you too can enjoy
extra **SAFETY**
extra **TYRE MILEAGE**
extra **COMFORT**
by fitting

MICHELIN

X TYRES

On your **PEUGEOT**



you too can enjoy
extra **SAFETY**
extra **TYRE MILEAGE**
extra **COMFORT**
by fitting

MICHELIN

X TYRES

On your **LAND ROVER**



you too can enjoy
extra **SAFETY**
extra **TYRE MILEAGE**
extra **COMFORT**
by fitting

MICHELIN

X TYRES

TWENTSCHE OVERSEAS TRADING CO. Ltd., Nairobi—Mombasa—Kampala
THE INTERNATIONAL MOTOR MART LTD. and KARIMJEE JIVANJEE Ltd.,
Dar-es-Salaam, Tanga, Moshi, Arusha, Lindi, Zanzibar

REMOVALS
C.M.C. USED CARS
14 MILLION FROM OUR STOCK OF GUARANTEED USED CARS

SPORTS & EXPORTS
REMOVALS
C.M.C. USED CARS
14 MILLION FROM OUR STOCK OF GUARANTEED USED CARS

TODAY'S RADIO PROGRAMME
FRIDAY, MARCH 11, 1950
K.B.S. ENGLISH
K.B.S. ARAB

MUTER AND OSWALD LIMITED
SALES OF FURNITURE, PLASTIC, GLASS, FIBRE, PAINTS, OILS, ETC.

MUTER AND OSWALD LIMITED
AUCTION OF SMALL HOUSEHOLD ITEMS AND BASKET WEAVING ON SATURDAY, MARCH 12

SAVAGE AND SCADL LIMITED
AUCTION OF FURNITURE, PLASTIC, GLASS, FIBRE, PAINTS, OILS, ETC.

HIGGINSON, WISEMAN & CO. LTD.
SOLE AGENTS OF VEHICLES, TIRE AND MOTORCYCLES

C.B. MISTRY
AUCTION OF SMALL HOUSEHOLD ITEMS AND BASKET WEAVING ON SATURDAY, MARCH 12

MUTER AND OSWALD LIMITED
SALES OF FURNITURE, PLASTIC, GLASS, FIBRE, PAINTS, OILS, ETC.

MUTER AND OSWALD LIMITED
AUCTION OF SMALL HOUSEHOLD ITEMS AND BASKET WEAVING ON SATURDAY, MARCH 12

SAVAGE AND SCADL LIMITED
AUCTION OF FURNITURE, PLASTIC, GLASS, FIBRE, PAINTS, OILS, ETC.

HIGGINSON, WISEMAN & CO. LTD.
SOLE AGENTS OF VEHICLES, TIRE AND MOTORCYCLES

C.B. MISTRY
AUCTION OF SMALL HOUSEHOLD ITEMS AND BASKET WEAVING ON SATURDAY, MARCH 12

MUTER AND OSWALD LIMITED
SALES OF FURNITURE, PLASTIC, GLASS, FIBRE, PAINTS, OILS, ETC.

MUTER AND OSWALD LIMITED
AUCTION OF SMALL HOUSEHOLD ITEMS AND BASKET WEAVING ON SATURDAY, MARCH 12

SAVAGE AND SCADL LIMITED
AUCTION OF FURNITURE, PLASTIC, GLASS, FIBRE, PAINTS, OILS, ETC.

HIGGINSON, WISEMAN & CO. LTD.
SOLE AGENTS OF VEHICLES, TIRE AND MOTORCYCLES

C.B. MISTRY
AUCTION OF SMALL HOUSEHOLD ITEMS AND BASKET WEAVING ON SATURDAY, MARCH 12

C. B. MISTRY
AUCTION OF SMALL HOUSEHOLD ITEMS AND BASKET WEAVING ON SATURDAY, MARCH 12

GEORGE A. TYSON
AUCTION OF SMALL HOUSEHOLD ITEMS AND BASKET WEAVING ON SATURDAY, MARCH 12

DAUGETY AND COMPANY LIMITED
AUCTION OF SMALL HOUSEHOLD ITEMS AND BASKET WEAVING ON SATURDAY, MARCH 12

MUTER AND OSWALD LIMITED
AUCTION OF SMALL HOUSEHOLD ITEMS AND BASKET WEAVING ON SATURDAY, MARCH 12

C.B. MISTRY
AUCTION OF SMALL HOUSEHOLD ITEMS AND BASKET WEAVING ON SATURDAY, MARCH 12

ROBINSON & GULTON LIMITED
AUCTION OF SMALL HOUSEHOLD ITEMS AND BASKET WEAVING ON SATURDAY, MARCH 12

DAUGETY AND COMPANY LIMITED
AUCTION OF SMALL HOUSEHOLD ITEMS AND BASKET WEAVING ON SATURDAY, MARCH 12

MUTER AND OSWALD LIMITED
AUCTION OF SMALL HOUSEHOLD ITEMS AND BASKET WEAVING ON SATURDAY, MARCH 12

MUTER AND OSWALD LIMITED
AUCTION OF SMALL HOUSEHOLD ITEMS AND BASKET WEAVING ON SATURDAY, MARCH 12

C.B. MISTRY
AUCTION OF SMALL HOUSEHOLD ITEMS AND BASKET WEAVING ON SATURDAY, MARCH 12

FRUITFUL INVESTMENTS LTD.
AUCTION OF SMALL HOUSEHOLD ITEMS AND BASKET WEAVING ON SATURDAY, MARCH 12

COLBURN'S LIMITED
AUCTION OF SMALL HOUSEHOLD ITEMS AND BASKET WEAVING ON SATURDAY, MARCH 12

O. M. SHUTE
AUCTION OF SMALL HOUSEHOLD ITEMS AND BASKET WEAVING ON SATURDAY, MARCH 12

W. F. VAN HEERDEN & CO.
AUCTION OF SMALL HOUSEHOLD ITEMS AND BASKET WEAVING ON SATURDAY, MARCH 12

Today's Cause List
AUCTION OF SMALL HOUSEHOLD ITEMS AND BASKET WEAVING ON SATURDAY, MARCH 12

TO	FARE	FARE	FARE
TO BOMBAY	100.00	100.00	100.00
TO KARACHI	120.00	120.00	120.00
TO COCHIN	140.00	140.00	140.00
TO Ceylon	160.00	160.00	160.00
TO SINGAPORE	180.00	180.00	180.00
TO MALACCA	200.00	200.00	200.00
TO PENANG	220.00	220.00	220.00
TO SINGAPORE	240.00	240.00	240.00
TO BANGKOK	260.00	260.00	260.00
TO PHNOM PENH	280.00	280.00	280.00
TO HO CHI MINH	300.00	300.00	300.00
TO SAIGON	320.00	320.00	320.00
TO HANOI	340.00	340.00	340.00
TO YOKOHAMA	360.00	360.00	360.00
TO TOKYO	380.00	380.00	380.00
TO MANILA	400.00	400.00	400.00
TO CEBU	420.00	420.00	420.00
TO DAVAO	440.00	440.00	440.00
TO SYDNEY	460.00	460.00	460.00
TO MELBOURNE	480.00	480.00	480.00
TO AUCKLAND	500.00	500.00	500.00
TO LONDON	520.00	520.00	520.00
TO PARIS	540.00	540.00	540.00
TO BRUSSELS	560.00	560.00	560.00
TO AMSTERDAM	580.00	580.00	580.00
TO ROTTERDAM	600.00	600.00	600.00
TO ANTWERP	620.00	620.00	620.00
TO BRISBANE	640.00	640.00	640.00
TO PERTH	660.00	660.00	660.00
TO ADELAIDE	680.00	680.00	680.00
TO MELBOURNE	700.00	700.00	700.00
TO SYDNEY	720.00	720.00	720.00
TO AUCKLAND	740.00	740.00	740.00
TO LONDON	760.00	760.00	760.00
TO PARIS	780.00	780.00	780.00
TO BRUSSELS	800.00	800.00	800.00
TO AMSTERDAM	820.00	820.00	820.00
TO ROTTERDAM	840.00	840.00	840.00
TO ANTWERP	860.00	860.00	860.00
TO BRISBANE	880.00	880.00	880.00
TO PERTH	900.00	900.00	900.00
TO ADELAIDE	920.00	920.00	920.00
TO MELBOURNE	940.00	940.00	940.00
TO SYDNEY	960.00	960.00	960.00
TO AUCKLAND	980.00	980.00	980.00
TO LONDON	1000.00	1000.00	1000.00
TO PARIS	1020.00	1020.00	1020.00
TO BRUSSELS	1040.00	1040.00	1040.00
TO AMSTERDAM	1060.00	1060.00	1060.00
TO ROTTERDAM	1080.00	1080.00	1080.00
TO ANTWERP	1100.00	1100.00	1100.00
TO BRISBANE	1120.00	1120.00	1120.00
TO PERTH	1140.00	1140.00	1140.00
TO ADELAIDE	1160.00	1160.00	1160.00
TO MELBOURNE	1180.00	1180.00	1180.00
TO SYDNEY	1200.00	1200.00	1200.00
TO AUCKLAND	1220.00	1220.00	1220.00
TO LONDON	1240.00	1240.00	1240.00
TO PARIS	1260.00	1260.00	1260.00
TO BRUSSELS	1280.00	1280.00	1280.00
TO AMSTERDAM	1300.00	1300.00	1300.00
TO ROTTERDAM	1320.00	1320.00	1320.00
TO ANTWERP	1340.00	1340.00	1340.00
TO BRISBANE	1360.00	1360.00	1360.00
TO PERTH	1380.00	1380.00	1380.00
TO ADELAIDE	1400.00	1400.00	1400.00
TO MELBOURNE	1420.00	1420.00	1420.00
TO SYDNEY	1440.00	1440.00	1440.00
TO AUCKLAND	1460.00	1460.00	1460.00
TO LONDON	1480.00	1480.00	1480.00
TO PARIS	1500.00	1500.00	1500.00
TO BRUSSELS	1520.00	1520.00	1520.00
TO AMSTERDAM	1540.00	1540.00	1540.00
TO ROTTERDAM	1560.00	1560.00	1560.00
TO ANTWERP	1580.00	1580.00	1580.00
TO BRISBANE	1600.00	1600.00	1600.00
TO PERTH	1620.00	1620.00	1620.00
TO ADELAIDE	1640.00	1640.00	1640.00
TO MELBOURNE	1660.00	1660.00	1660.00
TO SYDNEY	1680.00	1680.00	1680.00
TO AUCKLAND	1700.00	1700.00	1700.00
TO LONDON	1720.00	1720.00	1720.00
TO PARIS	1740.00	1740.00	1740.00
TO BRUSSELS	1760.00	1760.00	1760.00
TO AMSTERDAM	1780.00	1780.00	1780.00
TO ROTTERDAM	1800.00	1800.00	1800.00
TO ANTWERP	1820.00	1820.00	1820.00
TO BRISBANE	1840.00	1840.00	1840.00
TO PERTH	1860.00	1860.00	1860.00
TO ADELAIDE	1880.00	1880.00	1880.00
TO MELBOURNE	1900.00	1900.00	1900.00
TO SYDNEY	1920.00	1920.00	1920.00
TO AUCKLAND	1940.00	1940.00	1940.00
TO LONDON	1960.00	1960.00	1960.00
TO PARIS	1980.00	1980.00	1980.00
TO BRUSSELS	2000.00	2000.00	2000.00
TO AMSTERDAM	2020.00	2020.00	2020.00
TO ROTTERDAM	2040.00	2040.00	2040.00
TO ANTWERP	2060.00	2060.00	2060.00
TO BRISBANE	2080.00	2080.00	2080.00
TO PERTH	2100.00	2100.00	2100.00
TO ADELAIDE	2120.00	2120.00	2120.00
TO MELBOURNE	2140.00	2140.00	2140.00
TO SYDNEY	2160.00	2160.00	2160.00
TO AUCKLAND	2180.00	2180.00	2180.00
TO LONDON	2200.00	2200.00	2200.00
TO PARIS	2220.00	2220.00	2220.00
TO BRUSSELS	2240.00	2240.00	2240.00
TO AMSTERDAM	2260.00	2260.00	2260.00
TO ROTTERDAM	2280.00	2280.00	2280.00
TO ANTWERP	2300.00	2300.00	2300.00
TO BRISBANE	2320.00	2320.00	2320.00
TO PERTH	2340.00	2340.00	2340.00
TO ADELAIDE	2360.00	2360.00	2360.00
TO MELBOURNE	2380.00	2380.00	2380.00
TO SYDNEY	2400.00	2400.00	2400.00
TO AUCKLAND	2420.00	2420.00	2420.00
TO LONDON	2440.00	2440.00	2440.00
TO PARIS	2460.00	2460.00	2460.00
TO BRUSSELS	2480.00	2480.00	2480.00
TO AMSTERDAM	2500.00	2500.00	2500.00
TO ROTTERDAM	2520.00	2520.00	2520.00
TO ANTWERP	2540.00	2540.00	2540.00
TO BRISBANE	2560.00	2560.00	2560.00
TO PERTH	2580.00	2580.00	2580.00
TO ADELAIDE	2600.00	2600.00	2600.00
TO MELBOURNE	2620.00	2620.00	2620.00
TO SYDNEY	2640.00	2640.00	2640.00
TO AUCKLAND	2660.00	2660.00	2660.00
TO LONDON	2680.00	2680.00	2680.00
TO PARIS	2700.00	2700.00	2700.00
TO BRUSSELS	2720.00	2720.00	2720.00
TO AMSTERDAM	2740.00	2740.00	2740.00
TO ROTTERDAM	2760.00	2760.00	2760.00
TO ANTWERP	2780.00	2780.00	2780.00
TO BRISBANE	2800.00	2800.00	2800.00
TO PERTH	2820.00	2820.00	2820.00
TO ADELAIDE	2840.00	2840.00	2840.00
TO MELBOURNE	2860.00	2860.00	2860.00
TO SYDNEY	2880.00	2880.00	2880.00
TO AUCKLAND	2900.00	2900.00	2900.00
TO LONDON	2920.00	2920.00	2920.00
TO PARIS	2940.00	2940.00	2940.00
TO BRUSSELS	2960.00	2960.00	2960.00
TO AMSTERDAM	2980.00	2980.00	2980.00
TO ROTTERDAM	3000.00	3000.00	3000.00
TO ANTWERP	3020.00	3020.00	3020.00
TO BRISBANE	3040.00	3040.00	3040.00
TO PERTH	3060.00	3060.00	3060.00
TO ADELAIDE	3080.00	3080.00	3080.00
TO MELBOURNE	3100.00	3100.00	3100.00
TO SYDNEY	3120.00	3120.00	3120.00
TO AUCKLAND	3140.00	3140.00	3140.00
TO LONDON	3160.00	3160.00	3160.00
TO PARIS	3180.00	3180.00	3180.00
TO BRUSSELS	3200.00	3200.00	3200.00
TO AMSTERDAM	3220.00	3220.00	3220.00
TO ROTTERDAM	3240.00	3240.00	3240.00
TO ANTWERP	3260.00	3260.00	3260.00
TO BRISBANE	3280.00	3280.00	3280.00
TO PERTH	3300.00	3300.00	3300.00
TO ADELAIDE	3320.00	3320.00	3320.00
TO MELBOURNE	3340.00	3340.00	3340.00
TO SYDNEY	3360.00	3360.00	3360.00
TO AUCKLAND	3380.00	3380.00	3380.00
TO LONDON	3400.00	3400.00	3400.00
TO PARIS	3420.00	3420.00	3420.00
TO BRUSSELS	3440.00	3440.00	3440.00
TO AMSTERDAM	3460.00	3460.00	3460.00
TO ROTTERDAM	3480.00	3480.00	3480.00
TO ANTWERP	3500.00	3500.00	3500.00
TO BRISBANE	3520.00	3520.00	3520.00
TO PERTH	3540.00	3540.00	3540.00
TO ADELAIDE	3560.00	3560.00	3560.00
TO MELBOURNE	3580.00	3580.00	3580.00
TO SYDNEY	3600.00	3600.00	3600.00
TO AUCKLAND	3620.00	3620.00	3620.00
TO LONDON	3640.00	3640.00	3640.00
TO PARIS	3660.00	3660.00	3660.00
TO BRUSSELS	3680.00	3680.00	3680.00
TO AMSTERDAM	3700.00	3700.00	3700.00
TO ROTTERDAM	3720.00	3720.00	3720.00
TO ANTWERP	3740.00	3740.00	3740.00
TO BRISBANE	3760.00	3760.00	3760.00
TO PERTH	3780.00	3780.00	3780.00
TO ADELAIDE	3800.00	3800.00	3800.00
TO MELBOURNE	3820.00	3820.00	3820.00
TO SYDNEY	3840.00	3840.00	3840.00
TO AUCKLAND	3860.00	3860.00	3860.00
TO LONDON	3880.00	3880.00	3880.00
TO PARIS	3900.00	3900.00	3900.00
TO BRUSSELS	3920.00	3920.00	3920.00
TO AMSTERDAM	3940.00	3940.00	3940.00
TO ROTTERDAM	3960.00	3960.00	3960.00
TO ANTWERP	3980.00	3980.00	3980.00
TO BRISBANE	4000.00	4000.00	4000.00
TO PERTH	4020.00	4020.00	4020.00
TO ADELAIDE	4040.00	4040.00	4040.00
TO MELBOURNE	4060.00	4060.00	4060.00
TO SYDNEY	4080.00	4080.00	4080.00
TO AUCKLAND	4100.00	4100.00	4100.00
TO LONDON	4120.00	4120.00	4120.00
TO PARIS	4140.00	4140.00	4140.00
TO BRUSSELS	4160.00	4160.00	4160.00
TO AMSTERDAM	4180.00	4180.00	4180.00
TO ROTTERDAM	4200.00	4200.00	4200.00
TO ANTWERP	4220.00	4220.00	4220.00
TO BRISBANE	4240.00	4240.00	4240.00
TO PERTH	4260.00	4260.00	4260.00
TO ADELAIDE	4280.00	4280.00	4280.00
TO MELBOURNE	4300.00	4300.00	4300.00
TO SYDNEY	4320.00	4320.00	4320.00
TO AUCKLAND	4340.00	4340.00	4340.00
TO LONDON	4360.00	4360.00	4360.00
TO PARIS	4380.00	4380.00	4380.00
TO BRUSSELS	4400.00	4400.00	4400.00
TO AMSTERDAM	4420.00	4420.00	4420.00
TO ROTTERDAM	4440.00	4440.00	4440.00
TO ANTWERP	4460.00	4460.00	4460.00
TO BRISBANE	4480.00	4480.00	4480.00
TO PERTH	4500.00	4500.00	4500.00
TO ADELAIDE	4520.00		

POUNDED CUTS MADE FOR OFFER



Useful ones on her hands made... Zam-Buk

Zam-Buk From all Chemists & Stores.

REGULARITY the natural way!

DR. BILLY GRAHAM Standard Correspondent

ADOLESCENT PRICKLY HEAT

There's no need for you and your children to suffer from prickly heat...

ASK ABOUT THE E.A.A. CREDIT TRAVEL PLAN

Fight ASTHMA ATTACKS

REBUILDING OF TOWNS A RECONSTRUCTION program is under way at Elburg and Molo in the new African residential and commercial areas.

Soviet college gift to Ethiopia ELDEST SHOW CHAMPION

RUSSIA is to pay for a large school to be built in the interior of Ethiopia.

PREMIER MAY OPEN TRADE DISPLAY WORK on the foundations of a Russian industrial exhibition for Ethiopia and East Africa has begun near the stadium in Addis Ababa.

Discipline by parents too slack league told

COCOA CROP PLAN FOR ZANZIBAR UNDER WAY

Discipline by parents too slack league told

Slackening of discipline in many of Kenya's European homes is preventing new problems of charitable organizations such as the League of Mercy.

Help of 1000 men for the transport of heavy machinery for the planting of a cocoa crop in Zanzibar.

Biological control of parasite

£320 raid

Shell Afrigas makes life easy



VOI FARM SHOW PLACES ACCENT ON PROGRESS

Uganda trade fall-off

WOMEN'S SERVICE Kamba

WOMEN'S SERVICE Kamba

WOMEN'S SERVICE Kamba

WOMEN'S SERVICE Kamba

WOMEN'S SERVICE Kamba

WOMEN'S SERVICE Kamba

WOMEN'S SERVICE Kamba

WOMEN'S SERVICE Kamba

WOMEN'S SERVICE Kamba

WOMEN'S SERVICE Kamba

WOMEN'S SERVICE Kamba

WOMEN'S SERVICE Kamba

WOMEN'S SERVICE Kamba

WOMEN'S SERVICE Kamba

WOMEN'S SERVICE Kamba

WOMEN'S SERVICE Kamba

WOMEN'S SERVICE Kamba

VOI FARM SHOW PLACES ACCENT ON PROGRESS

Uganda trade fall-off

WOMEN'S SERVICE Kamba

WOMEN'S SERVICE Kamba

WOMEN'S SERVICE Kamba

WOMEN'S SERVICE Kamba

WOMEN'S SERVICE Kamba

WOMEN'S SERVICE Kamba

WOMEN'S SERVICE Kamba

WOMEN'S SERVICE Kamba

WOMEN'S SERVICE Kamba

WOMEN'S SERVICE Kamba

WOMEN'S SERVICE Kamba

WOMEN'S SERVICE Kamba

WOMEN'S SERVICE Kamba

WOMEN'S SERVICE Kamba

WOMEN'S SERVICE Kamba

WOMEN'S SERVICE Kamba

WOMEN'S SERVICE Kamba

WOMEN'S SERVICE Kamba

WOMEN'S SERVICE Kamba

Kisumu production of 'Dear Delinquent' never flagged

KISUMU AMATEUR DRAMATIC SOCIETY'S latest production, 'Dear Delinquent', by Jack Piggwillet...

£100 CHANCE FOR STUDENT

The Oxford and Cambridge Society of Kenya invites applications for a scholarship of £100 per annum...

Comedy buffer

Excellent comedy was introduced by the 'Big Brother' buffer, Wilkinson...

Appreciation

With the death of Thure Rundgren, Kenya has lost one of her oldest and most distinguished citizens.

Higher costs of preventing water loss

WORK continued last week on the water supply scheme at Tarpungu...

Dispute over redundancy in Zanzibar

Dispute has arisen over the redundancy of 200 workers at the Zanzibar Flour Mills...

TB suspects in re-examined

The project group of the Survey Department has re-examined 100 patients...

Campaign to free Kamba leaders

The Mchakaa Akamba Liberal Party is to form a 'Freedom Party' to campaign for the release of Kamba leaders...

Shell Afrigas makes life easy

When it's usual each day which has been helping you from promptly owning Afrigas Shell products...

APRILS THE MODERN FUEL FOR ALL DOMESTIC NEEDS

When it's usual each day which has been helping you from promptly owning Afrigas Shell products...

MR. TURE RUNDGREN

With the death of Thure Rundgren, Kenya has lost one of her oldest and most distinguished citizens...

Shell Afrigas makes life easy

When it's usual each day which has been helping you from promptly owning Afrigas Shell products...

APRILS THE MODERN FUEL FOR ALL DOMESTIC NEEDS

KEEP END STANDARD MERU AFRICANS INVEST IN THEIR OWN GAME RESERVE

By Anthony Dunn

By approving the allocation of £4,200 for this year the Meru African District Council became the first local authority in Kenya to have its own game reserve.

The reserve, 60 miles east of Meru Township, has been set aside as an adjunct of a settlement scheme. It is a large section of unimproved land in the Kiama area and is suitable for landless Meru people living in other areas. A high rainfall made the area most suitable for mixed farming, and today 1,000 families have smallholdings in the scheme.

At the Kiama area could money be used to clear the area of the Kenya Government. Mr. L. F. Kibuka is Kiama for this purpose.

LITTLE WATER

As the scheme developed, one of the main problems was water. Mr. Kibuka, an expert on water, has been appointed to study the water situation. Mr. L. F. Kibuka is Kiama for this purpose.

The new reserve already has one all-weather road through it, and when the Meru Game Reserve is completed, it will be the only one of its kind in the area. The reserve is situated in the Kiama area, which is one of the best areas in the country for the establishment of a game reserve.

The Government Department of Forests and Game has approved the scheme. The Meru African District Council has also approved the scheme. The scheme is a landmark in the history of the Meru people, who have always been interested in the establishment of a game reserve.



Warden to introduce rhinos and cobs

where in groups of three than one, but in this reserve there will be up to 10 in each herd.

The new reserve is also to receive a herd of some 20 cobs, a type of antelope. The Meru people have protected some of the cobs in the area for many years.

The cobs will be introduced in the reserve, and will be used for the purpose of the reserve. The Meru people have always been interested in the establishment of a game reserve.

Mr. L. F. Kibuka, who is the warden of the reserve, will be introducing the rhinos and cobs into the reserve. He will be accompanied by a team of men from the reserve.

The rhinos will be introduced in the reserve, and will be used for the purpose of the reserve. The Meru people have always been interested in the establishment of a game reserve.

The cobs will be introduced in the reserve, and will be used for the purpose of the reserve. The Meru people have always been interested in the establishment of a game reserve.

The rhinos and cobs will be introduced in the reserve, and will be used for the purpose of the reserve. The Meru people have always been interested in the establishment of a game reserve.

Mr. L. F. Kibuka, who is the warden of the reserve, will be introducing the rhinos and cobs into the reserve. He will be accompanied by a team of men from the reserve.

The rhinos will be introduced in the reserve, and will be used for the purpose of the reserve. The Meru people have always been interested in the establishment of a game reserve.

The cobs will be introduced in the reserve, and will be used for the purpose of the reserve. The Meru people have always been interested in the establishment of a game reserve.

The rhinos and cobs will be introduced in the reserve, and will be used for the purpose of the reserve. The Meru people have always been interested in the establishment of a game reserve.

New ways of saving time and money

By PETER SMILES

ECONOMY and the heavy load come up for discussion at the recent National Power Farming Conference, at Christchurch. The conference was held at the home of A. S. Christensen, Mr. Christensen's paper was on the subject of the use of power in the Meru area. The paper was on the subject of the use of power in the Meru area.

There are 100 power units in the Meru area, and the use of power is increasing. The use of power is increasing in the Meru area, and the use of power is increasing in the Meru area.

The use of power is increasing in the Meru area, and the use of power is increasing in the Meru area. The use of power is increasing in the Meru area, and the use of power is increasing in the Meru area.

After describing various features of the conference, the speaker said that the use of power is increasing in the Meru area, and the use of power is increasing in the Meru area.

The use of power is increasing in the Meru area, and the use of power is increasing in the Meru area. The use of power is increasing in the Meru area, and the use of power is increasing in the Meru area.

The use of power is increasing in the Meru area, and the use of power is increasing in the Meru area. The use of power is increasing in the Meru area, and the use of power is increasing in the Meru area.

The use of power is increasing in the Meru area, and the use of power is increasing in the Meru area. The use of power is increasing in the Meru area, and the use of power is increasing in the Meru area.

The use of power is increasing in the Meru area, and the use of power is increasing in the Meru area. The use of power is increasing in the Meru area, and the use of power is increasing in the Meru area.

The use of power is increasing in the Meru area, and the use of power is increasing in the Meru area. The use of power is increasing in the Meru area, and the use of power is increasing in the Meru area.

The use of power is increasing in the Meru area, and the use of power is increasing in the Meru area. The use of power is increasing in the Meru area, and the use of power is increasing in the Meru area.

ON ALL THESE ROUTES

your flight is hours shorter by BOAC jets!

Today BOAC's network of jetliner services links all six continents. BOAC offers you the fastest, most comfortable air travel ever. Comet jetliners, or jetprop Britannia link important cities all over the world. And BOAC services across the North Atlantic will soon be by magnificent Rolls-Royce 707 jetliners. You'll enjoy a new experience in air travel aboard these superb airliners. They're far faster and more comfortable. They're quieter. They're free from vibration. And you'll enjoy BOAC's friendly personal service, too, whether you fly Comet or low-fare Tourist. Get there sooner by BOAC jetliners all over the world.

Comet your local BOAC Appointed Travel Agent at BOAC, Prudential Building, 111st Street, Nairobi, Telephone 2831; or East African Airways (General Agents for BOAC), Mackinnon Building, Edinburgh, Nairobi, Box No. 90100, Telephone 2645; and at London, Manchester, New York, Singapore, Toronto, Bombay and Calcutta.

BRITISH OVERSEAS AIRWAYS CORPORATION WITH BOAC (INCORPORATED IN THE U.K.)

MENTAL FASHION LATEST FOR OTHER TO TRY OUT AT HOME

By ANNE CURRIEMAN

It would be no doubt that the Original look is proving a big fashion grommet in both Great Britain and America. In the British capital it is seen at its best in cocktail parties and in Chinese printed beachwear. Americans have been indulging in a kind of Oriental fabrics, furniture, decorations and accessories.

Retail shops report more than usually large sales of these things.

These things are being advertised in the papers, and perhaps there is something permanent about the new popularity.

Most women have heard of the type, to give a little idea of the style. It is a style which is in vogue at the moment, and is a style which is in vogue at the moment.

The style is a style which is in vogue at the moment, and is a style which is in vogue at the moment.

It is a style which is in vogue at the moment, and is a style which is in vogue at the moment.

The style is a style which is in vogue at the moment, and is a style which is in vogue at the moment.

The style is a style which is in vogue at the moment, and is a style which is in vogue at the moment.

The style is a style which is in vogue at the moment, and is a style which is in vogue at the moment.



Dress and jacket ensemble for the younger set.

Problems posed by drip-dry garment

UNTIL the few days since the machine you can throw into a washing machine and wash and dry in a drip-dry garment.

It is a machine which is in vogue at the moment, and is a machine which is in vogue at the moment.

The machine is a machine which is in vogue at the moment, and is a machine which is in vogue at the moment.

Wrinkles and 'crow's-foot' smoothed away

Placentuber - renewed Continental cosmetic - flabby skin. For it carries life-giving placental extracts from the placenta of the unborn child.

The Placentuber daily around the eyes and mouth. Then smooth over with a good lubricating cream, for instance "Creme Devilan". Ask for both at your chemist or cosmetic store.

Placentuber

FIGHTS AND PREVENTS the skin
The new Placentuber (C.M.) is available in
at Chemist, Dept. 3, 111, Finsbury Park, London, E.C.2.

Take
NYCIN TABLETS
to kill pain

NYCIN FOR HEADACHES, NEURALGIA, TOOTHACHE, RHEUMATISM, MIGRAINE, BRUISES, SPRAINS, MUSCULAR PAIN, PLEURALGIA.

LIFE ON H.P.

It is a style which is in vogue at the moment, and is a style which is in vogue at the moment.

The style is a style which is in vogue at the moment, and is a style which is in vogue at the moment.

The style is a style which is in vogue at the moment, and is a style which is in vogue at the moment.

RAIN

It is a style which is in vogue at the moment, and is a style which is in vogue at the moment.

The style is a style which is in vogue at the moment, and is a style which is in vogue at the moment.

TRIVY STITCHES

It is a style which is in vogue at the moment, and is a style which is in vogue at the moment.

The style is a style which is in vogue at the moment, and is a style which is in vogue at the moment.

JACKET PATTERNS

It is a style which is in vogue at the moment, and is a style which is in vogue at the moment.

The style is a style which is in vogue at the moment, and is a style which is in vogue at the moment.

ORIENTAL TOUCH TO AN EVENING GOWN

It is a style which is in vogue at the moment, and is a style which is in vogue at the moment.

The style is a style which is in vogue at the moment, and is a style which is in vogue at the moment.

It pays to tidy your beauty 'workshop'

By JUNE FIELD

YOU look after your skin, watch your figure, brush your hair. But can you honestly say you are as particular about your dressing-table, that "make-up" such a jumble of make-up, hair pins, scissors, and other things that you do not know where to put them?

It is a style which is in vogue at the moment, and is a style which is in vogue at the moment.

POSTBAG

It is a style which is in vogue at the moment, and is a style which is in vogue at the moment.

The style is a style which is in vogue at the moment, and is a style which is in vogue at the moment.

WALLPAPER EXPERIMENTS ON INCREASE

By PETER WILSHER

More expensive hand-printed papers within the range of practical experiments, reported the interest of artists, and Edward Partridge, with his designs, and his abstract leaves of "Artigue" would be impossible to use in a room of light and life.

It is a style which is in vogue at the moment, and is a style which is in vogue at the moment.

CHILDREN'S PAIN

Children's pain, a few drops of the new medicine, and the child is happy.

It is a style which is in vogue at the moment, and is a style which is in vogue at the moment.

Big City favourites



OMO

It is a style which is in vogue at the moment, and is a style which is in vogue at the moment.

Blue OMO

gives you the **WHITEST WASH IN THE WORLD!**

Best for coloureds too

Treasures

These classic, beautifully fashioned shirt waisters—truly named TREASURES—are so lovely and youthful in design. But each patterned design, too, of white, light or cool, comfortable VIVELLA, that never shrinks or fades. In fact, you'll find that the more it's washed, the softer, more feminine it becomes. For true elegance invest your good looks in one—or two—or three! Your choice—pinstriped, plaid, plain or solid colours.

Vivella

LOOK FOR TREASURES IN VIVELLA

From Enquiries—TREASURES DISTRIBUTORS (PTY.) LTD., P.O. BOX 4764, CAPE TOWN.

African Rainbow

by H. K. Hicks

"This is a timely story for the whole world to read, when the strife in Kenya was unknown... the whole team, with its photographic illustrations, displays a great knowledge and love of the country."

—EAST ANGLIAN DAILY TIMES.
"A first rate observer who knows and loves his Kenya native friends. A valuable man to have around in times changing times."
—S. P. R. MATS in the OXFORD MAIL.

"Essentially light-hearted, readable and entertaining."
—SIRSHINGHAM POST.

"It is a very well written account of an old settler in Kenya... He has a real feeling for the landscape and flowers of what is now certainly his own country."
—TIME AND TIDE.

"Lively and amusing."
—NOTTINGHAM GUARDIAN JOURNAL.

L. Crown 8vo. 26 pages of photographs. 21c.net.

Sidgwick & Jackson

1 Tavistock Chambers, Bloomsbury Way London, W.C.1, England

PETROL/SERVICE STATION AND GARAGE FOR SALE IN SALISBURY DISTRICT

3½ MILES FROM POST OFFICE

This station presently operating as a petrol station, is being offered for sale. The reason being that for personal reasons the proprietor is leaving the country. This business has been operated in the past showing excellent results. It is established in a progressive area and is a locality offering a great potential to an enterprising buyer. The operations workshop has every facility for minor and major repairs. A schedule of equipment and fixtures is available on application. The business also comprises a considerable range of spares, being particularly suitable to international private cars. A good proposition for transport operator. Long lease and low rental a definite attraction to this business. Purchase price, including stocks and equipment, £7,000.

Voucher X591

COASTAL HOTEL FOR SALE

Old-established hotel situated on Tudor Creek, Mombasa, fronting sandy beach. 46 bedrooms, mostly with private bathroom or shower. Approximately 5 acres of land, giving ample space for extension or for erection of petrol station and shops.

For sale as a going concern.

Particulars available from—

GEORGE A. TYSON AND PARTNERS
P.O. Box 373, Nairobi

HAWKINS, TYSON AND PARTNERS
P.O. Box 2137, Mombasa.

Clothes look crisp and new—stay clean longer when starched with



MUNICH
ATHENS
NICOSIA
TEL AVIV
ISTANBUL

Suddenly, distance loses its meaning as **Comet 4B** jets sweep into BEA stop-over service



ROME
NICE
ZURICH
DUSSELDORF
FRANKFURT
COPENHAGEN
STOCKHOLM
OSLO
WARSAW
MOSCOW
MALTA

New Comet 4B jets—singletons of this jet age—give added attraction to the BEA Stop-over plan. When you plan a European trip or a visit to British stop-off en route and see the great cities and gay resorts of Europe you're always wanted to see. When you reach the BEA network, you can fly on by the new BEA Comet 4B's or by the Victor's Viscount, according to the route you wish to take. The BEA "Stop-over" plan allows you to stop off anywhere you like and fly on next day, one week, whenever you like. It's a great idea... and it costs you no more than a through ticket. Comet 4B jets slash hours of normal flying times! The Comet 4B is the latest and fastest good reason for flying BEA in Europe.

* This new Comet 4B will be in service on many BEA routes as from 1st April, 1960.

SEE YOUR TRAVEL AGENT, B.O.A.C. OR E.A.A.



KENYA SAYS GOODBYE TO VENOMS

Squadrons to be equipped with Hunters

"FOR the past year Venoms in aircraft of the Squadron have been a constant sight in the air over Kenya. They have been a familiar sight to the eyes and ears of the people and the end of March they will have disappeared from the scene and become part of the history of the Royal Air Force."

First introduced for operational commission with the Royal Air Force at the beginning of 1955, the aircraft have given very reliable service in Germany, Malaya, the Arabian Peninsula and East Africa. Now six Squadrons, the last squadron of the Royal Air Force in Kenya, is being disbanded to form the 2nd link in the conversion from the Hunter Fighter Bomber Mark 4 to the Hunter Fighter Ground Attack Mark 5.

LONGER RANGE
The new ground crew and technical staff of 2nd Squadron will leave Nairobi by the end of the month for Stradbally, Suffolk, where the conversion to the Hunter will be completed. It is to take place over a period of 18 months.

Regarding the future of the Squadron, which has spent the last year in different parts of the Middle East, he commented: "As far as we know we shall be coming back to Kenya by the end of the month. The Mark 4 is the most recent development of the Hunter ground attack version and carries more armament and can make more effective strikes."

The presence of the Venoms from the late 208 Squadron will bring back nostalgic memories to many of the staff, especially to P. L. P. R. E. who served in the Squadron as a member of the spectacular parachute team which has delighted audiences at many shows in East, Central and Southern Africa.

END OF AN ERA
The Venoms have been a really interesting aircraft to fly. "I'd prefer said: "It may not have the speed of some of the more recent aircraft, but speed is not everything."

"It is quite fascinating to fly 20 to 30 knots faster than the speed of sound. For a short time after our arrival at Eastleigh, the local population seemed to have the idea that we had our own social amenities and preferred to be with us."

"But invitations to social events needed to be made in the community. Many of us have found it interesting to have the Venoms in the area."

So with the passing of the Venoms aircraft from the Kenya scene, and the Squadron's chapter is closed in the "Kenya" which is bound to be a new scene.

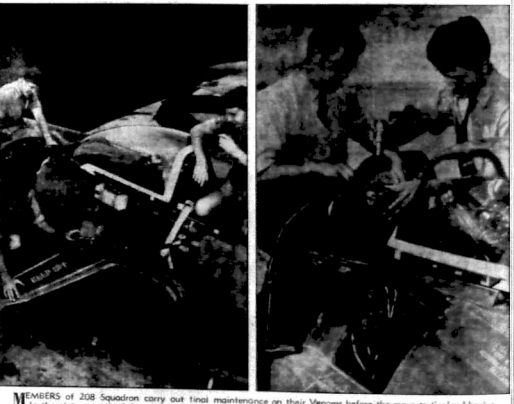


Last wave to Nairobi

GOODBYE Nairobi!
Ground crew of the advance party of 208 Squadron give a parting wave as they board a Hastings aircraft of R.A.F. Transport Command, bound for Stradbally, Suffolk. The squadron is to be equipped with Hunter aircraft during a conversion course at Stradbally. Kenya will be the last stop-over en route to return with their new aircraft to Eastleigh.



AIRCRAFT GET THE FINAL CHECKOVER



MEMBERS of 208 Squadron carry out final maintenance on their Venoms before the move to England begin. Leicester, aged 21. In the picture on the left are L.A.C. David Betts, aged 20, S.A.C. Dennis Austin, aged 25, and S.A.C. Peter Venon. They are L.A.C. John Bellis, aged 21, of Chester, and S.A.C. Charles Gardiner, aged 21, of Perth.

ADVERTISING...
OFFICE...
AGENCY...
100, N. BROADWAY, NEW YORK 100

Disturbed

A TIP FOR...
Disturbed...
A tip for...
Disturbed...
A tip for...

START...
START...
START...
START...

Skin

STOMACH...
UPSET?...
YOU NEED...
Bi-Sol...
THE HALLMARK...
FINE NASTY...
OMEGA...
How soon will...
your...
Sole...
Kenny...
DAVID...
Phone...
1000...
HARRIS

'BUY THE...
JANCO...
BOLTS...
SOFA...
ETC...
ALL...
KENYA...
BOLTS & NUTS...
MANUFACTURING...
Box...
MOMBASA

FOUR...
JERSEY...
S.W.2...
BRAND...
MANUFACTURED...
BY LATEX...
P.O. Box...

East African Standard, Ltd.
General Manager: Mr. J. H. ...
Editor: Mr. ...
Advertising Manager: Mr. ...
Subscription Manager: Mr. ...

Advertisements in this column are charged at the rate of ... per line per week ...

Advertisements in this column are charged at the rate of ... per line per week ...

Advertisements in this column are charged at the rate of ... per line per week ...

Advertisements in this column are charged at the rate of ... per line per week ...

Advertisements in this column are charged at the rate of ... per line per week ...

Advertisements in this column are charged at the rate of ... per line per week ...

Advertisements in this column are charged at the rate of ... per line per week ...

Advertisements in this column are charged at the rate of ... per line per week ...

Advertisements in this column are charged at the rate of ... per line per week ...

Advertisements in this column are charged at the rate of ... per line per week ...

Advertisements in this column are charged at the rate of ... per line per week ...

Advertisements in this column are charged at the rate of ... per line per week ...

Advertisements in this column are charged at the rate of ... per line per week ...

Advertisements in this column are charged at the rate of ... per line per week ...

Advertisements in this column are charged at the rate of ... per line per week ...

Advertisements in this column are charged at the rate of ... per line per week ...

Advertisements in this column are charged at the rate of ... per line per week ...

Advertisements in this column are charged at the rate of ... per line per week ...

Advertisements in this column are charged at the rate of ... per line per week ...

Advertisements in this column are charged at the rate of ... per line per week ...

Advertisements in this column are charged at the rate of ... per line per week ...

Advertisements in this column are charged at the rate of ... per line per week ...

Advertisements in this column are charged at the rate of ... per line per week ...

Advertisements in this column are charged at the rate of ... per line per week ...

Advertisements in this column are charged at the rate of ... per line per week ...

Advertisements in this column are charged at the rate of ... per line per week ...

Advertisements in this column are charged at the rate of ... per line per week ...

Advertisements in this column are charged at the rate of ... per line per week ...

Advertisements in this column are charged at the rate of ... per line per week ...

Advertisements in this column are charged at the rate of ... per line per week ...

Advertisements in this column are charged at the rate of ... per line per week ...

Advertisements in this column are charged at the rate of ... per line per week ...

Advertisements in this column are charged at the rate of ... per line per week ...

Advertisements in this column are charged at the rate of ... per line per week ...

Advertisements in this column are charged at the rate of ... per line per week ...

Advertisements in this column are charged at the rate of ... per line per week ...

Advertisements in this column are charged at the rate of ... per line per week ...

Advertisements in this column are charged at the rate of ... per line per week ...

Advertisements in this column are charged at the rate of ... per line per week ...

Advertisements in this column are charged at the rate of ... per line per week ...

Advertisements in this column are charged at the rate of ... per line per week ...

Advertisements in this column are charged at the rate of ... per line per week ...

Advertisements in this column are charged at the rate of ... per line per week ...

Advertisements in this column are charged at the rate of ... per line per week ...

Advertisements in this column are charged at the rate of ... per line per week ...

Advertisements in this column are charged at the rate of ... per line per week ...

Advertisements in this column are charged at the rate of ... per line per week ...

Castrol Remember These Facts!

These facts may be to your financial advantage at a later date, so please remember them:

1. The first East-West solo crossing of the Atlantic by air was made by Jim Moulton in a Puff Wuth in 1931. He also relied on Castrol.
2. The world land speed record has been broken 21 times by cars using Castrol, including such famous names as "Golden Arrow", "Blitzkrieg" and "Thunderbolt".
3. The first car ever to travel at two miles a minute was Captain Eyston's Castrol-fueled M.C. "Magic Midget" in 1932.
4. In 1953 an Austin Healey Sprite broke 15 world speed records at Ulth, U.S.A., using Castrol.

ASK FOR CASTROL BY NAME
 Castrol is available in Kenya, Uganda, Tanganyika, Malawi, Swaziland, Botswana, Lesotho, and South Africa.

WIGGLESWORTH & CO. (AFRICA) LTD.
 4001 Group Centre Road, Johannesburg, S.A.
 P.O. Box 10899 HAIBOSHI Salford Street Phone 50861

FOR SALE

FOR SALE: Various items including land, vehicles, and household goods. Includes details like '1000 Acres of land in ...' and '1955 Ford ...'.

WANTED

WANTED: Various items including land, vehicles, and household goods. Includes details like 'Wanted to buy ...' and 'Looking for ...'.

FOR SALE

FOR SALE: Various items including land, vehicles, and household goods. Includes details like '1000 Acres of land in ...' and '1955 Ford ...'.

WANTED

WANTED: Various items including land, vehicles, and household goods. Includes details like 'Wanted to buy ...' and 'Looking for ...'.

FOR SALE

FOR SALE: Various items including land, vehicles, and household goods. Includes details like '1000 Acres of land in ...' and '1955 Ford ...'.

WANTED

WANTED: Various items including land, vehicles, and household goods. Includes details like 'Wanted to buy ...' and 'Looking for ...'.

