

# EAST AFRICA

THE ONLY NEWSPAPER IN EUROPE DEVOTED  
EXCLUSIVELY TO THE INTERESTS OF  
THOSE LIVING, TRADING, HOLDING  
PROPERTY OR OTHERWISE INTERESTED IN  
EAST AND CENTRAL AFRICA.  
A WEEKLY JOURNAL

Volume 10, No. 281  
Published weekly at 110, Strand, Liverpool

THURSDAY, JULY 11, 1920

Annual Subscription, 50/- post free. Single Copies, 1/-



## BRITISH INDIA LINE

REGULAR SERVICE, LONDON AND HARBOULES, TO AND FROM EAST AFRICA  
Every two weeks via Suez and Cape Town, stopping at Aden and  
Bombay.

FAST MAIL AND PASSENGER SERVICE, BOMBAY - ZIMBABWE - ZAMBIA  
Every two weeks via East Africa, Cape Town, also calling at Durban, Natal.

AFRICAN MAIL SERVICES, N.A. - S.W.A. AND E.A. "D.W."  
Connecting with other services and providing complete facilities for mail and  
passengers.

Fig. 11, London, Liverpool, Bristol

General Managers: J. G. HOUSE, 110, STRAND, LONDON, W.C.2.  
Messrs. JAY DAWSON & CO., LEEDS, LEEDS, W. LEEDS ST. E.A.S.  
Agents: BELLAMY, BERRY & CO., 110, STRAND, LONDON, W.C.2.

### Tanganyika Territory ESTATE AGENTS, MANAGERS AND SECRETARIES.

Inspections, Valuations, Reports  
Reports on properties anywhere in Tanganyika

Registers of Properties for Sale

### THE TANGANYIKA ESTATE OFFICE, BAR ES SALAM

MANY YEARS' EXPERIENCE  
Telegrams—Estates, Dar es Salaam  
Cable—Estates (Bar Es Salaam), Dar es Salaam  
Post—No. 11, Dar es Salaam

<b>TAILORING EQUIPMENT OIL</b>	<b>INSURANCES OF ALL KINDS</b>
<b>MOTOR CARS SOLD ON RE-PURCHASE TERMS</b>	<b>REPAIRS AND OVERHAULS</b>
<b>SPORTS REQUISITES</b>	<b>GENERAL AGENTS</b>
<b>MOTOR CARS COLLECTED GARAGED AND SHIPPED</b>	<b>MOTOR CARS REPAIRED SPARES, TYRES, ETC.</b>
SPECIAL FACILITIES FOR PAYMENTS TANGANYIKA IN ALL ITS BRANCHES	

**GRIFFITHS, GILFILLAN & CO., LTD.**  
25 & 27, MARKET LANE, LIVERPOOL AND  
15, WARWICK STREET, LONDON, W.1.

# Those Early Morning Hours

THE East African Settler, accustomed to rising with the sun finds it difficult when at home on leave to stay abed till the Country regards as a suitable hour to get up. At Brooklands, we cater for the East African's early visit to be up and out in the freshness of the morning and the ideal flying time.

Of course, we do what we can to make his visit congenial in every other way. The accommodation and food are good, the company cheery, a club lounge and garage are available. Nowhere can flying be more pleasantly learnt.

AVRO AND MOTh AIRCRAFT EMPLOYED

Write for booklet

## BROOKLANDS' SCHOOL OF FLYING LTD



BROOKLANDS AERODROME, BY FLEET, SURREY

Telephone BY FLEET 211

Nearest Station WEST WEYBRIDGE

### SMOKE

B.C.A.



### CIGARETTES & TOBACCO

BRITISH GROWN  
BRITISH MADE

by

BRITISH CAPITAL  
BRITISH LABOUR

Made from the finest Nyasaland leaf

LARGE CIGARETTES  
100s and 50s per 100

STANDARD SIZE  
100s and 50s per 100

PIPE TOBACCO

*Support the  
Tobacco Planting  
Industry of the  
Empire*

Send a first order to

The BRITISH CENTRAL AFRICA CO. LTD.

THAMES HOUSE  
QUEEN STREET  
PLACE, E.C.4

We carry

Then ask your Tobacconist for B.C.A. EMPIRES

Tell your friends you saw it in East Africa



# BRITAIN'S BEST.

Use the radio valves that are acknowledged to be Britain's best—use Mullard. The reason for the supremacy of Mullard Valves is in the wonderful Mullard P. M. Filament. This filament has such an enormous emission surface that the maximum possible efficiency is gained from every Mullard Valve in your set. No other valve has the Mullard P. M. Filament. No other valve has the Mullard P. M. Performance. Prices from 12/6.



For speakers Mullard are unequalled. Though its price is very reasonable, the Mullard Model speaker gives such mellow tone and majestic volume as many more expensive speakers cannot. A tone control, also, is incorporated in its design, so that two variations of tone can be secured at will. This is an absolutely unique feature, so buy Mullard.

Mullard's modern design and high performance design and maximum performance. Buy Mullard.

Mullard (London) Ltd. C. 100, 65

# Mullard

## MASTER RADIO

W. G. REID

P.O. Box 362, MOMBASA

P.O. Box 913, NAIROBI



# ROBEY ENGINEERING EQUIPMENT FOR EAST AFRICAN INDUSTRIES

ROBEY'S Steam Deteriating Plant is acknowledged as the most efficient on the market, and the same high standard is maintained throughout the extensive range of steam engines, suitable for use in East Africa. The Robey Organisation is able to undertake the complete equipment of factories and mines including whatever special design is best suited to local conditions. Enquiries of whatever nature and magnitude are cordially invited.

- STEAM FACTORY EQUIPMENT
- OIL ENGINES STEAM ENGINES WINDING ENGINES
- PUMPS AND VALVES
- STEAM WAGONS & TRACTORS
- RAILWAY TRACKS & WAGONS
- ROAD MAKING MACHINERY
- ROAD ROLLERS. ETC.

# ROBEY.



## OF LINCOLN

ROBEY & CO. LTD. GLOBE WORKS, LINCOLN, ENGL.

LONDON OFFICE, 57, QUEEN VICTORIA STREET, E.C. 4

Telegrams: Robey, Lincoln Engineering. Codes: A.B.C. R. Bentley's Manual

Sole Agents: DALGETY & CO. LTD. NAIROBI, MOMBASA & ENSORET

Share parts stocked.

Please mention "East Africa" when writing to us elsewhere.



# MECHANICAL DRYING OF SISAL FIBRE

Old and New Methods Contrasted

Especially Suitable for East Africa

By a Sisal Engineer



In sisal engineering, the term "mechanical drying" may be taken to mean the removal of moisture from sisal fibre by means other than the sun. The principle upon which the mechanical drier operates is as follows:

On leaving the separator, the fibre is loaded with approximately 3 lb. of moisture per 1 lb. of fibre. A large proportion of this moisture is removed prior to drying by passing the fibre through a squeezing press, consisting of a pair of rollers revolving at approximately 40 feet per minute and working under a pressure of 5 tons per square inch. This squeezing reduces the moisture content to about 1 lb. of moisture per 4 lbs. of evaporated pulp.

The fibre, with a fall on the drying machine, passes through a grate and travels mechanically through the machine, being blown by the drying effect by the constant circulation of a large volume of air at a temperature approximately 200 F. The air as it circulates passes over a set of heated coils at a pressure of 50 lb. per square inch. At each circulation a small quantity of moisture-laden air at 25% relative humidity is discharged and is replaced by dry air at a relative humidity of the air being maintained continuously at a temperature and humidity suitable for drying the fibre down to its hygroscopic moisture content. The grate is driven by means of a variable speed gear, which enables the speed of the drying to be controlled as desired; a further form of control is by regulating the steam pressure on the heating coils.

The normal speed at which the machine is run causes the fibre to touch the rollers approximately 25 minutes, and the normal capacity of a 100 ft. long 800 lb. of dry fibre per hour. The steam rate required for the machine is 25 lb. per ton of dry fibre consumption in the region of 2500 lb. per ton of dry fibre.

The steam for heating the coils can be generated from good, holes and poles of oil, kerosene or wood fuel about 3 lbs. of steam can be raised per lb. of fuel, or if holes and poles are used it has been ascertained that 50 lb. of steam can be raised from roof and pole with an oil-fired boiler. 1 lb. of steam will be raised per 1 lb. of oil, and 1 lb. of steam will be raised per 1 lb. of wood fuel, or 150 lb. and poles.

### Claims for Mechanical Drying

All the advantages to be derived from mechanical drying is compared with the following:

- (1) Considers the resistance to the drying process.
- (2) Considers the cost of fuel and burning.
- (3) The fibres does not suffer from any damage in the drying.
- (4) The fibres does not suffer from any damage in the drying.
- (5) The fibres does not suffer from any damage in the drying.
- (6) The fibres does not suffer from any damage in the drying.
- (7) The fibres does not suffer from any damage in the drying.
- (8) The fibres does not suffer from any damage in the drying.
- (9) The fibres does not suffer from any damage in the drying.
- (10) The fibres does not suffer from any damage in the drying.

...the time of the discussion was held on the 1st of July in East Africa before a large gathering of sisal experts. All mechanical driers of this type of simple but superior type are in operation on the sisal estates and it was the general opinion that the claims made in favour of mechanical drying were in practice fully substantiated. The general opinion of the above said claims are as follows:

1. The mechanical drier is a more efficient drier than the sun-drying method. It will be noticed that the mechanical drier will be used considerably more than the sun-drying method, the leading cause being that the mechanical drier is a more efficient drier than the sun-drying method. It will be noticed that the mechanical drier will be used considerably more than the sun-drying method, the leading cause being that the mechanical drier is a more efficient drier than the sun-drying method.

2. The mechanical drier is a more efficient drier than the sun-drying method. It will be noticed that the mechanical drier will be used considerably more than the sun-drying method, the leading cause being that the mechanical drier is a more efficient drier than the sun-drying method.

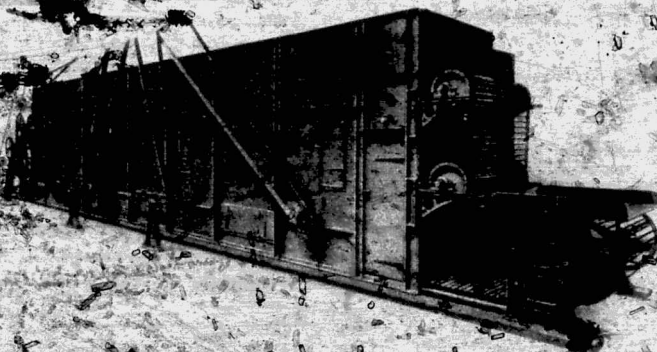
3. The mechanical drier is a more efficient drier than the sun-drying method. It will be noticed that the mechanical drier will be used considerably more than the sun-drying method, the leading cause being that the mechanical drier is a more efficient drier than the sun-drying method.

4. The mechanical drier is a more efficient drier than the sun-drying method. It will be noticed that the mechanical drier will be used considerably more than the sun-drying method, the leading cause being that the mechanical drier is a more efficient drier than the sun-drying method.

# MECHANICAL DRYING PLANT

FOR

# SISAL FIBRE



*It effects a considerable reduction in factory costs*

Fibre dried by this method is white in colour, than sun-dried fibre, brighter and nicer in appearance, softer to handle, and free from roused ends.

Apply for further particulars to

**PETRIE & McNAUGHE, Ltd.**

St. George's Ironworks, ROCHDALE, ENGLAND

Telephone No. 111, 112, 113, 114, 115, 116, 117, 118, 119, 120, 121, 122, 123, 124, 125, 126, 127, 128, 129, 130, 131, 132, 133, 134, 135, 136, 137, 138, 139, 140, 141, 142, 143, 144, 145, 146, 147, 148, 149, 150, 151, 152, 153, 154, 155, 156, 157, 158, 159, 160, 161, 162, 163, 164, 165, 166, 167, 168, 169, 170, 171, 172, 173, 174, 175, 176, 177, 178, 179, 180, 181, 182, 183, 184, 185, 186, 187, 188, 189, 190, 191, 192, 193, 194, 195, 196, 197, 198, 199, 200

See all your friends you saw it in East Africa





the humidity and the temperature of the ambient air. The amount of water vapour in the atmosphere is a fixed and definite quantity under any given conditions. At every temperature there is a maximum amount of water vapour which the air can hold per cubic foot, and any increase at once leads to condensation and deposition in the form of water particles. A bank of sisal left in contact with the air will dry off to a definite moisture content no matter how long it so remains. In other words, equilibrium conditions are reached, and will persist so long as the temperature and humidity of the air remain unchanged.

Having studied the temperatures and relative humidity of the ambient air in East Africa, and having ascertained the most suitable method for drying the fibre by the ambient air, when the temperature is  $25^{\circ}\text{C}$  and the relative humidity is 90%, and as these set conditions are only recorded once or twice a year, so much attention should not be given to them, although it is essential that a drier should be designed to cope with them.

Assuming that the ambient air or atmosphere in East Africa is a constant factor at  $25^{\circ}\text{C}$  and 90% relative humidity, and that the fibre is loaded with 100% moisture per ton of fibre, and further that the maximum amount of moisture to be evaporated per hour will not exceed 1.50 lbs, this allows for the drier to deliver six tons of wet fibre per 24 hours. Then six tons, or approximately 12,000 lbs of moisture must be evaporated per hour. The quantity of air required to absorb this moisture can be driven by suitable fans through the fibre, the air being passed at the rate of one foot per minute, and the feet per minute level maintained before and from the end of the fibre. The relative humidity, as the amount of moisture absorbed by 1 cubic foot of air at  $25^{\circ}\text{C}$  is a set factor.

#### Reduced Cost of Production.

It is of the opinion that a mechanical drier can be designed on the lines suggested and at a height within easy reach of all sisal growers, and present indications hold good, the drying of sisal fibre by the ambient air must inevitably come into practice. With a further marked reduction in the production cost per ton of fibre, not to lose and comprehensive consideration of mechanical systems of sisal drying shows clearly that the former will effect a great revolution in the production of sisal fibre in East Africa. The fact that even under the present primitive methods of production sisal is holding its own is a remarkable guarantee of its future prospects, under modern mechanical methods of production sisal will return larger profits in the near future.

This review is based on extensive sisal engineering practice and research, and any acknowledgment from so many sources, that detailed acknowledgment is impossible.

## FRANCIS THEAKSTON, LTD.

MOON, CREWE, BRISTOL



### LIGHT RAILWAY TRACK, WAGONS, LOCOMOTIVES

FOR SISAL, COTTON, RUBBER, ESTATES  
Head Office: 60, TUFTON STREET, WALSLEIGH, W. 10  
Kenya Agents: DALGETY & CO. (PVT.) LTD., NAIROBI.

*Anglo-African Produce & Co., Ltd.*  
*Import & Export Merchants*  
*Lanzetta*

EAST AFRICA

# THE HYDRAULIC ENGINEERING CO., LTD.

INCORPORATED 1874.

CHESTER ENGLAND

London Offices: 39, VICTORIA STREET, S.W.1.

## MAKERS OF HIGH-CLASS BALING PLANTS FOR COTTON, SISAL, JUTE, ETC.

Specialists in High-Speed Revolving Presses for making Cotton Bales of 400 to 800 lb. weight and any required density.

Hydraulic pressing plants have been supplied with capacities ranging from 10 to 60 Bales per hour.

Specially designed Sisal Presses hydraulically operated, for making 4 cwt. bales, with 4 ft. 6 in. box to allow 500 to be pressed without doubling. Finished Bales 50 cub. ft. to the ton. Supplied to Lugari Estates, Heane Craven Estates, Kakori, Mrebu Estates and Swift Rutherford, Punda Milia, etc.



REVOLVING BOX COTTON PRESS

ALL HIGH-SPEED PRESSES FITTED WITH AUTOMATIC APPLIANCES FOR PREVENTING DAMAGE



HIGH PRESSURE BELT-DRIVEN HORIZONTAL PUMPS FOR ALL PURPOSES



SISAL BALING PRESS

# MEAT RATIONS Ltd.

Registered in Tanganyika Territory

## Manufacturers of all Meat Products:

Beef, Pure Beef, Dripping,  
Feeding Meat, Meat and Bone  
Fertilisers, Marrow Fat

Pickled, Preserved, Chilled and Broken Beef  
for dispatch by rail and steamer to  
KENYA, TANGANYIKA, UGANDA, ZANZIBAR,  
and the BELGIAN CONGO.



Meat Rations and Cooking Fat for Native  
Labour on Mines, Estates and Institutions  
at very reduced rates.

MEAT RATIONS Ltd., P.O. Box 8, Mwanza, Tanganyika





# SMITH, MACKENZIE & CO.

EAST AFRICA

## GENERAL MERCHANTS & AGENTS

### SHIPPING

Agents, BRITISH INDIA AND PENINSULAR AND ORIENTAL STEAM NAVIGATION COMPANY, LTD. Passages and Freight to any part of the World.

### INSURANCE

MARINE, FIRE, MOTOR, LIFE, and all other classes of Insurance undertaken.

### PETROL & OILS

Agents, SHELL COMPANY OF EAST AFRICA, LTD. Shell Spirit, Lubricants and Kerosene.

### EXPORT AGENTS

All Branches Export Agency work at lowest rates.

### CLEARING & FORWARDING

Efficiently and cheaply executed. Passengers met on arrival and baggage cleared.

### PRODUCE

All classes of Produce purchased for cash.

### IMPORTS

Large stocks of all goods held.

### TIMBER & BUILDING MATERIALS

Large stocks, all sizes.

### COAL

Stocks held Withank Screened Steam Coal.

### LAND & ESTATE AGENTS

A large number of Estates for disposal always on our Register. We manage and act as Agents for Securities to Estates.

General Managers, THE AFRICAN WHARFAGE COMPANY, LTD. Wharfingers, Stevedores, THE AFRICAN MARINE & GENERAL ENGINEERING CO., LTD.

Agents, LLOYDS, and DEUTERNA

### KILINDINI, MOMBASA

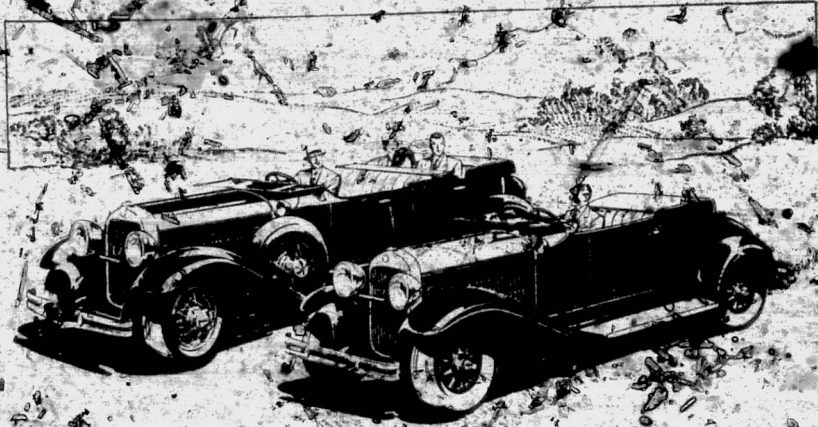
and at Nairobi, Kampala, Lamu, Tanga, Zanzibar, Dar es Salaam and Lindi







Those who KNOW values  
ACCLAIM the Greater HUDSON  
and ESSEX the Challenger



**M**OTORISTS have acclaimed Essex the Challenger and the Greater Hudson the outstanding values in all motordom. In both cars they have found challenging performance, speed, reliability and economy. They have found beauty, ease of control, roominess and luxurious appointments. This superior popularity is world-wide. Hudson-Essex deal-

ers are enjoying the most successful year in all the 21 years of Hudson-Essex history. There may be a dealership challenge available in your locality. Ask the nearest Hudson-Essex distributor about it or cable the factory direct for full details.

HUDSON MOTOR CO. CO.  
1000 BROADWAY  
NEW YORK, N. Y.  
Cable Address: HUDSONCAR

CARR, LAWSON & CO. LTD.  
SIXTH AVENUE, NAIROBI, KENYA COLONY



Established 1825

General Ltd

LIMITED

# KARIMJEE JIVANJEE AND CO.

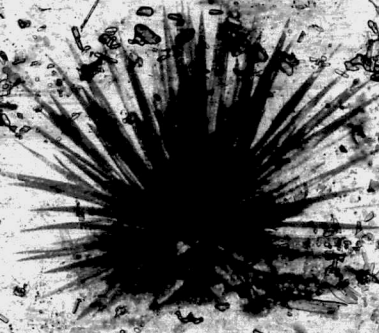
Head Office: ZANZIBAR, P.O. BOX No. 91

Branches: MOMBASA, DAR ES SALAAM, TANGANYIKA, NIAMI, KILIMANTJARO

**General Exporters, Importers, Shipping, Insurance and Commission Agents**

**PROPRIETORS AND MANAGING AGENTS FOR:**

- The Alavi Sisal Estates (Mark Soga)
- The Fatemi Sisal Estate (Mark Kungu)
- The Gamba Sisal Estates (Mark Gamba)
- The Hassan Sisal Estate (Mark Makanya)



- The Ngomeni Sisal Estate (Mark Tayab)
- The Mikhndi Sisal Estates (Mark Bamba)
- The Maowara Sisal Estate
- The Kimativi Sisal Estate (Mark Kimativi)
- The Marurur Sisal Estate

**ALSO OWNERS OF COFFEE, KAPOK, RUBBER, AND COCONUT ESTATES.**

**IMPORTERS OF ALL DESCRIPTIONS OF MERCHANDISE FROM ALL PARTS OF THE WORLD including**

Cotton Goods, Building Materials, Hardware, Agricultural Implements, Motor Cars and Trucks, Roskopf Genuine Watches, Primus Stoves, Oils and Paints, Chemicals, etc., etc.





# A good snapshot— every time!

If you are a photographer it will interest you to know that your pictures are taken on "Kodak" Film than on any other film in the world. This is because amateur photographers have learned from experience that they can rely upon "Kodak" Film in all climates and in all weathers. They rely upon its uniformity, its speed and its keeping quality and also upon its wonderful latitude. A quality of latitude that makes the most important of all—the film makes a generous allowance for errors of exposure. You get a good picture even when on "Kodak" Film because what your error may be within reason the latitude of the film will correct it. This is why "Kodak" Film is known as the dependable film.



*The dependable film  
in the yellow jacket*

Ask your dealer

for Kodak Film

Kodak East Africa Limited

Zebra House, Nairobi





Reimbursements of interest, market and  
 other fees; Widows' and Orphans' Schemes  
 contributions to, etc.

167,100  
 1,505,638

The sum of £1,505,000 had therefore to be raised by taxation to pay for the common services, and on a liberal computation it is estimated that the contribution from the European community in the form of taxation amounted to no more than £220,000. The European official community, it may be added, contributed a considerable portion of this sum, and it is not from it that these requests come for increased expenditure on European services. It is clear, therefore, that there is no fund available for the purposes mentioned in the preceding paragraph from the proceeds of the existing taxation paid by the European portion of the community, and if more for such purposes cannot be obtained from this source the only alternative would appear to be Imperial assistance.

Selection of Settlers.

His Excellency would be glad to have the views of the Congress Executive as to whether it is the intention that all applicants for leasehold leases should be selected by a Board before being granted a lease, inasmuch as the case of residents in the country, Indians and Europeans, who apply for land to make small farms has to be considered. This conception and might cause embarrassments and anomalies, such a system would also be difficult to reconcile with the policy advocated in the resolution concerning the freedom of disposal of rights to land. On this point also His Excellency would like to have a further expression of views.

Resolution No. 23 read:—

That this Congress recommends to Government the inauguration of a system of grants of freehold, and conversion of rights of occupancy and leasehold after development conditions have been completed, and that rights of occupancy

shall not be available after the development conditions have been completed.  
 The system of leasehold instead of the alienated part of the land has thus been recommended by his arrival in Tanganyika, and is in accordance with the general policy of the Colonial Office in East Africa and elsewhere. His Excellency personally belongs to the school of thought that believes that taking anything into consideration, and particularly the general public interest, the State is wise that retains the ownership of its land. Moreover, the law gives no indication that the leasehold system is intended for deterring persons from applying for land in Tanganyika, and in these circumstances he can conceive it to be his duty to recommend to the Secretary of State that the law should be altered in the manner desired by your Congress. If, however, the Executive desire to make a reasoned request to the Secretary of State for an amendment of the law, it will, of course, be His Excellency's duty to forward the same.

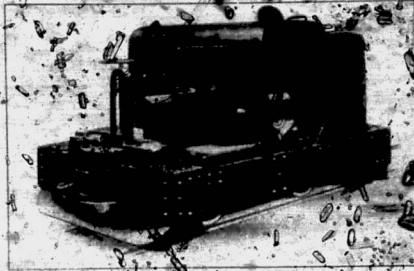
Transfer of a Right of Occupancy.

His Excellency is inclined on general principle to agree with the view that on the completion of development conditions of a right of occupancy have been fulfilled it should be possible for the holder to transfer it or deal with it without having to obtain the permission of Government, except so far as the subdivision of land is concerned. He would here again reiterate the principle that he would favour, and His Excellency would ask the Congress Executive to consider this aspect of the question.

Before leaving the subject of land the Government must lose no time in formulating the views expressed in the Congress that the Native has a moral right to the land which he occupies; that the person who has the moral right to the land is the one who makes the best economic use of it. This conception is contrary to the terms of the Mandate, and under the laws of the Territory the Native has a legal as well as a moral right to the land which he occupies. The Congress must be aware that a great deal of land is held by Europeans which is not beneficially occupied.



LOCOMOTIVES **SIMPLEX** LOCOMOTIVES  
 WITH  
 HIGH-SPEED DIESEL OIL ENGINES



SIMPLEX  
 CONTROL

ELECTRIC  
 STARTER

FUEL COSTS ONE-FIFTH THAT OF PETROL OR PARAFFIN

Sole Manufacturers and Licenses

THE MOTOR RAIL & TRAM CAR COMPANY, LTD.  
 SIMPLEX WORKS, BEDFORD, ENGLAND.

Cables and Telegrams  
 SIMPLEX, BEDFORD

A.B.C. Eng. & Ship. Co. Bedford

**DURANT, RADFORD & CO.**

LIMITED

Commission and Produce Merchants

GOVERNMENT ROAD, NAIROBI

GERMANY

Liberal advances made against Coffee, Sisal, and other Kenya Produce.

Best current prices and prompt settlements as a result of the firm's methods.

Advances for Coffee Machinery and spare parts; also index for General Merchandise on broken rupee, favourable terms.

OFFICE

**DURANT, RADFORD & Co., Ltd.**

BILLITER BUILDINGS, BILLITER STREET, LONDON, E.C.3

BRANCH OFFICE, LONDON

15th Avenue, New York

BURLINGTON HOUSE, JOHANNESBURG

CHAMBERS

You haven't read all the news till you've read the advertisement.

# BURGOYNE'S DISINFECTING FLUID

## The Most Powerful Disinfectant

For Hospitals, Ships, Farmers,  
Stockbreeders and

General  
Disinfecting  
Purposes

# ZOTALE

Especially  
Recommended  
for the Extermination  
of Insects on Cocoa-nut,  
Rubber, Coffee and other  
Plantations

Miscible in Water  
Pleasant and Safe to Use

SOLE MANUFACTURERS

**BURGOYNE, BURBIDGES & CO. LTD.**  
EAST HICK, LONDON, E.

## MENGO PLANTERS LTD KAMPALA.

Registered, Capital £100,000, Office, London, E.C. 4.  
Machinery, tools, and hardware. Stocks of  
all requisites for Planting, Gunpowder, Dynamite, Explosives, Special  
and TOOLS, etc. General Contractors, Plumber and Carpenter, Furniture Makers,  
Dressmakers, Wagon Builders and work.  
Reception of orders by tele-pattern, or by our personal staff. All wireless  
communication.



The Mengo Coffee Planters, the Company  
Coffee growing in Kampala and other places in the East Africa and possi-  
bly in other parts of Africa. The London and Kampala Office  
and the Mengo Office are the Agents for the above-mentioned  
Sole Agents for numerous manufacturers.

BRANCHES EVERYWHERE

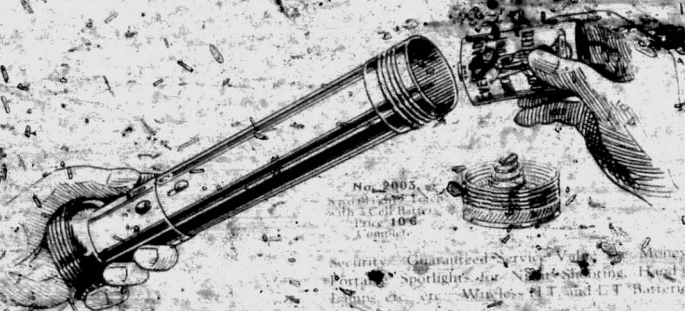
Agents for RWANDA, URUNDI, SUPPLIES AND TRANSPORT





EAST AFRICA

RELIABLE & EFFICIENT REFILL CELLS ECONOMICAL & CONVENIENT  
FOR PORTABLE ELECTRIC SPOTLIGHTS & SEARCHLIGHTS



No. 2005  
Standard size  
with 14 of  
cells  
Price 10/6  
Ampere

Security Guaranteed Service Value & Money. Write for Catalogue of  
Portable Spotlights for Night Shooting, Head Lamps for Farm Work, Bicycle  
Lamps, etc., etc. Also, H.T. and L.T. Batteries and Accumulators.

# EVER READY BRITAIN'S BEST BATTERIES

Sole Agents for Kenya, Tanganyika, Zanzibar and Uganda  
Kenya Agency Limited, Union Building, P.O. Box 781, Nairobi.

## The Uganda Company Ltd.

HEAD OFFICES  
Portland House, 73, Broad Street, London, E.C. 2

GENERAL OFFICES  
KAMPALA, UGANDA

Cotton Ginners  
Importers and Exporters, General Merchants  
Motor Agents, Insurance Agents  
Departmental Stores  
Motor Repairing, Motors and Carriages  
Kampala, Uganda

Agents for Ford Cars, Dunlop Tyres, B.S.A. Cycles, A.J.S. Cycles, Wapello  
Central Oils, Columbia Gramophones, etc., etc.

Please mention East Africa when writing to Advertiser.





# SOCIÉTÉ DU HAUT UELÉ ET DU NIL

Formerly METEXAS and MACRIS.

Société Congolaise Responsabilité limitée  
Capital France 25,000,000.00 Fully Paid

Siège Social - ABA (Congo Belge)

Siège Administratif - 86 Rue de Commerce, Bruxelles.

FARADJE  
WATSA Moto Mines  
SUNGU  
NIANGARA  
IRAMU  
KILO-MINES  
BUNNIA  
DANGU

GHAN  
NGO

### BRANCHES

GAMBELA  
SAYO  
GOREI  
BUREI

ABYSSINIA

KHARTOUM - P.O. Box 28  
REJAF  
MONGALLA  
XEI  
LOKA

SUDAN

PORT SUDAN AGENTS - Messrs. LORENZATO BROS. - P.O. Box 19.

TELEGRAPHIC ADDRESS - CONGOLCO - KHARTOUM, REJAF & MONGALLA.  
CODES - A.B.G. 5th CLASS and LOGAGNE.

IMPORTS - African and Fancy Brains, Cabots, Haberdashery, European and Native Requisites, Liquors, Provisions, &c. &c.

EXPORTS - Ivory, Rhino Horn, Kibber and Cotton.

MECHANICAL TRANSPORT - Transport by the Firm's own Motor Cars and Lorries of Merchandise, Luggage and Passengers, between Rejaf and ABA and on the roads in the Province Orientale of the Belgian Congo.

FORWARDING - Direct shipments of Luggage and Merchandise from Port Sudan to any part of the Belgian Congo and the Southern Sudan.

PASSENGERS AND TOURISTS - General Agents in Rejaf for Messrs. Life, Cook & Son, Ltd. Issue of Tickets, accommodation reserved direct shipment of luggage from Rejaf to any part of the world.

### GENERAL AGENTS IN THE SUDAN FOR

- The Government of the Belgian Congo
- The Ministry of Colonies of Belgium
- The Société des Mines de Kilo-Moto
- Compagnie des Mines de Kilo-Moto
- Société Belge des Mines de Kilo-Moto
- The Société Nationale Forestière et Minière du Haut Congo
- The Société Minière de Loka
- The Nieuw Afrikaansche Handels Vennootschap

# LEWIS & PEAT

LIMITED

OLD ESTABLISHED

6, Mincing Lane, London, E.C. 3

Also Members of the Baltic Exchange

---

## GENERAL PRODUCE BROKERS

---

Specialities: COFFEE

Kenya (Nairobi), Uganda, Toro, Tanganyika, Kilimanjaro,  
Mwanjui, Arusha, Meru, Amanji, Bukoba, etc.

*See our Special Report*

Ivory, Cocoa, Rubber, Ground Nuts,  
Gingellyseed and Cottonseed, Sugar

Copra, Palm Kernels, Sisal, Hemp, M  
Spices, Beeswax, Mimosa Bark, Tortoise-shell

Telegraphic Address  
LEWIS & PEAT  
LONDON

Telephone  
ROYAL 7001  
(2 lines)

the introduction of elaborate iron tools, and there is a set of rolling an electric milking machine and of a hand rearing of calves. Part of the farm, however, is under coffee and banana. Geo. Munira.

**Two Congo Farmers in the Bush**

Two of the hedonists and devotees of the motor car, and the packing case, furniture, which we displayed in the hotel, tea, coffee, his model of the Uganda, and given a piece of a solid iron bowl with electric bell, and still a miracle to speak of with dated hair. A real industrial bath with the factually produce hot and cold water. It is still a large struggle to prevent the boys throwing the water in a basin out of the boys and when he is becoming satisfied. He looks at the stuff if you recall the days when the land of the wilderness for hours, about in an endeavor to understand the workings of a man fitted with a car handle, or when he replaced a picture on the wall with your boots as before for more valuable and therefore an ancient possession. He looks at the boys' days and when he is ready to return and he is evidently his father's remark on first viewing him—his face unencumbered by the gramophone and even learn to change the records. But one day the *huana* started to take it to pieces and he fled into the bush taking with him the cook and his *totou* and his wife, flight from the devils which he miraculously was a tight looser on the world.

It is no longer a farm in the time, but perhaps after all, it simplifies life for the bank manager. But that his own fireplace and log fire and improvement of the shaded grazier, which constantly reminds the story of our slanders but.

# TORORO HOTEL

## UGANDA

ON MAIN KENYA - UGANDA ROAD

- EXCELLENT CUISINE
- BATHROOM ATTACHED
- ALL BEDROOMS

Parties conducted by car from Tororo Station on all weather roads throughout Uganda, at special rates, thus saving time and ensuring an opportunity of seeing the splendid scenery of Uganda at reasonable rates.

GARAGE ATTACHED TO HOTEL

# KENYA COLONY







The Tian had to give up—beaten by the

# RALEIGH THE ALL-STEEL BICYCLE

It takes something to beat an American bicycle in the wilds or through the city. The Raleigh will take you swiftly and safely, a bicycle for every day of every month of the year.

Including Dunlop tires and the best of everything in all-steel construction, silent pressure-bearing fork bracket, chain, fork crown, silver-rimmed wheels and many other unique features, give the strength and sureness of a head of iron of ordinary bicycles. And every Raleigh is guaranteed for 12 months or 1000 miles.

Write for "The Book of the Raleigh" to

THE RALEIGH CYCLE CO., LTD., NOTTINGHAM, ENGLAND

# MESSAGERIES MARITIMES

REGULAR FORTNIGHTLY SAILINGS

FROM

MARSEILLES

# EAST AFRICAN PORTS

Mombasa, Zanzibar, Dar es Salaam,

also to Madagascar and Mauritius.

Frequent Services of Fast Passenger Steamers operating between Marseilles and Egypt, East Africa and Syria, the Far East and Australia Ports.

Freight accepted for shipment to all ports of destination.

DIRECT STEAMERS TO SINGAPORE, CHINA, HONG KONG, JAPAN

London Head Office: 275, Fenchurch St., E.C.3. Sole Agency: 10, Pall Mall, S.W.1, also to any Passenger or Freight Agent.

Only advertising agencies of good quality can stand advertising.

# ROSACOMETTA BLOCK AND BRICK PRESSES

Patented and used all over the World



Hand crank type of  
block and brick press



Hand crank type of  
block and brick press



HAND crank type of block and brick press into motor presses, even after years of use 300 blocks or 1,500 bricks a day 30% saved on any masonry work.

Motor power 3 H.P. or 5 H.P. Blocks or 1,500 bricks a day.

The manufacture and trade in hollow blocks is today an excellent business. The machine is practically unbreakable and pays for itself in a few months. It is, for a long time, the most profitable investment in the masonry business. It is a machine that will last for years and years.



Motor power 3 H.P.

GIVES 20 YEARS OF BEST WORK



Blocks for building in the tropics



Sectional Building Erected in Tropical Africa

COMPAGNIA ROSA COMETTA & C. MILANO (126) ITALY

Cable address: Rosacometta, Milano

Tell your friends you saw it in "East Africa"





charge of the native school. A loud chorus of "amama" and "amama" was emitted at intervals, and long belts of "amama" and long belts of "amama" were sung.

What a life of mine! Scrupulous attention to the pronounced number and words of the "amama" and "amama" was looked on as a mark of respect, and the "amama" was sung with a whistle toward the school.

At 10.30 I left the school for the office. A few minutes before the school was dismissed, a number of the "amama" and "amama" were sung.

The lunch hour proceeds in a most secluded interval unless interrupted by letters from the office, or the presence of those who will do anything, generally in the afternoon, to do anything petty or trivial.

Afternoon Labours

By 3.30 I am back in the office. A few minutes before the school was dismissed, a number of the "amama" and "amama" were sung.

These matters finished, I settle down to check the petty cash, enter on the ledger, compile a few returns, start on the annual report, or even begin my scheme for a census of the entire population of the district. No sooner am I well down in one of these subjects than the door opens and the butler brings me a note that the Chief has called to see me.

I get up, and the butler, hoping that the coming of the day is over, the day is over, and the day is over, as a most astounding spectacle to see the day.

Half a dozen Natives of high rank, dressed in Hamburg hats, coats of all colours of the rainbow, sunbonnets, bouffants, pith helmets, and lace turbans, present themselves at the door. The bride and bridegroom, and the bride and bridegroom, are seated at the table, with the exception that the former is seated at the table, and the latter is seated at the table, and the latter is seated at the table.

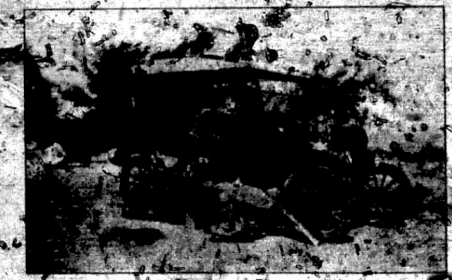
I return to my desk, and the day is over, as a most astounding spectacle to see the day. The day is over, and the day is over, as a most astounding spectacle to see the day.

A few minutes before the school was dismissed, a number of the "amama" and "amama" were sung. I take it by walking round the ground to see what work is required for the morning, such matters as mending the road, cleaning the streets, and the like, and the like.

At 1.30 I go to the office, and as the hour strikes, I stand in the office, while the school is dismissed, and the school is dismissed.

The Sergeant of Police and the Head Constable then make their report for the day. The sergeant tells me the number of men under his charge, the number of fines, and the number of convictions, details which I know by heart, and the sergeant is good for a complaint. The Head Constable, in his sparkling dress, looks on as he supervises the lock-up.

At 2.30 I go to the office, and as the hour strikes, I stand in the office, while the school is dismissed, and the school is dismissed.



ONE OF THE WEDDING PARTIES AT NAKURU, NAKURU.

THE AFRICAN MERCANTILE CO., LTD. 12, CANNON STREET, LONDON, E.C. 4

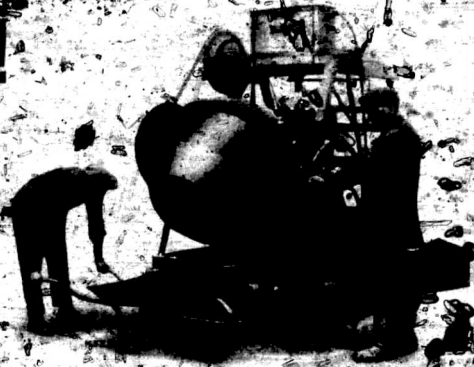
EAST AFRICAN BRANCHES: MOMBASA, NAIROBI, NAKURU, KAMPALA, JINJA, MWANZA, BUKOBA, TANGA, ZANZIBAR, IDAR, ES SALAAM, etc.

Import and Export Merchants Steamship Agents.

AGENTS FOR THE EAST AFRICAN STEAMSHIP CO. LTD. DEPOSITARIES FOR THE EAST AFRICAN STEAMSHIP CO. LTD.

# VALUE!

FOR THE BEST VALUE ON THE MARKET GET A GOODWIN CONCRETE MIXER. IT'S SURE TO BEY ITS WAY! A SMALL MIXER WITH A BIG CAPACITY AND



## BIG PROFITS!

This illustration shows a Goodwin Open-Drum Mixer in operation.



WRITE FOR BOOKLET NO. 2829.

Agents: Kenya, Uganda and Tanganyika: W. LOYD JONES, P.O. Box 661, Nairobi, Kenya Colony. Sole Agents: F. MILTON COLE, P.O. Box 69, Bulawayo.

GOODWIN, BARSBY & CO., Ltd., LEICESTER, ENG.



## PEARSON'S DISINFECTANTS AND DIPS

(NON-POISONOUS AND NON-IRRITANT IN USE)

For Governments, Railways, Mines, Plantations, Farms and General Household Use

**HYCOL No. 1.** A highly refined and concentrated liquid disinfectant. Kills all germs, stains and dirt. It is used for disinfecting floors, walls, ceilings, furniture, etc. It is also used for disinfecting milk cans, bottles, etc. It is used for disinfecting the hands and feet of persons who are ill. It is used for disinfecting the hands and feet of persons who have been in contact with the sick. It is used for disinfecting the hands and feet of persons who have been in contact with the sick. It is used for disinfecting the hands and feet of persons who have been in contact with the sick.

**HYCOL No. 2.** Similar to No. 1 but more powerful. It is used for disinfecting floors, walls, ceilings, furniture, etc. It is also used for disinfecting milk cans, bottles, etc. It is used for disinfecting the hands and feet of persons who are ill. It is used for disinfecting the hands and feet of persons who have been in contact with the sick. It is used for disinfecting the hands and feet of persons who have been in contact with the sick.

**SAL-HYCOL.** Germicidal value 75 to 177 times greater than Carbolic Acid. Specially prepared for use in the form of a thick paste or as a solution in water which it forms a stable white emulsion. It is used for disinfecting floors, walls, ceilings, furniture, etc. It is also used for disinfecting milk cans, bottles, etc. It is used for disinfecting the hands and feet of persons who are ill. It is used for disinfecting the hands and feet of persons who have been in contact with the sick. It is used for disinfecting the hands and feet of persons who have been in contact with the sick.

**IODINE-MEDOL UNGUENTUM** Kills germs, relieves itching and soothes the skin. It is used for disinfecting the hands and feet of persons who are ill. It is used for disinfecting the hands and feet of persons who have been in contact with the sick. It is used for disinfecting the hands and feet of persons who have been in contact with the sick.

**ALUM.** A highly efficient disinfectant. It is used for disinfecting floors, walls, ceilings, furniture, etc. It is also used for disinfecting milk cans, bottles, etc. It is used for disinfecting the hands and feet of persons who are ill. It is used for disinfecting the hands and feet of persons who have been in contact with the sick. It is used for disinfecting the hands and feet of persons who have been in contact with the sick.



THE KENYA AGENCY LTD., P.O. Box 781, NAIROBI

PEARSON'S ANTISEPTIC COMPANY, Ltd., 61, Mark Lane, London, E.C.3

Tell your friends you saw it in East Africa







**FERRY BRAND**

Registered Trade Mark

**FERTILISERS**

for

SISAL and MAIZE

FLAX and HEMP

RICE, TOBACCO

and CEREALS, etc.

The Use of "FERRY" Fertilisers ensures the Highest Possible Yields

**FERRY**

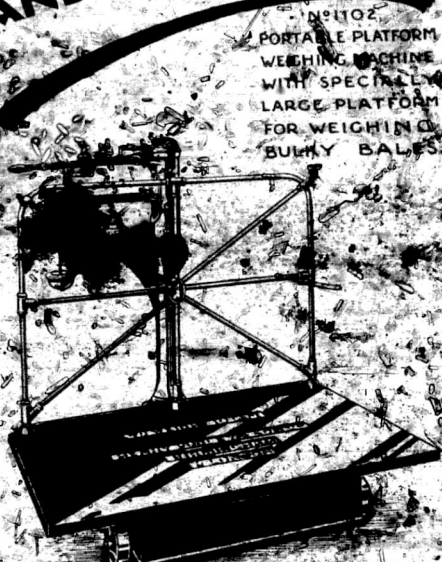
**RAT DESTROYER**

is deadly in effect and non-poisonous to domestic animals

The Briton Fertiliser Chemical and Manure Co. Ltd.

Dept. Q 519, One of the Great Works, London, E.C. 4

**BUILT FOR SERVICE AND ACCURACY**



Model No. 1102  
PORTABLE PLATFORM WEIGHING MACHINE WITH SPECIALLY LARGE PLATFORM FOR WEIGHING BULKY BALES

**TEA GROWERS!**

Should you require any

**TEA LEAD**

for Lining your Chests

**CHESTS**

with fittings complete

Send your enquiries to us stating sizes and quantities required

We are **ACTUAL MANUFACTURERS**

Quirk, Barton & Co., Ltd.

TRADING HOUSE

11, New Broad Street, LONDON, E.C. 4

ENGLAND

**POOLEY**

The arduous conditions under which a scale has to work have been borne in mind by the manufacturers of this machine and the result is an weighing instrument that, whilst essentially robust, will give accurate service over a long period of years.

The platform has been designed with a large platform for weighing bulky packages and so conforms with the strenuous needs of this country.

Be next time weighing on a Pooley

**HENRY POOLEY & SON LTD**  
100, BRIGHAM STREET  
BIRMINGHAM  
ENGLAND









# The Victoria Nyanza Sugar Co., Ltd.

is producing best quality sugar at the Miwani Estate, Kenya Colony.

The definite policy of the Company is to purchase within the Empire, and in the first five years of its existence it spent over £262,159 on overseas purchases within the Empire and over £190,266 on purchases in Kenya; disbursed its salaries and wages £128,743 to Europeans, £101,216 to natives and £2,152 to Indian artisans; purchased cane from planters to the value of £89,496, and paid £100,000 in freight to the Kenya and Uganda Railway.

Directors:

MELBOURNE  
J. H. NOTT (Acting Chairman)  
C. B. PALMER

LONDON  
G. W. W. MANNING  
A. A. SMITH

KENYA

S. R. MAYERS (Chairman and Managing Director)  
E. C. MAYERS

Registered Office:

408, Collins Street, Melbourne, Australia.

# East African Coffee Plantations, Ltd.

Authorised Capital, £500,000

Subscribed Capital, £150,000

owns the Kenia Estate, Kyambu, and the Kiunga, Kiunga, and Savani Estates, situated in the Kiunga district, Kenya. The chief objects of the company are to grow coffee, tea, maize and other agricultural products in East Africa.

Directors:

R. MAYERS (Managing Director)  
S. B. BAGLE  
W. W. BAYLES  
W. B. McCUTCHEN  
C. B. PALMER

Kenya  
S. R. MAYERS  
R. W. BAGLE  
E. C. MAYERS  
R. MAYERS

Registered Office:

408, Collins Street, Melbourne, Australia.

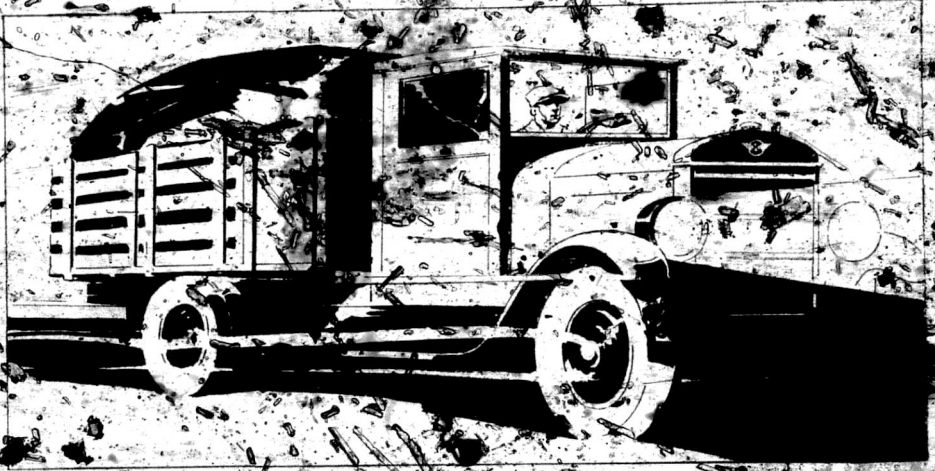
There is something to interest you in the advertisement...





# REO

## Speed Wagons for 93% of all Hauling Needs



Reo's new and greater Speed Wagon chassis range provides a rugged dependable chassis for 93% of all transportation requirements for both men and machines.

Reo Speed Wagons are built in 17 wheelbase sizes with load capacities of 1/2 ton, 1 ton, 1 1/2 tons, 2 tons and 3 tons.

A wide variety of bodies include

various bus types and special designs to fit practically every business.

Products of one of the oldest and most successful manufacturers in the industry, these latest improved Reo bus and truck chassis are preferred for their ability to haul more loads per day—with more profit per load, due to the exceptionally low operating costs.

REO are the initials of Ransom E. Olds, a pioneer in the motor car industry, one of the founders of the Reo Motor Car Company and at present Chairman of the Board of Directors.



CARR, LAWSON & CO. LTD.  
SIXTH AVENUE, NAIROBI, KENYA COLONY

East Africa in the Press.

THE KARL PETERS EPISODE.

The Deutsche Wochenschrift, a German newspaper published in South Africa, is very annoyed with East Africa for publishing the statement of a correspondent that Sir Frederick Jackson's correspondence should not be read by Karl Peters. Our correspondent wrote:

"In our ordinary terms of the late Sir Frederick Jackson you mention that Karl Peters, the German explorer, crossed Jackson's trail in Kavirondo, but you did not say that Peters, finding the Englishman absent from his camp, took an opportunity of open- ing a box and reading his private correspondence. As Peters's force was fully armed, Jackson's men could not resist. The very unpleasant incident should not be forgotten for it is an example of the kind of behaviour the British had to combat in those days, and illustrates the unscrupulous methods employed by the Germans."

The Deutsche Wochenschrift writes at the bottom of this well-known historical fact, "It includes its castigations with the remark that 'decent people do not publish such allegations without proof. That of course is admitted; and that proof we are happy to give.'"

Lady Jackson, who read the original statement at the time of publication, and whose attention it has since been recalled, writes to East Africa that it is "perfectly correct," and adds that the whole incident is recorded in the "Reminiscences" of Sir Frederick Jackson, which has been published in both form and substance in the German South African newspaper, now made into a "decent" code of ethics.

COFFEE, GROWING IN NYASALAND.

The Nyasaland Times said in a recent leader- ship article:

"Our experience points to the uselessness of investing large sums of money in coffee cultivation in this country. Each one has a different idea as to the cause of the failure of coffee in the early years of the century, but the 'solid fact' remains that of the 'or two' exceptions every attempt to grow coffee cultivation has failed. It is possible to grow coffee in Nyasaland, if it is possible to grow it in any other place, carefully planted and properly cared for and managed, may give a fair return on the investment, but anyone who relies upon it as a main crop is likely to be disappointed. The chief reason, in our opinion, is the variability of the rains. While the total rainfall may be the same as of old, the incidence of rain is changing, 'due to the changing of the great wet equatorial tracts of the earth.' The rainfall may be irregular, which is a difficult matter to be a crop of its kind. It will be possible to grow coffee in Nyasaland, but only in the rainy season. Otherwise, as the coffee is not likely to be a permanent crop, it is not worth the trouble and expense of growing it. The only hands that are likely to be successful in growing coffee in Nyasaland are those who are willing to look after and the growing of it. The only reason when labour is usually available, they may have attention to the details of which means that the only labour just when it will be all needed for a major cultivation. Of the whole there are no other major crops, and it is coffee, to the great advantage of the State."

THE TRANS-NZOIA AND UASIN GISHU.

This current issue of The Kenya and East African Medical Journal contains the most interesting article on malaria in the Uasin Gishu and Trans-Nzoia by Dr. J. McP. Campbell, who defines the areas in the following way:

The Trans-Nzoia and Uasin Gishu districts together form a rough triangle with its base to the north and the apex south. From apex to base is about 100 miles and the base is about 200 miles broad. The whole area (2,731 square miles) lies between the Equator and 14 deg. N. Mount Elgon is at the north-west angle and the Timboroa Hills at the south- west angle. The western boundary is all high land over 5,000 feet; the east of the triangle is the basin of the Nzoia river and the western boundary is broken through by the broad valley of this river. The Nzoia river rises in the Cherangani Hills and runs in a westerly direction, and receives numerous tributaries from the Elgeyo hills, the Timboroa hills, the Nandi hills and the slopes of Mount Elgon. The altitude varies from 5,000 feet in the Nzoia basin to 12,000 feet in the surrounding hills.

The railway line runs from Kipkabus in the south to Kisumu in the north and practically bisects the area. There is a well-developed road system throughout the area. For administrative purposes the lands north of the Nzoia have been named the Trans-Nzoia, and that south of the river is called the Uasin Gishu. In this report the whole area is called the Plateau. The European population was approximately 1,000 in 1926. The two districts are each locally surrounded by Native Reserves, the English, the Galla, the West Suk and Marakwet on the north, the Elgeyo on the east, and the Nandi and North Nandi on the west; the extreme southern portion of the Uasin Gishu only is in contact with other settled areas.

Most interesting particulars are given of the health conditions of the district from the days of early European settlement, it being incidentally mentioned that mosquito nets were not used in Eldoret before 1928. Malaria still, the writer believes, is a development progress, and though it does not disappear entirely, should diminish to the importance of a malarial fever in England.

"The country is alright," says the writer, "and as a result of the pioneer work done by early farmers, it is now known which should enable anyone with sufficient capital and a sufficient training in farming to make a healthy home and a comfortable life in the Uasin Gishu or Trans-Nzoia. Energy, capital and training are essential and would be insisted upon in prospective settlers. Newcomers should not be obliged to adopt a lower standard than that of European civilisation."

MAKE YOUR OWN SODA WATER

at 1d. per Dozen Bottles in the JUGEL JUNIOR Only. 10/6 complete

For Canteens, Restaurants, Messes, Hospitals, Clubs, Up Country Stations.



JUGEL & CO. (London), Ltd. 22, FLEET STREET, LONDON, W.C.



AN ECHO OF THE PRINCE'S VISIT

While the Prince of Wales was in Malindi the special correspondent of *The Daily Mail* called on the ruler of the fifty principal chiefs of Kavirondo in the district of Malindi. He stood in a line and saluted with palms, with the Governor of Malindi, the British and local officials and other Europeans. The ceremony of the salute is a wide-spread custom of African monarchs of the Eastern Continent. In those capitals, others content with the salute, behind the pavilion their attendants are in a constant state of activity. The chief, bearing a scepter, is surrounded by an array of bright banners, emblazoned with symbols of his descent, as the Black Bull of Sukuma, and the Red Zebra of Tabera, gave the camp the appearance of a gathering of medieval knights.

The chiefs were particularly gratified when the Prince said he hoped they would have almost equal footing during the coming months. Then the chiefs came forward in a long line and made their obeisance one by one. Gabriel of Mwanza, chief of the Kavirondo, in his solemn address, described the sensation he created by reason of the skillful blending of European and African modes in his ceremonial. Over his dark back and to his he wore a coat of red skin in the form of a coat, with the sleeves reaching to his knees. On his head was a shadow of a crown, his hair fastened up in the form of a plait of beaded heads.

One interesting chief was Sapi of the Kavirondo, a son of the late King. The skull of his father, who was killed in the Treaty of Versailles. He rebelled against the German authority many years ago, became an outlaw, and finally committed suicide under dramatic circumstances in 1880. The prince took his bones and skull to Berlin to be placed in a museum. The first request made by his father in the year was the return of his father's skull.

Two dignitaries passed before the Prince in their state address. Negebo of Kisumu, a chief of the Kavirondo, in a red cloth headdress and sober black attire, from the same district who was a member of the Kavirondo. They are the sole survivors of the ancient royal family of Kavirondo.

Sir Donald Cameron, a knight of the Prince, to accept a diamond from the fields at Shimoga in the Lake Victoria region, he said, had been offered by a South African sportsman the best diamond found in a field that the sportsman famous Sir Donald described the stone as a little bit of the heart of the country in crystal form.

PROPERTY PRICES IN KENYA

This writes a correspondent to the *Financial Review*. A friend newly back from Kenya tells me that the largest of residential property on the outskirts of Nairobi is produced at such a pace that the holders of coffee plantations and ranches are being visited by a real estate boom such as Florida enjoyed and California still enjoys. This follows the rapid improvement of roads in Kenya, the extension of railways, and the demand for a more countrywide with such centres as Nairobi. The Mombasa story about a farmer's house in the centre of Nairobi which had not been built in ten years, or was, added, was still more so. A few years later, it is said, it was sold for a price which was more than double the original price.

KHARTOUM AND OMDURMAN

Khartoum and Omdurman are the two largest cities in the Sudan. The former is the capital of the Sudan, and the latter is the largest city. The Sudan is a vast country, and the two cities are situated on the Nile river. The Nile is the longest river in the world, and it flows through the Sudan. The Sudan is a rich country, and it has many natural resources. The Sudan is also a country of great beauty, and it has many beautiful landscapes. The Sudan is a country of great interest, and it is worth visiting.

Across the Nile, on the west bank of Khartoum, with the light and sound of Khartoum, stands one of the greatest Native cities in all Africa. This is Omdurman, mud-walled and built on the banks of the Nile. It is a city of 100,000 people, of almost all the races of South Africa, with scarcely a white face or a European dwelling to be seen in its miles of canal-choked streets and tortuous alleys and bazaars. Here is the vast square where all armed Arab forces, towards Mecca when the Mahdi rebelled, faithful to prayer with the setting of each lurch, desert sup less than half a century ago.

There is the old palace of the Khalifa, the coach used by Gordon, the station of Sultan Pasha, the British headquarters after the battle which broke the Turkish power in the Sudan, and the mounted desert field of Omdurman with its monument to the gallant 1st Lancers. A volume could be written about this Native metropolis, which is known far and wide over the length and breadth of the Dark Continent.

## 'Tiger' Brand Cheese

Genuine Swiss Gruyère  
**THE BODY-BUILDER**

In boxes of 10 lbs. or 5 lbs. Which take the most nutrition.



EXCEPTIONAL QUALITY

PURITY GUARANTEED

The most popular brand in overseas markets owing to its superior qualities and general excellence.

Parker & Co., Ltd., 17, Elm St., E.C. 3

**DAY**



Expend your whole energy  
on the job in hand, make  
a full day of every day.  
Be as fit and let a full  
night's sleep restore you.  
Then your strength for the  
day is a morning cup of



and your rest  
is the night in another.

Take a moment  
with hot or cold water.

In 4 sizes  
at all Chemists & Grocers.



Send 4d. in stamps for sample to:  
A. H. WARDLE & Co., Ltd., P.O. Box 402, Salisbury.

**CASTLE BROTHER & Co. Ltd.**

(EST. 1896)

ARE OPEN TO RECEIVE  
CONSIGNMENTS OF EAST  
AFRICAN PRODUCE AND  
TO MAKE ADVANCES  
ON SAME.

THEY INVITE INQUIRIES  
FOR THE SUPPLY OF  
PLANTERS' ENGINEERING  
REQUIREMENTS.

Head Office  
**LLOYD'S AVENUE,  
LONDON, E.C.3.**  
Cables: Weldless, London.  
Also at Liverpool. The African  
Cables: Castle, Liverpool.

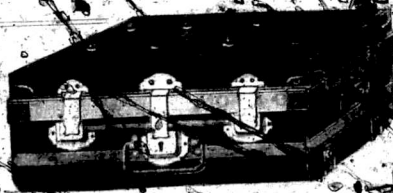
**TURBAN DATES**

**OBAYO REAL SARRINES**

THE BITE OF THE SEA  
The most specially selected sarrines in pure fibre  
The same as used on the tin is  
the highest of REAL  
FIELD & CO. Ltd. Manchester, London, E.C.3. Agents

**DUX BLACK CANVAS**

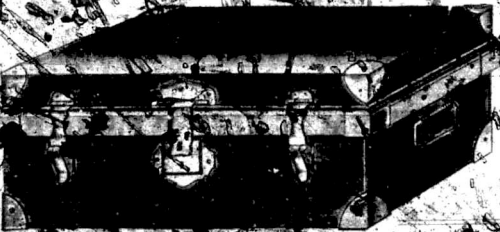
Approved by Government and used to  
be freely available for Transport  
in Tropical Countries.  
Durability twice other canvases.  
Other varieties: Brown, Green, White,  
suitable for all requirements, and  
with same properties.  
The **DUX CHEMICAL SOLUTIONS Co. Ltd.**,  
Bromley-by-Bow, London, E.3.



**G. W. VAUGHAN & SONS**  
Limited  
Birmingham, England.  
Patent Locks and Safes  
Established 1862

**Quality English Steel Trunks**

Made for the EAST AFRICAN Markets.



LAND AND LABOUR POLICY IN KENYA.

Annual Meeting of Anti-Slavery Society.

The land and labour policies of Kenya and Southern Rhodesia are to be discussed at the annual meeting of the Anti-Slavery and Abolition Society, to be held in the evening at the Park Hotel, 10, Abchurch Lane, London, E.C. 4, on Monday, July 15th, at 7.30 p.m. The Rev. Mr. Robert C. Anderson, of the Society, will take the chair, and Mr. Robert Macpherson, Colonial Secretary, will be the chief speaker. The meeting is expected to be well attended.

AN ABYSSINIAN MINING VENTURE.

"East Africa" Warning Endorsed.

In its issue of June 1st "East Africa" counselled its readers to be cautious if approached to invest in an Abyssinian mining venture which has recently been much touted by a certain unnamed journal. This financial journal has published the following note on this same subject—

"Inquiries are being made concerning a company called the Zephlanga West Ethiopian Parent Company, which is to deal with the Abyssinian gold and platinum syndicate. This scheme, according to the circulars, exploits the immense wealth in the gold and platinum deposits of Abyssinia. The statements made are very extravagant and no directors' names are mentioned. No technical information is given, or money is for mining engineers of the field, but has received it. We advise all the readers who have applied for information as to why they should buy shares, to keep their money in the bank, and to ignore the circulars with definite and crunched information from first-class mining authorities is forthcoming. There have been many cases of shares in mining companies being tumbled, and the price put in order to tempt the public, who have found after sending up their money, that the shares were unmarketable. This warning holds good until the position is cleared up, and anyone has bought shares should endeavour to get rid of them.

NEWS OF OUR ADVERTISERS.

During his visit to Nottingham the Sultan of Zanzibar was shown over the works of the Raleigh Cycle Company, where his son, Seid Abdullah, accepted a bicycle which at his request is to be painted green with gold trimmings. His business's attention is drawn to a large consignment of cycles ready for despatch to the company's agent in Zanzibar.

Elsewhere in this issue will be found an advertisement of the Tororo Hotel, Tororo, which to date it will be remembered, was visited by the Prince of Wales during his tour of Uganda. Tororo is 100 miles over the Kenya border and is just one hundred miles from Juja, Elbert, Kitale, and Soroti, being thus in a strategic commercial position, which accounts for the fact that many business representatives have in the last couple of years made it their headquarters. The management of the hotel can arrange the conveyance of passengers to and from the Protectorate at competitive rates.

This issue contains an advertisement announcing the entry into the East African market of Messrs. Gatto, Mather & Co. Ltd. who will also appoint representatives in the Dependencies. It is to be hoped they are going to accept consistently high standards of work in making advances against the company, which has a board of directors possessing practical knowledge of various branches of overseas trade, invites inquiries for general engineering supplies and is open to contract for construction work in East and Central Africa. Messrs. Gatto, Mather & Co. were first established in Liverpool as far back as 1855, and with their wide experience in the export trade should soon succeed in establishing themselves firmly in the East African field.

Last week's rain in Kenya were: Kisumu and Lumbwa 1/2 inch; Njoro, 1/2 inch; Kisumu, Rumuruti, Thika, and Mombasa 1/2 inch; Kitale, Songhor, 1/2 inch; Eldama Rayne and Kericho, 1/2 inch; Garobi, Narasha, Kiambu, Koru, and Gilgort 1/5 inch.

Scotland's Finest  
Groat has means good health food  
builds up the system, and is easily digested

**GRANT'S**  
Scotch OATMEAL

makes the porridge that stimulates, nourishes  
and supplies the necessary food value for  
mental as well as  
physical workers

Manufactured by  
**JOHN GRANT & SONS, Ltd.**  
Glen Mill, Dundee, Scotland.  
Largest Oatmeal & Flour  
Manufacturers in the World

**SCANDINAVIAN — EAST AFRICA**  
Telephone: ROYAL MAIL TELEGRAPH: CLARKSON, LONDON

REGULAR SAILINGS FROM NORWAY, SWEDEN, DENMARK, ICELAND, PORT SAID, PELOPONNES, BRITISH AND PORTUGUESE EAST AFRICA, MADAGASCAR, MAURITIUS, and REUNION.

For Freight and Insurance apply to  
**H. CLARKSON & CO., LTD., 60, Fenchurch Street, E.C. 5**

**MUSTAD FISHHOOKS**

O. MUSTAD & SON,  
OSLO - NORWAY. **Key Brand**

ESTABLISHED 1882

**BRITISH EAST AFRICA CORPORATION, Ltd.**

Registered Office: LONDON HOUSE, CRUTCHED CHURCH, LONDON, E.C. 3.

East African Branches: Nairobi, Mombasa, Kisumu, Kampala, Jinja, Bukoba, Mwanza, Tabora, Dar-es-Salaam, Tanganyika.

Passenger Services: See also to East Africa, Port of Call Islands, destinations, and to Africa, Canada, Australia, New Zealand, Tonga, etc. Freight weights and measures, etc.



# TANGANYIKA EXHIBITION

to be held at  
**DAR ES SALAAM**  
 September 2nd to 6th, 1929

The First AGRICULTURAL and INDUSTRIAL EXHIBITION  
 to be held in TANGANYIKA TERRITORY

Visitors and Exhibits are expected from the  
 United Kingdom, South Africa, India, Kenya,  
 Uganda, Nyasaland, Rhodesia, Zanzibar, etc.

### SECTIONS

- MINING and MINERALS
- FORESTRY and FOREST PRODUCTS
- LIVESTOCK
- HANDICRAFTS (Native and non-native)
- HIDES and SKINS
- MACHINERY (Agricultural, mining and industrial)
- FARM PRODUCE
- TRANSPORT and TRACTION
- PLANTATION PRODUCE
- IMPORTED TRADE EXHIBITS
- HORTICULTURE
- GAME and NATURAL HISTORY
- LOCAL MANUFACTURES

The largest area of the East African territories, TANGANYIKA TERRITORY bids fair to become the largest trader in imports and exports. Compare the almost phenomenal rise within a few years:

	1921	1927
Imports	£1,426,125	£3,750,000
Exports	£1,246,870	£4,050,000
Transit	£1,142,764	£2,061,078
Total	£2,815,759	£9,861,030

**BRITISH MANUFACTURERS** would do well to consider the importance of advertising their products through the medium of the Exhibition. The tariff for space for exhibits is as follows:— for cover, 10 temporary buildings provided by the Committee, 5/- per square yard; for open air, 2/- per square yard.

Temporary structures may be erected by exhibitors at their own expense, subject to the approval of the Committee.

**FOR VISITORS** the programme of recreations, including Tennis, Football, Hockey, Aquatic Sports, Regatta, etc., Concerts and Lectures, is being arranged.

Special Rail and Land Excursions from Kenya to Tanganyika at reduced rates will be available for visitors who desire to see the beauties of these countries.

Further particulars may be had from:

**H.M. TRADE COMMISSIONER FOR EASTERN AFRICA**  
 Royal Mail Building, Cannon Street, LONDON, S.W. 1.  
 The Secretaries, P.O. Box 20, DAR ES SALAAM

## VISIT TANGANYIKA







EAST AFRICA

# BARCLAYS BANK (DOMINION, COLONIAL AND OVERSEAS)

formerly  
THE COLONIAL BANK

with which are amalgamated

The National Bank of South Africa, Ltd.

The Anglo-Egyptian Bank, Ltd.

## Branches in East Africa

### KENYA—

MOROT, KITALE, MOMBASA, NAIROBI, NAKURU

TANGANYIKA TERRITORY—BAR, ESSELAAM, IRINGA, TANGA

UGANDA—JINJA, KAMPALA

NYASALAND—BLANTYRE, LAMBE

Over 200 Branches in Africa

MAURITIUS, BRITISH WEST INDIES, PALESTINE, GIBRALTAR, MALTA

THE BANK'S WORLD-WIDE ORGANISATION  
IS AT THE DISPOSAL OF  
MERCHANTS, SHIPPERS, SETTLERS AND TRAVELLERS

Head Office

54, LOMBARD STREET, LONDON, E.C. 3

# ESANOFELE

THE SOLE CURE FOR MALARIA



Through out the Tropics Esanofele has proved itself an

ten years to be the best remedy for malaria. It is a prophylactic and a cure. East African doctors recommend and prescribe which is obtained from a chemist.

Sole Distributors for East Africa

A. H. WARDLE & CO.

NAIROBI NOMBABA AND

# EAST AFRICA

By Mail Messageries

## MESSAGERIES MARITIMES

FOURTH CLASS MAILINGS FROM Marseilles

- Exploiateur Grandier 10 July
- Ayateur Roland Garros 1 Aug
- General Duchesne 15 Aug
- Leconte de Lisle 29 Aug
- General Veyron 12 Sept

LONDON HEAD OFFICE: 79/81, FINSBURY PARK, N.G.4. Agency for all East Africa. ALL PASSENGERS and FREIGHTS.

# PARKER PRODUCER GAS PLANTS

MOTOR TRANSPORT and TRACTOR WORK (BRITISH MADE THROUGHOUT)

## FORDSON TRACTOR PLANTS

PARKER - CYLINDER HEADS

LOSS IN POWER ENTIRELY COVERED

CONSERVE OIL AND FUEL

PRODUCER GAS PLANTS

THESE CYLINDER HEADS... INCREASING SPEED... OBTAINED UNDER PRODUCER GAS SYSTEM WILL EVEN APPROXIMATELY EQUAL... FUEL CONSUMPTION...

DESIGNED AND OPERATED BY EXPERT KNOWLEDGE... HIGHLY EFFICIENT CONSUMING...

## PARKER PRODUCER GAS PLANTS

47, Cannon Street, London, E.C.4. Gas Engine Works, London. Gas Engine Works, London.

# DARLINGTON'S HANDBOOKS

What a guide could be written for... British Railways

London - Glasgow  
London - Birmingham  
London - Manchester  
London - Liverpool  
London - Cardiff  
London - Swansea  
London - Bristol  
London - Exeter  
London - Plymouth  
London - Southampton  
London - Portsmouth  
London - Dover  
London - Folkestone  
London - Margate  
London - Ramsgate  
London - Deal  
London - Dover  
London - Folkestone  
London - Margate  
London - Ramsgate  
London - Deal  
London - Dover  
London - Folkestone  
London - Margate  
London - Ramsgate  
London - Deal

# THE POPULAR SERVICE

## EAST AFRICAN

THE EAST AFRICAN PUBLISHED BY THE EAST AFRICAN COMPANY LIMITED

## CITRA LINE

Concrete Italian Transatlantic... 1st class... 2nd class... 3rd class... 4th class... 5th class... 6th class... 7th class... 8th class... 9th class... 10th class... 11th class... 12th class... 13th class... 14th class... 15th class... 16th class... 17th class... 18th class... 19th class... 20th class...

FRANCE TOURIST OFFICE, S.A. 10, Waterloo Place, Strand, LONDON, W.C.2. Or Principal Agent.

# TRANS-ZAMBESIA, CENTRAL AFRICA

## SHIRE ENGLAND RAILWAYS

THE LINK BETWEEN BEIRA AND NYABEGA

Trains leave Beira for Mozambique completing the journey to Blantyre in thirty-five hours. The downward train leaves Blantyre for the Coast each Thursday.

Full particulars of trains, fares, and freight rates from the London Office, 5, Thames House, Queen St. Place, E.C.4.





His Majesty's  
**Eastern African Dependencies,  
Trade and Information Office,**

Royal Mail Building  
(Entrance in Spring Garden)  
Colonnade Street, London S.W. 1

All interested in  
Land Settlement, Trade, Touring,  
Big Game Hunting or Producing in  
**KENYA, TANGANYIKA, UGANDA,  
ZANZIBAR, NYASALAND, or  
NORTHERN SOLOMONS**

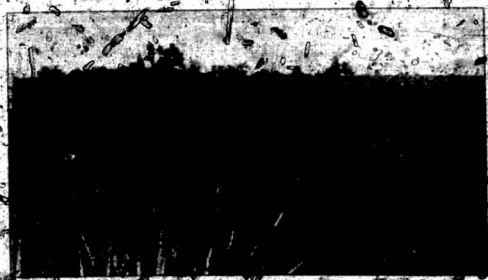
Are invited to apply to the above address for the latest information.  
The Commission will always be glad to give any assistance in its power to any person  
interested in Eastern Africa.  
Telephones: Regent 5701, 2. Telegrams: Eastatters, Western.

THE  
**KENYA and UGANDA  
RAILWAYS and HARBOURS**

A wonderful country which appeals to the  
**TOURIST SPORTSMAN SETTLER**

ENTRANCING  
SCENERY  
KENYA HIGHLANDS

The Great  
RIFT VALLEY  
and LAKE District.



COASTAL PLANTATION  
MOUNTS KENYA  
MELINDI AND  
ILGON AND  
RUWENDE

LAKE VICTORIA  
and the NILE

Coastal Plantation

A country with variations in altitudes ranges in every degree of temperate climate and every form of production, cannot  
but prove to be a land of opportunity and worthy of close inspection.

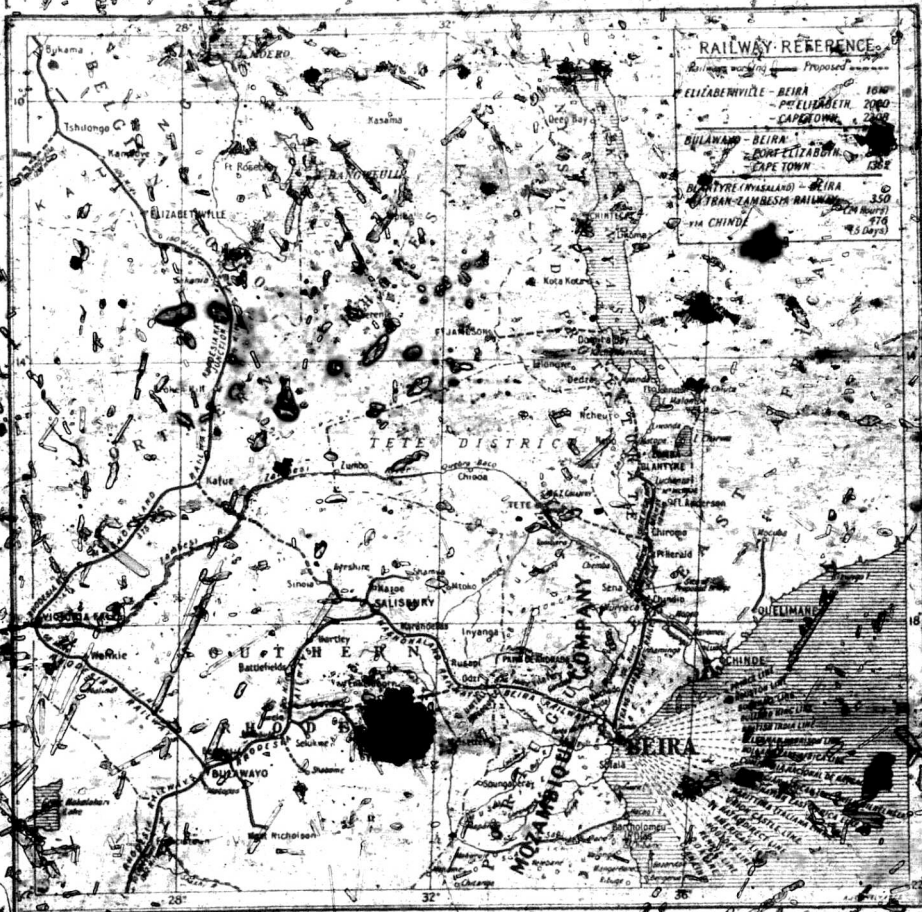
For information apply to the Trade and Information Office, Royal Mail Building, Colonnade Street, London S.W. 1.  
General Manager, Kenya and Uganda Railways and Harbours, Headquarters, Nairobi, Kenya.

This publication is published every Thursday in time to reach the leading East African mail.

# COMPANHIA DE MOZAMBIQUE

Head Offices  
London  
Paris

LUGO DA BIBLIOTECA PUBLICA, LISBON  
THAM'S HOUSE, QUEEN ST. PLACE, E.C.4  
53, BOULEVARD HAUSSMANN.



## MANICA AND SOFALA

The proportion of railway mileage constructed to total land area in square miles in the Mozambique Company's Territory of Manica and Sofala and in the British East African Dependencies is as follows:

Territory	Ratio of Railways to Area	Territory	Ratio of Railways to Area
Manica and Sofala	1 to 150	Nyasaland	1 to 300
Kenya Colony	1 to 180	Orissa	1 to 750
Tanganyika Territory	1 to 260	Northern Rhodesia	1 to 566

# THE STANDARD BANK OF SOUTH AFRICA

INCORPORATED IN SOUTH AFRICA AND THE GOVERNMENT OF THE NETHERLANDS, NIGERIA, NORTHERN RHODESIA, NYASALAND AND ZAMBIA

Head Office: 10, CLEMENTS LANE, LOMBARD STREET, and 77, KING WILLIAM STREET, LONDON, E.C.4.  
London Wall Branch: 83, LONDON WALL, E.C.2.  
West End Branch: 9, NOTTINGHAM AVENUE, W.C.2.  
New York Branch: 47, WALL STREET.

Head Office: 10, Clements Lane, Lombard Street, London, E.C.4.  
Bank of British West Africa, Ltd., is incorporated in the Straits Settlements.  
Over 100 Branches, Sub-Branches, and Agencies in South and East Africa.

## BRANCHES IN EAST AFRICA

- |               |          |
|---------------|----------|
| Arusha        | Morogoro |
| Rukoba        | Moshi    |
| Dar es Salaam | Mwanza   |
| Gidofet       | Nairobi  |
| Jinja         | Nakuru   |
| Kampala       | Nanyuki  |
| Kisumu        | Nyeri    |
| Kitale        | Tabora   |
| Lindi         | Tanga    |
| Mombasa       | Zanzibar |

## PRODUCE OF ALL KINDS FROM EAST AFRICA

THE STANDARD BANK OF SOUTH AFRICA, LTD. handles exports from EAST AFRICA and being a clearing bank through its LOCAL BRANCHES, it is the IMPORTANT PRODUCE MERCHANTS in the EAST EXCEPTIONAL FACILITIES.

The STANDARD BANK MONTHLY REVIEW is sent on application. It gives the latest information on Egyptian and East African matters of Trade and Commercial Interest.

BERTRAM LOWNDES, London Manager.

## FORTNUM & MASON FOR TROPICAL CLOTHING & STORES

It is the RIGHT kit, at the RIGHT price, and backed by Fortnum & Mason's 200 years' experience serving patrons overseas.

GROceries & PROVISIONS  
SHIRTS & UNDERWEAR  
BOOTS & SHOES  
TROPICAL TENNIS RACQUETS  
HELMETS  
& MOSQUITO NETS

Write for our EXPORT CATALOGUE  
152, PICCADILLY, LONDON, W.1.

Fortnum & Mason, Ltd., 152, Piccadilly, London, W.1.

## THE READY-TO-SERVE FOODS AND DAIRY PRODUCE OF

# 3 IN 1



MAKERS OF THE FAMOUS CHEDDLE CHEESE  
Applications invited.

John & Barrell & the Western Counties Creameries Ltd.  
Head Office: YEOVIC, Somerset, England.  
Export Dept: 10, Park Street, Bristol, S.C.

## The Ideal Spraying and Limewashing Machines

The sound construction up-to-date design scientific principles and exceptional economy of

*Martsmith* Sprayers makes them particularly suitable for use on plantations and for general colonial requirements.



Martineau & Smith, Holloway Road, Birmingham, Eng.

East Africa Representatives: Kenya Agency, Ltd., Union Buildings, Nairobi, Kenya Colony.

Martineau & Smith's standard portable Spraying Machine Price, F.O.B. £25.0.0. Without delivery and freight £22.0.0.