

RESEARCH ARTICLE

# Temperature-dependent phenology of *Plutella xylostella* (Lepidoptera: Plutellidae): Simulation and visualization of current and future distributions along the Eastern Afromontane

Benignus V. Ngowi<sup>1,2,3</sup>, Henri E. Z. Tonnang<sup>1,4</sup>, Evans M. Mwangi<sup>2</sup>, Tino Johansson<sup>1,5</sup>, Janet Ambale<sup>1</sup>, Paul N. Ndegwa<sup>2</sup>, Sevgan Subramanian<sup>1\*</sup>

**1** International Centre of Insect Physiology and Ecology, Nairobi, Kenya, **2** School of Biological Sciences, University of Nairobi, Nairobi, Kenya, **3** National Plant Quarantine Station, Tropical Pesticides Research Institute, Arusha, Tanzania, **4** International Maize and Wheat Improvement Centre (CIMMYT), Nairobi, Kenya, **5** Department of Geosciences and Geography, University of Helsinki, Helsinki, Finland

\* [ssubramania@icipe.org](mailto:ssubramania@icipe.org)



**OPEN ACCESS**

**Citation:** Ngowi BV, Tonnang HEZ, Mwangi EM, Johansson T, Ambale J, Ndegwa PN, et al. (2017) Temperature-dependent phenology of *Plutella xylostella* (Lepidoptera: Plutellidae): Simulation and visualization of current and future distributions along the Eastern Afromontane. PLoS ONE 12(3): e0173590. <https://doi.org/10.1371/journal.pone.0173590>

**Editor:** Robert B. Srygley, USDA Agricultural Research Service, UNITED STATES

**Received:** February 14, 2016

**Accepted:** February 23, 2017

**Published:** March 16, 2017

**Copyright:** © 2017 Ngowi et al. This is an open access article distributed under the terms of the [Creative Commons Attribution License](https://creativecommons.org/licenses/by/4.0/), which permits unrestricted use, distribution, and reproduction in any medium, provided the original author and source are credited.

**Data Availability Statement:** All relevant data have been submitted in the public repository PANGAEA. Data are available at <https://doi.org/10.1594/PANGAEA.858103>, doi:10.1594/PANGAEA.858111, doi:10.1594/PANGAEA.858113, doi:10.1594/PANGAEA.858110, doi:10.1594/PANGAEA.858118, doi:10.1594/PANGAEA.858120, doi:10.1594/PANGAEA.858124, doi:10.1594/PANGAEA.858115, doi:10.1594/PANGAEA.858116.

## Abstract

There is a scarcity of laboratory and field-based results showing the movement of the diamondback moth (DBM) *Plutella xylostella* (L.) across a spatial scale. We studied the population growth of the diamondback moth (DBM) *Plutella xylostella* (L.) under six constant temperatures, to understand and predict population changes along altitudinal gradients and under climate change scenarios. Non-linear functions were fitted to continuously model DBM development, mortality, longevity and oviposition. We compiled the best-fitted functions for each life stage to yield a phenology model, which we stochastically simulated to estimate the life table parameters. Three temperature-dependent indices (establishment, generation and activity) were derived from a logistic population growth model and then coupled to collected current (2013) and downscaled temperature data from AFRICLIM (2055) for geospatial mapping. To measure and predict the impacts of temperature change on the pest's biology, we mapped the indices along the altitudinal gradients of Mt. Kilimanjaro (Tanzania) and Taita Hills (Kenya) and assessed the differences between 2013 and 2055 climate scenarios. The optimal temperatures for development of DBM were 32.5, 33.5 and 33°C for eggs, larvae and pupae, respectively. Mortality rates increased due to extreme temperatures to 53.3, 70.0 and 52.4% for egg, larvae and pupae, respectively. The net reproduction rate reached a peak of 87.4 female offspring/female/generation at 20°C. Spatial simulations indicated that survival and establishment of DBM increased with a decrease in temperature, from low to high altitude. However, we observed a higher number of DBM generations at low altitude. The model predicted DBM population growth reduction in the low and medium altitudes by 2055. At higher altitude, it predicted an increase in the level of suitability for establishment with a decrease in the number of generations per year. If climate change occurs as per the selected scenario, DBM infestation may reduce in the selected region. The study

858122, doi:10.1594/PANGAEA.858112, doi:10.1594/PANGAEA.858121, doi:10.1594/PANGAEA.858117, doi:10.1594/PANGAEA.858128, doi:10.1594/PANGAEA.858129, doi:10.1594/PANGAEA.858127, doi:10.1594/PANGAEA.858114, doi:10.1594/PANGAEA.858104, doi:10.1594/PANGAEA.858106, doi:10.1594/PANGAEA.858108, doi:10.1594/PANGAEA.858119, doi:10.1594/PANGAEA.858105, doi:10.1594/PANGAEA.858130, doi:10.1594/PANGAEA.858107, doi:10.1594/PANGAEA.858109.

**Funding:** We gratefully acknowledge the financial support for this research from the Ministry of Foreign Affairs of Finland through the Climate Change Impacts on Ecosystem Services and Food Security in the Eastern Africa (CHIESA) Project and icipe core funding provided by UK Aid from the UK Government, Swedish International Development Cooperation Agency (Sida), the Swiss Agency for Development and Cooperation (SDC), Federal Ministry for Economic Cooperation and Development (BMZ), Germany, and the Kenyan Government.

**Competing interests:** The authors have declared that no competing interests exist.

highlights the need to validate these predictions with other interacting factors such as cropping practices, host plants and natural enemies.

## Introduction

Diamondback moth (DBM), *Plutella xylostella* (L.) (Lepidoptera: Plutellidae) is a major pest of cruciferous crops [1]. The pest is estimated to cause a global annual yield loss valued at US\$ 1.3 billion with control costs of US\$ 1.4 billion [2]. In Kenya, Macharia et al [3] reported that DBM contributes to 31% yield loss in farmer-managed cabbage (*Brassica oleraceae* var. *capitata* L.) crop. Success of DBM as a major pest is attributed to its ability to survive under a wide temperature range, prolific reproductive capacity, ability to feed on diverse host plants, and insecticide resistance [4–5].

Numerous studies on population dynamics of DBM have been conducted in the field [6–10] and in the laboratory [7–8,11–15]. Central to these studies is the role of temperature in influencing the life cycle of DBM. Based on accumulated day-degrees, numerous forecasts have been employed to predict the pest dynamics [16]. However, day-degree forecasts can only predict the sporadic occurrence of pests but not the spread [17]. Studies have also established that DBM migrate long ranges [18] and annually invade from regions where they can overwinter [1,11].

A recent study shows that, worldwide, a synergy of laboratory and field-based findings to map DBM activity across a spatial scale is limited [19]. Several distributions have been generated based on the presence data of DBM in a country/region, its seasonal phenology [19] and persistence [20–21]. Using a bioclimatic model created using CLIMEX, Zalucki and Furlong [19] synthesized the core and seasonal distribution map of DBM across the globe. But, there is a need to understand and predict likely changes in DBM population dynamics in precise hot-spot regions, to adopt location-specific and effective management strategies. Moreover, the CLIMEX-based approach mainly fails to consider the vulnerabilities of discrete stages of DBM to extreme temperatures and other biological characteristics of species [22]. In other instances, the forecast was developed using a Monte Carlo simulation from a fixed number of individuals between successive generations rather than targeting the whole population [17].

Built under the physiological timeline of development, phenology models employed in this work are reliable at predicting population dynamics of insect pests [23]. This modeling approach was applied to predict a decrease in the development times of eggs of *Busseola fusca* from 19.1 to 6.5 days between 15 and 30°C, respectively [24–26]. Phenology models are process-oriented mathematical expressions that link climate variability with lesser levels of abstraction to physiological pattern of the insect species growth to mimic and predict the dynamics of their population within a given point location or region [14,27–32].

In East Africa, cruciferous vegetables are grown under ecological conditions from semi-arid low to mid altitude regions to highlands [33]. The Eastern Afromontane transects are characterized with such diverse ecological conditions, and DBM is a key pest of crucifers across the altitude range. Montane ecosystems are vulnerable to climate change and are warming at a greater rate than low elevations [34–35]. Such rapid effects of climate change are likely to influence the physiology and phenology of key insect pests such as DBM, thereby affecting their ability to infest and damage their hosts along the altitudinal gradients. Understanding such changes in the pest's dynamics is essential, to develop and adopt new pest management strategies. In this regard, the present study focused on the development of temperature-driven

phenology models of DBM. Furthermore, the study linked the phenology model with field temperature datasets to estimate the pest demographic parameters and analyze the possible impacts of changes that can occur in the population of DBM along altitudinal transects in the Eastern Afromontane Biodiversity Hotspot (EABH). The phenology model was also mapped at high resolution using downscaled regional climate datasets (AFRICLIM) [36] to predict the changes in the distribution and abundance of DBM along altitudinal transects.

## Materials and methods

### Ethical statement

This study was carried out in cultivated farm plots where all plant species used (namely common cabbage *Brassica oleraceae* var. *capitata*, kale *Brassica oleraceae* var. *acephala* and Ethiopian mustard *Brassica carinata*) and the insect pest (DBM), are neither endangered nor protected.

The Regional Administrative Secretary of Kilimanjaro (reference letter FA/191/228/01/61) and the Kenya Forest Service (reference letter RESEA/1/KFS/5) granted permission to CHIESA project to conduct the research in Mt. Kilimanjaro and Taita hills, respectively. Individual small-scale farmers owning crucifer farm plots granted CHIESA project the permission to conduct research in their farm plots.

### Study sites

The altitudinal transects considered for the study were located within the Eastern Afromontane Biodiversity Hotspot (EABH) in Taita hills, Kenya and Mt. Kilimanjaro, Tanzania, as detailed in Mwalusepo et al [37]. These transects are 'hotspots' for cultivation of cruciferous vegetables throughout the year and DBM is a key constraint. A total of 13 crucifer farms were selected in the Taita hills transect, where the altitude increases from Majengo (830 masl) to Mbangang'ombe farm (1785 masl). The lowland Taita hills area is characterized by grassy fields and small thickets of shrubs and woodlands, which become denser with rising altitude. People have cleared nearly all the natural forest in the extensive undulating mountains for agriculture and human settlements [38]. A similar number of crucifer farms was selected in Mt. Kilimanjaro transect, where the altitude increases from Kisangesangeni B (716 masl) to Marua A farm (1692 masl). This transect is characterized by open fields and small stands of bushland areas in the lowlands. Midway up the transect is a transition between fragmented bushland and "Chagga homegardens", an agroforestry cropping system vertically characterized by a close intermix of assorted food crops and fodder herbs ( $\leq 1$  m.), coffee (1–2.5 m.), bananas (2.5–5 m.), fuel/fodder trees (5–20 m.) and timber/multipurpose trees ( $20 \geq 30$  m.) [39]. Sustainably maintained through use of traditional furrow irrigation and recycling of nutrients through farmyard manure, the homegardens are well established within the ecosystem in the higher altitudes. Geographic coordinates and elevations of the sampled farms were recorded using a handheld Global Positioning System (GPS) receiver (Garmin eTrex 30, Garmin International Inc., Taipei, Taiwan). Selected farms in both transects were classified into three designated altitudinal zones (low: 700–1200 metres above sea level [masl]; medium: 1201–1600 masl; high:  $> 1600$  masl). In each selected farm, a data logger (iButton, Maxim Integrated Products Inc., California, USA) was installed and daily mean minimum and maximum temperature recorded from January to December 2013.

### Temperature-dependent life tables for diamondback moth

The DBM population utilized for the establishment of life tables was obtained from crucifer vegetables grown in Taita hills transect. The DBM colony was maintained on common

cabbage plants (Gloria, F1 hybrid) at the International Centre of Insect Physiology and Ecology (*icipe*) in Nairobi, Kenya as described by Kahuthia-Gathu et al. [40]. The DBM were raised for one generation to enable the field stock to acclimatize to laboratory conditions.

Freshly laid eggs from the colony were inoculated on individual cabbage leaf bits and placed in glass vials (2.5 cm diameter, 7.5 cm high), lined with absorbent paper towels and covered with a fine mesh sieve ventilated lid. The vials were placed in an incubator (Sanyo MIR-554; Sanyo Electric Co. Ltd, Japan) at five constant temperatures (10, 15, 20, 25 and 30, each  $\pm 1^\circ\text{C}$ ). At  $35^\circ\text{C}$ , each egg was inoculated on whole young leaf to delay dehydration, with the stipule end wrapped in wet cotton wool and placed inside a ventilated plastic container (12 x 10.2 x 6.5cm) covered with muslin cloth. All experiments were carried out at  $70 \pm 10\%$  relative humidity and a 12:12 h (L:D) photoperiod. Egg development was recorded daily until hatching. Eggs that failed to hatch by the end of the experiment were assumed to have died. Freshly cut leaves of cabbage were provided to the larvae after every 1 or 2 days. Development of the larvae and pupae was checked and recorded daily. Developmental time and mortality rates were recorded for egg, larvae and pupae until adult emergence.

To record oviposition data, emerged adults were paired at a 1:1 ratio, placed inside ventilated plastic containers (12 x 10.2 x 6.5cm) and fed with 6% sugar solution absorbed in cotton wool balls. The sugar solution was replaced after every 1–2 days. A dried aluminum foil smeared with cabbage leaf extract was hung inside each container as an oviposition substrate. The oviposition substrate was replaced at 24-hour intervals and the numbers of eggs laid recorded. The total life period of each individual adult maintained in different temperature treatments was recorded.

## Phenology model building and validation using Insect Life Cycle Modeling (ILCYM version 3.0)

The Insect Life Cycle Modeling (ILCYM version 3.0) software [41] developed by the International Potato Centre, Lima, Peru [29] was used to generate temperature-dependent phenology models. ILCYM is an open-source computer-aided tool built on R codes and Java interface, equipped with modules for building process based and temperature dependent phenology models for insect populations. The ‘model builder’ module was used to develop the phenology models whereas the ‘validation and simulation’ module of ILCYM was applied to estimate six demographic parameters—[intrinsic rate of natural increase ( $r_m$ ), net reproduction rate ( $R_0$ ), gross reproduction rate (GRR), mean generation time (GT), finite rate of increase ( $\lambda$ ) and doubling time (Dt)] of the species]. Practically, ILCYM inputs experimental life table data to estimate functions for the species development time, development rate, mortality, senescence and fecundity. The software helps to establish temperature-dependent relationships between the transitions from one stage to another during the life history of an insect [29]. Statistical criteria, such as the Akaike’s information criterion (AIC) [42], which are inbuilt in ILCYM, were used to select the mathematical expression for each life stage of the pest with the best fit.

**Development time and its variation.** The values of the development rates of DBM obtained from laboratory experiments at different temperatures were normalized and fitted to density distribution functions. The cumulative frequencies of developmental times of each life stage and temperatures were plotted against normalized developmental times. Logit distribution curve [25,29] was considered as the best fit function for the egg, larva, pupa and adult male, whereas a complementary log–log (CLL) distribution curve [25] was considered as the best fit function for the adult female.

**Development rate.** Both linear and non-linear models were evaluated for fitting the development rates for each immature stage of the pest. The low temperature thresholds and thermal

constants were derived from the fitted linear regression model,

$$r(T) = a + bT$$

where,  $r(T)$  is the development rate at temperature  $T$ ,  $a$  is the intercept and  $b$  the slope of the equation. The values of development rates obtained by inverting the median development times (development rate = 1/ development time) were fitted best to Logan 1 [43] model. This function helps to represent and describe the temperature-dependent development rates of egg and larva. Hilbert and Logan model [44] proved to be the best fit for describing development rate of DBM pupa.

**Mortality of immature stages.** Mortality of eggs was best described by the Weibull function [45] whereas a second order polynomial expression [46] offered the best fit for mortality of the larvae and pupae, respectively.

**Adult life span and aging.** Tanigoshi model [43] fitted best to describe the relationship between the age of adult females and temperature. The modified Hilbert and Logan model [44] allowed a good representation of the senescence of adult males. Female longevity was measured and the following parameters calculated:

Age-specific survival ( $l_x$ ) of females at 10, 15, 20, 25 and 30°C.

$$\text{Expected remaining life span } (Ex) \text{ of females: } Ex = \sum_{y=x} \frac{ly + ly + 1}{2} / lx \text{ [47]}$$

**Reproduction.** A simple Gaussian function [48] was considered as the best fitted model in expressing the effects of temperature on fecundity. On the other hand, the relative oviposition frequency, which shows proportion of total lifetime reproductive potential that elapses during each time period, was evaluated in relation to the normalized age of females at a given temperature. The cumulative oviposition rate was plotted against the normalized age expressed as a ratio of age in days over the mean survival time. The Gamma function [49] was used to fit the experimental datasets and further help to estimate parameters such as:

- Age-specific fecundity ( $m_x$ ) (=females born/female) by multiplying the mean number of eggs by ratio of females to total population [50].

- Reproductive value ( $V_x$ ) of females:  $V_x = \frac{\sum_{y=x} (e^{r_m \cdot y} \cdot l_y \cdot m_y)}{l_x \cdot e^{-r_m \cdot x}}$  [51]

**Population growth parameters.** Once the phenology model was developed, the “validation and simulation” module imported the models from “model builder” and applied rate summation and cohort updating approaches to estimate the population growth parameters of DBM. The estimates were generated from stochastic simulations under constant temperatures with 10 repetitions. An initial population of 100 individuals and the estimated population growth parameters were plotted against the respective temperatures and fitted to cubic equations [52].

**Model validation.** The validation tool in ILCYM tests the ability of developed phenology models to reproduce similar physiological behavior of the insect under fluctuating temperature conditions [41]. A complete life table experiment was conducted outdoors at *icipe* (1619 m above sea level; latitude S 01.22051°; longitude E 036.89563°) following the same experimental procedures used for constant temperatures in the laboratory, from 3<sup>rd</sup> November– 30<sup>th</sup> December 2014. A total of 100 individual insects were used. Validation was conducted by using a stochastic simulation, in which results obtained from fluctuating temperatures were compared with phenology model simulation outputs. In addition, the effects of temperature on development time, adult life span, fecundity and population growth parameters obtained

from the phenology model were individually compared to published information using the generalized linear modeling (GLM) in R [53] with means separated by Tukey HSD ( $P < 0.001$ ).

### Climate data used in spatial analysis

The mean minimum and maximum temperature information collected from individual data loggers in each farm in the year 2013 were considered as current climatic conditions. Climate data to represent future climatic conditions (2055) were obtained from the regional climate models (RCMs) at 30" (1km) spatial resolution documented in Platts et al [36]. This is a down-scaled, bias-corrected and open source spatial database accessible at AFRICLIM (<http://www.york.ac.uk/environment/research/kite/resources/>) [37]. To establish the difference between the current and future climates, several steps were involved. The available downscaled values of future temperature (mean daily minimum and maximum) in raster format were loaded and opened in Quantum Geographic Information System software (QGIS) [54]. Every farm was presented with 24 files, in which 12 were the mean daily minimum temperatures covering a month (from January to December) and the remaining 12 were the mean daily maximum temperatures for the same period.

### Spatial analysis of distribution and abundance of DBM along the altitude and over time

The information on field geographical coordinates—altitude and temperature data—was arranged into a spatial framework and linked to the compiled phenology model, to estimate the life table parameters of DBM [30]. Three risk indices, namely establishment risk index (*ERI*), generation index (*GI*) and activity index (*AI*), were produced from the obtained population growth parameters. The *ERI* identifies areas with a favorable climate for survivorship and establishment of the pest, and it is estimated based on a daily time scale by the following expression:

$$ERI = \frac{\sum_{i=1}^{i=365} I_i}{I_t} * net - reproduction$$

where,  $I_i$  is the interval of day  $i$  (with  $i = 1, 2, 3, \dots, 365$ ) and the total number of intervals,  $I_t$ , is 365.

The index is 1 when all the immature stages of DBM survive throughout the year at varied proportions, with  $ERI < 1$  characterizing areas in which survival and establishment of the population is restricted to certain periods in the year.

The *GI* estimates the mean number of generations the pest can produce per annum, calculated by averaging sum of the estimated generation lengths in each Julian day as shown in the formula:

$$GI = \frac{\sum_{x=1}^{365} 365/Tx}{365}$$

where,  $Tx$  is the predicted generation length in days at Julian day  $x$  ( $x = 1, 2, 3, \dots, 365$ ). When temperature is rising, it theoretically implies more number of generations per year. However, in practice, extreme temperatures reduce fecundity and increase mortality, disrupting the finite rate of natural increase ( $\lambda$ ).

The third parameter, *AI*, is related to annual finite rate of natural increase of the DBM population, taking into account the whole life history of the pest. The index is calculated by taking

a log of products of the estimated finite rates of natural increase for each Julian day as shown below:

$$AI = \log_{10} \prod_{x=1}^{365} \lambda x$$

where,  $\lambda x$  is the finite rate of increase at Julian day  $x$  ( $x = 1, 2, 3, \dots, 365$ ). Every increase of  $AI$  by 1 implies a 10-fold increase of the pest population [55].

Using the index interpolator (a sub-module of ILCYM), the compiled DBM phenology, the Digital Elevation Model (DEM) defined by geo-referenced altitudinal data obtained from the Shuttle Radar Topography Mission (SRTM), and the temperature data in text files, were imputed into ILCYM and the pest risk indices for each transect generated in form of American Standard Code for Information Interchange (ASCII) formats [56]. Obtained results were transferred into QGIS for analysis, visualization and interpretation.

## Results

### Temperature-dependent life tables for diamondback moth and phenology model

**Development time.** Mean development times of the immature stages varied significantly with temperature (eggs:  $\chi^2 = 321.6$ ,  $df = 5, 930$ ,  $P < 0.001$ ; larvae:  $\chi^2 = 178.63$ ,  $df = 5, 741$ ,  $P < 0.001$ , pupa:  $\chi^2 = 254.27$ ,  $df = 5, 511$ ,  $P < 0.001$ ). The mean development times (where accumulated development frequency = 50%) decreased at all life stages with increasing temperatures. The mean developmental time of DBM egg varied from 20.6 days at 10°C to 2.5 days at 35°C. The mean developmental time of DBM larva was approximately 10 times higher at 10°C than at 35°C. The same trend was observed in the mean developmental times of pupae (Table 1).

**Development rate.** The estimated lower development threshold temperatures were 3.76°C for egg ( $F = 273.1$ ,  $df = 1, 4$  and  $P < 0.001$ ), 4.79°C for larva ( $F = 355.5$ ,  $df = 1, 4$  and  $P < 0.001$ ) and 4.21°C for pupa ( $F = 305.7$ ,  $df = 1, 4$  and  $P < 0.001$ ). The thermal constants expressed in degree days ( $DD = 1/\text{slope}$ ) to represent the amount of energy needed to complete development for eggs, larvae and pupae were estimated at 22.4, 58.5 and 37.1, DD respectively. Optimal values of temperatures reached 32.5 (eggs), 33.5 (larvae) and 33°C (pupae), respectively (Fig 1). Beyond these values, the model predicted a sharp decline in the development rates at all immature stages of DBM. The upper threshold limit for development of eggs larvae and pupae was observed at 40.6, 40.7 and 38°C, respectively.

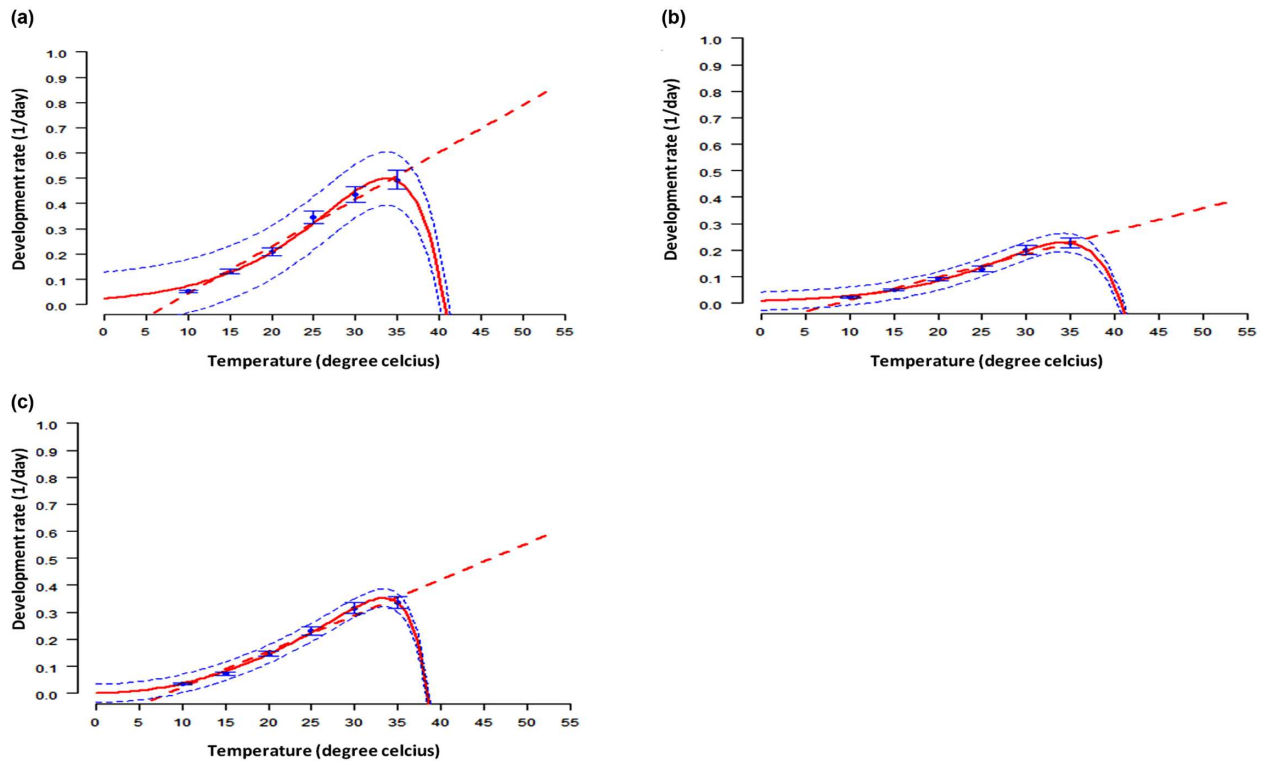
**Table 1. Mean development time of DBM life stages at different constant temperatures.**

| Temperature (°C) | Mean development time (No. of days ± SE) |                 |                |
|------------------|--|-----------------|----------------|
|                  | Egg (n = 936)*                           | Larva (n = 747) | Pupa (n = 517) |
| 10               | 20.64 ± 0.20a                            | 25.55 ± 1.65a   | 27.45 ± 1.04a  |
| 15               | 8.68 ± 0.27b                             | 19.30 ± 0.62b   | 14.84 ± 0.35b  |
| 20               | 5.40 ± 0.10c                             | 11.78 ± 0.20c   | 7.51 ± 0.09c   |
| 25               | 3.47 ± 0.07de                            | 7.89 ± 0.21d    | 4.84 ± 0.10d   |
| 30               | 3.43 ± 0.09e                             | 5.51 ± 0.12e    | 3.79 ± 0.07ef  |
| 35               | 2.55 ± 0.051f                            | 2.71 ± 0.24f    | 2.86 ± 0.20f   |

Mean values within a column followed by a different letter differ significantly at  $P < 0.05$ , Poisson and Negative binomial GLM (Tukey test).

\*n = number of immature stages observed

<https://doi.org/10.1371/journal.pone.0173590.t001>



**Fig 1. Development rates of immature stages of DBM: Egg (a), larva (b) and pupa (c).** Blue dots are the observed means  $\pm$  SE, the solid red line represents the selected model output, while the dotted blue lines represent the upper and lower 95% confidence limits. Bars represent standard deviations.

<https://doi.org/10.1371/journal.pone.0173590.g001>

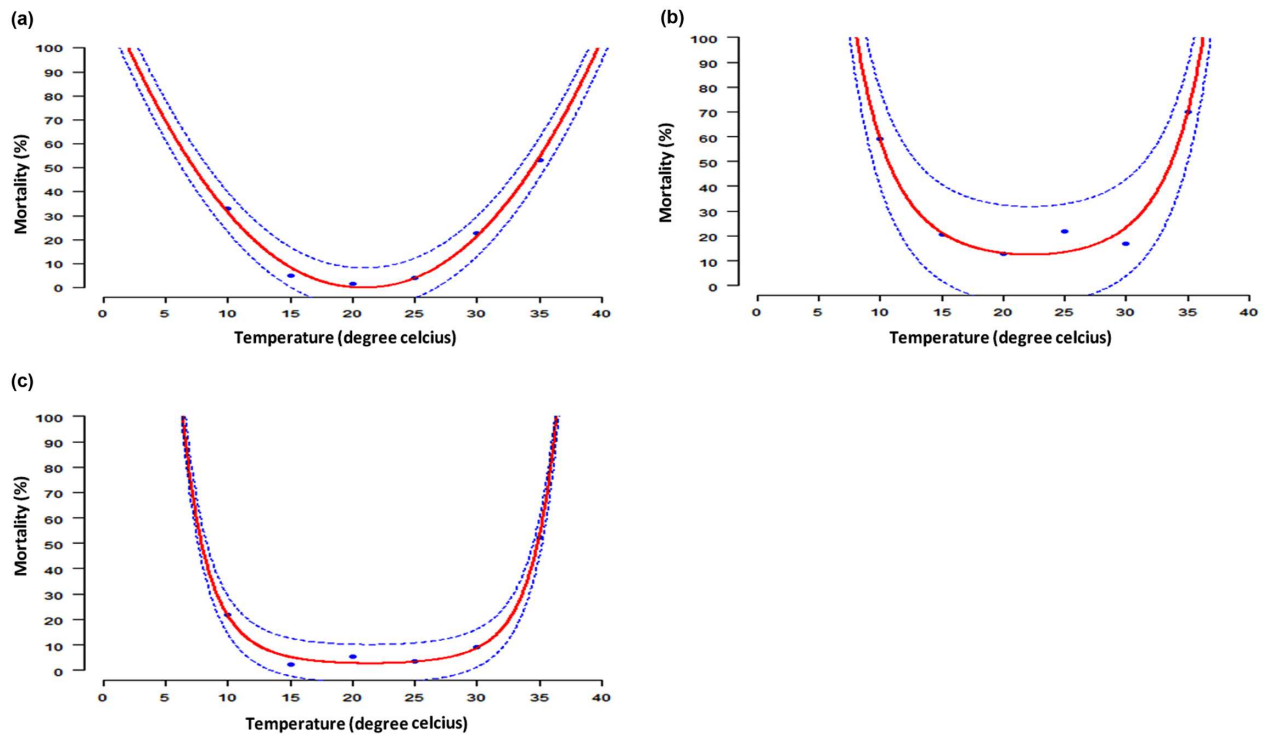
**Mortality of immature life stages.** Mortality of immature life stages of DBM was best described by Weibull function for eggs and a second order polynomial for larvae and pupae. The models predicted 20°C as the most favorable temperature level for the survival of eggs, larvae and pupae (Fig 2). The rates of mortality of immature life stages of DBM increased at extreme temperatures.

**Adult lifespan and reproduction.** The adult lifespan and fecundity differed significantly at extreme temperatures (lifespan: male;  $\chi^2 = 51.39$ ,  $df = 5$ , 240,  $P < 0.001$ ; female:  $\chi^2 = 37.22$ ,  $df = 5$ , 223,  $P < 0.001$ ; fecundity:  $\chi^2 = 318.12$ ,  $df = 4$ , 215,  $P < 0.001$ ). The lifespan of DBM females reached its peak of 58.46 days at 10°C whereas the lifespan of DBM males reached its peak at 44.09 (10°C) and 44.73 days (15°C). Overtime, the life span of adult DBM males was shorter than for females at 10°C, but females aged faster in subsequent temperatures (Table 2).

The temperature-dependent fecundity of DBM was described by a simple Gaussian function ( $P = 0.0191$ ;  $df = 3$ , 2;  $F = 51.5897$ ). The model predicted a value near 20°C to be the favorable temperature for DBM females to oviposit. Under this condition, a female produced an average of 265.2 eggs. At a constant temperature of 35°C, only a few adult females emerged from the pupae, but all failed to oviposit. At low and high temperatures, fecundity reduced considerably (Fig 3a). The relationship between cumulative oviposition rate and female age was described by the gamma function ( $P < 0.001$ ;  $df = 1$ , 246;  $F = 3780.426$ ) (Fig 3b).

Fifty (50) percent of the eggs were laid on the first 44.1, 31.9, 36.4, 13.8 and 11.5% of the adult lifetime, at 10, 15, 20, 25 and 30°C, respectively. A summary of the DBM life table is presented in Table 3.





**Fig 2. Temperature-dependent mortalities of immature life stages of DBM: Egg (a), larva (b) and pupa (c).** Blue dots are the observed means, the solid red line represents the selected model output, while dotted blue lines represent the upper and lower 95% confidence intervals of selected models.

<https://doi.org/10.1371/journal.pone.0173590.g002>

**Population growth parameters of DBM.** The intrinsic rate of natural increase of the population reached 0.21 at 25°C, suggesting this is the optimal temperature. The pest obtained a maximum net reproduction rate of 87.38 female offspring/female/generation at 20°C. Under the same conditions of temperature, the total number of offspring reached 136.12 individuals/female/generation. The time lags between the same life stages from one generation to the next reduced with increased temperature. Though the values did not differ substantially with temperature ( $\chi^2 = 0.00268$ ,  $df = 4, 45$ ,  $P = 0.9889$ ), the finite rate of population increased steadily from 10 to 25°C before starting to decline. An increase of temperature values from 10 to 25°C reduced the time period to double the population (Fig 4; Table 4).

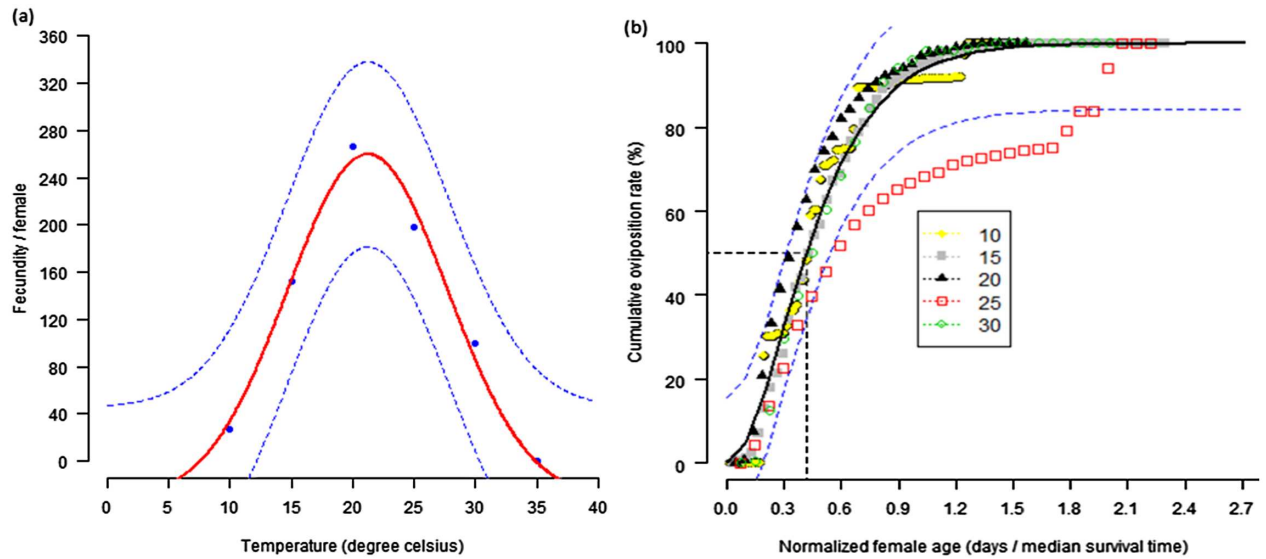
**Table 2. Lifespan and fecundity of DBM at constant temperatures.**

| Temperature (°C) | Longevity (in days) |                  | Fecundity [No. eggs/female] |
|------------------|---------------------|------------------|-----------------------------|
|                  | Male (n = 246)*     | Female (n = 229) | (n = 220)                   |
| 10               | 44.73 ± 3.82a       | 58.46 ± 3.89a    | 26.83 ± 10.09a              |
| 15               | 44.09 ± 2.68a       | 31.89 ± 1.84b    | 155.64 ± 18.72bde           |
| 20               | 31.97 ± 1.21b       | 22.61 ± 0.84c    | 265.21 ± 13.24cd            |
| 25               | 21.34 ± 1.6cd       | 14.04 ± 0.91de   | 197.83 ± 14.39d             |
| 30               | 20.17 ± 1.03d       | 13.90 ± 0.79e    | 101.54 ± 11.80e             |
| 35               | 7.33 ± 2.03e        | 6.43 ± 0.78f     | -                           |

Mean values within a column followed by different letter differ significantly at  $P < 0.05$ , Poisson and Negative binomial GLM (Tukey test)

\* n = number of adults observed

<https://doi.org/10.1371/journal.pone.0173590.t002>



**Fig 3. Temperature-dependent total egg production (a) and age-related cumulative proportion of egg production (b).** Age of the females at 50% oviposition is indicated. Dots represent data points. The upper and lower 95% confidence intervals of the model are indicated.

<https://doi.org/10.1371/journal.pone.0173590.g003>

**Phenology model evaluation.** The minimum and maximum temperatures recorded ranged between 13.1–18.6 and 22.6–38.6°C, respectively. The mean temperature was 21.8°C. The simulated values of intrinsic rate of natural increase ( $r_m$ ), finite rate of population increase ( $\lambda$ ), doubling time (Dt), and mortality were closely similar to the observed values (Table 5), signifying the strength of the developed phenology models in estimating demographic parameters.

### Temperature changes between the current and future scenarios

It was estimated that changes in the maximum temperatures between the current and future will be substantial (1.6°C) in the low zone of Taita hills and will reduce considerably towards farms located at the higher altitudes in the transect (Table 6). The changes will be comparatively lower and uniform along the Mt. Kilimanjaro transect.

### Spatial changes in distribution and abundance of DBM population

**Current scenario along the altitudinal transect.** The current suitability of habitat for the survivorship and establishment of DBM increased gradually from 700 masl in the low zone ( $ERI = 0.6049$ ) to 1690 masl in the high zone ( $ERI = 0.7842$ ) in Mt. Kilimanjaro (Fig 5a), reflecting the observed distribution of the pest in the transect. In contrast, the highest number of new generations of DBM added were in the low zone ( $GI = 19.5994$ ), with the number reducing steadily with increasing altitudes in the transect, settling to approximately 11 per annum in the high zone (Fig 5b). The temperature-dependent population increase is shown to decrease consistently from a range of approximately 363.6-fold at the bottom of the low zone ( $AI = 36.3586$ ) to approximately 213.5-fold at the top of the high zone ( $AI = 21.3541$ ) (Fig 5c).

Suitability of habitats based on temperature increased with increasing altitude in Taita hills. If you consider two farms, one at Majengo (830 masl) and the other at Dembwa (1107 masl), little variation in the level of suitability of habitat is noticed in the low zone ( $0.6719 \leq ERI \leq 0.7232$ ) (Fig 5d). From medium towards high zone, the farms become increasingly

**Table 3. Summary of the life table of DBM at different constant temperatures.**

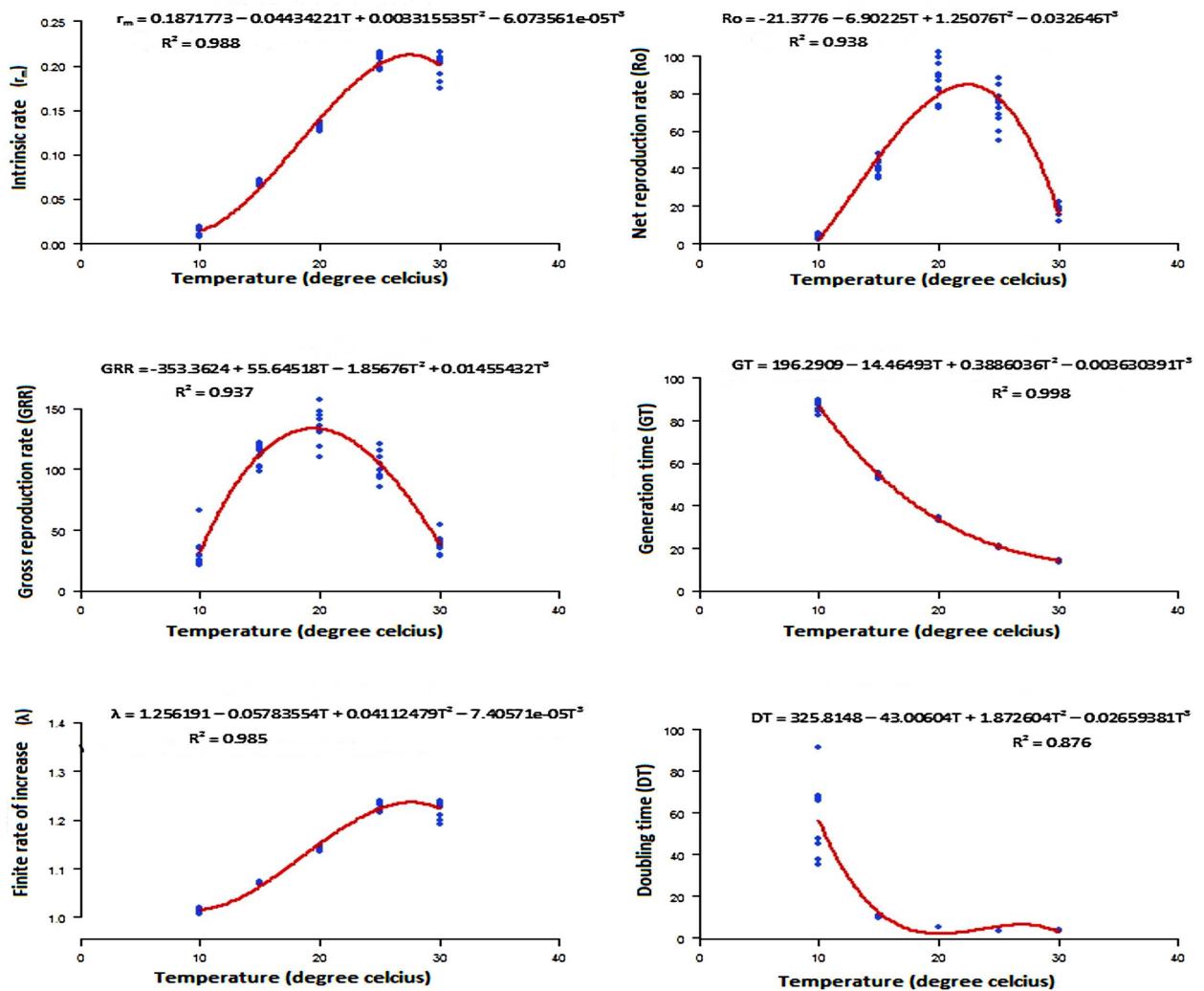
| Day                   | Age specific survival ( $l_x$ ) | Age specific fecundity ( $m_x$ ) | Reproductive value ( $V_x$ ) | Expected life expectancy ( $E_x$ ) |
|-----------------------|---------------------------------|----------------------------------|------------------------------|------------------------------------|
| <b>10°C (n = 24)*</b> |                                 |                                  |                              |                                    |
| 30                    | 0.96                            | 0.1                              | 0.2                          | 5                                  |
| 34                    | 0.86                            | 0.1                              | 0.1                          | 4.2                                |
| 38                    | 0.84                            | 1.5                              | 2.6                          | 3.7                                |
| 45                    | 0.75                            | 0                                | 0                            | 3.3                                |
| 58                    | 0.83                            | 0                                | 0.1                          | 3                                  |
| 66                    | 0.9                             | 0                                | 0                            | 2.4                                |
| <b>15°C (n = 46)</b>  |                                 |                                  |                              |                                    |
| 11                    | 0.81                            | 2                                | 3.9                          | 3.6                                |
| 22                    | 0.89                            | 2.8                              | 4.9                          | 3.2                                |
| 28                    | 0.74                            | 1                                | 1.6                          | 2.5                                |
| 31                    | 0.57                            | 0.1                              | 0.2                          | 2                                  |
| 35                    | 0.38                            | 0                                | 0                            | 1.7                                |
| 42                    | 0.8                             | 0.4                              | 0.4                          | 1                                  |
| <b>20°C (n = 57)</b>  |                                 |                                  |                              |                                    |
| 7                     | 0.95                            | 10.3                             | 20.5                         | 3.6                                |
| 12                    | 0.92                            | 5.9                              | 11.4                         | 3                                  |
| 16                    | 0.73                            | 2.3                              | 4.3                          | 2.1                                |
| 21                    | 0.36                            | 2.6                              | 3.9                          | 2.3                                |
| 25                    | 0.46                            | 0.4                              | 0.5                          | 1                                  |
| <b>25°C (n = 46)</b>  |                                 |                                  |                              |                                    |
| 4                     | 0.89                            | 7.6                              | 14.9                         | 3                                  |
| 8                     | 0.67                            | 2.4                              | 4.4                          | 2.2                                |
| 12                    | 0.5                             | 1.8                              | 2.8                          | 1.8                                |
| 16                    | 0.54                            | 1.4                              | 1.8                          | 1.7                                |
| 20                    | 0.29                            | 0                                | 0                            | 1.3                                |
| <b>30°C (n = 47)</b>  |                                 |                                  |                              |                                    |
| 3                     | 0.98                            | 9.7                              | 19                           | 3.3                                |
| 7                     | 0.76                            | 5.2                              | 10                           | 2.4                                |
| 11                    | 0.47                            | 2.5                              | 4.3                          | 1.8                                |
| 15                    | 0.56                            | 0                                | 0                            | 1.7                                |
| 19                    | 0.22                            | 0                                | 0                            | 1.2                                |

\* n = number of adults observed. At 35°C, no adult survived

<https://doi.org/10.1371/journal.pone.0173590.t003>

suitable, with the likelihood of pest establishment ranging between 0.7745 and 0.8631. However, it was observed that the pest produces increasingly fewer new generations with rising altitude, reducing from 17.5 generations ( $GI = 17.4606$ ) in the low zone to 7.7 generations ( $GI = 7.727$ ) in the high zone (Fig 5e). Population growth is roughly halved from a 331.8-fold increase in the low zone ( $AI = 33.1817$ ) to about 162.9-fold increase ( $AI = 16.2904$ ) in the high zone (Fig 5f).

**Changes between the current (2013) and future climate change scenarios (2055).** Most changes in potential distribution between the current (2013) and future (2055) scenarios in Mt. Kilimanjaro will happen in the low zone (Fig 6g) whose establishment risk index ranges from 0.1860 to 0.2103. In between the two periods, the capacity of DBM to produce new generations will reduce, resulting into a loss of approximately two generations ( $GI = -1.9299$ ) in the low zone (Fig 6h). This decline in number of generations will be reflected in the overall



**Fig 4. Population growth parameters of DBM estimated over a range of five constant temperatures.**  $r_m$ , intrinsic rate of natural increase;  $R_0$ , net reproduction rate; GRR, gross reproduction rate; GT, mean generation time;  $\lambda$ , finite rate of increase; and DT, doubling time.

<https://doi.org/10.1371/journal.pone.0173590.g004>

**Table 4. Estimated population growth parameters of DBM at different constant temperatures.**

| Temperature (°C) | Population growth parameters |               |                  |               |               |                |
|------------------|------------------------------|---------------|------------------|---------------|---------------|----------------|
|                  | $r_m$                        | $R_0$         | GRR              | GT            | $\lambda$     | Dt             |
|                  | (n = 50)                     | (n = 50)      | (n = 50)         | (n = 50)      | (n = 50)      | (n = 50)       |
| 10               | 0.01 ± 0.001a                | 3.31 ± 0.36a  | 32.44 ± 4.15a    | 86.92 ± 0.75a | 1.01 ± 0.001a | 56.96 ± 5.57a  |
| 15               | 0.07 ± 0.001a                | 41.22 ± 1.25b | 110.77 ± 2.91bcd | 54.31 ± 0.29b | 1.07 ± 0.001a | 10.14 ± 0.11b  |
| 20               | 0.13 ± 0.001a                | 87.38 ± 3.19c | 136.12 ± 4.41c   | 33.67 ± 0.18c | 1.14 ± 0.001a | 5.23 ± 0.05cde |
| 25               | 0.21 ± 0.002a                | 72.59 ± 3.28d | 102.8 ± 3.37d    | 20.63 ± 0.09d | 1.23 ± 0.003a | 3.35 ± 0.04de  |
| 30               | 0.20 ± 0.004a                | 17.08 ± 1.03e | 38.35 ± 2.31a    | 14.11 ± 0.08e | 1.22 ± 0.005a | 3.48 ± 0.08e   |

Mean values within a column followed by different letters differ significantly at  $P < 0.05$ , Poisson and Negative binomial GLM (Tukey test).  $r_m$ , intrinsic rate of natural increase;  $R_0$ , net reproduction rate; GRR, gross reproduction rate; GT, mean generation time;  $\lambda$ , finite rate of increase; Dt, doubling time (days). Adult female DBM failed to reproduce at 35 °C.

<https://doi.org/10.1371/journal.pone.0173590.t004>

**Table 5. Validation of the developed phenology model through comparison of observed and simulated population growth parameters of DBM life stages.**

| Population growth parameters |            |          |         | Phenology model |            |          |         | Euclidian distance |        |
|------------------------------|------------|----------|---------|-----------------|------------|----------|---------|--------------------|--------|
| Parameter                    | Simulated  | Observed | P-value | Mortality       | Simulated  | Observed | P-value | Egg                |        |
| $r_m$                        | 0.16(0.01) | 0.16     | 0.31    | Egg             | 0.12(0.05) | 0.12     | 0.5712  | Larva              | 41.83  |
| $\lambda$                    | 1.18(0.01) | 1.17     | 0.3054  | Larva           | 0.17(0.08) | 0.18     | 0.2611  | Pupa               | 75.48  |
| Dt                           | 4.28(0.32) | 4.34     | 0.3734  | Pupa            | 0.55(0.13) | 0.54     | 0.8497  | Female             | 103.09 |
|                              |            |          |         |                 |            |          |         | Male               | 41.29  |
|                              |            |          |         |                 |            |          |         |                    | 42.29  |

Standard errors are enclosed in brackets.

n = 100.

<https://doi.org/10.1371/journal.pone.0173590.t005>

population that will be characterized by a decline of the growth rate from the Kisangesangeni Madukani farm upwards to 22.3-fold in the low zone (Fig 6i).

The model predicts that most areas of the medium zone of Mt. Kilimanjaro will be least favorable for survival and establishment of DBM ( $ERI = 0.1134$ ) along the gradient (Fig 6g), leading to a reduction of the mean number of new generations added from 0.95 to 0.42 (Fig 6h). Changes in finite rate of population increase will be associated with the declining growth rate ( $-1.3578 \leq AI \leq -0.4838$ ); however, these will not be large enough to warrant significant change in the population growth rate in the zone (Fig 6i).

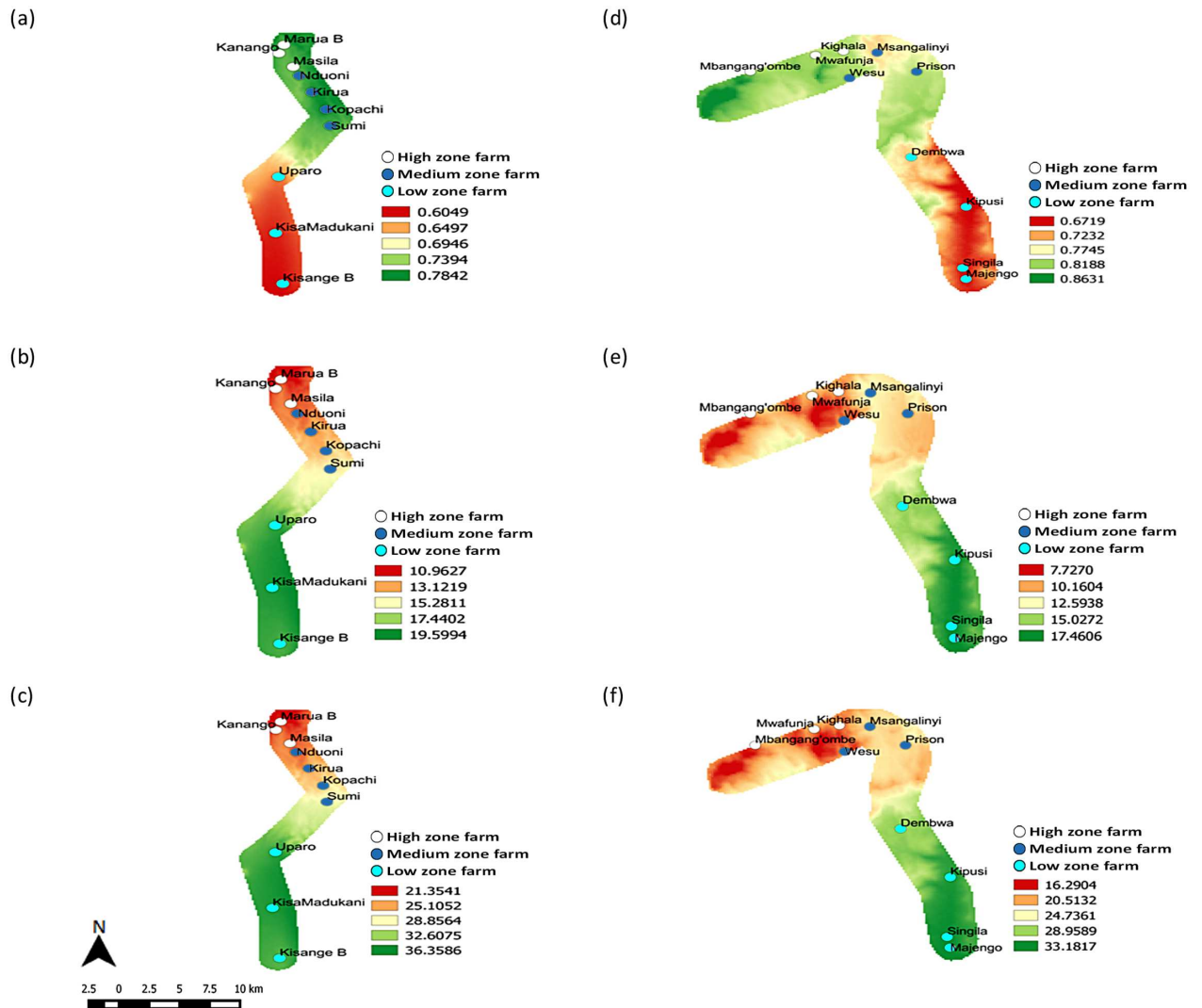
Population changes in the high zone of Mt. Kilimanjaro are associated with the increase of favorable temperature conditions for the establishment and distribution of the pest (increase of establishment risk index from 0.1134 to 0.1376 (Fig 6g)), which will further influence the number of generations and population growth. The increase in level of suitability will probably allow more DBM to shift into the zone; and thereby, add several new generations in the population (Fig 6h). The added new generations are likely to lead into a net increase of the population growth rate from approximately 3.9 to 12.6-fold.

The model also predicts that the changes in favorable habitats between current and future temperature conditions in Taita hills will be substantial in the low zone farms ( $0.2098 \leq ERI \leq 0.2667$ ) (Fig 7g). By 2055, the number of generations produced per annum will decline gradually, with a loss of approximately 12 generations alone in the lowest-lying farm in the transect, Majengo (Fig 7h), leading to a significant reduction of DBM population growth in the zone. The farm is predicted to lose about 92.2 times of its DBM population between these two periods (Fig 7i).

**Table 6. Changes between the current (2013) and future (2055) maximum and minimum temperatures on selected farms along Mt. Kilimanjaro transect and the Taita hills transect.** All current, future and their differences in temperatures were recorded in degrees centigrade (°C) and altitude in metres above sea level (masl).

| Mt. Kilimanjaro      |           |          |         |        |            | Taita hills |          |         |        |            |
|----------------------|-----------|----------|---------|--------|------------|-------------|----------|---------|--------|------------|
| Maximum temperatures |           |          |         |        |            |             |          |         |        |            |
| Zone                 | Farm      | Altitude | Current | Future | Difference | Farm        | Altitude | Current | Future | Difference |
| Low                  | Kisange B | 716      | 34.3    | 34.8   | 0.4        | Majengo     | 830      | 33.8    | 35.4   | 1.6        |
| Medium               | Kirua     | 1513     | 28.3    | 28.6   | 0.3        | Msangalinyi | 1461     | 27.7    | 28     | 0.3        |
| High                 | Marua A   | 1692     | 26.8    | 27.2   | 0.4        | Kishamba    | 1765     | 25.9    | 25.9   | 0          |
| Minimum temperatures |           |          |         |        |            |             |          |         |        |            |
| Low                  | Kisange B | 716      | 20      | 20.9   | 0.9        | Majengo     | 830      | 17.3    | 19.2   | 1.9        |
| Medium               | Kirua     | 1513     | 15      | 15.7   | 0.7        | Msangalinyi | 1461     | 13.1    | 15.8   | 2.7        |
| High                 | Marua A   | 1692     | 13.3    | 14.5   | 1.2        | Kishamba    | 1765     | 13.1    | 13.8   | 0.7        |

<https://doi.org/10.1371/journal.pone.0173590.t006>

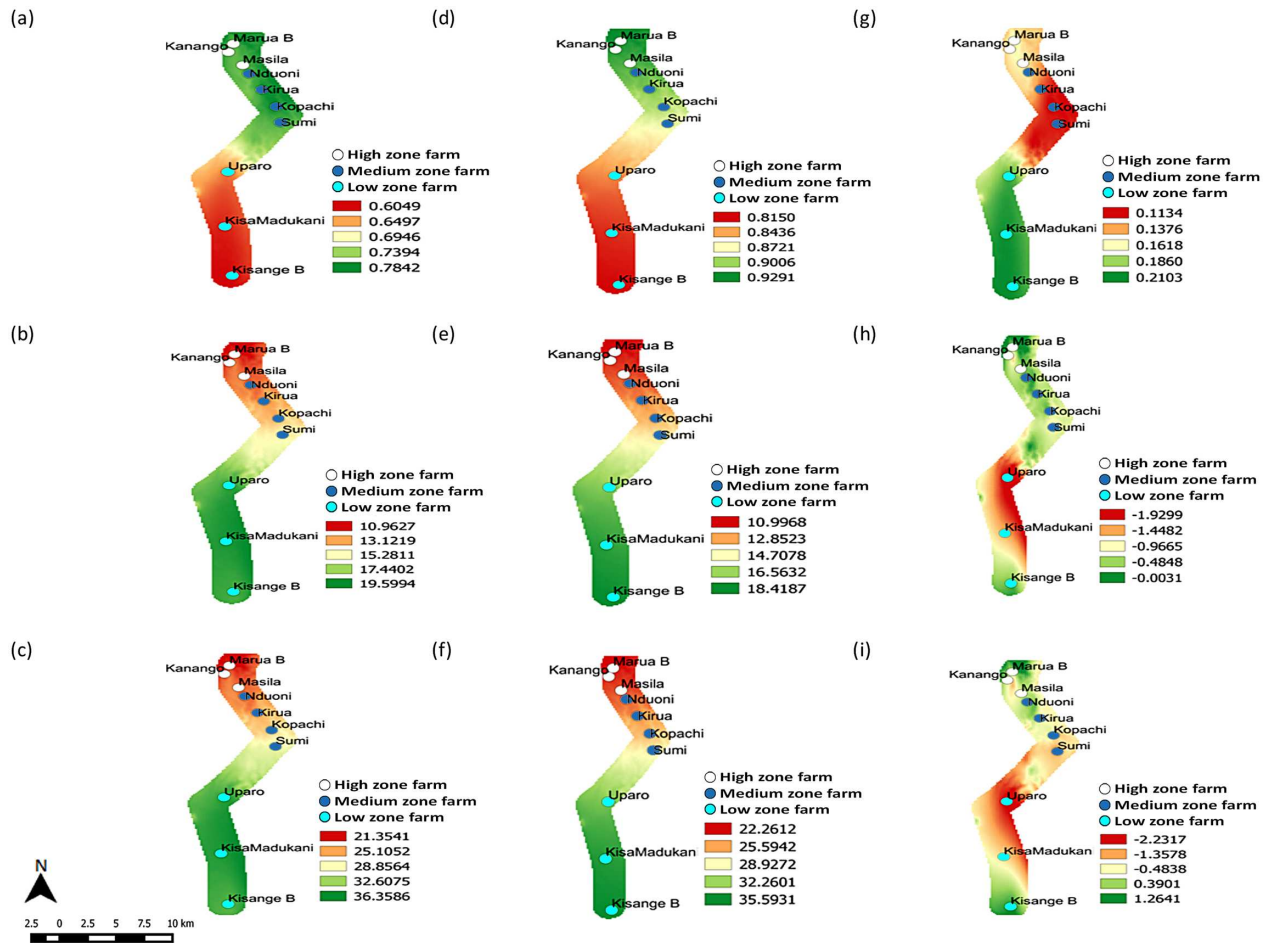


**Fig 5. Changes in the establishment, abundance and population growth rates of DBM along altitudinal gradients of Mt. Kilimanjaro and Taita hills.** Establishment risk indices (*ERI*) of Mt. Kilimanjaro (a) and Taita hills (d); Generation indices (*G*) of Mt. Kilimanjaro (b) and Taita hills (e); and Activity indices (*AI*) of Mt. Kilimanjaro (c) and Taita hills (f) \*KisangeB = Kisangesangeni B, KisaMadukani = Kisangesangeni Madukani.

<https://doi.org/10.1371/journal.pone.0173590.g005>

A wider range of the establishment risk index in the medium zone of Taita hills spanning from 0.1809 to 0.2667 (Fig 7g) can only suggest more suitable conditions and extensive favorable temperatures between current and future conditions. Nonetheless, the predicted changes seem unfavorable to DBM population, because, as the expected added number of generations reduces to approximately 8.74 and 10.74 generations, this will slow down the growth rate by 7 to 8-fold (Fig 7i), which will also translate to a reduction in the damage potential in the zone.

In the high zone of Taita hills, the environmental suitability for survivorship of DBM is expected to change little, with such changes becoming even smaller upwards in the zone (Fig 7g). In this zone, therefore, the pest will witness little variation on its annual number of new generations; which is translated into maintaining a more stabilized population compared to the other zones (Fig 7h). Potentially, the overall impact will be an increase of the population growth rate (Fig 7i).

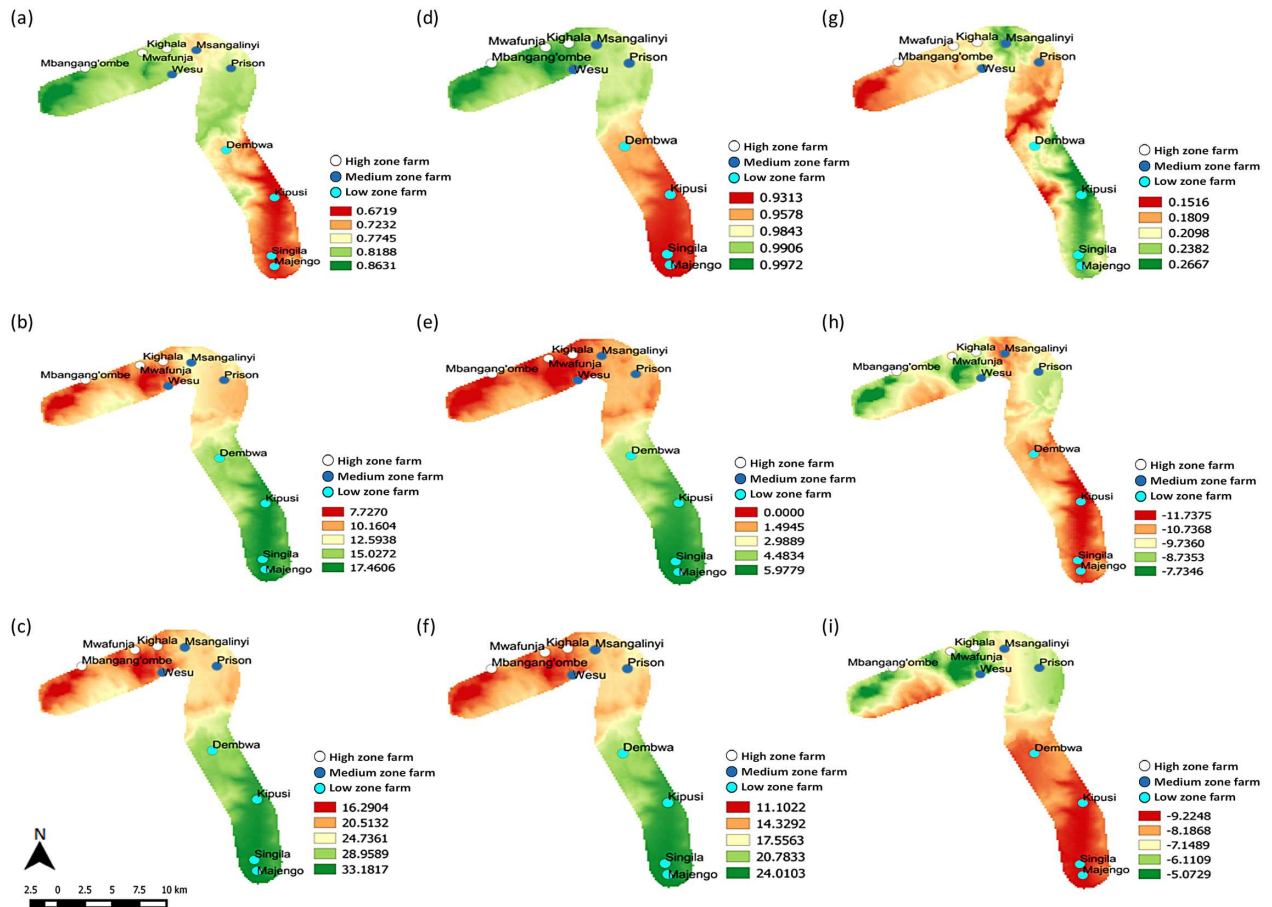


**Fig 6. Changed establishment, abundance and population growth rates across climate change scenarios of Mt. Kilimanjaro.** Current 2013 distribution and abundance of DBM: (a) *ERI*, (b) *Gf* and (c) *AI*; future 2055 distribution and abundance of DBM: (d) *ERI*, (e) *Gf* and (f) *AI*. Absolute change in distribution and abundance between current and future scenarios: (g) *ERI*, (h) *Gf* and (i) *AI*. *ERI* = Establishment Risk Index, *Gf* = Generation Index and *AI* = Activity Index. \*KisangeB = Kisangesangeni B, KisaMadukani = Kisangesangeni Madukani.

<https://doi.org/10.1371/journal.pone.0173590.g006>

## Discussion

Several bioclimatic models have been developed for determining temperature-dependent population dynamics, abundance and distribution of insect species in the field. Often these models are developed at broad geographic scale, mostly continental or global scale. Utility of such broad geographic scale prediction with scarce inclusion of information on the pest biology is often limited for improving or adapting management strategies in response to climate change at a local scale. In the eastern Afromontane, cruciferous vegetables such as kale and cabbage are widely cultivated in diverse agroecologies spread along the altitudinal gradient, but DBM is a key constraint to productivity of these vegetables [33,57]. The growth and development of DBM are significantly influenced by the prevailing weather variables, especially temperature and rainfall, in the field [58]. Understanding the effects of changing climate on DBM biology and damage to crops is critical for adapting and implementing management strategies in the region. However, previous efforts to predict distribution of DBM in relation to climatic



**Fig 7. Altered establishment, abundance and population growth rates across climate change scenarios of Taita hills.** Current 2013 distribution and abundance of DBM: (a) *ERI*, (b) *GI* and (c) *AI*; future 2055 distribution and abundance of DBM: (d) *ERI*, (e) *GI* and (f) *AI*. Absolute change in distribution and abundance between current and future scenarios: (g) *ERI*, (h) *GI* and (i) *AI*. *ERI* = Establishment Risk Index, *GI* = Generation Index and *AI* = Activity Index.

<https://doi.org/10.1371/journal.pone.0173590.g007>

variables using approaches such as CLIMEX [19] have been employed on a global scale and were entrenched on limited information on the pest biology. Regional prediction models, as reported for abundance of DBM in China using DYMEX software [59], are also not robust enough to properly analyze age-structured pest populations. Temperature-dependent life tables provide reliable information for understanding the life history, behavioral response and population dynamics of key insect pests such as DBM, under the widely changing temperature conditions in a local scale [31]. Furthermore, such information is useful for predicting potential impacts of climate change on the population dynamics through estimations of the lower and upper threshold of temperatures during the species life history [28].

We used process-based phenology models to understand the temperature-dependent population growth potential of DBM. Our results indicated that growth and reproduction of DBM could only be sustained between the minimum and maximum temperature thresholds of 3.76°C for eggs and 40.7°C for larvae, respectively. Although the development rate increased with temperature, our findings show that females failed to oviposit at temperatures beyond the maximum threshold of 30°C. Maximum number of eggs and female offspring were only produced at 20°C, suggesting the temperature range of 20–25°C is the optimum for high intrinsic



rate of natural increase and maximum net reproduction rate. These results agree with previous reports of Bahar et al [11] who found that 4°C was the lowest temperature threshold for eggs and that no larvae survived beyond 38°C. Marchioro and Foerster et al [26] also reported maximum oviposition by DBM at 20°C, with the highest intrinsic rate of natural increase occurring between 20 and 25°C. Further, 50% of the total number of eggs at 20°C were laid in 36.4% of the female's life time. Chelliah and Srinivasan [60] point out that DBM is physiologically programmed to lay the maximum number of eggs in the early days following eclosion.

Often, DBM outbreaks in the tropics occur during the hot dry season in the low altitudes soon after a wet season [61] or with ample irrigation resources [62] when there are abundant food supplies. The growth of DBM outside the optimum temperature range declined as evidenced by high egg mortality towards both the lower and upper temperature extremes (10°C and 30°C). A long period of exposure to temperature beyond 32.5°C impaired viability of the eggs, resulting in decline of field populations [26]. At temperatures, lower than optimum, longer development times resulted in fewer numbers of generations per year in the field. Exposure to freezing temperatures for less than two months could lead to hibernation of DBM [63]; however, such weather is uncommon to crucifer cultivation in the tropics. Similarly, with increasing temperatures above the optimum, shorter development times could lead to more generations per year in the field. However, this is not always the case in nature, because the relatively long periods of exposure to high temperatures interfere with food conversion-enzymes [64] and deprive the pupae and adults the possibility of gaining the normal weight for proper growth and differentiation [11,64].

Although the experiments were conducted at constant temperatures, in nature, temperatures fluctuate both due to diurnal variations and microclimate. Hence, when periodically stressed from the very hot or cold weather, insects limit their movements, only to resume normal activity when favorable conditions resume [65–66]. Liu et al [67] reported that eggs incubated for up to 36 hours at a constant temperature of 38°C could still develop when transferred to 28°C. Thus, to test reliability of the models developed under constant temperatures, it may be reasonable to compare species performance under a close range of fluctuating temperatures. However, only a few studies have investigated the effect of fluctuating temperatures on mortality and population growth parameters of DBM [66,68–69]. Under higher temperature fluctuations of  $25 \pm 10^\circ\text{C}$ , 57% of the eggs of DBM died at 37°C [67], which is comparable to 53.3% mortality observed in this study. Similarly, mortality rate of pupae (5.6%) observed at 20°C in the present study is comparable to mortality rate of 8.5% under fluctuating temperature (15–27°C, mean: 22°C) reported previously [66]. Our adopted models predicted the higher survival of pest population under moderate temperatures [68], which supports our observations on suitability of medium and high zones for DBM population buildup.

To understand the changes in population dynamics of DBM with graded changes in the weather variables along the altitudinal transects, we ran the developed phenology models with field collected temperature datasets from Mt. Kilimanjaro and Taita hills. Both in Mt. Kilimanjaro and Taita hills, suitability of habitats for survivorship and establishment increased from the low-altitude ( $ERI = 0.6049\text{--}0.6719$ ) to the high-altitude zones ( $ERI = 0.7842\text{--}0.8631$ ). However, with number of generations per year declining from 17–19 in the low altitude zones to 8–11 in the high zones, temperature-dependent population growth rate is nearly double in the low zones compared to the high zones. In addition, the shorter generation length in the low altitude zone implies a rapid increase in populations [31]. However, our findings indicate that this population growth trend will only hold if the pest population is not exposed for long periods at or above 35°C [15], which would otherwise compromise egg production, pupation and adult size [70].

Several studies have suggested that warming gets more rapid at higher elevations in the tropics [35] and particularly so, when the altitudinal gradient is constant. Based on the current (2013) and future (2055) temperatures on selected farms along each transect, significant increases in mean minimum temperatures could be expected in Mt. Kilimanjaro (+0.7–1.2°C) and Taita hills (+0.7–2.7°C), respectively. In the low altitude zone of Taita hills, increase of mean maximum temperature up to 1.6°C could also be expected. Change of mountain temperatures is also subject to the extreme local variability in the topography, slope, aspect, tree cover and exposure [35,71]. It is possible the well-managed “Chagga homegardens”, a multi-storeyed agroforestry cropping system based on banana and coffee, providing shading effects in the upward slope of Mt Kilimanjaro [39,72], enhanced resilience of the crucifer cropping systems to harsh climates by providing the favorable microclimate [73–77]. Taita hills, which has lost approximately 99% of its forest cover in the past few centuries [38] is likely to experience more warmer climates [37] compared to Mt. Kilimanjaro where nearly one third of the forest cover has been lost in the last 70 years [78]. The falling coffee prices in the world market, rising production costs and changing climate [76,79], to mention a few, have compelled some farmers in Mt. Kilimanjaro to substitute coffee with other food and cash crops [80]. To this end, the diversity, density and placement of existing shade trees have been changed, leading to significant reduction in the tree component of the Chagga homegardens [76].

Based on predictions of the DBM population risk indices in a future climate change scenario (2055) along the transects, the crucifer farms in the low zone of Mt Kilimanjaro near Kisangesangeni B and farms in higher altitudes of the transect from Kirua to Marua B are likely to face increasing pressures of DBM. The higher change in the population growths expected in the low zones of Mt Kilimanjaro indicates the possible role of Miwaleni springs, which is closest to the Kisangesangeni B farm, in producing the microclimate needed for both host plants and DBM in a region that is otherwise relatively hot. Furthermore, in the mid to high zones of Mt Kilimanjaro, the Chagga homegardens [39] could buffer DBM growth from unfavorable extreme temperatures.

However, significant declines in the *GI* across the Taita hills transect by 8–12 generations and declines in the *AI* from -5.0729 to -9.2248 due to rising temperatures in the future could lead to an overall decline in population of DBM across the transect. As noted in numerous studies [9–10,81], high field temperatures will not necessarily increase population of the pest but might impair the physiology of the pests directly and indirectly through increased killing capacity of its predators. The decline in egg oviposition and hatchability of DBM after 20 and 32.5°C, respectively [26], and the decline in finite rate of increase after 25°C, will inevitably cause a decrease of the DBM population in the low zone. The high zones of Taita hills will undergo significant increase in DBM dynamics with greater potential for survival of all life stages of DBM throughout the year with optimum temperature conditions, resulting in significant yield losses. However, with increasing temperature, the potential for outbreak of other pests such as thrips and aphids [82–83] in the low zones needs to be considered.

In conclusions, the study highlights how detailed temperature-based life analysis of a pest (such as DBM) in the laboratory combined with field-collected and downscaled temperature data could predict the dynamics of the pest at a local scale both under current and future climate change scenarios. In a broader sense, incorporating other factors known to influence DBM dynamics into the model such as weather-influenced reproductive and dispersal behavior of the pest [84–86], host plant diversity [12–13,40], natural enemy dynamics [32,87], relative humidity [88–89] and rainfall [90–91] could enhance the validity of these predictions. A recent study has highlighted the relevance of microclimate in influencing the bioecology of insect species [92]; hence incorporation of fine scale weather data for modeling species distribution can also further enhance the precision of the predictions.

## Acknowledgments

We thank the three anonymous referees for giving critical feedback during the revision stages. We acknowledge the International Centre of Insect Physiology and Ecology (*icipe*) for providing research facilities and appreciate the unwavering technical support of Mr. Charles Kanyi in the field. We acknowledge the editorial assistance from Mrs. Dolorosa Osogo, Science editor, *icipe*. We gratefully acknowledge the financial support for this research by the Ministry of Foreign Affairs of Finland through the Climate Change Impacts on Ecosystem Services and Food Security in the Eastern Africa (CHIESA) Project and *icipe* core funding provided by UK Aid from the UK Government, Swedish International Development Cooperation Agency (Sida), the Swiss Agency for Development and Cooperation (SDC), Federal Ministry for Economic Cooperation and Development (BMZ), Germany, and the Kenyan Government. *The views expressed herein do not necessarily reflect the official opinion of the donors.* BVN was supported by CHIESA under the CHIESA/WP5/Crucifers.

## Author Contributions

**Conceptualization:** BVN SS HEZT EMM PNN.

**Data curation:** BVN SS.

**Formal analysis:** BVN HEZT SS EMM.

**Funding acquisition:** SS TJ.

**Investigation:** BVN JA HEZT SS.

**Methodology:** BVN HEZT SS EMM PNN JA.

**Project administration:** SS HEZT TJ.

**Resources:** SS TJ.

**Software:** HEZT SS BVN.

**Supervision:** HEZT SS EMM PNN.

**Validation:** BVN JA HEZT SS.

**Visualization:** BVN SS HEZT.

**Writing – original draft:** BVN.

**Writing – review & editing:** BVN HEZT SS EMM PNN.

## References

1. Furlong MJ, Wright DJ, Dosdall LM (2013) Diamondback moth ecology and management: problems, progress, and prospects. *Annu Rev Entomol* 58: 517–541. <https://doi.org/10.1146/annurev-ento-120811-153605> PMID: 23020617
2. Verkerk RH, Wright DJ (1996) Multitrophic interactions and management of the diamondback moth: a review. *Bull Entomol Res* 86: 205–216.
3. Macharia I, Löhr B, De Groote H (2005) Assessing the potential impact of biological control of *Plutella xylostella* (diamondback moth) in cabbage production in Kenya. *Crop Prot* 24: 981–989.
4. Vickers RA, Furlong MJ, White A, Pell JK (2004) Initiation of fungal epizootics in diamondback moth populations within a large field cage: proof of concept of auto-dissemination. *Entomol Exp Appl* 111: 7–17.
5. Shelton AM (2004) Management of the diamondback moth: déjà vu all over again?, pp. 3–8. In *The Management of Diamondback Moth and Other Crucifer Pests*. Proceedings of the Fourth International

Workshop on Management of the Diamondback Moth and Other Crucifer Pests. Department of Natural Resources and Environment. Melbourne, Australia.

6. Umeya K, Yamada H (1973) Threshold temperature and thermal constants for development of the diamondback moth, *Plutella xylostella* L., with reference to their local differences. *Jpn J Appl Entomol Z* 17: 19–24.
7. Wakisaka S, Tsukuda R, Nakasuji F (1992) Effects of natural enemies, rainfall, temperature and host plants on survival and reproduction of the diamondback moth, pp. 16–36. In *The Management of Diamondback Moth and Other Crucifer Pests. Proceedings of the Second International Workshop on Management of the Diamondback Moth and Other Crucifer Pests*. Asian Vegetable Research and Development Centre. Tainan, Taiwan.
8. Shirai Y (2000) Temperature tolerance of the diamondback moth, *Plutella xylostella* (Lepidoptera: Yponomeutidae) in tropical and temperate regions of Asia. *Bull Entomol Res* 90: 357–364. PMID: [11020794](https://pubmed.ncbi.nlm.nih.gov/11020794/)
9. Ahmad T, Ansari M (2010) Studies on seasonal abundance of diamondback moth *Plutella xylostella* (Lepidoptera: Yponomeutidae) on cauliflower crop. *J Plant Prot Res* 50: 280–287.
10. Sow G, Diarra K, Arvanitakis L, Bordat D (2013) The relationship between the diamondback moth, climatic factors, cabbage crops and natural enemies in a tropical area. *Folia Hort* 25(1): 3–12.
11. Bahar MH, Soroka JJ, Grenkow L, Dosdall LM (2014) New threshold temperatures for the development of a North American diamondback moth (Lepidoptera: Plutellidae) population and its larval parasitoid, *Diadegma insulare* (Hymenoptera: Ichneumonidae). *Environ Entomol* 43: 1443–1452. <https://doi.org/10.1603/EN14055> PMID: [25259698](https://pubmed.ncbi.nlm.nih.gov/25259698/)
12. Golizadeh A, Kamali K, Fathipour Y, Abbasipour H (2007) Temperature-dependent development of diamondback moth, *Plutella xylostella* (Lepidoptera: Plutellidae) on two brassicaceous host plants. *Insect Sci* 14: 309–316.
13. Golizadeh A, Kamali K, Fathipour Y, Abbasipour H (2009) Life table of the diamondback moth *Plutella xylostella* (L.) (Lepidoptera: Plutellidae) on five cultivated brassicaceous host plants. *J Agric Sci Technol* 11: 115–124.
14. Marchioro CA, Foerster LA (2011) Development and survival of the diamondback moth, *Plutella xylostella* (L.) (Lepidoptera: Yponomeutidae) as a function of temperature: effect on the number of generations in tropical and subtropical regions. *Neotrop Entomol* 40: 533–541. PMID: [22068938](https://pubmed.ncbi.nlm.nih.gov/22068938/)
15. Nguyen C, Bahar MH, Baker G, Andrew NR (2014) Thermal tolerance limits of diamondback moth in ramping and plunging assays. *PLoS One* 9(1): e87535. <https://doi.org/10.1371/journal.pone.0087535> PMID: [24475303](https://pubmed.ncbi.nlm.nih.gov/24475303/)
16. Butts RA, McEwen FL (1981) Seasonal populations of the diamondback moth, *Plutella xylostella* (Lepidoptera: Plutellidae), in relation to day-degree accumulation. *Can Entomol* 113: 127–131.
17. Collier RH, Finch S (2001) Forecasting attacks by pest insects of cruciferous crops, pp. 163–168. In *The Management of Diamondback Moth and Other Crucifer Pests. Proceedings of the Fourth International Workshop on Management of the Diamondback Moth and Other Crucifer Pests*. Department of Natural Resources and Environment. Melbourne, Australia.
18. Xing K, Ma CS, Han JC (2013) Evidence of long distance migration of diamondback moth (DBM) *Plutella xylostella*: a review. *J Appl Ecol* 24: 1769–1776.
19. Zalucki MP, Furlong MJ (2011) Predicting outbreaks of a migratory pest: an analysis of diamondback moth distribution and abundance revisited, pp. 8–14. In *The Management of Diamondback Moth and Other Crucifer Pests. Proceedings of the Sixth International Workshop on Management of the Diamondback Moth and Other Crucifer Pests*. AVRDC-The World Vegetable Centre. Nakhon Pathom, Thailand.
20. Harcourt DG (1986) Population dynamics of the diamondback moth in southern Ontario, pp. 1–15. In *The Management of Diamondback Moth and Other Crucifer Pests. Proceedings of the First International Workshop on Management of the Diamondback Moth and Other Crucifer Pests*. AVRDC-The World Vegetable Centre. Tainan, Taiwan.
21. Honda K (1992) Hibernation and migration of diamondback moth in northern Japan, pp. 45–50. In *The Management of Diamondback Moth and Other Crucifer Pests. Proceedings of the Second International Workshop on Management of the Diamondback Moth and Other Crucifer Pests*. AVRDC-The World Vegetable Centre. Tainan, Taiwan.
22. Vannette RL, Hunter MD (2011) Genetic variation in expression of defense phenotype may mediate evolutionary adaptation of *Asclepias syriaca* to elevated CO<sub>2</sub>. *Glob Chang Biol* 17: 1277–1288.
23. Mohandass S, Zalucki MP (2004) DBM development: are we measuring the right temperatures?, pp. 117–122. In *The Management of Diamondback Moth and Other Crucifer Pests. Proceedings of the Fourth International Workshop on Management of the Diamondback Moth and Other Crucifer Pests*. Department of Natural Resources and Environment. Melbourne, Australia.

24. Khadioli N, Tonnang HEZ, Ong'amo G, Achia T, Kipchirchir I, Kroschel J et al. (2014) Effect of temperature on the life history parameters of noctuid lepidopteran stem borers *Busseola fusca* and *Sesamia calamistis*. *Ann Appl Biol* 165: 373–386.
25. Khadioli N, Tonnang HEZ, Muchugu E, Ong'amo G, Achia T, Kipchirchir I et al. (2014) Effect of temperature on the phenology of *Chilo partellus* (Swinhoe) (Lepidoptera, Crambidae); simulation and visualization of the potential future distribution of *C. partellus* in Africa under warmer temperatures through the development of life-table parameters. *Bull Entomol Res* 104: 809–822. <https://doi.org/10.1017/S0007485314000601> PMID: 25229840
26. Marchioro CA, Foerster LA (2012) Modelling reproduction of *Plutella xylostella* L. (Lepidoptera: Plutellidae): climate change may modify pest incidence levels. *Bull Entomol Res* 102: 489–496. <https://doi.org/10.1017/S0007485312000119> PMID: 22414235
27. Tonnang HEZ, Tchouassi DP, Igweta LK, Juarez H, Djouaka RF (2014) Zoom in at African country level: potential climate induced changes in areas of suitability for survival of malaria vectors. *Int J Health Geogr* 13(1): 12.
28. Kontodimas DC, Panagiotis AE, Stathas GJ, Economou LP (2004) Comparative temperature-dependent development of *Nephus includens* (Kirsch) and *Nephus bisignatus* (Boheman) (Coleoptera: Coccinellidae) preying on *Planococcus citri* (Risso) (Homoptera: Pseudococcidae): evaluation of a linear and various nonlinear models using specific criteria. *Environ Entomol* 33(1): 1–11.
29. Tonnang HEZ, Juarez H, Carhuapoma P, Gonzales JC, Mendoza D, Sporleder M et al. (2013) ILCYM—Insect Life Cycle Modeling: a software package for developing temperature-based insect phenology models with applications for regional and global analysis of insect population and mapping. International Potato Centre, Lima, Peru, pp 193.
30. Kroschel J, Sporleder M, Tonnang HEZ, Juarez H, Carhuapoma P, Gonzales JC et al. (2013) Predicting climate change-caused changes in global temperature on potato tuber moth *Phthorimaea operculella* (Zeller) distribution and abundance using phenology modeling and GIS mapping. *Agric For Meteorol* 170: 228–241.
31. Fand BB, Tonnang HEZ, Kumar M, Santanu KB, Singh NP, Rao DVKN et al. (2014) Predicting the impact of climate change on regional and seasonal abundance of the mealybug *Phenacoccus solenopsis* Tinsley (Hemiptera: Pseudococcidae) using temperature-driven phenology model linked to GIS. *Ecol Modell* 288: 62–78.
32. Li Z, Zalucki MP, Yonow T, Kriticos DJ, Bao H, Chen H et al. (2015) Population dynamics and management of diamondback moth (*Plutella xylostella*) in China: the relative contributions of climate, natural enemies and cropping patterns. *Bull Entomol Res* 106(2): 197–214. <https://doi.org/10.1017/S0007485315001017> PMID: 26693884
33. Kahuthia-Gathu R (2013) Seasonal incidence of *Plutella xylostella* (Lepidoptera: Plutellidae) and its associated natural enemies in major crucifer growing areas of Kenya. *J Appl Biosci* 46: 3103–3112.
34. Rangwala I, Miller JR (2012) Climate change in mountains: a review of elevation-dependent warming and its possible causes. *Clim Change* 114: 527–547.
35. Pepin N, Bradley RS, Diaz HF, Baraer M, Caceres EB, Forsythe N et al. (2015) Elevation-dependent warming in mountain regions of the world. *Nat Clim Chang* 5: 424–430.
36. Platts PJ, Omeny PA, Marchant R (2014) AFRICLIM: high-resolution climate projections for ecological applications in Africa. *Afr J Ecol* 53(1): 103–108.
37. Mwalusepo S, Tonnang HEZ, Massawe ES, Okuku GO, Khadioli N, Johansson T et al. (2015) Predicting the impact of temperature change on the future distribution of maize stem borers and their natural enemies along East African mountain gradients using phenology models. *PLoS One* 10(6): e0130427. <https://doi.org/10.1371/journal.pone.0130427> PMID: 26075605
38. Pellikka PKE, Lötjönen M, Siljander M, Lens L (2009) Airborne remote sensing of spatiotemporal change (1955–2004) in indigenous and exotic forest cover in the Taita Hills, Kenya. *Int J Appl Earth Obs Geoinf* 11(4): 221–232.
39. Fernandes ECM, Oktingati A, Maghembe J (1984) The Chagga homegardens: a multi-storeyed agroforestry cropping system on Mt. Kilimanjaro, Northern Tanzania. *Agroforest Syst* 2: 73–86.
40. Kahuthia-Gathu R, Löhr B, Poehling HM (2008) Development and reproductive potential of diamondback moth *Plutella xylostella* (Lepidoptera: Plutellidae) on cultivated and wild crucifer species in Kenya. *Int J Trop Insect Sci* 28(1): 19–29.
41. Sporleder M, Tonnang HEZ, Juarez H, Carhuapoma P, Gonzales JC, Simon R et al. (2012) ILCYM—Insect life cycle modeling (version 3.0): a software package for developing temperature-based insect phenology models with applications to regional and global analysis of insect population and mapping (user manual). International Potato Centre, Lima, Peru, pp 124.
42. Akaike H (1973) Information theory and an extension of the maximum likelihood principle. In: Second International Symposium on Information Theory. *Akademiai Kiado*, pp. 267–281.

43. Logan JA, Wollkind DJ, Hoyt SC, Tanigoshi LK (1976) An analytic model for description of temperature dependent rate phenomena in arthropods. *Environ Entomol* 5: 1133–1140.
44. Hilbert DW, Logan JA (1983) Empirical model of nymphal development for the migratory grasshopper, *Melanoplus sanguinipes* (Orthoptera: Acrididae). *Environ Entomol* 12: 1–5.
45. Weibull W (1951) A statistical distribution function of wide applicability. *J Appl Mech* 18: 293–297.
46. Gergonne JD (1974) The application of the method of least squares to the interpolation of sequences. *Hist Math* 1: 439–447.
47. Southwood TRE (1966) *Ecological Methods: With Particular Reference to the Study of Insect Populations*. 1st ed. London, UK: Methuen and Co. Ltd.
48. Ahlrichs R, Taylor PR (1981) The choice of gaussian basis sets for molecular electronic structure calculations. *J Chim Phys* 78: 315–324.
49. Bonnar JD (2010) *The Gamma Function*. Seattle, USA. CreateSpace Independent Publishing Platform.
50. Liu TX, Stansly PA, Hoelmer KA, Osborne LS (1997) Life history of *Nephaspis oculatus* (Coleoptera: Coccinellidae), a predator of *Bemisia tabaci* (Homoptera: Aleyrodidae). *Ann Entomol Soc Am* 90: 776–782.
51. Imura O (1987) Demographic attributes of *Tribolium freeman* Hinton (Coleoptera: Tenebrionidae). *Appl Entomol Zool* 22(4): 449–455.
52. Tanigoshi LK, Browne RW (1978) Influence of temperature on life table parameters of *Metaseiulus occidentalis* and *Tetranychus mcdanieli* (Acarina: Phytoseiidae, Tetranychidae). *Ann Entomol Soc Am* 71: 313–316.
53. R Core Team (2012) R: A language and environment for statistical computing. R Foundation for Statistical Computing. <http://www.R-project.org>. Accessed 12 November 2015.
54. QGIS Development Team (2009). QGIS Geographic Information System. Open Source Geospatial Foundation. <http://qgis.osgeo.org>. Accessed 9 October 2015.
55. Sporleder M, Simon R, Juarez H, Kroschel J (2008) Regional and seasonal forecasting of the potato tuber moth using a temperature-driven phenology model linked with geographic information systems, pp. 15–30. In: Kroschel J, Lacey L (Eds) *Integrated Pest Management for the Potato Tuber Moth Phthorimaea Operculella Zeller—A Potato Pest of Global Importance*. Weikersheim, Germany, Margraf Publishers.
56. American National Standards Institute (2007). American National Standard for Information Systems—Coded Character Sets—7-Bit American National Standard Code for Information Interchange (7-Bit ASCII). ANSI INCITS 4–1986. <http://sliderule.mraiw.com/w/images/7/73/ASCII.pdf>. Accessed 12 August 2016.
57. Nyambo B, Löhr B (2005) The role and significance of farmer participation in biocontrol-based IPM for brassica crops in East Africa. In: *Second International Symposium on Biological Control of Arthropods*. University of California, Riverside, pp. 290–301.
58. Löhr B, Kahuthia-Gathu R, Kariuki C, Obiero J, Gichini G (2007) Impact of an exotic parasitoid on *Plutella xylostella* (Lepidoptera: Plutellidae) population dynamics, damage and indigenous natural enemies in Kenya. *Bull Entomol Res* 97: 337–350. <https://doi.org/10.1017/S0007485307005068> PMID: 17645815
59. Maywald GF, Kriticos DJ, Sutherst RW, Bottomley W (2007) *Dymex Model Builder Version 3: User's Guide*. Hearne Scientific Software Pty Ltd. Melbourne, Australia, pp 172.
60. Chelliah S, Srinivasan K (1986) Bioecology and management of diamondback moth in India, pp. 63–76. In *The Management of Diamondback Moth Management*. Proceedings of the First International Workshop on Management of the Diamondback Moth and Other Crucifer Pests. Asian Vegetable Research and Development Center. Tainan, Taiwan.
61. Guilloux T, Monnerat R, Castelo-Branco M, Kirk A, Bordat D (2003) Population dynamics of *Plutella xylostella* (Lep., Yponomeutidae) and its parasitoids in the region of Brasilia. *J Appl Entomol* 127: 288–292.
62. Tonnang HEZ, Mohamed SF, Khamis F, Ekesi S (2015) Identification and risk assessment for worldwide invasion and spread of *Tuta absoluta* with a focus on Sub-Saharan Africa: implications for phytosanitary measures and management. *PLoS One* 10(8): e0135283. <https://doi.org/10.1371/journal.pone.0135283> PMID: 26252204
63. Honda KI (1992) Hibernation and migration of diamondback moth in Northern Japan, pp.43–50. In *The Management of Diamondback Moth and Other Crucifer Pests*. Proceedings of the Second International Workshop on Management of the Diamondback Moth and Other Crucifer Pests. AVRDC-World Vegetable Centre. Tainan, Taiwan.

64. Trudgill DL, Honek A, Li D, Van Straalen NM (2005) Thermal time-concepts and utility. *Ann Appl Biol* 146: 1–14.
65. Petavy G, David JR, Debat V, Gibert P, Moreteau B (2004) Specific effects of cycling stressful temperatures upon phenotypic and genetic variability of size traits in *Drosophila melanogaster*. *Evol Ecol Res* 6: 873–890.
66. Bahar MH, Soroka JJ, Dossdall LM (2012) Constant versus fluctuating temperatures in the interactions between *Plutella xylostella* (Lepidoptera: Plutellidae) and its larval parasitoid *Diadegma insulare* (Hymenoptera: Ichneumonidae). *Environ Entomol* 41(6): 1653–1661. <https://doi.org/10.1603/EN12156> PMID: 23321115
67. Liu S, Chen F, Zalucki MP (2002) Development and survival of diamondback moth (Lepidoptera: Plutellidae) at constant and alternating temperatures. *Environ Entomol* 31: 221–231.
68. Xing K, Ma CS, Zhao F, Han JC (2015) Effects of large temperature fluctuations on hatching and subsequent development of the diamondback moth (Lepidoptera: Plutellidae). *Fla Entomol* 98(2): 651–659.
69. Ahmad SK, Ali A, Rizvi PQ (2008) Influence of varying temperature on the development and fertility of *Plutella xylostella* (L.) (Lepidoptera: Yponomeutidae) on cabbage. *Asian J Agric Res* 2(1): 25–31.
70. Andrew NR (2013) Population dynamics of insects: impacts of a changing climate, pp. 311–324. In: Rohde K (Ed) *The Balance of Nature and Human Impact*. London, UK, Cambridge University Press.
71. Swann ALS, Fung IY, Chiang JCH (2011) Mid-latitude afforestation shifts general circulation and tropical precipitation. *Proc Natl Acad Sci U S A* 109(3): 712–716. <https://doi.org/10.1073/pnas.1116706108> PMID: 22190490
72. Hemp A (2006) The banana forests of Kilimanjaro: biodiversity and conservation of the Chagga homegardens. *Biodivers Conserv* 15(4): 1193–1217.
73. Stigter CJ (1984) Traditional use of shade: a method of microclimate manipulation. *Arch Meteorol Geophys Bioklimatol B* 34: 203–210.
74. Stigter K (1987) Traditional manipulation of microclimate factors: knowledge to be used. *ILEIA Newsletter* 3(3): 5–6. [http://www.agriculturesnetwork.org/magazines/global/microclimate-management/traditional-manipulation-of-microclimate-factors/at\\_download/article\\_pdf](http://www.agriculturesnetwork.org/magazines/global/microclimate-management/traditional-manipulation-of-microclimate-factors/at_download/article_pdf). Accessed 18 June 2016.
75. Weiwei L, Wenhua L, Moucheng L, Fuller AM (2014) Traditional agroforestry systems: one type of globally important agricultural heritage systems. *J Resour Ecol* 5(4): 306–313.
76. Soini (2000) Changing landscapes and livelihoods on the southern slopes of Mt. Kilimanjaro, Tanzania. Nairobi, Kenya. World Agroforestry Centre.
77. Lott JE, Ong CK, Black CR (2009) Understorey microclimate and crop performance in a *Grevillea robusta*-based agroforestry system in semi-arid Kenya. *Agric For Meteorol* 149:1140–1151.
78. Hemp A (2009). Climate change and its impact on the forests of Kilimanjaro. *Afr J Ecol* 47: 3–10.
79. Craparo ACW, Van Asten PJA, Läderach P, Jsogne LTP, Grab SW (2015) *Coffea arabica* yields decline in Tanzania due to climate change: global implications. *Agric For Meteorol* 2017: 1–10.
80. Aminu-Kano A, Gundel S, Kilambya W, Lazaro E, Polet G, Ruiz-Vega J et al. (1992) Coming down the mountain: a study of agriculture on the slopes of Mount Kilimanjaro Tanzania. Working Document Series 21, International Centre for Development Oriented Research in Agriculture. 111 pp.
81. Miranda F, Bylund H, Grönberg L, Larsson L, Björkman C (2011) Population density and killing capacity by predators of eggs and larvae of the diamondback moth in Nicaragua. *Environ Entomol* 40(2): 333–341.
82. Bergant K, Trdan S, Znidarcic D, Crepinsek Z, Kajfez-Bogata L (2005) Impact of climate change on developmental dynamics of *Thrips tabaci* (Thysanoptera: Thripidae): can it be quantified? *Environ Entomol* 34(4): 755–766.
83. Barton BT, Ives AR (2014) Direct and indirect effects of warming on aphids, their predators, and ant mutualists. *Ecol* 95(6): 1479–1484.
84. Zhang W, Zhao F, Hoffmann AA, Ma CS (2013) A single hot event that does not affect survival but decreases reproduction in the diamondback moth, *Plutella xylostella*. *PLoS One* 8(10): e75923. <https://doi.org/10.1371/journal.pone.0075923> PMID: 24116081
85. Zhang W, Chang XQ, Hoffmann AA, Zhang S, Ma CS (2015). Impact of hot events at different developmental stages of a moth: the closer to adult stage, the less reproductive output. *Sci Rep* 5: 10436. <https://doi.org/10.1038/srep10436> PMID: 26000790
86. Zhang W, Rudolf VHW, Ma CS (2015) Stage-specific heat effects: timing and duration of heat waves alter demographic rates of a global insect pest. *Oecol* 179: 947–957.
87. Smith TJ, Villet MH (2001) Parasitoids associated with the diamondback moth, *Plutella xylostella* (L.), in the Eastern Cape, South Africa, pp. 249–253. In *The Management of Diamondback Moth and Other Crucifer Pests*. Proceedings of the Fourth International Workshop on Management of the Diamondback

Moth and Other Crucifer Pests. Department of Natural Resources and Environment. Melbourne, Australia.

88. Guo S, Qin Y (2010) Effects of temperature and humidity on emergence dynamics of *Plutella xylostella* (Lepidoptera: Plutellidae). *J Econ Entomol* 103: 2028–2033. <https://doi.org/10.1603/EC09251> PMID: 21309222
89. Yamada H, Kawasaki K (1983) The effect of temperature and humidity on the development, fecundity and multiplication of the diamondback moth, *Plutella xylostella* (L.). *Jpn J Appl Entomol Z* 27: 17–21.
90. Kobori Y, Amano H (2003) Effect of rainfall on a population of the diamondback moth, *Plutella xylostella* (Lepidoptera: Plutellidae). *Appl Entomol Zool* 38: 249–253.
91. Sivapragasam A, Ito Y, Saito T (1988) Population fluctuations of the diamondback moth, *Plutella xylostella* (L.) on cabbages in *Bacillus thuringiensis* sprayed and non sprayed plots and factors affecting within-generation survival of immatures. *Res Popul Ecol* 30: 329–342.
92. Rebaudo F, Faye E, Dangles O (2016) Microclimate data improve predictions of insect abundance models based on calibrated spatiotemporal temperatures. *Front Physiol* 7(139): 1–12.



Copyright of PLoS ONE is the property of Public Library of Science and its content may not be copied or emailed to multiple sites or posted to a listserv without the copyright holder's express written permission. However, users may print, download, or email articles for individual use.