

ALL PAID

60

1900

1006

Sept 5

Return of funds applied for

that you have

at previous

at New York

at New York

I have

of the

of the

of the

of the

of the

of the

of the

of the

of the

of the

of the

of the

of the

of the

5-10
10-10-1908

[Faint handwritten notes, possibly a list or ledger entries, covering the left side of the page.]

10-10-1908

10-10-1908

10-10-1908

With reference to my Report No. 91 of 1907-8
I have the honor to acknowledge the receipt of your letter of the 10th inst. in relation to the applications for land in the West Africa Project during the half year ending June 30th 1908.

This statement covers the following sub-divisions:

- A. Applications which were granted during the half year ending June 30th 1908.
- B. Applications which were still pending settlement at the end of the half year.
- C. Applications which have been cancelled or withdrawn.

Very truly yours,
[Signature]



60000000

May 26 October 1906

Post. no. 687

St. Col. Kings, Seattle, WA

MINUTE.

- Mr. Postmaster 26/10
- Mr. Ellis 26/10
- Mr. Amroby
- Mr. ...
- Mr. ...

Dear Sir,

I am in receipt of your
 letter no. 2158 of the
 5th of September,
 enclosing the request
 of applications for
 ... of land in the
 ...
 ...
 ...
 ...

of ... to
 ...
 ...

to
land and

of 9000 acres
behold and 1000
fulhold each

to the Gov. of P.S.
and D. Van Breda.

Consider that it will
be necessary to take

care that the rules
limiting the amount

of land which a
person could

acquire be so framed
as to be consistent

with the principles
of justice and equity

and to be adapted
to the circumstances

of the colony
and to be subject
to the control of the
Legislature.

to be

22
has

to be
to be

to be
to be

to be
to be

to be
to be

to be
to be

1855

Freehold.	9	1000
	1	990
	1	857
Leasehold.	1	13,000
	3	2,000
	3	5,000
	6	10,000 + 5,000
	2	1000



Adding to Freehold the 20-2106 acres of freehold and pre-empted land in Illkanta, we have a total of 13,548 acres.

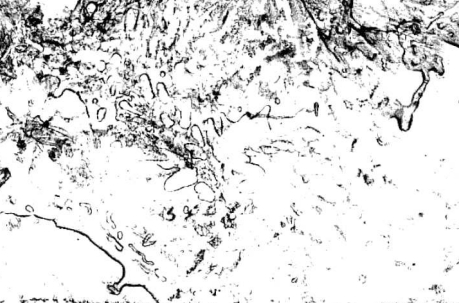
Now with the 85,159 acres of leasehold and other plots now or pre-empted in Illkanta, we have a total of 98,697 acres - or 84,214 will.

Now if we add to the above the pre-empted land in Illkanta, we have a total of 112,245 acres.

... 21 grants

... ..

35
15



...

...

... ..

1000
1000
1000
1000

... ..
... ..
... ..
... ..
... ..
... ..
... ..
... ..

1000

100
100

GENERAL AND SPECIAL INVESTIGATIONS

Report for July 1906 No. 30 Series 1906 Base 1906

Name of Plant	Locality	Elevation	Date of Collection	Collector	Remarks
<i>Sida</i> Tobacco	Pinar del Rio Haka and Cimarron	1000 feet	July 1906	S. P. Hillebrand	Common
<i>Sida</i>	Pinar del Rio	1000 feet	July 1906	S. P. Hillebrand	Common
<i>Sida</i>	Pinar del Rio	1000 feet	July 1906	S. P. Hillebrand	Common
<i>Sida</i>	Pinar del Rio	1000 feet	July 1906	S. P. Hillebrand	Common
<i>Sida</i>	Pinar del Rio	1000 feet	July 1906	S. P. Hillebrand	Common
<i>Sida</i>	Pinar del Rio	1000 feet	July 1906	S. P. Hillebrand	Common

LAND INDUSTRIES AND MINING

Name of Property	Location	Area	Value	Remarks
...
...
...
...
...
...
...
...
...
...
...
...
...
...
...
...
...
...
...
...
...
...
...
...
...

Handwritten notes in the bottom left corner of the table.

Handwritten notes in the bottom right corner of the table.

INDUSTRIAL AND MINING

for half of 1890

a

No.	Description	Quantity	Unit	Value
1	Building	1	sq. ft.	100
2	Building	1	sq. ft.	100
3	Building	1	sq. ft.	100
4	Building	1	sq. ft.	100
5	Building	1	sq. ft.	100
6	Building	1	sq. ft.	100
7	Building	1	sq. ft.	100
8	Building	1	sq. ft.	100
9	Building	1	sq. ft.	100
10	Building	1	sq. ft.	100
11	Building	1	sq. ft.	100
12	Building	1	sq. ft.	100
13	Building	1	sq. ft.	100
14	Building	1	sq. ft.	100
15	Building	1	sq. ft.	100
16	Building	1	sq. ft.	100
17	Building	1	sq. ft.	100
18	Building	1	sq. ft.	100
19	Building	1	sq. ft.	100
20	Building	1	sq. ft.	100

1890

1890

1890

1890

1890

LAND AND MINING CONCESSIONS

1906. Feb. 1906. Feb. 1906. Feb. 1906.

No.	Name	Date	Result of Application	Whether subject to P.O. or other law	Status of land	Remarks
1	Albin K.	1904. No. 24	Granted	Locally		
2	Do	1904. No. 24	do	do		
3	Do	1904. No. 24	do	do		
4	Do	1904. No. 24	do	do		
5	Do	1904. No. 24	do	do		
6	Do	1904. No. 24	do	do		
7	Do	1904. No. 24	do	do		
8	Do	1904. No. 24	do	do		
9	Do	1904. No. 24	do	do		
10	Do	1904. No. 24	do	do		
11	Do	1904. No. 24	do	do		
12	Do	1904. No. 24	do	do		
13	Do	1904. No. 24	do	do		
14	Do	1904. No. 24	do	do		
15	Do	1904. No. 24	do	do		
16	Do	1904. No. 24	do	do		
17	Do	1904. No. 24	do	do		
18	Do	1904. No. 24	do	do		
19	Do	1904. No. 24	do	do		
20	Do	1904. No. 24	do	do		
21	Do	1904. No. 24	do	do		
22	Do	1904. No. 24	do	do		
23	Do	1904. No. 24	do	do		
24	Do	1904. No. 24	do	do		
25	Do	1904. No. 24	do	do		
26	Do	1904. No. 24	do	do		
27	Do	1904. No. 24	do	do		
28	Do	1904. No. 24	do	do		
29	Do	1904. No. 24	do	do		
30	Do	1904. No. 24	do	do		
31	Do	1904. No. 24	do	do		
32	Do	1904. No. 24	do	do		
33	Do	1904. No. 24	do	do		
34	Do	1904. No. 24	do	do		
35	Do	1904. No. 24	do	do		
36	Do	1904. No. 24	do	do		
37	Do	1904. No. 24	do	do		
38	Do	1904. No. 24	do	do		
39	Do	1904. No. 24	do	do		
40	Do	1904. No. 24	do	do		
41	Do	1904. No. 24	do	do		
42	Do	1904. No. 24	do	do		
43	Do	1904. No. 24	do	do		
44	Do	1904. No. 24	do	do		
45	Do	1904. No. 24	do	do		
46	Do	1904. No. 24	do	do		
47	Do	1904. No. 24	do	do		
48	Do	1904. No. 24	do	do		
49	Do	1904. No. 24	do	do		
50	Do	1904. No. 24	do	do		
51	Do	1904. No. 24	do	do		
52	Do	1904. No. 24	do	do		
53	Do	1904. No. 24	do	do		
54	Do	1904. No. 24	do	do		
55	Do	1904. No. 24	do	do		
56	Do	1904. No. 24	do	do		
57	Do	1904. No. 24	do	do		
58	Do	1904. No. 24	do	do		
59	Do	1904. No. 24	do	do		
60	Do	1904. No. 24	do	do		
61	Do	1904. No. 24	do	do		
62	Do	1904. No. 24	do	do		
63	Do	1904. No. 24	do	do		
64	Do	1904. No. 24	do	do		
65	Do	1904. No. 24	do	do		
66	Do	1904. No. 24	do	do		
67	Do	1904. No. 24	do	do		
68	Do	1904. No. 24	do	do		
69	Do	1904. No. 24	do	do		
70	Do	1904. No. 24	do	do		
71	Do	1904. No. 24	do	do		
72	Do	1904. No. 24	do	do		
73	Do	1904. No. 24	do	do		
74	Do	1904. No. 24	do	do		
75	Do	1904. No. 24	do	do		
76	Do	1904. No. 24	do	do		
77	Do	1904. No. 24	do	do		
78	Do	1904. No. 24	do	do		
79	Do	1904. No. 24	do	do		
80	Do	1904. No. 24	do	do		
81	Do	1904. No. 24	do	do		
82	Do	1904. No. 24	do	do		
83	Do	1904. No. 24	do	do		
84	Do	1904. No. 24	do	do		
85	Do	1904. No. 24	do	do		
86	Do	1904. No. 24	do	do		
87	Do	1904. No. 24	do	do		
88	Do	1904. No. 24	do	do		
89	Do	1904. No. 24	do	do		
90	Do	1904. No. 24	do	do		
91	Do	1904. No. 24	do	do		
92	Do	1904. No. 24	do	do		
93	Do	1904. No. 24	do	do		
94	Do	1904. No. 24	do	do		
95	Do	1904. No. 24	do	do		
96	Do	1904. No. 24	do	do		
97	Do	1904. No. 24	do	do		
98	Do	1904. No. 24	do	do		
99	Do	1904. No. 24	do	do		
100	Do	1904. No. 24	do	do		

33 / 1

DO I QUANT
E. SPAN
ALTA

DO I QUANT
E. SPAN
ALTA