



ELSEVIER

**Small Blood Vessel Disease in the Brain Theme Issue**

## REVIEW

# Cerebral Small Vessel Disease in Sporadic and Familial Alzheimer Disease

Rajesh N. Kalaria\*<sup>†</sup> and Diego Sepulveda-Falla<sup>‡</sup>

From the Neurovascular Research Group,\* Translational and Clinical Research Institute, Newcastle University, Newcastle upon Tyne, United Kingdom; the Department of Human Anatomy,<sup>†</sup> College of Health Sciences, University of Nairobi, Nairobi, Kenya; and the Institute of Neuropathology,<sup>‡</sup> University Medical Center Hamburg-Eppendorf, Hamburg, Germany

Accepted for publication  
July 2, 2021.

Address correspondence to  
Rajesh N. Kalaria, F.R.C.Path.,  
Translational and Clinical  
Research Institute, Newcastle  
University, Campus for Ageing  
and Vitality, Newcastle upon  
Tyne, NE4 5PL, United King-  
dom. E-mail: [raj.kalaria@ncl.ac.uk](mailto:raj.kalaria@ncl.ac.uk).

Alzheimer disease (AD) is the most common cause of dementia. Biological definitions of AD are limited to the cerebral burden of amyloid  $\beta$  plaques, neurofibrillary pathology, and neurodegeneration. However, current evidence suggests that various features of small vessel disease (SVD) are part of and covertly modify both sporadic and familial AD. Neuroimaging studies suggest that white matter hyperintensities explained by vascular mechanisms occurs frequently in the AD spectrum. Recent advances have further emphasized that frontal periventricular and posterior white matter hyperintensities are associated with cerebral amyloid angiopathy in familial AD. Although whether SVD markers precede the classically recognized biomarkers of disease is debatable, post-mortem studies show that SVD pathology incorporating small cortical and subcortical infarcts, microinfarcts, microbleeds, perivascular spacing, and white matter attenuation is commonly found in sporadic as well as in mutation carriers with confirmed familial AD. Age-related cerebral vessel pathologies such as arteriosclerosis and cerebral amyloid angiopathy modify progression or worsen risk by shifting the threshold for cognitive impairment and AD dementia. The incorporation of SVD as a biomarker is warranted in the biological definition of AD. Therapeutic interventions directly reducing the burden of brain amyloid  $\beta$  have had no major impact on the disease or delaying cognitive deterioration, but lowering the risk of vascular disease seems the only rational approach to tackle both early- and late-onset AD dementia. (*Am J Pathol* 2021, ■: 1888–1905; <https://doi.org/10.1016/j.ajpath.2021.07.004>)

The most common cause of age-related dementia is the multifactorial Alzheimer disease (AD). Although <5% of biologically defined AD is thought to be familial in nature, even this proportion exhibits high phenotypic variability that can be modified by lifestyle or environmental factors. Late-onset AD is pathologically confirmed by the presence of extracellular amyloid  $\beta$  (A $\beta$ ) plaques, intracellular hyperphosphorylated tau, and neuron (or synaptic) loss.<sup>1</sup> Early-onset or familial AD bears similar biological features, although typically, the hallmark pathology accrues considerably before 65 years of age. Clinical AD patients predominantly present with an insidious progressive irreversible amnesia and global cognitive decline in the absence of overt vascular disease. However, numerous post-mortem studies show that vast majority of patients diagnosed with AD dementia invariably have cerebral vascular pathology

above and beyond normally aging healthy individuals.<sup>2–4</sup> Many of the brain vascular changes are attributed to covert or silent cerebral small vessel disease (SVD). SVD features involving intracranial vessels <1 mm in diameter may be acquired subsequent to the initial clinical diagnosis of AD but most likely result from long-standing hypertensive or other vascular disease, or from age-related intracranial microvascular pathology.<sup>5</sup>

Supported by Alzheimer's Research UK grant ARUK PG2013-22; Medical Research Council, UK grant MRC, G0500247 (R.N.K.); and US National Institute of Neurological Disorders and Stroke and National Institute on Aging cofunded grant RFINS110048 (D.S.-F.).

Disclosures: None declared.

This article is part of a review series on small blood vessel disease in the brain addressing current knowledge, new mechanisms, biomarkers, and therapeutic approaches.

While cerebral SVD independently contributes to morbidity, disability, and mortality, several studies have confirmed that SVD also adds to or modifies progression to dementia such that the threshold for impairment is reached earlier.<sup>6,7</sup> For example, in the Nun study, SVD type of pathology in the form of lacunar infarcts in the basal ganglia, thalamus, or deep white matter (WM) was described to be associated with a higher prevalence of dementia.<sup>8</sup> The presence of small vessel changes in clinically diagnosed and pathologically confirmed AD is not necessarily denied,<sup>9</sup> but deciphering whether vascular brain injury occurs prior to or concomitantly with neurodegenerative changes, has become a burning issue in AD research.

This review discusses the current evidence of SVD in early- and late-onset AD, and evaluate its contribution in the spectrum of AD. It also appraises whether early-onset AD cases support the proposal that prior vascular dysfunction is part of the biomarker profile of AD. This is timely because it is strikingly clear that reducing brain A $\beta$  overload via any treatment intervention has not had a substantial impact on improving cognition,<sup>10</sup> but lowering the severity or risk of vascular disease seems the worthwhile option to reduce the incidence of AD dementia.

## Epidemiology and Vascular Risk Factors in AD

Although conscious efforts are made to exclude the presence of overt vascular disease in the diagnosis of AD dementia, reasonable evidence suggests that sporadic AD is associated with pre-existing or late acquired vascular risk factors. These include hypertension, diabetes mellitus, hypercholesterolemia, obesity, metabolic syndrome, and atherosclerosis; all collectively promote morbidity and specifically increase the probability of clinical AD diagnosis. Current systematic reviews and recent meta-analyses have identified hypertension in midlife, high body mass index in late life, hyperhomocysteinemia, diabetes, head trauma, and orthostatic hypotension to be most strongly associated with dementia or AD.<sup>11–14</sup> In addition, vascular risk factors promote conversion of mild cognitive impairment to frank dementia.<sup>15</sup>

Blood pressure is one of the most widely evaluated risk factors for dementia and AD in particular. Hypertension is a risk for WM damage as well as clinically covert lesions such as arteriolosclerosis, microbleeds, microinfarcts, infarcts, endothelial damage, and vascular inflammation.<sup>13,16–19</sup> Although nondemented, normally aging individuals have histories of hypertension, large cohort studies suggest an association between systolic hypertension (>160 mm Hg) in midlife and late-onset AD by a risk of 18% to 25%<sup>20</sup> or decreased risk of AD in the short term, possibly due to reverse causation.<sup>21</sup> Blood pressure variability, albeit visit-to-visit or day-to-day, is also associated with progression of AD,<sup>22</sup> and optimal blood pressure management appears to be important for prevention of dementia.<sup>23</sup> The case for hypertension is further supported by a recent meta-analysis that explored the association of incident

AD with the use of five antihypertensive medications.<sup>24</sup> High systolic blood pressure (>140 mm Hg) with a median follow-up of 7 to 22 years in those using any antihypertensive agent had reduced risk for developing AD (HR, 0.8; 95% CI, 0.7 to 1.0) compared with those not on any antihypertensive agent. There were no significant differences between one drug class versus all others on risk of dementia. This indicates that certain protective measures against cardiovascular pathology appear beneficial in AD, although the use of antihypertensives in secondary prevention of what is described as pure AD seems to be unclear.<sup>25</sup> Findings from other longitudinal studies such as Atherosclerosis Risk in Communities (ARIC)<sup>26</sup> and SPRINT MIND<sup>27</sup> suggest that intensive blood pressure control would be beneficial for the risk of dementia and AD. Long-term hypertension may have a major role in subclinical cerebral SVD across subtypes and brain regions highlighting the need to recognize and treat hypertension early in life.<sup>18</sup> It is not unlikely that long-standing increase or variability in blood pressure may disrupt vasoregulatory functions, promote blood-brain barrier (BBB) damage, and cause neurodegeneration.<sup>28</sup> Each vascular factor or collectively all, in different combinations, may unevenly alter the vasculature of the body or brain to cause distortions in normal structure and function, and potentially induce a chronic cerebral hypoperfusive state in old age.<sup>29</sup>

Whether hypertension *per se* substantially increases AD pathology is still not clear. In the Honolulu-Asia Aging Study (HAAS), midlife systolic and diastolic blood pressures were associated with an increased number of neuritic plaques and neurofibrillary pathology,<sup>30</sup> whereas clinical studies showed that higher pulse pressure was associated with cerebral amyloidosis in the presence of neurodegeneration and progression to dementia and increased plasma A $\beta$  concentrations.<sup>31</sup> Another study showed that medicated hypertensives exhibited less AD pathology.<sup>32</sup> In the Religious Orders Study and the Rush Memory and Aging Project (RUSH) cohort, association between higher systolic blood pressure, albeit in late-life, was also associated with higher tangle burden.<sup>33</sup> Well-designed longitudinal prospective studies with post-mortem examination and a treatment intervention to control vascular risk factors by demonstrating reduction in AD pathology and neuronal atrophy could address this important question.

## Spectrum of SVD Pathology in AD

Cerebrovascular pathology corresponding to most radiologically defined lesions is common in late-onset AD (Table 1). Although there is uncertainty whether Auguste Deter<sup>34</sup> developed early- or late-onset AD, it is intriguing that Alzheimer had described vascular changes including neovascularization in this original case. Numerous studies<sup>3,4,35–38</sup> have now reported that patterns of pure neuritic plaque and neurofibrillary tangle pathology are not the norm in pathologically diagnosed AD (Figure 1). Small lesions including lacunar infarcts, microinfarcts, hemosiderin

deposition or microbleeds, arteriosclerosis, cerebral amyloid angiopathy (CAA), and arteriosclerotic leukoencephalopathy, or WM attenuation, are recorded, but large infarcts (>1 cm in diameter) tend to be selected out from such cohorts.<sup>3</sup> However, in a recent analysis from several centers, nearly 20% of AD subjects exhibited large infarcts.<sup>39</sup> Findings from the National Alzheimer's Coordinating Centers showed that whereas only 32% of the AD cases reported cerebrovascular disease, SVD in terms of both parenchymal and vessel pathologies included lacunes in 20%, multiple microinfarcts in 20%, arteriosclerotic leukoencephalopathy in 9%, hemorrhages in 7%, atherosclerosis in 40%, arteriolosclerosis in 35%, and CAA in 41% of AD cases. Overall, various features of SVD pathology were present in up to 80% of the 4629 AD autopsies.<sup>4</sup> In other clinicopathologic studies, even greater proportions of SVD pathology<sup>40,41</sup> were evident. In addition, the authors have reported high frequencies (approximately 100%) of microvascular degeneration in prospectively assessed AD subjects.<sup>42,43</sup> Remarkably, familial AD bears various features of SVD including severe WM attenuation and infarcts, although reporting such lesions was not the intent of previous studies, which focused on patterns of A $\beta$  deposition in the parenchyma and intracerebral vessels.<sup>44,45</sup> In fact, a large study in familial AD cases determined that WM hyperintensities (WMH) are a core feature in familial AD pathology.<sup>46</sup> In a South African subject with presenilin 1 (*PSEN1*) *Ile143Met* mutation, border zone infarcts, microinfarcts, arteriolosclerosis, perivascular spaces, and severe WM attenuation were also noted.<sup>47</sup> Similarly, in the large Colombian *PSEN1* *Glu280Ala* kindred,<sup>48</sup> severe SVD pathology not necessarily attributed to CAA was noted (D. Sepulveda-Falla, R.N. Kalaria, unpublished data).

Besides the inherent inconsistencies in reporting of SVD lesions across different centers, there is also an apparent mismatch or perhaps under-reporting of generally low prevalence of cardiovascular disease or relevant risk factors compared with degrees of SVD pathology in AD (and other neurodegenerative disorders such as Lewy body disease).<sup>4</sup> In a recent study,<sup>49</sup> clinical hypertensive disease or diabetes mellitus was recorded to be 10% lower, yet pathologic features of systemic vascular disease including moderate-to-severe coronary stenosis and variable infarction were up in 50% of the cases at post-mortem examination. Subclinical disease including cardiac dysfunction increases the risk of dementia.<sup>14,50</sup>

Individuals diagnosed with AD in the community at large also tend to have greater vascular pathology compared with those from memory clinics.<sup>2,51</sup> Normally aging community-dwelling older persons have some brain changes, and those with dementia often have multiple brain pathologies. However, cerebrovascular disease in AD patients increases the risk of developing clinical dementia and is additive,<sup>52</sup> taking lower burdens of AD pathology to tip over the threshold. In the HAAS, the five most important pathologies include microinfarcts, which are clinically silent but are correlated with dementia.<sup>53</sup>

Recent studies have highlighted cerebral arteriolosclerosis to be common in AD and other dementias.<sup>19</sup> The arteriolar wall modifications<sup>3</sup> comprise fibrinoid necrosis (and/or lipohyalinosis), microatheromas, and segmental arterial disorganization (Figure 1). Focal arteriolosclerotic changes characterized by degeneration of vascular myocytes (acellular) with concentric accumulation of extracellular matrix components, such as collagen and fibroblasts, are often evident in small vessels in the deep WM and basal ganglia.<sup>43</sup> Both cerebral arteriolosclerosis and atherosclerosis are independently associated with dementia and contribute to low scores in most cognitive domains, suggesting that covert vessel pathology is an under-recognized risk for AD dementia.<sup>54</sup> Interestingly, the presence of apolipoprotein E (*APOE*; ApoE)  $\epsilon$ 4 allele or vascular risk factors did not change the association between either of these vascular pathologies and dementia outcome.<sup>52</sup> There is also likely to be a complex, yet unappreciated, physiological interaction between risk factors associated with metabolic syndrome such as hypertension and inflammation to culminate in the arteriolar pathology.<sup>19</sup>

Arteriolar changes in familial AD do not appear to be vastly different from familial SVD such as those in cerebral autosomal dominant arteriopathy with subcortical infarcts and leukoencephalopathy (CADASIL).<sup>55</sup> In the *PSEN1* *Pro117Leu* mutation carriers, in addition to attenuation and perivascular spaces in the WM, there is an accelerated process of transformation in arteriolar myocytes characterized by loss of the tunica media, marked fibrous thickening of arteries and arterioles, and double-barreled arterioles that are comparable to, but distinct in some ways, from those in CADASIL. Cerebral capillaries with A $\beta$  deposits also reveal enhanced expression of fibrillar collagen 3 and 4. Ultrastructural studies indicate the presence of both A $\beta$  and collagen fibers within thickened basement membrane of capillaries. Degenerated-appearing pericytes are also observed with clusters of collagen fibers between lamellae of basement membranes.<sup>56</sup> In general, these observations are consistent with other pathologic studies of familial AD.<sup>44,47,57</sup>

Patterns of SVD are remarkably similar in neurodegenerative diseases, and the WM is particularly vulnerable irrespective of primary ischemic injury or a proteinopathy.<sup>3,58</sup> The natural history and staging of SVD suggest that arteriolosclerosis and CAA are the earliest changes. Modifications in perivascular spaces and myelin loss are the next most common lesions. Lacunar or regional infarcts, microinfarcts, and microbleeds occur because of an independent process or in the final phases of SVD (Figure 1). These may result from occlusion by microemboli or microthrombi originating from artery-to-artery thromboembolism and emboli from the heart.<sup>59</sup> Other causes include microaneurysms and repeated parenchymal injury resulting from the disruption of flow due to arteriolar stiffening and tortuosity. The regional progression of vessel changes suggests that CAA proceeds from neocortical to subcortical

**Table 1** Radiological and Pathologic Features of Spectrum of Small Vessel Disease in AD Dementia

Clinical features	SVD feature	Imaging marker	Key pathologic features	Degree of change in AD (cf. aging or neurological controls)*
Stroke(s)/vascular origin	Silent infarcts	WMHs on T2W, FLAIR, ↑ high signal	Unclear	++
	Transient Ischemic attacks	WMHs on DWM; high signal	Unclear	+
	White matter attenuation	WMHs (pvWMH, dWMH), WM atrophy in CAA; high signal	Demyelination in deep WM; axon damage	+++
	Lacunar infarcts	Hyperintense lesions on T2W/FLAIR	Lacunae (<1.5 cm) in BG, thalamus, WM	++
	Cortical Infarcts	Hyperintense lesions on T2W/FLAIR	Cortical infarcts	+
	Microinfarcts	Tiny hyperintense lesions on T2W (3T, 7T)	Microinfarcts (<0.5 cm) in GM and WM	+++
	Microbleeds	T2*W or GRE signal lobar and deep bleeds; hypointense lesions on T2W	Hemosiderin deposits in cortex (CAA) and subcortical structures (hypertensive)	++
Vascular pathologies	Intracerebral hemorrhages	Hyperintense on CT; hypointense lesions on T2W	ICH, microaneurysms	+
	Cerebral siderosis	Hypointense signal on GRE	SAH	+
	Perivascular spaces (enlarged Virchow-Robin spaces)	Hyperintense rounded lesions on T2W/FLAIR	PVS in WM; GM of BG	++
	Intracranial atherosclerosis	Unclear	Occasional microatheromas in branches of MCA, ACA	+
	Arteriolosclerosis	Unclear	Moderate-severe arteriolosclerosis	+++
Vascular Function	CAA	Posterior WMHs, lobar microbleeds	Moderate-severe CAA in cortex; predominance in occipital lobe	+++
	CBF	Resting CBF	Parietal, temporal lobes, BG	+++
	BBB function	Permeability on MRI (contrast agents, Gd)	EC damage, ↓ capillary density	+++
	PVW	Phase contrast MRI; pulse sequence with retrospective peripheral pulse gating sequences	Arteriosclerotic vessels; collagen fibers	+++
	Autonomic function (hypoperfusion)	Tilt table, carotid sinus supersensitivity (OH, CSH)	WMLs, arteriolosclerosis, microinfarcts in BG	++

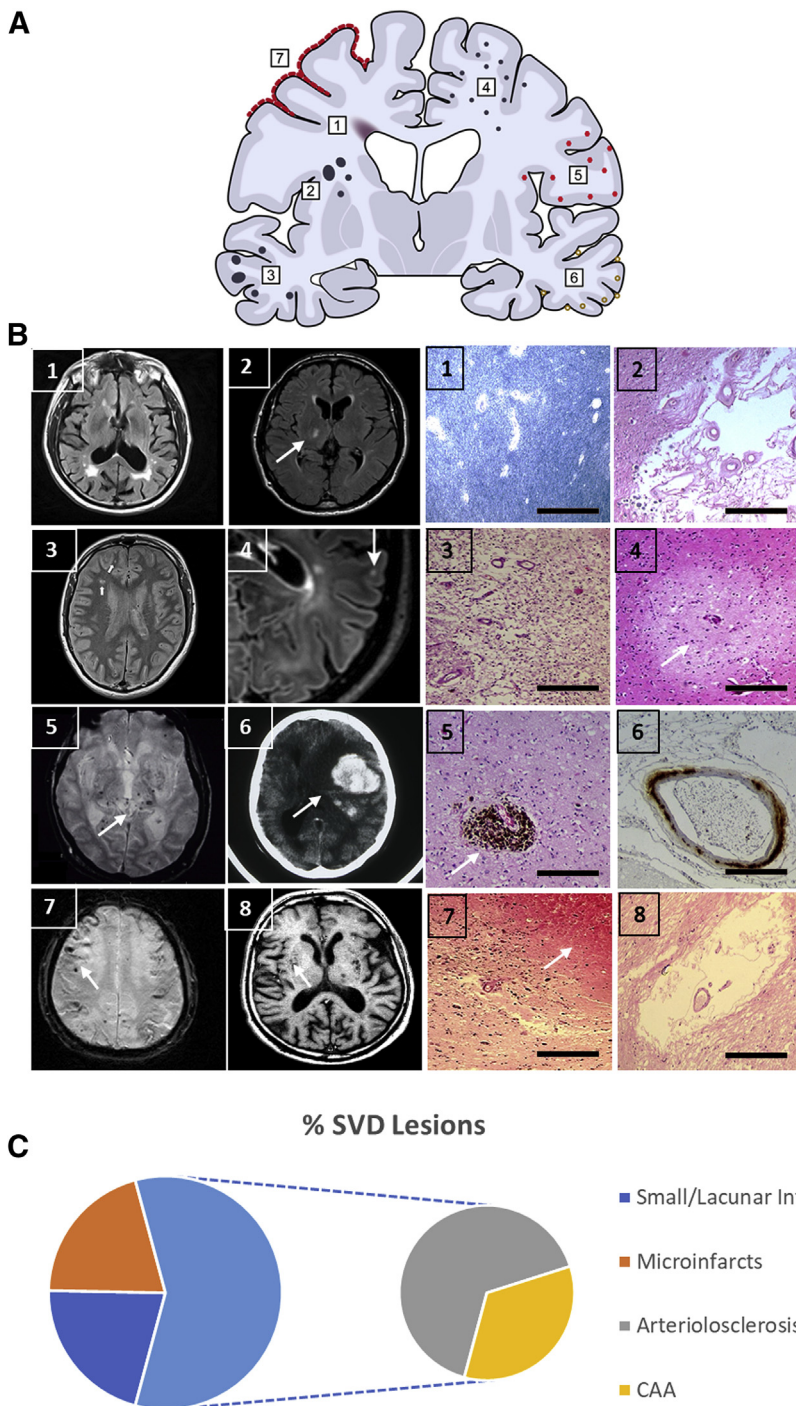
Neuroimaging and pathologic changes involving SVD in AD.

\*Changes found in AD type of dementia above and beyond normally aging healthy subjects. Arrow (↑) indicates increase. Scale of change means scores: +, mild (1); ++ moderate (2), severe +++ (3). Microhemorrhages may be caused by leakage by two mechanisms: microaneurysms and rupture of walls due to deposition of fibrillar proteins or iron.<sup>28</sup>

ACA, anterior cerebral artery; AD, Alzheimer disease; BG, basal ganglia; CAA, cerebral amyloid angiopathy; CBF, cerebral blood flow; CSH, carotid sinus hypersensitivity; DWM, deep white matter; dWMH, deep white matter hyperintensities; EC, endothelial cell; FLAIR, fluid attenuated inversion recovery; Gd, gadolinium; GM, grey matter; GRE, gradient echo; ICH, intracerebral hemorrhage; MCA, middle cerebral artery; MRI, magnetic resonance imaging; OH, orthostatic hypotension; PVS, perivascular space; pvWMH, periventricular white matter hyperintensities; PVW, pulse wave velocity; SAH, subarachnoid hemorrhage; SVD, small vessel disease; WM, white matter; WMH, white matter hyperintensities; WML, white matter lesion.

structures. Although pre-existing hypertensive disease distorts and damages the microvasculature,<sup>19</sup> cerebral vessels laden with A $\beta$  aggregates cause arteriosclerotic changes and damage the endothelium. Specific segmental patterns of capillary and arteriolar dysfunction appear to contribute to CAA and AD pathology.<sup>42,60</sup> Although initiating factors causing CAA microangiopathy may be different, end-stage pathology appears invariably similar, involving replacement of myocytes with collagenous or other nontensile

fibrillar material in both sporadic and familial cases. Intracranial arterial dolichoectasia also appears another cause of SVD, although this has not been widely described in AD. Microaneurysms arise in the context of hypertension, at weakened sites in vessel walls. The walls of aneurysms are composed of hyaline connective tissue, damaged myocytes, and elastica interna that may rupture to produce globular hemorrhages. They are transformed into fibrocollagenous balls, evident as complex tortuosities, when they heal due to



**Figure 1** **A:** Schematic of a coronal brain section showing different types of SVD pathologies found in sporadic and familial AD. Numbers in boxes (1 to 7) correspond to the location and type of lesions in **B**. Location of perivascular spaces generally in WM and subcortical grey matter (see below image 8 right and left). **B:** Images 1 to 8 (left) show MR scans in the axial plane with different lesions recognized and quantified in AD patients during life. Images 1 to 8 (right) show microscopic images of equivalent pathologies found in late-onset AD cases. Each of the pathologies has been demonstrated and often quantified in different cohorts consistently indicating greater representation of these pathologies in sporadic as well as familial AD than in aging controls or less common neurodegenerative dementias.<sup>3,4</sup> These include perivascular and deep WM lesions or attenuation (image 1, right and left), lacunar infarcts (<1.5 cm) (image 2, right and left), cortical or WM infarcts (1 to 2 cm) (image 3, right and left) in a *PSEN1 Glu280Ala*, microinfarcts (<0.5 cm) (image 4, right and left), lobar or deep microbleeds or hemosiderin (image 5, right and left), CAA or CAA-related ICH (image 6, right and left), superficial siderosis (image 7, right and left), and perivascular spaces (image 8, right and left). Increased perivascular spacing occurs because of reduction in arterial vascular tone and lack of perivascular solute drainage.<sup>35</sup> The WM changes ensue due to a chronic hypoxic state and decline in oligodendrocytes.<sup>36,37</sup> **Arrows** in panels show the location of key lesion(s). **C:** Pie chart shows average proportions of SVD pathologies in community-based observational and longitudinal cohort studies. % SVD lesions involve at least one lacunar infarct, a microinfarct, moderate-to-severe arteriolosclerosis, or CAA. Arteriolosclerosis is sometimes described as arteriosclerosis or total SVD. Perivascular spaces or WM attenuation or WM lesions were not consistently recorded. Microinfarct, unless specified, was considered that seen with the light microscope or to be <1 mm in diameter.<sup>38</sup> MR fluid attenuated inversion recovery image (image 3, left) from a 57-year-old male subject was kindly provided by and used with permission from Dr. Yakeel T. Quiroz (Departments of Psychiatry and Neurology, Harvard Medical School, Boston, MA). Scale bars = 50  $\mu$ m (**B**). AD, Alzheimer disease; CAA, cerebral amyloid angiopathy; ICH, intracerebral hemorrhage; MR, magnetic resonance; SVD, small vessel disease; WM, white matter.

thrombosis and fibrosis. They are most common at the interface between the grey matter and WM in most dementias.

Atherosclerosis coexists with sporadic SVD involving large extracranial vessels and cardioembolic disease. Some cohort studies have reported that atheromas within basal brain vessels are common in AD.<sup>4,52,61</sup> Small vessel atherosclerosis or microatheromas are occasionally also found

within proximal segments of penetrating arteries at junctions of branching and parent arteries, and in parent vessels overlying the branch origin. The pathogenesis of atherosclerosis in small cerebral vessels does not differ substantially from that in extracranial vessels but is characterized by macrophages and nearly complete stenosis.<sup>28</sup> It is not surprising that subsets of proteins and modules associated with cerebral atherosclerosis were also found in AD brains.<sup>62</sup>

## Radiologically-Defined SVD in Late-Onset AD

WMH on T2-weighted magnetic resonance imaging (MRI) have been invariably considered as radiological surrogate markers for SVD (Figure 1). The frequency of WMH or WM lesions increases to 94% by 80 years of age. The lesions are more common and extensive in patients with cardiovascular risk factors, and increase risk of stroke, dementia, and death. Both periventricular and deep WMH of vascular origin are common in late-onset AD,<sup>63</sup> and WMH and A $\beta$  accumulation worsen cognitive outcomes.<sup>64,65</sup> A recent systematic analysis indicated that extensive WMH burden was associated with higher risk of AD (HR, 1.5), suggesting that MRI markers of vascular brain injury have major clinical significance and implicate prevention strategies in individuals with covert SVD.<sup>5</sup> Some frontal periventricular and posterior WMH or WM lesions are present in a large majority of familial cases of AD.<sup>66</sup> In keeping with the pathology,<sup>43</sup> AD subjects also have less subcortical grey matter and WM with greater volumes of whole-brain, periventricular, and deep WM subcortical hyperintensities as well as lacunar lesions.<sup>67</sup>

Diffusion tensor imaging has been used to assess WM microstructural integrity and assess the progression of neurodegeneration in initial stages of disease.<sup>68,69</sup> Whether spatiotemporal patterns of these WM changes precede dementia symptoms in AD is uncertain. However, WM microstructural changes and increased water diffusivity in the WM in AD appear akin to SVD. Increased free water in normal-appearing WM in AD even without overt cerebrovascular disease suggests that mild vascular damage may occur due to microvascular degeneration and neuroinflammation-related BBB permeability.<sup>70</sup> In addition to WMH, a repertoire of SVD features can be detected by MRI in AD that are routinely demonstrated under the microscope (Figure 1). This includes lacunar infarcts, perivascular spacing, microbleeds, and microinfarcts. Most lacunar infarcts are clinically silent, as are microinfarcts, but both are found in greater numbers in AD compared with healthy aging subjects. These lesions may gradually disrupt cognitive network, modify global cognitive performance, and cause focal atrophy. Independent of the proteinopathy in AD, ongoing studies with more sensitive 7-T MR scanners and higher resolution modalities using 3-T suggest that microinfarcts and microbleeds<sup>71</sup> arise from cardiac microemboli, supporting the role of cardiovascular abnormalities in AD. Microbleeds as radiological evidence of SVD have also been detected in familial AD, specifically in patients carrying *PSEN1* missense mutations *Ala260Gly*, *Pro284Ser*, and *Pro355Ser* (Alzforum, <http://www.alzforum.org/mutations>, last accessed January 15, 2021).

Above all, the evidence for the presence of SVD in both sporadic and familial AD is compelling, although the interactions between vascular and neurodegenerative processes may not be understood. In support of the radiological

findings and presence of other biomarkers of SVD, collective evidence from the Alzheimer's Disease Neuroimaging Initiative (ADNI) studies suggests that vascular alterations such as cerebrovascular resistance and hypoperfusion precede A $\beta$  deposition and are predictive of disease progression.<sup>72–74</sup> Analysis of >7700 brain images and 1000 plasma and cerebrospinal fluid (CSF) biomarkers suggests that intrabrain vascular dysregulation is an early pathologic event during disease development. High abnormal levels of specific proteins associated with the integrity of the vascular system have been noted. This strongly implicates the inclusion of covert SVD features in the biomarker model of AD depicting disease progression. Congruent with this, brain extracellular vesicles were identified with molecular mediators of hypoxia responses and neuroprotection in preclinical AD and mixed dementias, supporting involvement of a vascular component in the etiology of AD.<sup>75</sup>

Elderly free of cardiovascular disease including atrial fibrillation have a lower cardiac index or output, which corresponds with lower cerebral blood flow (CBF) in the temporal lobes.<sup>76</sup> In addition, cardiovascular disease including myocardial infarction in midlife is more associated with lower grey matter perfusion in older age, but not very late in life.<sup>29</sup> Using advanced dynamic contrast-enhanced MRI sequences with high spatial and temporal resolutions, BBB breakdown in the hippocampus was suggested to occur in early stages of AD prior to laying down of disease pathology. This breach appears worse in individuals with mild cognitive impairment. Both clinical imaging and CSF biomarker studies indicate BBB abnormalities<sup>77</sup> with reduced CBF occur 10 to 20 years prior to onset of clinical symptoms of AD.<sup>78</sup> More recent studies have shown that CSF changes in markers of pericyte injury and BBB damage predict cognitive decline in patients with mild cognitive impairment independently of accumulation of A $\beta$  or hyperphosphorylated tau.<sup>77,79</sup> Thus, focal vascular dysfunction appears in early phases of AD perhaps concomitant with initial A $\beta$  accrual. Observations from sporadic disease are consistent with earlier findings in the Colombian *PSEN1 Glu280Ala* mutation carriers; regional cerebral perfusion abnormalities detected on single-photon emission tomography occur before development of clinical symptoms.<sup>48</sup> AD patients also demonstrate decreased perfusion in the posterior parietal and superior frontal cortex.<sup>80</sup> In another study on familial AD, early CBF changes particularly in the lenticulostriate arterial territories were identified in asymptomatic and mildly symptomatic subjects.<sup>81</sup>

The endothelium of cerebral vessels and capillaries represents a vulnerable interface, which may be chronically activated in SVD.<sup>9,28,35</sup> It has been proposed that in SVD, capillary flow patterns are disrupted to retard oxygen extraction and cause SVD-like pathology and lead to neurodegeneration.<sup>82</sup> However, not only hemodynamic events, but also arteriolar wall disintegration resulting from arterial

**Table 2** Molecular Pathology of the Microcirculation and BBB in Late-Onset AD

Cellular feature	Morphological changes	Biochemical markers
Cerebral endothelium loss of glucose transporter, Na <sup>+</sup> /K <sup>+</sup> ATPase	Loss of cytoplasm and endoplasmic reticulum. Increased pinocytosis. Changes in cytoplasm (oxidative and endoplasmic reticulum stresses) Endothelial membranes/microvascular endfeet Decreased mitochondria Loss of tight junctions	↓ GLUT1, Na <sup>+</sup> /K <sup>+</sup> ATPase, CD31, CD34 ↑ Glucose-6-phosphatase; proteases (endothelin converting enzyme-1) ↓ Alkaline phosphatase, γ-GGT, cholinesterases ↓ Carnitine acetyltransferase
Vascular basement membrane	Thickening of the ECM, collagen fibers	↑ COL, perlecan, fibrinogen, matrix metalloproteinases
Perivascular cells	Increased astrocytic feet Pericytes: cell numbers and coverage	↑ GFAP reactivity ↑ CSF sPDGFRβ1; ↑ cortex PDGFRβ1cortex; ↓ WM PDGFRβ1; ↑ perivascular macrophage markers, CD68, TREM2
Arteries/arterioles	Loss of vascular smooth muscle cells; increased microthrombi	↓ α-Smooth muscle actin; accumulation of Aβ
Cerebral microvessels	Changes in endothelium and perivascular macrophages	↑ Inflammatory mediators ICAM1 and cytokines

Summary of observations derived from several previous studies.<sup>9,28,35</sup> Arrows indicate decreases (↓) or increases (↑).

Aβ, amyloid β protein; AD, Alzheimer disease; AlkP, alkaline phosphatase; BBB, blood-brain barrier; CD, clusters of differentiation markers; CD31, CD34 cluster of differentiation markers 31 and 34 for endothelium; CD68, cluster of differentiation marker 68 for microglia; COL, collagens; CSF, cerebrospinal fluid; EC, endothelial cell; ECM, extracellular matrix; eNOS, endothelial nitric oxide synthase; GFAP, glial fibrillary acid protein; GGT, γ-glutamyl transpeptidase; GLUT1, glucose transporter 1; HIF-1α, hypoxia inducible factor 1α; NV, neurovascular; PDGFRβ, platelet-derived growth factor receptor β; PVS, perivascular space; SMC, smooth muscle cell; TREM2, triggering receptor expressed on myeloid cells 2; VEGF, vascular endothelial growth factor; WM, white matter.

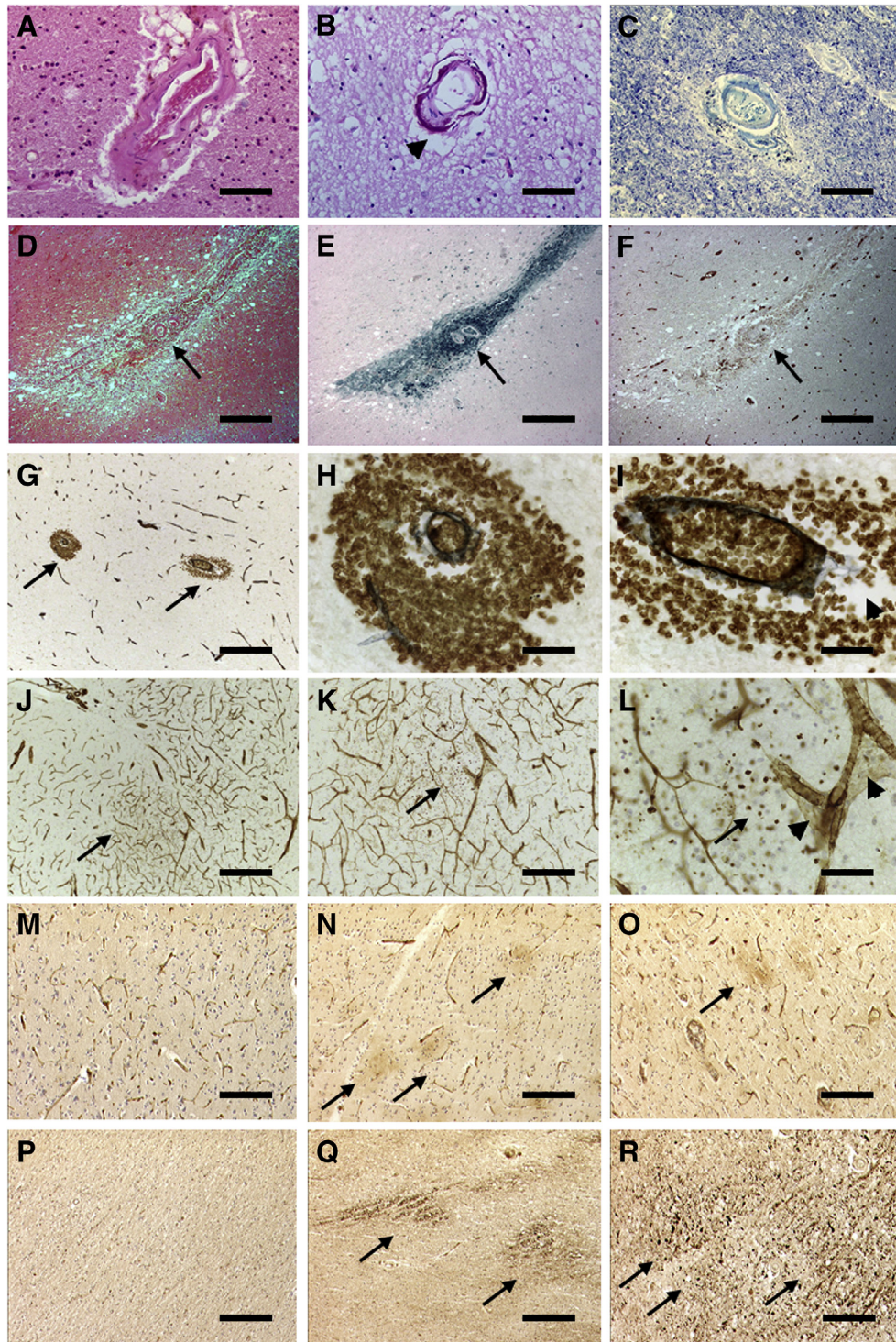
stiffening, may weaken the BBB and cause chronic leakage of fluid and macromolecules (Table 2 and Figure 2). In time, this may induce an inflammatory response with increased traffic in neutrophils and lymphocytes or perivascular macrophages. In older cases, age-related decline in BBB restoration mechanisms via astrocytic response may also promote microhemorrhages in the form of perivascular hemosiderin (Figure 2). Even though so far, there is no conclusive evidence of BBB damage in familial AD independent of CAA, early or non-amyloidogenic BBB breakdown has been identified in several AD murine models involving amyloid precursor protein (*APP*), *PSEN1*, tau, and *-APOE* mutations. These findings include loss of endothelial tight junctions, basement membrane degeneration, and pericytes loss. Of particular relevance is the mice lacking *PSEN1* presenting with abnormal vessel development.<sup>83</sup> This effect can be attributed to the role of γ-secretase in the cleavage and activation of Notch3, a key player in angiogenesis.

## WM Pathology and SVD in AD

Cerebral WM rarefaction or attenuation is a frequent structural change in AD (Figure 2). Periventricular WM lesions are similar to those in Binswanger's disease in up to 60% of AD.<sup>84</sup> Post-mortem studies showed that patterns of loss of myelin in AD are similar to those in vascular de-

mentia.<sup>37</sup> Axonal degeneration and gliosis in the deep WM are also described to be common in AD. Similarly, other components of the gliovascular unit including capillaries undergo degeneration and dilation in the WM in AD.<sup>58,85</sup> Pathologic correlates of WMH when SVD is obvious suggest demyelination, axonal abnormalities, clasmotodendrosis, microglial activation, hemosiderin deposits, arteriolosclerosis, pericyte cell loss, and BBB dysfunction secondary to degrees of vascular brain injury.<sup>86</sup> In support of these morphological findings, Wong et al<sup>87</sup> provided *in vivo* evidence to suggest the integrity of the BBB is compromised in relation to cerebral hypoperfusion in the WM. They reported that lower CBF was correlated with higher leakage measures in the perilesional zones, which became stronger in the proximity of WMH. However, such WM alterations cannot be fully accounted for by degenerative processes secondary to grey matter damage,<sup>68,84</sup> but may stem from vascular amyloid deposition, microvascular damage, and lack of solute drainage.<sup>88</sup>

Diffusion tensor imaging studies in mutation carriers in familial AD indicate changes in the cerebral WM occur years before symptom onset.<sup>89</sup> The mean diffusivity within the posterior parietal and medial frontal WM in mutation carriers was found to be stronger than in noncarriers. Higher mean diffusivity in fiber tracts was associated with lower grey matter volume in projection zones. These results suggest that regionally selective WM damage occurs considerably before the onset of disease that is associated with



**Figure 2** Cerebrovascular pathology in subcortical WM in AD. **A–C:** Severe arteriolar hyalinization (**A**), calcification in basal ganglia (**B**), and moderately hyalinized vessel in rarefied WM (**C**). **D–F:** Periarteriolar microhemorrhage (**arrows**) in temporal WM in a subject with CAA. Serial sections stained with hematoxylin and eosin (**D**), Perl's stain for iron (**E**), and GLUT1 antibody (brown) (**F**). **G–I:** Double immunohistochemistry (brown = GLUT1, black = COL4) shows leakage sites of GLUT1-positive erythrocytes perivascular to arterioles in the WM of an AD case. **G:** **Arrows** indicate perivascular infiltrates, shown at higher magnification in **H** and **I**. **J–L:** Double immunohistochemistry (brown = GLUT1, black = COL4) shows sites of infiltration of GLUT1-positive erythrocytes around capillaries and arterioles (**arrows**), some showing increased perivascular spaces (**arrowheads**). Comparison of images in panels **D–F** and **G–I** demonstrates differences in chronic and acute leakage from blood. **M–O:** ICAM1 IR in the WM of aging control (**M**), AD (**N**), and VaD (**O**) subjects. Increased IR in vessel walls and diffuse deposits is shown (**arrows**). Fibrinogen showed similar IR. **P–R:** APP IR in the WM of aging control (**P**), AD (**Q**), and VaD (**R**) subjects. Diffuse APP IR shows sites of damage (**arrows**). **B, F, and I:** Note the frequent perivascular spaces found in the WM in AD (**arrowheads**). Scale bars = 50  $\mu$ m. AD, Alzheimer disease; APP, amyloid precursor protein; CAA, cerebral amyloid angiopathy; COL, collagen 4; GLUT1, glucose transporter 1; ICAM1, intracellular adhesion molecule 1; IR, immunoreactivity; SVD, small vessel disease; VaD, vascular dementia; WM, white matter.



**Table 3** Familial AD Causative Mutations for CAA

Gene	Mutation*	CAA <sup>†</sup>	Notes <sup>‡</sup>	References <sup>§</sup>	
APP	<i>LysMet670/671AsnLeu</i>	Yes	Mouse model, CAA at 12–19 months	106	
	<i>Ala673Val</i>	Yes		107	
	<i>Asp678His</i>	Yes	Also present with cerebral microvasculopathy (23931937)	108	
	<i>Ala692Gly</i>	Yes		109	
	<i>Glu693Gly</i>	Yes	Mouse model shows no CAA	106	
	<i>Glu693Lys</i>	Yes		110	
	<i>Glu693Gln</i>	Yes	Mouse model, CAA at 12–22 months	111	
	<i>Asp694Asn</i>	Yes	Mouse model: APPSwDI (Swedish <i>Lys760Asn/Met671Leu</i> , Dutch <i>Glu693Gln</i> and Iowa <i>Asp694Asn</i> ), considered to be the optimal CAA model	112	
	<i>Ala713Thr</i>	Yes	WM changes, cerebral microangiopathy and CAA <sup>  </sup>	113,154	
	<i>Thr714Ile</i>	Yes	Transgenic APP695 mouse harboring <i>Lys670Asn</i> , <i>Met671Leu</i> , and <i>Thr714Ile</i> , develops CAA	114	
	<i>Ile716Phe</i>	Yes		106	
	<i>Val717Phe</i>	Yes	Mouse model shows no CAA	115	
	<i>Val717Gly</i>	Yes		116	
	<i>Val717Ile</i>	Yes	Mouse model, CAA at 15 months	117	
	<i>Val717Leu</i>	Yes		118	
	PSEN1	<i>Ile83_MetM84del</i>	Yes	( <i>DelIleMet</i> , <i>ΔIle83/Met84</i> , <i>ΔIle83/ΔMet84</i> )	119
		<i>Met84Thr</i>	Yes		120
		<i>Val89Leu (G&gt;T)</i>	Yes		121
		<i>Leu113_Ile114insThr</i>	Yes	( <i>Intron4</i> , <i>p.113+1delGly</i> , <i>splice5</i> , <i>InsThrAlaCys</i> )	122
		<i>Leu113Glns</i>	Yes		123
<i>Thr116Asn</i>		Yes		124	
<i>Pro117Leu</i>		Yes		56	
<i>Glu120Gly</i>		Yes		125	
<i>Asn135Tyr</i>		Yes		126	
<i>Met139Val</i>		Yes		127	
<i>Ile143Met</i>		Yes	CAA prominent in meningeal vessels	47	
<i>Ile143Val</i>		Yes		128	
<i>Leu174Met</i>		Yes		129	
<i>Glu184Asp</i>		Yes		130	
<i>Ile202Phe</i>		Yes		131	
<i>Gly217Asp</i>		Yes		132	
<i>Leu219Pro</i>		Yes		133	
<i>Aal260Gly<sup>¶</sup></i>		?		134	
<i>Val261Phe</i>		Yes		135	
<i>Gly266Ser</i>		Yes		136	
<i>Pro267Ala</i>		Yes		137	
<i>Leu268Pro</i>		Yes		138	
<i>Arg269His</i>		Yes		139	
<i>Leu271Val</i>		Yes		140	
<i>Val272Ala</i>		Yes		141	
<i>Arg278Ile</i>		Yes		127	
<i>Glu280Ala</i>		Yes	Paisa mutation	142	
<i>GluE280Gly</i>		Yes		143	
<i>Leu282Val</i>	Yes		144		
<i>Pro284Leu</i>	Yes		145		
<i>Leu286Pro</i>	Yes		138		
<i>Ser290Cys</i>	Yes	<i>Thr291_Ser319del (ΔAla9, Δ9)</i>	146		
<i>Gly378Glu</i>	Yes		123		
<i>Leu392Val</i>	Yes		145		
<i>Asn405Ser</i>	Yes		147		
<i>Gly417Ser</i>	Yes		148		
<i>Ala431Val</i>	Yes		145		
<i>Thr440del</i>	Yes		149		

(table continues)

**Table 3** (continued)

Gene	Mutation*	CAA <sup>†</sup>	Notes <sup>‡</sup>	References <sup>§</sup>
<i>PSEN2</i>	<i>Aal85Val</i>	Yes		150
	<i>Lys115Glufs</i>	Yes		151
	<i>Asn141Ile</i>	Yes	Volga German mutation	152
	<i>Leu221Thr</i>	Yes		153

\*Genotypes of different mutations per original references derived from the Alzforum Database (<http://www.alzforum.org/mutations>, last accessed January 15, 2021).

<sup>†</sup>Presence of variable degrees of CAA predominantly in cortical regions.

<sup>‡</sup>Presence or absence of CAA in various transgenic mouse models and features noted in case reports.

<sup>§</sup>References include citations of four abstracts.

<sup>¶</sup>Magnetic resonance imaging positive for microbleeds suggests likely CAA (cf. Figure 1B, images 5 and 6).

<sup>||</sup>First case in Argentina with *APP Ala171Thr* mutation showing marked vascular pathology.<sup>154</sup>

AD, Alzheimer disease; *APP*, amyloid precursor protein; CAA, cerebral amyloid angiopathy; *PSEN1*, presenilin 1; *PSEN2*, presenilin 2; WM, white matter.

primary AD pathology and microglia activation rather than any overt vascular disease. WM changes in neurodegenerative diseases could reflect pathologic processes other than those involved in SVD, that is, that nonvascular damage could increase fluid motion in discrete areas of the WM to result in hyperintense signals.<sup>90</sup> However, early changes in WM cannot all be explained by neurodegenerative pathology because there would not be sufficient burdens of neurodegenerative pathology at early stages.<sup>1</sup> Is it possible then, that the presence of low perfusion or disturbed arterial pulsation within the deeper layers of the WM disrupts flow in the long perforating arteries to cause a chronic hypoxic state and damage the deep WM?

Similar to indications of BBB damage, there is still no human pathologic evidence of WM damage independent of A $\beta$  pathology (Table 1 and Figure 2). However, alterations in myelin morphology and oligodendrocyte differentiation have been observed early in *APP/PSEN1* mice.<sup>91</sup> Astrocytic clasmatodendrosis has shown to be a pathologic correlate of WM damage.<sup>85</sup> Accordingly, the authors have observed this feature in the WM of *PSEN1 Glu280Ala* cases (D. Sepulveda-Falla, R.N. Kalaria, unpublished data).

## Consequences of Chronic Vascular Disease

Besides age, hypertension and diabetes mellitus are among the strong risk factors for SVD. Whereas it is not fully understood how diabetes might lead to SVD,<sup>92</sup> the deleterious effects of increased blood pressure are mediated by structural changes in smaller arteries leading to arteriosclerosis with two main consequences. First, the progressive segmental loss of myocytes with replacement by collagen fibers reduces vessel wall tone or elasticity in response to variations in blood pressure and loss of autoregulation through disruption of the perivascular nerve plexii. Second, the persistent high pulse pressure leads to focal disruption of capillaries, particularly in the deeper structures. This causes edema and BBB breach with chronic leakage of fluid and macromolecules (Figure 2) as well as incidental infarction, particularly in subcortical structures.

Aging-associated central arterial stiffness may increase SVD features with consequences on progression in the AD continuum. For example, aortic stiffening conveyed by higher pulse wave velocity, and therefore higher pulsatility, was associated with lower CBF particularly in the temporal lobes although cerebrovascular reactivity was preserved in *APOE*  $\epsilon$ 4 allele carriers with mild cognitive impairment.<sup>93</sup> Consistent with this, higher systolic blood pressure and pulse pressure,<sup>94</sup> or diastolic blood pressure<sup>95</sup> attributable to arterial stiffness, were related to greater cerebral retention of Pittsburgh Compound-B (PiB) in presymptomatic and AD patients. Arterial stiffness, or the surrogate marker pulse wave velocity, and mean arterial pressure were also highest in individuals with both high PiB retention and WMH (double hit), promoting the development of AD.<sup>96,97</sup> Although resting CBF may not be affected, higher pulsatility index likely promotes larger WMH volumes and increases perivascular spaces in subcortical structures.<sup>98</sup> It is conceivable that early in the presymptomatic stage prior to the manifestation of disease phenotype, vascular reactivity is compromised due to covert changes in vessel walls whether they are CAA or AD mutation carriers.<sup>99</sup>

Rodent models of A $\beta$  amyloidosis including those exhibiting CAA have demonstrated impairment in different features of cerebrovascular function including CBF, functional hyperemia, and cerebral autoregulation.<sup>100</sup> Although higher cerebrovascular resistance and altered transfer of CBF to cortical oxygenation in AD suggests that the microcirculation and properties of the microvasculature are changed,<sup>101</sup> all functional measures are not consistently replicated in AD. For example, it is controversial whether autoregulation in AD is altered *per se* to reflect in SVD-related cerebral perfusion. In an earlier study, Zazulia et al<sup>102</sup> reported there was absence of significant change in CBF with a 10 to 15 mm Hg reduction in mean arterial pressure within the normal autoregulatory range, suggesting that there was no generalized or local defect of autoregulation. However, using a linear mixed model, a recent study<sup>103</sup> demonstrated that the efficacy of cerebral autoregulation, assessed during stepwise changes in arterial pressure, was reduced in individuals with amnesic mild

cognitive impairment, which is a prodromal stage of AD. Various limitations including cohort sizes, coexisting factors, imaging techniques, variability in disease progression and study power can be attributed to inconsistent findings.

## SVD and CAA in Sporadic and Familial AD

For more than 100 years, cerebral congophilic angiopathy, or now widely described as CAA, has been identified as a pathologic hallmark of brain disease.<sup>104</sup> CAA was originally identified to be associated with wall thickening of small and medium-sized vessels together with the occurrence of cerebral microbleeds. Vessel wall thickening characteristically showed accumulation of eosinophilic material, Congo Red positive, identifying it as amyloid. The most common type of CAA is A $\beta$  angiopathy, which is reported to be as high as 90% in AD.<sup>105</sup> The majority of pathologically verified familial AD subjects exhibit CAA.<sup>47,56,106–153</sup> The first case in Argentina with marked vascular pathology including CAA carried the *APP Ala171Thr* mutation.<sup>154</sup> Specifically, at least 16 mutations in the *APP* and *PSEN1* genes are outright known for CAA in the clinical phenotype (Table 3). However, of 68 mutations identified in *APP*, 15 of them present with CAA. *APP* mutations are localized between amino acids 670 to 694 and 713 to 717. The first cluster corresponds to  $\alpha$ - and  $\beta$ -secretase cleavage sites and the second cluster to  $\gamma$ -secretase cleavage sites, indicating a direct role of abnormal A $\beta$  peptide(s) generation and their accumulation in cerebral vessels. Several murine AD models developed from these *APP* mutations have indicated CAA as well and have favored research in AD vascular pathology. So far, more than 320 *PSEN1* mutations have been identified. Accordingly, 37 *PSEN1* missense mutations are associated with the presence of mild-to-severe CAA (Table 3). These mutations are evenly distributed alongside the *PSEN1* gene sequence. However, *PSEN1* mutations below codon 200 have been characterized as having milder CAA pathology, whereas *PSEN1* mutations above codon 200 characteristically show severe CAA. Finally, while 64 mutations for *PSEN2* have been identified, at least 4 mutations have been associated with the presence of CAA (Table 3). It has been suggested that the composition of A $\beta$  aggregates differs between parenchymal deposits and those found in CAA-affected vessels. Parenchymal deposits are typically composed of longer A $\beta$  peptides, often with additional posttranslational modifications. CAA deposits, on the other hand, show shorter forms of A $\beta$  peptides.<sup>155</sup> Mutations in *APP*, *PSEN1*, and *PSEN2* genes modify size and biochemical profiles of A $\beta$  peptides generated from *APP*. The authors have shown that familial AD cases also show a distinctive A $\beta$  peptide signature in CAA deposits when compared with those from sporadic AD cases.<sup>142</sup>

In sporadic AD, CAA is more common in individuals with infarction and hemorrhages, and is also recognized as an

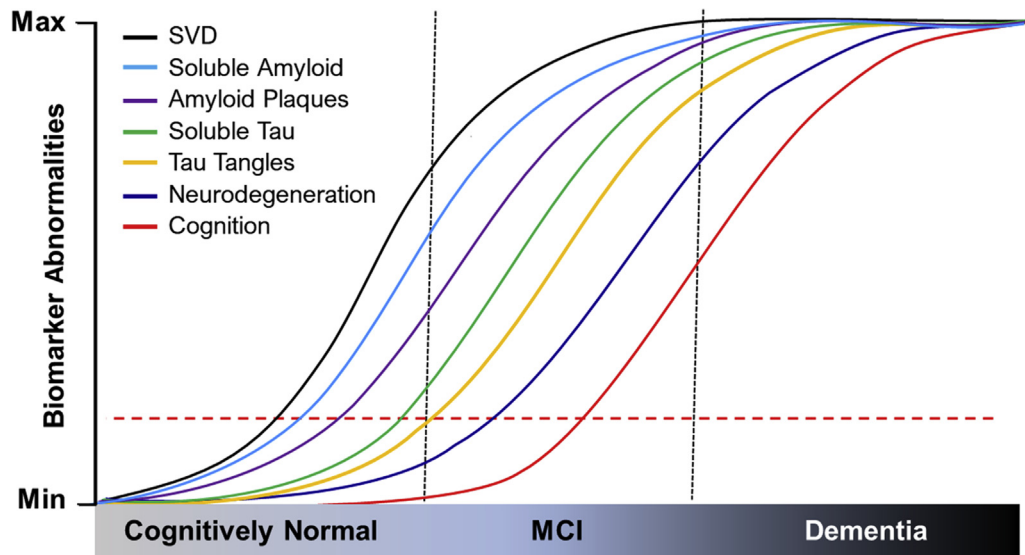
independent factor for severe cognitive impairment and dementia. SVD pathology in CAA is characterized by progressive segmental arteriosclerosis involving the medial-adventitial layers of intracranial arteries. Of the two types of CAA, Type I is associated with capillaries implicating focal BBB damage. Pathologic studies have shown variable patterns of CAA between early-onset and late-onset AD; Type I CAA is more common and more severe in *APP* duplication and missense mutations and in Down's syndrome compared with those in sporadic early- and late-onset AD.<sup>44</sup> That CAA plays a role in the pathogenesis of microvascular lesions is important,<sup>40,156</sup> but it is not the only factor, implying that even in familial AD, microvessels may undergo age-related changes prior to the appearance of CAA and independent of A $\beta$  accumulation.<sup>88</sup> For example, cerebral hypoperfusion associated with WM damage accelerates CAA and promotes cortical microinfarcts.<sup>157</sup>

In early-onset autosomal-dominantly inherited AD patients, ischemic WM changes can be detected at least 2 decades before the development of dementia. The Dominantly Inherited Alzheimer Network (DIAN) study indicated that mutation carriers had greater total WMH volumes, which appeared to increase approximately 6 years prior to expected symptom onset.<sup>46</sup> Given the propensity for a posterior distribution of WMH, CAA, which tends to be more prominent in the occipital lobe, was thought to be one of the mediating factors. These findings suggest that WMH are an essential feature of AD and should be incorporated into the biomarker model and a potential therapeutic target.<sup>46,158</sup>

Besides posterior dominant WMH, the radiological features of CAA include lobar microbleeds, dilated perivascular spaces, and multiple areas of superficial siderosis (Figure 1). Mutation carriers are more likely to have cerebral microbleeds than noncarriers, and patients with microbleeds have higher WMH volumes. Although there is some codependency between WMH and microbleeds, these observations highlight that WMH represents a core feature of AD independent of vascular forms of A $\beta$ .<sup>158</sup> In another imaging study, the peak skeletonized mean diffusivity, a measure of cerebral WM microstructural disruption as a simple marker of diffuse global WM heterogeneity, was increased in CAA suggesting a role for WM disruption in causing cognitive impairment in CAA.<sup>159</sup>

## Conclusions and Future Directions

There is a wealth of evidence from neuroimaging and pathologic studies demonstrating that various features of cerebral SVD are inherent to the AD continuum. The presence of greater burdens of SVD pathology in normal aging are evident, not only in late-onset AD, but also in mutation carriers with familial AD. Thus, vascular brain injury and consequent tissue changes in both grey matter



**Figure 3** Proposed modification of risk factors and biomarkers of AD in older age. Early changes include vascular disease factors associated with SVD in the progression of AD. SVD incorporates covert vascular brain injury including arteriolosclerosis in the early phase that may alter cerebral perfusion to cause WM changes and lead to the recognized biomarkers of AD. Fluctuations in CBF, blood pressure variability, perfusion pressure, PWV, and BBB damage may contribute to prodromal stages in the AD continuum. Vascular factors increase conversion of mild cognitive impairment (MCI) to dementia in the form of frank or clinical AD. These changes also promote changes in CSF and brain A $\beta$  and tau pathophysiology. The y axis represents increasing severity or accumulation of the biomarkers. The **horizontal dashed line** represents lower threshold changes in markers with minimal impact on clinical symptoms. Neurodegeneration is depicted as a late phase, but it is likely that tissue atrophy occurs concomitantly or as a consequence of SVD or small infarct pathology.<sup>28</sup> A $\beta$ , amyloid  $\beta$  protein; AD, Alzheimer disease; BBB, blood-brain barrier; CBF, cerebral blood flow; CSF, cerebrospinal fluid; Max, maximum; Min, minimum; PWV, pulse wave velocity; SVD, small vessel disease; WM, white matter.

and WM, particularly in the latter, are the norm rather than the exception. It is further apparent that vascular lesions or SVD modify the progression of disease and increase the odds of dementia (Figure 3). Hypertension-induced arteriosclerotic disease is an important index in AD as is CAA, which is irrefutably conditional to age-related changes in the cerebral intracranial vasculature. It is thought that vascular brain injury occurs concomitantly with neurodegenerative changes and that these are parallel processes without much mechanistic interaction between them. The fallacy of this argument is that in many studies, vascular brain injury used as a surrogate for SVD is assessed by overt lesions, such as infarcts,<sup>28</sup> evident both radiologically and pathologically. However, it is more likely that clinically silent lesions or covert changes characteristic of SVD contribute to precipitate AD type of pathology over long periods of time (Figure 3). Robust proof of this and of vascular risk factors including history of hypertension increasing the burden of A $\beta$  or neurofibrillary pathology are generally lacking. It is plausible that some of the evidence is confounded by selection bias of participants whose vascular risk factors are well-controlled, and markers of SVD such as WMH may not be evident in those at risk.<sup>160</sup> However, such evidence can be derived from large, comprehensive, prospectively followed longitudinal studies where SVD features including indices assessing BBB damage<sup>77</sup> are carefully monitored in both individuals at risk and those in the early stages of clinical disease. Evidence of early SVD and WM damage in

familial AD reinforces the certainty of AD as a multifactorial disorder. From this perspective, it is conceivable that the presence of SVD is either part of the pathologic processes that lead to AD, or that in some patients, SVD coexists with some other possible AD trigger, lowering the threshold for cognitive dysfunction and eventual dementia. It is probable that other cellular effects of familial AD mutations independent of A $\beta$  deposition also contribute to early SVD in familial AD cases (Figure 3). In the absence of any strong support for therapeutic approaches that lower A $\beta$  deposition or reduce neurofibrillary pathology, it is timely to strongly implement therapeutic and preventative measures that improve or retain functional properties of cerebral small vessels in the context of AD pathologies including CAA.

## Acknowledgments

We thank Drs. Yumi Yamamoto and Yoshiki Hase for their help with some images in Figures 1 and 2.

## Author Contributions

Both authors critically revised the manuscript for important intellectual content and approved the final version of the manuscript for submission.

## References

- Jack CR Jr, Bennett DA, Blennow K, Carrillo MC, Dunn B, Haeberlein SB, Holtzman DM, Jagust W, Jessen F, Karlawish J, Liu E, Molinuevo JL, Montine T, Phelps C, Rankin KP, Rowe CC, Scheltens P, Siemers E, Snyder HM, Sperling R; Contributors: NIA-AA Research Framework: toward a biological definition of Alzheimer's disease. *Alzheimers Dement* 2018, 14:535–562
- Neuropathology Group of the Medical Research Council Cognitive Function and Aging Study (MRC CFAS): Pathological correlates of late-onset dementia in a multicentre, community-based population in England and Wales. *Lancet* 2001, 357:169–175
- Deramecourt V, Slade JY, Oakley AE, Perry RH, Ince PG, Maurage CA, Kalaria RN: Staging and natural history of cerebrovascular pathology in dementia. *Neurology* 2012, 78:1043–1050
- Toledo JB, Arnold SE, Raible K, Brettschneider J, Xie SX, Grossman M, Monsell SE, Kukull WA, Trojanowski JQ: Contribution of cerebrovascular disease in autopsy confirmed neurodegenerative disease cases in the National Alzheimer's Coordinating Centre. *Brain* 2013, 136:2697–2706
- DeBette S, Schilling S, Duperron MG, Larsson SC, Markus HS: Clinical significance of magnetic resonance imaging markers of vascular brain injury: a systematic review and meta-analysis. *JAMA Neurol* 2019, 76:81–94
- Wang R, Laveskog A, Laukka EJ, Kalpouzos G, Backman L, Fratiglioni L, Qiu C: MRI load of cerebral microvascular lesions and neurodegeneration, cognitive decline, and dementia. *Neurology* 2018, 91:e1487–e1497
- DeCarli C, Villeneuve S, Maillard P, Harvey D, Singh B, Carmichael O, Fletcher E, Olichney J, Farias S, Jagust W, Reed B, Mungas D: Vascular burden score impacts cognition independent of amyloid PET and MRI measures of Alzheimer's disease and vascular brain injury. *J Alzheimers Dis* 2019, 68:187–196
- Snowdon DA, Greiner LH, Mortimer JA, Riley KP, Greiner PA, Markesbery WR: Brain infarction and the clinical expression of Alzheimer disease. *The Nun Study*. *JAMA* 1997, 277:813–817
- Sweeney MD, Montagne A, Sagare AP, Nation DA, Schneider LS, Chui HC, et al: Vascular dysfunction—the disregarded partner of Alzheimer's disease. *Alzheimers Dement* 2019, 15:158–167
- Veitch DP, Weiner MW, Aisen PS, Beckett LA, Cairns NJ, Green RC, Harvey D, Jack CR Jr, Jagust W, Morris JC, Petersen RC, Saykin AJ, Shaw LM, Toga AW, Trojanowski JQ, Alzheimer's Disease Neuroimaging Initiative: Understanding disease progression and improving Alzheimer's disease clinical trials: recent highlights from the Alzheimer's Disease Neuroimaging Initiative. *Alzheimers Dement* 2019, 15:106–152
- Akinyemi RO, Mukaetova-Ladinska EB, Attems J, Ihara M, Kalaria RN: Vascular risk factors and neurodegeneration in ageing related dementias: Alzheimer's disease and vascular dementia. *Curr Alzheimer Res* 2013, 10:642–653
- Stark SL, Roe CM, Grant EA, Hollingsworth H, Benzinger TL, Fagan AM, Buckles VD, Morris JC: Preclinical Alzheimer disease and risk of falls. *Neurology* 2013, 81:437–443
- Yu JT, Xu W, Tan CC, Andrieu S, Suckling J, Evangelou E, Pan A, Zhang C, Jia J, Feng L, Kua EH, Wang YJ, Wang HF, Tan MS, Li JQ, Hou XH, Wan Y, Tan L, Mok V, Tan L, Dong Q, Touchon J, Gauthier S, Aisen PS, Vellas B: Evidence-based prevention of Alzheimer's disease: systematic review and meta-analysis of 243 observational prospective studies and 153 randomised controlled trials. *J Neurol Neurosurg Psychiatry* 2020, 91:1201–1209
- Knopman DS, Gottesman RF, Sharrett AR, Tapia AL, DavisThomas S, Windham BG, Coker L, Schneider ALC, Alonso A, Coresh J, Albert MS, Mosley TH Jr: Midlife vascular risk factors and midlife cognitive status in relation to prevalence of mild cognitive impairment and dementia in later life: the Atherosclerosis Risk in Communities Study. *Alzheimers Dement* 2018, 14:1406–1415
- Li J, Wang YJ, Zhang M, Xu ZQ, Gao CY, Fang CQ, Yan JC, Zhou HD, Chongqing Ageing Study Group: Vascular risk factors promote conversion from mild cognitive impairment to Alzheimer disease. *Neurology* 2011, 76:1485–1491
- Carnevale D, Perrotta M, Lembo G, Trimarco B: Pathophysiological links among hypertension and Alzheimer's disease. *High Blood Press Cardiovasc Prev* 2016, 23:3–7
- Nelson L, Gard P, Tabet N: Hypertension and inflammation in Alzheimer's disease: close partners in disease development and progression! *J Alzheimers Dis* 2014, 41:331–343
- Petrea RE, O'Donnell A, Beiser AS, Habes M, Aparicio H, DeCarli C, Seshadri S, Romero JR: Mid to late life hypertension trends and cerebral small vessel disease in the Framingham Heart Study. *Hypertension* 2020, 76:707–714
- Blevins BL, Vinters HV, Love S, Wilcock DM, Grinberg LT, Schneider JA, Kalaria RN, Katsumata Y, Gold BT, Wang DJJ, Ma SJ, Shade LMP, Fardo DW, Hartz AMS, Jicha GA, Nelson KB, Magaki SD, Schmitt FA, Teylan MA, Ighodaro ET, Phe P, Abner EL, Cykowski MD, Van Eldik LJ, Nelson PT: Brain arteriosclerosis. *Acta Neuropathol* 2021, 141:1–24
- Lennon MJ, Makkar SR, Crawford JD, Sachdev PS: Midlife hypertension and Alzheimer's disease: a systematic review and meta-analysis. *J Alzheimers Dis* 2019, 71:307–316
- Gregson J, Qizilbash N, Iwagami M, Douglas I, Johnson M, Pearce N, Pocock S: Blood pressure and risk of dementia and its subtypes: a historical cohort study with long-term follow-up in 2.6 million people. *Eur J Neurol* 2019, 26:1479–1486
- de Heus RAA, Olde Rikkert MGM, Tully PJ, Lawlor BA, Claassen JAHR, NILVAD Study Group: Blood pressure variability and progression of clinical Alzheimer disease. *Hypertension* 2019, 74:1172–1180
- Ma Y, Tully PJ, Hofman A, Tzourio C: Blood pressure variability and dementia: a state-of-the-art review. *Am J Hypertens* 2020, 33:1059–1066
- Ding J, Davis-Plourde KL, Sedaghat S, Tully PJ, Wang W, Phillips C, Pase MP, Himali JJ, Gwen Windham B, Griswold M, Gottesman R, Mosley TH, White L, Guethnason V, DeBette S, Beiser AS, Seshadri S, Ikram MA, Meirelles O, Tzourio C, Launer LJ: Antihypertensive medications and risk for incident dementia and Alzheimer's disease: a meta-analysis of individual participant data from prospective cohort studies. *Lancet Neurol* 2020, 19:61–70
- Lebouvier T, Chen Y, Duriez P, Pasquier F, Bordet R: Antihypertensive agents in Alzheimer's disease: beyond vascular protection. *Expert Rev Neurother* 2020, 20:175–187
- Walker KA, Sharrett AR, Wu A, Schneider ALC, Albert M, Lutsey PL, Bandeen-Roche K, Coresh J, Gross AL, Windham BG, Knopman DS, Power MC, Rawlings AM, Mosley TH, Gottesman RF: Association of midlife to late-life blood pressure patterns with incident dementia. *JAMA* 2019, 322:535–545
- SPRINT MIND Investigators for the SPRINT Research Group, Nasrallah IM, Pajewski NM, Auchus AP, Chelune G, Cheung AK, Cleveland ML, et al: Association of intensive vs standard blood pressure control with cerebral white matter lesions. *JAMA* 2019, 322:524–534
- Kalaria RN: Neuropathological diagnosis of vascular cognitive impairment and vascular dementia with implications for Alzheimer's disease. *Acta Neuropathol* 2016, 131:659–685
- Suri S, Topiwala A, Chappell MA, Okell TW, Zsoldos E, Singh-Manoux A, Kivimaki M, Mackay CE, Ebmeier KP: Association of midlife cardiovascular risk profiles with cerebral perfusion at older ages. *JAMA Netw Open* 2019, 2:e195776
- Petrovitch H, White LR, Izmirilian G, Ross GW, Havlik RJ, Markesbery W, Nelson J, Davis DG, Hardman J, Foley DJ, Launer LJ: Midlife blood pressure and neuritic plaques, neurofibrillary tangles, and brain weight at death: the HAAS. Honolulu-Asia aging Study. *Neurobiol Aging* 2000, 21:57–62

31. Ruiz A, Pesini P, Espinosa A, Perez-Grijalba V, Valero S, Sotolongo-Grau O, Alegret M, Monleon I, Lafuente A, Buendia M, Ibarria M, Ruiz S, Hernandez I, San Jose I, Tarraga L, Boada M, Sarasa M: Blood amyloid beta levels in healthy, mild cognitive impairment and Alzheimer's disease individuals: replication of diastolic blood pressure correlations and analysis of critical covariates. *PLoS One* 2013, 8:e81334
32. Hoffman LB, Schmeidler J, Lesser GT, Beeri MS, Purohit DP, Grossman HT, Haroutunian V: Less Alzheimer disease neuropathology in medicated hypertensive than nonhypertensive persons. *Neurology* 2009, 72:1720–1726
33. Arvanitakis Z, Capuano AW, Lamar M, Shah RC, Barnes LL, Bennett DA, Schneider JA: Late-life blood pressure association with cerebrovascular and Alzheimer disease pathology. *Neurology* 2018, 91:e517–e525
34. Rupp C, Beyreuther K, Maurer K, Kins S: A presenilin 1 mutation in the first case of Alzheimer's disease: revisited. *Alzheimers Dement* 2014, 10:869–872
35. Carare RO, Aldea R, Agarwal N, Bacskai BJ, Bechman I, Boche D, et al: Clearance of interstitial fluid (ISF) and CSF (CLIC) group-part of Vascular Professional Interest Area (PIA): cerebrovascular disease and the failure of elimination of Amyloid-beta from the brain and retina with age and Alzheimer's disease-opportunities for therapy. *Alzheimers Dement (Amst)* 2020, 12:e12053
36. Fernando MS, Simpson JE, Matthews F, Brayne C, Lewis CE, Barber R, Kalaria RN, Forster G, Esteves F, Wharton SB, Shaw PJ, O'Brien JT, Ince PG: White matter lesions in an unselected cohort of the elderly: molecular pathology suggests origin from chronic hypoperfusion injury. *Stroke* 2006, 37:1391–1398
37. Ihara M, Polvikoski TM, Hall R, Slade JY, Perry RH, Oakley AE, Englund E, O'Brien JT, Ince PG, Kalaria RN: Quantification of myelin loss in frontal lobe white matter in vascular dementia, Alzheimer's disease, and dementia with Lewy bodies. *Acta Neuropathol* 2010, 119:579–589
38. Ince PG, Minett T, Forster G, Brayne C, Wharton SB, Medical Research Council Cognitive Function and Ageing Neuropathology Study: Microinfarcts in an older population-representative brain donor cohort (MRC CFAS): prevalence, relation to dementia and mobility, and implications for the evaluation of cerebral small vessel disease. *Neuropathol Appl Neurobiol* 2017, 43:409–418
39. Kryscio RJ, Abner EL, Nelson PT, Bennett D, Schneider J, Yu L, Hemmy LS, Lim KO, Masaki K, Cairns N, Xiong C, Woltjer R, Dodge HH, Tyas S, Fardo DW, Lou W, Wan L, Schmitt FA: The effect of vascular neuropathology on late-life cognition: results from the SMART Project. *J Prev Alzheimers Dis* 2016, 3:85–91
40. Kovari E, Herrmann FR, Hof PR, Bouras C: The relationship between cerebral amyloid angiopathy and cortical microinfarcts in brain ageing and Alzheimer's disease. *Neuropathol Appl Neurobiol* 2013, 39:498–509
41. Boyle PA, Yu L, Nag S, Leurgans S, Wilson RS, Bennett DA, Schneider JA: Cerebral amyloid angiopathy and cognitive outcomes in community-based older persons. *Neurology* 2015, 85:1930–1936
42. Kalaria RN, Premkumar DR, Pax AB, Cohen DL, Lieberburg I: Production and increased detection of amyloid beta protein and amyloidogenic fragments in brain microvessels, meningeal vessels and choroid plexus in Alzheimer's disease. *Brain Res Mol Brain Res* 1996, 35:58–68
43. Hase Y, Polvikoski TM, Firbank MJ, Craggs LJL, Hawthorne E, Platten C, Stevenson W, Deramecourt V, Ballard C, Kenny RA, Perry RH, Ince P, Carare RO, Allan LM, Horsburgh K, Kalaria RN: Small vessel disease pathological changes in neurodegenerative and vascular dementias concomitant with autonomic dysfunction. *Brain Pathol* 2020, 30:191–202
44. Mann DMA, Davidson YS, Robinson AC, Allen N, Hashimoto T, Richardson A, Jones M, Snowden JS, Pendleton N, Potier MC, Laquerriere A, Prasher V, Iwatsubo T, Strydom A: Patterns and severity of vascular amyloid in Alzheimer's disease associated with duplications and missense mutations in APP gene, Down syndrome and sporadic Alzheimer's disease. *Acta Neuropathol* 2018, 136:569–587
45. Lloyd GM, Trejo-Lopez JA, Xia Y, McFarland KN, Lincoln SJ, Ertekin-Taner N, Giasson BI, Yachnis AT, Prokop S: Prominent amyloid plaque pathology and cerebral amyloid angiopathy in APP V717I (London) carrier - phenotypic variability in autosomal dominant Alzheimer's disease. *Acta Neuropathol Commun* 2020, 8:31
46. Lee S, Viqar F, Zimmerman ME, Narkhede A, Tosto G, Benzinger TL, Marcus DS, Fagan AM, Goate A, Fox NC, Cairns NJ, Holtzman DM, Buckles V, Ghetti B, McDade E, Martins RN, Saykin AJ, Masters CL, Ringman JM, Ryan NS, Forster S, Laske C, Schofield PR, Sperling RA, Salloway S, Correia S, Jack C Jr, Weiner M, Bateman RJ, Morris JC, Mayeux R, Brickman AM, Dominantly Inherited Alzheimer Network: White matter hyperintensities are a core feature of Alzheimer's disease: evidence from the Dominantly Inherited Alzheimer Network. *Ann Neurol* 2016, 79:929–939
47. Heckmann JM, Low WC, de Villiers C, Rutherford S, Vorster A, Rao H, Morris CM, Ramesar RS, Kalaria RN: Novel presenilin 1 mutation with profound neurofibrillary pathology in an indigenous Southern African family with early-onset Alzheimer's disease. *Brain* 2004, 127:133–142
48. Fuller JT, Cronin-Golomb A, Gatchel JR, Norton DJ, Guzman-Velez E, Jacobs HIL, Hanseew B, Pardilla-Delgado E, Artola A, Baena A, Bocanegra Y, Kosik KS, Chen K, Tariot PN, Johnson K, Sperling RA, Reiman EM, Lopera F, Quiroz YT: Biological and cognitive markers of presenilin1 E280A autosomal dominant Alzheimer's disease: a comprehensive review of the Colombian kindred. *J Prev Alzheimers Dis* 2019, 6:112–120
49. Javanshiri K, Haglund M, Englund E: Cardiovascular disease, diabetes mellitus, and hypertension in Lewy body disease: a comparison with other dementia disorders. *J Alzheimers Dis* 2019, 71:851–859
50. de Bruijn RFAG, Portegies MLP, Leening MJG, Bos MJ, Hofman A, van der Lugt A, Niessen WJ, Vernooij MW, Franco OH, Koudstaal PJ, Ikram MA: Subclinical cardiac dysfunction increases the risk of stroke and dementia: the Rotterdam Study. *Neurology* 2015, 84:833–840
51. Schneider JA, Aggarwal NT, Barnes L, Boyle P, Bennett DA: The neuropathology of older persons with and without dementia from community versus clinic cohorts. *J Alzheimers Dis* 2009, 18:691–701
52. Arvanitakis Z, Capuano AW, Leurgans SE, Bennett DA, Schneider JA: Relation of cerebral vessel disease to Alzheimer's disease dementia and cognitive function in elderly people: a cross-sectional study. *Lancet Neurol* 2016, 15:934–943
53. Gelber RP, Launer LJ, White LR: The Honolulu-Asia Aging Study: epidemiologic and neuropathologic research on cognitive impairment. *Curr Alzheimer Res* 2012, 9:664–672
54. Ighodaro ET, Abner EL, Fardo DW, Lin A-L, Katsumata Y, Schmitt FA, Kryscio RJ, Jicha GA, Neltner JH, Monsell SE, Kukull WA, Moser DK, Appiah F, Bachstetter AD, Van Eldik LJ, Alzheimer's Disease Neuroimaging Initiative (ADNI), Nelson PT: Risk factors and global cognitive status related to brain arterio-sclerosis in elderly individuals. *J Cereb Blood Flow Metab* 2017, 37:201–216
55. Craggs LJ, Hagel C, Kuhlenbaeumer G, Borjesson-Hanson A, Andersen O, Viitanen M, Kalimo H, McLean CA, Slade JY, Hall RA, Oakley AE, Yamamoto Y, Deramecourt V, Kalaria RN: Quantitative vascular pathology and phenotyping familial and sporadic cerebral small vessel diseases. *Brain Pathol* 2013, 23:547–557
56. Szpak GM, Lewandowska E, Wierzbica-Bobrowicz T, Bertrand E, Pasennik E, Mendel T, Stepień T, Leszczyńska A, Rafalowska J: Small cerebral vessel disease in familial amyloid and non-amyloid angiopathies: FAD-PS-1 (P117L) mutation and CADASIL. *Immunohistochemical and ultrastructural studies. Folia Neuropathol* 2007, 45:192–204

57. Sabogal-Guáqueta AM, Arias-Londoño JD, Gutierrez-Vargas J, Sepulveda-Falla D, Glatzel M, Villegas-Lanau A, Cardona-Gómez GP: Common disbalance in the brain parenchyma of dementias: phospholipid profile analysis between CADASIL and sporadic Alzheimer's disease. *Biochim Biophys Acta Mol Basis Dis* 2020, 1866:165797
58. Hase Y, Ding R, Harrison G, Hawthorne E, King A, Gettings S, Platten C, Stevenson W, Craggs LJJ, Kalaria RN: White matter capillaries in vascular and neurodegenerative dementias. *Acta Neuropathol Commun* 2019, 7:16
59. Del Bene A, Makin SD, Doubal FN, Inzitari D, Wardlaw JM: Variation in risk factors for recent small subcortical infarcts with infarct size, shape, and location. *Stroke* 2013, 44:3000–3006
60. Bourassa P, Tremblay C, Schneider JA, Bennett DA, Calon F: Beta-amyloid pathology in human brain microvessel extracts from the parietal cortex: relation with cerebral amyloid angiopathy and Alzheimer's disease. *Acta Neuropathol* 2019, 137:801–823
61. Roher AE, Tyas SL, Maarouf CL, Dausgs ID, Kokjohn TA, Emmerling MR, Garami Z, Belohlavek M, Sabbagh MN, Sue LL, Beach TG: Intracranial atherosclerosis as a contributing factor to Alzheimer's disease dementia. *Alzheimers Dement* 2011, 7:436–444
62. Wingo AP, Fan W, Duong DM, Gerasimov ES, Dammer EB, Liu Y, Harerimana NV, White B, Thambisetty M, Troncoso JC, Kim N, Schneider JA, Hajjar IM, Lah JJ, Bennett DA, Seyfried NT, Levey AI, Wingo TS: Shared proteomic effects of cerebral atherosclerosis and Alzheimer's disease on the human brain. *Nat Neurosci* 2020, 23:696–700
63. Prins ND, Scheltens P: White matter hyperintensities, cognitive impairment and dementia: an update. *Nat Rev Neurol* 2015, 11:157–165
64. Scott JA, Braskie MN, Tosun D, Thompson PM, Weiner M, DeCarli C, Carmichael OT, Alzheimer's Disease Neuroimaging Initiative: Cerebral amyloid and hypertension are independently associated with white matter lesions in elderly. *Front Aging Neurosci* 2015, 7:221
65. Roseborough A, Ramirez J, Black SE, Edwards JD: Associations between amyloid beta and white matter hyperintensities: a systematic review. *Alzheimers Dement* 2017, 13:1154–1167
66. Walsh P, Sudre CH, Fiford CM, Ryan NS, Lashley T, Frost C, Barnes J, Investigators: The age-dependent associations of white matter hyperintensities and neurofilament light in early- and late-stage Alzheimer's disease. *Neurobiol Aging* 2021, 97:10–17
67. Ramirez J, McNeely AA, Scott CJ, Stuss DT, Black SE: Subcortical hyperintensity volumetrics in Alzheimer's disease and normal elderly in the Sunnybrook Dementia Study: correlations with atrophy, executive function, mental processing speed, and verbal memory. *Alzheimers Res Ther* 2014, 6:49
68. Agosta F, Pievani M, Sala S, Geroldi C, Galluzzi S, Frisoni GB, Filippi M: White matter damage in Alzheimer disease and its relationship to gray matter atrophy. *Radiology* 2011, 258:853–863
69. Lo Buono V, Palmeri R, Corallo F, Allone C, Pria D, Bramanti P, Marino S: Diffusion tensor imaging of white matter degeneration in early stage of Alzheimer's disease: a review. *Int J Neurosci* 2020, 130:243–250
70. Ji F, Pasternak O, Liu S, Loke YM, Choo BL, Hilal S, Xu X, Ikram MK, Venketasubramanian N, Chen CL, Zhou J: Distinct white matter microstructural abnormalities and extracellular water increases relate to cognitive impairment in Alzheimer's disease with and without cerebrovascular disease. *Alzheimers Res Ther* 2017, 9:63
71. Conijn MMA, Hoogduin JM, van der Graaf Y, Hendrikse J, Luijten PR, Geerlings MI: Microbleeds, lacunar infarcts, white matter lesions and cerebrovascular reactivity – a 7 T study. *Neuroimage* 2012, 59:950–956
72. Iturria-Medina Y, Sotero RC, Toussaint PJ, Mateos-Perez JM, Evans AC, Alzheimer's Disease Neuroimaging Initiative: Early role of vascular dysregulation on late-onset Alzheimer's disease based on multifactorial data-driven analysis. *Nat Commun* 2016, 7:11934
73. Yew B, Nation DA, Alzheimer's Disease Neuroimaging Initiative: Cerebrovascular resistance: effects on cognitive decline, cortical atrophy, and progression to dementia. *Brain* 2017, 140:1987–2001
74. Korte N, Nortley R, Attwell D: Cerebral blood flow decrease as an early pathological mechanism in Alzheimer's disease. *Acta Neuropathol* 2020, 140:793–810
75. Gallart-Palau X, Serra A, Hase Y, Tan CF, Chen CP, Kalaria RN, Sze SK: Brain-derived and circulating vesicle profiles indicate neurovascular unit dysfunction in early Alzheimer's disease. *Brain Pathol* 2019, 29:593–605
76. Jefferson AL, Liu D, Gupta DK, Pechman KR, Watchmaker JM, Gordon EA, Rane S, Bell SP, Mendes LA, Davis LT, Gifford KA, Hohman TJ, Wang TJ, Donahue MJ: Lower cardiac index levels relate to lower cerebral blood flow in older adults. *Neurology* 2017, 89:2327–2334
77. Nation DA, Sweeney MD, Montagne A, Sagare AP, D'Orazio LM, Pachicano M, Sepehrband F, Nelson AR, Buennagel DP, Harrington MG, Benzinger TLS, Fagan AM, Ringman JM, Schneider LS, Morris JC, Chui HC, Law M, Toga AW, Zlokovic BV: Blood-brain barrier breakdown is an early biomarker of human cognitive dysfunction. *Nat Med* 2019, 25:270–276
78. Benzinger TL, Blazey T, Jack CR Jr, Koeppe RA, Su Y, Xiong C, et al: Regional variability of imaging biomarkers in autosomal dominant Alzheimer's disease. *Proc Natl Acad Sci U S A* 2013, 110:E4502–E4509
79. Montagne A, Nation DA, Sagare AP, Barisano G, Sweeney MD, Chakhoyan A, Pachicano M, Joe E, Nelson AR, D'Orazio LM, Buennagel DP, Harrington MG, Benzinger TLS, Fagan AM, Ringman JM, Schneider LS, Morris JC, Reiman EM, Caselli RJ, Chui HC, Tcw J, Chen Y, Pa J, Conti PS, Law M, Toga AW, Zlokovic BV: APOE4 leads to blood-brain barrier dysfunction predicting cognitive decline. *Nature* 2020, 581:71–76
80. Johnson KA, Lopera F, Jones K, Becker A, Sperling R, Hilson J, Londono J, Siegert I, Arcos M, Moreno S, Madrigal L, Ossa J, Pineda N, Ardila A, Roselli M, Albert MS, Kosik KS, Rios A: Presenilin-1-associated abnormalities in regional cerebral perfusion. *Neurology* 2001, 56:1545–1551
81. McDade E, Kim A, James J, Sheu LK, Kuan DC, Minhas D, Gianaros PJ, Ikonovic S, Lopez O, Snitz B, Price J, Becker J, Mathis C, Klunk W: Cerebral perfusion alterations and cerebral amyloid in autosomal dominant Alzheimer disease. *Neurology* 2014, 83:710–717
82. Ostergaard L, Engedal TS, Moreton F, Hansen MB, Wardlaw JM, Dalkara T, Markus HS, Muir KW: Cerebral small vessel disease: capillary pathways to stroke and cognitive decline. *J Cereb Blood Flow Metab* 2016, 36:302–325
83. Nakajima M, Yuasa S, Ueno M, Takakura N, Koseki H, Shirasawa T: Abnormal blood vessel development in mice lacking presenilin-1. *Mech Dev* 2003, 120:657–667
84. Englund E: Neuropathology of white matter changes in Alzheimer's disease and vascular dementia. *Dement Geriatr Cogn Disord* 1998, 1(9 Suppl):6–12
85. Hase Y, Horsburgh K, Ihara M, Kalaria RN: White matter degeneration in vascular and other ageing-related dementias. *J Neurochem* 2018, 144:617–633
86. Ding R, Hase Y, Ameen-Ali KE, Ndung'u M, Stevenson W, Barsby J, Gourlay R, Akinyemi T, Akinyemi R, Uemura MT, Polvikoski T, Mukaetova-Ladinska E, Ihara M, Kalaria RN: Loss of capillary pericytes and the blood-brain barrier in white matter in poststroke and vascular dementias and Alzheimer's disease. *Brain Pathol* 2020, 30:1087–1101
87. Wong SM, Jansen JFA, Zhang CE, Hoff EI, Staals J, van Oostenbrugge RJ, Backes WH: Blood-brain barrier impairment and hypoperfusion are linked in cerebral small vessel disease. *Neurology* 2019, 92:e1669–e1677
88. Weller RO, Hawkes CA, Kalaria RN, Werring DJ, Carare RO: White matter changes in dementia: role of impaired drainage of interstitial fluid. *Brain Pathol* 2015, 25:63–78

89. Araque Caballero MÁ, Suárez-Calvet M, Duering M, Franzmeier N, Benzinger T, Fagan AM, Bateman RJ, Jack CR, Levin J, Dichgans M, Jucker M, Karch C, Masters CL, Morris JC, Weiner M, Rossor M, Fox NC, Lee J-H, Salloway S, Danek A, Goate A, Yakushev I, Hassenstab J, Schofield PR, Haass C, Ewers M: White matter diffusion alterations precede symptom onset in autosomal dominant Alzheimer's disease. *Brain* 2018, 141:3065–3080
90. Erten-Lyons D, Woltjer R, Kaye J, Mattek N, Dodge HH, Green S, Tran H, Howieson DB, Wild K, Silbert LC: Neuropathologic basis of white matter hyperintensity accumulation with advanced age. *Neurology* 2013, 81:977–983
91. Wu Y, Ma Y, Liu Z, Geng Q, Chen Z, Zhang Y: Alterations of myelin morphology and oligodendrocyte development in early stage of Alzheimer's disease mouse model. *Neurosci Lett* 2017, 642: 102–106
92. Bello-Chavolla OY, Antonio-Villa NE, Vargas-Vázquez A, Ávila-Funes JA, Aguilar-Salinas CA: Pathophysiological mechanisms linking type 2 diabetes and dementia: review of evidence from clinical, translational and epidemiological research. *Curr Diabetes Rev* 2019, 15:456–470
93. Jefferson AL, Cambroner FE, Liu D, Moore EE, Neal JE, Terry JG, Nair S, Pechman KR, Rane S, Davis LT, Gifford KA, Hohman TJ, Bell SP, Wang TJ, Beckman JA, Carr JJ: Higher aortic stiffness is related to lower cerebral blood flow and preserved cerebrovascular reactivity in older adults. *Circulation* 2018, 138:1951–1962
94. Langbaum JB, Chen K, Launer LJ, Fleisher AS, Lee W, Liu X, Protas HD, Reeder SA, Bandy D, Yu M, Caselli RJ, Reiman EM: Blood pressure is associated with higher brain amyloid burden and lower glucose metabolism in healthy late middle-age persons. *Neurobiol Aging* 2012, 33:e11–e19
95. Toledo JB, Toledo E, Weiner MW, Jack CR Jr, Jagust W, Lee VM, Shaw LM, Trojanowski JQ, Alzheimer's Disease Neuroimaging Initiative: Cardiovascular risk factors, cortisol, and amyloid-beta deposition in Alzheimer's Disease Neuroimaging Initiative. *Alzheimer's Dement* 2012, 8:483–489
96. Hughes TM, Kuller LH, Barinas-Mitchell EJ, Mackey RH, McDade EM, Klunk WE, Aizenstein HJ, Cohen AD, Snitz BE, Mathis CA, Dekosky ST, Lopez OL: Pulse wave velocity is associated with beta-amyloid deposition in the brains of very elderly adults. *Neurology* 2013, 81:1711–1718
97. Hughes TM, Wagenknecht LE, Craft S, Mintz A, Heiss G, Palta P, Wong D, Zhou Y, Knopman D, Mosley TH, Gottesman RF: Arterial stiffness and dementia pathology: Atherosclerosis Risk in Communities (ARIC)-PET study. *Neurology* 2018, 90:e1248–e1256
98. Shi Y, Thrippleton MJ, Blair GW, Dickie DA, Marshall I, Hamilton I, Doubal FN, Chappell F, Wardlaw JM: Small vessel disease is associated with altered cerebrovascular pulsatility but not resting cerebral blood flow. *J Cereb Blood Flow Metab* 2020, 40:85–99
99. van Opstal AM, van Rooden S, van Harten T, Ghariq E, Labadie G, Fotiadis P, Gurol ME, Terwindt GM, Wermer MJH, van Buchem MA, Greenberg SM, van der Grond J: Cerebrovascular function in presymptomatic and symptomatic individuals with hereditary cerebral amyloid angiopathy: a case-control study. *Lancet Neurol* 2017, 16:115–122
100. Toth P, Tarantini S, Csiszar A, Ungvari Z: Functional vascular contributions to cognitive impairment and dementia: mechanisms and consequences of cerebral autoregulatory dysfunction, endothelial impairment, and neurovascular uncoupling in aging. *Am J Physiol Heart Circ Physiol* 2017, 312:H1–H20
101. van Beek AH, Lagro J, Olde-Rikkert MG, Zhang R, Claassen JA: Oscillations in cerebral blood flow and cortical oxygenation in Alzheimer's disease. *Neurobiol Aging* 2012, 33:e21–e31
102. Zazulia AR, Videen TO, Morris JC, Powers WJ: Autoregulation of cerebral blood flow to changes in arterial pressure in mild Alzheimer's disease. *J Cereb Blood Flow Metab* 2010, 30: 1883–1889
103. Zhang L, Pasha EP, Liu J, Xing C-Y, Cardim D, Tarumi T, Womack K, Hynan LS, Cullum CM, Zhang R: Steady-state cerebral autoregulation in older adults with amnesic mild cognitive impairment: linear mixed model analysis. *J Appl Physiol* (1985) 2020, 129: 377–385
104. Greenberg SM, Bacskaí BJ, Hernandez-Guillamon M, Pruzin J, Sperling R, van Veluw SJ: Cerebral amyloid angiopathy and Alzheimer disease - one peptide, two pathways. *Nat Rev Neurol* 2020, 16:30–42
105. Thal DR, von Arnim C, Griffin WS, Yamaguchi H, Mrak RE, Attems J, Upadhyaya AR: Pathology of clinical and preclinical Alzheimer's disease. *Eur Arch Psychiatry Clin Neurosci* 2013, 2(263 Suppl):S137–S145
106. Reinert J, Richard BC, Klafki HW, Friedrich B, Bayer TA, Wiltfang J, Kovacs GG, Ingelsson M, Lannfelt L, Paetau A, Bergquist J, Wirths O: Deposition of C-terminally truncated Abeta species Abeta37 and Abeta39 in Alzheimer's disease and transgenic mouse models. *Acta Neuropathol Commun* 2016, 4:24
107. Giaccone G, Morbin M, Moda F, Botta M, Mazzoleni G, Uggetti A, Catania M, Moro ML, Redaelli V, Spagnoli A, Rossi RS, Salmona M, Di Fede G, Tagliavini F: Neuropathology of the recessive A673V APP mutation: Alzheimer disease with distinctive features. *Acta Neuropathol* 2010, 120:803–812
108. Huang CY, Hsiao IT, Lin KJ, Huang KL, Fung HC, Liu CH, Chang TY, Weng YC, Hsu WC, Yen TC, Huang CC: Amyloid PET pattern with dementia and amyloid angiopathy in Taiwan familial AD with D678H APP mutation. *J Neurol Sci* 2019, 398:107–116
109. Cras P, van Harskamp F, Hendriks L, Ceuterick C, van Duijn CM, Stefanko SZ, Hofman A, Kros JM, Van Broeckhoven C, Martin JJ: Presenile Alzheimer dementia characterized by amyloid angiopathy and large amyloid core type senile plaques in the APP 692Ala->Gly mutation. *Acta Neuropathol* 1998, 96:253–260
110. Tagliavini F, Rossi G, Padovani A, Magoni M, Andora G, Sgarzi M, Bizzi A, Savoirdo M, Carella F, Morbin M, Giaccone G, Bugiani O: A new  $\beta$ PP mutation related to hereditary cerebral haemorrhage. *Alzheimer's Rep* 1999, 2:S28
111. Timmers WF, Tagliavini F, Haan J, Frangione B: Parenchymal pre-amyloid and amyloid deposits in the brains of patients with hereditary cerebral hemorrhage with amyloidosis—Dutch type. *Neurosci Lett* 1990, 118:223–226
112. Mok T, Chalissery AJ, Byrne S, Costelloe L, Galvin L, Vinters HV, Farrell MA, Brett FM, Moroney JT: Familial cerebral amyloid angiopathy due to the Iowa mutation in an Irish family. *Can J Neurol Sci* 2014, 41:512–517
113. Armstrong J, Boada M, Rey MJ, Vidal N, Ferrer I: Familial Alzheimer disease associated with A713T mutation in APP. *Neurosci Lett* 2004, 370:241–243
114. Kumar-Singh S, De Jonghe C, Cruys M, Kleinert R, Wang R, Mercken M, De Strooper B, Vanderstichele H, Lofgren A, Vanderhoeven I, Backhovens H, Vanmechelen E, Kroisel PM, Van Broeckhoven C: Nonfibrillar diffuse amyloid deposition due to a gamma(42)-secretase site mutation points to an essential role for N-truncated A beta(42) in Alzheimer's disease. *Hum Mol Genet* 2000, 9:2589–2598
115. Ghetti B, Murrell J, Benson MD, Farlow MR: Spectrum of amyloid beta-protein immunoreactivity in hereditary Alzheimer disease with a guanine to thymine missense change at position 1924 of the APP gene. *Brain Res* 1992, 571:133–139
116. Mann DM, Jones D, Snowden JS, Neary D, Hardy J: Pathological changes in the brain of a patient with familial Alzheimer's disease having a missense mutation at codon 717 in the amyloid precursor protein gene. *Neurosci Lett* 1992, 137:225–228
117. Lantos PL, Luthert PJ, Hanger D, Anderton BH, Mullan M, Rossor M: Familial Alzheimer's disease with the amyloid precursor protein position 717 mutation and sporadic Alzheimer's disease have the same cytoskeletal pathology. *Neurosci Lett* 1992, 137:221–224



118. Ghetti B, Hake AM, Murrell JR, Epperson F, Farlow MR, Vidal R, Spina S: Familial Alzheimer's disease associated with the V717I amyloid precursor protein gene mutation: neuropathological characterization. *Alzheimers Dement (Amst)* 2008, 4:221
119. Steiner H, Revesz T, Neumann M, Romig H, Grim MG, Pesold B, Kretschmar HA, Hardy J, Holton JL, Baumeister R, Houlden H, Haass C: A pathogenic presenilin-1 deletion causes aberrant Aβ<sub>42</sub> production in the absence of congophilic amyloid plaques. *J Biol Chem* 2001, 276:7233–7239
120. Lanoiselée H-M, Nicolas G, Wallon D, Rovelet-Lecrux A, Lacour M, Rousseau S, et al, collaborators of the CNR-MAJ project: APP, PSEN1, and PSEN2 mutations in early-onset Alzheimer disease: a genetic screening study of familial and sporadic cases. *PLoS Med* 2017, 14:e1002270
121. Queralt R, Ezquerra M, Lleo A, Castellvi M, Gelpi J, Ferrer I, Acarin N, Pasarin L, Blesa R, Oliva R: A novel mutation (V89L) in the presenilin 1 gene in a family with early onset Alzheimer's disease and marked behavioural disturbances. *J Neurol Neurosurg Psychiatry* 2002, 72:266–269
122. Singleton AB, Hall R, Ballard CG, Perry RH, Xuereb JH, Rubinsztein DC, Tysoe C, Matthews P, Cordell B, Kumar-Singh S, De Jonghe C, Cruts M, van Broeckhoven C, Morris CM: Pathology of early-onset Alzheimer's disease cases bearing the Thr113-114ins presenilin-1 mutation. *Brain* 2000, 123:2467–2474
123. Finckh U, Kuschel C, Anagnostouli M, Patsouris E, Pantos GV, Gatzonis S, Kapaki E, Davaki P, Lamszus K, Stavrou D, Gal A: Novel mutations and repeated findings of mutations in familial Alzheimer disease. *Neurogenetics* 2005, 6:85–89
124. Sutovsky S, Smolek T, Turcani P, Petrovic R, Brandoburova P, Jadhav S, Novak P, Attems J, Zilka N: Neuropathology and biochemistry of early onset familial Alzheimer's disease caused by presenilin-1 missense mutation Thr116Asn. *J Neural Transm (Vienna)* 2018, 125:965–976
125. Lladó A, Sánchez-Valle R, Rey MJ, Mercadal P, Almenar C, López-Villegas D, Fortea J, Molinuevo JL: [New mutation in the PSEN1 (E120G) gene associated with early onset Alzheimer's disease]. *Spanish. Neurologia* 2010, 25:13–16
126. Natelson Love M, Clark DG, Cochran JN, Den Beste KA, Geldmacher DS, Benzinger TL, Gordon BA, Morris JC, Bateman RJ, Roberson ED: Clinical, imaging, pathological, and biochemical characterization of a novel presenilin 1 mutation (N135Y) causing Alzheimer's disease. *Neurobiol Aging* 2017, 49:216.e7–216.e13
127. Arber C, Lovejoy C, Harris L, Willumsen N, Alatz A, Casey JM, Lines G, Kerins C, Mueller AK, Zetterberg H, Hardy J, Ryan NS, Fox NC, Lashley T, Wray S: Familial Alzheimer's disease mutations in PSEN1 lead to premature human stem cell neurogenesis. *Cell Rep* 2021, 34:108615
128. Gallo M, Marcello N, Curcio SA, Colao R, Geracitano S, Bernardi L, Anfossi M, Puccio G, Frangipane F, Clodomiro A, Mirabelli M, Vasso F, Smirne N, Muraca G, Di Lorenzo R, Maletta R, Ghidoni E, Bugiani O, Tagliavini F, Giaccone G, Bruni AC: A novel pathogenic PSEN1 mutation in a family with Alzheimer's disease: phenotypical and neuropathological features. *J Alzheimers Dis* 2011, 25:425–431
129. Bertoli Avella AM, Marcheco Teruel B, Llibre Rodriguez JJ, Gomez Viera N, Borrajo Martinez I, Severijnen EA, Joosse M, van Duijn CM, Heredero Baute L, Heutink P: A novel presenilin 1 mutation (L174 M) in a large Cuban family with early onset Alzheimer disease. *Neurogenetics* 2002, 4:97–104
130. Yasuda M, Maeda K, Ikejiri Y, Kawamata T, Kuroda S, Tanaka C: A novel missense mutation in the presenilin-1 gene in a familial Alzheimer's disease pedigree with abundant amyloid angiopathy. *Neurosci Lett* 1997, 232:29–32
131. Ryan NS, Lashley T, Revesz T, Dantu K, Fox NC, Morris HR: Spontaneous ARIA (amyloid-related imaging abnormalities) and cerebral amyloid angiopathy related inflammation in presenilin 1-associated familial Alzheimer's disease. *J Alzheimers Dis* 2015, 44:1069–1074
132. Takao M, Ghetti B, Hayakawa I, Ikeda E, Fukuuchi Y, Miravalle L, Piccardo P, Murrell JR, Glazier BS, Koto A: A novel mutation (G217D) in the Presenilin 1 gene (PSEN1) in a Japanese family: presenile dementia and parkinsonism are associated with cotton wool plaques in the cortex and striatum. *Acta Neuropathol* 2002, 104:155–170
133. Smith MJ, Gardner RJ, Knight MA, Forrest SM, Beyreuther K, Storey E, McLean CA, Cotton RG, Cappal R, Masters CL: Early-onset Alzheimer's disease caused by a novel mutation at codon 219 of the presenilin-1 gene. *Neuroreport* 1999, 10:503–507
134. Piaceri I, Chiari A, Galli C, Bagnoli S, Ferrari C, Saavedra ST, Molinari MA, Vinceti G, Sorbi S, Nacmias B: Incomplete penetrance in familial Alzheimer's disease with PSEN1 Ala260Gly mutation. *Neurol Sci* 2020, 41:2263–2266
135. Farlow MR, Murrell JR, Hulette CM, Ghetti B: Hereditary lateral sclerosis and Alzheimer disease associated with mutation at codon 261 of the presenilin 1 (PS1) gene. *Neurobiol Aging* 2000, 21:62
136. Akatsu H, Yamagata H, Wake A, Watanabe I, Kimura N, Kamada K, Miyazaki T, Tanabe H, Miki T, Yamamoto T, Hori A, Mimuro M, Yoshida M, Hashizume Y: The first autopsy case report of familial Alzheimer's disease (AD) associated with a mutation at G266S in the presenilin 1 (PSEN1) gene. *Alzheimers Dement (Amst)* 2008, 4: T578
137. Ringman JM, Monsell S, Ng DW, Zhou Y, Nguyen A, Coppola G, Van Berlo V, Mendez MF, Tung S, Weintraub S, Mesulam M-M, Bigio EH, Gitelman DR, Fisher-Hubbard AO, Albin RL, Vinters HV: Neuropathology of autosomal dominant Alzheimer disease in the National Alzheimer Coordinating Center database. *J Neuropathol Exp Neurol* 2016, 75:284–290
138. Sánchez-Valle R, Lladó A, Ezquerra M, Rey MJ, Rami L, Molinuevo JL: A novel mutation in the PSEN1 gene (L286P) associated with familial early-onset dementia of Alzheimer type and lobar haematomas. *Eur J Neurol* 2007, 14:1409–1412
139. Gómez-Isla T, Wasco W, Pettingell WP, Gurubhagavatula S, Schmidt SD, Jondro PD, McNamara M, Rodes LA, DiBlasi T, Growdon WB, Seubert P, Schenk D, Growdon JH, Hyman BT, Tanzi RE: A novel presenilin-1 mutation: increased beta-amyloid and neurofibrillary changes. *Ann Neurol* 1997, 41:809–813
140. Kwok JB, Halliday GM, Brooks WS, Dolios G, Laudon H, Murayama O, Hallupp M, Badenhop RF, Vickers J, Wang R, Naslund J, Takashima A, Gandy SE, Schofield PR: Presenilin-1 mutation L271V results in altered exon 8 splicing and Alzheimer's disease with non-cored plaques and no neuritic dystrophy. *J Biol Chem* 2003, 278:6748–6754
141. Jimenez-Escrig A, Rabano A, Guerrero C, Simon J, Barquero MS, Güell I, Ginestal RC, Montero T, Orensanz L: New V272A presenilin 1 mutation with very early onset subcortical dementia and parkinsonism. *Eur J Neurol* 2004, 11:663–669
142. Dinkel F, Trujillo-Rodriguez D, Villegas A, Streffer J, Mercken M, Lopera F, Glatzel M, Sepulveda-Falla D: Decreased deposition of beta-amyloid 1-38 and increased deposition of beta-amyloid 1-42 in brain tissue of Presenilin-1 E280A familial Alzheimer's disease patients. *Front Aging Neurosci* 2020, 12:220
143. O'Riordan S, McMonagle P, Janssen JC, Fox NC, Farrell M, Collinge J, Rossor MN, Hutchinson M: Presenilin-1 mutation (E280G), spastic paraparesis, and cranial MRI white-matter abnormalities. *Neurology* 2002, 59:1108–1110
144. Dermaut B, Kumar-Singh S, De Jonghe C, Cruts M, Lofgren A, Lubke U, Cras P, Dom R, De Deyn PP, Martin JJ, Van Broeckhoven C: Cerebral amyloid angiopathy is a pathogenic lesion in Alzheimer's disease due to a novel presenilin 1 mutation. *Brain* 2001, 124:2383–2392
145. Bagyinszky E, Youn YC, An SS, Kim S: Mutations, associated with early-onset Alzheimer's disease, discovered in Asian countries. *Clin Interv Aging* 2016, 11:1467–1488
146. Crook R, Verkkoniemi A, Perez-Tur J, Mehta N, Baker M, Houlden H, Farrer M, Hutton M, Lincoln S, Hardy J, Gwinn K,

- Somer M, Paetau A, Kalimo H, Ylikoski R, Poyhonen M, Kucera S, Haltia M: A variant of Alzheimer's disease with spastic paraparesis and unusual plaques due to deletion of exon 9 of presenilin 1. *Nat Med* 1998, 4:452–455
147. Yasuda M, Maeda S, Kawamata T, Tamaoka A, Yamamoto Y, Kuroda S, Maeda K, Tanaka C: Novel presenilin-1 mutation with widespread cortical amyloid deposition but limited cerebral amyloid angiopathy. *J Neurol Neurosurg Psychiatry* 2000, 68:220–223
148. Miki T, Yokota O, Haraguchi T, Ikeuchi T, Zhu B, Takenoshita S, Terada S, Yamada N: Young adult-onset, very slowly progressive cognitive decline with spastic paraparesis in Alzheimer's disease with cotton wool plaques due to a novel presenilin1 G417S mutation. *Acta Neuropathol Commun* 2019, 7:19
149. Ishikawa A, Piao YS, Miyashita A, Kuwano R, Onodera O, Ohtake H, Suzuki M, Nishizawa M, Takahashi H: A mutant PSEN1 causes dementia with Lewy bodies and variant Alzheimer's disease. *Ann Neurol* 2005, 57:429–434
150. Piscopo P, Marcon G, Piras MR, Crestini A, Campeggi LM, Deiana E, Cherchi R, Tanda F, Deplano A, Vanacore N, Tagliavini F, Pocchiarri M, Giaccone G, Confaloni A: A novel PSEN2 mutation associated with a peculiar phenotype. *Neurology* 2008, 70:1549–1554
151. Braggin JE, Bucks SA, Course MM, Smith CL, Sopher B, Osnis L, Shuey KD, Domoto-Reilly K, Caso C, Kinoshita C, Scherpelz KP, Cross C, Grabowski T, Nik SHM, Newman M, Garden GA, Leverenz JB, Tsuang D, Latimer C, Gonzalez-Cuyar LF, Keene CD, Morrison RS, Rhoads K, Wijsman EM, Dorschner MO, Lardelli M, Young JE, Valdmanis PN, Bird TD, Jayadev S: Alternative splicing in a presenilin 2 variant associated with Alzheimer disease. *Ann Clin Transl Neurol* 2019, 6:762–777
152. Jayadev S, Leverenz JB, Steinbart E, Stahl J, Klunk W, Yu CE, Bird TD: Alzheimer's disease phenotypes and genotypes associated with mutations in presenilin 2. *Brain* 2010, 133:1143–1154
153. Wells JL, Pasternak SH: Case report of a 63-year-old patient with Alzheimer disease and a novel presenilin 2 mutation. *Alzheimer Dis Assoc Disord* 2019, 33:166–169
154. Suarez MCF, Brusco I, Damasso C, Olivar N, Morelli L, Russo G: Heterozygous APP A713T mutation carrier with inflammatory amyloid angiopathy and family history of Alzheimer's disease: first case in Argentina. *J Neurol Stroke* 2019, 9:86–89
155. Gkanatsiou E, Portelius E, Toomey CE, Blennow K, Zetterberg H, Lashley T, Brinkmalm G: A distinct brain beta amyloid signature in cerebral amyloid angiopathy compared to Alzheimer's disease. *Neurosci Lett* 2019, 701:125–131
156. Okamoto Y, Ihara M, Fujita Y, Ito H, Takahashi R, Tomimoto H: Cortical microinfarcts in Alzheimer's disease and subcortical vascular dementia. *Neuroreport* 2009, 20:990–996
157. Okamoto Y, Yamamoto T, Kalaria RN, Senzaki H, Maki T, Hase Y, Kitamura A, Washida K, Yamada M, Ito H, Tomimoto H, Takahashi R, Ihara M: Cerebral hypoperfusion accelerates cerebral amyloid angiopathy and promotes cortical microinfarcts. *Acta Neuropathol* 2012, 123:381–394
158. Lee S, Zimmerman ME, Narkhede A, Nasrabad SE, Tosto G, Meier IB, Benzinger TLS, Marcus DS, Fagan AM, Fox NC, Cairns NJ, Holtzman DM, Buckles V, Ghetti B, McDade E, Martins RN, Saykin AJ, Masters CL, Ringman JM, Frster S, Schofield PR, Sperling RA, Johnson KA, Chhatwal JP, Salloway S, Correia S, Jack CR Jr, Weiner M, Bateman RJ, Morris JC, Mayeux R, Brickman AM, Dominantly Inherited Alzheimer Network: White matter hyperintensities and the mediating role of cerebral amyloid angiopathy in dominantly-inherited Alzheimer's disease. *PLoS One* 2018, 13:e0195838
159. McCreary CR, Beaudin AE, Subotic A, Zwiers AM, Alvarez A, Charlton A, Goodyear BG, Frayne R, Smith EE: Cross-sectional and longitudinal differences in peak skeletonized white matter mean diffusivity in cerebral amyloid angiopathy. *Neuroimage Clin* 2020, 27:102280
160. Ramirez J, McNeely AA, Scott CJM, Masellis M, Black SE, Alzheimer's Disease Neuroimaging Initiative: White matter hyperintensity burden in elderly cohort studies: the Sunnybrook Dementia Study, Alzheimer's Disease Neuroimaging Initiative, and Three-City Study. *Alzheimers Dement* 2016, 12:203–210