

GUARANTEED THE LARGEST CIRCULATION OF ANY NEWSPAPER IN KENYA, UGANDA, TANGANYIKA AND ZANZIBAR.

£1,000 FREE INSURANCE

WITH THE AFRICAN GUARANTEE AND INDEMNITY CO., LTD.—(See Advertisement on page 2).

KENYA'S NEWSPAPER

THE EAST

Price 50 Cents.

African Standard



MOMBASA TIMES & UGANDA ARGUS.

WITH WHICH IS INCORPORATED

THE LEADER.

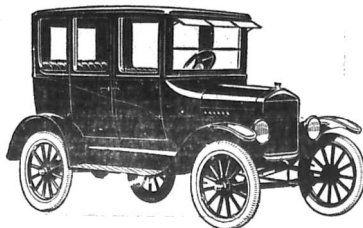
The Oldest Established Newspaper Published in Kenya and Uganda.

Official Organ of the Royal E.A. Automobile Association, Horticultural Society of Kenya, Etc.

No. 1031. REGISTERED AT THE GENERAL POST OFFICE AS A NEWSPAPER.

NAIROBI, SATURDAY, OCTOBER 3, 1925.

Price 50c per annum. Posted locally, 50c; Posted British Possessions 50c; Posted Foreign 45c.



The New Fordor Sedan

All cars nowadays are easy to drive. But the Ford remains the easiest to handle. This is mainly true because the Ford is the only car in which all the work of shifting the gears may be done without removing either hand from the steering wheel. The average woman requires both hands to turn the steering gear and she is hands-appeal when she must remove one to shift the gears. Especially is this true when the car is being "jockeyed" into a limited parking space or threaded through traffic. The Ford is the easiest and the safest car to drive.

The Service Company Limited

NAIROBI—MOMBASA—MOSHI.

LOOK

JACOBS
LIMITED

HALF YEARLY SALE

CLOSING DATE

Saturday October 17th

Bargains of Interest to You!!!

"Three Knots" HOSIERY OF QUALITY

The super quality English made stocking in all the new colours: Ivory, Tinsel Silver, Tinsel Gold, Flesh, Sunburn, Peach, India, Champagne, Putty, Nude, Stone, Shoes Grey, Paris Cinnamon, Nigger, and Black.
Usual Price, Shs. 7/50 pair.
SALE PRICE, 6-75 per pair

ARMY GREY SOCKS.
The ideal Shamba Sock in Grey Ribbed Wool. This is a fortunate purchase of real army surplus and they are of really excellent quality.
Usual Price, Shs. 2/75 pair.
SALE PRICE Shs. 2/- pair.

TOILET SETS.
A cheery but useful set in a good quality enamel and attractive colour. The set comprises Basin, large Exer. Chamber, Soap Dish, and brush vase. Can be supplied in set colours: Royal Blue, Mauve, Chocolate, or Dark Green.
Usual Price, Shs. 15/75.
SALE PRICE, Shs. 15/50.

THE "HUNTER" SHIRT.

A Cotton Gabardine Shirt in medium Khaki shade. Very strong material with two bulgy pockets. A good bush shirt.
Usual Price, Shs. 13/50.
SALE PRICE, Shs. 11 each.

DEBENHAM SPONGE CLOTHS.

Cotton Sponge Cloths and Ratines in a good variety of smart checks, stripes, and solids. New colours and smart effects.
Usual Price, 7/50 per yard.
SALE PRICE, 5/- per yard.

HOUSEHOLD SCALES.

Salter's "Household" spring balance with dial indicating weights up to 20 lbs.; large tin scale; always accurate and reliable.
Usual Price, Shs. 11/50.
SALE PRICE, Shs. 9/75.

HEAVY WOOL GOLF

With contrast check tops. In ribbed knitted Mail Mores. Gray, Fawn, or Brown.
Usual Price, Shs. 6/75 pair.
SALE PRICE Shs. 6-0 pair

Medium Weight Camel Shade Wool Golf No. 6. With neat striped tops. Very strong and just right for the shamba.
Usual Price, Shs. 5/70 pair.
SALE PRICE Shs. 4-50 pair

MEN'S STRIPED CEYLON PEJAMAS.

These are exceptionally warm and will keep a man extremely well in Block and Fancy Stripes, Slenders, Mens and Out Sizes.
Usual Price, Shs. 14/50.
SALE PRICE, Shs. 11/50.

CHECK ZEPHYR.

Easy to thread check and stripes Zep yrs of article dresses and coloring and real strong quality. A useful cloth for babies and children's winter frocks.
Usual Price, Shs. 2/50 and 2/75 per yard.
SALE PRICE 2/75 per yard



He does not know the difference between good and bad. All day he's had that Kruschen feeling!

He Sleeps Like a Child

A good night's sleep is the finest medicine in the world. You feel better, have more energy, and your work is done better. Kruschen Salts help you sleep like a child.

Indigestion and depression can make you feel that your sleep is bound to be troubled. That's actually because of your liver and bowels. Kruschen Salts help you sleep like a child.



Kruschen Salts. The most famous of salts. It is the only salt that is both a laxative and a purgative.

GOOD HEALTH FOR A FARTHING A DAY. Sole Manufacturers: E. GRIFFITHS HUGHES, Ltd., MANCHESTER, ENGLAND.

Every moment of every hour someone, Somewhere, is enjoying a cup of Lipton's Tea. The Universal Drink.

QUALITY! VALUE! FAIRNESS! CONFIDENCE! GAMAGE'S. UNIVERSAL PROVIDER. General Catalogue.

STRIKE PROTECTION.

Volunteer Service System.

THE LONDON, Sept. 21.—An influential group of employers in London have agreed to support a system of volunteer service to protect their interests in the event of a general strike.

COAL CONFERENCE.

Discussions Break Down.

LONDON, Sept. 21.—The coal conference, which has been in session since last week, has broken down today.

MOROCCO OPERATIONS.

Further Positions Taken.

MADRID, Sept. 21.—The operations in Morocco have continued today with further positions being taken by the French and Spanish forces.

THE USE OF NATIVE STOCK.

One of the main reasons...

THE USE OF NATIVE STOCK. One of the main reasons why the native stock is being used is because it is more suitable for the local conditions.

HONDAY'S CABLES.

LEAGUE OF NATIONS.

HONDAY'S CABLES. The League of Nations assembly has adjourned today after a session of several days.

DANGER IN AUSTRALIA.

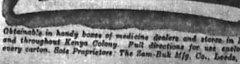
Premier and Labour Staff.

DANGER IN AUSTRALIA. The Premier and his staff are in danger of being ousted from office due to a vote of no confidence.

SEAMEN'S STRIKE.

Liner Gets Away.

SEAMEN'S STRIKE. The liner has finally gotten away today despite the strike by the seamen.



Zam-Buk. It's in handy boxes of medicine. Orders and notices to be filled and shipped to Zam-Buk, Ltd., 10, South Street, London, E.C. 4.

RUSSIA AND JAPAN.

Tokio Police Restrictions.

TOKIO, Sept. 21.—The police in Tokyo have imposed new restrictions on the press and public meetings.

BOMBAY COTTON STRIKE.

Seventy-seven Miles Id.

BOMBAY, Sept. 21.—The cotton strike in Bombay has now reached its seventy-seventh day.

ALL-INDIA CONGRESS.

S. African Resolution.

ALL-INDIA CONGRESS. The South African resolution has been adopted by the All-India Congress.

MISSION TO ARABIA.

Adjustment of Frontiers.

MISSION TO ARABIA. The mission to Arabia is making progress in the adjustment of frontiers.

INDIAN CEMENT.

HE DIDN'T KNOW.

INDIAN CEMENT. He didn't know that there was cement and cement. It all looked alike and one was a huge clump of hair.

AMERICAN NAUTICAL.

Submarine Sunk.

AMERICAN NAUTICAL. A submarine was sunk today in the Atlantic Ocean.

USE A GUARANTEED BRAND. NINE ELMS - LIGHTHOUSE BUREAU - HAND - PYRAMID - MAITRE - CRAB - BULLHORN - WHITES - INVICTA - PETERS ANCHOR.

USE A GUARANTEED BRAND. Kettles - Roy, Limited. Nairobi, Kampala, Mombasa and Zanzibar.

Let us quote you KEENEST PRICES for MWANZA RICE. Apply Mortiboy's Nicholas & Co., Ltd. NAIROBI.

Apply Mortiboy's Nicholas & Co., Ltd. NAIROBI. Agents - JAS. GROSEFIELD & BORN Ltd., SOAHS.

Coffee Farmers and Others. KESSER, ARBUTHNOT LATHKIN & CO. LTD.

One of the Oldest Firms in London are prepared to handle your business. All varieties in stock. For full particulars apply to their agent J. Lathkin & Co., Ltd., Nairobi.

CONFERENCE AGREED TO. Berlin, Sept. 21. A cabinet conference presided over by Chancellor Brüning...

INDO-MUSLIM RIOTS. Serious end to Ramli. Delhi, Sept. 21. Serious Hindu-Muslim riots are reported to have broken out in Ramli...

SHIMAZI LANDSIDE. Sand Digger Bored Alive. Shimoda, Sept. 21. A sand digger was reported to have been bored alive in Shimoda...

FRENCH STRIP WAR. The Capital Occupied. Paris, Sept. 21. A Damascus message says that the French have occupied the capital...

MISSION TO ARABIA. Adjustment of Frontiers. London, Sept. 21. An official statement says that the mission to Arabia is making progress...

LEAGUE OF NATIONS. Economic Conference. Geneva, Sept. 21. The Assembly of the League of Nations is holding an economic conference...

ITALIAN FLIGHT. Dispatches have arrived. Rome, Sept. 21. Dispatches have arrived from Italy...

MR. A'S UNCLE. Death of the Maharajah. Lahore, Sept. 21. The Maharajah of Patiala died today...

INDIAN CEMENT. HE DIDN'T KNOW. There was cement and cement. It all looked alike and one was a huge clump of hair.

AMERICAN NAUTICAL. Submarine Sunk. A submarine was sunk today in the Atlantic Ocean.

SEAMEN'S STRIKE. Liner Gets Away. The liner has finally gotten away today despite the strike by the seamen.

COAL CONFERENCE. Discussions Break Down. The coal conference, which has been in session since last week, has broken down today.

MOROCCO OPERATIONS. Further Positions Taken. The operations in Morocco have continued today with further positions being taken by the French and Spanish forces.

THE USE OF NATIVE STOCK. One of the main reasons why the native stock is being used is because it is more suitable for the local conditions.

HONDAY'S CABLES. LEAGUE OF NATIONS. The League of Nations assembly has adjourned today after a session of several days.

DANGER IN AUSTRALIA. The Premier and his staff are in danger of being ousted from office due to a vote of no confidence.

THE 1926 BUDGET EXAMINED.

MEDICAL AND EDUCATION EXPENDITURE.

The Medical Staff more than Doubled.

It was to be expected that the 1926 Budget would show a considerable increase in the expenditure on the medical and educational services. It has been estimated that the most important increase in the medical services is the doubling of the medical staff...

The educational expenditure has also increased considerably. The Education Department has received the following additional grant from the Government...

THE EMPLOYERS. The employers have also received a grant from the Government for the purpose of providing for the education of their employees...

THE AGRICULTURAL DEPARTMENT. The Agricultural Department has received a grant from the Government for the purpose of providing for the education of its staff...

THE PUBLIC WORKS DEPARTMENT. The Public Works Department has received a grant from the Government for the purpose of providing for the education of its staff...

THE PORT AND SHIPPING DEPARTMENT. The Port and Shipping Department has received a grant from the Government for the purpose of providing for the education of its staff...

THE AIR FORCE DEPARTMENT. The Air Force Department has received a grant from the Government for the purpose of providing for the education of its staff...

THE ARMY DEPARTMENT. The Army Department has received a grant from the Government for the purpose of providing for the education of its staff...

THE NAVY DEPARTMENT. The Navy Department has received a grant from the Government for the purpose of providing for the education of its staff...

THE POST AND TELEGRAPH DEPARTMENT. The Post and Telegraph Department has received a grant from the Government for the purpose of providing for the education of its staff...

KENYA PRODUCE.

London Market Report.

Messrs. Tyson Bros. have received the following cable report from the London Market...

THE MARKET continues to rally following the receipt of the Grade A size medium...

THE MARKET continues to rally following the receipt of the Grade A size medium...

THE MARKET continues to rally following the receipt of the Grade A size medium...

THE MARKET continues to rally following the receipt of the Grade A size medium...

THE MARKET continues to rally following the receipt of the Grade A size medium...

THE MARKET continues to rally following the receipt of the Grade A size medium...

THE MARKET continues to rally following the receipt of the Grade A size medium...

THE MARKET continues to rally following the receipt of the Grade A size medium...

THE MARKET continues to rally following the receipt of the Grade A size medium...

THE MARKET continues to rally following the receipt of the Grade A size medium...

THE MARKET continues to rally following the receipt of the Grade A size medium...

THE MARKET continues to rally following the receipt of the Grade A size medium...

AGRICULTURE IN UGANDA.

Cotton in 1924.

INCREASED ACREAGE RECORDED.

Experiments in Native Coffee Cultivation.

The Director of Agriculture in Uganda has reported that the agricultural development work in Uganda is progressing well...

THE ACREAGE. The approximate acreage planted throughout the Protectorate...

THE ACREAGE. The approximate acreage planted throughout the Protectorate...

THE ACREAGE. The approximate acreage planted throughout the Protectorate...

THE ACREAGE. The approximate acreage planted throughout the Protectorate...

THE ACREAGE. The approximate acreage planted throughout the Protectorate...

THE ACREAGE. The approximate acreage planted throughout the Protectorate...

THE ACREAGE. The approximate acreage planted throughout the Protectorate...

THE ACREAGE. The approximate acreage planted throughout the Protectorate...

THE ACREAGE. The approximate acreage planted throughout the Protectorate...

THE ACREAGE. The approximate acreage planted throughout the Protectorate...

THE ACREAGE. The approximate acreage planted throughout the Protectorate...

THE EAST AFRICAN STANDARD.

THE EAST AFRICAN STANDARD.

THE EAST AFRICAN STANDARD.

THE EAST AFRICAN STANDARD.

THE EAST AFRICAN STANDARD. The high quality of the wool was responsible for a greatly increased...

THE EAST AFRICAN STANDARD. The high quality of the wool was responsible for a greatly increased...

THE EAST AFRICAN STANDARD. The high quality of the wool was responsible for a greatly increased...

THE EAST AFRICAN STANDARD. The high quality of the wool was responsible for a greatly increased...

THE EAST AFRICAN STANDARD. The high quality of the wool was responsible for a greatly increased...

THE EAST AFRICAN STANDARD. The high quality of the wool was responsible for a greatly increased...

THE EAST AFRICAN STANDARD. The high quality of the wool was responsible for a greatly increased...

THE EAST AFRICAN STANDARD. The high quality of the wool was responsible for a greatly increased...

THE EAST AFRICAN STANDARD. The high quality of the wool was responsible for a greatly increased...

THE EAST AFRICAN STANDARD. The high quality of the wool was responsible for a greatly increased...

THE EAST AFRICAN STANDARD. The high quality of the wool was responsible for a greatly increased...

THE EAST AFRICAN STANDARD. The high quality of the wool was responsible for a greatly increased...



The best of the Beef is in this Bottle. Just add hot water to a spoonful of Bovril and you have a nourishing drink in a moment.

GENERAL AGENTS LTD. P.O. Box 24 Nairobi.

STOP ALL ACHES & PAINS USE SLOAN'S LINIMENT

If you're tormented by Rheumatism, Neuralgia, Sprain, Bruise, Backache, any muscular or nerve pain—just use how quickly Sloan's Liniment gives relief.

Don't you have or wish to rub in Sloan's Liniment. It penetrates and kills the pain instantly.

RHEUMATISM, BRACKACHE, SPRAINS, BRUISES AND ALL MUSCULAR AND NERVE PAINS

Look for the Portrait of Doctor Sloan.

Wholesale and Retail Ld. 10, Chesham Road, London, Eng.

THE EAST AFRICAN STANDARD. The high quality of the wool was responsible for a greatly increased...

THE EAST AFRICAN STANDARD. The high quality of the wool was responsible for a greatly increased...

THE EAST AFRICAN STANDARD. The high quality of the wool was responsible for a greatly increased...



The trusted friend of millions—make it yours.

The friend who can scare away the various little ills that often make daily life a burden is a friend indeed.

Andrew's Liver Salt is a powerful purifier of the blood and cleanses the system.

Andrew's LIVER SALT

Wholesale and Retail Ld. 10, Chesham Road, London, Eng.

THE EAST AFRICAN STANDARD. The high quality of the wool was responsible for a greatly increased...

THE EAST AFRICAN STANDARD. The high quality of the wool was responsible for a greatly increased...

THE EAST AFRICAN STANDARD. The high quality of the wool was responsible for a greatly increased...

THE EAST AFRICAN STANDARD. The high quality of the wool was responsible for a greatly increased...

THE EAST AFRICAN STANDARD. The high quality of the wool was responsible for a greatly increased...

THE EAST AFRICAN STANDARD. The high quality of the wool was responsible for a greatly increased...

THE EAST AFRICAN STANDARD. The high quality of the wool was responsible for a greatly increased...

Advertisement for VETARZO BLOOD MEDICINE, featuring a bottle and text about its benefits for various ailments.

Advertisement for GLORIOUS HEALTH and SANATOGEN, featuring a bottle and text about its benefits for general health.

WEDNESDAY, SEPT. 30, 1925

The sugar planting season. Many small plots of sugarcane are sown by the natives...

DISTRICT NOTES.

Mombasa.

From our Mombasa correspondent. In a recent publication...

Some thousands of eggs of the common fly were taken...

RUHISI BEACH. The British is again opening a beach for public use...

It is satisfactory to note that the mosquito problem...

It is interesting to note that the new Government...

It is interesting to note that the new Government...

It is interesting to note that the new Government...

It is interesting to note that the new Government...

It is interesting to note that the new Government...

It is interesting to note that the new Government...

It is interesting to note that the new Government...

It is interesting to note that the new Government...

It is interesting to note that the new Government...

It is interesting to note that the new Government...

It is interesting to note that the new Government...

It is interesting to note that the new Government...

It is interesting to note that the new Government...

It is interesting to note that the new Government...

THE LEGISLATURE OF GOVERNMENT

The Editor has not accepted responsibility for the contents...

The Editor has not accepted responsibility for the contents...

The Editor has not accepted responsibility for the contents...

The Editor has not accepted responsibility for the contents...

The Editor has not accepted responsibility for the contents...

The Editor has not accepted responsibility for the contents...

The Editor has not accepted responsibility for the contents...

The Editor has not accepted responsibility for the contents...

The Editor has not accepted responsibility for the contents...

The Editor has not accepted responsibility for the contents...

The Editor has not accepted responsibility for the contents...

The Editor has not accepted responsibility for the contents...

The Editor has not accepted responsibility for the contents...

The Editor has not accepted responsibility for the contents...

The Editor has not accepted responsibility for the contents...

The Editor has not accepted responsibility for the contents...

The Editor has not accepted responsibility for the contents...

Can You Picture this happy Baby? Image of a baby and a bottle of Woodward's Gripe Water.

WOODWARDS "Gripe Water" KEEPS BABY WELL. ARCHIBALD HOGG. Hardinge Street, Nairobi. Arms Ammunition, Etc., Etc.

ARCHIBALD HOGG. Hardinge Street, Nairobi. Arms Ammunition, Etc., Etc.

RIFLES all sizes 22 to .577 including Winchey Richards and Rigby makes...

SEMI AUTOMATIC TARGET PISTOLS, AIRGUNS and AIR PISTOLS 17 and 22 CALIBRE. CARTRIDGE BAGS, belts, fire cleaning and other accessories.

ZELISSI prismatic field glasses all sizes 2 x 30 to 7 x 50. "LITE-SITES" for night shooting, INFRARED watches, "MUTAX" eye cleaning brushes...

THE LITE & HABIT OF THE EDITOR. The Editor has not accepted responsibility for the contents...

THE CLAYTON FARM TRACTOR. Image of a tractor and text describing its features.

THE COAL INDUSTRY. Daily two or three have long since the Government purchased...

ATTEMPTS to begin the market, the news that it is necessary to see down the expense of production...

THE AFRICAN LIFE ASSURANCE SOCIETY LTD. For a statement of the affairs of the company...

Funds now over £2,268,000. The Society issues all classes of Life and Endowment Policies.

M. D. KAMPP, Manager, African Life Assurance Society, Ltd. For the blood in the life...

SURE SIGNS OF SURE IMPURITY. For the blood in the life. The blood is the life...

CLERK'S BLOOD MIXTURE. For the blood in the life. The blood is the life...

THE PRINCE OF WALES. Homeward Bound. The Prince of Wales has returned...

THE PRINCE OF WALES. Homeward Bound. The Prince of Wales has returned...

WEDNESDAY'S CABLES. FRENCH DEBT TO U.S.A. The American's Demand.

THE AMERICANS' DEMAND. (Continued from previous page.) The Journal publishes a Washington news item...

THE AMERICANS' DEMAND. (Continued from previous page.) The Journal publishes a Washington news item...

THE AMERICANS' DEMAND. (Continued from previous page.) The Journal publishes a Washington news item...

THE AMERICANS' DEMAND. (Continued from previous page.) The Journal publishes a Washington news item...

THE AMERICANS' DEMAND. (Continued from previous page.) The Journal publishes a Washington news item...

THE AMERICANS' DEMAND. (Continued from previous page.) The Journal publishes a Washington news item...

THE AMERICANS' DEMAND. (Continued from previous page.) The Journal publishes a Washington news item...

THE AMERICANS' DEMAND. (Continued from previous page.) The Journal publishes a Washington news item...

SAMUEL JACOBS & CO. Managing Agents. Theirs Royal Buildings, Sixth Avenue, NAIROBI.

REAL ESTATE AGENT, VALUERS AND PROPERTY MANAGERS. PERIODICAL SALES OF FARMS, RESHTALS, HOUSE PROPERTIES, Etc. &c.

WE shall be pleased to receive particulars of Properties for inclusion in our next Sale.

WE HAVE FOR SALE. FARMS for all purposes in all districts. RESIDENTIAL PROPERTIES and SITES in and around NAIROBI.

What is Poliflor? The Best Floor and Furniture Polish Obtainable. Made by the "POLIG" Polish Co.

THE PRINCE OF WALES. Homeward Bound. The Prince of Wales has returned...

SURE SIGNS OF SURE IMPURITY. For the blood in the life. The blood is the life...

CLERK'S BLOOD MIXTURE. For the blood in the life. The blood is the life...

J. H. ENGELBRECHT. For the blood in the life. The blood is the life...

THE 1926 BUDGET EXAMINED.

7

KEPLER MORE MONEY WANTED FOR THE SECRETARIAT

Changed Clerical Methods Contemplated.



A vitalizing and invigorating food. Helps you to digest and enjoy your other food and to put up with weight...

The new for 1926 and 1927... The Secretary-General... The Secretary-General... The Secretary-General...

The main of the Secretary-General... The Secretary-General... The Secretary-General... The Secretary-General...

prevention which entails revision... which suggests, therefore, that... which suggests, therefore, that...

COFFEE MACHINERY

Wm. McKinnon & Co., Ltd. Aberdeen. DRYERS OKRASSA TYPE

Complete with Heaters and Pans

12 SIZES of the above dryer are available ranging in capacity from 3,500 lbs to 28,200 lbs wet parchment per charge.

Right Types of Heaters, Comprising Direct Fire Heaters in 4 types Live Steam Heaters in 2 types Exhaust Steam Heaters in 2 types

PRICES: 1 ton size with Multitubular Live Steam Heater f o b England 2310 2 ton size with above Heater f o b England 2901 3 ton size with above Heater f o b England 3583 4 ton size with above Heater f o b England 4304

Catalogue, full particulars, and prices for any Station in Kenya, for all sizes from the Sole Agents, SCOTT & DAVIDSON.

Victoria St. Telephone: Nairobi or Thika. Messageries Matines P. O. Box 450

AFRICAN INDUSTRIES

THE ONLY PAPER PUBLISHED IN GREAT BRITAIN

THE LATEST FACTS, FIGURES, AND SETTLEMENTS MANUFACTURER, IMPORTER AND EXPORTER

It is available to the Printer, Merchant and Manufacturer. Rates of Subscription, 25/- per annum. Offices: 1, Southampton Street, Holborn, London, W.C.1. Cable: 'AFRICIND' - LONDON

DAVIDSON & HYDE

Receiving & Forwarding Agents

TURBO.

COFFEE MACHINERY

Wm. McKinnon & Co., Ltd. Aberdeen. DRYERS OKRASSA TYPE

Complete with Heaters and Pans

12 SIZES of the above dryer are available ranging in capacity from 3,500 lbs to 28,200 lbs wet parchment per charge.

Right Types of Heaters, Comprising Direct Fire Heaters in 4 types Live Steam Heaters in 2 types Exhaust Steam Heaters in 2 types

PRICES: 1 ton size with Multitubular Live Steam Heater f o b England 2310 2 ton size with above Heater f o b England 2901 3 ton size with above Heater f o b England 3583 4 ton size with above Heater f o b England 4304

Catalogue, full particulars, and prices for any Station in Kenya, for all sizes from the Sole Agents, SCOTT & DAVIDSON.

Victoria St. Telephone: Nairobi or Thika. Messageries Matines P. O. Box 450

AFRICAN INDUSTRIES

THE ONLY PAPER PUBLISHED IN GREAT BRITAIN

THE LATEST FACTS, FIGURES, AND SETTLEMENTS MANUFACTURER, IMPORTER AND EXPORTER

It is available to the Printer, Merchant and Manufacturer. Rates of Subscription, 25/- per annum. Offices: 1, Southampton Street, Holborn, London, W.C.1. Cable: 'AFRICIND' - LONDON

DAVIDSON & HYDE

Receiving & Forwarding Agents

TURBO.

COFFEE MACHINERY

Wm. McKinnon & Co., Ltd. Aberdeen. DRYERS OKRASSA TYPE

Complete with Heaters and Pans

12 SIZES of the above dryer are available ranging in capacity from 3,500 lbs to 28,200 lbs wet parchment per charge.

Right Types of Heaters, Comprising Direct Fire Heaters in 4 types Live Steam Heaters in 2 types Exhaust Steam Heaters in 2 types

PRICES: 1 ton size with Multitubular Live Steam Heater f o b England 2310 2 ton size with above Heater f o b England 2901 3 ton size with above Heater f o b England 3583 4 ton size with above Heater f o b England 4304

Catalogue, full particulars, and prices for any Station in Kenya, for all sizes from the Sole Agents, SCOTT & DAVIDSON.

Victoria St. Telephone: Nairobi or Thika. Messageries Matines P. O. Box 450

AFRICAN INDUSTRIES

THE ONLY PAPER PUBLISHED IN GREAT BRITAIN

THE LATEST FACTS, FIGURES, AND SETTLEMENTS MANUFACTURER, IMPORTER AND EXPORTER

It is available to the Printer, Merchant and Manufacturer. Rates of Subscription, 25/- per annum. Offices: 1, Southampton Street, Holborn, London, W.C.1. Cable: 'AFRICIND' - LONDON

DAVIDSON & HYDE

Receiving & Forwarding Agents

TURBO.

THURSDAY, OCT. 11, 1923

THE 1926 BUDGET.

We conclude in to-day's issue a series of articles in which we have outlined the provisions and intentions of the Budget for 1926 in 1925 in so far as they can be judged from the detailed figures and the short explanations thereof.

THURSDAY'S CABLES

At a meeting of the French Press in London, Marshal Foch announced that he had asked the British Government to replace him.

MOROCCO OPERATIONS.

At a meeting of the French Press in London, Marshal Foch announced that he had asked the British Government to replace him.

DEPORTATION APPLIED.

Seven of the September 20th cases left the ship and passed through the immigration office, but they will be deported next week.

LEAGUE AND SLAVERY.

The French Government has not yet decided upon the proposal of the League and Slavery Commission.

THURSDAY, OCT. 11, 1923

THE 1926 BUDGET.

We conclude in to-day's issue a series of articles in which we have outlined the provisions and intentions of the Budget for 1926 in 1925 in so far as they can be judged from the detailed figures and the short explanations thereof.

THURSDAY'S CABLES

At a meeting of the French Press in London, Marshal Foch announced that he had asked the British Government to replace him.

MOROCCO OPERATIONS.

At a meeting of the French Press in London, Marshal Foch announced that he had asked the British Government to replace him.

DEPORTATION APPLIED.

Seven of the September 20th cases left the ship and passed through the immigration office, but they will be deported next week.

LEAGUE AND SLAVERY.

The French Government has not yet decided upon the proposal of the League and Slavery Commission.

THURSDAY, OCT. 11, 1923

THE 1926 BUDGET.

We conclude in to-day's issue a series of articles in which we have outlined the provisions and intentions of the Budget for 1926 in 1925 in so far as they can be judged from the detailed figures and the short explanations thereof.

THURSDAY'S CABLES

At a meeting of the French Press in London, Marshal Foch announced that he had asked the British Government to replace him.

MOROCCO OPERATIONS.

At a meeting of the French Press in London, Marshal Foch announced that he had asked the British Government to replace him.

DEPORTATION APPLIED.

Seven of the September 20th cases left the ship and passed through the immigration office, but they will be deported next week.

LEAGUE AND SLAVERY.

The French Government has not yet decided upon the proposal of the League and Slavery Commission.

M. B. & Co. THE FAMOUS "TRAMP BOOT." Elk Hide with Chrome Soling. All sizes Custom Fit. 48-00 The Best Framing Boot Known.

M. B. & Co. Well known "STORMPROOF COAT" 3 in 1 This Raincoat was also absolutely Guaranteed, it is composed of the World renowned GAB of a Super Texture. Lined with Oil Silk under a Pure Wool Check lining. Price 82-50

Ladies & Gentlemen MOSQUITO BOOTS in Black or Tan. All sizes. LADIES TAN 38 50 MENS TAN 39 50 BLACK 41 50 Maxwell, Brady & Company. Box 50. NAIROBI. Phone 125.

FRENCH DEBT TO U.S.

London, September 28. While Washington dispatches are optimistic regarding the prospect of a Franco-American agreement, the newspapers here are skeptical.

YELLOW RIVER AOK.

Peking, September 28. As a result of a flood in a main tributary of the Yellow River northwards, the food is expected to be some 200,000 tons less than last year.

SOVIET CASH FOR JAPAN.

The Japanese Government has announced that it has received a proposal from the Soviet Government to purchase 1,000,000 rubles of Japanese Government bonds.

Your Back warns you. Illustration of a person holding their back in pain.

Do not suppose that the small of the back is good news. It is just what you need. If you are suffering from back pain, it is a warning that you should take action.

Do not suppose that the small of the back is good news. It is just what you need. If you are suffering from back pain, it is a warning that you should take action.

SUGAR.

THE VICTORIA NIENZA SUGAR CO., LTD.

We are manufacturing a very fine dry, hard, white sugar of 96% purity. The product is of the highest quality and is suitable for all purposes.

THE VICTORIA NIENZA SUGAR CO., LTD.

Works are placed on the market at 25/- per ton. Delivery at 28/- per ton. Works at 30/- per ton. Delivery at 32/- per ton.

BARKERS-LONDON SPECIAL NEW OVERSEAS LIST SENT FREE TO ANY ADDRESS

A Book for its Values: A Pleasure for its Range: Goods CONTENTS LADIES' DRESS, Hats, Tricots, Corsets, Pajamas, etc.

CROSS-WORD PUZZLE No. 32 28th PRIZE WINNER.

Crossword puzzle grid with clues for Across and Down. Includes prize information and contact details for M. P. De Mello.

SUPPLEMENTARY PUZZLE THE CIVIC RECEPTION

The following is the solution to the supplementary puzzle... THE CIVIC RECEPTION His Excellency Sir Edward...

SATURDAY'S CABLES LABOUR CONFERENCE

Advanced Resolutions. London, September 30. The two-day week of the Labour conference...

THE GOVERNOR ARRIVES THE NYANZA AUCTIONEERS

From Our Own Correspondents. His Excellency Sir Edward... Beg to announce that after September 28th, their Head Office will be at NAKURU.

Muter and Oswald's Sales

Notice of forthcoming sales

WEDNESDAY, 29th OCTOBER. At our Salerooms, Moko Buildings, 110 to 112, Upper Macao Street, London, W.C.2. 10.30 a.m. 100 pieces...

PLAID CUT ROUND THE DOTTED LINE

Plaid cut round the dotted line puzzle grid with clues for Across and Down.

THE CIVIC RECEPTION (Continued)

His Excellency Sir Edward... The reception was held in the afternoon at 4.30 p.m. in the Grand Ballroom of the Grosvenor Hotel...

LABOUR CONFERENCE (Continued)

The Labour Party conference... The resolution was met by Mr. A. J. Cook, Secretary of the Labour Party...

MORTGAGES AND REPORTS

MORTGAGES AND REPORTS. As we are in a position to arrange mortgages on approved security at reasonable rates...

Muter and Oswald's Sales

Daily instructed by His. Mr. S. W. Lyall Grant, who will be leaving Kenya, you shall and should be instructed by PUBLIC AUCTION, ABSOLUTELY WITHOUT...

IRON DRUMS

IRON DRUMS CAPACITY: 90 to 150 gallons. Duffell Bros. Water Casks, Oil Water Bolles, Gun Oil Cans, and numerous other purposes.

STRIKE-SEVERED ARMY

Home Secretary's View. London, September 30. That the Government's opposition to the maintenance of discipline in the ranks of the Army...

SPANISH OFFENSIVE

Extending the French Front. Marshal Juan y Garcia, Napoleon's great-grandson, has been appointed to the command of the French front, where an offensive is being planned...

DEBT DISCUSSIONS

An Agreement Reported. Washington, October 1. Finance Ministers of the United States and Great Britain have agreed to discuss the problem of international debt...

SITUATIONS VACANT

Mechanical Engineer required... Mechanical Engineer required must be thoroughly experienced in wire rope operations. Apply in writing to Messrs. Muter and Oswald, 110 to 112, Upper Macao Street, London, W.C.2.

THE EAST AFRICAN STANDARD No. 32

THE EAST AFRICAN STANDARD No. 32 CROSS-WORD PUZZLE COMPLETE. Name: Address: The Editor's decision must be accepted as final.

IRON DRUMS (Continued)

IRON DRUMS CAPACITY: 90 to 150 gallons. Duffell Bros. Water Casks, Oil Water Bolles, Gun Oil Cans, and numerous other purposes.

THE CORKYOND FUND

Contributions should be addressed to the Secretary to the Corkyond Fund, c/o The National Council for the Blind, 1, St. James's Place, London, W.1.

THE CORKYOND FUND (Continued)

Contributions should be addressed to the Secretary to the Corkyond Fund, c/o The National Council for the Blind, 1, St. James's Place, London, W.1.

A LEGAL POINT.

MORE EMPIRE NEWS

JOCKEY CLUB STAKES

MORE MOTORISTS

CORRESPONDENCE



THE EAST AFRICAN STANDARD Motor, and MAGAZINE SUPPLEMENT

SUPPLEMENT No. 101

SATURDAY, OCT. 9, 1926

NAIROBI.

The following paragraph... The following paragraph... The following paragraph...

Mr. H. M. ... Mr. H. M. ... Mr. H. M. ...

Mr. H. M. ... Mr. H. M. ... Mr. H. M. ...

Mr. H. M. ... Mr. H. M. ... Mr. H. M. ...

Mr. H. M. ... Mr. H. M. ... Mr. H. M. ...

The following paragraph... The following paragraph... The following paragraph...

Mr. H. M. ... Mr. H. M. ... Mr. H. M. ...

Mr. H. M. ... Mr. H. M. ... Mr. H. M. ...

Mr. H. M. ... Mr. H. M. ... Mr. H. M. ...

Mr. H. M. ... Mr. H. M. ... Mr. H. M. ...

The following paragraph... The following paragraph... The following paragraph...

Mr. H. M. ... Mr. H. M. ... Mr. H. M. ...

Mr. H. M. ... Mr. H. M. ... Mr. H. M. ...

Mr. H. M. ... Mr. H. M. ... Mr. H. M. ...

Mr. H. M. ... Mr. H. M. ... Mr. H. M. ...

The following paragraph... The following paragraph... The following paragraph...

Mr. H. M. ... Mr. H. M. ... Mr. H. M. ...

Mr. H. M. ... Mr. H. M. ... Mr. H. M. ...

Mr. H. M. ... Mr. H. M. ... Mr. H. M. ...

Mr. H. M. ... Mr. H. M. ... Mr. H. M. ...

THE EAST AFRICAN STANDARD WEEKLY EDITION. Small Advertisements are accepted only subject to approval.

THE CLUTH AND DRAKE Connection Between Wear and Overheating. COOLING METHOD.

Such as Wanted, To Let, For Sale and Situations Vacant and other notices.

FOR SALE. GO to K. M. Kelso and Co. for motor equipment.

WILLYS-KNIGHT... 6 Cylinder 60 h.p., Knight Engine, 7 Bearing Crank Shaft, oil pressure feed and throttle controlled.

THE EAST AFRICAN STANDARD... THE EAST AFRICAN STANDARD... THE EAST AFRICAN STANDARD...

THE EAST AFRICAN STANDARD... THE EAST AFRICAN STANDARD... THE EAST AFRICAN STANDARD...

THE EAST AFRICAN STANDARD... THE EAST AFRICAN STANDARD... THE EAST AFRICAN STANDARD...

THE EAST AFRICAN STANDARD... THE EAST AFRICAN STANDARD... THE EAST AFRICAN STANDARD...

THE EAST AFRICAN STANDARD... THE EAST AFRICAN STANDARD... THE EAST AFRICAN STANDARD...

WEATHER REPORT. For the week ending September 30th. Table with columns for Rainfall, Wind, and other weather data.

TEMPERATURE. Table with columns for Station, Max, Min, and other temperature data for various locations.

Mr. H. M. ... Mr. H. M. ... Mr. H. M. ...

THE EAST AFRICAN STANDARD... THE EAST AFRICAN STANDARD... THE EAST AFRICAN STANDARD...

Mr. H. M. ... Mr. H. M. ... Mr. H. M. ...

Mr. H. M. ... Mr. H. M. ... Mr. H. M. ...

Mr. H. M. ... Mr. H. M. ... Mr. H. M. ...

THE EAST AFRICAN STANDARD... THE EAST AFRICAN STANDARD... THE EAST AFRICAN STANDARD...

Mr. H. M. ... Mr. H. M. ... Mr. H. M. ...

Mr. H. M. ... Mr. H. M. ... Mr. H. M. ...

Mr. H. M. ... Mr. H. M. ... Mr. H. M. ...

THE EAST AFRICAN STANDARD... THE EAST AFRICAN STANDARD... THE EAST AFRICAN STANDARD...

Mr. H. M. ... Mr. H. M. ... Mr. H. M. ...

Mr. H. M. ... Mr. H. M. ... Mr. H. M. ...

Mr. H. M. ... Mr. H. M. ... Mr. H. M. ...

THE EAST AFRICAN STANDARD... THE EAST AFRICAN STANDARD... THE EAST AFRICAN STANDARD...

Mr. H. M. ... Mr. H. M. ... Mr. H. M. ...

Mr. H. M. ... Mr. H. M. ... Mr. H. M. ...

Mr. H. M. ... Mr. H. M. ... Mr. H. M. ...

THE EAST AFRICAN STANDARD... THE EAST AFRICAN STANDARD... THE EAST AFRICAN STANDARD...

There are Definite Reasons for the Superiority of B. S. A. MOTOR BICYCLES.

EVERY LUG IN THE B.S.A. FRAME is a SOLID STEEL FORGING. Hub cones are made from the hardest American steel casting ever... There are seven solid steel forgings in the Gear Box, and valves are made of unburnable steel to prevent pitting.

In Fact, for Quality, Value & Reliability you cannot do better than Buy a B.S.A. Sole Importers—Newtons Ltd., Nairobi.

WHAT IS CASTROL? WATFIELD CASTROL is the perfect scientific mixture of vegetable and mineral oils.

It is the only oil in the market that is made of the finest materials and is made by the Castrol Oil Co. Ltd. in Germany. It is a search for the best oil in the world. It is the only oil in the world that is made of the finest materials and is made by the Castrol Oil Co. Ltd. in Germany.



CHAMPION Dependable for Every Engine.

If you run a steam in a job you don't know how to handle it, install a complete new set of valves. The set of Champion valves will give you a complete new set of valves. It is the only set of valves in the world that is made of the finest materials and is made by the Champion Valve Co. Ltd. in England.

THE STEERING GEAR. How to Keep it in Perfect Working Order.

It is a vital factor. It is equally necessary to the life of a car. It is the most important part of the steering gear. It is the most important part of the steering gear. It is the most important part of the steering gear.

With a new set, and securing that steering in its proper position, the car will run with the regular ease and safety which only such work has earned.

In fact, in a simple matter. It is of great importance to the car. It is of great importance to the car. It is of great importance to the car.

THE BEST FOR LUBRICATION. Most of the lubrication is done by the car. It is the most important part of the lubrication. It is the most important part of the lubrication.

It is the most important part of the lubrication. It is the most important part of the lubrication. It is the most important part of the lubrication.

It is the most important part of the lubrication. It is the most important part of the lubrication. It is the most important part of the lubrication.

It is the most important part of the lubrication. It is the most important part of the lubrication. It is the most important part of the lubrication.

It is the most important part of the lubrication. It is the most important part of the lubrication. It is the most important part of the lubrication.

It is the most important part of the lubrication. It is the most important part of the lubrication. It is the most important part of the lubrication.

COOLING SYSTEMS. Faults Will be Eliminated as Time Goes on.

STEAM METHOD. On any new car the cooling system is one of the most important parts. It is the most important part of the cooling system. It is the most important part of the cooling system.

On the other hand, which is the most important part of the cooling system. It is the most important part of the cooling system. It is the most important part of the cooling system.

On the other hand, which is the most important part of the cooling system. It is the most important part of the cooling system. It is the most important part of the cooling system.

On the other hand, which is the most important part of the cooling system. It is the most important part of the cooling system. It is the most important part of the cooling system.

On the other hand, which is the most important part of the cooling system. It is the most important part of the cooling system. It is the most important part of the cooling system.

On the other hand, which is the most important part of the cooling system. It is the most important part of the cooling system. It is the most important part of the cooling system.

On the other hand, which is the most important part of the cooling system. It is the most important part of the cooling system. It is the most important part of the cooling system.

On the other hand, which is the most important part of the cooling system. It is the most important part of the cooling system. It is the most important part of the cooling system.

On the other hand, which is the most important part of the cooling system. It is the most important part of the cooling system. It is the most important part of the cooling system.

SILENT RUNNING. Tracing and Eliminating Noises.

MECHANICAL DEFECTS. Always try to locate a noise to produce a more silent car. It is the most important part of the silent running. It is the most important part of the silent running.

On the other hand, which is the most important part of the silent running. It is the most important part of the silent running. It is the most important part of the silent running.

On the other hand, which is the most important part of the silent running. It is the most important part of the silent running. It is the most important part of the silent running.

On the other hand, which is the most important part of the silent running. It is the most important part of the silent running. It is the most important part of the silent running.

On the other hand, which is the most important part of the silent running. It is the most important part of the silent running. It is the most important part of the silent running.

On the other hand, which is the most important part of the silent running. It is the most important part of the silent running. It is the most important part of the silent running.

On the other hand, which is the most important part of the silent running. It is the most important part of the silent running. It is the most important part of the silent running.

On the other hand, which is the most important part of the silent running. It is the most important part of the silent running. It is the most important part of the silent running.

On the other hand, which is the most important part of the silent running. It is the most important part of the silent running. It is the most important part of the silent running.

The Spark Plug. SHOULD BE CHANGED AFTER 10,000 MILES.

The modern plug in the modern engine has a very long life under normal conditions. It is the most important part of the spark plug. It is the most important part of the spark plug.

On the other hand, which is the most important part of the spark plug. It is the most important part of the spark plug. It is the most important part of the spark plug.

On the other hand, which is the most important part of the spark plug. It is the most important part of the spark plug. It is the most important part of the spark plug.

On the other hand, which is the most important part of the spark plug. It is the most important part of the spark plug. It is the most important part of the spark plug.

On the other hand, which is the most important part of the spark plug. It is the most important part of the spark plug. It is the most important part of the spark plug.

On the other hand, which is the most important part of the spark plug. It is the most important part of the spark plug. It is the most important part of the spark plug.

On the other hand, which is the most important part of the spark plug. It is the most important part of the spark plug. It is the most important part of the spark plug.

On the other hand, which is the most important part of the spark plug. It is the most important part of the spark plug. It is the most important part of the spark plug.

On the other hand, which is the most important part of the spark plug. It is the most important part of the spark plug. It is the most important part of the spark plug.

TYSON BROS., Ltd. EXPORTERS OF ALL CLASSES OF PRODUCE IMPORTERS OF—MOTOR CARS, MOTOR CYCLES, MACHINERY, ETC. MANAGING AGENTS AND SECRETARIES OF ALL CLASSES. WHITWAY BUILDING SIXTH AVENUE NAIROBI P.O. BOX 120. Phone 117. Telegrams "MAGAZINE."

There's longer life with Two Lungs

TER "MOTOR CYCLES" SAY— "Every Single Cigarette regular is a compromise in the matter of health. We might not die with it, but it is the big 'V'."

There's only one motor-cycle power unit which is perfectly balanced, practically as well as theoretically—and that's the Douglas horizontal opposed twin. Power stroke and idle stroke follow each other in perfect time, and consequently exceptionally smooth running, longer life to the remarkable power capacity and longer life to the machine on this motor-cycle.

Be sure to give the consideration to the unique advantages offered by

gasas MOTOR CYCLES. Immediate Delivery can be made of 2 1/2 h.p. 2-SPEED BILT-DRIVE MODEL at £62 10s.

PARSONS (British Made) NON-SKID CHAINS. Sole Importers—Newtons Ltd., Nairobi. RELIABLE UNDER THE WORST CONDITIONS. Obtainable at All Garages and from the

MOTOR TRAFFIC.

"SAFETY FIRST."

occupancy of one's own car, and the car itself.

CHANGING GEAR.

Popular Point of View Incorrect.

USEFUL HINTS.

DISADVANTAGES.

Having proved that the petrol saved by buying on a small gear as long as possible in a small gear is not a very convincing advantage, it will be of interest to readers to know the disadvantages.

DURANT RUGBY

Table listing chassis and box body prices for Durant Rugby, including Touring Body £245 and Special Tourer £260.

"REO" 1 1/4 Ton Trucks \$350

The first consignment of these well-known trucks were sold on arrival. Further consignments arriving shortly.

MORRIS TRUCK (Overseas Model)

Table listing Morris Truck specifications: Chassis Complete, Five Tyres, Steel Detachable Rims, Electric Lighting, Full Kit of Tools.

The Ordinance Infringed.

Words of Advice to All Motorists.

A BUSY DAY.

CARB AND OUIZERY.

FAST DRIVING.

Many drivers go so fast that they think they are not in a hurry. Fifty miles an hour on a road that is not a highway is not a hurry.

Fast driving is not the most desirable thing. It is a dangerous habit. It is a habit that is not only dangerous to the driver but also to the public.

CARE OF EQUIPMENT.

In order that the above mentioned suggestions may be recalled with a convenient reference, the following suggestions are made.

STERN AND HORN.

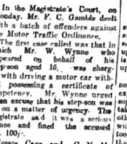
An important part of the equipment in the motor vehicle is the horn and the siren.

IDENTIFIED.

The Magistrate said that the first of the cases was a case of a motorist who was not identified.

THE PORT HALL ROAD.

A motorist was charged with driving a motor car which was not licensed to be driven on the Port Hall Road.



EDUCATION.

Mr. Laidl, from a garage engaged with driving a car with no licence, was fined £5.

SCOTTISH SIX DAYS

THE FAMOUS TRUMPH

(8-10 hp Type F.)

PUTS UP THE PREMIER PERFORMANCE and the Manufacturers' Team Prize

(fit as a unit) - (both)

WON OF THE FIRST TRIUMPH GRAND

6 SPECIAL TRUCK AWARDS (SPECIAL OWN)

1 FIRST CLASS AWARD (GOLD MEDAL)

ALSO SPECIAL AWARD

FOR BEST ROAD PERFORMANCE by a private owner, awarded by Mr. W. Woodrow on his 450 h.p. Triumph, which he had taken through four successive Scottish Six Days' Trials, gaining Premier Award upon each occasion.

Obtainable from - Sole Agents for Kenya, Uganda and Northern Tanganyika.

BULLOVS & ROY, Ltd.

P.O. Box 2, Nairobi & P.O. Box 212, Kampala.

also at

ROUSTAD & CLARKE, SIMBA.

FAST DRIVING.

Many drivers go so fast that they think they are not in a hurry. Fifty miles an hour on a road that is not a highway is not a hurry.

Fast driving is not the most desirable thing. It is a dangerous habit. It is a habit that is not only dangerous to the driver but also to the public.

CARE OF EQUIPMENT.

In order that the above mentioned suggestions may be recalled with a convenient reference, the following suggestions are made.

STERN AND HORN.

An important part of the equipment in the motor vehicle is the horn and the siren.

IDENTIFIED.

The Magistrate said that the first of the cases was a case of a motorist who was not identified.

THE PORT HALL ROAD.

A motorist was charged with driving a motor car which was not licensed to be driven on the Port Hall Road.

CHANGING GEAR.

Having proved that the petrol saved by buying on a small gear as long as possible in a small gear is not a very convincing advantage, it will be of interest to readers to know the disadvantages.

DISADVANTAGES.

Having proved that the petrol saved by buying on a small gear as long as possible in a small gear is not a very convincing advantage, it will be of interest to readers to know the disadvantages.

CHANGING GEAR.

Having proved that the petrol saved by buying on a small gear as long as possible in a small gear is not a very convincing advantage, it will be of interest to readers to know the disadvantages.

DISADVANTAGES.

Having proved that the petrol saved by buying on a small gear as long as possible in a small gear is not a very convincing advantage, it will be of interest to readers to know the disadvantages.

DISADVANTAGES.

Having proved that the petrol saved by buying on a small gear as long as possible in a small gear is not a very convincing advantage, it will be of interest to readers to know the disadvantages.

DISADVANTAGES.

Having proved that the petrol saved by buying on a small gear as long as possible in a small gear is not a very convincing advantage, it will be of interest to readers to know the disadvantages.

NEW RUGBY LAWS.

Latest Changes from England.

THE PENALTY KICK.

A player has been fined by the Rugby Football Union for kicking the ball into the line in the last five minutes of the game.

THE SCRUMMAGE.

Dealing with the question of the scrum, the new laws provide that the scrum shall be a contest of strength between the two teams.

THE KICKING OFF.

A player shall be considered as having kicked the ball into the line if he has done so within the last five minutes of the game.

THE HANDICAP.

The referee shall have the right to award a handicap to a player if he is injured during the game.

THE GOAL-KICK.

The following changes in the laws have been made with regard to the goal-kick.

THE BALL.

A ball which is used in a match shall be of a certain weight and size.

THE PLAYERS.

The following have been added to the list of players who are eligible to play.

THE LINE-OUT.

The following changes have been made in the laws relating to the line-out.

THE ADVANTAGE RULE.

The advantage rule shall apply to all matches played under the new laws.

HOME RACING.

The Caracraig and Cambridgeshire.

ACCEPTANCES.

The following are the acceptances for the Caracraig and Cambridgeshire.

GRANDSTANDS.

To be held on 14 November at 11.15 a.m.

THE RACE.

The race will start at 11.15 a.m. on 14 November.

THE RESULT.

The result of the race is as follows.

THE CAMBRIDGESHIRE.

To be held on 14 November at 11.15 a.m.

ACCEPTANCES.

The following are the acceptances for the Cambridgeshire.

GRANDSTANDS.

To be held on 14 November at 11.15 a.m.

THE RACE.

The race will start at 11.15 a.m. on 14 November.

THE RESULT.

The result of the race is as follows.

Railway Cricket.

INDIANS OPPOSE THE GOANS.

The following were the scores in a recent match played on Sunday.

Table with 2 columns: Team and Score.

RAILWAY GOANS.

(See last page.)

TOTAL FOR 4 WICKETS.

Total 63.

RAILWAY INDIANS.

(See last page.)

TOTAL FOR 4 WICKETS.

Total 63.

RAILWAY INDIANS.

(See last page.)

TOTAL FOR 4 WICKETS.

Table with 2 columns: Team and Score.

TOTAL FOR 4 WICKETS.

Total 63.

TOTAL FOR 4 WICKETS.

Total 63.

TOTAL FOR 4 WICKETS.

Total 63.

TOTAL FOR 4 WICKETS.

Total 63.

TOTAL FOR 4 WICKETS.

Total 63.

TOTAL FOR 4 WICKETS.

Total 63.

TOTAL FOR 4 WICKETS.

Total 63.

TOTAL FOR 4 WICKETS.

Total 63.

TOTAL FOR 4 WICKETS.

Total 63.

TOTAL FOR 4 WICKETS.

Total 63.

TOTAL FOR 4 WICKETS.

Total 63.

TOTAL FOR 4 WICKETS.

Total 63.

KENNEL NOTES.

Margaret Collyer.

The dog show is a most interesting one.

The dog show is a most interesting one.

The dog show is a most interesting one.

The dog show is a most interesting one.

The dog show is a most interesting one.

The dog show is a most interesting one.

The dog show is a most interesting one.

The dog show is a most interesting one.

The dog show is a most interesting one.

The dog show is a most interesting one.

The dog show is a most interesting one.

The dog show is a most interesting one.

The dog show is a most interesting one.

The dog show is a most interesting one.

The dog show is a most interesting one.

The dog show is a most interesting one.

The dog show is a most interesting one.

The dog show is a most interesting one.

The dog show is a most interesting one.

The dog show is a most interesting one.

The dog show is a most interesting one.

The dog show is a most interesting one.

The dog show is a most interesting one.

The dog show is a most interesting one.

The dog show is a most interesting one.

The dog show is a most interesting one.

LOCAL WRITING.

The following are the names of the writers.

The following are the names of the writers.

The following are the names of the writers.

The following are the names of the writers.

The following are the names of the writers.

The following are the names of the writers.

The following are the names of the writers.

The following are the names of the writers.

The following are the names of the writers.

The following are the names of the writers.

The following are the names of the writers.

The following are the names of the writers.

The following are the names of the writers.

The following are the names of the writers.

The following are the names of the writers.

The following are the names of the writers.

The following are the names of the writers.

The following are the names of the writers.

The following are the names of the writers.

The following are the names of the writers.

The following are the names of the writers.

The following are the names of the writers.

The following are the names of the writers.

The following are the names of the writers.

The following are the names of the writers.

The following are the names of the writers.

The following are the names of the writers.

LOCAL WRITING.

The following are the names of the writers.

The following are the names of the writers.

The following are the names of the writers.

The following are the names of the writers.

The following are the names of the writers.

The following are the names of the writers.

The following are the names of the writers.

The following are the names of the writers.

The following are the names of the writers.

The following are the names of the writers.

The following are the names of the writers.

The following are the names of the writers.

The following are the names of the writers.

The following are the names of the writers.

The following are the names of the writers.

The following are the names of the writers.

The following are the names of the writers.

The following are the names of the writers.

The following are the names of the writers.

The following are the names of the writers.

The following are the names of the writers.

The following are the names of the writers.

The following are the names of the writers.

The following are the names of the writers.

The following are the names of the writers.

The following are the names of the writers.

The following are the names of the writers.

LOCAL WRITING.

The following are the names of the writers.

The following are the names of the writers.

The following are the names of the writers.

The following are the names of the writers.

The following are the names of the writers.

The following are the names of the writers.

The following are the names of the writers.

The following are the names of the writers.

The following are the names of the writers.

The following are the names of the writers.

The following are the names of the writers.

The following are the names of the writers.

The following are the names of the writers.

The following are the names of the writers.

The following are the names of the writers.

The following are the names of the writers.

The following are the names of the writers.

The following are the names of the writers.

The following are the names of the writers.

The following are the names of the writers.

The following are the names of the writers.

The following are the names of the writers.

The following are the names of the writers.

The following are the names of the writers.

The following are the names of the writers.

The following are the names of the writers.

The following are the names of the writers.

LOCAL WRITING.

The following are the names of the writers.

The following are the names of the writers.

The following are the names of the writers.

The following are the names of the writers.

The following are the names of the writers.

The following are the names of the writers.

The following are the names of the writers.

The following are the names of the writers.

The following are the names of the writers.

The following are the names of the writers.

The following are the names of the writers.

The following are the names of the writers.

The following are the names of the writers.

The following are the names of the writers.

The following are the names of the writers.

The following are the names of the writers.

The following are the names of the writers.

The following are the names of the writers.

The following are the names of the writers.

The following are the names of the writers.

The following are the names of the writers.

The following are the names of the writers.

The following are the names of the writers.

The following are the names of the writers.

The following are the names of the writers.

The following are the names of the writers.

The following are the names of the writers.

Advertisement for Lodge Sparking Plugs, featuring a product image and text: 'For maximum power an every make of car... LODGE SPARKING PLUGS...'

Advertisement for Dodge & Hudson Service Station, featuring text: 'Dodge & Hudson SERVICE STATION... Removed to Victoria Street from Hardinge Street...'

Large advertisement for 'For Power - Safety Comfort - Speed Stamina - Pick-up' featuring 'CAKLAN' and 'The Motor Mart & Exchange, Ltd.' with a large image of a car and technical specifications.

SATURDAY'S FOOTBALL

Scotland Defeat England by default.

A LUCKY VICTORY

The second of the series of local international representative football matches... Scotland were the first to score...

SECOND HALF

Scotland scored the second half with a long shot... England were unable to score...

THE TEAMS

The following were the teams: Scotland (Scotland) and Macfarlane (Scotland)...

FIRST HALF

England, attacking the station goal, kicked off... Scotland goal during which Clouston scored...

Loss to Kenya Sport

MOMBASA SCRIPPER POOL BANZILIAI... Mombasa sportsmen will have a lot of fun...

First Place

WINNING THE P.A.C. MOTOR MARATHON TROPHY... Petrol Consumption 36.65 M.P.G. Average Speed 35.2 M.P.H.

QUALITY WILL TELL... CHRYSLER DISTRIBUTORS, YORK GARAGES, Ltd., Nairobi.

KENNEL NOTES

containing the dog well up the covering of the dog.

England... Scotland... The dog was found to be a good dog...

THE GARDEN

Mr. L. B. Lawrence, F.R.H.S., New York, Asia River, to whom... The meaning and origin of plant names...

THE ROMANCE OF PLANT NAMES

The meaning and origin of plant names... The romance of plant names...

DRINK INTEREST

DRINK INTEREST has found the names of plants called after famous persons... The names of plants called after famous persons...

THE OLD MAN

The old man came back from England and Scotland... The old man came back from England and Scotland...

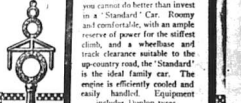
THE OLD MAN

The old man came back from England and Scotland... The old man came back from England and Scotland...



1914 FORD CARS

True Economy... The 1914 Ford cars are known for their economy and reliability...



All-British Standard CARS

BUY British CARS... Standard CARS are built in England and Scotland... They are known for their reliability and economy...

STANDARD MOTOR CO., LTD., COVENTRY, ENGLAND.

CHRYSLER SCORES DECISIVE VICTORY.

IN THE TRANSVAL AUTOMOBILE CLUB'S THREE-DAY TRIAL OVER 415 MILES OF TRANSVAL'S WORST ROADS... The Chrysler Six won the trial...

The Chrysler Six

DRIVEN BY MR. H. KAY, GAINED FIRST PLACE... The Chrysler Six is a reliable and economical car...

WINNING THE P.A.C. MOTOR MARATHON TROPHY.

Petrol Consumption 36.65 M.P.G. Average Speed 35.2 M.P.H. Result on Formula 25 Efficiency Marks 100 (maximum 100) Total Miles Covered 97 (maximum 100) Weight of Car and Passengers 4050 lbs.

THE GARDEN

Mr. L. B. Lawrence, F.R.H.S., New York, Asia River, to whom... The meaning and origin of plant names...

THE ROMANCE OF PLANT NAMES

The meaning and origin of plant names... The romance of plant names...

DRINK INTEREST

DRINK INTEREST has found the names of plants called after famous persons... The names of plants called after famous persons...

THE OLD MAN

The old man came back from England and Scotland... The old man came back from England and Scotland...

THE OLD MAN

The old man came back from England and Scotland... The old man came back from England and Scotland...

THE OLD MAN

The old man came back from England and Scotland... The old man came back from England and Scotland...

THE GARDEN

Mr. L. B. Lawrence, F.R.H.S., New York, Asia River, to whom... The meaning and origin of plant names...

THE ROMANCE OF PLANT NAMES

The meaning and origin of plant names... The romance of plant names...

DRINK INTEREST

DRINK INTEREST has found the names of plants called after famous persons... The names of plants called after famous persons...

THE OLD MAN

The old man came back from England and Scotland... The old man came back from England and Scotland...

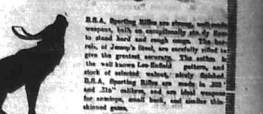
THE OLD MAN

The old man came back from England and Scotland... The old man came back from England and Scotland...

THE OLD MAN

The old man came back from England and Scotland... The old man came back from England and Scotland...

B.S.A. Sporting Rifle



B.S.A. Sporting Rifle

B.S.A. Sporting Rifle... The B.S.A. Sporting Rifle is a reliable and accurate rifle...

THE GARDEN

Mr. L. B. Lawrence, F.R.H.S., New York, Asia River, to whom... The meaning and origin of plant names...

THE ROMANCE OF PLANT NAMES

The meaning and origin of plant names... The romance of plant names...

DRINK INTEREST

DRINK INTEREST has found the names of plants called after famous persons... The names of plants called after famous persons...

THE OLD MAN

The old man came back from England and Scotland... The old man came back from England and Scotland...

DUNLOP REINFORCED BALLOON COVER

THE Dunlop Cover has produced a new and stronger Balloon Tyre for the 30 x 31 Beaded Edge Rims... The Dunlop Cover is a reliable and durable cover...

THE GARDEN

Mr. L. B. Lawrence, F.R.H.S., New York, Asia River, to whom... The meaning and origin of plant names...

THE ROMANCE OF PLANT NAMES

The meaning and origin of plant names... The romance of plant names...

QUALITY WILL TELL... CHRYSLER DISTRIBUTORS, YORK GARAGES, Ltd., Nairobi.

SUTTON'S SEEDS... Stock your garden with Sutton's Flowers and Vegetables, specially suited to East Africa.

OUR LONDON LETTER.

A Storm Brewing Up.

London, Sept. 4.—A storm is brewing up in the direction of the Government. The Government has been in power for the last 16 years and...

It is not possible to do without the assistance of the House of Commons. The Government has been in power for the last 16 years and...

There is a feeling of uneasiness in the air. The Government has been in power for the last 16 years and...

The Government has been in power for the last 16 years and...

The Government has been in power for the last 16 years and...

The Government has been in power for the last 16 years and...

The Government has been in power for the last 16 years and...

The Government has been in power for the last 16 years and...

low does not surprise, but the more so because they will follow. If the Government...

OUT FOR TROUBLE.—The Government has been in power for the last 16 years and...

OFFERS FOR WHIMLEY.—The Government has been in power for the last 16 years and...

public. An article published in the London Standard in respect of some of the people who had given them to the...

THE FINEST WHEAT IN SUITABLE SUB-DIVISIONS OF SOME OF THE FINEST WHEAT AND MIXED FARMING LAND IN THE HIGHEST AND RICHEST PARTS OF THE HIGH LANDS AT ROCK BOTTOM PRICES.

WHAT WE HAVE PLACED IN OUR HANDS FOR SALE IN SUITABLE SUB-DIVISIONS, 12,000 ACRES OF THE PRIME WHEAT LAND IN KENYA, SITUATED IN ONE OF THE MOST PRODUCTIVE PARTS OF THE COUNTRY, WITH LONG RAILWAY FRONTAGE. IT IS A PROPOSITION THAT WE CAN THOROUGHLY RECOMMEND TO THE PROSPECTOR WHO WANTS NOT ONLY A SOUND INVESTMENT BUT AN ATTRACTIVE HOME.

THE LAND IS OF GREAT DEPTH AND FERTILITY, IN ROLLING GRASSLAND INTERSPERSED WITH PATCHES OF TIMBER. THE RAINFALL IS GOOD AND WELL DISTRIBUTED. THE CLIMATE IS EXTREMELY HEALTHY AND BRACING. EACH SUBDIVISION HAS A PERMANENT WATER SUPPLY.

LOW PRICES RANGING FROM SH. 30/- TO SH. 40/- PER ACRE. PRICES BEING FIXED TO EFFECT A BATH SALE OF THE WHOLE OR ONE OR MORE PORTIONS. SH. 40/- PER ACRE CONTAINS A VALUABLE AREA OF TIMBER. WELL WORTH THE EXTRA PRICE.

COME AND SEE IT FOR YOURSELF.

Sands & Co. At our Saleyards, NAIVASHA Monday, 19th October

- 100 Fat weathers. 200 Young steers. 1000 Fat and Native Cows in calf and Calves at 1/2. 1000 Fat and Native Cows in calf and Calves at 1/2. 1000 Fat and Native Cows in calf and Calves at 1/2.

GIL GIL at Syndicate Yards TUESDAY 20th October

- On account of a short grazing on farming. 1000 Fat and Native Cows in calf and Calves at 1/2. 1000 Fat and Native Cows in calf and Calves at 1/2. 1000 Fat and Native Cows in calf and Calves at 1/2.

SANDS & Co., Auctioneers.

DISTRICT NOTES.

Kisumu.

[From Our Own Correspondent.] Kisumu, Sept. 24.—The past few days have seen a certain amount of excitement in the town and neighbourhood...

WHY THE OUTCRY?

There has been a good deal of outcry about the loss of British National Service men...

GOOD BYE.

It is a pleasure to bid adieu to our old friend...

Members.

The Field Club organized a race for the benefit of the...

THE FINEST WHEAT IN SUITABLE SUB-DIVISIONS OF SOME OF THE FINEST WHEAT AND MIXED FARMING LAND IN THE HIGHEST AND RICHEST PARTS OF THE HIGH LANDS AT ROCK BOTTOM PRICES.

WHAT WE HAVE PLACED IN OUR HANDS FOR SALE IN SUITABLE SUB-DIVISIONS, 12,000 ACRES OF THE PRIME WHEAT LAND IN KENYA, SITUATED IN ONE OF THE MOST PRODUCTIVE PARTS OF THE COUNTRY, WITH LONG RAILWAY FRONTAGE. IT IS A PROPOSITION THAT WE CAN THOROUGHLY RECOMMEND TO THE PROSPECTOR WHO WANTS NOT ONLY A SOUND INVESTMENT BUT AN ATTRACTIVE HOME.

THE LAND IS OF GREAT DEPTH AND FERTILITY, IN ROLLING GRASSLAND INTERSPERSED WITH PATCHES OF TIMBER. THE RAINFALL IS GOOD AND WELL DISTRIBUTED. THE CLIMATE IS EXTREMELY HEALTHY AND BRACING. EACH SUBDIVISION HAS A PERMANENT WATER SUPPLY.

LOW PRICES RANGING FROM SH. 30/- TO SH. 40/- PER ACRE. PRICES BEING FIXED TO EFFECT A BATH SALE OF THE WHOLE OR ONE OR MORE PORTIONS. SH. 40/- PER ACRE CONTAINS A VALUABLE AREA OF TIMBER. WELL WORTH THE EXTRA PRICE.

DISTRICT NOTES.

Kisumu.

[From Our Own Correspondent.] Kisumu, Sept. 24.—The past few days have seen a certain amount of excitement in the town and neighbourhood...

WHY THE OUTCRY?

There has been a good deal of outcry about the loss of British National Service men...

GOOD BYE.

It is a pleasure to bid adieu to our old friend...

Members.

The Field Club organized a race for the benefit of the...

THE FINEST WHEAT IN SUITABLE SUB-DIVISIONS OF SOME OF THE FINEST WHEAT AND MIXED FARMING LAND IN THE HIGHEST AND RICHEST PARTS OF THE HIGH LANDS AT ROCK BOTTOM PRICES.

WHAT WE HAVE PLACED IN OUR HANDS FOR SALE IN SUITABLE SUB-DIVISIONS, 12,000 ACRES OF THE PRIME WHEAT LAND IN KENYA, SITUATED IN ONE OF THE MOST PRODUCTIVE PARTS OF THE COUNTRY, WITH LONG RAILWAY FRONTAGE. IT IS A PROPOSITION THAT WE CAN THOROUGHLY RECOMMEND TO THE PROSPECTOR WHO WANTS NOT ONLY A SOUND INVESTMENT BUT AN ATTRACTIVE HOME.

THE LAND IS OF GREAT DEPTH AND FERTILITY, IN ROLLING GRASSLAND INTERSPERSED WITH PATCHES OF TIMBER. THE RAINFALL IS GOOD AND WELL DISTRIBUTED. THE CLIMATE IS EXTREMELY HEALTHY AND BRACING. EACH SUBDIVISION HAS A PERMANENT WATER SUPPLY.

LOW PRICES RANGING FROM SH. 30/- TO SH. 40/- PER ACRE. PRICES BEING FIXED TO EFFECT A BATH SALE OF THE WHOLE OR ONE OR MORE PORTIONS. SH. 40/- PER ACRE CONTAINS A VALUABLE AREA OF TIMBER. WELL WORTH THE EXTRA PRICE.

DISTRICT NOTES.

Kisumu.

[From Our Own Correspondent.] Kisumu, Sept. 24.—The past few days have seen a certain amount of excitement in the town and neighbourhood...

WHY THE OUTCRY?

There has been a good deal of outcry about the loss of British National Service men...

GOOD BYE.

It is a pleasure to bid adieu to our old friend...

Members.

The Field Club organized a race for the benefit of the...

THE FINEST WHEAT IN SUITABLE SUB-DIVISIONS OF SOME OF THE FINEST WHEAT AND MIXED FARMING LAND IN THE HIGHEST AND RICHEST PARTS OF THE HIGH LANDS AT ROCK BOTTOM PRICES.

WHAT WE HAVE PLACED IN OUR HANDS FOR SALE IN SUITABLE SUB-DIVISIONS, 12,000 ACRES OF THE PRIME WHEAT LAND IN KENYA, SITUATED IN ONE OF THE MOST PRODUCTIVE PARTS OF THE COUNTRY, WITH LONG RAILWAY FRONTAGE. IT IS A PROPOSITION THAT WE CAN THOROUGHLY RECOMMEND TO THE PROSPECTOR WHO WANTS NOT ONLY A SOUND INVESTMENT BUT AN ATTRACTIVE HOME.

THE LAND IS OF GREAT DEPTH AND FERTILITY, IN ROLLING GRASSLAND INTERSPERSED WITH PATCHES OF TIMBER. THE RAINFALL IS GOOD AND WELL DISTRIBUTED. THE CLIMATE IS EXTREMELY HEALTHY AND BRACING. EACH SUBDIVISION HAS A PERMANENT WATER SUPPLY.

LOW PRICES RANGING FROM SH. 30/- TO SH. 40/- PER ACRE. PRICES BEING FIXED TO EFFECT A BATH SALE OF THE WHOLE OR ONE OR MORE PORTIONS. SH. 40/- PER ACRE CONTAINS A VALUABLE AREA OF TIMBER. WELL WORTH THE EXTRA PRICE.

RALEIGH

THE GOLD MEDAL CYCLES.

- 5 hp. "V" Twin Combination 1212. 5 hp. All Chain, Solo, with Electric Lighting 1320. 5 hp. All Chain, Solo, with Electric Lighting 1320. 5 hp. All Chain, Solo, with Electric Lighting 1320.

WE HAVE A FULLY EQUIPPED

Wool & Mohair Cocks, LONDON, 17, DUNGEON ST. BEADFORD, 60, BRICK ST. LIVERPOOL, 13, RAINBOW ST.

CERESOS SALT

For dainty tables. MADE BY CERESOS LTD. LONDON & GREATHAM-ENGLAND.

The report of the new one to be found in the province of...

THE FINEST WHEAT IN SUITABLE SUB-DIVISIONS OF SOME OF THE FINEST WHEAT AND MIXED FARMING LAND IN THE HIGHEST AND RICHEST PARTS OF THE HIGH LANDS AT ROCK BOTTOM PRICES.

WHAT WE HAVE PLACED IN OUR HANDS FOR SALE IN SUITABLE SUB-DIVISIONS, 12,000 ACRES OF THE PRIME WHEAT LAND IN KENYA, SITUATED IN ONE OF THE MOST PRODUCTIVE PARTS OF THE COUNTRY, WITH LONG RAILWAY FRONTAGE. IT IS A PROPOSITION THAT WE CAN THOROUGHLY RECOMMEND TO THE PROSPECTOR WHO WANTS NOT ONLY A SOUND INVESTMENT BUT AN ATTRACTIVE HOME.

THE LAND IS OF GREAT DEPTH AND FERTILITY, IN ROLLING GRASSLAND INTERSPERSED WITH PATCHES OF TIMBER. THE RAINFALL IS GOOD AND WELL DISTRIBUTED. THE CLIMATE IS EXTREMELY HEALTHY AND BRACING. EACH SUBDIVISION HAS A PERMANENT WATER SUPPLY.

LOW PRICES RANGING FROM SH. 30/- TO SH. 40/- PER ACRE. PRICES BEING FIXED TO EFFECT A BATH SALE OF THE WHOLE OR ONE OR MORE PORTIONS. SH. 40/- PER ACRE CONTAINS A VALUABLE AREA OF TIMBER. WELL WORTH THE EXTRA PRICE.

COME AND SEE IT FOR YOURSELF.

THE FINEST WHEAT IN SUITABLE SUB-DIVISIONS OF SOME OF THE FINEST WHEAT AND MIXED FARMING LAND IN THE HIGHEST AND RICHEST PARTS OF THE HIGH LANDS AT ROCK BOTTOM PRICES.

WHAT WE HAVE PLACED IN OUR HANDS FOR SALE IN SUITABLE SUB-DIVISIONS, 12,000 ACRES OF THE PRIME WHEAT LAND IN KENYA, SITUATED IN ONE OF THE MOST PRODUCTIVE PARTS OF THE COUNTRY, WITH LONG RAILWAY FRONTAGE. IT IS A PROPOSITION THAT WE CAN THOROUGHLY RECOMMEND TO THE PROSPECTOR WHO WANTS NOT ONLY A SOUND INVESTMENT BUT AN ATTRACTIVE HOME.

THE LAND IS OF GREAT DEPTH AND FERTILITY, IN ROLLING GRASSLAND INTERSPERSED WITH PATCHES OF TIMBER. THE RAINFALL IS GOOD AND WELL DISTRIBUTED. THE CLIMATE IS EXTREMELY HEALTHY AND BRACING. EACH SUBDIVISION HAS A PERMANENT WATER SUPPLY.

BUY A KING DICK SPANNER.

THE GENUINE ARTICLE. GUARANTEED FOR EVER.

Stocked by



W.W. INGRAM & Co.

BRANCH OFFICE, NAIROBI.

Government Road, NAIROBI.

SUGAR CANE

Mosaic Disease

THE MOSAIC DISEASE (CONTINUED)

... has often been seen in the ...

MAIZE THOUSAND

It is not certain whether the disease has originated from ...

Get a Bottle To-Day!

THE 1926 BUDGET EXAMINED.

INCREASED NATIVE AGRICULTURAL SERVICES.

Police for the Northern Frontier District.



THE AGRI-CULTURAL SERVICES ...

MAIZE THOUSAND

It is not certain whether the disease has originated from ...

BULLOCK & ROY Ltd.

NAIROBI KAMPALA

IMPORTERS AND EXPORTERS

GENERAL HARDWARE MERCHANTS

SPECIALIZING IN BUILDERS REQUISITES

CARPENTERS & ENGINEERS TOOLS

FARM TOOLS

PAINTS AND OILS

A Large Concourse on hand of Corrugated Iron, Three-Ply Wood, Wall Boards, Bamford Mills, Galv'd & Sheet Water Piping, Barbed and Plain Fencing Wire, Trak Chains, etc.

WYNNE & SONS

LEICESTER CYCLING HOSE

Samples and Prices for Quantities.

Graham Dawson P.O. Box 216, Nairobi.

ITS APPEARANCE

The Mosaic is a leaf disease, and is usually distinguished by the ...

FOR SALE

White Camlin Jacket, per doz. 10/0

Coloured Jacket, per doz. 12/0

White Woolen Suit, per doz. 15/0

Blue Woolen Suit, per doz. 15/0

Black Woolen Suit, per doz. 15/0

Red Woolen Suit, per doz. 15/0

Green Woolen Suit, per doz. 15/0

Yellow Woolen Suit, per doz. 15/0

Orange Woolen Suit, per doz. 15/0

Pink Woolen Suit, per doz. 15/0

Light Blue Woolen Suit, per doz. 15/0

Dark Blue Woolen Suit, per doz. 15/0

White Woolen Suit, per doz. 15/0

Black Woolen Suit, per doz. 15/0

Red Woolen Suit, per doz. 15/0

Green Woolen Suit, per doz. 15/0

Yellow Woolen Suit, per doz. 15/0

Orange Woolen Suit, per doz. 15/0

Pink Woolen Suit, per doz. 15/0

Light Blue Woolen Suit, per doz. 15/0

Dark Blue Woolen Suit, per doz. 15/0

THE LOCAL ALLOCATION

The Administration branch of the Agricultural Department ...

AFRICAN GUARANTEE AND INDEMNITY Co., Ltd.

FIRE - MARINE - MOTOR ACCIDENT - LIABILITY.

EVERY KIND OF INSURANCE TRANSACTED UPON MOST FAVOURABLE TERMS AND AT THEIR LOWEST RATES OF PREMIUM.

CHIEF AGENTS FOR:

BEVA, MANILA, TAGAYTAG AND ZACABAN.

M. D. KAMPH

P.O. Box 100, NAIROBI.

Head Office: London, England.

VERMIKOL.

KILLS WHITE ANTS AND WEEVILS, AND ALL TREKAT PESTS.

KEEPS AWAY SILVER FISK.

PRESERVES HIDES & SKINS.

WONDERFULLY EFFECTIVE IN STORED MAIZE, BEANS AND ALL FOODS.

NO WASTAGE.

10 B. DRUMS ... Sha. 70/- per drum

25 B. DRUMS ... Sha. 250/- per drum

100 B. DRUMS ... Sha. 1,000/- per drum

100 B. DRUMS ... Sha. 1,000/- per drum

100 B. DRUMS ... Sha. 1,000/- per drum

RUBEROI.

BUY THE GUARANTEED ROOFING, ROOFING, ROOFING, ROOFING.

PUT A GOOD ROOF ON THAT SMALL SHEET YOURSELF.

NAILS & CEMENT FOR FIXING INCLUDED IN THE PRICE.

ROOFING Rolls of 7'2" x 3' PLY ... Sha. 65/- per Roll

FLOORING Rolls of 7'2" x 3' ... Sha. 85/- per Roll

Rolls of 7'2" x 3' ... Sha. 92/- per Roll

THE THERAPY

THE THERAPY

THE THERAPY

The Therapeutic branch of the Agricultural Department ...

ROYAL BROTHERHOOD

ROYAL BROTHERHOOD

IZAL.

THE CHEAPEST EFFICIENT FEUFD DISINFECTANT.

HIGHLY CONCENTRATED.

DILOTE 1 IN 600.

As supplied to Government Medical Departments, British Navy and Hospitals, Railways and Public Health Departments throughout the world.

IZAL KILLS GERMS.

1 GALLON TINS ... Sha. 7/50

1 GALLON DRUMS ... Sha. 11/50

2 GALLON DRUMS ... Sha. 23/00

5 GALLON DRUMS ... Sha. 27/00

10 GALLON DRUMS ... Sha. 53/00

ESITOL.

WOOD PRESERVATIVE AND DECORATIVE STAIN.

THE CHEAPEST WOOD PRESERVATIVE ON THE MARKET.

IN SOLUBLE FORM.

1 lb. TINS - 2 GALLONS, SHA. 7/50 PER TIN

SOLE AGENTS:

Boustead & Clarke, Ltd.

P.O. Box 377 COURT CHAMBERS, NAIROBI.

STEEDEMAN'S POWDERS

STEEDEMAN'S POWDERS

STEEDEMAN'S POWDERS

The Steedeman's Powder Company ...

M. S. Matharu.

NANYUKI

ENLARGEMENTS

ENLARGEMENTS

ENLARGEMENTS

The Enlargement branch of the Agricultural Department ...

DEPARTMENT OF AGRICULTURE

DEPARTMENT OF AGRICULTURE

NOTICE

NOTICE

NOTICE

The Notice branch of the Agricultural Department ...

DEPARTMENT OF AGRICULTURE

DEPARTMENT OF AGRICULTURE

THE UNION-CASTLE LINE

HOMEWARDS via EASTERN or WESTERN ROUTE

TO ENGLAND via SOUTH AFRICA

On Nov. 14 a.s. "Llandoverly Castle,"
On Jan. 9 a.s. "Llanstephan Castle."

P. O. Box 86.

Tel. Add. "UNICASTLE"

Tel. No. 107.

The Union-Castle Mail Steamship Co., Ltd.,
MOMBASA.

BRITISH INDIA STEAM NAVIGATION COMPANY, LTD.

AND

PENINSULAR AND ORIENTAL STEAM NAVIGATION Co.

LONDON AND EAST AFRICA LINE.

LONDON to BEIRA, via Marseilles, Port Said, Port Sudan, and Aden, Outwards and Inwards.

| Steamer | Arrives | Kilindi Sails from London about | Kilindi Sails from London about |
|---------------|---------------|---------------------------------|---------------------------------|
| a.s. Hibernia | 2nd October | 15th October | 15th October |
| a.s. Hibernia | 20th October | 21st October | 21st October |
| a.s. Hibernia | 27th November | 30th November | 30th November |
| a.s. Hibernia | 5th December | 2nd January, 1956 | 2nd January, 1956 |
| a.s. Hibernia | 22nd January | 29th February | 29th February |
| a.s. Hibernia | 19th February | 29th March | 29th March |
| a.s. Hibernia | 15th March | 27th April | 27th April |
| a.s. Hibernia | 12th April | 25th May | 25th May |
| a.s. Hibernia | 10th May | 23rd June | 23rd June |

TERMS—All passages—full or half—on the outward and homeward voyages. The above dates are liable to alteration without notice.

BOMBAY-DURBAN MAIL SERVICE.

Calling Kilindi, Swaha, Beira, Delagoa Bay, Durban, and Mozambique monthly. Outwards and Inwards.

| TO BOMBAY. | | TO DURBAN. | |
|-------------|---------------|----------------|---------------|
| a.s. Takada | 6th October | a.s. Karaga | 9th October |
| a.s. Karaga | 22nd October | a.s. Karaga | 26th October |
| a.s. Karaga | 29th November | a.s. Khandalla | 4th November |
| a.s. Karaga | 11th December | a.s. Karaga | 21st November |

Call Durban on Salamis. All vessels are fitted with the latest radio-telegraph. The above dates are subject to alteration without notice. The above dates are liable to alteration without notice.

COASTAL SERVICE.

The well-appointed Motor Vessel "DUMRA" maintains a 20 days service between Lamu and Mikindani, calling at Mombasa, Tanga, Zanzibar, Dar-es-Salaam, Mafia, Kilwa, Lindi.

Special terms for round trips. Due from Mikindani 1st October. Proceeds Lamu 6th October. Due from Lamu 9th October. Proceeds Mikindani 10th October.

All dates subject to alteration. Up country charges not accepted unless endorsed by a local Bank. Returns tickets issued at two single fares less 10 per cent.

Terms, rates of freight, and passages may be arranged with:

SMITH, MACKENZIE & CO.—AGENTS
KILINDINI, MOMBASA, ZANZIBAR, DAR-ES-SALAAM, TANGA, LINDI,
NAIROBI, KAMPALA and LAMU.

P. O. Box 128.

Telegraphic Address: "MACKENZIES," KILINDINI.

Telephone 66.

WEEKLY EDITION.

GUARANTEED THE LARGEST CIRCULATION OF ANY NEWSPAPER IN KENYA, UGANDA, TANGANYIKA AND ZANZIBAR.

£1,000 FREE INSURANCE

WITH THE AFRICAN GUARANTEE AND INSURANCE CO., LTD.—(See Advertisement on page 8)

KENYA'S NEWSPAPER.

THE EAST

Price 50 Cents.

African Standard

MOMBASA TIMES & UGANDA ARGUS.

WITH WHICH

THE LEADER.

The Oldest Established Newspaper Published in Kenya and Uganda.

ORIGINATED BY THE

WESTERN UNION

No. 1902.

NEWSPAPER OF THE GENERAL POST OFFICE AS A NEWSPAPER.

NAIROBI, SATURDAY, OCTOBER 10, 1955.

Price 50c per annum. Printed locally. (See Post Office Provisions No. 1902)



The owner of a Ford Truck in any part of the country can explain in a few words why it is unrivaled in the light truck field. First cost is lowest. Operation and upkeep incomparably reasonable. Speed, power and body equipment to meet the hauling demands of every business. The fleet, economical, easily handled Ford Truck is just as popular on the farm as it is in the town.

The Service Company Limited.

Importing Dealers and Distributors.
NAIROBI—MOMBASA—MOBEI.



JACOBS

HALF YEARLY SALE

P. O. Box 125
Phone 255

Telegrams
"ADVALOREM"
NAIROBI

CLOSING DATE
SATURDAY
October 17th.

SEE THE SPECIMENS

EMERALD HEMSTITCHED SHEETS.
Fine finish sheeting of very good quality, fully bleached. Will launder equal to the finest Linen. Both sheets hemstitched. Size 63" x 90".
Usual Price, Shs. 27/50
SALE PRICE Shs. 21/00 per pair.

HOUSEWIFE PILLOW CASES.
Superior quality cotton, perfectly free from dressing and very strong. These are made with the double flap top and there are no buttons to come off. Size 20" x 26".
Usual Price, Shs. 2/75 each.
SALE PRICE, Shs. 2/35 each. 6 for Shs. 13/.

SEE THE SPECIMENS

FRENCH ORTONOR.
A really fine lot of the best Colonial fabric, specially selected for their superb appearance and value. These are superior to appeal to your artistic taste. If you are a buyer of household fabrics, do not miss this. Usual Price Shs. 9/75.
SALE PRICE Shs. 6/150 per yard.

DUTCH ORTONOR.
Printed in a nice range of colorings and designs on a strong light weight cloth from Dutch weaving. Usual Price Shs. 3/50.
SALE PRICE Shs. 2/90 per yard.

MILK CANS.

These cans are made of strong block tin, to stand rough usage. They are fitted with stopper inside the cover to prevent spilling of the contents, also with lid and easy to lock. Four sizes in stock: 5, 10, 12 or 16 quart capacity.

Prices 19/50, 22/50, 27/50 & 34/50.
SALE PRICES Shs. 15/50, 18/50, 22/50 & 27/50.

BROWN GAUZE SCHOOL SHOES.

With an leather toe cap and facing. A good sturdy shoe suitable for school or holiday wear. Very cool and comfortable. These will give good service and at the price are the cheapest footwear obtainable for children.
Usual prices, Shs. 9/75 & 6/75.
SALE PRICES Shs. 7 to 10 Shs. 6/75 per pair. Size 12 to 15 Shs. 6/75 per pair.

FINGERED TOWELS.

Permanent heavy pile in fully fleeced soft cotton of quick drying quality.
Size. SALE PRICES:
30" x 40" Shs. 2/35 each.
30" x 41" Shs. 2/75
30" x 42" Shs. 2/35

HEMMED WHITE TOWELS.

These are of really beautiful quality and the size is 40" x 50".
Usual Price, Shs. 9/75 each.
SALE PRICE, Shs. 8/250 each.
Special heavy pile and fleeced towel.
Usual Price, Shs. 10/75 each.
SALE PRICE, Shs. 9/250 each.