

GUARANTEED THE LARGEST CIRCULATION OF ANY NEWSPAPER IN KENYA, UGANDA, TANGANYIKA AND ZANZIBAR.

# £1,000 FREE INSURANCE

WITH THE AFRICAN GUARANTEE AND INDEMNITY CO., LTD.—(See Advertisement on page 10.)

KENYA'S NEWSPAPER.

THE EAST

Price 50 Cents.

# African Standard

MOMBASA TIMES & UGANDA ARGUS.

WITH WHICH THE LEADER.

The oldest established newspaper published in Kenya and Uganda.

Official Organ of the Royal S.A. Automobile Association, Horticultural Society of Kenya, Etc.

No. 1030. PUBLISHED AT THE CENTRAL POST OFFICE AS A NEWSPAPER. NAIROBI, SATURDAY, NOVEMBER 28, 1936.

Printed for the Proprietor, Printed locally, by the Press Printing Works, Limited, Nairobi.



## Value For The Money



THE TOURING—£180, Nairobi

THE TUDOR SEDAN—£246, Nairobi.

THE FORD CAR IS UNIVERSALLY KNOWN TO BE RELIABLE, ECONOMICAL, CONVENIENT—EASY TO BUY.

Ford economy is not only a matter of low price and upkeep; it is a question of the saving you will enjoy in time, energy and health.

### The Service Company Limited.

NAIROBI—MOMBASA—MOSHI

Importing Dealers and Distributors.

## PYREX

THE TRANSPARENT OVERWARE. THE MOST HYGIENIC OF ALL CULINARY UTENSILS.

## PYREX



**PYREX KITCHEN DISH**  
With reversible cover & fern extra dish.  
10 1/2" x 8"  
Shs. 15/75 each.

**PYREX Individual Pudding and Tea Dish.**  
Round shape.  
Flat capacity.  
Shs. 2/-



**Pyrex Never Wears Out.**



**PYREX CUSTARD OR PUDDING CUPS.**  
As illustration.  
Shs. 1/50 each.

**Pyrex Saves Waste and Worry**



**PYREX Individual Soup or Porridge Servers.**  
Keeps the food warm.  
7oz. capacity.  
Shs. 5/95 each.

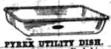


**PYREX PUDDING DISH**  
Round, wide rim.  
1 1/2 pt.  
Shs. 7/50  
2 1/2 pt.  
Shs. 7/50  
4 pt.  
Shs. 10/75



**No. 800 PYREX Casserole**  
A very useful dish.  
3 1/2 pint capacity.  
10 1/2" x 8"  
Shs. 9/50 each.

**Pyrex Saves**



**PYREX UTILITY DISH.**  
For Roasts, Yorkshire Puddings, etc.  
12 1/2" x 9 1/2" x 2"  
Shs. 12/50 each.

**Pyrex Saves**



**PYREX PIE DISH.**  
1 pint size, 11" x 8 1/2"  
Shs. 6/75 each.

**Pyrex Saves**



**PYREX PUDDING DISH**  
Round, shallow shape, with rim. 1 1/2 pint capacity.  
Shs. 6/75 each.

**Pyrex Saves**



**PYREX SQUARE PAN**  
Shape as sketch.  
6 1/2" x 7 1/2" x 1 1/2"  
Shs. 6/75  
11" x 6 1/2" x 1 1/2"  
Shs. 10/50



**PYREX SANDWICH DISH.**  
Round shallow shape for sandwiches, layer or sponge cakes. Shs. 9/50  
Illustration. Shs. 5/95 each

**Pyrex Fits All Daily Needs.**



**PYREX SQUARE CASSEROLE** with cover.  
3 1/2 pint capacity Shs. 14/50

**Pyrex Utensils for Cooking Every Dish.**



**PYREX OVAL DINNERS.**  
For fish and other hot food. Dish. With cover. 1 1/2 pint capacity.  
10" 11" 12 1/2" long  
6/75 7/50 9/75 each

**Pyrex Casserole**



**PYREX CASSE-ROLE**  
With dump cover.  
4 1/2 pt. capacity Shs. 20/50



**PYREX STEW POT.**  
As illustrated.  
Round shape, with cover.  
1 1/2 pint size. Shs. 12/75  
3 1/2 pint size. Shs. 16/50

**'Get it at Jacobs'**  
The House for Quality

WE ALLOW 5 PER CENT. CASH DISCOUNT.



P.O. BOX No. 206.  
PHONE No. 106.  
TELEGRAMS: "AFRISTAN"  
NAIROBI.

MESSAGERIES MARITIMES.

FRENCH MAIL STEAMERS.

The Quickest Route to London by Rail from Marseilles in 21 1/2 hours.

SAILINGS TO MARSEILLES.

Table with columns for ship names (e.g., GENERAL DE BRUNY, GENERAL GORDON), destinations, and departure dates.

RATES OF PASSAGE MONEY TO MARSHILLES.

Table with columns for ship names, destinations, and rates of passage money.

MAIL STEAMERS (M.S.).

Table with columns for ship names, destinations, and departure dates.

INTERMEDIATE STEAMERS (I.S.).

Table with columns for ship names, destinations, and departure dates.

FROM MARSEILLES (M.S.).

Table with columns for ship names, destinations, and departure dates.

MESSAGERIES MARITIMES Kilindini.

Phone 67. Telegraphic Address: "MESSAGERIES". P. O. Box 16, Mombasa.

Deutsche Ost Afrika Linie (GERMAN AFRICAN SERVICE).

Table with columns for ship names (e.g., UNIKUMBA, UNIKUMBA, UNIKUMBA), destinations, and departure dates.

Up-country charges cannot be accepted unless suitably endorsed by Local Agents.

Boustead & Clarke, Ltd.

Mombasa, Zanzibar, Dar-es-Salaam, Tanga, Kisumu, Kisumu, Jijiga and Kampala.

RELIABLE AGENTS IN LONDON.

LONDON BOTTLING AGENTS.

Agents for the following brands of bottles.

Agents for the following brands of bottles.

Agents for the following brands of bottles.

Agents for the following brands of bottles.

Agents for the following brands of bottles.

Agents for the following brands of bottles.

Agents for the following brands of bottles.

Agents for the following brands of bottles.

Agents for the following brands of bottles.

Agents for the following brands of bottles.

Agents for the following brands of bottles.

Agents for the following brands of bottles.

Agents for the following brands of bottles.

Agents for the following brands of bottles.

Agents for the following brands of bottles.

Agents for the following brands of bottles.

Agents for the following brands of bottles.

Agents for the following brands of bottles.

Agents for the following brands of bottles.

Agents for the following brands of bottles.

Agents for the following brands of bottles.

Agents for the following brands of bottles.

Agents for the following brands of bottles.

Agents for the following brands of bottles.

Agents for the following brands of bottles.

Agents for the following brands of bottles.

Agents for the following brands of bottles.

Agents for the following brands of bottles.

Agents for the following brands of bottles.

Agents for the following brands of bottles.

Agents for the following brands of bottles.

Agents for the following brands of bottles.

Agents for the following brands of bottles.

Agents for the following brands of bottles.

Agents for the following brands of bottles.

Agents for the following brands of bottles.

Agents for the following brands of bottles.

Agents for the following brands of bottles.

Agents for the following brands of bottles.

Agents for the following brands of bottles.

Agents for the following brands of bottles.

£1,000 FRESH INSURANCE WITH THE AFRICAN GUARANTEE AND INDemnITY CO. LTD.

KENYA'S NEWSPAPER.

THE EAST AFRICAN STANDARD.



MOMBASA TIMES & UGANDA ARGUS.

THE EAST AFRICAN STANDARD.

THE EAST AFRICAN STANDARD.

THE EAST AFRICAN STANDARD.

THE EAST AFRICAN STANDARD.

THE EAST AFRICAN STANDARD.

THE EAST AFRICAN STANDARD.

THE EAST AFRICAN STANDARD.

THE EAST AFRICAN STANDARD.

THE EAST AFRICAN STANDARD.

THE EAST AFRICAN STANDARD.

THE EAST AFRICAN STANDARD.

THE EAST AFRICAN STANDARD.

THE EAST AFRICAN STANDARD.

THE EAST AFRICAN STANDARD.

THE EAST AFRICAN STANDARD.

THE EAST AFRICAN STANDARD.

THE EAST AFRICAN STANDARD.

THE EAST AFRICAN STANDARD.

THE EAST AFRICAN STANDARD.

THE EAST AFRICAN STANDARD.

THE EAST AFRICAN STANDARD.

THE EAST AFRICAN STANDARD.

THE EAST AFRICAN STANDARD.

THE EAST AFRICAN STANDARD.

THE EAST AFRICAN STANDARD.

THE EAST AFRICAN STANDARD.

THE EAST AFRICAN STANDARD.

THE EAST AFRICAN STANDARD.

THE EAST AFRICAN STANDARD.

THE EAST AFRICAN STANDARD.

THE EAST AFRICAN STANDARD.

THE EAST AFRICAN STANDARD.

THE EAST AFRICAN STANDARD.

THE EAST AFRICAN STANDARD.

THE EAST AFRICAN STANDARD.

THE EAST AFRICAN STANDARD.

THE EAST AFRICAN STANDARD.

KEYMER SONS & CO.

Wholesale and Retail.

Wholesale and Retail.

Wholesale and Retail.

Wholesale and Retail.

Wholesale and Retail.

Wholesale and Retail.

Wholesale and Retail.

Wholesale and Retail.

Wholesale and Retail.

Wholesale and Retail.

Wholesale and Retail.

Wholesale and Retail.

Wholesale and Retail.

Wholesale and Retail.

Wholesale and Retail.

Wholesale and Retail.

Wholesale and Retail.

Wholesale and Retail.

Wholesale and Retail.

Wholesale and Retail.

Wholesale and Retail.

Wholesale and Retail.

Wholesale and Retail.

Wholesale and Retail.

Wholesale and Retail.

Wholesale and Retail.

Wholesale and Retail.

Wholesale and Retail.

Wholesale and Retail.

Wholesale and Retail.

Wholesale and Retail.

Wholesale and Retail.

Wholesale and Retail.

THE EAST AFRICAN STANDARD WEEKLY EDITION.

Small Advertisements.

Small Advertisements.

Small Advertisements.

Small Advertisements.

Small Advertisements.

Small Advertisements.

Small Advertisements.

Small Advertisements.

Small Advertisements.

Small Advertisements.

Small Advertisements.

Small Advertisements.

Small Advertisements.

Small Advertisements.

Small Advertisements.

Small Advertisements.

Small Advertisements.

Small Advertisements.

Small Advertisements.

Small Advertisements.

Small Advertisements.

Small Advertisements.

Small Advertisements.

Small Advertisements.

Small Advertisements.

Small Advertisements.

Small Advertisements.

Small Advertisements.

Small Advertisements.

Small Advertisements.

Small Advertisements.

Small Advertisements.

Small Advertisements.

Small Advertisements.

FOR SALE.

CHRISTMAS presents for your friends.

CHRISTMAS presents for your friends.

CHRISTMAS presents for your friends.

CHRISTMAS presents for your friends.

CHRISTMAS presents for your friends.

CHRISTMAS presents for your friends.

CHRISTMAS presents for your friends.

CHRISTMAS presents for your friends.

CHRISTMAS presents for your friends.

CHRISTMAS presents for your friends.

CHRISTMAS presents for your friends.

CHRISTMAS presents for your friends.

CHRISTMAS presents for your friends.

CHRISTMAS presents for your friends.

CHRISTMAS presents for your friends.

CHRISTMAS presents for your friends.

CHRISTMAS presents for your friends.

CHRISTMAS presents for your friends.

CHRISTMAS presents for your friends.

CHRISTMAS presents for your friends.

CHRISTMAS presents for your friends.

CHRISTMAS presents for your friends.

CHRISTMAS presents for your friends.

CHRISTMAS presents for your friends.

CHRISTMAS presents for your friends.

CHRISTMAS presents for your friends.

CHRISTMAS presents for your friends.

CHRISTMAS presents for your friends.

CHRISTMAS presents for your friends.

CHRISTMAS presents for your friends.

CHRISTMAS presents for your friends.

CHRISTMAS presents for your friends.

CHRISTMAS presents for your friends.

CHRISTMAS presents for your friends.

SITUATIONS WANTED.

COOPER The Coach, Rubber, etc.

COOPER The Coach, Rubber, etc.

COOPER The Coach, Rubber, etc.

COOPER The Coach, Rubber, etc.

COOPER The Coach, Rubber, etc.

COOPER The Coach, Rubber, etc.

COOPER The Coach, Rubber, etc.

COOPER The Coach, Rubber, etc.

COOPER The Coach, Rubber, etc.

COOPER The Coach, Rubber, etc.

COOPER The Coach, Rubber, etc.

COOPER The Coach, Rubber, etc.

COOPER The Coach, Rubber, etc.

COOPER The Coach, Rubber, etc.

COOPER The Coach, Rubber, etc.

COOPER The Coach, Rubber, etc.

COOPER The Coach, Rubber, etc.

COOPER The Coach, Rubber, etc.

COOPER The Coach, Rubber, etc.

COOPER The Coach, Rubber, etc.

COOPER The Coach, Rubber, etc.

COOPER The Coach, Rubber, etc.

COOPER The Coach, Rubber, etc.

COOPER The Coach, Rubber, etc.

COOPER The Coach, Rubber, etc.

COOPER The Coach, Rubber, etc.

COOPER The Coach, Rubber, etc.

COOPER The Coach, Rubber, etc.

COOPER The Coach, Rubber, etc.

COOPER The Coach, Rubber, etc.

COOPER The Coach, Rubber, etc.

COOPER The Coach, Rubber, etc.

COOPER The Coach, Rubber, etc.

COOPER The Coach, Rubber, etc.

SITUATIONS VACANT.

WANTED: good, honest, energetic.

WANTED: good, honest, energetic.

WANTED: good, honest, energetic.

WANTED: good, honest, energetic.

WANTED: good, honest, energetic.

WANTED: good, honest, energetic.

WANTED: good, honest, energetic.

WANTED: good, honest, energetic.

WANTED: good, honest, energetic.

WANTED: good, honest, energetic.

WANTED: good, honest, energetic.

WANTED: good, honest, energetic.

WANTED: good, honest, energetic.

WANTED: good, honest, energetic.

WANTED: good, honest, energetic.

WANTED: good, honest, energetic.

UNDER THE STANDARD.

NEW EDITION.

NEW EDITION.

NEW EDITION.

NEW EDITION.

NEW EDITION.

NEW EDITION.

NEW EDITION.

NEW EDITION.

NEW EDITION.

NEW EDITION.

NEW EDITION.

NEW EDITION.

NEW EDITION.

NEW EDITION.

NEW EDITION.

NEW EDITION.

NEW EDITION.

NEW EDITION.

NEW EDITION.

NEW EDITION.

NEW EDITION.

NEW EDITION.

NEW EDITION.

NEW EDITION.

NEW EDITION.

NEW EDITION.

NEW EDITION.

NEW EDITION.

NEW EDITION.

NEW EDITION.

NEW EDITION.

NEW EDITION.

NEW EDITION.

NOTICE.

Uganda's Business Barometer.

Uganda's Business Barometer.

Uganda's Business Barometer.

Uganda's Business Barometer.

Uganda's Business Barometer.

A. H. Wardle & Co., Ltd. CEMENTS. LARGE STOCK OF... PORTLAND CEMENT... BEST PORTLAND CEMENT... PORTLAND CEMENT... PORTLAND CEMENT...

THE COST OF LIVING. Bacon Costs and Production.

STeady Rise in the Price Paid to the Farmer.

The argument might be advanced that bacon is not a necessary foodstuff. Even those who regard the industry as an old-fashioned one and bacon might be economic from the marketing end, especially if there was a sufficient reason. But there is no such reason. It is the lowest priced of all the products of the pig, and it is the most profitable. It is the most profitable because it is the most profitable. It is the most profitable because it is the most profitable.

MONDAY, NOV. 20, 1922. MONDAY'S CABLES. THE LOST SUBMARINE.

London, Nov. 20.—A cable message received from the Admiralty today announced that the submarine 'H.M.S. Thetis' had been sighted by a patrol vessel on the 17th inst. The submarine was seen on the 17th inst. The submarine was seen on the 17th inst. The submarine was seen on the 17th inst.

DEATH OF THE QUEEN MOTHER at the age of 80.

Family by the Beside.

The announcement is made with profound regret that Her Majesty Queen Alexandra, died at Sandringham on Friday, at the age of 80. The announcement is made with profound regret that Her Majesty Queen Alexandra, died at Sandringham on Friday, at the age of 80.

Keira Church Service.

The Keira Church service will be held at 11 o'clock on Sunday, the 27th inst. The service will be held at 11 o'clock on Sunday, the 27th inst. The service will be held at 11 o'clock on Sunday, the 27th inst.



Her Majesty Queen Alexandra, died at Sandringham on Friday, at the age of 80.

Uganda Railway TENDERS FOR SCRAP. Tenders are invited for the purchase of a quantity of Scrap Iron and Steel...

RIDE LINE.

It is of interest to know in connection with the pig industry in Kenya. In the first place the pig industry in most countries is situated far from the coast. It is situated far from the coast. It is situated far from the coast.

AGRICULTURE.

The fact is that there are many who are engaged in agriculture. The fact is that there are many who are engaged in agriculture. The fact is that there are many who are engaged in agriculture.

GOVERNMENT. GOVERNMENT. GOVERNMENT.

The following were the members of the Government. The following were the members of the Government. The following were the members of the Government.

ROYALTY.

The following were the members of the Royal Family. The following were the members of the Royal Family. The following were the members of the Royal Family.

1. Tenders are invited for the purchase of a quantity of Scrap Iron and Steel...

2. The price should be per ton, and the Railway reserves the right to accept Tenders for the whole or part of the material it has disposal.

3. No guarantee as to quantity or quality can be given.

4. Payment must be made in cash before delivery.

5. The accepted Tenders must make their own arrangements for removal of the scrap within three months from the date of acceptance of their tender.

6. There is a siding into the Scrap Yard from which Railway trucks can be loaded.

7. Tenders in sealed envelopes marked "TENDERS FOR SCRAP" should reach the Chief Storekeeper, Uganda Railway, (P.O. Box 40), Nairobi on or before the 9th of January, 1923.

8. The Railway does not bind itself to accept the the highest or any tender.

G. L. M. FELLOWS, GENERAL MANAGER. 26th November 1922. UGANDA RAILWAY.

THE CLAYTON FARM TRACTOR. 358 H.P. Jones, Burton & Co., Ltd., Liverpool.

UGANDA LABOR.

The Recruiting the Government has issued the following notice. The Recruiting the Government has issued the following notice. The Recruiting the Government has issued the following notice.

AGRICULTURE.

The fact is that there are many who are engaged in agriculture. The fact is that there are many who are engaged in agriculture. The fact is that there are many who are engaged in agriculture.

ROYALTY.

The following were the members of the Royal Family. The following were the members of the Royal Family. The following were the members of the Royal Family.

AGRICULTURE.

The fact is that there are many who are engaged in agriculture. The fact is that there are many who are engaged in agriculture. The fact is that there are many who are engaged in agriculture.

AGRICULTURE.

The fact is that there are many who are engaged in agriculture. The fact is that there are many who are engaged in agriculture. The fact is that there are many who are engaged in agriculture.

AGRICULTURE.

The fact is that there are many who are engaged in agriculture. The fact is that there are many who are engaged in agriculture. The fact is that there are many who are engaged in agriculture.

AGRICULTURE.

The fact is that there are many who are engaged in agriculture. The fact is that there are many who are engaged in agriculture. The fact is that there are many who are engaged in agriculture.

AGRICULTURE.

The fact is that there are many who are engaged in agriculture. The fact is that there are many who are engaged in agriculture. The fact is that there are many who are engaged in agriculture.

AGRICULTURE.

The fact is that there are many who are engaged in agriculture. The fact is that there are many who are engaged in agriculture. The fact is that there are many who are engaged in agriculture.

AGRICULTURE.

The fact is that there are many who are engaged in agriculture. The fact is that there are many who are engaged in agriculture. The fact is that there are many who are engaged in agriculture.

AGRICULTURE.

The fact is that there are many who are engaged in agriculture. The fact is that there are many who are engaged in agriculture. The fact is that there are many who are engaged in agriculture.

AGRICULTURE.

The fact is that there are many who are engaged in agriculture. The fact is that there are many who are engaged in agriculture. The fact is that there are many who are engaged in agriculture.

SLEEPING SICKNESS. The British Government has formed the Director General of the League of Nations which is to be a permanent body...

CONFERENCE AGREEMENT. A joint statement has been issued by the second commission of the tariff conference...

REMINGTON GAME LOAD. THE CORRECT LOAD for whatever game you are going to shoot is the proper amount of powder...

QUEEN ALEXANDRA. Her Majesty the Queen Alexandra is expected to visit the East African territories...

MUSOLINI ON FASCISM. An extraordinary speech was made by Benito Mussolini at the opening of the Chamber...

STOP ALL ACHES & PAINS. USE SLOAN'S LINIMENT. If you're troubled by Rheumatism, Neuritis, Sprains, Backache, any muscular or nerve trouble...

REINHOLD EMERY. We drew attention at the time of the meeting in the Diet...

MOSUL DISPUTE. INTERNATIONAL COURT VIEW. THE HAGUE, November 27. The Mosul dispute...

Insomnia and Headache. Distressing Nervous Pains around the Head. Sable (Transvaal) Farmer's Testimony regarding the value of Cassell's Tablets in Nervous Ailments.

SUBMARINE FUTURE. Franco-British Agreement. (Various sources) have been interviewed by English and American newspapers...

REINHOLD EMERY. We drew attention at the time of the meeting in the Diet...

REINHOLD EMERY. We drew attention at the time of the meeting in the Diet...

REINHOLD EMERY. We drew attention at the time of the meeting in the Diet...

REINHOLD EMERY. We drew attention at the time of the meeting in the Diet...

REINHOLD EMERY. We drew attention at the time of the meeting in the Diet...

REINHOLD EMERY. We drew attention at the time of the meeting in the Diet...

REINHOLD EMERY. We drew attention at the time of the meeting in the Diet...

Dr. Cassell's Tablets. PRICE PER SIX SOUTH AFRICAN 12 1/2 (12 1/2 CENTS). FREE SAMPLES TO BE HAD ON APPLICATION.

REINHOLD EMERY. We drew attention at the time of the meeting in the Diet...

REINHOLD EMERY. We drew attention at the time of the meeting in the Diet...

REINHOLD EMERY. We drew attention at the time of the meeting in the Diet...

REINHOLD EMERY. We drew attention at the time of the meeting in the Diet...

REINHOLD EMERY. We drew attention at the time of the meeting in the Diet...

REINHOLD EMERY. We drew attention at the time of the meeting in the Diet...

REINHOLD EMERY. We drew attention at the time of the meeting in the Diet...

REINHOLD EMERY. We drew attention at the time of the meeting in the Diet...

WILKINSON'S 'WHITE LABEL' SOAP. 'THE SPIRIT OF REFINEMENT'.

REINHOLD EMERY. We drew attention at the time of the meeting in the Diet...

REINHOLD EMERY. We drew attention at the time of the meeting in the Diet...

REINHOLD EMERY. We drew attention at the time of the meeting in the Diet...

REINHOLD EMERY. We drew attention at the time of the meeting in the Diet...

REINHOLD EMERY. We drew attention at the time of the meeting in the Diet...

REINHOLD EMERY. We drew attention at the time of the meeting in the Diet...

REINHOLD EMERY. We drew attention at the time of the meeting in the Diet...

REINHOLD EMERY. We drew attention at the time of the meeting in the Diet...

Saved Baby's Life. For the benefit of mothers we print an extract from a letter received from Mrs. F. Watters, Military Works, Secunderabad.

REINHOLD EMERY. We drew attention at the time of the meeting in the Diet...

REINHOLD EMERY. We drew attention at the time of the meeting in the Diet...

REINHOLD EMERY. We drew attention at the time of the meeting in the Diet...

REINHOLD EMERY. We drew attention at the time of the meeting in the Diet...

REINHOLD EMERY. We drew attention at the time of the meeting in the Diet...

REINHOLD EMERY. We drew attention at the time of the meeting in the Diet...

REINHOLD EMERY. We drew attention at the time of the meeting in the Diet...

REINHOLD EMERY. We drew attention at the time of the meeting in the Diet...

WOODWARDS' Peppermint Cure. It is with the greatest pleasure and gratitude we have to announce that the late Douglas Margaret died this year...

REINHOLD EMERY. We drew attention at the time of the meeting in the Diet...

REINHOLD EMERY. We drew attention at the time of the meeting in the Diet...

REINHOLD EMERY. We drew attention at the time of the meeting in the Diet...

REINHOLD EMERY. We drew attention at the time of the meeting in the Diet...

REINHOLD EMERY. We drew attention at the time of the meeting in the Diet...

REINHOLD EMERY. We drew attention at the time of the meeting in the Diet...

REINHOLD EMERY. We drew attention at the time of the meeting in the Diet...

REINHOLD EMERY. We drew attention at the time of the meeting in the Diet...

WOODWARDS' Peppermint Cure. It is with the greatest pleasure and gratitude we have to announce that the late Douglas Margaret died this year...





THE UGANDA COMPANY.

Favourable Results. Public Ignorance.

The twenty second Ordinary Meeting of the Uganda Company Ltd was held in London on Monday, 15th November 1926...

LIMITED POSTAL RATES.

Public Ignorance.

In a letter addressed from Koro to the Editor of the East African Standard, dated 14th November 1926...

Jockey Club of Kenya.

Programme for the Nairobi New Race Meeting, to be held at the Nairobi Racecourse on Friday and Saturday the 1st and 2nd January, 1926.

DAY RACE.

THE COLE HURDLE CUP RACE.—A Cup value £50 presented by the late Mr. H. Cole...

EAST AFRICAN DEBY STAKES 1926.—Of 3000 Sores by subscription of 10 sores each...

TWO YEAR OLD STAKES.—A race open to all E.A.C.H. Horses 2 years old...

SMALL STEEPCHASE.—A handicap open to all Small and Abyssinian Ponies...

DIVIDED HANDICAP.—To be divided into three divisions by the Handicapper...

MAIDN.—A race open to all Maiden Horses 3 years and over...

SECOND DAY.

KEVA GRAND NATIONAL.—A Steeplechase Handicap open to all Horses...

DIVIDED HANDICAP.—To be divided into three divisions by the Handicapper...

TWO YEAR OLD NURSERY HANDICAP.—A race open to all E.A.C.H. Horses...

NARONI HANDICAP.—Open to all Horses. Distance 2 miles. Value £50 of which £10 to the second.

SMALL FLAT RACE.—A handicap open to all Small and Abyssinian Ponies...

OPEN BELLING HANDICAP.—A race value £20 open to all Horses. Winner to be sold for £60.

ENTRIES FOR ALL of the above close at 11.00 on FRIDAY, the 11th DECEMBER, 1926...

THE OFFICIAL MEMORANDUM will be distributed on the NARONI RACOCOURSES at 10 A.M. on FRIDAY, the 11th DECEMBER, 1926...

THE TURF CLUB WILL TAKE PLACE AT THE NEW STANLEY HOTEL, ON THURSDAY, the 21st DECEMBER at 9 p.m.

The Meeting Motor Car. We understand that the Public have been asked to send their names to Mr. Mackintosh...

WEDNESDAY'S CABLES.

ERIN IRRECONCILABLE.

Water and the Commission.

(From Murray's Agency.) The Government's resignation, which yesterday, when the Irish Executive Council accepted...

Mr. MacNeill's resignation, which yesterday, when the Irish Executive Council accepted...

Provide For Your Old Age

The African Life Assurance Society Ltd.

Funds now over £3,268,000. The Society issues all Classes of Life and Endowment Policies.

M. D. KAMPF, Manager, African Life Assurance Society, Ltd.

MOORING IN LONDON.

Federal Arrangements. President Gwynne promised to take steps to prevent the infliction of injustice on Ireland...

The following telegram was received from the Secretaries: "The Hon. Mr. MacNeill has been removed to London by the Minister of the Interior..."

The Hon. Mr. MacNeill has been removed to London by the Minister of the Interior...

The Hon. Mr. MacNeill has been removed to London by the Minister of the Interior...

The Hon. Mr. MacNeill has been removed to London by the Minister of the Interior...

The Hon. Mr. MacNeill has been removed to London by the Minister of the Interior...

The Hon. Mr. MacNeill has been removed to London by the Minister of the Interior...

Samuel Jacobs & Company.

THAYER HOTEL BUILDINGS, SIXTH AVENUE, NAIROBI.

PLANTATIONS, AND FARMS FOR SALE OF EVERY DESCRIPTION AND IN EVERY DISTRICT THROUGHOUT THE COLONY.

TOWN & RIBESIDENTIAL PROPERTIES IN AND OUTSIDE NAIROBI.

Mortgages and Loans. ARRANGED UP TO ANY AMOUNT, AND ON ANY TANGIBLE SECURITY, AT CURRENT RATES OF INTEREST.

PARTNERSHIP NEGOTIATED. ARBITRATIONS UNDERTAKEN. VALUATIONS.

FRENCH FINANCIAL CRISIS.

M. Painleve Resigns.

DEFEATED BY THREE VOTES AFTER MANY CLOSE DIVISIONS.

(From Murray's Agency.) THE NEXT MOVE. In the Chamber the Government majority was 100 votes...

The Chamber met on November 19th at 10.15. The Government's majority was 100 votes...

The Chamber met on November 19th at 10.15. The Government's majority was 100 votes...

The Chamber met on November 19th at 10.15. The Government's majority was 100 votes...

The Chamber met on November 19th at 10.15. The Government's majority was 100 votes...

The Chamber met on November 19th at 10.15. The Government's majority was 100 votes...

The Chamber met on November 19th at 10.15. The Government's majority was 100 votes...

The Chamber met on November 19th at 10.15. The Government's majority was 100 votes...

The Chamber met on November 19th at 10.15. The Government's majority was 100 votes...

The Chamber met on November 19th at 10.15. The Government's majority was 100 votes...

The Chamber met on November 19th at 10.15. The Government's majority was 100 votes...





THE NATIONAL BANK OF SOUTH AFRICA LTD.

HANKING BRANCH OF EVERY DESCRIPTION

Over 300 Branches and Sub-branches in South & East Africa

IN EAST AFRICA:

Portuguese Territory	Wyanad	Kenya Colony
Delagoa Bay	Blantyre	Elmore
Lourenco Marquis		Mombasa
Port Aislard		Nairobi

TANGANYIKA TERRITORY

Dar-es-Salaam

Tanga

OVERSEAS BRANCHES: LONDON, NEW YORK, PORT LOUIS

HEAD OFFICE: CAPETOWN

BANKERS TO THE GOVERNMENT OF THE UNION OF SOUTH AFRICA

ASK FOR C&E

MORTON'S JAMS & MARMALADE

AND EVERY KIND OF PROVISIONS RENOWNED THROUGHOUT THE WORLD OBTAINABLE AT ALL LEADING STORES

Sole Agents: Mortiboys Nicholas & Co., Ltd. Mombasa and Nairobi.

COFFEE MACHINERY

Wm. McKinnon & Co., Ltd.

Experience since 1785, of the manufacture of machinery to suit the conditions of every coffee growing country in the world is behind.

OUR 1926 RANGE

A and E Pulpers, 11 Types Breast, 21 Types Copper Covers, Repeating Pulpers, 11 Types Breast, 21 Types Copper Covers.

Disc Pulpers, with Copper or Cast Iron discs.

Pulp Separators, Rotary or Shaking.

Washing, Horizontal or Vertical.

Draining Plates and Slits Gates.

Quadrangle, For draining preparatory to mechanical drying.

Drums, Guards, or Screens.

Beaters, Steam, Direct Fire, or Electric.

Rollers, Africa, Uganda, Senegal, etc.

Pulshers, Senegal, San Jose, Okara.

Best Builders, Campaign and Brass.

Zanzibar, Venoprop and Horizontal in Wood or Metal.

Graders, for Cherry, Parchment, and Clean Coffee.

Washing, Pickling, Tables, Gates, or Treads.

Blowers, Saws, conveyors, Elevators, Pump.

Smoothing, Bearings, Pulleys, Gearing, etc.

Sizes, Engines and Boilers.

Water wheel, Pelton Wheels and Turbines.

CATALOGUES, FURTHER PARTICULARS, A.S.P. QUOTATIONS, etc. from THE SOLE AGENTS IN KENYA.

SCOTT & DAVIDSON

Nairobi

It is proposed to hold an Old Marlburian Dinner in Eldoret on Wednesday, December 13th (the Day before the Eldoret Show). Will all O.M.'s who wish to attend communication with MAJOR G. A. S. SM., P. O. CHEONGANI, as soon as possible in order that adequate arrangements can be made.

THE 1. EDITION. Low Pass. Experts May PROBLEM OF CHILD.

The Inspector of Schools is establishing the facts of the problem of the Ragged Psychological Research Expedition. The active mind of the study of the problem of the child will be able to investigate the facts of the child.

The investigation now about to be conducted by the Inspector of Schools in Kenya is one of the most important in the history of our country. It is a study of the child in his own environment. It is a study of the child in his own environment. It is a study of the child in his own environment.

THE INVESTIGATION NOW ABOUT TO BE CONDUCTED BY THE INSPECTOR OF SCHOOLS IN KENYA IS ONE OF THE MOST IMPORTANT IN THE HISTORY OF OUR COUNTRY. IT IS A STUDY OF THE CHILD IN HIS OWN ENVIRONMENT. IT IS A STUDY OF THE CHILD IN HIS OWN ENVIRONMENT. IT IS A STUDY OF THE CHILD IN HIS OWN ENVIRONMENT.

The investigation now about to be conducted by the Inspector of Schools in Kenya is one of the most important in the history of our country. It is a study of the child in his own environment. It is a study of the child in his own environment. It is a study of the child in his own environment.

REMOVAL IS AFTER ALL THE most important thing in the world. It is a study of the child in his own environment. It is a study of the child in his own environment. It is a study of the child in his own environment.

REMOVAL IS AFTER ALL THE most important thing in the world. It is a study of the child in his own environment. It is a study of the child in his own environment. It is a study of the child in his own environment.

QUESTIONS ARE BEING ASKED about the future of the East African. It is a study of the child in his own environment. It is a study of the child in his own environment. It is a study of the child in his own environment.

QUESTIONS ARE BEING ASKED about the future of the East African. It is a study of the child in his own environment. It is a study of the child in his own environment. It is a study of the child in his own environment.

East India Merchants and Commercial Agents

20, ARBUTHNOT LANE, LONDON, E.C.2

Agents for the sale of Tropical Produce and Reports of Sales Supplies.

Old Marlburian Dinner

Mrs. Hudson

GOVERNMENT ROAD

SOLE REPRESENTATIVE FOR KENYA COLONY AND UGANDA

THIRA TOWNSHIP. The Permanent Residents of Thira Township petitioned the work to the health conditions of the township in which they live. An article which appears to date three months ago on the subject of the township in which they live. An article which appears to date three months ago on the subject of the township in which they live.

FRIDAY'S CABLES. M. BRIAND REFUSES. Finance President Called.

(FRANCE PRESS ASSOCIATION) PARIS, November 24. M. Briand has refused to accept the office of President of the Council of Ministers.

QUEEN ALEXANDRA. Funeral Service.

The funeral of Her Majesty Queen Alexandra took place at 11.15 a.m. on Wednesday, November 22, at the Royal Albert Hall, London.

THE FRENCH FRANC. Fall of Another Point.

London, November 24. The French franc has fallen to a new low point.

MR. DAN WHELAN AT ATHENS. Double Resignation.

London, November 24. Mr. Dan Whelan has resigned from the Irish Free Government.

NEW QUEEN OF SWAM. Birth of a Daughter to Rama.

Rangoon, November 25. The birth of a daughter to Queen Rama has caused a great deal of excitement.

DOUBLE RESIGNATION. Mr. Maxwell has resigned from the Irish Free Government.

NEW QUEEN OF SWAM. Birth of a Daughter to Rama.

Rangoon, November 25. The birth of a daughter to Queen Rama has caused a great deal of excitement.

DOUBLE RESIGNATION. Mr. Maxwell has resigned from the Irish Free Government.

THE AFRICA FLIGHT. Official Air Itinerary.

(FROM OUR OWN CORRESPONDENT) KISUMU, November 25. The Africa flight yesterday, and has not arrived since yesterday.

It is reported that the African has reached Kisumu. The flight is expected to reach Kisumu on the 27th.

MOTOR OYULE SUITS. In a material that is absolutely waterproof. These garments are made in a double texture cloth, heavy and durable.

The Coat 68-50  
The Leggings 27-50  
Less 5% for Cash.

WE ARE NOW ABLE TO OFFER OUR NOTED BOLARO SHIRTS AT 25/0 NETT. A GENUINE REDUCTION OF 4/- PER SHIRT.

ALL WOOOL WARM GRAY SOCKS 9/- PER PAIR SPECIAL OFFER OF 6 PAIRS FOR 10/6.

Maxwell, Brady & Company

MENS WEAR SPECIALISTS. GOVERNMENT ROAD, NAIROBI.

P. O. Box 50. Phone 126.

The Proved Health Safeguard

RAMBO CARBOLIC SOAP

A Pure Soap combined with a Genuine Disinfectant. Washes and disinfects at the same time.

Made especially for the Tropics. Sold in dainty tins all over the world.

MORTIMORE & Co. Ltd. Mombasa & Nairobi.



Illustration of a man in a suit standing next to a motor vehicle.

Illustration of a man in a suit standing next to a motor vehicle.

Illustration of a man in a suit standing next to a motor vehicle.

Illustration of a man in a suit standing next to a motor vehicle.

Illustration of a man in a suit standing next to a motor vehicle.

Illustration of a man in a suit standing next to a motor vehicle.

Illustration of a man in a suit standing next to a motor vehicle.

Illustration of a man in a suit standing next to a motor vehicle.

Illustration of a man in a suit standing next to a motor vehicle.

Illustration of a man in a suit standing next to a motor vehicle.

Illustration of a man in a suit standing next to a motor vehicle.

THIKA TOWNSHIP.

A Government Cinderella Thirty Miles from Nairobi.

STAGNATION AND FLTH.

(From a SPECIAL CORRESPONDENT.)

I have long seen Thika Township... a Government Cinderella... Thirty Miles from Nairobi.

There is no prospect of a... a Government Cinderella... Thirty Miles from Nairobi.

There is no prospect of a... a Government Cinderella... Thirty Miles from Nairobi.

There is no prospect of a... a Government Cinderella... Thirty Miles from Nairobi.

There is no prospect of a... a Government Cinderella... Thirty Miles from Nairobi.

There is no prospect of a... a Government Cinderella... Thirty Miles from Nairobi.

There is no prospect of a... a Government Cinderella... Thirty Miles from Nairobi.

There is no prospect of a... a Government Cinderella... Thirty Miles from Nairobi.

There is no prospect of a... a Government Cinderella... Thirty Miles from Nairobi.

There is no prospect of a... a Government Cinderella... Thirty Miles from Nairobi.

There is no prospect of a... a Government Cinderella... Thirty Miles from Nairobi.

formed two Indians and a... a Government Cinderella... Thirty Miles from Nairobi.

A GRUBBY CINDERELLA... a Government Cinderella... Thirty Miles from Nairobi.

THE FATE OF THE BAR... a Government Cinderella... Thirty Miles from Nairobi.

THE FATE OF THE BAR... a Government Cinderella... Thirty Miles from Nairobi.

THE FATE OF THE BAR... a Government Cinderella... Thirty Miles from Nairobi.

THE FATE OF THE BAR... a Government Cinderella... Thirty Miles from Nairobi.

THE FATE OF THE BAR... a Government Cinderella... Thirty Miles from Nairobi.

THE FATE OF THE BAR... a Government Cinderella... Thirty Miles from Nairobi.

THE FATE OF THE BAR... a Government Cinderella... Thirty Miles from Nairobi.

THE FATE OF THE BAR... a Government Cinderella... Thirty Miles from Nairobi.

THE FATE OF THE BAR... a Government Cinderella... Thirty Miles from Nairobi.

THE FATE OF THE BAR... a Government Cinderella... Thirty Miles from Nairobi.

THE FATE OF THE BAR... a Government Cinderella... Thirty Miles from Nairobi.

CROSS-WORD PUZZLE

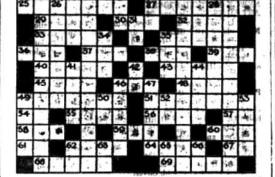
No. 40 36th PRIZE WINNER.

The following is the solution to PUZZLE No. 39.



The prize of Twenty Shillings for the best correct solution posted was won by Mr. J. HOODE.

PLEASE OUT HINTS IN DOTTED LINE.



HORIZONTAL CLUES

- 1 To dip in hot water. 2 To be in a state of excitement. 3 To be in a state of excitement.

VERTICAL

- 1 Pertaining to a group of people. 2 To be in a state of excitement.

- 1 To be in a state of excitement. 2 To be in a state of excitement.

CROSS-WORD PUZZLE SOLUTION.

The puzzle was set on Saturday December 11, 1921. The Editor's decision must be accepted as final.

Poultry Notes.

POULTRY ALIENS AND RESERVES.

(Continued from Nov. 14.) On my farm I have a... a Government Cinderella... Thirty Miles from Nairobi.

I am giving below some... a Government Cinderella... Thirty Miles from Nairobi.

Keep This is a most... a Government Cinderella... Thirty Miles from Nairobi.

It is a most... a Government Cinderella... Thirty Miles from Nairobi.

It is a most... a Government Cinderella... Thirty Miles from Nairobi.

It is a most... a Government Cinderella... Thirty Miles from Nairobi.

It is a most... a Government Cinderella... Thirty Miles from Nairobi.

It is a most... a Government Cinderella... Thirty Miles from Nairobi.

It is a most... a Government Cinderella... Thirty Miles from Nairobi.

It is a most... a Government Cinderella... Thirty Miles from Nairobi.

It is a most... a Government Cinderella... Thirty Miles from Nairobi.

It is a most... a Government Cinderella... Thirty Miles from Nairobi.

THE NIENZAU AUC HOMEERS NAKURU

Appliances, Automobiles, Land & Live Stock Agents.

Upcoming Sales: Moko, 10th December, 200 Head of Cattle including a complete grade Shorthorn.

Mukuroni. During December. 100 Lammas Oxen.

Further entries invited and will be advertised.

Past Present and Future

In the past gathering life was in the cities of Scotland. At present gathering life is in the world, and in future to be known as the finest Whisky produced in Scotland. This is

"LONG JOHN" SPECIAL RESERVE SCOTCH WHISKY.

Wholesale Distributors: D. EPSTEIN & Co. P.O. Box 178. NAIROBI.

If you contemplate purchasing an Engine, BE SURE AND INSURE.

THE PETTER'S TYPE CRUICK UOL ENGINE



See from 8 to 30/6 B.H.P. J. W. MILLIGAN & Co. NAIROBI.

Contains both each... a Government Cinderella... Thirty Miles from Nairobi.

Contains both each... a Government Cinderella... Thirty Miles from Nairobi.

Contains both each... a Government Cinderella... Thirty Miles from Nairobi.

The BETTER POLICY

Machinery Owners Who for Years Have Enjoyed COMPLETE CONFIDENCE

in placing their REPAIRS and REPLACEMENTS with US, that it is the BETTER POLICY

to pay for Satisfaction, than to pay for your EXPERIENCE, dearly through inferior workmanship

Engineers: AGRICULTURAL & GENERAL. Founders: METALLURGISTS. Welders: ENGRAVERS. SHEET METAL WORKERS

Isherwoods Limited

P.O. Box 78 Offices: Harding Street. G.P.O. Harina. Nairobi. Office: Commercial Street. NAIROBI.

ANNOUNCEMENT.

Messrs. EADIES FOOTWEAR

Representative will be at ELDORET.

From the 9th December Till 20th with a big Selection of the Latest and Best in Footwear for Ladies, Gents, and Children.

Special Lines for X'mas Presents.

Gents Ladies and Childrens Moccasin Slippers, Gents American Moccasin Shoes, Gents and Ladies, Crepe Sole Shoes, Ladies Brocade Evening Shoes, Gents Dress Shoes.

Big Selection Farm Boots.

Address advised later

Eadies Footwear, Limited.

Christmas Fare AT DUNCAN'S

Our stock will be complete with all sorts of good things for Christmas.

Our stock will be complete with all sorts of good things for Christmas.

Our stock will be complete with all sorts of good things for Christmas.

Our stock will be complete with all sorts of good things for Christmas.

Our stock will be complete with all sorts of good things for Christmas.

Health & Song



SPRATTS PACKET BIRD SEEDS

THE EAST AFRICAN STANDARD No. 40

CROSS-WORD PUZZLE SOLUTION.

The puzzle was set on Saturday December 11, 1921. The Editor's decision must be accepted as final.

DISTRICT NOTES.

Kisumu.

The Executive Engineer would like to see the road... The Executive Engineer would like to see the road...

Malindi.

The Executive Engineer would like to see the road... The Executive Engineer would like to see the road...

Ngunguru Land Sale.

The Tanganyika Government is offering for sale... The Tanganyika Government is offering for sale...

TRADE NOTES.

Trade still remains very slow... Trade still remains very slow...

WANTED.

1,000 Wattle Poles... 1,000 Wattle Poles...

REQUIRE FOR A...

European Driver for a... European Driver for a...

SITUATION VACANT.

Country estate wanted for... Country estate wanted for...

MALINDI IN MARCH.

In his speech regarding the... In his speech regarding the...

SATURDAY'S CABLES.

Whole Executive in Goa... Whole Executive in Goa...

QUEEN ALEXANDRA.

An united memorial service... An united memorial service...

COMMUNIST SENTENCE.

Two men sentenced to... Two men sentenced to...

Muter and Oswald's Sales

SALE OF LIMURU FARM BY PUBLIC AUCTION

On the 26th of November, 1924... On the 26th of November, 1924...

TRAVEL AND TOURS.

The Travelling Commission... The Travelling Commission...

RECORDS.

The Registrar of Births... The Registrar of Births...

RECORDS.

The Registrar of Births... The Registrar of Births...

RECORDS.

The Registrar of Births... The Registrar of Births...

Mengo Planters Ltd

KAMPALA

THE CHEAPEST DEPARTMENTAL STORE... THE CHEAPEST DEPARTMENTAL STORE...

CHRISTMAS CHEQUES.

FOR ALL KINDS OF... FOR ALL KINDS OF...

NEW BRIDGE.

I was interested to see... I was interested to see...

Geo. BLOWERS.

Manufacturers, Exporters, Importers... Manufacturers, Exporters, Importers...



MADE TO ORDER... MADE TO ORDER...

CASH WITH ORDER... CASH WITH ORDER...

BUY OUR PATENT BLOCKS AND BUILD YOUR OWN HOUSE... BUY OUR PATENT BLOCKS AND BUILD YOUR OWN HOUSE...

COLOURED AND WHITE HAY SILK.

COLOURED HAY SILK... COLOURED HAY SILK...

COLOURED AND WHITE HAY SILK.

COLOURED HAY SILK... COLOURED HAY SILK...

MENGO PLANTERS LTD.

P.O. Box 12, KAMPALA, UGANDA.

Cruden's Historical

Crude oils No. 1

King Charles, as he stepped out... King Charles, as he stepped out...

CRUDE OIL'S SOAP

THE AFRICA FLIGHT.

Airman Dead in December

(Para One Overseas) London, November 27... (Para One Overseas) London, November 27...

THE AFRICA FLIGHT.

(Para One Overseas) London, November 27... (Para One Overseas) London, November 27...

THE AFRICA FLIGHT.

(Para One Overseas) London, November 27... (Para One Overseas) London, November 27...

MUTINY IN CHINA.

Army Sent to Tswan.

London, November 25... London, November 25...

THE AFRICA FLIGHT.

(Para One Overseas) London, November 27... (Para One Overseas) London, November 27...

THE AFRICA FLIGHT.

(Para One Overseas) London, November 27... (Para One Overseas) London, November 27...

THE M.T. MYSTERY.

High Cost of Submarines.

London, November 25... London, November 25...

THE AFRICA FLIGHT.

(Para One Overseas) London, November 27... (Para One Overseas) London, November 27...

THE AFRICA FLIGHT.

(Para One Overseas) London, November 27... (Para One Overseas) London, November 27...

CRUDE OIL'S SOAP

King Charles, as he stepped out... King Charles, as he stepped out...

# WISDOM

SOCRATES:

"And will you have a work better done when the workman has many occupations or when he has only one."  
**FORD DEALERS EVERYWHERE ARE SPECIALISTS IN FORD PRODUCTS.**

There is REASON why the universal merchandising and Servicing of FORD Products is one of the outstanding achievements of this age.

# RESULT

In British East Africa, (according to the most recent authentic information) Tractors in 1925 of all kinds increased by 402 per cent.  
 Of every 100 Tractors coming into this country 87.5 are

# FORDSONS

65 are now en route from the Coast...you may be able to get yours from this consignment.

**PLACE AN ORDER TO-DAY.**

On the recommendation of the FORD MOTOR COMPANY OF CANADA LIMITED a TILLAGE EXPERT from the largest Manufacturers in the world, specialising in Tillage Implements will visit Kenya early in the New Year.

**SPECIALISATION MADE**

The Ford Motor Company of Canada, Limited,  
 FORD, ONTARIO, CANADA.



*The Service Company Limited.*  
**Cars Trucks Tractors**  
 NAIROBI, MOMBASA, KOGHI



SUPPLEMENT No. 102 SATURDAY, NOV. 26, 1926 NAIROBI

## THE EAST AFRICAN STANDARD WEEKLY EDITOR.

**Small Advertisements.**  
 Advertisements are accepted only subject to approval.  
**DOMESTIC ADVERTISEMENTS.** Births, Marriages and Deaths, etc. in per line of six words with a minimum of the **NEIGHBOURHOOD VERIFIED ADVERTISEMENTS.**  
 Such as Wanted, To Let, For Sale and Situations Vacant and Wanted, 1 per line of six words (ordinary type) or fraction of a line, minimum 6s.

### FOR SALE.

GO to K. Melroe and Co. of the Stocks of Shell and Progress Power, and all kinds of Oil.  
 GO to K. Melroe and Co. for Gray and Shalabhai Standard Six Cars also Grey 1 ton Trucks.

GO to K. Melroe and Co. for Dingle and H.R.A. motor cycles and all makes and sizes of parts and accessories.  
 GO to K. Melroe and Co. for motor accessories. Large stocks always on hand.  
 GO to K. Melroe and Co. for any size and make of type or any motor equipment. Phone No. 1, P.O. Box 97 The Address "Aunt."

### CAR CAUSERIE.

Modern Car Equipment.

#### ABOUT CLUTCHES.

During the past year or so front wheel brakes and hubless tyres have had a very prominent position in motorist discussions. In fact they are almost universally adopted and referred to them as a topic of conversation among those who are conversant with a comparatively simple motor requiring in the majority of cases, merely a change of gear. They are used by the public for their low pressure type, their low wear and tear, and their low cost. They are also used by the motorist who is not particularly concerned with their safety, but who is more concerned with their economy in order to reduce the cost.

I have had cars under my control on which the braking was so good as to be useless, because of this system being fitted to a heavy car. It was designed to carry a heavy load, but the brakes were not of the type which might result, but in order to overcome this, the car was fitted with a heavy spring on the front axle, and I have had cars which became very uncomfortable when the front wheel brakes were used, and I have had cars which were very uncomfortable when the front wheel brakes were used.

come to the conclusion that there are not a few with only two wheel braking systems which are indistinctly better to handle from every point of view than are some of the four-wheel braked cars.

#### NOT UNDERSTOOD.

The trouble with front wheel brakes is that not only have drums and shoes to be fitted to the wheels, complete with operating mechanisms, but the chassis in many other respects has to be re-constructed. The designer for the braking system stampeded the manufacturer, and rather than face unless they have fitted what looks like the brake to the front wheels of their car. It is made a mistake that the full constant front wheels is not understood in certain quarters, by some who say they have had in Europe and America advertising front wheel brakes which are fitted to all cars. If they did work as front wheel brakes should, they would be exceedingly dangerous.

#### INSTRUCTIONS Necessary.

This position is being realized in England is proved by the fact that the Austin Car Club, in outlining the course for their 200 mile race run during 1925, has introduced a large number of being made not only for the throttle which might result, but in order to overcome this, the car was fitted with a heavy spring on the front axle, and I have had cars which became very uncomfortable when the front wheel brakes were used, and I have had cars which were very uncomfortable when the front wheel brakes were used.

very careful adjustment indeed. I am afraid that manufacturers are not supplying such instructions to their customers as to how these adjustments should be carried out.

#### Adjustments Needed.

As a matter of fact it is a mere half score of the front wheel brakes that are not set properly, because, as I have said, they have been added as afterthoughts. If the shoe really did grip, the front axle would slide itself or be vibrated from the design, or the front spring would pull out. When a front wheel brake actually does really work a very severe twisting strain is placed on the axle of the front wheel, and this is not intended to take the strain unless it is withdrawn immediately. On many cars the front axle has been redesigned since the adoption of front wheel brakes, the difference being the circular section of the axle ends.

#### Experiments.

This position is being realized in England is proved by the fact that the Austin Car Club, in outlining the course for their 200 mile race run during 1925, has introduced a large number of being made not only for the throttle which might result, but in order to overcome this, the car was fitted with a heavy spring on the front axle, and I have had cars which became very uncomfortable when the front wheel brakes were used, and I have had cars which were very uncomfortable when the front wheel brakes were used.

6 CYLINDERS 40 B.H.P.

**£295** **£295**

POWER SPEED ECONOMY THE TOP GEAR CAR

Streamline Metal Safari Body-Sun Proof Top 5 Tyres & Tubes.  
 Gabriel Snubbers. Ready to Drive Away-No Extras.

**Monckton & Sear Ltd. NAIROBI-KENYA**  
**Mengo Planters Ltd. KAMPALA-JINJA**  
 BOMBO-NGORA ETC UGANDA

**Taking the Strain.**  
 A clutch is used to ease in order that the power of the engine may be transmitted gradually to the shaft. When a gear is engaged the clutch is connected with the shaft of the engine, and the power is transmitted to the back wheels of the car.  
 Taking the Strain.  
 A clutch is used to ease in order that the power of the engine may be transmitted gradually to the shaft. When a gear is engaged the clutch is connected with the shaft of the engine, and the power is transmitted to the back wheels of the car.  
 Taking the Strain.  
 A clutch is used to ease in order that the power of the engine may be transmitted gradually to the shaft. When a gear is engaged the clutch is connected with the shaft of the engine, and the power is transmitted to the back wheels of the car.

CAR CAREER.

(Continued from page 17)

will move faster and faster as the shaft permits the engine to apply its power more and more. This is done by making the gears in such a way that when it is applied, it also causes of instantly making a connection between the engine and the drive.

Types of Clutches.

There are two general types of clutch on use. One uses steel plates which are attached to the shaft and the other uses a very quickly slipping clutch which is made of many small plates per inch of diameter. The first type is known as the sliding clutch and the second as the multiple disc, in which the plates are made of steel and are either the hub or driven or flywheel. The sliding clutch is used in the motor cars and the multiple disc is used in the trucks and heavy machinery.

Sliding Clutch.

The single plate is one where a single plate is attached to the shaft and the other is attached to the hub. The two plates are attached to the shaft and the hub respectively. The sliding clutch is used in the motor cars and the multiple disc is used in the trucks and heavy machinery.

The One Clutch.

The one clutch is built so that it will slip when the engine is started and when the car is moving. It is used in the motor cars and the multiple disc is used in the trucks and heavy machinery.

about it when generally in the line. The term "clutch" in "clutch gear" and "clutch shaft" is understood thoroughly by the motorist. It is the part of the car which is used to connect the engine to the drive shaft and to disconnect them when necessary.

Running New Cars.

Complaints often are heard from new car purchasers who are dissatisfied with their cars. The reason for this is that they have not been properly instructed in the care and use of their cars. It is important to read the owner's manual and to have the car properly adjusted by a mechanic.

Checklist.

The need for careful running is not confined to the engine but extends to the entire car. It is important to check the oil level, the water level, and the tire pressure regularly. It is also important to have the car properly adjusted by a mechanic.

Lighting Up.

When the 800 miles, or whatever mileage is laid down, has been reached, it is important to have the car properly adjusted by a mechanic. This includes checking the oil level, the water level, and the tire pressure.

The Carburetor.

Also it is not uncommon to find a carburetor which is not properly adjusted. It is important to have the carburetor properly adjusted by a mechanic. This includes checking the air filter, the float valve, and the jets.

Another Point of View.

There are other points of view when it comes to the care and use of a car. It is important to have the car properly adjusted by a mechanic. This includes checking the oil level, the water level, and the tire pressure.

CHANGES.

Consequently the bearings are forced to carry a heavy load when the speed is high. This is why the bearings are made of a special material and are lubricated with a special oil. It is important to have the bearings properly lubricated by a mechanic.

CHANGES.

The need for careful running is not confined to the engine but extends to the entire car. It is important to check the oil level, the water level, and the tire pressure regularly. It is also important to have the car properly adjusted by a mechanic.

Lighting Up.

When the 800 miles, or whatever mileage is laid down, has been reached, it is important to have the car properly adjusted by a mechanic. This includes checking the oil level, the water level, and the tire pressure.

The Carburetor.

Also it is not uncommon to find a carburetor which is not properly adjusted. It is important to have the carburetor properly adjusted by a mechanic. This includes checking the air filter, the float valve, and the jets.

Another Point of View.

There are other points of view when it comes to the care and use of a car. It is important to have the car properly adjusted by a mechanic. This includes checking the oil level, the water level, and the tire pressure.

THE BUICK 1936 MODELS.

Latest Designs Embody Most Advanced Improvements.

INCREASED POWER IN ENGINES.

Details of the Most Recent Features in Motor Car Construction.

Being equipped with the latest and most advanced improvements, the Buick 1936 models are the most powerful and most reliable motor cars ever produced. The new 1936 models are equipped with a new type of engine which gives them a power increase of 10% over the 1935 models. This is due to the new type of combustion chamber and the new type of piston and rings.

The new 1936 models are also equipped with a new type of transmission which gives them a smoother and more efficient drive. This is due to the new type of gear teeth and the new type of shaft and bearings. The new 1936 models are also equipped with a new type of suspension which gives them a smoother and more comfortable ride.

The new 1936 models are also equipped with a new type of steering which gives them a more precise and more responsive steering. This is due to the new type of steering knuckles and the new type of tie rods and ball joints. The new 1936 models are also equipped with a new type of braking system which gives them a more powerful and more reliable braking system.

The new 1936 models are also equipped with a new type of lighting system which gives them a more powerful and more reliable lighting system. This is due to the new type of headlights and the new type of taillights and parking lights. The new 1936 models are also equipped with a new type of interior which gives them a more comfortable and more luxurious interior.

The new 1936 models are also equipped with a new type of exterior which gives them a more attractive and more modern exterior. This is due to the new type of body panels and the new type of trim and accessories. The new 1936 models are also equipped with a new type of paint which gives them a more durable and more attractive paint.

The new 1936 models are also equipped with a new type of safety system which gives them a more secure and more reliable safety system. This is due to the new type of seat belts and the new type of door locks and windows. The new 1936 models are also equipped with a new type of maintenance system which gives them a more convenient and more efficient maintenance system.

The new 1936 models are also equipped with a new type of service system which gives them a more prompt and more efficient service system. This is due to the new type of service centers and the new type of service technicians. The new 1936 models are also equipped with a new type of financing system which gives them a more flexible and more convenient financing system.

THE BUICK 1936 MODELS.

Latest Designs Embody Most Advanced Improvements.

INCREASED POWER IN ENGINES.

Details of the Most Recent Features in Motor Car Construction.

Being equipped with the latest and most advanced improvements, the Buick 1936 models are the most powerful and most reliable motor cars ever produced. The new 1936 models are equipped with a new type of engine which gives them a power increase of 10% over the 1935 models. This is due to the new type of combustion chamber and the new type of piston and rings.

The new 1936 models are also equipped with a new type of transmission which gives them a smoother and more efficient drive. This is due to the new type of gear teeth and the new type of shaft and bearings. The new 1936 models are also equipped with a new type of suspension which gives them a smoother and more comfortable ride.

The new 1936 models are also equipped with a new type of steering which gives them a more precise and more responsive steering. This is due to the new type of steering knuckles and the new type of tie rods and ball joints. The new 1936 models are also equipped with a new type of braking system which gives them a more powerful and more reliable braking system.

The new 1936 models are also equipped with a new type of lighting system which gives them a more powerful and more reliable lighting system. This is due to the new type of headlights and the new type of taillights and parking lights. The new 1936 models are also equipped with a new type of interior which gives them a more comfortable and more luxurious interior.

The new 1936 models are also equipped with a new type of exterior which gives them a more attractive and more modern exterior. This is due to the new type of body panels and the new type of trim and accessories. The new 1936 models are also equipped with a new type of paint which gives them a more durable and more attractive paint.

The new 1936 models are also equipped with a new type of safety system which gives them a more secure and more reliable safety system. This is due to the new type of seat belts and the new type of door locks and windows. The new 1936 models are also equipped with a new type of maintenance system which gives them a more convenient and more efficient maintenance system.

The new 1936 models are also equipped with a new type of service system which gives them a more prompt and more efficient service system. This is due to the new type of service centers and the new type of service technicians. The new 1936 models are also equipped with a new type of financing system which gives them a more flexible and more convenient financing system.

TYSON BROS., Ltd.

Exporters of all Classes of Produce. Importers of Machinery, Etc. Managing Agents and Secretaries.

All Classes of Insurance Transacted. WEITHWAY'S BUILDING, SIXTY AVENUE, NAIROBI. P.O. Box 128. Phone 117. Telegrams: 'MAGARIBI'.

VALUE Quality & Reliability

THE NEW Model 526 B.S.A. Motor Cycle

plans before the Motor Cycles being a machine of remarkably high quality at a surprising low figure. 460cc. Engine, three-speed gear box, strong frame made of stainless steel tubes and forged steel legs throughout. Straight pull chain drive, large diameter cables. Mechanical lubrication to engine and transmission high pressure grease gun. 17" x 17" bicycle spacers, adjustable handlebars and footrests. Shock absorbers on front forks.

ONLY TWO SIDE CAR OUTFITS climbed ALL HILLS in the recent INTERNATIONAL SIX DAYS TRIALS, and one was THE NEW \$26 B.S.A. SIDE CAR PRICE

Solo 587-66 cash I.O.M. Importers 576-66 cash I.O.M. Nairobi. Deferred Payment System on application. Call and let us demonstrate our B.S.A. remarkable machine, then book your order NOW to insure priority of delivery. Sole Importers—Newtons Ltd., Nairobi.

THE Model C.W. 345 h.p.

Patent Duplex gear, 14-horsepower, powerful flat crank. Patented Flat crank. Patented electric oil pump. Patented electric water pump. Patented electric fan. Patented electric generator. Patented electric lighting system. Patented electric horn. Patented electric bell. Patented electric door lock. Patented electric window crank.

Patent Duplex gear, 14-horsepower, powerful flat crank. Patented Flat crank. Patented electric oil pump. Patented electric water pump. Patented electric fan. Patented electric generator. Patented electric lighting system. Patented electric horn. Patented electric bell. Patented electric door lock. Patented electric window crank.

Patent Duplex gear, 14-horsepower, powerful flat crank. Patented Flat crank. Patented electric oil pump. Patented electric water pump. Patented electric fan. Patented electric generator. Patented electric lighting system. Patented electric horn. Patented electric bell. Patented electric door lock. Patented electric window crank.

Immediate Delivery! 664-0 F.O.R. NAIROBI.

Are you or be a limited number available. BUY YOUR DOUGLAS NOW. Sole Importers—Newtons Ltd., Nairobi.

MOTORISTS ARE DEMANDING CASTROL!

OBTAINABLE EVERYWHERE. The above statement is proved by our continually increasing sales of all grades of Wakenfield Castrol Oils and Greases.

WAKEFIELD Castrol MOTOR OIL

OBTAINABLE EVERYWHERE. Sole Importers—Newtons Ltd., Nairobi.

CHAMPION

Dependable for Every Engine. YOU WOULDNT DRIVE WITH A LEAK IN YOUR PETROL TANK

You wouldn't be a motorist if you discovered your petrol tank leaking, in getting repairs. You drive with such peace of mind as a result of your 2000 miles or more, as a really durable Champion petrol pump.

Get your petrol pump checked by a mechanic. You can be sure of a single one on his list of cars. You can be sure of a single one on his list of cars. You can be sure of a single one on his list of cars. You can be sure of a single one on his list of cars.

OBTAINABLE AT ALL GARAGES. Sole Importers—Newtons Ltd., Nairobi.

THE BUICK 1926 MODELS.

(Continued from page 19.)
any of the complications. Flawing has been improved by...
making the framing adjust...
with the aid of a...

HEAVY
Greatly improved brakes with higher pedal pressure has been secured. This has been obtained by utilizing the "heavy" principle...

TYRES
Larger and heavier tyres are supplied on all models. The Standard Buick 1926 is equipped with 31 x 5 1/2 Heavy Duty Tyres...

ed in December. Thus, the lower range being one size below the heading and over the top of the motor a slightly larger one is used. As this model is a top road car it is supplied...

INEXPENSIVE RIFLES FOR SMALL GAME SHOOTING.

For small game shooting and general work, the "Scepter" B.S.A. Rifle is the best weapon. It is a 20 Bore rifle with a long magazine hold...



B.S.A. Sporting Rifle.

Always clean your rifle with a B.S.A. standard cleaner, made by all good Dealers. Manufactured by B.S.A. GUNS LTD., Small Heath, Birmingham, England.

Engine hot or cold will never worry the motorist who can be fitted with the British made

ZENITH CARBURETTOR

is designed to give the motorist the maximum power for the minimum fuel consumption. It is a British made carburettor...



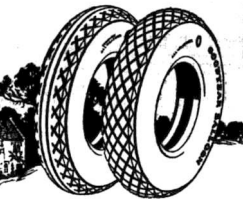
1184 H.R. CAR
True Economy
To get "Over the hills and far away" in a comfortable, safe and economical way...

Standard CARS
BUY British CARS
SOLE AGENTS FOR EAST AFRICA
M. AFRANAH & ROBERTSON
Dorchester, Dorset, England.

(Continued on page 21.)

SUPERWIST

- a new exclusive Goodyear development - is now built into all Goodyear Cord Tyres.



Solve the Tyre Question with Goodyears

When you buy a tyre, no matter whether price or quality is your first consideration, you can make a safe and certain selection if you buy a Goodyear.

For long wear, strength, appearance and high quality, you not only cannot surpass a Goodyear Tyre - you cannot equal it.

All-Weather Tread Cord Tyres provide the best in workmanship and materials. SUPERWIST, the new cord material, is now built into all Goodyear Cord Tyres.

Why not solve the tyre question right now and decide to buy Goodyear Tyres next time?

Goodyear Means Good Wear

GOOD YEAR CORD TYRES



UTMOST FOR THE SHELL

Nature's mixture of petrol and benzol, ensures the highest horse power output your engine is capable of developing.

SHELL

The WELL-BALANCED Petrol. Buy from the CERTIFIED Shell Pump or the SELLER'S Best One. BRITISH IMPERIAL Oil Co. (S.A.) Ltd. Agents: SMITH MACKENZIE & Co.

THE BUICK 1926 MODELS.

(Continued from page 20.)

only automatic. It is simply necessary to apply a small pressure to the hand and push in the springs some 1/20 operation. When the top is depressed, the top in the low position the top in the high position and the top in the low position...

ADJUSTABLE FRONT SEATS

Probably the greatest feature of all in connection with the Standard Buick five passenger Special is the fact that the front seats are adjustable. This means that one can obtain all the leg room he requires in any position...

THE SPORTS MODEL

The Sports Model Buick is included in the Master model only, both in top and five passenger body types. Three models are included in the Sports Model...

any point or detail which has been modified or altered.

regards design and finish. As a matter of fact, we have never seen any car, regardless of price, which is so finished as the Buick. The Buick finish is beautiful beyond compare. It is the durability of this type of finish is already well known to need further description. It is sufficiently so well known that the Buick finish is absolutely unaffected by any rain, frost, or mud.

Another point of importance is the thoroughly modern and extensive equipment which all Buick cars receive. The Service Station has a standard model. These cars are Co. Ltd. is equipped with special Buick tools and machinery all work being done by highly skilled European mechanics and service experts. All customers' cars while they are standing in the Service Station under repair are cleaned and dusted the roughly twice a day and no parts are allowed to keep the car in perfect condition, so that when the customer is taking the car the car is returned in better shape than when it was brought in.



Weather Proof.

MORRIS TRUCK (Overseas Model)

WITH SELF STARTER
Chassis Complete
Five Tyres
Steel Detachable Rims
Electric Lighting
Full Kit of Tools
WITHOUT SELF STARTER
£270
£260

Body Extra According to Specification.

CARR, LAWSON & Co., Ltd.
P. O. Box 205. SIXTH AVENUE, NAIROBI. Phone 240

For the week ending November 26th, 1938, the following prices are quoted by the Colonial and Protectorate of Kenya (except by courtesy of the Department of Agriculture).

Table with columns for Station, Price, and other details. Includes entries for Kisumu, Mombasa, Malindi, etc.

# Up a 12% Grade in high

Faced by a steep hill presenting a 12 per cent grade, you would decide immediately that no car on earth could climb to such a height in high gear. Railroad engineering limits its grades to 4 per cent.

But the new 1926 model Buick, with its superpowerful Valve-in-Head engine, can stop dead still in front of a 12 per cent grade — then start in high gear (without touching low or second)—and then lift itself to the top—gaining speed all the way.

The 1926 Buick is a remarkable motor car, not only in power, but in detail of refinement and advanced engineering excellence. All carbon and foreign matter is removed from the oil by microscopic filtration. While the engine is running—clear, pure oil is being constantly returning to the bearings and cylinder walls. All dust is removed from the air before it enters the carburetor. Even the petrol is filtered as it enters the carburetor, preventing all water and grit from lowering efficiency. Four-wheel servo-brakes and dipping head lights are among the improvements that place Buick definitely in advance of all motor car values.

Standard Six Touring ..... 2415    Master Six Sports Touring ..... 2545  
Standard Six Special Touring 465    Master Six Sports Roadster ..... 2335  
Master Six 2 Pass. Touring ..... 865    Master Six 2 Pass. Special ..... 2175

**Gilfillan & Company, Ltd.**  
DISTRIBUTORS



# the new Buick

## HIS JUVENILE EXCELLENCY!

Photos: E. A. Standard



Master John Gigg, son of His Excellency, Sir Edward Gigg, Governor of Kenya, entertains his very own Guard of Honour—the Police Boys' Brigade.



Outside the Royal House, Kajiado.



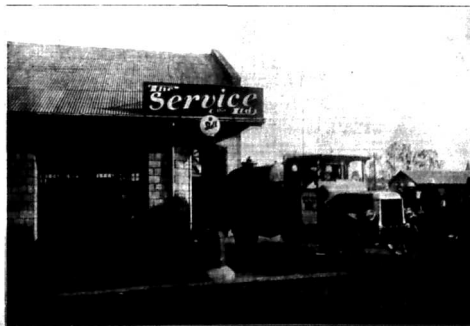
The Boma, Arusha Tanganyika Territory.



Native Market, Arusha.



Main Street, Arusha.



British Motor Corporation—A "Shell" Service Station.

**THE BUYER SELLS!!**



**SATISFACTION and SERVICE**

SATISFACTION SERVICE

MALE KNITTED JACKETS

JACKER JACKETS

JACKER PULLOVERS

NEW TRENCH COATS

BLACK or YELLOW GILKINS

Shs. 37-50

MOTIVE EGGINGS

Shs. 12-50

THE POPULAR READY TO WEAR HOLIDAY COAT & TROUSERS

Shs. 67-50

THE POPULAR READY TO WEAR COTTON GARDENING SPORTS SUIT

Shs. 35-50



Whiteway's Cash Price

Shs. 37-50

Whiteway's Cash Price

Shs. 44-00

A SPECIAL TAILORING OFFER

COAT & TROUSERS

Whiteway's Cash Price Shs. 100-00

GRANGE VESTS

Whiteway's Cash Price

Shs. 8-50

KNART TAPPETA SHIRTS

Whiteway's Cash Price

Shs. 19-50

Spec Price to match, 3-00

KOOLMESH VESTS

Whiteway's Cash Price

Shs. 7-50

SILE HANDKERCHIEFS

Whiteway's Cash Price

Shs. 7-50

TENNIS SOCKS

GRAND OAKERS,

MADE BY THE ALEXA CO. (LONDON) LTD.

Whiteway's Cash Price

Shs. 5-75

JACKER SOCKS

MADE BY THE ALEXA CO. (LONDON) LTD.

Whiteway's Cash Price

Shs. 6-50

SATURDAY, NOV. 26, 1934.

THE EAST AFRICAN STANDARD (MAGAZINE SECTION).

COUNTRY CRICKET.

Match Between Nyamira and Nairana.

VISITORS' BID SCORE.

The following were the scores in the first round match of the County Cricket Cup played at Nairobi on Saturday.

**NYAIRANA.**  
 McCreary-Taylor & B. Murray... 20  
 1st Innings: 100, 2nd Innings: 100  
 1st Innings: 100, 2nd Innings: 100

PARKLANDS.

CRICKET ON THE PITCH.

First Match to be Played in Trans-Horn.

(From Our Own Correspondent.)  
 A new record for the Trans-Horn was made on Saturday by the holding of the first cricket match in the district. The match was played on the new Parklands (Mr. H. J. Dwyer) XI versus the Parklands XI.

Kenya Cricket.

MATCHES FOR THE COMING WEEK-END.

It is understood that Kileleshwa will meet Kileleshwa in the second round of the Kenya Cricket Cup at Kileleshwa during the coming week-end of the match, but it can be said that out of the two teams Kileleshwa will be the favorite, which gives the necessary prospect of an arduous campaign to any other team in the district.

LOCAL MATCHES.

On Saturday the European School XI met at home in the second round of the Country Cup, the match was played at Nairobi.

THE NAIRONI MATCH.

In closing were the scores in the second round match between Parklands and Nyamira played at Nairobi on Saturday.

MYMKLANA.

At Nairobi on Saturday the Mymkhana XI met at home in the second round of the Country Cup, the match was played at Nairobi.

PARADES.

At Nairobi on Saturday the Parade XI met at home in the second round of the Country Cup, the match was played at Nairobi.

OTMUKHANA.

At Nairobi on Saturday the Otmukhana XI met at home in the second round of the Country Cup, the match was played at Nairobi.

LATEST LONDON RECEIPTS.

The following were the latest receipts on the 25th of the month: (London Club last night) 7/1. Darts: 7/1. Snooker: 7/1. Billiards: 7/1. Golf: 7/1.

LATEST LONDON PRICES.

(From Our Own Correspondent.)  
 The following are the probable prices and yields for the Manchester November 26 or 27, 1934.

Probable Starters and Jockeys.

(From Our Own Correspondent.)  
 The following are the probable starters and jockeys for the Manchester November 26 or 27, 1934.

Belbarrick Festival.

The Belbarrick Festival is being held at Nairobi on Saturday, November 26, 1934. The festival will include a variety of sports and games.

**FAIR IDEE JACKET**  
 Whiteway's Cash Price 49-50

**JACKER JACKETS**  
 Whiteway's Cash Price 69-50

**JACKER PULLOVERS**  
 Whiteway's Cash Price 69-50

**TWEED LEISURE COATS**  
 Whiteway's Cash Price 23-50

**SOUTH TWEED JACKETS**  
 Whiteway's Cash Price 49-50

**BLUE BLAZERS**  
 Whiteway's Cash Price 29-50

**BROWN BLAZERS**  
 Whiteway's Cash Price 49-50

**TENNIS FLANNELS**  
 Whiteway's Cash Price 49-50

**OXFORD RAGS**  
 Whiteway's Cash Price 49-50

**PURE SUEDE DESSING GOWNS**  
 Whiteway's Cash Price 95-00

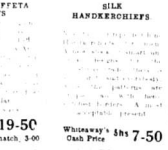
**PASLEY MOLLETON GOWNS**  
 Whiteway's Cash Price 39-50

**HAND-KNIT FOLLOVERS**  
 Whiteway's Cash Price 69-50

**SMART GOLFING FOLLOVERS**  
 Whiteway's Cash Price 69-50

**Real Camel Hair JACKETS**  
 Whiteway's Cash Price 75-00

**Real Camel Hair JACKETS**  
 Whiteway's Cash Price 45-00 & 49-50



**This is LEADERSHIP!**

Two years ago, Chrysler predicted that the Chrysler Six would change the whole trend of motor car design, engineering, manufacture and equipment.

Today the industry is following as advanced improvements in features which Chrysler introduced and which made the Chrysler Six the outstanding quality car in all the world.

Today, while other factories Chrysler's features of two years ago, Chrysler stands today the leader in motor car performance, record of successful operation, and of maintenance.

Chrysler Six owners the world over do not forget these truths—

Two years ago, Chrysler predicted the correct, ready car, combining comfort and ease of riding, without wasted weight or extravagance.

Two years ago, Chrysler introduced a new ratio of horse-power per pound of weight. The Chrysler Six today the only car in the world which gives a speed of 50 miles per hour with more than 200 lbs. of excess weight.

Two years ago, Chrysler predicted the first car in the world which would give an increased American taste in motor car first.

Two years ago, Chrysler predicted the first car in the world which would give an increased American taste in motor car first.

**CALL AT YORK GARAGES, Ltd.**  
 And Inspect This Wonderful New **CHRYSLER SIX**

The House FOR Men's Wear

**It always costs less at WHITEAWAYS!**

Visit Our Grand Toy Bazaar

P.O. Box 7 Nairobi.





# Home Football

Cabled Results of Last Saturday's Matches.

### OSWESLAVA'S FIRST DEFEAT

The following are the results of the football matches played in Great Britain yesterday:

ENGLISH LEAGUE	
Division	Result
Division 2	Derbyshire 2, Liverpool 0
Division 2	Manchester United 2, Cardiff City 0
Division 2	Sheff. Wednesd. 1, Notts 1
Division 2	Sheff. Wednesd. 1, Notts 1
Division 2	Sheff. Wednesd. 1, Notts 1

SCOTLAND LEAGUE	
Division	Result
Division 1	Perth 1, Dundee 1
Division 1	Dundee 1, Perth 1
Division 1	Dundee 1, Perth 1

WINTER SETTING IN	
Derby and Gatterick Race Abandoned.	The race which Derby and Gatterick have been abandoned owing to fog and frost.

A LOSS TO CRICKET.	
Death of Wisden's Almanack Editor.	LONDON, Nov. 26.—The man who has made Derby and Gatterick have been abandoned owing to fog and frost.

SOUTH AFRICAN CRICKET.	
Victoria Beaten by South Australia.	South Australia is defeated.

**AUSTRALIAN CRICKET.**  
Victoria Beaten by South Australia. South Australia is defeated.

**WINTER SETTING IN.**  
Derby and Gatterick Race Abandoned. The race which Derby and Gatterick have been abandoned owing to fog and frost.

**A LOSS TO CRICKET.**  
Death of Wisden's Almanack Editor. LONDON, Nov. 26.—The man who has made Derby and Gatterick have been abandoned owing to fog and frost.

**SCOTLAND LEAGUE.**  
Division 1 results: Perth 1, Dundee 1; Dundee 1, Perth 1; Dundee 1, Perth 1.

ENGLISH LEAGUE	
Division 1	Derbyshire 2, Liverpool 0
Division 1	Manchester United 2, Cardiff City 0
Division 1	Sheff. Wednesd. 1, Notts 1
Division 1	Sheff. Wednesd. 1, Notts 1

SCOTLAND LEAGUE	
Division 1	Perth 1, Dundee 1
Division 1	Dundee 1, Perth 1
Division 1	Dundee 1, Perth 1

WINTER SETTING IN	
Derby and Gatterick Race Abandoned.	The race which Derby and Gatterick have been abandoned owing to fog and frost.

A LOSS TO CRICKET.	
Death of Wisden's Almanack Editor.	LONDON, Nov. 26.—The man who has made Derby and Gatterick have been abandoned owing to fog and frost.

SOUTH AFRICAN CRICKET.	
Victoria Beaten by South Australia.	South Australia is defeated.

**TENNIS TOURISTS.**  
Opening Matches in the Union. GRIFFITHS BEATERS.

**GRIFFITHS BEATERS.**  
The Griffiths brothers, who are both tennis players, are both on the English tour.

**DECLINES TO STAND FOR PARLIAMENT.**  
The prospect was avoided.

**WELSH PLAYERS PA.**  
WELSH INTERNATIONAL JOINTS LEADS.

**How Studebaker Can Keep Quality Up and Prices Down.**

STUDEBAKER can pay a 15 per cent premium on every grade of steel, to reduce engine vibration to a minimum. Studebaker can acquire a machine as creditable as at the cost of \$12,000.

**KENNEL NOTES.**  
The English dog show is over.

**ONE OF US PEOPLE WHO HAVE**  
One of us people who have heard a certain amount of talk about the new setting of the English dog show is over.

**LETTERS TO THE EDITOR.**  
The following are the results of the letters to the editor.

**LETTERS TO THE EDITOR.**  
The following are the results of the letters to the editor.

**LETTERS TO THE EDITOR.**  
The following are the results of the letters to the editor.

**LETTERS TO THE EDITOR.**  
The following are the results of the letters to the editor.

**LETTERS TO THE EDITOR.**  
The following are the results of the letters to the editor.

**MATCH BETWEEN MAKUTU AND OYKHELA.**  
The following are the results of the match between Makutu and Oykhela.

**MATCH BETWEEN MAKUTU AND OYKHELA.**  
The following are the results of the match between Makutu and Oykhela.

**MATCH BETWEEN MAKUTU AND OYKHELA.**  
The following are the results of the match between Makutu and Oykhela.

**MATCH BETWEEN MAKUTU AND OYKHELA.**  
The following are the results of the match between Makutu and Oykhela.

**MATCH BETWEEN MAKUTU AND OYKHELA.**  
The following are the results of the match between Makutu and Oykhela.

**MATCH BETWEEN MAKUTU AND OYKHELA.**  
The following are the results of the match between Makutu and Oykhela.

**MATCH BETWEEN MAKUTU AND OYKHELA.**  
The following are the results of the match between Makutu and Oykhela.

**£52-10-0**  
THE FINEST MOTOR CYCLE PROPOSITION EVER OFFERED TO THE PUBLIC

**RALEIGH**  
The Gold Medal Model  
2.88 - Sunray Arm & Speed - chain drive - Independent internal expanding brakes - Dunlop tyres - Brampton Front Forks - King Starter  
**Kettler-Roy, Ltd.**

**EVERYTHING FOR GOLF**  
Our stock of Golf Clubs are always the most varied and the largest in Kenya.  
CLUBS FOR EVERY CLASS OF PLAYER AND SUITABLE FOR EVERY LOCAL COURSE.  
ALL GOLFING ACCESSORIES.  
ALL KINDS OF REPAIRS.

**Leadership and why**  
Ordinary logic demands that there must receive your immediate consideration if you have any need whatever for a truck.

**S. Fisher & Simmons, (E.A.) Ltd.**  
NAIROBI.  
Telephone: "Simmonds" Phone 968.

**GRAHAM BROTHERS**  
TRUCKS, Sold by Dodge Brothers  
Distributors Everywhere.

**FORD OWNERS**  
The finest Ford truck for sale in Kenya. Large carrying capacity, low maintenance, and excellent mileage.

**STUDEBAKER**  
BUILDERS OF TRUCKS FOR THE WORLD

# The Motor Mart & Exchange, Ltd.

## Announce the

# Cylinder



The Sign of Quality & Service



Due to arrive about the middle of December.

# Hupmobile

### BRIEF SPECIFICATIONS:

- ENGINE**—In line, six-cylinder, with 100 h.p., variable speed, 24 inch (1926) and 26 inch (1927) bore, 28 inch stroke, 1200 r.p.m. 250 cubic inches (1926) and 275 cubic inches (1927) displacement.
- CRANKSHAFT**—In line and dynamic balance. Weight, 84 lbs. (1926); 93 lbs. (1927). Four main bearings.
- PISTONS**—Four per cylinder. 29 inches over 54 (Kohler) type.
- VALVING**—Four valves per cylinder. Valve lift, 1/2 inch (1926) and 3/4 inch (1927). Valve gear, overhead.
- SALES**—Six valves and rapid opening. Six valves and rapid opening.
- IGNITION**—High tension type, magneto and spark.
- STEERING**—High tension magneto.
- STARTING**—High tension magneto.
- CLUTCH**—Dry disc type. Single clutch with 12 inch diameter.
- TRANSMISSION**—Four speeds. 12 inch diameter.
- COOLING**—By pump. Capacity 12 gallons (1926) and 14 gallons (1927).
- WEIGHT**—Approximate.
- CRANK**—In line, six-cylinder type. Three main bearings and two pressure. 24 inch bore and 28 inch stroke. 1200 r.p.m. 250 cubic inches (1926) and 275 cubic inches (1927) displacement.
- VALVING**—Four valves per cylinder. Valve lift, 1/2 inch (1926) and 3/4 inch (1927). Valve gear, overhead.
- SALES**—Six valves and rapid opening. Six valves and rapid opening.
- IGNITION**—High tension type, magneto and spark.
- STEERING**—High tension magneto.
- CLUTCH**—Dry disc type. Single clutch with 12 inch diameter.
- TRANSMISSION**—Four speeds. 12 inch diameter.
- COOLING**—By pump. Capacity 12 gallons (1926) and 14 gallons (1927).
- WEIGHT**—Approximate.



**THE GARDEN**

Miss Lauson, F.R.E.S. 2nd Club, 4th Street, is addressing the members of the East African Horticultural Society, 15/16, to be sent to the Hon. Secretary, P.O. Box 27, Nairobi.

**SUTTON'S EXPERIMENTAL GARDENS AT NAIROBI.**

One of my principal reasons for forming the East African Horticultural Society was to have a garden where I could grow the best varieties of flowers and plants which are available in the East African Colonies. I have now a collection of some 1000 plants, including many of the best varieties of flowers and plants which are available in the East African Colonies.

I have now a collection of some 1000 plants, including many of the best varieties of flowers and plants which are available in the East African Colonies.

I have now a collection of some 1000 plants, including many of the best varieties of flowers and plants which are available in the East African Colonies.

If you want to see a garden like this, you should visit Sutton's Experimental Gardens at Nairobi. It is a most interesting and instructive garden, and it is one of the best in the East African Colonies.

I have now a collection of some 1000 plants, including many of the best varieties of flowers and plants which are available in the East African Colonies.

I have now a collection of some 1000 plants, including many of the best varieties of flowers and plants which are available in the East African Colonies.

## A DUNLOP REINFORCED BALLOON COVER

for 30 x 34 BREADED EDGE RIMS.

The Dunlop Company has produced a new and stronger Balloon Tyre for the 30 x 34 Beaded Edge Rim.

This new reinforced tyre is marked "Dunlop Beaded Edge 31 x 46 Heavy Duty" and will be found an ideal tyre for heavy duty, and will meet the requirements of Ford, Daimler, Gray, Overland, Busan, Chevrolet.

owners who habitually carry big loads, but who yet desire the benefits of Balloon Tyre equipment.

It is good for any of the above cars and by reason of its particularly robust construction, is better able to withstand the risk of accidental damage than the usual 31 x 46 Cover.

THIS COVER FITS 30 x 34 BREADED EDGE RIMS. WITHOUT ALTERATION.

## DUNLOP and BE SATISFIED!

Obtainable at all Garages. WHOLESALE ONLY. THE DUNLOP RUBBER CO., LTD. (DEPOSITORS). Obtainable at all Garages.

The African Mercantile Co., Ltd. KISUMU. NAIROBI.

**IN THE GARDENS.**

In the trial grounds, about 12 inches high, the plants were sown on 12th of November. They were sown in the following order: "Buff Beauty", "White", "Red", "Yellow", "Orange", "Pink", "White", "Red", "Yellow", "Orange", "Pink", "White", "Red", "Yellow", "Orange", "Pink".

Among the intermediates were sown "Red", "Yellow", "Orange", "Pink", "White", "Red", "Yellow", "Orange", "Pink".

### HORTICULTURE

**ROSES, FLOWERS, FRUIT, VEGETABLES.**

ROSES: Red, White, Yellow, Orange, Pink, Purple, Blue, Green, Black, Grey, Silver, Gold, Bronze, Copper, Iron, Tin, Lead, Zinc, Cadmium, Mercury, Silver, Gold, Bronze, Copper, Iron, Tin, Lead, Zinc, Cadmium, Mercury.

FLOWERS: Red, White, Yellow, Orange, Pink, Purple, Blue, Green, Black, Grey, Silver, Gold, Bronze, Copper, Iron, Tin, Lead, Zinc, Cadmium, Mercury.

FRUIT: Apples, Pears, Plums, Peaches, Nectarines, Apricots, Cherries, Strawberries, Raspberries, Blackberries, Blueberries, Raspberries, Blackberries, Blueberries.

VEGETABLES: Potatoes, Onions, Carrots, Turnips, Cabbages, Broccoli, Cauliflowers, Peas, Beans, Lentils, Peas, Beans, Lentils, Peas, Beans, Lentils.

SEED BOWING: Large 1/2 inch diameter for writing seed and sowing. Many very small seeds. Very thick and too deep. It is difficult to make any understanding outside the seed. The seed gardeners, for very likely seeds should be sown in a shallow manner to see everything as thick.

SEED BOWING: Large 1/2 inch diameter for writing seed and sowing. Many very small seeds. Very thick and too deep. It is difficult to make any understanding outside the seed. The seed gardeners, for very likely seeds should be sown in a shallow manner to see everything as thick.

## SUTTON'S SEEDS.

Does your garden with the Sutton's Flowers and Vegetables. Specially selected to grow in the East African Colonies. Seed coats are inflexible when you consider the yield. Our pedigree seeds will repay you again and again by their productivity and resistance to disease.

Sutton's Seeds can be obtained from our Agents in Nairobi, Mombasa, Kisumu, Malindi, Lamu, Zanzibar, Pemba, Mozambique, Swaziland, Natal, Transvaal, Orange Free State, Cape Province, Natal, Transvaal, Orange Free State, Cape Province, Natal, Transvaal, Orange Free State, Cape Province.

Write to the Seed Grower, Sutton's Seeds, Reading, England.

CHESS
THE CHINA EDITOR OF THE 1926

PROBLEM No. 770
White to move. Black's King is on c4, his

PROBLEM No. 771
White to move. Black's King is on c4, his

PROBLEM No. 772
White to move. Black's King is on c4, his

Table with columns: Name, Position, Points, etc. for chess players.

advised list of our best chess competition.
CORRESPONDENCE:
L. A. Anderson, Thurston

PROBLEM No. 770
White to move. Black's King is on c4, his

PROBLEM No. 771
White to move. Black's King is on c4, his

PROBLEM No. 772
White to move. Black's King is on c4, his

PROBLEM No. 773
White to move. Black's King is on c4, his

is least, but I will hardly be a good
scout unless there is a good many
of the "Africa Chess Association"

SOLUTIONS:
PROBLEM No. 768 (Havry)
That makes very approximate time

SOLUTIONS:
PROBLEM No. 769 (Havry)
That makes very approximate time

COMMUNICATIONS FOR SHORT
SEASONS:
I beg to advise you that I have

Afternoon Football:
The following were the results
of African football matches played

SCOTTISH SIX DAYS
THE FAMOUS
TRUMPS
(4-60 h.p. Type P)
PUTS UP A BRILLIANT
PERFORMANCE

Manufacturers' Team
Prize
(But is no unlimited-Sole)
Sole of the Trusty Triumph gained
5 SPECIAL CLASS AWARDS
(SILVER CUPS)
1 FIRST CLASS AWARD
(GOLD MEDAL)
ALSO SPECIAL AWARD

FOR BEST SOLE PERFORMANCES by a private owner, named
by Mr. W. Woodcock on his 4-60 h.p. Triumph. This he has
fulfilled during four seasons Scottish Six Days' Trials, which he
has been awarded upon each occasion.
Obtainable From—Sole Agents for Kenya, Uganda
and Northern Tanganyika.
BULLOVS & ROY, Ltd.
P.O. Box 1, Nairobi & P.O. Box 113, Kampala.
BOSTUAD & OLARKE, Jinja.

IMPORTS & EXPORTS.

Imports and Exports.
The Shipping Station for
the month ended November 17,
gives the following principal im-

INSOLVENCY PETITION.

Mr. J. Lehnardt.
In the Supreme Court yesterday,
Mr. P. A. Marcus presented an

POST CONTROL.

The Editor does not accept respon-
sibility for the errors appearing
in the correspondence in these

REFUSING MONEY.

A Bank Dilemma.
Something of a situation has
developed in one of our banks

DEPARTURES AND ARRIVALS.

Following is a list of passengers
arriving in Nairobi on the 19th
inst. On Nov. 20, via Mombasa

DEPARTURES AND ARRIVALS.

Following is a list of passengers
arriving in Nairobi on the 19th
inst. On Nov. 20, via Mombasa

INSOLVENCY PETITION.

Mr. J. Lehnardt.
In the Supreme Court yesterday,
Mr. P. A. Marcus presented an

POST CONTROL.

The Editor does not accept respon-
sibility for the errors appearing
in the correspondence in these

REFUSING MONEY.

A Bank Dilemma.
Something of a situation has
developed in one of our banks

DEPARTURES AND ARRIVALS.

Following is a list of passengers
arriving in Nairobi on the 19th
inst. On Nov. 20, via Mombasa

DEPARTURES AND ARRIVALS.

Following is a list of passengers
arriving in Nairobi on the 19th
inst. On Nov. 20, via Mombasa

DEPARTURES AND ARRIVALS.

Following is a list of passengers
arriving in Nairobi on the 19th
inst. On Nov. 20, via Mombasa

INSOLVENCY PETITION.

Mr. J. Lehnardt.
In the Supreme Court yesterday,
Mr. P. A. Marcus presented an

POST CONTROL.

The Editor does not accept respon-
sibility for the errors appearing
in the correspondence in these

REFUSING MONEY.

A Bank Dilemma.
Something of a situation has
developed in one of our banks

DEPARTURES AND ARRIVALS.

Following is a list of passengers
arriving in Nairobi on the 19th
inst. On Nov. 20, via Mombasa

DEPARTURES AND ARRIVALS.

Following is a list of passengers
arriving in Nairobi on the 19th
inst. On Nov. 20, via Mombasa

DEPARTURES AND ARRIVALS.

Following is a list of passengers
arriving in Nairobi on the 19th
inst. On Nov. 20, via Mombasa

Astonishment!
It is astonishing how cheap, economical
and easy it is to do tip-top cooking on the

NEW PERFECTION
OIL COOK STOVE
Now especially
with the use of
LAUREL
PARAFFIN

Distributing Agents in Kenya, Uganda, Tanganyika
THE AFRICAN MERCANTILE COMPANY, LTD.
VACUUM OIL CO. OF SOUTH AFRICA, LTD.

Sands & Co.
Xmas Fat Stock Show and Sales
SHEEP, CATTLE and PIGS
Naivasha
At our Yards
MONDAY DECEMBER 7th.

10 Grade Shorthorn Cows in Calf.
10 Native Veals.
100 Grade Weiblers.
40 Fat Slaughter Cattle.
1 Pig.
1 Pure Bred Imported Yorkshire Bull. Just arrived from S. Africa.
1 Fine Cross Breeder 2 Disc Plough.
1 P.O. 2 Disc Plough.
1 Single F. M. Board.
Harrowing Machine.
1 8 ft. Harrow.
1 Dams Separator.

GILBY
TUESDAY 8th
200 Grade and Native
100 Grade Weiblers.
10 Fat Slaughter C.
40 Grade Hinters Sh.
100 Grade Shorthorn
10 Pigs.

Deaths of Mr. Whittall.
On Wednesday afternoon, an
every satisfaction of success
and regret that those who are
remains of Mr. T. H. Whittall
the late Mr. Whittall had
the following an account of
appreciated. The news of
was a great loss to all
Mrs. Whittall, was notified
at her home where he and Mrs. Whittall
were very happy in having
10 Fat Slaughter C. in
to be laid out at the
had been laid out at the
and was prepared
to be laid out at the
and was prepared
to be laid out at the

Nakuru Race Club
A Special General Meeting will be held at the
Victoria Hotel at 10.30 a.m. on Saturday, December
14, 1926.

- 1. Chairman's Report.
2. Financial Statement.
3. Election of Officers.
4. Any other business.

GRAY TOURING
"THE MILK-FED GALLON CAR."
Winner of the World's Official Government Record.
The Most Popular Car in Australia.
Sole Importers.
K. McIVOR & Co.
\$230

Gray Touring
THE MILK-FED GALLON CAR.
Winner of the World's Official Government Record.
The Most Popular Car in Australia.
Sole Importers.
K. McIVOR & Co.
\$230

SUGAR
THE VICTORIA NYANZA
SUGAR CO. LTD.

We are manufacturing a very high
quality sugar, which is known as
50 per cent polarization, which
is the highest quality of sugar
that can be produced. It is
the most reliable and purest
sugar for use in all climates.
It is the most reliable and purest
sugar for use in all climates.
It is the most reliable and purest
sugar for use in all climates.

SUGAR
THE VICTORIA NYANZA
SUGAR CO. LTD.

We are manufacturing a very high
quality sugar, which is known as
50 per cent polarization, which
is the highest quality of sugar
that can be produced. It is
the most reliable and purest
sugar for use in all climates.
It is the most reliable and purest
sugar for use in all climates.
It is the most reliable and purest
sugar for use in all climates.

PORT CONTROL

A Questionnaire.

The following questionnaire of a sub-committee of the Port Control Commission in Kenya has been submitted to the Maritime Chamber of the Chamber of Commerce and Industry...

A MATRIMONIAL DISPUTE

Restitution Sued.

The Registrar has recently ruled on the Uganda Case. His Honor Mr. Justice G. G. G. has ruled in favour of the wife in a matrimonial dispute...

DAMAGED TOTTEN.

Uganda Enquiries.

The Registrar has recently ruled on the Uganda Case. His Honor Mr. Justice G. G. G. has ruled in favour of the wife in a matrimonial dispute...

OVERSEAS MAILS

The notice is based upon the latest advice from the British Agents. It is possible, however, that circumstances may require a revision of the above programme...

Table with columns: FROM, TO, DEPARTURES, and arrival times for various destinations like Malindi, Mombasa, Zanzibar, etc.

Dr. LIVINGSTONE.

The Week's Big Lyric Film.

The fact that Mr. A. Webster presents the great African picture to the Lyric Theatre is a matter of little surprise...

DISTRICT NOTES.

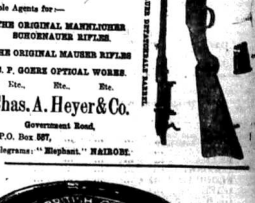
Kenya, November 25. The main object of the visit was to see the country and to see the people. It is a very interesting and instructive visit...

AT STUD FOCH

By LANG ROBE 122. The property of F. Greenwood, Williams St. For Sale. 300. Keep of mare Shs 50 per month.

Our Latest Invention

MARLBORO CIGARETTES. HAYES & CO. ALL HIGH VELOCITY. Retire long barrels 5000 yards lead light. The latest on the Market. Velocity and Accuracy assured.



In view of the heavy work which the ship has to do, it is essential that the engine should be kept in the best possible condition...

NEW PIPERS

In view of the fact that the Government is about to purchase a further day's work, it is essential that the pipers should be in the best possible condition...

The Registrar has recently ruled on the Uganda Case. His Honor Mr. Justice G. G. G. has ruled in favour of the wife in a matrimonial dispute...

CHURCH NOTICES.

ST. MARK'S CHURCH. For Sunday, 28th Nov. 10 a.m. Holy Communion. 11 a.m. Morning Prayer. 3 p.m. Evensong.

The Registrar has recently ruled on the Uganda Case. His Honor Mr. Justice G. G. G. has ruled in favour of the wife in a matrimonial dispute...

CHURCH NOTICES.

CATHOLIC CHURCH, SERVICES NAIROBI. Sunday, 28th Nov. 10 a.m. Holy Communion. 11 a.m. Morning Prayer. 3 p.m. Evensong.

The Registrar has recently ruled on the Uganda Case. His Honor Mr. Justice G. G. G. has ruled in favour of the wife in a matrimonial dispute...

Mhale Corporation.

Garage, Mhale, All Repairs Guaranteed. (Incorporated in Kenya) OVERHAULING A SPECIALTY. Proprietor: Mr. J. M. Mhale.

NAKURU R.

Special General Meeting. Notice of Meeting. 10.30 a.m. 1. Chairman's Report. 2. Financial Statement. 3. Election of Officers.

RECALYPIT POLES.

LABOR QUANTITIES OF POLES ARE AVAILABLE FOR SALE AT 10/- PER 100.

NAKURU R.

Special General Meeting. Notice of Meeting. 10.30 a.m. 1. Chairman's Report. 2. Financial Statement. 3. Election of Officers.

hackrah's NAKURU.

TOYS! TOYS! TOYS!!! A large selection of Toys just unpacked including numerous SMALL TOYS for stockings, TINSEL and GLASS ORNAMENTS for Xmas Trees.

NAKURU R.

Special General Meeting. Notice of Meeting. 10.30 a.m. 1. Chairman's Report. 2. Financial Statement. 3. Election of Officers.

REASONABLE SUGGESTIONS.

Silver Cigarette Case. Silver Ink Stand. Silver Ash Tray. Spirit Flask. Letter Case. Gentlemen's Silver Brush Case.

SEE OUR BEAUTIFUL DISPLAY OF CHRISTMAS GIFTS.

Silver Ash Tray. Silver Ink Stand. Silver Cigarette Case. Spirit Flask. Letter Case. Gentlemen's Silver Brush Case.

REASONABLE SUGGESTIONS.

Silver Ash Tray. Silver Ink Stand. Silver Cigarette Case. Spirit Flask. Letter Case. Gentlemen's Silver Brush Case.

NAKURU R.

Special General Meeting. Notice of Meeting. 10.30 a.m. 1. Chairman's Report. 2. Financial Statement. 3. Election of Officers.

RECALYPIT POLES.

LABOR QUANTITIES OF POLES ARE AVAILABLE FOR SALE AT 10/- PER 100.

NAKURU R.

Special General Meeting. Notice of Meeting. 10.30 a.m. 1. Chairman's Report. 2. Financial Statement. 3. Election of Officers.

hackrah's NAKURU.

TOYS! TOYS! TOYS!!! A large selection of Toys just unpacked including numerous SMALL TOYS for stockings, TINSEL and GLASS ORNAMENTS for Xmas Trees.

NAKURU R.

Special General Meeting. Notice of Meeting. 10.30 a.m. 1. Chairman's Report. 2. Financial Statement. 3. Election of Officers.

REASONABLE SUGGESTIONS.

Silver Cigarette Case. Silver Ink Stand. Silver Ash Tray. Spirit Flask. Letter Case. Gentlemen's Silver Brush Case.

SEE OUR BEAUTIFUL DISPLAY OF CHRISTMAS GIFTS.

Silver Ash Tray. Silver Ink Stand. Silver Cigarette Case. Spirit Flask. Letter Case. Gentlemen's Silver Brush Case.

REASONABLE SUGGESTIONS.

Silver Ash Tray. Silver Ink Stand. Silver Cigarette Case. Spirit Flask. Letter Case. Gentlemen's Silver Brush Case.

NAKURU R.

Special General Meeting. Notice of Meeting. 10.30 a.m. 1. Chairman's Report. 2. Financial Statement. 3. Election of Officers.

RECALYPIT POLES.

LABOR QUANTITIES OF POLES ARE AVAILABLE FOR SALE AT 10/- PER 100.

NAKURU R.

Special General Meeting. Notice of Meeting. 10.30 a.m. 1. Chairman's Report. 2. Financial Statement. 3. Election of Officers.

hackrah's NAKURU.

TOYS! TOYS! TOYS!!! A large selection of Toys just unpacked including numerous SMALL TOYS for stockings, TINSEL and GLASS ORNAMENTS for Xmas Trees.

NAKURU R.

Special General Meeting. Notice of Meeting. 10.30 a.m. 1. Chairman's Report. 2. Financial Statement. 3. Election of Officers.

REASONABLE SUGGESTIONS.

Silver Cigarette Case. Silver Ink Stand. Silver Ash Tray. Spirit Flask. Letter Case. Gentlemen's Silver Brush Case.

SEE OUR BEAUTIFUL DISPLAY OF CHRISTMAS GIFTS.

Silver Ash Tray. Silver Ink Stand. Silver Cigarette Case. Spirit Flask. Letter Case. Gentlemen's Silver Brush Case.

REASONABLE SUGGESTIONS.

Silver Ash Tray. Silver Ink Stand. Silver Cigarette Case. Spirit Flask. Letter Case. Gentlemen's Silver Brush Case.

INDICENT POSTCARDS

Indicent Postcards... These goods look like...

Under section 230 of the Customs Ordinance... These goods look like...

POLICE WORK... The incidents leading up to the arrest of the Indians are particularly interesting.

Each white one of the soldiers had stored the mails... The Indians were holding a secret and a number of the postcards changed hands under his very eyes.

prohibiting the Indians, which was they had purchased on the black market... The arrest of the guilty mail carrier was stated above in this issue.

CORRESPONDENCE

The Editor does not accept responsibility for the contents of the correspondence in this column... DEAR SIR,

possibly not to produce against the Government... DEAR SIR,

work is of a very inferior nature... DEAR SIR,

the enormous number of cattle condemned for sale... DEAR SIR,

THE BARRISU EXPEDITION... DEAR SIR,

Under no stretch of imagination can the inference seem to be drawn from the foundation course anywhere... DEAR SIR,

THE BARRISU EXPEDITION... DEAR SIR,

Under no stretch of imagination can the inference seem to be drawn from the foundation course anywhere... DEAR SIR,

Uganda Protectorate TENDERS

TENDERS are invited by the Tender Board, Entebbe for the supply of the undermentioned stores to various Government Departments to be delivered at Entebbe, Kampala, and Jinja during the year ending 31st December, 1926.

Table with columns: Description of Goods, Approximate total quantity required, Remarks. Includes items like BRICKS, BEANS, COCONUT OIL, GHEE, GROUND NUTS, MILK CONDENSED, OIL, PARAFFIN or KEROSINE, RICE NWANZA, PETROL, SALT OARBRE, COTTON SEED, BLANKETS, GUNNY BAGS, SUGAR, TEA, MOHBI, WHIS A, B, C, D and E, GREASE, OIL, Extra Heavy, OIL, Dark, M. Lubricating Oil, TIMBER, CHAIRS, Sitting Room, CHAIRS, Arm, LIME.

Approximately (a) 50 per cent of these quantities to be delivered at Bombo (b) To be delivered at any time in Kampala as required by the Municipality... TENDERS should include cost of Bags, Tins, etc. except where otherwise stated... FURTHER details regarding conditions of purchase and quantities in which required may be had on application to the PRESIDENT, TENDER BOARD, TREASURY, ENTebbe.

ROAD POLICE... To the Editor, 'E.A. Standard'... May I take up a few lines of your issue...

ROAD POLICE... To the Editor, 'E.A. Standard'... May I take up a few lines of your issue...

ROAD POLICE... To the Editor, 'E.A. Standard'... May I take up a few lines of your issue...

ROAD POLICE... To the Editor, 'E.A. Standard'... May I take up a few lines of your issue...

ROAD POLICE... To the Editor, 'E.A. Standard'... May I take up a few lines of your issue...

ROAD POLICE... To the Editor, 'E.A. Standard'... May I take up a few lines of your issue...

ROAD POLICE... To the Editor, 'E.A. Standard'... May I take up a few lines of your issue...

ROAD POLICE... To the Editor, 'E.A. Standard'... May I take up a few lines of your issue...

ROAD POLICE... To the Editor, 'E.A. Standard'... May I take up a few lines of your issue...

ROAD POLICE... To the Editor, 'E.A. Standard'... May I take up a few lines of your issue...

ROAD POLICE... To the Editor, 'E.A. Standard'... May I take up a few lines of your issue...

ROAD POLICE... To the Editor, 'E.A. Standard'... May I take up a few lines of your issue...

ROAD POLICE... To the Editor, 'E.A. Standard'... May I take up a few lines of your issue...

ROAD POLICE... To the Editor, 'E.A. Standard'... May I take up a few lines of your issue...

ROAD POLICE... To the Editor, 'E.A. Standard'... May I take up a few lines of your issue...

ROAD POLICE... To the Editor, 'E.A. Standard'... May I take up a few lines of your issue...

ROAD POLICE... To the Editor, 'E.A. Standard'... May I take up a few lines of your issue...

ROAD POLICE... To the Editor, 'E.A. Standard'... May I take up a few lines of your issue...

O. K. DAIN, PRESIDENT, TENDER BOARD.

That aching back! Is a dull, throbbing headache making you miserable? Are you suffering from aching joints, stiffness and head aches... THIBIQUE

CAN WE STILL BE CHRISTIANS?

No. 3.

THE GROUNDS OF BELIEF.

(BY A KENYA CHAPLAIN.)

The article in this issue has been contributed by a Kenya Chaplain who has endeavored to examine the mind of the average African...

With this we have to do. But we have not tried to prove that our hypothesis is the right one. Such proofs can be left ready to follow the reader up further on these lines.

THE OLD TESTAMENT. Few things are more important in the present time than that we should know fully the questions of the Old Testament...

UNIVERSAL THEODICY. But it is not enough to say that we must support and illustrate the doctrine of universal theodicy...

Are You Trading with a Heavy Handicap? The goods you are selling may be the best on the Market and your Accountancy system may be the best in efficiency...

AVERY Weighing Machines and you are not. Includes an illustration of a weighing scale.

Feats on a Farm.

(By Evans.)

When first we came to Elgen that I had not anticipated.

His family first suggested That a guest house be aboiled.

And he never really minded. He had some of his land laid out. He examined some native women...

Then he mounted on a ladder and built himself a mud wall. He had some more timber on hand...

Then he higher yet, and square. With this we have to do. But we have not tried to prove that our hypothesis is the right one...

With this we have to do. But we have not tried to prove that our hypothesis is the right one. Such proofs can be left ready to follow the reader up further on these lines.

THE OLD TESTAMENT. Few things are more important in the present time than that we should know fully the questions of the Old Testament...

UNIVERSAL THEODICY. But it is not enough to say that we must support and illustrate the doctrine of universal theodicy...

Are You Trading with a Heavy Handicap? The goods you are selling may be the best on the Market and your Accountancy system may be the best in efficiency...

AVERY Weighing Machines and you are not. Includes an illustration of a weighing scale.

CLEANER MILK.

Dairy Regulations Issued.

On the advice of the Central Milk Board, the Government has issued regulations for the control of the milk industry...

The local authority may not register the dairy unless and until the M.O.H. is satisfied with regard to the suitability of the premises...

The regulations make it plain that the milk which is placed for sale is defined as dairy and becomes liable to those rules. The regulations are issued...

The regulations make it plain that the milk which is placed for sale is defined as dairy and becomes liable to those rules. The regulations are issued...

The regulations make it plain that the milk which is placed for sale is defined as dairy and becomes liable to those rules. The regulations are issued...

The regulations make it plain that the milk which is placed for sale is defined as dairy and becomes liable to those rules. The regulations are issued...

The regulations make it plain that the milk which is placed for sale is defined as dairy and becomes liable to those rules. The regulations are issued...

The regulations make it plain that the milk which is placed for sale is defined as dairy and becomes liable to those rules. The regulations are issued...

The regulations make it plain that the milk which is placed for sale is defined as dairy and becomes liable to those rules. The regulations are issued...

The regulations make it plain that the milk which is placed for sale is defined as dairy and becomes liable to those rules. The regulations are issued...

The regulations make it plain that the milk which is placed for sale is defined as dairy and becomes liable to those rules. The regulations are issued...

The regulations make it plain that the milk which is placed for sale is defined as dairy and becomes liable to those rules. The regulations are issued...

HELD UP BY THE COURT. The other day the business of the Magistrate's Court was interrupted by the noise of a motor car...

Keyes Creaming Co., Ltd. MARI MARURI or Dr. 291, NAIROBI. C.D. issued in "The Old Mutual" for £200.

THE SOUTH AFRICAN MUTUAL LIFE ASSURANCE SOCIETY. Having opened Cape Town, Johannesburg, Durban, Port Elizabeth, East London, Grahamstown, and Cape of Good Hope.

For the Blood in the Life. Sure Signs of Milk Impurity. STEEDMAN'S POWDERS. What You Need.

Clark's Blood-Mixture. NOTICE. Our Officially Valid KITALE on November 20th and December 1st, 2nd, and ELDOROT on December 2nd, 3rd, 4th, and 5th.

Dr. DOBBIE, Ophthalmic Optician, Government Road.

IRON DRUMS.

MUNICIPAL COUNCIL. The Nelson Gilson Tank.

Keyes Creaming Co., Ltd. MARI MARURI or Dr. 291, NAIROBI. C.D. issued in "The Old Mutual" for £200.

THE SOUTH AFRICAN MUTUAL LIFE ASSURANCE SOCIETY. Having opened Cape Town, Johannesburg, Durban, Port Elizabeth, East London, Grahamstown, and Cape of Good Hope.

For the Blood in the Life. Sure Signs of Milk Impurity. STEEDMAN'S POWDERS. What You Need.

Clark's Blood-Mixture. NOTICE. Our Officially Valid KITALE on November 20th and December 1st, 2nd, and ELDOROT on December 2nd, 3rd, 4th, and 5th.

Dr. DOBBIE, Ophthalmic Optician, Government Road.

MUNICIPAL COUNCIL.

The Nelson Gilson Tank.

Keyes Creaming Co., Ltd. MARI MARURI or Dr. 291, NAIROBI. C.D. issued in "The Old Mutual" for £200.

THE SOUTH AFRICAN MUTUAL LIFE ASSURANCE SOCIETY. Having opened Cape Town, Johannesburg, Durban, Port Elizabeth, East London, Grahamstown, and Cape of Good Hope.

For the Blood in the Life. Sure Signs of Milk Impurity. STEEDMAN'S POWDERS. What You Need.

Clark's Blood-Mixture. NOTICE. Our Officially Valid KITALE on November 20th and December 1st, 2nd, and ELDOROT on December 2nd, 3rd, 4th, and 5th.

Dr. DOBBIE, Ophthalmic Optician, Government Road.

MUNICIPAL COUNCIL.

The Nelson Gilson Tank.

Keyes Creaming Co., Ltd. MARI MARURI or Dr. 291, NAIROBI. C.D. issued in "The Old Mutual" for £200.

THE SOUTH AFRICAN MUTUAL LIFE ASSURANCE SOCIETY. Having opened Cape Town, Johannesburg, Durban, Port Elizabeth, East London, Grahamstown, and Cape of Good Hope.

For the Blood in the Life. Sure Signs of Milk Impurity. STEEDMAN'S POWDERS. What You Need.

Clark's Blood-Mixture. NOTICE. Our Officially Valid KITALE on November 20th and December 1st, 2nd, and ELDOROT on December 2nd, 3rd, 4th, and 5th.

Dr. DOBBIE, Ophthalmic Optician, Government Road.

MUNICIPAL COUNCIL.

The Nelson Gilson Tank.

Keyes Creaming Co., Ltd. MARI MARURI or Dr. 291, NAIROBI. C.D. issued in "The Old Mutual" for £200.

THE SOUTH AFRICAN MUTUAL LIFE ASSURANCE SOCIETY. Having opened Cape Town, Johannesburg, Durban, Port Elizabeth, East London, Grahamstown, and Cape of Good Hope.

For the Blood in the Life. Sure Signs of Milk Impurity. STEEDMAN'S POWDERS. What You Need.

Clark's Blood-Mixture. NOTICE. Our Officially Valid KITALE on November 20th and December 1st, 2nd, and ELDOROT on December 2nd, 3rd, 4th, and 5th.

Dr. DOBBIE, Ophthalmic Optician, Government Road.

MUNICIPAL COUNCIL.

The Nelson Gilson Tank.

Keyes Creaming Co., Ltd. MARI MARURI or Dr. 291, NAIROBI. C.D. issued in "The Old Mutual" for £200.

THE SOUTH AFRICAN MUTUAL LIFE ASSURANCE SOCIETY. Having opened Cape Town, Johannesburg, Durban, Port Elizabeth, East London, Grahamstown, and Cape of Good Hope.

For the Blood in the Life. Sure Signs of Milk Impurity. STEEDMAN'S POWDERS. What You Need.

Clark's Blood-Mixture. NOTICE. Our Officially Valid KITALE on November 20th and December 1st, 2nd, and ELDOROT on December 2nd, 3rd, 4th, and 5th.

Dr. DOBBIE, Ophthalmic Optician, Government Road.

THE QUEST OF THE BEAUTIFUL.

ELIZABETH BARRDEN'S PREPARATIONS MAY BE OBTAINED FROM THE AGENTS Howse & McGeorge Ltd.

KENYA & UGANDA. Booklets will be posted free on application.

EQUATOR SAW MILLS.

Our Nairobi Mill will be closed for Stocktaking Tuesday 1st December, 1925.

From Nairobi. A letter which was largely with reference to the question...

From Tangaika. Mr. H. P. Power has been appointed as the manager of the Tangaika Terminus...

R. E. A. A. METAL DANGER SIGNS.

Required as soon as possible quotations for 6000 metal danger signs in unbreakable material, painted black.

RALEIGH THE GOLD METAL MOTOR CYCLE.

TREMENDOUS REDUCTIONS. 7 hp. 3 1/2 hp. 5 hp. 6 hp. 8 hp. 10 hp.

WANT TO TAKE FOR INDIGESTION. Clark's Blood-Mixture.

WANT TO TAKE FOR INDIGESTION. Clark's Blood-Mixture.



**The Motor Mail & Express, Ltd.**  
**Hornby, Bradford, Leeds.**  
 The **Motor Express Agency**  
 Ltd., Ltd., Leeds, London, Liverpool, Manchester, Newcastle-on-Tyne, & Co.  
**Express Transport Co.**  
 Ltd., Leeds, London, Manchester, & Co.  
**Express Transport Co.**  
 Ltd., Leeds, London, Manchester, & Co.  
**Express Transport Co.**  
 Ltd., Leeds, London, Manchester, & Co.  
**Express Transport Co.**  
 Ltd., Leeds, London, Manchester, & Co.

**KAVIRONDO WELFARE ASSOCIATION V.C.**

**(COMMUNICATED)**  
 The General Committee of the Kavirondo Welfare Association met at Nairobi on November 27. There was an impressive attendance both of Chairmen and of Trustees and ordinary members. Many thanks were tendered to the principal members of the Association who were present.

The minutes read and approved.

It is highly concentrated; therefore economical to transport. It mixes readily with cold water; requires the minimum of trouble to prepare, and is perfectly simple to use.

Used on 90 per cent of the sheep exhibited at the Royal Show of England—the greatest livestock exhibition in the world.

It has great protective power, lasting in the fleece for a long time after dipping, thus preventing re-infestation.

It is highly concentrated; therefore economical to transport. It mixes readily with cold water; requires the minimum of trouble to prepare, and is perfectly simple to use.

Used on 90 per cent of the sheep exhibited at the Royal Show of England—the greatest livestock exhibition in the world.

It has great protective power, lasting in the fleece for a long time after dipping, thus preventing re-infestation.

**COOPERS' POWDER DIP**



**Some Convincing Facts**

It is the original powder dip—all others are imitations.

For 70 years Cooper's Powder has cured scab, eradicated ticks, keds, lice and other insect parasites.

It never varies in strength or composition.

It is highly concentrated; therefore economical to transport. It mixes readily with cold water; requires the minimum of trouble to prepare, and is perfectly simple to use.

Used on 90 per cent of the sheep exhibited at the Royal Show of England—the greatest livestock exhibition in the world.

It has great protective power, lasting in the fleece for a long time after dipping, thus preventing re-infestation.

It is highly concentrated; therefore economical to transport. It mixes readily with cold water; requires the minimum of trouble to prepare, and is perfectly simple to use.

Used on 90 per cent of the sheep exhibited at the Royal Show of England—the greatest livestock exhibition in the world.

It has great protective power, lasting in the fleece for a long time after dipping, thus preventing re-infestation.

**Sole Manufacturers—Messrs. Wm. Cooper & nephews, Ltd., Birkhamstead, England.**

**Cooper Representative for East Africa**

**E. A. PRIESTLAND, BOX 523, NAIROBI.**

**Sole Distributing Agents for Kenya & Uganda—**

**Messrs. Bullows & Roy,**  
**P.O. BOX 2, NAIROBI.**

STOCKISTS IN ALL DISTRICTS.

**THE MEAT SUPPLY.**  
**Attitude of Natives Towards their Cattle.**

**EFFECT OF WIFE PURCHASE.**  
 (By Mr. S. R. CHAVANJA.)

In the following article, Mr. Chavanja alludes to his experiments on the stock industry in East Africa and puts forward certain suggestions for the improvement of the cattle industry in Kenya. His suggestions are aimed at one alteration in the fundamental attitude of the natives in respect of their stock.

While going to Kenya some years ago, I had frequent conversations with the natives on the subject of their stock industry. I found that they were very ignorant of the value of their stock, and that they were very wasteful in their disposal of it. They were also very ignorant of the value of their stock, and that they were very wasteful in their disposal of it.

It is not surprising that the natives are very ignorant of the value of their stock, and that they are very wasteful in their disposal of it. They are also very ignorant of the value of their stock, and that they are very wasteful in their disposal of it.

The natives are very ignorant of the value of their stock, and that they are very wasteful in their disposal of it. They are also very ignorant of the value of their stock, and that they are very wasteful in their disposal of it.

**ANNUAL SALES SUFFICIENT TO DIP OVER 300,000 SHEEP.**  
**WHICH IS INDISPENSIBLE FOR SUCCESSFUL MERIT.**

**Shs. 50/- per case of 40 packets.**

**Sole Manufacturers—Messrs. Wm. Cooper & nephews, Ltd., Birkhamstead, England.**

**Cooper Representative for East Africa**

**E. A. PRIESTLAND, BOX 523, NAIROBI.**

**Sole Distributing Agents for Kenya & Uganda—**

**Messrs. Bullows & Roy,**  
**P.O. BOX 2, NAIROBI.**

STOCKISTS IN ALL DISTRICTS.



**THE BEST OF THE BEST IN THIS BOTTLE**

**BOVRIL**

Just add hot water to a spoonful of Bovril and you have a nourishing drink in a moment.

**BOVRIL**

**NESTLE'S CONDENSED MILK**

**PREPARED**

**NESTLE'S CONDENSED MILK**

**PREPARED**

**There are many qualities of boot polish and the best is known as 'NUGGET'**

Trade Agents in the East and West Africa: **E. H. HAMILTON LTD., NAIROBI.**  
 For C.C. Prices

**Total Amount of Nairobi's contribution this year amounting to Shs. 7490/11 and I append herewith a statement of receipts and disbursements.**

<b>RECEIPTS</b>	
To contributions from the business firms, etc.	Shs. 851 10
From the City Council	2,600 00
From the Nairobi Water Works	1,500 00
Total	Shs. 8,951 10

**EXPENDITURE.**

To cost of notices, including printing	618 97
Telegrams and postage	10 10
Furniture, etc.	10 10
Profits (Nairobi)	1,400 14
Total	Shs. 8,100 10

In addition to the profit of Shs. 7,490/11, the profit from the land at Nakuru amounted to Shs. 1,592 00. I append a table to date of this profit. It is a record of the progress of the business, and shows that the profits are increasing.

**THE EAST AFRICAN STANDARD.**

**MARTIN'S PILLS**

**FOR ALL AFFECTIONS OF THE BOWEL**

**WATERBURY'S**

**WATERBURY'S**

**The Life of a Wagon**

The life of a wagon depends on its construction. A "Merryweather" Wagon is thoroughly constructed and can be relied upon to be the strongest and best South Africa can produce for a "Merryweather" Wagon.

**Remember**

OUR WAGONS are built specially for South African conditions and we realize that our best advertisement is a good article which will say "Merryweather" Wagon is so well made and suitable for the country.

**J. Merryweather & Sons,**  
 THE HOUSE OF GOOD WAGONS.  
 Church Street, VICTORIAHARBOUR, NAIROBI.

**EAST AFRICAN COMMERCIAL ASSOCIATION**

**Prices Still Falling**

(For One Only Government) London, Nov. 2, 1923.

**HEALTH RESORT**

**KIKUYU HOTEL**

**BOOK NOW FOR ONE YEAR**

**Christmas Holidays**

**The Life of a Wagon**

The life of a wagon depends on its construction. A "Merryweather" Wagon is thoroughly constructed and can be relied upon to be the strongest and best South Africa can produce for a "Merryweather" Wagon.

**Remember**

OUR WAGONS are built specially for South African conditions and we realize that our best advertisement is a good article which will say "Merryweather" Wagon is so well made and suitable for the country.

**J. Merryweather & Sons,**  
 THE HOUSE OF GOOD WAGONS.  
 Church Street, VICTORIAHARBOUR, NAIROBI.

**EAST AFRICAN COMMERCIAL ASSOCIATION**

**Prices Still Falling**

(For One Only Government) London, Nov. 2, 1923.

**HEALTH RESORT**

**KIKUYU HOTEL**

**BOOK NOW FOR ONE YEAR**

**Christmas Holidays**

**KENYA HORTICULTURAL SOCIETY.**

**Important Notice.**

Owing to the lateness of the Rain The Flower Show has been postponed.

**Thursday, December 31st 1923.**

**Waterbury's Ideal Fountain Pen**

**NOTE**

**NOTE**

**NOTE**

**NOTE**

**NOTE**

**NOTE**

**NOTE**

**NOTE**

**NOTE**

**NOTE**



Thomas Townend & Co.

Double Tennis HELMETS, Etc.

Sample of Prices From J. GRAHAM DAWSON

P.O. Box 216 Nairobi P. O. Box 316 Mombasa

DOBBIE. OPTHALMIC OPTICIAN. Government Road, NAIROBI. In connection with any other firm.

AFRICAN GUARANTEE AND INDEMNITY Co., Ltd. FIRE - BURGLAR - ROBBERY. EVERY KIND OF INSURANCE TRANSACTED UNDER MOST FAVORABLE TERMS AND AT THE LOWEST RATES OF PREMIUMS.

Pathe Baby Cinema. FREE DEMONSTRATIONS AT THE GRAFTON STUDIOS. TRUST ORAMBERS, GOVERNMENT ROAD, NAIROBI.

Pathe Baby Cinema. Take living pictures of your own children, your sport and pleasure trips, and secure a permanent living record of your stay in Kenya.

Join the Grafton Film Library. 750 different films to choose from, changed as often as you like.

Mutopoulos Lathras & Company, Ltd. NOW IN USE Usagara Company, Ltd.

USAGARA A handy guide that the name of the above Company MUTUPOLOS LATHRAS & COMPANY LIMITED has all business will be carried out under the same name.

A. S. B. H. CLARK, Government Road, NAIROBI.

SPINELESS CACTUS. Stock Breeders' Insurance Against Drought. METHOD OF PLANTING AND LAY-OUT.

[By TRAVIS I. FRYE, in the South African Farmer's Weekly.] I have received inquiries from many parts of South Africa relating to the subject of cactus and its use for stock feeding, and I therefore propose dealing with the matter as fully as possible...

Learned Farming is an interesting and charming book which contains a lot of practical and useful information for the farmer. It is written in a simple and easy-to-understand style...

AFRICAN GUARANTEE AND INDEMNITY Co., Ltd. FIRE - BURGLAR - ROBBERY. EVERY KIND OF INSURANCE TRANSACTED UNDER MOST FAVORABLE TERMS AND AT THE LOWEST RATES OF PREMIUMS.

There are millions of acres of suitable ground upon which the best of cactus could be grown. It is a hardy and reliable crop which requires little attention...

Pathe Baby Cinema

FREE DEMONSTRATIONS AT THE GRAFTON STUDIOS. TRUST ORAMBERS, GOVERNMENT ROAD, NAIROBI.

Take living pictures of your own children, your sport and pleasure trips, and secure a permanent living record of your stay in Kenya.

Join the Grafton Film Library. 750 different films to choose from, changed as often as you like.

Mutopoulos Lathras & Company, Ltd. NOW IN USE Usagara Company, Ltd.

USAGARA A handy guide that the name of the above Company MUTUPOLOS LATHRAS & COMPANY LIMITED has all business will be carried out under the same name.

A. S. B. H. CLARK, Government Road, NAIROBI.

KENYA ARTS & CRAFTS SOCIETY. Second Exhibition. ENCOURAGING IMPROVEMENT DURING THE YEAR.

The Kenya Arts and Crafts Society, formed on the 26th of March in the Memorial Hall, Nairobi, has just closed its second exhibition, which was organized by the Society. The exhibition was held in the Memorial Hall, Nairobi, and was a great success...

It is a most valuable book for the farmer. It contains a lot of practical and useful information for the farmer. It is written in a simple and easy-to-understand style...

AFRICAN GUARANTEE AND INDEMNITY Co., Ltd. FIRE - BURGLAR - ROBBERY. EVERY KIND OF INSURANCE TRANSACTED UNDER MOST FAVORABLE TERMS AND AT THE LOWEST RATES OF PREMIUMS.

There are millions of acres of suitable ground upon which the best of cactus could be grown. It is a hardy and reliable crop which requires little attention...

Pathe Baby Cinema

FREE DEMONSTRATIONS AT THE GRAFTON STUDIOS. TRUST ORAMBERS, GOVERNMENT ROAD, NAIROBI.

Take living pictures of your own children, your sport and pleasure trips, and secure a permanent living record of your stay in Kenya.

Join the Grafton Film Library. 750 different films to choose from, changed as often as you like.

Mutopoulos Lathras & Company, Ltd. NOW IN USE Usagara Company, Ltd.

USAGARA A handy guide that the name of the above Company MUTUPOLOS LATHRAS & COMPANY LIMITED has all business will be carried out under the same name.

A. S. B. H. CLARK, Government Road, NAIROBI.

KENYA ARTS & CRAFTS SOCIETY. Second Exhibition. ENCOURAGING IMPROVEMENT DURING THE YEAR.

The Kenya Arts and Crafts Society, formed on the 26th of March in the Memorial Hall, Nairobi, has just closed its second exhibition, which was organized by the Society. The exhibition was held in the Memorial Hall, Nairobi, and was a great success...

It is a most valuable book for the farmer. It contains a lot of practical and useful information for the farmer. It is written in a simple and easy-to-understand style...

AFRICAN GUARANTEE AND INDEMNITY Co., Ltd. FIRE - BURGLAR - ROBBERY. EVERY KIND OF INSURANCE TRANSACTED UNDER MOST FAVORABLE TERMS AND AT THE LOWEST RATES OF PREMIUMS.

There are millions of acres of suitable ground upon which the best of cactus could be grown. It is a hardy and reliable crop which requires little attention...

Pathe Baby Cinema

FREE DEMONSTRATIONS AT THE GRAFTON STUDIOS. TRUST ORAMBERS, GOVERNMENT ROAD, NAIROBI.

Take living pictures of your own children, your sport and pleasure trips, and secure a permanent living record of your stay in Kenya.

Join the Grafton Film Library. 750 different films to choose from, changed as often as you like.

Mutopoulos Lathras & Company, Ltd. NOW IN USE Usagara Company, Ltd.

USAGARA A handy guide that the name of the above Company MUTUPOLOS LATHRAS & COMPANY LIMITED has all business will be carried out under the same name.

A. S. B. H. CLARK, Government Road, NAIROBI.

Take Andrews. Andrews Liver Salt is a pleasant, effervescent saline that prevents biliousness, helps to regulate the bowels, and stimulates the liver.

Andrews LIVER SALT. It is a most valuable book for the farmer. It contains a lot of practical and useful information for the farmer. It is written in a simple and easy-to-understand style...

ARCHIBALD HOGG. Hardinge Street, Nairobi. Arms Ammunition, Etc., Etc.

ARCHIBALD HOGG. Hardinge Street, Nairobi. Arms Ammunition, Etc., Etc.

ARCHIBALD HOGG. Hardinge Street, Nairobi. Arms Ammunition, Etc., Etc.

Pathe Baby Cinema

FREE DEMONSTRATIONS AT THE GRAFTON STUDIOS. TRUST ORAMBERS, GOVERNMENT ROAD, NAIROBI.

Take living pictures of your own children, your sport and pleasure trips, and secure a permanent living record of your stay in Kenya.

Join the Grafton Film Library. 750 different films to choose from, changed as often as you like.

Mutopoulos Lathras & Company, Ltd. NOW IN USE Usagara Company, Ltd.

USAGARA A handy guide that the name of the above Company MUTUPOLOS LATHRAS & COMPANY LIMITED has all business will be carried out under the same name.

A. S. B. H. CLARK, Government Road, NAIROBI.

ENGINEERING DEPARTMENT. BARKER & GENERAL ENGINEERS. IRON & BRASS FOUNDERS.

NATIVE CATHOLIC UNION

A Lavender Body

Recently there was held at Nairobi, Kenya, a general meeting of members of the Native Catholic Union...

Alleged Forgery raised the following

It is stated that a specimen of the alleged forgery was submitted to the Hon. Mr. Justice...

THE D. O. C. OF THE DISTRICT

The District Officer has issued a notice regarding the proposed alterations to the Municipal Council...

THE D. O. C. OF THE DISTRICT

The District Officer has issued a notice regarding the proposed alterations to the Municipal Council...

TAXATION

The Hon. Mr. Justice has issued a decision regarding the taxation of certain goods...

THE EAST AFRICAN STANDARD

YOU'LL ENJOY TEA MORE

Lipton's Tea advertisement with text: 'If you insist on having LIPTON'S which holds first place for QUALITY and VALUE'

WANTED WILD ANIMALS, BIRDS, REPTILES advertisement for export with contact info for Rogers, Stanley Hotel, Nairobi.

THE RAPID CURE advertisement for a medicine treating various ailments.

THE RAPID CURE advertisement for a medicine treating various ailments.

DISTRICT NOTES

Thika. The rain has been of a character such that the crops have been saved...

Another sign of progress was in evidence last Wednesday when a group of stalwart Police officers might have been observed inspecting a site for the future Police Station at Thika Township...

The suggestion has been made that a park should be laid out in the area...

DISTRICT NOTES

Thika. The rain has been of a character such that the crops have been saved...

Another sign of progress was in evidence last Wednesday when a group of stalwart Police officers might have been observed inspecting a site for the future Police Station at Thika Township...

The suggestion has been made that a park should be laid out in the area...



Holeproof Hosiery advertisement with text: 'Beauty's Accessory! Holeproof silk made to plain make pretty and to emphasize the charm of those already charming.'

THE EAST AFRICAN STANDARD advertisement for a newspaper.

VERMUKOL RUBEROID advertisement for a roofing material with technical specifications.

ISAL advertisement for a disinfectant and germicide with various product listings.

Boustead & Clarke, Ltd. advertisement for stationery and printing services.

DISTRICT NOTES

Thika. The rain has been of a character such that the crops have been saved...

Another sign of progress was in evidence last Wednesday when a group of stalwart Police officers might have been observed inspecting a site for the future Police Station at Thika Township...

The suggestion has been made that a park should be laid out in the area...

DISTRICT NOTES

Thika. The rain has been of a character such that the crops have been saved...

Another sign of progress was in evidence last Wednesday when a group of stalwart Police officers might have been observed inspecting a site for the future Police Station at Thika Township...

The suggestion has been made that a park should be laid out in the area...

THE EAST AFRICAN MERCANTILE CO. advertisement for a variety of goods and services.



CORRESPONDENCE

The Editor does not accept responsibility for the views expressed in these columns...

has been taken in all school by boys from the same school...

WHEAT PRICES. Mr. de la Beche has indicated that wheat prices will be lower...

PORT CONTROL. The Editor, "E.A. Standard," writes to your issue of October 24th...

PLAQUE. The Editor, "E.A. Standard," writes to your issue of October 24th...

TRACTOR WORK BETWEEN COFFEE ROADS. The Editor, "E.A. Standard," writes to your issue of October 24th...

OUR BAILLOIS. The Editor, "E.A. Standard," writes to your issue of October 24th...

THE AGENT. The Editor, "E.A. Standard," writes to your issue of October 24th...

DEBILITATED SPORTS. The Editor, "E.A. Standard," writes to your issue of October 24th...

THE AGENT. The Editor, "E.A. Standard," writes to your issue of October 24th...

THE AGENT. The Editor, "E.A. Standard," writes to your issue of October 24th...

THE AGENT. The Editor, "E.A. Standard," writes to your issue of October 24th...

THE AGENT. The Editor, "E.A. Standard," writes to your issue of October 24th...

THE AGENT. The Editor, "E.A. Standard," writes to your issue of October 24th...

THE AGENT. The Editor, "E.A. Standard," writes to your issue of October 24th...

THE AGENT. The Editor, "E.A. Standard," writes to your issue of October 24th...

THE AGENT. The Editor, "E.A. Standard," writes to your issue of October 24th...

THE AGENT. The Editor, "E.A. Standard," writes to your issue of October 24th...

GOLDEN SMOKERS BRING GOLDEN SMILES



The pure manufactured Virginia Tobacco, Golden in color, with a rich, smooth taste...

These bullocks are usually reared on the highlands of Kenya...

A great feature in the increase of the price of meat is due to the fact that the old average...

Now as to world's private property. Kenya's economy will be paid from what I have written...

As a comparative price of bullocks in Kenya and elsewhere...

As a comparative price of bullocks in Kenya and elsewhere...

As a comparative price of bullocks in Kenya and elsewhere...

CORRESPONDENCE

The Editor does not accept responsibility for the views expressed in these columns...

THE AGENT. The Editor, "E.A. Standard," writes to your issue of October 24th...

THE AGENT. The Editor, "E.A. Standard," writes to your issue of October 24th...

THE AGENT. The Editor, "E.A. Standard," writes to your issue of October 24th...

THE AGENT. The Editor, "E.A. Standard," writes to your issue of October 24th...

THE AGENT. The Editor, "E.A. Standard," writes to your issue of October 24th...

THE AGENT. The Editor, "E.A. Standard," writes to your issue of October 24th...

THE AGENT. The Editor, "E.A. Standard," writes to your issue of October 24th...

THE AGENT. The Editor, "E.A. Standard," writes to your issue of October 24th...

UNION AGRICULTURE

The actual results are the new crop to be the obligation of the Government...

The Editor, "E.A. Standard," writes to your issue of October 24th...

THE AGENT. The Editor, "E.A. Standard," writes to your issue of October 24th...

THE AGENT. The Editor, "E.A. Standard," writes to your issue of October 24th...

THE AGENT. The Editor, "E.A. Standard," writes to your issue of October 24th...

THE AGENT. The Editor, "E.A. Standard," writes to your issue of October 24th...

THE AGENT. The Editor, "E.A. Standard," writes to your issue of October 24th...

THE AGENT. The Editor, "E.A. Standard," writes to your issue of October 24th...

THE AGENT. The Editor, "E.A. Standard," writes to your issue of October 24th...

Exceptional Offer

Wheat, maize and stock-raising Landowners Township and Station, within 5 miles of Nairobi...

H.F. WARD & COMPANY. NAIROBI HOUSE, NAIROBI.

CHARMING wood-planted house, standing in garden of 10 acres...

THE "Anand Paree". The Anand Paree, from Marvellous situated in Kilindi on the coast...

THEOS J. O'SHEA & Co. Ltd. Land Agents & Valuers. Eldoret & Kitale.

THE AGENT. The Editor, "E.A. Standard," writes to your issue of October 24th...

THE AGENT. The Editor, "E.A. Standard," writes to your issue of October 24th...

THE AGENT. The Editor, "E.A. Standard," writes to your issue of October 24th...

THE AGENT. The Editor, "E.A. Standard," writes to your issue of October 24th...

# OUR WOMEN'S PAGE

## A Letter from Paris

(From Fashion Correspondent)

**Requisite Workmanship**

The workmanship is better than ever, and the quality of the materials used is up to the mark. The afternoon and evening frocks are made of the finest materials, and the embroidery is done in large quantities, but only on the most necessary parts.

**Leather Trimming**

Child leather is used for trimmings and also for some of the most important details. It is used for the collars and cuffs, and also for the trimmings of the shoes.

A magnificent evening frock was seen of slightly draped gold tulle, with a white lace collar and cuffs. The skirt was of the same material, and the whole was trimmed with white lace.

**Ways of the Jacket**

It is a not too shabby thing, but it is a thing that is used again for simple after-dinner wear. The jacket is made of the same material, and the collar and cuffs are trimmed with white lace.

**Items of Interest**

Nothing is used as a great deal as when it is drawn through, even in the most unexpected materials. The lining is not so obvious in the work as it was in the past.

**The Undershirt or Bodice**

Modern social etiquette has decided that to be thoroughly up to the mark, a woman must wear a bodice or undershirt. This is a thing that is used again for simple after-dinner wear.

**Blackout Mitts**

Blackout mitts are being used in the most unexpected materials. They are made of the same material, and the collar and cuffs are trimmed with white lace.

**The Emphasis is on the Dress**

The modern woman wears a dress that is simple and elegant. It is made of the same material, and the collar and cuffs are trimmed with white lace.

There are few who remark the fact that the girls are beautiful, and that they are so well-dressed. They are so well-dressed that they are almost invisible. They are so well-dressed that they are almost invisible.

**A NEW PROFESSION**

The sale of the labour market makes very little to the woman who has the brains to dress a new profession. Here is the story of one of the best-paid women in the business world, who got simply rich in the most unorthodox way.

**A BAG FROM JAPAN**

It had been some time that a couple of Japanese had been making a purpose of visiting London. They had been making a purpose of visiting London, and they had been making a purpose of visiting London.

**The Dress Show**

The dress show has revealed the most interesting and beautiful dresses of the season. They are so well-dressed that they are almost invisible. They are so well-dressed that they are almost invisible.



**The Dress Show**

The dress show has revealed the most interesting and beautiful dresses of the season. They are so well-dressed that they are almost invisible. They are so well-dressed that they are almost invisible.

**FASHIONS IN PAGES**

**Completion Hour**

There is a still fashionable for the moment but the autumn ways up to the main by the



The new neckline is high in front and low at the back. It is outlined by a broad fold of the material, which lies at the back, the ends hanging to the waist.

The new neckline is high in front and low at the back. It is outlined by a broad fold of the material, which lies at the back, the ends hanging to the waist.

**NOTICE**

**Enquiry into Cost of Building**

A Committee has been appointed by Government to enquire into the position generally in regard to the cost of building in the Colony and to make recommendations with a view to reducing this cost.

**ATKINSON'S Celebrated Californian Poppy**

The Perfumes, Bath Soap, Toilet Cream, etc., are all made in London.

**ARTHUR KEMP**

**PELICAN BRAND**

Manufacturers of Hosiery, Sweaters, Cardigans, and Babies Woollens.

**"Ferreirinha"**

(Ferreira's Port)

In their own vast Quintas in the Douro Valley and Shipped by Quilata to

**The Standard Bank of South Africa Ltd.**

WITH WHICH IS INCORPORATED AFRICAN BANKING CORPORATION, LTD.

Authorized Capital £1,000,000

Subscribed Capital £500,000

Reserve Fund £250,000

Dividend £100,000

BOARD OF DIRECTORS

Wm. S. Anderson, Esq., Chairman

Edward Clifton Brown, Esq., Vice-Chairman

Robert Jameson, Esq., Director

James F. Wain, Esq., Director

**MOLO TIMBER COMPANY**

(Proprietor, W. J. Beeston)

Established 1912

Head Office: NYOROI

Telegrams: "Loomoos." From: Code: A.B.O. on 211/20.

**CEDAR**

PODO, MUKAO, N'GARAHIA, and MOREMI.

Lambs, Floorings, and Mouldings a specialty.

DOORS and WINDOWS (Made from seasoned timber)

Stock sizes or made to specification.

YOKES, HUBS, FELLOES, Etc.

Keenest Prices on Application.

**THE PRIDE OF CRAFTSMANSHIP**

And Many Years of Experience

has brought "Rainbow" Rubber Belting into favour with Buyers the world over.

If YOU are unacquainted with this super belt please write us & a sample will be posted immediately free of all charge

**Lamberts, Limited. NAIROBI**

**We Still Sell**

The Cheapest & best Terpuain on the market YOU'll need "em now the rains HAVE come!

Heavy green roofproof  
12' x 9' - 50-00  
15' x 18' - 120-00  
15' x 21' - 140-00  
15' x 24' - 160-00

Less 10 per cent for Cash

**Lamberts, Limited. NAIROBI**

**"Dar-es-Salaam Times"** NATIONAL BANK OF INDIA LIMITED.

(Incorporated in the United Kingdom)

THE ONLY NEWSPAPER PUBLISHED IN THE TANGANYIKA TERRITORY.

Circulates through the Whole Country, affording a LITERARY medium for Advertising.

Send for Specimen Copy and Advertising Tariff to Proprietors and Publishers—

**THE DAR-ES-SALAAM PRINTING & PUBLISHING CO.**

P. O. Box 40. Dar-es-Salaam. Telegrams: "Publishing," Dar-es-Salaam.

VINHOS DO PORTO.

# THE UNION-CASTLE LINE

HOMEWARDS via EASTERN or WESTERN

## VIA SUEZ CANAL.

Calling at Aden, Port Sudan, Suez, Port Said, Genoa and Marseilles Homewards.

Leaves England about	Leaves MOMBASA about
"Gloucester Castle" .....	5th December.
"Hampton Castle" (cargo only)	7th January 1926.
17th December "Guildford Castle"	6th Feb. 1926.
15th February, '26 "Llandoverly Castle"	3rd April.
6th April "Guildford Castle"	29th May.
2nd June "Gloucester Castle"	24th July.

All sailing dates are subject to alteration without notice.

## VIA SOUTH AFRICA.

Calling at Tanga, Zanzibar, Dar-es-Salaam, Port Amelia, Mozambique, Beira, Delagoa Bay, S.A. Union Ports, and Canary Islands.

Leaves England about	Leaves MOMBASA about
12th November. "Corie Castle" (cargo only)	18th December.
18th December. "Llanstephan Castle"	23d Jan., 1926.
7th January, '26 "Cargo Steamer"	18th February.
4th February. "Gloucester Castle"	1st March.
4th March. "Carlow Castle" (cargo only)	12th April.
1st April. "Llanstephan Castle"	29th April.
29th April. "Cawdor Castle" (cargo)	19th June.
27th May. "Llandoverly Castle"	21st June.
24th June. "Corie Castle" (cargo only)	6th August.

\* If sufficient inducement offered. Up-country cheques cannot be accepted unless endorsed by local bank.

Passage to Union-Castle steamers is required, in future, to be in possession of permits obtainable at the Company's Office.

P. O. Box 86. Tel. Add. "UNICASTLE" Tel. No. 107.  
The Union-Castle Mail Steamship Co., Ltd.,

MOMBASA

# BRITISH INDIA STEAM NAVIGATION COMPANY, LTD.

AND

PENINSULAR AND ORIENTAL STEAM NAVIGATION Co.

## LONDON AND EAST AFRICA LINE.

LONDON TO BEIRA, via Marseilles, Port Said, Port Sudan, and Aden, Outwards and Inwards.

Steamer	Arrives Kilindini Suez from Kilindini from London about	Leaves London about
S.S. Hantsia	26th November	17th November
S.S. Madras	23rd December	14th December
S.S. Malabar	27th January, 1926	18th January
S.S. Marikar	29th February	20th February
S.S. Madras	29th March	20th March
S.S. Madras	17th April	17th April
S.S. Madras	19th May	19th May
S.S. Malabar	19th June	14th May

N.B.—All Steamers will call at Marseilles on the Outward and Homeward Voyages. The above dates are liable to alteration without notice.

## BOMBAY—DURBAN MAIL SERVICE.

Calling Kilindini, Swahili, Beira, Delagoa Bay fortnightly Also Seydlitz, Dar-es-Salaam, and Mozambique monthly

Outwards and Inwards

TO BOMBAY.

Due to arrive Mombasa

S.S. Khandalla	1st December.
S.S. KARDA	17th December.
S.S. Karagola	29th December.
* Calls Peshawar	* Calls Seydlitz and Maragha

TO DURBAN.

S.S. Karagola	4th December.
S.S. Karapara	17th December.
S.S. Khandalla	1st January.

\* Calls Dar-es-Salaam.  
All vessels due to sail the day following arrival.  
TO LONDON & Marseilles via BOMBAY. These Steamers are now scheduled to arrive in Bombay on Saturdays as so to connect with the P. & O. Mail Steamers, thus giving passengers an alternative route to London and Marseilles, and saving 14 days of steaming.

## COASTAL SERVICE.

The well-appointed Motor Vessel "DUMRA" maintains a 26 day service between Lamu and Mikindani, calling at Mombasa, Tanga, Zanzibar, Dar-es-Salaam, Mafia, Kilwa, Lindi.

Special terms for round trips.

Proceeds Lamu 29th November  
Proceeds Mikindani 3rd December.

All dates subject to alteration. Up country cheques not accepted unless endorsed by a local bank.

Return tickets issued at two single fares less 20 per cent.

Terms, rates of freight, and passages may be arranged with:

**SMITH, MACKENZIE & CO.—AGENTS**  
KILINDINI, MOMBASA, ZANZIBAR, DAR-ES-SALAAM, TANGA, LINDI,  
NAIROBI, KAMPALA and LAMU.

P.O. Box 156.

Telegraphic Address: "MACKENZIE," KILINDINI.

Telephone 85.