

Coffee Farms for Sale.

Really Excellent Coffee Farm Proposition.

Staal Limited have two undeveloped farms, Ithanga Hills District, for sale. Each farm comprises six hundred acres approx., and one is on offer for £4,000 and the other for £5,000.

Terms for payment over period of years can be arranged. Apply for full particulars to:

W. C. C. HUNTER & Co.

P. O. Box 96, Nairobi.

THE EUROPEAN AND AFRICAN TRADES ORGANISATION

Telephone 195. P.O. Box 634. Telegrams: "Trades" London. Nairobi, Memorial Hall.

All Communications to be addressed to The Secretary, PLEASE NOTE THAT.

FROM THE BEGINNING OF SEPTEMBER 1925 THE FOLLOWING FEES WILL BE CHARGED BY THIS ASSOCIATION TO ALL THOSE WHO MAKE USE OF THE ASSOCIATION AND WHO ARE NOT REGULAR CONTRIBUTORS TO THE FUND OF THE ORGANISATION.

For each African Employee supplied ... For each European Employee supplied ... For each European Representative supplied ...

A list of the 5/ will be required from each European member or her name on the Organisation's Register as working employee unless such are regular subscribers to the Fund of the Organisation.

REGULAR CONTRIBUTORS WILL CONTINUE TO RECEIVE THE FULL SERVICES OF THE ORGANISATION FREE OF CHARGE.

MOTURING TOPICS

THE BATTERY.

Important Part of Car Often Neglected.

From the beginning of electric starting and lighting of automobiles the storage battery has been and is becoming the most important part of the motor system. In recent years, this importance has still further increased by the growing tendency to fit electrical apparatus on the battery.

This was a perfect maintenance. In order to have the best lighted when the motor was not running, one must have a battery. This is a fact, notwithstanding a general opinion that a generator will generate so that one can have power when running. Keep the battery charged and not be obliged to have a recharged generator. From some outside source of expense to the owner.

The three principal types of storage battery are the alkaline, the lead-acid, and the storage battery. The alkaline battery is the most common, and the lead-acid battery is the most expensive.

Practical experience indicates that the alkaline battery is the most reliable, and the lead-acid battery is the most expensive. The alkaline battery is the most common, and the lead-acid battery is the most expensive.

A simple method of testing the condition of the battery is to measure the specific gravity of the electrolyte. This can be done with a hydrometer. The specific gravity of the electrolyte should be between 1.200 and 1.250.

The electrolyte should be kept at a constant level. If it is too low, it should be topped up with distilled water. If it is too high, it should be diluted with distilled water.

The electrolyte should be kept at a constant level. If it is too low, it should be topped up with distilled water. If it is too high, it should be diluted with distilled water.

The electrolyte should be kept at a constant level. If it is too low, it should be topped up with distilled water. If it is too high, it should be diluted with distilled water.

CAPE TO CAIRO.

Court-Treat Expedition Nears Journey's End.

A notice issued by Crowley Motors, Ltd. dated December 21, states that the headquarters of the Court-Treat Expedition have been moved from the Government of Khartoum, to the Government of the two Sudanese provinces of Khartoum and El Omdurman. It is stated that the expedition is now nearing the end of its journey.

Writing to Crowley Motors, Ltd. Major Court-Treat says: "I will be interested to hear that the expedition has been successful in its journey. The expedition has been successful in its journey. The expedition has been successful in its journey."

The expedition has been successful in its journey. The expedition has been successful in its journey. The expedition has been successful in its journey.

The expedition has been successful in its journey. The expedition has been successful in its journey. The expedition has been successful in its journey.

The expedition has been successful in its journey. The expedition has been successful in its journey. The expedition has been successful in its journey.

The expedition has been successful in its journey. The expedition has been successful in its journey. The expedition has been successful in its journey.

The expedition has been successful in its journey. The expedition has been successful in its journey. The expedition has been successful in its journey.

The expedition has been successful in its journey. The expedition has been successful in its journey. The expedition has been successful in its journey.

NAIROBI SCHOOL OF DANCING

Private Tuition given in the NEW FERRIS TANGO.

For Terms, Etc. apply MISS EYDIE OUTRAM, P. O. BOX 506, NAIROBI.

For Terms, Etc. apply MISS EYDIE OUTRAM, P. O. BOX 506, NAIROBI.

For Terms, Etc. apply MISS EYDIE OUTRAM, P. O. BOX 506, NAIROBI.

For Terms, Etc. apply MISS EYDIE OUTRAM, P. O. BOX 506, NAIROBI.

For Terms, Etc. apply MISS EYDIE OUTRAM, P. O. BOX 506, NAIROBI.

For Terms, Etc. apply MISS EYDIE OUTRAM, P. O. BOX 506, NAIROBI.

For Terms, Etc. apply MISS EYDIE OUTRAM, P. O. BOX 506, NAIROBI.

For Terms, Etc. apply MISS EYDIE OUTRAM, P. O. BOX 506, NAIROBI.

For Terms, Etc. apply MISS EYDIE OUTRAM, P. O. BOX 506, NAIROBI.

For Terms, Etc. apply MISS EYDIE OUTRAM, P. O. BOX 506, NAIROBI.

For Terms, Etc. apply MISS EYDIE OUTRAM, P. O. BOX 506, NAIROBI.

For Terms, Etc. apply MISS EYDIE OUTRAM, P. O. BOX 506, NAIROBI.

For Terms, Etc. apply MISS EYDIE OUTRAM, P. O. BOX 506, NAIROBI.

For Terms, Etc. apply MISS EYDIE OUTRAM, P. O. BOX 506, NAIROBI.

For Terms, Etc. apply MISS EYDIE OUTRAM, P. O. BOX 506, NAIROBI.

For Terms, Etc. apply MISS EYDIE OUTRAM, P. O. BOX 506, NAIROBI.

For Terms, Etc. apply MISS EYDIE OUTRAM, P. O. BOX 506, NAIROBI.

For Terms, Etc. apply MISS EYDIE OUTRAM, P. O. BOX 506, NAIROBI.

For Terms, Etc. apply MISS EYDIE OUTRAM, P. O. BOX 506, NAIROBI.

For Terms, Etc. apply MISS EYDIE OUTRAM, P. O. BOX 506, NAIROBI.

For Terms, Etc. apply MISS EYDIE OUTRAM, P. O. BOX 506, NAIROBI.

NOTICE

We beg to announce that we have acquired the business of Messrs. Samuel Jones & Company, and will continue to carry on the business as Messrs. Samuel Jones & Company, Ltd. and Estate Agents, Valuers, Auctioneers, and Exporters, etc.

The registered capital of the new company is £10,000. Messrs. Samuel Jones & Company, Ltd. and Estate Agents, Valuers, Auctioneers, and Exporters, etc.

Our new premises are situated at the corner of the main road and the main road. The new premises are situated at the corner of the main road and the main road.

Our new premises are situated at the corner of the main road and the main road. The new premises are situated at the corner of the main road and the main road.

Our new premises are situated at the corner of the main road and the main road. The new premises are situated at the corner of the main road and the main road.

Our new premises are situated at the corner of the main road and the main road. The new premises are situated at the corner of the main road and the main road.

Our new premises are situated at the corner of the main road and the main road. The new premises are situated at the corner of the main road and the main road.

Our new premises are situated at the corner of the main road and the main road. The new premises are situated at the corner of the main road and the main road.

Our new premises are situated at the corner of the main road and the main road. The new premises are situated at the corner of the main road and the main road.

Our new premises are situated at the corner of the main road and the main road. The new premises are situated at the corner of the main road and the main road.

Our new premises are situated at the corner of the main road and the main road. The new premises are situated at the corner of the main road and the main road.

Our new premises are situated at the corner of the main road and the main road. The new premises are situated at the corner of the main road and the main road.

Our new premises are situated at the corner of the main road and the main road. The new premises are situated at the corner of the main road and the main road.

Our new premises are situated at the corner of the main road and the main road. The new premises are situated at the corner of the main road and the main road.

Our new premises are situated at the corner of the main road and the main road. The new premises are situated at the corner of the main road and the main road.

Our new premises are situated at the corner of the main road and the main road. The new premises are situated at the corner of the main road and the main road.

Our new premises are situated at the corner of the main road and the main road. The new premises are situated at the corner of the main road and the main road.

Our new premises are situated at the corner of the main road and the main road. The new premises are situated at the corner of the main road and the main road.

Our new premises are situated at the corner of the main road and the main road. The new premises are situated at the corner of the main road and the main road.

Our new premises are situated at the corner of the main road and the main road. The new premises are situated at the corner of the main road and the main road.

Our new premises are situated at the corner of the main road and the main road. The new premises are situated at the corner of the main road and the main road.

Our new premises are situated at the corner of the main road and the main road. The new premises are situated at the corner of the main road and the main road.

MORTGAGES

We have a large amount of money available for lending on mortgage. The interest rate is 4% per annum. The term of the mortgage is 10 years.

We have a large amount of money available for lending on mortgage. The interest rate is 4% per annum. The term of the mortgage is 10 years.

We have a large amount of money available for lending on mortgage. The interest rate is 4% per annum. The term of the mortgage is 10 years.

We have a large amount of money available for lending on mortgage. The interest rate is 4% per annum. The term of the mortgage is 10 years.

We have a large amount of money available for lending on mortgage. The interest rate is 4% per annum. The term of the mortgage is 10 years.

We have a large amount of money available for lending on mortgage. The interest rate is 4% per annum. The term of the mortgage is 10 years.

We have a large amount of money available for lending on mortgage. The interest rate is 4% per annum. The term of the mortgage is 10 years.

We have a large amount of money available for lending on mortgage. The interest rate is 4% per annum. The term of the mortgage is 10 years.

We have a large amount of money available for lending on mortgage. The interest rate is 4% per annum. The term of the mortgage is 10 years.

We have a large amount of money available for lending on mortgage. The interest rate is 4% per annum. The term of the mortgage is 10 years.

We have a large amount of money available for lending on mortgage. The interest rate is 4% per annum. The term of the mortgage is 10 years.

We have a large amount of money available for lending on mortgage. The interest rate is 4% per annum. The term of the mortgage is 10 years.

We have a large amount of money available for lending on mortgage. The interest rate is 4% per annum. The term of the mortgage is 10 years.

We have a large amount of money available for lending on mortgage. The interest rate is 4% per annum. The term of the mortgage is 10 years.

We have a large amount of money available for lending on mortgage. The interest rate is 4% per annum. The term of the mortgage is 10 years.

We have a large amount of money available for lending on mortgage. The interest rate is 4% per annum. The term of the mortgage is 10 years.

We have a large amount of money available for lending on mortgage. The interest rate is 4% per annum. The term of the mortgage is 10 years.

We have a large amount of money available for lending on mortgage. The interest rate is 4% per annum. The term of the mortgage is 10 years.

We have a large amount of money available for lending on mortgage. The interest rate is 4% per annum. The term of the mortgage is 10 years.

We have a large amount of money available for lending on mortgage. The interest rate is 4% per annum. The term of the mortgage is 10 years.

We have a large amount of money available for lending on mortgage. The interest rate is 4% per annum. The term of the mortgage is 10 years.

We have a large amount of money available for lending on mortgage. The interest rate is 4% per annum. The term of the mortgage is 10 years.

TO LET

1000 acres, 2000 acres, 3000 acres, 4000 acres, 5000 acres, 6000 acres, 7000 acres, 8000 acres, 9000 acres, 10000 acres.

1000 acres, 2000 acres, 3000 acres, 4000 acres, 5000 acres, 6000 acres, 7000 acres, 8000 acres, 9000 acres, 10000 acres.

1000 acres, 2000 acres, 3000 acres, 4000 acres, 5000 acres, 6000 acres, 7000 acres, 8000 acres, 9000 acres, 10000 acres.

1000 acres, 2000 acres, 3000 acres, 4000 acres, 5000 acres, 6000 acres, 7000 acres, 8000 acres, 9000 acres, 10000 acres.

1000 acres, 2000 acres, 3000 acres, 4000 acres, 5000 acres, 6000 acres, 7000 acres, 8000 acres, 9000 acres, 10000 acres.

1000 acres, 2000 acres, 3000 acres, 4000 acres, 5000 acres, 6000 acres, 7000 acres, 8000 acres, 9000 acres, 10000 acres.

1000 acres, 2000 acres, 3000 acres, 4000 acres, 5000 acres, 6000 acres, 7000 acres, 8000 acres, 9000 acres, 10000 acres.

1000 acres, 2000 acres, 3000 acres, 4000 acres, 5000 acres, 6000 acres, 7000 acres, 8000 acres, 9000 acres, 10000 acres.

1000 acres, 2000 acres, 3000 acres, 4000 acres, 5000 acres, 6000 acres, 7000 acres, 8000 acres, 9000 acres, 10000 acres.

1000 acres, 2000 acres, 3000 acres, 4000 acres, 5000 acres, 6000 acres, 7000 acres, 8000 acres, 9000 acres, 10000 acres.

1000 acres, 2000 acres, 3000 acres, 4000 acres, 5000 acres, 6000 acres, 7000 acres, 8000 acres, 9000 acres, 10000 acres.

1000 acres, 2000 acres, 3000 acres, 4000 acres, 5000 acres, 6000 acres, 7000 acres, 8000 acres, 9000 acres, 10000 acres.

1000 acres, 2000 acres, 3000 acres, 4000 acres, 5000 acres, 6000 acres, 7000 acres, 8000 acres, 9000 acres, 10000 acres.

1000 acres, 2000 acres, 3000 acres, 4000 acres, 5000 acres, 6000 acres, 7000 acres, 8000 acres, 9000 acres, 10000 acres.

1000 acres, 2000 acres, 3000 acres, 4000 acres, 5000 acres, 6000 acres, 7000 acres, 8000 acres, 9000 acres, 10000 acres.

1000 acres, 2000 acres, 3000 acres, 4000 acres, 5000 acres, 6000 acres, 7000 acres, 8000 acres, 9000 acres, 10000 acres.

1000 acres, 2000 acres, 3000 acres, 4000 acres, 5000 acres, 6000 acres, 7000 acres, 8000 acres, 9000 acres, 10000 acres.

1000 acres, 2000 acres, 3000 acres, 4000 acres, 5000 acres, 6000 acres, 7000 acres, 8000 acres, 9000 acres, 10000 acres.

1000 acres, 2000 acres, 3000 acres, 4000 acres, 5000 acres, 6000 acres, 7000 acres, 8000 acres, 9000 acres, 10000 acres.

1000 acres, 2000 acres, 3000 acres, 4000 acres, 5000 acres, 6000 acres, 7000 acres, 8000 acres, 9000 acres, 10000 acres.

1000 acres, 2000 acres, 3000 acres, 4000 acres, 5000 acres, 6000 acres, 7000 acres, 8000 acres, 9000 acres, 10000 acres.

1000 acres, 2000 acres, 3000 acres, 4000 acres, 5000 acres, 6000 acres, 7000 acres, 8000 acres, 9000 acres, 10000 acres.

1000 acres, 2000 acres, 3000 acres, 4000 acres, 5000 acres, 6000 acres, 7000 acres, 8000 acres, 9000 acres, 10000 acres.

1000 acres, 2000 acres, 3000 acres, 4000 acres, 5000 acres, 6000 acres, 7000 acres, 8000 acres, 9000 acres, 10000 acres.

1000 acres, 2000 acres, 3000 acres, 4000 acres, 5000 acres, 6000 acres, 7000 acres, 8000 acres, 9000 acres, 10000 acres.

1000 acres, 2000 acres, 3000 acres, 4000 acres, 5000 acres, 6000 acres, 7000 acres, 8000 acres, 9000 acres, 10000 acres.

1000 acres, 2000 acres, 3000 acres, 4000 acres, 5000 acres, 6000 acres, 7000 acres, 8000 acres, 9000 acres, 10000 acres.

1000 acres, 2000 acres, 3000 acres, 4000 acres, 5000 acres, 6000 acres, 7000 acres, 8000 acres, 9000 acres, 10000 acres.

1000 acres, 2000 acres, 3000 acres, 4000 acres, 5000 acres, 6000 acres, 7000 acres, 8000 acres, 9000 acres, 10000 acres.

1000 acres, 2000 acres, 3000 acres, 4000 acres, 5000 acres, 6000 acres, 7000 acres, 8000 acres, 9000 acres, 10000 acres.

1000 acres, 2000 acres, 3000 acres, 4000 acres, 5000 acres, 6000 acres, 7000 acres, 8000 acres, 9000 acres, 10000 acres.

1000 acres, 2000 acres, 3000 acres, 4000 acres, 5000 acres, 6000 acres, 7000 acres, 8000 acres, 9000 acres, 10000 acres.

1000 acres, 2000 acres, 3000 acres, 4000 acres, 5000 acres, 6000 acres, 7000 acres, 8000 acres, 9000 acres, 10000 acres.

1000 acres, 2000 acres, 3000 acres, 4000 acres, 5000 acres, 6000 acres, 7000 acres, 8000 acres, 9000 acres, 10000 acres.

1000 acres, 2000 acres, 3000 acres, 4000 acres, 5000 acres, 6000 acres, 7000 acres, 8000 acres, 9000 acres, 10000 acres.

1000 acres, 2000 acres, 3000 acres, 4000 acres, 5000 acres, 6000 acres, 7000 acres, 8000 acres, 9000 acres, 10000 acres.

1000 acres, 2000 acres, 3000 acres, 4000 acres, 5000 acres, 6000 acres, 7000 acres, 8000 acres, 9000 acres, 10000 acres.

1000 acres, 2000 acres, 3000 acres, 4000 acres, 5000 acres, 6000 acres, 7000 acres, 8000 acres, 9000 acres, 10000 acres.

1000 acres, 2000 acres, 3000 acres, 4000 acres, 5000 acres, 6000 acres, 7000 acres, 8000 acres, 9000 acres, 10000 acres.

1000 acres, 2000 acres, 3000 acres, 4000 acres, 5000 acres, 6000 acres, 7000 acres, 8000 acres, 9000 acres, 10000 acres.

1000 acres, 2000 acres, 3000 acres, 4000 acres, 5000 acres, 6000 acres, 7000 acres, 8000 acres, 9000 acres, 10000 acres.

1000 acres, 2000 acres, 3000 acres, 4000 acres, 5000 acres, 6000 acres, 7000 acres, 8000 acres, 9000 acres, 10000 acres.

1000 acres, 2000 acres, 3000 acres, 4000 acres, 5000 acres, 6000 acres, 7000 acres, 8000 acres, 9000 acres, 10000 acres.

1000 acres, 2000 acres, 3000 acres, 4000 acres, 5000 acres, 6000 acres, 7000 acres, 8000 acres, 9000 acres, 10000 acres.

1000 acres, 2000 acres, 3000 acres, 4000 acres, 5000 acres, 6000 acres, 7000 acres, 8000 acres, 9000 acres, 10000 acres.

1000 acres, 2000 acres, 3000 acres, 4000 acres, 5000 acres, 6000 acres, 7000 acres, 8000 acres, 9000 acres, 10000 acres.

1000 acres, 2000 acres, 3000 acres, 4000 acres, 5000 acres, 6000 acres, 7000 acres, 8000 acres, 9000 acres, 10000 acres.

1000 acres, 2000 acres, 3000 acres, 4000 acres, 5000 acres, 6000 acres, 7000 acres, 8000 acres, 9000 acres, 10000 acres.

1000 acres, 2000 acres, 3000 acres, 4000 acres, 5000 acres, 6000 acres, 7000 acres, 8000 acres, 9000 acres, 10000 acres.

1000 acres, 2000 acres, 3000 acres, 4000 acres, 5000 acres, 6000 acres, 7000 acres, 8000 acres, 9000 acres, 10000 acres.

1000 acres, 2000 acres, 3000 acres, 4000 acres, 5000 acres, 6000 acres, 7000 acres, 8000 acres, 9000 acres, 10000 acres.

1000 acres, 2000 acres, 3000 acres, 4000 acres, 5000 acres, 6000 acres, 7000 acres, 8000 acres, 9000 acres, 10000 acres.

1000 acres, 2000 acres, 3000 acres, 4000 acres, 5000 acres, 6000 acres, 7000 acres, 8000 acres, 9000 acres, 10000 acres.

1000 acres, 2000 acres, 3000 acres, 4000 acres, 5000 acres, 6000 acres, 7000 acres, 8000 acres, 9000 acres, 10000 acres.

1000 acres, 2000 acres, 3000 acres, 4000 acres, 5000 acres, 6000 acres, 7000 acres, 8000 acres

THE EAST AFRICAN STANDARD

Advertisements are accepted only subject to approval. SPECIAL ANNOUNCEMENTS... Classified advertisements...

SITUATIONS VACANT.

MOTHERS help for Nairobi... STOREKEEPER required... WANTED for Nairobi... MOTORIST's help in healthy...

P. GETHIN, THE 121 PETROL DEPOT. HUDSON SUPERIOR CARS FOR HIRE DAY AND NIGHT.

TO LET. Board and lodgings of Nyeri... TO LET. Large airy rooms, healthy locality...

TO LET. Board and Lodging to let. Quota... TO LET. For Partner good business... SUPER SIX HUDSON.

UNFURNISHED house containing... HOUSE required by Inspector... WOOD pres. in good working... PLANTER with experience...

TO LET. LARGE airy rooms in Standard... PUBLISHED for 6 months from... TURKEY egg for an incubator... MISCELLANEOUS.

TO LET. LARGELY furnished... P. O. M. WATSON, Secretary, Central Tender Board.

CLAIMS FOR THE RIGHT OF THE... INSURE YOUR MOTOR CARS AND MOTOR CYCLES WITH THE AFRICAN GUARANTEE AND INDemnITY Co. Ltd.

CLAIMTOWN RESIDENTIAL HOTEL. FULLY LICENCED. 6 miles from Nairobi - highly scenic. Excellent Cuisine.

COPY. 19th December, 1926. CABLEGRAM FROM JOHANNESBURG, TO RALEIGH NOTTINGHAM.

SENSATIONAL PERFORMANCE RALEIGH RIDERS IN SPEED RACES AT PRETORIA YESTERDAY. SEVEN FIRSTS, FIVE SECONDS, TWO THIRDS.

WALTER FOWLES. 19th December, 1926. CABLEGRAM FROM JOHANNESBURG, TO RALEIGH NOTTINGHAM.

Returning to Africa. MR. ROBERTS-GORE, TO TRAVEL WEST COAST.

ATKINSON'S Celebrated Californian Poppy. The Celebrated Undergarment...

HIGH VIEW HOTEL, LIMURU. Main Street of Limuru. 17 in Nairobi, 8 in Tamu.

LENIN MOTOR CAR. LIGHT and BEST LIGHT. For most factories by arrangement.

Y.M.C.A. Residential Club. AN IDEAL RESIDENCE FOR MEN. Large extensions and improvements...

LOWEY BILLIARDS TENNIS LIBRARY. Town and Country Visitors Welcome.

INSURE YOUR MOTOR CARS AND MOTOR CYCLES WITH THE AFRICAN GUARANTEE AND INDemnITY Co. Ltd.

M. D. KAMPP, Chief Agent. Temporary Office: COURT CHAMBERS.

CLAIMTOWN RESIDENTIAL HOTEL. FULLY LICENCED. 6 miles from Nairobi - highly scenic. Excellent Cuisine.

COPY. 19th December, 1926. CABLEGRAM FROM JOHANNESBURG, TO RALEIGH NOTTINGHAM.

SENSATIONAL PERFORMANCE RALEIGH RIDERS IN SPEED RACES AT PRETORIA YESTERDAY. SEVEN FIRSTS, FIVE SECONDS, TWO THIRDS.

EQUATOR SAW MILLS. PODO - CEDAR - HARDWOODS. Ask for Price List. Nairobi or Maji Mazuri. SILVERTOWN (DAX TYPE) Wood Preservative.

BRITISH INDIA STEAM NAVIGATION COMPANY, LTD. AND PENINSULAR AND ORIENTAL STEAM NAVIGATION CO. LONDON AND EAST AFRICA LINE.

ALL TICKETS SUBJECT TO ALTERATION. UPON TICKETS RETURNED TICKETS ISSUED AT TWO SINGLE FARES LESS 10 PER CENT.

ANALYSIS BOOKS. FOR PETTY CASH, CASH AND ALLOCATIONS. Muster Roll Books. ATTENDANCE REGISTERS.

TAWS. BOX 611. PHONE 141. NAIROBI. LIFE POLICIES. NAIROBI CORPORATION.

MEMORIAL HALL. SATURDAY, 16th Jan. MUSIC BY THE VAUDEVILLIAN JAZZ BAND. TICKETS - 5/-.

NAIROBI WATER SUPPLY. Consignees in the following areas are requested to construct the supply at their expense...

OVERLAND

A COMPLETE CAR Metal Safari Body 3 Ply Sun Proof Top 5 Tyres & Tubes Magneto Ignition

£195

THE OVERLAND Service Station Sixth Avenue NAIROBI.

Count Them on the Road! The DURANT RUGBY

Just a real good car With a sound service organisation behind it.

SIXTH AVENUE, NAIROBI.

CARR, LAWSON & Co., Ltd.

P.O. BOX 200. PHONE 103.

"THE ARISTOCRAT OF AMERICAN AUTOMOBILES."



£465

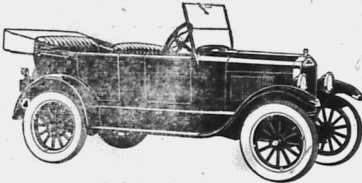
The Chrysler Six

DISTRIBUTORS YORK GARAGES Ltd., NAIROBI

IMPROVED MODELS.



NO CHANGE IN PRICE.



INCREASED values recently built into Ford cars are particularly noticeable in this attractive Touring Model, with its roomy, easy seats and pronounced beauty of line.

All the practical advantages which have made this car so universally popular are here in greater measure. Every added feature gives comfort, style and good looks in addition to remarkable utility.

The Service Company Limited.

IMPORTING DEALERS AND DISTRIBUTORS NAIROBI, MOMBASA, NAKURU, and MOSHI.



THE SERVICE COMPANY LIMITED... THE EAST AFRICAN STANDARD... THE SERVICE COMPANY LIMITED...

FIRE! FIRE! FIRE! THE YORKSHIRE INSURANCE COMPANY, LIMITED, Established 1824.

Marine Risks also undertaken Principal Agents: R. O. HAMILTON LTD. NAIROBI. Box 302

WEEK BY WEEK

The value of B.S.A. Motor Bicycles are breaking records. The reason, the right machines at the right price for every class of motor-cyclist for YOU!

B.S.A. The Undisputed Leader



Quality Makes Our Sales. See them at MEIVORS

SHELL SHELL MOTOR OILS

ERIM FLOW'S GARAGE FOR MOTOR REPAIRS, PETROL, TYRES, OILS, AND GREASES, NORTON MOTOR CYCLES, ALWAYS IN STOCK

EFFICIENT SERVICE BY EUROPEAN MECHANICS I.O. Box 646. Harding St. NAIROBI.

MARRIAGES... RAINY-DAY... THE EAST AFRICAN STANDARD... MOMBASA TIMES & UGANDA ARGUS... FRIDAY JAN 11 1930

THE EAST AFRICAN STANDARD

EAST AFRICAN SERVICE... A Governor's Visit... THE MAIRAI CHIEF... A BURNING NIGHT... THE MAIRAI CHIEF... A BURNING NIGHT... THE MAIRAI CHIEF...

H. F. WARD & COMPANY... MALAYA... KENYA... UGANDA AND TANGANYIKA... WARD & Co. Ltd. NAIROBI. Phone 56.

REPLY TO THE EDITOR... A wise preliminary to settlement or investment in Kenya is an inspection of our Property Register... TRANS-NZILIA... UGANDA BORNAS... THE CHIEF OF AFRICA... A GOVERNOR'S VISIT... THE MAIRAI CHIEF... A BURNING NIGHT...

MALARIA THE WORLD'S GREATEST REPEL FOR MALARIA IS F.S.N. G. FELLE... WARD & Co. Ltd. NAIROBI. Phone 56.

UNDER THE STANDARD CLOCK... THE EAST AFRICAN STANDARD... MOMBASA TIMES & UGANDA ARGUS... FRIDAY JAN 11 1930

THE EAST AFRICAN STANDARD... MOMBASA TIMES & UGANDA ARGUS... FRIDAY JAN 11 1930

Appointments... Local Water Shortage... Amstar's Surgeons... UGANDA BORNAS... THE CHIEF OF AFRICA... A GOVERNOR'S VISIT... THE MAIRAI CHIEF... A BURNING NIGHT...

Local Water Shortage... Amstar's Surgeons... UGANDA BORNAS... THE CHIEF OF AFRICA... A GOVERNOR'S VISIT... THE MAIRAI CHIEF... A BURNING NIGHT...

THE CHIEF OF AFRICA... A GOVERNOR'S VISIT... THE MAIRAI CHIEF... A BURNING NIGHT...

THE MAIRAI CHIEF... A BURNING NIGHT...

A BURNING NIGHT... THE MAIRAI CHIEF... A BURNING NIGHT...

THE FUTURE NAIROBI.

(Continued from page 2.)

A lobby and having afterwards... The future of Nairobi is a subject of great importance...

NAIROBI CHILDREN OUT TO TEA.

(Continued from page 2.)

The children were very happy... The tea party was a great success...

ANNUAL MEETING OF GIRL GUIDES.

(Continued from page 2.)

The annual meeting was held... The girls showed great interest...

PROGRESS OF ASSOCIATION IN FIGURES.

(Continued from page 2.)

The progress of the association... The figures show a steady increase...

SUN ECLIPSE OBSERVED IN KENYA.

(Continued from page 2.)

The eclipse was observed... The observations were very accurate...

IDEAL MORNING OBSERVED AND CLOUDLESS SKY.

(Continued from page 2.)

The morning was ideal... The sky was clear and bright...

LYRIC HALL

Ten o'clock Night The BETTER OLE BY Capt. BRUCE RAIN'S FATHER TO-NIGHT VAUDEVILIAN JAZZ BAND. NO PERFORMANCE THESE 2 EVENINGS

AS IN INDIA.

From the main entrance to the... The situation is similar to that in India...

THE YOUNG POLKS DAY.

The young polks day was... The children enjoyed the day very much...

THE PRESIDENT.

The president of the... The president was very kind...

THE CHILDREN'S DAY.

The children's day was... The children were very happy...

THE SHILOH OVER KEVA.

The shiloh over keva... The shiloh was very beautiful...

THE MONEY MARKET.

The money market... The market was very active...

White Cool Shoes for Hot Season

Advertisement for White Buckskin shoes. Includes images of shoes and text: 'White Buckskin 37/50', 'No 48927 Canvas Bar', 'No 38604', 'No 40142', 'No 17,50', 'No 58901', 'No 58990', 'No 58901', 'No 58990'.

A SITE RESERVED.

A site reserved for... The site is very important...

EXAMINATION FIGURES.

The examination figures... The figures show a good result...

THE MONEY MARKET.

The money market... The market was very active...

THE MONEY MARKET.

The money market... The market was very active...

THE MONEY MARKET.

The money market... The market was very active...

THE MONEY MARKET.

The money market... The market was very active...

Eadies The Shoe People

Advertisement for Eadies shoes. Includes text: 'Eadies The Shoe People', 'Ph.No. 433. Box 149. NAIROBI'.

PRIVATE ROADS.

Private roads... The roads are very important...

MR. CHAPLIN.

Mr. Chaplin... The actor was very popular...

THE MONEY MARKET.

The money market... The market was very active...

THE MONEY MARKET.

The money market... The market was very active...

THE MONEY MARKET.

The money market... The market was very active...

THE MONEY MARKET.

The money market... The market was very active...

THEATRE ROYAL.

TO-NIGHT, & Sat. Jan. 15th & 16th.

"CLAUDE DUVAL"

THE THRILLING ROMANCE OF THIS HIGHWAY MAN OF THE CAVALIER PERIOD, STAGED DRESSED & SCENED WITH MINUTE DETAIL.

FEATURING Nigel Barry & Fay Compton

Prices as Usual Stalls 2- & 1-, Circle, 3.

COLOURED EMBLEM TOILET SETS.

Coloured emblem toilet sets... The sets are very beautiful...

TOILET SETS & PHIBES.

Toilet sets and phibes... The sets are very beautiful...

TOILET SET SIX PHIBES.

Toilet set six phibes... The sets are very beautiful...

THE MONEY MARKET.

The money market... The market was very active...

THE MONEY MARKET.

The money market... The market was very active...

THE MONEY MARKET.

The money market... The market was very active...

CHILDPRUF

Advertisement for Childpruf. Includes text: 'CHILDPRUF FOR Children.' and an image of a child.

TOILET SETS & PHIBES.

Toilet sets and phibes... The sets are very beautiful...

TOILET SET SIX PHIBES.

Toilet set six phibes... The sets are very beautiful...

THE MONEY MARKET.

The money market... The market was very active...

THE MONEY MARKET.

The money market... The market was very active...

THE MONEY MARKET.

The money market... The market was very active...

THE MONEY MARKET.

The money market... The market was very active...

Warings

Advertisement for Warings. Includes text: 'Warings NAIROBI'S FASHION CENTRE' and an image of a woman.

THE HOUR

The hour... The hour is very important...

THE HOUR

The hour... The hour is very important...

THE HOUR

The hour... The hour is very important...

THE HOUR

The hour... The hour is very important...

THE HOUR

The hour... The hour is very important...

THE HOUR

The hour... The hour is very important...

THE HOUR

The hour... The hour is very important...

WITH REMINGTON YOU GET EUROPEAN SKILLED SERVICE WITH GUARANTEE.

MILL SUPPLY OF PARTS. ALL REPAIRS UNDERTAKEN.

REMINGTON TYPEWRITER AGENCY.

Government Road, NAIROBI. Phone 55.

Scotland's Finest Whisky

SPECIAL RESERVE

LONG JOHN

SCOTCH WHISKY

Characteristically PURE AND MATURE

LONG JOHN DISTILLERS LTD. GLASGOW, SCOTLAND

WHOLESALE DISTRIBUTORS

D. EPSTEIN & Co.

P.O. Box 178. NAIROBI. Phone 44.

MAIZE STATISTICS FROM SOUTH AFRICA.

Analysis of Carefully Made Tests.

COSTS AND PROFITS.

Interesting statistics are contained in the report on the cost of production of maize in South Africa for the season 1922-23 which has just been published by the Department of Agriculture for the Union of South Africa.

The outstanding feature of the results for the season under review was the higher yields of maize obtained and the correspondingly lower costs per bush. Both on the farms under investigation and throughout the country yields were 60 per cent. higher than the year previous and the cost per bush was 10 per cent. lower. The 1922-23 average yield was 42.5 bushels per acre, as against 26.5 bushels per acre in 1921-22. The average cost per bush was 1.10 shillings, as against 1.25 shillings in 1921-22. The average profit per bush was 1.10 shillings, as against 0.85 shillings in 1921-22.

LABOUR COSTS.

The amount of white labour employed in 1922-23 was 1,000,000 man-hours, as against 900,000 man-hours in 1921-22. The average wage per man-hour was 1.10 shillings, as against 1.05 shillings in 1921-22. The average profit per man-hour was 0.15 shillings, as against 0.10 shillings in 1921-22.

COMPARISON OF SEASONS.

The 1922-23 season was a very good one for the maize grower. The yield was 50 per cent. higher than in 1921-22, and the cost per bush was 10 per cent. lower. The profit per bush was 25 per cent. higher than in 1921-22.

Kenton College.

SOME EXCERPTS FROM THE MAGAZINE.

The Christmas term number of the *Kenyan Magazine* is a bright little publication reflecting the vigorous programme of the Faculty of the school whose second issue it is. The "School Notes" section contains a list of names of the school which has been postponed as a result of the outbreak of the influenza epidemic. The "School Notes" section is a very interesting one, and contains a list of names of the school which has been postponed as a result of the outbreak of the influenza epidemic.

NATIONAL BANK OF INDIA LIMITED.

Incorporated in the United Kingdom.

Bankers to the Colony and Protectorates of Kenya and Uganda Protectorate Governments.

Subscribed Capital £5,000,000
Paid-up Capital £2,000,000
Reserve Fund £2,800,000

HEAD OFFICE:
26, Abchurch Lane, E.C. 4

BRANCHES: Member, Nairobi, Nakuru, Kisumu, Eldoret, Malindi, Mombasa, Lamu, Dadaab, Siaya and Tana, Kisumu, Malindi, Mombasa, Lamu, Dadaab, Siaya and Tana, Kisumu, Malindi, Mombasa, Lamu, Dadaab, Siaya and Tana.

FIXED DEPOSITS: Deposits are received for fixed periods on terms which may be varied on request.

DOES YOUR FORD CAR LOOK SHABBY?

IF SO, WHAT YOU WANT IS A **ROBBIALAC OUTFIT**

FOR ENAMELING THE BODY, REPAINTING THE CUSHIONS, ETC., AND MAKE THE CAR LOOK LIKE NEW.

PRICE, COMPLETE WITH BRUSHES, ETC. IN VARIOUS COLOURS.
Large Size Shs. 30/-
Small Size Shs. 22/80

STOCKED BY—

THE SERVICE CO. LTD.
NAIROBI, AND BRANCHES.

MANUFACTURERS SOLE REPRESENTATIVE
Smith Mackenzie & Co.
P.O. Box 390. NAIROBI. Tel. 10.

ALIBHAI & Co.
BAZAR NAIROBI
LADIES AND GENTS TAILORS
TENT AND SAILMAKERS AND SAFARI OUTFITTERS.

J. H. ENGELBRECHT, NYERU.
Invincible Passenger Service, Royal Mail Motor Transport.

TENNIS RACKETS
Rebrazz
MAY & Co.
EXPERT EUROPEANS.

Charles Ware

The name that stands for integrity

PIEMOISE TURK ACCOUNTANT.

ESTABLISHED 20 YEARS.

Telephone: 632. Telegrams: Spornam. P.O. Box 170.

TRUST CHAMBERS, GOVERNMENT ROAD.

NOTE CHANGE OF ADDRESS.

The Smithfield Butchery.

(The oldest established European Butchery in Town)
Box 6. Phone 413.

The choicest only of all Butchers meat, Poultry, etc.

Meat Kept in Cold Store.

We are now in a position to Supply

P & O

PLANTERS & SHELLERS

THE HOMESTEAD.

(Late The Golden)

Facing Sports Club, Parklands. Very convenient to Town. Vacancy for a few Paying Guests. Evening Cooking Garage, Tennis.

MRS. G. WOODRUFF.

Telephone 482.

Ploughs, Disc Harrows, Cultivators etc.
J. W. MILLIGAN & CO.
GOVERNMENT ROAD
P.O. Box 148. NAIROBI.

GREAT ATTRACTION

AT THE

LYRIC

The Vaudevilian

JAZZ BAND

TO-NIGHT

TICKETS—Shs. 5/- at the door only a limited number obtainable.

JUST ARRIVED

Crepe de Chine in all colours

B. CHOITRAM.

Government Road,
P.O. Box 342. NAIROBI.

AMMUNITION

Owing to the high price of Ammunition, you want a Rifle not only to be accurate, but to be killing power.

OUR NEW INVENTION of Mauser and Maubler Shotguns with **EXTRA LONG BARREL 28"** gives naturally not only more accuracy, but a nearly 20 per cent. higher striking force on any Game.

Your Animal with one Cartridge. Our Mauser and Maubler Shotguns Rifles have proved an hitherto unknown success.

All birds available. Cal. 4.5 mm. 7 mm. 9 mm. 9 mm. 9.5 mm. 11.2 mm. from 200 to 4000/Sha.

ONLY OBTAINABLE FROM THE ORIGINAL MAUSER and MAUBLER SCHONAUER RIFLES

We guarantee accuracy, striking force and quality.

CHAS. A. HEYER & CO.
NAIROBI
Box 577. Telegrams: Khephat.

NOW IN STOCK

"B" PULPERS SIEVES
DISC PULPERS SPARES

SCOTT & DAVIDSON.
Sole Agents in Kenya for Wm. Mackenzie & Co. Ltd.,
10, GILBERT STREET, NAIROBI. S.O. 325. 211.

Short Loans Granted

£1 to £1000

CALL OR WRITE TO THE

Kenya Loan & Discount Co., Ltd.

Court Chambers, (1st Floor)
Box 546, NAIROBI.

Bills Discounted. Strictest Confidence.

OVERSEAS MAILS.

The notice is based upon the latest advice from the British Agents. It is possible, however, that circumstances may require alteration of the steamer programme, and the vessel may arrive earlier or later than anticipated, and the information given in this publication subject to this reservation.

Mails will be closed at Nairobi Post Office as noted below—

ARRIVALS

STEAMER	FROM	Days at Mombasa	Days at Nairobi
Karapara	South	Jan. 18	Jan. 19
Chambard	Bombay	" 20	" 21
Gen. Dumbane	Madagascar	" 22	" 23
Kisumu	Marseilles	" 24	" 25
Kenya	South	" 26	" 27
Gen. MacNeil	Bombay	" 28	" 29
Guilford Castle	Europe	Feb. 1	Feb. 2
Karoo	South	" 3	" 4
Karapara	Bombay	" 5	" 6

DEPARTURES.

STEAMER	FOR	Mails Close at O.P.O.	Days at Mombasa	Days at Nairobi
Karoo	South	Jan. 18	Jan. 19	Jan. 20
Chambard	Bombay	" 20	" 21	" 22
Gen. Dumbane	Madagascar	" 22	" 23	" 24
Kisumu	Marseilles	" 24	" 25	" 26
Kenya	South	" 26	" 27	" 28
Gen. MacNeil	Bombay	" 28	" 29	" 30
Guilford Castle	Europe	Feb. 1	Feb. 2	Feb. 3
Karoo	South	" 3	" 4	" 5
Karapara	Bombay	" 5	" 6	" 7

PORK SAUSAGES

Unobtainable from all the leading shops.

THE PRESIDENT'S FAVORITE

ESTD 1870

PETER & SON

We specialise in the following: DEVELOPING, PRINTING, and ENLARGING

With our new enlarger we are able to enlarge photographs to almost any size. Government Road. Phone 154. P.O. Box 411.

JUST ARRIVED LADIES & GENTS, HOLEPROOF HOSIERY IN ALL THE LATEST

SHADES

A large assortment of "TRICOLINE" IN VARIOUS COLOURS. AHAMED BROS., Bazaar, Nairobi. P.O. Box 254. Telegrams: "Outfitting."

White Lisbon Wine (DOG BRAND) By VASCONCELLOS LTDA. JUST ARRIVED (IN BULK)

Will be ready by 23rd inst. Prices Shs. 36/- per doz. bottles. B. C. Siqueira, POLICE STATION ROAD, VILLI AVENUE, NAIROBI

Toilet Requisite Co.

Government Road, Box 340. Phone 340. LADIES & GENTS HAIR DRESSERS. Galla Bonnelle Permanent Waving. Manicure, Massage. Elizabeth Arden Treatment. Special Attention: MAIL ORDER DEPARTMENT

"STANDARD" FEATURE PAGE

NOTES ON ART.

Perspective of Colour and Tone.

HINTS TO BEGINNERS.

By Margaret Colclough. The knowledge of the perspective of colour and tone is essential in the making of a picture. It is when the student is first introduced to the study of a master's work that he begins to understand the value of colour and tone in the composition of a picture. The student who is not familiar with the principles of perspective will find it difficult to understand the work of a master. The student who is familiar with the principles of perspective will find it easy to understand the work of a master.

Value of perspective in the composition of a picture. The student who is not familiar with the principles of perspective will find it difficult to understand the work of a master. The student who is familiar with the principles of perspective will find it easy to understand the work of a master.

Value of perspective in the composition of a picture. The student who is not familiar with the principles of perspective will find it difficult to understand the work of a master. The student who is familiar with the principles of perspective will find it easy to understand the work of a master.

RELIABLE CLOCKS.



Eight Day Lever Time Piece 100 With Striking 120/- 10 inch dial. These clocks have no pendulum and will go in any position.



The Dust proof Alarm Clock with bevelled glass 12/50 Postage 1/6 extra

E. DOBBIE.

Watchmaker, Jeweller, Silversmith and Optician. Government Road, NAIROBI

P. STEWART, C.A.S. S.E.D. PAINTER & DECORATOR. Redding Street. Plastering, Graining, Moulding, Gilding, etc. Oil and Water Colouring and Decorating. Coach & Motor Painting, Etc. P.O. Box 228, NAIROBI

RELIANCE TRANSPORT Co.

Phone 331. P.O. Box 482. OFFICER, GARAGE, FUEL DEPOT AND RAILWAY SIDING. ADELPHI STREET.

The Largest Motor Transport Co. in the Colony available for short distances or to the outposts of the Colony.

OUR FLEET OF 1-TON LORRIES 9 now on the road. 1 due to arrive December 26th; 2 due to arrive January 15. Total 12. FUEL - We hold the largest stocks in Nairobi.

NAIROBI MILK SUPPLY S. Andersen & Co. P.O. Box 330 NAIROBI

Miss KATHLEEN BATES, A.R.C.M. (Over 15 years in the profession) HARMONY, THEORY OF MUSIC, AND ADRIAL CULTURE. Pianist prepared for all Examinations. Teaching given in Singing and Instrumentation. Classes for Young Children on Special Modern Methods. Postal Address: Box 617, Nairobi.

Only two Manufacturers Offer "One-Profit" Unit Built Values

Only two manufacturers actually build their cars complete—make all their own engines, chassis, axles, gear boxes, differentials, steering gear, make all their own castings and drop forgings.

One is Ford. The other is Studebaker. To make this possible, Studebaker has for many years invested more than half his working capital in new and finer factory buildings and in the most modern, most efficient machinery and equipment. Because of this policy, numerous amounts in more than £20,000,000 have been built up and devoted exclusively to the production of Studebakers.

The One-Profit principle of manufacture makes possible four great advantages.

- 1. It eliminates the extra profit... 2. Because of the One-Profit savings... 3. It makes possible four quite... 4. And finally it enables us to build a better car because the vital parts are designed, engineered and manufactured complete by one organization...



Only STUDEBAKER builds the Duplex!

Studebaker Standard Six Duplex-Phaeton (illustrated) is a splendid example of One-Profit values. It has the most powerful engine of any car in the world of its weight and size. Duplex body, an exclusive Studebaker feature; full size balloon tyres, genuine Spanish grained leather upholstery, instruments, including a "day clock, grouped" in an oval panel under glass; light control on the steering wheel and many other desirable features.

Price \$245 FOR NAIROBI

THE STUDEBAKER CORPORATION OF AMERICA, SOUTH BEND, INDIANA

STUDEBAKER

BUILDERS OF QUALITY VEHICLES FOR 75 YEARS.

Sole Importers

K. McIVOR & Co.

NAIROBI.

P.O. Box 97.

Telephone 97.

Telegram: "AFFORD."

FOOTBALLS.

THE "STADIUM" Best quality English made...

THE "ARBO" Solid cowhide football...

THE "YEAR" Strong cowhide football...

FRED RAPER GENERAL COMMISSION AGENT.

P.O. Box 541. CITY HOUSE, Phone 148.

35/- GOLD MEDAL 35/-

Boiler Suits 18/-, Waterproof Gases 15/- COMPLETE STOCKS SADDLERY...

BINOCULARS. BINOCULARS.

ALL SPECIALLY BUILT FOR THE TROPICS. Binoculars 8 x 30, 6 x 30, 8 x 20...

Cartridge Hand Lamps for Night Travelling and Shooting.

We stock Messers and Messalibor Schenker Rifles and ammunition for every bore. SHAW & HUNTER...

Box 70. Telephone "GRAFFIA". Phone 210

Hupmobile 6

£425 Call for a Demonstration

THE MOTOR MART & EXCHANGE, LTD. NAIROBI.

LAWN TENNIS WE HAVE A LARGE SELECTION OF RACKETS, BALLS, NETS, PRESSES, COVERS...

POSTS, WINDERS, TAPE LINES ALL BY THE BEST MAKERS

RESTRICTING AND REPAIRS BY OUR OWN EUROPEAN WORKMEN

MAY & Co. The Sports House. J.R. STEPHENS & Co, Ltd., TAILORS AND OUTFITTERS

A FEW OF THE NEWEST GOODS JUST ARRIVED. English Box Manufacturers, Hand Made Printed, covered with effect...

A FEW OF THE NEWEST GOODS JUST ARRIVED. English Box Manufacturers, Hand Made Printed, covered with effect...

A FEW OF THE NEWEST GOODS JUST ARRIVED. English Box Manufacturers, Hand Made Printed, covered with effect...

A FEW OF THE NEWEST GOODS JUST ARRIVED. English Box Manufacturers, Hand Made Printed, covered with effect...

A FEW OF THE NEWEST GOODS JUST ARRIVED. English Box Manufacturers, Hand Made Printed, covered with effect...

A FEW OF THE NEWEST GOODS JUST ARRIVED. English Box Manufacturers, Hand Made Printed, covered with effect...

A FEW OF THE NEWEST GOODS JUST ARRIVED. English Box Manufacturers, Hand Made Printed, covered with effect...

A FEW OF THE NEWEST GOODS JUST ARRIVED. English Box Manufacturers, Hand Made Printed, covered with effect...

A FEW OF THE NEWEST GOODS JUST ARRIVED. English Box Manufacturers, Hand Made Printed, covered with effect...

A FEW OF THE NEWEST GOODS JUST ARRIVED. English Box Manufacturers, Hand Made Printed, covered with effect...

THE SPORTS PAGE THE RUGBY CODE M.C.C. IN WEST INDIES. LAWN-TENNIS AMATEUR. First Test Match Drawn at Barbados. Old Railing on Subject to Remain.

HOME FOOTBALL. Replays of English Cup Matches. CORINTHIANS BEATEN

[How Our Own Correspondent] London, Jan. 19. The following are the results of football matches played in Great Britain during the week.

ENGLISH CUP. Third Round Replays. Oldham Athletic 0, Millwall 1. Manchester City 0, Corinthian 1.

ENGLISH CUP. Third Division. Corinthian 1, Derby County 0.

SCOTTISH TRIALS. In England with three uninterupted trials, we have had choice of the best selection...

SCOTTISH TRIALS. In England with three uninterupted trials, we have had choice of the best selection...

SCOTTISH TRIALS. In England with three uninterupted trials, we have had choice of the best selection...

SCOTTISH TRIALS. In England with three uninterupted trials, we have had choice of the best selection...

SCOTTISH TRIALS. In England with three uninterupted trials, we have had choice of the best selection...

SCOTTISH TRIALS. In England with three uninterupted trials, we have had choice of the best selection...

SCOTTISH TRIALS. In England with three uninterupted trials, we have had choice of the best selection...

SCOTTISH TRIALS. In England with three uninterupted trials, we have had choice of the best selection...

SCOTTISH TRIALS. In England with three uninterupted trials, we have had choice of the best selection...

SCOTTISH TRIALS. In England with three uninterupted trials, we have had choice of the best selection...

SCOTTISH TRIALS. In England with three uninterupted trials, we have had choice of the best selection...

SCOTTISH TRIALS. In England with three uninterupted trials, we have had choice of the best selection...

SCOTTISH TRIALS. In England with three uninterupted trials, we have had choice of the best selection...

SCOTTISH TRIALS. In England with three uninterupted trials, we have had choice of the best selection...

SCOTTISH TRIALS. In England with three uninterupted trials, we have had choice of the best selection...

SCOTTISH TRIALS. In England with three uninterupted trials, we have had choice of the best selection...

SCOTTISH TRIALS. In England with three uninterupted trials, we have had choice of the best selection...

SCOTTISH TRIALS. In England with three uninterupted trials, we have had choice of the best selection...

SCOTTISH TRIALS. In England with three uninterupted trials, we have had choice of the best selection...

SCOTTISH TRIALS. In England with three uninterupted trials, we have had choice of the best selection...

SCOTTISH TRIALS. In England with three uninterupted trials, we have had choice of the best selection...

SCOTTISH TRIALS. In England with three uninterupted trials, we have had choice of the best selection...

SCOTTISH TRIALS. In England with three uninterupted trials, we have had choice of the best selection...

[How Our Own Correspondent] Barbados, January 19. The first test match between the M.C.C. and the West Indies was drawn, owing to rain there was no play and other than the first test match...

[How Our Own Correspondent] London, Jan. 19. To serve on a selection committee in connection with an enormous task, and one which is likely to have many public and expatriating problems and difficulties connected with the work...

[How Our Own Correspondent] London, Jan. 19. The following are the results of football matches played in Great Britain during the week.

[How Our Own Correspondent] London, Jan. 19. To serve on a selection committee in connection with an enormous task, and one which is likely to have many public and expatriating problems and difficulties connected with the work...

[How Our Own Correspondent] London, Jan. 19. To serve on a selection committee in connection with an enormous task, and one which is likely to have many public and expatriating problems and difficulties connected with the work...

[How Our Own Correspondent] London, Jan. 19. To serve on a selection committee in connection with an enormous task, and one which is likely to have many public and expatriating problems and difficulties connected with the work...

[How Our Own Correspondent] London, Jan. 19. To serve on a selection committee in connection with an enormous task, and one which is likely to have many public and expatriating problems and difficulties connected with the work...

[How Our Own Correspondent] London, Jan. 19. To serve on a selection committee in connection with an enormous task, and one which is likely to have many public and expatriating problems and difficulties connected with the work...

[How Our Own Correspondent] London, Jan. 19. To serve on a selection committee in connection with an enormous task, and one which is likely to have many public and expatriating problems and difficulties connected with the work...

[How Our Own Correspondent] London, Jan. 19. To serve on a selection committee in connection with an enormous task, and one which is likely to have many public and expatriating problems and difficulties connected with the work...

[How Our Own Correspondent] London, Jan. 19. To serve on a selection committee in connection with an enormous task, and one which is likely to have many public and expatriating problems and difficulties connected with the work...

[How Our Own Correspondent] London, Jan. 19. To serve on a selection committee in connection with an enormous task, and one which is likely to have many public and expatriating problems and difficulties connected with the work...

[How Our Own Correspondent] London, Jan. 19. To serve on a selection committee in connection with an enormous task, and one which is likely to have many public and expatriating problems and difficulties connected with the work...

[How Our Own Correspondent] London, Jan. 19. To serve on a selection committee in connection with an enormous task, and one which is likely to have many public and expatriating problems and difficulties connected with the work...

[How Our Own Correspondent] London, Jan. 19. To serve on a selection committee in connection with an enormous task, and one which is likely to have many public and expatriating problems and difficulties connected with the work...

[How Our Own Correspondent] London, Jan. 19. To serve on a selection committee in connection with an enormous task, and one which is likely to have many public and expatriating problems and difficulties connected with the work...

[How Our Own Correspondent] London, Jan. 19. To serve on a selection committee in connection with an enormous task, and one which is likely to have many public and expatriating problems and difficulties connected with the work...

[How Our Own Correspondent] London, Jan. 19. To serve on a selection committee in connection with an enormous task, and one which is likely to have many public and expatriating problems and difficulties connected with the work...

[How Our Own Correspondent] London, Jan. 19. To serve on a selection committee in connection with an enormous task, and one which is likely to have many public and expatriating problems and difficulties connected with the work...

[How Our Own Correspondent] London, Jan. 19. To serve on a selection committee in connection with an enormous task, and one which is likely to have many public and expatriating problems and difficulties connected with the work...

[How Our Own Correspondent] London, Jan. 19. To serve on a selection committee in connection with an enormous task, and one which is likely to have many public and expatriating problems and difficulties connected with the work...

[How Our Own Correspondent] London, Jan. 19. To serve on a selection committee in connection with an enormous task, and one which is likely to have many public and expatriating problems and difficulties connected with the work...

[How Our Own Correspondent] London, Jan. 19. To serve on a selection committee in connection with an enormous task, and one which is likely to have many public and expatriating problems and difficulties connected with the work...

[How Our Own Correspondent] London, Jan. 19. To serve on a selection committee in connection with an enormous task, and one which is likely to have many public and expatriating problems and difficulties connected with the work...

[How Our Own Correspondent] London, Jan. 19. To serve on a selection committee in connection with an enormous task, and one which is likely to have many public and expatriating problems and difficulties connected with the work...

[How Our Own Correspondent] London, Jan. 19. To serve on a selection committee in connection with an enormous task, and one which is likely to have many public and expatriating problems and difficulties connected with the work...

[How Our Own Correspondent] London, Jan. 19. To serve on a selection committee in connection with an enormous task, and one which is likely to have many public and expatriating problems and difficulties connected with the work...

FOOTLESS Footwear

THE "OAKMOORE" DEER WALKING SHOE. The best value in shoes on offer is in the Oakmoore Deer walking shoe...

THE "OAKMOORE" DEER WALKING SHOE. The best value in shoes on offer is in the Oakmoore Deer walking shoe...

THE "OAKMOORE" DEER WALKING SHOE. The best value in shoes on offer is in the Oakmoore Deer walking shoe...

THE "OAKMOORE" DEER WALKING SHOE. The best value in shoes on offer is in the Oakmoore Deer walking shoe...

THE "OAKMOORE" DEER WALKING SHOE. The best value in shoes on offer is in the Oakmoore Deer walking shoe...

THE "OAKMOORE" DEER WALKING SHOE. The best value in shoes on offer is in the Oakmoore Deer walking shoe...

THE "OAKMOORE" DEER WALKING SHOE. The best value in shoes on offer is in the Oakmoore Deer walking shoe...

THE "OAKMOORE" DEER WALKING SHOE. The best value in shoes on offer is in the Oakmoore Deer walking shoe...

THE "OAKMOORE" DEER WALKING SHOE. The best value in shoes on offer is in the Oakmoore Deer walking shoe...

THE "OAKMOORE" DEER WALKING SHOE. The best value in shoes on offer is in the Oakmoore Deer walking shoe...

THE "OAKMOORE" DEER WALKING SHOE. The best value in shoes on offer is in the Oakmoore Deer walking shoe...

THE "OAKMOORE" DEER WALKING SHOE. The best value in shoes on offer is in the Oakmoore Deer walking shoe...

THE "OAKMOORE" DEER WALKING SHOE. The best value in shoes on offer is in the Oakmoore Deer walking shoe...

THE "OAKMOORE" DEER WALKING SHOE. The best value in shoes on offer is in the Oakmoore Deer walking shoe...

THE "OAKMOORE" DEER WALKING SHOE. The best value in shoes on offer is in the Oakmoore Deer walking shoe...

THE "OAKMOORE" DEER WALKING SHOE. The best value in shoes on offer is in the Oakmoore Deer walking shoe...

THE "OAKMOORE" DEER WALKING SHOE. The best value in shoes on offer is in the Oakmoore Deer walking shoe...

THE "OAKMOORE" DEER WALKING SHOE. The best value in shoes on offer is in the Oakmoore Deer walking shoe...

THE "OAKMOORE" DEER WALKING SHOE. The best value in shoes on offer is in the Oakmoore Deer walking shoe...

THE "OAKMOORE" DEER WALKING SHOE. The best value in shoes on offer is in the Oakmoore Deer walking shoe...

THE "OAKMOORE" DEER WALKING SHOE. The best value in shoes on offer is in the Oakmoore Deer walking shoe...

THE "OAKMOORE" DEER WALKING SHOE. The best value in shoes on offer is in the Oakmoore Deer walking shoe...

THE "OAKMOORE" DEER WALKING SHOE. The best value in shoes on offer is in the Oakmoore Deer walking shoe...

THE "OAKMOORE" DEER WALKING SHOE. The best value in shoes on offer is in the Oakmoore Deer walking shoe...

THE "OAKMOORE" DEER WALKING SHOE. The best value in shoes on offer is in the Oakmoore Deer walking shoe...

THE "OAKMOORE" DEER WALKING SHOE. The best value in shoes on offer is in the Oakmoore Deer walking shoe...

THE "OAKMOORE" DEER WALKING SHOE. The best value in shoes on offer is in the Oakmoore Deer walking shoe...

THE NAKURU SHOW GATE ENTRIES CLOSE JANUARY 20th. SHOW OUR NEIGHBOURS WHAT KENYA IS DOING FILLING THE SHOW YARD WITH EXHIBITS TO BURSTING POINT

Printed and Published by EAST AFRICAN STANDARD Ltd., 25th Avenue, Nairobi.

FOOTLESS Footwear. P.O. Box No. 200. Phone No. 126. Telegrams: "ADVVALGERS". NAIROBI.

THE MAN WHO KNOWS AND APPRECIATES A GOOD BEER OR STOUT DRINKS

Kenya Beer & Stout

BECAUSE HE KNOWS THEY ARE REAL DRINKS WITH THE REAL HOME FLAVOUR

No. 3765. REGISTERED AT THE GENERAL POST OFFICE AS A NEWSPAPER.

GUARANTEED THE LARGEST CIRCULATION OF ANY NEWSPAPER. IN KENYA, UGANDA, TANGANYIKA AND ZANZIBAR.

DAILY EAST AFRICAN

The East African Standard

MOMBASA TIMES & UGANDA ARGUS. With which is incorporated THE LEADER.

NAIROBI, SATURDAY, JANUARY 16, 1929

THE LOUNGE FOR COCKTAILS AND TEAS THE DINING ROOM FOR BREAK FASTS, LUNCHES, AND DINNERS.

The NEW STANLEY HOTEL

EAST AFRICAN AIR MAIL

MR. ALAN COBHAM'S STORY FROM CAIRO TO KISUMU.

The Proposed Service.

FAMOUS PILOT SUPPORTS THE PROJECTED SCHEME.

The Difficult Areas.

ALTERNATIVE LAND ROUTE TO BE SURVEYED OR RETURN.

(Special to the "E. A. Standard" by Alan J. Cobham.)

Kisumu, January 16, 1929. Today, January 16, 1929, we have a very interesting and important news item for our readers, in the shape of a long and interesting account by Alan J. Cobham, the famous pilot, of his proposed service from Cairo to Kisumu.

The proposed service is from Cairo to Kisumu, via the Mediterranean Sea, by air. It will take about a week to complete the whole of the journey, and will be carried out by a biplane.

On our way from the Nile to the Mediterranean Sea, we shall have to pass through the Sudd, which is a very difficult area, and also the White Nile, which is a very difficult area.

On our way from the Nile to the Mediterranean Sea, we shall have to pass through the Sudd, which is a very difficult area, and also the White Nile, which is a very difficult area.

On our way from the Nile to the Mediterranean Sea, we shall have to pass through the Sudd, which is a very difficult area, and also the White Nile, which is a very difficult area.

On our way from the Nile to the Mediterranean Sea, we shall have to pass through the Sudd, which is a very difficult area, and also the White Nile, which is a very difficult area.

On our way from the Nile to the Mediterranean Sea, we shall have to pass through the Sudd, which is a very difficult area, and also the White Nile, which is a very difficult area.

On our way from the Nile to the Mediterranean Sea, we shall have to pass through the Sudd, which is a very difficult area, and also the White Nile, which is a very difficult area.

On our way from the Nile to the Mediterranean Sea, we shall have to pass through the Sudd, which is a very difficult area, and also the White Nile, which is a very difficult area.

On our way from the Nile to the Mediterranean Sea, we shall have to pass through the Sudd, which is a very difficult area, and also the White Nile, which is a very difficult area.

On our way from the Nile to the Mediterranean Sea, we shall have to pass through the Sudd, which is a very difficult area, and also the White Nile, which is a very difficult area.

On our way from the Nile to the Mediterranean Sea, we shall have to pass through the Sudd, which is a very difficult area, and also the White Nile, which is a very difficult area.

CAR SMASH ON NONG ROAD.

Mr. H. Bellinger Severely Injured.

THE WASH AREA

A DOUBLE SOMERSSET!

On Sunday, the 14th, the P.O. was severely damaged by the explosion of a bomb, which was thrown into the building by a man.

On Sunday, the 14th, the P.O. was severely damaged by the explosion of a bomb, which was thrown into the building by a man.

On Sunday, the 14th, the P.O. was severely damaged by the explosion of a bomb, which was thrown into the building by a man.

On Sunday, the 14th, the P.O. was severely damaged by the explosion of a bomb, which was thrown into the building by a man.

On Sunday, the 14th, the P.O. was severely damaged by the explosion of a bomb, which was thrown into the building by a man.

On Sunday, the 14th, the P.O. was severely damaged by the explosion of a bomb, which was thrown into the building by a man.

On Sunday, the 14th, the P.O. was severely damaged by the explosion of a bomb, which was thrown into the building by a man.

On Sunday, the 14th, the P.O. was severely damaged by the explosion of a bomb, which was thrown into the building by a man.

On Sunday, the 14th, the P.O. was severely damaged by the explosion of a bomb, which was thrown into the building by a man.

On Sunday, the 14th, the P.O. was severely damaged by the explosion of a bomb, which was thrown into the building by a man.

On Sunday, the 14th, the P.O. was severely damaged by the explosion of a bomb, which was thrown into the building by a man.

On Sunday, the 14th, the P.O. was severely damaged by the explosion of a bomb, which was thrown into the building by a man.

On Sunday, the 14th, the P.O. was severely damaged by the explosion of a bomb, which was thrown into the building by a man.

On Sunday, the 14th, the P.O. was severely damaged by the explosion of a bomb, which was thrown into the building by a man.

On Sunday, the 14th, the P.O. was severely damaged by the explosion of a bomb, which was thrown into the building by a man.

On Sunday, the 14th, the P.O. was severely damaged by the explosion of a bomb, which was thrown into the building by a man.

On Sunday, the 14th, the P.O. was severely damaged by the explosion of a bomb, which was thrown into the building by a man.

NORTHERN FRONTIER TRAGEDY.

European Trader Reported Shot by Somalis.

WIRELESS OPERATORS STRIKE.

Question to be Raised in Parliament.

COURT-TREAT EXPEDITION.

A DEAD-END ON THE BANKS OF THE NILE.

WHILE AWAY'S STOCK TAKING SALE.

Whiteways are offering over a million shillings worth of stock at prices that are bound to attract the public.

"Habari" at a Crisis.

THE CHAIRMAN'S INSTRUCTIONS WE MAKE IT SO.

WATCH THIS SPACE DAILY FOR SPECIAL OFFERS.

Whiteway, Laidlaw & Co., Ltd. NAIROBI.

PRICE 20 CENTA

ON MONDAY NEXT

WHITEAWAY'S STOCK TAKING SALE

Whiteways are offering over a million shillings worth of stock at prices that are bound to attract the public.

THIS IS NO ORDINARY SALE, THE CHAIRMAN HAS CABLED AS FOLLOWS.

LONDON, JAN. 15, 28.

"My hearty congratulations on your excellent December trade and my best wishes for a successful Clearance sale. The magnificent value you are now able to offer should attract a very large volume of Sales business. My best wishes for a successful Clearance sale."

THE CHAIRMAN'S INSTRUCTIONS WE MAKE IT SO.

Particular attention is directed to the Arcade window displays, these will be illuminated this evening from 6 to 8 p.m.

There are wonderful bargains in all departments prices are very much lower as this huge stock must be appreciably reduced before the annual stock taking.

Watch this space daily For Special Offers

Whiteway, Laidlaw & Co., Ltd. NAIROBI.

With reference to the following message from our European Correspondent, regarding the fact that a Dutch trader named Masurel was killed by Somalis in the Northern Frontier District, and about the news that the O.O. M.A.R. has left for the Northern Frontier District.

The fact that the O.O. M.A.R. has left for the Northern Frontier District, and about the news that the O.O. M.A.R. has left for the Northern Frontier District, and about the news that the O.O. M.A.R. has left for the Northern Frontier District.

The fact that the O.O. M.A.R. has left for the Northern Frontier District, and about the news that the O.O. M.A.R. has left for the Northern Frontier District, and about the news that the O.O. M.A.R. has left for the Northern Frontier District.

The fact that the O.O. M.A.R. has left for the Northern Frontier District, and about the news that the O.O. M.A.R. has left for the Northern Frontier District, and about the news that the O.O. M.A.R. has left for the Northern Frontier District.

The fact that the O.O. M.A.R. has left for the Northern Frontier District, and about the news that the O.O. M.A.R. has left for the Northern Frontier District, and about the news that the O.O. M.A.R. has left for the Northern Frontier District.

The fact that the O.O. M.A.R. has left for the Northern Frontier District, and about the news that the O.O. M.A.R. has left for the Northern Frontier District, and about the news that the O.O. M.A.R. has left for the Northern Frontier District.

The fact that the O.O. M.A.R. has left for the Northern Frontier District, and about the news that the O.O. M.A.R. has left for the Northern Frontier District, and about the news that the O.O. M.A.R. has left for the Northern Frontier District.

The fact that the O.O. M.A.R. has left for the Northern Frontier District, and about the news that the O.O. M.A.R. has left for the Northern Frontier District, and about the news that the O.O. M.A.R. has left for the Northern Frontier District.

The fact that the O.O. M.A.R. has left for the Northern Frontier District, and about the news that the O.O. M.A.R. has left for the Northern Frontier District, and about the news that the O.O. M.A.R. has left for the Northern Frontier District.

The fact that the O.O. M.A.R. has left for the Northern Frontier District, and about the news that the O.O. M.A.R. has left for the Northern Frontier District, and about the news that the O.O. M.A.R. has left for the Northern Frontier District.

The fact that the O.O. M.A.R. has left for the Northern Frontier District, and about the news that the O.O. M.A.R. has left for the Northern Frontier District, and about the news that the O.O. M.A.R. has left for the Northern Frontier District.

The fact that the O.O. M.A.R. has left for the Northern Frontier District, and about the news that the O.O. M.A.R. has left for the Northern Frontier District, and about the news that the O.O. M.A.R. has left for the Northern Frontier District.

The fact that the O.O. M.A.R. has left for the Northern Frontier District, and about the news that the O.O. M.A.R. has left for the Northern Frontier District, and about the news that the O.O. M.A.R. has left for the Northern Frontier District.

The fact that the O.O. M.A.R. has left for the Northern Frontier District, and about the news that the O.O. M.A.R. has left for the Northern Frontier District, and about the news that the O.O. M.A.R. has left for the Northern Frontier District.

The fact that the O.O. M.A.R. has left for the Northern Frontier District, and about the news that the O.O. M.A.R. has left for the Northern Frontier District, and about the news that the O.O. M.A.R. has left for the Northern Frontier District.

BARGAINS IN TOYS, CRACKERS & NOVELTIES, LADIES READY TO WEAR HATS, MEN'S FULL OVERS, ATKINSON'S & YARDLEY'S PERFUMERY etc., etc.

Visit our Display before going elsewhere. M. R. de SOUZA & Co. P.O. Box 195. Govt. Road. Phone 75.

THE !! BUILDING MATERIAL STANDARD BRICKS

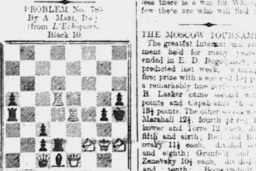
The Nairobi Brick, Tile & Pipe Works Ltd. Works: MUTHAIGA. Enquiries: BEALES & SMITHSON, MANAGING SECRETARIES. P.O. Box 191. Phones: 403, 43 Office 193.

THE EUROPEAN AND AFRICAN TRADES ORGANISATION

PLEASE NOTE THAT THE FOLLOWING FEES WILL BE CHARGED BY THIS ASSOCIATION TO ALL THOSE WHO MAKE USE OF THE ASSOCIATION AND WHO ARE NOT REGULAR SUBSCRIBERS TO THE FUNDS OF THE ORGANIZATION. For each African Employee supplied ... 5/- 6/ For each European Employee supplied ... 10/- 12/ For each European Employee supplied ... 10/- 12/

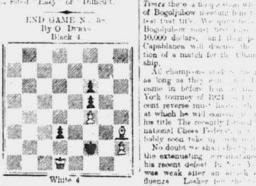
CHESS PROBLEMS

White to play and win. The whole strategy in producing the above position from the starting position is a matter of order to all readers. It is well known to every chess player that White's King is in a well-known trap of Black's King. In this position White has a well-known advantage. It is a matter of order to all readers. It is well known to every chess player that White's King is in a well-known trap of Black's King.



White to move. White mates in two moves. Black's move is to be decided by White. White mates in two moves. Black's move is to be decided by White.

White to move. White mates in two moves. Black's move is to be decided by White. White mates in two moves. Black's move is to be decided by White.



Colts very hard when Capablanca beat him in 1924. Capablanca probably will surprise the world of chess in the future. Some kind of a surprise. Some kind of a surprise. Some kind of a surprise.

THE LIGHTS TOURNAMENT

The lights tournament, and some good local news was brought to light. The organizers are to be congratulated upon the arrangement which included the provision of the prize cups. For the winner and runner-up. As we reported, Mr. L. A. Johnson beat Maslow (1-0).

L. A. Johnson beat Maslow (1-0). Mr. Chubb beat Maslow (1-0). Mr. Chubb beat Maslow (1-0). Mr. Chubb beat Maslow (1-0).

L. A. Johnson beat Maslow (1-0). Mr. Chubb beat Maslow (1-0). Mr. Chubb beat Maslow (1-0). Mr. Chubb beat Maslow (1-0).

NOTICE

The Director B.M.M. is an interesting article on the world war. The Director B.M.M. is an interesting article on the world war. The Director B.M.M. is an interesting article on the world war.

played in his first tour. Jera and Spangler. Two of them. Jera and Spangler. Two of them. Jera and Spangler. Two of them.

NAIROBI MILK SUPPLY S. Andersen & Co. P.O. Box 330 NAIROBI

Essjay Limited P.O. Box 634 Theatre Royal Building, Sixth Avenue, Nairobi. Phone 877. Telegrams: Essjay.

Notice. Notice. Notice. Notice. Notice. Notice. Notice. Notice.

MAISON MAX

Big to inform their numerous clients that they are not connected with Maison Max Ltd. and are not closing down or going into liquidation. BUSINESS AS USUAL.

P.O. Box 123. Phone 485. York House, Government Road, NAIROBI.

JOANES & BROS

Ladies Dress Makers & Gents Tailors & Outfitters. RAYNES BUILDING, Opposite Simpson and Whitelaw Lads. Come and inspect our newly arrived stock consisting of printed silks of various colors for Ladies and Gents high class suitings Terai hats, Felt Hats and Ties etc.

TO-DAY is one of motorised living and working—of swifter movement,—of increased accomplishment. The problem, squarely up to motorcar designers, engineers and manufacturers, has been the construction of a type of engine and motorcar to meet the vital and urgent needs of this new day.



Buick 24-35 Sport Touring. No other car in the world offers all these important advantages.

Such a motorcar is now here. Certainly no modern development in motor car design so completely answers the needs and requirements of the new-day driving as the new Buick. Decide now to see and drive this epochal motorcar at the very earliest opportunity. Nothing will so surely emphasize the vast difference between ordinary motorcars and the new Buick Six as the new delight you, yourself, feel the first time you drive a Buick.

- Four-wheel Brakes, Air Filter, Fuel Filter, Completely Sealed Chassis, Cantilever Springing, Dipping Head Lights, 72 Horse Power, Finger-Shift Steering, Light Pressure Clutch, Valve-in-Head Engine, Remarkable Fuel Economy.

There are more Buicks registered throughout the world than any other cars except Chevrolet and Ford. Buick predominance in registrations means extra miles turned in by old Buicks built. The oldest cars in regular operation in East Africa are Buicks that engineering has accomplished this by thinking always of superior stamina and placing it in every Buick part, and then, by placing around that stamina such protection as the famous "Sealed Chassis" and the "Triple Sealed Engine". All Buick operating parts are barricaded from dirt and road to insure longer life with less upkeep.

Gillfillan & Company, Ltd. DISTRIBUTORS

NOTICE. We beg to announce that we have acquired the business of Messrs. Samuel Sanyal & Company, and will continue to carry on the business formerly conducted by them as Managing and General Agents for the Land & Estate Agency, Valuers, Valuers, Probate, Executors, etc.

The registered capital of the new company is £10,000, and the Directors are Messrs. Samuel Sanyal and H. V. Meekowan.

Close to Limuru Station, 120 acres 410 per acre. 120 acres 410 per acre. 120 acres 410 per acre.

Marginal, 150 acres, 120 per acre. Marginal, 150 acres, 120 per acre. Marginal, 150 acres, 120 per acre.

Marginal, 150 acres, 120 per acre. Marginal, 150 acres, 120 per acre. Marginal, 150 acres, 120 per acre.

Marginal, 150 acres, 120 per acre. Marginal, 150 acres, 120 per acre. Marginal, 150 acres, 120 per acre.

Marginal, 150 acres, 120 per acre. Marginal, 150 acres, 120 per acre. Marginal, 150 acres, 120 per acre.

Marginal, 150 acres, 120 per acre. Marginal, 150 acres, 120 per acre. Marginal, 150 acres, 120 per acre.

Marginal, 150 acres, 120 per acre. Marginal, 150 acres, 120 per acre. Marginal, 150 acres, 120 per acre.

Marginal, 150 acres, 120 per acre. Marginal, 150 acres, 120 per acre. Marginal, 150 acres, 120 per acre.

Marginal, 150 acres, 120 per acre. Marginal, 150 acres, 120 per acre. Marginal, 150 acres, 120 per acre.

Marginal, 150 acres, 120 per acre. Marginal, 150 acres, 120 per acre. Marginal, 150 acres, 120 per acre.

Marginal, 150 acres, 120 per acre. Marginal, 150 acres, 120 per acre. Marginal, 150 acres, 120 per acre.

Marginal, 150 acres, 120 per acre. Marginal, 150 acres, 120 per acre. Marginal, 150 acres, 120 per acre.

Marginal, 150 acres, 120 per acre. Marginal, 150 acres, 120 per acre. Marginal, 150 acres, 120 per acre.

Marginal, 150 acres, 120 per acre. Marginal, 150 acres, 120 per acre. Marginal, 150 acres, 120 per acre.

Marginal, 150 acres, 120 per acre. Marginal, 150 acres, 120 per acre. Marginal, 150 acres, 120 per acre.

Marginal, 150 acres, 120 per acre. Marginal, 150 acres, 120 per acre. Marginal, 150 acres, 120 per acre.

Marginal, 150 acres, 120 per acre. Marginal, 150 acres, 120 per acre. Marginal, 150 acres, 120 per acre.

Marginal, 150 acres, 120 per acre. Marginal, 150 acres, 120 per acre. Marginal, 150 acres, 120 per acre.

Marginal, 150 acres, 120 per acre. Marginal, 150 acres, 120 per acre. Marginal, 150 acres, 120 per acre.

Marginal, 150 acres, 120 per acre. Marginal, 150 acres, 120 per acre. Marginal, 150 acres, 120 per acre.

THE EAST AFRICAN STANDARD
ADVERTISING RATES
DAILY EDITION.
 Classified advertising subject to approval.
NOTICE OF ADVERTISEMENTS
 Daily, 10 per line of 10 words.
REGULARLY PUBLISHED
ADVERTISEMENTS
 Daily, 10 per line of 10 words.
 For 14 days, 10 per line of 10 words.
 For 1 month, 10 per line of 10 words.
 For 3 months, 10 per line of 10 words.
 For 6 months, 10 per line of 10 words.
 For 1 year, 10 per line of 10 words.
 For 2 years, 10 per line of 10 words.
 For 3 years, 10 per line of 10 words.
 For 4 years, 10 per line of 10 words.
 For 5 years, 10 per line of 10 words.
 For 6 years, 10 per line of 10 words.
 For 7 years, 10 per line of 10 words.
 For 8 years, 10 per line of 10 words.
 For 9 years, 10 per line of 10 words.
 For 10 years, 10 per line of 10 words.

SITUATIONS VACANT.

MOTHERS HELP for Maternity is available for all mothers. Apply to: **MOHRI**, Nairobi.

STORER/KEEPER required for the storage of goods. Must have previous experience in a similar position. Apply to: **MOHRI**, Nairobi.

MOTHERS HELP is available for all mothers. Apply to: **MOHRI**, Nairobi.

WANTED Competent Book-keeper for Nairobi branch. Must be willing to relocate. Apply to: **MOHRI**, Nairobi.

WANTED Immediate entry for boys and girls of 10-15 years. Apply to: **MOHRI**, Nairobi.

WANTED For Kilo Moini, Kenya. Apply to: **MOHRI**, Nairobi.

WANTED Good practical knowledge of the Swahili language. Apply to: **MOHRI**, Nairobi.

COMMERCIAL TRAVELER young with good letters. Apply to: **MOHRI**, Nairobi.

SEVERAL Indian mechanics, only good and honest applicants. Apply to: **MOHRI**, Nairobi.

NOTICE.

Central Tender Board.
 Includes an article from the Kenya Gazette regarding the tender process. The article discusses the importance of transparency and fairness in the procurement of goods and services for the Government of Kenya.

EQUATOR SAW MILLS

Ask for Price List. Nairobi or Maji Mazuri.

Silvertown (DAB) Wood Preservative

Just Received Further Large Consignment in 8 Gallon Drums

Sadler Street. Box 291. Nairobi.

BRITISH INDIA STEAM NAVIGATION COMPANY, LTD

AFRICA AND EAST AFRICA LINE

Ship Name	Destination	Departure Date
MS. SHIRAZA	Aden, Colombo, Port Said, Port Sudan and Aden, Ormuz and Karachi.	16th January
MS. SHIRAZA	Aden, Colombo, Port Said, Port Sudan and Aden, Ormuz and Karachi.	30th January
MS. SHIRAZA	Aden, Colombo, Port Said, Port Sudan and Aden, Ormuz and Karachi.	13th February
MS. SHIRAZA	Aden, Colombo, Port Said, Port Sudan and Aden, Ormuz and Karachi.	27th February
MS. SHIRAZA	Aden, Colombo, Port Said, Port Sudan and Aden, Ormuz and Karachi.	12th March
MS. SHIRAZA	Aden, Colombo, Port Said, Port Sudan and Aden, Ormuz and Karachi.	26th March
MS. SHIRAZA	Aden, Colombo, Port Said, Port Sudan and Aden, Ormuz and Karachi.	9th April
MS. SHIRAZA	Aden, Colombo, Port Said, Port Sudan and Aden, Ormuz and Karachi.	23rd April
MS. SHIRAZA	Aden, Colombo, Port Said, Port Sudan and Aden, Ormuz and Karachi.	7th May
MS. SHIRAZA	Aden, Colombo, Port Said, Port Sudan and Aden, Ormuz and Karachi.	21st May
MS. SHIRAZA	Aden, Colombo, Port Said, Port Sudan and Aden, Ormuz and Karachi.	4th June
MS. SHIRAZA	Aden, Colombo, Port Said, Port Sudan and Aden, Ormuz and Karachi.	18th June
MS. SHIRAZA	Aden, Colombo, Port Said, Port Sudan and Aden, Ormuz and Karachi.	2nd July
MS. SHIRAZA	Aden, Colombo, Port Said, Port Sudan and Aden, Ormuz and Karachi.	16th July
MS. SHIRAZA	Aden, Colombo, Port Said, Port Sudan and Aden, Ormuz and Karachi.	30th July
MS. SHIRAZA	Aden, Colombo, Port Said, Port Sudan and Aden, Ormuz and Karachi.	13th August
MS. SHIRAZA	Aden, Colombo, Port Said, Port Sudan and Aden, Ormuz and Karachi.	27th August
MS. SHIRAZA	Aden, Colombo, Port Said, Port Sudan and Aden, Ormuz and Karachi.	10th September
MS. SHIRAZA	Aden, Colombo, Port Said, Port Sudan and Aden, Ormuz and Karachi.	24th September
MS. SHIRAZA	Aden, Colombo, Port Said, Port Sudan and Aden, Ormuz and Karachi.	8th October
MS. SHIRAZA	Aden, Colombo, Port Said, Port Sudan and Aden, Ormuz and Karachi.	22nd October
MS. SHIRAZA	Aden, Colombo, Port Said, Port Sudan and Aden, Ormuz and Karachi.	5th November
MS. SHIRAZA	Aden, Colombo, Port Said, Port Sudan and Aden, Ormuz and Karachi.	19th November
MS. SHIRAZA	Aden, Colombo, Port Said, Port Sudan and Aden, Ormuz and Karachi.	3rd December
MS. SHIRAZA	Aden, Colombo, Port Said, Port Sudan and Aden, Ormuz and Karachi.	17th December
MS. SHIRAZA	Aden, Colombo, Port Said, Port Sudan and Aden, Ormuz and Karachi.	31st December

FOR SALE.

Wanted immediate entry for boys and girls of 10-15 years. Apply to: **MOHRI**, Nairobi.

Wanted For Kilo Moini, Kenya. Apply to: **MOHRI**, Nairobi.

Wanted Good practical knowledge of the Swahili language. Apply to: **MOHRI**, Nairobi.

Commercial Traveler young with good letters. Apply to: **MOHRI**, Nairobi.

Several Indian mechanics, only good and honest applicants. Apply to: **MOHRI**, Nairobi.

WANTED.

Wanted immediate entry for boys and girls of 10-15 years. Apply to: **MOHRI**, Nairobi.

Wanted For Kilo Moini, Kenya. Apply to: **MOHRI**, Nairobi.

Wanted Good practical knowledge of the Swahili language. Apply to: **MOHRI**, Nairobi.

Commercial Traveler young with good letters. Apply to: **MOHRI**, Nairobi.

Several Indian mechanics, only good and honest applicants. Apply to: **MOHRI**, Nairobi.

P. O. M. WATSON.

INSURE YOUR MOTOR CAR AND MOTOR CYCLES

AFRICAN GUARANTEE AND INDEMNITY Co. Ltd.

M. D. KAMPEF, Chief Agent.

TEMPERATURE GAUGES: SOOTY CHIMNEYS

FOR SALE.

2000 P.A. music profits for 1000 shares. Apply to: **MOHRI**, Nairobi.

1000 P.A. music profits for 1000 shares. Apply to: **MOHRI**, Nairobi.

500 P.A. music profits for 500 shares. Apply to: **MOHRI**, Nairobi.

MISCELLANEOUS.

Qualified Teacher of P.E. for a school. Apply to: **MOHRI**, Nairobi.

Land 1000 sq. ft. for sale. Apply to: **MOHRI**, Nairobi.

YOUNG boy, 10 years old, for adoption. Apply to: **MOHRI**, Nairobi.

ROOM available for investment. Apply to: **MOHRI**, Nairobi.

ANALYSIS BOOKS

FOR PETTY CASH, CASH AND ALLOCATIONS

Muster Roll Books

ATTENDANCE REGISTERS

TAWNS BOX 611, NAIROBI

PHONE 141.

OPENING

ON MONDAY JANUARY 18th.

THE MEDICAL SUPPLY, Co.

DIRECT IMPORTERS:

WHOLESALE AND RETAIL CHEMISTS

AT THE

BOMA BUILDINGS, (Late Fisher & Simmons.)

Special Quotations to Employers of Labour.

MEMORIAL HALL

TO-NIGHT 16th Jan.

THE VARDOLIAN JAZZ BAND

LIFE POLICIES.

MEMORIAL HALL

TO-NIGHT 16th Jan.

THE VARDOLIAN JAZZ BAND

LIFE POLICIES.

CHURCH NOTICES.

NAIROBI CHAPLAINRY.

SUNDAY JAN 16

SUNDAY JAN 17

SUNDAY JAN 18

SUNDAY JAN 19

SUNDAY JAN 20

SUNDAY JAN 21

SUNDAY JAN 22

SUNDAY JAN 23

SUNDAY JAN 24

SUNDAY JAN 25

SUNDAY JAN 26

SUNDAY JAN 27

SUNDAY JAN 28

SUNDAY JAN 29

SUNDAY JAN 30

SUNDAY JAN 31

Y.M.C.A. Residential Club

AN IDEAL RESIDENCE FOR MEN

Large extensions and improvements have been effected, including new bedrooms, dining room, sanitary wing with shower, hot and cold water, electric light, etc.

LOWER BILLIARDS TENNIS LIBRARY.

Town and Country Visitors Welcome.

OVERLAND

A COMPLETE CAR Metal Safari Body 3 Ply Sun Proof Top 5 Tyres & Tubes Magneto Ignition

£195

THE OVERLAND Service Station Sixth Avenue NAIROBI.

Count Them on the Road! The DURANT RIGBY

Just a real good car With a sound service organisation behind it.

SIXTH AVENUE, NAIROBI.

CARR, LAWSON & Co., Ltd.

P. O. BOX 300. PHONE 103.

"THE ARISTOCRAT OF AMERICAN AUTOMOBILES."



£465

The Chrysler Six DISTRIBUTORS YORK GARAGES Ltd., NAIROBI

H. F. WARD & COMPANY

TELEPHONE 100

100

CARRIERS FINANCIAL

MANAGING AGENTS

NAIROBI KENYA COLONY

GENERAL MANAGERS

LAND

We have been entrusted with the negotiations for the disposal of two very valuable properties. Both are highly developed, and carrying substantial revenue.

A view preliminary to settlement or investment in Kenya Colony is an inspection of our Property Register.

We offer a complete summary of prices current in the various districts of the Colony, suitable for the cultivation of Maize, Cane, Rice, Wheat, Drying etc.

We have a special selection of properties on offer for a quick sale below current market rate.

Properties registered include small as well as large areas, developed and undeveloped. A similar area on offer in very favourable terms of payment.

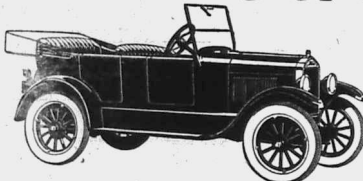
TRANS-NZRIA.—Inviting investors in this area can obtain up-to-date information upon the best properties for sale in that area. Complete arrangements have been made for inspection of these properties.

MALARIA THE WORLD'S GREATEST REMEDY FOR MALARIA IS ESAN O'FELE KENYA UGANDA AND TANGANYIKA. OR FROM THE SOLE AGENTS A. K. Wardle & Co. Ltd. NAIROBI. P. O. Box 103. Phone 66.

IMPROVED MODELS.



NO CHANGE IN PRICE.



INCREASED values recently, both for Ford cars are particularly noticeable in this respect. Tearing Model, with its roomy, easy, and a proportioned beauty of line.

All the practical advantages which have made this car so universally popular, are now in greater measure being added to Ford's new model of improved Ford models in addition to its remarkable utility.

The Service Company Limited.

IMPORTING DEALERS AND DISTRIBUTORS

NAIROBI, MOMBASA, NAKURU, and MOSHI



THE LIONESS MEANS TROUBLE

No pre-ignition with the well-balanced petrol-SHELL

BRITISH IMPERIAL OIL CO. (S.A.) Ltd. Agents: SMITH MACKENZIE & Co

Norton Motor Cycles



BRIMELOW'S GARAGE, NAIROBI

FIRE! FIRE! FIRE!

THE YORKSHIRE

INSURANCE COMPANY, LIMITED. Established 1824.

Marine Risks also undertaken Principal Agents—

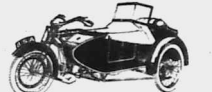
R. O. HAMILTON L., Phone 332 NAIROBI, Box 302

WEEK BY WEEK

The sale of B.S.A. Motor Bicycles are breaking records. The reason: the right machines at the right prices for every class of motor-cyclist—for YOU!

B.S.A.

The Undisputed Leader



Quality Makes Our Sales.

See them at McEVORS

THE EAST AFRICAN STANDARD

Mombasa Times & Uganda Argus

SATURDAY JAN. 16 1926

"HABARI"

The following number of the... The Government in these... The Government in these... The Government in these...

should be invited to design the... The Government in these... The Government in these... The Government in these...

ity and they will be difficult... The Government in these... The Government in these... The Government in these...

German Political Crisis... The Government in these... The Government in these... The Government in these...

Italy's Debt to Britain... The Government in these... The Government in these... The Government in these...

Sir Austen Chamberlain... The Government in these... The Government in these... The Government in these...

Standard Diary... The Government in these... The Government in these... The Government in these...

Light Upon Bishops... The Government in these... The Government in these... The Government in these...

Annual General Meeting... The Government in these... The Government in these... The Government in these...

Standard Diary... The Government in these... The Government in these... The Government in these...

THE LOAN CONTROVERSY.

Nairobi Chamber of Commerce Definitely Critical.

NEW TAXATION WARNING.

Outspoken Debate on Effects of the Proposals.

After a prolonged discussion on the proposed taxation... The Chamber views with considerable alarm the extreme... The Chamber views with considerable alarm the extreme...

THE URGENT CHARGES. My first point is... The Government has... The Government has...

THE CHAIRMAN'S VIEW. The Government has... The Government has... The Government has...

THE CHAIRMAN'S VIEW. The Government has... The Government has... The Government has...

THE CHAIRMAN'S VIEW. The Government has... The Government has... The Government has...

THE CHAIRMAN'S VIEW. The Government has... The Government has... The Government has...

THE CHAIRMAN'S VIEW. The Government has... The Government has... The Government has...

THE CHAIRMAN'S VIEW. The Government has... The Government has... The Government has...

THE CHAIRMAN'S VIEW. The Government has... The Government has... The Government has...

THE CHAIRMAN'S VIEW. The Government has... The Government has... The Government has...

THE CHAIRMAN'S VIEW. The Government has... The Government has... The Government has...

THE CHAIRMAN'S VIEW. The Government has... The Government has... The Government has...

proposals which two equally... The Government has... The Government has...

THE CHAIRMAN'S VIEW. The Government has... The Government has... The Government has...

THE CHAIRMAN'S VIEW. The Government has... The Government has... The Government has...

THE CHAIRMAN'S VIEW. The Government has... The Government has... The Government has...

THE CHAIRMAN'S VIEW. The Government has... The Government has... The Government has...

THE CHAIRMAN'S VIEW. The Government has... The Government has... The Government has...

THE CHAIRMAN'S VIEW. The Government has... The Government has... The Government has...

THE CHAIRMAN'S VIEW. The Government has... The Government has... The Government has...

THE CHAIRMAN'S VIEW. The Government has... The Government has... The Government has...

THE CHAIRMAN'S VIEW. The Government has... The Government has... The Government has...

THE CHAIRMAN'S VIEW. The Government has... The Government has... The Government has...

THE CHAIRMAN'S VIEW. The Government has... The Government has... The Government has...

THE CHAIRMAN'S VIEW. The Government has... The Government has... The Government has...

THE CHAIRMAN'S VIEW. The Government has... The Government has... The Government has...

THE CHAIRMAN'S VIEW. The Government has... The Government has... The Government has...

THE CHAIRMAN'S VIEW. The Government has... The Government has... The Government has...

had been... The Government has... The Government has...

THE CHAIRMAN'S VIEW. The Government has... The Government has... The Government has...

THE CHAIRMAN'S VIEW. The Government has... The Government has... The Government has...

THE CHAIRMAN'S VIEW. The Government has... The Government has... The Government has...

THE CHAIRMAN'S VIEW. The Government has... The Government has... The Government has...

THE CHAIRMAN'S VIEW. The Government has... The Government has... The Government has...

THE CHAIRMAN'S VIEW. The Government has... The Government has... The Government has...

THE CHAIRMAN'S VIEW. The Government has... The Government has... The Government has...

THE CHAIRMAN'S VIEW. The Government has... The Government has... The Government has...

THE CHAIRMAN'S VIEW. The Government has... The Government has... The Government has...

THE CHAIRMAN'S VIEW. The Government has... The Government has... The Government has...

THE CHAIRMAN'S VIEW. The Government has... The Government has... The Government has...

THE CHAIRMAN'S VIEW. The Government has... The Government has... The Government has...

THE CHAIRMAN'S VIEW. The Government has... The Government has... The Government has...

THE CHAIRMAN'S VIEW. The Government has... The Government has... The Government has...

THE CHAIRMAN'S VIEW. The Government has... The Government has... The Government has...

LYRIC HALL TO-NIGHT 8-15.

The BETTER OLE The play with a Laugh a minute

NEXT WEEK

All Star Cast including BETTY BALFOUR and MOYNA MCGILL in NOTHING ELSE MATTERS

White Cool Shoes for Hot Season

Advertisement for White Cool Shoes for Hot Season, featuring various styles of canvas shoes and their prices.

Fadies (The Shoe People) WITH MINUTE DETAIL

Phone 453, Box 149 NAIROBI

THEATRE ROYAL TO-NIGHT, Jan. 16th.

MATINEE To-day at 3.30 p.m. and To-night 8-15 p.m.

"CLAUDE DUVAL" THE THRILLING ROMANCE OF THIS HIGHWAY MAN OF THE CAVALIER PERIOD, STAGED DRESSED & SCENED WITH MINUTE DETAIL

FEATURING Nigel Barry & Fay Compton Prices as Usual Stalls 2/- & 1/-, Circle 3/-

Advertisement for Chilprufe Children's medicine, featuring an illustration of a child and text describing the product's benefits.

Advertisement for Warings NAIROBI'S FASHION CENTRE, featuring an illustration of a woman and text about their clothing and accessories.

Advertisement for COLOURED ENAMEL TOILET SETS, listing various styles and prices.

Advertisement for TOILET SET & PIECES, listing various styles and prices.

Advertisement for THE HOUSE FOR OTIAC, listing various services and prices.

AUCTION SALES.

Auction Diary

Hatfield, Jan. 16 at 10 a.m. Motor Sale (Avalon & Co.)
Hatchling, Jan. 16 at 10 a.m. Furniture Sale (Avalon & Co.)
Hatchling, Jan. 16 at 11 a.m. Stocking, Miscellaneous Sale (Clydesdale Auctioneers)
Monday, Jan. 16. Stock Sale at Nairobi (Sands & Co.)
Tuesday, Jan. 16. Stock Sale at Gilgil (Sands & Co.)

Muter and Oswald's Sales

Remnants, Remnants.

Duly instructed, we shall sell, by Public Auction, at our Salerooms, Harding Street, Nairobi, on

Wednesday, 20th Jan. at 9-30 a.m.

A LARGE RANGE OF REMNANTS IN VARIED LENGTHS.

MUTER and OSWALD, Auctioneers, Nairobi

CLIENTS PLEASE NOTE THAT WE HAVE REMOVED FROM GOVERNMENT ROAD TO FENNS BLDG., HARDING ST. next to Messrs. Galley & Roberts. THIS IS OUR ONLY ADDRESS

Austin's Auctions Motorcars & Motorcycles.

Austin & Co., Will sell Subject to low Reserves

TO-DAY JANUARY 16th.

at 10 sharp.

FORD CAR with OVERLAND TOURING BODY, in EXCELLENT RUNNING ORDER with 2 NEW GIRD COVERS, Steepney Wheel, Electric Light, Extra Acetoline Lamp, All in Good Condition.

34-h.p. NORTON MOTORCYCLE in PERFECT RUNNING ORDER VERY GOOD.
B.S.A. MOTORCYCLE in good running order.
AJAX "ROYAL" ABSOLUTELY NEW MACHINE, 2 stroke, in PERFECT ORDER.

CLIENTS PLEASE NOTE THAT WE HAVE REMOVED FROM GOVERNMENT ROAD TO FENNS BLDG., HARDING ST. next to Messrs. Galley & Roberts. THIS IS OUR ONLY ADDRESS

Austin's Auctions Duly instructed Austin & Co., Will sell WITHOUT RESERVE unless otherwise stated

Austin & Co., Will sell WITHOUT RESERVE unless otherwise stated

TO-DAY JANUARY 16th.

at 10 sharp.

SEVERAL TEAK DRESSING CHESTS, MORRIS CHAIRS, SINGLE BED IN TEAK COMPLETE, NEW DINING CHAIRS.

TEAK SIDEBOARDS, DOUBLE WASHSTAND, OCCASIONAL TABLES.

DOUBLE WARDROBE IN TEAK WITH TWO LARGE DRAWERS (reserve).

TWO CHESTERFIELD SUITES covered American, MEAT SAFE.

IMPORTED REVOLVING OFFICE CHAIR (Reserve), "ISMAK" HAND SEWING MACHINE in perfect order.

COMBINATION CHEST OF DRAWERS WARDROBE, BRONZ BATH.

LADIES TEAK WRITING TABLE, SEVERAL COUNTERTOPS.

BABIES BEAM in good condition (reserve), NEW CUSHIONS. ETC., ETC., ETC., ETC.

NERITINI RUBBER ESTATE FOR SALE, BY PUBLIC AUCTION,

unless previously disposed of by private treaty.

At MOMBASA ON Saturday, March 20th, 1926.

The Estate is situated on both sides of the Coastal Railway... (The text continues with details about the estate, including its size, location, and terms of sale.)

SANDS & Co. AT OUR YARDS NAIVASHA MONDAY 18th January

- We will sell on account of Messrs. Semai Bros to and partnership account.
150 Good Uruke Cows in Calf and Calves at foot
30 Grade Heifers.
18 Steers.
20 Trained Oxen.
Account estate late Mr. T. Chillingworth.
20 Young Steers.
20 Withers.
1 Ford Car Box Body only used 11 months Arse
Elaine Soda. Wire Netting, Roller Top Desk. Utility
Emale bath Sundries.
1 40 lbs. Kent. Camped. Table and Chairs. Tar
psulin
14 Trained Oxen.
1 Large S.A. Mule trained to harness.
2 Imported Canoe Rans, 2 really good runs

GIL GIL TUESDAY 19th January

- 100 Good Withers.
30 Native Cows.
30 Grade Cows.
18 Trained Oxen.
30 Fat Oxen.
Account estate late Mr. "Snowy" 3 yr old Reg. E.A.
S.B. branded A.M. and immunised to Red
Water.
2 Imported Canoe Rans, 2 really good runs.
4 High Grade Jersey Cows and Heifers in Calf
and Calves at foot.
2 Imported Imported Pedigreed Aberdeen
Angus Bulls.
30 Really fine fat Steers.
2 Imported Canoe Rans, 2 really good runs.
The above are a real good lot.

Sands & Co. Auctioneer

Sands & Co. Immune Cows

AT OUR 23rd AVENUE PREMISES Saturday, 23rd Jan. at 10-30 a.m.

22 Good Native Cows with 14 Calves at foot

balance Cows guaranteed in Calf. The above Cows are branded A.M. and T.P. This is the first sale since 1921 that we have been able to offer. A.M. and T.P. Cows.

We can recommend these cows to buyers.

SANDS & Co., Auctioneers.

Sands & Co. AT OUR 6TH AVENUE PREMISES Monday, 25th Jan. at 10-30 a.m.

WITHOUT RESERVE ACCOUNT OF ADMINISTRATOR GENERAL. 1 Petrol Oil Engine 5 H.P. 2 Tractor Ploughs, 2 Furrow M.P. 1 Trench Digger. A number spare plough shares

ACCOUNT VARIOUS CLIENTS 1 Light Wagon 2 Fourteen Foot Wagons 1 Red Top Car 1 Four Wheel Buggy

ASSORTMENT OF SUNDRIES SANDS & Co., Auctioneers.

Miss KATHLEEN BATES, A.R.C.M.

Gives Lessons in PIANO, VOICE, SINGING, HARMONY, THEORY OF MUSIC, AND AURAL CLASSES.

Apply STUDIO, GRATES BUILDINGS, SIXTH AVENUE, Nairobi. (Phone: Dues 417, Bantock.)

LYRIC Lounge and Tea Room for Lunchees and Teas. COOL and SPACIOUS.

We now have a Restaurant. Liquor License-SEE OUR WINE LIST. ONLY THE BEST OFFERED.

DEATH DUTIES LAW IN KENYA

A SKEIN ON A FOIBLE. A Kenya 'skidder' in an article published in East Africa writes...

Interest of Chamber of Commerce. ABOLITION SUGGESTED.

Because of the importance of the subject, and the fact that a long notice has to be given, the Chamber of Commerce has on Thursday evening...

A COMFORTING PHILOSOPHY. What would it be to you to meet, and you have dropped a chain...

RELIGIOUS. Budo kidogo! Budo kidogo! Budo kidogo! Budo kidogo!

Mr. G. A. Hamilton and there is another aspect which it might be well to mention...

ABOLISH IT. Mr. Tanshill said he would be prepared to see a bill brought in for the abolition of the death duty...

MR. GILGIL'S DEY-CLEANING & DYING WORKS. 75, THURLOW ROAD, NAIROBI.

ENLARGEMENTS FROM ANY PHOTOGRAPH. 2/6 PER PRINT. MARTIN PHOTO ENLARGERS.

Cruden's Historical Crusdeens No. 14. Aided the Great seeping from the anatomy books... CRUDEN'S SOAP

REZIN-MADE CLOTHES ARE THEIR OWN BEST ADVERTISEMENTS. JAMES REZIN, TAILOR OF QUALITY GOVERNMENT ROAD, NAIROBI.

THE HOUSE OF REZIN. E. DOBIE, OPTHALMIC OPTICIAN, Government Medical Officer. Telephone No. 90.

BRITISH SOUTH AFRICA ANNUAL 1925-1926. SIXTEEN YEAR OF PUBLICATION. UPWARDS OF 184 PAGES INCLUDING Special East African Supplements. ARTISTIC COLOURED PLATE.

SUITABLE FOR FRAMING. SPECIAL ARTICLES ON AGRICULTURE, MINING, RAILWAYS. THE PRICE at South Africa Saw has Price 5/ Postage 1/4. NOW ON SALE.

C. Denovan Land & Estate Agent City House Nairobi. Properties of all descriptions For Sale.

LOWEST POSSIBLE PRICES ALWAYS. ELEPHANT LONGLOTHE 36" WIDE 1 1/2" DEEP. HORNBOKES SANDWICH 36" WIDE 1 1/2" DEEP. FINE TARANTULLE 40" WIDE 2 1/2" DEEP. SUPERFINE TARANTULLE 40" WIDE 3 1/2" DEEP. PRINTED MAINJOK 38" WIDE 2 1/2" DEEP. BATISTE LONGERIE CLOTH 38" WIDE 3 1/2" DEEP. WHITE, MAUVE, PINK, SKY, PINK AND TANGORINE SHADES. TAMBOURINE LAWN 38" WIDE 3 1/2" DEEP. GREEN, WHITE, MAUVE, PINK AND BLUE. HUTCHINGS BIEMER & CO. 406, NAIROBI. Phone No. 406. 25% DISCOUNT FOR CASH. Monthly Accounts With Approved Customers.

UNION-CASTLE LINE

Service to England, East, South and West Africa Ports and Mediterranean PROSPECTIVE SAILINGS... HOLLAND AFRIKA LIJN

NAIROBI CHAMBER OF COMMERCE.

President's Annual Review. The annual meeting of the Nairobi Chamber of Commerce... The Chairman Mr. W. McCall...

THE EAST AFRICAN STANDARD.

Union-Castle Line. The annual meeting of the Nairobi Chamber of Commerce... The Chairman Mr. W. McCall...

Geo. BLOWERS.

Building Contractor, MASTFA OTHER DIRECT IMPORTER. CASH WITH ORDER. No. 1, No. 2, No. 3.

INTERESTING FIGURES.

Home Consumption. Domestic Exports. The value of home consumption... Domestic exports...

MEMBERSHIP AND ATTENDANCE.

The Treasurer's report. The membership of the Chamber... Attendance at meetings...

REVIEW OF ACTIVITIES.

The Chamber has held several general meetings during the year... Review of activities...

HOLLAND AFRIKA LIJN

JOINT SERVICE HOLLAND SUID-AFRIKA LIJN & HOLLAND OOST-AFRIKA LIJN. Steamers will load at Kilindi on or about the following dates...

PARIS-ROSE FARES.

Marcelline Antwerp and London (A) £48 (B) £42 10s. (C) £42 10s.

TWENTISCHE OVERSEAS TRADING CO. LTD.

MOMBASA KAMPALA. Tel. 140. Agents: NARURI, H. Thakral, Land and Estate Agent.

Give Her the Best.

TORR'S CHOCOLATES ARE SUPREME.

THE SALISBURY HOTEL

Family and Residential. Phone 168, Nairobi, Box 509.

English Cream Stilton Cheese

Arrived at R. B. DUNCAN'S, THE GROCER.

Dodge Bros Cars & Vans

Graham Bros Trucks. Accessories, Petrol & Oils.

OAKLEIGH PRIVATE HOTEL

Convenient and up-to-date in every way. Phone 329.

Notice of Removal

As from 1st December the Offices, Showroom and Garage of MESSRS. S. FISHER AND SIMMONS (E.A.) Ltd., will be transferred...

FOR HIGH CLASS Bread Cakes and Biscuits

De Luxe Biscuits Co. All kinds of Foodstuffs made to order.

E. Nicholas

WATCHMAKER & JEWELLER CITY HOUSE, NAIROBI.

New Goods for New Year.

JUST UNPACKED. Several kinds of silk, Ivory curries, Brass ornaments...

Notice of Removal

As from 1st December the Offices, Showroom and Garage of MESSRS. S. FISHER AND SIMMONS (E.A.) Ltd., will be transferred...

FOR HIGH CLASS Bread Cakes and Biscuits

De Luxe Biscuits Co. All kinds of Foodstuffs made to order.

E. Nicholas

WATCHMAKER & JEWELLER CITY HOUSE, NAIROBI.

New Goods for New Year.

JUST UNPACKED. Several kinds of silk, Ivory curries, Brass ornaments...

Sam Rifkin

WAGON BUILDER, BLACKSMITH, FARRIER. P.O. Box 475, Phone 141, DUES STREET, NAIROBI.

NOTICE.

Will the public's note permanent address of Guinness Cold Cream Biscuits...

De Luxe Boot Co.

All kinds of Footwear made to order. Opposite KANJEE NARAYAN Government Bldg.

Gilbs Cold Cream SHAVING SOAP

WHEAT GROWERS USE EPHOS AND BE FREE OF RUST.

J. G. ARONSON, P.O. Box 468, NAIROBI.

E. Nicholas

WATCHMAKER & JEWELLER CITY HOUSE, NAIROBI.

New Goods for New Year.

JUST UNPACKED. Several kinds of silk, Ivory curries, Brass ornaments...

ELLIOTS

Phone 62, NAIROBI, P.O. Box 479.

PETER & SON

We specialise in the following:
DEVELOPING, PRINTING, and ENLARGING.

With our new enlarger we are able to enlarge photographs to almost any size.
Government Road,
P.O. Box 411. Phone 154.

JUST ARRIVED

LADIES & GENTS' HOLEPROOF HOSIERY
IN ALL THE LATEST

SHADES

A huge assortment of
"TRIOLINE"

IN VARIOUS COLOURS

AHAMED BROS.

Phone: 201. **Bazaar, Nairobi.** P.O. Box 254
Telegrams: "Outfitting."

White Lisbon Wine

(DOG BRAND)

By

VASOONCELLOS LTDA.

JUST ARRIVED (IN BULK)

Will be ready by 22nd inst.

Phone 38. per doz bottles

B. C. Siqueira

POLICE STATION ROAD

VIII AVENUE, NAIROBI

Tollet Requisite Co.

Government Road.

Phone 349

Box 240

Telegrams: CYMON
LADIES & GENTS HAIR DRESSERS
Gallia Bonnelle Permanent Waving.

Specialities:—
Manicure, Massage,
Elizabeth Arden Treatment.
New Supplies of Slides, Combs, Shaving necessities
Perfumes, Powders, etc.

Special Attention:
MAIL ORDER DEPARTMENT

"STANDARD" FEATURE PAGE

Poultry Notes.

BOZ WEATHER AND THE POULTRY

It is a well known fact that the weather has a great influence on the health and productivity of poultry. In the tropics, the weather is generally hot and humid, which is not ideal for the birds. It is important for the farmer to take steps to protect his birds from the heat and humidity. This can be done by providing shade and ventilation for the birds. It is also important to keep the birds clean and dry, as this will help to prevent disease.

THE MARKET

POULTRY SUPPLIES

The market for poultry supplies is generally good. There is a steady demand for feed, bedding, and other supplies. The price of these supplies is generally stable, although there has been a slight increase in the price of feed recently. This is due to the increase in the price of grain. The price of bedding is also stable, although there has been a slight increase in the price of straw recently. This is due to the increase in the price of fuel.

The price of poultry is also generally good. There is a steady demand for chickens, ducks, and geese. The price of these birds is generally stable, although there has been a slight increase in the price of chickens recently. This is due to the increase in the price of feed. The price of ducks and geese is also stable, although there has been a slight increase in the price of ducks recently. This is due to the increase in the price of feed.

The price of eggs is also generally good. There is a steady demand for eggs. The price of eggs is generally stable, although there has been a slight increase in the price of eggs recently. This is due to the increase in the price of feed. The price of eggs is also stable, although there has been a slight increase in the price of eggs recently. This is due to the increase in the price of feed.

The price of poultry is also generally good. There is a steady demand for chickens, ducks, and geese. The price of these birds is generally stable, although there has been a slight increase in the price of chickens recently. This is due to the increase in the price of feed. The price of ducks and geese is also stable, although there has been a slight increase in the price of ducks recently. This is due to the increase in the price of feed.

"E. A. STANDARD" CROSS WORD PUZZLE.

The 43rd Prize Winner.

The 43rd Prize Winner.

The 43rd Prize Winner.

The 43rd Prize Winner.

The 43rd Prize Winner.

The 43rd Prize Winner.

The 43rd Prize Winner.

The 43rd Prize Winner.

The 43rd Prize Winner.

The 43rd Prize Winner.

The 43rd Prize Winner.

The 43rd Prize Winner.

The 43rd Prize Winner.

"E. A. STANDARD" CROSS WORD PUZZLE.

The 43rd Prize Winner.

The 43rd Prize Winner.

The 43rd Prize Winner.

The 43rd Prize Winner.

The 43rd Prize Winner.

The 43rd Prize Winner.

The 43rd Prize Winner.

The 43rd Prize Winner.

The 43rd Prize Winner.

The 43rd Prize Winner.

The 43rd Prize Winner.

The 43rd Prize Winner.

The 43rd Prize Winner.

The 43rd Prize Winner.

The 43rd Prize Winner.

The 43rd Prize Winner.

The 43rd Prize Winner.

The 43rd Prize Winner.

The 43rd Prize Winner.

The 43rd Prize Winner.

The 43rd Prize Winner.

The 43rd Prize Winner.

The 43rd Prize Winner.

The 43rd Prize Winner.

The 43rd Prize Winner.

The 43rd Prize Winner.

The 43rd Prize Winner.

The 43rd Prize Winner.

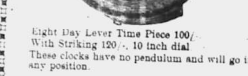
The 43rd Prize Winner.

The 43rd Prize Winner.

RELIABLE CLOCKS.



Light Day Lever Time Piece 100/
With Striking 120', 10 inch dial
These clocks have no pendulum and will go in any position.



The Dust-proof Alarm
A thoroughly reliable clock
with bevelled glass
12/50
Postage 1/50 extra

E. DOBBIE.
Watchmaker, Jeweller, Silversmith
and Optician.
Government Road, NAIROBI

TO LET.
House and building in good
condition to lease.
Apply Box 229
NAIROBI

FOR SALE.
For general use purpose, full
gear, lasting engine & trucked
at each.
Apply Box 229
NAIROBI

ANSWER TO CORRESPONDENT.

COPY.
19th December, 1925
CABLEGRAM FROM JOHANNESBURG,
TO RALEIGH NOTTINGHAM.

SENSATIONAL PERFORMANCE RALPH RIDERS
IN SPURT RACES AT PRETORIA YESTERDAY.
SEVEN TIMES, FIVE SECONDS, TWO THIRDS,
EASTEST TIME AGAINST CREAM OF EXAMON
RIDERS. FINEST PERFORMANCE ONE MARK OF
MOTOR CYCLE IN BIGGEST AMOTOR CYCLE
CARNIVAL HELD IN SOUTH AFRICA.

WALTER FOWKES.

Only two Manufacturers Offer "One-Profit" Unit Built Values

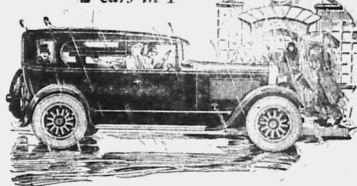
ONLY two manufacturers actually build their cars complete—make all their own bodies, engines, clutches, springs, gear boxes, differentials, steering gears, axles, gray iron castings and drop forgings. One is Ford. The other is Studebaker.

To make this possible, Studebaker has for many years invested more than half its earnings in new and finer factory buildings and in the most modern, most efficient machinery and equipment. Because of this policy, resources amounting to more than \$20,000,000 have been built up and devoted exclusively to the production of Studebakers.

This One-Profit principle of manufacture makes possible four great advantages:

1. It eliminates the extra profit and overhead that many other manufacturers have to pay and include in the purchase price to you. This keeps Studebaker prices low.
2. Because of the One-Profit savings, Studebaker is able to offer you a sturdier, more substantially built automobile. We pay a premium for the finest tools. We use best wood in body construction. Throughout the entire car—on hundreds of hidden places—you find the same high quality of materials and workmanship that you see on the open parts.
3. It makes possible finer quality, because Studebaker, being an independent manufacturer, with no subsidiary or allied companies to favour, is free to buy on the open market, demanding the finest materials at the lowest possible price. Studebaker purchasing agents are instructed in their search for quality and value.
4. And finally, it enables us to build a better car because the vital parts are designed, engineered and manufactured as a unit—Studebaker one function as a unit—with all the advantages of unit over assembled construction.

2 cars in 1



Only STUDEBAKER builds the Duplex!

Studebaker Standard Six Duplex Flaxton (illustrated) is a splendid example of One-Profit. It has the most powerful engine of any car in the world of its weight and size. Duplex body, an exclusive Studebaker feature; full size balloon tires, genuine finish grain leather upholstery; instruments, including an "e" day clock, grouped in an oval panel under glass; light control on the steering wheel and many other desirable features.

Price \$445
F.O.R. NAIROBI.

STUDEBAKER

BUILDERS OF QUALITY VEHICLES FOR 75 YEARS.

K. McIVOR & Co.

Sole Importers

P.O. Box 97.

Telephone 97.

NAIROBI.

Telegram: "AFFORD"

FOOTBALLS.

THE "STADIUM" Best quality English made...

THE "ARBO" Solid cowhide football Hand sewn with red...

THE "FICIAL" Strong cowhide football hand sewn. Will made...



FRED RAPER GENERAL COMMISSION AGENT.

35- GOLD MEDAL 35- Boiler Stacks 18", Waterproof Gapes 18" COMPLETE STOVING SADDLERY A.M.L.T. PO Green

BINOCULARS. BINOCULARS. ALL SPECIALLY BUILT FOR THE TROPICS.

SHAW & HUNTER LUM MARKERS Telephone "GIRAFFE" 2106

Hupmobile 6 £425



Call for a Demonstration THE MOTOR MART & EXCHANGE, LTD. NAIROBI.

LAWN TENNIS WE HAVE A LARGE SELECTION OF RACKETS, BALLS, NETS, PRESSES, COVERS, POSTS, WINDERS, TAPE LINES ALL BY THE BEST MAKERS

MAY & Co. The Sports House. J.R. STEPHENS & Co. Ltd. TAILORS AND OUTFITTERS

HARLEY-DAVIDSON THE MOTORCYCLE MANUFACTURER

PHOTOGRAPHY - Devore: 10, Herdgate Street, Motor Register. P.O. Box 168. Harding Street. NAIROBI. Official Service Station for the whole Motor Cycle

THE SPORTS PAGE

NAKURU RACES.

Excellent Entries for New Club's First Meeting.

FIRST DAY'S WEIGHTS.

The initial meeting of the newly formed Nakuru Race Club to be held on January 27 and 30, promises to be a great success.

Rugby in Britain.

RECORDS OF SOME OF THE LEADING CLUBS.

Table with columns: Club Name, P, W, L, D, Points, etc. Includes teams like Abernethy, Aberystwyth, Bedford, etc.

ICE-HOCKEY.

English Defeated After Extra Time.

[BRONCO] SEVEN'S AGENCY. In the European Ice-Hockey Championship series held today...

Nairobi Tennis.

TODAY'S MATCHES IN THE LEAGUE.

The following matches will be played today in the Nairobi and District Lawn Tennis League.

M.C.C. PROBLEMS.

Makers to Guarantee the Size of Cricket Balls.

Some explanation of the M.C.C. problems. The M.C.C. are anxious that conditions which have been used for some time in first-class cricket...

Footless Footwear advertisement with logo and text.

Footwear

Large advertisement for Footless Footwear featuring various shoe styles like 'Oakmore', 'Delta', 'Brown Willow', 'Men's Oxford Dress', etc., with prices and descriptions.

Table for First Day's Weights, listing names like Lacey, London, etc.

Table for Second Race, listing names like Gumban, M. P. Kelly, etc.

Table for Third Race, listing names like Maiden County, Keroo, etc.

Table for Fourth Race, listing names like Social Race, Schupp, etc.

Table for Fifth Race, listing names like Nakuru Handicap, Concomare, etc.

Table for Sixth Race, listing names like Hack Sweepstakes, Laffer, etc.

Table for Seventh Race, listing names like T.M. Handicap, Cambridge, etc.

CIVIL SERVICE TENNIS. The undersigned have been chosen to represent the Civil Service...

Local Hockey. The following will represent Ombakasha "B" in the London and District Hockey League...

OMBAKASHA BEATS HIS OPPONENTS. A week's practice was proof of the fact that the Ombakasha team...

Loss to Welsh Rugby. The following is a list of the players who were selected for the match...

TRAGIC PARSING OF FAMOUS INTERNATIONAL. One of the best known rugby clubs in the world...

LOCAL CRICKET. The following is the Railway team for the cricket match against Parkville...

THE NAKURU SHOW. LATE ENTRIES CLOSE JANUARY 30th. SHOW OUR NEIGHBOURS WHAT KENYA IS DOING

THE MAN WHO KNOWS AND APPRECIATES A GOOD BEER OR STOUT DRINKS

Kenya Beer & Stout BECAUSE HE KNOWS THEY ARE REAL DRINKS WITH THE REAL HOME FLAVOUR.

GUARANTEED THE LARGEST CIRCULATION OF ANY NEWSPAPER IN KENYA, UGANDA, TANGANYIKA AND ZANZIBAR. THE EAST AFRICAN 10 PAGES. MOMBASA TIMES & UGANDA ARGUS. THE LEADER

THE LOUNGE FOR COCKTAILS AND TRAYS THE DINING ROOM FOR BREAK FASTS, LUNCHEONS, and DINNERS. THE NEW STANLEY HOTEL. Price 20 CENTS.

No. 3794. PRINTED AT THE NATIONAL PRESS OFFICE & NEWSBUREAU.

NAIROBI, MONDAY, JANUARY 18 1936

MEMORANDA FOR COLONIAL OFFICE CONFERENCE. SPECIAL WEEKLY SUPPLEMENT.

SNOWSTORMS SWEEPING EUROPE. London not so white for many years. THOUSANDS OF PIONEER WORKING AT THE POLES.

MUST BREAK QUININE MONOPOLY. Action by League of Nations Health Experts. BRITISH RESTRICTION ON PRINCE AND WAR GRAVES COMMISSION.

ENDOWMENT FUND TO MAINTAIN CEMETERIES. NATIONALISATION OF ELECTRICITY. Government plan for Power.

OUTLINE BY PREMIER.

THUNDER BATTERS AFRICA. London, Jan. 15. It is a very dry day, but much snow is falling in London & in other parts of this country. There were further late falls in the north and west, and in the south and east. The snow is very soft and the wind is very light. The snow is very soft and the wind is very light. The snow is very soft and the wind is very light.

THUNDER BATTERS AFRICA. London, Jan. 15. It is a very dry day, but much snow is falling in London & in other parts of this country. There were further late falls in the north and west, and in the south and east. The snow is very soft and the wind is very light. The snow is very soft and the wind is very light.

THUNDER BATTERS AFRICA. London, Jan. 15. It is a very dry day, but much snow is falling in London & in other parts of this country. There were further late falls in the north and west, and in the south and east. The snow is very soft and the wind is very light. The snow is very soft and the wind is very light.

THUNDER BATTERS AFRICA. London, Jan. 15. It is a very dry day, but much snow is falling in London & in other parts of this country. There were further late falls in the north and west, and in the south and east. The snow is very soft and the wind is very light. The snow is very soft and the wind is very light.

THUNDER BATTERS AFRICA. London, Jan. 15. It is a very dry day, but much snow is falling in London & in other parts of this country. There were further late falls in the north and west, and in the south and east. The snow is very soft and the wind is very light. The snow is very soft and the wind is very light.

EAST AFRICAN COFFEE. London Market Strong and Dearest.

OBSERVATIONS OF THE ECLIPSE. British Expedition in Batavia.

FRENCH FINANCE BILL IN DANGER. Committee Knocks out Corner Stone.

NO PERMANENT BREACH WITH PEKIN. MANCHURIA.

WHITEWAY'S STOCK TAKING SALE. Whiteaways are offering over a million shillings worth of stock at prices that are bound to attract the public.

REORGANISATION OF INDUSTRY. Great Labour Scheme for Coal Commission.

PRINCESS ELOPEMENT. RECALLED DEATH OF TOSSELL.

THUNDER BATTERS AFRICA. London, Jan. 15. It is a very dry day, but much snow is falling in London & in other parts of this country. There were further late falls in the north and west, and in the south and east. The snow is very soft and the wind is very light. The snow is very soft and the wind is very light.

THUNDER BATTERS AFRICA. London, Jan. 15. It is a very dry day, but much snow is falling in London & in other parts of this country. There were further late falls in the north and west, and in the south and east. The snow is very soft and the wind is very light. The snow is very soft and the wind is very light.

THUNDER BATTERS AFRICA. London, Jan. 15. It is a very dry day, but much snow is falling in London & in other parts of this country. There were further late falls in the north and west, and in the south and east. The snow is very soft and the wind is very light. The snow is very soft and the wind is very light.

REORGANISATION OF INDUSTRY. Great Labour Scheme for Coal Commission.

PRINCESS ELOPEMENT. RECALLED DEATH OF TOSSELL.

THUNDER BATTERS AFRICA. London, Jan. 15. It is a very dry day, but much snow is falling in London & in other parts of this country. There were further late falls in the north and west, and in the south and east. The snow is very soft and the wind is very light. The snow is very soft and the wind is very light.

THUNDER BATTERS AFRICA. London, Jan. 15. It is a very dry day, but much snow is falling in London & in other parts of this country. There were further late falls in the north and west, and in the south and east. The snow is very soft and the wind is very light. The snow is very soft and the wind is very light.

THUNDER BATTERS AFRICA. London, Jan. 15. It is a very dry day, but much snow is falling in London & in other parts of this country. There were further late falls in the north and west, and in the south and east. The snow is very soft and the wind is very light. The snow is very soft and the wind is very light.

REORGANISATION OF INDUSTRY. Great Labour Scheme for Coal Commission.

PRINCESS ELOPEMENT. RECALLED DEATH OF TOSSELL.

THUNDER BATTERS AFRICA. London, Jan. 15. It is a very dry day, but much snow is falling in London & in other parts of this country. There were further late falls in the north and west, and in the south and east. The snow is very soft and the wind is very light. The snow is very soft and the wind is very light.

THUNDER BATTERS AFRICA. London, Jan. 15. It is a very dry day, but much snow is falling in London & in other parts of this country. There were further late falls in the north and west, and in the south and east. The snow is very soft and the wind is very light. The snow is very soft and the wind is very light.

THUNDER BATTERS AFRICA. London, Jan. 15. It is a very dry day, but much snow is falling in London & in other parts of this country. There were further late falls in the north and west, and in the south and east. The snow is very soft and the wind is very light. The snow is very soft and the wind is very light.

TO-DAY TO-DAY TO-DAY.

WHITEWAY'S STOCK TAKING SALE.

Whiteaways are offering over a million shillings worth of stock at prices that are bound to attract the public.

THIS IS NO ORDINARY SALE, THE CHAIRMAN HAS CABLED AS FOLLOWS.

CHAIRMAN. My hearty congratulations on your excellent December trade and my best wishes for a successful Clearance sale, stop. The magnificent value you are now able to offer should attract a very large volume of Sale business. stop. Make sale reductions as liberal as possible and prove to our customers that 'Whiteway's' cannot be beaten.

ON THE CHAIRMAN'S INSTRUCTIONS WE MAKE IT SO.

Particular attention is directed to the Arcade window displays, these will be illuminated this evening from 6 to 8 p.m.

There are wonderful bargains in all departments prices are very much lower as this huge stock must be appreciably reduced before the annual stock-taking.

Watch this space daily For Special Offers. Whiteaway, Laidlaw & Co., Ltd. NAIROBI.

THE !! BUILDING MATERIAL STANDARD BRICKS

The Nairobi Brick, Tile & Pipe Works Ltd. Works: MUTUAIGA. Enquiries: BEALES & SMITHSON, MANAGING SECRETARIES, P.O. Box 191. Phones: Works, 43 Office 193

THE EUROPEAN AND AFRICAN TRADE ORGANIZATION

Telephone 120. Telegrams: "TRADES ORGANISATION." P.O. Box 624. Nairobi, Kenya Colony. All Communications to be addressed to The 241, RETARU. FROM THE BEGINNING OF SEPTEMBER, 1929, THE FOLLOWING FEES WILL BE CHARGED BY THIS ASSOCIATION TO ALL THOSE WHO MAKE USE OF THE ASSOCIATION AND WHO ARE NOT REGULAR SUBSCRIBERS TO THE FUNDS OF THE ORGANIZATION...

Clairmont Residential Hotel

FULLY LICENCED. 6 miles from Nairobi—through beautiful scenery. Excellent Cuisine and Tete dinners a speciality. Dance Floor acknowledged one of the best in Kenya. Swimming Fl池, newly constructed. Permanent residents catered for. Terms, Apply Proprietor Box 525, Nairobi.

MOTORING TOPICS

CYCLE BRAKES

Introduction of System of Power-Braking.

REVOLUTIONARY IDEA.

A new system of brake application that is being introduced by Messrs. Bowler Wagon Ltd., Wellington, New Zealand, has been reported as a practical proposition by Motor Cycles, and is said to be one of a line of thought that has been long in the making...

THE MORRIS TRUCK.

Successful Trials in Great Britain.

Among recent developments in the motor vehicle industry, the introduction of the Morris truck is probably the most important. The truck is a standard 1-ton Morris motor truck in construction with a chassis frame evolved by Bowler, London, Ltd. The combination of these two up-to-date and thoroughly well-developed has produced a vehicle of the utmost utility as an Empire development.

MOTORS

ENT-TO-TO, NON-ENGINE MOTOR.

Motor standards 1 and 12 cm. trucks are daily given the utmost attention in every sphere of their activity. Their mobility was recently proved under the observation of the R.A.C. when a Morris 12 cm. truck with a load of 1,000 lb. drove through the length of the British Isles over the standard road of 1,000 miles per gallon.

Essjay Limited. P.O. Box 634. Theatre Royal Buildings, South Avenue, Nairobi. Phone: 377. Telegrams: Esjay Ltd.

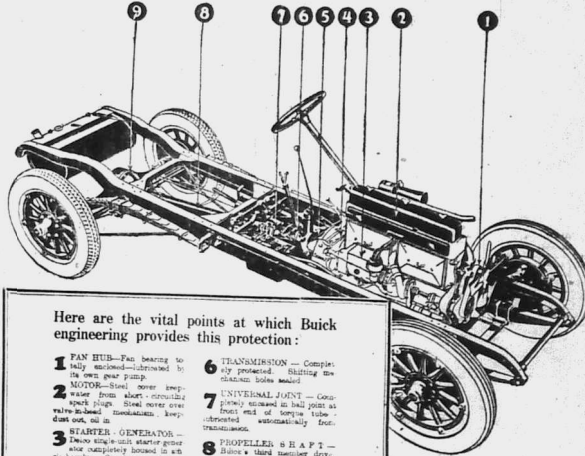
Nairobi Milk Supply. P. S. Andersen & Co. Nairobi. FOR SALE. For further dog puppils, please hunting areas 2 weeks old. One smooth Fox Terrier dog pedigree, 2 years old, 110 each. P.O. Box 810 Nairobi.

P. GETHIN. Petrol Depot. Hudson Super-Six Cars for Hire Day and Night. Telephone: 382. Esjay Ltd. Nairobi.

Sealed to Protect Buick Performance

Buick Chassis is completely sealed. Iron and steel housing protect the operation of all driving parts—seal them in to safeguard Buick performance. Some cars have some of this protection, but Buick is the only car in the world—regardless of price—that has a wall of defence continuous from fan hub to rear axle against road dirt, stones, water and loss of lubricant.

1 Oil Filter. 2 Air Filter. 3 Petrol Filter. Here are the vital points at which Buick engineering provides this protection: 1 FAN HUB—Pao bearing to seal mud—lubricated to prevent dirt from entering. 2 MOTOR—Steel cover completely seals motor from dirt and water. 3 STARTER—Generator and starter completely housed in an airtight casing. 4 FLYWHEEL—Completely sealed. 5 CLUTCH—Completely housed.



- 6 TRANSMISSION—Completely protected. 7 UNIVERSAL JOINT—Completely sealed. 8 AXLE—Sealed from dirt and water. 9 REAR AXLE—Placing type, enclosed in rear axle housing.

BUICK DISTRIBUTORS Gillilan & Company, Ltd.

Essjay Limited. P.O. Box 634. Theatre Royal Buildings, South Avenue, Nairobi. Phone: 377. Telegrams: Esjay Ltd. Includes text about property and insurance services.

The Eclipse.

NATIONAL BANK OF INDIA

LIMITED.

Bankers to the British and Protectorates of Kenya and Uganda and the Government.

Capital: £1,000,000. Reserve Fund: £200,000.

HEAD OFFICE: 1, Market Street, London, E.C.3. BRANCHES: Bombay, Madras, Calcutta, Rangoon, Singapore, etc.

FIXED DEPOSITS: Deposits for periods of 3 months, 6 months, 9 months, 12 months, etc.

LETTER OF CREDIT: Issued to all parts of the world.

AGENTS: Messrs. Messers. Messers. Messers.

WANTED.

Board and residence with private bath for young couple. Apply to Mr. J. M. Watson, Nairobi.

FOR SALE.

For sale: 1000 lbs. of flour, 500 lbs. of sugar, etc. Apply to Messrs. Messers.

DISCUSSION.

Discussion: The importance of education in Kenya. By Mr. J. M. Watson.

FOR SALE.

For sale: 1000 lbs. of flour, 500 lbs. of sugar, etc. Apply to Messrs. Messers.

SITUATIONS VACANT.

Situations vacant: Clerk, Nairobi. Apply to Messrs. Messers.

NOTICE.

Notice: The Central Tender Board has received...

TO LET.

To let: 1000 lbs. of flour, 500 lbs. of sugar, etc. Apply to Messrs. Messers.

TO LET.

To let: 1000 lbs. of flour, 500 lbs. of sugar, etc. Apply to Messrs. Messers.

LIFE POLICIES.

Life policies: National Mutual Life Association of Australasia Ltd.

WANTED.

Board and residence with private bath for young couple. Apply to Mr. J. M. Watson, Nairobi.

FOR SALE.

For sale: 1000 lbs. of flour, 500 lbs. of sugar, etc. Apply to Messrs. Messers.

DISCUSSION.

Discussion: The importance of education in Kenya. By Mr. J. M. Watson.

FOR SALE.

For sale: 1000 lbs. of flour, 500 lbs. of sugar, etc. Apply to Messrs. Messers.

SITUATIONS VACANT.

Situations vacant: Clerk, Nairobi. Apply to Messrs. Messers.

NOTICE.

Notice: The Central Tender Board has received...

TO LET.

To let: 1000 lbs. of flour, 500 lbs. of sugar, etc. Apply to Messrs. Messers.

TO LET.

To let: 1000 lbs. of flour, 500 lbs. of sugar, etc. Apply to Messrs. Messers.

LIFE POLICIES.

Life policies: National Mutual Life Association of Australasia Ltd.

WANTED.

Board and residence with private bath for young couple. Apply to Mr. J. M. Watson, Nairobi.

FOR SALE.

For sale: 1000 lbs. of flour, 500 lbs. of sugar, etc. Apply to Messrs. Messers.

DISCUSSION.

Discussion: The importance of education in Kenya. By Mr. J. M. Watson.

FOR SALE.

For sale: 1000 lbs. of flour, 500 lbs. of sugar, etc. Apply to Messrs. Messers.

SITUATIONS VACANT.

Situations vacant: Clerk, Nairobi. Apply to Messrs. Messers.

NOTICE.

Notice: The Central Tender Board has received...

TO LET.

To let: 1000 lbs. of flour, 500 lbs. of sugar, etc. Apply to Messrs. Messers.

TO LET.

To let: 1000 lbs. of flour, 500 lbs. of sugar, etc. Apply to Messrs. Messers.

LIFE POLICIES.

Life policies: National Mutual Life Association of Australasia Ltd.

EQUATOR SAW MILLS. PODO - CEDAR - HARDWOODS. Ask for Price List. Nairobo or Maji Mazuri. SILVERTOWN (OX TANK) Wood Preservative. Best Quality Lowest Price. Sadler Street. Box 291. Nairobo.

BRITISH INDIA STEAM NAVIGATION COMPANY, LTD. AND PENINSULAR AND ORIENTAL STEAM NAVIGATION CO. LONDON AND EAST AFRICA LINE. SUNDAY DURBAN MAIL SERVICE. SUNDAY NAIROBI SERVICE. SUNDAY DAR-es-SALAAM SERVICE.

ATKINSON'S Celebrated Californian Poppy. JOHN RIFKIN. WAGON BUILDER. SLACKTIEY FARMER. STOCKS OF AXLES, BRAKES, WAGONS, AND ALL WAGON PARTS.

TENNIS RACKETS. SUPER SIX HUDSON. MAY & Co.

E. DOBBIE, OPHTHALMIC OPTICIAN. JOANES & BROS. Ladies Dress Makers & Gents Tailors & Outfitters. P. YNCS BUILDING.

Central Tender Board. Come and inspect our newly arrived stock consisting of printed silks of various colors for Ladies and Gents high class suitings Terai hats, Felt Hats and Ties etc.

P. STEWART, CAR SKD PAINTER & DECORATOR. TO LET. Room and outpans of Super Road. Terms moderate. Apply P.O. Box 390.

Y.M.C.A. Residential Club. AN IDEAL RESIDENCE FOR MEN. Large extensions and improvements have been effected, including new bedroom wings, billiard-room, laundry wing with hot and cold water, electric tank, dark room, etc.

YOUR OPPORTUNITY! HAVING BEEN APPOINTED DISTRIBUTORS OF KOLCO CARBON PAPERS, RUBBER STAMP PADS AND P.T.O. INK... WE ARE DISPOSING OF OUR SMALL STOCK OF BEMINO TYPEWRITER CARBONS AT THE REDUCED PRICES OF SHS. 7.50 PER BOX.

OPENING ON MONDAY JANUARY 18th. THE MEDICAL SUPPLY, Co. DIRECT IMPORTERS: WHOLESALE AND RETAIL CHEMISTS AT THE BOMA BUILDINGS, (late Fisher & Simmons.) Retail Price Lists on Application. Special Quotations to Employers of Labour.

THE LOAN POSITION.

Nakuru Asks Lord Delamere to Consult in Future.

A CROWDED MEETING.

Keen Criticism of Rift Valley Member's Work.

RESOLUTIONS ADOPTED.

(From Our Special Correspondent.)

Nakuru, Saturday. The final ball of the Nakuru... was held to overflowing with every section of ladies and...

The speech was followed with attention and a keen desire to know the reasons...

This meeting of the Nakuru district was a most interesting one...

Mr. Delamere said he was afraid he could not do more than to refer to the subject in a general way...

GOVERNMENT HOUSE

Turning from the point to the note for Government House, Lord Delamere has arranged for...

SUPPLIES FUNDS

Lord Delamere said that the fact of interest which would have been found by the Colony in respect...

THE ISSUE

The noble lady who took that the note for Government House was a matter of the most serious...

Before concluding Lord Delamere said that he would like to apologise to himself for the fact that...

TOO HURRIED

I should like to apologise myself for the fact that I have not been able to do more than to refer to the subject in a general way...

QUESTIONS AND DEBATE.

Mr. Brown opening the discussion on the subject of the...

THE REPLY

Lord Delamere replying said he was perfectly true that something had been done in the past...

EDUCATION

Dealing with education a copyist is required that is to say...

LABOUR QUESTION

With regard to labour Delamere said he did not think...

LYRIC HALL TO-NIGHT 8-45. BETTY BALFOUR AND MOYNA MACGILL in Nothing Else Matters. Topical Budget Scenes of Queen Alexandra.

White Cool Shoes for Hot Season. No. 48927 Canvas Bar, No. 49142, No. 38894, No. 58501, No. 58600.

Eadies The Shoe People. Phone 433, Box 149, NAIROBI.

THE TRE ROYAL. TO-NIGHT JAN. 18th. TUESDAY Jan. 19th & WEDNESDAY Jan. 20th. AT 8.45 p.m.

DECEPTION. A film of the 16th century, showing part of the life of King Henry VIIIth, particularly his matrimonial affairs.

CHILPRUF. FOR Children. It is a considerable satisfaction to ladies to know that there is only one quality in Chilprufe...

Warings. NAIROBI'S FASHION CENTRE. Africa House, Government Road, NAIROBI.

COLOURED ENAMEL TILES SETS. 12 Tiles per set, 6 Pictures. Sh. 67/50. FOR QUALITY.

AUCTION SALES.**Auction Diary**

Monday, Jan. 18. Stock Sale at Nairobi (Roads & Co.)
Tuesday, Jan. 19. Stock Sale at Kiligi (Roads & Co.)

Muter and Oswald's Sales**Remnants, Remnants**

Duly instructed, we shall sell, by Public Auction, at our Sale-rooms, Harding Street, Nairobi, on
Wednesday, 20th Jan., at 9-30 a.m.
A LARGE RANGE OF REMNANTS IN VARIOUS LENGTHS.

Auctioneers,
Muter and OSWALD, Valuers,
Nairobi. Sardinia Agents.

**Sands & Co
Immune Cows**

AT OUR 6TH AVENUE PREMISES

Saturday, 23rd Jan. at 10-30 a.m.

22 Good Native Cows with 14 Calves at foot balance Cows guaranteed in calf.
The above Cows are branded A.M. and T.P.S. This is the first sale since 1923 that we have been able to offer A.M. and T.P.S. Cows.
We can recommend these cows to buyers.

SANDS & Co., Auctioneers.

Sands & Co.

AT OUR 6TH AVENUE PREMISES

Monday, 25th Jan. at 10-50 a.m.
WITHOUT RESERVE

ACCOUNT OF ADMINISTRATOR GENERAL

1. Petrol Oil Lignite & B.I.L.F.
2. Tractor Plough & Furrow M.P.
1. French Digger.
- A number spare plough shares.

- ACCOUNT VARIOUS CLIENTS
1. Light Wagon.
 2. Entree Food Wagon.
 1. Red Motor Car.
 1. Four Wheeled Infield Road.

ASSORTMENT OF SANDS

SANDS & Co., Auctioneers.

C. Denovan,

Land & Estate Agent
City House
Nairobi.

Properties of all descriptions
For Sale

**Cruden's Historical
Crude's No. 14**

Above the Great, coming from his factory in the city of a famous passage. In continued good fortune the wife of the latter had become possessed of one of CRUDEN'S SOAP which he had long since used in his work. The woman, not knowing the value of her gift, gave him a second drinking of the soap. He advised the owner of the purchase. It is sold by CRUDEN'S SOAP - a high class product and should not be used.

CRUDEN'S SOAP

Made in Kenya

RELANCE TRANSPORT Co.

Phone 321 P.O. Box 422
OFFICIAL GARAGE FUEL DEPOT, AND RAILWAY SIDING
SADLER STREET

The Largest Motor Transport Co. in the Colony available for short-term hire or for the output of the Colony.

OUR FLEET OF 1700 LORRIES
is now on the road. 1 due to arrive December 30th, 2 due to arrive January 15th. Total 12.
FUEL - We hold the largest stocks in Nairobi.

Pathe Baby Cinema**FREE DEMONSTRATIONS AT**

THE GRAFTON STUDIOS,
TRUST CHAMBERS,
GOVERNMENT ROAD, NAIROBI.

Take living pictures of your own children, your sport and pleasure trips, and secure a permanent living record of your stay in Kenya.

Join the Grafton Film Library - 700 different Films to choose from, changed as often as you like.

M. R. de SOUZA & Co.

(ESTABLISHED 1889)

GENERAL MERCHANTS

Ladies' & Gent's Expert Tailors & Outfitters

Direct Importers of

Best Groceries, Wines, Spirits and all Personal & Household Requisites.
P.O. Box 195 Govt. Road Phone 75

NOTICE**NAIROBI WATER SUPPLY.**

The attention of the public is drawn to the fact that the above supply is liable to contamination and that the consumption of unboiled water may be dangerous. It is therefore recommended that all water should be boiled before use.
MEDICAL OFFICER OF HEALTH

MOTORISTS

DRIVE CAREFULLY AND REMEMBER THERE ARE OTHER PERSONS WHO NEED THE USE OF THE ROAD.
GIVE CLEAR CORRECT SIGNS TO THE FRONT OR POINT DUTY.
RIGHT VEHICLE HAS AN EQUAL RIGHT TO THE ROAD.

WATCH THE CHILD - IT CAN STRAY BEFORE YOU CAN STOP.

R. G. B. SPICER,
Commissioner, Kenya Police

NOTICE.

THEO. SOUBOTEN.

The well-known Ladies and Gents Hairdresser, begs to announce to his many clients he has re-opened his shop again in Government Road (late occupied by Fisher and Shumton).
Treatment Wave, Manicure, Massage, Shingling, Hair-bling, etc.

A SPECIALITY

Telephone 245 NAIROBI Box No. 396

NAIROBI NORTH CONSTITUENCY.

Capt. H. F. WARD will address a meeting of his constituents at the Theatre Royal on **THURSDAY,** 21st January, 1926, at 4-50 p.m.

“£1,000

FOR WRITING A

POST CARD.”

AN ENGINEER SENT A POST CARD FOR PARTICULARS OF THE RUSTON COLD STARTING OIL ENGINE AS A RESULT AN ENGINE WAS INSTALLED AND THE FIRST YEAR'S RUNNING SHOWED A DIRECT SAVING OF \$812.41 (\$600 ON THE CAPITAL OUTLAY.)

SEND US A POST CARD

AND WE WILL DO THE SAME FOR YOU!

SIMPLY BY INSTALLING THE MOST ECONOMIC PRIME MOVER

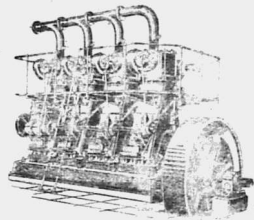
“The RUSTON” COLD STARTER

HORIZONTAL
TYPE

16 B. H. P.

To

340 B. H. P.



VERTICAL
TYPE

16 B. H. P.

To

1,100 B. H. P.

FUEL: Cotton Seed Oil, Palm Oil, Ground Nut Oil, Furnace Oil and Crude Oil.

AGENTS

Gailey & Roberts Ltd.
NAIROBI.

BRITISH SOUTH AFRICAN

ANNUAL 1925-1926.

SIXTEENTH YEAR OF PUBLICATION
UPWARDS OF 184 PAGES INCLUDING

Special East African Supplement.

ARTISTIC COLOURED PLATE

SUITABLE FOR FRAMING
SPECIAL ARTICLES ON AGRICULTURE, MINING AND RAILWAYS
SORT OF THE YEAR ETC.

The Prince as South Africa Saw Him

Price 5/- Postage 1/-

NOW on SALE

EAST AFRICAN STANDARD Ltd., South Africa.
A. J. MOORE, Government Road.
T. TAVES & Co., Ltd., Government Road.
C. MOBARA TEMER.
THE TRADING PRINTING & PUBLISHING CO., Ltd., KAMPALA.

LYRIC

Lounge and Two Rooms
for Lunches and Teas.

COOL and SPACIOUS.

We now have a Restaurant
Liquor License - SEE OUR
WINE LIST.

ONLY THE BEST OFFERED

ALWAYS ON ITS JOB

Fit and Ready for any honest days work.
All roads. All loads. All Distances

The Express Transport Co.
Cartage Contractors to Uganda Railway.

Shippers.

Bonded warehouse.

Coffee Carters

Fuel Suppliers.

Clearing, Storage and Transport Agents.

P.O. Box 435 Government Rd., Phone 322 and 324
NAIROBI.

LOWEST POSSIBLE

PRICES ALWAYS

ELEPHANT LONGCLOTH 36" WIDE 1.50
HORSEKES MADAPOLLAM 36" 1.75
WIDE 1.75
STANDARD TARANTULLE 40" WIDE 2.00
FINE TARANTULLE 40" WIDE 2.25
SUPERFINE TARANTULLE 40" WIDE 2.50
PRINTED NAINOOK 36" WIDE 2.75
TOM WHITE, MAUVE, SKY and PINK
GROUNDS
BASTIS LINGERIE CLOTH 36" WIDE 3.00
IN WHITE, MAUVE, PINK, SKY,
PRIME ROSE AND TANGERINE
SHADES.
TAMBOURINA LAWN 36" WIDE 2.75
SHADES, SKY, MAUVE, PINK and LINGERIE
SHADES.
HUTCHINGS BIEMER & CO., Ltd.
Nairobi. Phone 465
Box 466
5% DISCOUNT FOR CASH
Monthly Accounts With Approved Customers

UNION-CASTLE LINE

Services to England, East, South and West Africa... ROYAL MAIL STEAMERS... HOLLAND AFRIKA LIJN

THE LOAN POSITION.

Level Debitors said they were all agreed on the general position... The loan position is a subject which has been discussed in the past...

HOLLAND AFRIKA LIJN... JOINT SERVICE... HOLLAND SUID AFRIKA LIJN & HOLLAND OOST AFRIKA LIJN

HOLLAND AFRIKA LIJN

Services to England, East, South and West Africa... HOLLAND SUID AFRIKA LIJN & HOLLAND OOST AFRIKA LIJN

PASSENGER TABLE

Table with columns for destinations (Marzelle, Antwerp, London) and fares for different classes (1st, 2nd, 3rd).

TWENTICE OVERSEAS TRADING CO. LTD.

SOLE AGENTS: NAIROBI, KAMPALA, TORO, EL DUA... Telephone: 140

Give Her the Best.

TORR'S CHOCOLATES... ART SUPREME... THE SALISBURY Family and Residential HOTEL

English Cream Stilton Cheese

Arrived at R. B. DUNCAN'S, Phone 329 THE GROCER.

OAKLEIGH PRIVATE HOTEL

Comfortable and up-to-date in every way... Telephone: 110

Dodds Bros Cars & Vans

Gramm Bros Trucks... Accessories Petrol & Oils

Notice of Removal

As from 1st December the Offices, Showroom and Garage of MESSRS R. FISHER AND SIMMONS (R.A.) Ltd. will be transferred...

FOR HIGH CLASS Bread Cakes and Biscuits

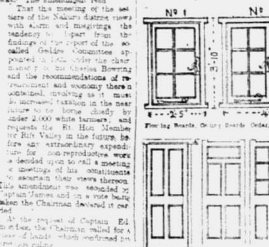
De Luxe Boot Co. All kinds of Footwear made to order.

WHEAT GROWERS

The following is an extract of the Manufacturer's Report... J. G. ARONSON, P.O. Box 468, NAIROBI

Geo. BLOWERS.

PHILIPINE CONTRACTOR MARINE UTILITY DESIGN IMPORTER... P.O. Box 201, NAIROBI



NOTE: Customers are notified that the region which already has goods from the Geo. Blowers... will be closed for a few days after the above date.

REMOVAL NOTICE

Will Clients Please Note that Geo. Blowers has Moved his Office & Works to Sadler St. next to Smith Mackenzie's.

SAM RIFKIN WAGON BUILDER, BLACKSMITH, FARRIER.

Mr. Rifkin has removed his office and works to Sadler St. next to Smith Mackenzie's.

NOTICE

Mr. Rifkin has removed his office and works to Sadler St. next to Smith Mackenzie's.

FOR HIGH CLASS Bread Cakes and Biscuits

De Luxe Boot Co. All kinds of Footwear made to order.

WHEAT GROWERS

The following is an extract of the Manufacturer's Report... J. G. ARONSON, P.O. Box 468, NAIROBI

E. Nicholas WATCHMAKER & JEWELLER

CITY HOUSE, NAIROBI. All classes of Watches, Clocks, Jewellery, Scientific Instruments, Sewing Machines, Gramophones, Cameras, Turvy Instruments and Jewellery, etc. Repaired.

NEW GOODS FOR NEW YEAR.

Several kinds of silks, Ivory curio, Brass ornaments, cashmere goods, real hand made carpets, Ladies and Gents hosiery, real china ware, etc.

WHEAT GROWERS

The following is an extract of the Manufacturer's Report... J. G. ARONSON, P.O. Box 468, NAIROBI

WHEAT GROWERS

The following is an extract of the Manufacturer's Report... J. G. ARONSON, P.O. Box 468, NAIROBI

WHEAT GROWERS

The following is an extract of the Manufacturer's Report... J. G. ARONSON, P.O. Box 468, NAIROBI

WHEAT GROWERS

The following is an extract of the Manufacturer's Report... J. G. ARONSON, P.O. Box 468, NAIROBI

WHEAT GROWERS

The following is an extract of the Manufacturer's Report... J. G. ARONSON, P.O. Box 468, NAIROBI

WHEAT GROWERS

The following is an extract of the Manufacturer's Report... J. G. ARONSON, P.O. Box 468, NAIROBI

WHEAT GROWERS

The following is an extract of the Manufacturer's Report... J. G. ARONSON, P.O. Box 468, NAIROBI

THE LOAN POSITION.

Level Debitors said they were all agreed on the general position... The loan position is a subject which has been discussed in the past...

SAM RIFKIN

Mr. Rifkin has removed his office and works to Sadler St. next to Smith Mackenzie's.

NOTICE

Mr. Rifkin has removed his office and works to Sadler St. next to Smith Mackenzie's.

FOR HIGH CLASS Bread Cakes and Biscuits

De Luxe Boot Co. All kinds of Footwear made to order.

WHEAT GROWERS

The following is an extract of the Manufacturer's Report... J. G. ARONSON, P.O. Box 468, NAIROBI

E. Nicholas WATCHMAKER & JEWELLER

CITY HOUSE, NAIROBI. All classes of Watches, Clocks, Jewellery, Scientific Instruments, Sewing Machines, Gramophones, Cameras, Turvy Instruments and Jewellery, etc. Repaired.

NEW GOODS FOR NEW YEAR.

Several kinds of silks, Ivory curio, Brass ornaments, cashmere goods, real hand made carpets, Ladies and Gents hosiery, real china ware, etc.

WHEAT GROWERS

The following is an extract of the Manufacturer's Report... J. G. ARONSON, P.O. Box 468, NAIROBI

WHEAT GROWERS

The following is an extract of the Manufacturer's Report... J. G. ARONSON, P.O. Box 468, NAIROBI

WHEAT GROWERS

The following is an extract of the Manufacturer's Report... J. G. ARONSON, P.O. Box 468, NAIROBI

WHEAT GROWERS

The following is an extract of the Manufacturer's Report... J. G. ARONSON, P.O. Box 468, NAIROBI

WHEAT GROWERS

The following is an extract of the Manufacturer's Report... J. G. ARONSON, P.O. Box 468, NAIROBI

WHEAT GROWERS

The following is an extract of the Manufacturer's Report... J. G. ARONSON, P.O. Box 468, NAIROBI

WHEAT GROWERS

The following is an extract of the Manufacturer's Report... J. G. ARONSON, P.O. Box 468, NAIROBI

WHEAT GROWERS

The following is an extract of the Manufacturer's Report... J. G. ARONSON, P.O. Box 468, NAIROBI

WHEAT GROWERS

The following is an extract of the Manufacturer's Report... J. G. ARONSON, P.O. Box 468, NAIROBI

WHEAT GROWERS

The following is an extract of the Manufacturer's Report... J. G. ARONSON, P.O. Box 468, NAIROBI



WITH REMINGTON YOU GET EUROPEAN SKILLED WITH GUARANTEE

FULL SUPPLY OF PARTS ALL REPAIRS UNDERTAKEN

REMINGTON TYPEWRITER AGENCY.

Government Road.

No. 47. NAIROBI. Phone 25.

Scotland's Finest Whisky. LONG JOHN Scotch Whisky. Characteristically PURE AND MATURE. Wholesale Distributors: D. EPSTEIN & Co. P.O. Box 176 NAIROBI Phone 41

THE LOAN POSITION.

(Continued from page 7.)

Mr. Tison asked if it was possible to credit the expenditure proposed on Government buildings with the expenditure on the new Court House which he suggested should be included in the same estimate...

Mr. Williams said Lord Dalmeida had more or less thrown down the gauntlet to them in connection with the expenditure on the new Court House. If they had such large sums available to invest, they would certainly be able to invest in the same...

Lord Dalmeida explained that the Court House was not in the same way as the new Court House and that he was not in a position to suggest that the Government should be asked to contribute to the cost of the new Court House...

TIMBER DESTROYED. Captain Mottahib directed the attention of the House to the destruction of timber reserves in the country...

He asked Lord Dalmeida to let him know the total amount given to the Government for the purchase of the 10,000 acres in the new Government House Reserve...

A resolution by Honorable Sir John Mottahib was moved in the following terms: That the Government should be asked to contribute to the cost of the new Court House...

Lord Dalmeida said the Government had been asked to contribute to the cost of the new Court House and that he was not in a position to suggest that the Government should be asked to contribute to the cost of the new Court House...

This in the opinion of the House is a very important matter and the Government should be asked to contribute to the cost of the new Court House...

Mr. W. Williams suggested that Lord Dalmeida should be asked to contribute to the cost of the new Court House and that he was not in a position to suggest that the Government should be asked to contribute to the cost of the new Court House...

He suggested that the Government should be asked to contribute to the cost of the new Court House and that he was not in a position to suggest that the Government should be asked to contribute to the cost of the new Court House...

On the other hand, it might be a difference of opinion as to what is the proper policy to be adopted in connection with the loan position...

Mr. W. Williams suggested that Lord Dalmeida should be asked to contribute to the cost of the new Court House and that he was not in a position to suggest that the Government should be asked to contribute to the cost of the new Court House...

Entertainments.

THE LYRIC.

A most delightful programme is being given by the Lyric Theatre in the new season of 'Sunderland'. The programme is a most interesting one and is being given by a most talented company...

Wishy Fivesy production. Nothing like this has been seen in the East African Colonies. The production is a most interesting one and is being given by a most talented company...

Mr. W. Williams suggested that Lord Dalmeida should be asked to contribute to the cost of the new Court House and that he was not in a position to suggest that the Government should be asked to contribute to the cost of the new Court House...

Death of Mr. Mervyn Reid.

DEATH OF MR. MERVYN REID.

THE GENERAL has had the death of Mr. Mervyn Reid, a well-known and successful business man, with deep sorrow. Mr. Reid was taken ill suddenly on the 15th inst. and died on the 17th inst. at the age of 55 years...

By his death the Veterinary Department has lost a valuable and capable and an able officer. It was a great loss to the Department and to the East African Colonies...

Mr. Reid was a most successful business man and a most successful officer. He was a most successful business man and a most successful officer. He was a most successful business man and a most successful officer...

DOES YOUR FORD CAR LOOK SHABBY? LOOK ALIBAI & CO. BAZAAR NAIROBI. Ladies and Gents Tailors, Tent and Sailmakers and Barbers, Hat Fitters.

IF SO, WHAT YOU WANT IS A ROBBIALAC OUTFIT. FOR ENAMELLING THE BODY, RENOVATING THE CUSHIONS, ETC., AND MAKE THE CAR LOOK LIKE NEW.

PRICE, COMPLETE WITH BRUSHES, IN VARIOUS COLOURS. Large Size Shs. 30. Small Size Shs. 22/6.

MANUFACTURERS SOLE REPRESENTATIVE: Smith Mackenzie & Co. P.O. Box 390 NAIROBI.

ALIBAI & Co. BAZAAR NAIROBI. Ladies and Gents Tailors, Tent and Sailmakers and Barbers, Hat Fitters.

J. H. ENGELBRECHT, Nyeri. Invaluable Passage Service, Royal Mail and Heavy Motor Transport.

LAND LAND LAND. I have several excellent farms for quick sale.

BIG "V" TWIN "RALEIGH" 1838. Hire Purchase Arranged. J. C. BUTTON, Hardinge Street, KETTLES-BOY LTD. Government Road.

NAIROBI WATER SUPPLY. Customers in the following areas are requested to arrange the meter supply as soon as possible...

THE SMITTFIELD BUTCHERY. The choicest only of all Butchers meat, Poultry, etc. Meat Kept in Cold Store.

JUST ARRIVED. Crepe de Chine in all colours. B. CHOITRAM, Government Road, P.O. Box 342 NAIROBI.

THE HOMESTEAD. Facing Sports Club, Parklands Very convenient to Town. Vacancy for a few. Paying Guests. European Cooking. Garage, Tennis. Mrs G. WOODBURY, Tel. 627.

Table with columns: STEAMER, FROM, ARRIVALS, DEPARTURES. Lists ship names and schedules.

AMMUNITINO. Owing to the high price of Ammunition, you want a Rifle not only to be accurate, but to have killing power. OUR NEW INVENTION of Mauser and Mauser-Shoemaker Rifles with the EXTRA LONG BARREL 98" gives accuracy not only more accurate, but nearly 20 per cent. higher.

Short Loans Granted £1 to £1000. CALL OR WRITE TO: Kenya Loan & Discount Co., Ltd. Court Chambers, (1st Floor) No 546 NAIROBI. Bills Discounted. Strictest Confidence.





FOOTBALLS.
THE "STADIUM."
 Best quality English made of leather ball. Head only throughout. 12 panel. Size 20. Each.

THE "AERO."
 Solid cowhide football. Head sewn and stitched. Full mesh air cover. Head with red rubber bladder. Size 20. Each.

THE "FIRAL."
 Strong cowhide football. Head sewn and stitched. Full mesh air cover. Head with red rubber bladder. Size 17.50. Each.



FRED RAPER
 GENERAL COMMISSION AGENT
 P. O. Box 541. CITY HOUSE. Phone 148

35/- Gold Medal 35/-
 Boiler Batts 18". Waterproof Capes 15". COMPLETE STOCKS SADDLERY A.M.L.T. P.8 Oken.

BINOCULARS. BINOCULARS.
 ALL SPECIALLY BUILT FOR THE TROPICS.
 Size 1.8. \$2.50. \$2.75. THE CHEAPEST IN TOWN.
 Outside Head Lamps for Night Travelling and Shooting



We stock Mauser and Mauser-Scovener Rifles and all munitions for every bore.
SHAW & HUNTER
 114 HALLWAY.
 Telephone "GIRAFFE." Phone 216

Hupmobile
£425
 The Motor Mart & Exchange, Ltd. NAIROBI.
LAWN TENNIS
 WE HAVE A LARGE SELECTION OF RACKETTS, BALLS, NETS, STRINGS, COVERS, POSTS, WINDERS, TAPE LINES ALL BY THE BEST MAKERS.
 RESTRICTING AND REPAIRS BY OUR OWN EUROPEAN WORKMEN.
MAY & Co. The Sports House.
J.R. SPELTENS & Co. Ltd. TAILORS AND OUTFITTERS.



Call for a Demonstration
The Motor Mart & Exchange, Ltd.
NAIROBI.
LAWN TENNIS
 WE HAVE A LARGE SELECTION OF RACKETTS, BALLS, NETS, STRINGS, COVERS, POSTS, WINDERS, TAPE LINES ALL BY THE BEST MAKERS.
 RESTRICTING AND REPAIRS BY OUR OWN EUROPEAN WORKMEN.
MAY & Co. The Sports House.
J.R. SPELTENS & Co. Ltd. TAILORS AND OUTFITTERS.

A FEW OF THE NEWEST GOODS JUST ARRIVED
 English Mill Handkerchiefs, Hand Knit Picnic Towels, etc. with real flannel. The very latest production from home. The finished effect of these handkerchiefs is really wonderful.
 Customers! They in all their "new" designs and materials including real Merinos.
 Fluffy Soft as all the finest shades of colours offered with flannel stripes on the inside.
 The above are the same as are being shown at the West End in London, the reason: A beautiful selection of goods for our windows. Don't miss seeing them before making your choice and let us show you others later.

HARLEY-DAVIDSON
 THE MOTOR VEHICLE MANUFACTURER
 Size 200-240. (Continental) £100-110
 Completely equipped up lamps, shower, flood and down lights. Aluminium alloy wheels. 18" x 16" tires. 24" x 24" front windows. Don't miss seeing them before making your choice and let us show you others later.
 Box 253. GOVERNMENT ROAD, NAIROBI. Phone 97.
TRUST TRIMMERS.
 All models of the famous range of machines including "Mass Production" Model P are now on view.
KENS ARKARD.
 B. D. BUTTON, Motor Engineer, NAIROBI.
 Official Service Station for the above Motor Cycle.

THE SPORTS PAGE

SATURDAY'S CRICKET. (P.A. Standard Special Cable Service).
INTERNATIONAL RUGBY.
THE BOXING RINGS.
HOME RACING.
Wales and England Draw
at Cardiff.

Railway Gains Defeat a Gymkhana Team.
GOOD BOWLING
 Played on the H.C. ground on Friday afternoon, the "friendly" match attracted between a Gymkhana team and the Railway team. The latter was victorious on some remarkable grounds.
 The first innings the Gymkhana side lost somewhat early at 25, a run in a half hour, and the Railway team made 118 before the Railway side was dismissed, of this score 10 was by the batsman against the "off" bowler. For he succeeded in knocking off 100 runs in 100 minutes. He was followed by a left hand batsman for 75. For the second side the Railway team made 100 runs in 100 minutes. The Railway team made a poor start in the first innings. The Railway team was dismissed at 12 before the Railway team was dismissed. The Railway team was dismissed at 12 before the Railway team was dismissed.

THE GRAND NATIONAL.
Sixty Entries for this Year's Race.
 The Grand National horse race is the most important of the year. There are 60 entries for the race, which will be held on Good Friday, April 28th, at Sandown Park. The race is run over a course of 4 miles, 5 furlongs, and 132 yards.

Local Lawn Tennis.
RESULTS OF SATURDAY'S PLAY
 The following are the results of the lawn tennis matches played on Saturday at the H.C. ground:
 1. Railway vs. Gymkhana. Railway won 2-0.
 2. Gymkhana vs. Railway. Gymkhana won 2-0.
 3. Railway vs. Gymkhana. Railway won 2-0.
 4. Gymkhana vs. Railway. Gymkhana won 2-0.

WALSLEY BELT
 The Walsley Belt is a new invention which has been patented by Mr. Walsley. It is a belt which is made of a special material which is designed to be used in the coal mines. It is made of a special material which is designed to be used in the coal mines. It is made of a special material which is designed to be used in the coal mines.

WILLIE SMITH STILL IN GREAT FORM.
More Billiard Breaks.
 Willie Smith is still in great form. He has made several more billiard breaks. He has made several more billiard breaks. He has made several more billiard breaks.

AMERICAN TENNIS PLAYERS.
 The American tennis players are expected to visit the H.C. ground in the near future. They are expected to visit the H.C. ground in the near future. They are expected to visit the H.C. ground in the near future.

THE NAIROBI SHOW
 JANUARY 22nd and 23rd
MUST BE THE SHOW OF SHOWS
 The Nairobi Show is the most important of the year. It is held on January 22nd and 23rd. It is the most important of the year. It is held on January 22nd and 23rd.

THE NAIROBI SHOW
 JANUARY 22nd and 23rd
MUST BE THE SHOW OF SHOWS
 The Nairobi Show is the most important of the year. It is held on January 22nd and 23rd. It is the most important of the year. It is held on January 22nd and 23rd.

Footless Footwear
 WE ALLOW 5 per cent DISCOUNT OFF THE LIST PRICE.
Oakmore
 THE "OAKMORE" DEBENT WALKING SHOE
 The best value to shoe on offer in the present market. Made of the finest quality of leather in the best workmanship. Shows up every inch of the foot. The Oakmore is made of the finest quality of leather in the best workmanship. Shows up every inch of the foot. The Oakmore is made of the finest quality of leather in the best workmanship. Shows up every inch of the foot.

"DELTA" TOWN SHOE
 Blocked in shoe and half shoe. In Tan Willow calf. Size 41. 42. 43. 44. 45. 46. 47. 48. 49. 50. 51. 52. 53. 54. 55. 56. 57. 58. 59. 60. 61. 62. 63. 64. 65. 66. 67. 68. 69. 70. 71. 72. 73. 74. 75. 76. 77. 78. 79. 80. 81. 82. 83. 84. 85. 86. 87. 88. 89. 90. 91. 92. 93. 94. 95. 96. 97. 98. 99. 100.

BROWN WOODS "OAKMORE" SHOES
 A well made shoe of smart appearance and light weight. Suitable for town wear. Has English Gait. Tanned sole. Comfortable shoe for hot days.
 Size 41. 42. 43. 44. 45. 46. 47. 48. 49. 50. 51. 52. 53. 54. 55. 56. 57. 58. 59. 60. 61. 62. 63. 64. 65. 66. 67. 68. 69. 70. 71. 72. 73. 74. 75. 76. 77. 78. 79. 80. 81. 82. 83. 84. 85. 86. 87. 88. 89. 90. 91. 92. 93. 94. 95. 96. 97. 98. 99. 100.

MEN'S "OAKMORE" GOLF SHOES
 Fine quality shoes with special leather in the toe. Dark in color. Has English Gait. Tanned sole. Comfortable shoe for hot days.
 Size 41. 42. 43. 44. 45. 46. 47. 48. 49. 50. 51. 52. 53. 54. 55. 56. 57. 58. 59. 60. 61. 62. 63. 64. 65. 66. 67. 68. 69. 70. 71. 72. 73. 74. 75. 76. 77. 78. 79. 80. 81. 82. 83. 84. 85. 86. 87. 88. 89. 90. 91. 92. 93. 94. 95. 96. 97. 98. 99. 100.

THE "RUCCO" FOOT SHOE
 Black patent leather shoe. Has English Gait. Tanned sole. Comfortable shoe for hot days.
 Size 41. 42. 43. 44. 45. 46. 47. 48. 49. 50. 51. 52. 53. 54. 55. 56. 57. 58. 59. 60. 61. 62. 63. 64. 65. 66. 67. 68. 69. 70. 71. 72. 73. 74. 75. 76. 77. 78. 79. 80. 81. 82. 83. 84. 85. 86. 87. 88. 89. 90. 91. 92. 93. 94. 95. 96. 97. 98. 99. 100.

MEN'S OXFORD DRESS SHOES
 In Black Glace or Patent Calf. Smartly turned out and the most easily shoe of the day.
 Size 41. 42. 43. 44. 45. 46. 47. 48. 49. 50. 51. 52. 53. 54. 55. 56. 57. 58. 59. 60. 61. 62. 63. 64. 65. 66. 67. 68. 69. 70. 71. 72. 73. 74. 75. 76. 77. 78. 79. 80. 81. 82. 83. 84. 85. 86. 87. 88. 89. 90. 91. 92. 93. 94. 95. 96. 97. 98. 99. 100.

WHITE SHOE TENNIS SHOES
 A strong upper, leather inside, punched cap, heavy pure plantation crepe rubber sole, and cemented to a leather sole. Has English Gait. Tanned sole. Comfortable shoe for hot days.
 Size 41. 42. 43. 44. 45. 46. 47. 48. 49. 50. 51. 52. 53. 54. 55. 56. 57. 58. 59. 60. 61. 62. 63. 64. 65. 66. 67. 68. 69. 70. 71. 72. 73. 74. 75. 76. 77. 78. 79. 80. 81. 82. 83. 84. 85. 86. 87. 88. 89. 90. 91. 92. 93. 94. 95. 96. 97. 98. 99. 100.

WHITE CANVAS TOWN SHOES
 In stout white canvas with leather inside and heavy pure plantation crepe rubber sole. Has English Gait. Tanned sole. Comfortable shoe for hot days.
 Size 41. 42. 43. 44. 45. 46. 47. 48. 49. 50. 51. 52. 53. 54. 55. 56. 57. 58. 59. 60. 61. 62. 63. 64. 65. 66. 67. 68. 69. 70. 71. 72. 73. 74. 75. 76. 77. 78. 79. 80. 81. 82. 83. 84. 85. 86. 87. 88. 89. 90. 91. 92. 93. 94. 95. 96. 97. 98. 99. 100.

MEN'S LEATHER SHIPPERS
 Italian cowhide. Tan upper. Stout leather sole. Calf or English Gait. Tanned sole. Comfortable shoe for hot days.
 Size 41. 42. 43. 44. 45. 46. 47. 48. 49. 50. 51. 52. 53. 54. 55. 56. 57. 58. 59. 60. 61. 62. 63. 64. 65. 66. 67. 68. 69. 70. 71. 72. 73. 74. 75. 76. 77. 78. 79. 80. 81. 82. 83. 84. 85. 86. 87. 88. 89. 90. 91. 92. 93. 94. 95. 96. 97. 98. 99. 100.

MEN'S GHEEK VULCANIS
 Heavily lined of best appearance and good wearing quality.
 Size 40/0.
TRAFFIC SCHOOL BOOTS AND SHOES
 In Tan Glace or Patent Calf. Smartly turned out and the most easily shoe of the day.
 Size 41. 42. 43. 44. 45. 46. 47. 48. 49. 50. 51. 52. 53. 54. 55. 56. 57. 58. 59. 60. 61. 62. 63. 64. 65. 66. 67. 68. 69. 70. 71. 72. 73. 74. 75. 76. 77. 78. 79. 80. 81. 82. 83. 84. 85. 86. 87. 88. 89. 90. 91. 92. 93. 94. 95. 96. 97. 98. 99. 100.

LACOS LIMITED
 P.O. Box No. 253. Phone No. 154.
"LADYKING"
 Telephone No. 1120. Phone No. 1120.

THE MAN WHO KNOWS AND APPRECIATES A GOOD BEER OR STOUT DRINKS

Kenya Beer & Stout BECAUSE HE KNOWS THEY ARE REAL DRINKS WITH THE REAL HOME FLAVOUR.

ADVERTISED AT THE GENERAL POST OFFICE, NAIROBI.

COME AND BACK IN A FORTNIGHT. OPERATION TROOPS IN RHINELAND.

Valuable information by Mr. Coblenz.

A SPECIAL INTERVIEW.

THE NEW OVERSEA COMMISSIONERS. KENYA. Jan 17, 1950. Mr. Coblenz is a well known figure in Kenya. He has been in the service of the Government for many years. He is a man of wide experience and has held various positions of responsibility. He is a man of high character and is well respected by his colleagues and the public. He is a man of high character and is well respected by his colleagues and the public.

HOW TO GET THE MAIL.

Several (continued Mr. Coblenz) of Uganda, Kenya, Colony and Protectorate. It is a matter of course that the Government will be pleased to supply the necessary information to those who are interested in the subject. It is a matter of course that the Government will be pleased to supply the necessary information to those who are interested in the subject.

AFRICA SAFE TRAVEL.

The weather which prevails throughout the continent is generally good. It is a matter of course that the Government will be pleased to supply the necessary information to those who are interested in the subject. It is a matter of course that the Government will be pleased to supply the necessary information to those who are interested in the subject.

GUARANTEED THE LARGEST CIRCULATION OF ANY NEWSPAPER. IN KENYA, UGANDA, TANGANYIKA AND ZANZIBAR.

DAILY EDITION THE EAST AFRICAN STRAIGHT PAGES.

MOMBASA TIMES & UGANDA ARGUS. THE OLDEST ESTABLISHED NEWSPAPER PUBLISHED IN KENYA AND UGANDA.

NAIROBI, TUESDAY, JANUARY 19, 1950.

PRINCES AND PRICES.

14.50 for a Cup of Coffee!

MOBILE LIFT EXPORT FOR KENYA.

THE PRINCE OF WALES. The Prince of Wales, who will visit Kenya in the next few weeks, is expected to bring with him a large number of gifts for the people of the country. It is a matter of course that the Government will be pleased to supply the necessary information to those who are interested in the subject.

TOLL OF THE COBAGET.

YOUR MASTER. It is a matter of course that the Government will be pleased to supply the necessary information to those who are interested in the subject. It is a matter of course that the Government will be pleased to supply the necessary information to those who are interested in the subject.

KENYA'S NIGHT CLUB.

Water now to be taken for the first time in the city. It is a matter of course that the Government will be pleased to supply the necessary information to those who are interested in the subject. It is a matter of course that the Government will be pleased to supply the necessary information to those who are interested in the subject.

THE DEATH DUTY LAW ADJUSTED.

Another Case Comes to Light.

UNFAIR REVENUE.

It is a matter of course that the Government will be pleased to supply the necessary information to those who are interested in the subject. It is a matter of course that the Government will be pleased to supply the necessary information to those who are interested in the subject.

TRAMCAR DISASTER.

EIGHTEN KILLED AND 20 INJURED. A tramcar disaster occurred in the city of Nairobi on the morning of the 15th inst. The tramcar was carrying a large number of passengers when it derailed and overturned. Eighteen people were killed and 20 were injured.

Eclipse Observations.

PAWNBROK, MONDAY, JANUARY 10. All pawnshop prices are up. It is a matter of course that the Government will be pleased to supply the necessary information to those who are interested in the subject. It is a matter of course that the Government will be pleased to supply the necessary information to those who are interested in the subject.

NAIROBI MEMBERS TO MEET TOWNSPEOPLE.

This Week's Chance to Express Views.

HUSBAND'S MEETING.

THE NAIROBI MEMBERS TO MEET TOWNSPEOPLE. This week's chance to express views on the proposed changes in the Municipal Council. It is a matter of course that the Government will be pleased to supply the necessary information to those who are interested in the subject.

WEATHER REPORT.

For the week ending January 9, 1950.

RAINFALL.

TEMPERATURE.

THE MONEY MARKET.

LAKE AREA MEETING.

THE NAIROBI SHOW. In connection with the Agricultural Show to be held at Nairobi on the 23rd and 24th inst., the Uganda Bank has announced that it will be pleased to supply the necessary information to those who are interested in the subject.

CONSTRUCTION OF MAIN TRUNK ROADS.

Nairobi-Uganda and Limuru-Nairobi.

KISUMU PROPOSALS.

At a meeting of the Nairobi District Board held on the 15th inst., the Government's proposals for the construction of main trunk roads were discussed. It is a matter of course that the Government will be pleased to supply the necessary information to those who are interested in the subject.

SALE PROCEEDS.

MENS WEARS SPECIALS.

LADIES WEAR SPECIALS.

CHILDREN WEAR SPECIALS.

TO-DAY'S CAVES LIST.

TABLES LOADED WITH BARGAINS IN FANCY AND PLAIN TABLE LINENS AT VERY LOW PRICES TO CLEAR.

THE LOUNGE FOR COCKTAILS AND TEAS. THE DINING ROOM FOR BREAKFASTS, LUNCHEONS, AND DINNERS. THE NEW STANLEY HOTEL.

WHITEAWAY'S GREAT SALE.

The Crowds that thronged the Store yesterday showed that the Nairobi Shopping Public knows a good thing.

Every Department is Offering Wonderful Bargains.

- 28 Tweed Sports Coats, Fawn. Shs. 18-50. 100 Mens Double Trousers. Shs. 15-50. 210 Mens Striped Shirts. Shs. 7-50. 50 Mens Cashmere Socks. Shs. 2-50. 200 Mens Golf Stockings. Shs. 3-95. 14 Paris Model Corsets. Shs. 150-0. 13 Natural Rub Bed. Shs. 2-50. 56 Striped Cotton Frocks. Shs. 14-50. 10 Ladies Knitwear. Shs. 14-50. 11 Princess Petticoats. Shs. 1-65. 28 Woolen Gowns. Shs. 5-00. 8 Girls School Frocks. Shs. 3-50. 14 Printed Blouses. Shs. 2-50. 10 Girls Knitwear. Shs. 14-50. 20 Knitted Frocks. Shs. 4-75.

Whiteaway, Leidlaw & Co., Ltd. NAIROBI.

THE !! BUILDING MATERIAL STANDARD BRICKS

The Nairobi Brick, Tile & Pipe Works Ltd. Works: MUTHAIGA. Enquiries: BEALES & SMITHSON, MANAGING SECRETARIES, P.O. Box 191. Phone: 705, 43 Office 160.

THE EUROPEAN AND AFRICAN TRADE ORGANISATION

Telephone 106. Telegrams: "E.T.O." P.O. Box 624. Headquarters: London. (Organisation)

All Communications to be addressed to THE SECRETARY, PLEASE NOTE THAT FROM THE BEGINNING OF SEPTEMBER, 1929, THE FOLLOWING FEES WILL BE CHARGED BY THE ASSOCIATION TO ALL THOSE WHO MAKE USE OF THE ASSOCIATION AND WHO ARE NOT REGULAR SUBSCRIBERS TO THE FUNDS OF THE ORGANISATION.

REGULAR SUBSCRIBERS WILL CONTINUE TO RECEIVE THE FULL SERVICES OF THE ORGANISATION FREE OF CHARGE.

M. E. de SOUZA & Co.

(ESTABLISHED 1889) GENERAL MERCHANTS Ladies' & Gent's Expert Tailors & Outfitters Direct Importers of Best Groceries, Wines, Spirits and all Personal & Household Requisites. P.O. Box 190 Govt. Road Phone 75

MOTURING TOPICS

TWO YEARS HENCE.

Cars of 100 Horse-power to Come on to the Market.

CHARLES PREDICION

Mr. Walter F. Chrysler has produced considerable progress in the past two years. It is in the car that he has made the greatest advance.

It is the general and not the individual automobile that the automobile manufacturer must have in mind, says Mr. Chrysler.

The motor car has reached a stage where it is required to be a reliable and efficient machine. The development of the automobile has been rapid and the progress has been steady.

THE TEST OF HIGH-VELOCITY

Mr. Chrysler's test car has been subjected to a series of high-velocity tests.

The test car has been subjected to a series of high-velocity tests, and the results have been most satisfactory.

The test car has been subjected to a series of high-velocity tests, and the results have been most satisfactory.

The test car has been subjected to a series of high-velocity tests, and the results have been most satisfactory.

The test car has been subjected to a series of high-velocity tests, and the results have been most satisfactory.

2400 REVOLUTIONS

The test car has been subjected to a series of high-velocity tests, and the results have been most satisfactory.

The test car has been subjected to a series of high-velocity tests, and the results have been most satisfactory.

The test car has been subjected to a series of high-velocity tests, and the results have been most satisfactory.

The test car has been subjected to a series of high-velocity tests, and the results have been most satisfactory.

The test car has been subjected to a series of high-velocity tests, and the results have been most satisfactory.

RULES OF THE ROAD.

A Straight Talk to Motor Drivers.

THE COMMON SENSE.

Every driver is expected to be a responsible citizen on the road.

Every driver is expected to be a responsible citizen on the road.

Every driver is expected to be a responsible citizen on the road.

Every driver is expected to be a responsible citizen on the road.

Rolling Resistance.

RESULTS OF A SERIES OF TESTS.

The rolling resistance of a tire is a factor of great importance.

The rolling resistance of a tire is a factor of great importance.

The rolling resistance of a tire is a factor of great importance.

The rolling resistance of a tire is a factor of great importance.

LOADS AND CURIOSITY.

It is important to know the load capacity of your car.

It is important to know the load capacity of your car.

It is important to know the load capacity of your car.

Essjay Limited P.O. Box 634 Theatre Royal Building Sixth Avenue, Nairobi Phone 377 Telegrams: Essjay Ltd

We have repeatedly expressed our opinion on the value of Nairobi property. It is a steady rise in value. In view of the improvements proposed to be carried out in Nairobi, we are sure that what we have said must continue. You should get your property values at a moderate level much lower.

A moving house, situated in a quiet residential area, is available for rent. The rent is moderate and the terms are liberal.

A good and well-located house is available for rent. The rent is moderate and the terms are liberal.

An interesting thing has been found in the course of our investigations. It is a steady rise in value.

P. GETHIN, Petrol Depot. ROYAL SUPERIOR GEAR FOR BIRD DAY AND NIGHT. Telephone 705, Nairobi. Box 59

A state house, containing 10 rooms, is available for rent. The rent is moderate and the terms are liberal.

A well-appointed state house, containing 10 rooms, is available for rent. The rent is moderate and the terms are liberal.

A newly built state house, containing 10 rooms, is available for rent. The rent is moderate and the terms are liberal.

A well-appointed state house, containing 10 rooms, is available for rent. The rent is moderate and the terms are liberal.

A well-appointed state house, containing 10 rooms, is available for rent. The rent is moderate and the terms are liberal.

A well-appointed state house, containing 10 rooms, is available for rent. The rent is moderate and the terms are liberal.

A well-appointed state house, containing 10 rooms, is available for rent. The rent is moderate and the terms are liberal.

A well-appointed state house, containing 10 rooms, is available for rent. The rent is moderate and the terms are liberal.

A well-appointed state house, containing 10 rooms, is available for rent. The rent is moderate and the terms are liberal.

A well-appointed state house, containing 10 rooms, is available for rent. The rent is moderate and the terms are liberal.

A well-appointed state house, containing 10 rooms, is available for rent. The rent is moderate and the terms are liberal.

A well-appointed state house, containing 10 rooms, is available for rent. The rent is moderate and the terms are liberal.

Sealed to Protect Buick Performance

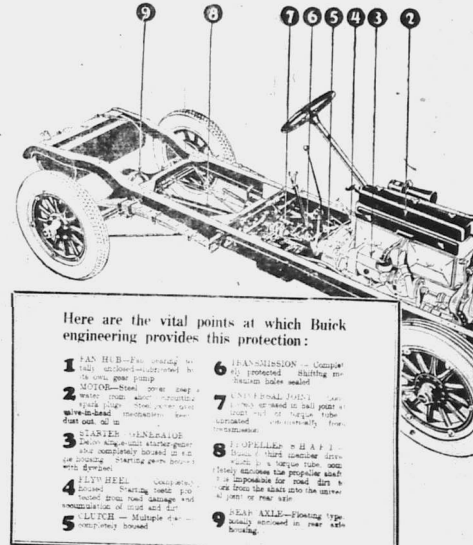
Buick Chassis is completely sealed. Iron and steel housing protect the operation of all driving parts—seal them in to safeguard Buick performance.

Some cars have this protection, but Buick is the only car in the world—regardless of price—that has a wall of defence completely from fan hub to rear axle against road dirt, stones, water and loss of lubricant.

And now to these seals Buick has added three more—

- 1 Oil Filter Buick Oil Filter is completely sealed with working parts. The engine is completely sealed with working parts. The engine is completely sealed with working parts.
- 2 Air Filter Buick Air Filter is completely sealed with working parts. The engine is completely sealed with working parts. The engine is completely sealed with working parts.
- 3 Petrol Filter Buick Petrol Filter is completely sealed with working parts. The engine is completely sealed with working parts. The engine is completely sealed with working parts.

Standard Six Touring £418



Here are the vital points at which Buick engineering provides this protection:

- 1 HUB-BEARING housing is completely sealed with working parts. The engine is completely sealed with working parts. The engine is completely sealed with working parts.
- 2 WAVE SHAFT SHAFT housing is completely sealed with working parts. The engine is completely sealed with working parts. The engine is completely sealed with working parts.
- 3 MOTOR housing is completely sealed with working parts. The engine is completely sealed with working parts. The engine is completely sealed with working parts.
- 4 STARBUCK housing is completely sealed with working parts. The engine is completely sealed with working parts. The engine is completely sealed with working parts.
- 5 FLYWHEEL housing is completely sealed with working parts. The engine is completely sealed with working parts. The engine is completely sealed with working parts.
- 6 TRANSMISSION housing is completely sealed with working parts. The engine is completely sealed with working parts. The engine is completely sealed with working parts.
- 7 REAR AXLE housing is completely sealed with working parts. The engine is completely sealed with working parts. The engine is completely sealed with working parts.
- 8 FRONT AXLE housing is completely sealed with working parts. The engine is completely sealed with working parts. The engine is completely sealed with working parts.
- 9 REAR AXLE housing is completely sealed with working parts. The engine is completely sealed with working parts. The engine is completely sealed with working parts.

DISTRIBUTORS Gilfillan & Company, Ltd.

Essjay Limited P.O. Box 634 Theatre Royal Building Sixth Avenue, Nairobi Phone 377 Telegrams: Essjay Ltd

THE EAST AFRICAN STANDARD

Advertisements are accepted only subject to payment.

Advertisements are accepted only subject to payment.

Advertisements are accepted only subject to payment.

Advertisements are accepted only subject to payment.

Advertisements are accepted only subject to payment.

Advertisements are accepted only subject to payment.

Advertisements are accepted only subject to payment.

Advertisements are accepted only subject to payment.

Advertisements are accepted only subject to payment.

Advertisements are accepted only subject to payment.

Advertisements are accepted only subject to payment.

Advertisements are accepted only subject to payment.

Advertisements are accepted only subject to payment.

Advertisements are accepted only subject to payment.

Advertisements are accepted only subject to payment.

Advertisements are accepted only subject to payment.

Advertisements are accepted only subject to payment.

Advertisements are accepted only subject to payment.

Advertisements are accepted only subject to payment.

Advertisements are accepted only subject to payment.

Advertisements are accepted only subject to payment.

Advertisements are accepted only subject to payment.

Advertisements are accepted only subject to payment.

Advertisements are accepted only subject to payment.

Advertisements are accepted only subject to payment.

Advertisements are accepted only subject to payment.

Advertisements are accepted only subject to payment.

WANTED.

BOARD and residence with per...

FURNISHED home containing...

THURKEY eggs for incubation...

SITUATIONS WANTED.

TEACHER, experienced, certifi...

FOR SALE.

£2,000 P.A. income profits for...

FOR SALE.

FOR SALE.

FOR SALE.

FOR SALE.

FOR SALE.

FOR SALE.

FOR SALE.

FOR SALE.

FOR SALE.

FOR SALE.

FOR SALE.

FOR SALE.

FOR SALE.

CORRESPONDENCE.

The Editor does not accept respon...

POPPY DAY.

To the Editor, "E. A. Standard"...

YOURS ARE.

ALISA TUNNEY.

THE REPORT.

The President.

FOR SALE.

FOR SALE.

FOR SALE.

FOR SALE.

FOR SALE.

FOR SALE.

FOR SALE.

FOR SALE.

FOR SALE.

FOR SALE.

FOR SALE.

FOR SALE.

Editor & Co. for sending their pro...

POPPY DAY.

YOURS FAITHFULLY.

LUCIE MCMILLAN.

EARL HAIG FUND.

FOR SALE.

FOR SALE.

FOR SALE.

FOR SALE.

FOR SALE.

FOR SALE.

FOR SALE.

FOR SALE.

FOR SALE.

FOR SALE.

FOR SALE.

FOR SALE.

FOR SALE.

FOR SALE.

EQUATOR SAW MILLS

PODO - CEDAR - HARDWOODS Ask for Price List. Nairobi or Maji Mazuri.



Silvertown (OK T) Wood Preservative

Best Quality Lowest Price. Sadler Street. Box 291. Nairobi.

BRITISH INDIA STEAM NAVIGATION COMPANY, LTD

Table with shipping schedules for routes to Bombay, Madras, and other ports. Includes ship names, departure dates, and agents.

Advertisement for M.P. de Meilo, featuring a portrait and text about legal services.

NOTICE.

FOR SALE

Leasehold, farm, Land Office No 3495, situated in Maraga District...

Advertisement for insurance services: Insure YOUR MOTOR CARS AND MOTOR CYCLES WITH THE AFRICAN GUARANTEE AND INDemnITY Co. Ltd.

Advertisement for Y.M.C.A. Residential Club, located at an ideal residence for rent.

YOUR OPPORTUNITY!

HAVING BEEN APPOINTED DISTRIBUTORS OF KOLOR CARBON PAPERS, RUBBER STAMP PADS AND P&D INK...

ATTENTION! TAWS BOX 611. NAIROBI PHONE 141.

OPENING ON MONDAY JANUARY 18th. THE MEDICAL SUPPLY, Co.

DIRECT IMPORTERS: WHOLESALE AND RETAIL CHEMISTS AT THE

BOMA BUILDINGS, (Late Fisher & Simmons.)

Retail Price Lists on Application. Special Quotations to Employers of Labour.

Advertisements are accepted only subject to payment.

Advertisements are accepted only subject to payment.

Advertisements are accepted only subject to payment.

Advertisements are accepted only subject to payment.

Advertisements are accepted only subject to payment.

Advertisements are accepted only subject to payment.

Advertisements are accepted only subject to payment.

Advertisements are accepted only subject to payment.

OVERLAND

A COMPLETE CAR
Metal Safari Body
3 Ply Sun Proof Top
5 Tyres & Tubes
Magneto Ignition

£195

THE OVERLAND Service Station
Sixth Avenue NAIROBI.

Count Them on the Road!
The DURANT RIGBY

Just a real good car
With a sound service organisation behind it.

SIXTH AVENUE, NAIROBI.

CARR, LAWSON & Co., Ltd.

P. O. BOX 200. TEL. 105

"THE ARISTOCRAT OF AMERICAN AUTOMOBILES."



£465

The Chrysler Six

DISTRIBUTORS
YORK GARAGES Ltd., NAIROBI

A WELL EQUIPPED BATH ROOM

IS A NECESSITY IN THIS CLIMATE, AND IS NOW WITHIN THE REACH OF ALL...
WHEN INSTALLING BATHS LAVATORY BASINS-SINKS-SHOWERS-W.C. SETS-AND BATH ROOM ACCESSORIES, and you will obtain the most up-to-date patterns in ranges with all pocket, constructed to last as long as your house.

Before deciding, call and inspect our stocks, and illustrated catalogues of SANITARY WARE, especially suitable for this country. BEWARE OF INFERIOR FITTINGS, OF FOREIGN MAKE which you may be told are just as good. THEY ARE NOT! Insist upon SHANKS GENERAL AGENTS H. F. WARD & Co., NAIROBI HOUSE, NAIROBI. WHO CARRY REPRESENTATIVE STOCK.



M. Walter Jamison, The Printing expert, leave Nairobi, August 7.

Ford THE UNIVERSAL CAR Improved Models

A Growing Vogue
Two Fords instead of the big car



To day the car is adapted to the needs of the family, not the family to the capabilities of the car. The amazing strides of the automobile industry, the development of production methods and the popularity of the improved Ford car have made possible this same point of view of the present day purchaser.

Two Ford cars may be bought and operated at the cost, or less than the cost, of one big car. Selection of two of the five standard Ford types: the Touring Car or the Roadster, the Ford Sedan, the Fordor Sedan, the Coupe, will provide approved personal transportation for a wide range of family activity.

If time was divided to the five and left at the curb all day, there's another at home for family.

The Service Company Limited.

IMPORTING DEALERS AND DISTRIBUTORS NAIROBI, MOMBASA, NAKURU, and MOSHI



No pre-ignition with the well-balanced petrol-SHELL

BRITISH IMPERIAL OIL Co. (S.A.) Ltd Agents: SMITH MACKENZIE & Co

Norton Motor Cycles



BRIMELOW'S GARAGE, NAIROBI. Herding St.

SILVO LIQUID SILVER POLISH advertisement with illustration of a woman applying polish.

B.S.A. The Undisputed Leader advertisement with illustration of a B.S.A. car.

THE EAST AFRICAN STANDARD
Tuesday Jan 8 1930

THE STANDARD (AND COST) OF LIVING.

We hope that the statement in our last issue...
The standard of living...
The cost of living...
The standard of living...
The cost of living...

NEW SECRETARY
Major...
THE O.P.U.
The annual general meeting...
THE PERKING GROND...
New Secretary...
Major...

All States Obv...
The annual general meeting...
The Perking Grond...
New Secretary...
Major...
"STANDARD" BOARD

TUESDAY, JAN 10 1924

READERS' VIEWS ON KENYA TOPICS

The Editor does not accept responsibility for the opinions expressed by correspondents in these columns...

THE FUTURE NAIBOI

To the Editor, E.A. Standard: I have been reading with interest the account of the future of Naiboi...

CITIZEN

To the Editor, E.A. Standard: I have been reading with interest the account of the future of Naiboi...

JOBS PROPOSAL

To the Editor, E.A. Standard: I have been reading with interest the account of the future of Naiboi...

REVENUE

To the Editor, E.A. Standard: I have been reading with interest the account of the future of Naiboi...

COLOURED ENAMEL TOILET SETS

Hold colours with black edge. A very attractive shade of black...

TOILET SETS & SHEETS

TOILET SETS & SHEETS. Toilet set with Dish, Chamber, Basin & Vase. Sh. 67/60.

TOILET SETS SIX PIECES

TOILET SETS SIX PIECES. Toilet set with Dish, Chamber, Basin & Vase. Sh. 95/00.

POTENTIALITY

To the Editor, E.A. Standard: I have been reading with interest the account of the future of Naiboi...

YOURS

NAIBOI

To the Editor, E.A. Standard: I have been reading with interest the account of the future of Naiboi...

YOURS

NAIBOI

To the Editor, E.A. Standard: I have been reading with interest the account of the future of Naiboi...

YOURS

NAIBOI

To the Editor, E.A. Standard: I have been reading with interest the account of the future of Naiboi...

YOURS

NAIBOI

To the Editor, E.A. Standard: I have been reading with interest the account of the future of Naiboi...

YOURS

NAIBOI

To the Editor, E.A. Standard: I have been reading with interest the account of the future of Naiboi...

YOURS

To the Editor, E.A. Standard: I have been reading with interest the account of the future of Naiboi...

YOURS

NAIBOI

To the Editor, E.A. Standard: I have been reading with interest the account of the future of Naiboi...

YOURS

NAIBOI

To the Editor, E.A. Standard: I have been reading with interest the account of the future of Naiboi...

YOURS

NAIBOI

To the Editor, E.A. Standard: I have been reading with interest the account of the future of Naiboi...

YOURS

NAIBOI

To the Editor, E.A. Standard: I have been reading with interest the account of the future of Naiboi...

YOURS

NAIBOI

To the Editor, E.A. Standard: I have been reading with interest the account of the future of Naiboi...

YOURS

To the Editor, E.A. Standard: I have been reading with interest the account of the future of Naiboi...

YOURS

NAIBOI

To the Editor, E.A. Standard: I have been reading with interest the account of the future of Naiboi...

YOURS

NAIBOI

To the Editor, E.A. Standard: I have been reading with interest the account of the future of Naiboi...

YOURS

NAIBOI

To the Editor, E.A. Standard: I have been reading with interest the account of the future of Naiboi...

YOURS

NAIBOI

To the Editor, E.A. Standard: I have been reading with interest the account of the future of Naiboi...

YOURS

NAIBOI

To the Editor, E.A. Standard: I have been reading with interest the account of the future of Naiboi...

YOURS

To the Editor, E.A. Standard: I have been reading with interest the account of the future of Naiboi...

YOURS

NAIBOI

To the Editor, E.A. Standard: I have been reading with interest the account of the future of Naiboi...

YOURS

NAIBOI

To the Editor, E.A. Standard: I have been reading with interest the account of the future of Naiboi...

YOURS

NAIBOI

To the Editor, E.A. Standard: I have been reading with interest the account of the future of Naiboi...

YOURS

NAIBOI

To the Editor, E.A. Standard: I have been reading with interest the account of the future of Naiboi...

YOURS

NAIBOI

To the Editor, E.A. Standard: I have been reading with interest the account of the future of Naiboi...

YOURS

To the Editor, E.A. Standard: I have been reading with interest the account of the future of Naiboi...

YOURS

NAIBOI

To the Editor, E.A. Standard: I have been reading with interest the account of the future of Naiboi...

YOURS

NAIBOI

To the Editor, E.A. Standard: I have been reading with interest the account of the future of Naiboi...

YOURS

NAIBOI

To the Editor, E.A. Standard: I have been reading with interest the account of the future of Naiboi...

YOURS

NAIBOI

To the Editor, E.A. Standard: I have been reading with interest the account of the future of Naiboi...

YOURS

NAIBOI

To the Editor, E.A. Standard: I have been reading with interest the account of the future of Naiboi...

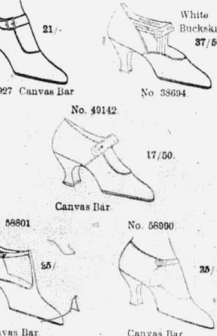
LYRIC HALL

TO-NIGHT 8-45 BETTY BAUFORD AND MOYNA MACGILL in Nothing Else Matters

Topical Budget Scenes of Queen Alexandra, and all the latest news

BIO-TEA FRIDAY AT 4.10.

White Cool Shoes for Hot Season



Babies The Shoe People

TO-NIGHT JAN. 19th & WEDNESDAY Jan. 20th AT 8-45 p.m.

THEATRE ROYAL.

DECEPTION

A film of the 18th century, showing part of the life of King Henry VIIIth, particularly his matrimonial affairs.

POPULAR PRICES

3. & 2.

CHILPRUFE FOR Children.

It is a considerable satisfaction to find no kinder that there is only one quality in Chilprufe—the first pure Wool—second or third grade to confuse them.



Waring's NAIROBI'S FASHION CENTRE

Africa House, Government Road, NAIROBI.

LAW COURTS SITE

THE EDITOR, E.A. STANDARD: I have been reading with interest the account of the future of Naiboi...

REVENUE

To the Editor, E.A. Standard: I have been reading with interest the account of the future of Naiboi...

YOURS

NAIBOI

To the Editor, E.A. Standard: I have been reading with interest the account of the future of Naiboi...

YOURS

NAIBOI

UNION-CASTLE LINE

Services to England, East, South and West Africa Ports and Stations PROSPECTIVE SAILINGS...

Table with columns for ship names, destinations, and departure dates. Includes ships like 'The Union-Castle', 'The West Africa', etc.

THE UNION-CASTLE MAIL STEAMSHIP CO. LTD. ON THE COMPANY'S SERVICE

HOLLAND AFRIKA LIJN

JOINT SERVICE (HOLLAND ZUID AFRIKA LIJN & HOLLAND OOST AFRIKA LIJN)

Table listing steamship schedules with columns for ship names, destinations, and dates.

Passenger information for the Holland Afrika Lijn service.

PASSENGER FARES: Antwerp and London (A) £48 (B) £42 10s.

For further information apply to the agents: TWENTSCHE OVERZEES TRADING CO., LTD.

Sub-Agents: NAIROBI: H. Therkla, Lead and Estate Agent.

Gine Her the Best.

TORR'S CHOCOLATES ARE SUPREME. THE SALISBURY, Family and Residential HOTEL.

English Cream Stilton Cheese IN JARS Arrived at R. B. DONNAN'S, THE GROCER.

English Cream Stilton Cheese IN JARS Arrived at R. B. DONNAN'S, THE GROCER. E. DORRIS, OFFICIALS OFFICIAL.

DISTRICT NOTES.

A Forty-Shilling Job. LOBBY DRIVER TAKES THE RULE OF THE ROAD.

Malaya. The Hon. Secretary of the Malaya Legislative Council... There was a large attendance at a public meeting...

The Law on Slencers. MAKER'S PART NOT EXCUSE FOR SLICING.

FINANCERS. Lord Praeger's report on the... The Hon. Secretary of the Malaya Legislative Council...

Goan Sportsman's Wedding. MISS C. FERREIRA ENGAGED TO MRS M. C. SERRAVALLO.

THE HON. SECRETARY OF THE MALAYA LEGISLATIVE COUNCIL... There was a large attendance at a public meeting...

LYRIC Lounge and Tea Room for Luncheon and Teas. COOL and SPACIOUS.

THE HON. SECRETARY OF THE MALAYA LEGISLATIVE COUNCIL... There was a large attendance at a public meeting...

ONLY THE BEST OFFERED. Miss KATHLEEN BATES, A.R.C.M. PIANO-FORTE SINGING, HARMONY, THEORY OF MUSIC.

Notice of Removal. As from 1st December the Offices, Showroom and Garage of MESSRS. F. FISHER AND SIMMONS (S.A.) Ltd.

Notice of Removal. As from 1st December the Offices, Showroom and Garage of MESSRS. F. FISHER AND SIMMONS (S.A.) Ltd.

JOHN RIFKIN

WAGON BUILDER, BLACKSMITH, FARRIER. WAGONS AND ALL WAGON PARTS.

WAGON BUILDER, BLACKSMITH, FARRIER. WAGONS AND ALL WAGON PARTS. All kinds of Wagons made to Order.

High View Hotel, Limuru. 17 in Number, 3 in Limuru. TEXAS HOSIERY.

TENNIS COURT, ELECTRIC LIGHT. For next season by arrangement.

NAIROBI School of Dancing. Private Tuition given in the new FRENCH TANGO.

MISS EDITH OUTHAM, P.O. BOX 506, NAIROBI.

ENLARGEMENTS FROM ANY PHOTOGRAPH. 2/6 PER FOOT. MARTIN.

SUPER SIX HUDSON. For How they or Night. ECONOMY DELIVER.

NOTICE. Will the public note permanent address of DeLuxe Boot Co.

DeLuxe Boot Co. All kinds of Footwear made to order. Opposite KANJEI NARANJEE Government Road.

FOR HIGH CLASS Bread Cakes and Biscuits.

ELLIOTS. P.O. Box 175. NAIROBI.

Geo. BLOWERS.

WINDING ORBATATORS, MASTS, OTHER STEEL IMPOSTS. CASH WITH ORDER.

Illustrations of various types of doors and windows.

NOTE. Clients are notified that any person who has been notified that any person who has been notified...

REMOVAL NOTICE

Will Clients Please Note that Geo. Blowers has Removed his Office & Works to Sadler St. next to Smith Mackenzie's.

TO LET. House and Outings of Ngara Road. Terms moderate.

The First Patent Holder was Gibbs. British and Still the Best. Gibbs Cold Cream Shaving Soap.

WHEAT GROWERS USE EFFRO AND BE FREE OF RUST. The following is an extract of the Manufacturer's Report.

WEDDING RINGS AND JEWELLERY MADE TO ORDER. ALL WORK GUARANTEED AND PROMPTLY RETURNED.

E. Nicholas WATCHMAKER & JEWELLER CITY HOUSE, NAIROBI. All classes of Watches, Clocks, Jewellery, Scientific Instruments.

New Goods for New Year. JUST UNPACKED. Several kinds of silks, Ivory curries, Brass ornaments.

NEW GOODS FOR NEW YEAR. JUST UNPACKED. Several kinds of silks, Ivory curries, Brass ornaments, real hand made carpets.



WITH REMINGTON YOU GET EUROPEAN SKILLED SERVICE WITH GUARANTEE

FULL SUPPLY OF PARTS. ALL REPAIRS UNDERTAKEN

REMINGTON TYPEWRITER AGENCY.

Government Road.

Box 67

NAIROBI

Phone 85

Scotland's Finest Whisky



Characteristically PURE AND MATURE

LONG JOHN DISTILLERS LTD. (Incorporated)

WHOLESALE DISTRIBUTORS D. EPSTEIN & Co.

P.O. Box 176

NAIROBI

Phone 44

Charles W are

The same that stands for integrity PIONEER TURF ACCOUNTANT.

Telephone: 879/80/81

TRUST CHAMBERS, GOVERNMENT ROAD.

P.O. Box 170

The Smithfield Butchery.

The oldest established European Butchery in Town) Box 6

Phone 413

The choicest only of all Butchers meat, Poultry, etc.

Meat Kept in Cold Store.

We are now in a position to Supply

P & O

PLANTERS & SHELLERS



Ploughs, Disc Harrows, Cultivators etc. J.W. MILLIGAN & CO.

GOVERNMENT ROAD

P.O. Box 148

NAIROBI

GICLI FARMERS.

Kenya Wool.

Forest Road.

PRICES IN LONDON

MEMBER SALE

A COMPLAINT BY THE RESIDENTS.

Proposed Fencing of a New Railway.

OUTBREAK OF EAST COAST FEVER.

There was a disappointing result at the meeting of the Gicli Farmers Association...

The following were elected President: Mr. R. Hill. Committee: Capt. A. G. Owen...

DOUBLE INOCULATION

The latest report of double inoculation being most satisfactory...

GILGIL TOWNSHIP

Attention was directed to the condition of the township...

EAST COAST FEVER

The outbreak of E. C. F. at Nanyuki in the district...

At the sale of wool conducted by Messrs. Watt and Co. at the...

Mr. W. A. Phillips reports to the Editor of the Standard...

From continued observation I can say that this year 1908...

The thymopneumonia virus and other diseases of the sheep...

Attention is drawn to the fact that the sheep are not yet...

As regards traffic here about one of the most serious...

It is proposed to erect a bridge over the river at Nanyuki...

TENNIS RACKETS MAY & CO.

DOES YOUR FORD CAR LOOK SHABBY?



IF SO, WHAT YOU WANT IS ROBBIALAC OUTFIT

PRICE COMPLETE WITH BRUSHES IN VARIOUS COLOURS

The SERVICE Co. NAIROBI, AND 9 BRANCHES

MANUFACTURERS SOLE REPRESENTATIVE Smith Mackenzie & Co.

ALIBHAI & Co. NAIROBI

LADIES AND GENTS TAILORS TENT AND SAILMAKERS AND SAFARI OUTFITTERS.

J. H. ENGBELBRECHT, NYERI Invaluable Passenger Service, Royal Mail and Heavy Motor Transport.

LAND LAND LAND If you want anything done come to ENGBELBRECHT

SAM RIFKIN WAGON BUILDER, BLACKSMITH, FARRIER.

P.O. Box 478, Phone 145, NAIROBI.

TO LET. Large airy room, healthy locality...

SEAGLES DAY-GLAZING & DYING WORKER

Yarn Dyeing Office: J. B. STEPHENS, Ltd.

TO LET. Board and lodging to let. Quite close to town.

FOR SALE. For Ten Acres, Fertile, pedregal, hating view, 6 weeks old...

P. STEWART, CAR, SED, PAINTER & DECORATOR.

Sign Painting, Graining, Marbling, Filigree, etc.

Cash, SED, PAINTER & DECORATOR, Hardings Street.

BIG "V" TWIN "RALEIGH" 1838L.

Hire Purchase Arranged.

J. C. BUTTON, Hardings Street, KETTLES-ROY LTD.

Government Road

NAIROBI WATER SUPPLY

Consumers in the following areas are requested to conserve the water supply...

PARKLANDS, WESTLAND, MUTIARA AND UPPER FARMLANDS

The office is specially directed against the watering of gardens

The supply is cut off at various points in the above areas

Municipal Offices, NAIROBI, 14th January 1908

C. B. DAVIDSON, Municipal Engineer

JUST ARRIVED Crepe de Chine in all colours

B. CHOITRAM, Government Road.

THE HOMESTEAD. Facing Sports Club, Parklands

MRS. G. WOODBURY, Proprietress.

Owing to the high price of Ammunition, we want a Rifle not only accurate...

OUR NEW INVENTION of Mauser and Mauser Rifle

All here available. Cal. 6.5 mm. 7 mm. 8 mm. 9 mm. 9.3 mm. 9.5 mm.

ONLY OBTAINABLE FROM THE SOLE AGENTS FOR THE ORIGINAL

CHAS. A. HEYER & CO. NAIROBI

NEW IN STOCK "B" PULPERS SIEVES SPARES

Scott & Davidson, Sole Agents in Kenya for Wm. Mackinnon & Co., Ltd.

Short Loans Granted £1.00 to £1000

Kenya Loan & Discount Co., Ltd. Court Chambers, (1st Floor)

OVERSEAS MAILS. The notice is based upon the latest advice from the British Agent...

Table with columns: ARRIVAL, FROM, Due at Month, Date.

Table with columns: DEPARTURES, STEAMER, FOR, Mails Close at P.O., Date.

Table with columns: STEAMER, FOR, Mails Close at P.O., Date.

Table with columns: STEAMER, FOR, Mails Close at P.O., Date.

Table with columns: STEAMER, FOR, Mails Close at P.O., Date.



PORK SAUSAGES

PETER & SON

We specialise in the following: DEVELOPING, PRINTING, and ENLARGING.

With our new enlarger we are able to enlarge photographs to almost any size. Government Road, Phone 154. P.O. Box 411.

JUST ARRIVED

LADIES & GENTS' HOLEPROOF HOSIERY IN ALL THE LATEST SHADES

A huge assortment of "TRICOLINE" IN VARIOUS COLOURS

SHAMED BROS.

Bazan, Nairobi. P.O. Box 251. Telegrams: "Outgutting".

White Lisbon Wine (DOG BRAND)

By VASOONCELLOS LTDA. JUST ARRIVED (IN BULK)

Prices Shs. 36/- per doz. bottles

B. C. Siqueira POLICE STATION ROAD VILL AVENUE, NAIROBI.

Toilet Requisite Co.

Government Road. Phone 349. Box 240.

LADIES & GENTS' HAIR DRESSERS. Gallia Bonelle Permanent Waving.

Manicure, Massage, Elizabeth Arden Treatment.

New Supplies of Slides, Combs, Shaving necessities, Perfumes, Powders, etc.

Special Attention: MAIL ORDER DEPARTMENT

"STANDARD" FEATURE PAGE

FARMING JOTTINGS

A Weekly Resume of Current Topics.

No. 2

TEA AND WATTLE

By the Editor

For the tea and wattle...

It is a well-known fact...

There are also...

It is a well-known fact...

There are also...

It is a well-known fact...

HEAVY YIELD

A farmer who...

It is a well-known fact...

There are also...

It is a well-known fact...

There are also...

It is a well-known fact...

There are also...

It is a well-known fact...

There are also...

It is a well-known fact...

ALREADY BEARING FRUIT

It is a well-known fact...

There are also...

It is a well-known fact...

There are also...

It is a well-known fact...

There are also...

It is a well-known fact...

There are also...

It is a well-known fact...

There are also...

NATIONAL BANK OF INDIA

LIMITED. Incorporated in the United Kingdom.

Bankers to the Colony and Protectorates of Kenya and Uganda Territory.

Subscribed capital: £1,000,000. Paid-up capital: £2,000,000. Reserve fund: £2,000,000.

HEAD OFFICE: 1, Leadenhall Street, London, E.C. 3.

BRANCHES: Bombay, Calcutta, London, Madras, Rangoon, Singapore, etc.

FIXED DEPOSITS: Deposits are received for fixed periods on terms which may be varied on application.

EXCHANGE: The Bank grants drafts on the Head Office, and Branches at the current rates of Exchange, forwarding that part of the Bill drawn to the place when required.

Every description of Banking business transacted with all parts of the world.

ARTHUR A. LEVAT, Manager, Nairobi Branch.

RELIABLE CLOCKS



Eight Day Lever Time Piece 100/ With Striking 120/-, 10 inch dial. These clocks have no pendulum and will go in any position.

The Dust-proof Alarm. A thoroughly reliable clock with bevelled glass. 12 50. Postage 1. 50 extra. E. DOBBIE.

Watchmaker, Jeweller, Silversmith and Optician. Government Road, NAIROBI.

JOANES & BROS

Ladies Dress Makers & Gents Tailors & Outfitters. RAYNE BUILDING Opposite Simpson and Whitelaw Lds.

Come and inspect our newly arrived stock consisting of printed silks of various colours for Ladies and Gents high class suitings Terai hats, Felt Hats and Ties etc.

NOTICE.

THEO SCHOUTEN.

The well-known Ladies and Gents Hairdresser begs to announce to his many clients he has reopened business again in Government Road (late occupied by Fisher and Simmons).

Permanent Wave, Manicure, Massage, Shingling, Hairdressing, etc.

A SPECIALITY: NAIROBI. Box No. 284. Telephone 245.

Only two Manufacturers Offer "One-Profit" Unit Built Values

ONLY two manufacturers actually build their cars complete—make all their own bodies, engines, chassis, springs, gear boxes, differentials, steering gears, axles, gray iron castings and drop forgings. One is Ford. The other is Studebaker.

To make this possible, Studebaker has for many years invested more than half its earnings in new and finer factory buildings and in the most modern, most efficient machinery and equipment. Because of this policy, resource-amounting to more than \$20,000,000 have been built up and devoted exclusively to the production of Studebakers.

This One-Profit principle of manufacture makes possible four great advantages:

- 1. It eliminates the extra profit cut overhead that many other manufacturers have to pay and include in the purchase price to cover the Studebaker price low.
2. Because of the One-Profit savings, Studebaker is able to offer more sturdier, more substantially built automobiles. We pay a premium for the finest steel. We use hard wood in body construction. Throughout the entire body a hundred of hidden places—over fifty—the same high quality of material and workmanship that you see out in the open.
3. It makes possible fine quality Studebaker, being an old-product manufacturer, who is already an established name in the open market, dominating the fine market, as the lowest possible price. Studebaker purchasing agents are sure included in their search for quality and value.
4. And finally it enables us to build a better car because the vital parts are designed, engineered and manufactured completely by one organization. Being built by a single-Studebaker car function as a unit with all the advantages of unit construction.

THE STUDEBAKER CORPORATION OF AMERICA, SOUTH BEND, INDIAN

STUDEBAKER

BUILDERS OF QUALITY VEHICLES FOR 73 YEARS

K. McIVOR & Co.

Sole Importers

P. O. Box 97.

NAIROBI.

Telegram: "AFFORD"



Only STUDEBAKER builds the Duplex!

Studebaker Standard Six Duplex Phaeton (illustrated) is a splendid example of One-Profit value. It has the most powerful engine of any car in the world of its weight and size. Duplex body, an exclusive Studebaker feature, full size balloon tyres, genuine Spanish grained leather upholstery, instruments, including an 8-day clock, grouped in an oval panel under glass; light control on the steering wheel and many other desirable features.

Price \$445 F.O.B. NAIROBI

HIGH GRADE GOLFERS WHO KNOW



We have prepared a nice selection of finished Golf Clubs... JACOBS GOLF CLUBS... ALL PRICES LESS 5% CASH DISCOUNT

FRED RAPER GENERAL COMMISSION AGENT

119, Box 541 CITY HOUSE, Phone 144



35- Gold Medal 35- Butler Suite 19, Waterproof Caps 15, COMPLETE STOCKS SADDLERY, A.M.L.T. P.O. Oxon

BINOCULARS. BINOCULARS

ALL SPECIALLY BUILT FOR THE TROPICS... THE CHEAPEST IN TOWN... Carbide Head Lenses for Night Travelling and Shooting



We stock Mauser and Mannlicher-Steiner Rifles and ammunition for sale

SHAW & HUNTER

Box 70. Telephone "CHIEFF" Phone 216

Hupmobile 6

£425



Call for a Demonstration

THE MOTOR MART & EXCHANGE, LTD.

NAIROBI

LAWN TENNIS

WE HAVE A LARGE SELECTION OF RACKETE BALLS, NETS, PRESSES, COVERS, POSTS, WINNERS, TAPE LINES ALL BY THE BEST MAKERS

MAY & Co. The Sports House.

J.R. STEPHENS & Co. Ltd., TAILORS AND OUTFITTERS

A FEW OF THE NEWEST GOODS JUST ARRIVED... THE ABOVE ARE THE SAME AS ARE BEING SHOWN IN THE NEW END OF LONDON... THE BEST OF THE NEWEST

HARLEY-DAVIDSON

THE MONROE VICE MAGNUM... COMPLETELY EQUIPPED WITH LAMPS, BATTERY, HOOD AND SADDLE... HARLEY-DAVIDSON MOTOR CO. J. C. BUTTON, Motor Engineer, NAIROBI.

THE SPORTS PAGE

(K.A. Standard Special) TENNIS ON THE PLATEAU. AUSTRALIAN CRICKET. HOME FOOTBALL. COUNTRY CUP CRICKET.

Successful Tournament at Eldoret. New South Wales Wins the Sheffield Shield. Gymkhana Wins Semi-Final Replay.

Championship Events. A WORLD'S RECORD. THIRKA DEFEATED.

More Cup Replays. ENGLISH CUP. ENGLISH LEAGUE.

Second Division. MEN'S SINGLES. LADIES SINGLES.

Local Lawn-Tennis. NEXT SATURDAY'S LEAGUE MATCHES POSTPONED.

The Hockey Field. THE HOKEY LEAD FOR THE 'MAY' MEN.

Handicap Events. DISTANCE EVENTS FOR 'MAY' MEN.

Handicap Events. DISTANCE EVENTS FOR 'MAY' MEN.

Handicap Events. DISTANCE EVENTS FOR 'MAY' MEN.

Handicap Events. DISTANCE EVENTS FOR 'MAY' MEN.

Handicap Events. DISTANCE EVENTS FOR 'MAY' MEN.

Handicap Events. DISTANCE EVENTS FOR 'MAY' MEN.

Handicap Events. DISTANCE EVENTS FOR 'MAY' MEN.

Handicap Events. DISTANCE EVENTS FOR 'MAY' MEN.

Handicap Events. DISTANCE EVENTS FOR 'MAY' MEN.

Handicap Events. DISTANCE EVENTS FOR 'MAY' MEN.

Handicap Events. DISTANCE EVENTS FOR 'MAY' MEN.

Handicap Events. DISTANCE EVENTS FOR 'MAY' MEN.

Handicap Events. DISTANCE EVENTS FOR 'MAY' MEN.

Handicap Events. DISTANCE EVENTS FOR 'MAY' MEN.

Handicap Events. DISTANCE EVENTS FOR 'MAY' MEN.

Handicap Events. DISTANCE EVENTS FOR 'MAY' MEN.

Handicap Events. DISTANCE EVENTS FOR 'MAY' MEN.

Handicap Events. DISTANCE EVENTS FOR 'MAY' MEN.

Handicap Events. DISTANCE EVENTS FOR 'MAY' MEN.

Handicap Events. DISTANCE EVENTS FOR 'MAY' MEN.

Handicap Events. DISTANCE EVENTS FOR 'MAY' MEN.

Handicap Events. DISTANCE EVENTS FOR 'MAY' MEN.

Handicap Events. DISTANCE EVENTS FOR 'MAY' MEN.

Handicap Events. DISTANCE EVENTS FOR 'MAY' MEN.

Handicap Events. DISTANCE EVENTS FOR 'MAY' MEN.

Handicap Events. DISTANCE EVENTS FOR 'MAY' MEN.

Handicap Events. DISTANCE EVENTS FOR 'MAY' MEN.

Handicap Events. DISTANCE EVENTS FOR 'MAY' MEN.

Handicap Events. DISTANCE EVENTS FOR 'MAY' MEN.

Handicap Events. DISTANCE EVENTS FOR 'MAY' MEN.

Handicap Events. DISTANCE EVENTS FOR 'MAY' MEN.

Handicap Events. DISTANCE EVENTS FOR 'MAY' MEN.

"LONGLIFE" ALUMINIUM

ALL THESE FINISHES ARE SUBJECT TO PATENT CLAIMS

KITCHEN UTENSILS

- 18" Frypan, 18" Frying Pan, 18" Skillet, 18" Saucepan, 18" Stock Pot, 18" Dutch Oven, 18" Pressure Cooker, 18" Roasting Pan, 18" Baking Tray, 18" Dish, 18" Plate, 18" Spoon, 18" Fork, 18" Knife, 18" Spoon, 18" Fork, 18" Knife, 18" Spoon, 18" Fork, 18" Knife.

- 18" Frypan, 18" Frying Pan, 18" Skillet, 18" Saucepan, 18" Stock Pot, 18" Dutch Oven, 18" Pressure Cooker, 18" Roasting Pan, 18" Baking Tray, 18" Dish, 18" Plate, 18" Spoon, 18" Fork, 18" Knife, 18" Spoon, 18" Fork, 18" Knife.

- 18" Frypan, 18" Frying Pan, 18" Skillet, 18" Saucepan, 18" Stock Pot, 18" Dutch Oven, 18" Pressure Cooker, 18" Roasting Pan, 18" Baking Tray, 18" Dish, 18" Plate, 18" Spoon, 18" Fork, 18" Knife, 18" Spoon, 18" Fork, 18" Knife.

- 18" Frypan, 18" Frying Pan, 18" Skillet, 18" Saucepan, 18" Stock Pot, 18" Dutch Oven, 18" Pressure Cooker, 18" Roasting Pan, 18" Baking Tray, 18" Dish, 18" Plate, 18" Spoon, 18" Fork, 18" Knife, 18" Spoon, 18" Fork, 18" Knife.

ALUMINIUM SUPERFINISH LIDS

These Lids are made of aluminum... ALUMINIUM SUPERFINISH LIDS... P.O. BOX NO. 124 TELEGRAMS 'ADVACOLMET' NAIROBI

Berkfeld Filters

These filters are made of aluminum... BERKFELD FILTERS... P.O. BOX NO. 124 TELEGRAMS 'ADVACOLMET' NAIROBI

THE NAKURU SHOW JANUARY 25th to 29th 1929

Send in your Entries at once. Late Entries Close Jan 23rd. 4th, 5th, 6th, 7th, 8th, 9th, 10th, 11th, 12th, 13th, 14th, 15th, 16th, 17th, 18th, 19th, 20th, 21st, 22nd, 23rd, 24th, 25th, 26th, 27th, 28th, 29th, 30th, 31st.