

Your Daily Bread

We supply the Best at a minimum competitive price. We undertake to deliver it at your place. We, in addition, allow special discount on large orders. We collect a small...

INSURE YOUR MOTOR CARS AND MOTOR CYCLES WITH THE AFRICAN GUARANTEE & INDemnITY Co., Ltd. M. D. KAMPE, CHIEF AGENT.

Temporary Offices: COURT CHAMBERS, NAIROBI.

Kijabe Hotel Kijabe.

Very nice from station. Including Climate Hotel Resort, Grand scenery from Kijabe Valley and Foremost Reservations. The best for Big Game Shooting in Colony.

MARTIN'S PILLS ADVERTISING. MARTIN'S PILLS ADVERTISING. MARTIN'S PILLS ADVERTISING.

Kikuyu Hotel KIKUYU.

Under New Management. Delightfully situated and healthy. A most charming from Town or Nairobi. Tennis Courts. Under 5 min. Ride. 14 miles on main road from Nairobi.

"STANDARD" FEATURE PAGE

BRITISH MOTOR CYCLES.

Industry Increasing in World's Markets.

THE OLYMPIA SHOW.

The Twelfth Olympia Cycle and Motor Cycle Show will open from June 15 to 22, 1922. British manufacturers of cycle and motor cycle accessories are understood to have made arrangements to exhibit, and there will be a larger number of exhibitors than in 1921, when a few firms only were invited to participate.

During the 1921 exhibition, many foreign manufacturers also exhibited if they desire. Many foreign manufacturers, however, British manufacturers, have been invited to exhibit in the World's Motor Cycle Show in London.

Report made has developed in all branches, including the supply of motor cycle component parts to Continental Europe. An ever-increasing number of Continental manufacturers. An excellent competition. British manufacturers continue to lead in the early years.

FERTILISE WITH EPHOS

The following testimonial speaks for itself: "You asked me how the experiment with 'Ephos' varied from the results I had got with 'Nitro' last year. I was putting your tip to the test. The potatoes were simply wonderful. I have grown potatoes in my garden, but I have never seen anything like this lot and I purchased the first 50 lbs from 'Ephos'." - A Kikuyu hit.

The original of the above testimonial can be seen on application to J. G. ARONSON, P. O. Box 681, Nairobi.

Dodge Cars.

PURCHASES BY AMERICAN ARMY.

The unusual record made by Dodge Brothers motor cars in France during the war. These cars were used by the United States Army in France during the war. The United States Army purchased 20,000 Dodge Brothers motor cars in France during the war.

The Tourist Trophy.

Large entries for this year's event. Entries for the Tourist Trophy race have been received from all over the world. The race will be held in London.

Tyre Pressures.

RESULTS OF TESTS AT FORD WORKS.

Under-inflation of a balloon tyre costs the owner past 200 miles of extra wear. The results of tests at Ford Works show that under-inflation of a tyre costs the owner past 200 miles of extra wear.

ATKINSON'S Celebrated Californian

Performs, Bath Soap, Toilet Powder, etc. To be obtained from all leading Stores and Grocers.

Poppy

Performs, Bath Soap, Toilet Powder, etc. To be obtained from all leading Stores and Grocers.

MEHMET AHMED & CO.

THE UP-TO-DATE STORE OF STOVE, FURNITURE, AND SATISFACTION. Ladies' and Gents' Tailors and Milliners, makers of best Upholstery, and complete outfitting. Phone: 184.

NOTICE.

We beg to announce to our customers that we have now completely reorganized our business. We will apply multi transport at lowest possible prices.

J. PLUM.

EXPERT RUBBER TYRETYPER REPAIRER. (Home Experiment) Repairs to all makes of machine undertakes and executed by European Workmanship at Moderate Charges.

"BLACK & WHITE"

SCOTCH WHISKY. "BLACK & WHITE" has a world-wide reputation based on its highest quality. JAMES WATSON & CO., LTD., 175, N. BAKER STREET, LONDON, W.1.

ATKINSON'S Celebrated Californian

Performs, Bath Soap, Toilet Powder, etc. To be obtained from all leading Stores and Grocers.

Poppy

Performs, Bath Soap, Toilet Powder, etc. To be obtained from all leading Stores and Grocers.

MEHMET AHMED & CO.

THE UP-TO-DATE STORE OF STOVE, FURNITURE, AND SATISFACTION. Ladies' and Gents' Tailors and Milliners, makers of best Upholstery, and complete outfitting. Phone: 184.

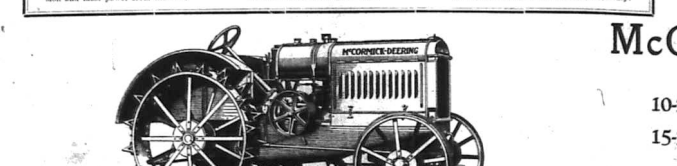
Power for Business-Like Farming

FOR nearly a century, the builders of this Company have been called in the pursuit of happiness on the farms involving the machine that are lifting the millions of men and women. The McCormick Farm equipment that has benefited the world during the past dozen years Tractors and Power Farming equipment have been offering new wonders. Great accomplishments lie ahead for the new farmer who is ready to combine past experience with the best knowledge his country has to offer.

We wish to announce that we expect the arrival shortly of our first shipment of the new McCormick Deering Narrow Tractor and Self-Propelled Tractor. Absolutely the last word in Deering and McCormick Tractor construction. Its main features are identical with those found in regular McCormick Deering Tractors. Years of grinding work in steel and orchard sections have proved every feature. Such proved dependability plus the narrow track makes this new Tractor extremely desirable.

Some Reasons Why Practical Men Select McCormick-Deering Tractors

- Powerful Engine. These tractors have valve-in-head, heavy duty engine. They are built to deliver an abundance of power over a long period of years. Working parts are through protection from dust and dirt. Removable Cylinders. Each cylinder is cast separately and fitted into the engine block which makes it possible to place a worn cylinder easily and economically. New cylinders made from a new engine. Crankshaft. The heavy-duty two-bearing crankshaft runs in ball bearings. Throttle Governor. The throttle governor regulates the fuel to the load and keeps the speed practically uniform. The pistons are close-fitting and have four rings which insure good compression and most power from the fuel. Gear Drive. The power is transmitted to the drive wheels through high-grade gears that run in oil. High-Tension Magneto. The high-tension magneto supplies a hot spark starting and running. Engineers consider this the best type of magneto for a farm tractor. Oil-Pump. The oil is kept in circulation by a gear oil-pump which assures proper lubrication of all moving parts. Frames. Strong, durable frames protect the tractor and operator from dust and dirt. Platform. The platform adds to the comfort of the operator and provides carrying space. Oil Air Cleaner. Air that reaches the cylinders is clean because the oil air cleaner catches and removes a dust particle.



McCormick-Deering TRACTORS

10-20 £268 f.o.r. Nairobi. 15-30 £368 f.o.r. Nairobi.

Giffillan & Company, Ltd. Distributors for Kenya, Uganda and Tanganyika.

Advertisement for 'Black & White' Scotch Whisky, featuring a bottle illustration and text about its quality and availability.

THE GROWING PROSPERITY OF KENYA AND UGANDA.

(Continued from page 1.)

and very conditions are favourable, a promising future for local...
The total quantity exported in 1925 was 6,054 cwt. as against 5,820 cwt. in 1924. The value of the exports was £1,700,000 as against £1,700,000 and the average price per cwt. was £112.82 as against £117.15 in 1924.

For blanketed materials Great Britain is the main supplying country...
In 1925 Great Britain held 96 per cent. as against 97.14 in 1924, and 93.33 per cent. in 1923. The value of the exports was £1,700,000 as against £1,700,000 and the average price per cwt. was £112.82 as against £117.15 in 1924.

CHAMBER OF COMMERCE TAKES INITIATIVE.

A GOOD EXAMPLE. [From our Nairobi correspondence.]
It is a very interesting letter which we received from the Chamber of Commerce in London...

THE NATIVE RESERVES.

To the Editor, "The Standard." Sir—With reference to the...
The Native Reserves are a subject which has been discussed in the Standard on several occasions...

ANIMALS IN HUMAN VICTIMS.

A notorious man-eating leopard of Rudungu (India) which for...
The man-eating leopard of Rudungu is a notorious animal which has been the cause of much suffering and death...

THEATRE NOTES.

The programme which is being for the first time...
The programme which is being for the first time at the Lyric Hall is a very interesting one...

Lyric Hall. TO-NIGHT 9.45. NEVA GERBER IN "Impulse" ADAPTED FROM THE NOVEL "HER UNKNOWN ENEMY" Bio-Tea this Friday, 4-15 PRICES AS USUAL 5h. 3s. and 1s.

Two Extra Special Lines. Colors in Stock Gold Silver French Nude Pearl Tan Bark Blue Fox Fine White Canvas 1 Bar Louis Heel ditto. ditto. With Rubber Heel 9-50 less 5% 9-50 less 5% for cash for cash

RAIDERS FOOTWEAR LTD, NAIROBI. P.O. Box 149. Phone 433. 9-50 less 5% 9-50 less 5% for cash for cash

VEHICLES.

Imports under this group amounted in value to £207,112 or 11.6 per cent of the total trade imports.

MOTOR CARS.

In 1925 American imported 96 per cent. as against 97.14 in 1924, and 93.33 per cent. in 1923. The value of the exports was £1,700,000 as against £1,700,000 and the average price per cwt. was £112.82 as against £117.15 in 1924.

THE SETTLERS OF KENYA.

Some impressions formed by Sir James Willcocks. Sir James Willcocks, the distinguished soldier and administrator...
The settlers of Kenya are a subject which has been discussed in the Standard on several occasions...

NATIVE CRIMINAL CASES.

To the Editor, "The Standard." Sir—The daily edition of your journal...
The Native Criminal Cases are a subject which has been discussed in the Standard on several occasions...

THE SILENT FILM.

The film "Impulse" adapted for the screen from No. 72 of the "Unknown Knight" by the author...
The silent film "Impulse" is a very interesting one and is being shown at the Lyric Hall...

THE SILENT FILM.

The film "Impulse" adapted for the screen from No. 72 of the "Unknown Knight" by the author...
The silent film "Impulse" is a very interesting one and is being shown at the Lyric Hall...

ADVERTISEMENTS.

Local advertising has had a very marked effect on the growth of the...
Local advertising has had a very marked effect on the growth of the economy in Kenya and Uganda...

INDIA AND TRADE.

The imports during 1925 were three times as great as the combined...
The imports during 1925 were three times as great as the combined imports of Kenya and Uganda...

THE SILENT FILM.

The film "Impulse" adapted for the screen from No. 72 of the "Unknown Knight" by the author...
The silent film "Impulse" is a very interesting one and is being shown at the Lyric Hall...

THE SILENT FILM.

The film "Impulse" adapted for the screen from No. 72 of the "Unknown Knight" by the author...
The silent film "Impulse" is a very interesting one and is being shown at the Lyric Hall...

THE SILENT FILM.

The film "Impulse" adapted for the screen from No. 72 of the "Unknown Knight" by the author...
The silent film "Impulse" is a very interesting one and is being shown at the Lyric Hall...

THE SILENT FILM.

The film "Impulse" adapted for the screen from No. 72 of the "Unknown Knight" by the author...
The silent film "Impulse" is a very interesting one and is being shown at the Lyric Hall...

THE SILENT FILM.

The film "Impulse" adapted for the screen from No. 72 of the "Unknown Knight" by the author...
The silent film "Impulse" is a very interesting one and is being shown at the Lyric Hall...

THE SILENT FILM.

The film "Impulse" adapted for the screen from No. 72 of the "Unknown Knight" by the author...
The silent film "Impulse" is a very interesting one and is being shown at the Lyric Hall...

THE SILENT FILM.

The film "Impulse" adapted for the screen from No. 72 of the "Unknown Knight" by the author...
The silent film "Impulse" is a very interesting one and is being shown at the Lyric Hall...

THE SILENT FILM.

The film "Impulse" adapted for the screen from No. 72 of the "Unknown Knight" by the author...
The silent film "Impulse" is a very interesting one and is being shown at the Lyric Hall...

THE SILENT FILM.

The film "Impulse" adapted for the screen from No. 72 of the "Unknown Knight" by the author...
The silent film "Impulse" is a very interesting one and is being shown at the Lyric Hall...

THE SILENT FILM.

The film "Impulse" adapted for the screen from No. 72 of the "Unknown Knight" by the author...
The silent film "Impulse" is a very interesting one and is being shown at the Lyric Hall...

THE SILENT FILM.

The film "Impulse" adapted for the screen from No. 72 of the "Unknown Knight" by the author...
The silent film "Impulse" is a very interesting one and is being shown at the Lyric Hall...

THE SILENT FILM.

The film "Impulse" adapted for the screen from No. 72 of the "Unknown Knight" by the author...
The silent film "Impulse" is a very interesting one and is being shown at the Lyric Hall...

THE SILENT FILM.

The film "Impulse" adapted for the screen from No. 72 of the "Unknown Knight" by the author...
The silent film "Impulse" is a very interesting one and is being shown at the Lyric Hall...

THE SILENT FILM.

The film "Impulse" adapted for the screen from No. 72 of the "Unknown Knight" by the author...
The silent film "Impulse" is a very interesting one and is being shown at the Lyric Hall...

THE SILENT FILM.

The film "Impulse" adapted for the screen from No. 72 of the "Unknown Knight" by the author...
The silent film "Impulse" is a very interesting one and is being shown at the Lyric Hall...

THE SILENT FILM.

The film "Impulse" adapted for the screen from No. 72 of the "Unknown Knight" by the author...
The silent film "Impulse" is a very interesting one and is being shown at the Lyric Hall...

THE SILENT FILM.

The film "Impulse" adapted for the screen from No. 72 of the "Unknown Knight" by the author...
The silent film "Impulse" is a very interesting one and is being shown at the Lyric Hall...

THE SILENT FILM.

The film "Impulse" adapted for the screen from No. 72 of the "Unknown Knight" by the author...
The silent film "Impulse" is a very interesting one and is being shown at the Lyric Hall...

THE SILENT FILM.

The film "Impulse" adapted for the screen from No. 72 of the "Unknown Knight" by the author...
The silent film "Impulse" is a very interesting one and is being shown at the Lyric Hall...

THE SILENT FILM.

The film "Impulse" adapted for the screen from No. 72 of the "Unknown Knight" by the author...
The silent film "Impulse" is a very interesting one and is being shown at the Lyric Hall...

THE SILENT FILM.

The film "Impulse" adapted for the screen from No. 72 of the "Unknown Knight" by the author...
The silent film "Impulse" is a very interesting one and is being shown at the Lyric Hall...

THE SILENT FILM.

The film "Impulse" adapted for the screen from No. 72 of the "Unknown Knight" by the author...
The silent film "Impulse" is a very interesting one and is being shown at the Lyric Hall...

THE SILENT FILM.

The film "Impulse" adapted for the screen from No. 72 of the "Unknown Knight" by the author...
The silent film "Impulse" is a very interesting one and is being shown at the Lyric Hall...

THE SILENT FILM.

The film "Impulse" adapted for the screen from No. 72 of the "Unknown Knight" by the author...
The silent film "Impulse" is a very interesting one and is being shown at the Lyric Hall...

THE SILENT FILM.

The film "Impulse" adapted for the screen from No. 72 of the "Unknown Knight" by the author...
The silent film "Impulse" is a very interesting one and is being shown at the Lyric Hall...

THE SILENT FILM.

The film "Impulse" adapted for the screen from No. 72 of the "Unknown Knight" by the author...
The silent film "Impulse" is a very interesting one and is being shown at the Lyric Hall...

THE SILENT FILM.

The film "Impulse" adapted for the screen from No. 72 of the "Unknown Knight" by the author...
The silent film "Impulse" is a very interesting one and is being shown at the Lyric Hall...

THE SILENT FILM.

The film "Impulse" adapted for the screen from No. 72 of the "Unknown Knight" by the author...
The silent film "Impulse" is a very interesting one and is being shown at the Lyric Hall...

THE SILENT FILM.

The film "Impulse" adapted for the screen from No. 72 of the "Unknown Knight" by the author...
The silent film "Impulse" is a very interesting one and is being shown at the Lyric Hall...

THE SILENT FILM.

The film "Impulse" adapted for the screen from No. 72 of the "Unknown Knight" by the author...
The silent film "Impulse" is a very interesting one and is being shown at the Lyric Hall...

THE SILENT FILM.

The film "Impulse" adapted for the screen from No. 72 of the "Unknown Knight" by the author...
The silent film "Impulse" is a very interesting one and is being shown at the Lyric Hall...

THE SILENT FILM.

The film "Impulse" adapted for the screen from No. 72 of the "Unknown Knight" by the author...
The silent film "Impulse" is a very interesting one and is being shown at the Lyric Hall...

THE SILENT FILM.

The film "Impulse" adapted for the screen from No. 72 of the "Unknown Knight" by the author...
The silent film "Impulse" is a very interesting one and is being shown at the Lyric Hall...

THE SILENT FILM.

The film "Impulse" adapted for the screen from No. 72 of the "Unknown Knight" by the author...
The silent film "Impulse" is a very interesting one and is being shown at the Lyric Hall...

Scotts Burmah Cheroots No. 1 IMPERIALS. Double Shgs. 6-00. Single, Shgs. 4-50. Light Refreshments. Right of Admission Reserved. Nairobi Railway Club Open Tuesday 19th, 9-12 p.m. TICKETS: Double Shgs. 6-00. Single, Shgs. 4-50. Light Refreshments. Right of Admission Reserved. Why? It fairly tells—so different from the average kind—fairer of taste—distinctly of style—all have been combined to meet the travelling, aiming how to be well. The "Marvel-Strip" for Wear. This "Marvel-Strip" is very different from the average kind—fairer of taste—distinctly of style—all have been combined to meet the travelling, aiming how to be well. NOW IN STOCK THE CELEBRATED ALMA GAZELLE PURE SILK HOSE FOR EVENING WEAR. ALL THE NEWEST SHADES WITH ARTISTIC GLOSS. Kayser. WHY? It fairly tells—so different from the average kind—fairer of taste—distinctly of style—all have been combined to meet the travelling, aiming how to be well. The "Marvel-Strip" for Wear. This "Marvel-Strip" is very different from the average kind—fairer of taste—distinctly of style—all have been combined to meet the travelling, aiming how to be well. NOW IN STOCK THE CELEBRATED ALMA GAZELLE PURE SILK HOSE FOR EVENING WEAR. ALL THE NEWEST SHADES WITH ARTISTIC GLOSS. Kayser. WHY? It fairly tells—so different from the average kind—fairer of taste—distinctly of style—all have been combined to meet the travelling, aiming how to be well. The "Marvel-Strip" for Wear. This "Marvel-Strip" is very different from the average kind—fairer of taste—distinctly of style—all have been combined to meet the travelling, aiming how to be well. NOW IN STOCK THE CELEBRATED ALMA GAZELLE PURE SILK HOSE FOR EVENING WEAR. ALL THE NEWEST SHADES WITH ARTISTIC GLOSS. Kayser.

AUCTION SALES

Muter and Oswald's Sales.

Miscellaneous Goods Sale

Duly instructed we shall sell by Public Auction without reserve, at our Salerooms, Hutco Building, Harding Street, Nairobi on

THURSDAY, 17th June at 9-30 a.m.
GLASS DECANTERS, TENNIS RACQUETS, BRASSMOUTH RECORDS, DINNER SERVICES, DESERT AND SEA SERVICES, CUTGLASS, MOKOITU HETS, NOVELS, CROCKERY, LARGE QUANTITY OF GOOD GLASSWARE. On behalf of the parties concerned:
1 Case plate glass 7 x 5 x 1/2" damaged in transit.
MOKOITU HETS, SUIT LENGTHS.
LAWY MOWER, No. 6 DOVER STOVE, and piping.
BELL TENT with poles, GARDEN ROLLER, LAWN with wicker lining and cover.
"ALWAYS ALLOR" MOTOR CYCLE.
"DOUGLAS" MOTOR CYCLE, 4 h.p. (reserve).
"FEELERS" LOVER ENGINES.
Etc. Etc. Etc.
MUTER and OSWALD, Auctioneers, Etc., Nairobi.

Muter and Oswald's Sales.

Catalogue Sale of Teak and other Furniture

Duly instructed, we shall sell, without reserve, at our Salerooms, Harding Street, Nairobi, on

Monday, 21st June at 9-30 a.m.
A Large Range of Well-Made Teak Furniture
including
WARDROBE in TEAK; oval bevelled mirror; 7 drawers.
DOUBLE WARDROBE in Teak; 3 bevelled mirrors.
SINGLE WARDROBE in teak; bevelled mirrors.
LINEN CUPBOARDS, MORRIS CHAIRS.
DUCHESS DRESSING TABLES in teak; oval bevelled mirrors.
DRESSING TABLES in teak; round bevelled mirrors.
UVAL DINING TABLES in teak;
SUITS of DINING CHAIRS in teak; upholstered.
TEAK DINNER WAGON, WRITING DEBK in teak; baize top.
SIDEBOARD in teak; SIDEBOARD (Walnut) 3 mirrors.
SINGLE BEDSTEPS in teak; with spring mattresses.
DOUBLE BEDSTEAD in teak; spring mattress.
SWING MIRROR on teak stand. CHEST OF DRAWERS.
DOUBLE BEDSTEAD in Tanganyika Mahogany.
THREE PIER CHESTERTFIELD SUITE, cretonne covered; castors.
SEVEN in Mahogany; cane seats and backs.
WASHSTANDS in teak. PALMSTANDS in teak.
WRITING BUREAU in teak. OCCASIONAL TABLES in teak.
BOOKSHELVES, CHILD'S COT and mattress.
RACHELOR WARDROBE; overhead; hanging compartment and drawers.
No. 6 "DOVER" Stove, Towel Rails, Etc. Etc. Etc.
Catalogue Sale.
MUTER and OSWALD, Auctioneers, Etc., Nairobi.

Sands & Co.

Londiani.

SATURDAY 26th JUNE at 10-30
120 Really Big A.M. & T. P. cows just released from Kibigori Boma.
64 Well Trained Oxen, Cows, Sundries, etc.
We will offer for sale on account of Mr. Reed his very fine farm of 914 acres. 4 miles from Londiani on main East Road.
A real attractive well proportioned.
A good large stone house and outbuildings abt 150 acres in almost free.
Also on account of Mr. Reed his property in Londiani Township.
Further entries being received
Sands & Co. Auctioneers.
RELIANCE TRANSPORT Co.
THE LARGEST MOTOR TRANSPORT CO. IN THE COLONY
We cater for Transport to all parts of the Colony and adjacent Territories.
OUR EXPERIENCED ADVERT & INTEREST ARE ALWAYS AT YOUR SERVICE.
FULL MERCHANTS
LARGEST STOCKS HELD IN NAIROBI AVAILABLE FOR IMMEDIATE DELIVERY.
Place: No. 40, Victoria Road, Post Office Building, NAIROBI.
London Agents: T. P. Harrow & Co., 25, Old Broad St., E.C. 2.

CATALOGUE SALE

Important Sale of House Furniture, Plate, China, Stove, Glass, Kitchen Utensils and Sundries also Good Ricksha.

Instructed by J. M. MAXWELL Esq., M. DARRE Esq., and other clients
Removed to OUR MART for CONVENIENCE OF SALE

Austin & Co.

Will sell by PUBLIC AUCTION ABSOLUTELY WITHOUT RESERVE
on
SATURDAY, June 19th at 10 sharp.
AT OUR MART, HARDING ST.
SISAK WOOD CIRCULAR DINING TABLE, GATE-LEGGED.
SET OF RUSH SEAT DINING CHAIRS in suite.
SISAK WOOD SIDE TABLE.
All the above furniture takes to pieces for storing.
Carved Coffee Table, Two Nice Occasional Tables. Swing Mirror with drawer, Tennis Net.
One No. 9 Valley DOVER STOVE, Two Fold Small Screens.
Fine Indian Teak Wardrobe with Full length Bev'd Mirror.
Splendid Teak Linen Cupboard fitted shelves.
Handsome Indian Teak, Sideboard with Dresser Back.
Small Settee, Suite of Gampher Wood Dining Chairs.
Nice Teak Circular Dining Table, LARGE QUANTITY OF GOOD BOOKS.
Book Case, 4 Nice Occasional Tables various.
Gampher Wood Wardrobe plain, Swing Mirror, Safai Table.
2 Palm Stands, 2 Kitchens Tables, 2 Carved Coffee Tables.
(One Drink Cupboard, Iron Single Bed & Mattress.
One Nearly New Child's Cycle, 3 Garden Chairs and Table.
Meat Sals, White Enamel Child's Cot, ONE 22 Ride. Afternoon Tea Stand, Morris Chair & Sundry Vases.
PLATE ETC.
Electric Plate Tea Set Camp's Tray and set complete.
E.F. Sugar Basin, R.E.F. Salvers, Silver & Glass Oil Cuvet.
Silver: Expanding Tooth Rack, E.P. Tea Set of Choice Design comp. Kettle on Spirit Stove Stand, Tea Pot, Cream Jug and Sugar Basin.
E.P. Coffee Pot, Silver Initiative, E.F. Bottle Holders.
21 Dishes Etc. Equal. Tumblers, 4 Colored Tea Sets Various designs.
Set of Six Italian Dessert Plates and lot of Crockery.
Quantity of Good Outtery.
CYCLE, RICKSHA, Etc.
4 h.p. Douglas Motor Cycle and Side Car in Running order.
A very good strong Black Ricksha.
One Kaleih Gent's Push Cycle with 3 Speed Gear and New Pump.
ON BEHALF OF ANOTHER CLIENT
Cane Chair, 3 Deck Chair, Pine Dish, weighted Moccasin and Two Single ditto. Lot of Kitchen Ware, Etc., Etc., Etc.
One Titan Sewing Machine in good order.
Also a lot of other goods mentioned not set to kinden.
CATALOGUES READY FRIDAY.
ABSOLUTELY WITHOUT RESERVE.

Medical Supply Co.

BOMA BUILDINGS, Government Road, NAIROBI.
Box 720.

Stocks are Being Sold at 20 per cent. Reduction Up to 25th June.
Call and See.

If You Want GOOD BREAD
Buy **Torr's.**
IT IS THE BEST.

THE NYANZA AUCTIONEERS NAKURU

The Sale advertised at MOLO on 17th June has been

POSTPONED

owing to Quarantine Regulations

The Nyanza Auctioneers, NAKURU.

WE SELL

HALLS WINE, WINEGARNIS, OVALTINE, GLAXO - NAIROL, BOVILL - SANATOGEN, Dr. DE JONGH'S COD LIVER OIL, KEPLER'S COD LIVER OIL WITH MALT EXTRACT

M. R. de SOUZA & Co.
P.O. Box 186. Govt. Rd., Nairobi. Phone 72.

Paris Gowns.

Just out from Paris new designs in exclusive model gowns to suit all figures. In C. de China, Maroon, Georgette, etc. All with Flared Skirts. Prices from Shs. 95/00.

MADAME LEON
Africa House. Government Road.

Express Transport Co.

Cartage Contractors to Uganda Railway Government Road, Nairobi.
P.O. Box 438. Phone: 333 and 55

Transport Shipping and Forwarding Contractors.

Furniture and General Goods removed, packed and dispatched to any part of the world. Or stored.
SPECIAL MOTOR CARRIAGE FACILITIES for transport of all classes of Produce or Heavy Material to and from long distances, quotations on application.

THE SALISBURY HOTEL

FAMILY & RESIDENTIAL.
Now nearing COMPLETION spacious and airy Stone Bed Rooms each fitted with Hot and Cold running water, also New Open Air Dining Room, and Dance Hall.
Phone 166. NAIROBI. P. O. Box 502.

MOTOR CYCLE'S

We have the following new Motor Cycles and Side Cars in Stock at prices as under:-
1-9 Harley Davidson with side-car... Shs. 1220
1-9 Raleigh with side-car and electric light... 2000
1-9 "OHLY" Sports (on Road ladies' machine)... 1850
2/4 "Solo with electric light... 1300
We have also the newest "Ten" Trikes complete with Body for Shs. 1000/-.
CAPITAL GARAGE.
opposite Fire Station, Victoria Street.

Used Cars For Sale.

BY PRIVATE TREATY.
Instructed thereby by various clients, we offer the following:-
Ford 1926 Model, Box Body, Rockwell 4 x 4, 1400 cc, Tyres; virtually new. 125/-.
Ford Box Body. In good running order and condition 543 A m.p.
Ford, Touring Model in perfect condition. 500/-
Motor 4. A reliable car in perfect mechanical condition. 410/-.
Ford Lorry, 1-Ton, Rockwell Axle 265/-.
Standard Light & 4 wheel running powerful engine, licensed and licensed. 1250/-
Jewett 2-seater, Fully equipped. Use 40 miles to the gallon. A dinky little car 210/-
Durrant, senior. Fully equipped. Dole Wheels; a rare bargain 250/-
Dodge Box Body 500 Cabriolet 2-seater 440/-
Ford Box Body, Rockwell Axle 260/-
Also Chevrolet 6 seater, new, does only 1500 miles.
Hog, 8-horse 1926 model.
The above cars have all been tested and approved sound and reliable.
A CAR FOR EVERY PURSE. ACES FOR EVERY PURPOSE. COME IN AND SEE THEM.

The Service Company, Ltd. NAIROBI.

The Remington Typewriter

"QUIET NO. 12"
Universally recognized as the most efficient typewriter on the market with 12 months total guarantee.



All Spares and European Mechanics.
THE REMINGTON TYPEWRITER AGENCY.
Phone 25. NAIROBI. P.O. Box 67

FOR SALE
MOMBASA - Fine Commercial Plot - NAIROBI - 2000 sq. ft. - 1/2 ACRE. MUTHAIGA - Residential Plot. NAIROBI - 1/2 ACRE. SALTANA - 1/2 Acre.

Talbot & Massy E. A. Ltd. ALL AT ROCK BOTTOM PRICES and on VERY EASY TERMS

Center House, NAIROBI P.O. Box 601.

ESSJAY LTD.

J. JACOBS, MANAGING DIRECTOR
THEATRE ROYAL BUILDINGS
P.O. Box 684 NAIROBI. Phone 477.
ESTATE COMMERCIAL & FINANCIAL AGENTS
SOUND INVESTMENTS IN HOUSE PROPERTY.
STONE BUILDING, 4 Rooms, K.P.D. Inside Reservoir II A.C. WATER, Garage on just over an acre. In good position. H.A. from Town. £1800 on terms.
WELL RECOMMENDED.
WELL BUILT HOUSE (Concrete Blocks) containing 4 Rooms Modern Sanitation and all other conveniences. Selling for £4575 on easy, generous terms.
OTHER ATTRACTIVE PROPERTIES FOR SALE.

Mortgages

Various sums are available on Town and Country Properties. DESERVE THE SHORTAGE we always have FURNISHING and UNFURNISHED HOUSES TO LET.
The Choice is limited. APPLY IMMEDIATELY.

FURNITURE

THE FOLLOWING IS A TYPICAL EXAMPLE OF THE VALUES OFFERED IN OUR FURNITURE DEPARTMENT:-
THE H.B. DINNING SUITE
6 SIDEBOARD WITH TWO CUPBOARDS, TWO DRAWERS & LARGE RECESS 507/6
SIX PIECE SUITE OF DINING CHAIRS COMBUSTIBLE OF OAK 180/6
CHINA DINING TABLE 6'0" x 3'6" 137/6
TWO PALM STANDS 25/6
SUCKERS TABLE 13/6
TWO PALM STANDS 25/6
Price Complete £32-0-0
Hutchings, Biemer & Co., Ltd. Box 468. NAIROBI. Phone 411. Monthly accounts opened with approved customers.

Union - Castle Line

ROSEDALE via SUVA CANAL
PHOSPHORITE CARLOADS

... to ...
... to ...
... to ...

... to ...
... to ...
... to ...

... to ...
... to ...
... to ...

... to ...
... to ...
... to ...

... to ...
... to ...
... to ...

... to ...
... to ...
... to ...

... to ...
... to ...
... to ...

... to ...
... to ...
... to ...

... to ...
... to ...
... to ...

... to ...
... to ...
... to ...

... to ...
... to ...
... to ...

... to ...
... to ...
... to ...

... to ...
... to ...
... to ...

... to ...
... to ...
... to ...

... to ...
... to ...
... to ...

... to ...
... to ...
... to ...

... to ...
... to ...
... to ...

... to ...
... to ...
... to ...

... to ...
... to ...
... to ...

... to ...
... to ...
... to ...

... to ...
... to ...
... to ...

... to ...
... to ...
... to ...

... to ...
... to ...
... to ...

... to ...
... to ...
... to ...

... to ...
... to ...
... to ...

... to ...
... to ...
... to ...

... to ...
... to ...
... to ...

... to ...
... to ...
... to ...

... to ...
... to ...
... to ...

... to ...
... to ...
... to ...

... to ...
... to ...
... to ...

... to ...
... to ...
... to ...

... to ...
... to ...
... to ...

... to ...
... to ...
... to ...

... to ...
... to ...
... to ...

... to ...
... to ...
... to ...

... to ...
... to ...
... to ...

... to ...
... to ...
... to ...

... to ...
... to ...
... to ...

... to ...
... to ...
... to ...

... to ...
... to ...
... to ...

... to ...
... to ...
... to ...

... to ...
... to ...
... to ...

... to ...
... to ...
... to ...

THIS YEAR'S ROYAL ACADEMY.

Generally interesting but Unseasonable.

THE KING'S PORTRAIT.

[FROM OUR LONDON CORRESPONDENT.]

The Royal Academy has opened this year and we are again

confronted with a display of

artistic talent which is

generally of a high order

and which is well worth

the attention of the public.

The exhibition is held in

the galleries of the Royal

Academy, which is situated

in the heart of London.

The exhibition is open to

the public from the 15th

of the month until the 1st

of the following month.

The exhibition is held in

the galleries of the Royal

Academy, which is situated

in the heart of London.

The exhibition is open to

the public from the 15th

of the month until the 1st

of the following month.

The exhibition is held in

the galleries of the Royal

Academy, which is situated

in the heart of London.

The exhibition is open to

the public from the 15th

of the month until the 1st

of the following month.

The exhibition is held in

the galleries of the Royal

Academy, which is situated

in the heart of London.

The exhibition is open to

the public from the 15th

of the month until the 1st

of the following month.

The exhibition is held in

the galleries of the Royal

Academy, which is situated

in the heart of London.

The exhibition is open to

has opened. This year we have an exhibition of the Royal Academy, which is situated in the heart of London. The exhibition is open to the public from the 15th of the month until the 1st of the following month.

The exhibition is held in the galleries of the Royal Academy, which is situated in the heart of London. The exhibition is open to the public from the 15th of the month until the 1st of the following month.

The exhibition is held in the galleries of the Royal Academy, which is situated in the heart of London. The exhibition is open to the public from the 15th of the month until the 1st of the following month.

The exhibition is held in the galleries of the Royal Academy, which is situated in the heart of London. The exhibition is open to the public from the 15th of the month until the 1st of the following month.

The exhibition is held in the galleries of the Royal Academy, which is situated in the heart of London. The exhibition is open to the public from the 15th of the month until the 1st of the following month.

The exhibition is held in the galleries of the Royal Academy, which is situated in the heart of London. The exhibition is open to the public from the 15th of the month until the 1st of the following month.

The exhibition is held in the galleries of the Royal Academy, which is situated in the heart of London. The exhibition is open to the public from the 15th of the month until the 1st of the following month.

The exhibition is held in the galleries of the Royal Academy, which is situated in the heart of London. The exhibition is open to the public from the 15th of the month until the 1st of the following month.

The exhibition is held in the galleries of the Royal Academy, which is situated in the heart of London. The exhibition is open to the public from the 15th of the month until the 1st of the following month.

The exhibition is held in the galleries of the Royal Academy, which is situated in the heart of London. The exhibition is open to the public from the 15th of the month until the 1st of the following month.

The exhibition is held in the galleries of the Royal Academy, which is situated in the heart of London. The exhibition is open to the public from the 15th of the month until the 1st of the following month.

The exhibition is held in the galleries of the Royal Academy, which is situated in the heart of London. The exhibition is open to the public from the 15th of the month until the 1st of the following month.

The exhibition is held in the galleries of the Royal Academy, which is situated in the heart of London. The exhibition is open to the public from the 15th of the month until the 1st of the following month.

The exhibition is held in the galleries of the Royal Academy, which is situated in the heart of London. The exhibition is open to the public from the 15th of the month until the 1st of the following month.

The exhibition is held in the galleries of the Royal Academy, which is situated in the heart of London. The exhibition is open to the public from the 15th of the month until the 1st of the following month.

The exhibition is held in the galleries of the Royal Academy, which is situated in the heart of London. The exhibition is open to the public from the 15th of the month until the 1st of the following month.

The exhibition is held in the galleries of the Royal Academy, which is situated in the heart of London. The exhibition is open to the public from the 15th of the month until the 1st of the following month.

The exhibition is held in the galleries of the Royal Academy, which is situated in the heart of London. The exhibition is open to the public from the 15th of the month until the 1st of the following month.

The exhibition is held in the galleries of the Royal Academy, which is situated in the heart of London. The exhibition is open to the public from the 15th of the month until the 1st of the following month.

The exhibition is held in the galleries of the Royal Academy, which is situated in the heart of London. The exhibition is open to the public from the 15th of the month until the 1st of the following month.

The exhibition is held in the galleries of the Royal Academy, which is situated in the heart of London. The exhibition is open to the public from the 15th of the month until the 1st of the following month.

is opened. This year we have an exhibition of the Royal Academy, which is situated in the heart of London. The exhibition is open to the public from the 15th of the month until the 1st of the following month.

The exhibition is held in the galleries of the Royal Academy, which is situated in the heart of London. The exhibition is open to the public from the 15th of the month until the 1st of the following month.

The exhibition is held in the galleries of the Royal Academy, which is situated in the heart of London. The exhibition is open to the public from the 15th of the month until the 1st of the following month.

The exhibition is held in the galleries of the Royal Academy, which is situated in the heart of London. The exhibition is open to the public from the 15th of the month until the 1st of the following month.

The exhibition is held in the galleries of the Royal Academy, which is situated in the heart of London. The exhibition is open to the public from the 15th of the month until the 1st of the following month.

The exhibition is held in the galleries of the Royal Academy, which is situated in the heart of London. The exhibition is open to the public from the 15th of the month until the 1st of the following month.

The exhibition is held in the galleries of the Royal Academy, which is situated in the heart of London. The exhibition is open to the public from the 15th of the month until the 1st of the following month.

The exhibition is held in the galleries of the Royal Academy, which is situated in the heart of London. The exhibition is open to the public from the 15th of the month until the 1st of the following month.

The exhibition is held in the galleries of the Royal Academy, which is situated in the heart of London. The exhibition is open to the public from the 15th of the month until the 1st of the following month.

The exhibition is held in the galleries of the Royal Academy, which is situated in the heart of London. The exhibition is open to the public from the 15th of the month until the 1st of the following month.

The exhibition is held in the galleries of the Royal Academy, which is situated in the heart of London. The exhibition is open to the public from the 15th of the month until the 1st of the following month.

The exhibition is held in the galleries of the Royal Academy, which is situated in the heart of London. The exhibition is open to the public from the 15th of the month until the 1st of the following month.

The exhibition is held in the galleries of the Royal Academy, which is situated in the heart of London. The exhibition is open to the public from the 15th of the month until the 1st of the following month.

The exhibition is held in the galleries of the Royal Academy, which is situated in the heart of London. The exhibition is open to the public from the 15th of the month until the 1st of the following month.

The exhibition is held in the galleries of the Royal Academy, which is situated in the heart of London. The exhibition is open to the public from the 15th of the month until the 1st of the following month.

The exhibition is held in the galleries of the Royal Academy, which is situated in the heart of London. The exhibition is open to the public from the 15th of the month until the 1st of the following month.

The exhibition is held in the galleries of the Royal Academy, which is situated in the heart of London. The exhibition is open to the public from the 15th of the month until the 1st of the following month.

The exhibition is held in the galleries of the Royal Academy, which is situated in the heart of London. The exhibition is open to the public from the 15th of the month until the 1st of the following month.

The exhibition is held in the galleries of the Royal Academy, which is situated in the heart of London. The exhibition is open to the public from the 15th of the month until the 1st of the following month.

The exhibition is held in the galleries of the Royal Academy, which is situated in the heart of London. The exhibition is open to the public from the 15th of the month until the 1st of the following month.

The exhibition is held in the galleries of the Royal Academy, which is situated in the heart of London. The exhibition is open to the public from the 15th of the month until the 1st of the following month.

Ellerman & Bucknall Steamship Co., Ltd.

New York-East Africa direct via Suez Canal. S.S. "URBINO" from New York and West St. John (N.B.) due Kilindini June 15th.

East Africa-Colombo, Madras, Rangoon and Calcutta direct. S.S. "URBINO" sails about June 21st.

S.S. "URBINO" will take cargo for New York, Philadelphia, Boston and Halifax (Nova Scotia) with quick transshipment into Ellerman & Bucknall India-American service at Colombo.

Three fast sailings monthly from Colombo (via Suez Canal). The African Mercantile Company, Limited. (Incorporated in England) Mombasa, Zanzibar, Dar-es-Salaam.

GOLTMANS' Cash Boot Stores.

Are well known for their PERSONAL ATTENTION. HIGHEST VALUE MEANS THE BEST. GOLTMANS - Electra Buildings Govt Road P.O. Box 113.

BONE BROS. BUILD BEAUTIFUL BRICK BUNGALOWS.

Being Erected in Gourdard and Valley Roads.

ESTIMATES FREE.

BONE BROS.

Box No. 963 NAIROBI.

JOHN RIFKIN

Wagon Builder, Blacksmith, Farrier.

Stocks of Axes, Brakes, Cast-iron for all wagon parts.

All kinds of wagons made to order.

P. GETZIN

Hudson Super Six Car for Hire Day and Night.

Telephone 158.

Wagon Builders, Blacksmiths, Farriers.

Stocks of Axes, Brakes, Cast-iron for all wagon parts.

All kinds of wagons made to order.

Wagon Builders, Blacksmiths, Farriers.

Stocks of Axes, Brakes, Cast-iron for all wagon parts.

All kinds of wagons made to order.

Wagon Builders, Blacksmiths, Farriers.

Stocks of Axes, Brakes, Cast-iron for all wagon parts.

All kinds of wagons made to order.

Wagon Builders, Blacksmiths, Farriers.

Stocks of Axes, Brakes, Cast-iron for all wagon parts.

All kinds of wagons made to order.

Wagon Builders, Blacksmiths, Farriers.

Stocks of Axes, Brakes, Cast-iron for all wagon parts.

All kinds of wagons made to order.

Wagon Builders, Blacksmiths, Farriers.



White Gold, Overt & Pearl Settings. \$150.00, \$200.00.

ESTIMATES FREE.

BONE BROS.

Box No. 963 NAIROBI.

JOHN RIFKIN

Wagon Builder, Blacksmith, Farrier.

Stocks of Axes, Brakes, Cast-iron for all wagon parts.

All kinds of wagons made to order.

P. GETZIN

Hudson Super Six Car for Hire Day and Night.

Telephone 158.

Wagon Builders, Blacksmiths, Farriers.

Stocks of Axes, Brakes, Cast-iron for all wagon parts.

All kinds of wagons made to order.

Wagon Builders, Blacksmiths, Farriers.

Stocks of Axes, Brakes, Cast-iron for all wagon parts.

All kinds of wagons made to order.

Wagon Builders, Blacksmiths, Farriers.

Stocks of Axes, Brakes, Cast-iron for all wagon parts.

All kinds of wagons made to order.

Wagon Builders, Blacksmiths, Farriers.

Stocks of Axes, Brakes, Cast-iron for all wagon parts.

All kinds of wagons made to order.

Wagon Builders, Blacksmiths, Farriers.

Stocks of Axes, Brakes, Cast-iron for all wagon parts.

All kinds of wagons made to order.

Wagon Builders, Blacksmiths, Farriers.

THE TOILET REQUISITE CO.

GALLIA 'BONGELLE'

THE OLDEST ESTABLISHED LADIES HAIR DRESSING SALOON.

Beauty Preparations, prepared for her by a famous skin specialist.

Treatment may be carried out here, or in your home.

Beauty Preparations, prepared for her by a famous skin specialist.

Treatment may be carried out here, or in your home.

Beauty Preparations, prepared for her by a famous skin specialist.

Treatment may be carried out here, or in your home.

Beauty Preparations, prepared for her by a famous skin specialist.

Treatment may be carried out here, or in your home.

Beauty Preparations, prepared for her by a famous skin specialist.

Treatment may be carried out here, or in your home.

Beauty Preparations, prepared for her by a famous skin specialist.

Treatment may be carried out here, or in your home.

Beauty Preparations, prepared for her by a famous skin specialist.

Treatment may be carried out here, or in your home.

Beauty Preparations, prepared for her by a famous skin specialist.

DANCING

CHILDREN AND ADULTS Classes and Private Lessons Daily at the Leroi Hall.

LATER BALL ROOM DANCING.

Includes the new and improved FRENCH TANGO.

Miss Mary's Outrigger and Miss Mignon's Academy.

P.O. Box No. Nairobi.

Typewriting Bureau, Room 11 & 19 Bina Buildings, (Opp. THE TERRY).

All classes of work undertaken and Short-hand & Typing Lessons given.

Individual Attention.

Also Circulating Library.

NOTE NEW ADDRESS: Hastings Street, Next to Inverbrood's Ltd., Opp. Stanley Hotel.

P.O. Box 479 Phone 142 NAIROBI.

ROYAL MAIL SERVICE

Will claim kindly consign all heavy goods to FORT HALL STATION G.S. J. H. ENGELBRECHT.

Will claim kindly consign all heavy goods to FORT HALL STATION G.S. J. H. ENGELBRECHT.

Will claim kindly consign all heavy goods to FORT HALL STATION G.S. J. H. ENGELBRECHT.

Will claim kindly consign all heavy goods to FORT HALL STATION G.S. J. H. ENGELBRECHT.

Will claim kindly consign all heavy goods to FORT HALL STATION G.S. J. H. ENGELBRECHT.

Will claim kindly consign all heavy goods to FORT HALL STATION G.S. J. H. ENGELBRECHT.

Will claim kindly consign all heavy goods to FORT HALL STATION G.S. J. H. ENGELBRECHT.

Will claim kindly consign all heavy goods to FORT HALL STATION G.S. J. H. ENGELBRECHT.

Will claim kindly consign all heavy goods to FORT

Rosenblum & Co. Ltd.

CLOCKTOWER BUILDINGS, OFF. GENERAL POST OFFICE.

WILL SELL AT GREATLY REDUCED PRICES. PRIOR TO REMOVAL TO THEIR NEW PREMISES...

IN HARDING STREET.

THE FOLLOWING STOCKS: CLOTHING OF ALL KINDS, CUTLERY, HABERDASHERY, NATIVE TRADE GOODS, PROVISIONS.

P.O. Box 331. Tel. No. 15. NAIROBI.



Keep two sticks in use - saves money

Why? The shaving stick absorbs a certain amount of moisture when in use. By keeping two Gillette Cold Cream Shaving Sticks...

Gillette Cold Cream SHAVING SOAP. YOUR CHEMIST STOCKS IT.

BROADCASTING COMES INTO ITS OWN.

How it Saved the Nation.

RUMOUR MAIN.

[FROM HIS LONDON CORRESPONDENT.]

As we are, around the fire on a cold winter evening...

There is no attempt to carry on party political campaigning...

In the short British Broadcasting has come into its own...

You remember the historic story of Lord Leathley Churchill...

High Class Grocers, Provision, Wine and Spirit Merchants.

Colonial General Stores

Government Road, NAIROBI.

Fresh stocks arriving by every mail. GIVE US A TRIAL. YOU WILL NOT BE DISAPPOINTED.

SAVED THE COUNTRY.

Indeed broadcasting saved the country. It is not too much to say...

COFFE MACHINERY NEW SHOWROOM AND OFFICE

ABOVE MAY & Co. GOVERNMENT ROAD, NAIROBI.

K. G. A. KENYA GENERAL AGENT.

LIFE AND FIRE ASSURANCE

FORD CARS LORRIES & TRACTORS

KIRKWOOD & Co., KITALA.

LANP in the TRANS NUBIA. UASIN GISHU and TURBO VALLEY.

SAVOY HOTEL. Calcedonian Road, the Hill, NAIROBI.

Cherry music. It told us of the continued and persistent functions it gave us...

Now as to the future: I harbor to newspapers have odd shreds of news...

It deserves the Empire's thanks. It is a great step towards the day when we shall be able to do without a newspaper...

Geo. BLOWERS



CONCRETE BLOCKS AND GUARANTEED MITTEN 'FERROBETS'...

Box 201 ALIBHAI & Co., Phone 218. GENERAL MERCHANTS, NAIROBI. PART IRON, MATTRESSES, COMBINATION, BEDSTEAD, etc.

Gun Repairs. We hereby beg to announce that our European Gunsmith has just arrived from home with the most up-to-date Machinery and Implements...

Chas. A. Hoyer & Co. Established 1908. GUN & RIFLE MAKERS. THE TAILORING HOUSE. Joanes & Bros., NAIROBI.

Short Loans Granted

Kenya Loan & Discount Co., Ltd. Court Chambers, (1st Floor) Box 446, NAIROBI. Bills Discounted. Strictest Confidence.

F. A. Head

Pianoforte Tuner and Repairer. Five years with Messrs. Chappell & Co., London. Seven years experience in Kenya Colony.

OVERSEAS MAILS. ARRIVAL and DEPARTURE tables. TOMATO SOUP. KENYA'S SAFARI FAVOURITE.

ROBBIALAC THE PERFECT PERMANENT AIR-DRYING ENAMEL FOR MOTOR CARS, MOTOR CYCLES BATHS, AND HOUSEHOLD DECORATION.

Smith Mackenzie & Co., NAIROBI.

Up-to-Date Hairdressing THEO. SCHOUTEN. PERMANENT WAVING GALLIA, 'BONCELLE,' AND EUGENE, MACHINES USED.

OAKLEIGH PRIVATE HOTEL. Comfortable and up-to-date in every way.

MRS. H. JARRETT, NAIROBI. P. O. Box 183.

Vertical text on the right edge of the page, including names and partial advertisements.

NATIONAL BANK OF INDIA LIMITED.

Incorporated in the United Kingdom.

Head Office in the City and
Branches in London and
Calcutta, Bombay, Madras,
Rangoon, Singapore, Penang,
Batavia, Bombay, Madras,
Calcutta, Ceylon, Hongkong,
Kobe, Lyons, Shanghai,
Sourabaya, Yokohama, and
other ports in India, China,
Japan, and the Straits Settlements.

Authorized Capital, £1,000,000
Reserve Fund, £2,000,000
Paid-up Capital, £2,500,000

HEAD OFFICE:
1, LEADENHALL STREET, E.C.3.
BRANCHES: London, Calcutta, Bombay, Madras, Rangoon, Singapore, Penang, Batavia, Bombay, Madras, Calcutta, Ceylon, Hongkong, Kobe, Lyons, Shanghai, Sourabaya, Yokohama, and other ports in India, China, Japan, and the Straits Settlements.

TELEGRAMS: "INDIA" and "NATIONAL BANK OF INDIA" in London, Calcutta, Bombay, Madras, Rangoon, Singapore, Penang, Batavia, Bombay, Madras, Calcutta, Ceylon, Hongkong, Kobe, Lyons, Shanghai, Sourabaya, Yokohama, and other ports in India, China, Japan, and the Straits Settlements.

P. STEWART,
O.S. & D.
PAINTER & DECORATOR.
10, BOND STREET, NAIROBI.

E. DOBBIE
WATCHMAKER AND
JEWELLER.
OPHTHALMIC OPTICIAN,
Government Road,
NAIROBI.

QUALIFIED REFRIGERATIONIST.
In Attendance Hours:
10.30 to 12.30 on Saturdays 9.15 to 11.15 on Sundays.
Telephone No. 90.
In connection with any other
specialties of the same name.

OUR WOMEN'S PAGE

A Letter from Paris
(From Fashion Correspondent.)



fall at the sides only. There was an entire absence of lining, and the gowns were designed to be worn and suitable pendant, long earrings and a whole battery of bracelets.

Low neckline but younger are the chief notes of the slightly shaped dresses put on almost imperceptibly from waist to hem. The whole skirt looks times the flounce are edged with a fine line of crystal beads or a gold or silver cord which makes the petals glisten as with dew drops.

Cape Effects.
Many frocks have a cape effect down the back only of lace or chiffon, either hanging straight down or draped into one shoulder. Long cascades, like fringe, are back, or the side of the front. Some capes are devised so that they are detachable, according to the occasion upon which the dress is worn. These, of course, are very handy, and have the additional advantage of making it appear that one has an extra cape on an ideal ornament, and a cost and so liable to emerge in a crowded condition. Whereas for transforming an ordinary little frock into a graceful and important looking gown, it surpasses any other device of the moment.

Still the "Two-piece".
The "two-piece" is still as popular as ever, and some charming colour combinations can be introduced. As for materials, georgette and silk reps are much favoured. A georgette gown with a contrasting colour gown with entire front in strips of silk reps about two inches wide, also down silk back if desired, worn with a silk cape coat, lined with georgette, or satre, looks delightful.

Shoes and Bookings.
Ridge stockings are worn in the day time and evening with black patent leather or satin shoes. Black walking shoes are strapped or piped with line of coloured leather to match the frock with

which they are worn. All the best shoes are decorative without being gaudy. They are completely made, and any ornament on the shoe is designed to go with the particular shape.

Bookies are still very much worn. Some, too, are of beautiful workmanship. Fan-shaped lines of lace are put on evening frocks, fastened with a narrow paste buckle. Larger bookies of contrast, beaten metal, or of precious stones are worn on black patent leather shoes.

Sports Suits.
The straight silhouette captured in the plainer skirt remains almost unaltered in the realm of sporting attire. The predominant tone of pale shades over earthy tones of the latest models, although white, yellow, and white or orange and white being a chic contrast.

A delightful garment seen at a recent dress show was a white gabardine skirt, worn with a trim blue serge coat, fastening at the waistline with two linked buttons. The coat was just hip-length and had a very natty small breast and a very natty small skirt. This chic garment was cut on those exquisitely simple lines that only the artist can achieve.

The Care of Brushes.
Neglect rather than use is the cause of the shortened career of many a good, shagreened or toilet brush. To ensure better and longer service, brushes must be treated with proper care. After use, they should always be left clean, and toilet brushes excepted, hanging up to protect the bristles.

Toilet brushes will remain clean for a much longer period if they are freed each day from accumulation of dirt. This can be done by striking the brush a few times over a level of newspaper, and daily process which effectively removes the dirt and breaks the hair, therefore, as well as the brush itself. Do this first in this way before washing and then clean the brush.

If the back is of silver, clean in the usual way with plate polish.

If of wood, rub well with a little linseed oil. Cover the back and the brush on the surface of a bowl of warm soapy water to which has been added one teaspoonful of ammonia per quart of water. Continue to strike the brush up and down until clean. Rinse in warm water to remove all traces of soap. Blime previously dissolved in boiling water in the proportion of one teaspoonful of borax to each quart of rising water. Remove the dish protecting the back, and strike the brush on it to get rid of any current of air away from the back when dry.

Rinse and furniture brushes of horsehair should be freed from all trace of dirt before being hung up. When soiled, scrub the handle which can cover it with cloth before the brush is washed. In the case of a long brush, do not scrub

the bristles, but have the head just over the edge of a tub. With a soapy swab, clean between the bristles, then prepare a bath of soapy soda water and strike the brush with the brush until clean. Rinse first in warm water to remove the soap, then in cold, to which a little common salt may be added. If the bristles need stiffening, shake well and hang out to dry.

Filter brushes used for sweeping carpets should be cleaned and washed in the same manner, except that warm salt water should be used, without soap, as the latter ruins the bristles. Add one table-spoonful of salt to each gallon of water. It is advisable, after washing and rinsing, to leave the brush in salt water overnight if it is required to be really stiff.

Best brooms may be washed in the same way, but using neither soap nor salt. Instead, add disinfectant and a little soda to the water. The same treatment holds good for scrubbing brushes, which can be stiffened by steeping in cold water.

Clean lead brushes with the aid of turpentine.



This is how your chiffer bit will look. It is a most effective dress adjunct.

South African Railways.

During the Slack Months of the Year

Take a Holiday
DOWN SOUTH

AND
Return Refreshed in Mind and Body
Determined to Go Again.

For Particulars apply—
TRADE COMMISSIONER FOR THE UNION OF SOUTH AFRICA,
P. O. Box 624, Memorial Hall, NAIROBI.

INSIST ON HAVING VOONIA GARDEN TEA

the delicious blend from CEYLON which is both fragrant and invigorating

Used by Hotels and Tea Rooms Throughout Kenya & Uganda

Even the most fastidious will tell you it is by far the best.

Blacklax's & Brown

Sole Agents
LAYS
MACKINNON BROTHERS, NAIROBI.

Tel. No. 81. Post No. 408.

Protecto

Closed in a moment—from within—that is the Studebaker Duplex feature. The motor is protected by air, oil and petrol filters. Accidents are minimized by the four wheel brakes. But only Studebaker tempts you to safeguard your health and comfort by the easy operation of its roller spring curtains.

CALL AND SEE THE NEW MODELS

Standard Duplex £435
Big Duplex £600

Sole Importers
K. McIVOR & Co.
NAIROBI.

Telephone 97.
P. O. Box 97.

Telegrams: "AFFORD."

THE SALISBURY HOTEL

FAMILY & RESIDENTIAL.

Now nearing COMPLETION spacious and airy Stone Bed Rooms each fitted with Hot and Cold running water, also New Open Air Dining Room, and Dance Hall.

Phone 166. NAIROBI. P. O. Box 500.

MOTOR CYCLES

We have the following new Motor Cycles and Side Cars in Stock at prices as under—

75 Harley Davidson	Shs. 1200
75 with side-car	2750
75 Raleigh with side-car, light	2500
3	1000
2 1/2	1417
2 1/4	1300
2	1000

Also available Stewart On Two Tracks complete with body for Shs. 1000/-.

CAPITAL GARAGE.

opposite Fire Station, Victoria Street.

If You Want
GOOD BREAD
Buy
Torr's.
IT IS THE BEST.

FERTILISE WITH EPHOS

The following testimonial speaks for itself—
"I am asked to have the experiment with 'Ephos' turned out. Really I hardly like to tell you you might fancy I was pulling your leg."
"The potatoes are just simply wonderful. You never saw such growth, even through the drought! I have grown potatoes all my life and in many-folds, but never had I seen anything like this but further it is not a question of fancy seed because I purchased the seed at the door from a 'Kilkey' shop."
The original of the above testimonial can be applied on to J. G. ARONSON, P. O. Box 681, Nairobi.

MOTURING TOPICS

CAR METALS.

Various Types Used in Manufacture.

MARCH OF THE TITANS.

The motorcar has made great strides in the ordinary life of the people. It is almost everywhere, where young men and women to transport a world, and especially cars. Motor traction development has made almost equally great changes in the design and operation of engines and machinery and especially in the number and character of motor metal.

When the motor car was in its infancy the number of different metals used was comparatively small—mainly iron and steel and such of these in common use together with a few special alloys. The small number of metals employed in the early days of the motor car is a fact which has been given prominence.

Both composition and quantity of metals used are usually called upon by engineers. The motor car is made of many different metals, but the most important are iron, steel, aluminum, copper, brass, and tin.

CENTRAL METALS.

In the old days engineers were quite content to make a machine, of iron, or aluminum, or steel, through the simple process of casting. The metal was poured through this meant a great deal of waste.

Today when more strength is required, two methods may be employed—the alloy method, or the use of increased dimensions, or to use a special alloy which has greater strength than the metal from which it is made. This extra cost may be due to the expense is also increased due to their requiring special processes in manufacturing, such as heat treating, etc.

It should be noted that when a fine expensive metal is used, say, in a motor car or airplane engine, the first cost may seem high, but when it is compared with the reduction in weight gained as a result of the use of the metal, the whole life of the machine it will be realized that

THE CAPE TO RAND.

THE CAPE TO RAND.

CHRYSLEER DOES JOURNEY IN RECORD TIME.

The latter property is due to the homogeneous character of the metal and to the fact that some of the carbon present in the metal is in the form of graphite, which is in itself a form of solid lubricant. The metal is specially adapted for cylinder liners and pistons and afterwards by wear so that causes very little dry smooth and

Intermediate between cast iron and steel we have a material called malleable cast iron. This is used to a considerable extent in America in connection with automotive work. It is obtained by heating iron castings to a red heat for anything up to three days in contact with oxide of iron.

The casting metal approaches, in composition to wrought iron, but is much tougher and less brittle than the latter. It is used in many cases to a certain extent in automobile work.

STEEL.

Until the advent of the automobile practically only two materials of steel existed—mild steel and cast or tool steel. Millions of tons of mild steel were used for structural purposes, and other work, but only a comparatively small quantity of the latter steel was manufactured.

At the present time there are some sixteen different grades of steel, each having a different composition recommended by the Standards Committee on Automobile Materials, and so stated above, in many cases actually, hardness, ductility and other properties are in some cases varied by a variation of heat treatment or by a slight change in the quantity of the alloying materials or by different methods in the manufacturing process.

One cannot fail to appreciate the remarkable motoring performance put up recently for Messrs. de la Bouverie and P. J. van der Westhuizen, who drove a Chrysler motor car from Cape Town to Randburg in the distance of 900 miles which divides Cape Town and Randburg from Durban in a time of 20 hours 18 mins. The average speed thus working out at 37 m.p.h. By this achievement the average speed of the Union Express, for the first time, has been practically in steel and condition, the only deviation being the addition of extra springs, the stripping of certain running gear, extra fuel consumption, and the employment of a special type of powerful lamp.

It is understood that the car was being specially prepared for the long journey, and judging by this, the information will not be disputed. The following is a list of towns, villages, and times noted en route.

Stage	Miles Time
Cape Town	0 0 0
Wynburg	37 6 44
Worcester	65 6 52
Worcester	83 7 06
Worcester	100 9 10
Matieland	165 10 38
Langfontein	180 11 10
Prins Albert-road	215 11 37
Prins Albert-road	230 12 36
Prins Albert-road	250 12 52
Prins Albert-road	272 6 7
Prins Albert-road	290 8 22
Prins Albert-road	310 9 12
Prins Albert-road	320 9 27
Prins Albert-road	330 9 42
Prins Albert-road	340 9 57
Prins Albert-road	350 10 12
Prins Albert-road	360 10 27
Prins Albert-road	370 10 42
Prins Albert-road	380 10 57
Prins Albert-road	390 11 12
Prins Albert-road	400 11 27
Prins Albert-road	410 11 42
Prins Albert-road	420 11 57
Prins Albert-road	430 12 12
Prins Albert-road	440 12 27
Prins Albert-road	450 12 42
Prins Albert-road	460 12 57
Prins Albert-road	470 13 12
Prins Albert-road	480 13 27
Prins Albert-road	490 13 42
Prins Albert-road	500 13 57
Prins Albert-road	510 14 12
Prins Albert-road	520 14 27
Prins Albert-road	530 14 42
Prins Albert-road	540 14 57
Prins Albert-road	550 15 12
Prins Albert-road	560 15 27
Prins Albert-road	570 15 42
Prins Albert-road	580 15 57
Prins Albert-road	590 16 12
Prins Albert-road	600 16 27
Prins Albert-road	610 16 42
Prins Albert-road	620 16 57
Prins Albert-road	630 17 12
Prins Albert-road	640 17 27
Prins Albert-road	650 17 42
Prins Albert-road	660 17 57
Prins Albert-road	670 18 12
Prins Albert-road	680 18 27
Prins Albert-road	690 18 42
Prins Albert-road	700 18 57
Prins Albert-road	710 19 12
Prins Albert-road	720 19 27
Prins Albert-road	730 19 42
Prins Albert-road	740 19 57
Prins Albert-road	750 20 12
Prins Albert-road	760 20 27
Prins Albert-road	770 20 42
Prins Albert-road	780 20 57
Prins Albert-road	790 21 12
Prins Albert-road	800 21 27
Prins Albert-road	810 21 42
Prins Albert-road	820 21 57
Prins Albert-road	830 22 12
Prins Albert-road	840 22 27
Prins Albert-road	850 22 42
Prins Albert-road	860 22 57
Prins Albert-road	870 23 12
Prins Albert-road	880 23 27
Prins Albert-road	890 23 42
Prins Albert-road	900 23 57

Received all kinds of best Crepe de Chine & Stockings.

B. CHOITRAM, Government Road, NAIROBI.



"BLACK & WHITE" SCOTCH WHISKY
"BLACK & WHITE" has a worldwide reputation based on superior high quality JAMES BUCHANAN & CO. LTD., GLASGOW, LONDON, & CAPE TOWN.
Samples and Prices may be obtained from AMERSON SMITH & CO., P. O. Box 287, NAIROBI KENYA. Agents for EASTERN AFRICA.

JUST ARRIVED

A BIG STOCK OF MORQUET KNITTING, READY MADE OR MADE TO ORDER.
Motor Hood Cloth and all Motor Outlets of all descriptions for the wet weather. Tarpaulins, Balloons, Traction Cables, Cushion Springs, etc., etc.



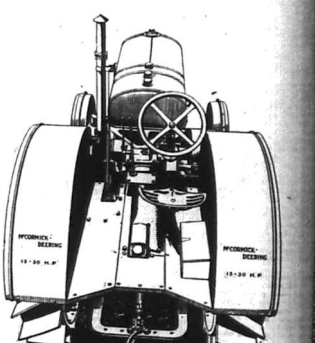
MEGHJI AHAMED & CO.
(Established 1902)
THE UP-TO-DATE STORE FOR QUALITY, AND
Ladies and Gent's Trunks, Tents and Sail Making, makers of best quality and reliable furniture.
Phone: 154. Tel.: "Tasartara." P. O. Box 100, DEANAN BAZAAR, NAIROBI.

Power for Business-Like Farming

FOR nearly a century, the builders of this Company have been selected in the Far East for their ability in lifting the millions of two and laborer of the thousands of men and women. Rapid strides have been made since Cyrus Hall McCormick built the first Reaper on an acre in Virginia in 1831. Agriculture has been assisted greatly by the mechanical farm equipment that has benefited the world. During the past dozen years Tractors and Power Mowers have been developed, and their use has been greatly extended. Great accomplishments lie ahead for the farmer who is ready to combine best experience with the latest word in standard and cost.

We wish to announce that we expect the arrival shortly of our first shipment of the new McCormick Deering, Rowley Trail and Coffee Tractors. Absolutely work in steel and orchard sections have proved every feature. Such proved dependability plus the new Tractor extremely desirable.

- ### Some Reasons Why Practical Men Select McCormick-Deering Tractors
- Powerful Engines.** These tractors have water-cooled, heavy-duty engines. They are built to deliver an abundance of power over a long period of years. Working parts are thoroughly protected from dust and dirt.
 - Removable Cylinders.** Each cylinder is cast separately and fitted into the engine block which makes it possible to place a worn cylinder easily and economically. New cylinders make practically a new engine.
 - Crankshaft.** The heavy-duty two-bearing crankshaft runs in large ball bearings.
 - Throttle Governor.** The throttle governor regulates the fuel to the load and keeps the speed practically uniform.
 - Pistons.** The pistons are close-fitting and are four rings which insure good compression and most power from the fuel.
 - Gear Drive.** The power is transmitted to the wheels through high-grade gears that run in oil.
 - High-Tension Magneto.** The high-tension magneto supplies a hot spark for starting and 1750 of rotation for a farm tractor.
 - Oil Pump.** The oil is kept in circulation by a gear oil pump which assures proper lubrication of the crank, valves, etc.
 - Fenders.** Strong, durable fenders protect the tractor and operator from dust and dirt.
 - Platform.** The platform adds to the compactness and provides carrying capacity.
 - Air Oil Cleaner.** Air that reaches the cylinders must pass through the air oil cleaner which cleans the dust and dirt.
 - One-Piece Main Frame.** The main frame is a single casting. There are no weak points in the main frame. The main frame is made of Gears Run in Oil. All gears run in a bath of oil.
 - High-Grade Bearings.** An unusually large quantity of ball and roller bearings are used which are easily lubricated, easy to fit and save power for productive work.
 - Cooling System.** The thermo-siphon system of cooling maintains uniform engine temperature.
 - Accessibility.** Engine working parts are readily reached by removing hand-hole covers and plates.
 - Power Transmission.** The power transmission is a multi-disc clutch in large and heavy proper transmission of the power.
 - IBC Drive.** International Harvester service covers the country, and it is easy to get extra parts or assistance whenever necessary.



McCORMICK-DEERING TRACTORS
10-20 **£268** f.o.r. Nairobi.
15-30 **£368** f.o.r. Nairobi.

Gilfillan & Company, Ltd.
Distributors for Kenya, Uganda and Tanganyika.

McCormick-Deering TRACTORS
10-20 **£268** f.o.r. Nairobi.
15-30 **£368** f.o.r. Nairobi.

Gilfillan & Company, Ltd.
Distributors for Kenya, Uganda and Tanganyika.

UYA AND UGANDA TRADE PROSPECTS.

Further Lessons of 1925.

THE PROPORTION OF EAST AFRICAN CONSUMPTION.

The Growth of Imports and Exports.

In Great Britain and thirteen per cent in India.

THE DISTRIBUTION.

It is gratifying to note that the United Kingdom and the Portuguese Republic are the two largest consumers of East African goods.

GROWTH OF IMPORTS.

The figures have been tabulated in five-yearly periods and show that the increase in imports in 1925 was 10.5 per cent over 1924.

EXPORTS.

The total value of exports to the United Kingdom and the Portuguese Republic in 1925 was £1,477,276, or 41.5 per cent of the total exports.

WAREHOUSES.

In addition to the Government warehouses at Mombasa, Kisumu, and Kampala, 23 private warehouses were licensed in 1925.

The growth of exports during the first six months of 1925 was 10.5 per cent over the same period in 1924.

During the period under review the total value of exports was £1,477,276, or 41.5 per cent of the total exports.

The value of imports of raw materials in 1925 was £1,477,276, or 41.5 per cent of the total imports.

The value of exports of raw materials in 1925 was £1,477,276, or 41.5 per cent of the total exports.

The value of imports of raw materials in 1925 was £1,477,276, or 41.5 per cent of the total imports.

The value of exports of raw materials in 1925 was £1,477,276, or 41.5 per cent of the total exports.

East Africa 16 per cent, and Belgium, 18 per cent. Having regard to the fact that the weather conditions prevailed throughout the year, it is not surprising that the increase in imports of raw materials in 1925 was 10.5 per cent over 1924.

The Commissioner of Customs gives a special report on the trade of East Africa in 1925. He points out that 14,700 tons of raw materials were imported in 1925, an increase of 10.5 per cent over 1924.

Reports of export and import duties in 1925 are given. The total value of exports was £1,477,276, or 41.5 per cent of the total exports.

It is interesting to note that the United Kingdom and the Portuguese Republic are the two largest consumers of East African goods.

The growth of imports in 1925 was 10.5 per cent over 1924. The total value of imports was £1,477,276, or 41.5 per cent of the total imports.

The value of exports of raw materials in 1925 was £1,477,276, or 41.5 per cent of the total exports.

The value of imports of raw materials in 1925 was £1,477,276, or 41.5 per cent of the total imports.

The value of exports of raw materials in 1925 was £1,477,276, or 41.5 per cent of the total exports.

The value of imports of raw materials in 1925 was £1,477,276, or 41.5 per cent of the total imports.

The value of exports of raw materials in 1925 was £1,477,276, or 41.5 per cent of the total exports.

The value of imports of raw materials in 1925 was £1,477,276, or 41.5 per cent of the total imports.

The value of exports of raw materials in 1925 was £1,477,276, or 41.5 per cent of the total exports.

The value of imports of raw materials in 1925 was £1,477,276, or 41.5 per cent of the total imports.

The value of exports of raw materials in 1925 was £1,477,276, or 41.5 per cent of the total exports.

The value of imports of raw materials in 1925 was £1,477,276, or 41.5 per cent of the total imports.

The value of exports of raw materials in 1925 was £1,477,276, or 41.5 per cent of the total exports.

The value of imports of raw materials in 1925 was £1,477,276, or 41.5 per cent of the total imports.

Responsibility of a Private Individual.

Seized to Escape of a Prisoner.

Two Court Views.

Wood and Timber.

Export Trade Growth.

Kenya and Uganda.

Cotton.

Sisal.

Flax.

Copper.

Gold, Pulp and Flour.

Animals.

Grain, Pulp and Flour.

Animals.

Grain, Pulp and Flour.

Animals.

Grain, Pulp and Flour.

Animals.

Crown Attempt to Re-open an Acquittal.

Doctors Alleged Act.

Miscellaneous.

Another Legal View.

Another Legal View.

Another Legal View.

Another Legal View.

Another Legal View.

Another Legal View.

Another Legal View.

Another Legal View.

Another Legal View.

Another Legal View.

Another Legal View.

Another Legal View.

Another Legal View.

Another Legal View.

Another Legal View.

Lyric Hall. NEVA GERBER in "Impulse".

Two Extra Special Lines. Colors in Stock: Gold, Silver, Blush, French Nude, Pearl, Green, Tan Bark, Blue Fox.

Eadies Footwear Ltd, Nairobi. P.O. Box 149. Phone 133.

THEATRE ROYAL. TO-NIGHT-FRIDAY-SATURDAY. "TO HAVE AND TO HOLD".

Scotts Burcham Cheroots No. 1 IMPERIALS. A full size, full flavoured cheroot made from matured tobacco of excellent aroma.

The Remington Typewriter. "QUIET NO. 12". Universally recognized as the most efficient typewriter.

Kaiser. WHY? It's different from the average kind-factors of wear -factors of style-also have been mentioned in a shimmering, shining blue of liveliness.

Warings. NOW IN STOCK THE CELEBRATED ALMA GAUGE. THIS SILK GLOVE FOR EVENING WEAR IN ALL THE NEWEST SHADES WITH ARTISTIC GLOCS.

AUCTION SALES

Muter and Oswald's Sales.

Miscellaneous Goods Sale

Duly instructed we shall sell by Public Auction Without reserve, at our Salerooms, Mutos Building, Hardings Street, Nairobi.

Muter and Oswald's Sales.

Catalogue/Sale of Teak and other Furniture

Duly instructed, we shall sell, without reserve, at our Salerooms, Hardings Street, Nairobi, on

Monday, 21st June at 9.30 a.m.

A Large Range of Well-Made Teak Furniture

WARDROBE IN TEAK; oval bevelled mirror; 7 drawers. DOUBLE WARDROBE in Teak; 2 bevelled mirrors. SINGLE WARDROBE in teak; bevelled mirrors. LINEN CUPBOARDS, MORRIS CHAIRS. DUCHESS DRESSING TABLES in teak; oval bevelled mirrors. DRESSING TABLES in teak; round bevelled mirrors. OVAL DINING TABLES in teak; SUITES OF DINING CHAIRS in teak; upholstered. TEAK DINNER WAGON. WRITING DESK in teak; basin top. SIDEBOARD in teak; SIDEBOARD (Walnut) 3 mirrors. SINGLE BEDSTEADS in teak; with spring mattresses. DOUBLE BEDSTEAD in teak; spring mattress. SWING MIRROR on teak stand. CHEST OF DRAWERS. DOUBLE BEDSTEAD in Tanganyika Mahogany. THREE PIECE CHESTERTFIELD SUITE, cretonne covered; castors. SETTEES in Mahogany; cane seats and backs. WASHSTANDS in teak. PALMSTANDS in teak. WRITING BUREAUX in teak. OCCASIONAL TABLES in teak. BOOKSHELVES. CHILD'S COT and mattress. BACHELOR WARDROBE; shelving; hanging compartment and drawers. No. 6 "Dover" Stove. Towel Rails. Etc., Etc., Etc.

Catalogue Sale. Muter and Oswald, Auctioneers, Etc, Nairobi.

Sands & Co. Londiani.

SATURDAY 26th JUNE at 10-30

120 Really Big A.M. & T. 1 1/2 acres just released from a Kibagati Boma. 6 Well Trained Oxen, Cows, Sunbirds, etc. We will offer for sale on account of Mr. Reed his very fine farm of 914 acres. 4 miles from Londiani on main Eldor Road. A real attractive wheat proposition. A good large stone house and outbuildings abt 150 acres in wheat now. Also on account of Mr. Choice his property in Londiani Township. Further entries being received.

Sands & Co. Auctioneers.

Paris Gowns.

Just out from Paris new designs in exclusive model gowns to suit all figures. In C. de Chine, Maroon, Georgette, etc. All with Flared Skirts. Prices from Shs. 85/90. MADAME LEON Africa House. Government Road.

CATALOGUE SALE

Important Sale of House Furniture, Plate, China, Stove, Glass, Kitchen Utensils and Sundries also Good Ricksha.

Instructed by J. H. MAXWELL Esq., M. DARDE Esq., and other clients Removed to OUR MART for GOVERNMENT OF SALE

Austin & Co.

Will sell by PUBLIC AUCTION ABSOLUTELY WITHOUT RESERVE

on SATURDAY, June 19th at 10 sharp.

AT OUR MART, HARDING ST. SISAW WOOD CIRCULAR DINING TABLE, GATE-LOGGED. Set of RUSH SEAT DINING CHAIRS on suite. SISAW WOOD SIDE TABLE.

All the above furniture takes to pieces for storing. Carved Coffee Table, Two Nice Occasional Tables. Swing Mirror with drawer, Tennis Net. One No. 9 Valley DOVE STOVE, Two Fold Small Beds. Book Case, 5 Nice Occasional Tables various. Camphor Wood Wardrobe plain, Swing Mirror, Safari Table, 2 Palm Stands, 2 Kitchen Tables, 2 Carved Coffee Tables. One Drink Cupboard, Iron Single Bed & Mattress. One Nearly New Child's Cycle, 3 Garden Chairs and Table. Metal Sale, White Enamel Child's Cot, ONE 22 Ride. Afternoon Tea Stand, Morris Chair & Sundry Tasse. E.P. Sugar Bins, 2 E.P. Salvers, Tray and set complete. Electric Plate Tea Set Comp's Silver and set glass. One P. Dream 'ing and Sugar Basin. E.P. Coffee Pot, other Containers, 3 E.P. Bottle Holders. 2 1/2 Dozen Ex. Qual. Tumblers, 4 Colored Tea Sets Various colors. Set of Six Italian Dessert Plates and lot of Crockery. QUANTITY OF GOOD OILY. DOUGLAS MOTOR Cycle and Side Car in Running order. A very good strong Black Ricksha. One Raleigh Green's Push Cycle with 3 Speed Gear and New Pump. OF BEHALF OF ANOTHER GLENT Gane Chair, 3 Deck Chairs, Fine Dble. weighted Morris Hotel and Two Single ditto. Lot of Kitchen Ware, Etc., Etc., One Titan Sewing Machine in good order. Also a lot of other goods, part-fires not set to hand. CATALOGUES READY FRIDAY. ABSOLUTELY WITHOUT RESERVE.

UNRESERVED SALE OF BUICK CAR, OFFICER'S TENT ALSO FORD CA & ROVER MOTOR CYCLE

Duly Instructed AUSTIN & Co. Will sell by AUCTION AT THE MART, HARDING ST., on

Saturday June 19th at 9-45 Sharp

BUICK 6 cyl. BOX BODY CAR, Perfect Running, 2 Spare Tyres recently overhauled and in perfect running order. THE ABOVE ABSOLUTELY WITHOUT RESERVE. Also FORD BOX BODY CAR good running order. Good Spare Tyres and electric light. ONE ROVER 4 1/2 hp. MOTOR CYCLE very fast and reliable. ONE OFFICER'S 40th. Tent in good and complete order. NOTE - SALE of above at 9-15 sharp owing to huge quantities of furniture sale.

THE DOUGLAS OUTFIT WITHOUT RESERVE will also be offered at same time.

Charles Ware

Telephone 422. TUESDAY ACCOUNTANT. P.O. BOX 1270. Telegrams: "Spartan" NAIROBI. Trust Chambers, Government Road.

BOOK OPEN DURBAN JULY HANDICAP

Terms Strictly Cash or Deposit Accounts. No Reply Distinctly Means no Business. WIRE, WRITE, CALL OR PHONE

BARCLAYS BANK (DOMINION, COLONIAL AND OVERSEAS)

FORMERLY THE NATIONAL BANK OF SOUTH AFRICA LIMITED.

Incorporated in The United Kingdom by Royal Charter 1905. with which is amalgamated

THE ANTO-EGYPTIAN BANK LIMITED.

Capital Authorized £ 10,000,000 Capital Subscribed £ 2,875,000 Reserve Funds £ 2,975,000 Unutilized Capital £ 2,500,000

HEAD OFFICE: 64 Lombard Street, London, E.C. 3. LONDON OFFICE: 29 Greenwhich Street, E.C. 4. 37/39 King William Street, E.C. 4. Cross Street, London, W.1. 111 St. Martin's Lane, Trafalgar Square, W.C. 2.

And Offices at Liverpool; Manchester; Hamburg; New York.

The Bank is represented in: British East Africa, Union of South Africa, Rhodesia, South West Africa, British West Africa, Egypt and the Sudan, West Indies, Mauritius, etc.

OVER FOUR HUNDRED BRANCHES. AGENTS IN ALL PRINCIPAL CITIES OF THE WORLD. All Classes of Banking business undertaken. The Bank also acts as Trustee and Executor.

Medical Supply Co. BOMA BUILDINGS, Government Road, NAIROBI.

Box 720.

Stocks are Being Sold at 20 per cent. Reduction

Santogin Ointment. Mellin's Food. Food's Creams. Food's Creams & Powders. Ointne Creams & Powders. Soaps. Tooth Brushes. & Every Variety of Toilet Requirement Until the end of this month.

S.S. Banbury Castle

This steamer is expected to arrive at Kilindini about 11th. instant and to sail Homeward via Suez Canal on the 25th instant accepting cargo for PORT SUDAN, GENOA, MARSEILLES, LONDON, ANTWERP, and USUAL NORTH CONTINENTAL PORTS also for NEW YORK and BOSTON with QUICK TRANSITSHIPMENT at Port Sudan. ANTWERP, and USUAL NORTH CONTINENTAL. Space may now be engaged on application to:- The Union Castle Mail Steamship Co. Ltd. Telephone 106. Telegrams: "UNICASTE." P.O. Box 95. Cables: UNICASTE.

THE EUROPEAN AND AFRICAN TRADES ORGANISATION

18, Kings Colway, London, E.C. 4. P.O. Box 624. Telegrams: "Trade Organisation." Memorial Hall.

REGISTRATION FEES. Please note that in future the following Fees will be payable in advance by all those who make use of the Organisation and who are not regular subscribers to its Funds.

EUROPEANS SEEKING EMPLOYMENT will be required to pay a Registration Fee of Shs. 5/- before placing his or her name on the Organisation's Register. EUROPEANS SEEKING EMPLOYERS will be required to pay in advance the following Fees:- FOR EACH EUROPEAN REQUIRED Shs. 5/- FOR EACH SWITZERLAND REQUIRED Shs. 10/- FOR EACH AFRICAN REQUIRED Shs. 20/- REGULAR SUBSCRIBERS will continue to receive the full services of the Organisation FREE OF CHARGE.

Used Cars For Sale

BY PRIVATE TRADING. Instructed thereby by various clients, we offer the following used cars for sale: Ford Box Body, in good order. Also Overhaul & 1400 cc. engine only and condition £35 A trip. Ford Touring Model in perfect condition £60. Essex 4. A reliable car in perfect mechanical condition £100. Ford Lorry, 1 Ton. Buxtonville. Also 600. Stradbaler Light 6. A well running powerful engine. Increased and lowered G.W. Duralast, new. Dully equipped. Dodge 3 Wheelers, a new bargain £200. Dodge Box Body 605. Ford Box Body, Buxtonville. Also 600. Ford Cars and Trucks. The above cars have all been tested and approved.

The Service Company, Ltd. NAIROBI.

REZIN TAILOR OF QUALITY

THE NAME THAT INSPIRES CONFIDENCE GENTLEMEN'S TAILORING IN ALL ITS BRANCHES. THE HOUSE OF REZIN.

FOR SALE: MOMBARA - Five Colonies' Plot. NAIROBI - Godowns and Offices. NATHURA - Residential Plot. MATHAMA - 4 1/2 Acres. ELDORET - 1 1/2 Acres. Talbot & Massy E. A. J.

ESSAY LTD

JACOBUS, MANAGING DIRECTOR. THEATRE ROYAL BUILDINGS. P. O. Box 614, Nairobi. Phone 777. ESTATE COMMERCIAL & FINANCIAL AGENCY.

Mortgages

Various sums available on Town and Country Property. DESPITE THE SHORTAGE we always have FURNITURE and UNFURNISHED HOUSES TO LET. The Choice is limited. APPLY IMMEDIATELY.

FURNITURE

THE FOLLOWING IS A TYPICAL EXAMPLE OF THE VALUES OFFERED OUR PURCHASERS DEPARTMENT.

THE H.B. DINNING SUITE. 6 SIDEBOARD WITH TWO CUPBOARDS. TWO DRAWERS & LARGE REFRIG. SIX PIECE SUITE OF DINING CHAIRS. CONSISTING OF 2 ARM and 4 WITHOUT ARM. CHAIRS. OVAL DINING TABLE 6' x 3' 6". SUN DOWN TEA TABLE. SIDEBOARD TABLE. TWO PALM TREE CHAIRS.

Price Complete £320/- Huthings, Biemer & Co., Ltd. Box 408. NAIROBI. Monthly accounts opened with approved banks.

M. Rosenblum & Co. Ltd.

CLOCKTOWER BUILDINGS,
OPP. GENERAL POST OFFICE,

WILL SELL, AT GREATLY
REDUCED PRICES, PRIOR
TO REMOVAL TO THEIR NEW PREMISES
IN
HARDING STREET,
THE FOLLOWING STOCKS:-
CLOTHING OF ALL KINDS,
CUTLERY,
HABERDASHERY,
NATIVE TRADE GOODS,
PROVISIONS,

P. O. Box 461. Tel. No. 15
NAIROBI.



Keep two sticks in use
— saves money

Why? The Shaving Stick absorbs a certain amount of moisture when in use. By keeping two Gillette Cold Cream Shaving Sticks and using them on alternate days, the 48 hours rest allows the moisture to evaporate, thus restoring the soap to normal. Each week longer and gives many more shaves to the stick. The Cold Cream blended into Gillette is an excellent skin soother and smooths the most sensitive skin, gives all the delight of a Cold Cream Massage.

Gillette Cold Cream SHAVING SOAP

YOUR CHEMIST STOCKS IT.

MORE THINGS SEEN IN THE STRIKE

A Simple Device for Protecting Cars.

STREET FIGHTS

[FROM OUR LONDON CORRESPONDENT.]
Cars trailing a wave underneath. This is explained by the following:—
Able to see a car approaching from a length of well insulated wire of sufficient length to reach the ground. A small plug at the end of the wire will make a better earth. When approaching trouble keep the wire on the ground and not the handle with the trailer in the air. Do not start the car with the handle with the trailer in the air.

The conductor of a bus run by "volunteers" stopping the bus outside a man's outfitting shop, buying a new collar, and leaving it. "Buses with" going to the Garage, "buses" shaked in his letters on the front where the destination is usually attached.

For the first time in the modern history there was no Hanged in Parliament. For a whole week it was without reports of the protest.

The select Agenda paper for the day was either misinterpreted or suppressed.

On the Underground Railway guard a number of the locomotives had little Union Jacks and their volunteer Guards frequently carried

Regents Park was used as a storage for the buses to get them from Chiswick where there was a rough element.

Practically all the buses run by volunteers had got stuck at home to them usually in dark.

ECOTON strike is in constant trouble. Kipling's phrase that "There's no man happy than a man who has done his duty." Many of the

street fights, were never chronicled in any way.
Colleges of volunteers who were very badly behaved during strike. Some are known to have laid out the strikers afterwards with crowbars.

Some of the Trades Union notices were amusing. In Popular they issued an appeal for the men to observe discipline. On one occasion they said "discipline" and another "discipline".
It will take months to get the markings of the Public Vehicles such as "For Pool Only".
The reason thing to be seen during the whole strike was a street accident to motor traffic—a great tribute to motor driving.

People's good humour and politeness never deserted them. There was never a shot fired, not even a blank shot, and despite the fact there is no real reason to believe that not a single person had his life as a man month or two of relatively minor importance.

The weather was all against the strike in the strike. There were most terrible mornings when the streets were empty and raining heavily, yet fortunately the strikers generally and there was no one who they were really gross.

TYPEWRITING
All Classes of Typewriting undertaken at MODERATE RATES. Strictly Confidential.
J. Wilcox.
City House, NAIROBI.

NOTICE

Do you know I paid nearly £10 for my "K" shoes in England at Goldman's Cash Boot shop. They are selling locally.

WE SELL

HALL'S WINE & INCARNIS.
GVALTOL.
BOVILLI—SANTOGEN.
DE BEGNING'S OILY OIL.
KEPLER'S COGNAC OIL WITH MALT EXTRACT.

M. R. de SOUZA & Co
P. O. Box 195. Govt. Rd., Nairobi. Phone 75.

COFFEE MACHINERY
NEW SHOWROOM
AND OFFICE

ABOVE MAY & Co. GOVERNMENT ROAD
Sole Agents in Kenya for Wm. & A. R. Simon & Co., Ltd., Box 456, Tel. "Polypers."

Colonial General Stores

GOVERNMENT ROAD, NAIROBI.

High Class Grocers, Provision, Wine and Spirit Merchants.

Fresh stocks arriving by every mail.

GIVE US A TRIAL

YOU WILL NOT BE DISAPPOINTED.
Phone 226. P. O. Box 456.

K. G. A.

KENYA GENERAL AGENTS.

LIFE AND FIRE ASSURANCE

FORD CARS LORRIES & TRACTORS

For further particulars apply to:
SHAMS-UD-DEEN

KIRKWOOD & Co., KITALA.

LAND AGENTS, MANAGING AGENTS, VALUERS, COMMISSION AND INSURANCE AGENTS, TRANSPORT AND PLOUGHING CONTRACTORS.
We invite inquiries for

LAND
in the TRANS NZOLA, UASIN GISHU and TURBO VALLEY

SAVOY HOTEL.

Calcedonian Road, the Hill, NAIROBI.
F. O. Box 30. Tel. "Savoy."

Geo. BLOWERS.

BUILDING CONTRACTOR, MANUFACTURER AND BIRD OF IMPORTERS. CASE WITH OTHERS.



Fronting Bars, Ceiling Bars, Ceils, Beestings & Beasts Imported, Dull Wood, Indian Teak, Ply Board, Adhesive Glass, etc.

Do you know I paid nearly £10 for my "K" shoes in England at Goldman's Cash Boot shop. They are selling locally.

CONCRETE BLOCKS ARE A GUARANTEED MIXTURE "FERROBLOC" THE LATEST SYSTEM WHICH USES THE BEST AND CHEAPEST WALLING MATERIAL. 100% STEEL—NO RUSTING METAL—SHALL AND LAUREL—ALSO "EXPANET".

NOTE: There is no attempt to show our stock price. We make no effort to show our stock price. We make no effort to show our stock price. We make no effort to show our stock price.

For FOOTBALLS and JERSEYS
MAY & Co.

Short Loans Granted

£1 to £1000

CALL OR WRITE TO THE

Kenya Loan & Discount Co., Ltd.

Court Chambers, (1st Floor)

Box 646, NAIROBI.

Bills Discounted. Strictest Confidence.

F. A. Head
Pianoforte Tuner and Repairer
Five years with Messrs. Chappell & Co., London.
Seven years experience in Kenya Colony.
Send all orders to P. O. Box 675.

Alibhai & Co., Phone 213

Resear. GENERAL MERCHANTS, NAIROBI.

THREE MATTRESSES
PART IRON Single 50/- each
COMBINATION Double 50/- each
BEDSTEAD Pillow 6/- each
Shs. 34/- Slips 1/75 & 3/00
Fine Mesh Mosquito Net Single Bed... Shs. 25/- each
Fine Mesh Mosquito Net Double Bed... Shs. 25/- each

Gun Repairs

We hereby beg to announce that our European Gunsmith has just arrived from home with the most up to date Machinery and Implements (now lying in Mombasa) which will enable us to execute any kind of repairs from a Spring to a new Stock or the fitting of a new Telescope Sight.

ALL REPAIRS WILL BE TAKEN IN ROTATION.

RIFLES, SHOT GUNS, PISTOLS & BINOCULARS.

Our new Stocks have just arrived from home about 600 Weapons by all Makers and in all calibres including our well known EXTRA LONG BARREL 28" Mauser and Mauser Schmeisser Rifles, also 350 Rigby, 318 and Westley Richards, Holland and Holland, Cogswell and Harrison, B.S.A. and others as well as a full range of ammunition, Goers and Zeiss Binoculars, etc.

600 WEAPONS TO SELECT FROM

Chas. A. Heyer & Co.
Established 1903.
GUN & RIFLE MAKERS
Theatre Royal Buildings, Box 567, Nairobi.

THE TAILORING HOUSE

Joanes & Bros., NAIROBI.

RAYNES BUILDING, Govt. Road.

Our clients are advised of the arrival of Tennis shirts of various qualities, Cork Helmet, Hosiery, "I" kinds of Saitting, Crapes d' Chine, Linen, Maroon Feral Hats, etc., etc. Secure your chance early.

Miss KATHLEEN BATES, J.R.C.M.

Great Lessons in PIANOFORTE, SINGING HARMONY, THEORY OF MUSIC AND ADJACENT CULTURE.

People prepared for all Examinations. Coaching given to Singers and Instrumentalists.

Classes for Young Children on Speech, Modern Methods.

Postal Address: Box 417, NAIROBI.

OVERSEAS MAILS.

ARRIVALS.

STEAMER	FROM	Months	Due at
Karagala	South		
Khandala	Europe	June 17	18
Lansbury Castle	Europe	" 25	" 25
Korona & Lala	Europe	" 27	" 27

DEPARTURES.

STEAMER	FOR	Months	Closes at
Karagala	Dombay	June 19	19
Khandala	South	" 25	" 25
Lansbury Castle	Europe	" 27	" 27
Korona & Lala	Europe	" 27	" 27



TOMATO SOUP

A new and delicious Upgrade Product. Stocked by all Grocers & Retail Stores.

Look to our Patent

SAFARI FAVORITE.

Kenya's SAFARI FAVORITE.

Look to our Patent

SAFARI FAVORITE.

STANDARD FEATURE PAGE

FARMING JOTTINGS.

A Resume of Current Topics.

MIXED CROPPING.

[By Herbert King.] A locally diversified line of... The chief direction along which...

bank or sheep might be fattened... An excellent scientific reason...

SEASONAL NOTATIONS.

It is no good talking of annual... The subject of relations for...

VALUE OF EYE.

It is a good idea to have... Another cutting will be possible...

MANAGEMENT.

The secret of success in carrying... The fourth year's crops should...

South African Railways.

During the Slack Months of the Year Take a Holiday DOWN SOUTH AND Return Refreshed in Mind and Body Determined to Go Again.

For Particulars apply: TRADE COMMISSIONER FOR THE UNION OF SOUTH AFRICA, P. O. Box 624, Memorial Hall, NAIROBI



SAM RIFKIN.

BLACKBURN FARRIER AND WAGON MAKER. All classes of Wagons, Truilles, South Gate, Road Carts, Motor Car Bodies, Carriage to order...

INSIST ON HAVING VOONIA GARDEN TEA

that delicious blend of CEYLON which is both fragrant and invigorating. Used by Hotels and Tea Rooms Throughout Kenya & Uganda

Kijabe Hotel Kijabe.

Five minutes from station (Incorporating Climate Hotel) Grand country drive looking Valley and Fessenden Reservoir. Best centre for Big Game Shooting in Colony.

Blacklaw & Brown

LATE MACKINNON BROTHERS, NAIROBI. Tel No. 21. Box No. 479.

COMMERCIAL BANK OF INDIA LIMITED. Capital: 1,000,000. Reserve: 2,000,000. Branches: London, Calcutta, Bombay, Madras, etc.

P. STEWART, C.S. B.E.D., ARCHT & DECORATOR. Building, Glazing, etc.

E. DOBBIE, WATCHMAKER AND JEWELLER. Government Road, NAIROBI.

PHARMALOGIC OPTICIAN. Government Road, NAIROBI.

MAILED REPLICATIONIST. Telephone No. 9. Saturdays 9-12.

Closed in a moment—from within—that is the Studebaker Duplex feature. The motor is protected by air, oil and petrol filters. Accidents are minimized by the four wheel brakes. But only Studebaker tempts you to safeguard your health and comfort by the easy operation of its roller spring curtains

CALL AND SEE THE NEW MODELS

Standard Duplex £435

Big 6 Duplex £600

Sole Importers K. McIVOR & Co. NAIROBI.

Telephone 97. P. O. Box 97.

Telegrams: "AFFORD."

Kenya Beer
IS
A GOOD WHOLESOME ALE
BREWED IN KENYA
FROM CHOICEST KENT HOPS
AND ENGLISH MALT

Kenya Stout
IS DELICIOUS & APPEATING
AND WILL KEEP YOU FIT.

**XXXX
Bundowner Ale**
IS JUST SUPERLATIVE BEER.

GUARANTEED THE LARGEST CIRCULATION OF ANY NEWSPAPER
IN KENYA, UGANDA, TANGANYIKA AND ZANZIBAR

DAILY EDITION.

The East African Standard

MOMBASA TIMES & UGANDA INDEPENDENT
THE LARGEST ESTABLISHED NEWSPAPER PUBLISHED IN KENYA AND UGANDA.

12 PAGES.
Which will be incorporated
THE LEADER.

THE
LOUNGE
FOR
BOOK TAKES
AND
TRAR

THE
DINING ROOM
FOR
BREAK FASTS,
LUNCHEONS, and
DINNERS.

THE NEW STANLEY HOTEL

GOVERNMENT & COAL PROBLEM.

**Important Pronouncement by Premier
in House of Commons.**

EIGHT-HOUR DAY AS A SOLUTION.

**Organization of the Industry on the Lines of the
Commission Report.**

(By WILKINSON.)

Mr. Baldwin this afternoon in the House of Commons made an important statement on the coal problem.

He said it was his personal conviction that the coal problem could be solved by the adoption of an eight-hour day for the coal miners. He stated that the coal industry was a unique industry and that the coal miners were the backbone of the nation. He said that the coal industry was a unique industry and that the coal miners were the backbone of the nation.

THE ROOT OF THE DIFFICULTY.

The difficulty of the situation was largely from the fact that the coal industry was a unique industry and that the coal miners were the backbone of the nation.

BETTER ORGANIZATION.

The coal industry was a unique industry and that the coal miners were the backbone of the nation.

WAGE REDUCTION.

The Government was prepared to consider any suggestion for a reduction in the coal miners' wages.

WAGE REDUCTION.

The Government was prepared to consider any suggestion for a reduction in the coal miners' wages.

WAGE REDUCTION.

The Government was prepared to consider any suggestion for a reduction in the coal miners' wages.

WAGE REDUCTION.

The Government was prepared to consider any suggestion for a reduction in the coal miners' wages.

WAGE REDUCTION.

The Government was prepared to consider any suggestion for a reduction in the coal miners' wages.

WAGE REDUCTION.

The Government was prepared to consider any suggestion for a reduction in the coal miners' wages.

WAGE REDUCTION.

The Government was prepared to consider any suggestion for a reduction in the coal miners' wages.

WAGE REDUCTION.

The Government was prepared to consider any suggestion for a reduction in the coal miners' wages.

WAGE REDUCTION.

The Government was prepared to consider any suggestion for a reduction in the coal miners' wages.

WAGE REDUCTION.

The Government was prepared to consider any suggestion for a reduction in the coal miners' wages.

**MANY KILLED IN INDIAN
RIOTING**

**Shot Guns Used between
Sikhs and Moslems.**

**MILITARY AID POLICE
CHARGES DENIED**

(THROUGH BRYCE'S AGENCY.)

Considerable trouble has been reported from the Punjab province in India. The trouble is said to be due to the fact that the Sikhs and Moslems are in conflict. The trouble is said to be due to the fact that the Sikhs and Moslems are in conflict.

THE PROSPECTS.

The prospects of the situation are said to be bright. The prospects of the situation are said to be bright.

THE PROSPECTS.

The prospects of the situation are said to be bright. The prospects of the situation are said to be bright.

THE PROSPECTS.

The prospects of the situation are said to be bright. The prospects of the situation are said to be bright.

THE PROSPECTS.

The prospects of the situation are said to be bright. The prospects of the situation are said to be bright.

THE PROSPECTS.

The prospects of the situation are said to be bright. The prospects of the situation are said to be bright.

THE PROSPECTS.

The prospects of the situation are said to be bright. The prospects of the situation are said to be bright.

THE PROSPECTS.

The prospects of the situation are said to be bright. The prospects of the situation are said to be bright.

THE PROSPECTS.

The prospects of the situation are said to be bright. The prospects of the situation are said to be bright.

THE PROSPECTS.

The prospects of the situation are said to be bright. The prospects of the situation are said to be bright.

THE PROSPECTS.

The prospects of the situation are said to be bright. The prospects of the situation are said to be bright.

THE PROSPECTS.

The prospects of the situation are said to be bright. The prospects of the situation are said to be bright.

THE PROSPECTS.

The prospects of the situation are said to be bright. The prospects of the situation are said to be bright.

**SOVIET ANSWER TO
FRENCH GOVERNMENT
RESIGNS.**

**French Financial Crisis
Startles Paris.**

Sudden Fall in Francus.

(THROUGH BRYCE'S AGENCY.)

The Soviet Government has answered the French Government's resignation. The Soviet Government has answered the French Government's resignation.

World Exchange.

The world exchange is said to be stable. The world exchange is said to be stable.

World Exchange.

The world exchange is said to be stable. The world exchange is said to be stable.

World Exchange.

The world exchange is said to be stable. The world exchange is said to be stable.

World Exchange.

The world exchange is said to be stable. The world exchange is said to be stable.

World Exchange.

The world exchange is said to be stable. The world exchange is said to be stable.

World Exchange.

The world exchange is said to be stable. The world exchange is said to be stable.

World Exchange.

The world exchange is said to be stable. The world exchange is said to be stable.

World Exchange.

The world exchange is said to be stable. The world exchange is said to be stable.

World Exchange.

The world exchange is said to be stable. The world exchange is said to be stable.

World Exchange.

The world exchange is said to be stable. The world exchange is said to be stable.

World Exchange.

The world exchange is said to be stable. The world exchange is said to be stable.

World Exchange.

The world exchange is said to be stable. The world exchange is said to be stable.

NEW MILLINERY

WHITEWAYS

**LADIES' SMART AFTERNOON
HATS.**

STYLISH FLY HATS.

PULL-ON STRAW HATS.

AFTERNOON HATS.

STYLISH FLY HATS.

PULL-ON STRAW HATS.

AFTERNOON HATS.

STYLISH FLY HATS.

PULL-ON STRAW HATS.

AFTERNOON HATS.

STYLISH FLY HATS.

PULL-ON STRAW HATS.

AFTERNOON HATS.

STYLISH FLY HATS.

PULL-ON STRAW HATS.

AFTERNOON HATS.

STYLISH FLY HATS.

PULL-ON STRAW HATS.

AFTERNOON HATS.

STYLISH FLY HATS.

PULL-ON STRAW HATS.

AFTERNOON HATS.

STYLISH FLY HATS.

PULL-ON STRAW HATS.

AFTERNOON HATS.

STYLISH FLY HATS.

PULL-ON STRAW HATS.

AFTERNOON HATS.

STYLISH FLY HATS.

PULL-ON STRAW HATS.

AFTERNOON HATS.

STYLISH FLY HATS.

PULL-ON STRAW HATS.

AFTERNOON HATS.

STYLISH FLY HATS.

PULL-ON STRAW HATS.

AFTERNOON HATS.

STYLISH FLY HATS.

PULL-ON STRAW HATS.

AFTERNOON HATS.

STYLISH FLY HATS.

PULL-ON STRAW HATS.

AFTERNOON HATS.

STYLISH FLY HATS.

PULL-ON STRAW HATS.

AFTERNOON HATS.

STYLISH FLY HATS.

PULL-ON STRAW HATS.

AFTERNOON HATS.

STYLISH FLY HATS.

PULL-ON STRAW HATS.

AFTERNOON HATS.

STYLISH FLY HATS.

PULL-ON STRAW HATS.

AFTERNOON HATS.

STYLISH FLY HATS.

PULL-ON STRAW HATS.

AFTERNOON HATS.

STYLISH FLY HATS.

PULL-ON STRAW HATS.

AFTERNOON HATS.

STYLISH FLY HATS.

PULL-ON STRAW HATS.

AFTERNOON HATS.

STYLISH FLY HATS.

PULL-ON STRAW HATS.

AFTERNOON HATS.

STYLISH FLY HATS.

PULL-ON STRAW HATS.

AFTERNOON HATS.

STYLISH FLY HATS.

PULL-ON STRAW HATS.

AFTERNOON HATS.

STYLISH FLY HATS.

PULL-ON STRAW HATS.

AFTERNOON HATS.

STYLISH FLY HATS.

PULL-ON STRAW HATS.

AFTERNOON HATS.

STYLISH FLY HATS.

PULL-ON STRAW HATS.

AFTERNOON HATS.

STYLISH FLY HATS.

PULL-ON STRAW HATS.

AFTERNOON HATS.

STYLISH FLY HATS.

PULL-ON STRAW HATS.

AFTERNOON HATS.

STYLISH FLY HATS.

PULL-ON STRAW HATS.

AFTERNOON HATS.

STYLISH FLY HATS.

PULL-ON STRAW HATS.

AFTERNOON HATS.

STYLISH FLY HATS.

PULL-ON STRAW HATS.

AFTERNOON HATS.

STYLISH FLY HATS.

PULL-ON STRAW HATS.

AFTERNOON HATS.

STYLISH FLY HATS.

PULL-ON STRAW HATS.

AFTERNOON HATS.

STYLISH FLY HATS.

PULL-ON STRAW HATS.

AFTERNOON HATS.

STYLISH FLY HATS.

PULL-ON STRAW HATS.

AFTERNOON HATS.

STYLISH FLY HATS.

PULL-ON STRAW HATS.

AFTERNOON HATS.

STYLISH FLY HATS.

PULL-ON STRAW HATS.

AFTERNOON HATS.

STYLISH FLY HATS.

PULL-ON STRAW HATS.

AFTERNOON HATS.

STYLISH FLY HATS.

PULL-ON STRAW HATS.

AFTERNOON HATS.

STYLISH FLY HATS.

PULL-ON STRAW HATS.

AFTERNOON HATS.

STYLISH FLY HATS.

PULL-ON STRAW HATS.

AFTERNOON HATS.

STYLISH FLY HATS.

PULL-ON STRAW HATS.

AFTERNOON HATS.

STYLISH FLY HATS.

PULL-ON STRAW HATS.

AFTERNOON HATS.

STYLISH FLY HATS.

PULL-ON STRAW HATS.

AFTERNOON HATS.

STYLISH FLY HATS.

PULL-ON STRAW HATS.

AFTERNOON HATS.

STYLISH FLY HATS.

PULL-ON STRAW HATS.

AFTERNOON HATS.

STYLISH FLY HATS.

PULL-ON STRAW HATS.

AFTERNOON HATS.

STYLISH FLY HATS.

PULL-ON STRAW HATS.

AFTERNOON HATS.

STYLISH FLY HATS.

PULL-ON STRAW HATS.

AFTERNOON HATS.

STYLISH FLY HATS.

PULL-ON STRAW HATS.

AFTERNOON HATS.

STYLISH FLY HATS.

PULL-ON STRAW HATS.

AFTERNOON HATS.

STYLISH FLY HATS.

PULL-ON STRAW HATS.

AFTERNOON HATS.

STYLISH FLY HATS.

PULL-ON STRAW HATS.

AFTERNOON HATS.

STYLISH FLY HATS.

PULL-ON STRAW HATS.

AFTERNOON HATS.

STYLISH FLY HATS.

PULL-ON STRAW HATS.

AFTERNOON HATS.

STYLISH FLY HATS.

PULL-ON STRAW HATS.

THE SALISBURY HOTEL
FAMILY & RESIDENTIAL.

Now nearing COMPLETION spacious and airy Stone Bed Rooms each fitted with Hot and Cold running water, also New Open Air Dining Room, and Dance Hall.

Phone 166. NAIROBI. P. O. Box 609.

MOTOR CYCLES

We have the following new Motor Cycles and Side Cars in Stock... 50 Harley Davidson... 50 Raleigh with side-car... 50 O.V.V. Sports... 50 (an Ideal ladies' machine)... 50 Side with electric light...

CAPITAL GARAGE.

opposite Fire Station, Victoria Street.

If You Want GOOD BREAD

Buy Torr's. IT IS THE BEST.

FERTILISE WITH EPHOS

The following testimonial speaks for itself: 'You asked me how the experiment with "Ephos" turned out. Really I hardly like to tell you, but I say I was pulling you leg. The potatoes are just simply wonderful, you have saved my garden, even though this drought. I never saw potatoes so big and in so many colors, but I don't have time to say this but further if it is not a question of cost and trouble, I purchased 100 lbs. of the "Ephos" from A. K. RAY'S Ltd.'

The original of the above testimonial can be seen on application to J. G. ARONSON, P.O. Box 681, Nairobi.

MOTING TOPICS

CAR INSURANCE.

Question of Claims for total loss.

POSITION EXPLAINED.

The basis of settlement of total loss claims under motor insurance policies is to provide some ground for misunderstanding than any other aspect of motor insurance, says an exchange. At first sight it would seem reasonable to suppose that, as the premium is partly based on value, the insuring company should pay the same value stated in the policy without any reference to the actual value of the car at the time of the loss. But it is not so simple as this. Total loss is not the only risk to be considered in fixing premium partly on value. It must be remembered that value affects the repair cost of accidental damage claims. It can generally be accepted that the more valuable the car the greater the cost of repairs. So that it is not excessive to say that because premium is based partly on value that the value stated in the policy should be paid in the event of total loss. There is another side, the legal and business side, insurance is a contract of indemnity only. It is not possible to get new lamps for old, or in this case new cars for old. All that any man can expect from any insurance policy is that it will give him an article similar to that destroyed, or failing that, the cash value of the article at the time of its destruction. But in the case of a new automobile which would place the assured in a better position than he was before, his loss occurred otherwise he would make a profit on the transaction, and the system would open the way to extortion. Now, every business man knows that insurance is a contract of indemnity. Therefore, it is in no way to insure his car only for the actual value which he knows it to be worth. This will not be paying premium on some fictitious value which he must know he cannot expect to get in the event of a total loss.

AN EXTREME CASE.

There remains a query of course, to the insured in particular in the same position as if he held the ordinary form of policy. Again, if by some change he manages to get a valued policy of a figure obviously greater than the value of the car, he may then think of their position in the replacement of the car. It is not possible to replace the vehicle by a similar one to that which was lost. Of course the assured can raise all sorts of trouble, but it is not the other hand, if he is properly insured, a court of law will not let him in his place. As a matter of fact, it is doubtful if "valued" is a proper market valuation decision in a proper market valuation decision to the legal aspect of the claim in policy themselves, whether they are "valued" or otherwise. They form the contract, and can only be construed accordingly, and the language is quite plain.

Fire Run by Fiat.

NEARLY 200 MILES IN FOUR DAYS.

An interesting performance, which proves the value of the motor cycle for long distance touring, has just been accomplished recently by two Italian motorists. Starting from Turin on 200 Fiat which has a four cylinder engine of only 500 c.c. capacity, the pair covered a distance of 1,800 miles in four days five hours 15 minutes, this time, of course, including stops and the machine. From the advertisements of the Fiat run through Milan, Udine, Trieste, Padua, Ferrara, Rimini, Bari, and touched the extreme southern point of Italy at Taranto. Fiat has kept the motor cycle passed across the big to Naples, via Palermo, and returned to their starting point at Turin after passing through Rome, Florence, Bologna and Alexandria, in the early morning of March 10. Road and weather conditions were not in favour of these high-speed long distance travellers. The rain, fog and wind were, moreover, handicaps, which in the south of Italy, especially, had roads were encountered. On the way to Palermo, particularly between that and Potenza, the road for a considerable distance was twelve inches deep in mud, and the fact that the pair were able to make their 2,000 miles in four days five hours is a wonderful testimony to the speed and reliability.

Tea

You want a good Tea to be sure—

to be sure see the Brooke Bond Red Label on the vacuum tin.

There is, of course, no doing as to the legal aspect of the claim in policy themselves, whether they are "valued" or otherwise. They form the contract, and can only be construed accordingly, and the language is quite plain.



"BLACK & WHITE" SCOTCH WHISKY. "BLACK & WHITE" has a world-wide reputation based on unsurviving high quality.

Samples and Prices may be obtained from AMERSON SMITH & CO., P.O. Box 287, NAIROBI KENYA. Agents for EASTERN AFRICA.

JUST ARRIVED A BIG STOCK OF MOSQUITO NETTING, READY MADE OR MADE TO ORDER. Motor Hood Cloth and all Motor Outfits of all descriptions for the wet weather. Tarpaulins, Hessian, Hessian Cloth, Canvas, Spinnings, etc., etc.



MORENJI AHMED & CO. (Incorporated in India) THE UP-TO-DATE STORE FOR QUALITY, AND SATISFACTION. Ladies' and Gent's Tailors, Hats and Hat Makers, and makers of Best Duckings, and complete outfit outfitters. Phone: 184. INDIAN BAZAAR, NAIROBI.

Advertisement for Motor Insurance, including sections on 'Question of Claims for total loss', 'POSITION EXPLAINED', 'AN EXTREME CASE', and 'Fire Run by Fiat'. It discusses the complexities of insurance claims and the value of a car at the time of loss.

THE "AGREED" POLICY.

The "agreed" policy is worked to the effect that in the event of a total loss the sum assured stated in the policy is the sum payable. How does this work out? It will only agree to a value that is reasonable and in strict relation to the market value of the car. The figure will

be revised and written down, each renewed date strictly in accordance with the market value, so the assured is particularly in the same position as if he held the ordinary form of policy. Again, if by some change he manages to get a valued policy of a figure obviously greater than the value of the car, he may then think of their position in the replacement of the car. It is not possible to replace the vehicle by a similar one to that which was lost. Of course the assured can raise all sorts of trouble, but it is not the other hand, if he is properly insured, a court of law will not let him in his place. As a matter of fact, it is doubtful if "valued" is a proper market valuation decision in a proper market valuation decision to the legal aspect of the claim in policy themselves, whether they are "valued" or otherwise. They form the contract, and can only be construed accordingly, and the language is quite plain.

Power for Business-Life Farming

FOR nearly a century, the builders of this Company have been called in the pursuit of happiness on the Farms deriving the machines that are lifting the millions of too hard labour off the shoulders of men and women. Rapid strides have been made since Cyrus Hall McCormick built the first Reaper on an acre in Virginia in 1831. Agriculture has been added upward by Mechanical Farm equipment that has benefited the world. During the past dozen years Tractors and Power Farming equipment have been effecting new wonders. Great accomplishments are ahead for the new farmer who is ready to combine past experience with knowledge at his command can give. We wish to announce that we expect the arrival shortly of our first shipment of the New McCormick Deering Narrow tread Sial and Coffee Tractors. Absolutely the best in Sial and Coffee Tractor construction. Its main features are identical with those found in regular McCormick Deering Tractors. Years of grinding work in steel and wood sections have proved every feature. Such proved dependability plus the narrow tread makes this new Tractor extremely desirable.

Advertisement for McCormick-Deering Tractors. Includes the text 'Some Reasons Why Practical Men Select McCormick-Deering Tractors' and 'Powerful Engine. These tractors have valve-in-head, heavy-duty engines. They are built to deliver an abundance of power over a long period of years. Working parts are thoroughly protected from dust and dirt.' Also features a large image of a tractor and the text 'McCormick-Deering TRACTORS 10-20 £268 f.o.r. Nairobi. 15-30 £368 f.o.r. Nairobi. Gilfillan & Company, Ltd. Distributors for Kenya, Uganda and Tanganyika.'

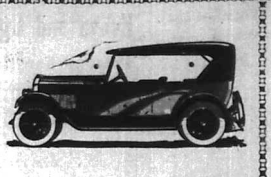
THE **LOWEST PRICED CAR IN KENYA**
£174/-

BUYS A STANDARD BATTERY IGNITION **OVERLAND SAFARI CAR.**

NO CHANGE IN QUALITY INCREASED SALES ONLY MAKE IT POSSIBLE FOR US TO SELL AT THIS PRICE.

Moulton & Morrison Ltd., NAIROBI.

The Improved Rugby Four
 THE CAR EVERYBODY IS TALKING ABOUT.
 Artistic Lines — Duco Finish
£230



CARR, LAWSON & Coy. Ltd.
 Phone 102, 103 104 105 106 107 108 109 110
 6th Avenue, NAIROBI P.O. Box 202

CHRYSLER SIX-FOUR
 AT THE NEW REDUCED PRICES STAND OUT MORE THAN EVER AS THE BIGGEST VALUE MOTORING INVESTMENT

Distributors: **YORK GARAGES Ltd., NAIROBI.**

H. F. WARD & COMPANY
 GENERAL MANAGERS
 NAIROBI HOUSE
 NAIROBI, KENYA COLONY

Two Specialities
 IMPORTED FOR THE CONNOISSEUR

QUEEN ANNE
 THE WHISKY that satisfies the most exacting palate

HAVANA CIGARS from the renowned **ROMEO & JULIET FACTORY** at very competitive prices. A new selection just received.

H. F. WARD & CO., NAIROBI HOUSE, NAIROBI.

Ford

A Quality Product with an Unrivalled Reputation for Reliability

PRICES DELIVERED NAIROBI.

Ford "Service" Box Body	£170	Ford Tourer-Coloured Models	£185
Ford "Light Delivery" Body	£185	Ford Standard Two Seater Model	£190
Ford "Canadian Farm" Body	£191	Ford Sports Two Seater Model	£195

Dual Ignition—Electric Starter—Incompressible Pump—Finaly Transmission.
 Tourer—Two Seater—Light Delivery and Canadian Form Models fitted all steel bodies.

Bucknell Gears 216 extra—Balloon Tyres 56 extra—Wire Wheels 56 extra.
 Ford One Ton Truck Chassis Crank Starter £182
 Ford One Ton Truck Chassis Electric Starter £147
 Bucknell Gears 225 extra. Warford Gears 232 extra. Fordson Tractor 1155.

KODAKS & CAMERAS

From **10/-** To **550/-**

We hold large stocks of
KODAKS, and BUTCHER'S FAMOUS CARBINE CAMERAS.
 Examine Our Stock before going elsewhere.

IT WILL PAY YOU.
A. H. WARDLE & Co., Ltd.
PHOTOGRAPHIC CHEMISTS.
 Phone 56. NAIROBI. P.O. Box 103

SHELL MOTOR OIL.

Extract from Article in "East African Standard" dated 3rd June, 1926, on minimizing carbon deposits—
 "Finally, buy only the highest quality lubricating oil of the correct grade as specified by the car makers or the oil refiners."

SHELL LUBRICATING OILS AND GREASES ARE OF THE HIGHEST QUALITY OBTAINABLE AND THERE IS A GRADE FOR EVERY CAR.

Buy Shell

THE BRITISH IMPERIAL OIL CO. (S.A.) LTD.
 Agents: Smith, Mackenzie & Co.

The **Oldest Scottish Insurance Office**
 — THE —
CALEDONIAN

Incorporated by Royal Charter A.D. 1800
 Principal Agents: **B. O. HAMILTON, LTD., NAIROBI.** Phone 302

THE EAST AFRICAN STANDARD
 FRIDAY, JUNE 18, 1926

THE MAIZE CASE—AND AFTER.

The Secretary of State has agreed to the introduction of amending legislation which will have for its object the imposition of the death penalty in cases of assault against women and children of the revolting character which so recently shocked the whole of East Africa. The history of the colonization of Africa has thus been repeated in this portion of the Empire and the fact comes under many reasons for reflection. It is no doubt directed to European circumstances here forced the decision upon the country, rather than upon which it is impossible to erect a capital which will bring total elimination and the wide community will be thankful to Government for its prompt removal of the elements of danger and to the Secretary of State for the speed with which he has substituted the steps of the man on the spot. He was as yet at the beginning of his work of eradicating the native poison—a long and tedious task full of uncertainty and discouragement which will bring constant cessation of ceaseless endeavor towards the attainment of ideal and it is one that in the outset stages, it would place our faith in the strength of the law rather than build upon a foundation which would crumble under the strain and bring down the whole structure of cooperation and harmonious racial relationships upon which the future of the country must be based. All right-thinking people, including the African to whose inherent manliness such an attitude as that which only this week by our Moab Correspondent we have faith which is sometimes so easily tried, condemn the signs

of brutality of character evident in assault against the person of women and children and if the thought of that would body of crime is becoming a strengthened law we may hope for a return of the sense of decorum which has been threatened during recent months in this country. It is worth better to face the facts and to deal with them constitutionally with the support of some public opinion than to indulge in self-defence. Kenya is an African Colony and we are dealing with a primitive people, who have only recently begun to take their contact with the influences of civilization of the modern world. Totalitarianism are breaking down gradually and the creation of a sense of western civility is slow, resulting thereby in the disappearance of the other direction. The African, particularly the aboriginal native, is left without the moral support which is essential to him in this stage of transition and he, together with other sections of the community, are thrown upon the strength of the institutions of the law and unaided improved institutions grow with the changes and progress, it is a definite intention to that progress to strengthen the law and to provide for the native people the stability of which they can place their dependence. We must consider most carefully how we can be best expressed by His Excellency the Governor at Kitale that those who would seek to suppress the law by leaving down the law of the country will be treated to their own and commonly used to the native world of the Colony. If this means anything to those who are present venters' utilization and the law is added to this young country it must include, even to self-restraint and moderation, honest and undeviating support of the established law of the country, not only that law institutions and social progress and development must be allowed to grow and flourish, but also because equality in justice

EMILE JARDIN & CIE.

Phone 64. NAIROBI. Box 26.

FULL RANGE OF WINES & SPIRITS
 NOW IN STOCK

WE SELL by BOTTLE & by CASE

B.S.A. MOTOR BICYCLES

SELLING BETTER DURING LAST SEASON
 We again sold more Motor Cycles than any other manufacturer and increased our output by some thousands of machines.

THAN EVER

TOTAL EMPLOYEES 33,100

Quality Makes Our Sales

Under the Standard Clock.

Birth Times.
 An early trainee is reported to have been born by his parents on 11th inst. at 22.30 p.m. at Hillside.

Old Whistleblower Diner.
 The Old Whistleblower Diner at P.O. Box 40 August 11. It is reported that there will be a room and a table at the diner only once in a while. It is reported that the diner will be open to without duty to be paid to D.P.O. Box 40.

Motor Cycling Medal.
 With a commendation Whistleblower's medal was awarded to a member of the Whistleblower's club by the Motor Cycling Medal of the British Motor Cycle Club. The medal was presented and received at the meeting of the club on Friday, June 18, 1926.

Kilimani Peak Base.
 Mr. W. A. Jones of the Kenya Government has been appointed a member of the Kilimani Peak Base Committee. The members are Mr. E. Baynes-Jones, Mr. J. B. ...

The Kinale Hill.
 The Office of the Director of Public Works has been advised that the section on the Kinale Hill construction line from the Kinale Hill to the Kinale Hill has been approved for public use. The section is to be constructed on a road 10 feet wide and is to be constructed on a road 10 feet wide. The section is to be constructed on a road 10 feet wide. The section is to be constructed on a road 10 feet wide.

Mombasa Gardens.
 The Mombasa Gardens may, on the 20th day, attain the capacity of an estimate of the value of the gardens. The gardens are to be constructed on a road 10 feet wide. The gardens are to be constructed on a road 10 feet wide. The gardens are to be constructed on a road 10 feet wide.

Tanganyika Appointments.
 The following Tanganyika appointments are announced: Mr. J. B. ...

Official Appointments.
 The following official appointments are announced: Mr. J. B. ...

The Maize Market.
 Mr. A. H. P. has been appointed a member of the Maize Market Committee. The members are Mr. E. Baynes-Jones, Mr. J. B. ...

EXCELLENCY'S VISIT TO THE TRANS-NZIOA.

First Passenger Train to Kitale.

CORDIAL WELCOME.

Governor's Admiration for "Amazing Development."

The Hon. the Governor... the first passenger train to Kitale... the amazing development of the Trans-Nzioa...

residents of the Trans-Nzioa for... the Governor's admiration for the amazing development of the Trans-Nzioa...

withed with great concern... the Governor's admiration for the amazing development of the Trans-Nzioa...

A RAILWAY ROMANCE.

His Excellency said how very much he had enjoyed his journey... the railway romance...

LOAN FIDUCIARIES.

The Government Loan proposals... the loan fiduciaries...

THE MONEY MARKET.

The money market... the money market...

THE GRAVE QUESTION.

His Excellency continued... the grave question...

LONDON AGENTS ENGLISH REPRESENTATIVES.

London City Agents have well organized staff and will undertake to represent and act for first-class firms in the following...

THE POLICE OF LAW.

His Excellency would be death with... the police of law...

THEATRE ROYAL.

The Theatre Royal announces... the theatre royal...

INADQUATE.

But it is to be regretted... inadequate...

THE LYRICAL.

The Lyric... the lyrical...

TRUSTESHIP.

The law will therefore be changed... trusteship...

A ZANZIBAR APPOINTMENT.

The following Zanzibar appointment... zanzibar appointment...

trouble would inevitably visit... the Lyric Hall...

Entertainments. THEATRE ROYAL. The Theatre Royal announces...

The Lyric. The Lyric... the lyrical...

Trusteship. The law will therefore be changed... trusteship...

Zanzibar Appointment. The following Zanzibar appointment... zanzibar appointment...

Lyric Hall. Don't forget BIO-TEA 4-15 TO-DAY. Admission—Shs 2/- including Tea. NO PERFORMANCE THIS EVENING.

4 New Arrivals Tennis & Walking. No. 47. Flax White Canvas. No. 204. White Buck. No. 300. White Buck. No. 77. White Bull. No. 80. White Bull. 22-50 31-50 40-00 30-00

THE MONEY MARKET. THEATRE ROYAL TO-NIGHT-SATURDAY. "TO HAVE AND TO HOLD". BETTY COMPTON & BERT LYTEL.

THEATRE ROYAL TO-NIGHT-SATURDAY. "TO HAVE AND TO HOLD". BETTY COMPTON & BERT LYTEL.

Kaiser. Why, it falls far... different from the average kind... Kaiser. HOW IN STOCK THE CELEBRATED ALAM GAUGE PURE BIRLE HORSE FOR SPINNING WOVEN IN ALL THE NEWEST MACHINES WITH ARTISTIC COLOR.

Scotts Burcha Cereots No. 1 IMPERIALS. A full size, full flavored cereal made from natural wheat of excellent strain. Price Shs. 2/50 per 100.

Scotts Burcha Cereots No. 1 IMPERIALS. A full size, full flavored cereal made from natural wheat of excellent strain. Price Shs. 2/50 per 100.

THEATRE ROYAL TO-NIGHT-SATURDAY. "TO HAVE AND TO HOLD". BETTY COMPTON & BERT LYTEL.

Warings. Why, it falls far... different from the average kind... Warings. HOW IN STOCK THE CELEBRATED ALAM GAUGE PURE BIRLE HORSE FOR SPINNING WOVEN IN ALL THE NEWEST MACHINES WITH ARTISTIC COLOR.

Warings. Why, it falls far... different from the average kind... Warings. HOW IN STOCK THE CELEBRATED ALAM GAUGE PURE BIRLE HORSE FOR SPINNING WOVEN IN ALL THE NEWEST MACHINES WITH ARTISTIC COLOR.

M. Rosenblum & Co. Ltd.

CLOCKTOWER BUILDINGS, OPP. GENERAL POST OFFICE.

WILL SELL, AT GREATLY REDUCED PRICES, PRIOR TO REMOVAL TO THEIR NEW PREMISES

IN HARDWARE STREET, THE FOLLOWING STOCKS:- CLOTHING OF ALL KINDS, CUTLERY, HABERDASHERY, NATIVE TRADE GOODS, PROVISIONS,

P.O. Box 581. Tel. No. 15. NAIROBI.



Keep two sticks in use - saves money

Why? The shaving stick shaves a certain amount of moisture when in use. By keeping two Gillette Cold Cream Shaving Sticks...

Elbe's Cold Cream SHAVING SOAP YOUR CHEMIST STOCKS IT.

ROBBIALAC

THE PERFECT PERMANENT AIR-DRYING ENAMEL FOR MOTOR CARS, MOTOR CYCLES BATHS, AND HOUSEHOLD DECORATION.

OBTAINABLE IN TINS OF VARIOUS SIZES (from 1 pint to 1 gallon) AND IN A LARGE VARIETY OF COLOURS.

ALSO COMPLETE OUTFITS FOR ENAMELLING CARS AND CYCLES.

OBTAINABLE FROM Galley and Roberts, Ltd., Nairobi. J. H. S. Todd & Co. Ltd., Nairobi. Stephens Ellis & Co., Nairobi. F. M. Bhaanje, Nairobi. The Service Co. Ltd., Nairobi.

If any difficulty in obtaining, send the name of your dealer to

Smith Mackenzie & Co., NAIROBI.

Up-to-Date Hairdressing THEO. SOBOTOVICZ.

PERMANENT WAVING GALLIA, "BONCELLE", AND EUGENE, MACHINES USED.

Every up to date appliance used in Ladies and Gent's Saloons.

GOVERNMENT ROAD. Phone 245. P.O. Box 254.

OAKLEIGH PRIVATE HOTEL. Comfortable and up-to-date in every way

MRS. H. JARRETT, NAIROBI. P. O. Box 188.

CORRESPONDENCE

(Continued from page 7.) he doing a much more worthy work. Yesterday afternoon came a letter who said he wanted work... you will notice I have qualified work. I told him to come this morning at seven o'clock. I was busy and did not take much notice of him. At four o'clock this morning up rolled my friend of the day before. He was wearing Lancashire's best and a three-shilling pair of the Fife Family an sailcloth, which proved him as a Christian landowner. He was a bank, as I supposed him to be. It had been for seven a "bill ye tambo." I asked him why he had not come at seven o'clock. He said he had spent the night on a long way off, as far off as the railway station, while waiting till a late way across country. I told him that was no reason for coming at ten o'clock and it did not require the services now. With approving nods he told me he had come to work and it was only ten o'clock. He then implied that with the advent of the Christmas holidays had ended. I was then willing to illustrate the disadvantages of postponing that preliminary report which is the most important way either - but he was too quick for me. That is the typical mischievous boy. Yours, etc. XEKKES. Lamara, June 15.

THE EAST AFRICAN STANDARD

(7) In the demand for wood abroad in this country... (8) The Kepsis and Uganda... (9) The Editor, "The East African Standard".

TERMS FOR RAILWAY MANUFACTURERS

To the Editor, "The East African Standard". Sir - All of us must be gratified that you are lifting the lid of secrecy which has shrouded the tender submitted for the construction of the new Railway Headquarters.

NOTICE

"Do you know I paid nearly a month for my 'G.E.' shoes in England as Goltman's Cash Store are selling locally."

YOUR DAILY BREAD

We supply the Best at a minimum competitive price. We undertake to deliver it at your place. We in addition, allow special discount on large order.

Received all kinds of best Croqs de Chine & Stockings. B. CHOITRAM. Government... NAIROBI.

Geo. BLOWERS, BUILDERS, CONTRACTORS, MANUFACTURERS, AND IRON WORKERS. Catalogue of building materials and services.

Cement products advertisement with prices for various brands and sizes.

Short Loans Granted advertisement offering loans from £1 to £1000.

Colonial General Stores

GOVERNMENT ROAD, NAIROBI. High Class Grocers, Provision, Wine and Spirit Merchants.

K. G. A. KEVTA GENERAL AGENT.

FOR LIFE AND FIRE ASSURANCE FOR MOTOR CARS. LORRIES & TRACTORS. SHAMS-UD-DEEN.

KIRKWOOD & Co., KITAILE.

LAND AGENTS, MANAGING AGENTS, VALUERS, COMMISSION AND INSURANCE AGENTS, TRANSPORT AND PLOUGHING CONTRACTORS.

SAVOY HOTEL. Calcedonian Road, the HILL, NAIROBI.

ALIBHAI & Co., GENERAL MERCHANTS.

Box 201, Phone 213. MATTRESSES, PART IRON, COMBINATION, HERDRAE.

Gun Repairs

We hereby beg to announce that our European Gunsmith has just arrived from home with the most up to date Machinery and Implements (now lying in Bombay) which will enable us to execute any kind of repairs from a Spring to a new Stock or the fitting of a new Telescope Sight.

Chas. A. Heyer & Co. ESTABLISHED 1908. GUN & RIFLE MAKERS.

THE TAILORING HOUSE. Joanes & Bros., NAIROBI. P.O. Box 355. BAYNES BUILDING.

Miss KATHLEEN BATES, A.R.C.M. GIVE LESSON IN PIANOFORTE, SINGING, THEORY OF MUSIC, AND AURAL CULTURE.

OVERSEAS MAILS.

Table with columns: STEAMER, FROM, TO, DEPARTURE.

KENYA'S SAFARI FAVORITE.

TOMATO SOUP advertisement with product image and text: KENYA'S SAFARI FAVORITE. TOMATO SOUP. A new and delicious Uganda Product. Sold by all Grocers in East Africa.

"STANDARD" FEATURE PAGE

(Special to "E.A. Standard")

AUCTION BRIDGE MADE EASY.

No. 5.

PLAYING THE CARDS.

(By Peter.)

Having thus briefly, and I hope clearly, given a rough-and-ready synopsis of the bidding principle of bidding at auction bridge, as practised by the average player...

The bridge player dreams of making signals under the table—those allowed and expected by the legitimate play of the cards. To his partner, who would choose him if he did, yet one is constantly meeting quite able people, apparently keen if not very intelligent card players, who consistently fail to make use of the signals...

Auction bridge is one of an immense good things that have been left to the "right-of-dominion" on the left of the player of the hand and the "right-of-dominion" on the right of the player of the hand. You will have the odds of making the first lead. Make sure it is really a your lead before you lead. The player who leads out of his hand is an expensive business and spells the game if you partner has made a call your lead will be normally his suit. At no-trumps, without an exception, the highest card you hold of that suit. When you lead out of your hand, you will have the odds of making the first lead. Make sure it is really a your lead before you lead. The player who leads out of his hand is an expensive business and spells the game if you partner has made a call your lead will be normally his suit.

There are heaps of players who give their partners appalling bids by carefully refraining from leading, even at no-trumps, the suit of their own king, so as to disclose to your partner that you hold the king. He will know that what to lead when his own suit is exhausted.

After all there are only three-teen cards in each suit, and but four suits, and the cards are distributed so that it is difficult play in the bidding, and second in next to no time a mere process of photographic memory. Let us begin at the beginning. When you have sorted and arranged your hand carefully, noting that you have the full quota, and the so-called points, then to the bidding logic.

Another criterion should be made by a still larger number of players is to begin to play their card before their turn. How they time a rubber game has been clearly watched from the doubling because of that suit.

There is only one essential excuse for failure to lead your partner's suit called no-trumps, unless you happen not to have one card of that particular suit and that is a suit of your own that commands four or five certain tricks of the suit.

There are heaps of players who give their partners appalling bids by carefully refraining from leading, even at no-trumps, the suit of their own king, so as to disclose to your partner that you hold the king. He will know that what to lead when his own suit is exhausted.

Directly the dummy hand goes down, if you are on the de-fault side, study the exposed cards intelligently, first in relation to the bidding, and second in conjunction with your own hand. If you hold the king of hearts, for example, and dummy has the ace, decide what you will do if the player of the hand actually turns a trump through you. Nothing is more fatal, in these or similar circumstances, than even a second's hesitation when the crisis of that finance arrives.

HELDAL SIGNALS. No responsible or sporting auction bridge player dreams of making signals under the table—those allowed and expected by the legitimate play of the cards. To his partner, who would choose him if he did, yet one is constantly meeting quite able people, apparently keen if not very intelligent card players, who consistently fail to make use of the signals...

There are heaps of players who give their partners appalling bids by carefully refraining from leading, even at no-trumps, the suit of their own king, so as to disclose to your partner that you hold the king. He will know that what to lead when his own suit is exhausted.

There are heaps of players who give their partners appalling bids by carefully refraining from leading, even at no-trumps, the suit of their own king, so as to disclose to your partner that you hold the king. He will know that what to lead when his own suit is exhausted.

DANCING NAIROBI SCHOOL OF DANCING FOR CHILDREN AND ADULTS. Classes and Private Lessons. Daily at the LEROY BROS. LATEST HALL-BROOM. Including the new simplified FRENCH TANGO. Mrs. E. M. O'SHEA and Mrs. M. M. ALLEN. P.O. Box 202, Nairobi.

Kijabe Hotel Kijabe. Few minutes from station. Excellent dining room. Grand scenery down Embury Valley and Forest. Best route for Big Game Shooting. Colony. Car, Pines and Motor for Hire.

NOTE NEW ADDRESS: Bunting Street. (late Ruttons Garage). Next to Isherwoods Ltd. Opp. Stanley Hotel. P.O. Box 475 Phone 142 NAIROBI.

SAM RIFKIN. SLACKMITH, FARRIER AND WAGON MAKER. All classes of Wagons, Truilles, South Car, Horse Car, Motor Car Bodies. Orders made to order at shortest notice. WORKMANSHIP & MATERIAL GUARANTEED. Quotations Free. Prices reasonable. Correspondence invited.

South African Railways. During the Slack Months of the Year Take a Holiday DOWN SOUTH AND Return Refreshed in Mind and Body Determined to Go Again. For Particulars apply—TRADE COMMISSIONER FOR THE UNION OF SOUTH AFRICA. P. O. Box 624. Memorial Hall, NAIROBI. INSIST ON HAVING VOONIA GARDEN TEA that delicious blend from CEYLON which is both fragrant and invigorating. Used by Hotels and Tea Rooms throughout Kenya & Uganda. Even the most fastidious will tell you it is by far the best. Sole Agents Blacklaws & Brown. LATE MACKENZIE BROTHERS, NAIROBI. Tel. No. 81. Box No. 474.

Closed in a moment—from within—that is the Studebaker Duplex feature. The motor is protected by air, oil and petrol filters. Accidents are minimized by the four wheel brakes But only Studebaker tempts you to safeguard your health and comfort by the easy operation of its roller spring curtains. CALL AND SEE THE NEW MODELS Standard Duplex £435 Big 6 Duplex £600 Sole Importers K. McIVOR & Co. NAIROBI. Telephone 97. P. O. Box 97. Telegram: "AFFORD."

THE IMPROVED "DUNLOP" STITCHLESS TENNIS BALL. This latest ball is ideal for the tropics as it retains its resiliency for a long period.

SPECIAL QUOTATIONS TO CLUBS. Sh. 2750. PER DOZEN. Phone 124 NAIROBI P.O. 205



FRED RAPER GENERAL COMMISSION AGENT. P.O. Box 141 CITY HOUSE. Phone 148. 35/ GOLD MEDAL 35/ LARGE STOCKS SADDLERY

ALWAYS:- BUY BRITISH GOODS. BRITISH AMMUNITION. BRITISH GUNS & RIFLES. 600,000 ROUNDS. HIGHER STOCKS OF ASSORTED GUNS & RIFLES BY THE WORLD'S BEST GUN MAKERS.

WE INVITE INSPECTION. SHAW & HUNTER. Sole Importers of ALL SHAW. The Leading Gunmakers in East Africa. NINTH AVENUE, NAIROBI. Phone 216

WARNING DONT BE FINED! BUY Pennant Licence Holders AT The Motor Mart & Exchange They Won't Fall Off. 4/- EACH.

RIFLES & GUNS. In addition to the complete range of NEW RIFLES & SHOT GUNS that we stock we have just present the following second-hand weapons, all are in excellent condition.

- Double barrel hammer Ejector Rifle... 180/-
450/400 by Lancaster in canvas case... 400/00
475 No. 2 by Watson, in canvas case... 340/00
500 No. 1 by Webley Richards, in canvas case... 400/00
450 double barrel Ejector Rifle... 300/00
450 No. 1 by Holland & Holland in canvas case... 600/00
450 No. 1 by Holland & Holland in leather case... 600/00
450 No. 1 by Wbley & Scott, in canvas case... 600/00
450 No. 1 by Wbley & Scott, in leather case... 1,200/00
475 No. 1 by Wbley & Scott in leather case... 900/00
300 No. 2 by Lancaster in canvas case and with 150 rds. 600/00
300 No. 2 by Lancaster in canvas case... 350/00
12 bore by Holland & Holland in canvas case... 600/00
450 No. 1 by Holland & Holland in leather case... 600/00
450 No. 1 by Wbley & Scott, in canvas case... 600/00
450 No. 1 by Wbley & Scott, in leather case... 1,200/00
300 No. 2 by Lancaster in canvas case... 350/00
450 No. 1 by Holland & Holland in leather case... 600/00
450 No. 1 by Wbley & Scott, in canvas case... 600/00
450 No. 1 by Wbley & Scott, in leather case... 1,200/00

Phone 32. MAY & CO., Box 47. THE SPORTS HOUSE.

J. R. Stephens & Co. Ltd. THE TAILORS & OUTFITTERS. Official Outfitters to Kanton College. A/ requirements for boys returning to school. IN STOCK GOVERNMENT ROAD P.O. Box 233 NAIROBI Phone 27

THE SPORTS PAGE

COUNTY CRICKET. RACING AT ASCOT. THE FRENCH SPORTSMAN. BOXING IN KENYA.

Chamogras Gains Mere Points. Cross-Bow Wins Royal Hunt Cup.

MIDDLESEX DOWN. ASCOT STAKES RESULT.

[TANCOCK BURN'S ANGER] London, June 12. The following were the scores at the close of play of county cricket matches, the last having been played on the first day of County cricket.

MIDDLESEX v. WARWICK. At Leeds: No play owing to rain on first day. Middlesex (1st innings) 110 (Bates 52 not out, Wyatt 41); Warwick (1st innings) 180 (Bishop 50, Wyatt 70, Ho 57, Dunton 2/0); Middlesex (2nd innings) 229.5 (Bishop 74 not out, Warwickshire won on the first innings.

SURREY v. ESSEX. At the Oval: No play owing to rain on 1st day. Surrey (1st innings) 306 (Daint 121, Ho 47); Essex (1st innings) 202/7 (Cammie 82, Freeman 31, No result.

KENT v. SOMERSET. At Tonbridge: Kent (1st innings) 55 (Hollings, who carried his bat throughout the innings, 30; Somerset (1st innings) 119 (Wright 42, Heddington 33); Kent (2nd innings) 0/2. How successful play was on the third day, commencing at 10 on the first innings.

BRISTOL v. WORCESTER. At Durdham: Bristol (1st innings) 119 (Howley carried his bat through the innings for 71 not out); Worcester (1st innings) 124 (Bowler 41), (Co 43); Bristol (2nd innings) 104; Worcester (2nd innings) 104. Worcester won by six wickets.

YORKS v. NOTTS. At Leeds: No play owing to rain. DERBY v. LANCESHIRE. At Chesterfield: No play owing to rain. LANC'S v. CAMBRIDGE UNIVERSITY. At Cambridge: Lancashire (1st innings) 91/2. No play owing to rain on second day.

LANC'S v. CAMBRIDGE UNIVERSITY. At Cambridge: Lancashire (1st innings) 91/2. No play owing to rain on second day.

LANC'S v. CAMBRIDGE UNIVERSITY. At Cambridge: Lancashire (1st innings) 91/2. No play owing to rain on second day.

LANC'S v. CAMBRIDGE UNIVERSITY. At Cambridge: Lancashire (1st innings) 91/2. No play owing to rain on second day.

LANC'S v. CAMBRIDGE UNIVERSITY. At Cambridge: Lancashire (1st innings) 91/2. No play owing to rain on second day.

LANC'S v. CAMBRIDGE UNIVERSITY. At Cambridge: Lancashire (1st innings) 91/2. No play owing to rain on second day.

LANC'S v. CAMBRIDGE UNIVERSITY. At Cambridge: Lancashire (1st innings) 91/2. No play owing to rain on second day.

LANC'S v. CAMBRIDGE UNIVERSITY. At Cambridge: Lancashire (1st innings) 91/2. No play owing to rain on second day.

LANC'S v. CAMBRIDGE UNIVERSITY. At Cambridge: Lancashire (1st innings) 91/2. No play owing to rain on second day.

LANC'S v. CAMBRIDGE UNIVERSITY. At Cambridge: Lancashire (1st innings) 91/2. No play owing to rain on second day.

LANC'S v. CAMBRIDGE UNIVERSITY. At Cambridge: Lancashire (1st innings) 91/2. No play owing to rain on second day.

LANC'S v. CAMBRIDGE UNIVERSITY. At Cambridge: Lancashire (1st innings) 91/2. No play owing to rain on second day.

LANC'S v. CAMBRIDGE UNIVERSITY. At Cambridge: Lancashire (1st innings) 91/2. No play owing to rain on second day.

LANC'S v. CAMBRIDGE UNIVERSITY. At Cambridge: Lancashire (1st innings) 91/2. No play owing to rain on second day.

LANC'S v. CAMBRIDGE UNIVERSITY. At Cambridge: Lancashire (1st innings) 91/2. No play owing to rain on second day.

THE FRENCH SPORTSMAN. How the State Has Organized Sport. Movement to Revise the Association.

ARMY TRAINING. A THEKA FUNCTION.

As the result of a meeting of the French people know that they are not accidents, but rather the logical outcome of a conscious effort to employ the national intelligence to a common purpose.

THE FRENCH people know that they are not accidents, but rather the logical outcome of a conscious effort to employ the national intelligence to a common purpose.

THE FRENCH people know that they are not accidents, but rather the logical outcome of a conscious effort to employ the national intelligence to a common purpose.

THE FRENCH people know that they are not accidents, but rather the logical outcome of a conscious effort to employ the national intelligence to a common purpose.

THE FRENCH people know that they are not accidents, but rather the logical outcome of a conscious effort to employ the national intelligence to a common purpose.

THE FRENCH people know that they are not accidents, but rather the logical outcome of a conscious effort to employ the national intelligence to a common purpose.

THE FRENCH people know that they are not accidents, but rather the logical outcome of a conscious effort to employ the national intelligence to a common purpose.

THE FRENCH people know that they are not accidents, but rather the logical outcome of a conscious effort to employ the national intelligence to a common purpose.

THE FRENCH people know that they are not accidents, but rather the logical outcome of a conscious effort to employ the national intelligence to a common purpose.

THE FRENCH people know that they are not accidents, but rather the logical outcome of a conscious effort to employ the national intelligence to a common purpose.

THE FRENCH people know that they are not accidents, but rather the logical outcome of a conscious effort to employ the national intelligence to a common purpose.

THE FRENCH people know that they are not accidents, but rather the logical outcome of a conscious effort to employ the national intelligence to a common purpose.

THE FRENCH people know that they are not accidents, but rather the logical outcome of a conscious effort to employ the national intelligence to a common purpose.

THE FRENCH people know that they are not accidents, but rather the logical outcome of a conscious effort to employ the national intelligence to a common purpose.

THE FRENCH people know that they are not accidents, but rather the logical outcome of a conscious effort to employ the national intelligence to a common purpose.

THE FRENCH people know that they are not accidents, but rather the logical outcome of a conscious effort to employ the national intelligence to a common purpose.

THE FRENCH people know that they are not accidents, but rather the logical outcome of a conscious effort to employ the national intelligence to a common purpose.

THE FRENCH people know that they are not accidents, but rather the logical outcome of a conscious effort to employ the national intelligence to a common purpose.

THE FRENCH people know that they are not accidents, but rather the logical outcome of a conscious effort to employ the national intelligence to a common purpose.

THE FRENCH people know that they are not accidents, but rather the logical outcome of a conscious effort to employ the national intelligence to a common purpose.

THE FRENCH people know that they are not accidents, but rather the logical outcome of a conscious effort to employ the national intelligence to a common purpose.

JACOBS LIMITED. Phone No. 126. Telegrams: "Afric" P.O. Box No. 255. NAIROBI.

The Premier House FOR HOUSEHOLD HARDWARE. This range is constructed exact as illustrations.

The "Kenya" Range. This range is constructed exact as illustrations. upper one showing range with boiler. It will suit to give maximum service in every way.

It is suitable for use with wood very roomy. All fittings are nickel plated and the finish and material are alike of very superior quality.

Size: No. 8 only. Without Boiler Shs. 350. With Boiler Shs. 495.

The Value of a Dover Stove. Kenya's Universal Favourite.

Kenya's Universal Favourite. Specially designed for wood fuel. Will give maximum amount of work.

Shs. 100 150 185 250. Spares can always be supplied for any of these models.

"Tam-Tam" Alarm Clocks. These clocks are of very strong construction and highly nickel plated.

Shs. 12/6 10/6 10/0 & 10/6. These clocks are of very strong construction and highly nickel plated.

The "Simplex" Pic-Nic Set. A compact spirit boiler for use on picnics. Beautifully finished with wire screen and shows away into small space as illustration.

WOVEN WIRE DISH COVERS. Specially strong blue painted iron and hanging lined rim.

Shs. 2/6 each. Specially strong blue painted iron and hanging lined rim.

3/6 4/0 4/6 16/6 18/6 20/6 25/6. Specially strong blue painted iron and hanging lined rim.

"The Kelly" Lamp. The perfect night light gives 1000 hours light.

Shs. 8/6 each. The perfect night light gives 1000 hours light.

WE ALLOW 5 per cent. CASH DISCOUNT. Shs. 8/6 each.

THE AUSTRALIANS. No Play at Sheffield on Wednesday.

London, June 16. The Australians were due to open their return fixture at Sheffield on Wednesday.

London, June 16. The Australians were due to open their return fixture at Sheffield on Wednesday.

London, June 16. The Australians were due to open their return fixture at Sheffield on Wednesday.

London, June 16. The Australians were due to open their return fixture at Sheffield on Wednesday.

London, June 16. The Australians were due to open their return fixture at Sheffield on Wednesday.

London, June 16. The Australians were due to open their return fixture at Sheffield on Wednesday.

London, June 16. The Australians were due to open their return fixture at Sheffield on Wednesday.

London, June 16. The Australians were due to open their return fixture at Sheffield on Wednesday.

London, June 16. The Australians were due to open their return fixture at Sheffield on Wednesday.

London, June 16. The Australians were due to open their return fixture at Sheffield on Wednesday.

London, June 16. The Australians were due to open their return fixture at Sheffield on Wednesday.

London, June 16. The Australians were due to open their return fixture at Sheffield on Wednesday.

London, June 16. The Australians were due to open their return fixture at Sheffield on Wednesday.

London, June 16. The Australians were due to open their return fixture at Sheffield on Wednesday.