







Let Your Jeweller Be Your Gift Adviser.

Diamond Set, 18 Carats, 7 1/2. 197/-  
 5 Stone Diamond Ring, 197/-  
 5 Stone Diamond Ring, 197/-



**FINE QUALITY WATCHES.**

Swiss Watch, 15 Jewel Lever Movement, £1.70/-  
 5 Stone Diamond Ring, £1.197/-



**SILVER WRAST WATCH**  
 Leather Strap, £1.70/-  
 Perfect Timekeeper.

**E. DOBBIE**  
 Watchmaker, Jeweller, & Optician,  
 Government Road, NAIROBI.

**WHY PAY 4/- lb. For IMPORTED Tea?**

When you can Buy **LOCALLY GROWN** TFA OF SUPERIOR QUALITY at **2-50 lb.** From **TORR'S**, GOVERNMENT ROAD, P.O. Box 419.

**UGANDA VETERINARY DEPARTMENT.**

Increases in Number of Cattle.

**THE FUTURE OF UGANDA.**

In the annual report of the Uganda Veterinary Department it is stated that the number of cattle in the country has increased by 100,000 in the past year.

Additional and varying work was done by the veterinary inspectors of outbreaks which occurred during the year.

**ANIMAL Husbandry.**

Dealing with animal husbandry the report says that there has been a marked increase in the number of cattle throughout the country of the Veterinary Department, but despite this favorable factor, the rate of increase has not been sufficient to meet the demand for beef and hides.

Every effort was made to extend the number of cattle in the country and in the past year the number of cattle in the country has increased by 100,000.

The number of cattle in the country has increased by 100,000 in the past year, and it is expected that the number will continue to increase in the future.

**INDIAN HIDE.**

The Department of the Indian Hide in the past year has been successful in securing a large quantity of hides from the Indian Hide.

The Department of the Indian Hide in the past year has been successful in securing a large quantity of hides from the Indian Hide.

The Department of the Indian Hide in the past year has been successful in securing a large quantity of hides from the Indian Hide.

The Department of the Indian Hide in the past year has been successful in securing a large quantity of hides from the Indian Hide.

The Department of the Indian Hide in the past year has been successful in securing a large quantity of hides from the Indian Hide.

The Department of the Indian Hide in the past year has been successful in securing a large quantity of hides from the Indian Hide.

**The Cotton Council in Uganda.**

The Cotton Council in Uganda in the past year has been successful in securing a large quantity of cotton from the Cotton Council.

The Cotton Council in Uganda in the past year has been successful in securing a large quantity of cotton from the Cotton Council.

The Cotton Council in Uganda in the past year has been successful in securing a large quantity of cotton from the Cotton Council.

The Cotton Council in Uganda in the past year has been successful in securing a large quantity of cotton from the Cotton Council.

The Cotton Council in Uganda in the past year has been successful in securing a large quantity of cotton from the Cotton Council.

The Cotton Council in Uganda in the past year has been successful in securing a large quantity of cotton from the Cotton Council.

**INSPECTOR GENERAL OF THE PORTS.**

The Inspector General of the Ports in the past year has been successful in securing a large quantity of goods from the Inspector General of the Ports.

The Inspector General of the Ports in the past year has been successful in securing a large quantity of goods from the Inspector General of the Ports.

The Inspector General of the Ports in the past year has been successful in securing a large quantity of goods from the Inspector General of the Ports.

The Inspector General of the Ports in the past year has been successful in securing a large quantity of goods from the Inspector General of the Ports.

The Inspector General of the Ports in the past year has been successful in securing a large quantity of goods from the Inspector General of the Ports.

The Inspector General of the Ports in the past year has been successful in securing a large quantity of goods from the Inspector General of the Ports.

**Essjay Ltd.**

8 LONDON WALLING GREEN, MIDDLESEX. ESTABLISHED 1885. OFFICE OF OUR LONDON AGENTS.

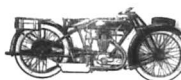
1. Representing East African business houses in London.
2. The purchase of special lines for all classes of trade.
3. Attending to the wants of East African visiting houses.
4. The purchase of individual requirements.
5. Engaging of staff in England for local business.
6. Securing accommodation for East African visiting houses.
7. Sale of East African Estates.
8. Financial proposals generally.

**THE EUROPEAN AND AFRICAN TRADES ORGANISATION**

Telephone: 128. Telegram: "Africa Organisation." 10, P.O. Box 100, Strand, London, W.C.2.

**EUROPEANS SEEKING EMPLOYMENT** will be required to pay a Registration Fee of £5/- before applying for a position. **EUROPEANS SEEKING EMPLOYERS** will be required to pay in advance the following Fees—**FOR EACH AFRICAN REQUIRED** £5/- **FOR EACH EUROPEAN REQUIRED** £5/- **FOR EACH REGULAR SUBSCRIBER** £5/-

**It is Yours for Sh. 25,000** newly built **STONE HOUSE** On Hill with all conveniences and Outhouses P.O. 538. Apply to Ledger Buildings, CAMPOS BROS.



Model G.8. H.P. 4.98. O.H.V. £90

**A.A.S.**

SUPREME IN SPEED AND IN RELIABILITY

WITH TERRY SADDLES SHOCK ABSORBERS -ETC-



Model G.5. H.P. 3.49 £70

**BUGAS**

THE NEW "E. W." MODEL

New Engine 348 c. c. with Enclosed Valves, Mechanical Lubrication etc. Giving 10 B. H. P. Patent low Pressure Braking System, Instantly Adjustable by hand. 3" Balloon Tyres. Taper Roller Bearings to Road wheels with steel hubs.

Complete with Lamp, Horn and all Tools.

£67.10.0

**CARR, LAWSON & Co. Ltd.** NAIROBI.

Box 203.

Phone 103.



















DRINK

GUINNESS

STOUT

BEER

DAIRY

STOUT

BEER

GUINNESS

STOUT

BEER

GUINNESS

STOUT

BEER

GUINNESS

STOUT

BEER

GUINNESS

STOUT

BEER

GUINNESS

STOUT

BEER

GUINNESS

STOUT

BEER

GUINNESS

STOUT

BEER

GUINNESS

STOUT

BEER

GUINNESS

STOUT

BEER

GUINNESS

STOUT

BEER

GUINNESS

STOUT

BEER

GUINNESS

STOUT

BEER

GUINNESS

STOUT

BEER

**GUARANTEED CIRCULATION OF ANY NEWSPAPER**  
**IN REVENUE OF THE EAST AFRICAN LANGANYIKA AND ZANZIBAR**

**THE EAST AFRICAN**

**MOMBASA TIMES & UGANDA ANGUS.**

PUBLISHED BY THE PROPRIETOR  
 THE GREAT EASTERN DISPENSARY, 100, MARKET STREET, SINGAPORE.

SATURDAY, AUGUST 27, 1920

Price 5 CENTS

**NO RAILWAY COMPETITION.**

**Tanganyika Governor Implements His Pledge.**

**RAIL RATES INCREASED.**

**Trade Driven Away and Given to Kenya as a Gift.**

**POSTOFFICEMENT URGED.**

The Governor of Tanganyika, Sir Donald Cameron, has announced that he will not entertain competition between the Kenya and Tanganyika systems, in likely to be a controversy.

The Governor has stated that the Kenya and Tanganyika systems are likely to be a controversy. He has also stated that the Kenya and Tanganyika systems are likely to be a controversy.

**GERMAN'S INTEREST IN LEAGUE PROGRAM.**

**Hope of Favourable Solution.**

**Has No Authority in Law.**

**CONFERENCE DELEGATES VISIT LINDRU.**

**Agricultural Experts on Tour.**

**CONFERENCE DELEGATES VISIT LINDRU.**

**Agricultural Experts on Tour.**

**MARKETING METHODS IN SOUTH AFRICA.**

**Scope of Official Control.**

**CONFERENCE PAPER.**

**COMPLEX SITUATION IMPROVED.**

**Here Men Returning to Work.**

**A HOPEFUL SIGN.**

**THE EAST AFRICAN**

**MARKETING METHODS IN SOUTH AFRICA.**

**Scope of Official Control.**

**CONFERENCE PAPER.**

**COMPLEX SITUATION IMPROVED.**

**Here Men Returning to Work.**

**A HOPEFUL SIGN.**

**MARKETING METHODS IN SOUTH AFRICA.**

**Scope of Official Control.**

**CONFERENCE PAPER.**

**COMPLEX SITUATION IMPROVED.**

**Here Men Returning to Work.**

**A HOPEFUL SIGN.**

**MARKETING METHODS IN SOUTH AFRICA.**

**Scope of Official Control.**

**CONFERENCE PAPER.**

**COMPLEX SITUATION IMPROVED.**

**Here Men Returning to Work.**

**A HOPEFUL SIGN.**

**MARKETING METHODS IN SOUTH AFRICA.**

**Scope of Official Control.**

**CONFERENCE PAPER.**

**COMPLEX SITUATION IMPROVED.**

**Here Men Returning to Work.**

**A HOPEFUL SIGN.**

**MARKETING METHODS IN SOUTH AFRICA.**

**Scope of Official Control.**

**CONFERENCE PAPER.**

**COMPLEX SITUATION IMPROVED.**

**Here Men Returning to Work.**

**A HOPEFUL SIGN.**

**MARKETING METHODS IN SOUTH AFRICA.**

**Scope of Official Control.**

**CONFERENCE PAPER.**

**COMPLEX SITUATION IMPROVED.**

**Here Men Returning to Work.**

**A HOPEFUL SIGN.**

**MARKETING METHODS IN SOUTH AFRICA.**

**Scope of Official Control.**

**CONFERENCE PAPER.**

**COMPLEX SITUATION IMPROVED.**

**Here Men Returning to Work.**

**A HOPEFUL SIGN.**

**MARKETING METHODS IN SOUTH AFRICA.**

**Scope of Official Control.**

**CONFERENCE PAPER.**

**COMPLEX SITUATION IMPROVED.**

**Here Men Returning to Work.**

**A HOPEFUL SIGN.**

**MARKETING METHODS IN SOUTH AFRICA.**

**Scope of Official Control.**

**CONFERENCE PAPER.**

**COMPLEX SITUATION IMPROVED.**

**Here Men Returning to Work.**

**A HOPEFUL SIGN.**

**OUR IDEA WHEN SELLING BEDSTEADS**

**THE VALUE WE GIVE MAKES FOR US LIFELONG FRIENDS!**

**WHITELAW BEDSTEAD**

**THREE-PART**

**WHITELAW BEDSTEAD**

**THREE-PART**

**WHITELAW BEDSTEAD**

**THREE-PART**

**OUR IDEA WHEN SELLING BEDSTEADS**

**THE VALUE WE GIVE MAKES FOR US LIFELONG FRIENDS!**

**WHITELAW BEDSTEAD**

**THREE-PART**

**WHITELAW BEDSTEAD**

**THREE-PART**

**WHITELAW BEDSTEAD**

**THREE-PART**

**OUR IDEA WHEN SELLING BEDSTEADS**

**THE VALUE WE GIVE MAKES FOR US LIFELONG FRIENDS!**

**WHITELAW BEDSTEAD**

**THREE-PART**

**WHITELAW BEDSTEAD**

**THREE-PART**

**WHITELAW BEDSTEAD**

**THREE-PART**

**OUR IDEA WHEN SELLING BEDSTEADS**

**THE VALUE WE GIVE MAKES FOR US LIFELONG FRIENDS!**

**WHITELAW BEDSTEAD**

**THREE-PART**

**WHITELAW BEDSTEAD**

**THREE-PART**

**WHITELAW BEDSTEAD**

**THREE-PART**

**OUR IDEA WHEN SELLING BEDSTEADS**

**THE VALUE WE GIVE MAKES FOR US LIFELONG FRIENDS!**

**WHITELAW BEDSTEAD**

**THREE-PART**

**WHITELAW BEDSTEAD**

**THREE-PART**

**WHITELAW BEDSTEAD**

**THREE-PART**

**OUR IDEA WHEN SELLING BEDSTEADS**

**THE VALUE WE GIVE MAKES FOR US LIFELONG FRIENDS!**

**WHITELAW BEDSTEAD**

**THREE-PART**

**WHITELAW BEDSTEAD**

**THREE-PART**

**WHITELAW BEDSTEAD**

**THREE-PART**

**Whiteaway Laidlaw & Co., LIMITED**

**RAILWAY COMPETITION.**  
**Tanganyika Governor Implements His Pledge.**  
**RAIL RATES INCREASED.**  
**"Trade Driven Away and Grew to Kenya as a GHL."**

**POSTMORTEM USED.**  
 The railway rates in Tanganyika, stated to be a result of a pledge given by **Dr. Donald Cameron** at the Governor's inauguration, that he would not increase rates on the Kenya-Uganda and Tanganyika systems, is likely to give a post-mortem.

The railway rates in Tanganyika, stated to be a result of a pledge given by **Dr. Donald Cameron** at the Governor's inauguration, that he would not increase rates on the Kenya-Uganda and Tanganyika systems, is likely to give a post-mortem.

**TEMPERATURE INCREASED?**  
 It is argued that the increase in rates from 800/000 from Dar-es-Salaam to Mwanza will only be a result of the increase in the cost of transport, which is being met by an increase in the rate of interest on the loan which was used to finance the railway.

**WATER COMPARED.**  
 It is noted that the water supply in Mwanza is being treated in a similar manner to that in Dar-es-Salaam, which is being treated in a similar manner to that in Mwanza.

**COMULAN STRAITS TUNEL?**  
**Vinta of Calais—Captives.**  
**SPANISH HOTEL.**

**GERMANY'S INTEREST IN LEAGUE PROGRAM.**  
**Hope of Favourable Solution.**

**MYSTERY NOTICE OF THE DEFENSE FORCE.**  
**Has No Authority in Law.**

**Kenya Coffee.**  
 Messrs J. W. Milligan & Co. are pleased to announce that the following labels report John & Co. have been awarded the contract for the supply of coffee to the Government of Kenya.

**TODAY'S CAUSE LIST.**  
**11.30 AM.**  
**12.30 PM.**  
**2.30 PM.**

**MARKETING METHODS IN SOUTH AFRICA.**  
**Scope of Official Conference Paper.**

**Mr. Cook Speaks Interview with Minister.**  
**LOCAL MARKETING.**

**CONFERENCE DELEGATES VISIT LIMURU.**  
**Agricultural Experts on Tour.**

**MINERAL MARKETS.**  
 Mineral markets in South Africa are under the direct control of the Government of the Republic of South Africa.

**CONFERENCE DELEGATES VISIT LIMURU.**  
 The conference delegates visited Limuru on their way to the conference in Nairobi.

**OUR IDEA WHEN SELLING BEDSTEADS**  
 "You can hardly make a friend in a year, but you can easily offend one in an hour."  
**THE VALUE WE GIVE MAKES FOR US LIFELONG FRIENDS!**



**RESTERZI BEDSTEAD**  
 This bed has delivered in the best quality and lowest price. The good materials used are of the best quality and are made in our own factory.

**THE FOLDEEZE ONE PART BEDSTEAD**  
 This bed is similar in every respect to the Whitelaw bed, but with one exception, it has two drawers of less than normal. It holds up to 120 lbs and weighs 12 lbs net.



**DOORMATORY BEDSTEAD**  
 This bed is similar in every respect to the Whitelaw bed, but with one exception, it has two drawers of less than normal. It holds up to 120 lbs and weighs 12 lbs net.

**Whiteway Laidlaw & Co. LIMITED.**  
 60, 62, 64, 66, 68, 70, 72, 74, 76, 78, 80, 82, 84, 86, 88, 90, 92, 94, 96, 98, 100, 102, 104, 106, 108, 110, 112, 114, 116, 118, 120, 122, 124, 126, 128, 130, 132, 134, 136, 138, 140, 142, 144, 146, 148, 150, 152, 154, 156, 158, 160, 162, 164, 166, 168, 170, 172, 174, 176, 178, 180, 182, 184, 186, 188, 190, 192, 194, 196, 198, 200, 202, 204, 206, 208, 210, 212, 214, 216, 218, 220, 222, 224, 226, 228, 230, 232, 234, 236, 238, 240, 242, 244, 246, 248, 250, 252, 254, 256, 258, 260, 262, 264, 266, 268, 270, 272, 274, 276, 278, 280, 282, 284, 286, 288, 290, 292, 294, 296, 298, 300, 302, 304, 306, 308, 310, 312, 314, 316, 318, 320, 322, 324, 326, 328, 330, 332, 334, 336, 338, 340, 342, 344, 346, 348, 350, 352, 354, 356, 358, 360, 362, 364, 366, 368, 370, 372, 374, 376, 378, 380, 382, 384, 386, 388, 390, 392, 394, 396, 398, 400, 402, 404, 406, 408, 410, 412, 414, 416, 418, 420, 422, 424, 426, 428, 430, 432, 434, 436, 438, 440, 442, 444, 446, 448, 450, 452, 454, 456, 458, 460, 462, 464, 466, 468, 470, 472, 474, 476, 478, 480, 482, 484, 486, 488, 490, 492, 494, 496, 498, 500, 502, 504, 506, 508, 510, 512, 514, 516, 518, 520, 522, 524, 526, 528, 530, 532, 534, 536, 538, 540, 542, 544, 546, 548, 550, 552, 554, 556, 558, 560, 562, 564, 566, 568, 570, 572, 574, 576, 578, 580, 582, 584, 586, 588, 590, 592, 594, 596, 598, 600, 602, 604, 606, 608, 610, 612, 614, 616, 618, 620, 622, 624, 626, 628, 630, 632, 634, 636, 638, 640, 642, 644, 646, 648, 650, 652, 654, 656, 658, 660, 662, 664, 666, 668, 670, 672, 674, 676, 678, 680, 682, 684, 686, 688, 690, 692, 694, 696, 698, 700, 702, 704, 706, 708, 710, 712, 714, 716, 718, 720, 722, 724, 726, 728, 730, 732, 734, 736, 738, 740, 742, 744, 746, 748, 750, 752, 754, 756, 758, 760, 762, 764, 766, 768, 770, 772, 774, 776, 778, 780, 782, 784, 786, 788, 790, 792, 794, 796, 798, 800, 802, 804, 806, 808, 810, 812, 814, 816, 818, 820, 822, 824, 826, 828, 830, 832, 834, 836, 838, 840, 842, 844, 846, 848, 850, 852, 854, 856, 858, 860, 862, 864, 866, 868, 870, 872, 874, 876, 878, 880, 882, 884, 886, 888, 890, 892, 894, 896, 898, 900, 902, 904, 906, 908, 910, 912, 914, 916, 918, 920, 922, 924, 926, 928, 930, 932, 934, 936, 938, 940, 942, 944, 946, 948, 950, 952, 954, 956, 958, 960, 962, 964, 966, 968, 970, 972, 974, 976, 978, 980, 982, 984, 986, 988, 990, 992, 994, 996, 998, 1000.

When better flour is made it will sell to "America's Mill."

Master Thomas Robinson & Son Ltd., of Northolt, one of the leading Milling Engineers of the world and the largest in the British Empire, are working an entirely new flour mill for us at Njoro, which is now nearing completion. It will be the largest mill in the country and the best work in economy and efficiency.

UNGA Ltd., Njoro.

FOR SALE OR TO LET. The property "Ray Station," situated 7 miles from Nairobi, on the Port Bell Road, comprising 254 acres. BUILDINGS—Two-story of three houses, furnished, separate kitchen, etc., stone stairs and office, also 6 stone lode house. Truly superb. All situated on the Escomond of 15 acres, which is enclosed by a 4 strand wire fence, and planted with various ornamental and fruit trees. VERY FULL PARTICULARS Apply to: BEALING & SMITHSON, NAIROBI.

Short Loans Granted \$1 to \$1000 CALL OR WRITE TO THE Kenya Loan & Discount Co. Ltd Court Chambers, (1st Floor) Box 444, NAIROBI. Bills Discounted. Strictly Confidential.

Smaller Engines for Cars.

There is a general feeling that the automobile engine of the future will be smaller and more efficient than the present type. This is due to the fact that the present engine is too large and too inefficient for the car. The engine of the future will be smaller and more efficient, and will be able to do more work in less space and with less fuel.

THE AMERICAN LIGHT-CAR.

While the increase in price of the automobile has been a serious handicap to its general use, the American light-car has been developed to meet the needs of the general public. It is a car that is small, light, and economical, and is able to do more work in less space and with less fuel.

MECHANICAL LOSSES.

When the engine of a car is running, there are many losses that occur. These losses are due to friction, heat, and other factors. The amount of these losses is a measure of the efficiency of the engine. The more efficient the engine, the less the losses, and the more work it can do.

MECHANICAL LOSSES.

When the engine of a car is running, there are many losses that occur. These losses are due to friction, heat, and other factors. The amount of these losses is a measure of the efficiency of the engine. The more efficient the engine, the less the losses, and the more work it can do.

MECHANICAL LOSSES.

When the engine of a car is running, there are many losses that occur. These losses are due to friction, heat, and other factors. The amount of these losses is a measure of the efficiency of the engine. The more efficient the engine, the less the losses, and the more work it can do.

MECHANICAL LOSSES.

When the engine of a car is running, there are many losses that occur. These losses are due to friction, heat, and other factors. The amount of these losses is a measure of the efficiency of the engine. The more efficient the engine, the less the losses, and the more work it can do.

MECHANICAL LOSSES.

When the engine of a car is running, there are many losses that occur. These losses are due to friction, heat, and other factors. The amount of these losses is a measure of the efficiency of the engine. The more efficient the engine, the less the losses, and the more work it can do.

MECHANICAL LOSSES.

When the engine of a car is running, there are many losses that occur. These losses are due to friction, heat, and other factors. The amount of these losses is a measure of the efficiency of the engine. The more efficient the engine, the less the losses, and the more work it can do.

MECHANICAL LOSSES.

When the engine of a car is running, there are many losses that occur. These losses are due to friction, heat, and other factors. The amount of these losses is a measure of the efficiency of the engine. The more efficient the engine, the less the losses, and the more work it can do.

LAND FOR SALE IN THE DISTRICT OF TONGO VALLEY.

THE TONGO VALLEY LANDS, TONGO VALLEY.

SAVOY HOTEL.

The most comfortable place situated in the heart of the city. GARDEN ROAD, THE HILLS. Clean to dining room, billiard room, Reading Room, Lawn, Garage, and all the latest improvements. EXCELLENT TABLE. Extensive of building with Fresh Lavatories, Turkish Baths and Palm Court, etc. Meeting Rooms from 1907. Proprietor: L. R. LANGRISH.

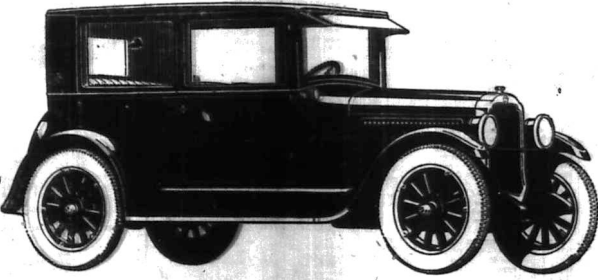
Colonial General Stores.

High Class Groceries, Provision, Wine and Spirit Merchants. Fresh stocks arriving by every mail. GIVE US A TRIAL YOU WILL NOT BE DISAPPOINTED. Phone 238. P. O. Box 294.

MISS KATHLEEN BATES, A.R.C.M.

gives lessons in FIANCING, SEWING, HAIRDRESSING, and AURAL CULTURE. at her Studio in Upper, Collins Building, Sixth Avenue. MISS MARY JOHNS, I.R.A.M. Music Lessons in the same building. At Home, etc. at 10, to give lessons in Voice Production and Elocution at the same place. Postal Address: Box 417.

Now Greater Beauty Finer Performance Lower Price



Coach \$350

Touring \$298

OLDSMOBILE HAS gone far beyond all existing standards to give to the public in this latest Oldsmobile performance and value absolutely new in the Oldsmobile price field.

Careful refinements in body, engine and chassis lift the already noted and proved Oldsmobile to an even higher plane of quality, just as the new reduced prices strongly emphasize its value.

Greater Beauty is one impressive feature—impaired by longer, lower, smarter bodies; by an attractive double head moulding; by handsome two-tone colour combinations in enduring Duo and by wood wheels with big balloon tyres—combining to present an appearance smart, youthful, distinctive.

Finer Performance too, has been achieved—through the introduction of vital engineering improvements resulting in swifter acceleration, superior braking, easier steering, greater economy and in a smooth, flexible power range which makes it possible to throttle down to a slow walk or quickly step up the speed to forty—fifty—or more miles per hour.

Lower Prices also are announced—and it is a striking dominant tribute to the better organization of Oldsmobile's vast resources that this company has succeeded in effecting in this, its latest Six, a still lower scale of price, with a strong advancement in Oldsmobile's great value.

OLDSMOBILE

Gillilan & Company, Ltd. DISTRIBUTORS





Let Your Jeweller Be Your Gift Adviser.



Table and Case, Milky Hill, East. The quality Lever Movement. Sh. 65/-

Show Wren Watch, 12 Jewel Lever Movement. Sh. 75/-

A Stone Diamond Ring. Sh. 150/-

Rings and 7 Links. Sh. 125/-



SILVER PLATED WATCH  
Ladies' Size  
Pocket Timepiece. Sh. 75/-

**H. DOBBIE**  
Watchmaker, Jeweller, & Optician,  
Government Road, NAIROBI.

**WHY PAY 4/- lb. FOR IMPORIED TEA?**  
When you can Buy **LOCALLY GROWN TEA OF SUPERIOR QUALITY** at **2-50 lb.**  
From **TORR'S**,  
GOVERNMENT ROAD,  
P.O. Box 418

**DISCUSS**

The British Government has been...  
The British Government has been...  
The British Government has been...

It is the duty of the British Government...  
It is the duty of the British Government...  
It is the duty of the British Government...

It is the duty of the British Government...  
It is the duty of the British Government...  
It is the duty of the British Government...

It is the duty of the British Government...  
It is the duty of the British Government...  
It is the duty of the British Government...

The British Government has been...  
The British Government has been...  
The British Government has been...

It is the duty of the British Government...  
It is the duty of the British Government...  
It is the duty of the British Government...

It is the duty of the British Government...  
It is the duty of the British Government...  
It is the duty of the British Government...

It is the duty of the British Government...  
It is the duty of the British Government...  
It is the duty of the British Government...

The British Government has been...  
The British Government has been...  
The British Government has been...

It is the duty of the British Government...  
It is the duty of the British Government...  
It is the duty of the British Government...

It is the duty of the British Government...  
It is the duty of the British Government...  
It is the duty of the British Government...

It is the duty of the British Government...  
It is the duty of the British Government...  
It is the duty of the British Government...

The British Government has been...  
The British Government has been...  
The British Government has been...

It is the duty of the British Government...  
It is the duty of the British Government...  
It is the duty of the British Government...

It is the duty of the British Government...  
It is the duty of the British Government...  
It is the duty of the British Government...

It is the duty of the British Government...  
It is the duty of the British Government...  
It is the duty of the British Government...

**Essjay Ltd.**

Essjay Ltd. is a company...  
Essjay Ltd. is a company...  
Essjay Ltd. is a company...

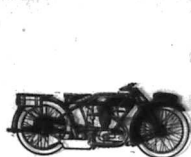
1. Representing East African...  
2. The purchase of special...  
3. In relation to the waste...  
4. The purchase of industrial...  
5. The purchase of...  
6. The purchase of...  
7. The purchase of...  
8. The purchase of...

**THE EUROPEAN AND AFRICAN TRADES ORGANISATION**

Registration Fee...  
Registration Fee...  
Registration Fee...

EUROPEAN SEEKING EMPLOYMENT...  
EUROPEAN SEEKING EMPLOYMENT...  
EUROPEAN SEEKING EMPLOYMENT...

It is Yours for Sh. 25.00



Model G.8. H.P. 4.98. O.H.V.  
**£90**

**A.J.S.**

SUPREME IN SPEED AND IN RELIABILITY

WITH TERRY SADDLES  
SHOCK ABSORBERS  
-ETC-



Model G.5. H.P. 3.49,  
**£70**

**HIGLAS**

THE NEW "E. W." MODEL

New Engine 348 c. c. with Enclosed Valves, Mechanical Lubrication etc. Giving 10 B. H. P. Patent low Pressure Braking System, Instantly Adjustable by hand, 3" Balloon Tyres. Taper Roller Bearings to Road wheels with steel hubs.

Complete with Lamp, Horn and all Tools.

**£67.10.0**

**CARR, LAWSON & Co. Ltd.**  
NAIROBI.

Box 205.

Phone 103.







## Express Transport Co.

Outage Contractors in Uganda Railway Government Road, Nairobi. Phone: 535 and 55.

P.O. Box 181  
Transport Shipping and Forwarding Contractors.

Furniture and General Goods removed, packed and despatched to any part of the world. Or stored.  
**SPECIAL MOTOR CARRIAGE FACILITIES** for transport of all classes of Produce or Heavy Material to and from long distances, quotations on application.

## Reliance Transport Co.

Phone 231, SADLER ST., NAIROBI. P.O. Box 482.  
The Largest Motor Transport Co. in the Colony.  
If you are requiring RELIABLE & EXPEDIENT Transport at reasonable charges, you cannot do better than send your enquiries to us. "In short" in the long run you will find we give you the cheapest and best service.

### FUEL MERCHANTS

Large stocks always on hand ready for immediate delivery.

## M.R. de Souza & Co

LADIES and GENTS FUR TAILORS and OUTFITTERS.

Direct Importers of all Wholesale and Retail Dealers in:

GROCERIES, WINES, SPIRITS, TOBACCOES, CIGARS, CIGARETTES, HARDWARE, CROCKERY, GLASSWARE, ETC., ETC.  
Prices moderate, Service prompt, efficient, satisfactory.  
GOVT. ROAD. Phone 75.  
P.O. Box 118.  
Established 1889.



## Explorers Use This Car Because It is Dependable

Planners and explorers, whose lives depend upon the reliability of the transportation they use, employ Dodge Brothers Motor Cars almost exclusively. Suchmen used Dodge Brothers Cars through the uncharted deserts of Central Australia. Dr. Roy Chapman Andrews, on three different occasions, penetrated the innermost wastes of Mongolia in a Dodge Brothers Car.  
The car's dependability is proverbial; and its exceptional riding comfort permits long travel over bad roads without fatigue.

Travels Over  
Sable Roads  
Rough Commercial Use  
12,000 Miles

S. FINEBERG & SIMONS (E.A.) LTD.  
Victoria Street, Nairobi.

## DODGE BROTHERS MOTOR CARS

Super Quality Willow Call Lovers.

**K**  
48450  
The K

OBTAINABLE ONLY AT  
**GOLTMANS**  
**CASH BOOT STORES**  
(Adjoining "TROCADERO")  
GENTS: WILLOW CALL OXFORD, LONDON  
OR BROKER AT 22/1

### RAILWAY LABORERS AND THE NATIVE IMPROVEMENT

It has been stated that the railway laborers in the Colony are to be organized into a union. This is a step which is being taken by the Government to improve the conditions of the native laborers. The railway laborers are to be organized into a union which will be known as the Railway Laborers' Union. This union will be organized into a union which will be known as the Railway Laborers' Union. This union will be organized into a union which will be known as the Railway Laborers' Union.

### INDUSTRIAL

**Part Interest Laid.**  
**COFFEE.**  
**THE ROPE.**

**LABOUR.**  
**THE ROPE.**

**LABOUR.**

### INDUSTRIAL

**Part Interest Laid.**  
**COFFEE.**  
**THE ROPE.**

**LABOUR.**  
**THE ROPE.**

**LABOUR.**

### INDUSTRIAL

**Part Interest Laid.**  
**COFFEE.**  
**THE ROPE.**

**LABOUR.**  
**THE ROPE.**

**LABOUR.**

**JOHN**  
Special Reserve  
SCOTCH WHISKY  
Wholesale Distributors—  
D. KEITH & CO., NAIROBI.  
W. S. HARRON & SON, LTD.  
PATENT

**IMPROVED 'IMPACT' GRINDERS**  
PRICES REDUCED  
The Service Company (which carries on these demonstrations in this district very shortly) which is interested in all who wish to do so.

**GRINDS FINE POWDER IN ONE PASSAGE THROUGH THE MILL.**  
J. W. MILLIGAN & Co.  
P.O. Box 148. NAIROBI.

**LIFE POLICIES**  
We can show you the most favourable endowment policy offered in this country. Big bonuses—unfavourable policy.  
NATIONAL MUTUAL LIFE ASSOCIATION OF AUSTRALIA LTD.,  
Apply KETTLES ROY LTD., Nairobi.  
P.O. Box 110.

## DANCING

**NAIROBI SCHOOL OF DANCING**  
for  
**CHILDREN AND ADULTS**  
Classical and Private Lessons  
Given by the Lady  
**LATIMER HALL ROOM**  
**DANCING**  
Including the new simplified  
**FRANCE TANGO**  
Miss Elyse Adams and  
Miss Muriel Almy  
P. O. Box 282, Nairobi.  
**STRETCHING BUREAU**  
Horn 15 19 19 Duple Buildings.  
(MR. T. FREEDY.)  
All classes of work undertaken  
and Shorthand & Typing Lessons  
Given.  
Individual Attention.  
Also Commercial Library.

**P. STEWART,**  
CLARK, B.B.D.,  
**PAINTER & DECORATOR**  
Haywards Place.  
Free Painting Estimates.  
Decorative Painting and  
Paper Hanging and  
Distich & Stenciling, Etc.  
P.O. Box 28, NAIROBI.

**SMITH'S**  
**DRUGGISTS & DISPENSERS**  
**WORKS.**  
J. W. SMITH, Esq.,  
Gen'l. Manager Office.

## Your Daily Bread

We supply the Best at a minimum  
concrete price.  
We undertake to deliver it at  
your place.  
We, in addition, allow special  
discount on large orders.  
We supply a stock.  
**THE HARRON BAKERY**  
Victoria Street.

**J. P. M.**  
**SEWERY REPAIRS**  
EXPERIENCED  
Repairs to all makes of machines  
underwritten and guaranteed by  
Thompson Workability  
at Harrow, Canada  
**MANUFACTURER OF**  
**"AVERAGE HOUSE"**

## NATIONAL BANK OF INDIA LIMITED.

(Incorporated in the United Kingdom.)  
Bankers to the Colony and  
Protectors of Exports and  
Imports.  
Subscribed Capital—44,000,000  
Paid-up Capital—22,000,000  
Reserve Fund—22,000,000

**HEAD OFFICE:**  
25, BATTERY ROAD, SINGAPORE.  
**BRANCHES:** Bombay, Madras,  
Calcutta, Rangoon, Yokohama,  
Canton, Hankow, Shanghai,  
Tientsin, Peking, Harbin, Kobe,  
Manila, Cebu, Singapore,  
Batavia, Surabaya, Medan,  
Sourabaya, Hongkong, London,  
San Francisco, New York, and  
Sanchez, P. R. I., A. S., Europe,  
Canada, South Africa, and  
Australia.

**FIXED DEPOSITS**—Deposits  
may be made for fixed periods on  
terms which may be learned on  
application.  
**EXCHANGE:** The Bank grants  
drafts on Hong Kong, Canton,  
Shanghai at the current rates of  
exchange, and issues letters of credit  
on the Bill drawn on the papers  
of the respective banks.

**ARTHUR A. LEONARD**  
Manager, India Branch.

**P. GETHIN,**  
PHONE 158.  
**HEDDON SUPERFINE**  
**CARD YU HEE DAY**  
**AND MORE.**

Received all kinds of best  
Crepe de Chine &  
Stockings.  
**B. CHOITMAN,**  
Manager, Road.

## Geo. BLOWERS

**BUILDING CONTRACTOR, MANUFACTURER, AND DIRECT IMPORTER.**  
P.O. Box 299,  
Scotch Street,  
NAIROBI.  
Tel. Ad. "Concrete"  
Phone: Works 260,  
House 440.

## MOMBASA CORAL LIME

FOR  
**Plastering, Whitewashing, and  
Agricultural Purposes.**  
The Maximum of Production with  
the Minimum of Pretension  
**NO RESIDUE. MORE ENDURABLE.**

Easy of application, Cheaper, Better and Dependable.  
THE CHEAPEST LIME IN THE COUNTRY.  
**MOTOR CAR WINDSCREEN GLASSES**  
POLISHED EDGE. CUT TO ANY PATTERN.

**OUR SIGN WRITING AND DECORATING DEPARTMENT**  
IS AT YOUR DISPOSAL  
ALL CLASSES OF WORK UNDERTAKEN.  
**ESTIMATES FREE.**

Customers are fully satisfied that our responsibility towards all goods from the moment  
the goods leave our works and an allowance can be made for any claim afterwards.  
Cash with Order.

## RALEIGH

7 h.p. Combination with electric light 1,800/-  
7 h.p. Combination without " 1,500/-  
7 h.p. Solo—with electric light " 1,550/-  
7 h.p. Solo—without " 1,450/-  
Price in our catalogue of motor vehicles  
**ALSO LUCAS ELECTRICAL SERVICE SPARES**  
**CENTRAL GARAGES**  
Victoria St. Opp. Police Station  
**KETTLES ROY LTD., NAIROBI**  
Manufacturers' Representatives.











**Book** **Beer**

... ..

... ..

**FRED RAPER**

GENERAL COMMISSIONER ARMY

No. 10, Box 541. CITY HOUSE, Phone 148.

New Military Tariff... ..

SADDLERY-CAMP FURNITURE-SEPARATORS

Ask for WESTERN AMMUNITION



Sole Agents: SHAW & HUNTER

**THEATRE ROYAL**

Nightly 6th to 11th Sept. at 8:45

**"THE YEOMEN OF THE GUARD"**

Cast of 50 Artists

Orchestra of 18 Players.

Produced by A. H. BIGGINS

Prices of Admission: 7/6, 5/6, 3/6, 2/6, 1/6

**Cheap Tennis Rackets.**

TO MAKE ROOM FOR NEW STOCKS AND ALSO TO KEEP OUR STOCKS FRESH WE ARE OFFERING THE FOLLOWING LAST SEASON'S RACKETS AT BARGAIN PRICES

- 4 Slazenger "Paterson" 65/- ea.
- 3 Slazenger "Adelbert" 60/-
- 1 Prosser, Phenomenon 55/-
- 1 Prosser, Corona 55/-
- 1 Prosser, Harvest 55/-
- 2 Prosser, B.A.F. 50/-
- 1 Jeffrey, Baby 50/-
- 2 Williams, Drive 50/-
- 4 Gray's, Cambridge 45/-
- 1 Straus, Iron 40/-
- 3 Sams, Iron, Standard 35/-

**MAY & Co.**

THE SPORTS HOUSE

J. R. Stephens & Co. Ltd.

THE TAILORS AND OUTFITTERS

Official Outfitters to Kenyon College.

All requirements for boys returning to school

IN STOCK

Government Road, NAIROBI. Phone 271.

**Tennis and a Colony**

... ..

**NEW FUR FOR THE YEAR**

... ..

**CRICKET ON SATURDAY**

... ..

**THE YACHTING CLUB**

... ..

**ROWING ON THE THAMES**

... ..

**THE OBITUARY**

... ..

**INTERNATIONAL TENNIS**

... ..

**ENGLAND EARLY DEFEATS SCOTLAND**

... ..

**CROSS-COUNTRY RACING**

... ..

**AFRICAN FOOTBALL**

... ..

**FOOTBALL ASSOCIATION**

... ..

**THE COUNTY FINAL**

... ..

**THE ZOOLOGICAL SOCIETY**

... ..

**THE ZOOLOGICAL SOCIETY**

... ..

**THE ZOOLOGICAL SOCIETY**

... ..

**THE ZOOLOGICAL SOCIETY**

... ..

**THE ZOOLOGICAL SOCIETY**

... ..

**THE ZOOLOGICAL SOCIETY**

... ..

**THE ZOOLOGICAL SOCIETY**

... ..

**THE ZOOLOGICAL SOCIETY**

... ..

**OLDFASHIONED WITH**

**OLDFASHIONED WITH**



... ..

**OLDFASHIONED WITH**

... ..

**OLDFASHIONED WITH**

... ..

**OLDFASHIONED WITH**

... ..

**OLDFASHIONED WITH**

... ..

**OLDFASHIONED WITH**

... ..

**OLDFASHIONED WITH**

... ..

**OLDFASHIONED WITH**

... ..

**OLDFASHIONED WITH**

... ..

**OLDFASHIONED WITH**

... ..

**OLDFASHIONED WITH**