





Gibbs Dentifrice safeguards every one of your twenty-two precious teeth.

Teeth and enamel, they receive when no toothbrush can reach, are very sensitive for gums, freckled deposits and other impurities. But they affect no living tissue, purifying from Gibbs Dentifrice. It makes nothing and opens nothing that removes the well-being of the tooth. It does not even stain. It polishes the teeth to pearly luster. So easily calculated in the polishing agent that it cannot scratch or wear the precious enamel.

Gibbs Dentifrice Buy a Tin from your Chemist To-Day.

Short Loans Granted £1 to £1000

Kenya Loan & Discount Co., Ltd. Court Chambers, (1st Floor) Box 646, NAIROBI.

TO LET A Large Stone Built House comprising 8 Rooms. Between Kyambura Road & Eastleigh P.O. 358. Apply to CAMPOS BROS Leader Buildings

MOTOR TOPICS

CELLULOSE Present Position of the Latest Systems

WHAT THEY MEAN TO OWNERS.

The cellulose covering of cars is a well-known fact. The direction of saving time, both in the factory and in the owner's motor home, and towards the prevailing habit of greater economy in the use of motor equipment, also have an advantage of synthetic materials.

The American companies commonly spoken of are the Daimler, Daimler-Benz, and others.

TWO DIFFERENT PRINCIPLES Ordinary of variables, namely, harden daily by oxidation of the surface film under the second and usually by oxidation beneath the surface, caused by the action of incorporated grains, such as corrosion or leaching of the body of the film takes time, according to the composition, or whether air-drying or baking is resorted to.

TO LET A Large Stone Built House comprising 8 Rooms. Between Kyambura Road & Eastleigh P.O. 358. Apply to CAMPOS BROS Leader Buildings

THE POSITION OVERSEAS. A certain amount of demand has been made for the address of motor equipment. The demand is not for the cheap, but for the durable, but they are not eager to purchase anything but the best. They are especially of being made in Germany and if the body work is done properly prepared before finishing.

As regards direct cost, these will be left for the dealer to choose between cellulose and varnish or enamel finishes, bearing in mind the saving of time and cost in the drying of the film to be applied, to some extent, by the first coat of the lacquer, its rather smaller covering power, and the labour of polishing.

Cellulose finishes, as applied to new motor cars, are practically equal in appearance to many of the older finishes, although there are differences in the quality or depth of the lustre, which, however, some people prefer. If the materials are carefully chosen and properly applied, the finish may be considered a lasting and satisfactory one which will not require painting any more than the old-fashioned varnish.

It should be well to draw attention to the fact that what is called cellulose and cellulose finishes are not unconditionally polished and cellulose finishes are not unconditionally polished. It is a fallacy to expect the rubbing in of large abrasive particles because the road will do it anything but make deflattering scratches, which may or may not (depending on their depth) be entirely removed by subsequent careful polishing.

It should be noted that a light finish obtained by very carefully applied lacquer, which is made to improve by rubbing from the front cover it, although it is very fine, is not the treatment that is of a varnished surface, and a non-polished cellulose lacquer car can of course be wiped down with a dry duster without any harm to the film. With reasonable care the finish improves as the

NATIONAL BANK OF NIGERIA LIMITED (Incorporated in the United Kingdom) Bankers to the Colony and Protectorates of Kenya and Uganda and to the East and West Africa.

HEAD OFFICE: 20, Bankers, London, E.C. 2. BRANCHES: Lagos, Accra, Freetown, Sierra Leone, Cape Town, Durban, Johannesburg, Harare, Salisbury, Bulawayo, Port Elizabeth, East London, Durban, Natal, Pietermaritzburg, Grahamstown, Port Natal, East London, Durban, Natal, Pietermaritzburg, Grahamstown, Port Natal.

FIXED DEPOSITS - Deposits are received for fixed periods on terms which may be entered on application. EXCHANGE - The Bank grants Drafts on the West Indies and Branches at the current rates of Exchange. Monthly Terms from 30/100.

ABRUHA'S LIQUOR Manager, Nairobi Branch.

MAY & Co. for ARMS & AMMUNITION



P. GETHIN, PHONE 158.

HUDSON SUPER-8 CARS FOR HIRE BY DAY AND NIGHT. Telephone "Guthrie, Nairobi" Box 39

Another Land Bargain KIRKWOOD & Co. LAMP 408775, 412448.

Well situated and within a few miles of two main line railway stations, a FARM of 100 acres with 1000 head of stock on the RIVER NZOIA. Admirationly suited for growing wheat and coffee. A very large area can be used for the plough and the soil is of undoubted fertility. PRICE 12/10/- per acre. We have a number of other farms for disposal.

SAVOY HOTEL.

The most comfortable place situated in the best part of Nairobi. CALDWELL ROAD, THE HILLS. Close to Government House. Beautiful Gardens, Lawns, Terraces, Hot and Cold Water Installation, etc. EXCELLENT FACILITIES. Extensive of building with Fish Lavatories, Tennis Court and Palm Court in construction. Monthly Terms from 25/-. J. R. LAURENCE. P.O. Box 20. Tel. "Savoy."

Colonial General Stores GOVERNMENT ROAD, NAIROBI.

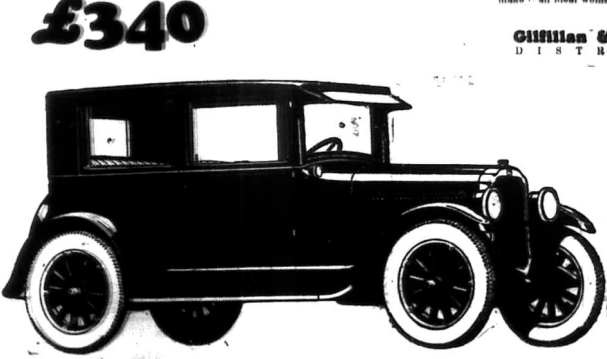
High Class Grocers, Provision, Wine and Spirit Merchants. Fresh supplies arriving by every mail.

GIVE US A TRIAL YOU WILL NOT BE DISAPPOINTED. Phone 226. P. O. Box 158.

F. A. Head.

Pianoforte Tuner and Repairer Five years with Messrs. Chappell & Co., London. Seven years experience in Kenya Colony. Send all orders to P.O. Box 675.

THE COACH Oldsmobile-Six £340



The shattering of the stock car record for the Pike's Peak course in Colorado, U.S.A., established the Oldsmobile Six as "Champion on the Hill." It is our reliability of Oldsmobile, the undimmed spirit of its performance throughout the roughest terrain, the wonderful comfort in which you ride, impress you more and more with its superiority. And as months and miles roll by, you're glad you drive an Oldsmobile.

The Coach This beautiful closed model is luxuriously appointed. Yet its rugged steel construction makes it particularly suitable for the roughest country roads.

It will designed springs, comfortable seats, easily depressed clutch pedal, efficient gearshift adjustable seats and steering column, positive light acting brakes make it an ideal woman's car.

Giffillan & Company, Ltd. DISTRIBUTORS

AFRICAN STANDARD DAILY EDITION

Subscription rates... Single copies 1/6... Advertisement rates...

SITUATIONS VACANT

WANTED Manager for... WANTED... (SEE) European... (SEE) European...

FOR SALE

PERILLA sweets in variety... (SEE) European... (SEE) European...

WANTED

WANTED... (SEE) European... (SEE) European...

FOR SALE

WANTED... (SEE) European... (SEE) European...

FOR SALE

WANTED... (SEE) European... (SEE) European...

FOR SALE

WANTED... (SEE) European... (SEE) European...

FOR SALE

WANTED... (SEE) European... (SEE) European...

FOR SALE

WANTED... (SEE) European... (SEE) European...

FOR SALE

PERILLA sweets in variety... (SEE) European... (SEE) European...

FOR SALE

PERILLA sweets in variety... (SEE) European... (SEE) European...

FOR SALE

PERILLA sweets in variety... (SEE) European... (SEE) European...

FOR SALE

PERILLA sweets in variety... (SEE) European... (SEE) European...

FOR SALE

PERILLA sweets in variety... (SEE) European... (SEE) European...

FOR SALE

PERILLA sweets in variety... (SEE) European... (SEE) European...

FOR SALE

PERILLA sweets in variety... (SEE) European... (SEE) European...

FOR SALE

PERILLA sweets in variety... (SEE) European... (SEE) European...

FOR SALE

PERILLA sweets in variety... (SEE) European... (SEE) European...

FOR SALE

PERILLA sweets in variety... (SEE) European... (SEE) European...

FOR SALE

PERILLA sweets in variety... (SEE) European... (SEE) European...

FOR SALE

PERILLA sweets in variety... (SEE) European... (SEE) European...

FOR SALE

PERILLA sweets in variety... (SEE) European... (SEE) European...

FOR SALE

PERILLA sweets in variety... (SEE) European... (SEE) European...

FOR SALE

PERILLA sweets in variety... (SEE) European... (SEE) European...

FOR SALE

PERILLA sweets in variety... (SEE) European... (SEE) European...

FOR SALE

PERILLA sweets in variety... (SEE) European... (SEE) European...

FOR SALE

PERILLA sweets in variety... (SEE) European... (SEE) European...

FOR SALE

PERILLA sweets in variety... (SEE) European... (SEE) European...

FOR SALE

PERILLA sweets in variety... (SEE) European... (SEE) European...

FOR SALE

PERILLA sweets in variety... (SEE) European... (SEE) European...

FOR SALE

PERILLA sweets in variety... (SEE) European... (SEE) European...

FOR SALE

PERILLA sweets in variety... (SEE) European... (SEE) European...

FOR SALE

PERILLA sweets in variety... (SEE) European... (SEE) European...

FOR SALE

PERILLA sweets in variety... (SEE) European... (SEE) European...

FOR SALE

PERILLA sweets in variety... (SEE) European... (SEE) European...

FOR SALE

PERILLA sweets in variety... (SEE) European... (SEE) European...

FOR SALE

PERILLA sweets in variety... (SEE) European... (SEE) European...

FOR SALE

PERILLA sweets in variety... (SEE) European... (SEE) European...

FOR SALE

PERILLA sweets in variety... (SEE) European... (SEE) European...

FOR SALE

PERILLA sweets in variety... (SEE) European... (SEE) European...

FOR SALE

PERILLA sweets in variety... (SEE) European... (SEE) European...

FOR SALE

PERILLA sweets in variety... (SEE) European... (SEE) European...

FOR SALE

PERILLA sweets in variety... (SEE) European... (SEE) European...

FOR SALE

PERILLA sweets in variety... (SEE) European... (SEE) European...

FOR SALE

PERILLA sweets in variety... (SEE) European... (SEE) European...

FOR SALE

PERILLA sweets in variety... (SEE) European... (SEE) European...

FOR SALE

PERILLA sweets in variety... (SEE) European... (SEE) European...

FOR SALE

PERILLA sweets in variety... (SEE) European... (SEE) European...

FOR SALE

PERILLA sweets in variety... (SEE) European... (SEE) European...

FOR SALE

PERILLA sweets in variety... (SEE) European... (SEE) European...

FOR SALE

PERILLA sweets in variety... (SEE) European... (SEE) European...

FOR SALE

PERILLA sweets in variety... (SEE) European... (SEE) European...

FOR SALE

PERILLA sweets in variety... (SEE) European... (SEE) European...

FOR SALE

PERILLA sweets in variety... (SEE) European... (SEE) European...

OUR SPECIALTY IN SAW TIMBER. TO SETTLERS. TO BUILDERS. TO EVERY BODY.

BRITISH INDIA STEAM NAVIGATION CO. LTD. AND PENINSULAR AND ORIENTAL STEAM NAVIGATION CO.

Terms notice of freight and passages may be arranged with SMITH, MAKENZIE & Co., Agents.

Royal Sovereign Pencils. 5/50 each. 5/50 dozen.

Phone 141, Box 611. TAWS Ltd, NAIROBI. Law, Commercial & Social Stationers.

Irish Table Napery. Dining Room Furniture. SHAMROCK DESIGN DAMASK TABLE CLOTH.

Hutchings, Biemer & Co., Ltd. 5% DISCOUNT ALLOWED FOR CASH. NAIROBI. Phone 409.









COLONIZATION IS BRITAIN'S PREMIER INDUSTRY.

The Growth of a Greater Empire.

FOUNDATIONS IN TRADE.

History of Chartered Companies Outlined.

Business has long depended upon the growth of the British Empire. It is the growth of the British Empire that has made possible the growth of the British Empire.

ENGLISH HEADLINE.

The English headline is the most important part of the newspaper. It is the headline that attracts the reader's attention.

REPRESENTATIVE OF EMPIRE.

The representative of the British Empire is the man who is able to represent the interests of the Empire in the world.

EMPIRE'S ADVENTURERS.

The adventures of the British Empire are the adventures of the world. It is the adventures of the British Empire that have made the world what it is today.

SLAZENGRS Tennis Ball.

Slazenger's Tennis Ball is the best tennis ball in the world. It is made of the finest materials and is guaranteed to last.

SLAZENGRS' GROVED FITZGERALD.

Slazenger's Groved Fitzgald is the best tennis ball in the world. It is made of the finest materials and is guaranteed to last.

THE GOVERNMENT'S LETTER TO MINERS.

Why Proposals Are Not Acceptable.

PARLIAMENTARY DEADLOCK.

The Government's proposals to the miners are not acceptable. The miners have made it clear that they will not accept any proposal that does not meet their demands.

London Opinion on Budget.

London opinion on the budget is generally favourable. The public seems to be satisfied with the Government's financial policy.

A Railway Wedding.

A railway wedding was celebrated in London. The bride and groom were both railway employees and the ceremony was held on a train.

World Money Exchanges.

World money exchanges are showing a steady decline. The value of the pound sterling has fallen significantly against other major currencies.

Farm and Home Journal.

The Farm and Home Journal is a valuable source of information for farmers and home owners. It provides practical advice on a wide range of subjects.

KENYA STOCK & SHARE COY. LTD.

Kenya Stock & Share Coy. Ltd. is a company that deals in the securities of the Kenya Colony. It provides a platform for investors to buy and sell shares.

Jockey Club Dance.

The Jockey Club Dance is a popular social event. It is held at the Jockey Club and provides an opportunity for members and their guests to enjoy a night of dancing.

THE NEW STANLEY HOTEL.

The New Stanley Hotel is a modern and comfortable establishment. It offers excellent accommodation and dining facilities for its guests.

Saturday, 9th Oct. 1926.

Music by Kenya Jazz Band. The Stanley Hotel, Nairobi.

LYRIC HALL.

Romance of Lady Hamilton.

TOPICAL BUDGET.

COMPLETE CHANGE OF PROGRAMME ON WEDNESDAY.

LADIES BOUDOIR Slippers.

Ladies Boudoir Slippers are the latest fashion. They are elegant and comfortable, perfect for the boudoir.

NATIVES AND THE LAW.

The relationship between natives and the law is a complex one. It involves the interpretation of laws that were not originally intended for them.

Lovely Little Ladies Moccasin Slippers.

Lovely Little Ladies Moccasin Slippers are a charming addition to any wardrobe. They are made of soft materials and are very comfortable.

EADIES FOOTWEAR LTD., NAIROBI.

THEATRE ROYAL.

TO-NIGHT - Wednesday.

LION CHANEY.

A Blind Bargain.

LOOK OUT FOR BABY PEGGY Showing Shortly.

Chilprufe for Children.

Chilprufe for Children is a safe and effective medicine. It is suitable for children of all ages and helps to relieve various ailments.

Warings NAIROBI'S FASHION CENTRE.

Warings is a leading fashion centre in Nairobi. It offers the latest in women's and children's clothing.

Africa House, Govt. Road, Nairobi.















A LONG DRAUGHT  
FROM A GLASS OF  
SPARKLING

**KENYA BEER**

IS INDEED ONE OF THE  
PLEASURES OF LIFE.  
ITS DELIGHTFUL BITE  
TICKLES THE PALATE  
AND ASKS  
WHAT ABOUT ANOTHER?

GUARANTEED THE LARGEST CIRCULATION OF ANY NEWSPAPER  
IN KENYA, UGANDA, TANGANYIKA AND ZANZIBAR.

DAILY EDITION.

THE EAST

12 PAGES.

# African Standard

MOMBASA TIMES & UGANDA ARGUS.  
THE OLDEST ESTABLISHED NEWSPAPER PUBLISHED IN KENYA AND UGANDA.

With which is incorporated  
THE LEADER.

PARKLANDS SPORTS CLUB

**DANCE**

At  
The New Stanley Hotel

Saturday Oct. 2nd.

DANCING FROM 9 P.M. TO 1 A.M.  
MUSIC BY KENYA JAZZ BAND.

No. 3079, PRINTED AT THE GENERAL POST OFFICE AS A NEWSPAPER.

NAIROBI, WEDNESDAY, SEPTEMBER 29, 1926

Price 20 CENTS

## FORCING COALOWNERS TO SETTLE? STRIKE DEADLOCK CONTINUES.

Parliament Renews the Emergency Regulations for Sixth Time.

SUGGESTION TO THE MINERS.

Legislation to Force Owners If the Strike is Called Off.

GOVERNMENT TERMS STILL OPEN

Parliament has renewed, for the sixth time, the Emergency Regulations which have been in force since the outbreak of the coal strike. Although the debate in the House of Commons has not amounted to the change of a word, the Premier indicates his appreciation of the offer made by the miners and his sympathy at the standstill and lack of courtesy of the coal owners. Legislation to force a National Tribunal on the coalowners is foreseen should the strike continue. It will call off the stoppage, but nothing averting of submission will be agreed to by Government.

Mr. Cook Ready to Retrait.

Mr. Cook, the Secretary of the National Union of Mineworkers, has expressed his readiness to accept the Government's offer of a National Tribunal. He stated that the miners were prepared to accept the Government's terms, provided that the Government was prepared to accept the miners' terms. He also stated that the miners were prepared to accept the Government's offer of a National Tribunal, provided that the Government was prepared to accept the miners' terms.

Mr. Cook, the Secretary of the National Union of Mineworkers, has expressed his readiness to accept the Government's offer of a National Tribunal. He stated that the miners were prepared to accept the Government's terms, provided that the Government was prepared to accept the miners' terms. He also stated that the miners were prepared to accept the Government's offer of a National Tribunal, provided that the Government was prepared to accept the miners' terms.

Commons Debate. The House of Commons has resumed its debate on the Emergency Regulations. The Government has renewed the Regulations for a sixth time, and the Opposition has expressed its disapproval. The Premier has indicated his sympathy for the miners and his willingness to accept their terms, provided that the Government is prepared to accept the miners' terms.

Mr. Chamberlain's Motion. Mr. Chamberlain has moved for the Government to accept the miners' terms. He stated that the Government should accept the miners' terms, provided that the Government was prepared to accept the miners' terms. He also stated that the Government should accept the miners' terms, provided that the Government was prepared to accept the miners' terms.

**WILL GERMAN RESCUE FRANCE?**  
Chances of a Rhineland Agreement.

The possibility of a Franco-German agreement has been discussed in the House of Commons. The Government has expressed its willingness to accept the terms of the Rhineland Agreement, provided that the Government was prepared to accept the terms of the Rhineland Agreement.

**TERRIBLE TANGANYIKA TRAGEDY.**  
Young Bride Found Shot Dead.

A young bride was found shot dead in Tanganyika. The tragedy occurred in a remote area of the colony. The bride was found with a fatal wound to the chest. The police are investigating the case.

**CHINESE CASUALTIES AT WANSEIN.**  
Seized British Steamers Released.

Chinese casualties at Wansein have been reported. The British steamers seized by the Chinese have been released. The incident occurred in the South China Sea.

**GOVERNMENT MAKES STATEMENT.**  
The Government has made a statement regarding the coal strike. The statement indicates that the Government is prepared to accept the miners' terms, provided that the Government is prepared to accept the miners' terms.

**HOW COST OF LIVING GOES UP.**  
Kisumu Fish King.

The cost of living has increased in Kisumu. The fish king has reported a significant increase in the price of fish. This is due to the shortage of fish in the area.

**URGENT NEED FOR MORE MERCHANTS ALLEGATIONS.**  
Large Profits Made by India Syndicate.

There is an urgent need for more merchants in India. Large profits are being made by an India syndicate. The syndicate is accused of exploiting the Indian market.

**FRENCHMAN'S ATTEMPT AT AIR RECORD.**  
Failure Through Fault in Aeroplane.

A Frenchman's attempt to set a new air record failed. The failure was due to a fault in the aeroplane. The Frenchman was flying over the Atlantic Ocean.

**Alan Cobham's Progress.**  
The progress of Alan Cobham's flight has been reported. He has successfully completed his flight around the world.

## VISIT OUR 2/50 BAZAAR THIS WEEK

**"THE TABLIC" CLOCK**



Large Profit Made by India Syndicate


URGENT NEED FOR MORE MERCHANTS ALLEGATIONS

**STANDARD VALUE**



Sh. 9/50

**THE BIG BELL LUMINOUS ALARM CLOCK**



Price, Sh. 30/-

**THE DWARF TIMEPIECE**



Standard Value, Sh. 3/50

**Whiteaways NAIROBI.**





SITUATION VACANT

APRIL Good English... WANTED: Manager for... FRENCH CLERK... (C)E. MURPHY... YOUNG man just arrived...

TRACTOR TRAIL AT LOWLAND

Always... Tractor... London has features... (C)E. MURPHY... YOUNG man just arrived...



OUR SPECIALITY IS SAWN TIMBER.

TO SETTLERS. There are always REPAIRS waiting to be done to buildings... TO BUILDERS. KEEP YOUR OUTSIDE WOODWORK...



TO BUILDERS. KEEP YOUR OUTSIDE WOODWORK FROM DECAY AND WHITE ANT...

HEAD OFFICE. 34/35... NAIROBI. (Box 281) Phone 113. HAJI MAZUEL.

SITUATIONS WANTED

By Young single man... ENGLISHMAN recently arrived... YOUNG man just arrived...

WANTED

FURNISHED House from Nairobi... FURNISHED house, six period... WANTED: a roomed house...

FOR SALE

Wanted Wolf Dog... (C)E. MURPHY... YOUNG man just arrived...

NOTICE

REGINA BREE... Haulage and general contracting... Qualified Optician...

LIME JUICE. Made from West Indian Lime Fruit and Clear Sugar. SUGGESTS YOUR HEALTH AND SATISFACTION YOUR HEALTH.

BRITISH INDIA STEAM NAVIGATION COMPANY, LTD.

Table with shipping schedules for Bombay-Durban Mail Service, Coastal Service, and other routes. Includes ship names, dates, and agents.

Y.M.C.A. AND Residential Club

AFRICAN GUARANTEE AND INDEMNITY Co., Ltd. M. D. KAMPP. (C)E. MURPHY... YOUNG man just arrived...

MARTIN'S PILLS

MAY & Co. for Firms & Administrators. NAIROBI RAILWAY CLUB. DANCE. Saturday, 2nd October, 1926.

Ladies' Hand Bags for all Occasions

PARTY CASES, VANITY CASES & PURSES. TWO WEEKS ONLY FROM OCTOBER 1st. 20 PER CENT. DISCOUNT.

Irish Table Napery. Dining Room Furniture.

Table listing various dining room furniture items such as damask table cloths, napkins, and chairs with prices.

Hutchings, Biemer & Co., Ltd. NAIROBI. MONTHLY ACCOUNTS WITH APPROVED CUSTOMERS.

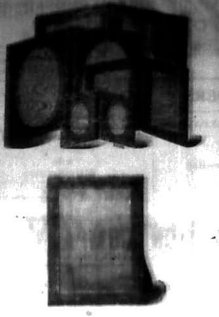
MISCELLANEOUS

3000 AVAILABLE on first... TYPENITING. All classes of typing... J. WILCOCK.

MISCELLANEOUS

3000 AVAILABLE on first... TYPENITING. All classes of typing... J. WILCOCK.

We have a choice selection of fine quality silver and leather shoes made to all sizes.



**E. DOBBIE.**  
Watchmaker Jeweller & Optician  
Government Road NAIROBI

**TO THE 'BOBBED AND SHINGLED'!**  
Hair just arrived with the new High Dentured Crowns

**MADAME LEON**  
1st FLOOR, AFRICA HOUSE,  
ABOVE WARING'S  
GOVT. ROAD.

**LIFE POLICIES**  
We can show you the most favourable endowment policy offered in this country.  
Big bonuses, comfortable policy.

**NATIONAL MUTUAL LIFE ASSOCIATION  
of AUSTRALASIA LTD.**  
Apply KILLER ROY LTD. Nairobi  
P.O. Box 104

**THE GOVERNMENT**  
The Government has decided to...  
**GOVERNMENT DECISIONS**  
The Government has decided to...  
**THE GOVERNMENT**  
The Government has decided to...

**IN THE PARLIAMENT**  
The Government has decided to...  
**THE GOVERNMENT**  
The Government has decided to...

**STATE EXPENDITURE REDUCTIONS**  
The Government has decided to...  
**MUNICIPAL COMEDIES**  
The Government has decided to...

**THE GOVERNMENT**  
The Government has decided to...  
**THE GOVERNMENT**  
The Government has decided to...

**THE GOVERNMENT**  
The Government has decided to...  
**THE GOVERNMENT**  
The Government has decided to...

**Crawford's**  
**CHEF'S**  
**SCOTCH WHISKY**  
ESTABLISHED SINCE 1850  
Whisky in Blended  
and Pure in Quality

**GUNNY BAGS**  
We Have Just Received a  
Large Shipment of  
**ALL SIZES**  
14lb. 2 lb. 2 1/2 lb. & 2 3/4 lb.

**J. W. MULLIGAN & Co**  
NAIROBI.  
P.O. Box 146.

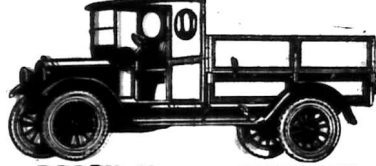
**APPLY FOR**  
Large Stocks of Best Kin Sharp Clean  
Building Sand,  
and  
**ATRI RIVER LIME.**  
As used by all Government Departments  
and  
Indian and European Contractors  
Prices very moderate

**Churanji Lal & Co.**  
Phone 897 White House Road,  
NAIROBI. Box 60

# WORLD LEADER IN HIGHWAY HAULAGE REO SPEED WAGONS

1 1/2 Tons  
Carrying Capacity  
Chassis with cab

**£350**



1 1/2 Tons  
Carrying Capacity  
Chassis with cab

**£350**

## REO HEAVY DUTY SPEED WAGON

Sturdy Six Cylinder  
Engine

2 TONS Carrying Capacity  
Chassis with Cab

Steel Disc  
Wheels

**£540**

**SUPREME IN THE 2 TON FIELD**

**CARR, LAWSON & Co., Ltd.**  
Sixth Avenue NAIROBI.

























# AUCTION SALES

## Muter and Oswald's Sales

Daily instructed, we shall sell, by Public Auction, without reserve, at our Salerooms, Mutos Building, Nairobi, (entrance by Lane)

**TO-DAY 29th Sept., at 9:30 a.m.**

"DOUGLAS" MOTOR CYCLE, 2 1/2 h.p., "BOOTH" SLOON DINNER SERVICE, GLASSWARE CROCKERY, GARDEN TOOLS, SKINS, CAMP BED, BIRD MAKER'S MODEL, IRON WAREHOUSE, MEDICINE CAMPBOARD, NOVELS, SECOND HAND CLOTHING, ONE PAIR DECATERS—cut glass, G.I. BATH, etc.

MUTER and OSWALD, Auctioneers, etc., NAIROBI.

## Muter and Oswald's Sales

### Sale by Catalogue of Teak Furniture

Daily instructed, we shall sell by Public Auction, WITHOUT RESERVE.

At our Salerooms, Mutos Building, Nairobi (entrance by Lane) on

**Monday, 4th October at 9:30 a.m.**

DINING TABLE—oval—in teak, with castors.  
REVOLVING BOOK CASE in teak, MORRIS CHAIRS  
SUITES OF DINING CHAIRS in teak.  
DRESSING TABLES in teak, with bevelled mirrors.  
SINGLE WARDROBE, SIDEBORD in teak, bevelled mirror.  
DOUBLE BEDSTEADS in teak, with spring mattresses, PALMSTANDS, WRITING DESK in teak, base top SINGLE BEDSTEAD, with spring mattress, SETTEE, DINING TABLE in teak—circular.  
OCASIONAL TABLES—teak, WRITING BUREAU, WARDROBE, teak, with oval bevelled mirror.  
ONE "6" DOVER" STOVE, WASHSTANDS.  
CRESTS OF DRAWERS in teak. DINNER WAGON in teak.  
Etc., Etc., Etc.

MUTER and OSWALD, Auctioneers, etc., NAIROBI.

MUTER and OSWALD beg to announce that a JUMBLE SALE will be held at their Auction Salerooms

On Saturday, 2nd Oct. at 9:30 a.m.

on behalf of THE NATIVE WOMEN'S HOME, KIKUYU.  
GIFTS OF NOVELS, MAGAZINES, CROCKERY, CLOTHING, JAMS, MARMALADES, OUT FLOWERS, VERANDAH PLANTS, "PROFITABLES" made to the Committee, will be sold by Public Auction, without reserve.

MUTER and OSWALD, Auctioneers, etc., NAIROBI.

**Sale, Sale, Sale**  
of Silks, Caros, etc., for few days only  
**B. CHOITRAM**  
DONALD ROAD, NAIROBI

## Reliance Transport Co.

Phone 281 SAIDLERS ST. NAIROBI P.O. Box 482  
The Largest Motor Transport Co. in the Colony. If you are requiring RELIABLE & Expedient Transport at reasonable charges, you cannot do better than require us to see. In short—in the long run you will find we give you the cheapest and best service.

FULL MERCHANTS  
Large stocks always on hand ready for immediate delivery.

# Sale

Sale of Contents of Outfitter, Furnishings, and Miscellaneous Fine Tent &c

## W. H. B. JUSTIN & Co.

Will sell by Public Auction WITHOUT RESERVE unless stated. AT THE MART, FRESHFIELDING, HADDINGE STREET.

**SATURDAY October 2nd at 9:30**

MAGNIFICENT CONTENTS OF OUTFITTER BY HARLES (reserve).  
FIVE YEAR FINEST DRESSING CHEST with Full Length MIRROR.  
Two Good Double Beds: tiled wire spring and Mattresses.  
Flair Good Morris Chairs upholstered in Orange and Red.  
Meal Sals, Pair Palm Stands, 3 Campbor: Wood Fall Iron Bureaux.  
Two Revolving Book Cases, Plain Wardrobe with drawer under.  
Dinner Wagon, Dressing Chest in Teak with Bevelled Mirrors.  
Mackintoshes, Thermos Flasks, Large Quantity of Good Novels.  
A VERY GOOD GENTS' PUNCH CYCLE in excellent condition.

One Garden Tennis Game complete in Box. On White Enamel Tray: On in new condition.  
A Pair of FINE PRIMA BINOCULARS in CASE splendid order by Collingdale of New Bond St. CHESTERFIELD SUITE in AMERICAN.  
SET of Dresser Shelves with cupboard under.  
Large Number of Good Gramophone Records, Fancy Candles, Shades.

Fancy, China, Several Occasional Tables.  
FIVE YEAR FINEST DRESSING CHEST with Full Length MIRROR.

Two Good Double Beds: tiled wire spring and Mattresses.

Flair Good Morris Chairs upholstered in Orange and Red.

Meal Sals, Pair Palm Stands, 3 Campbor: Wood Fall Iron Bureaux.

Two Revolving Book Cases, Plain Wardrobe with drawer under.

Dinner Wagon, Dressing Chest in Teak with Bevelled Mirrors.

Mackintoshes, Thermos Flasks, Large Quantity of Good Novels.

A VERY GOOD GENTS' PUNCH CYCLE in excellent condition.

## For Immediate Sale an Absolute Bargain.

FARM AT TURI—ONE MILE STATION APPROX 120 ACRES.

WALK IN WALK OUT—REASON FOR SALE—ILLNESS OWNER.  
HOUSE, BLDGS, FURNITURE, LINEN, CHINA, CUTLERY, GLASSWARE, KITCHEN UTEN SILS, SPOONS AND BATH STONES, ETC.  
ALSO A GOOD FISHPOND, GRAMOPHONE WITH RECORDS, ETC.  
4 GRADE COWS READY TO GRADE BULL.  
6 HEIFER CALVES, ALSO TURKEYS AND POWLS.  
FORD MOTOR CAR IN GOOD CONDITION WITH LOT OF SPARES.

STUDEBAKER 4 WHEEL LIGHT WAGON.  
CONTRACT LABOUR 90 STRONG 18 PER MONTH NO RATIONS—SIGNED ON TILL 1929  
SPLENDID AND CONSTANT WATER SUPPLY  
ORCHARD, VEGETABLE GARDEN and TENNIS COURT.

WATERFALL ON FARM SUITABLE FOR POWER.  
RIVER FISHED FROTH.  
FULL ASSURED FROM DAY OF OCCUPATION.  
HAIRY READY TO REAR DEO—JAN ALSO PUEBLE DETAILS. INVENTORIES AT OUR OFFICE.  
PRICE ONLY £3,000 OR NEAREST OFFER! BUT MUST BE AT ONCE!

## A SPINNING

OFFICES FRIN'S BLDG, HADDINGE STREET

## ONOTO

The Self Filling Safety

## PEN

Price Shs. 17/50 Posted Shs. 18/50

STANDARD Stationery Stores  
SIXTH AVENUE NAIROBI

Standard Stationery Stores  
SIXTH AVENUE NAIROBI

Standard Stationery Stores  
SIXTH AVENUE NAIROBI

## Now in Stock

Grease Proof Paper.

E. A. Standard Ltd. NAIROBI

# Sands & Co.

AT OUR RAILWAY SALEYARDS

Monday, 4th October at 10:30 a.m.

Acting on instructions from a contractor who is leaving Kenya we will offer for sale as follows—  
20 Treated Oats A.M.  
3 Indian Cans  
Tarpaulins  
10 Tokes and Chains.  
An account of a client—  
1 Team of 11 very good Impure Oxen.  
12 Cows in Calf and Calves at Foot.

## SANDS & Co. AUCTIONEERS

## FOR CEILINGS.

Fix "Fibrent" Flat

## ASBESTOS SHEETS,

non-conductor of heat and cold, Fire proof, Vermin and damp proof.

Apply to

## DENOVAN & DIEBEL

City House.

A. HOGG & COY., City House, NAIROBI

Despatch: 41 to 33 1/2 The Field

Cambridgehire: 10 1/2 to 33 1/2 The Field

Price List on application

Cash or Deposit Accounts only

Prompt Settlement.

Despatch: 41 to 33 1/2 The Field

Cambridgehire: 10 1/2 to 33 1/2 The Field

Price List on application

Cash or Deposit Accounts only

Prompt Settlement.

Despatch: 41 to 33 1/2 The Field

Cambridgehire: 10 1/2 to 33 1/2 The Field

Price List on application

Cash or Deposit Accounts only

Prompt Settlement.

Despatch: 41 to 33 1/2 The Field

Cambridgehire: 10 1/2 to 33 1/2 The Field

Price List on application

Cash or Deposit Accounts only

Prompt Settlement.

Despatch: 41 to 33 1/2 The Field

Cambridgehire: 10 1/2 to 33 1/2 The Field

Price List on application

Cash or Deposit Accounts only

Prompt Settlement.

Despatch: 41 to 33 1/2 The Field

Cambridgehire: 10 1/2 to 33 1/2 The Field

Price List on application

Cash or Deposit Accounts only

Prompt Settlement.

Despatch: 41 to 33 1/2 The Field

Cambridgehire: 10 1/2 to 33 1/2 The Field

Price List on application

# Important Announcements to Motorists

The Service Company, Ltd.

Has inaugurated a New Department of Test Drives

## STANLEY GARAGE

HARRISON STREET (opposite Stanley Hotel)  
USED CAR SALE ROOMS.

IF you are contemplating the purchase of a new car, you will find it to be the best possible of all makes at the same price.

USED CARS ALWAYS ON HAND FOR SALE BY PRIVATE PURCHASE.

IF you are contemplating the purchase of a new car, you will find it to be the best possible of all makes at the same price.

USED CARS ALWAYS ON HAND FOR SALE BY PRIVATE PURCHASE.

IF you are contemplating the purchase of a new car, you will find it to be the best possible of all makes at the same price.

USED CARS ALWAYS ON HAND FOR SALE BY PRIVATE PURCHASE.

IF you are contemplating the purchase of a new car, you will find it to be the best possible of all makes at the same price.

USED CARS ALWAYS ON HAND FOR SALE BY PRIVATE PURCHASE.

IF you are contemplating the purchase of a new car, you will find it to be the best possible of all makes at the same price.

USED CARS ALWAYS ON HAND FOR SALE BY PRIVATE PURCHASE.

IF you are contemplating the purchase of a new car, you will find it to be the best possible of all makes at the same price.

USED CARS ALWAYS ON HAND FOR SALE BY PRIVATE PURCHASE.

IF you are contemplating the purchase of a new car, you will find it to be the best possible of all makes at the same price.

USED CARS ALWAYS ON HAND FOR SALE BY PRIVATE PURCHASE.

IF you are contemplating the purchase of a new car, you will find it to be the best possible of all makes at the same price.

USED CARS ALWAYS ON HAND FOR SALE BY PRIVATE PURCHASE.

IF you are contemplating the purchase of a new car, you will find it to be the best possible of all makes at the same price.

USED CARS ALWAYS ON HAND FOR SALE BY PRIVATE PURCHASE.

IF you are contemplating the purchase of a new car, you will find it to be the best possible of all makes at the same price.

USED CARS ALWAYS ON HAND FOR SALE BY PRIVATE PURCHASE.

IF you are contemplating the purchase of a new car, you will find it to be the best possible of all makes at the same price.

USED CARS ALWAYS ON HAND FOR SALE BY PRIVATE PURCHASE.

IF you are contemplating the purchase of a new car, you will find it to be the best possible of all makes at the same price.

USED CARS ALWAYS ON HAND FOR SALE BY PRIVATE PURCHASE.

IF you are contemplating the purchase of a new car, you will find it to be the best possible of all makes at the same price.

USED CARS ALWAYS ON HAND FOR SALE BY PRIVATE PURCHASE.

IF you are contemplating the purchase of a new car, you will find it to be the best possible of all makes at the same price.

USED CARS ALWAYS ON HAND FOR SALE BY PRIVATE PURCHASE.

IF you are contemplating the purchase of a new car, you will find it to be the best possible of all makes at the same price.

USED CARS ALWAYS ON HAND FOR SALE BY PRIVATE PURCHASE.

IF you are contemplating the purchase of a new car, you will find it to be the best possible of all makes at the same price.

USED CARS ALWAYS ON HAND FOR SALE BY PRIVATE PURCHASE.

IF you are contemplating the purchase of a new car, you will find it to be the best possible of all makes at the same price.

USED CARS ALWAYS ON HAND FOR SALE BY PRIVATE PURCHASE.

IF you are contemplating the purchase of a new car, you will find it to be the best possible of all makes at the same price.

USED CARS ALWAYS ON HAND FOR SALE BY PRIVATE PURCHASE.

IF you are contemplating the purchase of a new car, you will find it to be the best possible of all makes at the same price.

USED CARS ALWAYS ON HAND FOR SALE BY PRIVATE PURCHASE.

IF you are contemplating the purchase of a new car, you will find it to be the best possible of all makes at the same price.

USED CARS ALWAYS ON HAND FOR SALE BY PRIVATE PURCHASE.

IF you are contemplating the purchase of a new car, you will find it to be the best possible of all makes at the same price.

USED CARS ALWAYS ON HAND FOR SALE BY PRIVATE PURCHASE.

IF you are contemplating the purchase of a new car, you will find it to be the best possible of all makes at the same price.

## FOR SALE

WITH 12 H.M.I. SEVEN Imported S.A. Motor  
Very perfectly fitted 150 p.p.m. Temperate  
Up to weight - 18 lbs. - Strong, beautiful model  
Ideal easy to play. Any trial at the office, examination  
Nairobi 1125. No offers. SPOKER,  
City, Nairobi.

## Notice.

THE NATIONAL BANK OF INDIA LIMITED  
STANDARD BANK OF SOUTH AFRICA LIMITED  
BARCLAYS BANK DOMINION COLONIAL AND  
AUSTRALASIAN

The National Branches of the above mentioned banks will be closed at 12 noon on Thursday the 3rd inst. and will not be open until the 5th inst. The 4th inst. is the 1st day of the month of October 1929.

## The Remington Typewriter

NO. 127



All Spares and European Mechanisms  
THE REMINGTON TYPewriter AGENCY,  
Phone 26 NAIROBI P.O. BOX 87.

## RUBBER STAMPS

Standard Stationery Stores  
NAIROBI

## Colony and Protectorate of Kenya.

## PUBLIC WORKS DEPARTMENT.

NOTICE

Notice is hereby given that, owing to the construction of a new bridge over the Fort Hill Embankment will be closed at Mile 18 from 10th to 17th October 1929 inclusive.

H. G. WALBY,  
Asst. Assistant Engineer in Charge, P.W.D.  
N.Y.B.R.I.

## Notice of Dissolution

Notice is hereby given that the partnership heretofore existing between Mathias Mwalimu Verger and Hunsdunian Sibusiso Verger (now known as the firm of "Sibusiso Verger and Son") of Nairobi, Mombasa and elsewhere, has been dissolved by the death of Mathias Mwalimu Verger on the 10th of August 1929, and that the business of Mombasa on the 10th of August 1929.

Notice is hereby given that the partnership heretofore existing between Mathias Mwalimu Verger and Hunsdunian Sibusiso Verger (now known as the firm of "Sibusiso Verger and Son") of Nairobi, Mombasa and elsewhere, has been dissolved by the death of Mathias Mwalimu Verger on the 10th of August 1929, and that the business of Mombasa on the 10th of August 1929.

Notice is hereby given that the partnership heretofore existing between Mathias Mwalimu Verger and Hunsdunian Sibusiso Verger (now known as the firm of "Sibusiso Verger and Son") of Nairobi, Mombasa and elsewhere, has been dissolved by the death of Mathias Mwalimu Verger on the 10th of August 1929, and that the business of Mombasa on the 10th of August 1929.

Notice is hereby given that the partnership heretofore existing between Mathias Mwalimu Verger and Hunsdunian Sibusiso Verger (now known as the firm of "Sibusiso Verger and Son") of Nairobi, Mombasa and elsewhere, has been dissolved by the death of Mathias Mwalimu Verger on the 10th of August 1929, and that the business of Mombasa on the 10th of August 1929.

## DON'T BUY DISCRIMINATELY.

HAVE THE VARIABLES YOU WANT AND HAVE THEM FIRST!

## TORR'S

## Chocolates

Single Vanilla Caramel Truffles - Strawberry  
Orange - Pistachio - Creams - Almond - Strawberry  
- Fruit and many other wonderful confections.

The only way to get them is to buy from TORR'S  
Made on the Premises.

P.O. 419

During the slack time Take a holiday in Sunny South Africa and Return Refreshed in Mind and Body Travel in South Africa is inexpensive and facilities are of high standard.

For particulars apply to: TRADE COMMISSIONERS FOR THE UNION OF SOUTH AFRICA, P. O. Box 624, Memorial Hall, NAIROBI

IN STOCK "A," "B," and REPASSER PULPERS SCOTT & DAVIDSON, Sole Agents in Kenya for Wm. McKinnon & Co. Ltd. Godown Victoria St. Box 426, Tel. "Palpans"

KENYA HOUSE P. O. Box 118 NAIROBI Tel. "Kenya House" HIGHLY RECOMMENDED RESIDENT HOTEL. RENOWNED FOR CATERING, COMFORT AND SERVICE UNDER PERSONAL SUPERVISION AND CONTROL BY THE PROPRIETRESS. Mrs. McLeod.

WHEN YOU GO TO LONDON.

(Continued from yesterday.)

The name Bala-Fun was a punning name upon that of the British Foreign Secretary, a bold or clever punning is a feature of the London press. The name was said to be seen in the morning paper in the window of a shop in the Strand, London, having been sent to the editor of the paper.

THE CHURCH OF THE BISHOP. Continues down the south side of Fleet Street until it reaches the junction of the Strand. The church is a fine specimen of the architecture of the 17th century. It is a fine specimen of the architecture of the 17th century.

HUNDREDS OF BOLIVIAN. For through Cuba himself and his personal influence, Las Maras, is rather despised in the eyes of the Londoners. The register books are still preserved in the church.

Another place of interest was the Bala-Fun, which occupied a site on the south side of Fleet Street, and which was a fine specimen of the architecture of the 17th century.

THE BISHOP. Another place of interest was the Bala-Fun, which occupied a site on the south side of Fleet Street, and which was a fine specimen of the architecture of the 17th century.

THE BISHOP. Another place of interest was the Bala-Fun, which occupied a site on the south side of Fleet Street, and which was a fine specimen of the architecture of the 17th century.

IN ENGLAND.

Various Transactions of a Bygone Age. A CHANGING COUNTRY.

To walk through the streets of London is to be reminded of the changes that have taken place since the days of the Tudors. The streets are now paved with asphalt, and the houses are now built of brick and stone.

THE CHURCH OF THE BISHOP. Continues down the south side of Fleet Street until it reaches the junction of the Strand. The church is a fine specimen of the architecture of the 17th century.

HUNDREDS OF BOLIVIAN. For through Cuba himself and his personal influence, Las Maras, is rather despised in the eyes of the Londoners. The register books are still preserved in the church.

Another place of interest was the Bala-Fun, which occupied a site on the south side of Fleet Street, and which was a fine specimen of the architecture of the 17th century.

THE BISHOP. Another place of interest was the Bala-Fun, which occupied a site on the south side of Fleet Street, and which was a fine specimen of the architecture of the 17th century.

HOPE'S Standard Windows NOW IN STOCK Beales & Smithson Sole Agents "Palpans Street" NAIROBI.



SEND FOR COPY OF FREE BOOKLET TO SMITH, MACKEWIE & CO., NAIROBI.

Express Transport Co. Carriage Contractors to Uganda Railway. Government Road, Nairobi. Phone: 323 and 35

Furniture and General Goods removed, packed and despatched to any part of the world. Or stored.

SPECIAL MOTOR CARRIAGE FACILITIES for transport of all classes of Produce or Heavy Material to and from long distances, quotations on application.

On Mon., Tue., Wed., October 4th, 5th and 6th. from 10 to 12.30 a.m.

CASE-COR DEMONSTRATIONS

will be held on a site beyond the Kenya Brewery.

NAIROBI

All models will be in operation drawing 3, 4 and 6 furrow ploughs. From the Brewery sign on the Thika Road posts will be erected showing the site.

SOLE IMPORTERS K. McIVOR & Co., Sixth Avenue, Nairobi.

Telegrams: "AFFORD"

P. O. Box, 97. Phone 7.

**CHARL'S WARE**  
 711 Gloucester, 712 Madison, 713 Franklin, 714 Washington, 715 191 to 197 others.

**CAMBRIDGE BRITISH**  
 716 Madison, 717 Boston, 718 New York, 719 Philadelphia, 720 Chicago, 721 St. Louis, 722 Cincinnati, 723 Cleveland, 724 Detroit, 725 Pittsburgh, 726 San Francisco, 727 Los Angeles, 728 Honolulu, 729 San Diego, 730 San Jose, 731 Portland, 732 Seattle, 733 Denver, 734 Salt Lake City, 735 Phoenix, 736 Tucson, 737 Albuquerque, 738 Las Vegas, 739 Reno, 740 Sacramento, 741 San Bernardino, 742 Orange, 743 Anaheim, 744 Long Beach, 745 Los Angeles, 746 San Francisco, 747 San Diego, 748 San Jose, 749 Portland, 750 Seattle, 751 Denver, 752 Salt Lake City, 753 Phoenix, 754 Tucson, 755 Albuquerque, 756 Las Vegas, 757 Reno, 758 Sacramento, 759 San Bernardino, 760 Orange, 761 Anaheim, 762 Long Beach, 763 Los Angeles, 764 San Francisco, 765 San Diego, 766 San Jose, 767 Portland, 768 Seattle, 769 Denver, 770 Salt Lake City, 771 Phoenix, 772 Tucson, 773 Albuquerque, 774 Las Vegas, 775 Reno, 776 Sacramento, 777 San Bernardino, 778 Orange, 779 Anaheim, 780 Long Beach, 781 Los Angeles, 782 San Francisco, 783 San Diego, 784 San Jose, 785 Portland, 786 Seattle, 787 Denver, 788 Salt Lake City, 789 Phoenix, 790 Tucson, 791 Albuquerque, 792 Las Vegas, 793 Reno, 794 Sacramento, 795 San Bernardino, 796 Orange, 797 Anaheim, 798 Long Beach, 799 Los Angeles, 800 San Francisco, 801 San Diego, 802 San Jose, 803 Portland, 804 Seattle, 805 Denver, 806 Salt Lake City, 807 Phoenix, 808 Tucson, 809 Albuquerque, 810 Las Vegas, 811 Reno, 812 Sacramento, 813 San Bernardino, 814 Orange, 815 Anaheim, 816 Long Beach, 817 Los Angeles, 818 San Francisco, 819 San Diego, 820 San Jose, 821 Portland, 822 Seattle, 823 Denver, 824 Salt Lake City, 825 Phoenix, 826 Tucson, 827 Albuquerque, 828 Las Vegas, 829 Reno, 830 Sacramento, 831 San Bernardino, 832 Orange, 833 Anaheim, 834 Long Beach, 835 Los Angeles, 836 San Francisco, 837 San Diego, 838 San Jose, 839 Portland, 840 Seattle, 841 Denver, 842 Salt Lake City, 843 Phoenix, 844 Tucson, 845 Albuquerque, 846 Las Vegas, 847 Reno, 848 Sacramento, 849 San Bernardino, 850 Orange, 851 Anaheim, 852 Long Beach, 853 Los Angeles, 854 San Francisco, 855 San Diego, 856 San Jose, 857 Portland, 858 Seattle, 859 Denver, 860 Salt Lake City, 861 Phoenix, 862 Tucson, 863 Albuquerque, 864 Las Vegas, 865 Reno, 866 Sacramento, 867 San Bernardino, 868 Orange, 869 Anaheim, 870 Long Beach, 871 Los Angeles, 872 San Francisco, 873 San Diego, 874 San Jose, 875 Portland, 876 Seattle, 877 Denver, 878 Salt Lake City, 879 Phoenix, 880 Tucson, 881 Albuquerque, 882 Las Vegas, 883 Reno, 884 Sacramento, 885 San Bernardino, 886 Orange, 887 Anaheim, 888 Long Beach, 889 Los Angeles, 890 San Francisco, 891 San Diego, 892 San Jose, 893 Portland, 894 Seattle, 895 Denver, 896 Salt Lake City, 897 Phoenix, 898 Tucson, 899 Albuquerque, 900 Las Vegas, 901 Reno, 902 Sacramento, 903 San Bernardino, 904 Orange, 905 Anaheim, 906 Long Beach, 907 Los Angeles, 908 San Francisco, 909 San Diego, 910 San Jose, 911 Portland, 912 Seattle, 913 Denver, 914 Salt Lake City, 915 Phoenix, 916 Tucson, 917 Albuquerque, 918 Las Vegas, 919 Reno, 920 Sacramento, 921 San Bernardino, 922 Orange, 923 Anaheim, 924 Long Beach, 925 Los Angeles, 926 San Francisco, 927 San Diego, 928 San Jose, 929 Portland, 930 Seattle, 931 Denver, 932 Salt Lake City, 933 Phoenix, 934 Tucson, 935 Albuquerque, 936 Las Vegas, 937 Reno, 938 Sacramento, 939 San Bernardino, 940 Orange, 941 Anaheim, 942 Long Beach, 943 Los Angeles, 944 San Francisco, 945 San Diego, 946 San Jose, 947 Portland, 948 Seattle, 949 Denver, 950 Salt Lake City, 951 Phoenix, 952 Tucson, 953 Albuquerque, 954 Las Vegas, 955 Reno, 956 Sacramento, 957 San Bernardino, 958 Orange, 959 Anaheim, 960 Long Beach, 961 Los Angeles, 962 San Francisco, 963 San Diego, 964 San Jose, 965 Portland, 966 Seattle, 967 Denver, 968 Salt Lake City, 969 Phoenix, 970 Tucson, 971 Albuquerque, 972 Las Vegas, 973 Reno, 974 Sacramento, 975 San Bernardino, 976 Orange, 977 Anaheim, 978 Long Beach, 979 Los Angeles, 980 San Francisco, 981 San Diego, 982 San Jose, 983 Portland, 984 Seattle, 985 Denver, 986 Salt Lake City, 987 Phoenix, 988 Tucson, 989 Albuquerque, 990 Las Vegas, 991 Reno, 992 Sacramento, 993 San Bernardino, 994 Orange, 995 Anaheim, 996 Long Beach, 997 Los Angeles, 998 San Francisco, 999 San Diego, 1000 San Jose, 1001 Portland, 1002 Seattle, 1003 Denver, 1004 Salt Lake City, 1005 Phoenix, 1006 Tucson, 1007 Albuquerque, 1008 Las Vegas, 1009 Reno, 1010 Sacramento, 1011 San Bernardino, 1012 Orange, 1013 Anaheim, 1014 Long Beach, 1015 Los Angeles, 1016 San Francisco, 1017 San Diego, 1018 San Jose, 1019 Portland, 1020 Seattle, 1021 Denver, 1022 Salt Lake City, 1023 Phoenix, 1024 Tucson, 1025 Albuquerque, 1026 Las Vegas, 1027 Reno, 1028 Sacramento, 1029 San Bernardino, 1030 Orange, 1031 Anaheim, 1032 Long Beach, 1033 Los Angeles, 1034 San Francisco, 1035 San Diego, 1036 San Jose, 1037 Portland, 1038 Seattle, 1039 Denver, 1040 Salt Lake City, 1041 Phoenix, 1042 Tucson, 1043 Albuquerque, 1044 Las Vegas, 1045 Reno, 1046 Sacramento, 1047 San Bernardino, 1048 Orange, 1049 Anaheim, 1050 Long Beach, 1051 Los Angeles, 1052 San Francisco, 1053 San Diego, 1054 San Jose, 1055 Portland, 1056 Seattle, 1057 Denver, 1058 Salt Lake City, 1059 Phoenix, 1060 Tucson, 1061 Albuquerque, 1062 Las Vegas, 1063 Reno, 1064 Sacramento, 1065 San Bernardino, 1066 Orange, 1067 Anaheim, 1068 Long Beach, 1069 Los Angeles, 1070 San Francisco, 1071 San Diego, 1072 San Jose, 1073 Portland, 1074 Seattle, 1075 Denver, 1076 Salt Lake City, 1077 Phoenix, 1078 Tucson, 1079 Albuquerque, 1080 Las Vegas, 1081 Reno, 1082 Sacramento, 1083 San Bernardino, 1084 Orange, 1085 Anaheim, 1086 Long Beach, 1087 Los Angeles, 1088 San Francisco, 1089 San Diego, 1090 San Jose, 1091 Portland, 1092 Seattle, 1093 Denver, 1094 Salt Lake City, 1095 Phoenix, 1096 Tucson, 1097 Albuquerque, 1098 Las Vegas, 1099 Reno, 1100 Sacramento, 1101 San Bernardino, 1102 Orange, 1103 Anaheim, 1104 Long Beach, 1105 Los Angeles, 1106 San Francisco, 1107 San Diego, 1108 San Jose, 1109 Portland, 1110 Seattle, 1111 Denver, 1112 Salt Lake City, 1113 Phoenix, 1114 Tucson, 1115 Albuquerque, 1116 Las Vegas, 1117 Reno, 1118 Sacramento, 1119 San Bernardino, 1120 Orange, 1121 Anaheim, 1122 Long Beach, 1123 Los Angeles, 1124 San Francisco, 1125 San Diego, 1126 San Jose, 1127 Portland, 1128 Seattle, 1129 Denver, 1130 Salt Lake City, 1131 Phoenix, 1132 Tucson, 1133 Albuquerque, 1134 Las Vegas, 1135 Reno, 1136 Sacramento, 1137 San Bernardino, 1138 Orange, 1139 Anaheim, 1140 Long Beach, 1141 Los Angeles, 1142 San Francisco, 1143 San Diego, 1144 San Jose, 1145 Portland, 1146 Seattle, 1147 Denver, 1148 Salt Lake City, 1149 Phoenix, 1150 Tucson, 1151 Albuquerque, 1152 Las Vegas, 1153 Reno, 1154 Sacramento, 1155 San Bernardino, 1156 Orange, 1157 Anaheim, 1158 Long Beach, 1159 Los Angeles, 1160 San Francisco, 1161 San Diego, 1162 San Jose, 1163 Portland, 1164 Seattle, 1165 Denver, 1166 Salt Lake City, 1167 Phoenix, 1168 Tucson, 1169 Albuquerque, 1170 Las Vegas, 1171 Reno, 1172 Sacramento, 1173 San Bernardino, 1174 Orange, 1175 Anaheim, 1176 Long Beach, 1177 Los Angeles, 1178 San Francisco, 1179 San Diego, 1180 San Jose, 1181 Portland, 1182 Seattle, 1183 Denver, 1184 Salt Lake City, 1185 Phoenix, 1186 Tucson, 1187 Albuquerque, 1188 Las Vegas, 1189 Reno, 1190 Sacramento, 1191 San Bernardino, 1192 Orange, 1193 Anaheim, 1194 Long Beach, 1195 Los Angeles, 1196 San Francisco, 1197 San Diego, 1198 San Jose, 1199 Portland, 1200 Seattle, 1201 Denver, 1202 Salt Lake City, 1203 Phoenix, 1204 Tucson, 1205 Albuquerque, 1206 Las Vegas, 1207 Reno, 1208 Sacramento, 1209 San Bernardino, 1210 Orange, 1211 Anaheim, 1212 Long Beach, 1213 Los Angeles, 1214 San Francisco, 1215 San Diego, 1216 San Jose, 1217 Portland, 1218 Seattle, 1219 Denver, 1220 Salt Lake City, 1221 Phoenix, 1222 Tucson, 1223 Albuquerque, 1224 Las Vegas, 1225 Reno, 1226 Sacramento, 1227 San Bernardino, 1228 Orange, 1229 Anaheim, 1230 Long Beach, 1231 Los Angeles, 1232 San Francisco, 1233 San Diego, 1234 San Jose, 1235 Portland, 1236 Seattle, 1237 Denver, 1238 Salt Lake City, 1239 Phoenix, 1240 Tucson, 1241 Albuquerque, 1242 Las Vegas, 1243 Reno, 1244 Sacramento, 1245 San Bernardino, 1246 Orange, 1247 Anaheim, 1248 Long Beach, 1249 Los Angeles, 1250 San Francisco, 1251 San Diego, 1252 San Jose, 1253 Portland, 1254 Seattle, 1255 Denver, 1256 Salt Lake City, 1257 Phoenix, 1258 Tucson, 1259 Albuquerque, 1260 Las Vegas, 1261 Reno, 1262 Sacramento, 1263 San Bernardino, 1264 Orange, 1265 Anaheim, 1266 Long Beach, 1267 Los Angeles, 1268 San Francisco, 1269 San Diego, 1270 San Jose, 1271 Portland, 1272 Seattle, 1273 Denver, 1274 Salt Lake City, 1275 Phoenix, 1276 Tucson, 1277 Albuquerque, 1278 Las Vegas, 1279 Reno, 1280 Sacramento, 1281 San Bernardino, 1282 Orange, 1283 Anaheim, 1284 Long Beach, 1285 Los Angeles, 1286 San Francisco, 1287 San Diego, 1288 San Jose, 1289 Portland, 1290 Seattle, 1291 Denver, 1292 Salt Lake City, 1293 Phoenix, 1294 Tucson, 1295 Albuquerque, 1296 Las Vegas, 1297 Reno, 1298 Sacramento, 1299 San Bernardino, 1300 Orange, 1301 Anaheim, 1302 Long Beach, 1303 Los Angeles, 1304 San Francisco, 1305 San Diego, 1306 San Jose, 1307 Portland, 1308 Seattle, 1309 Denver, 1310 Salt Lake City, 1311 Phoenix, 1312 Tucson, 1313 Albuquerque, 1314 Las Vegas, 1315 Reno, 1316 Sacramento, 1317 San Bernardino, 1318 Orange, 1319 Anaheim, 1320 Long Beach, 1321 Los Angeles, 1322 San Francisco, 1323 San Diego, 1324 San Jose, 1325 Portland, 1326 Seattle, 1327 Denver, 1328 Salt Lake City, 1329 Phoenix, 1330 Tucson, 1331 Albuquerque, 1332 Las Vegas, 1333 Reno, 1334 Sacramento, 1335 San Bernardino, 1336 Orange, 1337 Anaheim, 1338 Long Beach, 1339 Los Angeles, 1340 San Francisco, 1341 San Diego, 1342 San Jose, 1343 Portland, 1344 Seattle, 1345 Denver, 1346 Salt Lake City, 1347 Phoenix, 1348 Tucson, 1349 Albuquerque, 1350 Las Vegas, 1351 Reno, 1352 Sacramento, 1353 San Bernardino, 1354 Orange, 1355 Anaheim, 1356 Long Beach, 1357 Los Angeles, 1358 San Francisco, 1359 San Diego, 1360 San Jose, 1361 Portland, 1362 Seattle, 1363 Denver, 1364 Salt Lake City, 1365 Phoenix, 1366 Tucson, 1367 Albuquerque, 1368 Las Vegas, 1369 Reno, 1370 Sacramento, 1371 San Bernardino, 1372 Orange, 1373 Anaheim, 1374 Long Beach, 1375 Los Angeles, 1376 San Francisco, 1377 San Diego, 1378 San Jose, 1379 Portland, 1380 Seattle, 1381 Denver, 1382 Salt Lake City, 1383 Phoenix, 1384 Tucson, 1385 Albuquerque, 1386 Las Vegas, 1387 Reno, 1388 Sacramento, 1389 San Bernardino, 1390 Orange, 1391 Anaheim, 1392 Long Beach, 1393 Los Angeles, 1394 San Francisco, 1395 San Diego, 1396 San Jose, 1397 Portland, 1398 Seattle, 1399 Denver, 1400 Salt Lake City, 1401 Phoenix, 1402 Tucson, 1403 Albuquerque, 1404 Las Vegas, 1405 Reno, 1406 Sacramento, 1407 San Bernardino, 1408 Orange, 1409 Anaheim, 1410 Long Beach, 1411 Los Angeles, 1412 San Francisco, 1413 San Diego, 1414 San Jose, 1415 Portland, 1416 Seattle, 1417 Denver, 1418 Salt Lake City, 1419 Phoenix, 1420 Tucson, 1421 Albuquerque, 1422 Las Vegas, 1423 Reno, 1424 Sacramento, 1425 San Bernardino, 1426 Orange, 1427 Anaheim, 1428 Long Beach, 1429 Los Angeles, 1430 San Francisco, 1431 San Diego, 1432 San Jose, 1433 Portland, 1434 Seattle, 1435 Denver, 1436 Salt Lake City, 1437 Phoenix, 1438 Tucson, 1439 Albuquerque, 1440 Las Vegas, 1441 Reno, 1442 Sacramento, 1443 San Bernardino, 1444 Orange, 1445 Anaheim, 1446 Long Beach, 1447 Los Angeles, 1448 San Francisco, 1449 San Diego, 1450 San Jose, 1451 Portland, 1452 Seattle, 1453 Denver, 1454 Salt Lake City, 1455 Phoenix, 1456 Tucson, 1457 Albuquerque, 1458 Las Vegas, 1459 Reno, 1460 Sacramento, 1461 San Bernardino, 1462 Orange, 1463 Anaheim, 1464 Long Beach, 1465 Los Angeles, 1466 San Francisco, 1467 San Diego, 1468 San Jose, 1469 Portland, 1470 Seattle, 1471 Denver, 1472 Salt Lake City, 1473 Phoenix, 1474 Tucson, 1475 Albuquerque, 1476 Las Vegas, 1477 Reno, 1478 Sacramento, 1479 San Bernardino, 1480 Orange, 1481 Anaheim, 1482 Long Beach, 1483 Los Angeles, 1484 San Francisco, 1485 San Diego, 1486 San Jose, 1487 Portland, 1488 Seattle, 1489 Denver, 1490 Salt Lake City, 1491 Phoenix, 1492 Tucson, 1493 Albuquerque, 1494 Las Vegas, 1495 Reno, 1496 Sacramento, 1497 San Bernardino, 1498 Orange, 1499 Anaheim, 1500 Long Beach, 1501 Los Angeles, 1502 San Francisco, 1503 San Diego, 1504 San Jose, 1505 Portland, 1506 Seattle, 1507 Denver, 1508 Salt Lake City, 1509 Phoenix, 1510 Tucson, 1511 Albuquerque, 1512 Las Vegas, 1513 Reno, 1514 Sacramento, 1515 San Bernardino, 1516 Orange, 1517 Anaheim, 1518 Long Beach, 1519 Los Angeles, 1520 San Francisco, 1521 San Diego, 1522 San Jose, 1523 Portland, 1524 Seattle, 1525 Denver, 1526 Salt Lake City, 1527 Phoenix, 1528 Tucson, 1529 Albuquerque, 1530 Las Vegas, 1531 Reno, 1532 Sacramento, 1533 San Bernardino, 1534 Orange, 1535 Anaheim, 1536 Long Beach, 1537 Los Angeles, 1538 San Francisco, 1539 San Diego, 1540 San Jose, 1541 Portland, 1542 Seattle, 1543 Denver, 1544 Salt Lake City, 1545 Phoenix, 1546 Tucson, 1547 Albuquerque, 1548 Las Vegas, 1549 Reno, 1550 Sacramento, 1551 San Bernardino, 1552 Orange, 1553 Anaheim, 1554 Long Beach, 1555 Los Angeles, 1556 San Francisco, 1557 San Diego, 1558 San Jose, 1559 Portland, 1560 Seattle, 1561 Denver, 1562 Salt Lake City, 1563 Phoenix, 1564 Tucson, 1565 Albuquerque, 1566 Las Vegas, 1567 Reno, 1568 Sacramento, 1569 San Bernardino, 1570 Orange, 1571 Anaheim, 1572 Long Beach, 1573 Los Angeles, 1574 San Francisco, 1575 San Diego, 1576 San Jose, 1577 Portland, 1578 Seattle, 1579 Denver, 1580 Salt Lake City, 1581 Phoenix, 1582 Tucson, 1583 Albuquerque, 1584 Las Vegas, 1585 Reno, 1586 Sacramento, 1587 San Bernardino, 1588 Orange, 1589 Anaheim, 1590 Long Beach, 1591 Los Angeles, 1592 San Francisco, 1593 San Diego, 1594 San Jose, 1595 Portland, 1596 Seattle, 1597 Denver, 1598 Salt Lake City, 1599 Phoenix, 1600 Tucson, 1601 Albuquerque, 1602 Las Vegas, 1603 Reno, 1604 Sacramento, 1605 San Bernardino, 1606 Orange, 1607 Anaheim, 1608 Long Beach, 1609 Los Angeles, 1610 San Francisco, 1611 San Diego, 1612 San Jose, 1613 Portland, 1614 Seattle, 1615 Denver, 1616 Salt Lake City, 1617 Phoenix, 1618 Tucson, 1619 Albuquerque, 1620 Las Vegas, 1621 Reno, 1622 Sacramento, 1623 San Bernardino, 1624 Orange, 1625 Anaheim, 1626 Long Beach, 1627 Los Angeles, 1628 San Francisco, 1629 San Diego, 1630 San Jose, 1631 Portland, 1632 Seattle, 1633 Denver, 1634 Salt Lake City, 1635 Phoenix, 1636 Tucson, 1637 Albuquerque, 1638 Las Vegas, 1639 Reno, 1640 Sacramento, 1641 San Bernardino, 1642 Orange, 1643 Anaheim, 1644 Long Beach, 1645 Los Angeles, 1646 San Francisco, 1647 San Diego, 1648 San Jose, 1649 Portland, 1650 Seattle, 1651 Denver, 1652 Salt Lake City, 1653 Phoenix, 1654 Tucson, 1655 Albuquerque, 1656 Las Vegas, 1657 Reno, 1658 Sacramento, 1659 San Bernardino, 1660 Orange, 1661 Anaheim, 1662 Long Beach, 1663 Los Angeles, 1664 San Francisco, 1665 San Diego, 1666 San Jose, 1667 Portland, 1668 Seattle, 1669 Denver, 1670 Salt Lake City, 1671 Phoenix, 1672 Tucson, 1673 Albuquerque, 1674 Las Vegas, 1675 Reno, 1676 Sacramento, 1677 San Bernardino, 1678 Orange, 1679 Anaheim, 1680 Long Beach, 1681 Los Angeles, 1682 San Francisco, 1683 San Diego, 1684 San Jose, 1685 Portland, 1686 Seattle, 1687 Denver, 1688 Salt Lake City, 1689 Phoenix, 1690 Tucson, 1691 Albuquerque, 1692 Las Vegas, 1693 Reno, 1694 Sacramento, 1695 San Bernardino, 1696 Orange, 1697 Anaheim, 1698 Long Beach, 1699 Los Angeles, 1700 San Francisco, 1701 San Diego, 1702 San Jose, 1703 Portland, 1704 Seattle, 1705 Denver, 1706 Salt Lake City, 1707 Phoenix, 1708 Tucson, 1709 Albuquerque, 1710 Las Vegas, 1711 Reno, 1712 Sacramento, 1713 San Bernardino, 1714 Orange, 1715 Anaheim, 1716 Long Beach, 1717 Los Angeles, 1718 San Francisco, 1719 San Diego, 1720 San Jose, 1721 Portland, 1722 Seattle, 1723 Denver, 1724 Salt Lake City, 1725 Phoenix, 1726 Tucson, 1727 Albuquerque, 1728 Las Vegas, 1729 Reno, 1730 Sacramento, 1731 San Bernardino, 1732 Orange, 1733 Anaheim, 1734 Long Beach, 1735 Los Angeles, 1736 San Francisco, 1737 San Diego, 1738 San Jose, 1739 Portland, 1740 Seattle, 1741 Denver, 1742 Salt Lake City, 1743 Phoenix, 1744 Tucson, 1745 Albuquerque, 1746 Las Vegas, 1747 Reno, 1748 Sacramento, 1749 San Bernardino, 1750 Orange, 1751 Anaheim, 1752 Long Beach, 1753 Los Angeles, 1754 San Francisco, 1755 San Diego, 1756 San Jose, 1757 Portland, 1758 Seattle, 1759 Denver, 1760 Salt Lake City, 1761 Phoenix, 1762 Tucson, 1763 Albuquerque, 1764 Las Vegas, 1765 Reno, 1766 Sacramento, 1767 San Bernardino, 1768 Orange, 1769 Anaheim, 1770 Long Beach, 1771 Los Angeles, 1772 San Francisco, 1773 San Diego, 1774 San Jose, 1775 Portland, 1776 Seattle, 1777 Denver, 1778 Salt Lake City, 1779 Phoenix, 1780 Tucson, 1781 Albuquerque, 1782 Las Vegas, 1783 Reno, 1784 Sacramento, 1785 San Bernardino, 1786 Orange, 1787 Anaheim, 1788 Long Beach, 1789 Los Angeles, 1790 San Francisco, 1791 San Diego, 1792 San Jose, 1793 Portland, 1794 Seattle, 1795 Denver, 1796 Salt Lake City, 1797 Phoenix, 1798 Tucson, 1799 Albuquerque, 1800 Las Vegas, 1801 Reno, 1802 Sacramento, 1803 San Bernardino, 1804 Orange, 1805 Anaheim, 1806 Long Beach, 1807 Los Angeles, 1808 San Francisco, 1809 San Diego, 1810 San Jose, 1811 Portland, 1812 Seattle, 1813 Denver, 1814 Salt Lake City, 1815 Phoenix, 1816 Tucson, 1817 Albuquerque, 1818 Las Vegas, 1819 Reno, 1820 Sacramento, 1821 San Bernardino, 1822 Orange, 1823 Anaheim, 1824 Long Beach, 1825 Los Angeles, 1826 San Francisco, 1827 San Diego, 1828 San Jose, 1829 Portland, 1830 Seattle, 1831 Denver, 1832 Salt Lake City, 1833 Phoenix, 1834 Tucson, 1835 Albuquerque, 1836 Las Vegas, 1837 Reno, 1838 Sacramento, 1839 San Bernardino, 1840 Orange, 1841 Anaheim, 1842 Long Beach, 1843 Los Angeles, 1844 San Francisco, 1845 San Diego, 1846 San Jose, 1847 Portland, 1848 Seattle, 1849 Denver, 1850 Salt Lake City, 1851 Phoenix, 1852 Tucson, 1853 Albuquerque, 1854 Las Vegas, 1855 Reno, 1856 Sacramento, 1857 San Bernardino, 1858 Orange, 1859 Anaheim, 1860 Long Beach, 1861 Los Angeles, 1862 San Francisco, 1863 San Diego, 1864 San Jose, 1865 Portland, 1866 Seattle, 1867 Denver, 1868 Salt Lake City, 1869 Phoenix, 1870 Tucson, 1871 Albuquerque, 1872 Las Vegas, 1873 Reno, 1874 Sacramento, 1875 San Bernardino, 1876 Orange, 1877 Anaheim, 1878 Long Beach, 1879 Los Angeles, 1880 San Francisco, 1881 San Diego, 1882 San Jose, 1883 Portland, 1884 Seattle, 1885 Denver, 1886 Salt Lake City, 1887 Phoenix, 1888 Tucson, 1889 Albuquerque, 1890 Las Vegas, 1891 Reno, 1892 Sacramento, 1893 San Bernardino, 1894 Orange, 1895 Anaheim, 1896 Long Beach, 1897 Los Angeles, 1898 San Francisco, 1899 San Diego, 1900 San Jose, 1901 Portland, 1902 Seattle, 1903 Denver, 1904 Salt Lake City, 1905 Phoenix, 1906 Tucson, 1907 Albuquerque, 1908 Las Vegas, 1909 Reno, 1910 Sacramento, 1911 San Bernardino, 1912 Orange, 1913 Anaheim, 1914 Long Beach, 1915 Los Angeles, 1916 San Francisco, 1917 San Diego, 1918 San Jose, 1919 Portland, 1920 Seattle, 1921 Denver, 1922 Salt Lake City, 1923 Phoenix, 1924 Tucson, 1925 Albuquerque, 1926 Las Vegas, 1927 Reno, 1928 Sacramento, 1929 San Bernardino, 1930 Orange, 1931 Anaheim, 1932 Long Beach, 1933 Los Angeles, 1934 San Francisco, 1935 San Diego, 1936 San Jose, 1937 Portland, 1938 Seattle, 1939 Denver, 1940 Salt Lake City, 1941 Phoenix, 1942 Tucson, 1943 Albuquerque, 1944 Las Vegas, 1945 Reno, 1946 Sacramento, 1947 San Bernardino, 1948 Orange, 1949 Anaheim, 1950 Long Beach, 1951 Los Angeles, 1952 San Francisco, 1953 San Diego, 1954 San Jose, 1955 Portland, 1956 Seattle, 1957 Denver, 1958 Salt Lake City, 1959 Phoenix, 1960 Tucson, 1961 Albuquerque, 1962 Las Vegas, 1963 Reno, 1964 Sacramento, 1965 San Bernardino, 1966 Orange, 1967 Anaheim, 1968 Long Beach, 1969 Los Angeles, 1970 San Francisco, 1971 San Diego, 1972 San Jose, 1973 Portland, 1974 Seattle, 1975 Denver, 1976 Salt Lake City, 1977 Phoenix, 1978 Tucson, 1979 Albuquerque, 1980 Las Vegas, 1981 Reno, 1982 Sacramento, 1983 San Bernardino, 1984 Orange, 1985 Anaheim, 1986 Long Beach, 1987 Los Angeles, 1988 San Francisco, 1989 San Diego, 1990 San Jose, 1991 Portland, 1992 Seattle, 1993 Denver, 1994 Salt Lake City, 1995 Phoenix, 1996 Tucson, 1997 Albuquerque, 1998 Las Vegas, 1999 Reno, 2000 Sacramento, 2001 San Bernardino, 2002 Orange, 2003 Anaheim, 2004 Long Beach, 2005 Los Angeles, 2006 San Francisco, 2007 San Diego, 2008 San Jose, 2009 Portland, 2010 Seattle, 2011 Denver, 2012 Salt Lake City, 2013 Phoenix, 2014 Tucson, 2015 Albuquerque, 2016 Las Vegas, 2017 Reno, 2018 Sacramento, 2019 San Bernardino, 2020 Orange, 2021 Anaheim, 2022 Long Beach, 2023 Los Angeles, 2024 San Francisco, 2025 San Diego, 2026 San Jose, 2027 Portland, 2028 Seattle, 2029 Denver, 2030 Salt Lake City, 2031 Phoenix, 2032 Tucson, 2033 Albuquerque, 2034 Las Vegas, 2035 Reno, 2036 Sacramento, 2037 San Bernardino, 2038 Orange, 2039 Anaheim, 2040 Long Beach, 2041 Los Angeles, 2042 San Francisco, 2043 San Diego, 2044 San Jose, 2045 Portland, 2046 Seattle, 2047 Denver, 2048 Salt Lake City, 2049 Phoenix, 2050 Tucson, 2051 Albuquerque, 2052 Las Vegas, 2053 Reno, 2054 Sacramento, 2055 San Bernardino, 2056 Orange, 2057 Anaheim, 2058 Long Beach, 2059 Los Angeles, 2060 San Francisco, 2061 San Diego, 2062 San Jose, 2063 Portland, 2064 Seattle, 2065 Denver, 2066 Salt Lake City, 2067 Phoenix, 2068 Tucson, 2069 Albuquerque, 2070 Las Vegas, 2071 Reno, 2072 Sacramento, 2073 San Bernardino, 2074 Orange, 2075 Anaheim, 2076 Long Beach, 2077 Los Angeles, 2078 San Francisco, 2079 San Diego, 2080 San Jose, 2081 Portland, 2082 Seattle, 2083 Denver, 2084 Salt Lake City, 2085 Phoenix, 2086 Tucson, 2087 Albuquerque, 2088 Las Vegas, 2089 Reno, 2090 Sacramento, 2091 San Bernardino, 2092 Orange, 2093 Anaheim, 2094 Long Beach, 2095 Los Angeles, 2096 San Francisco, 2097 San Diego, 2098 San Jose, 2099 Portland, 2100 Seattle, 2101 Denver, 2102 Salt Lake City, 2103 Phoenix, 2104 Tucson, 2105 Albuquerque, 2106 Las Vegas, 2107 Reno, 2108 Sacramento, 2109 San Bernardino, 2110 Orange, 2111 Anaheim, 2112 Long Beach, 2113 Los Angeles, 2114 San Francisco, 2115 San Diego, 2116 San Jose, 2117 Portland, 2118 Seattle, 2119 Denver, 2120 Salt Lake City, 2121 Phoenix, 2122 Tucson, 2123 Albuquerque, 2124 Las Vegas, 2125 Reno, 2126 Sacramento, 2127 San Bernardino, 2128 Orange, 2129 Anaheim, 2130 Long Beach, 2131 Los Angeles, 2132 San Francisco, 2133 San Diego, 2134 San Jose, 2135 Portland, 2136 Seattle, 2137 Denver, 2138 Salt Lake City, 2139 Phoenix, 2140 Tucson, 2141 Albuquerque, 2142 Las Vegas, 2143 Reno, 2144 Sacramento, 2145 San Bernardino, 2146 Orange, 2147 Anaheim, 2148 Long Beach, 2149 Los Angeles, 2150 San Francisco, 2151 San Diego, 2152 San Jose, 2153 Portland, 2154 Seattle, 2155 Denver, 2156 Salt Lake City, 2157 Phoenix, 2158 Tucson, 2159 Albuquerque, 2160 Las Vegas, 2161 Reno, 2162 Sacramento, 2163 San Bernardino, 2164 Orange, 2165 Anaheim, 2166 Long Beach, 2167 Los Angeles, 2168 San Francisco, 2169 San Diego, 2170 San Jose, 2171 Portland, 2172 Seattle, 2173 Denver, 2174 Salt Lake City, 2175 Phoenix, 2176 Tucson, 2177 Albuquerque, 2178 Las Vegas, 2179 Reno, 2180 Sacramento, 2181 San Bernardino, 2182 Orange, 2183 Anaheim, 2184 Long Beach, 2185 Los Angeles, 2186 San Francisco, 2187 San Diego, 2188 San Jose, 2189 Portland, 2190 Seattle, 2191 Denver, 2192 Salt Lake City, 2193 Phoenix, 2194 Tucson, 2195 Albuquerque, 2196 Las Vegas, 2197 Reno, 2198 Sacramento, 2199 San Bernardino, 2200 Orange, 2201 Anaheim, 2202 Long Beach, 2203 Los Angeles, 2204 San Francisco, 2205 San Diego, 2206 San Jose, 2207 Portland, 2208 Seattle, 2209 Denver, 2210 Salt Lake City, 2211 Phoenix, 2212 Tucson, 2213 Albuquerque, 2214 Las Vegas, 2215 Reno, 2216 Sacramento, 2217 San Bernardino, 2218 Orange, 2219 Anaheim, 2220 Long Beach, 2221 Los Angeles, 2222 San Francisco, 2223 San Diego, 2224 San Jose, 2225 Portland, 2226 Seattle, 2227 Denver, 2228 Salt Lake City, 2229 Phoenix, 2230 Tucson, 2231 Albuquerque, 2232 Las Vegas, 2233 Reno, 2234 Sacramento, 2235 San Bernardino, 2236 Orange, 2237 Anaheim, 2238 Long Beach, 2239 Los Angeles, 2240 San Francisco, 2241 San Diego, 2242 San Jose, 2243 Portland, 2244 Seattle, 2245 Denver, 2246 Salt Lake City, 2247 Phoenix, 2248 Tucson, 2249 Albuquerque, 2250 Las Vegas, 2251 Reno, 2252 Sacramento, 2253 San Bernardino, 2254 Orange, 2255 Anaheim, 2256 Long Beach, 2257 Los Angeles, 2258 San Francisco, 2259 San Diego, 2260 San Jose, 2261 Portland, 2262 Seattle, 2263 Denver, 2264 Salt Lake City, 2265 Phoenix, 2266 Tucson, 2267 Albuquerque, 2268 Las Vegas, 2269 Reno, 2270 Sacramento, 2271 San Bernardino, 2272 Orange, 2273 Anaheim, 2274 Long Beach, 2275 Los Angeles, 2276 San Francisco, 2277 San Diego, 2278 San Jose, 2279 Portland, 2280 Seattle, 2281 Denver, 2282 Salt Lake City, 2283 Phoenix, 2284 Tucson, 2285 Albuquerque, 2286 Las Vegas, 2287 Reno, 2288 Sacramento, 2289 San Bernardino, 2290 Orange, 2291 Anaheim, 2292 Long Beach, 2293 Los Angeles, 2294 San Francisco, 2295 San Diego, 2296 San Jose, 2297 Portland, 2298 Seattle, 2299 Denver, 2300 Salt Lake City, 2301 Phoenix, 2302 Tucson, 2303 Albuquerque, 2304 Las Vegas, 2305 Reno, 2306 Sacramento, 2307 San Bernardino, 2308 Orange, 2309 Anaheim, 2310 Long Beach, 2311 Los Angeles, 2312 San Francisco, 2313 San Diego, 2314 San Jose, 2315 Portland, 2316 Seattle, 2317 Denver, 2318 Salt Lake City, 2319 Phoenix, 2320 Tucson, 2321 Albuquerque, 2322 Las Vegas, 2323 Reno, 2324 Sacramento, 2325 San Bernardino, 2326 Orange, 2327 Anaheim, 2328 Long Beach, 2329 Los Angeles, 2330 San Francisco, 2331 San Diego, 2332 San Jose, 2333 Portland, 2334 Seattle, 2335 Denver, 2336 Salt Lake City, 2337 Phoenix, 2338 Tucson, 2339 Albuquerque, 2340 Las Vegas, 2341 Reno, 2342 Sacramento, 2343 San Bernardino, 2344 Orange, 2345 Anaheim, 2346 Long Beach, 2347 Los Angeles, 2348 San Francisco, 2349 San Diego, 2350 San Jose, 2351 Portland, 2352 Seattle, 2353 Denver, 2354 Salt Lake City, 2355 Phoenix, 2356 Tucson, 2357 Albuquerque, 2358 Las Vegas, 2359 Reno, 2360 Sacramento, 2361 San Bernardino, 2362 Orange, 2363 Anaheim, 2364 Long Beach, 2365 Los Angeles, 2366 San Francisco, 2367 San Diego, 2368 San Jose, 2369 Portland, 2370 Seattle, 2371 Denver, 2372 Salt Lake City, 2373 Phoenix, 2374 Tucson, 2375 Albuquerque, 2376 Las Vegas, 2377 Reno, 2378 Sacramento, 2379 San Bernardino, 2380 Orange, 2381 Anaheim, 2382 Long Beach, 2383 Los Angeles, 2384 San Francisco, 2385 San Diego, 2386 San Jose, 2387 Portland, 2388 Seattle, 2389 Denver, 2390 Salt Lake City