

The Kenya Development... THE LEGISLATIVE COUNCIL SESSION RESUMED YESTERDAY.

THE HERBERTS

LEGISLATIVE COUNCIL SESSION RESUMED YESTERDAY.

The 1925 Estimates Introduced.

MEMBERS BEG CONGRATULATE GOVERNMENT ON THE PROPOSALS.

Lord Deane's Reply to HEZ's Speech.

GOVERNMENT PROPOSALS MUST NOT LEAD TO AN INCREASE IN TAXATION.

Members of the Legislative Council... The 1925 Estimates... Lord Deane's Reply to HEZ's Speech...

BRITISH EXPLANATION TO CHINA.

Sympathy With Ten Motions.

HOPES FOR THE FUTURE.

[By Wireless]... The British Government... Hopes for the future...

DEVELOPMENT IN FLAG GUARD.

Another Pen-Picture of the Horse Guards.

THE LAST MARCH PAST.

[By Wireless]... The Horse Guards... The last march past...

ANIMAL-BEARING RESEARCH.

Hudsons Envoys to the University.

ROBBER OWNERS' GIFT.

[By Wireless]... Hudsons Envoys... Robber owners' gift...

IMPERIAL CONFERENCE IN LONDON.

Arrival of Canadian Premier.

Arrival of Canadian Premier.

At Nizable Professor.

DEATH OF HENRI NAVILLE DOTTOROLOGIST.

At Nizable Professor.

Common Fighting.

RUSSIA WATER BAPTISM AN ABERRATION.

Common Fighting.

Common Fighting.

Common Fighting.

Common Fighting.

Common Fighting.

Common Fighting.

Common Fighting.

Common Fighting.

Common Fighting.

Common Fighting.

IMPERIAL CONFERENCE IN LONDON.

Arrival of Canadian Premier.

Arrival of Canadian Premier.

At Nizable Professor.

DEATH OF HENRI NAVILLE DOTTOROLOGIST.

At Nizable Professor.

Common Fighting.

RUSSIA WATER BAPTISM AN ABERRATION.

Common Fighting.

Common Fighting.

Common Fighting.

Common Fighting.

Common Fighting.

Common Fighting.

Common Fighting.

Common Fighting.

Common Fighting.

Common Fighting.

ANIMAL-BEARING RESEARCH.

Hudsons Envoys to the University.

ROBBER OWNERS' GIFT.

ANIMAL-BEARING RESEARCH.

Hudsons Envoys to the University.

ROBBER OWNERS' GIFT.

ANIMAL-BEARING RESEARCH.

Hudsons Envoys to the University.

ROBBER OWNERS' GIFT.

ANIMAL-BEARING RESEARCH.

Hudsons Envoys to the University.

ROBBER OWNERS' GIFT.

ANIMAL-BEARING RESEARCH.

Hudsons Envoys to the University.

ROBBER OWNERS' GIFT.

ANIMAL-BEARING RESEARCH.

Hudsons Envoys to the University.

ROBBER OWNERS' GIFT.

WHITEAW

Visitors to our Store... Have received Huge New Stock of Selected Goods

AT

Displays of all that is new from the London and Continental markets is a feature during our Show week

Don't fail to see :-

NEW DRESS GOODS, Bordered and Plain Light weight Wool Maroon, N in Silk Bourette, New Designs Maroon.

NEW PULOVERS, Men's Cashmere & Grey Flannels, Men's Gingham

LADIES' HOSIERY, You must see the brand of Ladies all silk Hosiery

WHITEAW

NAIROBI.

A NEW METHOD OF PROBLEM

Keeping a Car and Keeping His Friends.

SPECIAL INSTRUCTIONS BROUGHT WITH THE CAR.

Mr. Moore F. A. C. Fisher-Lynch, P. O. 6, (Author of "My Car to You")

One day, no doubt, some horse of fellow will write a lengthy treatise

THE NEW METHOD OF PROBLEM

KEEPING A CAR AND KEEPING HIS FRIENDS.

SPECIAL INSTRUCTIONS BROUGHT WITH THE CAR.

Mr. Moore F. A. C. Fisher-Lynch, P. O. 6, (Author of "My Car to You")

One day, no doubt, some horse of fellow will write a lengthy treatise

THE NEW METHOD OF PROBLEM

KEEPING A CAR AND KEEPING HIS FRIENDS.

SPECIAL INSTRUCTIONS BROUGHT WITH THE CAR.

Mr. Moore F. A. C. Fisher-Lynch, P. O. 6, (Author of "My Car to You")

One day, no doubt, some horse of fellow will write a lengthy treatise

THE NEW METHOD OF PROBLEM

KEEPING A CAR AND KEEPING HIS FRIENDS.

SPECIAL INSTRUCTIONS BROUGHT WITH THE CAR.

Mr. Moore F. A. C. Fisher-Lynch, P. O. 6, (Author of "My Car to You")

One day, no doubt, some horse of fellow will write a lengthy treatise

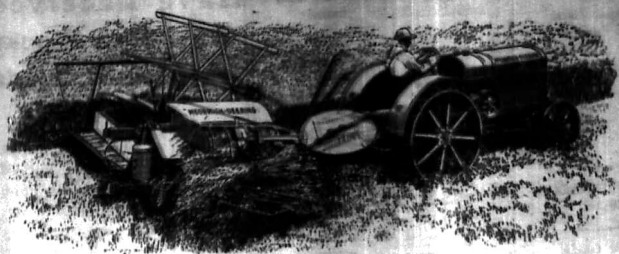
THE NEW METHOD OF PROBLEM

KEEPING A CAR AND KEEPING HIS FRIENDS.

SPECIAL INSTRUCTIONS BROUGHT WITH THE CAR.

Mr. Moore F. A. C. Fisher-Lynch, P. O. 6, (Author of "My Car to You")

One day, no doubt, some horse of fellow will write a lengthy treatise



A binder is shown here, its mechanism being operated by the power take-off of the McCormick-Deering Tractor.

Do You Know About the McCormick-Deering Power Take-Off?

Besides the belt and drawbar McCormick-Deering Tractors have a third power source—the power take-off, for running the mechanism of binders, maize-pickers, harvester-threshers, etc., direct from the tractor engine. This handy properly located, properly protected, power take-off always runs at the same speed whether the tractor is in high or low. It can be operated when the tractor is standing still, so a pulled machine can be cleared if clogged. It is gear driven. It runs at a uniform speed. The McCormick-Deering is the original triple-power tractor.

McCormick-Deering tractors are specially designed to operate by means of their power take-off the following equipment

- 16-20 tractor 2366
- 18-20 tractor 2366
- 16-40 Harrow land tractor, for ploughing and cultivating between rows of coffee and tea 2366

- McCormick-Deering Binder
- McCormick-Deering Harvester-Thresher
- McCormick-Deering Maize Picker

If you are farming in maize or wheat the McCormick-Deering tractor is indispensable to you.

Gillilan & Company, Ltd.
D I S T R I B U T O R S .

THE MOTOR HOME.

These, perhaps the most novel of all, is known as the "motor home." It will house the lawless individual who has the "motor home" in his mind. It is the most recently created machine of its kind. It is a motor home, but it is also a motor home. It is a motor home, but it is also a motor home. It is a motor home, but it is also a motor home.

AERTEX

TYZAMA SUITS

UNDERWEAR DRAWERS

AND COMBINATIONS AT VERY LOW PRICES.

Obtained from—

ALIBHAI & Co.

Talwar and Co., Calcutta, Bombay, Madras.

CLAIRMON

Next Dance

will be held

Saturday, 23rd October

at 9 p.m.

MUSIC BY HEAD'S DANCER BAND.

Tickets: Double, 15/0. Single, 7/6, including light refreshments.

Will your shirt face laundry?

If it is a Constatel shirt, you can be sure that it is a Constatel shirt. It is a Constatel shirt. It is a Constatel shirt. It is a Constatel shirt.

Ask your tailor for the Constatel shirt.

Consulate

The TAILORED with the Coat Suit

Stocked by all Good Outfitters

SHAN IN MIND

You can always count on

RAINFOATS

Supplied by

M. P. de Mello,
R.O. Box 214, Malindi.

ENLARGEMENTS

2'

MAT

TYPEWRITING.

All Classes of Typewriting undertaken at

MODERATE RATES.

Society Confidential

J. WILCOX,
215, High Street, MALINDI.

MISS KATHLEEN BATES, AI

PARAPORT, SHIRAZ, BANABET, TEBERT

ABRAL CULTURE.

At her Studio of Music, Gendun Building, Sixth Avenue

REPS HAIN FORTS, L.A.M.,

MELODY ROYALTY

It open to receive engagements Concerts, All Events, and also to give lessons in Voice Production and Eloquence above Studio.

Postal Address: Box 417, Malindi.

STANDARD EDITION.
 THE DAILY STANDARD...
 Published daily, except on Sundays and public holidays.
 Price 1/6 per copy.
 Annual subscription, 18/- in advance.
 Single copies, 1/6.
 Telephone 411.
 115, Market Street, NAIROBI.

SITUATIONS WANTED.
 FRENCH woman experienced in bookbinding, wants post in local or foreign country. Apply Vendor No. 4009, Standard, Nairobi.
 YOUNG single man (European) who is not afraid of work, wants a situation. Has a good knowledge of office work, a French officer work. Willing to accept reasonable remuneration. Apply Vendor No. 4004, Standard, Nairobi.
 YOUNG Lady, single, wishes to be employed in a respectable household position. Apply Vendor No. 4000, Standard, Nairobi.

WANTED.
 Mechanical Engineer...
 Mechanical Engineer, with 15 years' experience in the design and construction of machinery, wants a situation. Has a good knowledge of office work, a French officer work. Willing to accept reasonable remuneration. Apply Vendor No. 4004, Standard, Nairobi.
 YOUNG Lady, single, wishes to be employed in a respectable household position. Apply Vendor No. 4000, Standard, Nairobi.

DEPARTMENT OF AGRICULTURE.
 Venues post for Assistant Agricultural Officers. Salary K 400 to K 600 per annum. Applications to be sent to the Director of Agriculture, Nairobi, on or before 15th November 1926.

TO LET.
 LIGHT and spacious office in the city. Apply E. A. Standard, Ltd., Nairobi.
 F. Delightful grounds on Marborough Road, river at both ends, property, three rooms, bathroom with shower, standard, Apply Vendor No. 4076, Standard, Nairobi.
FOUND.
 A Gun shop in Nairobi where you can buy Mauser and Mauser Rifle cheaper than in England, Shill and Hunter. See 10.

MISCELLANEOUS.
 LADY requiring Highland about end November via Nile valley. Apply Vendor No. 4076, Standard, Nairobi.
 FOOT SALE of 100 lbs. of excellent condition, good as new. Apply Vendor No. 4076, Standard, Nairobi.
BOARD & RESIDENCE.
 Accommodation for two gentlemen, suit two friends. Apply Vendor No. 4076, Standard, Nairobi.
 LADY requiring Highland about end November via Nile valley. Apply Vendor No. 4076, Standard, Nairobi.

WANTED.
 A GREAT deal of Dupuy...
 Showmen and Typewriting...
 PUBLISHED: Home wanted...
 PUBLISHED: Home wanted...
 PUBLISHED: Home wanted...

OUR SPECIALITY
SAWN TIMBER.
TO SETTLERS. **TO BUILDERS.** **TO EVERY BODY.**
 There are always REPAIRS waiting to be done in buildings.
 SPECIAL OFFER.
 Ten and 4 ton lots of short length FODD, mixed dimensions. 100 lbs. per ton. 1000 ft. per lot. Cash with order.
 SHIP RENTING EXPANDED METAL for Concrete and Paving.
 21 Quaker per sq. Yards. Nairobi.

EXCURSIONS TO DURBAN
 During: December, 1926, January and February, 1927.
 First and Second Class Excursion Return tickets (Available for Two Months) will be issued by the Union-Castle Line and the British-India Line at the following rates:—
UNION-CASTLE LINE.
 1st Class "A" Grade £25 7/0
 1st Class "B" Grade £25 0/0
 2nd Class "A" Grade £25 0/0
 2nd Class "B" Grade £25 0/0
BRITISH-INDIA LINE.
 First Class £30 0/0
 Second Class £25 0/0
 Third Class £20 0/0
 It is arranged that the Union-Castle Line will issue to Excursionists return tickets at single fare from Nairobi and any station or port between Nairobi and Uganda. These rail tickets will be available for three months, and will be issued on production of a certificate from the shipping companies that applicants have purchased Ocean Excursion Tickets.
SAILING: December 1926, January and February 1927.
MEMORANDA TO DURBAN.
 About 28th December to 30th December: "LAFRANCE CADET"
 About 31st December to 2nd January: "KALAMIA"
 About 3rd January to 5th January: "KALAMIA"
 About 6th January to 8th January: "KALAMIA"
 About 9th January to 11th January: "KALAMIA"
 About 12th January to 14th January: "KALAMIA"
 About 15th January to 17th January: "KALAMIA"
 About 18th January to 20th January: "KALAMIA"
 About 21st January to 23rd January: "KALAMIA"
 About 24th January to 26th January: "KALAMIA"
 About 27th January to 29th January: "KALAMIA"
THE UNION-CASTLE MAIL S. S. Co., Ltd. KILINDINI. Tel. Adm.: "Quinette."
THE BRITISH-INDIA S. N. Co., Ltd. KILINDINI. Tel. Adm.: "Mushamba."

"KOLOK"
 Typewriter, Pen & Pencil Carbons, Stamp Pads & Pad Ink.
AFRICAN GUARANTEE & BENNETT CO., Ltd.
 M. D. KAMBER, CHIEF AGENT.
 Temporary Office: CUTTING CENTRE, NAIROBI.
TRINIS RACKETEERS. Sewing: MAY & Co., by EXPERT STYLISTS.

TAWS LTD., Stationers, NAIROBI. Phone 141.
 STAMPA PAD
 STAMPA PAD
 STAMPA PAD

All Wool Blankets FURNITURE
WINNEY BLANKET 30' x 45' 17 50 pair
WINNEY BLANKET 40' x 45' 22 50 pair
WINNEY BLANKET 10' 4 for Single Bed. 47 50 pair
WINNEY BLANKET 12' 4 for Double Bed. 67 50 pair
THE THAMES ALL WOOL BLANKET IN PEARL AND MAUVE SHADES, ENDS ARE BOUND WITH Size 60" x 90" 50 each
THE ARGENTIA ALL WOOL BLANKET IN GREENFORD ALL WOOL BLANKET IN FAWN ONLY SIZE 60 x 90 45 each
THE DORIA ALL WOOL BLANKET IN FAWN ONLY Size 64" x 74" 12 50, 74" x 94" 32 50
THE ARGENTIA ALL WOOL BLANKET IN SILVER GREY SHADE 64" x 74" 18 75
LARGE ASSORTMENT OF ALL WOOL TRAVELLING RUGS IN PLEASING CHECKS AND ASSORTED SHEDS 17 50 to 47 50
WHITE OOTON BLANKETS, Single size. 18 50 pair
RED ROOM BOOKCASE WITH FIVE SPACES, HEAVY DESIGNED FANCY BASE AND TOP 15' WIDTH 37 50 24" WIDTH 70/-
FLAT TOP BOOKCASE MADE OF SEASONED TIMBER AND STAINED AND POLISHED TO ANY SHADE 75 50
4' high, 3' wide, 10" deep 85/-
4' 6" high, 3' 6" wide, 10" deep 85/-
REVOLVING BOOKCASE WITH EIGHT COMPARTMENTS, Size of top 26" x 22" 85/-
LIBRARY BOOKCASE 6' WIDE, CENTER PORTION WITH LEAD LIGHT DOOR 275 50
AS ABOVE WITH PANELLED DOOR 237 50
WRITING BUREAU WITH THREE LONG AND TWO SMALL DRAWERS, TOP PORTION FITTED WITH PIGEON HOLES and FLAT 197 50
WRITING BUREAU AS ABOVE BUT WITH FOUR LONG DRAWERS and CIRCULAR LEGS, PRICE 247 50

Hutchings, Biemer & Co., Ltd., 45 DISCOUNT FOR CASH WITH ORDER. MONTHLY ACCOUNTS WITH APPROVED CUSTOMERS.

THE EUROPEAN AND AFRICAN TRADE ORGANIZATION

REGISTRATION FEE

For each European Required Shs. 50/-
For each Non-European Required Shs. 10/-
For each Native Required Shs. 5/-

MEMBERS SEEKING EMPLOYMENT will continue to receive the services of the Organization FREE OF CHARGE.

The "Bijou" Sheller

Sole Agents:
J. W. MULLIGAN & CO., NAIROBI

P.O. Box 148.

Genuine Clearance Sale.

Examples of our value:-

- Shs. 15/- A real Arctex Tennis Shirt
- Shs. 11/- Wash Wooling Blankets 60 x 90
- Shs. 7/- Men's Sola Hats
- Shs. 6/- Linen Crochet Thread, per doz.
- Shs. 5/- Genuine Rubber Soles and Heels, per set.

Many other bargains to pick up.

M. R. de Souza & Co.

General Merchants and Ladies, Gents and Children's Outfitters.

Govt. Road. Phone 75.

P.O. Box 190.

THE HOUSE BILLS

The Finance Bill, which was introduced in the House of Representatives on the 14th inst., is the most important measure of the Government's financial policy for the year 1936. It provides for an increase in the income tax on salaries and wages from 10 to 15 per cent, and for a reduction in the rate of interest on Government securities from 10 to 8 per cent. It also provides for a reduction in the rate of interest on the public debt from 10 to 8 per cent, and for a reduction in the rate of interest on the public debt from 10 to 8 per cent.

MR. HALL

Mr. Hall (Unionist) inquired whether the Government intended to introduce a Bill to amend the Income Tax Act, 1935, so as to provide for a reduction in the rate of interest on Government securities from 10 to 8 per cent, and for a reduction in the rate of interest on the public debt from 10 to 8 per cent.

THE NEW TAXES

With regard to the new taxes, the Government has announced that it will introduce a Bill to amend the Income Tax Act, 1935, so as to provide for a reduction in the rate of interest on Government securities from 10 to 8 per cent, and for a reduction in the rate of interest on the public debt from 10 to 8 per cent.

THE HOUSE BILLS

The Finance Bill, which was introduced in the House of Representatives on the 14th inst., is the most important measure of the Government's financial policy for the year 1936. It provides for an increase in the income tax on salaries and wages from 10 to 15 per cent, and for a reduction in the rate of interest on Government securities from 10 to 8 per cent. It also provides for a reduction in the rate of interest on the public debt from 10 to 8 per cent, and for a reduction in the rate of interest on the public debt from 10 to 8 per cent.

MR. HALL

Mr. Hall (Unionist) inquired whether the Government intended to introduce a Bill to amend the Income Tax Act, 1935, so as to provide for a reduction in the rate of interest on Government securities from 10 to 8 per cent, and for a reduction in the rate of interest on the public debt from 10 to 8 per cent.

THE HOUSE BILLS

The Finance Bill, which was introduced in the House of Representatives on the 14th inst., is the most important measure of the Government's financial policy for the year 1936. It provides for an increase in the income tax on salaries and wages from 10 to 15 per cent, and for a reduction in the rate of interest on Government securities from 10 to 8 per cent. It also provides for a reduction in the rate of interest on the public debt from 10 to 8 per cent, and for a reduction in the rate of interest on the public debt from 10 to 8 per cent.

THE HOUSE BILLS

The Finance Bill, which was introduced in the House of Representatives on the 14th inst., is the most important measure of the Government's financial policy for the year 1936. It provides for an increase in the income tax on salaries and wages from 10 to 15 per cent, and for a reduction in the rate of interest on Government securities from 10 to 8 per cent. It also provides for a reduction in the rate of interest on the public debt from 10 to 8 per cent, and for a reduction in the rate of interest on the public debt from 10 to 8 per cent.

MR. HALL

Mr. Hall (Unionist) inquired whether the Government intended to introduce a Bill to amend the Income Tax Act, 1935, so as to provide for a reduction in the rate of interest on Government securities from 10 to 8 per cent, and for a reduction in the rate of interest on the public debt from 10 to 8 per cent.

THE HOUSE BILLS

The Finance Bill, which was introduced in the House of Representatives on the 14th inst., is the most important measure of the Government's financial policy for the year 1936. It provides for an increase in the income tax on salaries and wages from 10 to 15 per cent, and for a reduction in the rate of interest on Government securities from 10 to 8 per cent. It also provides for a reduction in the rate of interest on the public debt from 10 to 8 per cent, and for a reduction in the rate of interest on the public debt from 10 to 8 per cent.

THE HOUSE BILLS

The Finance Bill, which was introduced in the House of Representatives on the 14th inst., is the most important measure of the Government's financial policy for the year 1936. It provides for an increase in the income tax on salaries and wages from 10 to 15 per cent, and for a reduction in the rate of interest on Government securities from 10 to 8 per cent. It also provides for a reduction in the rate of interest on the public debt from 10 to 8 per cent, and for a reduction in the rate of interest on the public debt from 10 to 8 per cent.

MR. HALL

Mr. Hall (Unionist) inquired whether the Government intended to introduce a Bill to amend the Income Tax Act, 1935, so as to provide for a reduction in the rate of interest on Government securities from 10 to 8 per cent, and for a reduction in the rate of interest on the public debt from 10 to 8 per cent.

THE HOUSE BILLS

The Finance Bill, which was introduced in the House of Representatives on the 14th inst., is the most important measure of the Government's financial policy for the year 1936. It provides for an increase in the income tax on salaries and wages from 10 to 15 per cent, and for a reduction in the rate of interest on Government securities from 10 to 8 per cent. It also provides for a reduction in the rate of interest on the public debt from 10 to 8 per cent, and for a reduction in the rate of interest on the public debt from 10 to 8 per cent.

GIFTS OF QUALITY.

For Christmas (also from Nov. 25th to Dec. 31st)

For Christmas (also from Nov. 25th to Dec. 31st)

For Christmas (also from Nov. 25th to Dec. 31st)

E. DOBBIE.

WATCHMAKER, JEWELLER & OPTICIAN

Government Road, NAIROBI.

MOTOR CYCLES

We have the following new Motor Cycles and side cars in stock at prices as under.

HERE PURCHASE ARRANGED.

7.9 Harley Davidson	1,950/-
7.9 Harley Davidson with Sidecar	2,750/-
7.9 Raleigh with Sidecar and Electric light	1,850/-
7.9 Raleigh with Sidecar	1,650/-
7.9 Raleigh Solo	1,550/-
7.9 Raleigh O.H.V. Sports	1,450/-
2.48 Raleigh All chain, 3 speed	1,417/-
2.48 Raleigh All chain, 2 speed	1,300/-
2.48 Raleigh All chain, 2 speed	1,200/-

Prices do not include licence and tax.

All repairs executed by European only.

ALSO STEWART one ten Trucks complete with body for 7,000/-

Capital Garage

Duggan's Fire Station, Victoria St.

THE NEW SIX

Prices

Chassis £375

Other Models from £419

The New Six - Is Truly Hupmobile

PEOPLE have always wanted to say that they drove a Hupmobile. If that was true, they were possessed of refined taste, discrimination and a sense of values. But many also wanted to drive a Six.

There was only one thing to do. It did not show a Hupmobile Six. The New Hupmobile Six is a new combination of a powerful combination that we have never before. This New Hupmobile Six is a new combination of a powerful combination that we have never before. This New Hupmobile Six is a new combination of a powerful combination that we have never before.

Hupmobile

SIX CYLINDER

The Motor Mart & Exchange, Ltd.

NAIROBI **NAKURU**

SALES
Water and Oswald's Sales.
SALE by CATALOGUE of FURNITURE and EFFECTS.
 They instructed by various parties proceeding on leave, we shall sell, by public auction, without reserve, various valuable articles, of our Business, Station Furniture, (contracted by Law) on

ERIDAY 22nd OCTOBER at 9:30 a.m.
 WARDROBES in Teak, with bevelled mirrors. SIDEBOARD in Teak. MORNING ORATOR. PALMSTANDS. OCCASIONAL TABLES in Teak. BOOKCASE. Glass fronted, shelves. "TIFAN" TREADLE SEWING MACHINE (newest) BEATING GREATLY. WIRELESS TABLE. WAITING TABLE. Table Top, Drawers. No. 5 "DOVER" SEWING Machine with spring. WRITING TABLE, OAK and mahogany. WARDROBE in Teak, bevelled mirror. REVOLVING BOOKCASE. WRITING BUREAU. WARDROBE in Teak. WARDROBE. No. 1. No. 2. No. 3.
MUTER and OSWALD, Auctioneers, etc. NAIROBI.

Sale of Ladies Dresses at OUR MART
 Daily Instructed.
AUSTIN & Co.
 Will sell by AUCTION WITHOUT RESERVE
Thursday October 21st at 10:30
 Twenty Fascinating French Frocks in a variety of New and Original Textiles Patterns and Colours.
NOW ON VIEW.

Messrs. E. Hutchison & Co.
 Beg to inform the public that they have taken over the premises in Government Road lately occupied by the Stockbreeders Direct Meat Supply Co., where they will carry on business as Auctioneers, Land and Estate Agents and Mortgage Brokers.
Regular Auctions will be held and collection and delivery undertaken by our own transport.
E. Hutchison, AUCTIONEER

PRACTICAL COFFEE PLANTING.
 With Special Reference to Eastern Africa
 BY P. H. SPROTT.

A most useful and up-to-date publication illustrated with diagrams and sketches
Shs. 10/- Posted 10-80
Standard Stationery Stores NAIROBI

XMAS PRESENTS
 for
 Your Dear Ones and Friends
 ORIENTAL, UNIQUE, USEFUL & AFFORDABLE GIFTS.
 Select at
Leitchand Woolhead Bros. NAIROBI.
 P.O. Box 275. City Road.



Symington's Soups
 Ready to serve
 Made with the finest of herbs and best of ingredients. No artificial colors, no preservatives, no sugar. Pure, rich, and delicious soup and vegetable.

A VERY OLD FAVOURITE
BROWN'S "FOUR CROWN" OLD SCOTCH WHISKY
 We beg to advise that Messrs Robert Brown Limited have appointed us Agents for the sale of this very old Whisky. Stocks have arrived and we welcome and solicit your enquiries.

Blacklaws & Brown
 LARUE MACHINERY, Etc.
 Tel. No. 211. Box No. 468

JOHN BOYES
KING OF THE SHAKIKUYU. (1924. EDITION.)
 No other interesting book has been published for many years than this tabular record of an Englishman's conquest as a soldier in East Africa. It tells how he captured an almost insurmountable stronghold over the Kenya table, how he became their king, how he was captured and held for his life by his own country, and, finally, how he was acquitted.
Price Shs. 2/60, Posted Shs. 2-90
 Special Price to Dealers for Quantities.

STANDARD STATIONERY STORES NAIROBI

ONOTO
 The Self Filling Safety
PEN
Price Shs. 17/60, Posted Shs. 18-60
 SPARE PARTS IN STOCK.
Standard Stationery Stores NAIROBI.
 SIXTH AVENUE

POLYGON
INVISIBLE INK
 Superior Writing and an Ideal Fountain Pen Ink Guaranteed Fadeproof, Antisepic, Waterproof. Non-corrosive.
 Use it to protect your Cheques, Notes, Deeds and other Valuable Documents.
 Sufficient to make 40 ounces.
 Dissolves in water only, and is then ready for use.
Price Shs. 2/00 per Tin
Standard Stationery Stores

NEW NOVELS
 DAVID WILKING. By Michael Compton. Price Shs. 7/60; Posted Shs. 8/-.
 ADAM'S HEED. By Lady Lytton. Price Shs. 8/60; Posted Shs. 9/-.
 THE SKIRGE HAND. By Carolyn Wells. Price Shs. 7/60; Posted Shs. 8/6.
 THE AVENGER. By Edgar Wallace. Price Shs. 7/60; Posted Shs. 8/-.
 THE BLACK OWL. By William Le Queux. Price Shs. 7/-; Posted Shs. 7/60.
 THE HIGH ADVENTURE. By Jeffrey Farrol. Price Shs. 7/-; Posted Shs. 7/60.
 THE UNDERSTANDING HEART. By Peter B. Kyne. Price Shs. 7/60; Posted Shs. 8/-.
 THE KEY ABOVE THE DOOR. By Maurice Walsh. Price Shs. 7/60; Posted Shs. 8/-.
 SEA WHISPERS. By W. W. Jacobs. Price Shs. 7/60; Posted Shs. 8/-.
 WOLF. By Albert Payson Terhune. Price Shs. 7/60; Posted Shs. 8/-.
 GABRIEL SAMARA. By E. Phillips Oppenheim. Price Shs. 7/60; Posted Shs. 8/-.
 THE MYSTERY LADY. By Robert W. Chambers. Price Shs. 8/60; Posted Shs. 7/-.
 THE WAY OF STARS. By L. Adams Beck. Price Shs. 7/-; Posted Shs. 7/60.
 STORIES NEAR AND FAR. By William J. Locke. Price Shs. 7/60; Posted Shs. 7/60.
 THE DARK CURTAIN. By J. E. Buckrose. Price Shs. 7/60; Posted Shs. 7/60.
 NOT FOR A DAY. By Emmeline Morrison. Price Shs. 7/60; Posted Shs. 7/60.
 THE SILVER SPOON. By John Galsworthy. Price Shs. 7/60; Posted Shs. 7/60.
 NEPIA. By Owen Rutter. Price Shs. 7/60; Posted Shs. 8/-.
 LITTLE TIGER. By Anthony Hope. Price Shs. 7/60; Posted Shs. 7/60.
 THE MOATED GRANGE. By Katharine Tynnes. Price Shs. 7/-; Posted Shs. 7/60.
 ALSO A LARGE STOCK OF NOVELS BY POPULAR AUTHORS AT Shs. 2/50, 3/50 and 4/50. Postage extra.

Standard Stationery Store NAIROBI.

LIFE POLICIES
 We can show you the most favourable endowment policy offered in this country. Big bonuses—non-forfeitable policy.
NATIONAL MUTUAL LIFE ASSOCIATION of AMERICA
 Apply to KETTLES BOY LTD. Nairobi. P.O. Box 100.

Y.M.C.A. AND Residential Club
 AN IDEAL RESIDENCE FOR MEN.
 Large apartments and bungalows would have been situated along the new business street, but the new building stage, necessitating the use of the main hall, led and cold water supply tank, and electric power.
LOUNGE, BILLIARDS, LIBRARY.
 General Secretary and Manager: Rev. B. J. Kettlewell, E.R.S.O.
NOTICE.
 SHOOTING IS STRICTLY PROHIBITED ON THE FOLLOWING: NAIROBI RIVER PARKS. See Map at 45 47 48 49 50 51 52 53 54 55 56 57 58 59 60 61 62 63 64 65 66 67 68 69 70 71 72 73 74 75 76 77 78 79 80 81 82 83 84 85 86 87 88 89 90 91 92 93 94 95 96 97 98 99 100
DORRIS E. GAVE.

Used Cars for Sale
 BY FIFTEEN YEARS
 SUP. 4-Door 2000 cc. 1914. Fully equipped car in perfect condition. A motor for 2000 cc. 1914.
 OLDSMOBILE 4-Door 2000 cc. 1914. Fully equipped car in perfect condition. A motor for 2000 cc. 1914.
 DODGE 1914.—In perfect running order and ready to go.
 BUICK SIX BODY.—Condition perfect, sound and ready to go.
 WILLYS-Knight Six Body.—An exceptionally fine motor car for quick sale. 575.
 OVERLAND 4.—Engine perfect. Requires few adjustments for quick sale. 575.
 FORD—1912 Model, condition as new. 5100.
MOTOR STOLE, LORRAINE, etc.
 Bona Fide Burglars. Owners and Secure Out.
 The above are here and ready for inspection and sale.

The Service Company, Ltd. NAIROBI.
IMPORTANT
 TO
Farmers & Employers of Natives.
LABOUR CARDS:
 13 x 21 Shs. 6/50 per 1000
 8 x 21 Shs. 7/50 per 1000
MUSTER ROLLS:
 8 x 5 50 openings Shs. 9/50 each
 12 x 5 50 openings Shs. 6/50 each
 13 x 8 100 openings Shs. 12/- each
 13 x 8 200 openings Shs. 19/- each
SQUATTERS:
 Forms Shs. 5/- per 100
 Labour Register Shs. 6/- each
 Stock Registers Shs. 2/50 each
LABOUR ALLOCATION BOOKS:
 15 x 8 50 in duplicate Shs. 9/-
LABOUR RETURN FORMS IN BOOKS:
 Of 50 with Blank Duplicate Shs. 5/- each

Standard Stationery Store
 P.O. Box 380. Sixth Avenue, NAIROBI.

Land & Estate TO LET
4 Roomed House; Upper Hill. FOR SALE.
 Building Plot 1 acre 3rd Avenue Parklands. Coffee farm 5/4 miles Nairobi 302 acres, 70 acres full bearing another 90 acres planted, 6 roomed house, Orchard, Sheds, Tanks, machinery, etc., etc., take over as a running concern.
 Apply to—
DENOVAN & DIEBEL City House.
MADAME LEON
 To see list of and desire such examples on view at LEON'S
1st FLOOR, AFRICA HOUSE, ABOVE WARING'S GOVT. ROAD.

RALEIGH

 7 b p Combination with electric light 1,800/-
 7 b p Combination without 1,600/-
 7 b p Solo—with electric light 1,550/-
 7 b p Solo—without 1,450/-
 Prices do not include delivery and accessories.
ALSO LUBRICATING ELECTRICAL SERVICE SPARES
CAPITAL.
 Victoria St. Opp. Fire Station.
KETTLES-BOY, LTD., NAIROBI
 Manufacturers' Representatives.

**THEIR
STEEL WINDOW
HOPE'S**
HENRY HOPE & SONS LTD.
Sole Agents for E.A.S.
Beales & Smithson
P.O. Box 604



Delay means Decey

Do not delay the sale of your property until you are driven to the police. At Beales & Smithson, we are ready to buy your property at once and on the spot. We are ready to buy your property at once and on the spot. We are ready to buy your property at once and on the spot.

**A WORD TO THE WISE
IS ENOUGH.**

To equal the merits of **JACOB'S BISCUITS**,
Is to Paint the Lily.
W. and R. Jacob & Co. Ltd., were the originators of the Cream Cracker Biscuits, which is still unequalled in lightness, flakiness, and delicacy of flavour, although often imitated. Other specialities are: Royal Afternoon Tea, Selected Cheese assorted, Variety, Butler Puff, Cracknel, Marie, Petit Buis, Gingernut, Osborne, Nicos, etc., etc.
Local Representative,
J. H. CLARE,
Africa House, Government Road,
P.O. Box 199, NAIROBI.

ST. JOHN'S FEATURE PAGE

**THE FAITH OF ONE
New Day in Millard
for God's Sake.**

By Arthur Stewart
The more work of civilization
the more the people of the world
are becoming aware of the
fact that the only way to
solve the world's problems
is by the adoption of
the Christian religion.
The more the people of the world
are becoming aware of the
fact that the only way to
solve the world's problems
is by the adoption of
the Christian religion.

THEIR WAY PLAN
The more the people of the world
are becoming aware of the
fact that the only way to
solve the world's problems
is by the adoption of
the Christian religion.

JUDGMENT OF THE GREAT
The more the people of the world
are becoming aware of the
fact that the only way to
solve the world's problems
is by the adoption of
the Christian religion.

THEIR WAY PLAN
The more the people of the world
are becoming aware of the
fact that the only way to
solve the world's problems
is by the adoption of
the Christian religion.

**South African
and Malaya**

**TROUT FISHING
IN
SOUTH AFRICA**

In the past ten years Trout fishing has made
considerable headway in South Africa.

Many streams remain, which afford, after
sport of the highest class to fishermen of the
quaint art.

The open season extends from October to
April. Railway travel in South Africa is
convenient and facilities are of high standard.
Accommodation is good.

For particulars apply to—
**TRADE COMMISSIONER FOR THE UNION
OF SOUTH AFRICA,**
Memorial Hall,
P.O. Box 604 NAIROBI.

Notice.

We have great pleasure to announce that
we have a large stock of **White Sugar**
of the highest quality, which we are
selling at a special price. Further notice
shall be as follows—
Price per cwt. 1/10
Price per load of 50 lbs. 5/6

KANJI NARANJEE,
Government Road P.O. Box 257
Please ring No. 279. NAIROBI.

Short Loans Granted
£1 to £1000

CALL OR WRITE TO THE
Kenya Loan & Discount Co., Ltd
Court Chambers, (1st Floor)
2nd Flr, NAIROBI.
Bills Discounted. Strictest Confidence.

REZIN
TAILOR OF QUALITY

THE NAME THAT
INSPIRES CONFIDENCE

**GENTLEMEN'S
TAILORING**

IN ALL ITS BRANCHES

THE House of Rezin

**Case Tractor
DEMONSTRATION**



Following on successful trials held recently in Nairobi, a further demonstration will be given
**On Thursday and Friday, Oct. 21st and 22nd, at
NAKURU**
on Messrs. McCall & Lawries farm, Rongai Hill, only 500 yards from Kampiya Moto Station
(Solih Branch Railway).
Tractors will be in operation from 9.30 to 12 and 2 to 4 daily.

Sole Importers
K. McIVOR & Co.,
Sixth Avenue,
Nairobi.

P.O. Box 97.
Phone 97.

Telegrams:
"Afford".

FOUR-DAY

RESULTS OF PLANK OF CHAMPIONSHIP

RESULTS OF PLANK OF CHAMPIONSHIP

GRAMOPHONES AND RECORDS.

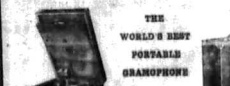
The Gramophone Co. Ltd. is pleased to have been awarded the title of Sole Distributors for Kenya...

Sole Distributors for Kenya.



THE NEW NEW A.M.V. TOBEAM AND BOUNDARY

This illustration shows the main features of the H.M.V. which have created such a great vogue of interest...



THE WORLD'S BEST PORTABLE GRAMOPHONE H.M.V.

This machine like all H.M.V. productions is one of perfect workmanship...



MODEL NO. 10

An entirely new machine with the latest improvements...



MODEL NO. 10A

A superb H.M.V. with 12 inch tone arm...

We Allow 5 per cent Cash Discount

FRED RAPER GENERAL COMMISSIONS AGENT

WATERPROOF CAPES A New Shipment Just Arrived.

HAVE YOU TRIED THE Hoston RUBBERIZED RUBBER?

Every bit of a H.M.V. and its 12 inch tone arm...

A. HOGG & COY. City Square, NAIROBI.

WEST AFRICAN GAMES will close end of November. Tickets 5/- each win and...

NEW IMPERIAL Famous Motor-Cycles Arrived

100 C.C. Twin & Lux, 500 Super, all chain, 3 speed...

T. A. SHERI GARAGE. Sole Selling Agent.

QUALITY GOODS.

To meet a persistent demand for quality goods we have added the following to our already complete range...

May & Co., THE SPORTS HOUSE.

J. R. Stephens & Co. Ltd. TAILORS AND OUTFITTERS

We have a very beautiful range of FINE POLLEN SHIRTS with two collars to each...

A PAPER BOX RACE AGAINST THE ANGLES.

Results of the Running competition of the Meeting.

STARTED KNOCK-OUT

FIRST ROUND.

SEMI-FINAL.

FINAL.

GAME SCHEDULE.

THE CAPTAIN'S PRIZE.

THE NEW NINE HOLS.

RAPID FIRE.

OPEN COMPETITION.

THE WORLD'S BEST PORTABLE GRAMOPHONE H.M.V.

MODEL NO. 10

MODEL NO. 10A

MODEL NO. 10B

MODEL NO. 10C

MODEL NO. 10D

MODEL NO. 10E

MODEL NO. 10F

MODEL NO. 10G

MODEL NO. 10H

MODEL NO. 10I

RESULTS OF PLANK OF CHAMPIONSHIP

The first round of the Plank of Championship...

Second round of the Plank of Championship...

Third round of the Plank of Championship...

Fourth round of the Plank of Championship...

Fifth round of the Plank of Championship...

Sixth round of the Plank of Championship...

Seventh round of the Plank of Championship...

Eighth round of the Plank of Championship...

Ninth round of the Plank of Championship...

Tenth round of the Plank of Championship...

Eleventh round of the Plank of Championship...

Twelfth round of the Plank of Championship...

Thirteenth round of the Plank of Championship...

Fourteenth round of the Plank of Championship...

Fifteenth round of the Plank of Championship...

Sixteenth round of the Plank of Championship...

Seventeenth round of the Plank of Championship...

Eighteenth round of the Plank of Championship...

Nineteenth round of the Plank of Championship...

Twentieth round of the Plank of Championship...

Twenty-first round of the Plank of Championship...

RESULTS OF PLANK OF CHAMPIONSHIP

The first round of the Plank of Championship...

Second round of the Plank of Championship...

Third round of the Plank of Championship...

Fourth round of the Plank of Championship...

Fifth round of the Plank of Championship...

Sixth round of the Plank of Championship...

Seventh round of the Plank of Championship...

Eighth round of the Plank of Championship...

Ninth round of the Plank of Championship...

Tenth round of the Plank of Championship...

Eleventh round of the Plank of Championship...

Twelfth round of the Plank of Championship...

Thirteenth round of the Plank of Championship...

Fourteenth round of the Plank of Championship...

Fifteenth round of the Plank of Championship...

Sixteenth round of the Plank of Championship...

Seventeenth round of the Plank of Championship...

Eighteenth round of the Plank of Championship...

Nineteenth round of the Plank of Championship...

Twentieth round of the Plank of Championship...

Twenty-first round of the Plank of Championship...

TIME FLIES ENTRIES FOR THE NAIROBI SHOW close on THURSDAY, NOVEMBER 4th. at the office of the Local Secretary of the Agricultural and Horticultural Society of Kenya, Nairobi. Show where you can get forms and Prize Lists can be obtained on application.

Printed and Published by: WEST AFRICAN STANDARD, Ltd., 2nd Floor, Nairobi, Kenya Colony.

Advantages and Disadvantages.

ADVANTAGES DISADVANTAGES.

Advantage every man, woman, and child can see. There are many reasons why a man should have a McCormick-Deering tractor. A man who has a McCormick-Deering tractor can do more work in less time, and with less expense. A man who has a McCormick-Deering tractor can do more work in less time, and with less expense. A man who has a McCormick-Deering tractor can do more work in less time, and with less expense.

Advantage every man, woman, and child can see. There are many reasons why a man should have a McCormick-Deering tractor. A man who has a McCormick-Deering tractor can do more work in less time, and with less expense. A man who has a McCormick-Deering tractor can do more work in less time, and with less expense. A man who has a McCormick-Deering tractor can do more work in less time, and with less expense.

Advantage every man, woman, and child can see. There are many reasons why a man should have a McCormick-Deering tractor. A man who has a McCormick-Deering tractor can do more work in less time, and with less expense. A man who has a McCormick-Deering tractor can do more work in less time, and with less expense. A man who has a McCormick-Deering tractor can do more work in less time, and with less expense.

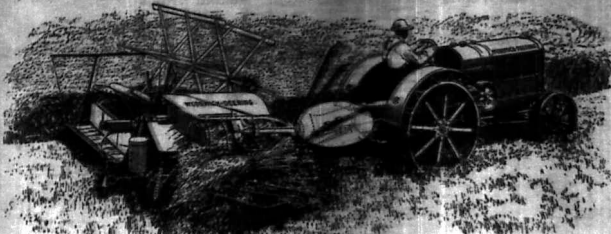
Advantage every man, woman, and child can see. There are many reasons why a man should have a McCormick-Deering tractor. A man who has a McCormick-Deering tractor can do more work in less time, and with less expense. A man who has a McCormick-Deering tractor can do more work in less time, and with less expense. A man who has a McCormick-Deering tractor can do more work in less time, and with less expense.

Advantage every man, woman, and child can see. There are many reasons why a man should have a McCormick-Deering tractor. A man who has a McCormick-Deering tractor can do more work in less time, and with less expense. A man who has a McCormick-Deering tractor can do more work in less time, and with less expense. A man who has a McCormick-Deering tractor can do more work in less time, and with less expense.

Advantage every man, woman, and child can see. There are many reasons why a man should have a McCormick-Deering tractor. A man who has a McCormick-Deering tractor can do more work in less time, and with less expense. A man who has a McCormick-Deering tractor can do more work in less time, and with less expense. A man who has a McCormick-Deering tractor can do more work in less time, and with less expense.

Advantage every man, woman, and child can see. There are many reasons why a man should have a McCormick-Deering tractor. A man who has a McCormick-Deering tractor can do more work in less time, and with less expense. A man who has a McCormick-Deering tractor can do more work in less time, and with less expense. A man who has a McCormick-Deering tractor can do more work in less time, and with less expense.

Advantage every man, woman, and child can see. There are many reasons why a man should have a McCormick-Deering tractor. A man who has a McCormick-Deering tractor can do more work in less time, and with less expense. A man who has a McCormick-Deering tractor can do more work in less time, and with less expense. A man who has a McCormick-Deering tractor can do more work in less time, and with less expense.



A binder is shown here, its mechanism being operated by the power take-off of the McCormick-Deering Tractor.

Do You Know About the McCormick-Deering Power Take-Off?

Besides the belt and drawbar McCormick-Deering Tractors have a third power source—the power take-off, for running the mechanism of binders, maize-pickers, harvester-threshers, etc., direct from the tractor engine. This handy properly located, properly protected, power take-off always runs at the same speed whether the tractor is in high or low. It can be operated when the tractor is standing still, so a pulled machine can be cleared if clogged. It is gear driven. It runs at a uniform speed. The McCormick-Deering is the original triple-power tractor.

McCormick-Deering tractors are specially designed to operate by means of their power take-off the following equipment

- 10-20 tractor \$350
- 15-20 tractor \$375
- 18-20 tractor \$400
- 22-20 tractor \$425

McCormick Deering Harvester
McCormick Deering Harvester Thresher
McCormick Deering Grain Puller

If you are farming in maize or wheat the McCormick-Deering tractor is indispensable to you.

Gillilan & Company, Ltd.
DISTRIBUTORS.

We think for the performance of the motor type of car, the most important feature is the power take-off. It is the power take-off that makes the car so useful and so convenient to operate.

In the latter days of automobile, we have really considerable tractors on the market. However, the great difference is in the power take-off. It is the power take-off that makes the car so useful and so convenient to operate.

While walking of wheels, it should be pointed out that the most serious source of exhaust is the engine. The engine is the most serious source of exhaust. The engine is the most serious source of exhaust.

Really, the few disadvantages which the motor type of car has, are not so serious and are not so important as the advantages. The advantages are the most important.

The new model which has just been introduced by the McCormick-Deering Company is a triple power tractor. It has a power take-off, a drawbar, and a belt.

A LIVE AXLE THREE TON CHASSIS.

The new model which has just been introduced by the McCormick-Deering Company is a triple power tractor. It has a power take-off, a drawbar, and a belt.

The new machine has an engine with a B. C. rating of 20 H. P. and develops 40 brake H. P. at 1800 revolutions. A four speed and reverse gearbox is standard, and the clutch, which is a multiple disc type, is of the high torque type. The other roller bearings are fitted to all road wheels, and to the top bearing of the shaft drive pivot shaft.

The frame length allows for a body 12' long, which is ample for most equipment. The front of this chassis are standardized, and the front end is standardized. The front end is standardized.

This high speed is necessary, generally, to give a maximum speed of 22 to 25 m. p. h. but for particular use conditions this speed may be increased to 30 m. p. h.

SAVOY HOTEL
The most comfortable place situated in the heart of the city of London.
GARDEN ROAD, THE BELL.
Close to Greenway Hotel, the
British Museum, Victoria Station, and
Old War Establishment, etc.
EXCELLENT RESTAURANT.
Extensive of London with South London.
Theatre Court and Palm Court in construction.
Monthly Dinner Room.
Telephone 2345.
J. R. LAMBOURN, Genl. Mgr.
P.O. Box 28.

AERTEX
FRENCH SUITS
UNDERWEAR, TIES, WAISTERS
AND COMBINATIONS AT VERY
LOW PRICES.
Obtain from—
ALIBON & Co.
Tailors and Outfitters,
MILNER Street, Glasgow.

CLAIRMONT
Next Dance
will be held
Saturday, 23rd October
at 9 p.m.
MUSIC BY HEAD'S DANCE BAND.
Tickets: Double, 15/0. Single, 7/0,
including light refreshments.

Will your shirt face the laundry?
IF it is a Consulate Shirt, the equipment does not matter. It is anticipated by the most business guarantee that has ever been given—that can ever be given about shirts in the wash.
Its pattern will stay the same; its colour will stay the same; its length, its girth, its cut, its texture—they will all stay the same. If it starts so, will it stay?
If it doesn't—we will replace it.
Ask your dealer to show you the Consulate range.

Consulate
THE TAILORED SHIRT with the Coat Sleeve.

Stocked by all Good Outfitters.

MISS KATHLEEN BATES, AGEN
15, GLENVIEW STREET, LONDON, W.1.
As the Studio of British Costume Builders, South Avenue, NEW BATH, BATH, S.W.1.
MEMO SOPRANO
It is open to receive engagements, Concerts, at London, etc., and also to give lessons in Vocal Production and Shouting at the same Studio.
Private Telephone No. 174, 175, 176.

GODILLOTT'S

FAMOUS
"A B C"

- ANCHOVIES IN OIL
- HOBS D'OEUVRES
- FRENCH MUSTARD
- PATE DE FOIE GRAS
- MUSHROOMS IN BOTTLES
- CHEERRIES FLAVOURED WITH MARASCHINO

AT ELLIOTS'

Phone 60 NAIROBI P.O. Box 175

OAKLEIGH PRIVATE HOTEL.

Continental and up-to-date in every way.
Up country visitors especially welcome.
Under the personal supervision of

MISS E. JARRETT. NAIROBI. P. O. Box 198.

Meghji Ahamed & Co.

(the oldest tentmakers in Kenya)
Ladies & Gents' Tailors, Tent and Sail Makers and General Outfitters.

Phone 158. Telegrams: "Tarpaulin" NAIROBI. P.O. Box 211.

Always in stock. At moderate prices:
Men's best with handkerchiefs and ties en suite.
Felt hats and double tiers in various colours.
Socks, stockings, cartriguns, jackets, sports coats, etc.
Pure wool suitings. White flannel and Gabardines for lewis trousers, etc. etc.

THE BARRISTER GENERAL.
Following is the changing personnel of the Executive Committee of the Chamber of Commerce and Industry on the resignation of Mr. J. G. M. ...

MR. MURPHY'S RESIGNATION.
Mr. MacLennan Wilson, who said that while he was personally in agreement with the Executive Committee through their own grave dangers that they were trying to hold the line in fact, but this twenty-four hours they were working as a body and a heavy and arduous and although he was not opposing that any resolution should be made, he would like to be placed on record. The one thing that was necessary they should be careful of the class of teachers. While useful work was being done, it was not the class of teachers that the Executive Committee had in mind.

CAPT. SCHWARTZ.
Capt. Schwartz (Shahid) Smith, and Ladies' Secretary with three items on the agenda for the day. The Ladies' Secretary who although one of the ladies, was received the recognition and vote of confidence and well-wishing courtesy.

EDUCATION.
Thirdly with regard to the education case. For a long time he had been trying to come to a conclusion as to how the issue and name of the Board should be handled. It is a pity that this matter is not yet settled. It is a pity that the Government has not yet decided on the matter. It is a pity that the Government has not yet decided on the matter.

MR. STANLEY'S RESIGNATION.
The Treasurer, Mr. Stanley, resigned his office as Treasurer of the Chamber of Commerce and Industry. He was succeeded by Mr. ...

MR. STANLEY'S RESIGNATION.
The Treasurer, Mr. Stanley, resigned his office as Treasurer of the Chamber of Commerce and Industry. He was succeeded by Mr. ...

MR. STANLEY'S RESIGNATION.
The Treasurer, Mr. Stanley, resigned his office as Treasurer of the Chamber of Commerce and Industry. He was succeeded by Mr. ...

MR. STANLEY'S RESIGNATION.
The Treasurer, Mr. Stanley, resigned his office as Treasurer of the Chamber of Commerce and Industry. He was succeeded by Mr. ...



James Watson & Co.
SPECIAL RESERVE
SCOTCH WHISKY
ESTABLISHED SINCE 1860

Remington Typewriters NOTICE

In view of a statement by a competitor claiming certain names of Firms and Institutions as USERS of their make of typewriters in Kenya and Tanganyika, we beg to notify that at least three quarters of the said alleged list are bigger REMINGTON users—and in some cases 50 per cent. REMINGTON users.

A list of REMINGTON USERS in Eastern Africa would occupy too large a space to be contained in a short circular.

REMINGTON TYPEWRITER AGENCY
Government Road, NAIROBI
and at Kampala.

Grand Fancy Dress Ball

St DUNSTONS
Saturday-November 13th
NEW STANLEY HOTEL
Tickets: Shs. 10/- each.

You can help to bring joy into the life of those men blinded in fighting for their King and Empire by being there.

The Total Gross proceeds, without any deductions whatsoever, will be given to St. Dunstan's.

VIBRATIONLESS BEYOND BELIEF

7-Bearing Crankshaft Motor.

- | | | |
|--|----------------------------|-------------------------------|
| World's Smoothest | Double Filament Headlights | New Instrument Board |
| Type of 50H.P. | New Wings Radiator Cap | With Instrument Lamps |
| With Buffer Insulated | Four-wheel Brakes | All Instruments in One |
| Motor Supports—Steel-Base | Five-Gear Wheels | Single Panel Under Glass |
| Very quiet for | Gasoline Pumps | Including 24-Stroke Oil Gauge |
| —no noise—making | An Oil Lamp | Best Upholstery of Canvas |
| Is notably quiet and | Oil Purifier | Three-Valve Motor Valve |
| Vibrationless Performance | | New-Design Body Colors |
| New Crankcase Reservoir | | Oil Rem. Apparatus |
| Overrunning Crankshaft Pulley | | Preventing Oil Contamination |
| New-Type Motor Muffler | | No-Corrosion Washers |
| Preventing Operator's Silence | | Full Four-Head Lamps |
| Motor Heat Control by Thermostatic Water Regulator | | |

LOW COST TRANSPORTATION

The Improved "Four"

TOURING **DUCCO FINISH \$230**

BOX BODY **ALUMINIUM PANELS IMPORVED SPRING SEATS. \$215**

The New "Six" TOURING **DUCCO FINISH \$280**

NASH RUGBY

A TRIAL RUN WILL CONVINC YOU

CARR, LAWSON & Co., Ltd.
Sixth Avenue NAIROBI.

Box 208.

'Phone 108'

THE UNION-CASSEL MAIL STEAMSHIP CO., LTD.
MOMBASA
OF THE COMPANY'S SERVICE
THE BRITISH EAST AFRICA CORPORATION, LTD.

HOLLAND AFRICA LIJN
SOLE SERVICE
ROBERTS & CO. LTD. (HOLLAND) (INCORPORATED IN HOLLAND)

Services will lead to Holland on or about the following dates:

10-11 HERBERGHE	(A)	100	Nov. 27
12-13 SALAMBA	(B)	100	Nov. 27
14-15 NIKERIE	(A)	100	Nov. 28
16-17 BILDERHIE	(B)	100	Nov. 28

HOMeward VIA THE CAPE:

18-19 BILDERHIE	(B)	100	Jan. 10
20-21 NIAS	(A)	100	Nov. 9
22-23 "JULIUSPOSTEN"	(B)	100	Nov. 22
24-25 "BRETTOESEN"	(A)	100	Dec. 20

PASSENGER SERVICE:

26-27 MARSHALLE	(A)	200-100	(D)	200-100
28-29 LONDON	(A)	200-100	(D)	200-100
30-31 THE CAPE	(A)	200-100	(D)	200-100

Passengers of the Line provide excellent accommodation for all classes.

Passengers for London will receive free first class tickets and steamer-travel arrangements to London.

For further information apply to the Agents—
TWENTICE OVERSEA TRADING CO. LTD.
MOMBASA. KAMPALA. ZIMBABWE.

THE EAST AFRICA COMPANY, LTD.
GENERAL MANAGERS
OF THE COMPANY'S SERVICE
THE BRITISH EAST AFRICA CORPORATION, LTD.

HOLLAND AFRICA LIJN
SOLE SERVICE
ROBERTS & CO. LTD. (HOLLAND) (INCORPORATED IN HOLLAND)

Services will lead to Holland on or about the following dates:

10-11 HERBERGHE	(A)	100	Nov. 27
12-13 SALAMBA	(B)	100	Nov. 27
14-15 NIKERIE	(A)	100	Nov. 28
16-17 BILDERHIE	(B)	100	Nov. 28

HOMeward VIA THE CAPE:

18-19 BILDERHIE	(B)	100	Jan. 10
20-21 NIAS	(A)	100	Nov. 9
22-23 "JULIUSPOSTEN"	(B)	100	Nov. 22
24-25 "BRETTOESEN"	(A)	100	Dec. 20

PASSENGER SERVICE:

26-27 MARSHALLE	(A)	200-100	(D)	200-100
28-29 LONDON	(A)	200-100	(D)	200-100
30-31 THE CAPE	(A)	200-100	(D)	200-100

Passengers of the Line provide excellent accommodation for all classes.

Passengers for London will receive free first class tickets and steamer-travel arrangements to London.

For further information apply to the Agents—
TWENTICE OVERSEA TRADING CO. LTD.
MOMBASA. KAMPALA. ZIMBABWE.

THE EAST AFRICA COMPANY, LTD.
GENERAL MANAGERS
OF THE COMPANY'S SERVICE
THE BRITISH EAST AFRICA CORPORATION, LTD.

HOLLAND AFRICA LIJN
SOLE SERVICE
ROBERTS & CO. LTD. (HOLLAND) (INCORPORATED IN HOLLAND)

Services will lead to Holland on or about the following dates:

10-11 HERBERGHE	(A)	100	Nov. 27
12-13 SALAMBA	(B)	100	Nov. 27
14-15 NIKERIE	(A)	100	Nov. 28
16-17 BILDERHIE	(B)	100	Nov. 28

HOMeward VIA THE CAPE:

18-19 BILDERHIE	(B)	100	Jan. 10
20-21 NIAS	(A)	100	Nov. 9
22-23 "JULIUSPOSTEN"	(B)	100	Nov. 22
24-25 "BRETTOESEN"	(A)	100	Dec. 20

PASSENGER SERVICE:

26-27 MARSHALLE	(A)	200-100	(D)	200-100
28-29 LONDON	(A)	200-100	(D)	200-100
30-31 THE CAPE	(A)	200-100	(D)	200-100

Passengers of the Line provide excellent accommodation for all classes.

Passengers for London will receive free first class tickets and steamer-travel arrangements to London.

For further information apply to the Agents—
TWENTICE OVERSEA TRADING CO. LTD.
MOMBASA. KAMPALA. ZIMBABWE.



**Fine Steel Explains
The Car's
LONG LIFE!**

This fact should be remembered by everyone who owns a car or expects to buy one.

In the percentage of costly Chrome Vanadium steel used, Dodge Brothers have cut out costs every other car in the world, regardless of price.

Chrome Vanadium is the most useful steel yet used. Its remarkable toughness and strength is only one characteristic reason why more than 50% of the 1,700,000 motor cars Dodge Brothers have built are still in service.

A. FISHER & SIMONS (EAST AFRICA) LTD.
NAIROBI

**Dodge Brothers
MOTOR CARS**

Reliance Transport Co.

Phone 331. SADDLER ST., NAIROBI. P.O. Box 492.
The Largest Motor Transport Co. in the Colony.
If you are requiring RELIABLE & Expedient Transport at reasonable charges, you cannot do better than send your enquiries to us. "In short" In the long run you will find we give you the cheapest and best service.
FUEL MERCHANTS.
Large stocks always on hand ready for immediate delivery.

P. STEWART,
G.A.S. S.E.D.
PAINTER & DECORATOR,
Headings Road.
High Paving, Graving,
Masonry, Glazing, etc.
House Painting and
Contracting.
Coach & Motor Painting, Etc.
P.O. Box 255, NAIROBI.

Deutsche Ost Afrika Linie
(GERMAN AFRICAN SERVICE)

The Service of Turbine Engines from Hamburg—Southampton round Africa, taking Freetown, Beaufort West, Port Elizabeth, Durban, Swakopmund, Windhoek, and Namibia—Mombasa, is especially direct and is exceptionally good Third Class accommodation.

HAIRINGS FROM MOMBASA TO HAMBURG.

10-11 HERBERGHE	(A)	100	Nov. 27
12-13 SALAMBA	(B)	100	Nov. 27
14-15 NIKERIE	(A)	100	Nov. 28
16-17 BILDERHIE	(B)	100	Nov. 28

VIA CAPE:

18-19 BILDERHIE	(B)	100	Jan. 10
20-21 NIAS	(A)	100	Nov. 9
22-23 "JULIUSPOSTEN"	(B)	100	Nov. 22
24-25 "BRETTOESEN"	(A)	100	Dec. 20

HAIRINGS FROM HAMBURG TO MOMBASA.

10-11 HERBERGHE	(A)	100	Nov. 27
12-13 SALAMBA	(B)	100	Nov. 27
14-15 NIKERIE	(A)	100	Nov. 28
16-17 BILDERHIE	(B)	100	Nov. 28

For further information apply to the Agents—
TWENTICE OVERSEA TRADING CO. LTD.
MOMBASA. KAMPALA. ZIMBABWE.

25 YEARS NAIROBI

experience as Gunmakers and Sole Agents of the largest and best Manufacturers of the World, has taught us to stock the most modern and effective Weapons which science has produced.

Maurer Rifles in Cal.
6.5 m./7 m./8 m./9 m./10 m./10.75 m./11.75 m./12 m./13 m./14 m./15 m.

Mauser Rifles in Cal.
6.5 m./7 m./8 m./9 m./10 m./11 m./12 m./13 m./14 m./15 m.

Mauser Rifles in Cal.
6.5 m./7 m./8 m./9 m./10 m./11 m./12 m./13 m./14 m./15 m.

Our 28" Barrels give a 20% higher striking force!!
more accuracy and better balance.
Send for free illustrated catalogue.

Our repairs of every description.

CHAS. A. HEYER & Co.

Gunmakers. Established 1868. NAIROBI.

Express Transport Co.
Carriage Contractors in Kenya & Uganda Railway Transport and Mail, Agents.

P.O. Box 492. Phone 331 and 44.

SPECIAL FACILITIES FOR STORAGE IN FREE STORES OR BOND.

of all classes of merchandise or personal effects.

COFFEES
and other produce transported, cleaned for under European Supervision.

Shipping to all parts of the world undertaken.

OVERSEAS MAILS.

ARRIVALS.				
STEAMER	FROM	Due at Mombasa.	Mails arrive in Nairobi.	
Loonice de Laik	Mombasa	Oct. 19	Oct. 20	
Kergalla	South	" 21	" 22	
Chandala	South	" 23	" 24	
Mafusa	Shupe	" 25	" 26	
A. B. Glass	Mombasa	Nov. 1	Nov. 2	
Larvoren	South	" 3	" 4	
Kina	South	" 5	" 6	

Loonice de Laik returns 2nd day.

DEPARTURES.				
STEAMER	FOR	Mails Close at Mombasa.	Date of Departure.	
Kergalla	South and Europe	Oct. 21	Oct. 21	
Chandala	South	" 22	" 22	
A. B. Glass	Europe	" 24	" 24	
Larvoren	South	" 26	" 26	
Kina	South	" 28	" 28	

UPLANDS WILTSHIRE HAM

Registered Trademark

Equal in favour to the Best English.

MEAT and FISH PASTES
Chicken and Ham,
Hare and Tongue,
Pate de Foie Gras,
Anchovy,
Salmon.

15 Glass Quay (No. 1) - 1st. - 1st.

OBTAINABLE FROM ALL THE LEADING STORES.

ABDULLA

General Contractor and Building Engineer.

Office: 11, 12 & 13, Market Street, Mombasa.

G. J. LANG.

BUILDING AND CONSTRUCTIONAL ENGINEER.

Office and works: 11, 12 & 13, Market Street, Mombasa.

THE SALISBURY HOTEL

Phone 150. NAIROBI. P.O. Box 400.

FAMILY & RESIDENTIAL.

First-class accommodation and catering. Comfortably furnished. Telephone. Complete conveniences.

RECENTLY OPENED. BEACONING LIGHTHOUSE AND OFFICE ATRE MOMBASA.

Head's Dance Band.

(Flute, Violin, Saxophone, Banjo and Drums)

Send all inquiries to
F. A. HEAD, P.O. Box 60, NAIROBI.

AFRICAN AND EUROPEAN TRADE ORGANIZATION

Members are invited to be addressed to the Secretary at the following address: For particulars of the work of the Organization, who are not registered subscribers to the journal, please apply to the Secretary at the above address. The Secretary will be glad to pay a Registration Fee of Shs. 5/- before the 1st of January in the year of the Organization's Anniversary.

MEMBERS SEEKING EMPLOYMENT will be supplied with a list of vacancies in the following countries: European Required Shs. 20/- Non-European Required Shs. 30/- Native Required Shs. 50/-

MEMBERS SEEKING EMPLOYMENT will be supplied with a list of vacancies in the following countries: European Required Shs. 20/- Non-European Required Shs. 30/- Native Required Shs. 50/-

MEMBERS SEEKING EMPLOYMENT will be supplied with a list of vacancies in the following countries: European Required Shs. 20/- Non-European Required Shs. 30/- Native Required Shs. 50/-



The "Bijou" Shelter

Sole Agents: **J. W. MILLIGAN & CO., NAIROBI**

Box 148

Genuine Clearance Sale.

Examples of our values:

- Real Aertex Tennis Shirts ... Shs. 12/-
- Woolen Blankets 69 x 80 ... Shs. 11/-
- Sole Hats ... Shs. 7/-
- Men's Linen Crotchet Thread, per doz. ... Shs. 6/-
- Butler Soles and Heels, per set ... Shs. 5/-

Many other Bargains to pick up.

M. R. de Souza & Co.

Wholesale Merchants and Ladies, Gents and Children's Outfitters.

Court Road. Phone 75.

The general public were disappointed at the result of the election. It was a surprise to many of them that the Government had not been able to secure a majority. The Government had a large number of supporters, but they were not able to secure a majority. The Government had a large number of supporters, but they were not able to secure a majority. The Government had a large number of supporters, but they were not able to secure a majority.

MEDICAL ATTENTION

During the week ending 10th Nov., the Health Officer reported that the number of cases of malaria was 10. The number of cases of malaria was 10. The number of cases of malaria was 10. The number of cases of malaria was 10.

MEMORANDUM

The Hon. Member for the Nairobi constituency has been invited to attend a meeting of the Executive Council of the Government on the 15th inst. The Hon. Member for the Nairobi constituency has been invited to attend a meeting of the Executive Council of the Government on the 15th inst.

The Government has decided to ... The Government has decided to ... The Government has decided to ... The Government has decided to ... The Government has decided to ...

LAND POLICY

Having replied lately to Mr. Fradette who suggested method of financing a Budget appeared to him somewhat fantastic, Mr. Northcote referred to Captain Kennedy's explanation that the Budget was sterile because it did not contain a land settlement scheme. Mr. Northcote was not the proponent of such a scheme. He had no intention of such a scheme. He had no intention of such a scheme.

COLORIAL SETTLEMENT

The Colonial Secretary has been invited to attend a meeting of the Executive Council of the Government on the 15th inst. The Colonial Secretary has been invited to attend a meeting of the Executive Council of the Government on the 15th inst.



D. KEVIN & CO.

MOTOR CYCLES

We have the following new Motor Cycles and side cars in stock at prices as under:

REAR PURCHASES ARRANGED.

- 7.9 Harley Davidson ... 1,950/-
- 7.9 Harley Davidson with Sidecar ... 2,750/-
- 7.9 Raleigh with Sidecar and Electric light ... 1,900/-
- 7.9 Raleigh with Sidecar ... 1,600/-
- 7.9 Raleigh Solo, with electric light ... 1,550/-
- 7.9 Raleigh Solo ... 1,450/-
- 3 1/2 Raleigh O.V. Sports ... 1,417/-
- 3.9 Raleigh All chain, 3 speed ... 1,050/-
- 3.9 Raleigh, All chain, 3 speed ... 1,000/-

All repairs executed by Europeans only. ALSO STEWART one ton Trucks complete with body for 7,000/-.

Capital Garage
Opposite Fire Station, Victoria St.

THE HUP SIX



The New Six
Is Truly Hupmobile

PEOPLE have always wanted to say that they drive a Hupmobile. It is the only car that they can say that they drive a Hupmobile. It is the only car that they can say that they drive a Hupmobile.

Prices

Chassis **£375**

Other Models from **£419**

Brief Specification:

- H. P. 236
- Oil Filter
- Petrol Filter
- Air Filter
- 4 Wheel brakes.
- Automatic screen wiper
- Rear Vision Mirror



Hupmobile

SIX CYLINDERS

The Motor Mart & Exchange, Ltd.

NAIROBI

NAKURU

CONCRETE MIXERS

Boales & Smithson
No. 250, "Avenue Road", NAIROBI.



Delay means Decay

Delay means decay. It is the only way to keep your money safe and secure. It is the only way to keep your money safe and secure. It is the only way to keep your money safe and secure.

SMITH, MACKEWIE & CO., NAIROBI.

WORD TO THE WISE IS ENOUGH

of the method of JACOB'S BISCUITS. Paint the Lily. F. and H. Jacob & Co. Ltd., were the originators of the Cream Cracker Biscuit, which is unequalled in its lightness, flakiness, and delicacy of flavour, although often imitated. Other specialities are: Royal Afternoon Tea, Baked Cheese assorted, Variety, Butter Puff, Meringe, Marie, Petit Butter, Gingernut, Omelette, Nive, etc., etc. Local Representative.

J. H. CLARKE,
Africa House, Government Road,
P.O. Box 106, NAIROBI.

WORLD LAWYER

Wm. Gifford's Great
Room.

AN UNUSUAL VIEW, BUT MADE TRIP TO EUROPE

(By Mrs. K. Dwyer, Captain
U.S.A. Women's Army
Team, France, 1918.)

By her victory at the front of the Ladies' Hospital at Wimbourne, she has become known as the "Lioness of Alton". She has been through all the trials and tribulations of a soldier's life. There is one more story in the first flight which she has not advanced since she first came into the hospital in 1917 and it is almost unnecessary to say that the flight is reported in this London.

It is not until she has been seen on the flight. Mrs. Gifford has won the championship at Wimbourne in 1917 and 1918. She was crowned champion through illness, but finally, as there is no other Mrs. Gifford, she was able to play. There are no other Mrs. Gifford, she was able to play. There are no other Mrs. Gifford, she was able to play.

of the method of JACOB'S BISCUITS. Paint the Lily. F. and H. Jacob & Co. Ltd., were the originators of the Cream Cracker Biscuit, which is unequalled in its lightness, flakiness, and delicacy of flavour, although often imitated. Other specialities are: Royal Afternoon Tea, Baked Cheese assorted, Variety, Butter Puff, Meringe, Marie, Petit Butter, Gingernut, Omelette, Nive, etc., etc. Local Representative.

J. H. CLARKE,
Africa House, Government Road,
P.O. Box 106, NAIROBI.

...the one of the most...
...the one of the most...
...the one of the most...

Other Great Players
Dr. Jacques Langue, Wimbledon, South-End and Winner with Colonel of the Mixed Doubles.

The Wimbledon tournament was thought to be close this year by a lottery which was extremely popular. I refer to that of Mrs. Gifford at the Ladies' Singles.

Miss Gifford was because of her profound knowledge of the game, she was able to give a complete understanding of all the different strokes.

WHAT MRS. GIFFORD'S VICTORY MEANS
Undoubtedly her example will be an inspiration because the younger school of English women players, for whom a brilliant future is opening out, is already a numerous one.

And your Miss Fry got so far as the final; she lost Miss Ryan in the final. She lost Miss Ryan in the final. She lost Miss Ryan in the final.

...the one of the most...
...the one of the most...
...the one of the most...

Other Great Players
Dr. Jacques Langue, Wimbledon, South-End and Winner with Colonel of the Mixed Doubles.

The Wimbledon tournament was thought to be close this year by a lottery which was extremely popular. I refer to that of Mrs. Gifford at the Ladies' Singles.

Miss Gifford was because of her profound knowledge of the game, she was able to give a complete understanding of all the different strokes.

WHAT MRS. GIFFORD'S VICTORY MEANS
Undoubtedly her example will be an inspiration because the younger school of English women players, for whom a brilliant future is opening out, is already a numerous one.

And your Miss Fry got so far as the final; she lost Miss Ryan in the final. She lost Miss Ryan in the final. She lost Miss Ryan in the final.

and Fisheries

TROUT FISHING IN SOUTH AFRICA

In the past few years trout fishing has made considerable headway in South Africa.

Many mountain streams, already stocked, offer sport of the highest class in Southern of the "golden age".

The open season extends from October to April. Railway travel in South Africa is inexpensive and facilities are of high standard. Accommodations is good.

For particulars apply to—
TRADE COMMISSIONERS FOR THE UNION OF SOUTH AFRICA,
Memorial Hall,
P.O. Box 624, NAIROBI.

XMAS PRESENTS

for
Your Dear Ones and Friends
ORIENTAL, EUROPEAN, USEFUL & AFFECTIONATE GIFTS.

Selected at
Lalchand Moolchand Bros.
P.O. Box 202, NAIROBI.

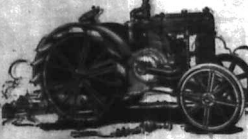
Fertilise with Ephos.

Probably the whole of the soil in Kenya is deficient in various degrees of phosphate and lime. Ephos contains 11.5% of these phosphates of lime and 20.1% of Potash and acid.

A visit to Kenia's Eastern Highlands will convince those interested in the source of Ephos where it was applied to 200 acres of coffee before the long rains this year.

Sole Agents and Distributors:
J. G. ABERNETHY, LTD. NAIROBI.
P.O. Box 68.

Case Tractor DEMONSTRATION



Following on successful trials held recently in Nairobi, a further demonstration will be given
On Thursday and Friday, Oct. 21st and 22nd, at NAKURU
on Messrs. McCall & Lawries farm, Rongai Hill, only 500 yards from Kampija Moto Station (Solai Branch Railway).
Tractors will be in operation from 9.30 to 12 and 2 to 4 daily.

Sole Importers
K. McIVOR & Co.,
Sixth Avenue,
Nairobi.

P.O. Box 97,
Phone 97.

Telegrams:
"Afford".

