

GUARANTEED THE LARGEST CIRCULATION OF ANY NEWSPAPER IN KENYA, UGANDA, TANGANYIKA AND ZANZIBAR.

NOTICE A. O. F. B. Always Order For Blowing & Blasting Kenya Beer, Stout or XXXX Good Froth Guaranteed.

DAILY EDITION.

THE EAST 4 PAGES. African Standard

MOMBASA TIMES & UGANDA ARGUS. THE LARGEST ESTABLISHED NEWSPAPER PUBLISHED IN KENYA AND UGANDA.

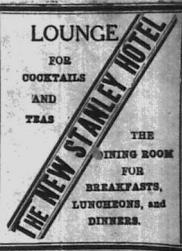
With which is incorporated THE LEADER.

NAIROBI, TUESDAY, JUNE 7, 1927.

LOUNGE

FOR COCKTAILS AND TRAYS

THE DINING ROOM FOR BREAKFASTS, LUNCHEONS, and DINNERS.



THE NEW STALWORTH HOTEL

Price 20 CENTS.

No. 4188. PUBLISHED AT THE GENERAL POST OFFICE, NAIROBI.

ANOTHER ATLANTIC AIR DASH.

Machine Sighted over Dortmund in Germany. DESTINATION UNKNOWN.

Airman and Passenger Share Six Oranges and Ten Chicken Sandwiches.

For the second time in a few days the Atlantic Ocean has been crossed by an American airman. Mr. Chamberlain, the author of the latest achievement...

Fragal Fare.

New York, June 4. (By wire.)—A European and the Indian steamer Chamberlain started at 6 a.m. on the flight to London.

PARIS 70 TOKIO.

New York, June 4. (By wire.)—A European and the Indian steamer Chamberlain started at 6 a.m. on the flight to London.

LEADER'S RETURN.

New York, June 4. (By wire.)—A European and the Indian steamer Chamberlain started at 6 a.m. on the flight to London.

Six Austen Chamberlain.

New York, June 4. (By wire.)—A European and the Indian steamer Chamberlain started at 6 a.m. on the flight to London.

SLIGHTLY INJURED IN A STREET RAMPAGE.

New York, June 4. (By wire.)—A European and the Indian steamer Chamberlain started at 6 a.m. on the flight to London.

[By Wireless.]

The French Air Corps, commanded by Dr. Fleuret, has been notified that the machine sighted over Dortmund in Germany...

TROOPING THE COLOURS IN LONDON.

Magnificent Spectacle on King's Birthday. RECORD CROWDS.

AN ANGLO-AMERICAN AGREEMENT.

Adjustment of Certain War Claims. BLOCKADE SEQUEL.

King's Gratitude.

REPLY TO GREETINGS FROM CITY OF LONDON.

The Balkan Agony.

RIFFLE BETWEEN GREEK SLAVS AND ALBANAINS.

Orders for Britain.

ADVENTURE NAVAL VESSELS AND BUZZARDIAN WIRELESS.

The Menace to Peking.

AMERICAN AND BRITISH TROOPS ON NORTH.

LEADER OF THE LORDS.

THE MARCH OF THE MARCHIONESS.

THE MARCHIONESS OF MARCHIONESS.

The Marchioness of Marchioness, who was the first woman to be created a Marchioness in Great Britain...

MARQUIS OF LANSDOWN DEAD.

Foreign Secretary at Critical Period in British History. NEGOTIATOR OF ENTENTE COORDIE.

One of the Last of the Aristocrats of the Victoria Era.

Lord Lansdowne, who was one of the last of the aristocrats of the Victoria era, died at his home in London...

WORK FOR INDIA.

It is impossible in a short space of time to mention activities which have been going on in India...

A MODIST DICTATOR.

She was named with almost no notice as the modist dictator of the day...

THE BALKAN AGONY.

RIFFLE BETWEEN GREEK SLAVS AND ALBANAINS.

THE BALKAN AGONY.

The Balkan Agony continues to be a source of concern to the world, with various nations vying for influence in the region...

Dress Materials for Chilly Days.

ALL WOOL MAROCCAIN. A soft flannel fluff treated with a special finish for extra warmth. SILKS, JUMPERS and Light Coats. In the popular shades of Indian, Berlin, Coral and Tonal.

CHARMING VOILES.

The new designs just to hand are in the most charming colors, and large plain patterns, suitable for Children's wear, as well as for Ladies' frocks.

SWISS FINEST BOBBING.

Some delightful effects in Plain Colors, Vests with embroidered herring. These are 50 inches wide and only 1 1/2 yards for a French Frock, Flare and Blouse.

COTTON MAROCCAIN.

The most useful fabric is much in vogue today, makes extra wide, in Tones and Meringe Prints, in all the latest shades.

GINGHAM CHECKS.

The kind that will stand up to hard wear and washing. Small large overchecks, in all the latest shades.

GILEMME FABRIC.

The newest Art silk and Cotton material in stripes and checks. 10 different designs and colors to choose from.

FOLLEE PRINTS.

Twenty new Central Prints just to hand. Bold striking designs for Frocks, Blouses, etc.

SUEDÉ To-Days Special Value.

The popular Government silk in 1927. Twelve beautiful plain colors, 50 inches wide. Also in Quant Bail yard Designs.

Whiteaways NAIROBI.



NOTICE  
S.O.F.B.  
XXXX  
XXXX

THE EAST AFRICAN STANDARD  
DAILY EDITION  
BEIRUT  
HOMER & LORAIN

BAGDAD

# Buick carries the Desert Mail

Oil discovered in Irak!

Overnight sleepy Bagdad became a feverish center of commerce. Transportation facilities were swamped—mails delayed. By the established trade route, Bagdad was 30 days from London.

A new way, and a shorter one, had to be found to carry passengers and the mail to Bagdad. The motor car suggested itself. And the difficulties of the situation suggested Buick. The route chosen was an abandoned camel trail, leading from Beirut on the Mediterranean—500 miles through the mountains and across the Syrian Desert.

This happened two years ago. To-day Major McCallum of the British Army and the Nairn

Transport Company has this to say of his fleet of Buicks:

"I should always use Buick again under the same circumstances.

"This car maintains a high speed for hours on end.

"It has the power to carry excessive weight over two ranges of mountains and the desert, without overheating. Our cars go to Bagdad and back again, 1000 miles, without adding a drop of water to the radiator."

Buick quality and design produce a reliability of performance known and spoken of all over the civilized world. Whenever there is hard work to be done, Buick is the car to do it.

Series "2830" (10 miles per hour)	2400
Series "2830" (15 miles per hour)	2400
Series "2830" (15 miles per hour)	2400
Series "2830" (15 miles per hour)	2400

# BUICK

Gilfillan & Company, Ltd.  
DISTRIBUTORS

THE EAST AFRICAN STANDARD DAILY EDITION. SUBSCRIPTION RATES.

Locally, yearly \$14.00. Monthly \$1.20. Foreign, yearly \$20.00. Monthly \$1.80.

FOR SALE. BRAN Special reduced prices. ROBINSON'S and others' all kinds of hardware.

FOR SALE. BRAN Special reduced prices. ROBINSON'S and others' all kinds of hardware.

FOR SALE. BRAN Special reduced prices. ROBINSON'S and others' all kinds of hardware.

FOR SALE. BRAN Special reduced prices. ROBINSON'S and others' all kinds of hardware.

FOR SALE. BRAN Special reduced prices. ROBINSON'S and others' all kinds of hardware.

FOR SALE. BRAN Special reduced prices. ROBINSON'S and others' all kinds of hardware.

FOR SALE. BRAN Special reduced prices. ROBINSON'S and others' all kinds of hardware.

KIKUYU HOTEL, KIKUYU. For rent, healthy, enjoyable Electric light throughout.

FOR SALE (Contd.). REINFORCED Concrete Col- paged with inside stairway, hot and cold water and electric light installations.

ROBINSON'S (Golden Star) Margarine. Black Cornmeal. Blue Maize Meal.

SOPAP. 25 lbs. each and 20 lbs. each. 10 lbs. each and 5 lbs. each.

SPICES Original Green Ginger. The Cold Weather. B. D. De la's.

WHO'S WHO 1927. An annual Directory, containing over 500,000 postal addresses.

WHOLESALE. European Commission, required for the complete of taking charge.

COMPETENT traveler, must type, knowledge of accounts and business contracts preferred.

GENTLEMAN fully experienced over 20 years Office work.

SEMINARY. For Sports Club. house provided. Single qualifications and salary expected.

WANTED Immediately good all round Butler. Apply giving testimonials P.O. Box 269.

SITUATIONS WANTED. COFFEE shamba manager, 30 years position. Excellent salary.

FURBOLAN shamba manager. Capable, good testimonials. Excellent salary.

SHORTLAND typist willing over machine. Apply Yeoman No. 5197.

THOROUGHLY competent Shortland Typist. Excellent testimonials.

CHEVROLET touring two or four motor, must be in good running order.

LADY requires immediately single room or half house in two or three suburbs.

PARTNER for country store. Fully equipped. Apply Yeoman No. 5197.

WILDERD Private Hotel, Molo. (Late Mrs. Waters) 30 rooms. Excellent for tourists.

WANTED to purchase for cash or exchange. Excellent Jewellery, guns, etc.

BOARD & RESIDENCE. MANOR House, Ngara Road 10. Comfortable rooms now ready.

BA. Profec. COFFEE shamba manager, 30 years position. Excellent salary.

FURBOLAN shamba manager. Capable, good testimonials. Excellent salary.

SHORTLAND typist willing over machine. Apply Yeoman No. 5197.

THOROUGHLY competent Shortland Typist. Excellent testimonials.

CHEVROLET touring two or four motor, must be in good running order.

LADY requires immediately single room or half house in two or three suburbs.

PARTNER for country store. Fully equipped. Apply Yeoman No. 5197.

WILDERD Private Hotel, Molo. (Late Mrs. Waters) 30 rooms. Excellent for tourists.

WANTED to purchase for cash or exchange. Excellent Jewellery, guns, etc.

BOARD & RESIDENCE. MANOR House, Ngara Road 10. Comfortable rooms now ready.

OUR SPECIALITY IS SAWN TIMBER. EQUATOR SAW MILLS. HEAD OFFICE: Sadler Street, NAIROBI. Phone 118.

TO SETTLERS. TO BUILDERS. TO EVERYBODY. There are always REPAIRS waiting to be done to buildings.

"DOMINANT" The most efficient Flat File yet invented - With the advantages of a lever-arch File.

10/50 Dozen. P. O. Box 611. Phone 141. NAIROBI.

OSTERIEITH & Co. Ltd. PRODUCE MERCHANTS. IMPERIAL CHAMBERS, GOVERNMENT ROAD, NAIROBI.

COFFEE BAGS. Now arriving 1 1/2 lb. 2 lb. and 2 1/2 lb. Having secured large quantities at exceptionally favorable prices.

P. O. Box 667. Kenya Marine - Capt. E.H.A. MARTIN. London Office 42, Old Broad St. E. C. 2.

SWEEPING REDUCTIONS, at our STOCKTAKING SALE Commencing on May 28th Closing June 7th.

Hutchings, Biemer & Co., Ltd. Box 408. Government Road, NAIROBI. Factory: Sadler Street, Phone 408.

A 100% Investment NATIONAL MUTUAL LIFE ASSOCIATION of Australasia Limited. Funds exceed £23,000,000.



MOTOR TOPICS

DRIVING LESSONS.

Instructions to the instructor.

HOW TO TEACH

The modern car has rendered such a pitch of efficiency, that any one... instructions to the instructor.

about it him—show all don't show! Turn the wheel gently, but... instructions to the instructor.

PERSONAL EXPERIENCE.

As regards the subject of driving... instructions to the instructor.

show the clutch or the pedals. On... instructions to the instructor.

THE USE OF THE MOTOR.

The use of the motor is one of the... instructions to the instructor.

GEAR CHANGING.

Gear changing is one of the most... instructions to the instructor.

STOPPING.

Stopping is one of the most difficult... instructions to the instructor.

STARTING.

Starting is one of the most difficult... instructions to the instructor.

NATIONAL BANK OF INDIA LIMITED. (Incorporated in the United Kingdom). Branches in New Zealand and Protectorate of Kenya and Swaziland. Deposits, Loans, etc.

B.P. The British Petro. Best Possible For Your Car. DISTRICT AGENTS: M. J. ROSE & CO., KIKIWOOD & CO., KENYA FARMERS' ASSOCIATION, NAURU, etc.

Symington's Soups. a perfect soup for popular price. Made from the finest meat and vegetables. You simply add a quart of water and boil 15 minutes.

ANNOUNCEMENT NAIVASHA ON MAIN ROAD. New LUNCH & TEA ROOMS. Will be opened, APRIL 26. Under Management of KIA ORA STORES.

WE STOCK Always big stock of Provisions, Wines, Liqueurs, Best Quality of Dutch and Indian Cigars, Cigarettes, etc. Also for farmers Broom Salt, Rock Salt, Dairy Salt, etc.

KANJEE NAR-NJEE. Govt. Road. P.O. Box 387. NAIROBI.

LION LAGER. Whenever you see a lion, keep cool. Think of the coolest thing in all Africa—OHLSON'S. Sold by DENOVAN & DIERCK.

Chevrolet Facts Registrations: The First 5 Months of 1927 In Nairobi. Show that Chevrolet has Registered 97% of the Total Registrations of all Competitive Cars. Features: (1) Semi-reversible steering, (2) Forced feed lubrication, (3) Semi elliptic springs, etc.

A BARGAIN SECOND HAND MILITARY OVERCOATS. Long at Shgs. 15/- each. Short at Shgs. 12/- each. M. ROSENBLUM & Co. Ltd.

THE KIDDIES DELIGHT. FINE CHOCOLATE CREAM BARS. BOUTWELLS FAVORITE CREAM CHOC BARS. BOUTWELLS WHIPPED CREAM WALNUTS.

Blacklaws & Brown. (Machinery Brokers). Tel. No. 81. NAIROBI. Box No. 408.

ARE YOU THINKING OF BUILDING? If so it will be in your interest to consult us and obtain our price. With our increased staff we are now able to undertake a number of smaller additional contracts.

THE EAST AFRICAN STANDARD KENYA DIARY 1928. ADVERTISEMENT SPACE MAY BE BOOKED NOW. R. A. STANDAARD 544. P.O. Box 386, NAIROBI.

BRITISH REINFORCED CONCRETE FABRIC. IS USED BY THE KENYA GOVERNMENT, KENYA & UGANDA RAILWAYS, HARBOR COMPLEMENTS, and the F.W.D. IN KENYA, HAMBURGA and TANZANIA. COURT CHAMBERS. WILL BE USED IN THE CONSTRUCTION OF THE NEW HOTEL IN 6th AVENUE.



NEW GOVERNOR OF THE INDIAN FRENCH £20 IN THE WORK OF THE LADY PROPOSED NEW 'WHITE' NORTHWEST HOME. ADMINISTRATIVE AREA. Divorce Petition. Into Dry Weather.

Will Be High Commissioner of East Africa. Tried to Get Task for Natives Increased.

SOME SPECULATIONS. 'HEAT NOT REPEATED' HENRI.

[From our own correspondents] The appointment of the new Governor of the Indian Territory...

The salary of the High Commissioner in the new territory...

The Governor's story was that Mr. Sheldrick and four other...

DEFENCE DISMISSED. The Magistrate said he believed...

He found accused guilty. On the 20th Mr. Sheldrick's appeal...

Mr. Schwartz said that the Magistrate said that...

THE GOVERNOR'S STORY. The new Magistrate issued a fine...

THE GOVERNOR'S STORY. Before Mr. Justice Abbotson in Chambers...

THE GOVERNOR'S STORY. In Court No. 7, the Magistrate...

Russians Depart. [By Wireless.] Boris M. Romagosa...

THE GOVERNOR'S STORY. The quantity of gold produced in the...

THE GOVERNOR'S STORY. The total number of Europeans employed in mining in the...

S. Jacobs Ltd. Nairobi. A BIG SELECTION OF NEW SHADES IN ALL SILK FULLY.

39 inches wide. Slage. 5/60 per yard.

PROPOSED NEW 'WHITE' ADMINISTRATIVE AREA.

This Suggested as Natural Centre.

[By A. STANFORD BREVINT.] Mr. Stanley of the Daily Nation...

[From Our Own Correspondents.] Under the name of the Daily Nation...

The new Magistrate has been appointed to the post of the new...

It is hoped that the Government will be able to do this...

CHILDREN'S SCHOOLS. With regard to the training of children...

THE GOVERNOR'S STORY. The new Magistrate issued a fine...

THE GOVERNOR'S STORY. Before Mr. Justice Abbotson in Chambers...

THE GOVERNOR'S STORY. In Court No. 7, the Magistrate...

Russians Depart. [By Wireless.] Boris M. Romagosa...

THE GOVERNOR'S STORY. The quantity of gold produced in the...

THE GOVERNOR'S STORY. The total number of Europeans employed in mining in the...

S. Jacobs Ltd. Nairobi. A BIG SELECTION OF NEW SHADES IN ALL SILK FULLY.

39 inches wide. Slage. 5/60 per yard.

Divorce Petition. Into Dry Weather.

WOMEN WORKERS. PROGRESS IN AFRICA. RUSSELL TO A TRIP TO EAST AFRICA.

[From Our Own Correspondents.] Under the name of the Daily Nation...

The new Magistrate has been appointed to the post of the new...

It is hoped that the Government will be able to do this...

CHILDREN'S SCHOOLS. With regard to the training of children...

THE GOVERNOR'S STORY. The new Magistrate issued a fine...

THE GOVERNOR'S STORY. Before Mr. Justice Abbotson in Chambers...

THE GOVERNOR'S STORY. In Court No. 7, the Magistrate...

Russians Depart. [By Wireless.] Boris M. Romagosa...

THE GOVERNOR'S STORY. The quantity of gold produced in the...

THE GOVERNOR'S STORY. The total number of Europeans employed in mining in the...

S. Jacobs Ltd. Nairobi. A BIG SELECTION OF NEW SHADES IN ALL SILK FULLY.

39 inches wide. Slage. 5/60 per yard.

LYRIC HALL 3 DAYS ONLY. Monday, Tuesday and Wednesday, at 8-6. NORMA TALMADGE IN "The Children in the House" Comedy. Thursday, Friday and Saturday. Edmund Cobb, Cathleen Calhoun and Francis Ford. WESTERN FEUDS.

TEMPERATURE. Rainfall. Station. Month. Max. Min. ...

The Golfers Ideal Perfect 5, 7, 9, 11, 13, 15, 17, 19, 21, 23, 25, 27, 29, 31, 33, 35, 37, 39, 41, 43, 45. With Crepe Sole. With Chrome Sole. 45/-

With Famous Skiside Golf Soles 47/50. If you do not require New Golf Shoes bring your old favourites for Re-Soling and Heels with Skiside Golf Soles.

Eadies Footwear Ltd. Nairobi. 100, Baiter Street. Nightly Theatre Royal Matinee Sat 3-30. TO-NIGHT AND GLORIA SWANSON. In a charming romance The Impossible Mrs. Bellow. Pathé Latest Gazette.

Reduced to £176. The Capitol Chevrolet 1 ton Truck Chassis. With the following features: 1) Air cleaner. 2) Oil filter. 3) Ford 30 x 5 Tyres. 4) Larger steering wheel. 5) New type head lights. 6) Larger radiator. 7) Full electrical equipment. ALL PRICES NETT CASH F.O.R.

The Motor Mart and Exchange Ltd. Nairobi. TOURING CAR £229. BOX BODY CARS FROM £109/10/0. TYPE "B" CHASSIS £172. The Motor Mart and Exchange Ltd. Nairobi. Nakuru.

World Money Exchange. [By Wireless.] Paris 124. London 408 9/16. ...

THE GOVERNOR'S STORY. The quantity of gold produced in the...

THE GOVERNOR'S STORY. The total number of Europeans employed in mining in the...

S. Jacobs Ltd. Nairobi. A BIG SELECTION OF NEW SHADES IN ALL SILK FULLY.

39 inches wide. Slage. 5/60 per yard.

# USE A LANZ AND SPEND THE SAVINGS

This is the tractor that has revolutionized planting costs in Kenya.



Do not miss this opportunity of seeing both the tractor and the machine working.

## A DEMONSTRATION

A breaking and cross-ploughing will be held at the Killima Kin Estate, Ltd., on Saturday, June 13th, using Massey-Harris Tractors. The road is in excellent condition all the way. We are looking forward to meeting you there.

### J. R. COX & Co.

P.O. Box 81, ELDORET.

P.O. Box 610, NAIROBI.

P.O. Box 204, KAMPALA.

Mortiboy's Nicholas & Co., Ltd. Mombasa Agents.

## B. F. A. Saw Mills

MILLS Factory Site, Nairobi.  
Pani River, Uganda.  
Kanyanya, Uganda.

P.O. Box 321, Nairobi.

Telegrams: Beams.

CAMPHOR, PODO, MWETI and BOXWOOD.  
Telephone Mills No. 92, Office No. 83.

Prompt Delivery.  
LONG LENGTHS A SPECIALITY.

## HAULAGE and TRANSPORT

STANDARD BUILDINGS,

ANY WEIGHT ANY DISTANCE  
HAULAGE & GENERAL TRANSPORT CO.,  
8th Avenue. Phone 55. P.O. Box 336.

## REGINA BRIEF

Dressmaking and Tailoring.

Smart, correct tailoring and perfect fitting for ladies and gentlemen by expert European tailor.  
No. 8, Theatre Royal Arcade  
P.O. Box 642, NAIROBI

## The Religion of Civilization.

### A POLISHED MATERIALISM

A correspondent in the Times contains the following article:

The first great cause that there can be a social organism, but that the social organism is not a mere aggregate of individuals, but a real organism, with a life of its own, and that the social organism is the basis of all human progress.

It seems impossible to make a synthesis of opinions of countries which even if they were not, and to obtain a common basis, yet it may not be without profit to recognize the nature of their difference. There is a materialistic dignity and charm, seen at its best in the social organism of the East.

There is another side to the picture. If the religion of civilization is influenced by the materialistic side, it is not bound to be the religion of civilization. There are thinkers who find in the teaching of Christ and the passages of the world. If this materialism is regarded as an error of extreme statement, the materialistic side, though perhaps, has never accepted of itself, and not infrequently it has been the subject of the most violent attacks of life in large sections of the world. It is the materialistic side, which is little more than sentimentalism. In the "Journal of the Commission" published in 1919

It is not denied that a man may without faith in the spiritual world still preserve high standards.

## The Religion of Civilization.

The religious conditions in the United States it was declared that "there is little evidence that the Christian religion is regarded as important by most people."

Consistently there is a marked increase in the number of non-Chinese, which is the result of the growth of the world of the Christian. That what is in the world, what is the way to non-Chinese, what is the way to non-Chinese, what is the way to non-Chinese, what is the way to non-Chinese.

Non-paganism may be defined and gradual, but it is alive at the end of its existence. If the price of the world fall from the great of its advances they face the object of life's effort and have to begin.

It cannot be saved by a partial acceptance of faith's assurance. The religion of civilization and the religion of Christ cannot come into any true alliance. We have to choose between them, for no man can serve two masters. It is clear that he who would turn the teaching of Christ and the passages of the world and who would give satisfaction in the union and eternal. Our duty fully apart from God, and we can only give ourselves our duty fully except as we make it part of our service to Him.

Those who think that life's aim is attained by compliance with the world's standards find that they give little strength in the day of their weakness, and provide no light as they enter the darkness of life's close.

## Motor Cycles

- Harley Davidson 7/0 Electric Model 1,900/-
- Harley Davidson 2 1/2 Magneto Ignition 1,450/-
- Raleigh 3.99 All Chain Magneto Ignition 1,450/-
- Raleigh 7. All Chain Magneto Ignition 1,450/-
- Raleigh 174 All Chain Magneto Ignition 1,450/-
- Zenith 175 c.c. J.A.P. Engine Lamplugh Mechanical oil pump sight feed type, fully equipped 1,190/-
- Zenith 300 c.c. J.A.P. Engine equipped as above 1,250/-

Service 8 a.m. to 7 p.m. daily all repairs executed by Europeans only under supervision of Mr. Benson.

## CAPITAL GARAGE.

Victoria St.

## SARDINES.

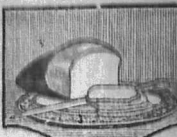
Best food to-day

### "Hors d'Oeuvre" Brand

Leader Building, P.O. Box 730 L. M. DAVE & Co.,

Board Residence—Rooms to let close to town. Gardeners preferred. From 4/10 monthly.

## FOR BREAD CAKES AND CONFECTIONERY



## ELLIOTS

NAIROBI. P.O. Box 121



## TEOFANI CIGARETTES

TRADE ONLY supplied by FERRY HIBES, Sole Distributing Agency, City House, Box 688, NAIROBI.

## Clairmont Residential Club

FULLY LICENCED.

20 minutes Car run from Nairobi. Separate Bungalows, Electric lighting throughout, SWIMMING TENNIS DANCING

Apply Manager: P.O. Box 629. NAIROBI.

## POSTAGE STAMPS.

Postage for 1890-1900 (£10/00) to be spent on used postage stamps. Highest prices paid and cash sent per return mail. Freighted years reputation for straightforward dealing. List of prices we pay sent post free on application.

T. H. BISHOP & Co. Auctioneers, Brompton, London, E.C.2.

P. STEWART, C.A.S., S.E.D., PAINTER & DECORATOR, Raffles Hotel, BANGKOK. P.O. Box 224.

PAINTS, COLOURS, OILS, VARNISHES & DESSERTS. Large or small quantities.

Face Yourself on the Right Side of the Bangor Line

INSURE YOUR MOTOR CARS AND MOTOR CYCLES. African Guarantee & Indemnity Co. Ltd. M. D. KAMPE, CHIEF AGENT.

Temporary Office: COURT CHAMBERS, NAIROBI.



THE ATTRACTION OF CUSTOMERS IS IN THE INTEREST... P. DE MELLO, NAIROBI.

# IMPORTANT NOTICE

The retail side of our business has been acquired by

Mr. Kenneth McIvor as from this date, who will trade as K. McIvor's Garage

All debts due to and payable by us will be settled forthwith.

We shall continue to act as Wholesale Importers of the well-known—Studebaker Cars, Case Tractors, Erskine Cars and Brockway Trucks.

## K. McIvor & Co.

## BRITISH SOUTH AFRICAN ANNUAL 1908-1909

With an East African Supplement Constantine from the Old Printing by Titus de Jongh. Photographs of South Africa, Rhodesia, Kenya, etc., and numerous interesting articles. PRICE, Shs. 6/- Post free 6/6 (packed in Cardboard)

Standard Stationery Stores, P.O. Box 290, NAIROBI.

MOMBASA TIMES CAN NOW BE ORDERED AT Standard Stationery Stores, SIXTH AVENUE, NAIROBI.

597591

Owing to considerations of space we are making a

# Large Reduction

# Gray Ton Trucks

Body & Cab. Magneto Ignition. Large Stocks of Spares. £130 F.O.B. Nairobi

K. McIVOR & Co. Sixth Avenue, Nairobi.



NOTICE.

Riverside Private Board Residence.

A healthy spot, 2 1/2 miles from town, situated of Salisbury Road and above Chiroiro. New Bedrooms, just erected, excellent table, tennis court, etc. Verandahs, 250/- and 200/- per month. For particulars apply to Mrs. BOWRING, Box 333, Nairobi.

TANGANYIKA CONCESSIONS.

Description of Share Holdings and Values.

PROSPECTING WORK.

The particulars that follow are extracted from and apply to the Statute in the Native Reg. The Tanganyika Company has lately been the topic of much discussion in the market and has been introduced on the market in an advertisement in the Standard. The last block stamped in black, are still available from official quotations. This containing a certain extent the price and imposing the progress of the share of the Union Mine is a very satisfactory.

Tanganyika Concessions, an English company formed on 23rd January, 1929, with the object of prospecting and developing in South Africa phosphate, concessions and rights of all kinds stipulated in Decree, 1901, their managing director, Mr. Williams, in order to carry out the concessions made or to be made between the latter time and the Statute for East Africa.

These concessions, dating from 18th December, 1901, and 22nd October, 1905, will be summarized as follows:— Mr. Williams really (Tanganyika Concessions) was also empowered to carry out all mining operations within an area of square miles, from the Indian Ocean frontier at the north-western boundary of Katanga up to the western bank of the Limpopo, and to ensure the development of the deposits found and recognized to be payable, either directly or by means of companies formed especially for this purpose; the capital of these companies was to be provided as to one-half through Mr. Williams and one-half by the Concessions Special du Katanga, the controlling portion sharing all the advantages resulting from these operations in the proportion of 80 per cent. for the Concessions Special du Katanga and 20 per cent. for Mr. Williams.

Active prospecting work was carried out, and within the territory conceded the Concessions Special du Katanga, defined territory, two large mining concessions containing deposits of copper, tin, iron, coal and mica. In 1908 the Tanganyika Company estimated that five of these concessions represented 15,000,000 tons of 4 per cent. copper ore, the greater part of which would be extracted on the surface, whereas in another group the ore discovered was valued at 15,000,000 tons containing per cent. copper. It was to develop these deposits that the Union Mine, in East Katanga, was formed in 1906, in accordance with the conditions imposed above. The development of the mining riches of East Katanga was naturally dependent on the creation of

lines of communication, and it was in this way that Tanganyika became interested in three railway projects—The Unions Railway Company, the Compagnie de Chemin de Fer de Katanga and the Benguela Railway Company. In 1920 they acquired interests in the Nile Camp Diocesan Syndicate.

THE COMPANY'S CAPITAL.

Tanganyika Concessions, had been formed with a capital of £100,000. They announced their list of subscribers, and the terms of the Union Mine, took into consideration the fact that the concession, independently of their obligations under other contracts, had to be developed in accordance with the Convention, and were thus authorized to increase the capital to £200,000. The per cent. Cumulative Preference shares, convertible into Ordinary shares, at 25/- up to 200,000. 1927, and £200,000 Ordinary shares, each of these having a nominal value of £1.

The capital of the company at 31st December, 1935, was represented by £102,950.000 Preference shares and £4,628,950.000 Ordinary shares. The capital of the Union Mine amounts to £128,000,000 francs, and there are besides Tanganyika Concessions, 20,400,000 francs. The company issued some time ago £200,000 Preference shares divided paying as from January, 1927.

The ore reserves are such that (at the end of 1935) the company containing approximately 5,285,000 tons of copper that company by developing these reserves of extraction, intend to reach a total production of 1,000 tons of copper per year. This production is estimated the Union Mine will be in all probability control the copper market of the world. It will be recognized besides that there are various other ores, such as tin, iron, mica, and other ores. The profits of the company after deduction of large amortizations accumulated amounting to £1,500,000 francs in 1925, 50,000,000 francs in 1926, and 150,000,000 francs in 1927. For the last three years they were equal to the total of the usual capital, and since 1922 the dividend on Central shares has increased from 25/- to 37 1/2 francs.

The shares of the Tanganyika Concessions in the dividend of the Union Mine amounted to £20,212 in 1926, £12,000 in 1927, £250,000 for 1928, and £110,000 in 1929. The increase in 1925 was due to the fall in the Belgian exchange rate, which their share for that year would have amounted to approximately £300,000. It must be noted that the net profit of the Tanganyika Company in the Union Mine was reduced in 1925 by 50,000 Preference shares and 1 million francs were decided on in order to increase the working capital of the Tanganyika Company, and thus to enable them to recover the cost of the acquisition of the Benguela Railway. REGISTERED IN BELGIUM. The proposed length of this line

through the territory of Portugal West Africa from the point of Lobito Bay on the Atlantic to Katanga (Katanga) on the Congo. The length of the line between Lobito Bay and Katanga is 795 kilometres. There remain to be completed the line from Katanga to the Congo frontier, and the line from the Congo frontier to the Congo coast. The length of the line from Katanga to the Congo coast is 237 of the

Arrangements have also been made for the completion, with all possible speed, of the section between the Belgian Congo frontier and some point in the neighbourhood of Chitanga. The completion of the Benguela Railway will mean for the Union Mine a great benefit, both in the time required for the transport of its products, and in the cost of transport.

The completion of the Benguela Railway situated at 1,200 metres and by the port of Beira, will be of great advantage to the Union Mine. An arrangement made with the Benguela Railway stipulated that a minimum of 50,000 tons are to be transported annually to the Union Mine until 1931. After 1930 there will be no further obligation for the Union Mine to transport its products to the Benguela Railway, but the Union Mine will certainly be entitled to a certain percentage of the cost of the development of the Benguela Railway.

The traffic on the Benguela Railway which has so far been opened to traffic has in 1925 been 150,000 passengers, and 124,175 tons of goods in 1921 to 1923, 225,000 passengers, and 170,000 tons of goods. The traffic of goods in 1925 was 200,000 tons. It is to be noted that in 1925 the traffic was 200,000 tons. It is to be noted that in 1925 the traffic was 200,000 tons.

The traffic on the Benguela Railway which has so far been opened to traffic has in 1925 been 150,000 passengers, and 124,175 tons of goods in 1921 to 1923, 225,000 passengers, and 170,000 tons of goods. The traffic of goods in 1925 was 200,000 tons. It is to be noted that in 1925 the traffic was 200,000 tons.

The traffic on the Benguela Railway which has so far been opened to traffic has in 1925 been 150,000 passengers, and 124,175 tons of goods in 1921 to 1923, 225,000 passengers, and 170,000 tons of goods. The traffic of goods in 1925 was 200,000 tons. It is to be noted that in 1925 the traffic was 200,000 tons.

60 SECONDS A MINUTE. This is the astonishing speed at which the empty tubes are filled with Gibbs Shaving Cream, and sealed. The same wonderful machine performs both operations with a precision impossible to human hands. Just the exact amount—just the amount's quantity. NO A MINUTE? This speedily met now adopting this revolutionary shaving cream. YOUR CHEMIST STOCKS IT. Gibbs SHAVING CREAM The Cream of Mankind. ARTISAN MADE.

Ephos Fertiliser. Important to Wheat Growers. Recent experiments at Canterbury Agricultural College, New Zealand, in conjunction with the Agricultural Dept. Justify our claim that EPHOS is the best fertilizer. Sole Agents and Stockists, J. G. ARONSON LTD., P.O. Box 681, NAIROBI.

Reliance Transport Co. TRANSPORT CONTRACTORS, FUEL MERCHANTS, PARTNERS—J. J. Keer, A. B. Keer. We have lately added to our fleet Lorries of the most up-to-date equipment and have others of British manufacture arriving in August. P.O. Box 462. Telephone address RELIANCE, SADDLER STREET, NAIROBI.

A Fresh Shipment OF Rowntree's Chocolates and Gums. ARRIVED PER S.S. LLANDAFF CASTLE. Colonial General Stores. Phone 226, Govt. Road, Box 426, NAIROBI.

OFFICIAL PROCEEDING OF THE SOUTH AND EAST AFRICAN COMBINED. Agricultural Cotton Entomological Mycological CONFERENCE. AUGUST 1936. 7388 Pages, Price 5/6, Post 6/6. Obtainable from: Standard Stationery Stores, P.O. Box 280, NAIROBI.

IT is very satisfactory to use a substitute in powder when you are in a hurry. Royal Baking Powder Co. Ltd. 101, 102, 103, Street, New York, U.S.A. Royal Baking Powder Co. 101, 102, 103, Street, New York, U.S.A.

GARS FOR HIRE. SEE KENYA IN COMFORT. HUDSON SUPER SIX GARS FOR HIRE. P. GETHIN, 101, 102, 103, Street, New York, U.S.A.

GARS FOR SALE. Hudson Super Six, excellent condition. Overland Four Tourer, excellent condition. Hudson Super Six, Union Sports (1,000 miles) low condition. Morris Cowley overcast. 4 (4 good tires) Standard Six, 5,000 miles, 2 good tires. Standard Six, 5,000 miles, 2 good tires. IF YOU WANT TO HIRE, BUY OR SELL, Ring GETHIN.

Board and Accommodation. Can be obtained at Mrs. STEVENSON, Box 28, NAKURU, (Late Lodge Hotel), THE

ARE YOU BUILDING? WE WILL QUOTE YOU for all classes of Building Material. Imported deal for ceilings and floorings, Teakwood in logs and planks supplied. Best British Cement, Mangalore Tiles, Corrugated Iron. F. M. BHAIJEE, P.O. Box 318, Indian Bazaar, Phone 583, Tel.—'Hardware', NAIROBI.

FOR Service & Satisfaction BUY YOUR Wines & Spirits PROVISIONS & GROCERIES Wholesale or Retail: Beliram Parimal & Co. (Established 1900.) Corner Swamp Road and Government Road, Phone 36, NAIROBI. P.O. Box 29. Also P.O. Box 47, MOHIBASA.

NOTICE. Local and Imported Apples and all kinds of other fruit, vegetables. Avocado Pears 5/- 1/2. Washington Navel Oranges 10 for 1/-. Local Oranges large 4/- 1/-. Bacon, Butter, Cheese, etc. Game Beef, Mutton, Pork and Sausages.

Foster & Blowers, NAIROBI.

Crawford's SPECIAL RESERVE SCOTCH WHISKY. Established since 1820. Mellow in Flavor and Ripe in Quality. P.O. Box 28, NAIROBI.

Dobbies Ltd. OPTICIAN OPTICIANS NAIROBI. Your Glasses and Goggles in Caskets, Embossed Cases and Amber Lenses.

Reduction in Price But Better Value Than Ever THE FOUR THE FOUR 12 yard Ribbon 10 inch Carriage Variable Line Spacer in strong new shape case Reduced 315- Price Standard Stationery Stores, Nairobi.



Special Notice

Mr. Schouten takes this pleasure of introducing to his clients Mr. F. V. Covey who has just joined the Mr. Covey is expert in all departments, having had his experience in the leading West End London...

COMPLETE CHANGE OF PROGRAMME. For Monday, Tuesday only. The programme for the week ending June 11th is as follows...

MAJESTIC To-day 1st Show 8 p.m. To-Night 2nd show 8.30 p.m. "EDDIE POLO" as

"MARVELOUS ROULOUX" in the Circus King

NEXT TO PARIS-EP. Nos. 5, 6, 7, 8, and 9. Don't miss it! Admission 5/2, 7, and 1/-

REMOVAL NOTICE M. R. D'Souza & Co.

Remington Typewriter Agency STANDARD-NOISELESS-PORTABLE. Sole East African Agents GUESTNER DUPLICATORS.

Government Road, NAIROBI. Phone No. 73. P.O. Box 186.

European Skilled Mechanics, at all Branches. Madataly Sulman Verjee & Sons INDIAN BAZAAR.

Dealers in: Fencing Wire, Black and Galvanized, Barbed Wire, Grinding Stones, Galvanized Baths, Cart Grass, Round and Flat Iron Bars, Axes, Hoes, Mattocks, Hatchets, Pruning Knives, Sickle, Vermorel, French Polish, Black Japan, C.I. Sheet, and other Building Materials.

Also: Account Books, Writing Pads, Large and Small Envelopes, Envelopes, Carbon Paper, Stamps, Glass Pen-cases, etc. 5/6.

P.O. Box 129. Enquiries Solicited. Tel. Ivory. HORN & RING HORNS.

Our Snapshot Competition WEEKLY PRIZES. 1st Prize £15. 2nd Prize £10. (if warranted). 5s. 6d. for every Picture Published.

The Competition is for Snapshots of EAST AFRICAN INTEREST and must be taken by the Competitor. THE NAME and ADDRESS of the Competitor and the SUBJECT of the PHOTOGRAPH should be written on the back of the print. ANY NUMBER of prints may be sent by the SAME COMPETITOR. Envelopes to be addressed to: THE "SNAPSHOT" COMPETITION, East African Standard, P.O. Box 380, NAIROBI.

If 3 lines or lines are sent we will make arrangements for reproduction if necessary. These lines or plates will be returned after publication. If photos are to be returned A STAMPED ENVELOPE MUST BE ENCLOSED.

The Editor's decision will be final.

CORRESPONDENCE

The Editor does not accept responsibility for the views expressed by the correspondents in these columns, and in all cases the name and address of the writer should be given, so that we may, if necessary, refer to him or her. Briefly is also essential to every contribution.

NAIROBI APPLA-MANDA. To the Editor, "E.A. Standard." Sir, I have the honor to express the thanks of the Director of the Corporation and the staff of the anti-malaria campaign. That the campaign has been so successful is due to the practical fact that there has been but little malaria in Nairobi so far this year.

JOHN T. GILES, Director of Medical and Sanitary Services. Nairobi, June 10, 1927.

GREENHAY AND THE DAIRY INDUSTRY. To the Editor, "E.A. Standard." Sir, In view of the fact that the high cost of dairy produce has led to a large number of consumers to lower a low level concerning the dairy industry...

It is in spite of the high prices being paid for butter during February, that your Commission were selling their butter at 2s. 2 1/2 per lb. and were paying their suppliers approximately 1s. 7 1/2 per lb. (average price for two creameries). Now there is approximately 84 per cent of butter fat in one lb. of butter which means that for the price of having his butter one lb. as a consumer, the dairy farmer paid for the creamery 2s. 2 1/2 per lb., whereas if he had made the butter himself, it would certainly not have cost him 5 cts. per lb. to make and he could have sold direct to the consumer at 1s. 2 1/2 per lb. which, in addition to the fact that the consumer would have got the butter at least 75 cts. per lb. more for his butter than he did by sending it to the creamery.

I have always been a believer in cooperative societies and I am a member of one myself and with all the raw material and no overhead expenses to a minimum.

SECTIBLES NOTES.

(Continued from page 10) continued subsequent to the war, and the difficulty of getting commission on the score of expense. The Inspector remarks that the Government has not made a united scheme, in return for the benefit of which the children in English, "which is to form the nucleus of a new school."

On the contrary, the medium of instruction is being retained in the discretion of the teachers and the choice of text-books is left to the discretion of school committees, as a result of which the Government has not made a united scheme, in return for the benefit of which the children in English, "which is to form the nucleus of a new school."

I repeat quite from Farming in South Africa, June, 1926: "We have for too many generations in countries where one grows wheat or some other food crop, been so used to the idea of the children themselves doing the work of the field, that the advantages of a bilingual education are inconceivable to the majority of school children."

At the recent Cambridge Local Examination were 50 candidates for the Preliminary, 13 for the Intermediate, and 10 for the Certificate Examination. Of these, 19 passed the Preliminary, 10 the Intermediate, and 5 obtained their School Certificate.

HENRY ARRIVED. It is believed that Mr. Henry has made his appearance on the scene in the shape of a Ford Toural and a Ford Roadster. It is believed that Mr. Henry has made his appearance on the scene in the shape of a Ford Toural and a Ford Roadster. It is believed that Mr. Henry has made his appearance on the scene in the shape of a Ford Toural and a Ford Roadster.

with his grey hair, looked very good indeed. It is believed that he will be a valuable addition to the staff of Victoria. His presence there will be a great help to the staff.

One can see that the problem also concerns the question of the width of the roads. The P.W.D. may also have to take into account the fact that the roads are to be widened to 30 ft. in some places, and the width of the roads to be widened to 30 ft. in some places.

According to the programme (inserted) the cost of the interest and residential area of the scheme is estimated at £100,000. The cost of the scheme is estimated at £100,000. The cost of the scheme is estimated at £100,000.

Building Conditions For Town Layout. The new conditions for town layout are as follows: (a) The width of the roads to be widened to 30 ft. in some places, and the width of the roads to be widened to 30 ft. in some places.

At the recent Cambridge Local Examination were 50 candidates for the Preliminary, 13 for the Intermediate, and 10 for the Certificate Examination. Of these, 19 passed the Preliminary, 10 the Intermediate, and 5 obtained their School Certificate.



You would notice her complexion among a thousand

As women take less than 100 people in one hour, it is a very healthy treatment. It is a very healthy treatment. It is a very healthy treatment.

PEERLESS ERASMIC WITH DENTIN SOAP

B. H. Myers & Co. Ltd. Nairobi. Phone 443. Government Road, near National Bank of India.

B. H. M. Suite. 5/1, Settee and 2 Easy Chairs, Covered American, and Fully Sprung at £40/-. 5/1, Settee and 2 Easy Chairs, Covered American, and Fully Sprung at £40/-.

B. H. M. Bedroom Suite. Comprising Panelled Wardrobe 3'6" with full length bevelled Mirror 15 x 48. Dressing Table 3'6" long with Square Bevelled Mirror, 1 Long Drawer and 2 small Drawers. Washstand, 3'6" long, 2 Door Cupboards with Boot Rack or Shelf, 2 Towel Rails and Toilet Shelf.

The Above Suite at £40/-. Come to our factory and showroom and see how your furniture is made.

ZIEGLER'S Dry Cleaning & Dyeing Works. Town Roving Office: No. 8, Theatre Royal Arcade.

Geo. BLOWERS BUILDING CONTRACTOR, MAUFACTURER AND DIRECT IMPORTER. Tel. Add. "Concrete". Phone: Work 300; House 425. Made in Coder

Geo. BLOWERS BUILDING CONTRACTOR, MAUFACTURER AND DIRECT IMPORTER.

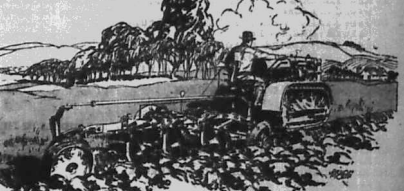
TEL. ADD. "CONCRETE". PHONE: WORK 300; HOUSE 425. Made in Coder. Windows glazed and fitted with double panes. Double panes are made in Coder. Double panes are made in Coder.



NOTE-All blocks shown are made in Coder. Double panes are made in Coder. Double panes are made in Coder. Double panes are made in Coder.

Any kind of JOINERY, both hard and soft woods. SHOP, OFFICE, and BANK FITTINGS made to order. Estimates free. Painting and Decorating by European Expert. Works: Sadler Street.

"Caterpillars" pay dividends to farmers



"Caterpillar" power means more land worked. "Caterpillar" economy means less cost-money saved is money earned.

"Caterpillars" quality of design and materials means uninterrupted service. "Caterpillar" means bigger profits and greater convenience.

SOLE AGENTS: GAILEY & ROBERTS, Ltd. KEWFA, UGANDA, TANZANIA.

2 TON MODEL 35 £275-00 4 TON MODEL 35 £775-00









THE EAST AFRICAN STANDARD

BEIRUT

BAGDAD

# Buick carries the Desert Mail

Oil discovered in Irak!

Overnight sleepy Bagdad became a feverish center of commerce. Transportation facilities were swamped—mails delayed. By the established trade route, Bagdad was 30 days from London.

A new way, and a shorter one, had to be found to carry passengers and the mail to Bagdad. The motor car suggested itself. And the difficulties of the situation suggested Buick. The route chosen was an abandoned camel trail, leading from Beirut on the Mediterranean—500 miles through the mountains and across the Syrian Desert.

This happened two years ago. To-day Major McCallum of the British Army and the Nairn

Transport Company has this to say of his fleet of Buicks:

"I should always use Buick again under the same circumstances.

"This car maintains a high speed for hours on end.

"It has the power to carry excessive weight over two ranges of mountains and the desert, without overheating. Our cars go to Bagdad and back again, 1000 miles, without adding a drop of water to the radiator."

Buick quality and design produce a reliability of performance known and spoken of all over the civilized world. Whenever there is hard work to be done, Buick is the car to do it.

Buick "48" (70 miles per hour)	—	—	—
Buick Touring	—	—	—
Buick Super Sedan	—	—	—
Buick "48" (70 miles per hour)	—	—	—
Buick Touring	—	—	—
Buick Super Sedan	—	—	—

# BUICK

Giffillan & Company, Ltd.  
DISTRIBUTORS





### Union-Castle Line

SAILINGS FOR ENGLAND  
VIA SUEZ

From Mombasa  
 "Lindoverly Castle" 20th June  
 "Gulford Castle" 19th Aug.  
 "Lindoverly Castle" 19th Aug.  
 "Gulford Castle" 8th Dec.  
 \*This steamer will not call at Aden, Port Sudan, Genoa or Marseilles.

Via SOUTH AFRICA: ...  
 "Bratton Castle" (cargo only) 8th July  
 "Llanstephan Castle" 22nd July  
 "Crawford Castle" (cargo only) 28th Aug.  
 "Llanstephan Castle" 16th Sept.  
 "Gaston" 11th Oct.  
 "Llanstephan Castle" 11th Nov.

For Rates of Freight and Passage Money Apply to:  
 The Union-Castle Mail Steamship Company Limited,  
 11, ABchurch Lane, LONDON, E.C. 4, ENGLAND.

...Or the Company's Agents:  
 The British East African Corporation, Ltd.,  
 11, ABchurch Lane, MOMBASA.

### BRITISH INDIA STEAM NAVIGATION COMPANY, LTD.

AND PENINSULAR AND ORIENTAL STEAM NAVIGATION CO.

London and East Africa Line.  
 LONDON TO BEIRA, VIA MOMBASA, PORT SUDAN, PORT SAID AND ADEN, OUTWARDS AND INWARDS.

London and Durban Mail Service.  
 Calling Kilindi, Zanzibar, Beira, Delagoa Bay, Inhambane, Also Swaziland, Durban, East London and Mozambique monthly, Outwards and Inwards.

Steamers, Arrives from London about  
 "MULERA" 11th June  
 "MADRA" 19th June  
 "MANTULA" 28th July  
 "MADRA" 28th August  
 "MATANA" 2nd September 1st October  
 "MADRA" 28th September 2nd October  
 "MANTULA" 2nd October 2nd November  
 "MADRA" 28th October 2nd November  
 "MATANA" 2nd December 2nd January  
 "MADRA" 28th January 19th February

Sells from Kilindi for London about  
 "MULERA" 11th June  
 "MADRA" 19th June  
 "MANTULA" 28th July  
 "MADRA" 28th August  
 "MATANA" 2nd September 1st October  
 "MADRA" 28th September 2nd October  
 "MANTULA" 2nd October 2nd November  
 "MADRA" 28th October 2nd November  
 "MATANA" 2nd December 2nd January  
 "MADRA" 28th January 19th February

Passenger steamers call at Plymouth to disembark passengers.  
 N.B.—All Steamers will call at Mombasa on the Outward and Homeward Voyages.

ALL RATES SUBJECT TO ALTERATION WITHOUT NOTICE. RETURN TICKETS ISSUED AT TWO SINGLE FARES LESS UP-COUNTRY CERQUES NOT ACCEPTED UNLESS ENDORSED BY A LOCAL BANK.

Terms, rates of freight and passages may be arranged with:  
 SMITH, MACKENZIE & CO. Agents—Kilindi, Mombasa, Zanzibar, Dar-es-Salaam, Tanga, Lindani, Lamu.  
 Passage agents only Nairobi & Kampala.

### TRY CHIVER'S CUSTARD Powder

With CHIVER'S CANIED FRUITS.  
 Made in Four Flavours.  
 Vanilla, Lemon, Almond and Standard.

Sole Agents—  
 R. O. HAMILTON, Ltd., Phone Box 302. NAIROBI.

### The Salisbury Hotel Nairobi

Phone 166. P.O. Box 300.

### HOLLAND AFRIKA LIJN

JOINT SERVICE.  
 HOLLAND ZUID-AFRIKA LIJN AND HOLLAND OOST-AFRIKA LIJN.

Steamers will load at Kilindi on or about the following dates:  
 "Gulphaak" (E) June 18th. s.s. "Bijvoet" (E) July 20th.  
 "Hillem" (E) June 25th. s.s. "Sumatra" (E) Aug. 15th.  
 "Thornhout" (A) July 10th. s.s. "Oriska" (E) Aug. 27th.

BEFOREWARD VIA THE CAPE.  
 s.s. "Springbok" (A) June 20th. s.s. "Melick" (A) Aug. 22nd.  
 s.s. "Rijk" (E) July 7th. s.s. "Paardvanger" (A) Sept. 5th.  
 s.s. "Tina" (E) July 20th. s.s. "Paardvanger" (A) Sept. 20th.  
 s.s. "Springbok" (A) Oct. 20th.

PASSENGER TABLES:  
 (A) — 200-10-0 (D) — 420-10-0  
 TO EUROPE (A) — 420-10-0 (D) — 420-10-0  
 TO LONDON (A) — 420-10-0 (D) — 420-10-0

VIA THE CAPE TO LONDON — (A) — 420-10-0 (D) — 420-10-0

For further information apply to the Agents—  
 TWENTSCHE OVERSEA TRADING CO. LTD.  
 MOMBASA, KAMPALA, F.O. Box 146. Telegrams: "HOLAFRIKO." Tel. 146.

Sub Agents: NAKURU H. Theodor, Ltd and Estates.

### WARNING!

TO ALL PURCHASERS OF HARVESTING MACHINERY.  
 CONSIDER BEFORE YOU BUY. THEN BUY THE BEST!

## MASSEY HARRIS REAPER THRESHER

First in the Field—Still in the Lead.

### Sole Agents. SMITH MACKENZIE & CO. NAIROBI.

P. O. Box 390.

### MONEY TO LEND

SHORT PERIOD LOANS GRANTED.  
 BILLS DISCOUNTED.  
 STRICTEST CONFIDENCE.  
 Call or Write to the—  
 Kenya Loan & Discount Co., Ltd.  
 1st Floor, Court Chambers, Nairobi. Box 548.  
 Established 1921.

### Hussein Suleman Virji & Sons

Dover Stoves from No. 6 to 6. Bristles Stoves Single and Double Burner, Primum Stoves, Spirit Stoves, Table Lamps, Hanging Lamps, Night Lamps, etc. Filers Enamel and Earthenware.  
 SUPPLIES NOW IN STOCK.  
 Box 298. Telegrams: "Sulversons." Tel. 364.

### DEUTSCHE OST-AFRIKA-LINIE.

GERMAN AFRICAN SERVICE.

Fast Service of Turbine Steamers from Hamburg—Southampton round Africa, taking First, Second and Third Class Passengers. Ex-cessive Service Outwards and Home. Attention is specially drawn to the exceptionally good Cabin accommodations.

SAILINGS FROM MOMBASA TO HAMBURG. VIA CAPE.  
 Calling at Aden, Beira, Port Said, Genoa, Marseilles, Malaga, Lisbon, Southampton, Hamburg, Antwerp, London, Liverpool, Harwich, and Rotterdam.

VIA CAPE.  
 Calling at Tanga, Zanzibar, Dar-es-Salaam, Port Anson, Mozambique, Beira, Lourenco Marques, Union, Port, Lourenco, Valparaiso, Rio, Cayenne, L'Anse-au-Loup, Southampton, and Antwerp.

20th June  
 22nd July  
 19th Aug.  
 11th Sept.  
 2nd Oct.  
 28th Nov.

20th June  
 22nd July  
 19th Aug.  
 11th Sept.  
 2nd Oct.  
 28th Nov.

20th June  
 22nd July  
 19th Aug.  
 11th Sept.  
 2nd Oct.  
 28th Nov.

18 Days to Genoa.  
 Up-country charges cannot be accepted unless mutually reduced by Local Bank.

18 Days to Southampton.  
 Up-country charges cannot be accepted unless mutually reduced by Local Bank.

23 Days to Southampton.  
 Up-country charges cannot be accepted unless mutually reduced by Local Bank.

For full particulars of passenger fares and freight rates apply to the Agents—  
**BOUSTEAD & CLARKE Ltd., and REDUCED.**  
 Telephone: "Progress."  
 MOMBASA, NAIROBI, KISUMU, JINJA.  
 GENERAL AGENTS: BOUSTEAD & CLARKE LTD.,  
 11, ABchurch Lane, LONDON, E.C. 4, ENGLAND.  
 Cable: "Ostafrika." P.O. Box 210.

W. C. Hunter & Co., Editors.

### OUR GUNS HAVE PROVED THEMSELVES!!!

Read the following unqualified testimonials:  
 "I have shot over 40 Elephants with your S.R. Rifle. I consider it the best rifle on this continent. Ample and superior to 118 or 250 Magnum. Your 28" Barrel is the best Gun on the Market."  
 (Sd.) F. B. Vrynes, Game Department, Tzanzania.

"I have been at the killing of 6 big Elephants and 9 Rhinos during the past month. I consider your D.W.M. ammunition 'The Best' and would use no other."  
 (Sd.) J. A. Hyman.

"I have the pleasure in telling you that I have just dropped a large Elephant with good results, they got about 1100 lbs. each.  
 As you know, I am using one of your 10.75 Rifle and have had wonderful results and I feel your D.W.M. ammunition very satisfactory."  
 (Sd.) H. P. Lavers, Box 500, Harare.

EVERY WEAPON TESTED IN YOUR PRESENCE, and sold under our own personal guarantee of 1 year.

2,000 Guns of every description in all sizes by order from Mombasa Stocked.  
 Send for Illustrated Catalogue gratis.  
 Gun repairs of every description by our European Gunsmiths.

### CHAS. A. HEYER & CO. GERMANY.

Box 307. Established 1902.

### OVERSEAS MAILS.

ARRIVALS.

STEAMER	FROM	Days at Mombasa	Days at Nairobi
Waghai	South	June 6	June 11
Madras	Europe	" 11	" 16
Key Le Rideau	Marseilles	" 14	" 19
Asapa	South	" 16	" 21

\*Madras carries 800 bags.

DEPARTURES.

STEAMER	FOR	Days at Mombasa	Days at Nairobi
Madras	Europe	June 10	June 15
Key Le Rideau	South	" 17	" 22

### Compagnia Italiana Transatlantica.

NEW EAST AFRICA—ITALY FAST DE-LUXE PASSENGER SERVICE.  
 sailings from Kilindi for Genoa

S. G. MAZZINI 6th July  
 S. F. CRISPI 8th Aug.

Apply—  
 M. D. KAMPP—Nairobi Agent  
 SOCIETA' COLONIALE ITALIANA—Mombasa Agents

### Compagnie Africaine de Navigation.

FAST CARGO STEAMERS.  
 Antwerp-East and South Africa Service.

S.S. "KAMBOVE"  
 Due to arrive Kilindi June 12th. Will take cargo for Dar-es-Salaam, Port Elizabeth, Lisbon and Antwerp.

For Freight and particulars apply to—  
**MITCHELL COTTS & Co.**  
 P. O. Box 141, MOMBASA also at P. O. Box 664, NAIROBI.

### DANCING.

The Nairobi School of Dancing and Physical Training, for adults and children.  
 Dancing lessons in the Lyric Hall (only by Miss Ed.)—Outdoor Classes at Harbair and Park. Instructors by Miss F. McKean.  
 Gymnastic class (ladies) at the Lyric Hall with Thursday 6.15-7.15 by Miss McKean.  
 BALLROOM lessons including the CHALLENGER.  
 Terms Apply Box 306, NAIROBI.

### Uplands Bacon Factory

REDUCTION IN PRICES.  
 No. 1 size has been reduced by 12 1/2%.  
 No. 2 size has been reduced by 40 cts.  
 Ask your Grocer for his present Uplands price.  
 This Bacon may be depended upon to form the tin in very fine condition,  
 It provides an extremely economical and delicious source for any meal.



# MOTURING TOPICS

## World Rubber Record

### BRITAIN PULLING AHEAD OF AMERICA

The latest list in the world rubber market shows the United Kingdom and the United States follow the latter prominently.

According to annual statistics just made public the United States used 175,000 tons during the last twelve months, that in the corresponding period the United Kingdom used 100,000 tons more.

The same list covers the market, the British export of tires has considerably exceeded that of the American exports, despite the enormous extent of the tire business in America. Most of the British manufacturers use only the finest plantation rubber and super quality Egyptian cotton, so that it is little wonder that the merits of British tires are now being recognized all over the world.

### A B.S.A. SUCCESS

The Southern B.S.A. Council, held their year-end Camberley Heath, had a reputation for being the most sporting event of the year. There was no regulations, the first man home won, but this sounds much more simple than it actually is. Some idea of the nature of the course may be gained from the knowledge that the same ground is used by the War Office for testing out tanks before they see fit to commence.

This year the national difficulties of the drivers were made almost impossible by the heavy rain which fell over the time. O. Barwell, on a B.S.A. T.P. 8 V.O.V. model, was the first man home, covering the course of 47 miles in 58 minutes 22 seconds. He was awarded the Sports Trophy, the runner-up, and the award for the best performance by a Camberley Club member.

## Future of Fuel

### QUESTIONS FOR THE CAR OWNER

Conflicting opinions regarding future petrol supplies, with no welding to moderate, have not been met. Only one question is the primary question. Can the fuel supply be increased?

On the supply of oil, it is estimated that the United States supplies oil to the world, but it will fill the world for generations.

Most statements on the subject of petroleum resources are optimistic. Geologists have been able to determine with some degree of accuracy the area of oil deposits. By drilling wells, but even the most careful estimates of the amount of oil to be obtained from any deposit are subject to unavoidable errors which make them merely careful guesses. With this in mind one must have any prophecy that is made with general figures of oil. Certainly there is serious disagreement as to the life of known oil deposits and there is ground to believe that they are not inexhaustible.

The time has come when the motorist must give consideration to the waste in the use of fuel, and make up his mind as to the economy of operation in general.

While the problem is ultimately one for the consumer to solve, he is powerless without the assistance of the engine designer. The driver must realize that the power and fuel will be seriously affected by a failure of the petroleum supply or a considerable increase in the cost of fuel if maintenance is not employed. Whether or not a permanent shortage of petroleum is imminent remains to be seen in view of the disagreement of authorities on the subject, but under any circumstances the interest of the driver of cars can best be served both now and in the future by a united demand for more efficiency in our operation. (Exchange)

## A Studebaker Record

### RECENT OUTPUT FOR ONE DAY

Studebaker again broke all records recently by shipping 1277 cars from its South Bend, Detroit, and Chicago plants during the week ending May 27, 1927.

It is worth noting that on the day this represents better than any other day in the history of the plant since the month of March, 1926, when 15,000 cars were shipped in 1926.

### A TRIUMPH TRIUMPH

The mountains course for the fifth annual Sir David's Reliability Trial sponsored by the M.C.C. of New South Wales recently was a real test for the 12 starters and their mounts. Heavy rains during the first three days rendered the roads greasy and slippery, and in places, so deep was the mud that many of the machines became bogged. The machines became bogged, the wheels of the vehicles and the tires were several times. Only four completed the course without loss of marks. Two of these, Messrs. F. H. Moore, S. C. Goodall and J. Crawford, were riding their Triumph motor cycles.

Points were lost for arriving late at controls, and it is not surprising that there were several retirements. Only four completed the course without loss of marks. Two of these, Messrs. F. H. Moore, S. C. Goodall and J. Crawford, were riding their Triumph motor cycles.

## CHANGING GEAR UNDER THE BOBBY

One of the most annoying things of knocking gears under the hood is that caused by a valve tappet being out of adjustment. It gives a regular metallic click which sometimes will make one think the engine is coming apart, especially when there are two or three of them. One of the tappets and valve stems. The proper distance in the adjustment of a governor tappet. A machine will fall the distance one to one of its work. The gear should just slip between them when the engine is free from the cam. The adjustment is so easy that it can be done in five minutes. Care should be taken that there is the reach of a gap between the two parts, otherwise there is danger of a valve being kept partly open, with consequent loss of power.

### CHEVROLET SALES

Responding to a January demand for cars unprecedented in the history of the company, Chevrolet again shattered all production records. In the month of January, 1927, Chevrolet sold 10,000 more cars than in any other month of the year.

Under a \$2,000,000 expansion program announced in 1926, the Chevrolet Motor Company is equipped for even greater production during 1927. By an intimate company, the Chevrolet Motor Company expects to sell 80,000 cars in the United States alone. A million sales in the company's world goal, Canada and foreign trade being looked for to contribute the balance of the grand total.

# ALM REE KEROSENE

FOR LIGHT. CLEAR CLEAN, BRIGHT AND SMOKELESS. FOR POWER. FOR QUIET, EASY STARTING AND ALL-ROUND RELIABILITY; USE IN TRACTORS AND ENGINES.

SOLE AGENTS: ELDORADO, KITALE, NAKURU, KIMUNU, JINJA, KAMPALA, MOSHI, MVAUSA, RWANDA, NAIROBI.

SOLE AGENTS: GIBSON & CO., LTD., NAIROBI. MAIN DISTRIBUTING AGENTS: ANGLO-PERIAN OIL CO. (KENYA), LTD.

# A BARGAIN

SECOND HAND MILITARY OVERCOATS.

Long at Shgs. 15/- each. Short at Shgs. 12/- each.

In Bales of fifty at Shgs. 13/- each all round.

**M. ROSENBLUM & Co. Ltd.**

Telegram: "Roosblum." Tel. No. 15. NAIROBI. P.O. Box 81.

# THE KIDDIES DELIGHT

FINIS CHOCOLATE CREAM BARS, BOWTIE'S PLAYBOY CREAM CHOC BARS, BOWTIE'S WHIPPED CREAM WAFERS, BOWTIE'S BUT CREAMS, BOWTIE'S CHOCOLATE CREAM DE MENTHE, ETC., ETC.

All at the modest price of 25 Cts. Each. Call and see our range of HIGH CLASS CONFECTIONERY.

MAPLE DELICIE, MAPLE BRAZILIA, MAPLE DRESSING, GOLDEN MALTED, BILLET ALMONDS, BUTTER, NOVA, ETC., ETC.

# Blacklaws & Brown

(Machinery, Hardware)

Tel. No. 51. NAIROBI. Box No. 69.

# ARE YOU THINKING OF BUILDING?

If so it will be in your interest to consult us and obtain our price.

With our increased staff we are now able to undertake a limited number of additional contracts.

We can also supply, at competitive prices delivered Nairobi, first quality concrete blocks and all stone.

The Nairobi Building & Development Co., Ltd. P.O. Box 446. Contractors & Engineers. Court Chambers, Phone 284. Tel. "ECONOMY" Nairobi. NAIROBI.

# THE EAST AFRICAN STANDARD


## KENYA DIARY

1928

RENTY DIARY

ADVERTISING SPACE MAY BE BOOKED NOW

E. A. STANDARD LTD. P.O. Box 288, NAIROBI.



# JOHN SCOTCH WHISKY

THE HOUSE OF DISTILLERS LTD. SCOTLAND

DISTRIBUTORS: D. R. STEIN & CO.

# WE STOCK

Always big stocks of Beverages, Wines, Liqueurs, Best Quality of Dutch and Indian Cigars, Cigarettes, Sweets, Chocolates, Biscuits, Delmonico Brand Baked Fruits in tins and Fruits in Syrup.

Also for farmers Rough Salt, Ro & Salt, Dairy Salt, and Tipson Salt, Limesoil oil, Methylated Spirit and Turpentine.

Ask for our retail price list to-day.

**KANJEE NAR-NJEE**

P.O. Box 337. NAIROBI. Govt. Road.



# LION LAGER

WHENEVER YOU SEE A LION, KEEP COOL. Think of the coolest thing in all Africa.

OHLSSON'S

DISTRIBUTED BY: DENOVAN & DIEBEL, SOLE AGENTS, NAIROBI, MOMBASA.

# BRITISH REINFORCED CONCRETE FABRIC

—IS USED BY THE— KENYA GOVERNMENT, KENYA & SOLEDA RAILWAYS, NAIROBI COLLEGE, and the F.W.D. IS KENYA, MOMBASA and TANGANYIKA.

—WAS USED IN THE CONSTRUCTION OF THE ROYAL EXCHANGE BUILDINGS and COURT CHAMBERS—

—WILL BE USED IN THE CONSTRUCTION OF—

The New Hotel in 6th Avenue

For particulars apply to the Agents of the

# BRITISH REINFORCED CONCRETE

ENGINEERS CO. LTD. BEALES & SMITHSON NAIROBI.

# More than Economical Transportation — a Distinctively Beautiful Car



WITH mechanical excellence and economical operation firmly established, Chevrolet and General Motors engineers have concentrated their efforts on appearance.

The result is the greatest of Chevrolet's many achievements. The Most Beautiful Chevrolet in Chevrolet History—brilliant in its molish Duco colors, irrefragible in its distinguishing contours and setting a new standard of small car value.

You see a Chevrolet in six or seven special showings of the new cars. We are sure you will feel happy repaid.

**CHEVROLET**

THE LANDAU Model of the motor car of the Chevrolet type.

THE MOTOR MART & EXCHANGE, LIMITED. NAIROBI. NAKURU. QUALITY AND BEAUTY AT LOW COST.





# USE A LANZ AND SPEND THE SAVINGS

This is the tractor that has revolutionized ploughing in Kenya.



Do not miss this opportunity of seeing both the 22 and 35 B.H.P. machines working.

## A DEMONSTRATION

of Breaking and cross-ploughing will be held at the Niliwa Kiu Estates, Ltd. on Saturday, June 11th, using Massey-Harris Ploughs. The road is in excellent condition all the way. We are looking forward to meeting you there.

### J. R. COX & Co.

P.O. Box 51, ELDORET. P.O. Box 670, NAIROBI. P.O. Box 263, KAMPALA.  
Mortiboy's Nicholas & Co., Ltd. Mombasa Agents.

# B. E. A. Saw Mills

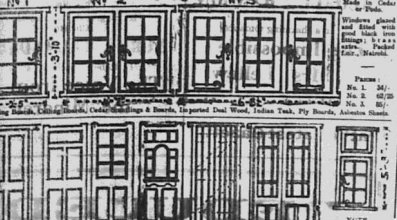
MILLS: Factory Sites, Nairobi. P.O. Box 321, Nairobi.  
Part Hillier, 2 Uplands, Katsikaya. Telegrams: Beams.  
Telephone Mills No. 93. Office No. 83.  
CAMPBELL, FODD, MWERI and BOXWOOD.  
Prompt Delivery.  
LONG LENGTHS A SPECIALITY.

## HAULAGE and TRANSPORT

STANDARD BUILDINGS. ANY WEIGHT ANY DISTANCE. HAULAGE & GENERAL TRANSPORT CO. 6th Avenue, Phone 85. P.O. Box 336.

# Geo. BLOWERS

BUILDING CONTRACTOR, MANUFACTURER AND DIRECT IMPORTER. P.O. Box 200, Saddler Street, NAIROBI. CASH WITH ORDER.



Windows, glass and iron work, door and window frames, all kinds of iron and steel work. Prices on application. Please specify all measurements.

Any kind of JOINERY, both hard and soft woods. SHOP, OFFICE, and BANK FITTINGS made to order. Estimates free. Painting and Decorating by European Expert.

Works: Saddler Street.

Miss KATHLEEN BATES, A.R.C.M. RECEIVES PUPILS FOR PIANO, VOICE, and THEORY. Conching given to Singers and Instrumentalists. STUDIO SIXTH AVENUE. Postal Address, Box 417.

# AGRICULTURE

## EASTERN AFRICA SHOW.

### The Milking Classes.

The milking classes at the Eastern Africa Show to be held in Nairobi on August 1, 2 and 3 are as follows—  
(Classes Nos. 63 and 64 in the Official Price List)—  
63. Cow, one year and under or eligible for entry in the East African Stud Book. To be judged on points, lactation, weight of milk, butter fat contents. To be milked at 3 p.m. on the day previous to the first day of the show.  
The Society's Gold and Silver Medals will be presented to the 1st and 2nd respectively in this class.  
64. Cow, any age, not eligible for entry in the East African Stud Book. To be judged on points, lactation, weight of milk, butter fat contents. To be milked dry at 5 p.m. on the day previous to the first day of the Show.  
The Society's Gold and Silver Medals will be presented to the 1st and 2nd respectively in this class.  
The dairy shows will be run in accordance with the following rules and scale of points—  
The animals will be milked for 4 1/2 p.m. on Sunday, July 31st, for the milk of the last twenty-four hours will be weighed at the Trial, animals will be milked for 6 1/2 a.m. and 2.30 p.m. on Monday August 1st.  
A certificate giving the last date of calving (which must be 120 days before the opening day of the Show) and the last date of service and stating that the cow has not been bred since that date, signed by the owner of the animal, sent in every case as soon as possible after the animal has served to the Registrar.

1. One point for every 1 lb. of milk.  
2. This milk will be analyzed on the first day of the show...  
3. Four points for every one per cent of fat above the average percentage of fat found in the two milkings...  
4. Five points for every one per cent of fat below the average percentage...  
5. Cows which have calved 90 days after being bred but not later than 100 days...  
6. Cows which have calved 121 to 150 days...  
7. Cows which have calved 151 to 180 days...  
8. Cows which have calved over 180 days...  
9. Cows which have calved over 180 days...  
A certificate giving the last date of calving (which must be 120 days before the opening day of the Show) and the last date of service and stating that the cow has not been bred since that date, signed by the owner of the animal, sent in every case as soon as possible after the animal has served to the Registrar.

# Motor Cycles

Harley Davidson 7/0 Electric Model 1,900/-  
Harley Davidson 7/0 1,400/-  
Raleigh 3/96 All Chain Magneto Ignition 1,400/-  
Raleigh 3/96 All Chain Magneto Ignition 1,400/-  
Raleigh 1/74 All Chain Magneto Ignition 1,200/-  
Zenith 175 c.c. J.A.P. Engine Lamplamp Mechanical 1,150/-  
Zenith 300 c.c. J.A.P. Engine equipped as above 1,200/-  
Service 8 a.m. to 7 p.m. daily all repairs executed by Europeans only under supervision of Mr. Bensen.

## CAPITAL GARAGE.

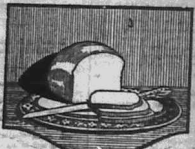
Victoria St. Opp. Fire Station.

## SARDINES.

"Hors d'Oevre" Brand. Leader Brands, P.O. Box 730. L. M. DAVE & CO. Board Residences—Rooms to let, close to town, comfortable. Tel. 430. 1001-1002. Apply Box 228.

# FOR BREAD

## CAKES AND CONFECTIONERY



# ELLIOTS

NAIROBI. Phone 60. P.O. Box 172.

# ANNOUNCEMENT

NAIVASHA OR MAIN ROAD. New LUNCH & TEA ROOMS WILL BE OPENED, APRIL 23. Under Management of KIA ORA STORES. NAIVASHA (Petronage Softly) ZAWILLI.

# Clairmont Residential Hotel

FULLY LICENCED. 20 minutes Car run from Nairobi. Separate Dungalows, Electric lighting throughout. SWIMMING. TENNIS. DANCING. Apply Manager: P.O. Box 625. NAIROBI.

## NATIONAL BANK OF INDIA LIMITED.

(Incorporated in the United Kingdom). Branches to be taken and Professors of Kenya and Uganda Prefecture. Subscribed Capital—44,000,000. Paid-up Capital—22,000,000. Reserve Fund—22,000,000. 25. Holbeagh, London, E.C. 3. Branches: Bombay, Madras, Calcutta, Rangoon, Singapore, Ceylon, Colombo, Madras, Pondicherry, Zanzibar, Dar-es-Salaam and Tanganyika. Also at Accra, Boma, Beira, Durban, Freetown, Harare, Johannesburg, Lagos, London, Lyons, Mombasa, Mozambique, Nairobi, Port of Spain, Singapore, Sri Lanka, Tientsin, Yokohama, and other ports.

## DANCING

ALL BRANCHES OF STAGE & BALLROOM DANCING taught by M. SA. Adrienne Ray. Member of S.A. DANCING TEACHERS' SOCIETY. Principal of the Adelaide School of Dancing.

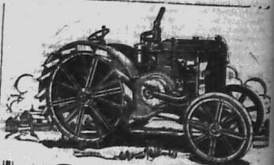
## MOMBASA EXPRESS TRANSPORT CO.

Experienced Service. SHIPPING. Satisfaction. CLEARING NAIROBI Bonded Warehousemen. Phone 333 and 55. Office Contractors to Kenya & Uganda Rly.

# The SHOE SPECIALISTS

## Maxwell Brady & Company

"M. B. & Co." THE "CHARLSTON" SANDAL. THE "CALIFORNIA" SANDAL. THE "MARIYARD" SEMI-SANDAL. THE "KENYA" FAVORITE. THE "ENTILE" RANGE. THE "LADY" RANGE. THE "LADY" RANGE. THE "LADY" RANGE.



# CASE IS BEST

K. McIVOR & Co., Nairobi.

INSURE YOUR MOTO CAR AND MOTO CYCLES with the Africa Guarantee & Indemnity Co. Ltd. M. D. KAMPE, CHIEF AGENT. Temporary Office: COURT CREMEDIERS' NAIROBI.

# MOMBASA TIMES

Can now be obtained at Standard Stationary Stores. SIXTH AVENUE, NAIROBI.

NOTICE.

Riverside Private Board Residence.

A healthy spot, 2 1/2 miles from town, situated of Salisbury Road and above Chirozo, N.P. Bedrooms, well erected, excellent table, tennis court, etc. Terms Shgs. 250/- and 200/- per month.

For particulars apply to Mrs. BOWRING, Box 24, Nairobi.

ARE YOU BUILDING? WE WILL QUOTE YOU for all classes of Building Material

Imported deal for ceilings and floorings, Teakwood in logs and planks supplied. Best British Cement, Mangalore Tiles, Congruated Iron.

F. M. BHAIJEE.

P. O. Box 218, Indian Bazaar, Phone 383. Tel.: "Hardware", NAIROBI.

Service & Satisfaction

BUY YOUR Wines & Spirits PROVISIONS & GROCERIES

Wholesale or Retail:

Beliram Parimal & Co.

(Established 1900). Corner Swamp Road and Government Road, Phone 383. NAIROBI. P. O. Box 29. Also P. O. Box 47, MOMBASA.

Crawford's SPECIAL RESERVE SCOTCH WHISKY. Established in 1820. Mellow in Flavor and Rich in Quality.

OFFICIAL PROCEEDING

OF THE SOUTH AND EAST AFRICAN COMBINED Agricultural Cotton Entomological Mycological CONFERENCE AUGUST 1928.

3281 Pages, Price Shs. 10 Posted Shs. 10/6

Obtainable from: Standard Stationery Stores, P. O. Box 380, NAIROBI

THE REFRESHING STORY OF A PRINTING WORKS.

Told by the Jejuas Native Teachers.

MIRACLES AND WONDERS.

The Jejuas School African teachers stated the story of the East African Standard. It was the first paper in the colony...

When we heard that we were to see and use the Standard Works in Nairobi we were overjoyed for some of us had seen the machine before...

When we got to the Standard works we were met by the Editor and told us to go to the office...

When we looked in through the door we saw the Editor of the Standard and he told us to go to the office...

"WE SAW..."

We saw eight Linotype machines at work. The operators who work there tell us the machines for typing letters. There are written on the type in the case of a typewriter...

whenever they are wanted again to make those other types of lead which are used in the printing...

A MARVEL

Then the Works Manager helped us by showing us the machine from which the other types are put in. As soon as the sheets are put in, the machine is started...

We saw a thing like a table with very small holes in it. In these holes are the types which we use to do the work...

"ONES AND ALL."

We saw another machine whose work is to cut the pages of books and the strips which are used in the printing...

We saw a press, a black machine whose work was printing the Standard. It was a very big machine and it was used to print the Standard...

"THE 'BRAINS' DEPT."

When we had seen all the things in the office of a gentleman called the Editor of the Standard. When we were there we found our minds refreshed and quieted for the air was pleasant and there was no confusion and noise like that which we experienced before...

U.S. and S.A.

PROMISE OF BIG BUSINESS IN THE FUTURE

According to Captain S. M. Wood, the South African writer and lecturer, the future of the United States is very bright...

GARS for HIRE

SEE KEVIA IN COMFORT HUDSON SUPER SIX GARS. Hire Day or Night. East Trip A. Specially P. GETHIN.

GARS for SALE

Hudson Super Six, excellent condition. Overland Four Tourer. Hudson Super Six. Dodge Super Six. Ford Model T. Buick Model T. Packard Model T. Buick Model T. Buick Model T.

BUY A CAR RING GETHIN.

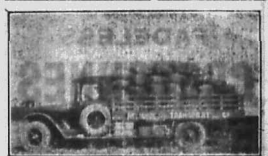
Board and Accommodation CAN BE OBTAINED AT Mrs. STEVENSON, Box 23, NAIROBI.

ACCOUNT BOOKS.

Books for Farmers and small Traders. Ledger, Cash Book, and Day Book. 2 Quins size Ledger Shs. 15/00 containing 115 pages per set.

Standard Stationery Stores, P. O. Box 380, Nairobi.

60 MINUTE SHAVING CREAM. This is the astonishing speed at which the safety razor is shaved with Gillette Shaving Cream and soiled. The most wonderful machine performs both operations with a precision impossible to human hand.



COFFEE FOR THE LONDON MARKET.

Reliance Transport Co.

TRANSPORT CONTRACTORS, FUEL MERCHANTS, PAINTERS—J. J. Ker, J. K. Ker, A. S. Ker. We have lately added to our fleet lorries of the most up-to-date equipment and have others of British manufacture arriving in August.

A. Fresh Shipment of Rowntree's Chocolates and Gums

ARRIVED PER S.S. LLANDAFF CASTLE.

Colonial General Stores.

Phone 226. Gertl Road. Box 406. NAIROBI.

DRUMS FOR SALE

GLASSES MADE UP TO OPTICIAN'S PRESCRIPTIONS. OVER 20000 IMPROVEMENTS IN STOCK.

Dobbies Ltd.

OPHTHALMIC OPTICIANS, NAIROBI. Sun Glasses and Goggles in Crocodile, Snake, Fawn and Amber Lenses.

BRITISH SOUTH AFRICAN ANNUAL

1926-1927. (17th Year of PUBLICATION.)

With an East African Supplement

Containing—A Beautiful Plate "The Stables, Groves Constant" from the Oil Painting by Titus de Jongh. Photographs of South Africa, Rhodesia, Kenya, etc., and numerous interesting articles.

PRICE, Shs. 5/-, Posted Shs. 6/35 (packed in Cardboard).

Standard Stationery Stores, P. O. Box 380, NAIROBI.

Reduction in Price But Better Value Than Ever THE CORNIA FOUR Standard Key Board Complete Visibility Automatic Ribbon Change in strong new shape case Reduced Shgs. 315/- Price Standard Stationery Stores, Nairobi.

# Nairobi Railway Club Fancy Dress Carnival

Saturday June 11th  
9-30 P.M. 2-30 A.M.

PAUL ROBINS and HIS NEW BOHEMIAN BAND.  
3 Prizes for Best Fancy Dress. } Spot Dance  
2 for Best Original Dress. }  
TICKETS 10/- Single; 15/- Double from Manager.

Nairobi's Finest and Most Fashionable  
Running Buffet.  
A Limited Number of Tickets.  
Right of Admission Strictly Reserved.

**De Luxe "Boot Cos."**  
Box 627. Trust Chambers, Govt Road, Nairobi.  
Specialists in Boot and Shoe Making.  
Recently arrived Snake, Lizard, Crocodile Skins, and  
Coloured Kids.  
SATISFACTION GUARANTEED.

**JUST ARRIVED**  
LARGE STOCKS OF  
**FADELESS  
CRETONNES**  
and  
CASEMENT CLOTHS  
in all shades.  
COME and SEE OUR WINDOW  
IT WILL BE WORTH YOUR WHILE.  
**AHAMED BROS.**  
Basant,  
P.O. Box 254. NAIROBI.

**Ephos Fertiliser**  
Important to Wheat Growers.  
Recent experiments at Canterbury Agricultural  
College, New Zealand, in conjunction with the Agricul-  
tural Dept. justify our claim that **EPHOS** is the best  
fertiliser.  
Sole Agents and Stockists,  
**J. G. ARONSON LTD.,**  
P.O. Box 681, NAIROBI.

**KOMO  
KILLS  
FLIES  
AND  
MOSQUITOES**  
Spray your Bedroom shortly before  
retiring with  
**KOMO**  
to ensure a good night's rest free  
from  
**MOSQUITOES.**  
**GET THE KOMO HABIT!**  
NON-POISONOUS. WILL NOT STAIN.  
**KOMO**  
The American Insecticide.  
PRICES: Shts. 4/50, 8/50, 16/- and 31/- each.  
SPRAYS: 4/50 each.  
Obtainable—  
**Standard Stationery  
Stores,**  
NAIROBI.

**"The Ulster Touch"**  
LARGER PRESS ON KENYA'S  
CONSTITUTIONAL DEMANDS.  
The following characteristic out-  
pouring by the English-speaking  
press was published recently by the  
Daily Irishman: "It is hardly  
"Kenya Character" that the  
Colonial Office Committee reports  
of Tuesday, and the nature  
of the proposals are such as to  
show that the Government are  
ready to grant the demands of the  
Kenya Europeans for self-govern-  
ment."  
The demand is not of extra-  
ordinary self-government. The  
population of Kenya comprises  
250,000 natives, 40,000 Asiatics,  
and some 12,000 Europeans, of  
whom only some 2,000 are per-  
manent residents.  
The city obviously is demand-  
ing the right of unrestricted political  
dominion, and unrestricted  
economic exploitation, over the  
entire dominion of the people.  
And they are looking their demand  
by their words, their threats, and  
armed rebellion. They threatened  
that in 1920, when it was proposed  
to give the suffrage to the Indian  
population.  
"We refused," write one of the  
leaders, "that the British Govern-  
ment would not send white troops  
against us, or that if they did the  
troops would refuse duty. It was  
not really a bluff, for the same  
hand had been dealt played and  
won in Ulster in 1914."  
Ulster, Kenya—where next?

**Rubber Trade Revolution.**  
NEW DISCOVERY SAID TO  
CHEAPER PRODUCTION.  
A new company established to  
cause a revolution in the rubber  
industry has been formed. The  
shareholders of the new company  
include the shareholders of the  
industrial interest concerned in  
developing new processes, relating  
to the manufacture of motor tubes,  
and other rubber goods.  
The principal feature in the de-  
velopment of rubber direct from the  
latex by means of electricity. Rub-  
ber will be used in its natural liquid  
state as latex, thus retaining its  
strength and requiring a consi-  
derably smaller quantity than lat-  
ex.

**Language in Africa.**  
"South Africa is already Eng-  
lish-speaking as well as African-  
speaking. It is English-speaking  
because English speaking 100% It  
is the English-speaking 100% It  
administration in East and Cen-  
tral Africa during the last few  
years which would not admit of  
this question (says a writer in the  
Daily Irishman).  
"In Kenya alone there are a  
multitude of languages. In the  
neighboring countries there are other  
multitudes of languages. The differ-  
ence is not that of dialect only, but  
of such a nature that it is impos-  
sible for the English-speaking  
that little tribes-people at hand have  
to speak to each other through the  
intermediary of interpreters. The  
"The Irishman" writes: "The  
bulk of a vast inferior East Coast  
population, which is not a native  
of the opinion of many, either to the  
of the education of administration."  
The English-speaking 100% It  
of the country is conventionally  
thought for it is inconceivable  
elsewhere in the same area  
of government as well as outside  
of it.  
"The way out of the difficulty  
thought to be in the making of  
English into the standard lan-  
guage. English would then be-  
come the language of schools, of  
Justice, and of Government. It  
perfectly learned it would be  
at least as useful as Swahili, and  
it would have to be an open door  
to knowledge to whoever cared to use  
it, which Swahili is not.  
"The adoption of English as the stan-  
dard language would also simplify  
the somewhat complex position of  
the kind of education which  
would bridge the gulf from the  
political relations of the tropics  
to those of the Western type of  
civilization in which the tropical  
people of tomorrow must find  
place."  
"It is not necessary to resort  
to letters to obtain the necessary  
strength."  
It is claimed that the new pro-  
cess of production, with a quantity of  
machinery, power and labor, and  
preserves the natural resin of the rub-  
ber. The inventor is Mr. J. H. King,  
of the Hampton Rubber  
Factory, who will be managing  
director of the new company. Re-  
spective companies are to be estab-  
lished for the United States and  
France.

**Prosphy to Be Fulfilled?**  
SEARCH FOR THE ARK OF  
THE COVENANT.  
Search for the Ark of the Coven-  
ant, the most sacred thing in the  
worship of ancient Jerusalem, will  
begin soon on Mount Nabo when  
F. W. F. says, the ark was hidden  
in the sixth century B.C. by the  
priests of Jerusalem.

Mr. A. J. Fether, president of  
the American-Jerusalem Bible  
Institute of Los Angeles, has ar-  
rived in Jerusalem to make the  
search. He is one of those who be-  
lieves that many of the ancient pro-  
phets of the Bible are on the eve  
of fulfillment. It was because of  
this belief that he came from Cali-  
fornia to search for the relic of  
Jehovah.

Just prior to the Babylonian  
captivity, Jeremiah had the ark in  
a cave on Mount Nabo. There-  
after, there, as reported of the ark  
being found, but according to a  
prophesy in the apocryphal Book  
of Maccabees, the ark will be  
found in Mount Nabo with the  
time when the Jews are gathered  
again in Palestine.

Since the war and the resultant  
encouragement of Jews to return  
to the Holy Land, there has been  
remarkable movement of the Jews  
towards their old home. Mr. Fether  
said he was confident that the  
present situation, both of fact and  
of prophesy, will fulfill the conditions of  
the prophesy.

After working a survey of Mount  
Nabo, Mr. Fether applied to the  
Trust-Trusts of Palestine for  
discharge for a lease of Mount  
Nabo. As yet, he has not heard  
if he will begin his search.

**YOU**  
will find the  
Royal Cook  
Book full of  
helpful lec-  
sonalizing  
plans. It will  
be sent to  
you free  
on receipt of  
your name  
and address.  
Royal Baking  
School  
100 Lamb Lane,  
New York, U.S.A.

**P. STEWART.**  
CARPENTER,  
PAINTER & DECORATOR,  
Hardinge Street, Nairobi.  
P.O. Box 226.  
PAINTS, COLOURS, OILS,  
VARNISHES & DISTEMPERS  
Large or small quantities.

**MARTIN'S  
PILLS**  
APOL & STYLL  
Sure and certain for all Female  
complaints. Every lady should  
keep a box in the house.  
Chemists and Druggists sell  
them throughout the world.  
Prepared by  
MARTIN, Chemist, Southampton, England.

**STATIONERY**  
at the  
**STANDARD OFFICE.**

**OKAHLIE PRIVATE HOTEL.**  
Comfortable and up-to-date in every way.  
Up-country visitors specially catered for.  
Special Monthly Terms for Permanent.  
MRS. H. JARRETT. Daily 16/-  
Managers. Phone 140. NAIROBI. P.O. Box 188.

**OF INTEREST TO SPORTS CLUB  
Silver & E.P. Cups  
And Miniatures.**  
WE HOLD A LARGE STOCK OF CUPS  
AND GIVE A LIBERAL DISCOUNT  
TO CLUBS.  
**Dobbies Ltd.**  
Watchmakers, Repairing Jewellers  
& Opticians.  
NAIROBI.

**Just Arrived**  
A DESCRIPTIVE CATALOGUE OF SOME OF THE  
**Common Trees and Woody Plants**  
OF  
Kenya Colony.  
by  
E. BATTISCOMBE, F.L.S.  
(with 44 Illustrations) PRICE 10/- (Postd) 10/75  
**Standard Stationery Stores**  
Sixth Avenue. NAIROBI.

**ROSE'S  
LIME JUICE**  
ENTIRELY BRITISH  
Made from West Indian Lime  
Fruit. Contains  
GARDEN YOUR TREES AND  
IMPROVE YOUR HEALTH  
without having ROSE'S

**ON WEDNESDAY**  
and  
Until Further Notice  
**MADAME BOWE ET CIE**  
WILL SHOW  
AT THE  
**NORFOLK HOTEL**  
Model Gowns,  
Jumper Suits,  
Ladies Silk Hose, etc.  
New Models by the Incoming Mails.

**STATIONERY**  
WE CAN SUPPLY ALL  
YOUR WANTS.  
Ask for quotations.  
**THE STANDARD STATIONERY STORE,**  
6th Avenue, NAIROBI. P.O. Box 280.

**FOR SALE**  
**Muthaiga.**  
Well Built Stone Residence with Guest Home, Modern  
Conveniences, Nice Grounds, Good Position. Ideal  
quarters for Boys all stone built.  
Immediate Possession.  
P.O. BOX 419.

**WHERE TO STAY**  
**SAVOY HOTEL**  
Calcuttan Road,  
THE HILL.  
Phone No. 400.  
P.O. Box 20. Tel.: "Savoy."

**Margaret Wallace,**  
P.O. Box 65, NAKURU.  
New premises in conjunction with Eadie's Foot-  
wear Ltd.,  
Just arrived a new consignment of Jumper Suits,  
Stockinette Dresses, Afternoon and Evening  
Dresses, Crepe-de-chine Unites, Silk Stockings in  
all the newest shades.  
Pressmaking on the Premises,  
Agents for Southall,  
Big stock of Eadie's Footwear just arrived.  
Repairs taken in and sent to Nairobi and returned  
promptly.

**F. A. HEAD,**  
PIANOFORTE, TUNER and REPAIRER.  
Five years with Messrs. Chappell & Co., London.  
Seven years experience in Kenya Colony.  
Send all orders to P.O. Box 675



THURSDAY, JUNE 8, 1927.

Special Notice

T. Schouten takes this pleasure of introducing to his clients Mr. F. V. Cope who has just joined his firm...

MAJESTIC

Your Last Opportunity—For 1 Day Only. THE MYSTERY OF THE "GOLDEN SKULL" 8 Chapters of 2 Reels each. In all 16 Parts of LOVE, ROMANCE and ADVENTURE.

Book early for to-morrow's Show at 9 p.m. 'Silver King' By Zanibar Dramatic Company.

FOR SALE

Robey Steam Engine.

30 NHP Double Cylinder, Semi Portable with circular fly wheel. In excellent condition and thorough working order.

W. C. HUNTER & Co.

Madatally Suleman Verjee & Sons

(In the premises formerly occupied by Messrs. Suleman Verjee & Sons.)

Dealers in: Fencing Wire, Black and Galvanized, Barbed Wire, Grinding Stones, Galvanized Baths, Cars, Gasoline, Bicycles, Trunks, Kettles, Socks, Varnish, French Polish, Bicycles, Japan, C.I. Sheet, and other Building Materials.

Also: Account Books, Writing Pads, Large and Small Envelopes, Pencils, Carbon Paper, Slate, Slate Penholders, etc.

Our Snapshot Competition

Weekly Prizes. 1st Prize Shs. 15/-, Extra Prize Shs. 10/- (if warranted), Shs. 5/- for every Picture Published.

The Competition is for Snapshots of EAST AFRICAN INTEREST and must be taken by the Competitor. THE NAME and ADDRESS of the Competitor and the SUBJECT OF THE PHOTOGRAPH should be written on the back of the print.

Envelopes to be addressed to: THE "SNAPSHOT" COMPETITION, East African Standard, P.O. Box 960, NAIROBI.

THE IMPORTANCE OF ADVERTISEMENT.

A Reply to the Earl of Birkenhead.

EMPIRE TOBACCO

The importance of advertising and the future of Empire tobacco were subjects discussed by the Tobacco Trade Congress recently...

AN INDIA PRESS VIEW OF A KENYA PROBLEM

Support for Sir E. Grigg's Impartiality.

THE EDUCATION TAX.

Appreciation of the position of the Kenya Government and the Kenya settler is a rare occurrence...

Under the title of 'Judges in Kenya', 'The Times of India' has published a leading article from which the following extracts are made:

Manufactured tobacco, within the Empire was under a duty of 1000,000 in 1924, it had risen to 10,000,000 weight, and although the figures for last year were not yet available, he believed the result for that year was even better...

There is at the moment in India a considerable amount of local criticism about the taxation of Indians in Kenya which is unfair to the Government of India...

For the moment we decline our main sympathies one with the Kenya Government. We note that Lord Buxton at a recent dinner to Sir Edward Grigg in London said that Sir Edward had about the most difficult job of any Crown Colony throughout the Empire...

Mr. J. H. Diamond Trade Commissioner for South Africa, said the consumption of cigarettes had increased enormously in the Union...

Colonel W. H. Franklin, Trade Commissioner in East Africa, said that good opportunities awaited the younger generation who went out to Kenya, Malaya, and the East African Dependencies to grow tobacco...

FOR RENEW



AMPLIORS AND

CONSULT

FILING SYSTEMS

Standard Stationery Stores

Advertisement for ERASMIC Shaving Cream. Includes a portrait of a man and the text 'Why? it's ready instantly-lathers richly-and no drawn, scraped feeling afterwards!'

Advertisement for B. H. Myers & Co. Ltd. Government Road, near National Bank of India.

Advertisement for B. H. M. Suit.

Advertisement for B. H. M. Bedroom Suite.

Advertisement for ZIGLER'S Dry Cleaning & Dyeing Works.

Advertisement for Caterpillars pay dividends to farmers. Includes an illustration of a tractor and a farmer.

Advertisement for Caterpillars pay dividends to farmers. Includes the text 'Caterpillar' power means more land worked' and 'Caterpillar' economy means less cost-money saved is money earned'.

Advertisement for GALEY & ROBERTS, Ltd. SOLE AGENTS. KENYA, UGANDA, TANGANYIKA.



NOTICE

Local and Imported Apples and all kinds of other fruit... Washington Navel Oranges 10 for 1/...

Foster & Blowers, NAIROBI.

NOTICE.

P. Alexander, Ladies and Gent's Hairdresser has moved... opposite New Stanley Hotel, which will be opened very shortly.

Full particulars will be published later. Harding Street. NAIROBI.

FARMS.

Farm of 1,450 acres with considerable development at £2-10-0 per acre. FARM of 2,000 acres at £2 per acre. FARM of 2,500 acres at £2 per acre.

KIRKWOOD & CO., Land Agents, Kitale

LADHAM STORES (N. JETEMAL).

HAS RE-STARTED THEIR BUSINESS AS USUAL JUST OPPOSITE THEIR OLD SHOP IN GOVERNMENT ROAD. NAIROBI. P.O. Box 516.

"STANDARD" FEATURE PAGE



(From Our Special Correspondent.)



Mr. G. Bernard Shaw

London, April 28. I suppose there are not many people who would...

London, April 28. I suppose there are not many people who would...

London, April 28. I suppose there are not many people who would...

London, April 28. I suppose there are not many people who would...

London, April 28. I suppose there are not many people who would...

London, April 28. I suppose there are not many people who would...

London, April 28. I suppose there are not many people who would...

London, April 28. I suppose there are not many people who would...

London, April 28. I suppose there are not many people who would...

London, April 28. I suppose there are not many people who would...

London, April 28. I suppose there are not many people who would...

London, April 28. I suppose there are not many people who would...

London, April 28. I suppose there are not many people who would...

South African Railways and Harbours

The Natal South Coast

Contains Many Alluring SEASIDE RESORTS Seasonable all the year round. The Childrens Paradise

For particulars apply— TRADE COMMISSIONER FOR THE UNION OF SOUTH AFRICA, Memorial Hall, NAIROBI. P.O. Box 694.

Make that Local Levy

A Trout Fishing Holiday.

Get out into the country, and enjoy some really good sport on our trout streams.

WE HAVE A STUNNING ASSORTMENT OF Fishing Tackle. OF ALL DESCRIPTIONS, AND WILL GLADLY SEND YOU OUR ILLUSTRATED CATALOGUE ON REQUEST.

MAY & Co., Ltd. THE SPORTS HOUSE NAIROBI.



Holywell Palace.

It is however, their ill-considered intention to enlarge the Palace...

NOT A RUCY RANT CAR

ANY AMBIGUOUS STATEMENTS THE FACT REMAINS THERE ARE MORE

RUCY RANT CAR

REGISTERED IN KENYA THAN ANY OTHER GEAR SHIFT CAR AND THE SERVICE ORGANISATION BEHIND THESE CARS IS

SECOND TO NONE IN AFRICA

Carr, Lawson & Co., Ltd., NAIROBI. KAMPALA, ELDORET

HIT & KILL!

With the modern cartridges in your rifle, you'll kill every thing...

SHAW & HUNTER

(Sole Agents for Western Cartridge Co.)

A. HOGG, Mutos & Biggs, NAIROBI. Book open on MANCHESTER AND ROYAL HUNT CUPS.

Advertisement for J.W. Milligan & Co. featuring a large illustration of a man in a hat and coat.

Charles Ware.

Accountant. P.O. Box 170. P.O. Boxes are continually changing, subject to market fluctuations.

New Imperial Motor Cycles

MOMBASA & MACK FOR PGS. 19, 20. This wonderful performance of our new 300 c.c. de Luxe...

HUNTER & SIMMONS

FUR ACCOUNTANTS. Telephone: "Basing," NAIROBI.

Manchester Cup-Run 10th June

Table listing participants for the Manchester Cup-Run 10th June, including names like Dark Javan, Paster (Earl), etc.

Lawn Tennis

We stock every requisite for the game, and every item in our stock is the best of its kind.

MAY & Co., Ltd.

Advertisement for MAY & Co., Ltd. featuring an illustration of a tennis player and a tennis racket.

THE SPORTS PAGE

COUNTRY CRICKET. MONDAY'S FOOTBALL. CURRIE CUP RUGBY.

Big Scoring at Tamin. Another Draw in John Boys' Cup. Another Victory for Province.

SECOND DAY'S SCORES. NO SCORE. TRANSVAAL DOWN.

[The Owe Over Commencement] In a Currie Cup Rugby fixture between Natal and Transvaal...

[The A. Standard's Special Cable Service] SOCCER IN S.A. Aberdeen Team's First Defeat.

[The Owe Over Commencement] The Aberdeen football team playing South Africa next Province at Natal...

exception of one more by California, the position by which was the best of the afternoon...

The team were very evenly matched, with neither getting a goal in the afternoon...

FINISH HALL. The referee of the race going down the slope and immediately commencing to read...

SOMERSET vs. GLouceSTER. At Tamin (1st innings): Somerset 148, Gloucester 80.

NORTONHANTS vs. LEICESTER. At Nottingham (1st innings): Nortonhants 148, Leicester 80.

TO-DAY'S MATCH. A May Cup football match will be played on the Colaba ground...

NEW ZEALANDERS. Second Day's Play Against Oxford. London, June 6.

SPORTS DIARY. Football: Gwynnes vs. Ballis. Golf: Gwynnes vs. Ballis.

THE EASTERN AFRICA SHOW

Nairobi August 1, 2, 3, 1927. Remember that most of the Eastern Africa territories are coming to this Show and Kenya will be the Livestock and Produce Class since July 1st.

TENNIS IN FRANCE.

The following are further results of matches played in the French Open Tennis Championships...

In the match of the ladies Doubles Mrs. Perovsk and Miss Hearn (South Africa) beat Miss Hearn and Miss Saunders (Britain) 6/2, 6/1.

In the final of the men's Doubles C. Gobet and Dragoon beat Borron and Lacroix 2/6, 6/2, 6/0, 1/6, 6/5.

It will now be known that the Committee will give the public a run for their money and not share the prize money in the usual way...

Kenitas. The cigarette for Gentlemen Everywhere. Obtainable at every store in Kenya at 2/50 per Packet of 50.

BRITISH AND BEST. Use this powder and get your game with hard-hitting long shots. REMARKABLY LIGHT RECOIL. NO BLOWTIE! CONSISTENT REGULARITY.

SMOKELESS DIAMOND

"Marvelously Quick". Use this powder and get your game with hard-hitting long shots. REMARKABLY LIGHT RECOIL. NO BLOWTIE! CONSISTENT REGULARITY.

BRITISH AND BEST

Use this powder and get your game with hard-hitting long shots. REMARKABLY LIGHT RECOIL. NO BLOWTIE! CONSISTENT REGULARITY.

Shaw Jumping.

COMPLAINT REGARDING THE PROGRAMME. To the Sports Editor, F.A.S. Sir: It was great joy to me to see that you had reported a jumper from Ireland...

TO-DAY'S MATCH.

A May Cup football match will be played on the Colaba ground in C.A.S. at 4.45 p.m. tomorrow between the teams of the Colaba and the Colaba...

NEW STOCKS OF Infants' Woolies

JUST RECEIVED. Wools, Matinee Coats, in plain and fancy knits. Shags, 8/50, 10/50, 12/50, 14/50, and 16/50.

WOOL BOOTES.

A big variety of styles in Genuine Wool, Washed Seal or Blue or Pink. Sizes: 9/1, 9/25, 9/50 to 9/250.