



BEIRUT

BAGDAD

# Buick carries the Desert Mail

Oil discovered in Irak!

Overnight sleepy Bagdad became a feverish center of commerce. Transportation facilities were swamped—mails delayed. By the established trade route, Bagdad was 30 days from London.

A new way, and a shorter one, had to be found to carry passengers and the mail to Bagdad. The motor car suggested itself. And the difficulties of the situation suggested Buick. The route chosen was an abandoned camel trail, leading from Beirut on the Mediterranean—500 miles through the mountains and across the Syrian Desert.

This happened two years ago. To-day Major McCallum of the British Army and the Nairn

Transport Company has this to say of his fleet of Buicks:

"I should always use Buick again under the same circumstances.

"This car maintains a high speed for hours on end.

"It has the power to carry excessive weight over two ranges of mountains and the desert, without overheating. Our cars go to Bagdad and back again, 1000 miles, without adding a drop of water to the radiator."

Buick quality and design produce a reliability of performance known and spoken of all over the civilized world. Whenever there is hard work to be done, Buick is the car to do it.

Buick "500" (70 miles per hour)  
 Sports Touring . . . . . \$215  
 Four-Door Sedan . . . . . \$240  
 Buick "500" (75 miles per hour)  
 Sports Touring . . . . . \$230  
 4 passenger Touring . . . . . \$255

# BUICK

Gilfillan & Company, Ltd.  
 DISTRIBUTORS







**DODGE BROTHERS MOTOR CARS**



**What "Dependable" Really Means**

The prove the motor business of your car and know that the engine will respond and function, even in the coldest weather—stays in the tracks and that these facilities—adhesive—to start on a long journey and know that you will arrive without a moment's delay. This will serve you far more without any over-riding.

That is Dependability as the public applies the word to Dodge Brothers motor-cars—Dependability which stands today on among the most important items—enduring Dodge Brothers remarkable success.

That is Dependability as the public applies the word to Dodge Brothers motor-cars—Dependability which stands today on among the most important items—enduring Dodge Brothers remarkable success.

**DODGE BROTHERS MOTOR CARS**  
S. FISHER & SIMONS (P.A.), Ltd.,  
Victoria Street, Nairobi.

**OAKLEIGH PRIVATE HOTEL**  
Comfortable and up-to-date in every way  
Up-country visitors specially catered for  
Special Monthly Terms for Permanent  
**KEE R. JARLEY**, Daily 10/-  
Managers

Phone 140 NAIROBI P.O. Box 118

**If the Question is REFRESHMENT The Answer is OHLSSON'S LION LAGER**

Imported by **DEVONAY & DIESEL**,  
City Branch, P.O. Box 117,  
Nairobi.

**Property SALE**

FOR

**SALE**

We have for SALE various attractive RESIDENCES and BUILDING SITES in MUTHIGA, PARKLANDS, THE HILL, and MARLBORO' ESTATE.

ALSO

COUNTRY RESIDENTIAL SITES, of varying acreages on main roads, in the vicinity of Nairobi.

TO LET or FOR SALE.

FURNISHED HOUSE, and 17 acres of good land, 7 miles Fort Hall Road, stone stables, etc., tennis court.

**Beales & Smithson.**

P.O. Box 320. NAIROBI. Phone 182.

**MOTORING**

**THE CAR FUEL**  
How to Add to Vehicle Emergency.

**EMERGENCY REMEDY**

It is a good thing to have some to get into a car and to have some ready to use in case of an emergency. The following is a list of some of the things that you should have in your car to use in case of an emergency.

First of all, you should have a spare tire. This is the most important thing to have in your car. It is the only thing that will get you out of a jam if you get stuck in a bad place.

Next, you should have a spare battery. This is also a very important thing to have in your car. It is the only thing that will start your car if the battery goes dead.

Then, you should have a spare set of headlights. This is also a very important thing to have in your car. It is the only thing that will let you see in the dark if your headlights go out.

Finally, you should have a spare set of tools. This is also a very important thing to have in your car. It is the only thing that will let you fix your car if it breaks down.

with all kinds of things to do with a car. It is a good thing to have some to get into a car and to have some ready to use in case of an emergency. The following is a list of some of the things that you should have in your car to use in case of an emergency.

First of all, you should have a spare tire. This is the most important thing to have in your car. It is the only thing that will get you out of a jam if you get stuck in a bad place.

Next, you should have a spare battery. This is also a very important thing to have in your car. It is the only thing that will start your car if the battery goes dead.

Then, you should have a spare set of headlights. This is also a very important thing to have in your car. It is the only thing that will let you see in the dark if your headlights go out.

Finally, you should have a spare set of tools. This is also a very important thing to have in your car. It is the only thing that will let you fix your car if it breaks down.

**INSURANCE**  
The Automobile Insurance Company of Kenya Ltd.

The Automobile Insurance Company of Kenya Ltd. is a company that provides insurance for automobiles. It is a company that is licensed to do business in Kenya. It is a company that has a long history of providing insurance to its policyholders.

The company provides a variety of insurance policies, including fire, theft, and collision. It also provides liability insurance for drivers. The company is known for its prompt payment of claims and its excellent customer service.

If you are looking for an insurance company that is reliable and trustworthy, the Automobile Insurance Company of Kenya Ltd. is a good choice. It is a company that has a proven track record of providing excellent service to its policyholders.

**THE BRITISH PETROL**

**Best Possible For Your Car**

The British Petrol is a high-quality fuel that is designed to provide the best possible performance for your car. It is a fuel that is made from the finest oil and is refined to the highest standards.

The British Petrol is known for its long life and its ability to keep your engine clean. It is a fuel that is also very economical, which means that you can save money on your fuel bills.

If you are looking for a fuel that will give your car the best possible performance, the British Petrol is the way to go. It is a fuel that is designed to meet all your needs and to provide you with the best possible driving experience.

**The British Petrol Best Possible For Your Car**

**DISTRICT AGENTS:**

J. R. JOX & CO., ELDORET.  
KERRYWOOD & CO., KITALE.  
KENYA FARMERS' ASSOCIATION, NAKURU.  
S. S. REDFOUR, KISUMU.  
J. E. FARLEY, LTD., JINJA.  
POLKES & CO., KAMPALA.  
GIBSON & CO. LTD., NAIROBI.

**MAIN DISTRIBUTING AGENTS:—**  
ANGLO-PETROL OIL CO. (KENYA) LTD.  
NAIROBI

**DANCING**  
taught by  
**Mrs. Adrienne Ray**

Member of  
S.A. Dancing Teachers' Socy.  
Principal of the Ashby School  
S.A.  
Solo Dancer and Ballet Master  
Kensington Theatre, London.  
Theatre, Australia.  
**PRIVATE LESSONS** given in  
**SO FLY CHALISTON**  
**MODERN BLACK BOTTOM**  
French Steps and New Walk  
Apply **LEIGH HALL, NAIROBI**  
or P.O. Box 166

**FIRST THEN OFF THE PISTON**

If the automobile catches fire the first procedure is to turn off the supply tap at all costs. Then stop the flow of further petrol. First aim at the engine. Then aim at the fuel tank. Then aim at the carburetor. Then aim at the radiator. Then aim at the rest of the car. This is the correct order of procedure. It is the only way to stop a fire from spreading.

It is important to remember that you should never get out of the car if the engine catches fire. You should stay in the car and try to stop the fire. If the fire gets too big, you should get out and call the fire department.

**ALTERNATIVES TO CLOTHING**

In addition to overalls or rags, you should have a few alternatives that you can use in case of an emergency. These alternatives should be made of a material that is fire-resistant and that is also easy to use.

One alternative is a fire blanket. This is a blanket that is made of a material that is fire-resistant. It is used to smother a fire. It is a very useful item to have in your car.

Another alternative is a fire extinguisher. This is a device that is used to put out a fire. It is a very important item to have in your car. It is the only thing that will let you stop a fire before it gets too big.

**THE WORLD'S MOST VERSATILE**

The world's most versatile car is the one that can do everything. It is a car that is designed to be used in a variety of different ways. It is a car that is also very economical and that is easy to maintain.

The world's most versatile car is the one that has a lot of different features. It is a car that has a lot of different options. It is a car that is designed to meet all your needs.

If you are looking for a car that is the most versatile, you should look for a car that has a lot of different features and options. It is a car that is designed to be used in a variety of different ways.

**More than Economical Transportation ~ a Distinctively Beautiful Car**

**CHEVROLET**

**THE LANDAU**  
Type of Chevrolet  
with a lot of different features

**WITH mechanical excellence**  
and economical operation firmly established, Chevrolet and General Motors engineers have concentrated their efforts on appearance.

The result is the greatest of Chevrolet's many achievements. The Most Beautiful Chevrolet in Chevrolet History—brilliant in its modish new Duo colors, irreplaceable in its distinguishing smartness and setting a new standard of small car value.

You are cordially invited to visit our special showing of the new cars. We are sure you will feel simply repaid.

**CHEVROLET**

**THE MOTOR MART & EXCHANGE, LIMITED.**

**"QUALITY AND BEAUTY AT LOW COST"**

**LONG JOHN SCOTCH WHISKY**

Not as old as the Pyramids, but old enough to be perfect.

**DISTRIBUTORS:**  
**D. EPPSTEIN & CO.**

**ARE YOU THINKING OF BUILDING?**

If so it will be in your interest to consult us and obtain our price.

With our increased staff we are able to undertake a limited number of additional contracts.

We can also supply, at competitive prices delivered Nairobi, first quality concrete blocks and cast stone.

**The Nairobi Building & Development Coy., Ltd.**  
P.O. Box 466 Contractors & Engineers, Court Chambers, Phone 294. NEIGHBORHOOD, NAIROBI.

**F. A. HEAD,**  
PIANO, FORTUNE, TUNER AND REPAIRER.  
Five years with Messrs. Chappell & Co., London,  
Seven years' experience in Kenya Colony.  
Send all orders to P.O. Box 675





# Lanz Crude Oil Engines

12-15 B. H. P. 15-18 B. H. P.  
 £150 f.o.r. Nairobi. £160 f.o.r. Nairobi.

## Less 2% discount for cash

**ECONOMY:** They use crude oil at 40 cents per gallon. They will run all day at a cost of 6 or 7 shillings.

**RELIABILITY:** No valves, magneto, carburetors, a safety plug. Forced feed lubrication to all bearings.

Made also in self-propelling and portable types. One of these will cost your thinking or shelling bill in half. No locking. No risk of fire. No time wasted getting up steam.

### Come and See One

Sole Distributors  
**J. R. COX & Co.**

P.O. Box 51. ZIMBOWE. P.O. Box 670. NAIROBI. P.O. Box 233. KAMPALA.

Mortuaries, Nicholas & Co. Ltd. Mombasa Agents.

# B. E. A. Saw Mills

MILLS: Factory Sites, Nairobi. P.O. Box 321, Nairobi.  
 Pari River, } Uplands  
 Katanakyu, }  
 Telephone Mills No. 53. Office No. 53.  
 CAMPBOR, PODO, MWIRI and BOXWOOD.  
 Prompt Delivery.  
 LONG LENGTHS A SPECIALTY.

## Haulage and Transport

STANDARD BUILDINGS.  
 ANY WEIGHT ANY DISTANCE  
 HAULAGE & GENERAL TRANSPORT CO.  
 6th Avenue. Phone 85. P.O. Box 336

## REGINA BRIEF

Smart, elegant tailoring and dressmaking for ladies and gentlemen by expert European tailors.  
 No. 8, Theatre Road, Nairobi.  
 P.O. Box 642, NAIROBI

## The SHOE SPECIALISTS

Maxwell Brady and Company

**M. B. & Co.**  
 P.O. Box 50, ELDORET  
 P.O. Box 107, ELDORET

**THE "CHARLESTON" SANDAL**  
 The rage of today. In Red, Dark Blue and California. All sizes and Halfes. **Shs. 15/90 per pair**

**THE "CALIFORNIA" SANDAL**  
 Smart and dainty. In Natural, Red, Medium Blue. All sizes and Halfes. **Shs. 20/ per pair**

**THE "MAXBRADY" SEMI SANDAL**  
 National Get a Pair with Striped Socks and Vampers. Ladies' Stock. All sizes and Halfes. **Shs. 20/50 per pair**

**THE "KENYA" FAVOURITE**  
 In a White Natural, Tan, Stone, Ladies' Stock. All sizes and Halfes. **Shs. 20/50 per pair**

**THE "BETTLE" LEAGUE**  
 In Ladies' Fancy Anklelets and Spider Calf. All sizes and Halfes. **Shs. 20/50 per pair**

**D.W.S. 1** 

**D.W.S. 2** 

**D.W.S. 3** 

A sk For "MAXBRADY" BRAND

## KENYA DIARY

THE EAST AFRICAN STANDARD  
 1928

P. STEWART, U.S. S.E.D.  
 BAKERS & BREADSTUFFERS  
 Macintosh Street, Nairobi  
 P.O. Box 226

## SARDINES

That hold today are  
 "Hors d'Oeuvre" Brand

Leather Buildings, P.O. Box 232. L. M. BATE & CO., NAIROBI.

## A GREAT AFRICAN EXPLORE

### Birthday Centenary of J. H. Speke

#### THE NILE'S SOURCE

Addressing a meeting of the Royal Geographical Society on May 20, 1876, Sir John Lubbock, then Secretary of the Society, said that the Nile's source was the subject of a great controversy. He said that the Nile's source was the subject of a great controversy. He said that the Nile's source was the subject of a great controversy.

Addressing a meeting of the Royal Geographical Society on May 20, 1876, Sir John Lubbock, then Secretary of the Society, said that the Nile's source was the subject of a great controversy. He said that the Nile's source was the subject of a great controversy.

Addressing a meeting of the Royal Geographical Society on May 20, 1876, Sir John Lubbock, then Secretary of the Society, said that the Nile's source was the subject of a great controversy. He said that the Nile's source was the subject of a great controversy.

## CAESAR FOR MILITARY PURPOSES

### P. GETHIN

Having Super 200, which is a great improvement on the ordinary 200. It is a great improvement on the ordinary 200. It is a great improvement on the ordinary 200.

Having Super 200, which is a great improvement on the ordinary 200. It is a great improvement on the ordinary 200. It is a great improvement on the ordinary 200.

Having Super 200, which is a great improvement on the ordinary 200. It is a great improvement on the ordinary 200. It is a great improvement on the ordinary 200.

## LADHARAM STORES

(J. JETEMAKAL)

HAS RESTARTED THEIR BUSINESS AS USUAL

JUST OPPOSITE THEIR OLD SHOP IN GOVERNMENT ROAD, NAIROBI.

## Esmal & Ramjee

Household Goods (General)

Phone No. 452

SEE OUR HUGE STOCK OF  
 CHINA AND EARTHEN  
**TOILET SETS**  
 (With and Without Falls)  
 OF VARIOUS DESIGNS AND COLOURS.

## NATIONAL BANK OF INDIA LIMITED.

(Incorporated in the United Kingdom)

Bankers to the Kenya and Protectorates of East Africa and Government.

Subscribed Capital - £1,000,000  
 Paid-up Capital - £2,000,000  
 Reserve Fund - £2,000,000

21, Bebbington, London, E.C. 2  
 BIAN HIES, Mombasa, Nairobi, Nakuru, Eldoret, Kisumu, Kampala, Juba, Zanzibar, Dar-es-Salaam, and Tanganyika.

Also at Calcutta, Bombay, Madras, Calcutta, Rangoon, Amoy, Canton, Hongkong, Shanghai, Yokohama, Kobe, Manila, Cebu, Singapore, Batavia, and Java.

AGENTS in New York and throughout U.S.A., Japan, Canada, South Africa, and Australia.

EXCHANGE: The Bank deals in all the leading currencies and issues all the leading bank notes. It also issues all the leading bank notes.

TRAVELLERS TO TANZANIA: A. S. McKENNEDY, Acting Manager, Nairobi Branch.

## Cawford's

### SPECIAL RESERVE SCOTCH WHISKY

Delicate, unimpaired Character. Superior to any other Scotch Whisky. The highest standard of purity and quality only the Scotch, well-matured Scotch Whisky can be so pure and so good.

The Whisky on which the Scotch never acts!

ESTABLISHED SINCE 1860



## WE STOCK

Always big stock of Provisions, Wines, Liqueurs, Best Quality of Dutch and Indian Cigars, Cigarettes, Sweets, Chocolates, Biscuits, Delicacies, Brand Dried Fruits, in tins and Fruits in tins.

Also for farmers: Rough Salt, Rock Salt, Dairy Salt, and Epsom Salt. Lined oil, Methylated Spirit and Turpentine.

Ask for our retail price list to-day.

**KANJEE NARANJEE**  
 P.O. Box 357. NAIROBI. Govt. Road.

## A. Fresh Shipment

of Rowntree's Chocolates and Gums

ARRIVED PER S.S. LINDALEY CASTLE.

### Colonial General Stores.

Phone 228. Govt. Road. Box 428. NAIROBI.

## Make that Local Leave

### Trout Fishing Holiday.

Get out into the country, and enjoy some really sports on our trout streams.

There is some excellent fishing to be had in many parts of the country now and our information is at your disposal.

WE HAVE A SPLENDID ASSORTMENT OF

### Fishing Tackle.

OF ALL DESCRIPTIONS, AND WILL GLADLY SEND YOU OUR CATALOGUE ILLUSTRATED CATALOGUE ON REQUEST.

## MAY & Co., Ltd.

### THE SPORTS HOUSE

NAIROBI.

## THE KIDDIES DELIGHT

FINE CHOCOLATE CREAM BARS  
 ROWNTREE'S FAVOURED GINGER CROCK BARS  
 ROWNTREE'S WHIPPED CREAM WALNUTS,  
 ROWNTREE'S BUTTER CROCK BARS  
 ROWNTREE'S CHOCOLATE CREAM DE MENTHE  
 ETC., ETC.

All at the modest price of 25 Cts. Each.  
 Call and see our range of HIGH CLASS CONFECTIONERY.

Which includes  
 MAPLE DELICIE, MAPLE BRAZILS, MAPLE DESSERT, GOLDEN MALTEX, BUTTER ALMONDS, BUTTER NOUGAT, ETC., ETC.

## Blacklaws & Brown

(Mackintosh Brothers)

Box No. 620. NAIROBI.

ZIEGLES'S  
 Dry Cleaning & Dyeing Works.  
 Town Receiving Office: No. 5, Theatre Royal Arcade.

ADVERTISEMENT SPACE IS AY BE BOOKED NOW  
 R. A. STANDARD LAM. P.O. Box 288, NAIROBI.











# SALES

## Miscellaneous Goods Sale.

Daily instructed, we shall sell by Public Auction, Without Reserve, at our Sale Rooms, Motor Building, Harding Street, Nairobi, on

**TUESDAY, 7th June 10 a.m.**

1 EASTWENT SINGLE DISC PLOUGH.  
SMALL TRUCK HARRON. "OLIVER" TYPE WRITER.  
EMERSON TYPEWRITER. "ALLIE" TYPE WRITER.  
GRAMOPHONE RECORDS. DUBURIES.  
ORANGE MATS. 10 PAPER WALL MATS.  
FLUOR TYPEWRITER. MOVIES.  
BRAND INLAND PHOTOGRAPH FRAMES.  
SECOND HAND OPTICONS. KITCHENS UTENSILS.  
TWO PAIRS GOLFERS, weight 300 lbs. each (reserve).

MUIR and GONWALD, Auctioneers, etc. Nairobi.

## E. HUTCHINSON & Co.

Daily instructed by a gentleman leaving Kenya we shall sell by Public Auction, Without Reserve, unless stated, at our Mart, Court Road, on

**Tuesday the 7th inst at 10 a.m.**

## High Class Furniture & effects

including:

No. 7 DOVER STOVE WITH PIPING IN PERFECT CONDITION.  
LADIES' TABLE IN GOOD TURNING ORDER.  
MIRAPOR CARPET 12'0" x 10'0". VERY LITTLE WORN.  
HALL STAND WITH MIRROR. PERFECTION PERAMBULATOR. TEAK CHINA CABINET.  
IMPORTED OVAL ROLL TOP DESK RESERVE.  
10 FRAMED PICTURES, INCLUDING OILS and WATERCOLOURS.  
GHESTERFIELD SUITE WITH CASTORS. COVERED CRETONE.  
6 PICTURES COVERED CRETONE. GLOBE EASY COVERED SATIS POPLIN.  
SET OF SIX DINING CHAIRS IN CAMPHOR WITH TURNED LEGS.  
BOX OTTOMAN IN CRETONE.  
TEAK SIDINGBOARD WITH TURNED LEGS.  
TEAK FALL FRONT LADIES WRITING BUREAU.  
SINGLE WARDROBE WITH FULL LENGTH MIRROR.  
SET OF SIX TEAK DINING CHAIRS. TURNED LEGS. RESERVE.  
FULL SIZE WHITE ENAMELLED ZINC BATH.  
BABY'S WHITE COAT and MATRESS.  
2 PARAVANS LAMPS WITH SPARE OIL CANS and WICKS and GLASS.  
DOUBLE TEAK WARDROBE WITH 2 FULL LENGTH MIRRORS. RESERVE.  
2 CAMP BEDS. KODODO HEAD.  
DOUBLE BED IN KANGANYIKA MAHOAGNYA WITH 2 PLY SPRING. DOUBLE BED WITH LINK SPRING.  
TEAK WASHSTAND WITH TILED BACK.  
TWO BRASS TRAYS, ONE LARGE, ONE SMALL.  
TEAK DRINKING TABLE WITH LENGTH MIRROR.  
LARGE OVAL MIRROR IN FRAME.  
GHESTERFIELD SUITE IN TEAK. 3 IRON BEDS and MATTRESSES.  
WARDROBE TRUNK. BACHELOR WARDROBE.  
TEAK RESERVE.  
BRASS COFFEE SET.  
GHESTERFIELD SUITE WITH LOOSE CRETONE COVERS.  
256 RIFLES and 110 lbs. AMMUNITION.  
80 LENGTHS TESSON and OTHER SILKS.  
2 BATHS. 2000 lbs. Weight. Tea Table, Bookcase, 200 lbs. Weight. Bedside Table, Writing Table, Coffee Tables, Trays, and many other articles too numerous to mention.

## Motor Cycles

Harley Davidson 4 & Electric Model 1,900.  
Harley Davidson 2 1/2 Magneto Ignition 1,400.  
Haleys 3 1/2 All Chain Magneto Ignition 1,400.  
Haleys 2 1/2 All Chain Magneto Ignition 1,400.  
Haleys 1 1/2 All Chain Magneto Ignition 950.  
Lester 1 1/2 A.V. Engine. Easygoing Mechanical oil pump sight feed type, fully equipped 1,100.  
Lester 1 1/2 C.V. Engine equipped as above 1,250.  
Series 3 L.S. to 7 1/2 all all repairs completed by Europeans only under supervision of Mr. Benson.

CAPITAL GARAGE.  
Victoria St. Opp. Fire Station.

## Auctions

Cate's Sale of Furniture (made by Macrae) Sewing Machine. Gramophone. Bedstead. Settee Suite. Bedstead. Fram. Silver Tea & Coffee set

Conducted by Special Clerks

**Austin & Co.**

will sell Without Reserve, unless otherwise stated at The Mart, on

**SATURDAY, June 4th at 9-30 sharp**

TEAK SIDINGBOARD with 3 Cupboards and 3 Drawers. 22" High Bed.  
TEAK DRESSING CHEST with Mirror 30" x 18".  
TEAK ORNATE WASHSTAND with HAND CARVED TOP and 2 Glass Door Cupboards.  
TEAK 3 Tier SERVING TABLE. TEAK DINNER WAGON.  
2 Teak CHAIRS and 2 DINING CHAIRS UPOLYESTERED IN TAPESTRY.  
TEAK OVAL DINING TABLE 54" x 28" with Turned Legs.  
Small WRITING DESK IN TEAK with STATIONARY BACK and 4 Drawers.  
ALL THE ABOVE FURNITURE WAS MADE BY IMPORTED 3 Piece SUITE COVERED WITH FAIRFAXY with DROP END SETTEE.  
TEAK DOUBBLE BED COMPLETE. DRESSING CHEST with Large Oval Mirror.  
WARDROBE 4' with Oval Mirror. DINING CHAIRS. CARED UPOLYESTERED.  
SINGER'S CABINET TRAPEZOID SEWING MACHINE in perfect order.  
WOODEN SINGLE BED COMPLETE. DESK with 5 Drawers.  
PILLOW STOOL with Cupboard Below. OVAL DINING TABLE.  
GHESTERFIELD SUITE COVERED FINE CRETONE extra well sprung (reserve).  
SIDINGBOARD 6' with Cupboards and Drawers.  
BABY'S HIGH CHAIR.  
RECORDS.  
EXTRA. 100 NOVELS. FOLDING FRAM. GLOBE RECORDS.  
SOLID SILVER TEA and COFFEE SET Handsome Design (reserve).  
DOUBLE WARDROBE with full size Mirror. MORRIS CHAIRS.  
WELL SPRUNG SETTEE COVERED BROWN CARPETED GLOVE.  
GLOBE EASY COVERED RED PLUSH. BENTWOOD ROOKING CHAIR.  
2 TEAK OFFICE CHAIRS CANE SEATS and BACKS. TROUSERS PRESS.  
NEARLY NEW LOW BODY FRAM (Reserve) DECK CHAIRS.  
LEATHER CRICKET BAG containing SPALDING 4 STAR BAT. Pair SPALDINGS. RUBBER CURRIED LE PADS. Pair RUBBER BAG GLOVES, all nearly new (reserve).  
EBURNE ROYAL CARPET SWEEPER. CHILD'S PLAYGROUND.  
SUITE OF 6 DINING CHAIRS. 4 DINING CHAIRS in Tanganyika Mahogany.  
H.E.V. TABLE GRAMOPHONE in MAHOAGNYA CASE, in perfect order, with 18 records (reserve).  
SPARE WHEEL FOR CHEV. CAR WITH NEARLY NEW COVER 30 x 3 1/2.  
BRAND NEW "SAVAGE" SPORTING 303 RIFLE IN CASE WITH 90 rounds (reserve).  
CHILD'S POSE CHAIR in perfect condition.  
IMPORTED DEAL EXTENDING TABLE WITH SOLID TURNED LEGS. EXTENDING FRAM 8' x 4' to 10'6" x 4'.  
BRAND NEW 3 Piece DINNER SERVICE. PAIR LARGE ORNATE VASES 33" high.  
TEAK DOUBLE WARDROBE HAND CARVED FRONT and 2 FULL LENGTH MIRRORS.  
HANDSOME COTTAGE PRAM BRAND NEW.  
MIRAPOR CARPET 12' x 9'.  
Etc. Etc.

TEAK SIDINGBOARD with 3 Cupboards and 3 Drawers. 22" High Bed.  
TEAK DRESSING CHEST with Mirror 30" x 18".  
TEAK ORNATE WASHSTAND with HAND CARVED TOP and 2 Glass Door Cupboards.  
TEAK 3 Tier SERVING TABLE. TEAK DINNER WAGON.  
2 Teak CHAIRS and 2 DINING CHAIRS UPOLYESTERED IN TAPESTRY.  
TEAK OVAL DINING TABLE 54" x 28" with Turned Legs.  
Small WRITING DESK IN TEAK with STATIONARY BACK and 4 Drawers.  
ALL THE ABOVE FURNITURE WAS MADE BY IMPORTED 3 Piece SUITE COVERED WITH FAIRFAXY with DROP END SETTEE.  
TEAK DOUBBLE BED COMPLETE. DRESSING CHEST with Large Oval Mirror.  
WARDROBE 4' with Oval Mirror. DINING CHAIRS. CARED UPOLYESTERED.  
SINGER'S CABINET TRAPEZOID SEWING MACHINE in perfect order.  
WOODEN SINGLE BED COMPLETE. DESK with 5 Drawers.  
PILLOW STOOL with Cupboard Below. OVAL DINING TABLE.  
GHESTERFIELD SUITE COVERED FINE CRETONE extra well sprung (reserve).  
SIDINGBOARD 6' with Cupboards and Drawers.  
BABY'S HIGH CHAIR.  
RECORDS.  
EXTRA. 100 NOVELS. FOLDING FRAM. GLOBE RECORDS.  
SOLID SILVER TEA and COFFEE SET Handsome Design (reserve).  
DOUBLE WARDROBE with full size Mirror. MORRIS CHAIRS.  
WELL SPRUNG SETTEE COVERED BROWN CARPETED GLOVE.  
GLOBE EASY COVERED RED PLUSH. BENTWOOD ROOKING CHAIR.  
2 TEAK OFFICE CHAIRS CANE SEATS and BACKS. TROUSERS PRESS.  
NEARLY NEW LOW BODY FRAM (Reserve) DECK CHAIRS.  
LEATHER CRICKET BAG containing SPALDING 4 STAR BAT. Pair SPALDINGS. RUBBER CURRIED LE PADS. Pair RUBBER BAG GLOVES, all nearly new (reserve).  
EBURNE ROYAL CARPET SWEEPER. CHILD'S PLAYGROUND.  
SUITE OF 6 DINING CHAIRS. 4 DINING CHAIRS in Tanganyika Mahogany.  
H.E.V. TABLE GRAMOPHONE in MAHOAGNYA CASE, in perfect order, with 18 records (reserve).  
SPARE WHEEL FOR CHEV. CAR WITH NEARLY NEW COVER 30 x 3 1/2.  
BRAND NEW "SAVAGE" SPORTING 303 RIFLE IN CASE WITH 90 rounds (reserve).  
CHILD'S POSE CHAIR in perfect condition.  
IMPORTED DEAL EXTENDING TABLE WITH SOLID TURNED LEGS. EXTENDING FRAM 8' x 4' to 10'6" x 4'.  
BRAND NEW 3 Piece DINNER SERVICE. PAIR LARGE ORNATE VASES 33" high.  
TEAK DOUBLE WARDROBE HAND CARVED FRONT and 2 FULL LENGTH MIRRORS.  
HANDSOME COTTAGE PRAM BRAND NEW.  
MIRAPOR CARPET 12' x 9'.  
Etc. Etc.

## The New 7-Seater Saloon

ANOTHER HUPMOBILE ACHIEVEMENT

NEVER before has even Hupmobile attained quite the arctic and mechanical triumph of the New Hupmobile Eight Seater Saloon. Hupmobile engineering has banished forever the bulky appearance formerly associated with maximum capacity saloons. Yet there is extra room in either compartment, and in front of and behind the well-ventilated seats.

A most car of cooling breeze—entrance is comfortable—and the finest straight-eight performance obtainable at any price.

THE MOTOR MART & EXCHANGE LTD.  
Nairobi and Nakuru.

## Hupmobile

SIXTY CYLINDERS

## BENNETT & BLACKSHIRES SALES

Sale by Public Auction  
**Miscellaneous Goods  
Soft Goods Etc.**  
At The Mart Harding Street

ON  
**Monday June 6th at 10 a.m.**

This Sale represents a large Variety of goods Sent in from Various Sources and too numerous to mention.

Bennett & Blackshire  
Auctioneers & Estate Agents.

## KING'S BIRTHDAY

Complete Change of Programme To-day at the

## MAJESTIC

SHOWS TO-DAY: 1st 3.30 p.m., 2nd 6 p.m., 3rd 8.30

## "SADE WENT SOWLING"

An exceptionally Fine Indian Production by Imperial Film Co. Agents to the famous Kohinoor Coy. Bombay  
Don't Miss This—Your Last Opportunity.  
BOOK NOW FOR REPEAT PERFORMANCE.  
Shirin Farah  
on Saturday, 4th June p.m.

The  
**Salisbury Hotel**  
Nairobi

Phone 160. P.O. Box 509.

## A. O. F. B.

Tornado John Unsworth  
OF THE PINK UNAT, LONDON  
NOW ON A PUBLICITY TOUR  
OF AFRICA

WILL BLOW A FEW FROTHY REMARKS ON THE AIMS, OBJECTS and CHARITIES OF THE ANCIENT ORDER OF FROTHBLOWERS DURING THE PERFORMANCE AT THE THEATRE ROYAL on MONDAY-NEXT JUNE 6th.

## DENOVAN & DIEBEL

Land & Estate Agents  
City House  
Phone 189. NAIROBI. Box 109.

PROPERTIES OF ALL DESCRIPTIONS

## FOR SALE

Now in Stock

Grease Proof Paper.  
E. A. Standard Ltd.  
NAIROBI

## For Account of Business Leaving Nairobi

Sale by Public Auction  
**CHEVROLET BOX BODY**

Recent Model fully equipped and in perfect condition.

## FORD BOX BODY

Latest Model fully equipped Ruckstell Axle. Full complement tools, chains, etc.

## Master 6 BUICK Master 6

A recent model beautifully equipped finished and insured. Guaranteed mechanically sound and in virtually new condition.

## At Stanley Garage

ON  
**SATURDAY, June 4th at 10 a.m.**

JOHN BENNETT,  
Auctioneer and Motor Car Salesman

## Sands & Co.

Sale of High Grade Ayreshire Cows.  
**WEDNESDAY, 8th June, at 11 a.m.**

Acting on instructions from Mrs. Parson Ltd., we will sell on the farm just round Lokobos Point on the Mts. Road.  
40 High Grade Ayreshire Cows in Calf and Calves at foot, in Purebred imported Ayreshire Dales.  
10 These Cows to call to Purebred Ayreshire Bults.  
4 Grade Heifers.  
Mrs. Parson has used only the very best imported Ayreshire Bults from the start. The above are very useful dairy cattle.

## SANDS & Co.

AUCTIONEERS

## San Concession for Sale.

Messrs. Estates & Investment Ltd., Boma Buildings, (Box 301) Nairobi, invite Tenders for the extraction of SAND from the Athi River beds on their property for a period of one year from 15th July, 1927.

## Nairobi Railway Club

NAIROBI'S FINEST DANCE FLOOR.

## DANCE

**Saturday, 4th June**  
9 P.M. - 2 A.M.

MUSIC BY  
The Nairobi Dance Orchestra  
TICKETS 5/- SINGLE, 10/- DOUBLE.  
LIGHT REFRESHMENTS.  
Right of Admission Reserved.

## Call & See

## Iron Bedsteads

Strong Durable



THREE PILES  
each 50/-  
SHEETS, MATTRESSES & PILLOWS  
at the same moderate price.  
**MEGHJI AHAMED & Co.**  
NAIROBI  
Indico Bazaar.



# AGRICULTURE

## Here is Your Tonic



Hall's Wine will build you up... make you well and strong.

**Hall's Wine** makes the blood rich and healthy. It feeds the nerves and tones up the entire system. That is why you feel the glow of health when you take Hall's Wine. It puts new life into you—it builds up strength—it takes away your feeling of depression.

## Hall's Wine

**THE SUPREME TONIC RESTORATIVE**

British doctors and nurses recommend Hall's Wine and take it themselves. From Chemists and Stores and All Branches of British East African Corporation, Nairobi, Kampala, Mombasa, Dar-es-Salaam, etc.

## FARMS.

Farm of 1,450 acres with considerable development at £2 10/0 per acre.  
 FARM of 2,000 acres at £2 per acre.  
 FARM of 2,500 acres with several hundred acres under cultivation and farm house and buildings, £2-10-0 per acre.  
 All these farms are situate in the Trans Nzoia, within easy distance of Railway station, and are thoroughly recommended an excellent bargain.

**KIRKWOOD & CO.,**  
 Land Agents, Kitale.

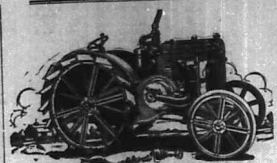
### POULTRY NOTES.

#### Egg Production for Table.

The production of eggs for table use is a branch of poultry husbandry which should receive the serious consideration of every holder of poultry. Poultry farmers in and around Nairobi, or Kiambu, have a market for their produce at their very doors. Those who have some facilities from a country house of some friends to entertain. Where there is a market for eggs the profit will certainly be seen on the actual price received. For the sake that the cost of production and the cost of living being lower in the country should not mislead even.

I feel that by sharing my opinion statements on the value of the 27" a dozen for eggs all the year round, and sold sometimes at the current market price, I am doing a reasonable profit on my birds.

To make poultry farming pay, by that I mean to make a profit.



**CASE IS BEST**

**K. McIVOR & Co., Nairobi.**

...and both species of the hen...  
 ...to the very best...  
 ...to the very best...  
 ...to the very best...

**WIGHT** is a new...  
 ...to the very best...  
 ...to the very best...

**WATER AND GRIT** are...  
 ...to the very best...  
 ...to the very best...

**KEVIA POULTRY CLUB NOTES.**

The Club Balance Sheet will be...  
 ...to the very best...  
 ...to the very best...

## South African Railways and Harbours

**HERMANUS**  
 Near Cape Town

**BIG SEA FISH**  
 High Class Hotel. Delightful surroundings. Magnificent cuisine.

For particulars apply—  
**TRADE COMMISSIONER FOR THE UNION OF SOUTH AFRICA.**  
 Memorial Hall, NAIROBI.  
 P.O. Box 624.

## A BARGAIN

SECOND HAND MILITARY OVERCOATS.  
 Long at Shgs. 15/- each.  
 Short at Shgs. 12/- each.  
 In Bales of fifty at Shgs. 12/- each all round.

**M. ROSENBLUM & Co. Ltd.**  
 Telegrams: "Rosenblum."  
 Tel. No. 16. NAIROBI. P.O. Box 581.

## ANNOUNCEMENT

**NAIVASHA**  
 ON MAIN ROAD.  
**New LUNCH & TEA ROOMS**  
 WILL BE OPENED, APRIL 2nd  
 Under Management of  
**KIA ORA STORES**  
 (Patronage Solicited)  
**TAWHILL.**

Fully Licensed.

# RUGBY

## Quality and Value Without an Equal

	<b>Rugby Four</b>	<b>Rugby Six</b>
Touring	£230	£280
Two-Seater	£230	£325
Box Body	£215	£265

# Carr, Lawson & Co., Ltd.,

SIXTH AVENUE, NAIROBI.

Phone 108 Box 203





BEIRUT

BAGDAD

# Buick carries the Desert Mail

Oil discovered in Irak!

Overnight sleepy Bagdad became a feverish center of commerce. Transportation facilities were swamped—mails delayed. By the established trade route, Bagdad was 30 days from London.

A new way, and a shorter one, had to be found to carry passengers and the mail to Bagdad. The motor car suggested itself. And the difficulties of the situation suggested Buick. The route chosen was an abandoned camel trail, leading from Beirut on the Mediterranean—500 miles through the mountains and across the Syrian Desert.

This happened two years ago. To-day Major McCallum of the British Army and the Nairn

Transport Company has this to say of his fleet of Buicks:

"I should always use Buick again under the same circumstances.

"This car maintains a high speed for hours on end.

"It has the power to carry excessive weight over two ranges of mountains and the desert, without overheating. Our cars go to Bagdad and back again, 1000 miles, without adding a drop of water to the radiator."

Buick quality and design produce a reliability of performance known and spoken of all over the civilized world. Whenever there is hard work to be done, Buick is the car to do it.

Buick "45" (70 miles per hour)	2110
Spare Tires	240
Front-Door Seals	240
Buick "45" (75 miles per hour)	2400
Spare Tires	240
Front-Door Seals	240

# BUICK

Gilfillan & Company, Ltd.  
DISTRIBUTORS













THE 1927 BIRTHDAY LIST

Mr. Arthur... Mr. Arthur... Mr. Arthur...

Mr. Arthur... Mr. Arthur... Mr. Arthur...

Mr. Arthur... Mr. Arthur... Mr. Arthur...

Mr. Arthur... Mr. Arthur... Mr. Arthur...

Mr. Arthur... Mr. Arthur... Mr. Arthur...

Mr. Arthur... Mr. Arthur... Mr. Arthur...

Mr. Arthur... Mr. Arthur... Mr. Arthur...

Mr. Arthur... Mr. Arthur... Mr. Arthur...

Mr. Arthur... Mr. Arthur... Mr. Arthur...

Mr. Arthur... Mr. Arthur... Mr. Arthur...

Mr. Arthur... Mr. Arthur... Mr. Arthur...

Mr. Arthur... Mr. Arthur... Mr. Arthur...

Mr. Arthur... Mr. Arthur... Mr. Arthur...

Mr. Arthur... Mr. Arthur... Mr. Arthur...

Mr. Arthur... Mr. Arthur... Mr. Arthur...

Mr. Arthur... Mr. Arthur... Mr. Arthur...

Mr. Arthur... Mr. Arthur... Mr. Arthur...

Mr. Arthur... Mr. Arthur... Mr. Arthur...

Mr. Arthur... Mr. Arthur... Mr. Arthur...

THE SOUTH AFRICAN FLAG BILL

Referred to Select Committee of All Parties.

Mr. Amery Defers a New Resolution.

Mr. Amery Defers a New Resolution.

Mr. Amery Defers a New Resolution.

Mr. Amery Defers a New Resolution.

Mr. Amery Defers a New Resolution.

Mr. Amery Defers a New Resolution.

Mr. Amery Defers a New Resolution.

Mr. Amery Defers a New Resolution.

Mr. Amery Defers a New Resolution.

Mr. Amery Defers a New Resolution.

Mr. Amery Defers a New Resolution.

Mr. Amery Defers a New Resolution.

Mr. Amery Defers a New Resolution.

Mr. Amery Defers a New Resolution.

Mr. Amery Defers a New Resolution.

Mr. Amery Defers a New Resolution.

Mr. Amery Defers a New Resolution.

Mr. Amery Defers a New Resolution.

THE WORK OF THE CONFERENCE

Mr. Amery Defers a New Resolution.

Mr. Amery Defers a New Resolution.

Mr. Amery Defers a New Resolution.

Mr. Amery Defers a New Resolution.

Mr. Amery Defers a New Resolution.

Mr. Amery Defers a New Resolution.

Mr. Amery Defers a New Resolution.

Mr. Amery Defers a New Resolution.

Mr. Amery Defers a New Resolution.

Mr. Amery Defers a New Resolution.

Mr. Amery Defers a New Resolution.

Mr. Amery Defers a New Resolution.

Mr. Amery Defers a New Resolution.

Mr. Amery Defers a New Resolution.

Mr. Amery Defers a New Resolution.

Mr. Amery Defers a New Resolution.

Mr. Amery Defers a New Resolution.

Mr. Amery Defers a New Resolution.

Mr. Amery Defers a New Resolution.

LYRIC HALL 3 DAYS ONLY

Normal Talmadge 'The Children in the House'

Normal Talmadge 'The Children in the House'

Normal Talmadge 'The Children in the House'

Normal Talmadge 'The Children in the House'

Normal Talmadge 'The Children in the House'

Normal Talmadge 'The Children in the House'

Normal Talmadge 'The Children in the House'

Normal Talmadge 'The Children in the House'

Normal Talmadge 'The Children in the House'

Normal Talmadge 'The Children in the House'

Normal Talmadge 'The Children in the House'

Normal Talmadge 'The Children in the House'

Normal Talmadge 'The Children in the House'

Normal Talmadge 'The Children in the House'

Normal Talmadge 'The Children in the House'

Normal Talmadge 'The Children in the House'

Normal Talmadge 'The Children in the House'

Normal Talmadge 'The Children in the House'

Normal Talmadge 'The Children in the House'

S. Jacobs Ltd., Nairobi. A BIG SELECTION OF NEW SHADES IN ALL SILK FUJI.

JOHANNESBURG DURBAN SERVICE NEXT YEAR.

THE "S. Standard" Special Cable Service.

The Golfers Ideal Perfect Stance No. 1610. With Famous Ukide Golf Shoes 4750.

Eadies Footwear Ltd. Nairobi.

Theatre Royal AND GLORIA SWAN SON.

Pathe Latest Gazette.

The Capitol Chevrolet 1 ton Truck Chassis.

U.S. and China.

BRITISH TROOPS IN PEKING.

U.S. and China.

U.S. and China.

U.S. and China.

U.S. and China.

U.S. and China.

U.S. and China.

U.S. and China.

U.S. and China.

U.S. and China.

U.S. and China.

U.S. and China.

U.S. and China.

REDUCED TO £176.

The Motor Mart and Exchange Ltd. Nairobi.







**A. C. P. B.**  
Always  
Order  
For  
Blowing & Blasting  
**Kenya Beer, Stout**  
or XXXX  
God Froth Guaranteed

**THE LEADER**  
PUBLISHED FOR THE PROPRIETOR  
BY THE MANAGER  
Nairobi, Friday, June 24, 1957.

League of Mercy  
**Dance**  
June 25th  
9 P.M.  
See advertisement page

**NAIROBI MEMBERS CONDEMN  
RACE COURSE HOSPITAL SITE.**

Views of Major H. F. Ward and  
Capt. H. E. Schwartz.

**NGARA ROAD A BETTER LOCATION.**

Promise that Legislative Council Will Discuss  
Subject Before Final Decision.

The Elected Members for the divisions of Nairobi, have wholeheartedly condemned the proposed establishment of the combined Hospital on the now notorious Race Course site. Major H. F. Ward, whose opposition in the Town Council is recalled, stated he was certain that the Race Course site would never be approved by the European Community. In fact he suggested that the "combined" character of the institution will not survive at all.

Capt. H. E. Schwartz's personal opinion—which he admits he holds most strongly—is that the Race Course site is most unsuitable. Having in view the fact that the Native area around the site must expand in the future, he reminds the public that the position would be a most unfortifying one for European nurses to live in. It will be remembered that a Nurse's Institute is one of the adjuncts of the Hospital scheme.

**Opposition Growing.**

It was on May 12 that an announcement, somewhat in the nature of a bombshell, was exploded in the Town Council that the Government had decided to accept the site of the Race Course for the proposed hospital. The announcement, which was made by the Government, was met with a storm of protest. The members of the Town Council, in addition to being shocked at the suggestion, also expressed their disapproval of the Government's decision. The members of the Town Council, in addition to being shocked at the suggestion, also expressed their disapproval of the Government's decision.

**Labour and Russia.**

A PROTEST AGAINST THE  
RUSSIAN EMERGENCY

**Trade Unions Bill.**

THE REPORT STATE OF THE  
TRADE UNION BILL HAS BEEN CAPTURED  
BY THE GULLIBLES.

**TODAY'S GAVEE LIST.**

Deliver Mr. Justice Robinson  
in Court No. 2, for hearing at  
10.15 a.m. (Application for  
Injunction Case No. 1, Mahabadi  
vs. The People's Organisation for  
the Discharge of Debt).

**THE PRIZE OF MICH.**

It is recalled that the afternoon  
session to discuss public problems  
of Nairobi, took place on the 22nd  
of June, towards the close of the  
session, the Government's  
objection to the Bill was  
expressed, and the Bill was  
thereupon withdrawn.

**HOUSE OF LORDS TO  
BE REFORMED.**

Government Will Introduce  
A Bill.

**RAIL MATHS OF WINGS AND  
WORDS OF MACHINES.**

Both Great Britain and America  
Attention.

**DEPORT ISLAND.**

Further details of the  
arrangements are set out below.

**CHURCH CONFERENCE.**

East African Bishops  
to Meet in Nairobi.

Among the subjects for discussion  
will be that of forming an  
East African Province.

**INDIAN PICKPOCKET.**

PROVING UNORTHODOX  
TACTICS IN NAIROBI.

**H.E. ON TOUR.**

RETURN FROM VISIT TO  
NORTHERN FRONTIER.

**THE "COLONIAL" TRAVEL  
RUG.**

It is recalled that the afternoon  
session to discuss public problems  
of Nairobi, took place on the 22nd  
of June, towards the close of the  
session, the Government's  
objection to the Bill was  
expressed, and the Bill was  
thereupon withdrawn.

**Whiteaways**

White Fleecy Cotton Blankets  
for babies, use or under  
blankets. With Red or Blue  
border and whipped ends.

**Whiteaways**

White Fleecy Cotton Blankets  
for babies, use or under  
blankets. With Red or Blue  
border and whipped ends.

**Whiteaways**

White Fleecy Cotton Blankets  
for babies, use or under  
blankets. With Red or Blue  
border and whipped ends.

**Whiteaways**

White Fleecy Cotton Blankets  
for babies, use or under  
blankets. With Red or Blue  
border and whipped ends.

**ALIBI FOR PAINT  
IN ATHENS.**

To Bomb the British  
Legation.

**U.S. OPTIMISM OVER  
GENEVA CONFERENCE.**

President "Most Hopeful"  
of Success.

**THE EARLY DAYS.**

Mr. John Fraser will be  
seen at the advanced age of 67,  
in his time, a great part in  
the politics of South Africa.

**DEATH OF A UNION  
POLITICIAN.**

Further details of the  
arrangements are set out below.

**THREE ARRESTS.**

Among the subjects for discussion  
will be that of forming an  
East African Province.

**INDIAN PICKPOCKET.**

PROVING UNORTHODOX  
TACTICS IN NAIROBI.

**H.E. ON TOUR.**

RETURN FROM VISIT TO  
NORTHERN FRONTIER.

**THE "COLONIAL" TRAVEL  
RUG.**

**Whiteaways**

White Fleecy Cotton Blankets  
for babies, use or under  
blankets. With Red or Blue  
border and whipped ends.

**Whiteaways**

White Fleecy Cotton Blankets  
for babies, use or under  
blankets. With Red or Blue  
border and whipped ends.

**Whiteaways**

White Fleecy Cotton Blankets  
for babies, use or under  
blankets. With Red or Blue  
border and whipped ends.

**Whiteaways**

White Fleecy Cotton Blankets  
for babies, use or under  
blankets. With Red or Blue  
border and whipped ends.

**Stocks Just Arrived**

**PURE WOOL WERTY  
BLANKETS.**  
Made from pure wools  
which give a maximum of  
warmth and a minimum of  
weight, with elastic borders.  
For single bed, 40" x 50"  
Price, 20/6 per pair.  
For the same quality of wools,  
but in a full double bed size,  
50" x 100 in.  
Price, 38/6 per pair.

**REAL  
Woolen  
Blankets**  
**SUPER QUALITY ALL  
WOOL WERTY  
BLANKETS.**  
Woven from specially selected  
young, guaranteed all wool,  
with fast blue borders, neatly  
stitched ends, and beautiful  
finish. Room helps of leading  
value, with instantly recognized  
the words of the quality.  
Size 60" x 90"  
Price, 28/6 per pair.  
Size 60" x 110"  
Price, 32/6 per pair.  
Size 60" x 130"  
Price, 38/6 per pair.

**Special Offer of Camel Blankets.**

**THE HORNBLAND BLANKET  
WEAVERS.**  
All Wool Cotton Colours with  
Kew Tulle and Blue borders.  
Very heavy and has the pro-  
portion of making an ideal  
blanket for the very warm  
months.  
Price, 38/6 each.

**THE HORNBLAND BLANKET  
WEAVERS.**  
All Wool Cotton Colours with  
Kew Tulle and Blue borders.  
Very heavy and has the pro-  
portion of making an ideal  
blanket for the very warm  
months.  
Price, 38/6 each.

**THE "COLONIAL" TRAVEL  
RUG.**  
It is recalled that the afternoon  
session to discuss public problems  
of Nairobi, took place on the 22nd  
of June, towards the close of the  
session, the Government's  
objection to the Bill was  
expressed, and the Bill was  
thereupon withdrawn.

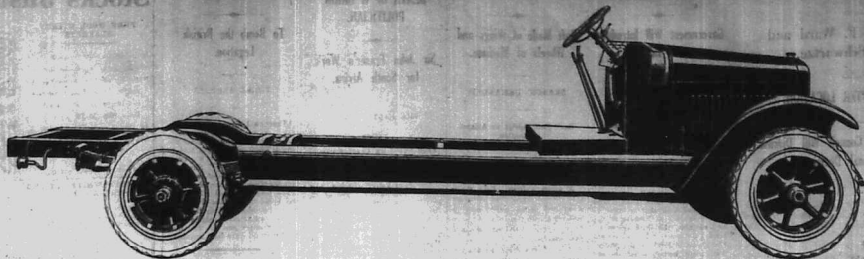
**THE "COLONIAL" TRAVEL  
RUG.**  
It is recalled that the afternoon  
session to discuss public problems  
of Nairobi, took place on the 22nd  
of June, towards the close of the  
session, the Government's  
objection to the Bill was  
expressed, and the Bill was  
thereupon withdrawn.

**Whiteaways**  
NAIROBI



# Just the Truck

for Fast, Low-Cost Hauling



## Model SL 2 Ton Speed Truck

**£448**

*Chassis complete  
with windshield.*

THIS long, powerful truck has several features of special interest to every transportation buyer. For example: the wheelbase of 160 inches provides long loading space. A capacity load of 4000 lbs. can be hauled without piling to an inconvenient height.

It is equipped with auxiliary rear springs (making four rear springs in all, an exclusive

feature of all International trucks) insuring easy riding for varying loads. Power tyre pump driven from the transmission, steel wheels, heavy-duty truck tyres are also standard.

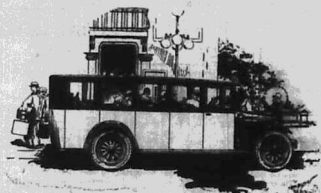
This sturdy truck is suitable for any body from the simple platform type to an enclosed bus body for carrying passengers.

*The complete range of International Truck chassis include the Special Utility for loadings up to 1 ton, Speed Trucks for 1, 1½, 2-ton, and Heavy Duty Trucks up to 5 ton capacities.*

*Write for literature.*



1-ton Chassis complete  
with windshield £343.



**Gilfillan & Company, Ltd.**  
D I S T R I B U T O R S

# INTERNATIONAL MOTOR TRUCKS

**ADVERTISEMENTS**  
 ADVERTISEMENTS in this paper are accepted on the following conditions:—  
 1. Advertisements are accepted on a cash basis.  
 2. Advertisements are accepted on a commission basis.  
 3. Advertisements are accepted on a monthly basis.  
 4. Advertisements are accepted on a quarterly basis.  
 5. Advertisements are accepted on a half-yearly basis.  
 6. Advertisements are accepted on an annual basis.  
 7. Advertisements are accepted on a long-term basis.  
 8. Advertisements are accepted on a special basis.  
 9. Advertisements are accepted on a private basis.  
 10. Advertisements are accepted on a confidential basis.  
 11. Advertisements are accepted on a secret basis.  
 12. Advertisements are accepted on a discreet basis.  
 13. Advertisements are accepted on a confidential basis.  
 14. Advertisements are accepted on a secret basis.  
 15. Advertisements are accepted on a discreet basis.  
 16. Advertisements are accepted on a confidential basis.  
 17. Advertisements are accepted on a secret basis.  
 18. Advertisements are accepted on a discreet basis.  
 19. Advertisements are accepted on a confidential basis.  
 20. Advertisements are accepted on a secret basis.  
 21. Advertisements are accepted on a discreet basis.  
 22. Advertisements are accepted on a confidential basis.  
 23. Advertisements are accepted on a secret basis.  
 24. Advertisements are accepted on a discreet basis.  
 25. Advertisements are accepted on a confidential basis.  
 26. Advertisements are accepted on a secret basis.  
 27. Advertisements are accepted on a discreet basis.  
 28. Advertisements are accepted on a confidential basis.  
 29. Advertisements are accepted on a secret basis.  
 30. Advertisements are accepted on a discreet basis.  
 31. Advertisements are accepted on a confidential basis.  
 32. Advertisements are accepted on a secret basis.  
 33. Advertisements are accepted on a discreet basis.  
 34. Advertisements are accepted on a confidential basis.  
 35. Advertisements are accepted on a secret basis.  
 36. Advertisements are accepted on a discreet basis.  
 37. Advertisements are accepted on a confidential basis.  
 38. Advertisements are accepted on a secret basis.  
 39. Advertisements are accepted on a discreet basis.  
 40. Advertisements are accepted on a confidential basis.  
 41. Advertisements are accepted on a secret basis.  
 42. Advertisements are accepted on a discreet basis.  
 43. Advertisements are accepted on a confidential basis.  
 44. Advertisements are accepted on a secret basis.  
 45. Advertisements are accepted on a discreet basis.  
 46. Advertisements are accepted on a confidential basis.  
 47. Advertisements are accepted on a secret basis.  
 48. Advertisements are accepted on a discreet basis.  
 49. Advertisements are accepted on a confidential basis.  
 50. Advertisements are accepted on a secret basis.  
 51. Advertisements are accepted on a discreet basis.  
 52. Advertisements are accepted on a confidential basis.  
 53. Advertisements are accepted on a secret basis.  
 54. Advertisements are accepted on a discreet basis.  
 55. Advertisements are accepted on a confidential basis.  
 56. Advertisements are accepted on a secret basis.  
 57. Advertisements are accepted on a discreet basis.  
 58. Advertisements are accepted on a confidential basis.  
 59. Advertisements are accepted on a secret basis.  
 60. Advertisements are accepted on a discreet basis.  
 61. Advertisements are accepted on a confidential basis.  
 62. Advertisements are accepted on a secret basis.  
 63. Advertisements are accepted on a discreet basis.  
 64. Advertisements are accepted on a confidential basis.  
 65. Advertisements are accepted on a secret basis.  
 66. Advertisements are accepted on a discreet basis.  
 67. Advertisements are accepted on a confidential basis.  
 68. Advertisements are accepted on a secret basis.  
 69. Advertisements are accepted on a discreet basis.  
 70. Advertisements are accepted on a confidential basis.  
 71. Advertisements are accepted on a secret basis.  
 72. Advertisements are accepted on a discreet basis.  
 73. Advertisements are accepted on a confidential basis.  
 74. Advertisements are accepted on a secret basis.  
 75. Advertisements are accepted on a discreet basis.  
 76. Advertisements are accepted on a confidential basis.  
 77. Advertisements are accepted on a secret basis.  
 78. Advertisements are accepted on a discreet basis.  
 79. Advertisements are accepted on a confidential basis.  
 80. Advertisements are accepted on a secret basis.  
 81. Advertisements are accepted on a discreet basis.  
 82. Advertisements are accepted on a confidential basis.  
 83. Advertisements are accepted on a secret basis.  
 84. Advertisements are accepted on a discreet basis.  
 85. Advertisements are accepted on a confidential basis.  
 86. Advertisements are accepted on a secret basis.  
 87. Advertisements are accepted on a discreet basis.  
 88. Advertisements are accepted on a confidential basis.  
 89. Advertisements are accepted on a secret basis.  
 90. Advertisements are accepted on a discreet basis.  
 91. Advertisements are accepted on a confidential basis.  
 92. Advertisements are accepted on a secret basis.  
 93. Advertisements are accepted on a discreet basis.  
 94. Advertisements are accepted on a confidential basis.  
 95. Advertisements are accepted on a secret basis.  
 96. Advertisements are accepted on a discreet basis.  
 97. Advertisements are accepted on a confidential basis.  
 98. Advertisements are accepted on a secret basis.  
 99. Advertisements are accepted on a discreet basis.  
 100. Advertisements are accepted on a confidential basis.

**THE charge for advertisements in this column is Sh. 1/- for a line of six words, or a fraction of a line, with a minimum of Sh. 1/-. Repeats half price on consecutive days only.**


**WANTED to purchase for cash, or exchange, the following:—**  
 1. 1/2 ton of iron  
 2. 1/2 ton of steel  
 3. 1/2 ton of copper  
 4. 1/2 ton of brass  
 5. 1/2 ton of zinc  
 6. 1/2 ton of lead  
 7. 1/2 ton of tin  
 8. 1/2 ton of nickel  
 9. 1/2 ton of silver  
 10. 1/2 ton of gold  
 11. 1/2 ton of platinum  
 12. 1/2 ton of palladium  
 13. 1/2 ton of rhodium  
 14. 1/2 ton of iridium  
 15. 1/2 ton of osmium  
 16. 1/2 ton of selenium  
 17. 1/2 ton of tellurium  
 18. 1/2 ton of arsenic  
 19. 1/2 ton of antimony  
 20. 1/2 ton of bismuth  
 21. 1/2 ton of mercury  
 22. 1/2 ton of cadmium  
 23. 1/2 ton of cobalt  
 24. 1/2 ton of manganese  
 25. 1/2 ton of chromium  
 26. 1/2 ton of vanadium  
 27. 1/2 ton of niobium  
 28. 1/2 ton of tantalum  
 29. 1/2 ton of molybdenum  
 30. 1/2 ton of tungsten  
 31. 1/2 ton of rhenium  
 32. 1/2 ton of ruthenium  
 33. 1/2 ton of rhodium  
 34. 1/2 ton of iridium  
 35. 1/2 ton of osmium  
 36. 1/2 ton of selenium  
 37. 1/2 ton of tellurium  
 38. 1/2 ton of arsenic  
 39. 1/2 ton of antimony  
 40. 1/2 ton of bismuth  
 41. 1/2 ton of mercury  
 42. 1/2 ton of cadmium  
 43. 1/2 ton of cobalt  
 44. 1/2 ton of manganese  
 45. 1/2 ton of chromium  
 46. 1/2 ton of vanadium  
 47. 1/2 ton of niobium  
 48. 1/2 ton of tantalum  
 49. 1/2 ton of molybdenum  
 50. 1/2 ton of tungsten  
 51. 1/2 ton of rhenium  
 52. 1/2 ton of ruthenium  
 53. 1/2 ton of rhodium  
 54. 1/2 ton of iridium  
 55. 1/2 ton of osmium  
 56. 1/2 ton of selenium  
 57. 1/2 ton of tellurium  
 58. 1/2 ton of arsenic  
 59. 1/2 ton of antimony  
 60. 1/2 ton of bismuth  
 61. 1/2 ton of mercury  
 62. 1/2 ton of cadmium  
 63. 1/2 ton of cobalt  
 64. 1/2 ton of manganese  
 65. 1/2 ton of chromium  
 66. 1/2 ton of vanadium  
 67. 1/2 ton of niobium  
 68. 1/2 ton of tantalum  
 69. 1/2 ton of molybdenum  
 70. 1/2 ton of tungsten  
 71. 1/2 ton of rhenium  
 72. 1/2 ton of ruthenium  
 73. 1/2 ton of rhodium  
 74. 1/2 ton of iridium  
 75. 1/2 ton of osmium  
 76. 1/2 ton of selenium  
 77. 1/2 ton of tellurium  
 78. 1/2 ton of arsenic  
 79. 1/2 ton of antimony  
 80. 1/2 ton of bismuth  
 81. 1/2 ton of mercury  
 82. 1/2 ton of cadmium  
 83. 1/2 ton of cobalt  
 84. 1/2 ton of manganese  
 85. 1/2 ton of chromium  
 86. 1/2 ton of vanadium  
 87. 1/2 ton of niobium  
 88. 1/2 ton of tantalum  
 89. 1/2 ton of molybdenum  
 90. 1/2 ton of tungsten  
 91. 1/2 ton of rhenium  
 92. 1/2 ton of ruthenium  
 93. 1/2 ton of rhodium  
 94. 1/2 ton of iridium  
 95. 1/2 ton of osmium  
 96. 1/2 ton of selenium  
 97. 1/2 ton of tellurium  
 98. 1/2 ton of arsenic  
 99. 1/2 ton of antimony  
 100. 1/2 ton of bismuth

**WANTED to purchase for cash, or exchange, the following:—**  
 1. 1/2 ton of iron  
 2. 1/2 ton of steel  
 3. 1/2 ton of copper  
 4. 1/2 ton of brass  
 5. 1/2 ton of zinc  
 6. 1/2 ton of lead  
 7. 1/2 ton of tin  
 8. 1/2 ton of nickel  
 9. 1/2 ton of silver  
 10. 1/2 ton of gold  
 11. 1/2 ton of platinum  
 12. 1/2 ton of palladium  
 13. 1/2 ton of rhodium  
 14. 1/2 ton of iridium  
 15. 1/2 ton of osmium  
 16. 1/2 ton of selenium  
 17. 1/2 ton of tellurium  
 18. 1/2 ton of arsenic  
 19. 1/2 ton of antimony  
 20. 1/2 ton of bismuth  
 21. 1/2 ton of mercury  
 22. 1/2 ton of cadmium  
 23. 1/2 ton of cobalt  
 24. 1/2 ton of manganese  
 25. 1/2 ton of chromium  
 26. 1/2 ton of vanadium  
 27. 1/2 ton of niobium  
 28. 1/2 ton of tantalum  
 29. 1/2 ton of molybdenum  
 30. 1/2 ton of tungsten  
 31. 1/2 ton of rhenium  
 32. 1/2 ton of ruthenium  
 33. 1/2 ton of rhodium  
 34. 1/2 ton of iridium  
 35. 1/2 ton of osmium  
 36. 1/2 ton of selenium  
 37. 1/2 ton of tellurium  
 38. 1/2 ton of arsenic  
 39. 1/2 ton of antimony  
 40. 1/2 ton of bismuth  
 41. 1/2 ton of mercury  
 42. 1/2 ton of cadmium  
 43. 1/2 ton of cobalt  
 44. 1/2 ton of manganese  
 45. 1/2 ton of chromium  
 46. 1/2 ton of vanadium  
 47. 1/2 ton of niobium  
 48. 1/2 ton of tantalum  
 49. 1/2 ton of molybdenum  
 50. 1/2 ton of tungsten  
 51. 1/2 ton of rhenium  
 52. 1/2 ton of ruthenium  
 53. 1/2 ton of rhodium  
 54. 1/2 ton of iridium  
 55. 1/2 ton of osmium  
 56. 1/2 ton of selenium  
 57. 1/2 ton of tellurium  
 58. 1/2 ton of arsenic  
 59. 1/2 ton of antimony  
 60. 1/2 ton of bismuth  
 61. 1/2 ton of mercury  
 62. 1/2 ton of cadmium  
 63. 1/2 ton of cobalt  
 64. 1/2 ton of manganese  
 65. 1/2 ton of chromium  
 66. 1/2 ton of vanadium  
 67. 1/2 ton of niobium  
 68. 1/2 ton of tantalum  
 69. 1/2 ton of molybdenum  
 70. 1/2 ton of tungsten  
 71. 1/2 ton of rhenium  
 72. 1/2 ton of ruthenium  
 73. 1/2 ton of rhodium  
 74. 1/2 ton of iridium  
 75. 1/2 ton of osmium  
 76. 1/2 ton of selenium  
 77. 1/2 ton of tellurium  
 78. 1/2 ton of arsenic  
 79. 1/2 ton of antimony  
 80. 1/2 ton of bismuth  
 81. 1/2 ton of mercury  
 82. 1/2 ton of cadmium  
 83. 1/2 ton of cobalt  
 84. 1/2 ton of manganese  
 85. 1/2 ton of chromium  
 86. 1/2 ton of vanadium  
 87. 1/2 ton of niobium  
 88. 1/2 ton of tantalum  
 89. 1/2 ton of molybdenum  
 90. 1/2 ton of tungsten  
 91. 1/2 ton of rhenium  
 92. 1/2 ton of ruthenium  
 93. 1/2 ton of rhodium  
 94. 1/2 ton of iridium  
 95. 1/2 ton of osmium  
 96. 1/2 ton of selenium  
 97. 1/2 ton of tellurium  
 98. 1/2 ton of arsenic  
 99. 1/2 ton of antimony  
 100. 1/2 ton of bismuth

**WANTED to purchase for cash, or exchange, the following:—**  
 1. 1/2 ton of iron  
 2. 1/2 ton of steel  
 3. 1/2 ton of copper  
 4. 1/2 ton of brass  
 5. 1/2 ton of zinc  
 6. 1/2 ton of lead  
 7. 1/2 ton of tin  
 8. 1/2 ton of nickel  
 9. 1/2 ton of silver  
 10. 1/2 ton of gold  
 11. 1/2 ton of platinum  
 12. 1/2 ton of palladium  
 13. 1/2 ton of rhodium  
 14. 1/2 ton of iridium  
 15. 1/2 ton of osmium  
 16. 1/2 ton of selenium  
 17. 1/2 ton of tellurium  
 18. 1/2 ton of arsenic  
 19. 1/2 ton of antimony  
 20. 1/2 ton of bismuth  
 21. 1/2 ton of mercury  
 22. 1/2 ton of cadmium  
 23. 1/2 ton of cobalt  
 24. 1/2 ton of manganese  
 25. 1/2 ton of chromium  
 26. 1/2 ton of vanadium  
 27. 1/2 ton of niobium  
 28. 1/2 ton of tantalum  
 29. 1/2 ton of molybdenum  
 30. 1/2 ton of tungsten  
 31. 1/2 ton of rhenium  
 32. 1/2 ton of ruthenium  
 33. 1/2 ton of rhodium  
 34. 1/2 ton of iridium  
 35. 1/2 ton of osmium  
 36. 1/2 ton of selenium  
 37. 1/2 ton of tellurium  
 38. 1/2 ton of arsenic  
 39. 1/2 ton of antimony  
 40. 1/2 ton of bismuth  
 41. 1/2 ton of mercury  
 42. 1/2 ton of cadmium  
 43. 1/2 ton of cobalt  
 44. 1/2 ton of manganese  
 45. 1/2 ton of chromium  
 46. 1/2 ton of vanadium  
 47. 1/2 ton of niobium  
 48. 1/2 ton of tantalum  
 49. 1/2 ton of molybdenum  
 50. 1/2 ton of tungsten  
 51. 1/2 ton of rhenium  
 52. 1/2 ton of ruthenium  
 53. 1/2 ton of rhodium  
 54. 1/2 ton of iridium  
 55. 1/2 ton of osmium  
 56. 1/2 ton of selenium  
 57. 1/2 ton of tellurium  
 58. 1/2 ton of arsenic  
 59. 1/2 ton of antimony  
 60. 1/2 ton of bismuth  
 61. 1/2 ton of mercury  
 62. 1/2 ton of cadmium  
 63. 1/2 ton of cobalt  
 64. 1/2 ton of manganese  
 65. 1/2 ton of chromium  
 66. 1/2 ton of vanadium  
 67. 1/2 ton of niobium  
 68. 1/2 ton of tantalum  
 69. 1/2 ton of molybdenum  
 70. 1/2 ton of tungsten  
 71. 1/2 ton of rhenium  
 72. 1/2 ton of ruthenium  
 73. 1/2 ton of rhodium  
 74. 1/2 ton of iridium  
 75. 1/2 ton of osmium  
 76. 1/2 ton of selenium  
 77. 1/2 ton of tellurium  
 78. 1/2 ton of arsenic  
 79. 1/2 ton of antimony  
 80. 1/2 ton of bismuth  
 81. 1/2 ton of mercury  
 82. 1/2 ton of cadmium  
 83. 1/2 ton of cobalt  
 84. 1/2 ton of manganese  
 85. 1/2 ton of chromium  
 86. 1/2 ton of vanadium  
 87. 1/2 ton of niobium  
 88. 1/2 ton of tantalum  
 89. 1/2 ton of molybdenum  
 90. 1/2 ton of tungsten  
 91. 1/2 ton of rhenium  
 92. 1/2 ton of ruthenium  
 93. 1/2 ton of rhodium  
 94. 1/2 ton of iridium  
 95. 1/2 ton of osmium  
 96. 1/2 ton of selenium  
 97. 1/2 ton of tellurium  
 98. 1/2 ton of arsenic  
 99. 1/2 ton of antimony  
 100. 1/2 ton of bismuth

**EQUATOR SAWS**  
 P.O. Flatman, P.O. Maj-Mazungu, P.O. Box 291, Nairobi.  
**IN STOCK 4,000 TONS**  
 Podo, Cedar, Hardwoods and Uganda Nvula.  
 Price List on Application.  
**ALSO IN STOCK**

Silverware Work	Color Printing	Photography	Shops' Good
Stain Wood	Refrigerated Meat	Refrigerated Meat	Refrigerated Meat
Preservative	100 lbs. cases	100 lbs. cases	100 lbs. cases
Spal. Drums 500/	100 lbs. cases	100 lbs. cases	100 lbs. cases
100 lbs. cases	100 lbs. cases	100 lbs. cases	100 lbs. cases
F.O.B. Nairobi	F.O.B. Nairobi	F.O.B. Nairobi	F.O.B. Nairobi

**SOLD ON A QUALITY BASIS**  
*Our Original Moderate Prices hold good To-day*  
  
**UNDERWOOD**  
*The Machine*  
*You will Eventually Buy.*

**OSTERIEITH & Co. Ltd.**  
 (with whom is associated Mr. G. I. Graham)  
**PRODUCE MERCHANTS.**  
 IMPERIAL CHAMBERS, GOVERNMENT ROAD, NAIROBI  
 (Next to Bullows and Roy).  
**COFFEE BAGS**  
 Now arriving 1 1/2 lb. and 2 1/2 lb.  
 Having secured large quantities at exceptionally favourable prices, we are selling very cheaply.  
 Prices upon application.  
 P. O. Box 667. Telegrams: "OSTERIEITHS" Nairobi  
 Kenya Manager: --- Capt. E. A. MARTIN  
 London Office Continental Office  
 42, Old Broad St. E. C. 2. 15, Rue des Chenes, Antwerp, Belgium.

**We specialize in the manufacture of Good Quality Household, Office and Club Furniture.**

DINING TABLES	from Shgs. 77/6	DOUBLE BEDSTADS	from Shgs. 165/0
DINING ROOM CHAIRS	Shgs. 21/0	SINGLE BEDSTADS	Shgs. 117/6
MODERN BEDSTADS	Shgs. 220/0	FOLDING IRONING TABLES	Shgs. 220/0
DINING TABLES	Shgs. 45/0	FOLDING TABLES	Shgs. 145/0
SUNDOWNER TABLES	Shgs. 35/0	WASHSTANDS	Shgs. 87/6
NESTS OF DINING TABLES	Shgs. 57/0	CHEST OF DRAWERS	Shgs. 87/6
OCASIONAL TABLES	Shgs. 42/0	COMMODES	Shgs. 40/0

**IT ALWAYS PAYS TO BUY THE BEST. WE GIVE MAXIMUM VALUE AT THE LOWEST PRICES.**

UPHOLSTERED CHAIRS	from Shgs. 87/6	HANGING MIRRORS	from Shgs. 29/6
CLUB EASY CHAIRS	Shgs. 115/0	FOLDING IRONING TABLES	Shgs. 40/0
SMALL SETTEES	Shgs. 102/0	FOLDING TABLES	Shgs. 75/0
LARGE SETTEES	Shgs. 220/0	FOLDING TABLES	Shgs. 75/0
WRITING BUREAUS	Shgs. 175/0	FILING CABINETS	Shgs. 107/6
PALMSTANDS	Shgs. 20/6	GATEWAY TABLES	Shgs. 87/6
BOOKCASES	Shgs. 57/0	JACOBIAN STYLE	Shgs. 87/6
		DECO TABLES	Shgs. 16/6
		PIANO STOOLS	Shgs. 22/0

**HUTCHINGS, BIEMER & CO. LTD.**  
 NAIROBI  
 We allow 5 per cent. Discount for Cash with Order.  
 Box 408 Phone 408

**Kikuyu Hotel**  
 Clean, Comfortable, Healthy, and Excellent for Work and  
 Country pleasure to Mosley morning (Sh. 2/-).  
 Discount trains from Nairobi.  
 Moderate charges and special quotations for families.



# TOPICS

Class of Car.      Avenue Motor by Car.      Science and the Motor.

## FEATURES OF THE LATEST MODEL

A few simple points to follow will make it clear to the buyer of any motor car that a motor car is not only a means of transport, but a means of pleasure. The first point to consider is the ease with which the car can be driven. The motor car should be so simple to drive that any one can take to it at once. The second point is the ease with which the car can be maintained. The motor car should be so simple to maintain that any one can take to it at once. The third point is the ease with which the car can be driven. The motor car should be so simple to drive that any one can take to it at once.

## LADY MOTOR CARS

Lady motor cars are designed to give the greatest pleasure to the driver. They are simple to drive, easy to maintain, and give the greatest pleasure to the driver. They are designed to give the greatest pleasure to the driver. They are simple to drive, easy to maintain, and give the greatest pleasure to the driver.

## WORK OF EXPERIMENTAL STATIONS

One of the most important works of experimental stations is the study of the motor car. The motor car is a complex machine, and its study requires the use of experimental stations. The motor car is a complex machine, and its study requires the use of experimental stations.

## AIR MOTOR ENGINES

Air motor engines are a new development in the motor car industry. They are simple to drive, easy to maintain, and give the greatest pleasure to the driver. They are designed to give the greatest pleasure to the driver.

## Exporters Use This Car Because It Is Dependable

Plovers and explorers, whose lives depend upon the reliability of the transportation they use, employ Dodge Brothers Motor Cars almost exclusively.

Businessmen send Dodge Brothers Cars through the authorized General Agents of Central and West Coast, Australia, Dr. Roy Chapman Andrews, the famous explorer, purchased the famous motor car of the expedition to Mongolia in a Dodge Brothers Car.

The car's dependability is proverbial, and its exceptional riding comfort permits long travel over bad roads without fatigue.

Touring Car	£210
Special Touring Car	£230
Limousine Box Body	£300

Delivered Nairobi.  
The Omrod Garage, NAKURU.  
Wells & Co., Ltd., Mombi and Arusha.  
KAMANI BERNINI, KAMPALA and BUROKA.

S. FISHER & SIMMONS (P.A.), Ltd.,  
Victoria Street, Nairobi.

## DODGE BROTHERS MOTOR CARS

F. A. HEAD,  
PIANOFOURTE, TUNER AND REPAIRER,  
Seven years' experience in Kenya Colony,  
and all orders to P.O. Box 675



Hi!  
if ever you meet a lion  
around a corner...  
Keep Cool  
drink Obhsion's  
LION LAGER  
Coolest thing in all Africa

## WAHILI BOOKS

EVERYDAY SWAHILI PHRASES and VOCABULARY  
12th Edition, by E. A. S. Ltd.,  
Price, Shgs. 2/-, Postd 2/6.  
SWAHILI VOCABULARY, by A. C. Madan,  
Price, Shgs. 2/-, Postd 2/6.  
LITTLE EXERCISES, by Edward Steere L.L.D.,  
Price, Shgs. 4/6, Postd 5/6.  
LITTLE TABLES WITH ENGLISH TRANSLATION  
by Steere L.L.D. Revised by Alice Werner,  
Price, Shgs. 4/6, Postd 5/6.  
SWAHILI GRAMMAR and VOCABULARY  
by Mrs. F. Bar,  
Price, Shgs. 5/6, Postd 5/6.  
ENGLISH-SWAHILI DICTIONARY  
SWAHILI-ENGLISH DICTIONARY  
by A. C. Madan,  
Price, Shgs. 12/-, Postd Shgs. 12/6.

Standard Stationery Store  
NAIROBI.

# USED CARS FOR SALE

In Order to Dispose of Several Used Car's we are Offering the Undermentioned at the Figures Stated

Hupp, 8 cyl Touring	£275	Chev Truck	£90
Hupp, 4 cyl	£220	Hupp, "	£90
Chrysler, 70	£200	Rugby Box-Body	£90
Hupp, 6 Box-Body	£185	Chev Truck	£70
Oakland Touring	£150	Hupp, Touring	£70
Studebaker, Box Body	£150	Hupp, "	£140

ALL IN PERFECT ORDER.  
Minute Inspection Invited

The Motor Mart and Exchange Ltd.  
NAIROBI.      NAKURU.

The British Petrol  
Best Possible  
For Your Car

SOLE AGENTS:  
J. R. GILL & CO.,  
KINROSS & CO.,  
J. P. FARMER & ASSOCIATES,  
J. T. BIRCHALL,  
J. M. FALLET, Ltd.,  
POLICE & CO.,  
G. G. ROBERTSON & CO.  
ALBERT MULLENZA & CO.,  
ROBERTSON & CO., Ltd.,  
MOMBASA  
KAMPALA  
MUSHEGA  
MURORO  
NAIROBI

## DANCING

Miss Adrienne Ray  
Member of  
S.A. Tropical Teachers Society,  
Principal of the Adolph School  
Bath Street and Dulla Street,  
Nairobi Theatre, London,  
Trill Theatre, Australia,  
Private Lesiree gives in the  
PEAK CHAIKENTON,  
modified BLACK BOTTOM,  
French Tuck and New Walk,  
Apply LYRIC HALL, NAIROBI  
or P.O. Box 160.

## BARGAINS!!!

Native Shirts at from Shgs. 9/6 per dozen  
Wash Shirting at from Shgs. 2/7 per dozen  
Other goods too numerous to mention including  
PANAMA, JEMBELE, AXES, etc.

## M. ROSENBLUM & Co. Ltd.

HARDING STREET,  
Nairobi.  
Tel. No. 15. NAIROBI. P.O. Box 581.

## POWER

JOHN DEERE FARM TRACTOR  
18-37 H.P.



DEPENDABLE, ECONOMICAL, DURABLE.  
Price £315  
We have large stocks of John Deere Tractors,  
Farm Trucks, Carts, Wagons, Ploughs,  
Harrows, Cultivators, Wheel Drills  
and Shelters.

TARPAULINS—ALL SIZES IN STOCK.  
B. W. SEAR (S.E.A. Wagon Works) Ltd.,  
Victoria Street,  
Phone 148. NAIROBI. P.O. Box 678.



GLASSES MADE UP TO OPTICIAN'S PRESCRIPTIONS, OVER  
5,000 CURVED LENSES IN STOCK.  
Dobbies Ltd.  
OPHTHALMIC OPTICIANS,  
Nairobi.

Sun Glasses and Goggles in Crookes, Smocks, Fuzas and Amber  
lenses.

## THE MORRIS, ENGLAND'S CAR FOR KENYA.

The new 1927 Morris Cars are the latest word in efficiency,  
comfort and design. We ask you to visit and see these  
beautiful models for yourself. They are intended to meet for  
value, and more than uphold the high standard of the finest  
British workmanship.

SOLE AGENTS—  
Mitchell Cotts & Co.  
P.O. Box 684 Theatre Road, Nairobi.







# WINGET

## OPEN DRUM CONCRETE MIXER

### THE GUARANTEED MIXER

## WITH THE GUARANTEED MIX

These are the only open drum type mixers on the market which mix instead of separating. This is due to the patent PIREN LANCASTER drum with the SEMI HELICAL BASE. "WINGET" mixers have other overwhelming advantages over any other on the market. Come and see a 54-6 in stock, or write for literature.

**A Size for Every Job**

**J. R. COX & Co.**

P. O. Box 61,  
ELDORET.

P. O. Box 67,  
NAIROBI.

P. O. Box 353,  
KAMPALA.

# B. E. A. Saw Mills

MILLS: Factory Sites, Nairobi,  
East River,  
Katamayu } Uplands

P. O. Box 211,  
Nairobi.

Telegrams: B.E.A.  
Telephone Mills No. 93. Office No. 88.  
CAMPBOR, FODO, MWERI and BOKWOOD.

Prompt Delivery,  
4 INCH CEDAR FLOORING.

## HAULAGE and TRANSPORT

STANDARD BUILDINGS,  
ANY WEIGHT ANY DISTANCE  
HAULAGE & GENERAL TRANSPORT CO.  
8th Avenue. Phone 85. P. O. Box 230.

## REGINA BRIEF.

Dramatizing and Printing.  
Smart, correct handling  
and perfect fitting for ladies  
and gentlemen by expert  
European fitters.  
No. 8, Theatre Royal  
Avenue.  
P. O. Box 642. NAIROBI.

Until Further Notice

# MADAME BOWE ET CIE

WILL SHOW

AT THE

## NORFOLK HOTEL

Model Gowns,  
Jumper Suits,  
Ladies Silk Hose, etc.

New Models by the Incoming Mails.

## WE STOCK

Always big stock of Provisions, Wines, Liqueurs,  
Best Quality of Dutch and Indian Cigars, Cigarettes,  
Sweets, Chocolates, Biscuits, Delmonico Brand Dried  
Fruits, in tins and Fruits in Syrup.  
Also for farings Rough Salt, Rock Salt, Dairy Salt,  
and Epsom Salt, Linned oil, Methylated Spirit and  
Turpentine.

Ask for our retail price list to-day.

**KANJEE NARANJEE**

P. O. Box 287.

NAIROBI.

Govt. Road.

## D. D. Costa & Sons.

LADIES' GENTS' AND  
CHILDREN  
TAILORS AND CUTTERS  
WOLLEN AND SHIRT MAKERS  
FOR YOUR REQUIREMENTS.  
SPECIAL CUTTERS AND  
TAILORS HAVE ARRIVED  
FROM BOMBAY.  
Special Avenue,  
P. O. Box No. 30,  
NAIROBI.

## Friend Bay Quakers.

DO YOU TRUST YOUR PROPERTY?

In spite of modern efforts to make a man appear, the Quakers of Friends is not thought by many people to be a religious order of people people who were once known as the Society of Friends.

There was this in this respect, that they will probably tend to rise for their maintenance in London today. Among Quakers in the District of Friends. Among Quakers in the District of Friends. Among Quakers in the District of Friends.

It is rather dry they were the Quakers of Friends. It is rather dry they were the Quakers of Friends. It is rather dry they were the Quakers of Friends.

The Quakers of Friends will be a Quaker of Friends. The Quakers of Friends will be a Quaker of Friends. The Quakers of Friends will be a Quaker of Friends.

## NOT INFALLIBLE.

Again, our Quaker belief in 20-  
cent leadership is not to imply any  
claim to infallibility; we recognize  
that it is easy for imperfect men to  
mislead their own people by  
something which is not really  
something which is not really  
something which is not really

The Quakers of Friends will be a  
Quaker of Friends. The Quakers of  
Friends will be a Quaker of Friends.  
The Quakers of Friends will be a  
Quaker of Friends.

The Quakers of Friends will be a  
Quaker of Friends. The Quakers of  
Friends will be a Quaker of Friends.  
The Quakers of Friends will be a  
Quaker of Friends.

The Quakers of Friends will be a  
Quaker of Friends. The Quakers of  
Friends will be a Quaker of Friends.  
The Quakers of Friends will be a  
Quaker of Friends.

The Quakers of Friends will be a  
Quaker of Friends. The Quakers of  
Friends will be a Quaker of Friends.  
The Quakers of Friends will be a  
Quaker of Friends.

The Quakers of Friends will be a  
Quaker of Friends. The Quakers of  
Friends will be a Quaker of Friends.  
The Quakers of Friends will be a  
Quaker of Friends.

The Quakers of Friends will be a  
Quaker of Friends. The Quakers of  
Friends will be a Quaker of Friends.  
The Quakers of Friends will be a  
Quaker of Friends.

The Quakers of Friends will be a  
Quaker of Friends. The Quakers of  
Friends will be a Quaker of Friends.  
The Quakers of Friends will be a  
Quaker of Friends.

The Quakers of Friends will be a  
Quaker of Friends. The Quakers of  
Friends will be a Quaker of Friends.  
The Quakers of Friends will be a  
Quaker of Friends.

The Quakers of Friends will be a  
Quaker of Friends. The Quakers of  
Friends will be a Quaker of Friends.  
The Quakers of Friends will be a  
Quaker of Friends.

The Quakers of Friends will be a  
Quaker of Friends. The Quakers of  
Friends will be a Quaker of Friends.  
The Quakers of Friends will be a  
Quaker of Friends.

The Quakers of Friends will be a  
Quaker of Friends. The Quakers of  
Friends will be a Quaker of Friends.  
The Quakers of Friends will be a  
Quaker of Friends.

The Quakers of Friends will be a  
Quaker of Friends. The Quakers of  
Friends will be a Quaker of Friends.  
The Quakers of Friends will be a  
Quaker of Friends.

## THE NEW AMERICAN

THE NEW AMERICAN

The New American will be a  
New American. The New American  
will be a New American. The New  
American will be a New American.

The New American will be a  
New American. The New American  
will be a New American. The New  
American will be a New American.

The New American will be a  
New American. The New American  
will be a New American. The New  
American will be a New American.

The New American will be a  
New American. The New American  
will be a New American. The New  
American will be a New American.

The New American will be a  
New American. The New American  
will be a New American. The New  
American will be a New American.

The New American will be a  
New American. The New American  
will be a New American. The New  
American will be a New American.

The New American will be a  
New American. The New American  
will be a New American. The New  
American will be a New American.

The New American will be a  
New American. The New American  
will be a New American. The New  
American will be a New American.

The New American will be a  
New American. The New American  
will be a New American. The New  
American will be a New American.

The New American will be a  
New American. The New American  
will be a New American. The New  
American will be a New American.

The New American will be a  
New American. The New American  
will be a New American. The New  
American will be a New American.

The New American will be a  
New American. The New American  
will be a New American. The New  
American will be a New American.

The New American will be a  
New American. The New American  
will be a New American. The New  
American will be a New American.

The New American will be a  
New American. The New American  
will be a New American. The New  
American will be a New American.

The New American will be a  
New American. The New American  
will be a New American. The New  
American will be a New American.

The New American will be a  
New American. The New American  
will be a New American. The New  
American will be a New American.

The New American will be a  
New American. The New American  
will be a New American. The New  
American will be a New American.

The New American will be a  
New American. The New American  
will be a New American. The New  
American will be a New American.

## CARS for HIRE

CARS for HIRE

CARS for HIRE

CARS for HIRE

CARS for HIRE

CARS for HIRE

CARS for HIRE

CARS for HIRE

CARS for HIRE

CARS for HIRE

CARS for HIRE

CARS for HIRE

CARS for HIRE

CARS for HIRE

CARS for HIRE

CARS for HIRE

CARS for HIRE

CARS for HIRE

CARS for HIRE

CARS for HIRE

## OF INTEREST TO SPORTS LOVERS

Silver & E.P. Cups

Silver & E.P. Cups

Silver & E.P. Cups

Silver & E.P. Cups

Silver & E.P. Cups

Silver & E.P. Cups

Silver & E.P. Cups

Silver & E.P. Cups

Silver & E.P. Cups

Silver & E.P. Cups

Silver & E.P. Cups

Silver & E.P. Cups

Silver & E.P. Cups

Silver & E.P. Cups

Silver & E.P. Cups

Silver & E.P. Cups

Silver & E.P. Cups

Silver & E.P. Cups

Silver & E.P. Cups

## Board and Accommodation.

Board and Accommodation.

Board and Accommodation.

Board and Accommodation.

Board and Accommodation.

Board and Accommodation.

Board and Accommodation.

Board and Accommodation.

Board and Accommodation.

Board and Accommodation.

Board and Accommodation.

Board and Accommodation.

Board and Accommodation.

Board and Accommodation.

Board and Accommodation.

Board and Accommodation.

Board and Accommodation.

Board and Accommodation.

Board and Accommodation.

Board and Accommodation.

Board and Accommodation.

Board and Accommodation.

Board and Accommodation.

Board and Accommodation.

Board and Accommodation.

Board and Accommodation.

Board and Accommodation.

Board and Accommodation.

Board and Accommodation.

Board and Accommodation.

Board and Accommodation.

Board and Accommodation.

Board and Accommodation.

Board and Accommodation.

Board and Accommodation.

Board and Accommodation.

Board and Accommodation.

Board and Accommodation.

Board and Accommodation.

Board and Accommodation.

Board and Accommodation.

Board and Accommodation.

Board and Accommodation.

Board and Accommodation.

Board and Accommodation.

Board and Accommodation.

Board and Accommodation.

Board and Accommodation.

Board and Accommodation.

Board and Accommodation.

Board and Accommodation.

Board and Accommodation.

Board and Accommodation.

Board and Accommodation.

Board and Accommodation.

Board and Accommodation.

Board and Accommodation.

Board and Accommodation.

Board and Accommodation.

Board and Accommodation.

Board and Accommodation.

## "KLEANBOR"

"KLEANBOR"

"KLEANBOR"

"KLEANBOR"

"KLEANBOR"

"KLEANBOR"

"KLEANBOR"

"KLEANBOR"

"KLEANBOR"

"KLEANBOR"

"KLEANBOR"

"KLEANBOR"

"KLEANBOR"

"KLEANBOR"

"KLEANBOR"

"KLEANBOR"

"KLEANBOR"

"KLEANBOR"

"KLEANBOR"

"KLEANBOR"

"KLEANBOR"

"KLEANBOR"

"KLEANBOR"

"KLEANBOR"

"KLEANBOR"

"KLEANBOR"

"KLEANBOR"

"KLEANBOR"

"KLEANBOR"

"KLEANBOR"

"KLEANBOR"

"KLEANBOR"

"KLEANBOR"

"KLEANBOR"

"KLEANBOR"

"KLEANBOR"

"KLEANBOR"

"KLEANBOR"

"KLEANBOR"

"KLEANBOR"

"KLEANBOR"

"KLEANBOR"

"KLEANBOR"

"KLEANBOR"

"KLEANBOR"

"KLEANBOR"

"KLEANBOR"

"KLEANBOR"

"KLEANBOR"

"KLEANBOR"

"KLEANBOR"

"KLEANBOR"

"KLEANBOR"

"KLEANBOR"

"KLEANBOR"

"KLEANBOR"

"KLEANBOR"

"KLEANBOR"

"KLEANBOR"

"KLEANBOR"

"KLEANBOR"

# Geo. BLOWERS

BUILDING CONTRACTOR, MANUFACTURER AND DIRECT IMPORTER.

P. O. Box 250. Tel. Add. "Concrete".

Sadler Street, NAIROBI. Phone: Work 365.

CASH WITH ORDER. No. 420.

NOTE: No. 1, 2, 3, 4, 5, 6, 7, 8, 9, 10, 11, 12, 13, 14, 15, 16, 17, 18, 19, 20, 21, 22, 23, 24, 25, 26, 27, 28, 29, 30, 31, 32, 33, 34, 35, 36, 37, 38, 39, 40, 41, 42, 43, 44, 45, 46, 47, 48, 49, 50, 51, 52, 53, 54, 55, 56, 57, 58, 59, 60, 61, 62, 63, 64, 65, 66, 67, 68, 69, 70, 71, 72, 73, 74, 75, 76, 77, 78, 79, 80, 81, 82, 83, 84, 85, 86, 87, 88, 89, 90, 91, 92, 93, 94, 95, 96, 97, 98, 99, 100.

NOTE: No. 1, 2, 3, 4, 5, 6, 7, 8, 9, 10, 11, 12, 13, 14, 15, 16, 17, 18, 19, 20, 21, 22, 23, 24, 25, 26, 27, 28, 29, 30, 31, 32, 33, 34, 35, 36, 37, 38, 39, 40, 41, 42, 43, 44, 45, 46, 47, 48, 49, 50, 51, 52, 53, 54, 55, 56, 57, 58, 59, 60, 61, 62, 63, 64, 65, 66, 67, 68, 69, 70, 71, 72, 73, 74, 75, 76, 77, 78, 79,











# AUCTION SALES



## JUMBLE SALE

On behalf of the Native Charity, we shall sell by Public Auction, at our Salerooms, Motor Building, Hastings Street, Nairobi.

**TO-DAY, 24th June at 10 a.m.**  
**MOVABLE SEWING MACHINES.**  
**CROCKERY, GLASSWARE, KITCHEN UTENSILS.**  
**VEGETABLES, FLOWERS, FRUIT, JAMS, CAKES.**  
**MUTER and OSWALD, Auctioneers, etc., Nairobi.**

Registered **PUDLO** Trade Mark.  
**BRAND**  
**OSMENT WATERPROOFING POWDER.**  
**IS RAFF AND PERMANENT**—It cannot fall in waterproof cement.  
 Tested by the most eminent authorities.  
 The use of Cement is made finer in texture, more elastic, and the colour of Cement work is made lighter and it can never become dirty.  
 There is no odour, and it is not injurious to health.  
 Awarded the Certificate of the Institute of Hygiene.  
 The setting of Cement is not affected.  
 No special knowledge is required to use it.  
 Cement is easier to work when the Powder is added. It is then more plastic.  
**SOLE AGENTS:**  
**DENOVAN & DIEBEL**  
 P.O. Box 100, NAIROBI.

## Auction Sale NAKURU.

**TUESDAY, the 28th June 1927 at 10-30 a.m.**  
 Enclosed with instructions we shall sell on the above date on the Flat behind THACKERAY'S STORE, LAKE ROAD, NAKURU.  
 A large quantity of second-hand  
 GALVANISED CORRUGATED IRON in good condition in 8', 9', and 10' lengths.  
 HIDEING, CUTTING, 6x1 and 4x2 CEDAR and the entire contents of the MERRIBON PLAX MILL including a Bijou Balling Press, Oil Engine (new), 2 Kennedy Plate with stands, 30 Notching Whisks and a quantity of Shading, Poling, Poling, Finishing's, Holes, and Machine Tools, etc., etc., and COFFEE TINS.  
 Also a Scotch Car and one two-wheeled Bicycle.  
 Also a variety of second hand Implements mostly WITHOUT RESERVE consisting of Mouldhats, Iron Containers, Aweys, and Howard Ploughs, Winnowers, Trashes, and Main Shellers.  
 Also new L.I.C. IMPLEMENTS at GREATLY REDUCED PRICES, viz. 2, 3, 4, 5, 6, 7, 8, 9, 10, 11, 12, 13, 14, 15, 16, 17, 18, 19, 20, 21, 22, 23, 24, 25, 26, 27, 28, 29, 30, 31, 32, 33, 34, 35, 36, 37, 38, 39, 40, 41, 42, 43, 44, 45, 46, 47, 48, 49, 50, 51, 52, 53, 54, 55, 56, 57, 58, 59, 60, 61, 62, 63, 64, 65, 66, 67, 68, 69, 70, 71, 72, 73, 74, 75, 76, 77, 78, 79, 80, 81, 82, 83, 84, 85, 86, 87, 88, 89, 90, 91, 92, 93, 94, 95, 96, 97, 98, 99, 100.  
 3 Farm Mouldboard Ploughs, X.L. Main Sheller, Salk Cutter, Salk Wheel, and Planting Jigs Cultivators.  
**HAROLD THACKERAY**  
 in conjunction with  
**W. J. HENSTON**  
 Auctioneers, NAKURU.



**JUST ARRIVED**  
 Fresh stock of selected suit lengths of pure woollen (Cashmere, Worsted, Gaber, etc., etc., etc.)  
 Suits of latest styles made to measure at a short notice.  
**PRICES TO SUIT ALL.**  
 Tussor, Khaki and Cotton Suits at quite moderate Prices.  
**Meghi Ahamed & Co.**  
 P.O. Box 313 Phone 184.  
 Telegrams: Tarpasulla, NAIROBI.

Come and View the Grand Finale  
 OR LAST CHAPTERS OF  
**EDDIE POLO**  
 as "Marvelous Roustes" in the  
**CIRCUS KING**  
 The Concluding Episodes Nos. 14, 15 & 16 to 10 Parts will be shown at 7.15  
**MAJESTIC**  
 MONDAY, TUESDAY OR WEDNESDAY ONLY  
 7.15 P.M. - 10.15 P.M. - 11.15 P.M.

# ASTIN'S AUCTIONS

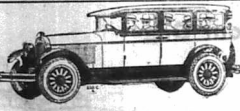
CATALOGUE SALE OF CHESTERFIELD SUITES, WARD ROBE, HORN GRAMOPHONES, DOVER STOVE, FIVE LAMP LAMP, TOST TYPEWRITER, etc.  
 Fully Illustrated by Several Clerks.

## ASTIN & Co.

will sell Without Reserve, unless otherwise stated, at The Mart, on  
**Saturday, June 25th at 9-30 sharp.**  
 SINGLE WARDROBE WITH MIRROR, MORRIS CHAIRS.  
 2 WOODEN BED WITH 3 ply Mattress. OCCASIONAL TABLE.  
 2 GILT-FRAME SUITES COVERED GENTLEMAN'S DINING CHAIRS.  
 GILT-FRAME SUITE COVERED GRAMOPHONE IN OAK CASE JACOBSEN DESIGN in Perfect Order and Condition (reserve).  
 DRESSING CHAIRS WITH OVAL and SQUARE MIRRORS. GOOD REVERE.  
 DOUBLE WARDROBES. OVAL DINING TABLE. GOOD TABLE.  
 OVAL COVE OVER WITH PRIMUS STOVE. TABLE DESK w/ 2 DRAWERS.  
 JACOBSEN DESIGN L' TRAU w/ 3 Drawers. TRAY TABLES.  
 DOVER STOVE No. 6 with BOILER. HALL STAND WITH MIRROR.  
 CHESTERFIELD SUITE in American. CHILD'S SWING COFFY.  
 TOST TYPEWRITER No. 20 in PERFECT ORDER, with Cover.  
 OVENATION DRESSING CHEST WARDENSTAND WITH MIRROR.  
 SWING MIRROR ON STAND. CHILD'S HIGH CHAIR.  
 ROYALTY LIME JUICE COORDIAL. UPBOARD WITH SHELVES.  
 H.M.V. TANK GRAMOPHONE IN OAK CASE with 3 Sound Boxes (RESERVE).  
 WILLIAMS' DESK. PEGAMOID TOP and 7 DRAWERS.  
 BUREAU WITH UPBOARD. WOOD MANTEL PLATE.  
 FINE CHESTERFIELD SUITE COVERED GOOD GENTLEMAN'S 2 Panel SETTY.  
 TRAY COFFY OF DRAWERS FULL SIZE. 1 WOOD BED COMPLETE.  
 DECCA PORTABLE GRAMOPHONE with 23 Good Records (RESERVE).  
 WELSH DRESSER COMBINATION. SINGLE WARDROBE.  
 Etc. Etc. Etc.

## AUSTIN & Co.

will offer subject to a low Reserve, on  
**Saturday June 25th at 9-30 sharp.**  
 2 B.S.A. MOTOR CYCLE in PERFECT RUNNING ORDER and CONDITION complete with ELECTRIC LIGHTING SET, TYRES GOOD.  
 An exceptional bargain at the Reserve.



## An Ideal Realized in Capacity and Grace

THE New Hupmobile Eight 7-Seater Saloon—a unique of superb performance and a magnificent body type—proves that a large capacity car is possible without unwieldy bulk. From driving compartment to rear seat, Hupmobile's ingenious engineering has provided a maximum of spacious comfort.  
 The prestige of Hupmobile's straight-eight engines and the distinctive grace of Hupmobile bodies are your guarantee of the most delightful motoring you ever experience.  
**THE MOTOR MART & EXCHANGE LTD.**  
 Nairobi and Nakuru.

**Hupmobile**  
 FIGHT CYLINDER  
 KENYA ARTS & CRAFTS SOCIETY  
 Photographic Exhibition  
 Under the distinguished patronage of His Excellency Sir Edward DeBunham, K.C.B.  
 AT THE MEMORIAL HALL, NAIROBI  
 Monday and Tuesday, June 26th and 27th 1927

# BENNETT & BLACKSHIRE

## UNRESERVED SALE

Household Furniture and Effects at the Mart, Hardinge Street,

**TO-DAY, 24th June at 10 a.m.**

received from various sources for disposal.

COMPREHENSIVE—OFFICE SAFE, Sideboards, Occasional Tables, Wardrobes, Bed, Single and Double, Chesterfield Buthon, Chair of Various Designs, Tables of All Sizes, Washstands, Chests of Drawers, Metal Safes, Bookshelves, Office Tables and Chairs, Morris Chairs, Books and Fancy Goods, Sundry Soft Goods, Also some very good China and Glassware.  
 Etc. Etc. Etc.

## EARLY NEXT MONTH

A Sale of Household Furniture and Effects at the house in Parklands.

## Bennett & Blackshire

**Estate Department:**  
 Magnificent Bone Built Bedsteads: Parklands Room House, 4 rooms on one acre well laid out grounds 2850. A bargain for quick sale.  
 Near town on Kabete Road 2 1/2 acre beautiful, laid out grounds including Tennis Court. All modern conveniences, large garage and outbuildings, 62,700. Mansion at Mt. Kenya, in course of construction 2 1/2 acres. Plans and specifications of this really magnificent property can be had on application at our office. The building will be a Double Storey Residence built on most modern and up-to-date lines including a Marble Hall, Inside sanitation, hot and cold water on each floor. Price 54,000.  
 SEVERAL EXCELLENT FARMING PROPERTIES  
 PHONO 142. BENNETT & BLACKSHIRE,  
 Office: Hastings St. Auctioneers and Estate Agents.

## JUST PUBLISHED OFFICIAL PROCEEDING

OF THE SOUTH AND EAST AFRICAN COMBINED  
 Agricultural  
 Cotton  
 Entomological,  
 Mycological  
 CONFERENCE  
 AUGUST 1926.  
 328 pages, Price Shs. 10/ Postpaid Shs. 10/65  
 Obtainable from:  
**Standard Stationery Stores,**  
 P.O. Box 280, NAIROBI.

## CARD INDEX CABINETS.

Indesee for above.  
 5 1/2 x 8 Single Drawer 12/60  
 6 1/2 x 8 Single 15/60  
 6 1/2 x 8 Double 22/60  
 8 1/2 x 8 Single 17/60  
 Standard Stationery Stores, P.O. Box 280, Nairobi.  
 Standard Stationery Stores, P.O. Box 280, Nairobi.

# Sisal

## Used Cars For Sale

All makes from five and seven years. Also new Saloons, etc. with a guarantee or our personal Motor Cycles of All Descriptions.  
**CARS FOR HIRE DRIVE YOURSELF OR DRIVER.**  
**DAY & NIGHT Storage, Repairs, Paint, etc. Tyres, etc.**  
**PETROL PUMP INSTALLED.**  
**LEAK US YOUR OLD CAR FOR A FEW POUNDS.**  
 We will Spray it with NITRO-VALSAP (The most Perfect Lacquer Finish.) and return it to you looking the same as if it had never been used. This Service is available on any day you showed it to your friends. This Service is available under the management of an expert (Mr. W. J. Johnston) direct from Valparaiso New York. Cars from 25 upwards.

## Esmail & Ramjee

Phone 452. Royal Exchange Building, Government Road, NAIROBI.  
**SEE THE ATTRACTIVE SETS OF CUT & CRYSTAL GLASSES IN OUR WINDOW**  
 of which we hold large stock.  
 (For 12 persons: Including Decester & Jug.)

# SISAL

## Cormorant Decorticator

**RESULT OF COMPARATIVE TEST.**  
 The following is the result of an INDEPENDENT TEST, conducted by a well-known Sisal Planter Kenya, showing yields of Fibre from the CORMORANT PORTABLE DECORTICATOR, compared with that of a Standard Machine in general use in Kenya.  
 The Tests were carried out under precisely similar conditions, the same weight and quality of leaves being used.

	Cormorant	Other make
Number of leaves ...	3	1,000
Weight of leaves ...	110 lbs.	1,000 lbs.
Weight of fibre before bruising ...	8 lbs.	10 lbs.
Weight of fibre after bruising ...	5 lbs.	11 lbs.
Percentage extracted, exclusive of Tow ...	3.42%	2.8%

In addition to the Fibre and Tow extracted by Cormorant as stated above, 1 lb. of Tow (which means the total waste), was recovered from the machine. After washing the Fibre, with the Machine in operation, the Fibre from this Machine can be said as No. 1 Kenya quality.  
 The above Test proves conclusively that the yield from the Cormorant exceeds that of other machines 33.18%; in other words, the Cormorant will give tons as against 100 tons.

## J. G. Aronson Ltd.

Court Chambers. P.O. Box 681. NAIROBI.  
**BRITISH SOUTH AFRICAN ANNUAL**  
 1898-1927.  
 (17th YEAR OF PUBLICATION.)  
**With an East African Supplement**  
 Containing—A Beautiful Plate "The Starbuck, G. Constantia" from the Oil Painting by Titus de Jonckheere, of South Africa, Rhodesia, Kenya, and numerous interesting articles.  
 PRICE, Shs. 5/-, Postpaid Shs. 5/65 (packed in cardboard box).  
**Standard Stationery Stores,**  
 P.O. Box 280, NAIROBI.

**Offers the best Spares Service Hire Purchases**  
 (ask for prices).  
**Garage**  
 (ask for prices).  
 Illustration of a motorcycle.





