

BEE. DAILY. ESTABLISHED IN 1906. THE NEW DARK ALE (XXX) is now obtainable at the same price as our well-known light PALE ALE. It's the finest tonic drink in Kenya. ASK FOR "LIGHT" or "DARK."

THE EAST AFRICAN STANDARD

UGANDA ARGUS THE LEADER. THE OLDEST ESTABLISHED NEWSPAPER PUBLISHED IN KENYA AND UGANDA.

NAIROBI, THURSDAY, MAY 17, 1928

14 PAGES.

FOR Morning AND Afternoon Teas Coffee and Ices New Stanley Hotel Cocktails in Speciality

Price: 20 CENTS.

VIOLENT EARTHQUAKES IN JAPAN & SOUTH AMERICA.

Sensational Message Picked up by Wireless Amateur. KRAKATOAG AGAIN ACTIVE.

Seven Thousand Eruptions Recorded During 24 Hours.

THE NORTHWEST AGENCY. Manchester, New Hampshire, May 15. The amateur wireless experimenter, Mr. Davis, has picked up the "Bremer's" arrival at Greatly and has picked up a sensational message recording earthquake in the Mikaito district of Japan.

A violent earthquake has occurred at Guasaguasi, Ecuador. The streets are littered with debris but no fatalities have been reported up to the present.

Batavia, May 15. Seven thousand eruptions have been recorded during the twenty-four hours by the island volcano of Krakatoa.

THE COMMISSIONERS IN LONDON.

THE BRITISH AIR AGREEMENT.

BY WIRELESS. Rugby, May 14. Sir Austen Chamberlain today announced the conclusion of an agreement with Persia whereby the Persian Government had expressed willingness to enter into negotiations with the British Imperial Airways Company regarding the routing of mail services between Egypt and India.

THE BRITISH IN PERSIA. The text was issued today of the British Minister in Tehran regarding the legal position of British nationals in Persia.

THE NOTE WHICH EMPHASIZES the judicial process and the law of Persia has been very appreciably reformed since that in all civil and criminal proceedings had been taken and there was a British consular practice every port along the coast where they were British subjects.

REPLYING to a further question, Sir Austen Chamberlain said that the Japanese Government considered it "highly necessary" to maintain the protection of Japanese passport holders in the affected areas and that Japanese immediately be withdrawn.

Sir Austen Chamberlain added that he had expressed to the Japanese Agent at Addis Ababa his sympathy with Japan in the present situation and that he hoped that later information would confirm the horrible accounts of outrages.

NORTHERNERS PREPARE TO LEAVE PEKING.

CONTINUING COAST BATTLE. Japanese Demand an Apology.

Punishment for Recent Outrages Called for.

THE NORTHWEST AGENCY. Peking, May 15. A stream of mail cars and wagons containing munitions passed through Peking today from the north to Manchuria where many Japanese women and children are working today.

They speak of the Northern movement as a national abandonment of the northern capital before the Nationalist Government from the South.

Shanghai, May 15. The Nationalists claim that Marshal Chang Tso-lin has ordered his left wing in an assumed traitorous move and they declare that the Northern army is preparing to march on the city.

THE TRENDS AWAY. Tokyo, May 15. The War Office has issued instructions to General Parkes regarding the Japanese forces at Tientsin to make the following arrangements with the National Government.

(1) An apology from General Chiang Kai-shek and the punishment of General Hoan and other officers primarily responsible for the protection of Britishers.

BY WIRELESS. Rugby, May 14. In the House of Commons today Sir Austen Chamberlain announced that the United States, British, French, Italian and Japanese had signed terms at Tientsin.

The British Government has closely watched the situation at Tientsin and should it be necessary to strengthen the British position there, there would be no difficulty.

REPLYING to a further question, Sir Austen Chamberlain said that the Japanese Government considered it "highly necessary" to maintain the protection of Japanese passport holders in the affected areas and that Japanese immediately be withdrawn.

Sir Austen Chamberlain added that he had expressed to the Japanese Agent at Addis Ababa his sympathy with Japan in the present situation and that he hoped that later information would confirm the horrible accounts of outrages.

HERCULEAN TASK IN UNITED STATES.

Curbing Mississippi's Flood Waters.

THE NORTHWEST AGENCY. Washington, May 15. President Coolidge has signed the Mississippi Control Bill committing the Government to the herculean task of curbing the river's flood waters.

This is probably one of the greatest engineering enterprises which has ever been undertaken and will cost over sixty million pounds.

Marine Insurance. LONDON RATE INCREASED BY 15 PER CENT.

THE NORTHWEST AGENCY. London, May 16. In consequence of heavy losses on the marine insurance market during recent years the London Underwriters' association has increased the rate on sailing ships by 10 per cent.

THE "HAIN". THREE DAYS' FLOTTY IN POLAR REGIONS.

THE NORTHWEST AGENCY. King's Bay, May 15. The ship "Hain" has taken 300 tons of coal and a three day flotty over Greenland and in the Polar regions.

NATIVE POLICE. COMMITTEE TO CONSIDER PENSIONERS SCHEME.

THE NORTHWEST AGENCY. The question of granting pensions to native police officers was raised in the Legislative Council yesterday by Major the Hon. R. W. J. Robertson (Conservative).

He proposed that the Government should consider the granting of pensions to native police officers after long periods of service.

The Colonial Secretary, Government has appointed a Committee consisting of the Hon. the Treasurer, Lieut. Colonel the Hon. G. C. Durham, the Commissioner of Police and the Hon. Member who is asking the question, to inquire into the matter.

South Lambwa. EXTRA POLICE OFFICERS NECESSARY.

THE NORTHWEST AGENCY. The current issue of the Kenya Official Gazette contains a Proclamation which is intended to increase the number of police officers in the district.

"MISS AFRICA" NEARS END OF JOURNEY.

Expected Arrival in England to-morrow.

PLIGHT'S PROGRESS. The Standard has received a cable from the Free Press stating that "Miss Africa," which left Nairobi last night, has arrived at Munich and expects to reach England on Friday next.

STANDARD CORRESPONDENT. Mr. H. B. Butler, the Deputy Director of the Native Labour Section of the International Labour Organisation at Geneva, yesterday the annual conference of the Anti-Slavery and Aborigines Protection Society at the Hotel Victoria.

He stated that the work had not been undertaken in connection with the proposed conference and that the solution could only be arrived at by a formal international conference.

It was reported that the standard miller makes in the Free East Africa Dependencies should be carefully handled to deal with the 10 per cent increase of those countries.

LEGISLATIVE COUNCIL. PROGRAMME OF TO-DAY'S BUSINESS.

Following is the order of the Day for today's meeting of the Legislative Council—

Confirmation of minutes—Meeting of the 10th May 1928. Presentation of petitions and memorials from the Kenyan people to be laid on the table.

NOTICE OF MOTION. The Hon. Colonel Harvey to state—

(1) Has the attention of Government been drawn to the fact that an article published in the Standard is being applied for in Kenya.

(2) What steps are being taken by Government to protect the public generally and the Coffee Industry in Kenya from the effects of the article.

THE NORTHWEST AGENCY. Major the Hon. R. W. J. Robertson stated that what arrangements are made for the clearing of the road in Nairobi from Mombasa to sub-stations for the purpose of the extension for that from other stations.

By The Hon. the Hon. J. Delaney. In view of the grave situation of the Free East Africa Dependencies of the Province of Wales and the Hon. the Hon. J. Delaney (Conservative) to visit Kenya to complete the unfinished half-room etc. and to finish the Government House and requests Government to appropriate £7,500 for the purpose.

That the 1st Supplementary Estimate for 1928 and the 2nd Supplementary Estimate for 1927 be referred to the Committee of Council.

Draft Standing Rules and Bills. The Drugs and Poisons Bill.

PRO BONO PUBLICO FOR THE PUBLIC BENEFIT BONO WAS MADE IN THE PUBLIC INTEREST BONO IS SPRAWED BY THE "PUBLIC-ENLIGHTENED BONO IS BOUGHT. AND DEATH TO ALL INSECTS BY BONO IS WROUGHT.

BONO The Miracle Cleaner Disinfectant, Deodorizer, Insect Destroyer.

TO KILL Beetles, Cockroaches, Bed Bugs, Moths, Flies, Mosquitoes, Lice, Chalk Lice, Water Bugs, Spiders, Hornets, Wasps and many other insects. TO CLEAN Sinks, Windows, Floors, Kitchens, Stairways, Bath Tubs, Toilet Bowls, Bathtubs, Wash Basins, Bath Rins, Garbage Cans, Dog Kennels, Stables, Hardwood Floors.

NOTE THE NEW BONO PRICES. One Quart Size 5/6 per tin. Half Gallon 8/6 per tin. One Gallon 15/6 per tin. Large Size 4/6 each. Small Size 2/6 each.

Further Information See Page 13 in To-Day's E. A. Standard. See THE BONO BEAR SPECIAL WINDOW DISPLAY

White ways NAIROBI

Beat Up a Simple Little Cake

IT WILL MOVE the life of the meal. And be sure to use Royal Baking Powder. Royal Baking Powder is the life of the recipe.

This was said crushingly about fifty years ago and housewives have been using Royal Baking Powder readily and constantly ever since. They have always found it pure, wholesome and dependable. Royal Baking Powder is available everywhere.

Prepared by
ROYAL BAKING POWDER CO.
220 N. 3rd St.
Philadelphia, Pa.



Send for the Royal Cook Book and you will receive many interesting and successful recipes. Copy will be sent free, if you will.

BUY YOUR CHOCOLATES FRESH FROM TORRS

Only the Best



The best optician and the best glasses are not necessarily the most expensive, but they will be vital even if they were. You are assured of receiving only the best, in consulting **DOBBIES Ltd. Nairobi.**

WALKERS

MACHINE MADE
AND HAND MADE
STATIONERY.



NOTE PAPER.
WRITING TABLETS.
CORRESPONDENCE CARDS.

CARD CASES.
LETTER WALLETS.



NOTE CASES
FOR
EAST AFRICAN CURRENCY.



KEYTAINERS.



LOOSE LEAF NOTE BOOKS.

TAWNS LIMITED.

Box 611, Phone 141.
Nairobi.

TRAGIC TOLL OF MODERNITY.

Heavy Increase in Heart Failure.

EMOTIONAL STRAIN

"We find that while the cancer death rate has increased rather less than 25 per cent., that for heart disease has increased nearly 600 per cent.

This significant statement was made by Dr. J. Stoddard Goodell in a lecture on "The Growth of Heart Disease in The United States," delivered at the Institute of Hygiene.

Dr. Goodell maintained that the mental and emotional strain of modern life is mainly responsible for the alarming increase in deaths from heart failure.

"The items in which we take our pleasures," he said, "is a direct increase of nature's demands for adequate rest. The habit of staying night clubs, the cocktail habit and excessive smoking cannot be too strongly condemned.

"The emotional character of modern play, sports, and films, with their appeals to the finer passions, inevitably leads to overstrain, with results which are reflected in the correspondingly increased number of deaths from heart disease.

Great Fight Death.

"Whereas a few years ago the age of sudden death was between fifty and sixty, an analysis of recent cases shows that the age is becoming much less.

Dr. Goodell reminded his audience that during the Desperado-Tommy fight no fewer than 100 persons died suddenly in various parts of the United States while listening in to the running commentary on the fight, and seven of these deaths occurred when Tommy was floored in the seventh round.

"A critical investigation of thousands of cases of heart disease," added Dr. Goodell, "shows that it is almost entirely due to the increase in arteriosclerosis, which is not only increasing in frequency, but is terminating at a far younger period of life.

Arterio-sclerosis is principally a family disease, transmitted through successive generations. It is caused by strain due to hard physical work, mental strain, and worry. Professional men are especially liable to mental strain and emotional disturbance.

Elephant as "Burglar."

HOUSEHOLDER ROUSED FROM HIS BED.

"It is an elephant!" Such was the shouted cry of Mr. W. J. Goddard, of Goddard's Farm, to his wife, who had declared "It is the cow's successor in the kitchen."

"As I happened along the passage," Mr. W. J. Goddard said, "I found my wife in a state of great alarm. They would not say through the crackery door, one by one, were being deliberately dropped on the floor.

"As I parted the curtains I saw some snuffing. At my nose an elephant's trunk."

"My wife hurriedly dressed our five children and rushed into the street.

"I woke some neighbors and then ran into the yard where I knew Bobe the crockery belonged to a show, had been stabled overnight.

Bobe was wedged in the kitchen doorway still breaking the eggs and saucers in her mouth, spit out the pieces in disgust, and then crept them with her great feet, resting the broken china.

"All I could do was to keep crying out, 'Come here, Bobe!' and at last she backed out. I followed her and she came along and took her back into her stable, the door of which she had had turned inside because she had been parted from some person with which she performed."

Bobe is a docile, playful Burmese elephant, 11 years old, and weighs a ton and three-quarters.

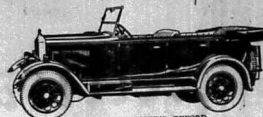
SUDDEN ATTACKS OF INDIGESTION.

Sudden attacks of indigestion are almost invariably due to excess acidity and food fermentation, causing the formation of gas, which often presses on the lungs and may even cause death. In such cases "Bismarck" Magnesia gives almost instant relief, because it immediately neutralizes the acid, stops the fermentation, disperses the gas, and soothes and heals the inflamed stomach lining. This is why so many doctors and nurses advise and recommend it to others.

"Bismarck" Magnesia is obtainable in all climates in the powder or tablet form and is the purest, most potent and safest means of relieving either sudden attacks of chronic indigestion. Get a package today, use as directed, and enjoy your food and live longer.

For-freight and particulars apply to:
MITCHELL COTTS & Co., Agents, Also at F.O. Box 100 Nairobi.

MORRIS



THE 1928 H.P. MORRIS OXFORD TOURER. 21 to 22 miles per gallon of petrol. 1000 miles or more per gallon of oil.

Price £338

The 1428 Morris Oxford Car

Finest value for the price.

The Car with a Long Life

Distributors:

Mitchell Cotts & Co., NAIROBI.

CAMPAGNE AFRICAINE de NAVIGATION

ANTWERP
DIRECT
KILINDINI

FAST CARGO STEAMERS.
VIA SUEZ CANAL.

KILINDINI
DIRECT
ANTWERP.

Outwards.

Homewards.

S.S. "Kasongo"

Due to arrive Kilindini 6th June. Will take cargo for Dar-es-Salaam and Beira.

S.S. "Katanga"

Due to arrive Kilindini 19th June. Will take cargo for Port Sudan, Port Said and Antwerp.

For-freight and particulars apply to:

MITCHELL COTTS & Co., Agents, Also at F.O. Box 100 Nairobi.

Have you tried the touch of this latest CORONA?



CORONA has always been famous for its convenience and durability, but this new model has an added advantage—a wonderfully light touch.

You would naturally have believed it possible to build such a smooth, easy key action in a portable typewriter.

Notice the big machine features throughout—the wide carriage, the full length, two-color, self-reversing ribbon, the variable line spacer, the stunning device, the standard forearm keyboard—and the many little refinements which you would not expect to find in a portable typewriter.

YOU CAN BUY A CORONA FOR Shs. 315

STANDARD STATIONERY STORES
P.O. Box 280 NAIROBI Phone 577

EAST AFRICAN STANDARD DAILY EDITION.

ADVERTISING RATES. Advertisements are accepted only subject to approval.

DOMESTIC ADVERTISEMENTS. Births, Marriages and Deaths...

ADVERTISEMENTS. Such as small Wanted, To Let, For Sale...

ALL THE ABOVE ADVERTISEMENTS ARE PRINTED PAYABLE IN ADVANCE...

THE SUBSCRIPTION RATES. DAILY. Weekly, yearly, 6 months, 3 months, quarterly.

WEEKLY. To let in any part of the city...

TO LET. 10' x 14' A.C. Office, furnished in a building...

FOR SALE. 6' in x 8 1/2 in White Glazed Walling...

THIS change for advertisements in this column is \$1.10 for a line of 14 words...

A NUMBER of Young Pura Bred Indian Bulls and White Leghorns...

BRUSHING presents that will give you a new look...

MISCELLANEOUS. THIS change for advertisements in this column is \$1.10 for a line of 14 words...

BRIT Values—White Crystal Bath Tablets...

A.B.S. Base, strong steel, with Lever Locks...

PROMISSORY Laundry near Bank of India, Box 460, Nairobi.

BOARD & RESIDENCE. THIS change for advertisements in this column is \$1.10 for a line of 14 words...

TO LET. THIS change for advertisements in this column is \$1.10 for a line of 14 words...

TO LET. A SUITE of rooms and well-furnished office in Coombe Chambers...

TO LET. EXCELLENT office in York House, Government Road.

TO LET. GARAGE or Godown in Park Street from June 1st.

TO LET. SINGLES and double accommodations in the Esplanade Hotel.

TO LET. VACANT now or next month three well furnished single rooms...

TO LET. HOUSE to let in various parts of Nairobi.

TO LET. LARGE stone house, Alwayth Hill, Nairobi.

TO LET. OFFICE No. 9 in Theatre Royal Arcade.

TO LET. 5-BROOMED stone house in Parklands.

TO LET. IT IS NOT SUFFICIENT TO ASK FOR Local Flour.

Kenya's Pride. Packed in 10lb, 20lb and 50lb bags.

Kenya Grain Mills Ltd. Kampala, Elbert, Nairobi.

FOR SALE (Contd.).

KENYA Governor Seed Wheat available August...

MARRONS (Green Vanilla, Crystallized Cream, etc.).

MASTERS BICYCLE, 1925 Model, a new tyre, newly painted...

ROPS (20 varieties), also Green and Deadwood Pines...

QUEED wool for sale. Finest Specialty selected...

THE SUBSCRIPTION RATES. DAILY. Weekly, yearly, 6 months, 3 months, quarterly.

WEEKLY. To let in any part of the city...

TO LET. 10' x 14' A.C. Office, furnished in a building...

FOR SALE. 6' in x 8 1/2 in White Glazed Walling...

THIS change for advertisements in this column is \$1.10 for a line of 14 words...

A NUMBER of Young Pura Bred Indian Bulls and White Leghorns...

BRUSHING presents that will give you a new look...

MISCELLANEOUS. THIS change for advertisements in this column is \$1.10 for a line of 14 words...

BRIT Values—White Crystal Bath Tablets...

A.B.S. Base, strong steel, with Lever Locks...

PROMISSORY Laundry near Bank of India, Box 460, Nairobi.

BOARD & RESIDENCE. THIS change for advertisements in this column is \$1.10 for a line of 14 words...

TO LET. THIS change for advertisements in this column is \$1.10 for a line of 14 words...

TO LET. A SUITE of rooms and well-furnished office in Coombe Chambers...

TO LET. EXCELLENT office in York House, Government Road.

TO LET. GARAGE or Godown in Park Street from June 1st.

TO LET. SINGLES and double accommodations in the Esplanade Hotel.

TO LET. VACANT now or next month three well furnished single rooms...

TO LET. HOUSE to let in various parts of Nairobi.

TO LET. LARGE stone house, Alwayth Hill, Nairobi.

TO LET. OFFICE No. 9 in Theatre Royal Arcade.

TO LET. 5-BROOMED stone house in Parklands.

TO LET. IT IS NOT SUFFICIENT TO ASK FOR Local Flour.

Kenya's Pride. Packed in 10lb, 20lb and 50lb bags.

Kenya Grain Mills Ltd. Kampala, Elbert, Nairobi.

WANTED.

THIS change for advertisements in this column is \$1.10 for a line of 14 words...

HARLEY'S Side-car new model, in perfect condition.

LOCOMOTIVE steam, for two foot gauge railway...

WORKING Factory capital £1,000-£1,500.

SITUATIONS WANTED. Mr. Shaw is particular to stress this in the first place...

EXPERIENCED Farm manager wants to take charge of a farm...

SITUATIONS WANTED. A Daily Express representative has tried the promise of 'Sham Shaw'...

COMPETENT clerk, must be quick, accurate, reliable.

DOGS FOR SALE. THIS change for advertisements in this column is \$1.10 for a line of 14 words...

5 ALGALIAN puppies, 100% pure imported dog, Apply Alphy.

J. W. MILLICAN & Co., LARD & MEAT AGENCY DEPARTMENT.

LIMBOU: 181 acres Freehold, 50 acres leasehold.

RURU: 500 acres, 147 acres bearing coffee, 18 acres sugar.

MAKUU: 200 acres, 120 acres bearing coffee, 18 acres sugar.

NAKURU: 680 acres 90 per cent. arable 500 acres ploughed.

NTERU: 2,284 acres, 2 trees on farm, Ideal dairy property.

NABRO: 2,092 acres within 5 miles of station.

RUMUITHI: Excellent stock farms of 200 acres.

NAKURU: 843 acres large well suitable for wheat.

MUTHAIGA: Stone house with 1000 acre estate.

ENGLISH AS G.B.S. SPEAKS HER.

'Voice of an Amiable Old Gentleman.'

'SHAM SHAW.'

'Let me introduce myself.'

No longer a remarkable set of prophetic records, made by the London Institute...

The set is a nominally a record for the instruction of foreigners learning English.

Mr. Shaw is particular to stress this in the first place...

'If what you hear is very disappointing, and you feel that money may be a hard-earned wage.'

THE change for advertisements in this column is \$1.10 for a line of 14 words...

THE change for advertisements in this column is \$1.10 for a line of 14 words...

THE change for advertisements in this column is \$1.10 for a line of 14 words...

THE change for advertisements in this column is \$1.10 for a line of 14 words...

THE change for advertisements in this column is \$1.10 for a line of 14 words...

THE change for advertisements in this column is \$1.10 for a line of 14 words...

THE change for advertisements in this column is \$1.10 for a line of 14 words...

THE change for advertisements in this column is \$1.10 for a line of 14 words...

THE change for advertisements in this column is \$1.10 for a line of 14 words...

THE change for advertisements in this column is \$1.10 for a line of 14 words...

THE change for advertisements in this column is \$1.10 for a line of 14 words...

THE change for advertisements in this column is \$1.10 for a line of 14 words...

THE change for advertisements in this column is \$1.10 for a line of 14 words...

THE change for advertisements in this column is \$1.10 for a line of 14 words...

THE change for advertisements in this column is \$1.10 for a line of 14 words...

THE change for advertisements in this column is \$1.10 for a line of 14 words...

THE change for advertisements in this column is \$1.10 for a line of 14 words...

THE change for advertisements in this column is \$1.10 for a line of 14 words...

THE change for advertisements in this column is \$1.10 for a line of 14 words...

THE change for advertisements in this column is \$1.10 for a line of 14 words...

THE change for advertisements in this column is \$1.10 for a line of 14 words...

THE change for advertisements in this column is \$1.10 for a line of 14 words...

THE change for advertisements in this column is \$1.10 for a line of 14 words...

THE EAST AFRICAN STANDARD

'I am a member of a committee established by the British Board of Trade...

'In London one hundred and fifty-two men out of every thousand people...

'I am a member of a committee established by the British Board of Trade...

'I am a member of a committee established by the British Board of Trade...

'I am a member of a committee established by the British Board of Trade...

'I am a member of a committee established by the British Board of Trade...

'I am a member of a committee established by the British Board of Trade...

'I am a member of a committee established by the British Board of Trade...

'I am a member of a committee established by the British Board of Trade...

'I am a member of a committee established by the British Board of Trade...

'I am a member of a committee established by the British Board of Trade...

'I am a member of a committee established by the British Board of Trade...

'I am a member of a committee established by the British Board of Trade...

'I am a member of a committee established by the British Board of Trade...

'I am a member of a committee established by the British Board of Trade...

'I am a member of a committee established by the British Board of Trade...

'I am a member of a committee established by the British Board of Trade...

'I am a member of a committee established by the British Board of Trade...

'I am a member of a committee established by the British Board of Trade...

'I am a member of a committee established by the British Board of Trade...

'I am a member of a committee established by the British Board of Trade...

'I am a member of a committee established by the British Board of Trade...

'I am a member of a committee established by the British Board of Trade...

'I am a member of a committee established by the British Board of Trade...

'I am a member of a committee established by the British Board of Trade...

'I am a member of a committee established by the British Board of Trade...

'I am a member of a committee established by the British Board of Trade...

'I am a member of a committee established by the British Board of Trade...

'I am a member of a committee established by the British Board of Trade...

'I am a member of a committee established by the British Board of Trade...

Equator Saw Mills. P.O. Plateau. P.O. Maji-Masuri. (Head Office) P.O. Box 291. NAIROBI. In Stock 4,000 Tons Seasoned Podocarpus. When Building, insist on your Contractor using Seasoned Timber.

Also in Stock 500,000 Attaining Feet CEDAR FLOORING All Red specially selected and SEASONED Large Stocks Cedar, Mahogany and UGANDA MUTUJI. Price List on Application. Hope's Steel Windows. Silver Tint Oak Stain Wood Preservative. Soft Sealing Expanded Metal.

WHAT YOU HAVE BEEN WAITING FOR. NOT A HELMET OR TERAI BUT DOUBLE FUR FELT SUNPROOF MILLINERY. THE 'FASCINATOR' AND 'INCOMPARABLE' ARE THE EPITOME OF ARTISTRY AND ARE STOCKED IN THE FOLLOWING COLOURS: BEIGE, PINK BEIGE, CEDAR, SANDALWOOD, MUSHROOM TINT, LIGHT BROWN, CAMEL, BEAVER, SHELL, ALMOND, LOGANBERRY, CORAL, COGNACIAN, P.B. RED, BLACK AND NAVY.

WARINGS Ltd., AFRICA HOUSE, GOVERNMENT ROAD, NAIROBI. ROYAL ENFIELD 'Made Like a Gun' The most reliable and economical Motor Cycle on the market. Come and see for yourself. Prices as follows: 2.25 H.P. Standard S.V. £55 2.50 H.P. Sport 3.46 H.P. Standard S.V. £70 3.746 H.P. Sport O.H.V. £85 4.58 H.P. Standard four speeds Sport. Comprehensive range of spares stocked. The Kenya Motorplough Co., Hastings Street. (Next door to J. W. Milligan & Co.)

ARIEL MOTOR CYCLES. It has been the response and the need of the times in making the committee with the general of the franchise... The Kenya Motorplough Co., Hastings Street. (Next door to J. W. Milligan & Co.)

THE UNION-CASTLE LINE.

ROSEWARDS via SUVA.

Table listing ship names, destinations, and departure dates for the Rosewards via Suva route.

ROSEWARD via SOUTH AFRICA.

Table listing ship names, destinations, and departure dates for the Roseward via South Africa route.

Agents: The Union-Castle Mail Steamship Co., Ltd. MOMBASA.

British India Steam Navigation Company, Ltd.

AND PENINSULAR AND ORIENTAL STEAM NAVIGATION CO.

Large shipping schedule table for British India Steam Navigation Company, listing routes to India, East Africa, and other regions with ship names and dates.

ALL DATES SUBJECT TO ALTERATION WITHOUT NOTICE. RETURN TICKETS ISSUED AT TWO POUNDS PARSE LESS 10%.

B. I. S. N. Co. SEA HOLIDAYS BY THE M. V. DUMRA.

TO MICHINDANI AND BACK—Occupying 6 to 12 days touching at Tanga, Zanzibar, Pemba, Salama, Kilwa, Ruvi Bay, Lindi and Mikindani.

TO LAMU AND BACK—Occupying 100/- inclusive. Sailings monthly. (See adverts above).

For full particulars apply: Smith Mackenzie & Co., Agents, Kilindini, Tanga, Zanzibar, Nairobi, etc.

Shell Motor Spirit advertisement featuring the Shell logo and text: 'The Public should refuse any can, the seal of which is not intact, or otherwise we cannot guarantee it contains only pure SHELL MOTOR SPIRIT.'

The Shell Company of East Africa Ltd. AGENTS. SMITH MACKENZIE & Co., Nairobi.

The African Marine & General Engineering advertisement: 'In their well-equipped Carpenters Shops, all types of Hoists and Office Furnitures are made and repaired.'

Deutsche Ost-Afrika-Linie (GERMAN AFRICA SERVICE) advertisement: 'Honourable via Suez Canal' and 'Honourable via Cape' routes.

BALLINOR ROUTE TO ALEXANDRIA advertisement: '10 Days to Genoa. 18 Days to Marseilles. 30 Days to Southampton.'

Compagnia Italiana Transatlantica advertisement: 'Monthly Passenger Service to NAPLES & GENOA by elegant and comfortable oil-burning turbine steamers.'

2 LIONS and 2 KONGONI advertisement: 'OUR WONDERFUL NEW 8 x 40 HIGH VELOCITY ORIGINAL MAUSER RIFLES CHARGE 62.5 GRAINS NITRO-CELLULOSE POWDER STRIKING FORCE 3085 Ft. Lm.'

HOLLAND AFRIKA LIJN advertisement: 'HOLLAND SUB-ARAFIEN and HOLLAND OOST AFRIKA LIJN.'

P. Stewart advertisement: 'C.A.B. S.E.D., FINEST & BRONZED FOR, Hottest Stock Market, P.O. Box 226.'

Expert Vulcanizing THE HEINTZ ELECTRIC WAY advertisement: 'All work guaranteed. K. McIvor's Garage, Phone 97, Sixth Avenue, P.O. Box 97.'

Increased Price of Pigs advertisement: 'Owing to the high cost of Maize and the shortage of other feeding materials, Uplands Bacon Factory are now paying 7c per lb. dead-weight, plus freight.'

Chivers' Patent Hygienic Cover advertisement: 'Keeps contents of jar covered in any climate or condition of atmosphere. Chivers' Jams.'

Just Arrived advertisement: 'FRESH CONSIGNMENTS OF MILITARY OVERCOATS. Pongas, Jambinis, Karani, Axos, Mallocks, Wale, Caps, Buckles, Goggles, Spades, Etc.'

M. ROSENBLUM & Co., Ltd. advertisement: 'Hardinge Street. Tel. No. 15. P.O. Box 97, Nairobi.'

Cement 'Hand Brand' advertisement: 'CORRUGATED IRON 24 GAUGE IN FOLLOWING LENGTHS: 6, 7, 8, 9, 10 feet. SPECIAL PRICES GIVEN ON APPLICATION.'

Hussein Suleiman Verjee & Sons advertisement: 'P.O. Box 266, Tel.: Sulversons, Jilano 564 Government Road, NAIROBI.'

Table with columns: STRAIGHTS, FROM, DUE at Mombasa, and MAILS PER WEEK.

Table with columns: STRAIGHTS, FOR, MAILS OPEN P.O.F.O., and DUE at Mombasa.

Reduced Bacon Prices advertisement: 'In the belief that this advance is only a temporary one they hope to maintain their Reduced Bacon Prices.'

Chain Brand

Portland CEMENT

(Manufactured in Schleswig-Holstein)
packed in Wooden Casks of 400lbs. gross.
At Shs. 21/- per Cask
Ex Godown Nairobi.

Africana Ltd.

Continental House,
P.O. Box 791. Hardinge Street. Nairobi.

Fuel and Transport

STANDARD FUEL.—Shillings 19/- per ton delivered within Municipal Area.
CUT FUEL.—Shillings 23/- per ton delivered within Municipal Area.
Special Quotations on large quantities.
TRANSPORT.—Prompt service. Cheapest quotation in Kenya.
SAND, BALLAST, LIME, PGM'S.—Always in stock. Prices on application. Prompt attention given to all orders.

UKAMBA TRANSPORT Coy.
Telephone 439. P.O. Box 563
OUR MOTTO PROMPTNESS.

Imtiazali & Son.

(Behind Khoja Mosque at Corner of River Road and Government Road).

Common Corrugated Iron Sheets and Poshos supplied.
Moput, Maize and Beans purchased.

LOOK

AFTER YOUR CANINE FRIENDS
AND FEED THEM ON
SPRATTS PATENT FOODS

DOG CAKES
PUPPY BISCUITS
BODMIN.
ALEX.
AND OVALS.
In convenient 7lb. bags

SOLD BY
Blacklaws & Brown
LATE
(MACKINNON BROS.)
NAIROBI

Tel. No. 31. Box No. 465

THE Bradford Manufacturing Co., Ltd.

**Announce Arrtyal of
SMART COSTUMES in PURE WOOL SUITINGS
STYLIST TWO AND THREE PIECE KNITTED
WOOL SUITS.**
Selected Range of COATS in WOOL and REPP-
DRESSES in EMBROIDERED WOOL CREPE
and REPP.
Imperial Chambers. Government Road.
Above Taxes, Ltd. Box 510

Just Unpacked.

444
COLOURED FELT HATS
OF
WIDE BRIMS
IN
ALL LATEST COLOURS.
PRICES MODERATE.

Husein & Co.

Phone 569. NAIROBI. Write Box 201.

FOR OVERSEAS AND LOCAL CONSUMPTION.
NYERI HILL (Catholic Mission)
COFFEE: 1 to 20 lb. well soldered Tins.
CAMPOS BROS.
P.O. Box 730. Leader Buildings.

MAN'S LIFE IN THE EITHER.

A World Peopled by Minds.

SCIENTIST'S LECTURE.

... of reality and animated
the world with the minds of the
and with constant being passed.
unimpaired by any union with
... described by the
Oliver Lodge at a lecture in Lon-
don.

The world of matter give
only an indication of what is really
going on in the immensities. We
gradually learning to under-
stand that.
Sir Oliver Lodge. His picture of
body of mind at a meeting of the
Parliamentary Advisory
Council in the Governor's House.
His subject was the use of ether.
The ether is not by ordinary peo-
ple.

Man's Two Bodies

He spoke only "as a man of
science," and first described the
matter known uses of the ether—
as mediums for light and electri-
cally: He then put forward the
theory that the ether is the basis
of the minds of living men as well
of the bodies of the men.
When we apply the uses of the
ether to the life we are getting
beyond certain knowledge, but
the ether described, and then to
the ether described, and then to
real habitation, that mind has, in
the ether at all. We are using the
ether wherever we move, think,
or think for it is the medium by
which the mind communicates its
will to the brain?

Your Enquiries Invited for

RAINCOATS, WARMCOATS,
ROYAL JAMES, RAY and ENSIGN CYCLES.
(English) Maker.

PORTLAND CEMENT, C.I. SHEETS AND
BUILDING MATERIALS.
Madatally Suleman Verjee & Sons
P.O. Box 12. India Bazaar. Nairobi.

and at Hassanali Bros.
P.O. Box 778. Govt. Road. Nairobi.
Buyers of Ivory & Rhino Horns.

... I observed a living man as
having two bodies similar in use
and shape—the ethereal body and
the "matter-body."

"We now know that the matter-
body is animated—materially, as
I think it may be said, "but the
ethereal body is continuous and not
subject to wear or decay, for such
are the properties of ether."

"I think it is the ethereal body
which is really animated. I can-
not say what I find that the ether
is the real basis of life, mind and
spirit and that only specifically in
the life and mind associated with
matter. The view of great astron-
omers is that only men in many
hundreds of centuries are the con-
ditions of the ether such as to
allow the formation of planets."
The exceptional thing in the
all about us. The ether is the
"matter-body" that we find over
into it! "

Our Being.

"Material life is not only a very
unpleasant episode in our exis-
tence, but also it is not the place
where we are least at home. Our
own senses have told us that we
are not only a "matter-body," but
an "ether-body," and that is what
I am now calling an "ether-body."
One of the uses of the ether,
is to exist at all—that is to
communicate. It is our physical
being, our present mode of
manifestation, our present
habitation. When we live in it
we are "out of existence" in the
sense in which we are not
conscious of its presence because
of our sense of touch.

There is too much loneliness
when dealing with life and matter.
to think of it as an entire world
of itself. The more we know of
universe the more we realize how
strange the result pro-
duced from very simple laws.
The simplicity and
grandeur of it all are the evan-
escence of science at the present
time.

"We shall find that all our
design, progress and organization
are but a fraction of a tremendous
whole which we cannot, in the
least degree imagine now."



**Crawford's
LIQUEUR**
SCOTCH WHISKY



ESSJAY LIMITED

(S. Jacobs—Managing Director)
No. 5 Theatre Royal Arcade, NAIROBI.
Box 634—Phone 377.

Financial and Property Agent. Business Consultants

Mortgages specialised in,
Town Properties negotiated,
Partnerships arranged,
Investments advised on
ANY REALISABLE ASSET NEGOTIATED
FOR CASE.

Keith Timber Co. Ltd

Saw Mills and Timber Merchants.
P.O. Box 974. Sadler Street. Nairobi.

FIRST CLASS CEDAR FOR ALL REQUIREMENTS.
MACHINED TIMBER A SPECIALITY.

A NEW STANDARD IN AUTOMOBILES ESTABLISHED.

The
NEW

RIGBY

FOURS
AND SIXES

MAJESTIC IN APPEARANCE
GIGANTIC IN POWER

Graceful lines :: Wide Doors :: Clear Vision Windshield ::
Bendix Fourwheel Brakes :: High Compression Engine ::
THESE ARE BUT A FEW OF THEIR FINE FEATURES

ARRIVING NEXT WEEK

Carr Lawson & Co., Ltd.

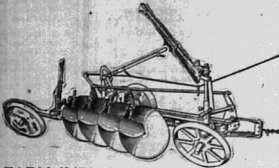
Nairobi

Nakuru

Eldoret

Kampala.

THE E. B. LINE



FARM IMPLEMENTS THAT STAND UP TO HEAVY DUTY
J. R. COX & Co.,

Kampala, Eldoret, Sixth Avenue, Nairobi, Nakuru, Dar-es-Salaam.

EXPEDITION TO WEST AND CENTRAL AFRICA.

Penetration into Unknown Country.

A NEW RECORD.

A dispatch has been received in England from Mr. and Mrs. T. A. Glover, the explorers, who a few weeks ago were reported to have been killed by natives in Central Africa. They claim to have penetrated further into the unknown parts of West and Central Africa than any other expedition.

The explorers ascended the highest mountain in the Tibesti Range, about 600 miles north-east of Lake Chad, and obtained valuable specimens, but Mrs. Glover was badly frost-bitten.

Mr. Glover claims that his wife had travelled a thousand miles beyond any point hitherto reached by a white woman.

The Daily Mail has published a letter from Mr. Glover, who describes their wanderings in the little-known parts of Africa and the reports of their march led by natives. The explorers set out from England in December, 1926 on an expedition to West and Central Africa.

In a Crater.

They ascended Mt. Kozouli, the highest mountain in the Tibesti Range, about four hundred miles north-east of Lake Chad. Mr. Glover writes: "We reached the summit and descended into the crater, where we obtained some valuable specimens. We suffered terrible hardships through the intense cold, my wife being badly frost-bitten on the hands and feet."

We saw the first expedition that has reached so far. The journey is the furthest made into the heart of Africa by a woman, my wife having travelled a thousand miles beyond any point reached hitherto by a white man. The natives, who are raiding Kozouli, gave us endless trouble, and caused us the greatest anxiety. Robbers from Kozouli entered our camp, but we drove them off."

In Nigeria, the expedition obtained a valuable shark skin for the British Museum.

A Rural Factory.

JAM MAKING UNDER IDEAL CONDITIONS.

New Health gives an interesting review of the conditions obtaining at Messrs. Glover's new central factory at Histon, near Cambridge, where it is stated it has been the aim of the firm to combine production with the raising of the standards above the fruit a grown and to adopt such measures as should be of real benefit to the producer, the worker and the community.

The usual story of the rise of English women farmers is one of family manufacture. It has been that of complete divorce of the family from the soil. The story of the new factory shows an equally complete preservation of the rural tradition, together with the building up of an absolutely modern manufacturing business indissolubly connected with the soil.

An outstanding feature is the evidence of the country atmosphere pervading the entire community, which is to be seen in the absence, well-bred of the girls and men throughout the factory. Of the firm's 1,000 permanent workers, two-thirds are kept employed in the factory by an ingenious device of rotating the many seasons of the business which fruit-preserving entails.

All the workers give the impression of living a healthy country life. They enjoy the dual advantages of factory life and conditions created by the most liberal and considerate employers imaginable, and the direct benefit to health of living in the country. Sir Rider Haggard in his "Himalayans" refers to "the excellent influence of the great factory upon the neighbourhood."

first to reach Europe. Sixty different specimens of fads were obtained, besides a new subgenus from the shores of Lake Chad.

Mr. Glover expresses the following note to his dispatch: "Since writing this account my travels we have learned from the French authorities that they reported as killed in action with robbers. The French General Corps were sent to try and find our remains. They failed to connect with us, and later were ordered to leave the area and returned safely from Tibesti."

ENTERTAINMENTS.

Phone 430. **SAVOY HOTEL** Box 20.
CALEDONIAN ROAD, THE HILL.

For Comfort, Excellent Cuisine, Best Wines, Spirits, Etc.
Hot and Cold Water Installation in the Rooms. Lounges, Reading and Writing Rooms, Beautiful Gardens, Garages, etc.

TERMS: Daily 12/50 Monthly from 36/0

Empire Day Ball

Wednesday, 23rd May at 9 p.m.

Tickets: Single 7-50 (INCLUDING REFRESHMENTS.)
Double 12-50

Syd. Ziegler and His Metronomes
FULL ORCHESTRA.

MADAME ROWE
Et Cie. Ltd.
ANNUAL STOCKTAKING
SALE
T-DAY

Union Building, P.O. Box 318. Phone 359.

Souza Junior & Dias

The Pioneer and Leading Stores

Government Road, Nairobi.

We do not cultivate a policy of Rush. In your shopping with us and save time and money. We wish to make your dealings with us as profitable to you.

We Stock Fresh Supplies Optly.

Direct Importers of Provision, Wines, Spirits, Liqueurs, Toilet Requisites, Cigars, Tobacco, Etc. Etc. Etc.

Ask for our Price List to-day. P.O. Box 241.

Dog Rusk.

IF YOU VALUE YOUR DOG

Feed it on our Dog Rusk.
ELLIOTS.

P.O. Box 175, Phone 60.

WHY DO CHEVROLETS SCORE??

— Because their Pistons Dont!!

THE REASON

Every day Chevrolet Salesmen are asked the question of what is meant by Invar strut pistons and what are their advantages. Few people have ever heard the name, which is a contraction of the word "invariable", as this material, when heated, expands less than any other known metal. It is a special nickel steel alloy of extreme toughness and rigidity and is practically the same metal used by the United States Bureau of Standards to construct its gauges and precision instruments.

There are many types of aluminum pistons available having a wide range of efficiency and wear and this piston with two "struts" or strips of Invar known as the "constant clearance type" was selected for Chevrolet only after a series of grueling tests on the General Motors Proving Ground. It makes possible a fit between the cylinder walls of 1/5 that of the ordinary aluminum piston which expands when heated making necessary excessive clearance between the piston and cylinder wall to prevent sticking and scoring, resulting in piston "slap" and oil pumping.

A practical demonstration of the controlling properties of Invar strut pistons was held recently. All the water was drained from the radiator of a test car, a blanket was thrown over the hood, and the engine was run at high speed for an extended period without a single piston scoring or seizing the wall of the cylinder block.

Invar strut pistons cost three times as much as the ordinary pistons and have been used for a long time in some of America's finest "constant clearance" engines. Their inclusion involves considerable expense further to assure for the 1928 Chevrolet its supreme Standard of Quality.

RUBBER STAMPS
AT THE
STANDARD OFFICE,
Nairobi.

A DANCE

WILL BE HELD AT

Clairmont

ON
Saturday May 19th
at 9-30 p.m.

TICKETS: 7/50 SINGLE, 12/50 DOUBLE.
Including Refreshments.
SPECIAL 7/50 DOUBLE TICKETS AFTER THEATRE.
PAUL ROBINS NEW BAND.

A RED WHITE AND BLUE
FANCY DRESS DANCE

ON WEDNESDAY, MAY 23rd at 9-30 P.M.

Notice.

Don't Forget Season Tickets for Serial "THE TRIAL OF THE OCTOPUS".
With BEN WILSON and NEVA GERBER.
Commencing Thursday, 17th May, 1928.
Change of Programme on Monday and Tuesday.

A. E. ZAY,
CONTRACTOR,
Alexandra Cinema.

H-O,

Quick Cooking Oats
Makes Porridge in
2 to 3 minutes.

Obtainable at:
Bellarm Parimal & Co.
(Established 1900.)
Corner Swamp Road and Government Road,
Phone 30 NAIROBI P.O. Box 29.
Also P.O. Box 47, MUMBARA.

Government Criticised for Policy of Vaccination.

COUNCIL DEBATE. Elected Member Suggests that Machinery of State is Obsolete.

Kenya Legislative Council yesterday adopted a resolution introduced by the Member for Major the Hon. R. W. B. Robertson-Edwards, authorising a private company to construct a bridge to connect Mombasa Island with the mainland.

In the course of a long debate, Elected Members criticised Government's vaccination in connection with this matter which was described as inextinguishable.

HISTORY OF THE NEGOTIATIONS.

The resolution, with an amendment proposed by Major Robertson, was adopted by the majority of the Council. The Government's policy of vaccination was criticised by several members, including Major Robertson, who suggested that the machinery of the State was obsolete.

Major Robertson, Elected Member for Mombasa, introduced a resolution in connection with the proposed bridge. He stated that the Government's policy of vaccination was in connection with this matter.

Major Robertson, Elected Member for Mombasa, introduced a resolution in connection with the proposed bridge. He stated that the Government's policy of vaccination was in connection with this matter.

Major Robertson, Elected Member for Mombasa, introduced a resolution in connection with the proposed bridge. He stated that the Government's policy of vaccination was in connection with this matter.

Major Robertson, Elected Member for Mombasa, introduced a resolution in connection with the proposed bridge. He stated that the Government's policy of vaccination was in connection with this matter.

Major Robertson, Elected Member for Mombasa, introduced a resolution in connection with the proposed bridge. He stated that the Government's policy of vaccination was in connection with this matter.

Major Robertson, Elected Member for Mombasa, introduced a resolution in connection with the proposed bridge. He stated that the Government's policy of vaccination was in connection with this matter.

Major Robertson, Elected Member for Mombasa, introduced a resolution in connection with the proposed bridge. He stated that the Government's policy of vaccination was in connection with this matter.

Major Robertson, Elected Member for Mombasa, introduced a resolution in connection with the proposed bridge. He stated that the Government's policy of vaccination was in connection with this matter.

Major Robertson, Elected Member for Mombasa, introduced a resolution in connection with the proposed bridge. He stated that the Government's policy of vaccination was in connection with this matter.

Major Robertson, Elected Member for Mombasa, introduced a resolution in connection with the proposed bridge. He stated that the Government's policy of vaccination was in connection with this matter.

Major Robertson, Elected Member for Mombasa, introduced a resolution in connection with the proposed bridge. He stated that the Government's policy of vaccination was in connection with this matter.

Major Robertson, Elected Member for Mombasa, introduced a resolution in connection with the proposed bridge. He stated that the Government's policy of vaccination was in connection with this matter.

Major Robertson, Elected Member for Mombasa, introduced a resolution in connection with the proposed bridge. He stated that the Government's policy of vaccination was in connection with this matter.

GOVERNMENT AND COST OF LIVING COMMISSION.

INTERIM REPORTS. The Need for Reliable Statistics.

The Relation Between Salaries and Prices. The Committee to Advise Government on Disposal of Future of Surplus Balances.

Liquid Capital. The Hon. Mr. J. G. Kirwaco. The Hon. Mr. J. G. Kirwaco.

The Hon. Mr. J. G. Kirwaco. The Hon. Mr. J. G. Kirwaco.

The Hon. Mr. J. G. Kirwaco. The Hon. Mr. J. G. Kirwaco.

The Hon. Mr. J. G. Kirwaco. The Hon. Mr. J. G. Kirwaco.

The Hon. Mr. J. G. Kirwaco. The Hon. Mr. J. G. Kirwaco.

The Hon. Mr. J. G. Kirwaco. The Hon. Mr. J. G. Kirwaco.

The Hon. Mr. J. G. Kirwaco. The Hon. Mr. J. G. Kirwaco.

The Hon. Mr. J. G. Kirwaco. The Hon. Mr. J. G. Kirwaco.

The Hon. Mr. J. G. Kirwaco. The Hon. Mr. J. G. Kirwaco.

The Hon. Mr. J. G. Kirwaco. The Hon. Mr. J. G. Kirwaco.

The Hon. Mr. J. G. Kirwaco. The Hon. Mr. J. G. Kirwaco.

The Hon. Mr. J. G. Kirwaco. The Hon. Mr. J. G. Kirwaco.

The Hon. Mr. J. G. Kirwaco. The Hon. Mr. J. G. Kirwaco.

The Hon. Mr. J. G. Kirwaco. The Hon. Mr. J. G. Kirwaco.

The Hon. Mr. J. G. Kirwaco. The Hon. Mr. J. G. Kirwaco.

The Hon. Mr. J. G. Kirwaco. The Hon. Mr. J. G. Kirwaco.

The Hon. Mr. J. G. Kirwaco. The Hon. Mr. J. G. Kirwaco.

The Hon. Mr. J. G. Kirwaco. The Hon. Mr. J. G. Kirwaco.

The Hon. Mr. J. G. Kirwaco. The Hon. Mr. J. G. Kirwaco.

The Hon. Mr. J. G. Kirwaco. The Hon. Mr. J. G. Kirwaco.

The Hon. Mr. J. G. Kirwaco. The Hon. Mr. J. G. Kirwaco.

The Hon. Mr. J. G. Kirwaco. The Hon. Mr. J. G. Kirwaco.

THE LYRIC.

Owing to its Great Success. "The WIZARD of OZ"

FEATURING LARRY SEMON. Will be Shown Until SATURDAY, May 19th. SEATS 3/- and 2/-.

Startrite Arch Support Gliders. S17. S44. Patent Ankle Bar from 16/50. Willow Cal Bar from 19/50.

Willow Ox from 19/50. Willow Bar from 16/50. Willow Sandal from 13/50. Willow Boot from 27/50.

EADES Footwear. Sole Startrite Agents for Kenya. P.O. Box 144, NAIROBI.

THEATRE 'O-Night at 8-45 p.m. ROYAL. AND MIGHTY TO SATURDAY, NEXT MAY 16th.

"SALLY" MUSICAL COMEDY. Going Stronger Than Ever.

BOOK YOUR SEATS TO-DAY AT THEATRE. The Booking is now exceedingly heavy and patrons are advised to make Early Reservation. Few 7/50 seats only left for Saturday.

Send the Children to this Sat's Matinee of Charlie Chaplin in "The Gold Rush"

SALLY & GONDOLIERS. Important Notice.

FAITH. The public is notified that we firmly believe that these shows will be worth seeing.

HOPE. If your car is wonky the chances are that your hopes of seeing them will vanish and instead you will sit in some muddy patch cursing.

CERTAINTY. Make sure that your car is in order by bringing it to us through overhauling.

"A STITCH IN TIME SAVES NINE".

"DONT CURSE". Come To Us, K. McIvor's Garage.

SIXTH AVENUE.

GOVERNMENT AND COST OF LIVING COMMISSION.

INTERIM REPORTS. The Need for Reliable Statistics.

The Relation Between Salaries and Prices. The Committee to Advise Government on Disposal of Future of Surplus Balances.

Liquid Capital. The Hon. Mr. J. G. Kirwaco. The Hon. Mr. J. G. Kirwaco.

The Hon. Mr. J. G. Kirwaco. The Hon. Mr. J. G. Kirwaco.

The Hon. Mr. J. G. Kirwaco. The Hon. Mr. J. G. Kirwaco.

The Hon. Mr. J. G. Kirwaco. The Hon. Mr. J. G. Kirwaco.

The Hon. Mr. J. G. Kirwaco. The Hon. Mr. J. G. Kirwaco.

The Hon. Mr. J. G. Kirwaco. The Hon. Mr. J. G. Kirwaco.

The Hon. Mr. J. G. Kirwaco. The Hon. Mr. J. G. Kirwaco.

The Hon. Mr. J. G. Kirwaco. The Hon. Mr. J. G. Kirwaco.

The Hon. Mr. J. G. Kirwaco. The Hon. Mr. J. G. Kirwaco.

The Hon. Mr. J. G. Kirwaco. The Hon. Mr. J. G. Kirwaco.

The Hon. Mr. J. G. Kirwaco. The Hon. Mr. J. G. Kirwaco.

The Hon. Mr. J. G. Kirwaco. The Hon. Mr. J. G. Kirwaco.

The Hon. Mr. J. G. Kirwaco. The Hon. Mr. J. G. Kirwaco.

The Hon. Mr. J. G. Kirwaco. The Hon. Mr. J. G. Kirwaco.

The Hon. Mr. J. G. Kirwaco. The Hon. Mr. J. G. Kirwaco.

The Hon. Mr. J. G. Kirwaco. The Hon. Mr. J. G. Kirwaco.

The Hon. Mr. J. G. Kirwaco. The Hon. Mr. J. G. Kirwaco.

The Hon. Mr. J. G. Kirwaco. The Hon. Mr. J. G. Kirwaco.

The Hon. Mr. J. G. Kirwaco. The Hon. Mr. J. G. Kirwaco.

The Hon. Mr. J. G. Kirwaco. The Hon. Mr. J. G. Kirwaco.

The Hon. Mr. J. G. Kirwaco. The Hon. Mr. J. G. Kirwaco.

The Hon. Mr. J. G. Kirwaco. The Hon. Mr. J. G. Kirwaco.

Men!— make your choice

It's the best there ever, either way

Gillette Shaving Cream or Gillette Cold Cream Shaving Soap! For shaving luxury never was with so little waste. Gillette Shaving Cream is made of the finest, most thoroughly refined waxes. Hold against the beard and you will find that the lather is made and makes every stroke work with ease and makes every stroke work with ease. It is clean and does not irritate the skin. It is clean and does not irritate the skin. It is clean and does not irritate the skin.

Gillette's SHAVING CREAM
The Cream of Shaves

Get it from your Chemist To-Day

NYALI BRIDGE TO BE BUILT BY PRIVATE COMPANY.

(Continued from page 9.)

land, the General Manager stated that the traffic at Mombasa during the past five years had increased by about 150 per cent. and that it would be to his advantage to build a bridge over the river which was the only route for the traffic. He stated that the time was not far distant when necessary work would have to be done, otherwise Mombasa would become a very congested island. There should be no outlet along the coast and that the land to the north was covered by a dense forest and would not increase his views in this respect.

Little Information.

Unfortunately, they had very little information regarding the proposed bridge. The site had never been examined by a competent bridge engineer as far as he was aware. They did not know what the foundations were and they did not know the cost. It was quite a common thing in other countries for private companies to be allowed to build bridges and other structures, but to find the country where there was a well known case of a private company without proper guarantee.

He did not wish to see in connection with this bridge a repetition of Mombasa. It would have saved the country £100,000 to build it. The Mombasa bridge had led them into all sorts of difficulties and had cost the Government not extrinsically but for at least ten years to come. He thought that adequate work necessary in regard to the building of this bridge was a very serious matter. Moreover, Government must insert a penalty clause in any report submitted to the Government.

At a meeting of the committee, he should like to see the bridge built by Government. Government was mainly bound to keep a highway open and his feeling was that no longer proper procedure. Moreover, Government must insert a penalty clause in any report submitted to the Government. He stated that the Government should be prepared to meet the cost of the bridge and that the Government should be prepared to meet the cost of the bridge and that the Government should be prepared to meet the cost of the bridge.

"Colonial Government."

The Hon. T. O'Brien supported the motion. He said the Government had been made by the General Manager and that the Government had been made by the General Manager and that the Government had been made by the General Manager.

Secretary Coerced.

The Colonial Secretary said he did not think there could be any question regarding the bridge. He stated that the Government had been made by the General Manager and that the Government had been made by the General Manager.

THE HOCKEY FIELD.

upon the possibility of afterwards his address in several points was inassailable as the Press table.

The Colonial Secretary, interposing said that the question had been fully discussed in this Council. He stated that the Government had been made by the General Manager and that the Government had been made by the General Manager.

Education Reports.

The Hon. T. O'Brien supported the motion. He said the Government had been made by the General Manager and that the Government had been made by the General Manager.

Reason for Delay in Publication.

The Hon. T. O'Brien supported the motion. He said the Government had been made by the General Manager and that the Government had been made by the General Manager.

A Further Victory.

The Hon. T. O'Brien supported the motion. He said the Government had been made by the General Manager and that the Government had been made by the General Manager.

London, May 15.

The Hon. T. O'Brien supported the motion. He said the Government had been made by the General Manager and that the Government had been made by the General Manager.

THE MONEY MARKET.

London, May 15.
Silver: 27 1/2.
Prices: 12 1/2.
Bombay, May 15.
R.T.: 1/6 3/4.

WHERE TO STAY

Town and Country.

The Salisbury Hotel

Nairobi.

Phone 140. P.O. Box 140.

OAKLEIGH PRIVATE HOME

COMFORTABLE AND UP-TO-DATE IN EVERY PARTICULAR. SPECIAL MONTHLY TERMS FOR PERMANENT RESIDENTS.

Phone: 180. NAIROBI. P.O. Box 180.

THE HILL PRIVATE HOME

VALLEY ROAD, NAIROBI.

Every convenience and comfort. Tel. Badminton, Garages, Motor Service. P.O. Box 550.

Stag's Head Hotel, Nakuru

Breakfast, Lunches, Tea, Dinners and Accommodation.

Hotel boys meet all trains.

J. G. HEATON.

BELL INN

(On Main Road) NAIROBI.

FIRST CLASS ACCOMMODATION. DELICIOUS BREAKFAST. CHEERFUL SERVICE. LARGE FRIGIDARIUM. ICEBERG BEVERAGES. ALL THE LATEST FASHIONS. BATHS AND SHOWER BATHS. QUARTERS.

TERMS: BREAKFAST, 8s. 6d. LUNCH, 8s. 6d. DINNER, 8s. 6d. BREAKFAST, 8s. 6d. FULL DAI, 16s. 6d.

TEAS, EXTRA SPECIAL. TARDY FOR WEEKENDS. TEAS WEEK A MONTH. QUARTERS.

BRACKENBUERT HOTEL LIMURU

(Hudson Case).

IDEAL WINTER RESIDENCE. (60 Beds)

The Nakuru Hotel

THE NAKURU HOTEL is the largest and best equipped hotel in the Highlands outside Nairobi and is replete with every comfort and convenience. It is under the management of a first class and touring centre for the most important hotels in the district of Kenya Colony.

80 single and double bedrooms—British Electric Installations—Hot and Cold Water at all times and in plenty with every comfort and convenience. SEPARATE COTTAGE QUARTERS. Laundry and Bakery. Motor Garage. Telephone. Telegrams: "Hotel Nakuru," Nairobi.

Proprietors: THE NAKURU HOTEL.

The Gables.

Near Parklands Police Station, P.O. Box 147, NAIROBI.

PIANOFORTE.

MISS TROTTER-BROWN, L.R.A.M., A.R.C.M. (Medallist).

Teachers Training Certificate, R.A.M. Term: Opens: MAY 14.

Private Address: 2nd House, Lower Arbutnot Road, Opposite European Hospital, Nairobi.

CEDAR, CEDAR, CEDAR. NATIONAL BANK OF INDIA LIMITED.

Cedar Logs, Posts, fencing poles and all sizes of even timber ready in stock. Rates solicited.

GEN MOHAMED.

General Contractors, Muges, P. O. Kilivuu.

John Rifkin

SIXTY AVENUE, NAIROBI.

BLACKSMITH, BLACKSMITH, FARRIER. STOCK OF AXLES, BRACKS, WAGONS, and ALL WAGON PARTS.

All kinds of Wagnes made to Order.

VISIT OUR SHOP AND GET THE BEST THINGS AT LOW PRICES.

FOR YOURS

B. CHOITRAM, CHILDREN'S TRICYCLES, MAY & CO., LTD.

Government Road, NAIROBI.

WINSOR & NEWTON'S Artists Materials.

A Large Range of Colours in Stock.

Pen Painting and Stencilling Outfits, Poster Colours, Sketch Blocks Etc.

Standard Stationery Stores. P.O. Box 380. NAIROBI.

Pen Painting and Stencilling Outfits, Poster Colours, Sketch Blocks Etc.

Standard Stationery Stores. P.O. Box 380. NAIROBI.

Pen Painting and Stencilling Outfits, Poster Colours, Sketch Blocks Etc.

Standard Stationery Stores. P.O. Box 380. NAIROBI.

THE White Nile HOTEL

no 10 HOTEL NYERI

FOR BREAKFAST, LUNCHEONS, TEAS, DINNERS and ACCOMMODATION

Situated on Main Road Gramas - White Nile.

The Navasha Hotel

Navasha.

Every Convenience and Comfort. Special Weekly and Monthly Terms.

The Insecticide

It POSITIVELY KILLS

FLIES, LEASH BUGS, ANTS, BEACHES and MOSQUITOES

READ WHAT THE S. A. NATIONAL RESERVOIR INSTITUTE

THE SOUTH AFRICAN INSTITUTE FOR MEDICAL RESEARCH

FOR many years past eminent Medical Authorities have been investigating the specific agents of malaria for the construction of Film and other disease-carrying insects.

Quite recently the Medical Research Council of South Africa, in a number of experiments conducted a series of experiments in which the efficacy of K.O.M. as a malarial insecticide was investigated.

It was found that in making 311 specimens of K.O.M. the quantity suggested by the Manufacturers—namely half-ounce every 24 hours of 1500 cubic centimeters—was sufficient to destroy the malarial parasite.

ALTHOUGH NO LESS THAN THIRTY-THREE LIQUID SPECIES OF MOSQUITOES AND SEVENTEEN SPECIES OF SAND FLIES WERE KILLED BY THE MOST SATISFACTORY RESULTS.

Journal of the Medical Association of South Africa, 1927, p. 107.

No. 1 Blue	...	Shs. 4/60
No. 2 Blue	...	Shs. 4/60
No. 3 Blue	...	Shs. 4/60
No. 4 Blue	...	Shs. 4/60
No. 5 Blue	...	Shs. 4/60
No. 6 Blue	...	Shs. 4/60
No. 7 Blue	...	Shs. 4/60
No. 8 Blue	...	Shs. 4/60
No. 9 Blue	...	Shs. 4/60
No. 10 Blue	...	Shs. 4/60
No. 11 Blue	...	Shs. 4/60
No. 12 Blue	...	Shs. 4/60
No. 13 Blue	...	Shs. 4/60
No. 14 Blue	...	Shs. 4/60
No. 15 Blue	...	Shs. 4/60
No. 16 Blue	...	Shs. 4/60
No. 17 Blue	...	Shs. 4/60
No. 18 Blue	...	Shs. 4/60
No. 19 Blue	...	Shs. 4/60
No. 20 Blue	...	Shs. 4/60
No. 21 Blue	...	Shs. 4/60
No. 22 Blue	...	Shs. 4/60
No. 23 Blue	...	Shs. 4/60
No. 24 Blue	...	Shs. 4/60
No. 25 Blue	...	Shs. 4/60
No. 26 Blue	...	Shs. 4/60
No. 27 Blue	...	Shs. 4/60
No. 28 Blue	...	Shs. 4/60
No. 29 Blue	...	Shs. 4/60
No. 30 Blue	...	Shs. 4/60

STANDARD STATIONERY STORES, NAIROBI.

New Stocks of
Linoleum
Carpets
Floor Coverings
Rugs, Etc.

A Big Range of Beautiful Designs.
To Suit Every Taste.
COME and INSPECT

Ahmed Bros.
THE HOUSE OF DISTINCTION.
 BAZAAR, Box 254. NAIROBI.

Your Ideal Shingle Exemplified

Your hair is your chief charm, and you cannot be too exact in mimicking in those you surpass delight. The attendants at **JOHN TIMMERS** in Harding Street will give you unreserved delight.

Be Convinced - not Persuaded

Save Time Save Money
Do better work
 by using—
DISSTON
 FILES — FILES

"The Files most Engineer use."

HEAT PROOF **WATER PROOF**

THE WONDER WATCH!

THE ROLEX OYSTER

DUBOIS, Ltd., Jewellers, NAIROBI.

We Guarantee

The Vix Humidifier and Petrol Saver.

to give from 25% more miles per gallon. over any make of car, lorry or tractor can be fitted with these marvellous Humidifiers.

SOLE AGENTS:
Nairobi Vulcanizing Co.
 P.O. Box 217. Victoria St!

Mrs KATHLEEN BATES A.R.C.M.
RECEIVES PUPILS FOR
PIANOFORTE-SINGING-HARMONY.
 Coaching given to Singers and Instrumentalists.
STUDIO SIXTH AVENUE.
 Postal Address—Box 817

CORRESPONDENCE.

METHODS OF FISHING ON LAKE VICTORIA.

KNINDS OF NETS.

Expert Proposes a Government Monopoly.

A HANDSILLS NUISANCE.

In the Editor, "E.A. Standard." Sir—Will you allow me the pleasure of making a statement in your paper in which to express my strong and indelible opinion on a fishery concession which appears to be gaining favour amongst the advertising public. I refer to the placing of handsills in the wake of stationary vessels for a short time, there is invariably to be found quite a number of those wretched vile and unwieldy nets, and I can only hope that the practice will soon be discontinued.

Yours etc,
 W. RAYMOND CARL
 Woodlands, Nairobi, May 15.

DAYLIGHT SAVING.

In the Editor, "E.A. Standard." Sir—Our legislators have standardized time for the country these many other systems, which, like the "standard" system, "happened" and then has been regarded almost as a law.

Let me say that no time will be lost in fixing the date of the change. The early adoption will be the quickest and best way of conditioning the objectives. Most of these thirty minute lags that they will not mean the sun on going for it was very wide awake at that time of the day they would not suffer enough to know the great advantage that rational time has brought in all parts of the world.

The fully supposing that a similar result could be achieved by altering the regular hours of business upon grave grounds. It is not intended. It is an idea that is particularly of the human mind. When you advance the clock thirty minutes once for all, it is altered for every day of the month, and without the slightest dislocation of affairs. There are only two points where it will be a point whatever in making out-of-door business, and that is at the very beginning of the year. If your present employees were, they can always get others. Happily that attitude of mind is to be much content.

If the General Public the people, their objection is of little value. It is not their business to be to our old time. Each should be content with the time that he has and double content to bring it all down to the level of the clock. It is not our business to be content with the time that we have, but to be content with the time that we have.

The profit of the public is in the making. I do not know where the clock in Summer in England more than in winter. The idea was of course raised about the 1914 war, and was compiled in September and October of the year 1914. It was the idea of some of the very people who had been in on the scene years before had the decency to explain to me how very advantageous the net was.

Method of Fishing.

In fishing, the net is attached to fixed vertical ropes at either end. These ropes are secured to the bottom of the lake by heavy stone, and the position of the net is marked by a buoy on the top end of the rope. The buoy is usually a light, and is attached to the rope by a heavy rope, and not by a light rope. The net is usually set in the evening, and is usually set in the evening, and is usually set in the evening.

Hand-made and Imported Nets.

In the Kavendo country these nets are made by hand. The nets are made of a material which is very strong and is very durable. The nets are made of a material which is very strong and is very durable. The nets are made of a material which is very strong and is very durable.

Net in the Lake.

In the Kavendo country these nets are made by hand. The nets are made of a material which is very strong and is very durable. The nets are made of a material which is very strong and is very durable. The nets are made of a material which is very strong and is very durable.

Net in the Lake.

In the Kavendo country these nets are made by hand. The nets are made of a material which is very strong and is very durable. The nets are made of a material which is very strong and is very durable. The nets are made of a material which is very strong and is very durable.

Net in the Lake.

In the Kavendo country these nets are made by hand. The nets are made of a material which is very strong and is very durable. The nets are made of a material which is very strong and is very durable. The nets are made of a material which is very strong and is very durable.

Net in the Lake.

In the Kavendo country these nets are made by hand. The nets are made of a material which is very strong and is very durable. The nets are made of a material which is very strong and is very durable. The nets are made of a material which is very strong and is very durable.

Net in the Lake.

In the Kavendo country these nets are made by hand. The nets are made of a material which is very strong and is very durable. The nets are made of a material which is very strong and is very durable. The nets are made of a material which is very strong and is very durable.

Net in the Lake.

In the Kavendo country these nets are made by hand. The nets are made of a material which is very strong and is very durable. The nets are made of a material which is very strong and is very durable. The nets are made of a material which is very strong and is very durable.

Net in the Lake.

In the Kavendo country these nets are made by hand. The nets are made of a material which is very strong and is very durable. The nets are made of a material which is very strong and is very durable. The nets are made of a material which is very strong and is very durable.

Net in the Lake.

In the Kavendo country these nets are made by hand. The nets are made of a material which is very strong and is very durable. The nets are made of a material which is very strong and is very durable. The nets are made of a material which is very strong and is very durable.

It will be observed that if they happen to swim into it, and if they happen to be in the net, they are "netted".

These nets are obtained from the manufacturers in Great Britain, who are competing with each other in the market for a small number of fish. The nets are made of a material which is very strong and is very durable. The nets are made of a material which is very strong and is very durable. The nets are made of a material which is very strong and is very durable.

A Big Benefit to the Legitimate Fishery?

In a further section of the preliminary report on the fishery of Lake Victoria, Mr. Kninds writes with regard to the method of fishing employed by the fishermen of the lake. The Lake's main occupation is to catch the fish, and to catch the fish, and to catch the fish.

Net in the Lake.

In the Kavendo country these nets are made by hand. The nets are made of a material which is very strong and is very durable. The nets are made of a material which is very strong and is very durable. The nets are made of a material which is very strong and is very durable.

Net in the Lake.

In the Kavendo country these nets are made by hand. The nets are made of a material which is very strong and is very durable. The nets are made of a material which is very strong and is very durable. The nets are made of a material which is very strong and is very durable.

Net in the Lake.

In the Kavendo country these nets are made by hand. The nets are made of a material which is very strong and is very durable. The nets are made of a material which is very strong and is very durable. The nets are made of a material which is very strong and is very durable.

Net in the Lake.

In the Kavendo country these nets are made by hand. The nets are made of a material which is very strong and is very durable. The nets are made of a material which is very strong and is very durable. The nets are made of a material which is very strong and is very durable.

Net in the Lake.

In the Kavendo country these nets are made by hand. The nets are made of a material which is very strong and is very durable. The nets are made of a material which is very strong and is very durable. The nets are made of a material which is very strong and is very durable.

Net in the Lake.

In the Kavendo country these nets are made by hand. The nets are made of a material which is very strong and is very durable. The nets are made of a material which is very strong and is very durable. The nets are made of a material which is very strong and is very durable.

Net in the Lake.

In the Kavendo country these nets are made by hand. The nets are made of a material which is very strong and is very durable. The nets are made of a material which is very strong and is very durable. The nets are made of a material which is very strong and is very durable.

Net in the Lake.

In the Kavendo country these nets are made by hand. The nets are made of a material which is very strong and is very durable. The nets are made of a material which is very strong and is very durable. The nets are made of a material which is very strong and is very durable.

Net in the Lake.

In the Kavendo country these nets are made by hand. The nets are made of a material which is very strong and is very durable. The nets are made of a material which is very strong and is very durable. The nets are made of a material which is very strong and is very durable.

Net in the Lake.

In the Kavendo country these nets are made by hand. The nets are made of a material which is very strong and is very durable. The nets are made of a material which is very strong and is very durable. The nets are made of a material which is very strong and is very durable.

Net in the Lake.

In the Kavendo country these nets are made by hand. The nets are made of a material which is very strong and is very durable. The nets are made of a material which is very strong and is very durable. The nets are made of a material which is very strong and is very durable.



"ERASMIC" Shaving Stick

Does not dry on the face. Its rich creamy lather helps the razor to give that close clean shave which is so desired.

BRITISH & BEST.

"ERASMIC" PATENT.

B. H. MYERS
 Box 461. & Co., Ltd. Phone 343.
B. H. M. BEDROOM SUITE.
 Comprising the following articles:
WARDROBE, 3ft. 6in. wide, neatly panelled sides and front. Ample hanging space and one large drawer.
DRESSING TABLE, 3ft. 6in. wide, one lower and two half drawers, oval mirror.
WASHSTAND, large eucalypt, two towel rails, toilet brush holder.
BEDROOM CHAIR, with cane seat.
SINGLE BEDSTEAD, 3ft. wide, panel at head and foot.
 Best quality 3 1/2 spring mattress. Iron Bracket fittings.

Price 500/-

Mazawattee Tea

The Most Delicious Tea in the World!

Mazawattee Tea

DELICIOUS MAZAWATTEE TEA

500 or 1000 cwt. cases of Mazawattee Tea

Mazawattee Tea in demand throughout the world and stocked by all High-Class Grocers

Representatives—
GENERAL AGENTS, Ltd.
 Bide Buildings, Grafton Road, NAIROBI.

META **INSTANT HEAT FOR INSTANT USE**

HEAT TABLETS

NON EXPLOSIVE DO NOT MELT

RECOMMENDED BY THE ROYAL NAVY

Used with Meta Patent Appliances in the Island, India, for the household, airport, factory, etc.

Sole Agents—**M. AYERS & Co., Wairoa, Box 28**

Notice.

A general meeting of the Kikuyu District Settlers' Association will be held at the Club House, Kyanburu, on Tuesday the 22nd inst. at 10.30 in the morning. The business is to discuss and instruct the Delegates on all matters that will be brought before the Convention at the forthcoming session and on their own position generally.

All interested are invited to attend.

Hawley Cameron & Bennett's

Annual Stocktaking Sale

OF

China **Enamel Ware**
Glass **Aluminium**
Cutlery **Brass**
Electro Plate

NOW PROCEEDING.

KENYA GOVERNMENT ARCHIVES
PHOTOGRAPHIC SERVICE
SECTION 8

CONTINUED ON

REEL No.

69

.....

KENYA GOVERNMENT ARCHIVES

PHOTOGRAPHIC SERVICE

SECTION 8

END

OF REEL NO. 68.....