



# FENCING



USED THE WORLD OVER

## Richard D. Johnson's Wire

### Varexo Steel Droppers

FIT ANY WIRE FENCE

Whatever the number and spacing of the wires



Always in stock. Orders booked for other sizes.

AGENTS—

**Dalgaty & Co. Ltd.**  
ELDORET. NAIROBI. MOMBASA

# BARGAINS

A limited number of NEW IMPERIAL MOTORCYCLES to be sold at greatly reduced prices in order to make room for 1922 MODELS. Cheaper than walking. SPARE PARTS OF HABLEY, TRIUMPH AND NEW APERALS IN STOCK.

T. A. SAPI

T. A. SAPI GARAGE, P.O. Box 270,  
Near N. B. of India. Phone 110.

**Kenya Loan & Discount Co., Ltd.**  
NAIROBI.

OFFICES.— P.O. Box  
1st Floor, Court Chambers. 546.

**FINANCIAL AGENTS.**  
BILLS DISCOUNTED.  
SHORT-TERM LOANS GRANTED.  
ANY RELIABLE ASSET NEGOTIATED FOR CASH.

Call or Write, Strictest Confidence.  
Established 1921.

# GREAT TRAFFIC WAR IN BRITAIN.

Arrival of the Sleaz Motor Coach.

LUXURY OF THE ROAD.

“WARSAW” Correspondent.

London, July 27.

Transport issues connected with everything nowadays. We have just appointed the following Royal Commission to investigate every aspect of this question and it will take two years to do it—

Mr. Arthur Griffith-Boscawen, an ex-Minister of Agriculture (Whichever).

The Marquis of Northampton, Major Sir Indrath Saldar, M.P., Mr. W. B. Shaw, ex-M.P., Major Asker, M.P., The Earl of Clarendon, for William Leitch, Mr. Levenshulter.

Certainly some inquiry is need of because there are no concrete principles upon which any transport legislation can be based or any plan upon which any improvement of the regulations of the different forms of vehicle traffic.

Although the railway have secured their Bill in Parliament supporting them to run road motor transport that are still utilizing G.O.S. signals and their position seems undisturbed to be very bad.

An Innovation.

The war is being carried into the Railway camp with energy. The motor coach sleeper is the latest development. Since the country will be a network of night motor coach services. Two million services are announced the week-end from London to Liverpool and the other from London to Newcastle-on-Tyne. Within the next few months many of the principal towns will be included in these midnight journeys. The railway companies are slowly yielding to this new man. At the moment I believe they regard shorter and journeys as the most serious objection.

Although Roadways will include these London-Liverpool services from the Royal Hotel, Wokingham Place, on August 24. The first coach will start at midnight and will arrive at Liverpool at 9 a.m. The fare will be the same as the third class railway fare. "Ladies all sleep the services all over the country," Mr. Chubb, writes.

The Manager has "only" driven from London to big provincial centres, but before starting we see in industrial towns about 200 miles. Immediately after his Liverpool will follow a service to Manchester, and other routes. In the new days we shall tackle the Plymouth route. I believe the services will be widely used. The cars are extremely comfortable, and are small and manoeuvrable, so that the journeys will be perfectly smooth. All the coaches are built specially built, each with four berths, as in a ship. They will be steered by circular steering, close handling and there will be fuel. Each car will be supplied with a steered and passengers will be served with refreshments in the morning, coffee or tea, free of charge. They are being built general almost all the valve Diesel engines with ball-bearing types.

The service between London, Dullington and Newcastle will be run by Express Motors, Ltd., of Dullington. This service will start between 9 and 10 p.m. from London and arrive at Newcastle about 9 a.m. Early morning fish will be served to all passengers.

The Railway's Reply.

Maintain the railways are re-proposing by introducing third class sleepers, and they say they are prepared to give the public as many as they want. Nevertheless, unless they cheapen fares, the public will still cling to the roads. The latest form of motor transport is an offer by one of the big steel China-plate Companies of a week's tour of 600 miles for 50/-. It starts every day from London and makes a circuit to some of the most interesting of night. No one is prepared to select a spot until the evening before.

All over the country obstructions have completely remodeled small size, and I should have killed caution in many places. The growth of the private motor has in addition made motoring all most impossible around London in the week-end. On the great arterial roads the spectacle of racing cars and motor cars is a sight that is seen at thousands of points all over the country, and the proportion as a whole of road traffic is increasing. I am sure they are all expecting and waiting for accidents to happen.

Meanwhile the Municipalities are spending liberally on it, not making such roads meet with everyone, even the motorist, consider that the maintenance of heavy goods roads is producing a type of traffic which is a real danger to highway.

Of course the list of fatal accidents is a numerous as ever and there must have been very nearly a score more people killed at the week-end quite apart from those who were injured. The rubber tyre has much to answer for.

# MORRIS



THE 12 HP. MORRIS COTTAGE TOURER. 10 to 25 miles per gallon of petrol. 1000 miles in one week.

Prices from £245

## Let us Demonstrate to YOU the Possibilities of Luxury Motoring at Minimum Cost.

Sole Distributors: **Mitchell Cotts & Co.,** NAIROBI.

## CAMPAGNE AFRICAINE DE NAVIGATION

ANTWERP DIRECT KILINDINI

FAST COUG STREAMS. VIA SUEZ CANAL

KILINDINI DIRECT ANTWERP.

Outwards.

Homewards.

S. S. "Kabalo"

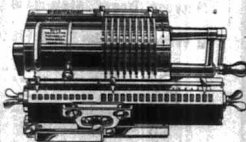
S. S. "Kabinda"

Due to arrive 29th August will take cargo for Dar-es-Salaam and Beira.

Due to arrive 11th September will take cargo for Port Sudan, Port Said and Antwerp.

For freight and particulars apply to:

**MITCHELL COTTS & Co.,** Agents, Also at P.O. Box 664, NAIROBI.



## THE BRITANNIC CALCULATOR

THE ALL-BRITISH Calculating Machine

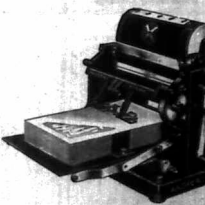
Shs. 94.0.

THE BRITANNIC CALCULATOR WILL PERFORM EVERY CLASS OF CALCULATION INVOLVING THE USE OF ALL FOUR RULES OF ARITHMETIC, NO MATTER HOW COMPLICATED.

ANDREW'S ALL-BRITISH ROTARY DUPLICATOR

The simplest and most rapid means of producing multiple copies.  
Shs. 95.0.

WE SHALL BE PLEASANT TO DEMONSTRATE THIS MACHINE AT ANY TIME.



**P. Stewart**  
C.S., S.M., PAINTER & DECORATOR, Hastings Street, Nairobi. P.O. Box 587.  
PAINTS, OILS, GLAZES, VARNISHES & PRESERVES. Large in Small Quantities.

NATIONAL BANK OF INDIA LIMITED.

(Incorporated in British India)  
Branches in the Colony and Protectorates of Kenya and Uganda Protectorate Government.  
Subscribed Capital — £4,000,000  
Paid-up Capital — £2,000,000  
Reserve Fund — £2,000,000

20, Rafflesplace, London, E.C. 4.  
BRANCHES IN: Bombay, Madras, Calcutta, Lahore, Rangoon, Bombay, Madras, Calcutta, Ceylon, Madras, Singapore, Penang, Malacca, Hongkong, Shanghai, Hankow, Canton, Amoy, Swatow, Tientsin, Peking, Harbin, Manchuria, and other ports.

AGENTS in New York and throughout U. S. A., Europe, Canada, South Africa and Australasia.  
**FRED BISHOP**—Diplomatist, an expert for land purchase and all matters which may be connected with application.

**REXCHAMBER**—The Bank guarantees the Best quality of Milk and Cream at the current rates of the Milk Board in the present region.  
Every description of packing business transacted with all parts of the world.  
A. S. McNEILLY, Manager, Nairobi Branch.

THE E. B. LINE  
Not an Experiment  
3 Acres Ploughed at The Cost of 1  
The Great Plains Plough.  
New Stock Arriving  
Send For Particulars TO **J. R. COX & Co.** SIXTH AVENUE, NAIROBI. Eldoret, Kampala, Dar-es-Salaam.

THE EASTERN BAZAAR, AND GET THE BEST CURRIES AND SILK AT LOW PRICES.  
FOR YOUR PRESENTS **B. CHOTRAI,** NAIROBI AND NAKURU.

**Doonholm Dairy**  
Box 11, Nairobi FOR Pure Milk and Cream. From Farm to Consumer.

**AH, IT'S DIFFERENT**  
That's the spontaneous verdict of those who drink **ROB ROY WHISKY**. Its exquisite bouquet and unrivaled high quality have given it an unparalleled supremacy in all the four corners of the world. BUY a bottle NOW and satisfy yourself it is not a mere claim but a fact.  
**ASK FOR ROB ROY.**

PHONE 141. **TAWES LTD., NAIROBI.** BOX 611.

AFRICAN STANDARD DAILY EDITION.

Subscription rates: 1/6 per week, 1/3 per month, 3/6 per quarter, 12/6 per year.

Advertisements: 1/6 per line per week, 1/3 per month, 3/6 per quarter, 12/6 per year.

Advertisements: 1/6 per line per week, 1/3 per month, 3/6 per quarter, 12/6 per year.

FOR SALE.

Small farm with 100 acres, 1/2 mile from town, 1/2 mile from school.

Small farm with 100 acres, 1/2 mile from town, 1/2 mile from school.

Small farm with 100 acres, 1/2 mile from town, 1/2 mile from school.

Small farm with 100 acres, 1/2 mile from town, 1/2 mile from school.

Small farm with 100 acres, 1/2 mile from town, 1/2 mile from school.

Small farm with 100 acres, 1/2 mile from town, 1/2 mile from school.

Small farm with 100 acres, 1/2 mile from town, 1/2 mile from school.

Small farm with 100 acres, 1/2 mile from town, 1/2 mile from school.

Small farm with 100 acres, 1/2 mile from town, 1/2 mile from school.

WANTED.

Wanted: A man with a motor car, for hire on the coast.

Wanted: A man with a motor car, for hire on the coast.

Wanted: A man with a motor car, for hire on the coast.

Wanted: A man with a motor car, for hire on the coast.

BOARD & RESIDENCE.

Board and residence: 1/2 mile from town, 1/2 mile from school.

Board and residence: 1/2 mile from town, 1/2 mile from school.

Board and residence: 1/2 mile from town, 1/2 mile from school.

Board and residence: 1/2 mile from town, 1/2 mile from school.

Board and residence: 1/2 mile from town, 1/2 mile from school.

Board and residence: 1/2 mile from town, 1/2 mile from school.

Board and residence: 1/2 mile from town, 1/2 mile from school.

Board and residence: 1/2 mile from town, 1/2 mile from school.

Board and residence: 1/2 mile from town, 1/2 mile from school.

Board and residence: 1/2 mile from town, 1/2 mile from school.

Board and residence: 1/2 mile from town, 1/2 mile from school.

Board and residence: 1/2 mile from town, 1/2 mile from school.

MISCELLANEOUS.

Miscellaneous: 1/2 mile from town, 1/2 mile from school.

Miscellaneous: 1/2 mile from town, 1/2 mile from school.

Miscellaneous: 1/2 mile from town, 1/2 mile from school.

Miscellaneous: 1/2 mile from town, 1/2 mile from school.

Miscellaneous: 1/2 mile from town, 1/2 mile from school.

Miscellaneous: 1/2 mile from town, 1/2 mile from school.

Miscellaneous: 1/2 mile from town, 1/2 mile from school.

Miscellaneous: 1/2 mile from town, 1/2 mile from school.

Miscellaneous: 1/2 mile from town, 1/2 mile from school.

Miscellaneous: 1/2 mile from town, 1/2 mile from school.

Miscellaneous: 1/2 mile from town, 1/2 mile from school.

Miscellaneous: 1/2 mile from town, 1/2 mile from school.

Miscellaneous: 1/2 mile from town, 1/2 mile from school.

Miscellaneous: 1/2 mile from town, 1/2 mile from school.

Miscellaneous: 1/2 mile from town, 1/2 mile from school.

Miscellaneous: 1/2 mile from town, 1/2 mile from school.

INCREASED SIZE OF POLICE WORK.

Effect of Nairobi's Expansion.

Effect of Nairobi's Expansion.

Effect of Nairobi's Expansion.

Effect of Nairobi's Expansion.

Effect of Nairobi's Expansion.

Effect of Nairobi's Expansion.

Effect of Nairobi's Expansion.

Effect of Nairobi's Expansion.

Effect of Nairobi's Expansion.

Effect of Nairobi's Expansion.

Effect of Nairobi's Expansion.

Effect of Nairobi's Expansion.

Effect of Nairobi's Expansion.

Effect of Nairobi's Expansion.

Effect of Nairobi's Expansion.

Effect of Nairobi's Expansion.

REDUCED ORDER.

Reduction in order: 1/2 mile from town, 1/2 mile from school.

Reduction in order: 1/2 mile from town, 1/2 mile from school.

Reduction in order: 1/2 mile from town, 1/2 mile from school.

Reduction in order: 1/2 mile from town, 1/2 mile from school.

Reduction in order: 1/2 mile from town, 1/2 mile from school.

Reduction in order: 1/2 mile from town, 1/2 mile from school.

Reduction in order: 1/2 mile from town, 1/2 mile from school.

Reduction in order: 1/2 mile from town, 1/2 mile from school.

Reduction in order: 1/2 mile from town, 1/2 mile from school.

Reduction in order: 1/2 mile from town, 1/2 mile from school.

Reduction in order: 1/2 mile from town, 1/2 mile from school.

Reduction in order: 1/2 mile from town, 1/2 mile from school.

Reduction in order: 1/2 mile from town, 1/2 mile from school.

Reduction in order: 1/2 mile from town, 1/2 mile from school.

Reduction in order: 1/2 mile from town, 1/2 mile from school.

Reduction in order: 1/2 mile from town, 1/2 mile from school.

WORK IN THE PREPARATION OF...

Work in preparation: 1/2 mile from town, 1/2 mile from school.

Work in preparation: 1/2 mile from town, 1/2 mile from school.

Work in preparation: 1/2 mile from town, 1/2 mile from school.

Work in preparation: 1/2 mile from town, 1/2 mile from school.

Work in preparation: 1/2 mile from town, 1/2 mile from school.

Work in preparation: 1/2 mile from town, 1/2 mile from school.

Work in preparation: 1/2 mile from town, 1/2 mile from school.

Work in preparation: 1/2 mile from town, 1/2 mile from school.

Work in preparation: 1/2 mile from town, 1/2 mile from school.

Work in preparation: 1/2 mile from town, 1/2 mile from school.

Work in preparation: 1/2 mile from town, 1/2 mile from school.

Work in preparation: 1/2 mile from town, 1/2 mile from school.

Work in preparation: 1/2 mile from town, 1/2 mile from school.

Work in preparation: 1/2 mile from town, 1/2 mile from school.

Work in preparation: 1/2 mile from town, 1/2 mile from school.

Work in preparation: 1/2 mile from town, 1/2 mile from school.

Equator Saw Mills. Phone: Nairobi 113. Telegrams: "CAPCAL". P.O. Box 181.

In Stock. 4,000 Tons Seasoned Pod. When Building, insist on your Contractor using.

Seasoned Timber. Price List on Application. Hope's Steel Windows.

To women who dress with distinction the exclusiveness of Cannon. unfaithfully appeals.

The "LIDO" The HAT for Sunny Countries. Wartras Ltd.

STILL WINNING. Proving their Absolute Dependability.

J. R. Cox & Co. SIXTH AVENUE. Nairobi, Eldoret, Kampala, Dar-es-Salaam.

Sixth Avenue Garage. Proprietor L. Basso. DISTRIBUTORS FOR Landia Lamda Cars & Lorries

Studebaker & Erskine "6" Cars. Spares for These Cars Always on Hand

European Mechanics. A large stock of second hand cars in excellent condition.



THE UNION-CASTLE LINE.

Forward via Suez. From Mombasa. 19th September, 19th November, 20th December, 19th February, 1927, 19th April, 19th August, 19th March, 1928.

British India Steam Navigation Company, Ltd.

London and East Africa Line. LONDON TO BELLA, Via Malacca, Port Said, Suez and Aden, Ostwards and Inwards. Steamers: Arrive Kilindi, East Coast, East Coast, East Coast, East Coast.

CHIVERS' PATENT HYGIENIC COVER. Jams. Sole Agents: R. O. HAMILTON, LTD. NAIROBI.

Keith Timber Co. Ltd. P.O. Box 574. Saller Street. NAIROBI. CEDAR AND PODO OF ALL SIZES.

HOLLAND AFRIKA LIJN. JOINT SERVICE. HOLLAND AFRIKA LIJN and HOLLAND OOST AFRIKA LIJN. Steamers will sail at Kilindi on the following dates: FORWARD VIA SUZ.

MORE ECONOMICAL. LESS DEFORMATION OF CRANK-CAKE OIL. LESS CARBONIZATION OF CYLINDER HEADS AND PISTONS. NO KNOCKING OR PINKING. Cross Power Kerosene. Tractors and Oil Engines. The Shell Company of East Africa Ltd. AGENTS. SMITH MACKENZIE & Co.

Expert Vulcanizing. HEINTZ ELECTRIC WAY. IT'S DIFFERENT. ALL WORK GUARANTEED. K. Melvor's Garage. Phone 97, Sixth Avenue. P.O. Box 87.

The African Marine & General Engineering. COBURN LTD., KILINDINI. SHIP REPAIRING, PAINT MAKING & REPAIRING, MOUNTING, OXY - ACETYLENE WELDING & CUTTING.

Messageries Maritimes. (FRENCH MAIL STEAMERS). Regular and fortnightly service from Mombasa to London. NEXE SAILINGS TO MARSEILLES.

OVERSEAS MAILES. ARRIVALS. DEPARTURES. Table with columns for STEAMERS, FROM, TO, Day of Month, Arr. Dep.

Deutsche Ost-Afrika-Linie. (GERMAN AFRICAN SERVICE). Homeward via Suez Canal. Kilindi to Durban. Sailing Mombasa 1926. Sailing Mombasa 1926.

Reduced Prices. Sloan's Liniment KILLS PAIN. Don't forget that liniment POSITIVELY KILLS. RHEUMATISM, SCIATICA, LUMBAGO, SPRAINS, SCALD BUBBLES.

Uplands News! BACON: There is a FURTHER WINTERFALL REDUCTION in Bacon Prices, which will allow you to do what you please. PIGS: Although Bacon has again been lowered and record deliveries of Pigs continue every effort is being made to maintain the present price of 45 cents per lb. Fat Pigs.

Compagnia Italiana Transatlantica. Monthly Passenger Service to NAPLES and GENOA by elegant and comfortable oil-burning turbine steamers. The best route to London, via Italy. 17 Days to Naples. 19 Days to Genoa.

STANDARD STATIONERY STORES. NAIROBI. No. 1 ... Shgs. 1/6. No. 2 ... Shgs. 6/6. No. 3 ... Shgs. 12/-. No. 4 ... Shgs. 25/-. Sprays ... Shgs. 9/75.

M.P. de Mello. THE WEEK'S ATTRACTION is the variety of DOUBLE TERRY HATS. M.P. de Mello. P.O. Box 414, NAIROBI.



# BONUS

DISTRIBUTION 20th SEPTEMBER, 1926.  
Policies taken out before that date will receive a FULL YEAR'S BONUS.

**EXAMPLE:**  
WHOLE LIFE POLICIES:  
Annual Premium for £1,000 ..... £23 6 8  
(Age 30)  
Annual BONUS on above commencing **THIRD YEAR** and increasing yearly with age of policy ..... £24 0 0  
For Rates rates for smaller and larger insurances. Similarly favourable terms for ENDOWMENTS. Apply Immediately To The

## NATIONAL MUTUAL

Life Association of Australasia, Ltd.  
(Funds £26,000,000).  
P.O. Box 894,  
Cambrian Building, Government Road, Nairobi.

Maxwell Brady & Co.

# START YOUR Stocktaking SALE TO - DAY

Purchase Your Outfitting AND Footwear from Us AND SAVE MONEY

### The Royal Family.

## How Princess Mary Conquered Her Shyness

Of all the human stories relating to the Royal Family, that of Princess Mary is perhaps the most tender and touching. Says a Soviet District in the "Opa Kopa," she had every advantage from the cradle to womanhood of acquiring domestic gifts, from her Royal mother—gifts in part duly reciprocated by her first attempt at sewing, her first attempt at cooking, her first attempt at reading, her first attempt at writing, her first attempt at dancing, her first attempt at playing the piano, her first attempt at singing, her first attempt at acting, her first attempt at anything she was ever doing.

Called thus to live, and surrounded by the attentions of a Royal mother who personally superintended her own rearing, the Princess advanced rapidly in the art of the late Queen during the latter part of her childhood, and displayed an aptitude for reading and music.

Her shyness was her leading characteristic. Her brothers with the heterochromism of youth called her out on this.

"Do I ever face the crowd," "David" would sometimes say, though it was notorious he himself found public life an overwhelming ordeal. But Mary, although she was called her "crying" resolution into play. When twelve years old the newspapers reported she had accompanied her mother to the opening of one of the London hospitals and had made a short speech.

The death of Queen Victoria and the accession of King Edward brought the Princess Mary more into public notice. Queen Alexandra often had her at Buckingham Palace. King Edward's Consort, with exquisite tact, gently suggested to the Princess that she should accompany her in her visits to the various hospitals. There were even those of the court remarking who did not look on the Princess sometimes looked "dowdy." But a change was wrought at the young woman, suddenly grieved from the public, and christening always in her mother's company.

AT THE PALACE.  
The death of King Edward and the accession of her father, changed the Princess's position. Her home was in Buckingham Palace though she remained a quiet and retiring girl, her hobbies books and needlework and tapestry. Nothing pleased her better than the relation of an impressive race that had earned her name using shooting.

Queen Mary had with her the Duke and Duchess of York, a nursery was formed of the Red and Blue rooms, two apartments long used as a picture gallery.

Among the photographs here, the Princess was particularly fond of the late Queen during the latter part of her childhood, and displayed an aptitude for reading and music.

Her shyness was her leading characteristic. Her brothers with the heterochromism of youth called her out on this.

"Do I ever face the crowd," "David" would sometimes say, though it was notorious he himself found public life an overwhelming ordeal. But Mary, although she was called her "crying" resolution into play. When twelve years old the newspapers reported she had accompanied her mother to the opening of one of the London hospitals and had made a short speech.

The death of Queen Victoria and the accession of King Edward brought the Princess Mary more into public notice. Queen Alexandra often had her at Buckingham Palace. King Edward's Consort, with exquisite tact, gently suggested to the Princess that she should accompany her in her visits to the various hospitals. There were even those of the court remarking who did not look on the Princess sometimes looked "dowdy." But a change was wrought at the young woman, suddenly grieved from the public, and christening always in her mother's company.

Queen Mary had with her the Duke and Duchess of York, a nursery was formed of the Red and Blue rooms, two apartments long used as a picture gallery.

Among the photographs here, the Princess was particularly fond of the late Queen during the latter part of her childhood, and displayed an aptitude for reading and music.

Her shyness was her leading characteristic. Her brothers with the heterochromism of youth called her out on this.

"Do I ever face the crowd," "David" would sometimes say, though it was notorious he himself found public life an overwhelming ordeal. But Mary, although she was called her "crying" resolution into play. When twelve years old the newspapers reported she had accompanied her mother to the opening of one of the London hospitals and had made a short speech.

The death of Queen Victoria and the accession of King Edward brought the Princess Mary more into public notice. Queen Alexandra often had her at Buckingham Palace. King Edward's Consort, with exquisite tact, gently suggested to the Princess that she should accompany her in her visits to the various hospitals. There were even those of the court remarking who did not look on the Princess sometimes looked "dowdy." But a change was wrought at the young woman, suddenly grieved from the public, and christening always in her mother's company.

## The Latest Inventions IN High Velocity Original Mauser Rifles



death of the second and last Marquess of Clanricarde.

His grandmother, Elizabeth Frouce, was daughter of the first Marquess, and through this he became heir to the immensely wealthy and somewhat peculiar holder of the title. Lord Lansdowne inherited in 1818 the property but lost the title of his great-uncle, the Clarence Marquess, because of a scandal.

The substance was a pitiful one. The second Marquess was of no average disposition, it was alleged he supported himself on an allowance of 4000 a year in London and his lunch out of a paper table sent to him by the Duke of Devonshire. His great-grandfather, John, one of the great historical characters of Marlborough and whose Holwell had walked in range on the appearance of his picture, the great Lord Chesterfield, was a violentist; but during the occupation of the last Marquess probably only two or three rooms had been used. The furniture was already the work of a scavenger and a general air of desolation overhung the old home.

The Duke and Duchess of Devonshire were early at the front and were the first to enter the house, the highest in the land. King George followed him with special friends.

It was the time when his name was being coupled with that of the Duke of Devonshire through the Duke's connection with the Duke of Devonshire.

### Our Articles are Returnable WITHIN 24 HOURS IF GOODS NOT SUITABLE.

STOCKINGS	Woolen	TRAY	The variety of designs and quality
Woolen	Cotton	UP TO - DAY	of these stockings
Cotton	Mixed	PRICES	will make you buy one pair at least!
Mixed		EXCHANGABLE	

General Kala Sidi Direct Importer, Government Road, MADRAS.

## LAND Kite District.

We have for sale various acreages developed and underplanted in the Transvaal, for disposal at prices to suit both large and small capitalists. Land is suitable for COFFEE, MAIZE, WHEAT, and mixed farming.

### KIRKWOOD & Co.

Land Agents and Valuers. KITALA.

# BEFORE YOU DECIDE TO KEEP YOUR OLD CAR JUST TRY A



## BOX BODY TOURING TRUCK

WITH ALUMINIUM BODY—IMPORTED SPRING SEATS—SUNPROOF TOP—FOUR WHEEL BRAKES. FITTED WITH FRONT AND REAR BUMPER—SHOCK ABSORBERS—WINDSCREEN SIDE SHIELDS—AUTOMATIC SCREEN WIPE—REAR VIEW MIRROR—OIL PUMP—PETROL AND AIR FILTERS—FOUR WHEEL BRAKES. ONE TON.

£200  
MAGNETO IGNITION 610 EXTRA.  
£230  
£185  
CHASSIS.

## CARR, LAWSON & Coy., Ltd.

Nairobi Nakuru Eldoret Kampala



*Scotland's Best*  
*you two of The Best!*



**rawford's**  
**SCOTCH WHISKY**

AS A SCOTCH WHISKY, IT IS THE BEST IN THE WORLD.

**NEW PRINCESS MARY**  
**CONQUERED HER SYRINUS.**

(Continued from page 4.)

King's daughter he was just over twenty and she was only sixteen. It was the most eligible match in the country.

The first man the Princess Mary met on the home of an aristocrat, and she was married to the King and Queen came with a bill of divorce from the King's Bench. The Princess Mary was then a young girl of sixteen, and she was married to the King's son, the Duke of York. She was then a young girl of sixteen, and she was married to the King's son, the Duke of York.

**THE EAST AFRICAN STANDARD**

family had in the Commonwealth was destroyed.

Today, the mansion is probably the most beautiful in the world. It is the most beautiful in the world. It is the most beautiful in the world.

**NAIRE LIQUOR LAW.**

Under certain clauses of the Natives Liquor License Act, it is provided that the license holder must be a native of the country.

**Good Plumbing Means Good Health.**

FOR SAFE SANITARY WORK  
TRY  
**Thornton & Turpin**

Boys, Plumbers and Sanitary Engineers,  
CITY HOUSE, NAIROBI.  
Phone 132. P.O. Box 292.  
AND AT MOMBASA.

GOVERNMENT CONTRACTORS.  
WORK UNDERTAKEN IN ANY PART OF  
KENYA AND UGANDA.

8 BATH A DAY KEEPS  
YOU FIT EVERY WAY  
SEE OUR STOCKS.

**MARRIAGE.**

The wedding took place on February 25, 1924, the bride having been raised a Knight of the Garter. The ceremony was held in the neighbourhood of London, and the bride was accompanied by the King's son, the Duke of York.

**THE TRANSPORTATION.**

The new transport is being used in the East African territories. It is a very useful machine, and it is being used in many parts of the country.

**STAG'S HEAD.**

The Stag's Head is a very popular place in Nairobi. It is a very popular place, and it is being used in many parts of the country.

**ENTERTAINMENTS.**

Phone Box  
430 **SAVOY HOTEL** 20

CALEDONIAN ROAD, THE HILL.  
The Most Comfortable  
:: HOTEL ::

**SYD. ZIEGLER'S**  
**METRONOMES**  
WILL PLAY FOR THE  
**GRAND BALL**

**Saturday, 1st September**  
at 9 p.m.

TICKETS: 1250 Double / Including  
750 Single refreshments.

**Afternoon Tea Dance**  
on Sunday, 2nd September  
4-30 p.m. to 7-30 p.m.

TICKET: Shgs. 3- each including  
afternoon TEA.



SYD ZIEGLER  
-AND HIS-  
METRONOMES.

**Visible Value Always Wins.**

YOU CAN SEE THE VALUE BUILT INTO THE

**CHEVROLET.**

MOTORISTS EVERYWHERE CAN UNDERSTAND THIS KIND OF  
VALUE, BECAUSE IT IS AVAILABLE FOR THE WORLD TO JUDGE.

**PRICES.**

Box-Bodies from £195  
Tourer " £225  
Roadster " £217  
Coach " £260  
Sedan " £280



**NEW FEATURES OF VALUE**

**Bumper Bars**  
Front & Rear.



**4 Wheel Brakes**

**The Motor Mart**  
AND EXCHANGE, Ltd.

A.C. Oil Filter; A.C. Air Cleaner; Longer Wheel Base; Semi-Elliptic Self-Steering Springs; Streamline Bodies by Fisher; Indestructible Illuminated Panel. GENUINE DUOCO FINISH.

**NAIROBI** Dar-es-Salaam.

**WHY CRY**  
THAT COST OF LIVING IS HIGH  
YOU COULD REDUCE IT BY TAKING YOUR MEALS AT  
**Palladium Restaurant**  
Theatre Royal.  
SPECIAL Terms for Residents.  
Breakfast, Lunch, Dinner and Supper.  
Morning and Afternoon Tea.

**KIKUYU HOTEL**  
DANCE  
Friday, August 31st. at 9 p.m.  
PAUL ROBINS IN HIS RED 'OT FOUR.

**INSURE**  
YOUR MOTOR CAR AND MOTOR CYCLES  
WITH THE  
AFRICAN ASSURANCE AND  
INDUSTRIAL CO., LTD.  
M. D. KAMPP,  
CHIEF AGENT.

**DATERS**  
28 MAR 1925  
Large ..... Shs. 7/-  
Small ..... Shs. 2/-  
STAMP PAID.  
Shs. 1/6 and 2/-

Standard Stationery Stores,  
NAIROBI.

**Stag's Head**  
**HOTEL, NAKURU**  
**Dance Sept. 1st**  
At 9-30 p.m.  
Tickets 5/- Including  
REFRESHMENTS.

**J. G. HEATH.**

**DANCE**  
**Salisbury Hotel**  
Saturday Sept. 15th  
At 9 p.m.  
Music by  
**Syd Ziegler's Metronomes**  
Double Shgs 1250 Single Shs 750  
Including refreshments.

**CAIRS FOR HIRE.**  
SEE KENTIA IN COMPANY.  
HUTCHINSON ROVER SIX CARB  
FOR

**HEER DAY or NIGHT.**  
Long Trip a Specialty.  
**P. GETHIN**  
Thames 122. Box 66  
Greenwich, London, E.C. 2.

**CARS OVERHAULED**  
BY EXPERT.

**CARS FOR SALE.**  
A. A. P. Ltd. practically  
new ..... £175  
Hudson Torque, good  
condition ..... £200  
Horse "6" good road  
condition ..... £150  
Hudson "Orange Six" ex-  
cellent condition, good  
tyres ..... £200

IF YOU WANT TO  
BUY,  
TRY,  
SELL, A CAR  
Ring GETHIN.

Flats Fronted on the Right Side  
of the Liqueur Line.

**KIKUYU HOTEL**  
DANCE  
Friday, August 31st. at 9 p.m.  
PAUL ROBINS IN HIS RED 'OT FOUR.

**WHY CRY**  
THAT COST OF LIVING IS HIGH  
YOU COULD REDUCE IT BY TAKING YOUR MEALS AT  
**Palladium Restaurant**  
Theatre Royal.  
SPECIAL Terms for Residents.  
Breakfast, Lunch, Dinner and Supper.  
Morning and Afternoon Tea.

**WHY CRY**  
THAT COST OF LIVING IS HIGH  
YOU COULD REDUCE IT BY TAKING YOUR MEALS AT  
**Palladium Restaurant**  
Theatre Royal.  
SPECIAL Terms for Residents.  
Breakfast, Lunch, Dinner and Supper.  
Morning and Afternoon Tea.

**WHY CRY**  
THAT COST OF LIVING IS HIGH  
YOU COULD REDUCE IT BY TAKING YOUR MEALS AT  
**Palladium Restaurant**  
Theatre Royal.  
SPECIAL Terms for Residents.  
Breakfast, Lunch, Dinner and Supper.  
Morning and Afternoon Tea.



# Willys - Knight

THE QUALITY CAR—NOT BUILT TO A PRICE.  
Embodying The Famous Double Sleeve Silent Knight Engine.



SAFARI CARS ..... \$580  
TOURING ..... \$400  
SEDAN ..... \$200  
All Cars Completely Equipped—No Extras

Let us demonstrate to you the principle of the Double Sleeve Valve.

No Springs—Tappets or Poppet Valves to Grind in—or adjust.

MOULTON & MORRISON Ltd.  
SIXTH AVENUE, NAIROBI.

# If you Grind Posho use the Best Mills for the Job

## Barron's or Bentall's Mills ARE BRITISH



POSHO MILLS  
For ALL PURPOSES.  
For ALL POWERS.  
For ALL PRICES.



J. W. Milligan & Co., P.O. Box 148.  
HARDINGE STREET Telephone 98.  
NAIROBI.

# A. H. Wardle & Co. Ltd. Optical Chemists.

Optical Manager:  
V. M. BROWNE, F.R.C.S., F.I.O.  
**SCIENTIFIC EYE TESTING.**  
Only the best lenses and frames stocked.  
Testing and Spectacles complete, from 80/-

# GIBBONS' STEEL CASEMENTS LOCKS & IRONMONGERY.

Make Their Appeal on the Basis of **QUALITY and PRICE.**  
Our Present Stock of

# STANDARD CASEMENTS STEEL

EMBODY THE LATEST IMPROVEMENTS & WE CARRY EXTENSIVE STOCKS.  
**R. G. Vernon & Co.**  
UNION BUILDING, NAIROBI.  
Phone 120. P.O. Box 134.

# ESANOFELE FOR MALARIA.

THE MOST EFFECTIVE CURE YET DISCOVERED FOR MALARIA.  
WIDELY RECOMMENDED BY THE MEDICAL PROFESSION.  
PRICE 7/6 PER COMPLETE CURE.  
SOLE AGENTS:  
**A. H. WARDLE & Co., Ltd.**  
CHERRY TREE, NAIROBI. MOMBASA. ILDOROT.

# DELIVERY FROM STOCK

of a limited number of **NEW FORD**

8-Seater PHAETONS.....	£194.
SPORTS COUPES.....	£241-10-0
EIGHT DELIVERY RUNABOUTS of 1500 lbs. capacity.....	£192-10-0
8-Seater TUDOR SEDANS.....	£220-10-0

The Service Co., Ltd. NAIROBI.

# EPIDEMICS

Begin in the Throat.  
**MONSOL THROAT PASTILES**  
Disinfect the Throat.  
PRICE 2/50 PER TIN

**Monsol Liquid.** For all general and surgical disinfection and personal hygiene. 3/- per bot.  
**Monsol Ointment.** For all conditions where an antiseptic ointment is indicated. 3/- per pot.

**Kodak (E. A.) Limited. Howse & McGeorge Chemists.**

Kenya, Uganda and Tanganyika.  
P.O. Box 28. Zebra House NAIROBI.

ABDULLA AT A MODERATE PRICE.

AT ALL LEADING STORES.  
SOLE AGENTS: R. O. HAMILTON, LTD., NAIROBI. Phone 322.  
Box 302.

# Lead the way on a B.S.A.

Make a date for a demonstration and do it now.  
**Carr, Lawson & Co. Ltd.** NAIROBI.

**DATE**  
DUNFER, Bertrand Guy, Royal Air Force, age 28 of Windsor, Bray, Ireland and Kapapa, Hialeah, died in England on 17th August as result of aeroplane accident. Deeply mourned by his sorrowing wife and relations.

**Malaria.**  
There is now to the death but was the human race and the mosquito and even if the former is gradually getting the upper hand in the struggle, the progress towards victory is not being made without suffering. Only now the seriousness of the malarial problem in this country by way of being recognized adequately and the measures to be taken to meet the menace has become more exact, even if not identical as it may be argued that the incidence of a certain amount of malaria in the Tropics is unavoidable and that the risk must be accepted as an other risk more or less inseparable from life in this part of the world. This, however, is not a wise way of regarding the matter and there is of course the fact which we have referred to often in the past and which has been entirely stamped and vigorous measure of control and attempted eradication, that malaria has been entirely stamped and in countries which have experienced to a much greater extent than has Kenya. Whilst the Government's declared intention to adopt comprehensive measures to combat the malarial menace is to be commended, it does not appear that the attention does not adhere to the fact that there have been a failure to grasp the seriousness of the potential spread of malaria many months ago. Today we quote from notes made by a Government official in the reply part of last year from which it is clear that the official concerned had realized the need for more energetic steps than had hitherto been undertaken. But although his views were compiled not later than last August, there is nothing to indicate that his suggestions led to the intensifying of the anti-malarial warfare or that anything like adequate measures were taken to prevent the multiplication of conditions suitable to the multiplication of the malarial organism. The public demand for something to be done consequent on the large-scale outbreak of malaria in several areas of the Highlands which hitherto had enjoyed practically complete immunity from the disease, led to an awakening by Government to the real needs of the situation which the reports of a few investigators had failed to acquire. Because of the delay it is likely that the country will be involved in a great deal of expenditure which might have been avoided by the use of ordinary foresight. At the last meeting of the Nairobi Town Council it was revealed that Government's contemplated the employment of an anti-malarial engineer who had had considerable experience in the Malay States. Frankly we see no reason to see the need for such an appointment at present. Antidotes. It is most necessary that there should be the fullest investigation and this might point to the desirability of increasing the anti-malarial staff, but surely some work has been written on the subject of control and eradication in other countries to make it unnecessary to have this additional engineering staff here. There may be some good reason of course which is not apparent to the lay mind, but we would have imagined that the Government would have had some one having learned the habits and breeding places of the malarial-carrying mosquito, the real, the highly specialized officer, and that the chief requisite would be a sufficient number of laymen, who, however, is a comparatively small matter as against the fact that malaria has become a serious menace to the country,—it might at

least be said a hydrological service would be of such a century of scientific knowledge as this—and that, be the cost great or small, the health of the community and the continued prosperity of the Colony depend largely upon its being effectively controlled, and that there is general agreement as to the desirability of instituting a health department of a whole-hearted campaign against malaria and its malarial agent, the mosquito.

**Under the Standard Clock.**  
Thursday, Oct. 25, 1928.  
On Thursday of this week, under the auspices of the Thursday Club, a concert will be given at the Y.M.C.A. Members of the Club and their friends are cordially invited.

**Packing Office.**  
The following office was opened this week:  
A large number of crates prepared by the Resident for export to the Standard Clock Company, Ltd. were packed at the Y.M.C.A. Members of the Club and their friends are cordially invited.

**Prize Drawing.**  
A further round was granted in the Resident's Magazine Competition in the case in which a number of the Standard Clock Company were drawn. The prize was a Standard Clock, and was won by Mr. J. M. O'Connell.

**Under the Standard Clock.**  
Thursday, Oct. 25, 1928.  
On Thursday of this week, under the auspices of the Thursday Club, a concert will be given at the Y.M.C.A. Members of the Club and their friends are cordially invited.

**Standard Dairy.**  
August 23:  
Lecture by Y.M.C.A. by Rev. F. G. Orr on "New Zealand."  
October 2 and 3:  
Eastern Africa Show, Standard Dairy.  
60-day's Exhibition.  
7 to 7.30—British Officers' Club.  
8 to 9—Zionist.  
9 to 10—Egerton and Radio Drive.  
9 to 10—Standard Dairy.

# Emile Jardin & Cie. Nairobi

# PORT

The largest and the best selection.  
From Shgs. 6/50 to 12/- per bottle. Reduction per case 10s.

**War Memorials.**  
During the last few days we have been receiving a large number of memorials from the various branches of the Y.M.C.A. in connection with the war. These memorials are of various kinds, including letters, photographs, and other mementoes of the war. They are all of a high quality and are well worth preserving. We are glad to receive them and will be happy to place them in a suitable collection for the benefit of the war veterans.

**Blissed the Road.**  
When Mr. J. W. Wardle & Co. Ltd. were asked to supply the necessary fittings for the new motor car without a rear wheel, they found that the "very rotten" state of the road had put the light on the fact that the car was not suitable for the conditions. The result was that the car was fitted with a rear wheel, and the car was now suitable for the conditions.

**Mr. W. M. Robertson.**  
Among those who have been asked to return to Kenya are Mr. W. M. Robertson, who was in the Indian Army, and Mr. W. M. Robertson, who was in the Indian Army. They are both of a high quality and are well worth preserving. We are glad to receive them and will be happy to place them in a suitable collection for the benefit of the war veterans.

**Trade Protection.**  
The Committee appointed at the Meeting of Nairobi Merchants on 10th 20th last, with a view to forming a Trade Protection Society, are now in receipt of a large number of proposals. These proposals are of various kinds, including letters, photographs, and other mementoes of the war. They are all of a high quality and are well worth preserving. We are glad to receive them and will be happy to place them in a suitable collection for the benefit of the war veterans.

**Mr. J. M. O'Connell.**  
A further round was granted in the Resident's Magazine Competition in the case in which a number of the Standard Clock Company were drawn. The prize was a Standard Clock, and was won by Mr. J. M. O'Connell.

A CAUTIOUS DRIVER'S NEGLIGENCE.

20/- for Making an E.P.O. Jump.

THE JUDGMENT.

Judgment was given by Mr. P. ... in the ...

DRINK AS AID TO GOOD DRIVING?

Novel Suggestion in Magistrate's Court.

GEO. FINE.

Mr. G. W. O'Conor, who was charged ...

MALARIA MENACE TO THE COLONY.

A REVIEW. Incidence and Habits of Anophelines.

Need for Immediate Combative Measures.

The Annual number of the ...

"LITTLE TICKS ON BIG TICKS."

PARASITES FOR PESTS. Discovery by American Entomologist.

Keeps Ticks to Follow Bluffs in Union.

Dr. S. A. Cooley, an entomologist ...

"On This Day"

ACQUITTED. In the last days of August 1914 ...

AFRICAN LABOUR.

STANDARD SPECIAL CORRESPONDENT. The ...

LYRIC HALL. Showing Shortly "LOST at SEA" THE FAKE FEATURING Henry Edward SHOWING ON 1st September PRICES: 5/- Reserved and 3/- Unreserved.

Supreme Shoe Value No. 37. 25/- Tan Willow Calf 1 Sizes. Black Box Calf 1 Sizes. Boys' Dress 1850. GENTS REAL CALF PATENT. No. 18A. 20/- DRESS SHOES.

Eadies Footwear Ltd. Box 149. Nairobi.

NIGHTLY AT 8.45. THEATRE ROYAL MATINEE'S AT 5.30. TO-NIGHT, and WEDNESDAY WALLACE BERRY IN THE THRILLING SCREEN REHARD OF HIS WALTER SCOTT'S FAMOUS NOVEL "KING RICHARD THE LION-HEARTED" Book To-day For "Beau Geste" SHOWING MONDAY, TUESDAY, WEDNESDAY, NEXT WEEK.

K. McIvor's Garage. FOR New Ford Cars & Trucks. AND Indian Motor Cycles. We can give prompt delivery of Armature Rewinds and undertake all work in connection with Electrical Equipment of Automobiles.

NO OMISSION.

As the case is being under ...

A CONTRACTOR—PRESENT DEBTS.

Remains Sent to Prison for Cheating.

FOUND ON WILD HARES.

They had been ...

THE MURKIN MARKET.

London, Aug. 20. ...

TO-DAY'S GAMES LIST.

Boxing, Football, ...

Two Specimens.

Our problem in America is ...

Read Wisdom.

Every careful motorist when ...

For Invalids and Convalescents A Wonderful Tonic.

"DUMINY" CHAMPAGNE. Vintage 1921 In 4 BOTTLES ("NIPPS"). Shs. 5/50.

S. Jacobs Ltd. 100, Strand, London, W.C.2.

Read the Facts.

Investigations into the ...

(Continued on page 20)

# Gibbs Shaving Cream gives personal attention to every hair

Gibbs water-holds lather—rich, creamy, summing—225 times the weight of the cream and—non-irritating, makes and holds every hair in the lather. No soap in it, indeed, has a hold on the hair for the soft sweep of the razor by the lightest touch of the non-irritating lather.



## Barclays Bank (Dominion Colonial and Overseas.)

THE COLONIAL BANK Incorporated in the United Kingdom by Royal Charter, 1826. Re-incorporated by Act of Parliament, 1925. with which is amalgamated THE NATIONAL BANK OF SOUTH AFRICA LIMITED A B D THE ANGLO-EGYPTIAN BANK, LIMITED. Capital Authorized ... £10,000,000 Capital Subscribed ... £2,000,000 Capital Paid up ... £ 4,975,000 Reserve Fund ... £ 1,250,000 Floating Capital ... £ 2,000,000

## MALARIA MENACE TO THE COLONY.

(Continued from page 9.) not be ligated by larvae. There appears to be no limitation as to the part of any larva in the middle part of the larva. The larva, therefore, may be found in any part of the body, and it is not necessary to examine the entire body to find the parasite. It is, however, necessary to examine the blood to find the parasite. It is, however, necessary to examine the blood to find the parasite.

Lack of Data. The greatest difficulty encountered by the majority of investigators in Kenya is the lack of reliable data. It is a common occurrence to find reports in this country which contain no reference to the methods used in the collection of material, and which are not accompanied by the information necessary to enable the reader to judge of the reliability of the data.

In connection with climatic records it is necessary to determine whether malaria is more prevalent in certain seasons than in others. In the majority of stations reliable records are not available, so that, assuming these records to be reliable, the study of the epidemiology of malaria is hampered.

The important influence of climatic conditions on the human and malarial parasite and the resistance to disease, are not understood. It is not known whether malaria is more prevalent in certain seasons than in others. In the majority of stations reliable records are not available, so that, assuming these records to be reliable, the study of the epidemiology of malaria is hampered.

There is a general feeling of opinion that malaria is more prevalent in certain seasons than in others. In the majority of stations reliable records are not available, so that, assuming these records to be reliable, the study of the epidemiology of malaria is hampered.

There is a general feeling of opinion that malaria is more prevalent in certain seasons than in others. In the majority of stations reliable records are not available, so that, assuming these records to be reliable, the study of the epidemiology of malaria is hampered.

There is a general feeling of opinion that malaria is more prevalent in certain seasons than in others. In the majority of stations reliable records are not available, so that, assuming these records to be reliable, the study of the epidemiology of malaria is hampered.

There is a general feeling of opinion that malaria is more prevalent in certain seasons than in others. In the majority of stations reliable records are not available, so that, assuming these records to be reliable, the study of the epidemiology of malaria is hampered.

There is a general feeling of opinion that malaria is more prevalent in certain seasons than in others. In the majority of stations reliable records are not available, so that, assuming these records to be reliable, the study of the epidemiology of malaria is hampered.

under officer should be able to obtain the advice and, if necessary, the cooperation in the field of an engineer trained in mosquito prevention measures. This staff with a central "Malaria Board" will deal with the problem in an organized manner with expert assistance.

It is probable that seventy-five per cent of the malaria in Nairobi could be avoided if the measures outlined. The staff's work here has not allowed time for devotion to the study of malaria. The staff with a central "Malaria Board" will deal with the problem in an organized manner with expert assistance.

The staff's work here has not allowed time for devotion to the study of malaria. The staff with a central "Malaria Board" will deal with the problem in an organized manner with expert assistance.

The staff's work here has not allowed time for devotion to the study of malaria. The staff with a central "Malaria Board" will deal with the problem in an organized manner with expert assistance.

The staff's work here has not allowed time for devotion to the study of malaria. The staff with a central "Malaria Board" will deal with the problem in an organized manner with expert assistance.

The staff's work here has not allowed time for devotion to the study of malaria. The staff with a central "Malaria Board" will deal with the problem in an organized manner with expert assistance.

The staff's work here has not allowed time for devotion to the study of malaria. The staff with a central "Malaria Board" will deal with the problem in an organized manner with expert assistance.

The staff's work here has not allowed time for devotion to the study of malaria. The staff with a central "Malaria Board" will deal with the problem in an organized manner with expert assistance.

The staff's work here has not allowed time for devotion to the study of malaria. The staff with a central "Malaria Board" will deal with the problem in an organized manner with expert assistance.

The staff's work here has not allowed time for devotion to the study of malaria. The staff with a central "Malaria Board" will deal with the problem in an organized manner with expert assistance.

# WHERE TO STAY Town & Country.

### THE HILL PRIVATE HOTEL.

VALLEY ROAD, LIMURU. All Modern Conveniences, To see, Dalman, Galt, Major Service and Complete Allied staff, will be appreciated by those seeking a quiet, comfortable and refined home. Phone 280, P.O. Box 758.

### LIMURU BRACKENHURST HOTEL.

HUDSON CANE.

## CLAIRMONT Residential Hotel.

One of Kenya's beauty spots within 7 miles from Nairobi by good motor road. Splendid swimming pool, free from all impurities with newly erected diving board and dressing rooms. Terms from 10/- per day inclusive. Excellent Cuisine and choicest wines stocked under supervision of the Proprietors. P.O. Box 620 - Nairobi. Telegrams: Clairmont.

## High View Hotel.

LIMURU (D Route). Healthy Situation. Ideal for Holidays. Luncheon, Tea, Tennis, etc., Terms Moderate.

## THE White Rhino Hotel Nyeri

FOR BREAKFAST, LUNCHEONS, TEAS, DINNERS AND ACCOMMODATION. Situated on Main Road, "Grains" - "Wainrith".

## BELL INN

(On Main Road) NAIVASHA. First-Class Accommodation. Electric Lighting Throughout. CATERING A SPECIALTY. Large Frigidaire Installed. Hot Drinks, Ice-creams available at all times. CLEANLINESS AND SATISFACTION GUARANTEED.

### OAKLEIGH PRIVATE HOTEL.

UNDER PERSONAL SUPERVISION OF MRS. H. HARRITT, Manageress, Phone 180. NAIROBI, P.O. Box 180.

### Oxford House.

KIKUYU ROAD, TENNIS. NAIROBI, P.O. Box 780.

### The Naivasha Hotel

Naivasha. Every Convenience and Comfort. Special Weekly and Monthly Terms.

## The Nakuru Hotel.

The Largest and oldest established hotel in the Highlands. NOTICE. The Proprietor has pleasure in announcing that he has secured the services of Mr. and Mrs. Edgar Archer to take over the management of The Nakuru Hotel. They are first class from England on or about September 15th. Mr. Archer has a long and distinguished record in the hotel world. He has been manager inter-alia of the ROYAL ALBION HOTEL, Broadstairs, the HOTEL METROPOLITAN, Heathall on the Sea, and the BURLINGTON HOTEL, Piccadilly. He has also acted as second manager to the RITZ HOTEL, Piccadilly, and assistant manager of the ST. ERMIN'S HOTEL, Westminster. He comes to Kenya direct from an engagement as manager of the Royal Crystal Palace Hotel, Upper Norwood. Mrs. Archer has in each case joined her husband in hotel management.

## A Small Selection from our Large Stock of Novels.

BY Edgar Wallace

- THE LATEST The Orator. The Gunner. The Flying Squad. Shgs. 4/60, posted Shgs. 7/-. LIBRARY EDITION. The Dark Oak Mystery. The Book of Judgement. The Green Rust. The Fellowship of the Frog. A Debt Discharged. The Book of All Power. Also a Good Selection of the "Bones Series". Shgs. 3/60, posted Shgs. 4/-. POPULAR EDITION. Fenside of the Pyramids. The Mystery of Death. Fly's Island. A King by Night. Room 15. The Black Abbot. Many other Titles to Choose from. Shgs. 2/60, posted Shgs. 3/85.

PAPER COVERS. The Law of the Four Just Men. The Clue of the New Yin. The Valley of Ghosts. Double Dan. And Others. 60c. 50, posted Shgs. 1/25.

"IT IS IMPOSSIBLE NOT TO BE THRILLED BY EDGAR WALLACE'S STANDARD STATIONERY STORES NAIROBI.

## LAST WEEK !!

OF OUR Genuine Sale!

Special Attractive Bargains "only a Week More" so do not miss this chance. Come and get a real value for YOUR MONEY.

### Ladharam Stores

P.O. Box 516. NAIROBI. Government Bond

### Your Efficiency DEPENDS UPON ACCURATE UNTRIMMING VISION. GOOD EYE-SIGHT IS THE ESSENTIAL TO CLARITY OF THOUGHT.

DO YOU HAVE YOUR EYES TESTED TO-DAY?

### Dobbles', Ltd.

OPHTHALMIC OPTICIANS. Phone 80.

## NOTICE

THE VICTORIA NTANZA SUGAR COMPANY. LIMITED has arranged with the undermentioned Stores to retail their No. 1 White Crystal Sugar at the following prices— Per pound ..... Cents 7/8 Per pocket of 56 lbs. .... Shgs. 10/75

- NAIROBI. S. Jacobs, Limited. R. B. Duncan, "Nairobi House." NAKURU. S. Jacobs, Limited. ELDORET. S. Jacobs, Limited. Wm Douglas.

### B. FLORENS.

FRENCH HAIRDRESSER. BUSINESS TRANSFERRED FROM NORFOLK HOTEL TO YORK HOUSE (near Makoa Bus). GOVERNMENT ROAD, opp. Treasurer, P.O. Box 92.

### SMITH'S PATENT HAIRDRESSER

will charge all hair periods. Standard Stationery Stores, NAIROBI.



ALL-SILK HEAVY SPUN CREPE

36 INCHES WIDE. Shs. 8/50 Per Yard In Latest Shades. FAST DYED PATTERNS ON APPLICATION. Ahamed Bros.

THE HOUSE OF DISTINCTION. BAZAAR. NAIROBI.

DISSTON SQUARES ACCURATE DEPENDABLE

STOCKED BY THE LEADING HARDWARE MERCHANTS. Made by Messrs. Henry Disston & Sons, Philadelphia, U.S.A.

We Need Your Head To Run Our Business.

JUST AS YOU NEED US TO LOOK AFTER YOUR PERSONAL APPEARANCE, AND GIVE YOU THAT WELL GROOMED LOOK SO ESSENTIAL TO SUCCESS. The Timmer Hairdressing Saloons.

THE CHARM OF THE DINING TABLE Lies in the Choice of Correct Silver Appointments.



DOBBIES, Ltd. Watchmakers, Jewellers & Optician Opticians NAIROBI.

LADIES! BON MARCHÉ.

Opp. Messrs. Howe & McGeorge. Government Road, NAIROBI. Up-to-date style. Well cut and beautifully made. Satisfaction guaranteed. Give us a trial. We are sure to please you.

CORRESPONDENCE INCREASED SCOPE OF POLICE WORK.

(Continued from page 3)

The editor does not accept responsibility for views expressed by his correspondents in his columns, and in all cases names and address of his correspondents will be published unless otherwise stated, and it is necessary for publication that the writer should be able to be reached in the event of any communication.

FILMS AND CHILDREN.

To the Editor, "E.A. Standard," Sir, The problem which I am sure, few people in the Province and the other members of the E. A. Standard are unaware of is the fact that the average film seen here is not a first hand in the matter of its content, and that it is not the best of the best, but the worst of the worst. The question is being raised by the Government.

1926, 1,300, 1,420, 1,460, 1,510, 1,520, 1,617, 1,612. Director Officers. Certificates of driving competence were issued by the Police Inspector in the Province in the month of August, 1926, as follows:—

The motor traffic in Kenya is increasing in volume and speed, and the Government are taking steps to improve a small number of the roads in the Province. The Government are also taking steps to improve the roads in the Province. The Government are also taking steps to improve the roads in the Province.

Office in Mombasa Police Sports Club in Mombasa. Instruction in Mombasa. Instruction in Mombasa. Instruction in Mombasa.

The Criminal Justice Commission has been set up to inquire into the working of the criminal justice system in Kenya. The Commission will be composed of representatives of the Government, the Bar, and the public.

PROFESSOR ANTISTONE, BANGOR, COASTAL F. J. COLLIER, BANGOR.

Twenty-three European members of the Feroe road club. The club is a branch of the Feroe road club. The club is a branch of the Feroe road club.

The British Stationery Society has been formed in Kenya. The Society will be composed of representatives of the Government, the Bar, and the public.



ERASMIC keeps the most delicate skin peevy clear and smooth as satin. It adds that delightful complexion to Milsdy's toilers. . . . the embodiment of feminine charm.

PEERLESS ERASMIC SOAP The Dainty Soap

This branch of your business is in the hands of an expert, and any work entrusted to us will be executed in any design at short notice. A good frame improves a good picture, and good frames only are produced by B. H. Myers & Co., Ltd.

Picture Framing

W. A. MARTEL, ESTABLISHED 1870. A BRANDY TIE IS HANDY FOR ALL OCCASIONS AND ALL CLASSES OF PEOPLE. MARTELL'S

MARTELL'S

Known throughout the World. Martell's for Age and Quality. F. COGNET & CO. Cognac.

Referenced by: GENERAL MANAGERS LTD. INSA BUILD. ROYAL BA. NAIROBI.

META INSTANT USE HEAT TABLETS

SUPERHEATED METALIZED PAPER. Sold with Meta Foils Applications to the Ideal Food for the household, sports, soldiers, etc. See Agents: J. AYRES & Co., NAIROBI, Ken. St.

CODES

A.B.O. 8th Edition Shs. 95/- posted 96/75. A.B.O. 6th Edition Shs. 95/- posted 96/75. Bentley Shs. 130/- posted 131/75.

STANDARD STATIONERY STORES P.O. BOX 888. NAIROBI.

Police Boys' Brigade. The boys' brigade is a branch of the Police Boys' Brigade. The boys' brigade is a branch of the Police Boys' Brigade.

The Railway Police. The railway police is a branch of the Railway Police. The railway police is a branch of the Railway Police.

Weights and Measures. The weights and measures are a branch of the Weights and Measures. The weights and measures are a branch of the Weights and Measures.

Summary. Summary of the news items. Summary of the news items. Summary of the news items.

Special Mention. Special mention of the news items. Special mention of the news items. Special mention of the news items.

The Arms Bureau. The arms bureau is a branch of the Arms Bureau. The arms bureau is a branch of the Arms Bureau.

Communication. Communication of the news items. Communication of the news items. Communication of the news items.

First Aid. First aid instructions for the public. First aid instructions for the public. First aid instructions for the public.

MAY & CO., LTD. FISHING TACKLE

Kamti & Liah & Co. Farm. Kamti & Liah & Co. Farm. Kamti & Liah & Co. Farm.

Trade Enquiries: WARDLE, Wholesale Stationer, Nairobi, Mombasa & Eldoret.

STANDARD STATIONERY STORES P.O. BOX 888. NAIROBI.

AUCTION SALES



Miscellaneous Goods. Duty instructed, we shall sell, by Public Auction, Without Reserve, at our Salerooms, Maico Building, Nairobi, on...

Wednesday, 29th August at 10 a.m. TENSIS BALLS. DRESS LENGTHS. MOSQUITO NETS. ENAMEL JUGS. BASINS, and TOILET WARE. ENAMEL FILTERS. AND HOT WATER PAPER and ENVELOPES. BRASSWARE. BATH and DOOR MATS. NOVELS. VOLUMES OF "STANDARD ENCYCLOPEDIA OF MODERN AGRICULTURE." Etc., Etc., Etc.

MUTER and OSWALD, Ltd., Auctioneers, etc., NAIROBI.



Property List. Furnished House to Let on Hill. CRAUFORD ROAD, partly or fully furnished house to let with immediate occupation; accommodation Dining Room, Drawing Room, Two Bedrooms, Balcony, Bathroom, etc.

MUTER and OSWALD, Ltd., Auctioneers, Estate Agents, NAIROBI.

E. Hutchison & Co.

Favoured with instructions from several clients, we shall sell by Public Auction, Without Reserve, (unless stated) at our Mart, Govt. Road, on...

16 PAIRS WELL MADE CHESTERFIELD SUITES. 10 PAIRS IN GOOD ORIGINAL USE. Indian Teak Writing Machine. Folding Card Table. Covered Bazaar. Double Single Bedsteads. Large Indian Teak Couchboard. 3 Office Tables. Campaigning Writing Bureau. Campaigner mechanical typewriter. BUREAU LEAK PINE-WOOD DRESSING CHAIR WITH LARGE OVAL MIRROR. 2 Chests of Drawers. Two Burner Oil Stove. No. 1 BUNNYHUGGE DOVEY STOVE WITH PIPING. Langanyika Mahogany Double Bed with three-py spring and mattress. Two Kitchen Tables. Two Oval Dining Tables. DOUBLE TEAK WARDROBE WITH TWO ENAMELED MIRRORS (reserve). 2 Morris Chairs. 12 Dining Chairs. Combination Dressing Chest. Teak Dressing Chest with 1 length mirror. Cheval Mirror. WILLOWBURY PIANO (reserve). Single Teak Backless Washbasin. MAISON TEAK PALM STANDS. Coffee Tables. Hand Singer Sewing Machine almost new (reserve). Bathroom Mirror. Pair Opera Glasses in leather Case. MOTHER OF PEARL OPERA GLASSES. Petrol Lamp. Silver Mounted Hot Water Jug. Toast Rack. Knives. Forks and Spoons. Divided Silver. Teak Dining Chair with 1 length mirror. Kitchen Utensils. CANTEN OF FRUIT KNIVES. FORKS and SERVETTES WITH MOTHER OF PEARL HANDLES. Occasional Table. Salt Tins. Tea Basket in Leather Case. 6 Pairs Twilled Sheets, One Pair Hemstitched Sheet. 2 Toilet Pails. 16 Turkish Towels. 8 Sails. Sidecar. AXMINSTER GARBE. 2 x 7". (reserve). 7 DOZEN TINS JACOBS BISCUITS. 90 2-lb. TINS AM. KASHERY STRAWBERRY. 46 TINS FRESH HERRINGS. 72 BOTTLES HEINZ TOMATO KETCHUP. 67-lb. TINS MARMALADE. 200 TINS SARDINES. The above groceries are all absolutely fresh stock.

E. Hutchison & Co. Auctioneers and Estate Agents.

SANDS & Co.

AT OUR RAILWAY SALAYAARDS, NAIROBI. Monday 3rd Sept. at 10 30 a.m.

- 22 Immune Trained Oeufs. 5 Immune Cows in Calf. 7 Store Pigs. 12 Good Young Breeding Swine. 10 Trained Oxen. 10 Fat Bullocks. 10 Young Heifers. 10 Cows with Calves at Foot. 6 Vealers.

Sands & Co. AUCTIONEERS.

Austins Auctions.

Instructed by a Lady leaving for home... WILL HOLD A CATALOGUE SALE OF FURNITURE AND EFFECTS ON Saturday, September 1st at 10 a.m. Further details will be advertised later.

AUSTIN & CO., Auctioneers & Estate Agents, Hardinge St., Nairobi

F. A. HEAD, PIANOFORTE, TUNER and REPAIRER. Five years with Messrs. Chappell & Co., London. Thirteen years' experience in Kenya Colony. Send all orders to P.O. Box 675

PUDLO MAKES CEMENT WATERPROOF. Sole Agents Denovan & Diebel CITY HOUSE NAIROBI

Notice to Hairdressers. The New Arusha Hotel will be completed about 10th December next. An excellently situated shop exists therein suitable for hairdressing and allied business. Address enquiries to RAY R. ULYATE, Arusha.

Jamal Pirbhai.

Sells anything You Cannot Sell. Auctioneer, Official Broker and Government Approved Valuer. Auctions Every Sunday, at 4 a.m. Opposite Jeevanji's Garden. P.O. Box No. 869, Nairobi, Kenya Colony

The Selection of Your Grocer. Must be a problem that puzzles you! Solve it by dealing with HARIHING GURJABAI (Established 1914). The Store that has always stood for Quality & Value. Give us a trial to prove this to you!

Direct Importer. FRESH STOCKS REGULARLY ARRIVING. Specialists in Choice Wines, Groceries, Provisions, Tobaccos, Crackery, Cement, Gunny Bags, C.I. Sheets, Local Produce, etc. Speciality Orders Give Personal Attention. Detailed Price List on Application. Mail Your Orders Direct to—P.O. Box No. 8, Donald Avenue—NAKURU—Phone No. 7.

Carbon Paper

MADE BY Graphia Ltd., London IN PURPLE AND BLACK. BOXES OF 100 SHEETS. QUARTO SIZE 10 x 8 1/2 x 5 1/2, per box FOOTSCAP SIZE 12 x 9 1/2 x 7 1/2, per box TYPEWRITER RIBBONS FOR Remington 1/2 inch, Royal No. 10 1/2 inch, Oliver 9/16 inch, Underwood 1 inch, Black and Red Record and Purple Copy, Shgs. 5/ each. STANDARD STATIONERY STORES NAIROBI.

CRICKET IN NAIROBI.

Faiah Mahomed, not out... Total 210. Bowling: Burton, 2/21; Franco, 2/60; P. Walter, 7/21; Mahabub, 4/18; N. Walter, 0/18; Mann, 0/15.

A DRAW GAME. (No Innings). Mahabub, b. K. Gohli, not out... Total 111. Bowling: K. Gohli, 8/39; Franco, 2/78; Amalbat, 1/60; Mann, 0/12.

F. I. I. (No Innings). Yakob, b. Mahabub... Total 111. Bowling: Burton, 1/28; Franco, 3/18; Mahabub, 8/37; P. Walter, 1/37.

Hone Racing. FRED EDWARD HANDICAP RACES. The following are the weights for the Fred Edward Handicap Races to be run on September 8, over two miles:

Fun Aslam... 8 lb. Cup-Pie... 8 lb. St Vincent... 8 lb. Saint Bernard... 8 lb. Lark... 8 lb. Blazon... 8 lb. Lord of Perth... 8 lb. West India... 7 lb 12. Royal Palace... 7 lb 10. Constant Sun... 7 lb 10. Aasry... 7 lb 10. Bays' Penn... 7 lb 10. Blue Arrow... 7 lb 10. Claret... 7 lb 9. Hammer... 7 lb 9. Hoop... 7 lb 9. Orient Knight... 7 lb 6. Strat St... 7 lb 6. Giovanni... 7 lb 6. Rock... 7 lb 6. Springfield... 6 lb 18. The Brown Tailcoat... 6 lb 18. Howland... 6 lb 18. Ironsides... 6 lb 18. Tabbas... 6 lb 18.

Both between were accorded an ovation on their magnificent and their brilliant display... The Indians held a second time... which to make 111. B. Gohli was the star... 31 Melhad was again the best for 27.

Both between were left with only three quarters of an hour toasting and made good use of that time... six minutes for the last end of three... considered to have been a moral victory for Gyanakshu. The scores were:

Table with 4 columns: Name, Score, Name, Score. Includes Vaidya, S. Walter, Barton, S. Walter, P. P. Walter, B. Gohli, etc.

Smokers Favorites. BURMA CIGARETTES. DART & LIGHT FLAKES. HART SNALES. LEAD SALT. MAGALISBERA TOBACCO. Wholesale Quotations on Application. BLACKLAWS & BROWN (Incl. Bros.). Tel No. 31. NAIROBI. Box No. 462.

The Victoria Nyanza Sugar Company Ltd.

MIWANI

Boq to notify the Public that they have commenced... to them at Miwani. Farmer's having sugar cane for disposal should communicate, without delay, with the factory, stating name of Farm and where situate, area of cane to be estimated weight of crop, what tonnage they are prepared to deliver daily and the date upon which they can commence delivery. Further particulars can be obtained at the mill office on application.

Property for Sale.

3869 acres of excellent Sisal land is offered for sale within nine miles of Nairobi with river frontage at Shaga, 25/ per acre. 5 roomed Stone House on 2 1/2 acres of Maitani Bush. 5 roomed Brick and Stone House all modern conveniences, Tennis Court and Summer House on Kilguy Road, Parklands. 26 acre Plot with River Frontage and permanent Spring at Busukia—Price only 2450. For further particulars of the above and other suitable property apply

Brown & Barratt P.O. Box 637, Phone 147. IEBA BUILDINGS, NAIROBI.

Miss KATHLEEN BATES A.R.C.M. RECEIVES PUPILS FOR PIANOFORTE—SINGING—HARMONY. AT HER Music Studio Sixth Avenue. (Postal Address: Box 417.) PUPILS OBTAINED TWENTY-TWO AWARDS IN THE MUSICAL FESTIVAL JULY 30—AUGUST 4.

FOR SALE

Blake new Stone Breakers complete with screen and spare parts. Apply: Anant Ram & Co. P.O. Box No. 130, NAIROBI. Tele. 229.

Jam Containers WITH LIDS

Jam Containers advertisement featuring an image of a container and text: 1 lb. Size for JAM, Etc. Shgs. 2/- per doz. Shgs. 25/- per gross.

Fruit Baskets CHIP WOOD WITH METAL HANDLES. Size 11 x 7 x 9 inches. Shgs. 6/- PER DOZ.

FANDARD STATIONERY STORES NAIROBI.

OUR SPECIALITY. Good Quality Furniture at Reasonable Prices. Shgs. 750.00.

FOR A GRAND DINING ROOM SUITE WHICH CONSISTS OF— SIDEROACK, 6ft wide with two Cupboards, 4 large drawers and a recessed seat. SUITE OF SIX DINING CHAIRS, strongly constructed, fitted with movable rexine covered seats. OVAL DINING TABLE, size 6'0" x 3'0" made with Queen Anne Legs. DINNER WAGON, 4ft wide with three Tiers. OCCASIONAL TABLE, with obliging top. BEST OF FOUR TRAYS, in useful sizes.

Hutchings, Biemer & Co. Ltd. NAIROBI. LESS 2% FOR CASH WITH ORDER ONLY. HERE PURCHASE TERMS ON APPLICATION. Monthly A/c's. with Approved Customers.





A Smart Man CAN SELL A Gold Brick

but he cannot look repeated orders. The hobo who stole the pie, and requested his friend to return the dish...

GOOD WILL, MEANS GOOD BUSINESS. SHAW & HUNTER Box 70, NAIROBI.

Charles Ware THE ASSURANCE ESTABLISHED AS ABOVE. No. 170, Market. Agents: 101 Gang Warley, 101 Royal Mile, 101 Park, 101 Black Swan, 101 South Street, 101 Victoria Road.

J. H. S. Todd & Co. Ltd. GENERAL MERCHANTS—NAIROBI.

WITH THEIR AID MAKE YOUR GARDEN WORTH WHILE. Image of a hand holding a garden tool.

THE Bradford Manufacturing Co. Ltd. Special Sale of Celanese, Ladies Underwear. 50 only Celanese, 3 in 1, Trinity Suits, 50 only Celanese, 3 in 1, Trinity Suits, 50 only Celanese, 3 in 1, Trinity Suits, 50 only Celanese, 3 in 1, Trinity Suits.

GOOD CLUBS DESERVE A GOOD BAG. We have a WONDERFUL SELECTION to show you. Price from Shs. 8-50 to Shs. 75-00.

MAY & Co., Ltd. THE SPORTS HOUSE, NAIROBI. We have a WONDERFUL SELECTION to show you. Price from Shs. 8-50 to Shs. 75-00. You cannot buy better GOLF CLUBS than those We Sell.

THE SPORTS PAGE

COUNTY CRICKET.

Scores on First Day of Play. A LANGRISHES COLLAPSE. (By Anne.)

London, August 25. The following were the scores at the close of the first day of play of county cricket matches...

At Leeds: Surrey (1st innings): 302 (Hallam 138, Tucker 67). Middlesex (1st innings): 263 (Hallam 100, Tucker 67).

At Worcester: Gloucestershire (1st innings): 205 (King 50 not out). Worcestershire (1st innings): 181 (Kilner 55, Green 61 not out).

At Northampton: Northants (1st innings): 301 (Kempsey 7/56, Newman 25). Hampshire (1st innings): 101/9 (Hoar, J. Tompkins 7).

At Lincolnshire: Lincolnshire (1st innings): 200 (Hallam 114, Burns 6/39). Kent vs West Indians. At Canterbury: Kent (1st innings): 203 (Chalmers 84, Brown 17).

"The All Blacks" in South Africa. Defeated by Western Province. (By Anne.)

London, August 27. The New Zealand Rugby team which will commence on Saturday, September 5, the tour of the island will be made to New Zealand by air...

Parke's Tennis. TOURNAMENT SERIES OF TENNIS AT NAIROBI. To-morrow is the closing date for entries for the Parke's Tennis Club Handicap tennis tournament...

NAIROBI GOLF CLUB.

The "Wood-B" Golfers Cup Tournament. MEMBERS CLOSE NEXT WEEK. (By Anne.)

I have a letter from Great Bay, the busy abode of Eldoret, which tells me that the members of the Plateau Golf Club...

At Nairobi: Nairobi (1st innings): 49/4 (Holland 28, Hume 6). At Kisumu: Kisumu (1st innings): 64/3 (Worwood vs Warwick).

"Wood-B" Golfers Cup. Entries for the "Wood-B" Golfers Cup close on September 2. The club has a number of members who are keen on the golf.

The Hie. Brookfield is still offering attractive odds in all sports. What you see is what you get.

A South African Publication. I have received by this mail a copy of "South African Golf" journal published in Cape Town. It contains a number of articles on the game.

The Railway Coaches. I wonder how many Kenya Golfers use the Railway Coaches to get to the golf course. It is a very convenient mode of transport.

"TRIPAL END TO A PINK ATTRACTIVE CASE" (By Wheeler.) D. G. Lowe to Retire. (By Wheeler.)

THE EASTERN AFRICA SHOW TO BE HELD AT NAIROBI October 2nd and 3rd, 1928. Entries for Horses, Cattle, Sheep, Pigs, Farm Produce, Dogs, Home Industries etc. CLOSE ON AUGUST 31st.

TENNIS AT NAIROBI.

Match between Lalkin and Nyeri. HOME TEAM VICTORY. (By Wheeler.)

On Sunday, August 10 there was a tennis match between Lalkin and Nyeri at the Olympia Club. The courts were made "dug" prior to the big trophy...

At Nairobi: Nairobi (1st innings): 49/4 (Holland 28, Hume 6). At Kisumu: Kisumu (1st innings): 64/3 (Worwood vs Warwick).

At Nairobi: Nairobi (1st innings): 49/4 (Holland 28, Hume 6). At Kisumu: Kisumu (1st innings): 64/3 (Worwood vs Warwick).

At Nairobi: Nairobi (1st innings): 49/4 (Holland 28, Hume 6). At Kisumu: Kisumu (1st innings): 64/3 (Worwood vs Warwick).

At Nairobi: Nairobi (1st innings): 49/4 (Holland 28, Hume 6). At Kisumu: Kisumu (1st innings): 64/3 (Worwood vs Warwick).

At Nairobi: Nairobi (1st innings): 49/4 (Holland 28, Hume 6). At Kisumu: Kisumu (1st innings): 64/3 (Worwood vs Warwick).

At Nairobi: Nairobi (1st innings): 49/4 (Holland 28, Hume 6). At Kisumu: Kisumu (1st innings): 64/3 (Worwood vs Warwick).

At Nairobi: Nairobi (1st innings): 49/4 (Holland 28, Hume 6). At Kisumu: Kisumu (1st innings): 64/3 (Worwood vs Warwick).

MUTHAGA GOLF CLUB.

Draw for the Morrison Cup. (By Wheeler.)

The Muthaga Golf Club August 10 there was a draw for the Morrison Cup. The draw was held at the club house...

At Nairobi: Nairobi (1st innings): 49/4 (Holland 28, Hume 6). At Kisumu: Kisumu (1st innings): 64/3 (Worwood vs Warwick).

At Nairobi: Nairobi (1st innings): 49/4 (Holland 28, Hume 6). At Kisumu: Kisumu (1st innings): 64/3 (Worwood vs Warwick).

At Nairobi: Nairobi (1st innings): 49/4 (Holland 28, Hume 6). At Kisumu: Kisumu (1st innings): 64/3 (Worwood vs Warwick).

At Nairobi: Nairobi (1st innings): 49/4 (Holland 28, Hume 6). At Kisumu: Kisumu (1st innings): 64/3 (Worwood vs Warwick).

At Nairobi: Nairobi (1st innings): 49/4 (Holland 28, Hume 6). At Kisumu: Kisumu (1st innings): 64/3 (Worwood vs Warwick).

At Nairobi: Nairobi (1st innings): 49/4 (Holland 28, Hume 6). At Kisumu: Kisumu (1st innings): 64/3 (Worwood vs Warwick).

At Nairobi: Nairobi (1st innings): 49/4 (Holland 28, Hume 6). At Kisumu: Kisumu (1st innings): 64/3 (Worwood vs Warwick).

KYNOC AMMUNITION. Recent successes at Bisley have resulted to the excellence and accuracy of KYNOC AMMUNITION. Made in all calibres from .22 to .600. Kynoch ammunition is a successful part of a big game hunter's equipment.

A. HOGG, Mutos B'dgs, NAIROBI. (ESTD 1888).

Double and Treble Events. Open or Deposit Accounts. Special Golf Accounts. Fair Prices. Security. Prompt Settlement.

Wet. H. T. Batterle for Wireless.

APPLY—KENYA AGENCY Ltd. UNION BUILDING, GOVERNMENT ROAD, BOX 751, NAIROBI.

Another Musical Festival.

We have just unpacked a consignment of H.M.V. Records by the undermentioned famous artists. The artists—like H.M.V. Records—are supreme in their art and lovers of good music should take early opportunity of inspecting this selection.

KENSITAS. S. & Co. D. Epstein & Co. S. Jacobs Ltd. NAIROBI. Another Musical Festival. We have just unpacked a consignment of H.M.V. Records by the undermentioned famous artists.

**KENYA BEER**  
Wholesome and Appotising.

**LIGHT OR DARK**

GUARANTEED THE LARGEST CIRCULATION OF ANY NEWSPAPER IN KENYA, UGANDA, TANGANYIKA AND ZANZIBAR.

DAILY EDITION.

THE EAST 14 PAGES.

# The East African Standard

UGANDA ARGUS THE LEADER.  
THE LARGEST ESTABLISHED PUBLICATION IN KENYA AND UGANDA.

NAIROBI, WEDNESDAY, AUGUST 29, 1929.

**THE LOUNGE**  
Having  
Afternoon  
TEAS  
Open on  
Sundays  
No Non-Residents

Price 20 CENTS.

### INAUGURATION OF THE ERA OF WORLD PEACE?

Representatives of the Powers Sign the Kellogg Pact.

### IMPRESSIVE CEREMONY.

French Statesman Stresses the Need for Continuance of Endeavor.

At ten minutes to four on Monday afternoon the principal nations of the earth signified their desire that in the future war will have no part in their relations with other peoples.

The ceremony of signing the League of Nations took place in the historic clock room of the War Office in London where ten years ago were begun the negotiations which ended with the Treaty of Versailles.

### THE WORK OF TO-MORROW.

Paris, August 27. The Philadelphians were seated at the grand hotel... M. Briand... M. St. Julien... M. de Broqueville... M. de Broqueville... M. de Broqueville...

### King of Albania.

His Majesty the King... M. St. Julien... M. de Broqueville... M. de Broqueville... M. de Broqueville...

### "This Honourable Council."

M. St. Julien... M. de Broqueville... M. de Broqueville... M. de Broqueville... M. de Broqueville...

### NEW ROLE FOR A PARLIAMENT.

M. St. Julien... M. de Broqueville... M. de Broqueville... M. de Broqueville... M. de Broqueville...

### "This Honourable Council."

M. St. Julien... M. de Broqueville... M. de Broqueville... M. de Broqueville... M. de Broqueville...

### RUSSIA AND DISARMAMENT.

Refusal to Attend Commission.

### SOVIET AND THE LEAGUE.

(TERRON RUTHER'S AGENT.) Moscow, August 27. M. Litvinov has sent a cable to the League of Nations... M. Litvinov has sent a cable to the League of Nations...

### STORAGE OF TANGANYIKA AND UGANDA PRODUCE.

(STANDARD SPECIAL CORRESPONDENT.) In the Mombasa, Monday... The Mombasa, Monday... The Mombasa, Monday...

### ROAD AND RAIL STRUCTURE BEING COMPLETED.

(STANDARD SPECIAL CORRESPONDENT.) The Mombasa, Monday... The Mombasa, Monday... The Mombasa, Monday...

### King of Albania.

His Majesty the King... M. St. Julien... M. de Broqueville... M. de Broqueville... M. de Broqueville...

### "This Honourable Council."

M. St. Julien... M. de Broqueville... M. de Broqueville... M. de Broqueville... M. de Broqueville...

### NEW ROLE FOR A PARLIAMENT.

M. St. Julien... M. de Broqueville... M. de Broqueville... M. de Broqueville... M. de Broqueville...

### COST OF SINGAPORE NAVAL BASE.

Colony's Protest to Britain.

### FRANCO-GERMAN RELATIONS.

(TERRON RUTHER'S AGENT.) Paris, Aug. 27. Dr. Stresemann in an interview... Dr. Stresemann in an interview... Dr. Stresemann in an interview...

### THE MAKUPA BRIDGE.

(STANDARD SPECIAL CORRESPONDENT.) The Mombasa, Monday... The Mombasa, Monday... The Mombasa, Monday...

### Government and Improved Facilities.

(STANDARD SPECIAL CORRESPONDENT.) Mombasa, Monday... Mombasa, Monday... Mombasa, Monday...

### King of Albania.

His Majesty the King... M. St. Julien... M. de Broqueville... M. de Broqueville... M. de Broqueville...

### "This Honourable Council."

M. St. Julien... M. de Broqueville... M. de Broqueville... M. de Broqueville... M. de Broqueville...

### NEW ROLE FOR A PARLIAMENT.

M. St. Julien... M. de Broqueville... M. de Broqueville... M. de Broqueville... M. de Broqueville...

### EVERY WOMAN CAN USE SUCCESSFULLY THE NEW

McCALL PRINTED PATTERN.



See Our Special Window Display of All NEW DRESS MATERIALS.

DRESS VIEYELLAS. The favorite silk, all-wool in the world... 7-50 PER YARD.

CHECK POPLINS. Something really new in Mottored Cotton... 5-50 PER YARD.

PRINTED ART SILK. A delightfully light material for dress... 6-50 PER YARD.

CHECK TROCCALCO. This famous washing material in a large range... 3-75 PER YARD.

FANCY RAYONS. By the best just a delivery of this fashionable fabric... 4-00 PER YARD.

TRICOLINE. Colors fast to sun or washing... 5-00 PER YARD.

CREPE DE CHINE. In the very latest spotted designs... 15-50 PER YARD.

VISLYKA. A famous washing material in a large range... 8-50 PER YARD.

LIZARD CREPES. A good material with crepe de Chine... 15-50 PER YARD.

MCCLESFIELD SILKS. The very latest thing in dress... 12-50 PER YARD.

MARICHERIE. An Art Silk material with the feel and appearance... 6-50 PER YARD.

COATING TWEEDS. Just arrived, a very special... 10-50 PER YARD.

WHITEAWAYS Nairobi.

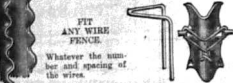
FENCING



USED THE WORLD OVER

Richard Johnson's Wire

Varex Steel Droppers



AGENTS—Dalgety & Co. Ltd. ELDBOROUGH NAIROBI MOMBASA

BARGAINS

A limited number of NEW IMPERIAL MOTORCYCLES to be sold at greatly reduced prices...

T. A. SAFI

T. A. SAFI GARAGE, P. O. Box 250, Near N. B. of India.

Kenya Loan & Discount Co., Ltd. NAIROBI.

FINANCIAL AGENTS. BILLS DISCOUNTED. SHORT-TERM LOANS GRANTED.

THE FOUNDATIONS OF ENGLAND.

Aristocrat No Longer a Tyrant.

"PRESERVED AS A PET."

"The British aristocracy, delineated as a class, has been preserved as a pet." This was...

THE FOUNDATIONS OF ENGLAND.

that underlying serdomness with-out was no great achievement was possible.

Buried Treasure.

LONDON EXPEDITION'S SEARCH.

Gold, silver, and diamonds to the value of £120,000, are believed to be hidden in the Square Stone House at Stamford, in Lincolnshire...

Here and There.

Captain Martin, director of the Harrow Zoological Expedition to South Africa, animals to have invented a bullet which whirrs, but does not kill, the animal at which it is fired.

The famous stained glass from the chapel at Astoria Park, which was sold at Sotheby's for £27,000, is to accompany the Duke of Devonshire to the United States...

Bandits living in wait to hold up a passenger train on the Columbian State railway at Florence, Pa., near Union, planned a dynamic bomb on the rails over which the train was due to pass.

The "Daily Express" of attending that negotiations for transferring the Children's Hospital, Great Ormond-street, to the site of the Framlingham Hotel, Bloomsbury, are now proceeding, and that a statement will probably be issued towards the end of this month.

The secretary of the United Bankers' Club, Englishly, vouches for the genuineness of an incident in a game of auction bridge. The dealer called seven hearts the second time seven spades, and the players were dumb with astonishment...

These Tunny, the world's heaviest weight boxing champion, announces that he is retiring from the ring.

"I have," he said, "found my life in the ring a very tiring one. A Central News message says that Tunny declared that he was retiring because there was no more money to be made in a large enough purse, and it was very tiring to be on the team before one develops. That has been long to wait, and so he was retiring ahead."

P. Stewart.

PAINTER & DECORATOR. Marriages Street, Nairobi. P. O. Box 225.

PAINTS, OILS, GLASS, FURNITURE & DISTRESSER. Large or Small Quantities.

NATIONAL BANK OF INDIA LIMITED.

(Incorporated in United Kingdom.)

Branches to the Colony and Protectorates of Kenya and Uganda Protectorate Government.

25, Bishopsgate, London, E.C. 2. BRANCHES: Mombasa, Nairobi, Nakuru, Kisumu, Eldoret, Kampala, Entebbe, Zanzibar, Dar-es-Salaam and Zomba.

AGENTS in New York and throughout U. S. A., Europe, Canada, South Africa and Australia.

FIXED DEPOSITS—Deposits are received for fixed periods on terms and conditions as usual.

EXCHANGE—The Bank grants Drafts on Head Office and Branches at the current rates of Exchange forwarding the way of the Bill direct to the payee's place required.

Every description of Banking business transacted with all parts of the world.

A. S. MACKENZIE, Manager, Nairobi Branch.



Characteristically PURE AND MATURE

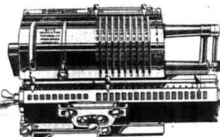


Wide Awake!

EXHAUSTED nerves that will not relax though body and mind are craving for a rest—they are the cause of your sleeplessness. Find your nerves by taking SANATOGEN for a few weeks...

SANATOGEN

The True Tonic-Food



THE BRITANNIC CALCULATOR

THE ALL-BRITISH Calculating Machine

Shs. 940.

THE BRITANNIC CALCULATOR WILL PERFORM EVERY CLASS OF CALCULATION INVOLVING THE USE OF ALL FOUR RULES OF ARITHMETIC, NO MATTER HOW COMPLICATED.

ANDREW'S ALL-BRITISH ROTARY DUPLICATOR

The simplest and most rapid means of producing multiple copies.

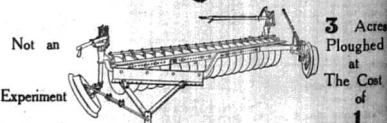
Shs. 950.

WE SHALL BE PLEASED TO DEMONSTRATE THIS MACHINE AT ANY TIME.

PHONE TAWS LTD., NAIROBI.

BOX 611.

THE E. B. LINE



Not an Experiment

The Great Plains Plough.

New Stock Arriving Send For Particulars TO J. R. COX & Co.

Nakuru, Eldoret, Kampala, Dar-es-Salaam.

Visit EASTERN BAZAAR,

AND GET THE BEST CURCUM AND SIKK AT LOW PRICES.

FOR YOUR PRESENTS

B. CHOITRAM, NAIROBI AND NAKURU.

Doonholm Dairy

Box 11, Nairobi

FIDB Pure Milk and Cream.

Free Pats to Consumers.

AH, IT'S DIFFERENT

That's the spontaneous verdict of those who drink ROB ROY WHISKY. Its exquisite bouquet and unvarying high quality have given it an unparalleled supremacy in all the four corners of the world.

ASK FOR ROB ROY.











# Madame Rowe Et Cie LIMITED.

ON VIEW  
**TO-DAY**  
 A LARGE AND VARIED SELECTION  
 OF  
**French Model Gowns**  
 AT  
**Shgs. 125-00.**  
 Union Buildings Government Road, Box 215.

FOR adequate protection against collisions or traffic damage, your car should be equipped with a Weed Bumper and a set of Weed Fender Guards.

Ask for them by name. Your dealer will attach them.

### WEED BUMPERS

**B. FLORENZ**  
 FRENCH HAIRDRESSER  
 BUSINESS TRANSFERRED FROM NORFOLK HOTEL TO YORK HOUSE (late Malton Max) GOVERNMENT ROAD, OPP. TROADERS, P. O. BOX 923.

## DOGS

That are Valued Should be Fed ON Our Dog Rusk.

## ELLIOTS

P. O. Box 175. Phone 60.

The Ideal Present  
**Dunhill's Lighter.**



STANDARD STATIONERY STORES.  
 P. O. BOX 380. NAIROBI. PHONE 678.

TOPICS FOR MOTORISTS.

### The One-Speed Driver.

Irritating Type of Road User.

As my first blank is so typical of a large and unfortunate number of one-speeders, I feel that it is worth making some publicity, in the vain hope that others of the type—blank brains are in quite numerous—will be warned by his own notorious type for years and years hence. I have never known a man who always thinks that the fault lies with the other fellow.

Another humorous point is that Blank considers himself to be a very useful driver, just because he never is in any circumstances involved in traffic accidents. He is really dangerous because only if compelled by traffic he will do it. He has never his car less than 25 m.p.h. It is in the "snail" gear.

Only on one occasion has Blank come out in my car, and he was certainly not at all, certainly not because set driving rapidly seemed to him to be the altogether wrong. Whenever the speedometer indicated 20 m.p.h. he was visibly distressed and when a long straight stretch of road dawned on him, he would endeavour to indulge in a short burst of 30 m.p.h. he would use a mud-bog and urged him to use a mud-bog and urged him to use a mud-bog.

When we set off on a suburban road, indicated by many minor roads, we were told that the local was driven much speedier, and our speed was 30 m.p.h.—no more to his, however indicated. This did not vary very particularly, but a little more travelling made the most important road in the district at right angles to the district of a dangerous T-junction made blank by houses on each side.

Stentor Notes

When we were within about 20 yards of the said spot, Blank commented a series of "stentor" notes, on a desultory

**Your Efficiency DEPENDS UPON ACCURATE UNFADING VISION GOOD EYE-SIGHT IS THE FIRST ESSENTIAL TO CLARITY OF THOUGHT.**

TESTED TO-DAY.

OPHTHALMIC OPTICIANS.  
**Doobies, Ltd.**  
 Box 93, NAIROBI. Phone 60.

**Your Own Home and Plot FOR £500 DOWN**  
 balance on mortgage at 8 per cent. Newly Built House, with all modern conveniences. Apply  
**R. O. PRESTON**  
 Box 807, Nairobi, or Office, Westlands.

## P. S. H. O.

SELLING AGENTS—  
**Universal Export Co., Ltd.,**  
 P. O. Box 540. NAIROBI. Tel. Enterprise.

FOR  
**Thika Sisal Co., Ltd., Thika.**

## B. E. A. Saw Mills

MILLS AND OFFICES, WORKSHOP ROAD, NEAR P. W. D. NAIROBI  
 Telephone No. 92. P. O. Box 521, Nairobi.  
 CAMBRON. FODD. MWERI and MUSA  
 Flooring. Ceiling. Monstings.  
 Long length Beams and Camphor Flooring.

### VALVE CLEARANCE AND TIMING.

#### Importance of Correct Tappet Adjustments.

The faulty running of an engine may often be traced to wrongly adjusted tappets. If both sides of the valve stems are tight on the tappet, compression will be poor, starting difficult and pulling back. In addition, the engine will have top dead centre valve clearance will be too tight. This is essential because close blow in the combustion and consequent piston wear while the exhaust valve cannot see properly their heads will be burned and, possibly, the settings will warp. Good work should never be used when adjusting the tappets, it is essential always to use a feeler gauge of the correct thickness, say that a fourths amount of mistake can be given.

In countries with valve clearance there is a great deal to be learned from the fact that the tappets should be set on the correct side of the valve stems. It is often a mistake to think that the tappets should be set on the correct side of the valve stems. It is often a mistake to think that the tappets should be set on the correct side of the valve stems.

#### Delicate Adjustments.


The test must be made, of course, with the tappets adjusted to the correct clearance, and it will be appreciated that an alteration in the timing can be made if necessary.

Let us suppose that the inlet valve should begin to open exactly on top dead centre, but that it does not close on top dead centre. By increasing the tappet clearance an extra thousandth

of an inch on the discrepancy can be corrected, and the additional clearance need cause no concern, because it is far better to use a thousandth of an inch on the left of the valve and have the timing correct than vice versa.

The exhaust valve timing will also pay for treatment. It is also a point to remember that the most critical point in the cycle of operation is a petrol engine is that at which the exhaust valve closes and the inlet open round about top dead centre. The opening of the exhaust valve before top dead centre and the closing of the inlet after top dead centre are, within limits, not nearly so important.

The valve of each cylinder should be checked in turn at the top dead centre position, but if the timing is set on the wrong side—i.e., that the inlet valve clearance than that recommended is used to correct the timing, it is better to let well alone and then correct the timing of the valves. Timing adjustments should be made when the car is running wheels—"Eh-tange".



Only  
**H-O.**  
 Quick Cooking Oats  
 Makes Porridge in 2 to 3 minutes.

Delicate Adjustments.  
 The test must be made, of course, with the tappets adjusted to the correct clearance, and it will be appreciated that an alteration in the timing can be made if necessary.

Let us suppose that the inlet valve should begin to open exactly on top dead centre, but that it does not close on top dead centre. By increasing the tappet clearance an extra thousandth

Good baking powder can be used in all varieties of bread-making. It is essential for all varieties of bread-making. It is essential for all varieties of bread-making.

Prepared by P. PHILLIPS P. O. Box 100 Nairobi, Kenya

## Does uphill work with downhill ease

# "RP"

## Anglo-Persian Oil Co., (KENYA) Ltd.

## H-O.

### Quick Cooking Oats Makes Porridge in 2 to 3 minutes.

Obtainable at  
**Beliram Parimal & Co.**  
 (Established 1906.)  
 Corner Swamp Road and Government Road, P.O. Box 10, NAIROBI. P.O. Box 51 Also P.O. Box 47, MUMBARA.

## SWEET CROP

PACKED IN 2 OZ. & 4 OZ. AIRTIGHT TINS

Chew the Best Smoking Mixture



Particular smokers have proved that this provides a smooth, cool smoke with an entire absence of bite. One 2oz. of this fine tobacco and an 8oz. of pipe tobacco gives popularity.

## Iron Bark Poles

WE NOW HAVE AMPLE STOCKS OF THESE AND CAN DELIVER IMMEDIATELY ON RECEIPT OF ORDER.

## Reliance Transport Co. Limited.

P. O. Box 482 Sadler Street. Telephone 331.

## Fuel and Transport

STANDARD FUEL—Shillings 18/- per ton delivered within Municipal Area.  
 CUT FUEL—Shillings 23/- per ton delivered within Municipal Area.

SPECIAL QUOTATIONS on large quantities in Kenya.

CLEARING AND FORWARDING AGENCY—We can now handle goods from the Coast to your Godown anywhere in Kenya, at reasonable rates.

SPECIAL QUOTATIONS for Local Garages, for Clearing and Forwarding Motor Cars from the Coast to any Godown in the Municipal Area 30/- per car. Documents to be handed to the Ukamba Transport Co. when your attention will be given them.

## UKAMBA TRANSPORT Coy

Telephone 488. P. O. Box 566.  
 OUR MOTTO: PROMPTNESS.

## Souza Junior & Dias

The Pioneer and Leading Stores  
 Government Road, Nairobi.

We do not cultivate a policy of Ruah. Do your shopping with us and save time and money. We wish to make your dealings with us profitable to you.

We Stock Fresh Supplies Only.  
 Direct Importer of Provisions, Wines, Spirits, Liqueurs, Toilet Requisites, Cigars, Tobacco, etc. etc. etc.

Ask for our Price List to-day. P. O. Box 241.

## STATIONERY

AT THE  
 STANDARD STATIONERY STORES.

## John Rifkin

SIXTH AVENUE  
 P. O. Box 112, NAIROBI



WAGON BUILDER  
 BLACKSMITH FARRIER  
 STOCK OF ALL KINDS OF  
 WAGONS AND ALL WAGON  
 All kinds of Repairs Made by







**COLONIAL PARLIAMENTS**  
**BOARD PROPOSAL.**  
 Invitations to a Conference.  
**A NECESSARY ENQUIRY.**

**ORIENTAL CONGRESS**  
**AT OXFORD.**  
**THE ANGIET EAST.**  
**RAIN WANTED.**

**"(A. S. Student) (S. P.)"**  
**NAIROBI SUFFERING FROM CHEESE SHORTAGE.**  
**FARMER'S SUGGESTION TO TOWNSHIP.**  
**TO BE HELD IN 1922.**

**On This Day**  
**LYRIC HALL.**  
**Showing Shortly**  
**"LOST at SEA"**  
**THE FAKE**  
**FEATURING**  
**Henry Edward**  
**SHOWING ON**  
**1st September**  
**PRICES: 5/- Reserved and 3/- Unreserved.**

**STANDARD SPECIAL**  
**CONVENTION.**  
 Monday, Monday.  
 Following the adjournment of the Executive and the Commission of Enquiry into the Administration of the Colonial Conference, the Standard Special Convention will be held on Monday, 27th October, in the Legislative Council Chamber, at 11 o'clock.

**THE EAST AFRICAN EXHIBITION.**  
 Monday, Monday.  
 The East African Exhibition opened on Monday, 27th August, at the Exhibition Grounds, Nairobi. The exhibition is the first of its kind in the East African region.

**STANDARD SPECIAL**  
**CONVENTION.**  
 Monday, Monday.  
 The Standard Special Convention will be held on Monday, 27th October, in the Legislative Council Chamber, at 11 o'clock.

**Supreme Shoe Value**  
 No. 37.  
 25/-  
 18/50  
 20/-  
 Boys  
 18/50  
 DRESS  
 SHOES.

**War against Malaria.**  
 The Government has issued orders for the eradication of malaria in the East African region. The orders require the use of DDT and other insecticides to destroy the breeding places of the malaria-carrying mosquitoes.

**REPORT.**  
 The East African Exhibition has been a great success. The exhibition has attracted a large number of visitors and has shown the progress of the East African region.

**Small Government Commission.**  
 The Small Government Commission has reported that the Government should reduce the number of departments and merge some of them.

**Today's Trains.**  
 Trains are due to leave Nairobi today for the following destinations:  
 Mombasa ..... 4.00 p.m.  
 Malindi ..... 7.47 p.m.  
 Eldoret ..... 12.30 p.m.  
 Thika, Nyeri and ..... 1.00 p.m.  
 New Rivers ..... 1.00 p.m.  
 Thika ..... 1.00 p.m.  
 The train from Mombasa due to arrive at Nairobi at 10.45 a.m.

**THE MALINDI WATSON'S ALPOINTEER.**  
 The Malindi Watson's Alpoioneer is a young man who has been appointed to the position of Alpoioneer in the East African region.

**Every Fine of Life.**  
 The East African Exhibition has been a great success. The exhibition has attracted a large number of visitors and has shown the progress of the East African region.

**Small Government Commission.**  
 The Small Government Commission has reported that the Government should reduce the number of departments and merge some of them.

**Today's Trains.**  
 Trains are due to leave Nairobi today for the following destinations:  
 Mombasa ..... 4.00 p.m.  
 Malindi ..... 7.47 p.m.  
 Eldoret ..... 12.30 p.m.  
 Thika, Nyeri and ..... 1.00 p.m.  
 New Rivers ..... 1.00 p.m.  
 Thika ..... 1.00 p.m.  
 The train from Mombasa due to arrive at Nairobi at 10.45 a.m.

**Protection and Progress.**  
 The Government has issued orders for the protection and progress of the East African region. The orders require the use of DDT and other insecticides to destroy the breeding places of the malaria-carrying mosquitoes.

**Every Fine of Life.**  
 The East African Exhibition has been a great success. The exhibition has attracted a large number of visitors and has shown the progress of the East African region.

**Small Government Commission.**  
 The Small Government Commission has reported that the Government should reduce the number of departments and merge some of them.

**Today's Trains.**  
 Trains are due to leave Nairobi today for the following destinations:  
 Mombasa ..... 4.00 p.m.  
 Malindi ..... 7.47 p.m.  
 Eldoret ..... 12.30 p.m.  
 Thika, Nyeri and ..... 1.00 p.m.  
 New Rivers ..... 1.00 p.m.  
 Thika ..... 1.00 p.m.  
 The train from Mombasa due to arrive at Nairobi at 10.45 a.m.

**Conference Arranged.**  
 The Government has arranged a conference to discuss the progress of the East African region. The conference will be held in Nairobi on Monday, 27th October.

**Every Fine of Life.**  
 The East African Exhibition has been a great success. The exhibition has attracted a large number of visitors and has shown the progress of the East African region.

**Small Government Commission.**  
 The Small Government Commission has reported that the Government should reduce the number of departments and merge some of them.

**THEATRE ROYAL**  
**NIGHTLY AT 8.45.**  
**TO-NIGHT.**  
**WALLACE BERRY**  
**IN THE THRILLING SCREEN VERSION OF SIR WALTER SCOTT'S FAMOUS NOVEL**  
**"KING RICHARD THE LION-HEARTED"**

**For Awards and Conventions**  
**A Wonderful Tonic.**  
**"DUMINY" CHAMPAGNE.**  
**Vintage 1921**  
 In 4 BOTTLES (N.T.P.S.)  
 Shs. 5/50.

**Every Fine of Life.**  
 The East African Exhibition has been a great success. The exhibition has attracted a large number of visitors and has shown the progress of the East African region.

**Small Government Commission.**  
 The Small Government Commission has reported that the Government should reduce the number of departments and merge some of them.

**THEATRE ROYAL**  
**NIGHTLY AT 8.45.**  
**TO-NIGHT.**  
**WALLACE BERRY**  
**IN THE THRILLING SCREEN VERSION OF SIR WALTER SCOTT'S FAMOUS NOVEL**  
**"KING RICHARD THE LION-HEARTED"**

**For Awards and Conventions**  
**A Wonderful Tonic.**  
**"DUMINY" CHAMPAGNE.**  
**Vintage 1921**  
 In 4 BOTTLES (N.T.P.S.)  
 Shs. 5/50.

**Every Fine of Life.**  
 The East African Exhibition has been a great success. The exhibition has attracted a large number of visitors and has shown the progress of the East African region.

**Small Government Commission.**  
 The Small Government Commission has reported that the Government should reduce the number of departments and merge some of them.

**THEATRE ROYAL**  
**NIGHTLY AT 8.45.**  
**TO-NIGHT.**  
**WALLACE BERRY**  
**IN THE THRILLING SCREEN VERSION OF SIR WALTER SCOTT'S FAMOUS NOVEL**  
**"KING RICHARD THE LION-HEARTED"**

**For Awards and Conventions**  
**A Wonderful Tonic.**  
**"DUMINY" CHAMPAGNE.**  
**Vintage 1921**  
 In 4 BOTTLES (N.T.P.S.)  
 Shs. 5/50.

**Every Fine of Life.**  
 The East African Exhibition has been a great success. The exhibition has attracted a large number of visitors and has shown the progress of the East African region.

**Small Government Commission.**  
 The Small Government Commission has reported that the Government should reduce the number of departments and merge some of them.

**THEATRE ROYAL**  
**NIGHTLY AT 8.45.**  
**TO-NIGHT.**  
**WALLACE BERRY**  
**IN THE THRILLING SCREEN VERSION OF SIR WALTER SCOTT'S FAMOUS NOVEL**  
**"KING RICHARD THE LION-HEARTED"**

**For Awards and Conventions**  
**A Wonderful Tonic.**  
**"DUMINY" CHAMPAGNE.**  
**Vintage 1921**  
 In 4 BOTTLES (N.T.P.S.)  
 Shs. 5/50.

**Every Fine of Life.**  
 The East African Exhibition has been a great success. The exhibition has attracted a large number of visitors and has shown the progress of the East African region.

**Small Government Commission.**  
 The Small Government Commission has reported that the Government should reduce the number of departments and merge some of them.

**THEATRE ROYAL**  
**NIGHTLY AT 8.45.**  
**TO-NIGHT.**  
**WALLACE BERRY**  
**IN THE THRILLING SCREEN VERSION OF SIR WALTER SCOTT'S FAMOUS NOVEL**  
**"KING RICHARD THE LION-HEARTED"**

# Gibbs Shaving Cream gives personal attention to every hair

Gibbs shaving cream is the most famous in the world. It is the only shaving cream that is sold in a tin. It is the only shaving cream that is sold in a tin. It is the only shaving cream that is sold in a tin.



**Gibbs SHAVING CREAM**  
The Cream of Shaves  
BRITISH MADE



## The Man with responsibilities

There is no greater responsibility than good health to the man of affairs. The foundation of good health is often the simplicity and naturalness of the daily diet.

Because Quaker Oats is a natural food, made from the most nutritious part of the best wheat crop, it contains the essential elements for perfect nutrition, namely, vitamins, carbohydrates, and mineral salts. It is easily digestible, gently laxative. It is energizing, health-building.



## Quaker Oats

# NOTICE

THE VICTORIA NYANZA SUGAR COMPANY,

LIMITED have arranged with the undermentioned Stores to retail their No. 1 White Crystal Sugar at the following prices—

Per pound ..... Cents /35  
Per pocket of 56 lbs. .... Shgs. 16/15

### NAIROBI.

- S. Jacobs, Limited.
- R. B. Duncan, "NAIROBI HOUSE"
- "NAKURU.
- S. Jacobs, Limited

### ELDERET.

- S. Jacobs, Limited
- Wm Douglas.

## UNWANTED AGENTS IN BRITAIN

Man Who Cannot be Deported.

### A DIFFICULT QUESTION.

There is a number of agents of British origin, who are in the habit of visiting the House of Commons, and who have been repeatedly asked to depart from the country, but who are unable to do so.

These agents are known as "Unwanted Agents" and are a source of great annoyance to the British Government. They are often found in the House of Commons, and are usually seen in the company of some of the members of the House.

On the other hand, it is not a British, or any other country's subject, who is in the habit of visiting the House of Commons, and who are usually seen in the company of some of the members of the House.

On inquiry at the Home Office, it was pointed out that nothing could be done at the Home Office, unless it was proved that the agent was of some other country, and that he had no right to be in the country.

### Uganda Cotton.

### A DISCUSSION ON STANDARDS.

The weather continues to be favorable and planting is proceeding with great activity in the Uganda Province. Many of the farmers are now ready to proceed with the planting of cotton.

The Director of Agriculture and the Cotton Association are holding a meeting at the Uganda Cotton Association, to discuss the standards of cotton.

Up to the present no much attention has been paid to the standards of cotton. It is now necessary to consider the standards of cotton, and to see that the cotton is of the best quality.

An interesting agenda is to be discussed at the 10th meeting to be held in Kampala on September 10. The agenda includes the standards of cotton, and the standards of the cotton industry.

## KAMPALA TO HAVE A WATER SUPPLY.

Scheme Approved by Secretary of State.

### SUCCESS OF AGITATION.

The Secretary of State has approved the scheme for the supply of water to Kampala. The scheme is a result of the agitation of the residents of Kampala.

This is a very great step in the right direction. The sanitary condition of the town and the health of the residents of Kampala are a matter of great importance. The scheme will provide the town with a good water supply, and will improve the sanitary condition of the town.

### Late Sir C. Felling.

Uganda's Regret at His Passing.

It was with the deepest sorrow that Uganda learned of the death of Sir Charles Felling. Sir Charles was a man of great ability and a man of great character. He was a man who was devoted to the service of Uganda, and who was a man who was a great asset to the country.

It is a great loss to the country that Sir Charles has passed away. His death is a great blow to the country, and it is a great loss to the people of Uganda. Sir Charles was a man who was a great asset to the country, and who was a man who was a great asset to the people of Uganda.

### Off for the Holidays.

MOTORING'S EFFECT ON THE HEARER.

After the very warm weather which has been experienced here, it is not surprising that many of the motorists are now off for the holidays. The weather is a great factor in the decision to go on a motor trip.

The weather is a great factor in the decision to go on a motor trip. It is a great pleasure to go on a motor trip, and it is a great pleasure to go on a motor trip in the company of friends and family.

It is a great pleasure to go on a motor trip, and it is a great pleasure to go on a motor trip in the company of friends and family. The weather is a great factor in the decision to go on a motor trip.

# WHERE TO STAY Town & Country.

**THE HILL PRIVATE HOTEL.**  
VALLEY ROAD,  
All Modern Conveniences. By Bus, Refrigerator, Garage, Motor Service and Complete Bathed suite, will be appreciated by those seeking a quiet, comfortable and ideal home.  
Phone 850 P.O. Box 753

**LIMURU BRACKENHURST HOTEL**  
HUDSON CANY.

**CLAIRMONT Residential Hotel.**  
One of Kenya's beauty spots within 7 miles from Nairobi by good motor road. Ideal for a quiet, comfortable and ideal home. Splendid swimming pool, free from all impurities with newly erected diving board and dressing rooms.  
Terms from 10/- per day inclusive. Excellent Cuisine and choicest wines stocked under supervision of the Proprietors.  
P.O. Box 520 Nairobi. Telegrams: Clairmont.

**High View Hotel.**  
LIMURU (D Route).  
Healthy Situation. Ideal for Holidays. Luncheon, Tea, Tennis, etc., Terms Moderate.

**THE White Rhino Hotel NYERI**  
FOR BREAKFAST, LUNCHEONS, TEAS, DINNERS AND ACCOMMODATION.  
Situated on Main Road; Grams—"Whitrhino."

**BELL INN (On Main Road) NAIVASHA**  
First-Class Accommodation. Electric Lighting throughout. LARGELY A SPECIALITY. CAREY'S SPECIALITY. Large Billiard Room. Beer, Wine, and Spirits. Refreshments. Telephone No. 1500. Full Day Breakfasts. Shs. 18.00. Extra special tariff for week. For Week and Month.

**OKAILEH PRIVATE HOTEL.**  
UNDER PERSONAL SUPERVISION OF MRS. H. JARRETT, Manageress.  
Phone 180. NAIROBI. P.O. Box 188.

**The Naivasha Hotel**  
Naivasha  
Every Convenience and Comfort. Special Weekly and Monthly Terms.

If you want to make sure that your name or firm is included in the New Directory 1929 fill in this form.  
Name.....  
Address.....  
Prof. or Editor. RED BOOK, 128, P.O. Box 800

## The Nakuru Hotel.

The Largest and oldest established hotel in the Midlands. The Proprietor has pleasure in announcing that he has secured the services of Mr. and Mrs. Edgar Archer to take over the management of The Nakuru Hotel. They are due to arrive from England on about September 15th. Mr. Archer has a long and distinguished record in the hotel world. He has been manager in charge of the ROYAL ALBION HOTEL, Broadstairs, the HOTEL METROPOLE, Bexhill-on-Sea, and the BURLINGTON HOTEL, Piccadilly. He has also acted as second manager of The RITZ HOTEL, Piccadilly, and assistant manager of the ST. ERMIN'S HOTEL, Westminster. He comes to Nakuru direct from an engagement as manager of The Royal Crystal Palace Hotel, Upper Norwood. Mrs. Archer has in each case joined her husband in hotel management.

## A Small Selection from our Large Stock of Novels.

# Edgar Wallace

- THE LATEST. The Orator. The Gunner.
- The Flying Squad. Shgs. 4/6, posted Shgs. 7/-.
- LIBRARY EDITION. The Three Oak Mystery. The Dark Days of London. Jack O' Judgment. The Green Rust. The Fellowship of the Frog. A Debt Discharged. The Book of All Power. Also a Good Selection of the "Homes Series" Shgs. 3/6, posted Shgs. 4/-.
- POPULAR EDITION. Penelope of the Polytechnic. The Melody of Death. Eve's Island. A King by Night. Room 15. The Black Abbot. Many other Titles to Choose from. Shgs. 2/6, posted Shgs. 2/8.
- PAPER COVERS. The Law of the Four Just Men. The Clue of the New Pin. The Valley of Ghosts. Double Dan. ACH and COMPANY. 8, 9, 10, 11, 12, 13, 14, 15, 16, 17, 18, 19, 20, 21, 22, 23, 24, 25, 26, 27, 28, 29, 30, 31, 32, 33, 34, 35, 36, 37, 38, 39, 40, 41, 42, 43, 44, 45, 46, 47, 48, 49, 50, 51, 52, 53, 54, 55, 56, 57, 58, 59, 60, 61, 62, 63, 64, 65, 66, 67, 68, 69, 70, 71, 72, 73, 74, 75, 76, 77, 78, 79, 80, 81, 82, 83, 84, 85, 86, 87, 88, 89, 90, 91, 92, 93, 94, 95, 96, 97, 98, 99, 100.

## STANDARD STATIONERY STORES NAIROBI.

# LAST WEEK!!!

## Genuine Sale!

Special Attractive Bargains "only a Week More" so do not miss this chance. Come and get a real value for YOUR MONEY

## Ladharam Stores

P.O. Box 816. NAIROBI. Government Road.

## General Vulcanizing Works

HARDING STREET NEAR BHIMJI HARSHAM. P.O. Box 690. NAIROBI. Most up-to-date vulcanizing plant in Kenya Colony. Competitive Prices. All repairs guaranteed. All sizes of tires and tubes retubed and recrossed. Petrol, Mobiloil, New Tyres, Rubber and accessories stocked.







**Important Notice**  
**Husein & Co.**  
 Desire to thank all their Patrons for their Patronage During Sale.

**BUY YOUR**  
**Chocolates**  
**FRESH**  
 FROM  
**TORRS**

**Hamilton Laing & Co. Ltd.**  
**WESTLANDS BAKERY**  
**OPEN SATURDAY**  
 WRAPPED BREAD, CAKES, ETC.

**MANGALORE DEAL**  
 TILES **TEAK**  
 in Logs and Scantlings  
**Swedish Imported Doors**  
 all sizes in Stock.

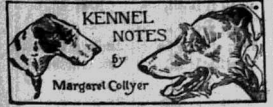
**F. M. BHAIJEE,**  
 Hardware Merchant  
 Phone 383. Indian Bazaar, Nairobi

**Geo. BLOWERS**  
 BUILDING CONTRACTOR, MANUFACTURER & DIRECT IMPORTER.

**CASH WITH ORDER.**

Price Lists:  
 No. 1 to No. 100 (various window and door styles)  
 Note: All prices include material and labor. Delivery charges extra.

**"STANDARD" FEATURE PAGE**



**KENNEL NOTES**  
 Margaret Collyer

Miss Collyer, I think, is welcome to the "Standard" for her articles on "Dog Notes" and "Dog Shows." Her articles are always of interest to the dog fanciers and are well worth reading. Her articles are always of interest to the dog fanciers and are well worth reading.

The James Melville gave the King a Collier dog of the name of King and the King bought it. This is a very interesting story and is well worth reading. The King's dog was a very fine specimen of the breed and was much admired by the King and the Queen.

**Save Capital Outlay**  
 BY  
**Obtaining Your Requirements**  
 FROM  
**SOUTH AFRICA**  
 Trade Commissioner for South Africa.  
 MEMORIAL HALL,  
 P. O. BOX 494,  
 NAIROBI

**ESSJAY LIMITED**  
 Theatre Royal Buildings.  
 Box 924—Phone 877.

**Financial and Property Agent.**  
 Mortgage specialism.  
 Town Properties negotiated,  
 Partnerships arranged,  
 Investments advised on.

**We have sound investments for sums from £100 upwards. In this respect we claim to be better for you than anyone else.**

**J. JACOBS,**  
 Managing Director.

**CEMENT.**  
 HAND BRAND AND FERROCEMENT  
 IMPORTED DEAL AND TEAKWOOD, OILS,  
 PAINTS AND DISTEMPERS, HOUSEHOLD  
 WARE AND BRUSHWARE  
 AT  
**Madamati Suleman Verjee & Sons,**  
 MADAMATI BUILDING, GOVT. ROAD,  
 NAIROBI.

GROCERIES, CONFECTIONERY, AND  
 CIGARETTES AT  
**Hassanali Bros.**  
 MADAMATI BUILDING, GOVT. ROAD,  
 P. O. Box 12. Phone 64. NAIROBI.

**Miss KATHLEEN BATES A.R.C.M.**  
 RECEIVES PUPILS FOR  
 PIANO-FORTE—SINGING—HARMONY.  
 AT HER  
**Music Studio Sixth Avenue.**  
 Postal Address: Box 417.

**PUPILS OBTAINED TWENTY-TWO AWARDS IN THE MUSICAL FESTIVAL JULY 30—AUGUST 4.**

**LAND**  
**Kitale District.**  
 We have parcels of various acreages developed and undeveloped in the Trans Nzoia, for disposal at prices suitable to suit both large and small capitalists (including land for COFFEE, MAIZE, WHEAT, and mixed farming).  
**KIRKWOOD & Co.**  
 Land Agents and Valuers,  
 KITALE.

**Fresh Posho. Maize Meal.**  
 5/40 a lead.  
**RAHM JIVRAJ,**  
 P. O. Box 11, NAIROBI.  
**FOR SALE.**  
 Light Wrought Blincher. Served. Shs. 20/- pair. Single. Mosquito Nets. Double & single. Square or Round Top. Shs. 15/- and 20/- each. Children's Washbasins. Assorted colors and sizes. At Shs. 6/- each. White Heavy Cush Quills. Double and single. At Shs. 15/- and 8/- each. Printed Blinds. Single lead. At Shs. 5/- each. Handwritten Shorthand. Double and single. At Shs. 10/- and 14/- pair. New American Underline Pen. At 6/- each. Special Quill Pen. 602. Geyl. Trade. P. O. Box 622.

**HERBERT BRENON Production**  
**BEAUGESTE**  
 with **Ronald Colman**  
 (BY ARRANGEMENT WITH SAMUEL GOLDWIN)  
 ALICE JEVON. NOAH BEY. WILLIAM POWELL. RALPH FORBES. NEIL HAMILTON. MARY BRIAN. NORMAN TREVOR. VICTOR MLAGALI.

**PLANS OPEN TO-DAY**

**Theatre Royal**  
**Royal**  
**Monday**  
**Wed.**  
**Sept. 3rd. 4th. 5th.**  
**FRIDAY:**  
 Order 7.00 & 5/-  
 Shs. 5/- & Reserved.  
 5/- Unreserved.

**GOOD CONCRETE REQUIRES GOOD BALLAST.**  
 Let me quote you either in Quarry or Delivered.  
 Well matured CONCRETE BLOCKS in stock at SHARP PRICES.  
 Buy of the Original Maker.  
 Delivery by motor lorry at stated rates.

**Theo. SCHOUTEN.**  
 MOMBASA, Govt. Road, NAIROBI, NAKURU,  
 WITH A STAFF OF FIRST CLASS LONDON (WEST END) OPERATORS.  
**At Your Service**  
 FOR EXPERT  
**Hairdressing**  
 PERMANENT WAVING, by the Best Systems.  
 P. O. Box 948. Artistically Executed.

**The House in the Cloud**  
 BY  
**Mrs. Malcolm Mason**  
 A DELIGHTFUL BOOK OF POEMS FOR CHILDREN.  
 Shs. 4/- Ported 4-30.  
**STANDARD STORES,**  
 NAIROBI.

THE SPORTS PAGE

A Smart Man CAN SELL A Gold Brick

but he cannot hook repeat orders. The hobo who stole the pie, and requested his friend to return the dish, and thank the lady, must have anticipated trouble, and the gunsmith who sends his client out with an unreliable equipment to shoot dangerous game, will not readily make money.

GOOD WILL MEANS GOOD BUSINESS. SHAW & HUNTER Box 70, NAIROBI.

Charles Ware

YOUR AGENT. Registered as Jockey. THE ABOVE "REGISTRATION" IS VALID. 1st Party: 10/11 Fiddler; 2nd Party: 10/11 Fiddler; 3rd Party: 10/11 Fiddler; 4th Party: 10/11 Fiddler; 5th Party: 10/11 Fiddler; 6th Party: 10/11 Fiddler; 7th Party: 10/11 Fiddler; 8th Party: 10/11 Fiddler; 9th Party: 10/11 Fiddler; 10th Party: 10/11 Fiddler.

J. H. S. Todd & Co. Ltd. GENERAL MERCHANTS - NAIROBI.



WITH THEIR AD MAKE YOUR GARDEN WORTH WHILE. THE Bradford Manufacturing Co. Ltd. Special Sale of Calanese, Ladies Underwear. 50 only Calanese, 3 in 1, Trinity Sets, Plain, Women's Size 18/50 OS 22/50 each.

GOOD CLUBS DESERVE A GOOD BAG

We have a WONDERFUL SELECTION of Golf Clubs to show you. Changing in price from Shs. 8-50 to Shs. 75-00. You cannot buy better GOLF CLUBS than those We Sell.

COUNTY CRICKET. PARKLANDS TENNIS. HOME RACING.

County Cricket. Hampshire Wins by an Innings.

Including extra for the Parklands Sports Club Handicap Lawn Tennis Tournament are reviewed below. Hampshire won today at Mease, May & Co. Albany, it being the first time that the club of names has been seen in the county's most prominent sportsman's club.

There will be definitely five or six matches in this year's tournament, and probably a sixth, in that the men's singles will be divided into two sections, which does not seem to be the case.

There will be definitely five or six matches in this year's tournament, and probably a sixth, in that the men's singles will be divided into two sections, which does not seem to be the case.

There will be definitely five or six matches in this year's tournament, and probably a sixth, in that the men's singles will be divided into two sections, which does not seem to be the case.

There will be definitely five or six matches in this year's tournament, and probably a sixth, in that the men's singles will be divided into two sections, which does not seem to be the case.

There will be definitely five or six matches in this year's tournament, and probably a sixth, in that the men's singles will be divided into two sections, which does not seem to be the case.

There will be definitely five or six matches in this year's tournament, and probably a sixth, in that the men's singles will be divided into two sections, which does not seem to be the case.

There will be definitely five or six matches in this year's tournament, and probably a sixth, in that the men's singles will be divided into two sections, which does not seem to be the case.

There will be definitely five or six matches in this year's tournament, and probably a sixth, in that the men's singles will be divided into two sections, which does not seem to be the case.

There will be definitely five or six matches in this year's tournament, and probably a sixth, in that the men's singles will be divided into two sections, which does not seem to be the case.

There will be definitely five or six matches in this year's tournament, and probably a sixth, in that the men's singles will be divided into two sections, which does not seem to be the case.

There will be definitely five or six matches in this year's tournament, and probably a sixth, in that the men's singles will be divided into two sections, which does not seem to be the case.

There will be definitely five or six matches in this year's tournament, and probably a sixth, in that the men's singles will be divided into two sections, which does not seem to be the case.

There will be definitely five or six matches in this year's tournament, and probably a sixth, in that the men's singles will be divided into two sections, which does not seem to be the case.

There will be definitely five or six matches in this year's tournament, and probably a sixth, in that the men's singles will be divided into two sections, which does not seem to be the case.

There will be definitely five or six matches in this year's tournament, and probably a sixth, in that the men's singles will be divided into two sections, which does not seem to be the case.

There will be definitely five or six matches in this year's tournament, and probably a sixth, in that the men's singles will be divided into two sections, which does not seem to be the case.

There will be definitely five or six matches in this year's tournament, and probably a sixth, in that the men's singles will be divided into two sections, which does not seem to be the case.

There will be definitely five or six matches in this year's tournament, and probably a sixth, in that the men's singles will be divided into two sections, which does not seem to be the case.

There will be definitely five or six matches in this year's tournament, and probably a sixth, in that the men's singles will be divided into two sections, which does not seem to be the case.

There will be definitely five or six matches in this year's tournament, and probably a sixth, in that the men's singles will be divided into two sections, which does not seem to be the case.

There will be definitely five or six matches in this year's tournament, and probably a sixth, in that the men's singles will be divided into two sections, which does not seem to be the case.

Tournament Entries Close Today.

Replay of Boyes Cup Semi-final Today. SERVICE VS. GALLIES. The replay of the semi-final for the John Hooper Cup is between Oldhamians 'A' and 'B' and will be played on the Oldham ground.

The following revised local football fixture list is published for general information. It is the unavoidable rearrangement of fixtures.

Thursday, August 30: Police vs. Railway (Key Cup).

Friday, September 1: Police vs. Monday (General Cup).

Saturday, September 2: Police vs. Monday (General Cup).

Sunday, September 3: Police vs. Monday (General Cup).

Monday, September 4: Police vs. Monday (General Cup).

Tuesday, September 5: Police vs. Monday (General Cup).

Wednesday, September 6: Police vs. Monday (General Cup).

Thursday, September 7: Police vs. Monday (General Cup).

Friday, September 8: Police vs. Monday (General Cup).

Saturday, September 9: Police vs. Monday (General Cup).

Sunday, September 10: Police vs. Monday (General Cup).

Monday, September 11: Police vs. Monday (General Cup).

Tuesday, September 12: Police vs. Monday (General Cup).

Wednesday, September 13: Police vs. Monday (General Cup).

Thursday, September 14: Police vs. Monday (General Cup).

Friday, September 15: Police vs. Monday (General Cup).

Saturday, September 16: Police vs. Monday (General Cup).

Sunday, September 17: Police vs. Monday (General Cup).

Monday, September 18: Police vs. Monday (General Cup).

Tuesday, September 19: Police vs. Monday (General Cup).



Recent successes at Bisley have testified to the excellence and accuracy of

KYNCOH AMMUNITION

made in all calibres from .22 to .600.

Kyncoch ammunition is an essential part of a big game hunter's equipment.

The Kyncoch .22 and revolver cartridges - British and Home. Available from all licensed dealers.

Wholesale and Retail Agents: London, E.P.C.

A. HOGG, Mutos B'dgs., NAIROBI.

(ESTD 1904).

Box Handbags, York, 2/6; 3/6; 4/6; 5/6; 6/6; 7/6; 8/6; 9/6; 10/6; 11/6; 12/6; 13/6; 14/6; 15/6; 16/6; 17/6; 18/6; 19/6; 20/6; 21/6; 22/6; 23/6; 24/6; 25/6; 26/6; 27/6; 28/6; 29/6; 30/6; 31/6; 32/6; 33/6; 34/6; 35/6; 36/6; 37/6; 38/6; 39/6; 40/6; 41/6; 42/6; 43/6; 44/6; 45/6; 46/6; 47/6; 48/6; 49/6; 50/6; 51/6; 52/6; 53/6; 54/6; 55/6; 56/6; 57/6; 58/6; 59/6; 60/6; 61/6; 62/6; 63/6; 64/6; 65/6; 66/6; 67/6; 68/6; 69/6; 70/6; 71/6; 72/6; 73/6; 74/6; 75/6; 76/6; 77/6; 78/6; 79/6; 80/6; 81/6; 82/6; 83/6; 84/6; 85/6; 86/6; 87/6; 88/6; 89/6; 90/6; 91/6; 92/6; 93/6; 94/6; 95/6; 96/6; 97/6; 98/6; 99/6; 100/6.

Box Legit. Domestic, 18/6; 19/6; 20/6; 21/6; 22/6; 23/6; 24/6; 25/6; 26/6; 27/6; 28/6; 29/6; 30/6; 31/6; 32/6; 33/6; 34/6; 35/6; 36/6; 37/6; 38/6; 39/6; 40/6; 41/6; 42/6; 43/6; 44/6; 45/6; 46/6; 47/6; 48/6; 49/6; 50/6; 51/6; 52/6; 53/6; 54/6; 55/6; 56/6; 57/6; 58/6; 59/6; 60/6; 61/6; 62/6; 63/6; 64/6; 65/6; 66/6; 67/6; 68/6; 69/6; 70/6; 71/6; 72/6; 73/6; 74/6; 75/6; 76/6; 77/6; 78/6; 79/6; 80/6; 81/6; 82/6; 83/6; 84/6; 85/6; 86/6; 87/6; 88/6; 89/6; 90/6; 91/6; 92/6; 93/6; 94/6; 95/6; 96/6; 97/6; 98/6; 99/6; 100/6.

Box F. Finest - 1 extra 1/2, 2 1/2, 3 1/2, 4 1/2, 5 1/2, 6 1/2, 7 1/2, 8 1/2, 9 1/2, 10 1/2, 11 1/2, 12 1/2, 13 1/2, 14 1/2, 15 1/2, 16 1/2, 17 1/2, 18 1/2, 19 1/2, 20 1/2, 21 1/2, 22 1/2, 23 1/2, 24 1/2, 25 1/2, 26 1/2, 27 1/2, 28 1/2, 29 1/2, 30 1/2, 31 1/2, 32 1/2, 33 1/2, 34 1/2, 35 1/2, 36 1/2, 37 1/2, 38 1/2, 39 1/2, 40 1/2, 41 1/2, 42 1/2, 43 1/2, 44 1/2, 45 1/2, 46 1/2, 47 1/2, 48 1/2, 49 1/2, 50 1/2, 51 1/2, 52 1/2, 53 1/2, 54 1/2, 55 1/2, 56 1/2, 57 1/2, 58 1/2, 59 1/2, 60 1/2, 61 1/2, 62 1/2, 63 1/2, 64 1/2, 65 1/2, 66 1/2, 67 1/2, 68 1/2, 69 1/2, 70 1/2, 71 1/2, 72 1/2, 73 1/2, 74 1/2, 75 1/2, 76 1/2, 77 1/2, 78 1/2, 79 1/2, 80 1/2, 81 1/2, 82 1/2, 83 1/2, 84 1/2, 85 1/2, 86 1/2, 87 1/2, 88 1/2, 89 1/2, 90 1/2, 91 1/2, 92 1/2, 93 1/2, 94 1/2, 95 1/2, 96 1/2, 97 1/2, 98 1/2, 99 1/2, 100 1/2.

DOUBLE AND TRIPLE STRENGTH. Cash or Deposit accounts. Special Credit Accounts may be opened on satisfactory reference. Following any rates.

Fair Prices - Security - Prompt Settlement.

Wet. H. T. Batteries for Wireless

APPLY - KENYA AGENCY Ltd. UNION BUILDING, GOVERNMENT ROAD, NAIROBI.

Box 781.

Another Musical Festival.

We have just unpacked a consignment of H.M.V. Records by the undermentioned famous artists. The artists - like the H.M.V. Records - are supreme in their own line and lovers of good music should take an early opportunity of inspecting this selection.



Only the standard of price, soundness, and variety of the H.M.V. Records can be compared with those of other companies.

KENSITAS

It is good to really good Cigarettes.

D. EPSTEIN & CO. NAIROBI.

100, 101, 102, 103, 104, 105, 106, 107, 108, 109, 110, 111, 112, 113, 114, 115, 116, 117, 118, 119, 120, 121, 122, 123, 124, 125, 126, 127, 128, 129, 130, 131, 132, 133, 134, 135, 136, 137, 138, 139, 140, 141, 142, 143, 144, 145, 146, 147, 148, 149, 150, 151, 152, 153, 154, 155, 156, 157, 158, 159, 160, 161, 162, 163, 164, 165, 166, 167, 168, 169, 170, 171, 172, 173, 174, 175, 176, 177, 178, 179, 180, 181, 182, 183, 184, 185, 186, 187, 188, 189, 190, 191, 192, 193, 194, 195, 196, 197, 198, 199, 200.

S. Jacobs Ltd., NAIROBI.

THE EASTERN AFRICA SHOW TO BE HELD AT NAIROBI October 2nd and 3rd, 1928.

Entries for Horses, Cattle, Sheep, Pigs, Farm Produce, Poultry, Dogs, Home Industries etc. will be closed ON AUGUST 31st.

All Communications to be addressed to THE SECRETARY, BOX 71, NAIROBI.



**KENYA BEER**  
Wholesome and Appetizing.  
**LIGHT OR DARK**

No. 4063. REGISTERED AT THE GENERAL POST OFFICE AS A NEWSPAPER.

GUARANTEED THE LARGEST CIRCULATION OF ANY NEWSPAPER IN KENYA, UGANDA, TANGANYIKA AND ZANZIBAR.

DAILY EDITION.  
**THE EAST AFRICAN**  
PAGES.

**The LOUNGE**  
For Morning and Afternoon TEAS  
Open on Sundays for Non-Residents  
The New Stanley Hotel  
Price 30 CENTS.

**PEACE LINECHON**  
NEARLY MARKED.  
FRITITION OMBUDY.  
Suffragettes and the Delegates.

Women, Suffragettes and Delegates.  
The peace linechon nearly marked.

**FRITITION OMBUDY.**  
Suffragettes and the Delegates.  
The peace linechon nearly marked.

**Leader Interviewed.**  
The peace linechon nearly marked.

**Special**  
The peace linechon nearly marked.

**Special**  
The peace linechon nearly marked.

**Special**  
The peace linechon nearly marked.

**UGANDA DEPARTMENT OF AGRICULTURE.**  
The peace linechon nearly marked.

**Weather's Bad Effect on All Crops.**  
The peace linechon nearly marked.

**TOO MANY DINARIES IN THE COUNTRY.**  
The peace linechon nearly marked.

**TOO MANY DINARIES IN THE COUNTRY.**  
The peace linechon nearly marked.

**TOO MANY DINARIES IN THE COUNTRY.**  
The peace linechon nearly marked.

**TOO MANY DINARIES IN THE COUNTRY.**  
The peace linechon nearly marked.

**TOO MANY DINARIES IN THE COUNTRY.**  
The peace linechon nearly marked.

**TOO MANY DINARIES IN THE COUNTRY.**  
The peace linechon nearly marked.

**TOO MANY DINARIES IN THE COUNTRY.**  
The peace linechon nearly marked.

**TOO MANY DINARIES IN THE COUNTRY.**  
The peace linechon nearly marked.

**TOO MANY DINARIES IN THE COUNTRY.**  
The peace linechon nearly marked.

**TOO MANY DINARIES IN THE COUNTRY.**  
The peace linechon nearly marked.

**TOO MANY DINARIES IN THE COUNTRY.**  
The peace linechon nearly marked.

**TOO MANY DINARIES IN THE COUNTRY.**  
The peace linechon nearly marked.

**TOO MANY DINARIES IN THE COUNTRY.**  
The peace linechon nearly marked.

**LEGISLATIVE COUNCIL.**  
The peace linechon nearly marked.

**Amendment to the Immigration Bill.**  
The peace linechon nearly marked.

**Amendment to the Immigration Bill.**  
The peace linechon nearly marked.

**Amendment to the Immigration Bill.**  
The peace linechon nearly marked.

**Amendment to the Immigration Bill.**  
The peace linechon nearly marked.

**Amendment to the Immigration Bill.**  
The peace linechon nearly marked.

**Amendment to the Immigration Bill.**  
The peace linechon nearly marked.

**Amendment to the Immigration Bill.**  
The peace linechon nearly marked.

**Amendment to the Immigration Bill.**  
The peace linechon nearly marked.

**Amendment to the Immigration Bill.**  
The peace linechon nearly marked.

**Amendment to the Immigration Bill.**  
The peace linechon nearly marked.

**Amendment to the Immigration Bill.**  
The peace linechon nearly marked.

**Amendment to the Immigration Bill.**  
The peace linechon nearly marked.

**Amendment to the Immigration Bill.**  
The peace linechon nearly marked.

**Amendment to the Immigration Bill.**  
The peace linechon nearly marked.

**TROUT FISHING AND GAME LAWS.**  
The peace linechon nearly marked.

**Select Committee Report on Bills.**  
The peace linechon nearly marked.

**Select Committee Report on Bills.**  
The peace linechon nearly marked.

**Select Committee Report on Bills.**  
The peace linechon nearly marked.

**Select Committee Report on Bills.**  
The peace linechon nearly marked.

**Select Committee Report on Bills.**  
The peace linechon nearly marked.

**Select Committee Report on Bills.**  
The peace linechon nearly marked.

**Select Committee Report on Bills.**  
The peace linechon nearly marked.

**Select Committee Report on Bills.**  
The peace linechon nearly marked.

**Select Committee Report on Bills.**  
The peace linechon nearly marked.

**Select Committee Report on Bills.**  
The peace linechon nearly marked.

**Select Committee Report on Bills.**  
The peace linechon nearly marked.

**Select Committee Report on Bills.**  
The peace linechon nearly marked.

**Select Committee Report on Bills.**  
The peace linechon nearly marked.

**Select Committee Report on Bills.**  
The peace linechon nearly marked.

**EVERY WOMAN CAN USE SUCCESSFULLY THE NEW McCALL PRINTED PATTERN**  
The peace linechon nearly marked.

**See Our Special Window Display of All NEW DRESS MATERIALS.**  
The peace linechon nearly marked.

**DRESS VIVELAS.**  
The peace linechon nearly marked.

**CHECK POPLINS.**  
The peace linechon nearly marked.

**PRINTED ART SILK.**  
The peace linechon nearly marked.

**CHECK TOBRALCO.**  
The peace linechon nearly marked.

**FANCY RAYONS.**  
The peace linechon nearly marked.

**TRICOLINE.**  
The peace linechon nearly marked.

**CREPE DE CHINE.**  
The peace linechon nearly marked.

**VISYLKA.**  
The peace linechon nearly marked.

**LIZARD CREPES.**  
The peace linechon nearly marked.

**MACCLESSFIELD SILKS.**  
The peace linechon nearly marked.

**MARICHNE.**  
The peace linechon nearly marked.

**COATING TWEEDS.**  
The peace linechon nearly marked.

**WHITEWAYS Nairobi.**  
The peace linechon nearly marked.

# FENCING



USE THE WORLD OVER

## Richard Johnson's Wire

### Varexo Steel Droppers



ANY WIRE FENCE



Whatever the number and spacing of the wires.

Write, in stock. Orders booked for other times.

AGENTS—

## Dalgaty & Co. Ltd.

ELDORET. NAIROBI. MOMBASA.

# BARGAINS

A limited number of NEW IMPERIAL MOTOR-CYCLES to be sold at greatly reduced prices in order to make room for 1938 MODELS. Cheaper than walking SPARE PARTS OF HARLEY, TRIUMPH AND NEW IMPERIALS IN STOCK.

T. A. SAFI

T. A. SAFI GARAGE, Near N. B. of India.

P.O. Box 250, Phone 170.

## Kenya Loan & Discount Co., Ltd.

NAIROBI.

OFFICES— P.O. Box 546.  
1st Floor, Court Chambers.

### FINANCIAL AGENTS.

BILLS DISCOUNTED.  
SHORT-TERM LOANS GRANTED.  
ANY REALISABLE ASSET NEGOTIATED FOR CASH.

Call or Write, Strictest Confidence. Established 1921.

## PEASANTS' WAR IN CHINA

Strong Resistance to Government.

APPEAL TO BRITERS?

A peasant war is raging ferociously in the districts in China. Government troops have been unsuccessful in completely subduing the peasants in the upper part of the country, and in the lower part called by the Chinese 'red' areas. It is thought in China that, if the rebels are too far pushed, they may appeal to the British for mediation as they are the nearest neighbour, in whom they have confidence, and who have in common with the Chinese Government. Should the British Government decide to mediate, the rebels may approach the Chinese Government to permit the British to refer gradually towards the British Frontier, where they will be forced to sue for peace.

Genialia Writes.

Meanwhile, they are determined to carry on a campaign against the British, which the Government troops find difficult to penetrate. The Chinese Government will probably be ultimately victorious as they are better equipped with arms and funds. If the British decide to use their influence to effect a settlement, it will be well within the next few months. If they refuse to interfere on the ground that the dispute is internal and administrative, it is probable that the Chinese will really help the rebels. The British Government need not surrender its interests by first coming to satisfactory terms, which the Chinese Government will not later disown, because once in its power, they have the leaders will receive heavy punishment.

Major Ormsby-Gore (Under-Secretary for the Colonies), speaking at the Franco-British Education Congress in London, held under the auspices of the League of Nations, dwelt on the danger of forcing English education with a purely European background down the throats of natives in the Colonies. A French delegate, M. Le Bourget, said the question of giving lessons in native languages instead of French in French schools in West Africa was being considered.

## SEARCH FOR SECRET OF TRUTH.

Believers and the "World Teacher."

"KRISHNA" AND GOLF.

Two thousand five hundred men—men, from thirty-seven different countries, were recently assembled at the pine-woods on the South Island, New Zealand, for a national searching for the secret of Truth. They are members of the Order of the "Star in the East," which was founded by Annie Besant, president of the Theosophical Society, in order to "bring together all believers in the presence of the World Teacher in the World."

The "World Teacher" was represented by 500 and 60 representative respectively. The members gathered twice daily to listen to the "World Teacher," Krishnamurti, expounding the doctrine. Krishnamurti, replying to a question on what was implied by the term "world teacher," said that the title meant that "Krishna calls himself the enlightened one," he added: "Christ calls himself the Son of God. It is all the same. We all strive to attain the truth. My believers may build a temple over my name; my will after I am dead."

Krishnamurti griped the arm of Besant's correspondent and ecstatically exclaimed: "They wanted to batter and wreck me. If I had accepted I would have been dead and another 'title' one of truth would have been sacrificed."

Theosophical Society, Krishnamurti through the conversation to call the esotericist's name 'Krishna' came to the North British comes to 77. It was the prelude day of his life when he saw his name in the Scottish papers after war."

Manila has become as salt and iodine a profession in New York as it was for the brave and assiduous of martial law. Marching statistics have been issued revealing that during the first six months of 1928 there were 221 murders in New York. There were, however, only 107 reported arrests and 147 persons prosecuted. Victims of first degree murder were returned in only two cases, both of which are now the subject of appeals to higher courts which may end in their being granted jury trials. Two persons were found guilty of second degree murder, while sixteen were found guilty of manslaughter and two of violence. These people were found guilty and had been charged. Ten trials are now pending in Manila.

# MORRIS

## The New 30 cwt Super Trucks

Have Now Arrived

COME and TRY ONE.

Specially Designed for Overseas Conditions.

### A Revelation of Modern Scientific Thought.

Sole Distributors:

# Mitchell Cotts & Co.,

NAIROBI.

## CAMPAGNE AFRICAINE de NAVIGATION

ANTWERP DIRECT KILINDINI

FAST CARGO STEAMERS VIA SUEZ CAP

KILINDINI DIRECT ANTWERP

Outwards.

S. S. "Kabalo"

Due to arrive 26th August will take cargo for Dar-es-Salaam and Beira.

Homewards.

S. S. "Kabinda"

Due to arrive 11th September will take cargo for Port Sudan, Port Said and Antwerp.

For freight and particulars apply to:

## MITCHELL COTTS & Co., Agents, NAIROBI.

Also at MOMBASA.

## UNDERWOOD TYPEWRITERS

SAVE TIME—THE PRINCIPAL BUSINESS COST.  
Over 3,000,000 in use—Speeding the World's Business.



FOUR BANK 380-

NEW PORTABLE



No. 5, 10" Model 665-



Portable Three Bank 320-

ALSO IN STOCK: 14", 16", 18", 20" and 26" Models.

## TAWNS LIMITED,

Box 611.

NAIROBI.

Phone 141.

## P. Stewart

C.S.E. S.B.D., PAINTER & DECORATOR, Beaufort Street, NAIROBI. P.O. Box 223.

PAINTS, COLOURS, OILS, VARNISHES & PRESERVATIVES. Large or Small Quantities.

NATIONAL BANK OF INDIA LIMITED.

(Incorporated in United Kingdom.)

Branches in the Colony and Protectorates of Kenya and Uganda Protectorate.

Scheduled Capital ... £4,000,000  
Paid-up Capital ... £2,000,000  
Reserve Fund ... £2,500,000

26, Bathurst, London, E.C. 3  
BRANCHES: Mombasa, Nairobi, Nakuru, Kisumu, Eldoret, Embaka, Kampala, Jinja, Zanzibar, Dar-es-Salaam and Tanganyika.

Also at Calcutta, Bombay, Madras, Karachi, Lahore, Amritsar, Delhi, Ceylon, Colombo, Kandy, Rangoon, Singapore, Penang, Malacca, Aden, and Sumatra, India, and throughout U. S. A., Europe, Canada, South Africa and Australia.

FIXED DEPOSITS—Deposits are accepted for fixed periods on terms which may be varied on application.

EXCHANGE—The Bank transmits drafts on the Head Office and branches at the current rates of exchange forwarding first copy of the Bill direct to the person when required.

## THE E. B. LINE

Not an Experiment

3 Acres Ploughed at the Cost of 1

### The Great Plains Plough.

New Stock Arriving  
Send For Particulars

## J. R. COX & Co.

SIXTH AVENUE, NAKURU. Eldoret, Kampala, Dar-es-Salaam.

Visit EASTERN BAZAAR,

AND GET THE BEST GUIDES AND SILK AT LOW PRICES

FOR YOUR PRESENTS...

B. CHOITRAM, NAIROBI AND NAKURU.

Doonholm Dairy

Box 11, Nairobi.

F.O.B.

Fresh Milk and Cream.

From Farm to Consumer.

## AH, IT'S DIFFERENT

That's the spontaneous verdict of those who drink **ROB ROY WHISKY**. Its exquisite bouquet and unvarying high quality have given it an unparalleled supremacy in all the four corners of the world. BUY a bottle NOW and satisfy yourself it is not a mere claim but a fact.

ASK FOR ROB ROY.





THE UNION-CASTLE LINE. BOMBARDERS VIA SUVA.

Table with columns: Destination, Date, and Ship Name. Includes destinations like London, Bombay, and Madras.

HOMEWARD VIA SOUTH AFRICA.

Table with columns: Destination, Date, and Ship Name. Includes destinations like London, Bombay, and Madras.

Agents: S.S. Corporation, Ltd., Nairobi, Kampala, etc. The Union-Castle Mail Steamship Co., Ltd. MOMBASA.

HOLLAND AFRIKA LIJN. JOINT SERVICE.

HOLLAND AFRIKA LIJN and HOLLAND OOST AFRIKA LIJN. Steamers will load at Mombasa on the following dates.

Table with columns: Ship Name, Destination, and Date. Includes destinations like Arriving, September 21, October 6, etc.

HOMEWARD VIA THE CAPE.

Table with columns: Ship Name, Destination, and Date. Includes destinations like August 31, September 21, etc.

PASSENGER SERVICE.

7th MARRILLIES (A) - 282-100 (B) - 422-100. 7th LONDON (A) - 282-100 (B) - 422-100.

For further information apply to the Agents.

THE NETHER OVERSEAS TRADING CO. LTD. MOMBASA. Telephone: "HOLAFRIC" Tel. 149.

British India Steam Navigation Company, Ltd. AND PENINSULAR AND ORIENTAL STEAM NAVIGATION CO.

Large table with columns: Destination, Date, Ship Name. Includes destinations like London, Bombay, Madras, and various ports in India and Africa.

ALL DATES SUBJECT TO ALTERATION WITHOUT NOTICE. RETURN TICKETS ISSUED AT TWO SINGLE FARES LESS 10%.

Cross Power Kerosene. MORE ECONOMICAL. LESS DILUTION OF CRANK-CASE OIL.

are reasons why you should use Cross Power Kerosene in your Tractors and Oil Engines. The Shell Company of East Africa Ltd. AGENTS. SMITH MACKENZIE & Co.

Advertisement for Chivers' Patent Hygienic Cakes and Jams. Includes an illustration of a cake and text describing the product's quality.

Advertisement for Keith Timber Co. Ltd. Located at Sadler Street, Nairobi. Specializes in CEDAR and POPO of ALL SIZES.

Advertisement for Expert Vulcanizing. HEINTZ ELECTRIC WAY. IT'S DIFFERENT. ALL WORK GUARANTEED.

Advertisement for Hussell Suleman Verjee & Sons. Government Road, NAIROBI. SPECIAL INTEREST TO LADIES!!!

Advertisement for The African Marine & General Engineering Co. Ltd. KILINDINI. OILY ACETYLENE WELDING & CUTTING.

Advertisement for Messageries Maritimes. (FRENCH MAIL STEAMERS). Regular and fortnightly service from and to Marseilles.

Advertisement for B. LANGMAN. All kinds of Sheet Metal Work, Tinsmith, Plumbing & Tank Making.

Table titled 'OVERSEAS MAILS'. Lists steamers, destinations, and dates. Includes destinations like Khabab, Pemba, Zanzibar, etc.

Advertisement for Deutsche Ost-Afrika-Linie. (GERMAN AFRICAN SERVICE). Homeward via Suez Canal. KILINDINI to DURBAN.

Advertisement for SAFARI. A SAGA OF THE AFRICAN BLUE, by MARTIN JOHNSON. Includes an illustration of a leopard.

Advertisement for Compagnia Italiana Transatlantica. Monthly Passenger Service to NAPLES and GENOVA by elegant and comfortable oil-burning turbine steamers.

Table titled 'FACTORIES'. Lists various factories and their locations. Includes destinations like Mombasa, Nairobi, etc.

Advertisement for Bacon's. BACON: There is a FURTHER SUBSTANTIAL REDUCTION in Bacon Prices. PIGS: Although Bacon has again been lowered and record deliveries of Pigs continue.







Scotland sends you two of the Best!



Crawford's is made in the Scotch and the Scotch is the best. Crawford's is the Scotch and the Scotch is the best. Crawford's is the Scotch and the Scotch is the best.

**Crawford's LIQUEUR SCOTCH WHISKY**

AT GLENROTH, LEITH, SCOTLAND

**UNION'S TRANSPORT DIFFICULTIES.**

**Double Rail Tracks Necessary.**

**A WARNING.**

It is a common view that the Government is to be congratulated for its policy of double-tracking the railway lines. It is a common view that the Government is to be congratulated for its policy of double-tracking the railway lines. It is a common view that the Government is to be congratulated for its policy of double-tracking the railway lines.

There, as an association, should be the means by which they can be met. They, as an association, should be the means by which they can be met. They, as an association, should be the means by which they can be met.

**Supplementary Estimates.**

**REFERRED TO SELECT COMMITTEE.**

Members, Friday

In the Legislative Council today, the Colonial Secretary reported that the second Supplementary Estimates, 1924, should be referred to a Select Committee of all the official members and so many official members as might be required.

**ENTERTAINMENTS.**

Phone **SAVOY HOTEL** Box 430 **20**

**CALEDONIAN ROAD, THE HILL.**

**The Most Comfortable :: HOTEL ::**

**SYD. ZIEGLER'S METRONOMES**

WILL PLAY FOR THE

**GRAND BALL**

ON **Saturday, 1st September**

at 9 p. m.

TICKETS: 1250 Double } Including refreshments.  
750 Single }

**Afternoon Tea Dance**

on Sunday, 2nd September

4-30 p.m. to 7-30 p.m.

TICKET- Shgs. 5- each including afternoon TEA.



SYD ZIEGLER AND HIS METRONOMES

**Good Plumbing Means Good Health.**

FOR SAFE SANITARY WORK TRY

**Thornton & Turpin**

Regis. Plumbers and Sanitary Engineers, CITY HOUSE, NAIROBI. P.O. Box 280 AND AT MOMBASA.

GOVERNMENT CONTRACTORS. WORK UNDERTAKEN IN ANY PART OF KENYA AND UGANDA.

A BATH A DAY KEEPS YOU FIT EVERY WAY

SEE OUR STOCKS.

**LYRIC HALL**

Showing Saturday, Sept. 1st.



THE FAKE

Henry Edwards will be remembered as the artist who made such a great success in the Name part of the Flag Lieutenant.

PRICES: Shgs. 2; Reserved; 3. Unreserved. Plans now open at the Lyric Booking Office. From 9 a.m. to 5.30 p.m.

**Stag's Head**

**HOTEL, NAKURU**

**Dance Sept. 1st**

At 9-30 p. m.

Tickets 5/- Including REFRESHMENTS.

**J. G. HEATH.**

**CARS FOR HIRE.**

SEE KENTIA IN COMFORT. RUDSON SUPER SIX CARB FOR

HERE DAY OR NIGHT. Long Trips a Specialty.

**P. GETHIN**

Phones: 124. 125. 126. 127. 128. 129. 130. 131. 132. 133. 134. 135. 136. 137. 138. 139. 140. 141. 142. 143. 144. 145. 146. 147. 148. 149. 150. 151. 152. 153. 154. 155. 156. 157. 158. 159. 160. 161. 162. 163. 164. 165. 166. 167. 168. 169. 170. 171. 172. 173. 174. 175. 176. 177. 178. 179. 180. 181. 182. 183. 184. 185. 186. 187. 188. 189. 190. 191. 192. 193. 194. 195. 196. 197. 198. 199. 200. 201. 202. 203. 204. 205. 206. 207. 208. 209. 210. 211. 212. 213. 214. 215. 216. 217. 218. 219. 220. 221. 222. 223. 224. 225. 226. 227. 228. 229. 230. 231. 232. 233. 234. 235. 236. 237. 238. 239. 240. 241. 242. 243. 244. 245. 246. 247. 248. 249. 250. 251. 252. 253. 254. 255. 256. 257. 258. 259. 260. 261. 262. 263. 264. 265. 266. 267. 268. 269. 270. 271. 272. 273. 274. 275. 276. 277. 278. 279. 280. 281. 282. 283. 284. 285. 286. 287. 288. 289. 290. 291. 292. 293. 294. 295. 296. 297. 298. 299. 300. 301. 302. 303. 304. 305. 306. 307. 308. 309. 310. 311. 312. 313. 314. 315. 316. 317. 318. 319. 320. 321. 322. 323. 324. 325. 326. 327. 328. 329. 330. 331. 332. 333. 334. 335. 336. 337. 338. 339. 340. 341. 342. 343. 344. 345. 346. 347. 348. 349. 350. 351. 352. 353. 354. 355. 356. 357. 358. 359. 360. 361. 362. 363. 364. 365. 366. 367. 368. 369. 370. 371. 372. 373. 374. 375. 376. 377. 378. 379. 380. 381. 382. 383. 384. 385. 386. 387. 388. 389. 390. 391. 392. 393. 394. 395. 396. 397. 398. 399. 400. 401. 402. 403. 404. 405. 406. 407. 408. 409. 410. 411. 412. 413. 414. 415. 416. 417. 418. 419. 420. 421. 422. 423. 424. 425. 426. 427. 428. 429. 430. 431. 432. 433. 434. 435. 436. 437. 438. 439. 440. 441. 442. 443. 444. 445. 446. 447. 448. 449. 450. 451. 452. 453. 454. 455. 456. 457. 458. 459. 460. 461. 462. 463. 464. 465. 466. 467. 468. 469. 470. 471. 472. 473. 474. 475. 476. 477. 478. 479. 480. 481. 482. 483. 484. 485. 486. 487. 488. 489. 490. 491. 492. 493. 494. 495. 496. 497. 498. 499. 500. 501. 502. 503. 504. 505. 506. 507. 508. 509. 510. 511. 512. 513. 514. 515. 516. 517. 518. 519. 520. 521. 522. 523. 524. 525. 526. 527. 528. 529. 530. 531. 532. 533. 534. 535. 536. 537. 538. 539. 540. 541. 542. 543. 544. 545. 546. 547. 548. 549. 550. 551. 552. 553. 554. 555. 556. 557. 558. 559. 560. 561. 562. 563. 564. 565. 566. 567. 568. 569. 570. 571. 572. 573. 574. 575. 576. 577. 578. 579. 580. 581. 582. 583. 584. 585. 586. 587. 588. 589. 590. 591. 592. 593. 594. 595. 596. 597. 598. 599. 600. 601. 602. 603. 604. 605. 606. 607. 608. 609. 610. 611. 612. 613. 614. 615. 616. 617. 618. 619. 620. 621. 622. 623. 624. 625. 626. 627. 628. 629. 630. 631. 632. 633. 634. 635. 636. 637. 638. 639. 640. 641. 642. 643. 644. 645. 646. 647. 648. 649. 650. 651. 652. 653. 654. 655. 656. 657. 658. 659. 660. 661. 662. 663. 664. 665. 666. 667. 668. 669. 670. 671. 672. 673. 674. 675. 676. 677. 678. 679. 680. 681. 682. 683. 684. 685. 686. 687. 688. 689. 690. 691. 692. 693. 694. 695. 696. 697. 698. 699. 700. 701. 702. 703. 704. 705. 706. 707. 708. 709. 710. 711. 712. 713. 714. 715. 716. 717. 718. 719. 720. 721. 722. 723. 724. 725. 726. 727. 728. 729. 730. 731. 732. 733. 734. 735. 736. 737. 738. 739. 740. 741. 742. 743. 744. 745. 746. 747. 748. 749. 750. 751. 752. 753. 754. 755. 756. 757. 758. 759. 760. 761. 762. 763. 764. 765. 766. 767. 768. 769. 770. 771. 772. 773. 774. 775. 776. 777. 778. 779. 780. 781. 782. 783. 784. 785. 786. 787. 788. 789. 790. 791. 792. 793. 794. 795. 796. 797. 798. 799. 800. 801. 802. 803. 804. 805. 806. 807. 808. 809. 810. 811. 812. 813. 814. 815. 816. 817. 818. 819. 820. 821. 822. 823. 824. 825. 826. 827. 828. 829. 830. 831. 832. 833. 834. 835. 836. 837. 838. 839. 840. 841. 842. 843. 844. 845. 846. 847. 848. 849. 850. 851. 852. 853. 854. 855. 856. 857. 858. 859. 860. 861. 862. 863. 864. 865. 866. 867. 868. 869. 870. 871. 872. 873. 874. 875. 876. 877. 878. 879. 880. 881. 882. 883. 884. 885. 886. 887. 888. 889. 890. 891. 892. 893. 894. 895. 896. 897. 898. 899. 900. 901. 902. 903. 904. 905. 906. 907. 908. 909. 910. 911. 912. 913. 914. 915. 916. 917. 918. 919. 920. 921. 922. 923. 924. 925. 926. 927. 928. 929. 930. 931. 932. 933. 934. 935. 936. 937. 938. 939. 940. 941. 942. 943. 944. 945. 946. 947. 948. 949. 950. 951. 952. 953. 954. 955. 956. 957. 958. 959. 960. 961. 962. 963. 964. 965. 966. 967. 968. 969. 970. 971. 972. 973. 974. 975. 976. 977. 978. 979. 980. 981. 982. 983. 984. 985. 986. 987. 988. 989. 990. 991. 992. 993. 994. 995. 996. 997. 998. 999. 1000.

**CARS OVERHAULED BY EXPERTS.**

**CARS FOR SALE.**

9 x 9 Flat practically new ... £175

Hudson Tourer, good running order ... £250

Haux "60", good sound condition ... £200

Hudson "Super Six" excellent condition, good tyres ... £250

IF YOU WANT TO HIRE, BUY, A CAR RING GETHIN.

Place Fronted on the Right Side of the Empire Lane.

**Visible Value Always Wins.**

YOU CAN SEE THE VALUE BUILT INTO THE

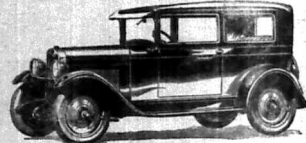
**CHEVROLET.**

MOTORISTS EVERYWHERE CAN UNDERSTAND THIS KIND OF VALUE, BECAUSE IT IS AVAILABLE FOR THE WORLD TO JUDGE.



**PRICES.**

Box Bodies from	£195
Tourer	£225
Roadster	£217
Coach	£260
Sedan	£280



**4 Wheel Brakes**

**NEW FEATURES OF VALUE**

**Bumper Bars Front & Rear.**

A.C. Oil Filter; A.C. Air Cleaner; Longer Wheel Base; Semi-Elliptic Self-Shudding Springs; Streamline Bodies by Fibro; Indirectly Illuminated Panel, GENUINE DUCO FINISH

**The Motor Mart**

AND EXCHANGE, Ltd.

NAIROBI. Dar-es-Salaam.

**DANCE**

**Salisbury Hotel**

Saturday Sept. 15th

AT 9 P.M.

**Syd Zieglers Metronomes**

Double Shgs 1250 Single Shgs 750 including refreshments.

**KIKUYU HOTEL**

**DANCE**

Friday, August 31st at 9 p.m. to 2 a.m.

Tickets- 750 Single, 10/- Double.

PAUL ROBINS IN HIS RED 'OT FOUR.

**WHY CRY**

THAT COPY OF LIVING IS HERE. YOU COULD REDUCE IT BY TAKING YOUR MEALS AT

**Palladium Restaurant**

Theatre Royal.

SPECIAL Terms for Dancers.

Breakfast, Lunch, Dinner and Supper. Morning and Afternoon Tea.

We stock a large range of fresh specialties in fancy boxes at prices to suit all pockets.

**INSURE**

FOUR MOTOR CARS AND MOTOR CYCLES

ARRIVAL GUARANTEED AND DEPARTURE SOON.

**M. D. KAMPP,**

CHIEF AGENT.

**DATERS.**



**28 MAR 1925**

Large ... Shs. 2/-  
Small ... Shs. 2/-

**STAMP PAPER.**

Shs. 1/50 and 2/-

Standard Stationery Stores, NAIROBI.

### Willys - Knight

THE QUALITY CAR—NOT BUILT TO A PRICE.  
Embodying The Famous Double Sleeve Silent Knight Engine.



**SAFARI CARS** ..... £290  
**TOURING** ..... £400  
**SEDAN** ..... £450

All Cars Completely Equipped—No Extras

Let us demonstrate to you the principle of the Double Sleeve Valve.

No Springs—Tappets or Poppet Valves to Grind in—or adjust.

**MOULTON & MORRISON Ltd.**  
SIXTH AVENUE, NAIROBI.

### If you Grind Posho use the Best Mills for the Job

## Barron's or Bental's Mills ARE BRITISH



POSITO MILLS  
For ALL PURPOSES.  
For ALL POWERS.  
For ALL PRICES.

**J. W. Milligan & Co.,** P.O. Box 148.  
Telephone 98.  
HARDINGE STREET, NAIROBI.

### A. H. Wardle & Co. Ltd.

Optical Chemists.  
NAIROBI.

Optical Manager: V. M. BROWSE, F.R.C.S., F.O.

### SCIENTIFIC EYE TESTING.

Only the best lenses and frames stocked.

Testing and Spectacles complete, from 25/-

Under the Standard Clock.

Late Sir C. Felling.  
The following is a copy of the telegram addressed to His Excellency the Governor from the Chairman of the Commission of Enquiry into the Administration of the Native Lands, dated 10th April, 1925.  
The following is a copy of the telegram addressed to His Excellency the Governor from the Chairman of the Commission of Enquiry into the Administration of the Native Lands, dated 10th April, 1925.  
The following is a copy of the telegram addressed to His Excellency the Governor from the Chairman of the Commission of Enquiry into the Administration of the Native Lands, dated 10th April, 1925.

We are pleased to announce that we are able to give

# DELIVERY FROM STOCK

of a limited number of

## NEW FORD

5-Seater PHAETONS	.....	£194.
SPORTS COUPES	.....	£241-10-0.
LIGHT DELIVERY RUNABOUTS of 1600 lbs. capacity	.....	£192-10-0.

And that we shall be able to deliver next month from stock

5-Seater TUDOR SEDANS

..... £229-10-0.

**The Service Co., Ltd.**  
SIXTH AVENUE, NAIROBI.

### STANDARD CASEMENTS

STEEL THE LATEST IMPROVEMENTS  
WE CARRY EXTENSIVE STOCKS.

### R. G. Vernon & Co.

UNION BUILDING, NAIROBI.  
Phone 120. P.O. Box 124.

## ESANOFELE

FOR MALARIA.

THE MOST EFFECTIVE CURE YET DISCOVERED FOR MALARIA  
WIDELY RECOMMENDED BY THE MEDICAL PROFESSION.

PRICE 7/6 PER COMPLETE CURE. SOLE AGENTS.

### A. H. WARDLE & Co. Ltd.

NAIROBI. OMBASA. ELDDRET.

## EPIDEMICS

Begin in the Throat.

### MONSOL THROAT PASTILLES

Disinfect the Throat.  
PRICE 2/6 PER TIN.

**Moncol Liquid.**  
For all general and surgical disinfection and personal hygiene.  
3/- per bot.


**Moncol Ointment.**  
For all conditions where an antiseptic ointment is indicated.  
3/- per pot.

**Kodak (E. A.) Limited.**  
**Howe & McGeorge**  
Chemists.  
Kenya, Uganda and Tanganyika.  
P.O. Box 28. Zebra House, NAIROBI.

### African Standard

GUANDA ABUO  
THURSDAY, APR. 16, 1925.

#### A Port Problem.



There was an echo in a recent debate by delegates to the native and the West Conference of the agitation which arose as the result of the discussion on Kilindi in last year. The discussion centred on the question of the free storage period which has been advanced as one of the chief reasons for delays which have taken place in shipping export trade in the past. Compared with the practice of other parts of the world, the twenty-day free storage allowed at Kilindi in general is at the point of being extravagant and is becoming increasingly evident that the period must be reduced in the interests of smooth and efficient trading at the Port in the future. It will be recalled that in the course of their report published in April of this year the Committee of the Port Advisory Board expressed its opinion on the causes of congestion at Mombasa and to suggest numerous alternative means possible, expressed the opinion that the free storage period of the general character of all commodities for export should be further reviewed immediately in order to ensure that it does not become excessive, as it is obviously impossible to ensure proper security of cargo and a constant flow of traffic through the steanid sheds until they are utilized only for the purpose for which they were constructed. His Excellency the Earl of Devonport, as Chairman of the Port Advisory Board for Transport in a comment which was added as a footnote to the report, pointed out that the Committee had not advanced any suggestion which would be of any benefit to the country. He also mentioned that the Committee had not considered the matter.

important to the system of "inasmuch as the admin control has been permanently discontinued and commercial practice and port regulations come into line with what has been proved to be consistent in other parts of the world." The Port Advisory Board subsequently reported that the free storage period should be reduced to seven days. The late General Manager, in the course of the debate of Mombasa and West Conference stressed the necessity for a reduction and stated that the maximum period should not exceed seven days. At the same time as the result of the report, the maximum period should be reduced to seven days. At the same time as the result of the report, the maximum period should be reduced to seven days. At the same time as the result of the report, the maximum period should be reduced to seven days.

The Director of Agriculture pointed out that that might very easily render the whole of the grading system less effective; whilst it was demonstrated that the machine grade is well able to keep pace with present-day demands on the service. We think, however, that the Director of Agriculture should reconsider the possibility of effective control of produce in the future. Improvement on the present position would be found along the lines suggested by the Committee—the restriction of an effective liaison between the port and the dealer and the Railway. It is suggested that the necessary information from all consignments of produce they to be ready for shipment as any terms, and be able to make the necessary arrangements for special reception and despatch at the port. In other directions too, notably as has been pointed out on more than one occasion recently, that the Board should consider the possibility of shipping documents, improvement and be able to make the necessary arrangements for special reception and despatch at the port. In other directions too, notably as has been pointed out on more than one occasion recently, that the Board should consider the possibility of shipping documents, improvement and be able to make the necessary arrangements for special reception and despatch at the port.

### Emile Jardin & Cie.

Nairobi

## PORT



The largest and the best selection

From Shgs. 8/60 to 12/- per bottle  
Reduction per case lots.

### Lead the way on a B-S-A



Make a date for a demonstration and do it now.  
Come in and See the Range

### Garr, Lawson & Co. Ltd.

NAIROBI.

### STANDARD DIARY.

August 31.  
Friday. (1st) - British Official Wireless from London for Eastern Africa. Shows in Classes for horses and cattle, sheep, pigs, ferns, garden, poultry, dogs, horses, deer, swine, and other animals.

October 2nd.  
Monday. (1st) - British Official Wireless from London. Shows ground.

60-Day's Wireless.

7-5 to 7-30 - British Official Wireless from London, news and information.

7-30 to 8-0 - British Official Wireless from London, news and information.

8-0 to 8-15 - British Official Wireless from London, news and information.

8-15 to 8-30 - British Official Wireless from London, news and information.

8-30 to 9-0 - British Official Wireless from London, news and information.

9-0 to 9-15 - British Official Wireless from London, news and information.

9-15 to 9-30 - British Official Wireless from London, news and information.

9-30 to 10-0 - British Official Wireless from London, news and information.

10-0 to 10-15 - British Official Wireless from London, news and information.

10-15 to 10-30 - British Official Wireless from London, news and information.

10-30 to 11-0 - British Official Wireless from London, news and information.

11-0 to 11-15 - British Official Wireless from London, news and information.

11-15 to 11-30 - British Official Wireless from London, news and information.

11-30 to 12-0 - British Official Wireless from London, news and information.

MAIZE AND CONGESTION AT THE PORT.

Conference Discussion on the Free Storage Period.

REDUCTION REQUESTED.

Railway View That Imposition of Penalties would Expedite Shipping Arrangements.

The need for greatly reduced... for maize awaiting shipment at the coast in order to relieve port congestion was stressed by the General Manager of Railways at the recent joint session of the Wheat and Maize Conferences held in Nairobi.

The argument put forward by the General Manager was that in view of the very low railway rate on maize it was unfair to expect a long free storage period... and he suggested that the time for storage in private god-downs outside the port area should be permitted.

The Director of Agriculture contended that grading was carried out at a greater rate than the Railway were able to deliver.

After a long discussion a resolution was passed suggesting that the free storage period should be reduced to 12 days... and that there should be a speeding-up of the formalities at the Port in connection with shipment of cereals.

FROM 21 TO 12 DAYS.

During the proceedings of the Maize and Wheat Conferences... combined session... the free storage period was reduced from 21 to 12 days.

The Hon. General Manager, Kenya and Uganda Railway... was asked for a statement of the present state of affairs.

He stated that the Port Authority... free storage period... had been reduced to 12 days.

The General Manager... the necessity in general... long free storage period... was reduced to 12 days.

The Hon. Mr. Joyce... the shorter period... the port... was reduced to 12 days.

Mr. Joyce... the shorter period... the port... was reduced to 12 days.

Mr. Joyce... the shorter period... the port... was reduced to 12 days.

Mr. Joyce... the shorter period... the port... was reduced to 12 days.

Mr. Joyce... the shorter period... the port... was reduced to 12 days.

Mr. Joyce... the shorter period... the port... was reduced to 12 days.

Mr. Joyce... the shorter period... the port... was reduced to 12 days.

Mr. Joyce... the shorter period... the port... was reduced to 12 days.

Mr. Joyce... the shorter period... the port... was reduced to 12 days.

Mr. Joyce... the shorter period... the port... was reduced to 12 days.

Mr. Joyce... the shorter period... the port... was reduced to 12 days.

Mr. Joyce... the shorter period... the port... was reduced to 12 days.

Mr. Joyce... the shorter period... the port... was reduced to 12 days.

Mr. Joyce... the shorter period... the port... was reduced to 12 days.

Mr. Joyce... the shorter period... the port... was reduced to 12 days.

ANTI-MALARIA WORKS IN NAIROBI.

Account of Six Month's Work.

REPORT TO COUNCIL.

"STANDARD" SPECIAL CORRESPONDENT.

Mombasa, Monday.

The following report... of anti-malaria works... was presented to the Council of the Municipal Corporation...

The report... of anti-malaria works... was presented to the Council of the Municipal Corporation...

The report... of anti-malaria works... was presented to the Council of the Municipal Corporation...

The report... of anti-malaria works... was presented to the Council of the Municipal Corporation...

The report... of anti-malaria works... was presented to the Council of the Municipal Corporation...

The report... of anti-malaria works... was presented to the Council of the Municipal Corporation...

The report... of anti-malaria works... was presented to the Council of the Municipal Corporation...

The report... of anti-malaria works... was presented to the Council of the Municipal Corporation...

The report... of anti-malaria works... was presented to the Council of the Municipal Corporation...

The report... of anti-malaria works... was presented to the Council of the Municipal Corporation...

The report... of anti-malaria works... was presented to the Council of the Municipal Corporation...

The report... of anti-malaria works... was presented to the Council of the Municipal Corporation...

The report... of anti-malaria works... was presented to the Council of the Municipal Corporation...

The report... of anti-malaria works... was presented to the Council of the Municipal Corporation...

The report... of anti-malaria works... was presented to the Council of the Municipal Corporation...

The report... of anti-malaria works... was presented to the Council of the Municipal Corporation...

The report... of anti-malaria works... was presented to the Council of the Municipal Corporation...

The report... of anti-malaria works... was presented to the Council of the Municipal Corporation...

The report... of anti-malaria works... was presented to the Council of the Municipal Corporation...

The report... of anti-malaria works... was presented to the Council of the Municipal Corporation...

SOMERIA VIEWS ON FENCING.

Arguments for and Against.

DEFINITIONS WANTED.

"STANDARD" SPECIAL CORRESPONDENT.

Over thirty Someria... in regard to fencing...

Over thirty Someria... in regard to fencing...

Over thirty Someria... in regard to fencing...

Over thirty Someria... in regard to fencing...

Over thirty Someria... in regard to fencing...

Over thirty Someria... in regard to fencing...

Over thirty Someria... in regard to fencing...

Over thirty Someria... in regard to fencing...

Over thirty Someria... in regard to fencing...

Over thirty Someria... in regard to fencing...

Over thirty Someria... in regard to fencing...

Over thirty Someria... in regard to fencing...

Over thirty Someria... in regard to fencing...

Over thirty Someria... in regard to fencing...

Over thirty Someria... in regard to fencing...

Over thirty Someria... in regard to fencing...

Over thirty Someria... in regard to fencing...

Over thirty Someria... in regard to fencing...

Over thirty Someria... in regard to fencing...

Over thirty Someria... in regard to fencing...

Over thirty Someria... in regard to fencing...

AMERICA AND THE KELLOGG PACT.

Senate Expected to Ratify It.

THE MONROE DOCTRINE.

"STANDARD" SPECIAL CORRESPONDENT.

(THROUGH RUTHER FORT)

(THROUGH RUTHER FORT)

(THROUGH RUTHER FORT)

(THROUGH RUTHER FORT)

(THROUGH RUTHER FORT)

(THROUGH RUTHER FORT)

(THROUGH RUTHER FORT)

(THROUGH RUTHER FORT)

(THROUGH RUTHER FORT)

(THROUGH RUTHER FORT)

(THROUGH RUTHER FORT)

(THROUGH RUTHER FORT)

(THROUGH RUTHER FORT)

(THROUGH RUTHER FORT)

(THROUGH RUTHER FORT)

(THROUGH RUTHER FORT)

(THROUGH RUTHER FORT)

(THROUGH RUTHER FORT)

(THROUGH RUTHER FORT)

(THROUGH RUTHER FORT)

(THROUGH RUTHER FORT)

"On This Day"

ALBERT BAKER.

ALBERT BAKER.

ALBERT BAKER.

ALBERT BAKER.

ALBERT BAKER.

ALBERT BAKER.

ALBERT BAKER.

ALBERT BAKER.

ALBERT BAKER.

ALBERT BAKER.

ALBERT BAKER.

ALBERT BAKER.

ALBERT BAKER.

ALBERT BAKER.

ALBERT BAKER.

ALBERT BAKER.

ALBERT BAKER.

ALBERT BAKER.

ALBERT BAKER.

ALBERT BAKER.

ALBERT BAKER.

ALBERT BAKER.

ALBERT BAKER.

ALBERT BAKER.

LYRIC HALL. RE-OPENING TO-NIGHT AT 8.45 WITH JANE NOYAK and HUNTLEY GORDON IN "Lost at Sea" FOOTLIGHTS and TOPICAL BIDDOT. PLANS OPEN FOR THE BRITISH SUPER PRODUCTION "THE YAKK" featuring HENRY EDWARDS COMMENCING THIS SATURDAY.

Supreme Shoe Value. 25/- Tan Willow Calf 1 Sizes. 25/- Black Box Calf 1 Sizes. BASS AMERICAN MOCCASIN. Gent's 35/- Boys from 1850. GENTS REAL CALF PAT. NO. 18A. DRESS SHOE. 20/-

Today's Trains. Trains are due to leave Nairobi today for the under mentioned destinations at the times stated. Mombasa 12.20 p.m. Kisumu 12.40 p.m. Eldoret and Juba 12.30 p.m. The train from Mombasa is due to arrive at Nairobi at 12.51 a.m.

THE Venerable Archbishop Mackay and Rev. E. J. Gill have returned to Zanbari from England. Mr. John Ferry Jones has been appointed Acting District Commissioner of Nairobi.

THEATRE ROYAL. NIGHTLY AT 8.45. TOM MIX WHO HAS FORSAKEN HIS WESTERN ROLE FOR THE DARE-DIVIL CAVALLIER SO-FAMOUS IN HISTORY. DICK TURPIN. Also Shows at This Saturday's Matinee.

Have you Booked for "BEAU GESTE" Opening Monday Next.

Rub O'Rishion. K. McIvor's Garage.

FOR New Ford Cars & Trucks. AND Indian Motor Cycles.

We can give prompt delivery of Amature Rewinds and undertake all work in connection with Electrical Equipment of Automobiles.

S. Jacobs Ltd.

Swiss Aeroplanes Co. Ltd. (Continued on page 11.)

Swiss Aeroplanes Co. Ltd. (Continued on page 11.)

Swiss Aeroplanes Co. Ltd. (Continued on page 11.)

Swiss Aeroplanes Co. Ltd. (Continued on page 11.)



**SAYS A MEN'S CLOTHES EXPERT:**

"Half the secret of well-fitting evening dress is a well-fitting dress shirt underneath."

Any man who isn't careful about his clothes knows this is true.

It is because Continental Dress Shirts are tailored to fit you so faithfully that you find a growing number of well-dressed men buying their regular-made shirts only at our store.

Such dress-fitting confetti they say. Such immaculate styles! Such extraordinary resistance to laundry grime! And such remarkably modest prices!

Stained by all good means throughout East Africa.



**Consulate**

DRESS SHIRTS

MADE IN ENGLAND BY MR. BERTHIAUX & CO. LTD., 109 & 110 WOOD ST. LONDON, E.C.4.

**Barclays Bank (Dominion Colonial and Overseas.)**

**THE COLONIAL BANK**

Incorporated in the United Kingdom by Royal Charter, 1836. Re-incorporated by Act of Parliament, 1925.

**THE NATIONAL BANK OF SOUTH AFRICA LIMITED**

AND

**THE ANGLO-EGYPTIAN BANK, LIMITED.**

Capital Authorized ... £10,000,000  
 Capital Subscribed ... £4,750,000  
 Capital Paid up ... £3,475,000  
 Reserve Fund ... £1,250,000  
 Unallocated Capital ... £1,000,000

HEAD OFFICE: 54, Lombard Street, London, E.C. 4.  
 LONDON OFFICES: 37/38 King William Street, E.C. 4.  
 (Cross Street, London Wall, E.C. 4.)  
 211, St. Martin's Lane, Trafalgar Square, and Offices at Liverpool, Manchester, Hamburg, New York.

**BRANCHES IN EAST AFRICA:**  
 Nairobi, Mombasa, Malindi, Aden, Zanzibar, Kampala, Jinja, Tanga and Dar-es-Salaam.

The bank is represented in:  
 Union of South Africa, Rhodesia, South West Africa, British West Africa, West Indies, Egypt and the Sudan, Mauritius, etc.

**AGENTS IN ALL PRINCIPAL OFFICES OF THE WORLD.**  
 All classes of Banking Business undertaken.

**OVER FOUR HUNDRED BRANCHES.**  
 ALL CLASSES OF BANKING OFFICES OF THE WORLD.

The Bank acts as Trustee and Executor.

**NOTICE**

**THE VICTORIA NYANZA SUGAR COMPANY, LIMITED** have arranged with the undermentioned Stores to retail their No. 1 White Crystal Sugar at the following prices—

Per pound ... Cents /83  
 Per pocket of 50 lbs. ... Shgs. 16/75

- NAIROBI.**
- S. Jacobs, Limited.  
 B. B. Duncan, "Nairobi House."
- NAKURU.**
- S. Jacobs, Limited
- ELDORET.**
- S. Jacobs, Limited.  
 Wm Douglas.

**CODES**

A.B.C. 5th Edition ... Shgs. 95/- posted 96/75  
 A.B.C. 6th Edition ... Shgs. 95/- posted 96/75  
 Bentley ... Shgs. 150/- posted 151/75

STANDARD STATIONERY STORES  
 P.O. Box 599.

**MAIZE AND CONGESTION AT THE PORT.**

(Continued from page 9.)

filled. Even under existing conditions such things had occurred.

**Up Country Grading.**

The General Manager stated that in South Africa grading was done up the line. He would like to see the railway to control such grading. The railway would prefer to do it, but could not do so on the point.

Mr. Campbell said that some years ago he was organizing the export of maize in South Africa. Shippers were mostly by private owners on contract. He intended to skip the following week and notified the railway 31 days before shipment, when it was received, and it was forwarded to suit the shippers of the ship.

The contractor, the railway, told them the quantities to be moved, and other maize was not accepted by the Railway at that time. The shippers worked well, but merchants occasionally had difficulty in completing the contract. In this country grading was done in two hands but such organization would be more properly center. The facilities in the way of documents were similar in South Africa for shippers than in this Colony.

The General Manager stated that of the ship which was particular export of maize was cancelled. This applied to cotton, maize and all other commodities, but was naturally a general disorganization of the port.

Colonel Griffiths made the point that a ship might be two or three days late and when it comes it has a consignment which will not be shipped. It is a question of the ship's right to be loaded.

The Chairman (Dr. Hertz) asked whether, if the free storage period was reduced, the railway would guarantee the delivery of the port in time to enable ships to be loaded.

The General Manager stated that in South Africa not a bag of export maize moved to the port without a particular ship, and that no railway in the world assumed responsibility for delay.

Mr. Campbell said that in instances where part of a consignment would have been shipped, it was intended for had the ship not been two days late. He concluded that the Director was possible for the delay should pay in such a case.

The General Manager returned that it was not possible for the railway to accept responsibility for delay.

The Chairman remarked that the quantity to be exported during the last season might be double that of last season when the season occurred. The Agricultural Department must stand for the consistency and reliability of the railway's certificate, and that £1,000 bags could be graded per day and only once miss the shipping of grading operations had there been any delay and that was due to congestion, not through the financial difficulties of certain firms. The Department was not primarily concerned with the question of movement of maize but with grading, and that could not be done in private godowns except under a permit.

Mr. Campbell said that he did not hold up maize at the port for a period more than 24 hours, and that he had exceptionally not more than 48 hours.

The General Manager pointed out that maize paid the lowest rate of any commodity and was entitled to free consideration in the matter of free storage than any other commodity. The least that could be done in respect of this commodity was to move it quickly.

The Chairman thought that there were four factors involved—1. The period of free storage; 2. Grading in private god-

**WHERE TO STAY Town & Country**

**THE HILL PRIVATE HOTEL.**  
 VALLEY ROAD.  
 All Modern Conveniences. To nos. Dedman, Garage, Motor Service and Complete Allied ones, will be appreciated by those seeking a quiet, comfortable and reduced home.  
 Phone 880 P.O. Box 788

**LIMURU**  
**BRACKENHURST HOTEL**  
 HUDSON CANE.

**CLAIRMONT**  
 Residential Hotel.

One of Kenya's beauty spots within 7 miles from Nairobi by good motor road.

Splendid swimming pool, free from all impurities with newly erected diving board and dressing room.

Terms from 10/- per day inclusive. Excellent Cuisine and choicest wines stocked under supervision of the Proprietors.  
 P.O. Box 525. Telegrams: Clairmont. Nairobi.

**High View Hotel.**  
 LIMURU (D Route)  
 Healthy Situation. Ideal for Holidays. Lanchester, Tennis, etc., Terms Moderate.

**THE White Rhino Hotel**  
 NYERI  
 FOR BREAKFAST, LUNCHEONS, TEAS, DINNERS and ACCOMMODATION.  
 Situated on Main Road.  
 Grains—"Whitrhino."

**BELL INN**  
 (On Main Road) NAIVASHA

**TARIFF.**

Breakfast ... Shs. 3/0  
 Lunch ... Shs. 4/0  
 Dinner, Bed and ... Shs. 5/0  
 Breakfast ... Shs. 15/0  
 Full Day ... Shs. 18/0

First Class Accommodation, Electric Lighting Throughout, CATERING A SPECIALTY, Large Refrigerator Installed, Iced Drinks, Ice-creams available at all times.

CLEANLINESS AND SATISFACTION GUARANTEED.

Extra special tariff for week ends.  
 For Week and Month.

**OAKLEIGH PRIVATE HOTEL.**  
 UNDER PERSONAL SUPERVISION OF MRS. H. JARRETT, Managers, Phone 180. NAIROBI. P.O. Box 188.

**The Naivasha Hotel**  
 Naivasha

Every Convenience and Comfort. Special Weekly and Monthly Terms.

**The Nakuru Hotel.**  
 The Largest and oldest established house in the Midlands.  
 HOTEL.

The Proprietor has pleasure in announcing that he has secured the services of Mrs. Edgar Archer to take over the management of the Nakuru Hotel. They are due to arrive from England about September 5th.

Mr. Archer has a long and distinguished record in the hotel world. He has been manager of the ROYAL ALHION HOTEL, Broadstairs, the HOTEL METROPOLITAN, Piccadilly, and the BULLINGDON HOTEL, Piccadilly. He has also acted as second manager to the RITZ HOTEL, Piccadilly, and assistant manager of the ST. ERMIN'S HOTEL, Westminster. He comes to Nairobi direct from an engagement as manager of the Royal Crystal Palace Hotel, Upper Norwood.

Mrs. Archer has in each case joined her husband in hotel management.

A Small Selection from our Large Stock of Novels.

**Edgar Wallace**

- THE LATEST The Oracle. The Gunner. The Flying Squad. Shgs. 4/6, posted Shgs. 7/-.
- LIBRARY EDITION The Three Oak Mystery. The Dark Eyes of London. Jack O' Judgment. The Green Rust. The Fellowship of the Frog. A Debt Discharged. The Book of all Power. Also a Good Selection of the "Bones Series". Shgs. 8/6, posted Shgs. 4/-.
- POPULAR EDITION Pentape of the Polyants. The Mystery of Death. Eve's Island. A King by Night. Room 12. The Black Abbot. Many other Titles to Choose from. Shgs. 2/6, posted Shgs. 2/85.
- PAPER COVERS The Law of the Four Just Men. The Gine of the New Pin. The Valley of Ghosts. Double Dan. And Others.
- Cents 95, posted Shgs. 1/25.

"IT IS IMPOSSIBLE NOT TO BE THRILLED BY EDGAR WALLACE"

STANDARD STATIONERY STORES, NAIROBI.

**LAST WEEK !!!**

OF OUR Genuine Sale!

Special Attractive Bargains "only a Week More" so do not miss this chance. Come and get a real value for YOUR MONEY

**Ladharam Stores**  
 P.O. Box 516. NAIROBI. Government Road.

**BUY YOUR FRESH FROM TORRS' CHOCOLATES**

**THE WEEK'S ATTRACTION** is the variety of **DOUBLE TERAI HATS.**

M.P. de Mello, NAIROBI.

Use Hats! What a dream it is. A fascinating world of money making. A paying parade of sheer delight. That gladdens the heart and makes one wish for a million more. It is an endless pot of gold. It is a fortune. With M.P. de Mello's!

**WCEWAN'S RED LABEL BEER**

Wholesale Bottlers in Nairobi.  
 WCEWAN & CO. OVERSEAS COMPANY.

If you want to make sure that your name or firm is included in the New Directory 1929 fill in this Form.

Name \_\_\_\_\_  
 Address \_\_\_\_\_  
 Post to: EDITOR, RED CROSS, 1828, P.O. Box 502

ALL-SILK

HEAVY

SPUN CREPE

96 INCHES WIDE.

Shs. 8/50 Per Yard

In Latest Shades.

FAST DYED

PATTERNS ON APPLICATION

Ahamed Bros.

THE HOUSE OF DISTINCTION. BAZAAR. NAIROBI.

Box 264.

DISSTON SQUARES ACCURATE DEPENDABLE

STOCKED BY THE LEADING HARDWARE MERCHANTS.

Made by Messrs. Henry Diston & Sons, Philadelphia, U.S.A.

We Need Your Head To Run Our Business.

JUST AS YOU NEED US TO LOOK AFTER YOUR PERSONAL APPEARANCE, AND GIVE YOU THAT WELL GROOMED LOOK SO ESSENTIAL TO SUCCESS.

The Timmer Hairdressing Saloons.

Hardinge St. NAIROBI.

THE CHARM OF THE DINING TABLE

Lies in the Choice of Correct Silver Appointments.



PIREX DIBL No. 10 In Rectangular Tray

PIREX DIBL In Round Silver Frame. Size 10 1/2. A Choice Selection.

DOBBIES, Ltd. WATCHMAKERS, SPECIALISTS OF OPTICAL OPTICIANS, NAIROBI.

LADIES!

To look smart in others eyes: come and have a frock made at

BON MARCHÉ.

Opp. Messrs. Howes & McGeorges, Government Road, NAIROBI. by our expert tailors. Up-to-date style. Well cut and beautifully made. Satisfaction guaranteed. Prices as low as possible. We are sure to please you.

ANTI-MALARIA WORKS IN NAIROBI.

(Continued from page 9)

The Assistant Chief Engineer, Kenya and Uganda Railway, the Assistant Engineer of Civil Works, the Municipal Engineer, Nairobi, and the Assistant Engineer of Public Works, Nairobi, were present at a meeting held on the 21st February, 1912, at the offices of the Committee regarding the malarial disease in Nairobi. The meeting was held in the presence of the Assistant Chief Engineer, Kenya and Uganda Railway, the Assistant Engineer of Civil Works, the Municipal Engineer, Nairobi, and the Assistant Engineer of Public Works, Nairobi. The meeting was held in the presence of the Assistant Chief Engineer, Kenya and Uganda Railway, the Assistant Engineer of Civil Works, the Municipal Engineer, Nairobi, and the Assistant Engineer of Public Works, Nairobi.

CORRESPONDENCE.

The editor does not accept responsibility for the views expressed by his correspondents in reference to the Editor.

RECEIVED. The Editor, "The East African Standard," Nairobi, Kenya.

BROADCASTING.

To the Editor, "The East African Standard." Mr. R. L. Stanley might like to know if the program for the 21st August is still in the hands of the Editor. The program for the 21st August is still in the hands of the Editor. The program for the 21st August is still in the hands of the Editor.

LETTERS.

Dear Sir, I have to inform you that the program for the 21st August is still in the hands of the Editor. The program for the 21st August is still in the hands of the Editor. The program for the 21st August is still in the hands of the Editor.

SUBUKIA VIEWS ON FENCING.

(Continued from page 9)

Mr. W. B. Ashby had the opportunity to attend the fencing tournament held at the Government Club on the 21st August. He was much pleased with the results of the tournament. He was much pleased with the results of the tournament. He was much pleased with the results of the tournament.

Opposing Views.

Mr. W. B. Ashby had the opportunity to attend the fencing tournament held at the Government Club on the 21st August. He was much pleased with the results of the tournament. He was much pleased with the results of the tournament. He was much pleased with the results of the tournament.

COMMUNITY OPINION.

(Continued from page 9)

The community opinion regarding the malarial disease in Nairobi is generally favorable. The community opinion regarding the malarial disease in Nairobi is generally favorable. The community opinion regarding the malarial disease in Nairobi is generally favorable.

Public Health.

The public health authorities in Nairobi are working hard to prevent the spread of malarial disease. The public health authorities in Nairobi are working hard to prevent the spread of malarial disease. The public health authorities in Nairobi are working hard to prevent the spread of malarial disease.



ERASMIC keeps the most delicate skin perfectly clear and smooth as satin. It adds that delicate softness to Nairobi's toilette. It is the embodiment of feminine charm.

PEERLESS ERASMIC SOAP

The Dainty Soap. BRANCO PERPARAN - LONDON. It is the most perfect soap for the face and body. It is the most perfect soap for the face and body.

Picture Framing

This branch of our business is in the hands of an expert, and any work entrusted to us will be executed in any design at short notice.

A good frame improves a good picture, and good frames only are produced by B. H. Myers & Co., Ltd.

Box 362. GOVERNMENT ROAD. Box 463. FURNITURE SUPPLIED ON THE HIRE PURCHASE SYSTEM.

Questions for Government.

Under the Bill for two-thirds majority of all members or committees of the Legislative Council. The Bill for two-thirds majority of all members or committees of the Legislative Council.

A Fencing Contest.

Mr. W. B. Ashby had the opportunity to attend the fencing tournament held at the Government Club on the 21st August. He was much pleased with the results of the tournament. He was much pleased with the results of the tournament. He was much pleased with the results of the tournament.

Martell's for Age and Quality

Known throughout the World. A BRANDY THAT IS HANDY FOR ALL OCCASIONS AND A GRAND BRANDY FOR EVERYBODY.



Wholesaled by all High-Class Hotels and Wine & Spirit Merchants.

REPRESENTATIVES: GENERAL MANAGERS, THE EAST AFRICAN STANDARD, NAIROBI.

META HEAT TABLETS

NON EXPLOSIVE - DO NOT MELT. SUPERHEATED HYDRATED SODIUM. Sold with Meta Patent Appliances in the Ideal 'Red' for the home or office.

Sole Agents: ATRES & Co., DARJEELING, Box 6.

Caley's Chocolates.

Only Genuine Caley's Chocolates. Distributing Agents: H. KIRST, City Square, P.O. Box 685, NAIROBI.

Every Day Over 1,000,000

Satisfied Customers Buy and Drink

THE TEA OF TEASHP FARM.

The Proprietor: REDDALE in sole establishment. The Proprietor: REDDALE in sole establishment.

# AUCTION SALES



**English Tailored Clothing (new) and Wire Netting.**

Duly instructed, we shall sell, by Public Auction, without Reserve, at our Salerooms, Moto Building, Nairobi, on

**Saturday, 1st September, at 10 a.m.**

LARGE RANGE of (new) ENGLISH TAILORED CLOTHING including FIFTEEN SUITS, (blue, light grey, dark grey and salmon) COATS and VESTS, TWENTY PAIRS TROUSERS, OVERCOATS, COSTUMES, HATS and RAIN COATS, DRESS and MORNING COATS, SPORTS SUITS, BREECHES, JODHPURS, etc., etc.  
TWENTY-THREE rolls of WIRE NETTING

MUTER and OSWALD, Ltd., Auctioneers, NAIROBI.



**Notice of Sale of Furniture and Effects.**

At our Salerooms, Moto Building,

**Monday, 3rd September, at 10 a.m.**

Details of which will be advertised later.

MUTER and OSWALD, Ltd., Auctioneers, NAIROBI.

## SANDS & Co,

AT OUR RAILWAY SALEYARDS, NAIROBI

**Monday 3rd Sept. at 10 30 a.m.**

- 32 Immune Trained Cows
- 5 Immune Cows in Calf
- 7 Store Figs
- 12 Good Young Breeding Sows
- 10 Trained Oxen
- 10 Fat Bullocks
- 10 Young Heifers
- 10 Cows with Calves at Foot
- 6 Weaners.

**Sands & Co**

AUCTIONEERS

## Loreto Convent

NAIROBI.

Boarding and Day School Boarders return Monday, 10th. Classes resumed Tuesday 11th September.

Pupils received for Kindergarten and Junior School Candidates prepared for Preliminary Junior School Certificate Cambridge, and London University. The school syllabus includes Drawing, Needlework, Singing, Music and Dancing Lessons. Keen interest in games is kept up by the League Matches, and the new tennis courts give opportunity for excellent practice and contests. The health department of the pupils receives special attention.

For Further Particulars apply to MOTHER SUPERIOR, P.O. Nairobi.

## PUDLO

MAKES CEMENT

WATERPROOF

Sole Agents

**Denovan & Diebel**

CITY HOUSE  
NAIROBI

# Austins Auctions

CATALOGUE SALE OF GOOD FURNITURE, CHESTERFIELD SUITES, NEW CARPETS, B.S.A. 375 EXPRESS RIFLE, NEW CLOSETMINT CLOTHES, GRAMOPHONE, RECORD, BLANKETS, SHEETS, PILLOWS, MOSQUITO NETS.

Instructed by a Lady leaving for Home and other friends

**Austin & Co.**

will sell WITHOUT RESERVE unless stated, at THE MART, on

**Saturday, September 1st, at 10 a.m.**

TWIN TEAK BEDS COMPLETE. TEAK DINING TABLE SUITE OF 6 TEAK DINING CHAIRS. Chesterfield Suite with loose Crestone covers. Cedar Single Wardrobe with Large Mirror. 4 NEARLY NEW IRON BEDS COMPLETE. Double Washstands. 4 Bentwood Chair. Dressing Table. Sideboard with 2 drawers and 2 Cupboards. Full Front Writing Bureau. Pair of Car Chairs 20 x 24 H.M.M. Table Gramophone with 25 good Records. Teak Tea Table. Palm Stands. Dressing Table with 4ft. Mirror. 3 Single Hanging Wardrobes. Art Square Carpet 9' x 9'. Carved Top Tea Table. Desk Chair. 2 Upholstered Wicker Chairs. Settee with loose covers. GOOD CHESTERFIELD SUITE WITH LOOSE BROWN COVERS. 4 Arm-chairs with loose cushions. Commode. Occasional Tables. TEAK Dressing Table with 4 mirror. New Kitchen Tables. Chest of Drawers. Framed Pictures. Chiffoniere. Table Gramophone. TEAK DOUBLE WARDROBE with Drawers inside and 4 mirror (reserve). NEARLY NEW ENAMELED TOILET SETS. HALF DINNER SERVICE complete. Faucet with Teapot. GLASSWARE. 375 Express B.S.A. RIFLE in case (very low reserve). Cratone Curtains. Coffee Cups and Saucers. Cheese Dish. Vases. Good Saffron. Sausagepan. NEARLY NEW GOOD BLANKETS. SHEETS. PILLOW CASES. KAPOK TOWELS. MOSQUITO NETS. NEW LARGE TOILETS. Knives and Forks, etc. NEARLY NEW BRUNSWICK PORTABLE GRAMOPHONE (reserve). New Meat Scales. Tanganyika Mahogany DINING TABLE 6'6" x 29". 3 Bound Volumes "Times of India". 2 NEW CARPETS 12' x 9' (reserve). Etc., Etc., Etc.

AUSTIN & CO., Auctioneers, Hardinge St., Nairobi.

## FOR SALE, Mombasa.

Plot: Kilindini Road frontage, immediate occupation. Freehold 4/3 sq. foot. 20 per cent. deposit. Balance in 4 equal yearly instalments at low interest.

Apply Brown and Barrett, Box 487, W. J. Moynagh, Box 54, Nairobi, Milligan & Co., Box 148, Nightingale & Co., Box 606, Nightingale & Co., Mombasa, Springfield & Co.,

## Jamal Pirbhai.

Sells anything You Cannot Sell. Auctioneer, Official Broker and Government Approved Valuer. Auctions Every Sunday, at 9 a.m. Opposite (Jeevanji) Garden.

P.O. Box No. 509, Nairobi, Kalia Colony.

## The Selection of Your Grocer

Must be a problem that puzzles you. Solve it by dealing with **HARISINGH, GUJBHAI** (Established 1910.)

The Store that has always stood for **Quality & Value.**

Give us a trial to prove this to you!

**Direct Importer.**

FRESH VICTORIES REGULARLY ARRIVING.

Specialists in Choice Wines, Groceries, Provisions, Tobaccos, Confectionery, Canned, Gunny Bags, C.I. Sweets, Local Produce, etc.

Uncopyable Orders Give Personal Attention

Detailed Price List on Application. Mail Your Orders Direct to—P.O. Box No. 8, Donald Avenue—NAKURU—Phone No. 7.

## Rubber Stamps

AT THE

STANDARD STATIONERY STORES

NAIROBI.

**F. A. HEAD,**  
PINKPOKETE, TUNER and REPAIRER.  
Five years with Messrs. Chappell & Co., London  
Seven year experience in Kenya Colony.  
Send all orders to P. O. Box 675

## Smokers Favourites.

No. 1 Large.	SCOTTS	No. 2 Medium.
BURMAH CIGARETTES.		
H. & C.'s DARK & LIGHT FLAKES.		
1 lb. Bags.	HARTLEY'S LEAD SEAL.	1 lb. Bags.

MAGALIESBERG TOBACCO.

Wholesale Quotations on Application.

**BLACKLAYS & BROWN**  
Tel. No. (late Mackintosh Bros.) Box No. 81. NAIROBI. 468.

## Theo. SCHOUTEN.

MOMBASA Govt. Road, NAIROBI, NAKURU.

WITH A STAFF OF FIRST CLASS

LONDON (WEST END) OPERATORS.

## At Your Service

FOR EXPERT

## Hairdressing

PERMANENT WAVING, by the Best Systems. Phone 945. Artistically Executed. P. O. Box 534.

## Important Notice.

## Husein & Co.

Desire to thank all their Patrons for their Patronage During Sale.

## ESSJAY LIMITED

Theatre Royal Buildings.

Box 634—Phone 877.

## Financial and Property Agent.

Mortgages specialized in. Town Properties negotiated, Partnerships arranged, Investments advised on.

We have sound investments for sums from £100 upwards. In this respect we claim to do better for you than anyone else.

S. JACOBS,  
Managing Director.

## LAND

## Kitale District.

We have farms of various acreages developed and undeveloped in the Trans Nzoia, for disposal at prices to suit both large and small capitalists. Land is suitable for COFFEE, MAIZE, WHEAT, and mixed farming.

## KIRKWOOD & Co.

Land Agents and Valuers, KITALE.

## Sale of Carts and Oxen.

Miss Mohamed Majid Plaintiff  
Alia Bhikha Defendant.  
Civil Case No. 2006 of 1928.  
Under instructions from Court

## C. DENOVAN.

Will sell by Public Auction 4 oxen and two carts, on **THURSDAY, THE 29th AUGUST, 1928** at the spot in Eastleigh in 1st Section near Mosque at 10 a.m.

The Victoria Nyanza Sugar Company Ltd.

## MIWANI

Beq. to notify the Public that they have commenced crushing and all orders for sugar should be addressed to them at Miwani.

Farmer's having sugar canes for disposal should communicate, without delay, with the factory, stating number of Farm and where situated, area of cane available, estimated weight of crop, what tonnage they can contract to deliver daily and the date upon which they can commence delivery. Further particulars can be obtained at the mill office on application.

## Property for Sale.

2868 acres of excellent Sial land is offered for Sale, within nine miles of Nairobi with river front at Shige 26 1/2 per acre.

5 roomed Stone House on 23 acres of Malama Road, Parklands. Price £1,250.

5 roomed Brick and Stone House all modern conveniences, Tennis Court and Summer House at Kikuyu Road, Parklands.

24 acre Plot with Fruit Plantage and permanent Spring at Ruaraka—Price only £500.

For further particulars of the above and other valuable property apply

## Brown & Barratt

P. O. Box 637. Phone 147, IEBA BUILDINGS, NAIROBI.

## It's a

Direct Benefit to Customers, as we

Woolly Ties,	DIRECTLY	Bath Sheets,	Importers,
Leather Shooings,	AND	Bed Towels,	
Pyjama Shirts,	SELL	Underwear,	
"Cottons" Shirts,	BY	Children's Boods,	
Woolen Blankets,	RETAIL.	etc., etc.	
General Merchants			

## Kala Sidi

Government Road, NAIROBI.

## Jam Containers

WITH LIDS

1 lb. Size for CREAM, Etc. Shgs. 9/- per doz. Shgs. 25/- per gross.		1 lb. Size for JAM, Etc. Shgs. 2/6 per doz. Shgs. 20/- per gross.
---	--	---

## Fruit Baskets

CHIP WOOD WITH METAL HANDLES. Size 11 1/2 x 7 x 8 inches. Price 1/- per doz.

STANDARD STATIONERY STORES, NAIROBI.

## Manufactured in Kenya. To Suit Local Conditions.

GOOD QUALITY UPHOLSTERY OF SIMPLE, BUT COMFORTABLE LINES.

Chairs Shgs. 115/- Settee 220/-	
Price Complete Shgs. 450/- Covered in Plain White	

Our well-known Equator Suite made of selected hardwood frames, sprung with best English steel covered springs. Only the greatest fittings used.

We have a large selection of materials suitable for loose covers, in choice designs.

**Hutchings, Biemer & Co. Ltd**

LESS 5% FOR CASH WITH ORDER. Monthly A/c with Approved Customers. Furniture Supplier on Easy Terms of Payment.



Wireless Components & Sets
IN STOCK.

USE THIS WEEK. H.T. BATTERIES.
LOUD SPEAKERS HAVE NOW ARRIVED.

W. H. Moore & Roy Ltd.
GENUINE HOUSE. BOX 455. NAIROBI.

B.S.A. "Kone"

Loud Speakers

L. Melvors Garage.

Wet. H. T. Batteries for Wireless

APPLY TO: KENYA AGENCY LTD.
UNION BUILDING, GOVERNMENT ROAD, NAIROBI.

MANGALORE DEAL TILES ALL SIZES.

TEAK in Logs and Scantlings

Swedish Imported Doors all sizes in Stock.

F. M. BHAIJEE, Hardware Merchant, Indian Bazaar, Nairobi

Geo. BLOWERS

BUILDING CONTRACTOR, MANUFACTURER & N. DIRECT IMPORTER.
Tel. Add. "Concrete". Phone: Work 398. House 459.

CASH WITH ORDER.
No. 1, 2, 3.
Light Woodlin Blinds, flowered, etc.



NOTE: Prices subject to change without notice.
No. 1, 2, 3, 4, 5, 6, 7, 8, 9, 10, 11, 12, 13, 14, 15, 16, 17, 18, 19, 20, 21, 22, 23, 24, 25, 26, 27, 28, 29, 30, 31, 32, 33, 34, 35, 36, 37, 38, 39, 40, 41, 42, 43, 44, 45, 46, 47, 48, 49, 50, 51, 52, 53, 54, 55, 56, 57, 58, 59, 60, 61, 62, 63, 64, 65, 66, 67, 68, 69, 70, 71, 72, 73, 74, 75, 76, 77, 78, 79, 80, 81, 82, 83, 84, 85, 86, 87, 88, 89, 90, 91, 92, 93, 94, 95, 96, 97, 98, 99, 100.

ANY SIZES TO ORDER—WOOD, BRASS, IRON.
OUR RESPONSIBILITY ORDERS OF DELIVERY TO RAILWAY.

GOOD CONCRETE REQUIRES GOOD BALLAST.
Let me quote you either in Quarry or Delivered.

Well matured CONCRETE BLOCKS, in stock at SHARP PRICES.
Buy of the Original Maker.

Delivery by motor lorry at stated rates.

WIRELESS NOTES

How to Instal and Operate a Set.

By G. Elphinstone Roe, A.C.G.I., A.M.I.E.E.

To-day we get the feel of a new wireless aerial designed to help their interested audience in East Africa. In simple non-technical language an account is given of the various parts of the set and how to connect them up.

The primary object of these notes is to enable the subscriber to obtain satisfactory results from his broadcasting receiver, and to do this as much as possible in the unsatisfactory state of affairs which exists when a receiver looks new.

It is assumed that a listener has purchased his receiver, his first problem will be that of installation. Firstly, he will consider the erection of an aerial.

The aerial consists essentially of an elevated copper wire connected to the terminal of the receiver marked "Aerial" or "Antenna," and to nothing else.

A simple form of procedure is as follows:—Length of the wire is about 200 ft. The wire is attached to an insulator at one end of the string, a rope is attached, about 50 feet long, to the other end of the string, a rope is attached, about 50 feet long, to the other end of the string, a rope is attached, about 50 feet long, to the other end of the string.

Some should then be measured by the subscriber. A length of 50 feet from this, a suitable length of horizontal wire, with the necessary insulators, should be suspended from the tower to the mast.

The aerial may be suspended from the tower to the mast, or from the tower to the mast, or from the tower to the mast, or from the tower to the mast.

The aerial may be suspended from the tower to the mast, or from the tower to the mast, or from the tower to the mast, or from the tower to the mast.

The aerial may be suspended from the tower to the mast, or from the tower to the mast, or from the tower to the mast, or from the tower to the mast.

Very desirable to point out the hook or dabby be painted all over. It is also advised to use a suitable material for the hook or dabby.

The receiver may now be put in place, and should be put in place so as to point to the centre of the land wire.

The receiver may now be put in place, and should be put in place so as to point to the centre of the land wire.

The receiver may now be put in place, and should be put in place so as to point to the centre of the land wire.

several wires, about 1/4 inch in diameter, in each radial strand, and is very suitable for this purpose. It is usually necessary to use a special type of wire for the antenna, each part being a separate H.V. battery about the size of a brick.

Amusing the receiver to be correctly mounted, it should be secured in a position so that the switch on the front panel, when it is turned on, will be in the closed position.

To do this, take the two leads of the receiver, one in each hand, and take them simultaneously to the "plug" in the hand of the operator.

At the same time, however that it is not left in condition known as "switching," i.e. when either the ringing switch or the varying whistle is audible.

Lastly, the H.T. (high-tension) battery may be connected, and will consist of two or three cells.

Union of South Africa

Save Capital Outlay

Obtaining Your Requirements

FROM SOUTH AFRICAN Trade Commissioner for South Africa, MEMORIAL HALL, P.O. BOX 624, NAIROBI.

CEMENT. HAND BRAND AND FERROCEMENT ALSO IMPROVED DEAL AND TEAKWOOD, OILS, PAINTS AND DISTEMPERS, HOUSEHOLD-WARE AND BRUSHWARE.

Madatally Suleman Verjee & Sons, MADATALLY BUILDING, GOVT. ROAD, NAIROBI.

GROCERIES, CONFECTIONERY, AND CIGARETTES AT Hassanal Bros. MADATALLY BUILDING, GOVT. ROAD, NAIROBI.

Next week's notes will deal with the general handling of a receiver, with special reference to this matter of installation, and the maintenance of a set in good order and condition.

Each week these notes will contain references to necessary components obtainable in Kenya.

A new type of wet H.T. battery is now available in Kenya, and should prove of great use.

The reason for this is that not only is the battery of a very high capacity, but also for every other receiver which is in use.

These notes will be published in the form of a book, and will be available in the form of a book.

Theatre Royal Monday Tuesday Wed. Sept. 3rd. 4th. 5th.

RAHM JIVRAI, P.O. Box 18, NAIROBI.

FOR SALE.

Light Woodlin Blinds, flowered, etc. No. 29, pair.

Mosaic Tiles, double & single. No. 18, 24, and 36, each.

White Honey Comb Quilt. No. 1, 2, 3, 4, 5, 6, 7, 8, 9, 10, 11, 12, 13, 14, 15, 16, 17, 18, 19, 20, 21, 22, 23, 24, 25, 26, 27, 28, 29, 30, 31, 32, 33, 34, 35, 36, 37, 38, 39, 40, 41, 42, 43, 44, 45, 46, 47, 48, 49, 50, 51, 52, 53, 54, 55, 56, 57, 58, 59, 60, 61, 62, 63, 64, 65, 66, 67, 68, 69, 70, 71, 72, 73, 74, 75, 76, 77, 78, 79, 80, 81, 82, 83, 84, 85, 86, 87, 88, 89, 90, 91, 92, 93, 94, 95, 96, 97, 98, 99, 100.

Printed Book. No. 1, 2, 3, 4, 5, 6, 7, 8, 9, 10, 11, 12, 13, 14, 15, 16, 17, 18, 19, 20, 21, 22, 23, 24, 25, 26, 27, 28, 29, 30, 31, 32, 33, 34, 35, 36, 37, 38, 39, 40, 41, 42, 43, 44, 45, 46, 47, 48, 49, 50, 51, 52, 53, 54, 55, 56, 57, 58, 59, 60, 61, 62, 63, 64, 65, 66, 67, 68, 69, 70, 71, 72, 73, 74, 75, 76, 77, 78, 79, 80, 81, 82, 83, 84, 85, 86, 87, 88, 89, 90, 91, 92, 93, 94, 95, 96, 97, 98, 99, 100.

Special Questions for Quantities. D. DAVEY, Govt. Road, P.O. Box 652.



HERBAT BRENON Production with Ronald Colman. (BY ARRANGEMENT WITH MESSRS. GAYLORD).

ALICE JOYCE MOAH BRIAN WILLIAM POWELL RALPH FORBES NELL HAMILTON NARY BEARY NORMAN TREVOR VICTOR HILGIAN

Plans for Ben To-day.

MISS KATHLEEN BATES A.R.C.M. RECEIVES PUPILS FOR PIANOFORTE—SINGING—HARMONY. AT 5 PM. Music Studio Sixth Avenue.

Postal Address: Box 417. PUPILS OBTAINED TWENTY-FOUR AWARDS IN THE MUNICIPAL FESTIVAL JULY 30—AUGUST 4.

Wanted a Gunbearer

who can bear to use a gun that will not shoot straight. If he will apply to us we will sell him a gun that will make shooting a pleasure, instead of a penance.

SHAW & HUNTER
Box 70, NAIROBI.

Charles Ware

SOLE AGENT.
Residence at 28, Essex St., LONDON.
21 February, 20/1.
21 February, 20/1.
21 February, 20/1.
21 February, 20/1.

DEPOSIT ACCOUNTS ON APPROVED REFERENCE ONLY.

J. H. S. Todd & Co. Ltd.
GENERAL MERCHANTS—NAIROBI.



THE Bradford Manufacturing Co. Ltd.
Special Sale of Calanese, Ladies Underwear.
50 only Calanese, 3 in 1, Trinity Sets,
Plain, Women's Size 19/50 OS 25/30 each.

GOOD CLUBS DESERVE A GOOD BAG
We have a WONDERFUL SELECTION to show you hanging in at prices from Shs. 8-50 to Shs. 75-00

MAY & Co., Ltd.
THE SPORTS HOUSE, NAIROBI.

COUNTY CRICKET.

Ken Defeated by West Indies.

MATCHES UNFINISHED.

(THROUGH REVIEWERS AGENTS).
London, August 27.
The following were the scores of the close of the season's play of county cricket matches during the country on the second day.

Medicine vs. Surrey.
At Lords:
Surrey (1st innings): 332
(Middleton 50, Pender 67)

West vs. Leicester.
At Leyton:
West (1st innings) 207
(Connor 123, Mc Coy 71, Gillis 79)
Leicester (1st innings) 205
(Mc Coy 71, Dawson 125 and 126)

Sumner vs. Yorks.
At Leeds:
Yorks (1st innings): 420/4
declared (Bradford 228, Holmes 60, Kemp 50)

Nottingham vs. Derbyshire.
At Nottingham:
Nottingham (1st innings) 219
(Lawson 72/92)

Warwick vs. Warwick.
At Worcester:
Warwick (1st innings): 217
(Meyer 102, not out)

Warwickshire vs. Warwickshire.
At Worcester:
Warwickshire (1st innings): 217
(Meyer 102, not out)

Northants vs. Northants.
At Northampton:
Northants (1st innings): 101
(Kennedy 7/68, Newman 6/80)

Nottingham vs. Nottingham.
At Nottingham:
Nottingham (1st innings): 101
(Kennedy 7/68, Newman 6/80)

Warwick vs. Warwick.
At Worcester:
Warwick (1st innings): 217
(Meyer 102, not out)

Warwickshire vs. Warwickshire.
At Worcester:
Warwickshire (1st innings): 217
(Meyer 102, not out)

Warwick vs. Warwick.
At Worcester:
Warwick (1st innings): 217
(Meyer 102, not out)

Warwickshire vs. Warwickshire.
At Worcester:
Warwickshire (1st innings): 217
(Meyer 102, not out)

Warwick vs. Warwick.
At Worcester:
Warwick (1st innings): 217
(Meyer 102, not out)

THE SPORTS PAGE

HOME FOOTBALL.

Results of Last Monday's Matches.

(STANDARD CORRESPONDENT).
London, Aug. 27.
The following Section League football matches were played on Monday.

First Division.
Aston, Villa, Manchester United 0.
Huddersfield 4, Bolton Wanderers 1.

Second Division.
Bradford 1, Chelsea 2.
Clapton Orient 1, Northfleet 4.

Third Division.
Aston, Villa, Manchester United 0.
Huddersfield 4, Bolton Wanderers 1.

Fourth Division.
Aston, Villa, Manchester United 0.
Huddersfield 4, Bolton Wanderers 1.

Fifth Division.
Aston, Villa, Manchester United 0.
Huddersfield 4, Bolton Wanderers 1.

Sixth Division.
Aston, Villa, Manchester United 0.
Huddersfield 4, Bolton Wanderers 1.

Seventh Division.
Aston, Villa, Manchester United 0.
Huddersfield 4, Bolton Wanderers 1.

Eighth Division.
Aston, Villa, Manchester United 0.
Huddersfield 4, Bolton Wanderers 1.

Ninth Division.
Aston, Villa, Manchester United 0.
Huddersfield 4, Bolton Wanderers 1.

Tenth Division.
Aston, Villa, Manchester United 0.
Huddersfield 4, Bolton Wanderers 1.

Eleventh Division.
Aston, Villa, Manchester United 0.
Huddersfield 4, Bolton Wanderers 1.

Twelfth Division.
Aston, Villa, Manchester United 0.
Huddersfield 4, Bolton Wanderers 1.

Thirteenth Division.
Aston, Villa, Manchester United 0.
Huddersfield 4, Bolton Wanderers 1.

Fourteenth Division.
Aston, Villa, Manchester United 0.
Huddersfield 4, Bolton Wanderers 1.

WORLD'S BOXING TITLE CONTEST.

Open-air Meeting in London.

FLYWEIGHTS AND BANTAMS.

(THROUGH REVIEWERS AGENTS).
London, Aug. 27.
One of the few world's boxing title matches to be held in London will take place in the open-air at the Crystal Palace, Champion, and Flower, the American heavyweight.

The fight will be preceded by a 15-round contest at 10.15 between Johnny Hill, the European Flyweight Champion, and Flower, the American heavyweight.

Much satisfaction is expressed in boxing circles regarding the fresh match made between Johnny Hill and Newbery Brown, who are to meet at Crystal Palace for the world's flyweight title on August 29, says a boxing writer in "All Britain".

It would have been too bad if the American would have been compelled to return home without a fight, as the referee was thought to have been about three weeks ago, but was persuaded to remain a little longer.

Brown Delighted.
He is now delighted at the prospect of all his modifying character in the ring. Brown was brought to England in May last, for the purpose of fighting one flyweight champion for the world's title at Stamford Bridge on June 4. At last, as all the world knows, that purpose has been fulfilled through Brown's return to England.

The reason for this was that while Brown's return was requested by the National Boxing Association of America as the best 100 pounds in the world, he was found by the New York Commission nominated by Schwartz on the championship fight.

To Fight for a Vacant Title.
Since then, however, Schwartz has not yet been seen in the heavyweight class, and that the way is left clear for Brown to fight for the title left vacant by Fido Lee, who retired after the championship.

At Harlow, by the way, returned to the ring last week when he fought at Harlow, Essex, 12. These days he is no longer a flyweight and may see championship success in another division.

African Football.
RAILWAY APPRENTICES WIN THE MAXWELL CUP.

A large crowd witnessed the final for the African Football Association Maxwell Cup on Friday last, between the Railway Apprentices and the Nairobi Police. The match, though not fast and lively, resulted in a draw.

There was no score at half-time, but the Railway Apprentices took advantage of their opportunity to sweep down the field in fine style, scoring two goals without reply, thus decisively winning the match and trophy.

The play was presided in the end by Capt. Walsley-Bourne.

SPORTS DIARY.
August 31:
Meeting of Rugby Football Union, Norfolk Hotel, 6.0.

Estates close for Muthika Golf Club's 1926 Championship, September 1.
Football: Harrow Cup, Police vs. Mombasa on Friday ground.

KENYA RACING.

Valuable Addition to the Colony's Breeding.

AN IMPORTED STALLION.

(STANDARD CORRESPONDENT).
Nairobi, August 27.
The latest importation of horse stock into Kenya has been the arrival of a two year old stallion from the Darby-Bridgman, the well-known trainer of Nairobian.

This stallion, whose name is Zilverna, is a very well set up animal with good long sloping shoulders, the hind-quarters being long and strongly muscled. His colour is brown, and when I saw him yesterday he was really in splendid condition, apparently losing very little on the voyage out. When he had had sufficient time to settle down and become acclimated, he should turn out to be one of the best young thorough-breds in the country, and a most valuable addition to Kenya's racing stock.

Being bred.
Zilverna is by Silvern oak of County Zoo, Silvern, being by Plympton oak of Silver Fox. Silvern was the Champion Cup and was second in the St. Leger. Among his progeny are: Redwood, who won the Newmarket October Stakes and the Newmarket Five Hurdles and Silver Oak, who won the 2,000 Guineas and was sold for £7,000, a price for a horse trained in Ireland.

Comstock-Zilverna is also the dam of The Panther, winner of the 2,000 Guineas. This mare has so far, turned out to be the most profitable of the mares that the National Stud received from Lord Wavertree, and her of progeny have been sold for a total of £1,000 guineas. The Panther was trained by J. A. G. giving being the highest priced youngster of his season.

Silver Fox was bought by the National Stud for £12,000, and amongst her progeny are to be found—Pittalis, a winner of the Derby and the Oaks, Silver Stinger of the Cambridgeshire, and Redwood, a winner of the Oaks of York Hurdles.

Zilverna, who is not standing to stud just yet, will see an action on a two year old at the December term meeting in Nairobi. He was purchased from the National Stud, being trained by the National Stud.

The House in the Cloud

Mrs. Malcolm Mason
A DELIGHTFUL BOOK OF POEMS FOR CHILDREN.
Shgs. 4/- Portion 4-50.

STANDARD STATIONERY STORES, NAIROBI.

Another Musical Festival.
We have just unpacked a consignment of H.M.V. Records by the undermentioned famous artists. The artists—like the H.M.V. Records—are supreme in their own line and lovers of good music should take an early opportunity of inspecting this consignment.

If all were connoisseurs, they'd not be nearly enough "Kenitas" to go round.

Only the selection of records that are available for sale in Nairobi, Kenya, and Mombasa, and only the selection of records that are available for sale in Nairobi, Kenya, and Mombasa, and only the selection of records that are available for sale in Nairobi, Kenya, and Mombasa.

Kenitas
L.A. good or really good Kenitas are best.

D. EPSTEIN & CO., NAIROBI.
1 WICK STEEL, 104-106, Princes Street, London, England.



Recent successes at Bulby have testified to the excellence and accuracy of KYNOC AMMUNITION.

A. HOGG, Mutos B'dgs, NAIROBI. (SINCE 1904).

8. Lager, Dumeter, 13/5/6, 1 Mile 8 burings 125 pams; 5/2 Poles; 4/1 Opelin, Fairway; 7/1 Poles; 8/1 Poles; 10/1 Poles; 12/1 Poles; 14/1 Poles; 16/1 Poles; 18/1 Poles; 20/1 Poles; 22/1 Poles; 24/1 Poles; 26/1 Poles; 28/1 Poles; 30/1 Poles; 32/1 Poles; 34/1 Poles; 36/1 Poles; 38/1 Poles; 40/1 Poles; 42/1 Poles; 44/1 Poles; 46/1 Poles; 48/1 Poles; 50/1 Poles; 52/1 Poles; 54/1 Poles; 56/1 Poles; 58/1 Poles; 60/1 Poles; 62/1 Poles; 64/1 Poles; 66/1 Poles; 68/1 Poles; 70/1 Poles; 72/1 Poles; 74/1 Poles; 76/1 Poles; 78/1 Poles; 80/1 Poles; 82/1 Poles; 84/1 Poles; 86/1 Poles; 88/1 Poles; 90/1 Poles; 92/1 Poles; 94/1 Poles; 96/1 Poles; 98/1 Poles; 100/1 Poles.

Doak in Detail Accounts. Special Credit Accounts may be opened on satisfactory references. Settling, Monday and week before any day.

Fair Prices — Security — Prompt Settlement.

The House in the Cloud BY Mrs. Malcolm Mason A DELIGHTFUL BOOK OF POEMS FOR CHILDREN. Shgs. 4/- Portion 4-50. STANDARD STATIONERY STORES, NAIROBI.

Another Musical Festival. We have just unpacked a consignment of H.M.V. Records by the undermentioned famous artists. The artists—like the H.M.V. Records—are supreme in their own line and lovers of good music should take an early opportunity of inspecting this consignment.



Kenitas
L.A. good or really good Kenitas are best.

D. EPSTEIN & CO., NAIROBI.
1 WICK STEEL, 104-106, Princes Street, London, England.

THE EASTERN AFRICA SHOW TO BE HELD AT NAIROBI

October 2nd, and 3rd., 1928. DON'T FORGET ENTRIES CLOSE ON AUGUST 31st.

ALL Communications to be addressed to THE SECRETARY, BOX 671, NAIROBI.

Printed and Published by HART AFRICAN STANDARD, Ltd., 28th Avenue, Nairobi, Kenya Colony.