

KAUWA BEER
Wholesome and Appetizing.
LIGHT OR DARK

GUARANTEED THE LARGEST CIRCULATION OF ANY NEWSPAPER IN KENYA, UGANDA, TANGANYIKA AND ZANZIBAR.

DAILY EDITION.

THE EAST 14 PAGES

African Star

UGANDA ARGUS THE LEADER.
THE OLDEST ESTABLISHED NEWSPAPER PUBLISHED IN KENYA AND UGANDA.

NAIROBI, SATURDAY, SEPTEMBER 15, 1929

The LOUNGE
FOR Morning AND Afternoon TEAS
Open on Sundays to Non-Residents
The New Stanley Hotel

SERIOUS FIRE AT THE KENYA GRAIN MILLS.

Outbreak Thought to be Due to Spontaneous Combustion.

CONSIDERABLE DAMAGE.

Some of the Machinery and Large Stocks of Wheat Destroyed.

Damage estimated at many thousand pounds, started from the loss which occurred through the interruption in working, was caused as a result of a fire at the Kenya Grain Mills, Nairobi.

The alarm was given early yesterday morning and the firemen directed their chief efforts to saving that portion of the building, at first little understood by the flames, and containing the most important part of the machinery.

The outbreak is thought to have been the result of spontaneous combustion.

EARLY MORNING ALARM.

A disastrous fire occurred in Nairobi early yesterday morning, the result of which a big part of the Kenya Grain Mills was burnt out. It is estimated that the total loss amounts to approximately £10,000.

Shortly before 7 o'clock the Nairobi fire brigade received a call and immediately proceeded to the fire. The fire was very little to be seen, as a greater part of the fire was in the main building and it was only seen from the office of the manager, who was in the office at the time.

The fire was seen through the window of the office. The roof of the office portion had already collapsed and an early hour. The fire was seen through the window of the office. The roof of the office portion had already collapsed and an early hour.

The Kenya Grain Mills was built in two portions with a fireproof wall between, and it is undoubtedly due to this fact, and to the prompt action of the fire brigade, that the damage was not very much greater. The side tower, which was burning slowly, was the only part of the building which was not destroyed. The fire was seen through the window of the office.

Cause Unknown.

The cause of the fire is not known, but it is presumed to have been spontaneous combustion, wheat dust being an explosive material.

When the machinery which was destroyed was a combined roller and winnowing machine, and the loss which were full of wheat. The fire was seen through the window of the office.

The fire was seen through the window of the office. The roof of the office portion had already collapsed and an early hour.



A VIEW OF THE FIRE.

ROYAL VISITORS IN CAIRO.

Lack of a Formal Welcome.

As an Entitled Incident, Mr. Powell, the Financier, told a "Standard" representative that the first intimation which he received was on the telephone which began shouting "Hello, molo, molo." All endeavors to question the natives in order to find out where the fire was serious. Finally a European went to the mill to see what the fire was doing.

When the British arrived they found the mill in a state of confusion. The fire had spread to the top two floors of the building and the roof had fallen in places. The fire was seen through the window of the office.

Mr. Powell and Mr. Stevenson were assisted in their efforts by Mr. Dyer who was the first person to arrive on the scene after the brigade.

It was quickly realized that there was little hope of saving the portion which was actually burning and therefore a great effort was made to prevent the fire from spreading into the other section of the building.

Throughout last night some 200 men were on duty and water was continually played on the fire by day-long squads.

["N. A. Standard" Special Service] Swans for Kenya.

["STANDARD" CORRESPONDENT] London, Sept. 12. Two swans presented by the Victoria and Albert Museum to the Kenya Government have been shipped to Mombasa.

SHIP WORKERS DEMAND A CONFERENCE.

Australian Trouble due to Extremists.

["TERRON BRITISH AGENCY"] Cairn, September 13. A labor conference was held here today under the auspices of the Federal President, to arrange for an immediate conference in order to effect a stoppage of the strike.

The ship owners have not yet decided to employ free labor. The owner declares that many members of the union were ready to obey the strikers' demands but were overruled by a small coterie of extremists.

Temple Industry.

FACT BETWEEN AMERICA AND WALES.

["BY WRITERS"] Rugby, Sept. 12. American and Welsh temple manufacturers have signed an agreement allowing the Welsh temple makers to export to America.

["BY WRITERS"] Rugby, Sept. 12. Speaking before the Duanmu Council of the League of Nations this afternoon, Lord Curzon said that the League of Nations had a special committee to investigate the situation in the Middle East.

["BY WRITERS"] London, Sept. 12. Lord Curzon in an interview with Reuters stated that the "situation" which he referred to was a result of the attitude of other Powers to the Anglo-French Naval Conference.

["TERRON BRITISH AGENCY"] London, Sept. 13. Lord Curzon in an interview with Reuters stated that the "situation" which he referred to was a result of the attitude of other Powers to the Anglo-French Naval Conference.

["BY WRITERS"] London, Sept. 12. Speaking before the Duanmu Council of the League of Nations this afternoon, Lord Curzon said that the League of Nations had a special committee to investigate the situation in the Middle East.

Whiteaways

The House For Costumes Dresses Etc



WOOLLY SUITS
Ladies smart 3-piece Woolly Suits consisting of coat, skirt and jacket. Colors, Blue, Pink, and Green accented with stripe designs.
Shgs. 85-00

ART SILK DRESSES
Arrived by the last mail an extremely smart selection of ladies' Art Silk Morning and Afternoon dresses. Long, short or no sleeves. Plain colors, or fancy designs in Green, Blue, Pink, and Green accented with stripe designs.
Shgs. 39-50

CASHMERE SUITS
Made from a fine, light weight wool and cotton Cashmere in Browns and Pinks with Herring Bone designs.
Shgs. 37-50

CASHMERE DRESSES
A large and varied range of ladies light weight Wool and Cotton Cashmere Dresses. Fashionable styles, pleated skirts. Blue or Pink only.
Shgs. 29-50

"VAGABOND" TRAVEL
The most popular and attractive line in Kenya, with the latest London fashions.
Shgs. 29-50
49-50 55-00 69-50


Also Children's **Shgs. 14-50**
STRAW HATS
Various colours and shapes arrive by each mail. We hold by far the largest selection in town of these goods.

AFTERNOON FLY HATS
A huge range of these ever popular and useful hats, large or small shapes in Blues, Beiges, Browns, Salmons, Greys, Red, etc.
Shgs. 2-00

BLEUVELLES WAIST COATS
Modern design all-wool ladies' Glycerine, Castigione, Speckled, Fawn and Grey waists. A useful garment for school wear.
Shgs. 29-50

WOLE DRESSES
We have just received a large delivery of ladies' Wool dresses in a large number of fancy designs and colorings. A real bargain offer.
Shgs. 8-50 each.





De Reszke
—of course!

Virginian 50 for 2/5. Turkish 50 for 2/50 for 50c.
Distributors: DALGETY & Co., Ltd.

PRIME MINISTER AND UNEMPLOYMENT.

Details of a New Scheme.

"A TRAGIC PROBLEM"

(STANDARD) CORRESPONDENT.
London, Thursday, Aug. 24.
The Prime Minister has been a letter to 150,000 unemployed men appealing for co-operation in solving the existing problem of unemployment as an effective, speedy, and sympathetic interest. A good deal has necessarily to be said in connection with regard to those cases where unemployment is directly traceable to the fault of the individual or of groups of individuals but it is felt that circumstances must not allow sympathy to be diverted from the great mass of those who are not of work through no fault of their own, and above all, must not be allowed to divert attention from the best manner of dealing with the problem.

As a matter of fact, the most hopeful point in the general industrial outlook at the present moment is the display of a spirit of general co-operation by employers, moreover, based upon a sincere appreciation by employers and employed alike of the fact that it is in their own interest to solve the problem as far as possible in terms of the best interests of the community. The more attention is focused upon this problem, the better will be the chances of its speedy but satisfactory solution.

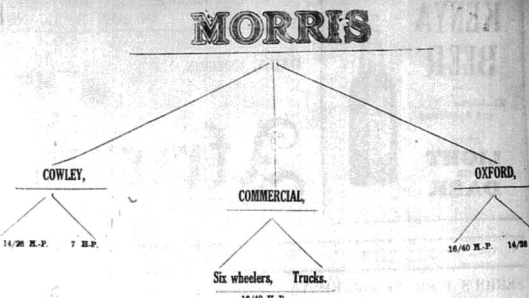
Mr James H. Logan, producer of the legislation, has died at Oakland, California, on the 26th of 30 Mr. Logan created the Liquority by creating the bankery and the railway. Specimens of the new fruit produced by him were presented to the University of California for the benefit of the people of the nation. Liquority culture is now a major industry in many parts of the United States particularly through

The French authorities have decided to embark on a great campaign to stamp out the drug traffic in France, especially in Paris. It will be under the direction of specially trained detectives, who will assume the roles of drug-takers and traffickers in order to discover the sources of supply for the illicit dependence on a stimulative non-ether districts.

The campaign as the result of the recent sensational trial in Paris of 25 persons connected with the traffic. It was there established that the use of the biggest obstacle for the distribution of opium, morphine, heroin and cocaine was through doctors and chemists who are in contact with the sale centres in Paris, and the importation centres at Marseille.

Miss KATHLEEN BATES A.R.C.M.
RECEIVES PUPILS FOR
PIANOFORTE—SINGING—HARMONY.
AT HER
Music Studio Sixth Avenue.
Postal Address: Box 417.

Kenya Loan & Discount Co., Ltd.
NAIROBI.
OFFICES— P.O. Box
1st Floor, Court Chambers. 546.
FINANCIAL AGENTS.
BILLS DISCOUNTED.
SHORT PERIOD LOANS GRANTED.
ANY REALISABLE ASSETS NEGOTIATED FOR CASH.
Call or Write, Strictest Confidence.
Established 1921.



"The Famous Morris Family Tree!"
Every Descendent so far has proved itself Worthy to bear the name.
"MORRIS"

Sole Distributors:
Mitchell Cotts & Co.,
NAIROBI.

CAMPAGNE AFRICAINE de NAVIGATION
ANTWERP DIRECT KILINDINI
FAST CARGO STEAMERS. VIA SUEZ CAT. KILINDINI DIRECT ANTWERP.

Homewards.
S. S. "Kabinda"
Due to arrive September, 12th will take cargo for Port Sudan, Port Said and Antwerp. Cargo accepted for U.S.A. and Canadian Ports on Through Bills of Lading. Transshipment Antwerp. Frequent connections to destinations.

For freight and particulars apply to:
MITCHELL COTTS & Co., Agents. Also at
MOMBASA. P.O. Box 694. Nairobi.

HOUR BY HOUR, DAY BY DAY UNDERWOOD TYPEWRITERS
SAVE TIME—THE PRINCIPAL BUSINESS COST.
Over 3,000,000 in use—Speeding the World's Business.



NEW PORTABLE. **FOUR BANK 380!**

No. 5, 10" Model 665! **Portable Three B nk 320!**

ALSO IN STOCK: 14", 16", 18", 20" and 28" Models.

TAWNS LIMITED,
Box 611. NAIROBI. Phone 141.

B. FLORENS.
FRENCH HAIRDRESSER.
BUSINESS TRANSFERRED FROM NORFOLK HOTEL TO YORK HOUSE (late Masons) near GOVERNMENT ROAD, opp. Treasurer, P.O. Box 623.

POSHO
SELLING AGENTS—
Universal Export Co., Ltd.,
P.O. Box 540. NAIROBI. Tel. Enterprise.
FOR
Thika Sisal Co., Ltd., Thika.

Souza Junior & Dias
Established in 1880.
The Pioneer and Leading Stores
Government Road, Nairobi.

Transact your purchases where facilities are BEST. Cut down the Bill. Buy your Requirements from us. In fact everything for yourself and Home. At Lowest Prices. We Stock Fresh Supplies Only.
A Trial Order is Solicited.
P.O. Box 941.

BUY YOUR Chocolates FRESH FROM TORRS

WINSOR & NEWTON'S Artists' Materials.



A Large Range of Colours in Stock.

Pen Painting and Stenciling Outfits. Poster Colours. Sketch Blocks Etc.
Standard Stationery Stores.
P.O. Box 380. NAIROBI.

EAST AFRICAN STANDARD DAILY EDITION. ADVERTISERS' RATE. Advertisements are accepted only on DOMESTIC APPROVAL.

WANTED. TO LET. THE charge for advertisements in this column is Sh. 1/- for a line of six words, or a fraction of the line, with a minimum of six words. Repeats half price on consecutive days only.

FARMERS FOR SALE. J. W. HILLIGAN & CO. LAND SETTLEMENT AGENCY. 146 LAKE NAIROBI. Phone 52.

THE PRACTICE OF SOCIAL HYGIENE. Establishing a Health Conscience. EMPIRE-WIDE WORK. To have throughout the Empire an agency...

Equator Saw Mills. P.O. Plateau. F.O. Maji-Mauri. Head Office: P.O. Box 291, NAIROBI. 131 CONSIDERABLE REDUCTIONS IN PRICES OF FOOD. PRICE LIST ON APPLICATION.

AGENTS FOR. Silverton Oak Stain, Wood Preserver, 5 gal. Drums 35/-, 1 gal. Drums 6/-. Hope's Steel Casement English Made. Self-Setting Expanded Metal. Twyford's Sanitary Fittings.

THE charge for advertisements in this column is Sh. 1/- for a line of six words, or a fraction of the line, with a minimum of six words. Repeats half price on consecutive days only.

TO let for each small brick or concrete room near town. Apply to Mr. W. H. 7624, 'Standard', Nairobi.

ROOMS to let. 200 acres of freehold. 250 acre plot. 200 acre plot. 200 acre plot. 200 acre plot.

THE charge for advertisements in this column is Sh. 1/- for a line of six words, or a fraction of the line, with a minimum of six words. Repeats half price on consecutive days only.

THE charge for advertisements in this column is Sh. 1/- for a line of six words, or a fraction of the line, with a minimum of six words. Repeats half price on consecutive days only.

Select Your Hat FOR THE ROYAL VISIT from the Dozens of New Models. Cannon Hat. Waring's, Ltd. Africa House, Government Road, Nairobi.

THE charge for advertisements in this column is Sh. 1/- for a line of six words, or a fraction of the line, with a minimum of six words. Repeats half price on consecutive days only.

THE charge for advertisements in this column is Sh. 1/- for a line of six words, or a fraction of the line, with a minimum of six words. Repeats half price on consecutive days only.

THE charge for advertisements in this column is Sh. 1/- for a line of six words, or a fraction of the line, with a minimum of six words. Repeats half price on consecutive days only.

THE charge for advertisements in this column is Sh. 1/- for a line of six words, or a fraction of the line, with a minimum of six words. Repeats half price on consecutive days only.

THE charge for advertisements in this column is Sh. 1/- for a line of six words, or a fraction of the line, with a minimum of six words. Repeats half price on consecutive days only.

LET ARIEL POPULARITY BE YOUR GUIDE. When choosing your new mount. ARIEL is the most popular motor cycle of today. J. R. Cox & Co. SIXTH AVENUE. Nairobi. Eldoret. Kisumu. Dar-es-Salaam.

THE charge for advertisements in this column is Sh. 1/- for a line of six words, or a fraction of the line, with a minimum of six words. Repeats half price on consecutive days only.

THE charge for advertisements in this column is Sh. 1/- for a line of six words, or a fraction of the line, with a minimum of six words. Repeats half price on consecutive days only.

THE charge for advertisements in this column is Sh. 1/- for a line of six words, or a fraction of the line, with a minimum of six words. Repeats half price on consecutive days only.

THE charge for advertisements in this column is Sh. 1/- for a line of six words, or a fraction of the line, with a minimum of six words. Repeats half price on consecutive days only.

THE charge for advertisements in this column is Sh. 1/- for a line of six words, or a fraction of the line, with a minimum of six words. Repeats half price on consecutive days only.

THE charge for advertisements in this column is Sh. 1/- for a line of six words, or a fraction of the line, with a minimum of six words. Repeats half price on consecutive days only.

THE charge for advertisements in this column is Sh. 1/- for a line of six words, or a fraction of the line, with a minimum of six words. Repeats half price on consecutive days only.

THE charge for advertisements in this column is Sh. 1/- for a line of six words, or a fraction of the line, with a minimum of six words. Repeats half price on consecutive days only.

THE charge for advertisements in this column is Sh. 1/- for a line of six words, or a fraction of the line, with a minimum of six words. Repeats half price on consecutive days only.

THE charge for advertisements in this column is Sh. 1/- for a line of six words, or a fraction of the line, with a minimum of six words. Repeats half price on consecutive days only.

THE charge for advertisements in this column is Sh. 1/- for a line of six words, or a fraction of the line, with a minimum of six words. Repeats half price on consecutive days only.

Reduced Prices. KOMO. Don't forget that you can kill it positively kills. FILLS FLIES, BUGS, ANTS, ROACHES & MOSQUITOES. STANDARD STATIONERY STORES. KENYARI.

THE charge for advertisements in this column is Sh. 1/- for a line of six words, or a fraction of the line, with a minimum of six words. Repeats half price on consecutive days only.

THE charge for advertisements in this column is Sh. 1/- for a line of six words, or a fraction of the line, with a minimum of six words. Repeats half price on consecutive days only.

THE charge for advertisements in this column is Sh. 1/- for a line of six words, or a fraction of the line, with a minimum of six words. Repeats half price on consecutive days only.

THE charge for advertisements in this column is Sh. 1/- for a line of six words, or a fraction of the line, with a minimum of six words. Repeats half price on consecutive days only.

THE charge for advertisements in this column is Sh. 1/- for a line of six words, or a fraction of the line, with a minimum of six words. Repeats half price on consecutive days only.

THE charge for advertisements in this column is Sh. 1/- for a line of six words, or a fraction of the line, with a minimum of six words. Repeats half price on consecutive days only.

THE charge for advertisements in this column is Sh. 1/- for a line of six words, or a fraction of the line, with a minimum of six words. Repeats half price on consecutive days only.

THE charge for advertisements in this column is Sh. 1/- for a line of six words, or a fraction of the line, with a minimum of six words. Repeats half price on consecutive days only.

THE charge for advertisements in this column is Sh. 1/- for a line of six words, or a fraction of the line, with a minimum of six words. Repeats half price on consecutive days only.

THE charge for advertisements in this column is Sh. 1/- for a line of six words, or a fraction of the line, with a minimum of six words. Repeats half price on consecutive days only.

THE charge for advertisements in this column is Sh. 1/- for a line of six words, or a fraction of the line, with a minimum of six words. Repeats half price on consecutive days only.

THE charge for advertisements in this column is Sh. 1/- for a line of six words, or a fraction of the line, with a minimum of six words. Repeats half price on consecutive days only.

THE charge for advertisements in this column is Sh. 1/- for a line of six words, or a fraction of the line, with a minimum of six words. Repeats half price on consecutive days only.

THE charge for advertisements in this column is Sh. 1/- for a line of six words, or a fraction of the line, with a minimum of six words. Repeats half price on consecutive days only.

THE charge for advertisements in this column is Sh. 1/- for a line of six words, or a fraction of the line, with a minimum of six words. Repeats half price on consecutive days only.

THE charge for advertisements in this column is Sh. 1/- for a line of six words, or a fraction of the line, with a minimum of six words. Repeats half price on consecutive days only.

THE charge for advertisements in this column is Sh. 1/- for a line of six words, or a fraction of the line, with a minimum of six words. Repeats half price on consecutive days only.

THE charge for advertisements in this column is Sh. 1/- for a line of six words, or a fraction of the line, with a minimum of six words. Repeats half price on consecutive days only.

THE charge for advertisements in this column is Sh. 1/- for a line of six words, or a fraction of the line, with a minimum of six words. Repeats half price on consecutive days only.

THE charge for advertisements in this column is Sh. 1/- for a line of six words, or a fraction of the line, with a minimum of six words. Repeats half price on consecutive days only.

THE charge for advertisements in this column is Sh. 1/- for a line of six words, or a fraction of the line, with a minimum of six words. Repeats half price on consecutive days only.

THE charge for advertisements in this column is Sh. 1/- for a line of six words, or a fraction of the line, with a minimum of six words. Repeats half price on consecutive days only.

THE charge for advertisements in this column is Sh. 1/- for a line of six words, or a fraction of the line, with a minimum of six words. Repeats half price on consecutive days only.

THE charge for advertisements in this column is Sh. 1/- for a line of six words, or a fraction of the line, with a minimum of six words. Repeats half price on consecutive days only.

THE charge for advertisements in this column is Sh. 1/- for a line of six words, or a fraction of the line, with a minimum of six words. Repeats half price on consecutive days only.

WEATHER REPORT. Following a report of observations made at the Mombasa station of the East African Meteorological Service yesterday: Wind direction. Temperature. Dew point. Barometer. Rainfall. N.B.—Forecast in italics and a corrected for temperature reduced to sea level and standard gravity. (Temperature in Fahrenheit degrees is given in brackets.) Wind force in the position that it demands a forecast of 12th instant.

THE UNION-CASTLE LINE.

From Mombasa.
'Goulden Castle' 20th September.
'Ladyship Castle' 28th September.
'Castles' 18th April.
'Goulden Castle' 20th May.

HOLLAND AFRIKA LIJN

ARRIVING
aa 'Jagerfontein' (C) ... September 22.
aa 'Kliphout' (C) ... September 25.
aa 'Vredijk' (C) ... October 20.

The African Marine & General Engineering COMPANY, LTD., KILINDINI.
SHIP REPAIRING, SAIL MAKING & REPAIRING, Moulding OXY-ACETYLENE WELDING & CUTTING.

Deutsche Ost-Afrika-Linie (GERMAN AFRICAN SERVICE)

Table with columns for ship names, departure dates, and destinations. Includes ships like Adolph Woermann, Nansa, and Tananika.

Compagnia Italiana Transatlantica

Monthly Passenger Service to NAPLES and GENOA by elegant and comfortable of burning turbine steamers.
17 Days to Naples, 18 Days to Genoa.

British India Steam Navigation Company, Ltd.

LONDON TO BRILL, Via Mombasa, Port Said, Port Sudan and Aden, Ombaka and Isawala.
Mombasa. Arrives Kilindi 2nd day.
London about 10th day.

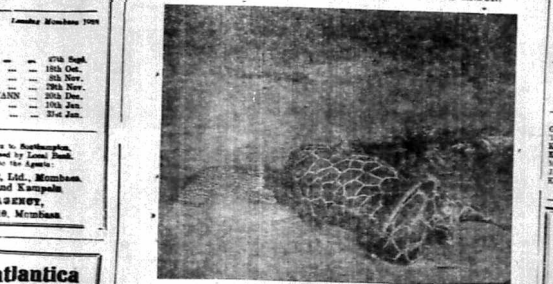
ALL STATES SUBJECT TO ALTERATION WITHOUT NOTICE. RETURN TICKETS ISSUED AT TWO SINGLE FARES LESS 10%.

KING'S CUP WON ON SHELL FOR THE FIFTH TIME.
Mr. W. L. Hope, winner of the same race in 1927, flying the new Gipsy Moth and using Shell petrol, won the King's Cup race which finished at Brooklands on July 21st.

Messageries Maritimes.

(FRENCH MAIL STEAMERS)
Regular and fortnightly service from and to Marseilles.
THE QUEENSLAND SERVICE TO LONDON.
NEXT SAILINGS TO MARSEILLES.

THE SAFARI A SAGA OF THE AFRICAN BLUE, by MARTIN JOHNSON.



"A LEOPARD THAT DESERVED HIS PICTURE"
A GAME RANGER'S NOTEBOOK by A. BLATNEY PERCIVAL.
STALKING BIG GAME WITH A CAMERA.

CHIVERS' GUSTARD POWDER
Delicious with Chivers' Canned Fruit.
MADE IN FOUR FLAVOURS: Vanilla, Lemon, Almond and Standard.

Keith Timber Co. Ltd.
P.O. Box 874. Sadler Street, Nairobi.
CEDER AND PADDLE OF ALL SIZES. MACHINED TIMBER A SPECIALITY.

Expert Vulcanizing THE HEINTZ ELECTRIC WAY IT'S DIFFERENT.
ALL WORK GUARANTEED.
K. McIvor's Garage. Phone 97, Sixth Avenue. P.O. Box 97.

A "Royal" Drink TUBORG BEER.
AGENTS WANTED. Obtainable AT All Leading Stores-Hotels & Bars.

Table with columns for STRAINERS, FROM, and dates. Lists destinations like South, East, and West.

UPLANDS NEWS! BACON: One gross of new receipts in the MINDFULNESS of SERVICE, both in the CHOICEST MEAT and in the CONSUMER'S LARGE, high quality, should lead to a constant supply.

DESTITUTE

Your first duty surely is to provide so that in the event of your death your dependents will not be left destitute.

Write us and we will show you how this can be done to your best advantage.

Exceptionally low premiums. Liberal conditions. Excellent bonus benefits declared annually.

Example: **WHOLE LIFE POLICIES.**

Annual premium for £1,000, (Age 30) **£23 6 8**

Annual BONDS on above **£24 0 0** (increasing with age of policy)

Similarly favorable terms for ENDOWMENTS.

Write for full particulars of these, Joint Lives, or Children's Assurances, to

National Mutual Life Association of Australasia Ltd.
(FUNDS £26,000,000.)
P.O. Box 100,
Cambrian Building, Government Road,
Nairobi.

Agriculture.

The Value of Scientific Research.

The growing need for the maximum exploitation of all possible food areas is now approaching us as an economic necessity writes H. J. Jones in the "Tropical Agriculture Review." More cultivation is required to feed the world's population. Scientific knowledge is required to aid this. The use of land and labor, in its best sense, is the value of putting the Empire's resources to the best use. The Empire's resources are being expended and Palestine is being returned to fertility by European collaboration.

Central Africa was years ago appreciated as one of the remaining world reserve areas of food supply. Penetration enough, it was one English but American countries which mapped out Africa according to the agricultural possibilities of its soil. But English research into the agricultural possibilities of this area is now under way. The Committee on Agricultural Research in the Near-East, Eastern Dependencies, with Lord Lever as Chairman, and the East Africa Parliamentary Commission have both discussed the subject and stressed its magnitude and importance.

The Lever Committee was, of course, as its title implies, concerned with other areas as well as Africa. The expenditure of £15,000 a year recommended is but too small when compared with the United States on agricultural research within its own boundaries.

Here it is worth pointing out that the popular assumption that tropical Africa will be essentially unproductive is not founded by the facts. Generally speaking the soil is good as everywhere with those of the temperate zones. There is little doubt of the possibility of growing the valuable crops which these are not accustomed to. In these areas, too, the soil and fungus pests are more harmful and most constant in their depredations, as much so there are some quarantine regulations in force as to the import of many plants.

Regarding the Empire as a whole the age of adversity is over and the Imperial Agricultural Research Committee. This body met in late last October and discussed the present need of and the further research stations required. An indication

is given as to be established for tropical research. The separate functions of each are set out for their own particular areas. Canada, East African Institute (1922).

Africa's island pests are estimated to do damage to the extent of £20,000,000 a year. There are great losses among sheep owing to the bluetick. In the sub-tropical areas the bluetick fly causes a great deal of harm to cattle. The chief menace to fruit is the Citrus moth which breeds three times a year. Weeds are the cause of the loss. The prickly pear covers 10 million acres in Queensland. The grass grain in Fennoscandia, one of the best which is rapidly spreading in New Zealand, one harmful.

Canadian Research Institute (1912) and it is now proposed to set up a special projects laboratory. What progress as a result of the laboratory tests, will receive reference as to the best varieties to sow and the best way to handle their crops, as well as the influence of soil cultivation, and manuring on the quality of their grain. Trinidad houses the Imperial College of Tropical Agriculture.

NEW.

Amongst these bulwarks of civilization must be mentioned the rubber tree. Botanical genius. Chief among these is the rubber tree. It has been proved of incalculable value to the Dominion and Colonies by introducing new stages and developing natural resources. New sets are the enterprise for the Empire's benefit.

The famous Ceylon Cinnamon, Peppery, founded in 1821, introduced into that island country and rubber. It was due to this that the ruin of the coffee industry by fungus was not irreparable. The greatest assistance necessary for all these activities comes from home resources. The Empire Marketing Board also of the £1,000,000 that it controls grants a subsidy to New Zealand for the carrying out research work against the shepherds pest in New Zealand.

The Dominion Commission during the seventeen years of its existence has been one of its many activities a great agricultural service. It has conducted demonstration and research. The Dominion Commission has conducted the permanent station and independent University investigations. The Dominion Commission has been so successful that it will flourish in areas where other demonstration and research. The Dominion Commission has been so successful that it will flourish in areas where other demonstration and research. The Dominion Commission has been so successful that it will flourish in areas where other demonstration and research.

SOIL INVESTIGATION.

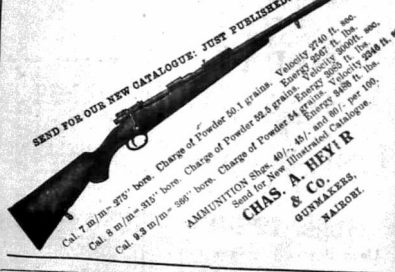
The fundamental work other is that concerned with the investigation of the soil. Here the investigation of the physicist is of the utmost importance. It has already been proved by Gillette that it is usual to classify soils according to the underlying geological strata, no matter what the ecological origin, all types of soil influenced by the same climate are similar to one another. The Edmondston Station is investigating the soil. It has been found that a thousand million small things in a soil will be present in a soil. These organisms are not, unfortunately, well understood. These organisms are not, unfortunately, well understood. These organisms are not, unfortunately, well understood.

Such scientific work as this is essential to the progress of the Dominion in the productive capacity of the land. Sir David Hall, the Chief Scientific Advisor to the Board of Agriculture, offers a word of warning.

"It may be doubted whether the behavior of the soil will be profitable from a consideration of its composition as revealed, for example, by a mechanical analysis. The fact is, however, so numerous, and their interactions so complex, we shall be satisfied if we can accurately describe an unknown soil in a series and thereby predict its performance in the field as they are. It is identical with some selected standards."

Research on the movement of water in soil and the prevention of the best crops come from an improved downward or

The Latest Inventions — IN — High Velocity Original Mauser Rifles



Cal. 7.50 (m) 370' boxes Charge of Powder 101 grains Velocity 2740 ft. sec.

Cal. 8 m (m) 315' boxes Charge of Powder 82.2 grains Velocity 2600 ft. sec.

Cal. 9.8 (m) 500' boxes Charge of Powder 102.4 grains Velocity 2500 ft. sec.

AMMUNITION: 40', 40', 40', 40' Send for New Illustrated Catalogue.

CHAS. A. HEYER & CO. GUNSMITHS, NAIROBI.

DO NOT FAIL TO TRY YOUR HAND
At Winning one of the two Prizes of 100-
CASH AT
Maxwell Brady & Co.'s
SALE
This Week
For Details See Notices On Our Windows

Good Plumbing Means Good Health.

FOR SAFE SANITARY WORK
TRY
Thornton & Turpin
Regis. Plumbers and Sanitary Engineers,
CITY HOUSE, NAIROBI.
'Phone 145.
AND AT MOMBASA.
GOVERNMENT CONTRACTORS
WORK UNDERTAKEN IN ANY PART OF
KENYA AND UGANDA.
W BATH A DAY KEEPS
YOU FIT EVERY WAY
SEE OUR STOCKS.

CHRYSLER

Only Standardised Quality Gives This Greater Value

CHRYSLER cars—"52", "62", "72" and Imperial "80"—are designed and built for people who want that extra something which makes all the difference between value and performance that are merely mechanical and unimpressive that are truly distinctive. Pick-up, power and speed that amaze as much as they exhilarate—instant responsiveness to steering when brakes that insure safety—most unusual riding comfort—marked freedom from mechanical care—alluring smartness in line and colour.

Through Standardised Quality each Chrysler becomes by the advanced engineering, precision manufacturing and vast resources concentrated in the development and building of all other Chrysler models. Through Standardised Quality, you get in Chrysler cars of lower price, the refinements required by Chrysler cars of top price.

That the public has been quick to grasp the significance of its benefits is evidenced by the constantly growing world-wide preference for Chrysler's products.

" 72 "	Seven Passenger Phaeton	£490
	Box Body	£400
	Crown Sedan	£535
	Sports Roadster	£450
" 62 "	Five Passenger Touring	£350
	Box Body	£340
	Roadster	£350
" 52 "	Sedan	£350
	Coupe	£325
" 72 "	Touring	£325
	Box Body	£270

CARR, LAWSON & Coy., Ltd.
Nairobi Nakuru Eldoret Kampala.

Here and There.

THEATRE ROYAL PRINCES SEASON

Feature Pictures 8-15 Twice Musical Comedy 8-15 Nightly MONDAY, OCT. 1st TO SATURDAY, OCT. 6th

PLANS NOW OPEN "CHANG"

THIS YEAR'S GREAT PICTURE SHOWING Mon. Tues. Wed. Sept. 24th, 25th, 26th. NIGHTLY AT 8-45

"Mercenary Mary"

MUSICAL COMEDY SHOWING Fri. Tues. Thur. Sat. Sept. 28th Oct. 2nd 4th 6th at 8-45

THE "COUNTRY GIRL"

MUSICAL COMEDY SHOWING Sat. Mon. Wed. Fri. Sept. 29th Oct. 1st 3rd 5th MON. TUE. WED.-OCT 1st 2nd 3rd AT 6-15 P.M. "Roses of Picardy" AT 6-15 P.M.

The Different British War Picture. BOOKING OFFICE OPEN DAILY AT THEATRE 10 a.m. to 1 p.m. and 2 p.m. to 9 p.m.

It is announced that the White Star Line has ordered from Messrs. Harland and Wolff, Belfast, a mammoth liner...

There was an intensely dramatic scene in Court in Vienna during the trial of the assassin of the Emperor...

The 17-year-old American "Sisime twins," Mary and Marguerite, was now in a local hospital preparing to undergo an operation...

A sensational attempt has been made to kidnap Mr. Harry M. Blackmer, the American millionaire...

The Botanical Society of South Africa is becoming anxious over the destruction of ferns in the Riverdale district...

soon as the millionaire was outside the afternoon train the captain was to arrest Mr. Blackmer...

An aviator's masterpiece, which for many years remained at 10, Downing Street, has come into the possession of the owner of the Aerodrome Hotel, Croydon...

A recently new theory of cancer was advanced last month by Dr. Ellen Malcolm, director of cancer research at the University of Pennsylvania...

It has been found that people having "nodules" are practically immune from cancer...

The greatest avalanche that Europe has ever known threatened in Switzerland when the village and mine of the finest mill-growth land in the country...

A recently-dressed woman waiting down a Berlin avenue began to weep...

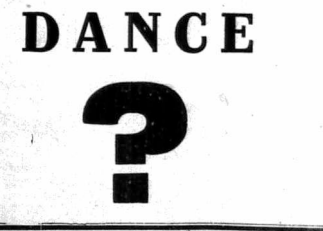
When she reached home with the girl she found it had been kidnapped last year because she was missing...

Dr. Malcolm declares that there are indications that cancer is associated with, and to a large extent caused by, the relative alkalinity of the blood.

ENTERTAINMENTS.

Phone SAVOY HOTEL Box 430 20 CALEDONIAN ROAD, THE HILL. The Most Comfortable :: HOTEL ::

This Space is Reserved FOR THE NEXT



DANCE SALISBURY HOTEL To-night Sept. 15th at 9 p.m.

WHY CRY THAT COST OF LIVING IS HIGH YOU COULD REDUCE IT BY TAKING YOUR MEALS AT Polladium Restaurant Theatre Royal.

FOR SALE. Light Woolen Blankets, dowered: Shk. 20/- pair...

NATIONAL BANK OF INDIA LIMITED. (Incorporated in United Kingdom.)

FIXED DEPOSITS—Deposits can be made for fixed periods in terms which may be varied on application.

INSURE FOUR MOTOR CARS AND MOTOR CYCLES IN THE CITY.

CARS FOR HIRE. SEE KENYA IN COMFORT HUDSON SUPER SIX CARS FOR HIRE DAY OR NIGHT.

CARS OVERHAULED BY EXPERT. GETHIN.

Ring GETHIN. RING GETHIN.

Visit EASTERN BAZAAR. AND GET THE BEST CURROR AND SILK AT LOW PRICES.

Fresh Posho. Maize Meal. 5/40 a load.

Delamare. 100 sheets, 1000 pages, ruled. Sh. 7/- each. 10/60 dozen.

1 1/2 TON New Chevrolet Truck Arrives.

Universally Approved FIRST CONSIGNMENT Sold Ahead SECOND CONSIGNMENT Now Available.

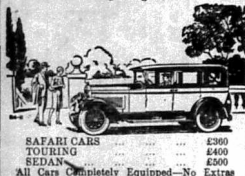
£ 172 NAIROBI. FOUR WHEEL BRAKES. FOUR SPEED GEARS. NEW FRONT AXLE, SPECIALLY DESIGNED FOR 30 OWT. LOAD.

MOTOR MART and EXCHANGE, Ltd. NAIROBI. Dar-es-Salaam.

Nakuru.

Willys - Knight

THE QUALITY CAR—NOT BUILT TO A PRICE.
Embodying The Famous Double Sleeve Silent Knight Engine.

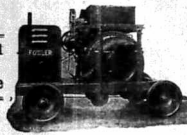


SAFARI CARS £300
TOURING £400
SEDAN £300
All Cars Completely Equipped—No Extras
Let us demonstrate to you the principle of the Double Sleeve Valve.
No Springs—Tappets or Poppet Valves to Grind in—or adjust.
MOULTON & MORRISON Ltd.
SIXTH AVENUE, NAIROBI.

USE Fowler Concrete Mixers

Build up your Business on a Concrete Foundation.

Efficient & Up-to-Date



Well Built & Reliable

For full particulars apply to:—
J. W. Milligan & Co.
P. O. Box 148. Telephone 98.
Hardinge Street, NAIROBI.

A. H. Wardle & Co. Ltd.

Optical Chemists.
NAIROBI.

Optical Manager:
V. M. BROWSE, F.R.C.S., F.I.O.

SCIENTIFIC EYE TESTING.
Only the best lenses and frames stocked.
Testing and Spectacles complete, from 25/-

GIBBONS'

STEEL CASEMENTS
LOCKS & IRONMONGERY.
Make Their Appeal on the Basis of
QUALITY AND PRICE

Our Present Stock of
STANDARD CASEMENTS STEEL
EMBODY THE LATEST IMPROVEMENTS.
WE CARRY EXTENSIVE STOCKS.

R. G. Vernon & Co.

UNION BUILDING,
NAIROBI. P. O. Box 134.

SHORT RAINS

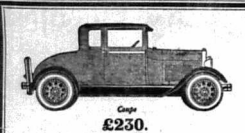
BE PREPARED FOR THE SHORT RAINS.
NOW NEARLY DUE.
COPPER RAIN GAUGES.
COMPLETE WITH MEASURING GLASS.
2750

NE
A. H. WARDLE & Co., Ltd.
MOMBASA. NAIROBI. ELDORET.

The Law's Deceit.
The law was not put a nickname by 'journal', the National Standard, the active charged with this object. The object, said the magazine, was being executed. The law was not usually had a mile away from the law. The law was not usually had a mile away from the law. The law was not usually had a mile away from the law.

Wanted Native Arrested.
Some weeks ago it was reported that a native was wanted. The native was not arrested at Mombasa.

Nairobi Visitors.
List of visitors staying at the Nairobi Hotel ending by September 15: Mr. J. H. G. ... Mr. J. H. G. ... Mr. J. H. G. ...



DELIVERY FROM STOCK

BOOK YOUR ORDERS NOW

The Service Co., Ltd.

SIXTH AVENUE.

NAIROBI.

EPIDEMICS

Begin in the Throat.

MONSOL THROAT PASTILES
Disinfect the Throat.
PRICE 2/6 PER TIN.

Monsol Liquid. For all general and surgical disinfection and personal hygiene. 3/- per bot.

Monsol Ointment. For all conditions where an antiseptic ointment is indicated. 3/- per pot.

Kodak (R. A.) Limited.
Howse & McGeorge
Chemists.
Kenya, Uganda and Tanganyika.
P.O. Box 23. Zebra House. NAIROBI.

THE YORKSHIRE INSURANCE COMPANY LIMITED.

ESTABLISHED 1894.
Chief Agents—
R. O. HAMILTON, LTD.
Box 802. NAIROBI. Phone 852.

Lead the way on a B.S.A

Make a date for a demonstration and do it now.
Come in and see the Range
Carr, Lawson & Co. Ltd.
NAIROBI.

GRANT'S B.P

A happy combination of the Bounty of Nature and the Distiller's Art



Emile Jardin & Cie.
Sole Agents NAIROBI.

DEATHS

RENNE. At the European Hospital on 12th inst. after an operation, Margaret, beloved wife of L. R. Renne, Master-joiner.

WIGBERT.—Clarence Walter, Wagoner from Mbaraka, at Umtali, Rhodesia, in his 57th year, August, 1929.

African Standard
UGANDA AGENTS
SATURDAY, SEPT. 15, 1929.

Notice.
Some strictly speaking a sound of any kind but although we have the authority of the Falmouth for speaking of it in a joyful connection, usually the word is associated with sounds that are anything but pleasant and the dictionary definition of the word as "any over-loud or excessive sound" is the one which is generally accepted as being most appropriate. It is in this sense that the subject of noise is receiving the attention of several notable scientists in Britain who, our London correspondent reports, are organizing a disputation to wait upon the Minister of Health with a view to discussing "the increase of unnecessary noise in this highly mechanized age, with particular reference to its effect upon the health and well-being of the individual." It is indicated that the disputation will not only confine itself to a discussion on the situation existing in Britain by road traffic, but—

we are sure to find a number of our own machinery and when the town are made hideous with the sounds of traffic it is curious that comparatively little has been accomplished in the way of counteracting mechanical noise. It is even true that for the most part there has been a tendency to add to the unpleasant sounds inseparably associated with the realm of machinery by introducing unnecessary and often ear-splitting motor horns and the like. It is the risk of increasing the contemptuous displeasure of many of the younger generation in the Colony, we dare to suggest that the increasing volume of jazz is in itself an indication that noise is welcomed, at least it is possible that in the opinion and ears of many of the young will be embraced by the British description. There are other disturbing notes than those associated with mechanical progress. Who, for instance, has not known the long-drawn-out wailing of a siren which is repeated by a sirenless horn occasionally by the road-side (or what a smart westerly wind may be called a "sea-unlucky" or merely nose-destroying cry resulting from the momentary but turbulent swarms of a number of ants in an otherwise peaceful garden. It may possibly be true that much bad chatter to south of the Sahara and that that difficulty of obtaining what is charming the only in a "lack of energy" for the most part of the subject of noise. It is to be assumed that there are many people in Nairobi who enjoy the sound of harking and whining, since certainly by the volume of continual noise of this sort seems to be increasing. Generally "noise" of this description is not only appreciated by the majority of our own people but also by the "foreigners" who are here. It is to be assumed that there are many people in Nairobi who enjoy the sound of harking and whining, since certainly by the volume of continual noise of this sort seems to be increasing.

Under the Standard Clock.

To Be Broadcast.
The Ladies concert in the Theatre Royal on Friday evening will be broadcast between 8 and 10 p.m.

Breaking News.
A sub-committee of the Nairobi Town Council which was held on August 26, 1929, and which had been appointed to inquire into the matter of the proposed extension of the Nairobi Municipal Council, decided that at the first meeting of the Council on September 1st, the Council should be asked to consider the proposed extension of the Council.

Trade Protection.
Another meeting of those interested in the formation of a Trade Protection Society will be held in the evening of September 21st, at 8.40 p.m. All traders and business men interested in the subject are invited to attend and to discuss the matter with Mr. W. H. Martin, P.O. Box 220, of with Mr. U. K. P. O. Box 100.

Missing Car Recovered.
The highly touring car which was reported to have been stolen from the Law's Deceit on September 10th, was recovered on September 12th, at Nairobi on November 10th, at Nairobi on November 10th, at Nairobi on November 10th.

STANDARD DIARY.
September 22: Council date for Application to ...
September 23: M.C.A. letters by Captain ...
September 24: ...
September 25: ...
September 26: ...
September 27: ...
September 28: ...
September 29: ...
September 30: ...

THE ROYAL VIET.
September 21: ...
September 22: ...
September 23: ...
September 24: ...
September 25: ...
September 26: ...
September 27: ...
September 28: ...
September 29: ...
September 30: ...

Co-op's Whistles.
7 to 8.30—Orange ...
8.30 to 9.30— ...
9.30 to 10.30— ...
10.30 to 11.30— ...
11.30 to 12.30— ...

CHIEF JUSTICE OF ZANZIBAR.

Appointment for a Kenya Judge?

JURIST PICKERING

The "East African Standard" has published a notice of the appointment of the Chief Justice of Zanzibar...

LOCUSTS CAUSING DAMAGE TO CROPS.

Flying Swarms in the Sukuma Valley.

OFFICIAL REPORT.

The following report on the locusts was received from the Department of Agriculture...

MYSTERY OF RIVER ROAD EXPLOSION.

Enquiry into Indian Youth's Death.

'TIDYING UP' TRAGEDY.

The mystery of the explosion in the River Road shop was solved by a forensic expert...

CAUSE AND TRANSMISSION OF MALARIA.

Reply to Sub-soil Water Level Theory.

AN ANCIENT IDEA.

(From a Medical Correspondent) The cause and transmission of malarial fever has been a subject of much speculation...

THE EFFECT OF NOISE ON HEALTH.

Minister to Receive a Deputation.

MANY SIDED PROBLEM.

STANDARD CORRESPONDENT. The problem of noise is one of the most important of the day...

LYRIC HALL. TO-NIGHT AT 8-10. Ivor Novello and June Ambrose in THE LODGER. PLANS NOW OPEN FOR BOOKING. Shs 5/- and 3/-

Last Half-Day Sale Finishes TO-DAY. DONT MISS OPPORTUNITY TO GET BEST VALUE IN FOOTWEAR IN KENYA. Eadies Footwear Ltd. Box 149. Nairobi.

Table with 2 columns: Train Name, Time. Includes Nairobi, Nakuru, Eldoret, Thika, and Mombasa.

TODAY'S GAMES LIST. Orders the A.G. Registrar for Football, Cricket, and other sports.

THE ORDER OF MERIT.

NIGHTLY AT 8-10. THEATRE ROYAL MATINEES SATS. 3-30. TO-DAY AT 3-30 p. m. and 8-45 p. m. Jackie Coogan in "Little Robinson Crusoe".

K. Melvors Garage. We repair all Makes of Cars and Trucks. WE DO IT TO-DAY—NOT TO-MORROW.

Wireless. We can supply from stock the following: Three Valve Selectors Sets. B.S.A. "Kone Loud Speakers," 18" and 20".

Bankruptcy Court.

LIABILITIES £54 AND NO ASSETS. K. Graham Harris appeared in the Bankruptcy Court...

Yellow Locusts.

The Department of Agriculture will be in a position to issue a report on the yellow locusts...

Police Inquiries.

Dr. C. B. R. of the Native Dispensary, thought the illness sustained by the deceased...

Development Phase.

When three weeks the patient had been in the hospital...

Imperial Airways' First Dividend.

STANDARD CORRESPONDENT. The dividend of Imperial Airways...

A Big Bill.

In connection with an account of the late Mr. Justice...

Entertainments.

THEATRE ROYAL. The film shown at the Theatre Royal...

World Money Exchange.

Table with 2 columns: Location, Exchange Rate. Includes London, New York, and other cities.

Real "Denby Ware" Toilet Sets

Advertisement for Denby Ware Toilet Sets, featuring various models and prices.

Toy Cars.

Advertisement for toy cars, including a 2000 cc. Government model.

Real "Denby Ware" Toilet Sets

Advertisement for Denby Ware Toilet Sets, featuring various models and prices.

Real "Denby Ware" Toilet Sets

Advertisement for Denby Ware Toilet Sets, featuring various models and prices.

Real "Denby Ware" Toilet Sets

Advertisement for Denby Ware Toilet Sets, featuring various models and prices.

Advertisement for K. Melvors Garage, detailing services for cars and trucks.

SAYS A MEN'S CLOTHES EXPERT:

"Half the success of well-fitting evening dress is a well-fitting dress shirt underneath. . . . Any man who isn't certain about his clothes knows this is true.

It is because Consulate Dress Shirts are tailored to fit the figure so faithfully that you find a growing number of well-dressed men buying them regularly and referring all orders.

Such close-fitting comfort they say. Such immaculate of style! Such extraordinary resistance to wash and wring! and such remarkably modest prices.

Consulate Dress Shirts are the very of the latest tailored shirt-making of French origin. On one and of the same. Fully guaranteed.

Stocked by all good boots throughout East Africa.



Consulate DRESS SHIRTS

MADE IN ENGLAND BY H. BERTHIER & CO. LTD., 100, NEW BOND ST., LONDON, E.C.4.

You Can't Go Far Without Meeting a Reliance Lorry

AND

You Can't Go Far Without Meeting a Reliance Transport Co., Ltd.

P.O. Box 482, Sadler Street, Telephone 281.

Your Efficiency DEPENDS UPON ACCURATE UNTRIMMING VISION. GOOD EYE-SIGHT IS THE FIRST ESSENTIAL TO CLARITY OF THOUGHT.

HAVE YOUR EYES TESTED TO-DAY.

Dobbies, Ltd.
OPTICIAN OPTICIANS.
NAIROBI. Phone 90.



NOTICE

THE VICTORIA NYANZA SUGAR COMPANY, LIMITED have arranged with the undermentioned Stores to retail their No. 1 White Crystal Sugar at the following prices:—

Per pound	...	Cents	/38
Per peck of 56 lbs.	...	Shgs.	16/75

- NAIROBI.**
- S. Jacobs, Limited.
 - R. D. Duncan, "Nairobi House."
 - M. S. Elliot & Company,
 - Blacklaws & Brown,
 - Kanji Naranji,
- NAKURU.**
- S. Jacobs, Limited
 - Ibrahim Karimbux,
- ELDORET.**
- S. Jacobs, Limited
 - Wm Douglas
- RONGAI.**
- Ruben Brothers,

APPETITE IMPROVED QUICKLY

CARTER'S HIBBILLS

Trade-Exclusives: **W. ABERNETHY, Wholesale Chemist, Nairobi, Mombasa & Eldoret.**



Try this old friend for Sciatica

No other treatment for Sciatica has received such universal approval as Sloan's Liniment. Applied night and day it penetrates instantly and means an abundant supply of freshly purified blood (circulating through the affected area. Pain is relieved and the cure is rapidly effected. Clean and easy to use—no rubbing required.

"The Finest Pain Reliever"

"I have used Sloan's Liniment for Rheumatism and can say without fear of contradiction, it is the finest pain reliever in the world."—W. W. Wolfe, St. Mary, Kansas, U.S.A.


Sold by all Dealers.

Sloan's Liniment KILLS PAIN

RHEUMATISM, SCIATICA, LUMBAGO, SPRAINS, ACHING MUSCLES.

For Breakfast serve this delicious nutritious FOOD

early digested easily prepared healthful for old and young



THE WEEK'S ATTRACTION

is the variety of **DOUBLE TERAI HATS.**

M. P. de Mello,
P.O. Box 414, NAIROBI.

Doonholm Dairy

Box 11, Nairobi

FRESH MILK and Cream.

From Farm to Consumer.

EVERYTHING FOR SPORT

at **MAY & CO., LTD.,**

Church Notices.

ALL SAINTS' CHURCH.

SUNDAY, SEPT. 14, 7:30 a.m. Holy Communion.
8:45 a.m. Children's Service.
9:30 a.m. Sunday School, All Saints.
10:30 a.m. Morning Prayer followed by Holy Communion.
5:0 p.m. Children's Service.
7:0 p.m. Evensong.
Prayers.
The Bishop of Mombasa. Wed. 7:30 p.m. Holy Communion. Friday, 7:30 St. Matthew. Holy Communion. W. J. Wright.

ST. MARK'S, PARLAVLANDS.

SUNDAY, SEPT. 14, 8:0 a.m.: Holy Communion and Address.
9:30 a.m.: Canon Rogers.
10:30 a.m.: Children's Service.
6:30 p.m.: Evensong.
Preacher: Canon Rogers.

TRIKA NYERI CHAPLAINCY.

SUNDAY, SEPT. 14, 8:00 a.m. Morning Prayer and Holy Communion.

LIMURU and KYAMBU CHAPLAINCY.

SUNDAY, SEPT. 14, 10:30 a.m. Morning Prayer and Holy Communion.

NAKURU CHAPLAINCY.

SUNDAY, SEPT. 14, 8:00 a.m. Morning Prayer and Holy Communion.
9:30 a.m. Morning Prayer and Holy Communion.
Canon Wright.
KARETE, 8:15 p.m. Evensong Service. Canon Leakey.

ELDORET and TRANS NYOGA CHAPLAINCY.

SUNDAY, SEPT. 14, 10:30 a.m. Morning Prayer and Holy Communion.
Canon Wright.
NAKURU, 8:00 a.m. Evensong. Canon Wright.
LUMBUWA, 10:30 a.m. Morning Prayer and Holy Communion.
Rev. A. Williams.
SUNDAY, SEPT. 14, 10:30 a.m. Morning Prayer and Holy Communion.
Rev. A. Williams.

CHURCH OF SCOTLAND.

ST. ANDREW'S, NAIROBI. SUNDAY, SEPT. 14, 9:15 a.m. Sunday School in Church and at Mr. Craig's House, Railway Avenue, Parklands.
10:30 a.m. Morning Service. Preacher: Rev. B. J. Headle.
6:30 p.m. Evensong Service. Preacher: Rev. J. F. G. Orr, M.A., B.D.
KYAMBU, St. Paul's (Church of England). 10:30 a.m. Rev. J. F. G. Orr. LILONGWE, St. Columba's. 11:0 a.m. Rev. J. W. Arthur, M.A.
KIKUYU, Church of Scotland (Methodist Church). 11:15 a.m. European Service. Preacher: M. J. Ellis.

CHRISTIAN SCIENCE.

Christian Science services are held 10 a.m. every Sunday at the Love Hall, Nairobi.

CATHOLIC CHURCH SERVICES.

IV Avenue, XVI Bantua after Pentecost. Celebrations at 4.45 p.m. Benediction of the Blessed Sacrament at 6.0 p.m. Wednesdays, Fridays and Saturdays: Holy Eucharist, 6.45. Mass on Wednesdays, 6.45. 8.00 p.m. 8.00 p.m.

WHERE TO STAY Town & Country.

THE HILL PRIVATE HOTEL.
VALLEY ROAD,
All Modern Conveniences, Picnics, Bathing, Garage, Motor Service and Complete Attend. acc. will be appreciated by those seeking a quiet comfortable and refined home.
Phone 850. P.O. Box 738.

LIMURU BRACKENHURST HOTEL HUDSON-CANE.

CLAIRMONT Residential Hotel.

One of Kenya's beauty spots within 7 miles from Nairobi by good motor road. Splendid swimming pool, free from all impurities with newly erected diving board and dressing rooms.

Terms from 10/- per day inclusive. Excellent Cuisine and choicest wines stocked under supervision of the Proprietors. P.O. Box 595. Telegrams: Clairmont-Nairobi.

THE White Rhino Hotel NYERI

FOR BREAKFAST, LUNCHEONS, TEAS, DINNERS and ACCOMMODATION. Situated on Main Road, Gramp. "Whithino."

An Opportunity is Offered For You To

SELL YOUR FARM, OBTAIN A PARTNER FOR YOUR FARM, SELL YOUR BUSINESS, OBTAIN A PARTNER FOR YOUR BUSINESS, RAISE FRESH CAPITAL FOR YOUR ENTERPRISE, OBTAIN SOUTH AFRICAN AGENTS, SECURE THE SERVICES OF SPECIALIZED EMPLOYEES.

It is the intention of our Mr. Jacobs to visit the Union shortly, and he will endeavour to bring the potentialities of Kenya before the South African public. He is intimately acquainted with that country, and is prepared to negotiate any type of business as above indicated.

For details and terms please communicate with—

ESSJAY LIMITED.
P.O. Box 634, NAIROBI.

AH, IT'S DIFFERENT

That's the spontaneous verdict of those who drink **ROB ROY WHISKY.** Its exquisite bouquet and unvarying high quality have given it an unparalleled supremacy in all the four corners of the world. It is a bottle NOW and satisfy yourself it is not a mere claim but a fact.

ASK FOR ROB ROY.

Smokers Favourites.

No. 1 Large.	SCOTTS	No. 2 Medium.
1 lb. Bag.	HARTLEYS	1 lb. Bag.
	LEAD SEAL.	

BURMAH CIGARETTES.
H. & C. O. DARK SLEIGHT FLAKES.

MAGALIESBERG TOBACCO.
Wholesale Quotations on Application.

BLACKLAWS & BROWN
(In the Mackintosh Bldg.)
Tel. No. 31. NAIROBI. Box No. 468.

The Nakuru Hotel.

The Largest and oldest established hotelery in the Midlands.

NOTE: The Proprietor has pleasure in announcing that he has secured the services of Mr. and Mrs. Edgar Archer to take over the management of The Nakuru Hotel. They are due to arrive from England on or about September 6th.

Mr. Archer has a long and distinguished record in the hotel world. He has been manager, inter alia, of the ROYAL ALBION HOTEL, Broadstairs, the HOTEL METROPOLITAN, Bechlin on Sea, and the HURLINGHOLM HOTEL, Piccadilly. He has also acted as second manager to the RITZ HOTEL, Piccadilly, and assistant manager of the ST. ERMIN'S HOTEL, Westminster. He comes to Nakuru direct from an engagement as manager of the Royal Crystal Palace Hotel, Upper Norwood. Mrs. Archer has in each case joined her husband in hotel management.

OAKLEIGH PRIVATE HOTEL.

UNDER PERSONAL SUPERVISION OF **MRS. H. JARRETT,** Managers, Phone 180. NAIROBI. P.O. Box 183.

The Naivasha Hotel

Naivasha

Every Convenience and Comfort. Special Weekly and Monthly Terms.

Stag's Head Hotel, Nakuru

FOR Breakfast, Luncheons, Teas, Dinners and Accommodation.

Situated on Main Road.

Hotel boys meet all trains.

J. G. HEATH.

BELL INN

(On Main Road) NAIVASHA

TARIFF	First-Class Accommodation.
Breakfast	Shs. 5.00
Lunch	Shs. 4.00
Dinner	Shs. 4.00
Dinner, Bed and Breakfast	Shs. 15.00
Full Day	Shs. 18.00
Tea	Shs. 1.00

Extra special tariff for week-ends.

First-Class Accommodation. Electric Lighting Throughout. CATERING A SPECIALITY. Large Refrigerator Installed. Good Drinks, Ice-creams available at all times. CLEANLINESS AND SATISFACTION GUARANTEED.

High View Hotel.

LIMURU (D Route). Healthy Situation. Ideal for Holidays, Luncheon, Teas, Tennis, etc., Terms Moderate.

If you want to make sure that your name or firm is included in the **New Directory 1929-30** in this Form

Name _____

Address _____

Post to: **REYNOLDS, 2ND FLOOR, 1285, P.O. BOX 958.**

ALL-SILK

HEAVY.
SPUN CREPE
36 INCHES WIDE.
Shs. 8/50 Per Yard

In Latest Shades.
FAST DYED
PATTERNS ON APPLICATION.
Ahamed Bros.

THE HOUSE OF DISTINCTION.
BAZAR NAIROBI.
DISSTON SQUARES ACCURATE
DEPENDABLE
STOCKED BY THE LEADING HARDWARE MERCHANTS.

We Need Your Head To Run Our Business.

JUST AS YOU NEED US TO LOOK AFTER YOUR PERSONAL APPEARANCE, AND GIVE YOU THAT WELL GROOMED LOOK SO ESSENTIAL TO SUCCESS.

The Timmer Haldressing Saloons.
Hardinge St. NAIROBI.

THE CHARM OF THE DINING TABLE
Lies in the Choice of Correct Silver Appointments.



DOBBIES, Ltd.
WATCHMAKERS, JEWELLERS & OPTICALIANS NAIROBI.

LADIES!
FOR YOUR DRESS LENGTHS. VISIT **BON MARCHÉ.**

Smart and attractive designs in Volles, Gingham, Cope-de-chine, etc.; to choose from extensive range.
Prices to Suit All
Opposite Messrs. Hoopes & McGeorge,
Rugby Ground Road—NAIROBI.

The editor does not accept responsibility for the views expressed in the correspondence in this column, and on all matters of controversy the views of the writer are given as a private citizen. Directly it is considered to be of public interest.

AN EARLHORN GRIEVANCE.

To the Editor, "E.A. Standard."
Sir—My copy of a few lines of your valuable paper to a little grievance of the residents of Earlhorn.

Yours etc,
Nairobi, Sept. 15.

CROP REPORT

To the Editor, "E.A. Standard."
Sir—I have read, with much interest, the reports of the Agricultural Department, to investigate a system of crop estimate, and the appointment of crop reporters, in various districts from amongst local settlers.

Yours etc,
Nairobi, Sept. 15.

ISSUES AND MUNICIPAL GOVERNMENT.

To the Editor, "E.A. Standard."
Sir—My attention has been drawn to the report made recently by Mr. Logan and the Committee on Municipal Government to the Legislative Council. It is interesting and important to our people, to the effect:

Yours etc,
Nairobi, September 15.

COST OF LIVING

To the Editor, "E.A. Standard."
Sir—Government some time ago published a "Statistical Digest" with an expert Statistician in charge. It recently having had access to his figures, Government

When Indigestion makes eating a penance

Why suffer the torturing agonies of indigestion day after day, and then wonder why? Why do indigestion pain your appetite, your work and your play? You can get rid of your trouble now and all the time with Bisurated Magnesia, the only medicine which gives instant relief even in the most distressing cases. Bisurated Magnesia removes the cause of the trouble, neutralizing acidity, preventing fermentation and helping the digestive organs to carry out their work naturally and unimpeded. Recommended by the medical profession and used in many of the largest hospitals, no home should be without a tin of Bisurated Magnesia.

BISURATED MAGNESIA

IN POWDER SOLD BY CHEMISTS AND IN TABLETS SOLD EVERYWHERE

Your Own Home and Plot
FOR 5500 DOLLARS
balance on mortgages at 8 per cent.
Newly built houses, with all modern conveniences Apply

R. O. PRESTON
Box 307, Nairobi, or Office, Westlands.

CORRESPONDENCE

Country Roads and Weather Report.

Mr. Galton-Frost writes—
The weather this week is much the same as that for last week. There is a good deal of rain everywhere excepting the Kilimanjaro.

The following is the state of country made on the 15th inst. Nairobi received last evening.
Nairobi—Mombasa. Best good.
Mombasa—Tanga. Fair.
Nairobi—Kisumu. Fair.

Yours etc,
Nairobi, Sept. 15.

DECLINE IN PROPORTION OF BOY TO GIRL IN INDIA.

The Associated Chambers of Commerce who claim to represent the great majority of the Indian community in London, Aug. 15.

The chairman therefore recommended a scheme for granting the province control of the proportion of the population up to full responsible autonomy. If this is granted, however, they express the opinion that should be provided for safeguards.

Yours etc,
Nairobi, Sept. 15.

Just Received.

New Goods of every description such as, Silk and Cotton Piece Goods, Carpets, Rugs, Tackets, Time Pieces, Shirts, Pyjamas, Ladies and Gents Under Wear, etc., etc., etc.

AT **Ladharam Stores**

P.O. Box 818. NAIROBI. Government Road.

Notice.

MR. RICHARD M. GEAHER, Architect, has opened his office in "Corner House," Nairobi.

THE WEEK'S WEATHER.

Department of Agriculture's Report.

Department of Agriculture weather report for the week ending 15th September, 1927 at certain stations in the Colony. Temperature of Nairobi—

Table with 2 columns: Station, Temp. (100° F), Wind, Clouds, Rainfall. Includes stations like Nairobi, Mombasa, Kisumu, etc.

When a monthly return is received from the stations in the Colony as adjusted if a slight variation from the original formation is shown.

Vital Statistics.

London, Aug. 15.

A decline in the proportion of boys to girls in India is reported by the Registrar-General's quarterly returns for the second quarter of 1927.

The first explanation is that there were more marriages in the year 1927 than in any other year since 1921, when there were 250,000 births in the year 1927.

Vital Statistics.

In the first Position of Uganda there were 86,000 births during 1927. The number of children one year of age was 223,843, the rate of infant mortality being 25.7 per 1,000 as against 26.7 per 1,000 as the birth rate of 20.58 is the highest ever recorded.



ERASMIC keeps the most delicate skin perfectly clear and smooth as satin. It adds that delightful elusiveness to Missy's toilette. . . . the embodiment of feminine charm!

PEERLESS ERASMIC Soap

Picture Framing
This branch of our business is in the hands of an expert, and any work entrusted to him will be executed in any dash at short notice.

B. H. Myers & Co., Ltd.
Phone 348. GOVERNMENT ROAD, Box 461
FURNITURE SUPPLIED ON THE HIRE PLANES.
EASY TERMS.

J. A. F. MARTELL ESTABLISHED 1820
A BRANDY THAT IS HANDED FOR OVER 100 YEARS AND ALL NATIONS A GRAND BRAND OF BRANDY.

Martell's for Age and Quality
Known throughout the World
Martell's Brandy advertisement with bottle illustration.

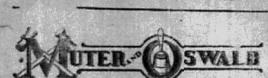
REAL SOURCE OF ECONOMY LIES IN OUR STAGE OF

Articles in Wool: Bulwara, Cardigan, Sweaters, Underwear, Socks, Stockings, Blankets, etc., etc., etc.
Articles in Cotton: Pyjama Suits, Bath Sheets, Towels, Underwear, etc., etc., etc.

General **Kala Sidi** Importers
Government Road, NAIROBI.

Hamilton & Coy.
BAKERS AND BUTCHERS,
WESTLANDS.
BREAD, CAKES, AND BISCUITS,
Hotels and Boarding Houses supplied at Wholesale Rates.
Top Prices Paid for Prime Slaughter Stock.

AUCTION SALES



"Oakland" Box Body Motor Car.

Daily instructed, we shall sell by PUBLIC AUCTION WITHOUT RESERVE at our Salerooms, Mutos Building, Nairobi, on

Monday, 17th Sept at 10 a.m. Precisely.

ONE "OAKLAND" BOX BODY MOTOR CAR, 8 good tyres, lights, in running order.

MOTOR and OSWALD, Ltd., Auctioneers, NAIROBI.



Daily instructed by the Proprietor of the "Thames" Hotel, Burlington Road, Nairobi, we shall sell by Catalogue by

Public Auction, absolutely without reserve The Entire Furnishings and Effects of the Hotel which have been removed to our Salerooms, Mutos Building, for convenience of sale, on

Monday, 17th Sept. at 10 a.m.

SIX WARDROBES, with oblong bevelled mirrors. FOUR WARDROBES, with oval bevelled mirrors. SEVEN THREE PIECE IRON BEDS. SEVEN BEDS, with covered springs. SEVENTEEN CHAIRS, with new 2 1/2" spring mattresses. EIGHT WASHSTANDS with cupboards and four washbasins, with cupboards. SEVEN DRESSING TABLES in assorted finishes with oblong bevelled mirrors. FIVE DRESSING TABLES, oval and round bevelled mirrors. Occupation of Tables, Morris Chairs, with cushions. TWENTY SINGLE MATTRESSES—precisely new. CHEST OF DRAWERS, HULL SHIRT, TWO CHESTERS, TERFIELD SUITERS, with loose covers. LARGE BUREAU, CARPETED HALL SEAT, FIVE DINING CHAIRS, Palmsteads. TWELVE SETS ENAMEL TOILET WARE—practically new. Kitchen sink, inner Wagon, campwood Mosaic, etc., etc.—All of the above goods are now on view, and Catalogues are now being prepared.

Wednesday, 19th Sept at 10 a.m.

MISCELLANEOUS GOODS LINOLITH BLANKETS, LINEN, CUTLERY, CROCKERY, GLASSWARE, KITCHEN UTENSILS, etc.

MOTOR and OSWALD, Ltd., Auctioneers, NAIROBI.



Solal Farm for Sale.

"Walk-In: Walk Out"

ABOUT 1,200 ACRE FARM, ONE MILE FROM RAILWAY STATION, 5,000-6,000 50 years lease, low Government rental; three permanent streams; approximately 600 acres very tight clearing suitable for maize and 200 acres heaviy clearing for coffee.

Six roomed house of mud bricks, plastered inside and outside, and in throughout with "Parole" installation; large verandah; hot and cold water laid on throughout. Dairies, Cattle Dip, 40 stall Cowshead, Calf Houses, Feeding Bais, etc. FLOOD ASSETS INCLUDED IN THE SALE PRICE—50 Head of CATTLE (40 COWS, 2 BULLS, Calves, Heifers and Steers. All Household Furniture (personal effects excluded). Plane, Gramophone (Fordson) Tractor, "Tian" Tractor, 2 Ploughs. All home implements. Blacksmith's Forge, Stocks. Dies, and other tools. Scotch Cart, "Bugby" Derrant Motor Car. Dairy Implements. Mule and Saddletry, etc., etc.

THIS FARM ON WHICH SEVERAL THOUSANDS OF POUNDS HAS BEEN SPENT IS BEING PLACED ON THE MARKET OWING TO THE NECESSITY OF OWNER LEAVING THE COUNTRY AND IS AVAILABLE FOR £4,500 or near offer, which above one half could probably be arranged on mortgages at 8 per cent.

For further particulars of the above, and other properties apply to—

MOTOR and OSWALD, Ltd., Auctioneers, NAIROBI.

Rubber Stamps

STANDARD STATIONERY STORES, NAIROBI.



Sale of Garage Tools and Equipment.

Daily instructed by A. F. Davey, Esq., proprietor of the Ruiru Garage, who is discontinuing his business, we shall sell, by PUBLIC AUCTION, without reserve (unless stipulated) at

The Ruiru Garage ON Thursday, 20th Sept. at 10 a.m.

THE FULL EQUIPMENT OF THE GARAGE including: ONE HAYLEIGH VILKINSON and quality material (res.) ONE "LISTER 110 VOLT LIGHTING SET, belt driven (in original case)—RESERVE. VICES, GARAGE JACKS, PULL-WEELERS SPANNERS, CHISELS, BOLTS and NUTS, BENTHENTON TAP and DIES, CUM OIL. ONE SET WITH WORTH TAP and DIES 1/2" to 1" (new) ONE SET COMPLETE WITH WORTH TAP and DIES, 1" to 1 1/2" (new) ONE SET BEAMS, 1" to 1 1/2" parallel (reserve) TYPEWRITER, TWO LOOSE LEAF LEDGERS, FILES, etc., etc. AND REPAIRS OF GARAGE ACCESSORIES.

MOTOR and OSWALD, Ltd., Auctioneers, etc., NAIROBI.

E. Hutchison & Co.

Favoured with instructions from several clients we shall sell by public auction without reserve (unless stated) at our Mart Govt. Road, on

Tuesday 18th inst. at 11 a.m.

a varied selection of new and second-hand furniture and effects including the following—
LARGE CABIN TRUNK, TWO TEAK COUNTER SHOW CASES WITH NINE DRAWERS, 12 LARGE CASES, FRONTED UPON CASES, 2 MORRIS CHAIRS, Two Oval Dining Tables, 15 Dining Chairs, Washstands, Two Office Tables, Square Dining Table, Teak Dressing Chest, CHESTERFIELD SUITE IN CRETONE, Teak Bachelor Bed Wardrobe, Two Plain Wardrobes, 2 Chests of Drawers, EXCEPTIONALLY WELL MADE CHESTERFIELD SUITE IN AMERICAN Style, Single bed and Spring, 8 Single Mattresses, 2 Matt Single bed and Spring, 2 Two Revolving Bookcases, Two Sideboards, 2 Wall Bookcases, Pair Travelling Trunks, Fishing Rod, Two Ladies Writing Bureau, Cheval Mirror, Teak Sewing Machine, H.M.V. CABINET GRAMOPHONE WITH 43 SELECTED RECORDS (10 in Bundles Novels, Washstands, Dec. Tables, Palm Stands, Coffee Tables, 3 FULL LENGTH ENGLISH BEVELLED MIRRORS, Two Teak Cabinets in press, 6 Pillows, 20 Bath Mats, BURMA, 200 in DOVER STOVE, 4 OIL PAINTING, Mosquito Net, Cane Stand, Lace Bedspread, Two Burner Refrigerator, 200 in over new (Reserve) 3 Pairs Hemstitched Sheets, 1 ALL travelling Bag, 1 Bed and Mattress, 3 GENUINE PEPPER PLATES, REVERSIBLE CARPET 9 x 9 (Reserve), Kitchen Utensils, Old China, 2 Camp Beds, 1 Bed Rug and many other items too numerous to detail.

E. HUTCHISON & CO. Auctioneers and Estate Agents.

Sands & Co.

AT OUR YARDS, NAIVASHA.

On Monday, 17th at 10-30 a.m.

- 30 High Grade Friesland Cows, heavy in Calf and Calves at foot.
 - 64 Grade and Native Cows in Calf and Calves at foot.
 - 70 Real Good Slaughter Oxen.
 - 100 Good High Grade Merino Ewes.
 - 20 Pigs.
 - Penful and Sundries.
 - 2 Wagons complete with Trek Gear and 30 good young A.M. and T. Trained oxen.
- Red Shorthorn Bull, Bora 1st February, 1923. (Imp.) Sire Connington Minstrel out of Dafoird II (Imp.).

Sands & Co., AUCTIONEERS.

Sands & Co.

AT OUR RAILWAY YARDS, NAIROBI, ON

Wed. 19th Sept. at 10-30 a.m.

- 10 Native Cows in Calf and Calves at Foot
- 30 Good Native Steers.
- 10 Immune Trek Oxen.
- 110 Native Sheep.

Sands & Co., AUCTIONEERS.

Austin & Co.

CATALOGUE SALE OF BIFLES, GREENHAM ENCYCLOPEDIA, CYCLES, BICYCLES, TABLES, COO, BROODSIDE SUIT CASE, GOOD FURNITURE, CAMP BED, etc.

Instructed by several Clients

will sell WITHOUT RESERVE unless stated, AT THE MART ON

Monday, 17th Sept. at 10 a.m.

Complete set of 12 Volumes of THE NEW GREENHAM ENCYCLOPEDIA, in new condition (reserve). 200 "Jiffy" Bicycles, in good condition. "Lester" Cycle. TEAK Double Wardrobe with large mirror. Set of 6 New Camphor Wood Dining Chairs with Oval Dining Table to match. Table Gramophones in good condition. ALL BRASS TREASURES OOT NEARLY NEW (reserve). Single Wardrobes with 2 Trunk in addition. Bedroom chairs. Double Bed complete. New Iron Beds with Coloured Springs Childs Cot. 250 MAGNUM RIGBY MATRONS. RIFLE SHOOTING CONDITION (res.). B.S.A. 375 EXPRESS Rifle in CASE. Good Morris cycle. PRIMESS DRESSING CHEST IN TEAK. TEAK Double Washstand. 3 Drawer Writing Table. Several Dressing Tables of 6 Black Dining Chairs with Oval table to match. SOLID CROCKERY SUITE CASE 26 with cover (res.). TEAK Sideboard with Tables Suite of 6 Black Dining Tables. STRIPPED CEMENT CLOTH. Large Oval Dining table in Teakgrains Mahogany. Folding Camp Bed. Well polished Black Dressing Table in Teak. Teak Design Novels. Large Mirror Back Sideboard in Teak. ALL TEAK THROUGHOUT. JACOBINE COMPLETE DRESSING CHESTS (res.). NEARLY NEW RESEARCHER MICROWAVE. 2 Cane Saddles, complete with all fittings (reserve). C. Becheret in Case. BRASS DOUBLE BED WITH FOX SPRING MATTRESSES. 3 DIANZAS A.C.A. PORTABLE GAS MAPHON IN LEATHER CASE.

AUSTIN & CO. Auctioneers, Harding St., Nairobi.

Austin & Co.

will sell subject to low reserves, AT THE MART ON

Monday, 17th Sept. at 10-30 a.m.

TRUJAN BOX BODY CAR IN GOOD RUNNING ORDER. 200 in. Electric Lights and Self Starter.

TRUJAN 1927 MODEL 4 SEATER IN PERFECT RUNNING ORDER & CONDITION. 2 Spare Tyres. COMPLETE SET OF COLONIAL SPARELS SELF Starter. 200 in. Electric LIGHTS CHEVROLET BOX BODY IN GOOD RUNNING ORDER.

Desirable Property FOR SALE.

Measara Road, Parklands Well built grounds with Fruit Trees etc., containing 4 Bedrooms, Dining-room, Lounge, Bathroom with Porcelain Bath and Hot and Cold water installation. Extra Large Verandah, Garage and fine Tennis court. Prices and Particulars from AUSTIN & CO., Auctioneers & Estate Agents, Harding St., Nairobi.

THE NAIROBI AUCTIONEERS' NAKURU

NAKURU.

September 18th at 10-30 a.m.

- 14 Cows (including 1 M.M. Oren)
- 50 Good Heavy Slaughter Oxen.
- 70 Trained Immune Oxen.
- 2 Wagons, trek gear.

1 Small pony with saddle and bridle, complete to ride.

A LARGE SELECTION of nearly new IMPLEMENT and TOOLS from a settler who is leaving up including plows, harrows 6 ridger cultivators, Northson shodder, 6 inch or harness, Oliver tractor cultivator, mattocks, crowbars, pangas, picks etc.

Further particulars from the Auctioneers at Nakuru.

Nyeri Polo Tournament

POLO 90th and 22nd instances.

GYMKHANA, 21st instants.

DANCES AS USUAL.

Visit of H.R.H. The Duke of Cornwall.

All ex-officers and other ranks D.C.L.L. are requested to communicate "marré moje" with Major Kirton, Buiru.

The Victoria Nyanza Sugar Company Ltd.

MIWANI

Bag to notify the Public that they have commenced crushing and all orders for sugar should be addressed to them at Miwani.

Farmer's having sugar cane for disposal should communicate, without delay, with the factory, stating number of Cane and where situated, area of cane, able, estimated weight of crop, what tonnage they contract to deliver daily and the date upon which they can commence delivery. Further particulars can be obtained at the mill office on application.

Property for Sale.

2988 acres of excellent Sial land is offered for sale within nine miles of Nairobi with river front at Shug. 25 1/2 per acre. 5 roomed Stone House on 21 acres of Matara Mt. Parklands. Price £1,250. 6 Roomed Brick and Stone House all modern conveniences, Tennis Court and Summer House at Kikuyu Road, Parklands. 24 acre Plot with River Frontage and permanent Spring at Enaraka—Egges only £450. For further particulars of the above and other available property apply

Brown & Barratt

P.O. Box 487, Phone 147, IREA BUILDINGS, NAIROBI.

Jamal Pirbhai.

Sells anything You Cannot Sell. Auctioneer, Official Broker and Government Approved Valuer. Auctions Every Sunday, at 9 a.m. Opposite Jeervany Garden. P.O. Box No. 309, Nairobi, Kenya Colony.

Sale of Household Furniture Etc.

Under instructions received from Trustees.

C. DENOVA

Will sell by Public Auction on Monday, the 17th September at 10 a.m. the furniture belonging to the Hussein at his house, Ngara Road, Nairobi.

Hartley's Tobaccos

Red Seal 1 lbs bags also Rhodesian, Invicta, and Rhodesian Ping Out. Fresh Stocks Arrived. Sole Agents and Distributors. Denovan & Diebel CITY HOUSE, NAIROBI.

We have a Representative Selection of choice designs in Furniture now on view.

GATEWAY TABLES. Size 36 x 24" Constructed with Jacobean Turned Legs. Oval or Oblong Top. Sh. 77/0.

FOLDING BRIDGE TABLE. Size 36 x 36" Top fitted with Green All Wood Beveled Seats. 4 Folding Glass Tables attached. A new design. Sh. 77/0.

REFLECTORY COFFEE TABLE. With thick turned legs and sideposts. Size 18 x 14. Sh. 65/-. Size 14 x 14. Sh. 67/0.

Hutchings, Biemer & Co. Ltd.

HERE PURCHASE TREES AGAINST LESS 5% FOR CASH WITH ORDER. Box 492, NAIROBI. Phone 147.

Monthly A/c's. with Approved Customers.



Crawford's LIQUEUR SCOTCH WHISKY ESTD 1860

The Athletic World

Womens International Contest

A British Victory. STANDARD OBSERVERS: London, Aug 30. The international Match between women athletes which took place last Tuesday...

PUTTING. THE HEAT (Match) 40. Heston (Australia) 39 ft. 5 in. New world record. 39 ft. 10 in. W. Jones (Australia) 39 ft. 10 in. 2. Jacks (Germany) 39 ft. 10 in. 3. V. Vaino (Finland) 39 ft. 10 in. 4. J. Irving (Germany) 39 ft. 10 in. 5. J. Vaino (Finland) 39 ft. 10 in. 6. J. Irving (Germany) 39 ft. 10 in. 7. J. Vaino (Finland) 39 ft. 10 in. 8. J. Irving (Germany) 39 ft. 10 in. 9. J. Vaino (Finland) 39 ft. 10 in. 10. J. Irving (Germany) 39 ft. 10 in.

100 YARDS OPEN HANDicap. 1. V. Vaino (Finland) 1:10. 2. J. Irving (Germany) 1:11. 3. J. Vaino (Finland) 1:12. 4. J. Irving (Germany) 1:13. 5. J. Vaino (Finland) 1:14. 6. J. Irving (Germany) 1:15. 7. J. Vaino (Finland) 1:16. 8. J. Irving (Germany) 1:17. 9. J. Vaino (Finland) 1:18. 10. J. Irving (Germany) 1:19.

100 YARDS HURDLES (1/2 mile). 1. M. Clark (British Empire) 1:17. 2. J. H. Bell (England) 1:18. 3. J. H. Bell (England) 1:19. 4. M. Clark (British Empire) 1:20. 5. J. H. Bell (England) 1:21. 6. M. Clark (British Empire) 1:22. 7. J. H. Bell (England) 1:23. 8. M. Clark (British Empire) 1:24. 9. J. H. Bell (England) 1:25. 10. M. Clark (British Empire) 1:26.

100 YARDS INVITATION RACE. 1. Wilson (New Zealand) 1:10. 2. W. K. Thompson (Australia) 1:11. 3. Wilson (New Zealand) 1:12. 4. W. K. Thompson (Australia) 1:13. 5. Wilson (New Zealand) 1:14. 6. W. K. Thompson (Australia) 1:15. 7. Wilson (New Zealand) 1:16. 8. W. K. Thompson (Australia) 1:17. 9. Wilson (New Zealand) 1:18. 10. W. K. Thompson (Australia) 1:19.

THE POULTRY WORLD.

Preparing Birds for Show.

Training and Cleaning. The training of the birds intended for showing in Nairobi should be done in a special way. Heavy birds are not very difficult to get tame and quiet to handle, but the smaller birds, such as Lushes, will not be so good if handled.

Washing Birds in Water. Washing birds in water may be done in a special way. The birds should be washed in a tank or trough, and the water should be changed frequently. The birds should be washed in a tank or trough, and the water should be changed frequently.

Feeding and Watering. The plumage feeds do not, as the birds require something of the kind at the back of the neck, and it will be necessary to wash the neck plumage. The plumage feeds do not, as the birds require something of the kind at the back of the neck, and it will be necessary to wash the neck plumage.

100 METRES OPEN RELAY RACE. 1. London (British Empire) 1:10. 2. London (British Empire) 1:11. 3. London (British Empire) 1:12. 4. London (British Empire) 1:13. 5. London (British Empire) 1:14. 6. London (British Empire) 1:15. 7. London (British Empire) 1:16. 8. London (British Empire) 1:17. 9. London (British Empire) 1:18. 10. London (British Empire) 1:19.

100 METRES OPEN RELAY RACE. 1. London (British Empire) 1:10. 2. London (British Empire) 1:11. 3. London (British Empire) 1:12. 4. London (British Empire) 1:13. 5. London (British Empire) 1:14. 6. London (British Empire) 1:15. 7. London (British Empire) 1:16. 8. London (British Empire) 1:17. 9. London (British Empire) 1:18. 10. London (British Empire) 1:19.



Keep Empire Trade within the Empire

Buying South African Manufactured Products. Trade Commissioner for South Africa, MEMORIAL HALL, P.O. BOX 624, NAIROBI.

Fuel and Transport

STANDARD FUEL—Shillings 19/- per ton delivered within Municipal Area. CUT FUEL—Shillings 23/- per ton delivered within Municipal Area. U.K. AMBA TRANSPORT CO. P.O. Box 566. OUR MOTTO: PROMPTNESS.

LAND Kiteal District.

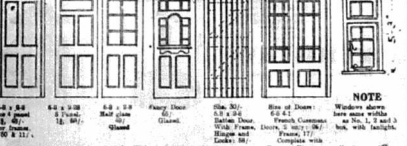
We have farms of various acreages developed and undeveloped in the Teza Zone. For disposal I propose to suit both large and small capitalists. Land is suitable for COFFEE, MAIZE, WHEAT, and mixed farming. KIRKWOOD & Co. Land Agents and Valuers, KITEAL.

Barclays Bank (Dominion Colonial and Overseas.)

THE ANGLO-EGYPTIAN BANK, LIMITED. Capital Authorized £12,000,000. Capital Subscribed £4,875,000. Capital Paid up £4,875,000. Reserve Fund £2,000,000.

BRANCHES IN EAST AFRICA: Nairobi, Mombasa, Nakuru, Kisumu, Eldoret, Kampala, Jinja, Tanganyika, Dar-es-Salaam. The bank is represented by: D. F. Boleby, Agent, Nairobi. South West Africa, British West Africa, West Indies, Egypt and the Sudan, Mauritius, etc.

Geo. BLOWERS



NOTE: All sizes double size quoted. Without showing details. Plans, Specifications, Estimates, etc., sent free. Write for particulars. Geo. Blowers, 10, Market Street, Nairobi.

Theo. SCHOUTEN. MOMBASA. Govt. Road, NAIROBI. NAKURU. WITH A STAFF OF FIRST CLASS LONDON (WEST END) OPERATORS.

At Your Service FOR EXPERT Hairdressing PERMANENT WAVING, by the Best Systems. Phone 948. Artistically Executed. P.O. Box 324. TIMBER. FOREST DEPARTMENT. Cordoning posts 70, 85, or 100 (1/75 each on 3rd yard).

Bits and Pieces Humours Stories by GEORGE ROBEY THE WORLD FAMOUS COMEDIAN. Illustrated by E. P. KINSELLA.

Here is a volume packed with the funniest fun of the day. Every man and woman must have a copy. It is strongly recommended. All the world has laughed at and is still laughing at. Buy it now. It is the best of its kind. The publisher has the pleasure to announce that the book is now available in paperback form. The price is 1/6. The publisher has the pleasure to announce that the book is now available in paperback form. The price is 1/6.

SOUTH AFRICA TANGANYIKA UGANDA DENMARK EAST INDIES BELGIUM AMERICA KENYA ENGLAND ROMANIA



Spare Service

Proprietor L. BASSO. DISTRIBUTORS FOR LANCIA, STUDEBAKER and ERSKINE CARS. Phone 560. NAIROBI. P.O. Box 633.

KENYA BEER

Wholesome and Appetizing.

LIGHT OR DARK



No. 4578. MANUFACTURED BY THE GENERAL BEER BREWERY LTD., NAIROBI, KENYA.

HURRICANE AND TORNADES BRING DEATH & DESTRUCTION.

Desolation in West Indies & Southern States of America.

TOWNS RUINED.

Liner Escapes but Fears Entertained for Safety of Many Cargo Vessels.

One of the worst storms on record has swept over the West Indies and the Southern part of the U.S.A. leaving a trail of death and destruction.

Towns have been laid in ruins and thousands of people are homeless with the total damage believed to represent many millions of pounds.

SCHOOL WIPED OUT.

New York, Sept. 14. A wind velocity of 120 miles per hour was registered by the General Weather Bureau at the Government observatory at San Juan, Puerto Rico before the storm struck here yesterday in a gale which is sweeping the West Indies.

Cable and wireless communications with Puerto Rico were interrupted only the slightest interval since the storm struck. The damage was widespread, however, with an estimated \$1,000,000 dollars at San Juan alone where business has been stopped.

Several hundred lives were lost and many thousands of people were injured. The damage was widespread, however, with an estimated \$1,000,000 dollars at San Juan alone where business has been stopped.

Several hundred lives were lost and many thousands of people were injured. The damage was widespread, however, with an estimated \$1,000,000 dollars at San Juan alone where business has been stopped.

Several hundred lives were lost and many thousands of people were injured. The damage was widespread, however, with an estimated \$1,000,000 dollars at San Juan alone where business has been stopped.

Several hundred lives were lost and many thousands of people were injured. The damage was widespread, however, with an estimated \$1,000,000 dollars at San Juan alone where business has been stopped.

Several hundred lives were lost and many thousands of people were injured. The damage was widespread, however, with an estimated \$1,000,000 dollars at San Juan alone where business has been stopped.

Several hundred lives were lost and many thousands of people were injured. The damage was widespread, however, with an estimated \$1,000,000 dollars at San Juan alone where business has been stopped.

Several hundred lives were lost and many thousands of people were injured. The damage was widespread, however, with an estimated \$1,000,000 dollars at San Juan alone where business has been stopped.

Several hundred lives were lost and many thousands of people were injured. The damage was widespread, however, with an estimated \$1,000,000 dollars at San Juan alone where business has been stopped.

Several hundred lives were lost and many thousands of people were injured. The damage was widespread, however, with an estimated \$1,000,000 dollars at San Juan alone where business has been stopped.

Several hundred lives were lost and many thousands of people were injured. The damage was widespread, however, with an estimated \$1,000,000 dollars at San Juan alone where business has been stopped.

Several hundred lives were lost and many thousands of people were injured. The damage was widespread, however, with an estimated \$1,000,000 dollars at San Juan alone where business has been stopped.

GUARANTEED THE LARGEST CIRCULATION OF ANY NEWSPAPER IN KENYA, UGANDA, TANGA NYIKA AND ZANZIBAR.

DAILY EDITION.

THE EAST 16 PAGES.

The East Standard

UGANDA ARGUS. With which is published THE EAST STANDARD. THE MOST ESTABLISHED NEWSPAPERS PUBLISHED IN KENYA AND MANDARU.

NAIROBI, MONDAY, SEPTEMBER 17, 1928.

The LOUNGE
FOR
Morning
and
Afternoon
TEAS

Open
Sundays
to
Non-Residents

The New Stanley Hotel

DRAMATIC COLLAPSE OF SHIPPING STRIKE.

Work to be Resumed Today.

AWARD ACCEPTED.

(BY WIRELESS.)
Malmoe, Sept. 14. Twenty-five vessels and thirty-five coastal vessels, aggregating 30,000 tons, saw at present 100,000 tons of cargo, and the crews of eight boats and the crews of six boats have been paid off.

The striking seamen, the H. M. S. M. Bruner, in refusing the request of the maritime union to arrange a conference for the settlement of the strike and the request was required to ask the Government to be a party to an unlawful act.

The shipping agents in Malmoe, Sept. 14. The maritime union has accepted the offer of the Government to arbitrate the dispute, and the strike is ended.

Flying Boats.

END OF 25,000 MILES JOURNEY.

(BY WIRELESS.)
London, Sept. 15. The four Royal Air Force flying boats which left Southampton on October last have completed their 25,000 miles flight and returned to base.

The Rhineland.

VIEW OF FRENCH AND GERMAN GOVERNMENTS.

(BY WIRELESS.)
London, Sept. 15. It is understood that the Government has issued a statement in support of the position taken up by the French Government.

Appeal for Help.

The American Red Cross has received an appeal from St. Petersburg, Florida, for help in relieving the suffering of the victims of the hurricane.

General's Death.

(BY WIRELESS.)
London, Sept. 14. The death is announced of Major-General Sir Douglas Haig, K.C., G.C.B., G.C. The death occurred at his residence in London.

Dictator Thanks the Police.

(BY WIRELESS.)
London, Sept. 14. The Dictator of Mexico, General Calles, has issued a statement thanking the police for their services during the recent disturbances.

THE SALT TAX IN CHINA.

Joint Note from Three Powers.

NATIONALIST DELAY.

(BY WIRELESS.)
London, Sept. 15. The British, Japanese and French Legations in Peking have sent a joint note to Nanking insisting on the Chinese National Government to meet the need for prompt and effective restoration of the salt tax in the proper form.

The Chinese salt revenue is assigned as security for various foreign loans, and the Nationalist Government has delayed in restoring the salt tax.

"W. A. Standard" Special.

A Social Problem.

(BY WIRELESS.)
London, Sept. 15. The "Manchester Guardian" has published a special article on the social problem of unemployment.

Pyramid Glumb.

The Royal Highnesses the Prince of Wales and the Duke of Gloucester have left for the island of Malta.

The Spanish Plot.

(BY WIRELESS.)
London, Sept. 14. The Dictator of Mexico, General Calles, has issued a statement regarding the Spanish plot to overthrow the Government.

General's Death.

(BY WIRELESS.)
London, Sept. 14. The death is announced of Major-General Sir Douglas Haig, K.C., G.C.B., G.C. The death occurred at his residence in London.

Dictator Thanks the Police.

(BY WIRELESS.)
London, Sept. 14. The Dictator of Mexico, General Calles, has issued a statement thanking the police for their services during the recent disturbances.

GOLF FROM THE TOP OF THE GREAT PYRAMID.

Incident during the Princess' Visit to Egypt.

A BRILLIANT SHOT.

Their Royal Highnesses Embark on the "Malda" for Kenya.

The Prince of Wales and the Duke of Gloucester have left Egypt on the s.s. "Malda" bound for Mombasa.

Whilst in the neighbourhood of Cairo their Royal Highnesses climbed the Great Pyramid on the top of which the Prince of Wales played golf.

NOVEL EQUIPMENT.

(BY WIRELESS.)
London, Sept. 15. The Prince of Wales and the Duke of Gloucester have been seen in the company of King Paul of Greece at the Royal Palace in Athens.

The Prince of Wales and the Duke of Gloucester have been seen in the company of King Paul of Greece at the Royal Palace in Athens.

The Prince of Wales and the Duke of Gloucester have been seen in the company of King Paul of Greece at the Royal Palace in Athens.

The Prince of Wales and the Duke of Gloucester have been seen in the company of King Paul of Greece at the Royal Palace in Athens.

The Prince of Wales and the Duke of Gloucester have been seen in the company of King Paul of Greece at the Royal Palace in Athens.

The Prince of Wales and the Duke of Gloucester have been seen in the company of King Paul of Greece at the Royal Palace in Athens.

The Prince of Wales and the Duke of Gloucester have been seen in the company of King Paul of Greece at the Royal Palace in Athens.

The Prince of Wales and the Duke of Gloucester have been seen in the company of King Paul of Greece at the Royal Palace in Athens.

The Prince of Wales and the Duke of Gloucester have been seen in the company of King Paul of Greece at the Royal Palace in Athens.

The Prince of Wales and the Duke of Gloucester have been seen in the company of King Paul of Greece at the Royal Palace in Athens.

The Prince of Wales and the Duke of Gloucester have been seen in the company of King Paul of Greece at the Royal Palace in Athens.

The Prince of Wales and the Duke of Gloucester have been seen in the company of King Paul of Greece at the Royal Palace in Athens.

The Prince of Wales and the Duke of Gloucester have been seen in the company of King Paul of Greece at the Royal Palace in Athens.

Whiteaways

Always foremost with the latest in Ladies Coats and Jumpers. Novelties arrive by coach mail and are all marked at competitive price.

A VISIT WILL REPAY YOU.

Black wool & linnen coats
A good useful low priced coat for evening wear.

Shgs. 79-50

Woolen coats
A selection of smart ladies' coats for evening wear.

Shgs. 59-50

Black Evening Coats
Made from Black Silk and Wool fancy. These make very effective coats for evening wear.

Shgs. 62-50

Leather Motoring Coats
The very latest in ladies' coats. Plain Brown leather Silk lined.

Shgs. 160-00

Shgs. 200-00

Real Leather Wool Silk, Silk Lined.

Shgs. 175-00

Gambler's Jumpers
Made from a fine light weight wool and cotton. Plain, Maroon or Navy.

Shgs. 15-50

Silk Jumpers
Good quality hand wearing. Cream Silk Jumpers with fancy trim.

Shgs. 16-50

Also in a variety of Plain colours.
Shgs. 25-00
Green or White only.

Art Silk Jumpers
An extremely smart design of Ladies Art. Silk Jumpers with contrasting trim. Egg Blue, Pink, Peach, Rose. A real good line.

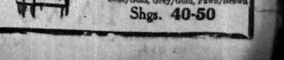
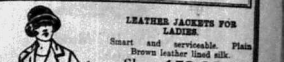
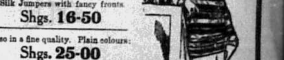
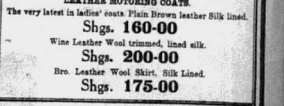
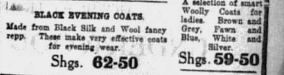
Shgs. 18-50

Leather Jackets for Ladies
Smart and serviceable. Plain Brown leather jackets.

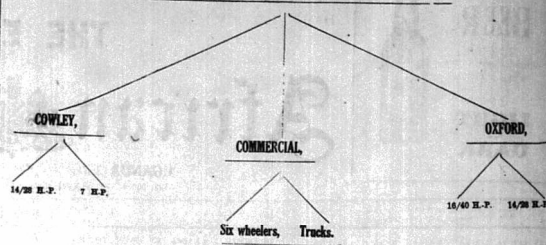
Shgs. 159-00

Tennis Coats
Just arrived! A delivery of smart, stylish, woolly coats for tennis. Hand Dressed. Plain or Striped.

Shgs. 40-50



MORRIS



"The Famous Morris Family Tree!"
 Every Descendant so far has proved itself Worthy to bear the name.
"MORRIS"

Sole Distributors:
Mitchell Cotts & Co.,
 NAIROBI.

CAMPAGNIE AFRICAINE DE NAVIGATION
 FAST CARCO STEAMERS. VIA SUEZ CANAL.
 ANTWERP DIRECT KILINDINI DIRECT ANTWERP.
Outwards. **Homewards.**
S.S. "Katanga" Due to arrive Kilindini 29th September. Will take cargo for Dar-es-Salaam and Beira.
S.S. "Kabalo" Due to arrive Kilindini 28th September. Will take cargo for Port Sudan, Port Said and Antwerp.
 For freight and particulars apply to:
MITCHELL COTTS & Co., Agents, Also at MOMBASA. P.O. Box 664

MR. SASTRI NOT ANXIOUS TO STAY IN UNION.

Indians' Debt to their Agent-General.

WORK ACCOMPLISHED

Mr. Sastri, the Indian Agent-General in the name of an interview with a "Natal Witness" reveals that he will not be free to say anything in connection with the "Union" in the terms of office in the Union. A month or so ago Mr. Sastri had been informed that Mr. Sastri had been asked to resign from the Government of India in South Africa extended for a year.

"I came with the intention," said Mr. Sastri, of staying for only a year. I arrived at Pretoria on June 1st and I have stayed for a further term of six months. At the present of Indian opinion in India and also at the request of the Indian Government, Mr. Sastri prolonged his stay in the Union. It is not considered likely that Mr. Sastri will agree to a second extension of his term of office, though the feeling in favour of his retention, which is already beginning to make itself manifest, will be as acute as it has been on the first occasion. At the same time, the fact that the wife of the Agent-General is a high-caste Brahmin and, according to the social laws of her race, would lose caste if she were to cross the sea may influence public opinion in this country against a second extension to a further term of office here.

His Original Mission.
 Mr. Sastri's mission was to interpret the real wishes of the highest class of Indian administrators, and to bring as he has been frank and candid to the Indian and European alike, holding the balance between the races with great care. Wherever there is a feeling of preventing further immigration, he has made it clear to the English people that the Empire, in giving the Indian people who form the staple of the Empire, no less a portion of the Empire than in his handling of the situation, was to implement the agreement between the Union and the Indian Government.

He laid special emphasis on the importance of Indian education, placing this before housing reform. At the same time he referred to

deal with political questions, such as the franchise, which advanced Indian leaders invited him to discuss.

The difficulties which beset the carrying out of the agreement tended to become smaller as a result of his first tour of Natal, but it still remained to be seen if the cause of friction between the Union and the Indians would be removed. The trade union question remained entirely untouched, and the existing clauses of the Wages Act was still a problem of vital importance.

Direct Entry.
 These questions were rendered more acute by the problem of direct entry into the Union, which was the matter most continuously before the Legislature during the first eight months of the working of the agreement. There was a steady increase in the registration figures, but not sufficient to keep pace with the natural increase of the Indian population. The opposition of a large section of the Indian community to the continuation scheme, which provided that no legal action should be taken against illegal immigrants who had registered in the Union, made the situation even more complicated than before. It was objected that the scheme was a plot to entrap illegal entrants, and particularly those European and Indian who had obtained their entry. The strenuous task which the Agent-General has successfully undertaken in surmounting this opposition and bringing the continuation scheme into force is one of the triumphs of modern statesmanship.

Another Success.
 Mr. Sastri's success in his educational policy has been an equally important achievement. The visit to Durban of what will be followed with confidence, eventually by an Indian university, recently by the Government, is concrete proof of the success of this policy. There is no doubt that the work of the Agent-General in the last 18 months will lead to a better understanding between European and Indian for their mutual good.

Insufficient Stamps.

STANDARD CORRESPONDENT.
 London, Aug. 25.
 Nearly 5,000,000 insufficiently postage stamps are produced from this country every year, and the loss to the Post Office from stamps collected from the addresses exceeds £400,000.
 Calling attention to this, the Postmaster-General points out that insufficiently paid correspondence is liable to delay and to be refused by the addressee, who would be obliged to pay a postage equivalent to double the deficiency in postage.

A faultless dinner ends with
DE RESZKE
 The Aristocrat of Cigarettes

Virginian 50 for / 2/5
 10 for / -/50
 Turkish 50 for / 2/50

Dalgety & Co.

NAIROBI WATER SUPPLY

The attention of the public is drawn to the fact that the above supply is liable to contamination and that the consumption of unboiled water may be dangerous. It is therefore recommended that all water should be boiled before use.

MEDICAL OFFICER OF HEALTH.

Kenya Loan & Discount Co., Ltd.
 NAIROBI.
 OFFICES—
 1st Floor, Court Chambers. P.O. Box 546.
FINANCIAL AGENTS.
 BILLS DISCOUNTED.
 SHORT PERIOD LOANS GRANTED.
 AMY REALISABLE ASSET NEGOTIATED FOR CASH.
 Call or Write, Strictest Confidence. Established 1921.

UNDERWOOD TYPEWRITERS

SAVE TIME—THE PRINCIPAL BUSINESS COST.
 Over 5,000,000 in use—Speeding the World's Business.



NEW PORTABLE

FOUR BANK 380.



No. 5. 10" Model 665L.

Portable Three B nk 320L.

ALSO IN STOCK. 14", 16", 18", 20" and 26" Models.

TAWNS LIMITED,

Box 611.

NAIROBI.

Phone 141.

B. FLORENS.
 FRANCHISE RESTAURANT,
 BUSINESS TRANSFERRED FROM NOBOLLE HOTEL
 TO YORK HOUSE (late Malton Mex)
 GOVERNMENT ROAD, opp. Traders,
 P.O. Box 223.

POSHO
 SELLING AGENTS—
Universal Export Co., Ltd.,
 P.O. Box 540. NAIROBI. Tel. Enterprise.
Thika Sisal Co., Ltd., Thika.

Souza Junior & Dias
 Established in 1880.
The Pioneer and Leading Stores
 Government Road, Nairobi.
 Transact your purchases where facilities are BEST. Cut down the Bill. Buy your Requirements from us. In fact everything for yourself and Home. At Lowest Prices.
 We Stock Fresh Supplies Only.
 A Trial Order is Solicited.
 P.O. Box 241.

BUY YOUR
Chocolates
FRESH FROM TORRS

WINSOR & NEWTON'S
 Artists' Materials.

A Large Range of Colours
 "in Stock."
 Pen Painting and Stenciling Colours
 Poster Colours. Sketch Blocks Etc.
Standard Stationery Stores.
 P.O. Box 230. NAIROBI.

EAST AFRICAN STANDARD DAILY EDITION.

ADVERTISEMENT RATES.
Advertisements are accepted only subject to approval.

DOMESTIC ADVERTISEMENTS.

Marriage and Deaths.—In 15 lines of 12 characters with a minimum of six words.

THE SUBSCRIPTION RATES.

Locally, yearly	Shs. 40.00
" 6 months	" 23.00
" 3 months	" 13.00
Foreign, yearly	Shs. 75.00
" 6 months	" 45.00
" 3 months	" 25.00

FOR SALE.

THE charge for advertisements in this column is Shs. 1/- for the first line, with a minimum of 10 lines, for the first week, 5/- for each consecutive day only.

FOR SALE.

THE charge for advertisements in this column is Shs. 1/- for the first line, with a minimum of 10 lines, for the first week, 5/- for each consecutive day only.

FOR SALE.

THE charge for advertisements in this column is Shs. 1/- for the first line, with a minimum of 10 lines, for the first week, 5/- for each consecutive day only.

FOR SALE.

THE charge for advertisements in this column is Shs. 1/- for the first line, with a minimum of 10 lines, for the first week, 5/- for each consecutive day only.

FOR SALE.

THE charge for advertisements in this column is Shs. 1/- for the first line, with a minimum of 10 lines, for the first week, 5/- for each consecutive day only.

FOR SALE.

THE charge for advertisements in this column is Shs. 1/- for the first line, with a minimum of 10 lines, for the first week, 5/- for each consecutive day only.

FOR SALE.

THE charge for advertisements in this column is Shs. 1/- for the first line, with a minimum of 10 lines, for the first week, 5/- for each consecutive day only.

FOR SALE.

THE charge for advertisements in this column is Shs. 1/- for the first line, with a minimum of 10 lines, for the first week, 5/- for each consecutive day only.

FOR SALE.

THE charge for advertisements in this column is Shs. 1/- for the first line, with a minimum of 10 lines, for the first week, 5/- for each consecutive day only.

FOR SALE.—(Contd.)

DEMAULT, B.S. coach used. Ideal lady's car, mileage under 5000 perfect running order, £100. To see, James & McIlroy's Garage, Mrs. Giffard, Kilmac.

WANTED.

THE charge for advertisements in this column is Shs. 1/- for the first line, with a minimum of 10 lines, for the first week, 5/- for each consecutive day only.

WANTED.

THE charge for advertisements in this column is Shs. 1/- for the first line, with a minimum of 10 lines, for the first week, 5/- for each consecutive day only.

WANTED.

THE charge for advertisements in this column is Shs. 1/- for the first line, with a minimum of 10 lines, for the first week, 5/- for each consecutive day only.

WANTED.

THE charge for advertisements in this column is Shs. 1/- for the first line, with a minimum of 10 lines, for the first week, 5/- for each consecutive day only.

WANTED.

THE charge for advertisements in this column is Shs. 1/- for the first line, with a minimum of 10 lines, for the first week, 5/- for each consecutive day only.

WANTED.

THE charge for advertisements in this column is Shs. 1/- for the first line, with a minimum of 10 lines, for the first week, 5/- for each consecutive day only.

WANTED.

THE charge for advertisements in this column is Shs. 1/- for the first line, with a minimum of 10 lines, for the first week, 5/- for each consecutive day only.

WANTED.

THE charge for advertisements in this column is Shs. 1/- for the first line, with a minimum of 10 lines, for the first week, 5/- for each consecutive day only.

WANTED.

THE charge for advertisements in this column is Shs. 1/- for the first line, with a minimum of 10 lines, for the first week, 5/- for each consecutive day only.

WANTED.

THE charge for advertisements in this column is Shs. 1/- for the first line, with a minimum of 10 lines, for the first week, 5/- for each consecutive day only.

WANTED.

THE charge for advertisements in this column is Shs. 1/- for the first line, with a minimum of 10 lines, for the first week, 5/- for each consecutive day only.

TO LET.

THE charge for advertisements in this column is Shs. 1/- for the first line, with a minimum of 10 lines, for the first week, 5/- for each consecutive day only.

TO LET.

THE charge for advertisements in this column is Shs. 1/- for the first line, with a minimum of 10 lines, for the first week, 5/- for each consecutive day only.

TO LET.

THE charge for advertisements in this column is Shs. 1/- for the first line, with a minimum of 10 lines, for the first week, 5/- for each consecutive day only.

TO LET.

THE charge for advertisements in this column is Shs. 1/- for the first line, with a minimum of 10 lines, for the first week, 5/- for each consecutive day only.

TO LET.

THE charge for advertisements in this column is Shs. 1/- for the first line, with a minimum of 10 lines, for the first week, 5/- for each consecutive day only.

TO LET.

THE charge for advertisements in this column is Shs. 1/- for the first line, with a minimum of 10 lines, for the first week, 5/- for each consecutive day only.

TO LET.

THE charge for advertisements in this column is Shs. 1/- for the first line, with a minimum of 10 lines, for the first week, 5/- for each consecutive day only.

TO LET.

THE charge for advertisements in this column is Shs. 1/- for the first line, with a minimum of 10 lines, for the first week, 5/- for each consecutive day only.

TO LET.

THE charge for advertisements in this column is Shs. 1/- for the first line, with a minimum of 10 lines, for the first week, 5/- for each consecutive day only.

TO LET.

THE charge for advertisements in this column is Shs. 1/- for the first line, with a minimum of 10 lines, for the first week, 5/- for each consecutive day only.

TO LET.

THE charge for advertisements in this column is Shs. 1/- for the first line, with a minimum of 10 lines, for the first week, 5/- for each consecutive day only.

TO LET.

THE charge for advertisements in this column is Shs. 1/- for the first line, with a minimum of 10 lines, for the first week, 5/- for each consecutive day only.

FARMS FOR SALE.

J. W. MILLIGAN & CO. LAND & ESTATE AGENCY DEPARTMENT.
Box 104, NAIROBI. Phone 58

FARMS FOR SALE.

KYAMBO: 6 miles to Nairobi, coffee estate of 313 acres with well served of bearing coffee trees ready for planting. For 7 acres ready for planting. For 7 acres suitable. Large permanent stream and two rivers. Well equipped factory. Large new store and concrete house. 25/3.

FARMS FOR SALE.

DHARU: 45 miles good wood land, 140 acres good stream. 15 miles from Railway. Price 2000 for immediate sale. Terms can be arranged if required. 20/25.

FARMS FOR SALE.

THOMSON'S FALLS: 1700 acres open country; 1500 acres available for about 500 acres of coffee. 250 acres ploughed. Several good rivers. Price 1200 per acre. 25/14.

FARMS FOR SALE.

THOMSON'S FALLS: 1700 acres open country; 1500 acres available for about 500 acres of coffee. 250 acres ploughed. Several good rivers. Price 1200 per acre. 25/14.

FARMS FOR SALE.

THOMSON'S FALLS: 1700 acres open country; 1500 acres available for about 500 acres of coffee. 250 acres ploughed. Several good rivers. Price 1200 per acre. 25/14.

FARMS FOR SALE.

THOMSON'S FALLS: 1700 acres open country; 1500 acres available for about 500 acres of coffee. 250 acres ploughed. Several good rivers. Price 1200 per acre. 25/14.

FARMS FOR SALE.

THOMSON'S FALLS: 1700 acres open country; 1500 acres available for about 500 acres of coffee. 250 acres ploughed. Several good rivers. Price 1200 per acre. 25/14.

FARMS FOR SALE.

THOMSON'S FALLS: 1700 acres open country; 1500 acres available for about 500 acres of coffee. 250 acres ploughed. Several good rivers. Price 1200 per acre. 25/14.

FARMS FOR SALE.

THOMSON'S FALLS: 1700 acres open country; 1500 acres available for about 500 acres of coffee. 250 acres ploughed. Several good rivers. Price 1200 per acre. 25/14.

FARMS FOR SALE.

THOMSON'S FALLS: 1700 acres open country; 1500 acres available for about 500 acres of coffee. 250 acres ploughed. Several good rivers. Price 1200 per acre. 25/14.

FARMS FOR SALE.

THOMSON'S FALLS: 1700 acres open country; 1500 acres available for about 500 acres of coffee. 250 acres ploughed. Several good rivers. Price 1200 per acre. 25/14.

TENNIS AT PARKLANDS.

Yesterday's Matches Postponed.

RESULTS AND PICTURES.

Men's Singles.
Swinson (2-1) 19 beat Halling (see Feb. 8) 0-6.
Gosler (2-0) beat Harvey (see Feb. 8) 0-6.
Hoy (4-6) beat Hays (see Feb. 8) 0-6.
Swinson (1-1) beat Gosler (see Feb. 8) 0-6.
Swinson (1-1) beat Gosler (see Feb. 8) 0-6.
Swinson (1-1) beat Gosler (see Feb. 8) 0-6.

Men's Doubles.

Harrison and Jones (4-6) beat Squire and Thompson (see Feb. 8) 0-6.
Walker and Schiller (4-6) beat Hoy and Hendry (see Feb. 8) 0-6.
Jolley and Jolly (walk over).
Paine and Field (3-6) beat Payne and Jones (see Feb. 8) 0-6.
Harris and Wood (see Feb. 8) 0-6.
Harris and Wood (see Feb. 8) 0-6.

Mixed Doubles.

Davis and Mrs. Sikes (1-1) lose Squire and Mrs. Johnston (see Feb. 8) 0-6.
Harrison and Mrs. Pingree (walk over).
Harrison and Mrs. Sikes (1-1) lose Squire and Mrs. Johnston (see Feb. 8) 0-6.
Harrison and Mrs. Sikes (1-1) lose Squire and Mrs. Johnston (see Feb. 8) 0-6.

SOTIF COFFEE FARMS.

HAVING BEEN INSTRUCTED to sub-let a small estate of 2500 acres of coffee land in the South Area we are now offering for sale 2000 acres on most attractive terms of present coffee and well equipped. Labour plentiful. Each acre planted with coffee and coffee plants applied. Free. Unique opportunity. Price for quick sale, £4,000.

SOTIF COFFEE FARMS.

HAVING BEEN INSTRUCTED to sub-let a small estate of 2500 acres of coffee land in the South Area we are now offering for sale 2000 acres on most attractive terms of present coffee and well equipped. Labour plentiful. Each acre planted with coffee and coffee plants applied. Free. Unique opportunity. Price for quick sale, £4,000.

SOTIF COFFEE FARMS.

HAVING BEEN INSTRUCTED to sub-let a small estate of 2500 acres of coffee land in the South Area we are now offering for sale 2000 acres on most attractive terms of present coffee and well equipped. Labour plentiful. Each acre planted with coffee and coffee plants applied. Free. Unique opportunity. Price for quick sale, £4,000.

SOTIF COFFEE FARMS.

HAVING BEEN INSTRUCTED to sub-let a small estate of 2500 acres of coffee land in the South Area we are now offering for sale 2000 acres on most attractive terms of present coffee and well equipped. Labour plentiful. Each acre planted with coffee and coffee plants applied. Free. Unique opportunity. Price for quick sale, £4,000.

SOTIF COFFEE FARMS.

HAVING BEEN INSTRUCTED to sub-let a small estate of 2500 acres of coffee land in the South Area we are now offering for sale 2000 acres on most attractive terms of present coffee and well equipped. Labour plentiful. Each acre planted with coffee and coffee plants applied. Free. Unique opportunity. Price for quick sale, £4,000.

SOTIF COFFEE FARMS.

HAVING BEEN INSTRUCTED to sub-let a small estate of 2500 acres of coffee land in the South Area we are now offering for sale 2000 acres on most attractive terms of present coffee and well equipped. Labour plentiful. Each acre planted with coffee and coffee plants applied. Free. Unique opportunity. Price for quick sale, £4,000.

SOTIF COFFEE FARMS.

HAVING BEEN INSTRUCTED to sub-let a small estate of 2500 acres of coffee land in the South Area we are now offering for sale 2000 acres on most attractive terms of present coffee and well equipped. Labour plentiful. Each acre planted with coffee and coffee plants applied. Free. Unique opportunity. Price for quick sale, £4,000.

SOTIF COFFEE FARMS.

HAVING BEEN INSTRUCTED to sub-let a small estate of 2500 acres of coffee land in the South Area we are now offering for sale 2000 acres on most attractive terms of present coffee and well equipped. Labour plentiful. Each acre planted with coffee and coffee plants applied. Free. Unique opportunity. Price for quick sale, £4,000.

SOTIF COFFEE FARMS.

HAVING BEEN INSTRUCTED to sub-let a small estate of 2500 acres of coffee land in the South Area we are now offering for sale 2000 acres on most attractive terms of present coffee and well equipped. Labour plentiful. Each acre planted with coffee and coffee plants applied. Free. Unique opportunity. Price for quick sale, £4,000.

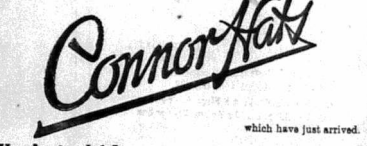
Equator Saw Mills

P.O. Plateau. P.O. Maji-Mauri. Head Office: P.O. Box 291, NAIROBI. Telegrams: NAIROBI, GAFAL. Telephone: 113. CONSIDERABLE REDUCTIONS IN PRICES OF FOOD. PRICE LIST ON APPLICATION.

AGENTS FOR

Silverton Oak Stain.	Hope's Steel Casements.	Self-Sterilizing English Maca.	Expanded Metal.	Twyford's Sanitary Fittings.
----------------------	-------------------------	--------------------------------	-----------------	------------------------------

Select your Hat FOR THE ROYAL VISIT
from the Dozens of New Models of



Dunlop Hats

which have just arrived.

Waring's, Ltd.

Africa House, Government Road, Nairobi.

Another Proof of

ARIEL Reliability

Monnier Dino, and amateur, riding a two port Ariel, finished first in the Paris-Pyrenees Paris, 3,500 kilometers trial, and made fastest time in the 200 c.c. class on the famous Tourmales Hill. M. Dino's machine had just completed a tour covering 11,000 kilo-meters through France Spain Portugal and Italy—During the tour M. Dino rode against the pick of European riders.

J. R. Cox & Co. SIXTH AVENUE

Nairobi. Eldoret. Kampala. Dar-es-Salaam.

Rifle Shooting Reduced Prices.

CIVIL SERVICE CLUB



IT POSITIVELY KILLS FLIES, BEES, BUGS, ANTS, ROACHES & MOSQUITOES.

No. 1	Shgs. 8/50
No. 2	Shgs. 9/25
No. 3	Shgs. 12/1
No. 4	Shgs. 25/1
No. 5	Shgs. 3/75

STANDARD STATIONERY STORES, NAIROBI.

Madame Rowe Et Cie LIMITED. ON VIEW TO-DAY

A LARGE AND VARIED SELECTION OF French Model Gowns Shgs. 125-00.

Union Building Government Road. Box 215. Tel. No. 250.

County Chemical Co. Ltd. Birmingham. Motor car and Cycle Accessories of all kinds. Stocks available locally.

"HEMICO" The Name with a Reputation.



TRADE ENQUIRIES TO UNIVERSAL EXPORT Co., Ltd., Box 540, Nairobi.

Have you Tried These Special Lines? SAILOR SAVORIES, TYNE BRAND HERRINGS, PARBLEY BRAND SALMON, TIP TREES JAMS, OLD ENGLISH MARMALADE, TOM-TIT FRUIT SALAD, DEL-MONTE ASPARAGUS, FINEST FRENCH PRUNES.

Ask for them at ELLIOTS P.O. Box 175. Phone 60.

The Ideal Present Duohill's Lighter.



STANDARD STATIONERY STORES. P.O. BOX 550. NAIROBI. PHONE 678.

Topics for Motorists.

How the Car Benefits the World In Universal Use.

Travel today from Iceland in the south, from Detroit to Bangkok, from Peking to Shanghai, and you will find motor vehicles in use... The automobile is a means of transport... It is a means of transport... It is a means of transport...

No Bonanzas. Transportation has no bonanzas. It was a natural development that the American automobile industry should have turned to overseas markets.

The automobile manufacturing industry of the United States of America is the largest in the world... It is a means of transport... It is a means of transport...

It was recognized first that any industry which employs nearly 4,000,000 men and women directly and indirectly... It is a means of transport... It is a means of transport...

...and the automobile industry has profited most from being competitive. Transportation is a means of transport... It is a means of transport... It is a means of transport...

It is encouraging to those of us in the automobile export business, here in the United States and in Europe, to see that it is being comprehended more and more throughout the world... It is a means of transport... It is a means of transport...

...an one of these in the export business... It is a means of transport... It is a means of transport...

"BP" automobile industries of their own... It is a means of transport... It is a means of transport...

You Can't Improve on it - Your Engine will!

Anglo-Persian Oil Co., (KENYA) Ltd.

QUALITY is one of the outstanding characteristics of all Weed Bumpers and Fender Guards... Ask for them by name "Weed" Your dealer will attach them WEED BUMPERS



HARDWARE, STATIONERY, Also Cement, C.I. Sheets, Ridgings, Gutters, Distempers, Oils, Paints, Madately Suleman Virjee & Sons, MADATALY BUILDING, GOVERNMENT ROAD. Also GROCERIES, CIGARETTES, CONFECTIONERY, Etc.

Hassanali Bros. P.O. Box 12. Phone 54

This Week WE SHALL OFFER A FEW LINES AT SPECIAL PRICES.

This is your opportunity to purchase good quality Materials and Garments AT A RIDICULOUSLY LOW PRICE.

Husein & Co. The Corner Shop, Govt. Road, NAIROBI.

H.O. Quick Cooking Oats Makes Porridge in 2 to 3 minutes.

Obtainable at Bellram Parimal & Co. (Established 1906) KAT. KOTER SWAMPY ROAD and Government Road, Phone 80. NAIROBI. P.O. Box 80. Also P.O. Box 47, MUMBAI.

The Tourist - Trophy Race.

Kaye Don's Great Victory.

...and the automobile industry has profited most from being competitive. Transportation is a means of transport... It is a means of transport... It is a means of transport...

...and the automobile industry has profited most from being competitive. Transportation is a means of transport... It is a means of transport... It is a means of transport...

...and the automobile industry has profited most from being competitive. Transportation is a means of transport... It is a means of transport... It is a means of transport...

...and the automobile industry has profited most from being competitive. Transportation is a means of transport... It is a means of transport... It is a means of transport...

...and the automobile industry has profited most from being competitive. Transportation is a means of transport... It is a means of transport... It is a means of transport...

...and the automobile industry has profited most from being competitive. Transportation is a means of transport... It is a means of transport... It is a means of transport...

...and the automobile industry has profited most from being competitive. Transportation is a means of transport... It is a means of transport... It is a means of transport...

...and the automobile industry has profited most from being competitive. Transportation is a means of transport... It is a means of transport... It is a means of transport...

...and the automobile industry has profited most from being competitive. Transportation is a means of transport... It is a means of transport... It is a means of transport...

...and the automobile industry has profited most from being competitive. Transportation is a means of transport... It is a means of transport... It is a means of transport...

...and the automobile industry has profited most from being competitive. Transportation is a means of transport... It is a means of transport... It is a means of transport...

...and the automobile industry has profited most from being competitive. Transportation is a means of transport... It is a means of transport... It is a means of transport...

...and the automobile industry has profited most from being competitive. Transportation is a means of transport... It is a means of transport... It is a means of transport...

...and the automobile industry has profited most from being competitive. Transportation is a means of transport... It is a means of transport... It is a means of transport...

...and the automobile industry has profited most from being competitive. Transportation is a means of transport... It is a means of transport... It is a means of transport...

...and the automobile industry has profited most from being competitive. Transportation is a means of transport... It is a means of transport... It is a means of transport...

...and the automobile industry has profited most from being competitive. Transportation is a means of transport... It is a means of transport... It is a means of transport...

...and the automobile industry has profited most from being competitive. Transportation is a means of transport... It is a means of transport... It is a means of transport...

...and the automobile industry has profited most from being competitive. Transportation is a means of transport... It is a means of transport... It is a means of transport...

...and the automobile industry has profited most from being competitive. Transportation is a means of transport... It is a means of transport... It is a means of transport...

...and the automobile industry has profited most from being competitive. Transportation is a means of transport... It is a means of transport... It is a means of transport...

...and the automobile industry has profited most from being competitive. Transportation is a means of transport... It is a means of transport... It is a means of transport...

...and the automobile industry has profited most from being competitive. Transportation is a means of transport... It is a means of transport... It is a means of transport...

...and the automobile industry has profited most from being competitive. Transportation is a means of transport... It is a means of transport... It is a means of transport...

...and the automobile industry has profited most from being competitive. Transportation is a means of transport... It is a means of transport... It is a means of transport...

...and the automobile industry has profited most from being competitive. Transportation is a means of transport... It is a means of transport... It is a means of transport...

...and the automobile industry has profited most from being competitive. Transportation is a means of transport... It is a means of transport... It is a means of transport...

...and the automobile industry has profited most from being competitive. Transportation is a means of transport... It is a means of transport... It is a means of transport...

...and the automobile industry has profited most from being competitive. Transportation is a means of transport... It is a means of transport... It is a means of transport...

...and the automobile industry has profited most from being competitive. Transportation is a means of transport... It is a means of transport... It is a means of transport...

...and the automobile industry has profited most from being competitive. Transportation is a means of transport... It is a means of transport... It is a means of transport...

...and the automobile industry has profited most from being competitive. Transportation is a means of transport... It is a means of transport... It is a means of transport...

...and the automobile industry has profited most from being competitive. Transportation is a means of transport... It is a means of transport... It is a means of transport...

...and the automobile industry has profited most from being competitive. Transportation is a means of transport... It is a means of transport... It is a means of transport...

...and the automobile industry has profited most from being competitive. Transportation is a means of transport... It is a means of transport... It is a means of transport...

...and the automobile industry has profited most from being competitive. Transportation is a means of transport... It is a means of transport... It is a means of transport...

F.A. HEAD, PIENOFOOTE, TUNER AND REPAIR. Five years with Messrs. Chappell & Co., London. Send all orders to P.O. Box 675.

Miss KATHLEEN BATES A.R.C.M. REV. J. PETER FORBES. PIANOFOOTE-SINGING-HARMONY. AT HER Music Studio Sixth Avenue. Postal Address: Box 417.

THEATRE ROYAL PRINCES SEASON

Twice Musical Comedy Nightly 6-15 6-42 MONDAY, OCT. 1st to SATURDAY, OCT. 6th

PLANS NOW OPEN FOR

"CHANG"

THIS YEAR'S GREAT PICTURE SHOWING Mon. Tues. Wed. Sept. 24th, 25th, 26th. NIGHTLY AT 8.45

"Mercenary Mary"

MUSICAL COMEDY SHOWING Fri. Tues. Thur. Sat. Sept. 28th Oct. 2nd 4th 6th at 8-45 MATINEE, SATURDAY, OCT. 6th at 3 p.m.

The "COUNTRY GIRL"

MUSICAL COMEDY, SHOWING Sat. Mon. Wed. Fri. Sept. 29th Oct. 1st 3rd 5th

AT 6-15 P.M. "Roses of Picardy" AT 6-15 P.M.

The Different British War Picture.

BOOKING OFFICE OPEN DAILY AT THEATRE. 10 a.m. to 12 p.m. and 2 p.m. to 9 p.m. Musical Comedy Prices: 10/0, 7/0, 5/-, week nights 10/0, 7/0, 5/0, Saturdays. Matinee: Children 2/0 & 4/-; Adults 7/0 & 5/- All Seats Reserveable. EARLY BOOKING NOW ESSENTIAL.

SOUTH AFRICAN BOYS NOT RELIABLE.

Trade Passing into Hands of Immigrants.

"SOMETHING LACKING."

In the trade and business activity of South Africa... The Board was too high... "You are asking us," he said, "not only to train the boys, but to give them something which they are not earning."

"South African boys do not consider immunities in the way they should," said Mr. Findlay... "They do not take it sufficiently seriously. I am sorry to say that in the average South African born European boy I have never been successful. I have tried them one after the other."

"This is a very serious matter," said Mr. Findlay... "It is not to the position, the class of men, but to the attitude of mind... going to show all the business of the country..."

The Lambert Ferry. The general manager of the associated railway of the River Swynahed... "The boys do not take it sufficiently seriously."

Kenya and Uganda Trade.

ITEMS IN CUSTOMS SHIPPING RETURN

The following imports and exports for Kenya and Uganda are included in the Customs shipping return for the week ending September 8, 1934.

Imports.

Agricultural implements, 1,300 packages; Ammunition, 10 cases; Beads, 20 cases; Beer, 200 cases; Blouse, 215 cases; Blankets, 277 packages; Boots and shoes, 112 cases; Bullion and specie, 19 cases; Cattle, 200 head; Cement, 40 packages; China and glassware, 549 packages; Condensed milk, 223 cases; Cotton piece goods, 1,730 packages; Cycles, 50 packages; Duffel, 200 packages; Emu, 500 packages; Fruit, fresh, 30 packages; Fuel, 500 packages; Galvanised sheet, 451 packages; Glass, 6 packages; Glass, 200 tons; Heavy bags, 540 packages; Industrial and agricultural machinery, 584 packages; Iron and steel manufactures, 7,309 packages; Iron wire, 1,268 packages; Kerseane oil, 2,625 packages; Lamps and lanterns, 104 packages; Lubricating oils and greases, 1,201 packages; Matches, 103 cases; Measured water, 143 cases; Motor spirit, 569 packages; Motor vehicles and parts, 723 packages; Paints, colours, 456 packages; Paper, printing, 63 packages; Paper, cigarette, 2 packages; Paper, other sorts, 104 packages; Printed matter, 104 packages; Provision, 2,449 cases; Provisions, other sorts, 147 cases; Railway material, rails and sleepers, 23,024 packages; Railway material, other sorts, 19,677 packages; Rice, 424 bags; Salt, 65 bags; Sugar, 257 bags; Tea, 265 cases; Tobacco and cigarette, 456 cases; Wearing apparel, 106 packages; Wines and spirits, 2,311 cases; Miscellaneous, 11,283 packages. Total, 94,081; Gross, 500 tons.

Exports.

Beans, 224 bags to Dar-es-Salaam, 78 bags to Union of South Africa; Butter, 6 cases to Seychelles; Cedar, 424, 875 packages to Egypt, 228 bags to Aden, 682 bags to Sialoa; Beans, 1,482 bags to United States of America; 50 tons Portuguese fennel; 10 tons to Union of South Africa; 222 bags to Great Britain; 117 bags to France; 2 bags to Ceylon; 83 bags to Japan; Cotton, 430 bales to Japan, 1,047 bales to India; Copra, 970 bags to Italy.

"When the Cat's Away..." A NEW SORT OF GAZE CREASERS... "STANDARD" CORRESPONDENT... London, Aug. 23... Owners of managers in Madras and Belgaum are food with a fresh provision of suggested goods. They have, for months past, been made the victims of their friends' friends. Their houses were trampled in the most audacious manner at the height of the London season. Their food was eaten and their wines were drunk by all the company—by people they did not even know.

ENTERTAINMENTS.

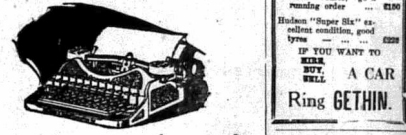
Phone 430 SAVOY HOTEL Box 20 CALEDONIAN ROAD, THE HILL. The Most Comfortable :: HOTEL ::

This Space is Reserved FOR THE NEXT DANCE



WHY CRY THAT COST OF LIVING IS HIGH YOU COULD REDUCE IT BY TAKING YOUR MEAL AT Palladium Restaurant Theatre Royal. SPECIAL Prices for Boarders. Breakfast, Lunch, Dinner and Supper. Morning and Afternoon Tea. We stock a large range of fresh chocolates in fancy boxes at prices as low as all packets.

CORONA



...in colors! CORONA has always been the most popular portable typewriter. Now you can have this famous Personal Writing Machine in a beautiful Duco finish to match or harmonize with the color scheme of your room or office.

Shgs. 330- STANDARD STATIONERY STORES, NAIROBI.

General Vulcanizing Works HARDINGE STREET NEAR BHIMJI HASHAM. P.O. Box 600. NAIROBI.

MARTIN'S OILLS ADOLF K. & F. ZL. Special Certificates for all Types... Competitive Prices. All repairs guaranteed. All sizes of tyres and tubes repaired. Petrol, Mobiloil, New Tyres, Tubes and other accessories stocked.

CARS FOR HIRE. SEE KENTIA IN COMPANY. HODGSON RUBBER SIX CARS FOR HIRE DAY OR NIGHT. Long Trips a Speciality. P. GETHIN. Garage, 102, Box 88, Nairobi. CARS OVERHAULED BY EXPERT.

CARS FOR SALE. Hodson Tourer, good running order... £150. Hodson "Super Six" excellent condition, good tyres... £225. IF YOU WANT TO BUY A CAR Ring GETHIN.

Visit EASTERN BAZAAR, AND GET THE BEST CURRIOS AND SILKS AT LOW PRICES. FOR YOUR PRESENTS... B. CHOTIRAM, NAIROBI and NAKURU.

Fresh Posho. Maize Meal, 5/4 a load. Apply. RAHIM JIVRAJ, P.O. Box 15, NAIROBI.

STATIONERY STANDARD OFFICE NAIROBI.

1 1/2 TON New Chevrolet Arrives.

Universally Approved

FIRST CONSIGNMENT Sold Ahead SECOND CONSIGNMENT Now Available.

FOUR WHEEL BRAKES. FOUR SPEED GEARS. NEW FRONT AXLE, SPECIALLY DESIGNED FOR 30 OWT. LOAD. FRONT BUMPER BAR OF PRESSED STEEL. BETTER AND STRONGER RADIATOR. NAIROBI.

MOTOR MART and EXCHANGE, Ltd. NAIROBI. Dar-es-Salaam.

£ 172 NAIROBI. Nakuru.

EGYPT AND THE KELLOGG PACT.

Effect on Relations with Britain.

PREMIER'S SPEECH.

THE PREMIER'S SPEECH.

London, Sept. 16.—The Prime Minister's speech on the Kellogg pact to Egypt which he delivered in the House of Commons on the 15th, was one of the most important of his career. It was a speech which was listened to with the greatest interest by the Egyptian people. The Premier's speech was a masterpiece of statesmanship. It was a speech which was listened to with the greatest interest by the Egyptian people. The Premier's speech was a masterpiece of statesmanship. It was a speech which was listened to with the greatest interest by the Egyptian people.

51 Senators.

Washington, Sept. 16.—The Senate today passed a bill which would reduce the number of Senators from 96 to 51. The bill was passed by a vote of 75 to 21. The bill would reduce the number of Senators from 96 to 51. The bill was passed by a vote of 75 to 21.

SOLD WORLD FLIGHT OF 27,000 MILES.

A Light Aeroplane Attempt.

London, Sept. 16.—A world flight of 27,000 miles in a light aeroplane was attempted today. The flight was made by a pilot named ... The flight was made by a pilot named ...

RECORD SWARM IN SUBTINA AREA.

The swarms of flying locusts in Subtina were reported as the largest that has ever been seen in Kenya. The swarms have been in the district for several days. The swarms have been in the district for several days.

WY WARRIORS.

Highly Sept. 16.—The Wy warriors were reported as being active in the district. The warriors were reported as being active in the district. The warriors were reported as being active in the district.

THE COFFEE MARKET.

The coffee market was reported as being active. The market was reported as being active. The market was reported as being active.

Real "Denby Ware" Toilet Sets

Sets with complete sets

Shgs 87/60

S. Jacobs Ltd.

A fascinating ware in most attractive shape and colour. Made in America. Mince. Merve. Anesthet or Black with yellow lining.

OBITUARY.

A Well-known Planter Passes.

MR. R. L. LUMBERSON.

MR. R. L. LUMBERSON.

The "R. L. Lumberson" was a well-known planter who passed away recently. He was a well-known planter who passed away recently. He was a well-known planter who passed away recently.

ST. MARY'S CHURCH.

The St. Mary's church was reported as being active. The church was reported as being active. The church was reported as being active.

RECORD SWARM IN SUBTINA AREA.

The swarms of flying locusts in Subtina were reported as being active. The swarms were reported as being active. The swarms were reported as being active.

WY WARRIORS.

The Wy warriors were reported as being active. The warriors were reported as being active. The warriors were reported as being active.

THE COFFEE MARKET.

The coffee market was reported as being active. The market was reported as being active. The market was reported as being active.

Real "Denby Ware" Toilet Sets

Sets with complete sets

Shgs 87/60

S. Jacobs Ltd.

A fascinating ware in most attractive shape and colour. Made in America. Mince. Merve. Anesthet or Black with yellow lining.

CITY AVENUES A DEATH.

Blood Hunt Through a Capital.

OFFICIALS KILLED.

OFFICIALS KILLED.

The Department of Agriculture was reported as being active. The department was reported as being active. The department was reported as being active.

ST. MARY'S CHURCH.

The St. Mary's church was reported as being active. The church was reported as being active. The church was reported as being active.

RECORD SWARM IN SUBTINA AREA.

The swarms of flying locusts in Subtina were reported as being active. The swarms were reported as being active. The swarms were reported as being active.

WY WARRIORS.

The Wy warriors were reported as being active. The warriors were reported as being active. The warriors were reported as being active.

THE COFFEE MARKET.

The coffee market was reported as being active. The market was reported as being active. The market was reported as being active.

Real "Denby Ware" Toilet Sets

Sets with complete sets

Shgs 87/60

S. Jacobs Ltd.

A fascinating ware in most attractive shape and colour. Made in America. Mince. Merve. Anesthet or Black with yellow lining.

CONFERENCE ON THE PIG INDUSTRY.

A Fear of Over Production?

MARKET PROBLEMS.

MARKET PROBLEMS.

The Department of Agriculture was reported as being active. The department was reported as being active. The department was reported as being active.

ST. MARY'S CHURCH.

The St. Mary's church was reported as being active. The church was reported as being active. The church was reported as being active.

RECORD SWARM IN SUBTINA AREA.

The swarms of flying locusts in Subtina were reported as being active. The swarms were reported as being active. The swarms were reported as being active.

WY WARRIORS.

The Wy warriors were reported as being active. The warriors were reported as being active. The warriors were reported as being active.

THE COFFEE MARKET.

The coffee market was reported as being active. The market was reported as being active. The market was reported as being active.

Real "Denby Ware" Toilet Sets

Sets with complete sets

Shgs 87/60

S. Jacobs Ltd.

A fascinating ware in most attractive shape and colour. Made in America. Mince. Merve. Anesthet or Black with yellow lining.

CELEBRATION SOCIETY OF KENYA.

Proceedings at the Annual Meeting.

NEW LEASE OF LIFE.

NEW LEASE OF LIFE.

The Department of Agriculture was reported as being active. The department was reported as being active. The department was reported as being active.

ST. MARY'S CHURCH.

The St. Mary's church was reported as being active. The church was reported as being active. The church was reported as being active.

RECORD SWARM IN SUBTINA AREA.

The swarms of flying locusts in Subtina were reported as being active. The swarms were reported as being active. The swarms were reported as being active.

WY WARRIORS.

The Wy warriors were reported as being active. The warriors were reported as being active. The warriors were reported as being active.

THE COFFEE MARKET.

The coffee market was reported as being active. The market was reported as being active. The market was reported as being active.

Real "Denby Ware" Toilet Sets

Sets with complete sets

Shgs 87/60

S. Jacobs Ltd.

A fascinating ware in most attractive shape and colour. Made in America. Mince. Merve. Anesthet or Black with yellow lining.

"On Elite Day"

SEPTEMBER 17TH.

THE LYRIC HALL.

THE LYRIC HALL.

The Lyric Hall was reported as being active. The hall was reported as being active. The hall was reported as being active.

RECORD SWARM IN SUBTINA AREA.

The swarms of flying locusts in Subtina were reported as being active. The swarms were reported as being active. The swarms were reported as being active.

WY WARRIORS.

The Wy warriors were reported as being active. The warriors were reported as being active. The warriors were reported as being active.

THE COFFEE MARKET.

The coffee market was reported as being active. The market was reported as being active. The market was reported as being active.

Real "Denby Ware" Toilet Sets

Sets with complete sets

Shgs 87/60

S. Jacobs Ltd.

A fascinating ware in most attractive shape and colour. Made in America. Mince. Merve. Anesthet or Black with yellow lining.

THE LYRIC HALL.

NO-TIGHT AT 8.45.

Ivor Novello

And June

IN THE LODGER

founded on the famous Story

by Mrs. Belle Lowndes

Directed by Alfred Hitchcock.

PLANS NOW OPEN FOR BOOKING

Shs. 5/- and 3/-

THE LYRIC HALL.

The Lyric Hall was reported as being active. The hall was reported as being active. The hall was reported as being active.

RECORD SWARM IN SUBTINA AREA.

The swarms of flying locusts in Subtina were reported as being active. The swarms were reported as being active. The swarms were reported as being active.

WY WARRIORS.

The Wy warriors were reported as being active. The warriors were reported as being active. The warriors were reported as being active.

THE COFFEE MARKET.

The coffee market was reported as being active. The market was reported as being active. The market was reported as being active.

Real "Denby Ware" Toilet Sets

Sets with complete sets

Shgs 87/60

S. Jacobs Ltd.

A fascinating ware in most attractive shape and colour. Made in America. Mince. Merve. Anesthet or Black with yellow lining.

THE LYRIC HALL.

NO-TIGHT AT 8.45.

Ivor Novello

And June

IN THE LODGER

founded on the famous Story

by Mrs. Belle Lowndes

Directed by Alfred Hitchcock.

PLANS NOW OPEN FOR BOOKING

Shs. 5/- and 3/-

THE LYRIC HALL.

The Lyric Hall was reported as being active. The hall was reported as being active. The hall was reported as being active.

RECORD SWARM IN SUBTINA AREA.

The swarms of flying locusts in Subtina were reported as being active. The swarms were reported as being active. The swarms were reported as being active.

WY WARRIORS.

The Wy warriors were reported as being active. The warriors were reported as being active. The warriors were reported as being active.

THE COFFEE MARKET.

The coffee market was reported as being active. The market was reported as being active. The market was reported as being active.

Real "Denby Ware" Toilet Sets

Sets with complete sets

Shgs 87/60

S. Jacobs Ltd.

A fascinating ware in most attractive shape and colour. Made in America. Mince. Merve. Anesthet or Black with yellow lining.

See Our Windows. The Latest in Shoes and Hosiery Ruby Ring.



Today's Trains.

Trains are due to leave Nairobi today for the under mentioned destinations at the times stated: 2:00 pm Mombasa 4:00 pm Nakuru 4:30 pm Eldoret and Jilka 7:47 pm Thika, Nyiri 9:30 pm Naro Moru 11:20 am This afternoon 1:00 pm The train from Mombasa is due to arrive at Nairobi 10:1 a.m.

Eadies The Fashion Footgear People

Box 149. Nairobi.

NIGHTLY AT 8.45. THEATRE ROYAL MATINEES SATS. 5.30.

TO-NIGHT - Tuesday - Wednesday.

Bruce Bairnsfather's Comedy - the Greatest War Picture.

"THE BETTER 'OLE"

FEATURING

SYD CHAPLIN

PRICES AS USUAL. Circle 3/-; Stalls 2/-

Opens Monday next with "CHANG" Already Booking well for week for three nights

K. McIvor's Garage.

We Repair all Makes of Cars and Trucks.

WE DO IT TO-DAY - NOT TO-MORROW.

We can give prompt delivery of Armature Rewinds, and Battery repairs. Every description of Automobile Electrical Work undertaken.

Vulcanizing by the Latest Electrical Process.

Wireless:

We can supply from Stock the following: Three Valve Selectors Sets.

B.S.A. - Kone Loud Speakers. "15" and "30".

Leclanche H.T. Wet Batteries on 45 Volts Units.

Selector Vinyl Gramophone Pick Ups.

THE LYRIC HALL.

NO-TIGHT AT 8.45.

Ivor Novello

And June

IN THE LODGER

founded on the famous Story

by Mrs. Belle Lowndes

Directed by Alfred Hitchcock.

PLANS NOW OPEN FOR BOOKING

Shs. 5/- and 3/-

THE LYRIC HALL.

The Lyric Hall was reported as being active. The hall was reported as being active. The hall was reported as being active.

RECORD SWARM IN SUBTINA AREA.

The swarms of flying locusts in Subtina were reported as being active. The swarms were reported as being active. The swarms were reported as being active.

WY WARRIORS.

The Wy warriors were reported as being active. The warriors were reported as being active. The warriors were reported as being active.

THE COFFEE MARKET.

The coffee market was reported as being active. The market was reported as being active. The market was reported as being active.

Real "Denby Ware" Toilet Sets

Sets with complete sets

Shgs 87/60

S. Jacobs Ltd.

A fascinating ware in most attractive shape and colour. Made in America. Mince. Merve. Anesthet or Black with yellow lining.

SAYS A MEN'S CLOTHES EXPERT:

"Hat the secret of well-fitting dress lies in the well-fitting dress shirt underneath... Any man who isn't careful about his clothes knows his loss."

It is because Comodate Dress Shirts are tailored to the figure so fluidly that you find a growing number of well-dressed men buying them regularly and referring all others.

Such clean-fitting comfort! They say, "Such simplicity of style! Such extraordinary response to laundry gratings! And such eminently modern prices!"

Stitched by all good hands throughout East Africa.

Consulate DRESS SHIRTS

MADE IN ENGLAND BY MR. BRITTON & CO., LTD., 10, ABchurch WOOD ST., LONDON, E.C.4.

THE BOYHOOD OF G. B. SHAW.

Precedens, Solids and Poils.

EARLY LOVE OF MUSIC.

"Could Whistle the Whole of an Oratorio."

At 33, Spangstedt, Dublin, George Bernard Shaw first saw the light of day. Spangstedt is an unpretentious thoroughfare about a mile from the heart of the city, with narrow rows of modern two-story houses rising above them with the more substantial buildings of the Jewish colony. It is his home to be known on the South Circular Road, writes a correspondent of the "Cape Times."

Shaw's father had some sort of office—was a clerk, he is defined in the Dublin law courts. Shaw's business continues to do other spheres and he was connected as a partner in Gilchrist & Co's Mill on the outskirts of the city. In addition to a great deal of class sobriety, George Carr Shaw had inherited a taste of imprudence. Shaw in his place of "Missions" talks of the "Missions" ignorance most children have of their parents. Shaw's mother, Lavinia Elizabeth Gurly, was born in 1822. She was married on one side to a James Gurly who fled from Ireland in 1849 to avoid prosecution of James W. J. Irish. Persecution, on another side she was awarded from the Gold family, which went from England to Ireland with Strongens in Henry W. J. Irish. George Bernard Shaw may have inherited from the one the spirit of Protestantism and from the other the spirit of a nationalist.

that G.B.S. became, in his view, a "well-made" man. At an early age he was familiar with various musical instruments, from the organ to the piano and the violin. He was a pianist and a violinist, and he was also a composer. He was a member of the "The Young Men's Association" and he was also a member of the "The Young Men's Association."

As a boy, George Bernard Shaw was prominent, athletic, superior and musical. He was a pianist and a violinist, and he was also a composer. He was a member of the "The Young Men's Association" and he was also a member of the "The Young Men's Association."

Scotland's Finest Whisky.

LONG JOHN

WHISKY

Characteristically PURE AND MATURE

DISTRIB. BY: D. EPSTEIN & Co.

Your Own Home and Plot!

FOR £500 DOWN

balance on mortgage at 5 per cent.

Newly Built House, with all modern conveniences.

Apply **R. O. PRESTON**

Box 507, Nairobi. or Office, Westlands.

You Can't Go Far

Without Meeting a Reliance Lorry

AND

You Can't Go Far

Without Meeting a Reliance Lorry

Wearing in Employing one

Reliance Transport Co., Ltd.

P.O. Box 482, Sadler Street, Telephone 331.

Your Efficiency DEPENDS UPON ACCURATE UNIFORM VISION. GOOD EYESIGHT IS THE VERY ESSENTIAL TO CLARITY OF THOUGHT.

HAVE YOUR EYES TESTED TO-DAY.

Dobbies, Ltd.

OPTICAL AND OPTICIANS. NAIROBI. Phone 90.

WHERE TO STAY Town & Country.

THE Nakuru Hotel.

The NAKURU HOTEL is the largest and best equipped hotel in the Highlands outside Nairobi and it is supplied with every comfort and convenience. Nakuru is the commercial, travelling and touring centre for the most important and richest farming districts of Kenya.

30 single and double bedrooms—British Electric Installation—Hot and Cold water at all times. Best value under skilled management. Outside and inside lounges, reading and writing rooms. SEPARATE COTTAGE QUARTERS. Laundry and Bakery. Ample motor space. Telegrams: "Hotel, Nakuru."

Salisbury Hotel
Nairobi.
Phone 166. P.O. Box 509.

THE PRIVATE HOTEL.
Nairobi.
All Modern Conveniences. Tennis, Billiards, Garage, Motor Service and Complete Allied area, will be appreciated by those seeking a quiet, comfortable and refined home.
Phone 850. P.O. Box 758.

OAKLEIGH PRIVATE HOTEL.

UNDER PERSONAL SUPERVISION OF MRS. H. JARRETT, Manageress.
Phone 180. NAIROBI. P.O. Box 183.

The Nivasha Hotel
Nivasha

Every Convenience and Comfort.
Special Weekly and Monthly Terms.

CLAIRMONT
Residential Hotel.

One of Kenya's beauty spots within 7 miles from Nairobi by good motor road. Excellent swimming pool, free from all impurities with newly erected diving board and dressing rooms.

Terms from 10/- per day inclusive. Excellent Cuisine and choicest wines stocked under supervision of the Proprietor.

Nairobi. Telegrams: "Clairmont."

White Rhino Hotel
NYERI

FOR BREAKFAST, LUNCHEONS, TEAS, DINNERS AND ACCOMMODATION.

Situated on Main Road,
Grassy—"Whitishin."

Stag's Head
Hotel, Nakuru

FOR Breakfast, Luncheons, Teas, Dinners and Accommodation.

Situated on Main Road.
Hotel boys meet all trains.

J. G. HEATH.

BELL INN
(On Main Road) NAIROBI

TARIFF: Breakfast... £2. 5/0, Lunch... £2. 4/0, Dinner... £2. 5/0, Breakfast... £1. 15/0, Full Day... £1. 10/0.

Very special tariff for week-ends. For Week and Month.

Electric Lighting throughout. CATERING A SPECIALTY. Large Refreshment Bar. Ice-cream available at all times. CLEANLINESS AND SATISFACTION GUARANTEED.

High View Hotel.
LIMBURI (D. Route).

Healthy Situation. Ideal for Holidays. Luncheon, Teas, Tennis, etc. Terms Moderate.

If you want to make sure that your name or firm is included in the New Directory 1939 fill in this form.

Name.....
Address.....

Thornton & Turpin

Regis. Planners and Sanitary Engineers,
CITY HOUSE, NAIROBI.
Phone 146. P.O. Box 390.
AND AT MOMBASA.

GOVERNMENT CONTRACTORS
WORK UNDERTAKEN IN ANY PART OF KENYA AND UGANDA.

A BATH A DAY KEEPS YOU FIT EVERY WAY.
SEE OUR STOCKS.

Strong-willed Mother.

Lavinia Gurly, daughter of a country gentleman, was brought up with aristocratic breeding by her maiden aunt, Ellen Walsingham, who intended to leave her a fortune. After her father's second marriage, the girl, strong-willed and self-reliant in spite of her premature upbringing, struck out for herself. In 1852 she married George Bernard Shaw, then a young man, through her senior. Her first step was to leave her father's house and to go to live with her mother, the estate in Dublin that belonged to her. Her mother had died, and her father had died, and she had been left with a fortune.

In 1852 Bernard became a doctor. He was a pianist and a violinist, and he was also a composer. He was a member of the "The Young Men's Association" and he was also a member of the "The Young Men's Association."

From the first Mrs Shaw showed the initiative, courage and independence of mind that characterized her life. She was a pianist and a violinist, and she was also a composer. She was a member of the "The Young Men's Association" and he was also a member of the "The Young Men's Association."

In 1860 Mrs Shaw became a pianist and a violinist, and she was also a composer. She was a member of the "The Young Men's Association" and he was also a member of the "The Young Men's Association."

The direct and indirect influence of G.B.S. on the musical world is shown in his own words. He was a pianist and a violinist, and he was also a composer. He was a member of the "The Young Men's Association" and he was also a member of the "The Young Men's Association."

What in Mrs Shaw's estimation was the most important factor in her life was her mother. She was a pianist and a violinist, and she was also a composer. She was a member of the "The Young Men's Association" and he was also a member of the "The Young Men's Association."

Good Plumbing Means Good Health.

FOR SAFE SANITARY WORK ONLY

Thornton & Turpin

Regis. Planners and Sanitary Engineers,
CITY HOUSE, NAIROBI.
Phone 146. P.O. Box 390.
AND AT MOMBASA.

GOVERNMENT CONTRACTORS
WORK UNDERTAKEN IN ANY PART OF KENYA AND UGANDA.

A BATH A DAY KEEPS YOU FIT EVERY WAY.
SEE OUR STOCKS.



A Child Can See The Difference

YOU see here two machines devised for testing the cords in tyre fabric.

On each machine is a strand of Supertwist cord and of ordinary cord.

On the machine in the background the ordinary cord is broken, while the Supertwist cord is in tact.

Yet both cords were of equal length, and both cords were stretched in equal measure.

On the machine in the foreground the ordinary cord is lax, while the Supertwist cord is taut.

Both these cords also were of the same length; both were equally stretched.

When the tension was relaxed the Supertwist cord sprang back to its original dimension, recovering like a rubber band.

But the ordinary cord lost its spring, and now hangs slack and distended.

Ask your dealer for them.

By this simple demonstration a child can see the difference between Supertwist cord and ordinary cord.

This difference is important, as one cause of the great superiority of Goodyear Tyres over ordinary tyres.

Built with Supertwist cord, Goodyear Tyres stretch and recover under the shocks of the road without damage.

Tyres of ordinary cord lack this ability and under road-shock suffer precisely the results you see here.

Supertwist cord is Goodyear-developed and Goodyear-patented, and is used only in Goodyear Tyres.

Its elasticity and durability have reduced blowouts and similar troubles to the vanishing point.

Supertwist is one of the reasons why the present Goodyear Balloon with the tractive All-Weather Tread is called "Goodyear's greatest tyre."

It is one of the reasons also why you should insist on Goodyear Tyres.

GOODYEAR

E-28-4

Giffillan & Company, Ltd.
DISTRIBUTORS

ALL-SILK

36 INCHES WIDE
\$hs. 8/50 Per Yard

SPUN CREPE

in Latest Shades.

FAST DYE

PATTERNS ON APPLICATION

Ahamed Bros.

THE HOUSE OF DISTRICTION

HAZAR NAIROBI

Box 234

MADE BY
HENRY DUNLOP & CO.,
PHILADELPHIA, U.S.A.

WE NEED YOUR HEAD TO RUN OUR

Business.

JUST AS YOU NEED US TO LOOK AFTER
YOUR PERSONAL APPEARANCE, AND
GIVE YOU THAT WELL-GROOMED LOOK

SO ESSENTIAL TO SUCCESS.

The Timmer Hair Dressing
Saloons, NAIROBI.

THE CHARM
OF THE
DINING TABLE

Lies in the Choice of
Correct Silver Appointments.

DOBBIE'S, LTD.
A Glass, Porcelain,
& China Decorators
in England, Glasgow, France,
Australia, and all the principal
Manufacturing Countries.

Just Unpacked

Latest Silk Shirts with Large Fringes in Latest
Up-to-date colours.

Our Special Window Display.

BON MARCHE.

Opposite Howse and McGeorge Ltd.
Environment Road, Nairobi.

THE COST OF LIVING.

Prices of Local Produce
in August
MEMORANDUM

Item	1928	1927	1926	1925	1924	1923	1922	1921	1920	1919	1918	1917	1916	1915	1914	1913	1912	1911	1910
Wheat	100.00	95.00	90.00	85.00	80.00	75.00	70.00	65.00	60.00	55.00	50.00	45.00	40.00	35.00	30.00	25.00	20.00	15.00	10.00
Barley	90.00	85.00	80.00	75.00	70.00	65.00	60.00	55.00	50.00	45.00	40.00	35.00	30.00	25.00	20.00	15.00	10.00	5.00	0.00
Oats	80.00	75.00	70.00	65.00	60.00	55.00	50.00	45.00	40.00	35.00	30.00	25.00	20.00	15.00	10.00	5.00	0.00	0.00	0.00
Maize	70.00	65.00	60.00	55.00	50.00	45.00	40.00	35.00	30.00	25.00	20.00	15.00	10.00	5.00	0.00	0.00	0.00	0.00	0.00
Rice	60.00	55.00	50.00	45.00	40.00	35.00	30.00	25.00	20.00	15.00	10.00	5.00	0.00	0.00	0.00	0.00	0.00	0.00	0.00
Beans	50.00	45.00	40.00	35.00	30.00	25.00	20.00	15.00	10.00	5.00	0.00	0.00	0.00	0.00	0.00	0.00	0.00	0.00	0.00
Peas	40.00	35.00	30.00	25.00	20.00	15.00	10.00	5.00	0.00	0.00	0.00	0.00	0.00	0.00	0.00	0.00	0.00	0.00	0.00
Lentils	30.00	25.00	20.00	15.00	10.00	5.00	0.00	0.00	0.00	0.00	0.00	0.00	0.00	0.00	0.00	0.00	0.00	0.00	0.00
Apples	20.00	15.00	10.00	5.00	0.00	0.00	0.00	0.00	0.00	0.00	0.00	0.00	0.00	0.00	0.00	0.00	0.00	0.00	0.00
Oranges	10.00	5.00	0.00	0.00	0.00	0.00	0.00	0.00	0.00	0.00	0.00	0.00	0.00	0.00	0.00	0.00	0.00	0.00	0.00
Lemons	5.00	0.00	0.00	0.00	0.00	0.00	0.00	0.00	0.00	0.00	0.00	0.00	0.00	0.00	0.00	0.00	0.00	0.00	0.00
Bananas	0.00	0.00	0.00	0.00	0.00	0.00	0.00	0.00	0.00	0.00	0.00	0.00	0.00	0.00	0.00	0.00	0.00	0.00	0.00

WEATHER REPORT.

Forecast for the East African Meteorological Service at the Meteorological Office, London, August 1928.

The weather in the East African region is expected to be generally dry and hot during the next few days. A slight increase in rainfall is expected in the coastal areas.

At Nairobi, the weather is expected to be clear and hot with a maximum temperature of 85°F and a minimum of 60°F. A light breeze will prevail throughout the day.

At Mombasa, the weather is expected to be clear and hot with a maximum temperature of 85°F and a minimum of 60°F. A light breeze will prevail throughout the day.

At Kisumu, the weather is expected to be clear and hot with a maximum temperature of 85°F and a minimum of 60°F. A light breeze will prevail throughout the day.

At Kampala, the weather is expected to be clear and hot with a maximum temperature of 85°F and a minimum of 60°F. A light breeze will prevail throughout the day.

THE EAST AFRICAN STARBOARD

Learning Men's Ages
AND FEATHERED.
PETER PAN TANNED
Senseless Act of
Vanishing
LONDON OUTRAGE

This is a story of a man who was once a great hero, but who has since become a villain. He was once a brave warrior, but now he is a coward. He was once a noble knight, but now he is a traitor. He was once a loyal servant, but now he is a rebel. He was once a good friend, but now he is an enemy. He was once a true hero, but now he is a false hero. He was once a great man, but now he is a small man. He was once a noble man, but now he is a base man. He was once a true man, but now he is a false man. He was once a good man, but now he is a bad man. He was once a noble man, but now he is a base man. He was once a true man, but now he is a false man. He was once a good man, but now he is a bad man.

State of the Theatre.

The theatre in the East African region is in a state of decline. There are very few theatres left, and those that remain are in a state of neglect. The audience is small and uneducated. The plays are of a low quality and are not interesting. The actors are poorly trained and do not have the necessary skills to perform. The theatre is a dying art in this region.

THE EXPRESS TRANSPORT CO.
Nairobi and Mombasa
Change Contractors to Kenya and Uganda Railways

GO TO Problems
Compulsive
FOR THE SOLUTION
OF ALL YOUR PROBLEMS
BY THE EXPERTS AT THE EXPRESS TRANSPORT CO.

ERASMIC SOAP

The charm of Erasmic Soap lies in the fragrance and the modernity of the design. It is a soap that is both beautiful and useful. It is a soap that is both clean and gentle. It is a soap that is both modern and timeless. It is a soap that is both simple and complex. It is a soap that is both ordinary and extraordinary. It is a soap that is both common and rare. It is a soap that is both familiar and unfamiliar. It is a soap that is both known and unknown. It is a soap that is both seen and unseen. It is a soap that is both felt and unfelt. It is a soap that is both touched and untouchable. It is a soap that is both held and unheld. It is a soap that is both used and unused. It is a soap that is both loved and unloved. It is a soap that is both cherished and uncherished. It is a soap that is both treasured and untreasured. It is a soap that is both valued and unvalued. It is a soap that is both prized and unprized. It is a soap that is both honored and unhonored. It is a soap that is both respected and unrespected. It is a soap that is both admired and unadmired. It is a soap that is both revered and unrevered. It is a soap that is both worshipped and unworshipped. It is a soap that is both loved and unloved. It is a soap that is both cherished and uncherished. It is a soap that is both treasured and untreasured. It is a soap that is both valued and unvalued. It is a soap that is both prized and unprized. It is a soap that is both honored and unhonored. It is a soap that is both respected and unrespected. It is a soap that is both admired and unadmired. It is a soap that is both revered and unrevered. It is a soap that is both worshipped and unworshipped.

Picture Framing
This service of our business is in the hands of an expert. A good frame imparts a good feeling, and good frames are a thing of beauty.
B. H. Myers & Co., Ltd.
Phone 542
Government Road, Eastleigh
Paintings supplied on the most purchaser's terms and on liberal terms.
All orders and inquiries to the above address.

Martell's
Age and Quality
Known through-out the World

J & F MARTELL
COGNAC
ALL ORDERS AND INQUIRIES TO THE ABOVE ADDRESS.

AFRIKANDER
A PERFECT BLEND
FINEST TOBACCO
MIXTURE

Hamilton & Coy.
BAKERS AND BUTCHERS
WESTLANDS
CARETS AND DISCOUNTS
Holes and Boards for Prices Stamped Stock.
Top Prices Paid for Prime Stamped Stock.
Wholesale and Retail.
Wholesale and Retail.

A faultless dinner ends with

DE RESZKE The Aristocrat of Cigarettes

Virginian 10 for 2/6
Turkish 10 for 2/0

Dalgety & Co.

A CROP CALENDAR REMINDER

Many More Reports Required.

LETTER TO PRODUCERS.

From a similar letter which has been addressed by the Director of Agriculture to a large number of producers throughout the Colony...

Railways Request.

It will no doubt be realized that unless an ample number of carefully completed reports are received from correspondents, the Department will not be in a position to give the railway authorities...

It should be understood that the returns required are in respect of the crops which are being grown, connected with any other crops...

The Director of Geology, Mr. Wickett, recently returned from safari, says the "Uganda News" has brought him some wonderful specimens of copper.

TOC II.

A POWER HOUSE FOR SOCIAL SERVICE.

The T.C. II. of which the Prince of Wales is Patron, is almost as healthy by name nowadays as the other "Anglo-Indian" clubs...

UGANDA COTTON CROP PROSPECTS.

Improved Conditions at End of July.

The following Cotton Report by the Uganda Department is based on the survey on cotton conducted during the period January 1 to July 31...

Table with columns for District, Area, and Total. Lists districts like Masaka, Karamoja, and their respective cotton crop statistics.

Steady Nerves!

Sanatogen acts like that. Slowly at first, then more quickly, the well of fatigue lifts from your body...

After having tried everything else in vain and after finding that Sanatogen is the only food which has been found to restore and rebuild...

SANATOGEN

Start taking Sanatogen as a diet. You find it certainly worth your trying Sanatogen as a diet.

REAL SOURCE OF ECONOMY LIES IN OUR TACT OF BUYING ARTICLES IN ODDEN.

Articles in Wool: Buttons, Cardigans, Sweaters, Underwear, Socks, Stockings, Market, Blankets, etc.

General Merchants Kala Sidi Importers Government Road, NAIROBI.

POSHO

SELLING AGENTS— Universal Export Co., Ltd., P.O. Box 640. NAIROBI. Tel. Enterprise.

FOR Thika Sisal Co., Ltd., Thika.

Kenya Loan & Discount Co., Ltd. NAIROBI. P.O. Box 1st Floor, Court Chambers. 548

FINANCIAL AGENTS. BILLS DISCOUNTED. SHORT-PERIOD LOANS GRANTED. ANY REALISABLE ASSET NEGOTIATED FOR CASH.

Call or Write, Strictest Confidence. Established 1921.

BY HOUR, DAY BY DAY UNDERWOOD TYPEWRITERS

SAVE TIME—THE PRINCIPAL BUSINESS COST. Over 3,000,000 in use—Speeding the World's Business.



NEW PORTABLE FOUR BANK 380.



No. 5, 10" Model 665L. Portable Three Bank 320.

ALSO IN STOCK: 14", 16", 18", 20" and 28" Models.

TAWNS LIMITED, Box 611. NAIROBI. Phone 141.

NATIONAL BANK OF INDIA LIMITED.

(Incorporated in United Kingdom). Bankers to the Colony and Protectorates of Kenya and Uganda. P.O. Box 100, NAIROBI.

INSURE

ROOF MOTOR CARS AND MOTOR CYCLES. AFRICA GUARANTEED AND INSURANCE CO., LTD. M. D. KAMPE, MANAGERS.

Doonholm Dairy

Fresh Milk and Cream. From Farm to Consumer. Box 11, Nairobi. FSD.

Fresh Posho, Maize Meal, 5/40 a load.

Appl. RAHIM JIVRAJ, P.O. Box 15, NAIROBI. MAY & CO., LTD THE SPORTS SPECIALISTS.

Visit EASTERN BAZAAR, AND GET THE BEST CURRAN AND BILA AT LOW PRICES. FOR YOUR PRESENTS. R. CHOTIAH, NAIROBI and MARIUJI.

BUY YOUR

Chocolates FRESH FROM TORRS

WINSOR & NEWTON'S Artists' Materials.



A Large Range of Colours in Stock.



Pen Painting and Stenciling Outfits. Poster Colours. Sketch Blocks Etc. Standard Stationery Stores. P.O. Box 860. NAIROBI.

LAST AFRICAN STANDARD DAILY EDITION. ADVERTISEMENTS... SUBSCRIPTION RATES...

FOR SALE—(Contd.)

NANTU Co-operative Cream-gold butter... NEW Crop White Beans... OVE-N-UPF Boston Home...

WANTED.

THE charge for advertisements in this column is Sh. 1/- for a line of six words...

MISCELLANEOUS.

THE charge for advertisements in this column is Sh. 1/- for a line of six words... MISCELLANEOUS.

TO LET

THE charge for advertisements in this column is Sh. 1/- for a line of six words... TO LET.

BOARD & RESIDENCE.

THE charge for advertisements in this column is Sh. 1/- for a line of six words... BOARD & RESIDENCE.

FARMS FOR SALE

J. W. MILLIGAN & CO. LAND ESTATE AGENCY... K'YAMBU 6 miles to Nairobi... DIATBAU 440 acres good wheat farm...

Lorry and Car.

FORHIRE DRIVER WHO WAS NEGLIGENCE. An Indian was charged before the Magistrate...

Equator Saw Mills. P.O. Plateau. P.O. Mail-Masiri. Head Office: P.O. Box 291, Nairobi. Telgrams: CAPVAL. Price list on application.

Select Your Hat FOR THE ROYAL VISIT. From the Dozens of New Models of Warnings, Ltd. Africa House, Government Road, Nairobi.

Another Proof of ARIEL Reliability. Monsiur Dino, and amateur, riding a two port Ariel, finished first in the Paris-Pyrenees-Trip, 2,600 kilometers trial...

J. R. Cox & Co. SIXTH AVENUE. Nakuru Eldoret. Kampala. Dar-es-Salaam. Reduced Prices.

Standard Stationery Stores, NAIROBI. LOMO. Don't forget the tin. IT POSITIVELY KILLS. MADE OF THE BEST MEAT AND VEGETABLES.

FOR SALE.

THE charge for advertisements in this column is Sh. 1/- for a line of six words... FOR SALE.

MISCELLANEOUS.

THE charge for advertisements in this column is Sh. 1/- for a line of six words... MISCELLANEOUS.

SITUATIONS WANTED.

THE charge for advertisements in this column is Sh. 1/- for a line of six words... SITUATIONS WANTED.

FARMS FOR SALE

Dalgely & Company, Limited LAND AGENCY DEPARTMENT. SIXTH AVENUE. P.O. Box 66, NAIROBI.

Tibetan Tramp Flyer.

ILLITERATE WHO SPEAKS IN FIVE TONGUES. The police at Geneva have arrested for vagabondage an occurrence...

FOR SALE.

THE charge for advertisements in this column is Sh. 1/- for a line of six words... FOR SALE.

MISCELLANEOUS.

THE charge for advertisements in this column is Sh. 1/- for a line of six words... MISCELLANEOUS.

SITUATIONS WANTED.

THE charge for advertisements in this column is Sh. 1/- for a line of six words... SITUATIONS WANTED.

FARMS FOR SALE

Dalgely & Company, Limited LAND AGENCY DEPARTMENT. SIXTH AVENUE. P.O. Box 66, NAIROBI.

Tibetan Tramp Flyer.

ILLITERATE WHO SPEAKS IN FIVE TONGUES. The police at Geneva have arrested for vagabondage an occurrence...

THEATRE ROYAL PRINCES SEASON

Feature Pictures
6-15
Twice Musical Comedy Nightly
8-45
MONDAY, OCT. 18 TO SATURDAY, OCT. 20

PLANS NOW OPEN

"CHANG"

THIS YEAR'S GREAT PICTURE SHOWING
Mon. Tues. Wed.
Sept. 24th, Oct. 2nd, 5th, 26th.
NIGHTLY AT 8-45

"Mercenary Mary"

MUSICAL COMEDY SHOWING
Fri. Tues. Thur. Sat.
Sept. 28th Oct. 2nd, 4th 6th at 8-45
MATINEE, SATURDAY, OCT. 3rd at 3 p.m.

The "COUNTRY GIRL"

MUSICAL COMEDY SHOWING
Sat. Mon. Wed. Fri.
Sept. 29th Oct. 1st 3rd 5th

MON, TUES, WED.—OCT. 1st, 2nd, 3rd
AT 6-15 P.M. **"Roses of Picardy"** AT 6-15 P.M.
The Different British War Picture.

BOOKING OFFICE OPEN DAILY AT THEATRE.
10 a.m. to 1 p.m. and 2 p.m. to 9 p.m.
Musical Comedy Prices: 10/6, 7/6, 5/6, week nights
10/6, 7/6, 5/6, Saturdays.
Matinee: 5/6, 3/6 & 4/-. Adults 7/6 & 5/-.
All Seats Reserved.
EARLY BOOKING NOW ESSENTIAL.

AGRICULTURE.

Wool Production.

Mr. J. F. Walker, of the U.S. Department of Agriculture, who has been on a tour of sheep-producing countries, has come to New Zealand, Australia and other countries to study the wool industry. He is the "Farmer Weekly" reporter recently presented to the Senate. In reply to the Senator's question, he has forwarded a letter to the American authorities, in which he says to effect: "Mr. Walker's conclusions, while admitting that in New Zealand there is probably no room for much further extension, he thinks the case is quite different in Australia and South Africa. With regard to Australia he points out that the increase in wool per sheep has gone, and there is no reason why it should not go on increasing until an average of 10 lb. per head is reached. Because of a total yield therefore is not a matter of the mere number of sheep. Constant tending for greater production as the increased extension being paid the country into smaller pastures and improvement of these areas, and the provision of pastures that are suitable for the production of rabbits and application of phosphate, in any case he does not believe that the limit of what is obtainable for sheep breeding has been reached."

At a recent sheep show, Mr. Walker, in his report, gives the value of the sheep in that country as 25,000,000, which he considers satisfactory. It may be, he is not sure, however, of the value of the sheep in the U.S. (1) The sheep industry in the States is more extensive and more diversified, and a good area of the same country, which is really good wool-growing country, is well known. (2) There are millions of non-wool-bearing sheep also practically useless, cattle, lambs, etc., which are taking place in South Africa as in Australia. (3) It will be very surprising if some increase in the number of wool-producing sheep does not take place in South Africa during the next ten to twenty years, especially as the Government is very active, and in a most practical manner, encouraging sheep raising, and every possible way. When it has come to this, the sheep and wool industry thirty odd years ago, South Africa produced between 200,000 and 300,000 bales, mostly pure Merino or cross-bred, and of such a high quality, and spreading stations, but not so rapidly since, according to a report of the enormous advancement in wool

production in South Africa, the great improvement in the amount of wool produced in that country, and the intrinsic value of the wool is due to the improvement in the breed of sheep, and the fact that twenty years ago 200,000 on wool sheep from Australia, plus, as previously mentioned, the most sympathetic attitude of all political parties in South Africa towards an industry the value of which is fully realized. Encouraging Outlook. "In conclusion, I agree with Mr. Walker that the wool industry of South Africa is likely to be ahead of present and prospective supplies, and that, therefore, the outlook for sheep men in Australia and New Zealand, as regards the value of wool, to compete the enormous use of such substitutes as Rayon, and Shoddy, encouraging, but I think to the wool grower, should the world's best and most healthy clothing for mankind, viz., wool, become too dear, the above named substitutes and shoddy will be forced into use to the detriment of wool. A point worth stressing is that wool is not as cheap as other countries, but our sheep produce on the average twice as much wool as the rest of the world, and wool which is the open market of the world commands on the average a very much higher price per pound than the wool of any other wool-producing competitor. In the sheep and wool industry Australia stands supreme."

Kicking Cows.

The most common vice of the dairy cow is that of kicking with a little of her tail either from fear or pain, says the "Farm and Ranch Review," and it was handled properly this may grow into a habit. Under no circumstances should one strike a cow that kicks. It does no good and always makes them worse. Gentle measures,

however, will not work with all cows and some old cows that have been taught by mismanagement to kick one should be done by the last of one's means. Such animals should always be kept during milking. One way of doing this is by means of a ruler heavy strap with a strong loop. The strap is put round one hind leg above the

hook, and this and drawn through the loop. The strap is then put over the other hind leg and hooked on the two legs are held close together. Another method is to tie a rope or strip tightly around the body just back of the hip, hence short back of the udder. In a short time the cow will stand quietly with her hind legs tucked

NOVELS

East African Standard
NAIROBI.

1 1/2 TON New Chevrolet Truck Arrives.

Universally Approved
FIRST CONSIGNMENT Sold Ahead—
SECOND CONSIGNMENT Now Available.

£ 172 NAIROBI. £ 172 NAIROBI.

FOUR WHEEL BEARS. FOUR SPEED GEARS. NEW FRONT AXLE, SPECIALLY DESIGNED FOR 30 GWT. LOAD. FRONT BUMPER BAR OF PRESSED STEEL. BETTER AND STRONGER RADIATOR.

MOTOR MART and EXCHANGE, Ltd. NAIROBI. Dar-es-Salaam.

ENTERTAINMENTS.

Phone **SAVOY HOTEL** Box 430 20
CALEDONIAN ROAD, THE HILL.
The Most Comfortable
:: HOTEL ::

Syd Ziegler AND HIS METRONOMES WILL PLAY FOR THE Novelty and Spot DANCE ON SATURDAY NEXT 22nd. September.

Tickets: {10-50 Double} Including Refreshment
{7-50 Single}

WHY CRY

YEAR COST OF LIVING IS HIGH. YOU COULD REDUCE IT BY EATING YOUR MEALS AT Palladium Restaurant Theatre Royal. SPECIAL Prices for Residents. Breakfast, Lunch, Dinner and Supper. Morning and Afternoon Tea. We stock a large range of fresh chocolates in fancy boxes at prices to suit all pockets.

CARS for HIRE.

SEE KENYA IN CONFORT HUDSON MOTOR BUS GEAR. HIRE DAY or SPECIAL. Long Trip a Specialty. P. GETHIN. Phones: 158. Box 85. (Graham's) "Gethin," Nairobi.

CARS OVERHAULD BY EXPERT.

CARS for SALE.

Hudson Tourer, good condition, only £150. Hudson "Super Six" excellent condition, good tyres. IF YOU WANT TO BUY A CAR CALL RING GETHIN.

Barclays Bank (Dominion Colonial and Overseas.)

THE COLONIAL BANK
Incorporated in The United Kingdom by Royal Charter, 1808. Re-incorporated by Act of Parliament, 1920. with which is amalgamated.
THE NATIONAL BANK OF SOUTH AFRICA LIMITED AND
THE ANGLO-EGYPTIAN BANK, LIMITED.
Capital Authorized ... £10,000,000
Capital Subscribed ... £4,675,000
Capital Paid up ... £4,675,000
Reserve Fund ... £1,500,000
Total Capital ... £11,850,000

HEAD OFFICE: 54, Lombard Street, London, E.C. 4.
LONDON OFFICES: 27/29, King William Street, E.C. 4.
CHINA BRANCH: London, Peking, Hankow, Shanghai, Canton, Tientsin, Harbin, Yokohama, Kobe, and other ports in China, Japan, and the East Indies.
AND OFFICES at Liverpool, Manchester, Bombay, Calcutta, Madras, Rangoon, Singapore, and other ports in the East Indies, China, and Japan.

BRANCHES IN EAST AFRICA: Nairobi, Mombasa, Malindi, Eldoret, Kisumu, Kampala, Jinja, Tanga and Dar-es-Salaam.
The bank is represented in—
Union of South Africa, Rhodesia, South West Africa, British West Africa, West Indies, Egypt and the Sudan, Mauritius, etc.

AGENTS IN ALL PRINCIPAL CITIES OF THE WORLD
All classes of Banking Business undertaken.
The Bank also acts as Trustee and Receiver.

Your Efficiency BEHINDS UPON A SURELY UNTRYING VISION. GOOD EYE-SIGHT IS THE FIRST ESSENTIAL TO CLARITY OF THOUGHT.

HAVE YOUR EYES TESTED TO-DAY.
Dobbies, Ltd. OPTICIAN OPTICIANS. Box 80. NAIROBI. Phone 90.

"Use this old friend for Sprains"

To drive out the pain and disperse congestion that quickly renders ineffective the Sloan's Liniment. It penetrates and slowly melts a variety of new blood forming through the painful tissues, carrying away congestion and giving welcome relief and comfort. For Rheumatism and kindred ailments Sloan's Liniment is the approved treatment. It can be used easy to use—no rubbing.

"Sloan's Great Green Relief." "I had a bad and heavy bruise and sprain of my leg. I used your wonderful relief and in a few minutes I was free from pain." J. J. Taylor, 21, North Street, Boston, Mass., U.S.A.

Made by J. C. Sloan, Inc.

Sloan's Liniment KILLS PAIN

The Standard Treatment for RHEUMATISM, SCIATICA, NEURALGIA, SPRAINS, ACING BRUISES, &c.

NARROWS FIRE BRIGADE.

Men and Equipment Described.

A FALSE ALARM.

Cautioning Demonstration of Efficiency.

Nairobi fire fighting equipment was inspected at the Narrows...

Some time past the various suburbs in the Narrows...

With the object of demonstrating that the Narrows firemen...

With the object of demonstrating that the Narrows firemen...

With the object of demonstrating that the Narrows firemen...

With the object of demonstrating that the Narrows firemen...

With the object of demonstrating that the Narrows firemen...

With the object of demonstrating that the Narrows firemen...

With the object of demonstrating that the Narrows firemen...

With the object of demonstrating that the Narrows firemen...

With the object of demonstrating that the Narrows firemen...

With the object of demonstrating that the Narrows firemen...

With the object of demonstrating that the Narrows firemen...

With the object of demonstrating that the Narrows firemen...

With the object of demonstrating that the Narrows firemen...

With the object of demonstrating that the Narrows firemen...

With the object of demonstrating that the Narrows firemen...

With the object of demonstrating that the Narrows firemen...

With the object of demonstrating that the Narrows firemen...

With the object of demonstrating that the Narrows firemen...

With the object of demonstrating that the Narrows firemen...

READY FOR ACTION.



Pictures shows the fire engine manned ready for action. In the background is the Fire Station.

LUMBWA CO-OPERATIVE SOCIETY.

Butcher & DROUGHT.

Another Successful Year.

Butcher & DROUGHT.

Another Successful Year.

Butcher & DROUGHT.

Another Successful Year.

Butcher & DROUGHT.

Another Successful Year.

Butcher & DROUGHT.

Another Successful Year.

Butcher & DROUGHT.

Another Successful Year.

Butcher & DROUGHT.

Another Successful Year.

Butcher & DROUGHT.

Another Successful Year.

Butcher & DROUGHT.

Another Successful Year.

Butcher & DROUGHT.

Another Successful Year.

Butcher & DROUGHT.

In this connection I would like to mention...

In order to encourage this source of supply in the future...

The total quantity of our supply was more than 400 tons...

These decreases were mainly, if not wholly, due to the drought...

While on the subject of prices, you will recall that it was...

Table with columns for Month, 1st, 2nd, and 3rd. Lists prices for various months from April to May.

NATIVE OR ARAB?

Defence in a Liquor Case.

In the Honorable Magistrate's Court yesterday a native...

The defence was that the woman was born at Lamu...

A further one arising out of the case was in connection with...

All Indian was charged before Mr. Gamble in the Municipal Magistrate's Court...

As a result of the decrease in supplies our production...

Side of border in 1925-26 amounted to 194,940 lbs...

The policy pursued by your hon. body in regard to the...

"On This Day"



The day in 1925 as given above is the day when the Great Plague...

Trains are due to leave Nairobi today for various destinations...

The day of the sheep wool-handling operations is evidently closed...

The administration has now been notified that the Government...

As a result of the decrease in supplies our production...

The policy pursued by your hon. body in regard to the...

LYRIC HALL. TO-NIGHT AT 8.45. Ivor Novello And June IN THE LODGER founded on the famous Story by Mr. Ballo Lowndes Directed by Alfred Hitchcock PLANS NOW OPEN FOR BOOKING Shs. 5/- and 3/-

SEE Our Shoes. The Latest in Windows and Hosiery Ruby Ring. Newcut Styles. Story. Today's Train. Trains are due to leave Nairobi today for various destinations...

NIGHTLY AT 8.45. THEATRE ROYAL MATINEES SATS. 3.30. TO-NIGHT - Wednesday. Bruce Bairnsfather's Comedy - the Greatest War Picture. "THE BETTER 'OLE" FEATURING SYD CHAPLIN PRICES AS USUAL: Circle 3/-; Stalls 2/-

K. Melvick's Garage. We Repair all Makes of Cars and Trucks. WE DO IT TO-DAY - NOT TO-MORROW.

Wireless: We can supply from Stock the following: Three Valve Selectors Sets. B.S.A. "Kone Loud Speakers," 13" and 38". Leclanche H.T. Batteries on 48 Volts Units. Selector Vox Gramophone Pick Ups.

Real "Denby Ware" Toilet Sets. Sets with full complete. Sets with full complete. Sets with full complete.

SAYS A MEN'S CLOTHES EXPERT:

"Hold the secret of well-fitting evening dress is a well-fitting dress under the microscope... Any man who knows his clothes knows this is true."

It is because Complete Dress Shirts are tailored to the figure so accurately that you find a growing number of well-dressed men buying them regularly and retaining all others.

Such data - fitting comfort they say. Such immortality of style! Such extraordinary response to laundry practicality and such remarkably modest prices!

Stocked by all good dealers throughout East Africa



Consulate DRESS SHIRTS

Smokers Favourites.

Advertisement for Scott's Bismarck Cigarettes, Hartley's Lead Seal, and Magalliesberg Tobacco. Includes prices and contact information for Blacklaws & Brown.

Advertisement for Mangalore Deal Tiles and Teak in Logs and Scantlings, Swedish Imported Doors.

Advertisement for F. M. Bhaijee, Hardware Merchant, Indian Bazaar, Nairobi.

Advertisement for Souza Junior & Dias, Established in 1880, The Pioneer and Leading Stores, Government Road, Nairobi.

Advertisement for Just Received, New Goods of every description such as Silk and Cotton Piece Goods, Carpets, Rugs, Watches, Time Pieces, Shirts, Pyjamas, Ladies and Gents Under Wear, etc., etc., etc. Ladharam Stores, Government Road, Nairobi.

NAIROBI FIRE BRIGADE.

(Continued from page 9.)

side. As the engine slows on approaching the second man at the back of the engine... One of these carries a standpipe and also a key (which is about four feet long) for use with the hydrant.

As a precaution against the engine stopping on the way... The engine then moves forward and the long hose pipe comes into action.

Another interesting exhibition was given by two of the firemen who jumped from the tower of the engine... The height of the jump was 25 feet.

The general impression was that the men were well equipped and that the Brigade is in a very efficient and healthy state at all times.

and there is great danger to the life of anyone who is in it.

Smart Work.

Without any warning to the men, who were entirely unprepared, a false alarm was given in the form of the "Blastard" representative machine for his himself... The alarm bell rang and immediately on could be seen nothing but men running in various directions of dress.

Another interesting exhibition was given by two of the firemen who jumped from the tower of the engine... The height of the jump was 25 feet.

The general impression was that the men were well equipped and that the Brigade is in a very efficient and healthy state at all times.

WHERE TO STAY Town & Country.

Advertisement for Nakuru Hotel, The Salisbury Hotel, Nairobi. Phone 166. P.O. Box 509.

Advertisement for Oakleigh Private Hotel, The Naivasha Hotel, Nairobi. Phone 150. P.O. Box 153.

Advertisement for The Hill Private Hotel, All Modern Conveniences, The Hill, Nairobi. Phone 850. P.O. Box 783.

Advertisement for Brackenhurst Hotel, Hudson Canal.

Advertisement for Clairmont Residential Hotel, One of Kenya's beauty spots within 7 miles from Nairobi by good motor road.

Advertisement for The White Rhino Hotel, Nyeri, For Breakfast, Lunches, Teas, Dinners and Accommodation.

Advertisement for Stag's Head Hotel, Nairobi, For Breakfast, Lunches, Teas, Dinners and Accommodation.

WEATHER REPORT.

Following are results of observations made at the Mombasa station of the East African Meteorological Service on Sunday and yesterday:-

Table with columns: Date, Pressure, Wind, Direction, Temperature, Max. Min., Rainfall. Data for 18-2-28, 18-3-28, 18-4-28.

Weather Notes:—Pressure a cordily falling; weather partially cloudy and generally fine; light showers during the nights of 18th and 19th.

Advertisement for THE VICTORIA NYANZA SUGAR COMPANY, LIMITED, with contact information for Nairobi.

Good Plumbing Means Good Health.

Advertisement for Thornton & Turpin, Regis. Plinbers and Sanitary Engineers, City House, Nairobi.

Advertisement for Government Contractors, Work Undertaken in ANY PART OF KENYA AND UGANDA.

Advertisement for McEwan's Red Label Beer, Mombasa, Wholesale Stockists by Nairobi: D. Roberts & Co.

Advertisement for Bell Inn (On Main Road) Naivasha, First-Class Accommodation, Electric Lighting Throughout.

Advertisement for High View Hotel, Limuru (P. Road), Healthy Situation, Ideal for Holidays.

Advertisement for High View Hotel, Limuru (P. Road), Healthy Situation, Ideal for Holidays, with contact information for Nairobi.

ALL-SILK

HEAVY
SPUN CREPE
80 INCHES WIDE.
Shs. 8/50 Per Yard

In Latest Shades.
FAST DYED
PATTERNS ON APPLICATION.
Ahamed Bros.

THE HOUSE OF DISTINCTION.
BAZAAR NAIBOBI

DISSTON SQUARES
ACCURATE
DEPENDABLE
STOCKED BY THE LEADING
HARIWARE MERCHANTS.
Made by
Messrs. Henry Disston & Sons,
Philadelphia, U.S.A.

We Need Your Head To Run Our Business.

JUST AS YOU NEED US TO LOOK AFTER YOUR PERSONAL APPEARANCE, AND GIVE YOU THAT WELL-GROOMED LOOK SO ESSENTIAL TO SUCCESS.

The Timmer Hairdressing Saloons.
NAIBOBI

THE CHARM
OF THE
DINING TABLE
Lies in the Choice of
Correct Silver Appointments.



FRYER DISH
No. 87/1.
In Knives and Forks.

FRYER DISH
In French Knives and Forks.
No. 79/1.
A Choice Selection.

DOBBIES, Ltd.
WATCHMAKERS, JEWELLERS & OPTICAL OPTICIANS
NAIBOBI.

Just Unpacked
Ladies Silk Shawls with large Fringes in latest Up-to-date colours.
Also Silk and Crepe-de-Chine Scarves.
See Our Special Window Display.

BON MARCHÉ.
Opposite House and McGeorge Ltd.
Government Road, Naibobi.

CORRESPONDENCE.

The editor does not accept responsibility for the views expressed by the correspondents in these columns, and in all cases the names and addresses of the writers should be given, so that, should it be necessary to publish them, they may be contacted.

THE ROYAL VISIT

To the Editor, "The Standard."
The fact that the British Royal Commission has been appointed to investigate the health of the British Empire is a most interesting and important one. It is a sign that the British people are beginning to take an interest in their own health and the health of their fellow-citizens.

THE NAIBOBI RACE

To the Editor, "The Standard."
The fact that the British Royal Commission has been appointed to investigate the health of the British Empire is a most interesting and important one. It is a sign that the British people are beginning to take an interest in their own health and the health of their fellow-citizens.

THE FRENCH REPORT

To the Editor, "The Standard."
The fact that the British Royal Commission has been appointed to investigate the health of the British Empire is a most interesting and important one. It is a sign that the British people are beginning to take an interest in their own health and the health of their fellow-citizens.

MALARIA

Malaria or Parasite.

(By Elliott Fitzgibbon)

I was much gratified to read the courteous reply of "A Medical Correspondent" to my article on Malaria. I am, however, enabled to give you the missing theory in support of, or against, the theory of the parasites which he has used.

First, the mere antiquity of the malaria theory is of no value as an argument. Much of what is valuable medical knowledge at the present day was propounded by Hippocrates some 2,500 years ago, while the most up-to-date theory of the malaria theory, as a malarial, typhoid and, to some extent, of the typhoid fever of Marseilles 3,500 years ago.

Secondly, there is no body of scientific data, in the case of any disease, to be drawn from the observation of the micro-organisms or parasites associated with that disease. It is only by different environments of some sort, or by the action of some other force, that the disease is produced. The influence of the environment is the only force of life is rapid in some proportion to the power of rapid multiplication, so might be expected to be the case with the malaria parasite.

Thirdly, the appointment of the London School of Tropical Medicine, in 1902, is a most interesting and important one. It is a sign that the British people are beginning to take an interest in their own health and the health of their fellow-citizens.

Fourthly, the appointment of the London School of Tropical Medicine, in 1902, is a most interesting and important one. It is a sign that the British people are beginning to take an interest in their own health and the health of their fellow-citizens.

Fifthly, the appointment of the London School of Tropical Medicine, in 1902, is a most interesting and important one. It is a sign that the British people are beginning to take an interest in their own health and the health of their fellow-citizens.

Sixthly, the appointment of the London School of Tropical Medicine, in 1902, is a most interesting and important one. It is a sign that the British people are beginning to take an interest in their own health and the health of their fellow-citizens.

Seventhly, the appointment of the London School of Tropical Medicine, in 1902, is a most interesting and important one. It is a sign that the British people are beginning to take an interest in their own health and the health of their fellow-citizens.

Eighthly, the appointment of the London School of Tropical Medicine, in 1902, is a most interesting and important one. It is a sign that the British people are beginning to take an interest in their own health and the health of their fellow-citizens.

Ninthly, the appointment of the London School of Tropical Medicine, in 1902, is a most interesting and important one. It is a sign that the British people are beginning to take an interest in their own health and the health of their fellow-citizens.

detail, but I may mention that even from your correspondent's short description of the experiment I can detect some serious flaws.

"Not Conclusive."
Fourthly, the abundant experimental evidence from the malarial treatment of other diseases, that indicates that malarial fever is not a disease, but a symptom of a disease, is a most interesting and important one. It is a sign that the British people are beginning to take an interest in their own health and the health of their fellow-citizens.

Fifthly, the appointment of the London School of Tropical Medicine, in 1902, is a most interesting and important one. It is a sign that the British people are beginning to take an interest in their own health and the health of their fellow-citizens.

Sixthly, the appointment of the London School of Tropical Medicine, in 1902, is a most interesting and important one. It is a sign that the British people are beginning to take an interest in their own health and the health of their fellow-citizens.

Seventhly, the appointment of the London School of Tropical Medicine, in 1902, is a most interesting and important one. It is a sign that the British people are beginning to take an interest in their own health and the health of their fellow-citizens.

Eighthly, the appointment of the London School of Tropical Medicine, in 1902, is a most interesting and important one. It is a sign that the British people are beginning to take an interest in their own health and the health of their fellow-citizens.

Ninthly, the appointment of the London School of Tropical Medicine, in 1902, is a most interesting and important one. It is a sign that the British people are beginning to take an interest in their own health and the health of their fellow-citizens.

Tenthly, the appointment of the London School of Tropical Medicine, in 1902, is a most interesting and important one. It is a sign that the British people are beginning to take an interest in their own health and the health of their fellow-citizens.

Eleventhly, the appointment of the London School of Tropical Medicine, in 1902, is a most interesting and important one. It is a sign that the British people are beginning to take an interest in their own health and the health of their fellow-citizens.

Twelfthly, the appointment of the London School of Tropical Medicine, in 1902, is a most interesting and important one. It is a sign that the British people are beginning to take an interest in their own health and the health of their fellow-citizens.

Thirteenthly, the appointment of the London School of Tropical Medicine, in 1902, is a most interesting and important one. It is a sign that the British people are beginning to take an interest in their own health and the health of their fellow-citizens.

A.P.W.D. Wedding.

A pretty wedding took place on Saturday last in St. Mark's Church. The bride was Miss W. F. Farris and the bridegroom Mr. W. A. Williams (both on the staff of the Public Works Department, Nairobi).

The ceremony was conducted by the Rev. P. P. P. and Mr. N. Stewart officiated at the organ. The bride was given away by Mr. M. B. B. of the P.W.D. (M) made a pretty promise in the usual manner, and was attended with white geraniums, the bride being an old maid, and the groom being a bachelor.

The bridegroom, Miss N. Chambers wears a crown of white roses, and a white veil, and a white gown. The bride wears a crown of white roses, and a white veil, and a white gown.

The bridegroom, Miss N. Chambers wears a crown of white roses, and a white veil, and a white gown. The bride wears a crown of white roses, and a white veil, and a white gown.

The bridegroom, Miss N. Chambers wears a crown of white roses, and a white veil, and a white gown. The bride wears a crown of white roses, and a white veil, and a white gown.

The bridegroom, Miss N. Chambers wears a crown of white roses, and a white veil, and a white gown. The bride wears a crown of white roses, and a white veil, and a white gown.

The bridegroom, Miss N. Chambers wears a crown of white roses, and a white veil, and a white gown. The bride wears a crown of white roses, and a white veil, and a white gown.

The bridegroom, Miss N. Chambers wears a crown of white roses, and a white veil, and a white gown. The bride wears a crown of white roses, and a white veil, and a white gown.

The bridegroom, Miss N. Chambers wears a crown of white roses, and a white veil, and a white gown. The bride wears a crown of white roses, and a white veil, and a white gown.

The bridegroom, Miss N. Chambers wears a crown of white roses, and a white veil, and a white gown. The bride wears a crown of white roses, and a white veil, and a white gown.

The bridegroom, Miss N. Chambers wears a crown of white roses, and a white veil, and a white gown. The bride wears a crown of white roses, and a white veil, and a white gown.



"SPARKLETS"
THE SODA FOUNTAIN OF 1,000,000 ROWS.
ASK THE CONNOISSEUR-HE KNOWS
"WATS READY AND ALWAYS HANDY."

PEERLESS
ERASMIC
The Dainty SOAP
ERASMIC PERFUMES - LONDON

Picture Framing
This branch of our business is in the hands of an expert and we will accept no work unless we are satisfied in every respect as to the quality of the work.

B. H. Myers & Co., Ltd.
PHONE 343 GOVERNMENT ROAD, BOX 461
FRANCIS TRANTOR SUPPLIED ON THE IRISH PURCHASE
EASY TERMS.

"SPARKLETS"
THE SODA FOUNTAIN OF 1,000,000 ROWS.
ASK THE CONNOISSEUR-HE KNOWS
"WATS READY AND ALWAYS HANDY."



A SODA FOUNTAIN ON A TEA-TABLE.
BE SAFE AND INDEPENDENT. MAKE YOUR OWN SODA-WATER AT HOME. IT COSTS LESS AND IS MORE ENJOYED.

REPRESENTATIVES -
GENERAL AGENTS, LTD.,
LIBRA BUILDINGS, East Road, NAIBOBI.

You Can't Go Far
Without Meeting a Reliance Lorry
AND
You Can't Go Far
Without Meeting a Reliance Lorry
Wrote in Employing
Reliance Transport Co., Ltd.
P.O. Box 462, Sadler Street, Telephone 621.

Longont Limited
AH, IT'S DIFFERENT
That's the spontaneous verdict of those who drink **ROB ROY WHISKY**. Its exquisite bouquet and unrivalling high quality have given it an unparalleled supremacy in all the four corners of the world. BUY a bottle NOW and satisfy yourself it is not a mere claim but a fact.

Longont Limited
AH, IT'S DIFFERENT
That's the spontaneous verdict of those who drink **ROB ROY WHISKY**. Its exquisite bouquet and unrivalling high quality have given it an unparalleled supremacy in all the four corners of the world. BUY a bottle NOW and satisfy yourself it is not a mere claim but a fact.

Longont Limited
AH, IT'S DIFFERENT
That's the spontaneous verdict of those who drink **ROB ROY WHISKY**. Its exquisite bouquet and unrivalling high quality have given it an unparalleled supremacy in all the four corners of the world. BUY a bottle NOW and satisfy yourself it is not a mere claim but a fact.

AUCTION SALES



Fire Sa'vage Fire Salvage.

THREE HUNDRED BAGS WHEAT

On behalf of the Parties concerned, we shall sell by PUBLIC AUCTION WITHOUT RESERVE on the site of the Kenya Grain Mills, Ltd., Nairobi on

To-day, 18th Sept. 10 a.m.

THREE HUNDRED BAGS WHEAT (slightly damaged by water) LOTS OF TEN BAGS SEVERAL TONS OF WHEAT (suitable for cattle feeding) in bulk "KENYA PRIDE" flour in bags of 10 lbs., 20 lbs. and 50 lbs. (containers slightly damaged)

MUTER and OSWALD, Ltd., Auctioneers, NAIROBI.



Linoleum, Blankets, Linen, Cutlery and Miscellaneous Goods.

Duly instructed, we shall sell the balance of the effects removed from the "Thames" Hotel for conveyance of sale, at our Salerooms, Mutos Building, by Public Auction, without reserve, on

Wednesday, 19th Sept at 10 a.m.

LENGTHS OF LINOLEUM—practically new TOWELS, BLANKET SHEETS, TABLE CLOTHS, NAPKINS, PILLOWS, CUFFY, CROCKERY, GLASSWARE, NOVELS, KITCHEN UTENSILS, etc., etc.

MUTER and OSWALD, Ltd., Auctioneers, NAIROBI.



Notice of Sale by Catalogue of Furniture and Effects.

at our Salerooms, Mutos Building, on MONDAY, 24th September, at 10 a.m. (full details will be advertised later)

MUTER and OSWALD, Ltd., Auctioneers, NAIROBI.



Solal Farm for Sale.

"Walk-In" Walk Out"

ABOUT 1,500 ACRE FARM, ONE MILE FROM RAILWAY STATION; altitude 5,800—6,000 ft; 69 years lease; low Government rent; three permanent streams, approximately 400 acre very high clearing suitable for maize and 200 acre heavier clearing for coffee.

Six roomed house of mud bricks, plastered inside and outside, and lit throughout with "Petrolite" installation; large verandah; hot and cold water laid on to bathroom.

Dairies, Cattle Dip, 40 stall Cowshed, Calf Houses, Feeding Bails, etc.

LOOSE ASSETS INCLUDED IN THE SALE PRICE.—50 Head of CATTLE (34 COWS, 2 BULLS, Calves, Heifers and Steers. All Household Furniture (personal effects excluded), Piano, Gramophone (Fordson Tractor, "Titan" Tractor, 2 Ploughs All kinds implements, Blacksmith's Forge, Stocks, Dies, and other tools. Stock Cart, "Rugby Durant" Motor Car, Dairy Implements, Mule and Saddle, etc., etc.

THIS FARM ON WHICH SEVERAL THOUSANDS OF POUNDS HAS BEEN SPENT IS BEING PLACED ON THE MARKET OWING TO THE NEAR AND IS AVAILABLE FOR £4,500 or near offer, of which about one half could probably be arranged on mortgage at 8 per cent.

For further particulars of the above, and other properties apply to—

MUTER and OSWALD, Ltd., Auctioneers, NAIROBI.

Austins Auctions

LADIES NEW SHOES.
Austin & Co.
will sell WITHOUT RESERVE, at THE MART on
Thursday Sept. 20th at 10 a.m.
50 PAIRS OF LADIES BRAND NEW SAMPLE CONTINENTAL DAY AND EVENING SHOES Extra fine quality. All colours and sizes. On view Wednesday.
AUSTIN & Co., Auctioneers, Harding's St., Nairobi.

Desirable Property for SALE.

Manara Road, Parklands
Well Built W. and 1. House standing in 4 acres of well laid grounds with Fruit Trees containing 4 Bedrooms, Dining-room, Lounge, Bathroom with Porcelain Bath and Hot and Cold water installation, Extra Large Verandah, Garage and the Tennis court. Price £1,400. Further particulars from
AUSTIN & Co., Auctioneers & Estate Agents,
Harding's St., Nairobi.

E. Hutchison & Co.

Favoured with instructions from several clients we shall sell by public auction without reserve (unless stated) at our Mart Govt. Road, on

To-day 18th inst. at 10 a.m.

a varied selection of new and second-hand furniture and effects including the following:
LARGE CABIN TRUNK, TWO TEAK COUNTER SHOW CASES WITH NINE DRAWERS, 12 LARGE GLASS CUPBOARD, 12 PAIR SILVER CASES, 2 Morris Chairs, Two Oval Dining Tables, 18 Dining Chairs, Washstands, Two Office Tables, Square Dining Table, Teak Dressing Chest, Dressing TABLE SUITE IN CRETONE, Teak Chest of Drawers, Camphorwood Bedstead, Wardrobe, Wardrobe, Chamberwood Bedstead, Wardrobe, 2 Chests of Drawers, EXCEPTIONALLY WELL MADE CHEST OF DRAWERS IN AMERICAN (B) Teak Single Bed and Spring, 6 Single Mattresses, 2 Teak White Enamel Iron Bed, Two Revolving Bookcases, Two Sideboards, Two Oval Bookcases, Pair Brass Ornaments, Folding Rod, Two Ladies Writing Bureaux, Cheval Mirror, Trundle Sewing Machine, H.M.V. CABINET GRAMOPHONE, WILLIS SEAT, 12 RECORDS (R) 10 Bandle Songs, Washstands, Occ. Tables, Palm Stands, 3/6ft Tall stands, 6 SINGLE MIRRORS, 2 Teak Tents Raquets in Press, 6 Pillows, 30 Bath SPRING NEW, (Reserve) No. 9 DOVER STOVE, OIL PAINTINGS, Mosquito Net, Cane Stand, Ledge Bedstead, Two Burner Perfectoid Oil Stove with ALL-wood travelling Rug, Iron Bed and Mattress, 3 GENUINE PEPPER PLATES, REVERSIBLE CARPET, 2 Camp Beds, Hand Made Rug and many other items too numerous to detail.

E. Hutchison & Co. Auctioneers and Estate Agents



Sale of Garage Tools and Equipment.

Duly instructed by A. F. Davey, Esq., proprietor of the Ruiru Garage, we are commencing his business, we shall sell by PUBLIC AUCTION, without reserve (unless stipulated) at

The Ruiru Garage
ON
Thursday, 20th Sept. at 10 a.m.

THE FULL EQUIPMENT OF THE GARAGE including ONE "HARVEY-BROS." VULCANISER and quantity of material (res.) ONE "LISTER" 10-volt LIGHTING fitted driven in original casing—reserve. BENCHES, VICES, GARAGE JACKS, PULLWHEELERS SPANNERS, CHISELS, BOLTS AND NUTS, TWENTY GALLON TINS OF JACOMUL OIL, ONE SET WHITEWOT TAP AND DIES and NUTS, ONE SET COMPLETE WHITEWOT 1 1/2" to 1" (new), ONE SET COMPLETE WHITEWOT 1 1/2" to 1" (res.) 1" to 1/2" parallel (res.) TYPEWRITER AND NUTS TWENTY GALLON TINS OF JACOMUL OIL, TWO LOOSE LEAF LEDGERS, FILES, etc., etc. TWO LARGE RANGE OF GARAGE ACCESSORIES, AND LARGE RANGE OF GARAGE ACCESSORIES.

MUTER and OSWALD, Ltd., Auctioneers, etc., NAIROBI.

You Own Home and Plot
FOR £500 DOWN
Balance on mortgage at 7 1/2 per cent.
Newly Built House, with all modern conveniences.
Apply
R. O. PRESTON
Bus 587, Nairobi, at Office, Westlands

Kenya and Uganda Railways and Harbours Stores Department.

Clearing Section.
Tenders are invited for the supply of general provisions, Sweets, Tea, Coffee, Beans, Wine, Spices, Beans, imported Mineral Waters, Tobacco, Cigarettes, etc. from the 1st January to 31st December, 1929.
2. Only approximate quantities of requirements are given, as per lists which will be inspected at the Railways Stores Office at Nairobi and Kilindi where any further information can be obtained that is desired. The Railway do not undertake to order all the items or quantities shown on such lists.
3. Orders will be placed from time to time during the period stipulated for such articles and for such quantities as may be required. In regard to Beer, Mineral Waters, Wines, Spices, Cigarettes, Tobacco, etc. the Railway do not undertake to order any particular brand, or make, but will sell such brands and makes as are selected for the year, as required.

The Railway do not undertake to order all the items or quantities shown on such lists.
3. Orders will be placed from time to time during the period stipulated for such articles and for such quantities as may be required. In regard to Beer, Mineral Waters, Wines, Spices, Cigarettes, Tobacco, etc. the Railway do not undertake to order any particular brand, or make, but will sell such brands and makes as are selected for the year, as required.

5. The Brands, makes, and sizes, of the packing to be specified against each item; and prices to include the full quantity in some conditions.
6. Tenders in sealed envelopes marked "Tenders for Catering Stores" should reach the Chief Storekeeper, Kenya and Uganda Railways and Harbours (P.O. Box 40), Nairobi on or before the 24th October, 1929. Tenders received after that date will not be considered.
7. The lowest or any tender will not necessarily be accepted.

G. D. RHODES, Acting General Manager, Kenya and Uganda Railways and Harbours, Nairobi, 11th September, 1929.

Kenya and Uganda Railways and Harbours

TENDERS FOR THE SUPPLY OF UNIFORMS.

Tenders are invited for the supply of Uniforms for the station on the 1st January to 31st December, 1929.
2. List of approximate quantities, type, class, and designations can be obtained at the Chief Storekeeper's Office, Nairobi, or the Railways Stores Office, Kilindi.
3. Samples of material and woven designations must be submitted to the Chief Storekeeper.
4. Sealed tenders marked "Tenders for Uniforms" should reach the Chief Storekeeper, Kenya and Uganda Railways and Harbours (P.O. Box 40), Nairobi, on or before the 24th October, 1929. Tenders received after that date will not be considered.
5. The lowest or any tender will not necessarily be accepted.

G. D. RHODES, Acting General Manager, Kenya and Uganda Railways and Harbours, Nairobi, 11th September, 1929.

Sands & Co.

AT OUR RAILWAY YARDS, NAIROBI, ON

Wed. 19th Sept. at 10-30 a.m.

10 Native Cows in Calf and Calves at Foot.
20 Cows, 20 Calves, 20 Bulls, 20 Steers.
10 Immune Trill Oxen.
110 Native Sheep.

Sands & Co. AUCTIONEERS

Hartley's Tobaccos

Red Seal 1 lbs. bags also
Rhodesian, Inverca, and Rhodesian Plug Cut
Fresh Stocks Arrived.
Sole Agents and Distributors

Denovan & Diebel CITY HOUSE, NAIROBI.

Property for Sale.

2885 acres of excellent Sisal land is offered for Sale, within nine miles of Nairobi, with river frontage of 2 1/2 miles.
5 roomed Stone House on 23 acres of Matama Road, Parklands. Price £11,250.
5 roomed Brick and Stone House all modern conveniences, Tennis Court and Summer House of Kilgus, near Kawanda.
24 acre Plot with River Frontage and permanent Spring at Busakas—Price only £450.
For further particulars of the above and other valuable property apply to
Brown & Barratt
P.O. Box 637, Phone 147, IBEA BUILDINGS, NAIROBI.

The Victoria Nyanga Sugar Company Ltd.

MIWANI

Be to notify the Public that they have commenced crushing and all orders for sugar should be addressed to them at Miwani.

Farmer's having sugar cane for disposal should communicate, without delay, with the factory, stating the number of Farm and where situated, area of cane acreable, estimated weight of crop, what tonnage they wish to contract to deliver daily and the date upon which they can commence delivery. Further particulars can be obtained at the mill office on application.

IN HIS MAJESTY'S SUPREME COURT OF KENYA District Registry Mombasa.

Civil Case No. 100 of 1927.

1. Barclays Bank (Dominion, Colonial and Overseas).
2. John Selwyn Jamal as Receiver in the Bankruptcy estate of Hisham Jamal and Company. Plaintiffs.
Mohamed Abdullah and Nizam Dui (Son of Karam Dui) trading as Imamudin Mahmud and Co., and Mohamed Abdullah as Administrator of the estate of the late Imamudin Karamahli. Defendants.

AUCTION SALE.

On Saturday the 20th day of October, 1929, under the order of His Honourable Court dated the 21st day of May, 1929, the undersigned will sell in Ouygi District Kisi at hour of 3 p.m.

All that piece or parcel of land situated in the Township of Ouygi in the South Kavirato District in the Nyanza Province of the East Africa Protectorate being Plot No. 19 of Section 1 of Portion 8E comprising Five Thousand square feet or thereabouts which said piece or parcel of land is now partly demarcated and described on a Plan annexed to an Identificatory Lease made the 18th day of December, 1911, between His Most Gracious Majesty King George V of the one part and Abdulrazak Alidha V. vana of the other part.

All that piece or parcel of land situated in the Township of Kendu in the District of South Kavirato in the Nyanza Province of the East Africa Protectorate being Plot No. 8 of Section II of Portion No. 10 comprising Five Thousand square feet or thereabouts which said piece or parcel of land is now partly delineated and described on a Plan annexed to an Identificatory Lease made the 8th day of March, 1912, between His Most Gracious Majesty King George V of the one part and Bodis Walls of Kendu of the other part.

The Original Titles may be inspected at the office of Deputy Registrar of the Supreme Court at Mombasa and the conditions of Sale may be inspected at the office of the Registrar of the Supreme Court at Mombasa or at the office of the Auctioneer at Kisi at any time prior to the sale.

R. R. GHOFRA, Court Broker.

Kisi, 15th September, 1929.

Jamal Pirbhai.

Sells anything You Own! Sell! Auctioneer, Official Broker and Government Approved Valuer. Auctions Every Sunday, at 9 a.m. Opposite Levanj Garden, P.O. Box No. 209, Nairobi, Kenya Colony.

We have a Representative Selection of choice designs in Furniture now on view.

CATERING TABLES.
Nos. 36 & 24. Outfitted with Jacobean Turned Legs and/or Choking Top. Nos. 37/38.

FOLDING SEATED TABLES.
Nos. 20 & 21. 20" fitted with Green All-Well Billiard Top. 21" fitted with Green All-Well Billiard Top. A new design. Nos. 37/38.

REPOSITORY COFFEE TABLE.
With thick turned legs and elegant. Nos. 37/38.

REPOSITORY COFFEE TABLE.
With thick turned legs and elegant. Nos. 37/38.

Hutchings, Biemer & Co. Ltd.

SEE FURNITURE TERMS ARRANGED. LESS 5% FOR CASH WITH ORDER. NAIROBI. Phone 200. Monthly A/c's with Approved Customers.

