

KENYA BEER

Wholesome and Appetizing.
LIGHT OR DARK



No. 4688. BREWERY AT THE GENERAL POST OFFICE AS A SUBSIDY.

PRICE OF WALES AS A BARBER'S ASSISTANT.

Merry Times at the Court of King Neptune.

THE DUKES "CRIMES"

Hungry and Growing Bares Receive a Royal Victim.

"Standard" Special Correspondent on Board the S.S. "Malda."

As Sea, Wednesday.
Neptune took a heavy toll on board the s.s. "Malda" this afternoon when he held his court and condemned about twenty young subjects to the barber's chair, or rather, they were ordered to undergo a haircut.

His Royal Highness the Prince of Wales in an appropriate fancy costume in common with the other gentlemen, filled the lively part of barber's assistant. The latter was equipped with a large metal brush, seriously lathering with a sticky concoction in the hands amongst whom was the Duke of Gloucester.

The Prince was engaged on several counts including failing to visit East Africa before 1922, neglecting to bring his charger and being "one of the two first offenders." The conventional in which Mr. W. F. Campbell, the well-known Provincial Commissioner, made an imposing Neptune entered in a ragging which Neptune's buffoon naturally tipped the Prince of Wales into the bath where hungry and howling bears awaited a royal feast.

WOMEN'S RECEPTION CEREMONY

Beauty of the Decorations.

"STANDARD" SPECIAL CORRESPONDENT.

Mombasa, Thursday.
Mombasa in splendour in a display of the city of the East with a profusion of red and white balloons which were blown up by the city authorities. The decorations are an added touch to the scene. The decorations are an added touch to the scene. The decorations are an added touch to the scene.

"STANDARD" SPECIAL CORRESPONDENT.

Mombasa, Thursday.
The decorations are an added touch to the scene. The decorations are an added touch to the scene. The decorations are an added touch to the scene.

"STANDARD" SPECIAL CORRESPONDENT.

Mombasa, Thursday.
The decorations are an added touch to the scene. The decorations are an added touch to the scene. The decorations are an added touch to the scene.

GUARANTEED THE LARGEST CIRCULATION OF ANY NEWSPAPER IN KENYA, UGANDA, TANGANYIKA AND ZANZIBAR.

DAILY EDITION.

THE EAST AFRICAN 14 PAGES.



UGANDA ARGUS WHICH WHICH THE LARGEST CIRCULATION OF ANY NEWSPAPER IN KENYA AND UGANDA.

NAIROBI, FRIDAY, SEPTEMBER 28, 1926.

A GREAT DAY FOR KENYA.

Prince and Duke of Gloucester Arrive this Morning.

EXCHANGE OF MESSAGES

Their Royal Highnesses the Prince of Wales and the Duke of Gloucester will land at Mombasa this morning. Yesterday His Excellency the Governor on behalf of the Government and people of Kenya sent the following wireless message to the Prince of Wales:

"In the name of the whole Colony I beg to welcome Your Royal Highness on your first entry into East Africa. We are one and all most eagerly awaiting your arrival here and hope that you and His Royal Highness the Duke of Gloucester will enjoy your stay."

His Excellency received the following reply—

"I have pleasure in Kenya Colony and am glad to thank for the kind message of welcome sent to us on your visit to East Africa. We are both looking forward to your stay."

EDWARD P. HENRY.

STATUTORY COMMISSION ON INDIAN REFORM.

Chairman on its aims and Objects.

To be Opposed by Dockers.

"STANDARD" SPECIAL CORRESPONDENT.

Mombasa, Thursday.
The dockers at Adalade have refused to handle the strike of the dockers.

"STANDARD" SPECIAL CORRESPONDENT.

Mombasa, Thursday.
The dockers at Adalade have refused to handle the strike of the dockers.

"STANDARD" SPECIAL CORRESPONDENT.

Mombasa, Thursday.
The dockers at Adalade have refused to handle the strike of the dockers.

END OF THE NINTH LEAGUE ASSEMBLY.

Criticism of Heavy Expenditure.

"STANDARD" SPECIAL CORRESPONDENT.

Mombasa, Thursday.
The League of Nations assembly has ended its session in London. The League of Nations assembly has ended its session in London.

"STANDARD" SPECIAL CORRESPONDENT.

Mombasa, Thursday.
The League of Nations assembly has ended its session in London.

"STANDARD" SPECIAL CORRESPONDENT.

Mombasa, Thursday.
The League of Nations assembly has ended its session in London.

FORTRESS COMPLETELY WRECKED WHEN MUNITIONS EXPLODE.

Second Spanish Disaster Within a few Days.

MANY KILLED AND INJURED.

Chimney pots, glass and mud rain on to the Crowded Streets.

"STANDARD" SPECIAL CORRESPONDENT.
Melilla, September 28.
Forty people have been killed and 200 injured as the result of an explosion at a munitions depot at Fort Cabritas.

The latest official information with regard to the explosion states that 31 civilians, men, women and children were killed and 200 were injured, while the military casualties, both European and native, were also very heavy. The total probably will not be ascertained for some time.

The fortress is reported to be ruined.

Life an Earthquake.

An account by an eyewitness of this second disaster which has overtaken the Spanish nation, within a few days states that the explosion occurred as the audiences were emerging from the theatre and the streets were crowded by people proceeding to their homes.

A sudden flash rent the sky, followed by a terrific detonation. Splinters of glass, chimney pots, and showers of mud and rain came on to the streets.

The public-stricken crowd believed that an earthquake had occurred.

Nothing was left of the fortress but a huge funnel-shaped crater bordered by blocks of stone.

The complete darkness delayed the rescue work.

REVOLUTION IN MOTOR CONSTRUCTION.

Automatic Gear Change Invented.

"STANDARD" SPECIAL CORRESPONDENT.

Mombasa, Thursday.
A revolution in motor construction has been effected in the form of an automatic gear change. The invention is a result of the work of an American inventor.

"STANDARD" SPECIAL CORRESPONDENT.

Mombasa, Thursday.
A revolution in motor construction has been effected in the form of an automatic gear change.

LEAGUE AND MODEL TREATIES.

Letter to be Sent to Different Nations.

"STANDARD" SPECIAL CORRESPONDENT.

Mombasa, Thursday.
The League of Nations assembly has ended its session in London. The League of Nations assembly has ended its session in London.

"STANDARD" SPECIAL CORRESPONDENT.

Mombasa, Thursday.
The League of Nations assembly has ended its session in London.

They're Here

The New McCall's Patterns for September.

Its not too late to take advantage of the perfect pattern in making morning, afternoon and evening dresses for the Royal Visit.

Get rid of that home made look and get the latest Parisian styles.

PRINTED ART SILK.

A delightfully dainty material for morning or afternoon dresses, a large range of fancy flowered and check designs. 36" wide. 6-50 PER YARD

FANCY RAYONS.

By the last post a delivery of this fashionable fabric in a number of beautiful fancy designs. 36" wide. 4-50 PER YARD

"LIZARD CREPES."

A good medium weight Crepe de China, hand pattern in Blues and Greys. 36" inches wide. 15-50 PER YARD

L'ÉCHO DE PARIS



Delightful for informal wear, the charming frock with deep cape collar. A full apron slightly attached at the waist forms the full skirt with an unusual hemline.

L'ÉCHO DE PARIS



A tailored and straight line dress has a feminine touch in the circular panel above and draped to the side. The waist is brought a new note over the snug, tight hipline.

MACCLESFIELD SILKS.

The very latest thing in dress silks, popular shade designs in Grey, Salmon, Blue, etc. 38 inches wide. 12-50 PER YARD

MARICHONE

An Art Silk material with the feel and appearance of a heavy rib Crepe de China, washable and wears splendidly in beige, Blue, Red, Salmon, Arrow, Dawn, Fawn. 6-50 PER YARD

ART. SILK CREPES.

Art. Silk Crepe de China, a wonderfully made, price material, answers the same purposes as real silk. 9-50 PER YARD

ART. VOILES.

A new wide, light as Gossamer, with a wonderful sheen, in a fascinating range of smart multi-colored. 8-50 PER YARD

ART. SILKS.

A special offer in fancy multi-strap artificial silk material. 36 inches wide. 3-95 PER YARD

WHITEAWAYS NAIROBI.

FENCING

Johnsons special LIGHT No. 8 WIRE

Galvanized by "Crapp" Patent Process.
Length per 100lb. Roll 543 yds. (approx.)
Price upto 6 rolls ... 21.25 per roll.
10 rolls or over ... 19.75 per roll.
All fencing requirements from

DALGETY & CO. LTD.

MOMBASA — NAIROBI — ELDORET.

POSHO

SELLING AGENTS—
Universal Export Co., Ltd.
P.O. Box 640. NAIROBI. Tel. Enterprise.

FOR
Thika Sisal Co., Ltd., Thika.

Kenya Loan & Discount Co., Ltd.
NAIROBI.
OFFICES— P.O. Box
1st Floor, Court Chambers. 646.

FINANCIAL AGENTS.
BILLS DISCOUNTED.
SHORT-TERM LOANS GRANTED.
FOR CASH.
ANY REALISABLE ASSET NEGOTIATED.
Call or Write. Strictest Confidence.
Established 1921.

BRITISH PRESS AND THE ROYAL TOUR

Haytless about Location of Mombasa.

"GOLF WITH NATIVES"

(STANDARD) LONDON, Sept. 24.—
Although there has been no detailed programme published since the announcement of the Prince of Wales's plan to visit East Africa, it is hoped that it is a matter of time before the Prince will be seen in East Africa. It is expected that the Prince will be accompanied by the Duke of Gloucester and the Duke of Devonshire. The Prince is expected to arrive in East Africa in the latter part of the month. It is expected that the Prince will be accompanied by the Duke of Gloucester and the Duke of Devonshire. The Prince is expected to arrive in East Africa in the latter part of the month. It is expected that the Prince will be accompanied by the Duke of Gloucester and the Duke of Devonshire.

Princes' Preferences.

Perhaps it is desirable to remember the preferences of the Princes. Both the Duke of Gloucester and the Duke of Devonshire are known to be keen golfers. It is expected that the Prince will be accompanied by the Duke of Gloucester and the Duke of Devonshire. The Prince is expected to arrive in East Africa in the latter part of the month. It is expected that the Prince will be accompanied by the Duke of Gloucester and the Duke of Devonshire.

The Duke's Equipment.

Finally we have the following report on the "Fencing Standard". The Duke is taking with him a most elaborate array of fencing equipment. His rifle is a contemporary model. The Duke is taking with him a most elaborate array of fencing equipment. His rifle is a contemporary model. The Duke is taking with him a most elaborate array of fencing equipment. His rifle is a contemporary model.

Alti River Fish.

A PROHIBITED AREA DESCRIBED.

The Fish Protection Rules, 1925, which have been issued by the Licensing the Governor in Council and published in the current issue of the "Kenya Official Gazette".

Mulberry Silk Industry.

Specification and blue-print of a silk rearing station (complete being offered for sale by the Department of Agriculture, Cyprus. Can be supplied on application to the Entomological Department of Agriculture, Nicosia, Cyprus.

Winged Death!

Flux, with their foot-and-taloned bodies, drag the germs of typhoid, influenza, cholera, dysentery one year your good, your clothing, over your very person! Destroy these winged pest-locusts before they destroy you. Kill flies with FIT!

Do not confuse FIT with ordinary insecticides. Greater kill power means satisfaction with FIT. Made by the largest manufacturer of insecticides in the world. Buy FIT and a FIT Sprayer today.



FOR SALE. Light Woolen Diapers, Towels, etc.

Children's Woolen Suits, Knitted Undies and Socks, etc.

Printed Bed Spreads, single and double, etc.

New American Cotton Ties, etc.

Wool and Cotton Mixed Hosiery, etc.

Printed Bed Spreads, single and double, etc.

Wool and Cotton Mixed Hosiery, etc.

Printed Bed Spreads, single and double, etc.

Wool and Cotton Mixed Hosiery, etc.

Printed Bed Spreads, single and double, etc.

Wool and Cotton Mixed Hosiery, etc.

Printed Bed Spreads, single and double, etc.

Wool and Cotton Mixed Hosiery, etc.

Printed Bed Spreads, single and double, etc.

Wool and Cotton Mixed Hosiery, etc.

Printed Bed Spreads, single and double, etc.

Wool and Cotton Mixed Hosiery, etc.

Printed Bed Spreads, single and double, etc.

Wool and Cotton Mixed Hosiery, etc.

Printed Bed Spreads, single and double, etc.

Wool and Cotton Mixed Hosiery, etc.



Do not confuse FIT with ordinary insecticides. Greater kill power means satisfaction with FIT. Made by the largest manufacturer of insecticides in the world. Buy FIT and a FIT Sprayer today.

FOR SALE. Light Woolen Diapers, Towels, etc.

Children's Woolen Suits, Knitted Undies and Socks, etc.

Printed Bed Spreads, single and double, etc.

New American Cotton Ties, etc.

Wool and Cotton Mixed Hosiery, etc.

Printed Bed Spreads, single and double, etc.

Wool and Cotton Mixed Hosiery, etc.

Printed Bed Spreads, single and double, etc.

Wool and Cotton Mixed Hosiery, etc.

Printed Bed Spreads, single and double, etc.

Wool and Cotton Mixed Hosiery, etc.

Printed Bed Spreads, single and double, etc.

Wool and Cotton Mixed Hosiery, etc.

Printed Bed Spreads, single and double, etc.

Wool and Cotton Mixed Hosiery, etc.

Printed Bed Spreads, single and double, etc.

Wool and Cotton Mixed Hosiery, etc.

Printed Bed Spreads, single and double, etc.

Wool and Cotton Mixed Hosiery, etc.

Printed Bed Spreads, single and double, etc.

Wool and Cotton Mixed Hosiery, etc.

Printed Bed Spreads, single and double, etc.

Wool and Cotton Mixed Hosiery, etc.

Printed Bed Spreads, single and double, etc.

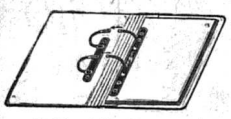
Wool and Cotton Mixed Hosiery, etc.

Printed Bed Spreads, single and double, etc.

Wool and Cotton Mixed Hosiery, etc.

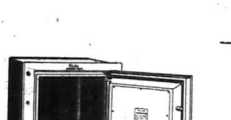
Printed Bed Spreads, single and double, etc.

Wool and Cotton Mixed Hosiery, etc.



Special quotations for quantities.

THE NEW FILE PUNCH
Specially manufactured for TAWS Ltd., Price 2/- each.



Special quotations for quantities.

THE "MEILINK" STEEL SAFE
Guaranteed FIRE & BURGLAR Proof.
Fitted with Dial Combination Lock
Price with interior fittings Sh. 97/-.
Height 48 inches.

TAWS LIMITED.
Box 611. NAIROBI. Phone 141.

THE "DOMINANT"

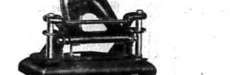
A FLAT file with a flexible lever arch

The most efficient file yet invented

Stocked in Five Colours.

Footstep size 1/- each.

8 in. ... 7/6



Special quotations for quantities.

John Rifkin

SIXTH AVENUE, P.O. Box 216, NAIROBI.



WAGON BUILDERS, BLACKSMITHS, FARRIERE, STOCK OF AXLES BRACKS, WAGONS, AND ALL WAGON PARTS.

All Kinds of Wagon Made to Order.

NATIONAL BANK OF INDIA LIMITED.

(Incorporated in India)

Bankers to the Colony and Protectorates of Kenya and Uganda Protectorates.

Subscribed Capital ... £4,000,000
Paid-up Capital ... £2,000,000
Reserve Fund ... £2,000,000

36, Bankers, London, E.C. 4.
BRANCHES: Mombasa, Nairobi, Kisumu, Malindi, Lamu, Tanga, Zanzibar, Dar-es-Salaam and Aden.

AGENTS in New York and throughout U.S.A., Europe, Canada, South Africa and A.S.

FIXED DEPOSITS—Deposits are received for fixed periods on terms which may be liberal on application.

EXCHANGE—The Bank grants Drafts on the Head Office and Branches at the current rate. Remittance guaranteed every day of the year direct to the persons concerned.

Remittances of banking business transacted with all parts of the world.

A. S. MURPHY, General Manager.

INSURE

ROBE MOTOR CARS AND MOTOR CYCLES

THE APRIAN QUARTERS AND INVESTMENT CO. LTD.

M. D. KAMPP, CHIEF AGENT.

Doonholm Dairy

Box 11, Nairobi

Pure Milk and Cream.

From Farm to Consumer.

P. STEWART, C.A.S., S.E.D.

PAINTER & DECORATOR

Harding Street, NAIROBI.

P.O. Box 226.

PAINTS, COLOURS, OILS, VARNISHES & DISTEMPERS.

Large or Small Quantities.

MAY & CO., LTD.

SPORTS SPECIALISTS.

VIA EASTERN BAZAAR.

AND GET THE BEST CURTAIN AND SILK UP LIFTERS.

FOR YOUR PRESENTS

B. CHITRAM, NAIROBI and NAKURU.

BUY YOUR CHOCOLATES FRESH FROM TORRS

WINSOR & NEWTON'S Artists' Materials.

A Large Range of Colours in Stock.

Pen Painting and Stenciling Outfits. Poster Colours. Sketch Blocks. Standard Stationery Stores.

P.O. Box 580, NAIROBI.

British India Steam Navigation Company, Ltd.

London and East Africa Lines
LONDON TO BEIRA, VIA MARIETTA, PORT SAID, PORT SUEZ AND ADEN, OMANWADI AND KARACHI.
Suez Canal
Arrive Kilindi 10/10
London about 10/10

London and East Africa Lines
LONDON TO BEIRA, VIA MARIETTA, PORT SAID, PORT SUEZ AND ADEN, OMANWADI AND KARACHI.
Suez Canal
Arrive Kilindi 10/10
London about 10/10

London and East Africa Lines
LONDON TO BEIRA, VIA MARIETTA, PORT SAID, PORT SUEZ AND ADEN, OMANWADI AND KARACHI.
Suez Canal
Arrive Kilindi 10/10
London about 10/10

THE UNION-CASTLE LINE.
FORWARDERS VIA SUZ.
From Mombasa
10th November, 1924
15th December, 1924
20th January, 1925
25th February, 1925
30th March, 1925
10th April, 1925
15th May, 1925

ROSEWARD VIA SOUTH AFRICA
From Mombasa
12th October, 1924
16th Nov. 1924
27th October, 1924

London Castle
"Dalla"
"Sandara Castle"
"Seymour"
"Lancashire Castle"
"London Castle"
"Hendry"
"Cape Verde"
"Parns Home from 25th 1st class and 25th 2nd class

Agents—
S.E.A. Corporation, Ltd.
The East Africa Estates, Ltd.
J. J. O'Brien & Co., Ltd.
The Union-Castle Mail Steamship Co., Ltd. MOMBASA.

WE STOCK
Cement, C.I., Sheets, Teak and Deal, Wood, Three Ply Boards, Asbestos Slates, Riddings, Distempers, Oil and Paints.
Madatally Suleman Verjee & Sons
Madatally Building, Govt. Road.
also
Groceries, Cigarettes and Confectionery at **HASSANALI BROS.**
P.O. Box 12, Phone 54.

Miss KATHLEEN BATES A.R.C.M.
RECEIVES PUPILS FOR
PIANOFORTE—SINGING—HARMONY.
AT HER
Music Studio, Sixth Avenue.
Postal Address: Box 417.

The African Marine & General Engineering
COMPANY, LTD., KILINDINI
SHIP REPAIRING, SAID MAKING & REPAIRING, Moulding
OXY. ACETYLENE WELDING & CUTTING
In their well-equipped Carpenters Shops, all types of House and Office Furniture are made and repaired.
Estates requiring repairs to machinery, implements etc., are invited to communicate.
Telephone 88. ESTIMATES GIVEN, Tel. "Amigos" Mombasa.
SMITH, MACKENZIE & Co., General Manager.

Deutsche Ost-Afrika-Linie
(GERMAN AFRICA'S SERVICE)
Homeward via Suez Canal
Kilindi to Durban.

Leaving Mombasa 1924		Leaving Mombasa 1925	
ADOLPH WORMMANN	10th Oct.	ADOLPH WORMMANN	10th Oct.
USABARU	20th Nov.	USABARU	20th Nov.
USABARU	12th Dec.	USABARU	12th Dec.
KANGANJIKI	1st Jan.	KANGANJIKI	1st Jan.
ADOLPH WORMMANN	22nd Jan.	ADOLPH WORMMANN	22nd Jan.
USABARU	12th Feb.	USABARU	12th Feb.
USABARU	12th March	USABARU	12th March
USABARU	10th April	USABARU	10th April
TANGANIKA	7th May	TANGANIKA	7th May
ADOLPH WORMMANN	17th May	ADOLPH WORMMANN	17th May

BEIJLINGS SUBJECTS TO ALTERATION
De-County charges cannot be accepted unless notified and covered by Local Bank
For full particulars of post rates here and freight rates apply to the Agents
SABERT & Co., Ltd. Agents
2421 JEWELLRY, Njoro, Nairobi, Kilindi, Mombasa, Huja and Karungu
and KARUNGU DISTRICT.
and DEUTSCHE OST-AFRIKA-LINIE, GENERAL AGENT
Cable "OSTLINIE" P.O. Box 210, Mombasa

Compagnia Italiana Transatlantica
Monthly Passenger Service to NAPLES and GENOA by elegant and comfortable oil-burning turbine steamers. The best route to London, via Italy.
17 Days to Naples, 19 Days to Genoa.
Sailing from Kilindi to Genoa:
"S.S. 'F. CRISPI'" ... 1st October.
Sailing to Dar-es-Salaam, Beira, Lourenco Marques and Durban by other steamers.
apply to:
"S. D. KAMPF"—Nairobi—P.O. Box 208.
"SOCIETA' COLONIALE ITALIANA"—Mombasa—P.O. Box 107.

KING'S CUP
WON ON
SHELL
FOR THE
FIFTH TIME
Mr. W. L. Hope, winner of the same race in 1927, flying the new Gipsy Moth and using Shell petrol, won the King's Cup race which finished at Brooklands on July 21st. Mr. Hope was against a notable field of 30 starters.

Messageries Maritimes.
(FRENCH MAIL STEAMERS).
Regular and fortnightly services from and to Marseilles.
THE QUINCY LINE TO LONDON
NEXT SAILINGS TO MARSAILLES:
s.s. Leonide de Lisle ... 29th September
s.s. General Veyron ... 14th October
s.s. Bernard de St. Pierre ... 29th October
s.s. "Explorateur Grandville" ... 13th November
s.s. Antoinette Robert Odet ... 29th November
NEXT ARRIVAL FROM MARSAILLES:
s.s. Bernard de St. Pierre ... 30th September
(Sailing same day for Zanzibar, Dar-es-Salaam, Madagascar Mauritius)
MESSAGERIES MARITIMES S.A. SHIP YARD
P.O. Box 16 MOMBASA. P.O. Box 28 NAIROBI

Johnny Wright's
Black and Red Seal
Whiskies
SCOTLAND'S OLDEST AND BEST
(Established—1790)
"Not a Headache in a Hoghead"
ASK FOR
X
Johnny Wright
AND SEE THAT YOU GET IT.

Holloways Gin
(LONDON DRY)
DOUBLE DISTILLED
PUREST AND BEST
NOTHING FINER
NOTHING PURER
NOTHING SUPERIOR
TWO MODELS.
A 1/2 to suit all hands (without Gold Band)
Sh. 17/60 posted Sh. 18/12 with clip attached.
Sh. 21/- posted Sh. 21/60
Standard Bottling Works
P.O. Box 500, NAIROBI.

Onoto the Pen
We have sound investments for sums from upwards. In this respect we claim to do better than anyone else.
S. JACOBS, Managing Director

OVERSEAS MAILS.

STEAMERS	FROM	Days of Week	Members
Elora	Il de St. Pierre	Sep. 29	20
Leticia de Lala	Durban	Oct. 2	20
Elora	South	Oct. 5	14
Karungu	Bombay	Oct. 8	14
E. Grandville	Marseilles	Oct. 11	14

Il de St. Pierre carries 800 bags.

STEAMERS	FOR	Made Close	Days of Week	Members
Madison (parcels only)	Marseilles	Sep. 29	20	
Leticia de Lala	Elora	Oct. 2	20	
Karungu	Bombay	Oct. 5	20	
E. Grandville	South	Oct. 8	20	
A. Wormann	Europe	Oct. 11	20	

UPLANDS NEWS!
BACON: Our process of cure results in the MOST DELICIOUS SHERRING, both in the GROWING and in the CONSUMER'S Larder. The quality, together with our consistency of quality, has made our bacon the most popular and carefully looked after registered brand.
Sausages: We have recently secured a unique BERTIE thereby our present and future output represents the BEST BERTIE that Kenya has ever produced. Our BERTIE is unique in that the UPLANDS CURE DRESS is applied to each breakfast table.

Chivers' Jam
Chivers' Olde English Marmalade
Chivers' Jellie
Sole Agents—R. O. HAMILTON

Keith Timber Co.
CEDAR AND POPE OF ALL SIZES
MACHINED TIMBER, A SPECIALTY
CEDAR FENCING POSTS, SEASONED
BLOCKS IN STOCK.
RAWS HAMMERED AND REPAIRED
BY AN EXPERT.

Expert Vulcanizing
HEINTZ
ELECTRIC WAY
IT'S DIFFERENT
ALL WORK GUARANTEED
K. McIvor's Garage
Phone 7, Sixth Avenue, P.O. Box

ESSJAY LIMITE
Theatre Royal Buildings
Box 634—Phone 377.

Financial and Property Agent
Mortgages specialised in,
Town Properties negotiated,
Partnerships arranged,
Investments advised on.
We have sound investments for sums from upwards. In this respect we claim to do better than anyone else.

DESTITUTE

Your first duty surely is to provide so that in the event of your death your dependents will not be left destitute.

Write us now and we will show you how this can be done to your best advantage.

Exceptionally low premiums. Liberal conditions. Excellent bonus results declared annually.

Example:
WHOLE LIFE POLICIES:
Annual premium for £1,000 (Age 30) ... £23 6 8
Annual BONUS on above ... £24 0 0
(increasing with age of policy)

National Mutual Life Association of Australasia Ltd.

(FUNDS £28,000,000.)
P.O. Box 884.
Cambrian Building, Government Road, Nairobi.

ROYAL VISIT

Correct Wear FOR Garden Party

OR :: Ball ::

FROM THE SPECIALISTS.

Maxwell NAIROBI
Bradley & Co.

ADMINISTRATION OF THE PORT OF TANGA.

"Devastating Social Policy."

TRADE'S CRITICISM.

(STANDARD CORRESPONDENT.)
London, Aug. 30.—Conditions at the port of Tanga were discussed yesterday at a meeting of the East African Section of the London Chamber of Commerce, Major to Humphrey Leggett, chairman of the section, presiding. Extracts from the report of the sub-committee of the Joint East African Board on the subject (which were noted at the time) were read.

Major C. L. Walsh advised that the situation of the Secretary of State for the Colonies be drawn to the very unsatisfactory state of affairs prevailing at the port that a local committee, with no official majority, be appointed to report on the improvements necessary. He said it was no exaggeration to say that Tanga was a good deal worse than a third-class Portuguese port in Africa. The result of Government administration of the port was evident enough, and the time had come when those who said the port was entirely devoid of any life-giving stimulus.

Mr. H. Forthwick seconded the resolution.

Mr. A. Wigmore suggested the proposal contained in the report of the sub-committee of the Joint East African Board that the Government should appoint a committee to report on the situation of the port.

They moved in the matter it was assumed that things would continue as they were. It must not be forgotten that the trade of the port was growing tremendously. The exports last year amounted to over one million pounds.

"Government Policy."

Major Walsh disagreed with the statement that things would continue as they were. It was part of the policy of the administration in Tanganyika to leave Tanga as a "charismatic port."

The Chairman suggested that a memorandum should be prepared by the meeting, dealing with the contents of the report of the East African Section of the London Chamber of Commerce, and the memorandum should be sent to the Secretary of State for the Colonies.

Notes on Rail.

The Chairman recalled the recent resolution passed by the Executive Committee of the Section that the Government should consider the possibility of increasing the rate on the Tanganyika railway to meet the needs of the industry, and urged the need of a very substantial reduction.

Colonel Franklin said the new railway rates came into force in Tanganyika on August 15, but up to the present he did not know the particulars.

The Chairman referred to the necessity of the establishment of a railway route to the inland districts of the East African country, and the fact that the railway industry might be influenced as in India and in this country.

Charges at Kilindi.

A resolution was carried on the proposition of Mr. Parkell directing attention to the unsatisfactory nature of the landing charges at Kilindi in matters relating to the Manchester Chamber had drawn high-value goods, and asking that wharfe and lighterage charges should be reduced.

The Chairman suggested that a memorandum should be prepared by the meeting, dealing with the contents of the report of the East African Section of the London Chamber of Commerce, and the memorandum should be sent to the Secretary of State for the Colonies.

A Town Plot.

A letter was submitted to the last meeting of the Town Planning and Public Health Committee of the Town Council from the Acting Commissioner for Local Government, Roads and Settlements regarding the Municipal Council's Authority's recommendation of a direct grant of a portion of land adjacent to the existing railway in cooperation in Plot 602, Government Road, to Mr. O. W. Carr, the owner of the plot, subject to the surrender of the existing title for Plot 602 and acceptance of a new title for the whole area.

Do not fail to visit The HUNTER'S PARADISE.

WHEN AT THE SHOW
Chas. A. Heyer & Co.,
have something **NEW**
TO SHOW YOU.
Come and See It!!!

Guns and Gadgets Galore.

CHAS. A. HEYER & Co.,
NAIROBI.
Established 1903.

HEADACHE RELIEVED



CARTER'S PAIN-EXPELLER
Trade Secret.
WARRLE, Wholesale Chemists.
Nairobi, Mombasa & Eldoret.

STAMP ALBUMS



Standard Stationery Stores
NAIROBI.

Your Efficiency
DEPENDS UPON ACCURATE
ENTERING VISION. GOOD
EYE-SIGHT IS THE FIRST
ESSENTIAL TO CLARITY OF
THOUGHT.

DOBBIES, LTD.
OPHTHALMIC OPTICIANS
Box 92. NAIROBI. Phone 90.

Your Own Home and Plot
FOR £500 DOWN
balance on mortgage at 6 per cent.
Newly Built House, with all modern conveniences.
Apply

R. O. PRESTON
Box 807, Nairobi, or Office, Westlands.

"55"



"65"

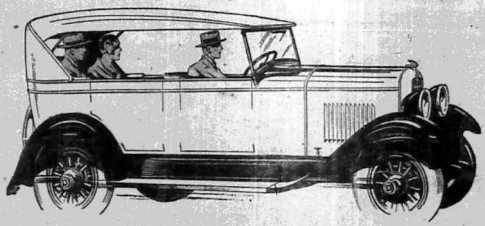
Touring
Box Body

£285
£265

£290
£275

Touring
Box Body

Six Cylinder Engine
Four Wheel Brakes
Oil Purifier
Air Filter



Automatic Screen Wiper
Rear View Mirror
Shock Absorbers
Bumper Bars

Carr, Lawson & Co., Ltd.

Nairobi Nakuru Eldoret Kampala.

Madame Rowe Et Cie LIMITED. ON VIEW TO-DAY A LARGE AND VARIED SELECTION OF French Model Gowns

Shgs. 125-00. Union Building Government Road. Box 215. Tel No. 259.

County Chemical Co. Ltd. Birmingham.

Motor car and Cycle Accessories of all kinds. Stocks available locally.

HEMICO The Name with a Reputation.



TRADE ENQUIRIES TO UNIVERSAL EXPORT Co., Ltd., Court Chambers, Box 540, Nairobi.

Advertisement for Weed Bumpers and Pender Guards, featuring an illustration of a car bumper and text describing the product's benefits.

Advertisement for Elliot's products, including Savlor Savories, Tyne Brand Herrings, Parsley Brand Salmon, Tip Trees Jams, Old English Marmalade, Tom-Tit Fruit Salad, Del-Monte Asparagus, and Finest French Prunes.

Advertisement for Hamilton & Coy. Bakers and Butchers, Westlands Breads, Cakes, and Biscuits, Hotels and Boarding Houses supplied at Wholesale Rates, Top Prices Paid for Prime Slaughter Stock.

The Motor Cyclist.

The 249 c. c. B. S. A. Cycle.

Its Care and Maintenance.

The immense popularity of the machine of the hour... The presence of dirt or oil on the bearing of the valve will cause excessive oil consumption...

Adjustment of Rear Wheel. I can not over stress how well looked after the back wheel of the B.S.A. and could find no means of moving it equidistantly on each side to adjust the rear chain.

Heavy Oil Consumption. Depressing the control for a second or two with the engine running...

Using engine valve and allows the discharge of the pump to be directed on to the primary chain. The presence of dirt or oil on the bearing of the valve will cause excessive oil consumption...

It is essential that the oil level in the tank be kept at the normal level of between 1.500 miles. Though the maker's recommendation is to use a slightly heavier oil...

It is essential to get home in this manner, but the springs are not then set at the requisite tension. The chain will be found to come loose and will be liable to slip...

It is essential to get home in this manner, but the springs are not then set at the requisite tension. The chain will be found to come loose and will be liable to slip...

It is essential to get home in this manner, but the springs are not then set at the requisite tension. The chain will be found to come loose and will be liable to slip...

It is essential to get home in this manner, but the springs are not then set at the requisite tension. The chain will be found to come loose and will be liable to slip...

It is essential to get home in this manner, but the springs are not then set at the requisite tension. The chain will be found to come loose and will be liable to slip...

It is essential to get home in this manner, but the springs are not then set at the requisite tension. The chain will be found to come loose and will be liable to slip...

It is essential to get home in this manner, but the springs are not then set at the requisite tension. The chain will be found to come loose and will be liable to slip...

A Friend in need is A Friend indeed.

An ally will be doing you a good turn if he lends you a tin of



One good turn It needs no other!

NOTICE

THE VICTORIA NYANZA SUGAR COMPANY LIMITED have arranged with the undermentioned

Stores to retail their No. 1 White Crystal Sugar at the following prices:-

Table with 2 columns: Per pound and Per packet of 50 lbs. Prices listed for Nairobi, Nakuru, Eldoret, and Ruben Brothers.

NAIROBI.

- S. Jacobs, Limited. R. B. Duncan, Nairobi House. M. S. Elliot & Company. Blacklads & Brown. Kanji Naranji.

NAKURU.

- S. Jacobs, Limited. Ibrahim Karimbur.

ELDORET.

- S. Jacobs, Limited. Wm Douglas.

RONGAL.

- Ruben Brothers.

H-O.

Quick Cooking Oats Makes Porridge in 2 to 3 minutes.

Obtainable at Beliram Parimal & Co (Established 1900). Corner Swamp Road and Government Road, Phone 30, NAIROBI P.O. Box 59. Also P.O. Box 47, MOMBASA.

If you want to make sure that your name or firm is included in the New Directory 1923 fill in this form.

Name Address

Name Address

Post to: EDITOR, RED BOOK, 1920, P.O. Box 905.

Advertisement for Long John's Jacob's Biscuits, featuring an illustration of a man carrying a large sack and text describing the biscuits.

Jacob's Biscuits ARE THE BEST. We do not ask you to take our word for this, we have booked a stand at the Agricultural Show which will be devoted exclusively to our products.

Advertisement for Remington Firearms Ammunition Cutlery, featuring an illustration of a woman with a rifle and text describing the products.

Trans Nzoia KIRKWOOD & Co., Kitale. Maize Dealers, Importers and Exporters. All Farming Requirements and Building Materials Stocked.

Kyambu Sports Club. The Annual General Meeting of the above Club will be held in the Club House, Saturday, 26th inst. at 6 p.m.

WHERE THE ROYAL VISITORS WILL STAY IN NAIROBI.

Some of the Main Features of the New Government House.

PRINCES SUITES.

Beautiful and Spacious Ballroom Opening on to a Large Loggia.

One of the most beautiful buildings in Kenya, and indeed in the whole of East Africa, is Government House, Nairobi, where, during part of their holiday, the Royal Highnesses, the Prince of Wales and the Duke of Gloucester will be the guests of His Excellency the Governor and the Honourable Lady Grigg.

Special suites have been prepared for the Prince and the Duke, both of them commanding beautiful views of the grounds and surrounding country.

CLEVER WORKMANSHIP.

["STANDARD" SPECIAL.]

Whilst the Prince of Wales is staying at Government House in Nairobi, he will be the guest of His Majesty the King, whilst the Duke of Gloucester will be the guest of Her Majesty the Queen. The main part of the building is a picture of the hand which built it, and the workmanship is of a high order. The building is a masterpiece of modern architecture, and the workmanship is of a high order. The building is a masterpiece of modern architecture, and the workmanship is of a high order.

THE BALL ROOM.

The most recent addition to Government House is the ball-room, which is a masterpiece of modern architecture, and the workmanship is of a high order.

The ball-room is a masterpiece of modern architecture, and the workmanship is of a high order. The ball-room is a masterpiece of modern architecture, and the workmanship is of a high order. The ball-room is a masterpiece of modern architecture, and the workmanship is of a high order.

THE BALL ROOM.

The most recent addition to Government House is the ball-room, which is a masterpiece of modern architecture, and the workmanship is of a high order.

The ball-room is a masterpiece of modern architecture, and the workmanship is of a high order. The ball-room is a masterpiece of modern architecture, and the workmanship is of a high order. The ball-room is a masterpiece of modern architecture, and the workmanship is of a high order.

THE BALL ROOM.

The most recent addition to Government House is the ball-room, which is a masterpiece of modern architecture, and the workmanship is of a high order.

The ball-room is a masterpiece of modern architecture, and the workmanship is of a high order. The ball-room is a masterpiece of modern architecture, and the workmanship is of a high order. The ball-room is a masterpiece of modern architecture, and the workmanship is of a high order.

THE BALL ROOM.

The most recent addition to Government House is the ball-room, which is a masterpiece of modern architecture, and the workmanship is of a high order.

The ball-room is a masterpiece of modern architecture, and the workmanship is of a high order. The ball-room is a masterpiece of modern architecture, and the workmanship is of a high order. The ball-room is a masterpiece of modern architecture, and the workmanship is of a high order.

THE BALL ROOM.

The most recent addition to Government House is the ball-room, which is a masterpiece of modern architecture, and the workmanship is of a high order.

The ball-room is a masterpiece of modern architecture, and the workmanship is of a high order. The ball-room is a masterpiece of modern architecture, and the workmanship is of a high order. The ball-room is a masterpiece of modern architecture, and the workmanship is of a high order.

THE BALL ROOM.

The most recent addition to Government House is the ball-room, which is a masterpiece of modern architecture, and the workmanship is of a high order.

The ball-room is a masterpiece of modern architecture, and the workmanship is of a high order. The ball-room is a masterpiece of modern architecture, and the workmanship is of a high order. The ball-room is a masterpiece of modern architecture, and the workmanship is of a high order.

THE BALL ROOM.

The most recent addition to Government House is the ball-room, which is a masterpiece of modern architecture, and the workmanship is of a high order.

The ball-room is a masterpiece of modern architecture, and the workmanship is of a high order. The ball-room is a masterpiece of modern architecture, and the workmanship is of a high order. The ball-room is a masterpiece of modern architecture, and the workmanship is of a high order.

THE BALL ROOM.

The most recent addition to Government House is the ball-room, which is a masterpiece of modern architecture, and the workmanship is of a high order.

The ball-room is a masterpiece of modern architecture, and the workmanship is of a high order. The ball-room is a masterpiece of modern architecture, and the workmanship is of a high order. The ball-room is a masterpiece of modern architecture, and the workmanship is of a high order.

THE BALL ROOM.

The most recent addition to Government House is the ball-room, which is a masterpiece of modern architecture, and the workmanship is of a high order.

SERIOUS FLOODS IN SOUTH AFRICA.

Collapse of Houses on an Island.

ATTEMPTS TO SET FIRE TO A SHIP.

Two Victims.

PERPETRATOR'S AGENCY.

Special Court.

ATTEMPTS TO SET FIRE TO A SHIP.

Two Victims.

PERPETRATOR'S AGENCY.

Special Court.

ATTEMPTS TO SET FIRE TO A SHIP.

Two Victims.

PERPETRATOR'S AGENCY.

Special Court.

ATTEMPTS TO SET FIRE TO A SHIP.

Two Victims.

PERPETRATOR'S AGENCY.

Special Court.

ATTEMPTS TO SET FIRE TO A SHIP.

Two Victims.

PERPETRATOR'S AGENCY.

Special Court.

ATTEMPTS TO SET FIRE TO A SHIP.

Two Victims.

PERPETRATOR'S AGENCY.

Special Court.

ATTEMPTS TO SET FIRE TO A SHIP.

Two Victims.

PERPETRATOR'S AGENCY.

Special Court.

ATTEMPTS TO SET FIRE TO A SHIP.

Two Victims.

PERPETRATOR'S AGENCY.

Special Court.

ATTEMPTS TO SET FIRE TO A SHIP.

Two Victims.

PERPETRATOR'S AGENCY.

Special Court.

ATTEMPTS TO SET FIRE TO A SHIP.

Two Victims.

PERPETRATOR'S AGENCY.

Special Court.

ATTEMPTS TO SET FIRE TO A SHIP.

Two Victims.

PERPETRATOR'S AGENCY.

Special Court.

ATTEMPTS TO SET FIRE TO A SHIP.

Two Victims.

PERPETRATOR'S AGENCY.

Special Court.

ATTEMPTS TO SET FIRE TO A SHIP.

Two Victims.

PERPETRATOR'S AGENCY.

Special Court.

ATTEMPTS TO SET FIRE TO A SHIP.

Two Victims.

PERPETRATOR'S AGENCY.

Special Court.

ATTEMPTS TO SET FIRE TO A SHIP.

Two Victims.

COAST NATIVES & ARABS ARRIVE IN NAIROBI.

"On the Day"

TO TAKE PART IN THE ROYAL RECEPTION.

Many Types.

["STANDARD" SPECIAL.]

There was some of the first day at Nairobi Station yesterday, and 800 Arabs and natives arrived from the coast to take part in the Royal Reception by special train from the Coast to Nairobi. The train arrived at Nairobi at 10.30 a.m. and was met by the Prince of Wales and the Duke of Gloucester.

["STANDARD" SPECIAL.]

There was some of the first day at Nairobi Station yesterday, and 800 Arabs and natives arrived from the coast to take part in the Royal Reception by special train from the Coast to Nairobi. The train arrived at Nairobi at 10.30 a.m. and was met by the Prince of Wales and the Duke of Gloucester.

["STANDARD" SPECIAL.]

There was some of the first day at Nairobi Station yesterday, and 800 Arabs and natives arrived from the coast to take part in the Royal Reception by special train from the Coast to Nairobi. The train arrived at Nairobi at 10.30 a.m. and was met by the Prince of Wales and the Duke of Gloucester.

["STANDARD" SPECIAL.]

There was some of the first day at Nairobi Station yesterday, and 800 Arabs and natives arrived from the coast to take part in the Royal Reception by special train from the Coast to Nairobi. The train arrived at Nairobi at 10.30 a.m. and was met by the Prince of Wales and the Duke of Gloucester.

["STANDARD" SPECIAL.]

There was some of the first day at Nairobi Station yesterday, and 800 Arabs and natives arrived from the coast to take part in the Royal Reception by special train from the Coast to Nairobi. The train arrived at Nairobi at 10.30 a.m. and was met by the Prince of Wales and the Duke of Gloucester.

["STANDARD" SPECIAL.]

There was some of the first day at Nairobi Station yesterday, and 800 Arabs and natives arrived from the coast to take part in the Royal Reception by special train from the Coast to Nairobi. The train arrived at Nairobi at 10.30 a.m. and was met by the Prince of Wales and the Duke of Gloucester.

["STANDARD" SPECIAL.]

There was some of the first day at Nairobi Station yesterday, and 800 Arabs and natives arrived from the coast to take part in the Royal Reception by special train from the Coast to Nairobi. The train arrived at Nairobi at 10.30 a.m. and was met by the Prince of Wales and the Duke of Gloucester.

["STANDARD" SPECIAL.]

There was some of the first day at Nairobi Station yesterday, and 800 Arabs and natives arrived from the coast to take part in the Royal Reception by special train from the Coast to Nairobi. The train arrived at Nairobi at 10.30 a.m. and was met by the Prince of Wales and the Duke of Gloucester.

["STANDARD" SPECIAL.]

There was some of the first day at Nairobi Station yesterday, and 800 Arabs and natives arrived from the coast to take part in the Royal Reception by special train from the Coast to Nairobi. The train arrived at Nairobi at 10.30 a.m. and was met by the Prince of Wales and the Duke of Gloucester.

["STANDARD" SPECIAL.]

There was some of the first day at Nairobi Station yesterday, and 800 Arabs and natives arrived from the coast to take part in the Royal Reception by special train from the Coast to Nairobi. The train arrived at Nairobi at 10.30 a.m. and was met by the Prince of Wales and the Duke of Gloucester.

["STANDARD" SPECIAL.]

There was some of the first day at Nairobi Station yesterday, and 800 Arabs and natives arrived from the coast to take part in the Royal Reception by special train from the Coast to Nairobi. The train arrived at Nairobi at 10.30 a.m. and was met by the Prince of Wales and the Duke of Gloucester.

["STANDARD" SPECIAL.]

There was some of the first day at Nairobi Station yesterday, and 800 Arabs and natives arrived from the coast to take part in the Royal Reception by special train from the Coast to Nairobi. The train arrived at Nairobi at 10.30 a.m. and was met by the Prince of Wales and the Duke of Gloucester.

["STANDARD" SPECIAL.]

There was some of the first day at Nairobi Station yesterday, and 800 Arabs and natives arrived from the coast to take part in the Royal Reception by special train from the Coast to Nairobi. The train arrived at Nairobi at 10.30 a.m. and was met by the Prince of Wales and the Duke of Gloucester.

["STANDARD" SPECIAL.]

There was some of the first day at Nairobi Station yesterday, and 800 Arabs and natives arrived from the coast to take part in the Royal Reception by special train from the Coast to Nairobi. The train arrived at Nairobi at 10.30 a.m. and was met by the Prince of Wales and the Duke of Gloucester.

["STANDARD" SPECIAL.]

There was some of the first day at Nairobi Station yesterday, and 800 Arabs and natives arrived from the coast to take part in the Royal Reception by special train from the Coast to Nairobi. The train arrived at Nairobi at 10.30 a.m. and was met by the Prince of Wales and the Duke of Gloucester.

["STANDARD" SPECIAL.]

There was some of the first day at Nairobi Station yesterday, and 800 Arabs and natives arrived from the coast to take part in the Royal Reception by special train from the Coast to Nairobi. The train arrived at Nairobi at 10.30 a.m. and was met by the Prince of Wales and the Duke of Gloucester.

["STANDARD" SPECIAL.]

There was some of the first day at Nairobi Station yesterday, and 800 Arabs and natives arrived from the coast to take part in the Royal Reception by special train from the Coast to Nairobi. The train arrived at Nairobi at 10.30 a.m. and was met by the Prince of Wales and the Duke of Gloucester.

["STANDARD" SPECIAL.]

There was some of the first day at Nairobi Station yesterday, and 800 Arabs and natives arrived from the coast to take part in the Royal Reception by special train from the Coast to Nairobi. The train arrived at Nairobi at 10.30 a.m. and was met by the Prince of Wales and the Duke of Gloucester.

["STANDARD" SPECIAL.]

There was some of the first day at Nairobi Station yesterday, and 800 Arabs and natives arrived from the coast to take part in the Royal Reception by special train from the Coast to Nairobi. The train arrived at Nairobi at 10.30 a.m. and was met by the Prince of Wales and the Duke of Gloucester.

["STANDARD" SPECIAL.]

There was some of the first day at Nairobi Station yesterday, and 800 Arabs and natives arrived from the coast to take part in the Royal Reception by special train from the Coast to Nairobi. The train arrived at Nairobi at 10.30 a.m. and was met by the Prince of Wales and the Duke of Gloucester.

["STANDARD" SPECIAL.]

There was some of the first day at Nairobi Station yesterday, and 800 Arabs and natives arrived from the coast to take part in the Royal Reception by special train from the Coast to Nairobi. The train arrived at Nairobi at 10.30 a.m. and was met by the Prince of Wales and the Duke of Gloucester.

["STANDARD" SPECIAL.]

There was some of the first day at Nairobi Station yesterday, and 800 Arabs and natives arrived from the coast to take part in the Royal Reception by special train from the Coast to Nairobi. The train arrived at Nairobi at 10.30 a.m. and was met by the Prince of Wales and the Duke of Gloucester.

["STANDARD" SPECIAL.]

There was some of the first day at Nairobi Station yesterday, and 800 Arabs and natives arrived from the coast to take part in the Royal Reception by special train from the Coast to Nairobi. The train arrived at Nairobi at 10.30 a.m. and was met by the Prince of Wales and the Duke of Gloucester.

["STANDARD" SPECIAL.]

There was some of the first day at Nairobi Station yesterday, and 800 Arabs and natives arrived from the coast to take part in the Royal Reception by special train from the Coast to Nairobi. The train arrived at Nairobi at 10.30 a.m. and was met by the Prince of Wales and the Duke of Gloucester.

["STANDARD" SPECIAL.]

There was some of the first day at Nairobi Station yesterday, and 800 Arabs and natives arrived from the coast to take part in the Royal Reception by special train from the Coast to Nairobi. The train arrived at Nairobi at 10.30 a.m. and was met by the Prince of Wales and the Duke of Gloucester.

["STANDARD" SPECIAL.]

There was some of the first day at Nairobi Station yesterday, and 800 Arabs and natives arrived from the coast to take part in the Royal Reception by special train from the Coast to Nairobi. The train arrived at Nairobi at 10.30 a.m. and was met by the Prince of Wales and the Duke of Gloucester.

["STANDARD" SPECIAL.]

There was some of the first day at Nairobi Station yesterday, and 800 Arabs and natives arrived from the coast to take part in the Royal Reception by special train from the Coast to Nairobi. The train arrived at Nairobi at 10.30 a.m. and was met by the Prince of Wales and the Duke of Gloucester.

["STANDARD" SPECIAL.]

There was some of the first day at Nairobi Station yesterday, and 800 Arabs and natives arrived from the coast to take part in the Royal Reception by special train from the Coast to Nairobi. The train arrived at Nairobi at 10.30 a.m. and was met by the Prince of Wales and the Duke of Gloucester.

LYRIC HALL.

TO-NIGHT AT 8.45.

Anita Stewart

IN THE LODGE IN THE WILDERNESS

TOPICAL BUDGET Showing all the Latest News including TENNIS FINALS.

Commencing Sat. Sept. 29th

The Super War film **Soul of France**

PLANS NOW OPEN FOR BOOKING.

Just Arrived a Big Consignment

OF THE LATEST EVENING SHOES

IN THE NEW SHALIMA EASTERN FABRIC

ROBYN RAY'S TOILET.

Point The Heels and Subtle Shades All Short Cotton 14/60 12/ 8 to 10 1/2

Today's Trains.

Trains are due to leave Nairobi today for the under mentioned destinations at the times stated—

Mombasa	12.30 p.m.
Nairobi	12.30 p.m.
El Dorado	1.00 p.m.
Thika	1.00 p.m.
Nairobi	1.00 p.m.
Mombasa	1.00 p.m.

A wonderful Selection of Afternoon Shoes for the Garden Party.

Eadies The Fashion Footgear People

NAIROBI.

PRINCES' SEASON AT THE THEATRE ROYAL

MATINEE: This Saturday 9 p.m. Next Week Two Performances Nightly.

Pictures 9.15 p.m. and Musical Comedy at 8.45 p.m.

Theatre Season Opens TO-NIGHT

WITH **"MERCENARY MARY"**

MUSICAL COMEDY, ALSO SHOWING FOR ONE MATINEE To-morrow, Saturday

AND **"COUNTRY GRIL"**

Opens To-morrow Night

EARLY BOOKING ESSENTIAL FOR GOOD SEATS.

K. McIvors Garage.

We Repair all Makes of Cars and Trucks.

WE DO IT TO-DAY—NOT TO-MORROW.

We can give prompt delivery of Armature Rewinds and Battery repairs. Every description of Automobile Electrical Work undertaken.

Vulcanizing by the Latest Electrical Process.

Wireless:

We can supply from Stock the following: Three Valve Selectors Sets.

B.S.A. "Kone Loud Speakers," 15" and 90".

Lecanhe H.T. Wet Batteries on 48 Volts Units.

Selector Vox Gramophone Pick Ups.

ATTEMPTS TO SET FIRE TO A SHIP.

Two Victims.

PERPETRATOR'S AGENCY.

Special Court.

ATTEMPTS TO SET FIRE TO A SHIP.

Two Victims.

PERPETRATOR'S AGENCY.

Special Court.

ATTEMPTS TO SET FIRE TO A SHIP.

Two Victims.

PERPETRATOR'S AGENCY.

Special Court.

ATTEMPTS TO SET FIRE TO A SHIP.

Two Victims.

PERPETRATOR'S AGENCY.

Special Court.

ATTEMPTS TO SET FIRE TO A SHIP.

Two Victims.

PERPETRATOR'S AGENCY.

Special Court.

ATTEMPTS TO SET FIRE TO A SHIP.

Two Victims.

PERPETRATOR'S AGENCY.

Special Court.

ATTEMPTS TO SET FIRE TO A SHIP.

Two Victims.

PERPETRATOR'S AGENCY.

Special Court.

ATTEMPTS TO SET FIRE TO A SHIP.

Two Victims.

PERPETRATOR'S AGENCY.

Special Court.

ATTEMPTS TO SET FIRE TO A SHIP.

Two Victims.

PERPETRATOR'S AGENCY.

Special Court.

ATTEMPTS TO SET FIRE TO A SHIP.

Two Victims.

PERPETRATOR'S AGENCY.

Special Court.

ATTEMPTS TO SET FIRE TO A SHIP.

Two Victims.

PERPETRATOR'S AGENCY.

Special Court.

ATTEMPTS TO SET FIRE TO A SHIP.

Two Victims.

PERPETRATOR'S AGENCY.

Special Court.

ATTEMPTS TO SET FIRE TO A SHIP.

Two Victims.

ATTEMPTS TO SET FIRE TO A SHIP.

Two Victims.

PERPETRATOR'S AGENCY.

Special Court.

ATTEMPTS TO SET FIRE TO A SHIP.

Two Victims.

PERPETRATOR'S AGENCY.

Special Court.

ATTEMPTS TO SET FIRE TO A SHIP.

Two Victims.

PERPETRATOR'S AGENCY.

Special Court.

ATTEMPTS TO SET FIRE TO A SHIP.

Two Victims.

PERPETRATOR'S AGENCY.

Special Court.

ATTEMPTS TO SET FIRE TO A SHIP.

Two Victims.

PERPETRATOR'S AGENCY.

Special Court.

ATTEMPTS TO SET FIRE TO A SHIP.

Two Victims.

PERPETRATOR'S AGENCY.

Special Court.

ATTEMPTS TO SET FIRE TO A SHIP.

Two Victims.

PERPETRATOR'S AGENCY.

Special Court.

ATTEMPTS TO SET FIRE TO A SHIP.

Two Victims.

PERPETRATOR'S AGENCY.

Special Court.

ATTEMPTS TO SET FIRE TO A SHIP.

Two Victims.

PERPETRATOR'S AGENCY.

Special Court.

ATTEMPTS TO SET FIRE TO A SHIP.

Two Victims.

PERPETRATOR'S AGENCY.

Special Court.

ATTEMPTS TO SET FIRE TO A SHIP.

Two Victims.

PERPETRATOR'S AGENCY.

Special Court.

ATTEMPTS TO SET FIRE TO A SHIP.

Two Victims.

PERPETRATOR'S AGENCY.

Special Court.

ATTEMPTS TO SET FIRE TO A SHIP.

Two Victims.

ATTEMPTS TO SET FIRE TO A SHIP.

Two Victims.

PERPETRATOR'S AGENCY.

Special Court.

ATTEMPTS TO SET FIRE TO A SHIP.

Two Victims.

PERPETRATOR'S AGENCY.

Special Court.

ATTEMPTS TO SET FIRE TO A SHIP.

Two Victims.

PERPETRATOR'S AGENCY.

Special Court.

ATTEMPTS TO SET FIRE TO A SHIP.

Two Victims.

PERPETRATOR'S AGENCY.

Special Court.

ATTEMPTS TO SET FIRE TO A SHIP.

Two Victims.

PERPETRATOR'S AGENCY.

Special Court.

ATTEMPTS TO SET FIRE TO A SHIP.

Two Victims.

PERPETRATOR'S AGENCY.

Special Court.

ATTEMPTS TO SET FIRE TO A SHIP.

Two Victims.

PERPETRATOR'S AGENCY.

Special Court.

ATTEMPTS TO SET FIRE TO A SHIP.

Two Victims.

PERPETRATOR'S AGENCY.

Special Court.

ATTEMPTS TO SET FIRE TO A SHIP.

Two Victims.

PERPETRATOR'S AGENCY.

Special Court.

ATTEMPTS TO SET FIRE TO A SHIP.

Two Victims.

PERPETRATOR'S AGENCY.

Special Court.

ATTEMPTS TO SET FIRE TO A SHIP.

Two Victims.

SAYS A MEN'S CLOTHES EXPERT:



"Half the secret of well-dressed men is a well-fitting dress shirt underneath..."

Consulate Dress Shirts are the latest variety of the latest styles...

Consulate DRESS SHIRTS



Lady Grigg's Nursing Association.

Your Insurance COSTS ONE GUINEA A YEAR. The benefits of Membership are: 1. To save three guineas a week...

THE SECRETARY, P.O. Box 888, Nairobi.



Posts and Telegraph Department.

NOTICE

POSTAGE DUE LABELS.

On and from the 1st October 1928 Postage Due Labels showing the charges due will be affixed to all correspondence and packets...

Members of the public are accordingly asked to refer to pay any postal charges or correspondence the 1st October 1928 using Postage Due Labels...

T. FITZGERALD, POSTMASTER GENERAL.

Colony and Protectorates of Kenya and Uganda Protectorate.

New Publication.

"Chronicles of Kenya."

By

A. DAVIS and H. G. ROBERTSON.

Major-General Sir Edward Northey, C.M.G., etc., in the course of a foreword to the book, says:—

"I am satisfied that the object of the authors of these bold and caustic sketches is a worthy one, and of good intention; they reflect, I think, actual conditions and settlers' opinions, some humorously put, others in more serious vein."

Price Sh. 8.50.

Orders are shortly arriving. Copies may be ordered from the EAST AFRICAN STANDARD, THE MEMBERS TIMES, & J. MOORE, and all bookstalls throughout East Africa.

Publisher, Cecil Palmer, Chandos St., London, W.

ELDRORT RACES.

(Continued from page 7).

Mr. J. B. Fisher's "Buckskin" - W. A. J. Spencer's "Clancy" - Mr. J. B. Fisher's "Buckskin" - W. A. J. Spencer's "Clancy" - Mr. J. B. Fisher's "Buckskin" - W. A. J. Spencer's "Clancy"...

Mr. M. Markham's "King's Guard" - B.C.B.R. 5 years - Mr. M. Markham's "King's Guard" - B.C.B.R. 5 years - Mr. M. Markham's "King's Guard" - B.C.B.R. 5 years...

NOTICE.

Notice is hereby given that the partnership heretofore existing between Thomas Crawford Pearson and John Richard Warburton, both of Njoro, carrying on business in Kenya Colony under the name and style of Thomas Crawford Pearson & Warburton, has been dissolved as from the 24th day of September 1928.

THE NAKURU TRUST CO., LTD.

before the 18th October, 1928. P.O. Box 44, NAKURU. Dated this 24th day of September, 1928. T. O. PEARSON, For J. R. Warburton, by his Attorney, T. C. Pearson.

Monsieur Florens French Hair-Dresser.

Has the honor to inform his clients that he has secured the assistance of Monsieur Thomas, who has obtained the prize diploma for hair cutting and waving awarded by the International Hair-Dressing Competition of Paris, 1927. Specialties for managen, dyeing, decoration. New treatments for all hair complaints. Moderate terms.

Good Plumbing Means Good Health.

FOR SAFE SANITARY WORK

Thornton & Turpin

Regis. Plumbers and Sanitary Engineers, CITY HOUSE, NAIROBI. Phone 196. P.O. Box 660.

GOVERNMENT CONTRACTORS, WORK UNDERTAKEN IN ANY PART OF KENYA AND UGANDA. AT AND MOMBASA.

W BATH & DAY KAYS YOU FIT EVERY WAY SEE OUR STOCKS.

East African Horticultural and Agricultural Show

Nairobi, October 2 and 3, 1928.

On the above dates, the following trains, which will stop at the Norfolk Level Crossing and Westlands Ramp to pick up or set down passengers, will run between Nairobi and the Show Grounds Siding:—

Table with columns: Nairobi, dep. 10.00, 11.30, 12.30, 1.15, 2.45, 4.00, 6.15. Row Ground, arr. 10.30, 12.00, 1.00, 1.45, 3.15, 4.30, 6.45.

Return tickets will be issued at Nairobi Station to the Show Ground Siding at the following rates:— 2nd Class Return Shs. 1/-. 3rd Class Return—cents 50.

Tickets will be available on day of issue only. Single tickets will not be issued.

G. D. RHODES, Acting General Manager. General Manager's Office. Nairobi, September 1928.

Souza Junior & Dias

Established in 1880. The Pioneer and Leading Stores

Government Road, Nairobi.

Transact your purchases where facilities are BEST. Cut down the Bill. Buy your requirements from us. In fact everything for yourself and home. At Lowest Prices.

We stock Fresh Supplies Only. A Trial Order is Solicited. P.O. Box 641.

WHERE TO STAY Town & Co

The Salisbury Hotel

Nairobi. Phone 166. P.O. Box 609.

THE HILL PRIVATE HOTEL.

VALLEY ROAD. All Modern Conveniences, 20 miles, Rudolph, Garoga, Motor Service and Complete House and site, will be appointed by those seeking a quiet, comfortable and refined home. Phone 250. P.O. Box 788.

BRACKENHURST HOTEL

HUDSON CANE.

CLAIRMONT Residential Hotel.

One of Kenya's best hotels within 7 miles from Nairobi by good motor road. Excellent Cuisine and choicest wines stocked under supervision of the Proprietors. P.O. Box 625. Nairobi. Telegrams: Clairmont.

THE Nakuru Hotel

The NAKURU HOTEL is the largest equipped hotel in the Highlands country and is replete with every comfort and convenience. Situated in the commercial, business and touring center for the most important farming districts of Kenya. 30 single and double Bedrooms—British Installation—Hot and Cold water at Best Vendors under skilled management and inside lounge, reading and writing and SEPARATE COTTAGE QUARTERS. Laundry and Bakery. Ample motor and horse stables. Telephone: "HOLA, NAKURU." Telegrams: "HOLA, NAKURU."

OAKLEIGH PRIVATE HOTEL

UNDER PERSONAL SUPERVISION MRS. H. BARRETT, Manageress. Phone 180. NAIROBI. P.O. Box 180.

The Nairvasha Hotel

Nairvasha. Every Convenience and Comfort. Special Weekly and Monthly Terms.

THE White Rhino Hotel

NYERI. FOR BREAKFAST, LUNCHEONS, TEA, DINNERS AND ACCOMMODATION. Situated on Main Road. Grams—"Whitrhino."

Stag's Head Hotel, Nakuru

FOR Breakfast, Lunches, Tea, Dinners and Accommodation. Situated on Main Road. Hotel boys meet all trains. J. G. HEATH.

BELL INN

(On Main Road) NAIROBI. BREAKFAST: 5/6. LUNCH: 5/6. DINNER: 5/6. Dinner, Bed and Breakfast: 12/6. Full Day: 25/6. Free Bed, Drinks, Lunch and Bed. Special tariff for week-end. CLEANLINESS and SERVICE. PATRON GUARANTEED.

High View Hotel.

LIMURU (O. Route). Healthy Situation. Ideal for Holidays. Lunches, Tea, Tennis, etc., Terms Moderate.

AUCTION SALES



Diary of Auction Sales.

Saturday, 29th September, at the Kenya Grain Mills, 10 a.m. Fire Salvage Sale.
 Monday, 1st October, at our Salerooms, at 10 a.m. Sale of Catalogue of Furniture and Effects in the Estate of the late Major R. Nicholson; also selection of Empire Mahogany Furniture.
 Thursday, 4th October, at the Lyric Hall, 10 a.m. Sale of Wines and Spirits.
 Friday, 5th October, at our Salerooms, 10 a.m. "Chevrolet" and "Bean" Touring Cars, Tractors, Baling Wire, and Agricultural Implements.
 Monday, 8th October, at our Salerooms, at 10 a.m. Catalogue Sale of Furniture and Effects.
 (For full details of all Sales see "The East African Standard" Daily Editions.)

MUTER and OSWALD, Ltd., Auctioneers, NAIROBI.



Fire Salvage

On behalf of the parties concerned, we shall sell, by Public Auction, Without Reserve, at the Kenya Grain Mills, on

Saturday, 29th, Sept. at 10 a.m.

CORRUGATED IRON. CONCRETE TANK SHABBING PULLEYS. PLUMBER BLOCKS. GEARING. BELTING. Etc., Etc., Etc.

MUTER and OSWALD, Ltd., Auctioneers, NAIROBI.



Important Auction Sale of Good Furniture and Effects.

Duly instructed by the Attorney for the Executor L.M. Shangri, consisting of large Table; 8 chairs (2 with carver and 6 ordinary) with upholstered seats; backs, and SIDEBOARD, all in excellent condition. LARGE DESK in Mahogany. DINNER, TEA and COFFEE SERVICES. CHINA. GLASSWARE. PICTURES. EASY CHAIRS. CHESTERFIELD SUITE of three pieces; well sprung. SINGLE BEDSTEADS with HEAVY MATTRESSES. INDIAN CARVED TABLES, and OAK CASSED PIANO by Army and Navy Stores together with a variety of other effects.

Monday, October 1st.

THE ENTIRE FURNISHINGS and EFFECTS from the residence of the late Major Nicholson (which effects have been removed to our salerooms, for convenience of sale) comprising

THE EXCELLENT DINING ROOM SUITE in Mahogany, consisting of large Table; 8 chairs (2 with carver and 6 ordinary) with upholstered seats; backs, and SIDEBOARD, all in excellent condition. LARGE DESK in Mahogany. DINNER, TEA and COFFEE SERVICES. CHINA. GLASSWARE. PICTURES. EASY CHAIRS. CHESTERFIELD SUITE of three pieces; well sprung. SINGLE BEDSTEADS with HEAVY MATTRESSES. INDIAN CARVED TABLES, and OAK CASSED PIANO by Army and Navy Stores together with a variety of other effects.

On behalf of other clients—
 A SELECTION of GOOD IMPORTED MAHOGANY FURNITURE including LARGE WRITING BUREAU, DRESSING TABLE, OLD TALL BOY, CASKET, STAND, MINATURE CHEST of DRAWERS, OCCASIONAL TABLE, folding top; PORTABLE WASHSTAND; BOLDUC BUREAU with fitted leather stationary racks and clock; THREE INDIAN CARPETS, sizes 12 x 10; 12 x 9; 11 x 9. WALNUT WARDROBE, size 12 x 10; WALNUT DRESSING TABLE. Also ONE ANTIQUE OAK CHEST of DRAWERS. A GILLIAN PIANO PLAYER (for attachment to any piano) with about 200 records, indexed, all in good order and condition. CHESTERFIELD SUITE well sprung; castors; in Cretonne covers and TAPESTRY.

Note—Opportunities to purchase the class of furniture offered at this sale are limited, and the auctioneers draw the attention of intending purchasers to this sale. All goods will be on view from Friday, 29th September, when catalogues will be available.

MUTER and OSWALD, Ltd., Auctioneers, NAIROBI.



"Chevrolet" and "Bean" Touring Cars.

Duly instructed, we shall sell, by Public Auction, at our Salerooms, Mutos Building, Hardinge Street, on

Monday, 1st Oct. at 10 a.m. precisely

"CHEVROLET" TOURING CAR (Without Reserve), 12 h.p. "BEAN" TOURING CAR (subject to Low Reserve).
 "GRAHAM BROTHERS" 14 ton TRUCK in good running order; registered number B.7040; good starter; light; good tyres. (Without Reserve). These cars may be inspected on Saturday morning and prior to Sale.

MUTER and OSWALD, Ltd., Auctioneers, NAIROBI.



Sale of Special interest to Clubs, Hotels, Merchants and others.

WINES, SPIRITS and PROVISIONS to be sold ABSOLUTELY WITHOUT RESERVE.

Duly instructed by A. L. Block, Esq., who is liquidating a stock of goods from a Bankrupt Estate, we shall sell by PUBLIC AUCTION ABSOLUTELY WITHOUT RESERVE on

on Thursday 4th October at 10 a.m.

at the Lyric Restaurant, Hardinge Street, Nairobi, about TWO HUNDRED CASES of WINES and SPIRITS comprising CHAMPAGNE, WHISKYS, IMPORTED BEERS, GUINNESS STOUT (quarts, pints and sips), CHianti (quarts), CHARLES MAISON, SANDERMAN'S DOUTON, THREE DIAMOND and OLD TAWNY PORTS, SHERRY, CLARIF (quarts and pints) SPANISH WINES, SPARKLING MUSCATELS, BURGUNDIES and other wines, also all in original cases, also TWO CASES EPSOM SALT, KANGI POLISH, SARDINES GLAXO OVO, SAUCES, TOBACCO, and one length 1" Manila Rope.

MUTER and OSWALD, Ltd., Auctioneers, Nairobi.



Garden Tractors, Agricultural Machinery, and Baling Wire

Duly instructed, we shall sell by PUBLIC AUCTION, WITHOUT RESERVE, at our Salerooms, Mutos Building, Hardinge Street, on

Friday 5th October at 10 a.m.

THREE NEW "FEDERAL" GARDEN TRACTORS, 1 1/2 h.p. suitable for light cultivation and garden work; with range of accessories. ONE "SQUIER" 12" COPPER BRONZ COFFEE PULPER for power or hand use. WILLIAMS Baling Wire MILL. SEVERAL TONS of IRON BAILING WIRE in various gauges. TWO THREE FURROW DISC PLOUGHS. H.C. CULTIVATOR. TWO 12" "LIXN" PLOUGHS. "AMAMCO" NO. 1 CONCRETE MIXER. THREE ROLLER SUGAR CANE CRUSHERS. One power Disc. Shavers. Hand Disc. Cultivator. Three. Plough springs, etc. THREE 50 Gallon Sugar Cane Mill Vais. Knapsack Sprayer. 6 Double Action Mysteri Sprayers, etc. etc.

MUTER and OSWALD, Ltd., Auctioneers, NAIROBI.

Property for Sale.

2666 acres of excellent Sial land is offered for Sale, within nine miles of Nairobi with river frontage at Shgs. 25/- per acre.
 5 rounded Stone house on 21 acres off Mtama Road, Parklands, Nairobi.
 5/Roomed Brick and Stone House all modern conveniences, Tennis Court and Summer House off Kileleshwa Road, Parklands.
 24 acre Plot with River Frontage and permanent Spring at Busakaka—Price offered K400.
 For further particulars of the above and other valuable property apply.

Brown & Barratt

Box 657, Phone 147, ICEA BUILDING, NAIROBI.

£100,000

TO LEND ON 1st MORTGAGE IN SMALL OR LARGE AMOUNTS

E. Hutchison & Co.

Auctioneers and Estate Agents, Box 140, NAIROBI.

Austins Auctions

CATALOGUE SALE of 9 m/m MANNLICHER SCHOENAUER RIFLE. H.M.V. GRAMOPHONE. CANTEN of NEW CUTLERY, GOOD CROCKERY, HAND CARVED TEAK SIDEBOARD, TENNIS SET, FILTER, GOOD FURNITURE, 2 BURNER STOVE, BEDS, CHESTERFIELD SUITE, ETC. Favoured with instructions.

Austin & Co.

will sell Without Reserve, unless stated, at THE MART, on

Saturday Sept. 29th at 10 a.m.

9 m/m MANNLICHER SCHOENAUER RIFLE in new condition (reserve). Borden's Wadettes in TEAK 2 Dinner Wagon. 2 Suite of well made Dining Chairs, Oblong and Oval Dining Tables. Teak and Podo Sideboard. Good Tennis Set. 30 x 34 Square Waxed complete. 2 Teak Double Washstands. Single Wood Bed complete. Iron Beds complete, 2 Club Easies Covered bedroons. 2 Fall Front Writing Bureau. 3 Chests of Drawers. Coffee Stools.

HANDSOME HAND CARVED TEAK SIDEBOARD WITH MIRROR BACK full size (reserve). Child's Cot. Several Dressing Chests. Nine Kitchen Tables. Bedroom Chests. Washstand. Pram in new condition (reserve). Berkefeld Filter in good order. Bed side Tables. Teak Writing Table with Pigeon Hole 100 round of 10 born ammunition.

H.M.V. CHESTERFIELD SUITE UPHOLSTERED IN GOOD CRITONE (reserve). 2 Burner Perfection Stove with Oven in new condition. Mandoline. Fancy Occasional Tables. CANTEN OF NEW STAINLESS and E.P.N.S. CUTLERY containing 54 pieces (reserve). A useful present.

And the following goods which are only a few weeks old TEAK DOUBLE BED COMPLETE with Overlay and Pillows. Half Dinner Service. Tea Service. Coffee Service. Dish. Cret. Sweet. Dishes. 6 Pairs Fine Eaters. 6 Coffee Spoons in Case. Carvers. Scentopans. 6 each Stainless Table and Dessert. Knives. 6 each F.P.N.S. Spoons and Forks. Etc., Etc. Etc. TEAK SEWINGCASE with class round three sides 6' long by 45" High.

AUSTIN & CO., Auctioneers & Estate Agents, Hardinge St., Nairobi.

Studebaker Boxbody. Hupmobile Touring. A.J.S. Combination.

Austin & Co.

will sell subject to low reserves, at THE MART, on

Saturday, Sept. 29th at 10 a.m.

HUPMOBILE 4 TOURING CAR in Excellent Running Order and condition. Tyres in good condition. Electric Lights and Self Starter.
 STUDEBAKER LIGHT 6 BOX BODY in good running order and condition. Electric light. Tyres good. 1928 Model.
 A.J.S. TWIN CYL COMBINATION IN PERFECT RUNNING ORDER and CONDITION. 2 New Tyres. Lucas Lighting Set. Sidecar in fine condition with Glass Screen.

Sands & Co.

At Sixth Avenue

Wednesday, 3rd October at 10-30.

Without Reserve

1 Meat Cart.
 1 Tin Fire House.
 Entrenching Tools.
 Sledge Hammers, Vices, Pangas
 10 Pairs Trolley Wheels.
 Groceries.
 100 ft. of Shafting 42in Pulley (Wheels Mule Harness, Saddlery Parts, Saws 1 Box Curd Golph.
 Large Assortment of Sundries.

Sands & Co. AUCTIONEERS

Notice.

WE WILL Open the New City Market

IN SADLER ST. NEAR THE NEW AVENUE HOTEL

FOR BUSINESS ON Friday, 28th Sept. at 9 a.m.

Sands & Co. PROPRIETORS.

The Victoria Nyanza Sugar Company Ltd.

MIWANI

Des to notify the Public that they have commenced crushing and all orders for sugar should be addressed to them at Miwani.

Farmer's having sugar canes for disposal should communicate, without delay, with the factory, stating number of Farm and where situate, area of canes available, estimated weight of crop, what tonnage they can contract to deliver daily and the date upon which they can commence delivery. Further particulars can be obtained at the mill office on application.

Jamal Pirbhai.

Sells anything You Cannot Sell. Auctioneer, Official Broker and Government Approved Valuer. Auctions Every Sunday, at 9 a.m. Opposite Jeevanji Garden. P. O. Box No. 308, Nairobi, Kenya Colony.

Hartley's Tobaccos

Red Seal 1 lb. bags also Rhodesian, Invicta, and Rhodesian Plug Cut Fresh Stocks Arrived.

Denovan & Diebel CITY HOUSE, NAIROBI.

This Week

WE SHALL OFFER A FEW LINES AT SPECIAL PRICES. This is your opportunity to purchase good quality Materials and Garments

Husein & Co.

The Corner Shop, Govt. Road, NAIROBI.

Just Unpacked.

"Bela -- Chine." Fibre Silk, in all very attractive shades. 50ins. Wide Shgs. 6/50 a yd. Also a very good range of cotton dress materials suitable for morning wear in very dainty Checks and Stripes. 36ins. wide Shgs 2/- a yard and upwards.

Ladharam Stores (GENERAL DRAPERS).

Govt. Road, NAIROBI. Box 516

Reduced Prices FOR CASH

From 27th Sept. to 10th Oct. 20% OFF ALL

Dress Materials Gents Outfitting, Carpets & Rugs.

7 1/2% OFF ALL

Furniture During this Period Hutchings, Biemer & Co. Ltd.

Box 408, NAIROBI Phone 408.

GUARANTEED THE LARGEST CIRCULATION OF ANY NEWSPAPER IN KENYA, UGANDA, TANGANYIKA AND ZANZIBAR.

DAILY EDITION.

THE EAST AFRICAN 14 PAGES.

African Standard

UGANDA ARGUS With which it is incorporated THE LEADER THE OLDEST ESTABLISHED NEWSPAPER PUBLISHED IN KENYA AND UGANDA.

NAIROBI, SATURDAY, SEPTEMBER 29, 1928

The LOUNGE
FOR
Morning
and
Afternoon
TEAS

The New Stanley Hotel

Open
ON
Sundays
TO
Non-Residents

Price 30 CENTS



THE PRINCES LAMB IN KENYA.

ROYAL HIGHNESSES RECEIVE AN ENTHUSIASTIC WELCOME FROM MOMBASA.

From Picturesque Gathering on the Quayside at Kilindiini.

ANNOUNCEMENT OF THE ADDRESS.

Princes Georgey in the Wonderful Land of Promise in Eastern Africa."

Princes the Prince of Wales and the Duke of Gloucester and received a most loyal and enthusiastic welcome from the citizens and the decorated troops.

Princes which greeted the heir to the Throne and his royal highnesses, The gorgeous line of the Indian and Arab and the beautiful troops of Egyptian khaki and blue.

Princes having appointed the Grand of Honour composed of the British, upon the decorations of some of whom he received, presented to the Royal Pavilion where he received.

Princes the Royal Highness, said the day would be for the purpose of marking the completion of the most significant event in the history of Kenya since the British first set foot on the soil. It has there remained only this wonderful land of promise.

THE COMPLETED CIRCLE.

Princes the British with the Royal Highness, the prince.

Princes the British with the Royal Highness, the prince.

Princes the British with the Royal Highness, the prince.

Princes the British with the Royal Highness, the prince.

Princes the British with the Royal Highness, the prince.

Princes the British with the Royal Highness, the prince.

Princes the British with the Royal Highness, the prince.

Princes today in our act of welcome to Your Royal Highness. We wish to see your Royal Highness an enjoyable visit to the country of this promise, which has beyond this gateway, and happy memories of your stay amongst us.

Princes We wish also to welcome to you country your brother, His Royal Highness the Duke of Gloucester, and wish that his Majesty's journey to Mombasa, and happy memories of your stay amongst us.

Princes We wish also to welcome to you country your brother, His Royal Highness the Duke of Gloucester, and wish that his Majesty's journey to Mombasa, and happy memories of your stay amongst us.

Princes We wish also to welcome to you country your brother, His Royal Highness the Duke of Gloucester, and wish that his Majesty's journey to Mombasa, and happy memories of your stay amongst us.

Princes We wish also to welcome to you country your brother, His Royal Highness the Duke of Gloucester, and wish that his Majesty's journey to Mombasa, and happy memories of your stay amongst us.

Princes We wish also to welcome to you country your brother, His Royal Highness the Duke of Gloucester, and wish that his Majesty's journey to Mombasa, and happy memories of your stay amongst us.

Princes We wish also to welcome to you country your brother, His Royal Highness the Duke of Gloucester, and wish that his Majesty's journey to Mombasa, and happy memories of your stay amongst us.

Princes We wish also to welcome to you country your brother, His Royal Highness the Duke of Gloucester, and wish that his Majesty's journey to Mombasa, and happy memories of your stay amongst us.

Princes We wish also to welcome to you country your brother, His Royal Highness the Duke of Gloucester, and wish that his Majesty's journey to Mombasa, and happy memories of your stay amongst us.

Princes We wish also to welcome to you country your brother, His Royal Highness the Duke of Gloucester, and wish that his Majesty's journey to Mombasa, and happy memories of your stay amongst us.

Princes We wish also to welcome to you country your brother, His Royal Highness the Duke of Gloucester, and wish that his Majesty's journey to Mombasa, and happy memories of your stay amongst us.

Princes We wish also to welcome to you country your brother, His Royal Highness the Duke of Gloucester, and wish that his Majesty's journey to Mombasa, and happy memories of your stay amongst us.

Princes We wish also to welcome to you country your brother, His Royal Highness the Duke of Gloucester, and wish that his Majesty's journey to Mombasa, and happy memories of your stay amongst us.

Princes We wish also to welcome to you country your brother, His Royal Highness the Duke of Gloucester, and wish that his Majesty's journey to Mombasa, and happy memories of your stay amongst us.

Princes We wish also to welcome to you country your brother, His Royal Highness the Duke of Gloucester, and wish that his Majesty's journey to Mombasa, and happy memories of your stay amongst us.

Princes We wish also to welcome to you country your brother, His Royal Highness the Duke of Gloucester, and wish that his Majesty's journey to Mombasa, and happy memories of your stay amongst us.

Princes We wish also to welcome to you country your brother, His Royal Highness the Duke of Gloucester, and wish that his Majesty's journey to Mombasa, and happy memories of your stay amongst us.

BEAUTIFUL AND UNIQUE ADDRESS.

From Government & Peoples of Kenya.

ARTIST'S CREATION.

THE STANDARD SPECIAL.

Enclosed in colors by Mr. Monday.

The lower border is composed of the most delicate and beautiful.

Men and women of all ages and all nations will find it a most interesting and valuable.

Princes We wish also to welcome to you country your brother, His Royal Highness the Duke of Gloucester, and wish that his Majesty's journey to Mombasa, and happy memories of your stay amongst us.

Princes We wish also to welcome to you country your brother, His Royal Highness the Duke of Gloucester, and wish that his Majesty's journey to Mombasa, and happy memories of your stay amongst us.

Princes We wish also to welcome to you country your brother, His Royal Highness the Duke of Gloucester, and wish that his Majesty's journey to Mombasa, and happy memories of your stay amongst us.

Princes We wish also to welcome to you country your brother, His Royal Highness the Duke of Gloucester, and wish that his Majesty's journey to Mombasa, and happy memories of your stay amongst us.

Princes We wish also to welcome to you country your brother, His Royal Highness the Duke of Gloucester, and wish that his Majesty's journey to Mombasa, and happy memories of your stay amongst us.

Princes We wish also to welcome to you country your brother, His Royal Highness the Duke of Gloucester, and wish that his Majesty's journey to Mombasa, and happy memories of your stay amongst us.

Princes We wish also to welcome to you country your brother, His Royal Highness the Duke of Gloucester, and wish that his Majesty's journey to Mombasa, and happy memories of your stay amongst us.

Princes We wish also to welcome to you country your brother, His Royal Highness the Duke of Gloucester, and wish that his Majesty's journey to Mombasa, and happy memories of your stay amongst us.

Princes We wish also to welcome to you country your brother, His Royal Highness the Duke of Gloucester, and wish that his Majesty's journey to Mombasa, and happy memories of your stay amongst us.

Princes We wish also to welcome to you country your brother, His Royal Highness the Duke of Gloucester, and wish that his Majesty's journey to Mombasa, and happy memories of your stay amongst us.

Princes We wish also to welcome to you country your brother, His Royal Highness the Duke of Gloucester, and wish that his Majesty's journey to Mombasa, and happy memories of your stay amongst us.

They're Here

The New McCall's Patterns for September.

Its not to late to take advantage of the perfect pattern in making morning, afternoon and evening dresses for the Royal Visit.

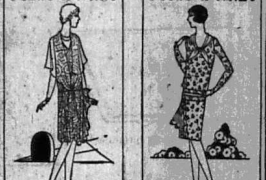
Get rid of that home made look and get the latest Parisian styles.

PRINTED ART SILK. A delightfully dainty material for morning or afternoon dress, a large square of fancy flowered and check designs. 30" wide. 6-50 PER YARD.

FANCY RAYONS. By the last part a delivery of this fashionable fabric in a number of beautiful fancy designs. 90 inches wide. 4-50 PER YARD.

LIZARD CREPPES. A good medium weight Crepe de China, lined pattern in blue and grey. 38 inches wide. 1-50 PER YARD.

L'ÉCHO DE PARIS. A good medium weight Crepe de China, lined pattern in blue and grey. 38 inches wide. 1-50 PER YARD.



Model Dress Pattern 228

Model Dress Pattern 227

Dinner Frock. Delightful for informal wear. Style designed in Grey, Salmon, Blue, etc. 38 inches wide. 12-50 PER YARD.

Informal Frock. A tailored and elegant dress has a feminine touch. It is styled above and draped to the side. It is finished with a narrow band. 38 inches wide. 12-50 PER YARD.

MACCLESFIELD SILKS. The very latest light in dress silks, popular style designed in Grey, Salmon, Blue, etc. 38 inches wide. 12-50 PER YARD.

MARICHENE. An Art Silk material with the feel and appearance of a heavy silk. Crepe de China, weaves and drapes splendidly in Blue, Grey, Navy, Almond, Apricot, Dawn, Fawn. 6-50 PER YARD.

ART SILK CREPPES. ART SILK CREPE de China, a wonderfully made fabric material, covers the same purpose as real silk. 9-50 PER YARD.

ART VOILES. A new voile, light in texture, with a wonderful sheen, in a fascinating range of beautiful colorings. 40 inches wide. 8-50 PER YARD.

ART SILKS. A special offer in fancy multi-striped artificial silk dress material. 38 inches wide. 3-95 PER YARD.

WHITEAWAYS

Princes We wish also to welcome to you country your brother, His Royal Highness the Duke of Gloucester, and wish that his Majesty's journey to Mombasa, and happy memories of your stay amongst us.

AFRICAN STANDARD

DAILY EDITION

ADVERTISEMENTS... subject to approval... subject to approval...

FOR SALE... (Contd.)

THE charge for advertisements in these columns is Sh. 1/6 for a line of 36 words...

FOR SALE... (Contd.)

FOR SALE... (Contd.)

FOR SALE... (Contd.)

FOR SALE... (Contd.)

FOR SALE... (Contd.)

FOR SALE... (Contd.)

FOR SALE... (Contd.)

FOR SALE... (Contd.)

FOR SALE... (Contd.)

FOR SALE... (Contd.)

FOR SALE... (Contd.)

FOR SALE... (Contd.)

FOR SALE... (Contd.)

FOR SALE... (Contd.)

FOR SALE... (Contd.)

FOR SALE... (Contd.)

SITUATIONS VACANT.

FOR THE charge for advertisements in these columns is Sh. 1/6 for a line of 36 words...

FOR THE charge for advertisements in these columns is Sh. 1/6 for a line of 36 words...

FOR THE charge for advertisements in these columns is Sh. 1/6 for a line of 36 words...

FOR THE charge for advertisements in these columns is Sh. 1/6 for a line of 36 words...

FOR THE charge for advertisements in these columns is Sh. 1/6 for a line of 36 words...

FOR THE charge for advertisements in these columns is Sh. 1/6 for a line of 36 words...

FOR THE charge for advertisements in these columns is Sh. 1/6 for a line of 36 words...

FOR THE charge for advertisements in these columns is Sh. 1/6 for a line of 36 words...

FOR THE charge for advertisements in these columns is Sh. 1/6 for a line of 36 words...

FOR THE charge for advertisements in these columns is Sh. 1/6 for a line of 36 words...

FOR THE charge for advertisements in these columns is Sh. 1/6 for a line of 36 words...

FOR THE charge for advertisements in these columns is Sh. 1/6 for a line of 36 words...

FOR THE charge for advertisements in these columns is Sh. 1/6 for a line of 36 words...

FOR THE charge for advertisements in these columns is Sh. 1/6 for a line of 36 words...

FOR THE charge for advertisements in these columns is Sh. 1/6 for a line of 36 words...

FOR THE charge for advertisements in these columns is Sh. 1/6 for a line of 36 words...

FOR THE charge for advertisements in these columns is Sh. 1/6 for a line of 36 words...

FOR THE charge for advertisements in these columns is Sh. 1/6 for a line of 36 words...

FOR THE charge for advertisements in these columns is Sh. 1/6 for a line of 36 words...

SITUATIONS VACANT.

FOR THE charge for advertisements in these columns is Sh. 1/6 for a line of 36 words...

FOR THE charge for advertisements in these columns is Sh. 1/6 for a line of 36 words...

FOR THE charge for advertisements in these columns is Sh. 1/6 for a line of 36 words...

FOR THE charge for advertisements in these columns is Sh. 1/6 for a line of 36 words...

FOR THE charge for advertisements in these columns is Sh. 1/6 for a line of 36 words...

FOR THE charge for advertisements in these columns is Sh. 1/6 for a line of 36 words...

FOR THE charge for advertisements in these columns is Sh. 1/6 for a line of 36 words...

FOR THE charge for advertisements in these columns is Sh. 1/6 for a line of 36 words...

FOR THE charge for advertisements in these columns is Sh. 1/6 for a line of 36 words...

FOR THE charge for advertisements in these columns is Sh. 1/6 for a line of 36 words...

FOR THE charge for advertisements in these columns is Sh. 1/6 for a line of 36 words...

FOR THE charge for advertisements in these columns is Sh. 1/6 for a line of 36 words...

FOR THE charge for advertisements in these columns is Sh. 1/6 for a line of 36 words...

FOR THE charge for advertisements in these columns is Sh. 1/6 for a line of 36 words...

FOR THE charge for advertisements in these columns is Sh. 1/6 for a line of 36 words...

FOR THE charge for advertisements in these columns is Sh. 1/6 for a line of 36 words...

FOR THE charge for advertisements in these columns is Sh. 1/6 for a line of 36 words...

FOR THE charge for advertisements in these columns is Sh. 1/6 for a line of 36 words...

FOR THE charge for advertisements in these columns is Sh. 1/6 for a line of 36 words...

Church Notices.

ALL SAINTS CATHEDRAL... SUNDAY, SEPT. 20... 7:30 a.m. Holy Communion...

ALL SAINTS CATHEDRAL... SUNDAY, SEPT. 20... 7:30 a.m. Holy Communion...

ALL SAINTS CATHEDRAL... SUNDAY, SEPT. 20... 7:30 a.m. Holy Communion...

ALL SAINTS CATHEDRAL... SUNDAY, SEPT. 20... 7:30 a.m. Holy Communion...

ALL SAINTS CATHEDRAL... SUNDAY, SEPT. 20... 7:30 a.m. Holy Communion...

ALL SAINTS CATHEDRAL... SUNDAY, SEPT. 20... 7:30 a.m. Holy Communion...

ALL SAINTS CATHEDRAL... SUNDAY, SEPT. 20... 7:30 a.m. Holy Communion...

ALL SAINTS CATHEDRAL... SUNDAY, SEPT. 20... 7:30 a.m. Holy Communion...

ALL SAINTS CATHEDRAL... SUNDAY, SEPT. 20... 7:30 a.m. Holy Communion...

ALL SAINTS CATHEDRAL... SUNDAY, SEPT. 20... 7:30 a.m. Holy Communion...

ALL SAINTS CATHEDRAL... SUNDAY, SEPT. 20... 7:30 a.m. Holy Communion...

ALL SAINTS CATHEDRAL... SUNDAY, SEPT. 20... 7:30 a.m. Holy Communion...

ALL SAINTS CATHEDRAL... SUNDAY, SEPT. 20... 7:30 a.m. Holy Communion...

ALL SAINTS CATHEDRAL... SUNDAY, SEPT. 20... 7:30 a.m. Holy Communion...

ALL SAINTS CATHEDRAL... SUNDAY, SEPT. 20... 7:30 a.m. Holy Communion...

ALL SAINTS CATHEDRAL... SUNDAY, SEPT. 20... 7:30 a.m. Holy Communion...

ALL SAINTS CATHEDRAL... SUNDAY, SEPT. 20... 7:30 a.m. Holy Communion...

ALL SAINTS CATHEDRAL... SUNDAY, SEPT. 20... 7:30 a.m. Holy Communion...

ALL SAINTS CATHEDRAL... SUNDAY, SEPT. 20... 7:30 a.m. Holy Communion...

Equator Saw Mills. P.O. Plateau. P.O. Maji-Masiri. Head Office. P.O. Box 291. NAIROBI. Telegrams GAFCAL.

AGENTS FOR... Silverstone Oak Stain. Wood Preservation. 1 gal. Drums 25/- 1 gal. Drums 25/-

Select Your Hat FOR THE ROYAL VISIT from the Dozens of New Models of

Worings, Ltd. Africa House, Government Road, Nairobi.

Another Proof of ARIEL Reliability. Monsieur Dino, amateur, riding a two port Ariel, finished first in the Paris-Paris Races-Lars, 2,500 miles on the famous Tourmalin Hill, in the 500 c.c. class had just completed a four hour, 11,000 kilo meters from France Spain Portugal and Italy—During the race M. Dino rode against the pick of European riders.

J. R. Cox & Co. SIXTH AVENUE. Nakuru Eldoret. Kampala. Dar-es-Salaam.

Every day for Breakfast. QUAKER OATS is rich in vitamins, carbohydrates, mineral salts. It is easy to digest, easy to prepare and economical. Good for old and young.

"The Lens". Photo Optical Store. Zeiss, Zeiss-Ikon, Agfa (Agfa Goods). Harding Street, Opposite the New Hotel.

delicious and nutritious - QUAKER OATS is rich in vitamins, carbohydrates, mineral salts. It is easy to digest, easy to prepare and economical. Good for old and young.

Quaker Oats. by our Ophthalmic Optician with the most modern Sight Testing Apparatus in East Africa.

FOR SALE

FOR SALE... (Contd.)

FOR SALE... (Contd.)

FOR SALE... (Contd.)

FOR SALE... (Contd.)

FOR SALE... (Contd.)

FOR SALE... (Contd.)

FOR SALE... (Contd.)

FOR SALE... (Contd.)

FOR SALE... (Contd.)

FOR SALE... (Contd.)

FOR SALE... (Contd.)

FOR SALE... (Contd.)

FOR SALE... (Contd.)

FOR SALE... (Contd.)

FOR SALE... (Contd.)

FOR SALE... (Contd.)

FOR SALE... (Contd.)

FOR SALE

FOR SALE... (Contd.)

FOR SALE... (Contd.)

FOR SALE... (Contd.)

FOR SALE... (Contd.)

FOR SALE... (Contd.)

FOR SALE... (Contd.)

FOR SALE... (Contd.)

FOR SALE... (Contd.)

FOR SALE... (Contd.)

FOR SALE... (Contd.)

FOR SALE... (Contd.)

FOR SALE... (Contd.)

FOR SALE... (Contd.)

FOR SALE... (Contd.)

FOR SALE... (Contd.)

FOR SALE... (Contd.)

FOR SALE... (Contd.)

FOR SALE

FOR SALE... (Contd.)

FOR SALE... (Contd.)

FOR SALE... (Contd.)

FOR SALE... (Contd.)

FOR SALE... (Contd.)

FOR SALE... (Contd.)

FOR SALE... (Contd.)

FOR SALE... (Contd.)

FOR SALE... (Contd.)

FOR SALE... (Contd.)

FOR SALE... (Contd.)

FOR SALE... (Contd.)

FOR SALE... (Contd.)

FOR SALE... (Contd.)

FOR SALE... (Contd.)

FOR SALE... (Contd.)

FOR SALE... (Contd.)

FOR SALE

FOR SALE... (Contd.)

FOR SALE... (Contd.)

FOR SALE... (Contd.)

FOR SALE... (Contd.)

FOR SALE... (Contd.)

FOR SALE... (Contd.)

FOR SALE... (Contd.)

FOR SALE... (Contd.)

FOR SALE... (Contd.)

FOR SALE... (Contd.)

FOR SALE... (Contd.)

FOR SALE... (Contd.)

FOR SALE... (Contd.)

FOR SALE... (Contd.)

FOR SALE... (Contd.)

FOR SALE... (Contd.)

FOR SALE... (Contd.)

FOR SALE

FOR SALE... (Contd.)

FOR SALE... (Contd.)

FOR SALE... (Contd.)

FOR SALE... (Contd.)

FOR SALE... (Contd.)

FOR SALE... (Contd.)

FOR SALE... (Contd.)

FOR SALE... (Contd.)

FOR SALE... (Contd.)

FOR SALE... (Contd.)

FOR SALE... (Contd.)

FOR SALE... (Contd.)

FOR SALE... (Contd.)

FOR SALE... (Contd.)

FOR SALE... (Contd.)

FOR SALE... (Contd.)

FOR SALE... (Contd.)

THE UNION-CASTLE LINE.

HOMEWARD via SUVA.

From Mombasa

'Goldfield Castle' ... 20th November, 20th December, 'Lambton Castle' ... 16th June.

HOMEWARD via SOUTH AFRICA

'Landed Castle' ... 27th October, 'Galka' ... 16th Nov., 'Bundara Castle' ... 19th October.

Agents: S.E.A. Corporation, Ltd., East African Estates, Ltd., J. J. O'Riordan & Co., Ltd.

British India Steam Navigation Company, Ltd

AND PENINSULAR AND ORIENTAL STEAM NAVIGATION CO.

London and East Africa. LONDON TO BRITIA, Via Malacca, Port Said, Port Sudan and Aden, Ombasa and Mombasa.

Shipping schedule table with columns for ship names, dates, and destinations. Includes ships like 'Maitland', 'Maida', 'Madda', etc.

ALL DATES SUBJECT TO ALTERATION WITHOUT NOTICE. RETURN TICKETS ISSUED AT TWO SINGLE FARES LESS 10%.

HOLLAND AFRIKA LIJN

JOINT SERVICE. HOLLAND ZUID-AFRIKA LIJN and HOLLAND OOST-AFRIKA LIJN.

Shipping schedule table for Holland Afrika Lijn with columns for ship names, dates, and destinations. Includes ships like 'Kilpatrick', 'Yonkers', 'Ugriphark', etc.

Agents: F. J. Bos Ltd., Kampala, Mombasa.

KING'S CUP WON ON SHELL FIFTH TIME. Mr. W. I. Hope, winner of the same race in 1927, flying the new Guppy Mark and using Shell petrol, won the King's Cup race which finished at Brooklands on July 21st.

The African Marine & General Engineering Company, Ltd., Kilindini. SHIP REPAIRING, CANNING, MAKING & REPAIRING, Moulding, OXY-ACETYLENE WELDING & CUTTING.

Deutsche Ost-Afrika-Linie (German/African Service.) COAST WISE EXCURSIONS. Beira, Lourenco Marques and Durban and Return First and Second Class Only.

Compagnia Italiana Transatlantica. Monthly Passenger Service to NAPLES and GENOA by elegant and comfortable air-barring turbine steamers.

Messageries Maritimes (FRENCH MAIL STEAMERS). Regular and fortnightly service from and to Marseilles. ROUTE TO LONDON.

Johnny Wright's Black and Red Seal Whiskies. SCOTLAND'S OLDEST and BEST (Established—1700). "Not a Headache in a Hogshead".

Holloway's Gin (LONDON DRY). DOUBLE DISTILLED PUREST and BEST. NOTHING FINER. NOTHING PURER.

FOR SALE. Light Woolen Blankets, Towels, Mosquito Netting, etc. S. JACOBS Managing Director.

NATIONAL BANK OF INDIA LIMITED. (Incorporated in United Kingdom). Bankers to the Colony and Protectorate of Kenya and Uganda Protectorate.

UPLANDS NEWS! BACON: Our process of cure results in the MINIMUM SKEINAGE, both in the GROCER'S SHOP and in the CONSUMER'S KITCHEN.

Chivers' Jam. Chivers' Old English Marmalade. Chivers' Jellies. Sole Agents: R. O. HAMILTON, Ltd.

Keith Timber Co. CEDAR and PODO of ALL SIZES MACHINED TIMBER. CEDAR FENCING POSTS, SEASONED P. BLOCKS IN STOCK.

Expert Vulcanizing. HEINTZ ELECTRIC WAY IT'S DIFFERENT. ALL WORK GUARANTEED. K. McIvor's Garage.

ESSJAY LIMITE Theatre Royal Building. Box 634—Phone 377.

Financial and Property Agents. Mortgages specialised in. Town Properties negotiated. Partnerships arranged.

OVERSEAS MAILS. Table showing shipping schedules for various routes including Beira, Lourenco Marques, Durban, Bombay, etc.

DESTITUTE

Your first duty surely is to provide so that in the event of your death your dependents will not be left destitute.

Write us and we will show you how this can be done to your best advantage.

Exceptionally low premiums. Liberal conditions. Excellent bonus results declared annually.

Example:
WHOLE LIFE POLICIES:
Annual Premium for £1,000 (Age 30) **£23 6 8**
Annual BONUS on above (increasing with age of policy) **£24 0 0**

Similarly favourable terms for ENDOWMENTS. Write for full particulars of these, Joint Lives, or Children's Assurances, to

National Mutual Life Association of Australasia Ltd.
(FUNDS £26,000,000.)
P.O. Box 884.
Cambrian Building, Government Road, Nairobi.

VISIT OF THE NAVAL CONTINGENT.

Part in the Royal Welcome.

THE PROGRAMME

Following is the programme for the visit of the naval contingent to Nairobi in connection with the Royal visit.

Strength of Party — 2
Petry Officers — 4
Rating — 0

Billings — 0
Officers with R.A.R. Officers with R.A.R. Sergeant Major

Parties Officers with R.A.R. Sergeant Major
Billings at Memorial Hall with members of the Publication Restaurant

SATURDAY, 20th SEPT
4.30 p.m. Leave Mombasa

SUNDAY, 21st SEPT
10.30 a.m. Arrive Nairobi. The detachment will be welcomed by the Chairman of the Naval Entertainment Committee, supported by members of the Committee. Officers' boats and Petry Officers' boats

All will be dined in a central position in three galleys. (1) Officers. (2) Petry Officers. (3) Rating. The Petry Officers and Ratings will fall in outside the Station and march to the Memorial Hall—Senior Petry Officer in Charge.

The R.A.R. Drum and File Band will perform of Col. Williams and Officers will lead Col. Marshall at the Memorial Hall. The detachment will be dismissed and the Petry Officers taken over by their boats.

The Officers will be taken over at the Station by their boats.

1 p.m. Luncheon at the New Stanley Hotel for ALL BANSI. Gen. Mc H. T. Martin, Acting Colonial Secretary will preside.

MONDAY 1st OCT
9.30 a.m. Motor buses will transport Ratings from billets to Government House to acknowledge arrangements for the following day's Banquet.

5 p.m. Reception, in Their Royal Highnesses' Hall. The match will give the route at Government House to acknowledge arrangements for the following day's Banquet.

8.30 p.m. The party will have the choice of attending—
(a) The "Royal" "Counter" Oct.

(b) Lyric Hall Cinema Show
(c) Being Tournaments Royal Navy v Kenya

TUESDAY, 22nd OCT
9.30 a.m. Motor buses will transport Ratings from billets to Government House to acknowledge arrangements for the following day's Banquet.

(d) The "Royal" "Counter" Oct.

(e) The "Royal" "Counter" Oct.

(f) The "Royal" "Counter" Oct.

(g) The "Royal" "Counter" Oct.

(h) The "Royal" "Counter" Oct.

(i) The "Royal" "Counter" Oct.

(j) The "Royal" "Counter" Oct.

(k) The "Royal" "Counter" Oct.

(l) The "Royal" "Counter" Oct.

(m) The "Royal" "Counter" Oct.

(n) The "Royal" "Counter" Oct.

(o) The "Royal" "Counter" Oct.

(p) The "Royal" "Counter" Oct.

(q) The "Royal" "Counter" Oct.

(r) The "Royal" "Counter" Oct.

(s) The "Royal" "Counter" Oct.

(t) The "Royal" "Counter" Oct.

(u) The "Royal" "Counter" Oct.

(v) The "Royal" "Counter" Oct.

(w) The "Royal" "Counter" Oct.

(x) The "Royal" "Counter" Oct.

(y) The "Royal" "Counter" Oct.

(z) The "Royal" "Counter" Oct.

WEDNESDAY 3RD OCTOBER
10 a.m. Motor buses will transport Ratings to the Agricultural and the Sports ground.

2.45 p.m. Motor buses for the Agricultural and the Sports ground.

4 p.m. Departure for Mombasa.

THURSDAY 4th OCTOBER
10 a.m. Motor buses will transport Ratings to the Agricultural and the Sports ground.

2.45 p.m. Motor buses for the Agricultural and the Sports ground.

4 p.m. Departure for Mombasa.

FRIDAY 5th OCTOBER
10.30 a.m. Arrive Nairobi.

1 p.m. Luncheon at New Stanley Hotel.

2.45 p.m. Motor buses for the Agricultural and the Sports ground.

4 p.m. Departure for Mombasa.

SATURDAY 6th OCTOBER
10.30 a.m. Arrive Nairobi.

1 p.m. Luncheon at New Stanley Hotel.

2.45 p.m. Motor buses for the Agricultural and the Sports ground.

4 p.m. Departure for Mombasa.

SUNDAY 7th OCTOBER
10.30 a.m. Arrive Nairobi.

1 p.m. Luncheon at New Stanley Hotel.

2.45 p.m. Motor buses for the Agricultural and the Sports ground.

4 p.m. Departure for Mombasa.

MONDAY 8th OCTOBER
10.30 a.m. Arrive Nairobi.

1 p.m. Luncheon at New Stanley Hotel.

2.45 p.m. Motor buses for the Agricultural and the Sports ground.

4 p.m. Departure for Mombasa.

TUESDAY 9th OCTOBER
10.30 a.m. Arrive Nairobi.

1 p.m. Luncheon at New Stanley Hotel.

2.45 p.m. Motor buses for the Agricultural and the Sports ground.

4 p.m. Departure for Mombasa.

WEDNESDAY 10th OCTOBER
10.30 a.m. Arrive Nairobi.

1 p.m. Luncheon at New Stanley Hotel.

2.45 p.m. Motor buses for the Agricultural and the Sports ground.

4 p.m. Departure for Mombasa.

Do not fail to visit The HUNTER'S PARADISE.

WHEN AT THE SHOW
Chas. A. Heyer & Co.,
have something **NEW**
TO SHOW YOU.
Come and See It!!!
Guns and Gadgets Galore.

CHAS A. HEYER & CO.,
NAIROBI.
Established 1903.

ROYAL VISIT

Correct Wear FOR Garden Party OR :: Ball :: FROM THE SPECIALISTS,

Maxwell Brady & Co. NAIROBI

SUPPLEMENTARY

H.M.S. "Enterprise" Boat

Strength of Party — 16
Rating — 0

Billings will be in the Memorial Hall with seats at the Pallas Restaurant

FRIDAY, 20th SEPT
10.30 a.m. Arrive Nairobi.
8.30 p.m. Attend Cinema Show at the Lyric Hall

SATURDAY, 21st SEPT
1.30 p.m. Light Match at Parklands "Enterprise" vs. Kenya Police.

(b) Final General Cup (Association) at Collins Ground. Both at 5 p.m.

SUNDAY 30th SEPT
1 p.m. Luncheon at the New Stanley Hotel to extend welcome to Naval Visitors.

MONDAY 1st OCTOBER
9.30 a.m. Reception of Forces at Government House.
5 p.m. Reception at Royal Party.

8.30 p.m. Boxing Tournament at the Lyric Hall.

TUESDAY 2nd OCTOBER
9.30 a.m. Banquet at Government House.
2 p.m. Agricultural Show.

Strength of Party — 16
Rating — 15

Billings at the New Stanley Hotel

Rating in the Memorial Hall with some of the Parklands Restaurant

SATURDAY 20th SEPT
8 a.m. Arrive Nairobi.
10 a.m. Play Golf at Parklands "Enterprise" vs. Kenya Police.

8.30 p.m. Motor buses for the Agricultural and the Sports ground.

SUNDAY 21st SEPT
1 p.m. Luncheon at New Stanley Hotel.

2.45 p.m. Motor buses for the Agricultural and the Sports ground.

4 p.m. Departure for Mombasa.

MONDAY 22nd OCTOBER
10.30 a.m. Arrive Nairobi.

1 p.m. Luncheon at New Stanley Hotel.

2.45 p.m. Motor buses for the Agricultural and the Sports ground.

4 p.m. Departure for Mombasa.

TUESDAY 23rd OCTOBER
10.30 a.m. Arrive Nairobi.

1 p.m. Luncheon at New Stanley Hotel.

2.45 p.m. Motor buses for the Agricultural and the Sports ground.

4 p.m. Departure for Mombasa.

WEDNESDAY 24th OCTOBER
10.30 a.m. Arrive Nairobi.

1 p.m. Luncheon at New Stanley Hotel.

2.45 p.m. Motor buses for the Agricultural and the Sports ground.

4 p.m. Departure for Mombasa.

THURSDAY 25th OCTOBER
10.30 a.m. Arrive Nairobi.

1 p.m. Luncheon at New Stanley Hotel.

2.45 p.m. Motor buses for the Agricultural and the Sports ground.

4 p.m. Departure for Mombasa.

FRIDAY 26th OCTOBER
10.30 a.m. Arrive Nairobi.

1 p.m. Luncheon at New Stanley Hotel.

2.45 p.m. Motor buses for the Agricultural and the Sports ground.

4 p.m. Departure for Mombasa.

HEADACHE RELIEVED QUICKLY

Carter's Little Blue Pills
Trade Registered.
CARTER'S LITTLE BLUE PILLS
Trade Registered.
CARTER'S LITTLE BLUE PILLS
Trade Registered.

Your Efficiency DEPENDS UPON ACCURATE UNFADING VISION.

GOOD EYESIGHT IS THE FIRST ESSENTIAL TO CLARITY OF THOUGHT.
HAVE YOUR EYES TESTED TO-DAY.
Dobbies, Ltd.
OPTHALMIC OPTICIANS.
Box 88, NAIROBI. Phone 80

Visit EASTERN BAZAAR.

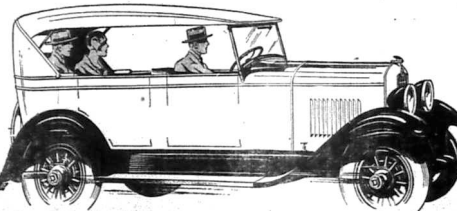
AND GET THE BEST CIGARETTES AND S.M. & LOW PRICES.
FOR YOUR PRESENTS
R. CHITRAM
NAIROBI AND NARUTI
MAY & CO. LTD
THE SPORTS SPECIALISTS.

Your Own Home and Plot

FOR £500 DOWN
balance on mortgage at 8 per cent
Newly Built House, with all modern conveniences
Apply
R. O. PRESTON
Box 807, Nairobi, or Office, Westlands

"55" DURANT "65"

Touring **£280** Touring **£290**
Box Body **£265** Box Body **£275**



Six Cylinder Engine
Four Wheel Brakes
Oil Purifier
Air Filter

Automatic Screen Wiper
Rear View Mirror
Shock Absorbers
Bumper Bars

Carr, Lawson & Coy., Ltd.

Nairobi Nakuru Eldoret

sloan's Liniment KILLS PAIN
The Standard Treatment for RHEUMATISM, NEURALGIA, LUMBAGO, SPRAINS, AGING MUSCLES.

Madame Rowe Et Cie

LIMITED.

ON VIEW
TO-DAY

A LARGE AND VARIED
SELECTION
OF

French Model Gowns

Shgs. 125-00.

Union Building Government Road.
Box 215. Tel. No. 259.

County Chemical Co. Ltd.
Birmingham.

Motor car and Cycle Accessories of all kinds.
Stocks available locally.

"HEMICO"

The Name with Reputation.



TRADE ENQUIRIES TO UNIVERSAL EXPORT
Co., Ltd., Nairobi.
Court Chambers, Box 540.

Trans Nzoiia

KIRKWOOD & Co, Kitale.

Maise Dealers,
Importers and Exporters.
All Farming Implements and Building Materials
Stocked.
Transport Contractors.
Railway Clearing and Forwarding Agents
Distributors of B. P. Patrol, Tractor Keroseines
Cruide Oil.
Agents for G. NORTE & Son Ltd., Cockshutt
Implements and Spares. Land Agents.

Have you Tried

These Special Lines?

- SALON SAVORIES,
- TYNE BRAND HERRINGS,
- PARSLEY BRAND SALMON,
- TIP TREES JAMS,
- OLD ENGLISH MARMALADE,
- TOM-TIT FRUIT SALAD,
- DEL-MONTE ASPARAGUS,
- FINEST FRENCH PRUNES.

Ask for them at
ELLIOTS

P. O. Box 175. Phone 60.

Hamilton & Coy.

BAKERS AND BUTCHERS
WESTLANDS
BREAD, CAKES, AND BISCUITS.
Hotels and Boarding Houses supplied at
Wholesale Rates.
Top Prices Paid for Prime Slaughter Stock.



CHESS

By A. R. Spencer Palmer,
Solutions and all chess correspond-
ence should be sent direct to
"CHESS" and addressed to
P. O. Box No. Nairobi.

PROBLEM No. 899.
By Sam Loyd.
Black 2.



White 6
White mates in two moves.

PROBLEM No. 900.
By Sam Loyd.
Black 5.



White 5
White mates in three moves.

SOLUTIONS
To **PROBLEM No. 899**: Key,
1. P-K4, 2. R-K5, 3. R-K5, 4. R-K5, 5. Q-K4, 6. Q-K4, 7. Q-K4, 8. Q-K4, 9. Q-K4, 10. Q-K4, 11. Q-K4, 12. Q-K4, 13. Q-K4, 14. Q-K4, 15. Q-K4, 16. Q-K4, 17. Q-K4, 18. Q-K4, 19. Q-K4, 20. Q-K4, 21. Q-K4, 22. Q-K4, 23. Q-K4, 24. Q-K4, 25. Q-K4, 26. Q-K4, 27. Q-K4, 28. Q-K4, 29. Q-K4, 30. Q-K4, 31. Q-K4, 32. Q-K4, 33. Q-K4, 34. Q-K4, 35. Q-K4, 36. Q-K4, 37. Q-K4, 38. Q-K4, 39. Q-K4, 40. Q-K4, 41. Q-K4, 42. Q-K4, 43. Q-K4, 44. Q-K4, 45. Q-K4, 46. Q-K4, 47. Q-K4, 48. Q-K4, 49. Q-K4, 50. Q-K4, 51. Q-K4, 52. Q-K4, 53. Q-K4, 54. Q-K4, 55. Q-K4, 56. Q-K4, 57. Q-K4, 58. Q-K4, 59. Q-K4, 60. Q-K4, 61. Q-K4, 62. Q-K4, 63. Q-K4, 64. Q-K4, 65. Q-K4, 66. Q-K4, 67. Q-K4, 68. Q-K4, 69. Q-K4, 70. Q-K4, 71. Q-K4, 72. Q-K4, 73. Q-K4, 74. Q-K4, 75. Q-K4, 76. Q-K4, 77. Q-K4, 78. Q-K4, 79. Q-K4, 80. Q-K4, 81. Q-K4, 82. Q-K4, 83. Q-K4, 84. Q-K4, 85. Q-K4, 86. Q-K4, 87. Q-K4, 88. Q-K4, 89. Q-K4, 90. Q-K4, 91. Q-K4, 92. Q-K4, 93. Q-K4, 94. Q-K4, 95. Q-K4, 96. Q-K4, 97. Q-K4, 98. Q-K4, 99. Q-K4, 100. Q-K4, 101. Q-K4, 102. Q-K4, 103. Q-K4, 104. Q-K4, 105. Q-K4, 106. Q-K4, 107. Q-K4, 108. Q-K4, 109. Q-K4, 110. Q-K4, 111. Q-K4, 112. Q-K4, 113. Q-K4, 114. Q-K4, 115. Q-K4, 116. Q-K4, 117. Q-K4, 118. Q-K4, 119. Q-K4, 120. Q-K4, 121. Q-K4, 122. Q-K4, 123. Q-K4, 124. Q-K4, 125. Q-K4, 126. Q-K4, 127. Q-K4, 128. Q-K4, 129. Q-K4, 130. Q-K4, 131. Q-K4, 132. Q-K4, 133. Q-K4, 134. Q-K4, 135. Q-K4, 136. Q-K4, 137. Q-K4, 138. Q-K4, 139. Q-K4, 140. Q-K4, 141. Q-K4, 142. Q-K4, 143. Q-K4, 144. Q-K4, 145. Q-K4, 146. Q-K4, 147. Q-K4, 148. Q-K4, 149. Q-K4, 150. Q-K4, 151. Q-K4, 152. Q-K4, 153. Q-K4, 154. Q-K4, 155. Q-K4, 156. Q-K4, 157. Q-K4, 158. Q-K4, 159. Q-K4, 160. Q-K4, 161. Q-K4, 162. Q-K4, 163. Q-K4, 164. Q-K4, 165. Q-K4, 166. Q-K4, 167. Q-K4, 168. Q-K4, 169. Q-K4, 170. Q-K4, 171. Q-K4, 172. Q-K4, 173. Q-K4, 174. Q-K4, 175. Q-K4, 176. Q-K4, 177. Q-K4, 178. Q-K4, 179. Q-K4, 180. Q-K4, 181. Q-K4, 182. Q-K4, 183. Q-K4, 184. Q-K4, 185. Q-K4, 186. Q-K4, 187. Q-K4, 188. Q-K4, 189. Q-K4, 190. Q-K4, 191. Q-K4, 192. Q-K4, 193. Q-K4, 194. Q-K4, 195. Q-K4, 196. Q-K4, 197. Q-K4, 198. Q-K4, 199. Q-K4, 200. Q-K4, 201. Q-K4, 202. Q-K4, 203. Q-K4, 204. Q-K4, 205. Q-K4, 206. Q-K4, 207. Q-K4, 208. Q-K4, 209. Q-K4, 210. Q-K4, 211. Q-K4, 212. Q-K4, 213. Q-K4, 214. Q-K4, 215. Q-K4, 216. Q-K4, 217. Q-K4, 218. Q-K4, 219. Q-K4, 220. Q-K4, 221. Q-K4, 222. Q-K4, 223. Q-K4, 224. Q-K4, 225. Q-K4, 226. Q-K4, 227. Q-K4, 228. Q-K4, 229. Q-K4, 230. Q-K4, 231. Q-K4, 232. Q-K4, 233. Q-K4, 234. Q-K4, 235. Q-K4, 236. Q-K4, 237. Q-K4, 238. Q-K4, 239. Q-K4, 240. Q-K4, 241. Q-K4, 242. Q-K4, 243. Q-K4, 244. Q-K4, 245. Q-K4, 246. Q-K4, 247. Q-K4, 248. Q-K4, 249. Q-K4, 250. Q-K4, 251. Q-K4, 252. Q-K4, 253. Q-K4, 254. Q-K4, 255. Q-K4, 256. Q-K4, 257. Q-K4, 258. Q-K4, 259. Q-K4, 260. Q-K4, 261. Q-K4, 262. Q-K4, 263. Q-K4, 264. Q-K4, 265. Q-K4, 266. Q-K4, 267. Q-K4, 268. Q-K4, 269. Q-K4, 270. Q-K4, 271. Q-K4, 272. Q-K4, 273. Q-K4, 274. Q-K4, 275. Q-K4, 276. Q-K4, 277. Q-K4, 278. Q-K4, 279. Q-K4, 280. Q-K4, 281. Q-K4, 282. Q-K4, 283. Q-K4, 284. Q-K4, 285. Q-K4, 286. Q-K4, 287. Q-K4, 288. Q-K4, 289. Q-K4, 290. Q-K4, 291. Q-K4, 292. Q-K4, 293. Q-K4, 294. Q-K4, 295. Q-K4, 296. Q-K4, 297. Q-K4, 298. Q-K4, 299. Q-K4, 300. Q-K4, 301. Q-K4, 302. Q-K4, 303. Q-K4, 304. Q-K4, 305. Q-K4, 306. Q-K4, 307. Q-K4, 308. Q-K4, 309. Q-K4, 310. Q-K4, 311. Q-K4, 312. Q-K4, 313. Q-K4, 314. Q-K4, 315. Q-K4, 316. Q-K4, 317. Q-K4, 318. Q-K4, 319. Q-K4, 320. Q-K4, 321. Q-K4, 322. Q-K4, 323. Q-K4, 324. Q-K4, 325. Q-K4, 326. Q-K4, 327. Q-K4, 328. Q-K4, 329. Q-K4, 330. Q-K4, 331. Q-K4, 332. Q-K4, 333. Q-K4, 334. Q-K4, 335. Q-K4, 336. Q-K4, 337. Q-K4, 338. Q-K4, 339. Q-K4, 340. Q-K4, 341. Q-K4, 342. Q-K4, 343. Q-K4, 344. Q-K4, 345. Q-K4, 346. Q-K4, 347. Q-K4, 348. Q-K4, 349. Q-K4, 350. Q-K4, 351. Q-K4, 352. Q-K4, 353. Q-K4, 354. Q-K4, 355. Q-K4, 356. Q-K4, 357. Q-K4, 358. Q-K4, 359. Q-K4, 360. Q-K4, 361. Q-K4, 362. Q-K4, 363. Q-K4, 364. Q-K4, 365. Q-K4, 366. Q-K4, 367. Q-K4, 368. Q-K4, 369. Q-K4, 370. Q-K4, 371. Q-K4, 372. Q-K4, 373. Q-K4, 374. Q-K4, 375. Q-K4, 376. Q-K4, 377. Q-K4, 378. Q-K4, 379. Q-K4, 380. Q-K4, 381. Q-K4, 382. Q-K4, 383. Q-K4, 384. Q-K4, 385. Q-K4, 386. Q-K4, 387. Q-K4, 388. Q-K4, 389. Q-K4, 390. Q-K4, 391. Q-K4, 392. Q-K4, 393. Q-K4, 394. Q-K4, 395. Q-K4, 396. Q-K4, 397. Q-K4, 398. Q-K4, 399. Q-K4, 400. Q-K4, 401. Q-K4, 402. Q-K4, 403. Q-K4, 404. Q-K4, 405. Q-K4, 406. Q-K4, 407. Q-K4, 408. Q-K4, 409. Q-K4, 410. Q-K4, 411. Q-K4, 412. Q-K4, 413. Q-K4, 414. Q-K4, 415. Q-K4, 416. Q-K4, 417. Q-K4, 418. Q-K4, 419. Q-K4, 420. Q-K4, 421. Q-K4, 422. Q-K4, 423. Q-K4, 424. Q-K4, 425. Q-K4, 426. Q-K4, 427. Q-K4, 428. Q-K4, 429. Q-K4, 430. Q-K4, 431. Q-K4, 432. Q-K4, 433. Q-K4, 434. Q-K4, 435. Q-K4, 436. Q-K4, 437. Q-K4, 438. Q-K4, 439. Q-K4, 440. Q-K4, 441. Q-K4, 442. Q-K4, 443. Q-K4, 444. Q-K4, 445. Q-K4, 446. Q-K4, 447. Q-K4, 448. Q-K4, 449. Q-K4, 450. Q-K4, 451. Q-K4, 452. Q-K4, 453. Q-K4, 454. Q-K4, 455. Q-K4, 456. Q-K4, 457. Q-K4, 458. Q-K4, 459. Q-K4, 460. Q-K4, 461. Q-K4, 462. Q-K4, 463. Q-K4, 464. Q-K4, 465. Q-K4, 466. Q-K4, 467. Q-K4, 468. Q-K4, 469. Q-K4, 470. Q-K4, 471. Q-K4, 472. Q-K4, 473. Q-K4, 474. Q-K4, 475. Q-K4, 476. Q-K4, 477. Q-K4, 478. Q-K4, 479. Q-K4, 480. Q-K4, 481. Q-K4, 482. Q-K4, 483. Q-K4, 484. Q-K4, 485. Q-K4, 486. Q-K4, 487. Q-K4, 488. Q-K4, 489. Q-K4, 490. Q-K4, 491. Q-K4, 492. Q-K4, 493. Q-K4, 494. Q-K4, 495. Q-K4, 496. Q-K4, 497. Q-K4, 498. Q-K4, 499. Q-K4, 500. Q-K4, 501. Q-K4, 502. Q-K4, 503. Q-K4, 504. Q-K4, 505. Q-K4, 506. Q-K4, 507. Q-K4, 508. Q-K4, 509. Q-K4, 510. Q-K4, 511. Q-K4, 512. Q-K4, 513. Q-K4, 514. Q-K4, 515. Q-K4, 516. Q-K4, 517. Q-K4, 518. Q-K4, 519. Q-K4, 520. Q-K4, 521. Q-K4, 522. Q-K4, 523. Q-K4, 524. Q-K4, 525. Q-K4, 526. Q-K4, 527. Q-K4, 528. Q-K4, 529. Q-K4, 530. Q-K4, 531. Q-K4, 532. Q-K4, 533. Q-K4, 534. Q-K4, 535. Q-K4, 536. Q-K4, 537. Q-K4, 538. Q-K4, 539. Q-K4, 540. Q-K4, 541. Q-K4, 542. Q-K4, 543. Q-K4, 544. Q-K4, 545. Q-K4, 546. Q-K4, 547. Q-K4, 548. Q-K4, 549. Q-K4, 550. Q-K4, 551. Q-K4, 552. Q-K4, 553. Q-K4, 554. Q-K4, 555. Q-K4, 556. Q-K4, 557. Q-K4, 558. Q-K4, 559. Q-K4, 560. Q-K4, 561. Q-K4, 562. Q-K4, 563. Q-K4, 564. Q-K4, 565. Q-K4, 566. Q-K4, 567. Q-K4, 568. Q-K4, 569. Q-K4, 570. Q-K4, 571. Q-K4, 572. Q-K4, 573. Q-K4, 574. Q-K4, 575. Q-K4, 576. Q-K4, 577. Q-K4, 578. Q-K4, 579. Q-K4, 580. Q-K4, 581. Q-K4, 582. Q-K4, 583. Q-K4, 584. Q-K4, 585. Q-K4, 586. Q-K4, 587. Q-K4, 588. Q-K4, 589. Q-K4, 590. Q-K4, 591. Q-K4, 592. Q-K4, 593. Q-K4, 594. Q-K4, 595. Q-K4, 596. Q-K4, 597. Q-K4, 598. Q-K4, 599. Q-K4, 600. Q-K4, 601. Q-K4, 602. Q-K4, 603. Q-K4, 604. Q-K4, 605. Q-K4, 606. Q-K4, 607. Q-K4, 608. Q-K4, 609. Q-K4, 610. Q-K4, 611. Q-K4, 612. Q-K4, 613. Q-K4, 614. Q-K4, 615. Q-K4, 616. Q-K4, 617. Q-K4, 618. Q-K4, 619. Q-K4, 620. Q-K4, 621. Q-K4, 622. Q-K4, 623. Q-K4, 624. Q-K4, 625. Q-K4, 626. Q-K4, 627. Q-K4, 628. Q-K4, 629. Q-K4, 630. Q-K4, 631. Q-K4, 632. Q-K4, 633. Q-K4, 634. Q-K4, 635. Q-K4, 636. Q-K4, 637. Q-K4, 638. Q-K4, 639. Q-K4, 640. Q-K4, 641. Q-K4, 642. Q-K4, 643. Q-K4, 644. Q-K4, 645. Q-K4, 646. Q-K4, 647. Q-K4, 648. Q-K4, 649. Q-K4, 650. Q-K4, 651. Q-K4, 652. Q-K4, 653. Q-K4, 654. Q-K4, 655. Q-K4, 656. Q-K4, 657. Q-K4, 658. Q-K4, 659. Q-K4, 660. Q-K4, 661. Q-K4, 662. Q-K4, 663. Q-K4, 664. Q-K4, 665. Q-K4, 666. Q-K4, 667. Q-K4, 668. Q-K4, 669. Q-K4, 670. Q-K4, 671. Q-K4, 672. Q-K4, 673. Q-K4, 674. Q-K4, 675. Q-K4, 676. Q-K4, 677. Q-K4, 678. Q-K4, 679. Q-K4, 680. Q-K4, 681. Q-K4, 682. Q-K4, 683. Q-K4, 684. Q-K4, 685. Q-K4, 686. Q-K4, 687. Q-K4, 688. Q-K4, 689. Q-K4, 690. Q-K4, 691. Q-K4, 692. Q-K4, 693. Q-K4, 694. Q-K4, 695. Q-K4, 696. Q-K4, 697. Q-K4, 698. Q-K4, 699. Q-K4, 700. Q-K4, 701. Q-K4, 702. Q-K4, 703. Q-K4, 704. Q-K4, 705. Q-K4, 706. Q-K4, 707. Q-K4, 708. Q-K4, 709. Q-K4, 710. Q-K4, 711. Q-K4, 712. Q-K4, 713. Q-K4, 714. Q-K4, 715. Q-K4, 716. Q-K4, 717. Q-K4, 718. Q-K4, 719. Q-K4, 720. Q-K4, 721. Q-K4, 722. Q-K4, 723. Q-K4, 724. Q-K4, 725. Q-K4, 726. Q-K4, 727. Q-K4, 728. Q-K4, 729. Q-K4, 730. Q-K4, 731. Q-K4, 732. Q-K4, 733. Q-K4, 734. Q-K4, 735. Q-K4, 736. Q-K4, 737. Q-K4, 738. Q-K4, 739. Q-K4, 740. Q-K4, 741. Q-K4, 742. Q-K4, 743. Q-K4, 744. Q-K4, 745. Q-K4, 746. Q-K4, 747. Q-K4, 748. Q-K4, 749. Q-K4, 750. Q-K4, 751. Q-K4, 752. Q-K4, 753. Q-K4, 754. Q-K4, 755. Q-K4, 756. Q-K4, 757. Q-K4, 758. Q-K4, 759. Q-K4, 760. Q-K4, 761. Q-K4, 762. Q-K4, 763. Q-K4, 764. Q-K4, 765. Q-K4, 766. Q-K4, 767. Q-K4, 768. Q-K4, 769. Q-K4, 770. Q-K4, 771. Q-K4, 772. Q-K4, 773. Q-K4, 774. Q-K4, 775. Q-K4, 776. Q-K4, 777. Q-K4, 778. Q-K4, 779. Q-K4, 780. Q-K4, 781. Q-K4, 782. Q-K4, 783. Q-K4, 784. Q-K4, 785. Q-K4, 786. Q-K4, 787. Q-K4, 788. Q-K4, 789. Q-K4, 790. Q-K4, 791. Q-K4, 792. Q-K4, 793. Q-K4, 794. Q-K4, 795. Q-K4, 796. Q-K4, 797. Q-K4, 798. Q-K4, 799. Q-K4, 800. Q-K4, 801. Q-K4, 802. Q-K4, 803. Q-K4, 804. Q-K4, 805. Q-K4, 806. Q-K4, 807. Q-K4, 808. Q-K4, 809. Q-K4, 810. Q-K4, 811. Q-K4, 812. Q-K4, 813. Q-K4, 814. Q-K4, 815. Q-K4, 816. Q-K4, 817. Q-K4, 818. Q-K4, 819. Q-K4, 820. Q-K4, 821. Q-K4, 822. Q-K4, 823. Q-K4, 824. Q-K4, 825. Q-K4, 826. Q-K4, 827. Q-K4, 828. Q-K4, 829. Q-K4, 830. Q-K4, 831. Q-K4, 832. Q-K4, 833. Q-K4, 834. Q-K4, 835. Q-K4, 836. Q-K4, 837. Q-K4, 838. Q-K4, 839. Q-K4, 840. Q-K4, 841. Q-K4, 842. Q-K4, 843. Q-K4, 844. Q-K4, 845. Q-K4, 846. Q-K4, 847. Q-K4, 848. Q-K4, 849. Q-K4, 850. Q-K4, 851. Q-K4, 852. Q-K4, 853. Q-K4, 854. Q-K4, 855. Q-K4, 856. Q-K4, 857. Q-K4, 858. Q-K4, 859. Q-K4, 860. Q-K4, 861. Q-K4, 862. Q-K4, 863. Q-K4, 864. Q-K4, 865. Q-K4, 866. Q-K4, 867. Q-K4, 868. Q-K4, 869. Q-K4, 870. Q-K4, 871. Q-K4, 872. Q-K4, 873. Q-K4, 874. Q-K4, 875. Q-K4, 876. Q-K4, 877. Q-K4, 878. Q-K4, 879. Q-K4, 880. Q-K4, 881. Q-K4, 882. Q-K4, 883. Q-K4, 884. Q-K4, 885. Q-K4, 886. Q-K4, 887. Q-K4, 888. Q-K4, 889. Q-K4, 890. Q-K4, 891. Q-K4, 892. Q-K4, 893. Q-K4, 894. Q-K4, 895. Q-K4, 896. Q-K4, 897. Q-K4, 898. Q-K4, 899. Q-K4, 900. Q-K4, 901. Q-K4, 902. Q-K4, 903. Q-K4, 904. Q-K4, 905. Q-K4, 906. Q-K4, 907. Q-K4, 908. Q-K4, 909. Q-K4, 910. Q-K4, 911. Q-K4, 912. Q-K4, 913. Q-K4, 914. Q-K4, 915. Q-K4, 916. Q-K4, 917. Q-K4, 918. Q-K4, 919. Q-K4, 920. Q-K4, 921. Q-K4, 922. Q-K4, 923. Q-K4, 924. Q-K4, 925. Q-K4, 926. Q-K4, 927. Q-K4, 928. Q-K4, 929. Q-K4, 930. Q-K4, 931. Q-K4, 932. Q-K4, 933. Q-K4, 934. Q-K4, 935. Q-K4, 936. Q-K4, 937. Q-K4, 938. Q-K4, 939. Q-K4, 940. Q-K4, 941. Q-K4, 942. Q-K4, 943. Q-K4, 944. Q-K4, 945. Q-K4, 946. Q-K4, 947. Q-K4, 948. Q-K4, 949. Q-K4, 950. Q-K4, 951. Q-K4, 952. Q-K4, 953. Q-K4, 954. Q-K4, 955. Q-K4, 956. Q-K4, 957. Q-K4, 958. Q-K4, 959. Q-K4, 960. Q-K4, 961. Q-K4, 962. Q-K4, 963. Q-K4, 964. Q-K4, 965. Q-K4, 966. Q-K4, 967. Q-K4, 968. Q-K4, 969. Q-K4, 970. Q-K4, 971. Q-K4, 972. Q-K4, 973. Q-K4, 974. Q-K4, 975. Q-K4, 976. Q-K4, 977. Q-K4, 978. Q-K4, 979. Q-K4, 980. Q-K4, 981. Q-K4, 982. Q-K4, 983. Q-K4, 984. Q-K4, 985. Q-K4, 986. Q-K4, 987. Q-K4, 988. Q-K4, 989. Q-K4, 990. Q-K4, 991. Q-K4, 992. Q-K4, 993. Q-K4, 994. Q-K4, 995. Q-K4, 996. Q-K4, 997. Q-K4, 998. Q-K4, 999. Q-K4, 1000. Q-K4, 1001. Q-K4, 1002. Q-K4, 1003. Q-K4, 1004. Q-K4, 1005. Q-K4, 1006. Q-K4, 1007. Q-K4, 1008. Q-K4, 1009. Q-K4, 1010. Q-K4, 1011. Q-K4, 1012. Q-K4, 1013. Q-K4, 1014. Q-K4, 1015. Q-K4, 1016. Q-K4, 1017. Q-K4, 1018. Q-K4, 1019. Q-K4, 1020. Q-K4, 1021. Q-K4, 1022. Q-K4, 1023. Q-K4, 1024. Q-K4, 1025. Q-K4, 1026. Q-K4, 1027. Q-K4, 1028. Q-K4, 1029. Q-K4, 1030. Q-K4, 1031. Q-K4, 1032. Q-K4, 1033. Q-K4, 1034. Q-K4, 1035. Q-K4, 1036. Q-K4, 1037. Q-K4, 1038. Q-K4, 1039. Q-K4, 1040. Q-K4, 1041. Q-K4, 1042. Q-K4, 1043. Q-K4, 1044. Q-K4, 1045. Q-K4, 1046. Q-K4, 1047. Q-K4, 1048. Q-K4, 1049. Q-K4, 1050. Q-K4, 1051. Q-K4, 1052. Q-K4, 1053. Q-K4, 1054. Q-K4, 1055. Q-K4, 1056. Q-K4, 1057. Q-K4, 1058. Q-K4, 1059. Q-K4, 1060. Q-K4, 1061. Q-K4, 1062. Q-K4, 1063. Q-K4, 1064. Q-K4, 1065. Q-K4, 1066. Q-K4, 1067. Q-K4, 1068. Q-K4, 1069. Q-K4, 1070. Q-K4, 1071. Q-K4, 1072. Q-K4, 1073. Q-K4, 1074. Q-K4, 1075. Q-K4, 1076. Q-K4, 1077. Q-K4, 1078. Q-K4, 1079. Q-K4, 1080. Q-K4, 1081. Q-K4, 1082. Q-K4, 1083. Q-K4, 1084. Q-K4, 1085. Q-K4, 1086. Q-K4, 1087. Q-K4, 1088. Q-K4, 1089. Q-K4, 1090. Q-K4, 1091. Q-K4, 1092. Q-K4, 1093. Q-K4, 1094. Q-K4, 1095. Q-K4, 1096. Q-K4, 1097. Q-K4, 1098. Q-K4, 1099. Q-K4, 1100. Q-K4, 1101. Q-K4, 1102. Q-K4, 1103. Q-K4, 1104. Q-K4, 1105. Q-K4, 1106. Q-K4, 1107. Q-K4, 1108. Q-K4, 1109. Q-K4, 1110. Q-K4, 1111. Q-K4, 1112. Q-K4, 1113. Q-K4, 1114. Q-K4, 1115. Q-K4, 1116. Q-K4, 1117. Q-K4, 1118. Q-K4, 1119. Q-K4, 1120. Q-K4, 1121. Q-K4, 1122. Q-K4, 1123. Q-K4, 1124. Q-K4, 1125. Q-K4, 1126. Q-K4, 1127. Q-K4, 1128. Q-K4, 1129. Q-K4, 1130. Q-K4, 1131. Q-K4, 1132. Q-K4, 1133. Q-K4, 1134. Q-K4, 1135. Q-K4, 1136. Q-K4, 1137. Q-K4, 1138. Q-K4, 1139. Q-K4, 1140. Q-K4, 1141. Q-K4, 1142. Q-K4, 1143. Q-K4, 1144. Q-K4, 1145. Q-K4, 1146. Q-K4, 1147. Q-K4, 1148. Q-K4, 1149. Q-K4, 1150. Q-K4, 1151. Q-K4, 1152. Q-K4,

SAYS A MEN'S CLOTHES EXPERT:

"Half the success of well-fitting custom dress is a well-fitting dress shirt underneath..."

Consulate DRESS SHIRTS

MADE IN ENGLAND BY MR. HESTER & CO. LTD., LONDON, ENGLAND

BIRD'S is the smile maker.

BIRD'S Custard is among the really necessary foods of childhood.

BIRD'S Custard is among the really necessary foods of childhood.

Lady Grigg's Nursing Association.

Your Insurance.

COSTS ONE GUINEA A YEAR.

Jockey Club of Kenya.

SPECIAL GENERAL MEETING.

Notice is hereby given that a Special General Meeting of the Members of the Jockey Club of Kenya will be held at the New Stanley Hotel, Nairobi, at 9:30 a.m. on Friday, October 5th, 1928.

Miss KATHLEEN BATES A.R.C.M.

PIANOFORTE—SINGING—HARMONY.

Music Studio Sixth Avenue.

The Weather.

OFFICIAL REPORT FOR THE WEEK.

Station	1st Day	Wind and
		to 20th Sept. 1928
Department of Agriculture, weather report for the week ending 28th September 1928, at certain Stations in the Colony and Protectorate of Kenya.		
Station	1st Day	Wind and
		to 20th Sept. 1928
Eldama	10.50	0.30
Fort Hall	20.47	0.00
Gerard	28.53	0.28
Kisumu	38.02	0.70
Kericho	38.99	0.00
Lywebi	26.06	0.00
Lamu	16.48	0.00
Leroyi	11.18	0.00
Lumbwa	32.08	0.54
Machakos	25.28	0.00
Maldindi	21.43	0.00
Moi	20.30	0.00
Moro	21.83	0.00
Nairobi	17.99	0.21
Nakuru	22.88	0.10
Nyeri	18.13	0.39
Rumuri	11.77	0.12
Senghor	37.12	0.00
Siaya	27.45	0.00
Tika	15.59	0.00

INSURE

YOUR MOTOR CAR AND MOTOR CYCLES

M. D. KAMPE, CHIEF SURGEON.

Doonholm Dairy

Box 11, Nairobi

FUD

Fine Milk and Cream.

From Farm to Consumer.

THE WEEK'S ATTRACTION

DOUBLE TERRA HATS.

M. P. de Mello, P.O. Box 414, NAIROBI.

Meal-time misery-Indigestion

'BISURATED' MAGNESIA

IN POWDER SOLD BY CHEMISTS AND IN TABLETS STORES EVERYWHERE.

'BISURATED' MAGNESIA

McEvans

It goes down so cool on a hot day

It creates that pleasant after-taste.

McEvans

THE OVERMAN COMPANY, Sole Importers for Kenya.

WHOLESALE PROVISIONS IN NAIROBI—S. EPSTEIN & CO.

At The Busy B's

Dog and Poultry Food Specialists.

Spratts Patent Foods

FOR DOGS

Dog Cakes. Loose and in 7 lb. bags.

Puppy Biscuits. Loose and in 7 lb. bags.

Ovals. In 7 lb. bags. Boudin. In 7 lb. bags.

FOR POULTRY

Chicken Meal. Loose and in 7 lb. bags.

Laymor. In 7 lb. bags. Meco. In 7 lb. bags.

Flint Grit. Loose and in 1 lb. cwt. bags.

Oyster Shell. Loose and in 1 cwt. bags.

FOR CAGE BIRDS

Mixed Bird Seed. Loose and in 1 lb. pkts.

Parrot Food. In 1 lb. pkts.

Send for descriptive Price List

Blacklaws & Brown (late Mackinnon Bros.), NAIROBI. Box No. 468. Tel. No. 31. "Blacklaws"

WHERE TO STAY Town & Country

The Nakuru Hotel.

The Salisbury Hotel

Nairobi.

Phone 168. P.O. Box 506.

THE HILL PRIVATE HOTEL

VALLEY ROAD.

All Modern Conveniences, Tennis, Badminton, Garage, Motor Service and Complete Allied trades will be appreciated by those seeking a quiet, comfortable and refined home. (Phone 869).

P.O. Box 788

LIMURU.

BRACKENHURST HOTEL

HUDSON CANE.

CLAIRMONT Residential Hotel.

One of Kenya's beauty spots within 7 miles from Nairobi by good motor road.

Splendid swimming pool, free from all impurities with newly erected diving board and dressing rooms.

Terms from 10/- per day inclusive.

Excellent Cuisine and choicest wines stocked under supervision of the Proprietors.

Telegrams: Clairmont.

Kenya & Uganda Railways and Harbours.

East African Horticultural and Agricultural Show

Nairobi, October 2 and 3, 1928.

On the above dates, the following trains, which will stop at the Nairobi Level Crossing and Westlands Ramp to pick up or set down passengers, will run between Nairobi and the Show Ground Siding—

1st Class Return Shs. 1.00

2nd Class Return Shs. 1.00

3rd Class Return—Cents 50

Tickets will be available on day of issue only. Single tickets will not be issued.

G. D. RODES, Acting General Manager.

General Manager's Office, Nairobi, September 1928.

Souza Junior & Dias

Established in 1886.

The Pioneer and Leading Stores

Government Road, Nairobi.

Transact your purchases where facilities are BEST. Cut down the Bill. Buy your Requirements from us. In fact everything for yourself and Home. At Lowest Prices.

We Stock Fresh Supplies Only.

A Trial Order is Solicited.

P.O. Box 841

OAKLEIGH PRIVATE HOTEL

UNDER PERSONAL SUPERVISION OF MRS. H. JARRETT, Manageress.

Phone 189. NAIROBI. P.O. Box 189.

The Naivasha Hotel

Naivasha

Every Convenience and Comfort.

Special Weekly and Monthly Terms.

THE White Rhino Hotel

NYERI

FOR BREAKFAST, LUNCHEONS, TEA, DINNERS AND ACCOMMODATION.

Situated on Main Road.

Grams—"Whitrhino."

Stag's Head Hotel, Nakuru

FOR BREAKFAST, LUNCHEONS, TEA, DINNER, ACCOMMODATION.

Situated on Main Road.

Hotel Boys on Call.

BEER (On Main)

TARFF

Breakfast ————

Lunch ————

Dinner ————

Beer ————

Breakfast and Beer ————

Full Day ————

Tea ————

Extra special tariff for students and children.

For Week and Month.

High V...

Healthy Dinner

Lunches, Tea, etc.

AUCTION SALES



Diary of Auction Sales.

To-day, 28th September, at the Kenya Grain Mills, 10 a.m., Fire Salvage Sale.
 Monday, 1st October, at our Salerooms, at 10 a.m. Sale by Catalogue of Furniture and Effects in the Estate of the late Major R. Nicholson; also selection of imported Mahogany Furniture, The East African Standard "Daily Editions."
 Thursday, 4th October, at the Lyric Hall, 10 a.m. Sale of Wines and Spirits.
 Friday, 5th October, at our Salerooms, 10 a.m. "Federal" Garden Tractors, Baling Wire, and Agricultural Implements.
 Monday, 8th October, at our Salerooms, at 10 a.m. Catalogue Sale of Furniture and Effects.
 (For full details of all Sales see "The East African Standard" Daily Editions.)

MUTER and OSWALD, Ltd., Auctioneers, NAIROBI.



Fire Salvage

On behalf of the parties concerned, we shall sell, by Public Auction, Without Reserve, at the Kenya Grain Mills, on

To-day, 29th, Sept. at 10 a.m.

CORRUGATED IRON, CONCRETE TANK, FITTING, PULPERS, PLUMBER BLOCKS, GEARING, BELTING, Etc., Etc., Etc.

MUTER and OSWALD, Ltd., Auctioneers, NAIROBI.



Important Auction Sale of Good Furniture and Effects.

Duly instructed by the Attorney for the Executor in the Estate of the late Major R. Nicholson, WE SHALL SELL BY PUBLIC AUCTION, ABSOLUTELY WITHOUT RESERVE,

At our Salerooms, Mutos Building, Hardinge Street, commencing at 10 a.m., on

Monday, October 1st.

THE ENTIRE FURNISHINGS and EFFECTS from the residence of the late Major Nicholson (which effects have been removed to our salerooms, for convenience of sale) comprising:
 THE EXCELLENT DINING ROOM SUITE in bouclé containing of large oval table, 8 chairs (2 carver and 6 ordinary) with upholstered seats and backs, and SIDEBOARD, all in excellent condition; LARGE DESK in Mahogany, DINNER, TEA and COFFEE SERVICES, CHINA, GLASSWARE, PICTURES, EASY CHAIRS, CHESTERFIELD SUITE of three pieces, well sprung SINGLE BEDSTEPS in double containing of large oval table, 8 chairs (2 carver and 6 ordinary) with upholstered seats and backs, and SIDEBOARD, all in excellent condition; LARGE DESK in Mahogany, DINNER, TEA and COFFEE SERVICES, CHINA, GLASSWARE, PICTURES, EASY CHAIRS, CHESTERFIELD SUITE of three pieces, well sprung SINGLE BEDSTEPS in double containing of large oval table, 8 chairs (2 carver and 6 ordinary) with upholstered seats and backs, and SIDEBOARD, all in excellent condition; OAK CHEST DRAWERS, CILICIAN PIANO (with CARVED TABLES, and ONE CASED PIANO by Army and Navy Stores together with a variety of other effects.

On behalf of other clients—
 A SELECTION of GOOD IMPORTED MAHOGANY FURNITURE including LARGE WRITING BUREAU, DRESSING TABLE, OLD TALL BOY, CASKET, AND MINIATURE CHEST of DRAWERS, OCCASIONAL TABLE, folding top, PORTABLE WASHSTAND, BOURBOUR BUREAU with fitted leather stationery racks and clock, THREE INDIAN CHAIRS, sizes 12 x 10, 12 x 9, 11 x 9, WALNUT WARDROBE and WALNUT DRESSING TABLE. Also ONE ANTIQUE PLAYER (for attachment to the CILICIAN PIANO records, indexed, all in good order and condition. CHESTERFIELD SUITE, well sprung chairs, etc. in Notebooks and LAFESTIN.
 Opportunities to purchase the class of furniture offered at this sale are rare, and interested purchasers draw the attention of intending purchasers to this sale.
 All goods will be on "low from Friday" 29th September, when catalogues will be available.

MUTER and OSWALD, Ltd., Auctioneers, NAIROBI.



"Chevrolet" and "Bean" Touring Cars.

Duly instructed, we shall sell by Public Auction, at our Salerooms, Mutos Building, Hardinge Street, on

Monday, 1st Oct. at 10 a.m. precisely

"CHEVROLET" TOURING CAR (Without Reserve), 12 h.p. "BEAN" TOURING CAR (subject to Low Reserve).

"GRAHAM BROTHERS" 14 hp TRUCK in good running order; registered number 157049 self starter, lights, good tyres. (Without Reserve). These cars may be inspected on Saturday morning and prior to Sale.

MUTER and OSWALD, Ltd., Auctioneers NAIROBI.



Sale of Special interest to Clubs, Hotels, Merchants and others.

WINES, SPIRITS and PROVISIONS to be sold ABSOLUTELY WITHOUT RESERVE.

Duly instructed by A. L. Block, Esq., who is liquidating a stock of goods from a bankrupt Estate, we shall sell by PUBLIC AUCTION ABSOLUTELY WITHOUT RESERVE ON

Thursday 4th October, at 10 a.m.

at the Lyric Restaurant, Hardinge Street, Nairobi, ABOUT TWO HUNDRED CASES of WINES and SPIRITS comprising CHAMPAGNES, WHISKEYS, IMPORTED BEERS, GUINNESS STOUT (quarts, pints and nips) CHIANTI (quarts), CHARLES M. CON. SANDEMAN'S DOBRO, THREE DIAMOND AND OLD TAWNY PORTS, SHERRY CLARETS (quarts and pints) SPANISH WINES, SPARKLING MUSCATELS, BURGUNDIES and other wines, etc. Also in original cases, also, TWO CASES, EPOM SALES, MANSION POLISH, SARDINES GLAXO, ONYX SAUCES, TOBACCO, and one length 1/2 Manila Rope.

MUTER and OSWALD, Ltd., Auctioneers, Nairobi



Garden Tractors, Agricultural Machinery, and Baling Wire

Duly instructed, we shall sell by PUBLIC AUCTION, WITHOUT RESERVE, at our Salerooms, Mutos Building, Hardinge Street, on

Friday 5th October at 10 a.m.

THREE NEW "FEDERAL" GARDEN TRACTORS 14 h.p. suitable for light cultivation and garden work, with range of accessories. ONE "SQUIER" 12" COPPER DRUM COFFEE MILL. MILL for power or hand. WILLIAMS' MEALIE PEEL for power or hand. WILLIAMS' MEALIE MILL. SEVERAL TONS of IRON BALKING WIRE in various gauges. TWO THREE FURROW DISC PLOUGHS. T.L.C. CULTIVATOR. TWO 12" "LXNY" PLOUGHS. "AMAYO" No. 1 CONCRETE MIXER. THREE ROLLER SUGAR CANE CRUSHERS. One power. Discs, Shavers, Harrow, Discs, Cultivator Lines, Plough springs, etc. THREE 50 gallon Sugar Cane Mills. Knapsack Sprayer. 2 Double Acting "Mysto" Sprayers, etc., etc.

MUTER and OSWALD, Ltd., Auctioneers, NAIROBI.

Brown & Barrat.

Real Estate, Insurance and Commission Agents. ATTACHEE HOUSE property in every suburb of Nairobi.

FARMS suitable for every pocket in any district throughout Kenya and Tanganyika Territory.

MORTGAGES arranged on best terms. INSURANCE of every description transacted. BUYING commissions undertaken.

Phone 147. Write Box 487. Call 1 B E A Bldg., Government Road.

Brown & Barratt

£100,000 TO LEND ON 1st MORTGAGE IN SMALL OR LARGE AMOUNTS.

E. Hutchison & Co. Auctioneers and Estate Agents, Box 146, NAIROBI.

Austins Auctions

CATALOGUE SALE of 9 m/m MANNLICHER SCHOENAUER RIFLE. H.M.V. GRAMOPHONE. CANTEN of NEW CUTLERY, GOOD CROCKERY, HAND CARVED TEAK SIDEBARD, TERNIS SET, FIFTEEN, GOOD FURNITURE, 2 BURNER STOVE, BEDS, CHESTERFIELD SUITE, ETC. Favoured with instructions,

Austin & Co.

will sell Without Reserve, unless stated, at THE MART, on

To-day Sept. 29th at 10 a.m.

9 m/m MANNLICHER SCHOENAUER RIFLE in new condition (reserve). Badminton Wankettes in TEAK 2 Dinner Wagons. 2 Suite of well made Dining Chairs. Dining and Old Dining Tables. Teak and Polo Side Table. Good Icebox No. 34 Spare Wheel. 20 plate, 2 Teak Double Washstands, Single Wood Bed complete. 2 Fall Front Writing Bureaux, 3 Chests of Drawers. Coffee Stools. HANDSOME HAND CARVED TEAK SIDEBARD WITH MIRROR BACK full size (reserve). Child's Cots. Several Dressing Chests. New Kitchen Tables. Bedroom Chairs. Tea Tables. Child's Pram in new condition (reserve). Berkefeld Rifle in good order. Meat Scales. Morris Chairs. H.M.V. TABLE GRAMOPHONE IN MAHOGANY CASE (reserve). Palm-Stands. Dining Tables. Teak Writing Table with Pigeon Hole. 100 rounds of 12. ammunition. WELL MADE CHESTERFIELD SUITE UPHOLSTERED IN GOOD CRITONNE (reserve). 2 Burner Perfection Stove. Oven in new condition. Mandoline. Fancy Occasional Tables. CANTEN of NEW STAINLESS and E.P.N.S. CUTLERY containing 94 pieces (reserve). A useful

Also the following goods which are only a few weeks old and TEAK DOUBLE BED COMPLETE with Overlay and Pillows. Half Dinner Service. Tea Service. Coffee Service. Bottle Dish. Cruet. Sweet Dishes. 6 Pairs Fine Eaters. 6 Coffee Spoons in Case. Carvers. Saneopans. 4 each Stainless Table and Dessert Knives. 6 each, F.P.N. Spoons and Forks. Etc., Etc., Etc. TEAK SHOWCASE with Glass, round three sides 6' long by 45" High.

AUSTIN & CO. Auctioneers & Estate Agents, Hardinge St., Nairobi.

Studebaker Boxbody. Hupmobile Touring. A.J.S. Combination.

Austin & Co.

will sell subject to low reserves, at THE MART, on

To-day, Sept. 29th at 10 a.m.

HUPMOBILE 4 TOURING CAR in Excellent Running Order and condition. Tyres in good condition. Electric Lights and Self Starter. STUDEBAKER LIGHT 6 BOX BODY in good running order and condition. Electric lights. Tyres good. 1923 Model. TWIN CYL COMBINATION IN PERFECT RUNNING ORDER and CONDITION. 2 New Tires. Lucas Lighting Set. Sidecar in fine condition with Glass Screen.

Sands & Co.

At Sixth Avenue

Wednesday, 3rd October at 10.30.

Without Reserve

- 1 Meat Cart.
- 1 Tin Foot House.
- Entrenching Tools.
- Sledge Hammers, Vices, Pangas.
- 10 Pairs Trolly Wheels.
- 10 Groovers.
- 100 ft. of Shafting. 42in. Pulley Wheels. Mule Harness, Saddlery Parts, Saws 1 Box Chain. 50ft Chain.
- Large Assortment of Sundries.

Sands & Co. AUCTIONEERS

Notice.

We have opened The New City Market

IN SADLER ST. NEAR THE NEW AVENUE HOTEL FOR BUSINESS

Sands & Co. PROPRIETORS

The Victoria Nyanza Sugar Company Ltd.

MIWANI

Des to notify the Public that they have commenced crushing and all orders for sugar should be addressed to them at Miwani.

Farmer's having sugar canes for disposal should communicate, without delay, with the factory, stating number of Farm and where situate, area of cane available, estimated weight of crop, what tonnage they can contract to deliver daily and the date upon which they can commence delivery. Further particulars can be obtained at the mill office on application.

Jamal Pirbhai.

Sells anything You Cannot Sell. Auctioneer, Official Broker and Government Approved Valuer. Auctions Every Sunday, at 9 a.m. Opposite Jeevanji Garden. P.O. Box No. 309. Nairobi, Kenya Colony

Hartley's Tobaccos

Red Seal 4 lbs. bags Rhodesian, Invia, and Rhodesian Plug Cut. Fresh Stocks Arrived. Sole Agents and Distributors

Denovan & Diebel CITY HOUSE, NAIROBI

E. Hutchison & Co.

OWING TO THE BARAZA AND SHOW ON TUESDAY OUR USUAL WEEKLY SALE IS POSTPONED UNTIL FRIDAY 5th OCTOBER, AT 10 A.M. FULL DETAILS LATER.

E. Hutchison & Co.

Auctioneers and Estate Agents.

Just Unpacked.

"Bela - Chine."

Fibre Silk, in all very attractive shades. 30ins. Wide, 8/50 a yd. Also a very good range of cotton dress materials suitable for morning wear in very dainty Checks and Stripes. 30ins. wide Shgs. 2/- a yard and upwards.

Ladharam Stores

(GENERAL DRAPERS.) Govt. Road. NAIROBI. Box 510.

Reduced Prices

FOR CASH

From 27th Sept. to 10th Oct. 20% OFF ALL

Dress Materials Gents Outfitting, Carpets & Rugs.

7 1/2% OFF ALL

Furniture During this Period

Hutchings, Biemer & Co. Ltd.

Box 408. NAIROBI. Phone 498.

