



By Special Appointment to H. M. THE KING

FISONS' Concentrated Coffee FERTILIZER

Table with 2 columns: Analysis, Percentage. Rows include Nitrogen, Phosphate, Potash, Urea, and Payment Note.

Price is per ton of 2,000 lbs. net weight... Limited stocks of Fisons' Concentrated Coffee Fertilizer are being held at Nairobi and Eldoret...

Stock your order with the Agents - Dalgety & Co., Ltd. NAIROBI. ALDORBY.

VERMOUTH

This Vermouth is made from genuine portwine in a midway between French and Italian Vermouth in taste - a "mixed vermouth" in fact. Sold cheap to make room for this year.

MISA'S SHERRY

"Oloroso" at 4/6 per qt. bot. This is the finest wine for the table. SPECIAL PRICE TO THE TRADE. To be had from -

B. C. SIQUEIRA, P.O. Box 642, NAIROBI.

HARDIGS and BRIEF.

Mrs. Hardigs, ex-Rojina Brief begs to announce that she has returned to her business and undertakes DRESSMAKING OF EVERY DESCRIPTION. HIGH-CLASS GENTS' and LADIES' TAILORING by Mr. Hardigs. UP-TO-DATE FITTING ROOM. THEATRE ROYAL BUILDINGS, Station 7. P.O. Box 843.

ASSOCIATED PRODUCERS OF EAST AFRICA.

Lord Cranworth Resigns From Chairmanship.

HIS RESIGNATION.

STANDARD - (Continued). London, Jan. 21. Today a general meeting of the Associated Producers of East Africa was held at 200, Piccadilly. Lord Cranworth, and there was a discussion on the resignation of Lord Cranworth from the position of Chairman of the Association...

Major Cowley remarked that the discussion had had a very useful effect, and his motion against which the criticism had been made was warmly received...

Lord Cranworth Resigns. The next item on the agenda was the resignation of Lord Cranworth from the position of Chairman of the Association...

There were three motions which suggested him in taking the motion he did. There was no other motion attached to the post, and, finally, he had had time to devote to it. He was aware that they had been something of a very important matter, and that which they should have done...

THE EAST AFRICAN STANDARD.

Several standards related which were not to be sent to the Council of the Convention...

His second reason was favour of choice of Chairman was in favour of a step of this kind was always desirable...

Producer and Merchant. The third reason advanced for the position on the Joint East African Board...

There was a long discussion over the question of Land Settlement in Tanganyika...

As regards the Tanganyika Board of the four Members of Parliament...

He had nothing to suggest to say about the Board, but he was a fellow delegate to the conference...

Major Cowley appointed. He suggested that they should elect Major Cowley as Chairman...

On the motion of Lord Cranworth, who had been present...

Several standards related which were not to be sent to the Council of the Convention...

On the motion of Mr. Johnson, seconded by Major Cowley...

There was a long discussion over the question of Land Settlement in Tanganyika...

As regards the Tanganyika Board of the four Members of Parliament...

He had nothing to suggest to say about the Board, but he was a fellow delegate to the conference...

Major Cowley appointed. He suggested that they should elect Major Cowley as Chairman...

On the motion of Lord Cranworth, who had been present...

On the question of land proposals, it was announced that those interested, both from this country and the producers in East Africa...

The Association considered a publicity scheme on posting cards, which proposed the cost of £10,000...

The Association considered a publicity scheme on posting cards, which proposed the cost of £10,000...

The Association considered a publicity scheme on posting cards, which proposed the cost of £10,000...

The Association considered a publicity scheme on posting cards, which proposed the cost of £10,000...

The Association considered a publicity scheme on posting cards, which proposed the cost of £10,000...

The Association considered a publicity scheme on posting cards, which proposed the cost of £10,000...

The Association considered a publicity scheme on posting cards, which proposed the cost of £10,000...

The Association considered a publicity scheme on posting cards, which proposed the cost of £10,000...

The Association considered a publicity scheme on posting cards, which proposed the cost of £10,000...

The Association considered a publicity scheme on posting cards, which proposed the cost of £10,000...

The Association considered a publicity scheme on posting cards, which proposed the cost of £10,000...

The Association considered a publicity scheme on posting cards, which proposed the cost of £10,000...

Advertisement for Scottland's Finest Whisky, JONG JOHN, and Honesty Being Our Watchword. Includes text about whisky quality and agent information.

Advertisement for Ukamba Transport Company, featuring a truck and text about fuel supply and transport services.

Advertisement for Roneo Duplicators, featuring images of Model 16 and Model 2 machines and text about their features and prices.

Advertisement for Martin's Oils, featuring a can of oil and text about various oil products and agents.

Advertisement for John Riskia, featuring a portrait and text about his services as a painter and decorator.

Advertisement for P. Stewart, featuring text about his services as a painter and decorator.

Advertisement for D. Lyall, featuring text about his services as a watchmaker and jeweller.

Large advertisement for Roneo Duplicators, featuring large text and images of the machines, and text about their features and prices.

THE EAST AFRICAN STANDARD DAILY EDITION.

Advertisements are accepted only subject to approval by the Domestic Advertisements.

Subscription rates: Daily, 1s. 6d. per week; 10s. 6d. per month; 36s. per annum.

SITUATIONS WANTED.

THE charge for advertisement in this column is Sh. 1/- for a line of six words, or a Sh. 1/6 for a line with a minimum of Sh. 1/6. Repeats half price on consecutive days only.

SITUATIONS VACANT.

THE charge for advertisement in this column is Sh. 1/- for a line of six words, or a Sh. 1/6 for a line with a minimum of Sh. 1/6. Repeats half price on consecutive days only.

TO LET.

THE charge for advertisement in this column is Sh. 1/- for a line of six words, or a Sh. 1/6 for a line with a minimum of Sh. 1/6. Repeats half price on consecutive days only.

MOMBASA WANTS A COAT OF ARMS.

Chance for Designers in the Colony. 5s. PER LINE.

EQUATOR SAW MILLS

P.O. PLATEAU. P.O. MAJI-MAZUHI. Head Office: P.O. Box 291 NAIROBI.

Highest Quality Lowest Prices Largest Stocks Smallest Moisture Contents Quickest Delivery

New Concolor Creations FOR THE TROPICS



We have just received a consignment of three new Concolor Tropical Models specially made to our own design.

Day and Evening Gowns of Exclusive French and Viennese Designs made to Order.

Warnings Ltd. Africa House, Government Road, NAIROBI.

ADVERTISEMENTS

For Sale and Situation Vacant and Wanted, 1s. per line per week.

WEEKLY

For sale and Situation Vacant and Wanted, 1s. per line per week.

FOR SALE

THE charge for advertisement in this column is Sh. 1/- for a line of six words, or a Sh. 1/6 for a line with a minimum of Sh. 1/6.

WANTED

THE charge for advertisement in this column is Sh. 1/- for a line of six words, or a Sh. 1/6 for a line with a minimum of Sh. 1/6.

FARMS FOR SALE

THE charge for advertisement in this column is Sh. 1/- for a line of six words, or a Sh. 1/6 for a line with a minimum of Sh. 1/6.

MISCELLANEOUS

THE charge for advertisement in this column is Sh. 1/- for a line of six words, or a Sh. 1/6 for a line with a minimum of Sh. 1/6.

BOARD A RESIDENCE

THE charge for advertisement in this column is Sh. 1/- for a line of six words, or a Sh. 1/6 for a line with a minimum of Sh. 1/6.

FARMS FOR SALE

THE charge for advertisement in this column is Sh. 1/- for a line of six words, or a Sh. 1/6 for a line with a minimum of Sh. 1/6.

STOCKBREEDERS DIRECT MEAT SUPPLY CO. LTD.

FINEST QUALITY GRADE BEEF, PORK; MUTTON; VEAL; SHEEP.

Motor Tours, Ltd. Head Office, Nairobi. 8 per cent DISCOUNT on all month's a/c paid by 15th inst.

Public Meeting IN THE Kikuyu Constituency

The Hon. Col. G. G. DUBHAM, D.S.O., M.L.C., supported by Members of the Executive of the CONVENTION OF ASSOCIATIONS, will address Meetings, as under, on the subject of the REPORT OF THE COMMISSIONER OF CLOSER UNION OF THE DEPENDENCIES IN EASTERN AND CENTRAL AFRICA.

TO LET

THE charge for advertisement in this column is Sh. 1/- for a line of six words, or a Sh. 1/6 for a line with a minimum of Sh. 1/6.

TO LET

THE charge for advertisement in this column is Sh. 1/- for a line of six words, or a Sh. 1/6 for a line with a minimum of Sh. 1/6.

TO LET

THE charge for advertisement in this column is Sh. 1/- for a line of six words, or a Sh. 1/6 for a line with a minimum of Sh. 1/6.

TO LET

THE charge for advertisement in this column is Sh. 1/- for a line of six words, or a Sh. 1/6 for a line with a minimum of Sh. 1/6.

TO LET

THE charge for advertisement in this column is Sh. 1/- for a line of six words, or a Sh. 1/6 for a line with a minimum of Sh. 1/6.

TO LET

Fully furnished 3 roomed Stone House in Westlands with nice garden. Low rent to suitable tenant.

TO LET

THE charge for advertisement in this column is Sh. 1/- for a line of six words, or a Sh. 1/6 for a line with a minimum of Sh. 1/6.

TO LET

THE charge for advertisement in this column is Sh. 1/- for a line of six words, or a Sh. 1/6 for a line with a minimum of Sh. 1/6.

TO LET

THE charge for advertisement in this column is Sh. 1/- for a line of six words, or a Sh. 1/6 for a line with a minimum of Sh. 1/6.

TO LET

THE charge for advertisement in this column is Sh. 1/- for a line of six words, or a Sh. 1/6 for a line with a minimum of Sh. 1/6.

TO LET

THE charge for advertisement in this column is Sh. 1/- for a line of six words, or a Sh. 1/6 for a line with a minimum of Sh. 1/6.

TO LET

THE charge for advertisement in this column is Sh. 1/- for a line of six words, or a Sh. 1/6 for a line with a minimum of Sh. 1/6.

TO LET

THE charge for advertisement in this column is Sh. 1/- for a line of six words, or a Sh. 1/6 for a line with a minimum of Sh. 1/6.

TO LET

THE charge for advertisement in this column is Sh. 1/- for a line of six words, or a Sh. 1/6 for a line with a minimum of Sh. 1/6.

TO LET

THE charge for advertisement in this column is Sh. 1/- for a line of six words, or a Sh. 1/6 for a line with a minimum of Sh. 1/6.

TO LET

THE charge for advertisement in this column is Sh. 1/- for a line of six words, or a Sh. 1/6 for a line with a minimum of Sh. 1/6.

TO LET

THE charge for advertisement in this column is Sh. 1/- for a line of six words, or a Sh. 1/6 for a line with a minimum of Sh. 1/6.

TO LET

THE charge for advertisement in this column is Sh. 1/- for a line of six words, or a Sh. 1/6 for a line with a minimum of Sh. 1/6.

TO LET

THE charge for advertisement in this column is Sh. 1/- for a line of six words, or a Sh. 1/6 for a line with a minimum of Sh. 1/6.

TO LET

THE charge for advertisement in this column is Sh. 1/- for a line of six words, or a Sh. 1/6 for a line with a minimum of Sh. 1/6.

TO LET

THE charge for advertisement in this column is Sh. 1/- for a line of six words, or a Sh. 1/6 for a line with a minimum of Sh. 1/6.

TO LET

THE charge for advertisement in this column is Sh. 1/- for a line of six words, or a Sh. 1/6 for a line with a minimum of Sh. 1/6.

TO LET

THE charge for advertisement in this column is Sh. 1/- for a line of six words, or a Sh. 1/6 for a line with a minimum of Sh. 1/6.

TO LET

THE charge for advertisement in this column is Sh. 1/- for a line of six words, or a Sh. 1/6 for a line with a minimum of Sh. 1/6.

TO LET

THE charge for advertisement in this column is Sh. 1/- for a line of six words, or a Sh. 1/6 for a line with a minimum of Sh. 1/6.

TO LET

THE charge for advertisement in this column is Sh. 1/- for a line of six words, or a Sh. 1/6 for a line with a minimum of Sh. 1/6.

TO LET

THE charge for advertisement in this column is Sh. 1/- for a line of six words, or a Sh. 1/6 for a line with a minimum of Sh. 1/6.

TO LET

THE charge for advertisement in this column is Sh. 1/- for a line of six words, or a Sh. 1/6 for a line with a minimum of Sh. 1/6.

TO LET

THE charge for advertisement in this column is Sh. 1/- for a line of six words, or a Sh. 1/6 for a line with a minimum of Sh. 1/6.

TO LET

THE charge for advertisement in this column is Sh. 1/- for a line of six words, or a Sh. 1/6 for a line with a minimum of Sh. 1/6.

TO LET

THE charge for advertisement in this column is Sh. 1/- for a line of six words, or a Sh. 1/6 for a line with a minimum of Sh. 1/6.

Are You Prejudiced Against Local Productions?

A trial of our FLOUR will convince you of its GOOD QUALITY.

The Annual General Meeting will be held at the New Stanley Hotel, Nairobi, (by kind permission of the Management) on MONDAY, the 22nd February, 1926, commencing at 9 p.m.

- AGENDA: 1. Minutes of the last Annual General Meeting. 2. Annual Report and Balance Sheet. 3. Election of Officers. 4. Election of Committee. 5. General Business.

Jockey Club of Kenya DANCE

WILL BE HELD AT THE NEW STANLEY HOTEL ON SATURDAY, 2nd March at 9 p.m.

POLYGON INK POWDER

Superior Writing and 7/2 Ideal Fountain Pen Ink. DARK BLUE. ONE TIN MAKES 40 OUNCES OF INK.

"THE LENS"
 Patent Pending
 Price's Building, HAIROBI.
 Special Glasses for All Optical and Photographic Goods.
ZEISS
 LENSES, MICROSCOPES, LEVELS, TRIANGULATORS, REFRACTOMETERS, SPECTROSCOPES, and other instruments in East Africa of Spectacles, Photo-Optical Apparatus and Scientific Glass with the famous ZEISS and ZEISSER LENSES (white or black) for all Camera, Cinematograph and Projector work. Also Zeiss and Zeissler Lenses (white or black) for all Camera Lenses in any One Workshop. All work done by fully qualified Optician. All work done with the most up-to-date Testing Apparatus. PRICE OF CHARGE.

Agriculture.

Rust in Wheat.

Canadian Experiments in Sulphur Dusting.

In a letter which appeared in the "East African Standard" a short time ago on the subject of rust in wheat it was suggested that the Department of Agriculture might make a useful practical and notes of spraying wheat with flowers of sulphur, as practiced in Canadian wheat fields. It was further stated that in Canada this method of dealing with rust had been found to increase the yield very considerably, and it was suggested that the introduction of a similar system might permit of the growing of a much higher yielding type of wheat than that usually grown in Kenya which might not be rust proof.

In an interview with the Government Agricultural and Plant Breeder a representative of the "East African Standard" asked of spraying with flowers of sulphur had been tried experimentally on a small scale in Canada it does not appear to have been adopted generally, probably on account of the expense. There are no records of such tests in the official documents dealing with wheat which that section may have possible. It is, however, particularly in Kenya, has been tried on a number of other crops. It would appear, however, from certain records in a series of "The International" (The International) journal which is the official organ of the American Phytopathological Society, that experiments have been carried out that it is not to be desired. It is, however, it has been found necessary to deal with it in three times a week would seem to indicate that for the present the cost would be too far from an economical means of this method.

Canadian Experiments.
 The following are reports from the Phytopathology regarding Canadian experiments.

Prothymol experiments on the control of leaf and stem rusts of wheat by sulphur dust. D. H. Bailey and F. G. Zenger.
 Two series of experiments were conducted on Marquis wheat at Winnipeg, were dusted thoroughly, weekly, semi-weekly, and bi-weekly with sulphur dust. The results of the application of sulphur was in the second series 20 lbs. per acre. The plots dusted once every two weeks were rated as heavily as the checks. One application per week had some influence, and two applications per week had a very marked influence in controlling rust and increasing the yield. Three applications per week at 15 lb. per acre practically controlled both leaf and stem rust, and the increase in yield was 20 bushels per acre as compared with the average of the check plots. One plot was dusted at the rate of 15 lbs. per acre when rust seemed imminent (7 applications). The percentage infection and yield in this plot were about the same as in the plots receiving two applications per week or a total of 37 applications.

Second report on dusting for several years. C. V. Kitching and H. H. Whittell.
 The second series' results in dusting with sulphur for the control of rust on wheat and oats confirm the indications of the preliminary experiments of 1922. They show that proper application of dusting sulphur will control these diseases to a significant degree. The total increase on heavy rusted plots of winter wheat dusted with leaf rust only was 18.5 per cent or 8.6 bushels per acre. The maximum increase on any individual plot was 47.5 per cent or 21.3 bushels per acre, while the minimum increase was 7.5 per cent or 3.5 bushels per acre. The dusted plots were arranged in a randomized fashion with 20 checks of the same size. Infection was reduced on the average, 48.5 per cent.

Increased Yield.
 The total yield on twenty plots of two square rods of oats,

affected with both leaf and stem rust, was increased 19.0 per cent or 8.6 bushels per acre. The maximum yield on any individual plot was increased 42.1 per cent or 19.6 bushels per acre, while the minimum increase was 6.0 per cent or 2.8 bushels per acre. The dusted infection in checkerboard fashion with 20 equal sized checks. Infection was reduced, on the average, 57.0 per cent.

There is some indication that excessive applications of sulphur dust may cause decreased yields in wheat.
 Effect of Sulphur dust on the development of black stem rust in wheat in a natural epidemic. S. B. Lambert and E. C. Shabman.

Wheat was dusted in several localities in Minnesota in 1922 with prophylactic sulphur at the rate of about 20 lbs. per acre, so that the incidence of stem rust, a heavy natural epidemic obtained in some instances. The results supported Kitching's statements that sulphur dust controls rust under certain conditions. Time of application is a most critical factor. In some experiments, one application virtually controlled rust in spite of a heavy natural epidemic. In others, five applications were practically ineffective, although the first application was made at a critical period before a spore shower. It does not seem to inhibit development of uredinia after plants are soon infected. In the last rust spring, in a heavy epidemic, it would be necessary to begin dusting when the grain is in flower, or earlier, and continue until the hard dough stage, thus necessitating five or six applications. No two seasons are alike, and it is doubtful whether the proper time could be predicted with even approximate accuracy in any given season. Co-operative investigations by the Office of Cereal Investigation, Bureau of Plant Industry, U. S. Department of Agriculture, and the Minnesota Agricultural Experiment Station.

Best All Round Rifle on the Market.
 30" barrel \$25.00
 28" barrel \$20.00
 Ammunition \$45.00 per 100 rounds
 5 per cent. Discount for Cash.
Chas. A. Heyer & Co.,
 The only European Gunmakers in Kenya.
 Great Elephant. Box 207.
 Est. 1908.

FOR AN EFFICIENT AND PERMANENT HOT WATER SUPPLY
INSTALL A Beeson Hot Water Boiler

For particulars relating to the size of Boiler required and prices apply to—
Thornton & Turpin (Sole Agents)
 REGISTERED PLUMBERS AND SANITARY ENGINEERS,
 NAIROBI AND MOMBASA.
 Phone 163 P.O. Box 266, Nairobi. and P.O. Box 356, Mombasa.

BBB, ORLIK, LOEWÉ & DUNHILL PIPES
MAY & CO., LTD
ACCO FASTENERS
 with slide strap compressor.
 No. 1 size ... \$hs. 12/50 per 100
 No. 2 size ... \$hs. 12/50 per 100
 Standard Stationery Stores NAIROBI

Football Season 1929

The Famous "Hotspur" and Other Makes
 well Brady & Co. NAIROBI and ELDORET.

28/50, 37/50, 40/50

E T O

NEW CREATION BY CHRYSLER

The New Style that Re-Styles all Motor Cars.

IN FIVE YEARS CHRYSLER ENGINEERING HAS ORIGINATED, PIONEERED OR DEVELOPED TO HIGHEST EFFICIENCY THESE EPOCH-MAKING FEATURES: ----

- "Silver Dome" high compression engine using any petrol.
- Exclusive type of high turbulence combustion chamber.
- iso-therm invar-strut pistons, tongue and groove rings.
- Air cleaner and oil filter.
- Manifold heat control, for elimination of "spitting" and "spluttering".
- Body and crank shaft impulse neutralizers.
- Hydraulic shock absorbers for supreme ease of riding.
- Light action internal expanding hydraulic four-wheel brakes.
- Balanced road wheels.
- Ornamental, indirectly lighted instrument panel.
- Saddle seat spring cushions.

Sedan £350
Coupe £335
Touring £310
Two Seater £310

CARR, LAWSON & Co., Ltd.

Nairobi Nakuru Eldoret Kampala

Its a Long Lane that has no Turning

BUT WHEN THE LONGEST LANE IS NEVER MOSTLY LOST BY SEVERAL TRAVELLING WHEELS THE MORE SPIRIT USE



The Esprit de Cars.

NOTICE.

Ring up 596 for the Nairobi Vulcanizing Co.

WIDIO ARE NOT EXPERIMENTERS
What we say we mean; What we mean we say.
"WE GUARANTEE ALL OUR WORK"
Agents for Mr. CRITCHLOW'S PETROL SAVER.

ESSJAY LIMITED.

BUILDING HOUSE, GOVERNMENT ROAD, NAIROBI. Phone 577.

FINANCIAL & PROPERTY AGENT.

Mortgages specialised in.
Town Properties Negotiated.
Partnerships Arranged.
Investments Advised on.

We have sound investments for sums from £100 upwards. In this respect we claim to do better for you than anyone else.

S. JACOBS, Managing Director.

NOTICE.

THE VICTORIA NYANZA SUGAR COMPANY, LIMITED, have arranged with the under-mentioned Stores to retail their No. 1 White Crystal Sugar at the following prices:
Per pound Cents -/28
Per packet of 50 lbs Shgs. 1/7 7/8

NAIROBI.

J. Jacobs, Limited, Auctioneers.
H. H. Dorman, Nairobi House.
M. C. Dixon & Co., Company.
Hindlars & Brown.
The Indian House Trading Co., Ltd.
Peters, Limited.
Wholesale Grocers.

NAKURU.

J. Jacobs, Limited, Auctioneers.
S. Jacobs, Limited, Wholesale Grocers.
Wm. Douglas, ROUSAI.

Mascot Footwear

35/-

Patent Court, Smart Toe, Louis Heel.
Patent 1-Bar, round toe, Spanish Cuban
Patent Sunday Heel, round toe.
Fawn 1-Bar, Louis Heel.
Tan Glace 1-Bar Louis Heel.

De Luxe Boot Co., Box 627, NAIROBI.

Topics for the Motorist.

The Art of Gear Changing.

Speed the Governing Factor.

A Slogan for the Motorist.

As a motor owner, you are getting the best out of your driving. The question is not so much how fast you may be going, but how fast you may be going. It is not the car, but the driver who is the key to the car's performance. The car is only as good as the driver who is in it. The driver who is in it is the key to the car's performance. The car is only as good as the driver who is in it. The driver who is in it is the key to the car's performance.

Economical Speeds.

There is a speed value in respect of every motor-car engine speed range which it will function at its highest efficiency in power output for fuel economy. But to practice the speed of the engine the road is not a suitable one. A driver, when walking pace to go much in a mile a minute possibly. A driver, when walking pace to go much in a mile a minute possibly. A driver, when walking pace to go much in a mile a minute possibly.

Calculating Engine Speed.

It is more simple and ready a plan to work out a set of "constants" which will provide for the determination of engine speed from "speedometer" reading, and vice versa, by easy multiplication or division.

Value the value of 100 per cent. value, multiply by the ratio, and divide by the ratio of the gear.

constant value (for gear ratio) used, the engine speed will be determined thus. 50 by 43 equals 1,150 r.p.m. as before.

Remembering, now, that a certain standard engine speed is assumed to within reasonable limits for the purpose of comparison, the correct moment for gear-changing up or down can be determined readily enough.

The Right Moment.

In any individual case, the most correct time has been ascertained in this way, the moment when the engine is just starting to be strained at the right moment.

The VICTORY SIX



Engineering Victory of the Decade

Dodge Brothers Victory Six is the only car of its kind in the world. Its chassis frame is the first width of the body—for the first time in motor car history! And the body has only a major part.

W. Spitzer and Co., Limited—Kisumu Garage, Kisumu, Embaka, Kampala, Mwanza & Bukuru.

S. FISHER & SIMMONS (E.A.) LTD., Victoria Street, NAIROBI.

DODGE BROTHERS MOTOR CARS

SPECIAL 'H & S' SCOTCH



The finest obtainable irrespective of price. The product of an independent firm of Scotch Whisky Distillers. The Whisky of Quality.

WOLENBERG AND RETAIL STOCKISTS: COLONIAL GENERAL STORES, LTD., NAIROBI. W. H. Holt & Sons Limited, Aberdeen-Glasgow Distillery, Greenburgh, Scotland.

KENYA SETTLERS DIARY 1928.

Containing Useful Information for the Settler. Price: Shs. 3/6 Posted 4/-. LETT'S DIARIES 1928. POCKET and OFFICE PILOT Desk Calendars

Complete Reills Shs. 6/6 posted 8/-. Shs. 3/75 posted 4/18

Standard Stationery Stores, NAIROBI.

Trans Nzola Land KIRKWOOD & Co.

The well-known Land Agents with the most comprehensive list of properties for sale in the fertile Trans Nzola district where the rains never fail. Every facility and assistance offered to New-comers. Try us a visit or let us know your requirements. Telegrams: Kirkwood, Kitale.

WELCOME NEWS BIG REDUCTIONS IN THE PRICE OF Spratts Dog Food

- DOG Cakes 7lb. bag Shs. 5/20
- PUPPY BISCUITS 7lb. bag Shs. 5/10
- ROASTED ALKAX 7lb. bag Shs. 5/75
- POULTRY FOODS. GRITS, MEDICINES. 7lb. bag Shs. 5/-
- MERO 7lb. bag Shs. 4/75
- WATER SEED 4lb. bag Shs. 4/-
- PLANT GRIE 2lb. bag Shs. 4/-
- POULTRY SPECIE. 10 lb. pack Shs. 10/-

BLACKLAWS & BROWN (LATE MACRINNON BROS.)

Kenya Loan & Discount Co., Ltd NAIROBI

OFFICES: P.O. Box 646, 1st Floor, Court Chambers. FINANCIAL AGENTS. HILLS BROS. PRINTERS. SHEET PAPER & INKS GRANTED. ANY REALISABLE ASSET NEGOTIATED. F.O.B. CASH. Call or Write, Street 100/100/100. Established 1897.

INSURE WITH THE GENERAL ACCIDENT, FIRE and LIFE ASSURANCE CORPORATION, LTD.

ALL Classes of Insurance Business Transacted. THE HOUSEHOLDERS INDISPENSABLE POLICY This combined Policy embraces the risks of FIRE, BURGLARY and ACCIDENTS in DOMESTIC SERVANTS.

M. D. KAMPF Chief Representative.

P.O. Box 296, NAIROBI. Gen'l. Chambers.

Theo. SCHOUTEN LADIES & GENTLEMEN'S HAIRDRESSING.

PERMANENT WAVING A SPECIALTY. UNDER PERSONAL SUPERVISION.

All the Leading Toilet Requisites Stocked. GOVERNMENT ROAD. Also at MOMBASA and NAKURU. Phone 245.

The "GUILDHALL" BOOK HEADING INDICATOR.

IN FOUR SIZES. INVARIABLE TO ALL ANALYSIS BOOK USERS. No. 1 size 90s. Shs. 1/150 No. 2 size 120s. Shs. 1/150 No. 3 size 160s. Shs. 2/250 No. 4 size 180s. Shs. 2/250. This Patent Device saves either the cost of printing or the necessity of writing in headings.

STANDARD STATIONERY STORES, NAIROBI.

When Your Liver is Right You are Well

Remember your liver, kidneys and bladder... The liver is the largest gland in the body... It filters the blood and removes poisons...



Dr. Williams' Pink Pills for Pale People

Dr. Williams' Pink Pills for Pale People

Dr. Williams' Pink Pills for Pale People

Dr. Williams' Pink Pills for Pale People

Dr. Williams' Pink Pills for Pale People

Dr. Williams' Pink Pills for Pale People

Dr. Williams' Pink Pills for Pale People

Dr. Williams' Pink Pills for Pale People

Dr. Williams' Pink Pills for Pale People

Dr. Williams' Pink Pills for Pale People

Dr. Williams' Pink Pills for Pale People

Dr. Williams' Pink Pills for Pale People

Dr. Williams' Pink Pills for Pale People

Dr. Williams' Pink Pills for Pale People

Dr. Williams' Pink Pills for Pale People

Dr. Williams' Pink Pills for Pale People

Dr. Williams' Pink Pills for Pale People

Dr. Williams' Pink Pills for Pale People

Dr. Williams' Pink Pills for Pale People

Dr. Williams' Pink Pills for Pale People

Dr. Williams' Pink Pills for Pale People

Dr. Williams' Pink Pills for Pale People

Dr. Williams' Pink Pills for Pale People

Dr. Williams' Pink Pills for Pale People

Dr. Williams' Pink Pills for Pale People

Dr. Williams' Pink Pills for Pale People

Dr. Williams' Pink Pills for Pale People

Dr. Williams' Pink Pills for Pale People

Dr. Williams' Pink Pills for Pale People

Dr. Williams' Pink Pills for Pale People

Dr. Williams' Pink Pills for Pale People

Dr. Williams' Pink Pills for Pale People

Dr. Williams' Pink Pills for Pale People

Dr. Williams' Pink Pills for Pale People

Dr. Williams' Pink Pills for Pale People

Dr. Williams' Pink Pills for Pale People

Dr. Williams' Pink Pills for Pale People

Dr. Williams' Pink Pills for Pale People

Dr. Williams' Pink Pills for Pale People

Dr. Williams' Pink Pills for Pale People

COFFEE AREAS BEAT OFF THE FIRST LOCUST ATTACK.

(Continued from page 3).

ship and at Masera. Day and night were moved off to the station of Daguerri at about 2 P.M. A big swarm was reported in the neighbourhood of the station. It was a swarm of locusts. It was a swarm of locusts. It was a swarm of locusts.

small swarm was reported from Marbera (Kinnari) at about 10 P.M. It was a swarm of locusts. It was a swarm of locusts. It was a swarm of locusts.

Many serious swarms passed over the district on the 11th and 12th inst. The swarms were reported from the station of Daguerri at about 2 P.M. It was a swarm of locusts.

From the latest information received it would appear that Nairobi is completely free from locusts. It is completely free from locusts. It is completely free from locusts.

At Limuru, where a meeting of settlers was held yesterday, it was stated that the locusts were not so numerous as on the Nairobi side of Westlands.

At Limuru, where a meeting of settlers was held yesterday, it was stated that the locusts were not so numerous as on the Nairobi side of Westlands.

Cost Produce.

PROMISE OF THE NEW SUGAR PLANTATIONS.

It is not a question of the interest competing with the interest in regard to produce. Cost producing is not a question of the interest competing with the interest in regard to produce.

It is not a question of the interest competing with the interest in regard to produce. Cost producing is not a question of the interest competing with the interest in regard to produce.

It is not a question of the interest competing with the interest in regard to produce. Cost producing is not a question of the interest competing with the interest in regard to produce.

It is not a question of the interest competing with the interest in regard to produce. Cost producing is not a question of the interest competing with the interest in regard to produce.

It is not a question of the interest competing with the interest in regard to produce. Cost producing is not a question of the interest competing with the interest in regard to produce.

It is not a question of the interest competing with the interest in regard to produce. Cost producing is not a question of the interest competing with the interest in regard to produce.

It is not a question of the interest competing with the interest in regard to produce. Cost producing is not a question of the interest competing with the interest in regard to produce.

It is not a question of the interest competing with the interest in regard to produce. Cost producing is not a question of the interest competing with the interest in regard to produce.

It is not a question of the interest competing with the interest in regard to produce. Cost producing is not a question of the interest competing with the interest in regard to produce.

It is not a question of the interest competing with the interest in regard to produce. Cost producing is not a question of the interest competing with the interest in regard to produce.

Intense Cold Throughout Europe.

(Continued from page 1).

ed on the ice in the Gulf of Finland. The ice was several days, and was discovered with parts of the boat. The ice was several days, and was discovered with parts of the boat.

ed on the ice in the Gulf of Finland. The ice was several days, and was discovered with parts of the boat. The ice was several days, and was discovered with parts of the boat.

ed on the ice in the Gulf of Finland. The ice was several days, and was discovered with parts of the boat. The ice was several days, and was discovered with parts of the boat.

ed on the ice in the Gulf of Finland. The ice was several days, and was discovered with parts of the boat. The ice was several days, and was discovered with parts of the boat.

ed on the ice in the Gulf of Finland. The ice was several days, and was discovered with parts of the boat. The ice was several days, and was discovered with parts of the boat.

ed on the ice in the Gulf of Finland. The ice was several days, and was discovered with parts of the boat. The ice was several days, and was discovered with parts of the boat.

ed on the ice in the Gulf of Finland. The ice was several days, and was discovered with parts of the boat. The ice was several days, and was discovered with parts of the boat.

ed on the ice in the Gulf of Finland. The ice was several days, and was discovered with parts of the boat. The ice was several days, and was discovered with parts of the boat.

ed on the ice in the Gulf of Finland. The ice was several days, and was discovered with parts of the boat. The ice was several days, and was discovered with parts of the boat.

ed on the ice in the Gulf of Finland. The ice was several days, and was discovered with parts of the boat. The ice was several days, and was discovered with parts of the boat.

ENTERTAINMENTS.

By Special Request THE PROPRIETORS OF THE AVENUE HOTEL have been specially requested to give a SUNDOWNER DANCE ON THE ROOF GARDEN. PAUL ROBINS BAND AT 8.15 on FEB. 12th from 7.15 to 11.45. FREE ADMISSION TO RESIDENTS.

"The Strolling Players" The Theatre Royal Company will present THEIR PIERROT ENTERTAINMENT AT THE NAKURU HOTEL On Friday and Saturday FEBRUARY 19th and 20th. The following cast will appear: M. H. THRO BLUNT, W. DIAMANT, NELLA POTGIETTER, GLAHSY GOOLE with J. G. TAYLOR and DOROTHY SUMMERS. PRICES: 7/6 and 5/-. MOLO, KITAI and 1/10 NETT to FOLLOW! KITAILE, Feb. 20th, 7/6 and 5/-. ELDOROT Feb. 22nd, 2/6d.

NOVELTY DANCE AT THE KIKUYU HOTEL ON Saturday, February 19th. TICKETS Shs. 10/60 Double, Shs. 7/60 Single Including Light Refreshments. MUSIC BY SYD SIEGLER'S FULL BAND.

BRACKENHURST, LIMURU SATURDAY, FEBRUARY 14. AT 8 P.M. VARIETY ENTERTAINMENT AND DANCE. TICKETS 5/- INCLUDING LIGHT SUPPER.

THEATRE ROYAL Sunday, February 17th at 8.45. SIR ARTHUR CONAN DOYLE, M.D., L.D. will deliver his famous lecture "MY PSYCHIC EXPERIENCES" (as given in U.S.A., Australia, South Africa, etc.) Written Questions will be answered at the close of the lecture. BOOKING AT THEATRE ROYAL. PRICES: Shs. 7/60, 5/4, 5/1.

Tuesday, February 19th at 8-45 SECOND LECTURE entitled "THE WONDERS OF PSYCHIC KNOWLEDGE" In which Sir Arthur will show upon the screen some 20 examples from his unique collection of Psychic Photographs and Pictures. PRICES: As above. BOOKING OPEN NOW AT THEATRE ROYAL.

Sure Remedy for Indigestion.

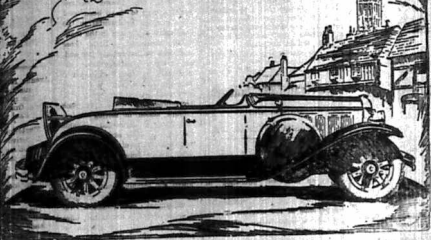
You see stop digestive pain in several ways, but the actual cause of the trouble remains, to grow worse and worse. On the other hand, you take water after eating, you not only stop the immediate pain, but you also remove the cause of the trouble. "Bismarck" Magnesia is a complete treatment, and soothing, healing and strengthening the inflamed stomach lining, which has become raw with the action of acid. All over Magnesia used by people with a tendency to acidity, indigestion, and acting thus not a few ailments, in both powder and tablet form. Get a package today. It is the only remedy that will stop digestive pain where they start quickly and completely.

MOMBASA TIMES CAN BE OBTAINED at the Standard Stationery Stores, P.O. Box 353, NAIROBI.

Best Quality Goods. Prompt Attention. Unfailing Courtesy & Reasonable Prices. Are a few of the contributing factors to the success of our business to-day. WE ARE CONVINCED and a SHORT TRIAL WILL CONVINCE YOU that your needs and interests can be better served at Prim's House, Govt. Road, than elsewhere in the Colony.

CAN you really afford to let the opportunity of proving this pass by? Remember, Our business has been built on SERVICE!

Colonial General Stores LIMITED. P.O. BOX 428



Sports Roadster £384 Phaeton £384 4 Door Sedan £433 2 Door Sedan £410 DELIVERY NAIROBI.

THE MOTOR MART and Exchange, Ltd. Nairobi. Nakuru. Dar-es-salaam.

WHAT IT MEANS TO YOU.

The development of this new car by General Motors is an event of real importance to the motorist who insists upon high quality, yet who must buy economically.

It offers speed—over sixty miles an hour—and power, from a 65-horse-power engine for the hills and bad roads— together with true riding comfort, in luxurious seats, convenient controls, and the ability to hold the road at all speeds.

A New OAKLAND Series 6-212 -the cosmopolitan six

Dar-es-salaam. Nairobi. Nakuru.

SEITLER'S CRITICISM OF THE COMMISSION'S REPORT.

Member for Kikuyu Declares It Is Impracticable.

SELF GOVERNMENT AIMS.

Linora Endorses the Judgment of the Unofficial Leaders.

Linora district secretary endorsed the report expressed by the Elected Members of the Convention of Associations in regard to the report of the Hilton Young Commission at the first of the Kikuyu Constituency meetings, held yesterday.

L. C. Durham, the Member of Legislative Council for the Constituency made a comparison with Southern Rhodesia in the Convention of Associations in regard to the Kikuyu and declared that in this Colony there were a few types of men—men more qualified to look after their own interests.

In supporting Colonel Durham's criticisms, another speaker said it seemed to carry its own defeat in itself, in its extremist nature would serve to consolidate the opposition.

FUTURE OF YANGANYIKA.

SEITLER'S SPECIAL CONFERENCE. The future in the Linora area of the Kikuyu constituency has been a subject of much interest to the members of the Kikuyu Constituency Meetings held in the Hilton Young Report.

General Bents Quoted. The speaker said that he was not a political man, but he was a Kikuyu and he was interested in the future of his people.

With regard to the franchise, he said that he was not a political man, but he was a Kikuyu and he was interested in the future of his people.

He said that he was not a political man, but he was a Kikuyu and he was interested in the future of his people.

He said that he was not a political man, but he was a Kikuyu and he was interested in the future of his people.

He said that he was not a political man, but he was a Kikuyu and he was interested in the future of his people.

He said that he was not a political man, but he was a Kikuyu and he was interested in the future of his people.

He said that he was not a political man, but he was a Kikuyu and he was interested in the future of his people.

He said that he was not a political man, but he was a Kikuyu and he was interested in the future of his people.

He said that he was not a political man, but he was a Kikuyu and he was interested in the future of his people.

He said that he was not a political man, but he was a Kikuyu and he was interested in the future of his people.

He said that he was not a political man, but he was a Kikuyu and he was interested in the future of his people.

He said that he was not a political man, but he was a Kikuyu and he was interested in the future of his people.

THE HIGHLANDS CATHEDRAL.

Valuable Work by Groups of Workers.

MEETING AT ELDORET.

Speakers Appeal for Duty and Co-operation.

SEITLER'S CONFERENCE. A large attendance was present at the meeting of the Highlands Cathedral.

The Chairman laid stress on the duty and co-operation of the workers in the Highlands Cathedral.

The meeting proceeded in a most interesting manner, with speakers appealing for duty and co-operation.

Groups of Workers.

In a spirit of changing positions in a campaign to depict too much of the individual. You have to form groups. There are several of the Churches in the Highlands Cathedral.

Our aims and ideals were no more than a series of resolutions. We were not to be a political party.

Our aims and ideals were no more than a series of resolutions. We were not to be a political party.

Our aims and ideals were no more than a series of resolutions. We were not to be a political party.

Our aims and ideals were no more than a series of resolutions. We were not to be a political party.

Our aims and ideals were no more than a series of resolutions. We were not to be a political party.

Our aims and ideals were no more than a series of resolutions. We were not to be a political party.

Our aims and ideals were no more than a series of resolutions. We were not to be a political party.

Our aims and ideals were no more than a series of resolutions. We were not to be a political party.

Our aims and ideals were no more than a series of resolutions. We were not to be a political party.

Our aims and ideals were no more than a series of resolutions. We were not to be a political party.

Our aims and ideals were no more than a series of resolutions. We were not to be a political party.

Our aims and ideals were no more than a series of resolutions. We were not to be a political party.

WITH THE DUKE OF GLOUCESTER ON SAFARI.

Enjoyable Experience But Few Thrills.

THE KING'S ILLNESS.

Now H.R.H. Received the News in the Congo.

[E. A. Standen's Special]. When the Duke of Gloucester came to the Congo on his safari, he was accompanied by a large party.

The Duke of Gloucester was accompanied by a large party on his safari in the Congo.

The Duke of Gloucester was accompanied by a large party on his safari in the Congo.

The Duke of Gloucester was accompanied by a large party on his safari in the Congo.

The Duke of Gloucester was accompanied by a large party on his safari in the Congo.

The Duke of Gloucester was accompanied by a large party on his safari in the Congo.

The Duke of Gloucester was accompanied by a large party on his safari in the Congo.

The Duke of Gloucester was accompanied by a large party on his safari in the Congo.

The Duke of Gloucester was accompanied by a large party on his safari in the Congo.

The Duke of Gloucester was accompanied by a large party on his safari in the Congo.

The Duke of Gloucester was accompanied by a large party on his safari in the Congo.

The Duke of Gloucester was accompanied by a large party on his safari in the Congo.

The Duke of Gloucester was accompanied by a large party on his safari in the Congo.

The Duke of Gloucester was accompanied by a large party on his safari in the Congo.

The Duke of Gloucester was accompanied by a large party on his safari in the Congo.

The Duke of Gloucester was accompanied by a large party on his safari in the Congo.

The Duke of Gloucester was accompanied by a large party on his safari in the Congo.

LYRIC HALL.

TO-NIGHT ONLY at 8.45 p.m.

A Daughter of Israel

PRICES: Shs. 5/- and Shs. 3/-



Nature gave you child Beautiful Feet

You, and you, you can keep them beautiful. They must be built into the way they are made.

Trains are due to leave Nairobi today for the following destinations at the following times:

Table with 2 columns: Destination and Time. Includes Nairobi to Kisumu, Nairobi to Mombasa, Nairobi to Malindi, Nairobi to Lamu, Nairobi to Taita, Nairobi to Kilimanjaro, Nairobi to Zanzibar.

Star-Rite for Boys and Girls. Sole Agents—Eadies Footwear Ltd.

THEATRE ROYAL.

TO-NIGHT AND TOMORROW NIGHT AT 8.45 "HER SISTER FROM PARIS"

with CONSTANCE TALMAGE and RONALD COLMAN. USUAL PRICES: Circle 8/- Stalls 2/-

THURSDAY, FEB. 14th "Bardelys The Magnificent" A METRO-GOLDWYN-MAYER PICTURE

Starring JIM GILBERT. PRICES: Circle 5/- Stalls 3/-

The Theatre Royal present "THE STROLLING PLAYERS" ON TOUR. At Nairobi, Feb. 15 and 16; Kitale Feb. 20 and 21; and Eldoret, Feb. 22 and 23

WE SELL SERVICE AND REPAIR ALL MAKES OF CARS & TRUCKS

WE GIVE EXPERT ADVICE TO WIRELESS ENTHUSIASTS.

COMPLETE WIRELESS SETS AND COMPONENT PARTS ALWAYS IN STOCK.

RADIO BATTERIES CHARGED, AND ELECTRICAL WORK OF ALL DESCRIPTION UNDERTAKEN.

CALL AND INSPECT THE LATEST MODEL INDIAN SCOUT 45 ON VIEW AT

K. McIvors Garage.

Phone 97. Sixth Avenue. P.O. Box 97

Ellye Day FEBRUARY 15th

In Paris on the 12th, February 15th, the death of Ellye Day was announced. She was a well-known actress and singer.



TALLEYRAND

Ellye Day was a well-known actress and singer. She was born in London and died in Paris.

Today's Trains.

Trains are due to leave Nairobi today for the following destinations at the following times:

Table with 2 columns: Destination and Time. Includes Nairobi to Kisumu, Nairobi to Mombasa, Nairobi to Malindi, Nairobi to Lamu, Nairobi to Taita, Nairobi to Kilimanjaro, Nairobi to Zanzibar.

Star-Rite for Boys and Girls. Sole Agents—Eadies Footwear Ltd.

P.O. Box 149, NAIROBI.

THEATRE ROYAL.

TO-NIGHT AND TOMORROW NIGHT AT 8.45 "HER SISTER FROM PARIS"

with CONSTANCE TALMAGE and RONALD COLMAN. USUAL PRICES: Circle 8/- Stalls 2/-

THURSDAY, FEB. 14th "Bardelys The Magnificent" A METRO-GOLDWYN-MAYER PICTURE

Starring JIM GILBERT. PRICES: Circle 5/- Stalls 3/-

The Theatre Royal present "THE STROLLING PLAYERS" ON TOUR. At Nairobi, Feb. 15 and 16; Kitale Feb. 20 and 21; and Eldoret, Feb. 22 and 23

WE SELL SERVICE AND REPAIR ALL MAKES OF CARS & TRUCKS

WE GIVE EXPERT ADVICE TO WIRELESS ENTHUSIASTS.

COMPLETE WIRELESS SETS AND COMPONENT PARTS ALWAYS IN STOCK.

RADIO BATTERIES CHARGED, AND ELECTRICAL WORK OF ALL DESCRIPTION UNDERTAKEN.

CALL AND INSPECT THE LATEST MODEL INDIAN SCOUT 45 ON VIEW AT

K. McIvors Garage.

Phone 97. Sixth Avenue. P.O. Box 97

(Continued on page 11.)

(Continued on page 10.)

Quality Carpets
Continuing a Campaign
to Have Carpets Cleaned

Latest Arrivals!
Latest Designs!!
Latest Shades!!!

Ahamed Bros.
THE HOUSE OF
DISTINCTION

P.O. Box BAZAAR
254 NAIROBI. 261.

HAWKES'
Cork Helmets

FOREMOST SINCE 1871.
Hawkes & Co., Ltd., 1, Savile Row, London, W.1.
STOCKED BY HIGH-CLASS OUTFITTERS.



KRAFT
CHEDDAR
CHEESE

A FRESH CONSIGNMENT OF THIS
WELL-KNOWN CHEESE
HAS JUST BEEN

Sh. 1/75 UNPACKED Sh. 1/75
AND AT AND
Sh. 1/50 Sh. 2/75
P.O. Box 175 Phone
ELLIOTS 60.

Monsieur Florens
FRENCH HAIRDRESSER,
PERMANENT WAVING—WHOLE HEAD.
69-
GOVERNMENT ROAD, YORK BUILDINGS,
P.O. Box 918 Phone 861.

TORR'S
Fresh
Chocolates.

Take a Box Home with You.

LADIES!!!
When you have decided upon your frocks
get in touch with

BON MARCHÉ

Buy the materials for your frocks and make them
at our Tailoring Department—
IT IS CHEAPER!

We stock up-to-date designs and colours in
DRESS MATERIALS either in Silk or Cotton.
Government Road, NAIROBI.

LADIES!!!
When you have decided upon your frocks
get in touch with

BON MARCHÉ

Buy the materials for your frocks and make them
at our Tailoring Department—
IT IS CHEAPER!

We stock up-to-date designs and colours in
DRESS MATERIALS either in Silk or Cotton.
Government Road, NAIROBI.

CORRESPONDENCE

POSTAL RATES.
To the Editor, "E.A. Standard."
The editor does not accept respon-
sibility for the views expressed
and is not bound by the opinions
of his correspondents in these
columns, and in all cases the
name and address of the writer
must accompany all articles, and
necessarily for publication, but
will, if desired, be sent to the
address to which they are
sent, unless otherwise stated.

Why this ridiculous rate, con- sidering the fact that it secures for the postal service for the convenience of the public, and is a very poor and not to be com mended way of the postal service and electric convenience rendered by the postal services to the public, is in general in other British Colonies, such as the Cape of Good Hope, South Africa?
The author employs a staff of 200 men, and it is not surprising that a good portion of the postal service is in general in other British Colonies, such as the Cape of Good Hope, South Africa?

Why this ridiculous rate, con sidering the fact that it secures for the postal service for the convenience of the public, and is a very poor and not to be com mended way of the postal service and electric convenience rendered by the postal services to the public, is in general in other British Colonies, such as the Cape of Good Hope, South Africa?
The author employs a staff of 200 men, and it is not surprising that a good portion of the postal service is in general in other British Colonies, such as the Cape of Good Hope, South Africa?

Why this ridiculous rate, con sidering the fact that it secures for the postal service for the convenience of the public, and is a very poor and not to be com mended way of the postal service and electric convenience rendered by the postal services to the public, is in general in other British Colonies, such as the Cape of Good Hope, South Africa?
The author employs a staff of 200 men, and it is not surprising that a good portion of the postal service is in general in other British Colonies, such as the Cape of Good Hope, South Africa?

Why this ridiculous rate, con sidering the fact that it secures for the postal service for the convenience of the public, and is a very poor and not to be com mended way of the postal service and electric convenience rendered by the postal services to the public, is in general in other British Colonies, such as the Cape of Good Hope, South Africa?
The author employs a staff of 200 men, and it is not surprising that a good portion of the postal service is in general in other British Colonies, such as the Cape of Good Hope, South Africa?

Why this ridiculous rate, con sidering the fact that it secures for the postal service for the convenience of the public, and is a very poor and not to be com mended way of the postal service and electric convenience rendered by the postal services to the public, is in general in other British Colonies, such as the Cape of Good Hope, South Africa?
The author employs a staff of 200 men, and it is not surprising that a good portion of the postal service is in general in other British Colonies, such as the Cape of Good Hope, South Africa?

Why this ridiculous rate, con sidering the fact that it secures for the postal service for the convenience of the public, and is a very poor and not to be com mended way of the postal service and electric convenience rendered by the postal services to the public, is in general in other British Colonies, such as the Cape of Good Hope, South Africa?
The author employs a staff of 200 men, and it is not surprising that a good portion of the postal service is in general in other British Colonies, such as the Cape of Good Hope, South Africa?

WIND, DUST, HEAT AND LOCALITY.

"STANDARD" - GILDERHEDER.
The Editor, "E.A. Standard."
The editor does not accept respon-
sibility for the views expressed
and is not bound by the opinions
of his correspondents in these
columns, and in all cases the
name and address of the writer
must accompany all articles, and
necessarily for publication, but
will, if desired, be sent to the
address to which they are
sent, unless otherwise stated.

Why this ridiculous rate, con sidering the fact that it secures for the postal service for the convenience of the public, and is a very poor and not to be com mended way of the postal service and electric convenience rendered by the postal services to the public, is in general in other British Colonies, such as the Cape of Good Hope, South Africa?
The author employs a staff of 200 men, and it is not surprising that a good portion of the postal service is in general in other British Colonies, such as the Cape of Good Hope, South Africa?

Why this ridiculous rate, con sidering the fact that it secures for the postal service for the convenience of the public, and is a very poor and not to be com mended way of the postal service and electric convenience rendered by the postal services to the public, is in general in other British Colonies, such as the Cape of Good Hope, South Africa?
The author employs a staff of 200 men, and it is not surprising that a good portion of the postal service is in general in other British Colonies, such as the Cape of Good Hope, South Africa?

Why this ridiculous rate, con sidering the fact that it secures for the postal service for the convenience of the public, and is a very poor and not to be com mended way of the postal service and electric convenience rendered by the postal services to the public, is in general in other British Colonies, such as the Cape of Good Hope, South Africa?
The author employs a staff of 200 men, and it is not surprising that a good portion of the postal service is in general in other British Colonies, such as the Cape of Good Hope, South Africa?

Why this ridiculous rate, con sidering the fact that it secures for the postal service for the convenience of the public, and is a very poor and not to be com mended way of the postal service and electric convenience rendered by the postal services to the public, is in general in other British Colonies, such as the Cape of Good Hope, South Africa?
The author employs a staff of 200 men, and it is not surprising that a good portion of the postal service is in general in other British Colonies, such as the Cape of Good Hope, South Africa?

Why this ridiculous rate, con sidering the fact that it secures for the postal service for the convenience of the public, and is a very poor and not to be com mended way of the postal service and electric convenience rendered by the postal services to the public, is in general in other British Colonies, such as the Cape of Good Hope, South Africa?
The author employs a staff of 200 men, and it is not surprising that a good portion of the postal service is in general in other British Colonies, such as the Cape of Good Hope, South Africa?

Why this ridiculous rate, con sidering the fact that it secures for the postal service for the convenience of the public, and is a very poor and not to be com mended way of the postal service and electric convenience rendered by the postal services to the public, is in general in other British Colonies, such as the Cape of Good Hope, South Africa?
The author employs a staff of 200 men, and it is not surprising that a good portion of the postal service is in general in other British Colonies, such as the Cape of Good Hope, South Africa?



"ERASMIC" Shaving Stick

Does half the razor's work by swiftly preparing the face for the blade.

Leaves the skin soft and smooth. DOES NOT DRY ON THE FACE.

B. H. Myers & Co., Ltd.
Phone 843. GOVT. ROAD. Box 461.

FURNITURE SUPPLIED ON HIRE PURCHASE.

NO DEPOSIT

Small Monthly Payments

ALL OUR FURNITURE IS SOLD WITH A GUARANTEE.

The Romance of Scotland is interwoven in the distillation and fragrance of

SPEY ROYAL

BY ROYAL APPOINTMENT.



Whisky

of the

guaranteed by the proprietors.

Whisky

of the

guaranteed by the proprietors.

TRY PETERS UNION TYRES AND TUBES

for greater mileage and efficiency.

Sole Importers—
HANSING & Co. (East Africa)
P.O. Box 272, MOMBASA

Representatives—
DENOVAT & DIEBEL, NAIROBI.

PLASMOQUINE COMP.

The new active ANTIMALARIAL.

The remedy recommended by L. G. Ferehaidt, Director of the International League Against Malaria.

Obtainable through all Leading Chemists.

Sole Agents—
HANSING & Co. (East Africa)
P.O. Box 272, MOMBASA

Representatives—
DENOVAT & DIEBEL, NAIROBI.

THE ENGLAND CATHEDRAL.

WIND, DUST, HEAT AND LOCALITY.
The Editor, "E.A. Standard."
The editor does not accept respon-
sibility for the views expressed
and is not bound by the opinions
of his correspondents in these
columns, and in all cases the
name and address of the writer
must accompany all articles, and
necessarily for publication, but
will, if desired, be sent to the
address to which they are
sent, unless otherwise stated.

Why this ridiculous rate, con sidering the fact that it secures for the postal service for the convenience of the public, and is a very poor and not to be com mended way of the postal service and electric convenience rendered by the postal services to the public, is in general in other British Colonies, such as the Cape of Good Hope, South Africa?
The author employs a staff of 200 men, and it is not surprising that a good portion of the postal service is in general in other British Colonies, such as the Cape of Good Hope, South Africa?

Why this ridiculous rate, con sidering the fact that it secures for the postal service for the convenience of the public, and is a very poor and not to be com mended way of the postal service and electric convenience rendered by the postal services to the public, is in general in other British Colonies, such as the Cape of Good Hope, South Africa?
The author employs a staff of 200 men, and it is not surprising that a good portion of the postal service is in general in other British Colonies, such as the Cape of Good Hope, South Africa?

Why this ridiculous rate, con sidering the fact that it secures for the postal service for the convenience of the public, and is a very poor and not to be com mended way of the postal service and electric convenience rendered by the postal services to the public, is in general in other British Colonies, such as the Cape of Good Hope, South Africa?
The author employs a staff of 200 men, and it is not surprising that a good portion of the postal service is in general in other British Colonies, such as the Cape of Good Hope, South Africa?

Why this ridiculous rate, con sidering the fact that it secures for the postal service for the convenience of the public, and is a very poor and not to be com mended way of the postal service and electric convenience rendered by the postal services to the public, is in general in other British Colonies, such as the Cape of Good Hope, South Africa?
The author employs a staff of 200 men, and it is not surprising that a good portion of the postal service is in general in other British Colonies, such as the Cape of Good Hope, South Africa?

Why this ridiculous rate, con sidering the fact that it secures for the postal service for the convenience of the public, and is a very poor and not to be com mended way of the postal service and electric convenience rendered by the postal services to the public, is in general in other British Colonies, such as the Cape of Good Hope, South Africa?
The author employs a staff of 200 men, and it is not surprising that a good portion of the postal service is in general in other British Colonies, such as the Cape of Good Hope, South Africa?

Why this ridiculous rate, con sidering the fact that it secures for the postal service for the convenience of the public, and is a very poor and not to be com mended way of the postal service and electric convenience rendered by the postal services to the public, is in general in other British Colonies, such as the Cape of Good Hope, South Africa?
The author employs a staff of 200 men, and it is not surprising that a good portion of the postal service is in general in other British Colonies, such as the Cape of Good Hope, South Africa?

THE ENGLAND CATHEDRAL.

WIND, DUST, HEAT AND LOCALITY.
The Editor, "E.A. Standard."
The editor does not accept respon-
sibility for the views expressed
and is not bound by the opinions
of his correspondents in these
columns, and in all cases the
name and address of the writer
must accompany all articles, and
necessarily for publication, but
will, if desired, be sent to the
address to which they are
sent, unless otherwise stated.

Why this ridiculous rate, con sidering the fact that it secures for the postal service for the convenience of the public, and is a very poor and not to be com mended way of the postal service and electric convenience rendered by the postal services to the public, is in general in other British Colonies, such as the Cape of Good Hope, South Africa?
The author employs a staff of 200 men, and it is not surprising that a good portion of the postal service is in general in other British Colonies, such as the Cape of Good Hope, South Africa?

Why this ridiculous rate, con sidering the fact that it secures for the postal service for the convenience of the public, and is a very poor and not to be com mended way of the postal service and electric convenience rendered by the postal services to the public, is in general in other British Colonies, such as the Cape of Good Hope, South Africa?
The author employs a staff of 200 men, and it is not surprising that a good portion of the postal service is in general in other British Colonies, such as the Cape of Good Hope, South Africa?

Why this ridiculous rate, con sidering the fact that it secures for the postal service for the convenience of the public, and is a very poor and not to be com mended way of the postal service and electric convenience rendered by the postal services to the public, is in general in other British Colonies, such as the Cape of Good Hope, South Africa?
The author employs a staff of 200 men, and it is not surprising that a good portion of the postal service is in general in other British Colonies, such as the Cape of Good Hope, South Africa?

Why this ridiculous rate, con sidering the fact that it secures for the postal service for the convenience of the public, and is a very poor and not to be com mended way of the postal service and electric convenience rendered by the postal services to the public, is in general in other British Colonies, such as the Cape of Good Hope, South Africa?
The author employs a staff of 200 men, and it is not surprising that a good portion of the postal service is in general in other British Colonies, such as the Cape of Good Hope, South Africa?

Why this ridiculous rate, con sidering the fact that it secures for the postal service for the convenience of the public, and is a very poor and not to be com mended way of the postal service and electric convenience rendered by the postal services to the public, is in general in other British Colonies, such as the Cape of Good Hope, South Africa?
The author employs a staff of 200 men, and it is not surprising that a good portion of the postal service is in general in other British Colonies, such as the Cape of Good Hope, South Africa?

Why this ridiculous rate, con sidering the fact that it secures for the postal service for the convenience of the public, and is a very poor and not to be com mended way of the postal service and electric convenience rendered by the postal services to the public, is in general in other British Colonies, such as the Cape of Good Hope, South Africa?
The author employs a staff of 200 men, and it is not surprising that a good portion of the postal service is in general in other British Colonies, such as the Cape of Good Hope, South Africa?

AUCTION SALES.



Daily instructed by several parties proceeding on leave, we shall sell by PUBLIC AUCTION, WEDNESDAY, FEBRUARY 14, 1929, unless postponed, at our Salerooms, Mintos Building, Hardinge Street, Nairobi.

TO-DAY 13th FEBRUARY at 10 a.m.

No. 8 "Dover" Stove and Piping. Kitchen Tables. Mattresses. Girl's Cycle. Coat Mirrors. Brass Mounted Iron Bedstead with spring mattress. Bouffe Bedstead. Spring mattress. Double iron bedsteads. Double Spring Mattress. Washable Mattress. Mirror. Glass of drawers in oak and mahogany. Washstands. Lot and Mattress. Brass 200 lbs. Billiard Table top with cues and balls. Brass Vases. "Vasey" Brackets in Brass. Linoleum Paraffin Burners. "Dionophone" and Records. Double Wardrobe, bedstead mirror. (Available) 2 soles. Urn-shaped decorative. Single Wardrobe, bedstead mirror. Chamberlain Suite. "A.J.S." Motor Cycle Combination. Child's Playground. "Dumley" Perambulator (res.). Porcelain Washbain. Pictures. Music Stool.

MUTER and OSWALD Ltd., Auctioneers, NAIROBI.



5 Acre Plot NGONG ROAD. £500 or near offer.
1 Acre Freehold Plot KILIMANI. Good Red Soil. £150 or offer.

These two properties must be sold quickly and no reasonable offer will be refused.
MUTER and OSWALD, Ltd., Agents NAIROBI.

Further Reductions ONLY FOR FEW DAYS

IN DRESS MATERIAL, STEE OVER AND LOOK AROUND OUR WINDOWS. DON'T MISS THIS OPPORTUNITY. CALL OR WRITE AT

Mrs. HUSEIN'S SHOP GOVERNMENT ROAD, NAIROBI.

NAIROBI CORPORATION TO CONTRACTORS.

Tenders are invited for the Hanging of Black Trap Chippings and Grit for Road making purposes, for a period of six months. Specifications may be obtained at the Municipal Engineer's Office. The lowest or any tender not necessarily accepted. Municipal Offices, Nairobi, 12th February, 1929.

M.R. de Souza & Co.

(Established 1889). P.O. Box No. 195 Phone No. 75. We beg to announce to our numerous customers that we have received a stock of LADIES' HATS in latest style cheap in price but good in quality. In addition to low price we offer 20 per cent. discount for cash. Our stock of Provisions is also offered to our customers at very reduced prices. NAIROBI. Government Road.

RUBBER DESK PADS

This indispensable pad is an ornament to the Desk. FLAT and NON-SLIPPING—DOES NOT CURL UP AT THE EDGES—RESISTANT TO STAIN—EASILY REMOVED—CLEAN AND HYGIENIC.

3 SIZES:	
12 x 24 inches	Shs. 12/50 each
22 x 14 inches	Shs. 15/- each
20 x 18 inches	Shs. 15/50 each

STANDARD STATIONERY STORES, NAIROBI.

AUSTIN'S AUCTIONS.

CORRUGATED IRON, CHARCOAL, TYRES, NEW INNER TUBES, ETC. **AUSTIN & CO.** will sell WITHOUT RESERVE, at THE MART, on **Thursday Feb 14th, at 10 am** About 40 Sheets Corrugated Iron, 7 Bags Charcoal, Block Making Machine, Wire Netting, Second Hand Motor Covers and Tubes, New Glanher Tubes 31 x 4, Electrical Fittings, Exposed Taps, Broad Tins, Ice Cream Freezers, Lino, Mince Meat Machines, Large Cooking Pots, Brass Water Taps, Car Cushions, etc.

AUSTIN & CO. Auctioneers and Estate Agents, HARDINGE ST. NAIROBI

SANDS & CO., A' our Railway Saleyards

To-day 13th Feb 11-30 a.m. 1 Slaughter Oxen. 12 Grade Cows with Calves at foot. Further entries being received

SANDS & CO., AUCTIONEERS

Sands & Co., AT OUR YARDS, NAIVASHA.

Monday, 18th Feb, at 10-30 a.m

- 1 50 Gal. Water Cart Practically New
- 1 Morris 1 Ton Lorry in first class running order
- 6 Really First Class Milking Cows near Calving
- 100 Grade Sheep.
- 94 Grade and Native Cows. A real good herd
- 40 Grade Steers
- 10 High Grade Shorthorn Heifers
- 8 A.M. and T. Trained Trois Oxen

POULTRY and BUNDRIES. Further entries invited

SANDS & CO., AUCTIONEERS

SANDS & CO., IN The City Market.

SADLER STREET. Every TUESDAY and FRIDAY at 9 a.m. FRUIT, VEGETABLES and FARM PRODUCE

AT OUR RAILWAY SALEYARDS NAIROBI. Every WEDNESDAY, at 11 a.m.

LIVE STOCK OF ALL DESCRIPTION. Entries for the above markets invited.

SANDS & CO., AUCTIONEERS

SANDS & CO., SADDLERS STREET

KAVIROINDO GRASS MATS ALL SIZES. ANY QUANTITY. Shs. 2/50 LARGE Shs. 2 SMALL

SANDS & CO., AUCTIONEERS

Metropolitan Garage USED CARS

Rolls Royce (new safari body), a magnificent car £300
Rogley Six Fourer, perfect condition 250
Chrysler Sports Tourer, mileage 13,000 230
Chevrolet, box body, just overhauled 158
Reliable Cars for Hire with or without Drivers
ALL CARS OVER £50 SUBJECT TO 3 MONTHS FREE SERVICE. EXPERT REPAIRS ALL MAKES CARS. D. J. L. LETHBRIDGE, Sole Proprietor Two doors from Avenue Road

NOTICE. FOR REAL SOUND FARMING, PLANTING and BUSINESS INVESTMENTS

CONSULT **MUNDELL,** P.O. Box 54. — ELDORRET

THE NYANZA AUCTIONEERS NAKURU

Slaughter Stock Sale

Nakuru, Tuesday February 19th 1929, 2-30 p.m

About One hundred and twenty head slaughter oxen, comprising 70 head prime quality young oxen from the Hamarura district mostly 3 and 4 year old grade Shorthorn.

20 Prime Native Oxen. 30 Fat Native Oxen. Suitable for compound meat.

At 10 a.m. on the same date we are selling the NAKURU BUSINESS and RESIDENTIAL PLOTS at the Railway Institute. For particulars see "Official Gazette."

Farm Sale.

NAKURU, SATURDAY, FEB. 16th

at the Nakuru Hotel at 10-30 a.m. By Instructions of the Trustee in the bankrupt estate of J. R. S. Stuart.

That well-known and highly desirable property known as MALTGRAVES FARM, LONDANI (L.O. 4778), comprising six hundred acres held on a 999 year lease.

The farm is situated one mile south of Londani station (hotel, post office, etc.) on the main Lumba Road; it is bounded on two sides by this road and on one side by a good permanent stream. The situation is exceptionally warm and sheltered for this altitude (7,000 feet) being protected from the prevailing East Wind by the Mt. Elgon Mountains.

SOIL.—About half of the farm is highly fertile FERTILE SOIL yielding heavy crops of both Maize and Wheat and eminently suitable for all classes of temperate and sub-tropical fruits and a great variety of farm crops. The remainder is first class grazing and wood land with a very heavy stock carrying capacity.

IMPROVEMENTS include a well built four roomed house with three additional guest huts, large stone floored cedar slab and iron roof stores, 3 implement sheds, office, four houses, tennis court, cattle kraal, etc. Several hundred fencing posts have been put in on the boundary and in the grounds around the house.

TWENTY TWO ACRES planted with FRUIT TREES, chiefly ALMONDS. About one hundred and seventy acres of the best land has been cleared and plowed (delicious land gave very heavy crops wheat this season).

LABOUR.—A number of Lumba squatters are resident and both Lumba and Kikuyu labour is plentiful being obtainable from Crown lands in the neighbourhood. A government cattle dip is available on an adjoining farm. There are two salt licks on the property and water power could be obtained from the river at small cost.

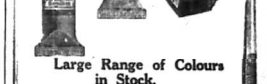
Good Timber is obtainable from Government forests within three miles.

N.B.—During the past two abnormally dry seasons this district has suffered NO LACK OF RAIN. In all the property is one of the best MIXED FARMING and DAIRYING propositions ever offered by auction in Kenya.

Terms of sale are CASH but mortgage for up to half the purchase price can be arranged to approved buyers. Further particulars from and inspection arranged by

THE NYANZA AUCTIONEERS, P.O. Box 67, NAKURU.

WINSOR & NEWTON'S ARTISTS' MATERIALS



Large Range of Colours in Stock.



STENCILING OUTFITS, PEN PAINTING SETS, POSTER COLOURS, SKETCH BLOCK, ETC.

Standard Stationery Stores. P.O. Box 360. — NAIROBI.

GODFREY'S CAR MA

(LATE STANLEY GARAGE). **USED CARS.**

Morris Oxford, 14/28 h.p. Four Right Torrid, fully fitted with new 2nd and 3rd gear model. Chevrolet Tourer. New tyres and chassis. 2500. Chevrolet, 1927. New tyres and chassis. 2500. Chrysler 1927. Fully equipped. 2100. Ford in excellent condition. 2100. In perfect running order. 2100.

Reliable Cars for Hire with Driver or drive your Second-hand Spare Parts for all Makes of

W. M. GODFREY, Sole Proprietor

South African Tobacco

HARTLEY'S RED SEAL in 4 lb. bags. HARTLEY'S N. 19 in 4 lb. tins. INVICTA (Rhodesian) in 4 lb. tins. RHODESIAN RED SEAL PLUGO out in

STOCKED BY ALL THE LEADING STORE REPRESENTATIVES.

Denovan & Di

City House, NAIROBI.

Tel. 189. Box

HOUSE PROPERTY FOR SALE.

1 1/2 acres Freehold. Well constructed house with 12 and Mangrove site road, 6 miles from Nairobi. situated in beautiful. £2,500. 1 1/2 acres approximately, off Hospital Road, near the road, some house, tennis court and well laid 81,000 sq. ft. and 81,000 on mortgage at 7 1/2 per cent. 20 acres Building plot corner of Lenana and Wood. Price on application. 10 acres Building Plot, Parklands, with small house for subdivision. Price on application. For further particulars of the above and other estate property, apply to

BROWN & BARBATT, P.O. Box 627 I.H.E.A. Building, Overt Road, 1.

HOPE'S STEEL CASEMENTS

ARE ACKNOWLEDGED AS BEING THE STEEL CASEMENT ON THE MARKET

NOTE.—We accept full responsibility on a replace, free of charge, any Window, supplied by us, which closes a Latent Defect.

Beales & Smithson

AVENUE HOUSE.

Our Upholstery is noted For Its Comfort and Durability

- COTTAGE CHAIRS — Shgs.
- EQUATOR CHAIRS — Shgs.
- COMFY CHAIRS — Shgs.
- TUB CHAIRS — Shgs.
- SUPPER EASY CHAIRS — Shgs.
- MADE WITH LONG, FLEXIBLE, coppered springs and stuffed with best and Ostr. Hardwood frames. Only this material used.

LESS 10% FOR CASH WITH ORDER.

Hutchings, Blomer & Co. Box 408 NAIROBI Phone

"THE LENS"

P.O. Box 221, Prince's Building, Nairobi. The Premier House for All Optical and Photographic Goods.

ZEISS

FIELD GLASSES, LENSES, MICROSCOPES, LENSES, TRIPPOIDS, REFRACTOMETERS. The most selection to East Africa of Spectacles, Pans, etc. ZEISS PORTAL and UMBRAL LENSES (white or tinted). ZEISS-BLON Camera, Chromatop-Camera and Projector. All Amateur and Chromatograph Developing, Fixing and Reports in all Camera jobs in our Own Workshop. Report Night Working by fully qualified Opticians. Call and have your eyes tested with the most up-to-date Single-View Apparatus FREE OF CHARGE.

Agriculture

A Review of the Coffee Market.

World Prospects for the Coming Season.

The following review of the coffee market has been issued by Mr. John K. Gillies and Co., Ltd., dated January 6, 1929.

Both here and on the Continent a pessimistic view of the coffee situation is generally held, and this is generally based on the fact that the crop of the past year was not so good as the crop of the year before. It is, however, a mistake to judge the situation on the basis of the crop of the past year, as the average price for the year ending in 1928 was 100/00 per cwt. as compared with 100/00 per cwt. in 1927.

East Africa has been the exception, arrivals having been small owing to the lateness of these crops, and offerings of Kenya during the period having amounted to only 4,000 bags compared with 10,000 bags last year. These figures have kept fairly steady and in the case of the more desirable lots at one time showed an advance, though with heavier offerings just before Christmas demand slackened and prices eased somewhat.

Offerings for sale of the new Kenya and Tanganyika crops are shown to show lack of sale but compared with the two previous seasons.

Through the past three months prices for Brazil, in common with other kinds generally, showed a weak tendency, and superior Santos coffee recently was quoted around 96/0, C and F was partly disappointing consumption figures and partly to reports that the Sao Paulo Institute had held on prices. While in fact these reports were rather alarming, purchases reported to be for account of the Government, together with more demand from the trade, have, however, enabled the price to rise to the same level as in 1928, and to amount 101/0. C and F some months prices were 104/0. At this time had been the past year arrivals in London of the principal mild coffee were some 11,000 bags in excess of those of 1927. Reports showed an increase of some 200,000 bags while home consumption was practically the same, and in London the total stock in December 26, just the total stock in London amounted to 10,000 bags compared with 10,000 bags in 1927, of which the refined coffee accounted 50,000 bags against 57,000 bags.

East Africa. Arrivals of 1928/29 bags were again very considerably in excess of any previous year, and for the first time form the largest item in the list of arrivals. With both home consumption and export showing very satisfactory increase, however, stocks of these coffee at Liverpool, on account of the increase of 1,183 bags as compared with last year, are still of the much heavier average.

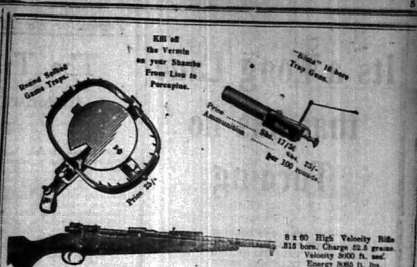
The following figures give (1) the stocks of offerings and (2) sales of East African Coffee in public auction and (3) the average prices realized for the quantities sold, as first offering during the past four years: Kenya—1928, 12,000 bags, 100/00 per cwt.; 1927, 12,000 bags, 100/00 per cwt.; 1926, 12,000 bags, 100/00 per cwt.; 1925, 12,000 bags, 100/00 per cwt. Tanganyika—1928, 11,000 bags, 100/00 per cwt.; 1927, 11,000 bags, 100/00 per cwt.; 1926, 11,000 bags, 100/00 per cwt.; 1925, 11,000 bags, 100/00 per cwt.

As regards the current, Brazil crop the official estimates gave rise, it is understood, not likely to be reached, and it is thought that this season's Brazilian yield will be stronger, 3,000,000 bags than the last official estimate of 2,800,000 bags, and that the yield will be more than 3,000,000 bags against the last official estimate of 2,500,000 bags.

Of the 1929/30 Brazil crop an official estimate has not been issued, but unofficial estimates of the Santos crop suggest some 14 to 15,000,000 bags, while it is thought here to be refined around 12,000,000 bags, whilst the rest of the crop is estimated at 3,000,000 bags. In the case of the Sao Paulo crop, the last official estimate for November 30, last amounted to 15,000,000 bags, and at October 31, and 12,271,000 bags twelve months ago.

Taking the lowest of the above estimates for 1929/30, adding 1,500,000 bags for other Brazilian crops and assuming that mild crops do not exceed last season's, it is thought here we get a total probable production of over 30,000,000 bags of present crop. It is seen thus to be that the task of the Sao Paulo Institute, which, for some time successfully controlled the general course of prices, is not likely to be lightened.

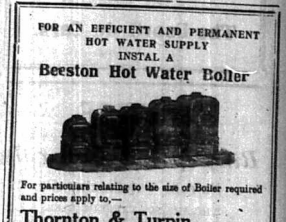
World Deliveries. As regards coffee generally, the statistical movement has not been



THE BEST ALL ROUND RIFLE ON THE MARKET. 24" barrel, 20" bore, 250 lbs. weight. \$ per cent. Discount for Cash. Chas. A. Heyer & Co., Sole Importers in Kenya. Box 187.



GET YOUR ELLWOOD HELMETS OF UNIVERSAL FAME from M. P. DE MELLO, P.O. Box 414, West Road, NAIROBI.



FOR AN EFFICIENT AND PERMANENT HOT WATER SUPPLY. INSTAL A Beeston Hot Water Boiler. For particulars relating to the size of Boiler required and prices apply to Thornton & Turpin (Sole Agents) REGISTERED PLUMBERS AND SANITARY ENGINEERS. NAIROBI and MOMBASA. P.O. Box 260, Nairobi, and P.O. Box 388, Mombasa.

Football Season 1929

Call and See Our Stocks. The Famous "Hotspur" and Other Makes. Prices from Shs. 28/50, 37/50, 40/-

Maxwell Brady & Co. NAIROBI and at ELDORET.

CARR, LAWSON & Co., Ltd. NEW CREATION BY CHRYSLER The New Style that Re-Styles all Motor Cars. IN FIVE YEARS CHRYSLER ENGINEERING HAS ORIGINATED, PIONEERED OR DEVELOPED TO HIGHEST EFFICIENCY THESE EPOCH-MAKING FEATURES: Silver Dome high compression engine using any petrol. Exclusive type of high turbulence combustion chamber. Iso-therm invar-strut pistons, tongue and groove rings. Air cleaner and oil filter. Manifold heat control for elimination of "spitting" and "spluttering". Body and crank shaft impulse neutralisers. Hydraulic shock absorbers for supreme ease of riding. Light action internal expanding hydraulic four-wheel brakes. Balanced road wheels. Ornamental, indirectly lighted instrument panel. Saddle seat spring cushions. Sedan £350, Coupe £335, Touring £310, Two Seater £310. Nairobi, Nakuru, Eldoret, Kampala.

When Your Liver Is Right You Are Well

The most healthful, pure, and... Liver... health...

Doan's Backache Kidney Pills

Doan's Backache Kidney Pills... relief... health...

Why old standby for Rheumatics

Why old standby for Rheumatics... relief... health...

Doan's Liniment KILLS PAIN

Doan's Liniment KILLS PAIN... relief... health...

LOCAL GOVERNMENT IN KENYA.

Acting Commissioner on His Tour. VIEWS OF DISTRICTS.

Mr. W. M. Logan, Acting Commissioner for Local Government...

The result of enquiries at Thika regarding the new Nairobi District...

Under the Local Government Ordinance. Some enquiries were made at Malindi...

At Malindi no formal enquiry was held, but the matter has been discussed by the members of a sub-committee...

had voted that the establishment of Local Government for the district should be deferred...

At Nyeri a fairly representative meeting was held of the southern section of the North Nyeri area...

From the above facts it will be seen that the first part of the seven districts are being established...

Municipal Boards. With regard to the Municipal Board, the Nairobi Municipal Board has not yet been established...

TALES TOLD TO THE MAGISTRATE.

The Crime of Having No Work. DEBROUCH AMONG TRAVELERS.

While the local criminal court was sitting yesterday forenoon, a stranger was to be seen on the outer side of Government Road...

The local unemployed occupied the first half dozen pews in the lower gallery to take their place in the dock when called upon.

The unemployed. Sir Arthur would have been surprised to find that the unemployed had been so numerous...

The unemployed. Sir Arthur would have been surprised to find that the unemployed had been so numerous...

coldest money. He had collected Shs. 15/- and was sitting on the bench of a high chair...

Another man was called by name from the list to see if his former employer had returned from overseas leave. The man who answered...

The complaint in the case was made by the complainant, who stated that he had been employed by the defendant...

The complaint in the case was made by the complainant, who stated that he had been employed by the defendant...

to naturally appear in the witness box in the witness box, which they ran the witness stand...

"I have heard of you," the Magistrate said. "I have heard of you," the Magistrate said...

The man who answered the question stated that he had been employed by the defendant...

The man who answered the question stated that he had been employed by the defendant...

ENTERTAINMENTS.

"The Strolling Players"

The Theatre Royal Company will present their PIERROT ENTERTAINMENT AT THE NAKURU HOTEL On Friday and Saturday FEBRUARY 17th and 18th

J. G. TAYLOR and DOROTHY SUMMERS. PRICES: 7/6 and 5/-

NOVELTY DANCE

AT THE KIKUYU HOTEL ON Saturday, February 16th. TICKETS Shs. 12/6 Double, Shs. 7/6 Single

MUSIC BY STD ZIGLER'S FULL BAND.

BRACKENHURST, LIMURU SATURDAY, FEBRUARY 16, AT 7 P.M. YAKUBU ENTERTAINMENT AND DANCE. TICKETS 9/- INCLUDING LIGHT SUPPER.

THEATRE ROYAL.

Sunday, February 17th at 8-45 SIR ARTHUR CONAN DOYLE, M.D., M.C. "MY PSYCHIC EXPERIENCES"

Written Questions will be answered at the close of the lecture. BOOKING AT THEATRE ROYAL. PRICES: Shs. 7/6, 5/-, 4/-, 2/-

Tuesday, February 19th at 8-45 LUXURIOUS LECTURE entitled "THE WONDERS OF PSYCHIC KNOWLEDGE"

In which Sir Arthur will show upon the screen some 80 examples from his unique collection of "Psychic Photographs and Pictures." PRICES:—As above. BOOKING NOW AT THEATRE ROYAL.

DIE STAMPS.

EMBOSS YOUR OWN NOTE-PAPER. NAIROBI, AS UNDER, NAKURU, Kenya Colony, KINJA COLONY, Kenya Colony. PRICE, Shs. 17/6

P. GETHIN.

Flour 14/-, Bux 8/-, Grams 6/-, NAIROBI, LUXURIOUS TOURING CARS FOR HIRE DAY and NIGHT. With Experienced Drivers. Long Trips a Speciality.

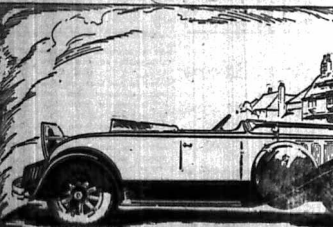
Ring GETHIN

If you want to Hire a Car Sell your old car. Ring GETHIN.

WHAT IT MEANS TO YOU.

The development of this new car by General Motors is an event of high importance to the motorist who insists upon high quality, yet who also buys economically.

Maximum Speed—over sixty miles an hour—and more, from a 50 horse-power engine for the hills and bad roads—together with true riding comfort, luxurious make, convenient controls, and the ability to hold the road at all speeds.



Sports Roadster £384 Phaeton £384 4 Door Sedan £433 2 Door Sedan £410 DELIVERY NAIROBI

A New OAKLAND Series 6-212 -the cosmopolitan six

THE MOTOR MART and Exchange, Ltd.

Dar-es-salaam. Nairobi. Nakuru.

Best Quality Goods. Prompt Attention. Unfailing Courtesy & Reasonable Prices.

Are a few of the contributing factors to the success of our business to-day. WE ARE CONVINCED and a SHORT TIME WILL CONVINCE YOU that your needs and interests can be better served at PRIMO'S HOME, GOVT. ROAD, than elsewhere in the Colony.

What you really should be told the opportunity of getting this man by 1. Remember, our business has been built on SERVICE!

Colonial General Stores LIMITED.

PHONE 228 P.O. BOX 624

Willys-Knight

SLEEVE VALVE ENGINES.
ALL SIXES.

NOTED FOR ECONOMICAL PETROL
CONSUMPTION AND LONG LIFE
COMPLETE CARS FROM

£320

FOUR DOOR SALOON
£360

MOULTON & MORRISON Ltd.
NAIROBI.

CONCRETE MIXERS

POWERFUL 7/8
WATER
S.E.P. PATTER ENGINE

POWERFUL MIXING
S.E.P. PATTER ENGINE.

PORTLAND CEMENT MACHINES FOR ALL CLASSES OF WORK

MOSHI Box 10 **J. W. Milligan & Co. NAIROBI** Box 148

THE MACHINE THAT SAVES MONEY AT
EVERY TURN.
5 to 6 CUH. YDS. PER HOUR.
HIGH SPEED DISCHARGE.
NO SPILLING OR SPLASHING.

THE MACHINE FOR HIGHER SPEED,
REDUCED COST AND BETTER QUALITY
OF OUTPUT.

A. H. Wardle & Co. Ltd.
Optical Chemists
NAIROBI.

Optical Manager:

V. M. BROWSE, F.R.S.M.C., F.I.O.

SCIENTIFIC EYE TESTING.

Only the best lenses and frames stocked.
Testing and Spectacles complete, from 25/-.

QUEEN ANNE

RARE
OLD
SCOTCH
WHISKY

The Choice of the Connoisseur

As selected for the Royal Safari.

Distributors—
R. G. Vernon & Co.
UNION BUILDINGS,
NAIROBI.
P.O. Box 114.

Phone 120.

Post Cards

OF EXCEPTIONAL INTEREST OF
GAME & NATIVE LIFE

ISSUED BY

MR. MARGIN JOHNSON

Price 6/6 per doz. unsorted Post Free

ON SALE AT

A. H. Wardle & Co. Ltd.
CHEMISTS
NAIROBI—MOMBASA—ELDORSET

The French Bank.
The Bank of France has
been authorized to
issue notes in
the sum of 100
million francs.
The notes will be
issued in 1920.
The bank has
been authorized to
issue notes in
the sum of 100
million francs.
The notes will be
issued in 1920.

The Coffee Market.
The coffee market
is showing a
marked advance.
The price of
coffee has
risen to a
level not seen
for many years.
The market is
expected to
continue to
advance.

The Kenya
Government has
announced that
it has decided to
issue 100,000
pounds of
sterling notes.
The notes will
be issued in
1920.

The Kenya
Government has
announced that
it has decided to
issue 100,000
pounds of
sterling notes.
The notes will
be issued in
1920.

The Kenya
Government has
announced that
it has decided to
issue 100,000
pounds of
sterling notes.
The notes will
be issued in
1920.

The Kenya
Government has
announced that
it has decided to
issue 100,000
pounds of
sterling notes.
The notes will
be issued in
1920.

"JUDGE" BRAND
HEAVY QUALITY WROUGHT STEEL UTENSILS
"THE BRAND FOR QUALITY GOODS"

TEA POTS
Finest quality enamel.
Best handles. Standard
Yellow Glaze. Orange
Glaze.
2pt. Shs. 7/- 3pt. Shs. 8/7½



MILK JUGS.
To match Tea Pot.
1 1/2, 1 3/4, 2pt.
Shs. 3/6 4/- 5/1 1/2
2pt. Shs. 4/6 5/1 1/2



**"COCOA" WARE
STEVY PANS.**
Extra heavy quality
enamel. Inside, hard
enamel. How handles
and lined cover.
Capacity 4pts. Shs. 7/30
Capacity 6pts. Shs. 7/10
Capacity 8pts. Shs. 11/30



**TEA SETS—An Enamel in Scourie or
Princess Enamel, Compacting Milk Jug,
Sugar Tails, Tray, Hot Water Jug and
Tea Pot for early morning use.**
Shs. 22/60 per set.

**"COCOA" WARE
POTATO STEAMERS.**
Bright pure enamel finish
with perforated bottom
for quick cooking.
4pt. Shs. 10/6 10pt.
Shs. 10/0 7/30 4/7½.

We allow 5 per cent. Cash Discount.

S. JACOBS Ltd.
Phone No. 23 P.O. Box 255
GOVERNMENT ROAD,
NAIROBI.

QUINACINE

THE RELIABLE PREVENTIVE AND CURE
FOR

Influenza

Cold in the Head Feverish Colds Pains in Back and Limbs

ALWAYS KEEP A BOTTLE HANDY.

PRICE 2/- AND 5/30.

KODAK (E.A.) LTD., INC.

Howse & McGeorge.

NAIROBI AND ALL BRANCHES.

CALEDONIAN

GUANDA ASSURANCE
FIDELITY, FEB. 14, 1920

Insurance Company

Oldest Scottish Insurance Office.
Founded 1805.
Principal Agents—
R. O. HAMILTON, Ltd. Phone 352
Box 303

African Standard

GUANDA ASSURANCE
FIDELITY, FEB. 14, 1920

A Public Health Campaign.
In another column there will
be found an exceedingly interest-
ing article on some aspects of the
campaign which is now being car-
ried out by Government through
the Medical Department in order
to eliminate and minimize what
has been called the public health
crisis of the community.
The Medical Department has
shown considerable and quite ad-
mirable skill within recent years
in applying some of the principles
of advertising and propaganda to
the objective side of its work.
It realizes something more than
ordinary official perseverance to
be included in the Budget of the
Colony for the year 7 programme
and to permit an imaginative
bureaucracy to provide money for
the interpretation. It is of
course, merely the adoption of
modern methods, and methods
which are particularly suitable to
the conditions which exist
themselves to medical authorities
in East Africa. While it is quite
possible to run up a propaganda
and to spend large sums of money
on advertising campaigns—per-
haps they should be called some-
thing else—without much ap-
parent result, there is very little
danger of that occurring in
Kenya. We would indeed encourage
Government to persevere in
other directions the principle
in the subject of the advertisement
the masses of all news in matters
affecting the public health.
The Medical Department is adopting
a slogan—"Every man his own
health officer"—which is a happy
way of inviting the co-operation
of the public in the health
of the Colony for good health and of im-
proving on the individual's sense
of the personal responsibility
without which no amount of edu-
cation or propaganda can achieve
its object. There is no need to
confuse the campaign with the
problem of malaria. Malaria is
not an incidental disease, one of
several which requires to be
studied in a general way with a
determination to eliminate the
general causes of infection and
contamination. The campaign is
really based on the broader basis
of general public health and from
the point of view of malaria and
requires the full co-operation
of the community. The article
which we refer to has been so
written that it is intended to be
read by the public at large, and
the Medical Department has been
obliged to obtain a special license
of every kind for three years.

Police Meeting.
Police points were discussed on
every road leading into Nairobi
yesterday morning for the purpose
of catching those people who had
not taken out motor car license
plates. The result of the meeting
was that the Police only found a
handful of such offenders who
had not complied with the law.

Revenue Train.
The large amount of bills being
sent to the Treasury for the
purpose of collecting the revenue
of the Colony has been a
matter of concern to the
Commissioner of the Treasury
for some time. It is hoped that
the amount of bills sent to the
Treasury will be reduced to a
reasonable extent by the
introduction of a new system
of collecting the revenue.

Kenya Chess Club.
The Kenya Chess Club
has been organized for the
purpose of promoting chess
in the Colony. The club has
been formed by the union
of several smaller clubs.

Kenya Chess Club.
The Kenya Chess Club
has been organized for the
purpose of promoting chess
in the Colony. The club has
been formed by the union
of several smaller clubs.

Under the Standard Clock.

Police Meeting.
Police points were discussed on
every road leading into Nairobi
yesterday morning for the purpose
of catching those people who had
not taken out motor car license
plates. The result of the meeting
was that the Police only found a
handful of such offenders who
had not complied with the law.

Revenue Train.
The large amount of bills being
sent to the Treasury for the
purpose of collecting the revenue
of the Colony has been a
matter of concern to the
Commissioner of the Treasury
for some time. It is hoped that
the amount of bills sent to the
Treasury will be reduced to a
reasonable extent by the
introduction of a new system
of collecting the revenue.

Kenya Chess Club.
The Kenya Chess Club
has been organized for the
purpose of promoting chess
in the Colony. The club has
been formed by the union
of several smaller clubs.

Kenya Chess Club.
The Kenya Chess Club
has been organized for the
purpose of promoting chess
in the Colony. The club has
been formed by the union
of several smaller clubs.

Chianti Antinori

FLORENCE
(Italy)
Sole Agents:



EMILE JARDIN & Co.
NAIROBI.

Lead the way on a B-S-A



BRITAIN'S BIGGEST SELLER.
LET US GIVE YOU A TRIAL RUN.
Carr, Lawson & Co. Ltd.
NAIROBI.

RECEPTION OF CLOSER UNION REPORT IN BRITAIN. Selections from the Opinions of the Home Press.

NO. 1. "THE TIMES" AND THE "GUARDIAN"

Necessary for Discovering the Right Political Road as Soon as Possible.

On the whole the Report of the Closer Union Commission has had a good press in Britain. It is proposed to publish the views of the leading newspapers in order to inform the African public opinion in regard to the Home atmosphere.

"The Times" welcomes the endeavor to define hitherto loosely used phrases in Imperial Native policy and says the search for the right road cannot be too soon. The conditions in Kenya preclude legislative Council evolution on the ordinary lines.

The day will come, the newspaper declares, when the problem will be how to protect minorities in the face of native demands.

In the light of the maintenance of Imperial control, "The Times" finds satisfaction in the abundant evidence that Europeans who make their homes in the Colonies need not fear autocratic injustice.

"The Manchester Guardian" declares its intent to be that the enlightened native policy of Kenya and Uganda is now something to fear in Great Britain. If there is a sound native policy which gives the African freedom for his natural development.

THE INDIAN POSITION IN THE LEGISLATURE.

The House of the Union Territory Legislative Council met on Friday, January 12. It was the first meeting since the election on the previous evening. The day's business was the reading of the report of the Indian Commission.

"The Times" decries its removal to the House of the Union Territory Legislative Council. It says that the report is a masterpiece of evasion and that the Commission has done little to help the Indian people.

"The Guardian" says that the Commission has done little to help the Indian people. It says that the Commission has done little to help the Indian people.

"The Times" says that the Commission has done little to help the Indian people. It says that the Commission has done little to help the Indian people.

"The Guardian" says that the Commission has done little to help the Indian people. It says that the Commission has done little to help the Indian people.

"The Times" says that the Commission has done little to help the Indian people. It says that the Commission has done little to help the Indian people.

"The Guardian" says that the Commission has done little to help the Indian people. It says that the Commission has done little to help the Indian people.

"The Times" says that the Commission has done little to help the Indian people. It says that the Commission has done little to help the Indian people.

"The Guardian" says that the Commission has done little to help the Indian people. It says that the Commission has done little to help the Indian people.

"The Times" says that the Commission has done little to help the Indian people. It says that the Commission has done little to help the Indian people.

"The Guardian" says that the Commission has done little to help the Indian people. It says that the Commission has done little to help the Indian people.

"The Times" says that the Commission has done little to help the Indian people. It says that the Commission has done little to help the Indian people.

"The Guardian" says that the Commission has done little to help the Indian people. It says that the Commission has done little to help the Indian people.

"The Times" says that the Commission has done little to help the Indian people. It says that the Commission has done little to help the Indian people.

"The Guardian" says that the Commission has done little to help the Indian people. It says that the Commission has done little to help the Indian people.

"The Times" says that the Commission has done little to help the Indian people. It says that the Commission has done little to help the Indian people.

"The Guardian" says that the Commission has done little to help the Indian people. It says that the Commission has done little to help the Indian people.

NEW VALUATION ROLL FOR NAIROBI. Work to be Done for £2,000.

TENDER DECISION.

The Nairobi Town Council has approved the plan for the new valuation roll for Nairobi. The roll will be based on the value of the property in Nairobi and will be used to determine the amount of the rates to be levied on the property.

The Council has also decided to tender for the work of valuing the property in Nairobi. The tender will be opened on the 26th inst.

The Council has also decided to tender for the work of valuing the property in Nairobi. The tender will be opened on the 26th inst.

The Council has also decided to tender for the work of valuing the property in Nairobi. The tender will be opened on the 26th inst.

The Council has also decided to tender for the work of valuing the property in Nairobi. The tender will be opened on the 26th inst.

The Council has also decided to tender for the work of valuing the property in Nairobi. The tender will be opened on the 26th inst.

The Council has also decided to tender for the work of valuing the property in Nairobi. The tender will be opened on the 26th inst.

The Council has also decided to tender for the work of valuing the property in Nairobi. The tender will be opened on the 26th inst.

The Council has also decided to tender for the work of valuing the property in Nairobi. The tender will be opened on the 26th inst.

The Council has also decided to tender for the work of valuing the property in Nairobi. The tender will be opened on the 26th inst.

The Council has also decided to tender for the work of valuing the property in Nairobi. The tender will be opened on the 26th inst.

The Council has also decided to tender for the work of valuing the property in Nairobi. The tender will be opened on the 26th inst.

The Council has also decided to tender for the work of valuing the property in Nairobi. The tender will be opened on the 26th inst.

The Council has also decided to tender for the work of valuing the property in Nairobi. The tender will be opened on the 26th inst.

The Council has also decided to tender for the work of valuing the property in Nairobi. The tender will be opened on the 26th inst.

The Council has also decided to tender for the work of valuing the property in Nairobi. The tender will be opened on the 26th inst.

The Council has also decided to tender for the work of valuing the property in Nairobi. The tender will be opened on the 26th inst.

The Council has also decided to tender for the work of valuing the property in Nairobi. The tender will be opened on the 26th inst.

The Council has also decided to tender for the work of valuing the property in Nairobi. The tender will be opened on the 26th inst.

The Council has also decided to tender for the work of valuing the property in Nairobi. The tender will be opened on the 26th inst.

The Council has also decided to tender for the work of valuing the property in Nairobi. The tender will be opened on the 26th inst.

The Council has also decided to tender for the work of valuing the property in Nairobi. The tender will be opened on the 26th inst.

The Council has also decided to tender for the work of valuing the property in Nairobi. The tender will be opened on the 26th inst.

The Council has also decided to tender for the work of valuing the property in Nairobi. The tender will be opened on the 26th inst.

The Council has also decided to tender for the work of valuing the property in Nairobi. The tender will be opened on the 26th inst.

THE LOCUSTS. Swarms Still in and Near Nairobi. Caused by Hinder of Works Strikers.

PATENTS RETALIATE TO ATTACKS.

Very little news was received from the Department of Agriculture regarding locusts in the Nairobi area and the surrounding districts. From this it is believed that the locusts have been driven back to the north and west.

The locusts have been driven back to the north and west. The locusts have been driven back to the north and west.

The locusts have been driven back to the north and west. The locusts have been driven back to the north and west.

The locusts have been driven back to the north and west. The locusts have been driven back to the north and west.

The locusts have been driven back to the north and west. The locusts have been driven back to the north and west.

The locusts have been driven back to the north and west. The locusts have been driven back to the north and west.

The locusts have been driven back to the north and west. The locusts have been driven back to the north and west.

The locusts have been driven back to the north and west. The locusts have been driven back to the north and west.

The locusts have been driven back to the north and west. The locusts have been driven back to the north and west.

The locusts have been driven back to the north and west. The locusts have been driven back to the north and west.

The locusts have been driven back to the north and west. The locusts have been driven back to the north and west.

The locusts have been driven back to the north and west. The locusts have been driven back to the north and west.

The locusts have been driven back to the north and west. The locusts have been driven back to the north and west.

The locusts have been driven back to the north and west. The locusts have been driven back to the north and west.

The locusts have been driven back to the north and west. The locusts have been driven back to the north and west.

The locusts have been driven back to the north and west. The locusts have been driven back to the north and west.

The locusts have been driven back to the north and west. The locusts have been driven back to the north and west.

The locusts have been driven back to the north and west. The locusts have been driven back to the north and west.

The locusts have been driven back to the north and west. The locusts have been driven back to the north and west.

The locusts have been driven back to the north and west. The locusts have been driven back to the north and west.

The locusts have been driven back to the north and west. The locusts have been driven back to the north and west.

The locusts have been driven back to the north and west. The locusts have been driven back to the north and west.

The locusts have been driven back to the north and west. The locusts have been driven back to the north and west.

The locusts have been driven back to the north and west. The locusts have been driven back to the north and west.

The locusts have been driven back to the north and west. The locusts have been driven back to the north and west.

CROSS-CHANNEL SHIP ASKORE. Fast on the Rocks Near Dover.

A High Wind.

The cross-channel ship Askore was driven ashore near Dover on the 22nd inst. The ship was driven ashore by a high wind and was damaged.

The ship was driven ashore by a high wind and was damaged. The ship was driven ashore by a high wind and was damaged.

The ship was driven ashore by a high wind and was damaged. The ship was driven ashore by a high wind and was damaged.

The ship was driven ashore by a high wind and was damaged. The ship was driven ashore by a high wind and was damaged.

The ship was driven ashore by a high wind and was damaged. The ship was driven ashore by a high wind and was damaged.

The ship was driven ashore by a high wind and was damaged. The ship was driven ashore by a high wind and was damaged.

The ship was driven ashore by a high wind and was damaged. The ship was driven ashore by a high wind and was damaged.

The ship was driven ashore by a high wind and was damaged. The ship was driven ashore by a high wind and was damaged.

The ship was driven ashore by a high wind and was damaged. The ship was driven ashore by a high wind and was damaged.

The ship was driven ashore by a high wind and was damaged. The ship was driven ashore by a high wind and was damaged.

The ship was driven ashore by a high wind and was damaged. The ship was driven ashore by a high wind and was damaged.

The ship was driven ashore by a high wind and was damaged. The ship was driven ashore by a high wind and was damaged.

The ship was driven ashore by a high wind and was damaged. The ship was driven ashore by a high wind and was damaged.

The ship was driven ashore by a high wind and was damaged. The ship was driven ashore by a high wind and was damaged.

The ship was driven ashore by a high wind and was damaged. The ship was driven ashore by a high wind and was damaged.

The ship was driven ashore by a high wind and was damaged. The ship was driven ashore by a high wind and was damaged.

The ship was driven ashore by a high wind and was damaged. The ship was driven ashore by a high wind and was damaged.

The ship was driven ashore by a high wind and was damaged. The ship was driven ashore by a high wind and was damaged.

The ship was driven ashore by a high wind and was damaged. The ship was driven ashore by a high wind and was damaged.

The ship was driven ashore by a high wind and was damaged. The ship was driven ashore by a high wind and was damaged.

The ship was driven ashore by a high wind and was damaged. The ship was driven ashore by a high wind and was damaged.

The ship was driven ashore by a high wind and was damaged. The ship was driven ashore by a high wind and was damaged.

The ship was driven ashore by a high wind and was damaged. The ship was driven ashore by a high wind and was damaged.

The ship was driven ashore by a high wind and was damaged. The ship was driven ashore by a high wind and was damaged.

The ship was driven ashore by a high wind and was damaged. The ship was driven ashore by a high wind and was damaged.

LYRIC HALL. TO-NIGHT AT 8.45 p.m. Richard Talmadge IN LUCKY DICK. Showing SATURDAY, 16th FEBRUARY PHYLLIS NEILSON-TERRY IN BOADICEA. A Picture of intense interest. PRICES AS USUAL: Shs. 3/- and Shs. 2/-

High Wind. A terrific wind blew throughout the night and was killed with the rain. Some estimates of the wind were gathered which the Times found on the roof of the building. The wind was blowing from the north and was very strong. The wind was blowing from the north and was very strong.

STAIR-RIPE. Care for your child Beautiful Feet. You, and your child, can keep them beautiful. You must care for your child's feet. You must care for your child's feet.

Eadies Footwear Ltd. Sole Agents. P.O. Box 149, NAIROBI.

THEATRE ROYAL. TO-NIGHT AT 8.45 JOHN GILBERT AS "Bardelys the Magnificent" PRICES: Circle 9/-, Stalls 3/-

SIR ARTHUR DOYLE, NEXT SUNDAY AT 8.45 (See page 7).

WE SELL SERVICE AND REPAIR ALL MAKES OF CARS & TRUCKS

WE GIVE EXPERT ADVICE TO WIRELESS ENTHUSIASTS. COMPLETE WIRELESS SETS AND COMPONENT PARTS ALWAYS IN STOCK. RADIO BATTERIES CHARGED, AND ELECTRICAL WORK OF ALL DESCRIPTION UNDERTAKEN. CALL AND INSPECT THE LATEST MODEL INDIAN SCOUT 45 ON VIEW AT K. McIvor's Garage. Phone 97, 16th Avenue, P.O. Box 97

Very little news was received from the Department of Agriculture regarding locusts in the Nairobi area and the surrounding districts. From this it is believed that the locusts have been driven back to the north and west.

The locusts have been driven back to the north and west. The locusts have been driven back to the north and west.

The locusts have been driven back to the north and west. The locusts have been driven back to the north and west.

The locusts have been driven back to the north and west. The locusts have been driven back to the north and west.

The locusts have been driven back to the north and west. The locusts have been driven back to the north and west.

The locusts have been driven back to the north and west. The locusts have been driven back to the north and west.

Very little news was received from the Department of Agriculture regarding locusts in the Nairobi area and the surrounding districts. From this it is believed that the locusts have been driven back to the north and west.

The locusts have been driven back to the north and west. The locusts have been driven back to the north and west.

The locusts have been driven back to the north and west. The locusts have been driven back to the north and west.

The locusts have been driven back to the north and west. The locusts have been driven back to the north and west.

The locusts have been driven back to the north and west. The locusts have been driven back to the north and west.

The locusts have been driven back to the north and west. The locusts have been driven back to the north and west.

The locusts have been driven back to the north and west. The locusts have been driven back to the north and west.

Very little news was received from the Department of Agriculture regarding locusts in the Nairobi area and the surrounding districts. From this it is believed that the locusts have been driven back to the north and west.

The locusts have been driven back to the north and west. The locusts have been driven back to the north and west.

The locusts have been driven back to the north and west. The locusts have been driven back to the north and west.

The locusts have been driven back to the north and west. The locusts have been driven back to the north and west.

The locusts have been driven back to the north and west. The locusts have been driven back to the north and west.

The locusts have been driven back to the north and west. The locusts have been driven back to the north and west.

The locusts have been driven back to the north and west. The locusts have been driven back to the north and west.

Very little news was received from the Department of Agriculture regarding locusts in the Nairobi area and the surrounding districts. From this it is believed that the locusts have been driven back to the north and west.

The locusts have been driven back to the north and west. The locusts have been driven back to the north and west.

The locusts have been driven back to the north and west. The locusts have been driven back to the north and west.

The locusts have been driven back to the north and west. The locusts have been driven back to the north and west.

The locusts have been driven back to the north and west. The locusts have been driven back to the north and west.

The locusts have been driven back to the north and west. The locusts have been driven back to the north and west.

The locusts have been driven back to the north and west. The locusts have been driven back to the north and west.



Will your shirt face the laundry?

It is a Comitate shirt, the question does not arise; it is anticipated by the most binding guarantee that has ever been given—that can ever be given—about shirts in the wash.

Its pattern will stay the same; its length will stay the same; its collar will stay the same; its length will stay the same; its length will stay the same.

As it stays, so will it stay. If it doesn't, we will replace it.

Ask your dealer to show you the Comitate range.



STOCKED BY ALL THE BEST OUTFITTERS.

The man who asks for BEER deserves what he gets.

The man who asks for McEWAN'S gets what he deserves.

Overman & Company
Agents, Mombasa.

HONESTY
BEING
Our Watchword

WE DO NOT ASK YOU TO BELIEVE THAT

Black is White
SATISFY YOURSELF, OURS IS NOT AN ADVERTISING

Claim but a Fact.

Nairobi General Cash Stores, Ltd.
Government Road, NAIROBI.

NOTICE TO ROAD CONTRACTORS.
KINANGOP ESCARPMENT—NAIVASHA ROAD.

Tenders are invited for the construction of 20,000 lineal feet of road starting from the Njibali Road on the Kinangop.

Specifications and plans may be seen in application at: Executive Engineer's Office, Public Works Department, NAKURU.

Tenders must be delivered by 10 a.m. on the 20th February, 1929 addressed to: EXECUTIVE ENGINEER, Public Works Department, NAKURU.

MELANYL
Marking Ink.
Large size Shs 1/75

STANDARD STATIONERY STORES, NAIROBI.

RECEPTION OF CLOSER UNION REPORT IN BRITAIN.

(Continued from page 9.)

most of the territories the Government and the legislative and executive Councils. It may even provide the answer whether it is not too heavy, gives the present state of the East African Colonies and the available resources, but this question is a secondary consideration. For many months, it has been in the hands of the British Government, and it is to be expected that it will be published in the near future.

The report is a valuable one, and it is to be expected that it will be published in the near future. It is a valuable one, and it is to be expected that it will be published in the near future. It is a valuable one, and it is to be expected that it will be published in the near future.

"The Manchester Guardian"
The Manchester Guardian... The Manchester Guardian... The Manchester Guardian...

"Miss Africa"
The Manchester Guardian... The Manchester Guardian... The Manchester Guardian...

PARSENGER DELIGHTED WITH FLIGHT.
The Manchester Guardian... The Manchester Guardian... The Manchester Guardian...

WEATHER REPORT.
Following are the results of the East African Meteorological Service's yesterday, 13th February, 1929.

Wind	Temp.	Humidity
Mombasa 24.25	NW	85 to 90 N.W. Fan.
Nairobi 24.33	NW	85.5 to 92 N.W. Fan.

GENERAL ACCIDENT, FIRE AND LIFE ASSURANCE CORPORATION, LTD.
All Classes of Insurance Transacted.

M. D. KAMPP Chief Representative.
P.O. Box 296. NAIROBI. Court Chambers.

WHERE IS SIR ARTHUR CONAN DOYLE?

Home Query Which Nairobi Can Answer.

COMING LECTURES.

Where is Sir Arthur Conan Doyle? This is a query which is being asked in Nairobi. The answer is that he is in London, and he is expected to return to Nairobi in the near future.

THE SOLUTION.
The answer to the riddle of the Conan Doyle is that he is in London, and he is expected to return to Nairobi in the near future.

QUESTION OF TYPE OF BRIDGE FOR LIMBOUR RD.
The following report for the Nairobi road works... The following report for the Nairobi road works...

RAILWAY TRAFFIC.
Statistics provided by the Kenya and Uganda Railway Administration show that the total export traffic loaded on the coast during 1928 was 273,000 tons, compared with 272,000 tons in 1927, an increase of 1,000 tons.

THE TOWN TRAFFIC.
The total town traffic loaded on the coast during 1928 was 2,710,000 compared with 2,700,000 in 1927, an increase of 10,000 tons.

THE TOWN TRAFFIC.
The total town traffic loaded on the coast during 1928 was 2,710,000 compared with 2,700,000 in 1927, an increase of 10,000 tons.

THE TOWN TRAFFIC.
The total town traffic loaded on the coast during 1928 was 2,710,000 compared with 2,700,000 in 1927, an increase of 10,000 tons.

THE TOWN TRAFFIC.
The total town traffic loaded on the coast during 1928 was 2,710,000 compared with 2,700,000 in 1927, an increase of 10,000 tons.

THE TOWN TRAFFIC.
The total town traffic loaded on the coast during 1928 was 2,710,000 compared with 2,700,000 in 1927, an increase of 10,000 tons.

THE TOWN TRAFFIC.
The total town traffic loaded on the coast during 1928 was 2,710,000 compared with 2,700,000 in 1927, an increase of 10,000 tons.

THE TOWN TRAFFIC.
The total town traffic loaded on the coast during 1928 was 2,710,000 compared with 2,700,000 in 1927, an increase of 10,000 tons.

THE TOWN TRAFFIC.
The total town traffic loaded on the coast during 1928 was 2,710,000 compared with 2,700,000 in 1927, an increase of 10,000 tons.

THE TOWN TRAFFIC.
The total town traffic loaded on the coast during 1928 was 2,710,000 compared with 2,700,000 in 1927, an increase of 10,000 tons.

WHERE TO STAY
TOWN & COUNTRY.

THE Naivasha Hotel.
UNDER ENTIRELY NEW MANAGEMENT. EUROPEAN SUPERVISION. ELECTRIC LIGHTS. BUT AN COLD WATER INSTALLATION. SPECIAL WEEB-IND TRAYS.

The Salisbury Hotel
Nairobi.
Phone 104. P.O. Box 569.

SAVOY HOTEL
THE HILL, NAIROBI.
Box 28. Phone 438.

THE White Rhino Hotel
NYERI
FOR BREAKFASTS, LUNCHEONS, TEAS, DINNERS AND ACCOMMODATION. Situated on Main Road, GRAHAM'S Wharf.

WAKLEIGH PRIVATE HOTEL
UNDER PERSONAL SUPERVISION OF MRS. H. JARRETT, Manageress. Phone 150. NAIROBI. P.O. Box 183.

THE Blue Posts Hotel
THIKA
NOW UNDER NEW MANAGEMENT.

Kenya Loan & Discount Co., Ltd
NAIROBI.
OFFICES—The Floor, Court Chambers, P.O. Box 540. FINANCIAL AGENTS. BILLS DISCOUNTED. SHORT-TERM LOANS GRANTED. ANY REALISABLE ASSET NEGOTIATED FOR CASH. Call or Write. Strictly Confidential. Established 1881.

RUBBER DESK PADS
This indispensable pad is an ornament to the Desk. FLAT and NON-SLIPPING. DOES NOT CRACK UP AT THE EDGE—INK STAINS EARLY REMOVED. CLEAN and HYGIENIC.

3 SIZES
18 x 26 inches... Shs. 12/60 each
22 x 24 inches... Shs. 15/- each
30 x 18 inches... Shs. 15/60 each

STANDARD STATIONERY STORES, NAIROBI.

STANDARD STATIONERY STORES, NAIROBI.

STANDARD STATIONERY STORES, NAIROBI.

STANDARD STATIONERY STORES, NAIROBI.

STANDARD STATIONERY STORES, NAIROBI.

Public Health.

Work in the Settled Districts of the Colony. Modern Medicine in the Field.

A Travelling Dispensary and Laboratory.

[* M. K. Standard * Special.]

During the past year the "East African Standard" has on several occasions referred to the "Winged Death" Campaign which is being conducted by the Medical Department in some of the Settled Districts of Kenya.

More properly, this campaign should be termed the "Blackfly-biting Campaign." It is a health campaign which is being conducted by the Medical Department and not merely the development. It is a health campaign which is being conducted by the Medical Department and not merely the development.

It is a health campaign which is being conducted by the Medical Department and not merely the development. It is a health campaign which is being conducted by the Medical Department and not merely the development.

It is a health campaign which is being conducted by the Medical Department and not merely the development. It is a health campaign which is being conducted by the Medical Department and not merely the development.

Parva Victim.

To have mastered and come to know the Parva Victim and the Medical Department in connection with the programme of public health work approved by the Legislative Council during its recent session has been a great task for the Medical Department.

To have mastered and come to know the Parva Victim and the Medical Department in connection with the programme of public health work approved by the Legislative Council during its recent session has been a great task for the Medical Department.

To have mastered and come to know the Parva Victim and the Medical Department in connection with the programme of public health work approved by the Legislative Council during its recent session has been a great task for the Medical Department.

To have mastered and come to know the Parva Victim and the Medical Department in connection with the programme of public health work approved by the Legislative Council during its recent session has been a great task for the Medical Department.

To have mastered and come to know the Parva Victim and the Medical Department in connection with the programme of public health work approved by the Legislative Council during its recent session has been a great task for the Medical Department.

To have mastered and come to know the Parva Victim and the Medical Department in connection with the programme of public health work approved by the Legislative Council during its recent session has been a great task for the Medical Department.

made considerable recommendations to the sector as to the general measures to be adopted to prevent disease.

The Medical Department has since a more efficient house to be erected at the same time it should be possible to carry out a grand plan of propaganda among the natives in connection with the various methods of living the progress of the campaign and so on.

It is a health campaign which is being conducted by the Medical Department and not merely the development. It is a health campaign which is being conducted by the Medical Department and not merely the development.

It is a health campaign which is being conducted by the Medical Department and not merely the development. It is a health campaign which is being conducted by the Medical Department and not merely the development.

It is a health campaign which is being conducted by the Medical Department and not merely the development. It is a health campaign which is being conducted by the Medical Department and not merely the development.

It is a health campaign which is being conducted by the Medical Department and not merely the development. It is a health campaign which is being conducted by the Medical Department and not merely the development.

It is a health campaign which is being conducted by the Medical Department and not merely the development. It is a health campaign which is being conducted by the Medical Department and not merely the development.

It is a health campaign which is being conducted by the Medical Department and not merely the development. It is a health campaign which is being conducted by the Medical Department and not merely the development.

It is a health campaign which is being conducted by the Medical Department and not merely the development. It is a health campaign which is being conducted by the Medical Department and not merely the development.

It is a health campaign which is being conducted by the Medical Department and not merely the development. It is a health campaign which is being conducted by the Medical Department and not merely the development.

It is a health campaign which is being conducted by the Medical Department and not merely the development. It is a health campaign which is being conducted by the Medical Department and not merely the development.

It is a health campaign which is being conducted by the Medical Department and not merely the development. It is a health campaign which is being conducted by the Medical Department and not merely the development.

made considerable recommendations to the sector as to the general measures to be adopted to prevent disease.

The Medical Department has since a more efficient house to be erected at the same time it should be possible to carry out a grand plan of propaganda among the natives in connection with the various methods of living the progress of the campaign and so on.

It is a health campaign which is being conducted by the Medical Department and not merely the development. It is a health campaign which is being conducted by the Medical Department and not merely the development.

It is a health campaign which is being conducted by the Medical Department and not merely the development. It is a health campaign which is being conducted by the Medical Department and not merely the development.

It is a health campaign which is being conducted by the Medical Department and not merely the development. It is a health campaign which is being conducted by the Medical Department and not merely the development.

It is a health campaign which is being conducted by the Medical Department and not merely the development. It is a health campaign which is being conducted by the Medical Department and not merely the development.

It is a health campaign which is being conducted by the Medical Department and not merely the development. It is a health campaign which is being conducted by the Medical Department and not merely the development.

It is a health campaign which is being conducted by the Medical Department and not merely the development. It is a health campaign which is being conducted by the Medical Department and not merely the development.

It is a health campaign which is being conducted by the Medical Department and not merely the development. It is a health campaign which is being conducted by the Medical Department and not merely the development.

It is a health campaign which is being conducted by the Medical Department and not merely the development. It is a health campaign which is being conducted by the Medical Department and not merely the development.

It is a health campaign which is being conducted by the Medical Department and not merely the development. It is a health campaign which is being conducted by the Medical Department and not merely the development.

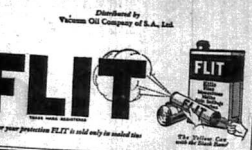
It is a health campaign which is being conducted by the Medical Department and not merely the development. It is a health campaign which is being conducted by the Medical Department and not merely the development.



Winged Death!

From their foul-scented bodies, they spread the germs of typhoid, infectious fever, cholera, dysentery over your face, over your clothing, over your very person. Destroy them - wipe them out - before they destroy you. Kill them with FLIT.

Fit closes the house in a few minutes of dusting with FLIT. The insects, bedbugs, roaches, etc., and flies. It searches out the cracks where insects hide and breed, destroying their eggs. Do not confine FLIT with ordinary insecticides. Greater killing power means assistance with FLIT. Made by the largest fly sprayer factory in the world. Buy FLIT and FLIT spray.



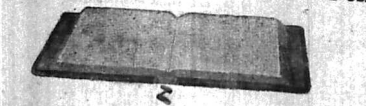
Per your protection FLIT is sold only in sealed tins.

B. E. A. Saw Mills

MILLS AND OFFICES, WORKSHOP ROAD, NIAIRI P.O. BOX 221, NAIROBI. Telephone No. 83. P.O. Box 221, NAIROBI. Telegrams: Beams. CAMPEER, FODD, MWERI and MUSA. Callings. Mofidging. Long length Beams and Camphor Flooring

LOOSE LEAF LEDGERS.

INSTANT REFERENCE PERPETUAL USE.



"RIVAL" "INVADER" "CLARION" Three Binder, Full Bound, Maroon Cover, Standard Binding. Three Binder, Full Bound, Maroon Cover, Standard Binding. Three Binder, Full Bound, Maroon Cover, Standard Binding.

SIZES: 9x11, 11x11, 11x14, 13x11, 13x14. BINDERS INDEXES AND SHEETS SOLD SEPARATELY. SHEETS SPECIALLY RULED AND PRINTED TO ORDER.

Let Us Quote You. A COMPLETE LEDGER BINDER INDEX AND 250 STOCK RULED SHEETS. From Shs. 69/50 to Shs. 135/50 according to size and quality of Binder.

A LARGE STOCK KEPT OF

NOTE BOOKS. BINDERS AND INDEXES.

STANDARD STATIONERY STORE, NAIROBI

Any product bearing the name of CROSSE & BLACKWELL may safely be taken on trust. It is as good as any 300 years of experience can make it.

Public Meeting in the Kikuyu Constituency

The Hon. Col. C. G. DURHAM, D.S.O. M.L.C. supported by Members of the Executive of the GOVERNMENT OF ASSOCIATIONS, will address Meetings, as follows, on the subject of THE REPORT OF THE COMMISSIONERS OF ROBBERS UNION OF THE DEPENDENCIES IN EASTERN AND CENTRAL AFRICA.

Thursday, February 14th: The Club House, Nairobi, 10.30 a.m.

Monday, February 18th: Major Stearn's House, Mile 10, Ngong Road, 9.30 p.m.

THE VICTORIA NYAZEA SUGAR COMMISSIONERS have arranged with the Underwriter to return their No. 1 Whites under the following prices:

Per ton 100 Cents - 38 Cents - 35 Cents - 33 Cents - 30 Cents - 28 Cents - 25 Cents - 23 Cents - 20 Cents - 18 Cents - 15 Cents - 13 Cents - 10 Cents - 8 Cents - 5 Cents - 3 Cents - 1 Cent

KAUKURU ELDORET NGONGAI

Further Reductions ONLY FOR FEW DAYS

IN DRESS MATERIAL STEP OVER AND LOOK AROUND OUR WINDOWS. DON'T MISS THIS OPPORTUNITY. CALL OR WRITE AT

HUSEIN'S SHOP GOVERNMENT ROAD, NAIROBI.

Ascat Footwear

35/- 1-2oz round toe, Spanish Cuban. 1-1/2oz round toe, Spanish Cuban. 1-1/2oz round toe, Spanish Cuban. 1-1/2oz round toe, Spanish Cuban.

De Luxe Boot Co., 87, NAIROBI.

ANICAL PRESSES.

PRESSING AND PRESERVING LEAVES, FLOWERS, ETC. MADE CLOTH BOARD COVERS WEAVE STRAPS AND BUCKLES. Twelve Sheets Specially Prepared Paper. Shs. 7/50 Size 14 1/2 x 21 Shs. 9/50

Chrysler Chooses GOODYEAR

The well-known Chrysler organization have announced their intention of equipping all Chrysler cars for export with Goodyear Heavy Duty Tyres made with "SUPERTWIST" Cord.

This decision was reached after exhaustive tests under every conceivable type of road condition.

High speeds, rapid acceleration and braking actions impose great strains upon tyres. Colonial road conditions introduce other factors such as rocks, deep ruts and thorns.

Goodyear Heavy Duty Tyres have proved their ability to render extreme mileages even under such severe operating conditions.

Chrysler engineers with their exacting standards and their constant search for the finest equipment obtainable have, in selecting Goodyears, given an endorsement which will have far reaching effect throughout the world.

The following divisions of the Chrysler Corporation are equipping their cars and trucks with Goodyear Tyres.

Dodge
"Standard" Six
"Victory" Six
"Senior" Six

De Soto

All models

Graham Brothers Trucks

All models

Graham Brother Coaches

All models

Fargo Trucks

All models

GOODYEAR

GOODYEAR & Company Ltd.
DISTRIBUTORS

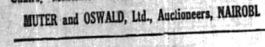
AUCTION SALES.



CATALOGUE SALE OF BRASS BEDSTEAD, TEAK FURNITURE AND EFFECTS.

With my RESERVE, unless stipulated, at our Salerooms, Mutes Building, on MONDAY, FEB. 16th at 10 a.m.

The above mentioned articles will be sold by public auction... Muter and Oswald, Ltd., Auctioneers, NAIROBI.



PROPERTIES for Immediate Sale.

- 4 Acre Plot NGIRO ROAD, £500 or offer. 1 Acre Freehold Plot KILIMANI, £150 or offer.

These two properties must be sold quickly and no reasonable offer will be refused.

Muter and Oswald, Ltd., Estate Agents, NAIROBI.

Sands & Co. AT OUR YARDS, NAIVASHA.

Monday, 18th Feb. at 10-50 a.m.

- 1 150 Gal. Water Cart Practically New. 1 Morris 1 Ton Lorry in first class running order. 6 Really First Class Milking Cows near Calving. 100 Grade Sheep. 64 Grade and Native Cows. A real good herd. 64 Grade Steers. 10 High Grade Shorthorn Heifers. 8 A.M. and T. Trained Truck Oxen.

POULTRY and SUNDRIES. Further entries invited.

SANDS & CO., AUCTIONEERS.

SANDS & CO., IN THE City Market.

Every TUESDAY and FRIDAY at 9 a.m.

FRUIT, VEGETABLES and FARM PRODUCE

AT OUR RAILWAY SALEYARDS, NAIROBI, Every WEDNESDAY, at 11 a.m.

LIVE STOCK OF ALL DESCRIPTION Entries for the above market invited.

SANDS & CO., AUCTIONEERS.

SANDS & CO., SAVILE STREET, KAVIRONO GRASS MATS

ALL SIZES. ANY QUANTITY. Sh. 2/50 LARGE Sh. 2/- SMALL.

SANDS & CO., AUCTIONEERS.

OBTAIN TOP PRICES.

For all articles you wish to dispose of by sending them to JAMAL PIRBHAI.

AUCTIONEER, OFFICIAL BROKER AND GOVERNMENT APPROVED VALUER.

Auction every Sunday, commencing at 9 a.m. P.O. Box No. 359. 49, Spring Garden, NAIROBI.

AUSTIN'S AUCTIONS.

CORRUGATED IRON, CHARCOAL, TYRES, NEW DRESS TYRES, ETC. AUSTIN & CO.

will sell WITHOUT RESERVE, at THE MART, TO-DAY, FEB. 14th at 10 a.m.

About 40 Sheets Corrugated Iron. 7 Bags Charcoal. Block Making Machine. Wire Netting. Second Hand Motor Covers and Tubs. New Glanchar Tubes 3 1/2 x 4. Electrical Fittings. Exonol Jug. Bread Tins. Ice Cream Freezers. Lino. Mince Meat Machines. Large Cooking Pots. Brass Water Taps. Car Cushions. Yost-Knamm Bats for Washstands. Trunks Uniform Case. Knamm Bats for Washstands.

AUSTIN & CO. Auctioneers and Estate Agents, HARRIDGE ST., NAIROBI.

AUSTIN'S AUCTIONS.

CATALOGUE SALE OF FURNITURE, TYPE-WRITING, FOLDING PRAM, GRAMOPHONE, SEWING MACHINE, INCUBATOR, BR. BED, BANJO, GUAR, HANDBLES, NEW RUBB. LID SPEAKER, Etc.

AUSTIN & CO. will sell WITHOUT RESERVE unless stated, at THE MART, on SATURDAY, FEB. 16th at 10 a.m.

Royal standard Typewriter in good order. Gramophone. Sewing Machine. Handmade Bed. Electric Fan. Folding Pram. Gramophone. Sewing Machine. Incubator. Bed. Banjo. Guar. Handbles. New Rubber Lid Speaker. Etc.

AUSTIN & CO. will sell WITHOUT RESERVE unless stated, at THE MART, on SATURDAY, FEB. 16th at 10 a.m.

Royal standard Typewriter in good order. Gramophone. Sewing Machine. Handmade Bed. Electric Fan. Folding Pram. Gramophone. Sewing Machine. Incubator. Bed. Banjo. Guar. Handbles. New Rubber Lid Speaker. Etc.

AUSTIN & CO. Auctioneers & Estate Agents, Harridge Street, Nairobi.

OLDSMOBILE TOURING CAR.

AUSTIN & CO. will sell subject to a very low reserve, at the MART, on SATURDAY, FEB. 16th at 10 a.m.

6-cyl. Oldsmobile Touring Car in perfect running order and condition. Electric Lights, Self Starter, Spot Lights all in good order. Tyres in fair condition. A really good serviceable car.

AUSTIN & CO., Auctioneers & Estate Agents, Harridge Street, Nairobi.

HAIRDRESSING SPECIALITIES.

PERMANENT WAVING and TINTING. At Reasonable Charges.

C. W. YOUNG, Phone 18, 255 - Timmer Hairdressing Saloon, HARRIDGE ST.

HORSES FOR SALE

POLO PONIES and BACKS always on hand. From £15 to £100. Apply - G. M. LAWRENCE, Equator Equipping School, Tel.grams - "Lawrence, Equator."

NOTICE.

FOR REAL SOUND FARMING, PLANTING and BUSINESS INVESTMENTS CONSULT

MUNDELL,

P.O. Box 26, - ELDORET.

THE NYANZA AUCTIONEERS NAKURU

Slaughter Stock Sale

Nakuru, Tuesday February 19th 1920, 2-30 pm

About One hundred and twenty head slaughter oxen, comprising 70 head prime quality oxen from the Government Slaughterhouse and 5 and 4 year old grade Shorthorn.

30 Prime Native Oxen. 50 Prime Fat Grade Butchers for compound meat. 50 Prime Fat Oxen. 50 Prime Fat Oxen. 50 Prime Fat Oxen.

At 10 a.m. on the same date we are selling the NAKURU BUSINESS and PROPERTY at Public Auction by the Nyanza Auctioneers. For particulars see Official Gazette.

Farm Sale.

NAKURU, SATURDAY, FEB. 16th at the Nakuru Hotel at 10-30 a.m. By Instructions of the Trustee in the bankruptcy estate of J. B. Stewart.

This well-known and highly desirable property known as MALOYVA FARM, LINDIAN (L.O. 4778), comprising six hundred acres held on a 999 year lease.

The farm is situated one mile south of Lindian station (about 10 miles from Nairobi) and is bounded on the north and east by the Nairobi River. The soil is exceptionally warm and sheltered for this latitude. Wind by the Macassarment.

SOIL - About half of the farm is highly fertile and produces a heavy crop of both Maize FERTILE SOIL, yielding a heavy crop of both Maize and Wheat and eminently suitable for all classes of crops.

IMPROVEMENTS - The remainder is first class grazing and well land with a very heavy stock carrying capacity of about 100 head.

LABOUR - A number of Lumbwa squatters are resident and both Lumbwa and Kikuyu labour is plentiful in the neighbourhood.

A government cattle dip is available on an adjoining farm. There are two small locks on the property and water power could be obtained from the river at small cost.

Good Timber is obtainable from Government forests within three miles.

N.B. - During the past two abnormally dry seasons this district has suffered NO LACK OF RAIN.

In all the proposed lots there is one of the BEST MIXED FARMING and BREEDING propositions ever offered by auction in Kenya.

The Terms of sale are CASH but mortgage for up to half the purchase price can be arranged to approved buyers.

Further particulars from and inspection arranged by THE NYANZA AUCTIONEERS, P.O. Box 67, NAKURU.

NOTICE.

Nakuru Race Club.

JUNE MEETING, 1922 and ONWARDS. NAKURU STUB PRODUCE STAKES.

By Subscription of £2 each Stallion with sufficient added by the Club to allow Nominators of the Stallion which is Entry of the Winner to receive £25. Winner £150. Second £25. Third £15.

Entry Fee £1 each for the produce of Mares named on or before 30th April, 1922 (if mare not produced in full to be refunded). £2 in addition if not struck out by 31st October, 1920 and a further £3 in addition if not struck out by March 31st, 1921.

Two-Year-Olds only. Fillies and Geldings 19-11. Penalty of 7lbs. to be carried by winners of stakes aggregating £100.

Penalty of 4lbs. to be carried by winners of stakes aggregating £50.

Special Allowance 15s. Distress 5s. Fulling. Closed March 31st 1925 for Stallions, and April 30th 1925 for Mares.

Breeding Allowance as per Scale given below. SCALE OF BREEDING ALLOWANCE - For progeny of Stallions standing at fee of £8 to £10 inclusive 7lbs. For progeny of Stallions standing at fee of less than £8, 14lbs.

NOTE - It is proposed to increase the Stakes in future years commensurate with Subscriptions received. By Order of the Stewards, NAKURU RACE CLUB, H. MACDONALD, Hon. Secretary.

GODFREY'S CAR MART.

(LATE STANLEY GARAGE).

USED CARS.

Morris Oxford, 14/20 2-p. Four seat, current and economical. A nice, new. New type. 1919. Chevrolet, 1919. New type. 1919. Chrysler 7. Fully equipped. 1919. Ford Model T. 1919. Ford Model T. 1919. Ford Model T. 1919.

FORD TRUCKS for sale from £25. Reliable Cars for Hire with driver or drive yourself. Second-hand Spare Parts for all Makes of Cars.

W. H. GODFREY, Sole Proprietor.

Phone 142. Box 766.

South African Tobacco

HARTLEY'S LEAD SEAL in 4-lb. bags. HARTLEY'S No. 19 in 4-lb. tins. INVICTA (Rhodesian) in 4-lb. tins. RHODESIAN RED SEAL 1 1/2 lb. tin in 14-lb. tin.

Stocked by ALL THE LEADING STORES. APPROVED BY THE SOUTH AFRICAN GOVERNMENT.

Denovan & Diebe

City House, NAIROBI. Tel. 189. Box 108.

HOUSE PROPERTY FOR SALE

- 1. 141 acre Freehold. Well cultivated house with 15 acres and Mangrove Island. £2500. 2. 1 1/2 acre approximately, of Hospital Road near Ardena. Five roomed stone house, tennis court and well laid out. £1000 cash and £1000 on mortgage at 7 1/2 per cent. 3. Price on application. 4. 10 acres. Gravelled Lane. Parklands, with small house. For further particulars of the above and other attractive realty, apply -

BROWN & BARRATT, P.O. Box 417 I.B.E.A. Building, Govt. Road, Phoenix.

HOPE'S STEEL CASEMENTS

ARE AVAILABLE AS BEING THE BEST STEEL CASEMENT ON THE MARKET.

NOTE - We accept full responsibility and will replace, free of charge, any Hope Windows, supplied by us, which do close a latent defect.

Beales & Smithson

AVENUE HOUSE

Our Upholstery is noted For Its Comfort and Durability

COTTAGE CHAIRS ... Shgs. 7/6. EQUATOR CHAIRS ... Shgs. 11/6. FLOOR CHAIRS ... Shgs. 11/6. TUB CHAIRS ... Shgs. 12/0. SUPER EASY CHAIRS ... Shgs. 17/6. MADE WITH LONG, FLEXIBLE, STEEL coppered springs and stuffed with best Kapok and Cot. Handwood frames. Only the best materials used.

LESS 10% FOR CASH WITH ORDER.

Hutchings, Blemer & Co. Ltd. Box 408 NAIROBI Phone 408.

"This is so Sutton!"

as the lady said when we gave her a bunch of flowers grown from the world's finest seeds. Sutton's seeds are commended for hardiness and excellence wherever there is soil and water for their growth.

SHAW & HUNTER Ltd.
AGENTS,
P.O. Box 79, NAIROBI.

Charles Ware

TREASURER,
(Established 53 years.)

Box 170, NAIROBI. Tel. Address: "Sportman."
WILL GENTS PLEASE NOTE THAT DURING MY ABSENCE IN ENGLAND MR. P. A. THOMAS WILL ACT AS MY BEST REPRESENTATIVE IN KENYA COLONY.
Licence Holders:—J/1 Falmouth; J/1 Grande Taverne; J/1 Seng; 1/10000; 14/11 Orust Spire; 1/1 Master Dicks; Magalones; 1/11 Kato.

Obese on enquiry.
Great Hatched:—12/11 Orust Spire; 1/41 Master Dicks; Magalones; 1/11 Kato.
Obese on enquiry.
IT IS DISTINGUISHED UNDESIRABLE THAT NO REPLY MEANS NO BUSINESS.

J.H.S. Todd & Co. Ltd.
NAIROBI

YOU CAN DEPEND
MORE ON THESE
BOLTS.

The process applied to their manufacture is a triumph of specialized engineering.



We hold all appliances
Requisite in
Engineering—Tools,
Shaping, Pulleys,
Belting.

J.H.S. Todd & Co. Ltd.
NAIROBI

WELCOME NEWS
BIG REDUCTIONS IN THE PRICE OF
Spratts Dog Foods

Dog owners will be interested to know that we can now offer several foods as under:—
DOG CUBS
PUPPY BISCUITS
ROBIN
ALASKA
POULTRY FOODS, 3s. 6d.
GAIN'S MEDICINES, 3s. 6d.
CHICK MEAL, 3s. 6d.
MEAT CHIT, 3s. 6d.
OYSTER SHELL, 3s. 6d.
FLINT CHIT, 3s. 6d.
PULTRY SPIRIT, 3s. 6d.
MEDICINES—Bismuth, Co. Capsules, Liver, Eye, Spittle, Capsules, Siles, Siphons, Heavy Pills, Live Fish, etc., 3s. 6d.

BLACKLAW & BROWN
(LATE MACKINNON BROS.)
Tel. No. 31 NAIROBI. Box No. 468



THE MOST WONDERFUL VALVE
EVER OFFERED.
At 1-50 each.
TRY IT AND BE CONVINCED.
MAY & Co., Ltd.
THE SPORTS HOUSE,
NAIROBI

THE EAST AFRICAN STANDARD

THE SPORTS PAGE

THE OPENING FLAT RACING. CRICKET. BRITISH GOLF PROSPECTS. RYLER CUP TEAM FOR MOOVTOWN. THE ADVANCE OF THE TENNIS SCHEDULE.



Prospects for the "Lions" and "National."

NEVER SO "OPEN" AS THIS YEAR.

Never in the history of the Lions and Great National have the entries looked so early. Despite the number of withdrawals, both races present a problem to the member of the public who wishes to make the horse, as all intensions and betting are so open that it is likely to afford some opportunity for the man who seeks to bet wisely among the long odds. However, it is probable that the "Lions" will be the more popular, and it is to be expected that the "National" will be the more popular, and it is to be expected that the "Lions" will be the more popular, and it is to be expected that the "National" will be the more popular.

FOOD DISPLAY BY VISITING TEAM.

(By "Billy Singh.")
The table was set on their own on Sunday of last week. The table was set on their own on Sunday of last week. The table was set on their own on Sunday of last week.

RAILWAY GOALS.

First innings.
Alex D'Souza & Field.
Fremont, C. at Smith & Field.
Fremont, C. at Smith & Field.
Fremont, C. at Smith & Field.

FOUR WICKET VICTORY.

(By "Billy Singh.")
The table was set on their own on Sunday of last week. The table was set on their own on Sunday of last week. The table was set on their own on Sunday of last week.

THE ADVANCE OF THE TENNIS SCHEDULE.

The list of ten players selected by the British Professional Golfers' Association to play the Ryder Cup team for the first time in April will appear to be a list of ten players who are well known to the public. It is to be expected that the "Lions" will be the more popular, and it is to be expected that the "National" will be the more popular.

THE EAST AFRICAN STANDARD

THE OPENING FLAT RACING. CRICKET. BRITISH GOLF PROSPECTS. RYLER CUP TEAM FOR MOOVTOWN. THE ADVANCE OF THE TENNIS SCHEDULE.

NEVER SO "OPEN" AS THIS YEAR.

FOOD DISPLAY BY VISITING TEAM.

(By "Billy Singh.")
The table was set on their own on Sunday of last week. The table was set on their own on Sunday of last week. The table was set on their own on Sunday of last week.

RAILWAY GOALS.

First innings.
Alex D'Souza & Field.
Fremont, C. at Smith & Field.
Fremont, C. at Smith & Field.
Fremont, C. at Smith & Field.

FOUR WICKET VICTORY.

(By "Billy Singh.")
The table was set on their own on Sunday of last week. The table was set on their own on Sunday of last week. The table was set on their own on Sunday of last week.

THE ADVANCE OF THE TENNIS SCHEDULE.

The list of ten players selected by the British Professional Golfers' Association to play the Ryder Cup team for the first time in April will appear to be a list of ten players who are well known to the public. It is to be expected that the "Lions" will be the more popular, and it is to be expected that the "National" will be the more popular.

THE EAST AFRICAN STANDARD

THE OPENING FLAT RACING. CRICKET. BRITISH GOLF PROSPECTS. RYLER CUP TEAM FOR MOOVTOWN. THE ADVANCE OF THE TENNIS SCHEDULE.

NEVER SO "OPEN" AS THIS YEAR.

FOOD DISPLAY BY VISITING TEAM.

(By "Billy Singh.")
The table was set on their own on Sunday of last week. The table was set on their own on Sunday of last week. The table was set on their own on Sunday of last week.

RAILWAY GOALS.

First innings.
Alex D'Souza & Field.
Fremont, C. at Smith & Field.
Fremont, C. at Smith & Field.
Fremont, C. at Smith & Field.

FOUR WICKET VICTORY.

(By "Billy Singh.")
The table was set on their own on Sunday of last week. The table was set on their own on Sunday of last week. The table was set on their own on Sunday of last week.

THE ADVANCE OF THE TENNIS SCHEDULE.

The list of ten players selected by the British Professional Golfers' Association to play the Ryder Cup team for the first time in April will appear to be a list of ten players who are well known to the public. It is to be expected that the "Lions" will be the more popular, and it is to be expected that the "National" will be the more popular.

THE EAST AFRICAN STANDARD

THE OPENING FLAT RACING. CRICKET. BRITISH GOLF PROSPECTS. RYLER CUP TEAM FOR MOOVTOWN. THE ADVANCE OF THE TENNIS SCHEDULE.

NEVER SO "OPEN" AS THIS YEAR.

FOOD DISPLAY BY VISITING TEAM.

(By "Billy Singh.")
The table was set on their own on Sunday of last week. The table was set on their own on Sunday of last week. The table was set on their own on Sunday of last week.

RAILWAY GOALS.

First innings.
Alex D'Souza & Field.
Fremont, C. at Smith & Field.
Fremont, C. at Smith & Field.
Fremont, C. at Smith & Field.

FOUR WICKET VICTORY.

(By "Billy Singh.")
The table was set on their own on Sunday of last week. The table was set on their own on Sunday of last week. The table was set on their own on Sunday of last week.

THE ADVANCE OF THE TENNIS SCHEDULE.

The list of ten players selected by the British Professional Golfers' Association to play the Ryder Cup team for the first time in April will appear to be a list of ten players who are well known to the public. It is to be expected that the "Lions" will be the more popular, and it is to be expected that the "National" will be the more popular.

THE EAST AFRICAN STANDARD

THE OPENING FLAT RACING. CRICKET. BRITISH GOLF PROSPECTS. RYLER CUP TEAM FOR MOOVTOWN. THE ADVANCE OF THE TENNIS SCHEDULE.

NEVER SO "OPEN" AS THIS YEAR.

FOOD DISPLAY BY VISITING TEAM.

(By "Billy Singh.")
The table was set on their own on Sunday of last week. The table was set on their own on Sunday of last week. The table was set on their own on Sunday of last week.

RAILWAY GOALS.

First innings.
Alex D'Souza & Field.
Fremont, C. at Smith & Field.
Fremont, C. at Smith & Field.
Fremont, C. at Smith & Field.

FOUR WICKET VICTORY.

(By "Billy Singh.")
The table was set on their own on Sunday of last week. The table was set on their own on Sunday of last week. The table was set on their own on Sunday of last week.

THE ADVANCE OF THE TENNIS SCHEDULE.

The list of ten players selected by the British Professional Golfers' Association to play the Ryder Cup team for the first time in April will appear to be a list of ten players who are well known to the public. It is to be expected that the "Lions" will be the more popular, and it is to be expected that the "National" will be the more popular.

THE EAST AFRICAN STANDARD

THE OPENING FLAT RACING. CRICKET. BRITISH GOLF PROSPECTS. RYLER CUP TEAM FOR MOOVTOWN. THE ADVANCE OF THE TENNIS SCHEDULE.

NEVER SO "OPEN" AS THIS YEAR.

FOOD DISPLAY BY VISITING TEAM.

(By "Billy Singh.")
The table was set on their own on Sunday of last week. The table was set on their own on Sunday of last week. The table was set on their own on Sunday of last week.

RAILWAY GOALS.

First innings.
Alex D'Souza & Field.
Fremont, C. at Smith & Field.
Fremont, C. at Smith & Field.
Fremont, C. at Smith & Field.

THE EAST AFRICAN STANDARD

THE OPENING FLAT RACING. CRICKET. BRITISH GOLF PROSPECTS. RYLER CUP TEAM FOR MOOVTOWN. THE ADVANCE OF THE TENNIS SCHEDULE.

NEVER SO "OPEN" AS THIS YEAR.

FOOD DISPLAY BY VISITING TEAM.

(By "Billy Singh.")
The table was set on their own on Sunday of last week. The table was set on their own on Sunday of last week. The table was set on their own on Sunday of last week.

RAILWAY GOALS.

First innings.
Alex D'Souza & Field.
Fremont, C. at Smith & Field.
Fremont, C. at Smith & Field.
Fremont, C. at Smith & Field.

THE EAST AFRICAN STANDARD

THE OPENING FLAT RACING. CRICKET. BRITISH GOLF PROSPECTS. RYLER CUP TEAM FOR MOOVTOWN. THE ADVANCE OF THE TENNIS SCHEDULE.

NEVER SO "OPEN" AS THIS YEAR.

FOOD DISPLAY BY VISITING TEAM.

(By "Billy Singh.")
The table was set on their own on Sunday of last week. The table was set on their own on Sunday of last week. The table was set on their own on Sunday of last week.

RAILWAY GOALS.

First innings.
Alex D'Souza & Field.
Fremont, C. at Smith & Field.
Fremont, C. at Smith & Field.
Fremont, C. at Smith & Field.

THE EAST AFRICAN STANDARD

THE OPENING FLAT RACING. CRICKET. BRITISH GOLF PROSPECTS. RYLER CUP TEAM FOR MOOVTOWN. THE ADVANCE OF THE TENNIS SCHEDULE.

NEVER SO "OPEN" AS THIS YEAR.

FOOD DISPLAY BY VISITING TEAM.

(By "Billy Singh.")
The table was set on their own on Sunday of last week. The table was set on their own on Sunday of last week. The table was set on their own on Sunday of last week.

RAILWAY GOALS.

First innings.
Alex D'Souza & Field.
Fremont, C. at Smith & Field.
Fremont, C. at Smith & Field.
Fremont, C. at Smith & Field.

THE EAST AFRICAN STANDARD

THE OPENING FLAT RACING. CRICKET. BRITISH GOLF PROSPECTS. RYLER CUP TEAM FOR MOOVTOWN. THE ADVANCE OF THE TENNIS SCHEDULE.

NEVER SO "OPEN" AS THIS YEAR.

FOOD DISPLAY BY VISITING TEAM.

(By "Billy Singh.")
The table was set on their own on Sunday of last week. The table was set on their own on Sunday of last week. The table was set on their own on Sunday of last week.

RAILWAY GOALS.

First innings.
Alex D'Souza & Field.
Fremont, C. at Smith & Field.
Fremont, C. at Smith & Field.
Fremont, C. at Smith & Field.

THE EAST AFRICAN STANDARD

THE OPENING FLAT RACING. CRICKET. BRITISH GOLF PROSPECTS. RYLER CUP TEAM FOR MOOVTOWN. THE ADVANCE OF THE TENNIS SCHEDULE.

NEVER SO "OPEN" AS THIS YEAR.

FOOD DISPLAY BY VISITING TEAM.

(By "Billy Singh.")
The table was set on their own on Sunday of last week. The table was set on their own on Sunday of last week. The table was set on their own on Sunday of last week.

RAILWAY GOALS.

First innings.
Alex D'Souza & Field.
Fremont, C. at Smith & Field.
Fremont, C. at Smith & Field.
Fremont, C. at Smith & Field.

THE EAST AFRICAN STANDARD

THE OPENING FLAT RACING. CRICKET. BRITISH GOLF PROSPECTS. RYLER CUP TEAM FOR MOOVTOWN. THE ADVANCE OF THE TENNIS SCHEDULE.

NEVER SO "OPEN" AS THIS YEAR.

FOOD DISPLAY BY VISITING TEAM.

(By "Billy Singh.")
The table was set on their own on Sunday of last week. The table was set on their own on Sunday of last week. The table was set on their own on Sunday of last week.

RAILWAY GOALS.

First innings.
Alex D'Souza & Field.
Fremont, C. at Smith & Field.
Fremont, C. at Smith & Field.
Fremont, C. at Smith & Field.

THE EAST AFRICAN STANDARD

THE OPENING FLAT RACING. CRICKET. BRITISH GOLF PROSPECTS. RYLER CUP TEAM FOR MOOVTOWN. THE ADVANCE OF THE TENNIS SCHEDULE.

NEVER SO "OPEN" AS THIS YEAR.

FOOD DISPLAY BY VISITING TEAM.

(By "Billy Singh.")
The table was set on their own on Sunday of last week. The table was set on their own on Sunday of last week. The table was set on their own on Sunday of last week.

RAILWAY GOALS.

First innings.
Alex D'Souza & Field.
Fremont, C. at Smith & Field.
Fremont, C. at Smith & Field.
Fremont, C. at Smith & Field.

THE EAST AFRICAN STANDARD

THE OPENING FLAT RACING. CRICKET. BRITISH GOLF PROSPECTS. RYLER CUP TEAM FOR MOOVTOWN. THE ADVANCE OF THE TENNIS SCHEDULE.

NEVER SO "OPEN" AS THIS YEAR.

FOOD DISPLAY BY VISITING TEAM.

(By "Billy Singh.")
The table was set on their own on Sunday of last week. The table was set on their own on Sunday of last week. The table was set on their own on Sunday of last week.

RAILWAY GOALS.

First innings.
Alex D'Souza & Field.
Fremont, C. at Smith & Field.
Fremont, C. at Smith & Field.
Fremont, C. at Smith & Field.

THE EAST AFRICAN STANDARD

THE OPENING FLAT RACING. CRICKET. BRITISH GOLF PROSPECTS. RYLER CUP TEAM FOR MOOVTOWN. THE ADVANCE OF THE TENNIS SCHEDULE.

NEVER SO "OPEN" AS THIS YEAR.

FOOD DISPLAY BY VISITING TEAM.

(By "Billy Singh.")
The table was set on their own on Sunday of last week. The table was set on their own on Sunday of last week. The table was set on their own on Sunday of last week.

RAILWAY GOALS.

First innings.
Alex D'Souza & Field.
Fremont, C. at Smith & Field.
Fremont, C. at Smith & Field.
Fremont, C. at Smith & Field.

THE EAST AFRICAN STANDARD

THE OPENING FLAT RACING. CRICKET. BRITISH GOLF PROSPECTS. RYLER CUP TEAM FOR MOOVTOWN. THE ADVANCE OF THE TENNIS SCHEDULE.

NEVER SO "OPEN" AS THIS YEAR.

FOOD DISPLAY BY VISITING TEAM.

(By "Billy Singh.")
The table was set on their own on Sunday of last week. The table was set on their own on Sunday of last week. The table was set on their own on Sunday of last week.

RAILWAY GOALS.

First innings.
Alex D'Souza & Field.
Fremont, C. at Smith & Field.
Fremont, C. at Smith & Field.
Fremont, C. at Smith & Field.

THE EAST AFRICAN STANDARD

THE OPENING FLAT RACING. CRICKET. BRITISH GOLF PROSPECTS. RYLER CUP TEAM FOR MOOVTOWN. THE ADVANCE OF THE TENNIS SCHEDULE.

NEVER SO "OPEN" AS THIS YEAR.

FOOD DISPLAY BY VISITING TEAM.

(By "Billy Singh.")
The table was set on their own on Sunday of last week. The table was set on their own on Sunday of last week. The table was set on their own on Sunday of last week.

RAILWAY GOALS.

First innings.
Alex D'Souza & Field.
Fremont, C. at Smith & Field.
Fremont, C. at Smith & Field.
Fremont, C. at Smith & Field.

THE EAST AFRICAN STANDARD

THE OPENING FLAT RACING. CRICKET. BRITISH GOLF PROSPECTS. RYLER CUP TEAM FOR MOOVTOWN. THE ADVANCE OF THE TENNIS SCHEDULE.

NEVER SO "OPEN" AS THIS YEAR.

FOOD DISPLAY BY VISITING TEAM.

(By "Billy Singh.")
The table was set on their own on Sunday of last week. The table was set on their own on Sunday of last week. The table was set on their own on Sunday of last week.

RAILWAY GOALS.

First innings.
Alex D'Souza & Field.
Fremont, C. at Smith & Field.
Fremont, C. at Smith & Field.
Fremont, C. at Smith & Field.

THE EAST AFRICAN STANDARD

THE OPENING FLAT RACING. CRICKET. BRITISH GOLF PROSPECTS. RYLER CUP TEAM FOR MOOVTOWN. THE ADVANCE OF THE TENNIS SCHEDULE.

NEVER SO "OPEN" AS THIS YEAR.

FOOD DISPLAY BY VISITING TEAM.

(By "Billy Singh.")
The table was set on their own on Sunday of last week. The table was set on their own on Sunday of last week. The table was set on their own on Sunday of last week.

RAILWAY GOALS.

First innings.
Alex D'Souza & Field.
Fremont, C. at Smith & Field.
Fremont, C. at Smith & Field.
Fremont, C. at Smith & Field.

THE EAST AFRICAN STANDARD

THE OPENING FLAT RACING. CRICKET. BRITISH GOLF PROSPECTS. RYLER CUP TEAM FOR MOOVTOWN. THE ADVANCE OF THE TENNIS SCHEDULE.

NEVER SO "OPEN" AS THIS YEAR.

FOOD DISPLAY BY VISITING TEAM.

(By "Billy Singh.")
The table was set on their own on Sunday of last week. The table was set on their own on Sunday of last week. The table was set on their own on Sunday of last week.

RAILWAY GOALS.

First innings.
Alex D'Souza & Field.
Fremont, C. at Smith & Field.
Fremont, C. at Smith & Field.
Fremont, C. at Smith & Field.