









UNION CASTLE LINE.

Table with shipping schedules for Union Castle Line, including destinations like Bombay, Madras, and Swatow, and dates of departure.

British India Steam Navigation Company, Ltd.

Table with shipping schedules for British India Steam Navigation Company, listing routes to Bombay, Madras, and Swatow with specific dates.

Advertisement for Chivers' Patent Hygienic Cover, featuring an illustration of a person and text describing the product's benefits.

MESSAGERIES MARITIMES

Table with shipping schedules for Messageries Maritimes, listing routes to London, Bombay, and Madras.

Clan - Ellerman - Harrison Lines, (JOINT SERVICE)

Table with shipping schedules for Clan - Ellerman - Harrison Lines, including routes to Liverpool, Glasgow, and Manchester.

Ellerman and Bucknall Line, NEW YORK - MOMBASA VIA SUZEE.

Table with shipping schedules for Ellerman and Bucknall Line, listing routes to New York and Mombasa.

THE AFRICAN MERCANTILE Company, Limited, MOMBASA (cable Navigation) NAIROBI.

Within Forty-Eight Hours

Advertisement for Shell Aviation Spirit and Golden Shell Oil, highlighting the speed of service and the quality of the products.

The African Marine & General Engineering COMPANY LTD. KILINDINI.

Text advertisement for African Marine & General Engineering, listing services such as ship repairing, sail making, and welding.

Mrs. E. M. PAINE, I.R.A.M., A.R.C.M.

Text advertisement for Mrs. E. M. Paine, offering services for concrete and plaster work.

FOR SALE.

Text advertisement for various goods for sale, including woolen goods and household items.

Deutsche Ost-Afrika-Linie (GERMAN AFRICAN SERVICE)

Table with shipping schedules for Deutsche Ost-Afrika-Linie, listing routes to Hamburg and South.

Johnny Wright's

Advertisement for Johnny Wright's Whiskies, featuring an illustration of a bottle and text describing the quality of the drinks.

NATIONAL BANK OF INDIA LIMITED.

Text advertisement for National Bank of India, listing services and capital.

Keith Timber Co. L<sup>td</sup>

Text advertisement for Keith Timber Co., providing contact information and phone number.

Advertisement for F. A. HEAD, Piano Forte Tuner and Repairer, with contact details.

The Kenya Vulcanizing Works.

Text advertisement for The Kenya Vulcanizing Works, listing services and contact information.

OVERSEAS MAILS.

Table with shipping schedules for Overseas Mails, listing routes to various international destinations.

Compagnia Italiana Transatlantica.

Text advertisement for Compagnia Italiana Transatlantica, listing services and routes.

HOLLOWAY'S LONDON

Advertisement for Holloway's Gin, featuring an illustration of a hand holding a glass and text describing the product.

UPLANDS NEWS

Text advertisement for Uplands News, providing information about the publication.

ROYAL CLUB PILSENER BEER.

Text advertisement for Royal Club Pilsener Beer, highlighting its quality and availability.

UPLANDS PRODUCTS

Text advertisement for Uplands Products, listing various goods and services.



**"THE LENS"**  
P. O. Box 821, Prince's Buildings, Grange, "Estimate"  
NAIROBI.

The Premier House for All Optical and Photographic Goods.

**ZEISS**  
FIELD GLASSES, LENSES, MICROSCOPES, LEVELS,  
THEODOLITES, KESTERKOPFERBERG.

The best selection in East Africa of Spectacles, Prismas, Binoculars and Monoculars fitted with the famous ZEISS OPTICAL and VERRALL LENSES (white or tinted), ZEISS LEICA Camera, Camera-Attachments and Projectors. All American and Cinema-Graph Developing, Printing and Engraving by the same experts.

Repairs to all Cameras done in one Day Workshop. Experts Right Tools; by fully qualified Optician.

Call and have your eyes tested with the most up-to-date Right-Fitting Apparatus FREE OF CHARGE.

**THE SALE OF THE SEASON NOW ON**

**Enormous Bargains IN Footwear and Outfitting**

**Maxwell Brady & Co.**

SPECIALISTS  
Nairobi and Eldoret

**Agriculture.**

# January Crop Report.

## Serious Position in the Native Reserves.

The following crop report for the month of January has been received from the Department of Agriculture.

On the introduction of the system of crop reports it was hoped that the January report would be the last of the series for the year. It has, however, been found that, in some districts, harvesting was not completed and Crop Commissioners are asked to submit a further report for the month of February which will deal with the actual crop harvested. In view of the foregoing it has been decided that in future the period will be defined for one month and reports will be issued monthly to respect of the period July to February inclusive, and not from June to January as originally intended.

At the end of January harvesting was sufficiently advanced to indicate that the yields of all crops have fallen off considerably as compared with previous estimates, with the result that considerable decreases are shown as compared with the previous month's estimate.

In the case of maize it has been found, particularly in the Transvaal, that the grain is light in weight. In some instances as much as 10 per cent., and some districts being experienced in getting the full 200 lbs. of grain into the small size of each. In the case of coffee, it is found that the beans are much smaller and lighter than the cherry gave promise of and in some instances pebbly occurs in much larger proportion than is usual.

Trout and breams accounted for a further falling off in the wheat crop and it is known that considerable damage has been caused by locusts during the month of February, details of which will be published later.

The weather throughout the month was very dry, some districts having been totally devoid of rain during the month.

**RUFOPHAN AREAS.**

Ruf Hall is reported that owing to the dry weather coffee berries are not filling satisfactorily.

It is also noted that coffee trees are ready to flower.

From the Transvaal the dry coffee trees are reported to be looking very well and appear healthy. Coffee picking is well in progress, but the cherry is falling to give the results previously anticipated, with the result that a further decrease in the estimated output is predicted.

**MAIZE.** Good rains have occurred in this District, and there is every prospect that the previous estimate of coffee will be realized.

**MAIZE.** Locusts caused some considerable losses in the wheat yield and at the end of the month the damage was continuing.

**KILOBALI.** The maize crop in this district, although high has not come up to former expectations, and the total yield is reduced in consequence. A slight increase in the output of coffee is recorded.

**MAIZE.** The harvesting of maize in this district is ceasing completely and there is evidence of a considerable falling off in the yield. The lack of rain when wheat was coming into ear accounts for a further falling off in this crop.

**TRANSVAAL.** Although maize, factory crops of maize have been reported in this district, it has been found that the grain is light and in consequence a falling off in the total yield is estimated.

**UJUMBU.** Previous expectations in the maize crop are not being realized and the estimated total yield has decreased by 25,000 bags.

**NATIVE RESERVES.**

**CO. PROTIVA.**

Mr. C. O. Oates, Assistant Agricultural Officer, reports as follows:

"During the month I was able to visit nearly the whole of the Malindi and Kilifi districts.

The outlook has not improved from December, the following are the individual district reports.

**KILIFI.** Maize. This, the most important food crop on the Coast has suffered badly during the last

month. There has been very little rain and for the most part a severe dry season has been blowing, this together with the hot sun, has scorched the maize badly. The crop would seem to be a complete failure in the Chonyi and Amani regions, whilst the shambas around Malindi and the factories are in little better case. Schools, Omani and Baniwa should have about a quarter crop, this would also have been the case in Viongan and Mangan. The two latter, however, have been visited by severe frosts and many shambas have completely died. Good rains around Malindi are not better, although the crops were planted earlier.

**MAIZE.** There are few places where this crop has not been a failure.

**POPO AND KUNDE.** These two crops have also failed, lack of rain at their most critical period being the cause.

**CAVANA.** This is the only crop that is looking at all fit, its leaves are still full. Cavana should be of great assistance during a hard time.

**MAIZE.** The prospects of this crop are far better in the district than in Kilifi. When the water was last up the Bahari valley, at the beginning of the month, the maize was looking very well. A fairly good crop second season and if there have been two or three inches of really good rain one should be harvest-possible, if course, that the crops are not badly attacked by insects.

**REPORT.** This crop is doing well around the Malindi area and up the Bahari valley.

**KUNDE AND POPO.** These crops are not so good as the maize in Malindi District as in Kilifi. There grows few crops here have been obtained.

**COFFEE.** During the month good second pickings have been taken. The quality is very good, from a disease and part of new trees the crop is showing to the dry weather.

(Continued on page 7.)

Bill of the Vennin on your Shamba from Lian to Forepore.

THE BEST ALL ROUND RIFLE ON THE MARKET

Price, 24" barrel	£28 2/6
28" barrel	£32 2/6
30" barrel	£36 2/6
32" barrel	£40 2/6
34" barrel	£44 2/6
36" barrel	£48 2/6
38" barrel	£52 2/6
40" barrel	£56 2/6
42" barrel	£60 2/6
44" barrel	£64 2/6
46" barrel	£68 2/6
48" barrel	£72 2/6
50" barrel	£76 2/6
52" barrel	£80 2/6
54" barrel	£84 2/6
56" barrel	£88 2/6
58" barrel	£92 2/6
60" barrel	£96 2/6

5 per cent. Discount for Cash.

**Chas. A. Heyer & Co.,**  
The only European Gunmakers in Kenya.  
Est. 1910.

Phone 110. Box 287.

**How to Avoid Indigestion.**

**AN EASY WAY TO DO IT.**

In most digestive troubles, excess acid and fermented food have a tendency to remain in the stomach until the next meal is eaten. That is why intense pain so often follows immediately after eating. In cases of this kind, digestive disturbance can be absolutely prevented by taking half a teaspoonful of Bismarck Magnesia powder or two or three tablets in a little water half an hour before eating. This neutralises the acid, and in effect washes out the stomach, leaving it clean and sweet for the next meal. Get a package of this Bismarck Magnesia powder or two or three tablets in a little water half an hour before eating. In very bad cases take another dose after dinner, to make assurance doubly sure.

**CEBAR POLES & POSTS AND TIMBER.**  
All sizes available at moderate prices. A trial order will be gladly accepted.

**NUBUZZA KARIKULLA, ELIJAH.**

**FOR AN EFFICIENT AND PERMANENT HOT WATER SUPPLY**

**INSTALL A Beston Hot Water Boiler**

For particulars relating to the size of Boiler required and prices apply to—

**Thornton & Turpin** (Sole Agents)  
REGISTERED PLUMBERS AND SANITARY ENGINEERS.  
NAIROBI AND MOMBASA.  
Phone 185. P.O. Box 228, Nairobi and P.O. Box 386, Mombasa.

# REO MAGLONS

Six-Cylinder Engine

Overhead Valves

Four-wheel Hydraulic Brakes

1 1/2-Tons Capacity

**£350**

Myers Automatic Magazine Chassis Lubrication

Single Plate Clutch

2-Tons Capacity

**£500**

**CARR, LAWSON & Co., Ltd.**

Nairobi Nakuru Eldoret Kampala

Topics for the Motorist.

Artificial Silk and the Woman Motorist.

Two Modern "Luxury" Necessities.

This kind of the present... artificial silk with a woolen...

low to clothe themselves and their... artificial silk with a woolen...

an artificial silk with a woolen... artificial silk with a woolen...

bridging the gap between new and... artificial silk with a woolen...

No motorist will dispute the... artificial silk with a woolen...

At this year's Artificial Silk... artificial silk with a woolen...

Do not forget, also, that in the... artificial silk with a woolen...

It is not surprising, therefore... artificial silk with a woolen...

750 Yds. of artificial silk... artificial silk with a woolen...

A distinct essential to pro... artificial silk with a woolen...

It is not surprising, therefore... artificial silk with a woolen...

It is not surprising, therefore... artificial silk with a woolen...

To try your luck... artificial silk with a woolen...

It is not surprising, therefore... artificial silk with a woolen...

It is not surprising, therefore... artificial silk with a woolen...

It is not surprising, therefore... artificial silk with a woolen...

Palmtree Kerosene... A CLEAR STEADY LIGHT... NO SMOKE NO SMELL... ECONOMICAL... Gibbon & Co. Ltd. NAIROBI.

Nothing Rots your Tyres... more than caked mud in small holes... HAVE YOUR TYRES VULCANIZED... BEFORE THE RAINS COME... Nairobi Vulcanizing Co.

ESSJAY LIMITED... BOLUS HOUSE, GOVERNMENT ROAD, NAIROBI.

FINANCIAL & PROPERTY AGENT... We have sound investments for sums from £100 upwards.

STOCK TAKING... Sale! Sale!!... OUR RECORD KEEPING SALE... KALA SIDI NAIROBI.

View Post Cards... Books of Twelve Nairobi Views... Books of Twelve Mombasa Views... STANDARD STATIONERY STORES, NAIROBI.

REDUCE YOUR FUEL BILL... by obtaining your supplies at the Ukamba Transport Company... Log Fuel, Shs. 19/- per ton...

Kenya Loan & Discount Co., Ltd... P.O. Box 544, NAIROBI... OFFICES—1st Floor, Court Chambers...

SALE GENUINE SALE... AT DAYARAM BROS. FOR FORTNIGHT ONLY... Tremendous Reductions allowed in entire stock.

Country Roads and Weather Report... Mr. Dalton-Finnel writes as follows:—The drought still continues...

Sale! Sale! Sale!! FOR LAST 10 DAYS ONLY... Immense Reduction in every Department... LADHARAM STORES, Govt. Road, NAIROBI.

Trans Nzola Land KIRKWOOD & Co. OF KITALO... The well-known Land Agents with the most comprehensive list of properties for sale in the fertile Trans Nzola district.

The Settler Supply Store will be to your benefit... STOCKISTS of Groceries, Provisions, Confectionary, Glassware, Tobacco, Fruit, etc. etc. Settler Supply Store, GOVERNMENT ROAD, Phone 688.

Gentleman's Contantal Wardrobes... Specially designed for tidy men who desire a compact wardrobe with a separate compartment for each garment... £1615 only

Less 10 per cent for CASH with orders... Hutchings, Blemer & Co. Ltd. NAIROBI. DUE ST.

Metropolitan Garage USED CARS... Rolls Royce (new value) built in perfect condition... ALL CARS OVER £50 SUBJECT TO 3 MONTHS FREE SERVICE.

THE BRADFORD MANUFACTURING CO., LTD. SPECIALS: 72 pairs only, Men's Heavy Ribbed Wool Socks... 15/6 per pair

MELANYL... The Annual General Meeting of the Kenya Arts and Crafts Society will be held on MONDAY, the 11th March... Marking Ink. Large size Shs 1/75

It's so Easy for You to Enjoy Good Health

Just take a course of small pills... Dr. Williams' Pink Pills for Pale People...

CAFFEIN'S BENEFITS

Dr. Williams' Pink Pills... Caffein's benefits for health and vitality...

HELP!

When a mosquito makes you... Dr. Williams' Pink Pills for Pale People...



Wholesale Distributors: D. BRYNER & Co.

AGRICULTURE

(Continued from page 4.)

Digs. Males. Along the Coast this crop has been fair, the best...

General. The position in East Africa is very much less than...

Wheat. The staple crop is well forward and should have been reaped by the end of the month.

Maize was healthy and oats were forming well.

Wheat and Oryza seed in the districts has done well.

On the 30th of January, 1920, at 10 a.m. at Iganga and Tigray...

South Kinyua Reserve. Mr. South Kinyua, Assistant Agricultural Officer...

All operations. The estimated yield throughout the whole reserve will be very much less than was anticipated in the earlier days.

Maize. In use or two bushels a fair crop may be harvested, but not so much as in the case of wheat.

Maize and Mince. Paddy throughout the reserve. Position. When paddy is properly well give a fair yield...

Maize and Mince. Paddy throughout the reserve. Position. When paddy is properly well give a fair yield...

Reserve, with the result that some crops have reached their peak...

Mr. W. O. Bannerman, Assistant Agricultural Officer, reports that...

General. The position in East Africa is very much less than...

Wheat. The staple crop is well forward and should have been reaped by the end of the month.

Maize was healthy and oats were forming well.

Wheat and Oryza seed in the districts has done well.

On the 30th of January, 1920, at 10 a.m. at Iganga and Tigray...

South Kinyua Reserve. Mr. South Kinyua, Assistant Agricultural Officer...

All operations. The estimated yield throughout the whole reserve will be very much less than was anticipated in the earlier days.

Maize. In use or two bushels a fair crop may be harvested, but not so much as in the case of wheat.

Maize and Mince. Paddy throughout the reserve. Position. When paddy is properly well give a fair yield...

Maize and Mince. Paddy throughout the reserve. Position. When paddy is properly well give a fair yield...

It is estimated that out of a total population of 100,000, at least 100,000 are affected, more or less seriously, and a severe epidemic is not far off.

For Hill, Boma and South Nyasa. Mr. A. D. Hastings, Assistant Agricultural Officer, reports that...

General. The position in East Africa is very much less than...

Wheat. The staple crop is well forward and should have been reaped by the end of the month.

Maize was healthy and oats were forming well.

Wheat and Oryza seed in the districts has done well.

On the 30th of January, 1920, at 10 a.m. at Iganga and Tigray...

South Kinyua Reserve. Mr. South Kinyua, Assistant Agricultural Officer...

All operations. The estimated yield throughout the whole reserve will be very much less than was anticipated in the earlier days.

Maize. In use or two bushels a fair crop may be harvested, but not so much as in the case of wheat.

Maize and Mince. Paddy throughout the reserve. Position. When paddy is properly well give a fair yield...

Maize and Mince. Paddy throughout the reserve. Position. When paddy is properly well give a fair yield...

Victoria. This crop is grown extensively throughout the reserve...

Wheat. It is regrettable an accident due to lack of rain, which may be alleviated with yield...

General. The position in East Africa is very much less than...

Wheat. The staple crop is well forward and should have been reaped by the end of the month.

Maize was healthy and oats were forming well.

Wheat and Oryza seed in the districts has done well.

On the 30th of January, 1920, at 10 a.m. at Iganga and Tigray...

South Kinyua Reserve. Mr. South Kinyua, Assistant Agricultural Officer...

All operations. The estimated yield throughout the whole reserve will be very much less than was anticipated in the earlier days.

Maize. In use or two bushels a fair crop may be harvested, but not so much as in the case of wheat.

Maize and Mince. Paddy throughout the reserve. Position. When paddy is properly well give a fair yield...

Maize and Mince. Paddy throughout the reserve. Position. When paddy is properly well give a fair yield...

General. The position in East Africa is very much less than...

Wheat. The staple crop is well forward and should have been reaped by the end of the month.

Maize was healthy and oats were forming well.

Wheat and Oryza seed in the districts has done well.

On the 30th of January, 1920, at 10 a.m. at Iganga and Tigray...

South Kinyua Reserve. Mr. South Kinyua, Assistant Agricultural Officer...

All operations. The estimated yield throughout the whole reserve will be very much less than was anticipated in the earlier days.

Maize. In use or two bushels a fair crop may be harvested, but not so much as in the case of wheat.

Maize and Mince. Paddy throughout the reserve. Position. When paddy is properly well give a fair yield...

Maize and Mince. Paddy throughout the reserve. Position. When paddy is properly well give a fair yield...

ENTERTAINMENT

St. Patrick's Dinner and Dance

All Irish people are reminded that the ANNUAL DINNER and DANCE will be held at the NEW STANLEY HOTEL on SATURDAY, the 16th MARCH at 7.30 p.m. Tickets obtainable from the Hon. Secy., 140, NAIROBI.

NO NOTICE will be taken of the 1000'S TICKETS

MARCH 9th. 9 p.m. - 2 a.m. By E. ZIEGLER and HIS METRONOMES

SETTLE TICKETS: Non-members, Shs. 7/60 each

Brackenhurst EVERY SATURDAY DANCING TO AMPLIFIER 9 to 12 p.m. SPECIAL DINNER, SHS. 3/- EVERY SUNDAY

NAIROBI CORPORATION NOTICE

Completion of a Voters' list for election in accordance with Local Government (Municipalities) Ordinance, 1916.

The Nairobi Municipal Council has instructed the Town Clerk to issue a Voters' list for election in accordance with the Local Government (Municipalities) Ordinance, 1916.

THE PREVIOUS MUNICIPAL VOTERS' ROLL IS REVOKED AND VOTERS ARE ONLY ALLOWED TO FURNISH FRESH AFFILIATIONS AS ACCEPTED BY THE VOTERS' ROLL COMMISSIONER.

Municipal Offices, March 2nd, 1920.

THE SOUTH AND EAST AFRICAN YEAR BOOK and GUIDE for 1920 with Atlas

Shs. 2/50 posted Shs. 3/35 STANDARD STATIONERY STORES - NAIROBI -

Table with columns: District, Maize, Wheat, Oryza, Coffee. Lists various districts and their crop yields.

INSURE YOUR MOTOR CAR AND MOTOR CYCLES

AFRICAN OVERLAND AND IMPERIAL 50, LEEDS. M. D. KAMPE, CHIEF AGENT.

BUY THE VICTORIA NYANZA SUGAR COMPANY'S No. 1 WHITE CRYSTAL SUGAR

at the following prices on the unadorned casks: 112 lbs. 4/6; 25 lbs. 1/12.

S. Jacobs, Limited, Nairobi; M. S. Elliot and Co., Ltd., Nairobi; Messrs. H. J. & Co., Ltd., Nairobi; Messrs. J. & Co., Ltd., Nairobi; Messrs. J. & Co., Ltd., Nairobi; Messrs. J. & Co., Ltd., Nairobi.

MAY & CO., LTD. FISHING TACKLE

Shs. 2/50 posted Shs. 3/35

Best Quality Goods. Unfailing Courtesy & Reasonable Prices.

WE ARE CONVINCED and a SHORT TRIAL WILL CONVINC YOU that your needs and interest can be better served at Prince's House, Govenor Road, than elsewhere in the Colony.

Remember, Our business has been built on SERVICE!

Colonial General Stores LIMITED.

140, NAIROBI

READ THIS

ADDIS ABABA, ABYSSINIA, 4th JANUARY, 1920.

Messrs. Motor Mart and Exchange Ltd., P.O. Box 179, Nairobi.

Your letter of December 15th just to hand. I am indeed pleased over the way you have handled the sale of my car both as regards price and quickness of sale.

I was pleased with the purchase of the car, and our second transaction has been equally satisfactory, and I shall certainly come to you for another car or my return to Kenya.

Yours faithfully, (Name on application)

GET A CHEVROLET

The Car with the Highest Second-hand Value

THE MOTOR MART AND EXCHANGE Ltd.

NAKURU NAIROBI DAR-ES-SALAAM



# OVERLAND 4 Cylinder CARS

HAVE NOT GONE OUT OF PRODUCTION.  
THE INCREASING DEMAND & UNIVERSAL  
APPRECIATION OF THIS STURDY CAR  
CONTINUES.

STEEL COVERED SAFARI BODIES  
CELLULOSE FINISHED.

**£180**

**MOULTON & MORRISON Ltd.**  
NAIROBI.



**WEBBS FLOWER AND VEGETABLE SEEDS.**  
Large Selection at £50 per pkt.

**LAWN MOWERS**

**GARDEN TOOLS**

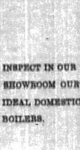
**J. W. Milligan & Co.,** NAIROBI  
Box 25.

**DO NOT BE DAZZLED!**  
PROTECT YOUR EYES AGAINST GLARE,  
AND YOUR HEAD AGAINST SUBSEQUENT PAINS

By Using  
**CHANCE'S CROOKES GLASS.**  
We change the Crookes Glass in plain  
glass or ground to your prescription.

We also stock the new GRADUATED LENSES.  
**A. H. Wardle & Co. Ltd.**  
MOMBASA • NAIROBI • ELDORSET.

We specialize in equipment for  
**DOMESTIC HOT WATER INSTALLATIONS**  
and shall be pleased to give you the benefit  
of our experience.



In a range of  
sizes, suitable  
for all require-  
ments.

and the COOKHEAT STOVE  
with better giving supplies of hot water.  
**R. G. VERNON & Co.**  
Union Buildings, Government Road,  
NAIROBI. P.O. Box 124.

## SPECIAL VALUES in LADIES' WEAR

**GRACE SPORTS CORSETS.**  
No. 694. Four Sports Corsets in Pink Brocade Art Silk with  
strong elastic bands. 6 inches deep in front with longer skirt  
at back. 4 hole supporters. A smart lovely garment.  
Usual Price, Shs. 21/- SALE PRICE, Shs. 15/-

**ROYAL WORCESTER CORSETS.**  
No. 662. R.W. Splice Corset. Broad T. one-piece Model. No  
lacing. In Pink Brocade with elastic top band and wide elastic  
inserts. A very good corset for sports wear.  
Usual Price, Shs. 21/- SALE PRICE, Shs. 17/10

**GOSSARD CORSETS.**  
About 24 pairs of Gosard Corsets in various styles and sizes.  
To be cleared at Shs. 10/- and 15/-.

**PHOENIX SILK HOSE.**  
Pure thread silk top, side top and feet, extra reinforced heel  
and toes. In a big range of smart shades including sand-  
blond, blue, tan, brown, blue, black, navy and many  
other new smart shades.  
Usual Price, Shs. 18/11 SALE PRICE, Shs. 9/6 each  
3 pairs for Shs. 27/6

**12 ONLY.**  
**Ladies Cotton Voile  
DAY FROCKS.**

In smart printed designs and new  
styles with long sleeves. These are  
really special value as they are  
exactly cut and well made.  
USUAL PRICE, Shs. 22/10

**SALE Price, Shs. 20/-  
each.**

**TWO STEEPLE CASHEMERE FROCKS.**  
Several very well Cashmere Frocks with contrast trimmings.  
To be cleared at Shs. 16/- each

**WHITE ART SILK JUMPERS.**  
Plain stockette and fancy knits with either One or Two  
Collars in White or Ivory Original Frocks. Shs. 15/- to 27/10  
SALE OFFER, Shs. 12/- each

**12 ONLY. COLOURED ART SILK JUMPERS.**  
In various shades and styles. These are smart high quality  
goods and can be changed to give special effects.  
Usual Price, Shs. 25/- to 42/- SALE PRICE, Shs. 20/- each

**LADIES FANELLE SLEEVELESS COATS.**  
Cream Fanelle Vests with contrast design of Fawn, Rose and  
Red. Also self colour Vests of Fawn, Rose and Almond  
Tremmed Cream Silk Brod. Usual Price, Shs. 27/10, 29/10 SALE PRICE, Shs. 23/10 ea.

**CASHEMERE COATERS.**  
In Cream, light weight Cashmere without sleeves, edged  
Black, Fawn, Rose or Almond  
Usual Price, Shs. 22/10 SALE PRICE, Shs. 18/- each

# S. Jacobs L<sup>td</sup>. Annual Sale

## QUINACINE

THE RELIABLE PREVENTIVE AND CURE  
FOR  
**Influenza**  
**Cold in the Head**  
**Feverish Colds**  
**Pains in Back**  
**and Limbs**

ALWAYS KEEP A BOTTLE HANDY.  
PRICE 2/- AND 3/6.

KODAK (I.L.A.) LTD., INC.  
**Howse & McGeorge**  
NAIROBI AND ALL BRANCHES.

## THE YORKSHIRE

INSURANCE COMPANY  
LIMITED.

Principal Representatives :  
**R. O. Hamilton, Limited.**  
P.O. Box 366 NAIROBI. Phone 311.

## £62-10-0

### Pay as You Ride

There is no need for you to wait for your  
new B. S. A.—you can come along to us  
NOW, and for a small deposit take away a  
1929 model B. S. A., paying the re-  
minder as you ride.

100 MILES PER GALLON.  
**PERFECT IN EVERY PART**  
**We Want to Give You**  
**a Trial Run**  
CALL AND SEE US TO-DAY.  
**Carr, Lawson & Co. Ltd.**  
NAIROBI.

## Chianti

### Antinori

FLORENCE  
(Italy)  
Sole Agents:

**EMILE JARDIN & Cie.**  
NAIROBI.

**African Standard**  
UGANDA AGENCIES  
MONDAY, MARCH 4, 1930

The Defence Force—  
A Nairobi Bulletin.

The District Commissioner,  
Nairobi, has circulated blank  
papers for the purpose of obtain-  
ing a Defence Force Committee  
for the Defence Force District of  
Nairobi. The step has been de-  
vised in line with the provisions  
of the Defence Force Act, 1925,  
in two sections, Nairobi (West) and  
Nairobi (East). It is noted that  
there are three sections proposed in  
one township, it is a third than are  
provided for two sections, Nairobi  
(North) and Mathiga, only one  
section appears. The ballot is con-  
ducted in the manner in which  
somewhat, there is an opportunity  
for the members of the Defence  
Force to be consulted on the  
subject of the formation of a  
Defence Force Committee. The  
ballot form gives no indication of  
the nature of the selection of the  
members of the Defence Force  
Committee, and it is not clear  
whether the members of the  
Committee will be elected by the  
members of the Defence Force  
or whether they will be appointed  
by the District Commissioner.

After consultation with  
the Defence Force Committee,  
the District Commissioner will  
appoint the members of the  
Committee and the members of  
the Committee will be elected by  
the members of the Defence  
Force. The members of the  
Committee will be elected by the  
members of the Defence Force  
and the members of the  
Committee will be elected by the  
members of the Defence Force.

Under the  
Standard Clock.

The annual general meeting of  
the Standard Clock Company  
will be held on March 11, 1930,  
at 11 o'clock in the forenoon  
at the Standard Clock Company  
Building, 10, Market Street,  
Nairobi.

**Under the Standard Clock.**

The annual general meeting of  
the Standard Clock Company  
will be held on March 11, 1930,  
at 11 o'clock in the forenoon  
at the Standard Clock Company  
Building, 10, Market Street,  
Nairobi.

**Mr. T. A. Wood.**  
Nairobi, who has recently  
returned from a tour in  
Japan, has been elected  
to the Legislative Council  
for the term ending  
March 31, 1931.

**At the Bina Post.**  
The Bina Post, one of  
the oldest newspapers in  
the Colony, has recently  
been purchased by a  
new proprietor. An  
arrangement has been  
made for the publication  
of the paper at the  
Bina Post, Easton  
Nairobi, which will be  
published weekly.

**Donor Meeting.**  
Under the auspices of  
the Nairobian Farmers  
Association a public  
meeting will be held on  
Friday, March 7, 1930,  
at 7.30 p.m. in the  
Nairobian Farmers  
Association Building,  
Nairobi. The object of  
the meeting is to  
discuss the question of  
the formation of a  
Nairobian Farmers  
Association.

**Post Cards**  
of EXCEPTIONAL INTEREST OF  
GAME & NATIVE LIFE  
taken by  
**MR. MARTIN JOHNSON**  
Shs. 6/12 per doz. inserted Post Free

**ON SALE AT**  
**A. H. Wardle & Co. Ltd.**  
CHEMISTS  
MOMBASA, NAIROBI, ELDORSET.

**The Bina Post.**  
The Bina Post, one of  
the oldest newspapers in  
the Colony, has recently  
been purchased by a  
new proprietor. An  
arrangement has been  
made for the publication  
of the paper at the  
Bina Post, Easton  
Nairobi, which will be  
published weekly.

**Under the Standard Clock.**

The annual general meeting of  
the Standard Clock Company  
will be held on March 11, 1930,  
at 11 o'clock in the forenoon  
at the Standard Clock Company  
Building, 10, Market Street,  
Nairobi.

**Under the Standard Clock.**

The annual general meeting of  
the Standard Clock Company  
will be held on March 11, 1930,  
at 11 o'clock in the forenoon  
at the Standard Clock Company  
Building, 10, Market Street,  
Nairobi.

**Under the Standard Clock.**

The annual general meeting of  
the Standard Clock Company  
will be held on March 11, 1930,  
at 11 o'clock in the forenoon  
at the Standard Clock Company  
Building, 10, Market Street,  
Nairobi.

DEATH OF KINYANJULI KIKUYU PARAMOUNT CHIEF.

Blending of European and African at Funeral Service.

THE GOAT-SKIN SYMBOL OF POWER.

Reminiscences of a Forceful Man of Humble Origin.

Kinyanjul, Paramount Chief of the Kikuyu, whose dignified figure was well-known in Kenya, died from blood poisoning on Friday night, was buried on Saturday.

Many guests have taken place in the organization of the funeral, loyal and devoted supporter of Government.

QUANTY REMINISCENCES OF HIS LIFE.

A modest figure and powerful personality in Kenya, late Paramount Chief of the Kikuyu, died on Friday night from blood poisoning. He had about 75 years of age. He was a man of forceful personality though of humble origin. He was a loyal and devoted supporter of Government. Many guests have taken place in the organization of the funeral, loyal and devoted supporter of Government.

THE ROYAL AIR FORCE ESTIMATES.

Reduction of £50,000 on Last Year.

GREATER EFFICIENCY.

In submitting Air Estimates for 1920, the Secretary has indicated a reduction of £50,000 on the last year's estimate. The reduction is due to a number of reasons, including the fact that the Royal Air Force is now being reorganized on a new basis. The new organization is based on the principle of efficiency and economy. It is expected that the new organization will be able to perform the same amount of work with a smaller number of personnel and a smaller expenditure of money.

Reliability and Safety.

The Air Minister stated that the reliability of aircraft and the safety of the air service have been improved. This is due to the fact that the Royal Air Force has been equipped with the latest type of aircraft. These aircraft are more reliable and safer than those which were used in the past. The Air Minister also stated that the Royal Air Force has been able to maintain a high standard of efficiency and economy. This is due to the fact that the Royal Air Force has been able to reduce its expenditure on aircraft and other equipment.

Attitude to Missions.

In his address to the Congress in London, the late Paramount Chief of the Kikuyu, Kinyanjul, expressed his attitude to missions. He stated that the Kikuyu people were not opposed to missions, but they were opposed to the missionaries who were not interested in the welfare of the Kikuyu people. He stated that the Kikuyu people were interested in the welfare of their own people, and they were interested in the welfare of their own country. He stated that the Kikuyu people were interested in the welfare of their own people, and they were interested in the welfare of their own country.

A Missionary's Character.

Kikuyu elders' reminiscences of incidents at various stages in the life of their Chief led to light on the more picturesque side of his personality. It was noted that Kikuyu was not a religious man, but he was a man of great character. He was a man of great character, and he was a man of great character. He was a man of great character, and he was a man of great character.

Entertainments.

LYNCH HALL. On Saturday evening a large number of people had to be turned away from the entertainment given in Lynch Hall. The entertainment was very successful, and it was very successful. The entertainment was very successful, and it was very successful.

Mandated Territories. PUBLIC INDIFFERENCE TO LABOUR RETURNS.

Only 50 per cent. Made With Regularity.

A KEY TO CRITICISM.

The appearance in the Mandated Territories of a public indifference to labour returns is a key to criticism. This is due to the fact that the Mandated Territories are not being developed in a proper manner. The Mandated Territories are not being developed in a proper manner, and this is due to the fact that the Mandated Territories are not being developed in a proper manner.

Rise in Oil Shares.

The effect of the recent agreement on oil shares has been a rise in the price of oil shares. This is due to the fact that the agreement has been a success. The agreement has been a success, and this is due to the fact that the agreement has been a success.

The Pension Ordinance.

The Pension Ordinance is a bill which is intended to provide for the pension of certain officers. This is a very important bill, and it is very important. This is a very important bill, and it is very important.

Effect of an Amending Bill.

The effect of an amending bill on the Pension Ordinance is a very important one. This is due to the fact that the amending bill is a very important one. This is a very important one, and it is very important.

UGANDA OUTPOST.

The Uganda Outpost is a very important one. This is due to the fact that the Uganda Outpost is a very important one. This is a very important one, and it is very important.

“Ojo Ojo”

Lyric Hall

TO-NIGHT AND TO-MORROW NIGHT ONLY

BY SPECIAL REQUEST.

Henry Edwards

WITH ISABEL JEANS

FURTHER ADVENTURES

OF THE FLAG LIUTENANT

PRICES: SH. 5/- and SH. 3/-

Showing Wednesday

“THUMBS DOWN”

WITH CREIGHTON DALE and LOIS BOYD

Last Week

OF

SALE

DO NOT MISS THIS OPPORTUNITY OF GETTING A REAL BARGAIN.

There are still a large number of shoes to be sold AT OR BELOW COST.

Our new goods are being sold at the usual prices LESS 10 per cent. for CASH.

Radie's Footwear Ltd.

Box 149, Nairobi.

Today's Train.

Trains are due to leave Nairobi today for the undermentioned destinations at the times stated:-

Moroti and Juba 7:45 pm

Thika 1:00 pm

Thika 1:00 pm

Thika 1:00 pm

Thika 1:00 pm

Thika 1:00 pm

Thika 1:00 pm

Thika 1:00 pm

Thika 1:00 pm

Thika 1:00 pm

Thika 1:00 pm

Thika 1:00 pm

THEATRE ROYAL

TO-NIGHT, TUESDAY and WEDNESDAY at 8:45 pm.

“SONS OF THE SEA”

WITH WALLACE BERRY and ALL STAR CAST

LOVE!! BATTLE!! LAUGHTS!!

PRICES Circle 5/- Stalls 3/-

SHOWING THURSDAY, FRIDAY and SATURDAY at 8:45 pm.

“Trial by Jury”

WITH W. S. GILBERT and ARTHUR SULLIVAN

Plan Opening shortly

WE SELL SERVICE AND REPAIR ALL MAKES OF CARS & TRUCKS

WE GIVE EXPERT ADVICE TO WIRELESS ENTHUSIASTS.

COMPLETE WIRELESS SETS and COMPONENT PARTS ALWAYS IN STOCK.

RADIO BATTERIES CHARGED, and ELECTRICAL WORK of ALL DESCRIPTION UNDERTAKEN.

BALED and INSPECT THE LATEST MODEL INDIAN SCOUT 45

ON VIEW AT K. McIvor Garage.

Phone 57, Sixth Avenue, E.O. Box 92



“Ojo Ojo” Lyric Hall TO-NIGHT AND TO-MORROW NIGHT ONLY BY SPECIAL REQUEST. Henry Edwards WITH ISABEL JEANS FURTHER ADVENTURES OF THE FLAG LIUTENANT PRICES: SH. 5/- and SH. 3/- Showing Wednesday “THUMBS DOWN” WITH CREIGHTON DALE and LOIS BOYD

Today's Train. Trains are due to leave Nairobi today for the undermentioned destinations at the times stated:- Moroti and Juba 7:45 pm Thika 1:00 pm Thika 1:00 pm Thika 1:00 pm Thika 1:00 pm Thika 1:00 pm Thika 1:00 pm Thika 1:00 pm Thika 1:00 pm Thika 1:00 pm

THEATRE ROYAL

TO-NIGHT, TUESDAY and WEDNESDAY at 8:45 pm.

“SONS OF THE SEA”

WITH WALLACE BERRY and ALL STAR CAST

LOVE!! BATTLE!! LAUGHTS!!

PRICES Circle 5/- Stalls 3/-

SHOWING THURSDAY, FRIDAY and SATURDAY at 8:45 pm.

“Trial by Jury”

WITH W. S. GILBERT and ARTHUR SULLIVAN

Plan Opening shortly

WE SELL SERVICE AND REPAIR ALL MAKES OF CARS & TRUCKS

WE GIVE EXPERT ADVICE TO WIRELESS ENTHUSIASTS.

COMPLETE WIRELESS SETS and COMPONENT PARTS ALWAYS IN STOCK.

RADIO BATTERIES CHARGED, and ELECTRICAL WORK of ALL DESCRIPTION UNDERTAKEN.

BALED and INSPECT THE LATEST MODEL INDIAN SCOUT 45

ON VIEW AT K. McIvor Garage.

Phone 57, Sixth Avenue, E.O. Box 92

THE EAST AFRICAN STANDARD

Reads and Rail Problems in East Africa.

(Continued from page 1.)

of the country is increasing year by year and the rate of progress...

Mr. J. W. Jeffrey was impressed by the impression which was made...

The problem of Nairobi, that he believes, is not a technical one...

As for the coming on the possibility of a Cape to Cairo...

Notice. NAIROBI WATER SUPPLY. The attention of the public is drawn to the fact...

MEDICAL OFFICERS OF HEALTH. INVEST YOUR MONEY WISELY FOR A POUND SAVED IS A POUND EARNED.

INSURE WITH THE GENERAL ACCIDENT, FIRE AND LIFE ASSURANCE CORPORATION, LTD.

THE HOUSEHOLDERS INDISPENSABLE POLICY This combined Policy combines the risks of FIRE, BURGLARY AND ACCIDENTS IN DOMESTIC PREMISES.

M. D. KAMPP Chief Representative, P. O. Box 296, NAIROBI. Court Chambers.

BOTANICAL PRESSES. FOR PRESSING AND PRESERVING LEAVES, FLOWERS, ETC.

Containing Twelve Sheets Specimens Prepared Paper. Size 11 x 9 1/2. Price 7/6. 12/6. 15/6. STATIONERY STORES.

DEATH OF KINYANJU, KIKUYU PARAMOUNT CHIEF.

(Continued from page 1.)

The fact was that his employment on best-of-charge running...

Many Widows. It would be interesting to know how many widows and children...

Kinyanju's work for Government must have been very busy at times...

Remarkable Memory. A somewhat remarkable feature of Kinyanju's character was his ability to remember the date...

Changed Conditions. Kinyanju was the first Feroze of the tribe of Kinyanjui. Probably, he was also the last...

The Funeral. Between an avenue of trees in a plantation of the road to Dagob...

World's Exchange. (By WIRELESS.) Rugby, March 2. Paris: 124.25. London: 124.25. New York: 4.83 1/2. Brussels: 34.93.

Immigration and Emigration.

(Continued from page 1.)

Important additions to immigration and emigration statistics...

Official Privates. The Chief Native Commissioner, in making the report...

Important additions to immigration and emigration statistics...

Official Privates. The Chief Native Commissioner, in making the report...

Official Privates. The Chief Native Commissioner, in making the report...

Official Privates. The Chief Native Commissioner, in making the report...

Official Privates. The Chief Native Commissioner, in making the report...

WHERE TO STAY TOWN A COUNTRY.

Stag's Head Hotel. NAKURU. MAIN ROAD, CLOSE TO NEW POST OFFICE, BANKS, SHOP & STATION CENTRAL.

EXCELLENT ACCOMMODATION, ELECTRIC LIGHT, H. & C. WATER IN ALL BEDROOMS. EUROPEAN SANITATION and BATHS.

CATERING IN ALL BRANCHES. Special attention devoted to the Hotel. Cuisine suitable for every Entertainment.

The Salisbury Hotel. Nairobi. P. O. Box 56. Phone 104.

WHEN PASSING THROUGH CALL AT THE Naivasha Hotel. HOT WATER INSTALLATION, GOOD CUISINE.

SAVOY HOTEL. THE HILL, NAIROBI. Box 122.

THE White Rhino Hotel. Nyeri. BOX BREAKFASTS, LUNCHEONS, FERRIES, DINNERS AND ACCOMMODATION.

THE Blue Posts Hotel. THIKA. BOX UNDER NEW MANAGEMENT.

OAKLEIGH PRIVATE HOTEL. UNDER PERSONAL SUPERVISION OF MRS. M. JARVIS, Manageress.

The Gilgil Hotel. has been taken over by MADAME PERIGUEUX (late of Elft Valley Hotel Club).

The Hotel has been renovated and re-arranged. FRENCH CUISINE. SPECIAL ATTENTION given to the Staff.

An all-cleansing Foam that surges into every crevice and interstice of all your teeth.

No toothbrush ever made can reach the real danger roots of your teeth. But all all-cleansing foam from Gibbs Dentifrice...



Gibbs Dentifrice

MAIZE, MEALIE MEAL AND ALL NATIVE FOODSTUFFS SUPPLIED.

Kassam & Karmali. 608 Victoria St. Phone 458. (Opp. Fire Station). ENQUIRIES INVITED.

Notice. NAIROBI WATER SUPPLY. The attention of the public is drawn to the fact that the above supply is liable to contamination...

Invest your money wisely for a pound saved is a pound earned. Your teeth are thoughtlessly sent messes pounds needlessly wasted.

Insurance with the General Accident, Fire and Life Assurance Corporation, Ltd.

Botanical Presses. For pressing and preserving leaves, flowers, etc. Containing twelve sheets specimens prepared paper.

Your dog and mine. A free newspaper published in the interest of man's best friend.

Stag's Head Hotel. NAKURU. MAIN ROAD, CLOSE TO NEW POST OFFICE, BANKS, SHOP & STATION CENTRAL.

EXCELLENT ACCOMMODATION, ELECTRIC LIGHT, H. & C. WATER IN ALL BEDROOMS. EUROPEAN SANITATION and BATHS.

CATERING IN ALL BRANCHES. Special attention devoted to the Hotel. Cuisine suitable for every Entertainment.

The Salisbury Hotel. Nairobi. P. O. Box 56. Phone 104.

WHEN PASSING THROUGH CALL AT THE Naivasha Hotel. HOT WATER INSTALLATION, GOOD CUISINE.

SAVOY HOTEL. THE HILL, NAIROBI. Box 122.

THE White Rhino Hotel. Nyeri. BOX BREAKFASTS, LUNCHEONS, FERRIES, DINNERS AND ACCOMMODATION.

THE Blue Posts Hotel. THIKA. BOX UNDER NEW MANAGEMENT.

OAKLEIGH PRIVATE HOTEL. UNDER PERSONAL SUPERVISION OF MRS. M. JARVIS, Manageress.

The Gilgil Hotel. has been taken over by MADAME PERIGUEUX (late of Elft Valley Hotel Club).

The Hotel has been renovated and re-arranged. FRENCH CUISINE. SPECIAL ATTENTION given to the Staff.

World's Exchange. (By WIRELESS.) Rugby, March 2. Paris: 124.25. London: 124.25. New York: 4.83 1/2. Brussels: 34.93.

Spiritualism Nearly Finished. The Whole Community is indebted to Sir A. Coan Doyle for proving by his Lectures and Answers to Questions the Socratic Character of Spiritualism.

The Satan of Scriptures, Lucifer, Son of the Morning, The Anointed Cherub that Covereth, Fall of Wisdom and Perfect in Beauty (Enochian) (2:12-17) against whom our Lord our Michael the Archangel could speak...

St. Paul states the chief sign of the end of the Christian Age is this form of Satan's activity. With all Powers and Miracles, and Wonders of Law, with all Doctrines of Utopianism, and all other things pertaining to them...

God's Message is: "God so loved the world that He gave His only-begotten Son, that WHOEVER BELIEVETH in Him should not perish, but have everlasting life. (John 3:16). Turn ye, Turn ye, for WHY WILL YE DIE? (Matthew 23:11).

B. C. KEAYE, KERICHO.





Kenya & Uganda Railways & Harbours.

EARTHWORK CONTRACT.

Tenders are invited for the excavation and loading into trucks, of approximately 1,750,000 cubic feet of earth in the Nairobi Railway Area.

Full particulars and specification can be obtained at the office of the Chief Engineer, Kenya and Uganda Railways and Harbours.

Tenders in sealed covers marked "Tender for Earthwork" should reach the office of the Chief Engineer, Kenya and Uganda Railways and Harbours, P.O. Box 79, Nairobi, on or before 4 p.m. on Monday, the 11th March 1928.

The High Commissioner does not bind himself to accept the lowest or any Tender.

G. D. RHODES,

Ag. General Manager,

Kenya and Uganda Railways and Harbours, Nairobi, 2nd March, 1928.

Kenya & Uganda Railways & Harbours COFFEE-MILLING IN TRANSIT RATES.

The method of billing rates on coffee tendered to the Administration, consigned to be milled in transit and subsequently exported, has been revised. These rates will, in future, be based as follows:-

- (A) From (A) the original forwarding station to (B) the milling station. A mileage proportion of the through export rate from the original forwarding station to the Port for the actual weight conveyed from (A) to (B) plus a terminal charge of 20 cents per 100 lb.

- (B) From (C) the original forwarding station to (D) the Port. A mileage proportion of the through export rate from the original forwarding station to the Port for the actual weight conveyed from (C) to (D) plus a terminal charge of 20 cents per 100 lb.

In the case of coffee consigned to be milled whilst in transit to the Port for shipment, at a mill which is not situated on the direct route from the original forwarding station to Kiindini Harbour, an additional charge at the rate of Shs. 2/- per ton per 50 miles or part thereof, for the mileage in excess of the direct distance from the original forwarding station to the Port, will be levied.

G. D. RHODES,

Acting General Manager.

Headquarters Offices, Nairobi, 1st March, 1928.

Souza Junior & Dias

Government Road, NAIROBI.

Be glad to announce to the Public that we have just unpacked fine

ITALIAN HAND-MADE MARBLE STATUES of all kinds and various curio art artistically made.

PRICES TO SUIT ALL POCKETS and all are to be cleared at once.

Iron Bark Poles

AND

Fencing Posts

White Ants don't Like them

RELANCE TRANSPORT COMPANY LIMITED.

P. O. Box 482. Telephone 331

BOLUS HOUSE,

NAIROBI.

NOTICE

FOR REAL SOUND FARMING, PLANTING and BUSINESS INVESTMENTS

CONRULU

MUNDELL,

61 B, Grosvenor, - - - NAIROBI

WOLFGOOD BECOMES A SHEPHERD DOG.

E. A. Kennel Club's Interesting Decision.

A representative gathering of the East African Kennel Club assembled at the Hotel Astoria, in the absence of the President Mr. James Lakerwood was voted to be the Chairman in the course of the meeting.

The Kennel Club of England had announced the action of the Committee and upheld the suspension of a member which was awarded by your Committee.

These have been brought before the Committee of Dogs advertised for sale, sometimes at a comparatively low price. It is also known have arisen that at a later date these dogs have been proved not to be purebred.

Ongoing Shows.

Your Committee has agreed to support the Agricultural and Horticultural Societies Show to be held in December at Nakuru and the one at Eldoret in the early months of 1928.

Many valuable dogs have been imported from England and the Continent and are available for sale.

Our Hon. Secretary proceeded to England at the early part of the year and did very good work for the Club.

The following officers were elected for the coming year:- President, Mr. H. P. Dealey, Vice-President, Lady Sibley Farrer, Capt. Farrer, Mr. James Lakerwood, Lord Hugh Kennedy, General

Mr. H. P. Dealey, Vice-President, Lady Sibley Farrer, Capt. Farrer, Mr. James Lakerwood, Lord Hugh Kennedy, General

Mr. H. P. Dealey, Vice-President, Lady Sibley Farrer, Capt. Farrer, Mr. James Lakerwood, Lord Hugh Kennedy, General

Mr. H. P. Dealey, Vice-President, Lady Sibley Farrer, Capt. Farrer, Mr. James Lakerwood, Lord Hugh Kennedy, General

Mr. H. P. Dealey, Vice-President, Lady Sibley Farrer, Capt. Farrer, Mr. James Lakerwood, Lord Hugh Kennedy, General

Mr. H. P. Dealey, Vice-President, Lady Sibley Farrer, Capt. Farrer, Mr. James Lakerwood, Lord Hugh Kennedy, General

Mr. H. P. Dealey, Vice-President, Lady Sibley Farrer, Capt. Farrer, Mr. James Lakerwood, Lord Hugh Kennedy, General

Mr. H. P. Dealey, Vice-President, Lady Sibley Farrer, Capt. Farrer, Mr. James Lakerwood, Lord Hugh Kennedy, General

Mr. H. P. Dealey, Vice-President, Lady Sibley Farrer, Capt. Farrer, Mr. James Lakerwood, Lord Hugh Kennedy, General

Mr. H. P. Dealey, Vice-President, Lady Sibley Farrer, Capt. Farrer, Mr. James Lakerwood, Lord Hugh Kennedy, General

Mr. H. P. Dealey, Vice-President, Lady Sibley Farrer, Capt. Farrer, Mr. James Lakerwood, Lord Hugh Kennedy, General

Mr. H. P. Dealey, Vice-President, Lady Sibley Farrer, Capt. Farrer, Mr. James Lakerwood, Lord Hugh Kennedy, General

Mr. H. P. Dealey, Vice-President, Lady Sibley Farrer, Capt. Farrer, Mr. James Lakerwood, Lord Hugh Kennedy, General

Mr. H. P. Dealey, Vice-President, Lady Sibley Farrer, Capt. Farrer, Mr. James Lakerwood, Lord Hugh Kennedy, General

at the October 10 show he was under dispute, it being alleged that this dog is not purebred.

The possibility of a dog such as these not coming to light in the means of causing considerable damage to any particular Kennel which might use these cross bred dogs for stud purposes.

The matter was fully discussed. Mr. Duly pointed out that it would be impossible for owners of dogs already registered (minus pedigree) to have their registrations cancelled or not to be in a position to register the progeny of these particular dogs.

It was finally agreed not to register the progeny of any dog already registered minus pedigree and breeding, also the progeny of these dogs could be registered on proof of the parents having living pedigree.

Lady Sibley Farrer's amended proposition that no dog be registered in future unless breeding particulars be given at the time of application, with the above exceptions.

The proposition on being put to the meeting was carried, Mr. Duly dissenting.

at the October 10 show he was under dispute, it being alleged that this dog is not purebred.

The possibility of a dog such as these not coming to light in the means of causing considerable damage to any particular Kennel which might use these cross bred dogs for stud purposes.

The matter was fully discussed. Mr. Duly pointed out that it would be impossible for owners of dogs already registered (minus pedigree) to have their registrations cancelled or not to be in a position to register the progeny of these particular dogs.

It was finally agreed not to register the progeny of any dog already registered minus pedigree and breeding, also the progeny of these dogs could be registered on proof of the parents having living pedigree.

Lady Sibley Farrer's amended proposition that no dog be registered in future unless breeding particulars be given at the time of application, with the above exceptions.

The proposition on being put to the meeting was carried, Mr. Duly dissenting.

The following letter had been received from Mr. F. One of Kabete—"I wish to bring up for discussion the matter of the advisability of the East African Kennel Club holding a show in July at Nairobi, by monetary donations should be given in present.

An application was made by the Secretary asking that he be given permission to release to various places unless breeding particulars up to grand-parents were furnished at the time of making application for registration.

The following example were quoted: (1) One "Abredali" which was bred and shown by an exported exhibitor as a pure bred dog and won a challenge cup. It was subsequently found that the dog was cross bred and three years later.

(2) A case of a "Wire-haired Fox Terrier" having been shown at the October 10 show he was under dispute, it being alleged that this dog is not purebred.

The possibility of a dog such as these not coming to light in the means of causing considerable damage to any particular Kennel which might use these cross bred dogs for stud purposes.

The matter was fully discussed. Mr. Duly pointed out that it would be impossible for owners of dogs already registered (minus pedigree) to have their registrations cancelled or not to be in a position to register the progeny of these particular dogs.

It was finally agreed not to register the progeny of any dog already registered minus pedigree and breeding, also the progeny of these dogs could be registered on proof of the parents having living pedigree.

Lady Sibley Farrer's amended proposition that no dog be registered in future unless breeding particulars be given at the time of application, with the above exceptions.

The proposition on being put to the meeting was carried, Mr. Duly dissenting.

The following letter had been received from Mr. F. One of Kabete—"I wish to bring up for discussion the matter of the advisability of the East African Kennel Club holding a show in July at Nairobi, by monetary donations should be given in present.

An application was made by the Secretary asking that he be given permission to release to various places unless breeding particulars up to grand-parents were furnished at the time of making application for registration.

The following example were quoted: (1) One "Abredali" which was bred and shown by an exported exhibitor as a pure bred dog and won a challenge cup. It was subsequently found that the dog was cross bred and three years later.

(2) A case of a "Wire-haired Fox Terrier" having been shown at the October 10 show he was under dispute, it being alleged that this dog is not purebred.

The possibility of a dog such as these not coming to light in the means of causing considerable damage to any particular Kennel which might use these cross bred dogs for stud purposes.

The matter was fully discussed. Mr. Duly pointed out that it would be impossible for owners of dogs already registered (minus pedigree) to have their registrations cancelled or not to be in a position to register the progeny of these particular dogs.

It was finally agreed not to register the progeny of any dog already registered minus pedigree and breeding, also the progeny of these dogs could be registered on proof of the parents having living pedigree.



The Unwelcome Guest

The disgusting fly comes to your dinner table from the foodstuffs of places. His six hairy legs bring to your food the germs of countless diseases. Kill this uninvited guest—FLIT.



B. E. A. Saw Mills MILLS AND OFFICES—WORKSHOP ROAD, near P.W.D., NAIROBI.

Long Length Beams and Camphor Flooring

You have seen it You have heard about it BUT Have You Driven it

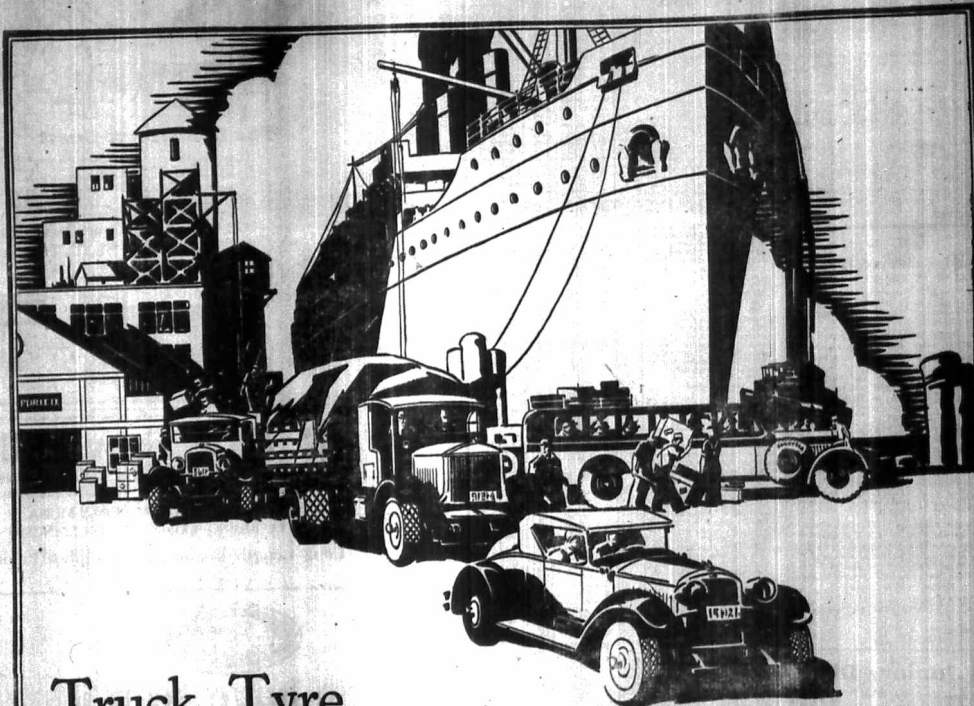
We invite you to do so believing that the only reliable test is a road test. A Ford owner will tell you that this car has exceeded every expectation but you must convince yourself.



Service Company, Limited, NAIROBI.

MARTIN'S PILLS. APOLC & STEEL. Best medicine for all ailments. Every body should keep a box in the house.

STAMP ALBUMS. The following officers were elected for the coming year:- President, Mr. H. P. Dealey, Vice-President, Lady Sibley Farrer, Capt. Farrer, Mr. James Lakerwood, Lord Hugh Kennedy, General



# Truck Tyre Improvements that mean money to you

Fully as great as the recent advances in passenger car tire construction are the improvements which Goodyear now offers in truck tires.

New peaks of truck tire ability result from these new betterments - new reaches in efficient and economical motor transport.

New and improved tread designs, for example, provide great go-ahead tractive power on Goodyear Truck Tires. Stronger and tougher tread compounds set up a new measure of Goodyear resistance to wear.

Extra durable body stock and structure extend still farther the vitality of Goodyear Tires, already the record holders for long life at low per-mile cost.

You ought to know about these Goodyear achievements if you are an owner or user of trucks. Goodyear Truck Tire Experts are at your command for consultation on the right type and size of Goodyears for your vehicles. Your local Goodyear Truck Tire Service Station Dealer is equipped and eager to give you the standard Goodyear Service that backs up Goodyear Truck Tire equality.

**Gilfillan & Company, Ltd.**  
D I S T R I B U T O R S

**GOODYEAR**

**TEO'S "DEVAL"**  
 Washing & Silk  
 Dresses.  
 Latest London Styles.  
 Just Unpacked.

**INSPECTION INVITED.**  
**Shamed Bros.**  
 THE HOUSE OF DISTINCTION.  
 HAZAR, NAIROBI. Phone 281

Going to England?  
 IN GOOD SUEE  
 BUY KNITTED JODS  
**JAEGER**  
 Pure Wool  
 YOU WILL WANT IT AFTER  
 NOW LEAVE YOUR HATS  
 TO THE SHAMERS' SUITCASES.

**Look at These Prices**

WENTE SALMON ..... Shs. 2/4 lb. tin  
 ANBARAGUS ... Shs. 2/7 1/2 large tin  
 TIPS BAs 2/10 large tin  
 PEACHES IN SYRUP Shs. 2/4 large tin  
 APRICOTS IN SYRUP Shs. 2/7 1/2 large tin

**S. Elliot & Co. Ltd.**  
 Box 175. Phone 60.

**HARDIGS and BRIEF.**  
 Sign, see Register Brief begs to announce that she  
 is now taking orders for her business and undertakes  
 the MAKING OF EVERY DESCRIPTION  
 LACES GENTS and LADIES TAILORING  
 by Mr. Marjorie.  
 DE-DATE FITTING ROOM  
 107, ROYAL BUILDINGS, Saleses 7.  
 P.O. Box 642.

**FRESH**  
**Chocolates.**  
 Get a Box Home with You.

**ON MARCHÉ**  
**Clearance Sale**  
 NOW IN FULL PROGRESS.  
 SEE THE WONDERFUL BARGAINS  
 IN LAMES' PROCKS, UNDERWEAR,  
 STOCKINGS, etc.  
 RUBB REDUCTIONS IN  
 MEN'S & CHILDREN'S WEAR.  
 In-day—Remember the very bargains you met  
 on your heart stop, may be gone.  
 Government Road, NAIROBI.

**CORRESPONDENCE.**

**BRITAIN.**  
 To the Editor, "E.A. Standard."  
 I have the honor to receive the  
 first question of "Last" at  
 (1) and (2) and (4) and (4)—  
 in that order I give them  
 to the Editor of "Last" as  
 follows:—(1) and (2) and (4) and  
 (4) are all the same, and I  
 think of all English States.  
 If I suggest that "Last" is  
 a "Last" of "Last" would  
 be more suitable.

**GOOD STAKE.**  
 March 1, 1920.  
 (This subject is dealt with else-  
 where today.—Ed. E. A.)

**THE REPORT OF INDIA.**  
 To the Editor, "E.A. Standard."  
 I have the honor to receive the  
 first question of "Last" at  
 (1) and (2) and (4) and (4)—  
 in that order I give them  
 to the Editor of "Last" as  
 follows:—(1) and (2) and (4) and  
 (4) are all the same, and I  
 think of all English States.  
 If I suggest that "Last" is  
 a "Last" of "Last" would  
 be more suitable.

**TRAVEL EXPENSE FOR JANUARY.**  
 To the Editor, "E.A. Standard."  
 I have the honor to receive the  
 first question of "Last" at  
 (1) and (2) and (4) and (4)—  
 in that order I give them  
 to the Editor of "Last" as  
 follows:—(1) and (2) and (4) and  
 (4) are all the same, and I  
 think of all English States.  
 If I suggest that "Last" is  
 a "Last" of "Last" would  
 be more suitable.



**"ERASMIC" Shaving Stick.**  
 Does half the razor's work  
 by swiftly preparing the face  
 for the blade.  
 Leaves the skin soft and smooth.  
 DOES NOT DRY ON THE FACE.

**B. H. MYERS & Co., Ltd.**  
 Phone 343 GOVT. ROAD, Box 461.  
**FURNITURE SUPPLIED ON HIRE PURCHASE.**  
**NO DEPOSIT.**  
 Small Monthly Payments.  
 ALL OUR FURNITURE IS SOLD  
 WITH A GUARANTEE.

**LETTE SODA BOY!**  
 And the Boy makes no mistake about it,  
 either! He has  
**A SPARKLET**  
 ready, able, in a second, a supply of the  
 Best, Bubbling, Refreshing Soft-water  
 is produced.

**Boys fountain on a tea-tray.**  
 A Boys fountain on a tea-tray.

**PETERS UNION**  
 TYRES and TUBES.  
 For greater mileage and efficiency.  
 Sole Importers—  
 "HANSING & Co. (East Africa)  
 P.O. Box 322, MOMBASA.  
 Representatives—  
 DEMOVAN & DIEBEL, NAIROBI.

**PLASMOQUINE COMP.**  
 The new effective ANTI-MALARIAL.  
 Bred and manufactured by  
 I. G. Pharmaceuticals Aktiengesellschaft  
 (Incorporated in Germany).  
 Sole Importers—  
 "HANSING & Co. (East Africa)  
 P.O. Box 322, MOMBASA.  
 Representatives—  
 DEMOVAN & DIEBEL, NAIROBI.

**THE SPINE AGE IN KENYA.**  
 To the Editor, "E.A. Standard."  
 I have the honor to receive the  
 first question of "Last" at  
 (1) and (2) and (4) and (4)—  
 in that order I give them  
 to the Editor of "Last" as  
 follows:—(1) and (2) and (4) and  
 (4) are all the same, and I  
 think of all English States.  
 If I suggest that "Last" is  
 a "Last" of "Last" would  
 be more suitable.

**TRAVEL EXPENSE FOR JANUARY.**  
 To the Editor, "E.A. Standard."  
 I have the honor to receive the  
 first question of "Last" at  
 (1) and (2) and (4) and (4)—  
 in that order I give them  
 to the Editor of "Last" as  
 follows:—(1) and (2) and (4) and  
 (4) are all the same, and I  
 think of all English States.  
 If I suggest that "Last" is  
 a "Last" of "Last" would  
 be more suitable.

**TRAVEL EXPENSE FOR JANUARY.**  
 To the Editor, "E.A. Standard."  
 I have the honor to receive the  
 first question of "Last" at  
 (1) and (2) and (4) and (4)—  
 in that order I give them  
 to the Editor of "Last" as  
 follows:—(1) and (2) and (4) and  
 (4) are all the same, and I  
 think of all English States.  
 If I suggest that "Last" is  
 a "Last" of "Last" would  
 be more suitable.

**TRAVEL EXPENSE FOR JANUARY.**  
 To the Editor, "E.A. Standard."  
 I have the honor to receive the  
 first question of "Last" at  
 (1) and (2) and (4) and (4)—  
 in that order I give them  
 to the Editor of "Last" as  
 follows:—(1) and (2) and (4) and  
 (4) are all the same, and I  
 think of all English States.  
 If I suggest that "Last" is  
 a "Last" of "Last" would  
 be more suitable.

**THE SPINE AGE IN KENYA.**  
 To the Editor, "E.A. Standard."  
 I have the honor to receive the  
 first question of "Last" at  
 (1) and (2) and (4) and (4)—  
 in that order I give them  
 to the Editor of "Last" as  
 follows:—(1) and (2) and (4) and  
 (4) are all the same, and I  
 think of all English States.  
 If I suggest that "Last" is  
 a "Last" of "Last" would  
 be more suitable.

**TRAVEL EXPENSE FOR JANUARY.**  
 To the Editor, "E.A. Standard."  
 I have the honor to receive the  
 first question of "Last" at  
 (1) and (2) and (4) and (4)—  
 in that order I give them  
 to the Editor of "Last" as  
 follows:—(1) and (2) and (4) and  
 (4) are all the same, and I  
 think of all English States.  
 If I suggest that "Last" is  
 a "Last" of "Last" would  
 be more suitable.

**TRAVEL EXPENSE FOR JANUARY.**  
 To the Editor, "E.A. Standard."  
 I have the honor to receive the  
 first question of "Last" at  
 (1) and (2) and (4) and (4)—  
 in that order I give them  
 to the Editor of "Last" as  
 follows:—(1) and (2) and (4) and  
 (4) are all the same, and I  
 think of all English States.  
 If I suggest that "Last" is  
 a "Last" of "Last" would  
 be more suitable.

**TRAVEL EXPENSE FOR JANUARY.**  
 To the Editor, "E.A. Standard."  
 I have the honor to receive the  
 first question of "Last" at  
 (1) and (2) and (4) and (4)—  
 in that order I give them  
 to the Editor of "Last" as  
 follows:—(1) and (2) and (4) and  
 (4) are all the same, and I  
 think of all English States.  
 If I suggest that "Last" is  
 a "Last" of "Last" would  
 be more suitable.

**THE SPINE AGE IN KENYA.**  
 To the Editor, "E.A. Standard."  
 I have the honor to receive the  
 first question of "Last" at  
 (1) and (2) and (4) and (4)—  
 in that order I give them  
 to the Editor of "Last" as  
 follows:—(1) and (2) and (4) and  
 (4) are all the same, and I  
 think of all English States.  
 If I suggest that "Last" is  
 a "Last" of "Last" would  
 be more suitable.

**TRAVEL EXPENSE FOR JANUARY.**  
 To the Editor, "E.A. Standard."  
 I have the honor to receive the  
 first question of "Last" at  
 (1) and (2) and (4) and (4)—  
 in that order I give them  
 to the Editor of "Last" as  
 follows:—(1) and (2) and (4) and  
 (4) are all the same, and I  
 think of all English States.  
 If I suggest that "Last" is  
 a "Last" of "Last" would  
 be more suitable.

**TRAVEL EXPENSE FOR JANUARY.**  
 To the Editor, "E.A. Standard."  
 I have the honor to receive the  
 first question of "Last" at  
 (1) and (2) and (4) and (4)—  
 in that order I give them  
 to the Editor of "Last" as  
 follows:—(1) and (2) and (4) and  
 (4) are all the same, and I  
 think of all English States.  
 If I suggest that "Last" is  
 a "Last" of "Last" would  
 be more suitable.

**TRAVEL EXPENSE FOR JANUARY.**  
 To the Editor, "E.A. Standard."  
 I have the honor to receive the  
 first question of "Last" at  
 (1) and (2) and (4) and (4)—  
 in that order I give them  
 to the Editor of "Last" as  
 follows:—(1) and (2) and (4) and  
 (4) are all the same, and I  
 think of all English States.  
 If I suggest that "Last" is  
 a "Last" of "Last" would  
 be more suitable.

**THE SPINE AGE IN KENYA.**  
 To the Editor, "E.A. Standard."  
 I have the honor to receive the  
 first question of "Last" at  
 (1) and (2) and (4) and (4)—  
 in that order I give them  
 to the Editor of "Last" as  
 follows:—(1) and (2) and (4) and  
 (4) are all the same, and I  
 think of all English States.  
 If I suggest that "Last" is  
 a "Last" of "Last" would  
 be more suitable.

**TRAVEL EXPENSE FOR JANUARY.**  
 To the Editor, "E.A. Standard."  
 I have the honor to receive the  
 first question of "Last" at  
 (1) and (2) and (4) and (4)—  
 in that order I give them  
 to the Editor of "Last" as  
 follows:—(1) and (2) and (4) and  
 (4) are all the same, and I  
 think of all English States.  
 If I suggest that "Last" is  
 a "Last" of "Last" would  
 be more suitable.

**TRAVEL EXPENSE FOR JANUARY.**  
 To the Editor, "E.A. Standard."  
 I have the honor to receive the  
 first question of "Last" at  
 (1) and (2) and (4) and (4)—  
 in that order I give them  
 to the Editor of "Last" as  
 follows:—(1) and (2) and (4) and  
 (4) are all the same, and I  
 think of all English States.  
 If I suggest that "Last" is  
 a "Last" of "Last" would  
 be more suitable.

**TRAVEL EXPENSE FOR JANUARY.**  
 To the Editor, "E.A. Standard."  
 I have the honor to receive the  
 first question of "Last" at  
 (1) and (2) and (4) and (4)—  
 in that order I give them  
 to the Editor of "Last" as  
 follows:—(1) and (2) and (4) and  
 (4) are all the same, and I  
 think of all English States.  
 If I suggest that "Last" is  
 a "Last" of "Last" would  
 be more suitable.

**THE SPINE AGE IN KENYA.**  
 To the Editor, "E.A. Standard."  
 I have the honor to receive the  
 first question of "Last" at  
 (1) and (2) and (4) and (4)—  
 in that order I give them  
 to the Editor of "Last" as  
 follows:—(1) and (2) and (4) and  
 (4) are all the same, and I  
 think of all English States.  
 If I suggest that "Last" is  
 a "Last" of "Last" would  
 be more suitable.

**TRAVEL EXPENSE FOR JANUARY.**  
 To the Editor, "E.A. Standard."  
 I have the honor to receive the  
 first question of "Last" at  
 (1) and (2) and (4) and (4)—  
 in that order I give them  
 to the Editor of "Last" as  
 follows:—(1) and (2) and (4) and  
 (4) are all the same, and I  
 think of all English States.  
 If I suggest that "Last" is  
 a "Last" of "Last" would  
 be more suitable.

**TRAVEL EXPENSE FOR JANUARY.**  
 To the Editor, "E.A. Standard."  
 I have the honor to receive the  
 first question of "Last" at  
 (1) and (2) and (4) and (4)—  
 in that order I give them  
 to the Editor of "Last" as  
 follows:—(1) and (2) and (4) and  
 (4) are all the same, and I  
 think of all English States.  
 If I suggest that "Last" is  
 a "Last" of "Last" would  
 be more suitable.

**TRAVEL EXPENSE FOR JANUARY.**  
 To the Editor, "E.A. Standard."  
 I have the honor to receive the  
 first question of "Last" at  
 (1) and (2) and (4) and (4)—  
 in that order I give them  
 to the Editor of "Last" as  
 follows:—(1) and (2) and (4) and  
 (4) are all the same, and I  
 think of all English States.  
 If I suggest that "Last" is  
 a "Last" of "Last" would  
 be more suitable.

**THE SPINE AGE IN KENYA.**  
 To the Editor, "E.A. Standard."  
 I have the honor to receive the  
 first question of "Last" at  
 (1) and (2) and (4) and (4)—  
 in that order I give them  
 to the Editor of "Last" as  
 follows:—(1) and (2) and (4) and  
 (4) are all the same, and I  
 think of all English States.  
 If I suggest that "Last" is  
 a "Last" of "Last" would  
 be more suitable.

**TRAVEL EXPENSE FOR JANUARY.**  
 To the Editor, "E.A. Standard."  
 I have the honor to receive the  
 first question of "Last" at  
 (1) and (2) and (4) and (4)—  
 in that order I give them  
 to the Editor of "Last" as  
 follows:—(1) and (2) and (4) and  
 (4) are all the same, and I  
 think of all English States.  
 If I suggest that "Last" is  
 a "Last" of "Last" would  
 be more suitable.

**TRAVEL EXPENSE FOR JANUARY.**  
 To the Editor, "E.A. Standard."  
 I have the honor to receive the  
 first question of "Last" at  
 (1) and (2) and (4) and (4)—  
 in that order I give them  
 to the Editor of "Last" as  
 follows:—(1) and (2) and (4) and  
 (4) are all the same, and I  
 think of all English States.  
 If I suggest that "Last" is  
 a "Last" of "Last" would  
 be more suitable.

**TRAVEL EXPENSE FOR JANUARY.**  
 To the Editor, "E.A. Standard."  
 I have the honor to receive the  
 first question of "Last" at  
 (1) and (2) and (4) and (4)—  
 in that order I give them  
 to the Editor of "Last" as  
 follows:—(1) and (2) and (4) and  
 (4) are all the same, and I  
 think of all English States.  
 If I suggest that "Last" is  
 a "Last" of "Last" would  
 be more suitable.

**THE SPINE AGE IN KENYA.**  
 To the Editor, "E.A. Standard."  
 I have the honor to receive the  
 first question of "Last" at  
 (1) and (2) and (4) and (4)—  
 in that order I give them  
 to the Editor of "Last" as  
 follows:—(1) and (2) and (4) and  
 (4) are all the same, and I  
 think of all English States.  
 If I suggest that "Last" is  
 a "Last" of "Last" would  
 be more suitable.

**TRAVEL EXPENSE FOR JANUARY.**  
 To the Editor, "E.A. Standard."  
 I have the honor to receive the  
 first question of "Last" at  
 (1) and (2) and (4) and (4)—  
 in that order I give them  
 to the Editor of "Last" as  
 follows:—(1) and (2) and (4) and  
 (4) are all the same, and I  
 think of all English States.  
 If I suggest that "Last" is  
 a "Last" of "Last" would  
 be more suitable.

**TRAVEL EXPENSE FOR JANUARY.**  
 To the Editor, "E.A. Standard."  
 I have the honor to receive the  
 first question of "Last" at  
 (1) and (2) and (4) and (4)—  
 in that order I give them  
 to the Editor of "Last" as  
 follows:—(1) and (2) and (4) and  
 (4) are all the same, and I  
 think of all English States.  
 If I suggest that "Last" is  
 a "Last" of "Last" would  
 be more suitable.

**TRAVEL EXPENSE FOR JANUARY.**  
 To the Editor, "E.A. Standard."  
 I have the honor to receive the  
 first question of "Last" at  
 (1) and (2) and (4) and (4)—  
 in that order I give them  
 to the Editor of "Last" as  
 follows:—(1) and (2) and (4) and  
 (4) are all the same, and I  
 think of all English States.  
 If I suggest that "Last" is  
 a "Last" of "Last" would  
 be more suitable.

**HEARSON'S Incubators**  
 TO EGG.  
 SEAMLESS STEEL  
**Milk Cans**  
 1-GALLON TO 16-GALL.  
**Wire Netting**  
 FOR POULTRY RUNS,  
 Etc., Etc.

**Electric MOTORS**  
 5 TO 40 H.P.  
**SUPPLIES and FITTINGS**  
 for WIRING.  
**HOUSEHOLD APPLIANCES.**  
**Wireless COMPLETE SETS**  
 FULL RANGE of COMPONENTS.

**MOMBASA**  
 Box 352.

**KAMPALA**  
 Box 212.

**PLASMOQUINE COMP.**  
 The new effective ANTI-MALARIAL.  
 Bred and manufactured by  
 I. G. Pharmaceuticals Aktiengesellschaft  
 (Incorporated in Germany).  
 Sole Importers—  
 "HANSING & Co. (East Africa)  
 P.O. Box 322, MOMBASA.  
 Representatives—  
 DEMOVAN & DIEBEL, NAIROBI.





# OUR WOMEN'S PAGE

## A Letter from Paris

(By Yvonne ROLLIER)



There has also a place among the fashions of the moment. Think of the very considerable popularity of the "sweater" as an element of the very serviceable wearing quality. The new type is produced in many pastel shades, pale yellow, pale pink, cherry, blue and the "Bordeaux" tones and brown tints are included in the color line, as is also the more definitely re-established navy-blue.

Another renaissance is making its way in a certain wear and is christened "madras" clothes. The fabric shows two spots over-looking, light and dark. Here the range of colors includes raspberry, turquoise, green, mustard and beige, as well as one or two other lightish tints.

A notable commission, on the other hand, from the fabric weavers of the forthcoming season is metal thread in relation to sport fabrics. This would now appear to be entirely out of the running, so to speak; and it seems likely that wool lace, now made in smaller and more attractive designs, will to some extent take its place for jumper tops.

Excellent new wearing materials are other fabric situations. Notably, there is a hatched wool embroidered in light and charming colors on a white ground. Some of the new crepons are embroidered in a self-colored; and some in all-over designs. A particularly interesting innovation is embroidered linon, destined for those who wish something more than the ordinary of evening wear. The new lines in linon are from the change of creating crepe. It does not show creases. Similar materials in the form of some very self-colored linon which have the suppleness of crepe de chine.

Silk shawls with handsome borders are being designed for wear over evening dresses.

The long skirt remains a well-loved accessory of day and evening dress. Kasch, silk or chiffon, is most favored in the time of day and the character of the frock is the favored skirt fabric.



© 1932

"SPECIAL" CHEESE STRAWS.

Mix together one cupful of flour, one teaspoonful of baking powder, a pinch each of cayenne-pepper and salt. When well blended, pour in one heaping egg and mix again; now add sufficient milk to make a stiff dough, which must be rolled out to a thickness of a quarter of an inch, on a floured board. Cut into "straws" and bake for fifteen minutes in a hot oven.

The new soft alpaca is used for a bewitching little day dress which illustrates the continued vogue of the cat's paw tail shade. It is made with a flatter bodice and a slightly flared skirt, both cut in horizontal strips and joined with self-colored silk Goggin-stitching. No other material appears on this model.

Creep together three-quarters of a cupful of granulated sugar and a quarter of a cupful of butter. Beat two eggs until very light and frothy, and add three to the sugar and butter, with one cupful of milk. Mix well, and add one cupful of flour and one cupful of cornmeal, sifted together with one teaspoonful of baking powder, and a teaspoonful of salt. Beat lightly and quickly, turn into a shallow oven-proof loaf. The oven should be hot when the bread goes in, but the temperature should be lowered as it cooks.



The practical vogue for the "two-tone" toilette is beautifully illustrated in this model of old-rose crepe satin and black. The sleeveless frock, cut with an inset extending down at one side and a broad washed sash at waist, is perfectly suitable for informal dinner-or-dance wear. With the addition of the lace collar, made with long sleeves and bound with the satin, it immediately takes on the guise of a very smart "afternoon cover for home or less formal occasions."

The designer has christened this "The Frocks of Youth." Eminent youthful fit it, with its simple box flounce, and the graceful line most admirably arranged over the shoulders and caught with a buckle at the entire back, when the ends tend to follow the windings. The subtle pale lemon yellow—delightful alike for the delicate blonde and the true brunette.

Now that fashion is slowly but surely changing several curved lines and higher waistlines, new materials are being adopted to express these modifications.

There are six manner of light fabric, known as lillo and fillo, for tail-made suits. "Tress" is the shortening name of numerous over-sewnable for games. These light dresses, suits and frocks are seen in a great variety of checked and figured designs.

Diamond-like, in leather, weight, is mounted on coarse net and is used to fashion sports raincoats. Patterns and colors are checked, interwoven, both form and color used the latter. Both handing and color are checked. Patterns seen so far to be reserved for accessories for wear with neutral-based shere and black-and-white, brown-and-black, and navy-blue-and-white. "Gadabouts" is a fabric for dresses, and fine shades of blue colors are the most modish patterns. "Zilla" frocks of checked cottons have a pleasant simplicity and an engaging shirred neckline, maintained in black-and-white, brown-and-black, and navy-blue-and-white.

A web frock in a bopack

# A Winning "Double"

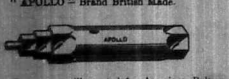
## Crawford's LIQUEUR

SCOTCH WHISKY



## TUBULAR BOX SPANNERS.

"APOLLO" - Brand British Made.



Set of 3 Spanners as illustrated for American Bolls from 1 1/8" to 7/16" six sizes. Shs. 3/-

Set of 6 Spanners for American Bolls from 3/16" to 1 1/2" (Standard American Car Set) Shs. 10/6

Set of 7 Spanners for Whitworth Bolls, sizes from 1/8" to 1 1/2" (Workshop Set) Shs. 17/-

## W.W. INGRAM & Co.

### THE TOOL HOUSE

NAIROBI

Miss KATHLEEN BATES, A.R.C.M.  
RECEIVES PUELS FOR  
PIANOFORTE - SINGING - HARMONY  
At the MUSIC STUDIO, SIXTH AVENUE  
Postal Address: Box 417

## Geo. BLOWERS.

BUILDING CONTRACTOR, MANUFACTURER AND DIRECT IMPORTER.  
Bedford Place, P.O. Box 869 NAIROBI.  
Tel. Ad. "Concrete." Phone: Work 1860. House 488.



Plumbing, Electric, Heating, Cold Water, Gas, and other services. Estimates on application. 10, Upper West, near the Post Office, NAIROBI.

Concrete Blocks, ADD SIZES IN STOCK.  
Quarry Chips - Black Trap Ballast.  
(Machine broken and Screened to any size.)  
Best Kima Sand IN ANY QUANTITY.  
(CAR, TRUCK OR TRAM LOADS).  
DELIVERIES BY LORRIES AT QUOTED RATES.



## SOUTH AFRICA

PROVIDES EVERY FACILITY FOR CHEAP AND CHEERFUL HOLIDAYS

For particulars apply—  
Trade Commissioner for South Africa, Box 534, NAIROBI.

## NURSERY RHYMES NEWLY NARRATED.

No. 14.—SING A SONG OF SIXPENCE.

Sing a song of expense, Life is full of care  
Four or twenty pay-days not enough each year  
While our shop is open you'll have good cause to sing  
For if you buy from S. J. D. you'll save on everything.

For all your requirements in Groceries, Provisions, Confectionery, Wines, Spirits, Liqueurs, Cigars, Cigarettes and Tobaccos, Toilet Requisites and Sundries.

## Souza Junior & Dias.

(Established in 1880).

P.O. Box 341 NAIROBI, Govt. Road. DISCOUNT GIVEN ON CASH PURCHASES.

## Rubber Stamps

AT THE STANDARD STATIONERY STORES NAIROBI.



## SIXTH AVENUE GARAGE

CARS FOR HIRE. SECOND-HAND CARS.  
Agents for—  
STUDEBAKER, LANCIA, BREGINE, FIAT, ROYAL ENFIELD MOTOR-CYCLES.  
Phone 556. Tel. Ad. "Sixth." Box 533.

RIDICULOUS RHYMES.

No. 1. There once was a tripe, which no one could pigs For guile he had no kibbitz...

SHAW & HUNTER Ltd.

P.O. Box 79, NAIROBI. Sole Agents for Western Cartridge Co.

Charles Ware

TORT ACCOUNTANT. (Established 20 years.)

170, NAIROBI. Will clients please note that during my absence in ENGLAND Mr. P. A. THOMAS will act as my sole REPRESENTATIVE in KENYA COLONY...

THE SPORTS PAGE

SATURDAY'S RACES.

Third Day of Nairobi March Meeting.

"CAMBRON" AGAIN WINS THE BIG EVENT.

A large crowd assembled at the Nairobi race course on Saturday last when the big event of the day was the 1000 yards race...

The racing under the circumstances was all that could be desired. The horses carrying the main portion of the public money had their share of the victory...

The following are the details of the races.

First Race. DWARF PLATE 3 furlongs. Cam, L. Lawford's JOVIAL, a 4 (Champion)...

Second Race. MRS. BRONNIE'S SPORTS, EARL, a 114 (Mr. Parnall) 2...

Third Race. KENYA GOLD CUP, 1 1/2 miles. M. J. B. Murphy's GAY LAD, a 10 (Champion)...

Fourth Race. RACING PRIZE, 2 1/2 furlongs. M. J. B. Murphy's GAY LAD, a 10 (Champion)...

Fifth Race. NAIROBI HANDICAP STAKES, 1 1/2 miles. M. J. B. Murphy's GAY LAD, a 10 (Champion)...

Sixth Race. Houghton Maiden Plate, 1 mile. M. J. B. Murphy's GAY LAD, a 10 (Champion)...

Seventh Race. Jockey Club Stakes, 1 mile. M. J. B. Murphy's GAY LAD, a 10 (Champion)...

Eighth Race. Mr. M. Markham's Cambridge Handicap, 1 mile. M. J. B. Murphy's GAY LAD, a 10 (Champion)...

Ninth Race. Mr. A. B. Parnall's Kenya Gold Cup, 1 1/2 miles. M. J. B. Murphy's GAY LAD, a 10 (Champion)...

Tenth Race. Mr. C. B. Murphy's Racing Prize, 2 1/2 furlongs. M. J. B. Murphy's GAY LAD, a 10 (Champion)...

Eleventh Race. Mr. M. J. B. Murphy's Nairobi Handicap Stakes, 1 1/2 miles. M. J. B. Murphy's GAY LAD, a 10 (Champion)...

Twelfth Race. Mr. M. J. B. Murphy's Houghton Maiden Plate, 1 mile. M. J. B. Murphy's GAY LAD, a 10 (Champion)...

Thirteenth Race. Mr. M. J. B. Murphy's Jockey Club Stakes, 1 mile. M. J. B. Murphy's GAY LAD, a 10 (Champion)...

Fourteenth Race. Mr. M. J. B. Murphy's Mr. M. Markham's Cambridge Handicap, 1 mile. M. J. B. Murphy's GAY LAD, a 10 (Champion)...

Fifteenth Race. Mr. M. J. B. Murphy's Mr. A. B. Parnall's Kenya Gold Cup, 1 1/2 miles. M. J. B. Murphy's GAY LAD, a 10 (Champion)...

Sixteenth Race. Mr. M. J. B. Murphy's Mr. C. B. Murphy's Racing Prize, 2 1/2 furlongs. M. J. B. Murphy's GAY LAD, a 10 (Champion)...

Seventeenth Race. Mr. M. J. B. Murphy's Mr. M. J. B. Murphy's Nairobi Handicap Stakes, 1 1/2 miles. M. J. B. Murphy's GAY LAD, a 10 (Champion)...

Eighteenth Race. Mr. M. J. B. Murphy's Mr. M. J. B. Murphy's Houghton Maiden Plate, 1 mile. M. J. B. Murphy's GAY LAD, a 10 (Champion)...

Nineteenth Race. Mr. M. J. B. Murphy's Mr. M. J. B. Murphy's Jockey Club Stakes, 1 mile. M. J. B. Murphy's GAY LAD, a 10 (Champion)...

Twentieth Race. Mr. M. J. B. Murphy's Mr. M. J. B. Murphy's Mr. M. Markham's Cambridge Handicap, 1 mile. M. J. B. Murphy's GAY LAD, a 10 (Champion)...

Twenty-first Race. Mr. M. J. B. Murphy's Mr. A. B. Parnall's Kenya Gold Cup, 1 1/2 miles. M. J. B. Murphy's GAY LAD, a 10 (Champion)...

Twenty-second Race. Mr. M. J. B. Murphy's Mr. C. B. Murphy's Racing Prize, 2 1/2 furlongs. M. J. B. Murphy's GAY LAD, a 10 (Champion)...

Twenty-third Race. Mr. M. J. B. Murphy's Mr. M. J. B. Murphy's Nairobi Handicap Stakes, 1 1/2 miles. M. J. B. Murphy's GAY LAD, a 10 (Champion)...

Twenty-fourth Race. Mr. M. J. B. Murphy's Mr. M. J. B. Murphy's Houghton Maiden Plate, 1 mile. M. J. B. Murphy's GAY LAD, a 10 (Champion)...

CRICKET.

Indian School in Form.

The Indian School played a nice game at Nairobi when they defeated the latter by five wickets.

Scottish and English Cup Competitions.

GUSTABLE LEAGUE PROGRAMME.

ENGLISH CUP.

SCOTTISH CUP.

WORLD'S FLYING MATCH CHAMPIONSHIP.

HONEY BEES IN AMERICA.

HEAVY AMMUNITION.

WELCOME NEWS.

BLACKLAW & BROWN.

THE CHOICE OF A GOOD CIGARETTE.

STILL REMAINS SIMPLE.

THE BEST VALUE EVER OFFERED.

At 1.50 each.

TRY IT AND BE CONVINCED.

MAY & Co., Ltd.

THE SPORTS BOSS, NAIROBI.

HOME FOOTBALL RESULTS.

Scottish and English Cup Competitions.

GUSTABLE LEAGUE PROGRAMME.

ENGLISH CUP.

SCOTTISH CUP.

WORLD'S FLYING MATCH CHAMPIONSHIP.

HONEY BEES IN AMERICA.

HEAVY AMMUNITION.

WELCOME NEWS.

BLACKLAW & BROWN.

THE CHOICE OF A GOOD CIGARETTE.

STILL REMAINS SIMPLE.

THE BEST VALUE EVER OFFERED.

At 1.50 each.

TRY IT AND BE CONVINCED.

MAY & Co., Ltd.

THE SPORTS BOSS, NAIROBI.

THE MOST VALUABLE EVER OFFERED.

At 1.50 each.

TRY IT AND BE CONVINCED.

MAY & Co., Ltd.

THE SPORTS BOSS, NAIROBI.

THE MOST VALUABLE EVER OFFERED.

At 1.50 each.

TRY IT AND BE CONVINCED.

MAY & Co., Ltd.

THE SPORTS BOSS, NAIROBI.

THE MOST VALUABLE EVER OFFERED.

At 1.50 each.

TRY IT AND BE CONVINCED.

MAY & Co., Ltd.



Recent successes at Kiderley have been testified to the excellence and accuracy of KYNOCHE AMMUNITION in all calibres from .22 to .600.

A HOGG. MACKINNON'S BUILDINGS, NAIROBI. 1801 BAKER STREET, NAIROBI.

WELCOME NEWS. BIG REDUCTIONS IN THE PRICE OF SPRAYS AND FOODS.

DOG CAKES, PUFFY BRIBETS, POULTRY FOODS, GIBBS MEDICINE, CHICKEN MEAL, MERO, PLINTY DIRT, POULTRY FEED.

BLACKLAW & BROWN (LATE MACMILLAN) BROS. Ltd. No. 11, NAIROBI.

THE CHOICE OF A GOOD CIGARETTE, SIR, STILL REMAINS SIMPLE.

There are, it is true, many products on these days, to gladden the eye. They are 'devices' and additions of all kinds...

KEN'SIT'S NOT A COLONY IN A THOUSAND.

Ken. Hennessey, the New Zealand one who along with Paul Brierly is regarded as the only British heavy...

WORLD'S FLYING MATCH CHAMPIONSHIP. At Paris for a contest for the world's greatest champion...

HONEY BEES IN AMERICA. Ken. Hennessey, the New Zealand one who along with Paul Brierly is regarded as the only British heavy...

HEAVY AMMUNITION. Kynoch's ammunition is an essential part of a big game's equipment.

WELCOME NEWS. BIG REDUCTIONS IN THE PRICE OF SPRAYS AND FOODS.





Agriculture.

Observations on Some of Kenya's Soils. Preliminary Survey to Determine Cause of Low Yields.

The following notes on observations made on the soil samples... have been prepared by Mr. A.L.C. Austin, B.Sc. (Hons.), M.C., I.A., Plant Breeder and expert of this Bulletin...

through the necessary analytical work... has been prepared by Mr. A.L.C. Austin, B.Sc. (Hons.), M.C., I.A., Plant Breeder and expert of this Bulletin...

However, from observations made in the field it became apparent... that the soil fertility was probably due to varying conditions...

(mangan) in the soil and others... which are the most fertile...

Soils depending for their characteristics... on the parent rock, e.g. the dark grey soils around Mombasa, Voi and generally in the Rift Valley...

Red Soils.

Very common in explanation... these may be described as follows:—

There are chocolate red soils, commonly known as 'Forest' soils... which are found in Kiambu, Fort Hall, Nyeri and Embu...

Less Fertile Soils.

Where these red soils have lost their chocolate red colour... have taken on either a light red or a brownish or a yellowish red...

usually and possibly even a solid mass of mangan oxide on the soil profile... If, therefore, holes be drilled at various depths...

At stated above these soils will be more acid than the chocolate red forest soils... In illustration of this the following figures obtained...

At stated above these soils will be more acid than the chocolate red forest soils... In illustration of this the following figures obtained...

At stated above these soils will be more acid than the chocolate red forest soils... In illustration of this the following figures obtained...

At stated above these soils will be more acid than the chocolate red forest soils... In illustration of this the following figures obtained...

The man who asks for BEER deserves what he gets. The man who asks for McEWAN'S gets what he deserves. Overman & Company Agents. Mombasa.

SALE GENUINE SALE AT DAYARAM BROS. FOR PORTNIGHT ONLY. Tremendous Reductions allowed in entire stock. BUY EARLY AND SAVE MONEY.

A visit to the Settler Supply Store will be to your benefit. STOCKISTS of Groceries Provisions, Confectionery, Cigarettes, Tobacco, Fruit, etc. etc. Settler Supply Store. GOVERNMENT ROAD. Phone 48.

TOUR EQUATORIAL AFRICA in luxurious Buick Fleet. LUXURIOUS COACH, Fleet Tourer by best of Buick touring cars, hot body and motor are available for faster and extended touring parties.

African Tours H. J. GIBBS.

Art Metal Preserve Your Records FROM DUST IN Art Metal FILING CABINETS CUPBOARDS. SHELVEING. Estimated for any quantity of SHELVEING with or without backs and doors, sent on request. Dalgety & Company Ltd. MOMBASA, NAIROBI, ELDORET.

Mascot Footwear 35/- Patent Shoe, Smart Toe, Louis Heel. Patent 1-Bar, round toe, Spanish Cuban. Patent Sandal Bar Lizard Skin. Patent 1-Bar, Louis Heel. Tan Glace 1-Bar Louis Heel. De Luxe Boot Co., Box 677, NAIROBI.

Further Reductions ONLY FOR FEW DAYS IN DRESS MATERIAL, STEP OVER AND LOOK AROUND OUR WINDOWS DON'T MISS THIS OPPORTUNITY CALL OR WRITE H.T. CORNER HUSEIN'S SHOP GOVERNMENT ROAD, NAIROBI.

RONE Filing System Ball Bearing Steel Cabinets British Made. With or without Automatic Lock. Prices Right. The Filing System is simple, easy to learn AND easy to use. DISPENSES WITH THE CARD INDEX CONSULT US Standard Stationery Stores, Phone 572. P.O. Box 380.

Doonholm Dairy. 101, NAIROBI. PURE MILK AND CREAM. FROM Farms to Consumers.

P. STEWART, C.A.S., S.E.D., PAINTER & DECORATOR. Headquarters Street, NAIROBI. P.O. Box 222.

CEBAR POLES & POSTS AND TIMBER. All sizes available. Immediate production. A trial order solicited. NUBIA & KARULLA, ELABE.

INSURE MOTOR CARS AND MOTOR CYCLES WITH THE AFRICAN GUARANTEE AND INSURANCE CO. LTD. M. D. KAMPP, GREEN AGENCY.

PHILIP GIBBS. Author of 'Young Africa' 'The day after tomorrow,' 'S.A.' Shs. 6/60. Posted 7/-.

Standard Stationery Stores NAIROBI.

Your Dog AND MINE A FREE NEWSPAPER published in the interests of man's best friend. You will receive regular copies if you send your name and address to: THE KENYA AGENCY Ltd., Union Building, Box 781, NAIROBI.

Standard Stationery Stores NAIROBI.







# ZEISS

**FOR YOUR EYES.**  
How appreciable to delicate eyes in the substitution of the ordinary corrective lenses by the modern Zeiss Ikon lenses which reproduce on the retina images of perfect clarity from all points to which the light is directed. The wide field of vision of Zeiss Ikon lenses and the clarity they provide by the mobility of the new apparatus the fitting of interiors which were from the manufacturer's advertisement.

**FOR YOUR CAMERA.**  
The eye of your camera is its lens. Just as the full power of the eye relies on its crystalline lens so the camera is what the lens makes it. A better lens provides invariably better pictures, irrespective of the time of day, season or weather and increases our enjoyment of our photographic work. This is why the big camera works of all countries fit their higher grade cameras with Zeiss Ikon lenses, the finest and most reliable camera eyes in the world.

**Special ZEISS PUNKAL.**  
44  
**THE LENS**  
F. O. Box 921, GOVT. ROAD, FRANCIS HOUSE.

## AGRICULTURE.

(Continued from page 5).

may be said that if the climate is suitably any cereal can be grown on the soil. It is true that barley requires a less acid soil than maize or oats; and maize and sorghum are more tolerant of acid soils. So that, given suitably fertile soil and being given the treatment that maize needs, the soil on the surface, even at the bottom of the ridge, is never so acid as to be completely infertile, any crop except barley could be grown on top white, on the redler sides and bottom. It would give much better results than the soil on the ridge would give quite good results even if the soil were not so acid. It is not so acid with the soil on the ridge as it is on the sides and bottom. It is not so acid with the soil on the ridge as it is on the sides and bottom. It is not so acid with the soil on the ridge as it is on the sides and bottom.

Reserve being roughly bounded on the south by the Nana River and extending almost to Mt. Kenia in the North. It is also found in the Turko Valley and in parts of the Western and Northern Plateaus. The sandy nature of these soils is due to the influence of the rock from which they are formed. Their color varies greatly from a sooty black, through reddish black, yellow, to a warm grey. Murrain formation is seldom met with on these sands, which are, at the same time, of

acid (they have been developed under a fair rainfall). Their acid character and acidity and some of their fertility varies very considerably. This variation in productivity is reduced to some extent in the soil colour. Where the surface soil is of natural condition is very dark it is actually black in some cases. A depth of a foot or more, the soil is not too acid and the accumulation of organic matter has consequently been considerable—hence the dark color.

These analytical results are further confirmed by figures obtained on soil samples taken from fields which showed a considerable amount of phosphorus in the growing crop. In all cases the soil from that part of the field which was growing good wheat or maize was much darker in colour than the soil from those parts growing poor wheat or maize. Two examples of this observation from widely separated farms are given.

**Good Wheat.** Exchangeable Calcium 0.229 per cent. Poor Wheat 0.167 per cent. Soil colour (related to organic matter) good wheat, dark; poor wheat, lighter.

**Good Maize.** Exchangeable Calcium 0.204 per cent. Poor Maize 0.069 per cent. Soil colour good maize, very dark; poor maize, much lighter.

As before, the soil acidity is to be regarded as being proportionately greater as the exchangeable calcium in the soil. Good sandy soils, because they are "light" will even, under the best conditions, always be more suited to maize than to wheat. If not too acid they are suitable for barley, while the best of them are coffee soils. The worst patches, and these are small, are too acid even to grow good maize. On the poorer kinds but not the worst (and that is meant by poorer will now be evident) it is important to plant crops early in the season in order that they make use of the maximum amount of moisture. The benefits of this early planting has frequently been demonstrated particularly where good rains have been experienced in July and August. It should be noted that because of their lightness, the or-

ganic matter of these sandy soils will probably disappear on cultivation more rapidly than in the case of the other red soils. (To be Continued).

### Sir John Davidson.

(STANDARD CORRESPONDENT.)  
Mombasa, Feb. 24.  
An interesting visitor to Mombasa at the present time is Major General Sir John Hargrey Davidson, G.C.M.G., D.S.O., M.P. Sir John is on the Board of Directors of the African Mercantile Co. Ltd. and has not, by any means, his feet set. He was briefly indicated in your correspondence of the 12th inst. My interview was sought with him, and he declared that he did not mind, but Sir John distinguished visitor, and his interest was sought with him. This much he did confirm, that his visit here was in no way political and had no special significance attached to it. It was purely a business-connection.

Sir John Davidson has been in East Africa frequently in the past and his knowledge of the country is very considerable yet, as is generally the way with the man who knows the famous visitor has never raised any great "whiff of indignation" unlike so many people, contact and otherwise, who dash rapidly through Kenya on a hurried "tour" of a couple of months or so, then return home and regard the whole with blankness or superficiality of the country and its people. Sir John has apparently been informed of himself with some history by word of mouth, and he is known to those interested enough to ask him

Kill the vermin on your estate from Lons to Portugal.

"Shoot 16 birds in 15 minutes."

"Shoot 17 birds in 10 minutes."

"Shoot 20 birds in 10 minutes."

8 to 60 High Velocity Rifle. 810 bore. Charge 2 1/2 grams. Velocity 2,000 ft. per sec. Energy 3,000 ft. lbs.

**THE BEST ALL ROUND RIFLE ON THE MARKET**

Price: 24" barrel ..... Shs. 300/-  
28" barrel ..... Shs. 400/-  
Ammunition ..... Shs. 45/- per 100 rounds.

5 per cent. Discount for Cash.

**Chas. A. Heyer & Co.,**  
The only European Gunmakers in Kenya, East Africa.

Drawn: Elephant.

**FOR AN EFFICIENT AND DURABLE HOT WATER SUPPLY INSTAL A Beeston Hot Water Boiler**

**GET YOUR ELLWOOD HELMETS or UNIVERSAL FAMES from M. P. de MELLO, P.O. Box 414, Ghest, Road, NAIROBI.**

For particulars relating to the size of Boiler required and prices apply to—

**Thornton & Turpin** (Sole Agents) REGISTERED PLUMBERS and SANITARY ENGINEERS, NAIROBI and MOMBASA. P.O. Box 269, Nairobi, and P.O. Box 356, Mombasa.

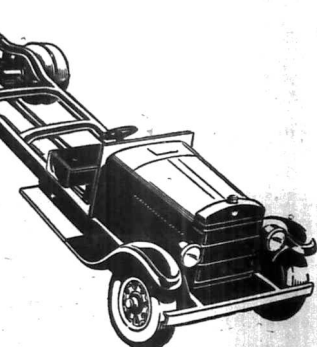
# A Footwear FEAST

**This Days Special Mens Tan Calf Willow Shoes Wonderful Value. WERE 42/- and 45/-**

**Maxwell Brady & Co. Nairobi and at Eldoret.**

# REO TRUCKS WAGONS

**Six-Cylinder Engine**  
**Overhead Valves**  
**Four-wheel Hydraulic Brakes**  
**1 1/2-Tons Capacity**  
**£350**



**Myers Automatic Magazine Chassis Lubrication**  
**Single Plate Clutch**  
**2-Tons Capacity**  
**£500**

**CARR, LAWSON & Co., Ltd.**  
Nairobi Nakuru Eldoret Kampala







# OVERLAND 4 Cylinder CARS

HAVE NOT GONE OUT OF PRODUCTION.  
THE INCREASING DEMAND & UNIVERSAL  
APPRECIATION OF THIS STURDY CAR  
CONTINUES.

STEEL COVERED SAFARI BODIES  
CELLULOSE FINISHED.

## £180

MOULTON & MORRISON Ltd.  
NAIROBI.



WEBBS FLOWER and VEGETABLE SEEDS,  
Large Selection at 1/30 per pkt.

LAWN MOWERS

GARDEN TOOLS

MUSHI Box 25. **J. W. Milligan & Co.,** NAIROBI Box 143.

### DO NOT BE DAZZLED!

PROTECT YOUR EYES AGAINST GLARE, and  
YOUR HEAD AGAINST SUBSEQUENT PAINS  
By Using  
**CHANCE'S CROOKS GLASS.**  
We supply the Four Shades of Crooks Glass in plain  
glass or ground to your prescription.  
We also stock the new GRADUATED LENSES.

**A. H. Wardle & Co. Ltd.**  
MOMBASA : NAIROBI : ELDORET.

We specialists in equipment for  
DOMESTIC HOT WATER INSTALLATIONS  
and shall be pleased to give you the benefit  
of our experience.



INSPECT IN OUR  
SHOWROOM OVER  
IDEAL DOMESTIC  
BOILERS

In a range of  
sizes, suitable  
for all require-  
ments.

and the COOKING STOVE  
with boiler giving ample supply of hot water.  
**R. G. VERNON & Co.**  
Union Buildings, Government Road,  
NAIROBI. P.O. Box 134.

# Bargains For Home Dressmakers

**PRINTED LINEN.**  
A smart starched dress cloth which gives most satisfying  
service. The designs are all crisp chevron and cross-hatch designs  
which are guaranteed absolutely fast. 20 inches wide.  
Usual Price, 5/6. **SALE PRICE, 3/6 per yard.**

**ABROUANE FABRIC.**  
A tough hard wearing Egyptian cotton fabric. 36 inches wide,  
in length or bleached. Used for Tunic Frocks, Boys' Frocks,  
Kiddee's wear. **Usual Price, 5/6. SALE PRICE, 3/6 per yard.**

**ENGLISH SCARVE CREPE.**  
120 yards of pure silk (Mulgara Crepe) for Tunic Frocks and  
underwear. In Cream only. A real hard wearing material.  
Usual Price, 5/6. **SALE PRICE, 3/6 per yard.**

**JAPANESE DRESS SILKS.**  
Taken are offered in a gorgeous range of stripes, checks and  
patterns which in a great variety of colors and designs. They  
wash and wear splendidly. Width 30 inches.  
Usual Price, 12/6. **SALE PRICE, 8/6 per yard.**

THESE ARE  
**HUNDREDS**  
OF  
**Remnants**

suitable for ladies', child-  
ren's and infants' dresses,  
suits and underwear at  
**LOW PRICES.**  
**RUDDICULOUSLY**

**PRINTED DRESS VOILES.**  
A special clearance line of smart dress voiles which will wash  
and wear well.  
**VERY SPECIAL VALUE. A 3-yard Dress Length for 5/6.**  
A nice variety of smart and good quality designs  
which will give excellent wear and they are warm enough for  
the cold season. They will make excellent morning gowns.  
Usual Price, 5/6. **SALE PRICE, 3/6 per yard.**

**SILK and WOOL STOCKINETTE.**  
A smart cloth for jumper suits in greys of Rose, Grey, Rose,  
Pearl, Silver, Periwinkle or Bazaar with stripes or check design  
in White Silk. A smart and hard wearing material.  
Usual Price, 5/6. **SALE PRICE, 3/6 per yard.**

**NATURAL SPIN TURSORE.**  
A delightful all strip cloth, 50 inches wide. Suitable for dresses,  
children's blouses, etc. **Usual Price, 5/6. SALE PRICE, 3/6 per yard.**

## Post Cards

OF EXCEPTIONAL INTEREST OF  
GAME & NATIVE LIFE  
taken by  
**MR. MARTIN JOHNSON**  
5/6. 6/6 per doz. assorted Post Free

ON SALE AT  
**A. H. Wardle & Co. Ltd.**  
CHEMISTS  
NAIROBI. — MOMBASA. — ELDORET

# QUINACINE

THE RELIABLE PREVENTIVE AND CURE  
FOR  
**Influenza**  
**Cold in the Head**  
**Feverish Colds**  
**Pains in Back**  
**and Limbs**

ALWAYS KEEP A BOTTLE HANDY.  
PRICE 2/- AND 3/0.

KODAK (E.A.) LTD., INC.  
**Hovak & McGeorge**  
NAIROBI AND ALL BRANCHES.



**Chianti Antinori**  
FLORENCE  
(Italy)  
Sole Agents  
**EMILE JARDIN & Co.**  
NAIROBI.

# THE YORKSHIRE INSURANCE COMPANY LIMITED.

Principal Representatives:  
**R. O. Hamilton, Limited.**  
P.O. Box 262 NAIROBI. Phone 552

## £62-10-0 Pay as You Ride

There is no need for you to wait for your  
new B. S. A. — you can come along to  
NOW, and for a small deposit take away  
a 1922 model B. S. A., paying the re-  
minder as you ride.



100 MILES PER GALLON.  
**PERFECT IN EVERY PART**  
**We Want to Give You**  
**a Trial Run**  
CALL AND SEE US TO-DAY.  
**Carr, Lawson & Co. Ltd.**  
NAIROBI.

**BIRTH**  
WOODLEY—On 28th March at  
Nairobi to Mr. and Mrs. Frank  
Woodley—a son.

**MARRIAGE**  
NORRIS—DURHAM—On Febru-  
ary 2nd March, at St. Andrew's  
Church, Nairobi, by Rev. J. F.  
Orr, M.A., R.D., Harold  
James Norris, youngest son of the  
late George Norris of Cecil Mid-  
dleton and Susan (Sussey) and  
Mrs. Norris of Haverly, Middle-  
sex, to Elsie Madge Durham, only  
daughter of Mr. and Mrs. T. D.  
Durham of Parklands, Nairobi.

**African Standard**

**USANDA ABOLISH**  
TUESDAY, MARCH 6, 1922.

**The Timber Industry.**

An announcement made to-day  
states that the timber industry in  
East Africa have formed them-  
selves into an Association, to be  
known as the "Timbermen's  
Association of East Africa." The  
objects are fully set out in the  
constitution of the Association.  
The timber industry in East  
Africa while engaged in  
rivalry in one way or another  
own as or whatever may be the  
proper form in the circumstances.  
The fact is that the timber in-  
dustry in East Africa is a  
—and it embraces the rest—  
"to promote and protect the interests  
of the timber industry in East  
Africa." The third is "to pro-  
mote, support or oppose legisla-  
tion or other measures affecting  
the industry." On the fifth  
provision we find an defini-  
tion of timber and timberland,  
statistical and other information,  
the constitution and control of  
the grading of timber, standard  
sections of dimensions etc. The  
fourth rule of East Africa is  
"to promote the interests of the  
industry by the means best  
available." The fifth rule is  
"to institute a full enquiry into the  
working of this association. The

has been hastened by the enquiry  
now on foot into the conditions  
of the industry which have revealed  
the mismanagement of production  
for the past few years. The ques-  
tion of timber is largely one for  
the future of the country. The  
Nairobi Chamber of Commerce  
has unquestionably suffered  
from the lack of public know-  
ledge of the problem. It is  
James Norris, youngest son of the  
late George Norris of Cecil Mid-  
dleton and Susan (Sussey) and  
Mrs. Norris of Haverly, Middle-  
sex, to Elsie Madge Durham, only  
daughter of Mr. and Mrs. T. D.  
Durham of Parklands, Nairobi.

"It is a constant source of  
regret to the country, as a  
result of a change in public  
opinion." Today the country is paying  
the cost of the timber in-  
dustry in the form of a  
"The timber industry in East  
Africa while engaged in  
rivalry in one way or another  
own as or whatever may be the  
proper form in the circumstances.  
The fact is that the timber in-  
dustry in East Africa is a  
—and it embraces the rest—  
"to promote and protect the interests  
of the timber industry in East  
Africa." The third is "to pro-  
mote, support or oppose legisla-  
tion or other measures affecting  
the industry." On the fifth  
provision we find an defini-  
tion of timber and timberland,  
statistical and other information,  
the constitution and control of  
the grading of timber, standard  
sections of dimensions etc. The  
fourth rule of East Africa is  
"to promote the interests of the  
industry by the means best  
available." The fifth rule is  
"to institute a full enquiry into the  
working of this association. The

"It is a constant source of  
regret to the country, as a  
result of a change in public  
opinion." Today the country is paying  
the cost of the timber in-  
dustry in the form of a  
"The timber industry in East  
Africa while engaged in  
rivalry in one way or another  
own as or whatever may be the  
proper form in the circumstances.  
The fact is that the timber in-  
dustry in East Africa is a  
—and it embraces the rest—  
"to promote and protect the interests  
of the timber industry in East  
Africa." The third is "to pro-  
mote, support or oppose legisla-  
tion or other measures affecting  
the industry." On the fifth  
provision we find an defini-  
tion of timber and timberland,  
statistical and other information,  
the constitution and control of  
the grading of timber, standard  
sections of dimensions etc. The  
fourth rule of East Africa is  
"to promote the interests of the  
industry by the means best  
available." The fifth rule is  
"to institute a full enquiry into the  
working of this association. The

"It is a constant source of  
regret to the country, as a  
result of a change in public  
opinion." Today the country is paying  
the cost of the timber in-  
dustry in the form of a  
"The timber industry in East  
Africa while engaged in  
rivalry in one way or another  
own as or whatever may be the  
proper form in the circumstances.  
The fact is that the timber in-  
dustry in East Africa is a  
—and it embraces the rest—  
"to promote and protect the interests  
of the timber industry in East  
Africa." The third is "to pro-  
mote, support or oppose legisla-  
tion or other measures affecting  
the industry." On the fifth  
provision we find an defini-  
tion of timber and timberland,  
statistical and other information,  
the constitution and control of  
the grading of timber, standard  
sections of dimensions etc. The  
fourth rule of East Africa is  
"to promote the interests of the  
industry by the means best  
available." The fifth rule is  
"to institute a full enquiry into the  
working of this association. The

"It is a constant source of  
regret to the country, as a  
result of a change in public  
opinion." Today the country is paying  
the cost of the timber in-  
dustry in the form of a  
"The timber industry in East  
Africa while engaged in  
rivalry in one way or another  
own as or whatever may be the  
proper form in the circumstances.  
The fact is that the timber in-  
dustry in East Africa is a  
—and it embraces the rest—  
"to promote and protect the interests  
of the timber industry in East  
Africa." The third is "to pro-  
mote, support or oppose legisla-  
tion or other measures affecting  
the industry." On the fifth  
provision we find an defini-  
tion of timber and timberland,  
statistical and other information,  
the constitution and control of  
the grading of timber, standard  
sections of dimensions etc. The  
fourth rule of East Africa is  
"to promote the interests of the  
industry by the means best  
available." The fifth rule is  
"to institute a full enquiry into the  
working of this association. The

"It is a constant source of  
regret to the country, as a  
result of a change in public  
opinion." Today the country is paying  
the cost of the timber in-  
dustry in the form of a  
"The timber industry in East  
Africa while engaged in  
rivalry in one way or another  
own as or whatever may be the  
proper form in the circumstances.  
The fact is that the timber in-  
dustry in East Africa is a  
—and it embraces the rest—  
"to promote and protect the interests  
of the timber industry in East  
Africa." The third is "to pro-  
mote, support or oppose legisla-  
tion or other measures affecting  
the industry." On the fifth  
provision we find an defini-  
tion of timber and timberland,  
statistical and other information,  
the constitution and control of  
the grading of timber, standard  
sections of dimensions etc. The  
fourth rule of East Africa is  
"to promote the interests of the  
industry by the means best  
available." The fifth rule is  
"to institute a full enquiry into the  
working of this association. The

"It is a constant source of  
regret to the country, as a  
result of a change in public  
opinion." Today the country is paying  
the cost of the timber in-  
dustry in the form of a  
"The timber industry in East  
Africa while engaged in  
rivalry in one way or another  
own as or whatever may be the  
proper form in the circumstances.  
The fact is that the timber in-  
dustry in East Africa is a  
—and it embraces the rest—  
"to promote and protect the interests  
of the timber industry in East  
Africa." The third is "to pro-  
mote, support or oppose legisla-  
tion or other measures affecting  
the industry." On the fifth  
provision we find an defini-  
tion of timber and timberland,  
statistical and other information,  
the constitution and control of  
the grading of timber, standard  
sections of dimensions etc. The  
fourth rule of East Africa is  
"to promote the interests of the  
industry by the means best  
available." The fifth rule is  
"to institute a full enquiry into the  
working of this association. The

"It is a constant source of  
regret to the country, as a  
result of a change in public  
opinion." Today the country is paying  
the cost of the timber in-  
dustry in the form of a  
"The timber industry in East  
Africa while engaged in  
rivalry in one way or another  
own as or whatever may be the  
proper form in the circumstances.  
The fact is that the timber in-  
dustry in East Africa is a  
—and it embraces the rest—  
"to promote and protect the interests  
of the timber industry in East  
Africa." The third is "to pro-  
mote, support or oppose legisla-  
tion or other measures affecting  
the industry." On the fifth  
provision we find an defini-  
tion of timber and timberland,  
statistical and other information,  
the constitution and control of  
the grading of timber, standard  
sections of dimensions etc. The  
fourth rule of East Africa is  
"to promote the interests of the  
industry by the means best  
available." The fifth rule is  
"to institute a full enquiry into the  
working of this association. The

"It is a constant source of  
regret to the country, as a  
result of a change in public  
opinion." Today the country is paying  
the cost of the timber in-  
dustry in the form of a  
"The timber industry in East  
Africa while engaged in  
rivalry in one way or another  
own as or whatever may be the  
proper form in the circumstances.  
The fact is that the timber in-  
dustry in East Africa is a  
—and it embraces the rest—  
"to promote and protect the interests  
of the timber industry in East  
Africa." The third is "to pro-  
mote, support or oppose legisla-  
tion or other measures affecting  
the industry." On the fifth  
provision we find an defini-  
tion of timber and timberland,  
statistical and other information,  
the constitution and control of  
the grading of timber, standard  
sections of dimensions etc. The  
fourth rule of East Africa is  
"to promote the interests of the  
industry by the means best  
available." The fifth rule is  
"to institute a full enquiry into the  
working of this association. The

"It is a constant source of  
regret to the country, as a  
result of a change in public  
opinion." Today the country is paying  
the cost of the timber in-  
dustry in the form of a  
"The timber industry in East  
Africa while engaged in  
rivalry in one way or another  
own as or whatever may be the  
proper form in the circumstances.  
The fact is that the timber in-  
dustry in East Africa is a  
—and it embraces the rest—  
"to promote and protect the interests  
of the timber industry in East  
Africa." The third is "to pro-  
mote, support or oppose legisla-  
tion or other measures affecting  
the industry." On the fifth  
provision we find an defini-  
tion of timber and timberland,  
statistical and other information,  
the constitution and control of  
the grading of timber, standard  
sections of dimensions etc. The  
fourth rule of East Africa is  
"to promote the interests of the  
industry by the means best  
available." The fifth rule is  
"to institute a full enquiry into the  
working of this association. The

"It is a constant source of  
regret to the country, as a  
result of a change in public  
opinion." Today the country is paying  
the cost of the timber in-  
dustry in the form of a  
"The timber industry in East  
Africa while engaged in  
rivalry in one way or another  
own as or whatever may be the  
proper form in the circumstances.  
The fact is that the timber in-  
dustry in East Africa is a  
—and it embraces the rest—  
"to promote and protect the interests  
of the timber industry in East  
Africa." The third is "to pro-  
mote, support or oppose legisla-  
tion or other measures affecting  
the industry." On the fifth  
provision we find an defini-  
tion of timber and timberland,  
statistical and other information,  
the constitution and control of  
the grading of timber, standard  
sections of dimensions etc. The  
fourth rule of East Africa is  
"to promote the interests of the  
industry by the means best  
available." The fifth rule is  
"to institute a full enquiry into the  
working of this association. The

"It is a constant source of  
regret to the country, as a  
result of a change in public  
opinion." Today the country is paying  
the cost of the timber in-  
dustry in the form of a  
"The timber industry in East  
Africa while engaged in  
rivalry in one way or another  
own as or whatever may be the  
proper form in the circumstances.  
The fact is that the timber in-  
dustry in East Africa is a  
—and it embraces the rest—  
"to promote and protect the interests  
of the timber industry in East  
Africa." The third is "to pro-  
mote, support or oppose legisla-  
tion or other measures affecting  
the industry." On the fifth  
provision we find an defini-  
tion of timber and timberland,  
statistical and other information,  
the constitution and control of  
the grading of timber, standard  
sections of dimensions etc. The  
fourth rule of East Africa is  
"to promote the interests of the  
industry by the means best  
available." The fifth rule is  
"to institute a full enquiry into the  
working of this association. The

"It is a constant source of  
regret to the country, as a  
result of a change in public  
opinion." Today the country is paying  
the cost of the timber in-  
dustry in the form of a  
"The timber industry in East  
Africa while engaged in  
rivalry in one way or another  
own as or whatever may be the  
proper form in the circumstances.  
The fact is that the timber in-  
dustry in East Africa is a  
—and it embraces the rest—  
"to promote and protect the interests  
of the timber industry in East  
Africa." The third is "to pro-  
mote, support or oppose legisla-  
tion or other measures affecting  
the industry." On the fifth  
provision we find an defini-  
tion of timber and timberland,  
statistical and other information,  
the constitution and control of  
the grading of timber, standard  
sections of dimensions etc. The  
fourth rule of East Africa is  
"to promote the interests of the  
industry by the means best  
available." The fifth rule is  
"to institute a full enquiry into the  
working of this association. The

Under the  
Standard Clock.

**New Dining Car.**  
The new dining car on the  
Nairobi-Nakuru line is the  
equipped in every way for  
great pay that this is a  
making but service. The  
the clear sign in the car  
which have been supplied  
not only after a long time  
with the best standard time  
dining car ever seen.

**The Dog Gymkhana.**  
The attractive programme for  
the Dog Gymkhana is now  
in the hands of the  
arranged on the 15th of  
March from 12.30 to 1.30  
at the Memorial Hall, Nairobi.

**Organizer for Convoy.**  
A committee has been  
organizing expeditions to  
the interior of the country  
to give employment to  
the natives. The committee  
has been organized by  
the Government and  
the Chamber of Commerce.

**Light Officers.**  
The Light Officers of the  
Nairobi Garrison are  
now in the hands of the  
arranged on the 15th of  
March from 12.30 to 1.30  
at the Memorial Hall, Nairobi.

**Mr. Martin Johnson.**  
The Light Officers of the  
Nairobi Garrison are  
now in the hands of the  
arranged on the 15th of  
March from 12.30 to 1.30  
at the Memorial Hall, Nairobi.

**Mr. Martin Johnson.**  
The Light Officers of the  
Nairobi Garrison are  
now in the hands of the  
arranged on the 15th of  
March from 12.30 to 1.30  
at the Memorial Hall, Nairobi.

**Mr. Martin Johnson.**  
The Light Officers of the  
Nairobi Garrison are  
now in the hands of the  
arranged on the 15th of  
March from 12.30 to 1.30  
at the Memorial Hall, Nairobi.

**Mr. Martin Johnson.**  
The Light Officers of the  
Nairobi Garrison are  
now in the hands of the  
arranged on the 15th of  
March from 12.30 to 1.30  
at the Memorial Hall, Nairobi.

**Mr. Martin Johnson.**  
The Light Officers of the  
Nairobi Garrison are  
now in the hands of the  
arranged on the 15th of  
March from 12.30 to 1.30  
at the Memorial Hall, Nairobi.

**Mr. Martin Johnson.**  
The Light Officers of the  
Nairobi Garrison are  
now in the hands of the  
arranged on the 15th of  
March from 12.30 to 1.30  
at the Memorial Hall, Nairobi.

**Mr. Martin Johnson.**  
The Light Officers of the  
Nairobi Garrison are  
now in the hands of the  
arranged on the 15th of  
March from 12.30 to 1.30  
at the Memorial Hall, Nairobi.















