

UNION CASTLE LINE.

ROSEBANK VIA SEZEL. From Mombasa. "Ogilby Castle" 2nd June. "Lansdowne Castle" 10th September. "Durban Castle" 18th October. "Ogilby Castle" 18th December. "Lansdowne Castle" 28th January. "Lansdowne Castle" 15th February.

British India Steam Navigation Company, Ltd. AND PENINSULAR AND ORIENTAL STEAM NAVIGATION CO.

LONDON AND EAST AFRICA LINE. LONDON TO BEIRA, via Mozambique, Port Said Port Sudan, Aden, Outwards stop Homeraux. Steamers: Arrive Kilim. Leave Kilim. London about. S.S. "Widdow" 10th May. S.S. "Widdow" 20th May. S.S. "Widdow" 30th May.

Chivers' Custard Powder. Includes an image of a custard cup and text: "Chivers' Custard Powder... Canned Fruit... CHIVERS & SONS, LTD., The Custard Factory, Milton, Cambridgeshire, England."

MESSAGERIES MARITIMES. (PENION MAIL STEAMERS). Regular and fortnightly service from and to Mombasa. THE QUEENSHIRE ROUTE TO LONDON.

Clan - Ellerman - Harrison Lines, (JOINT SERVICE)

Liverpool - Glasgow - Ayr - Rosyth - Manchester. From LIVERPOOL and GLASGOW. "Dun Kilduff" 1st April. "City of Seattle" 19th May. "City of Seattle" 19th May.

ALL DATES SUBJECT TO ALTERATION WITHOUT NOTICE. INFANTS TICKETS ISSUED AT TWO ENGLISH POUNDS PER ADULT. UP-COUNTRY CHEQUES NOT ACCEPTED UNLESS ENDORSED BY A LOCAL BANK.

One Swallow Does't Make a Trip

One "Perfection" DOES Make a Drink! Actions Speak Louder Than Words. Try One And See! Mc. Callums Perfection Whisky. Agents - Smith, Mackenzie & Company. P.O. Box 390. Phone 368. NAIROBI.

Ellerman and Bucknall Line. NEW YORK - MOMBASA VIA SEZEL.

FROM AMERICA. Due to arrive. "City of Seattle" 19th May. "City of Seattle" 19th May. "City of Seattle" 19th May.

FOR SALE. Great Britain, well built 4500 cwt. Cipe and Sension 7/60 per ton. Soap Plant, white 7/60 per ton. Most Prime quality 7/60 per ton.

The African Marine & General Engineering COMPANY LTD. KILINDINI.

SHIP REPAIRING. SAIL MAKING & REPAIRING. MOLDING. OXY - ACETYLENE WELDING & CUTTING. In their well-equipped Carpenters Shop, all types of House and Office Furniture are made and repaired.

Mrs. E. M. PAINE, L.R.A.M., A.R.C.O.

(Soloist for Concerts and Festivals at the Royal Albert Hall, London.) LESSONS GIVEN IN Singing, Voice Production and Pianoforte. STUDIO - Capital Chambers, near Hotel Avenue, Sixth Avenue, 6/P. P.O. Box 308, NAIROBI.

FOR SALE.

Govt. Batts, well built 4500 cwt. Cipe and Sension 7/60 per ton. Soap Plant, white 7/60 per ton. Most Prime quality 7/60 per ton.

Deutsche Ost-Afrika-Linie (GERMAN AFRICAN SERVICE).

DEUTSCHE OST-AFRIKA-LINE GENERAL AGENCY, MOMBASA. Cable: "Deutlin." P.O. 213. HORNWARD to SOUTH AFRICA. From Mombasa. S.S. "USAROMO" 1st June. S.S. "USAROMO" 15th June.

Davis & Co. Theatre Royal Bldg.

For Sale. HILL. 9 acre plot fresh build East End close to Golf Course. £1,000. PARCEL 2 one plot each 1/2 acre at £120.

NATIONAL BANK OF UGANDA LIMITED.

(Incorporated in United Kingdom.) Branches in the Colony and Protectorate of Uganda. Head Office: Kampala. Capital: £2,000,000.

Compagnia Italiana Transatlantica.

Monthly Passenger Service to NAPLES and GENOA. THE RUBY ROUTE TO ENGLAND. Sailing from KILINDINI to GENOA on the 1st of June. S.S. "C. CRISTO" 1st June - 1st August.

Iron Fencing Posts.

DAVIS & Co. announce the pending arrival of the second consignment of Iron Standard Fencing Posts. Price £18 per 100, f.o.b. Nairobi. Reduction for quantity. Great saving in wear, transport and labour.

EAT MORE BACON.

(1) BECAUSE PORKERS continue to make record deliveries of pigs. (2) BECAUSE the QUALITY of "Epland" Bacon was never so high.

"Chronicles of Kenya"

By DAVID H. H. G. ROBERTSON. "One word with us would have had a good impression and the whole of the world of the 'Chronicles of Kenya' as a work of fiction, but those of us with vivid memories of this fascinating country would be none the less to call it a work of truth." The book is full of detailed stories and packed with delightful humour. -Geographical Magazine.

EAT MORE BACON.

(1) BECAUSE PORKERS continue to make record deliveries of pigs. (2) BECAUSE the QUALITY of "Epland" Bacon was never so high. (3) BECAUSE the PRICE of "Epland" Bacon was never so low - cheaper than the same quality and cut in England.

EAT MORE BACON.

Every description of Porkers and Bacon is given in this book. It is a book that every one who is interested in the subject should have. Price 5s. 6d. net.

ZEISS

TO REPROBATE:

A revelation in road illumination for night-travelling. Call and inspect our ZEISS REVOZYLAR. Our ZEISS REVOZYLARs protect your eyes from glaring sunlight in the day and from the glare of powerful headlights in the night.

TO DISCOVER:

ZEISS NIGHTSCOOPERS are well known in the medical profession all over the world. We specially advise Doctors to inspect our ZEISS instruments.

TO ESTABLISH:

We have just received a new complement of ZEISS SURVEILING INSTRUMENTS which cannot be beaten for scientific accuracy.

"THE LENS" Trade's Building, Queen's Edifice, NAIROBI.

PLAY TITLES BY SHAKESPEAR

(3)

"A Winters Tale"

Tell it in Comfort Over a Good Fire of Reliance Fuel

Reliance Transport Co. Ltd.

BOLUS HOUSE, NAIROBI.

P.O. Box 482

Telephone 331

NOTICE.

FOR REAL SOUND FARMING, PLANTING and BUSINESS INVESTMENTS

CONSULT

MUNDSELL,

P.O. Box 84, — EDDORBT.

Agriculture.

Crop Report for February.

Effect of Unfavourable Weather & Locusts.

The following report issued by the Department of Agriculture, which is in respect of the month of February 1932 and gives the best figures for the month and also which will be published unless there is some serious crop failure will be dealt with.

The publication of this report is necessary to obtain estimates of the damage caused by the invasion of locusts during the season under review. It was found, generally speaking, as the seasons were more or less localized and not widespread throughout the different districts, that the Crop Correspondent system does not lend itself to the collection of reliable information under such circumstances and as a consequence the attempt has been made to collect considerable reductions in the estimated total yields of the three crops reported upon are shown in this as compared with the previous reports. This was first shown in the September report when it was stated that "The results obtained in this first attempt may not be as accurate as may be expected in subsequent reports when Correspondents will have discovered and remedied errors in their previous estimates."

The following shows the differences which occur in comparison with the September with the February report:

Maise: September, 1,628,500 bags; February, 1,221,211 bags; Difference, 296,007 bags; 18.0 per cent. Wheat: September, 234,449 bags; February, 150,161 bags; Difference, 84,288 bags; 35.9 per cent. Coffee: September, 154,200 cwts; February, 118,347 cwts.

We cannot, however, be said that these variations are wholly due to the effect of locusts. If Correspondents had not, to a large measure, been affected by the unfavourable weather conditions prevailing during the period together with the losses caused by locusts previously referred to.

The weather throughout the month was generally very dry, and it would appear that the conditions, taken as a whole, were, and having regard to the

average of rain over the whole of the very good condition.

Summary of Reports.

Fort Hall. Very droughty conditions prevail. Locusts appeared on several occasions but the damage done was negligible.

Kisumu. Locusts made their appearance on the month side of the district but did little damage. A shortage of rain is reported but locusts have not standing up well and have a healthy appearance.

Eretria. Except for a dry spell conditions in this district report normal throughout the month.

Mecheser. Locusts continued to cause serious losses in the wheat crop of this district.

Kisumu-Jambani. Conditions remained favourable in this district. The harvest of maize almost complete giving an average district yield of 22.2 bags per acre. Yields of up to 25 bags per acre are reported.

Nairobi. The weather remained very dry throughout the month resulting in further falling off in the maize crop; further reduction in the maize crop is also reported.

Trans-Nzari. Maize showed only very light damage, a 20 per cent reduction in the total yield; a slight falling off in the coffee crop is also reported.

Native Reports.

Coast Province. Mr. C. O. Davis, Assistant Agricultural Officer reports as follows:

"During the month it was as usual in Kilifi and Digo districts, the food position in these parts is very bad, conditions bordering on famine prevailing in many cases."

Mau. The position is much the same as last month. In the places where there are crops, these have been harvested, but only in a few localities is there any return.

The natives are beginning to get their animals ready for the long

season, the old manure is being burnt off and stoving taking place.

Food conditions are so bad that it is expected there will be little maize left for planting.

Other Crops. With the exception of Cassava there are no other crops in the ground this season.

Maize. All the shambles sown during a period through the District season have been eaten off by locusts.

Other Crops. These have also suffered, even bananas have been stripped clean, whilst all the smaller crops have been completely obliterated.

Maize. This district is better off than the Kilifi and Digo.

Maize. About half a crop has been raised up the Sabaki valley; this should leave the district going until the next crop is ready.

Other Crops. Maize has been raised at Mandari and other places. The crop is a fair one.

Cotton. The crop has finished, the total output about 200 tons, this being about 50 more than last year. Had the crop been good the output would have been much greater.

Other Crops. Maize has been raised at Mandari and other places. The crop is a fair one.

Cotton. The crop has finished, the total output about 200 tons, this being about 50 more than last year. Had the crop been good the output would have been much greater.

Other Crops. Maize has been raised at Mandari and other places. The crop is a fair one.

Cotton. The crop has finished, the total output about 200 tons, this being about 50 more than last year. Had the crop been good the output would have been much greater.

Other Crops. Maize has been raised at Mandari and other places. The crop is a fair one.

Cotton. The crop has finished, the total output about 200 tons, this being about 50 more than last year. Had the crop been good the output would have been much greater.

Other Crops. Maize has been raised at Mandari and other places. The crop is a fair one.

Cotton. The crop has finished, the total output about 200 tons, this being about 50 more than last year. Had the crop been good the output would have been much greater.

Other Crops. Maize has been raised at Mandari and other places. The crop is a fair one.

Cotton. The crop has finished, the total output about 200 tons, this being about 50 more than last year. Had the crop been good the output would have been much greater.

Other Crops. Maize has been raised at Mandari and other places. The crop is a fair one.

Cotton. The crop has finished, the total output about 200 tons, this being about 50 more than last year. Had the crop been good the output would have been much greater.

Other Crops. Maize has been raised at Mandari and other places. The crop is a fair one.

Cotton. The crop has finished, the total output about 200 tons, this being about 50 more than last year. Had the crop been good the output would have been much greater.

damage is not universal, and some parts have escaped, others parts have been completely destroyed.

The other sub-locations, Matuyia, Thumani, Kibambini and Karambini have only limited supplies varying considerably, some people having up to three months' supply, while others are almost without any.

It is therefore probable that all parts, with the possible exception of Njiru and Uthuki, will require help before the next harvest by the middle of May.

Next Crop. If rain was early and good, fresh crops may be expected by the middle of May.

Supplies Available for Report.

Maise. Sufficient information is not forthcoming as to the quantity of maize which will be required for the alleviating of famine in certain Native Reserves to accurately estimate the remaining stocks which will be available for export. Demands made for the maize of the normal trade have been received from Tanganyika and Uganda, and it is believed that stocks previously destined for Europe have been directed to these territories. It is now, however, almost certain that previous estimates of between 800,000 and 1,000,000 bags for export will not be realized, and that about 750,000 bags will be nearer the true figure of export for the year.

Wheat. The "short rains" season having been seriously damaged by the invasion of locusts, the crop harvested throughout the month is estimated at least 60,000 bags available for export will be maintained.

Cotton. The crop has finished, the total output about 200 tons, this being about 50 more than last year. Had the crop been good the output would have been much greater.

Other Crops. Maize has been raised at Mandari and other places. The crop is a fair one.

Cotton. The crop has finished, the total output about 200 tons, this being about 50 more than last year. Had the crop been good the output would have been much greater.

Other Crops. Maize has been raised at Mandari and other places. The crop is a fair one.

Cotton. The crop has finished, the total output about 200 tons, this being about 50 more than last year. Had the crop been good the output would have been much greater.

Other Crops. Maize has been raised at Mandari and other places. The crop is a fair one.

Cotton. The crop has finished, the total output about 200 tons, this being about 50 more than last year. Had the crop been good the output would have been much greater.

Other Crops. Maize has been raised at Mandari and other places. The crop is a fair one.

Cotton. The crop has finished, the total output about 200 tons, this being about 50 more than last year. Had the crop been good the output would have been much greater.

Other Crops. Maize has been raised at Mandari and other places. The crop is a fair one.

Cotton. The crop has finished, the total output about 200 tons, this being about 50 more than last year. Had the crop been good the output would have been much greater.

Other Crops. Maize has been raised at Mandari and other places. The crop is a fair one.

Cotton. The crop has finished, the total output about 200 tons, this being about 50 more than last year. Had the crop been good the output would have been much greater.

Other Crops. Maize has been raised at Mandari and other places. The crop is a fair one.

Cotton. The crop has finished, the total output about 200 tons, this being about 50 more than last year. Had the crop been good the output would have been much greater.

Other Crops. Maize has been raised at Mandari and other places. The crop is a fair one.

"LONG JOHN"



Special Reserve
FINEST SCOTCH WHISKY

The versatility of our business is significant of our progressive methods. We can now supply you, in addition to our usual lines, Cement, Sand, Lime etc. Also Taxis as well as domestic servants.

Nairobi General Cash Stores, Ltd.
FOR ECONOMIC PURCHASES,
Government Road, NAIROBI.

BUMPER BARS
Front & Rear.
Shock absorbers
Standard Fitting.

The

THE NEW NACIBO

Big IN EVERY WAY EXCEPT IN PRICE.

Call and see them in our Showrooms.

Kerr's Motors

Nakuru

Kampala

Nairobi

Eldoret

Kitale

Completely re-designed
Luxury Bodies
Beautiful finish
and Style.

U. S. L. BATTERIES

Fresh Stocks
Just Arrived

Suitable for
Overland - Chevrolet - Bugby

Shs. 80 each.

CHARGING EXTRA

Shs. 16-

MOULTON & MORRISON LTD.
NAIROBI

Other Engines May be Cheaper
Other Discounts May be Greater
But It Pays You to Buy a Petter.

Sizes in stock

1 1/2 H.P.

to

24-28 H.P.

BUY

J. W. Milligan & Co.

MOSHI
Box 26.



Full range

of Spares

in stock

for

EVERY SIZE.

BRITISH

NAIROBI
Box 148

DO NOT BE DAZZLED!
PROTECT YOUR EYES AGAINST GLARE, AND
YOUR HEAD AGAINST SUBSEQUENT PAINS.
By
CHANGES CROOKES GLASS.
We supply the Four Shades of Crookes Glass in plain
glass or ground to your prescription.
We also stock the new GRADUATED LENSES.
A. H. WARDLE & Co. Ltd.
MOMBASA : NAIROBI : ELDORET.

QUEEN ANNE

RARE
OLD
SCOTCH
WHISKY

The Choice of the Connoisseur.

Distributors:-
R. G. VERNON & Co.
Union Building, NAIROBI.
Telephone No. 190.
P. O. Box 124.

Copper Rain Gauges

recommended for their accuracy and rain bringing power.

COMPLETE WITH MEASURING GLASS.

2750.

WARDLES

CHEMISTS

MOMBASA. NAIROBI. ELDORET.

AN ENTIRELY NEW RANGE OF LADIES' WATERPROOF COATS

Reliable and Inexpensive, in the Season's Newest Styles.

'DUVINE' COATS.

Click rubber on single feature
Parasitic cloth Single breasted
style with belt. Crown, Bases or
Fawn Ground with contrast
checks. Shs. 27/60.

IMITATION LEATHER COATS.

Heavy weight rubberized leather
cloth, set in a smart D. B. French
style. Colors include Myrtle,
Rapt, Bases and Tan. Shs. 35/-.
Shs. 29/60.

FINEST ART SILK COATS.

Self art silk coat with rubber
A thoroughly reliable rubber
A smart shade of beige. Hairs,
Rapt, and Fawn de Nil. Single
breasted with belt. Shs. 29/60.

JASPS AND CHECK RUBBER WATERPROOF.

Grounds of Gou, Navy, Waterloo
Green or Tan in ON very neat
diamond checks or plaid stripes.
Single breasted and belted. Shs. 29/60.

IMITATION LEATHER COATS.

Ladies D. B. waterproof coats in
two tone effects. Very smart
shape and guaranteed quality.
Shades are: Royal, Black, Brown,
Red and Green with contrast
Trimming. Shs. 29/60.

SHOT ART SILK WATERPROOF.

Art Silk lined rubber in shades of
Rose, Watercolor and Royal with
shot effect. A smart and service-
able coat. Shs. 30/60.

RAINBOW SILK WATERPROOFS.

A nice range of art silk jackets
in various colors. Superior
quality and smart appearance.
Single breasted with belt. Shs. 30/60.

FAINTON WATERPROOFS.

In self colored art silk, cloth,
plaid, wares. Well made and
smartly cut. In shades of
tan or beige. Shs. 28/60.

S. JACOBS, LTD. NAIROBI.

Phone No. 23. P. O. Box 205.

GOLDS & INFLUENZA

ALWAYS START IN THE THROAT.
Kill all harmful germs in the mouth and throat
by means of

MONSOL PASTILLES.

Each PASTILLE contains enough MONSOL
powerful non-poisonous antiseptic, to disinfect
thoroughly; yet they are harmless and soothing to
delicate throats.

NEVER BE WITHOUT

MONSOL

THROAT PASTILLES
THE NEW THROAT HYGIENE
Other MonsoL Preparations:
MonsoL Liquid, MonsoL Internal Capsules,
MonsoL Outward and Mental Tooth Paste.
KODAK (E.A.) LTD., INC.

Howse & McGeorge
NAIROBI and ALL BRANCHES.

A Brand with all the Highest Made It can carry—
the finest Whisky in the world.
"None has finer one by its parallel."



WHISKY DE LUXE
Emile Jardin & Co.
NAIROBI. WHOLESALE.

MEMBERSHIP OF THE FOUNDATION OF SERVICE.

MACKINLAY & Co.

31, Cannon St., London, E.C.1

BUYERS AND SHIPPERS

TO ALL EAST AFRICAN MARKETS.

Exporters of Produce

OF COMMISSION BASIS.

LIBERAL ADVANCES TO

APPROVED CLIENTS.

For fullest information communicate with—

R. O. HAMILTON, LTD.,

NAIROBI. Phone 252.

THERE'S NOTHING

LIKE A

B.S.A.



FOR

EAST AFRICAN CONDITIONS

Let us give you a trial run.

Carr, Lawson & Co. Ltd.

NAIROBI.

African Standard

UWANDA AUGUS.

FRIDAY, MAY 3, 1908.

The Colonial Service.

One of the most interesting
announcements made during the
debate on the Colonial Office
Estimates was Mr. Amery's state-
ment of the purposes and per-
sonnel of a special Committee
which has been set up to "con-
sider the existing system of ap-
pointment in the Colonial Office
to the public service of Depen-
dent and possessing territories,
government, and to make such re-
commendations as might be con-
sidered desirable." The terms of
reference are sufficiently wide to
include the question of the ap-
pointment of the staff of the
Colonial Office. The special Com-
mittee has been appointed by
the Committee itself in order to
represent the best traditions of
the British Civil Service and the
British system of public school
and university education, and
it has been strengthened by the in-
clusion of others whose experi-
ence of colonial life is a little
more recent and less practical.
The President, Hon. the Chief
Justice of Kenya, Dr. Norwood
the Headmaster of Harrow, Mr.
R. B. Washburn, the First Civil
Service Commissioner, Sir Rus-
sell Smith, Comptroller of the
Treasurer, the Secretary, the
Deputy Secretary of the Labour
Party who has displayed a special
interest in Colonial questions, Mr.
John Burden, at one time Private
Secretary to Lord Milner, whose
influence on Colonial matters has
universally recognized and has
been widely distributed by the
Milner School of young men who
have since held many impor-
tant appointments in the Colo-
nial Service, and Mr. Henry Tom-

linson, a retired Senior Principal
of the Postmaster General's
Office. It is not quite clear what
has influenced the Secretary of
State for the Colonies in under-
taking an examination of the
existing system, but there is no
question of the value of the
enquiry. The old system of se-
lection by examination has had
many disadvantages. The chief
asset which a successful candi-
date of the administrative service
must possess in an African Colony
is character, and neither charac-
ter nor the important considera-
tion of health can be decided by
the mental capacity to cope with
an examination paper bearing
little, if any, relation to the pre-
sential tests which Africa or any
other parts of the Colonial Ser-
vice will impose upon a man at
each stage in his career as an
officer of Government. The ap-
pointment of the staff of the
Colonial Office has been selected
by geographical considerations.
East Africa has suffered most
what has been the case with
with much less healthy parts of
the Colonial Empire and repeated
endeavours have been made to
secure terms of service for the
officers of government more in
keeping with the facts as they
are now known. It seems not
reasonable to suppose that any
wide enquiry into the system of
appointments to the Colonial Ser-
vice should take into considera-
tion the diverse parts of the Em-
pire, and we have no doubt
that Sir Samuel Wilson, as
this point before the Committee,
that Sir Edward Grey, and
others with the Secretary of State,
will be led to the conclusion
in the course of the enquiry.
There are few further aspects of
the general question on which we
may be permitted to venture, but
in the difficulty which we
have experienced in obtaining the
services of technical officers, and
in a variety of other instances,

in general, the general position
of the great underdeveloped areas
of the Colonial Empire depends
very considerably on the quality
of scientific research, and we
believe that the Imperial Govern-
ment in Britain should hold
forth every encouragement to
the young men in the Empire to
take the attack upon the various
problems facing the Colonies
which seem to be opening up
in the attack upon the various
problems facing the Colonies.
The second point of consid-
erable importance is the matter
such as Kenya, where the pre-
sumption of white settlement is a
fundamental principle, and where
the constant progress of a wide-
spread tradition of responsibility
can only be removed by the com-
plete and economic life of the
country by increasing association of
the Colonies with the metropoli-
tan and responsibilities of govern-
ment, we believe that it is desir-
able that the Colonial Office should
be organized on a new basis, and
the system of appointment by the
Colonial Office but we would
very much prefer to see the im-
portance of including in that
survey and in any scheme which
may be recommended, a full and
continually extended opportunity
to local people to play an increas-
ingly important part in the
development of the Colonies and
in the development of the land of
their birth or adoption. In a few
years the Colonies will be so
developed that opportunity and it should
not be denied.

Under the
Standard Clock.

Colonial Standard Clock.
Member of Legislative Council for
Nairobi District, is expected to arrive
back in the Colony this month.

Nairobi Standard Clock.
It is announced that the Nairobi
Liquors Board, Route A, has been
formed. The members of the Board
will be a couple of weeks in the
City. The members of the Board
will be a couple of weeks in the
City.

Major Grogan.
The Major Grogan, who was
recently selected Member of the
Legislative Council for Nairobi
District, is leaving the Colony for
England on May 11. The Major
is a member of the Legislative
Council, and is still under considera-
tion.

New Reading Room.
The reading room for the
Nairobi Club of East
Africa and the East African
Journal, Nairobi, has been
located in a central position
in Nairobi. The room is
on the second floor of Harney's
Block, No. 12, P. O. Box 124.
Daily (Sundays excepted) from
8.0 a.m. to 2.0 p.m. and
from 6.0 a.m. to 2.0 p.m.

Protecting the Protector.
Many strange occurrences, the
majority of which were con-
sidered as accidents, have been
reported in the past few days.
and many of them have been
attributed to the presence of
the Protector in the area.
The Protector is not really
invisible, but it is so nearly
invisible that it is often
taken into a limited space, but
it is so nearly invisible that it is
often taken into a limited space,
but it is so nearly invisible that
it is often taken into a limited
space, but it is so nearly invis-
ible that it is often taken into
a limited space, but it is so
nearly invisible that it is often
taken into a limited space, but
it is so nearly invisible that it
is often taken into a limited
space, but it is so nearly invis-
ible that it is often taken into
a limited space, but it is so
nearly invisible that it is often
taken into a limited space, but
it is so nearly invisible that it
is often taken into a limited
space, but it is so nearly invis-
ible that it is often taken into
a limited space, but it is so
nearly invisible that it is often
taken into a limited space, but
it is so nearly invisible that it
is often taken into a limited
space, but it is so nearly invis-
ible that it is often taken into
a limited space, but it is so
nearly invisible that it is often
taken into a limited space, but
it is so nearly invisible that it
is often taken into a limited
space, but it is so nearly invis-
ible that it is often taken into
a limited space, but it is so
nearly invisible that it is often
taken into a limited space, but
it is so nearly invisible that it
is often taken into a limited
space, but it is so nearly invis-
ible that it is often taken into
a limited space, but it is so
nearly invisible that it is often
taken into a limited space, but
it is so nearly invisible that it
is often taken into a limited
space, but it is so nearly invis-
ible that it is often taken into
a limited space, but it is so
nearly invisible that it is often
taken into a limited space, but
it is so nearly invisible that it
is often taken into a limited
space, but it is so nearly invis-
ible that it is often taken into
a limited space, but it is so
nearly invisible that it is often
taken into a limited space, but
it is so nearly invisible that it
is often taken into a limited
space, but it is so nearly invis-
ible that it is often taken into
a limited space, but it is so
nearly invisible that it is often
taken into a limited space, but
it is so nearly invisible that it
is often taken into a limited
space, but it is so nearly invis-
ible that it is often taken into
a limited space, but it is so
nearly invisible that it is often
taken into a limited space, but
it is so nearly invisible that it
is often taken into a limited
space, but it is so nearly invis-
ible that it is often taken into
a limited space, but it is so
nearly invisible that it is often
taken into a limited space, but
it is so nearly invisible that it
is often taken into a limited
space, but it is so nearly invis-
ible that it is often taken into
a limited space, but it is so
nearly invisible that it is often
taken into a limited space, but
it is so nearly invisible that it
is often taken into a limited
space, but it is so nearly invis-
ible that it is often taken into
a limited space, but it is so
nearly invisible that it is often
taken into a limited space, but
it is so nearly invisible that it
is often taken into a limited
space, but it is so nearly invis-
ible that it is often taken into
a limited space, but it is so
nearly invisible that it is often
taken into a limited space, but
it is so nearly invisible that it
is often taken into a limited
space, but it is so nearly invis-
ible that it is often taken into
a limited space, but it is so
nearly invisible that it is often
taken into a limited space, but
it is so nearly invisible that it
is often taken into a limited
space, but it is so nearly invis-
ible that it is often taken into
a limited space, but it is so
nearly invisible that it is often
taken into a limited space, but
it is so nearly invisible that it
is often taken into a limited
space, but it is so nearly invis-
ible that it is often taken into
a limited space, but it is so
nearly invisible that it is often
taken into a limited space, but
it is so nearly invisible that it
is often taken into a limited
space, but it is so nearly invis-
ible that it is often taken into
a limited space, but it is so
nearly invisible that it is often
taken into a limited space, but
it is so nearly invisible that it
is often taken into a limited
space, but it is so nearly invis-
ible that it is often taken into
a limited space, but it is so
nearly invisible that it is often
taken into a limited space, but
it is so nearly invisible that it
is often taken into a limited
space, but it is so nearly invis-
ible that it is often taken into
a limited space, but it is so
nearly invisible that it is often
taken into a limited space, but
it is so nearly invisible that it
is often taken into a limited
space, but it is so nearly invis-
ible that it is often taken into
a limited space, but it is so
nearly invisible that it is often
taken into a limited space, but
it is so nearly invisible that it
is often taken into a limited
space, but it is so nearly invis-
ible that it is often taken into
a limited space, but it is so
nearly invisible that it is often
taken into a limited space, but
it is so nearly invisible that it
is often taken into a limited
space, but it is so nearly invis-
ible that it is often taken into
a limited space, but it is so
nearly invisible that it is often
taken into a limited space, but
it is so nearly invisible that it
is often taken into a limited
space, but it is so nearly invis-
ible that it is often taken into
a limited space, but it is so
nearly invisible that it is often
taken into a limited space, but
it is so nearly invisible that it
is often taken into a limited
space, but it is so nearly invis-
ible that it is often taken into
a limited space, but it is so
nearly invisible that it is often
taken into a limited space, but
it is so nearly invisible that it
is often taken into a limited
space, but it is so nearly invis-
ible that it is often taken into
a limited space, but it is so
nearly invisible that it is often
taken into a limited space, but
it is so nearly invisible that it
is often taken into a limited
space, but it is so nearly invis-
ible that it is often taken into
a limited space, but it is so
nearly invisible that it is often
taken into a limited space, but
it is so nearly invisible that it
is often taken into a limited
space, but it is so nearly invis-
ible that it is often taken into
a limited space, but it is so
nearly invisible that it is often
taken into a limited space, but
it is so nearly invisible that it
is often taken into a limited
space, but it is so nearly invis-
ible that it is often taken into
a limited space, but it is so
nearly invisible that it is often
taken into a limited space, but
it is so nearly invisible that it
is often taken into a limited
space, but it is so nearly invis-
ible that it is often taken into
a limited space, but it is so
nearly invisible that it is often
taken into a limited space, but
it is so nearly invisible that it
is often taken into a limited
space, but it is so nearly invis-
ible that it is often taken into
a limited space, but it is so
nearly invisible that it is often
taken into a limited space, but
it is so nearly invisible that it
is often taken into a limited
space, but it is so nearly invis-
ible that it is often taken into
a limited space, but it is so
nearly invisible that it is often
taken into a limited space, but
it is so nearly invisible that it
is often taken into a limited
space, but it is so nearly invis-
ible that it is often taken into
a limited space, but it is so
nearly invisible that it is often
taken into a limited space, but
it is so nearly invisible that it
is often taken into a limited
space, but it is so nearly invis-
ible that it is often taken into
a limited space, but it is so
nearly invisible that it is often
taken into a limited space, but
it is so nearly invisible that it
is often taken into a limited
space, but it is so nearly invis-
ible that it is often taken into
a limited space, but it is so
nearly invisible that it is often
taken into a limited space, but
it is so nearly invisible that it
is often taken into a limited
space, but it is so nearly invis-
ible that it is often taken into
a limited space, but it is so
nearly invisible that it is often
taken into a limited space, but
it is so nearly invisible that it
is often taken into a limited
space, but it is so nearly invis-
ible that it is often taken into
a limited space, but it is so
nearly invisible that it is often
taken into a limited space, but
it is so nearly invisible that it
is often taken into a limited
space, but it is so nearly invis-
ible that it is often taken into
a limited space, but it is so
nearly invisible that it is often
taken into a limited space, but
it is so nearly invisible that it
is often taken into a limited
space, but it is so nearly invis-
ible that it is often taken into
a limited space, but it is so
nearly invisible that it is often
taken into a limited space, but
it is so nearly invisible that it
is often taken into a limited
space, but it is so nearly invis-
ible that it is often taken into
a limited space, but it is so
nearly invisible that it is often
taken into a limited space, but
it is so nearly invisible that it
is often taken into a limited
space, but it is so nearly invis-
ible that it is often taken into
a limited space, but it is so
nearly invisible that it is often
taken into a limited space, but
it is so nearly invisible that it
is often taken into a limited
space, but it is so nearly invis-
ible that it is often taken into
a limited space, but it is so
nearly invisible that it is often
taken into a limited space, but
it is so nearly invisible that it
is often taken into a limited
space, but it is so nearly invis-
ible that it is often taken into
a limited space, but it is so
nearly invisible that it is often
taken into a limited space, but
it is so nearly invisible that it
is often taken into a limited
space, but it is so nearly invis-
ible that it is often taken into
a limited space, but it is so
nearly invisible that it is often
taken into a limited space, but
it is so nearly invisible that it
is often taken into a limited
space, but it is so nearly invis-
ible that it is often taken into
a limited space, but it is so
nearly invisible that it is often
taken into a limited space, but
it is so nearly invisible that it
is often taken into a limited
space, but it is so nearly invis-
ible that it is often taken into
a limited space, but it is so
nearly invisible that it is often
taken into a limited space, but
it is so nearly invisible that it
is often taken into a limited
space, but it is so nearly invis-
ible that it is often taken into
a limited space, but it is so
nearly invisible that it is often
taken into a limited space, but
it is so nearly invisible that it
is often taken into a limited
space, but it is so nearly invis-
ible that it is often taken into
a limited space, but it is so
nearly invisible that it is often
taken into a limited space, but
it is so nearly invisible that it
is often taken into a limited
space, but it is so nearly invis-
ible that it is often taken into
a limited space, but it is so
nearly invisible that it is often
taken into a limited space, but
it is so nearly invisible that it
is often taken into a limited
space, but it is so nearly invis-
ible that it is often taken into
a limited space, but it is so
nearly invisible that it is often
taken into a limited space, but
it is so nearly invisible that it
is often taken into a limited
space, but it is so nearly invis-
ible that it is often taken into
a limited space, but it is so
nearly invisible that it is often
taken into a limited space, but
it is so nearly invisible that it
is often taken into a limited
space, but it is so nearly invis-
ible that it is often taken into
a limited space, but it is so
nearly invisible that it is often
taken into a limited space, but
it is so nearly invisible that it
is often taken into a limited
space, but it is so nearly invis-
ible that it is often taken into
a limited space, but it is so
nearly invisible that it is often
taken into a limited space, but
it is so nearly invisible that it
is often taken into a limited
space, but it is so nearly invis-
ible that it is often taken into
a limited space, but it is so
nearly invisible that it is often
taken into a limited space, but
it is so nearly invisible that it
is often taken into a limited
space, but it is so nearly invis-
ible that it is often taken into
a limited space, but it is so
nearly invisible that it is often
taken into a limited space, but
it is so nearly invisible that it
is often taken into a limited
space, but it is so nearly invis-
ible that it is often taken into
a limited space, but it is so
nearly invisible that it is often
taken into a limited space, but
it is so nearly invisible that it
is often taken into a limited
space, but it is so nearly invis-
ible that it is often taken into
a limited space, but it is so
nearly invisible that it is often
taken into a limited space, but
it is so nearly invisible that it
is often taken into a limited
space, but it is so nearly invis-
ible that it is often taken into
a limited space, but it is so
nearly invisible that it is often
taken into a limited space, but
it is so nearly invisible that it
is often taken into a limited
space, but it is so nearly invis-
ible that it is often taken into
a limited space, but it is so
nearly invisible that it is often
taken into a limited space, but
it is so nearly invisible that it
is often taken into a limited
space, but it is so nearly invis-
ible that it is often taken into
a limited space, but it is so
nearly invisible that it is often
taken into a limited space, but
it is so nearly invisible that it
is often taken into a limited
space, but it is so nearly invis-
ible that it is often taken into
a limited space, but it is so
nearly invisible that it is often
taken into a limited space, but
it is so nearly invisible that it
is often taken into a limited
space, but it is so nearly invis-
ible that it is often taken into
a limited space, but it is so
nearly invisible that it is often
taken into a limited space, but
it is so nearly invisible that it
is often taken into a limited
space, but it is so nearly invis-
ible that it is often taken into
a limited space, but it is so
nearly invisible that it is often
taken into a limited space, but
it is so nearly invisible that it
is often taken into a limited
space, but it is so nearly invis-
ible that it is often taken into
a limited space, but it is so
nearly invisible that it is often
taken into a limited space, but
it is so nearly invisible that it
is often taken into a limited
space, but it is so nearly invis-
ible that it is often taken into
a limited space, but it is so
nearly invisible that it is often
taken into a limited space, but
it is so nearly invisible that it
is often taken into a limited
space, but it is so nearly invis-
ible that it is often taken into
a limited space, but it is so
nearly invisible that it is often
taken into a limited space, but
it is so nearly invisible that it
is often taken into a limited
space, but it is so nearly invis-
ible that it is often taken into
a limited space, but it is so
nearly invisible that it is often
taken into a limited space, but
it is so nearly invisible that it
is often taken into a limited
space, but it is so nearly invis-
ible that it is often taken into
a limited space, but it is so
nearly invisible that it is often
taken into a limited space, but
it is so nearly invisible that it
is often taken into a limited
space, but it is so nearly invis-
ible that it is often taken into
a limited space, but it is so
nearly invisible that it is often
taken into a limited space, but
it is so nearly invisible that it
is often taken into a limited
space, but it is so nearly invis-
ible that it is often taken into
a limited space, but it is so
nearly invisible that it is often
taken into a limited space, but
it is so nearly invisible that it
is often taken into a limited
space, but it is so nearly invis-
ible that it is often taken into
a limited space, but it is so
nearly invisible that it is often
taken into a limited space, but
it is so nearly invisible that it
is often taken into a limited
space, but it is so nearly invis-
ible that it is often taken into
a limited space, but it is so
nearly invisible that it is often
taken into a limited space, but
it is so nearly invisible that it
is often taken into a limited
space, but it is so nearly invis-
ible that it is often taken into
a limited space, but it is so
nearly invisible that it is often
taken into a limited space, but
it is so nearly invisible that it
is often taken into a limited
space, but it is so nearly invis-
ible that it is often taken into
a limited space, but it is so
nearly invisible that it is often
taken into a limited space, but
it is so nearly invisible that it
is often taken into a limited
space, but it is so nearly invis-
ible that it is often taken into
a limited space, but it is so
nearly invisible that it is often
taken into a limited space, but
it is so nearly invisible that it
is often taken into a limited
space, but it is so nearly invis-
ible that it is often taken into
a limited space, but it is so
nearly invisible that it is often
taken into a limited space, but
it is so nearly invisible that it
is often taken into a limited
space, but it is so nearly invis-
ible that it is often taken into
a limited space, but it is so
nearly invisible that it is often
taken into a limited space, but
it is so nearly invisible that it
is often taken into a limited
space, but it is so nearly invis-
ible that it is often taken into
a limited space, but it is so
nearly invisible that it is often
taken into a limited space, but
it is so nearly invisible that it
is often taken into a limited
space, but it is so nearly invis-
ible that it is often taken into
a limited space, but it is so
nearly invisible that it is often
taken into a limited space, but
it is so nearly invisible that it
is often taken into a limited
space, but it is so nearly invis-
ible that it is often taken into
a limited space, but it is so
nearly invisible that it is often
taken into a limited space, but
it is so nearly invisible that it
is often taken into a limited
space, but it is so nearly invis-
ible that it is often taken into
a limited space, but it is so
nearly invisible that it is often
taken into a limited space, but
it is so nearly invisible that it
is often taken into a limited
space, but it is so nearly invis-
ible that it is often taken into
a limited space, but it is so
nearly invisible that it is often
taken into a limited space, but
it is so nearly invisible that it
is often taken into a limited
space, but it is so nearly invis-
ible that it is often taken into
a limited space, but it is so
nearly invisible that it is often
taken into a limited space, but
it is so nearly invisible that it
is often taken into a limited
space, but it is so nearly invis-
ible that it is often taken into
a limited space, but it is so
nearly invisible that it is often
taken into a limited space, but
it is so nearly invisible that it
is often taken into a limited
space, but it is so nearly invis-
ible that it is often taken into
a limited space, but it is so
nearly invisible that it is often
taken into a limited space, but
it is so nearly invisible that it
is often taken into a limited
space, but it is so nearly invis-
ible that it is often taken into
a limited space, but it is so
nearly invisible that it is often
taken into a limited space, but
it is so nearly invisible that it
is often taken into a limited
space, but it is so nearly invis-
ible that it is often taken into
a limited space, but it is so
nearly invisible that it is often
taken into a limited space, but
it is so nearly invisible that it
is often taken into a limited
space, but it is so nearly invis-
ible that it is often taken into
a limited space, but it is so
nearly invisible that it is often
taken into a limited space, but
it is so nearly invisible that it
is often taken into a limited
space, but it is so nearly invis-
ible that it is often taken into
a limited space, but it is so
nearly invisible that it is often
taken into a limited space, but
it is so nearly invisible that it
is often taken into a limited
space, but it is so nearly invis-
ible that it is often taken into
a limited space, but it is so
nearly invisible that it is often
taken into a limited space, but
it is so nearly invisible that it
is often taken into a limited
space, but it is so nearly invis-
ible that it is often taken into
a limited space, but it is so
nearly invisible that it is often
taken into a limited space, but
it is so nearly invisible that it
is often taken into a limited
space, but it is so nearly invis-

AN ATTEMPT TO FOUND UTOPIA IN KENYA.

Story of Curious Scheme of Settlement 30 Years Ago.

"SUBLIME SELFISHNESS"

Motives and Means Which Guided Life in "Freeland."

Since the recent explanations given in Nairobi of scientific discoveries in the realms of spiritualism and the revelations of the wonders of psychic knowledge, Kenya people have had little enlightenment of the high-brow variety.

Now a lady whose name is Barbara Woodton has revealed Kenya in a new light, and tells a story which will be read with considerable amusement. Kenya, the land of sublime selfishness, a "Utopian Freeland,"—that is the basis upon which she relates her story of the only one of our Utopias which ran any serious risk of coming to a successful issue.

According to her account, this experimental Utopia was established in that part of East Africa now known as Kenya somewhere about the end of the 19th century. The master mind behind the organization, the creator of the new life was one, Theodor Herzka, a journalist—connoisseur of the standing.

A NOVEL SYSTEM.

Miss Barbara Woodton, whose introduction to the "Freeland" system is the "sublime selfishness" continues her story. Herzka followed up the publication of his idea by working to form a number of associations all over the world, the object of which was to collect money and volunteers to establish the settlement.

Curious Finance.

The finance of all this business was arranged through a Central Bank which was to have the ordinary means of a bank. It was to be a branch of the Central Bank of all you would call it. The Central Bank was to have its own money, and was to be able to issue its own notes. It was to be a bank of all you would call it. The Central Bank was to have its own money, and was to be able to issue its own notes. It was to be a bank of all you would call it.

The first account of the proposed Freeland appeared in a book under the title of "Freeland" which was published in 1897. A copy of the first issue of the journal was secured with describing the scheme. The first project was to build a town to begin the building of the new world in Kenya. The first project was to build a town to begin the building of the new world in Kenya.

For the first few weeks of their stay in Kenya the colonists were not to be troubled by the project of the settlement. The first project was to build a town to begin the building of the new world in Kenya.

It was not until the first of the settlement was established that the project of the settlement was established. The first project was to build a town to begin the building of the new world in Kenya.

It was not until the first of the settlement was established that the project of the settlement was established. The first project was to build a town to begin the building of the new world in Kenya.

It was not until the first of the settlement was established that the project of the settlement was established. The first project was to build a town to begin the building of the new world in Kenya.

It was not until the first of the settlement was established that the project of the settlement was established. The first project was to build a town to begin the building of the new world in Kenya.

It was not until the first of the settlement was established that the project of the settlement was established. The first project was to build a town to begin the building of the new world in Kenya.

It was not until the first of the settlement was established that the project of the settlement was established. The first project was to build a town to begin the building of the new world in Kenya.

It was not until the first of the settlement was established that the project of the settlement was established. The first project was to build a town to begin the building of the new world in Kenya.

It was not until the first of the settlement was established that the project of the settlement was established. The first project was to build a town to begin the building of the new world in Kenya.

It was not until the first of the settlement was established that the project of the settlement was established. The first project was to build a town to begin the building of the new world in Kenya.

THE CHILDREN'S SEASIDE HOLIDAY FUND.

25 a Day Needed for Next Sixty Days.

Having reached the round figure of £200, the Children's Seaside Holiday Fund seems to have passed the first stage of its existence.

The fund is now in the hands of the trustees, and the public is invited to contribute to it. The fund is now in the hands of the trustees, and the public is invited to contribute to it.

The fund is now in the hands of the trustees, and the public is invited to contribute to it. The fund is now in the hands of the trustees, and the public is invited to contribute to it.

The fund is now in the hands of the trustees, and the public is invited to contribute to it. The fund is now in the hands of the trustees, and the public is invited to contribute to it.

The fund is now in the hands of the trustees, and the public is invited to contribute to it. The fund is now in the hands of the trustees, and the public is invited to contribute to it.

The fund is now in the hands of the trustees, and the public is invited to contribute to it. The fund is now in the hands of the trustees, and the public is invited to contribute to it.

The fund is now in the hands of the trustees, and the public is invited to contribute to it. The fund is now in the hands of the trustees, and the public is invited to contribute to it.

The fund is now in the hands of the trustees, and the public is invited to contribute to it. The fund is now in the hands of the trustees, and the public is invited to contribute to it.

The fund is now in the hands of the trustees, and the public is invited to contribute to it. The fund is now in the hands of the trustees, and the public is invited to contribute to it.

The fund is now in the hands of the trustees, and the public is invited to contribute to it. The fund is now in the hands of the trustees, and the public is invited to contribute to it.

The fund is now in the hands of the trustees, and the public is invited to contribute to it. The fund is now in the hands of the trustees, and the public is invited to contribute to it.

The fund is now in the hands of the trustees, and the public is invited to contribute to it. The fund is now in the hands of the trustees, and the public is invited to contribute to it.

The fund is now in the hands of the trustees, and the public is invited to contribute to it. The fund is now in the hands of the trustees, and the public is invited to contribute to it.

The fund is now in the hands of the trustees, and the public is invited to contribute to it. The fund is now in the hands of the trustees, and the public is invited to contribute to it.

The fund is now in the hands of the trustees, and the public is invited to contribute to it. The fund is now in the hands of the trustees, and the public is invited to contribute to it.

The fund is now in the hands of the trustees, and the public is invited to contribute to it. The fund is now in the hands of the trustees, and the public is invited to contribute to it.

The fund is now in the hands of the trustees, and the public is invited to contribute to it. The fund is now in the hands of the trustees, and the public is invited to contribute to it.

The fund is now in the hands of the trustees, and the public is invited to contribute to it. The fund is now in the hands of the trustees, and the public is invited to contribute to it.

The fund is now in the hands of the trustees, and the public is invited to contribute to it. The fund is now in the hands of the trustees, and the public is invited to contribute to it.

THE ROSES INDUSTRIES AND JUVENILE DEVIATIONS.

25 a Day Needed for Next Sixty Days.

Having reached the round figure of £200, the Children's Seaside Holiday Fund seems to have passed the first stage of its existence.

The fund is now in the hands of the trustees, and the public is invited to contribute to it. The fund is now in the hands of the trustees, and the public is invited to contribute to it.

The fund is now in the hands of the trustees, and the public is invited to contribute to it. The fund is now in the hands of the trustees, and the public is invited to contribute to it.

The fund is now in the hands of the trustees, and the public is invited to contribute to it. The fund is now in the hands of the trustees, and the public is invited to contribute to it.

The fund is now in the hands of the trustees, and the public is invited to contribute to it. The fund is now in the hands of the trustees, and the public is invited to contribute to it.

The fund is now in the hands of the trustees, and the public is invited to contribute to it. The fund is now in the hands of the trustees, and the public is invited to contribute to it.

The fund is now in the hands of the trustees, and the public is invited to contribute to it. The fund is now in the hands of the trustees, and the public is invited to contribute to it.

The fund is now in the hands of the trustees, and the public is invited to contribute to it. The fund is now in the hands of the trustees, and the public is invited to contribute to it.

The fund is now in the hands of the trustees, and the public is invited to contribute to it. The fund is now in the hands of the trustees, and the public is invited to contribute to it.

The fund is now in the hands of the trustees, and the public is invited to contribute to it. The fund is now in the hands of the trustees, and the public is invited to contribute to it.

The fund is now in the hands of the trustees, and the public is invited to contribute to it. The fund is now in the hands of the trustees, and the public is invited to contribute to it.

The fund is now in the hands of the trustees, and the public is invited to contribute to it. The fund is now in the hands of the trustees, and the public is invited to contribute to it.

The fund is now in the hands of the trustees, and the public is invited to contribute to it. The fund is now in the hands of the trustees, and the public is invited to contribute to it.

The fund is now in the hands of the trustees, and the public is invited to contribute to it. The fund is now in the hands of the trustees, and the public is invited to contribute to it.

The fund is now in the hands of the trustees, and the public is invited to contribute to it. The fund is now in the hands of the trustees, and the public is invited to contribute to it.

The fund is now in the hands of the trustees, and the public is invited to contribute to it. The fund is now in the hands of the trustees, and the public is invited to contribute to it.

The fund is now in the hands of the trustees, and the public is invited to contribute to it. The fund is now in the hands of the trustees, and the public is invited to contribute to it.

The fund is now in the hands of the trustees, and the public is invited to contribute to it. The fund is now in the hands of the trustees, and the public is invited to contribute to it.

The fund is now in the hands of the trustees, and the public is invited to contribute to it. The fund is now in the hands of the trustees, and the public is invited to contribute to it.

ARE GAME SCOUTS PAID BY RESULTS?

Supreme Court and Premium on Delinquency.

A MACHAKOS CASE.

As appears by an opinion of Mr. Justice in the case of the Machakos Game Scouts, the Supreme Court has decided that game scouts are not to be paid by results.

The Supreme Court has decided that game scouts are not to be paid by results. The Supreme Court has decided that game scouts are not to be paid by results.

The Supreme Court has decided that game scouts are not to be paid by results. The Supreme Court has decided that game scouts are not to be paid by results.

The Supreme Court has decided that game scouts are not to be paid by results. The Supreme Court has decided that game scouts are not to be paid by results.

The Supreme Court has decided that game scouts are not to be paid by results. The Supreme Court has decided that game scouts are not to be paid by results.

The Supreme Court has decided that game scouts are not to be paid by results. The Supreme Court has decided that game scouts are not to be paid by results.

The Supreme Court has decided that game scouts are not to be paid by results. The Supreme Court has decided that game scouts are not to be paid by results.

The Supreme Court has decided that game scouts are not to be paid by results. The Supreme Court has decided that game scouts are not to be paid by results.

The Supreme Court has decided that game scouts are not to be paid by results. The Supreme Court has decided that game scouts are not to be paid by results.

The Supreme Court has decided that game scouts are not to be paid by results. The Supreme Court has decided that game scouts are not to be paid by results.

The Supreme Court has decided that game scouts are not to be paid by results. The Supreme Court has decided that game scouts are not to be paid by results.

The Supreme Court has decided that game scouts are not to be paid by results. The Supreme Court has decided that game scouts are not to be paid by results.

The Supreme Court has decided that game scouts are not to be paid by results. The Supreme Court has decided that game scouts are not to be paid by results.

The Supreme Court has decided that game scouts are not to be paid by results. The Supreme Court has decided that game scouts are not to be paid by results.

The Supreme Court has decided that game scouts are not to be paid by results. The Supreme Court has decided that game scouts are not to be paid by results.

The Supreme Court has decided that game scouts are not to be paid by results. The Supreme Court has decided that game scouts are not to be paid by results.

The Supreme Court has decided that game scouts are not to be paid by results. The Supreme Court has decided that game scouts are not to be paid by results.

The Supreme Court has decided that game scouts are not to be paid by results. The Supreme Court has decided that game scouts are not to be paid by results.

"Oh! Oh! Oh!"

Supreme Court and Premium on Delinquency.

A MACHAKOS CASE.

As appears by an opinion of Mr. Justice in the case of the Machakos Game Scouts, the Supreme Court has decided that game scouts are not to be paid by results.

The Supreme Court has decided that game scouts are not to be paid by results. The Supreme Court has decided that game scouts are not to be paid by results.

The Supreme Court has decided that game scouts are not to be paid by results. The Supreme Court has decided that game scouts are not to be paid by results.

The Supreme Court has decided that game scouts are not to be paid by results. The Supreme Court has decided that game scouts are not to be paid by results.

The Supreme Court has decided that game scouts are not to be paid by results. The Supreme Court has decided that game scouts are not to be paid by results.

The Supreme Court has decided that game scouts are not to be paid by results. The Supreme Court has decided that game scouts are not to be paid by results.

The Supreme Court has decided that game scouts are not to be paid by results. The Supreme Court has decided that game scouts are not to be paid by results.

The Supreme Court has decided that game scouts are not to be paid by results. The Supreme Court has decided that game scouts are not to be paid by results.

The Supreme Court has decided that game scouts are not to be paid by results. The Supreme Court has decided that game scouts are not to be paid by results.

The Supreme Court has decided that game scouts are not to be paid by results. The Supreme Court has decided that game scouts are not to be paid by results.

The Supreme Court has decided that game scouts are not to be paid by results. The Supreme Court has decided that game scouts are not to be paid by results.

The Supreme Court has decided that game scouts are not to be paid by results. The Supreme Court has decided that game scouts are not to be paid by results.

The Supreme Court has decided that game scouts are not to be paid by results. The Supreme Court has decided that game scouts are not to be paid by results.

The Supreme Court has decided that game scouts are not to be paid by results. The Supreme Court has decided that game scouts are not to be paid by results.

The Supreme Court has decided that game scouts are not to be paid by results. The Supreme Court has decided that game scouts are not to be paid by results.

The Supreme Court has decided that game scouts are not to be paid by results. The Supreme Court has decided that game scouts are not to be paid by results.

The Supreme Court has decided that game scouts are not to be paid by results. The Supreme Court has decided that game scouts are not to be paid by results.

The Supreme Court has decided that game scouts are not to be paid by results. The Supreme Court has decided that game scouts are not to be paid by results.

LYRIC HALL.

TO-NIGHT AT 8-45 p.m. A glimpse behind the curtains of the great international spy system is given in the thrilling Drama—

SECRET ORDERS

EVELYN BRENT

IN THE ROLE OF A SECRET SERVICE AGENT IN ONE OF THE MOST INTRIGUING EPIC FILMS EVER PRODUCED.

PRICES 3s. 3/- and 2/-

COMFORT, LIGHTNESS AND DURABILITY

all combined in this 'Everyman's Shoe'

Willow Gull and Brown Hide Sandal, Crepe Sole

Willow Gull and Brown Hide Sandal, Crepe Sole

Willow Gull and Brown Hide Sandal, Crepe Sole

Willow Gull and Brown Hide Sandal, Crepe Sole

Willow Gull and Brown Hide Sandal, Crepe Sole

Willow Gull and Brown Hide Sandal, Crepe Sole

Willow Gull and Brown Hide Sandal, Crepe Sole

Willow Gull and Brown Hide Sandal, Crepe Sole

Willow Gull and Brown Hide Sandal, Crepe Sole

Willow Gull and Brown Hide Sandal, Crepe Sole

Willow Gull and Brown Hide Sandal, Crepe Sole

Willow Gull and Brown Hide Sandal, Crepe Sole

Willow Gull and Brown Hide Sandal, Crepe Sole

Willow Gull and Brown Hide Sandal, Crepe Sole

Willow Gull and Brown Hide Sandal, Crepe Sole

Willow Gull and Brown Hide Sandal, Crepe Sole



RICHIELLO

the late by hanging, and it was a... (text continues)

the late by hanging, and it was a... (text continues)

the late by hanging, and it was a... (text continues)

the late by hanging, and it was a... (text continues)

the late by hanging, and it was a... (text continues)

the late by hanging, and it was a... (text continues)

the late by hanging, and it was a... (text continues)

the late by hanging, and it was a... (text continues)

the late by hanging, and it was a... (text continues)

the late by hanging, and it was a... (text continues)

the late by hanging, and it was a... (text continues)

the late by hanging, and it was a... (text continues)

the late by hanging, and it was a... (text continues)

the late by hanging, and it was a... (text continues)

the late by hanging, and it was a... (text continues)



in stock from Children's 10/- to Ladies' 17/0.

Prices from 8s. 10/- to 8s. 17/0.

EADIE'S FOOTWEAR LTD.

Box 140. NAIROBI.

Also at NAKURU and ELDORSET.

THEATRE ROYAL

ITS CIRQUE WEEK IN NAIROBI! TO-NIGHT AND EVERY NIGHT OF THIS WEEK

CHARLIE CHAPLIN

in his Latest Release "THE CIRQUE"

and "OUT OF THE INKWEEL"

and "THE ZOO'S WHO'S WHO"

AN ANIMAL COMEDY.

MATINEE PRICES: ADULTS 3s. 4/-; CHILDREN 3s. 2/-.

MATINEE PRICES: ADULTS 3s. 4/-; CHILDREN 3s. 2/-.

MATINEE PRICES: ADULTS 3s. 4/-; CHILDREN 3s. 2/-.

MATINEE PRICES: ADULTS 3s. 4/-; CHILDREN 3s. 2/-.

FOR Ford Cars AND Trucks.

The work may not be... (text continues)

The work may not be... (text continues)

The work may not be... (text continues)

The work may not be... (text continues)

The work may not be... (text continues)

The work may not be... (text continues)

K. Melvor's Garage. AUTHORIZED FORD SERVICE STATION

JUST UNPACKED Ladies' Woolen Costumes!!

The Latest and the Best Range ever Imported into the country. YOU ARE CORDIALLY INVITED TO Come and Inspect without any Obligation to Buy

Ahamed Bros. THE HOUSE OF DISTINCTION!

HAZARA, NAIROBI. Phone 281.

RAIN OR SNOW WEAR JAEGER



FORCE

The Ideal Breakfast Food Per 150 Packet

From M. S. Elliot & Co. Ltd. P.O. Box 175. Phone 60.

B. Florens,

FRENCH HAIR DRESSER Permanent and Tinting Specialist. Depot Insecto rapid (or Oriental) Hairs. MODERATE CHARGES. Phone 521. NAIROBI. P.O. Box 923. Fork Building, Government Road.

TORR'S

Fresh

Chocolates.

Take a Box Home with You.

Special Bargains IN HATS

To make room for the large stock of new hats we allow

20% DISCOUNT

FOR 15 DAYS ONLY

Smartest styles at lowest prices. COME AND BUY ONE TO-DAY.

Bon Marche GOVERNMENT ROAD, NAIROBI

CORRESPONDENCE

The editor does not accept responsibility for the views expressed by his correspondents in their columns, and in all cases the names and addresses of the writers must accompany the letters, and as a guarantee of good faith, the names of the correspondents should be given in full.

INDIAN JAMBHEE FUND.

To the Editor, "E. A. Standard." Sir,—I am very sorry to read that the Indian Jambhee Fund has not as yet reached £50. With the taking into consideration that the population of the Indian in this country is considerable, it has given much more higher than the other community. I understand that the Indian Jambhee Fund has not as yet reached £50. With the taking into consideration that the population of the Indian in this country is considerable, it has given much more higher than the other community.

To the Editor, "E. A. Standard." Sir,—I am very sorry to read that the Indian Jambhee Fund has not as yet reached £50. With the taking into consideration that the population of the Indian in this country is considerable, it has given much more higher than the other community. I understand that the Indian Jambhee Fund has not as yet reached £50. With the taking into consideration that the population of the Indian in this country is considerable, it has given much more higher than the other community.

THE ISOLATION HOSPITAL.

To the Editor, "E. A. Standard." Sir,—I am very sorry to read that the Indian Jambhee Fund has not as yet reached £50. With the taking into consideration that the population of the Indian in this country is considerable, it has given much more higher than the other community. I understand that the Indian Jambhee Fund has not as yet reached £50. With the taking into consideration that the population of the Indian in this country is considerable, it has given much more higher than the other community.

THE INDIAN QUESTION.

To the Editor, "E. A. Standard." Sir,—I am very sorry to read that the Indian Jambhee Fund has not as yet reached £50. With the taking into consideration that the population of the Indian in this country is considerable, it has given much more higher than the other community. I understand that the Indian Jambhee Fund has not as yet reached £50. With the taking into consideration that the population of the Indian in this country is considerable, it has given much more higher than the other community.

ONE WHO KNOWS.

Yours etc. NAIROBI, May 2, 1922.

THE INDIAN QUESTION.

To the Editor, "E. A. Standard." Sir,—I am very sorry to read that the Indian Jambhee Fund has not as yet reached £50. With the taking into consideration that the population of the Indian in this country is considerable, it has given much more higher than the other community. I understand that the Indian Jambhee Fund has not as yet reached £50. With the taking into consideration that the population of the Indian in this country is considerable, it has given much more higher than the other community.

Fashions for Men.

SHIRT CHANGES IN LATEST STYLES. "STANDARD" CORRESPONDENT. London, (By mail.) Sir,—I am very sorry to read that the Indian Jambhee Fund has not as yet reached £50. With the taking into consideration that the population of the Indian in this country is considerable, it has given much more higher than the other community. I understand that the Indian Jambhee Fund has not as yet reached £50. With the taking into consideration that the population of the Indian in this country is considerable, it has given much more higher than the other community.

ALEXANDER DAVIS Managing Director.

THE EAST AFRICAN STANDARD NAIROBI.

ANSWERS TO CORRESPONDENTS.

"R." "Talk"—It seems to be a question of a sense of humor.

"Why Wily" "Nairobi."

It has been quite rightly stated that Sir Samuel Wilson will investigate and discuss the whole subject matter of the Congo Relief Report, but the Report has not yet been published.

Yours etc. "AMUSED."

NAIROBI, April 30, 1922.

THEATRE CHARGES.

To the Editor, "E. A. Standard." Sir,—I am very sorry to read that the Indian Jambhee Fund has not as yet reached £50. With the taking into consideration that the population of the Indian in this country is considerable, it has given much more higher than the other community. I understand that the Indian Jambhee Fund has not as yet reached £50. With the taking into consideration that the population of the Indian in this country is considerable, it has given much more higher than the other community.

"Jalinton." "Nairobi."

It would have been necessary to include certain statements from your letter and the remainder, being of any use with only a few aspects of the industry, and by no means touching the main problem is not a helpful contribution.

Congo Famine.

MAIZE ORDERED FROM UNITED STATES.

General Gilman, Governor-General of the Belgian Congo, has received dispatches from the territory of Brussels about the famine which is being visited by the Belgian Congo.

THE INDIAN QUESTION.

To the Editor, "E. A. Standard." Sir,—I am very sorry to read that the Indian Jambhee Fund has not as yet reached £50. With the taking into consideration that the population of the Indian in this country is considerable, it has given much more higher than the other community. I understand that the Indian Jambhee Fund has not as yet reached £50. With the taking into consideration that the population of the Indian in this country is considerable, it has given much more higher than the other community.

ONE WHO KNOWS.

Yours etc. NAIROBI, May 2, 1922.

THE INDIAN QUESTION.

To the Editor, "E. A. Standard." Sir,—I am very sorry to read that the Indian Jambhee Fund has not as yet reached £50. With the taking into consideration that the population of the Indian in this country is considerable, it has given much more higher than the other community. I understand that the Indian Jambhee Fund has not as yet reached £50. With the taking into consideration that the population of the Indian in this country is considerable, it has given much more higher than the other community.



PEERLESS ERASMIC The Dainty SOAP. You wash your face 1000 times a year. Surely you appreciate the importance of using the soap which guards the healthy texture of your skin.

B. H. MYERS & Co., Ltd. Phone 543. GOVT. ROAD, Box 461. FURNITURE SUPPLIED ON HIRE PURCHASE. NO DEPOSIT. Small Monthly Payments. ADD OUR FURNITURE IS SOLD WITH A GUARANTEE.

NECTAR! THE DRINK OF KINGS AND THE KING OF DRINKS.

AYALA CHAMPAGNE advertisement with logo and text: Not a new and experimental beverage but as old established wine which has been served to the aristocracy of all countries for many years to come.

Wolf Steam Engines. Portable and Stationary. Made by MACHINERIE FABRIK SIEGAL & WOLF A.G. OVER 100 WORKING IN EAST AFRICA TO-DAY.

HOW IS IT THAT MALARIA IS NOT STAYED OUT? Pilsanogine Corp. Sole Agents: DENOVAN & DEBELL, City Street, Nairobi. Sole Agents: HANING & CO. (S.S.) MOMBASA.

BILLOWS & ROY LTD.

NAIROBI, MOMBASA, KAMPALA. For Interior Panelling & Ceilings USE UPERS BOARD STOCKED IN SIZES 7' 8' 9' 10' 12' x 3' and 4' Wide. RECOMMENDED BY ARCHITECTS FOR ITS STERLING EFFICIENCY.

Arms & Accessories.

Genuine Original Messer... John Rigby... Rifle and Pistol... Smith and Wesson... All makes, all calibres, all prices...

Shaw & Hunter Ltd.

1000 Giltspur, Box 201, May 1926. 11 Miles - Prices on equity... 'Victory Cup', Box 415, May 1926. 7 Furlongs - Prices on equity...

1000 Giltspur, Box 201, May 1926. 11 Miles - Prices on equity... 'Victory Cup', Box 415, May 1926. 7 Furlongs - Prices on equity...



GET IN TOUCH WITH US

for BATHROOM, HALL and BEDROOM MIRRORS and FITTINGS.

THEY ARE ESSENTIAL AND MAKE THE HOME BEAUTIFUL.



THEY ARE ESSENTIAL AND MAKE THE HOME BEAUTIFUL.

RUGBY CLUBS.

PLEASE NOTE THAT We are stockists of the most famous rugger ball and of the famous 'DREADNOUGHT' rugger knickers...

Inviting The Rugger Builders, and other football gear also in stock.

Craigs Sports House, (next door to Dobbin's), Phone 147



A Wonderful Selection OF NEW CLUBS FOR YOUR INSPECTION including A Large Range of LADIES CLUBS

EVERYTHING FOR GOLF EVERYTHING GOOD AT MAY & Co., Ltd. The Sports House, NAIROBI.

THE SPORTS PAGE

COUNTY CRICKET OPENS.

Notes Sets the New Fashion Agog.

THREE CENTURIONS

(SPECIAL CORRESPONDENT) London, May 7. Wednesday marked the opening of the cricket season in England...

THE RECORD OF THE GLASSES.

(SPECIAL CORRESPONDENT) London, May 7. There are twenty-five probabilities for the second of the 'Cricket of the One Thousand Guinea run at Newmarket, to take place over one mile...

PROBABILITIES FOR THE ONE THOUSAND GUINEAS.

(SPECIAL CORRESPONDENT) London, May 7. There are twenty-five probabilities for the second of the 'Cricket of the One Thousand Guinea run at Newmarket...

THE RECORD OF THE GLASSES.

(SPECIAL CORRESPONDENT) London, May 7. There are twenty-five probabilities for the second of the 'Cricket of the One Thousand Guinea run at Newmarket...

THE RECORD OF THE GLASSES.

(SPECIAL CORRESPONDENT) London, May 7. There are twenty-five probabilities for the second of the 'Cricket of the One Thousand Guinea run at Newmarket...

THE RECORD OF THE GLASSES.

(SPECIAL CORRESPONDENT) London, May 7. There are twenty-five probabilities for the second of the 'Cricket of the One Thousand Guinea run at Newmarket...

THE RECORD OF THE GLASSES.

(SPECIAL CORRESPONDENT) London, May 7. There are twenty-five probabilities for the second of the 'Cricket of the One Thousand Guinea run at Newmarket...

THE RECORD OF THE GLASSES.

(SPECIAL CORRESPONDENT) London, May 7. There are twenty-five probabilities for the second of the 'Cricket of the One Thousand Guinea run at Newmarket...

THE RECORD OF THE GLASSES.

(SPECIAL CORRESPONDENT) London, May 7. There are twenty-five probabilities for the second of the 'Cricket of the One Thousand Guinea run at Newmarket...

THE RECORD OF THE GLASSES.

(SPECIAL CORRESPONDENT) London, May 7. There are twenty-five probabilities for the second of the 'Cricket of the One Thousand Guinea run at Newmarket...

THE RECORD OF THE GLASSES.

(SPECIAL CORRESPONDENT) London, May 7. There are twenty-five probabilities for the second of the 'Cricket of the One Thousand Guinea run at Newmarket...

THE RECORD OF THE GLASSES.

(SPECIAL CORRESPONDENT) London, May 7. There are twenty-five probabilities for the second of the 'Cricket of the One Thousand Guinea run at Newmarket...

NAIROBI GOLF CLUB.

Teams to Meet Mathaga Men.

THE LUGHY TOURNEY AT WILSON LEATHES.

(SPECIAL CORRESPONDENT) Nairobi, May 7. Undoubtedly the Saturday last was so well, that by 3 p.m. the several of the guests being under the impression that the 'Cricket of the One Thousand Guinea run at Newmarket...

THE RECORD OF THE GLASSES.

(SPECIAL CORRESPONDENT) London, May 7. There are twenty-five probabilities for the second of the 'Cricket of the One Thousand Guinea run at Newmarket...

THE RECORD OF THE GLASSES.

(SPECIAL CORRESPONDENT) London, May 7. There are twenty-five probabilities for the second of the 'Cricket of the One Thousand Guinea run at Newmarket...

THE RECORD OF THE GLASSES.

(SPECIAL CORRESPONDENT) London, May 7. There are twenty-five probabilities for the second of the 'Cricket of the One Thousand Guinea run at Newmarket...

THE RECORD OF THE GLASSES.

(SPECIAL CORRESPONDENT) London, May 7. There are twenty-five probabilities for the second of the 'Cricket of the One Thousand Guinea run at Newmarket...

THE RECORD OF THE GLASSES.

(SPECIAL CORRESPONDENT) London, May 7. There are twenty-five probabilities for the second of the 'Cricket of the One Thousand Guinea run at Newmarket...

THE RECORD OF THE GLASSES.

(SPECIAL CORRESPONDENT) London, May 7. There are twenty-five probabilities for the second of the 'Cricket of the One Thousand Guinea run at Newmarket...

THE RECORD OF THE GLASSES.

(SPECIAL CORRESPONDENT) London, May 7. There are twenty-five probabilities for the second of the 'Cricket of the One Thousand Guinea run at Newmarket...

THE RECORD OF THE GLASSES.

(SPECIAL CORRESPONDENT) London, May 7. There are twenty-five probabilities for the second of the 'Cricket of the One Thousand Guinea run at Newmarket...

THE RECORD OF THE GLASSES.

(SPECIAL CORRESPONDENT) London, May 7. There are twenty-five probabilities for the second of the 'Cricket of the One Thousand Guinea run at Newmarket...

THE RECORD OF THE GLASSES.

(SPECIAL CORRESPONDENT) London, May 7. There are twenty-five probabilities for the second of the 'Cricket of the One Thousand Guinea run at Newmarket...

THE RECORD OF THE GLASSES.

(SPECIAL CORRESPONDENT) London, May 7. There are twenty-five probabilities for the second of the 'Cricket of the One Thousand Guinea run at Newmarket...

HOME FOOTBALL AFFAIRS.

Making Up the Leeway.

MORE MID-WINTER MATCH RESULTS.

(SPECIAL CORRESPONDENT) London, May 7. 'With a nod to the football season so close at hand clubs are busy engaged in making up the leeway caused during the halting of the programme by the cup loss...

THE RECORD OF THE GLASSES.

(SPECIAL CORRESPONDENT) London, May 7. There are twenty-five probabilities for the second of the 'Cricket of the One Thousand Guinea run at Newmarket...

THE RECORD OF THE GLASSES.

(SPECIAL CORRESPONDENT) London, May 7. There are twenty-five probabilities for the second of the 'Cricket of the One Thousand Guinea run at Newmarket...

THE RECORD OF THE GLASSES.

(SPECIAL CORRESPONDENT) London, May 7. There are twenty-five probabilities for the second of the 'Cricket of the One Thousand Guinea run at Newmarket...

THE RECORD OF THE GLASSES.

(SPECIAL CORRESPONDENT) London, May 7. There are twenty-five probabilities for the second of the 'Cricket of the One Thousand Guinea run at Newmarket...

THE RECORD OF THE GLASSES.

(SPECIAL CORRESPONDENT) London, May 7. There are twenty-five probabilities for the second of the 'Cricket of the One Thousand Guinea run at Newmarket...

THE RECORD OF THE GLASSES.

(SPECIAL CORRESPONDENT) London, May 7. There are twenty-five probabilities for the second of the 'Cricket of the One Thousand Guinea run at Newmarket...

THE RECORD OF THE GLASSES.

(SPECIAL CORRESPONDENT) London, May 7. There are twenty-five probabilities for the second of the 'Cricket of the One Thousand Guinea run at Newmarket...

THE RECORD OF THE GLASSES.

(SPECIAL CORRESPONDENT) London, May 7. There are twenty-five probabilities for the second of the 'Cricket of the One Thousand Guinea run at Newmarket...

THE RECORD OF THE GLASSES.

(SPECIAL CORRESPONDENT) London, May 7. There are twenty-five probabilities for the second of the 'Cricket of the One Thousand Guinea run at Newmarket...

THE RECORD OF THE GLASSES.

(SPECIAL CORRESPONDENT) London, May 7. There are twenty-five probabilities for the second of the 'Cricket of the One Thousand Guinea run at Newmarket...

THE RECORD OF THE GLASSES.

(SPECIAL CORRESPONDENT) London, May 7. There are twenty-five probabilities for the second of the 'Cricket of the One Thousand Guinea run at Newmarket...

ELEY GRAND PRIX loaded with Smokeless Diamond powder the most popular cartridge for all field game... ELEY GRAND PRIX

A. HOGG. MACKENNIE'S BUILDINGS, NAIROBI. 1.000 Guinea, Newmarket, 3/6 2/1 mile - S.P. Limit 100/7. Victoria Cup, Box 415, May 1926. 7 Furlongs - Prices on equity...

Maurice Rosenston TURF ACCOUNTANT. Trust, Buildings, Government Road, P.O. Box 461 NAIROBI. Telegrams: Totetite.

NOTICE THE MEN WHO SHOOT THEM, SIR. 'They're usually seasoned snappers, the official men...'

MUTUALIA RUGBY CLUB. The following fifteen will represent Mathaga in the first match against the Nairobi Club...

KENSINGTON NOT A COUGH IN A THOUSAND. I am particularly proud of the hand-shake... NOT A COUGH IN A THOUSAND

UNION CASTLE LINE.

Table with shipping schedules for Union Castle Line, including destinations like London, Bombay, and Swetland, and ship names like 'Gulliford Castle' and 'Lancaster Castle'.

British India Steam Navigation Company, Ltd.

Table with shipping schedules for British India Steam Navigation Company, listing routes to London, East Africa, and India, with ship names like 'S.S. Madras' and 'S.S. Madras'.

Advertisement for Chivers' Custard Powder, featuring an image of a bowl of custard and text describing its quality and availability.

Advertisement for Messageries Maritimes, listing various shipping routes and services, including 'French Mail Steamers'.

HOLLAND AFRICA LIJN

Table with shipping schedules for Holland-Africa Line, listing routes to Europe, India, and Australia, with ship names like 'S.S. Gierkerk' and 'S.S. Nijnt'.

Large advertisement for 'One Swallow Doesn't Make a Summer' featuring a bottle of McCallum's Perfection Whisky and the text 'One "Perfection" DOES Make a Drink! Actions Speak Louder Than Words.'

Advertisement for Keith Timber Co. Ltd. and F. A. Head, Penaforte Tuner and Repairer, listing services and contact information.

TWENTICE OVERSEAS TRADING CO., LTD.

Text providing contact information for Twentice Overseas Trading Co., Ltd., including addresses in Mombasa and Kampala.

FOR SALE

Text listing items for sale, including a grand piano, a typewriter, and other household goods.

The Kenya Vulcanizing Works.

Text providing contact information for The Kenya Vulcanizing Works, including address and phone number.

The African Marine & General Engineering Company Ltd. KILIMBO.

Text describing services offered by The African Marine & General Engineering Company, including ship repairs and machinery work.

Mrs. E. M. PAINE, L.R.A.M., A.R.C.M.

Text providing information about Mrs. E. M. Paine, including her qualifications and services as a pianist and teacher.

K. McIvor's Garage.

Text advertising K. McIvor's Garage, highlighting services like car repairs and tire services.

Deutsche Ost-Afrika-Linie

Text describing the Deutsche Ost-Afrika-Linie, including routes to East Africa and Europe.

Davis & Co.

Text advertising Davis & Co., listing various goods for sale such as furniture, carpets, and household items.

NATIONAL BANK OF INDIA LIMITED.

Table with financial information for the National Bank of India, including interest rates and exchange rates.

COASTWISE EXCURSIONS.

Text describing coastwise excursions, including routes to Beira, Lourenco Marques, and Durban.

Iron Fencing Posts.

Text advertising iron fencing posts, highlighting their quality and availability.

EAT MORE BACON.

Text advertising 'Eat More Bacon' with a list of reasons why it is a healthy and delicious choice.

S. S. Njassa

Text providing information about the S.S. Njassa, including its route and schedule.

Compagnia Italiana Transatlantica.

Text advertising Compagnia Italiana Transatlantica, listing routes to Europe and the Americas.

LORD BIRKENHEAD ON THE BALFOUR MEMORANDUM.

(Continued from page 1).



Johnnie Walker - always pure and mature. Guaranteed same quality everywhere.

JOHNNIE WALKER Barn 1820 - Still going Strong

Agents: MOUTRIAD & CLARKE LTD., Messias, Nairobi, Dar-es-Salaam, Dar and Kampala.

M. R. de Souza & Co. ESTABLISHED 1869.

A small Stock of the following Sports Goods will be disposed of at 20% discount. Best Quality Spalding's Cricket Bats, Hockey Sticks, Cricket Balls, Hockey, "Exceller" Foot Balls Complete, "Boy Special", Spare Bladders for above.

sent from Parliamentary Assesment of Committee. In the Balfour Memorandum, which was sent by Lord Balfour to the Conservative number of the Coalition Government, it was stated that the sum of £10,000,000 was being sent to the United States... The sum of £10,000,000 was being sent to the United States... The sum of £10,000,000 was being sent to the United States...

Defending Mr. Curzon's conduct in the Balfour Memorandum, Mr. Curzon said that the Balfour Memorandum was not a business proposition, it was a political statement... Mr. Curzon said that the Balfour Memorandum was not a business proposition, it was a political statement...

Mr. Curzon's statement... The Balfour Memorandum was not a business proposition, it was a political statement... The Balfour Memorandum was not a business proposition, it was a political statement...

Britain's Credit... Lord Birkenhead agreed that we had paid and were paying the United States on a scale which the late Mr. Robert Law had hardly exaggerated in describing a scale which would affect our standards of living to a great extent... Britain's Credit...

BANKRUPTCY LAW TO STOP FRAUD.

Allegations Against an Indian Trader.

COURT ACTION SUGGESTED.

"One of the principles of the Bankruptcy Law is that the Official Receiver should be called upon to investigate the conduct of a debtor in connection with those bankruptcy regulations... The Official Receiver should be called upon to investigate the conduct of a debtor in connection with those bankruptcy regulations...

The Official Receiver should be called upon to investigate the conduct of a debtor in connection with those bankruptcy regulations... The Official Receiver should be called upon to investigate the conduct of a debtor in connection with those bankruptcy regulations...

The Official Receiver should be called upon to investigate the conduct of a debtor in connection with those bankruptcy regulations... The Official Receiver should be called upon to investigate the conduct of a debtor in connection with those bankruptcy regulations...

The Official Receiver should be called upon to investigate the conduct of a debtor in connection with those bankruptcy regulations... The Official Receiver should be called upon to investigate the conduct of a debtor in connection with those bankruptcy regulations...

of upon this instant offer of a solution of compromise and does not think that if the creditors had not taken the action they did, the debtor would have got away with anything.

After the hearing of certain evidence, Mr. Hopley was obliged to adjourn the public examination to a date to be fixed by the court.

"Attempt to Defraud." The Official Receiver said that the debtor had been guilty of a fraud... The Official Receiver said that the debtor had been guilty of a fraud...

The Official Receiver said that the debtor had been guilty of a fraud... The Official Receiver said that the debtor had been guilty of a fraud...

The Official Receiver said that the debtor had been guilty of a fraud... The Official Receiver said that the debtor had been guilty of a fraud...

The Official Receiver said that the debtor had been guilty of a fraud... The Official Receiver said that the debtor had been guilty of a fraud...

ENTERTAINMENTS.

Grand Evening Concert

Marie Shorten

WILL SING A VOCAL SOLO AT THE PLANO KATHLEEN BATES, A.E.C.M. VIOLIN OBLIGATOES BY R. STEPHENS. 9 p.m. AT THE AVENUE HOTEL. ASSISTED BY W. DIAMANT, HARBORON. AT THE PLANO KATHLEEN BATES, A.E.C.M. VIOLIN OBLIGATOES BY R. STEPHENS. RESERVED SEATS: 4/50 (Armchairs) and 2s. 6d. BOOKING OPEN AT EAST AFRICAN STANDARD AND AVENUE HOTEL.

SUNDOWNER DANCE

WILL BE HELD ON THE ROOF GARDEN AT HOTEL AVENUE, TO-DAY 4th May FROM 1 P.M. TO 7.30 P.M. MUSIC BY AMPLIFIER.

Miss Ellen Twells I. R.A.M. PIANO FORTÉ LESSONS.

At European School and near Nairobi Club. Particulars and testimonials on application P.O. Box 953.

Moccasin Shoes.

Made from American Elk Hides. Gent's Upride Soles 30 00, Chrome Soles 35 00, Ladies Upride Soles 25 00, Chrome Soles 25 00, Children's from 14 00. DE LUXE BOOT CO., Box 927. NAIROBI.

And Again, To Whom It May Concern

THE NEW CHEVROLET SIX CAR does over 60 miles per hour.

BE CONVINCED.

Motor Mart AND EXCHANGE, Ltd.

John Rifkin

SOLE AGENTS, P.O. Box 114, NAIROBI.

WAGON BUILDERS, BLACKSMITH, FARMER, BLACK, SHAKER, WAGON, and ALL WAGON PARTS.

ALL KINDS OF WAGONS BUILT TO ORDER.

FOR SALE.

THREE ROOMED STONE HOUSE, No 112, New Park Hall Road, 22' x 28', balance on easy terms.

THORPE BROTHERS, No 112.

BUY

THE VICTORIA NYANZA SUGAR COMPANY'S No. 1 WHITE CRYSTAL SUGAR

at the following prices from the undermentioned stores: Per Pouch (50 lbs.) 15/-, 10/6, 10/0, 9/6, 9/0, 8/6, 8/0, 7/6, 7/0, 6/6, 6/0, 5/6, 5/0, 4/6, 4/0, 3/6, 3/0, 2/6, 2/0, 1/6, 1/0, 1/2, 1/4.

CHEER POLLS & POSTS AND FINES. All sizes available at combination prices. A trial order solicited. NUBOLA KALINZILLA, ELGAR.

MOMBASA TIMES CAN BE OBTAINED AT THE Standard Stationery Stores, NAIROBI.

IS YOUR FUEL SATISFACTORY NO?

THEN TRY THE Ukamba Transport Company. Who supply best quality Dry Waste at 1/- per ton—Standard Lge. 22' per ton—12" pieces Cut. FENCING and WATTLE POLES. QUOTATION ON APPLICATION. Special Reduced Quotations for Transport.

Souza Junior & Dias.

beg to announce to the public that they have secured the Services of the Staff of Messrs. Thomas & Brown in their Tailoring Dept. This has been necessitated by the increasing demand on the part of the Public for the High Class Ladies and Gentlemen's Tailoring obtainable at

Souza Junior & Dias, Government Road, NAIROBI.

SWAN

Colours: Blue Black, Green, and Red. Bgt. 1/50 per bottle.

FOUNTAIN PEN INK

"LIPS DROP" BOTTLE 2/6, 3/6 each. In Blue Black only. STANDARD STATIONERY STORES, NAIROBI.

U.S.L. BATTERIES

Fresh Stocks
Just Arrived

Suitable for
Overland - Chevrolet - Rugby

Shs. 80 each.

CHARGING EXTRA

Shs. 16/-

MOULTON & MORRISON LTD.
NAIROBI.

Other Engines May be Cheaper
Other Discounts May be Greater
But It Pays You to Buy a Petter.

Sizes in stock

1 1/4 H.P.

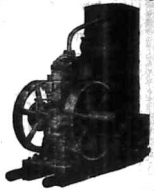
to

24-28 H.P.

BUY

J. W. Milligan & Co.

MOSHI
Box 26.



Full range
of stocks
in space
for
EVERY SIZE.

BRITISH

NAIROBI
Box 148.

DO NOT BE DAZZLED!
PROTECT YOUR EYES AGAINST GLARE,
AND YOUR HEAD AGAINST SUBSEQUENT PAIN.
By Using
CHANCE'S CROOKES GLASS.
We supply the Four Shades of Crookes Glass in plain glass or ground to your prescription.
We also stock the new GRADUATED LENSES.

A. H. Wardle & Co. Ltd.
MOMBASA - NAIROBI - EL DORET.

QUEEN ANNE

RARE
OLD
SCOTCH
WHISKY

The Choice of the Connoisseur.

Distributors:-
R. G. VERNON & Co.
Union Building, NAIROBI.
Telephone No. 120.
P.O. Box 134.

Under the
Standard Clock.

Nature Shop Hours.
The Standard Clock Co. Ltd. will conduct the services at the
St. Andrew's Church.

During the absence of the Rev. F. G. Orr, Minister of the Parish, the Rev. J. J. Eastaugh will conduct the services at the St. Andrew's Church, Nairobi.

Aeroplane Parts.
Included in the list of reports for Kenya and Uganda in the Customs weekly magazine return for the week ending April 27, there is item, "The purchase of Aeroplane parts to three-p...

A Traffic Rule.
An addition which has been made to the Traffic Rules which will enable Lwala and Mlira to be used as a road for the purpose of speed exceeding twelve miles an hour on any road within the boundaries of the City Park, Nairobi.

Waiver to the Park.
The following is to-nominate the Land Programme for City Park. (By permission of H. G. S. W. Wilson, D.S.O., and the Officer-in-Charge, Nairobi.)

Non-Native Poll Tax.
An amendment to the Native Poll Tax which will enable Lwala and Mlira to be used as a road for the purpose of speed exceeding twelve miles an hour on any road within the boundaries of the City Park, Nairobi.

Copper Rain Gauges

recommended for their accuracy and rain bringing power.

COMPLETE WITH MEASURING GLASS.
2750.

WARDLES
CHEMISTS
MOMBASA. NAIROBI. EL DORET.

AN ENTIRELY NEW RANGE OF LADIES' WATERPROOF COATS

Reliable and Inexpensive, in the Season's Newest Styles.

"ORDER" COATS. Check rubber on single texture Furacra cloth. Single breasted style with belt. Green, Beige, or Navy. Covered with contrast checks. Shs. 77/60.	IMITATION LEATHER COATS. Heavy weight rubberized leather cloth, cut in a loose D. B. French style. Colours include Myrtle, Rust, Beige and Tan. Shs. 88/-.	PINKED ART SILK COATS. Soft art silk coat lined rubber. A thoroughly reliable waterproof in smart shades of Beige, Helio, Blue and Tan. Single breasted with belt. Shs. 59/60.	JASPE AND CHECK RUBBER WATERPROOFS. Grounds of Beige, Marine, Waterlily Green or Blue de Nil on very strong diamond checks. Single breasted and belted. Shs. 25/60.
IMITATION LEATHER COATS. Ladies D. B. waterproof coats in two time effects. Very smart shade and guaranteed quality. Shades are Navy, Black, Brown, Red and Green with contrast trimmings. Shs. 59/60.	SHOT ART SILK WATERPROOFS. Art Silk, lined rubber in shades of Rust, Waterlily and Beige with shot effect. A smart and serviceable coat. Shs. 59/60.	RAINBOW SILK WATERPROOFS. A nice range of art silk Jaspé stripes in various colourings. Superior quality and smart appearance. Single breasted with belt. Shs. 60/60.	FAINTON WATERPROOFS. In self colour art silk, cloth, rubbered weaves. Well made and smartly cut, in shades of Beige, Rust or Beige. Shs. 58/-.

S. JACOBS, LTD. Phone No. 23. P.O. Box 100. NAIROBI.

COUGHS AND INFLUENZA

ALWAYS STARTS IN THE THROAT.
Kill all harmful germs in the mouth and throat by means of

MONSOL PASTILLES.

Each PASTILLE contains enough MONSOL, the powerful non-poisonous antiseptic, to disinfect thoroughly; yet they are harmless and soothing to delicate throats.

NEVER BE WITHOUT

MONSOL

THROAT PASTILLES
THE NEW THROAT HYGIENE

Other MONSOL Preparations:
Monsol Liquid, Monsol Internal Capsules, Monsol Ointment and Monsol Tooth Paste.

KODAK (E.A.) LTD., INC.
Howse & McGeorge
NAIROBI and ALL BRANCHES.

BUSINESS BUILT ON THE FOUNDATION OF SERVICE.

MACKINLAY & Co.

31, CHICHELI ST., LONDON, E.C.1.
BUYERS AND SHIPPERS
OF ALL EAST AFRICAN MARKETS.

Exporters of Produce
ON COMMISSION BASIS.

LIBERAL ADVANCES TO APPROVED CLIENTS.

For further information communicate with:
R. O. HAMILTON, LTD., Phone 332.
P.O. Box 202. NAIROBI.

THERE'S NOTHING LIKE A

B.S.A.



EAST AFRICAN CONDITIONS
Let us give you a trial run.
Carr, Lawson & Co. Ltd.
NAIROBI.

A Brand with all the Highest Made it can carry - the finest Whisky in the world.
"None but the best" is its parallel.



WHISKY DE LUXE

Sole Agents:-
Emile Jardin & Co.
RETAIL NAIROBI. WHOLESALE

African Standard

UGANDA AMBUL
SATURDAY, MAY 4, 1929

Matthew Wellington.

Two years ago an old native resident in Mombasa came before the notice of the general public of Kenya. Before that time few people in this busy workaday Colony had heard of Matthew Wellington. At the end of last year, when His Royal Highness the Prince of Wales was in Mombasa, the same old African, his credentials slight with pleasure, was introduced to the Prince by the Bishop of Mombasa. Among the shade of the crowd of people who attended the Garden Party—Mombasa ladies in European dress and commercial men in their most becoming sartorial possessions, Indian gentlemen in gold-tipped Arabi in flowing robes bright with jeweled ornaments—was a man who had been a soldier in the Indian Army, a survivor of the stirring past, though his feet and hand were bare and his only outward claim to a knowledge of the festive character of the occasion was the faded flower in the lapel of a much crumpled and ill-fitting grey suit. Matthew Wellington bowed to the Prince, the two men lived there for twenty-five years. In his time he had been a slave and the unenviable part played in the history of Africa dates from the time when a British cruiser rescued him from an Arab slave show and landed him in India. There, Matthew came under the influence of the Church Missionary Society, which has done so much fine work in Africa, and he received a partial education at C.M.S. school. It was from the school that Livingston obtained the services of some of the African servants, including Matthew Wellington. Today the old principles, ingrained at the beginning of the century, are still in force. The simple way and affairs of a companion will be to go to his Maker? That would be a little to the memory of Livingston and to the character of the late living link with the past which would be worthy of Kenya. Matthew Wellington represents the African past which will be recovered. His share in that past has a special sentimental value to the country and that sentiment demands something more than dependence upon private charity, though he had been poor however generous it is given. When Legislative Council met in Mombasa, the Members will place before the Government a motion providing financially for the maintenance of the infirm link with history. Many times the small sum necessary have been spent on cases with medical claims upon the responsibility of the Colony, and it is temporary medicine is needed to bridge the gap. Two years ago an appeal was also made in London but Matthew Wellington's case was not taken up. The possibility of Kenya and that responsibility should be willingly and ever gratefully accepted.

Week-End Wireless.

SATURDAY, MAY 4.
7.0 to 7.30—British Official news.
7.30 to 7.45—British Official news.
7.45 to 7.55—London and London news.
7.55 to 8.00—London news.
8.00 to 8.15—London news.
8.15 to 8.30—London news.
8.30 to 8.45—London news.
8.45 to 9.00—London news.
9.00 to 9.15—London news.
9.15 to 9.30—London news.
9.30 to 9.45—London news.
9.45 to 10.00—London news.

Monday, May 6.
8.00 to 8.15—London news.
8.15 to 8.30—London news.
8.30 to 8.45—London news.
8.45 to 9.00—London news.
9.00 to 9.15—London news.
9.15 to 9.30—London news.
9.30 to 9.45—London news.
9.45 to 10.00—London news.

JUST UNPACKED
Ladies'
Woollen Costumes!!

The Latest and the Best Range ever Imported into the country!

YOU ARE CORDIALLY INVITED TO Come and Inspect without any Obligation to Buy

Ahamed Bros.

THE HOUSE OF DISTINCTION.

HAZARD, Phone 284.
 NAIROBI, 281.

PROBING THE SECRETS OF THE WIND AND WEATHER.

Work of the East African Meteorological Station.

IMPORTANCE OF RECORDS.

System Which Will be of Greatest Benefit to Agriculture.

For a year past the "Standard" has been publishing its weather reports and although the time has not yet arrived when it is possible to make any general statements, the organization of the East African meteorological service has that object in view.

Occasionally the "Standard" has been asked whether the daily weather reports could be interpreted by the layman with the object of forming some useful conception of coming weather conditions and the possibility of changes in the daily statements. The following article is intended to convey in a really understandable way, something of the work which is being undertaken and the efficiency in the absence of accumulated data of accurate interpretation, a difficulty which will remain until the complete organization of a chain of reporting stations working over a considerable period.

A WONDERFUL CLOCK.

(E. A. Standard Special.)

It may seem as a surprise to people in Nairobi, to whom a knowledge of a quarter of an hour in the main roads of the town does not appear to be a matter of any account, to hear that there is within a short distance of a certain capital a clock which is really something to boast of. This clock is at the Observatory of the Meteorological Station at Nairobi and is concerned daily with the weather.

The Meteorological Service under Mr. A. Walker, is one of which very little is heard; yet its efficient work is being done and we all of this work is of a preliminary nature Kenya will benefit in the years to come.

In order to appreciate the scope of the work which is at present being undertaken it is necessary to pay a visit to the Kibera Station where the complicated and regular business of the station is carried out. A representative of the "Standard" accompanied by Mr. Walker, and although it is necessary for a layman to be present, many of the intricacies which are there, much may still be learned. It has been stated that the present work is of a preliminary nature. The reason for this is that many of the scientific instruments are still to be obtained and the station is not yet fully equipped. It is, however, a very long period of time, but no work is being carried out on the ground, the correct records on which future observations will be based.

One of the stations in eastern Kenya to have a chain of telegraph wires which reports conditions daily throughout the station. This work is carried out by the station. The instruments are now being ordered and the station is being equipped. It is, however, a very long period of time, but no work is being carried out on the ground, the correct records on which future observations will be based.

RAIN or SNOW
 WEAR **JAEGER**
 sold throughout the country, but beware of inferior imitations.
 Headed by the LEADING OUTFITTERS.

FORCE
 The Ideal Breakfast Food Per 150 Packet
 From M. S. Elliot & Co. Ltd
 P.O. Box 175. Phone 60.

B. Florens,
 FRENCH HAIR DRESSER
 Permanent and Tinting Specialist.
 Depot Incento rapid (of Oriental Hair). MODERATE CHARGES.
 Phone 361. NAIROBI. P.O. Box 225. York Building, Government Road.

TORR'S
 Fresh Chocolates.
 Take a Box Home with You.

Special Bargains IN HATS
 To make room for the large stock of new hats we allow
20% DISCOUNT FOR 15 DAYS ONLY
 Smartest styles at lowest prices. COME AND BUY ONE TO-DAY.
Bon Marche
 GOVERNMENT ROAD, NAIROBI.

BULLOWS & ROY LTD.
 NAIROBI, BOX 7. MOMBASA, BOX 322. KAMPALA, BOX 212.
For Interior Panelling & Ceilings USE LIPSON BOARD
 STOCKED IN SIZES 7' 8' 9' 10' 12' x 3" and 4" wide
 RECOMMENDED BY ARCHITECTS FOR ITS STERLING EFFICIENCY.

the high standard, but it has not been necessary to use this as a basis for the station only now. A very recently completed battery has been installed in the main room and it is used for the meteorological service. These are the stations which the pressure recorded at these stations, as it may be found that there are centres of high or low pressure prevailing in certain directions.

Each of the first order stations will have a Dines First Barograph the records of which appear on a chart through an instrument which makes the record at each hour. The barograph is resting on a platform which is supported by order to observe any discontinuity. The instruments just described are of second order stations.

Another very important instrument is that which records the direction and velocity of the wind. This is a Dines Pressure Cup anemometer mounted on the wind-vane on the roof of the building. The instruments just described are of second order stations.

The instruments just described are of second order stations. The instruments just described are of second order stations. The instruments just described are of second order stations.

The instruments just described are of second order stations. The instruments just described are of second order stations. The instruments just described are of second order stations.

The instruments just described are of second order stations. The instruments just described are of second order stations. The instruments just described are of second order stations.

The instruments just described are of second order stations. The instruments just described are of second order stations. The instruments just described are of second order stations.

The instruments just described are of second order stations. The instruments just described are of second order stations. The instruments just described are of second order stations.



"ERASMIC"
 The Dainty SOAP.
 Fragrant and Refreshing Best for the Complexion.

B. H. MYERS & Co., Ltd.
 PHONE 543 GOVT. ROAD, BOX 461.
 FURNITURE SUPPLIED ON HIRE PURCHASE.
 NO DEPOSIT.
 Small Monthly Payments.
 ALL OUR FURNITURE IS SOLD WITH A GUARANTEE.

NECTAR!
 THE DRINK OF KINGS AND THE KING OF DRINKS.
AYALA CHAMPAGNE
 Not a new and experimental beverage but an old established liquid vintage which has lived and thrived upon the reputation among connoisseurs.
 Stocked by all High Class Hotels and Wine and Spirit Merchants.
 Represented by: General Agents Ltd. (Govt. Road, NAIROBI).

Wolf Steam Engines.
 Portable and Stationary
 Made by MASCHINENFABRIK BUCKAU & WOLF A.G.
 OVER 100 WORKING IN EAST AFRICA TO-DAY.
 Agents—DENYER & DIBBLE, City House, Nairobi.
 Sole Agents—HANSING & CO., (E.A.) MOMBASA.

HOW IS THAT MALARIA IS NOT STAMPED OUT?
 because quinine only removes the fever producing germs from the blood, and an apparently healed person remains an incubator of infection to his neighbors.
 The actual infecting germs are destroyed and the fever is brought down by giving the new specific malarial remedy.
Plasmoquine Comp.
 Bayer Medical Laboratories.
 Obtainable through all Leading Chemists.

