

DRINK KFYA BEER

AND Support one of Your own Industries.

Kenya Breweries Ltd. Established 1922.

REGISTERED AT THE GENERAL POST OFFICE AS A NEWSPAPER.

GUARANTEED THE LARGEST CIRCULATION OF ANY NEWSPAPER IN KENYA, UGANDA, TANGANYIKA AND ZANZIBAR.

DAILY EDITION THE EAST AFRICAN Standard 14 PAGES

UGANDA ARGUS With which is incorporated THE OLDEST ESTABLISHED NEWSPAPER PUBLISHED IN KENYA AND UGANDA.

NAIROBI, THURSDAY, OCTOBER 17, 1929.

The LOUNGE

for Morning AND Afternoon TEAS

OPEN ON

SUNDAYS

TO Non-Residents.

PRICE, 20 CENTS.



GOVERNOR'S ADDRESS TO COUNCIL

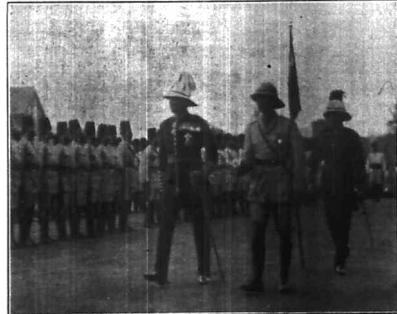
H. E. SIR E. GRIGG'S LAST BUDGET SESSION REVIEW.

Stresses Need for Early Finality in the Closer Union Problem.

ATTITUDE TO THE WILSON REPORT.

Committee of Enquiry into Political Conditions in the Kikuyu Reserve.

OPENING OF COUNCIL



H. E. Sir Edward Grigg, reviewing the Guard of Honour at the ceremonial opening of the new Session of the Kenya Legislative Council yesterday.

FURTHER PRESS COMMENT ON WILSON REPORT.

Critical Views By Independent Journal.

SUPPORT BY IRISH NEWSPAPER.

General Opinion Either Neutral or Unfavourable.

Most of the comment appearing in British journals on the report on East Africa by Sir Samuel Wilson is either of a neutral character or is unfavourable.

The 'Irish Times' supports the recommendations contained in the report, and says that would give the people on the spot a chance to obtain greater influence in the conduct of their own affairs.

A DIFFICULT MISSION.

Further comment on Sir Samuel Wilson's report has appeared in the Press. The 'Economist' an independent journal, in a column, while the 'Irish Times' supports the adoption of Sir Samuel Wilson's suggested scheme.

'The Economist' considers that the report is likely to make a difficult situation more difficult. The journal does not think the present Government would accept the responsibility of weakening the previous Government's policy of native interests being paramount.

(Continued on page 9.)

The Kenya Legislative Council opened its fifth session yesterday in Nairobi.

This will be the last Budget session, under normal circumstances, over which His Excellency the Governor, Sir Edward Grigg, will preside. His tour of office comes to an end about September next year.

Dealing with finance he pointed out that the locust campaign had cost £25,000 and the damage by locusts was estimated at £30,000 while the cost of famine relief totalled £28,000. He explained that, taking into consideration minor works authorized by Council, the expenditure of the Colony, in consequence of the foregoing emergency measures had exceeded the revenue this year by £180,000.

His Excellency tributed the wisdom of the country in supporting the policy of accumulating a surplus, which was totalled £200,000.

In a reference to education, the Governor announced that following completion of the building programme, Government intended to introduce at the end of next year the principle of compulsory education for white children.

An economic survey of the Kericho Branch Railway and the reduction of postal charges in April to 15 cents were also announced.

In a reference to the Native Lands Trust Bill, which has recently been approved, His Excellency said the long delay had encouraged agitators to spread unrest, especially in the Kikuyu country, and that agitation had sprung from a failure of crops in a wide area.

His Excellency announced that he had appointed a Committee some time ago to go into the Kikuyu Reserve and conduct a full enquiry into conditions. The Committee had been welcomed by responsible native leaders.

The Closer Settlement Scheme has been approved but the Land Bank proposal is still under consideration though Government intends to proceed with it.

In a reference to the Wilson Report he intimated his complete agreement with the views expressed by the Governor and Sir Jacob Harth and declared the time for practical investigation had passed.

It would be necessary a transfer of part responsibility in the Kenya Legislature to the inefficient ranks and he hoped it would not be suggested that the Governor of Uganda, and the Acting Governor of Kenya (with the support of Sir Samuel Wilson) were prepared to see Native interests sacrificed.

The Governor denounced as false, any suggestion that safeguarding of the interests of one race could only be achieved by sacrificing the interests of another.

The Governor's Review. THE BULKWICK OF SUPERFLUOUS SALARIES.

His Excellency the Governor Sir Edward Grigg, in his address to Council, said:

This is the fifth annual session of the Council which I have had the honour of opening. The review of the Colony's affairs which I am about to undertake will therefore be my last, and I shall venture with your indulgence to give it a rather wider range than usual, looking forward as well as back.

When I opened Council as your agent, I expressed my great appreciation of the steadfastness and good temper shown by the Council throughout a period of heavy strain caused by the already widespread shortage in the main during the first half of the present year the drought which was accompanied by locusts and native reserves. Strong measures were quite rightly taken, my absence to safeguard the food supplies, and the famine which outbreak some portions of the reserves was successfully combated with important results. These measures included the 'Colony's' surplus and the 'Colony's' surplus fund.

Since July, however, wide spread and well-distributed rains have transpired the fact of the year. Good crops are now assured and the prospects of the year. Good crops are now assured and the prospects of the year. Good crops are now assured and the prospects of the year.

Locust Campaign. £200,000 COST AND £300,000 DAMAGE.

The cost of the campaign against locusts has been very severe. In 1928 the resources available for locust control were £21,000 in the present year they have been estimated at £200,000. This is certainly an

Unemployed in Britain.

(BY WIRELESS.)

By the total number of unemployed on October 7, 1929, was 2,200,000 more than the week before, but 112,500 less than the year before—British official figures.

Unemployment in Britain. The total number of unemployed on October 7, 1929, was 2,200,000 more than the week before, but 112,500 less than the year before—British official figures.

Local Government. CITY OF NAIROBI.

The address annual statement with the local authorities expenditure of £21,000 against income of £20,000 for the year 1928-29. The budget for 1929-30 is £200,000 against income of £200,000.

Today's Features

- 'The East African' 13.14
'The Daily Nation' 13.14
'The Daily Star' 13.14
'The Daily Telegraph' 13.14
'The Daily Express' 13.14
'The Daily Mail' 13.14
'The Daily Mirror' 13.14
'The Daily News' 13.14
'The Daily Herald' 13.14
'The Daily Worker' 13.14
'The Daily People' 13.14
'The Daily Express' 13.14
'The Daily Mail' 13.14
'The Daily Mirror' 13.14
'The Daily News' 13.14
'The Daily Herald' 13.14
'The Daily Worker' 13.14
'The Daily People' 13.14

Effect on Finances. Expenditure Exceeds Revenue By £180,000.

The address annual statement with the local authorities expenditure of £21,000 against income of £20,000 for the year 1928-29. The budget for 1929-30 is £200,000 against income of £200,000.

Local Government. CITY OF NAIROBI.

The address annual statement with the local authorities expenditure of £21,000 against income of £20,000 for the year 1928-29. The budget for 1929-30 is £200,000 against income of £200,000.

Today's Features

- 'The East African' 13.14
'The Daily Nation' 13.14
'The Daily Star' 13.14
'The Daily Telegraph' 13.14
'The Daily Express' 13.14
'The Daily Mail' 13.14
'The Daily Mirror' 13.14
'The Daily News' 13.14
'The Daily Herald' 13.14
'The Daily Worker' 13.14
'The Daily People' 13.14
'The Daily Express' 13.14
'The Daily Mail' 13.14
'The Daily Mirror' 13.14
'The Daily News' 13.14
'The Daily Herald' 13.14
'The Daily Worker' 13.14
'The Daily People' 13.14

Unemployed in Britain.

(BY WIRELESS.)

By the total number of unemployed on October 7, 1929, was 2,200,000 more than the week before, but 112,500 less than the year before—British official figures.

Unemployment in Britain. The total number of unemployed on October 7, 1929, was 2,200,000 more than the week before, but 112,500 less than the year before—British official figures.

Local Government. CITY OF NAIROBI.

The address annual statement with the local authorities expenditure of £21,000 against income of £20,000 for the year 1928-29. The budget for 1929-30 is £200,000 against income of £200,000.

Today's Features

- 'The East African' 13.14
'The Daily Nation' 13.14
'The Daily Star' 13.14
'The Daily Telegraph' 13.14
'The Daily Express' 13.14
'The Daily Mail' 13.14
'The Daily Mirror' 13.14
'The Daily News' 13.14
'The Daily Herald' 13.14
'The Daily Worker' 13.14
'The Daily People' 13.14
'The Daily Express' 13.14
'The Daily Mail' 13.14
'The Daily Mirror' 13.14
'The Daily News' 13.14
'The Daily Herald' 13.14
'The Daily Worker' 13.14
'The Daily People' 13.14

CHILDPROF FOR CHILDREN

There is nothing made to equal 'Childprof' in Comfort, in Wearing and Washing Qualities, and in the end, in Price Economy.



CHILDREN'S VESTS

Children's Vests are made in the finest quality, light blue, low neck, with elasticated cuffs and collar, and are intended for older children wearing open garments and lower at the neck. The other has a high neck and button front and is known as style B.

CHILDREN'S COMBIS.

Childprof Combinations are made for fine dress, perfect comfort and great length of life. There is a strengthening whenever damaged, and the full wrap over a reinforced at top and bottom. Style One (on left) has high neck, open all down the front. Style Three, — Low neck, closed front all down.

WHITEAWAY LAIDLAW & Co. Ltd. for all CHILDPROF in NAIROBI.

ZEISS

Best illumination of slow windows.
 Your Show Window is your best salesman. While the last few years the art of lighting show windows has passed in rapid strides from success to success. An increase of its intensity to nine times the initial intensity in the finest show illumination, as achieved by the

ZEISS REFLECTORS
 constituted in itself an achievement which represented all that was highest in former years.

The new Zeiss Most Brilliant Reflector furnishes a means of lighting show windows which surpass even this intensified illumination by a multiple. Using only a 100-watt filament bulb the show window may be furnished in the principal direction, an intensity of about 6000 c.p. ft., roughly a light which is 20 times as intense as that needed by a filament lamp without reflector.

Ask for our catalogue containing full particulars for all the kinds of indoor and outdoor lighting.

"THE LENS," Limited.
 P.O. Box 271, Princes' House, NAIROBI. Phone: 228

HONEST BEER

HOPS, MALT, YEAST and PURE SPRING WATER.

(NOTHING else) That's

McEWAN'S

OVERMAN AND COMPANY
 MOMBASA.
 SOLE AGENTS.

CEMENT

HAND BRAND PORTLAND
 CORRUGATED IRON SHEETS,
 GALVANISED PLAIN SHEETS,

ASBESTOS SHEETS,
 PLY BOARDS and SX BOARDS.

AT VERY LOWEST POSSIBLE PRICE.
Albval Shariff & Sons.
 Government Road and Bazaar,
 NAIROBI. Phone 274

CROP PROSPECTS IN THE TRANS-KIOJA.

Coffee and Maize in Good Condition.

DEVELOPMENT IN DISTRICT

Chamber of Commerce for Kiolo.

STANDARD CORRELATION.
 Kiolo, October 16. We seem at last to be enjoying a break in the rains which have been more than generous this year. The coffee planters have of course welcomed every drop, but the remainder of us are only pleased to welcome a spot of sunshine. Maize raising has already commenced in some parts of the district, and from everywhere reports of excellent crops are coming in. It is expected that the maize crop will be well above the average. Kiolo itself is at last beginning to walk up and maize buyers, transport contractors, and agricultural machinery agents are all getting busy in order to obtain their share of the season's business.

The Wilson Report.

Politically also, we expect a certain liveliness in the next future. The Wilson report has only just reached us and we have not yet had time to digest it, but it appears at first sight to be quite the most reasonable, clearly defined, and workable document which has appeared since we entered the Commission Era. No doubt the district as a whole will express its opinion in due course.

Next we have the important question of Local Government. It is hoped that the Trans-Kiolo, as a district will connect to Kiolo, as a municipality will probably follow suit. Meetings are to be held in Kiolo in the near future to discuss these matters.

The Trans-Nova Branch of the East African Women's League has not been idle. Meetings have been held and she, too, lectures on the subject of matters have been given under the auspices.

Building Schemes.

One hears rumours of further building schemes in Kiolo, and work has actually been commenced on the extension to the Kiolo

Hotel. These practical expressions of faith in the future of the District are the finest propaganda we could wish for.

Landless Gnat Prevention.

The district has been much troubled by the lately inadequate mosquito netting for the sake of many of our citizens in Kiolo. Recently three natives, one of whom was a constable in connection with a serious offence against a European, were without aid of the gnat at night and are still at large despite energetic efforts on the part of the police to reduce them.

It appears that the staff of the gnat netting is being increased to eight night guard and the holding of gnat nets is being made a compulsory way of escape in a determined effort to prevent the further spread of the gnat. It is to be hoped that the gnat netting will be made more effective and that the natives will be made to understand that they are not to be considered more valuable than the natives necessary.

Telephone Facilities.

We are glad to notice that the Postal authorities are aware of the growing importance of Kiolo. A telephone system has been studied and has been very well supported and objections to the Post Office to provide better facilities for the public have been carried out. We are duly appreciative.

Locusts.

With the opening of the crop the locust menace has receded in to the distance, but we will have some of heavy infestations in Turkana and Karamoja which give us seriously to think whether the very large sums expended on the recent campaigns have been justified. No doubt some good has been done but it appears highly probable that the locusts are here and in so many instances have been the expense incurred. The Kiolo Commodity Company, a co-operative of the district, is considering the production of at least one if not two plays, and in the meantime the Kiolo Amateur Dramatic Society is advertised to produce "The Hilarious" at the Kiolo Club on October 26 and on October 27. We had some success will attend their efforts.

Following the great success which attended the first annual show of the Trans-Nova Historical Society, the Trans-Nova Post Office Society is holding a show on October 25. The recent visit of the Agricultural Commission brought into focus the importance of agriculture for farms in the district and we hope this new venture will receive energetic support.

A Chamber of Commerce.

At last Kiolo is to have a

ASLEEP IN MOMBASA MID.

Dramatic End to African Safari.

ADVENTURE TALKS

A remarkable tale of adventure in East Africa was told in a home "talk" given by Mr. J. H. ROGERS, a leading sportsman, at the Mombasa Club on October 16. The story was that the party was on a safari in the north-west of the continent of East Africa, in the district of the Victoria Nile. The party was on a safari in the north-west of the continent of East Africa, in the district of the Victoria Nile. The party was on a safari in the north-west of the continent of East Africa, in the district of the Victoria Nile.

The man fell so heavily that the car stopped down the hills backwards and he said to those who then he had a touch of fever.

After the rain, few days the horses of the second car broke down and he was forced to leave the car to be repaired, with horses to be sent along with him. The man fell so heavily that the car stopped down the hills backwards and he said to those who then he had a touch of fever.

The man fell so heavily that the car stopped down the hills backwards and he said to those who then he had a touch of fever.

The man fell so heavily that the car stopped down the hills backwards and he said to those who then he had a touch of fever.

The man fell so heavily that the car stopped down the hills backwards and he said to those who then he had a touch of fever.


The man fell so heavily that the car stopped down the hills backwards and he said to those who then he had a touch of fever.

The man fell so heavily that the car stopped down the hills backwards and he said to those who then he had a touch of fever.

The man fell so heavily that the car stopped down the hills backwards and he said to those who then he had a touch of fever.

The man fell so heavily that the car stopped down the hills backwards and he said to those who then he had a touch of fever.

The man fell so heavily that the car stopped down the hills backwards and he said to those who then he had a touch of fever.

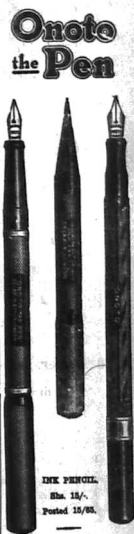


Half a Bottle of
Crawford's LIQUEUR
 SCOTCH WHISKY

is better than a whole bottle of inferior whisky.

A. & A. CRAWFORD,
 LEITH - SCOTLAND

Onoto the Pen



INK PENNIGL
 Eba. 18/6.
 Posted 14/6/29.

THE TROCADERO BAR
 and
RESTAURANT
 Proprietor—W. M. GODFREY.
 Manager—J. H. ROGERS.

GRILLS—ALL MEALS—REFRESHMENTS—TEAS.

UNDER ENTIRELY NEW MANAGEMENT.

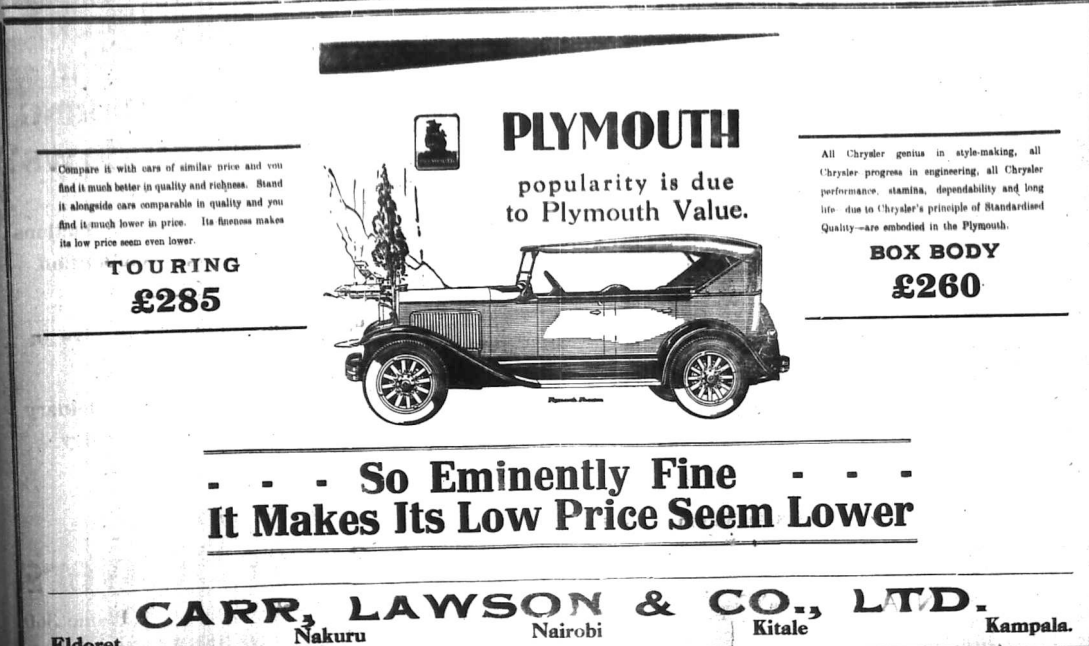
Hours 8 a.m. --- Till 11 p.m.

Miss KATHLEEN BATES, A.R.C.M.
 RECEIVES PUPILS FOR
 PIANOFORTE—SINGING—HARMONY
 at the MUSIC STUDIO, SIXTH AVENUE.
 POSTAL ADDRESS: Box 417.

TWO MOMBASA.
 A nib to suit all hands (without GHS Band)
 Eba. 17/60 posted Eba. 12/60.
 Standard Stationery Stores
 P. O. Box 220, NAIROBI.

Compare it with cars of similar price and you find it much better in quality and richness. Stand it alongside cars comparable in quality and you find it much lower in price. Its fitness makes its low price seem even lower.

TOURING £285



PLYMOUTH
 popularity is due to Plymouth Value.

All Chrysler genius in style-making, all Chrysler progress in engineering, all Chrysler performance, stamina, dependability and long life—due to Chrysler's principle of Standardized Quality—are embodied in the Plymouth.

BOX BODY £260

So Eminently Fine It Makes Its Low Price Seem Lower

CARR, LAWSON & CO., LTD.
 Eldoret Nakuru Nairobi Kitale Kampala.

MOTOR NEWS

From Road & Showroom.

THE INTERNATIONAL SIX DAYS.

Lessons of the Trial

TRIFURC FOR BRITISH PRODUCTS.

The outstanding point of this year's International Six Days trial is that British riders on British machines entirely won the hand. When it is remembered that this test was performed on an "even" course against all sorts of odds and in the teeth of the strongest opposition of every description, the achievement simply commensurate the British competitors for the many headlocks which they had no face to win the International Six Days and to emerge here as prize for which we had no entry and to collect over here the gold medals is a performance which can only be judged from the knowledge that the world we should indeed be proud of for that. The fact that the winners and of our riders say "Olympic" in "Motor Cycling".

Now in all all over the world two such ambitious a task was undertaken. Two months before the organization was in too many hands. How much better it would have been for everybody had one or even two, come before him from which to conduct the event. It might have been better able to see quite so much of the course and to have been able to come approximating to test in which they have been able to. If this had been the case, the situation would have been considerably simplified. Officials would have had time to be taken before they were displaced from their posts. The British Championship could have been held which plenty of suitable hotel accommodation, instead of being held in the competitors in small motor hotels, which was very unsuitable for lodging the large number of people connected with the trial. It must be remembered, in passing, that some of the quarters provided were absolutely atrocious.

More important still is another point which would have been tackled if it was Mr. Ebbels who was in charge. It had to come a paper ship. Mr. Loughborough and Mr. Ebbels worked all night with Mr. Ebbels was a terrific amount of hard work. Yet, despite their efforts the majority of competitors were unable to achieve until the conclusion of the event. One or two might have been able to do so, but the fact that the British riders on British machines were able to do so is a point which should be noted. The fact that the British riders on British machines were able to do so is a point which should be noted.

One example only of the difficulty need be given. Before the high-speed test a number of the players could not be changed while waiting for the start. Immediately after the start, the British rider, Mr. Ebbels, was in the lead and was in the lead. The British rider, Mr. Ebbels, was in the lead and was in the lead. The British rider, Mr. Ebbels, was in the lead and was in the lead.

The fact that the British riders on British machines were able to do so is a point which should be noted. The fact that the British riders on British machines were able to do so is a point which should be noted. The fact that the British riders on British machines were able to do so is a point which should be noted.

The fact that the British riders on British machines were able to do so is a point which should be noted. The fact that the British riders on British machines were able to do so is a point which should be noted. The fact that the British riders on British machines were able to do so is a point which should be noted.

The fact that the British riders on British machines were able to do so is a point which should be noted. The fact that the British riders on British machines were able to do so is a point which should be noted. The fact that the British riders on British machines were able to do so is a point which should be noted.

DODGE BROTHERS

NEW SIX MOTOR CARS

Stylish Beauty with Proved Reliability.

Attractive beauty and smart style distinguish Dodge Brothers NEW Motor Cars which are world-famous for their proved reliability.

Stylish design has achieved as once competitors' length, the appearance of luxurious with simple elegance, attractive lightness and genuine comfort.

The bodies finished in pastel lacquer colors, with pure, unbroken lines, and low rectangular windows, create a convincing picture of exterior smartness. Interior beauty speaks for itself in the splendid upholstery and fittings. A handsome car—with greatly increased fuel economy and proved reliability in every detail!

S. Fisher & Simmons (E.A.) Ltd.,
Victoria Street, NAIROBI.

- W. SPRINGETT & Co.,
- J. J. RICE,
- KASSAM EBRAHIM & Co.,
- D. CREIGHTON-BALFOUR & Co.,
- ROVELLS & WESTCOCK,
- SARGAN & Co.,
- MORARA,
- KITALE,
- KAMPALA,
- NDALLO and
- ARTSIA,
- NYANZA.

Metropolitan Garage.

Specialists in Automobile Repair

WE ALWAYS HAVE A NUMBER OF SELECTED AND OVERHAULED AND BLENDED CARS IN STOCK.

Rugby, Box Body, 1927 Model, 2000 cc. 1928 Model, 2000 cc. 1929 Model, 2000 cc. 1930 Model, 2000 cc. 1931 Model, 2000 cc. 1932 Model, 2000 cc. 1933 Model, 2000 cc. 1934 Model, 2000 cc. 1935 Model, 2000 cc. 1936 Model, 2000 cc. 1937 Model, 2000 cc. 1938 Model, 2000 cc. 1939 Model, 2000 cc. 1940 Model, 2000 cc. 1941 Model, 2000 cc. 1942 Model, 2000 cc. 1943 Model, 2000 cc. 1944 Model, 2000 cc. 1945 Model, 2000 cc. 1946 Model, 2000 cc. 1947 Model, 2000 cc. 1948 Model, 2000 cc. 1949 Model, 2000 cc. 1950 Model, 2000 cc. 1951 Model, 2000 cc. 1952 Model, 2000 cc. 1953 Model, 2000 cc. 1954 Model, 2000 cc. 1955 Model, 2000 cc. 1956 Model, 2000 cc. 1957 Model, 2000 cc. 1958 Model, 2000 cc. 1959 Model, 2000 cc. 1960 Model, 2000 cc. 1961 Model, 2000 cc. 1962 Model, 2000 cc. 1963 Model, 2000 cc. 1964 Model, 2000 cc. 1965 Model, 2000 cc. 1966 Model, 2000 cc. 1967 Model, 2000 cc. 1968 Model, 2000 cc. 1969 Model, 2000 cc. 1970 Model, 2000 cc. 1971 Model, 2000 cc. 1972 Model, 2000 cc. 1973 Model, 2000 cc. 1974 Model, 2000 cc. 1975 Model, 2000 cc. 1976 Model, 2000 cc. 1977 Model, 2000 cc. 1978 Model, 2000 cc. 1979 Model, 2000 cc. 1980 Model, 2000 cc. 1981 Model, 2000 cc. 1982 Model, 2000 cc. 1983 Model, 2000 cc. 1984 Model, 2000 cc. 1985 Model, 2000 cc. 1986 Model, 2000 cc. 1987 Model, 2000 cc. 1988 Model, 2000 cc. 1989 Model, 2000 cc. 1990 Model, 2000 cc. 1991 Model, 2000 cc. 1992 Model, 2000 cc. 1993 Model, 2000 cc. 1994 Model, 2000 cc. 1995 Model, 2000 cc. 1996 Model, 2000 cc. 1997 Model, 2000 cc. 1998 Model, 2000 cc. 1999 Model, 2000 cc. 2000 Model, 2000 cc. 2001 Model, 2000 cc. 2002 Model, 2000 cc. 2003 Model, 2000 cc. 2004 Model, 2000 cc. 2005 Model, 2000 cc. 2006 Model, 2000 cc. 2007 Model, 2000 cc. 2008 Model, 2000 cc. 2009 Model, 2000 cc. 2010 Model, 2000 cc. 2011 Model, 2000 cc. 2012 Model, 2000 cc. 2013 Model, 2000 cc. 2014 Model, 2000 cc. 2015 Model, 2000 cc. 2016 Model, 2000 cc. 2017 Model, 2000 cc. 2018 Model, 2000 cc. 2019 Model, 2000 cc. 2020 Model, 2000 cc. 2021 Model, 2000 cc. 2022 Model, 2000 cc. 2023 Model, 2000 cc. 2024 Model, 2000 cc. 2025 Model, 2000 cc. 2026 Model, 2000 cc. 2027 Model, 2000 cc. 2028 Model, 2000 cc. 2029 Model, 2000 cc. 2030 Model, 2000 cc. 2031 Model, 2000 cc. 2032 Model, 2000 cc. 2033 Model, 2000 cc. 2034 Model, 2000 cc. 2035 Model, 2000 cc. 2036 Model, 2000 cc. 2037 Model, 2000 cc. 2038 Model, 2000 cc. 2039 Model, 2000 cc. 2040 Model, 2000 cc. 2041 Model, 2000 cc. 2042 Model, 2000 cc. 2043 Model, 2000 cc. 2044 Model, 2000 cc. 2045 Model, 2000 cc. 2046 Model, 2000 cc. 2047 Model, 2000 cc. 2048 Model, 2000 cc. 2049 Model, 2000 cc. 2050 Model, 2000 cc. 2051 Model, 2000 cc. 2052 Model, 2000 cc. 2053 Model, 2000 cc. 2054 Model, 2000 cc. 2055 Model, 2000 cc. 2056 Model, 2000 cc. 2057 Model, 2000 cc. 2058 Model, 2000 cc. 2059 Model, 2000 cc. 2060 Model, 2000 cc. 2061 Model, 2000 cc. 2062 Model, 2000 cc. 2063 Model, 2000 cc. 2064 Model, 2000 cc. 2065 Model, 2000 cc. 2066 Model, 2000 cc. 2067 Model, 2000 cc. 2068 Model, 2000 cc. 2069 Model, 2000 cc. 2070 Model, 2000 cc. 2071 Model, 2000 cc. 2072 Model, 2000 cc. 2073 Model, 2000 cc. 2074 Model, 2000 cc. 2075 Model, 2000 cc. 2076 Model, 2000 cc. 2077 Model, 2000 cc. 2078 Model, 2000 cc. 2079 Model, 2000 cc. 2080 Model, 2000 cc. 2081 Model, 2000 cc. 2082 Model, 2000 cc. 2083 Model, 2000 cc. 2084 Model, 2000 cc. 2085 Model, 2000 cc. 2086 Model, 2000 cc. 2087 Model, 2000 cc. 2088 Model, 2000 cc. 2089 Model, 2000 cc. 2090 Model, 2000 cc. 2091 Model, 2000 cc. 2092 Model, 2000 cc. 2093 Model, 2000 cc. 2094 Model, 2000 cc. 2095 Model, 2000 cc. 2096 Model, 2000 cc. 2097 Model, 2000 cc. 2098 Model, 2000 cc. 2099 Model, 2000 cc. 2100 Model, 2000 cc. 2101 Model, 2000 cc. 2102 Model, 2000 cc. 2103 Model, 2000 cc. 2104 Model, 2000 cc. 2105 Model, 2000 cc. 2106 Model, 2000 cc. 2107 Model, 2000 cc. 2108 Model, 2000 cc. 2109 Model, 2000 cc. 2110 Model, 2000 cc. 2111 Model, 2000 cc. 2112 Model, 2000 cc. 2113 Model, 2000 cc. 2114 Model, 2000 cc. 2115 Model, 2000 cc. 2116 Model, 2000 cc. 2117 Model, 2000 cc. 2118 Model, 2000 cc. 2119 Model, 2000 cc. 2120 Model, 2000 cc. 2121 Model, 2000 cc. 2122 Model, 2000 cc. 2123 Model, 2000 cc. 2124 Model, 2000 cc. 2125 Model, 2000 cc. 2126 Model, 2000 cc. 2127 Model, 2000 cc. 2128 Model, 2000 cc. 2129 Model, 2000 cc. 2130 Model, 2000 cc. 2131 Model, 2000 cc. 2132 Model, 2000 cc. 2133 Model, 2000 cc. 2134 Model, 2000 cc. 2135 Model, 2000 cc. 2136 Model, 2000 cc. 2137 Model, 2000 cc. 2138 Model, 2000 cc. 2139 Model, 2000 cc. 2140 Model, 2000 cc. 2141 Model, 2000 cc. 2142 Model, 2000 cc. 2143 Model, 2000 cc. 2144 Model, 2000 cc. 2145 Model, 2000 cc. 2146 Model, 2000 cc. 2147 Model, 2000 cc. 2148 Model, 2000 cc. 2149 Model, 2000 cc. 2150 Model, 2000 cc. 2151 Model, 2000 cc. 2152 Model, 2000 cc. 2153 Model, 2000 cc. 2154 Model, 2000 cc. 2155 Model, 2000 cc. 2156 Model, 2000 cc. 2157 Model, 2000 cc. 2158 Model, 2000 cc. 2159 Model, 2000 cc. 2160 Model, 2000 cc. 2161 Model, 2000 cc. 2162 Model, 2000 cc. 2163 Model, 2000 cc. 2164 Model, 2000 cc. 2165 Model, 2000 cc. 2166 Model, 2000 cc. 2167 Model, 2000 cc. 2168 Model, 2000 cc. 2169 Model, 2000 cc. 2170 Model, 2000 cc. 2171 Model, 2000 cc. 2172 Model, 2000 cc. 2173 Model, 2000 cc. 2174 Model, 2000 cc. 2175 Model, 2000 cc. 2176 Model, 2000 cc. 2177 Model, 2000 cc. 2178 Model, 2000 cc. 2179 Model, 2000 cc. 2180 Model, 2000 cc. 2181 Model, 2000 cc. 2182 Model, 2000 cc. 2183 Model, 2000 cc. 2184 Model, 2000 cc. 2185 Model, 2000 cc. 2186 Model, 2000 cc. 2187 Model, 2000 cc. 2188 Model, 2000 cc. 2189 Model, 2000 cc. 2190 Model, 2000 cc. 2191 Model, 2000 cc. 2192 Model, 2000 cc. 2193 Model, 2000 cc. 2194 Model, 2000 cc. 2195 Model, 2000 cc. 2196 Model, 2000 cc. 2197 Model, 2000 cc. 2198 Model, 2000 cc. 2199 Model, 2000 cc. 2200 Model, 2000 cc. 2201 Model, 2000 cc. 2202 Model, 2000 cc. 2203 Model, 2000 cc. 2204 Model, 2000 cc. 2205 Model, 2000 cc. 2206 Model, 2000 cc. 2207 Model, 2000 cc. 2208 Model, 2000 cc. 2209 Model, 2000 cc. 2210 Model, 2000 cc. 2211 Model, 2000 cc. 2212 Model, 2000 cc. 2213 Model, 2000 cc. 2214 Model, 2000 cc. 2215 Model, 2000 cc. 2216 Model, 2000 cc. 2217 Model, 2000 cc. 2218 Model, 2000 cc. 2219 Model, 2000 cc. 2220 Model, 2000 cc. 2221 Model, 2000 cc. 2222 Model, 2000 cc. 2223 Model, 2000 cc. 2224 Model, 2000 cc. 2225 Model, 2000 cc. 2226 Model, 2000 cc. 2227 Model, 2000 cc. 2228 Model, 2000 cc. 2229 Model, 2000 cc. 2230 Model, 2000 cc. 2231 Model, 2000 cc. 2232 Model, 2000 cc. 2233 Model, 2000 cc. 2234 Model, 2000 cc. 2235 Model, 2000 cc. 2236 Model, 2000 cc. 2237 Model, 2000 cc. 2238 Model, 2000 cc. 2239 Model, 2000 cc. 2240 Model, 2000 cc. 2241 Model, 2000 cc. 2242 Model, 2000 cc. 2243 Model, 2000 cc. 2244 Model, 2000 cc. 2245 Model, 2000 cc. 2246 Model, 2000 cc. 2247 Model, 2000 cc. 2248 Model, 2000 cc. 2249 Model, 2000 cc. 2250 Model, 2000 cc. 2251 Model, 2000 cc. 2252 Model, 2000 cc. 2253 Model, 2000 cc. 2254 Model, 2000 cc. 2255 Model, 2000 cc. 2256 Model, 2000 cc. 2257 Model, 2000 cc. 2258 Model, 2000 cc. 2259 Model, 2000 cc. 2260 Model, 2000 cc. 2261 Model, 2000 cc. 2262 Model, 2000 cc. 2263 Model, 2000 cc. 2264 Model, 2000 cc. 2265 Model, 2000 cc. 2266 Model, 2000 cc. 2267 Model, 2000 cc. 2268 Model, 2000 cc. 2269 Model, 2000 cc. 2270 Model, 2000 cc. 2271 Model, 2000 cc. 2272 Model, 2000 cc. 2273 Model, 2000 cc. 2274 Model, 2000 cc. 2275 Model, 2000 cc. 2276 Model, 2000 cc. 2277 Model, 2000 cc. 2278 Model, 2000 cc. 2279 Model, 2000 cc. 2280 Model, 2000 cc. 2281 Model, 2000 cc. 2282 Model, 2000 cc. 2283 Model, 2000 cc. 2284 Model, 2000 cc. 2285 Model, 2000 cc. 2286 Model, 2000 cc. 2287 Model, 2000 cc. 2288 Model, 2000 cc. 2289 Model, 2000 cc. 2290 Model, 2000 cc. 2291 Model, 2000 cc. 2292 Model, 2000 cc. 2293 Model, 2000 cc. 2294 Model, 2000 cc. 2295 Model, 2000 cc. 2296 Model, 2000 cc. 2297 Model, 2000 cc. 2298 Model, 2000 cc. 2299 Model, 2000 cc. 2300 Model, 2000 cc. 2301 Model, 2000 cc. 2302 Model, 2000 cc. 2303 Model, 2000 cc. 2304 Model, 2000 cc. 2305 Model, 2000 cc. 2306 Model, 2000 cc. 2307 Model, 2000 cc. 2308 Model, 2000 cc. 2309 Model, 2000 cc. 2310 Model, 2000 cc. 2311 Model, 2000 cc. 2312 Model, 2000 cc. 2313 Model, 2000 cc. 2314 Model, 2000 cc. 2315 Model, 2000 cc. 2316 Model, 2000 cc. 2317 Model, 2000 cc. 2318 Model, 2000 cc. 2319 Model, 2000 cc. 2320 Model, 2000 cc. 2321 Model, 2000 cc. 2322 Model, 2000 cc. 2323 Model, 2000 cc. 2324 Model, 2000 cc. 2325 Model, 2000 cc. 2326 Model, 2000 cc. 2327 Model, 2000 cc. 2328 Model, 2000 cc. 2329 Model, 2000 cc. 2330 Model, 2000 cc. 2331 Model, 2000 cc. 2332 Model, 2000 cc. 2333 Model, 2000 cc. 2334 Model, 2000 cc. 2335 Model, 2000 cc. 2336 Model, 2000 cc. 2337 Model, 2000 cc. 2338 Model, 2000 cc. 2339 Model, 2000 cc. 2340 Model, 2000 cc. 2341 Model, 2000 cc. 2342 Model, 2000 cc. 2343 Model, 2000 cc. 2344 Model, 2000 cc. 2345 Model, 2000 cc. 2346 Model, 2000 cc. 2347 Model, 2000 cc. 2348 Model, 2000 cc. 2349 Model, 2000 cc. 2350 Model, 2000 cc. 2351 Model, 2000 cc. 2352 Model, 2000 cc. 2353 Model, 2000 cc. 2354 Model, 2000 cc. 2355 Model, 2000 cc. 2356 Model, 2000 cc. 2357 Model, 2000 cc. 2358 Model, 2000 cc. 2359 Model, 2000 cc. 2360 Model, 2000 cc. 2361 Model, 2000 cc. 2362 Model, 2000 cc. 2363 Model, 2000 cc. 2364 Model, 2000 cc. 2365 Model, 2000 cc. 2366 Model, 2000 cc. 2367 Model, 2000 cc. 2368 Model, 2000 cc. 2369 Model, 2000 cc. 2370 Model, 2000 cc. 2371 Model, 2000 cc. 2372 Model, 2000 cc. 2373 Model, 2000 cc. 2374 Model, 2000 cc. 2375 Model, 2000 cc. 2376 Model, 2000 cc. 2377 Model, 2000 cc. 2378 Model, 2000 cc. 2379 Model, 2000 cc. 2380 Model, 2000 cc. 2381 Model, 2000 cc. 2382 Model, 2000 cc. 2383 Model, 2000 cc. 2384 Model, 2000 cc. 2385 Model, 2000 cc. 2386 Model, 2000 cc. 2387 Model, 2000 cc. 2388 Model, 2000 cc. 2389 Model, 2000 cc. 2390 Model, 2000 cc. 2391 Model, 2000 cc. 2392 Model, 2000 cc. 2393 Model, 2000 cc. 2394 Model, 2000 cc. 2395 Model, 2000 cc. 2396 Model, 2000 cc. 2397 Model, 2000 cc. 2398 Model, 2000 cc. 2399 Model, 2000 cc. 2400 Model, 2000 cc. 2401 Model, 2000 cc. 2402 Model, 2000 cc. 2403 Model, 2000 cc. 2404 Model, 2000 cc. 2405 Model, 2000 cc. 2406 Model, 2000 cc. 2407 Model, 2000 cc. 2408 Model, 2000 cc. 2409 Model, 2000 cc. 2410 Model, 2000 cc. 2411 Model, 2000 cc. 2412 Model, 2000 cc. 2413 Model, 2000 cc. 2414 Model, 2000 cc. 2415 Model, 2000 cc. 2416 Model, 2000 cc. 2417 Model, 2000 cc. 2418 Model, 2000 cc. 2419 Model, 2000 cc. 2420 Model, 2000 cc. 2421 Model, 2000 cc. 2422 Model, 2000 cc. 2423 Model, 2000 cc. 2424 Model, 2000 cc. 2425 Model, 2000 cc. 2426 Model, 2000 cc. 2427 Model, 2000 cc. 2428 Model, 2000 cc. 2429 Model, 2000 cc. 2430 Model, 2000 cc. 2431 Model, 2000 cc. 2432 Model, 2000 cc. 2433 Model, 2000 cc. 2434 Model, 2000 cc. 2435 Model, 2000 cc. 2436 Model, 2000 cc. 2437 Model, 2000 cc. 2438 Model, 2000 cc. 2439 Model, 2000 cc. 2440 Model, 2000 cc. 2441 Model, 2000 cc. 2442 Model, 2000 cc. 2443 Model, 2000 cc. 2444 Model, 2000 cc. 2445 Model, 2000 cc. 2446 Model, 2000 cc. 2447 Model, 2000 cc. 2448 Model, 2000 cc. 2449 Model, 2000 cc. 2450 Model, 2000 cc. 2451 Model, 2000 cc. 2452 Model, 2000 cc. 2453 Model, 2000 cc. 2454 Model, 2000 cc. 2455 Model, 2000 cc. 2456 Model, 2000 cc. 2457 Model, 2000 cc. 2458 Model, 2000 cc. 2459 Model, 2000 cc. 2460 Model, 2000 cc. 2461 Model, 2000 cc. 2462 Model, 2000 cc. 2463 Model, 2000 cc. 2464 Model, 2000 cc. 2465 Model, 2000 cc. 2466 Model, 2000 cc. 2467 Model, 2000 cc. 2468 Model, 2000 cc. 2469 Model, 2000 cc. 2470 Model, 2000 cc. 2471 Model, 2000 cc. 2472 Model, 2000 cc. 2473 Model, 2000 cc. 2474 Model, 2000 cc. 2475 Model, 2000 cc. 2476 Model, 2000 cc. 2477 Model, 2000 cc. 2478 Model, 2000 cc. 2479 Model, 2000 cc. 2480 Model, 2000 cc. 2481 Model, 2000 cc. 2482 Model, 2000 cc. 2483 Model, 2000 cc. 2484 Model, 2000 cc. 2485 Model, 2000 cc. 2486 Model, 2000 cc. 2487 Model, 2000 cc. 2488 Model, 2000 cc. 2489 Model, 2000 cc. 2490 Model, 2000 cc. 2491 Model, 2000 cc. 2492 Model, 2000 cc. 2493 Model, 2000 cc. 2494 Model, 2000 cc. 2495 Model, 2000 cc. 2496 Model, 2000 cc. 2497 Model, 2000 cc. 2498 Model, 2000 cc. 2499 Model, 2000 cc. 2500 Model, 2000 cc. 2501 Model, 2000 cc. 2502 Model, 2000 cc. 2503 Model, 2000 cc. 2504 Model, 2000 cc. 2505 Model, 2000 cc. 2506 Model, 2000 cc. 2507 Model, 2000 cc. 2508 Model, 2000 cc. 2509 Model, 2000 cc. 2510 Model, 2000 cc. 2511 Model, 2000 cc. 2512 Model, 2000 cc. 2513 Model, 2000 cc. 2514 Model, 2000 cc. 2515 Model, 2000 cc. 2516 Model, 2000 cc. 2517 Model, 2000 cc. 2518 Model, 2000 cc. 2519 Model, 2000 cc. 2520 Model, 2000 cc. 2521 Model, 2000 cc. 2522 Model, 2000 cc. 2523 Model, 2000 cc. 2524 Model, 2000 cc. 2525 Model, 2000 cc. 2526 Model, 2000 cc. 2527 Model, 2000 cc. 2528 Model, 2000 cc. 2529 Model, 2000 cc. 2530 Model, 2000 cc. 2531 Model, 2000 cc. 2532 Model, 2000 cc. 2533 Model, 2000 cc. 2534 Model, 2000 cc. 2535 Model, 2000 cc. 2536 Model, 2000 cc. 2537 Model, 2000 cc. 2538 Model, 2000 cc. 2539 Model, 2000 cc. 2540 Model, 2000 cc. 2541 Model, 2000 cc. 2542 Model, 2000 cc. 2543 Model, 2000 cc. 2544 Model, 2000 cc. 2545 Model, 2000 cc. 2546 Model, 2000 cc. 2547 Model, 2000 cc. 2548 Model, 2000 cc. 2549 Model, 2000 cc. 2550 Model, 2000 cc. 2551 Model, 2000 cc. 2552 Model, 2000 cc. 2553 Model, 2000 cc. 2554 Model, 2000 cc. 2555 Model, 2000 cc. 2556 Model, 2000 cc. 2557 Model, 2000 cc. 2558 Model, 2000 cc. 2559 Model, 2000 cc. 2560 Model, 2000 cc. 2561 Model, 2000 cc. 2562 Model, 2000 cc. 2563 Model, 2000 cc. 2564 Model, 2000 cc. 2565 Model, 2000 cc. 2566 Model, 2000 cc. 2567 Model, 2000 cc. 2568 Model, 2000 cc. 2569 Model, 2000 cc. 2570 Model, 2000 cc. 2571 Model, 2000 cc. 2572 Model, 2000 cc. 2573 Model, 2000 cc. 2574 Model, 2000 cc. 2575 Model, 2000 cc. 2576 Model, 2000 cc. 2577 Model, 2000 cc. 2578 Model, 2000 cc. 2579 Model, 2000 cc. 2580 Model, 2000 cc. 2581 Model, 2000 cc. 2582 Model, 2000 cc. 2583 Model, 2000 cc. 2584 Model, 2000 cc. 2585 Model, 2000 cc. 2586 Model, 2000 cc. 2587 Model, 2000 cc. 2588 Model, 2000 cc. 2589 Model, 2000 cc. 2590 Model, 2000 cc. 2591 Model, 2000 cc. 2592 Model, 2000 cc. 2593 Model, 2000 cc. 2594 Model, 2000 cc. 2595 Model, 2000 cc. 2596 Model, 2000 cc. 2597 Model, 2000 cc. 2598 Model, 2000 cc. 2599 Model, 2000 cc. 2600 Model, 2000 cc. 2601 Model, 2000 cc. 2602 Model, 2000 cc. 2603 Model, 2000 cc. 2604 Model, 2000 cc. 2605 Model, 2000 cc. 2606 Model, 2000 cc. 2607 Model, 2000 cc. 2608 Model, 2000 cc. 2609 Model, 2000 cc. 2610 Model, 2000 cc. 2611 Model, 2000 cc. 2612 Model, 2000 cc. 2613 Model, 2000 cc. 2614 Model, 2000 cc. 2615 Model, 2000 cc. 2616 Model, 2000 cc. 2617 Model, 2000 cc. 2618 Model, 2000 cc. 2619 Model, 2000 cc. 2620 Model, 2000 cc. 2621 Model, 2000 cc. 2622 Model, 2000 cc. 2623 Model, 2000 cc. 2624 Model, 2000 cc. 2625 Model, 2000 cc. 2626 Model, 2000 cc. 2627 Model, 2000 cc. 2628 Model, 2000 cc. 2629 Model, 2000 cc. 2630 Model, 2000 cc. 2631 Model, 2000 cc. 2632 Model, 2000 cc. 2633 Model, 2000 cc. 2634 Model, 2000 cc. 2635 Model, 2000 cc. 2636 Model, 2000 cc. 2637 Model, 2000 cc. 2638 Model, 2000 cc. 2639 Model, 2000 cc. 2640 Model, 2000 cc. 2641 Model, 2000 cc. 2642 Model, 2000 cc. 2643 Model, 2000 cc. 2644 Model, 2000 cc. 2645 Model, 2000 cc. 2646 Model, 2000 cc. 2647 Model, 2000 cc. 2648 Model, 2000 cc. 2649 Model, 2000 cc. 2650 Model, 2000 cc. 2651 Model, 2000 cc. 2652 Model, 2000 cc. 2653 Model, 2000 cc. 2654 Model, 2000 cc. 2655 Model, 2000 cc. 2656 Model, 2000 cc. 2657 Model, 2000 cc. 2658 Model, 2000 cc. 2659 Model, 2000 cc. 2660 Model, 2000 cc. 2661 Model, 2000 cc. 2662 Model, 2000 cc. 2663 Model, 2000 cc. 2664 Model, 2000 cc. 2665 Model, 2000 cc. 2666 Model, 2000 cc. 2667 Model, 2000 cc. 2668 Model, 2000 cc. 2669 Model, 2000 cc. 2670 Model, 2000 cc. 2671 Model, 2000 cc. 2672 Model, 2000 cc. 2673 Model, 2000 cc. 2674 Model, 2000 cc. 2675 Model, 2000 cc. 2676 Model, 2000 cc. 2677 Model, 2000 cc. 2678 Model, 2000 cc. 2679 Model, 2000 cc. 2680 Model,

MACDONALD ARRIVES IN CANADA

Several Messages To People of the States.

ENTHUSIASTIC WELCOMES

...arrived on another steamer... several messages to people of the states...

BY WIRELES

...Macdonald arrived... several messages to people of the states...

WELCOMED IN CANADA

...Macdonald arrived... several messages to people of the states...

EMPEROR OF CANADA

...Macdonald arrived... several messages to people of the states...

REAR RELOCATED FROM ROCKS

...Macdonald arrived... several messages to people of the states...

REMAIN WITH BRYAN'S THEE LEAD

...Macdonald arrived... several messages to people of the states...

THROUGH BRYAN'S ADVOCACY

...Macdonald arrived... several messages to people of the states...

DRAFT IN BRITAIN

...Macdonald arrived... several messages to people of the states...

DRESSY PREPARED FOR SIXTY YEARS

...Macdonald arrived... several messages to people of the states...

BY WIRELES

...Macdonald arrived... several messages to people of the states...

ECHO OF STOCK EXCHANGE SENSATION

Heavy Group of Companies to be Wound Up

ORDER BY THE COURT

...Macdonald arrived... several messages to people of the states...

THE KING BRIGS DIVISION

...Macdonald arrived... several messages to people of the states...

ALLEGED MOTOR CYCLE THEFT

...Macdonald arrived... several messages to people of the states...

TWO INDIAN BOYS BEFORE THE COURT

...Macdonald arrived... several messages to people of the states...

CONSIDERABLE AMOUNT OF INTEREST

...Macdonald arrived... several messages to people of the states...

EMPEROR OF CANADA

...Macdonald arrived... several messages to people of the states...

REAR RELOCATED FROM ROCKS

...Macdonald arrived... several messages to people of the states...

REMAIN WITH BRYAN'S THEE LEAD

...Macdonald arrived... several messages to people of the states...

THROUGH BRYAN'S ADVOCACY

...Macdonald arrived... several messages to people of the states...

DRAFT IN BRITAIN

...Macdonald arrived... several messages to people of the states...

DRESSY PREPARED FOR SIXTY YEARS

...Macdonald arrived... several messages to people of the states...

LESS WEATH BEING GROWN IN KENYA

Reduction in Average Under Cultivation.

OFFICIAL GOVT REPORT

...Macdonald arrived... several messages to people of the states...

THE HISTORICAL RECORD

...Macdonald arrived... several messages to people of the states...

CLIMATE

...Macdonald arrived... several messages to people of the states...

SUMMARY OF DISTRICT REPORTS

...Macdonald arrived... several messages to people of the states...

THE OFFICE PROBABLY

...Macdonald arrived... several messages to people of the states...

PROBABLY HEAVY RAIN

...Macdonald arrived... several messages to people of the states...

THE RAINFALL

...Macdonald arrived... several messages to people of the states...

AREAS UNDER MAIN CROPS

...Macdonald arrived... several messages to people of the states...

THE FIVE POWER NAVAL CONFERENCE

Invitations Accepted By All Nations.

ITALY'S REPLY

...Macdonald arrived... several messages to people of the states...

JAPAN ACCEPTS

...Macdonald arrived... several messages to people of the states...

ITALY CONSIDERS

...Macdonald arrived... several messages to people of the states...

TO-DAY'S CAUSE

...Macdonald arrived... several messages to people of the states...

C. IN THE MATTER OF

...Macdonald arrived... several messages to people of the states...

THE MATTER OF

...Macdonald arrived... several messages to people of the states...

THE MATTER OF

...Macdonald arrived... several messages to people of the states...

THE MATTER OF

...Macdonald arrived... several messages to people of the states...

LEGISLATIVE COUNCIL

Business For To-Day's Sitting

THE FOLLOWING IS THE ORDER

...Macdonald arrived... several messages to people of the states...

BY THE HON. THE ACTING

...Macdonald arrived... several messages to people of the states...

CHINESE METHODS OF ARREST

...Macdonald arrived... several messages to people of the states...

GENERAL TAKEN PRISONER BY HIS HOST

...Macdonald arrived... several messages to people of the states...

MONEY MARKET

...Macdonald arrived... several messages to people of the states...

THEATRE ROYAL

...Macdonald arrived... several messages to people of the states...

THE MATTER OF

...Macdonald arrived... several messages to people of the states...

THE MATTER OF

...Macdonald arrived... several messages to people of the states...

FURTHER PRESS COMMENT ON WILSON REPORT

(Continued from page 1.)

THE IMPARTIAL COMMITTEE

...Macdonald arrived... several messages to people of the states...

BY THE HON. THE ACTING

...Macdonald arrived... several messages to people of the states...

CHINESE METHODS OF ARREST

...Macdonald arrived... several messages to people of the states...

GENERAL TAKEN PRISONER BY HIS HOST

...Macdonald arrived... several messages to people of the states...

MONEY MARKET

...Macdonald arrived... several messages to people of the states...

THEATRE ROYAL

...Macdonald arrived... several messages to people of the states...

THE MATTER OF

...Macdonald arrived... several messages to people of the states...

THE MATTER OF

...Macdonald arrived... several messages to people of the states...

LYRIC HALL TO-NIGHT SHIRAZ The marvellous story of Shah Jahan's love for Mumtaz-Mahal...

Tennis Shoes In Great Variety. See our Special variety display for these and other goods at lowest prices.

Eadie's Footwear Ltd. NAIROBI. Also a large selection of Girls' Tennis Shoes. Prices from Shs. 10/6 pair.

THE WAREHOUSE CASE Prices for to-nights are Shillings 7/60, 5/0 and 3/0. BOOK YOUR SEATS IN ADVANCE.

We Sell & Service NEW Ford Cars & Trucks K. McIvor's Garage 107 SIXTH AVENUE Phone 97

The World's Shipbuilding... THEATRE ROYAL... K. McIvor's Garage... 107 SIXTH AVENUE Phone 97

THE MATTER OF... THE MATTER OF... THE MATTER OF... THE MATTER OF... THE MATTER OF

THE MATTER OF... THE MATTER OF... THE MATTER OF... THE MATTER OF... THE MATTER OF

THE MATTER OF... THE MATTER OF... THE MATTER OF... THE MATTER OF... THE MATTER OF

THE MATTER OF... THE MATTER OF... THE MATTER OF... THE MATTER OF... THE MATTER OF

THE MATTER OF... THE MATTER OF... THE MATTER OF... THE MATTER OF... THE MATTER OF

THE MATTER OF... THE MATTER OF... THE MATTER OF... THE MATTER OF... THE MATTER OF

AUCTION SALES.



CATALOGUE SALE OF FURNITURE AND EFFECTS.

Daily instructed, we shall sell, BY PUBLIC AUCTION, WITHOUT RESERVE, unless stipulated, at our Sale-rooms, Moter Building, Nairobi, on:

MONDAY, Oct. 21st at 10 a.m.
 Single Wardrobe in Teak, bevelled mirror. Cheval Mirror. Duchess Dressing Table in teak bevelled mirror. Showcases—glassed front. Dressing Tables in teak. Chests of Drawers—teak. Washstands in teak. Beside Cupboards in teak. Perambulator. Single Iron Bedsteads Single Bedsteads in c.w. spring mattress. Folding Bedsteads, spring mattresses. Writing Desk by McTear (pegwood top) cupboard and drawers. "Titan" Treadle Sewing Machine. "Yost" Typewriter Brass Mounted (double) Iron Bedstead, spring mattress. Chested Suits on castors. Club Easies. Morris Chairs. Case stand in teak. Card Table. Oval Dining Table. Case of Six Dining Chairs in c.w. Tray Table in teak. Writing Bureau—teak. Sideboard in mahogany drawers and cupboards. Occasional Table. Cabinet of 21 shallow drawers. Mosaic Kitchen Tables, etc.

MUTER and OSWALD Ltd., Auctioneers, NAIROBI.



Daily instructed by J. R. Cox Esq. WE SHALL SELL, BY PUBLIC AUCTION, ABSOLUTELY WITHOUT RESERVE, AT THE RESIDENCE, ON:

WEDNESDAY, OCT. 23rd at 9-30 a.m.
 THE ENTIRE FURNISHINGS AND EFFECTS OF THE DOUBLE STORED RESIDENCE IN CALEDONIAN ROAD, THE HILL, NAIROBI.

VERANDAH—Gate legged Table. Morris Chairs. Deck Chairs. Plants and Ferns in vases and Pots. Cotr Mats.

NURSERY—Large Toy Cabinet in Cedar, three compartments. Black Board. Toys Shelving Stools. Books. Four upholstered chairs. Two Fairy Cycle-children. Child's Dining Chair. Two Fairy Cycle-children.

DRAWING ROOMS—Four pairs beige Curtains and Valances. Music Cabinet in mahogany, with 6 shelf drawers. Gate Legged Table, mahogany top. Lamp-shades.

Imported Chesterfield Suite, extra large Chesterfield and two-Club Easies: covered in brown repp, red and cushions to match. Suite of Eight Dining Chairs (two carved) tapasy seats. Occasional Tables. H.M.V. Table Gramophone. Range of Good Gramophones Records. Lampshades.

DINING ROOM—Telescopic Dining Table in mahogany with teak top (black) two extra leaves to seat 12. Large Cedar Table. Suite of Eight Dining Chairs (black) case seats and loose cushions. Dutch Dresser Sideboard (black) in mahogany 4 drawers and cupboard. Sideboard to match, with liquor cabinet and basin lined drawer. Serving Table (black) on castors. Chateau as a lounge. Lampshades. Mosaic Spoor-Dinner Tea and Breakfast Service. Glassware Coffee Service. Cutlery. Hangings "Singer" Hand Sewing Machine. Kids pottery.

STUDY—Writing Desk in mahogany. Leather Top: double sided, with 12 drawers and two cupboards. Two Case Seated Top Chairs. Black Writing Desk with 8 drawers. Book Rack. Stationery. Occasional Table. "Noelens" Portable Typewriter. Two Sets Golf Clubs in bags. Curtains. Lampshade.

BEDROOMS—Twin Bedsteads, white enamelled (extra long) with Heaf's Patent "Reversible Hair" Reversible Pillows. Cushions. Rugs. Dressing Table in mahogany with three mirrors. "Universal" Bedstead in Wrought Iron Electric Standard Lamp. Electric Reading Lamps. Tall Boy in Cedar Beside Table. Wrought Iron Hair Sling. Washstand. Bachelor's Two Iron Beds in mahogany, 6 cedar lined shelf drawers, hanging compartment; three doors bevelled mirror. Three Oak Bedsteads in mahogany, case seats mirror. Twin Bedsteads in mahogany, with Best Spring Enamelled—white and Heaf's Patent "Reversible Hair" Wardrobe, in mahogany with 6 shelf drawers; bevelled mirror; 3 doors. Double Bedstead in cedar, with Heaf's Mattresses as above. Cedar Chest of Drawers. Oval Bevelled Mirror. Large Linen Cupboard in mahogany Sotted Linen Chest—in mahogany. Curtains. Lampshades. White enamelled framed mirror.

SUNDRIES—Garden Roller. Tools. Crockery Kitchen Utensils. Provisions. Mosaic. Dresser, zinc top. Wine Cupboard—white. "Universal" Arm and Case. Chamber Jar. Kitchen Camp Bed, etc.

NOTE—The majority of the Items of Furniture were made by Messrs. Butchings, Biemer & Co., Ltd., and are of first class materials.

THE EFFECTS MAY BE VIEWED AND CATALOGUES WILL BE AVAILABLE ON TUESDAY, 22nd OCTOBER AT THE RESIDENCE BETWEEN 4 and 6 p.m.

MUTER and OSWALD Ltd., Auctioneers, etc., NAIROBI.

AUSTIN'S AUCTIONS.

CATALOGUE SALE OF FURNITURE. LADIES UNDERCLOTHING. GENTS SOCKS AND HANDKERCHIEFS. BATH SOAPS. CAMELIA BLENDED SILK SHAWLS. LEATHER SUIT CASE. DRESS LENGTHS. NEW PILLOW CASES. CHESTERFIELD SUITES. RIFLES. HALF DINNER SET. DISCA GRAMOPHONE.

AUSTIN & CO will sell WITHOUT RESERVE unless stated at THE MART, on

SATURDAY, OCT. 19th at 10 a.m.

The following brand new goods:
 Ladies Silk Underclothing. Counterpane. Pillow cases. Gents Socks and Handkerchiefs. Bath Shippers. Babes Shoes. Bath Soap. 2 Good Quality Cambric Blankets. Silk Embroidered Shawls. Ladies Irons. Large Leather Suit Case. Half Dinner Set. 36 pairs Blue and Gold Chesterfield Suits upholstered in Green Striped Poplin and Cretonne. Single and Double Beds. New Single Bed with Box Spring Mattress (res.). New Folding Bed with 2 1/2 Mattress. Teak Hanging Wardrobe. Large Welsh Dresser. Sideboard in Teak (oval top). Dining Tables and Chair. Dining Tables. Tray Table. Teak Bedstead. 4 drawers. 4 Lights. Drawers. Club Easies. New Lino 12 x 8. Teak Bookcase. Boy's Bicycle in good order. Large 14cm. Frunk Oak Cabinet Gramophone. New Bentwood Chair. Teak and Polo Sideboard. 4 Lights. Gramophone. Opera stool and Bedside Table. Teak Writing Bureau. Dinner Wagon. Coffee Stools. Child's cot complete. Bachelor's Wardrobe in Solid Teak with Mirror (res). 356 Mauser Rifles 376 Rifle in splendid condition, etc.

AUSTIN & CO., Hardings Street, NAIROBI Auctioneers and Estate Agents.

IMPORTANT FOR ALL TO READ!!!

The Nairobi General Cash Stores Ltd. sends notice of an advertisement. Patrons and new comers, are quite bewildered by the haste and bludge, which so palpably proves the popularity of our store. Many no mistake about the goods and looks in adequately, well known. Tested Vegetable and Flower Seeds, in black and colored Pictorial Packets, also Fertilisers and other Horticultural Goods which include immediate, all of which are sown to the Colony, and which are beneficial to the success of cultivation of soil in East Africa, wherever. For general gardening. Vegetable Market gardening, see seasonal, or when the multifarious dangers which small quantities, have to be explained.

TRY US—The Store of Farming Seeds of every description and Farming Safeguards.

Nairobi General Cash Stores, Ltd.

Government Road, P.O. Box 525, NAIROBI, Kenya Colony

Watts "Mirror" Blades

Universally acknowledged to be the finest generally KEENER EDGES. SMOOTHER SHAVES. LONGER SERVICE.

Made in Sheffield, England, by a firm established here over 150 years. WATTS MIRROR Blades are revolutionizing the razor market. You will be amazed at the difference. They are made from the very finest steel obtained, with patented and exclusive patent, especially with the highest quality operations. Finest and most perfect workmanship and attention to every detail of manufacture that are subjected to a very rigid inspection.

WATTS MIRROR Blades surpass all others. For AUTOSTOP HOLDERS MADE FOR TWO MODELS. For GILLETTE HOLDERS. Each packet wrapped in TRANS-PARENCE CELLULOSE OF PATENT. Agents and export price: Shs. 6/- per pkt.

In Patent Shop Ltd. Nairobi. Consistent of 10 Blades. From All Branches of KODAK (E.A.) Ltd. Kenya, Uganda and Tanganyika. Agents.



FREEHOLD KILIMATI PLOTS.
 ON MAIN NGONG ROAD: two freehold plots, each one acre or thereabouts, situated 2 1/2 miles from centre of Nairobi: £100 per acre, separately or as one block of two acres.
 OFF NGONG ROAD. Five acres, freehold two road boundaries, £70 per acre.
 For further particulars of the above, and other properties, apply to:
MUTER and OSWALD Ltd., Auctioneers, NAIROBI.

CREAMERY BUTTER.

Purest and Best

Stocked by ALL THE BEST GROCERS. ASK FOR IT AND SEE YOU GET IT.

Advice to Purchasers

Don't get your Furniture broken sent Home by Reliance

Reliance Transport Co., Ltd.

Telephones 331 Bolns House, P.O. Box 482 627 Government Road.

JUST UNPACKED

at Ladharam's LADIES BEST STRAW HATS, in smartest colours with large brims. Floral and Plain Groceries. G. de Chinas. Shawanags. Full and Broaded Silk in all Latest Shades. Prices Reduced to a Remarkable Extent. PAY US A VISIT. P.O. Box 516 Govt Road, NAIROBI.

Kenya Loan & Discount Co. Ltd.

P.O. Box 546, NAIROBI. OFFICE—1st Floor, Court Chambers.

FINANCIAL AGENTS. Bills Discounted. Short-period Loans Granted. Any realisable Asset negotiated for Cash. Call or Write. STRICTEST CONFIDENCE. ESTABLISHED 1921.

LETTS OFFICE AND POCKET DIARIES

Pocket Sizes	Shgs. 1/50 to Shgs. 10/50
Office Sizes	Shgs. 2/25 to Shgs. 11/-

SYSTEM Desk Calendars

Complete	(EXPECTED SHORTLY.) Shgs. 5/-. Posted Shgs. 6/50
Refills only	Shgs. 5/-. Posted Shgs. 6/50

PILOT Desk Calendars

Complete	Shgs. 6/50. Posted Shgs. 8/-. Shgs. 5/-. Posted Shgs. 6/15
Refills only	Shgs. 5/-. Posted Shgs. 6/15

Standard Stationery Stores, Sixth Avenue, NAIROBI.

50 Cars to Select From 50

Godfrey's Car Mart

SADLER STREET USED CARS.
 Dodge Box Body. In good running order. spacious body. 255 H.P. 1st 200 & 1st 100. Economically overhauled. Excellent car. 690 Bank (Standard 6) Box Body. A really good proposition. In perfect condition. 6100
 Chevrolet Touring. In excellent condition and running order. 255 H.P. 1st 200 & 1st 100. Economically overhauled. Excellent car. 690 Bank (Standard 6) Box Body. A really good proposition. In perfect condition. 6100
 Chevrolet Truck. 9 1/2 ton. Loaded. done only 2,000 miles. still as new. Special commercial. 6900
 Over leaving. Quik car. 2100
 Chevrolet Truck. 9 1/2 ton. Loaded. done only 2,000 miles. still as new. Special commercial. 6900
 Over leaving. Quik car. 2100

ARIEL, DOUGLAS and OTHER MOTORCYCLES. CAR INSURANCE ARRANGED. New and Second-hand Spares for all makes of cars. NEW TYRES AT CLEARANCE PRICES. CARS FOR HIRE WITH DRIVER or DRIVE YOURSELF. Phone 145 W. M. Godfrey. No. 708, So. Proprietor.

Rhodesian Tobaccos TRY



A really good smoke. — Stocked in all leading stores. Representatives—DENOVAN & DIEBEL, CITY HOUSE, NAIROBI.

HOPES'S ARE THE BEST

Steel Windows

FOR SALE

MUTHAIGA—Double story stone house (lastest design). Five bedrooms, every convenience, usual outbuilding standing on 3 1/2 acres FREEHOLD, well wooded and corner plot. Price moderate and any reasonable terms accepted.
 KILIMATI—Small stone and concrete house on 2 1/2 acres of freehold ground, excellent soil, corner plot. Price only £1,200 terms can be arranged.
 KILIMATI—11.81 acres of Ngong Road, good red soil, suitable for subdivision. Price £70 per acre on any reasonable terms.
 For particulars of the above and other attractive Residential property, apply to:

BROWN & BARRATT, 105 Bldg, Govt. Road, Phone 627

NOW ON SALE Coffee Planting

IN Kenya Colony BY

F. H. Spratt

Price Shgs. 10. Posted 1050.

A written and completely revised work by the author. Has already been translated into Swahili. The knowledge which further experience and additional scientific research have obtained and preparation has brought to light.
STANDARD STATIONERY STORES, NAIROBI.

Shaw & Hunter Ltd.

Double Barrel Shot Guns from 150/-, Rifles from 250/-... Double Barrel Shot Guns from 150/-, Rifles from 250/-, a variety of second-hand weapons...

Shaw & Hunter Ltd.

Box 70, NAIROBI.

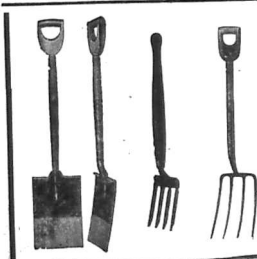
CHARLES WARE.

Chartered Accountant. (Established 25 years) Tel. Add: "Sportsman." NAIROBI.

CAMBRIDGEHIRE (1 mile 1 furlong). Sun October 29th. 1011 Athol; 1411 Mashed Buns; The Marsh; 1411 Ghent...

DOUBLES CES. and CAM. TO WIN ANY POINT. Playing and Receiving on Nairobi Meeting all next Events. CREDIT ACCOUNTS ON APPROVED REFERENCE ONLY ON CASH.

NO REPLY DISTINCTLY MEANS NO BUSINESS.



Maurice Rosenston P.O. Box 161. Telegrams: Tostolm. ROMA BUILDING, GOVERNMENT ROAD, NAIROBI.

CAMBRIDGEHIRE. Sun October 29th. 1 mile 1 furlong—12 1/2. Athol; The Marsh; 1411 Mashed Buns; Ghent; 12011...

FIREARMS

We carry large and varied stocks of RIFLES and REVOLVERS, PISTOLS and SHOTGUNS, made by the world's foremost makers... Ask for our Catalogue.

May & Co. Ltd. The Sports House NAIROBI.

CARTRIDGES

THE SPORTS PAGE

A SPORTSMAN'S WINDOW.

An Outlook on the World of Recreation

CURRENT EVENTS REVIEWED

I take up my pen again on the eve of the 11th of the International week... The week ends in a night, and with Ghent Cup matters still remain undecided, the sooner period will be definitely over in another fortnight at most.

It would be manifestly wrong on my part to conclude without some reference to the Fettes. They were the night to contrast the penitentiary steps with the Coast...

The Internationals. There is one other aspect of the Association game I would like to touch upon...

Maurice Rosenston. In the case of Thomas I must not be having no more than a passing thought...

What Was the Proper Course? And now I am going to make an expression that is being felt by the sportsman...

What Was the Proper Course? In conversation with a prominent player in the town the other day the subject, dear to my heart, cropped up regarding the difference...

What Was the Proper Course? In conversation with a prominent player in the town the other day the subject, dear to my heart, cropped up regarding the difference...

What Was the Proper Course? In conversation with a prominent player in the town the other day the subject, dear to my heart, cropped up regarding the difference...

What Was the Proper Course? In conversation with a prominent player in the town the other day the subject, dear to my heart, cropped up regarding the difference...

What Was the Proper Course? In conversation with a prominent player in the town the other day the subject, dear to my heart, cropped up regarding the difference...

SCOTLAND MEETS THE AULD ENEMY.

Narrow Defeat of the Sassemachs.

A GAME OF MISSED CHANCES

The first of the series of international matches in which teams representing Scotland and the Continent met for the first time...

Kilke Sports Club.

ELDON LAWN TENNIS TOURNAMENT

STANDARD COMMENTARY. In the result of the Kilke Open...

STANDARD COMMENTARY. In the result of the Kilke Open...

STANDARD COMMENTARY. In the result of the Kilke Open...

STANDARD COMMENTARY. In the result of the Kilke Open...

STANDARD COMMENTARY. In the result of the Kilke Open...

STANDARD COMMENTARY. In the result of the Kilke Open...

STANDARD COMMENTARY. In the result of the Kilke Open...

STANDARD COMMENTARY. In the result of the Kilke Open...

STANDARD COMMENTARY. In the result of the Kilke Open...

STANDARD COMMENTARY. In the result of the Kilke Open...

CLARITY FOOTBALL MATCHES.

"OLD CROCK" AND CUP WARRIORS

Yours truly, T. NODDEN

Many Football Matches. Yours truly, T. NODDEN.

Local Cricket.

TEAMS FOR THE WEEK END.

The following teams are asked to represent Civil Service in the match against the...

Commercial Sports Club

The following have been selected to represent the Commercial Sports Club in a match against Parklands Sports Club...

HOCKEY MATCH.

A friendly hockey match between the M.C.A. and Bunsby G.O. will take place this evening at 8.15 on the Mains ground...

CIVIL SERVICE CLUB.

Members of the Civil Service M.C.A. Club are reminded that a hand-picked team will play a hand-picked team (Friday) evening, over 200 yards.

SPORTS DIARY.

October 19. Mather's Golf Club. Long 12-hole. Mather's Golf Club. Captain's Tea.

October 20. Mather's Golf Club. Men's Stroke, Senior. Mather's Golf Club. Lady Captain's Prize.

October 21. Mather's Golf Club. Men's Stroke, Senior. Mather's Golf Club. Lady Captain's Prize.

October 22. Mather's Golf Club. Men's Stroke, Senior. Mather's Golf Club. Lady Captain's Prize.

October 23. Mather's Golf Club. Men's Stroke, Senior. Mather's Golf Club. Lady Captain's Prize.

October 24. Mather's Golf Club. Men's Stroke, Senior. Mather's Golf Club. Lady Captain's Prize.

October 25. Mather's Golf Club. Men's Stroke, Senior. Mather's Golf Club. Lady Captain's Prize.



SWIFT AND SURE

You cannot drop feet-footed back, however excellent a shot you may be, unless you have a good rifle and ammunition. You no doubt value your rifle and it is a mistake to suppose that any cartridge will do for it.



KYNOCH CARTRIDGES

BRITISH & BEST IMPERIAL CHEMICAL INDUSTRIES LTD. LONDON, S.W.1.

A. HOGG.

MACKINNON'S BUILDINGS, NAIROBI. English Starting Block. MIDDLE PARK STAKES, NEWMARKET, 17/10/20, 6 furlongs...

CAMBRIDGEHIRE STAKES, NEWMARKET, 10/10/20, 1 mile 1 furlong—12 1/2. Athol; The Marsh; 1411 Mashed Buns; Ghent; 12011...

EAST-AFRICAN DERBY—1/1 Driving. Myosotis 9/1. Be the Best. Open 9 a.m. to 12 noon—8.45 Derby. 8.30 a.m. to 4 p.m. DOUBLE AND TRIPLE EVENTS.

The "SPALDING" MULTIDOT KROFLITE GOLF BALL

with its twelve distinct coloured dots is EASIER TO HIT. EASIER TO IDENTIFY. EASIER TO FIND.

3RAIC'S SPORTS HOUSE, Phone 321 Government Road, Box 187

Watches of Precision and Beauty

WEAR A ROLEX AND BE ON TIME. 25 Worlds Records. Large Variety of Models for Ladies and Gents.



See Our Windows. SOLE AGENTS FOR EAST AFRICA: DOBBIES Ltd. Watchmakers, Jewellers and Opticians. Phone No. NAIROBI.

Nakuru Show. December 4th & 5th 1929

ENTRIES CLOSE—TRADE AND DISTRICT EXHIBITS—November 1st. OTHER SECTIONS—November 5th. FOR PRIZE LISTS AND ALL INFORMATION APPLY TO THE SECRETARY, The Royal Agricultural and Horticultural Society of Kenya.

The Secretary, The Royal Agricultural and Horticultural Society of Kenya, Box 671, NAIROBI.

Printed and Published by EAST AFRICAN STANDARD, Ltd., Sixth Avenue, Nairobi, Kenya Colony.

UNION-CASTLE LINE.

HOMERWARD via SUEZ.

"Landover Castle"	From Mombasa (Agent)
"Landover Castle"	5th October
"Landover Castle"	19th November, 1920.
"Landover Castle"	1st February, 1921.
"Landover Castle"	15th March, 1921.
"Landover Castle"	29th May, 1921.

HOMERWARD via SOUTH AFRICA.

"Dromedary Castle" (large)	20th October
"Landover Castle"	7th November
"Landover Castle"	21st December
"Landover Castle"	4th January, 1921.
"Landover Castle"	18th February, 1921.
"Landover Castle"	4th March, 1921.
"Landover Castle"	18th April, 1921.
"Landover Castle"	2nd May, 1921.

Passenger Agents: E.A. Corporation, Ltd., East African Estates, Ltd., O'Shea Co. Ltd., Nairobi, Kampala, etc.

British India Steam Navigation Company, Limited,

AND PENINSULAR AND ORIENTAL STEAM NAVIGATION CO.

LONDON AND EAST AFRICA LINE.

LONDON TO NAIROBI, via Kilindini, Port Said, Port Sudan and Aden, Ostende and Harwarth.

Steamers	Arrive Kilindini	Sails from London
"S.S. Madras"	29th Oct.	29th Oct.
"S.S. Madras"	29th Nov.	29th Nov.
"S.S. Madras"	29th Dec.	29th Dec.
"S.S. Madras"	29th Jan.	29th Jan.
"S.S. Madras"	29th Feb.	29th Feb.
"S.S. Madras"	29th Mar.	29th Mar.
"S.S. Madras"	29th Apr.	29th Apr.
"S.S. Madras"	29th May	29th May
"S.S. Madras"	29th Jun.	29th Jun.
"S.S. Madras"	29th July	29th July

BOMBAY-DURBAN MAIL SERVICE.

Calling Kilindini, Zanzibar, Dar-es-Salaam, Beira, Delagoa Bay, Durban, East London, Cape Town, and Harwarth.

Steamers	Arrive Durban	Sails from Durban
"S.S. Madras"	29th Oct.	29th Oct.
"S.S. Madras"	29th Nov.	29th Nov.
"S.S. Madras"	29th Dec.	29th Dec.
"S.S. Madras"	29th Jan.	29th Jan.
"S.S. Madras"	29th Feb.	29th Feb.
"S.S. Madras"	29th Mar.	29th Mar.
"S.S. Madras"	29th Apr.	29th Apr.
"S.S. Madras"	29th May	29th May
"S.S. Madras"	29th Jun.	29th Jun.
"S.S. Madras"	29th July	29th July

Chivers' Custard Powder

combines highest quality ingredients with the most delicious taste. Delicacies with Chivers' Canned Fruit.

CHIVERS & SONS, LTD.
The Custard Factory, Hites, Cambridge, England.

Sole Agents: R. O. HAMILTON, LTD., Nairobi, Phone 48.

MESSAGERIES MARITIMES

(PRIME MAIL STEAMERS)

Regular and fortnightly service from and to Marseilles.

THE QUELRET ROUTE TO LONDON

REGULAR SAILING TO Marseilles.

"L'Arctique"	29th October
"General Voyer"	11th November
"Chambré"	25th November
"Bernardin de Sine"	9th December

ORIENTAL MAIL STEAMERS

REGULAR SAILING FROM Marseilles.

"Bernardin de Sine"	29th October
"Messageries Maritimes"	11th November
"P.O. Box 14, MOMBASA."	25th November
"P.O. Box 25, NAIROBI."	9th December

Keith Timber Co., Ltd.

P O Box 874 Sadler Street Nairobi

Phone 598.

Pianoforte Tuning

AND REPAIRING.

Ten years experience in Kenya Colony and first year with Messrs. Chappell & Co., London.

F. A. HEAD,
Box 874, NAIROBI.

B. E. A. SAW MILLS

Telephone No. 83 P.O. Box 571

Telegrams: "Beams," Nairobi.

Camphor, Podo, Mweri and Muna.

Flooring, Ceiling and Moulding.

OVERSEAS MAILES.

ARRIVALS

STRAMERS	FROM	Due at Mombasa	Mail at Nairobi
Dromedary Castle	Europe	Oct. 16	Oct. 16
Karungu	South	" 17	" 17
Messageries Maritimes	South	" 19	" 19
Kalaba	Europe	" 20	" 20
Milca	Europe	" 20	" 20
Dromedary Castle	Europe	" 21	" 21

Kalaba arrives 875, Letter 871, parcel bags.

DEPARTURES

STRAMERS	FOR	Mail at Mombasa	Date of Departure
Karungu	Europe	Oct. 17	Oct. 17
Messageries Maritimes	South	" 19	" 19
Chicago Maru	Europe	" 20	" 20
Warrage	Europe	" 21	" 21

Compagnia Italiana Transatlantica,

Monthly Passenger Service to NAPLES and GENOA.

THE BEST ROUTE TO ENGLAND

SAILINGS FROM KILINDINI TO GENOA on the 1st of every Month.

s.s. "MAZZINI" — 1st November, 1st January, 1st March, etc.

s.s. "F. CRISPI" — 1st December, 1st February, 1st April, etc.

Off-shore turbine-steamers — Very roomy cabins — Fresh running water in all cabins and baths — Orchestra — Chromatograph — Book Games — Swimming Pools, etc.

20% per cent. reduction in return ticket if returning within one year.

Special reduction to Government Officials and their dependants.

REGULAR MONTHLY EXCURSIONS—MOMBASA, ZANZIBAR, DAR-ES-SALAM.

Leaving Mombasa on the 20th, returning with same steamer to Mombasa on the last of every month.

NOTE—Special concession on E.U.R. on inland excursions.

Return fares in Kenya to Mombasa at single fare rates.

For further particulars of sailings, rate of passage, etc., apply to:

SOCIETA' ITALIANA S.P.A.—MOMBASA, P.O. Box 175

M. D. KAMPP, — NAIROBI, P.O. Box 268.

Deutsche Ost-Afrika-Linie

(GERMAN AFRICAN SERVICE).

DEUTSCHE OST-AFRIKA-LINIE GENERAL AGENCY, MOMBASA.

HOMERWARD via SUEZ CANAL. GULF—DURBAN—P.O. BOX 210. MOMBASA TO ROUTE.

STEAMERS	Arrive Mombasa	Sails from Mombasa
"S.S. WARBURG" (large steamer)	29th Oct.	29th Oct.
"S.S. ADOLPH WOERMANN"	19th Nov.	19th Nov.
"S.S. USARAKO"	29th Dec.	29th Dec.
"S.S. USARAKO"	19th Jan.	19th Jan.
"S.S. NAJSSA"	29th Feb.	29th Feb.
"S.S. TANGANIKA"	19th Mar.	19th Mar.
"S.S. USARAKO"	29th Apr.	29th Apr.
"S.S. ADOLPH WOERMANN"	19th May	19th May
"S.S. TANGANIKA"	29th Jun.	29th Jun.

Cargo steamers carry a limited number of passengers at "P" grade fare.

SAILINGS SUBJECT TO ALTERATION.

Information regarding connections at Lourenco Marques or Durban of the above steamers may be obtained from the Agents.

UP-COUNTRY CHARGES CANNOT BE ACCEPTED EXCEPT BY FULLY ENDORSED BY LOCAL BANC.

Visitors to D.O.A. steamers are required to be in possession of permits obtainable at the Agents—

BOUSTADT & CLARKE, Ltd. or **DALGETY & CO., Ltd., Eldoret, Nairobi, Kisumu, Juba and Nakuru.**

The African Marine & General Engineering Company, Ltd., KILINDINI.

SHIP REPAIRING. SAIL MAKING & REPAIRING. MOULDING. OXY ACETYLENE WELDING & CUTTING.

In their well-equipped Carpenters Shop, all types of Boats and Office Furniture are made and repaired.

Estates requiring repairs to machinery, implements, etc., are invited to communicate.

Telephone 81 ESTIMATES GIVEN. Tel.: "Amgeco," Mombasa.

SMITH, MACKENZIE & Co., General Managers.

Clan-Elleman-Harrison Lines, (JOINT SERVICE)

Liverpool — Glasgow — Ayr — Manchester.

From LIVERPOOL and GLASGOW. Due to arrive Kilindini.

s.s. "Clan Maclean"	9th Oct.
s.s. "Clan Douglas"	23rd Oct.
A Hall Line Steamer	19th Nov.

LOADING for LIVERPOOL.

s.s. "Clan Douglas"	29th Oct.	31st Oct.
s.s. "Clan Maclean"	10th Nov.	29th Nov.
A Hall Line Steamer	19th Dec.	19th Dec.

WIRELESS

Latest Receiver, no batteries, all that is required is to plug into the electric light socket.

Complete with loud speaker, Shs. 350.

Terms for Gramophone Pick-up on the net.

Lochhead, Moore & Roy, Ltd.,
P.O. Box 455, NAIROBI.

Ellerman and Bucknall Line

NEW YORK — MOMBASA via SUEZ

FROM AMERICA. Due to arrive Kilindini.

s.s. "City of Durban"	29th Oct.	29th Oct.
s.s. "City of London"	29th Nov.	29th Nov.
s.s. "City of Oakland"	29th Dec.	29th Dec.

THE AFRICAN MERCANTILE Company, Limited, MOMBASA (cables Navigators) NAIROBI.

BEST VALUE EVER OFFERED

THE BON AMI EN-TOUT-CAS GENTS' TENNIS SHOES.

PRICE, 15/60 pair

GUARANTEED FOR FOUR MONTHS' WEAR FROM DATE OF PURCHASE.

Sold by the

De Luxe Boot Co.
Govt. Road, NAIROBI.

CLAN LINE STEAMERS LTD. SERVICE

to

NEW YORK (without transhipment)

and to other U.S.A. Ports with transhipment.

NOTE—A direct call will be made at Boston if sufficient disponent.

THE SHORT ROUTE via SUEZ CANAL

S.S. "CLAN KENNETH"

Expected to arrive MOMBASA about 25th November.

For terms of freight, etc., apply to:

THE AFRICAN MERCANTILE COMPANY, LIMITED, MOMBASA,

TANGA, ZANZIBAR, DAR-ES-SALAM.

Genuine Sale.

ASTONISHING VALUE OFFERED for a Fortnight Only.

90" Flat Bed	£ 7	per yard
3 1/2" Sheet Iron	£ 2	per yard
3 1/2" Sheet Iron	£ 1	per yard
3 1/2" Sheet Iron	£ 1	per yard
3 1/2" Sheet Iron	£ 1	per yard
3 1/2" Sheet Iron	£ 1	per yard
3 1/2" Sheet Iron	£ 1	per yard
3 1/2" Sheet Iron	£ 1	per yard
3 1/2" Sheet Iron	£ 1	per yard
3 1/2" Sheet Iron	£ 1	per yard

Also many other articles Below Cost Price.

A VISIT WILL CONVINCE YOU.

Lalehand Moolchand Bros.
E.O. Box 375 NAIROBI. Govt. Road

A. J. ELY & Co., Ltd.
Shamba Chemists, NAIROBI.

TO COFFEE GROWERS—White non-absorbent cotton wool in bale tote, at line quotes.

TO SHEEP FARMERS—Carbon Tetrachloride in gallon jars. Phone 625

Hussein Suleman Verjee & Sons.

IT ALWAYS PAYS TO BUY FROM SPECIALIST, AND SO SAVE YOUR TIME AND MONEY BY BUYING FROM US.

Large Quantity of C.I. Sheets and Expanded Metal now Available. Price as Application.

Phone 364 Government Road. Box 226 NAIROBI.

VOONIA TEA

INCREASES IN POPULARITY DAILY.

AWARDED

Ten Gold Medals

BEWARE OF FRAUDULENT IMITATIONS. INSIST ON SEEING THE NAME.

"VOONIA"
on every packet or case.

BLACKLACS & BROWN
(LATE MACKENZIE & CO.)

Tel. No. NAIROBI. Box No. 51. Telegrams: "Blacklacs" 488.

SAVOY BAR.

with LOUNGE and BRIDGE ROOM.

COUNTER SNACKS and MUSIC from 5 p.m.

Calcuttana Road, The Hill.

ROYAL INSURANCE Co., Ltd.

(Incorporated in England.)

FUNDS £7,000,000.

We take pleasure in informing that we have been appointed PRINCIPAL REPRESENTATIVES for Kenya and Uganda of the above well-established Company.

The Royal Insurance Co., Limited transacts all classes of insurance business and has appointed a representative to assist in conducting their operations in E. Africa.

East African Estates, Ltd.

UNION BUILDING, GOVERNMENT ROAD, NAIROBI. Tel. No. 5.

THE SIX WHEELER

MANCHESTER TRUCK

NOW ON VIEW - ALL TRUCK NOT A MOTOR CAR CONVERSION.

22.5 H.P. 4 Cylinder Engine Five Bearing Crank Shaft.

Fort Dunlop Tyres Standard

2 1/2 Tons Capacity.

MOULTON & MORRISON Ltd. SIXTH AVENUE, NAIROBI.

J. W. MILLIGAN & Company. P.O. Box 148. NAIROBI. BRANCHES: MOSHI and ARUSHA. Phone No. 98

Why Pay Rent?

When you own your house... PARKLANDS (2nd Avenue) 1 1/2 acres... TO LET-KIRURU ROAD... We have properties in UGANDA, TANGANYIKA and KENYA FOR SALE-CONSULT US.

BUILDING PLOTS. KIRURU ROAD 1/2 acre... GOOD LANE Wood and Iron House... NOORO ROAD Four miles from Nairobi... NOORO ROAD Small Farm consisting of 150 acres.

GOOD EIGHT DANGEROUS

It is often just this eye which... V. H. WARDLE P.T.O. Optical Manager... A. H. WARDLE

GIBBONS Steel Casements Locks and Ironmongery

Make Their Appeal on the Basis of QUALITY AND PRICE.

Our present stock of Standard Steel Casements embody the latest improvements. WE CARRY EXTENSIVE STOCKS.

R. G. VERNON & Co. UNION BUILDING. Telephone No. 120 NAIROBI. P. O. Box 124

Two Sure Remedies For Constipation.

Both Rexall Ointment and Rexall Health Salt have two remedies-both of which will build the muscles of the bowels...

Rexall Ointment Rexall Health Salt

Sold and recommended by A. H. Wardle & Co. Ltd. Wholesale and Retail Chemists. Kenya and Uganda.

CHAMPION SPARKING PLUGS

Outsell All Others Throughout the World BECAUSE They are the BEST

A Type for Every Engine IN STOCK

at Shs. 4/- each CHAMPION Dependable for Every Engine. Carr, Lawson & Co., Ltd.

S. Jacobs, Limited.

We specialise in long wearing office furniture... No native labour or cheap materials are used... We do not make so called cheap furniture as it pays no one other to buy it or to sell it.

The Broad Law.

Government is being asked by question in the Legislative Council whether they will consider amendments to the Broad Law to deal with weight and quality.

CALEDONIAN Insurance Company

Oldest Scottish Insurance Office. FOUNDED IN 1805. PRINCIPAL REPRESENTATIVES: R. G. HAMILTON, Ltd., NAIROBI. Phone 352

STANDARD DIARY

To-night: Presentation "The Wren" by the Wren Dramatic Club... Monday: Meeting of the Executive Committee... Tuesday: Meeting of the Executive Committee... Wednesday: Meeting of the Executive Committee... Thursday: Meeting of the Executive Committee... Friday: Meeting of the Executive Committee... Saturday: Meeting of the Executive Committee... Sunday: Meeting of the Executive Committee.

Lovely Homes

It's so wonderfully easy to transform your house with DUCO... The DUCO does quickly. Just choose your colour and apply it on—any kind of surface, polished or unpolished.

BRUSHING

For hundreds of Years "DUCO" has been used to clean and polish... Galley & Roberts Ltd. Sole Agents and Branches.

PINE TREE Soluble Disinfecting Fluid

for GENERAL SANITARY USE. CHEAP, HARMLESS, CONVENIENT and EFFECTIVE.

A gallon drum will make from 50 to 100 gallons of disinfectant... KODAK E. A. Ltd., INC. Howse & McGeorge CHEMISTS. NAIROBI and ALL BRANCHES.

Emblem Assorted BISCUITS

Give a reward just for afternoon tea. There are no less than 12 kinds of little shortbreads, macarons with chocolate, meringues or cream sandwich biscuits in this delicious assortment

Made only by **CARR'S OF CARLISLE**

STOCKED BY THE LEADING GROCERS.

An applied to the House of Commons.

Amstel Beer

Guaranteed free of chemicals.

Obtainable at all leading Hotels, Bars and Stores. Ask for it by its colour.

CEMENT

HAND BRAND PORTLAND

CORRUGATED IRON SHEETS. GALVANISED PLAIN SHEETS.

ASBESTOS SHEETS. PLY BOARDS AND SX BOARDS.

AT VERY LOWEST POSSIBLE PRICE.

Alibhai Shariff & Sons.

Government Road and Bazaar, NAIROBI. Phone 274

JUST ARRIVED!!

FROCKS

FOR ALL OCCASIONS.

VERY LATEST DESIGNS.

Apply—
Mrs. G. O. RANDALL.

First floor, Court Chambers, Court Square, NAIROBI.

IMPORTANT.

Your attention is drawn to the fact that we have now arranged for a continuous supply of the best quality fuel. Up-to-date fuel cutting machinery has been acquired, and we are in a position to supply any quantity of standard or cut fuel. AT OLD PRICES.

No Satisfaction - No Pay.

THE Express Transport Coy.

Garbage Contractors to KENYA & UGANDA RAILWAYS & HARBOURS.

Phone Nos. 333 (town) and 55 (station).

SHOULD UNUSED LAND GO BACK TO CROWN?

(Continued from page 1.)

production be tolerated, if they were able to find a producer who would begin to develop? There was no lack of applicants of almost every description.

He imagined that certain land would be developed. He would oppose the motion. If only they had the thing to develop, they would be forced to see that the amount of production was increased to the benefit of the State.

The speaker was very much in order by His Excellency for declaring that he would not be in any way concerned under the terms of the motion.

It might be suggested, continued the speaker, that there was a danger to the natives of the Colony. He believed that the Native Land Trust Bill would be passed shortly. The natives already applied the policy in his own reserve, and he would not dissent it.

Colonel the Hon. C. G. Durban (Kisumu) fervently seconded the motion.

Government Opposition

The Hon. Acting Commissioner for Lands (Government) moved and seconded, that he did not propose to deal at length with the details of the motion, because he had tried to do so in his speech, but he would not reply to any argument. He appeared to be under the impression that a title was not granted until development work was carried out. The title was granted immediately an auction was held. The only objection the Crown could receive land was through the Native Land Trust Bill.

He opposed the motion. It had been stated that the title was granted by its adoption, but the fact was that the title was not granted until the land was developed. He would not be in any way concerned under the terms of the motion.

The Hon. Acting Commissioner for Lands (Government) moved and seconded, that he did not propose to deal at length with the details of the motion, because he had tried to do so in his speech, but he would not reply to any argument. He appeared to be under the impression that a title was not granted until development work was carried out. The title was granted immediately an auction was held. The only objection the Crown could receive land was through the Native Land Trust Bill.

Indian Report

The Hon. A. H. Malik (Indian representative) moved and seconded, that he did not propose to deal at length with the details of the motion, because he had tried to do so in his speech, but he would not reply to any argument. He appeared to be under the impression that a title was not granted until development work was carried out. The title was granted immediately an auction was held. The only objection the Crown could receive land was through the Native Land Trust Bill.

THE BRADFORD MANUFACTURING CO., LTD.

TAKE PRIDE IN YOUR NEW CAR.

Protect the coach work from the sun and dust in Parking Grounds by using OUB DUST SHEETS

Size 14-ft. 3-in. x 18-ft. ... Shs. 45/- each.
Size 14-ft. 3-in. x 18-ft. 6-in. ... Shs. 50/- each.
Size 14-ft. 3-in. x 21-ft. ... Shs. 55/- each.

Long Klack-Dust Coats, well Tailored, Shs. 17/6 each.

Government Road, P.O. Box 107.

Kenya Loan & Discount Co. Ltd.

P.O. Box 545, NAIROBI.

OFFICE—1st Floor, Court Chambers.

FINANCIAL AGENCIES.

Bills Discounted. — Short-period Loans Granted.

Any Realisable Asset mortgaged for Cash.

Call or Write. — STRICTEST CONFIDENCE.

ESTABLISHED 1921.

Railway Apprentices. Service Gratuity.

THEIR POSITION IN REGARD TO LEAVE.

The position of railway apprentices and learners is a subject that has been referred to in the Legislative Council yesterday by the Acting Treasurer for Nairobi South. The position of apprentices and learners is a subject that has been referred to in the Legislative Council yesterday by the Acting Treasurer for Nairobi South. The position of apprentices and learners is a subject that has been referred to in the Legislative Council yesterday by the Acting Treasurer for Nairobi South.

Service Gratuity

The Acting Treasurer for Nairobi South asked the Acting Treasurer for Nairobi South whether it is a fact that apprentices and learners are entitled to a gratuity of 25 years of service. He stated that he had been informed that apprentices and learners are entitled to a gratuity of 25 years of service.

Entertainments.

LYRIO HALL.

In many ways the film which was shown at the Lyrio Hall on Wednesday and which will be continued for the remainder of the week, is a masterpiece. It is a faithful reproduction of an old Indian legend, telling the story of the Raj Mahal, at Agwa, India's most famous summer resort.

The Harvest of the Sea

However far inland you may be, and whatever the season of the year, you can enjoy the pick of the sea's harvest in the form of "Stippers."

These dainty little silver fish, in purest Olive Oil or choice Tomato Sauce, are the most modern methods which preserve all their delicate flavor and valuable vitamins, make a delightful addition to your meals.

No hard bones or tough skins—just tasty mouthfuls of sheer goodness, nourishing and delicious.

Travellers!

If you are preparing for "safar" try us for the best English make

Joan's Bros Steel Trunks

Available now in all sizes.

Prong very competitive to suit all pockets.

Also Suit Cases, Baking Stoves, etc., can be had from us.

KALA SIDI

Genl. Road, NAIROBI.

DIRECT IMPORTERS.

Skippers

These dainty little silver fish, in purest Olive Oil or choice Tomato Sauce, are the most modern methods which preserve all their delicate flavor and valuable vitamins, make a delightful addition to your meals.

No hard bones or tough skins—just tasty mouthfuls of sheer goodness, nourishing and delicious.

Announcement

The UGANDA TRANSPORT CO. have now got a new motor vehicle for hire. It is a 1929 model and is very reliable. It is available for hire on all routes. It is available for hire on all routes.

UKAMBA Transport Co.

Phone Nos. 402, 403, 404, 405, 406, 407, 408, 409, 410, 411, 412, 413, 414, 415, 416, 417, 418, 419, 420.

WHERE TO STAY TOWN and COUNTRY.

THE Stag's Head Hotel

NAKURU

Main Road close to New Post Office, Banks, Shops, Club and Station.

Electric Light, Hot and Cold Water in all Bedrooms.

EUROPEAN SANITATION and BATHS.

Especially Attractive and Comfortable Private Rooms.

CUISINE THE BEST OBTAINABLE.

WEEK ENDS—SPECIAL TERMS.

Daily Boarders Catered for at Special Rates.

DANCES, WEEDINGS, PUBLIC DINNERS, arranged.

Personal Manager, Mrs. JESSE. Proprietress.

"Gledrid House"

SALISBURY ROAD, BOARD RESIDENCE.

TERMS MODERATE. TENNIS.

THE Hill Private Hotel

Phone 380 P.O. Box 783, NAIROBI.

Delightful Situation, Tennis, Badminton, Garage, Hospitality and Comfort. Separate Tables. Excellent Fare. MODERATE TERMS.

DAILY, SH. 2/6. MONTHLY from 41/6. Proprietors—Captain and Mrs. BOBSON.

The Salisbury Hotel

NAIROBI.

Phone 166. E.O. Box 56.

THE NEW OAKLEIGH HOTEL LTD.

Single Rooms, Double Rooms, Suites, Lounge, Smoking Room, Ladies' Briggles, 2 Tennis Courts, Lock-up Garage, etc., etc.

LICENSED.

LIMBO ROAD, over Ainsworth Bridge.

Under the same management as the Hotel Avonlea.

NORFOLK HOTEL

Phone Nos. 410, 411, 412, 413, 414, 415, 416, 417, 418, 419, 420.

Deliciously good food and drink.

Well ventilated and lighted.

Bar and billiard room.

SAVOY HOTEL

Box 27 The Hill, NAIROBI with 100 Rooms and 10 Bathrooms.

Large Double Rooms, Single Rooms with private bathrooms, Lock-up Garage, etc., etc.

Lounge, Spacious Dining-room, Reading-room, Billiard-room, etc.

TERMS MODERATE Apply—MANAGER.

Announcement

The UGANDA TRANSPORT CO. have now got a new motor vehicle for hire. It is a 1929 model and is very reliable. It is available for hire on all routes. It is available for hire on all routes.

UKAMBA Transport Co.

Phone Nos. 402, 403, 404, 405, 406, 407, 408, 409, 410, 411, 412, 413, 414, 415, 416, 417, 418, 419, 420.

Sportex

THE CLOTH FOR "CHAMPIONS" OF THE "CHAMPION" OF CLOTHS.

A Thoroughly Dependable, Hard-wearing TWEED FABRIC

— for —

PLUS-FOUR SUITS, SPORTS COATS and GOLF-JACKETS.

Patterns on Application.

Ahamed Bros.

THE HOUSE OF DISTINCTION

1000 HAZAR P.O. BOX 291 NAIROBI. 254

CALIFORNIA TO KENYA



The world's best Asparagus come from California. Libby's Asparagus is grown in the California Sacramento River Delta district. It is packed on the spot to get the right degree of heat to preserve the natural flavour.

To be certain of getting the finest pack of Asparagus Insist on

Libby's

which is stocked by Progressive Grocers Everywhere.

Eat More Bread

BUT IT MUST BE

"ELLIOT'S"

ALL THE LEADING STORES.

and from

M. S. ELLIOT & Co. Ltd.

P.O. Box 175 Phone 68

SPECIAL DISPLAY OF

CELANESE LINGERIE

in wide range of Attractive new styles and lovely new colorings

COME TODAY AND INSPECT

Ben Marche

Government Rd., NAIROBI.

Divided Opinion on Central Offices Site.

(Continued from page 3.)

tion in the office to be treated on the Secretariat side of the Secretariat.

Department of Local Government, Lands and Settlement, Medical Department, Chief Native Commissioner, Treasury, Audit, Attorney General, Forest Department, Agricultural Department, Surveyor General, Education Department, Public Works Department.

It is stated that the Government does not appear to be generally recognized, that the proposed site for the new Legislative Council Chamber in our view the members of the general public who would have daily business to transact with the heads of Departments, would be situated in these Offices would be a small building it would not reasonably be expected that the public convenience was being unduly sacrificed by placing them some three-quarters of a mile from the centre of the city.

THE POLICE AND THE MOTORIST

As the Editor, A. A. Mwanaka writes in his article on the subject of the motorist's position in today's paper on the subject of the Police and the Motorist, we cannot but be struck by the position stated as stated in a letter which would have been sent to the Editor of the office, but I should have no hesitation in stating my own opinion on the subject of the motorist's position in today's paper on the subject of the Police and the Motorist. The English gentleman, whose name is given as "A. A. Mwanaka" in the world, would, if in his own mind, be a motorist, and would be a motorist in connection with being late in connection with some other office when he is in a hurry to get to the office.

Discretion is not allowed in the Police Department in fact it is stated that these particular police have been directed to be more strict in their efforts in connection with the motorist's position in today's paper on the subject of the Police and the Motorist. It is stated that the motorist's position in today's paper on the subject of the Police and the Motorist is a matter of discretion in the Police Department.

Starting City Square

On the other hand we consider, particularly if the view expressed in the report is correct as the direction in which Nairobi should be expected to extend, that building these offices in the City Square, the Government would be obtaining a large area of land which would more probably be used for residential purposes, and that in the long run the Municipality would be a loser by the construction of such potentially valuable land. We do not deny that some amount of ground space can be added by the construction of a building of more stories, but we are doubtful how far such a building could be made to conform architecturally with the other buildings to be sited in the City Square, and in any case we see no reason for reasons for having recourse to such

WEATHER REPORT.

Following are the results of observations made at stations of the East African Meteorological Service, 17th October, 1929

Station.	Pressure	Direction	Temperature	Wind	Humidity	Cloud
Mombasa	30.08	8 W	82	87	075	00

Weather—Cloudy; heavy rain during the night. (Nairobi).
 Weather—Cloudy; heavy rain during the night. (Nairobi).
 N.B.—Pressure is given in lbs and is corrected but not reduced to sea level. Wind force is given in the nearest 1/4 m.p.h. (—1 m.p.h.). Wind force is given on the Beaufort Scale.

CORRESPONDENCE

The editor does not accept responsibility for the views expressed by his correspondents in these columns and in all cases the name and address of the writer must accompany a letter, and necessarily publication is a guarantee of good faith. Letters are not returned to writers unless they are enclosed to return to them.

STRIKING SUCCESS OF "THE WARE CASE"

(Continued from page 3.)

Bliss's make up an extraordinarily good deal of being in connection with the "Ware Case" which has brought him to the attention of the public in the Kenya Colony.

It is stated that the party have been chosen with the greatest care and that the party have been chosen with the greatest care and that the party have been chosen with the greatest care.

THE POLICE AND THE MOTORIST

As the Editor, A. A. Mwanaka writes in his article on the subject of the motorist's position in today's paper on the subject of the Police and the Motorist, we cannot but be struck by the position stated as stated in a letter which would have been sent to the Editor of the office, but I should have no hesitation in stating my own opinion on the subject of the motorist's position in today's paper on the subject of the Police and the Motorist.

WEATHER REPORT.

Following are the results of observations made at stations of the East African Meteorological Service, 17th October, 1929

Station.	Pressure	Direction	Temperature	Wind	Humidity	Cloud
Mombasa	30.08	8 W	82	87	075	00

Weather—Cloudy; heavy rain during the night. (Nairobi).
 Weather—Cloudy; heavy rain during the night. (Nairobi).
 N.B.—Pressure is given in lbs and is corrected but not reduced to sea level. Wind force is given in the nearest 1/4 m.p.h. (—1 m.p.h.). Wind force is given on the Beaufort Scale.

MONEY MARKET.

London, October 17.
 Prices: 128.20
 4.98 1/16
 Bombay, October 17.
 T. 115 7/32
 5 1/4 1/4

JACOB'S BY ROYAL COMMAND

JACOB'S BISCUITS

JACOB'S CHEESE ASSORTED BISCUITS



Biscuits may serve as a luxury, an accompaniment to daily needs, or an excellent light meal in themselves—Jacob's make them all.

In Jacob's SELECTED ASSORTED there are biscuits that suit every meal in the day; Jacob's CHEESE ASSORTED are exactly as supplied by special command to H.M. King George V. Jacob's ORANGE CREAMS are rich sandwich biscuits, full of the flavour of fresh fruit.

Others are—

Crust Crackers, Water Biscuits, Fruit Assorted, Crisp Buns, Buns, Puff Buns, Fruit Assorted, Tea Buns.

Jacob's Biscuits are hermetically sealed and always arrive fresh.

J. & W. B. JACOB & CO., LTD., DUBLIN, IRELAND

BISCUITS

Representatives for East Africa,
J. H. CLARK,
 NAIROBI and MOMBASA.

MATHER & PLATT LTD.

Manufacturers of—

ELECTRICAL MACHINERY; PUMPS FOR ALL PURPOSES; FIRE FIGHTING EQUIPMENT.

TELEPHONE ASSISTANCE AND ESTIMATES GIVEN FREE.

Sole Agents—
Smith, Mackenzie & Co., Box 390, NAIROBI

WHY BUILT TO BURN?

CEPROC

FIRE-PROOF WALLBOARD FOR PARTITIONS AND CEILINGS.

Messrs SMITH, MACKENZIE & Co., P.O. Box 390, NAIROBI



"ERASMIC" The Dainty SOAP

Fragrant and Refreshing Best for the Complexion.

SAVE 5/- IN THE £

ORDER YOUR FURNITURE DIRECT FROM OUR FACTORY.

EASY MONTHLY PAYMENTS. Special Terms for Civil Servants.

B. H. MYERS & Co., Ltd.
 THE CHEAPEST HOUSE IN NAIROBI.
 Phone 843. Gora Road, P.O. Box 461.

W. A. GILBEY Ltd.,

ARE THE LARGEST WINE-SPIRIT MERCHANTS IN THE WORLD.



Gilbey's Whisky to make you brisky. A Gilbey's Gin to welcome you in. A Gilbey's Sherry to make you merry. A Gilbey's Port to put you away.

Stocked by all High-Class Hotels and Wine & Spirit Merchants.

GENERAL AGENCIES, LTD.

IDEA BUILDING, Gora Road, NAIROBI.

WHY IS A QUININE-CURED INDIVIDUAL STILL INFECTIOUS?

Because the source of malaria infection in the blood, the malarial parasite, is not removed by quinine, and consequently non-infectious blood is still present.

PREVENT MALARIA BY USING

Plamochnin Compound

Bayer Master Lactus Obtainable through all Leading Chemists.

Best Manila Cigars

FROM
Kenya Grocery Co. Ltd.
 Electoria Street, NAIROBI.

Phone 456 P.O. Box 822
 WHOLESALE PROVISION MERCHANTS.

AUCTION SALES.



CATALOGUE SALE OF FURNITURE AND EFFECTS.

Duly instructed, we shall sell, by PUBLIC AUCTION, WITHOUT RESERVE, unless stipulated, at our Sale rooms, Mutos Building, Nairobi, on

MONDAY, Oct. 21st at 10 a.m.
Single Wardrobe in Teak, bevelled mirror. Cheval Mirror. Duchess Dressing Table in teak: bevelled mirror. Showcase—glazed front. Dressing Tables in teak. Chests of Drawers—teak. Washstands in teak. Bedside Chests in teak. Parlorometer. Single Iron Bedsteads Single Bedsteads in c.w. spring mattress. Folding Bedsteads, spring mattresses. Writing Desk by McCrene (pegboard top) cupboard and drawers. "Tian" Trunk. Sewing Machine—"Kest" Typewriter. Brass Moulded (double) Iron Bedstead, spring mattress. Chesterfield Suits on castors. Club Stairs. Morris Chair. Cake-stand in teak. Card Table. Oval Dining Table. Suite of Six Dining Chairs in c.w. Tray Tables in teak. Writing Bureau—teak. Sideboard in teak: drawers and cupboards. Occasional Tables. Cabinet of 21 shallow drawers. Washstand. Kitchen Table. 1 canteen of stainless Cutlery (reserve), etc., etc.

MUTER and OSWALD Ltd., Auctioneers, NAIROBI.



Duly instructed by J. R. Cox Esq., WE SHALL SELL, BY PUBLIC AUCTION, ABSOLUTELY WITHOUT RESERVE, AT THE RESIDENCE, on

WEDNESDAY, Oct. 23rd at 9-30 a.m.
THE ENTIRE FURNISHINGS AND EFFECTS OF THE DOUBLE STORED RESIDENCE IN CALEDONIAN ROAD, THE HILL, NAIROBI.

VERANDAH—Gate legged Table. Morris Chair. Desk with Chairs. Plants and Ferns in Tubs and Pots. Coir MURBURY—Large Toy Cabinet in cedar, three compartments. Black Board. Toys. Shaving Stools. Books. Four upholstered carriage type Chairs for children. Bedstead in teak. Bedside Chest. DRAWING ROOM—Four pairs bevelled Cord Curtains and Valances. Music Cabinet in m'vuli, with 6 shelf drawers. Gate Legged Table, m'vuli top. Lamp shades. Imported Chesterfield Suite, extra large Chesterfield and two Club Seats; covered in brown repp, and cushions to match. Suite of Eight Dining Chairs (two carved) tapestry seats. Occasional Tables. M.M.V. Table Gramophone. Range of Good Gramophone Records. LAMP SHADES.

DINING ROOM—Telescopic Dining Table in m'vuli with teak top (black) two extra leaves; to seat 12. Large Cedar Table. Suite of Eight Dining Chairs (black) cane seats and loose cushions. Eight Drawers (black) in m'vuli; 6 drawers and cupboard. Sideboard to match, with liquor cabinet and hair-line drawer. Serving Table (black) on castors. Curtains as hung. Lampshades. Measi Spear. Dinner Set and breakfast service. Glassware. Coffee Service. Quilts. Plaques. "Singer" Hand Sewing Machine. Kisa pottery.

STUDY—Writing Desk in m'vuli; Leather top; double drawers with 12 "Patent" Lockers. Two Cane Seated Tub Chairs. Black Writing Desk with 8 drawers. Book Shelves. Stationery. Occasional Table. "Noblesse" Portable Typewriter. Two Sets Golf Clubs in bags. Curtains. Lampshade.

BEDROOMS—Twin Bedsteads, white enamelled (extra long) with Head and Foot Boards. Bedsteads with Spring Mattresses and Head's Horse Hair Mattresses. Felted. Washbasin. Huge Dressing Table in mahogany in m'vuli; with 12 drawers. Dressing Chest, wrought Iron Electric Standard Lamp. Electric Reading Lamp. Tall Boy in cedar. Bedside Lamps. Head's Horse Hair Side Table. Bedsteads. Bedsteads' Wardrobes in polished birch; 6 cedar lined chest drawers, hanging compartment; three doors; bevelled mirror. Three other Bedsteads—Cane seat. Bedstead. Single Bedsteads in m'vuli; with box spring and Kapok Mattresses. Twin Bedsteads—white enamelled, with Head mattress as above. Wardrobe in m'vuli with 6 shelf drawers; bevelled mirror. Large Linen Cupboard in m'vuli. Sealed Glass Case in m'vuli. Curtains. Lampshades. White enamelled framed mirror.

SUNDRIES—Garden Roller. Tool. Crochery. Kitchen Utensils. Provisions. Meat safe. Dresser, zinc top. Wire Cupboard—white. "Universal" Auto Calc Thermal Jar. Kitchen Table. Camp Bed, etc., etc.

NOTE—The majority of the items of Furniture were made by Messrs. Hutchings, Blumer & Co., Ltd., and are of first class materials.

THE EFFECTS MAY BE VIEWED AND CATALOGUES WILL BE AVAILABLE ON TUESDAY, 22nd OCTOBER at the RESIDENCE between 4 and 6 p.m.

MUTER and OSWALD Ltd., Auctioneers, etc. NAIROBI.

AUSTIN'S AUCTIONS.

CATALOGUE SALE OF FURNITURE, LADIES UNDERCLOTHING, GENTS SOCKS and HANDBERG CHIEFS, BATH SOAPS, CAMELHAIR BLANKETS, SILK SHAWLS, LEATHER SUIT CASES, DRESS LENGTHS, NEW PILLOW CASES, CHESTERFIELD SUITES, RIFLES, HALF DINNER SET, DECCA GRAMOPHONE.

AUSTIN & CO. will sell WITHOUT RESERVE unless stated, at THE MART, on

SATURDAY, OCT. 19th at 10 a.m.

The following trand new goods:
Ladies Silk Underclothing, Counterpane Pillow Cases, Gents Socks and Handkerchiefs, Ladies Slippers, Babes Shoes, Bath Soap, 2 Good Quality Camelhair Blankets, Silk Embroidered Shawls, Ladies Dress Lengths, Large Leather Suit Case, Half Dinner Set, DECCA GRAMOPHONE.

Chesterfield Suits upholstered in Green Striped Poplin and Crombie. Single and Double Beds. New Single Bed with Box Spring Mattress (res.). New Folding Bed with 3 ply Mattress. Teak Hanging Wardrobe. Gents Wardrobe. Large Welsh Dresser. Sideboard in Teak brand new (res.). Dining Tables and Chairs. Lamphour Wood Office Desk recline top, 4 drawers. Chests of Drawers. Club Seats. New Linoleum. 6 Bed Bookcase. Tray Table. Teak and Good Dressing Chest. Records. Novelty Boy's Bicycle in good order. Large Cabin Trunk. Oak Cabinet. Four New Bevelled Chairs. Teak and Polo Sideboard. Decca Portable Gramophone. Occasional and Bedside Tables. Teak Writing Bureau. Dinner Wagon. Coffee Stool. Child's cot complete. Bachelor's Wardrobe in Solid Teak with Mirror (res.). 250 Mason's Rifles. 375 Rifle in splendid condition, etc. Columbia Portable Gramophone in perfect order. Smith Premier Typewriter. Hudson Super Six 7 seater Touring Car in good order and condition (see res.). Triumph F. Model Motorcycle in excellent running order (see res.).

AUSTIN & CO., Hardings Street, NAIROBI Auctioneers and Estate Agents.

AUSTIN & CO., FOR SALE.

CROOKED LANE, 4 acre Plots in good position with roads round the property from E106. The Owner will build substantial stone houses on the plots consisting of Dining Room, Lounge, 2 Bed rooms, Bathroom and Kitchen with inside sanitation, close to Verandah, Boy's quarters and garage for 4 cars. For further particulars and plans apply

AUSTIN & Co., Estate Agents, Hardings Street, NAIROBI

IN HIS MAJESTY'S SUPREME COURT OF KENYA AT NAIROBI.

CIVIL CASE No. 16 of 1929.
Harry Edward Watts Plaintiff
Anna Marie Allison Defendant
TAKE NOTICE THAT Pursuant to an order of His Majesty's Supreme Court of Kenya, at Nairobi, dated the 19th day of August, 1929, we shall sell by PUBLIC AUCTION at the NAIROBI HOTEL, on

MONDAY, Oct. 21st at 11 a.m.

The Property described hereunder, viz—
SCHEDULE OF PROPERTY
All that piece or parcel of land situate at the North East of Lake Sola in the Subukia District, that is to say, Land North A 37.6 comprising S. 111 C 3979 acres more or less, and held by the above named Defendant for the beneficial use of a term of 999 years, from the 1st day of December, 1921, subject to the annual rental of Shs. 575-80 reversible, and other provisions and conditions hereinafter by the relative Grant stated in the 20th March, 1926.

Further particulars from the Auctioneers, or Messrs. Hamilton, Harrison and Mathews, Solicitors Nairobi.



FOR SALE

FREEROAD KILIMANI PLOTS.
ON MAIN NGONG ROAD: two freehold plots, each one acre or thereabouts; only about 31 miles from centre of Nairobi; at £1100 per acre; separately or as one block of two acres.
OFF NGONG ROAD, Five acres, freehold two road boundaries, £75 per acre.

For further particulars of the above, and other properties, apply to—

MUTER and OSWALD Ltd., Estate Agents, NAIROBI.

HONEY Airborne Honey The Health Food.

The Best New Zealand Honey Therefore the Best in the World. Give it to the Kiddies Recommended by the doctors. Ask your grocer for it and see you get AIRBORNE.

Sands & Co. WHOLESALE AGENTS

Advice to Purchasers Dont get your Furniture broken send it Home by Reliance

Reliance Transport Co., Ltd.

Telephones 331 Bolus House, P.O. Box 482 627 Government Road,

JUST UNPACKED

at Ladharam's LADIES BEST STRAW HATS, in smartest colours with large Brims. Floral and Plain Georgettes, C. de Calices, Chantungis, Fujil and Brocade Silk in all Latest Shades. Prices Reduced to a Remarkable Extent. PAY US A VISIT. P.O. Box 516 Govt. Road, NAIROBI.

Special Opportunity For 2 Weeks Only

Now offer you 4/- in the £ Cash Discount on All Your Purchases of Broomware, Cloisonnaware, Ivory and other Carvings, Carpets and Mattings. 2/- in the £ on all Soft Goods.

Japan Bazaar

J. E. GIDOMALL, NAIROBI Govt. Road.

JAMAL PIRBHAI.

SELLS ANYTHING YOU CANNOT SELL. Auctioneer, Official Broker and Government Appointed Valuer. AUCTION EVERY SATURDAY and SUNDAY, commencing at 10 p.m. and 4 a.m. respectively. P.O. Box No. 209 Opp. Argylls Garden, Box No. 594, NAIROBI.

Note—No matter whether second-hand or new, but highest prices always available for clean articles

Kiambu Agrie Lime Lime Limited

from our works—Cheapest and Best

Lt.: Elmhurst Phone 468 Box 413 Chamber of Commerce Building.

POLYONK INK POWDER Superior Writing and an Ideal Fountain Pen Ink. DARK BLUE ONE TIN MAKES 40 OUNCES OF INK. FADERSHIP, ACIDPROOF WATERPROOF & NON-CORROSIVE. Shs. 1/25 per tin Shs. 1/31 per doz. tin

STANDARD STATIONERY STORES, Sixth Avenue, NAIROBI.

50 Cars to Select From 50 Godfrey's Car Mart SADLER STREET USED CARS.

Degea Bus Body, in good running order, spacious body. A mile at Flat 509. A smart little car. Recently overhauled, economical and sound. 600 miles. (Standard 6) Box Body. A really good proposition in petrol running order. £430. Fully equipped including (Loving) Spare Tyre. Small machine. Virtually new condition. A remarkably good value. £240.

ARIEL, DOUGLAS and OTHER MOTORCYCLES. GAR INSURANCE ARRANGED. New and Second-hand Spares for all makes of cars. NEW TYRES at CLEARANCE PRICES. CARS FOR HIRE WITH DRIVER or DRIVE YOURSELF. W. M. GODFREY, Sole Proprietor. Phone 148 Box 766

Rhodesian Tobaccos TRY



A really good smoke.—Baked in all leading stores. Representatives—DENOVAN & DIEBEL, CITY ROVER, NAIROBI.

FOR SALE

MUTEAIGA.—Double story stone house of latest design. Five bedrooms, every convenience, unusual outlook, standing on a 7/5 acre FREEHOLD, well wooded corner plot. Price moderate and any reasonable offer considered. KILIMANI: Small stone and concrete house on 2 1/2 acre freehold ground, excellent soil, corner plot, only £1,800 terms could be arranged. KILIMANI: 11 1/2 acre of Nyong Road, good road suitable for sub-division. Price £70 per acre on reasonable terms. For particulars of the above and other attractive Residential property, apply—

BROWN & BARRATT.

GALVANISED PLAIN SHEETS in 16, 18, 20, 24, 28, 32, 36 and 39 GAUGES also CORRUGATED IRON SHEETS, CEMENT, RIDGINGS, and OTHER BUILDING MATERIALS. AT MADATALLY SULEMAN VEREE & SONS, Madatally Building, Government Road, P.O. Box 112 NAIROBI. Phone 54.

Watts "Mirror" Blades

Universally acknowledged to be the finest produced. KEENER EDGES, SMOOTHER SHAVES—LONGER SERVICE.—Made in Sheffield, England, by a firm established over 150 years. WATTS MIRROR Blades are manufactured in Safety Razor Works. You will be amazed at this difference. They are made from the finest quality of material, and are finished with the highest degree of accuracy. They are made to order, and are supplied in quantities to suit the requirements of all classes of users. WATTS MIRROR Blades surpass all others.



In Patent Spring-Lid Moulded Containers of 16 Blades. From the Branch of KODAK (E.A.) Ltd., Kenya, Uganda and Tanganyika. Agents—

W.WINGRAM & CO THE TOOL HOUSE NAIROBI.

Fraser Standard "The Stanley"

Saturday Nov. 2nd at 9 p.m.

Kenya Breweries Ltd. Established 1922.

UGANDA ARGUS With which is incorporated THE LEADER THE OLDEST ESTABLISHED NEWSPAPER PUBLISHED IN KENYA AND UGANDA.

NAIROBI, SATURDAY, OCTOBER 19, 1929.

PRIOR, 30 GUYANA

MOTOR TAXATION ISSUE REOPENED.

But Government Opposed to a Complete Enquiry.

LEGISLATIVE COUNCIL DEBATE.

Mr. Valley Member Calls for Removal of Hampering Clauses.

The altered basis of motor taxation was introduced less than a year ago, it was wholeheartedly condemned by most of the centres in the country.

The change was stated to be based on the principle that transport should pay in direct relation to the use of roads and damage to the roads. The Government supported strongly the imposition of the tax on petrol only as a guide both to usage and weight, and a fair rate licence fee of 11/-.

The subject has been raised again in Legislative Council, although because of the general concern was a technical weakness in the Bill.

D.P.V. DEPRECATES HASTE.

During Thursday's sitting of the Executive Council the Hon. Mr. D.P.V. deprecates haste in the Bill.

A Select Committee be appointed to review the Motor Taxation Bill, 1928, in the light of the experience of the last six months, and to make recommendations.

Mr. Poyne Cobb said that the object of his motion was in no way meant to copy the proposals of the Commission but to see that the Commission had not been misled by the Government.

It particularly worried the hon. member dealing with the motor tax issue, in his opinion, that the Government had not been able to get into the details of vehicle taxation, and that it was in favour of the Government.

It was pointed out that the hon. member had not yet had a fair trial. He wanted to see the details of the proposals.

It was pointed out that the hon. member had not yet had a fair trial. He wanted to see the details of the proposals.

It was pointed out that the hon. member had not yet had a fair trial. He wanted to see the details of the proposals.

It was pointed out that the hon. member had not yet had a fair trial. He wanted to see the details of the proposals.

It was pointed out that the hon. member had not yet had a fair trial. He wanted to see the details of the proposals.

MR. RAMSAY MACDONALD IN CANADA.

Guest of Governor-General at Ottawa.

VISIT TO THE PREMIER.

(BY WIRELESS.)

Mr. Ramsay Macdonald, accompanied by Miss Isabel Macdonald, left Toronto at mid-night for Ottawa where he arrived this morning.

He was met by the Canadian Premier, Mr. Mackenzie King, Mr. Macdonald proceeded to Government House where he was welcomed by Lord Willington, the Governor-General, and Lady Willington who guests will be during his stay in the Dominion capital.

Later he went with Mr. Mackenzie King to the latter's country house or afterwards for a talk which is expected to stand mainly with the subject of naval assistance.

To-night Mr. Macdonald will be the guest of Honour at a dinner to be given by the Dominion House of Commons in the Parliament Building at Ottawa. He has numerous other engagements to fulfil before he leaves Ottawa on his return to the Monday evening—British Official Wireless Service.

ARMISTICE DAY CEREMONY.

Prince of Wales to Represent the King.

GEORGETOWN SERVICE.

(BY WIRELESS.)

The Prince of Wales will represent the King at the Armistice Day Service at the Cenotaph, Georgetown, Guyana, on the occasion of the last public observance of the King's birthday.

It was not anticipated that the King would attend the Service this year—British Official Wireless Service.

Leprosy Relief.

INVESTIGATIONS IN EAST AFRICA.

(BY WIRELESS.)

Dr. Coleman, secretary of the Empire Leprosy Relief Society, is leaving on January 10 to conduct investigations into the treatment of leprosy in East Africa.

He was the Prince of Wales who he expressed his interest in the work.

A. A. Standard Special Cable Service.

E. A. SECTION OF THE LONDON CHAMBER.

Discussion on Wilson Report Held Over.

(BY WIRELESS.)

The second night of the new Budget money Bill will be held on Wednesday, November 20th, at the London Chamber, 11, Abchurch Lane.

The question of Government Departments having licence to sell their goods, and the question of the London Chamber of Commerce (East African Section) of the London Chamber of Commerce, has been discussed at a meeting held on the 17th.

The amendment, which has been proposed, is to allow the London Chamber of Commerce to sell its goods, and to allow the London Chamber of Commerce to sell its goods.

ORDERS CONTRACTS.

(BY WIRELESS.)

Mr. A. Wigwag pointed out that the increase in the production of steel was one of the greatest factors in East Africa and would continue to increase.

MINISTERS RAISED TO MEMBERSHIP.

(BY WIRELESS.)

The King has approved the appointment of Mr. William Augustus Forbes Mackenzie, Extraordinary and Minister Plenipotentiary at Warsaw, to the Ambassador Extraordinary and Plenipotentiary at that capital—British Official Wireless Service.

SECOND TRIAL FLIGHT OF AIRSHIP R101.

To Tour the Western Counties.

A STORM WEAATHERED.

(BY WIRELESS.)

The second trial flight of the new British airship R101 will be made on Wednesday, November 20th, at the London Chamber of Commerce, 11, Abchurch Lane.

The airship will leave the mooring mast at 8 o'clock in the morning and fly via the coast of the English Channel, making a tour over the Western Counties, and will return to the mooring mast at 4 o'clock in the afternoon.

The airship will be accompanied by the Hon. Mr. A. Wigwag, who will be seen in the form of the airship.

Diplomatic Service.

(BY WIRELESS.)

The King has approved the appointment of Mr. William Augustus Forbes Mackenzie, Extraordinary and Minister Plenipotentiary at Warsaw, to the Ambassador Extraordinary and Plenipotentiary at that capital—British Official Wireless Service.

BARRAGE OVER RIVER SEVERN.

Electricity Scheme Costing £25,000,000.

Disorders in Palestine.

(BY WIRELESS.)

Mr. D. J. Vaughan, Labour Minister, announced at a meeting of the House of Commons, that he expects to report to the Government on the situation in Palestine, and to make recommendations on the subject.

The situation in Palestine is a serious one, and it is expected that the Government will take steps to bring about a settlement of the situation.

REMOVED LEAVING FOR ALEXANDRIA.

(BY WIRELESS.)

Mr. A. Wigwag pointed out that the increase in the production of steel was one of the greatest factors in East Africa and would continue to increase.

MONEY MARKET.

(BY WIRELESS.)

The London money market is quiet, and the rate for three months' time is 4 1/2 per cent.

FRANCE ALIENS SET OUT FOR MADAGASCAR.

(BY WIRELESS.)

Two companies of French troops are leaving for Madagascar, and will be engaged in the campaign against the rebels.

CONTRACTS STILL OPEN.

(BY WIRELESS.)

The London Chamber of Commerce is still open for business, and will continue to operate until further notice.

STANDARD CORRESPONDENT.

Mr. J. H. Dilling writing to the Standard on the question of the proposed new law, and pointing out that it was in the interest of the country.

STANDARD CORRESPONDENT.

Mr. J. H. Dilling writing to the Standard on the question of the proposed new law, and pointing out that it was in the interest of the country.

African Pioneer Flight.

(BY WIRELESS.)

Two companies of French troops are leaving for Madagascar, and will be engaged in the campaign against the rebels.

NEW KING OF AFGHANISTAN.

(BY WIRELESS.)

The National Assembly at Kabul has elected Mr. Amanullah Khan as King of Afghanistan.

Australian Elections.

(BY WIRELESS.)

The Australian elections have been held, and the results are as follows: Mr. Bruce has been elected.

Naval Conference.

(BY WIRELESS.)

The naval conference is still in progress, and will continue until further notice.

FRANCE ALIENS SET OUT FOR MADAGASCAR.

(BY WIRELESS.)

Two companies of French troops are leaving for Madagascar, and will be engaged in the campaign against the rebels.

CONTRACTS STILL OPEN.

(BY WIRELESS.)

The London Chamber of Commerce is still open for business, and will continue to operate until further notice.

STANDARD CORRESPONDENT.

Mr. J. H. Dilling writing to the Standard on the question of the proposed new law, and pointing out that it was in the interest of the country.

STANDARD CORRESPONDENT.

Mr. J. H. Dilling writing to the Standard on the question of the proposed new law, and pointing out that it was in the interest of the country.

MINISTERS RAISED TO MEMBERSHIP.

(BY WIRELESS.)

The King has approved the appointment of Mr. William Augustus Forbes Mackenzie, Extraordinary and Minister Plenipotentiary at Warsaw, to the Ambassador Extraordinary and Plenipotentiary at that capital—British Official Wireless Service.

NEW KING OF AFGHANISTAN.

(BY WIRELESS.)

The National Assembly at Kabul has elected Mr. Amanullah Khan as King of Afghanistan.

Australian Elections.

(BY WIRELESS.)

The Australian elections have been held, and the results are as follows: Mr. Bruce has been elected.

Naval Conference.

(BY WIRELESS.)

The naval conference is still in progress, and will continue until further notice.

REMOVED LEAVING FOR ALEXANDRIA.

(BY WIRELESS.)

Mr. A. Wigwag pointed out that the increase in the production of steel was one of the greatest factors in East Africa and would continue to increase.

MONEY MARKET.

(BY WIRELESS.)

The London money market is quiet, and the rate for three months' time is 4 1/2 per cent.

Disorders in Palestine.

(BY WIRELESS.)

Mr. D. J. Vaughan, Labour Minister, announced at a meeting of the House of Commons, that he expects to report to the Government on the situation in Palestine, and to make recommendations on the subject.

BARRAGE OVER RIVER SEVERN.

(BY WIRELESS.)

The second trial flight of the new British airship R101 will be made on Wednesday, November 20th, at the London Chamber of Commerce, 11, Abchurch Lane.

ROAD DEVELOPMENT IN EAST AFRICA.

Key to the Future of the Country.

FOR LINES DEPARTMENT TRAM RAILWAYS.

(BY WIRELESS.)

Mr. D. J. Vaughan, Labour Minister, announced at a meeting of the House of Commons, that he expects to report to the Government on the situation in East Africa, and to make recommendations on the subject.

The situation in East Africa is a serious one, and it is expected that the Government will take steps to bring about a settlement of the situation.

Disorders in Palestine.

(BY WIRELESS.)

Mr. D. J. Vaughan, Labour Minister, announced at a meeting of the House of Commons, that he expects to report to the Government on the situation in Palestine, and to make recommendations on the subject.

REMOVED LEAVING FOR ALEXANDRIA.

(BY WIRELESS.)

Mr. A. Wigwag pointed out that the increase in the production of steel was one of the greatest factors in East Africa and would continue to increase.

MONEY MARKET.

(BY WIRELESS.)

The London money market is quiet, and the rate for three months' time is 4 1/2 per cent.

Disorders in Palestine.

(BY WIRELESS.)

Mr. D. J. Vaughan, Labour Minister, announced at a meeting of the House of Commons, that he expects to report to the Government on the situation in Palestine, and to make recommendations on the subject.

BARRAGE OVER RIVER SEVERN.

(BY WIRELESS.)

The second trial flight of the new British airship R101 will be made on Wednesday, November 20th, at the London Chamber of Commerce, 11, Abchurch Lane.

CHILPRUF FOR CHILDREN

There is nothing made to equal "Chilprufe" in Comfort, in Wearing and Washing Qualities, and in its Price economy.

THE UNSHRINKABLE ALL-WOOL UNDERWEAR. All "Chilprufe" is made from a limited fabric of unshrunked, genuine, pure wool. It is made from a limited fabric of unshrunked, genuine, pure wool. It is made from a limited fabric of unshrunked, genuine, pure wool.

CHILDREN'S VESTS. Chilprufe vests are made in two distinct styles. One is a simple, plain vest, and the other is a more elaborate vest with a decorative pattern. Both are made from a limited fabric of unshrunked, genuine, pure wool.

CHILDREN'S COMBIES. Chilprufe combies are made in two distinct styles. One is a simple, plain combie, and the other is a more elaborate combie with a decorative pattern. Both are made from a limited fabric of unshrunked, genuine, pure wool.

Chilprufe Trunks. Chilprufe trunks are made in two distinct styles. One is a simple, plain trunk, and the other is a more elaborate trunk with a decorative pattern. Both are made from a limited fabric of unshrunked, genuine, pure wool.

Chilprufe Boys' Combies. Chilprufe boys' combies are made in two distinct styles. One is a simple, plain boys' combie, and the other is a more elaborate boys' combie with a decorative pattern. Both are made from a limited fabric of unshrunked, genuine, pure wool.

WHITEWAY LAIDLAW & Co. Ltd. 45, Abchurch Lane, London, E.C. 4.

SUBTERRANEAN CLOVER.

WEALTH IN SHEEP
City Man's Hobby Pays.

LESSON TO PASTORALISTS.

To depasture 40 sheep, 24 lambs, 3 ewes, and 2 ewes for more than 18 weeks on seven and a half acres of land may seem impossible to pastoralists, but this was done by Mr. J. U. Marshall, at Bulima, where for the past five years he has successfully experimented with the cultivation of subterranean clover. He has 1,500 acres of land, and explains in brief a stock of 1,000 breeding ewes, and to raise 2,000 lambs this year. Mr. Marshall says that the fertility capacity of the soil—contains naturally much improved soil with the aid of dowers—The Adelaide News.

Best Quality South Australian Subterranean CLOVER SEED, 5/2 per lb.

Also: FINEST SOUTH AFRICAN LUCERNE SEED, 1/75 per lb.

Daigety & Company Ltd.

CHESS

By A. H. Spence. **Solutions and all Chess correspondence should be sent direct to him, P.O. Box 78, Nairobi.**

PROBLEM No. 1049
By G. H. Harter.



White 3.
While white has 12 moves. This means White to play and force Black to recapture him. White has to come his own King to be mated, despite all strictures as to avoid giving mate. In these unusual positions the usual rules of the game of rook apply; the King may not move into check, and so on.

This type of problem furnishes examples of tactics not used in dilemmas, and makes a pleasant change. As Black has to give the mate, the problem is half-solved larger than the ordinary type.

PROBLEM No. 1041
By Lord.



White 4.
White makes 4 moves. A comical example of the purpose of a problem. It is not a

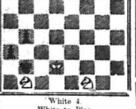
question of who will win, but of showing one particular way of playing. In finding how to mate in three moves the active players and enjoy the most nearly way of handling this position.

A NOTE TO SOLVERS

Mate in three moves always within three moves. If a mate in two, such "short mate" does not, render the problem unsound.

END GAME

By Her. H. E. Cunningham. **Black 1.**



White 1.
What result should follow the best moves on both sides? In many players prefer, and it certainly does provide excellent practice for over-the-board play.

SOLUTIONS

The Puzzle of "Andax"
Having returned from the "action" the composer writes giving his solution, and joins on in awarding a win to P. L. Viner and H. B. Cook, whose results equal his own, though in No. 10 he employs a totally different arrangement as shown below.



The White Pawns represent the Queen, and the Black Pawns

the 11 unpaired squares, which is supposed to be the same number obtainable. The composer's explanation is particularly interesting, and it is a wonderful thing that in unpaired 8 Queens and 8 Pawns it is possible. The 11 unpaired squares into one cluster intended to be the 11 special prize. This 3/7, is divided between the 11 squares, and I am sure that all readers will join me in thanking the author for the very pleasant diversion that his ingenious problem has provided. There is another intention that extends to his credit: he is the first composer, as far as my attention goes, to have included the problems and the preliminary.

RUSSIAN CUP TOURNAMENT

RUSSIAN CUP TOURNAMENT
Spencer Palmer won his first game with White, and the other two were both games with Negro. Max Hübner and the Rev. G. H. Carstén, 1 each. Davidson thus finishes with 11 points. Spencer Palmer had 174 and 2 games to play.

IN THE BRITISH CHAMPIONSHIP

As we published last week King's move should read "K-K2." The mistake was my own as copies the score. It was no fault of the printer.

CATHOLIC CHURCH SERVICES.

IV AVENUE.
XXII Sunday after Pentecost. Holy Masses at 7.45 and 8 o'clock. Wednesdays at 6.0 p.m. Wednesdays and Fridays. Holy Wednesdays at 6.0 p.m. Mass on Wednesdays 6.45.

ALL SAINTS CATHEDRAL, NAIROBI.

SUNDAY, OCT. 20
7.30 a.m. Holy Communion.
9.30 a.m. Sunday School.
10.30 a.m. Children's Service, Christ Church, Rabai Road.
10.30 a.m. Morning Prayer, followed by Holy Communion.
3.0 p.m. Children's Services.
7.0 p.m. Evening.
Wed. 7.30. Holy Communion.
W. J. Wright.

DONALD FISHER'S
'Ye Monks'
From a dietetic point of view "Ye Monks" is a safe stimulant, on account of its freedom from the impurities which are prominent in immature blends of Scotch Whisky.

Sole Producers:
DONALD FISHER, LTD.
EDINBURGH

Obtainable from ALL THE LEADING STORES.

Obtainable from ALL THE LEADING STORES.

JUST ARRIVED!!
FROCKS
FOR ALL OCCASIONS.
VERY LATEST DESIGNS.

First Store, Coats Chambers, Court Square, NAIROBI.

Apply—
Mrs. G. O. RANDALL.

REMOVED.

Beliram Papmal & Co.
new conveyance and most complete premises in ROYALTY HOUSE, Government Road, recently vacated by Messrs. Bullock and Roy Ltd. GROCERIES, WINES and SPIRITS.

LOCAL LIMERICKS.
[Watch for your District.]
No. 54—Kahawa.
A noble young sport of Kahawa
Was caught in a very sharp shower.
He simply hates chills
So he took seven pills
And a couple of bottles of dawa.
In addition to Groceries, Provision, Wine, Spirits, Confectionery, etc., we have a large assortment of proprietary medicines.

Souza Junior & Dias
P.O. Box 341, Govt. Road, NAIROBI, (Phone 26)

Hussein Suleman Ferjee & Sons.
IT ALWAYS PAYS TO BUY FROM SPECIALIST, AND SO SAVE YOUR TIME AND MONEY BY BUYING FROM US. We Specialize in Hardware, Building Materials, etc.

Large Quantity of C.I. Sheets and Expanded Metal on Available. Prices on Application.

Phone 364 Government Road, Box 238 NAIROBI.

MVULI TIMBER
Great Trade Agency East
UGANDA FRUITS
R. B. SIRDAW,
1925 Uganda

Travellers
If you are preparing to travel, try the best English make.
Jean's Bros Steel Trunk
Available now in all of these very important and all pocket sizes. Also Steel Cases, Bags, etc. See us for us.

KALA SIDA
Genl. Road, NAIROBI
DIRECT IMPORTERS

Standard Stationery Stores NAIROBI.

THE TROCADERO BAR
and
RESTAURANT
Proprietor—W. M. GODFREY. Manager—J. H. ROGERS.

GRILLS—
ALL MEALS—
REFRESHMENTS—
TEAS.

UNDER ENTIRELY NEW MANAGEMENT
Hours 8 a.m. --- Till 11 p.m.

The New Ford

The Car that Surprised the Whole World.

IT IS A MASTERPIECE IN LOW PRICED VEHICLES, EMBODYING MANY ADVANCED IDEAS AND IS A FINISHED PRODUCT OF ENGINEERING GENIUS.

No other Car at anything like the price gives the same Power, Comfort and Reliability.

CONVINCING TESTIMONY OF FORD'S LEADERSHIP IS AN OUTPUT OF OVER 10,000 CARS AND TRUCKS DAILY.

Nairobi Motors.

Tel. 317. 6th Avenue. Box No. 460.

Kiambu Agric Lime
from our works—Cheapest and Best
Lime Limited
Tel: Lamelite Phone 468 Box 413
Chamber of Commerce Building.

Sound Investments.
Business and Residential Plots, with or without Buildings, in Eldoret.
Coffee, Malt, Wheat and Stial Propositions in the Kipkeroy, Turko, Plateau, Kipkabus and Barot Forest Areas.

Apply to J. McNAB MUNDSELL
Approved Valuer, Real Estate, Commission and Insurance Agent.
P.O. Box 56, ELDORET.

Watts "Mirror" Blades
Universally acknowledged to be the finest procurable.
KEENER EDGES, SMOOTHER SHAVES, LONGER SERVICE.

Made in Stamford, England, by a firm established over 150 years. You are made from the very finest steel obtainable, with polished and embossed finish, completely with the highest skilled operative. They are produced to a very strict standard. At every stage WATTS MIRROR Blades surpass all others.

For AUTOSTROP HOLDERS. MADE PRIOR TO 1924 MODELS. For GILLETTE HOLDERS. Each package is wrapped in TRANE PARENT CELLULOSE which is air, moisture and odour proof.
Shs. 6/- per pkt.

In Patent Spring Ltd. Nicheless Customers of its Blade From All Branches of KODAK (E.A.) Ltd. Kenya, Uganda and Tanganyika.
Agents—
W.W. GRAM & CO
THE TOOL HOUSE
NAIROBI.

UNION - CASTLE LINE.

HOMEWARD via SUVA. From Mombasa (Abiti) 20th November, 1920. In February, 1920. 20th March, 1920. 19th April, 1920. 17th May, 1920.

British India Steam Navigation Company, Limited, AND PENINSULAR AND ORIENTAL STEAM NAVIGATION CO.

LONDON AND EAST AFRICA LINE. LONDON TO BEIRA, via Mauritius, Port Said Port Sudan and Aden, Outwards and Homeward. Steamers: Arrive Kilindi, Beira from London about. Leave for London about.

Chivers' Custard Powder

Advertisement for Chivers' Custard Powder featuring an image of a bowl of custard and text describing its quality and availability.

MESSAGERIES MARITIMES

(FRENCH MAIL STEAMERS). Regular and fortnightly service from and to Marseilles. THE OPTIMUM ROUTE TO LONDON. NEXT SAILING TO Marseilles.

Compagnia Italiana Transatlantica.

Monthly Passenger Service to NAPLES and GENOA. THE BEST ROUTE TO ENGLAND. SAILINGS FROM KILINDINI to GENOA on the 1st of Every Month.

Deutsche Ost-Afrika-Linie

(GERMAN AFRICAN SERVICE). DEUTSCHE OST-AFRIKA-LINIE GENERAL AGENT, MOMBASA. Coatswice Excursions. (at considerably reduced fares).

The African Marine & General Engineering

SHIP REPAIRING. SAIL MAKING & REPAIRING. MOULDING. OXY ACETYLENE WELDING & CUTTING. In their well-equipped Carpenters Shop, all types of House and Office Furniture are made and repaired.

Coatswice Excursions.

BEIRA and LOURENCO MARQUES First, Second and Intermediate Class available for the following steamers: S.S. 'Uambara' 31st Oct. S.S. 'Uganda' 21st Nov.

HOLLAND AFRICA LIJN

JOINT SERVICE. HOLLAND-ETHIOPIA LIJN AND HOLLAND-OOST AFRICA LIJN. Steamers will load at Kilindi on or about the following dates: HOMEWARD via SUVA.

CEMENT

HAND BRAND PORTLAND CORRUGATED IRON SHEETS. GALVANISED PLAIN SHEETS. ASBESTOS SHEETS. PLY BOARDS AND SX BOARDS.

MAKE A NOTE

F.M. BHAIJEE ROYALTY HOUSE, Government Road. Is Your Hardware House. IMPORTANT FOR ALL TO READ!!!

Central Garage.

REPAIRS TO ALL MAKES OF TRUCKS, MOTOR CARS AND MOTOR CYCLES. Speciality: Repairs to Electrical Equipment. Painting, Oiling, Polishing and Waxing.

LETTS OFFICE AND POCKET DIARIES

1920. Pocket Diaries... Shgs. 1/50 to Shgs. 10/50. Office Sizes... Shgs. 2/25 to Shgs. 11/.

TRY US - The Store of Farming Seeds of every description

and Farming Safeguards. Nairobi General Cash Stores, Ltd. Government Road, P.O. Box 556, Nairobi.

Miss Kathleen Bates A.R.C.M.

PIANOFORTE - SINGING - HARMONY. THE MISS KATHLEEN BATES A.R.C.M. 10, N. B. ROAD, NAIROBI.

SYSTEM Desk Calendars

(EXPECTED SHORTLY) Complete... Shgs. 8/-, Posted Shgs. 9/50. Retail only... Shgs. 6/-, Posted Shgs. 5/50.

ESSJAY. Limited.

BOLUS HOUSE, GOVERNMENT ROAD, NAIROBI. Financial & Property Agents. Mortgages Specialized. Two Partners Registered.

PILOT Desk Calendars

Standard Stationery Stores, 10, N. B. ROAD, NAIROBI.

Keith Timber Co. Ltd.

P O Box 874 Sadler Street NAIROBI.

Phone 598

Pianoforte Tuning AND REPAIRING. In Kenya Colony and five years with Messrs. F. A. HEAD, Box 676, NAIROBI.

WIRELESS

Latest Receiver, no batteries, all that is required is to plug it into the electric light socket. Complete with loud speaker, Shgs. 350/-.

Lochhead, Moore & Roy, Ltd.

P.O. Box 455, NAIROBI.

OVERSEAS MAILS.

Table with columns: STEAMERS, FROM, TO, ARRIVAL, DEPARTURES. Lists shipping schedules for various routes including South, Bombay, and others.

ROYAL INSURANCE Co. Ltd.

(Incorporated in England). FUNDS £25,000,000. We take pleasure in informing that we have been appointed PRINCIPAL REPRESENTATIVE for Kenya and Uganda of the above-mentioned company.

INDIA & BACK FLIGHT.

The spirit supplies for the Duchess of Bedford's remarkable flight to India and back were provided at all points on the route, with the exception of Karachi, by the British Petroleum Co., Ltd.—a distributing organisation of the Anglo-Persian Oil Co., Ltd.

The machine was a Fokker with Bristol Jupiter Engine, piloted by Capt. C. D. Barard.

"BP"

Anglo Persian Oil Co., (Kenya) Ltd.

Agents—
GIBSON & Co., Ltd.
Mombasa, Nairobi, Eldoret, Dar-es-Salaam.

Metropolitan Garage.

Specialists in Automobile Repairs
3 Aboon Avenue Road.

WE ALWAYS HAVE A NUMBER OF SELECTED AND OVERHAULED HAND CABS IN STOCK.

Kugley Bus Body, 1927 Model, new battery and tyres, in excellent order. **£50**

Black, Late 1926 Model, Standard Four-door, comes and see this outstanding bargain. £23

Chevrolet, 1926 Bus Body, new tyres, in perfect condition. £23

Small mileage. £23

Gay Truck, Brand New, Standard body, ready to start work. Cost over £70. £100

CARS FOR HIRE.

D. J. L. LEBERBERG,
Bols Proprietor.

SAVOY BAR.

(In the Building)
with LOUNGE and BRIDGE ROOM.
COUNTER SNACKS and MUSIC from 5 p.m.
Chandosian Road, The Hill.

ARE YOU REQUIRING Doors or Windows?

I am Making Enormous Reductions to Oppose Foreign Competition.

Support the Country You Live In.

Buy a Better and Cheaper Joinery Article made in the Country.

Ask for Prices From

George Blowers

P. O. Box 259. Phone 360.
NAIROBI.

MOTOR NEWS from Road & Showroom.

TEST OF THE BUICK-MARQUETTE.

A Moderate Priced Addition to G.M. Range.

EXCEPTIONAL PERSONAL UNDER THEHORN.

The latest product to be placed on the market by General Motors Ltd., is particularly interesting as it falls into a definite class in the long line of different models, some of no make, some of which which this "Big concern" manufactures. The car is a hard deal with by Buick dealers, and is known as the Buick-Marquette.

It is definitely one for the average man—a machine which appears cheaply because of its phenomenal performance on top gear. There are several outstanding features which intrigue, apart from those being the utter seas with which the car can be handled, its facility under all conditions.

It is definitely one for the average man—a machine which appears cheaply because of its phenomenal performance on top gear. There are several outstanding features which intrigue, apart from those being the utter seas with which the car can be handled, its facility under all conditions. It is definitely one for the average man—a machine which appears cheaply because of its phenomenal performance on top gear. There are several outstanding features which intrigue, apart from those being the utter seas with which the car can be handled, its facility under all conditions.

makes it possible to get away quickly from a stationary position when a gradient is encountered. The engine is another major feature for the greater part of its range as a smooth gas actuated engine. The steering gear has a low ratio which brings the driver's feet on a sharp corner, allows the motor to be manoeuvred in a confined space without physical effort, a feature which is more valuable as traffic conditions grow congested.

Easy Handling.

An extremely valuable feature of the car is the ease with which it can be handled. It is almost the kind of car in which the throttle and the brake pedals are the same. The steering gear will need throughout a full clutch and motor gear. The clutch pedal is almost light. The throttle pedal is in light movement that it takes a little time for one to become accustomed to its exact control.

Easy Braking Power.

The brake power is exceedingly good, the stopping distance from 20 m.p.h. being 20 feet. From 40 m.p.h. it was found to be 40 feet. There is more brake effort than the rest of the cars of the front, a customary matter in America, but which is not so in this country. The car is not so heavy, and the whole action of the car is very light. The car is not so heavy, and the whole action of the car is very light. The car is not so heavy, and the whole action of the car is very light.

The statements are very neatly presented, and the car is well equipped in front of the driver. The design is very modern with most American designs, it is very neat and satisfactory in the action.

Low Costs.

The car is of which the test was carried out has been assembled only some two days before had done so conservatively a closed space. There was no a significant appearance in the engine. The car was approached from the Whitehouse Road, the speedometer giving a very sharp right hand bend. Naturally, no road was thus afforded the speedometer made indicated no more than four miles per hour, at the top of Whitehouse Road, the speedometer indicated 34 miles per hour. There was no other feature to be noted in the slightest. The car was being driven by the driver.

Again, the writer accomplished another distinctive performance, and that was to get out of the car while it was proceeding up the grade past the entrance to the Lady Norah Hotel, walk round the car then return to his seat at the steering wheel. This was accomplished with the car near to top gear, and the pick away was smooth and swift. There is no judder on corners, and an entire absence of roll or shimmy.

The body is typically American.

The body is typically American. The car is not so heavy, and the whole action of the car is very light. The car is not so heavy, and the whole action of the car is very light. The car is not so heavy, and the whole action of the car is very light.

Engines—The cylinders side by side valves, bore 1 7/8 ins. stroke 4 1/2 ins. Total displacement 40.775 H.P. at 1,800 P.M. The placement 21 1/2 in. The car has three forward speeds and reverse with central control.

Maximum speed on gears: 1st 25 m.p.h., 2nd 40 m.p.h., 3rd 50 m.p.h. (approximate speed). Acceleration—From 0 to 50 m.p.h. in 10 sec. Top speed 50 m.p.h. with gear.

Price Range.

Full equipment £23 to 24 m.p.h., top speed 50 m.p.h. (English Imperial). Dimensions—Wheelbase 116 inches, track 56 ins front and 57 ins rear.

Lubrication—Zerk system, using transmission oil starting. Detroit-Bery two unit system. Oil—Eight day delivery. Transmission—sliding side gear type. Axles—front semi-floating, rear overdrive Elliott type. Brakes—Duo-Servo, front and rear. Hydraulic shock absorbers. Water system, thermostatically controlled.

A WING TOOL TABLE.

The prices are as follows: 410 motor £245, 2 motor £245, 2 motor £250, 2 motor £270. Box Body £200. These prices are for work wheels. If fitted with wire wheels, bumpers and luggage grid £20 extra, with bumpers only £5 extra.

DODGE BROTHERS

NEW SIX MOTOR CARS

Stylish Beauty with Proved Reliability.

Attractive beauty and smart style distinguished Dodge Brothers NEW Motor Cars which are world-famous for their proved reliability.

Skilful design has achieved a newness, length, the appearance—ample clearance, attractive lightness genuine comfort.

The bodies finished in pasted lacquer colors, with pure, unbroken lines, and low rectangular windows, create a convincing picture of exterior smartness. Interior beauty speaks for itself in the splendid upholstery and fittings. A handsome car—with greatly increased fuel economy and proved reliability in every detail!

S. Fisher & Simmons (E.A.) Ltd.

Victoria Street, NAIROBI.

W. SPRINGETT & Co.	MOMBASA
F. J. BICE	NAIROBI
KASSAB EDEHATHI & Co.	KAMPALA
D. CROUGHTON-BALFOUR & Co.	NAIROBI
POWELL & WESTON	SODDI
KASSAB & Co.	ARISHA
	MWANDA

B. Florens.

FRENCH HAIR DRESSER.
PERMANENT and TINTING SPECIALIST.
Depot insecto rapid at Oriental House.

Mascheron — Crespis — Massage.
MODERATE CHARGES.

Phone 361 NAIROBI. P.O. Box 69.
York Buildings, Government Road, opposite Brixton St.

Phone 686. P.O. Box 217.

QUESTION?

DOES IT PAY TO HAVE MY TYRES VULCANIZED?
YES

IF THEY ARE REPAIRED AT HARWOOD'S
Vulcanizing & Engineering Co.

FOR AN EFFICIENT AND PERMANENT HOT WATER SUPPLY install a

BESTON HOT WATER BOILER



For particulars relating to the size of Boiler required and prices apply to—

Thornton & Turpin

Registered Plumbers and Sanitary Engineers.
NAIROBI and MOMBASA.
Phone 185 P.O. Box 268, Nairobi, and P.O. Box 305, Mombasa.

B. E. A. SAW MILLS

Telephone No. 85 P.O. Box 99.
Telegrams: "Beams," Nairobi.

Cumpher, Podo, Mwari and Mumbi.
Flooring, Ceiling and Moulding.

P. Stewart,

C.A.S., S.E.D.,
PAINTER and DECORATOR.

Hardinge Street,
P.O. Box 124, NAIROBI.

66 Miles on 1 Gallon of Petrol.

Walter Crabb—1922 & at Whitson, U.S.A. has patented a "Triple Motion" Petrol Valve and Carbon Eliminator for all Autos and Engines that burn petrol gas.

2000 Test report as high as 66 miles on 1 gallon New Ford 60. Other makes report amazing increase of 10% or more.

Mr. Crabb offers to send 100 to introduce. He also wants Country and State Agents everywhere to sell £20 to £100 per month. Write him today. "Triple Motion" Valve, 1000 Broadway, New York, U.S.A.

TO LET OR FOR SALE.

60 x 100 ft Victoria Street, east of Central Hotel, suitable for garage, workshop, wholesale, etc.

THAKORE BROTHERS.

Under New Management
Fresh Milk supplied daily at your door

by the Killarney Dairy,
P.O. NAIROBI.

Please Yourself on the Right Side of the Danger Line!

INSURE

YOUR MOTOR CARS and MOTOR CYCLES with the AMERICAN LIABILITY and INDEMNITY CO. LTD.

M. D. KAMFP, Chief Agent.

Insured Hand Company (U.S.) Limited.
Members of the Council of Commerce and the Chamber of Commerce in London and London.

5% Energy 16% Protein



QUAKER OATS is nature's ideal health food, rich in the vitamins required for the body's healthy development of body, bone and muscle. Its energy building qualities are derived from the abundance of its protein, phosphorus, potassium, iron and calcium. Quaker Oats is a natural source of energy, strength and health.

Quaker Oats

INSURE YOUR MOTOR CARS and MOTOR CYCLES with the AMERICAN LIABILITY and INDEMNITY CO. LTD.

VOONIA TEA

INCREASES IN POPULARITY DAILY. AWARDED Ten Gold Medals.

Beware of fraudulent imitations. INSIST ON SEEING THE NAME "VOONIA" IN EVERY PACKET OF TEA.

BLACKLAKES & BROWN (LONDON) LTD. NAIROBI. Tel No. 31. Telegrams: "Blacklake" 488.

NEW CRIMINAL CODE FOR EAST AFRICA.

(Continued from page 9.)

The Solicitor-General succeeded the motion.
Official Opposition.

Captain the Hon. H. E. Schuster (Nairobi South) said that it was his intention to speak in favour of the Bill...

He opposed the second reading of the Bill. It was not wanted and there was no demand for it from the public...

He asked the House to refer to the subject of the Bill to the Legislative Council...

Completed Judge. It was perfectly clear that the English word of that class...

Objection Terms. It had been suggested that with terms so drastic and that were obsolete...

structure shown referred to my appointment to the Law Commission...
Magistrate's Opinion. In spite of the remarks made by the members...

Standing Title of This Bill. Referring to the words which I had reported used by the Secretary...

The Indian View. The Hon. A. H. Malik (Indian representative) opposed the present proposal...

Objection Terms. It had been suggested that with terms so drastic and that were obsolete...

would be introduced by the new law? The new Penal Code...

The mover had referred to the effect of the Bill...

He suggested that the Bill should be referred to the Legislative Council...

He suggested that the Bill should be referred to the Legislative Council...

He suggested that the Bill should be referred to the Legislative Council...

He suggested that the Bill should be referred to the Legislative Council...

He suggested that the Bill should be referred to the Legislative Council...

he was unable to allow an open vote, but he would be glad to accept the suggestion...

He also referred to the fact that before taking up appointments...

The Bill then passed its second reading.

He suggested that the Bill should be referred to the Legislative Council...

He suggested that the Bill should be referred to the Legislative Council...

He suggested that the Bill should be referred to the Legislative Council...

He suggested that the Bill should be referred to the Legislative Council...

WHERE TO STAY TOWN AND COUNTRY.

"Gledrid House" SALISBURY ROAD, BOARD RESIDENCE. TERMS MODERATE. TENNIS.

THE Hill Private Hotel Phone 350 P.O. Box 783, NAIROBI.

DAILY, Shs. 12/50 MONTHLY from £12/10/0 Proprietors—Captain and Mrs. DOBSON.

The Salisbury Hotel Nairobi. Phone 166. P.O. Box 500.

THE NEW OAKLEIGH HOTEL Ltd. Single Rooms, Double Rooms, Suites, Lounges, Smoking Room, Ladies' Bridge Room, 2 Tennis Courts, Lock-up Garages, etc.

THE NORFOLK HOTEL. Situated at the Largest and Oldest Established Hotel in Nairobi.

SAVOY HOTEL. The Hill, NAIROBI. Phone 48. Large Double Rooms, Single Rooms with or without H and G. Water.

THE Stag's Head Hotel NAKURU. Main Road close to New Town Office, Banks, Shops, C.O. and Bazaar.

DAKERS, WEDDINGS, PUBLIC DINNERS, Mrs. JESSE, Proprietress.

DAYARAM'S. have now on display a selection of PRINTED & PLAIN MATERIALS suitable to make your Frocks. An inexpensive one VISIT THE STORE AND PICK YOUR CHOICE AT BARGAIN PRICE.

Emblem Assorted BISCUITS. Made only by GARR'S OF CARLISLE. STOCKED BY THE LEADING GROCERS.

Amstel Beer the Best in East and West. Guaranteed free of Chemicals. Obtainable at all leading Hotels, Bars and Stores.

BARCLAYS BANK (DOMINION, COLONIAL AND OVERSEAS). Incorporated by Act of Parliament, 1906.

THE ANGLO-EGYPTIAN BANK, LTD. Capital Authorized £1,000,000. Capital Subscribed £4,672,000. Capital Paid up £4,672,000. Reserve Fund £1,600,000.

View Post Cards Books of Twelve Nairobi Views Books of Twelve Mombasa Views. STANDARD STATIONERY STORES, NAIROBI.

BUY THE VICTORIA SQUARE EQUAL COBALT'S NO. 1 WATERING CAN. STILL STRONG. THE SALE Everything in our line is given away at Gift Prices.

M.P. DE MELLO. P.O. Box 414. THE SALE Everything in our line is given away at Gift Prices.

Arays TOILET CREATIONS. There's just that distinctive difference about an Arays' creation which prompts you to discriminate instinctively to select it—more of your refinement, quality and service. The name Arays embraces soap to gently cleanse the skin, cream to bring new beauty, powder to protect it, lipstick and scent to complete the perfect note.

Arays TOILET CREATIONS. There's just that distinctive difference about an Arays' creation which prompts you to discriminate instinctively to select it—more of your refinement, quality and service. The name Arays embraces soap to gently cleanse the skin, cream to bring new beauty, powder to protect it, lipstick and scent to complete the perfect note.

AUCTION SALES.



CATALOGUE SALE OF FURNITURE and EFFECTS.

Daily instructed, we shall sell, by PUBLIC AUCTION, WITHOUT RESERVE, unless stipulated, at our Sale-rooms, Mutos Building, Nairobi.

MONDAY, OCT. 21st at 10 a.m.

Single Wardrobe in Teak, bevilled mirror. Chest of Drawers. Bedstead in teak. Bedside Cupboards in teak. Paraphanelor. Single Iron Bedstead in teak. Spring Mattress. Folding Bedstead. Writing Desk by Mel ray (pegwood top) cupboard and drawers "Titan" Treadle Sewing Machine. "Yast" Typewriter. Brass Mounted (double) Iron Bedstead, spring mattress. Chesterfield Suites on castors. Club Easels. Morris Chair. Cane-stained table. Card Table. Oval Dining Table. Set of Six Dining Chairs in c.w. Tray Tables in teak. Writing Bureau—teak. Sideboard in teak: drawers and cupboards. Occasional Tables. Cabinet of 21 shallow drawers. Washstand. Kitchen Table 1 canteen of stainless Cutlery (reserve), etc., etc.

MUTER and OSWALD Ltd., Auctioneers, NAIROBI.



Daily instructed by J. R. Cox Esq. WE SHALL SELL, BY PUBLIC AUCTION, ABSOLUTELY WITHOUT RESERVE, AT THE RESIDENCE, on

WEDNESDAY, OCT. 23rd at 9-30 a.m.

THE ENTIRE FURNISHINGS and EFFECTS OF THE DOUBLE STORED RESIDENCE in CALEDONIAN ROAD, THE HILL, NAIROBI.

VERANDAH—Gate-legged Table. Morris Chairs. Desk. Plants and Vases in Tube and Pots. Coat Mats.

NURSERY—Large Toy Cabinet in cedar: three compartments. Black Board. Toys. Shelving. Stools. Bookcase. Four upholstered cover type Chairs for children. Child's Dining Table. Two Fairy Cycle.

DRAWING ROOM—Four pairs beige Cord Curtains and "Madras" Muffs. M'vull's m'vull, with 6 cupboards and drawers. Gate Legged Table, m'vull top. Lampshades.

Imported Chesterfield Suite, extra large Chancelfield and two Club Easels: covered in brown repp, and cushions to match. Suite of Eight Dining Chairs (two corner) capeset seats. Occasional Table. Gramophone. Range of Good Gramophone Records. Lampshades.

DINING ROOM—Telescopic Dining Table in m'vull with top top (black) two extra leaves to seat 12. Large Cedar Table. Suite of eight Dining Chairs (black) cane seats and loose cushions. Dutch sideboard (black) in m'vull; 4 drawers and cupboard. Cupboards to match, with liquor cabinet and base lined drawer. Serving Table (black) on castors. Sideboard as hung. Lampshades. Mosaic Spots. Dinner Set and Breakfast Service. Glassware. Coffee Service. Canteen. "Singer" Hand Sewing Machine. Kisan pottery.

STUDY—Writing Desk in M'vull; Leather Top; double sided; with 12 drawers and two compartments. Two sets of Black and White Writing Desk with 8 drawers. Book Cases. Dictionary. Occasional Table. "Noblesse" Knickerbocker Chair. Two sets of Child's Crib in beige. Curtains. Lampshade.

BEDROOMS—Twin Bedsteads, white enamelled (extra long) with iron's patent. "Etoner Side" Reverseable Spring Mattresses and iron's patent Bedsteads. Inlaid. Cushions. Kupa. Dressing Table in polished m'vull; two mirrors. "Kau" book drawers. Dressing Iron. Jockey's Saddle. Bedside Reading Lamp. Tall Boy in Cedar. Bedside Lamp. Two Horse Hair Single Arm Bedsteads. Bedstead's Wardrobe in polished m'vull; 6 cedar lined about drawers, hanging compartments; three doors: bevilled mirror. Three Towel Racks. Wardrobe in m'vull, with box spring and cane-kapok Mattresses. Twin Bedsteads—white enamelled—with mattress as above. Wardrobe in robe in m'vull with 6 short drawers; bevilled mirror; 3 doors. Double bedstead in cedar with iron's Mattresses as above. Washstand in m'vull. Bedside Mirror. Large Linen Cupboard in m'vull. Sueded Linen Chest—in vull. Curtains. Lampshades. White enamelled framed mirror.

SUNDRIES—Garden Rellor. Tools. Crochery. Kitchen Utensils. Provision. Washstand. Dresser; zinc top. White Cupboard—white, "Universal" Anio Cane Therman Jar. Kitchen Table, Camp Bed, etc., etc.

NOTE—The majority of the items of Furniture were made by Messrs. Hutchings, Blumer & Co., Ltd., and are of first class material.

THE EFFECTS MAY BE VIEWED and CATALOGUES WILL BE AVAILABLE on TUESDAY, 22nd OCTOBER at the RESIDENCE between 4 and 6 p.m.

MUTER and OSWALD Ltd., Auctioneers, etc., NAIROBI.

AUSTIN'S AUCTIONS.

CATALOGUE SALE OF FURNITURE, LADIES UNDERCLOTHING and HENRIEGUE and HENDERSON CHIEFS, BATH SOAPS, CAMELHAIR BLANKETS, SILK SHAWLS, LEATHER SUIT CASE, DRESS LENGTHS, NEW PLOW, ASKIN, CHESTERFIELD SUITES, RIFLES, HALF DINNER SET, DECCA GRAMOPHONE.

AUSTIN & CO. will sell WITHOUT RESERVE unless stated at THE MART.

TO-DAY, OCT. 19th at 10 a.m.

The following brand new goods:

Ladies Suits upholstered in Green Striped Poplin and Creosone Single and Double Beds. New Single Bed with Box Spring Mattress (red). New Folding Bed with 2 1/2 Mats. Teak Hanging Wardrobe. Tennis Racket. Large Welch Dresser. Sideboard in Teak brand new (red). Dining Tables and Chairs. Campion Wood Office Desk with top, 4 drawers. Chest of Drawers. Club Easels. New Lino 12' x 6'. Teak Bookcase. Tray Table. Teak and Pine Dressing Chest. Ladies Leggs. Large Lady's Bicycle in good order. Large Cabin Trunk. Oak Cabinet Gramophone. New Bentwood Chairs. Teak and Polo Sideboard. Three Portable Gramophones (one a small and coffee table). Teak Writing Bureau. Dinner Wagon. Bedside Table. Child's cot complete. Bachelor's Wardrobe in Solid Teak with Mirror. Red. 25/6 Mauer. Rifles. 375 Rifle in splendid condition. Columbia Portable Gramophone in perfect order. Smith Premier Typewriter. Hudson Super Six 7 Seater Touring Car in good order and condition (low res.). Triumph P. Model Motor Cycle in excellent running order (low res.).

AUSTIN & CO. Hardinge Street, NAIROBI. Auctioneers and Estate Agents.

AUSTIN'S AUCTIONS.

SALE OF NEW SAMPLE GOODS daily instructed

AUSTIN & CO. will sell WITHOUT RESERVE, at THE MART on

TUESDAY, OCT. 21st at 10 a.m.

Electric Motorcycle Lamp. Rickshaw Lamp. Cycle Lamp. Motorcycle Cycle. Aerials. Generators for cars. Window and sign. Acetylene and the following articles: Gents Tennis Shoes. Spammers. Hammer. Shaving Soap. Rubber. Kipling. Heavy Foot. Easels. 12 gents Gift Watches. Boot Polish.

AUSTIN & CO. Auctioneers and Estate Agents, Hardinge St. NAIROBI.



FOR SALE

FREEHOLD KILIMANI PLOTS.

ON MAIN NGONG ROAD: two freehold plots, each one acre or thereabouts, siting 1/4 mile from centre of Nairobi: £100 per acre; separately or as one block of two acres.

OFF NGONG ROAD, Five acres, freehold two road boundaries, £75 per acre.

For further particulars of the above, and other properties, apply to

MUTER and OSWALD Ltd., Estate Agents, NAIROBI.

JAMAL PIRBHAI.

SELLS ANYTHING YOU CANNOT SELL. Auctioneer, Official Broker and Government Appointed Valuer AUCTION EVERY SATURDAY at 10 a.m. and 5 p.m. and 9 a.m. (reserve) P.O. Box No. 200. Off. Jinnah Garden. Phone No. 504. NAIROBI.

Note—No matter whether second-hand or new, but highest price always available for clean articles.

Complete farm in Upper Bonga: 2,949 acres all arable, river frontage, 1,100 acres developed, 700 acres under maize and 100 acres under cereals this year. 1000 cows, guinea pigs, all necessary out-buildings, 100 head good trained Oxen, 4 wagons, 2 tractors, combined harvester, Homestead shelter, double drill, 6 plows, etc., etc., valued £2,600. Crop prospects good, should realize £3,400. Everything, title included, walk in walk out, sacrifice £16,500. Terms can be arranged by instalment.

Apply—PRINGLE and JONES. RONGAI

E. Hutchison & Co.

Favoured with instructions from several clients we shall sell by public auction, without reserve (unless stated) at our Mart, Government Road, on

Tuesday 22nd inst. at 10 a.m.

A VARIED SELECTION OF NEW AND SECOND-HAND FURNITURE and EFFECTS including the following—

3 Piece Chesterfield Suite covered crests. 4 Teak Coffee Stools. Teak Palm Stand. 2 Occasional Tables. Morris Chair. Carved Occasional Table. Linn Chest (reserve). 2 Large Oval Dining Tables. 12 Dining Chair to match. Small Oval Dining Table. Indian Teak Writing Bureau. 2 Sideboards. Side Table. 3 Pairs Morris Chair Cushions. Teak Folding Table. Stained Oblong Dining Table. Indian Teak Double Wardrobe, with Two Full Length Bevilled Mirrors. Cupboard Drawers. etc. Five Single Wardrobes various designs. 3 Indian Teak Dressing Chests. Washstands. Duchess Dressing Upright. "Theral" Mirror. Bedside Cupboard. 2 Chests of Drawers. Double Bed with 3 ply spring and mattress. Indian Teak Double Bed with Best Box Spring (R). 2 Bedroom Chairs. White Enamel Washstand. White Enamel Round Mirror. Indian Teak Writing Bureau. 2 fronted Upholstery. 3 Walnut Blankets. 6 Bath Sheets. 2 Single Mattresses. 6 Small Mosquito Nets. 2 Office Table. Tray Table. Single Mangle. Milk Separator. Washstand. Almost New Bicycle (R). Ladies Bicycle. 20 Bundles Novels. 100 Gramophone Records. Gramophones. 2 Coloured Bedspreads. 3 Pairs Hamstead Shirts. Four Ladettes. 3 Single Spring Mattresses. Kitchen Tables. Enamel Toilet Wagon. 94 Teak Writing Bureau. 7 Teak Door Frames. Kapok Pillow. Electric Motor. Kipling. 12 Yard Bed. 2 Yards Black and White Lino. Camera. Post Card. D. B. Shot Gun (R). 2 Small Writing Table. Bookshelf. 3 Motor Toys. Length Material, and other things too numerous to detail.

E. HUTCHISON & CO. AUCTIONEERS, Etc. NAIROBI.

IN HIS MAJESTY'S SUPREME COURT OF KENYA AT NAIROBI.

CIVIL CASE No. 16 of 1926. Harry Edward Watts Plaintiff

Ann Marie Allison Defendant

TAKE NOTICE THAT Pursuant to an order of His Majesty's Supreme Court of Kenya, at Nairobi, dated the 16th day of August, 1926, we shall sell by PUBLIC AUCTION at the

NAKURU HOTEL on

MONDAY, OCT. 21st at 11 a.m.

The Property described hereunder, viz— SCHEDULE OF PROPERTY

All that plot or parcel of land situate to the North East of Lake Seta in the Suburb of NAKURU, that is to say, Land No. 2568 of meridional District—comprising S 111 C.

ing 2670 more or less, and held by the above named Defendant, all of the unexpired residue of a term of 999 years, from the 1st day of December, 1921, subject to the annual rental of Shs. 575/00 payable, and other provisions and conditions as provided by the relative Grant dated the 20th March, 1926.

Further particulars from the Auctioneers, or Messrs. Hamilton, Harrison and Mathews, Solicitors, Nairobi.

HAROLD THACKRAH,

Auctioneer, Land and Estate Agent, NAKURU.

HONEY Airborne Honey

The Health Food. The Best New Zealand Honey Therefore the Best in the World.

Give it to the Sick and Recommended by the doctors. Ask your grocer for it and see you get AIRBORNE.

Sands & Co. WHOLESALE AGENTS

JUST UNPACKED at Ladharam's

LADIES BEST STRAW HATS, in all the latest styles, some plain, some plaid, Floral and Plain Georgettes, C. de Chines, Shamantas, Fajji and Brocade Silk. As to quality, price and variety, you will find no other place in Nairobi. Prices Reduced to a Remarkable Extent. PAY US A VISIT.

P.O. Box 516 Gort. Road, NAIROBI.

50 Cars to Select From 50

Godfrey's Car Mart

SADLER STREET USED CARS.

Dodge Box Body, in good condition, 5000. Ford Model T, 1918. Buick (Standard) 800. Buick (Standard) 900. Buick (Standard) 1000. Buick (Standard) 1200. Buick (Standard) 1400. Buick (Standard) 1600. Buick (Standard) 1800. Buick (Standard) 2000. Buick (Standard) 2200. Buick (Standard) 2400. Buick (Standard) 2600. Buick (Standard) 2800. Buick (Standard) 3000. Buick (Standard) 3200. Buick (Standard) 3400. Buick (Standard) 3600. Buick (Standard) 3800. Buick (Standard) 4000. Buick (Standard) 4200. Buick (Standard) 4400. Buick (Standard) 4600. Buick (Standard) 4800. Buick (Standard) 5000.

ARIEL, DOUGLAS and OTHER MOTORCYCLES. CAR INSURANCE ARRANGED. New and second-hand Spares for all makes of cars.

NEW TYRES at CLEARANCE PRICES. CARS FOR HIRE WITH DRIVER or DRIVE YOURSELF.

W. M. GODFREY, Sole Proprietor.

Phone 143. 75-766.



A really good smoke - Stocked in all leading stores. Representatives—DENOVAN & DIEBEL, CITY HOUSE, NAIROBI.

HOPE'S ARE THE BEST

Steel Windows

FOR SALE

MUTHIGA—Double storey stone house of latest design. Five bedrooms, every convenience, usual outfit, standing on 8 7/8 acres FREEHOLD, well wooded and corner plot. Price moderate and any reasonable terms accepted.

KILIMANI: Small stone and concrete house on 24 acres of freehold ground, excellent soil, corner plot. Price only £1,900. Terms can be arranged.

KILIMANI: 11.81 acres off Ngong Road, good red soil, suitable for stock-farming. Price £70 per acre and any reasonable terms.

For particulars of the above and other attractive Residential property, apply—

BROWN & BARRATT, P.O. Box 627, Gort. Road, NAIROBI.

Advice to Purchasers

Don't get your Furniture broken send it Home by Reliance

Reliance Transport Co., Ltd.

Telephone 531. 627. Bolus House, P.O. Box 627, Government Road.

