

British India Steam Navigation Company, Limited, AND PENINSULAR AND ORIENTAL STEAM NAVIGATION CO.

UNION-CASTLE LINE.

HOMEWARD via SUZEL.

Table with columns: Ship Name, From Mombasa (About), Date. Includes 'Lantern Castle', 'Granatella Castle', 'Lantern Castle', 'Lantern Castle'.

HOMEWARD via SOUTH AFRICA.

Table with columns: Ship Name, From Mombasa (About), Date. Includes 'Lantern Castle', 'Lantern Castle', 'Lantern Castle', 'Lantern Castle'.

Passes Home from 455 1/2 class and 424 1/2 class.

Passenger Agents: B.S.A. Corporation, Ltd. Nairobi, Kampala, etc. East Africa Steamer, Ltd. Nairobi. East Africa Steamer, Ltd. Nairobi. C. C. Weston and Co. Mombasa and Arabua.

LONDON AND EAST AFRICA LINE.

Table with columns: London to Beira, Beira to London, Outwards and Homewards. Includes ship names like 'Kilindini', 'Mombasa'.

ROBEY-DUNBAR MAIL SERVICE.

Table with columns: Callings Kilindini, Zanzibar, Dar-es-Salaam, Beira, Delagoa Bay, etc. Includes ship names like 'Khandani', 'Keranga'.

COASTAL SERVICE.

Table with columns: Special 1st Class Excursions. Includes ship names like 'Mikindani', 'Druaka'.

ARRIVE MOMBASA.

Table with columns: Ship Name, Date. Includes 'Khandani', 'Keranga', 'Khandani'.

ARRIVE MOMBASA.

Table with columns: Ship Name, Date. Includes 'Khandani', 'Keranga', 'Khandani'.

ARRIVE MOMBASA.

Table with columns: Ship Name, Date. Includes 'Khandani', 'Keranga', 'Khandani'.

Homeward steamers call at Plymouth offering passengers the opportunity of disembarking there.

Cargo accepted for Antwerp direct on all steamers.

Homeward steamers call at Plymouth offering passengers the opportunity of disembarking there.

Cargo accepted for Antwerp direct on all steamers.

Homeward steamers call at Plymouth offering passengers the opportunity of disembarking there.

Cargo accepted for Antwerp direct on all steamers.

ALL DATAS SUBJECT TO ALTERATION WITHOUT NOTICE. RETURN TICKETS ISSUED AT TWO HUNDRED POUNDS LESS 10%.

UP-COUNTRY CHEQUES NOT ACCEPTED UNLESS ENDORSED BY A LOCAL BANK.

Times, Rates of Freight and Passages to be arranged with SMITH, MACKENZIE & CO., Agents: Kilindini, Mombasa, Zanzibar, Dar-es-Salaam, Tangani, Lindi and Lamu.

Passenger Agents only Nairobi and Kampala. Also the following Sub-Agents (see passenger only): NAIROBI: Tyson Bros. Ltd. NAIROBI; The Kenya Farmers' Association Ltd. ELDERORF, Barendse & Co. ROY; The Boy Scouts. KITALE: Messrs. Davis & Honeyey.

Chivers' Canned Fruits

The link between the ENGLISH ORCHARD AND EAST AFRICAN HOMES. R. O. HAMILTON, Ltd., NAIROBI.

MESSAGERIES MARITIMES

Regular and fortnightly services from and to Marseilles. THE QUICKEST ROUTE TO LONDON. NEXT SAILINGS TO MARSEILLES: 'General Vignon', 'Chambers', 'Bernardin de St. Pierre', 'Ville de Strasbourg'.

Compagnia Italiana Transatlantica

Weekly Passenger Service to NAPLES and GENOA. THE BEST ROUTE TO ENGLAND. SAILINGS FROM KILINDINI TO GENOA on the 1st of Every Month. 'MAZZINI', 'M. CRISPINI'.

Deutsche Ost-Afrika-Line

Table with columns: Homeward via SUZEL CANAL, MOMBASA to SOUTH. Includes ship names like 'Watussi', 'Urabanda', 'Njassa', 'Tanganyika', 'Uruschika', 'Uruschika', 'Uruschika', 'Uruschika'.

SAILINGS SUBJECT TO ALTERATION. Information regarding connection at Lourenco Marques or Durban of the above steamers may be obtained from the Agents. UP-COUNTRY CHEQUES CANNOT BE ACCEPTED UNLESS AUTHORIZED BY THE AGENTS.

THE AFRICAN MARINE AND GENERAL ENGINEERING CO., Ltd.

KILINDINI - MOMBASA. MARINE AND MECHANICAL ENGINEERS. REPAIRS TO ALL TYPE OF MACHINERY. SPECIALISTS IN: Reinstalling of Boilers, Casting and Machining of Bronze Dies, etc.

HOLLAND AFRICA LYN

Table with columns: Homeward via SUZEL, Homeward via the CAPE. Includes ship names like 'HAB', 'GRIFFBERG', 'ALPINE', 'SPINGOENTEN', 'GRIFFBERG', 'HAWAII', 'NIEUWERK'.

The Trocadero Bar

Restaurant. Grill at all hours. ALL MEALS - REFRESHMENTS - TEAS. COME AND TRY 'OLD BOB'S' BAR SNACKS. His Pressed Beef and Curries. The Best Dinner Served in Town at Shs. 4/-.

BROWNS

'FOUR CROWN SCOTCH' WHISKY. Mellow with Age. Enquiries to BLACKLAKS & BROWN (LATE MACKENZIE BROS.), NAIROBI.

Reliance Transport Co., Ltd.

TRANSPORT, WOOD FUEL, COAL, POLES AND FENCING POSTS, MANURE and LIME, STORAGE. BOLUS HOUSE, Government Road. Telephone: Office 351, Workshop: 627. Telegrams: 'Reliance'.

LOCUSTS DESTROYED.

BY USING INGREDIENTS LATELY PUBLISHED BY THE 'E. A. STANDARD'. Send your enquiries to: MADATALLY SULEMAN VERJEE & SONS, Government Road, NAIROBI.

TO LET.

RUAKA. Stone House, 10 acres of land with plenty of Fruit Trees, its own river, (by five minutes from Nairobi).

Kenya Mountain.

By E. A. T. DUTTON. With fifty-six full page illustrations reproduced in Colotype. 'A book well worth sending to your friends at home.' PRICE: Shs. 24/-; Postd. Shs. 25/8.

THE BRADFORD PAPER CO., LTD.

We have just received a selected assortment of Ladies real Leather Coats, Short and Long, suitable for Morning, etc. in all the newest shades. Also lengths of Ladies Coating Tweeds.

Keith Timber Co., LIMITED.

Sadler Street, NAIROBI. THE PLACE FOR TIMBER, MOULDINGS, WOOD BLOCK FLOORING, ROOFING and PLANT TYPING BEINGS, AT REASONABLE PRICES.

PIANOFORTE TUNING AND REPAIRING.

Seven years experience in Kenya Colony and five years with Messrs. Chappell and Co., London. F. A. HEAD, Box 674, NAIROBI.

OVERSEAS MAILS.

Table with columns: STRAHERS, FROM, Des, Mails. Includes destinations like Madras, Aden, Burma, Natal, etc.

UPLANDS BACON FACTORY

Luncheons, Dinners and Picnics are not complete without resort to our 33 Varieties of Tinned and Glass Goods. NEVER SO GOOD - NEVER SO CHEAP. Our cuts at all the leading Stores in Eastern Africa.

A NEW EYE TROUBLE.

Symptoms and Treatment.

A poultry farmer has been advised about a new eye trouble amongst his chickens, which has been giving a good deal of trouble lately.

I have described by my reference to a bulletin from the U. S. Department of Agriculture. The complaint is called Menan's Eye Worm of Chickens.

The parasite in question is a round worm known as Oxyuris Meunani and is found beneath the scintillating membrane of the eye of the chicken. The worms of this species are white, cylindrical, thin, measuring a little over half an inch in length with the thickness of a fine sewing needle. The body is thickest near the middle, tapering towards each end. The posterior end is more pointed, and it is made more or less curved slightly, while the female is straight. The female are generally slightly larger than the males. The number which may be present in a subject varies from few to many. One investigator has taken nearly two hundred from the eye of a single chicken.

Symptoms.

The presence of these worms in the eye are frequently borne by chickens without apparent inconvenience. On the other hand, it seems that considerable irritation of the ocular membrane would be produced by the movements of the worms, which are seen to be very active when the scintillating membrane is drawn away. In such cases as is to express them to view.

Apart from the possibility of an active irritation caused by the worms undoubtedly have an incense effect merely from their presence as foreign bodies. In any case the presence of these parasites in such a sensitive locality would tend to cause inflammation.

As stated it is possible that the parasites may be there without causing inconvenience, and do not always the case. Distinct symptoms of irritation become evident at times. The affected bird is uneasy and sometimes its eyes which exhibit an acute inflammation accompanied by an abundance of watery discharge.

stages of the inflammation seem to be confined almost entirely to the eye itself. The scintillating membrane, which usually and promptly slightly beyond the eyelids and is found in the eye, is found in continual motion to and fro, as if to remove some foreign body. The eyelids become stuck together and a white cheesy matter, easily removed, gathers beneath them.

There is sometimes the complication of catarrh. The tissues surrounding the eye become highly inflamed, and are reddened and swollen.

The eyeball is likely to be involved if the cornea becomes opaque and later the entire cornea is destroyed and the orbital cavity is filled with purulent material. When this stage is reached the worms are no longer to be found in the eye. The cornea may also become affected. The bird becomes anemic, emaciated, declines in strength, becomes emaciated, and dies in three or four weeks.

Treatment.

The treatment consists in the removal of the worms, combined with treatment of the catarrh.

The best method of removing the worms is by irrigating with a solution of Bicarbonate of Soda, or a one or two per cent. solution of creolin.

The irrigation has the effect of partially dissolving the worms, which may then be removed entirely by wiping away with a soft cloth.

The eyes should be regularly irrigated with Boracic Lotion, also with a mixture of zinc peroxide and one part iodiform, or carbolic vehicle. A.M.B.

MORRY MARKET.

London, Feb. 13.
Dollars: 4.86 1/2
London, Feb. 13.
T.T.: 1/8 7/8
1/2 1/8

RETURNS OF IMPORTS AND EXPORTS.

The following imports and exports for Kenya and Uganda are published in the column headed 'Imports and Exports' for the week ending February 13, 1914.

Imports.

Agricultural implements 930 packages; Ammunition 21 cases; Beer 17,000 cases; Books 17 cases; Flour 700 cases; Glassine 90 bags; Iron 700 cases; Linseed 100 cases; Soap 200 cases; Tea 200 cases; Tobacco 100 cases; Cotton 100 cases; Petroleum 100 cases; ...

Exports.

Better 200 bales to Great Britain; Henna 247 bags to Dares-Salaam; Beans 10 bags to ...

YOUR FAVOURITE SUNDOWNER! HEERING'S CHERRY BRANDY



Wholesale Bottlers: JARDIN, PHIPSON & Co., Ltd. NAIROBI.

CELOTEX AN ECONOMY IN BUILDING INSULATION FIVE REASONS WHY EVERY BUILDING BENEFITS

- 1. It insulates against heat and cold.
2. It checks rising condensation and preventing of water.
3. It has a tensile strength of over 200 lbs. per square inch.
4. It adds strength and rigidity to any building.
5. It is applicable to wood, metal, or other super-structures and under any kind of covering.

According to Data Published by ASH & Co. A.S.E. Brick Size, 8" x 7" x 1 1/2" length.
Write for particulars and Illustrated literature to- THE ANGLO-BALTIC TIMBER COY. LIMITED. NAIROBI.

WHO ASKS FOR "BEER" IS WHAT HE GETS.

WHO ASKS FOR "McEWAN'S" GETS WHAT HE DESERVES.

MAN AND COMPANY AGENTS. MOMBASA.

D. SCHOUTEN

and GENTLEMEN'S HAIRDRESSING and Waving a Speciality PERSONAL SUPERVISION. Leading Toilet Requisites Stocked. GOVERNMENT ROAD. at MOMBASA and NAKURU. 334. Phone 245.

Proves what it IS what it DOES

A Motor car proves what it is by what it does. For performance is tangible, definite—something you can easily check for yourself.

When we say the new Multi-Range Chryslers are swifter in pick-up than other cars—smoother in flights—faster in climbing hills—easier to drive—we are simply stating facts you can prove.

This new Chrysler leadership in performance is the result of such advancements in engineering as the new Chrysler Multi-Range four-speed transmission and gear shaft with a new, quiet Acceleration Range that combines the pick-up of "second" with the smooth, silent flexibility of "high." Shifting gears back and forth between forward speeds can be done at any car speed without clashing. Another fundamental is Down-Draft carburetion, which introduces the most advanced fueling practice.

In the midst of all today's claims and counterclaims, Chrysler suggests a demonstration that you may hear for yourself why—

CHRYSLER INSPIRES A PRIDE ALL ITS OWN

CARR, LAWSON & CO., LTD.

Eldoret, Nakuru, Nairobi, Kitale, Kampala.

MOTOR NEWS

From Road & Showroom

THE TREND OF DESIGN.

Effect of Convention Upon Originality.

MOTOR VEHICLES OF THE FUTURE

In the following article taken from the "Automotive" magazine, Mr. W. L. Fisher, editor of "The Automobile Engineer," gives an anticipation of the future of the motor vehicle.

A recent article in the "Automotive" magazine, dealing with the convention upon originality in design, has led to the question of what form the motor vehicle will take in the years to come. It may, therefore, be interesting to those who are interested in the future of the motor vehicle to know the opinion of an expert on this subject.

No such radical general change in motor vehicle planning appears to be in sight at present, though new designs may burst upon an unattended wheel at any moment.

From time to time there have already been some innovations which seemed to justify the view that something fresh was actually on the way.

One such radical general change in motor vehicle planning appears to be in sight at present, though new designs may burst upon an unattended wheel at any moment.

Many years ago Dr. F. C. Lancaster designed cars constructed on more logical premises, and no one now doubts that the basic viewpoint from which he attacked the problem of the right one.

cars were a logical outcome. The first requirement at transport is a mobile platform of a given width by a given length, these dimensions being varied by consideration of functional convenience.

There was, however, even when the original Lancaster cars were designed a period of traditional conservatism, and it was not until the motor vehicle was fully so much as possible of the motor vehicle of the future.

There was, however, even when the original Lancaster cars were designed a period of traditional conservatism, and it was not until the motor vehicle was fully so much as possible of the motor vehicle of the future.

There was, however, even when the original Lancaster cars were designed a period of traditional conservatism, and it was not until the motor vehicle was fully so much as possible of the motor vehicle of the future.

There was, however, even when the original Lancaster cars were designed a period of traditional conservatism, and it was not until the motor vehicle was fully so much as possible of the motor vehicle of the future.

There was, however, even when the original Lancaster cars were designed a period of traditional conservatism, and it was not until the motor vehicle was fully so much as possible of the motor vehicle of the future.

SPECIAL PURPOSE VEHICLES.

Two Morris Six Wheelers for Prince's Safari.

A NORQUOY PROOF VEHICLE

(Continued.) Among the list of entries two Buick-Royce cars figure and these will undoubtedly score heavily for appearance; they are, of course, extremely popular on the Continent.

A very high standard of comfort and safety has been attained in the new "Safety Eight," which the Volvo Car, have just placed on the market for, in addition to its 8-cylinder engine, its passenger number of most desirable safety factors.

A very high standard of comfort and safety has been attained in the new "Safety Eight," which the Volvo Car, have just placed on the market for, in addition to its 8-cylinder engine, its passenger number of most desirable safety factors.

A very high standard of comfort and safety has been attained in the new "Safety Eight," which the Volvo Car, have just placed on the market for, in addition to its 8-cylinder engine, its passenger number of most desirable safety factors.

A very high standard of comfort and safety has been attained in the new "Safety Eight," which the Volvo Car, have just placed on the market for, in addition to its 8-cylinder engine, its passenger number of most desirable safety factors.

REPUTATION

The Greatest Asset In Commercial Life is reputation for the quality of one's goods. THIS is particularly true of Motor Vehicles in East Africa, where the conditions are so trying. Dealers in Motor Vehicles in this colony will speak glowingly of the reputations of their cars, but these are mainly gained in other countries, under other conditions: they are useless in East Africa. It is an

EAST AFRICAN REPUTATION

that will attract the wisest buyer. He knows other claims are useless. The Motor Vehicles with the **FINEST** reputation in East Africa are

The Dodge Cars and Dodge Trucks

RACKED BY The Finest Service in E. Africa.

The purchaser of discrimination will examine the mechanical specifications of THE DODGE - compare them with those of any other car in East Africa and will undoubtedly

BUY THE DODGE.

S. FISHER & SIMMONS (E.A.) LTD., VICTORIA STREET, NAIROBI. SEE OUR RANGE OF SIXES; Sedans, Tourers, Bus Bodies and the famous DODGE-GRAHAM TRUCKS.

Tel. 302. Box 406.

Metropolitan Garage.

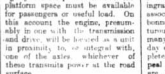
SPECIALISTS IN AUTOMOBILE REPAIRS. 2 doors Avenue Hotel. We always have a number of selected and overhauled 2nd-hand Cars in stock.

Duco Spray Painting

Have your car touched up or completely redone, by UP-TO DATE PLANT

Wanted for Cash Box Body Cars FOR HIRE

D. J. L. LETHBRIDGE, Sole Proprietor.



SAFETY

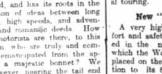
Safety

Wool Tyre Chains prevent dangerous skidding accidents.

Protect your passengers, yourself and your car by carrying always Wool Tyre Chains, ready to be put on when needed.

Look for the name "Wool" on every book. American Chain Co. New York, N. Y. U.S. PATENTED

WEED TYRE CHAINS



SAFETY

Safety

Wool Tyre Chains prevent dangerous skidding accidents.

Protect your passengers, yourself and your car by carrying always Wool Tyre Chains, ready to be put on when needed.

Look for the name "Wool" on every book. American Chain Co. New York, N. Y. U.S. PATENTED

WEED TYRE CHAINS

Ingersoll Rand Company (S.A.) Limited.

Makers of all Classes of Compressed Air Plant and Pumps. Specialists in Deepwell Pumping Installations. For information write to: J. FOLLOE, Father House, BELLEVILLE, Telephone No. 280

more space on oil

Power in every drop! Quick, smooth, clean power that will pull your car over the steepest grades. And pull it without a squeak of protest from your motor.

Step on one of the thousands of Pegasus Pump-Taps.

Pegasus is sold only through pumps and related accessories bearing the Pegasus brand which guarantees you the best product.

VACUUM OIL COMPANY OF SOUTH AFRICA, LTD.

For correct lubrication of your motor car use Mobilol. Contact the Chief of Representatives.

PEGASUS MOTOR SPIRIT

"THE SPIRIT OF MILEAGE AND POWER"

DISTRIBUTING AGENTS IN KENYA, UGANDA, TANGANYIKA AND ZANZIBAR. THE AFRICAN MERCANTILE COMPANY, LIMITED.

RUBBER STAMPS

AT THE Standard Stationery Store, NAIROBI.

GREAT MILEAGE

10 Important features in the NEW ROYAL

- 1-Complete Overhaul Millage
- 2-Low Power Consumption
- 3-Extraordinary Fuel Economy
- 4-Extraordinary Durability
- 5-Extraordinary Reliability
- 6-Extraordinary Safety
- 7-Extraordinary Comfort
- 8-Extraordinary Economy
- 9-Extraordinary Appearance
- 10-Extraordinary Performance

HERE is a tyre that looks, says and gives Mileage! Created to meet every condition of to-day's car and driving, this New Royal adds thousands of miles of surprisingly economical service.

The New Royal

The Tyre of Today for the Car of Today

CARR, LAWSON & CO., LTD., NAIROBI.

ESSJAY, Limited.

BOLUS HOUSE, GOVERNMENT ROAD, Box 634, NAIROBI. Phone 28.

Financial and Property Agents. Meritages Specialised in. Town Properties Negotiated, Partnerships Arranged, Investments Advised on.

WE HAVE SOUND INVESTMENTS FOR SALE FROM 500 UPWARDS. IN THIS RESPECT WE CLAIM TO DO BETTER FOR YOU THAN ANY ONE ELSE.

S. JACOBS, Managing Director.

B. Florens

FRENCH HAIR DRESSER. PERMANENT WAVING AND TINTING A SPECIALITY. PHONE 561. YORK BUILDING - GOVERNMENT ROAD, NAIROBI. Opposite Electric Light Co.

View Post Cards

Books of Twelve Nairobi Views. Books of Twelve Mombasa Views. BEZEL ENLARGED - REPRODUCED TO SEEN 100. Price 2/- per book. Posted 2/6 1/2.

STANDARD STATIONERY STORE, NAIROBI.

UNDER THE STANDARD CLOCK (Continued)

Under the Standard Clock (Continued)
The following is the list of the...

UNDER THE STANDARD CLOCK (Continued)

Under the Standard Clock (Continued)
The following is the list of the...

UNDER THE STANDARD CLOCK (Continued)

Under the Standard Clock (Continued)
The following is the list of the...

UNDER THE STANDARD CLOCK (Continued)

Under the Standard Clock (Continued)
The following is the list of the...

UNDER THE STANDARD CLOCK (Continued)

Under the Standard Clock (Continued)
The following is the list of the...

UNDER THE STANDARD CLOCK (Continued)

Under the Standard Clock (Continued)
The following is the list of the...

UNDER THE STANDARD CLOCK (Continued)

Under the Standard Clock (Continued)
The following is the list of the...

UNDER THE STANDARD CLOCK (Continued)

Under the Standard Clock (Continued)
The following is the list of the...

LIME BURNING INDUSTRY IN KENYA.

IN THE WOMB OF A KILN.

Colony Graveyard of East African Animal Life.

With a few miles of Nairobi, a fire is kept constantly burning. Its purpose is to produce lime for the deposit of limestone found on what was once a "waste" corner of a collocation plantation.

The local company of Lime Limited, has erected a factory with modern kilns, cable railway and factory to produce lime for all purposes.

There is also a colossal manumom—the graveyard of thousands of animals whose bones are turned into lime for fertilizing purposes.

FERTILISER FACTORY AT WORK.

If you ever see a dose of earth with a small quantity of water, you will find it very sticky. This is because of the water being bound to the particles of earth. This is the same thing which happens in the soil of a field.

FERTILISER FACTORY AT WORK.

It is a well-known fact that the soil of a field is very sticky. This is because of the water being bound to the particles of earth. This is the same thing which happens in the soil of a field.

FERTILISER FACTORY AT WORK.

It is a well-known fact that the soil of a field is very sticky. This is because of the water being bound to the particles of earth. This is the same thing which happens in the soil of a field.

FERTILISER FACTORY AT WORK.

It is a well-known fact that the soil of a field is very sticky. This is because of the water being bound to the particles of earth. This is the same thing which happens in the soil of a field.

FERTILISER FACTORY AT WORK.

It is a well-known fact that the soil of a field is very sticky. This is because of the water being bound to the particles of earth. This is the same thing which happens in the soil of a field.

FERTILISER FACTORY AT WORK.

It is a well-known fact that the soil of a field is very sticky. This is because of the water being bound to the particles of earth. This is the same thing which happens in the soil of a field.

"Stray Thoughts of a Pilgrim."

The "East African Standard" has arranged for the publication of a short series of articles under the heading of "Stray Thoughts of a Pilgrim."

THE NEW LIBRARY GIRLS SCHOOL.

At a late hour last night information was received in Nairobi that the new library girls school was to be opened in Nairobi.

THE NEW LIBRARY GIRLS SCHOOL.

At a late hour last night information was received in Nairobi that the new library girls school was to be opened in Nairobi.

THE NEW LIBRARY GIRLS SCHOOL.

At a late hour last night information was received in Nairobi that the new library girls school was to be opened in Nairobi.

THE NEW LIBRARY GIRLS SCHOOL.

At a late hour last night information was received in Nairobi that the new library girls school was to be opened in Nairobi.

THE NEW LIBRARY GIRLS SCHOOL.

At a late hour last night information was received in Nairobi that the new library girls school was to be opened in Nairobi.

THE NEW LIBRARY GIRLS SCHOOL.

At a late hour last night information was received in Nairobi that the new library girls school was to be opened in Nairobi.

THE NEW LIBRARY GIRLS SCHOOL.

At a late hour last night information was received in Nairobi that the new library girls school was to be opened in Nairobi.

THE NEW LIBRARY GIRLS SCHOOL.

At a late hour last night information was received in Nairobi that the new library girls school was to be opened in Nairobi.

Keeps Musical Festival. THE FIGHT FOR THE CUP.

Keeps Musical Festival. THE FIGHT FOR THE CUP. The following is the programme...

Keeps Musical Festival. THE FIGHT FOR THE CUP.

Keeps Musical Festival. THE FIGHT FOR THE CUP. The following is the programme...

Keeps Musical Festival. THE FIGHT FOR THE CUP.

Keeps Musical Festival. THE FIGHT FOR THE CUP. The following is the programme...

Keeps Musical Festival. THE FIGHT FOR THE CUP.

Keeps Musical Festival. THE FIGHT FOR THE CUP. The following is the programme...

Keeps Musical Festival. THE FIGHT FOR THE CUP.

Keeps Musical Festival. THE FIGHT FOR THE CUP. The following is the programme...

Keeps Musical Festival. THE FIGHT FOR THE CUP.

Keeps Musical Festival. THE FIGHT FOR THE CUP. The following is the programme...

Keeps Musical Festival. THE FIGHT FOR THE CUP.

Keeps Musical Festival. THE FIGHT FOR THE CUP. The following is the programme...

Keeps Musical Festival. THE FIGHT FOR THE CUP.

Keeps Musical Festival. THE FIGHT FOR THE CUP. The following is the programme...

Keeps Musical Festival. THE FIGHT FOR THE CUP. The following is the programme...

STANDARD CLOCK.

Standard Clock. The following is the list of the...

STANDARD CLOCK.

Standard Clock. The following is the list of the...

Big Bargains Today at EADIE'S SALE.

- LADIES' WHITE SHOES - 10/-
LADIES' SLIPPERS - 5/-
CHILD'S TENNIS - 3/50
MENS SHOES - 20/-

Big Bargains in Ladies Shoes in Small Sizes to 2 1/2 to 6 and 7 from 10/- must be cleared. Come Early.

WE ALSO ALLOW 10% OFF NEW GOODS JUST ARRIVED.

Eadie's Footwear Ltd.

P. O. BOX 148. NAIROBI.

CORRESPONDENCE.

Sportex

THE CLOTH FOR "STAMFORDS"
THE "CHAMPION" OF GLOBA.

A Thoroughly Dependable,
Hard-wearing
TWEED FABRIC

— for —
**PLUS-FOUR SUITS,
SPORTS COATS and
GOLF-JACKETS.**

Patterns on Application.

Ahamed Bros.
THE HOUSE OF DISTINCTION.
ROZAS, NAIROBI. P.O. Box 254
NAIROBI.

Paste is messy—Powder wasteful

Gilbs Dentifrice

cleans cleanly
and economically

Gilbs Dentifrice meets the modern demand for concentrated usefulness. It does the work of both powder and paste without the messiness of either.

Ensures that sparkling spotlessness. Ensures also safety at the danger-line—where teeth meet gums—and adds delight on the this enamel.

And Gilbs Dentifrice is so deliciously fragrant that it is a sheer pleasure to use.

Your teeth are from Castles—defend them with

Gilbs Dentifrice

WELL KNOWN BRAND

YOUR CHEMIST STOCKS THEM

High CLASS **S AND W** Vegetables,
FRUITS, Dried Fruits,
In SYRUP, Oils and Pickles.

WE HAVE JUST UNPACKED A
LARGE ASSORTMENT OF THIS
WELL KNOWN BRAND

including—			
PEACHES in Syrup	24s.	Sbs.	2725
Raspberries	" "	" "	2225
Loganberries	" "	" "	1100
Cherries	" "	" "	2125
Pineapple	" "	" "	2225
Grape Fruit	" "	" "	2725
Blackberries	" "	" "	1100
Strawberries	2s.	" "	2100

Wholesale Prices on Application.

ELLIOT'S & Co. Ltd.
P.O. Box 177. Phone 60.

NOTICE

Attention of all our customers, is drawn to the fact that it has been brought to our notice, that recently some Hawkers are attempting to take undue advantage of our good name, and pursue the undesirable practice of going from door to door to receive orders of tailoring works and supplying materials in our name as our representatives.

Our representatives are being sent out by us to receive orders, and the orders thus given do not concern us as regards quality of materials and the workmanship.

BON MARCHE
GOVERNMENT ROAD, NAIROBI.

BROADCASTING IN KENYA.

The Editor "E.A. Standard"
Sir—I am writing to you in connection with the address of the writer who has been appointed to the position of Chief Engineer of the Kenya Railways. I am writing to you in connection with the address of the writer who has been appointed to the position of Chief Engineer of the Kenya Railways.

The Editor "E.A. Standard"
Sir—I am writing to you in connection with the address of the writer who has been appointed to the position of Chief Engineer of the Kenya Railways. I am writing to you in connection with the address of the writer who has been appointed to the position of Chief Engineer of the Kenya Railways.

The Editor "E.A. Standard"
Sir—I am writing to you in connection with the address of the writer who has been appointed to the position of Chief Engineer of the Kenya Railways. I am writing to you in connection with the address of the writer who has been appointed to the position of Chief Engineer of the Kenya Railways.

Yours etc,
H. A. CLAY.
February 15, 1930.

UNEMPLOYMENT.

The Editor "E.A. Standard"
Sir—We read with much interest the article in your issue of the 12th inst. headed "Unemployment in Kenya" by Mr. R. H. Moore. The article is a very good one and we are glad to see that you have taken the trouble to publish it.

The Editor "E.A. Standard"
Sir—We read with much interest the article in your issue of the 12th inst. headed "Unemployment in Kenya" by Mr. R. H. Moore. The article is a very good one and we are glad to see that you have taken the trouble to publish it.

THE COST OF LIVING

The Editor "E.A. Standard"
Sir—We read with much interest the article in your issue of the 12th inst. headed "The Cost of Living" by Mr. R. H. Moore. The article is a very good one and we are glad to see that you have taken the trouble to publish it.

The Editor "E.A. Standard"
Sir—We read with much interest the article in your issue of the 12th inst. headed "The Cost of Living" by Mr. R. H. Moore. The article is a very good one and we are glad to see that you have taken the trouble to publish it.

The Editor "E.A. Standard"
Sir—We read with much interest the article in your issue of the 12th inst. headed "The Cost of Living" by Mr. R. H. Moore. The article is a very good one and we are glad to see that you have taken the trouble to publish it.

The Editor "E.A. Standard"
Sir—We read with much interest the article in your issue of the 12th inst. headed "The Cost of Living" by Mr. R. H. Moore. The article is a very good one and we are glad to see that you have taken the trouble to publish it.

Yours etc,
H. A. CLAY.
February 15, 1930.

"ON THIS DAY."

February 15th.
The Editor "E.A. Standard"
Sir—We read with much interest the article in your issue of the 12th inst. headed "On This Day" by Mr. R. H. Moore. The article is a very good one and we are glad to see that you have taken the trouble to publish it.

The Editor "E.A. Standard"
Sir—We read with much interest the article in your issue of the 12th inst. headed "On This Day" by Mr. R. H. Moore. The article is a very good one and we are glad to see that you have taken the trouble to publish it.

The Editor "E.A. Standard"
Sir—We read with much interest the article in your issue of the 12th inst. headed "On This Day" by Mr. R. H. Moore. The article is a very good one and we are glad to see that you have taken the trouble to publish it.

Yours etc,
H. A. CLAY.
February 15, 1930.

SUBURBAN ROADS—KILIMANI.

The Editor "E.A. Standard"
Sir—We read with much interest the article in your issue of the 12th inst. headed "Suburban Roads—Kilimani" by Mr. R. H. Moore. The article is a very good one and we are glad to see that you have taken the trouble to publish it.

The Editor "E.A. Standard"
Sir—We read with much interest the article in your issue of the 12th inst. headed "Suburban Roads—Kilimani" by Mr. R. H. Moore. The article is a very good one and we are glad to see that you have taken the trouble to publish it.

The Editor "E.A. Standard"
Sir—We read with much interest the article in your issue of the 12th inst. headed "Suburban Roads—Kilimani" by Mr. R. H. Moore. The article is a very good one and we are glad to see that you have taken the trouble to publish it.

Yours etc,
H. A. CLAY.
February 15, 1930.



"ERASMIC"
The Dainty SOAP
Fragrant and Refreshing
Best for the Complexion.

HAVE YOUR TYRES TESTED FREE DAILY AT EBOO'S PETROL STATION. This Will Save You POUNDS QUICK SERVICE IS OUR WATCHWORD. Eboo's Petrol Station SIXTH AVENUE, NAIROBI.

J. & F. MARTELL ESTABLISHED COGNAC 1715. A BRANDY THAT IS HANDY FOR ALL OCCASIONS AND ALL NATIONS. A GRAND BRIDG OF MARTELL'S MARTELL'S

MARTELL'S for AGE and QUALITY. Know throughout the world.

Representatives—General Agents, Ltd., The Buildings, Government Road, NAIROBI.

AFRICA'S PREMIER ANNUAL Twentieth Year of Publication. THE British South Africa Annual 1929-1930. Portraying in Pictures and Prose Africa and Its People from the Equator to Cape Point. A Remarkable Series of Full Page Artistic Reproductions Old Masters at the Cape.

Colour Reproductions by well-known Artists. BOOK YOUR ORDER NOW. Reduced to 4/- Postage 1/40 extra. From STANDARD STATIONERY STORES, or from the Proprietors and Publishers. Hortors Limited, CAPE TOWN. Johannesburg, Pretoria, Bloemfontein, Durban, Port Elizabeth and Pietermaritzburg.

GREAT REDUCTION IN PRICE, TENNENTS BEER AND PERFECTION WHISKY TRY THEM FIRST.
Messrs. SMITH, MACKENZIE & Co., NAIROBI.

Kenya Loan & Discount Co. Ltd.
P.O. Box 546, NAIROBI.
OFFICE—1st Floor, Court Chambers.
FINANCIAL AGENTS
Bills Discounted—Short-period Loans Granted.
Any Realizable Asset mortgaged for Cash.
Call or Write. STRICTEST CONFIDENCE.
ESTABLISHED 1921.
ALIBAH SHARRIF & SONS.
P.O. Box 892. NAIROBI. Phone 374.
GOVERNMENT ROAD and BAZAAR.

FEDERAL BANK OF N.I.P.D. LIMITED.

(Incorporated in United Kingdom)

Branches in the Colony and possessions of Kenya and East Africa.

Branches in the Colony and possessions of Kenya and East Africa. Head Office: Nairobi.



ON THE ROAD IN AN HOUR BRUSHING ROBBIALO

Agents: BENTH, MACHENRE & Co. Dec. 200, NAIROBI

EVERYTHING FOR SPORT AT MAY & CO. LTD.

MILKMAKERS' UNION. PURE MILK AND CREAM. Farm to Consumer. Box 11, NAIROBI.

SPORTS and PASTIMES.

A CAUSEME OF AFFAIRS. Leaves from a Sportsman's Diary.

A REVIEW OF CURRENT EVENTS.

(Forward.) I think most people very sorry to a certain extent that the South African students did not succeed in keeping their line intact at the Omat, especially as it occurred in their final game before departing.

Sometimes I am inclined to think that we stage our rugby season at the wrong time of the year. Recently the grounds have been in fair condition for the Omat and I see the Police and Mr. McGuire are taking advantage of the soft grounds and playing a match to-day.

At the annual general meeting of the Rugby Union it is to be fully decided whether the Championship should be continued or not.

After writing so much in connection with rugby I feel a bit of a traitor to start on soccer.

to do away with the Championship, have some good old friendly games, which after all is the true spirit of rugby and at the end of the season when interest is flagging a little, revive matches and finally winding up, preferably in old of some covering charity with a little knock-out.

The Service, however, will be hand put to raise a side, unless new blood is forthcoming.

However, I do not suppose my friends would get for them. I should see the Service in the field in spite of new Clubs draining their last season's resources.

One very pleasing result of teams like the Police and Rugby entering the Rugby field will be a general distribution of the star players and next seasons game should be fairly even.

I remember reading a "Sixteen Year" column recently in a Home sporting paper and the Rugby Constable was required for a certain County game and one of the qualifications was "must be a cricket player."

Local Soccer. After writing so much in connection with rugby I feel a bit of a traitor to start on soccer.

It now appears that, instead of being there, I have the honor of being a Member, all Clubs who are affiliated to the Association in the right to nominate a representative to look after their interests at Council meetings.

One point I failed to under stand from the information given to me by the Hon. Secretary was the fact that Capt. J. S. Robertson relinquishes the position of Vice-President in favor of an other gentleman equally interested in the soccer code and was proposed to be a Patron of the Association.

However, I do not suppose my friends would get for them. I should see the Service in the field in spite of new Clubs draining their last season's resources.

One very pleasing result of teams like the Police and Rugby entering the Rugby field will be a general distribution of the star players and next seasons game should be fairly even.

A couple of years ago the question of the value of a dropped goal was under consideration by the Rugby Union Board. When the point arose again, I thought, England who had one of its staunchest supporters, in decrease in value will be in regard to means all Wales new achievement to a Belfast beaten by a dropped goal to a try.

In the matter of the value of a dropped goal, I think the R. U. is wise to have the value of the Rugby League book and award points for a try conceded on the spot, to a try conceded on the spot, to a try conceded on the spot.

The matter of qualification had been open to discussion and I see in the Scottish team to meet Ireland, that J. R. Hutson has been selected as centre three under Scotland.

Talking of Scotland always reminds me of the old people because many years ago I was honored by a certain person that the Scots are men, but the Yorkshire men are women.

One of the qualifications had been open to discussion and I see in the Scottish team to meet Ireland, that J. R. Hutson has been selected as centre three under Scotland.

To attract attention, don't give it attention. A woman's mind concentrates in a depressing sight, and you, how many notified, just as easily beautified as might strongly hair.



SPEND YOUR HOLIDAY IN SOUTH AFRICA. RAILWAY EXCURSION PARIES are available all the year round for fares of four or more travelling together on the lines of the South African Railway Administration.

Stewart, C.A.B. S.E.D., PAINTER and DECORATOR. Harding Street, DEPT. NAIROBI.

Londholm Dairy, for PURE MILK and CREAM. Farm to Consumer. Box 11, NAIROBI.

THE F... TRUCK. IS DIFFERENT FROM OTHER TRUCKS OF ITS KIND. The Advantages Are: A Minimum Petrol Consumption of 15 Miles per Gallon. Develops 20% More Pulling Power. Will take full Load up any known Gradient. Can be Supplied with Battery or Magneto Ignition. It Costs Less to Purchase. 3 Gear Chassis 39' x 6' Oversize Tyres £178-15-0. 6 Gear Chassis 39' x 6' Oversize Tyres £190-15-0. NAIROBI MOTORS. Box 460. 6th AVENUE. Tel. 317.

34

BRITISH GOODS

Holland and Holland
John Ripley and Co.
Wentley Richards and Co.
B.S.A. Guns Ltd.

and both
Kynoch and Eley AMMUNITION
always in stock.

SHAW & HUNTER LTD.

SOLE AGENTS. NAIROBI.

CHARLES WARE.

TURF ACCOUNTANT.

(Established 25 years). Tel. Ad. "Sportsman."
Box 175. Trust Chambers, Government Road, NAIROBI.

WH Clients please note I am going to Nanyuki Races for my annual card and shall not be back until Tuesday, 11th Feb. When I shall commence operations on the English Events when I shall commence operations on the English Events.

LINCOLNSHIRE HANDICAP, GRAND NATIONAL and ENGLAND DERBY BETTING FOR CASH ONLY.

Credit Accounts as Approved Reference For CASH ONLY. NO REPLY DISTINCTLY MEANS NO BUSINESS.

RELIABILITY is ascertained by using any of these articles—all our stocks are of the same consistent quality.

LONG LIFE and MAXIMUM strength are ensured.

J.H.S. TODD & Co. Ltd

TRADE MARK

MAURICE ROSENSTON

P.O. Box 461. Telephone "461." 461.

RAI, BUILDINGS, GOVERNMENT ROAD, NAIROBI.

LINCOLN HANDICAP. Mar March 29th, 1 mile—10/1. Square Book, Le France, Vauzet, Contour; 20/1. April, 10/1. Grand Parada, Skipper, Louisiana 11/3; 10/1. 7/10/1. Others.

The following have been accepted in Lincoln Handicap—Kings Oven, Day, Pennington Court, Captain Elm, Budgey, Grandfather, Monaster de Neul, Douglas, Fitzpatrick, Copmanshan, Orpenda.

GRAND NATIONAL. Mar March 31st, 1 mile 2 1/2 furlongs—7/1. Hogg, Sham Gullin; 20/1. K.C.G., Great Span, Kilburn; 20/1. Others.

Multiple Jumps the Derby.

DUBLIN FLY HANDICAP. Mar March 14th, 1 mile 10/1. The Don, 22/1. Deorum, Conqueror; 14/1. July 16/1. Great Lion; 20/1. Blue Tom, Dupes, Charlotte, Dick Warier, Glen Albyn, 20/1. Ash, Onward Knight, Pavilion, Blorhede Day, Skipper, A.C.H. Standard, Silver on South, Astoria, Baskin; may be seen as Official Meeting Calendar on South African Racing may be seen in my office.

LAWN TENNIS

RACKETS
BALLS
NETS
and all ACCESSORIES

TO GET THE BEST GO TO

MAY & Co., Limited.

THE Sports House
NAIROBI.

THE SPORTS PAGE

NAIROBI GOLF CLUB NOTES

Entry and Draw for the Veterans' Cup.

PREPARING FOR THE "B. E. F." MATCH AGAINST THE REST.

A Most Consistent Lady Golfer.

Major Snowden, the Secretary of the Nairobi Golf Club took up his duties on Monday last. There is always a rash of work when any change takes place, but our new Secretary seems well able to cope with it and I think the Club will be running very smoothly with a weak or over.

The annual general meeting has already been reported in these columns. I was pleased to see the practically identical very nice address of the Club given in the minutes in which the members were made aware of the fact that they were available on the 20th committee.

The annual general meeting has already been reported in these columns. I was pleased to see the practically identical very nice address of the Club given in the minutes in which the members were made aware of the fact that they were available on the 20th committee.

The Ladies' Competition was played on Wednesday, and I was pleased to see the practically identical very nice address of the Club given in the minutes in which the members were made aware of the fact that they were available on the 20th committee.

MAURICE ROSENSTON

P.O. Box 461. Telephone "461." 461.

RAI, BUILDINGS, GOVERNMENT ROAD, NAIROBI.

LAWN TENNIS

RACKETS
BALLS
NETS
and all ACCESSORIES

TO GET THE BEST GO TO

MAY & Co., Limited.

THE Sports House
NAIROBI.

LAWN TENNIS

RACKETS
BALLS
NETS
and all ACCESSORIES

TO GET THE BEST GO TO

MAY & Co., Limited.

THE Sports House
NAIROBI.

NANYUKI SPORTS CLUB.

Results of February Race Meeting.

GOOD RUNNING AT TWO DAYS' GALLOPS.

STANDARD—CORRESPONDENT.
Nanyuki, February 12.—Some 500 spectators were present at the two-day racing held on February 5 and 6. The following were the results:

FIRST DAY.

CAPIVY STAKES (2nd Division). 10 furlongs. Mrs. J. Lawrence's MURBO 12/1, O'Connell's 12/1, Mrs. E. Dasher's NEVER-MORE 12/1, O'Connell's 12/1, Mrs. E. Dasher's NEVER-MORE 12/1, O'Connell's 12/1.

SECOND DAY.

CAPIVY STAKES (2nd Division). 10 furlongs. Mrs. J. Lawrence's MURBO 12/1, O'Connell's 12/1, Mrs. E. Dasher's NEVER-MORE 12/1, O'Connell's 12/1.

THIRD DAY.

CAPIVY STAKES (2nd Division). 10 furlongs. Mrs. J. Lawrence's MURBO 12/1, O'Connell's 12/1, Mrs. E. Dasher's NEVER-MORE 12/1, O'Connell's 12/1.

FOURTH DAY.

CAPIVY STAKES (2nd Division). 10 furlongs. Mrs. J. Lawrence's MURBO 12/1, O'Connell's 12/1, Mrs. E. Dasher's NEVER-MORE 12/1, O'Connell's 12/1.

FIFTH DAY.

CAPIVY STAKES (2nd Division). 10 furlongs. Mrs. J. Lawrence's MURBO 12/1, O'Connell's 12/1, Mrs. E. Dasher's NEVER-MORE 12/1, O'Connell's 12/1.

Good!
It's British!

If the name Eley or Kynoch is stamped on the side of a cartridge you may be sure that it will perform its duty as a cartridge as expected to do. It will kill its bird, be comfortable in use, will not jam and will not damage your gun. In any case Eley and Kynoch cartridges are dependable.

The "Green Pat" is a new cartridge, the most powerful of its kind. It is suitable for all game up to and including the largest species of birds and mammals.

Don't use inferior cartridges from any other source.

USE ELEY OR KYNOCHE. BRITISH and BEST.

Obtainable from ALL DEALERS. Write for full particulars to ELEY & CO., LTD., LONDON, W.C.

A. HOGG.

MACKINNON'S BUILDINGS, NAIROBI.

ENGLAND DERBY, 14 miles, 4:45—100/8. The Field.

LINCOLNSHIRE HANDICAP, 95-100, 1 mile 10/1. Parada, Square Book, Le France, Vauzet, Contour; 20/1. Blue Tom, Dupes, Charlotte, Dick Warier, Glen Albyn, 20/1. Ash, Onward Knight, Pavilion, Blorhede Day, Skipper, A.C.H. Standard, Silver on South, Astoria, Baskin; may be seen as Official Meeting Calendar on South African Racing may be seen in my office.

GRAND NATIONAL, Liverpool, 28-30, 1 mile 2 1/2 furlongs—7/1. Hogg, Sham Gullin; 20/1. K.C.G., Great Span, Kilburn; 20/1. Others.

Multiple Jumps the Derby.

DUBLIN FLY HANDICAP, Mar March 14th, 1 mile 10/1. The Don, 22/1. Deorum, Conqueror; 14/1. July 16/1. Great Lion; 20/1. Blue Tom, Dupes, Charlotte, Dick Warier, Glen Albyn, 20/1. Ash, Onward Knight, Pavilion, Blorhede Day, Skipper, A.C.H. Standard, Silver on South, Astoria, Baskin; may be seen as Official Meeting Calendar on South African Racing may be seen in my office.

"HSPADING" MULTITOP KROPPIT GOLF BALL

Print its twelve distinct colored dots to EASIER TO HIT, EASIER TO IDENTIFY, EASIER TO FIND.

CRAIG'S SPORTS HOUSE.

Phone 321. Government Road, Box 95.

NAIROBI RAILWAY CLUB.

The following teams will represent Matunga in their game against Mr. Edwards' 15 men tomorrow on Matunga ground. The following players are selected that anyone unable to turn out on Monday will be replaced by the Standard Club of South Africa, (Phone 281) as soon as possible. H. Hogg, Morison, Wynne, Ninn, Victor, George, Henry, Allen, F. Morrison. Scores: Wright 11/10.

Local Cricket.

MUTHAIGA TEAM TO MEET EDWARDS XI.

Your Kenitas Cigarettes, Sir. Now packed in Curved tins of 50.

Tahr Valley Golf Club.

TEAMS FOR TODAY'S MATCH.

The following have been selected to represent the Tahr Valley Golf Club in their game against the Standard Club of South Africa, (Phone 281) as soon as possible. H. Hogg, Morison, Wynne, Ninn, Victor, George, Henry, Allen, F. Morrison. Scores: Wright 11/10.

OUR WOMEN'S PAGE.

WATERING
 The ALSTON PATENT Stock Water Trough is the outcome of 50 years Pastoral experience in Australia.

IT WON'T LEAK
 WON'T SAG
 WON'T BREAK

Complete with Rigid Steel Frame.

FOR CATTLE FOR SHEEP AND PIGS.

10/- per foot. 8/- per foot.
 In lengths of 54 ft. 9/- per foot. 7/- per foot.

Dalgely & Company Ltd.
 NAIROBI. ELDORET.



A Letter From Paris.

(By Odette Bouché.)

note; fat far has been taken in account for some months now, but the finishing bow is quite new! On the cuffs were small lace-trimmed ermine, but there was no more for trimming. As you see, it was a suit for really nice days. When the coat was opened, I saw that it was woven ermine-trimmed navy blue satin printed with white dots of various sizes, some very large.

The bodice was made with a blouse effect at the waist and belted by soft white kid. The skirt was flared, mounted in points on a small pipe, and was the regulation five inches below the knee. The coat was lined throughout with the spotted satin. But I particularly admired the skirt of dark navy kid cut out in small spots to show white kid, thus matching the satin-trimmed ermine. The rather large flat cap matched the shoes and my very dark navy kid gloves completed the picture. "No, not quite!" I have forgotten the dropped heel of the same kind of cloth as the coat, with a sequin and diamond brooch in the folds.

My Hat is Chic.
 When I saw this very lovely lady, I wondered if she had chosen this colour for the whole of her wardrobe. Of course, the idea of one

colour scheme throughout is not so fashionable as it was. That was a lovely time for women when the dress, shoes, stockings, gloves and bag, not to mention hair, umbrellas and jewellery, all for every dress and suit we had. But navy blue is so chic again, that I thought this smart woman might possibly possess a charming evening gown of such navy blue fabric. The slim bodice, I thought, would have a very deep V decolletage at back and front, fitted in a little with soft pink satin and cut. The skirt would smooth itself down over the hips, whence it would fall to the hem in very full gentle folds in the front, whence it would fall to the hem in the V at the back. This would be a gracious velvet-trimmed deep petal colour, and at the front V would a little old-world poof of small bell flowers in the same material and colour. The shoes would surely be of petal colour with white bands of navy velvet.

The Petticoat's Shoe.
 All shoes match the gown now, unless you choose gold or silver brooch instead. "There are always pretty and bright, but I am afraid they are not so chic. There is a vogue for plain white satin slippers



This alluring little hat is arranged in very fine black straw with delicate white lace and veiling. Like all advance models, it has a crown which fits the head, and very firm graduating lines a deep fly towards the nape of the neck. With very lovely jewelled buckles, which have the advantage of being detachable, so that it is possible to wear them on other shoes. Another very useful shoe that can be worn with practically any gown, except a dark one, is made of soft or soft moire. With a diamond or coloured stone buckle it looks charming, and has the advantage of making the feet appear very small.

The pointed shoe cover was very much in favour with French women, who produced the round short toe. Now toes are really stumpy, especially in the day time, then black or white, blue, very dark green, and very dark red hit toes are the favourite.

TWO SIMPLE RECIPES

Omelet of Onion Soup.

Put six onions, and slice them finely. Melt an ounce of butter in a stew pan, and fry the onions until they are brown. Now, add slowly, spirals in about two ounces of flour, stirring all the time. Heat three pints of milk to boiling point, and add onion and flour with pepper and salt to taste. Simmer gently for about an hour, and serve with several pieces of toast.

Wholemeal Souffle.

Put six ounces half a pound of white flour two teaspoons of baking powder, and a good pinch of salt. Mix in half a pound of wholemeal flour, rub in a quarter of a pound of lard, add cold water, to make a stiff dough. Roll out, cut into rounds, and bake in a hot oven. Serve hot if possible.

DONALD FISHER'S
"Ye Monks"
 From a dietetic point of view "Ye Monks" is a safe stimulant, on account of its freedom from the impurities which are prominent in immature blends of Scotch Whisky.

Sole Proprietors:
DONALD FISHER, LTD.
 EDINBURGH.

Obtainable from
ALL THE LEADING STORES.

Analy's
TOILET CREATIONS

Made by VINOLIA London, England.

For skin soft-smooth and clear—for tastes of uret-remediers, here are exquisite toilet creations. Analy's soap and cream to cleanse and soothe the complexion; powder to protect; lipstick and perfumes to add finishing touches of great distinction.

YOUR FAVOURITE SUNDOWNER!
HEERING'S
CHERRY BRANDY



Wholesale Bottlers:
JARDEN, PHIPSON and Co., Ltd.
 NAIROBI.

Plain and figured cloth are combined in the fashioning of an elegant evening gown. Shades of beige, green and black appear in the printed fabric, which forms the fitting upper part, while a deep, neutral brown of plain black cloth forms the lower part. Note the neat shoulder straps cut in one with the bodice, and the entire absence of trimming.

In the Box last week, I saw an ensemble so smart that I had to make a note of it. A net too tall, not too slim woman was wearing a negligee, shaped at the natural waistline just sufficiently to make the skirt flare nicely.

A Pattern in Navy and White.
 The coat was of fine, dark navy serge cloth, and the small stand-up collar of white ermine. (You note I say "white ermine." In time past this would not have been necessary, but now half the ermine is pale beige, while quite a lot of it is real grey and even black). Well, this was white. And the little face collar stood up round the nape of the neck, while a tiny point was let in like a yoke on the back of the neck and finished by a small bow of the fur. This is a novel



In Paris, as well as in London, navy blue is considered one of the smartest colouring of the season. It comes up very well in soft satin waists—the material in which late interesting afternoon dress is developed. Brown, instead, black is worked in to a certain design on the long sleeves, and "traces" of a smaller shade which shows the cross-over bodice at the side.

RONEO

Model 16



Shgs. 850-

Self Feeding

Self Inking

DUPLICATORS

MAN WE SHOW YOU THE MACHINE ITSELF

Model 2



Shgs. 350-

ANY ONE WHO CAN TURN A HANDLE CAN OPERATE THE NEW
 MODEL RONEO DUPLICATOR.

The Multi Plesco a Useful Roneo Flat Duplicator Shs. 120-
 Standard Stationery Stores.
 NAIROBI.

Quick Relief from Indigestion.

No matter which of the many forms of indigestion you may have—heartburn, sourness, flatulency, gastritis, or old-fashioned dyspepsia, you get quick relief by taking "Bismarck" Magnesia.

This is the most prompt remedy for indigestion and allied stomach disorders because it instantly removes the excess acid and stopping food fermentation. "Bismarck" Magnesia also soothes and backs the inflamed stomach lining and so strengthens the digestive organs that the most healthy digestion is bound to result. It is for this that doctors everywhere prescribe "Bismarck" Magnesia for digestive disorders, and why you may heartily and safely use it so long. Make a point of getting a package of Bismarck Magnesia powder or tablets from your chemist. However chronic your indigestion may be, "Bismarck" Magnesia will bring a speedy relief to your troubles so that you can rest, think and smoke without fear of pain or discomfort to follow.

FOR
 Furniture of Household Use,
 Shop Fittings of every description,
 Tennis Racket Repairs.

THE
PHUMANSINGH CLOCKSHOP
 Next to Dolus House,
 Government Road, NAIROBI.

EVERYTHING FOR SPORT
 AT
MAY & CO., LTD.

B. Florens

FRENCH HAIR DRESSER.
 PERMANENT WAVING AND TINTING A SPECIALTY.

PHONE 501. — GOVERNMENT ROAD, NAIROBI. — OPPOSITE BUNDS LIGHT CO.

The Trocadero Bar and Restaurant

Proprietor—W. M. Godfrey,
 Manager—Mr. Bob Billings.

GRILLS AT ALL HOURS.
 ALL MEALS—REFRESHMENTS—TEAS.
 COME AND TRY
 "OLD BOB'S" BAR SNACKS.
 His Pressed Beef and Curries
 Cannot be Beaten.

The Best Dinner Served in Town at Shs. 4/-.

ESSJAY, Limited.
 BOLUS HOUSE, GOVERNMENT ROAD,
 NAIROBI. Phone 507.

Financial and Property Agents.
 Mortgages Specialised in,
 Town Properties Negotiated,
 Partnerships Arranged,
 Investments Advised on.

WE HAVE SOUND INVESTMENTS FOR SUMS FROM 500 UPWARDS. IN THIS RESPECT WE CLAIM TO DO BETTER FOR YOU THAN ANY ONE ELSE.

S. JACOBS,
 Managing Director.

MULLI TIMBER
 LONDON FRUIT
 R. B. SIRDAW

THE AFRICAN STANDARD DAILY EDITION.

FOR SALE—(Continued).

SITUATIONS VACANT.

WANTED.

SMITH, MACKENZIE & Co., Land & Estate Agency Department, Box 350, NAIROBI. Phone 358.

J. W. MILLIGAN & Co., Land & Estate Agency Department, Box 148, NAIROBI. Phone 98.

ADVERTISEMENTS.

CONCRETE House, Upper Park...

WANTED. A most Indian Typist...

WANTED. 300 acres suitable for coffee...

TO LET. In House situated opposite...

TO LET. 270 acres freehold...

TO LET. 2100 acres freehold...

TO LET. 3000 acres freehold...

ADVERTISEMENTS.

ROOMS, central town, near...

WANTED. 1200 acres in the Bush...

TO LET ON LEASE. FROM HEREIN to sell...

TO LET. 500 acres freehold...

TO LET. 500 acres freehold...

TO LET. 500 acres freehold...

TO LET. 500 acres freehold...

FOR SALE.

COGNAC. 1000 cases, 1000 cases...

WANTED. 2000 acres of which...

TO LET ON LEASE. FROM HEREIN to sell...

TO LET. 500 acres freehold...

TO LET. 500 acres freehold...

TO LET. 500 acres freehold...

TO LET. 500 acres freehold...

FOR SALE.

ROOMS, central town, near...

WANTED. 2000 acres of which...

TO LET ON LEASE. FROM HEREIN to sell...

TO LET. 500 acres freehold...

TO LET. 500 acres freehold...

TO LET. 500 acres freehold...

TO LET. 500 acres freehold...

FOR SALE.

ROOMS, central town, near...

WANTED. 2000 acres of which...

TO LET ON LEASE. FROM HEREIN to sell...

TO LET. 500 acres freehold...

TO LET. 500 acres freehold...

TO LET. 500 acres freehold...

TO LET. 500 acres freehold...

FOR SALE.

ROOMS, central town, near...

WANTED. 2000 acres of which...

TO LET ON LEASE. FROM HEREIN to sell...

TO LET. 500 acres freehold...

TO LET. 500 acres freehold...

TO LET. 500 acres freehold...

TO LET. 500 acres freehold...

FOR SALE.

ROOMS, central town, near...

WANTED. 2000 acres of which...

TO LET ON LEASE. FROM HEREIN to sell...

TO LET. 500 acres freehold...

TO LET. 500 acres freehold...

TO LET. 500 acres freehold...

TO LET. 500 acres freehold...

FOR SALE.

ROOMS, central town, near...

WANTED. 2000 acres of which...

TO LET ON LEASE. FROM HEREIN to sell...

TO LET. 500 acres freehold...

TO LET. 500 acres freehold...

TO LET. 500 acres freehold...

TO LET. 500 acres freehold...

FOR SALE.

ROOMS, central town, near...

WANTED. 2000 acres of which...

TO LET ON LEASE. FROM HEREIN to sell...

TO LET. 500 acres freehold...

TO LET. 500 acres freehold...

TO LET. 500 acres freehold...

TO LET. 500 acres freehold...

FOR SALE.

ROOMS, central town, near...

WANTED. 2000 acres of which...

TO LET ON LEASE. FROM HEREIN to sell...

TO LET. 500 acres freehold...

TO LET. 500 acres freehold...

TO LET. 500 acres freehold...

TO LET. 500 acres freehold...

BOX TENGOR.



Camera for Sporty with three interchangeable lenses for distance, groups and portraits...

LIME. The Flour Fertiliser.

...The Stock. Order Now for Long Runs.

...J. ELY and Co. Ltd. SHAMBA CHEMISTS.

...OPPER RAIN GAUGE. ...with Glass. ...Shs. 22/6. ...Shs. 4/6.

O. SCHOUTEN

...GENTLEMEN'S HAIRDRESSING. ...Waving a Speciality. ...PERSONAL SUPERVISION. ...Leading Toilet Requisites Stocked. ...GOVERNMENT ROAD. ...at MOMBASA and NAKURU. ...Phone 245.

EAST AFRICAN RECIPES.

EGG DISHES.

(By a Kenya Housewife.)

Eggs may vary in size and quality, according to the breed of the fowls and the food they are given...

Golden Eggs.

Boil four or five large potatoes and mash them with a little milk or butter...

Polish Potatoes.

Boil some large potatoes. Cut a slice from the top of each and scoop off the inside...

Meat and Spaghetti Pie.

Boil a breakfastful of spaghetti until soft. Make a breakfastful of white sauce...

White sauce. Cover with brown bread crumbs, more grated cheese and butter...

Eggs à l'Oignon.

Put two very large onions and cut them in thin rings with salt and pepper, and cook...

Hot Potato.

These may be made with bought potato, but are most likely of the variety made at home...

Scotch Eggs.

After one small hard boiled egg in each portion, shell the egg and when quite cold mix in flour...

MOUSE MARRY.

London, Feb. 15. Prices: 124/11. Dollars: 486 8/16. T.T.: 145 7/8. T.M.: 118 0/8.

The Kera Club.

ANNUAL GENERAL MEETING OF MEMBERS.

MEMBERS' CORRESPONDENCE.

Kera, February 12. The annual general meeting of the Kera Club was held on Monday February 8...

RELiance TRANSPORT Co., Ltd.

TRANSPORT. WOOD FUEL. COAL. POLES and FENCING POSTS. MANURE and LIME. STORAGE. BOLUS HOUSE, Government Road. Telephone: Office 151. Workshop: 627. Telegrams: "Reliance." P.O. Box 482.

NATIONAL BANK OF INDIA LIMITED.

(Incorporated in Calcutta.) Bankers to the Colony and Protectorates of Kenya and Uganda... Reserve Fund ... £1,000,000.

Advertisement for Crawford's Double Whisky. Includes image of a bottle and text: 'A Winning Double Crawford's LIQUEUR SCOTCH WHISKY'.

Advertisement for Reliance Transport Co., Ltd. listing services like transport, wood fuel, coal, poles and fencing posts, manure and lime, storage, and bolus house.

28, Hockley, London, E.C.1. H. B. DICKSON, Manager. Agents in New York and throughout U.S.A., Canada, South Africa and Australia.

FIXED DEPOSIT - Deposits are received for fixed periods on terms which may be learned on application.

BUY THE VICTORIA BRANDS EGGS. EGGS. EGGS.

At the following prices from the undermentioned stores. Per Pound. Gross, 4/8. Per pound (56 lbs.) Shs. 12/9. M. S. Jones Ltd., Nairobi. M. S. Miller & Co. Ltd., Nairobi. Blackbills and Brown. Birkline House Trading Co., Ltd., Nairobi. Wainman, Limited. Colonial General Stores. Bellamy, Trickett & Co. The Parklands Stores. Franklin Kitchener. Bognal Trading Co. Bognal S. Jacobs, Limited. Wm. Douglas. Henry Wilson.

REMEMBER.

THE

PONTIAC SIX

In 1928 Won and Held the Position of the Largest Selling Six in the World! It is the Product of the most Modern Car Factory costing over £2,000,000! It Boasts Superb Bodies by Fisher-Elegant in Appointments-Luxuriously Comfortable. It's Engine Develops 60 H. P. at 3,000 R. P. M.

Latest Models Now Available for Demonstration. Let us Explain Our FREE Insurance and Licence Scheme.

306. KAMPALA. KENYA MOTORS NAIROBI. NAKURU. Phone 206. Kitale.



round--- and round---and round

A TITTLE as a dog chasing his tail... your wheels spin... your smooth rubber tires...



WEED TYRE CHAINS

BROWNS "FOUR CROWN SCOTCH" WHISKY

Mellow with Age... Enquiries to BLACKLAWS & BROWN (LATE MACKINNON BROS.)

MOTOR NEWS From Road & Showroom

THE TREND OF DESIGN. Effect of Curvature Upon Originality.

MOTOR VEHICLES OF THE FUTURE

The second Commercial Vehicle Show should have provided the car designer with food for thought...

The early Landmaster cars, then, embody this basic principle, namely, a maximum platform space...

More recent designs, aiming at the provision of a low floor level and the utmost platform space...

With the evolution of a different method, then, suspension also will doubtless undergo drastic change...

with a sloping "V" screen, and low load level, is better in the matter of wind resistance than the ordinary open four-seater.

A further point that it seems reasonable to suppose is that the present definition of the frame structure will also disappear...

When it is possible to secure a platform which fulfills the conditions set out for it, it is not to be said for the claims of an engine or a layout of the kind...

Weight Distribution. Where it is possible to secure a platform which fulfills the conditions set out for it, it is not to be said for the claims of an engine or a layout of the kind...

Passenger weight in the type of vehicle shown in the illustration is presumably to be more equally distributed than the one which is shown in the present, but this should leave the greater mass of the power and drive units...

The purchaser of discrimination will examine the mechanical specifications of THE DODGE - compare them with those of any other car in East Africa...

BUY THE DODGE. The Finest Service in E. Africa.

REPUTATION The Greatest Asset In Commercial Life. is reputation for the quality of one's goods. THIS is particularly true of Motor Vehicles in East Africa...

EAST AFRICAN REPUTATION that will attract the wise buyer. He knows other claims are useless. The Motor Vehicles with the FINEST reputation in East Africa are

The Dodge Cars and Dodge Trucks. BACKED BY THE Finest Service in E. Africa. The purchaser of discrimination will examine the mechanical specifications of THE DODGE...

BUY THE DODGE. S. FISHER & SIMMONS (E.A.) LTD., VICTORIA STREET, NAIROBI. SEE OUR RANGE OF SIXES, Sevens, Tourers, Bus Bodies and the famous DODGE-GRAHAM TRUCKS.

Metropolitan Garage. SPECIALISTS IN AUTOMOBILE REPAIRS. 2 doors Avenue Hotel. We always have a number of selected and overhauled Standard Cars in stock.

Duco Spray Painting. Have your car repainted or completely reduced, by our UP-TO DATE PAINT. Wanting for Cash Box Body CARS FOR HIRE

JOHN RIFKIN. WAGON BUILDER. BLACKMETH WAGON. ALL KINDS OF WAGONS MADE TO ORDER.

GREATIER MILEAGE. MARTIN'S PILLS. APOL & STEEL. Sure and certain for all Female complaints. Every lady should keep a box in the house.

MARTIN'S PILLS. APOL & STEEL. Doonholm Dairy, for PURE MILK and CREAM. From Farm to Consumer.

Geo. BLOWERS. BUILDING CONTRACTOR, MANUFACTURER AND DIRECT IMPORTER. SALES STREET, NAIROBI. GREATLY REDUCED PRICES.

The NEW LOGO. The Type of Today for the Cars of Today. CARR, LAWSON & CO., LTD., NAIROBI.

AFRICA'S PREMIER Annual. Twentieth Year of Publication. THE British South Africa Annual 1929-1930. Portraying in Picture and Press Artistic and Its People from the Equator to Cape Town.

WHY BUY AMERICAN DOORS AND SEND YOUR MONEY ABROAD? I can compete with them—and beat them! CONCRETE BLOCKS. QUARRY CHIPS. BLACK TRAP BALLAST.

Quality Tolls

WAVI 69

THE AFRICAN MERCANTILE COMPANY, LTD. NAIROBI.

MR. E. H. PAINE, LEAM. A.R.C.M. SENIOR and FIFTEEN POINTS LESSONS. Capital Chambers, next Royal Review.

The Best of
 Singer.
 As Good
 As they look
 As it Performs
 As it Pleasures
 As it Suits

J. Dwyer Disp. Table
 J. Dwyer Cabinet Table

ALIBAI SHARIF & SONS.
 P.O. Box 92. NAIROBI. Phone 274.
 GOVERNMENT ROAD and BAZAAR.

Dramatic Ending to the Kibbo Kimo Enquiry.

(Continued from page 8.)

The police were again informed. There were other hand and finger impressions which up to date had not been identified. Since the arrest of Mutua Njoro the finger and hand impressions of Mutua Njoro had been taken to verify that they were the same as those registered in the bureau which were examined. The impressions were identical.

Expert's Methods.—With regard to the foot-prints which were put into the crater definitely said that the foot-prints did not belong to Mutua Njoro. Hoping foot-prints he asked for and obtained permission to put in a memorandum reading as follows:

Identification in this case is based on a simplified pattern of a Foot impression.

Classification of Symbols.—A method is adopted to identify, not to describe generally, the impressions. The pattern, simple, double or triple, to be compared, and if possible identified with that of one or more particular finger or foot impressions. Let me take examples which have no ridges of lines on them throughout their course in the field of observation. They might possibly remain but do not form any cases for preservation as they may not be identified against the accused person. If they are not even the demarcations or impressions from skins. If fingerprints, they may not be of human origin.

Application of Measurements.—It may be well to utter a caution in regard to the application of measurements. A tendency is to exaggerate the dimensions of lines and to the length and breadth, and the measurements are used and estimated upon. Two prints taken from the same living man's fleshy finger or foot will often give somewhat divergent results and one or two feet to fill in by an act of imagination. Thus slight and seemingly insignificant gaps with the limitations that fall in between one's own private impressions. In this case we must ask how these measurements were taken. It is very well to take an accurate foot print after arrest when the foot has been prepared. To plot this in an any ink, but in the case before me, the impressions have been taken under different conditions and one was taken with due deliberation and the other casually made. When one says in a Court of Law that two foot marks compared or saw in lower dimensions the same, he merely propounds a theory that it is possible for both to be different. This is not identity. It is essential to have a basic fixed point, and leave the Court to speculate upon that speculation.

...summarizing the facts in the case and setting on the law and the just way would then be their verdict. In this country however the enquiry suggested as to combine both functions. My approach was that the evidence—the would not be a part of the evidence and therefore I viewed all the evidence which had been taken into consideration. The bones which appeared to have been discovered in the case and which was 180 yards away from the actual European house, the inscription observed in the case, and all a bone in which a hole was drilled and the hole left by itself. If understood however, that she was referred to there at her own request.

Prerequisites.—Captain Taylor illustrated to the magistrates the facts that he considered to be in certain details between the plates made by Captain Cochrane and the actual footprints taken from Mutua Njoro. He was prepared to go into court and aver the impressions found as shown by Captain Cochrane's sketch are not those of his boy (pointing to Mutua Njoro). He said after reading the written statement Mr. Paine remarked that it was "a fine covering."

Continuing.—Captain Taylor said that in view of the fact that the cylinder of the lamp was coated with oil and there were no indications of oil on the clock, the presumption was that the clock was touched by Mutua Njoro before he touched the lamp. The lamp had been held with the left hand. Regarding the marks inside the window which had been made, he said that the marks were not identical to a footmark. Captain Taylor agreed with Inspector Magner that the marks were not identical to a footmark. His personal opinion was that if somebody had passed through the window, he had been suggested, he would have left some identifiable impression.

At the conclusion of Captain Taylor's evidence Mr. Paine indicated would have to recall Captain Cochrane to obtain certain further information.

Support's Movement.

...to a question as to the state of the weather at Kibbo on the night of January 28, produced the "occurrence book" of the Kibbo police station, which recorded that on that night of January 28, the weather was fine. There was moonlight until 9 p.m. During the night it was dark and visibility was poor.

Magistrate's Finding.—The enquiry was then adjourned to the following day to consider his finding. On resumption Mr. Paine said that under English law he would address the jury.

...at least two and probably three persons being concerned in the case, and that the evidence made the supposition of attempted rape impractical as it was not usual to find more than one or two persons with such a crime. If on the other hand it turned out to be that only one person present was a theory and not Kibbo was a theory that there was a conspiracy between the crime was not justified.

Magistrate's Finding.—The only conclusion he was reached was that the evidence made the supposition of attempted rape impractical as it was not usual to find more than one or two persons with such a crime. If on the other hand it turned out to be that only one person present was a theory and not Kibbo was a theory that there was a conspiracy between the crime was not justified.

Magistrate's Finding.—The only conclusion he was reached was that the evidence made the supposition of attempted rape impractical as it was not usual to find more than one or two persons with such a crime. If on the other hand it turned out to be that only one person present was a theory and not Kibbo was a theory that there was a conspiracy between the crime was not justified.

Magistrate's Finding.—The only conclusion he was reached was that the evidence made the supposition of attempted rape impractical as it was not usual to find more than one or two persons with such a crime. If on the other hand it turned out to be that only one person present was a theory and not Kibbo was a theory that there was a conspiracy between the crime was not justified.

Magistrate's Finding.—The only conclusion he was reached was that the evidence made the supposition of attempted rape impractical as it was not usual to find more than one or two persons with such a crime. If on the other hand it turned out to be that only one person present was a theory and not Kibbo was a theory that there was a conspiracy between the crime was not justified.

...at least two and probably three persons being concerned in the case, and that the evidence made the supposition of attempted rape impractical as it was not usual to find more than one or two persons with such a crime. If on the other hand it turned out to be that only one person present was a theory and not Kibbo was a theory that there was a conspiracy between the crime was not justified.

...at least two and probably three persons being concerned in the case, and that the evidence made the supposition of attempted rape impractical as it was not usual to find more than one or two persons with such a crime. If on the other hand it turned out to be that only one person present was a theory and not Kibbo was a theory that there was a conspiracy between the crime was not justified.

...at least two and probably three persons being concerned in the case, and that the evidence made the supposition of attempted rape impractical as it was not usual to find more than one or two persons with such a crime. If on the other hand it turned out to be that only one person present was a theory and not Kibbo was a theory that there was a conspiracy between the crime was not justified.

...at least two and probably three persons being concerned in the case, and that the evidence made the supposition of attempted rape impractical as it was not usual to find more than one or two persons with such a crime. If on the other hand it turned out to be that only one person present was a theory and not Kibbo was a theory that there was a conspiracy between the crime was not justified.

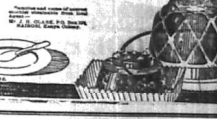
Beauty on the table!

For giving bright and very beautiful table effects, nothing equals Jellies made with Bird's Crystal Jelly Powder. They sparkle with brilliance and their beautiful colours—crystal clear—make a joy to behold.

Is Bird's Crystal Jellies this transparency indicates purity.

TRY IT TO-DAY! Bird's Crystal Jelly Powder

Diabetes instantly—see fruit. Purely guaranteed by Alfred Bird & Sons, Ltd., Makers of BIRD'S CRISTAL.



FOR AN EFFICIENT AND PERMANENT HOT WATER SUPPLY. INSTAL A BESTON HOT WATER BOILER.

Thornton & Turpin



For particulars relating to the size of Boiler required and prices apply to—Thornton & Turpin (Sole Agents).

Registered Plumbers and Sanitary Engineers. NAIROBI and MOMBASA.

Phone 105. P.O. Box 269, Nairobi, and P.O. Box 386, Mombasa.

ANOTHER WORLD WIDE KNOWN SETTLER FOR KENYA and UGANDA

"TEXACO"

The Texas Company (South Africa) Limited. Beg to Announce the Arrival of their First Consignment of Texaco Petroleum Products

- TEXACO The New and Better Motor Spirit.
- TEXACO Clean Clear Golden Motor Oils.
- TEXACO Industrial Lubricating Oils.
- TEXACO Illuminating Oil.
- TEXACO Super Power Paraffin for Tractors.
- TEXACO Greases.
- TEXACO Roofing.
- TEXACO Asphalt.



There is a Texaco Lubricant for Every Purpose - Let the Red Star and Green T be your Guide.

GARAGES, FILLING STATIONS, and GENERAL DEALERS INTERESTED ARE INVITED TO MAKE APPLICATION FOR SUPPLIES:

LALJI BUILDINGS, Corner Kilindini and Saim Roads, NAIROBI. Phone 841. Box 431.

TEXACO HOUSE, SADLER STREET, NAIROBI. Phone 1061. P.O. Box 269, Nairobi, and P.O. Box 386, Mombasa. Telegraphic Address: "Texaco."

NEW!

ALL PURPOSE CHISEL SET SHTS. 3/75

SOLE AGENTS: For the VICTOR Tool Co. Cleveland, Ohio, U.S.A.

THE TOOL HOUSE NAIROBI.

Get Better Value

The Express Transport Coy.

Offers better value in Shipping to any part of the world.

CORRESPONDENCE.

The editor does not accept responsibility for the views expressed by his correspondents...

LABOUR RECRUITING To the Editor "E.A. Standard."

LABOUR RECRUITING To the Editor "E.A. Standard."

LABOUR RECRUITING To the Editor "E.A. Standard."

LABOUR RECRUITING To the Editor "E.A. Standard."

TO LET. RUAKA. Stone House, 18 acres of land with plenty of Fruit Trees, its own river.

Husseln Suleman Verjee & Sons

High Class Stationery AT LOW COST



IN BLUE AND CREAM NOTE PAPER (FOLDED) AND ENVELOPES BOXED 50 OF EACH...

STANDARD STATIONERY STORES. NAIROBI.

in this city, where both the men and women are no high; and in the case of those of us who are not well...

LABOUR RECRUITING To the Editor "E.A. Standard."

LABOUR RECRUITING To the Editor "E.A. Standard."

LABOUR RECRUITING To the Editor "E.A. Standard."

LABOUR RECRUITING To the Editor "E.A. Standard."

LABOUR RECRUITING To the Editor "E.A. Standard."

LABOUR RECRUITING To the Editor "E.A. Standard."

LABOUR RECRUITING To the Editor "E.A. Standard."

LABOUR RECRUITING To the Editor "E.A. Standard."

LABOUR RECRUITING To the Editor "E.A. Standard."

LABOUR RECRUITING To the Editor "E.A. Standard."

LABOUR RECRUITING To the Editor "E.A. Standard."

LABOUR RECRUITING To the Editor "E.A. Standard."

LABOUR RECRUITING To the Editor "E.A. Standard."

LABOUR RECRUITING To the Editor "E.A. Standard."

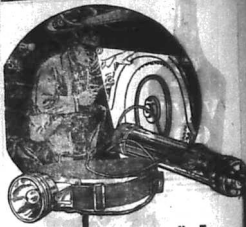
LABOUR RECRUITING To the Editor "E.A. Standard."

LABOUR RECRUITING To the Editor "E.A. Standard."

LABOUR RECRUITING To the Editor "E.A. Standard."

LABOUR RECRUITING To the Editor "E.A. Standard."

LABOUR RECRUITING To the Editor "E.A. Standard."



Light Wherever You Turn Your Eyes.

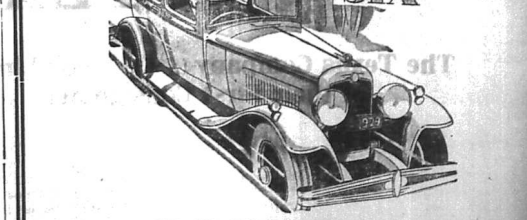
COMFORTABLY Labeled to "Prove" that no flashlight is as good as Winchester's... Winchester Repeating Arms Company.

WINCHESTER HEADLIGHT

LOCUSTS DESTROYED

By using ingredients lately published by the "E.A. STANDARD." MADATALLY SULEMAN VERJEE & SONS

MORRIS MOTORS



ISIS SIX SALOON AND TOURER. THE MORRIS NEW COLONIAL MODEL.

Has just arrived in Nairobi and is on view at our temporary premises at the METROPOLITAN GARAGE, SIXTH AVENUE.

LOOK OUT FOR THE MORRIS MINORS ARRIVING SOONLY. The Overseas Motor Transport Co., Ltd. P.O. BOX 951, NAIROBI.

AUCTION SALES



Sale by CATALOGUE of FURNITURE and EFFECTS... Public Auction without Reserve, at the Salerooms, Mutos Building, Nairobi.

TO-DAY 17th FEBRUARY, 1930, at 9-30 a.m.

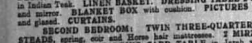
The entire contents of the rooms including... TELESCOPIC DINING TABLE... CHAIRS... BED ROOM... BATH ROOM...

STUDY: Large ROLL TOP DESK, 6 flower drawers... OFFICE: Large wooden writing board... DRAWING ROOM: BIRD PIANO...

MAIN BEDROOM: THREE QUARTER MATTRESS... SECOND BEDROOM: TWIN THREE-QUARTER BED...

Large Range of Ferns and Begonias in Pots and Drums... The Auctioneers draw attention to the fact that the sale will commence at 9.30 a.m.

MOTOR and OSWALD Ltd., Auctioneers, Nairobi.

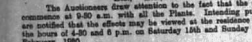


SALE of GROCERIES and PROVISIONS... Public Auction, without Reserve, at our Salerooms, Mutos Building, Nairobi on...

TUESDAY, 18th FEB, at 10 a.m.

To be Sold in Small Lots a Large Range comprising... Biscuits, Confectionery, Jam and Marmalade, Pickles, Tinned Meats...

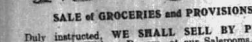
MOTOR and OSWALD LTD., Auctioneers, P. O. Box 257



SALE of LINEN, MOTOR CYCLE and MISCELLANEOUS GOODS... Daily instructed, We SHALL SELL BY PUBLIC AUCTION, without reserve, under stipulated, at our Salerooms, Mutos Building, Harding's Street, on...

WEDNESDAY, 19th FEB. at 10 a.m.

H.P. DOUGLAS MOTOR CYCLE Lady's Model... Window Bangs, Woollen Blankets and Rugs... Kitchen Utensils, Bird Cages, Records, Music, Novels, Crochets, Set of Steamers, Pictures...



LOOSE LEAF... NOTE BOOKS... A COMPLETE LEADER BINDER INDEX and 250 STOCK RULED SHEETS...

TO-DAY 17th FEBRUARY, 1930, at 9-30 a.m.

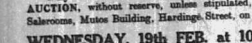
The entire contents of the rooms including... TELESCOPIC DINING TABLE... CHAIRS... BED ROOM... BATH ROOM...

STUDY: Large ROLL TOP DESK, 6 flower drawers... OFFICE: Large wooden writing board... DRAWING ROOM: BIRD PIANO...

MAIN BEDROOM: THREE QUARTER MATTRESS... SECOND BEDROOM: TWIN THREE-QUARTER BED...

Large Range of Ferns and Begonias in Pots and Drums... The Auctioneers draw attention to the fact that the sale will commence at 9.30 a.m.

MOTOR and OSWALD Ltd., Auctioneers, Nairobi.



SALE of LINEN, MOTOR CYCLE and MISCELLANEOUS GOODS... Daily instructed, We SHALL SELL BY PUBLIC AUCTION, without reserve, under stipulated, at our Salerooms, Mutos Building, Harding's Street, on...

WEDNESDAY, 19th FEB. at 10 a.m.

H.P. DOUGLAS MOTOR CYCLE Lady's Model... Window Bangs, Woollen Blankets and Rugs... Kitchen Utensils, Bird Cages, Records, Music, Novels, Crochets, Set of Steamers, Pictures...

Thackrah's Sales, Nakuru

FAVOURED with instructions from CAPT. R. L. STOBART... MONDAY, the 24th inst., at 10-30 A.M.

MENENGAI ESTATE, NAKURU... comprising approx. 6400 acres and situated 7 miles from Nakuru on the main Nakuru-Narok road.

ABSOLUTELY WITHOUT RESERVE... the entire contents of AGRICULTURAL IMPLEMENTS, MACHINERY, SPARE PARTS, WORKSHOP TOOLS, and HOUSEHOLD FURNITURE now on the farm, including...

WORKSHOP TOOLS... Complete set of Blacksmith's tools, Buffalo drill with bit, Black and saddle, Vice, 2 sets stocks and dies, large blow hammers, etc. etc.

THE SALE WILL BE HELD AT THE WHEAT STORE WHICH IS APPROX. 1 MILE FROM THE JUNCTION OF THE LOWER NAROK-BARINDI ROADS.

Thackrah's Nakuru



FOR SALE

Killmani Freehold Plot... Freehold Plot of 8.70 acres, with good main road frontage, in Killmani, Price £2000.

MOTOR and OSWALD Ltd., Estate Agents, NAIROBI

E. Hutchison & Co.

Favoured with instructions from several clients we shall sell by public auction without reserve (unless stated) at our Mart, Government Road, on...

TUESDAY, 18th inst. at 10 a.m.

EXCEPTIONALLY WELL MADE THREE PIECE CHESTERFIELD SUITE COVERED BUE TAPESTRY... CHESTERFIELD SUITE, THREE PIECE, COVERED GOOD CRETONE. SETTEE COVERED AMERICAN CLUB EASY TO MATCH.

PLAY PEN, Childs Wagoning Stools, ALMOST NEW PERAMBULATOR, Box, Two Office Tables, Occasional Table, Bookshelf, Two Sideboards; TEAK BACHELOR WARDROBE, Teak Single Wardrobe, Writing Bureau, Oblong Dining Table, Corona Typewriter, Oliver Typewriter, TWO BURNER PERFECTION STOVE WITH OVEN.

E. HUTCHISON & Co., AUCTIONEERS, LTD., NAIROBI.

SANDS & Co., PASTEURISED MILK... Acting as agents for Kenya Co-operative Creamery, we are now looking orders for best Pasteurised Milk.

SANDS & Co., SADDLER STREET.

Godfrey's Car Mart

THE PREMIER USED CAR SALESMAN... Texaco House - Sadler Street.

50 USED CARS 50 TO SELECT FROM

Hebber Super 6, Six Body... Extra 1000 m.p.h. Good running and condition.

Four T. Model, Six Body... 8 1/2 in good running and condition.

West Saloon, Model A... Very small vehicle, Virtually new, Lined and insulated for parcel. This is a most interesting "Prize" item. Price £175.

Dege Six Body, Fully equipped... Good condition and reliable.

Whippet Transport... Complete, perfect. Reliable and economical. Does 22 m.p.h. A most interesting car. Price £120.

Standard Truck 6 Cyl... Good condition. Runs only 4,800 miles. Excellent as new.

Chevrolet Six Body... 4000 m.p.h. Very fast or defect. Condition as new.

Ford Six Body, Latest model... Small mileage. In perfect mechanical condition.

W. M. GODFREY, Sole Proprietor

ARIEL, DOUGLAS and OTHER MOTORCYCLES... CAR INSURANCE ARRANGED.

BREAK-DOWN TRUCK (with crane) available any time any day... New and Second-Hand Buses for all makes of cars.

W. M. GODFREY, Sole Proprietor

SMALL MODERN HOUSE, FURNISHED, FORREST ROAD. FROM 1ST APRIL.

STONE HOUSE, UNFURNISHED, SALISBURY ROAD, IMMEDIATE OCCUPATION.

Properties of all description for sale.

Denovan & Diebel, LAND AGENTS, CITY HOUSE.

JUST UNPACKED... Fresh stock of plants and forest Art Bibles very smart colours; also Silk, Crepe, chinos, Vigi Craps, Georgettes, Fuji, Shantung, and all in attractive designs and latest shades.

PRICES REDUCED TO A REMARKABLE EXTENT. A VISIT WILL CONVINC YOU.

LADHARAN STORES - General Milliners, Hatters and Haberdashers.

OUR Snapshot Competition WEEKLY PRIZES:

1st Prize, Shs. 15/-; Extra Prize, Shs. 10/- (if warranted). Shs. 5/- for every Picture Published.

The Competition is for Snapshots of EAST AFRICA INTEREST and may be taken by the Competitor.

THE "SNAPSHOT" COMPETITION, East African Standard, P. O. Box 800, NAIROBI.

If Films or Plates are sent we will make free development if necessary. Three films or plates will be returned after publication.

All prize winning photographs will be published in "East African Standard".

If photos are not returned, a STAMPED ADDRESS will be sent.

THE "SNAPSHOT" COMPETITION, East African Standard, P. O. Box 800, NAIROBI.

If Films or Plates are sent we will make free development if necessary. Three films or plates will be returned after publication.

All prize winning photographs will be published in "East African Standard".

SPORTS AND PASTIMES.

HORSE BREEDING IN KENYA

Owners and Breeders Association.

HALL-BRED AND BLOOD STOCK BOOK.

(Continued.)

The Owners' and Breeders' Association has filed a long list with the Registrar of Companies, and by taking action with regard to the Blood Book as far as it concerns horses. The present Blood Book or as they name the Horse Section of it, is not a credit to those who are interested in the industry and in the sport of horse raising, and we believe that the Society is taking action in conjunction with the Jockey Club with a view to improving matters and eventually getting every eligible horse in Kenya registered in the Blood Book.

The Society has also started the Half-Bred and Blood Book, and it is hoped that full advantage will be taken of this.

The Half-Bred Blood Book of Great Britain has only very recently been completed, and we can do no more than quote the 1920 Bloodstock Breeder's Review in regard to this important work.

The Review says:—

"It would be well-nigh impossible to exaggerate the debt we owe to Miss F. G. Lyons, who has done so much to complete the Half-Bred Blood Book. Until she set about collecting the in-

formation from three volumes written by her, and which were when, as we had indicated, that it was desired to ascertain the interrelationships of a "Race Through the World" with a standard pedigree."

If such a book is considered to be of value to those who are comparatively few with horses competing, how much more so necessary in such a country as Kenya, where it is so difficult to get to the start of the race, and where the distance from the Colony is so far in the distance. If such a book is considered to be of value to those who are comparatively few with horses competing, how much more so necessary in such a country as Kenya, where it is so difficult to get to the start of the race, and where the distance from the Colony is so far in the distance.

In Great Britain during 1920 the Blood Book was issued by the Registrar of Companies. It was issued in 1920. It was issued in 1920. It was issued in 1920.

It was issued in 1920. It was issued in 1920. It was issued in 1920. It was issued in 1920.

It was issued in 1920. It was issued in 1920. It was issued in 1920. It was issued in 1920.

It was issued in 1920. It was issued in 1920. It was issued in 1920. It was issued in 1920.

MANUKI SPORTS CLUB.

Polo Tournament Won By Nyri.

REFLECTIONS ON RACE MEETING.

(STANDARD CORRESPONDENT.)

Nairobi, February 13.

A three chukker knock-out polo tournament was held and won by Nyri. In the first game Makuyu and Nyri Men met.

Nyri Men received 1 1/8 goals, Makuyu 2. Nyri Men received 1 1/2. A somewhat satisfactory game. Better results would have been obtained had Nyri Men been more accurate in front of the goal.

PPET vs. NAYRI.

Nayri got 2 goals. Result: Nyri 5, Nayri 10.

Nayri in the game were seriously outplayed, as they were mounted, with one exception, on the final point, while the Nyri team used counter-attacks. Notwithstanding this handicap, the Nyri team played showed that when better mounted they will be easily capable of sustaining tournament form.

Final.

Nyri vs. Makuyu.

Makuyu received 1 goal. Result: Nyri 6, Makuyu 21.

The teams were as follows:

Makuyu: 1. L. Lawford, 2. W. A. Boyd, 3. L. Levy, 4. J. C. Comber.

Nyri: C. O'Hagan, R. Peel, H. H. Lyons, R. Johnston.

Nyri Men: N. Turner, R. B. Lyons, A. U. Lyons, F. C. Allport.

Nyri: T. C. C. Lewis, E. K. Basted, W. Weatherly, R. B. Boyd.

The Spring meeting of the Nyri Sports Club, held on February 7, 8, and 9, proved to be of the most successful and enjoyable of any held in recent years. Occasional thunder showers softened the ground, but at the same time, undoubtedly kept less arduous motorists away. Nevertheless, following the almost record attendance at the attendance at both days racing was well up to average.

Nyri meetings are universally acknowledged to be some of the most pleasant fixtures on the sports of the country and visitors come long distances to enjoy them.

Racing on both days provided excellent sport and thrilling finishes, including several close finishes, and on the second day, Capt. K. T. Good, while the results of the club are due to Mr. Alexander for writing as a flower for the maintenance of the meeting.

The outstanding achievement of the meeting as regards the actual racing was the remarkable exhibition provided by Mr. Robert Dalbey, who rode on lower than most winners. Among outstanding horses were those of the public, and among the Nyri sportsmen it was not more often seen in public, and it was also expressed by members of the meeting that Mr. Dalbey was riding at his best.

A somewhat remarkable story is being told in connection with Mr. Dalbey's success. The day before the meeting, the favourite jockey gave birth to three puppies. His thorough familiarity reached to a friend that on the first day of racing he would ride three winners. On his return home in the evening four more pups had arrived, and he at once decided that he would ride four winners on the second day. Both prophesies were exactly correct.

It is worthy of the general organization of the meeting, one can only wish it was the most glowing of the sportsman efforts of Capt. Dalbey, who, though being some ten miles away, worked almost day and night to make the show go with a swing. In this great enterprise he was most ably assisted by Mrs. Nyri, who organized the whole of the committee, well seconded by the ladies committee, among whom Mrs. Purcell and Mrs. Nyri were outstanding personalities. Contributions in kind had been supplied to the club from all over the district for days before and the work of sorting out a heterogeneous collection of pigeons, doves, shrikes, hares, and other birds was no exception. One was provided by Mr. Chuter, made from one from the Nyri Co-operative Co. and many more were appreciated.

Still more humane deeds were done by the members of the local band. "The Pink Pigeons" who, when it was found that an imported article had not arrived from the States—made from their respective birds of sickness and saved the situation by playing it safe.

The warmest appreciation of the entire committee is therefore due to Mrs. King (Mrs.) and Mr. J. Appleby, (unanimously) supported by the Bill Ryan (dram) who so ably stepped into the breach, caused by the failure of the professional.

It was one of the most enjoyable meetings.

SOUTH AFRICA

IF YOU WANT Magnificent Scenery Equal to the Alps.

Visit the Drakensberg In Natal.

For full particulars apply to—
The South Africa Office, Memorial Hall, P.O. Box 624, NAIROBI.

If You Don't Want Your Face

to attract attention, don't give it attention. A woman's natural complexion is a depressing sight, and yet, how easily modified, just as easily beautified in a straightforward hairdressing. Consult us about face massage and Eugene Permann's "Cosmetics." "These 924" it's not supposed—

ROMANOS
LADIES AND GENTLEMEN'S HAIRDRESSING.
NAIROBI HOUSE,
P.O. Box 1. GOVT. ROAD.
Persons and Afternoon Tea served in the Lounge, girls.

Chiropractic Spinal Manipulation

The new universally-recognized Druggan System of Healing has restored thousands of sufferers to health. By removing the pressure on the nerves, which is causing your Headaches, Neuritis, Stomach, Stomach, Liver and Kidney Troubles, etc., it will bring you new renewed Life, Vigor and Spirituality.
Miss E. GOOD, D.C., Spinal Nerve Specialist, who has had very wide and successful experience, is now practicing at Tor's Hotel, (Room 21) Nairobi. Hours 9.30-11, 2-4; Saturdays 9.30-11, and by appointment. Telephone No. 593.

Real Scotch Whisky

"LONG JOHN" is good honest Scotch Whisky, brewed in Scotland, and characterized by its pure and mature.

LONG JOHN SCOTCH WHISKY

Non-Slip Pulley Drives when Slack

Multiplax BELTING

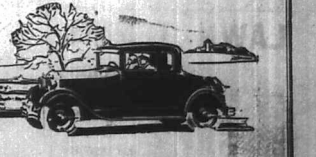
Agents and Stockists—
SMITH, MACKENZIE & COMPANY,
P.O. Box 399, NAIROBI. Phone 368.

"THESEASON" FOR FORDS A TITITUDE IN SALES

FORD Sales are Greatest for the simple reasons of low operating costs, High Re-Sale Value, remarkable Performance and Attractive Appearance. **FORD Leads the Field because of—Value in the New Car.**



Prices from **£182-10-0**



The Special appeal to Motorists is Quick Acceleration, Light Control, Houdaille Shock Absorbers, Enclosed Brakes, Ease of starting when Cold and A Wealth of other Attractive Features

NAIROBI MOTORS

6th AVENUE

Box 460.

Tel. 317

