



# WATERING

The ALSTON PATENT  
Stock Water Trough is  
the outcome of 50 years  
Pastoral experience in  
Australia.

## IT WONT LEAK WONT SAG WONT BREAK

Complete with Right Size Frame.

FOR CATTLE FOR SHEEP AND  
PIGS.  
10/- per foot. 8/- per foot.  
15/- per foot. 12/- per foot.  
18/- per foot. 15/- per foot.

Dalgity & Company Ltd.  
NAIROBI. ELDORET.



The subscription to the Kenya Horticultural Society for 1924 is now closed and should be sent to the Secy. Secretary, E.O. Dow, Nairobi, 41, Government Buildings, Nairobi, P.O. Box 27, Nairobi.

### EDITORS NOTES.

I am glad to hear that several lists are being prepared in answer to the request from the Secretary, R. H. W. We are very anxious to send in as complete a list as possible, so will all gardeners help to the best of their ability.

The Sale of Plants "is being done for Saturday, April 6. It is being held in 'The B. F. Meyer's' Garden, Riverside. It is a fine Contributions of plants should be left either at Mrs. Meyer's house on Friday or early Saturday or they may be deposited at Messrs. Simpson and Whitlock's to be collected.

### SOME CAREFUL FERTILISERS READY TO HAND.

Soil.  
The enrichment of soil as a fertilizer cannot be over-emphasized. The first thing to do is to keep it stored in a dry place, as it loses its virtue if allowed to get wet.

Secondly, never use cow or fresh manure. If applied fresh, it is so acrid that it will kill even a large tree, if stored at the least, it is, and, if used on small plants during dry weather, it will burn even on foot you or three months old it burns and over us it in hot, dry weather, but in showery weather or on dewy mornings.

It can be used for dusting seed beds, such as onions, carrots, parsnips, flower seeds, cabbage, in fact, all seedlings will be protected and encouraged to grow by slight applications.

As an insecticide it is superior against snails, slugs, turnip flies, beetles, and other flies. In fact, all seedlings will be protected and encouraged to grow by slight applications.

As an insecticide it is superior against snails, slugs, turnip flies, beetles, and other flies. In fact, all seedlings will be protected and encouraged to grow by slight applications.

As an insecticide it is superior against snails, slugs, turnip flies, beetles, and other flies. In fact, all seedlings will be protected and encouraged to grow by slight applications.

good. A peck in a loosely woven sack, suspended in a barrel of soft water, will give 20 gallons of pot-n-up for pot plants (to be used after the ordinary watering).

### Boxes.

Boxes have been used as a fertilizer for a very long time. They are rather a slow-acting manure, owing to the time they take to decay. For the vegetable garden it is best to procure finely-ground bone meal. When decomposition takes place in the organic matter is converted into ammonia, carbonic acid and other acids. These acids break up the insoluble phosphates and change them into soluble form. Boxes contain, roughly about 9 per cent nitrogen, and 45 to 50 per cent phosphate of lime.

### Wood Ash.

This is an extremely valuable fertilizer, and should be stored in a dry shed. It contains about 5 to 10 per cent of carbonate of potash, which is the most effective form in which potash can be applied to the soil. Apply at the rate of about 4 cwt. per acre in the spring and in the progress of making the manure, and helps to break up heavy clayey soils, making them more friable. (A Gardening and Country Life.)

### QUESTIONS AND ANSWERS.

Mrs. Hester of Eldoret writes to ask -  
1. Banana Crues - Where do you get it?  
2. Banana Crues - Where do you get it?  
3. Banana Crues - Where do you get it?

You should write to the following names: -  
1. Will you please forward how? They very probably will at 8,000.

2. When ought I to sow seed? It depends whether you want to have seedlings ready for transplanting in the field. If you do your sowing seed in permanent beds in the potting house until the ground, it damp with water.

3. Will Casuarina Veitchii grow in this? It should.

4. Do you advise sending to England for plants? It is better certainly, though you can get some good ones here now. Most other plants come so readily from here. There is no risk of bad plants if you buy from a good source. Though you may see one or two plants very successfully if you go to the firms which import the plants.

5. Roses seem to grow almost everywhere in Kenya. Try again some imported.

6. Roses seem to grow almost everywhere in Kenya. Try again some imported.

7. Will Citrus grow here? It is worth trying.

I have received several enquiries about delphinium and why it does not thrive. The whole point about delphinium is that it does not thrive. It is a most delicate form in which potash can be applied to the soil.

First London Embassy in London, Feb. 27, 1924. The probably have been given a statement on the subject of the Embassy in London today. For some a certain statement visualized the burning down of the Embassy in London, which was the result of the fire which broke out in the Embassy in London on the 27th of February. It is a fact that the Embassy in London was destroyed by fire on the 27th of February. It is a fact that the Embassy in London was destroyed by fire on the 27th of February.

**DONALD FISHER'S**  
**"Ye Monks"**  
is pre-eminently the Scotch Whisky for the home.  
It adds a sociable touch to the sideboard or the dining-table.  
**Why not try it to-day?**

Sole Proprietors:  
**DONALD FISHER, LTD.**  
EDINBURGH  
OBTAINABLE FROM ALL THE LEADING STORES.



THE NATIONAL BANK (DOMINION COLONIAL AND OVERSEAS)

## BARCLAYS BANK (DOMINION COLONIAL AND OVERSEAS)

Incorporated by Act of Parliament.  
Incorporated by Act of Parliament.

THE NATIONAL BANK (DOMINION COLONIAL AND OVERSEAS)

THE ANGLO-EGYPTIAN BANK LTD.

Capital Authorized ... £10,000,000  
Capital Paid up ... £4,875,000  
Reserve Fund ... £1,500,000

OVER 600 BRANCHES IN THE United States, British West Indies, Egypt, Palestine and other parts of the world.

THE BANK UNDERTAKES ALL CLASSES OF BANK BUSINESS AND ALSO ACTS AS TRUSTEE AND EXECUTOR.

BRANCHES IN EAST AFRICA: Nairobi, Mombasa, Malindi, Eldoret, Kisumu, Kampala, Jinja, Tanganyika, Dar-es-Salaam, Iringa, Tabora, Nyanga, Arusha and Mwanza.

HEAD OFFICE: 54, Lombard Street, London, E.C. 4.  
LONDON OFFICES: 20, Abchurch Lane, E.C. 4; 1, Cornhill Place, E.C. 3; 11, Old Bailey, E.C. 4; 11, Mark Lane, E.C. 3.

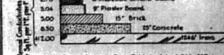
Correspondents in all the Principal Cities and Towns of the World.

## CELOTEX

AN EXPERT IN BUILDING INSULATION  
FIVE REASONS WHY EVERY BUILDING BENEFITS

1. It insulates against heat and cold.
2. It checks condensation and sweating of walls.
3. It has a strength of over 300 lbs. per square foot.
4. It is applicable to wood, metal or other super-super and under any roof covering.
5. It is applicable to wood, metal or other super-super and under any roof covering.

Compare these insulating values -



According to Data Published by A.S.H. (V.C.A.) Ltd.  
Block Sheds, 6", 7", 8", 9" and 10" lengths.  
Block Sheds, 6", 7", 8", 9" and 10" widths.  
Block Sheds, 6", 7", 8", 9" and 10" heights.

Write for particulars and Illustrated Memoirs to THE ANGLO-BALTIC TIMBER CO. LIMITED, NAIROBI.

## Kenya Loan & Discount Co. Ltd.

P.O. Box 546, NAIROBI.  
OFFICE - 1st Floor, Court Chambers.  
FINANCIAL AGENTS

Bills Discounted - Short-term Loans Granted - Any available - Assets mortgaged for Cash - Call or Write - STRICTLY CONFIDENTIAL - ESTABLISHED 1921.

## ESSJAY, Limited.

604, HOUSE, GOVERNMENT ROAD, NAIROBI. Phone 377.

Financial and Property Agents.  
Mortgages Specialised in.  
Town Properties Negotiated.  
Partnerships Arranged.  
Investments Advised on.

WE HAVE SOUND INVESTMENTS FOR SUMS FROM £100 UPWARDS. IN THIS RESPECT WE CLAIM TO DO BETTER FOR YOU THAN ANY OTHER ELSE.  
S. JACOBS, Managing Director.

# ROE

Model 16 Shgs. 850/-  
Self Feeding Self Inking  
Model 2 Shgs. 350/-

ANY ONE WHO CAN TURN A HANDLE CAN OPERATE THE NEW MODEL BONEO DUPLICATOR.

## The Multi Plesco a Useful Boneo Flat Duplicator Shs. 120/-

Standard Stationery Stores. NAIROBI.

## Noorralli Dhanni Glassware Mart

Next Stanley Road, North Station, ENGLISH TIN WARE.

- Shell Cakes, 6/6
- Shell Cakes, 6/6
- Shell Cakes, 6/6
- Green Spins, 6/6
- Black Inlaid, 6/6
- Green Spins, 6/6
- Aluminum, 6/6
- Flour Sifters, 6/6
- Ironing set complete with decorated, 6/6
- 1 Doz. in set, 6/6
- 2 Doz. in set, 6/6
- 3 Doz. in set, 6/6
- 4 Doz. in set, 6/6
- 5 Doz. in set, 6/6
- 6 Doz. in set, 6/6
- 7 Doz. in set, 6/6
- 8 Doz. in set, 6/6
- 9 Doz. in set, 6/6
- 10 Doz. in set, 6/6
- 11 Doz. in set, 6/6
- 12 Doz. in set, 6/6
- 13 Doz. in set, 6/6
- 14 Doz. in set, 6/6
- 15 Doz. in set, 6/6
- 16 Doz. in set, 6/6
- 17 Doz. in set, 6/6
- 18 Doz. in set, 6/6
- 19 Doz. in set, 6/6
- 20 Doz. in set, 6/6

## RUBBER STAMPS AT THE Standard Stationery Store. NAIROBI.

## A. J. ELY and Co. Ltd. SHAMBA CHEMISTS, NAIROBI. COPPER RAIN GAUGE.

Complete with Glass ... Shs. 26/-  
Spare Glass ... Shs. 4/6

## BROWNS "FOUR CROWN SCOTCH" WHISKY

Mellow with Age  
Enquiries to BLACKLACK & BROWN (LTD. BLACKLACKEN ROAD) NAIROBI. Box No. 41.

## P. Stewart PAINTER and DECORATOR.

Hardinge Street, P.O. Box 226, NAIROBI.

FOR Furniture of Household Use, Shop Fittings of every description, Paints, Oils, Varnishes, etc.

## PHARMACEUTICAL STOCKINGS

Next to Bona House, Government Road, Nairobi.

## Doomhall Dairy, for PURE MILK and CREAM.

From Farm to Consumer. Box 11, NAIROBI.



British India Steam Navigation Company, Limited,

Table with columns for LONDON AND EAST AFRICA LINE, BOMBAY-DURBAN MAIL SERVICE, and COASTAL SERVICE. Includes ship names, routes, and dates.

UNION-CASTLE LINE.

Table for UNION-CASTLE LINE with columns for HOMEWARD via SUEZ and HOMEWARD via SOUTH AFRICA. Lists ship names and departure dates.

Advertisement for Chivers' Jams and Chivers' Jellies, featuring product images and text.

MESSAGERIES MARITIMES.

Table for MESSAGERIES MARITIMES listing ship names, routes, and dates.

Advertisement for Compagnia Italiana Transatlantica, including sailing routes and contact information.

Advertisement for Deutsche Ost-Afrika-Linie, listing routes to East Africa and Europe.

Advertisement for The Bradford Manufacturing Co. Limited, featuring children's clothing.

Advertisement for THE AFRICAN MARINE and GENERAL ENGINEERING CO. Ltd., specializing in machinery repairs.

Advertisement for Deutsche Ost-Afrika-Linie, listing routes to East Africa and Europe.

Advertisement for Keith Timber Co., Limited, offering timber and flooring services.

Advertisement for Coranotype personal letters, featuring an illustration of a man writing.

Advertisement for HOLLAND AFRICA LIJN, listing shipping routes and schedules.

Advertisement for PIANOFORTE TUNING and REPAIRING services.

Advertisement for STANDARD STATIONERY STORES, listing various stationery items.

Advertisement for BUILDERS! and HUTCHINGS BIEMER & Co., Ltd., featuring building materials and machinery.

Table for OVERSEAS MAILS, listing ship names, routes, and dates.

Advertisement for UPLANDS BACON FACTORY, featuring various food products.

























(Incorporated in United Kingdom)
Branches to the Colony and Protectorate of Kenya and Uganda, East Africa, East Africa Protectorate, Government.

Head Office: London, E.C.4.
BRANCHES: Bombay, Madras, Calcutta, Rangoon, Harbin, Hankow, Canton, Amoy, Singapore, Penang, Malacca, Johore Bahru, Batavia, Surabaya, Medan, Palembang, Padang, Bencoolen, London, London, London.

AGENTS in New York and throughout U.S.A., Canada, South Africa and elsewhere.
FIXED DEPOSIT: Deposits are received for fixed periods on terms which will be found on application.

REMITTANCE: The Bank grants Drafts on the Home Office and Branches at the current rates of Exchange forwarding a true copy of the Bill direct to the person which requires. Every description of Banking business transacted with all parts of the world.

A. M. BUCKENRIE, Manager, Nairobi Branch.

BUY THE VICTORIA TRAVEL CO. COMPASS BOOK No. 1 WHITE CRAYON GUIDE at the following price from the undersigned source:
Per Pound 1/6
Per pocket (56116) 1s. 10/75
S. Jacobs, Ltd., Nairobi.
R. B. Deacon, " Nairobi Home."
M. S. Elliot & Co., Ltd.
Blackburne & Brown, Kinross House Trading Co., Ltd.
Winkham, Limited.
Colonial General Stores.
Belmore, Parnell & Co.
The Parklands Store.
Hankins Kaufmann.
Nogoo Trading Co.
S. Jacobs, Limited.
W. G. W.
Henry Wilson.

SPORTS and PASTIMES.

A SPORTSMAN'S WINDOW.

An Outlook on the World of Recreation.

CURRENT EVENTS

There is a lull in Kenya sporting events for the moment, and the result is that this interest is largely centered abroad at the outside world. During the past week-end the International Rugby matches at Murrayfield and Whitehaven occupied attention. Again the Rugby of Whitehaven was more successful than was expected. The game to Whitehaven men means a great deal to them. That second half victory of the Whitehaven type of them, and which have covered some confusion to the selectors, who made him three changes, was in the half back line and two forward.

The field is now clear for the more important of the trials, at least in the eyes of the English and English. North of Chester there is only one to be mentioned and that is between St. Albans and St. Albans. The Rugby players in spite of his recent victory believe of all to secure the honor of this year, but perhaps those age old games of strife has found something of that double nature passing down through the corridors of time to this day. It is little of the nationality of the English is understood and forgotten.

March 12 should not be a struggle at the Rugby Tropic. The honor of the championship country pass of the century should now be in the hands of England as having to do with her team selection. A win was never far from, but we think the man responsible for this showing of the side will be considered to find the same side against the men from the north. There is likely to be change in the team which will show what is to be.

Physical Culture: I understand that the girls club in connection with the physical training at the Nairobi British Athletic Club has fallen through. All along it has been considered a sort of transport for the members of this club. The numbers have never been really high for this club, although there was some proof that with the cooperation

problems solved, the club would prove a considerable help. The being of twenty 7 new on the occasion of a visit I had also convinced me that there should be an absence of club. Twenty years ago I feel sure such "interest" could serve me well, almost, but the age of thirty has not yet arrived.

A Novel Scheme: That was rather a novel scheme which the Nairobi Railway Club have adopted with a view to securing an appropriate working design to ornament the club. It is a scheme which is something about this competition which has been made. I almost become an aspirant to their two points, but after consulting a large number of crossed signals, the my friends state that the my Nairobi station and the club flag light, and perhaps just as well. Anyway, it is a good scheme, and the club are to be commended on the way they are going about matters. My wish is that they are helping to create interest in the club and attracting new members, because there is always an appeal about such schemes. If the ladies are to be mentioned to help in the bringing of new members, I suggest that they be invited to assist in the artistic design and decorate articles being, and all will agree the ladies are that and more.

The "Aha's": Ever another man has come and gone we will be discussing the production and possibility of the Australian cricket team which is to tour England in the coming summer in search of the "Aha's." South with all likelihood, form the major part of the team, and it will be interesting to see who the men are who will track the rest from the sidelines.

Did money to the purpose will be used to fund the honor of the Old Country in the Tests. Will profits be recognized to the fullest extent? sooner or later the "Old Wabblers" must give up, and at least that they be recognized without delay. Few often has Hulse been stated as having played his last representative match? The Surrey men want to give the younger men a chance, but it has been prevented by the consistency of the players knocking at the door of Test and there we should be given our chance.

Coming Football Season: Since the last time we were in the coming season will be one again with us in Kenya.

School Defeat "Old Boys."

BARTON AND BURTON AMONG THE WICKETS

On Saturday the School Defeat the Old Boys by 68 runs.

Table with 2 columns: Player Name and Runs. Total 130.

The Old Boys.

Table with 2 columns: Player Name and Runs. Total 130.

Bowling.

Table with 2 columns: Player Name and Runs. Total 130.

Already some of the clubs have started to send their losses in order and in the case of the U.M.C.A. several practice games have been played. There is nothing to be done, and the early start bookings good practice for the competition. But I would refer to the "Old Wabblers" the men who played in that material that the club at the time of last season, and as the result of which the European Festival has been fitted with wireless head-phones, but it is necessary to be made to make the match an annual one in some respects. If this is to be, then I would suggest that it is taken place much earlier, and that it be a "half-day" of cricket.

CORINTHIAN.



SPEND YOUR HOLIDAY IN SOUTH AFRICA

RAILWAY EXCURSION FARES are available all the year round for parties of four or more traveling together over the lines of the South African Railway Administration.

TOURS arranged for parties or individual persons at inclusive fares to cover rail, hotel, motor and other services. Through and Return Tickets from Kenya, Uganda and Tanganyika to Any Station on the South African Railways can now be arranged in Nairobi. Further particulars and literature are obtainable from:-

THE SOUTH AFRICA OFFICE, (P.O. Box 624), Memorial Hall, NAIROBI.

The Manager, Tourist and Travel Bureau, South African Railways, JOHANNESBURG.

The Tourist Agent, S.A.R. Tourist Bureau, S.A.R. Tourist Bureau, DUBLIN.

Theo. SCHOUTEN

LADIES and GENTLEMEN'S HAIRDRESSING

Permanent Waving a Speciality UNDER PERSONAL SUPERVISION.

All the Leading Toilet Requisites Stocked. GOVERNMENT ROAD.

Also at MOMBASA and NAKURU.

P.O. Box 334. Phone 245.

Chiropractic Spinal Manipulation

the new untriedly-recognized Duplain System of Healing is now thousands of sufferers to Health. By removing the pressure on the nerves, which is causing your Headaches, Neuritis, Sciatica, Rheumatism, Lame and Kidney Troubles etc., it will bring you to renewed Life, Vigor and Energy.

Miss B. GOOD, D.C., Spinal Nerve Specialist, who has had wide practical experience, is now practicing at Tor's Hotel (Room 2) Nairobi, Hours 9.30-11, P.-4, 10-12, 1-4, and by appointment. Telephone No. 609.

20 FORD OWNERS

Rally to Prove FORD MODEL "A" the Most Economical Car in South Africa.

On Feb. 1st. in a great public petrol consumption Competition over the Johannesburg-Potchefstroom road - Specially selected because it is level and permits the minimum of coasting - Mr. H. V. Vincent, owner of T. J. 6486 an ordinary owner driven Standard MODEL "A" FORD Averaged 53 Miles Per Gallon.

Mr. G. E. Smith, owner of T. J. 15458, Model "A" Ford 51-6 Per Gallon. Mr. J. C. Farquhar, owner of T. J. 16492, Model "A" Ford 51-4 Per Gallon.

The Average of 13 Ford Owners Entered was 48-4 M. P. G.

Extract from the "Sunday Times" Feb. 5th 1930.

LOCAL AGENTS. NAIROBI MOTORS.

6th AVENUE.

Tel. 317.

Box 460.



**KENYA BREWERIES LTD.**  
 2, 3, 4, 5, 6, 7, 8, 9, 10, 11, 12, 13, 14, 15, 16, 17, 18, 19, 20, 21, 22, 23, 24, 25, 26, 27, 28, 29, 30, 31, 32, 33, 34, 35, 36, 37, 38, 39, 40, 41, 42, 43, 44, 45, 46, 47, 48, 49, 50, 51, 52, 53, 54, 55, 56, 57, 58, 59, 60, 61, 62, 63, 64, 65, 66, 67, 68, 69, 70, 71, 72, 73, 74, 75, 76, 77, 78, 79, 80, 81, 82, 83, 84, 85, 86, 87, 88, 89, 90, 91, 92, 93, 94, 95, 96, 97, 98, 99, 100  
 COURT CHAMBERS, NAIROBI.  
 Supplied in 1 Dozen Quart and  
 2 Dozen Pint Cases.

**GUARANTEED THE LARGEST CIRCULATION OF ANY NEWSPAPER  
 IN KENYA, UGANDA, TANGANYIKA AND ZANZIBAR.**

DAILY EDITION.

THE EAST

6 PAGES

# The East African Standard

**UGANDA ARGUS** With which is incorporated **THE LEADER**  
 THE OLDEST ESTABLISHED NEWSPAPER PUBLISHED IN KENYA AND UGANDA.

NAIROBI, FRIDAY, FEBRUARY 26, 1950.

**The LOUNGE**  
 for  
 Morning  
 AND  
 Afternoon  
 TEAS  
 OPEN ON  
**SUNDAYS**  
 TO  
**Non-Residents.**  
**The NEW STANLEY HOTEL**  
 PRICE, 20 CENTS.

**SPECIALLY PACKED  
 FOR ALL SETTLERS**  
 available in Licensed Stores.

## THE ROAD VS. RAIL CONTROVERSY.

Recommendations by South African Commission.

**NO MONOPOLIES.**

### Proper Control Road Users by System of Licenses.

considerable time ago the Government of the Union of South Africa appointed a Commission to study the Road vs. Rail problem.

The recommendations of the Commission, the most important of which appear below, are of great interest to East Africa where a similar problem awaits solution.

The South African Commission is opposed to any monopoly but urges that the restrictions preventing the Railways operating on the roads should be repealed.

The principle of reasonable control—divorced from politics, is upheld and a system of "public services licenses" is urged with proper conditions.

Selection for road purposes is examined and the necessity for a proper apportionment among road users is stressed. Co-ordination of road and rail services, a national road policy and a national Board to carry out a progressive road policy are all major parts in the Report.

### FREEDOM FOR THE RAILWAY.

The following are amongst some of the more important recommendations included in the Report of the Commission which was reported in January 1929 to the Government of the Union of South Africa and reports upon the whole system of road motor transport and railway services of the Union of South Africa.

(1) To the fact that the main transport systems of the country are now in a state of transition in which various forms of transport are being investigated and compared.

(2) In all the measures, it needs to be adopted for better selection, co-ordination and control of the public interest.

The principal recommendations of the Commission are:

There should be no monopoly of public transport on roads, a system of public transport should be established and operated as a healthy and desirable business.

There should be no monopoly of public transport on roads, a system of public transport should be established and operated as a healthy and desirable business.

There should be no monopoly of public transport on roads, a system of public transport should be established and operated as a healthy and desirable business.

There should be no monopoly of public transport on roads, a system of public transport should be established and operated as a healthy and desirable business.

There should be no monopoly of public transport on roads, a system of public transport should be established and operated as a healthy and desirable business.

## RAILWAY EXTENSIONS IN EAST AFRICA.

Application to Colonial Development Fund.

**LINE TO OYOBO BORDER.**

(BY WIRELESS.)  
 Rugby, February 26.  
 Answering a question in the House of Commons today regarding the Colonial Development Fund, Dr. Drummond Young said that preliminary application for assistance from the Colonial Development Fund had been made by the High Commissioner for Transport for Kenya and Uganda in connection with the proposal to extend the railway line to Oyoobo border.

The High Commissioner said that the Uganda Congo border. Arrangements were made in the usual way to ensure that electric machinery and material imported into East Africa in connection with any such project would, save in exceptional circumstances, be of British manufacture and origin.

In regard to Nigeria, he said that he had been arranged to see the Prime Minister's room at the House of Commons and that he had been told that a new line to be built from Lagos to the Niger delta.

The Government is now considering the possibility of a new line to be built from Lagos to the Niger delta.

The Government is now considering the possibility of a new line to be built from Lagos to the Niger delta.

The Government is now considering the possibility of a new line to be built from Lagos to the Niger delta.

The Government is now considering the possibility of a new line to be built from Lagos to the Niger delta.

The Government is now considering the possibility of a new line to be built from Lagos to the Niger delta.

The Government is now considering the possibility of a new line to be built from Lagos to the Niger delta.

The Government is now considering the possibility of a new line to be built from Lagos to the Niger delta.

The Government is now considering the possibility of a new line to be built from Lagos to the Niger delta.

The Government is now considering the possibility of a new line to be built from Lagos to the Niger delta.

The Government is now considering the possibility of a new line to be built from Lagos to the Niger delta.

## NO BREAKDOWN OF NAVAL CONFERENCE.

Discussions With British Premier.

**WORK TO CONTINUE.**

(BY WIRELESS.)  
 London, February 26.  
 The heads of the British, Canadian, Japanese and Italian delegations to the London Naval Conference, which is now in its second week, met today with the British Premier's room at the House of Commons to consider the continuation of the work of the Conference.

A communiqué stated: "It was agreed, subject to the agreement of the British Government, that as soon as the Conference is in a position to resume its full activities, the original programme of work will be continued."

It was also stated that the Conference will continue to work on the original programme of work, which includes the reduction of armaments and the limitation of naval armaments.

The Conference will continue to work on the original programme of work, which includes the reduction of armaments and the limitation of naval armaments.

The Conference will continue to work on the original programme of work, which includes the reduction of armaments and the limitation of naval armaments.

The Conference will continue to work on the original programme of work, which includes the reduction of armaments and the limitation of naval armaments.

The Conference will continue to work on the original programme of work, which includes the reduction of armaments and the limitation of naval armaments.

The Conference will continue to work on the original programme of work, which includes the reduction of armaments and the limitation of naval armaments.

The Conference will continue to work on the original programme of work, which includes the reduction of armaments and the limitation of naval armaments.

The Conference will continue to work on the original programme of work, which includes the reduction of armaments and the limitation of naval armaments.

The Conference will continue to work on the original programme of work, which includes the reduction of armaments and the limitation of naval armaments.

The Conference will continue to work on the original programme of work, which includes the reduction of armaments and the limitation of naval armaments.

The Conference will continue to work on the original programme of work, which includes the reduction of armaments and the limitation of naval armaments.

## GAME SLAUGHTER IN TANGANYIKA.

Planters Repulse to Government's Game Laws.

**REINTEGRATING THE LAW.**

(BY WIRELESS.)  
 Dar-es-Salaam, Feb. 26.  
 In regard to an article appearing in the "East African Standard" of January 16, 1950, the Government has issued a statement through the East African Association stating that the Government had had of the case of orally to game by natives, with or without previous notice, with great regret, and is considering the question of strengthening legislation in regard to the protection of game.

The Association, it is added, is under a misapprehension when writing of magistrates being permitted to act lightly with offenders in the case of game.

The Association is also under a misapprehension when writing of magistrates being permitted to act lightly with offenders in the case of game.

The Association is also under a misapprehension when writing of magistrates being permitted to act lightly with offenders in the case of game.

The Association is also under a misapprehension when writing of magistrates being permitted to act lightly with offenders in the case of game.

The Association is also under a misapprehension when writing of magistrates being permitted to act lightly with offenders in the case of game.

The Association is also under a misapprehension when writing of magistrates being permitted to act lightly with offenders in the case of game.

The Association is also under a misapprehension when writing of magistrates being permitted to act lightly with offenders in the case of game.

The Association is also under a misapprehension when writing of magistrates being permitted to act lightly with offenders in the case of game.

The Association is also under a misapprehension when writing of magistrates being permitted to act lightly with offenders in the case of game.

The Association is also under a misapprehension when writing of magistrates being permitted to act lightly with offenders in the case of game.

The Association is also under a misapprehension when writing of magistrates being permitted to act lightly with offenders in the case of game.

The Association is also under a misapprehension when writing of magistrates being permitted to act lightly with offenders in the case of game.

## TANGANYIKA FLOODS FROM THE AIR.

Valuable Survey of the Damaged Line.

**PHOTOGRAPHIC RECORD.**

(BY WIRELESS.)  
 Dar-es-Salaam, Feb. 26.  
 An invaluable survey of the flooded areas of Central Tanganyika has been carried out by Flight Lieutenant Swaffer of Wilson Airways during which the Tanganyika Survey Department recorded the position by aerial photographs.

It was found that main railway line runs below the rivers in a valley quite 700 feet low the level of the surrounding country and it is believed that in order to eliminate future risks presented by flooded streams, considerable re-arrangement may be necessary.

It was found that main railway line runs below the rivers in a valley quite 700 feet low the level of the surrounding country and it is believed that in order to eliminate future risks presented by flooded streams, considerable re-arrangement may be necessary.

It was found that main railway line runs below the rivers in a valley quite 700 feet low the level of the surrounding country and it is believed that in order to eliminate future risks presented by flooded streams, considerable re-arrangement may be necessary.

It was found that main railway line runs below the rivers in a valley quite 700 feet low the level of the surrounding country and it is believed that in order to eliminate future risks presented by flooded streams, considerable re-arrangement may be necessary.

It was found that main railway line runs below the rivers in a valley quite 700 feet low the level of the surrounding country and it is believed that in order to eliminate future risks presented by flooded streams, considerable re-arrangement may be necessary.

It was found that main railway line runs below the rivers in a valley quite 700 feet low the level of the surrounding country and it is believed that in order to eliminate future risks presented by flooded streams, considerable re-arrangement may be necessary.

It was found that main railway line runs below the rivers in a valley quite 700 feet low the level of the surrounding country and it is believed that in order to eliminate future risks presented by flooded streams, considerable re-arrangement may be necessary.

It was found that main railway line runs below the rivers in a valley quite 700 feet low the level of the surrounding country and it is believed that in order to eliminate future risks presented by flooded streams, considerable re-arrangement may be necessary.

It was found that main railway line runs below the rivers in a valley quite 700 feet low the level of the surrounding country and it is believed that in order to eliminate future risks presented by flooded streams, considerable re-arrangement may be necessary.

It was found that main railway line runs below the rivers in a valley quite 700 feet low the level of the surrounding country and it is believed that in order to eliminate future risks presented by flooded streams, considerable re-arrangement may be necessary.

It was found that main railway line runs below the rivers in a valley quite 700 feet low the level of the surrounding country and it is believed that in order to eliminate future risks presented by flooded streams, considerable re-arrangement may be necessary.

It was found that main railway line runs below the rivers in a valley quite 700 feet low the level of the surrounding country and it is believed that in order to eliminate future risks presented by flooded streams, considerable re-arrangement may be necessary.

## Strong Influences to Accept Post.

(BY WIRELESS.)  
 London, February 26.  
 Strong influences have been brought to bear upon General Smuts to accept the post of High Commissioner of the federated East African territories.

It has not yet been given any decision.

## Death of Famous Surgeon.

(BY WIRELESS.)  
 London, February 26.  
 The death has occurred of Sir Alfred Dorey Frigg, K.C.V.O., a Surgeon-in-Chief to the King and to the Duke of Cornwall, who took a prominent part in the formation of the Ancient Order of Footlovers movement.

The late Sir Alfred Frigg was born in 1865 and was educated at Merchant Taylor's, London University and Guy's Hospital. In addition to his post of Surgeon-in-Chief to the King and to the Duke of Cornwall, he was also Surgeon to Guy's Hospital, Surgeon-in-Chief to the late King Edward VII, Consulting Surgeon to the Royal Navy and Surgeon to the Hospital for Children and Women, Waterloo Bridge Road. He was a member of a number of medical, hospital and benevolent societies.

The late Sir Alfred Frigg was born in 1865 and was educated at Merchant Taylor's, London University and Guy's Hospital. In addition to his post of Surgeon-in-Chief to the King and to the Duke of Cornwall, he was also Surgeon to Guy's Hospital, Surgeon-in-Chief to the late King Edward VII, Consulting Surgeon to the Royal Navy and Surgeon to the Hospital for Children and Women, Waterloo Bridge Road. He was a member of a number of medical, hospital and benevolent societies.

The late Sir Alfred Frigg was born in 1865 and was educated at Merchant Taylor's, London University and Guy's Hospital. In addition to his post of Surgeon-in-Chief to the King and to the Duke of Cornwall, he was also Surgeon to Guy's Hospital, Surgeon-in-Chief to the late King Edward VII, Consulting Surgeon to the Royal Navy and Surgeon to the Hospital for Children and Women, Waterloo Bridge Road. He was a member of a number of medical, hospital and benevolent societies.

## Communists in Africa.

(BY WIRELESS.)  
 London, February 26.  
 Several thousand men and women are believed to be Communist in Africa.

It is believed that the Communist Party in Africa has a membership of several thousand men and women.

The Communist Party in Africa has a membership of several thousand men and women.

The Communist Party in Africa has a membership of several thousand men and women.

The Communist Party in Africa has a membership of several thousand men and women.

The Communist Party in Africa has a membership of several thousand men and women.

## GAME SLAUGHTER IN TANGANYIKA.

Planters Repulse to Government's Game Laws.

**REINTEGRATING THE LAW.**

(BY WIRELESS.)  
 Dar-es-Salaam, Feb. 26.  
 In regard to an article appearing in the "East African Standard" of January 16, 1950, the Government has issued a statement through the East African Association stating that the Government had had of the case of orally to game by natives, with or without previous notice, with great regret, and is considering the question of strengthening legislation in regard to the protection of game.

The Association, it is added, is under a misapprehension when writing of magistrates being permitted to act lightly with offenders in the case of game.

The Association is also under a misapprehension when writing of magistrates being permitted to act lightly with offenders in the case of game.

The Association is also under a misapprehension when writing of magistrates being permitted to act lightly with offenders in the case of game.

The Association is also under a misapprehension when writing of magistrates being permitted to act lightly with offenders in the case of game.

The Association is also under a misapprehension when writing of magistrates being permitted to act lightly with offenders in the case of game.

The Association is also under a misapprehension when writing of magistrates being permitted to act lightly with offenders in the case of game.

The Association is also under a misapprehension when writing of magistrates being permitted to act lightly with offenders in the case of game.

The Association is also under a misapprehension when writing of magistrates being permitted to act lightly with offenders in the case of game.

The Association is also under a misapprehension when writing of magistrates being permitted to act lightly with offenders in the case of game.

The Association is also under a misapprehension when writing of magistrates being permitted to act lightly with offenders in the case of game.

The Association is also under a misapprehension when writing of magistrates being permitted to act lightly with offenders in the case of game.

The Association is also under a misapprehension when writing of magistrates being permitted to act lightly with offenders in the case of game.

The Association is also under a misapprehension when writing of magistrates being permitted to act lightly with offenders in the case of game.

The Association is also under a misapprehension when writing of magistrates being permitted to act lightly with offenders in the case of game.

## Danger to Central Railway from Present Alignment.

(BY WIRELESS.)  
 Dar-es-Salaam, Feb. 26.  
 An invaluable survey of the flooded areas of Central Tanganyika has been carried out by Flight Lieutenant Swaffer of Wilson Airways during which the Tanganyika Survey Department recorded the position by aerial photographs.

It was found that main railway line runs below the rivers in a valley quite 700 feet low the level of the surrounding country and it is believed that in order to eliminate future risks presented by flooded streams, considerable re-arrangement may be necessary.

It was found that main railway line runs below the rivers in a valley quite 700 feet low the level of the surrounding country and it is believed that in order to eliminate future risks presented by flooded streams, considerable re-arrangement may be necessary.

It was found that main railway line runs below the rivers in a valley quite 700 feet low the level of the surrounding country and it is believed that in order to eliminate future risks presented by flooded streams, considerable re-arrangement may be necessary.

It was found that main railway line runs below the rivers in a valley quite 700 feet low the level of the surrounding country and it is believed that in order to eliminate future risks presented by flooded streams, considerable re-arrangement may be necessary.

It was found that main railway line runs below the rivers in a valley quite 700 feet low the level of the surrounding country and it is believed that in order to eliminate future risks presented by flooded streams, considerable re-arrangement may be necessary.

It was found that main railway line runs below the rivers in a valley quite 700 feet low the level of the surrounding country and it is believed that in order to eliminate future risks presented by flooded streams, considerable re-arrangement may be necessary.

It was found that main railway line runs below the rivers in a valley quite 700 feet low the level of the surrounding country and it is believed that in order to eliminate future risks presented by flooded streams, considerable re-arrangement may be necessary.

It was found that main railway line runs below the rivers in a valley quite 700 feet low the level of the surrounding country and it is believed that in order to eliminate future risks presented by flooded streams, considerable re-arrangement may be necessary.

It was found that main railway line runs below the rivers in a valley quite 700 feet low the level of the surrounding country and it is believed that in order to eliminate future risks presented by flooded streams, considerable re-arrangement may be necessary.

It was found that main railway line runs below the rivers in a valley quite 700 feet low the level of the surrounding country and it is believed that in order to eliminate future risks presented by flooded streams, considerable re-arrangement may be necessary.

# EVERYTHING FOR TENNIS WEAR A I Whiteaways.

**Men's Sports Shoe.** Our most popular line, white duck uppers with white rubber soles and laces, best quality white canvas. Sizes 7-12, \$7.95 per pair.

**Men's Tennis Shoe.** Tennis made brighter by the new cream. Made in colors of Apple Green, Blue, and White. Best with white rubber soles and best quality white canvas. \$7.95 per pair, also in various colors white rubber soles and best quality white canvas. \$7.95 per pair.

**Men's Tennis Shoe.** Tennis made brighter by the new cream. Made in colors of Apple Green, Blue, and White. Best with white rubber soles and best quality white canvas. \$7.95 per pair, also in various colors white rubber soles and best quality white canvas. \$7.95 per pair.

**Men's Tennis Shoe.** Tennis made brighter by the new cream. Made in colors of Apple Green, Blue, and White. Best with white rubber soles and best quality white canvas. \$7.95 per pair, also in various colors white rubber soles and best quality white canvas. \$7.95 per pair.

**WHITEAWAY, LAIDLAW & Co., Ltd., NAIROBI**

## Confession Still Alive.

(BY WIRELESS.)  
 London, February 26.  
 Authoritative British sources have announced that the confession of the man who was believed to be the assassin of the late King George VI is still alive.

The man who was believed to be the assassin of the late King George VI is still alive.

The man who was believed to be the assassin of the late King George VI is still alive.

The man who was believed to be the assassin of the late King George VI is still alive.

The man who was believed to be the assassin of the late King George VI is still alive.

The man who was believed to be the assassin of the late King George VI is still alive.

## Men's Tennis Shoe.

Our most popular line, white duck uppers with white rubber soles and laces, best quality white canvas. Sizes 7-12, \$7.95 per pair.

Our most popular line, white duck uppers with white rubber soles and laces, best quality white canvas. Sizes 7-12, \$7.95 per pair.

Our most popular line, white duck uppers with white rubber soles and laces, best quality white canvas. Sizes 7-12, \$7.95 per pair.

Our most popular line, white duck uppers with white rubber soles and laces, best quality white canvas. Sizes 7-12, \$7.95 per pair.

Our most popular line, white duck uppers with white rubber soles and laces, best quality white canvas. Sizes 7-12, \$7.95 per pair.

Our most popular line, white duck uppers with white rubber soles and laces, best quality white canvas. Sizes 7-12, \$7.95 per pair.

## Men's Tennis Shoe.

Our most popular line, white duck uppers with white rubber soles and laces, best quality white canvas. Sizes 7-12, \$7.95 per pair.

Our most popular line, white duck uppers with white rubber soles and laces, best quality white canvas. Sizes 7-12, \$7.95 per pair.

Our most popular line, white duck uppers with white rubber soles and laces, best quality white canvas. Sizes 7-12, \$7.95 per pair.

Our most popular line, white duck uppers with white rubber soles and laces, best quality white canvas. Sizes 7-12, \$7.95 per pair.

Our most popular line, white duck uppers with white rubber soles and laces, best quality white canvas. Sizes 7-12, \$7.95 per pair.

Our most popular line, white duck uppers with white rubber soles and laces, best quality white canvas. Sizes 7-12, \$7.95 per pair.

## Murder in India.

(BY WIRELESS.)  
 London, February 26.  
 A man was shot dead in India.

A man was shot dead in India.

A man was shot dead in India.

## Military Officer Killed.

(BY WIRELESS.)  
 London, February 26.  
 A military officer was killed in India.

A military officer was killed in India.

A military officer was killed in India.

A military officer was killed in India.

A military officer was killed in India.

A military officer was killed in India.



**WATERING**  
The ALSTON PATENT Stock Water Trough is the outcome of 50 years Pastoral experience in Australia.

IT WONT LEAK  
WONT DRAG  
WONT BREAK  
Complete with Nigal Steel Frame.  
FOR SHEEP AND  
FOR CATTLE  
16' per foot. 7 1/2' per foot.  
10' per foot. 5 1/2' per foot.  
12' per foot. 6 1/2' per foot.

**Dalgely & Company Ltd.**  
NAIROBI. ELDORET.

**ESSJAY, Limited.**  
BOLUS HOUSE, GOVERNMENT ROAD,  
NAIROBI. Phone 377.

Financial and Property Agents.  
Mortgages Specialised In.  
Town Properties Negotiated.  
Partnerships Arranged.  
Investments Advised on.

WE HAVE SOUND INVESTMENTS FOR SUMS FROM 250 UPWARDS. IN THIS RESPECT WE CLAIM TO DO BETTER FOR YOU THAN ANY ONE ELSE.

J. JACOBS,  
Managing Director.

**A. J. ELY and Co. Ltd.**  
SIAMMA CHEMISTS,  
675 COPPER RAIN GAUGE,  
NAIROBI.  
Complete with Glasses ... Shs. 75/00  
Spare Glasses ... Shs. 4/00

**NYANZA DISTRICT COUNCIL.**

**Road Problems in the Area.**

**FINANCIAL QUESTION.**

**(STANDARD) CORRESPONDENT.**

A meeting of the Nyanza District Council was held at Lunenburg during the month when certain important matters were discussed. In the absence of the Native Commissioner, the Resident Commissioner was elected to preside.

**Mohoroni-Songhor-Chemill Road.**  
The most important matter under discussion was one which had been of considerable difficulty to the Council for some considerable time, was the question of the taking over of the newly constructed motor road from Mohoroni to Songhor, and thence to Chemill.

Very last month, a deputation from the Council had an interview with the Central Road Board, and they had made the best bargain possible on behalf of the Council on the subject of taking the road over from the Public Works Dept.

A preliminary discussion had taken place at a meeting of the Nyanza District Council of the Council, which had been held on the previous day, and Council was asked to adopt the following resolution which had been carried at that meeting:—

"That this Council take over the Mohoroni-Songhor-Chemill road, given the Basic Road recommended by the Central Road and Traffic Board, provided that a sum of not less than £500 be allocated to Council for the purpose of putting this road into a satisfactory state of repair."

Mr. Allen, who had moved this resolution at the Standing Committee meeting stated that, after mature consideration he was not satisfied with it as it was worded, and asked to have it amended to read:— "That the Council take over the Mohoroni-Songhor-Chemill road, given the Basic Road recommended by the Central Road and Traffic Board, provided that its construction be handed over to the Council for the purpose of putting this road into a satisfactory state of repair, and further, provided that the sum is not less than £500."

Mr. Allen, who had moved this resolution, stated that the Council had not taken over until three years as it has been put into proper order and a final condition.

tion by the Public Works Department.

Mr. Pearce seconded.  
After lengthy discussion Capt. Paine's amendment was put to the vote and lost by three votes to six, whilst the original Resolution was carried by six votes to three.

**Main Trunk Road from Kiama.**  
It was reported that the Executive Engineer, P.W.D., Kiama, proposed to start the construction of the main Kiama-Nairobi road from Kiama, through the Mbaraka-Kiama, during the current year. It was noted and suggested that this road would pass through the area of the Council.

It was reported that the Executive Engineer, P.W.D., Kiama, proposed to start the construction of the main Kiama-Nairobi road from Kiama, through the Mbaraka-Kiama, during the current year. It was noted and suggested that this road would pass through the area of the Council.

It was reported that the Executive Engineer, P.W.D., Kiama, proposed to start the construction of the main Kiama-Nairobi road from Kiama, through the Mbaraka-Kiama, during the current year. It was noted and suggested that this road would pass through the area of the Council.

It was reported that the Executive Engineer, P.W.D., Kiama, proposed to start the construction of the main Kiama-Nairobi road from Kiama, through the Mbaraka-Kiama, during the current year. It was noted and suggested that this road would pass through the area of the Council.

It was reported that the Executive Engineer, P.W.D., Kiama, proposed to start the construction of the main Kiama-Nairobi road from Kiama, through the Mbaraka-Kiama, during the current year. It was noted and suggested that this road would pass through the area of the Council.

It was reported that the Executive Engineer, P.W.D., Kiama, proposed to start the construction of the main Kiama-Nairobi road from Kiama, through the Mbaraka-Kiama, during the current year. It was noted and suggested that this road would pass through the area of the Council.

It was reported that the Executive Engineer, P.W.D., Kiama, proposed to start the construction of the main Kiama-Nairobi road from Kiama, through the Mbaraka-Kiama, during the current year. It was noted and suggested that this road would pass through the area of the Council.

It was reported that the Executive Engineer, P.W.D., Kiama, proposed to start the construction of the main Kiama-Nairobi road from Kiama, through the Mbaraka-Kiama, during the current year. It was noted and suggested that this road would pass through the area of the Council.

It was reported that the Executive Engineer, P.W.D., Kiama, proposed to start the construction of the main Kiama-Nairobi road from Kiama, through the Mbaraka-Kiama, during the current year. It was noted and suggested that this road would pass through the area of the Council.

It was reported that the Executive Engineer, P.W.D., Kiama, proposed to start the construction of the main Kiama-Nairobi road from Kiama, through the Mbaraka-Kiama, during the current year. It was noted and suggested that this road would pass through the area of the Council.

It was reported that the Executive Engineer, P.W.D., Kiama, proposed to start the construction of the main Kiama-Nairobi road from Kiama, through the Mbaraka-Kiama, during the current year. It was noted and suggested that this road would pass through the area of the Council.

It was reported that the Executive Engineer, P.W.D., Kiama, proposed to start the construction of the main Kiama-Nairobi road from Kiama, through the Mbaraka-Kiama, during the current year. It was noted and suggested that this road would pass through the area of the Council.

It was reported that the Executive Engineer, P.W.D., Kiama, proposed to start the construction of the main Kiama-Nairobi road from Kiama, through the Mbaraka-Kiama, during the current year. It was noted and suggested that this road would pass through the area of the Council.

power to stand alone, and under

lock to go into the matter, to do with be could by way of securing the resolution. It was decided to inform the petitioners that the matter was referred to the R.C. for his action.

**Main Trunk Road from Kiama.**  
It was reported that the Executive Engineer, P.W.D., Kiama, proposed to start the construction of the main Kiama-Nairobi road from Kiama, through the Mbaraka-Kiama, during the current year. It was noted and suggested that this road would pass through the area of the Council.

It was reported that the Executive Engineer, P.W.D., Kiama, proposed to start the construction of the main Kiama-Nairobi road from Kiama, through the Mbaraka-Kiama, during the current year. It was noted and suggested that this road would pass through the area of the Council.

It was reported that the Executive Engineer, P.W.D., Kiama, proposed to start the construction of the main Kiama-Nairobi road from Kiama, through the Mbaraka-Kiama, during the current year. It was noted and suggested that this road would pass through the area of the Council.

It was reported that the Executive Engineer, P.W.D., Kiama, proposed to start the construction of the main Kiama-Nairobi road from Kiama, through the Mbaraka-Kiama, during the current year. It was noted and suggested that this road would pass through the area of the Council.

It was reported that the Executive Engineer, P.W.D., Kiama, proposed to start the construction of the main Kiama-Nairobi road from Kiama, through the Mbaraka-Kiama, during the current year. It was noted and suggested that this road would pass through the area of the Council.

It was reported that the Executive Engineer, P.W.D., Kiama, proposed to start the construction of the main Kiama-Nairobi road from Kiama, through the Mbaraka-Kiama, during the current year. It was noted and suggested that this road would pass through the area of the Council.

It was reported that the Executive Engineer, P.W.D., Kiama, proposed to start the construction of the main Kiama-Nairobi road from Kiama, through the Mbaraka-Kiama, during the current year. It was noted and suggested that this road would pass through the area of the Council.

It was reported that the Executive Engineer, P.W.D., Kiama, proposed to start the construction of the main Kiama-Nairobi road from Kiama, through the Mbaraka-Kiama, during the current year. It was noted and suggested that this road would pass through the area of the Council.

It was reported that the Executive Engineer, P.W.D., Kiama, proposed to start the construction of the main Kiama-Nairobi road from Kiama, through the Mbaraka-Kiama, during the current year. It was noted and suggested that this road would pass through the area of the Council.

It was reported that the Executive Engineer, P.W.D., Kiama, proposed to start the construction of the main Kiama-Nairobi road from Kiama, through the Mbaraka-Kiama, during the current year. It was noted and suggested that this road would pass through the area of the Council.

It was reported that the Executive Engineer, P.W.D., Kiama, proposed to start the construction of the main Kiama-Nairobi road from Kiama, through the Mbaraka-Kiama, during the current year. It was noted and suggested that this road would pass through the area of the Council.

It was reported that the Executive Engineer, P.W.D., Kiama, proposed to start the construction of the main Kiama-Nairobi road from Kiama, through the Mbaraka-Kiama, during the current year. It was noted and suggested that this road would pass through the area of the Council.

It was reported that the Executive Engineer, P.W.D., Kiama, proposed to start the construction of the main Kiama-Nairobi road from Kiama, through the Mbaraka-Kiama, during the current year. It was noted and suggested that this road would pass through the area of the Council.

what is the actual width of the road

reserve through this form, do not the statutory reserve covered under the Crown Lands Ordinance.

**Dangerous Bridge.**  
Mr. Latimer-Stubbs raised the question of the responsibility for repairing bridges in townships. He referred to a bridge on the bridge in Londiani township which was reported to be in a dangerous condition. He stated that it was in a dangerous condition and that it was almost unsafe for use. He stated that the Council had brought the matter to the notice of the Executive Engineer, P.W.D., Kiama, and had been informed that it was the duty of the Executive Engineer to repair the bridge. He stated that the cost of the bridge was £100, and that it was a very important bridge for the township.

It was reported that the Executive Engineer, P.W.D., Kiama, proposed to start the construction of the main Kiama-Nairobi road from Kiama, through the Mbaraka-Kiama, during the current year. It was noted and suggested that this road would pass through the area of the Council.

It was reported that the Executive Engineer, P.W.D., Kiama, proposed to start the construction of the main Kiama-Nairobi road from Kiama, through the Mbaraka-Kiama, during the current year. It was noted and suggested that this road would pass through the area of the Council.

It was reported that the Executive Engineer, P.W.D., Kiama, proposed to start the construction of the main Kiama-Nairobi road from Kiama, through the Mbaraka-Kiama, during the current year. It was noted and suggested that this road would pass through the area of the Council.

It was reported that the Executive Engineer, P.W.D., Kiama, proposed to start the construction of the main Kiama-Nairobi road from Kiama, through the Mbaraka-Kiama, during the current year. It was noted and suggested that this road would pass through the area of the Council.

It was reported that the Executive Engineer, P.W.D., Kiama, proposed to start the construction of the main Kiama-Nairobi road from Kiama, through the Mbaraka-Kiama, during the current year. It was noted and suggested that this road would pass through the area of the Council.

It was reported that the Executive Engineer, P.W.D., Kiama, proposed to start the construction of the main Kiama-Nairobi road from Kiama, through the Mbaraka-Kiama, during the current year. It was noted and suggested that this road would pass through the area of the Council.

It was reported that the Executive Engineer, P.W.D., Kiama, proposed to start the construction of the main Kiama-Nairobi road from Kiama, through the Mbaraka-Kiama, during the current year. It was noted and suggested that this road would pass through the area of the Council.

It was reported that the Executive Engineer, P.W.D., Kiama, proposed to start the construction of the main Kiama-Nairobi road from Kiama, through the Mbaraka-Kiama, during the current year. It was noted and suggested that this road would pass through the area of the Council.

It was reported that the Executive Engineer, P.W.D., Kiama, proposed to start the construction of the main Kiama-Nairobi road from Kiama, through the Mbaraka-Kiama, during the current year. It was noted and suggested that this road would pass through the area of the Council.

It was reported that the Executive Engineer, P.W.D., Kiama, proposed to start the construction of the main Kiama-Nairobi road from Kiama, through the Mbaraka-Kiama, during the current year. It was noted and suggested that this road would pass through the area of the Council.

It was reported that the Executive Engineer, P.W.D., Kiama, proposed to start the construction of the main Kiama-Nairobi road from Kiama, through the Mbaraka-Kiama, during the current year. It was noted and suggested that this road would pass through the area of the Council.

**DONALD FISHER'S**  
**"Ye Monks"**  
is pre-eminently the Scotch Whisky for the home.  
It adds a sociable touch to the sideboard or the dining-table.  
Why not try it to-day?  
Sole Proprietors:  
**DONALD FISHER, LTD.**  
EDINBURGH.  
OBTAINABLE FROM ALL THE LEADING STORES.

**Remington**  
**New Club**  
**Wetproof**  
All Remington Fur lined shoes can carry rainwater through the Remington patented "Wetproof" process. Special care applied not only to the body of the shoe but also to the welt and turn-over-making a perfect seal. All unbroken powder so effective that it can stand up to any weather. The "Wetproof" process, by keeping the shoes dry, keeps them soft and supple. Always fresh, dependable and comfortable. Remington Arms Co., Inc. (INCORPORATED IN U.S.A.)

**Remington**  
**ATV**  
**Remington**  
SPECIAL CUTTING CUTLERY  
BIRMINGHAM PATENT CUTLERY

**Geo. BLOWERS.**

BUILDING CONTRACTOR, MANUFACTURER AND DIRECT IMPORTER.  
SADLER STREET, NAIROBI. GREATLY REDUCED PRICES. Tel. Adm. "Concrete" 300. Phone: Works 300. House 435

No. 16 No. 17 No. 18  
Flaming Beams, Cellulose Boards, Color Resinboards & Boards, Imperial Wood Work, Indian Teak, Ply Boards, Adhesive Boards

**BISURATED MAGNESIA**  
BUY THE VICTORIA NYANZA SUGAR COMPANY'S No. 1 WHITE CENTRAL SUGAR.  
At the following prices from the undersmentioned Sugar Co. Ltd.  
Per Pound (56-lbs.) 3/6  
Per cwt. (112-lbs.) 35/0

**WHY BUY AMERICAN DOORS**  
AND SEND YOUR MONEY ABROAD?  
I can compare with them—and beat them!  
Send for my ILLUSTRATED CATALOGUE and Price List.  
SOUND quotations for SOUND work.

**CONCRETE BLOCKS**  
ALL SIZES IN STOCK.  
**BEST KIMA SAND**  
IN ANY QUANTITIES.  
(Cart, Truck or Train Load).

**QUARRY CHIPS**  
**BLACK TRAP BALLAST**  
(Machine Broken and Screened to any Size).  
DELIVERY BY LORRIES AT QUOTED RATES.  
Plumbing and Sanitary Work done under the Supervision of our own European Firm.

**REDUCTION IN PRICE OF**  
**The Kenya Quick Letter File.**

for up-to-the-minute Filing Systems.  
This is one file which makes all your papers available immediately.  
1. Illustration No. 1 shows the file with the papers securely bound into the folder. Every paper is in position. Immediate reference.  
2. One of the great advantages of this file is that the margins are plainly visible, thus you have a complete reference to all details on the page.  
3. Remember, that you can remove or attach any paper you wish without disturbing the other papers in the file. Your papers stay always in order—always neat—always tidy. It is the one file which definitely upsets any other file placed on the market.  
The mechanism is fitted with handle covers, in six colors holding size. The fittings are metal and highly finished.  
The only file with all the advantages of the lever lock file.  
Price—Postage Size: Shs. 16/0 each. Shs. 18/0 each. Shs. 16/0 each. Shs. 16/0 each.

**Standard Stationery Stores, Nairobi.**

**Standard Stationery Stores, Nairobi.**

**RUBBER STAMPS**  
AT THE Standard Stationery Store.





### UNION-CASTLE LINE.

**HOMEWARD via RUE.**

"Edinburgh Castle"	From Mombasa (About)	22nd March 1920
"Granville Castle"	"	17th March
"Lancaster Castle"	"	17th May
"Edinburgh Castle"	"	17th July
"Lancaster Castle"	"	16th September

**HOMEWARD via SOUTH AFRICA.**

"Lancaster Castle"	From Mombasa (About)	20th February
"Edinburgh Castle"	"	17th March
"Granville Castle" (Cargo Only)	"	4th May
"Lancaster Castle"	"	18th May
"Edinburgh Castle"	"	18th June
"Granville Castle"	"	16th August
"Lancaster Castle"	"	16th August

Passenger Agents—

B.E.A. Corporation, Ltd. Nairobi, Kampala, etc.  
 East African Steamers, Ltd. Nairobi.  
 East African Steamers, Ltd. Nairobi.  
 T. J. O'Brien & Co., Ltd. Eldoret and Kisumu.  
 C. O. Monahan and Co. Mombasa and Aden.

For Rates and Freight and Passage Money, apply to—  
 THE UNION-CASTLE MAIL STEAMSHIP CO., LTD.,  
 MOMBASA.

### British India Steam Navigation Company, Limited,

AND PASSENGER AND GENERAL STEAM NAVIGATION CO.

**LONDON AND EAST AFRICA LINE.**

LONDON TO SUEZ, via Malindi, Port Said, Port Sudan and Aden, Onwards and Homewards.

Steamer	Arrives	Gails from
Kilindini	Kilindini	London about
Kilindini	Kilindini	London about

**ROMA-MY-DURBAN MAIL SERVICE.**

Steamer	Arrives	Gails from
Kilindini	Kilindini	London about
Kilindini	Kilindini	London about

**COASTAL SERVICE.**

Steamer	Arrives	Gails from
Kilindini	Kilindini	London about
Kilindini	Kilindini	London about

**TO BOMBAY:**

"Karaga"	7th March
"Kara"	10th March
"Kandala"	4th April
"Kara"	10th April
"Kara"	2nd May

**TO DURBAN:**

"Karaga"	9th March
"Kara"	22nd March
"Kara"	19th April
"Kara"	19th April

**ARRIVE MOMBASA: 20th March, 1920.**

**DEPART MOMBASA: 22nd March, 1920.**

**ARRIVE MOMBASA: 20th April, 1920.**

**DEPART MOMBASA: 22nd April, 1920.**

**ARRIVE MOMBASA: 20th May, 1920.**

**DEPART MOMBASA: 22nd May, 1920.**

**ARRIVE MOMBASA: 20th June, 1920.**

**DEPART MOMBASA: 22nd June, 1920.**

**ARRIVE MOMBASA: 20th July, 1920.**

**DEPART MOMBASA: 22nd July, 1920.**

**ARRIVE MOMBASA: 20th August, 1920.**

**DEPART MOMBASA: 22nd August, 1920.**

Upward steamers call at Plymouth affording passengers the opportunity of disembarking there. Cargo accepted for Antwerp direct on all steamers.

ALL DATES SUBJECT TO ALTERATION WITHOUT NOTICE. RETURN TICKETS ISSUED AT TWO SINGLE FARES LESS 10%. UP-COUNTRY CHEQUES NOT ACCEPTED UNLESS ENDORSED BY A LOCAL BANK.

Terms, Rates of Freight and Passage may be obtained with **SMITH, HACKETT & CO. AGENTS: Kilindini, Mombasa, Zanzibar, Dar-es-Salaam, Tanganyika, Zomba, Lindi and Lamu.** Passenger Agencies: Nairobi and Kampala. Also the following Sub-Agents (for passage only): NAIROBI: Tyson Bros. Ltd. NAIROBI; The Kenya Farmers' Association Ltd. FLORENCE; Standard & Co. SOY; The Boy Estate. KITALA: Messrs. Davis & Honey.

### Chivers' Jams

Made from the finest quality fruit and selected sugar only

### Chivers' Old English Marmalade

The Original

### Chivers' Jellies

Prepared with the Finest Fruit

Chivers & Sons, Ltd.  
 Sole Agents—R. O. HAMILTON, Ltd.  
 Box 302. NAIROBI. Phone 352.

---

### MESSAGERIES MARITIMES

(FRENCH MAIL STEAMERS)

Regular and fortnightly service from Aden to Marseilles.

**THE QUICKEST ROUTE TO LONDON, NEXT SAILINGS TO MARSEILLES—**

"Cambon"	2nd March, 1920
"Barradin de St. Pierre"	17th March, 1920
"Ville de Strasbourg"	17th March, 1920
"Antoine Roland Gervais"	14th April, 1920

**NEXT ARRIVAL FROM MARSEILLES—**

"Victor Bonafant"	4th March, 1920
-------------------	-----------------

**EMIL JARDIN, P.O. Box 18, MOMBASA. P.O. Box 50, NAIROBI.**

### Compagnia Italiana Transatlantica

Monthly Passenger Service to NAPLES and GENOA.

**THE FAST ROUTE TO ENGLAND.**

SAILINGS from KILINDINI to GENOA on the 1st of Every Month.

**"MAZZINI"**—1st March, 1st May, etc.  
**"F. CRISPI"**—1st April, 1st June, etc.

Old-fashioned Italian Steamers—Very roomy Cabins—Fresh running water in all Cabins and Decks—Orchestrated—Catering—Cook House—Grinding Flour, etc.

By way of post, reduction on return ticket if returning within one year.

Special reduction to Government Officials and their dependants.

**REGULAR MONTHLY EXCURSIONS—MOMBASA, ZANZIBAR, DAR-ES-SALAAM.**

Leaving Mombasa on the 20th, returning with same steamer to Mombasa on the 1st of every month.

Leaving Mombasa on K.P.R. to inland excursions.

Passes for any station in Kenya to Mombasa at single fare rates.

**BAGGAGE FREE ALLOWANCE TO LONDON.**

1st Class Passengers 4 Cwts.  
 2nd Class do. 3 Cwts.

Baggage will be labelled and loaded on board for prompt despatch to London by sea by transatlantic mail-steamers at Port Said.

For further particulars of sailings, rates of passage, etc., apply to—  
**SOCIETA' COLONIALE ITALIANA—MOMBASA, P.O. Box 176. M. LAMPERT, NAIROBI, P.O. Box 202.**

### Deutsche Ost-Afrika-Linie

(GERMAN AIRLINE SERVICE).

DEUTSCHE OST-AFRIKA-LINIE GENERAL AGENCY, MOMBASA.

Cable: "Ostafrika." P.O. 210.

**HOMEWARD via SUEZ CANAL.**

From Mombasa.	MOMBASA to SOUTH.
a.s. WATUBSI	a.s. USAMBARA
a.s. USAMBARA	a.s. NJARSA
a.s. NJARSA	a.s. TANGANIKA
a.s. TANGANIKA	a.s. USAMBARA
a.s. USAMBARA	a.s. USAMBARA (Homewards via Cape)
a.s. NJARSA	a.s. NJARSA (Homewards via Cape)

Information regarding connection at Lourenço Marques or Durban of the above steamers may be obtained from the Agents.

UP-COUNTRY CHEQUES CANNOT BE ACCEPTED UNLESS SUITABLY ENDORSED BY LOCAL BANK.

Visitors to D.O.A.L. Steamers are required to be in possession of permits obtainable at the Agents.

For full particulars of passenger fares and freight rates apply to the Agents.

**BOUSTEAD AND CLARKE, Ltd., or to DALGETY & Co., Ltd., Eldoret, Mombasa, Nairobi, Kisumu, and Kampala.**

### The Bradford Manufacturing Co. Limited.

**JUST RECEIVED.**

A very large consignment of our famous Poplin Tennis Shirts, 8/50 each, or 3 for 25s. Colours: Mauve, Grey, Light and Dark Blues, Tussock and Navy. Size, 14" to 17" neck.

Boys' White Twill Tennis Shirts, 6/0 each. Shirts are sold with the usual B. M. Co. guarantee. "SATISFACTION OR MONEY REFUNDED."

Imperial Chambers, Government Road, Above Town, Ltd. P.O. Box 510.

### THE AFRICAN MARINE AND GENERAL ENGINEERING CO., Ltd.

KILINDINI—MOMBASA.

MARINE AND MECHANICAL ENGINEERS. REPAIRS TO ANY TYPE OF MACHINERY.

**SPECIALISTS IN**

Remounting of Bearings. Casting and turning of Brass, Decorative Castings, Oil-Engine, and Cutting and Building up of worn Shafts, etc. Changes in Coal Burners, Drums, etc., up to 1 ton. All kinds of Boiler Repairs.

If sketches or drawings supplied, we undertake to make Machines or Engine Spares Parts from the Pattern to the Finished Article.

We have skilled Chinese workmen in each Department of our Workshops where we will despatch to any part of the country, given due notice.

Telephone 311. Estimates Given. Telegrams: Amgees, Mombasa.

**SMITH, HACKETT & COMPANY, General Managers.**

### Keith Timber Co., Limited.

Sadler Street, NAIROBI.

THE PLACE FOR TIMBER, MOULDINGS, WOOD BLOCK, FLOORING, ROOFING and PLANT TRAY SHINGLES, AT REASONABLE PRICES.

**P. O. Box 874. Phone 598.**

---

### PIANOFORTE TUNING AND REPAIRING.

Ten years experience in Kenya Colony and five years with Messrs. Chappell and Co., London.

**F. A. HEAD,**  
 Box 874, NAIROBI.



**It is now considered good form to Coronate personal letters**

Social usage change, even as styles in dress. It is now considered smart and up to the minute to Coronate personal letters on attractive single sheet letterheads.

The best papermakers now put out personal stationery designed for use in the typewriter, although any kind may be used in Corona.

Cutman still does that formal note of acceptance be handwritten but practically every note may be typed.

Aside from adding interest to letterwriting, what a boon this is to those who receive the letters.

Desires of the domestic field and freedom from any appearance of haste in a social letter is now required for home use.

**STANDARD STATIONERY STORES, NAIROBI.**

### Clan-Elleman-Harrison Lines, (JOINT SERVICE)

Liverpool—Glasgow—Avenmouth—Manchester.

**LOADING FOR LIVERPOOL.** Due to arrive. Due to sail. Kilindini. Kilindini.

a.s. "City of Bath"	24th Feb.	6th Mar.
a.s. "Anlicher"	31st March	18th Mar.
a.s. "Clan Maciver"	27th March	6th April

**FROM LIVERPOOL AND GLASGOW.** Due to arrive Kilindini.

a.s. "Anlicher"	2nd Mar.
a.s. "City of Dundee"	22nd Mar.
a.s. "Clan Maciver"	19th April

### Elleman and Bucknall Line

NEW YORK—MOMBASA via SUEZ.

From AMERICA. Due to arrive Kilindini. Due to sail Kilindini.

a.s. "City of Agos"	1st Mar.	6th Mar.
a.s. "City of Halifax"	27th March	31st March
a.s. "City of Christiana"	24th April	28th April

**THE AFRICAN MERCANTILE Company, Limited, MOMBASA (Cables Navigation) NAIROBI**

### Clan Line Steamers Limited.

SERVICE

**NEW YORK DIRECT-BOSTON & PHILADELPHIA WITH TRANSITSHIP**

THE SHORT ROUTE via SUEZ CANAL

**S.S. "CLAN MACIVER."**

EXPECTED TO ARRIVE AT MOMBASA 7th. March, and Sail 9th. March.

For terms of freight, etc., apply to—  
**THE AFRICAN MERCANTILE COMPANY, LIMITED, MOMBASA, TANGA, ZANZIBAR, DAR-ES-SALAAM.**

**JUST UNPACKED**

Fresh stock of plain and floral Art Silks in very smart colours; also Silk, Crepe-de-chine, Vici Crepe, Georgette, Fuji, Shantung, and Macdoell Silks, all in attractive designs and latest shades.

PRICES REDUCED TO A REMARKABLE EXTENT. A VISIT WILL CONVINCE YOU.

**LADHARAM STORES**  
 —General Milliners, Hosiery and Embroiderers—  
 60st. Bldg. NAIROBI. P.O. Box 514.

### OVERSEAS MAILS.

**ARRIVALS.**

STEAMERS	FROM	Due at Mombasa.	Mail arrive at Mombasa.
City of Agos	Europe	Mar. 2	Mar. 2
A. R. Harco	Europe	" 6	" 6
Karaga	Europe	" 6	" 6
Bombay	Europe	" 6	" 6
City of Agos	Europe	Mar. 2	Mar. 2

City of Agos carries 352 letter Bags, 366 Parcel Bags.

**DEPARTURES.**

STEAMERS	FOR	Make Call at G.P.O.	Date of Departure
Landed Castle	South	" Feb. 20	Mar. 1
Chambers	Europe	" Mar. 1	Mar. 1
Chicago	Europe	" Mar. 1	Mar. 1
Karaga	Europe	" Mar. 1	Mar. 1
London	Europe	" Mar. 1	Mar. 1
Walsby	Europe	" Mar. 1	Mar. 1

### UPLANDS BACON FACTORY

Luncheons, Dinners and Picnics are not complete without resort to our 33 Varieties of Tinned and Glass Goods

**NEVER SO GOOD — NEVER SO CHEAP.**

On sale at all the leading Stores in Eastern Africa.

Be sure to note the Brand.

None other genuine Uplands

STANDARD STATIONERY STORES, NAIROBI.

to spend this money on the present alignment work, the principal money away. He had received an offer from the contractor to survey a new line, but a certain amount to be paid for the survey to the Surveyor General. His approval. Mr. Latham Saunders admitted that an "old road" "to be used" for the right to enter their land for the survey, and it is agreed that the Council should adopt the principle of the survey being carried out in this manner, and that a sub-committee consisting of the Chairman of the Finance Committee, the Chairman of the Lands and Survey Committee, and Messrs. Latham Saunders and Tarrant should be appointed to make terms of agreement with the landholders and put up their recommendations to the Council.

**Shops on Farms.**

The Chairman raised the question of the position of shops on European farms. He pointed out that at the moment their position was illegal as it contravened the Ordinance implied in each lease, and it was also, adversely to the newly created Public Health Ordinance. In this Ordinance, section 10 is sub-divided into what was included in the Government, and it was recommended that it should now be treated in the Minister Commissioner of the Province. The question raised as to the advisability of having more than a certain number of shops on farms, and the opinion held expressed that certain sites should be selected where shops should be allowed, for example, at stations e.g., Mombasa, Roma and Chumali where no townships yet existed, and further, at distances not less than 10 to 12 miles apart. In order to conform with the Law, it would be necessary to sub-lease land to the shopkeeper, so that he might have some security of tenure. It was a matter of principle, and a clause had been inserted in the Crown Lands Ordinance to prevent the selling of land in the Highways to Non-European. The underlying principle in the Public Health Ordinance was to regulate these matters in order to prevent the spread of disease. The danger of shops being erected for the purpose of the sale of sleeping quarters to those who should be raised.

Capt. Palmox proposed: "That

**Improvements to the Canal.**

**WATERWAYS MEMORANDUM.**

**"STANDARD" CORRESPONDENT.**

Mombasa, February 25. The new mainline footings in Mombasa, several which your correspondent had a week recently while establishing the area of the work of the sanitary and health departments, have reduced the amount of actual work and work like the Kilimindi Silt. Here, one shaft covered in a well-cut location south on the lines of a Garden City. The streets are straight and the houses abutting thereon conform to plans laid down by the Town Planning Authority. At the moment of writing, these streets are neither horizontal nor paved but they serve their purpose as so actual traffic area as the feet of the natives and, an occasional car, pass this way.

The result of this system of definite lines of houses, constructed to a common plan and conforming to well-defined rules of sanitation and hygiene, to enable the Health Authorities to keep a check also on the dirt and the habits of the populace. Under the old conditions, with the houses literally

this Council considers it advisable for a check or check to be established over Railway Stations which are not within a township area, and others distant from the Railway at specified points where District Associations recommend their desirability; that these districts should enjoy no immunity of tenure, and that provision should be made in their agreements forbidding trading in poach, wheat, coffee and other produce." Further, that the District Associations' recommendations should be subject to the approval of the District Council.

This was seconded by Mr. Tarrant, and carried unanimously.

No resolution was proposed with regard to the presence of shops owned by natives "equations," but the meeting was of the unanimous opinion that not more than one should be sanctioned on any farm.

to the street. That was in the old jammed-up town where people were crowded close by people with the old Arab stone houses and where everything was wild and to a great extent, chaotic and insanitary.

**Improvements.**

The old Salim Road North, the "Petticoat Lane" of the island, has now been transformed into the last of the decrepit old and made into a new street. One can now drive over towards Messrs. Taylor, and the site of the new Central Station. The hideous conditions that prevailed in this Salim Road quarter have been eliminated and a large bare area now awaits building operations. Incidental removal of many of the vermin-infested houses in the better part of the walls of the old Jamat Cemetery. A few weeks ago a hundred of houses leased up against these walls and one could only guess at what lay behind them. Now, the walls of this city of the dead have been exposed to the light and air and another place kept has been removed.

The new Market Road, about which much has been written, cuts the edge of the Native Location and the Kilimindi Silt, and one obtains from this thoroughfare an interesting glimpse into the life of the East. Swenke Tarrant is a famous roadworker of the natives and here, of an evening, repair the vendors of cheap groceries, cloths, hats, shorts, shirts, and so on. These are spread out on the ground and the natives walk about among them selecting their fancy and paying for it after the usual interminable arguments. This district perhaps affords the most interesting of all side lights into the native life of the island. So the changes go on and so are improvements effected.

**Crawford's LIQUEUR SCOTCH WHISKY**

The Whisky for very Special Occasions and which costs a little more!



The proprietors of 'SPECIAL RESERVE' Scotch's Finest Standard Blend. A.A. CRAWFORD LITH-CRAWFORD.

**Chiropractic-Spinal Manipulation**

the new universally-recognized System of Healing has restored thousands of sufferers to health. By removing the pressure on the nerves, which is causing your Headache, Neuritis, Gout, Stomach, Liver and Kidney Troubles etc., it will bring to you too, renewed Life, Vigor and Energy.

Mrs. E. GOOD, D.C., Spinal Nerve Specialist, who has had very wide and successful experience, is now practicing at 107th Street, (Room 2) Market, from 9:30-11, 5-6, Saturdays 9:30-11, and by appointment. Telephone No. 550.

**Kenya Loan & Discount**

Co. Ltd. P.O. Box 546, NAIROBI. OFFICE—1st Floor, Court Chambers. FINANCIAL AGENTS Bills Discounted — Short-period Loans Granted. Any reliable Asset negotiated for Cash. Call or Write. STRICTEST CONFIDENCE. ESTABLISHED 1921.

**The Pen**



THE PEN. Patented 18/10.

TWO MODELS. A nib to suit all hands. (Without Gold Band). Pat. 17/20 passed this 18/10.

Standard Stationery Store. NAIROBI.

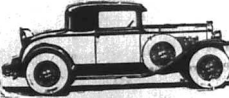
**Often Have You Heard**

the can't find time for a haircut? He doesn't go to the barber's unless an appointment to have his hair cut is made in a private club by a man who is a barber. The barber is worth the extra fifty cents. MEN'S AND CHILDREN'S HAIRDRESSERS. ROMANO'S. NAIROBI HOUSE, GOVT. ROAD. Phone 664.

**Trocadero Bar AND Restaurant**

Director—W. M. Godfrey. Manager—Mr. Bob Billings. GRILLS AT ALL HOURS. BEVERAGES—REFRESHMENTS—TEAS. COME AND TRY OLD BOB'S BAR SNACKS. His Pressed Beef and Curries Cannot be Beaten. Best Dinner Served in Town at Shs. 4.-

**PONTIAC VALUE**

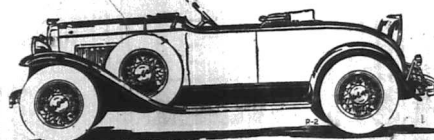


All Big Car Features are Embodied in these Amazing Cars.



Power - Speed - Beauty - Acceleration - Are All Found in the Pontiac.

**Low Cost**



**Low Upkeep**

x 306. Kampala.

**KENYA MOTORS** Eldoret. NAIROBI. Nakuru.

'Phone 206 Kitale.











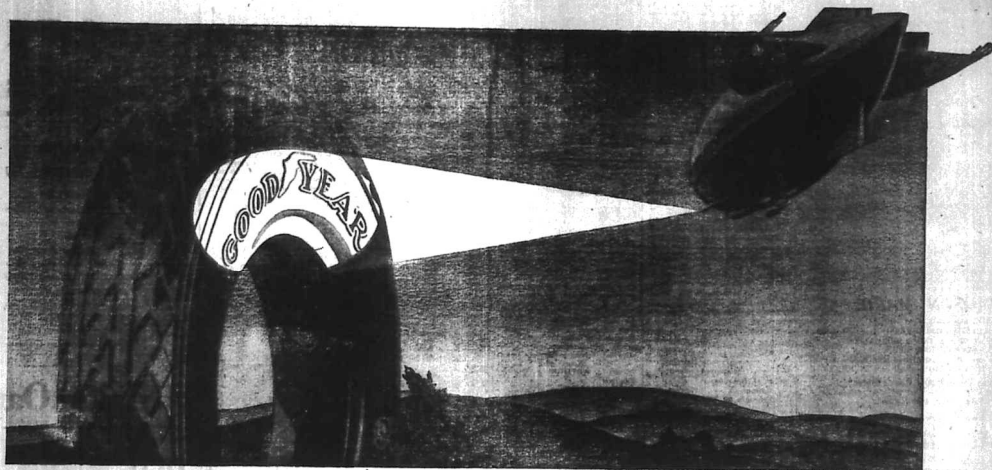




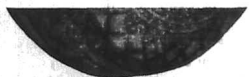








**More People Ride, More Tons are Hauled on  
Goodyear TYRES Than On Any Other Make •**



Highway or Skyway, factory or field, the mark of Goodyear excellence extends around the world. Remember this when you buy a tyre.

Greater comfort, lasting strength, security, downright goodness - these are insured and bulwarked by the expert effort of conscientious workmen, by the generous merit of flawless material, by the abiding integrity of Goodyear manufacture.

The superiority of Goodyear Tyres in tread and body can be demonstrated. The proof of their worth is in their world-wide public acceptance.

*A Tube equally superior is made for every Goodyear Tyre*

Tread and carcass: these are the two main parts of a tyre.

There is greater traction in the All-Weather Tread.

There is greater vitality in the Supertwist carcass.

Evidence? Goodyear Dealers will demonstrate.

Proof? The world over, more people ride on Goodyear Tyres than on any other make.

**GOODYEAR**

**Giffillan & Company Ltd.**  
DISTRIBUTORS













# KENYA NATIONAL ARCHIVES

## PHOTOGRAPHIC SERVICE

Description of Document..... THE EAST AFRICAN STANDARD (MOMBASA TIMES & UGANDA ARGUS)  
..... (Daily Edition) 1st to 28th February, 1930, .....

Reference No..... From E.A.S. Library. ....

**END**