

Kenya Breweries Ltd.  
OUR LATEST BEER  
Kenya Lager  
(TUSKER BRAND)  
You Haven't Tried It  
You've Missed a Treat.

GUARANTEED THE LARGEST CIRCULATION OF ANY NEWSPAPER  
IN KENYA, UGANDA, TANGANYIKA AND ZANZIBAR.

# 12 PAGES

## THE EAST

# Standard

UGANDA ARGUS THE LEADER  
THE OLDEST ESTABLISHED NEWSPAPER PUBLISHED IN KENYA AND UGANDA.

NAIROBI, WEDNESDAY, JUNE 24, 1960.

GARRY COOK  
AND  
HIS BAND  
"THE STANLEY"  
Saturday July 5th

**CLOSE OF UNOFFICIAL CONFERENCE.**

**Comprehensive Case Being Prepared.**

**FURTHER PRESS COMMENT.**

**Tanganyika Condemnation of Unworkable Proposals.**

Unofficial Conference closed on Sunday evening and it is announced that a comprehensive case will be prepared on the discussions.

Conference was marked by the greatest cordiality and unanimity.

Press comment continues. Mr. Garvin, in the "Observer" takes the view that the Common Roll is not the way to go.

"Tanganyika Standard" condemns the proposals as unworkable and declares that it ignores the fact that while settlement is definitely bound up with the fabric of East Africa it is freedom any scheme to follow.

Meanwhile German public opinion continues to be opposed to this change in the status of the German Colony.

**GERMAN OPPOSITION GROWING.**

Continues to grow.

London, June 23.—The German Government has today announced that it will not accept the proposals for the German Colonies.

**TANGANYIKA CRITICISM OF GERMAN OPPOSITION.**

London, June 23.—The Tanganyika Government has today announced that it will not accept the proposals for the German Colonies.

**GERMAN OPPOSITION GROWING.**

Continues to grow.

London, June 23.—The German Government has today announced that it will not accept the proposals for the German Colonies.

**STUDYING THE AFRICAN NATIVE.**

**Professor's Work in Tanganyika.**

**A NEW AFRICA.**

The history, tradition and culture of the African have been studied at various points by members of the "New Africa" group.

In an interview with a representative of the "New Africa" group, Professor [Name] said that he was studying the African native in Tanganyika.

**THE EMPIRE MARKETING BOARD.**

**GOOD WORK DONE.**

Statement of the growth of Empire Marketing Board work in Kenya.

**"S. A. Standard" Special Cable Service.**

**Obituary.**

**MR. J. J. ZIMMER OF GARTWICK.**

**"S. A. Standard" Special Cable Service.**

**Obituary.**

**PROBLEMS OF COLONIAL ADMINISTRATION.**

**Conference Opens in London Today.**

**THREE MAIN SUBJECTS.**

The Colonial Conference will be opened in London today.

**Another Australia Fight.**

**TWO EMPLOYMENT AGREES AT MANARUA.**

**RECORDS COUNCIL GENERAL IT GENERAL.**

**"S. A. Standard" Special Cable Service.**

**Obituary.**

**MR. J. J. ZIMMER OF GARTWICK.**

**"S. A. Standard" Special Cable Service.**

**Obituary.**

**Obituary.**

**GEN. SMUTS' EAST AFRICAN VISIT.**

**A Six Weeks' Tour.**

**Botanical Expeditions.**

**"S. A. Standard" Special Cable Service.**

**RECORDS COUNCIL GENERAL IT GENERAL.**

**"S. A. Standard" Special Cable Service.**

**Obituary.**

**MR. J. J. ZIMMER OF GARTWICK.**

**"S. A. Standard" Special Cable Service.**

**Obituary.**

**Obituary.**

**Obituary.**

PRICE 9c PER COPY.  
KENYA CONVENTION OF ASSOCIATIONS  
Importance of Formulating Opinion.  
DELEGATES FROM UNAFFILIATED SOCIETIES.  
THE MOST NEWSY.  
LONDON, June 23.—The Kenya Convention of Associations has today announced that it will not accept the proposals for the German Colonies.

**WHITEWAYS OFFERS IN BOYS WEAR.**

**BOYS GREY FLANNEL SUITS.**

Consisting of a single breasted Jacket and Knee length Trousers made from a material as extremely well suited for school wear.

Shgs 17-50, 19-50, 21-50 each.

**BOYS GREY FLANNEL SHORTS.**

Keen material as the above, good easy cut and finished, these shorts last longer for sports or general use, well worn and wash well.

Shgs 8-50 pair.

**BOYS NAVY SPORTS BLAZERS.**

Made from a medium weight strong yarn fabric with broad lapels. A useful and attractive garment for school wear.

Shgs 15-50, 17-50 each.

**BOYS NAVY KNICKERS.**

Keen material as the above, but slightly darker shade. Strongly made will wash and wear well.

Shgs 8-50 pair.

**BOYS JERSEYS.**

Pure wool knitted Jersey, with polo collar and button neck. Useful for the present cool weather. Jersey, Grey, Navy, Blue, Green, Red, Yellow, White, etc.

Shgs 9-50, 10-50 each.

WHITEWAY, LAIDLAW & Co. Ltd. NAIROBI

WHITEWAY, LAIDLAW & Co. Ltd. NAIROBI



THE AFRICAN STANDARD

DAILY EDITION. SUBSCRIPTION RATES: For 3 months... For 6 months... For 1 year...

Advertisements: 7, 10, 12, 14, 16, 18, 20, 22, 24, 26, 28, 30, 32, 34, 36, 38, 40, 42, 44, 46, 48, 50, 52, 54, 56, 58, 60, 62, 64, 66, 68, 70, 72, 74, 76, 78, 80, 82, 84, 86, 88, 90, 92, 94, 96, 98, 100.

FOR SALE (Continued).

WAGON with three months. Also 10 per cent discount for cash. Also various other approved applications to approval.

BOARD AND RESIDENCE.

THE above for department in 1920. Also for sale in 1920. Also for sale in 1920.

FOR SALE (Continued).

MAKING 1000. Also for sale in 1920. Also for sale in 1920.

MISCELLANEOUS.

HAMBURG Paper. Also for sale in 1920. Also for sale in 1920.

SITUATIONS VACANT.

WANTED a girl just left school. Also for sale in 1920.

CASH SALES Ltd.

JUST ARRIVED. Wash Glass, 7/6 each. Metal Cans, 1/6 each.

CASH SALES Ltd.

JUST ARRIVED. Wash Glass, 7/6 each. Metal Cans, 1/6 each.

Just Arrived.

New Stock. Wash Glass, 7/6 each. Metal Cans, 1/6 each.

CASH SALES Ltd.

JUST ARRIVED. Wash Glass, 7/6 each. Metal Cans, 1/6 each.

Just Arrived.

New Stock. Wash Glass, 7/6 each. Metal Cans, 1/6 each.

CASH SALES Ltd.

JUST ARRIVED. Wash Glass, 7/6 each. Metal Cans, 1/6 each.

Just Arrived.

New Stock. Wash Glass, 7/6 each. Metal Cans, 1/6 each.

Just Arrived.

New Stock. Wash Glass, 7/6 each. Metal Cans, 1/6 each.

Just Arrived.

New Stock. Wash Glass, 7/6 each. Metal Cans, 1/6 each.

TO LET.

THIRTEEN change for advance. Also for sale in 1920.

TO LET.

FLOOR on the 1st. Also for sale in 1920.

TO LET.

ROOM in the 1st. Also for sale in 1920.

TO LET.

ROOM in the 1st. Also for sale in 1920.

TO LET.

ROOM in the 1st. Also for sale in 1920.

TO LET.

ROOM in the 1st. Also for sale in 1920.

TO LET.

ROOM in the 1st. Also for sale in 1920.

TO LET.

ROOM in the 1st. Also for sale in 1920.

TO LET.

ROOM in the 1st. Also for sale in 1920.

TO LET.

ROOM in the 1st. Also for sale in 1920.

TO LET.

ROOM in the 1st. Also for sale in 1920.

TO LET.

ROOM in the 1st. Also for sale in 1920.

TO LET.

ROOM in the 1st. Also for sale in 1920.

TO LET.

ROOM in the 1st. Also for sale in 1920.

SITUATIONS WANTED.

12th change for advance. Also for sale in 1920.

SITUATIONS WANTED.

13th change for advance. Also for sale in 1920.

SITUATIONS WANTED.

14th change for advance. Also for sale in 1920.

SITUATIONS WANTED.

15th change for advance. Also for sale in 1920.

SITUATIONS WANTED.

16th change for advance. Also for sale in 1920.

SITUATIONS WANTED.

17th change for advance. Also for sale in 1920.

SITUATIONS WANTED.

18th change for advance. Also for sale in 1920.

SITUATIONS WANTED.

19th change for advance. Also for sale in 1920.

SITUATIONS WANTED.

20th change for advance. Also for sale in 1920.

SITUATIONS WANTED.

21st change for advance. Also for sale in 1920.

SITUATIONS WANTED.

22nd change for advance. Also for sale in 1920.

SITUATIONS WANTED.

23rd change for advance. Also for sale in 1920.

SITUATIONS WANTED.

24th change for advance. Also for sale in 1920.

SITUATIONS WANTED.

25th change for advance. Also for sale in 1920.

SITUATIONS WANTED.

26th change for advance. Also for sale in 1920.

SITUATIONS WANTED.

27th change for advance. Also for sale in 1920.

SITUATIONS WANTED.

28th change for advance. Also for sale in 1920.

SITUATIONS WANTED.

29th change for advance. Also for sale in 1920.

SITUATIONS WANTED.

30th change for advance. Also for sale in 1920.

SITUATIONS WANTED.

31st change for advance. Also for sale in 1920.

SITUATIONS WANTED.

32nd change for advance. Also for sale in 1920.

SITUATIONS WANTED.

33rd change for advance. Also for sale in 1920.

SITUATIONS WANTED.

34th change for advance. Also for sale in 1920.

SITUATIONS WANTED.

35th change for advance. Also for sale in 1920.

SITUATIONS WANTED.

36th change for advance. Also for sale in 1920.

SITUATIONS WANTED.

37th change for advance. Also for sale in 1920.

SITUATIONS WANTED.

38th change for advance. Also for sale in 1920.

SITUATIONS WANTED.

39th change for advance. Also for sale in 1920.

SMITH, MACKENZIE & Co. Land & Estate Agency Department, Box 390, NAIROBI. Phone 768.

TO LET—Third Avenue. Two bed-rooms, bath, kitchen, sitting-room, dining-room, 10' x 14' 6".

FOR SALE—Bedroomed on 2 acres. Stand on the 1st of the 3rd Avenue, Nairobi.

FOR SALE—Bedroomed on 2 acres. Stand on the 1st of the 3rd Avenue, Nairobi.

FOR SALE—Bedroomed on 2 acres. Stand on the 1st of the 3rd Avenue, Nairobi.

FOR SALE—Bedroomed on 2 acres. Stand on the 1st of the 3rd Avenue, Nairobi.

FOR SALE—Bedroomed on 2 acres. Stand on the 1st of the 3rd Avenue, Nairobi.

FOR SALE—Bedroomed on 2 acres. Stand on the 1st of the 3rd Avenue, Nairobi.

FOR SALE—Bedroomed on 2 acres. Stand on the 1st of the 3rd Avenue, Nairobi.

FOR SALE—Bedroomed on 2 acres. Stand on the 1st of the 3rd Avenue, Nairobi.

FOR SALE—Bedroomed on 2 acres. Stand on the 1st of the 3rd Avenue, Nairobi.

FOR SALE—Bedroomed on 2 acres. Stand on the 1st of the 3rd Avenue, Nairobi.

FOR SALE—Bedroomed on 2 acres. Stand on the 1st of the 3rd Avenue, Nairobi.

FOR SALE—Bedroomed on 2 acres. Stand on the 1st of the 3rd Avenue, Nairobi.

FOR SALE—Bedroomed on 2 acres. Stand on the 1st of the 3rd Avenue, Nairobi.

FOR SALE—Bedroomed on 2 acres. Stand on the 1st of the 3rd Avenue, Nairobi.

FOR SALE—Bedroomed on 2 acres. Stand on the 1st of the 3rd Avenue, Nairobi.

J. W. MILLIGAN & Co. Land & Estate Agency Department, Box 48, NAIROBI. Phone 98.

TO LET—Kilimanjaro 3 acres. Stand on the 1st of the 3rd Avenue, Nairobi.

FOR SALE—Bedroomed on 2 acres. Stand on the 1st of the 3rd Avenue, Nairobi.

FOR SALE—Bedroomed on 2 acres. Stand on the 1st of the 3rd Avenue, Nairobi.

FOR SALE—Bedroomed on 2 acres. Stand on the 1st of the 3rd Avenue, Nairobi.

FOR SALE—Bedroomed on 2 acres. Stand on the 1st of the 3rd Avenue, Nairobi.

FOR SALE—Bedroomed on 2 acres. Stand on the 1st of the 3rd Avenue, Nairobi.

FOR SALE—Bedroomed on 2 acres. Stand on the 1st of the 3rd Avenue, Nairobi.

FOR SALE—Bedroomed on 2 acres. Stand on the 1st of the 3rd Avenue, Nairobi.

FOR SALE—Bedroomed on 2 acres. Stand on the 1st of the 3rd Avenue, Nairobi.

FOR SALE—Bedroomed on 2 acres. Stand on the 1st of the 3rd Avenue, Nairobi.

FOR SALE—Bedroomed on 2 acres. Stand on the 1st of the 3rd Avenue, Nairobi.

FOR SALE—Bedroomed on 2 acres. Stand on the 1st of the 3rd Avenue, Nairobi.

FOR SALE—Bedroomed on 2 acres. Stand on the 1st of the 3rd Avenue, Nairobi.

FOR SALE—Bedroomed on 2 acres. Stand on the 1st of the 3rd Avenue, Nairobi.

FOR SALE—Bedroomed on 2 acres. Stand on the 1st of the 3rd Avenue, Nairobi.

FOR SALE—Bedroomed on 2 acres. Stand on the 1st of the 3rd Avenue, Nairobi.

WHY PAY MORE FOR IMPORTED FLOUR? KENYA'S PRIDE...

TIMMERS FOR PERMANENT WAVING (Non-Electrical), TINTING, SETTING, WAVING, MASSAGE. AT REASONABLE PRICES.

BUILDERS, CONTRACTORS AND FURNITURE MAKERS. Obtain TIMBER of all sorts and sizes at reasonable prices, from The Kenya Timber Co.

WATER AND MAIZE TANKS. From 100 to 2,000 Gallons, or 9 to 75 Bags capacity in stock.

HARRIS & BELL Ltd. Bricklayers, Plumbers, Electricians, Hardwares, Tinsmiths, NAIROBI.

WHY PAY MORE FOR IMPORTED FLOUR? KENYA'S PRIDE...

**UNION-CASTLE LINE**

**HOMEWARD VIA SUEZ**

From Mombasa (About) 19th July-1927  
 "Landship Castle"  
 "Landship Castle"  
 "Landship Castle"  
 22nd September  
 26th November  
 19th December

**HOMEWARD VIA SOUTH AFRICA**

From Mombasa (About)

"British Castle" (Cargo only) 27th July  
 "Landship Castle" 14th August  
 "Landship Castle" 16th September  
 "Landship Castle" 21st October  
 "Landship Castle" 24th November  
 "Landship Castle" 28th December

From Four Runs 25th 1st class and 21st 2nd class

Passage Agents—  
 R. S. A. Corporation, Ltd., Nairobi, Kampala, etc.  
 Messageries Maritimes, Ltd., Mombasa, Malindi, etc.  
 R. O. Hamilton Ltd., Mombasa  
 C. O. W. & Co., Ltd., Malindi and Kisumu  
 G. O. Mombasa and Co., Ltd.

For Rates and General and Passage Manages apply to  
**THE UNION-CASTLE MAIL STEAMERS CO., LTD., MOMBASA.**

**British India Steam Navigation Company, Limited,**  
**AND PENINSULAR AND ORIENTAL STEAM NAVIGATION CO.**

**EXCURSIONS**  
**To South Africa**  
**June, July and August**

BY  
**Union-Castle & British India Lines.**

**SAILINGS FROM MOMBASA**

Ats. 20 June ..... S.S. "Karnapa"  
 " 20 July ..... S.S. "Khadha"  
 " 20 Aug. .... S.S. "Blonde"  
 " 19 Sept. .... S.S. "Karnapa"  
 " 19 Oct. .... S.S. "Blonde"  
 " 18 Nov. .... S.S. "Karnapa"  
 " 18 Dec. .... S.S. "Blonde"

**RETURNING PASSENGERS**

From Cape Town 25th June  
 From Durban 25th July  
 From Port Elizabeth 25th Aug.  
 From East London 25th Sept.  
 From Cape Town 25th Oct.  
 From Durban 25th Nov.  
 From Port Elizabeth 25th Dec.

**TICKETS INTER-CONTINENTAL**  
 Return Railway Journey to Coast at Single Rate.  
 Second Class or "B" Grade Union-Castle 25s  
 Union-Castle Line, East-Indian Line, 20s 6d Mombasa.

**ALL DATES SUBJECT TO ALTERATION WITHOUT NOTICE**  
 RETURN TICKETS ISSUED AT 10% DISCOUNT FOR PASSENGERS ACCEPTED ENGLISH ENDORSER BY A LOCAL RAILWAY.  
 Return, Rates of Passage may be arranged with  
**SMITH, MACDONALD & CO.** Agents, Nairobi, Mombasa, Malindi, Durban, Johannesburg, Pretoria, East London, etc.  
 Passenger Agents only Nairobi and Kampala. Also the following Sub-Agents (See passage list):  
 Nairobi, Tynes, How, Ltd., NAIROBI; The Kenya Partnership, Nairobi; Randell & Co., ROY, The Bay Station, KENYA; Messrs. Davis & Sonberry.

**Chivers' Jam**

Made in silver-lined pans at the Orchard Factory, with freshly gathered fruit and treated with purest sugar only. Every jar carries a guarantee of absolute purity.

**TRY ALSO Chivers' Canned Fruits with Chivers' Custard Powder**

Write for Booklet. B. O. HAMILTON LTD., NAIROBI. Tel. 311.

**CHIVERS & SONS, Ltd.**, The Orchard Factory, HEVOR, CAMBRIDGE.

**MESSAGERIES MARITIMES**  
 Regular and frequency service from and to Marseilles.

**THE QUICKEST ROUTE TO LONDON**  
 NEXT SAILING TO MARSEILLES—

s.s. "General De Gaulle" 20th July  
 s.s. "General De Gaulle" 27th July  
 s.s. "General De Gaulle" 3rd Aug.

**ORCHESTRA ON ALL STEAMERS**  
 NEXT ARRIVAL FROM MARSEILLES—

s.s. "General De Gaulle" 20th July  
 s.s. "General De Gaulle" 27th July  
 s.s. "General De Gaulle" 3rd Aug.

**CITRA LINE**  
 Compagnia Italiana Transatlantica

**THE BEST ROUTE TO ENGLAND**  
 (Sailing from KENYOTA to DEBORA and NAIRØBI)

s.s. "G. MARZENI"—1st July, 1st September, 1st November.  
 s.s. "V. OMBRE"—1st Aug., 1st October, 1st December.

Oil burning turbines—very easy. Cabin—3rd running water in all cabins and bathrooms. Free entertainment—both sea and shore.  
 30 per cent. reduction on return tickets if returning within one year.  
 Special rates to Government Officials and their dependents.  
**MONTHLY EXCURSIONS—MOMBASA, MALINDI, DAR ES SALAAM**  
 Leaving Mombasa on the 26th, returning by same steamer to Mombasa on the last day of every month.

Commission on R.U.M. to be transmitted—return free any steamer to Mombasa at single fare rates. Heavy baggage not to be transmitted from Port of London and return free by fast steamer.

The further particulars apply to: Nairobi, P.O. Box 170.  
 Mombasa, P.O. Box 500.

**Deutsche Ost-Afrika-Linie**

**(GERMAN AFRICAN SERVICE)**  
**DEUTSCHE OST-AFRIKA-LINIE GENERAL AGENT, MOMBASA.**  
 Cable "Deutsche". P.O. 278.

**HOMEWARD VIA SUEZ CANAL**

s.s. "URUMBARA" (cargo steamer) 30th July  
 s.s. "URUBANA" (cargo steamer) 29th Aug.  
 s.s. "AD. WÖRDMANN" (cargo steamer) 26th Sept.  
 s.s. "URUBARA" (cargo steamer) 24th Oct.  
 s.s. "URUBANA" (cargo steamer) 22nd Nov.  
 s.s. "URUBANIKIA" (cargo steamer) 20th Dec.  
 s.s. "URUBARAKA" (cargo steamer) 18th Jan. Feb.  
 s.s. "URUBUNA" (cargo steamer) 16th Feb.

**HOMEWARD VIA CAPE**

s.s. "WANDONI" (cargo steamer) 2nd July  
 s.s. "WANDONI" (cargo steamer) 30th July  
 s.s. "TANGANIKIA" (cargo steamer) 27th Sept.  
 s.s. "WANDONI" (cargo steamer) 25th Oct.  
 s.s. "WANDONI" (cargo steamer) 22nd Nov.  
 s.s. "AD. WÖRDMANN" (cargo steamer) 20th Dec.  
 s.s. "URUBANIKIA" (cargo steamer) 18th Jan.  
 s.s. "URUBARA" (cargo steamer) 16th Feb.

**SAILINGS SUBJECT TO ALTERATION**  
 Information regarding connection at East African Ports of Call may be obtained from the Agents.  
**UP-COUNTRY CHARGES CARVED BY ACCEPTED ENGLISH ENDORSER MUST BE PAID BY LOCAL RAIL.**  
 Return, Rates of Passage may be arranged with SMITH, MACDONALD & CO., Agents, Nairobi, Mombasa, Malindi, Durban, Johannesburg, Pretoria, East London, etc.  
 Passenger Agents only Nairobi and Kampala. Also the following Sub-Agents (See passage list): Nairobi, Tynes, How, Ltd., NAIROBI; The Kenya Partnership, Nairobi; Randell & Co., ROY, The Bay Station, KENYA; Messrs. Davis & Sonberry.

**THE AFRICAN MARINE AND GENERAL ENGINEERING CO., Ltd.**

**MARINE AND MECHANICAL ENGINEERS, SPECIALISTS IN ALL TYPES OF MACHINERY.**

**APPROVALS IN:**  
 Installation of Boilers, Casting and Machining of Brass, Brass-Copper, etc. etc.  
 Marine and Mechanical Engineering, Installation and Repairing of Worn Shafts, etc.  
 Casting in Oil, Brass, Iron, Steel, etc.  
 up to 1 ton. All kinds of Boiler Repair Work.

If alterations of design, casting and machining of Brass, Brass-Copper, etc. etc. are required, we undertake to make Machines or Engine Parts from the Patterns to the Finished Article.  
 We have skilled Craftsmen and Department of our Work, where we will do any work at any of the country, etc. etc.

Telephone 81.  
 Mombasa. Nairobi. Kampala. Entebbe.  
**SMITH, MACDONALD and COMPANY, General Managers.**

**THE CLAN LINE STEAMERS LTD.**

**"Clan Keith"**  
 WILL LOAD AT  
**Dar-es-Salaam Zanzibar Tanga Mombasa**

**ROTTERDAM (Direct) AND ANTWERP WITH TRANSITSHIP.**  
**End of June.**

For Further Information Apply To:  
**THE AFRICAN MERCANTILE CO., Ltd., MOMBASA—AND—BRANCHES.**

**STARFRITE**  
 Teaches the foot firmness

**Eddies & Footwear, Ltd., NAIROBI.**

**Holland Afrika Lijn.**

**FABRICUS VARE**  
 To Mombasa (A) 28-6-20 (B) 4-7-20 (C) 29-10-20  
 To London (A) 27-6-20 (B) 2-7-20 (C) 25-10-20

A, B and C Steamers of the line provide sufficient accommodation for passengers.

If steamer lines call at London, passages for England and return free for all ticket-holders and steamers—2nd class.

Steamers will load at Kilindi on or about the following dates:

**HOMEWARD VIA SUEZ**

s.s. "NIALS" (A) Arriving via the Cape on July 16  
 s.s. "WILHELMINE" (B) Arriving via the Cape on Aug 16  
 s.s. "WILHELMINE" (C) Arriving via the Cape on Sept 16  
 s.s. "WILHELMINE" (D) Arriving via the Cape on Oct 16  
 s.s. "WILHELMINE" (E) Arriving via the Cape on Nov 16  
 s.s. "WILHELMINE" (F) Arriving via the Cape on Dec 16

**HOMEWARD VIA THE CAPE**

s.s. "WILHELMINE" (A) Arriving via the Cape on July 27  
 s.s. "WILHELMINE" (B) Arriving via the Cape on Aug 27  
 s.s. "WILHELMINE" (C) Arriving via the Cape on Sept 27  
 s.s. "WILHELMINE" (D) Arriving via the Cape on Oct 27  
 s.s. "WILHELMINE" (E) Arriving via the Cape on Nov 27  
 s.s. "WILHELMINE" (F) Arriving via the Cape on Dec 27

**Kenya Loan & Discount Co., Ltd.**

66, NAIROBI  
 OFFICES—1st Floor, Court Chambers.  
**FINANCIAL AGENTS**

Bills Discounted—Short-period Loans Granted.  
**Any Realizable Asset Registered for Credit.**  
**CALL OR WRITE.—DEFERRED GOVERNMENT.**  
 ESTABLISHED 1882.

**TWENTYSIX OVERSEAS TRADING CO., LTD.**  
 MOMBASA. KAMPALA.  
 P.O. Box 149. Telephone "20LAFARGE". Tel. 318

**LIME**  
**Time Limited**  
 Sole Selling Agent—Kenya, Uganda, Tanganyika.  
 P.O. Box 406, Nairobi. Telephone "20LAFARGE". Tel. 318

**NEW FOR NAIROBI**  
 WE HAVE RECEIVED  
**FRESH STOCK OF RIBB FOR LADIES DRESSES**

IN ENDOCRIM MATERIAL AND CUTE DESIGNS  
 ALSO CHILDREN'S WOVEN WEARS  
 IN ABSORBENT FINEST FABRICS  
 PRICES EXTREMELY LOW.

**LADHARAN STORES**  
 P.O. Box 416, Genl. Bd., NAIROBI.

**Eat More Bacon**

To encourage this the **Uplands Bacon Factory** have reduced their prices very substantially.

Bacon has never been so cheap in Eastern Africa and British will doubtless supply their customers at prices well below those of the trade.

Insist on seeing the **Uplands** Brand.

None Other Genuine "UPLANDS"

**Bradford Manufacturing Co., Ltd.**

We have just received the following:  
 Children's Boys' Cloth Dresses, 12/6 to 20/0 each  
 Women's Night Gown Dresses, 16/6 to 30/0 each  
 Women's Petticoats, 12/6 to 25/0 each  
 Women's Pajamas in Lawn, 11/6 to 45/0 each  
 Women's Blouses, 12/6 to 25/0 each  
 Women's Aprons, 12/6 to 25/0 each

Write for catalogue to: Bradford Manufacturing Co., Ltd., 10, Abchurch Lane, London, E.C. 4.

**Keith Timber Co. LIMITED.**

**Sadder Street, NAIROBI.**

THE PLACE FOR TIMBER, MOULDINGS, WOOD BLOCK FLOORING, ROOFING AND PLANK THAT ENDURES.

**P. O. Box 874. Phone 596.**

**PIANOFOUR TUNING AND REPAIRING**

Two years experience in Kenya Colony and five years with Messrs. Chappell and Co., London.

**F. A. HEAD,**  
 Box 675, NAIROBI.

**OVERSEAS MAILS.**

STEAMERS	FROM	Days of Month	Days of Week
Karnati Maru	South Africa	1st	Mon
Midway Maru	South Africa	15th	Thu
Gen. Dispatches	Europe (p.m.)	25th	Wed
Karnati Maru	South Africa	30th	Mon
Midway Maru	South Africa	14th	Thu
Karnati Maru	South Africa	29th	Sat

Gen. Dispatches arrive 120 hrs. Continental call at 180 hrs. (with 48 hrs. stop-overs).  
 G. Mombasa service 300 hours and 185 port days.

**Uplands Bacon Factory**

To encourage this the Uplands Bacon Factory have reduced their prices very substantially.

Bacon has never been so cheap in Eastern Africa and British will doubtless supply their customers at prices well below those of the trade.

Insist on seeing the **Uplands** Brand.

None Other Genuine "UPLANDS"

ARRIED UNANIMOUSLY!



IT'S AN UNDERWOOD every detail reflecting the experience of the world's largest typewriter manufacturer.

SAWS LIMITED, one 141 NAIROBI Box 611



Half a Bottle of Crawford's SCOTCH WHISKY is better than a whole bottle of inferior whisky.

Passes list

AT CHRISTMAS.

The following passengers sailed from Mombasa on June 18... Mr. H. Widdows, Post Paid, Mr. W. Watson, Mr. C. Andrews, Mr. H. Widdows, Post Paid, Mr. W. Watson, Mr. C. Andrews, Mr. H. Widdows, Post Paid, Mr. W. Watson, Mr. C. Andrews...

Mr. A. O'Shea, Mrs. M. O'Shea, Mr. R. Bellamy, Mrs. M. Bellamy, Mr. C. Bellamy, Mrs. C. Bellamy, Mr. H. Bellamy, Mrs. H. Bellamy, Mr. J. Bellamy, Mrs. J. Bellamy, Mr. K. Bellamy, Mrs. K. Bellamy...

IMMEL. NOTES.

(Continued from page 5.)

responds to manfully after a few days that covers, as once again it should have been explained, the whole of the subject. A school-teacher has the dog only when he is not in school and they say they have had a dog that was very intelligent and that it remained loyal for a long time after they were away. The dog was very smart and they say they have had a dog that was very intelligent and that it remained loyal for a long time after they were away.

The trouble after a number treatment with Haverdore in very many cases appears to be increased provided carefully method have been used. In some cases Haverdore seems absolutely ineffective. The food should be given on a regular basis. Blood tests have been made for several weeks. It is not so long as it has been at the end of the bottle, which is a good thing to do. The patient must be kept at the end of the bottle, which is a good thing to do. The patient must be kept at the end of the bottle, which is a good thing to do.



EMPIRE. ENTERTAINMENTS. THEATRE. ROYAL. When Fleet meets Fleet? THE BATTLE OF JUTLAND. AS TOLD FROM THE BRITISH AND GERMAN POINTS OF VIEW.

The Picture contains some marvellous captures scenes applied from official quarters which are in themselves a guarantee of accuracy. Prices: Reserved Box 5/- & Unreserved Box 3/- & 2/-.

FRIDAY AND SATURDAY, JUNE 28, 29th and 30th. By GENERAL REQUEST SPECIAL RETURN VISIT OF DICK NORTON'S GLOBE TROTTERS. IN A COMPLETE CHANGE OF PROGRAMME. BOOK EARLY—PRICES: Box 7/6, 5/- and 3/-.



ONE MILLION YEARS AGO... EMPIRE THEATRE... JULY, MON. TH. TUES. SD. WEDNES. 6th and THURS. 10th.

"A REAL REVUE AT LAST" Turn on the Heat. A RED HOT REVUE OF DANCING AND SINGING WITH A STORY. 30 SINGERS—IN SPWITAL MUSICAL MELODIES... 30 SINGERS—IN SPWITAL MUSICAL MELODIES... 30 SINGERS—IN SPWITAL MUSICAL MELODIES...

ALL-ROUND MOTORING TOURS FOR MOTOR TOURS LTD. Mr. Kimmagong from the Office and Mess. Reserve Mr. Kimmagong from the Office and Mess. Reserve Mr. Kimmagong from the Office and Mess. Reserve...

A. J. ELY and Co. Ltd. SHAMBA CHREIMISTS. COPPER RAIN GAUGE. Complete with Glasses. Price 5/6.

THEATRE. ROYAL. JUNE 28th and 29th. ROBERT LORAIN, & URSULA JEANS. In the Film Edition, Of The St. James Theatre Success.

"S.O.S." AN ALL BRITISH PRODUCTION. "NIZE PEOPLE." A Laughable Comedy, Featuring "Isis and Lantini."

The Whirl of the Charleston One of the "On With The Dance" Series—now in Latin Edition. The Tropical Budget. THE PRICES: Box 9/- & 5/-.

Syd Ziegler & His Torr's Hotel Music. Afternoon Tea in The Lounge On Wednesday. TORR'S HOTEL

City Square Mansions. THIS ANNOUNCEMENT IS MADE TO THE GENERAL PUBLIC... THE LUXURIOUS LOUNGE... ESTABLISHED IN 1914...

Piccadilly Restaurant. THEATRE ROYAL MILDENHURST. The Best and Cheapest Lunch and Dinner served in Town.

ZEISS IKON. CAMERAS and CINEMAS. The Machine of Choice. Kinema. THE standard light Cine Taking Machine...

IT IS WISE TO BUY A SIX

CHEVROLET. WILL GIVE YOU GREATER VALUE. THE MOTOR MART AND EXCHANGE LTD. NAIROBI-NAKURU-ELDORADO AND DAR ES SALAAM.

# MOSQUITOES

AND OTHER INSECTS OBNOXIOUS EVERYWHERE

## BLACK FLAG

HAS BEEN SPRAYED  
USE IT IN YOUR HOME AND ENJOY  
YOUR REST  
IN COMFORT

Pint 3/- each.  
Quarts 1/- each.  
Gallons 1/8/- each.  
Sprayers 8/- each.  
Powder for Flies, Cockroaches, etc., etc. 4/60 per bottle.  
Powder Gums 60 Gums each.

**Howse & McGeorge Ltd. CHEMISTS.**  
AGENTS FOR—KODAK (K.A.) Ltd., NAIROBI and ALL BRANCHES.

# J. W. Milligan & Co.

Importers of  
Agricultural Implements  
and Machinery of All  
Descriptions, etc.

## WE HAVE IN STOCK THE FOLLOWING LINES

Clock Cream Separators, Clock Churns and Milk Cans.  
Carpenters and Masons Tools of all descriptions.  
Oils and Greases.  
Bells, Nuts and Screws.  
Tolo Ploughs.  
Disc Ploughs—Rollers and Dragon Cultivators.  
Petrol Oil Engines and Lighting Sets.

BRANCHES:  
**MORBI AND AURHIA.**

Exporters of  
Colony Glass, Milk  
Whisk, Irons,  
etc., etc.

## YOUR EYES.

### CROOK'S ANTI-GLARE GLASSES.

These Glasses at Three Shillings, are the only perfect glare glasses, and run to the eyes, day or night, or in any weather.  
They can be treated to convert into any lens.  
All Right Reading and Convexity Free.

**A. H. WARDLE & Co., Ltd.**  
V. M. BROWNE, F.R.M.C., F.I.C., Optical Specialist.

## Merryweather

THE WORLD'S LEADING SPECIALISTS IN  
**Fire Protection**

ERECTOR FIRE PUMPS,  
Firearms, Hydrants and Hose,  
Fire Engines, Fire Trucks,  
and C.C.O.'s. Hand  
Pump Sprayers, Hose  
and Fire Buckets, Iron  
Fire Escape Buckets, etc., etc.

Head for latest Catalogues to the East African Representative.

**R. G. VERNON & Co.**  
Union Buildings—Government Road,  
NAIROBI. P.O. No. 124.

## MORLEY'S BRITISH MADE SILK HOSE.

### Combining Beauty and Quality.

THE FAVOURITE OF QUALITY.

In a thin range of good shades. Silk plaited with wool. Manufactured with special care. Available in all sizes.  
Shs. 13/60 per pair.

**LA MODE.**  
A stocking of high quality, in shades of French, Spanish, Navy, Teague and Fresh Navy. Fully laced with wool. Made in England.  
Shs. 17/60 per pair.

**BEAUFORT.**  
A stocking of high quality, in shades of Blue, French Navy, Teague and Fresh Navy. Fully laced with wool. Made in England.  
Shs. 22/60 per pair.

**"OLYMPIAN"**  
This stocking is made of 10 threads silk to 100 threads wool. It has practical joint spring back and Merrowed Cotton Top and Bottom.  
Shs. 9/75 per pair.

**STOCKISTS**  
**S. JACOBS Ltd.**  
Phone Government Road, NAIROBI. P. O. Box 285.

## USED CARS

**Chrysler Plymouth Box Body**  
In perfect mechanical condition. 2779 good ————— £110.

**Chrysler '62' Roadster**  
Mileage 18,000 L.A. — Duromed, mechanical condition perfect — £170.

**Morris Cowley Saloon.**  
In very excellent order throughout upholstery as new. Very carefully used by owner driver only — £110.

**Nash Light Six Saloon.**  
Licensed for full year—used in Nairobi only—in excellent order with an exceptionally quiet and responsive engine — £125.

# CARR, LAWSON & COMPANY LIMITED.

# THE YORKSHIRE INSURANCE COMPANY LIMITED.

Established 1894.  
Principal Representatives—  
**E. O. HAMILTON, Ltd.,**  
Phone 882 and 9188 — P.O. Box 398.

## BURGESS SNAP LITE FLASHLIGHT

Sh. 2-50 each.

The Burgess Snap Lite is the smallest and yet for the most powerful adaptation of Edison's greatest invention—the incandescent lamp. It is constructed from a heavy brass body of malleable or heavier than a man's wrist—made of the most compact light made. It is in fact a complete light made in six easy parts.

It is so small that it can be carried in a pocket, or it can be carried in a bag, or it can be carried in a box. It is so small that it can be carried in a pocket, or it can be carried in a bag, or it can be carried in a box.

It is so small that it can be carried in a pocket, or it can be carried in a bag, or it can be carried in a box.

**STANDARD BURGESS**  
Phone 8, 1/10  
**ONT CELLS**  
On 20 each.

**INGRAM AND CO., LTD.**  
**THE TOOL WORKS,**  
NAIROBI.

## 7 Reasons for using Burgess Diacs in the home

- 1 It produces a brilliant glow flame, rich in colour and exceptionally durable.
- 2 Its flame is clean and exceptionally clean.
- 3 It is impervious to air, dust and all the ordinary accidents of the home.
- 4 Anyone can use it. — Just touch it on and the flame burns to disappearance in 10 seconds.
- 5 It does in one hour what six candles can't do in a week.
- 6 It can be applied to practically all surfaces whether previously painted or polished.
- 7 It is 18 beautiful colours and Black, White and Grey.

Obtainable from  
**GAILEY & ROBERTS, LTD.,**  
NAIROBI and BRANCHES.

## WARDLE'S Pectoral Balm

**SUCCEDS**  
in curing COUGHS and COLDS  
WHERE OTHER REMEDIES FAIL.  
Shs. 2/60 and 4/60 per bottle.

FROM—  
**A. H. Wardle & Co. Ltd CHEMISTS.**  
KENYA-UGANDA-TANGANYIKA.

## DOOM OF FLYING IN AFRICA

Prince of Wales on Aviation.

Speaking at the meeting of the Congress of the Federation of the Chamber of Commerce of the British Empire on May 26, the Prince of Wales said—'I have been looking forward to this meeting for some time, and I feel that it is one of the most important of its kind to be held in Africa. It is one of the most important of its kind to be held in Africa. It is one of the most important of its kind to be held in Africa.'

## STANDARD MARK

10. South Africa  
11. British Empire  
12. British Empire  
13. British Empire  
14. British Empire  
15. British Empire  
16. British Empire  
17. British Empire  
18. British Empire  
19. British Empire  
20. British Empire

## UNION THE STRIKE

European Union...  
The British Union...  
The French Union...  
The Italian Union...  
The Japanese Union...  
The American Union...  
The Chinese Union...  
The Indian Union...  
The Australian Union...  
The New Zealand Union...  
The South African Union...  
The Canadian Union...  
The Argentine Union...  
The Chilean Union...  
The Peruvian Union...  
The Bolivian Union...  
The Paraguayan Union...  
The Uruguayan Union...  
The Brazilian Union...  
The Mexican Union...  
The Central American Union...  
The Caribbean Union...  
The West Indian Union...  
The South American Union...  
The African Union...  
The Asian Union...  
The Pacific Union...  
The Arctic Union...  
The Antarctic Union...

## TO-DAY'S GAMES LIST

The following is the list of the Sportsmen...  
J. C. F. Smith, 1st; J. C. F. Smith, 2nd; J. C. F. Smith, 3rd; J. C. F. Smith, 4th; J. C. F. Smith, 5th; J. C. F. Smith, 6th; J. C. F. Smith, 7th; J. C. F. Smith, 8th; J. C. F. Smith, 9th; J. C. F. Smith, 10th.

AN "ECONOMIC UNIT" IN COFFEE.

A Good Income From a Hundred Acres.

PRODUCTION COSTS.

What a Planter May Do Who Makes His Shamba His Job.

second article on the Coffee Industry written by a resident of the East African Standard by a Mr. C. Planter of the East African Standard... the various questions of an "Economic Unit" in coffee.

Why examines the main costs of production on a bush of eight acres, to see which he maintains can be achieved by proper cultivation and expenditure of the available capital and shows by figures that 100 acres can produce an income sufficient to maintain a living.

PROFITS PER ACRE.

(Special to the East African Standard.)

It is not to be supposed that the coffee planter is to be regarded as a farmer in the ordinary sense of the word. He is not a farmer in the ordinary sense of the word. He is not a farmer in the ordinary sense of the word.

He is not a farmer in the ordinary sense of the word. He is not a farmer in the ordinary sense of the word. He is not a farmer in the ordinary sense of the word.

He is not a farmer in the ordinary sense of the word. He is not a farmer in the ordinary sense of the word. He is not a farmer in the ordinary sense of the word.

He is not a farmer in the ordinary sense of the word. He is not a farmer in the ordinary sense of the word. He is not a farmer in the ordinary sense of the word.

He is not a farmer in the ordinary sense of the word. He is not a farmer in the ordinary sense of the word. He is not a farmer in the ordinary sense of the word.

He is not a farmer in the ordinary sense of the word. He is not a farmer in the ordinary sense of the word. He is not a farmer in the ordinary sense of the word.

He is not a farmer in the ordinary sense of the word. He is not a farmer in the ordinary sense of the word. He is not a farmer in the ordinary sense of the word.

He is not a farmer in the ordinary sense of the word. He is not a farmer in the ordinary sense of the word. He is not a farmer in the ordinary sense of the word.

He is not a farmer in the ordinary sense of the word. He is not a farmer in the ordinary sense of the word. He is not a farmer in the ordinary sense of the word.

He is not a farmer in the ordinary sense of the word. He is not a farmer in the ordinary sense of the word. He is not a farmer in the ordinary sense of the word.

He is not a farmer in the ordinary sense of the word. He is not a farmer in the ordinary sense of the word. He is not a farmer in the ordinary sense of the word.

He is not a farmer in the ordinary sense of the word. He is not a farmer in the ordinary sense of the word. He is not a farmer in the ordinary sense of the word.

He is not a farmer in the ordinary sense of the word. He is not a farmer in the ordinary sense of the word. He is not a farmer in the ordinary sense of the word.

He is not a farmer in the ordinary sense of the word. He is not a farmer in the ordinary sense of the word. He is not a farmer in the ordinary sense of the word.

He is not a farmer in the ordinary sense of the word. He is not a farmer in the ordinary sense of the word. He is not a farmer in the ordinary sense of the word.

He is not a farmer in the ordinary sense of the word. He is not a farmer in the ordinary sense of the word. He is not a farmer in the ordinary sense of the word.

He is not a farmer in the ordinary sense of the word. He is not a farmer in the ordinary sense of the word. He is not a farmer in the ordinary sense of the word.

BURDEN OF TAXATION IN NAIROBI.

Municipal Councillors' Views.

THE NAIROBI ASSOCIATION.

At the monthly meeting held Friday of the Executive Committee of the Nairobi Association... the resolution was carried—"That in the next meeting of the Council of the Nairobi Association...

It was submitted to the meeting by Mr. Manning, and was seconded by Mr. G. Hooper...

It was also submitted to the meeting by Mr. Manning, and was seconded by Mr. G. Hooper...

It was also submitted to the meeting by Mr. Manning, and was seconded by Mr. G. Hooper...

It was also submitted to the meeting by Mr. Manning, and was seconded by Mr. G. Hooper...

It was also submitted to the meeting by Mr. Manning, and was seconded by Mr. G. Hooper...

It was also submitted to the meeting by Mr. Manning, and was seconded by Mr. G. Hooper...

It was also submitted to the meeting by Mr. Manning, and was seconded by Mr. G. Hooper...

It was also submitted to the meeting by Mr. Manning, and was seconded by Mr. G. Hooper...

It was also submitted to the meeting by Mr. Manning, and was seconded by Mr. G. Hooper...

It was also submitted to the meeting by Mr. Manning, and was seconded by Mr. G. Hooper...

It was also submitted to the meeting by Mr. Manning, and was seconded by Mr. G. Hooper...

It was also submitted to the meeting by Mr. Manning, and was seconded by Mr. G. Hooper...

It was also submitted to the meeting by Mr. Manning, and was seconded by Mr. G. Hooper...

It was also submitted to the meeting by Mr. Manning, and was seconded by Mr. G. Hooper...

It was also submitted to the meeting by Mr. Manning, and was seconded by Mr. G. Hooper...

It was also submitted to the meeting by Mr. Manning, and was seconded by Mr. G. Hooper...

It was also submitted to the meeting by Mr. Manning, and was seconded by Mr. G. Hooper...

It was also submitted to the meeting by Mr. Manning, and was seconded by Mr. G. Hooper...

It was also submitted to the meeting by Mr. Manning, and was seconded by Mr. G. Hooper...

BRIDGE BUILDING AT MALINDI.

Assessing Steel Structure.

DISTRICT NOTES.

(STANDARD CORRESPONDENT.)

Malindi, June 19. Bridge have all been transported to the site of the bridge... the work of the bridge is now well advanced...

At present a great meeting is being held at Malindi... the meeting was presided over by Mr. G. Hooper...

The Chairman stated that the first meeting was held on Friday... the meeting was held in the afternoon...

Malindi was mentioned twice last night... the meeting was held in the afternoon...

Malindi was mentioned twice last night... the meeting was held in the afternoon...

Malindi was mentioned twice last night... the meeting was held in the afternoon...

Malindi was mentioned twice last night... the meeting was held in the afternoon...

Malindi was mentioned twice last night... the meeting was held in the afternoon...

Malindi was mentioned twice last night... the meeting was held in the afternoon...

Malindi was mentioned twice last night... the meeting was held in the afternoon...

Malindi was mentioned twice last night... the meeting was held in the afternoon...

Malindi was mentioned twice last night... the meeting was held in the afternoon...

Malindi was mentioned twice last night... the meeting was held in the afternoon...

Malindi was mentioned twice last night... the meeting was held in the afternoon...

Malindi was mentioned twice last night... the meeting was held in the afternoon...

Malindi was mentioned twice last night... the meeting was held in the afternoon...

Malindi was mentioned twice last night... the meeting was held in the afternoon...

Malindi was mentioned twice last night... the meeting was held in the afternoon...

Malindi was mentioned twice last night... the meeting was held in the afternoon...

Malindi was mentioned twice last night... the meeting was held in the afternoon...

SHEFFIELD STEEL INDUSTRY.

Unfavorable Reports.

DECREASED PROFIT.

An optimistic forecast of industrial conditions in the Sheffield steel industry... the industry has been the victim of a slump...

The industry has been the victim of a slump... the industry has been the victim of a slump...

The industry has been the victim of a slump... the industry has been the victim of a slump...

The industry has been the victim of a slump... the industry has been the victim of a slump...

The industry has been the victim of a slump... the industry has been the victim of a slump...

The industry has been the victim of a slump... the industry has been the victim of a slump...

The industry has been the victim of a slump... the industry has been the victim of a slump...

The industry has been the victim of a slump... the industry has been the victim of a slump...

The industry has been the victim of a slump... the industry has been the victim of a slump...

The industry has been the victim of a slump... the industry has been the victim of a slump...

The industry has been the victim of a slump... the industry has been the victim of a slump...

The industry has been the victim of a slump... the industry has been the victim of a slump...

The industry has been the victim of a slump... the industry has been the victim of a slump...

The industry has been the victim of a slump... the industry has been the victim of a slump...

The industry has been the victim of a slump... the industry has been the victim of a slump...

The industry has been the victim of a slump... the industry has been the victim of a slump...

The industry has been the victim of a slump... the industry has been the victim of a slump...

The industry has been the victim of a slump... the industry has been the victim of a slump...

The industry has been the victim of a slump... the industry has been the victim of a slump...

The industry has been the victim of a slump... the industry has been the victim of a slump...

The industry has been the victim of a slump... the industry has been the victim of a slump...

MAGNAN SODA CO'S OPERATIONS.

Effects of Trade Depression.

QUESTIONS IN CONNECTION.

(STANDARD CORRESPONDENT.)

London, June 19. The Magnan Soda Co. has reported a decrease in profit... the company has reported a decrease in profit...

The company has reported a decrease in profit... the company has reported a decrease in profit...

The company has reported a decrease in profit... the company has reported a decrease in profit...

The company has reported a decrease in profit... the company has reported a decrease in profit...

The company has reported a decrease in profit... the company has reported a decrease in profit...

The company has reported a decrease in profit... the company has reported a decrease in profit...

The company has reported a decrease in profit... the company has reported a decrease in profit...

The company has reported a decrease in profit... the company has reported a decrease in profit...

The company has reported a decrease in profit... the company has reported a decrease in profit...

The company has reported a decrease in profit... the company has reported a decrease in profit...

The company has reported a decrease in profit... the company has reported a decrease in profit...

The company has reported a decrease in profit... the company has reported a decrease in profit...

The company has reported a decrease in profit... the company has reported a decrease in profit...

The company has reported a decrease in profit... the company has reported a decrease in profit...

The company has reported a decrease in profit... the company has reported a decrease in profit...

The company has reported a decrease in profit... the company has reported a decrease in profit...

The company has reported a decrease in profit... the company has reported a decrease in profit...

The company has reported a decrease in profit... the company has reported a decrease in profit...

The company has reported a decrease in profit... the company has reported a decrease in profit...

The company has reported a decrease in profit... the company has reported a decrease in profit...









SPORTS and PASTIMES.

MARLBAYS BANK (DOMINION, COLONIAL AND OVERSEAS)
Solely Incorporated by Royal Charter 1885.
THE COLONIAL BANK
with which are amalgamated
THE NATIONAL BANK OF SOUTH AFRICA, LTD.
and
THE ANGLO-EGYPTIAN BANK LTD.

OVER 600 BRANCHES IN
Upper South Africa, Rhodesia, South West Africa,
South West Africa, West Indies, Zeyre, Palestine and the
Indian, Malacca, etc.
BANK UNDERTAKES ALL CLASSES OF BANKING
BUSINESS AND ALSO ACTS AS TRUSTEE
AND EXECUTOR.
BRANCHES IN EAST AFRICA:
Nairobi, Mombasa, Berbera, Eldoret, Embu,
Kampala, Kisumu, Tanganyika,
India, Bulawayo, Mozambique, Lusaka and Malindi.
HEAD OFFICE: 1, Lombard Street, London, E.C. 4.
LOCAL OFFICES:
12, Greenmarket Street, E.C. 3, Cross Place, London,
W.C. 2, 111, N. Market Lane, Chadwell Heath, W. 17.
OFFICES IN Liverpool, Manchester, Bremen, New York.

Reliance Transport Co. Ltd.
TRANSPORT
WOOD FUELS
COAL
POLES AND FENCING POSTS
MATERIALS AND LIME
STORAGE

BOLUS HOUSE
GOVERNMENT BOARD
at the following prices from
the undersigned firm:
Sole Agents:
R. J. Smith & Co., Ltd.
Blackburn and Hovers
Solicitors:
Messrs. Deane,
Cox & Co., Ltd.
The Parklands House
Blackburn, Lancashire
The Parklands House
Blackburn, Lancashire
Messrs. Deane,
Cox & Co., Ltd.
Solicitors:
Messrs. Deane,
Cox & Co., Ltd.
Blackburn, Lancashire

Geo. Blowers.
BUILDING CONTRACTOR, MANUFACTURER AND DIRECT IMPORTER.
GREATLY REDUCED PRICES
Tel. Add.: "Concrete"
Phone: Works 205
House 465

Why Buy American Doors
and send two money orders
I can compete with them—and beat them!
Send for my illustrated catalogue and Price List.
SOUND quotations for SOUND work.

CONCRETE BLOCKS
ALL SIZES IN STOCK
BEST KIMA SAND
IN ANY QUANTITY.
QUARRY CHIPS
BLACK TRAP BALLAST
(Machines Broken and
Screened to any Size).
DELIVERED BY LORETS AT QUOTED RATES.
Plumbing and Sanitary Work done under the Supervision
of our own European Specialists.

LAWN TENNIS

Championships at Hjeri

A SUCCESSFUL FUNCTION.

OPEN LADIES' DOUBLES

First Round

Second Round

Third Round

Fourth Round

Fifth Round

Semi-Final

Final

Semi-Final

Final

Final

Final

Final

Final

Final

Final

Final

Final

Final

Final

Final

Final

Final

Final

Final

Final

Final

Final

Final

Final

Final

Final

Final

Final

Final

OPEN LADIES' DOUBLES

First Round

Second Round

Third Round

Fourth Round

Fifth Round

Semi-Final

Final

Semi-Final

Final

Final

Final

Final

Final

Final

Final

Final

Final

Final

Final

Final

Final

Final

Final

Final

Final

Final

Final

Final

Final

Final

Final

Final

Final

Final

Final

Final

Final

Final

Final

Final

Final

Final

Final

Final

Final

OPEN LADIES' DOUBLES

First Round

Second Round

Third Round

Fourth Round

Fifth Round

Semi-Final

Final

Semi-Final

Final

Final

Final

Final

Final

Final

Final

Final

Final

Final

Final

Final

Final

Final

Final

Final

Final

Final

Final

Final

Final

Final

Final

Final

Final

Final

Final

Final

Final

Final

Final

Final

Final

Final

Final

Final

Final

SPEND YOUR HOLIDAYS IN

SOUTH AFRICA

EXCURSIONS

TO SOUTH AFRICA

are available by

RAIL AND STEAMER

during

JUNE JULY & AUGUST

Full particulars obtainable from

Steamship Companies or from

Memorial Hall,

211, Cross Street,

NAIROBI.

MEMORIAL HALL

211, Cross Street

NAIROBI.

MEMORIAL HALL

211, Cross Street

NAIROBI.

MEMORIAL HALL

211, Cross Street

NAIROBI.

MEMORIAL HALL

211, Cross Street

NAIROBI.

MEMORIAL HALL

211, Cross Street

NAIROBI.

MEMORIAL HALL

211, Cross Street

NAIROBI.

MEMORIAL HALL

211, Cross Street

NAIROBI.

MEMORIAL HALL

211, Cross Street

NAIROBI.

MEMORIAL HALL

211, Cross Street

NAIROBI.

MEMORIAL HALL

211, Cross Street

NAIROBI.

MEMORIAL HALL

211, Cross Street

NAIROBI.

SPEND YOUR HOLIDAYS IN SOUTH AFRICA EXCURSIONS TO SOUTH AFRICA are available by RAIL AND STEAMER during JUNE JULY & AUGUST Full particulars obtainable from Steamship Companies or from Memorial Hall, 211, Cross Street, NAIROBI.



Start the day right!



RICH in energy. Quaker Oats is ideal for the first meal. It is a delicate, food, easy to prepare, easy to digest, yet full of nourishment. Its energizing ingredients supply sustain the body through the five morning hours when 70% of the day's work is done. It is the food of mid-morning headaches, fatigue and between-meal hunger. You will feel better, work better with a first meal of Quaker Oats—every day.

Quaker Oats

OPEN DAY and NIGHT

From TO-DAY we are pleased to inform our CUSTOMERS and FRIENDS that we shall keep our premises OPEN AT ALL TIMES. 'As usual we stock all the Popular Brands of OIL, PETROL, and GREASE, AND NOW MORE THAN EVER WE ARE—

Always at Your Service BHIMJI'S VI. Avenue Nairobi. Phone 321 & 678. PETROL STATION.

ESSJAY, Limited. EMPREE THEATRE BUILDING, Box 624. NAIROBI. Phone 677.

Financial and Property Agents. Mortgages Specialised in their arrangement. Partners' Amalgamated Investments Admin. on.

WE HAVE SOUND INVESTMENTS FOR SUMS FROM 100 UPWARDS. IN THIS RESPECT WE CLAIM TO DO BETTER FOR YOU THAN ANYONE ELSE.

E. SACCOMA, Managing Director.

Advertisement for Motor Mart featuring images of cars and text: Motor Mart and Exchange, Ltd. NAIROBI. Chevrolet Tourer 1929, four cylinder, excellent condition. Pontiac Four Door Sedan 1930. Chrysler "470" Splendid condition. Ford Box Body Model "A" mileage only 4000—now a new 1930. Willys Knight Tourer, a sound proposition. Buick Tourer 1929 in excellent condition.

### Rifles & Shot Guns.

We carry a large selection of Fire Arms by the best Makers Only.

Manchester Schomacher Rifles in calibres 4.5m/5m m/n, and 9.8 m/n.

Mauser Rifles

Calibres 256, 275, 315, 366, 423, 404.

ALL High Velocity Accuracy guaranteed.

Rolland & Holland, J. Ripley & Co., Waudley, Richards, and B.S.A. Ltd. Weapons stocked.

AMMUNITION in all calibres & Makers stocked. Inspection invited.

**SEAW & HUNTER Ltd.**  
P.O. Box 70, NAIROBI.

# THE SPORTS PAGE

## DOBBIE CUP MATCH.

### Police Still Undefeated.

#### A GOOD GAME FOLLOWS.

The first meeting of the season between the Police and Railway took place last evening on the former's home ground, at the Dobbie Cup. The Police, captained by Mr. Thorne, beat the Railway 2-1. The Railway, captained by Mr. Thorne, had the advantage in the first half, but the Police were equal to the occasion and secured the victory in the second half. The game was a good one and well played. The Police were equal to the occasion and secured the victory in the second half. The game was a good one and well played.

## Maxwell Brady Soccer Cap.

### BEST OF THE INTERNATIONAL.

The following teams have been selected to play in the International Soccer match (Maxwell Brady Cup) commencing on 25th June at 8.30 p.m. on the Railway Grounds, Nairobi.

**INTERNATIONAL (Home):** (Captain) Thomas (Pilot), (Vice-captain) Wilson (Clyde), (Goalkeeper) W. Jones (Clyde), (Defence) J. Brown (Clyde), (Forward) J. Smith (Clyde).

**INTERNATIONAL (Away):** (Captain) J. Jones (Clyde), (Vice-captain) J. Smith (Clyde), (Goalkeeper) J. Brown (Clyde), (Defence) J. Wilson (Clyde), (Forward) J. Thomas (Clyde).

## CHARLES WARE

### THEY ACCOUNTANT.

Established 18 years. Tel. A.M. 2498.

101, The Trust Chambers, Government Road, NAIROBI.

All Prices are Subject to Market Fluctuations.

Deposits Accepted and pay by reasonable amount. Credit Accounts opened and well approved references.

NO REPLY DIRECT MEANS NO BUSINESS



## Emmenton

To All interested in Building

Stocks held of proved **Special Products,**

For the Decorative and Preservative treatment of **Cement, Plaster, Brick, etc.,**

in **BLACK TILE AND BRICK BEDS, GREEN YELLOW and MARIGOLD**

## J.H.S. Todd & Co. Ltd.

INCORPORATED IN ENGLAND

101, GOVERNMENT ROAD, NAIROBI.

**MAURICE ROSENSTON**  
K.M.A. BUILDING CONTRACTOR, ROAD, NAIROBI.  
Tel. 304-901. Ext. A.M. 2498.

### INTER-VARIETY POKE

(STANDARD COMPETITION)

London, June 21.

The weather proved to be the best for the Inter-Variety Poké, which was held at the Victoria Ground, London, on Saturday night. The match was a good one and well played. The Police were equal to the occasion and secured the victory in the second half. The game was a good one and well played.



## KYNOCHE

### RIFLE CARTRIDGES

#### BRITISH & BEST

Obtainable from all licensed dealers throughout East Africa.

**A. HOGG.**

MADEIRA'S BUILDINGS, NAIROBI.

MORNINGTON PLACE, 26/100, 2 miles - 1st/2nd/3rd/4th/5th/6th/7th/8th/9th/10th/11th/12th/13th/14th/15th/16th/17th/18th/19th/20th/21st/22nd/23rd/24th/25th/26th/27th/28th/29th/30th/31st/32nd/33rd/34th/35th/36th/37th/38th/39th/40th/41st/42nd/43rd/44th/45th/46th/47th/48th/49th/50th/51st/52nd/53rd/54th/55th/56th/57th/58th/59th/60th/61st/62nd/63rd/64th/65th/66th/67th/68th/69th/70th/71st/72nd/73rd/74th/75th/76th/77th/78th/79th/80th/81st/82nd/83rd/84th/85th/86th/87th/88th/89th/90th/91st/92nd/93rd/94th/95th/96th/97th/98th/99th/100th/101st/102nd/103rd/104th/105th/106th/107th/108th/109th/110th/111th/112th/113th/114th/115th/116th/117th/118th/119th/120th/121st/122nd/123rd/124th/125th/126th/127th/128th/129th/130th/131st/132nd/133rd/134th/135th/136th/137th/138th/139th/140th/141st/142nd/143rd/144th/145th/146th/147th/148th/149th/150th/151st/152nd/153rd/154th/155th/156th/157th/158th/159th/160th/161st/162nd/163rd/164th/165th/166th/167th/168th/169th/170th/171st/172nd/173rd/174th/175th/176th/177th/178th/179th/180th/181st/182nd/183rd/184th/185th/186th/187th/188th/189th/190th/191st/192nd/193rd/194th/195th/196th/197th/198th/199th/200th/201st/202nd/203rd/204th/205th/206th/207th/208th/209th/210th/211st/212th/213th/214th/215th/216th/217th/218th/219th/220th/221st/222nd/223rd/224th/225th/226th/227th/228th/229th/230th/231st/232nd/233rd/234th/235th/236th/237th/238th/239th/240th/241st/242nd/243rd/244th/245th/246th/247th/248th/249th/250th/251st/252nd/253rd/254th/255th/256th/257th/258th/259th/260th/261st/262nd/263rd/264th/265th/266th/267th/268th/269th/270th/271st/272nd/273rd/274th/275th/276th/277th/278th/279th/280th/281st/282nd/283rd/284th/285th/286th/287th/288th/289th/290th/291st/292nd/293rd/294th/295th/296th/297th/298th/299th/300th/301st/302nd/303rd/304th/305th/306th/307th/308th/309th/310th/311st/312th/313th/314th/315th/316th/317th/318th/319th/320th/321st/322nd/323rd/324th/325th/326th/327th/328th/329th/330th/331st/332nd/333rd/334th/335th/336th/337th/338th/339th/340th/341st/342nd/343rd/344th/345th/346th/347th/348th/349th/350th/351st/352nd/353rd/354th/355th/356th/357th/358th/359th/360th/361st/362nd/363rd/364th/365th/366th/367th/368th/369th/370th/371st/372nd/373rd/374th/375th/376th/377th/378th/379th/380th/381st/382nd/383rd/384th/385th/386th/387th/388th/389th/390th/391st/392nd/393rd/394th/395th/396th/397th/398th/399th/400th/401st/402nd/403rd/404th/405th/406th/407th/408th/409th/410th/411st/412th/413th/414th/415th/416th/417th/418th/419th/420th/421st/422nd/423rd/424th/425th/426th/427th/428th/429th/430th/431st/432nd/433rd/434th/435th/436th/437th/438th/439th/440th/441st/442nd/443rd/444th/445th/446th/447th/448th/449th/450th/451st/452nd/453rd/454th/455th/456th/457th/458th/459th/460th/461st/462nd/463rd/464th/465th/466th/467th/468th/469th/470th/471st/472nd/473rd/474th/475th/476th/477th/478th/479th/480th/481st/482nd/483rd/484th/485th/486th/487th/488th/489th/490th/491st/492nd/493rd/494th/495th/496th/497th/498th/499th/500th/501st/502nd/503rd/504th/505th/506th/507th/508th/509th/510th/511st/512th/513th/514th/515th/516th/517th/518th/519th/520th/521st/522nd/523rd/524th/525th/526th/527th/528th/529th/530th/531st/532nd/533rd/534th/535th/536th/537th/538th/539th/540th/541st/542nd/543rd/544th/545th/546th/547th/548th/549th/550th/551st/552nd/553rd/554th/555th/556th/557th/558th/559th/560th/561st/562nd/563rd/564th/565th/566th/567th/568th/569th/570th/571st/572nd/573rd/574th/575th/576th/577th/578th/579th/580th/581st/582nd/583rd/584th/585th/586th/587th/588th/589th/590th/591st/592nd/593rd/594th/595th/596th/597th/598th/599th/600th/601st/602nd/603rd/604th/605th/606th/607th/608th/609th/610th/611st/612th/613th/614th/615th/616th/617th/618th/619th/620th/621st/622nd/623rd/624th/625th/626th/627th/628th/629th/630th/631st/632nd/633rd/634th/635th/636th/637th/638th/639th/640th/641st/642nd/643rd/644th/645th/646th/647th/648th/649th/650th/651st/652nd/653rd/654th/655th/656th/657th/658th/659th/660th/661st/662nd/663rd/664th/665th/666th/667th/668th/669th/670th/671st/672nd/673rd/674th/675th/676th/677th/678th/679th/680th/681st/682nd/683rd/684th/685th/686th/687th/688th/689th/690th/691st/692nd/693rd/694th/695th/696th/697th/698th/699th/700th/701st/702nd/703rd/704th/705th/706th/707th/708th/709th/710th/711st/712th/713th/714th/715th/716th/717th/718th/719th/720th/721st/722nd/723rd/724th/725th/726th/727th/728th/729th/730th/731st/732nd/733rd/734th/735th/736th/737th/738th/739th/740th/741st/742nd/743rd/744th/745th/746th/747th/748th/749th/750th/751st/752nd/753rd/754th/755th/756th/757th/758th/759th/760th/761st/762nd/763rd/764th/765th/766th/767th/768th/769th/770th/771st/772nd/773rd/774th/775th/776th/777th/778th/779th/780th/781st/782nd/783rd/784th/785th/786th/787th/788th/789th/790th/791st/792nd/793rd/794th/795th/796th/797th/798th/799th/800th/801st/802nd/803rd/804th/805th/806th/807th/808th/809th/810th/811st/812th/813th/814th/815th/816th/817th/818th/819th/820th/821st/822nd/823rd/824th/825th/826th/827th/828th/829th/830th/831st/832nd/833rd/834th/835th/836th/837th/838th/839th/840th/841st/842nd/843rd/844th/845th/846th/847th/848th/849th/850th/851st/852nd/853rd/854th/855th/856th/857th/858th/859th/860th/861st/862nd/863rd/864th/865th/866th/867th/868th/869th/870th/871st/872nd/873rd/874th/875th/876th/877th/878th/879th/880th/881st/882nd/883rd/884th/885th/886th/887th/888th/889th/890th/891st/892nd/893rd/894th/895th/896th/897th/898th/899th/900th/901st/902nd/903rd/904th/905th/906th/907th/908th/909th/910th/911st/912th/913th/914th/915th/916th/917th/918th/919th/920th/921st/922nd/923rd/924th/925th/926th/927th/928th/929th/930th/931st/932nd/933rd/934th/935th/936th/937th/938th/939th/940th/941st/942nd/943rd/944th/945th/946th/947th/948th/949th/950th/951st/952nd/953rd/954th/955th/956th/957th/958th/959th/960th/961st/962nd/963rd/964th/965th/966th/967th/968th/969th/970th/971st/972nd/973rd/974th/975th/976th/977th/978th/979th/980th/981st/982nd/983rd/984th/985th/986th/987th/988th/989th/990th/991st/992nd/993rd/994th/995th/996th/997th/998th/999th/1000th/1001st/1002nd/1003rd/1004th/1005th/1006th/1007th/1008th/1009th/1010th/1011st/1012th/1013th/1014th/1015th/1016th/1017th/1018th/1019th/1020th/1021st/1022nd/1023rd/1024th/1025th/1026th/1027th/1028th/1029th/1030th/1031st/1032nd/1033rd/1034th/1035th/1036th/1037th/1038th/1039th/1040th/1041st/1042nd/1043rd/1044th/1045th/1046th/1047th/1048th/1049th/1050th/1051st/1052nd/1053rd/1054th/1055th/1056th/1057th/1058th/1059th/1060th/1061st/1062nd/1063rd/1064th/1065th/1066th/1067th/1068th/1069th/1070th/1071st/1072nd/1073rd/1074th/1075th/1076th/1077th/1078th/1079th/1080th/1081st/1082nd/1083rd/1084th/1085th/1086th/1087th/1088th/1089th/1090th/1091st/1092nd/1093rd/1094th/1095th/1096th/1097th/1098th/1099th/1100th/1101st/1102nd/1103rd/1104th/1105th/1106th/1107th/1108th/1109th/1110th/1111st/1112th/1113th/1114th/1115th/1116th/1117th/1118th/1119th/1120th/1121st/1122nd/1123rd/1124th/1125th/1126th/1127th/1128th/1129th/1130th/1131st/1132nd/1133rd/1134th/1135th/1136th/1137th/1138th/1139th/1140th/1141st/1142nd/1143rd/1144th/1145th/1146th/1147th/1148th/1149th/1150th/1151st/1152nd/1153rd/1154th/1155th/1156th/1157th/1158th/1159th/1160th/1161st/1162nd/1163rd/1164th/1165th/1166th/1167th/1168th/1169th/1170th/1171st/1172nd/1173rd/1174th/1175th/1176th/1177th/1178th/1179th/1180th/1181st/1182nd/1183rd/1184th/1185th/1186th/1187th/1188th/1189th/1190th/1191st/1192nd/1193rd/1194th/1195th/1196th/1197th/1198th/1199th/1200th/1201st/1202nd/1203rd/1204th/1205th/1206th/1207th/1208th/1209th/1210th/1211st/1212nd/1213th/1214th/1215th/1216th/1217th/1218th/1219th/1220th/1221st/1222nd/1223rd/1224th/1225th/1226th/1227th/1228th/1229th/1230th/1231st/1232nd/1233rd/1234th/1235th/1236th/1237th/1238th/1239th/1240th/1241st/1242nd/1243rd/1244th/1245th/1246th/1247th/1248th/1249th/1250th/1251st/1252nd/1253rd/1254th/1255th/1256th/1257th/1258th/1259th/1260th/1261st/1262nd/1263rd/1264th/1265th/1266th/1267th/1268th/1269th/1270th/1271st/1272nd/1273rd/1274th/1275th/1276th/1277th/1278th/1279th/1280th/1281st/1282nd/1283rd/1284th/1285th/1286th/1287th/1288th/1289th/1290th/1291st/1292nd/1293rd/1294th/1295th/1296th/1297th/1298th/1299th/1300th/1301st/1302nd/1303rd/1304th/1305th/1306th/1307th/1308th/1309th/1310th/1311st/1312th/1313th/1314th/1315th/1316th/1317th/1318th/1319th/1320th/1321st/1322nd/1323rd/1324th/1325th/1326th/1327th/1328th/1329th/1330th/1331st/1332nd/1333rd/1334th/1335th/1336th/1337th/1338th/1339th/1340th/1341st/1342nd/1343rd/1344th/1345th/1346th/1347th/1348th/1349th/1350th/1351st/1352nd/1353rd/1354th/1355th/1356th/1357th/1358th/1359th/1360th/1361st/1362nd/1363rd/1364th/1365th/1366th/1367th/1368th/1369th/1370th/1371st/1372nd/1373rd/1374th/1375th/1376th/1377th/1378th/1379th/1380th/1381st/1382nd/1383rd/1384th/1385th/1386th/1387th/1388th/1389th/1390th/1391st/1392nd/1393rd/1394th/1395th/1396th/1397th/1398th/1399th/1400th/1401st/1402nd/1403rd/1404th/1405th/1406th/1407th/1408th/1409th/1410th/1411st/1412th/1413th/1414th/1415th/1416th/1417th/1418th/1419th/1420th/1421st/1422nd/1423rd/1424th/1425th/1426th/1427th/1428th/1429th/1430th/1431st/1432nd/1433rd/1434th/1435th/1436th/1437th/1438th/1439th/1440th/1441st/1442nd/1443rd/1444th/1445th/1446th/1447th/1448th/1449th/1450th/1451st/1452nd/1453rd/1454th/1455th/1456th/1457th/1458th/1459th/1460th/1461st/1462nd/1463rd/1464th/1465th/1466th/1467th/1468th/1469th/1470th/1471st/1472nd/1473rd/1474th/1475th/1476th/1477th/1478th/1479th/1480th/1481st/1482nd/1483rd/1484th/1485th/1486th/1487th/1488th/1489th/1490th/1491st/1492nd/1493rd/1494th/1495th/1496th/1497th/1498th/1499th/1500th/1501st/1502nd/1503rd/1504th/1505th/1506th/1507th/1508th/1509th/1510th/1511st/1512th/1513th/1514th/1515th/1516th/1517th/1518th/1519th/1520th/1521st/1522nd/1523rd/1524th/1525th/1526th/1527th/1528th/1529th/1530th/1531st/1532nd/1533rd/1534th/1535th/1536th/1537th/1538th/1539th/1540th/1541st/1542nd/1543rd/1544th/1545th/1546th/1547th/1548th/1549th/1550th/1551st/1552nd/1553rd/1554th/1555th/1556th/1557th/1558th/1559th/1560th/1561st/1562nd/1563rd/1564th/1565th/1566th/1567th/1568th/1569th/1570th/1571st/1572nd/1573rd/1574th/1575th/1576th/1577th/1578th/1579th/1580th/1581st/1582nd/1583rd/1584th/1585th/1586th/1587th/1588th/1589th/1590th/1591st/1592nd/1593rd/1594th/1595th/1596th/1597th/1598th/1599th/1600th/1601st/1602nd/1603rd/1604th/1605th/1606th/1607th/1608th/1609th/1610th/1611st/1612th/1613th/1614th/1615th/1616th/1617th/1618th/1619th/1620th/1621st/1622nd/1623rd/1624th/1625th/1626th/1627th/1628th/1629th/1630th/1631st/1632nd/1633rd/1634th/1635th/1636th/1637th/1638th/1639th/1640th/1641st/1642nd/1643rd/1644th/1645th/1646th/1647th/1648th/1649th/1650th/1651st/1652nd/1653rd/1654th/1655th/1656th/1657th/1658th/1659th/1660th/1661st/1662nd/1663rd/1664th/1665th/1666th/1667th/1668th/1669th/1670th/1671st/1672nd/1673rd/1674th/1675th/1676th/1677th/1678th/1679th/1680th/1681st/1682nd/1683rd/1684th/1685th/1686th/1687th/1688th/1689th/1690th/1691st/1692nd/1693rd/1694th/1695th/1696th/1697th/1698th/1699th/1700th/1701st/1702nd/1703rd/1704th/1705th/1706th/1707th/1708th/1709th/1710th/1711st/1712th/1713th/1714th/1715th/1716th/1717th/1718th/1719th/1720th/1721st/1722nd/1723rd/1724th/1725th/1726th/1727th/1728th/1729th/1730th/1731st/1732nd/1733rd/1734th/1735th/1736th/1737th/1738th/1739th/1740th/1741st/1742nd/1743rd/1744th/1745th/1746th/1747th/1748th/1749th/1750th/1751st/1752nd/1753rd/1754th/1755th/1756th/1757th/1758th/1759th/1760th/1761st/1762nd/1763rd/1764th/1765th/1766th/1767th/1768th/1769th/1770th/1771st/1772nd/1773rd/1774th/1775th/1776th/1777th/1778th/1779th/1780th/1781st/1782nd/1783rd/1784th/1785th/1786th/1787th/1788th/1789th/1790th/1791st/1792nd/1793rd/1794th/1795th/1796th/1797th/1798th/1799th/1800th/1801st/1802nd/1803rd/1804th/1805th/1806th/1807th/1808th/1809th/1810th/1811st/1812th/1813th/1814th/1815th/1816th/1817th/1818th/1819th/1820th/1821st/1822nd/1823rd/1824th/1825th/1826th/1827th/1828th/1829th/1830th/1831st/1832nd/1833rd/1834th/1835th/1836th/1837th/1838th/1839th/1840th/1841st/1842nd/1843rd/1844th/1845th/1846th/1847th/1848th/1849th/1850th/1851st/1852nd/1853rd/1854th/1855th/1856th/1857th/1858th/1859th/1860th/1861st/1862nd/1863rd/1864th/1865th/1866th/1867th/1868th/1869th/1870th/1871st/1872nd/1873rd/1874th/1875th/1876th/1877th/1878th/1879th/1880th/1881st/1882nd/1883rd/1884th/1885th/1886th/1887th/1888th/1889th/1890th/1891st/1892nd/1893rd/1894th/1895th/1896th/1897th/1898th/1899th/1900th/1901st/1902nd/1903rd/1904th/1905th/1906th/1907th/1908th/1909th/1910th/1911st/1912th/1913th/1914th/1915th/1916th/1917th/1918th/1919th/1920th/1921st/1922nd/1923rd/1924th/1925th/1926th/1927th/1928th/1929th/1930th/1931st/1932nd/1933rd/1934th/1935th/1936th/1937th/1938th/1939th/1940th/1941st/1942nd/1943rd/1944th/1945th/1946th/1947th/1948th/1949th/1950th/1951st/1952nd/1953rd/1954th/1955th/1956th/1957th/1958th/1959th/1960th/1961st/1962nd/1963rd/1964th/1965th/1966th/1967th/1968th/1969th/1970th/1971st/1972nd/1973rd/1974th/1975th/1976th/1977th/1978th/1979th/1980th/1981st/1982nd/1983rd/1984th/1985th/1986th/1987th/1988th/1989th/1990th/1991st/1992nd/1993rd/1994th

K. B. L.

REDUCE THE COST OF LIVING BY RETURNING YOUR BOTTLE.

BEER 3/6 per dozen. WINE 1/- per dozen.

ONLY BOTTLES YOUR OWN OWNERS OR THEIRS TO BE RETURNED THROUGH YOUR OWN LABELS BEARING OUR OWN LABELS ACCEPTED.

K. B. L. Breweries Ltd.

NAIROBI

REPRODUCED BY THE SPECIAL POST OFFICE AS A NEWSPAPER.

GUARANTEED THE LARGEST CIRCULATION OF ANY NEWSPAPER IN KENYA, UGANDA, TANGANYIKA AND ZANZIBAR.

DAILY EDITION.

12 PAGES

THE EAST AFRICAN STANDARD



UGANDA ARGUS THE LEADER

THE OLDEST ESTABLISHED NEWSPAPER PUBLISHED IN KENYA AND UGANDA.

NAIROBI, WEDNESDAY, JUNE 25, 1926.

GARRY COOK AND HIS BAND AT 'THE STANLEY'

Saturday July 5th

PRICE, 20 CENTS.

SIMON COMMISSION'S PROPOSALS

FEDERATION THE NEW AIM FOR INDIA.

With Autonomy for the Various Provincial Units.

AN ALL-INDIA OUTLOOK.

Providing a Constitution Which Can Develop Within Itself.

"POWER TO STEP IN"

The long awaited Report of the Simon Commission has now appeared complete in the second volume dealing with the constitutional reforms published yesterday.

Commissioners recommend the abolition of British rule in India and the formation of a federation of the Indian Provinces.

A scheme would leave the door open for the inclusion of the Indian States, now ruled by British, whose rulers felt that the time had come for such association with British India.

Chiefdoms proposed that the aim should be a Federal Government, including Burma which should have its own government.

Provincial Freedom.

The scheme aims at giving a maximum of Provincial autonomy consistent with the common interests of India as a whole. Each Province should be as far as possible "mistress in her own house."

The Franchise.

The franchise should be extended from the present figure of 25% to 50 per cent with an increase in the ratio of women voters.

Full force of majority rule will be mitigated by vesting certain powers of intervention in the Governor of the Province who will act for the Governor-General.

Legislatures are contemplated to meet the need for a representative more and more of the units of the Federation.

Governor-General would be the real and active head of the Government and represent the King-Empire, not the Secretary of State.

Alternative Power.

An absolute condition of the political development of India, the gateway of the North West Frontier States to be safe held and for many years the presence of British troops will therefore be necessary, discharging an Imperial obligation.

Finally, while prepared to recommend a considerable advance towards self-government, the Commission feels that the experiment should not be bought too dearly. There must therefore be in India a power which will step in and save a situation before it is too late and that alternative authority must be able

have regard to the future development of India as a whole... The Commission to adjust Provincial boundaries... The Commission to adjust Provincial boundaries... The Commission to adjust Provincial boundaries...

possible. The Government of India... The Commission to adjust Provincial boundaries... The Commission to adjust Provincial boundaries... The Commission to adjust Provincial boundaries...

the Government-General... The Commission to adjust Provincial boundaries... The Commission to adjust Provincial boundaries... The Commission to adjust Provincial boundaries...

The Franchise.

India by the extension of the franchise... The Commission to adjust Provincial boundaries... The Commission to adjust Provincial boundaries...

the Commission to adjust Provincial boundaries... The Commission to adjust Provincial boundaries... The Commission to adjust Provincial boundaries...

the Commission to adjust Provincial boundaries... The Commission to adjust Provincial boundaries... The Commission to adjust Provincial boundaries...

the Commission to adjust Provincial boundaries... The Commission to adjust Provincial boundaries... The Commission to adjust Provincial boundaries...

the Commission to adjust Provincial boundaries... The Commission to adjust Provincial boundaries... The Commission to adjust Provincial boundaries...

the Commission to adjust Provincial boundaries... The Commission to adjust Provincial boundaries... The Commission to adjust Provincial boundaries...

the Commission to adjust Provincial boundaries... The Commission to adjust Provincial boundaries... The Commission to adjust Provincial boundaries...

the Commission to adjust Provincial boundaries... The Commission to adjust Provincial boundaries... The Commission to adjust Provincial boundaries...

the Commission to adjust Provincial boundaries... The Commission to adjust Provincial boundaries... The Commission to adjust Provincial boundaries...

the Commission to adjust Provincial boundaries... The Commission to adjust Provincial boundaries... The Commission to adjust Provincial boundaries...

the Commission to adjust Provincial boundaries... The Commission to adjust Provincial boundaries... The Commission to adjust Provincial boundaries...

the Commission to adjust Provincial boundaries... The Commission to adjust Provincial boundaries... The Commission to adjust Provincial boundaries...

the Commission to adjust Provincial boundaries... The Commission to adjust Provincial boundaries... The Commission to adjust Provincial boundaries...

the Commission to adjust Provincial boundaries... The Commission to adjust Provincial boundaries... The Commission to adjust Provincial boundaries...

The Franchise.

the Commission to adjust Provincial boundaries... The Commission to adjust Provincial boundaries... The Commission to adjust Provincial boundaries...

the Commission to adjust Provincial boundaries... The Commission to adjust Provincial boundaries... The Commission to adjust Provincial boundaries...

the Commission to adjust Provincial boundaries... The Commission to adjust Provincial boundaries... The Commission to adjust Provincial boundaries...

the Commission to adjust Provincial boundaries... The Commission to adjust Provincial boundaries... The Commission to adjust Provincial boundaries...

the Commission to adjust Provincial boundaries... The Commission to adjust Provincial boundaries... The Commission to adjust Provincial boundaries...

the Commission to adjust Provincial boundaries... The Commission to adjust Provincial boundaries... The Commission to adjust Provincial boundaries...

the Commission to adjust Provincial boundaries... The Commission to adjust Provincial boundaries... The Commission to adjust Provincial boundaries...

the Commission to adjust Provincial boundaries... The Commission to adjust Provincial boundaries... The Commission to adjust Provincial boundaries...

the Commission to adjust Provincial boundaries... The Commission to adjust Provincial boundaries... The Commission to adjust Provincial boundaries...

the Commission to adjust Provincial boundaries... The Commission to adjust Provincial boundaries... The Commission to adjust Provincial boundaries...

the Commission to adjust Provincial boundaries... The Commission to adjust Provincial boundaries... The Commission to adjust Provincial boundaries...

the Commission to adjust Provincial boundaries... The Commission to adjust Provincial boundaries... The Commission to adjust Provincial boundaries...

the Commission to adjust Provincial boundaries... The Commission to adjust Provincial boundaries... The Commission to adjust Provincial boundaries...

the Commission to adjust Provincial boundaries... The Commission to adjust Provincial boundaries... The Commission to adjust Provincial boundaries...

The Franchise.

the Commission to adjust Provincial boundaries... The Commission to adjust Provincial boundaries... The Commission to adjust Provincial boundaries...

the Commission to adjust Provincial boundaries... The Commission to adjust Provincial boundaries... The Commission to adjust Provincial boundaries...

the Commission to adjust Provincial boundaries... The Commission to adjust Provincial boundaries... The Commission to adjust Provincial boundaries...

the Commission to adjust Provincial boundaries... The Commission to adjust Provincial boundaries... The Commission to adjust Provincial boundaries...

the Commission to adjust Provincial boundaries... The Commission to adjust Provincial boundaries... The Commission to adjust Provincial boundaries...

the Commission to adjust Provincial boundaries... The Commission to adjust Provincial boundaries... The Commission to adjust Provincial boundaries...

the Commission to adjust Provincial boundaries... The Commission to adjust Provincial boundaries... The Commission to adjust Provincial boundaries...

the Commission to adjust Provincial boundaries... The Commission to adjust Provincial boundaries... The Commission to adjust Provincial boundaries...

the Commission to adjust Provincial boundaries... The Commission to adjust Provincial boundaries... The Commission to adjust Provincial boundaries...

the Commission to adjust Provincial boundaries... The Commission to adjust Provincial boundaries... The Commission to adjust Provincial boundaries...

the Commission to adjust Provincial boundaries... The Commission to adjust Provincial boundaries... The Commission to adjust Provincial boundaries...

the Commission to adjust Provincial boundaries... The Commission to adjust Provincial boundaries... The Commission to adjust Provincial boundaries...

the Commission to adjust Provincial boundaries... The Commission to adjust Provincial boundaries... The Commission to adjust Provincial boundaries...

the Commission to adjust Provincial boundaries... The Commission to adjust Provincial boundaries... The Commission to adjust Provincial boundaries...

WHITEWAYS OFFERS IN BOYS WEAR.

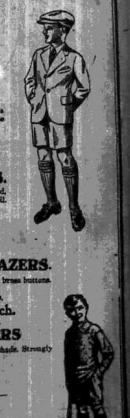
Boys Grey Flannel Suits. Consisting of a single breasted jacket and flannel made from a fairly heavy medium grey flannel, well cut and finished, these are extremely useful and smart for school.

Boys Grey Flannel Shorts. Knives material as the above, good easy cut and well finished, useful knicker for sports or general use, will wash and wear well.

Boys Navy Sports Blazers. Made from a medium weight strong navy flannel, with brass buttons and a useful and smart garment for sports.

Boys Navy Knickers. Knives material as the above, knit slightly darker shade. Strongly made with wash and wear.

Boys Jerseys. Pure wool knitted jersey, with polo collar and button neck. Useful and smart garment for sports.



WIRELESS IN EAST AFRICA.

The "E. A. Standard" has arranged for the regular publication of articles by Mr. Leonard J. Hughes, a well-known Kanga radio authority. It will probably be of interest to readers if some indication is given to the methods of testing Wireless apparatus. Above these Wireless enthusiasts, our readers are also interested in a certain extent in accumulators.

One way of testing an accumulator by looking at and comparing the amount of gas which is evolved from the original amount of electrolyte. It is possible to see the state of charge of an accumulator by looking at the amount of gas evolved from the plates, and also, in a lot of cases, the outside temperature of the battery. In a battery, where it is possible to see the plates, it will be found when the battery is fully charged that one of the plates is a chocolate brown and the other a silice grey. The tubes in combination with the other methods, can be explained will give reliable indication of the state of charge of the battery.

The battery on full charge will show a 2½ Volts on each cell and should not be used when the voltage is less than 2½ Volts per cell. A high resistance voltmeter must be used, and readings should be taken when the battery is being used, either when charging or discharging. Tests of voltage taken from the battery, to see if it has become and only give a false indication of the state of the battery.

A battery when fully charged can be tested by measuring the density of the acid in the container. This is probably the most reliable method of testing a battery, especially if it is in good condition. An instrument known as a hydrometer (shown in our illustration) is used for this purpose. Different battery makers have slightly different densities and maintain for the density of the acid in the battery. A certain type of battery will show a density of 1.280 and should not be discharged less than 0.9 falls below 1.175.

Under no circumstances should an accumulator be put across the terminals of a battery, otherwise the acid will be boiled out and the oil probably damaged. An accumulator will be tested by using a test lamp. If a test lamp is used, it is used as an indication whenever the state of charge of a battery. This is done by connecting the test lamp across the terminals of the battery. An accumulator can be recharged by means of a battery which is not provided that of the voltage of the donor current is greater than that of the battery. The resistance is included in the circuit to bring down the

TESTING BATTERIES.

a wireless page. These articles, will appear weekly.

It is possible to see the state of charge of an accumulator by looking at and comparing the amount of gas which is evolved from the original amount of electrolyte. It is possible to see the state of charge of an accumulator by looking at the amount of gas evolved from the plates, and also, in a lot of cases, the outside temperature of the battery. In a battery, where it is possible to see the plates, it will be found when the battery is fully charged that one of the plates is a chocolate brown and the other a silice grey. The tubes in combination with the other methods, can be explained will give reliable indication of the state of charge of the battery.

The battery on full charge will show a 2½ Volts on each cell and should not be used when the voltage is less than 2½ Volts per cell. A high resistance voltmeter must be used, and readings should be taken when the battery is being used, either when charging or discharging. Tests of voltage taken from the battery, to see if it has become and only give a false indication of the state of the battery.

A battery when fully charged can be tested by measuring the density of the acid in the container. This is probably the most reliable method of testing a battery, especially if it is in good condition. An instrument known as a hydrometer (shown in our illustration) is used for this purpose. Different battery makers have slightly different densities and maintain for the density of the acid in the battery. A certain type of battery will show a density of 1.280 and should not be discharged less than 0.9 falls below 1.175.

Under no circumstances should an accumulator be put across the terminals of a battery, otherwise the acid will be boiled out and the oil probably damaged. An accumulator will be tested by using a test lamp. If a test lamp is used, it is used as an indication whenever the state of charge of a battery. This is done by connecting the test lamp across the terminals of the battery. An accumulator can be recharged by means of a battery which is not provided that of the voltage of the donor current is greater than that of the battery. The resistance is included in the circuit to bring down the

Analyt TOILET CREATIONS

There's just that distinctive difference about an Analyt creation which prompts a lady's discriminating instinct to select it—a note of utter refinement, quality and service.

The name Analyt embraces soap to gently cleanse the skin, cream to bring new beauty, powder to protect it, lipsticks and scent to complete the perfect toilet.



Made by VINCENZA, London, England

GENUINE OFFER BEST ENGLISH MAKE "PANGAS"

AT 3/7½ HOURS. AT MADRATALI SULEMAN YEMER & SONS, PHONE 64, Govt. Bldg., P.O. Box 13, NAIROBI.

'CYCLONE' KINGDOCK FARM TRUBBS ARE UNBREAKABLE

FOR CATTLE HOMES FOR PIGS and SHEEP.

A MAGNIFICENT FENCE AT A REALLY LOW COST.

DALGETY & COMPANY LIMITED, NAIROBI.

TO MOTORISTS. PULL-U-OUT

A wonderful tool for pulling motors out when badly stuck in mud holes, without damaging your car. Will pull any car with greatest ease up to 15 tons. Price Shgs. 106/7.

TO TRANSPORT RIDERS.

A similar tool for pulling out lorries, up to 8 tons. Price Shgs. 220.

No motorist proceeding out of Nairobi should be without one of these tools. Obtainable, and Demonstration can be Seen At The Anglo Baltic Timber Co., Limited.



More time to yourself

For pleasure-filled work and leisure-filled days use a Perfection Oil Cook Stove. Costs but "one penny per hour burner" if you use LAUREL PARAFFIN, the original oil for the original stove.

PERFECTION Oil Cook Stoves

VACUUM OIL COMPANY OF SOUTH AFRICA, LIMITED DISTRIBUTING AGENTS IN KENYA, UGANDA, TANGANYIKA AND ZAMBIA THE AFRICAN MERCANTILE COMPANY, LIMITED.

ELDERST. NAIROBI. MURURI. NAIROBI. KILIMANJARO. DAR ES SALAAM. KAMPALA. KAMPALA. KAMPALA. KAMPALA.

MARTIN'S PILLS ARIOL & SYDNEY

Sure-detractors for All Female Complaints. Every lady should keep a box in the home. Chemist and Sons Ltd. Proprietors. HARTY, GILBERTSON, LONDON.

P. Stewart, PAINTER and DECORATOR.

Herdings Street, P.O. Box 206, NAIROBI.

Just Arrived New Stock

Highly commended of Designer and The services, of latest designs and assignments.

Also Prices Over Wars and Jacobean Glass Ware, suitable for Wedding Presents. Noorali Dhanji. GLASWATER MART, Black Avenue.

DICK-MARQUETTE

You will find much to admire in this moderate priced Buick Product. Its graceful lines and luxurious upholstery will intrigue you. Its acceleration and lively performance will amaze you.

The marvelous performance in mind—owing to its light weight and excellent power weight ratio will astonish you.

In short, you will wonder how such a car can be produced at such a moderate figure. Only the enormous resources of General Motors Corporation make such VALUE POSSIBLE

MARQUETTE BOX	£295	SEDAN	£380
TOURER	£350	COUPE	£375

Box 306. KENYA MOTORS. Phone 206.

Kampala. Eldoret. NAIROBI. Nakuru. Kitale.

**THE AFRICAN STANDARD**  
**DAILY EDITION.**  
**Subscription Rates:**  
 12 months, 50/-  
 6 months, 28/-  
 3 months, 15/-  
 Single copies, 6d.  
 Advertisements: 1/6 per line per week.  
 Classifieds: 1/6 per line per week.  
 Telegrams: 1/6 per line per week.  
 Telephone: 1/6 per line per week.  
 Cable: 1/6 per line per week.  
 Postage: 1/6 per line per week.  
 Printing: 1/6 per line per week.  
 Distribution: 1/6 per line per week.  
 Total: 1/6 per line per week.

**TO LET.**  
 THIS cheap, but substantial, 12 room house, with 12 ft. of water, is situated in the best part of the city. It is a most desirable home for a family, and is well fitted for a business. It is situated in the best part of the city. It is a most desirable home for a family, and is well fitted for a business. It is situated in the best part of the city. It is a most desirable home for a family, and is well fitted for a business.

**ROAD AND RESIDENCE.**  
 THIS cheap, but substantial, 12 room house, with 12 ft. of water, is situated in the best part of the city. It is a most desirable home for a family, and is well fitted for a business. It is situated in the best part of the city. It is a most desirable home for a family, and is well fitted for a business.

**SITUATIONS WANTED.**  
 I AM seeking a position in the office of a firm, with a minimum of 10 years' experience. I am a most desirable candidate for the position. I am a most desirable candidate for the position. I am a most desirable candidate for the position.

**SMITH, MACKENZIE & Co.**  
 Land & Estate Agency Department.  
 Box 390. NAIROBI. Phone 763.  
 TO LET—Third Avenue, Park Road, 3000 sq. ft. of land, with 12 ft. of water, is situated in the best part of the city. It is a most desirable home for a family, and is well fitted for a business.

**J. W. MILLIGAN & Co.**  
 Land & Estate Agency Department.  
 Box 148. NAIROBI. Phone 96.  
 TO LET—Elliott—40 acres, with 12 ft. of water, is situated in the best part of the city. It is a most desirable home for a family, and is well fitted for a business.

**FOR SALE.**  
 THIS cheap, but substantial, 12 room house, with 12 ft. of water, is situated in the best part of the city. It is a most desirable home for a family, and is well fitted for a business. It is situated in the best part of the city. It is a most desirable home for a family, and is well fitted for a business.

**W. J. MOYKACH**  
 AGENCIES  
 THE oldest established State of Kenya.  
 CORNER OF STAMP ROAD.  
 NEW buildings to be let on long lease. 2000 sq. ft. of land, with 12 ft. of water, is situated in the best part of the city. It is a most desirable home for a family, and is well fitted for a business.

**BROWN & HARRATT**  
 Estate Agents.  
 Property Lists.  
 THIS cheap, but substantial, 12 room house, with 12 ft. of water, is situated in the best part of the city. It is a most desirable home for a family, and is well fitted for a business.

**CASH SALES**  
 FOR SALE—3000 sq. ft. of land, with 12 ft. of water, is situated in the best part of the city. It is a most desirable home for a family, and is well fitted for a business.

**FOR SALE OR TO LET.**  
 THIS cheap, but substantial, 12 room house, with 12 ft. of water, is situated in the best part of the city. It is a most desirable home for a family, and is well fitted for a business.

**FOR SALE.**  
 THIS cheap, but substantial, 12 room house, with 12 ft. of water, is situated in the best part of the city. It is a most desirable home for a family, and is well fitted for a business.

**FOR SALE.**  
 THIS cheap, but substantial, 12 room house, with 12 ft. of water, is situated in the best part of the city. It is a most desirable home for a family, and is well fitted for a business.

**FOR SALE.**  
 THIS cheap, but substantial, 12 room house, with 12 ft. of water, is situated in the best part of the city. It is a most desirable home for a family, and is well fitted for a business.

**FOR SALE.**  
 THIS cheap, but substantial, 12 room house, with 12 ft. of water, is situated in the best part of the city. It is a most desirable home for a family, and is well fitted for a business.

**FOR SALE.**  
 THIS cheap, but substantial, 12 room house, with 12 ft. of water, is situated in the best part of the city. It is a most desirable home for a family, and is well fitted for a business.

**FOR SALE.**  
 THIS cheap, but substantial, 12 room house, with 12 ft. of water, is situated in the best part of the city. It is a most desirable home for a family, and is well fitted for a business.

**FOR SALE.**  
 THIS cheap, but substantial, 12 room house, with 12 ft. of water, is situated in the best part of the city. It is a most desirable home for a family, and is well fitted for a business.

**FOR SALE.**  
 THIS cheap, but substantial, 12 room house, with 12 ft. of water, is situated in the best part of the city. It is a most desirable home for a family, and is well fitted for a business.

**FOR SALE.**  
 THIS cheap, but substantial, 12 room house, with 12 ft. of water, is situated in the best part of the city. It is a most desirable home for a family, and is well fitted for a business.

**FOR SALE.**  
 THIS cheap, but substantial, 12 room house, with 12 ft. of water, is situated in the best part of the city. It is a most desirable home for a family, and is well fitted for a business.

**FOR SALE.**  
 THIS cheap, but substantial, 12 room house, with 12 ft. of water, is situated in the best part of the city. It is a most desirable home for a family, and is well fitted for a business.

**FOR SALE.**  
 THIS cheap, but substantial, 12 room house, with 12 ft. of water, is situated in the best part of the city. It is a most desirable home for a family, and is well fitted for a business.

**FOR SALE.**  
 THIS cheap, but substantial, 12 room house, with 12 ft. of water, is situated in the best part of the city. It is a most desirable home for a family, and is well fitted for a business.

British India Steam Navigation Company, Limited, AND GENERAL AND OVERSEAS STEAM NAVIGATION CO.

Table with shipping schedules for British India Steam Navigation Company, including routes to London, India, and various ports. Includes columns for ship names, dates, and destinations.

EXCURSIONS To South Africa, JUNE, JULY and AUGUST. UNION-CASTLE & BRITISH INDIA LINES. SAILINGS FROM MOMBASA. Includes ship names like KARAGOLA, ELIZABETH, and KALAPA.

CITRA LINE Compagnia Italiana Transatlantica. Excursions by S.S. "MAZZINI" leaving Mombasa on 9th for Zanzibar and Dar-es-Salaam. Includes details on fares and routes.

THE AFRICAN MARINE AND GENERAL ENGINEERING CO., Ltd. MARINE AND MECHANICAL ENGINEERS. SPECIALISTS IN Resisting of Diesels, Engines and Machining of Marine Diesels. Includes contact information for Nairobi.

Deutsche Ost-Afrika-Linie (GERMAN AFRICAN SERVICE). DEUTSCHE OST-AFRIKA-LINIEN GENERAL AGENCY, MOMBASA. Includes shipping schedules for routes to the Red Sea, Cape, and India.

Chivers' Ju... Made in silver-lined pans at the Oxchard Factory with freshly gathered fruit and refined sugar only. Includes advertisement for Chivers' English Canned Fruits and Messageries Maritimes.

Bradford Manufacturing Co., Ltd. We have just received the celebrated Golden Bells brand... Includes details on various types of cloth and fabric.

Keith Timber Limited. Saddle Street, Nairobi. SPECIAL PLICE FOR TIMBER, MOULDINGS, FLOORING, ROOFING AND PLASTER. Includes contact information for Nairobi.

"LONG JOHN" Whisky Scotch Whisky. WE HAVE REALIZED FOR MANY YEARS THAT the use of A Corkscrew is the only way to get the most out of your whisky. Includes an image of a bottle and a corkscrew.

Clan-Ellerman-Harrison Lines, (JOINT SERVICE). Liverpool - Glasgow - Avonmouth - Manchester. Includes shipping schedules and contact information for Nairobi.

NEW FOR NAIROBI LADIES DRESSES CHILDREN'S WOOLLEN WEAR IN ABSOLUTELY FINE STYLES. Includes advertisement for Ladabarran Stores.

STARRITE. Treats the foot firmness. This medicine will relieve itching and burning... Includes an image of a foot and a bottle of Starrite.

PERMANENT WAVING TO THOSE WHO ARE INTERESTED IN PERMANENT WAVING we beg to announce that our system has been proved by long experience to be the best and most effective. Includes advertisement for Eadies Footwear, Ltd.

PIANOFORTE TUNING AND REPAIRING. Ten years experience in Kenya... Includes advertisement for F. A. HEAD, Nairobi.

Eat More Bacon To encourage this the Uplands Bacon Factory has reduced their prices very substantially. Includes advertisement for Uplands Bacon Factory.

's LIME Pure-Bottle-Trial-Industrial-Approved. Lime Limited. Includes advertisement for various types of lime.



MERCHANT CALCULATING MACHINE MASTER OF MATHEMATICS



Portable Model, 670/-... 3 SALIENT FEATURES: SIMPLICITY—ACCURACY—EASE.

TAWS LIMITED, Phone 141 NAIROBI Box 3611

ALL-ROUND MOTORING TOURS

Mr. Kilgusby tours the Coast and Mount Kenya... EQUATORIAL AFRICA... RAILWAY TICKETS... Motor Tours Ltd.

Prophy-lactic does double duty... THE CHEMIST DISPENSARY

IT IS WISE TO BUY A SIX-CHEVROLET

WILL GIVE YOU GREATER VALUE THE MOTOR MART AND EXCHANGE LTD.

WIRELESS... "ON THE DAY"... The foundation of the Order of the... The Order has been... The Order has been...

Underfoot Telegraphs... POST OFFICE NEWS FOR MAY... The following list of unadvertised...



EMPIRE THEATRE... Last Night of the Thrillingly Produced Film, "S.O.S."... BATTLE OF JUTLAND... DICK NORTON'S GLOBE TROTTERS

Syd Ziegler & His... Torr's Hotel Music... Afternoon Tea in the Lounge TO-DAY

EMPIRE THEATRE... JULY Mon. 7th Tues. 8th Wed. 9th and Thurs 10th... Turn on the Heat... NEW and ORIGINAL

ZEISS IKON... KINAMO... THE LITTLEST LIGHT... Full particulars from the S.E. Department of Customs...

A. J. ELY and Co. Ltd. SPERMEN CHEMISTS... COPPER RAIN GAUGE... STOLZENBERG Flat Files







LARGE CONSIGNMENT  
OF THE  
**Celebrated**  
**J. B.**  
Corsets  
AND  
Combinaires  
IN THE  
LATEST NEW STYLES.  
Hutchings  
Biemer & Co., Ltd.

**SEASON COMMISSIONER'S PROPOSALS.**  
(Continued from page 1.)  
**Internal Security.**  
**NEED FOR A POWER THAT CAN STEP IN.**

The question of internal security has become a dominant factor in the public mind. The danger of disorder is a real present. The Government, "The day after tomorrow" is the population and industry and commerce between important communities which have led to time-wasting and disturbance. The history of some of the past few years shows how a slight modification may cause serious trouble. It is not a matter of if it should not at any stage, may easily appear from distant quarters in the world as in these times frequent local disturbances and attempts to cause trouble in India and elsewhere in particular for Belgium and wireless telegrams.

**Internal Administration.**  
The problem involved in internal security is not however a matter only of preservation of order. The very existence of the population depends on the administrative machinery. There are great opportunities on the land which are fully utilized by a judicious system of irrigation. A still larger attraction is the population in dependence on the extension of processing rain. If a moment fails, water is not sufficient to grow the crops. Food loss means white spots have not had. A system of irrigation work in Punjab is only prevented by constant vigilance on part of authorities.

If a plan was proposed and executed a considerable amount of work could be done. It is not however a matter of only preservation of order. The very existence of the population depends on the administrative machinery. There are great opportunities on the land which are fully utilized by a judicious system of irrigation. A still larger attraction is the population in dependence on the extension of processing rain. If a moment fails, water is not sufficient to grow the crops. Food loss means white spots have not had. A system of irrigation work in Punjab is only prevented by constant vigilance on part of authorities.

**Protection of Minorities.**  
The Commission also state in the spirit of tolerance in the proposed plan for India and it is a condition that minorities are prepared to treat in the same spirit. It is not however a matter of only preservation of order. The very existence of the population depends on the administrative machinery. There are great opportunities on the land which are fully utilized by a judicious system of irrigation. A still larger attraction is the population in dependence on the extension of processing rain. If a moment fails, water is not sufficient to grow the crops. Food loss means white spots have not had. A system of irrigation work in Punjab is only prevented by constant vigilance on part of authorities.

The Commission also state in the spirit of tolerance in the proposed plan for India and it is a condition that minorities are prepared to treat in the same spirit. It is not however a matter of only preservation of order. The very existence of the population depends on the administrative machinery. There are great opportunities on the land which are fully utilized by a judicious system of irrigation. A still larger attraction is the population in dependence on the extension of processing rain. If a moment fails, water is not sufficient to grow the crops. Food loss means white spots have not had. A system of irrigation work in Punjab is only prevented by constant vigilance on part of authorities.

The Commission also state in the spirit of tolerance in the proposed plan for India and it is a condition that minorities are prepared to treat in the same spirit. It is not however a matter of only preservation of order. The very existence of the population depends on the administrative machinery. There are great opportunities on the land which are fully utilized by a judicious system of irrigation. A still larger attraction is the population in dependence on the extension of processing rain. If a moment fails, water is not sufficient to grow the crops. Food loss means white spots have not had. A system of irrigation work in Punjab is only prevented by constant vigilance on part of authorities.

The Commission also state in the spirit of tolerance in the proposed plan for India and it is a condition that minorities are prepared to treat in the same spirit. It is not however a matter of only preservation of order. The very existence of the population depends on the administrative machinery. There are great opportunities on the land which are fully utilized by a judicious system of irrigation. A still larger attraction is the population in dependence on the extension of processing rain. If a moment fails, water is not sufficient to grow the crops. Food loss means white spots have not had. A system of irrigation work in Punjab is only prevented by constant vigilance on part of authorities.

**THE EAST AFRICAN ECONOMY.**  
The economy of East Africa is a subject of increasing importance. The East African Commission has been set up to study the economic conditions of the region. The Commission's report is a valuable contribution to the knowledge of the East African economy. It is a study of the economic conditions of the region, and it is a study of the economic conditions of the region.

**MIXED RECEPTION AT HOME.**  
The Commission's report has been received with mixed feelings. Some are of the opinion that the report is a valuable contribution to the knowledge of the East African economy. Others are of the opinion that the report is a study of the economic conditions of the region, and it is a study of the economic conditions of the region.

**Station in India.**  
The Commission's report has been received with mixed feelings. Some are of the opinion that the report is a valuable contribution to the knowledge of the East African economy. Others are of the opinion that the report is a study of the economic conditions of the region, and it is a study of the economic conditions of the region.

**GENERAL IMPROVEMENT REPORTED.**  
The Commission's report has been received with mixed feelings. Some are of the opinion that the report is a valuable contribution to the knowledge of the East African economy. Others are of the opinion that the report is a study of the economic conditions of the region, and it is a study of the economic conditions of the region.

**Travels in India.**  
The Commission's report has been received with mixed feelings. Some are of the opinion that the report is a valuable contribution to the knowledge of the East African economy. Others are of the opinion that the report is a study of the economic conditions of the region, and it is a study of the economic conditions of the region.

**Travels in India.**  
The Commission's report has been received with mixed feelings. Some are of the opinion that the report is a valuable contribution to the knowledge of the East African economy. Others are of the opinion that the report is a study of the economic conditions of the region, and it is a study of the economic conditions of the region.

**Travels in India.**  
The Commission's report has been received with mixed feelings. Some are of the opinion that the report is a valuable contribution to the knowledge of the East African economy. Others are of the opinion that the report is a study of the economic conditions of the region, and it is a study of the economic conditions of the region.

**Travels in India.**  
The Commission's report has been received with mixed feelings. Some are of the opinion that the report is a valuable contribution to the knowledge of the East African economy. Others are of the opinion that the report is a study of the economic conditions of the region, and it is a study of the economic conditions of the region.

**FRENCH COLONIAL DEVELOPMENT.**  
The French colonial development is a subject of increasing importance. The French colonial development is a study of the economic conditions of the region, and it is a study of the economic conditions of the region.

**Complete Rectricity in Trade.**  
The French colonial development is a subject of increasing importance. The French colonial development is a study of the economic conditions of the region, and it is a study of the economic conditions of the region.

**INCREASED FINANCE.**  
The French colonial development is a subject of increasing importance. The French colonial development is a study of the economic conditions of the region, and it is a study of the economic conditions of the region.

**Weather Report.**  
The French colonial development is a subject of increasing importance. The French colonial development is a study of the economic conditions of the region, and it is a study of the economic conditions of the region.

**High Cost of Living.**  
The French colonial development is a subject of increasing importance. The French colonial development is a study of the economic conditions of the region, and it is a study of the economic conditions of the region.

**High Cost of Living.**  
The French colonial development is a subject of increasing importance. The French colonial development is a study of the economic conditions of the region, and it is a study of the economic conditions of the region.

**High Cost of Living.**  
The French colonial development is a subject of increasing importance. The French colonial development is a study of the economic conditions of the region, and it is a study of the economic conditions of the region.

**High Cost of Living.**  
The French colonial development is a subject of increasing importance. The French colonial development is a study of the economic conditions of the region, and it is a study of the economic conditions of the region.

**Where to Stay.**  
The French colonial development is a subject of increasing importance. The French colonial development is a study of the economic conditions of the region, and it is a study of the economic conditions of the region.

**Where to Stay.**  
The French colonial development is a subject of increasing importance. The French colonial development is a study of the economic conditions of the region, and it is a study of the economic conditions of the region.

**Where to Stay.**  
The French colonial development is a subject of increasing importance. The French colonial development is a study of the economic conditions of the region, and it is a study of the economic conditions of the region.

**Where to Stay.**  
The French colonial development is a subject of increasing importance. The French colonial development is a study of the economic conditions of the region, and it is a study of the economic conditions of the region.

**Where to Stay.**  
The French colonial development is a subject of increasing importance. The French colonial development is a study of the economic conditions of the region, and it is a study of the economic conditions of the region.

**Where to Stay.**  
The French colonial development is a subject of increasing importance. The French colonial development is a study of the economic conditions of the region, and it is a study of the economic conditions of the region.

**Where to Stay.**  
The French colonial development is a subject of increasing importance. The French colonial development is a study of the economic conditions of the region, and it is a study of the economic conditions of the region.

**WHERE TO STAY.**  
The French colonial development is a subject of increasing importance. The French colonial development is a study of the economic conditions of the region, and it is a study of the economic conditions of the region.

**WHERE TO STAY.**  
The French colonial development is a subject of increasing importance. The French colonial development is a study of the economic conditions of the region, and it is a study of the economic conditions of the region.

**WHERE TO STAY.**  
The French colonial development is a subject of increasing importance. The French colonial development is a study of the economic conditions of the region, and it is a study of the economic conditions of the region.

**WHERE TO STAY.**  
The French colonial development is a subject of increasing importance. The French colonial development is a study of the economic conditions of the region, and it is a study of the economic conditions of the region.

**WHERE TO STAY.**  
The French colonial development is a subject of increasing importance. The French colonial development is a study of the economic conditions of the region, and it is a study of the economic conditions of the region.

**WHERE TO STAY.**  
The French colonial development is a subject of increasing importance. The French colonial development is a study of the economic conditions of the region, and it is a study of the economic conditions of the region.

**WHERE TO STAY.**  
The French colonial development is a subject of increasing importance. The French colonial development is a study of the economic conditions of the region, and it is a study of the economic conditions of the region.

**THE SUNSHINE OF THE NIGHT**  
**COLEMAN**  
LAMP and LANTERNS.  
For Farms and Salar.  
WHEATLEY, LAIDLAW & Co., Ltd.  
LAMBERTS, Ltd.  
EMERALD and RAJME  
MADYALY SULEMAN VERIE & SONS.  
IBRAHIM KARIMCH.  
NORRALLI DRANI.  
Etc., etc.

**BURGESS**  
**SNAP LITE**  
**FLASHLIGHT**  
Sh. 2-50 each.  
The Burgess Snap Lite is the most useful and popular addition of Edison's gas mantle. It is a study of the economic conditions of the region, and it is a study of the economic conditions of the region.

**INGRAM AND CO. LTD.**  
**THE POOL HOUSE**  
NAIROBI.  
The Pool House is a study of the economic conditions of the region, and it is a study of the economic conditions of the region.

**"STANLEY HOUSE"**  
Hardinge Street  
Now Nearing Completion  
Most Modern Construction  
Well Appointed Shops and Office Suites  
Apply Messrs. Gill & Johnson.  
15 BROAD BROOMS.

**THE SAVOY HOTEL**  
Only 6 Minutes Bus into Town.  
Beautifully Situated in the Hill.  
Surrounded by Delightful Gardens.  
Dainty Meals prepared by an Experienced Chef.  
Large Well Appointed Bar.  
FULLY LICENSED BAR.  
Phone 218 to the Building. (All Inland).  
Tel. 630 P.O. Box 20

**PALACE HOTEL**  
Grand.  
Palace.  
Members.  
**HOTEL AVENUE**  
Grand.  
Avenue.  
Members.  
**HOTEL AVENUE**  
Grand.  
Avenue.  
Members.

**Stag's Head Hotel**  
NAKURU  
Main Road close to New Post Office, Banks, Shops, Club and Station.  
Electric Light, Hot and Cold Water in all Bedrooms.  
EUROPEAN BATHING and BAZAR.  
Especially Attractive and Comfortable.  
WEEK ENDS—SPECIAL TERMS.  
DAILY Breakfasts Ordered for at Special Rates.  
WEDDINGS, PARTIAL MANAGER.  
FOLKLO DINNER, Mrs. TERRY.  
Arranged.  
The Registrar.

**SPORTS DIARY.**  
Tombola Golf Club, Mixed Pro.  
Mombasa Golf Club, Mixed Pro.  
June 21: Mombasa Golf Club, Mixed Pro.  
June 22: Mombasa Golf Club, Mixed Pro.  
June 23: Mombasa Golf Club, Mixed Pro.  
June 24: Mombasa Golf Club, Mixed Pro.  
June 25: Mombasa Golf Club, Mixed Pro.  
June 26: Mombasa Golf Club, Mixed Pro.  
June 27: Mombasa Golf Club, Mixed Pro.  
June 28: Mombasa Golf Club, Mixed Pro.  
June 29: Mombasa Golf Club, Mixed Pro.  
June 30: Mombasa Golf Club, Mixed Pro.

**THE EDWARD HOTEL**  
(Late Oakleigh Hotel)  
Phone 1004. Fully Licensed.  
MOTOR BUS SERVICE /50 TO TOWN (EUROPEAN DRIVER).  
Commencing July 1st a Bus Service will run at convenient hours to and from the Edward Hotel for the convenience of clients.

**GROSVENOR HOUSE**  
GIRDWOOD ROAD.  
Phone 627. ONE MILE FROM POST OFFICE.

**THE NORFOLK HOTEL**  
The Management of the Norfolk Hotel is the responsibility of the Proprietor.  
The Proprietor is a study of the economic conditions of the region, and it is a study of the economic conditions of the region.







Rifles & Shot Guns.

We carry a large selection of Fire Arms by the best Makers City.
Maulsner, Schoenauer Rifles in calibres 4.5mm (9 m/m), and 6.5 m/m.

CHARLES WARE

TELEPH. ACCOUNTANT.
100, Broad Street, NAIROBI.

All Prices are Subject to Market Fluctuations.
We accept orders subject to available stocks.



To All interested in Building
Stocks held of proved Special Products.
For the Decorative and Preservative treatment of Cement, Plaster, Brick, etc.



MAURICE ROSENTHAL
ROMA BUILDING GOVERNMENT ROAD, NAIROBI.
NORTH BRIDLE PLATE, June 20, 1926.

Football.

'BOOBER' BATTLE, 18/ 20, 22 and 30.
RUGBY BATTLE 18/ 4 or 28/ 18 and 30.
JERRETT.

STOCKINGS.
SHORTS.
SHIP GUARDS.
SCURRY CAPS.
KEEP CAPS.
AND ALL ACCESSORIES.

May & Co., Ltd.
THE SPORTS HOUSE.
NAIROBI.

THE SPORTS PAGE

DOBBIE CUP LEAGUE.
How the Clubs Stand.

Notes-Yorkshire Match Abandoned.

DEWEY'S BABY WIN.

COUNTRY CRICKET CHAMPIONSHIP.

Notes-Yorkshire Match Abandoned.

DEWEY'S BABY WIN.

COUNTRY CRICKET CHAMPIONSHIP.

Notes-Yorkshire Match Abandoned.

DEWEY'S BABY WIN.

COUNTRY CRICKET CHAMPIONSHIP.

Notes-Yorkshire Match Abandoned.

DEWEY'S BABY WIN.

COUNTRY CRICKET CHAMPIONSHIP.

Notes-Yorkshire Match Abandoned.

DEWEY'S BABY WIN.

COUNTRY CRICKET CHAMPIONSHIP.

Notes-Yorkshire Match Abandoned.

DEWEY'S BABY WIN.

COUNTRY CRICKET CHAMPIONSHIP.

Notes-Yorkshire Match Abandoned.

DEWEY'S BABY WIN.

COUNTRY CRICKET CHAMPIONSHIP.

Notes-Yorkshire Match Abandoned.

DEWEY'S BABY WIN.

COUNTRY CRICKET CHAMPIONSHIP.

WINDHOLE OPENS.
Australian Champion's Surprise Defeat.

COCKNEY HAS TO FIGHT.

WINDHOLE OPENS.

COCKNEY HAS TO FIGHT.

WINDHOLE OPENS.

COCKNEY HAS TO FIGHT.

WINDHOLE OPENS.

COCKNEY HAS TO FIGHT.

WINDHOLE OPENS.

COCKNEY HAS TO FIGHT.

WINDHOLE OPENS.

COCKNEY HAS TO FIGHT.

WINDHOLE OPENS.

COCKNEY HAS TO FIGHT.

WINDHOLE OPENS.

COCKNEY HAS TO FIGHT.

WINDHOLE OPENS.

COCKNEY HAS TO FIGHT.

WINDHOLE OPENS.

COCKNEY HAS TO FIGHT.

WINDHOLE OPENS.

COCKNEY HAS TO FIGHT.

WINDHOLE OPENS.

COCKNEY HAS TO FIGHT.

WINDHOLE OPENS.

WINDHOLE OPENS.

COCKNEY HAS TO FIGHT.

WINDHOLE OPENS.

COCKNEY HAS TO FIGHT.

WINDHOLE OPENS.

COCKNEY HAS TO FIGHT.

WINDHOLE OPENS.

COCKNEY HAS TO FIGHT.

WINDHOLE OPENS.

COCKNEY HAS TO FIGHT.

WINDHOLE OPENS.

COCKNEY HAS TO FIGHT.

WINDHOLE OPENS.

COCKNEY HAS TO FIGHT.

WINDHOLE OPENS.

COCKNEY HAS TO FIGHT.

WINDHOLE OPENS.

COCKNEY HAS TO FIGHT.

WINDHOLE OPENS.

COCKNEY HAS TO FIGHT.

WINDHOLE OPENS.

COCKNEY HAS TO FIGHT.

WINDHOLE OPENS.

COCKNEY HAS TO FIGHT.

WINDHOLE OPENS.



SWIFT AND SURE
KNOCK CARTRIDGES FOR MAUSER and MANNLICH SCARLETT rifles are equal the most popular on the market.

KYNOCH RIFLE CARTRIDGES

BRITISH & BEST
Obtainable from all licensed dealers throughout East Africa.

A. HOGG.

MASSINGER'S BUILDINGS, NAIROBI.
NORTH BRIDLE PLATE, June 20, 1926.

ENGLISH SET LEADERS

1926/27.
1st. Major, 1927. 2nd. Major, 1928.

DOBBIES Ltd.

Collecting and Dressing of SPECIALLY BLENDED TWEEDS.

NOTICE

The winner of the British Amateur Championship played "Spalding" Golf balls throughout the tournament.

CRAG'S SPORTS HOUSE

Box Government Road, Nairobi.

ROLEX GENEX & LINGOTT PRECISION WATCHES

Prices as in England.

GEM SET MODELS IN 18K WHITE GOLD OR PLATINUM

LADIES' WRIST WATCHES IN SILVER OR GOLD, H.S. METAL AND WHITE GOLD.

GENTS' WRIST WATCHES IN SILVER

For Catalogue apply to DOBBIES Ltd.

SOLE AGENTS FOR EAST AFRICA WATERMANKEN, JEWELLERS & SILVERSMITHS.

Phone 90. NAIROBI. P. O. Box 89.



THE EAST

African Standard

UGANDA ARGUS THE LEADER

THE OLDEST PUBLISHED NEWSPAPER PUBLISHED IN KENYA AND UGANDA.

AT THE STANLEY

Saturday July 5th

PRICE, 20 CENTS.

REDUCE THE COST OF LIVING BY RETURNING TO US YOUR EMPTY BOTTLES...

Kenya Breweries Ltd. KAIROH.

PRINTED AT THE GENERAL POST OFFICE AS A NEWSPAPER.

CONSERVATIVE PARTY'S EMPIRE POLICY.

Referendum on Question of Food Taxes.

MR. BALDWIN STANDS FIRM.

Food Taxes at the Elections Would Mean Defeat at the Polls.

Mr. Baldwin has won the first round in the fight with the Conservative-Empire Party...

RECIPROCAL PREFERENCE

Mr. Baldwin, the Conservative leader, has announced a new programme regarding his Empire...

Coal Mines Bill

LORDS DEBTY UPON AMENDMENTS.

The House of Lords today insisted upon large amendments to the Coal Mines Bill which the House of Commons had rejected...

INDIAN CONVICTS MUTINY.

45 Killed, 51 Wounded.

ARMOURY BURNED, 5 BOMBES DESTROYED.

[THROUGH NEWSPAPERS' AGENCY.]

Rangoon, June 24. A mutiny, resulting in 45 deaths and 51 persons being wounded occurred at the Central Jail...

[“N. A. Standard” Special Cable Service.]

Road to Rail.

[THROUGH NEWSPAPERS' AGENCY.]

FANTASIA OPERATIONS FAVOUR THE RAILWAYS.

Durban, June 24. The Premier's Minister of Commerce has adopted a resolution...

[THROUGH NEWSPAPERS' AGENCY.]

Spanish Intrigue.

[THROUGH NEWSPAPERS' AGENCY.]

TROOPS STANDING BY IN SEVILLE.

[THROUGH NEWSPAPERS' AGENCY.]

Madrid, June 24.

The fact that the Workers Union had not been informed of the impending strike at Seville...

Portuguese E. A.

AND MEDICAL ASSISTANTS' DEMANDS.

The Salubrious Chamber of Commerce of Lisbon has informed the Portuguese Government...

THE ATLANTIC AIR ATTEMPT.

“Southern Cross” Reported.

80 Miles an Hour.

[THROUGH NEWSPAPERS' AGENCY.]

WEDNESDAY.

[THROUGH NEWSPAPERS' AGENCY.]

The following plane has already arrived at Portland, Maine...

[“N. A. Standard” Special Cable Service.]

Photographers of Kenya.

[THROUGH NEWSPAPERS' AGENCY.]

SHOW HIGH QUALITY PICTURES.

[THROUGH NEWSPAPERS' AGENCY.]

Kenya at the Meeting of the North-Hold Hotel.

[THROUGH NEWSPAPERS' AGENCY.]

Mr. Fox, President occupied the chair and he briefly outlined the purpose and the workings of the Kenya Club...

[THROUGH NEWSPAPERS' AGENCY.]

London, June 24.

Admission from the public that between 1000 and 1500 persons were present at the meeting...

[THROUGH NEWSPAPERS' AGENCY.]

Nairobi Theatre Traffic.

NO PARKING AT THEATRE OR ROYAL.

[THROUGH NEWSPAPERS' AGENCY.]

For the greater convenience of the public the Corporation of Nairobi is asked very kindly to make arrangements for the collection of motor cars...

[THROUGH NEWSPAPERS' AGENCY.]

From 7 p.m. no cars shall be allowed to park in front of the Theatre...

[THROUGH NEWSPAPERS' AGENCY.]

“T.P.P.”

[THROUGH NEWSPAPERS' AGENCY.]

A TYPICAL SOUTH AFRICAN.

“I remember and wonder what my dear ones I used to bury the South African War. The years the war they did live like me, no good was done...”

COMMUNISTS IN PALESTINE.

South African Muzzle Industry.

Trained with Enthusiasm Among the Arabs.

[THROUGH NEWSPAPERS' AGENCY.]

High, June 24.

The Communist International has decided to support the constitution and the general election which was due will not now take place.

[“N. A. Standard” Special Cable Service.]

Imperial Press Conference.

[THROUGH NEWSPAPERS' AGENCY.]

NEWSPAPERS THE MEMBERS.

[THROUGH NEWSPAPERS' AGENCY.]

London, June 24.

The King received the members of the Imperial Press Conference...

[THROUGH NEWSPAPERS' AGENCY.]

Mr. Fox, President occupied the chair and he briefly outlined the purpose and the workings of the Kenya Club...

[THROUGH NEWSPAPERS' AGENCY.]

London, June 24.

Admission from the public that between 1000 and 1500 persons were present at the meeting...

[THROUGH NEWSPAPERS' AGENCY.]

Nairobi Theatre Traffic.

NO PARKING AT THEATRE OR ROYAL.

[THROUGH NEWSPAPERS' AGENCY.]

For the greater convenience of the public the Corporation of Nairobi is asked very kindly to make arrangements for the collection of motor cars...

[THROUGH NEWSPAPERS' AGENCY.]

From 7 p.m. no cars shall be allowed to park in front of the Theatre...

[THROUGH NEWSPAPERS' AGENCY.]

“T.P.P.”

“I remember and wonder what my dear ones I used to bury the South African War. The years the war they did live like me, no good was done...”

CONSTITUTION OF MALTA SUSPENDED.

Power Given Into Hands of the Governor.

EMERGENCY MEASURE.

[THROUGH NEWSPAPERS' AGENCY.]

High, June 24.

The British Government has decided to suspend the constitution and the general election which was due will not now take place.

[“N. A. Standard” Special Cable Service.]

Imperial Press Conference.

[THROUGH NEWSPAPERS' AGENCY.]

NEWSPAPERS THE MEMBERS.

[THROUGH NEWSPAPERS' AGENCY.]

London, June 24.

The King received the members of the Imperial Press Conference...

[THROUGH NEWSPAPERS' AGENCY.]

Mr. Fox, President occupied the chair and he briefly outlined the purpose and the workings of the Kenya Club...

[THROUGH NEWSPAPERS' AGENCY.]

London, June 24.

Admission from the public that between 1000 and 1500 persons were present at the meeting...

[THROUGH NEWSPAPERS' AGENCY.]

Nairobi Theatre Traffic.

NO PARKING AT THEATRE OR ROYAL.

[THROUGH NEWSPAPERS' AGENCY.]

For the greater convenience of the public the Corporation of Nairobi is asked very kindly to make arrangements for the collection of motor cars...

[THROUGH NEWSPAPERS' AGENCY.]

From 7 p.m. no cars shall be allowed to park in front of the Theatre...

[THROUGH NEWSPAPERS' AGENCY.]

“T.P.P.”

“I remember and wonder what my dear ones I used to bury the South African War. The years the war they did live like me, no good was done...”

CONSTITUTION OF MALTA SUSPENDED.

Power Given Into Hands of the Governor.

EMERGENCY MEASURE.

[THROUGH NEWSPAPERS' AGENCY.]

High, June 24.

The British Government has decided to suspend the constitution and the general election which was due will not now take place.

[“N. A. Standard” Special Cable Service.]

Imperial Press Conference.

[THROUGH NEWSPAPERS' AGENCY.]

NEWSPAPERS THE MEMBERS.

[THROUGH NEWSPAPERS' AGENCY.]

London, June 24.

The King received the members of the Imperial Press Conference...

[THROUGH NEWSPAPERS' AGENCY.]

Mr. Fox, President occupied the chair and he briefly outlined the purpose and the workings of the Kenya Club...

[THROUGH NEWSPAPERS' AGENCY.]

London, June 24.

Admission from the public that between 1000 and 1500 persons were present at the meeting...

[THROUGH NEWSPAPERS' AGENCY.]

Nairobi Theatre Traffic.

NO PARKING AT THEATRE OR ROYAL.

[THROUGH NEWSPAPERS' AGENCY.]

For the greater convenience of the public the Corporation of Nairobi is asked very kindly to make arrangements for the collection of motor cars...

[THROUGH NEWSPAPERS' AGENCY.]

From 7 p.m. no cars shall be allowed to park in front of the Theatre...

[THROUGH NEWSPAPERS' AGENCY.]

“T.P.P.”

“I remember and wonder what my dear ones I used to bury the South African War. The years the war they did live like me, no good was done...”



The Ace spring is the culmination of all the experience and experiments of the Simmons Company. No amount of money can buy a more delicate or more efficient spring operation...

THE BEAUTIFUL MATTRESS. The new Beautyrest mattress means more restful sleep. It is a perfect combination of all the latest scientific principles...

WHITEWAY, LAIDLAW & Co., Ltd. NAIROBI. ALSO STORES AT OUR MEMBERSHIP STORES AND HARBOR STORES.

**'CYCLONE'**  
RINGLOCK FARM  
FENCES ARE  
UNBREAKABLE



**FOR CATTLE BOMAS -  
FOR PIGS and SHEEP -**

**A MAGNIFICENT FENCE AT A  
REALLY LOW COST.**

**DALGETY & COMPANY**  
LIMITED.  
NAIROBI

**BARCLAYS BANK (DOMINION,  
COLONIAL AND OVERSEAS)**

Authorized by Act of Parliament, 1826.  
Incorporated by Royal Charter, 1886.

**THE COLONIAL BANK.**  
with all assets managed  
by the NATIONAL BANK OF SOUTH AFRICA, LTD.  
and THE ANGLO-EGYPTIAN BANK LTD.

Capital Authorized £10,000,000  
Capital Subscribed £6,572,500  
Capital Paid up £2,725,000  
Reserve Fund £2,350,000

OVER 60 BRANCHES IN  
London, South Africa, Rhodesia, South West Africa,  
British West Africa, West India, Egypt, Palestine and the  
Indian Archipelago, etc.

THE BANK UNDERTAKES ALL CLASSES OF BANKING  
BUSINESS AND ALSO ACTS AS TRUSTEE  
AND EXECUTOR.

BRANCHES IN EAST AFRICA:  
Nairobi, Mombasa, Zanzibar, Aden, Malindi,  
Kismayu, Juba, Tabora, Beaufort West, W.C.A.  
Fringa, Bulawayo, Swazeni, Rhodesia and Kenya.

HEAD OFFICE: 54, Lombard Street, London, E.C. 3.  
LONDON OFFICES: 10, Abchurch Lane, London, E.C. 4.  
W. 10, 2, 111, St. Martin Lane, Trafalgar Square, W.C. 2.

OFFICES in Liverpool, Manchester, Hamburg, New York.

Correspondents in all the Principal Cities and Towns  
of the World.

**LOW and BONAR, LTD.**  
DUNDEE.  
Manufacturers of DUNDEE BASKETS for Ostrich, Zebra, Dog, etc.  
CATTLE of all types. **SAFARI BASKETS.**  
BOYS and OVERSEAS. **OFFYON DROCKS, etc.**  
Agents for the East African Agency, Kampala, Uganda, Kenya, Canada, South Africa and Australia.

**NATIONAL BANK OF INDIA**  
LIMITED.

Incorporated in United Kingdom.

Branches in the Colony and  
Provinces of Kenya and  
Uganda Provinces  
Government.

Subscribed Capital £ 8,000,000  
Reserve Fund £ 2,000,000

16, Old Broad Street, London, E.C. 2.  
Branches: Bombay, Calcutta, Madras, Rangoon, Singapore, Penang, Malacca, Medan, Seremban, Ipoh, Kuala Lumpur, Johore Bahru, Singapore, Penang, Malacca, Medan, Seremban, Ipoh, Kuala Lumpur, Johore Bahru, Singapore, Penang, Malacca, Medan, Seremban, Ipoh, Kuala Lumpur, Johore Bahru.

AGENTS in New York and  
San Francisco, U.S.A., Bombay,  
Canada, South Africa and  
Australia.

**THE subscription to the Kenya Horticultural Society is due!**  
The Secretary, P.O. Box 27, Nairobi. All correspondence for the Society should be addressed to the Horticultural Editor, P.O. Box 27, Nairobi.

**Editor's Notes.**

I am so indebted to you for your very good lists of plants that I have had to write them in two parts. This may be a little inconvenient, but I hope you will not mind. I have had to write in a little more detail than I could have done, but I hope you will not mind. I have had to write in a little more detail than I could have done, but I hope you will not mind.

**Plants of Plants.**

The time for growing this appeal for lists is drawing very near. We everyone, who can, please send a special effort, draw up a list of plants growing in their gardens, and send it off. I think the end of the month is the very best time to do so. It is essential that we should have several lists of plants sent in. No two people ever grow exactly the same plants.

**Market Show.**

This show is to be held in the Show Grounds in Nakuru on Saturday, 22nd July. We want all the exhibitors we can get to make the show a success. Any one who is feeling a little nervous about exhibiting might take courage and send in this list of exhibitors. Every exhibitor will be given to receive on the 22nd July, 1934.

**SAVING-TIPS** will send double leaving only the main body to be sent to the same time. I would be best to state them too, a list of all well-developed plants from the large ones to the small ones. I have had to write in a little more detail than I could have done, but I hope you will not mind.

**Plants of Plants.**

The time for growing this appeal for lists is drawing very near. We everyone, who can, please send a special effort, draw up a list of plants growing in their gardens, and send it off. I think the end of the month is the very best time to do so. It is essential that we should have several lists of plants sent in. No two people ever grow exactly the same plants.

**Market Show.**

This show is to be held in the Show Grounds in Nakuru on Saturday, 22nd July. We want all the exhibitors we can get to make the show a success. Any one who is feeling a little nervous about exhibiting might take courage and send in this list of exhibitors. Every exhibitor will be given to receive on the 22nd July, 1934.

**SAVING-TIPS** will send double leaving only the main body to be sent to the same time. I would be best to state them too, a list of all well-developed plants from the large ones to the small ones. I have had to write in a little more detail than I could have done, but I hope you will not mind.

**Plants of Plants.**


The time for growing this appeal for lists is drawing very near. We everyone, who can, please send a special effort, draw up a list of plants growing in their gardens, and send it off. I think the end of the month is the very best time to do so. It is essential that we should have several lists of plants sent in. No two people ever grow exactly the same plants.

**Market Show.**

This show is to be held in the Show Grounds in Nakuru on Saturday, 22nd July. We want all the exhibitors we can get to make the show a success. Any one who is feeling a little nervous about exhibiting might take courage and send in this list of exhibitors. Every exhibitor will be given to receive on the 22nd July, 1934.

**SAVING-TIPS** will send double leaving only the main body to be sent to the same time. I would be best to state them too, a list of all well-developed plants from the large ones to the small ones. I have had to write in a little more detail than I could have done, but I hope you will not mind.

**THE BEST**  
KILLS  
ROSCOVES



...and should be sent to the Editor, P.O. Box 27, Nairobi.

...and should be sent to the Editor, P.O. Box 27, Nairobi.

**Plants of Plants.**

The time for growing this appeal for lists is drawing very near. We everyone, who can, please send a special effort, draw up a list of plants growing in their gardens, and send it off. I think the end of the month is the very best time to do so. It is essential that we should have several lists of plants sent in. No two people ever grow exactly the same plants.

**Market Show.**

This show is to be held in the Show Grounds in Nakuru on Saturday, 22nd July. We want all the exhibitors we can get to make the show a success. Any one who is feeling a little nervous about exhibiting might take courage and send in this list of exhibitors. Every exhibitor will be given to receive on the 22nd July, 1934.

**SAVING-TIPS** will send double leaving only the main body to be sent to the same time. I would be best to state them too, a list of all well-developed plants from the large ones to the small ones. I have had to write in a little more detail than I could have done, but I hope you will not mind.

**SUNLIGHT**  
THE WORLD'S  
PUREST SOAP



...and should be sent to the Editor, P.O. Box 27, Nairobi.

...and should be sent to the Editor, P.O. Box 27, Nairobi.

**SUNLIGHT**  
SOAP

**BUILDERS, CONTRACTORS AND FURNITURE MAKERS.**

Obtain Timbers of all sorts and sizes at reasonable prices, from The Kenya Timber Co. P.O. Box 969 Victoria Street, NAIROBI.

**DUCK MARQUETTE**

...and should be sent to the Editor, P.O. Box 27, Nairobi.

...and should be sent to the Editor, P.O. Box 27, Nairobi.

**DUCK MARQUETTE**

**YOU WILL FIND MUCH TO ADMIRE IN THIS MODERATE PRICED MARQUETTE BOX.**

**MARQUETTE BOX £295 SEDAN £280**  
**TOURER £350 COUPE £375**

**VALUE POSSIBLE**

**KENYA MOTORS.**

**Box 306. Kampala. Eldoret. NAIROBI. Nakuru. Kitale.**

**"STANLEY HOUSE"**

**Now Nearing Completion**  
**Most Modern Construction**

Hardinge Street

**Well Appointed Shops and Office Suites**

Apply Messrs. Gill & Johnson, P.O. Box 27, Nairobi.





British India Steam Navigation Company, Limited, AND PENINSULAR AND ORIENTAL STEAM NAVIGATION CO.

EXCURSIONS To South Africa June, July and August

BY Union-Castle & British India Lines. RAISING FROM MOMBASA. AM 30 July... 12 July... 17 July... 24 July... 31 July...

ROYAL-DUTCH MAIL SERVICE. Calling Kribbiel, Beaulieu, Durban, Swakop, Beira, Delagoa Bay, etc.

Call at Kribbiel, Beaulieu, Durban, Swakop, Beira, Delagoa Bay, etc. 30th June... 7th July... 14th July... 21st July... 28th July...

COASTAL SERVICE

S.S. "Diana," 30th June. S.S. "Mascot," 7th July. S.S. "Mascot," 14th July. S.S. "Mascot," 21st July. S.S. "Mascot," 28th July.

UNION-CASTLE LINE. HOMBWARD vs SUZL. From Mombasa (Above). 20th July 1920. 27th August. 3rd September. 10th October. 17th November. 24th December.

CITRA LINE Compagnie Italiana Transatlantica. THE BEST ROUTE TO ENGLAND.

(Via Rome, Alexandria, Genoa and Palermo). S.S. "G. MAZZINI" - 1st July, 1st September, 1st November. S.S. "E. ORSINI" - 1st August, 1st October, 1st December.

THE AFRICAN MARINE AND GENERAL ENGINEERING CO., Ltd. KILINDINI - MOMBASA. MAINLINE and MECHANICAL ENGINEERS, REPAIRS TO ANY TYPE OF MACHINERY.

Deutsche Ost-Afrika-Linie. (GERMAN AFRICAN SERVICES). DEUTSCHE OST-AFRIKA-LINIE GENERAL AGENCY, MOMBASA.

Table with shipping schedules for Deutsche Ost-Afrika-Linie. Columns: HOMBWARD vs SUZL CANAL, MOMBASA vs SOUTH, HOMBWARD vs CAPE. Lists ship names and dates.

Holland Afrika Lijn. PAREDEERS FAHRE. To Mombasa (A) - 25/6-0 (B) - 28/6-0 (C) - 31/6-0. To London (A) - 1/7-0 (B) - 4/7-0 (C) - 7/7-0.

Teaches the foot firmness. STAR-RITE. Ladies' Footwear, Ltd. NAIROBI. NEW FOR NAIROBI WE HAVE RECORDED THE BEST STOCKS OF SILKS FOR LADIES DRESSES.

THE Clan Line Steamers Ltd. "Clan Keith" WILL LOAD AT Dar-es-Salaam Zanzibar Tanga Mombasa FOR Rotterdam (Direct) and ANTWERP with TRANSPARENT End of June.

PERMANENT WAVING TO THOSE WHO ARE INTERESTED IN PERMANENT WAVING we beg to announce that our systems have been proved by long experience to be the best and specially the cheapest.

THE LINE Lime Limited. TWEETSCHE OVERSEAS TRADING CO., LTD. MOMBASA. P. O. No. 148. Telephone "HOLAFIC" No. 148.

NEW FOR NAIROBI WE HAVE RECORDED THE BEST STOCKS OF SILKS FOR LADIES DRESSES. LADIES DRESSES. CHANGING WOODEN WARE. IN ABSOLUTELY PRIME QUALITY. LADHARAN STORES.

Chivers' Jam. Made in silver-lined pans at the Orchard Factory with freshly gathered fruit and refined sugar only. English Canned Fruits with Chivers' Custard Powder.

MESSAGERIES MARITIMES (FRENCH MAIL STEAMERS). THE QUICKEST ROUTE TO LONDON. REGULAR and DELICIOUS SERVICE FROM MOMBASA TO LONDON.

Bradford Manufacturing Co., Ltd. We have just imported the following: Children's Knitted Cotton Dressing Gowns, 12 to 16; Women's Knitted Cotton Dressing Gowns, 12 to 16; Women's Pique Knitted Dressing Gowns, 12 to 16; Women's Pique Knitted Dressing Gowns, 12 to 16; Women's Pique Knitted Dressing Gowns, 12 to 16.

Keith Timber Co. LIMITED. Sadler Street, NAIROBI. THE PLACE FOR TIMBER, MILLWORK, WOOD FLOORING, ROOFING and PLASTER. P. O. Box 874. Phone 47.

PIANOFORTE TUNING AND REPAIRING. Ten years experience in Kenya Colony and years with the Messrs. Chappell and Co., London. F. A. HEAD. Box 675, NAIROBI.

OVERSEAS MAILS ARRIVALS. STEAMERS FROM Mombasa. Date of Arrival. S.S. "Diana" (Suez) 30th June. S.S. "Mascot" (Suez) 7th July. S.S. "Mascot" (Suez) 14th July. S.S. "Mascot" (Suez) 21st July. S.S. "Mascot" (Suez) 28th July.

Eat More Bacon To Encourage this the Uplands Bacon Factory have reduced their prices very substantially. Bacon has never been so cheap in Eastern Africa and therefore will definitely assist your customers at present below those prevailing in England for all best British brands.

MARCHANT CALCULATING MACHINE MASTER OF MATHEMATICS



Portable Model. 475/-

3 SALIENT FEATURES. SIMPLICITY-ACCURACY-SPEED.



TAWS LIMITED, Phone 141 NAIROBI Box 611

ALL-ROUND MOTORING TOURS TO Mt. Kenya and the Victoria Reserve.

MOTOR TOURS LTD. 70, Box 500.

SPECIAL OFFER FOR ONE MONTH ONLY.

B. FLORENS. FRENCH HAIRDRESSER.

2nd Bldg., Govt. Road, Phone 881, P.O. Box 262.

IT IS WISE TO BUY - A SIX -

CHEVROLET WILL GIVE YOU GREATER VALUE THE MOTOR MART AND EXCHANGE LTD.

CONSTITUTION OF MALTA

They had an alternative but it was rejected. The members of the committee...

The amendment by which the article should be placed in an appropriate manner...

The Constitution. The origin of the whole dispute began when a priest, a British subject...

The House consists of 19 members. The members represent the clergy, the graduates...

THE ROMAN CATHOLIC CHURCH

The Roman Catholic Church in Malta is nearly two centuries old. It is the only one of the kind...

Passenger List

"LANCASHIRE GARRET." The following passengers sailed on the "Lancashire Garret" on 17th March...



EMPIRE. TO-NIGHT FRIDAY and SATURDAY

DICK NORTON PRESENTS HIS "GLOBE TROTTERS"

THIS COMPANY DELIGHTED NAUGHTY AUDIENCES A WEEKS AGO AND NOW APPEARS WITH TWO COMPLETE CHANGES OF PROGRAMME.



EMPIRE THEATRE

JULY Mon. 7th Tues. 8th Wed. 9th and Thurs 10th

This Year's Super Production Turn on The Heat

A Musical Comedy based on 20 real performers intelligently dressed in a progressive setting.

See Millicent and Her Girls. A REAL HOT DANCING REVUE WITH ARTISTS OF DISTINCTION.

"GREAT STUFF THIS SHOW" IF YOU HAD NOT ALREADY BOOKED YOUR SEATS-DO NOT NOW.

PRICES: 7/6, 5/- and 3/- (reserved).

ZEISS IKON

CAMERAS and GIMBALS. The backbone of Success. For Business, Pleasure, and Kinship.

AFRICAN GUARANTEE and INSURANCE. M. D. KAMFF



THEATRE ROYAL

A Remarkable UFA Production, "AT THE EDGE OF THE WORLD"

BRIGITTE HELM FEATURING GREAT "Metropolis" STAR

LUPINO LANE IN "ONLY ME."

Piccadilly Restaurant. THEATRE ROYAL BUILDINGS.

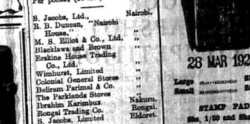
THE ARRANGEMENT IS MADE TO THE GENERAL PUBLIC. THE NEW UP-TO-DATE CITY SQUARE MANSIONS.

City Square Mansions

JULY 1st, 1920.

THE RUBY STAR

THE RUBY STAR JEWELLERY COMPANY. No. 1, WHITE CRISTAL BUILDING.



MAY & CO. LTD. THE SPORTS SPECIALISTS.

GRUBBER OFFER. BEST ENGLISH MAKE. "PANGAS".

### MOSQUITOES

AND OTHER INSECTS CANNOT LIVE WHERE

# BLACK FLAG

HAS BEEN SPRAYED

USE IT IN YOUR HOME AND ENJOY YOUR BEST IN COMFORT



1 Pint 9/- each.  
Quarts 5/- each.  
Gallons 15/- each.  
Sprayers 5/-  
Fender for Flies, Cockroaches, etc. 4/6 per bottle.  
Powder Guns 20 Cents each.

**Howse & McGeevie Ltd. CHEMISTS.**  
AGENTS FOR—KODAK (E.A.) LTD. NAIROBI and ALL BRANCHES.

# USED CARS



**Chrysler Plymouth Box Body**  
In perfect mechanical condition. Try us good - £110.

**Chrysler '62' Roadster**  
Mileage 10,000 E. - Discard, mechanical condition perfect - £170.

**Morris Cowley Saloon.**  
In very excellent order throughout tubularity as new. Very satisfactory used by Owner driver only - £110.

**Nash Light Six Saloon.**  
Licensed for full year—used in Nairobi only—in excellent order with an exceptionally quiet and responsive engine - £125.

# CARR, LAWSON & COMPANY LIMITED.

# J. W. Milligan & Co.

Importers of Agricultural Implements, and Machinery of all descriptions, etc.

Exporters of Coffee, Silk, Maize, Wheat, Ivory, etc., etc.

**WE HAVE IN STOCK THE FOLLOWING LINES**

Cloak Cream Separators, Cloak Churns and Milk Cans.  
Carpenters and Masons Tools of all descriptions.  
Oils and Greases.  
Bolt Nuts and Screws.  
Toto Ploughs.

Disc Ploughs—Rollers, and Tractor Cultivators.  
Petrol Oil Engines and Lighting Sets.

Branches: **MOMBASA and NAIROBI.**

Phone No. 146. P. O. Box 37.

## TWO ITEMS OF SPECIAL INTEREST To The Man of Business.

### VANILLA SHIRTS

The original and only genuine which will not fray and two hours Van Heusen collars neatly matching the shirt. These shirts are guaranteed absolutely fast colors and their tails will give excellent wear.

The colors are: Royal Brown, Blue and Champagne. Neck stripes on White and Blue. Collar in style 25, slightly lower and shorter than style 11 in white only.

S/Ns. 25/ - each.

Complete with 2 Van Heusen Collars.

### Van Heusen Collars.

The original and only genuine which will not fray and two hours Van Heusen collars neatly matching the shirt. These shirts are guaranteed absolutely fast colors and their tails will give excellent wear.

The colors are: Royal Brown, Blue and Champagne. Neck stripes on White and Blue. Collar in style 25, slightly lower and shorter than style 11 in white only.

S/Ns. 25/0 each.

STOCKISTS

## S. JACOBS Ltd.

Government Road. NAIROBI. Phone No. 23. P. O. Box 252.

# YOUR EYES.

## GROCK'S ANTI-GLARE GLASSES.

These Glasses are Self-Cleaning and they not only remove the glare from the roads and the "glare" from the sun, they also prevent the sun from getting into the eyes.

They clean glass plates, and can be used on all glasses.

Perfect eye glasses, and can be made to suit the eyes.

They can be fitted, or so as to make the eyes low.

All Right Travel and Convalescence Free.

**A. H. WARDLE & Co. Ltd.**  
V. M. BROWER, F.R.M.C., F.I.O., Optical Surgeon.

## Merryweather

THE WORLD'S LEADING SPECIALISTS IN

## Fire Protection

WATERPROOF FIRE PUMPS, Fireproofing, Firebricks and "Knox" Enameled "Fox" Safes, and "C.C.T." Hand Pumps, Fire-Resisting, Hand Pumps, and Fire Brackets, and Fire Hoses, etc., etc.

Send for latest Catalogues to the East African Representatives.

**R. G. VERNON & Co.**  
Drain Buildings, Government Road. NAIROBI, P. O. Box 124.

## WARDLE'S Pectoral Balm

SUCCESSFUL in curing COUGHS and COLDS

WHERE OTHER REMEDIES FAIL.

Shs. 2/6 and 4/60 per bottle.

FROM—

## A. H. Wardle & Co. Ltd. CHEMISTS.

KENYA-TANGANYIKA

# THE YORKSHIRE

## INSURANCE COMPANY LIMITED

Established 1894.

Principal Representative:—

R. H. HAMILLTON, Ltd.,  
Phone 352 - NAIROBI - P. O. Box 352.

THE "SNAPSHOT" COMPETITION. East African Standard. P. O. Box 200, NAIROBI.

IF FIFTH OF THESE are sent we will acknowledge the reproduction if possible.

These films or plates will be returned after publication. All prize winning photographs will be published in the East African Standard.

IF A PRIZE IS TO BE AWARDED A STAMPED ENVELOPE MUST BE ENCLOSED.

The Editor's decision is final.

### 7 Reasons for using "Brushing Discs" in the home

1. It produces a beautiful grey, fish-egg skin, in colour and exceptionally durable.
2. It is easier to clean than any other material.
3. It is impervious to oil stains and all the little accidents of the day.
4. A person can use it, just break it on and the brush mark disappears as an eraser peels off.
5. It does in one hour and cannot crack or peel off.
6. It can be used to practically all surfaces from wood to metal or polished.
7. It is beautiful colour, and Black, White and Cream.

Obtainable from GAILLY & ROBERTS, LTD. NAIROBI and BRANCHES.

## African Standard

MONDAY MORNING, THURSDAY, JUNE 8, 1950.

### The General Election Proposal.

It was reported in our columns yesterday that the European District Members of the Kenya Legislative Council proposed to consider, as an early date, what is a General Election, should be held in the Colony in connection with the recent publication by the Imperial Government of the statement on foreign policy in East Africa and the Mediterranean in the reply to a question in the House of Lords.

The suggestion is that a General Election should be held in the Colony in connection with the recent publication by the Imperial Government of the statement on foreign policy in East Africa and the Mediterranean in the reply to a question in the House of Lords.

The suggestion is that a General Election should be held in the Colony in connection with the recent publication by the Imperial Government of the statement on foreign policy in East Africa and the Mediterranean in the reply to a question in the House of Lords.

# STANDARD

DONOR OF THE STANDARD

Special meeting of Ken. Trib. (Trib. for Africa) at 10.15 p.m. tomorrow. 10.15 p.m. tomorrow. 10.15 p.m. tomorrow.

10.15 p.m. tomorrow. 10.15 p.m. tomorrow. 10.15 p.m. tomorrow.

10.15 p.m. tomorrow. 10.15 p.m. tomorrow. 10.15 p.m. tomorrow.

10.15 p.m. tomorrow. 10.15 p.m. tomorrow. 10.15 p.m. tomorrow.

... ...  
... ...  
... ...  
... ...  
... ...

... ...  
... ...  
... ...  
... ...  
... ...

W OF CRIMINAL TRESPASS. Appeal Court Decision.

AGRICULTURAL ADVANCES. KITALA TRADING PROBLEMS.

INTERNATIONAL SOCIETY. THE LATE MR. G. R. MAYER. Buried in a Hill-Top Tomb.

AGRICULTURAL ADVANCES. BOARD STATEMENT ON MORE DIFFICULTIES OF OPINION.

THE SIMON COMMISSION. MORE DIFFICULTIES OF OPINION.

MAKE CONSTITUTION IN TRANS UNION. DAILING ACTIVITIES IN KITALA.

THE MONEY MARKET. SPORTS. THE GAMES.

THE INTENT OF THE TRAVELLER.

LOANS LIQUIDATION.

THE FIRST OF THE MAZDZI BURY INTERNATIONAL CLUB THAT THE UNION WAS THE PLAY OF THE RAILWAY GENERAL MANAGER.

THE BODY OF THE LATE MR. GEORGE R. MAYER, WHO WAS BORN IN 1854 AND DIED IN 1924, WAS BURIED IN A HILL-TOP TOMB.

THE BOARD STATEMENT ON MORE DIFFICULTIES OF OPINION.

THE FEDERAL GOVERNMENT.

CONGRESSIONAL PAPER.

THE INTENT OF THE TRAVELLER. A public opinion poll in the Kitala...

LOANS LIQUIDATION. The Government has decided to liquidate...

THE FIRST OF THE MAZDZI BURY INTERNATIONAL CLUB THAT THE UNION WAS THE PLAY OF THE RAILWAY GENERAL MANAGER.

THE BODY OF THE LATE MR. GEORGE R. MAYER, WHO WAS BORN IN 1854 AND DIED IN 1924, WAS BURIED IN A HILL-TOP TOMB.

THE BOARD STATEMENT ON MORE DIFFICULTIES OF OPINION.

THE FEDERAL GOVERNMENT.

CONGRESSIONAL PAPER.

THE INTENT OF THE TRAVELLER. A public opinion poll in the Kitala...

LOANS LIQUIDATION. The Government has decided to liquidate...

THE FIRST OF THE MAZDZI BURY INTERNATIONAL CLUB THAT THE UNION WAS THE PLAY OF THE RAILWAY GENERAL MANAGER.

THE BODY OF THE LATE MR. GEORGE R. MAYER, WHO WAS BORN IN 1854 AND DIED IN 1924, WAS BURIED IN A HILL-TOP TOMB.

THE BOARD STATEMENT ON MORE DIFFICULTIES OF OPINION.

THE FEDERAL GOVERNMENT.

CONGRESSIONAL PAPER.

THE INTENT OF THE TRAVELLER. A public opinion poll in the Kitala...

LOANS LIQUIDATION. The Government has decided to liquidate...

THE FIRST OF THE MAZDZI BURY INTERNATIONAL CLUB THAT THE UNION WAS THE PLAY OF THE RAILWAY GENERAL MANAGER.

THE BODY OF THE LATE MR. GEORGE R. MAYER, WHO WAS BORN IN 1854 AND DIED IN 1924, WAS BURIED IN A HILL-TOP TOMB.

THE BOARD STATEMENT ON MORE DIFFICULTIES OF OPINION.

THE FEDERAL GOVERNMENT.

CONGRESSIONAL PAPER.

THE INTENT OF THE TRAVELLER. A public opinion poll in the Kitala...

LOANS LIQUIDATION. The Government has decided to liquidate...

THE FIRST OF THE MAZDZI BURY INTERNATIONAL CLUB THAT THE UNION WAS THE PLAY OF THE RAILWAY GENERAL MANAGER.

THE BODY OF THE LATE MR. GEORGE R. MAYER, WHO WAS BORN IN 1854 AND DIED IN 1924, WAS BURIED IN A HILL-TOP TOMB.

THE BOARD STATEMENT ON MORE DIFFICULTIES OF OPINION.

THE FEDERAL GOVERNMENT.

CONGRESSIONAL PAPER.

THE INTENT OF THE TRAVELLER. A public opinion poll in the Kitala...

LOANS LIQUIDATION. The Government has decided to liquidate...

THE FIRST OF THE MAZDZI BURY INTERNATIONAL CLUB THAT THE UNION WAS THE PLAY OF THE RAILWAY GENERAL MANAGER.

THE BODY OF THE LATE MR. GEORGE R. MAYER, WHO WAS BORN IN 1854 AND DIED IN 1924, WAS BURIED IN A HILL-TOP TOMB.

THE BOARD STATEMENT ON MORE DIFFICULTIES OF OPINION.

THE FEDERAL GOVERNMENT.

CONGRESSIONAL PAPER.

THE INTENT OF THE TRAVELLER. A public opinion poll in the Kitala...

LOANS LIQUIDATION. The Government has decided to liquidate...

THE FIRST OF THE MAZDZI BURY INTERNATIONAL CLUB THAT THE UNION WAS THE PLAY OF THE RAILWAY GENERAL MANAGER.

THE BODY OF THE LATE MR. GEORGE R. MAYER, WHO WAS BORN IN 1854 AND DIED IN 1924, WAS BURIED IN A HILL-TOP TOMB.

THE BOARD STATEMENT ON MORE DIFFICULTIES OF OPINION.

THE FEDERAL GOVERNMENT.

CONGRESSIONAL PAPER.

LARGER CONSISTENT OF THE Celebrated **J. B. Corsets and Combinales** IN THE LATEST NEW STYLES.

Hutchings Biemer & Co., Ltd.



**VACCINATION FOR RINDERPEST.**

**Doubt in Nanyuki.**

**ONE SHOT KILLS LION—A LARGE LEOPARD.**

**[STANDARD CORRESPONDENT.]**

A general meeting of the Nanyuki Rinderpest and Pox Board was held last night in the Nanyuki Hotel. The following were present: Mr. J. B. ...

**LAW OF CRIMINAL TRESPASS.**

(Continued from page 7.)

The only one possible ...

**THE LATE MR. G. R. MAYERS.**

(Continued from page 7.)

D. A. Johnson, J. P. Marshall ...

**"ON THIS DAY."**

THE 19th of February, 1920, ...

**WHERE TO STAY**

**ROVE AND COUNTRY.**

**PALACE HOTEL**

**HOTEL AVENUE**

**HOTEL AVENUE**

**THE TWO MOST UP-TO-DATE AND LATEST MODELS OF HOTEL IN KENYA.**

**This is Worth Your Consideration**

**Stag's Head Hotel**

**NAKURU**

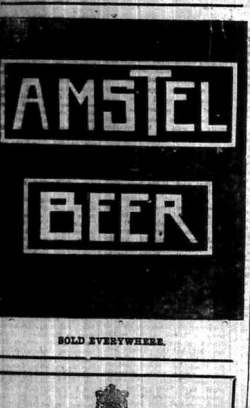
Main Road from New Post Office, Banksia, Shops, Club and Station.

**The Edward Hotel**

(Late Oakleigh Hotel)

**AMSTEL BEER**

**BOLD EVERYWHERE.**



The report of the business committee ...

Mr. Hamilton Bridges argued ...

Mr. G. R. Mayers ...

Mr. J. B. ...

By appointment to **H.M. King George V.**

**WHITE HORSE WHISKY**



The annual subscription ...

Mr. D. A. Johnson ...

Mr. G. R. Mayers ...

Mr. J. B. ...

The Court reserved judgment ...

The Court reserved judgment ...

Mr. G. R. Mayers ...

Mr. J. B. ...

Delegates to the Convention ...

The Court reserved judgment ...

Mr. G. R. Mayers ...

Mr. J. B. ...

Mr. Booth suggested that ...

The Nanyuki Football Club ...

Mr. G. R. Mayers ...

Mr. J. B. ...

By Appointment to **His Majesty the King**

**JOHN RIFKIN**

**Salisbury Hotel Nairobi.**

**TORR'S HOTEL**

**GROSVENOR HOUSE**

**THE NAKURU HOTEL**

**THE NAKURU HOTEL**


**THE NAKURU HOTEL**

**THE NAKURU HOTEL**

**THE NAKURU HOTEL**

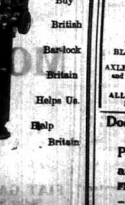
**BAR-LOGE TYPEWRITER AGENCY.**

**By Appointment to His Majesty the King**



**Doonholm Dairy**

**PURE MILK AND CREAM FROM FARM TO CONSUMER.**



**Salisbury Hotel Nairobi.**

**TORR'S HOTEL**

**WHEEN VISITING NAIROBI STAY AT**

**THE NAKURU HOTEL**

**THE NAKURU HOTEL**



**Just on Hand!**

Fresh Consignment of ALL-BLACK

ALLEN & CO.

STOCKINGS: IN LATEST LUXURIOUS SHADES. Renowned for Long and Satisfactory Wear.

**Ahamed Bros**

THE HOUSE OF DISTINCTION. Ex. 254 - Bazaar - NAIROBI - Phone 201.

**he 'after-feeling' is the test of a Shaving Cream**

Gibbs Shaving Cream or Stick leaves you a face that smiles, cools, smooths, combats. Every last bit of stubble moves cleanly away at a stroke. The water-bubbler lather has soaked every hair to the root. The Cold Cream that is a Gibbs lather takes away all trace of tenderness.

**Gibbs SHAVING CREAM**

YOUR CHEMIST STOCKS IT

**Look at These Prices.**

- Del Monte Salmon 3/- per Tin
- Del Monte Fruit and Beans 1 1/2/- per Doz
- Del Monte Pork and Beans 1/- per Tin
- Del Monte Fried Cod Outlets 1/25 per Tin
- Cross & Blackwell's Broilers 1/50 per Tin
- Cross & Blackwell's Haddock 1/50 per Tin
- Morton's Flaked Rice 1/- per Tin
- Morton's Split Peas 1/25 per Tin
- Walls Beef Sausages 1/50 per Tin

**TO BE HAD AT M. S. ELLIOT & Co. Ltd.**  
P.O. Box 175 Phone 60.

**PROTECT YOURSELF Against Cold**

NEW RANGE OF Jumper Suits, Cardigans, Jumpers, etc., etc. In Most Cheapest Colours.

**BON MARCHÉ**

Government Road NAIROBI

**CORRESPONDENCE.**

The editor does not accept responsibility for the views expressed by correspondents. He is not to be held responsible for the contents of letters, nor for the opinions of correspondents, or for the accuracy of the facts stated in correspondence.

**Temp Fix**

**A FLKA FOR LOCAL PRODUCE**

To the Editor, "E.A. Standard." Sir—There are many. During the past few years this Colony has been very successful in its exports. It is a pity that the Government has not taken any steps to encourage the local producer. It is a pity that the Government has not taken any steps to encourage the local producer. It is a pity that the Government has not taken any steps to encourage the local producer.

and they were pretty heavily taxed, especially marketing. The Board of Agriculture and we are sure that the Government will take steps to encourage the local producer. It is a pity that the Government has not taken any steps to encourage the local producer.

**THE TEMPERANCE**

The temperance cause has been a long and hard one. It is a pity that the Government has not taken any steps to encourage the local producer. It is a pity that the Government has not taken any steps to encourage the local producer.

**THE TEMPERANCE**

The temperance cause has been a long and hard one. It is a pity that the Government has not taken any steps to encourage the local producer. It is a pity that the Government has not taken any steps to encourage the local producer.

**The Answer to the Desert Problem:**

**"MY LADY" CANNED FRUITS**

for particular people

Canned "My Lady" fruits are the fruit of the desert. They are packed in pure sugar syrup, and the famous "My Lady" brand is the only one of its kind.

Obtainable at all times from **Eboos' Petrol Station**, 14/15, Market Street, NAIROBI.

**WHAT'S YOUR MINES A FILL ON?**

SKILL, FEGASUS, B.P. or TEXACO PETROL

Obtainable at all times from **Eboos' Petrol Station**, 14/15, Market Street, NAIROBI.

**W. A. GILBEY LTD.**  
ARE THE LARGEST WHISKY-MERCHANTS IN THE WORLD.

**Gilbey's Scotch Whisky**

Obtainable at all times from **Eboos' Petrol Station**, 14/15, Market Street, NAIROBI.

**HOT CAKES**

MADE of wholesome ingredients, and mixed and baked in a special oven. A delectable hot cake is made with...

**WHEN ORDERING BEER INSIST ON**

**TENNENT'S BEER**

AND BE THAT YOU GET IT.

**WHEN ORDERING BEER INSIST ON**

**TENNENT'S BEER**

AND BE THAT YOU GET IT.

**WHEN ORDERING BEER INSIST ON**

**WHEN ORDERING BEER INSIST ON**

**TENNENT'S BEER**

AND BE THAT YOU GET IT.

**WHEN ORDERING BEER INSIST ON**

**TENNENT'S BEER**

AND BE THAT YOU GET IT.

**WHEN ORDERING BEER INSIST ON**

**WHEN ORDERING BEER INSIST ON**

**TENNENT'S BEER**

AND BE THAT YOU GET IT.

**WHEN ORDERING BEER INSIST ON**

**TENNENT'S BEER**

AND BE THAT YOU GET IT.

**WHEN ORDERING BEER INSIST ON**

**WHEN ORDERING BEER INSIST ON**

**TENNENT'S BEER**

AND BE THAT YOU GET IT.

**WHEN ORDERING BEER INSIST ON**

**TENNENT'S BEER**

AND BE THAT YOU GET IT.

**WHEN ORDERING BEER INSIST ON**

**WHEN ORDERING BEER INSIST ON**

**TENNENT'S BEER**

AND BE THAT YOU GET IT.

Wm. S. ELLIOT, MACKENZIE & Co., P.O. Box 200, Phone 300, NAIROBI.

**COATES' ORIGINAL PLYMOUTH GIN**

The Gln of the Distinctive Flavour.

SOLE AGENTS: FOR KENTIA, NAIROBI & TANZANIA, JARDIN, PRINSON & Co., Ltd., MOMBASA.

**A. J. ELY and Co. Ltd.**

14/15, MARKET STREET, NAIROBI.

CHOPPER COIN GAUGE

Complete with Glass and Spare Glasses

AUCTION SALES



SALE BY CATALOGUE OF FURNITURE & EFFECTS

To-day, 26th June, at 10 a.m. ... CHESTERFIELD SUITES, LOOSE COVERS, ON CASTORS. Club Easy Chairs...

STUDY, Two Book Ends, Writing Table, Lamps and two or three Ornamental Tables...

STUNNING ELIZETH TABLE, Miss Gable, Donee Service for Twelve...

MUTER and OSWALD Ltd., Auctioneers, Etc., NAIROBI



CATALOGUE SALE OF FURNITURE AND EFFECTS

Friday, 29th June, at 10 a.m.

Chamberlain's Suite, loose covers, on castors. Club Easy Chairs...

MUTER and OSWALD Ltd. Auctioneers, Etc., NAIROBI



FOR SALE

Moderate Stone Residence situated in the Hill District

TO LET

Delightfully situated, well furnished, stone house of three floors...

MUTER and OSWALD Ltd. Estate Agents, NAIROBI

RESIDENT MAGISTRATE'S COURT NAIROBI

Under instruction received

C. DENOVAN

Friday 27th June at 10 o'clock

At Stone Quarry of Linnam Road, Parklands, Stone Quarry...

AUSTIN'S AUCTIONS

CATALOGUE SALE OF GOOD FURNITURE. BOX CHESTERS, BEDS, CHESTERFIELD SUITES, FRIGIDERS...

AUSTIN & CO., will sell, Without Reserve, at the Mart, on

Saturday June 28th, at 10 a.m.

"Lion" Lawnmower 12" in good order. Campbrough Woodin Wardrobe with 2 Mirrors...

AUSTIN & CO., AUCTIONEERS and ESTATE AGENTS, Harding Street, NAIROBI

SANDS & CO.

AT THE NAIROBI AERODROME

Monday June 30th at 11 a.m.

Acting on instruction, we will sell, Without Reserve, The Wood and Iron Hangar erected for Baron Rothschild's Puker Aeroplane...

SANDS & CO., AUCTIONEERS

SANDS & CO.

Rural Building Sites

OUTSIDE MUNICIPAL AREA.

Good all weather road leads the property on an acre 1/2 miles of perimeter road on the other boundary...

Suitable for Dairying, Market Gardening and Cattle.

Also some very desirable plots on the Nguro Road.

Apply: SANDS & Co. Auctioneers

BURGESS SNAP LITE FLASHLIGHT Sh. 2-50 each. The Burgess type light is the smallest and by far the most popular adaptation of Edison's great invention...

THACKRAFF'S, Ltd. NAIROBI. LAND AND ESTATE AGENTS, AUCTIONEERS & APPOINTED VALUERS...

BEST VALUE IN

CREST TOWELS, BLENDED SUITINGS, BLENDED SUITINGS, BLENDED SUITINGS, BLENDED SUITINGS

E. Hutchinson & Co.

Box 140 NAIROBI

Abdul Wahid & Sons.

RETAILERS AND CONTRACTORS. Office Telephone 68. P.O. Box No. 292. Telephone 352. Nairobi.

"The problem of TRANSPORT is solved. We do it for you."

RING—FIVE—EIGHT PLEASE.

THE NYANZA AUCTIONEERS

NAKURU

Dairy Herd Dispersal.

By instruction of the Honorable J. D. H. Moberley we will sell on the Farms on

Tuesday July 1st at 11 a.m.

THE COMPLETE HERD OF HIGH-GRADE FRIESIAN CATTLE comprising—

85 Cows in milk or in calf. 30 Heifers. 23 Calves.

Also included, by permission, 12 young untrained A.M.T. Cows.

This is a genuine dispersal sale and the milk cattle are well known as one of the highest-yielding grades herds in Kenya...

THE FARM IS 10 Miles East of NAKURU on the main Nairobi Road, conveyances from Nakuru can be arranged on application to the Auctioneers.

Movement permits can be obtained into all except gusted closed areas.

Bidding can be arranged by the Auctioneers for a small charge, but buyers requiring this are requested to bring their own herdsmen.

SALE OF QUITE NEW BLANKETS, SHOP GOODS AND FURNITURE OR,

Friday, the 27th day of June 1930.

At 9 a.m.

JAMAL PIRBHAI

Daily instructed by clients, I shall sell by Public Auction and absolutely without reserve, the following goods at my Auction Mart, situate oppo-

1 Lot quite new blankets of different varieties, grammes, Saker, Shiraz, Khinkra, etc. hot-water-bottles, pieces of flannel cloth, pieces of silk, watches, cycles, rubber, iron, soap, milk and sundry articles.

JAMAL PIRBHAI, Auctioneer and Official Broker.

FIG. Box No. 209, Phone No. 564, NAIROBI.

ESSJAY, Limited.

EMPIRE THEATRE BUILDINGS, Box 684, NAIROBI. Phone 877.

Financial and Property Agents.

Marriages Specialized in. Terms Very reasonable. Partners Arranged— at a special charge.

WE HAVE SOUND INVESTMENTS FOR SUMS FROM 4000 UPWARDS. IN THIS RESPECT WE CLAIM TO DO BETTER FOR YOU THAN ANYONE ELSE.

W. BACON.

THE PREMIER USED CAR SALESMAN.

Godfrey's Car Mart

Terrace House - Sadler Street

50 USED CARS

TO SELECT FROM

4 CHEVROLET TRUCKS, 4

One New Specialty Built Fitted with Ley Tex Cars Only from 2,000 to 4,000 Miles.

Guaranteed in Perfect Mechanical Condition.

Motor Cycles 7 Bicycles new and second-hand.

Motor Cars 2 New and second-hand. Chrysler 2 New Buick.

Motor Cars 1928 Ford Model. Small model. Good condition. Price £110.

ARIEL MOTOR CYCLES. SOLE AGENTS FOR KENTIA AND TANGANYIKA.

THE POPULAR MACHINE WITH COMPREHENSIVE SERVICE REPAIR IT.

£1500 - ARIEL COMPETITION - £1500

YOUR USED CAR TRADED - IN FOR ANY MAKE NEW CAR - TERMS ARRANGED.

At a low cash price. Factors mentioned on application. ARIEL, DOUGLAS and OTHER MOTORCYCLES.

CAR INSURANCE ARRANGED.

REPAIR-DOWN TRUCKS (with spare parts) available any time at low price and second-hand spares for all makes and models.

NEW TYRES at CLEARANCE PRICES.

CATER FOR ALL MOTOR DRIVERS - DRIVE YOURSELF.

Price List. See 745. W. M. GODFREY, Sole Proprietor.

Hartley's Tobacco

Best Soil 1/2 bags also

Rhodesian, Levita, and Rhodesian Plug Cut.

Fresh Stocks Arrived

Sole Agents and Distributors

Denovan & Diebel

VICTORIA BUILDINGS, Victoria Street, NAIROBI

Reliance Transport

Co. Ltd.

TRANSPORT, WOOD FUEL, COALS

POLES and FENCING POSTS, MANURE and LIMB, STORAGE

BOLUS HOUSE

GOVERNMENT ROAD

Telephone: 680-233, 680-234, 680-235, 680-236, 680-237, 680-238, 680-239, 680-240, 680-241, 680-242, 680-243, 680-244, 680-245, 680-246, 680-247, 680-248, 680-249, 680-250, 680-251, 680-252, 680-253, 680-254, 680-255, 680-256, 680-257, 680-258, 680-259, 680-260, 680-261, 680-262, 680-263, 680-264, 680-265, 680-266, 680-267, 680-268, 680-269, 680-270, 680-271, 680-272, 680-273, 680-274, 680-275, 680-276, 680-277, 680-278, 680-279, 680-280, 680-281, 680-282, 680-283, 680-284, 680-285, 680-286, 680-287, 680-288, 680-289, 680-290, 680-291, 680-292, 680-293, 680-294, 680-295, 680-296, 680-297, 680-298, 680-299, 680-300

YOOONIA TEA

It is still acknowledged to be the most ECONOMICAL.

Comparing it with other brands HALF THE QUANTITY will suffice to give you that full DELICIOUS LIQUOR

stimulation, fragrance and invigorating.

Obtainable anywhere.

BLACKLAW & BROWN

145, RATTAL STREET, NAIROBI.

Telephone: 680-300, 680-301, 680-302, 680-303, 680-304, 680-305, 680-306, 680-307, 680-308, 680-309, 680-310, 680-311, 680-312, 680-313, 680-314, 680-315, 680-316, 680-317, 680-318, 680-319, 680-320, 680-321, 680-322, 680-323, 680-324, 680-325, 680-326, 680-327, 680-328, 680-329, 680-330, 680-331, 680-332, 680-333, 680-334, 680-335, 680-336, 680-337, 680-338, 680-339, 680-340, 680-341, 680-342, 680-343, 680-344, 680-345, 680-346, 680-347, 680-348, 680-349, 680-350, 680-351, 680-352, 680-353, 680-354, 680-355, 680-356, 680-357, 680-358, 680-359, 680-360, 680-361, 680-362, 680-363, 680-364, 680-365, 680-366, 680-367, 680-368, 680-369, 680-370, 680-371, 680-372, 680-373, 680-374, 680-375, 680-376, 680-377, 680-378, 680-379, 680-380, 680-381, 680-382, 680-383, 680-384, 680-385, 680-386, 680-387, 680-388, 680-389, 680-390, 680-391, 680-392, 680-393, 680-394, 680-395, 680-396, 680-397, 680-398, 680-399, 680-400

# TO MOTORISTS. PULL-OUT

A wonderful tool for pulling motors out when they stick in mud holes, without damaging your car. Will pull any car with greatest ease up to 15 tons. Price Shs. 167/-

### TO TRANSPORT RIDERS.

A smaller tool for pulling out lorries, up to a ton. Price Shs. 285/-

Any motorist proceeding out of Nairobi should be furnished with one of these tools.

Available, and Demonstration Cars, Be Seen At **The Anglo Baltic Timber Co., Limited.**



### ON THE ROAD IN AN HOUR

BRUSHING ROEMALOID

## Kenya Loan & Discount Co. Ltd.

P.O. Box 646, NAIROBI.  
OFFICES—1st Floor, Court Chambers.

### FINANCIAL AGENCIES

Here Discounted—Short-period Loans Granted. Any Available Asset Negotiated for Cash. Call or Write. **STRICTLY CONFIDENTIAL.** ESTABLISHED 1891.

### EVERY TIME, LABOUR AND MONEY.

NO SOAP, SOAP OR SCOURING REQUIRED.

Preventive of CHOLERA, MALARIA, DYSENTERY and other diseases. Highly Effective in Mosquitoes and other insects.

## 66 TARSAP 33

THE PERFECT DISINFECTANT, CLEANER, ALKALINE SHAMPY and SOAPS

Govt. Laboratories, NAIROBI. Phone 574.

# MOTOR NEWS

By Road & Showroom.

### MOTORING IN EAST AFRICA.

Impartation of English Goods.

**LABORATORY SPECIAL.**

In the course of a similar lecture to that of the 23rd Oct. Mr. Gordon Power, the Hon. Chief Justice, who has distinguished himself as a member of the Executive Council of Kenya, Uganda and Tanganyika, while the Hon. African Motor Trade Importers' Association is assembled in Nairobi, said that he was sure that the motor industry in East Africa would be a very important undertaking, and that it would be a very profitable one. He said that he was sure that the motor industry in East Africa would be a very important undertaking, and that it would be a very profitable one. He said that he was sure that the motor industry in East Africa would be a very important undertaking, and that it would be a very profitable one.

### Facilities for the Motorist.

RAILWAY CONCESSIONS IN SOUTH AFRICA.

Some months ago the Railway Commission in South Africa, which is a special commission specially constituted to investigate the railway concessions to be granted in South Africa, has been set on foot. It is a commission which is to be set up in the near future, and it is to be set up in the near future, and it is to be set up in the near future.

### OPPORTUNITIES AND THE CHINA.

THE CHINA MOTOR INDUSTRY.

The Chinese motor industry is a very important one, and it is a very important one. It is a very important one, and it is a very important one. It is a very important one, and it is a very important one. It is a very important one, and it is a very important one.

## Spend Your Holidays in SOUTH AFRICA

### EXCURSIONS TO SOUTH AFRICA

are available by **RAIL AND STEAMER** during **JUNE JULY & AUGUST**

Full particulars obtainable from Steamship Companies or from **Memorial Hall, Box 654, NAIROBI.**

### THE MAN WHO ASKS FOR "BEER" DESERVES WHAT HE GETS.

### THE MAN WHO ASKS FOR "McEWANS" GETS WHAT HE DESERVES.

## OVERMAN AND COMPANY

AGENTS, MOMBASA.

## Concrete Partition Blocks

FOR THE INTERNAL WALLS OF BUILDINGS

### OUR STOCKS EXCEED 80,000 BLOCKS

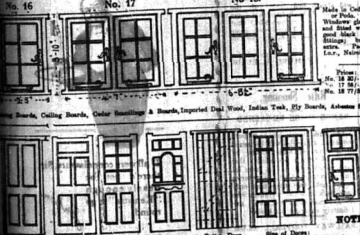
## STIRLING & SCOTT, Ltd.

Phone 192, NAIROBI. P.O. Box 946.

# Geo. BLOWERS.

BUILDING CONTRACTOR, MANUFACTURER AND DIRECT IMPORTER.

100 WATER STREET, NAIROBI. Phone 300. Phone 425



### WHY BUY AMERICAN DOORS

AND SEND YOUR MONEY ABROAD?

I can compete with them and beat them!

Send for my **ILLUSTRATED CATALOGUE** and Price-List. **QUOTED** quotations for **ROUGH** work.

### CONCRETE BLOCKS

ALL SIZES IN STOCK

### BEST KIMA SAND

IN ANY QUANTITY.

### QUARRY CHIPS

BLACK TRAP BALLAST

(Machine Broken and Screened to suit Size.)

### DELIVERIES BY LORRIES AT QUOTED RATES.

### P. Stewart, PAINTER and DECORATOR.

Hardings Street, NAIROBI. P.O. Box 228.

## Crawford's LIQUEUR

SCOTCH WHISKY

A & J CRAWFORD, DISTN. SCOTLAND.

## The Trocadero Bar

AND Restaurant

Proprietor—W. M. Godfrey.  
Manager—Mr. Bob Hillings.

GRILES AT ALL HOURS.  
ALL MEALS—REFRESHMENTS—TEAS—GOMME AND TRY.

"OLD BOB'S" BAR SNACKS.  
Hot Dressed Beef and Chicken.  
Cannons Be Beasts.

### The Best Dinner Served in Town at Shs. 4/-.

## Motor Mart

and Exchange, Ltd. NAIROBI.

Chevrolet Tourer 1929, done only 2,000 miles. £140

Chevrolet Tourer 1928, four cylinder, excellent condition. £150

Ford Six Door Sedan. £180

Chrysler "70" Splendid condition. £120

Ford Six Body Model "A" 2 1/2 mileage only 600—also new. £120

Willys Knight Tourer, a sound proposition. £90

Jeep Tourer 1928 in excellent condition. £100

### Rifles & Shot Guns.

We carry a large selection of Fire Arms by the best Makers Only.

Mauser Rifle/Shot Guns in calibres  
 6.5mm (30.8mm), and 9.5mm (37.8mm).

Mauser Rifles  
 Calibres 568, 375, 319, 266, 405, 408.  
 ALL High Velocity Accuracy guaranteed,  
 Holland & Holland, J. Rigby & Co., Weasby,  
 Richards and H.S. Lee. Wagonette stocked.  
 MAGNIFICENT in all calibres and Make stocked.  
 Suspensions Involved.

### SHAW & HUNTEG Ltd.

Z.O. Box 70, NAIROBI.



**SWIFT AND SURE**

Kynoch cartridges for MAUSER and MANNLICHER-SCHOENAUER are the most popular in the market. They are always the choice of the most expert marksmen. KYNOCHE CARTRIDGES give you the most accurate and most reliable results. On your next order specify

## KYNOCHE RIFLE CARTRIDGES

BRITISH & BEST

Obtainable from all licensed dealers throughout East Africa

### A. HOGG, NAIROBI.

MAKING'S BULLDOG, NAIROBI.  
 An O.B.U. SUMMER CUP, 20/8/20, 14 miles, 1st prize, 41/2 hours. 2nd prize, 41/2 hours. 3rd prize, 41/2 hours. 4th prize, 41/2 hours. 5th prize, 41/2 hours. 6th prize, 41/2 hours. 7th prize, 41/2 hours. 8th prize, 41/2 hours. 9th prize, 41/2 hours. 10th prize, 41/2 hours. 11th prize, 41/2 hours. 12th prize, 41/2 hours. 13th prize, 41/2 hours. 14th prize, 41/2 hours. 15th prize, 41/2 hours. 16th prize, 41/2 hours. 17th prize, 41/2 hours. 18th prize, 41/2 hours. 19th prize, 41/2 hours. 20th prize, 41/2 hours. 21st prize, 41/2 hours. 22nd prize, 41/2 hours. 23rd prize, 41/2 hours. 24th prize, 41/2 hours. 25th prize, 41/2 hours. 26th prize, 41/2 hours. 27th prize, 41/2 hours. 28th prize, 41/2 hours. 29th prize, 41/2 hours. 30th prize, 41/2 hours. 31st prize, 41/2 hours. 32nd prize, 41/2 hours. 33rd prize, 41/2 hours. 34th prize, 41/2 hours. 35th prize, 41/2 hours. 36th prize, 41/2 hours. 37th prize, 41/2 hours. 38th prize, 41/2 hours. 39th prize, 41/2 hours. 40th prize, 41/2 hours. 41st prize, 41/2 hours. 42nd prize, 41/2 hours. 43rd prize, 41/2 hours. 44th prize, 41/2 hours. 45th prize, 41/2 hours. 46th prize, 41/2 hours. 47th prize, 41/2 hours. 48th prize, 41/2 hours. 49th prize, 41/2 hours. 50th prize, 41/2 hours. 51st prize, 41/2 hours. 52nd prize, 41/2 hours. 53rd prize, 41/2 hours. 54th prize, 41/2 hours. 55th prize, 41/2 hours. 56th prize, 41/2 hours. 57th prize, 41/2 hours. 58th prize, 41/2 hours. 59th prize, 41/2 hours. 60th prize, 41/2 hours. 61st prize, 41/2 hours. 62nd prize, 41/2 hours. 63rd prize, 41/2 hours. 64th prize, 41/2 hours. 65th prize, 41/2 hours. 66th prize, 41/2 hours. 67th prize, 41/2 hours. 68th prize, 41/2 hours. 69th prize, 41/2 hours. 70th prize, 41/2 hours. 71st prize, 41/2 hours. 72nd prize, 41/2 hours. 73rd prize, 41/2 hours. 74th prize, 41/2 hours. 75th prize, 41/2 hours. 76th prize, 41/2 hours. 77th prize, 41/2 hours. 78th prize, 41/2 hours. 79th prize, 41/2 hours. 80th prize, 41/2 hours. 81st prize, 41/2 hours. 82nd prize, 41/2 hours. 83rd prize, 41/2 hours. 84th prize, 41/2 hours. 85th prize, 41/2 hours. 86th prize, 41/2 hours. 87th prize, 41/2 hours. 88th prize, 41/2 hours. 89th prize, 41/2 hours. 90th prize, 41/2 hours. 91st prize, 41/2 hours. 92nd prize, 41/2 hours. 93rd prize, 41/2 hours. 94th prize, 41/2 hours. 95th prize, 41/2 hours. 96th prize, 41/2 hours. 97th prize, 41/2 hours. 98th prize, 41/2 hours. 99th prize, 41/2 hours. 100th prize, 41/2 hours.

## NOTICE

The winner of the British Amateur Championship played "Spalding" Golf balls throughout the tournament.

### CRAIG'S SPORTS HOUSE,

Government Road, NAIROBI.

# THE SPORTS PAGE

"R. A. Standard" Special (Continued)

## COUNTY CRICKET CHAMPIONSHIP.

Few Matches Defeated

**BURKES AT HARBOR JULY RACE MEETING.**

**OLD TRAFFORD GAMES SHOW.**

**STANDARD - CORRESPONDENT.**

It was one of the matches which started on Saturday week, in a definite and important way. The day was a day's play in the middle of the week for the first time since the end of 1914 for the few hours of the week which were devoted to cricket. The match was played on a pitch which was not only a quarter to a mile, but also was a very good one. It was a match which was played on a pitch which was not only a quarter to a mile, but also was a very good one. It was a match which was played on a pitch which was not only a quarter to a mile, but also was a very good one.

All the Oval men delayed the start until a quarter to one, but were very fairly well prepared. Burkes taking place for a few minutes. The match was played on a pitch which was not only a quarter to a mile, but also was a very good one. It was a match which was played on a pitch which was not only a quarter to a mile, but also was a very good one.

The following are the details of play:

**Notes as to Varieties.**

At Trent Bridge: Yorkshire 1st innings 104 for 1 (Smith); 2nd 100 (Maitland); 41 (Greenwood).

Notes 1st innings 215 for 4 (Lilly 120).

**Northants vs. Middlesex.**

At Scarborough: Northants 1st innings: 109 (Blackwell 60). Middlesex 1st innings: 106 (Dodd) 2nd innings: 201 for 4 (Dodd) 3rd innings: 104 for 4 (Maitland) 2nd innings for 1st Innings were on the first Innings.

**At Perthshire vs. Gloucestershire.**

Perthshire 1st innings: 270 (Head 90, Arnold 66). Gloucestershire 1st innings: 219 for 1 (Head). Gloucestershire 2nd innings: 135 (Harvey 60, 2nd 130). Perthshire 2nd innings: 180 runs.

**Derbyshire vs. Somerset.**

Derbyshire 1st innings: 56 (Stretton 7/11, Mitchell 3/7). Somerset 1st innings: 70 (Stable 17/7). Derbyshire 2nd innings: 81 for 4 (Derbyshire was for 27 minutes).

**Derbyshire vs. Surrey.**

At Kensington Oval: Derbyshire 1st innings: 61 for 6 (Maitland 37, Pinnar 70). Surrey 1st innings: 272 (Stretton 115 for 2). Surrey was on the first Innings.

**Worcestershire vs. Gloucestershire.**

At Newcastle: Worcester 1st innings: 280 (Worcestershire 1st innings: 270 for 9 (Dodd) (Wright 117). Gloucestershire 2nd innings: 200 for 2 (Stretton 105 not out). Worcestershire was on the first Innings.

**Worcestershire vs. Kent.**

At Scarborough: Worcester 1st innings: 115 (Pinnar 60/2). Kent 1st innings: 173 for 5 (Dodd 17/5). Worcester 2nd innings: 201 (Dodd 100). Kent 2nd innings: 41 for 1. Kent was on the first Innings.

**Worcestershire vs. Gloucestershire.**

At Scarborough: Worcester 1st innings: 210 (Dodd 100, Pinnar 60/2). Gloucestershire 1st innings: 210 (Dodd 100, Pinnar 60/2). Gloucestershire 2nd innings: 210 (Dodd 100, Pinnar 60/2). Worcester 2nd innings: 210 (Dodd 100, Pinnar 60/2).

**Worcestershire vs. Gloucestershire.**

At Scarborough: Worcester 1st innings: 210 (Dodd 100, Pinnar 60/2). Gloucestershire 1st innings: 210 (Dodd 100, Pinnar 60/2). Gloucestershire 2nd innings: 210 (Dodd 100, Pinnar 60/2). Worcester 2nd innings: 210 (Dodd 100, Pinnar 60/2).

**Worcestershire vs. Gloucestershire.**

At Scarborough: Worcester 1st innings: 210 (Dodd 100, Pinnar 60/2). Gloucestershire 1st innings: 210 (Dodd 100, Pinnar 60/2). Gloucestershire 2nd innings: 210 (Dodd 100, Pinnar 60/2). Worcester 2nd innings: 210 (Dodd 100, Pinnar 60/2).

**Worcestershire vs. Gloucestershire.**

At Scarborough: Worcester 1st innings: 210 (Dodd 100, Pinnar 60/2). Gloucestershire 1st innings: 210 (Dodd 100, Pinnar 60/2). Gloucestershire 2nd innings: 210 (Dodd 100, Pinnar 60/2). Worcester 2nd innings: 210 (Dodd 100, Pinnar 60/2).

"R. A. Standard" Special (Continued)

## THE SECOND TEST MATCH.

Larwood and Southern Chosen.

**GRAY AND STOUTLIPP FOR STARTERS.**

**STANDARD - CORRESPONDENT.**

The second Test match between England and Australia was played on Saturday at Harborside. The match was played on a pitch which was not only a quarter to a mile, but also was a very good one. It was a match which was played on a pitch which was not only a quarter to a mile, but also was a very good one.

The following are the details of play:

**Notes as to Varieties.**

At Trent Bridge: Yorkshire 1st innings 104 for 1 (Smith); 2nd 100 (Maitland); 41 (Greenwood).

Notes 1st innings 215 for 4 (Lilly 120).

**Northants vs. Middlesex.**

At Scarborough: Northants 1st innings: 109 (Blackwell 60). Middlesex 1st innings: 106 (Dodd) 2nd innings: 201 for 4 (Dodd) 3rd innings: 104 for 4 (Maitland) 2nd innings for 1st Innings were on the first Innings.

**At Perthshire vs. Gloucestershire.**

Perthshire 1st innings: 270 (Head 90, Arnold 66). Gloucestershire 1st innings: 219 for 1 (Head). Gloucestershire 2nd innings: 135 (Harvey 60, 2nd 130). Perthshire 2nd innings: 180 runs.

**Derbyshire vs. Somerset.**

Derbyshire 1st innings: 56 (Stretton 7/11, Mitchell 3/7). Somerset 1st innings: 70 (Stable 17/7). Derbyshire 2nd innings: 81 for 4 (Derbyshire was for 27 minutes).

**Derbyshire vs. Surrey.**

At Kensington Oval: Derbyshire 1st innings: 61 for 6 (Maitland 37, Pinnar 70). Surrey 1st innings: 272 (Stretton 115 for 2). Surrey was on the first Innings.

**Worcestershire vs. Gloucestershire.**

At Newcastle: Worcester 1st innings: 280 (Worcestershire 1st innings: 270 for 9 (Dodd) (Wright 117). Gloucestershire 2nd innings: 200 for 2 (Stretton 105 not out). Worcestershire was on the first Innings.

**Worcestershire vs. Kent.**

At Scarborough: Worcester 1st innings: 115 (Pinnar 60/2). Kent 1st innings: 173 for 5 (Dodd 17/5). Worcester 2nd innings: 201 (Dodd 100). Kent 2nd innings: 41 for 1. Kent was on the first Innings.

**Worcestershire vs. Gloucestershire.**

At Scarborough: Worcester 1st innings: 210 (Dodd 100, Pinnar 60/2). Gloucestershire 1st innings: 210 (Dodd 100, Pinnar 60/2). Gloucestershire 2nd innings: 210 (Dodd 100, Pinnar 60/2). Worcester 2nd innings: 210 (Dodd 100, Pinnar 60/2).

**Worcestershire vs. Gloucestershire.**

At Scarborough: Worcester 1st innings: 210 (Dodd 100, Pinnar 60/2). Gloucestershire 1st innings: 210 (Dodd 100, Pinnar 60/2). Gloucestershire 2nd innings: 210 (Dodd 100, Pinnar 60/2). Worcester 2nd innings: 210 (Dodd 100, Pinnar 60/2).

**Worcestershire vs. Gloucestershire.**

At Scarborough: Worcester 1st innings: 210 (Dodd 100, Pinnar 60/2). Gloucestershire 1st innings: 210 (Dodd 100, Pinnar 60/2). Gloucestershire 2nd innings: 210 (Dodd 100, Pinnar 60/2). Worcester 2nd innings: 210 (Dodd 100, Pinnar 60/2).

**Worcestershire vs. Gloucestershire.**

At Scarborough: Worcester 1st innings: 210 (Dodd 100, Pinnar 60/2). Gloucestershire 1st innings: 210 (Dodd 100, Pinnar 60/2). Gloucestershire 2nd innings: 210 (Dodd 100, Pinnar 60/2). Worcester 2nd innings: 210 (Dodd 100, Pinnar 60/2).

**Worcestershire vs. Gloucestershire.**

At Scarborough: Worcester 1st innings: 210 (Dodd 100, Pinnar 60/2). Gloucestershire 1st innings: 210 (Dodd 100, Pinnar 60/2). Gloucestershire 2nd innings: 210 (Dodd 100, Pinnar 60/2). Worcester 2nd innings: 210 (Dodd 100, Pinnar 60/2).

**Worcestershire vs. Gloucestershire.**

At Scarborough: Worcester 1st innings: 210 (Dodd 100, Pinnar 60/2). Gloucestershire 1st innings: 210 (Dodd 100, Pinnar 60/2). Gloucestershire 2nd innings: 210 (Dodd 100, Pinnar 60/2). Worcester 2nd innings: 210 (Dodd 100, Pinnar 60/2).

"R. A. Standard" Special (Continued)

## WHIRLWIND—SECOND DAY.

Surprise Defeat of Oregon.

**LIN'S BRILLIANT AMATEUR HOPKIN.**

**STANDARD - CORRESPONDENT.**

The second day of the Whirlwind was played on Saturday at Harborside. The match was played on a pitch which was not only a quarter to a mile, but also was a very good one. It was a match which was played on a pitch which was not only a quarter to a mile, but also was a very good one.

The following are the details of play:

**Notes as to Varieties.**

At Trent Bridge: Yorkshire 1st innings 104 for 1 (Smith); 2nd 100 (Maitland); 41 (Greenwood).

Notes 1st innings 215 for 4 (Lilly 120).

**Northants vs. Middlesex.**

At Scarborough: Northants 1st innings: 109 (Blackwell 60). Middlesex 1st innings: 106 (Dodd) 2nd innings: 201 for 4 (Dodd) 3rd innings: 104 for 4 (Maitland) 2nd innings for 1st Innings were on the first Innings.

**At Perthshire vs. Gloucestershire.**

Perthshire 1st innings: 270 (Head 90, Arnold 66). Gloucestershire 1st innings: 219 for 1 (Head). Gloucestershire 2nd innings: 135 (Harvey 60, 2nd 130). Perthshire 2nd innings: 180 runs.

**Derbyshire vs. Somerset.**

Derbyshire 1st innings: 56 (Stretton 7/11, Mitchell 3/7). Somerset 1st innings: 70 (Stable 17/7). Derbyshire 2nd innings: 81 for 4 (Derbyshire was for 27 minutes).

**Derbyshire vs. Surrey.**

At Kensington Oval: Derbyshire 1st innings: 61 for 6 (Maitland 37, Pinnar 70). Surrey 1st innings: 272 (Stretton 115 for 2). Surrey was on the first Innings.

**Worcestershire vs. Gloucestershire.**

At Newcastle: Worcester 1st innings: 280 (Worcestershire 1st innings: 270 for 9 (Dodd) (Wright 117). Gloucestershire 2nd innings: 200 for 2 (Stretton 105 not out). Worcestershire was on the first Innings.

**Worcestershire vs. Kent.**

At Scarborough: Worcester 1st innings: 115 (Pinnar 60/2). Kent 1st innings: 173 for 5 (Dodd 17/5). Worcester 2nd innings: 201 (Dodd 100). Kent 2nd innings: 41 for 1. Kent was on the first Innings.

**Worcestershire vs. Gloucestershire.**

At Scarborough: Worcester 1st innings: 210 (Dodd 100, Pinnar 60/2). Gloucestershire 1st innings: 210 (Dodd 100, Pinnar 60/2). Gloucestershire 2nd innings: 210 (Dodd 100, Pinnar 60/2). Worcester 2nd innings: 210 (Dodd 100, Pinnar 60/2).

**Worcestershire vs. Gloucestershire.**

At Scarborough: Worcester 1st innings: 210 (Dodd 100, Pinnar 60/2). Gloucestershire 1st innings: 210 (Dodd 100, Pinnar 60/2). Gloucestershire 2nd innings: 210 (Dodd 100, Pinnar 60/2). Worcester 2nd innings: 210 (Dodd 100, Pinnar 60/2).

**Worcestershire vs. Gloucestershire.**

At Scarborough: Worcester 1st innings: 210 (Dodd 100, Pinnar 60/2). Gloucestershire 1st innings: 210 (Dodd 100, Pinnar 60/2). Gloucestershire 2nd innings: 210 (Dodd 100, Pinnar 60/2). Worcester 2nd innings: 210 (Dodd 100, Pinnar 60/2).

**Worcestershire vs. Gloucestershire.**

At Scarborough: Worcester 1st innings: 210 (Dodd 100, Pinnar 60/2). Gloucestershire 1st innings: 210 (Dodd 100, Pinnar 60/2). Gloucestershire 2nd innings: 210 (Dodd 100, Pinnar 60/2). Worcester 2nd innings: 210 (Dodd 100, Pinnar 60/2).

**Worcestershire vs. Gloucestershire.**

At Scarborough: Worcester 1st innings: 210 (Dodd 100, Pinnar 60/2). Gloucestershire 1st innings: 210 (Dodd 100, Pinnar 60/2). Gloucestershire 2nd innings: 210 (Dodd 100, Pinnar 60/2). Worcester 2nd innings: 210 (Dodd 100, Pinnar 60/2).

**Worcestershire vs. Gloucestershire.**

At Scarborough: Worcester 1st innings: 210 (Dodd 100, Pinnar 60/2). Gloucestershire 1st innings: 210 (Dodd 100, Pinnar 60/2). Gloucestershire 2nd innings: 210 (Dodd 100, Pinnar 60/2). Worcester 2nd innings: 210 (Dodd 100, Pinnar 60/2).

## CHARLES WARE

TRUST ACCOUNTANT,  
 25, 26, 27, 28, 29, 30, 31, 32, 33, 34, 35, 36, 37, 38, 39, 40, 41, 42, 43, 44, 45, 46, 47, 48, 49, 50, 51, 52, 53, 54, 55, 56, 57, 58, 59, 60, 61, 62, 63, 64, 65, 66, 67, 68, 69, 70, 71, 72, 73, 74, 75, 76, 77, 78, 79, 80, 81, 82, 83, 84, 85, 86, 87, 88, 89, 90, 91, 92, 93, 94, 95, 96, 97, 98, 99, 100.

All Prices are Subject to Market Fluctuations.  
 Special Accounts opened for any reasonable amount.  
 No DEBIT DISCOUNTS given. No CREDIT given.  
 No DEBIT DISCOUNTS given. No CREDIT given.

## Cementone

To All Interested in Building

Stocks held of proved **Special Products,**

For the Decorative and Preservative treatment of

### Cement, Plaster Brick etc., in

### BLACK TILE and BRICK BEDS,

### GREEN YELLOW and MARGOLD

J.H. Todd & Co. Ltd.  
 NAIROBI

## MAURICE ROSENSTON

F.O. BOX 161  
 ROSA BUILDING, GOVERNMENT ROAD, NAIROBI

NEWBURY CLUB, Box 70, 15 miles - 4/7; Stoke Star, 6/2  
 NAIROBI CLUB, Box 70, 15 miles - 4/7; Stoke Star, 6/2  
 NAIROBI CLUB, Box 70, 15 miles - 4/7; Stoke Star, 6/2

DOUBLES, WINS OR PLACES ONLY.  
 Traces carried on any even.

## Football.

"BOOKER" BALLS, 18 1/2 - 22 (60 and 90)

"RUGBY BALLS 90" 4 or 6 panels.

JERSEYS, STOCKINGS, SHORTS, BRIM GUARDS, GURUK CAPS, KEEPER CAPS, AND ALL ACCESSORIES.

### May & Co., Ltd.

### THE SPORTS HOUSE

NAIROBI.