

The LOUNGE FOR Morning AND Afternoon TEAS The NEW STANLEY HOTEL OPEN ON SUNDAYS TO Non-Residents.

BE SURE IT'S A BISKER KENYA Breweries Ltd. Box 161. Nairobi.

DAILY EDITION THE EAST 12 PAGES African Standard

UGANDA ARGUS With which THE LEADER.

THE OLDEST ESTABLISHED NEWSPAPER PUBLISHED IN KENYA AND UGANDA.

NAIROBI, MONDAY, JANUARY 26, 1953.

PRICE, 50 CENTS.

TRADE OUTLOOK IN TANGANYIKA.

Scepticism in Regard to Early Revival.

THE ECONOMIC POSITION.

Prospects of Cycle of Lean Years.

During the course of the debate on the Estimates in the Tanganyika Legislative Council, Major East, one of the European Liberal Members, said that he recognised the danger of pessimism in regard to the present economic position of the country. He added the positive given of the existing state of the country's finances was entirely unjustified.

He did not agree, however, with the Government's estimate of possible or probable revenue for the coming year. Government had estimated on a revival in trade, whereas the speaker could see no prospects of a trade revival.

The world at the present moment was overstocked, he continued, to an incredible extent, and as far as Tanganyika was concerned, they were over-producing. Sida was the major industry, and owing to the fall in prices, unless there was some method of financial assistance to the planter, there would be very little chance of obtaining the estimate of revenue from this quarter.

It was obvious that they were faced with the question of retrenchment in some form or other. While he agreed that Government could not have done more during the past year, the fact remained that the territory's establishment had been allowed to remain at too large proportions.

He finally touched on native policy and said that the colonies could never for one moment accept, nor for one moment allow themselves to be forced to accept the policy recently announced by the Secretary of State.

Native Policy.

During the debate on the second reading of the 1952-53 Supply Bill in the Tanganyika Legislative Council, the Hon. Mr. East said that he had recognised the danger of overstocking. He fully appreciated the view that he says that the future gives promise of a revival in the present state of this country's industry, especially in regard to sisal, as pointed out recently by the Prime Minister. But on the whole, he would like to see all the sisal in the country, and he would like to see the maximum amount of possible revenue for the territory.

Railway Revenue.

Dealing with one or two specific items, it is perfectly obvious that small amendments must be made. The last time we have considered the Railway Department's estimate as the moment, will not be until next year. It is necessary to review the transfer of the Railway Department's estimate to the Government, and to see that the amount of the estimate is not too high. It is necessary to see that the amount of the estimate is not too high. It is necessary to see that the amount of the estimate is not too high.

The Revenue. Apart from the railway point of view as showing the revenue I would point out that they are not too high. It is necessary to see that the amount of the estimate is not too high.

THE MEOPHAM AIR DISASTER.

Primary Cause Now Explained.

A Phenomenon.

REPORT BY COMMITTEE OF INVESTIGATION

THROUGH REUTERS AGENCY. London, January 25. The report of the Committee of the Aeronautical Research Board, after a full review of various hypotheses, said that the most probable primary cause of the Meopham air disaster on July 21, 1950 was a phenomenon called "buffeting," a species of irregular oscillation which caused a break-up in the tail unit in the final moments of the flight.

The disaster at Meopham, Kent, occurred on July 21, 1950, when a Junker aeroplane, on arrival at Dover, for Dover to London, crashed. The Marquis of Exeter, Lord Robert Ward, Bart., Viscount Eldon and Sir John Glynne, were killed, as also was Colonel Glynne, the pilot. The cause of the disaster could not be explained at the enquiry.

German in Upper Silesia.

ILL-TREATMENT CHARGES INVESTIGATED

THROUGH REUTERS AGENCY. London, January 25. At the final sitting of the League Council a dispatch of the most important news with which has been faced for a long time, namely the complaint of ill-treatment by the Germans in Upper Silesia.

The Council adopted a report by the committee prepared for it by the League members Mr. Tolson, in numerous cases. He charged the Polish Government with neglecting the Committee of Enquiry, and suggesting the steps which the Polish Government should take to remedy the situation. Mr. Tolson's statement in a closing speech congratulated the League members on the steps which they had taken to remedy the situation. He said that the League members had taken the steps which they had taken to remedy the situation.

Sugar Fires in Cuba.

ENORMOUS AMOUNT OF SUGAR DESTROYED.

THROUGH REUTERS AGENCY. Havana, Jan. 24. A heavy fire in the city of Havana has destroyed an enormous amount of sugar. The fire was caused by a lightning strike on a sugar plantation. The fire was caused by a lightning strike on a sugar plantation.

A Church Appointment.

THROUGH REUTERS AGENCY. London, January 25. The Bishop of Exeter has been appointed to the see of Worcester. The Bishop of Worcester has been appointed to the see of Exeter.

GANDHI TO BE RELEASED.

Along With 30 Other Congress Leaders.

Result of Appeals.

CREATING ATMOSPHERE FOR CO-OPERATION.

THROUGH REUTERS AGENCY. New Delhi, January 25. Gandhi will probably be released during the week-end. A meeting of the Members of the Legislative Assembly have today in a statement expressing gratification at the Government's decision to release Gandhi and other Congress leaders.

Political Progress.

New Delhi, January 25. Members members of the Legislative Assembly have today in a statement expressing gratification at the Government's decision to release Gandhi and other Congress leaders.

WORLD CONFERENCE FOR 1952.

THROUGH REUTERS AGENCY. London, January 25. The League of Nations Council at a meeting to be held at Geneva on January 25, 1952, will discuss the draft convention drawn up by the Preparatory Commission.

Serious Fire at Kilindi.

MANY NATIVE HOUSES DESTROYED.

THROUGH REUTERS AGENCY. Nairobi, January 25. A serious fire at Kilindi, in the state for native residential houses on Saturday night. No one was hurt, but the fire broke out in a pit used by the municipal council as a dump for refuse and which it often burning and sparks were carried on to the neighbouring houses.

Trans Nzoia Weather.

FAVOURABLE TO HARVESTING CONDITIONS.

THROUGH REUTERS AGENCY. Nairobi, January 25. After the onset of a heavy shower of rain mentioned in my last report, the weather has again returned to the normal for this time of year, dry and hot. This is a great boon to the farmers who are now putting into their fields carrying maize from the farms to the stores.

SIR WILLIAM BULL.

Sir William Bull, well known as a Conservative member of Parliament for 20 years before 1920 and a prominent advocate of the Chamberlain Plan, has today proposing a toast at a public dinner at the Royal Albert Hall.

DR. MAUNDSELL.

THROUGH REUTERS AGENCY. London, January 25. Dr. A. T. Maundsell, Archbishop and Member of the House of Bishops, has today in a statement expressing gratification at the Government's decision to release Gandhi and other Congress leaders.

GERMAN SHIP SHELLED OFF RIO DE JANEIRO.

Incident During Revolt in Brazil.

FINDING OF THE COURT.

Unintelligible Signal by Shore Garrison Fort.

The incident off Rio de Janeiro in October last, when a German liner was fired upon by a garrison fort, causing a number of deaths, has been investigated by a Maritime Court at Hamburg. The Court found that the fort was to blame in the first instance for giving an unintelligible signal followed by a badly aimed warning shot. The captain of the vessel was also blamed for not stopping.

Series of Misunderstandings.

THROUGH REUTERS AGENCY. Hamburg, Jan. 24. The Maritime Court, investigating the circumstances of the firing on the German steamer "Baltic" in Rio de Janeiro, has today in its verdict said that the incident was due to a series of misunderstandings.

The captain of the vessel was also blamed for not stopping. The court found that the fort was to blame in the first instance for giving an unintelligible signal followed by a badly aimed warning shot. The captain of the vessel was also blamed for not stopping.

The court found that the fort was to blame in the first instance for giving an unintelligible signal followed by a badly aimed warning shot. The captain of the vessel was also blamed for not stopping.

The court found that the fort was to blame in the first instance for giving an unintelligible signal followed by a badly aimed warning shot. The captain of the vessel was also blamed for not stopping.

The court found that the fort was to blame in the first instance for giving an unintelligible signal followed by a badly aimed warning shot. The captain of the vessel was also blamed for not stopping.

The court found that the fort was to blame in the first instance for giving an unintelligible signal followed by a badly aimed warning shot. The captain of the vessel was also blamed for not stopping.

The court found that the fort was to blame in the first instance for giving an unintelligible signal followed by a badly aimed warning shot. The captain of the vessel was also blamed for not stopping.

The court found that the fort was to blame in the first instance for giving an unintelligible signal followed by a badly aimed warning shot. The captain of the vessel was also blamed for not stopping.

The court found that the fort was to blame in the first instance for giving an unintelligible signal followed by a badly aimed warning shot. The captain of the vessel was also blamed for not stopping.

The court found that the fort was to blame in the first instance for giving an unintelligible signal followed by a badly aimed warning shot. The captain of the vessel was also blamed for not stopping.

LAST WEEK OF WHITEWAYS STOCKTAKING Final Reductions in every Department Don't Miss visiting the Store during this Week Bargains for Everyone.

OUR WOMEN'S PAGE.

A Letter from Paris.



A red maroon model features a smart little vest of fringed serge in the same shade, and fastens to match on the shoulders; the popular bolero is cleverly suggested by means of strappings of the maroon.

The Parisienne gets into a little rest at the beginning of the season, and turned to more substantial materials. Some of them were not so very much more substantial. It is true, but at least they were not less. Now she is going back to it because she realizes she cannot do without it for "best" clothes.

The dance and dinner frock, the little one for the dance, the jumper for the best, and the dress, of course, the best lingerie—all are made of lace now. The favorite color is a soft yellow-pink, which makes such a woman who wears it look as if she had the most marvellous complexion. It seems to make a woman's skin soft and brilliant, and the ideal frock that gives depth and warmth to her coloring such as no other tint can give. This color is called onion pink, and it wears a little, so different material. I love it best in lace.

The Fitted Frock.

I saw a frock made entirely of mill crepe with a narrow black band to the knee. The bodice fitted like a glove to the hips, and the skirt, too, with sufficient width to give a lovely swing when the wearer danced. The décolletage was square back and front and most perfectly cut, just sufficiently wide to look pretty. You can imagine the softness of a gaping square back, can you not? The top of the square at the slender shoulder straps was of almost invisible net to match the lace.

Nettle-Rose Lace.

Another lace gown also had a

slim bodice, but the skirt was made with beautifully smart pointed pockets. This to be a better modern than the color of string. The bodice had a round neck in front and the shoulders were very interesting, the back and all down one side of it. A very nice decorative dull pink silk. Naturally, a little corset, would give the most so instead there was a lovely scarf of red and white, with a pointed diamond-shaped one from point to point, the points of which were joined with a narrow band of net in the center of the band of net and the pointed diamonds fell over the area, making an adorable effect.

I saw this exceedingly nice scarf made in a fine rare velvet for a rare maroon gown. The scarf was primrose style, but had a deep pink, and was made to match the scarf. It was a lovely combination, and I would have liked for a girl who wears one really good-looking evening gown.

The Lace Lingerie Set.

With a lace gown it is nice to wear lingerie of some fancy material. It sounds expensive, but it is really better than anything else. It is so lovely, and it is so easy to wear. It is so easy to wear, and it is so easy to wear. It is so easy to wear, and it is so easy to wear.

And the Lace Jumper.

The pretty shawl will not lose popularity as fast as the vest. It looks like under the coat, and it is really better than anything else.

Any gown has a suit of dress length, and a suit of dress length with a few changes to with the flare of the skirt. Your jumper may be of light, heavy, almost brown, has remained an excellent one for a long time. It is so good, and it is so good. It is so good, and it is so good.

"EMERGENCY RATIONING"

The great art of life, declares a writer, you need for home



Another smart dress in every-day wear is expressed in navy-blue stockettes. The bodice, belted at normal, extends over the hips like a shaped yoke, and a pretty trimmed with Echu and deep cuts of beige and navy spotted eyes de chat.

And her business with equal dignity, "to be prepared for emergencies."

SAUCE FOR SWEET PUFFERS.

Pavlova Sauce—From three-quarters of a pint of milk take sufficient to mix half an ounce sufficient to a smooth paste. Heat the remainder of the milk, stir in the mixed curd, and cook well, adding sugar to sweeten. Lastly, stir in enough vanilla and essence to flavor and a small piece of butter.

Hot Brand Sauce—Cream three ounces of fresh butter; add gradually three ounces of mastic sugar and three teaspoonful of brandy, the latter drop by drop, leaving all the time. Pipe up in a dish, give a little setting over the sauce, and leave in a cool place until required.

Sherry Sauce—Mix two ounces of butter in a saucepan, stir in an ounce of flour, and gradually add three-quarters of a pint of hot water. Cook well, stirring all the time, evenside with two ounces of sugar and give a few servings, stir in a gill of sherry.

Quick energy POST TOASTIES for that hot weather feeling

It's the Wake-up Food

A full and energy food that's most important. It's light, but you won't get light and really digest. Try a tempting bowlful of the Wake-up Food, Post Toasties.

Here's why these crumbly flakes tempt the appetite! Delicious flakes from the tender hearts of selected white corn, tossed golden crisp and seasoned to flavor goodness! Every member of the family uses for this quick-energy breakfast the Wake-up Food, Post Toasties.

And don't forget—there's just one way to get the Wake-up Food. Ask your grocer for Post Toasties in the red and yellow, wax-wrapped packages.

POST TOASTIES, INC., BATTLE CREEK, MICH. © 1925, C. B. Co.

1847 1921

BY APPOINTMENT

FISONS FERTILIZERS FOR KENYA COFFEE

WRITE FOR PARTICULARS AND PRICES OF THE SPECIAL BLEND FERTILIZER SUITABLE FOR YOUR COFFEE STATING ALTITUDE, RAINFALL, PARTICULARS OF SHADE, ETC.

DALGETY & COMPANY LIMITED,
NAIROBI.
P.O. Box 66

MARCONI VALVES.

are used by the B.C. IMPERIAL AIRWAYS and almost all the Big British Airlines—BRING YOUR SET UP TO DATE by following their example.

S. Jacobs Ltd. (H. V. Dept.)
NAIROBI.

Ray de Cologne is absolutely inflexible for refreshing and restoring tired nerves. Since 1700 this original Ray de Cologne, has always maintained the same high quality. Look for the RED TRADE MARK and the distinctive signature which should.

Sole Agent for East Africa
J. FLUM, Africa House, P.O. Box 747, NAIROBI.

OF IMPORTANCE

Mardigs & Brief

"The Tailoring Work"

have just received materials of the very latest fashion and style. An equalled opportunity is offered now to obtain suits of the most distinctive cut by Mr. Paul Mardigs at prices ranging from Shs. 130/-.

Royal Exchange Bldgs., Opp. S. Jacobs Ltd., Govt. Road.
P.O. Box 642 — NAIROBI.

NATURALLY REQUIRE VALUE FOR YOUR MONEY

YOU WANT THE BEST WE CAN GIVE YOU.

We transport anything anywhere. We deliver from hand, bag to motor car. We ship to any part of the globe. We clear from ship to shore. We supply goods daily from 4,000 tons always in stock. We supply labour to outfit or re-stock your goods.

The Express Transport Coy.

SHIPPING CONTRACTORS TO KENYA AND UGANDA RAILWAYS AND HARBOURS.

The firm you will eventually go to

MOMBASA — NAIROBI.

I'll Pay You

whenever you wish to be repaid if you study these

HYDROGEN PEROXIDE very useful for many purposes. OUB 12% volume of potassium dichromate prepared, dissolved bottles of 4, 10 and 20 lbs. respectively 1/75, 1/50 and 6/50 per gallon. 1/100 only.

COOL-LIVER OIL and **HAIR EXTRACT** are the only 15/- Available in 4 and 7 lbs. The larger the size the more economical. Wonderful for Hydrogen Peroxide daily cover as required.

The Nairobi Pharmacy
Junction of Victoria St. and River Road — NAIROBI.

PAIN AFTER EATING

STOP AT ONCE!

IT'S not the food you eat which causes pain, but the stomach which acts up. You feel full, you are uncomfortable, you get gas and cramps. It is the food which is not absorbed. Magnesia immediately neutralizes acid and pain and discomfort. It is the most certain cure for digestive pain and is used immediately by doctors all over the world because it is so safe. It is the only one that does not harm.

"BISURATED" MAGNESIA
Powder and Tablets from all chemists.

Geo. BLOWERS

BUILDING CONTRACTOR, MANUFACTURER AND DIRECT IMPORTER

SAULLER STREET, NAIROBI. GREATLY REDUCED PRICES

NO. 16 NO. 17 NO. 18

Planting Boards, Ceiling Boards, Color Tinting & Staining, Imported Dual Wood, Indian Teak, Fly Screens, Adhesive

Why Buy American Doors and Send Your Money Abroad? I can compete with them—and beat them! Send for my ILLUSTRATED CATALOG and Price List. SOUND quotations for ROUGH WORK.

CONCRETE BLOCKS. ALL SIZES IN STOCK. QUARRY BLENDED BEST KILN BURN IN ANY QUANTITY. (Cart Truck or Train Load). Machine Broken and Screened to any size.

CEMENT BELLS BY JORRIES AT QUOTED RATES.

PLUMBING AND SANITARY WORK DONE UNDER THE SUPERVISION OF OUR OWN EUROPEAN SPECIALISTS.

UP-TO-DATE and ATTRACTIVE. **SIGNS** Latest London Styles, Ideas, Layouts, Pictorial Designs, Posters.

THE EAST AFRICAN STANDARD DAILY EDITION.

Advertisements are accepted only subject to approval.

Domestic Advertisements: Births, Marriages and Deaths...

Advertisements: Full rate, 1/6 per line of 20 words with a minimum of 50.

THE SUBSCRIPTION TABLE: Weekly, monthly, quarterly rates.

WEEKLY

Printed by James K. Hannay, at the Press, 25, Abchurch Lane, London, E.C. 4.

FOR SALE

THESE change for advertisements in this column is 1/6 for 14 lines with a minimum of 50...

BRIGHTEN THE New Year for you and your friends with a gift...

Bought the Best by shopping at B.D.B.'s. We carry the finest quality of table dainties...

EMERALD CUT, good ring, 100 carats. Cash price £25. Apply H.L. Skinner, Thompson's Lane.

CONTROL your Menly Bug by using U.C.N. Dainty Dressing. Now available. Empson & Whitlaw, Ltd.

LASTING Flat Mallets. Flat with Metal Caps. Size 9 1/2. Flat. Price 90/- per gross. Flat. Price 100/- per dozen per pair. Wholesale. Price 30/- per pair. Apply Messrs. P.O. Box 500, Nairobi.

MUTHAIGA For Sale. Full built FIVE room house. Situated in the best of the Westwoods, on a fine site. Repeats half price on consecutive days only.

BOARD AND RESIDENCE. THE change for advertisements in this column is 1/6 for 14 lines with a minimum of 50...

KIBRONDEL. 1st Avenue, Parklands, comfortable residential property. Apply Messrs. M.K. O.G. No. 1128.

LARGE Front Double Room 40 sq. ft. Full built. Walking distance from the Hill Road. No. 1269. Standard. Nairobi.

TO BAKERS.

THE BEST IS MILLED BY Kenya Grain Mills Ltd. NAIROBI. BE SURE YOU GET IT.

WANTED.

THESE change for advertisements in this column is 1/6 for 14 lines with a minimum of 50...

LOADS for 14 ton Lorry. Running drive-way. 4000 lbs. 1000 lbs. 1000 lbs. 1000 lbs. Apply Messrs. P.O. Box 500, Nairobi.

UNEMPLOYED wanted. 40/- weekly. 20/- half weekly. 10/- full weekly. Apply Messrs. P.O. Box 500, Nairobi.

WANTED. A good second hand. 14 ton Lorry. Running drive-way. 4000 lbs. 1000 lbs. 1000 lbs. 1000 lbs. Apply Messrs. P.O. Box 500, Nairobi.

TO LET.

THESE change for advertisements in this column is 1/6 for 14 lines with a minimum of 50...

WELLINGTON house on Hillside. 14 room house. Situated in the best of the Westwoods, on a fine site. Repeats half price on consecutive days only.

WELLINGTON house on Hillside. 14 room house. Situated in the best of the Westwoods, on a fine site. Repeats half price on consecutive days only.

LARGE Furnished Room. 14 room house. Situated in the best of the Westwoods, on a fine site. Repeats half price on consecutive days only.

MUTHAIGA. 14 room house. Situated in the best of the Westwoods, on a fine site. Repeats half price on consecutive days only.

STABLES. 14 room house. Situated in the best of the Westwoods, on a fine site. Repeats half price on consecutive days only.

TWO Wood and Iron Buildings. 14 room house. Situated in the best of the Westwoods, on a fine site. Repeats half price on consecutive days only.

WELL Furnished Stone House. 14 room house. Situated in the best of the Westwoods, on a fine site. Repeats half price on consecutive days only.

To Let For Sale.

THESE change for advertisements in this column is 1/6 for 14 lines with a minimum of 50...

CONCRETE HOUSE. 14 room house. Situated in the best of the Westwoods, on a fine site. Repeats half price on consecutive days only.

AFRICAN GUARANTEE and INDEMNITY Co., Ltd. M.D. KAMPP. Chief Agent.

ENGLISH house on Nairobi. 14 room house. Situated in the best of the Westwoods, on a fine site. Repeats half price on consecutive days only.

KIBRONDEL. 1st Avenue, Parklands, comfortable residential property. Apply Messrs. M.K. O.G. No. 1128.

LARGE Front Double Room 40 sq. ft. Full built. Walking distance from the Hill Road. No. 1269. Standard. Nairobi.

SITUATIONS VACANT.

THESE change for advertisements in this column is 1/6 for 14 lines with a minimum of 50...

EUROPEAN Engineer. Apply to Messrs. P.O. Box 500, Nairobi.

STOREROOM. 14 room house. Situated in the best of the Westwoods, on a fine site. Repeats half price on consecutive days only.

WANTED. 14 room house. Situated in the best of the Westwoods, on a fine site. Repeats half price on consecutive days only.

WANTED. 14 room house. Situated in the best of the Westwoods, on a fine site. Repeats half price on consecutive days only.

WANTED. 14 room house. Situated in the best of the Westwoods, on a fine site. Repeats half price on consecutive days only.

WANTED. 14 room house. Situated in the best of the Westwoods, on a fine site. Repeats half price on consecutive days only.

WANTED. 14 room house. Situated in the best of the Westwoods, on a fine site. Repeats half price on consecutive days only.

WANTED. 14 room house. Situated in the best of the Westwoods, on a fine site. Repeats half price on consecutive days only.

WANTED. 14 room house. Situated in the best of the Westwoods, on a fine site. Repeats half price on consecutive days only.

WANTED. 14 room house. Situated in the best of the Westwoods, on a fine site. Repeats half price on consecutive days only.

WANTED. 14 room house. Situated in the best of the Westwoods, on a fine site. Repeats half price on consecutive days only.

WANTED. 14 room house. Situated in the best of the Westwoods, on a fine site. Repeats half price on consecutive days only.

WANTED. 14 room house. Situated in the best of the Westwoods, on a fine site. Repeats half price on consecutive days only.

WANTED. 14 room house. Situated in the best of the Westwoods, on a fine site. Repeats half price on consecutive days only.

WANTED. 14 room house. Situated in the best of the Westwoods, on a fine site. Repeats half price on consecutive days only.

WANTED. 14 room house. Situated in the best of the Westwoods, on a fine site. Repeats half price on consecutive days only.

WANTED. 14 room house. Situated in the best of the Westwoods, on a fine site. Repeats half price on consecutive days only.

DROWN & BARRATT, LTD.

ESTATE AGENTS. 10, Park Road, Nairobi. P.O. Box 504.

PROPERTY LIST. MUTHAIGA. A delightful plot of 1/2 acre. Situated in the best of the Westwoods, on a fine site. Repeats half price on consecutive days only.

KILIMBOI ROAD. 21/2 acres of land. Situated in the best of the Westwoods, on a fine site. Repeats half price on consecutive days only.

TO LET. We have a number of attractive houses to let in all parts of the town. Apply to Messrs. P.O. Box 500, Nairobi.

GIRARDIA ROAD. Attractive 14 room house. Situated in the best of the Westwoods, on a fine site. Repeats half price on consecutive days only.

KARIBU ROAD. Plot of 1/2 acre with building. Situated in the best of the Westwoods, on a fine site. Repeats half price on consecutive days only.

RYERHIDE ESTATE. Desirable plots for sale. Situated in the best of the Westwoods, on a fine site. Repeats half price on consecutive days only.

BEACH PROPERTY. On the Aberdonian. 2,200 acres of land. Situated in the best of the Westwoods, on a fine site. Repeats half price on consecutive days only.

W. J. MOYNAGH. AFRICA HOUSE. 10, Park Road, Nairobi. P.O. Box 54.

FOR SALE. Choice building of 1/2 acre in Kenia. 2000 sq. ft. of land. Situated in the best of the Westwoods, on a fine site. Repeats half price on consecutive days only.

FOR SALE. 50 acres of land with house and outbuildings. Situated in the best of the Westwoods, on a fine site. Repeats half price on consecutive days only.

HOUSE PLANT. The choicest land in the town for sale. Situated in the best of the Westwoods, on a fine site. Repeats half price on consecutive days only.

FOR SALE. 21/2 acres of land with house and outbuildings. Situated in the best of the Westwoods, on a fine site. Repeats half price on consecutive days only.

FOR SALE. 21/2 acres of land with house and outbuildings. Situated in the best of the Westwoods, on a fine site. Repeats half price on consecutive days only.

FOR SALE. 21/2 acres of land with house and outbuildings. Situated in the best of the Westwoods, on a fine site. Repeats half price on consecutive days only.

FOR SALE. 21/2 acres of land with house and outbuildings. Situated in the best of the Westwoods, on a fine site. Repeats half price on consecutive days only.

FOR SALE. 21/2 acres of land with house and outbuildings. Situated in the best of the Westwoods, on a fine site. Repeats half price on consecutive days only.

FOR SALE. 21/2 acres of land with house and outbuildings. Situated in the best of the Westwoods, on a fine site. Repeats half price on consecutive days only.

J. A. LANDMAN & Co.

LAND, ESTATE and MANAGING AGENTS. CITY SQUARE MANSIONS. Phone 277. NAIROBI. P.O. Box 956.

TO LET. Very attractive four room house in Matunga. The Hill, Nairobi. P.O. Box 500. Repeats half price on consecutive days only.

FOR SALE. Mombasa. Two very attractive 8 room houses. Situated in the best of the Westwoods, on a fine site. Repeats half price on consecutive days only.

FOR SALE. The Hill. 21/2 acres of land with house and outbuildings. Situated in the best of the Westwoods, on a fine site. Repeats half price on consecutive days only.

FOR SALE. Mombasa. 1/2 acre of land with house and outbuildings. Situated in the best of the Westwoods, on a fine site. Repeats half price on consecutive days only.

FOR SALE. Ngara Road. 1/2 acre of land with house and outbuildings. Situated in the best of the Westwoods, on a fine site. Repeats half price on consecutive days only.

FOR SALE. Ngara Road. 1/2 acre of land with house and outbuildings. Situated in the best of the Westwoods, on a fine site. Repeats half price on consecutive days only.

FOR SALE. Ngara Road. 1/2 acre of land with house and outbuildings. Situated in the best of the Westwoods, on a fine site. Repeats half price on consecutive days only.

FOR SALE. Ngara Road. 1/2 acre of land with house and outbuildings. Situated in the best of the Westwoods, on a fine site. Repeats half price on consecutive days only.

FOR SALE. Ngara Road. 1/2 acre of land with house and outbuildings. Situated in the best of the Westwoods, on a fine site. Repeats half price on consecutive days only.

FOR SALE. Ngara Road. 1/2 acre of land with house and outbuildings. Situated in the best of the Westwoods, on a fine site. Repeats half price on consecutive days only.

FOR SALE. Ngara Road. 1/2 acre of land with house and outbuildings. Situated in the best of the Westwoods, on a fine site. Repeats half price on consecutive days only.

FOR SALE. Ngara Road. 1/2 acre of land with house and outbuildings. Situated in the best of the Westwoods, on a fine site. Repeats half price on consecutive days only.

FOR SALE. Ngara Road. 1/2 acre of land with house and outbuildings. Situated in the best of the Westwoods, on a fine site. Repeats half price on consecutive days only.

FOR SALE. Ngara Road. 1/2 acre of land with house and outbuildings. Situated in the best of the Westwoods, on a fine site. Repeats half price on consecutive days only.

FOR SALE. Ngara Road. 1/2 acre of land with house and outbuildings. Situated in the best of the Westwoods, on a fine site. Repeats half price on consecutive days only.

FOR SALE. Ngara Road. 1/2 acre of land with house and outbuildings. Situated in the best of the Westwoods, on a fine site. Repeats half price on consecutive days only.

FOR SALE. Ngara Road. 1/2 acre of land with house and outbuildings. Situated in the best of the Westwoods, on a fine site. Repeats half price on consecutive days only.

J. W. MILLIGAN & Co.

Land & Estate Agents Licensed Valuers. Box 148. NAIROBI. Phone 98.

URSIN GIBBU. For Sale. Large piece of land from the 400 to 300. Repeats half price on consecutive days only.

URSIN GIBBU. 1000 acres of land. Situated in the best of the Westwoods, on a fine site. Repeats half price on consecutive days only.

URSIN GIBBU. 1000 acres of land. Situated in the best of the Westwoods, on a fine site. Repeats half price on consecutive days only.

URSIN GIBBU. 1000 acres of land. Situated in the best of the Westwoods, on a fine site. Repeats half price on consecutive days only.

URSIN GIBBU. 1000 acres of land. Situated in the best of the Westwoods, on a fine site. Repeats half price on consecutive days only.

URSIN GIBBU. 1000 acres of land. Situated in the best of the Westwoods, on a fine site. Repeats half price on consecutive days only.

URSIN GIBBU. 1000 acres of land. Situated in the best of the Westwoods, on a fine site. Repeats half price on consecutive days only.

URSIN GIBBU. 1000 acres of land. Situated in the best of the Westwoods, on a fine site. Repeats half price on consecutive days only.

URSIN GIBBU. 1000 acres of land. Situated in the best of the Westwoods, on a fine site. Repeats half price on consecutive days only.

URSIN GIBBU. 1000 acres of land. Situated in the best of the Westwoods, on a fine site. Repeats half price on consecutive days only.

URSIN GIBBU. 1000 acres of land. Situated in the best of the Westwoods, on a fine site. Repeats half price on consecutive days only.

URSIN GIBBU. 1000 acres of land. Situated in the best of the Westwoods, on a fine site. Repeats half price on consecutive days only.

URSIN GIBBU. 1000 acres of land. Situated in the best of the Westwoods, on a fine site. Repeats half price on consecutive days only.

URSIN GIBBU. 1000 acres of land. Situated in the best of the Westwoods, on a fine site. Repeats half price on consecutive days only.

URSIN GIBBU. 1000 acres of land. Situated in the best of the Westwoods, on a fine site. Repeats half price on consecutive days only.

URSIN GIBBU. 1000 acres of land. Situated in the best of the Westwoods, on a fine site. Repeats half price on consecutive days only.

URSIN GIBBU. 1000 acres of land. Situated in the best of the Westwoods, on a fine site. Repeats half price on consecutive days only.

TO LET.

A small concrete block house on Lenana Road. The Hill. Monthly tenancy or long lease as desired. Apply to Messrs. P.O. Box 500, Nairobi.

OVERALLS

LYONS' HEROON As A Lion Brand Overall. Size 18 and below 17 1/2. Each all sizes. Also Overall Size 18 and Motor Cyclist Overall 15 1/2. Apply to Messrs. P.O. Box 500, Nairobi.

FRED RAPER

Hadding Street, NAIROBI. P.O. Box 841.

ROMANO'S HAIRDRESSING

37/50 Permanent Waving 37/50. During this month we are offering 10% discount on all hairdressing. Apply to Messrs. P.O. Box 500, Nairobi.

SUKARI Ltd.

have pleasure in announcing that they are now producing the Finest Quality White Sugar. When ordering SUGAR from 20 to 200 cwt insist on being supplied with.

STIRLING & SCOTT Ltd.

E.O. Box 246. Victoria Street. Phone 192.

Godfrey's Car Mart Ltd.

are now able to undertake running repairs for all types of MOTH LAND PLANERS. This includes top overhaul of engines, rigging, adjusting and general inspection. Private Owners Especially Catered For. A Certified A. & G. Engineer Employed.

Deonholm Dairy

PURE MILK and CREAM. FROM FARM TO CONSUMER. P.O. Box 11, NAIROBI.

THE KENTA Fete Supply Co.

We supply for hire. Godfrey's Car Mart. 1000. Apply to Messrs. P.O. Box 500, Nairobi.

Municipal Council of Nairobi.

The Council invite TENDERS for the supply during a period of three, and alternatively, six months from the 28th February, 1921, of the following: (a) MAIZE FLOUR for Native Staff. (b) CRUSHED MAIZE for Oxen. The approximate quantities required are (a) 30 tons per month, (b) 10 tons per month. Maize Flour must be sufficiently ground to equal sample No. 4 on F. 14 of the Chemical Dept. Report for 1920. Persons tendering are requested to quote for net weight delivered F.O. Nairobi and allow for the sacks, which must be in good condition and be unbranded. Sealed Tenders suitably endorsed and accompanied by samples must be forwarded so as to reach the undersigned not later than 2 p.m. on Monday, the 24th day of February, 1921. The lowest or any tender may not be accepted. Dated this twenty-second day of January, 1921. F. S. ZECKERSLEY, Municipal Officer. Hamilton House, Nairobi. Town Clerk.

Black & Brown

(LATE MACKINNON BROS.) Tel. No. NAIROBI. Box No. 21. Telegrams: "BLACKLAW'S" 468.

UNION-CASTLE LINE.

Homeward via SUEZ. From Mombasa Arrives England about 14th Feb. 14th Feb. 14th Mar. 14th Apr. 14th May. 14th Jun. 14th Jul. 14th Aug. 14th Sep. 14th Oct. 14th Nov. 14th Dec.

British India Steam Navigation Company, Limited

LONDON AND EAST AFRICA. LONDON TO BOMBAY, via Marseilles, Port Said, Port Sudan and Aden, Outwards and Homeward. Steamers: Arrives, Sails from London about. S.S. "Mafura" 13th Feb. 14th Feb. S.S. "Mafana" 13th Feb. 14th Mar.

Chivers' Jams

Made in silver-lined pans at the Orchard Factory with freshly gathered fruit and refined sugar only. Every jar carries a guarantee of absolute purity.



THE CHIVERS' English Canned Fruits with Chivers' Custard Powder

SOLE AGENTS: R. O. HAMILTON, LTD., 10, RIVER STREET, LONDON, E.C. 4.

MESSAGERIES MARITIMES

Regular and bi-weekly service from and to Marseilles. The quickest route to London. Next sailings to Marseilles: S.S. "Boulogne" (Marseilles) 1st Feb. 1st Mar. S.S. "General Dubouché" 1st Feb. 1st Mar.

CITRA LINE

Compagnia Italiana Transatlantica. THE BEST ROUTE TO ENGLAND. S.S. "Y. CERISI" 1st February, 1st April, 1st June, 1st August. S.S. "Y. MARETTI" 1st March, 1st May, 1st July, 1st September.

DEUTSCHE OST-AFRIKA-LINIE

Homeward via SUEZ CANAL. From Mombasa: S.S. "WANGONI" 2nd Feb. 2nd Feb. S.S. "WATUSI" 2nd Feb. 2nd Feb. S.S. "USABAMA" 7th Mar. 7th Mar.

SCIENCE VS. WHITE ANTS

A striking story of triumph over great difficulties is at last revealed by the manufacturers of Celotex. Five years ago this wonderful product was introduced to East Africa and despite the fact it contains nothing of food value, it was found in a few cases certain species of termites could attack it.

Celotex

IS NOW GUARANTEED WHITE ANT-PROOF. At no Extra Cost. Kenya has long endorsed its amazing properties of resisting heat and sound, its extreme lightness and its decorative beauty of its surface.

MVULI TIMBER. Best quality straight-grained. Best for floors. Price 1/6-1/4 per ft. square. UGANDA FRUITS. Apply locally. R. B. SIRDAW. P.O. Box 6. Jinja, Uganda.

ANGLO BALTIC TIMBER CO., LTD.

Best Quality! Lowest Prices! Miwani Superfine Sugar can now be obtained from all leading stores at the following prices:- 4 lbs. for Sh. 1/-, 56 lb. packet for Sh. 19/0.

Why Pay More? Insist on MIWANI SUPERFINE and get the best value for your money.

THE VICTORIA NYATEA SUGAR CO., LIMITED. MIWANI or LOCAL AGENTS.

BRICKS

are universally recognised as the best building material ever 3,000,000 Invicta Bricks have been used in Nairobi during the past twelve months. INVICTA BRICK & TILE WORKS. P.O. Box 128. Tel. 68.

B.M.C. VALUES

HOUSEHOLD GOODS. Prices Still Coming Down. Pure Wool Wifney Blankets. Size 63 x 86 35-50 per pair. Feather Pillows Pure Ligen Ticking with Purified Soft Downy Feather. 10-50 each. Our Special Single Bedsteads Guaranteed Free from Buggery. Size 64 x 90 12-50 per pair.

Specify LIME. Produced at our works are increasingly specified by Architects and Engineers for use throughout Kenya and Uganda. Lime Limited. Tel. 4244, 4245, 4246, 4247, 4248, 4249, 4250, 4251, 4252, 4253, 4254, 4255, 4256, 4257, 4258, 4259, 4260.

DEUTSCHE OST-AFRIKA-LINIE

For Passenger Fares and Freight Rates Apply To: DEUTSCHE OST-AFRIKA-LINIE Generalagentur, Mombasa. Cable: "OSTLINIE". P.O. Box 210, MOMBASA.

NAIROBI and ELDORET: DeWilly & Company, Limited. NJOBO and NAURU DISTRICT: Carl Jungblut, Njoro. KISUMU and KAMPALA: Bestenlad & Clarke Ltd.

LOUIS DELIA SHOES. Eadies Footwear Ltd. P.O. Box 148. NAIROBI. There is something very attractive in the looks of Louis and Delia Shoes. But good looks weren't the main thing when the shoes were made. Other things were also achieved.

HAIR DRESSING IT IS GENERALLY KNOWN THEO. SCHOUTEN BUT WE WISH TO CONVINCe ALL CONCERNED BY THE CONVICED. NOTE REDUCTION IN PRICES. Ladies Hairdress 2/6; Men and Water Waving 3/6. Manicure 2/6; Shampoo 2/6; Also Great Reduction. IN PARLIAMENTARY WAVING. ALL OTHER BRANCHES OF LADIES HAIRDRESSING. See our list of prices. GOVERNMENT ROAD. Phone 546.

For the Best

THEO. SCHOUTEN. NOTE REDUCTION IN PRICES. Ladies Hairdress 2/6; Men and Water Waving 3/6. Manicure 2/6; Shampoo 2/6; Also Great Reduction. IN PARLIAMENTARY WAVING. ALL OTHER BRANCHES OF LADIES HAIRDRESSING. See our list of prices. GOVERNMENT ROAD. Phone 546.

OVERSEAS MAILS.

Table with columns: Steamers, From, Due at Mombasa, Mails, etc. Includes routes to Nias, David Livingston, F. Crichton, etc.

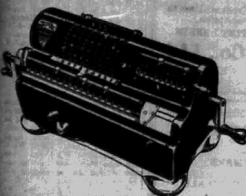
DEPARTURES.

Table with columns: Steamers, To, Mails at Mombasa, G.F.O., Departure, etc. Includes routes to London, India, etc.

Uplands Bacon

The Factory now holds record stocks of choice quality from which to select precisely what individual buyers require. Stocked by all the leading stores in Kenya, Uganda, Tanganyika and the Belgian Congo. No one to see the Registered Brand. NEVER SO CHEAP! NEVER SO GOOD!

MARCHANT Calculating Machines
ASTER of
MATHEMATICS



They Save Time and Money.
TAWS LIMITED.
 NAIROBI.



For the
EYE
 the best
 is just
GOOD
 enough!

"THE LENS" Ltd.
 Nos 921, Prins's House, (East, Road, NAIROBI, PHOENIX, etc.)

MOTOR TOURS Ltd.
 Tourist Agents, Opposite the G.P.O. for
MOTORING TOURS
 and **THE NILE ROUTE TO EUROPE.**
 Luxurious Cars for Hire—European Drivers.

**KIBOS INDIANS SEEK
 FINANCIAL AID.**
 Price For Sugar Cane
 Below Cutting Cost.
RELATION SUGGESTED.

**Government Aided to Help
 Kibos Report.**

Following the example set by Legislative Council in writing a letter to the Home Secretary, the Indian leaders are asking for financial assistance for the sugar cane growers of Kibos. Evaluation of the time allowed for land purchase instalments is also being sought.

A "Committee of Representatives" appointed in connection with the recent Congress adopted the following resolutions—
 1. The Congress requests the Government to extend the principle of Government aid to independent growers of Kibos (Indian settlements) and to give them financial benefits of the protective duty which at present goes to the sugar manufacturers and the Government should further be requested to grant subsidies, during the present financial crisis, in cases where such financial duties, in cases where such duties of protection exceeds the market price of sugar cane and to provide other facilities which would render the export of sugar profitable, and enable the cane growers to grow a further crop.

2. This Congress requests the Government that, owing to the present financial stringency and trade depression, time for payment of instalments due in 1931-32 on land recently auctioned at Kibos and purchased by Indian farmers, be extended.

Price Below Cost.
 The petition is explained in the following extract from a letter recently sent to the Acting Colonial Secretary after a Deputation had discussed the petition in detail.

"Consequent upon the establishment of the sugar factory at M'ward which has been the recipient of many unusual concessions and protection from the Government, a large community of Indians took to growing sugar cane on a fairly large scale in the vicinity, relying on the hope that they will get a fair deal in the price of their produce, commensurate with the market price of the sugar allowing a fair margin of profit for the manufacturers. In practice, however, it has been proved that the sugar

cane growers sell at a loss, at the very best, and that the Government is asked to be extended to Indian farmers of Kibos. It is suggested that a board of inquiry should be constituted and fix a price of sugar cane for the Indian farmers, which should be below the cost of production and below the market price of the sugar, with the Indian settlers at Kibos find themselves confronted with disastrous financial loss and are threatened with a total failure of the whole industry. An Deputy.

"The financial help provided by the Government to European farmers during the war, which is asked to be extended to Indian farmers of Kibos. It is suggested that a board of inquiry should be constituted and fix a price of sugar cane for the Indian farmers, which should be below the cost of production and below the market price of the sugar, with the Indian settlers at Kibos find themselves confronted with disastrous financial loss and are threatened with a total failure of the whole industry. An Deputy.

Land Installments.
 "Government help is also asked out of the loan raised for the purpose of helping the farming community in the country to enable them to purchase land. The resolution further requests the Government to extend the time for the payment of instalments for the purchase of land to the Government for 1931-32 in respect of the land recently auctioned and purchased by Indian farmers in Kibos District.

"It is hardly necessary for me to lay any stress on the reasonable nature of this request which has become necessary owing to the unusually hard times through which the country is passing financially."

Dr. von Opel, the German engineer, claims that within the next 50 years the world will be able to read of rockets flying from Berlin to New York in the space of three hours.

Today's Train.

The following trains are due to leave Nairobi to-day—
 Nairobi to Kisumu, 9:00 a.m.
 Nairobi to Kisumu, 1:05 p.m.
 Nairobi to Kisumu, 4:00 p.m.
 Nairobi to Kisumu, 7:47 p.m.
 The following trains are due to arrive at Nairobi to-day—
 Nairobi to Kisumu, 8:30 a.m.
 Nairobi to Kisumu, 10:31 a.m.
 Nairobi to Kisumu, 2:41 p.m.
 Nairobi to Kisumu, 8:50 p.m.



Nightly at 8-45 p.m.
EMPIRE Matinee Sat. 5-15 p.m.
TO-NIGHT, TUESDAY, and WEDNESDAY.
 THE SCREEN SPECTACLE PERIOD HISTORICAL

"STUDENT OF PRAGUE"
 OF
"PRAGUE"
 A THRILLING ROMANCE BASED ON AN OLD BOHEMIAN LEGEND—FEATURING

CONRAD VEIDT
 A PICTURE THAT WILL APPEAL TO ALL CINEMA GOERS—

OPENING Thursday THIS WEEK

"SUBMARINE"

The Most Spectacular of All Sea Pictures—a romance of surprises, low thrills and daring action.

FILMED AT THE BOTTOM OF THE SEA.

Slightly at 8-45 p.m. **ROYAL** Nightly at 8-45 p.m.
TO-NIGHT TUESDAY, and WEDNESDAY.

THE SCREEN ADAPTION OF HENRY ARTHUR JONES' FAMOUS PLAY
"THE PHYSICIAN"
 A British Production with a British Cast including

Miles Mander. Humbertson Wright. Mary Brough.

KENYA LIDO
 BLUE POSTS THEKA.
SWIMMING BATH
 Water Hygienically Treated and Constant Overhead.
 Outdoor Miniature Golf Course Tennis Quizzes—Frog Pong—Attractive New Roster of AMPLIFIER DANCES WEEKLY.
 Weekend Rates 10/- per day. Sunday Luncheon 9/10
 GOOD ROAD.

TOURNAMENTS HERE IS YOUR CHANCE WIN A PRIZE ENTER FOR

TABLE TENNIS TOURNAMENT
 HANICAP
 CUPS FOR WINNER AND RUNNER UP.
 ENTRY FEE 3/-.
 on Wednesday 28th Inst at 8-45

MINIATURE GOLF COMPETITION
 PRIZES FOR BEST GAMES.
 LADIES AND GENTS.
 ENTRY 1/-.
 PLAYED BEFORE 1-2-31

.22 RIFLE-MONTHLY Spoon Shoot
 TO BE SHOT BEFORE 1-2-31.
 ENTRY 1/-.
 IN BASEMENT OF

City Square Mansions

Hotel Avenue
Sundowner Dance
 Wednesday the 28-31-31.
 from 8-9 p.m.
 ADMISSION FREE.
 Music by the Dixie Dancers and Concert Orchestra.

Hotel Avenue
HOTEL AVENUE

THE TWO MOST UP-TO-DATE AND LUXURIOUS HOTELS IN KENYA. BURN IN CONSTRUCTION.
This is Worth Your Consideration
 Visitors at the Palace Hotel, Nanyuki, planning to visit Nairobi and desiring to stay at the Hotel Avenue, Nairobi, will be pleased to know that the Hotel Avenue, Nairobi, is now open. It is the most modern and comfortable hotel in Nairobi and offers every facility for the comfort and convenience of its guests.
 Write for Brochure to the Hotel Avenue, Nairobi.

DANCE

1st NAIROBI (Volunteer) BATTALION
Kenya Defence Force.

AT THE
LYRIC HALL

ON
Saturday January, 31st 9 p.m.

GARRY COOK and HIS RHYTHM BOYS
 IN ATTENDANCE.

TICKETS: Shs. 10/- Double; Shs. 6/- Single.
 DRESS: MESS KIT OR EVENING DRESS and MINIATURES.

TORR'S HOTEL.

THE HOTEL ORCHESTRA WILL PLAY DAILY DURING LUNCH (Saturdays and Sundays Excepted).
 Also MON., WED. and FRIDAYS FOR AFTERNOON TEA 4-3 p.m.

NIGHTLY 8-11 p.m. (Sunday Excepted). SATURDAYS 8-2 a.m.
 BOOK YOUR TABLES FOR SAT. NEXT.

PICCADILLY RESTAURANT

THEATRE ROYAL BUILDING
 FRENCH COOKING
 The Best and Cheapest Lunch and Dinner Served in Town.
 SERVICE A LA CARTE
 LORRYER & SPECIALITE—GRELLE—
 FRENCH PARTIES—ICE.
 NURSERY, BIRTH-DAY & ITALIAN.
 CATERING UNDEBTAKEN FOR SMALL OR LARGE PARTIES AFTERNOON.

40,000 MILES WITHOUT DECARBONISING
 BY A CAR USING
CASTROL C.W.

Messrs. C. C. Wakefield & Co., Ltd.
 London, E.C.3.

Dear Sirs,
 It may interest you to know that I own a four year old car which has done 45,000 miles on Castrol C.W. and for the first time (at 40,000 miles) was the engine touched.—ENOUGH SAID!

THE MOTOR MART
 AND EXCHANGE LTD.

Eldoret Nakuru NAIROBI Mombasa Dar-es-Salaam.



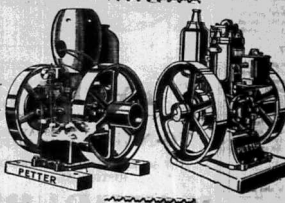
The Smart Dressing Table and Elizabeth Arden

Optimism of women everywhere in America, France, England, Germany, Italy, Spain—have found Elizabeth Arden's Vegetarian Toilet Preparation essential for giving better care of the skin.

Howse and McGeorge Ltd. NAIROBI and BRANCHES.

PETTER OIL ENGINES 1 1/2 H.P. TO 4000 B.H.P.

- Paraffin Engines in Stock 1 1/2 B.H.P. 3 B.H.P. 5 B.H.P.



- Crude Oil Engines in Stock 5 B.H.P. 8 B.H.P. 15 B.H.P. 24 B.H.P. LARGER TYPES TO ORDER.

SOLE AGENTS: J. W. MILLIGAN & Co. P.O. Box 148. NAIROBI Phone 98.

VISITORS TO KENYA

CARR, LAWSON & CO. beg to announce that they have made arrangements for the sale of reliable Secondhand Cars on a definite repurchase basis for the convenience of Visitors to the Colony who wish to see as much of the Country as possible...

GARR, LAWSON & Co. LIMITED, NAIROBI.



UNRIVALED IN EAST AFRICA SOLD EVERYWHERE

ECONOMY and RELIABILITY

No Truck, Regardless of Price, Gives Greater Value. Built to give long and faithful service, to stand up to the roughest work without the least of costly repairs.

DODGE TRUCKS Fisher, Simmons & Rodway (E. A.) Ltd. ROLE DISTRIBUTORS OF

MACKINLAY & Co. 21, Colwell St., London, E.C.1. BUYERS AND SHIPPERS ALL EAST AFRICAN MARKETS.

For fullest information communicate with E. O. HAMILTON, Ltd. Box 868 NAIROBI Phone 352.

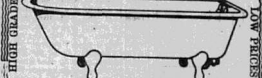
You'll Enjoy Using DUCO It's So Easy

Just brush it on — anyone can use it. Obtainable from GATLEY and ROBERTS, Ltd NAIROBI and BRANCHES.

DO NOT BE DAZZLED. PROTECT YOUR EYES AGAINST GLARE, and YOUR HEAD AGAINST SUBSEQUENT PAIN. CHANCE'S CROOKS GLASS. We supply the Four Shades of Crooks Glass in plain frame or ground to your prescription.

A. H. WARDLE & Co., Ltd MOMBASA : NAIROBI : ELDORET.

SHANKS' SANITARYWARE HAS BECOME A HOUSEHOLD WORD ALL OVER THE WORLD. IT IS ALSO BRITISH.



Pay a visit to our new Showroom and there inspect Model Bathrooms—Baths—Lavatory Basins—All Kinds of Sanitary Appliances—Bathroom Accessories.

R. G. VERNON & Co., Elliot Street, Box 124 NAIROBI Phone 129

KEEP HEALTHY! Rexall Medicines

No preparations are more carefully and scientifically prepared than these. EXALL Health Salts 1/50 EXALL Antidotes for Constipation 2/6 EXALL Asthma Powder 2/6 EXALL Syrup of Hypophites 3/6 EXALL Kinase Liquid Antiseptic 2/50, 4/50 and 7/50.

A. H. WARDLE & Co. Ltd. Wholesale and Retail Chemists. NAIROBI and BRANCHES

Liquor License. The African Dispensing Society, the Mahler Medical Hospital, and the British F. C. Hospital, are all licensed to sell liquor.

Civil Servants Association. The annual election meeting of the European Civil Servants Association was held at Hall, Nairobi, on 24th Jan.

Waikanae District Council. The annual election meeting of the Waikanae District Council was held at the Municipal Buildings on 24th Jan.

Being Operative. The annual election meeting of the Kenya Operative Association was held at the Municipal Buildings on 24th Jan.

Manpower. The annual election meeting of the Kenya Manpower Association was held at the Municipal Buildings on 24th Jan.

Manpower. The annual election meeting of the Kenya Manpower Association was held at the Municipal Buildings on 24th Jan.

Manpower. The annual election meeting of the Kenya Manpower Association was held at the Municipal Buildings on 24th Jan.

Manpower. The annual election meeting of the Kenya Manpower Association was held at the Municipal Buildings on 24th Jan.

Manpower. The annual election meeting of the Kenya Manpower Association was held at the Municipal Buildings on 24th Jan.

Manpower. The annual election meeting of the Kenya Manpower Association was held at the Municipal Buildings on 24th Jan.

Manpower. The annual election meeting of the Kenya Manpower Association was held at the Municipal Buildings on 24th Jan.

Manpower. The annual election meeting of the Kenya Manpower Association was held at the Municipal Buildings on 24th Jan.

Manpower. The annual election meeting of the Kenya Manpower Association was held at the Municipal Buildings on 24th Jan.

Manpower. The annual election meeting of the Kenya Manpower Association was held at the Municipal Buildings on 24th Jan.

Manpower. The annual election meeting of the Kenya Manpower Association was held at the Municipal Buildings on 24th Jan.

BUSINESS BUILT ON THE FOUNDATION OF SERVICE. UGANDA ABOVE MONDAY, JAN. 29, 1961

The R.E.A.A.A. Although the very comprehensive report of a year's work prepared by the Hon Secretary of the Royal East African Agricultural and Allied Producers Association...

RAILWAY INDIAN INSTITUTE. Members of the Railway Indian Institute are advised that the Annual General Meeting...

RAILWAY INDIAN INSTITUTE. Members of the Railway Indian Institute are advised that the Annual General Meeting...

RAILWAY INDIAN INSTITUTE. Members of the Railway Indian Institute are advised that the Annual General Meeting...

RAILWAY INDIAN INSTITUTE. Members of the Railway Indian Institute are advised that the Annual General Meeting...

RAILWAY INDIAN INSTITUTE. Members of the Railway Indian Institute are advised that the Annual General Meeting...

RAILWAY INDIAN INSTITUTE. Members of the Railway Indian Institute are advised that the Annual General Meeting...

RAILWAY INDIAN INSTITUTE. Members of the Railway Indian Institute are advised that the Annual General Meeting...

RAILWAY INDIAN INSTITUTE. Members of the Railway Indian Institute are advised that the Annual General Meeting...

RAILWAY INDIAN INSTITUTE. Members of the Railway Indian Institute are advised that the Annual General Meeting...

STANDARD DIARY

- 20-day: Annual General Meeting, European Civil Servants Association, Municipal Hall, 8.30 p.m. 21-day: Annual General Meeting of the Kenya Manpower Association, Municipal Hall, 8.30 p.m. 22-day: Annual General Meeting of the Kenya Manpower Association, Municipal Hall, 8.30 p.m.

Amazing Value

RED SHEETS, MADE FROM FINE QUALITY TEXTURE, SOFT FINISH REALLY BEHEMID.

Sh. 875 Per Pair

Less 10% Discount for Cash.

Hutchings, Biemer & Co. Ltd. P.O. Box 468. Telephone 668.

FURTHER PRICE REDUCTIONS BROOKE'S

LEMOS—Lemon Squash. OJOS—Orange Squash. BIRDS—Ginger Wine. LIME JUICE.

NOW: Shgs. 2/75 per Bottle Retail

ASK YOUR GROCER.

SAVE MONEY BY DEALING WITH Juja Trading Company, Thika. (Sub-Agents for Shell Co. of E.A. Ltd.)

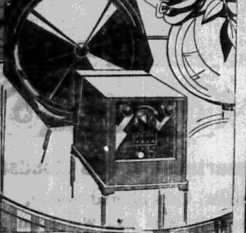
PHILIPS CASAPHONE

The Most Ideal Instrument for a CHRISTMAS SEASON

NO BATTERIES required, just plug in to the electric light socket, and push the red button.

TROUBLE FREE

Your Gramophones records played through the Wireless Set, will sound most pleasing.



A PHILIPS product backed with a guarantee Particulars from Lochhead Moore & Roy LIMITED.

SIXTH AVENUE, RETROUR, EDINBURGH. P.O. Box 468

TRADE OUTLOOK IN TANGANYIKA.

(Continued from page 1)

in the publication for assuming that in the last few months we will see a trade revival? I can see no prospect of a revival...

Steel Industry. Turning to the major industry of the country, the steel industry...

The speaker then continued as long as to show the influence that depression had on the buying capacity of the people...

After from the question of price he said, "which as another matter arises, we are asked to consider, next price...

Now: Shgs. 2/75 per Bottle Retail

ASK YOUR GROCER.

SAVE MONEY BY DEALING WITH Juja Trading Company, Thika. (Sub-Agents for Shell Co. of E.A. Ltd.)

PHILIPS CASAPHONE

The Most Ideal Instrument for a CHRISTMAS SEASON

NO BATTERIES required, just plug in to the electric light socket, and push the red button.

TROUBLE FREE

Your Gramophones records played through the Wireless Set, will sound most pleasing.



A PHILIPS product backed with a guarantee Particulars from Lochhead Moore & Roy LIMITED.

SIXTH AVENUE, RETROUR, EDINBURGH. P.O. Box 468

KENYA'S PROGRESS IN PUBLIC HEALTH.

(Continued from page 7)

Mr. E. Barrow replied suitably on the part of the guests and thanked the hosts for the interesting and useful details and vital points.

THE ASSOCIATION. Dr. Anderson proposed the toast of "The British Medical profession in Kenya" with particular emphasis on the local branch.

The Native. The President (Dr. H. L. Gordon) replied to the toast. He said he would like to add very few words to what he had said at the luncheon.

TWO DEPARTMENTAL COMMISSIONS. The President (Dr. H. L. Gordon) replied to the toast. He said he would like to add very few words to what he had said at the luncheon.

The Weather. The following is the B.E.A. Meteorological Service Weather Report for Nairobi, issued on Monday, January 9, at 6.00 a.m.

Weather Report Table with columns for Time, Temp., Wind, Cloud, etc.

Mr. E. Barrow replied suitably on the part of the guests and thanked the hosts for the interesting and useful details and vital points.

THE ASSOCIATION. Dr. Anderson proposed the toast of "The British Medical profession in Kenya" with particular emphasis on the local branch.

The Native. The President (Dr. H. L. Gordon) replied to the toast. He said he would like to add very few words to what he had said at the luncheon.

TWO DEPARTMENTAL COMMISSIONS. The President (Dr. H. L. Gordon) replied to the toast. He said he would like to add very few words to what he had said at the luncheon.

The Weather. The following is the B.E.A. Meteorological Service Weather Report for Nairobi, issued on Monday, January 9, at 6.00 a.m.

Weather Report Table with columns for Time, Temp., Wind, Cloud, etc.

Mr. E. Barrow replied suitably on the part of the guests and thanked the hosts for the interesting and useful details and vital points.

WHERE TO STAY

THE EDWARD HOTEL

Box 1066. Phone 106. Now Fully Licensed

Have a SUNDOWNER AT THE EDWARD.

TRY AN EDWARD COCKTAIL.

LISTEN OR DANCE TO THE WIRELESS.

PLAY TENNIS OR PING PONG.

HAVE A FIRST CLASS DINNER.

THE STAG'S HEAD HOTEL

NAKURU

On Main Road close to New Post Office, Bank, Club and Station.

Exceptionally attractive and Comfortable. Public Rooms. In response to numerous requests from our Visitors, we are now offering...

AVONDALE. PARKLANDS ESTATE, Opposite Parklands Sports Ground.

GROSVENOR HOUSE. GIBBOURD ROAD. P.O. Box 1062.

IF YOU WANT EVERYTHING OF THE BEST... THE SAVOY HOTEL.

THE NORFOLK HOTEL NAIROBI.

Every convenience. Tennis Court, own Laundry, on the premises, special parking ground for cars.

Update: It is sold in all rooms 17/60 per day. Includes breakfast, 16/00 per day.

Salisbury Hotel NAIROBI.

Don't fail to see our Window Display, it will give you some idea of our Tailor's and Dressmaker's work.

Chas. A. Heyer & Co. Ltd. THE GUNMAKERS, NAIROBI.

FRANK JUDGE MEMORIAL FUND. AN APPEAL TO KENYA SPORTSMEN.

Will all Old Sportsmen having subscription lists for the Frank Judge Memorial Fund...

AUCTION SALES.



Duly instructed, we shall sell, by Public Auction, Without Reserve, unless stipulated, at Our Sale-rooms, Messrs Building, Hardings Street, Nairobi.

TO-DAY 26th January at 10 a.m.

Chamberlain Suits. Easy Chairs. Morris Chairs. Bag of Good Golf Clubs. Native Kaitie and Shields. Ouzanas. Bhoorches Chairs. Deck Chairs. Writing Table. Occasional Tables. Bedsteads. Carved Table in Mahu. Oval Dining Tables. Suites of Dining Chairs. Good Bedsteads. Bidsteads in Tanganyika Manganese by Hutchings (Low Reserve). Writing Tables, drawers. Invention (Low Reserve). "Singer" Treadle Sewing Machine (low reserve). Cheval Mirror. Single Wardrobe, Novelty mirror, three drawers. Chest of Drawers. Dressing Tables, bevelled mirror. Camp Bedstead. Single Iron Bedstead. Cot Mattresses. Single Bedstead, spring mattress. Single Bed, Box spring, Etc., Etc., Etc. Hamam Cart. Collapsible Cot, White enameled, with mattress and mosquito net. Three Burner Oil Stove (new). Chest of Drawers. Single Wardrobe. Dressing Mirror. Bedstead. Bedstead. Office Chair in Government Road as from 1st February, at moderate prices. For further particulars of above, apply to—

MUTER and OSWALD Ltd., Auctioneers, Etc., NAIROBI.



Residential Plots in Ngong Road Area. Imuru Property of 20 acres Freshland. 5700 will purchase commodious house with modern conveniences on one acre Freshland situated in KILIMANJARO.

TO LET. Attractive modern stone residence in Marlborough Estate. Double storied house in Muthaiga for six months. Well furnished house on lot for one year. Furnished modern house for four months; under two miles from town. Suites of rooms of single offices in Princes House, Government Road as from 1st February, at moderate prices. For further particulars of above, apply to—

MUTER and OSWALD Ltd., Estate Agents, NAIROBI.

Sale by Public Auction.

Under Warrant of Sale issued by H.M.'s Supreme Court at Nairobi, wherein Robert Byros Darby Williams, Administrator of the Estate of the late Annie Willis is the Plaintiff and Mohamed Dhunji is the Defendant.

ON FRIDAY, THE 30th DAY OF JANUARY, 1931,

the undersigned will sell by Public Auction at the Law Court, Mombasa, the following Property attached in the above case.

SCHEDULE. ALL THAT piece of land situated at Changamwe-Miritini in the Mombasa District of the extra Provincial Province of the said Colony containing One Thousand and Ninety-three acres or thereabouts being sub-division Number 375 (originally Numbered 371) of the section Number V Mainland North of Meridional District South A 37 8 which said piece of land is more particularly delineated and described on the Plan Number 29960 attached to Certificate of Ownership Number 9099 dated the twenty-first day of February, One thousand nine hundred and twenty-five (Registered in the Coast Registry Mombasa on the twenty-third day of February, One thousand Nine hundred and twenty-five) and also contained and delineated on the Plan Number 29960 deposited in the Office of the Recorder of Titles at Mombasa and thereon numbered 375 section V together with certain buildings erected and being in (together with the mineral Rights).

G. A. DATOO & Co., Auctioneers, Telephone 34.

Thackrah's Furniture Sales. Duly instructed we shall sell, on SATURDAY, 31st DECEMBER at 10.30 A.M. At Rear of our Premises, Lake Road, Nakuru. A large and varied selection of GOOD CLASS FURNITURE in oak, mahogany, poplar, etc. ENTIRELY WITHOUT RESERVE. Full particulars of Lots to be offered may be had from—

THACKRAH'S Ltd., Auctioneers, Nakuru.

AUSTIN'S AUCTIONS.

CATALOGUE SALE OF GOOD FURNITURE AND EFFECTS
on Saturday Jan. 31st at 10 a.m.
NUMERous DETAILS WILL BE ADVERTISED LATER.
AUSTIN & Co.,
AUCTIONEERS and ESTATE AGENTS,
Hardings Street, NAIROBI.

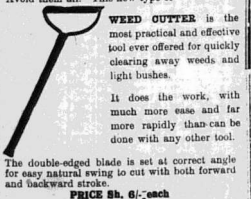
Airbourne Honey
New Zealand's Best

ASK FOR IT AND SEE
YOU GET IT.

Creamery Butter
Purest and Best

ALL THE BEST SHOPS STOCK IT.

Weeds—Rats—Plague.
Avoid them all. This new type of



It does the work, with much more ease and far more rapidly than can be done with any other tool.

PRICE 8s. 6d.—each



MUNICIPAL COUNCIL OF NAIROBI.

Pursuant to the provisions of Section 71 of the Local Government (Municipalities) Ordinance 1928.

NOTICE IS HEREBY GIVEN

- 1. That the Municipal Council of Nairobi at the Meeting thereof to be held on the 2nd day of February, 1931, propose to make the Nairobi Municipality By-laws (Amendment) which relate to the parking of motor vehicles at Victoria Street.
- 2. That a copy of such proposed By-laws is deposited at the Municipal Offices, Nairobi, and is open to inspection during office hours by any person interested.
- 3. That any objection to such proposed By-laws must be lodged with the undersigned within ten days from the date hereof.

Dated this Twenty-fourth day of January, 1931.
Municipal Offices, F. S. ECKERSLEY, Town Clerk.
Hamilton House, Nairobi.

E. Hutchison & Co.

Favoured with instructions, we shall sell by Public Auction Entirely Without Reserve, at our Mart, Government Road, on **Tuesday the 27th inst. at 10 a.m.**

The following Furniture and Effects:
Three Piece Chesterfield Suite covered crestone. Three Piece Chesterfield Suite with lacquer covers. Good Club Easy. Three Sideboards. Six Dining Chairs. Twin Single Beds with Box Springs. Iron Bed and Mattress. Good Double Bed with Box Spring. Four Single Wardrobes. Four Dressing Chests. Washstands. Chests of Drawers. Morris Chairs. Toilet Set. Congoleum Square. Length Linoleum. Tapestry Carpet 3 x 9. Kitchen Table. Lot Pictures including set of three Art Photographs. Water Colour. Eight Racing Pictures. Corona Portable Typewriter. Electric Reading Lamp. Two Cabin Trunks. Bus Case. Hat Box. Milk Can. Two Good Cameras. Bureau. Metal Case. Cake Stand. Towel Horse. Camp Chair. Filler. Pillows. Two Office Tables. Very Good Eight-Day Clock. Fryer. Suit Good Books. Three Travelling Bags. Two Wristled Watches. Six Attache Cases. Ladies Cellanese Underclothing. Ladies Dresses (new). Mah Jongg Set (low reserve). And many other items.

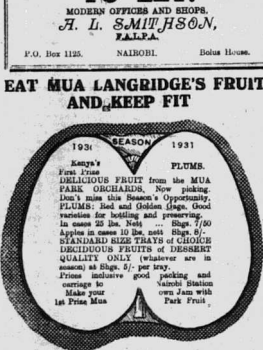
E. HUTCHISON & Co., AUCTIONEERS, Etc. NAIROBI.

METROPOLITAN GARAGE.
(OPP. GODFREY'S CAR MART)
Repairs all makes of Cars. Duro Spray Painting. Overhauls a Speciality. Vulcanizing & Retreading.
SECONDHAND CARS BOUGHT and SOLD.

Our Charges are the most moderate in the country. This week's bargain ESSEX COACH, very good condition. Other Bargains in Stock.
D. J. LETHBRIDGE, SOLE PROPRIETOR.

FOR SALE.
BUSINESS and RESIDENTIAL SITES.
TO LET.
MODERN OFFICES and SHOPS.
A. L. SMITHSON, F.A.I.C.E.A.
P.O. Box 1125. NAIROBI. Dolus House.

EAT MUA LANGRIDGE'S FRUIT AND KEEP FIT



and Sukari Sugar. G. L. LANGRIDGE, F.R.H.S., Mos Park Orchards, F.O. 4th River Station, Kenya Colony. Agents: F. H. SPIDOTT, P.O. Box 810, Nairobi. HERBERT & MORGAN, P.O. Box 111, Nakuru. ALEXANDER HEED, Nyet.

THE PREMIER USED CAR SALESMAN.

Godfrey's Car Mart LIMITED.

Texaco House -- Sadler Street.

50 USED CARS 50 TO SELECT FROM

International Truck 1 Ton. Recently overhauled. New Tyres 50mm and reliable. £320.
Dodge 600 Body. A sound powerful and reliable vehicle. £175.
Humber 600. Recently overhauled. £175.
Over a Box Body 1927. In very good running order and condition. £150.
Humber 600. Recently overhauled. £150.
Ford Roadster. Latest model. £125.
Kaiser Super Six. Sports car. £125.
Kaiser Super Six. Sports car. £125.
Kaiser Super Six. Sports car. £125.
Kaiser Super Six. Sports car. £125.

Duco Spray Painting

Oxy-Acetylene Welding

SOLE AGENTS FOR

Ariel Motor cycles

MEALY BUG.

USE

Tree Tanglefoot

THE BEST PREVENTATIVE

Stocks on Hand

Sole Agents: **DENOVAN & DIEBEL**, VICTORIA STREET -- NAIROBI.

FOR SALE

MUTHAIGA

4 Plots of 2 or 2½ acres each offered for cash or on terms.

For further particulars apply to— **Beales & Smithson,** Avenue House, Sixth Avenue, NAIROBI.

LETTS DIARIES 1931

OFFICE AND POCKET SIZES. **SYSTEM** DESK CALENDARES. COMPLETE AND REFILLS. **PILOT** DESK CALENDARES. COMPLETE AND REFILLS. **FANCY CALENDARES, CHRISTMAS CARDS, ETC.**

Standard Stationery Stores, NAIROBI.

A SPLENDID OPPORTUNITY

To secure a DELIGHTFUL HOME,

Consisting of a newly-built double-storied Residence of BRICK with modern conveniences and refinements, situated on nearly 4 acres of FREE HOLD land, West of and over 500 feet higher than Nairobi. Only 4½ miles on good roads. Municipal water and electric light. In fact, the charm of living in the Country with the amenities of Town: Price: Only £1,900.

Apply: **A. L. SMITHSON,** F.A.I.C.E.A.
Dolus House, NAIROBI. Telephone 750.

AFRIKANDER

SMOKING MIXTURE

IN 1 1/2 OZ. TINS

**A PERFECT BLEND
FINEST EMPIRE
TOBACCO**

**SEE COUPON ENCLOSED
FOR A TIN FREE OR SEVERAL
VALUABLE FREE
GIFTS**

THE VAUXHALL "VX" ON TRIAL

British Car For Colonial Markets.

AN ATTRACTIVE HOME PURCHASE

(MOTORING CORRESPONDENT). One can see in the lacking of the Colonial markets by the Vauxhall Motor Company, as well as an attempt on the part of British manufacturers to provide a car really suitable for conditions in foreign parts. Perhaps the change in policy is due to the fact that the well known British production is now controlled by General Motors Ltd., but to find out for any, it retains its individuality

A British car, constructed by British engineers and British materials, British car manufacturers are now becoming conservative and when you find a maker producing a model suitable for the Colonies, particularly you are entitled to expect your car, and have a car that will last.

A car of two ages is the Vauxhall, the "VX" is a car, essentially, rather than the home country, where the incidence of the winter does not "kill" the car, but the incidence of the "Climax" model in England, with the one exception that the engine is 20 H.P. as against the 15 H.P. of the "Climax" type. The Vauxhall forms a considerable departure from any previous model, and the engine, and they are completely the modern trend of the automobile world, but they are designed with due regard to cost from the very commencement.

The chassis though conventional is interesting, especially the braked front axle, which, by its very simple

hydraulic shock absorbers give it a smooth and comfortable ride, while the simple road construction of the chassis is a point being right and of half price over the ground. All the controls are within easy reach of the driver, and the front suspension is adjustable.

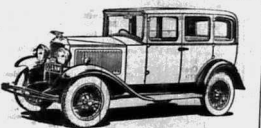
British Style and Dignity

The car has all the style and dignity of a British production; the upholstery is carried out in a fine quality with heavy furnishings. Nothing has been overlooked, and standard equipment includes

the following details should prove interesting: the touring package is a folding top, with a length of 56 in. The overall length of the car is 140 in. The wheel base is 100 in. The gear ratio is 100-13.33. 2,000 c.c. (150 B.H.P.) 7/5, 1923-1924.

Engine Details.

The engine is a six cylinder unit with a capacity of 194 c.c. and a beam stroke of 42.5 in. Cooling—Water cooled with centrifugal circulating pump.



The Saloon model.



You sit, bowed in the dash.

bumpers front and rear, falding gear type. Three speeds forward, and reverse.

Clutch—Bulldog single dry plate type with warped disc for Clutch.

Carburettor—Latest "U" type Smith. Outstanding accessible, light control. Fuel pump.

Ignition—Full capacity 9 coilless.

Lubrication—Roll pressure lubrication, four feed system operated by filter. Crankcase ventilating system. Clean lubricator throughout.

Steering—By high pressure pump.

Electrical system—Lamps 6 volt, system for electric starting, operated by pedal switch. Battery independent of fuel system.

Brakes—Rear wheel steering gear. Steering—Hobby steering gear, and level.

Front Axle—Reversal Elliott type of steady tie beam action.

Transmission—Selective sliding gear type. Three speeds forward, and reverse.

Clutch—Bulldog single dry plate type with warped disc for Clutch.

Carburettor—Latest "U" type Smith. Outstanding accessible, light control. Fuel pump.

Ignition—Full capacity 9 coilless.

Lubrication—Roll pressure lubrication, four feed system operated by filter. Crankcase ventilating system. Clean lubricator throughout.

Steering—By high pressure pump.

Electrical system—Lamps 6 volt, system for electric starting, operated by pedal switch. Battery independent of fuel system.

Brakes—Rear wheel steering gear. Steering—Hobby steering gear, and level.

Front Axle—Reversal Elliott type of steady tie beam action.

EL-WEL-TRA AGRICULTURAL CHAINS

represent the best obtainable in Trace Chains. They are made up a quality item to give you the most in service and satisfaction. Furnished in pairs in all sizes required.

Order from your dealer
AMERICAN CHAIN COMPANY, INC.
NEW YORK, N. Y., U.S.A.

Multiplax BELTING

FOR HEAVY & UNEVEN LOADS

Agents and Stockists:
EMITH MACKENZIE & COMPANY,
P.O. Box 200, NAIROBI. Phone 203

city, achieve reliability in contrast to more elaborate designs which are usually but more expensive.

The compound is built with a system of air circulation intended to keep frames away from the sun's heat and to avoid any contact with a high compression rubber compound that modern production, the sports coupe.

The "VX" is built with an extremely chassis and sports springing to meet the optimum value for use in the Colonies. The reinforced, pressed steel frame has channels of exceptional width and depth, with heavy transverse long semi-elliptic springs at front and rear coupled with Lovejoy

bumpers front and rear, falding gear type. Three speeds forward, and reverse.

Clutch—Bulldog single dry plate type with warped disc for Clutch.

Carburettor—Latest "U" type Smith. Outstanding accessible, light control. Fuel pump.

Ignition—Full capacity 9 coilless.

Lubrication—Roll pressure lubrication, four feed system operated by filter. Crankcase ventilating system. Clean lubricator throughout.

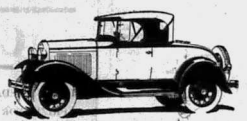
Steering—By high pressure pump.

Electrical system—Lamps 6 volt, system for electric starting, operated by pedal switch. Battery independent of fuel system.

Brakes—Rear wheel steering gear. Steering—Hobby steering gear, and level.

Front Axle—Reversal Elliott type of steady tie beam action.

The New Ford Roadster



- Beauty :: ::
- Style :: ::
- Safety :: ::
- Comfort :: ::
- Speed :: ::
- Power :: ::
- Economy :: ::
- Reliability :: ::
- Long Life :: ::

Call or Telephone for Demonstration.

Nairobi Ford Motors

Box 460 Tel. 317.



A view of the interior of the motorless saloon, depicting the well upholstered interior, and comfortable seating.

taken on top. The steering is exceptionally light and the car rides the road well. It has plenty of wheelbase and the car has an important factor in Kenya, light and quick set over in Africa. The "VX" should not take long to prove itself as a car able to hold its own with any in the country.

Home Purchase Scheme

In these motorless, shortly proceeding on leave, and continue plate purchasing a car in England, the Vauxhall models provide an excellent sales arrangement whereby the "VX" could be purchased through the local dealer here, and would be ready for use on arrival in Great Britain. There the car can be used during leave, then returned to Kenya, where it is re-assembled. It is an attractive arrangement, and one which will obtain considerable success.

With regard to the power unit

Four Axle—Semi-floating with large type pressed steel housing.

Brakes—Foot controlled semi-rigid, internal expanding brake, front and rear. Hand independently operated, internal self-acting on rear wheels.

Frame—Reinforced pressed steel with channels of exceptional width and depth. Heavy cross members.

Wheelbase—81 1/2 in.

Springing—Light coilover steel front, semi-elliptic, rear semi-elliptic, coilover.

Front End—Front 16 in x 14 in, rear 14 in x 14 in.

Wheels—16 in. x 14 in. with spring-acting hydraulic shock absorbers front and rear.

Wheels—Wire, 19 in. x 4 in. with brass rim. Lock to spin.

Tires—Medium. Front 2.00 x 22.

The local agents are the Motor Sales and Exchange, Ltd., 241 Avenue, Nairobi.

Free Insurance

Against Ill Health.

A Holiday in South Africa.

Climates that Please and Ensure Health and Pleasure.

For full particulars apply to
THE SOUTH AFRICA OFFICE,
Memorial Hall,
Box 634,
NAIROBI.

Wilson Airways Ltd.

ANNOUNCEMENT.

Having completed over one hundred and fifty thousand miles of flying, the Company wishes to emphasize the fact that flying is both safe and cheap for the busy man.

Offering a progressive policy the fleet has been increased and values of pilot and rates have been reduced as follows:

- London single, two seater, four and five motor machines
- London-Johannesburg—100 per mile flown by passenger.
- London-Johannesburg—75 per mile flown by passenger.

Fights are arranged as follows:

For full information apply to the Company's office:
STANLEY STREET,
HARRINGTON STREET,
NAIROBI.

T.O. No. 1697; Cable: WILSONAIR; Telephone 323

BINNING THE PRAIRIES

Of Oatmeal Brand Whisky, it is healthy and the cheap. It is healthy and the cheap. It is healthy and the cheap. It is healthy and the cheap. It is healthy and the cheap. It is healthy and the cheap.

AMSTEL

SUPER

STOUT

Try it for yourself.

Sole Distributors:
Tynteche Overseas Trading Co., Bombay.

SULPHURIC ACID

FOR BATTERY purposes, pure, commercial, specific gravity 1.84 in two gallon jars at greatly reduced prices.

A. J. ELY and Co., Ltd.

THE CHEMISTS,
Box 625. P.O. Box 411. NAIROBI.

Kenya Loan & Discount Co., Ltd.

P.O. Box 646, NAIROBI.

OFFICE—1st Floor, Court Chambers.

Financial Agents

Bills Discounted—Short-term Loans Granted. Any Realizable Asset Accepted for Cash. Call or Write. STRICTEST CONFIDENTIAL. ESTABLISHED 1891.

Showing the money driving seat, and seat back based on the "VX".

THE SPORTS PAGE

Good! It's British!



If the name Eley or Kynoch is stamped on the head of a cartridge you may be sure that it will accomplish all that a cartridge is expected to do. It will kill its bird, be comfortable in use, will eject easily and will not damage your gun. In a word Eley and Kynoch cartridges are dependable.

Don't see inferior cartridges in your gun. Use ELEY OR KYNOC, BRITISH AND BEST.



A. HOGG, MAKING IRON, BRASS AND ALL PRINCIPAL METALS. BANGOR ROAD, NAIROBI. NO. 10 ANTIFORGE BANGOR ROAD, NAIROBI, P.O. BOX 10.

The Guard that Never Requires Relieving. Always on Duty BUY -YALE- PADLOCKS And Get The Security You Want You can buy them from your Hardware Dealer.

CHARLES WARE. TURK ACCOUNTANT. Established 16 years. Tel. 444. 5, Egerton, N. No. 170, Trafalgar, Government Road, NAIROBI.

WHITEN MARKING OUT OR DYING COFFEE WE CAN SUPPLY YOU NEEDS. Steel Coffee Chains with Brass Taps Nine Feet Apart. Coffee Tray Wire, British Manufacture

J.H.S. TODD & CO. LTD. MAURICE ROBERTSON, GOVERNMENT ROAD, NAIROBI. P.O. Box 61. Tel. Address: 'Tollan'.

LINCOLNSHIRE HANDICAP. GOLF NATIONAL. ENGLISH DERBY. ENGLISH GOLF NATIONAL. ENGLISH GOLF NATIONAL.

FISHING. WHAT ABOUT THAT FISHING HOLIDAY NOW THAT THE CHRISTMAS RUSH IS OVER? TROUT ARE ABUNDANT. ROADS ARE GOOD.

MAY & Co. Ltd. THE SPORTS HOUSE. NAIROBI.

ENGLISH CUP SENSATIONS.

Arsenal beaten by the "Pensurers."

SEPARATOR DIES FROM EXCITEMENT.

STANDARD ACCOUNTANT. London, Jan. 25. Fine weather accompanied by cold dry snap in the air prevailed for the fourth round of the English Cup on Saturday. London was again busy in the drive, in that it had two good games of Standard League and at Brentford. The lack of the drive saw Chelsea at home on the strongly favored Highway man, and the sensation of the round came with the entry of the Arsenal, beaten by the "Pensurers" by the odd goal and three. There was an attendance of 42,725 to witness the match at Stamford Bridge, where standard rules from start to finish. The match was to be turned away from the gates, and the match saw the exciting nature of the game. Bishop and Mills scored for the Chelsea side, while Burton finished Arsenal's only goal.

STANDARD ACCOUNTANT. London, Jan. 25. Another sensation in the Cup was the pairing out of the Champions, Sheffield Wednesday, who fell to Barnsley, a club which was Cup finalists last season. London have thus only one club represented in the trophy which they, who should they pass on to the final stage would score a very popular win.

FA Cup. FOURTH ROUND RESULTS. Bolton Wm. 1, Sunderland 1. Blackburn 2, Port Vale 0. Burnley 2, Sheffield Wed. 1. Bradford City 1, Bradford City 0. Watlington Wm. 2. Ipswich 0, Portsmouth 1. Chelsea 2, Arsenal 1. Crystal Palace 0, Everton 0. Grimsby 1, Manchester U. 0. Leeds Utd 4, Newcastle U. 1. Sheffield Utd. 2, Notts Co. 1. Southampton 2, Albion 1. West Brom. Alb. 1, Tottenham 1. Wolves 2, Brighton and H. 0.

ENGLISH LEAGUE. Division I. Liverpool 1, Aston Villa 1. Tottenham 2, Huddersfield 1. Division II. Charlton A. 0, Bristol City 0. Notts For. 2, Millwall 1. Southampton 0, Reading 2. Swansea 3, Plymouth Arg. 0. Division III. Brentford 3, Norwich City 0. Fulham 3, Thames 2. Tottenham 2, Clapton C. 0. White St. G. F. Rangers 2.

SCOTS RUGBY. Scottish Opened 1st. London, January 24. [STANDARD] correspondents' match, which was witnessed by a Saturday with France as visitors. The match ended in a draw, with the Scots leading several of their tries.

SCOTS RUGBY. Scottish Opened 1st. London, January 24. [STANDARD] correspondents' match, which was witnessed by a Saturday with France as visitors. The match ended in a draw, with the Scots leading several of their tries.

SCOTS RUGBY. Scottish Opened 1st. London, January 24. [STANDARD] correspondents' match, which was witnessed by a Saturday with France as visitors. The match ended in a draw, with the Scots leading several of their tries.

SCOTS RUGBY. Scottish Opened 1st. London, January 24. [STANDARD] correspondents' match, which was witnessed by a Saturday with France as visitors. The match ended in a draw, with the Scots leading several of their tries.

NAKURU RACE CLUB. NYANZA CRICKET CLUB. CALEDONIAN GOLF PARTY.

Easy Win For Nakuru Team. Fraser Wins After a Tie.

COOK'S FIVE DRINGS FOR HORSE SIDE. BURN'S CONCERT FOLLOWS PLAY.

BY A CORRESPONDENT. NAIROBI, Jan. 25. Nyansa cricket team paid a visit to Nakuru, and were easily due to a fine knock of 52 by Cook. The following are the details:

Table with 2 columns: Player Name and Runs. Includes names like A. H. Hinchinson, H. H. Hinchinson, etc.

THE FOLLOWING IS THE LIST OF THE PLAYERS WHO TOOK PART IN THE MATCH. A. H. Hinchinson 13-w b. H. H. Hinchinson 88. H. H. Hinchinson 88. H. H. Hinchinson 88.

THE FOLLOWING IS THE LIST OF THE PLAYERS WHO TOOK PART IN THE MATCH. A. H. Hinchinson 13-w b. H. H. Hinchinson 88. H. H. Hinchinson 88. H. H. Hinchinson 88.

THE FOLLOWING IS THE LIST OF THE PLAYERS WHO TOOK PART IN THE MATCH. A. H. Hinchinson 13-w b. H. H. Hinchinson 88. H. H. Hinchinson 88. H. H. Hinchinson 88.

THE FOLLOWING IS THE LIST OF THE PLAYERS WHO TOOK PART IN THE MATCH. A. H. Hinchinson 13-w b. H. H. Hinchinson 88. H. H. Hinchinson 88. H. H. Hinchinson 88.

THE FOLLOWING IS THE LIST OF THE PLAYERS WHO TOOK PART IN THE MATCH. A. H. Hinchinson 13-w b. H. H. Hinchinson 88. H. H. Hinchinson 88. H. H. Hinchinson 88.

THE FOLLOWING IS THE LIST OF THE PLAYERS WHO TOOK PART IN THE MATCH. A. H. Hinchinson 13-w b. H. H. Hinchinson 88. H. H. Hinchinson 88. H. H. Hinchinson 88.

THE FOLLOWING IS THE LIST OF THE PLAYERS WHO TOOK PART IN THE MATCH. A. H. Hinchinson 13-w b. H. H. Hinchinson 88. H. H. Hinchinson 88. H. H. Hinchinson 88.

CHICKEN. THE FINEST EGG PRODUCING & BONE FORMING FOOD FOR GRIT POWLS. Tel: MARBLE. KENYA MARBLE QUARRIES Co. P.O. Box 834.

GOLFERS!!! Come and inspect our New Consignment of STEEL SHAPED DRIVERS, BRASSIES, SPOONS AND IRON NECK, RUSTLESS CUSHIONS. CRAIG'S SPORTS HOUSE Ltd. Box No. 357 Government Road, Phone 921.

CHALLENGE CUPS. SHIELDS, MEDALS AND OTHER TROPHIES AS PRIZES FOR ALL KINDS OF SPORTS AND COMPETITIONS ARE SUPPLIED BY US at English Prices. WE HAVE A LARGE AND COMPREHENSIVE STOCK OF CUPS IN SILVER AND E.P. Engraving OF THE HIGHEST STANDARD AT REASONABLE CHARGES. REQUIRES FROM SPORTS CLUBS ESPECIALLY INVITED. For Catalogues and Prices apply to: DOBBIES LTD., Wellington, Jewellers and Silversmiths. Phone 90 NAIROBI. P.O. Box 86.

DOBBIES LTD. Wellington, Jewellers and Silversmiths. Phone 90 NAIROBI. P.O. Box 86.

UNION-CASTLE LINE

From Mombasa Arrives England... From Mombasa Arrives South Africa... For Rates and Freight and Passage Money, Apply to THE UNION-CASTLE MAIL STEAMSHIP CO., LTD. MOMBASA.

British India Steam Navigation Company, Limited

LONDON AND EAST AFRICA LINE... BOMBAY-DURBAN MAIL SERVICE... COASTAL SERVICE... BRITISH INDIA STEAM NAVIGATION CO. LTD. LONDON.

Chivers' Jams

Made in alive-lined pans at the Orchard Factory with freshly extracted and refined sugar only. Every jar carries a guarantee of absolute purity. CHIVERS' English Canned Fruit with Chivers' Cornflour Powder.



MESSAGERIES MARITIMES

Regular and fortnightly service from and to Mombasa. The Quickest Route to Marseilles... Next Sailings to Marseilles: General Duchesne, Aviator Roland Garros, Leonora de Lido, Chambré.

CITRA LINE

Compagnie Italiana Transatlantica. THE BEST ROUTE TO ENGLAND. BRINGS FROM KILINDINI TO GENOA AND NAPLES. S.S. 'MAZZINI'—1st March, 1st June, 1st August.

DEUTSCHE OST-AFRIKA-LINIE

GERMAN AFRICAN SERVICE. HOMEWARD via SUEZ CANAL... HOMEWARD via CAPE... From Mombasa: 'WANGONI', 'WATUSE', 'TANGANYIKA', 'UBENA', 'NIZAMBA', 'ADOLPH WOERMANN', 'USAMBARA', 'WATUSE', 'WANGONI'.

Holland Afrika Lijn

PARISERVAAR FARE... To Mombasa... To London... A. B. and C. Steamers of the Line provide excellent value accommodation for passengers.

P. STEWART, C.A.S.S.E.D.

PAINTER and DECORATOR... Has been to his own premises in Victoria Street, opposite the Prince Laundry, P.O. Box 229 - MOMBASA.

MAY & CO., LTD.

FOR ARMS AND AMMUNITION

SUMMER EXCURSIONS TO SOUTH AFRICA

Up-Country Cheques Cannot be Accepted Unless Specially Endorsed by Local Bank. For Passenger Fares and Freight Rates Apply to: DEUTSCHE OST-AFRIKA-LINIE Generalagenten, Mombasa.

HOMEWARD via SUEZ

STEAMER... Arriving at the Cape on... S.S. 'GIEBERG', 'JACQUESFONTEIN', 'KALIFONTEIN', 'NIZAMBA', 'WATUSE', 'WANGONI', 'JACQUESFONTEIN'.

HOMEWARD via THE CAPE

STEAMER... Arriving at the Cape on... S.S. 'RIETPOFFEN', 'NIZAMBA', 'WATUSE', 'WANGONI', 'JACQUESFONTEIN'.

TWENTSCHE OVERSEAS TRADING CO., LTD.

MOMBASA KAMPALA... P.O. Box 140. Telegrams: 'HOLAFRIC'. Tel. 140.

AMSTEL

SUPER STOUT

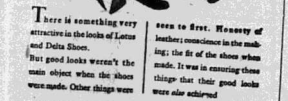
Try it for yourself. Sole Distributors: Twentsche Overseas Trading Co., Mombasa.

B.M.C. VALUES

IN HOUSEHOLD GOODS Prices Still Coming Down Pure Wool Wilton Blankets Size 63 x 86 35-50 per pair. Feather Pillows Pure Linen Ticking with Purified Soft Down Feathers 10-50 each.

B.M.C. HOUSE

Corner of Government Road... Fifth Avenue opp. the New N.B.J. Bank P.O. Box 610.



LOTUS SHOES Ladies Footwear Ltd.

P.O. Box 148. NAIROBI.

BRICKS

are universally recognised as the best building material over 3,000,000 Invicta Bricks have been used in Nairobi during the past twelve months. INVICTA BRICK & TILE WORKS, P.O. Box 785 - Tel. 669.

LADIES HAIRDRESSING

MAISON MARIE Permanent Waving, Permanent Prices, No Fluctuations. Kenya's Most Up-to-date and Luxurious Ladies' Saloons. Phone 945. Theatre Royal Buildings Sixth Avenue, NAIROBI. P.O. Box 408.

Keith Timber Co., Ltd.

Sadler Street, NAIROBI Cedar Block Flooring A Speciality. Phone 500. Box 874.

PIANOFORTE TUNING AND REPAIRING.

Ten years experience in Kenya Colony and the years with Messrs. Chappell and Co., London. F. A. HEAD, Box 675, NAIROBI.

OVERSEAS MAILS.

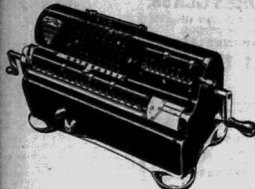
Table with columns for ARRIVALS and DEPARTURES, listing steamers, ports, and dates.

Uplands Bacon

The Factory now holds record stocks of absolute quality from which to select precisely what individual buyers require. Stocked by all the leading stores in Kenya, Uganda, Tanganyika and the Belgian Congo.

Be sure to see the Registered Brand. NEVER SO OKKAP! NEVER SO GOOD!

MARCHANT Calculating Machines
ASTER of
ARITHMETICS



They Save Time and Money.
TAWS LIMITED.
NAIROBI.



SINGING THE PRAISES
Of Outside Brand Vitamins, it is good and it's cheap. It is handy made and equal to any imported vitamin. Every good drug store has that you get Outside Brand. Sold by all Grocers in Nairobi.



For the
EYE
is best
as Just
GOOD
enough!

"THE LENS" Ltd.
Box 921, Prince's House, East Road, NAIROBI. Phone 220.

AMNESTY IN INDIA.
(Continued from page 1.)

insure lifted for by the Viceroy, some millions but no doubt will be placed on the favourable reception of the suggestion of the Congress by the Indian Party, and apart from the Conference, and on the known desire of a section of the Congress for the abandonment of non-co-operation, and on the fact that the demands of the Congress as they stood 18 months ago are very largely met by what has happened since now. The Government are now amnestied. It says, in the Indian States, that of those which can be justified only by success.

The "Manchester Guardian" states that "The promise of Gandhi will encourage the Indian States in the Congress. It is a gesture of goodwill and a mark of the unshaky pact. It states that as a result of the Conference a new situation has arisen. Up to now, following the view of the British Government, Mr. Butler and some others, the Congress has not committed itself in regard to Mr. Macdonald's statement. The Government's attitude is at least hopeful."

The "Daily News" says that "As all intelligent well-wishers of India will earnestly hope, those related with the opportunity offered them, there can be no doubt that a general amnesty will follow. The bold step already taken is a guarantee of that—British Official Wireless Service."

Price of Petrol.

EXPECTED INCREASE IN UGANDA.

The possibility of an increase in the price of petrol in Uganda is indicated following a discussion at a recent meeting of the Uganda Chamber of Commerce.

A representative of the "Uganda Herald" was informed by the leading petrol companies that the price would probably be increased soon by five cents a gallon.

"At the present moment were one contemporary the retail price is Shs. 21/ per gallon, and it is interesting to note that two-thirds of that price is absorbed in customs charges, railway freight and overhead expenses, the remaining Shs. 17/ being allowed for selling in the Dutch East Indies, re-export and transport to East Africa. The overhead expenses include the fuel cooking plant and the new loading dock and storage tanks at Mombasa which are capable of storing 70,000 tons of fuel."

"The whole of the oil-take in East Africa is extremely small as compared with the world's markets and the overlands are practically the same for a very much larger market. As the consumption of fuel in East Africa is not so heavy as in other parts of the world, it is not so frequently imbalanced by the price decrease."

"The proposed rise of five cents per gallon is brought about by the fact that the Railway freight from the coast to Kampala is higher than the steamer freight from Mombasa, which accordingly has been raised to be in line with the Railway. Petrol which previously came in drums across the lake from Kisumu will now approximately five cents more now, owing to the increased freight and the general public will consequently be asked to pay more for an already over-expensive commodity."

Fire at Malindi.

NATIVE LIVES ALL HIS POSSESSIONS.

(STANDARD CORRESPONDENT.) Malindi, Kenya, 25.

With the hottest part of the year drawing near, the great snow Malindi is becoming very dry and will soon be liable to every direction, as a means of improving the soil for the benefit of the crops and sheep. It follows that the Malindi people are liable to the new men also getting dry as timber, and in the case of the snow-burned white was blown continuously for half an hour, so the clothes of snobs some from a house, on the Malindi road, closely surrounded by other houses. The red flames were magnified to watch as they ate up the roof. Two men above the beach sawage in landing up to the wall of the roof away from the house, and in a few minutes the Malindi which they stepped off the roof. This undoubtedly stepped the blame from speaking to the neighbouring roof. Presently the walls of the house were pushed in to the extent that fire burned itself out. Much sympathy is felt for the owner who saved only his bed, and bed everything else including his woman's picture of cotton which was in readiness for the opening of the local grocery.

Motor Car Disabled.

Another fire accident occurred at Pindi 24, where a motorcar was covering three Europeans from Nairobi, who were visiting the Salt Works. The driver, unfamiliar with local conditions, drove his car into one of the areas frequently inundated by the sea, and finding the ground was becoming softer and softer, he attempted to back it out again. Finally the car caught fire and was completely burned out.



Nightly at 8-45 p.m. **EMPIRE** Matinee Sats. 3-15 p.m.

TO-NIGHT, and WEDNESDAY.
THE SCREEN SPECTACLE PERIOD HISTORICAL.

"STUDENT OF PRAGUE"
A THRILLING ROMANCE BASED ON AN OLD BOHEMIAN LEGEND—FEATURING
CONRAD VEIDT
A PICTURE THAT WILL APPEAL TO ALL CINEMA GOERS—

OPENING Thursday THIS WEEK
"SUBMARINE"

The Most Spectacular of All Sea Pictures—a romance of surprises, new thrills and daring action.
FILMED AT THE BOTTOM OF THE SEA.

DANCE
1st NAIROBI (Volunteer) BATTALION
Kenya Defence Force.

AT THE
LYRIC HALL
ON
Saturday January, 31st 9 p.m.

GARRY COOK and HIS RHYTHM BOYS
IN ATTENDANCE.
TICKETS: Shs. 10/- Double, Shs. 6/- Single.
Dress: Mens Kit or Evening Dress and Miniature.

PICCADILLY RESTAURANT
TERMINI ROYAL BUILDING
FRENCH COOKING.
The Best and Cheapest Lunch and Dinner Served in Town.
BRUVICE A LA CARTE
LOBSTER A SPECIALITE—GRILLS—
FRENCH PASTRIES—ICES
RUSSIAN BUREK—MILK TO A L'ITALIANA
CATERING UNDERTAKEN FOR SMALL OR LARGE PARTIES ANYWHERE.

KENYA LIDO
BLUE POSTS THEKA.
SWIMMING BATH
Water Hygienically Treated and Constant Overflow.
Outdoor Miniature Golf Course Tennis Quoits—Ping Pong—Attractive New Rondaire.
AMPLIFIED DANCES WEEKLY.
Weekend Rates 12/- per day
Sunday Luncheon 2/50
GOOD ROAD.

Nightly at 8-45 p.m. **ROYAL** Nightly at 8-45 p.m.

TO-NIGHT and WEDNESDAY.
THE SCREEN ADAPTATION OF HENRY ARTHUR JONES' FAMOUS PLAY
"THE PHYSICIAN"

A British Production with a British Cast including—
Miles Mander.
Humbertson Wright.
Mary Brough.

TORR'S HOTEL.
THE HOTEL ORCHESTRA WILL PLAY DAILY DURING LUNCH (Saturdays and Sundays Excepted.) Also MON., WED. and FRIDAYS FOR AFTERNOON TEA 4-6 p.m.

NIGHTLY 8-11 p.m. (Sunday Excepted.) SATURDAYS 8-2 a.m.
BOOK YOUR TABLES FOR SAT. NEXT.

HAVE YOUR TEA and SUNDOWNER COMFORTABLY WITH MUSIC.

HOTEL AVENUE
ENTERTAINMENT PROGRAMME.
Sundowner Dances

Wednesday and Saturday
from 8-2 p.m. Admission Free.
Music by the Bijou Dance and Concert Orchestra.

DAILY MORNING and AFTERNOON TEA CONCERTS, by Phillips Amphitheatre.
Daily Wireless News and Concerts from 7-10 p.m.

HOTEL AVENUE'S Popular Dinner Dance
Saturday the 31st Jan.
from 8 p.m.—2 a.m.

Music by the Bijou Dance and Concert Orchestra.
Admission: Dinner 12/-; Dance only 7/50
EVENING DRESS ESSENTIAL.

TOURNAMENTS
HERE IS YOUR CHANCE
WIN A PRIZE
ENTER FOR

TABLE TENNIS TOURNAMENT
HANDICAP
CUPS FOR WINNERS and RUNNER UP.
ENTRY FEE 3/-.
on Wednesday 25th Inst at 8-45

MINIATURE GOLF COMPETITION
PRIZES FOR BEST CENTS.
LADIES and GENTS.
ENTRY 1/-.
PLAYED BEFORE 1-2-31

.22 RIFLE-MONTHLY
Shooting
TO BE SHOT BEFORE 1-2-31.
ENTRY 1/-.
IN BASEMENT OF

City Square Mansions

It's Sitting Wrong That Tires You!

Chevrolet's Adjustable Drivers Seat Overcomes This Trouble.

THE MOTOR MART
AND EXCHANGE LTD.

Eldoret Nakuru NAIROBI Mombasa Dar-es-Salaam.

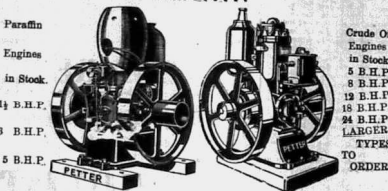


The Smart Dressing Gown and Elizabeth Arden

Millions of women everywhere in America, France, England, Germany, Italy, Spain, have found Elizabeth Arden's Vaseline Toilet Preparations essential for their home care of the skin...

Howe's and McGeorge Ltd. NAIROBI AND BRANCHES.

PETTER OIL ENGINES 1 1/2 H.P. TO 4000 B.H.P.



SOLE AGENTS: J. W. MILLIGAN & Co. P.O. Box 148. NAIROBI Phone 98.

VISITORS TO KENYA

CARR, LAWSON & CO. beg to announce that they have made arrangements for a sale of reliable Secondhand Cars for the definite repurchase basis for the convenience of Visitors to the Colony who wish to see as much of the Country as possible...

ECONOMY AND RELIABILITY

No Truck, regardless of Price, Gives Greater Value. Built to give long and faithful service, to stand up to the roughest work, without the need of costly repairs...

DODGE TRUCKS Fisher, Simmons & Rodway (E. A.) Ltd. SOLE DISTRIBUTORS OF THE TRIUMPHANT DODGE VICTORIA STREET, NAIROBI.

CARR, LAWSON & Co. LIMITED, NAIROBI.

Advertisement for Grants Whisky, featuring a bottle illustration and text: 'GRANTS POLISHING WAX MAINTAINS THE LUSTRE OF THE "DUCO" FINISH'.

Advertisement for Grants Whisky, featuring a bottle illustration and text: 'GRANTS POLISHING WAX MAINTAINS THE LUSTRE OF THE "DUCO" FINISH'.

Advertisement for Crookes Glass: 'DO NOT BE DAZZLED. PROTECT YOUR EYES AGAINST GLARE, AND YOUR HEAD AGAINST SUBSEQUENT PAINS. CHANCE'S CROOKES GLASS. We supply the Four Shades of Crookes Glass in plain glass or ground to your prescription. We also stock the new GRADUATED LENSES. A. H. WARDLE & Co., Ltd. MOMBASA : NAIROBI : ELDORET.'

Advertisement for Shanks Sanitaryware: 'QUALITY IS THE TRUE TEST OF CLEANLINESS. SHANKS' SANITARYWARE HAS BECOME A HOUSEHOLD WORD ALL OVER THE WORLD. IT IS ALSO BRITISH.'

Advertisement for Rexall Medicines: 'KEEP HEALTHY! By using Rexall Medicines. No preparations are more carefully and scientifically prepared than these. EXALL Health Salts 1/30, EXALL Orders for Constipation 2/6, EXALL Asthma Powder 2/6, EXALL Syrup of Hypophites 5/50, EXALL Kinine Lippin Antimalic 2/50, 4/50 and 7/50.'

Advertisement for A. H. Wardle & Co. Ltd.: 'Wholesale and Retail Chemists, NAIROBI and BRANCHES.'



Automatic Telephone. The weekly meeting of the T. H. will be held in Crutched House this evening at 8 o'clock.

To H. Women Helpers. The weekly meeting of the T. H. will be held in Crutched House this evening at 8 o'clock.

Civil Servants. The annual general meeting of the Kenya Civil Servants Association was held at the Memorial Hall, Nairobi, on January 26th.

A Prayer Chain. The Indian Ladies' Prayer Chain, which was organized for the purpose of praying for the welfare of the King and Queen, was held at the Memorial Hall, Nairobi, on January 26th.

To and From Leaves. The following leave certificates are noted in the current issue of the Kenya Gazette: Mr. J. H. Thompson, Mr. H. W. Thompson, Mr. J. H. Thompson, Mr. H. W. Thompson, Mr. J. H. Thompson, Mr. H. W. Thompson.

Business built on the foundation of service. MACKINLAY & Co. 21, Chichester St., London, E.C.1. BUYERS AND SHIPPERS FOR ALL EAST AFRICAN MARKETS. Exporters of Produce on Commission Basis. LIBERAL ADVANCES TO APPROVED CLIENTS. For full information communicate with: E. O. HAMILTON, Ltd., Box 303, NAIROBI. Phone 352.

Business of the circumlocutors, the Board was formed to give an attention since last April to that side of the problem than to the more important aspects of agricultural production. But the way is being cleared for a definite study and action. The growing one of the motor industry has been that, at least so far as Government control is concerned, there is a growing realization that the country would be well advised to know what steps have been taken, and by whom, in the past. The United Kingdom's contribution to the shipping and oil companies. The United Kingdom's contribution to the shipping and oil companies. The United Kingdom's contribution to the shipping and oil companies.

Standard Diary. January 27: Annual General Meeting at the Memorial Hall, Nairobi. January 28: General Meeting of the Women's Section of the British Legion, Nairobi. January 29: General Meeting of the Women's Section of the British Legion, Nairobi. 10.30 to 11.30 a.m. - Dromedary Loan Program. 7.00 p.m. - British Official Window Cleaning. 7.15 p.m. - British Official Window Cleaning. 7.30 p.m. - British Official Window Cleaning. 7.45 p.m. - British Official Window Cleaning. 8.00 p.m. - British Official Window Cleaning.

ECONOMIC POSITION OF KENYA TO-DAY.

Comparisons with Rest of the World.

A COMPREHENSIVE REVIEW.

Other Countries Suffering to Greater Extent.

During the course of an address to the Nairobi Association on the present economic position in Kenya, Captain H. F. Ward, who it is understood, will be a candidate for Nairobi North at the Legislative Council elections, gave an interesting review of the financial situation of the country.

He prefaced his observations by referring to the conditions of depression existing in other countries, which he pointed out clearly by referring to statistics in Kenya. Considering these facts, he added, the people in Kenya were extraordinarily lucky.

He did not disguise the fact, however, that the industries of the Colony were passing through an extremely difficult period, and every care should be taken toward economy of working. This was already being done, but there remained other avenues to be explored.

He opposed any suggestion of a reduction in Civil Service salaries or in any drastic reduction of staff. He asked his audience to realize that the whole of the dislocation of the services as a result of the 1920-21 crisis, which only added to the pensions list, and further added to the cost of replacement afterwards.

He emphasized that there was no question of a town vs. country controversy, as the interests of every one were the same.

Avenues for Economy.

Captain H. F. Ward, who was given the honor of opening the session for Nairobi North at the Legislative Council on the 26th inst., addressed the members of the Nairobi Association on the 26th inst. He reviewed the economic position of the Colony in the light of the present depression, and pointed out the various avenues for economy which he thought would be of service to the Colony.

The Outside World.

"Kenya's economic position," said Captain Ward, "is not so good as it used to be. The world is in a state of depression, and this has affected us very much. We must look for economy in every department of our life."

Railway Finance.

With regard to the railway, the Captain said that the railway had been a source of revenue for the Colony for many years. However, the depression had affected the railway very much, and it was necessary to look for economy in the railway department.

Government Expenditure.

The Government expenditure in Kenya had been very large in recent years. However, the depression had affected the Government very much, and it was necessary to look for economy in the Government department.

Public Works.

Public works in Kenya had been very large in recent years. However, the depression had affected public works very much, and it was necessary to look for economy in the public works department.

Private Industry.

Private industry in Kenya had been very large in recent years. However, the depression had affected private industry very much, and it was necessary to look for economy in the private industry department.

Education.

Education in Kenya had been very large in recent years. However, the depression had affected education very much, and it was necessary to look for economy in the education department.

Health.

Health in Kenya had been very large in recent years. However, the depression had affected health very much, and it was necessary to look for economy in the health department.

Revenue.

Revenue in Kenya had been very large in recent years. However, the depression had affected revenue very much, and it was necessary to look for economy in the revenue department.

NEW AUTOMATIC TELEPHONES.

To be inaugurated in Nairobi To-morrow.

Hints to Subscribers.

HOW TO WORK THE SIGNAL AND HEARING OF SIGNALS.

From to-morrow Nairobi will be the first station to be equipped with automatic telephones. The system is of the most up-to-date type and will be of great service to the public.

Mr. H. F. Ward's Speech.

Mr. H. F. Ward's speech was a comprehensive review of the economic position of Kenya. He pointed out the various avenues for economy and the need for a more efficient system of government.

Overhaul Checks.

Mr. H. F. Ward announced that the Government was to overhaul the checks issued in Kenya. This was done to ensure that the checks were of the highest quality and were not subject to forgery.

Mr. H. F. Ward's Speech.

Mr. H. F. Ward's speech was a comprehensive review of the economic position of Kenya. He pointed out the various avenues for economy and the need for a more efficient system of government.

A Simple System.

The simple system of telephony was inaugurated in Nairobi to-morrow. This system will be of great service to the public and will be the first of its kind in Kenya.

A Bottle of Whisky.

An Auckland merchant who had a bottle of whisky which he had bought in Nairobi, was surprised to find that the bottle was empty when he opened it. He was told that the bottle was empty because the whisky had been stolen.

Missing.

A missing person was reported to have been seen in Nairobi. The person was described as a young man who was about 20 years of age and was wearing a dark suit.

Misses.

Two misses were reported to have been seen in Nairobi. The misses were described as young women who were about 18 years of age and were wearing light-colored dresses.

Misses.

Two misses were reported to have been seen in Nairobi. The misses were described as young women who were about 18 years of age and were wearing light-colored dresses.

Misses.

Two misses were reported to have been seen in Nairobi. The misses were described as young women who were about 18 years of age and were wearing light-colored dresses.

Misses.

Two misses were reported to have been seen in Nairobi. The misses were described as young women who were about 18 years of age and were wearing light-colored dresses.

Misses.

Two misses were reported to have been seen in Nairobi. The misses were described as young women who were about 18 years of age and were wearing light-colored dresses.

Misses.

Two misses were reported to have been seen in Nairobi. The misses were described as young women who were about 18 years of age and were wearing light-colored dresses.

Misses.

Two misses were reported to have been seen in Nairobi. The misses were described as young women who were about 18 years of age and were wearing light-colored dresses.

THE AFRICAN AIR ROUTE.

Views of Sir Pierre Van Ryneveld.

COMFORT AND RELIABILITY.

(From an Air Correspondent).

London, Jan 27.—(Special Column.) The views of Sir Pierre Van Ryneveld, Chief of the Air Staff, on the proposed African air route, are of great interest. He has pointed out the advantages of such a route, and has expressed his confidence in the reliability of the service.

THE WHEAT HARVEST IN BURNI FOREST.

Better Yields Than Anticipated.

PROMISING DISTRICT.

The wheat harvest in the Burni Forest district is reported to be very good. The yields are better than anticipated, and the district is considered to be very promising for the future.

The Popular Yields.

The popular yields of the wheat harvest in the Burni Forest district are reported to be very good. The yields are better than anticipated, and the district is considered to be very promising for the future.

The Popular Yields.

The popular yields of the wheat harvest in the Burni Forest district are reported to be very good. The yields are better than anticipated, and the district is considered to be very promising for the future.

The Popular Yields.

The popular yields of the wheat harvest in the Burni Forest district are reported to be very good. The yields are better than anticipated, and the district is considered to be very promising for the future.

The Popular Yields.

The popular yields of the wheat harvest in the Burni Forest district are reported to be very good. The yields are better than anticipated, and the district is considered to be very promising for the future.

The Popular Yields.

The popular yields of the wheat harvest in the Burni Forest district are reported to be very good. The yields are better than anticipated, and the district is considered to be very promising for the future.

The Popular Yields.

The popular yields of the wheat harvest in the Burni Forest district are reported to be very good. The yields are better than anticipated, and the district is considered to be very promising for the future.

The Popular Yields.

The popular yields of the wheat harvest in the Burni Forest district are reported to be very good. The yields are better than anticipated, and the district is considered to be very promising for the future.

The Popular Yields.

The popular yields of the wheat harvest in the Burni Forest district are reported to be very good. The yields are better than anticipated, and the district is considered to be very promising for the future.

The Popular Yields.

The popular yields of the wheat harvest in the Burni Forest district are reported to be very good. The yields are better than anticipated, and the district is considered to be very promising for the future.

The Popular Yields.

The popular yields of the wheat harvest in the Burni Forest district are reported to be very good. The yields are better than anticipated, and the district is considered to be very promising for the future.

The Popular Yields.

The popular yields of the wheat harvest in the Burni Forest district are reported to be very good. The yields are better than anticipated, and the district is considered to be very promising for the future.

The Popular Yields.

THE AFRICAN AIR ROUTE.

Views of Sir Pierre Van Ryneveld.

COMFORT AND RELIABILITY.

(From an Air Correspondent).

London, Jan 27.—(Special Column.) The views of Sir Pierre Van Ryneveld, Chief of the Air Staff, on the proposed African air route, are of great interest. He has pointed out the advantages of such a route, and has expressed his confidence in the reliability of the service.

THE WHEAT HARVEST IN BURNI FOREST.

Better Yields Than Anticipated.

PROMISING DISTRICT.

The wheat harvest in the Burni Forest district is reported to be very good. The yields are better than anticipated, and the district is considered to be very promising for the future.

The Popular Yields.

The popular yields of the wheat harvest in the Burni Forest district are reported to be very good. The yields are better than anticipated, and the district is considered to be very promising for the future.

The Popular Yields.

The popular yields of the wheat harvest in the Burni Forest district are reported to be very good. The yields are better than anticipated, and the district is considered to be very promising for the future.

The Popular Yields.

The popular yields of the wheat harvest in the Burni Forest district are reported to be very good. The yields are better than anticipated, and the district is considered to be very promising for the future.

The Popular Yields.

The popular yields of the wheat harvest in the Burni Forest district are reported to be very good. The yields are better than anticipated, and the district is considered to be very promising for the future.

The Popular Yields.

The popular yields of the wheat harvest in the Burni Forest district are reported to be very good. The yields are better than anticipated, and the district is considered to be very promising for the future.

The Popular Yields.

The popular yields of the wheat harvest in the Burni Forest district are reported to be very good. The yields are better than anticipated, and the district is considered to be very promising for the future.

The Popular Yields.

The popular yields of the wheat harvest in the Burni Forest district are reported to be very good. The yields are better than anticipated, and the district is considered to be very promising for the future.

The Popular Yields.

The popular yields of the wheat harvest in the Burni Forest district are reported to be very good. The yields are better than anticipated, and the district is considered to be very promising for the future.

The Popular Yields.

The popular yields of the wheat harvest in the Burni Forest district are reported to be very good. The yields are better than anticipated, and the district is considered to be very promising for the future.

The Popular Yields.

The popular yields of the wheat harvest in the Burni Forest district are reported to be very good. The yields are better than anticipated, and the district is considered to be very promising for the future.

The Popular Yields.

The popular yields of the wheat harvest in the Burni Forest district are reported to be very good. The yields are better than anticipated, and the district is considered to be very promising for the future.

The Popular Yields.

THE AFRICAN AIR ROUTE.

Views of Sir Pierre Van Ryneveld.

COMFORT AND RELIABILITY.

(From an Air Correspondent).

London, Jan 27.—(Special Column.) The views of Sir Pierre Van Ryneveld, Chief of the Air Staff, on the proposed African air route, are of great interest. He has pointed out the advantages of such a route, and has expressed his confidence in the reliability of the service.

THE WHEAT HARVEST IN BURNI FOREST.

Better Yields Than Anticipated.

PROMISING DISTRICT.

The wheat harvest in the Burni Forest district is reported to be very good. The yields are better than anticipated, and the district is considered to be very promising for the future.

The Popular Yields.

The popular yields of the wheat harvest in the Burni Forest district are reported to be very good. The yields are better than anticipated, and the district is considered to be very promising for the future.

The Popular Yields.

The popular yields of the wheat harvest in the Burni Forest district are reported to be very good. The yields are better than anticipated, and the district is considered to be very promising for the future.

The Popular Yields.

The popular yields of the wheat harvest in the Burni Forest district are reported to be very good. The yields are better than anticipated, and the district is considered to be very promising for the future.

The Popular Yields.

The popular yields of the wheat harvest in the Burni Forest district are reported to be very good. The yields are better than anticipated, and the district is considered to be very promising for the future.

The Popular Yields.

The popular yields of the wheat harvest in the Burni Forest district are reported to be very good. The yields are better than anticipated, and the district is considered to be very promising for the future.

The Popular Yields.

The popular yields of the wheat harvest in the Burni Forest district are reported to be very good. The yields are better than anticipated, and the district is considered to be very promising for the future.

The Popular Yields.

The popular yields of the wheat harvest in the Burni Forest district are reported to be very good. The yields are better than anticipated, and the district is considered to be very promising for the future.

The Popular Yields.

The popular yields of the wheat harvest in the Burni Forest district are reported to be very good. The yields are better than anticipated, and the district is considered to be very promising for the future.

The Popular Yields.

The popular yields of the wheat harvest in the Burni Forest district are reported to be very good. The yields are better than anticipated, and the district is considered to be very promising for the future.

The Popular Yields.

The popular yields of the wheat harvest in the Burni Forest district are reported to be very good. The yields are better than anticipated, and the district is considered to be very promising for the future.

The Popular Yields.

The popular yields of the wheat harvest in the Burni Forest district are reported to be very good. The yields are better than anticipated, and the district is considered to be very promising for the future.

The Popular Yields.

Compare the Smartness of this Roadster with other Similar Cars offered to-day. Take a Trial Trip and you will soon become a Fiat Owner. Price £205.00. BULLOCK GARAGES SOCIETA COLONIALE ITALIANA. NAIROBI.

Amazing Value

BEST SEEDS, MADE FROM FINE QUALITY TARIKWA, SOFT FINISH HEATLY HEMMED

WILL WEAR AND WASH WELL

SIZE 24" x 60"

Sh. 875 PER PAIR

Less 10% Discount for Cash.

Hutchings, Biemer & Co. Ltd. P.O. Box 466 Telephone 466.

CREDIT PROBLEMS OF AGRICULTURE.

(Continued from page 1.)

£12.10 depreciation but enclosure of interest on Capital.

Dairy Produce.

As regards the Dairy Industry, the export price of butter at the Treasury is at present 60 cents per pound, having fallen from 75 cents in the past three months...

The Coffee Problem.

As regards Coffee, the recent actual survey of production which has strengthened the position of the grower...

As a result of these and other factors which it is unnecessary to enumerate, the Coffee Industry...

In some cases the proceeds of the current crop will be inadequate to liquidate these advances...

It is worth noting that the proceeds of the current crop will be inadequate to liquidate these advances...

After stressing the fact that no manufacturer in the industry is able to absorb eventually the entire output...

By appointment to H.M. King George V. H.M. The King of Spain.

White Horse Whisky advertisement with logo and text.

MOTOR TOURS Ltd. Tourist Agents, Opposite the G.P.O. for MOTORING TOURS.

Enjoy the World's Radio Programmes with the Philips Receiver for Short and Long Wavelengths

Type No. 2802

This set has been designed by the same Engineer who built PCJ

It has been designed to give utmost Satisfaction to the user

WHERE there is an A.C. supply available the whole installation except the fore-mentioned accumulator can consist of:

Philips Shortwave receiver No. 2802, Philips E. T. Supply Unit No. 2803, and a Philips Loud-speaker

By using also Philips trickle charger type No. 1017 you have at your disposal a completely mains-free Radio Receiving Installation.

Particulars from Lochhead Moore & Roy Limited.

SIXTH AVENUE P.O. Box 468 NAIROBI. Phone 468.

It was last November, according to the report of the 1921 Harvest Commission...

Having set out the main features of the Commission's report...

It is suggested that any proposals which Government may secure or make in other respects...

Such a reduction would enable the farmer to pay for his crop...

With regard to what the present position is as regards the payment to the farmer of about 10% per cent on the price...

The figure is very near the 10% per cent which is the basis of the present system...

In regard to Dairying, the present position is that the farmer may or may not provide the means of carrying the industry over the present crisis...

The present situation in the Road Industry makes a definite point to suggest any stable measure of Road Interference...

The present position in the Road Industry makes a definite point to suggest any stable measure of Road Interference...

The Board is of opinion on the evidence before it both verbal and documentary, that a combination of Road and Dairying...

The Board is of opinion on the evidence before it both verbal and documentary, that a combination of Road and Dairying...

The Board is of opinion on the evidence before it both verbal and documentary, that a combination of Road and Dairying...

The Board is of opinion on the evidence before it both verbal and documentary, that a combination of Road and Dairying...

The Board is of opinion on the evidence before it both verbal and documentary, that a combination of Road and Dairying...

The Board is of opinion on the evidence before it both verbal and documentary, that a combination of Road and Dairying...

The Board is of opinion on the evidence before it both verbal and documentary, that a combination of Road and Dairying...

The Board is of opinion on the evidence before it both verbal and documentary, that a combination of Road and Dairying...

"ON THIS DAY"

JANUARY DAY.

It must be a wonderful thing to create great news and know that it will appear in the columns of the Standard...

In regard to the Coffee Industry, the Board is of opinion that the position of the grower...

The Board is of opinion that any proposals which Government may secure or make in other respects...

Such a reduction would enable the farmer to pay for his crop...

With regard to what the present position is as regards the payment to the farmer of about 10% per cent on the price...

The figure is very near the 10% per cent which is the basis of the present system...

In regard to Dairying, the present position is that the farmer may or may not provide the means of carrying the industry over the present crisis...

The present situation in the Road Industry makes a definite point to suggest any stable measure of Road Interference...

The present position in the Road Industry makes a definite point to suggest any stable measure of Road Interference...

The Board is of opinion on the evidence before it both verbal and documentary, that a combination of Road and Dairying...

The Board is of opinion on the evidence before it both verbal and documentary, that a combination of Road and Dairying...

The Board is of opinion on the evidence before it both verbal and documentary, that a combination of Road and Dairying...

The Board is of opinion on the evidence before it both verbal and documentary, that a combination of Road and Dairying...

The Board is of opinion on the evidence before it both verbal and documentary, that a combination of Road and Dairying...

The Board is of opinion on the evidence before it both verbal and documentary, that a combination of Road and Dairying...

The Board is of opinion on the evidence before it both verbal and documentary, that a combination of Road and Dairying...

The Board is of opinion on the evidence before it both verbal and documentary, that a combination of Road and Dairying...

Stag's Head Hotel advertisement with logo and text.

AVONDALE PARKLANDS ESTATE advertisement.

GROSVENOR HOUSE advertisement.

IF YOU WANT EVERYTHING OF THE BEST TRY THE SAVOY HOTEL advertisement.

The Norfolk Hotel NAIROBI advertisement.

Every convenience, Tennis Court, own Laundry in the premises, special cooking for cars.

A Perfect Situation with every convenience and comfort.

Salisbury Hotel NAIROBI advertisement.

The Edward Hotel advertisement.

Now Fully Licensed HAVE A SUNDOWNER AT THE EDWARD.

TRY AN EDWARD COCKTAIL. LISTEN OR DANCE TO THE WIRELESS. PLAY TENNIS OR PING PONG.

KIKUYU HOTEL advertisement.

Fifteen miles from Nairobi on a good road. NOW UNDER THE MANAGEMENT OF MR BLADEN TAYLOR.

EXCELLENT CUISINE. GORGEOUS WINES AND LIQUORS. FORTHS FOR HIRE. RIDING LESSONS GIVEN. SPECIAL TERMS FOR WEEK-END VISITORS.

Keya Appointments. The following appointments are notified in the Honorary Office...

On the one hand the Board was informed from an authoritative source that no drastic change of policy from that which prevailed last session is contemplated.

The Board is of opinion that the position of the grower in the coffee industry...

The Board is of opinion that any proposals which Government may secure or make in other respects...

Such a reduction would enable the farmer to pay for his crop...

With regard to what the present position is as regards the payment to the farmer of about 10% per cent on the price...

The figure is very near the 10% per cent which is the basis of the present system...

In regard to Dairying, the present position is that the farmer may or may not provide the means of carrying the industry over the present crisis...

The present situation in the Road Industry makes a definite point to suggest any stable measure of Road Interference...

The present position in the Road Industry makes a definite point to suggest any stable measure of Road Interference...

The Board is of opinion on the evidence before it both verbal and documentary, that a combination of Road and Dairying...

The Board is of opinion on the evidence before it both verbal and documentary, that a combination of Road and Dairying...

The Board is of opinion on the evidence before it both verbal and documentary, that a combination of Road and Dairying...

QUICK COOKING advertisement.

The New Quaker Oats advertisement.

QUICK COOKING advertisement.

The New Quaker Oats advertisement.

QUICK COOKING advertisement.

The New Quaker Oats advertisement.

QUICK COOKING advertisement.

The New Quaker Oats advertisement.

QUICK COOKING advertisement.

CORRESPONDENCE.

ummit Tennis Shirts



MEAN PERFECT FIT, COMFORT, STYLE AND DURABILITY.

Famed Bros

THE HOUSE OF DISTINCTION. P.O. Box 254 Bazaar-Nairobi Phone 261

Advertisement for Kaiser Hosiery and Underwear, featuring a woman in a dress and the text 'Throughout the EMPIRE Women of Breeding and Good Taste instinctively CHOOSE KAISER Hosiery and Underwear'.

Advertisement for Buret Tea, featuring a woman in a dress and the text 'A Real Good Kenya Product BURET TEA WE HAVE NOW REDUCED THE PRICE OF THIS FIRST CLASS TEA'.

Advertisement for M. S. Elliot & Co., Limited, featuring a woman in a dress and the text 'A Real Good Kenya Product M. S. Elliot & Co., Limited'.

Advertisement for Meghji Ahamed & Co., featuring a woman in a dress and the text 'ALWAYS IN STOCK All sizes and types of TENTS for tropical use'.

The Editor does not accept responsibility for the correspondence he receives...

East Coast Fever.

IS IT A MINERAL DETRIMENTAL DISEASE?

To the Editor, "E.A. Standard." Sir—A letter from a well known paleontologist as Mr. Abraham of South Africa...

What do I think is Factor X which causes my important health from death although I do not die from it? A mineral disease, I think myself and which others have done the honor of asking.

I hope the Research Department, which undertakes scientific and knowledge, will consider the following theory worthy of spending a little money to discover.

I would like to suggest that East Coast Fever is a mineral disease which it only occurs in districts where there is a mineral deficiency in either the pasture or the soil.

It may be an unconsidered element it may be a combination of elements.

That if you have a mineral deficiency in the blood plasma is limited to the passive organism East Coast Fever either in the breast or the skin.

It is conceivable, and should be worth investigating, that a mineral deficiency in the blood plasma on the part of the animal is the cause of the disease.

It is mineral and a liver survey are made and the findings are correlated with the incidence of East Coast Fever some good may be done.

If experiments were conducted with the object of testing the above theory it is conceivable that a valuable element might be acquired.

Yours etc. M. C. WETTERBELL. Nairobi, January 25, 1931.

THE KEVYA OUTLOOK—MR. O'BRIEN'S SPEECH.

To the Editor, "E.A. Standard." Sir—I shall be grateful if you can allow me a little space to make some comment on Mr. O'Brien's speech before the Nairobi Rotary Club.

After Mr. O'Brien's return from London as a member of the Executive Committee it was obvious that he realized the country with which he was a poor man—now it seems he thinks it his own duty to do so.

Dealing with the economic situation, Mr. O'Brien is wonted to have said that Kenya is on the brink of a complete economic collapse, and outlined steps to be taken to deal with the situation.

What these steps are is not reported except that "an enquiry commission" had been appointed on the ground that Great Britain was the cause.

It is not a political speech that any democratic party at all would make in the Colony's Constituent Assembly. It is a political speech that any democratic party at all would make in the Colony's Constituent Assembly.

It is not a political speech that any democratic party at all would make in the Colony's Constituent Assembly. It is a political speech that any democratic party at all would make in the Colony's Constituent Assembly.

It is not a political speech that any democratic party at all would make in the Colony's Constituent Assembly. It is a political speech that any democratic party at all would make in the Colony's Constituent Assembly.

It is not a political speech that any democratic party at all would make in the Colony's Constituent Assembly. It is a political speech that any democratic party at all would make in the Colony's Constituent Assembly.

It is not a political speech that any democratic party at all would make in the Colony's Constituent Assembly. It is a political speech that any democratic party at all would make in the Colony's Constituent Assembly.

It is not a political speech that any democratic party at all would make in the Colony's Constituent Assembly. It is a political speech that any democratic party at all would make in the Colony's Constituent Assembly.

It is not a political speech that any democratic party at all would make in the Colony's Constituent Assembly. It is a political speech that any democratic party at all would make in the Colony's Constituent Assembly.

It is not a political speech that any democratic party at all would make in the Colony's Constituent Assembly. It is a political speech that any democratic party at all would make in the Colony's Constituent Assembly.

It is not a political speech that any democratic party at all would make in the Colony's Constituent Assembly. It is a political speech that any democratic party at all would make in the Colony's Constituent Assembly.

It is not a political speech that any democratic party at all would make in the Colony's Constituent Assembly. It is a political speech that any democratic party at all would make in the Colony's Constituent Assembly.

It is not a political speech that any democratic party at all would make in the Colony's Constituent Assembly. It is a political speech that any democratic party at all would make in the Colony's Constituent Assembly.

It is not a political speech that any democratic party at all would make in the Colony's Constituent Assembly. It is a political speech that any democratic party at all would make in the Colony's Constituent Assembly.

It is not a political speech that any democratic party at all would make in the Colony's Constituent Assembly. It is a political speech that any democratic party at all would make in the Colony's Constituent Assembly.

It is not a political speech that any democratic party at all would make in the Colony's Constituent Assembly. It is a political speech that any democratic party at all would make in the Colony's Constituent Assembly.

It is not a political speech that any democratic party at all would make in the Colony's Constituent Assembly. It is a political speech that any democratic party at all would make in the Colony's Constituent Assembly.

It is not a political speech that any democratic party at all would make in the Colony's Constituent Assembly. It is a political speech that any democratic party at all would make in the Colony's Constituent Assembly.

It is not a political speech that any democratic party at all would make in the Colony's Constituent Assembly. It is a political speech that any democratic party at all would make in the Colony's Constituent Assembly.

It is not a political speech that any democratic party at all would make in the Colony's Constituent Assembly. It is a political speech that any democratic party at all would make in the Colony's Constituent Assembly.

It is not a political speech that any democratic party at all would make in the Colony's Constituent Assembly. It is a political speech that any democratic party at all would make in the Colony's Constituent Assembly.

It is not a political speech that any democratic party at all would make in the Colony's Constituent Assembly. It is a political speech that any democratic party at all would make in the Colony's Constituent Assembly.

It is not a political speech that any democratic party at all would make in the Colony's Constituent Assembly. It is a political speech that any democratic party at all would make in the Colony's Constituent Assembly.

It is not a political speech that any democratic party at all would make in the Colony's Constituent Assembly. It is a political speech that any democratic party at all would make in the Colony's Constituent Assembly.

Advertisement for FLIT disinfectant, featuring an illustration of a fly and the text 'KILL these Killers! FLIT Kills quicker'.

Advertisement for MOTORISTS! Ebo's Petrol Station, featuring the text 'FOR Quick Service with Courtney TRY Ebo's Petrol Station'.

Advertisement for THE ROMANCE OF SCOTLAND, featuring a bottle of whisky and the text 'The Romance of Scotland is interwoven in the distillation and fragrance of W. & A. GILBERT'S SPEY-ROYAL BY ROYAL APPOINTMENT'.

Advertisement for THE FINEST FROUGHALL WHISKY, featuring the text 'THE FINEST FROUGHALL WHISKY Stocked by all High-Class Hotels and Spirit Merchants'.

Advertisement for B. FLORENS FRENCH HAIR DRESSER, featuring the text 'B. FLORENS FRENCH HAIR DRESSER PERMANENT AND TINTING SPECIALIST'.

Advertisement for TOYS, featuring the text 'TOYS BUY AT Ladharam Stores, GENERAL DRAPERS, Govt. Road, NAIROBI. Box 516.'

Advertisement for JOHNNIE WALKER WHISKY, featuring a man in a top hat and the text 'JOHNNIE WALKER We have the pleasure to announce that in consequence of the former agents having relinquished their interest in this Whisky, we have now been appointed Sole Agents for Kenya and Uganda'.

British Woman. (Daily.) One hundred and thirty-seven copies of the British Woman were sent to the Editor for publication. The British Woman is a weekly magazine published by the British Women's Club, 10, St. James's Place, London, W.1.

The Editor, "E.A. Standard." Sir—I am writing to you to inform you that I have received your letter of the 21st inst. regarding the matter of the British Woman. I am sorry to hear that you are having difficulty in getting the magazine published in Kenya.

The Editor, "E.A. Standard." Sir—I am writing to you to inform you that I have received your letter of the 21st inst. regarding the matter of the British Woman. I am sorry to hear that you are having difficulty in getting the magazine published in Kenya.

The Editor, "E.A. Standard." Sir—I am writing to you to inform you that I have received your letter of the 21st inst. regarding the matter of the British Woman. I am sorry to hear that you are having difficulty in getting the magazine published in Kenya.

BARCLAYS BANK (DOMINION, COLONIAL AND OVERSEAS)
 Incorporated by Royal Charter 1826. Re-incorporated by Act of Parliament, 1881.
THE COLONIAL BANK
 with which are amalgamated
THE NATIONAL BANK OF SOUTH AFRICA, LTD.
 and
THE ANGO-EGYPTIAN BANK LTD.

Capital Authorized	£1,000,000
Capital Subscribed	£625,750
Capital Paid up	£425,000
Reserve Fund	£150,000

OVER 400 BRANCHES IN THE Cities of South Africa, Rhodesia, South West Africa, British West Africa, West Indies, Egypt, Palestine and the Sudan, Mauritius, etc.

THE BANK UNDERTAKES ALL CLASSES OF BANKING BUSINESS AND ALSO ACTS AS TRUSTEE AND EXECUTOR.

BRANCHES IN EAST AFRICA: Nairobi, Mombasa, Heligoland, Eldoret, Kisumu, Kampala, Juba, Tanga, Dar-es-Salaam, Zanzibar, Beira, Mozambique, Harare and Bulawayo.

HEAD OFFICE: 4, Lombard Street, London, E.C.4. **LONDON OFFICES:** 20, Gracechurch Street, E.C.3. City, London, W.C.2. **NEW YORK OFFICE:** 60, Broadway, New York, N.Y.

Correspondents in all the Principal Cities and Towns of the World.

EAT MUA LANGRIDGE'S FRUIT AND KEEP FIT

1921 SEASON 1931

KEVIN'S FRUIT
 DELICIOUS FRUIT from the MUA PARK ORCHARD, New Zealand. Don't miss the famous KEVIN'S FRUIT. Best and Golden Apple. Good varieties for cooking and preserving. Apples in season 10 lbs. per bag. 50 KEVIN'S SIZE PEARS in season 10 lbs. per bag. DELICIOUS FRUIT OF DESSERT QUALITY ONLY (available in season) 50 lbs. per bag. Prices include cartage, packing and cartage to Make your 1st Page Man.

PLUMS
 DELICIOUS FRUIT from the MUA PARK ORCHARD, New Zealand. Don't miss the famous KEVIN'S FRUIT. Best and Golden Apple. Good varieties for cooking and preserving. Apples in season 10 lbs. per bag. 50 KEVIN'S SIZE PEARS in season 10 lbs. per bag. DELICIOUS FRUIT OF DESSERT QUALITY ONLY (available in season) 50 lbs. per bag. Prices include cartage, packing and cartage to Make your 1st Page Man.

HIDROGEN PAROXIDE
 Very useful for many purposes. O.T.P. guaranteed stability in patent stoppered bottles of 4, 10 and 30 ccs, respectively 1/75, 3/10 and 6/10 per bottle, or 1/30 ccs. in 4 oz. sealed bottles 1/30 only.

QUD LIVER OIL AND MALT EXTRACT
 Best of the only QUD. Available in 1, 2, 4 and 7 lbs. the larger the size the more economical. Wholesale price given on request.

The Nairobi Pharmacy
 115, River Road, NAIROBI.



LAMPS THAT SHINE BY DAY
 We show that there have been reflections with the following

BRUSHING COMB

M.C.C. IN SOUTH AFRICA.
 The first of the first two Test matches between the M.C.C. and South Africa was played on the Wanderers Ground, Johannesburg, on December 28th, 29th and 30th. The result was a draw. The M.C.C. side was a regularly selected eleven, and the South African side was a selection of all for the small test of 126, to be played on the 29th and 30th. This was the first of the Test matches. The M.C.C. side was a regular eleven, and the South African side was a selection of all for the small test of 126, to be played on the 29th and 30th. This was the first of the Test matches.

OUR SOUTH AFRICAN CORRESPONDENT
 writes on December 28th:
 The first of the first two Test matches between the M.C.C. and South Africa was played on the Wanderers Ground, Johannesburg, on December 28th, 29th and 30th. The result was a draw. The M.C.C. side was a regularly selected eleven, and the South African side was a selection of all for the small test of 126, to be played on the 29th and 30th. This was the first of the Test matches. The M.C.C. side was a regular eleven, and the South African side was a selection of all for the small test of 126, to be played on the 29th and 30th. This was the first of the Test matches.

THE FIRST TEST MATCH.
 The first of the first two Test matches between the M.C.C. and South Africa was played on the Wanderers Ground, Johannesburg, on December 28th, 29th and 30th. The result was a draw. The M.C.C. side was a regularly selected eleven, and the South African side was a selection of all for the small test of 126, to be played on the 29th and 30th. This was the first of the Test matches. The M.C.C. side was a regular eleven, and the South African side was a selection of all for the small test of 126, to be played on the 29th and 30th. This was the first of the Test matches.

THE FIRST TEST MATCH.
 The first of the first two Test matches between the M.C.C. and South Africa was played on the Wanderers Ground, Johannesburg, on December 28th, 29th and 30th. The result was a draw. The M.C.C. side was a regularly selected eleven, and the South African side was a selection of all for the small test of 126, to be played on the 29th and 30th. This was the first of the Test matches. The M.C.C. side was a regular eleven, and the South African side was a selection of all for the small test of 126, to be played on the 29th and 30th. This was the first of the Test matches.

THE FIRST TEST MATCH.
 The first of the first two Test matches between the M.C.C. and South Africa was played on the Wanderers Ground, Johannesburg, on December 28th, 29th and 30th. The result was a draw. The M.C.C. side was a regularly selected eleven, and the South African side was a selection of all for the small test of 126, to be played on the 29th and 30th. This was the first of the Test matches. The M.C.C. side was a regular eleven, and the South African side was a selection of all for the small test of 126, to be played on the 29th and 30th. This was the first of the Test matches.

THE FIRST TEST MATCH.
 The first of the first two Test matches between the M.C.C. and South Africa was played on the Wanderers Ground, Johannesburg, on December 28th, 29th and 30th. The result was a draw. The M.C.C. side was a regularly selected eleven, and the South African side was a selection of all for the small test of 126, to be played on the 29th and 30th. This was the first of the Test matches. The M.C.C. side was a regular eleven, and the South African side was a selection of all for the small test of 126, to be played on the 29th and 30th. This was the first of the Test matches.

Free Insurance Against Ill Health. A Holiday in South Africa.
 Climates that Please and Ensure Health and Pleasure.

For full particulars apply to THE SOUTH AFRICA OFFICE, Memorial Hall, Box 204, NAIROBI.

TO LET.
 A small concrete block house of Lenana Road, The Hill. Monthly tenancy or long lease as desired.

STIRLING & SCOTT Ltd.
 P.O. Box 245, Victoria Street. Phone 128.

Weeds—Rats—Plague.
 Avoid them all. This new type of WEED CUTTER is the most practical and effective tool ever offered for quickly clearing away weeds and light bushes.

It does the work, with much more ease and far more rapidly than can be done with any other tool.

The double-edged blade is set at correct angle for easy natural swing to cut with both forward and backward strokes.

PRICE 5s. 6d. each

INGRAM & Co. Ltd.
THE TOOL HOUSE
 NAIROBI.

Don't fail to see our Window Display, it will give you some idea of our Taxidermist's Skill. Send or Call for our complete Price List. See our large and varied ranges of Guns and Rifles, we hold a stock second to none. Let us have the pleasure of showing you around our premises and workshops without any obligation on your part to purchase.

Chas. A. Hoyer & Co. Ltd., THE GUNSMEN, NAIROBI.

SULPHURIC ACID
 for BATTERY purposes, pure, industrial, specific gravity 1.85 to 2.00 gallon per sq. inch.

A. J. ELY and Co. Ltd.
 THE CHEMISTS, Phone 524, F.O. Box 411, NAIROBI.

Kenya Loan & Discount Co., Ltd.
 P.O. Box 446, NAIROBI. OFFICE—1st Floor, Court Chambers.

Financial Agents
 Bills Discounted—Short-term Loans Granted. All Realizable Assets Repossessed for Cash. Call or Write, ESTABLISHED CONFIDENCE. ESTABLISHED 1861.

Geo. Blowers.
 BUILDING CONTRACTOR, MANUFACTURER AND DIRECT IMPORTER.
 54 DUBLIN STREET, GREATLY REDUCED PRICES. Tel. Ad. "Concrete". Phone: Works 360. House 425.

Windows, doors, and other fittings. Made in Color. Windows, doors, and other fittings. Made in Color. Windows, doors, and other fittings. Made in Color.

WHY BUY AMERICAN DOORS AND SEND YOUR MONEY ABROAD?
 I can compete with them—and beat them! Send for my LITERATED CATALOGUE and Price List. See for myself. BOWEN'S PATENT for SOUND WORK.

CONCRETE BLOCKS. ALL SIZES IN STOCK. BEST KILN SAND IN ANY QUANTITY. (Cart Truck or Train Load).

DELIVERIES BY LORRIES AT QUOTED RATES. PLUMBING AND SANITARY WORK DONE UNDER THE SUPERVISION OF OUR OWN SUPERIOR SPECIALISTS. ESTIMATES FREE. UP-TO-DATE AND ATTRACTIVE. SIGNS.

Latest London Styles, Ideas, Layouts, Pictorial Designs, Footers.

THE FIRST TEST MATCH.
 The first of the first two Test matches between the M.C.C. and South Africa was played on the Wanderers Ground, Johannesburg, on December 28th, 29th and 30th. The result was a draw. The M.C.C. side was a regularly selected eleven, and the South African side was a selection of all for the small test of 126, to be played on the 29th and 30th. This was the first of the Test matches. The M.C.C. side was a regular eleven, and the South African side was a selection of all for the small test of 126, to be played on the 29th and 30th. This was the first of the Test matches.

THE FIRST TEST MATCH.
 The first of the first two Test matches between the M.C.C. and South Africa was played on the Wanderers Ground, Johannesburg, on December 28th, 29th and 30th. The result was a draw. The M.C.C. side was a regularly selected eleven, and the South African side was a selection of all for the small test of 126, to be played on the 29th and 30th. This was the first of the Test matches. The M.C.C. side was a regular eleven, and the South African side was a selection of all for the small test of 126, to be played on the 29th and 30th. This was the first of the Test matches.

THE FIRST TEST MATCH.
 The first of the first two Test matches between the M.C.C. and South Africa was played on the Wanderers Ground, Johannesburg, on December 28th, 29th and 30th. The result was a draw. The M.C.C. side was a regularly selected eleven, and the South African side was a selection of all for the small test of 126, to be played on the 29th and 30th. This was the first of the Test matches. The M.C.C. side was a regular eleven, and the South African side was a selection of all for the small test of 126, to be played on the 29th and 30th. This was the first of the Test matches.

THE FIRST TEST MATCH.
 The first of the first two Test matches between the M.C.C. and South Africa was played on the Wanderers Ground, Johannesburg, on December 28th, 29th and 30th. The result was a draw. The M.C.C. side was a regularly selected eleven, and the South African side was a selection of all for the small test of 126, to be played on the 29th and 30th. This was the first of the Test matches. The M.C.C. side was a regular eleven, and the South African side was a selection of all for the small test of 126, to be played on the 29th and 30th. This was the first of the Test matches.

THE FIRST TEST MATCH.
 The first of the first two Test matches between the M.C.C. and South Africa was played on the Wanderers Ground, Johannesburg, on December 28th, 29th and 30th. The result was a draw. The M.C.C. side was a regularly selected eleven, and the South African side was a selection of all for the small test of 126, to be played on the 29th and 30th. This was the first of the Test matches. The M.C.C. side was a regular eleven, and the South African side was a selection of all for the small test of 126, to be played on the 29th and 30th. This was the first of the Test matches.

THE FIRST TEST MATCH.
 The first of the first two Test matches between the M.C.C. and South Africa was played on the Wanderers Ground, Johannesburg, on December 28th, 29th and 30th. The result was a draw. The M.C.C. side was a regularly selected eleven, and the South African side was a selection of all for the small test of 126, to be played on the 29th and 30th. This was the first of the Test matches. The M.C.C. side was a regular eleven, and the South African side was a selection of all for the small test of 126, to be played on the 29th and 30th. This was the first of the Test matches.

THE EAST AFRICAN STANDARD DAILY EDITION. ADVERTISEMENTS: Advertisements are accepted only subject to approval.

Domestic Advertisements: Births, Marriages and Deaths, &c., at the rate of six words with minimum of six lines.

Advertisements: such as mail wanted, To Let, For Sale, and Situations Vacant, &c., are charged at the rate of one word or fraction of a line, initial letters are printed in consecutive days only Half Price.

All the above Advertisements are strictly payable in Advance, and no exception will be made in this rule.

THE SUBSCRIPTION RATE: DAILY: Locally, yearly, Shs 6.00; half yearly, Shs 3.00; Quarterly, Shs 2.00. For the Post, yearly, Shs 7.00; half yearly, Shs 3.50; Quarterly, Shs 2.50.

WEEKLY: Posted, yearly, Shs 25.00; half yearly, Shs 12.50; Quarterly, Shs 8.50.

FOR SALE: Concrete House, 2000 sq. ft. with 2 bedrooms, 2 baths, and large veranda. Price Shs 2500. Apply to Vendor No. 1611.

FOR SALE - (Continued). THE CHEAP TRACTOR & also a line of his Works, or a fraction of a line, with a minimum of Shs 5/-.

NEW WALKER TRACTOR & also a line of his Works, or a fraction of a line, with a minimum of Shs 5/-.

STRAW and ladder order for cutting dried for horse, mules, or stable for hand or large, suitable for cattle. Price Shs 100.

TO LET. THE CHEAP TRACTOR & also a line of his Works, or a fraction of a line, with a minimum of Shs 5/-.

CONCRETE House, 2000 sq. ft. with 2 bedrooms, 2 baths, and large veranda. Price Shs 2500. Apply to Vendor No. 1611.

DWELLING HOUSE, 2000 sq. ft. with 2 bedrooms, 2 baths, and large veranda. Price Shs 2500.

FROM 1st February or 1st March furnished house situated in 14 Avenue Parklands. Price Shs 2500.

LARGE double bedroom and sitting room. Full furnished. Apply Vendor No. 1595.

MURRAY'S - Double Bedroom House, 2 bedrooms, 2 baths, tennis court. Price Shs 2500.

M. Spencer Palmer's furnished house at Maitland. Price Shs 2500.

TWO Wood and Iron Buildings, 2000 sq. ft. each. Price Shs 2500.

WELL FURNISHED House, 2 bedrooms, 2 baths, tennis court. Price Shs 2500.

WANTED. THE CHEAP TRACTOR & also a line of his Works, or a fraction of a line, with a minimum of Shs 5/-.

WANTED. THE CHEAP TRACTOR & also a line of his Works, or a fraction of a line, with a minimum of Shs 5/-.

CONTROL your Money Day by Day using T.C.M. Banking System. Price Shs 2500.

DUMFRIES Level in Case. Maker of the most famous Typewriters. Price Shs 2500.

DAVIDSON'S Flat Machines. Price Shs 2500.

HAND Saws, Planes, and other tools. Price Shs 2500.

ERIC SHIRLEY. Stationer and Printer. Price Shs 2500.

Good Quality HOUSEHOLD and OFFICE FURNITURE.

FOOTWEAR. THE CHEAP TRACTOR & also a line of his Works, or a fraction of a line, with a minimum of Shs 5/-.

THE CHEAP TRACTOR & also a line of his Works, or a fraction of a line, with a minimum of Shs 5/-.

THE CHEAP TRACTOR & also a line of his Works, or a fraction of a line, with a minimum of Shs 5/-.

THE CHEAP TRACTOR & also a line of his Works, or a fraction of a line, with a minimum of Shs 5/-.

THE CHEAP TRACTOR & also a line of his Works, or a fraction of a line, with a minimum of Shs 5/-.

THE CHEAP TRACTOR & also a line of his Works, or a fraction of a line, with a minimum of Shs 5/-.

THE CHEAP TRACTOR & also a line of his Works, or a fraction of a line, with a minimum of Shs 5/-.

SITUATIONS VACANT. BROWN & BARRETT, LTD. ESTATE AGENTS. PROPERTY LIST.

KIKUYU ROAD: 2.18 acres of land together with a wood and iron house, gully, masonry building, and tennis court. Price Shs 2500.

TO LET. We have a number of a comfortable house to let in all parts of the city.

GEORARD ROAD: 2.18 acres of land together with a wood and iron house, gully, masonry building, and tennis court. Price Shs 2500.

KAPETE ROAD: 1st of high ground with excellent view. Price Shs 2500.

RIVERBUSH ESTATE: 2000 acres of land with 2000 head of stock. Price Shs 2500.

FARM PROPERTY. 2000 acres of land with 2000 head of stock. Price Shs 2500.

FOR SALE. 2000 acres of land with 2000 head of stock. Price Shs 2500.

FOR SALE. 2000 acres of land with 2000 head of stock. Price Shs 2500.

FOR SALE. 2000 acres of land with 2000 head of stock. Price Shs 2500.

FOR SALE. 2000 acres of land with 2000 head of stock. Price Shs 2500.

FOR SALE. 2000 acres of land with 2000 head of stock. Price Shs 2500.

FOR SALE. 2000 acres of land with 2000 head of stock. Price Shs 2500.

FOR SALE. 2000 acres of land with 2000 head of stock. Price Shs 2500.

FOR SALE. 2000 acres of land with 2000 head of stock. Price Shs 2500.

FOR SALE. 2000 acres of land with 2000 head of stock. Price Shs 2500.

FOR SALE. 2000 acres of land with 2000 head of stock. Price Shs 2500.

FOR SALE. 2000 acres of land with 2000 head of stock. Price Shs 2500.

FOR SALE. 2000 acres of land with 2000 head of stock. Price Shs 2500.

FOR SALE. 2000 acres of land with 2000 head of stock. Price Shs 2500.

FOR SALE. 2000 acres of land with 2000 head of stock. Price Shs 2500.

FOR SALE. 2000 acres of land with 2000 head of stock. Price Shs 2500.

FOR SALE. 2000 acres of land with 2000 head of stock. Price Shs 2500.

FOR SALE. 2000 acres of land with 2000 head of stock. Price Shs 2500.

FOR SALE. 2000 acres of land with 2000 head of stock. Price Shs 2500.

FOR SALE. 2000 acres of land with 2000 head of stock. Price Shs 2500.

FOR SALE. 2000 acres of land with 2000 head of stock. Price Shs 2500.

FOR SALE. 2000 acres of land with 2000 head of stock. Price Shs 2500.

FOR SALE. 2000 acres of land with 2000 head of stock. Price Shs 2500.

FOR SALE. 2000 acres of land with 2000 head of stock. Price Shs 2500.

FOR SALE. 2000 acres of land with 2000 head of stock. Price Shs 2500.

J. A. LANDMAN & Co. LAND, ESTATE AND MANAGING AGENTS. CITY SQUARE MANROBI. P.O. Box 968.

TO LET. Very attractive for a school and kindergarten building in Maitland. Price Shs 2500.

FOR SALE. 2000 acres of land with 2000 head of stock. Price Shs 2500.

FOR SALE. 2000 acres of land with 2000 head of stock. Price Shs 2500.

FOR SALE. 2000 acres of land with 2000 head of stock. Price Shs 2500.

FOR SALE. 2000 acres of land with 2000 head of stock. Price Shs 2500.

FOR SALE. 2000 acres of land with 2000 head of stock. Price Shs 2500.

FOR SALE. 2000 acres of land with 2000 head of stock. Price Shs 2500.

FOR SALE. 2000 acres of land with 2000 head of stock. Price Shs 2500.

FOR SALE. 2000 acres of land with 2000 head of stock. Price Shs 2500.

FOR SALE. 2000 acres of land with 2000 head of stock. Price Shs 2500.

FOR SALE. 2000 acres of land with 2000 head of stock. Price Shs 2500.

FOR SALE. 2000 acres of land with 2000 head of stock. Price Shs 2500.

FOR SALE. 2000 acres of land with 2000 head of stock. Price Shs 2500.

FOR SALE. 2000 acres of land with 2000 head of stock. Price Shs 2500.

FOR SALE. 2000 acres of land with 2000 head of stock. Price Shs 2500.

FOR SALE. 2000 acres of land with 2000 head of stock. Price Shs 2500.

FOR SALE. 2000 acres of land with 2000 head of stock. Price Shs 2500.

FOR SALE. 2000 acres of land with 2000 head of stock. Price Shs 2500.

FOR SALE. 2000 acres of land with 2000 head of stock. Price Shs 2500.

FOR SALE. 2000 acres of land with 2000 head of stock. Price Shs 2500.

FOR SALE. 2000 acres of land with 2000 head of stock. Price Shs 2500.

FOR SALE. 2000 acres of land with 2000 head of stock. Price Shs 2500.

FOR SALE. 2000 acres of land with 2000 head of stock. Price Shs 2500.

FOR SALE. 2000 acres of land with 2000 head of stock. Price Shs 2500.

FOR SALE. 2000 acres of land with 2000 head of stock. Price Shs 2500.

FOR SALE. 2000 acres of land with 2000 head of stock. Price Shs 2500.

FOR SALE. 2000 acres of land with 2000 head of stock. Price Shs 2500.

FOR SALE. 2000 acres of land with 2000 head of stock. Price Shs 2500.

FOR SALE. 2000 acres of land with 2000 head of stock. Price Shs 2500.

FOR SALE. 2000 acres of land with 2000 head of stock. Price Shs 2500.

J. W. MILLIGAN & Co. Land & Estate Agents Licensed Valuers. Box 148. NAIROBI. Phone 98

UJAIN GIBBU. The flats. Large area of land from Shs 750 to Shs 2500 per acre. Price Shs 2500.

UJAIN GIBBU. 1200 acres of land with 1200 head of stock. Price Shs 2500.

UJAIN GIBBU. 1200 acres of land with 1200 head of stock. Price Shs 2500.

UJAIN GIBBU. 1200 acres of land with 1200 head of stock. Price Shs 2500.

UJAIN GIBBU. 1200 acres of land with 1200 head of stock. Price Shs 2500.

UJAIN GIBBU. 1200 acres of land with 1200 head of stock. Price Shs 2500.

UJAIN GIBBU. 1200 acres of land with 1200 head of stock. Price Shs 2500.

UJAIN GIBBU. 1200 acres of land with 1200 head of stock. Price Shs 2500.

UJAIN GIBBU. 1200 acres of land with 1200 head of stock. Price Shs 2500.

UJAIN GIBBU. 1200 acres of land with 1200 head of stock. Price Shs 2500.

UJAIN GIBBU. 1200 acres of land with 1200 head of stock. Price Shs 2500.

UJAIN GIBBU. 1200 acres of land with 1200 head of stock. Price Shs 2500.

UJAIN GIBBU. 1200 acres of land with 1200 head of stock. Price Shs 2500.

UJAIN GIBBU. 1200 acres of land with 1200 head of stock. Price Shs 2500.

UJAIN GIBBU. 1200 acres of land with 1200 head of stock. Price Shs 2500.

UJAIN GIBBU. 1200 acres of land with 1200 head of stock. Price Shs 2500.

UJAIN GIBBU. 1200 acres of land with 1200 head of stock. Price Shs 2500.

UJAIN GIBBU. 1200 acres of land with 1200 head of stock. Price Shs 2500.

UJAIN GIBBU. 1200 acres of land with 1200 head of stock. Price Shs 2500.

UJAIN GIBBU. 1200 acres of land with 1200 head of stock. Price Shs 2500.

UJAIN GIBBU. 1200 acres of land with 1200 head of stock. Price Shs 2500.

UJAIN GIBBU. 1200 acres of land with 1200 head of stock. Price Shs 2500.

UJAIN GIBBU. 1200 acres of land with 1200 head of stock. Price Shs 2500.

UJAIN GIBBU. 1200 acres of land with 1200 head of stock. Price Shs 2500.

UJAIN GIBBU. 1200 acres of land with 1200 head of stock. Price Shs 2500.

UJAIN GIBBU. 1200 acres of land with 1200 head of stock. Price Shs 2500.

UJAIN GIBBU. 1200 acres of land with 1200 head of stock. Price Shs 2500.

UJAIN GIBBU. 1200 acres of land with 1200 head of stock. Price Shs 2500.

UJAIN GIBBU. 1200 acres of land with 1200 head of stock. Price Shs 2500.

UJAIN GIBBU. 1200 acres of land with 1200 head of stock. Price Shs 2500.

TO BAKERS. WHAT FLOUR DO YOU USE? THE BEST IS MILLED BY Kenya & Nairobi Mills Ltd. GRAIN.

THE BEST IS MILLED BY Kenya & Nairobi Mills Ltd. GRAIN.

THE BEST IS MILLED BY Kenya & Nairobi Mills Ltd. GRAIN.

THE BEST IS MILLED BY Kenya & Nairobi Mills Ltd. GRAIN.

THE BEST IS MILLED BY Kenya & Nairobi Mills Ltd. GRAIN.

THE BEST IS MILLED BY Kenya & Nairobi Mills Ltd. GRAIN.

THE BEST IS MILLED BY Kenya & Nairobi Mills Ltd. GRAIN.

THE BEST IS MILLED BY Kenya & Nairobi Mills Ltd. GRAIN.

THE BEST IS MILLED BY Kenya & Nairobi Mills Ltd. GRAIN.

THE BEST IS MILLED BY Kenya & Nairobi Mills Ltd. GRAIN.

THE BEST IS MILLED BY Kenya & Nairobi Mills Ltd. GRAIN.

THE BEST IS MILLED BY Kenya & Nairobi Mills Ltd. GRAIN.

COBORA Portable Typewriter. Price Shs 2500.

COBORA Portable Typewriter. Price Shs 2500.

COBORA Portable Typewriter. Price Shs 2500.

COBORA Portable Typewriter. Price Shs 2500.

COBORA Portable Typewriter. Price Shs 2500.

COBORA Portable Typewriter. Price Shs 2500.

COBORA Portable Typewriter. Price Shs 2500.

COBORA Portable Typewriter. Price Shs 2500.

COBORA Portable Typewriter. Price Shs 2500.

COBORA Portable Typewriter. Price Shs 2500.

COBORA Portable Typewriter. Price Shs 2500.

COBORA Portable Typewriter. Price Shs 2500.

COBORA Portable Typewriter. Price Shs 2500.

COBORA Portable Typewriter. Price Shs 2500.

COBORA Portable Typewriter. Price Shs 2500.

COBORA Portable Typewriter. Price Shs 2500.

COBORA Portable Typewriter. Price Shs 2500.

COBORA Portable Typewriter. Price Shs 2500.

COBORA Portable Typewriter. Price Shs 2500.

COBORA Portable Typewriter. Price Shs 2500.

COBORA Portable Typewriter. Price Shs 2500.

COBORA Portable Typewriter. Price Shs 2500.

COBORA Portable Typewriter. Price Shs 2500.

COBORA Portable Typewriter. Price Shs 2500.

COBORA Portable Typewriter. Price Shs 2500.

COBORA Portable Typewriter. Price Shs 2500.

COBORA Portable Typewriter. Price Shs 2500.

COBORA Portable Typewriter. Price Shs 2500.

COBORA Portable Typewriter. Price Shs 2500.

COBORA Portable Typewriter. Price Shs 2500.

COBORA Portable Typewriter. Price Shs 2500.

COBORA Portable Typewriter. Price Shs 2500.

COBORA Portable Typewriter. Price Shs 2500.

COBORA Portable Typewriter. Price Shs 2500.

COBORA Portable Typewriter. Price Shs 2500.

COBORA Portable Typewriter. Price Shs 2500.

COBORA Portable Typewriter. Price Shs 2500.

COBORA Portable Typewriter. Price Shs 2500.

COBORA Portable Typewriter. Price Shs 2500.

COBORA Portable Typewriter. Price Shs 2500.

COBORA Portable Typewriter. Price Shs 2500.

COBORA Portable Typewriter. Price Shs 2500.

COBORA Portable Typewriter. Price Shs 2500.

COBORA Portable Typewriter. Price Shs 2500.

COBORA Portable Typewriter. Price Shs 2500.

COBORA Portable Typewriter. Price Shs 2500.

COBORA Portable Typewriter. Price Shs 2500.

COBORA Portable Typewriter. Price Shs 2500.

COBORA Portable Typewriter. Price Shs 2500.

COBORA Portable Typewriter. Price Shs 2500.

COBORA Portable Typewriter. Price Shs 2500.

COBORA Portable Typewriter. Price Shs 2500.

COBORA Portable Typewriter. Price Shs 2500.

COBORA Portable Typewriter. Price Shs 2500.

COBORA Portable Typewriter. Price Shs 2500.

COBORA Portable Typewriter. Price Shs 2500.

COBORA Portable Typewriter. Price Shs 2500.

COBORA Portable Typewriter. Price Shs 2500.

COBORA Portable Typewriter. Price Shs 2500.

COBORA Portable Typewriter. Price Shs 2500.

COBORA Portable Typewriter. Price Shs 2500.

COBORA Portable Typewriter. Price Shs 2500.

COBORA Portable Typewriter. Price Shs 2500.

COBORA Portable Typewriter. Price Shs 2500.

COBORA Portable Typewriter. Price Shs 2500.

COBORA Portable Typewriter. Price Shs 2500.

COBORA Portable Typewriter. Price Shs 2500.

COBORA Portable Typewriter. Price Shs 2500.

COBORA Portable Typewriter. Price Shs 2500.

COBORA Portable Typewriter. Price Shs 2500.

UNION-CASTLE LINE.

HOEKWARD VIA SUEZ.

From Mombasa Arrives England about

Lionsbay Castle	21st Feb.	18th March
Onwardly Castle	4th Apr.	7th Apr.
Lionsbay Castle	18th Apr.	14th May
Onwardly Castle	31st May	3rd June
Lionsbay Castle	14th June	17th June
Onwardly Castle	28th June	31st July
Lionsbay Castle	11th Aug.	14th Sept.
Onwardly Castle	25th Oct.	28th Oct.

HOEKWARD VIA SOUTH AFRICA.

From Mombasa Arrives England about

Lionsbay Castle	21st Feb.	18th March
Onwardly Castle	4th Apr.	7th Apr.
Lionsbay Castle	18th Apr.	14th May
Onwardly Castle	31st May	3rd June
Lionsbay Castle	14th June	17th June
Onwardly Castle	28th June	31st July
Lionsbay Castle	11th Aug.	14th Sept.
Onwardly Castle	25th Oct.	28th Oct.

Passenger Agents:
 J. B. A. Corporation, Ltd., Nairobi, Kampala, etc.
 J. H. & A. Watson, Ltd., Nairobi, Kampala, etc.
 T. J. O'Hara & Co., Ltd., Nairobi, Kampala, etc.
 Messrs. Messers, Ltd., Nairobi, Kampala, etc.
 G. O. Mackenzie & Co., Mombasa and Arusha.

British India Steam Navigation Company, Limited

LONDON AND EAST AFRICA LINE.

London to HELLA, via Mombasa, Port Said, Suez, Balaia and Aden, Outwards and Homeward.

Steamers: Kilmindri, Kilmindri, Kilmindri

HOEKWARD VIA SOUTH AFRICA.

From Mombasa Arrives England about

"Madras"	10th Feb.	14th Feb.
"Madras"	24th Feb.	28th Feb.
"Madras"	10th Mar.	14th Mar.
"Madras"	24th Mar.	28th Mar.
"Madras"	10th Apr.	14th Apr.
"Madras"	24th Apr.	28th Apr.
"Madras"	10th May.	14th May.
"Madras"	24th May.	28th May.
"Madras"	10th June.	14th June.
"Madras"	24th June.	28th June.
"Madras"	10th July.	14th July.
"Madras"	24th July.	28th July.
"Madras"	10th Aug.	14th Aug.
"Madras"	24th Aug.	28th Aug.

ALL DATES SUBJECT TO ALTERATION WITHOUT NOTICE. RETURN TICKETS ISSUED AT TWO SINGLE FARES LESS 10%.
 Terms, Rates of Freight and Passages may be arranged with SMITH MACLEOD & Co., Agents, Kilmindri, Mombasa, Zanzibar, Dar-es-Salaam, Tanga, Lindi and Lamu.
 NAIROBI: Tyson Bros. Ltd., NAIROBI. The Kenya Farmers' Association Ltd., BOX 7, The Sey Bazaar, KILIMINDRI.

Chivers' Jams

Made in silver-lined pans at the Orchard Factory with freshly gathered fruit and refined sugar only. Every jar carries a guarantee of absolute purity.

CHIVERS' English Canned Fruits with Chivers' Custard Powder

R. O. HAMILTON, LTD., NAIROBI.



MESSAGERIES MARITIMES
 Regular and fortnightly service from Mombasa to Marseilles.
 Next Sailings to Marseilles—

"Le General Dubouché"	28th Feb.
"Le Général de Lalle"	14th March
"Le Général de Lalle"	28th March

CITRA LINE

Compagnia Italiana Transatlantica.
THE BEST ROUTE TO ENGLAND.
 (Using the new KILMINDRI to NAIROBI LINE.)
 S.S. P. "CRETE" - 1st February, 1st April, 1st June, 1st August.
 S.S. G. "MAZZINI" - 1st March, 1st May, 1st July, 1st September.

DEUTSCHE OST-AFRIKA-LINE

(GERMAN AFRICAN SERVICE.)

HOEKWARD VIA SUEZ CANAL.

"WANGONI"	2nd Feb.
"WATUBSI"	16th Feb.
"USABARUM"	30th Feb.
"TANGANIJA"	14th April
"TUBERA"	28th May
"NJASSA"	11th June
"ADOLPH WOERMANN"	25th July
"USABARUM"	8th August

SUMMER EXCURSIONS TO SOUTH AFRICA—Oct. 1890 to February, 1931.

Up-Country Cheques Cannot Be Accepted Unless Specially Endorsed By Local Bank.

For Passenger Fares And Freight Rates Apply To—
DEUTSCHE OST-AFRIKA-LINE Generalagent, Mombasa.
 Cable: "OSTLINE" P.O. Box 219, MOMBASA.

Clan-Ellerman-Harrison Lines

(JOINT SERVICE)

Liverpool - Glasgow - Ayr - Manchester.

Due to arrive: Due to sail.

Looking for Liverpool	Kilmindri	Kilmindri
" " " " " "	In port	2nd Feb.
" " " " " "	2nd Feb.	2nd Mar.
" " " " " "	2nd Mar.	2nd Mar.

MVUJI TIMBER
 Best quality firebricks
 Suitable for chimneys
 Used in the best buildings
 R. B. SIRDAW, P.O. Box 80, JINJA, Uganda.

Ellerman and Bucknall Line

NEW YORK - MOMBASA VIA SUEZ.

From AMERICA:

"City of Charleston"	1st Feb.	2nd Feb.
"City of Mombasa"	15th Mar.	16th Mar.
"City of Agnes"	29th Apr.	30th Apr.

THE AFRICAN MERCHANTS Company, Limited

MOMBASA (Cables Navigation) NAIROBI

Best Quality! Lowest Prices!

Miwani Superfine Sugar

Can now be obtained from all leading Stores at the following prices:

8 lbs. for Sh. 1/-.
 56 lb. packet for Sh. 19/0.

Why Pay More?

Insist on MIWANI SUPERFINE and get the best value for your money. Address all enquiries to—

THE VICTORIA NYANZA SUGAR CO., LIMITED.
 MIWANI or LOCAL AGENTS.

Kenya Loan & Discount Co., Ltd.

P.O. Box 448, NAIROBI.
 OFFICE—1st Floor, Court Chambers.

Financial Agents

50% Discounted—Guaranteed—Savings Guaranteed.
 Any Banknote—Cash—Negotiable—For Cash—Call or Write. ESTABLISHED 1902.

B.M.C. VALUES

HOUSEHOLD GOODS
 Prices Still Coming Down

Pure Wool, Wiltan Blankets
 Size 63 x 86 **35-50** per pair.

Feather Pillows Fawn Lining Ticking with Purified Soft Downy Feathers
10-50 each.

Our Special Single Bedsteads Guaranteed Free from Distorting.

Size 64 x 90 **12-50** per pair

Government Calico Pillow Cases Practically Durable.

Size 20 x 30 **2/-** each.

The Bradford Manufacturing Co. Ltd.
B.M.C. HOUSE
 Corner of Government Road
 Fifth Avenue opp. the New N.B.J. Bank
 P.O. Box 810.



LOTUS SHOES
Eadies Footwear Ltd.

P.O. Box 149. NAIROBI.

BRICKS

are universally recognised as the best building material

over 3,000,000

Invicta Bricks

have been used in Nairobi during the past twelve months

INVICTA BRICK & TILE WORKS,
 P.O. Box 738 - Tel. 600.

37/50 Permanent Waving 37/50

During this month we are offering a special bargain on our 37/50 Permanent Waving 37/50. For a limited time.

37/50 Permanent Waving 37/50

SPECIALISTS.

Keith Timber Co., Ltd.
 Sadler Street, NAIROBI.
Cedar Block Flooring
 A Speciality
 Box 874. Phone 588.

PIANOFORTE TUNING AND REPAIRING.
 Ten years experience in Kenya Colony and five years with Messrs. Chappell and Co., London.

F. A. HEAD,
 Box 675, NAIROBI.

OVERSEAS MAILS.

ARRIVALS.

Steamers	From	Due at Mombasa	At
Favo	South India	Jan. 25	Jan. 26
Filices	India	Jan. 25	Jan. 26
Canada Maru	Europe	Feb. 5	Feb. 6
City of Christiana	Europe	Feb. 5	Feb. 6
Etowanda	India	Feb. 5	Feb. 6
Karica	Europe	Feb. 5	Feb. 6
Chambard	Europe	Feb. 5	Feb. 6
Matiana	Europe	Feb. 5	Feb. 6

DEPARTURES.

Steamers	To	Leave at Mombasa G.P.O.	Depart
Lionsbay Castle	South India	Jan. 28	Jan. 29
Mercator Maru	Europe	Feb. 2	Feb. 3
Wangoni	Europe	Feb. 2	Feb. 3
Canada Maru	Europe	Feb. 2	Feb. 3
Kilmindri	Europe	Feb. 2	Feb. 3
Karica	Europe	Feb. 2	Feb. 3
Gem. Dubouché	Europe	Feb. 2	Feb. 3
Mildura	Europe	Feb. 2	Feb. 3
Karavon	Europe	Feb. 2	Feb. 3

Uplands Bacon

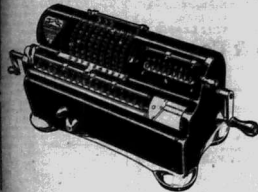
The Factory now holds record stocks of the highest quality from which to select precisely what individual buyers require.

Stocked by all the leading Stores in Kenya, Uganda, Tanganyika and the Belgian Congo.

Be sure to see the Registered Brand.

NEVER SO CHEAP! NEVER SO GOOD!

MARCHANT Calculating Machines MASTERS of MATHEMATICS



They Save Time and Money.

TAWNS LIMITED.
NAIROBI.

MOTOR TOURS Ltd.
Tourist Agents, Opposite the G.P.O. for
MOTORING TOURS
and **THE HILE ROUTE TO EUROPE.**
Luxurious Cars for Hire—European Drivers.



For the
EYE!
the best
is Just
GOOD
enough!

"THE LENS" Ltd.
Box 521, Prince's House, Elvet Road, NAIROBI. Phone 222.

DEBATE IN COMMONS ON INDIAN CONFERENCE.

(Continued from page 1.)
a sharp awakening when it saw the whole position jeopardized. Mr. Baldwin emphasized that Mr. Churchill was speaking for the Conservative Party, and said that if he led the Conservative Party in opposing the Indian Government their Congress would be impeded as far as they could which had been done by the Indian Ministry to work out a federal committee.
Mr. Wedgwood Benn, Secretary for India, in winding up the debate said in regard to Mr. Baldwin's promise to work for federation in India that he could not see the Federal India without giving responsibility at the centre.

Mr. Baldwin's View

[By wireless.]
The chief interest in the later stages of last night's debate in the House of Commons on the Indian Round Table Conference centred in a trenchant attack on the Government's policy delivered by Mr. Winston Churchill and a reply to it by Mr. Stanley Baldwin. While admitting Mr. Churchill's sincerity, Mr. Baldwin denied responsibility for the views expressed, and declared that any attempt to break up the cooperation of all parties in this country in regard to India would, if successful, make the task of any British Government in India impossible.

Strong must not be afraid to be called weak and if at any time the Conservatives return to power it would be their duty to implement the work of the Conference. They must work for the Federation of India, without denying the existence of the difficulty. He intended to do all in his power to see that, subject to proper safeguards, the pledges of successive Governments to offer India an equal partnership in the British Empire should be redeemed.

The Secretary for India, Captain Wedgwood Benn, concluding the debate, (which throughout was maintained on a high level) said that for the future two things were necessary—one was necessary and the other was special. If India was fit for self-government, it was fit for it at the earliest moment. They had been the trophy of the past—British Official Wireless Service.

A New Situation

The Government of India's appreciation of the situation up to January 28 states that the cabinet opinion generally recognizes that the Prime Minister's declaration

of policy at the conclusion of the Indian Conference has created a new situation in which all parties can cooperate to bring the new constitution to a fulfilment.
The Nationalists of the Legislature have accepted the statement in welcome and gratifying approval of the principle underlying it, subject to further consideration after details are evolved. They request a general political assembly and appeal to Congress leaders to co-operate with the rest of the country in securing modifications and improvements.

The Motion in the Assembly acknowledges the offer of the British Government to assist in fulfilling the political aspirations of India and to provide for the necessary safeguards during the period of transition. This approval in particular of the Prime Minister's announcement regarding procedure for Minorities—British Official Wireless Service.

Kenya Coffee Sale.

DISAPPOINTMENT AS TO QUALITY.

The following are the latest details regarding the London coffee market, with special reference to East African coffee.
Messrs. J. G. Aronson Limited have received the following cables from their London principals, dated January 29—"Good buying Kenya. Slightly down. Others steady. Average prices fair. Superior quality steady and smaller Columbian weak."
A report for the quarter ending December 31, 1930, made by Messrs. Leslie and Anderson reads as follows—

"Arrivals of new crop have been reaching this market for some weeks, but up to date the collections in London, with exceptions here and there, has been disappointing. At times bids made in the Sales Room have been declined for considerable quantities, but the coffee were ultimately sold, so that little or no loss has been incurred. It is very disappointing to the Home Trade to notice the lower standard now prevailing for the Kenya coffee for this has been very popular with them for many years and we now have minor complaints, as regards these coffees, that we have not so long heard about the East India, namely that they are not what they used to be. We have imports of this grade, are likely to exceed last season's total, and if this should be the case, we face values of most of season shipments will be on a low base."



Nightly at 8-45 p.m. **EMPIRE** Matinee at 3-15 p.m.

TO-NIGHT,
THE SCREEN SPECTACLE PERIOD HISTORICAL

"STUDENT OF PRAGUE"
OF
CONRAD VEIDT
A THRILLING ROMANCE BASED ON AN OLD BOHEMIAN LEGEND—FEATURING

CONRAD VEIDT
A PICTURE THAT WILL APPEAL TO ALL CINEMA GOERS—

OPENING Thursday THIS WEEK

"SUBMARINE"

The Most Spectacular of All Sea Pictures—a romance of surprise, new thrills and daring action
FILMED AT THE BOTTOM OF THE SEA.

Nightly at 8-45 p.m. **ROYAL** Nightly at 8-45 p.m.

TO-NIGHT
THE SCREEN ADAPTATION OF HENRY ARTHUR JONES' FAMOUS PLAY

"THE PHYSICIAN"
A British Production with a British Cast including—
Miles Mander.
Humbertson Wright.
Mary Brough.

DANCE

1st NAIROBI (Volunteer) BATTALION
Kenya Defence Force.

AT THE
LYRIC HALL

ON
Saturday January, 31st

9 p.m.
GARRY OOKO and HIS RHYTHM BOYS
IN ATTENDANCE.

TICKETS: Shs. 10/- Double; Shs. 6/- Single.
Dress: Mess Kit or Evening Dress and Miniature.

PICCADILLY RESTAURANT
GREAT ROYAL BUILDING
FRENCH COOKING
The Best and Cheapest Lunch and Dinner Served in Town.
SERVICES A LA CARTE
LORRETT A SPECIALITE—GRELLE—
FRENCH PASTRIES—ICE
RUNDIAN BOURG—MIXTO A L'ITALIANA
CATERING ORDERS TAKEN FOR SMALL OR LARGE PARTIES ANYWHERE

KENYA LIDO
BLUE POSTS TRIKA.
SWIMMING BATH
Water Hygienically Treated and Constant Overflow.
Outdoor Miniature Golf Course, Tennis Courts—
Ping Pong—Attractive New Bandstand.
AMPLIFIED DANCES WEEKLY.
Weekend Rates 1/- per day
Sunday Luncheon 2/6
GOOD ROAD.

HAVE YOUR TEA AND SUNDOWNER COMFORTABLY WITH MUSIC.
HOTEL AVENUE
ENTERTAINMENT PROGRAMME.
Sundowner Dances
every
Wednesday & Saturday
from 8-8 p.m. : Admission Free.
Music by the Bijou Dance and Concert Orchestras.

DAILY MORNING and AFTERNOON TEA COFFEES, by Philips Amplifier.
Daily Wireless News and Concerts from 7-10 p.m.
HOTEL AVENUE'S
Popular Dinner Dance
Saturday the 31st Jan.
from 8 p.m.—4 a.m.
Music by the Bijou Dance and Concert Orchestras.
Admission : Dinner Dance 15/-; Dance only 7/6
EVENING DRESS ESSENTIAL.

TORR'S HOTEL.
THE HOTEL ORCHESTRA WILL PLAY DAILY DURING LUNCH (Saturdays and Sundays Excepted).
Also MON, WED, and FRIDAYS FOR AFTERNOON TEA 4-6 p.m.
NIGHTLY 8-11 p.m. (Sunday Excepted).
SATURDAYS 8-3 a.m.
BOOK YOUR TABLES FOR SAT. NIGHT.
ENTRY 1/-.

TOURNAMENTS
HERE IS YOUR CHANCE WIN A PRIZE
ENTER FOR
TABLE TENNIS TOURNAMENT
HANDICAP
CUPS for WINNER and RUNNER UP.
ENTRY FEE 3/-.
on **Wednesday 28th Inst at 8-45**
MINIATURE GOLF CAPTION
PRIZES FOR BEST CARDS.
LADIES AND GENTS.
ENTRY 1/-.
PLAYED BEFORE 12-3-31.
.22 RIFLE-MONTHLY Spoon Shoot
TO BE SHOT BEFORE 1-3-31.
ENTRY 1/-.
IN BASEMENT OF
City Square Mansions

It's Sitting Wrong That Tires You.

Chevrolet's Adjustable Drivers Seat Overcomes This Trouble.

THE MOTOR MART AND EXCHANGE LTD.

Eldoret Nakuru NAIROBI Mombasa Dar-es-Salaam.

Amazing Value

RED SHEETS, MADE FROM FINE QUALITY TEXTURE, SOFT FINISH NEATLY BEHEADED

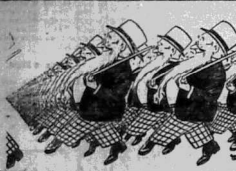
WILL WEAR AND WASH WELL

SIZE 44" x 90"

Sh. 875 Per Pair

Less 10% Discount for Cash.

Hutchings, Biemer & Co. Ltd. P.O. Box 466. Telephone 466.



THE YOUNGER BRIGADE

JOIN THEM TO-DAY.

THE VERY BEST BEER.

Obtainable at All Principal Hotels and Stores.

Enjoy the World's Radio Programmes with the Philips Receiver for Short and Long Wavelengths

Type No. 2802

This set has been designed by the same Engineer who built PCJJ

It has been designed to give utmost Satisfaction to the user

WHERE there is an A.C. supply available the whole installation except the fore-mentioned accumulator can consist of:

- Philips Shortwave receiver No. 2802, Philips H. T. Supply Unit No. 3003, and a Philips loud-speaker

By using also Philips trickle charger type No. 1017 you have at your disposal a completely maintained Radio Receiving Installation.

Fully illustrated operating instructions are supplied with each set.

Particularly from Lochhead Moore & Roy LIMITED. SIXTH AVENUE P.O. Box 465 NAIROBI. Phone 464.

NOVELS

AS AT THE STANDARD STATIONERY STORES, NAIROBI.

LONG TERM CREDITS FOR AGRICULTURE.

(Continued from page 7).

towards rationalisation before being called upon to issue loans.

(4) Each section of the industry will be able to report to the Society in the interim as to the terms which would be made for the loan which the society would be asked to make. It will be the duty of the society to make a report to the Government on the basis of the reports of the sections.

The formation of a series of Co-operative Societies need not be a lengthy process. In each section of the industry there are sufficient farmers to whom the benefits of the scheme will accrue and it will be essential for the members of the society to be farmers who have not become members will not be entitled to the benefits of the society.

It is proposed to start as a preliminary step a series of co-operative societies in each section of the industry. These societies will be formed on a basis of co-operation between the members of the industry who are to be benefited by the scheme.

The Co-operative Societies will be formed on a basis of co-operation between the members of the industry who are to be benefited by the scheme.

The Co-operative Societies will be formed on a basis of co-operation between the members of the industry who are to be benefited by the scheme.

The Co-operative Societies will be formed on a basis of co-operation between the members of the industry who are to be benefited by the scheme.

The Co-operative Societies will be formed on a basis of co-operation between the members of the industry who are to be benefited by the scheme.

The Co-operative Societies will be formed on a basis of co-operation between the members of the industry who are to be benefited by the scheme.

The Co-operative Societies will be formed on a basis of co-operation between the members of the industry who are to be benefited by the scheme.

The Co-operative Societies will be formed on a basis of co-operation between the members of the industry who are to be benefited by the scheme.

The Co-operative Societies will be formed on a basis of co-operation between the members of the industry who are to be benefited by the scheme.

The Co-operative Societies will be formed on a basis of co-operation between the members of the industry who are to be benefited by the scheme.

The Co-operative Societies will be formed on a basis of co-operation between the members of the industry who are to be benefited by the scheme.

ASSURANCE TO CIVIL SERVANTS.

(Continued from page 7).

able if they were not less than 30 per cent of the liability actually drawn was not more than £20 per annum for unmarried and £75 per annum for married (or wife, aged 60 or over) and if the amount of the loan was not more than £2000.

A suggestion had been put forward as to a way of meeting the cost of the scheme. It was proposed to put it into the hands of the Government of Kenya, but it was pointed out that the Government would have to meet the cost of the scheme.

The Government of Kenya will be asked to meet the cost of the scheme. It is proposed to start as a preliminary step a series of co-operative societies in each section of the industry.

The Government of Kenya will be asked to meet the cost of the scheme. It is proposed to start as a preliminary step a series of co-operative societies in each section of the industry.

The Government of Kenya will be asked to meet the cost of the scheme. It is proposed to start as a preliminary step a series of co-operative societies in each section of the industry.

The Government of Kenya will be asked to meet the cost of the scheme. It is proposed to start as a preliminary step a series of co-operative societies in each section of the industry.

The Government of Kenya will be asked to meet the cost of the scheme. It is proposed to start as a preliminary step a series of co-operative societies in each section of the industry.

The Government of Kenya will be asked to meet the cost of the scheme. It is proposed to start as a preliminary step a series of co-operative societies in each section of the industry.

The Government of Kenya will be asked to meet the cost of the scheme. It is proposed to start as a preliminary step a series of co-operative societies in each section of the industry.

The Government of Kenya will be asked to meet the cost of the scheme. It is proposed to start as a preliminary step a series of co-operative societies in each section of the industry.

Heat in Island.

Heat in Island. Heat in Island. Heat in Island. Heat in Island. Heat in Island.

Heat in Island. Heat in Island. Heat in Island. Heat in Island. Heat in Island.

Heat in Island. Heat in Island. Heat in Island. Heat in Island. Heat in Island.

Heat in Island. Heat in Island. Heat in Island. Heat in Island. Heat in Island.

Heat in Island. Heat in Island. Heat in Island. Heat in Island. Heat in Island.

Heat in Island. Heat in Island. Heat in Island. Heat in Island. Heat in Island.

Heat in Island. Heat in Island. Heat in Island. Heat in Island. Heat in Island.

Heat in Island. Heat in Island. Heat in Island. Heat in Island. Heat in Island.

Heat in Island. Heat in Island. Heat in Island. Heat in Island. Heat in Island.

Heat in Island. Heat in Island. Heat in Island. Heat in Island. Heat in Island.

Heat in Island. Heat in Island. Heat in Island. Heat in Island. Heat in Island.

Stag's Head Hotel

NAKURU On Main Road about 2000 Feet from Post Office, Nairoi. Electric Light, Hot and Cold Water in all Bathrooms. EUROPEAN RESTAURATION and BATHS. Exceptionally attractive and Comfortable Public Rooms. In response to numerous enquiries from our Visitors, on and after November 15th, we will apply for a license to serve HOT DRINKS to take at 7/6. DINING-HALL WITH SATURDAY BREAK (DANCING 8.15 p.m. to 11.0 p.m.). Under the Personal Management of MRS. JERRI. Tel. 7 JERRI. NAKURU. Post-Office.

AVONDALE

PARKLANDS ESTATE, Opposite Parklands Sports Ground. P.O. Box 188. NAIROBI. 29 monthly. TENNIS

GROSVENOR HOUSE

637 GIBBOURD ROAD. P.O. Box 1028. ONE MILE FROM POST OFFICE.

IF YOU WANT EVERYTHING OF THE BEST TRY THE SAVOY HOTEL

The Best Continental Hotel. Spacious Lounges, Beautiful Gardens, Tennis Court. First Class Cooking and Service. Fully Licensed Bar. Everything Up-to-Date. All Most Attractive Terms. From 20/- per month (All Inclusive). Tel. 430. P.O. Box 90.

The Norfolk Hotel

premier convenience. Tennis Courts, own Laundry on the premises, spacious parking ground for cars. Monthly (includes 41/- per room) 17/60 per day. (includes 41/- per room) 17/60 per day. See contained particulars and booklets by arrangement. Manager: C. A. BLAKE.

Salisbury Hotel

NAIROBI

The Edward Hotel

Box 1064. Phone 188. NOW FULLY LICENSED HAVE A BUNDOONER AT THE EDWARD. TRY AN EDWARD COCKTAIL. LISTEN OR DANCE TO THE WIRELESS. PIAT TENNIS OR PING PONG. HAVE A FIRST CLASS DINNER.

KIKUYU HOTEL

KIKUYU. TELEPHONE 5. Fifteen miles from Nairobi on a good road. NOW UNDER THE MANAGEMENT OF MR. BLADEN TAYLOR. EXCELLENT CUISINE. CHOICEST WINES AND LIQUORS. PONIES FOR HIRE. RIDING LESSONS GIVEN. SPECIAL TERMS FOR WEEK-END VISITORS.

This is the First Great Rule for economical baking

ROYAL The Cream of Tartar BAKING POWDER. DON'T take risks if you want to keep your baking bills. Failures mean a dead loss - no matter how small the sum. Success depends chiefly on your baking powder. So the first great rule for economical baking is to choose a baking powder that does its work properly every time.

ROYAL BAKING POWDER. The Cream of Tartar BAKING POWDER. Sold only at P. PHILLIPS, P.O. Box 124, NAIROBI. Kenya Colony. Please send me five copies of the Royal Cook Book. Name: Address:

SMOKING MIXTURE. THE PERFECT BLEND FINEST EMPIRE TOBACCOES. 4 OZ. TINS. BE CAREFULLY ENCLOSED IS AN ENGLISH VALUABLE GIFT.

Summit Tennis Shirts



"Steel Grub" "GAMMA IMPROVED"

TENNIS TROUSERS. MEAN PERFECT FIT, COMFORT, STYLE AND DURABILITY.

Ahamed Bros

THE HOUSE OF DISTINCTION. P.O. Box 264 NAIROBI. Phone 261



Throughout the EMPIRE

Women of Breeding and Good Taste Instinctively CHOOSE

Kaiser Hosiery and Underwear

A Real Good Kenya Product

BURET TEA

WE HAVE NOW REDUCED THE PRICE OF THIS FIRST CLASS TEA TO BURET SPECIAL ... 2/- per lb. RED LABEL ... 1/40 per lb. BUY YOUR TEA FROM US.

M. S. Elliot & Co., LIMITED.

P.O. Box 175. Phone 60.

ALWAYS IN STOCK

AT: Meghji Ahamed & Co. (The oldest established tea house in the country). 22, Box No. 512. (Delaware). NAIROBI.

CORRESPONDENCE.

The Editor does not accept responsibility for the correspondence in these columns and address all letters and notices to the Editor. The Editor is not responsible for the return of unsolicited material.

THE SCOTTISH PROBLEM - FACTS AND PROSPECTS - COVTS

To the Editor: "E. A. Standard." The Editor does not accept responsibility for the correspondence in these columns and address all letters and notices to the Editor. The Editor is not responsible for the return of unsolicited material.

Disregarding the ignorance at length of a prominent British newspaper to mention these people in these days of general over-education...

Undoubtedly the factor in the present fall of the Kenya market is the general depression of 1929...

Another crisis is less easy, but rapid but probably more feasible and definite import to the farmers...

The wages have fallen and unless cut by a serious depression...

The wages were again cut because that is what the market would bear...

A correspondent wonders why there is a difference of £200 per ton between the whole and retail prices of coffee...

Such an effect could be produced in Kenya if we were prepared to face the difficulties of the present period...

RELIEF OF AGRICULTURE.

To the Editor: "E. A. Standard." Sir: Mr. Harcourt would you be good enough to send me a copy of a book of £10 to £15 per copy...

Many of the coffee estates in the mountainous districts of the Kenya Colony...

The direct effect of conditions from year to year and those to which the regular may be illustrated by the following statistics...

So with the main issue. It will benefit districts like the Plateau and Nakuru...

It is a matter of course to particularly important issues. Times of the year are very important...

Instead of Commissionaries, depositors, Kenya wants a permanent Financial Adviser like Canada, Brazil and other countries...

After all, the Port of London sends our coffee on lighters and the lack of them at Mombasa has more than doubled the port charges on coffee...

Mr. VILLIERS, Your etc. Kaps, 25 JAN. 1931.

To the Editor: "E. A. Standard." Sir: In support of Mr. Newman's letter, published by you this morning...

Mr. S. YS. DE MONTAGU. NAIROBI, January 24, 1931.

At least A TONIC LAXATIVE WHICH TONES AS IT CLEANS

Phosferine HEALTH SALT THE POWER BRUFF SALTS

Pro-Phy-lactic cleans the teeth, protects the gums

Pro-Phy-lactic TOOTH BRUSHES

MOTORISTS! FOR Quick Service with Courtesy TRY Eboo's Petrol Station

The Romance of Scotland is interwoven in the distillation and fragrance of W. & A. GILBEY'S SPEY ROYAL BY ROYAL APPOINTMENT.

Whisky of the age. Blended and guaranteed by the proprietors.

WHISKY THE FINEST PRODUCE. Stocked by all High-Class Hotels and Wine and Spirit Merchants.

B. FLORENS FRENCH HAIR DRESSER. PERMANENT AND TINTING SPECIALIST.

TOYS - BUY AT - Ladharam Stores, GENERAL DRAPERS, Govt. Road, NAIROBI, Box 658.

MATHER & PLATT LTD

Manufacturers of ELECTRICAL MACHINERY; PUMPS FOR ALL PURPOSES; WATER STORAGE TANKS; FIRE FIGHTING EQUIPMENT.

FIRM'S TECHNICAL ENGINEER RESIDENT IN THE COUNTRY. Advice and Estimate for Electrical and Hydraulic Schemes, etc. given.

WHY BUILD TO BURN? FIRE-PROOF WALLBOARD FOR PARTITIONS AND CEILINGS. Messrs. SMITH, MACKENZIE & CO., P.O. Box 260, NAIROBI.

The Guard that Never Requires Relieving. Always on Duty BUY -YALE- PADLOCKS

And Get The Security You Want You can buy them from your Hardware Dealer.

CHARLES WARE. TURTLE ACCOUNTANT.

Established 35 years. Tel. Ad. 214, 215, 216, 217. Nos 170, Trout Chambers, Government Road, NAIROBI.

CREDIT, LETTER, WIRE BUSINESS ONLY.

WHETHER MARKING OUT OR DRIVING COFFEE WE CAN SUPPLY YOUR NEEDS. Steel Coffee Churns with Brass Tubs Nine Feet Apart. Coffee Tray Wire, British Manufacture

J.H. TODD & CO. LTD. Sole Importers of the following:-

MAURICE ROSENSTON. P.O. Box 411. Tel. Ad. 215, 216, 217. 101, Upper Deck, GOVERNMENT ROAD, NAIROBI.

FISHING. WHAT ABOUT THAT FISHING HOLIDAY NOW THAT THE CHRISTMAS RUSH IS OVER? TROUT ARE ABUNDANT. ROADS ARE GOOD.

MAY & Co. Ltd. THE SPORTS HOUSE. NAIROBI.

POLICE WIN BY TEN WICKETS. Commercial Lead on First Innings.

CARLIS WICKETS FOR 20 RUNS. (Outfield) Cricket can be a funny game at times, and it proved so today when the Commercial played the Police.

Commercial Lead on First Innings. (Outfield) Cricket can be a funny game at times, and it proved so today when the Commercial played the Police.

THE SPORTS PAGE

English League Matches. NUTHAIGA GOLF CLUB. KENTA KONGONS ON TOUR.

SMALLWOODS METACULOUS GATOR. (By "Chak").

SMALLWOODS METACULOUS GATOR. (By "Chak").

SMALLWOODS METACULOUS GATOR. (By "Chak").

SMALLWOODS METACULOUS GATOR. (By "Chak").

SMALLWOODS METACULOUS GATOR. (By "Chak").

SMALLWOODS METACULOUS GATOR. (By "Chak").

SMALLWOODS METACULOUS GATOR. (By "Chak").

SMALLWOODS METACULOUS GATOR. (By "Chak").

SMALLWOODS METACULOUS GATOR. (By "Chak").

SMALLWOODS METACULOUS GATOR. (By "Chak").

SMALLWOODS METACULOUS GATOR. (By "Chak").

SMALLWOODS METACULOUS GATOR. (By "Chak").

SMALLWOODS METACULOUS GATOR. (By "Chak").

SMALLWOODS METACULOUS GATOR. (By "Chak").

SMALLWOODS METACULOUS GATOR. (By "Chak").

SMALLWOODS METACULOUS GATOR. (By "Chak").

SMALLWOODS METACULOUS GATOR. (By "Chak").

SMALLWOODS METACULOUS GATOR. (By "Chak").

SMALLWOODS METACULOUS GATOR. (By "Chak").

SMALLWOODS METACULOUS GATOR. (By "Chak").

SMALLWOODS METACULOUS GATOR. (By "Chak").

Good! It's British! ELEY MATCH-GRADE QUALITY. ELEY BRAND PRIZE QUALITY. This cartridge is loaded with high grade British makehead powder.

THE name Eley or Kynoch is stamped on the head of a cartridge you may be sure that it will accomplish all that a cartridge is expected to do. It will kill its bird, be comfortable in use, will eject easily and will save your gun. In a word Eley and Kynoch cartridges are dependable.

THE LONDON, NATIONAL, DERBY and all PRINCIPAL ENGLISH RACES FROM 20/11. LAST NO ANT-POST BETTING SALE—STARTING PRICE, NO LIMIT.

CHICKEN THE FINEST EGG PRODUCING & BONE FORMING FOOD FOR GRIT FOWLS. 1st. MARBLE. KENYA MARBLE QUARRIES CO.

"The Winners" at WIMLEDON Championships last year Men's Singles, Women's Singles, Men's Doubles, all using "Spalding" RACKETS and wms.

CRAIG'S SPORTS HOUSE Ltd. Phone 321. Government Road. Box 697.

CHALLENGE CUPS. SHIELDS, MEDALS AND OTHER TROPHIES AS PRIZES FOR ALL KINDS OF SPORTS AND COMPETITIONS ARE SUPPLIED BY US.

at English Prices WE HAVE A LARGE AND COMPREHENSIVE STOCK OF CUPS IN SILVER AND E.P.

Engraving OF THE HIGHEST STANDARD AT REASONABLE CHARGES.

ESPECIALLY INVITED. For Catalogues and Prices apply to:

DOBBIES LTD. 1st. Ed. 1906. Watchmakers, Jewellers and Silversmiths.

Phone 90 NAIROBI. P.O. Box

SPORTS DIARY. January 31st. Nuthaiga Golf Club Annual Gen. Meeting, 6.30 p.m. Annual General Meeting, Foot-Pace Association, at Kenia, New Stanley Hotel, 8.30.