



Kenya Breweries Ltd. Box 161. Nairobi.

GUARANTEED THE LARGEST CIRCULATION OF ANY NEWSPAPER IN KENYA, UGANDA, TANGANYIKA AND ZANZIBAR.

DAILY EDITION.

THE EAST 12 PAGES

African Standard

EGANDA ARGUS with this LEADER

THE OLDEST PUBLISHED NEWSPAPER IN KENYA AND UGANDA.

NAIROBI, THURSDAY, MARCH 12, 1953.

East Africa Irish S.c.i.e.l.y.

THE ANNUAL DINNER AND DANCE

OPEN TO MEMBERS AND THEIR GUESTS AT THE NEW STANLEY Tuesday, March 17th, AT 7.30 P.M.

PRINCE, 30 CENTRE.

SIR EDWARD GRIGG AND LORD PASSFIELD.

Secretary of State Dodges Ex-Governor's Questions.

A WHITE PAPER FOC.

Sir C. Bowring Condemns Vote System for Natives.

East African ex-Governors, Sir Edward Grigg and Sir Charles Bowring have appeared before the Joint Committee, as witnesses.

Sir Edward Grigg tried to pin Lord Passfield down to definite declarations of his attitude towards the various White Papers issued since 1952 but the Secretary of State gave qualified replies.

A first extract is given below from the long report of Sir Edward's evidence on the first day—a fortnight which has not yet been published.

Sir Edward Grigg laid emphasis on the need for an improvement in constitutional relations between Kenya and Uganda whatever happened to Tanganyika in any scheme.

He also emphasized that the ability of the Civil Service to do its work depended very largely on its relations with the rest of the European community.

In his view political questions affecting the Kenya constitution would largely disappear into the background if an assurance was given to the White Paper which removed the fear of the future and which created continuity in Imperial policy.

The evidence Sir Charles Bowring, in the interests of the natives favoured close relations between Nyasaland and North-Western Rhodesia and the East and Northern Rhodesia rather than with South Africa. He also said the vote was not up to the native.

East Africa and Nyasaland.

London, March 10. Sir Edward Grigg concluded his evidence before the Joint Committee.

The Secretary of State for the Colonies, Lord Passfield, had an audience with the Ex-Governor.

London, March 10. Sir Edward Grigg concluded his evidence before the Joint Committee.

THE CONFERENCE ON INDIA

Reason For Conservative Attitude.

FEAR OF EXTREMISTS.

Ques. Internal Talks.

(THROUGH BRITISH ASSOCIATION.)

(THROUGH BRITISH ASSOCIATION.)

(THROUGH BRITISH ASSOCIATION.)

(THROUGH BRITISH ASSOCIATION.)

(THROUGH BRITISH ASSOCIATION.)

(THROUGH BRITISH ASSOCIATION.)

(THROUGH BRITISH ASSOCIATION.)

(THROUGH BRITISH ASSOCIATION.)

(THROUGH BRITISH ASSOCIATION.)

(THROUGH BRITISH ASSOCIATION.)

(THROUGH BRITISH ASSOCIATION.)

(THROUGH BRITISH ASSOCIATION.)

(THROUGH BRITISH ASSOCIATION.)

14 VILLAGES WIPE'D OUT.

Toll of Balkan Earthquake.

Thousands Homeless.

(THROUGH BRITISH ASSOCIATION.)

(THROUGH BRITISH ASSOCIATION.)

(THROUGH BRITISH ASSOCIATION.)

(THROUGH BRITISH ASSOCIATION.)

(THROUGH BRITISH ASSOCIATION.)

(THROUGH BRITISH ASSOCIATION.)

(THROUGH BRITISH ASSOCIATION.)

(THROUGH BRITISH ASSOCIATION.)

(THROUGH BRITISH ASSOCIATION.)

(THROUGH BRITISH ASSOCIATION.)

(THROUGH BRITISH ASSOCIATION.)

(THROUGH BRITISH ASSOCIATION.)

(THROUGH BRITISH ASSOCIATION.)

(THROUGH BRITISH ASSOCIATION.)

A NEW AIR MACHINE.

To Land Nearly Vertically.

(BY WIRELESS.)

(BY WIRELESS.)

(BY WIRELESS.)

(BY WIRELESS.)

(BY WIRELESS.)

(BY WIRELESS.)

(BY WIRELESS.)

(BY WIRELESS.)

(BY WIRELESS.)

(BY WIRELESS.)

(BY WIRELESS.)

(BY WIRELESS.)

(BY WIRELESS.)

(BY WIRELESS.)

SENSE OF SECURITY AMONGST NATIVES.

Aim of League General Act of Arbitration.

COMMONS DEBATE.

(THROUGH BRITISH ASSOCIATION.)

(THROUGH BRITISH ASSOCIATION.)

(THROUGH BRITISH ASSOCIATION.)

(THROUGH BRITISH ASSOCIATION.)

(THROUGH BRITISH ASSOCIATION.)

(THROUGH BRITISH ASSOCIATION.)

(THROUGH BRITISH ASSOCIATION.)

(THROUGH BRITISH ASSOCIATION.)

(THROUGH BRITISH ASSOCIATION.)

(THROUGH BRITISH ASSOCIATION.)

(THROUGH BRITISH ASSOCIATION.)

(THROUGH BRITISH ASSOCIATION.)

(THROUGH BRITISH ASSOCIATION.)

(THROUGH BRITISH ASSOCIATION.)

HEAVY FALL IN 1950 DOMESTIC EXPORTS.

Total Reduction of One and a Half Millions.

POOR COTTON CROP.

(BY WIRELESS.)

(BY WIRELESS.)

(BY WIRELESS.)

(BY WIRELESS.)

(BY WIRELESS.)

(BY WIRELESS.)

(BY WIRELESS.)

(BY WIRELESS.)

(BY WIRELESS.)

(BY WIRELESS.)

(BY WIRELESS.)

(BY WIRELESS.)

(BY WIRELESS.)

COLDEST MARCH NIGHT FOR 50 YEARS.

Windy Weather Continues in Britain.

MORE SNOW COMING.

(BY WIRELESS.)

(BY WIRELESS.)

(BY WIRELESS.)

(BY WIRELESS.)

(BY WIRELESS.)

(BY WIRELESS.)

(BY WIRELESS.)

(BY WIRELESS.)

(BY WIRELESS.)

(BY WIRELESS.)

(BY WIRELESS.)

(BY WIRELESS.)

(BY WIRELESS.)

(BY WIRELESS.)

THE CHANCELLOR.

A SHORT IMPROVEMENT REPORTED.

(BY WIRELESS.)

(BY WIRELESS.)

(BY WIRELESS.)

(BY WIRELESS.)

(BY WIRELESS.)

(BY WIRELESS.)

(BY WIRELESS.)

(BY WIRELESS.)

(BY WIRELESS.)

(BY WIRELESS.)

(BY WIRELESS.)

(BY WIRELESS.)

(BY WIRELESS.)

(BY WIRELESS.)

THE AIR MAIL.

Carrying Five Bags of Mail.

(THROUGH BRITISH ASSOCIATION.)

(THROUGH BRITISH ASSOCIATION.)

(THROUGH BRITISH ASSOCIATION.)

(THROUGH BRITISH ASSOCIATION.)

(THROUGH BRITISH ASSOCIATION.)

(THROUGH BRITISH ASSOCIATION.)

(THROUGH BRITISH ASSOCIATION.)

(THROUGH BRITISH ASSOCIATION.)

(THROUGH BRITISH ASSOCIATION.)

(THROUGH BRITISH ASSOCIATION.)

(THROUGH BRITISH ASSOCIATION.)

(THROUGH BRITISH ASSOCIATION.)

(THROUGH BRITISH ASSOCIATION.)

(THROUGH BRITISH ASSOCIATION.)

THE CHANCELLOR.

A SHORT IMPROVEMENT REPORTED.

(BY WIRELESS.)

(BY WIRELESS.)

(BY WIRELESS.)

(BY WIRELESS.)

(BY WIRELESS.)

(BY WIRELESS.)

(BY WIRELESS.)

(BY WIRELESS.)

(BY WIRELESS.)

(BY WIRELESS.)

(BY WIRELESS.)

(BY WIRELESS.)

(BY WIRELESS.)

(BY WIRELESS.)

THE CHANCELLOR.

A SHORT IMPROVEMENT REPORTED.

(BY WIRELESS.)

(BY WIRELESS.)

(BY WIRELESS.)

(BY WIRELESS.)

(BY WIRELESS.)

(BY WIRELESS.)

(BY WIRELESS.)

(BY WIRELESS.)

(BY WIRELESS.)

(BY WIRELESS.)

(BY WIRELESS.)

(BY WIRELESS.)

(BY WIRELESS.)

(BY WIRELESS.)

THE CHANCELLOR.

A SHORT IMPROVEMENT REPORTED.

(BY WIRELESS.)

(BY WIRELESS.)

(BY WIRELESS.)

(BY WIRELESS.)

(BY WIRELESS.)

(BY WIRELESS.)

(BY WIRELESS.)

(BY WIRELESS.)

(BY WIRELESS.)

(BY WIRELESS.)

(BY WIRELESS.)

(BY WIRELESS.)

(BY WIRELESS.)

(BY WIRELESS.)

THE CHANCELLOR.

A SHORT IMPROVEMENT REPORTED.

(BY WIRELESS.)

(BY WIRELESS.)

(BY WIRELESS.)

(BY WIRELESS.)

(BY WIRELESS.)

(BY WIRELESS.)

(BY WIRELESS.)

(BY WIRELESS.)

(BY WIRELESS.)

(BY WIRELESS.)

(BY WIRELESS.)

(BY WIRELESS.)

(BY WIRELESS.)

(BY WIRELESS.)

THE CHANCELLOR.

A SHORT IMPROVEMENT REPORTED.

(BY WIRELESS.)

(BY WIRELESS.)

(BY WIRELESS.)

(BY WIRELESS.)

(BY WIRELESS.)

(BY WIRELESS.)

(BY WIRELESS.)

(BY WIRELESS.)

(BY WIRELESS.)

(BY WIRELESS.)

(BY WIRELESS.)

(BY WIRELESS.)

(BY WIRELESS.)

(BY WIRELESS.)

THE CHANCELLOR.

A SHORT IMPROVEMENT REPORTED.

(BY WIRELESS.)

(BY WIRELESS.)

(BY WIRELESS.)

(BY WIRELESS.)

(BY WIRELESS.)

(BY WIRELESS.)

(BY WIRELESS.)

(BY WIRELESS.)

(BY WIRELESS.)

(BY WIRELESS.)

(BY WIRELESS.)

(BY WIRELESS.)

(BY WIRELESS.)

(BY WIRELESS.)

THE CHANCELLOR.

A SHORT IMPROVEMENT REPORTED.

(BY WIRELESS.)

(BY WIRELESS.)

(BY WIRELESS.)

(BY WIRELESS.)

(BY WIRELESS.)

(BY WIRELESS.)

(BY WIRELESS.)

(BY WIRELESS.)

(BY WIRELESS.)

(BY WIRELESS.)

(BY WIRELESS.)

(BY WIRELESS.)

(BY WIRELESS.)

(BY WIRELESS.)

THE CHANCELLOR.

A SHORT IMPROVEMENT REPORTED.

(BY WIRELESS.)

(BY WIRELESS.)

(BY WIRELESS.)

(BY WIRELESS.)

(BY WIRELESS.)

(BY WIRELESS.)

(BY WIRELESS.)

(BY WIRELESS.)

(BY WIRELESS.)

(BY WIRELESS.)

(BY WIRELESS.)

(BY WIRELESS.)

(BY WIRELESS.)

(BY WIRELESS.)

THE CHANCELLOR.

A SHORT IMPROVEMENT REPORTED.

(BY WIRELESS.)

(BY WIRELESS.)

(BY WIRELESS.)

(BY WIRELESS.)

(BY WIRELESS.)

(BY WIRELESS.)

(BY WIRELESS.)

(BY WIRELESS.)

(BY WIRELESS.)

(BY WIRELESS.)

AFRICAN STANDARD DAILY EDITION. ADVERTISEMENT RATES: Advertisements accepted only subject to approval.

FOR SALE - (Continued). PREPARED for the Bains, Bost, and Whitaker, Ltd.

TO LET. THREE charge for advertisement in this column. A line of 100 words, or a fraction thereof, is considered one insertion.

BROWN & HARRATT, LTD. BRYANS AGENCIES. LAND, ESTATE AND MANAGING AGENTS.

J. A. LANDMAN & Co. LAND, ESTATE AND MANAGING AGENTS. 10, COLLEGE STREET, NAIROBI.

J. W. MILLIGAN & Co. ESTABLISHED 1894. Land & Estate Agents Licensed Valuers.

ADVERTISEMENTS. An office and Situations Vacant. Wanted, in part letters and notices of a line, must be sent in duplicate on consecutive days.

SITUATIONS VACANT. A COACHMAN - Secretary and office position. A COACHMAN - Secretary and office position.

BUNALONG on Mzee Road. Modern car. Apply Kapteke. BUNALONG on Mzee Road.

OFFICE communication, admirably situated in Government. OFFICE communication, admirably situated in Government.

TO LET: The Hill. 100 acres. TO LET: The Hill. 100 acres.

FOR SALE: Mzee Hill. 2000 acres. FOR SALE: Mzee Hill. 2000 acres.

EUROPEAN electrician and mechanic with long experience. EUROPEAN electrician and mechanic with long experience.

STONE dwelling house on Mzee Road. STONE dwelling house on Mzee Road.

STONE House, 4 Apartments. STONE House, 4 Apartments.

STONE House, 4 Apartments. STONE House, 4 Apartments.

FOR SALE: Salisbury Lane. FOR SALE: Salisbury Lane.

FOR SALE: Nairobi. 1,355 acres. FOR SALE: Nairobi. 1,355 acres.

FOR SALE. THREE charge for advertisement in this column. A line of 100 words, or a fraction thereof, is considered one insertion.

DON'T Drink Mammalian Milk. Get the wholesome product of the cow.

WANTED. £4,000 or 500 on Town Property in Highlands.

W. J. MOYNAH. AGENT IN CHARGE. AGENT IN CHARGE.

FOR SALE: The Hill. 100 acres. FOR SALE: The Hill. 100 acres.

FOR SALE: Nairobi. 1,355 acres. FOR SALE: Nairobi. 1,355 acres.

BOARD & RESIDENCE. DUNKIN'S HOME - 100 acres. DUNKIN'S HOME - 100 acres.

KIBONDI. 100 acres. KIBONDI. 100 acres.

KORU. 100 acres. KORU. 100 acres.

MORTGAGES arranged on Nairobi. MORTGAGES arranged on Nairobi.

FOR SALE: Nairobi. 1,355 acres. FOR SALE: Nairobi. 1,355 acres.

FOR SALE: Nairobi. 1,355 acres. FOR SALE: Nairobi. 1,355 acres.

SITUATIONS VACANT. WANTED a good cook for private family. WANTED a good cook for private family.

L. GASCONE & Co. Estate Agents, Valuers, Accountancy, Insurance.

THE Kenya Fertilizer Co., Ltd. Good Cakes, Best Tables, etc.

KENYA JOBBING HOUSE. Next to Municipality. KENYA JOBBING HOUSE.

FOR SALE: Nairobi. 1,355 acres. FOR SALE: Nairobi. 1,355 acres.

FOR SALE: Nairobi. 1,355 acres. FOR SALE: Nairobi. 1,355 acres.

FOR SALE: Nairobi. 1,355 acres. FOR SALE: Nairobi. 1,355 acres.

FOR SALE: Nairobi. 1,355 acres. FOR SALE: Nairobi. 1,355 acres.

FOR SALE: Nairobi. 1,355 acres. FOR SALE: Nairobi. 1,355 acres.

FOR SALE: Nairobi. 1,355 acres. FOR SALE: Nairobi. 1,355 acres.

FOR SALE: Nairobi. 1,355 acres. FOR SALE: Nairobi. 1,355 acres.

FOR SALE: Nairobi. 1,355 acres. FOR SALE: Nairobi. 1,355 acres.

FOR SALE: Nairobi. 1,355 acres. FOR SALE: Nairobi. 1,355 acres.

FOR SALE: Nairobi. 1,355 acres. FOR SALE: Nairobi. 1,355 acres.

FOR SALE: Nairobi. 1,355 acres. FOR SALE: Nairobi. 1,355 acres.

FOR SALE: Nairobi. 1,355 acres. FOR SALE: Nairobi. 1,355 acres.

FOR SALE: Nairobi. 1,355 acres. FOR SALE: Nairobi. 1,355 acres.

FOR SALE: Nairobi. 1,355 acres. FOR SALE: Nairobi. 1,355 acres.

FOR SALE: Nairobi. 1,355 acres. FOR SALE: Nairobi. 1,355 acres.

FOR SALE: Nairobi. 1,355 acres. FOR SALE: Nairobi. 1,355 acres.

FOR SALE: Nairobi. 1,355 acres. FOR SALE: Nairobi. 1,355 acres.

FOR SALE: Nairobi. 1,355 acres. FOR SALE: Nairobi. 1,355 acres.

FOR SALE: Nairobi. 1,355 acres. FOR SALE: Nairobi. 1,355 acres.

FOR SALE: Nairobi. 1,355 acres. FOR SALE: Nairobi. 1,355 acres.

FOR SALE: Nairobi. 1,355 acres. FOR SALE: Nairobi. 1,355 acres.

FOR SALE: Nairobi. 1,355 acres. FOR SALE: Nairobi. 1,355 acres.

FOR SALE: Nairobi. 1,355 acres. FOR SALE: Nairobi. 1,355 acres.

FOR SALE: Nairobi. 1,355 acres. FOR SALE: Nairobi. 1,355 acres.

FOR SALE: Nairobi. 1,355 acres. FOR SALE: Nairobi. 1,355 acres.

FOR SALE: Nairobi. 1,355 acres. FOR SALE: Nairobi. 1,355 acres.

FOR SALE: Nairobi. 1,355 acres. FOR SALE: Nairobi. 1,355 acres.

FOR SALE: Nairobi. 1,355 acres. FOR SALE: Nairobi. 1,355 acres.

FOR SALE: Nairobi. 1,355 acres. FOR SALE: Nairobi. 1,355 acres.

FOR SALE: Nairobi. 1,355 acres. FOR SALE: Nairobi. 1,355 acres.

FOR SALE: Nairobi. 1,355 acres. FOR SALE: Nairobi. 1,355 acres.

FOR SALE: Nairobi. 1,355 acres. FOR SALE: Nairobi. 1,355 acres.

FOR SALE: Nairobi. 1,355 acres. FOR SALE: Nairobi. 1,355 acres.

FOR SALE: Nairobi. 1,355 acres. FOR SALE: Nairobi. 1,355 acres.

FOR SALE: Nairobi. 1,355 acres. FOR SALE: Nairobi. 1,355 acres.

FOR SALE: Nairobi. 1,355 acres. FOR SALE: Nairobi. 1,355 acres.

FOR SALE: Nairobi. 1,355 acres. FOR SALE: Nairobi. 1,355 acres.

FOR SALE: Nairobi. 1,355 acres. FOR SALE: Nairobi. 1,355 acres.

FOR SALE: Nairobi. 1,355 acres. FOR SALE: Nairobi. 1,355 acres.

FOR SALE: Nairobi. 1,355 acres. FOR SALE: Nairobi. 1,355 acres.

FOR SALE: Nairobi. 1,355 acres. FOR SALE: Nairobi. 1,355 acres.

FOR SALE: Nairobi. 1,355 acres. FOR SALE: Nairobi. 1,355 acres.

FOR SALE: Nairobi. 1,355 acres. FOR SALE: Nairobi. 1,355 acres.

FOR SALE: Nairobi. 1,355 acres. FOR SALE: Nairobi. 1,355 acres.

FOR SALE: Nairobi. 1,355 acres. FOR SALE: Nairobi. 1,355 acres.

FOR SALE: Nairobi. 1,355 acres. FOR SALE: Nairobi. 1,355 acres.

FOR SALE: Nairobi. 1,355 acres. FOR SALE: Nairobi. 1,355 acres.

FOR SALE: Nairobi. 1,355 acres. FOR SALE: Nairobi. 1,355 acres.

FOR SALE: Nairobi. 1,355 acres. FOR SALE: Nairobi. 1,355 acres.

FOR SALE: Nairobi. 1,355 acres. FOR SALE: Nairobi. 1,355 acres.

FOR SALE: Nairobi. 1,355 acres. FOR SALE: Nairobi. 1,355 acres.

FOR SALE: Nairobi. 1,355 acres. FOR SALE: Nairobi. 1,355 acres.

FOR SALE: Nairobi. 1,355 acres. FOR SALE: Nairobi. 1,355 acres.

FOR SALE: Nairobi. 1,355 acres. FOR SALE: Nairobi. 1,355 acres.

FOR SALE: Nairobi. 1,355 acres. FOR SALE: Nairobi. 1,355 acres.

FOR SALE: Nairobi. 1,355 acres. FOR SALE: Nairobi. 1,355 acres.

TO BAKERS. WHAT FLOUR DO YOU USE? THE BEST IS MILLED BY Kenya Grain Mills Ltd.

TO BAKERS. WHAT FLOUR DO YOU USE? THE BEST IS MILLED BY Kenya Grain Mills Ltd.

TO BAKERS. WHAT FLOUR DO YOU USE? THE BEST IS MILLED BY Kenya Grain Mills Ltd.

TO BAKERS. WHAT FLOUR DO YOU USE? THE BEST IS MILLED BY Kenya Grain Mills Ltd.

TO BAKERS. WHAT FLOUR DO YOU USE? THE BEST IS MILLED BY Kenya Grain Mills Ltd.

TO BAKERS. WHAT FLOUR DO YOU USE? THE BEST IS MILLED BY Kenya Grain Mills Ltd.

THE EAST AFRICAN STANDARD. PUBLISHED BY THE EAST AFRICAN STANDARD. PRINTED BY THE EAST AFRICAN STANDARD.

UNION - CASTLE LINE.

Table with shipping schedules for Union-Castle Line, including destinations like London, Liverpool, and South Africa.

British India Steam Navigation Company, Limited

Table with shipping schedules for British India Steam Navigation Company, listing routes to India, Ceylon, and Australia.

Advertisement for CHIVERS' ENGLISH CANNED FRUITS and CUSTARD POWDER, featuring an image of a product can.

Messageries Maritimes

Table with shipping schedules for Messageries Maritimes, listing routes to Europe and Australia.

CITRA LINE

Compagnie Belge de Navigation. THE BRISTOL ROUTE TO ENGLAND. S.S. "CRISTE" - 1st April, 1st June, 1st August, 1st October.

DEUTSCHE OST-AFRIKA-LINIE

Table with shipping schedules for Deutsche Ost-Afrika-Linie, listing routes to East Africa and Europe.

Holland Afrika Lijn

PAASCHERVAAR. To Harare, to London, to Amsterdam. It steams direct to all ports, passengers for England will receive first class tickets...

P. STEWART, C.A.S.S.E.D.

Painter and Decorator. Victoria Street, opposite the Post Office, NAIROBI. P.O. Box 100 - NAIROBI.

EASTERN COASTWISE EXCURSIONS TO SOUTH AFRICA - to June, 1915.

Up-Country Cheques Cannot be Accepted Unless Specially Endorsed by Local Bank. DEUTSCHE OST-AFRIKA-LINIE General-Agentur, Mombasa.

DOONHOLM DAIRY

PURE MILK and CREAM FROM FARM TO CONSUMER. P.O. Box 11, NAIROBI.

B.M.C. RAINCOATS

250 To Select from: Ladies and Children Men and Youths. All sizes stocked in numerous Styles and Qualities. The Bradford Manufacturing Co. Ltd. B.M.C. House.

Have you been to Eadie's Sale

If not do not miss seeing the Big Bargains that are waiting for your inspection. Come early and have a look through it will pay YOU.

OUR Snapshot Competition

WEEKLY PRIZES: 1st Prize, Shs. 15/-, Extra Prize, Shs. 10/- (if warranted). Shs. 5/- for every Picture Published. The Competition is for Snapshots of EAST AFRICAN INTEREST and must be taken by the Competitor.

With FAT LIME

Lime Limited. The Builder's Best Building Material.

BRICKS

are universally recognized as the best building material. over 3,000,000 Invoiced Bricks have been used in Nairobi during the past twelve months.

37/50 Permanent Waving 37/50

During this month we are offering a permanent wave at 37/50 per single head. "ROMANO'S HAIRDRESSING".

Just Unpacked. CREPE DE CHINE, GEORGETTES and ROLLING SILKS

DAYARM BROS. (NEXT TO ELECTRA HOUSE) Govt. Road, NAIROBI. P.O. Box 190.

PIANOFORTE TUNING AND REPAIRING.

Ten years experience in Kenya Colony and five years with Messrs. Chappell and Co., London. F. A. HEAD, Box 676, NAIROBI.

OVERSEAS MAILS.

Table with shipping schedules for Overseas Mails, listing arrivals and departures to various countries.

Uplands Bacon

The Factory now holds record stocks of excellent quality from which to select precisely what individual buyers require. Stocked by all the leading Stores in Kenya, Uganda, Tanganyika and the Belgian Congo.

MR. HOWARD GRIGG AND LORD PASSFIELD.

Mr. Howard Grigg and Lord Passfield. (Continued from page 1.)

Mr. Howard Grigg and Lord Passfield. (Continued from page 1.)

Mr. Howard Grigg and Lord Passfield. (Continued from page 1.)

Mr. Howard Grigg and Lord Passfield. (Continued from page 1.)

Mr. Howard Grigg and Lord Passfield. (Continued from page 1.)

Mr. Howard Grigg and Lord Passfield. (Continued from page 1.)

Mr. Howard Grigg and Lord Passfield. (Continued from page 1.)

Mr. Howard Grigg and Lord Passfield. (Continued from page 1.)

How dependent upon the masses... maintenance of what was in the main a Civil Service Government...

Chief Union. Lord Stanley said the Edward's reply was divided into two sections...

The Kenya Commission. Lord Stanley said that the Kenya Commission...

The Kenya Commission. Lord Stanley said that the Kenya Commission...

The Kenya Commission. Lord Stanley said that the Kenya Commission...

The Kenya Commission. Lord Stanley said that the Kenya Commission...

The Kenya Commission. Lord Stanley said that the Kenya Commission...

The Kenya Commission. Lord Stanley said that the Kenya Commission...

whole of this movement as being a product of this country regarding the position of the British...

Mr. Howard Grigg. Yes, and I think that something that would seem them that if Imperial policy were established it would not be altered...

Lord Stanley. It is a question of policy in this country which would not vary according to the completion of the Secretary of State.

Mr. Howard Grigg. Yes, I think that we should be satisfied with the Imperial Government...

Lord Stanley. If Chief Union of our own was established with a legislative apparatus...

Mr. Howard Grigg. Yes, I think that we should be satisfied with the Imperial Government...

Lord Stanley. It is a question of policy in this country which would not vary according to the completion of the Secretary of State.

Mr. Howard Grigg. Yes, I think that we should be satisfied with the Imperial Government...

whole of this movement as being a product of this country regarding the position of the British...

Mr. Howard Grigg. Yes, and I think that something that would seem them that if Imperial policy were established it would not be altered...

Lord Stanley. It is a question of policy in this country which would not vary according to the completion of the Secretary of State.

Mr. Howard Grigg. Yes, I think that we should be satisfied with the Imperial Government...

Lord Stanley. If Chief Union of our own was established with a legislative apparatus...

Mr. Howard Grigg. Yes, I think that we should be satisfied with the Imperial Government...

Lord Stanley. It is a question of policy in this country which would not vary according to the completion of the Secretary of State.

Mr. Howard Grigg. Yes, I think that we should be satisfied with the Imperial Government...

ENTERTAINMENT THEATRE

EMPIRE NIGHTLY 8-45 MATINEES SAT. 3-15

TO-NIGHT FRIDAY and SATURDAY SPECIAL DOUBLE FEATURE PROGRAMME

Gloria Swanson IN A THRILLING ROMANCE

"The Untamed Lady" Also The Adventures of Maya The Bee

AL JOLSON in "SAY IT WITH SONGS"

TALKIES SHOWING SHORTLY

NOW OPEN THE NEW FULLY LICENSED Salisbury Lounge

Lees Physical Training School

Have your tea and sundowner comfortably with music. HOTEL AVENUE

Every Wednesday and Sunday from 6-8 p.m. HOTEL AVENUE

THE TWO MOST UP-TO-DATE AND LUXURIOUS HOTELS IN KENYA. HOTEL AVENUE

THE SMALLER CINEMA CAMERA for 16 mm. ZEISS IKON KINAMO 510

"THE LENS" Ltd. Sole E.A. Distributors

"SOLID GOLD" QUARTO (8" x 10")

PICCADILLY RESTAURANT FRENCH COOKING

THEATRE ROYAL NIGHTLY 8-45

TO-NIGHT FRIDAY and SATURDAY THE WILLIAM FOX SPECTACULAR PRODUCTION

"SACRIFICE" A ROMANCE OF LIFE TO-DAY

"WOULD YOU BELIEVE IT" FEATURING WALTER TODD

TORR'S HOTEL THE HOTEL OWNERS' WILL PAY DAILY BREAKFAST

NIGHTLY 8-11 p.m. (Sunday Excepted) SATURDAYS 8-9 a.m.

BOOK YOUR TABLES FOR SAT. NEXT

FOR TICKETS AND INFORMATION OF TRAVEL SUDAN Government RAILWAYS and Steamers

THE OFFICIAL BOOKING AGENTS, Specialties in long distance inclusive Motorway Tours.

THE SMALLER CINEMA CAMERA for 16 mm. ZEISS IKON KINAMO 510

"THE LENS" Ltd. Sole E.A. Distributors

"SOLID GOLD" QUARTO (8" x 10")

PICCADILLY RESTAURANT FRENCH COOKING

THE TWO MOST UP-TO-DATE AND LUXURIOUS HOTELS IN KENYA. HOTEL AVENUE

Every Wednesday and Sunday from 6-8 p.m. HOTEL AVENUE

THE SMALLER CINEMA CAMERA for 16 mm. ZEISS IKON KINAMO 510

"THE LENS" Ltd. Sole E.A. Distributors

PRESENTING THE NEW CHEVROLET SIX THE MOTOR MART & EXCHANGE Ltd.

THE GREAT KENYA VALUE THE MOTOR MART & EXCHANGE Ltd.

STANDARD STATIONERY STORES, SIXTH AVENUE, NAIROBI. CARBON PAPERS

Soiled Linen Baskets

WELL MADE, STRONG and DURABLE.
 7 1/2 inches High.
 ROUND SHAPE Shs. 25/-
 CORNERED SHAPE Shs. 23/6

Waste Paper Baskets

13 inches High.
 Shs. 5-75 each.
 LESS 10 per cent. DISCOUNT FOR CASH.

Hutchings Biemer & Co., LIMITED.

COLEMAN

LAMPS
 LANTERNS.

Model 200 Model 118

CAMP STORES

WHITLAW, LAIDLAW & CO. LMS.
 LAURENCE LANE
 BRADLEY, SILVERMAN & CO. LTD.
 ISRAHIM KARIMUDDIN
 FOGARLI DEARAH
 Shs. 25/-

The Motor Service Co.,

SIXTH AVENUE NAIROBI.

Your Opportunity

A FEW 1898 WILLIS KNIGHT AND OVERLAND CARS and TRUCKS AVAILABLE AT SPECIALLY REDUCED PRICES.

from £165 from

Kodak International Sh.400,000 COMPETITION Strictly for Amateurs
 Sh.2,000 in Cash Prizes for East Africa. Easy to enter, subject interest alone will count
 Six Picture Classes. 115 Prizes for East Africa

19 Prizes in Each Class

1. A. Children. 2. Boys. 3. Ladies. 4. Men. 5. Motor. 6. Sports. 7. Travelling. 8. Views. 9. Wild Life. 10. Zoology.

2. A. Children. 3. Boys. 4. Ladies. 5. Men. 6. Motor. 7. Sports. 8. Travelling. 9. Views. 10. Zoology.

3. A. Children. 4. Boys. 5. Ladies. 6. Men. 7. Motor. 8. Sports. 9. Travelling. 10. Views. 11. Zoology.

JACOBS COMMITTED FOR TRIAL

(Continued from page 7.)

Mr. Abbott promised that the transaction had been no profitable one, and that he had no other interest in the property.

Mr. Justice Dickson, in giving judgment, said that the evidence was not sufficient to establish that Mr. Abbott was a party to the transaction.

TO-DAY'S CAMEL LIFE

Before Mr. Justice Dickson, to Chamber at 9.30 a.m.

C. C. A. Robinson vs. The State.

In Court No. 1 for hearing on 10th March.

C. C. Pughall & Co. vs. The State.

Mr. Justice Dickson, in giving judgment, said that the evidence was not sufficient to establish that Mr. Abbott was a party to the transaction.

Mr. Justice Dickson, in giving judgment, said that the evidence was not sufficient to establish that Mr. Abbott was a party to the transaction.

Inspector Morrison then gave evidence of having arrested Jacobs that morning on the 11th of March, 1918, on a warrant issued by the Court. Account was taken of the property found on him at the time of his arrest.

Mr. Justice Dickson, in giving judgment, said that the evidence was not sufficient to establish that Mr. Abbott was a party to the transaction.

Mr. Justice Dickson, in giving judgment, said that the evidence was not sufficient to establish that Mr. Abbott was a party to the transaction.

Mr. Justice Dickson, in giving judgment, said that the evidence was not sufficient to establish that Mr. Abbott was a party to the transaction.

Mr. Justice Dickson, in giving judgment, said that the evidence was not sufficient to establish that Mr. Abbott was a party to the transaction.

Maxwell Bracy's

QUALITY FIRST—AND ALWAYS

We are TAKING STOCK next month, and having had a complete overhaul in readiness for this event have turned out a great number of **ODDMENTS**. These have been marked down at **RIDICULOUSLY LOW PRICES** to ensure them going out.

We cannot enumerate every LINE but a careful glance at the **LISTS BELOW** will give the **PUBLIC** an excellent idea of the **WONDERFUL BARGAINS** WE ARE OFFERING FROM MARCH 12th to 21st inclusive.

MENS	WEAR	BARGAINS
21/-	Male for Afternoon suit including Vest. Made by John H. Gifford in Grey and Fawn Shades.	21/-
8/-	Men's Large Shirts Fine Heliconia for production on the Standard 12 1/2 and 14. ORIGINAL PRICE 21/-.	8/-
35/-	John B. Betson Head Colour Hair, only 0 left. ORIGINAL PRICE 70/-.	35/-
50/-	John B. Betson, Plus Fur Felt Double Tere. ORIGINAL PRICE 100/-.	50/-
12/50	Face Coloured Silk Scarves in really China. ORIGINAL PRICE 22/50 & 25/-.	12/50
15/-	Men's Fanny Popular Dressing Gown. ORIGINAL PRICE 35/-.	15/-
22/50	Men's Fanny Popular Dressing Gown. ORIGINAL PRICE 35/-.	22/50
22/-	Men's Fine Cashmere Pullovers in Camel. ORIGINAL PRICE 37/50.	22/-
7/-	Men's Hair to match above. ORIGINAL PRICE 12/50.	7/-
7/50	Men's Trousers with 2 Buttons to match. ORIGINAL PRICE 12/50 & 15/50.	7/50
10/-	Men's Trousers with 2 Buttons to match. ORIGINAL PRICE 12/50 & 15/50.	10/-
19/50	Men's Trousers with 2 Buttons to match. ORIGINAL PRICE 12/50 & 15/50.	19/50
12/50	Men's Trousers with 2 Buttons to match. ORIGINAL PRICE 12/50 & 15/50.	12/50
8/-	Men's Trousers with 2 Buttons to match. ORIGINAL PRICE 12/50 & 15/50.	8/-
2/75	Men's Trousers with 2 Buttons to match. ORIGINAL PRICE 12/50 & 15/50.	2/75
3/75	Men's Trousers with 2 Buttons to match. ORIGINAL PRICE 12/50 & 15/50.	3/75
20/-	Men's Trousers with 2 Buttons to match. ORIGINAL PRICE 12/50 & 15/50.	20/-
15/-	Men's Trousers with 2 Buttons to match. ORIGINAL PRICE 12/50 & 15/50.	15/-
3	Men's Trousers with 2 Buttons to match. ORIGINAL PRICE 12/50 & 15/50.	3
8/50	Men's Trousers with 2 Buttons to match. ORIGINAL PRICE 12/50 & 15/50.	8/50
2/75	Men's Trousers with 2 Buttons to match. ORIGINAL PRICE 12/50 & 15/50.	2/75

FOOTWEAR	BARGAINS	
7/50	Leading Black Satin and Silver Brocade Hat. ORIGINAL PRICE 10/0 to 20/0.	7/50
12/50	Leading Silver Brocade Bachel Hat, with Louis Heel, and Black Satin Hat, with Louis Heel. ORIGINAL PRICE 20/0 to 25/0.	12/50
22/50	Leading "Maitland" Grand 1 1/2 Hat. ORIGINAL PRICE 30/0 to 35/0.	22/50
21/-	Leading Hat, with and Bage Bage Evening Shoes, also plain Black Satin Hat, with Louis Heel. ORIGINAL PRICE 20/0 to 25/0.	21/-
25/-	Leading Hat, with and Bage Bage Evening Shoes, also plain Black Satin Hat, with Louis Heel. ORIGINAL PRICE 20/0 to 25/0.	25/-
29/50	Leading Hat, with and Bage Bage Evening Shoes, also plain Black Satin Hat, with Louis Heel. ORIGINAL PRICE 20/0 to 25/0.	29/50
30/50	Leading Hat, with and Bage Bage Evening Shoes, also plain Black Satin Hat, with Louis Heel. ORIGINAL PRICE 20/0 to 25/0.	30/50
32/50	Leading Hat, with and Bage Bage Evening Shoes, also plain Black Satin Hat, with Louis Heel. ORIGINAL PRICE 20/0 to 25/0.	32/50
35/-	Leading Hat, with and Bage Bage Evening Shoes, also plain Black Satin Hat, with Louis Heel. ORIGINAL PRICE 20/0 to 25/0.	35/-
40/-	Leading Hat, with and Bage Bage Evening Shoes, also plain Black Satin Hat, with Louis Heel. ORIGINAL PRICE 20/0 to 25/0.	40/-
16/-	Leading Hat, with and Bage Bage Evening Shoes, also plain Black Satin Hat, with Louis Heel. ORIGINAL PRICE 20/0 to 25/0.	16/-

BOYS	SCHOOL	WEAR
2/50	Boys Grey School Suits with matching Coat. ORIGINAL PRICE 3/00 to 5/00.	2/50
2/-	Boys' Outdoors 1 Size. An absolute snip.	2/-
10/-	Boys' Navy Blouses to fit ages 4 to 14 years. ORIGINAL PRICE 18/- to 25/-.	10/-
1/6	Boys' Navy Blouses to fit ages 4 to 14 years. ORIGINAL PRICE 18/- to 25/-.	1/6

Government Road, NAIROBI.

P.O. Box 20

STERLING & SCOTT Ltd.

P.O. Box 246 Victoria Street, Freetown 2192.

Kenya Mountain

By E. A. T. DUTTON.

With fifty-six full page illustrations.

"A book worth reading to your friends at Christmas."

PRICE Shs. 2/-, postpaid Shs. 2/6.

STANDARD STATIONERY STORES.

CORRESPONDENCE.

Summit Tennis Shirts



MEAN PERFECT FIT, COMFORT, STYLE and DURABILITY.

Named Bros

THE HOUSE OF DISTINCTION. P.O. Box 264 Bessara-Nairobi 4 Phone 2281.

PRODUCTS OF GREAT BRITAIN

East Africa's Best Customer BUY FROM THOSE WHO BUY FROM YOU.



Keeps your Teeth Sparkling White.



Soothes and comforts the skin.

BRITISH YOUR CHEMIST STOCKS THEM

from the raw material to the finished product.

In your own interests support Local Industry

- Bread 1/37 per lb. loaf.
Milk 1/2 lb.
Cakes 1/2 doz.
Upland Bacon Sliced 1/4 lb.
Middle 1/4 lb.
Lard 1/4 lb.
Flour Kenya Pride 1/10 lb. bag.
Oatmeal 1/10 lb. per lb.
Sweet Tea 1/40 & 1/2 per lb.
Marmalade 1/12 per jar.
Bottled Sweets 1/2 bottle.

M. S. Elliot & Co., LIMITED. P.O. Box 175. Phone 2060.

Rainy Season HAS NOW SET IN.

Renew your Motor Car Hoods with best, strong and lasting Motor Hood Material.
Meghji Ahamed & Co., (The Oldest Established Tent Makers in Kenya). P.O. Box 313. Telephone 2608.

The Editor does not accept responsibility for the contents of the letters published in this column.
The Editor, 'E. A. Standard.'

North Africa at between one-third and one-half of the rate of the other countries, and there seems no reason to suppose that the general conditions are different from those of the other countries.

RAILWAY RATES ON KENYA RAIL. To the Editor, 'E. A. Standard.'

JOINT COMMITTEE-NATIVE WITNESSES. To the Editor, 'E. A. Standard.'

THE EAST AFRICAN STANDARD. To the Editor, 'E. A. Standard.'

THE EAST AFRICAN STANDARD. To the Editor, 'E. A. Standard.'

THE EAST AFRICAN STANDARD. To the Editor, 'E. A. Standard.'

THE EAST AFRICAN STANDARD. To the Editor, 'E. A. Standard.'

THE EAST AFRICAN STANDARD. To the Editor, 'E. A. Standard.'

THE EAST AFRICAN STANDARD. To the Editor, 'E. A. Standard.'

THE EAST AFRICAN STANDARD. To the Editor, 'E. A. Standard.'

THE EAST AFRICAN STANDARD. To the Editor, 'E. A. Standard.'

THE EAST AFRICAN STANDARD. To the Editor, 'E. A. Standard.'

THE EAST AFRICAN STANDARD. To the Editor, 'E. A. Standard.'

THE EAST AFRICAN STANDARD. To the Editor, 'E. A. Standard.'

THE EAST AFRICAN STANDARD. To the Editor, 'E. A. Standard.'

THE EAST AFRICAN STANDARD. To the Editor, 'E. A. Standard.'

THE EAST AFRICAN STANDARD. To the Editor, 'E. A. Standard.'

THE EAST AFRICAN STANDARD. To the Editor, 'E. A. Standard.'

THE EAST AFRICAN STANDARD. To the Editor, 'E. A. Standard.'

THE EAST AFRICAN STANDARD. To the Editor, 'E. A. Standard.'

THE EAST AFRICAN STANDARD. To the Editor, 'E. A. Standard.'

THE EAST AFRICAN STANDARD. To the Editor, 'E. A. Standard.'

THE EAST AFRICAN STANDARD. To the Editor, 'E. A. Standard.'

THE EAST AFRICAN STANDARD. To the Editor, 'E. A. Standard.'

THE EAST AFRICAN STANDARD. To the Editor, 'E. A. Standard.'

THE EAST AFRICAN STANDARD. To the Editor, 'E. A. Standard.'

THE EAST AFRICAN STANDARD. To the Editor, 'E. A. Standard.'

THE EAST AFRICAN STANDARD. To the Editor, 'E. A. Standard.'

THE EAST AFRICAN STANDARD. To the Editor, 'E. A. Standard.'

THE EAST AFRICAN STANDARD. To the Editor, 'E. A. Standard.'

THE EAST AFRICAN STANDARD. To the Editor, 'E. A. Standard.'

THE EAST AFRICAN STANDARD. To the Editor, 'E. A. Standard.'

THE EAST AFRICAN STANDARD. To the Editor, 'E. A. Standard.'

THE EAST AFRICAN STANDARD. To the Editor, 'E. A. Standard.'

Give your linen fair treatment in the wash



There is one way to be sure your household linen is getting fair treatment in the wash—use the best.
Sunlight Soap is the best.



THE ROMANCE OF SCOTLAND IS INTERVIEWED IN THE DISTANT AND MAGNIFICENT W. G. GILBERT'S SPEY-ROYAL BY ROYAL APPOINTMENT.



WHISKY THE FINEST SCOTCH WHISKY. Stocked by all High Class Hotels and Wine and Spirit Merchants.

B. FLORENS FRENCH HAIR DRESSER. FRAGRANCE AND SHIRTING SPECIALIST.

All Orders Executed under our Personal Supervision. JAMES REZIN Tailor & Breches Maker.

LETTS DIARIES 1931 OFFICE AND POCKET SIZES. SYSTEM DESK CALENDARS. COMPLETE AND REFILLS. PILOT DESK CALENDARS. COMPLETE AND REFILLS. FANCY CALENDARS. ETC.

Standard Stationery Store, NAIROBI.

DEPARTMENT OF AGRICULTURE.

Returns of Maize Graded during Week ended 7th March 1931.

Table with columns: District, No. of Bags Wet, Average Moisture Content. Rows include Kiara, Kisumu, etc.

FINANCE AND THE RECORD.

To the Editor, 'E. A. Standard.' Sir—Mr. E. C. Shippin in his recent letter to you points out that the construction of a statue proposed in the Gambia is a plain place for the most part.

COGNAC?—Well, Just One!

You've probably said it yourself... often, and how often have you been disappointed! It is so easy to put an age on a bottle—and so hard to live up to it! DE LUZE. 50 YEARS OLD. No Vintage, Mark You! But a perfect blend of OLD Brandies. Jardin, Phipson & Co., Ltd. Box 26, NAIROBI.

Box 26, NAIROBI.

AUCTION SALES.



MISCELLANEOUS GOODS SALE.

Uniquely introduced, we shall sell by Public Auction, Without Reserve, unless stipulated, at Our Sale-rooms, Motor Building, Harding Street, Nairobi, on Friday, 13th March at 10 a.m. ... On behalf of the parties concerned:— Sir Cecil Jackson's Floor Polish each case containing 15 dozen tins (damaged in transit).



TO LET. FURNISHED and UNFURNISHED HOUSES, at Moderate Rentals. SUITES OF OFFICES in PRINCES HOUSE, Government Road; recently vacated by the Shell Co. SUITS OF OFFICES in MUTOR BUILDING, Harding Street, from 1st June.

AUSTIN'S AUCTIONS.

SALE OF MACHINERY, TIMBER, ALUMINIUM SHEETS, MOTORS, etc. ... TO-DAY, March 12th, at 10 a.m. 187 Sawbench Complete with Shafting and Spare Saws, by Bonner and Gunn. Station Planning Machine, complete with shafting, by T. Robinson and Co. ... AUSTIN & CO. AUCTIONEERS AND ESTATE AGENTS, Harding Street, Nairobi.

AUSTIN'S AUCTIONS

CATALOGUE SALE OF GOOD FURNITURE, CRESTED BEDS, TYPEWRITER, GRAMOPHONE, CHINA and GLASS, etc. ... TO-DAY, March 14th at 10 a.m. Chesterfield Suites in Roxine, Popin and Cretonne. Chest Writing Bureau, Nests of 3 Teak Tables. ... AUSTIN & CO. AUCTIONEERS AND ESTATE AGENTS, Harding St., NAIROBI.

E. Hutchison & Co.

FOR SALE.—Small Freshford Farm, Limuru. Ideally situated, 50 acres, £8 pa. ... FOR SALE.—Good Stone House, Kikuyu Road. Two bedrooms, inside sanitation. Nice garden. ... SANDS & CO. AT OUR SALEYARDS, NAIVASIA Monday, 16th March AT 10-30 A.M.

SANDS & CO.

30 Grade Cows in Calf to Pedigreed Ayrshire Bulls. 11 Shave Cows. 40 Grade Sheep. 48 Grade and Native Cows. 30 Grade Steers. SANDS & CO. AUCTIONEERS

Butter Ghee

1/- per lb. SANDS & CO. NAIROBI

THACKRAH'S Ltd.

THE UP-COUNTRY LAND AND ESTATE AGENTS. AUTOMOBILES & APPROVED VALUERS, INSURANCE, SHIPPING and FINANCIAL AGENTS. Shops, Offices, Godowns, Houses and Farms. TO LET OR FOR SALE.

THE PREMIER USED CAR SALESMAN.

Godfrey's Car Mart LIMITED. Texaco House - Sadler Street.

50 USED CARS 50 TO SELECT FROM

First Light Delivery (Model A) Recently overhauled. 1000 cc. 400. ... First Truck Model A. Does only 1,000 miles. 400. ... Dodge 3 Body—A superb power and reliable vehicle. 400. ... Chevrolet 5 Touring car. 400. ... Ford 5 Body, 1927 Model. 400. ...

Sole Agents: Ariel Motorcycles 1931 Models Arriving Shortly.

MEALY BUG.

USE Tree Tanglefoot THE BEST PREVENTATIVE Stocks on Hand Sole Agents: DENOVAN & DIEBEL VICTORIA STREET - NAIROBI.

METROPOLITAN GARAGE.

(OFF. GODFREY'S CAR MART.) Repairs all makes of Cars. Duo Spray Painting. Overhaul a Speciality. Valves and Retreading. ... D. J. LETHBRIDGE, SOLE PROPRIETOR.

A. L. SMITHSON.

F.A.L.P.A. Estate Agent and Approved Valuer. ALL KINDS OF INSURANCE EFFECTED. MORTGAGES ARRANGED. VALUATIONS FOR INSURANCE, MORTGAGE, ESTATE DUTY and PROBATE. BOLUS HOUSE, Telephone 2750. NAIROBI. P.O. Box 1192.

REDUCTION IN PRICE OF The Kenya Quick Letter File.

for up-to-the-minute Filing Systems. This is one File.

- 1. Illustration No. 1 shows a file with the papers correctly held in the folder. Every paper is in position for immediate reference. 2. One of the great advantages of this file is that the margins are plainly visible, thus you have a complete reference to all details on the pages. 3. Remember, that you can remove or add any paper you wish without disturbing the other papers in the file. Your papers are always in order—always ready to hand. It is the one file which definitely demonstrates why you should use an efficient filing system. The problem is filed with simple ease. It is an efficient filing system. The fittings are metal and highly resistant parts. Only the file fits with all the advantages of the lower size file. Price—Complete file. O.S. 50 each. Sigs. 8.50 Dozen. Sigs. 100.00 Dozen.

Standard Stationery Stores, Nairobi.

"W. P. B."



Standard Stationery Stores

LYTERLIFE

The New Non-Liquid Patrol for all pocket or table lighters.

Eight reasons why LYTERLIFE is better than Liquid Patrol. 1. A nucleus of the tube fills your lighter in a jiffy. 2. Lyterlife can be used in any type of pocket or table lighter. 3. Lyterlife lasts as long as long as petrol. 4. Lyterlife, because it is non-liquid, eliminates all spilling, leakage and waste. 5. Lyterlife is non-combustible. It is not affected by either heat or cold. 6. Lyterlife will not evaporate, thus doing away with any deposits. 7. Lyterlife problems that smokers have long been looking for—a clear white flame without smoke or odor. 8. Lyterlife—the only non-liquid petrol, is the answer to every lighter-filling problem. On Sale at Hovos & McGeorge—All Branches; May & Co., Ltd.; Maxwell House & Co.; R. Jacobs Ltd.; A. H. Wainman & Co., Ltd.; T. W. Ltd. Agents—WIGRAM and Co., Ltd. Box 105, Nairobi.

OBTAIN TOP PRICES BY SENDING YOUR ARTICLES TO JAMAL PIRBHAI WHO SELLS ANYTHING YOU CANNOT SELL. AUCTIONEER, OFFICIAL BROKER, LAND AND ESTATE AGENT AND GOVERNMENT APPROVED VALUER. AUCTION EVERY SATURDAY AND SUNDAY. Commencing at 10 a.m. and 2 p.m. Respectively. P.O. Box No. 260. Opp. Jivanga Cinema. Phone No. 2842. Note—No matter whether auctioneer, or one best highest prices always available for clean articles.

Rubber Stamps AT THE STANDARD STATIONERY STORES, NAIROBI.

COMPARISONS

BUT THE ONLY WAY FOR THE LAYMAN TO UNDERSTAND IS TO COMPARE AND YOU ARE SURE TO CHOOSE

Geo. BLOWERS AS YOUR BUILDER

Quality WE GIVE TO ALL JOBS Big & Small CONSULTATIONS ARE FREE. A TALK WITH US MAY AND ESTIMATES SAVE YOU POUNDS.

Wood Block Floors

OURS HAVE NEVER BEEN SURPASSED. OUR BLOCKS FIT CLOSE and a PERFECT FLOOR IS A BIG ASSET TO YOUR HOME. Cut out The Old Dull Paint

BY HAVING YOUR DOORS, WINDOWS, and FINISHINGS, IN OILED OR POLISHED MIVULI

WE SPECIALIZE IN — CONCRETE OF ALL FORMS. JOINEERY. FURNITURE — ONLY TO YOUR DESIGN. SANITARY TILING. ARTISTIC SIGNS FOR ALL PURPOSES. PAINTING AND DECORATING.

WE SUPPLY CUT STONE—BALLAST—ANY SIZE AND ALL BUILDING MATERIALS. SEND FOR OUR ILLUSTRATED CATALOGUE. Phone: 2624 Office. 2624 House. P.O. Box No. 2624. Tel. Add. "GODFREY'S"

CLARKE'S BANK (DOMINION, COLONIAL AND OVERSEAS)

Incorporated by Act of Parliament, 1914.

THE COLONIAL BANK

with which are amalgamated

THE NATIONAL BANK OF SOUTH AFRICA, LTD.

and

THE ANGLO-EGYPTIAN BANK LTD.

Capital Authorized ... £18,000,000
 Capital Subscribed ... £6,577,500
 Capital Paid up ... £1,450,000
 Reserve Fund ... £1,450,000

OVER 500 BRANCHES IN Africa, South Africa, Rhodesia, South West Africa, East Africa, West Indies, Egypt, Palestine and the Sudan, Mauritius, etc.

THE BANK UNDERTAKES ALL CLASSES OF BANKING BUSINESS AND ALSO ACTS AS TRUSTEE AND EXECUTOR.

BRANCHES IN EAST AFRICA: Nairobi, Mombasa, Kisumu, Eldoret, Eldama, Kampala, Juba, Tangi, Dar-es-Salaam, Kampala, Kisumu, Nairobi and Mombasa.

HEAD OFFICE: 54, Lombard Street, London, E.C. 4.

BRANCH OFFICES: 2, Cross Street, R.O.C. Street, Freetown, West Africa; 111, St. Martin's Lane, Trafalgar Square, W.C. 2.

OFFICES IN Liverpool, Manchester, Hamburg, New York.

Correspondents in all the Principal Cities and Towns of the World.

RETOUNG WINGS AND WHEELS

BRUSHING ROSSIALON

By use of this perfect solution

AGENTS: MCKENZIE & CO., 280, NAIROBI.

MOTOR NEWS

TOYOTA SHOWROOM

MYSTERIOUS POWER LOSS

Conditions of Patent

REVIEWS OF GARDEN

than the first, we must usually have recourse to the use of a pump, and the best method is to pump up one cylinder by hand, and then try the distribution by pulling the valve to the top of the cylinder in the reverse direction.

Little except on the compression stroke, at the end of each stroke, but on the first stroke, and when the valve is fully open, the engine will give a sudden, jerky, and noisy motion, and when the valve is closed, the engine will give a sudden, jerky, and noisy motion, and when the valve is closed, the engine will give a sudden, jerky, and noisy motion.

Whether the piston and ring fit in good order, unless action depends on the valve mechanism.

Whether the piston and ring fit in good order, unless action depends on the valve mechanism.

Whether the piston and ring fit in good order, unless action depends on the valve mechanism.

SOUTH AFRICAN Jams and Jellies ARE Of the Finest Quality AND Obtainable from all Leading Grocers

For full particulars apply to **THE SOUTH AFRICA OFFICE, Memorial Hall, Box 694, NAIROBI.**

SUKARI Ltd.

have pleasure in announcing that they are now producing the Finest Quality White Sugar.

When ordering SUGAR from your grocer, insist on being supplied with **Sukari Superfine**

Unequalled in Sweetness, Whiteness and Purity.

NAIROBI STOCKISTS - B. B. DUNCAN

Place yourself on the right side of the road with **INSURE**

YOUR MOTOR CARS AND MOTOR CYCLES

AFRICAN GUARANTEE AND INDEMNITY CO., Ltd. 84 D. KAMPP, Chief Agent.

MAY & CO. LTD. FISHING TACKLE.

THE EAST AFRICAN STANDARD

INSURE

Place yourself on the right side of the road with **INSURE**

YOUR MOTOR CARS AND MOTOR CYCLES

AFRICAN GUARANTEE AND INDEMNITY CO., Ltd. 84 D. KAMPP, Chief Agent.

MAY & CO. LTD. FISHING TACKLE.

ALL PARTIES WELCOME THIS MEASURE OF PROTECTION

Crawford's LIQUEUR

SCOTCH WHISKY

NO CONDITIONS OF TRANSPORT CAN ALTER THE FACT THAT CRAWFORD'S WHISKY REACHES YOU EXACTLY AS IT LEAVES THE BONDED WAREHOUSE

ESTABLISHED IN 1860

J. & F. CRAWFORD - LEITH, SCOTLAND

Providing Greater Value at Lower Cost

Ford

Large production and Ford methods of manufacturing have made it possible to put more and more value into the Ford Car without extra cost to the purchaser.

That the public appreciates the substantial worth of the new Ford is shown by its widening use by people in all walks of life.

Throughout, the new Ford is an example of fine engineering and craftsmanship in volume production - a value far above the price you pay.

NAIROBI MOTORS

Box 460. NAIROBI. Tel. 2458.

What are the SHORT waves saying?

They're sending their Message to you

PILOT SUPER WASP

THE WORLD'S BEST ALL-MAINS SHORT WAVE SET.

Erected and Tested Shs. 450/-

Broadcast Band:-

THE PILOT MIDGET ALL ELECTRIC

COMBINING IN CABINET MOVING COIL LOUD SPEAKER.

3 STATE SCREEN GRID H.F. AMPLIFICATION.

1 DETECTOR. 1 POWER OUTPUT L.F.

ALL ELECTRIC CONVERTER FOR NAIROBI A.C. MAINS. ERRECTED AND TESTED Shs. 400/-.

Demonstrations In Our SHOWROOMS

Tuesdays 10 a.m. Thursdays 3-30 p.m.

THE MOTOR MART

and Exchange Limited. NAIROBI.

THIKA'S Best and Cheapest

Greases, Oils, Lubricants, Motor Oils and Greases, Tyres, Tubes and Washers.

JUA TRADING Co.

Agents Shell Co. of E.A. Ltd.

It Is Cruelty

to inflict on your little boy the pain of a mosquito bite. Adopt the modern method and give him the best protection.

QUININE CHOCOLATES

Instead of bitterness, not even the slightest suspicion of the use of sugar, and the best good quinine all the same.

Obtainable only at **THE NAIROBI PHARMACY, P.O. Box 188, NAIROBI.**

THE SPORTS PAGE



DANGEROUS GAME

For heavy or dangerous horses accustomed at other times to such or jungle, we have...

ELEY OR KYNOCH

CARTRIDGES SPECIAL CREDIT DEPARTMENT... A. HOGG... NATIONAL, 37-38, 39...

LIME

THE FINEST IN THE WORLD... KEYS MARBLE QUARRIES CO.

Golf Championships

THE BIG FOUR OF 1930... British Open Championship... American Amateur Championship...

Enjoy the World's... Radio Programmes

with the Philips Receiver (Short and Long Wave Lengths) TYPE No. 2802

THIS SET HAS BEEN DESIGNED BY THE SAME ENGINEER WHO BUILT P.C.I.L. IT HAS BEEN DESIGNED TO GIVE YOU THE MOST SATISFACTION TO THE USER.

WHERE there is an A.C. supply available the whole installation except the accumulator can consist of: Philips Shortwave receiver No. 2802, Philips M. T. Supply Unit No. 2609, and a Philips Loud-speaker.

By using also Philips triode charger No. 1617 you have at your disposal completely modern Radio Reception.

Fully illustrated operating instructions supplied with each set.

Particulars from Lockhead Moore & Co. Limited, SIXTH AVENUE, P.O. Box 636 NAIROBI.

The SHIRTS that LAUGH at the LAUNDRY Consulate SHIRTS Stocked by the Leading Outfitters.

CHARLES WARE. YOUR ACCOUNTANT. Established 25 years. Tel. Add. 1, 2, 3, 4, 5, 6, 7, 8, 9, 10, 11, 12, 13, 14, 15, 16, 17, 18, 19, 20, 21, 22, 23, 24, 25, 26, 27, 28, 29, 30, 31, 32, 33, 34, 35, 36, 37, 38, 39, 40, 41, 42, 43, 44, 45, 46, 47, 48, 49, 50, 51, 52, 53, 54, 55, 56, 57, 58, 59, 60, 61, 62, 63, 64, 65, 66, 67, 68, 69, 70, 71, 72, 73, 74, 75, 76, 77, 78, 79, 80, 81, 82, 83, 84, 85, 86, 87, 88, 89, 90, 91, 92, 93, 94, 95, 96, 97, 98, 99, 100.

Deposits Accounts opened for any reasonable amount. Credit Accounts treated only with approved references. NO REPLY DISTINGUISH MEANS NO BUSINESS.

CREDIT, LETTERS, WIRE BUSINESS ONLY.

Imported Steel Windows AND Wooden Doors Eliminate Warping Worries

Ask for Price List J.H.S. TODD & CO. LTD. NAIROBI

MAURICE ROSENSTON P.O. Box 481. 10, 11, 12, 13, 14, 15, 16, 17, 18, 19, 20, 21, 22, 23, 24, 25, 26, 27, 28, 29, 30, 31, 32, 33, 34, 35, 36, 37, 38, 39, 40, 41, 42, 43, 44, 45, 46, 47, 48, 49, 50, 51, 52, 53, 54, 55, 56, 57, 58, 59, 60, 61, 62, 63, 64, 65, 66, 67, 68, 69, 70, 71, 72, 73, 74, 75, 76, 77, 78, 79, 80, 81, 82, 83, 84, 85, 86, 87, 88, 89, 90, 91, 92, 93, 94, 95, 96, 97, 98, 99, 100.

GRAND NATIONAL, 15/1, 16/1, 17/1, 18/1, 19/1, 20/1, 21/1, 22/1, 23/1, 24/1, 25/1, 26/1, 27/1, 28/1, 29/1, 30/1, 31/1, 32/1, 33/1, 34/1, 35/1, 36/1, 37/1, 38/1, 39/1, 40/1, 41/1, 42/1, 43/1, 44/1, 45/1, 46/1, 47/1, 48/1, 49/1, 50/1, 51/1, 52/1, 53/1, 54/1, 55/1, 56/1, 57/1, 58/1, 59/1, 60/1, 61/1, 62/1, 63/1, 64/1, 65/1, 66/1, 67/1, 68/1, 69/1, 70/1, 71/1, 72/1, 73/1, 74/1, 75/1, 76/1, 77/1, 78/1, 79/1, 80/1, 81/1, 82/1, 83/1, 84/1, 85/1, 86/1, 87/1, 88/1, 89/1, 90/1, 91/1, 92/1, 93/1, 94/1, 95/1, 96/1, 97/1, 98/1, 99/1, 100/1.

GRAND NATIONAL, 15/1, 16/1, 17/1, 18/1, 19/1, 20/1, 21/1, 22/1, 23/1, 24/1, 25/1, 26/1, 27/1, 28/1, 29/1, 30/1, 31/1, 32/1, 33/1, 34/1, 35/1, 36/1, 37/1, 38/1, 39/1, 40/1, 41/1, 42/1, 43/1, 44/1, 45/1, 46/1, 47/1, 48/1, 49/1, 50/1, 51/1, 52/1, 53/1, 54/1, 55/1, 56/1, 57/1, 58/1, 59/1, 60/1, 61/1, 62/1, 63/1, 64/1, 65/1, 66/1, 67/1, 68/1, 69/1, 70/1, 71/1, 72/1, 73/1, 74/1, 75/1, 76/1, 77/1, 78/1, 79/1, 80/1, 81/1, 82/1, 83/1, 84/1, 85/1, 86/1, 87/1, 88/1, 89/1, 90/1, 91/1, 92/1, 93/1, 94/1, 95/1, 96/1, 97/1, 98/1, 99/1, 100/1.

GRAND NATIONAL, 15/1, 16/1, 17/1, 18/1, 19/1, 20/1, 21/1, 22/1, 23/1, 24/1, 25/1, 26/1, 27/1, 28/1, 29/1, 30/1, 31/1, 32/1, 33/1, 34/1, 35/1, 36/1, 37/1, 38/1, 39/1, 40/1, 41/1, 42/1, 43/1, 44/1, 45/1, 46/1, 47/1, 48/1, 49/1, 50/1, 51/1, 52/1, 53/1, 54/1, 55/1, 56/1, 57/1, 58/1, 59/1, 60/1, 61/1, 62/1, 63/1, 64/1, 65/1, 66/1, 67/1, 68/1, 69/1, 70/1, 71/1, 72/1, 73/1, 74/1, 75/1, 76/1, 77/1, 78/1, 79/1, 80/1, 81/1, 82/1, 83/1, 84/1, 85/1, 86/1, 87/1, 88/1, 89/1, 90/1, 91/1, 92/1, 93/1, 94/1, 95/1, 96/1, 97/1, 98/1, 99/1, 100/1.

GRAND NATIONAL, 15/1, 16/1, 17/1, 18/1, 19/1, 20/1, 21/1, 22/1, 23/1, 24/1, 25/1, 26/1, 27/1, 28/1, 29/1, 30/1, 31/1, 32/1, 33/1, 34/1, 35/1, 36/1, 37/1, 38/1, 39/1, 40/1, 41/1, 42/1, 43/1, 44/1, 45/1, 46/1, 47/1, 48/1, 49/1, 50/1, 51/1, 52/1, 53/1, 54/1, 55/1, 56/1, 57/1, 58/1, 59/1, 60/1, 61/1, 62/1, 63/1, 64/1, 65/1, 66/1, 67/1, 68/1, 69/1, 70/1, 71/1, 72/1, 73/1, 74/1, 75/1, 76/1, 77/1, 78/1, 79/1, 80/1, 81/1, 82/1, 83/1, 84/1, 85/1, 86/1, 87/1, 88/1, 89/1, 90/1, 91/1, 92/1, 93/1, 94/1, 95/1, 96/1, 97/1, 98/1, 99/1, 100/1.

GRAND NATIONAL, 15/1, 16/1, 17/1, 18/1, 19/1, 20/1, 21/1, 22/1, 23/1, 24/1, 25/1, 26/1, 27/1, 28/1, 29/1, 30/1, 31/1, 32/1, 33/1, 34/1, 35/1, 36/1, 37/1, 38/1, 39/1, 40/1, 41/1, 42/1, 43/1, 44/1, 45/1, 46/1, 47/1, 48/1, 49/1, 50/1, 51/1, 52/1, 53/1, 54/1, 55/1, 56/1, 57/1, 58/1, 59/1, 60/1, 61/1, 62/1, 63/1, 64/1, 65/1, 66/1, 67/1, 68/1, 69/1, 70/1, 71/1, 72/1, 73/1, 74/1, 75/1, 76/1, 77/1, 78/1, 79/1, 80/1, 81/1, 82/1, 83/1, 84/1, 85/1, 86/1, 87/1, 88/1, 89/1, 90/1, 91/1, 92/1, 93/1, 94/1, 95/1, 96/1, 97/1, 98/1, 99/1, 100/1.

GRAND NATIONAL, 15/1, 16/1, 17/1, 18/1, 19/1, 20/1, 21/1, 22/1, 23/1, 24/1, 25/1, 26/1, 27/1, 28/1, 29/1, 30/1, 31/1, 32/1, 33/1, 34/1, 35/1, 36/1, 37/1, 38/1, 39/1, 40/1, 41/1, 42/1, 43/1, 44/1, 45/1, 46/1, 47/1, 48/1, 49/1, 50/1, 51/1, 52/1, 53/1, 54/1, 55/1, 56/1, 57/1, 58/1, 59/1, 60/1, 61/1, 62/1, 63/1, 64/1, 65/1, 66/1, 67/1, 68/1, 69/1, 70/1, 71/1, 72/1, 73/1, 74/1, 75/1, 76/1, 77/1, 78/1, 79/1, 80/1, 81/1, 82/1, 83/1, 84/1, 85/1, 86/1, 87/1, 88/1, 89/1, 90/1, 91/1, 92/1, 93/1, 94/1, 95/1, 96/1, 97/1, 98/1, 99/1, 100/1.

GRAND NATIONAL, 15/1, 16/1, 17/1, 18/1, 19/1, 20/1, 21/1, 22/1, 23/1, 24/1, 25/1, 26/1, 27/1, 28/1, 29/1, 30/1, 31/1, 32/1, 33/1, 34/1, 35/1, 36/1, 37/1, 38/1, 39/1, 40/1, 41/1, 42/1, 43/1, 44/1, 45/1, 46/1, 47/1, 48/1, 49/1, 50/1, 51/1, 52/1, 53/1, 54/1, 55/1, 56/1, 57/1, 58/1, 59/1, 60/1, 61/1, 62/1, 63/1, 64/1, 65/1, 66/1, 67/1, 68/1, 69/1, 70/1, 71/1, 72/1, 73/1, 74/1, 75/1, 76/1, 77/1, 78/1, 79/1, 80/1, 81/1, 82/1, 83/1, 84/1, 85/1, 86/1, 87/1, 88/1, 89/1, 90/1, 91/1, 92/1, 93/1, 94/1, 95/1, 96/1, 97/1, 98/1, 99/1, 100/1.

GRAND NATIONAL, 15/1, 16/1, 17/1, 18/1, 19/1, 20/1, 21/1, 22/1, 23/1, 24/1, 25/1, 26/1, 27/1, 28/1, 29/1, 30/1, 31/1, 32/1, 33/1, 34/1, 35/1, 36/1, 37/1, 38/1, 39/1, 40/1, 41/1, 42/1, 43/1, 44/1, 45/1, 46/1, 47/1, 48/1, 49/1, 50/1, 51/1, 52/1, 53/1, 54/1, 55/1, 56/1, 57/1, 58/1, 59/1, 60/1, 61/1, 62/1, 63/1, 64/1, 65/1, 66/1, 67/1, 68/1, 69/1, 70/1, 71/1, 72/1, 73/1, 74/1, 75/1, 76/1, 77/1, 78/1, 79/1, 80/1, 81/1, 82/1, 83/1, 84/1, 85/1, 86/1, 87/1, 88/1, 89/1, 90/1, 91/1, 92/1, 93/1, 94/1, 95/1, 96/1, 97/1, 98/1, 99/1, 100/1.

GRAND NATIONAL, 15/1, 16/1, 17/1, 18/1, 19/1, 20/1, 21/1, 22/1, 23/1, 24/1, 25/1, 26/1, 27/1, 28/1, 29/1, 30/1, 31/1, 32/1, 33/1, 34/1, 35/1, 36/1, 37/1, 38/1, 39/1, 40/1, 41/1, 42/1, 43/1, 44/1, 45/1, 46/1, 47/1, 48/1, 49/1, 50/1, 51/1, 52/1, 53/1, 54/1, 55/1, 56/1, 57/1, 58/1, 59/1, 60/1, 61/1, 62/1, 63/1, 64/1, 65/1, 66/1, 67/1, 68/1, 69/1, 70/1, 71/1, 72/1, 73/1, 74/1, 75/1, 76/1, 77/1, 78/1, 79/1, 80/1, 81/1, 82/1, 83/1, 84/1, 85/1, 86/1, 87/1, 88/1, 89/1, 90/1, 91/1, 92/1, 93/1, 94/1, 95/1, 96/1, 97/1, 98/1, 99/1, 100/1.

GRAND NATIONAL, 15/1, 16/1, 17/1, 18/1, 19/1, 20/1, 21/1, 22/1, 23/1, 24/1, 25/1, 26/1, 27/1, 28/1, 29/1, 30/1, 31/1, 32/1, 33/1, 34/1, 35/1, 36/1, 37/1, 38/1, 39/1, 40/1, 41/1, 42/1, 43/1, 44/1, 45/1, 46/1, 47/1, 48/1, 49/1, 50/1, 51/1, 52/1, 53/1, 54/1, 55/1, 56/1, 57/1, 58/1, 59/1, 60/1, 61/1, 62/1, 63/1, 64/1, 65/1, 66/1, 67/1, 68/1, 69/1, 70/1, 71/1, 72/1, 73/1, 74/1, 75/1, 76/1, 77/1, 78/1, 79/1, 80/1, 81/1, 82/1, 83/1, 84/1, 85/1, 86/1, 87/1, 88/1, 89/1, 90/1, 91/1, 92/1, 93/1, 94/1, 95/1, 96/1, 97/1, 98/1, 99/1, 100/1.

GRAND NATIONAL, 15/1, 16/1, 17/1, 18/1, 19/1, 20/1, 21/1, 22/1, 23/1, 24/1, 25/1, 26/1, 27/1, 28/1, 29/1, 30/1, 31/1, 32/1, 33/1, 34/1, 35/1, 36/1, 37/1, 38/1, 39/1, 40/1, 41/1, 42/1, 43/1, 44/1, 45/1, 46/1, 47/1, 48/1, 49/1, 50/1, 51/1, 52/1, 53/1, 54/1, 55/1, 56/1, 57/1, 58/1, 59/1, 60/1, 61/1, 62/1, 63/1, 64/1, 65/1, 66/1, 67/1, 68/1, 69/1, 70/1, 71/1, 72/1, 73/1, 74/1, 75/1, 76/1, 77/1, 78/1, 79/1, 80/1, 81/1, 82/1, 83/1, 84/1, 85/1, 86/1, 87/1, 88/1, 89/1, 90/1, 91/1, 92/1, 93/1, 94/1, 95/1, 96/1, 97/1, 98/1, 99/1, 100/1.

GRAND NATIONAL, 15/1, 16/1, 17/1, 18/1, 19/1, 20/1, 21/1, 22/1, 23/1, 24/1, 25/1, 26/1, 27/1, 28/1, 29/1, 30/1, 31/1, 32/1, 33/1, 34/1, 35/1, 36/1, 37/1, 38/1, 39/1, 40/1, 41/1, 42/1, 43/1, 44/1, 45/1, 46/1, 47/1, 48/1, 49/1, 50/1, 51/1, 52/1, 53/1, 54/1, 55/1, 56/1, 57/1, 58/1, 59/1, 60/1, 61/1, 62/1, 63/1, 64/1, 65/1, 66/1, 67/1, 68/1, 69/1, 70/1, 71/1, 72/1, 73/1, 74/1, 75/1, 76/1, 77/1, 78/1, 79/1, 80/1, 81/1, 82/1, 83/1, 84/1, 85/1, 86/1, 87/1, 88/1, 89/1, 90/1, 91/1, 92/1, 93/1, 94/1, 95/1, 96/1, 97/1, 98/1, 99/1, 100/1.

GRAND NATIONAL, 15/1, 16/1, 17/1, 18/1, 19/1, 20/1, 21/1, 22/1, 23/1, 24/1, 25/1, 26/1, 27/1, 28/1, 29/1, 30/1, 31/1, 32/1, 33/1, 34/1, 35/1, 36/1, 37/1, 38/1, 39/1, 40/1, 41/1, 42/1, 43/1, 44/1, 45/1, 46/1, 47/1, 48/1, 49/1, 50/1, 51/1, 52/1, 53/1, 54/1, 55/1, 56/1, 57/1, 58/1, 59/1, 60/1, 61/1, 62/1, 63/1, 64/1, 65/1, 66/1, 67/1, 68/1, 69/1, 70/1, 71/1, 72/1, 73/1, 74/1, 75/1, 76/1, 77/1, 78/1, 79/1, 80/1, 81/1, 82/1, 83/1, 84/1, 85/1, 86/1, 87/1, 88/1, 89/1, 90/1, 91/1, 92/1, 93/1, 94/1, 95/1, 96/1, 97/1, 98/1, 99/1, 100/1.

GRAND NATIONAL, 15/1, 16/1, 17/1, 18/1, 19/1, 20/1, 21/1, 22/1, 23/1, 24/1, 25/1, 26/1, 27/1, 28/1, 29/1, 30/1, 31/1, 32/1, 33/1, 34/1, 35/1, 36/1, 37/1, 38/1, 39/1, 40/1, 41/1, 42/1, 43/1, 44/1, 45/1, 46/1, 47/1, 48/1, 49/1, 50/1, 51/1, 52/1, 53/1, 54/1, 55/1, 56/1, 57/1, 58/1, 59/1, 60/1, 61/1, 62/1, 63/1, 64/1, 65/1, 66/1, 67/1, 68/1, 69/1, 70/1, 71/1, 72/1, 73/1, 74/1, 75/1, 76/1, 77/1, 78/1, 79/1, 80/1, 81/1, 82/1, 83/1, 84/1, 85/1, 86/1, 87/1, 88/1, 89/1, 90/1, 91/1, 92/1, 93/1, 94/1, 95/1, 96/1, 97/1, 98/1, 99/1, 100/1.

GRAND NATIONAL, 15/1, 16/1, 17/1, 18/1, 19/1, 20/1, 21/1, 22/1, 23/1, 24/1, 25/1, 26/1, 27/1, 28/1, 29/1, 30/1, 31/1, 32/1, 33/1, 34/1, 35/1, 36/1, 37/1, 38/1, 39/1, 40/1, 41/1, 42/1, 43/1, 44/1, 45/1, 46/1, 47/1, 48/1, 49/1, 50/1, 51/1, 52/1, 53/1, 54/1, 55/1, 56/1, 57/1, 58/1, 59/1, 60/1, 61/1, 62/1, 63/1, 64/1, 65/1, 66/1, 67/1, 68/1, 69/1, 70/1, 71/1, 72/1, 73/1, 74/1, 75/1, 76/1, 77/1, 78/1, 79/1, 80/1, 81/1, 82/1, 83/1, 84/1, 85/1, 86/1, 87/1, 88/1, 89/1, 90/1, 91/1, 92/1, 93/1, 94/1, 95/1, 96/1, 97/1, 98/1, 99/1, 100/1.

REPLE SHOOTING. RUGGER AND HOCKEY. NUTHAGA TENNIS TOURNAMENT.

Lincoln and Grand National. Probable Starters and Jockeys.

LATEST BETTING QUOTATIONS.

STANDARD COMMENTARY.

London, March 19. Masses and Ballpark stand favourites for the Lincolnshire Handicap and the Grand National respectively.

On Saturday, March 21, the first of the season's horse racing is expected to be held at the sports ground of the Maitland Golf Club.

On Sunday, March 22, cricket is to be played at the sports ground of the Maitland Golf Club.

On Monday, March 23, tennis is to be played at the sports ground of the Maitland Golf Club.

On Tuesday, March 24, football is to be played at the sports ground of the Maitland Golf Club.

On Wednesday, March 25, hockey is to be played at the sports ground of the Maitland Golf Club.

On Thursday, March 26, rugby is to be played at the sports ground of the Maitland Golf Club.

On Friday, March 27, tennis is to be played at the sports ground of the Maitland Golf Club.

On Saturday, March 28, football is to be played at the sports ground of the Maitland Golf Club.

On Sunday, March 29, cricket is to be played at the sports ground of the Maitland Golf Club.

On Monday, March 30, tennis is to be played at the sports ground of the Maitland Golf Club.

On Tuesday, March 31, football is to be played at the sports ground of the Maitland Golf Club.

On Wednesday, April 1, hockey is to be played at the sports ground of the Maitland Golf Club.

On Thursday, April 2, rugby is to be played at the sports ground of the Maitland Golf Club.

On Friday, April 3, tennis is to be played at the sports ground of the Maitland Golf Club.

On Saturday, April 4, football is to be played at the sports ground of the Maitland Golf Club.

On Sunday, April 5, cricket is to be played at the sports ground of the Maitland Golf Club.

On Monday, April 6, tennis is to be played at the sports ground of the Maitland Golf Club.

On Tuesday, April 7, football is to be played at the sports ground of the Maitland Golf Club.

On Wednesday, April 8, hockey is to be played at the sports ground of the Maitland Golf Club.

On Thursday, April 9, rugby is to be played at the sports ground of the Maitland Golf Club.

On Friday, April 10, tennis is to be played at the sports ground of the Maitland Golf Club.

On Saturday, April 11, football is to be played at the sports ground of the Maitland Golf Club.

On Sunday, April 12, cricket is to be played at the sports ground of the Maitland Golf Club.

REPLE SHOOTING. RUGGER AND HOCKEY. NUTHAGA TENNIS TOURNAMENT.

Lincoln and Grand National. Probable Starters and Jockeys.

LATEST BETTING QUOTATIONS.

STANDARD COMMENTARY.

London, March 19. Masses and Ballpark stand favourites for the Lincolnshire Handicap and the Grand National respectively.

On Saturday, March 21, the first of the season's horse racing is expected to be held at the sports ground of the Maitland Golf Club.

On Sunday, March 22, cricket is to be played at the sports ground of the Maitland Golf Club.

UNION-CASTLE LINE.

S. S. "Grantly Castle."

The above-named vessel is expected to sail for Dar es Salaam, via Tanga and Zanzibar, on Saturday, the 25th March, and to return to Mombasa on Thursday, 2nd April.

Fares for the round trip, including stay on board at Dar es Salaam—

1st Class "A" Grade 57-4-6
1st Class "B" Grade 53-8-6

Passenger Agents—

B.E.A. Corporation, Ltd. Nairobi, Kampala, etc.
Dee Africa Steamer, Ltd. T. J. O'Hara & Co., Ltd. Mombasa and Kisumu.
Raffles African Lines, Ltd. Nakuru.
C. G. Morrison & Co. Mombasa and Arabua.

For Rates and Freight and Passage Money, apply to THE UNION-CASTLE MAIL STEAMSHIP CO., LTD., MOMBASA.

British India Steam Navigation Company, Limited

AND PASSENGER AND GENERAL STEAM NAVIGATION CO.

LONDON AND EAST AFRICA LINE.		BOMBAY—SUEZ—RED SEA SERVICE.		COASTAL SERVICE.	
LONDON TO BEIRA, via Mozambique, Port Swindell, Port Sudan and Aden, Outwards and Homeward.		Calling Kilindini, Zanzibar, Pemba, Mosambique, Beira; Dabruj; Sey Intabulaj; also Kilindini monthly Outwards and Homeward.		S.S. "Emma".	
Beira, Mozambique.	Arrive Kilindini from London about	Sails from Kilindini for London about	TO BOMBAY.	To Mombasa	To Dar
S.S. "Mallam" 14th March	14th March	S.S. "Kanga" 16th March	16th March	14th March	21st March
S.S. "Mallam" 18th April	18th April	S.S. "Kanga" 18th April	18th April	18th April	25th April
S.S. "Mallam" 22nd May	22nd May	S.S. "Kanga" 22nd May	22nd May	22nd May	29th May
S.S. "Mallam" 26th June	26th June	S.S. "Kanga" 26th June	26th June	26th June	3rd July
S.S. "Mallam" 30th July	30th July	S.S. "Kanga" 30th July	30th July	30th July	6th August
S.S. "Mallam" 3rd August	3rd August	S.S. "Kanga" 3rd August	3rd August	3rd August	10th August
S.S. "Mallam" 7th September	7th September	S.S. "Kanga" 7th September	7th September	7th September	14th September
S.S. "Mallam" 11th October	11th October	S.S. "Kanga" 11th October	11th October	11th October	18th October
S.S. "Mallam" 15th November	15th November	S.S. "Kanga" 15th November	15th November	15th November	22nd November
S.S. "Mallam" 19th December	19th December	S.S. "Kanga" 19th December	19th December	19th December	26th December
S.S. "Mallam" 23rd January	23rd January	S.S. "Kanga" 23rd January	23rd January	23rd January	30th January
S.S. "Mallam" 27th February	27th February	S.S. "Kanga" 27th February	27th February	27th February	3rd March
S.S. "Mallam" 3rd March	3rd March	S.S. "Kanga" 3rd March	3rd March	3rd March	7th March
S.S. "Mallam" 7th April	7th April	S.S. "Kanga" 7th April	7th April	7th April	11th April
S.S. "Mallam" 11th May	11th May	S.S. "Kanga" 11th May	11th May	11th May	15th May
S.S. "Mallam" 15th June	15th June	S.S. "Kanga" 15th June	15th June	15th June	19th June
S.S. "Mallam" 19th July	19th July	S.S. "Kanga" 19th July	19th July	19th July	23rd July
S.S. "Mallam" 23rd August	23rd August	S.S. "Kanga" 23rd August	23rd August	23rd August	27th August
S.S. "Mallam" 27th September	27th September	S.S. "Kanga" 27th September	27th September	27th September	31st September
S.S. "Mallam" 1st October	1st October	S.S. "Kanga" 1st October	1st October	1st October	5th October
S.S. "Mallam" 5th November	5th November	S.S. "Kanga" 5th November	5th November	5th November	9th November
S.S. "Mallam" 9th December	9th December	S.S. "Kanga" 9th December	9th December	9th December	13th December
S.S. "Mallam" 13th January	13th January	S.S. "Kanga" 13th January	13th January	13th January	17th January
S.S. "Mallam" 17th February	17th February	S.S. "Kanga" 17th February	17th February	17th February	21st February
S.S. "Mallam" 21st March	21st March	S.S. "Kanga" 21st March	21st March	21st March	25th March
S.S. "Mallam" 25th April	25th April	S.S. "Kanga" 25th April	25th April	25th April	29th April
S.S. "Mallam" 29th May	29th May	S.S. "Kanga" 29th May	29th May	29th May	3rd June
S.S. "Mallam" 2nd June	2nd June	S.S. "Kanga" 2nd June	2nd June	2nd June	6th June
S.S. "Mallam" 6th July	6th July	S.S. "Kanga" 6th July	6th July	6th July	10th July
S.S. "Mallam" 10th August	10th August	S.S. "Kanga" 10th August	10th August	10th August	14th August
S.S. "Mallam" 14th September	14th September	S.S. "Kanga" 14th September	14th September	14th September	18th September
S.S. "Mallam" 18th October	18th October	S.S. "Kanga" 18th October	18th October	18th October	22nd October
S.S. "Mallam" 22nd November	22nd November	S.S. "Kanga" 22nd November	22nd November	22nd November	26th November
S.S. "Mallam" 26th December	26th December	S.S. "Kanga" 26th December	26th December	26th December	30th December
S.S. "Mallam" 3rd January	3rd January	S.S. "Kanga" 3rd January	3rd January	3rd January	7th January
S.S. "Mallam" 7th February	7th February	S.S. "Kanga" 7th February	7th February	7th February	11th February
S.S. "Mallam" 11th March	11th March	S.S. "Kanga" 11th March	11th March	11th March	15th March
S.S. "Mallam" 15th April	15th April	S.S. "Kanga" 15th April	15th April	15th April	19th April
S.S. "Mallam" 19th May	19th May	S.S. "Kanga" 19th May	19th May	19th May	23rd May
S.S. "Mallam" 23rd June	23rd June	S.S. "Kanga" 23rd June	23rd June	23rd June	27th June
S.S. "Mallam" 27th July	27th July	S.S. "Kanga" 27th July	27th July	27th July	31st July
S.S. "Mallam" 31st August	31st August	S.S. "Kanga" 31st August	31st August	31st August	4th September
S.S. "Mallam" 4th September	4th September	S.S. "Kanga" 4th September	4th September	4th September	8th September
S.S. "Mallam" 8th October	8th October	S.S. "Kanga" 8th October	8th October	8th October	12th October
S.S. "Mallam" 12th November	12th November	S.S. "Kanga" 12th November	12th November	12th November	16th November
S.S. "Mallam" 16th December	16th December	S.S. "Kanga" 16th December	16th December	16th December	20th December
S.S. "Mallam" 20th January	20th January	S.S. "Kanga" 20th January	20th January	20th January	24th January
S.S. "Mallam" 24th February	24th February	S.S. "Kanga" 24th February	24th February	24th February	28th February
S.S. "Mallam" 28th March	28th March	S.S. "Kanga" 28th March	28th March	28th March	1st April
S.S. "Mallam" 2nd April	2nd April	S.S. "Kanga" 2nd April	2nd April	2nd April	5th April
S.S. "Mallam" 6th May	6th May	S.S. "Kanga" 6th May	6th May	6th May	9th May
S.S. "Mallam" 10th June	10th June	S.S. "Kanga" 10th June	10th June	10th June	13th June
S.S. "Mallam" 14th July	14th July	S.S. "Kanga" 14th July	14th July	14th July	17th July
S.S. "Mallam" 18th August	18th August	S.S. "Kanga" 18th August	18th August	18th August	21st August
S.S. "Mallam" 22nd September	22nd September	S.S. "Kanga" 22nd September	22nd September	22nd September	25th September
S.S. "Mallam" 26th October	26th October	S.S. "Kanga" 26th October	26th October	26th October	29th October
S.S. "Mallam" 29th November	29th November	S.S. "Kanga" 29th November	29th November	29th November	2nd December
S.S. "Mallam" 3rd December	3rd December	S.S. "Kanga" 3rd December	3rd December	3rd December	6th December
S.S. "Mallam" 7th January	7th January	S.S. "Kanga" 7th January	7th January	7th January	10th January
S.S. "Mallam" 11th February	11th February	S.S. "Kanga" 11th February	11th February	11th February	14th February
S.S. "Mallam" 15th March	15th March	S.S. "Kanga" 15th March	15th March	15th March	18th March
S.S. "Mallam" 19th April	19th April	S.S. "Kanga" 19th April	19th April	19th April	22nd April
S.S. "Mallam" 23rd May	23rd May	S.S. "Kanga" 23rd May	23rd May	23rd May	26th May
S.S. "Mallam" 27th June	27th June	S.S. "Kanga" 27th June	27th June	27th June	30th June
S.S. "Mallam" 31st July	31st July	S.S. "Kanga" 31st July	31st July	31st July	3rd August
S.S. "Mallam" 4th August	4th August	S.S. "Kanga" 4th August	4th August	4th August	7th August
S.S. "Mallam" 8th September	8th September	S.S. "Kanga" 8th September	8th September	8th September	11th September
S.S. "Mallam" 12th October	12th October	S.S. "Kanga" 12th October	12th October	12th October	15th October
S.S. "Mallam" 16th November	16th November	S.S. "Kanga" 16th November	16th November	16th November	19th November
S.S. "Mallam" 20th December	20th December	S.S. "Kanga" 20th December	20th December	20th December	23rd December
S.S. "Mallam" 24th January	24th January	S.S. "Kanga" 24th January	24th January	24th January	27th January
S.S. "Mallam" 31st February	31st February	S.S. "Kanga" 31st February	31st February	31st February	3rd March

ALL DATES SUBJECT TO ALTERATION WITHOUT NOTICE. RETURN TICKETS ISSUED AT TWO SINGLE FARES LESS 10% UP-COUNTRY CHEQUES NOT ACCEPTED UNLESS ENDORSED BY A LOCAL BANK. Terms, Rates of Freight and Passage may be obtained with SMITH MACKENZIE & Co. Agents: Kilindini, Mombasa, Zanzibar, Pemba, Mosambique, Tanga, Lindi and Lamu. Passenger Agents only Nairobi and Kampala. Also the following Sub-Agents (for passage only): Mombasa, P.O. Box 179; NAIROBI: Tyson Bros. Ltd.; NAIROBI: The Kenya Farmers' Produce, Ltd.; MOMBASA: G.H. Hensley & Co.; SOY: The Soy Station, KATUNDE, London House.

CHIVERS' ENGLISH CANNED FRUIT



CHIVERS & SON, 100, Abchurch Lane, London, E.C. 4. Sole Agents for East Africa: S. G. HAMILTON LTD., NAIROBI, BOX 10.

Messageries Maritimes

Regular and fortnightly service from London to Mombasa. The quickest route to London. West Balling to Marseilles. (GENUINE MAIL STEAMERS).
Regular and fortnightly service from London to Mombasa.
West Balling to Marseilles.
S.S. "Lorraine" to London 1st March 1914
S.S. "Chambers" to London 15th March 1914
S.S. "Barracuda" to London 29th March 1914
S.S. "General Vignon" to London 12th April 1914
S.S. "General Vignon" to London 26th April 1914
S.S. "General Vignon" to London 10th May 1914
S.S. "General Vignon" to London 24th May 1914
S.S. "General Vignon" to London 7th June 1914
S.S. "General Vignon" to London 21st June 1914
S.S. "General Vignon" to London 5th July 1914
S.S. "General Vignon" to London 19th July 1914
S.S. "General Vignon" to London 2nd August 1914
S.S. "General Vignon" to London 16th August 1914
S.S. "General Vignon" to London 30th August 1914
S.S. "General Vignon" to London 13th September 1914
S.S. "General Vignon" to London 27th September 1914
S.S. "General Vignon" to London 11th October 1914
S.S. "General Vignon" to London 25th October 1914
S.S. "General Vignon" to London 8th November 1914
S.S. "General Vignon" to London 22nd November 1914
S.S. "General Vignon" to London 6th December 1914
S.S. "General Vignon" to London 20th December 1914
S.S. "General Vignon" to London 3rd January 1915
S.S. "General Vignon" to London 17th January 1915
S.S. "General Vignon" to London 31st January 1915
S.S. "General Vignon" to London 14th February 1915
S.S. "General Vignon" to London 28th February 1915
S.S. "General Vignon" to London 12th March 1915
S.S. "General Vignon" to London 26th March 1915
S.S. "General Vignon" to London 9th April 1915
S.S. "General Vignon" to London 23rd April 1915
S.S. "General Vignon" to London 7th May 1915
S.S. "General Vignon" to London 21st May 1915
S.S. "General Vignon" to London 4th June 1915
S.S. "General Vignon" to London 18th June 1915
S.S. "General Vignon" to London 2nd July 1915
S.S. "General Vignon" to London 16th July 1915
S.S. "General Vignon" to London 30th July 1915
S.S. "General Vignon" to London 13th August 1915
S.S. "General Vignon" to London 27th August 1915
S.S. "General Vignon" to London 10th September 1915
S.S. "General Vignon" to London 24th September 1915
S.S. "General Vignon" to London 8th October 1915
S.S. "General Vignon" to London 22nd October 1915
S.S. "General Vignon" to London 5th November 1915
S.S. "General Vignon" to London 19th November 1915
S.S. "General Vignon" to London 3rd December 1915
S.S. "General Vignon" to London 17th December 1915
S.S. "General Vignon" to London 31st December 1915
S.S. "General Vignon" to London 14th January 1916
S.S. "General Vignon" to London 28th January 1916
S.S. "General Vignon" to London 11th February 1916
S.S. "General Vignon" to London 25th February 1916
S.S. "General Vignon" to London 11th March 1916
S.S. "General Vignon" to London 25th March 1916
S.S. "General Vignon" to London 8th April 1916
S.S. "General Vignon" to London 22nd April 1916
S.S. "General Vignon" to London 6th May 1916
S.S. "General Vignon" to London 20th May 1916
S.S. "General Vignon" to London 3rd June 1916
S.S. "General Vignon" to London 17th June 1916
S.S. "General Vignon" to London 1st July 1916
S.S. "General Vignon" to London 15th July 1916
S.S. "General Vignon" to London 29th July 1916
S.S. "General Vignon" to London 12th August 1916
S.S. "General Vignon" to London 26th August 1916
S.S. "General Vignon" to London 9th September 1916
S.S. "General Vignon" to London 23rd September 1916
S.S. "General Vignon" to London 7th October 1916
S.S. "General Vignon" to London 21st October 1916
S.S. "General Vignon" to London 4th November 1916
S.S. "General Vignon" to London 18th November 1916
S.S. "General Vignon" to London 2nd December 1916
S.S. "General Vignon" to London 16th December 1916
S.S. "General Vignon" to London 30th December 1916
S.S. "General Vignon" to London 13th January 1917
S.S. "General Vignon" to London 27th January 1917
S.S. "General Vignon" to London 10th February 1917
S.S. "General Vignon" to London 24th February 1917
S.S. "General Vignon" to London 10th March 1917
S.S. "General Vignon" to London 24th March 1917
S.S. "General Vignon" to London 7th April 1917
S.S. "General Vignon" to London 21st April 1917
S.S. "General Vignon" to London 5th May 1917
S.S. "General Vignon" to London 19th May 1917
S.S. "General Vignon" to London 2nd June 1917
S.S. "General Vignon" to London 16th June 1917
S.S. "General Vignon" to London 30th June 1917
S.S. "General Vignon" to London 14th July 1917
S.S. "General Vignon" to London 28th July 1917
S.S. "General Vignon" to London 11th August 1917
S.S. "General Vignon" to London 25th August 1917
S.S. "General Vignon" to London 8th September 1917
S.S. "General Vignon" to London 22nd September 1917
S.S. "General Vignon" to London 6th October 1917
S.S. "General Vignon" to London 20th October 1917
S.S. "General Vignon" to London 3rd November 1917
S.S. "General Vignon" to London 17th November 1917
S.S. "General Vignon" to London 31st December 1917
S.S. "General Vignon" to London 14th January 1918
S.S. "General Vignon" to London 28th January 1918
S.S. "General Vignon" to London 11th February 1918
S.S. "General Vignon" to London 25th February 1918
S.S. "General Vignon" to London 11th March 1918
S.S. "General Vignon" to London 25th March 1918
S.S. "General Vignon" to London 8th April 1918
S.S. "General Vignon" to London 22nd April 1918
S.S. "General Vignon" to London 6th May 1918
S.S. "General Vignon" to London 20th May 1918
S.S. "General Vignon" to London 3rd June 1918
S.S. "General Vignon" to London 17th June 1918
S.S. "General Vignon" to London 1st July 1918
S.S. "General Vignon" to London 15th July 1918
S.S. "General Vignon" to London 29th July 1918
S.S. "General Vignon" to London 12th August 1918
S.S. "General Vignon" to London 26th August 1918
S.S. "General Vignon" to London 9th September 1918
S.S. "General Vignon" to London 23rd September 1918
S.S. "General Vignon" to London 7th October 1918
S.S. "General Vignon" to London 21st October 1918
S.S. "General Vignon" to London 4th November 1918
S.S. "General Vignon" to London 18th November 1918
S.S. "General Vignon" to London 2nd December 1918
S.S. "General Vignon" to London 16th December 1918
S.S. "General Vignon" to London 30th December 1918
S.S. "General Vignon" to London 13th January 1919
S.S. "General Vignon" to London 27th January 1919
S.S. "General Vignon" to London 10th February 1919
S.S. "General Vignon" to London 24th February 1919
S.S. "General Vignon" to London 10th March 1919
S.S. "General Vignon" to London 24th March 1919
S.S. "General Vignon" to London 7th April 1919
S.S. "General Vignon" to London 21st April 1919
S.S. "General Vignon" to London 5th May 1919
S.S. "General Vignon" to London 19th May 1919
S.S. "General Vignon" to London 2nd June 1919
S.S. "General Vignon" to London 16th June 1919
S.S. "General Vignon" to London 30th June 1919
S.S. "General Vignon" to London 14th July 1919
S.S. "General Vignon" to London 28th July 1919
S.S. "General Vignon" to London 11th August 1919
S.S. "General Vignon" to London 25th August 1919
S.S. "General Vignon" to London 8th September 1919
S.S. "General Vignon" to London 22nd September 1919
S.S. "General Vignon" to London 6th October 1919
S.S. "General Vignon" to London 20th October 1919
S.S. "General Vignon" to London 3rd November 1919
S.S. "General Vignon" to London 17th November 1919
S.S. "General Vignon" to London 31st December 1919
S.S. "General Vignon" to London 14th January 1920
S.S. "General Vignon" to London 28th January 1920
S.S. "General Vignon" to London 11th February 1920
S.S. "General Vignon" to London 25th February 1920
S.S. "General Vignon" to London 11th March 1920
S.S. "General Vignon" to London 25th March 1920
S.S. "General Vignon" to London 8th April 1920
S.S. "General Vignon" to London 22nd April 1920
S.S. "General Vignon" to London 6th May 1920
S.S. "General Vignon" to London 20th May 1920
S.S. "General Vignon" to London 3rd June 1920
S.S. "General Vignon" to London 17th June 1920
S.S. "General Vignon" to London 1st July 1920
S.S. "General Vignon" to London 15th July 1920
S.S. "General Vignon" to London 29th July 1920
S.S. "General Vignon" to London 12th August 1920
S.S. "General Vignon" to London 26th August 1920
S.S. "General Vignon" to London 9th September 1920
S.S. "General Vignon" to London 23rd September 1920
S.S. "General Vignon" to London 7th October 1920
S.S. "General Vignon" to London 21st October 1920
S.S. "General Vignon" to London 4th November 1920
S.S. "General Vignon" to London 18th November 1920
S.S. "General Vignon" to London 2nd December 1920
S.S. "General Vignon" to London 16th December 1920
S.S. "General Vignon" to London 30th December 1920
S.S. "General Vignon" to London 13th January 1921
S.S. "General Vignon" to London 27th January 1921
S.S. "General Vignon" to London 10th February 1921
S.S. "General Vignon" to London 24th February 1921
S.S. "General Vignon" to London 10th March 1921
S.S. "General Vignon" to London 24th March 1921
S.S. "General Vignon" to London 7th April 1921
S.S. "General Vignon" to London 21st April 1921
S.S. "General Vignon" to London 5th May 1921
S.S. "General Vignon" to London 19th May 1921
S.S. "General Vignon" to London 2nd June 1921
S.S. "General Vignon" to London 16th June 1921
S.S. "General Vignon" to London 30th June 1921
S.S. "General Vignon" to London 14th July 1921
S.S. "General Vignon" to London 28th July 1921
S.S. "General Vignon" to London 11th August 1921
S.S. "General Vignon" to London 25th August 1921
S.S. "General Vignon" to London 8th September 1921
S.S. "General Vignon" to London 22nd September 1921
S.S. "General Vignon" to London 6th October 1921
S.S. "General Vignon" to London 20th October 1921
S.S. "General Vignon" to London 3rd November 1921
S.S. "General Vignon" to London 17th November 1921
S.S. "General Vignon" to London 31st December 1921
S.S. "General Vignon" to London 14th January 1922
S.S. "General Vignon" to London 28th January 1922
S.S. "General Vignon" to London 11th February 1922
S.S. "General Vignon" to London 25th February 1922
S.S. "General Vignon" to London 11th March 1922
S.S. "General Vignon" to London 25th March 1922
S.S. "General Vignon" to London 8th April 1922
S.S. "General Vignon" to London 22nd April 1922
S.S. "General Vignon" to London 6th May 1922
S.S. "General Vignon" to London 20th May 1922
S.S. "General Vignon" to London 3rd June 1922
S.S. "General Vignon" to London 17th June 1922
S.S. "General Vignon" to London 1st July 1922
S.S. "General Vignon" to London 15th July 1922
S.S. "General Vignon" to London 29th July 1922
S.S. "General Vignon" to London 12th August 1922
S.S. "General Vignon" to London 26th August 1922
S.S. "General Vignon" to London 9th September 1922
S.S. "General Vignon" to London 23rd September 1922
S.S. "General Vignon" to London 7th October 1922
S.S. "General Vignon" to London 21st October 1922
S.S. "General Vignon" to London 4th November 1922
S.S. "General Vignon" to London 18th November 1922
S.S. "General Vignon" to London 2nd December 1922
S.S. "General Vignon" to London 16th December 1922
S.S. "General Vignon" to London 30th December 1922
S.S. "General Vignon" to London 13th January 1923
S.S. "General Vignon" to London 27th January 1923
S.S. "General Vignon" to London 10th February 1923
S.S. "General Vignon" to London 24th February 1923
S.S. "General Vignon" to London 10th March 1923
S.S. "General Vignon" to London 24th March 1923
S.S. "General Vignon" to London 7th April 1

**TO STOP YOUR
ACHES & PAINS
USE**



KENYA WIRELESS

**R.E.A.C. Programme
For Next Week.**

The following is the R.E.A.C. programme for the week commencing Monday, 7th K.C. Wave-length 750 K.C. Wave-length 5,000 K.C. Wave-length 50 metres.

SUNDAY, MARCH 15
9.50 p.m.—Radio of the Cathedral of the Highlands, Nairobi.
9.50 p.m.—Service of Remembrance for the Fallen of the War.
7.30 to 8—Concert, which will include the Cantata, "There is a Green Hill Far Away," sung by Mabel Bramwell.

MONDAY, MARCH 16
6.30 p.m.—Children's Corner.
7.00 Time Signal—British Official Wireless Press, Local News, Weather Report, and Mail News.
7.15 to 8—Selection of records.
8.00 to 9.00—Light Orchestra.
9.00 to 10—Radio Music.

TUESDAY, MARCH 17
10.30 to 11.30 a.m.—Instruments Concert.
7.00 p.m.—Time Signal—British Official Wireless Press, Local News, Weather Report, and Mail News.
7.15 to 7.45—Selection of Irish Records.
7.45 to 8.00—Columbia Gramophone Concert, kindly provided by R.E.A.C. Music Stores, Nairobi.
8.00 Time Signal—Extracts from opera.
9.00 to 9.30—Talk on the Hebrew Language, by the Rev. H. J. Rabinoff.

WEDNESDAY, MARCH 18
6.30 p.m.—Children's Corner.
7.00 Time Signal—British Official Wireless Press, Local News, Weather Report, and Mail News.
7.15 to 8.00—Selections from the "Fiddlers' Concert."
8.00 Time Signal—Extracts from opera.

6.45 to 8.15—Program on Stage, by 6.15 to 8.15—Orchestral and vocal concert.

THURSDAY, MARCH 19
7.30 p.m.—Dramatization Programme.
8.00 Time Signal—British Official Wireless Press, Local News, Weather Report, and Mail News.
7.15 to 8.00—Instrumental concert.
8.00 to 9.00—Miscellaneous concert.
9.00 Time Signal—Extracts from opera.
9.45 to 9.55—Book Review by Mr. Dewar.
9.55 to 10—Miscellaneous concert occasional.

FRIDAY, MARCH 20
6.30—Children's corner.
7.00—British Official Wireless Press, Local News, Weather Report, and Mail News.
7.15 to 7.45—Selection of records, which will include "Ondine in G Major" (op. 152) by Schubert. Followed by the Leader, String Quartet and Horns.
8.00—Time Signal. Extracts from opera.
8.45 to 9.00—Talk on Gardening by H. J. Rabinoff.
9.00 to 9.15—Spain Wai.

SATURDAY, MARCH 21
7.00 p.m.—Time Signal—British Official Wireless Press, Local News, Weather Report, and Mail News.
7.15 to 8.00—Selections from the "Fiddlers' Concert," kindly provided by Messrs. F. Jacobs Ltd. Nairobi.
8.00 Time Signal—Extracts from opera.

TODAY'S GAZETTE
Before Mr. Justice Dickinson in Court No. 2, the Public Prosecutor, at 10 a.m.,
Henderson J. O'Connell—Bar. A. K. Kibuka carrying on business, as if the British Supply Stores, Nairobi.
Henderson J. O'Connell—Bar. A. K. Kibuka, proprietor of the "Central Garage," (Case No. 1).
Henderson J. O'Connell—Bar. A. K. Kibuka, proprietor of the "Central Garage," (Case No. 2).
Henderson J. O'Connell—Bar. A. K. Kibuka, proprietor of the "Central Garage," (Case No. 3).
Henderson J. O'Connell—Bar. A. K. Kibuka, proprietor of the "Central Garage," (Case No. 4).
Henderson J. O'Connell—Bar. A. K. Kibuka, proprietor of the "Central Garage," (Case No. 5).
Henderson J. O'Connell—Bar. A. K. Kibuka, proprietor of the "Central Garage," (Case No. 6).
Henderson J. O'Connell—Bar. A. K. Kibuka, proprietor of the "Central Garage," (Case No. 7).
Henderson J. O'Connell—Bar. A. K. Kibuka, proprietor of the "Central Garage," (Case No. 8).
Henderson J. O'Connell—Bar. A. K. Kibuka, proprietor of the "Central Garage," (Case No. 9).
Henderson J. O'Connell—Bar. A. K. Kibuka, proprietor of the "Central Garage," (Case No. 10).



Nightly at 8.45 **EMPIRE** Matinee at 3.15

TO-NIGHT and SATURDAY.
SPECIAL DOUBLE FEATURE PROGRAMME.

Gloria Swanson
IN A THRILLING ROMANCE
"The Untamed Lady"

Also
The Adventures of Maya The Bee

A unique nature story told in a delightful manner. This picture is considered to be the finest of its type produced and has enjoyed worldwide presentation.

TALKIES SHOWING SHORTLY with

AL JOLSON
in "SAY IT WITH SONGS"

NOW OPEN
THE NEW FULLY LICENSED
Salisbury Lounge
FRONTING SALISBURY BOUL.

Very fine Match Billiard Table by Burroughs and Watts.
The Lounge and Billiard Room are Teak Panelled and Furnished in Beal Salisbury Style.
MR. GEORGE SHAW IN CHARGE.

HAVE YOUR TEA AND SUNDOWNER COMFORTABLY WITH MUSIC.

HOTEL AVENUE
ENTERTAINMENT PROGRAMME
SUNDOWNER DANCES
Every Wednesday and Sunday from 6-8 p.m. Admission Free.
Music by Jack Dent and his new Metro Four.
DAILY EVENING AND AFTERNOON TEA CONCERTS, by Phillips Amplifier.
Daily Wireless News and Concerts from 7-10 p.m.

HOTEL AVENUE

Grand 271.
Avenue 271.
Nairobi 271.

THE MOST UP-TO-DATE AND LUXURIOUS HOTELS IN KENYA, RUN IN CONJUNCTION.

This is Worth Your Consideration!
Visitors at the Palace Hotel, Nairobi, presented by Nairobi and desiring to stay at the Hotel Avenue, Nairobi, will be allowed use of their accounts for accommodation at the Hotel Avenue, providing they stay there within one week of leaving Mombasa or vice versa.

PICCADILLY RESTAURANT
FRENCH ROYAL BUFFETING
FRENCH COOKING.
The Best and Cheapest Lunch and Dinner Served in Town.
SERVICE A LA CARTE.
LOBSTER A SPECIALTY—GRILLS—FRENCH PATISseries—ICEs.
RUSKIAN, RUSSIAN, MINTO & CIGARILLAS.
CATERING UNDERTAKES FOR SMALL OR LARGE PARTIES ANYWHERE.

Nightly at 8.45 **THEATRE ROYAL** Nightly at 8.45

TO-NIGHT and SATURDAY.
THE **WILLIAM FOX SPECTACULAR PRODUCTION!**
"SACRIFICE"
A ROMANCE OF LIFE TO-DAY—A PICTURE WITH A MORAL—A BRITISH PRODUCTION WITH AN ALL STAR BRITISH CAST
THEY HO LAUGH SHOWING SHORTLY.
"WOULD YOU BELIEVE IT" FEATURING WALTER FORDE.

TORR'S HOTEL.
THE HOTEL ORCHESTRA WILL PLAY DAILY DURING LUNCH (Saturdays and Sundays Excepted).
Also MORE, WEE, and FRIDAYS FOR AFTERNOON TEA 4-5 p.m.
NIGHTLY 8-11 p.m. (Sunday Excepted).
SATURDAYS 8-11 p.m.
BOOK YOUR TABLES FOR SAT. NEXT.

Lees Physical Training School.
(OPPOSITE CITY SQUARE MANSIONS).
PRIVATE OR CLASS LESSONS IN PHYSIOLOGICAL CULTURE—FENCING—BOXING and GENERAL PHYSICAL TRAINING—
SLEIGHT OF HAND—
HALL OPEN FOR ENGAGEMENTS—FOR MEETINGS—DANCES—REHEARSAL ROOMS, ETC.
Apply P.O. Box 163 or Personally to BARNBY'S AMUSEMENT PARK.

The Edward Hotel
P.O. Box 1004 NAIROBI. Phone 2180.
FULLY LICENSED.
Proprietor: R. G. Cole.

Sundowner Dance
Thursday the 19-3-31
Admission Free.
from 6-8 p.m.
Music by
The Edward Dance & Concert Orchestra.

NOTICE.
Owing to reconstruction work, power will be cut off in the following areas on Saturday, the 14th instant, from 1 p.m. to 6 p.m. and on Sunday, the 15th instant, from 9 a.m. to 9 p.m.—
ALL GODOWN SITES. WORKSHOPS ROAD.
DUKE STREET. RIVER ROAD.
VICTORIA STREET. QUARRY ROAD.
STATION ROAD. PARK ROAD.
ALL FACTORY SITES. PARK ROAD.
THE EAST AFRICAN POWER AND LIGHTING COMPANY, LIMITED.
THE WELL-KNOWN AND POPULAR
KENYA FILE
FOOLSCAP SIZE ASSORTED COLOURS.
REDUCED TO
REGS. 3/6 each.
REGS. 9/6 dozen.
REGS. 10/6 gross.

ZEISS IKON KINAMO S10.
The smallest Cinema Camera for 16 mm.
A creator of lasting treasures
A genuine source of constant pleasures.
Sole E.A. Distributors—
"THE LENS" Ltd.
101-102, Othman's Bazaar, North Road, NAIROBI. Phone 2088.

For TICKETS and INFORMATION OF TRAVEL on the **SUDAN Government RAILWAYS** and Steamers, apply to **INDIA MOTOR TOURS Ltd.**
Crompton, C.E.O., 2nd Floor, NATIONAL THE OFFICIAL BOOKING AGENTS,
Invariable in Every Continent Industry Motoring Zone.

Don't fail to see

THE SMARTEST CAR IN TOWN. THE 1931 CHEVROLET SIX DE LUXE ROADSTER.

THE MOTOR MART & EXCHANGE Ltd.,
Eldoret Nakuru Nairobi Mombasa Dar-es-salaam.

TWO HINTS for DOG OWNERS

If good food on a dog is naturally desirable both for its appearance and well-being. Ensure these conditions on YOUR dog by using

- (1) "VETAX" LIQUID DOG SOAP
This soap destroys vermin and is a sure preventative of mange and other parasitic skin diseases.
- (2) "ELKON FLAG" INSECT POWDER.
A very effective insecticide which destroys all those pests so troublesome to dogs.

GET THESE NOW FROM

Howse & McGeorge LIMITED.
NAIROBI and BRANCHES.

THE CHEAPEST POWER.

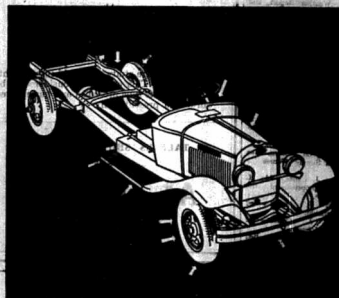


An 8 H.P. Engine will cost 30 cents per hour for fuel.

A 14 H.P. Engine will cost 57 cents per hour for fuel.

BLACKSTONE G. NORTH & SON, LIMITED.

ELDORET. NAIROBI. NAKURU.



DODGE: THE TRUCK WITH THE FINEST REPUTATION IN EAST AFRICA!
Fisher, Sherratt & Rodway (E.A.) Ltd.
SOLE DISTRIBUTORS OF THE TRUMPHANT DODGE.

Box 406. Phone: 3202.

THE NEW N. - PRESSURE FRAME
A New, Strong and Durable Frame. Comfortable to Wear. Pleasing in Appearance.

A. H. Wardle & Co., Ltd.
NAIROBI and BRANCHES.
OPHTHALMIC OPTICIANS.

IDEAL HOT WATER SUPPLY.



The "Ideal" Domestic Boilers.
Stocked in all sizes.
R. G. VERNON & Co.
Phone 2544. Box 124. Elliot St. Nairobi.



MOSQUITOES "BURN UP" WHEN TANGLEFOOT!
HITS THEM!
IT'S KILLING POWER IS SECOND TO NO OTHER FLY SPRAY.
WHEN ORDERING INQUIRY TO TANGLEFOOT!
IF YOUR USUAL STORE CANNOT SUPPLY YOUR TANGLEFOOT ORDER APPLY TO THE SOLE AGENTS.
A. H. Wardle & Co., Ltd.
CHEMISTS.
NAIROBI. Phone 2543.



IDEAL HOT WATER SUPPLY.
Make Certain of Your HOT BATH by installing the most up-to-date and effective Boiler on the Market.

Employers who have not yet in their labor unions in the month of February. It is implied that these are not yet operative. The committee results in a prosecution.

During the recent election in Nairobi a number of the papers were not taken. The Superintendent of Census returns, people would be disappointed. The committee results in a prosecution.

A new way of fighting with the mosquito is being introduced. The committee results in a prosecution.

At a Section last night the committee results in a prosecution.

HUDSON SALOON, in perfect condition throughout. Paint work as new. £300.

OLYMP 7 H.P. SALOON, an excellent light car in splendid order, complete with numerous spares.

CARE, LAWSON & CO., LTD.
NAIROBI.

Let **Poli-flox** polish your floor!

R. O. HAMILTON, Ltd.
Box 302. Phone 2332.

NAIROBI - On 9th March at 7 p.m. Dr. Dorothy, wife of W. B. Denton, Nyeri, a son.

African Standard
DONDUA ANGO.
FRIDAY, MARCH 13, 1931.

The Retail Industry.
The depression which has taken the Retail Industry in Europe since 1929 is in evidence here. The outlook is very dark. The fall in value has been sudden and devastating and the most serious effects to be noted are the reduction in production and the loss of business. The Retail Industry is in a very serious position. The value of the goods sold has fallen to a very low level. The Retail Industry is in a very serious position. The value of the goods sold has fallen to a very low level. The Retail Industry is in a very serious position. The value of the goods sold has fallen to a very low level.

World Affairs.
The world is in a very serious position. The value of the goods sold has fallen to a very low level. The world is in a very serious position. The value of the goods sold has fallen to a very low level. The world is in a very serious position. The value of the goods sold has fallen to a very low level.

Local News.
The local news is very interesting. The value of the goods sold has fallen to a very low level. The local news is very interesting. The value of the goods sold has fallen to a very low level. The local news is very interesting. The value of the goods sold has fallen to a very low level.

Grant's Whisky

Grant's Scotch Whisky

UNRIVALLED IN EAST AFRICA
SOLD EVERYWHERE.

"Bring home a tin of Brushing Duco"

Brushing Duco

GAILEY & ROBERTS LTD.
NAIROBI and BRANCHES.

ADMINISTRATION OF THE FRONTIER PROVINCE.

Present System Too Heavy a Burden on the Colony.

SIR E. GRIGG'S SCHEME.

Joint Committee Discussion of the Powers of High Commissioner.

Edward adhered to his view that Native affairs should be left to the local Governors and Legislative Councils.

It also thought that many difficulties apparently raised by the mandate were largely verbal.

The Mandate Difficulty.

Following is a continuation of the evidence given by Sir Edward Grigg before the Joint Committee.

Local Stanley: There is no doubt that the interests of East Africa as a whole are best served by the present system.

Local Stanley: I think that the interests of East Africa as a whole are best served by the present system.

Local Stanley: I think that the interests of East Africa as a whole are best served by the present system.

Local Stanley: I think that the interests of East Africa as a whole are best served by the present system.

A BLAZE AT ELDORET.

Timber Yard Destroyed. £3,000 Damage.

Extensive Official Trials. The British and Foreign Telegraphs.

East African Office.

MARKET GENERALLY TREMULOUS.

Mr. C. D. Mackenzie and Co. have prepared the following information dated March 10 from Nairobi.

Coffee Market. Generally in complete with East African coffee.

Local Stanley: I think that the interests of East Africa as a whole are best served by the present system.

Local Stanley: I think that the interests of East Africa as a whole are best served by the present system.

Local Stanley: I think that the interests of East Africa as a whole are best served by the present system.

Local Stanley: I think that the interests of East Africa as a whole are best served by the present system.

Local Stanley: I think that the interests of East Africa as a whole are best served by the present system.

Local Stanley: I think that the interests of East Africa as a whole are best served by the present system.

Local Stanley: I think that the interests of East Africa as a whole are best served by the present system.

Local Stanley: I think that the interests of East Africa as a whole are best served by the present system.

Local Stanley: I think that the interests of East Africa as a whole are best served by the present system.

Local Stanley: I think that the interests of East Africa as a whole are best served by the present system.

Local Stanley: I think that the interests of East Africa as a whole are best served by the present system.

Local Stanley: I think that the interests of East Africa as a whole are best served by the present system.

Local Stanley: I think that the interests of East Africa as a whole are best served by the present system.

Local Stanley: I think that the interests of East Africa as a whole are best served by the present system.

Local Stanley: I think that the interests of East Africa as a whole are best served by the present system.

EAST AFRICAN SEAL FOR MARINE ROSES.

Unexpectedly Good Reports From the Navy.

SEA WATER TESTS.

Extensive Official Trials. The British and Foreign Telegraphs.

Extensive Official Trials. The British and Foreign Telegraphs.

Extensive Official Trials. The British and Foreign Telegraphs.

Extensive Official Trials. The British and Foreign Telegraphs.

Extensive Official Trials. The British and Foreign Telegraphs.

Extensive Official Trials. The British and Foreign Telegraphs.

Extensive Official Trials. The British and Foreign Telegraphs.

Extensive Official Trials. The British and Foreign Telegraphs.

Extensive Official Trials. The British and Foreign Telegraphs.

Extensive Official Trials. The British and Foreign Telegraphs.

Extensive Official Trials. The British and Foreign Telegraphs.

Extensive Official Trials. The British and Foreign Telegraphs.

Extensive Official Trials. The British and Foreign Telegraphs.

Extensive Official Trials. The British and Foreign Telegraphs.

Extensive Official Trials. The British and Foreign Telegraphs.

Extensive Official Trials. The British and Foreign Telegraphs.

Extensive Official Trials. The British and Foreign Telegraphs.

Extensive Official Trials. The British and Foreign Telegraphs.

Extensive Official Trials. The British and Foreign Telegraphs.

CRIMINOUS STORY OF A HIBED CAR.

Charge Against a European.

LETTER INQUIRY.

A European accused Mr. M. O. Omon.

A European accused Mr. M. O. Omon.

A European accused Mr. M. O. Omon.

A European accused Mr. M. O. Omon.

A European accused Mr. M. O. Omon.

A European accused Mr. M. O. Omon.

A European accused Mr. M. O. Omon.

A European accused Mr. M. O. Omon.

A European accused Mr. M. O. Omon.

A European accused Mr. M. O. Omon.

A European accused Mr. M. O. Omon.

A European accused Mr. M. O. Omon.

A European accused Mr. M. O. Omon.

A European accused Mr. M. O. Omon.

A European accused Mr. M. O. Omon.

A European accused Mr. M. O. Omon.

A European accused Mr. M. O. Omon.

A European accused Mr. M. O. Omon.

A European accused Mr. M. O. Omon.

Some were in this country, could with safety send their... The British and Foreign Telegraphs.

THE PITS LOT.

Following is the price list... The British and Foreign Telegraphs.

Form Prices—With Form... The British and Foreign Telegraphs.

Form Prices—With Form... The British and Foreign Telegraphs.

Form Prices—With Form... The British and Foreign Telegraphs.

Form Prices—With Form... The British and Foreign Telegraphs.

Form Prices—With Form... The British and Foreign Telegraphs.

Form Prices—With Form... The British and Foreign Telegraphs.

Form Prices—With Form... The British and Foreign Telegraphs.

Form Prices—With Form... The British and Foreign Telegraphs.

Form Prices—With Form... The British and Foreign Telegraphs.

Form Prices—With Form... The British and Foreign Telegraphs.

Form Prices—With Form... The British and Foreign Telegraphs.

Form Prices—With Form... The British and Foreign Telegraphs.

Form Prices—With Form... The British and Foreign Telegraphs.

Form Prices—With Form... The British and Foreign Telegraphs.

FACTORY CAR NUMBER.

AN INDIAN WHO RAVES.

A Sikh, engaged in contracting for fuel for the Indian...

Mr. W. M. F. Marshall, a member of the Legislative Council...

Mr. W. M. F. Marshall, a member of the Legislative Council...

Mr. W. M. F. Marshall, a member of the Legislative Council...

Mr. W. M. F. Marshall, a member of the Legislative Council...

Mr. W. M. F. Marshall, a member of the Legislative Council...

Mr. W. M. F. Marshall, a member of the Legislative Council...

Mr. W. M. F. Marshall, a member of the Legislative Council...

Mr. W. M. F. Marshall, a member of the Legislative Council...

Mr. W. M. F. Marshall, a member of the Legislative Council...

Mr. W. M. F. Marshall, a member of the Legislative Council...

Mr. W. M. F. Marshall, a member of the Legislative Council...

TOP KEPTED UNDER THE TREE.

Mr. W. M. F. Marshall, a member of the Legislative Council...

Mr. W. M. F. Marshall, a member of the Legislative Council...

Mr. W. M. F. Marshall, a member of the Legislative Council...

Mr. W. M. F. Marshall, a member of the Legislative Council...

Mr. W. M. F. Marshall, a member of the Legislative Council...

Mr. W. M. F. Marshall, a member of the Legislative Council...

Mr. W. M. F. Marshall, a member of the Legislative Council...

Mr. W. M. F. Marshall, a member of the Legislative Council...

Mr. W. M. F. Marshall, a member of the Legislative Council...



THE 1931 MODEL 1215 H.P.

Fast and Steady on the Road. Reliable and Comfortable.

PRICES RECENTLY REDUCED. FIAT GARAGES, Nairobi.

SAVIER STREET. SOCIETA COLONIALE ITALIANA.

P.O. Box 985. Telegrams: "COLONIALI". Telephone No. 9773.

Soiled Linen Baskets

WELL MADE, STRONG and DURABLE. 27 inches High. ROUND SHAPE Shs. 25/- CORNERED SHAPE Shs. 23/6 Waste Paper Baskets 12 inches High. Shs. 5-75 each. LESS 10 per cent. DISCOUNT FOR CASH.

Hutchings Biomer & Co., LIMITED.

Building Materials

British Portland Cement FERROCRETE SNOWCRETE COLOURCRETE. Walpumar Paints Asbestos Cement Sheets G.C.I. Sheets - Ridgings Plain Sheets - Solder Etc.

The African Mercantile Co., Ltd.

The Motor Service Co., SIXTH AVENUE - NAIROBI.

Your Opportunity A FEW THOUSAND WILLIS KNIGHT and OVERLAND CARS and TRUCKS AVAILABLE AT SPECIALLY REDUCED PRICES.

from £165 from

AFRIKANDER SMOKING MIXTURE PERFECT BLEND FINEST EMPIRE TOBACCO. THE ONLY CIGARETTES IN THE WORLD WITH VALUABLE FREE GIFTS

NOW IN PREPARATION THE EAST AFRICAN ANNUAL 1931 - 32.

The Compiler of the above Annual is now prepared to consider photographs and articles. All pictures or articles published will be paid for. THE COMPILER, 'The East African Annual,' P.O. Box 890, Nairobi.

EAST AFRICAN SERIAL FOR MARCH 1932.

Speech Day at Kenton College. (Continued from page 7.)

It is only those present can bear the appearance of the rows of blacked-out pages in the book. I make my task above expectations. I think it is the only book in the world where so many growing boys are mentioned. The author's services of a doctor are less required. The author's name is not mentioned. I think it is the only book in the world where so many boys are mentioned. I think it is the only book in the world where so many boys are mentioned.

When I say that all this is an experience, I can say that it is an experience. I can say that it is an experience. I can say that it is an experience. I can say that it is an experience.

Key's Memory. Key's memory is a well-known phrase. It is a well-known phrase. It is a well-known phrase. It is a well-known phrase.

On the question of freight rates it was reported that the Joint East African Board had written to the steamship lines. The Chairman said that at the last meeting of the Joint East African Board it was suggested that a joint might form a reliable subject for investigation by the Imperial Economic Committee. Not only that but he had written to the steamship lines.

With regard to the inclusion of Guthrie's Options for East Africa, the Chairman said that he had written to the steamship lines. The Chairman said that he had written to the steamship lines.

On the question of freight rates it was reported that the Joint East African Board had written to the steamship lines. The Chairman said that at the last meeting of the Joint East African Board it was suggested that a joint might form a reliable subject for investigation by the Imperial Economic Committee.

With regard to the inclusion of Guthrie's Options for East Africa, the Chairman said that he had written to the steamship lines. The Chairman said that he had written to the steamship lines.

On the question of freight rates it was reported that the Joint East African Board had written to the steamship lines. The Chairman said that at the last meeting of the Joint East African Board it was suggested that a joint might form a reliable subject for investigation by the Imperial Economic Committee.

The Overseas Motor Transport Co. (E.A.) Ltd. 28th Avenue, NAIROBI.

The Weather.

Official Report for the Week. The following is the B.R.A. Meteorological Office's Report for the week ending March 18th. The weather was generally fine and sunny with some light rain on the 10th and 11th.

The following is the B.R.A. Meteorological Office's Report for the week ending March 18th. The weather was generally fine and sunny with some light rain on the 10th and 11th.

The following is the B.R.A. Meteorological Office's Report for the week ending March 18th. The weather was generally fine and sunny with some light rain on the 10th and 11th.

The following is the B.R.A. Meteorological Office's Report for the week ending March 18th. The weather was generally fine and sunny with some light rain on the 10th and 11th.

The following is the B.R.A. Meteorological Office's Report for the week ending March 18th. The weather was generally fine and sunny with some light rain on the 10th and 11th.

The following is the B.R.A. Meteorological Office's Report for the week ending March 18th. The weather was generally fine and sunny with some light rain on the 10th and 11th.

The following is the B.R.A. Meteorological Office's Report for the week ending March 18th. The weather was generally fine and sunny with some light rain on the 10th and 11th.

The following is the B.R.A. Meteorological Office's Report for the week ending March 18th. The weather was generally fine and sunny with some light rain on the 10th and 11th.

The following is the B.R.A. Meteorological Office's Report for the week ending March 18th. The weather was generally fine and sunny with some light rain on the 10th and 11th.

WHERE TO STAY TOWN AND COUNTRY.

GROSVENOR HOUSE GIBBOUD ROAD. Phone No. 2949. P.O. Box 110. ONE MILE FROM POST OFFICE.

SAVOY HOTEL (GIBBOUD ROAD). Daily Rate 10/- Monthly 25/- (Includes) P.O. Box 21. TENNIS. Phone No. 2949.

The Norfolk Hotel NAIROBI. Daily rate 10/- Monthly 25/- (Includes) P.O. Box 21. TENNIS. Phone No. 2949.

CITY SQUARE MANSIONS Restaurant & Bar. (Fully Licensed). Make your plans early, quick and efficient service. Telephone No. 2222. P.O. Box 948. Within three quarters of a mile from the Post Office.

FAIRVIEW PRIVATE HOTEL BISHOPS ROAD - THE HILL. Telephone No. 2222. P.O. Box 948. Within three quarters of a mile from the Post Office.

Stag's Head Hotel NAKURU. On Main Road close to New Post Office, Shops, Schools, Club and Station. European Restaurant and Bar. Telephone No. 2222. P.O. Box 948.

AVONDALE OLD ITALIAN COTTAGE. 21, 23 and 25 MONTHLY INCLUDES, TENNIS, P.O. Box 128.

LADIES HAIRDRESSING MAISON MARE. Permanent Waves, Permanent Prices. No Fictitious. Kenya's Most Up-to-date and Luxurious Ladies' Saloons. Telephone 2226. Nairobi. P.O. Box 101.

AVONDALE OLD ITALIAN COTTAGE. 21, 23 and 25 MONTHLY INCLUDES, TENNIS, P.O. Box 128.

Invicta Bricks. are universally recognised as the best building material. over 3,000,000 used in Nairobi during the past twelve months. Invicta Bricks & Tiles Works, P.O. Box 128.

The Coffee Market.

A SLIGHT REDUCTION IN PRICES. Messrs. J. W. Milligan and Co., sole agents for Messrs. John R. Gillis and Co., Ltd., have received the following selected coffee report from the Kenya Coffee Growers' Association. During the fortnight ending 11th March, 1932, 12,500 bags of Kenya Coffee were sold, making an average price of 2/10 1/2 per bag. The highest price paid for whole beans was 2/10 1/2 per bag.

The demand during the fortnight ending 11th March, 1932, was somewhat less than in previous months, and prices are accordingly 1/2 per bag lower. The highest price paid for whole beans was 2/10 1/2 per bag.

The demand during the fortnight ending 11th March, 1932, was somewhat less than in previous months, and prices are accordingly 1/2 per bag lower. The highest price paid for whole beans was 2/10 1/2 per bag.

The demand during the fortnight ending 11th March, 1932, was somewhat less than in previous months, and prices are accordingly 1/2 per bag lower. The highest price paid for whole beans was 2/10 1/2 per bag.

Safety Weed Tyre Chains prevent dangerous sliding accidents. Protect your passengers, yourself and your car by carrying always Weed Tyre Chains, ready to be put on when needed. Look for the name 'WEED' on every chain. AMERICAN CHAIN CO. New York, N. Y., U.S.A.

AUCTION SALES.



MISCELLANEOUS GOODS SALE.

Notice instructed, we shall sell by Public Auction, Without Reserve, unless stipulated, at Our Sale-rooms, Motor Building, Harding's Street, Nairobi.

TO-DAY, 13th March at 10 a.m.

Carpeting, Mosquito Nets, Pillows, Loose Covers, Blue and White Linen Service, Coffee Cups and Saucers, Sympies, Hurricane Lamps, Lanthorns, Trays, Kinnari Toilet Sets, Enameware, Native Mat, Spot and Head Lamp, Electric Kettle, Kitchen Utensils, Good News, Gramophone Records, Hammers, Hand Saw, Augers, Planes, Etc., Etc., Etc.

Wire Netting, 30 Automatic Pistol, "BOBBY" BOX BODY Car in good running order, six tyres, Luggage Carrier, self starter, lights, etc. (very low reserve).

On behalf of the parties concerned - Six Omas Jackson's Floor Polish each case containing 12 dozen tins (damaged in transit).

MUTER and OSWALD Ltd., Auctioneers, Etc. NAIROBI.



CATALOGUE SALE OF FURNITURE AND EFFECTS.

Duly instructed, we shall sell by Public Auction, Without Reserve, unless stipulated, at Our Sale-rooms, Motor Building, Harding's Street, Nairobi.

on Monday 16th, March at 10 a.m.

Chesterfield Suites, Easy Chairs, Morris Chairs, Dining Table, Suites of Dining Chairs, Coffee Stools, Army and Navy Bunks, Upright Grand Piano, Iron frame, Oak Case (low reserve), Acoustic Vocalion Piano Player, Occasional Tables, Dressing Tables, Washstands, Wardrobes, bevelled mirrors, Hanging Wastebas, Chest of Drawers, Double Bedstead, spring mattress, Mattresses, Fire Grate, Electric Lamp in brass, Metalcase, Kitchen Tins, Chinese God in Brass, Etc., Etc., Etc.

MUTER and OSWALD Ltd., Auctioneers, Etc. NAIROBI.



TO LET.

FURNISHED and UNFURNISHED ROOMS, at Moderate Rentals.

SUITE of OFFICES in PRINCES HOUSE, Government Road; recently vacated by the Shell Co.

SUITE of THREE OFFICES in AVONTO BUILDING, Harding's Street, from 1st June.

For further particulars apply to: MUTER and OSWALD Ltd., Estate Agents, NAIROBI.

THACKRAH'S Ltd.,

ESTABLISHED 1811. The Up-Country LAND and ESTATE AGENTS, AUCTIONEERS & APPROVED VALUERS, INSURANCE, SHIPPING and FINANCIAL AGENTS. Shops, Offices, Godowns, Houses and Farms, TO LET or FOR SALE.

OUR Snapshot Competition WEEKLY PRIZES;

1st Prize, Shs. 15/-; Extra Prizes, Shs. 10/- (if warranted), Shs. 5/- for every Picture Published. The Competition is for Snapshots of EAST AFRICAN INTEREST and must be taken by the Competitor.

The NAME and ADDRESS of the Competitor and the SUBJECT of the PHOTOGRAPH should be written on the back of the print.

ANY NUMBER of prints may be sent by THE SAME COMPETITORS TO

THE "SNAPSHOT" COMPETITION, East African Standard, P. O. Box 363, NAIROBI.

If Films or Plates are sent we will make Enlargements for reproduction if necessary.

These films or plates will be returned after publication.

All prize winning photographs will be published in the "East African Standard."

If photos are to be returned A STAMPED ENVELOPE MUST BE ENCLOSED. The Editor's decision is final.

AUSTIN'S AUCTIONS

CATALOGUE SALE of GOOD FURNITURE, CHESTERFIELD SUITES, TEEFWATER, GRAMOPHONE, CHINA and GLASS WARE, BABY STAIRS, BASKETS, PLATED WARE, BOOKS, ETC., ETC., ETC.

AUSTIN & CO.

will sell Without Reserve unless stated, at the Mart, Saturday March 14th at 10 a.m.

Chesterfield Suites in Rexine, Poplin and Cretonne. Teak Writing Bureau. Nestle of 3 Teak Tables. Bechamel Wastebas in Teak with Mirror. Teak Double Washstand. Good Single Iron Beds complete. New Boxspring Single Beds. Single Wood Beds complete with Ottoman. Small Stretcher Bed. Treasure Cot. Suite of Good Dining Chairs with Solid turned legs with Extending Rectangular Dining Table and Sideboard (res). Hanging and Bachelier Wardrobes with Mirrors. Several Dressing Tables. Coffee Stools. Bedside Tables. Office Desks and Tables. Teak Chest of Drawers. Morris Chairs. Tea Tables. Coir Matting. Bedroom Druggist. Baby's Enamel Bath Scales and Basket in new condition. Tennis Rackets. Suite of Dining Tables and Chairs. Several Sideboards. Large New Galv. Iron Bath. Scales with Weights. Good Tennis Set. Kitchen Utensils. Cutlery. Glassware. Bread Slicer. Kitchen Tables. Fillers. Trousers Press. Jap. Teapots. Sets of Embroid. Ware. Geneva Portable Typewriter in New Condition (res). Silver Plated Fruit and Cake stands. Assorted Good Brassware. Glass Flower Bowls. China Coffee Sets. Oak Salad Bowl. Records. Cloisonne Powder Bowls. 54 piece Dinner Set. Photo Frames. Good Blankets and New Travelling Bags. Large Brass Plant Bowl. Pair of Hand Painted Water Colours framed. Columbia Portable Gramophone in New Condition (res). And numerous other articles.

BUICK MASTER'S BOXBODY CAR in excellent running order and condition. Aluminium Body. Tyres good. (Just been de-aerionized) (res.)

MODEL T FORD BOXBODY CAR in good running order and condition with Spare parts.

AUSTIN & CO.

AUCTIONEERS and ESTATE AGENTS, Harding St., NAIROBI.

SANDS & CO.

AT OUR SALEYARDS, NAIVASHA

Monday, 16th March

AT 10.30 A.M.

20 Grade Cows in Calf to Pedigreed Ayrshire Bulls.

5 Native Cows, 60 Grade Shyres, 48 Grade and Native Cows, 30 Grade Steers.

SANDS & CO., AUCTIONEERS.

SALE BY PUBLIC AUCTION OF DESIRABLE HOUSE.

NO RESERVE. Subject to confirmation by who is a Merchant. G. A. DATOO & CO.

On instructions from Owner will sell at Public Sale, on SATURDAY the 15th MARCH, at 10 AM, that land and residence presently occupied by Indian African Line Inspector under lease from the Government, bounded as plot 11 8 1/2 3/4 Section VII, 6750 sq. ft. 600 year lease 100 x 75 feet, 100 feet wide. Back of Indian African Line Inspector's property, bathroom, linen store, water, fish, latrine, verandah, garage, 10 rooms, two kitchens, tiled floors and roof, white washing in kitchen, latrine, Kitchen range, h. & c. water, bath, shower, bath and toilet.

For further particulars apply to: G. A. DATOO & Co. Wombasa.

Butter Ghee

1/- per lb.

SANDS & CO., NAIROBI.

SALE BY PUBLIC AUCTION OF DESIRABLE HOUSE.

NO RESERVE. Subject to confirmation by who is a Merchant. G. A. DATOO & CO.

On instructions from Owner will sell at Public Sale, on SATURDAY the 15th MARCH, at 10 AM, that land and residence presently occupied by Indian African Line Inspector under lease from the Government, bounded as plot 11 8 1/2 3/4 Section VII, 6750 sq. ft. 600 year lease 100 x 75 feet, 100 feet wide. Back of Indian African Line Inspector's property, bathroom, linen store, water, fish, latrine, verandah, garage, 10 rooms, two kitchens, tiled floors and roof, white washing in kitchen, latrine, Kitchen range, h. & c. water, bath, shower, bath and toilet.

For further particulars apply to: G. A. DATOO & Co. Wombasa.

ARE YOU GOING HOME?

We will Store or Ship Your Merchandise IF NOT

We will Supply You with Fuel or Transport

The Express Transport Coy.

carriage contractors to Kenya and Uganda Railways and Harbours.

The Firm You will Eventually GO TO FUEL NOW Shsg. 19/- and 22/- (cut)

Also at Mombasa

E. Hutchison & Co.

FOR SALE - Small Freehold Farm. Lamoru. Ideally situated 55 acres. £8 p.a. FOR SALE - Two good building Plots. Duke Street. 5,446 sq. feet.

FOR SALE - Good Stone House, Kikuyu Road. Two bedrooms. Inside sanitation. Nice garden. £1,000 terms, or 10 let 10/6 per month.

FOR SALE - 5/2 acres, Parklands, with three houses and room for three more.

FOR SALE - Exceptionally attractive Residence. Callindani Road fitted with all up-to-date requirements. 4 bedrooms. Dining Room, Large Lounge, Guest House, Tennis Court. Garden and Lawns extending to 2.16 acre. A really attractive property.

MORTGAGE - £3,000 to lend on first mortgage in amounts of £2,000 and £1,000 respectively.

A. L. SMITHSON.

F.A.I.P.A.

Estate Agent and Approved Valuer.

ALL KINDS OF INSURANCE EFFECTED. MORTGAGES ARRANGED.

VALUATIONS FOR INSURANCE, MORTGAGE, ESTATE DUTY AND PROBATE.

BOLUS HOUSE, Telephone 2786. NAIROBI. P. O. Box 1155.

Permanent Waving

Macdonald Steam System

We beg to inform that Mr. Leo Ehrman from Mexico and Leonard, Picochilly, London, professor of modern and historical hairdressing, has now joined our already proficient staff.

This is the first time that the Macdonald Steam System has been used in Africa. Come along and find out all about it. Advice Free. Only to be seen at

Theo. Schouten

Phone 2245. Government Road, Box 334.

Best Quality! Lowest Prices!

Miwani Superfine Sugar

can now be obtained from all leading Stores at the following prices: - 4 lbs. for Shs. 1/-, 56 lb. packet for Shs. 13/50.

Why Pay More?

Insist on MIWANI SUPERFINE and get the best value for your money. Address all enquiries to: THE VICTORIA NYANZA SUGAR CO., LIMITED, MIWANI or LOCAL AGENTS.

METROPOLITAN GARAGE.

(OFF. GODFREY'S CAR MART.) Repairs all makes of Cars. Denco Spray Painting. Overhauls a Specialty. Vulcanising & Retreading. SECONDHAND CARS BOUGHT and SOLD. Our Charges are the most moderate in the country.

A personal interest taken in every car. This Week's Bargains: Essex Super Six Tourer ... 245 First Two Seater (Guaranteed) ... 270

D. J. LETHBRIDGE, SOLE PROPRIETOR.

THE PREMIER USED CAR SALESMAN.

Godfrey's Car Mart

LIMITED.

Texaco House - Sadler Street.

50 USED CARS 50

TO SELECT FROM

Fort Light Model A. Dues...

First Trunk Model A. Dues... 1,000 m.m. Ford...

First Trunk Model A. Dues... 1,000 m.m. Ford...

First Trunk Model A. Dues... 1,000 m.m. Ford...

First Trunk Model A. Dues... 1,000 m.m. Ford...

First Trunk Model A. Dues... 1,000 m.m. Ford...

First Trunk Model A. Dues... 1,000 m.m. Ford...

First Trunk Model A. Dues... 1,000 m.m. Ford...

First Trunk Model A. Dues... 1,000 m.m. Ford...

First Trunk Model A. Dues... 1,000 m.m. Ford...

First Trunk Model A. Dues... 1,000 m.m. Ford...

First Trunk Model A. Dues... 1,000 m.m. Ford...

First Trunk Model A. Dues... 1,000 m.m. Ford...

First Trunk Model A. Dues... 1,000 m.m. Ford...

First Trunk Model A. Dues... 1,000 m.m. Ford...

First Trunk Model A. Dues... 1,000 m.m. Ford...

First Trunk Model A. Dues... 1,000 m.m. Ford...

First Trunk Model A. Dues... 1,000 m.m. Ford...

First Trunk Model A. Dues... 1,000 m.m. Ford...

First Trunk Model A. Dues... 1,000 m.m. Ford...

First Trunk Model A. Dues... 1,000 m.m. Ford...

First Trunk Model A. Dues... 1,000 m.m. Ford...

First Trunk Model A. Dues... 1,000 m.m. Ford...

First Trunk Model A. Dues... 1,000 m.m. Ford...

First Trunk Model A. Dues... 1,000 m.m. Ford...

First Trunk Model A. Dues... 1,000 m.m. Ford...

First Trunk Model A. Dues... 1,000 m.m. Ford...

First Trunk Model A. Dues... 1,000 m.m. Ford...

First Trunk Model A. Dues... 1,000 m.m. Ford...

First Trunk Model A. Dues... 1,000 m.m. Ford...

First Trunk Model A. Dues... 1,000 m.m. Ford...

First Trunk Model A. Dues... 1,000 m.m. Ford...

First Trunk Model A. Dues... 1,000 m.m. Ford...

First Trunk Model A. Dues... 1,000 m.m. Ford...

First Trunk Model A. Dues... 1,000 m.m. Ford...

First Trunk Model A. Dues... 1,000 m.m. Ford...

First Trunk Model A. Dues... 1,000 m.m. Ford...

First Trunk Model A. Dues... 1,000 m.m. Ford...

WON-SLA
Clings to the Pulley
Drives when Slack



Multi-Plar BELTING

Agents and Stockists—
SMITH MACKENZIE & COMPANY
P.O. Box 390, NAIROBI. Phone 2555.

SURVIVAL OF THE FITTEST.

Football's Heavy Toll.

MEMBERSHIP OF THE LEAGUE LIGHTS.

(Continued from page 10)

Although on the surface football is such a popular game, the players being taken to the hospital are a sad commentary on the game.

It is in spite of a brilliantly sunny day that the match was so hotly contested.

Two brilliant periods. There were two brilliant periods in the match.

There were two brilliant periods in the match. The first was in the 15th minute.

There were two brilliant periods in the match. The second was in the 35th minute.

There were two brilliant periods in the match. The third was in the 45th minute.

There were two brilliant periods in the match. The fourth was in the 55th minute.

There were two brilliant periods in the match. The fifth was in the 65th minute.

There were two brilliant periods in the match. The sixth was in the 75th minute.

There were two brilliant periods in the match. The seventh was in the 85th minute.

There were two brilliant periods in the match. The eighth was in the 95th minute.

There were two brilliant periods in the match. The ninth was in the 105th minute.

There were two brilliant periods in the match. The tenth was in the 115th minute.

There were two brilliant periods in the match. The eleventh was in the 125th minute.

There were two brilliant periods in the match. The twelfth was in the 135th minute.

There were two brilliant periods in the match. The thirteenth was in the 145th minute.

There were two brilliant periods in the match. The fourteenth was in the 155th minute.

There were two brilliant periods in the match. The fifteenth was in the 165th minute.

There were two brilliant periods in the match. The sixteenth was in the 175th minute.

There were two brilliant periods in the match. The seventeenth was in the 185th minute.

There were two brilliant periods in the match. The eighteenth was in the 195th minute.

NATIONAL BANK OF INDIA LIMITED.

(Incorporated in United Kingdom)

Bankers to the Colony and Protectorates of Kenya and Uganda Protectorates Government

Subscribed Capital £1,500,000 Paid up Capital £2,000,000 Reserve Fund £2,000,000

25, Abchurch Lane, London, E.C. 4. BRANCHES: Bombay, Nairobi, Nakuru, Kisumu, Eldoret, Rongai, Kampala, Jinja, Zomba, Dar es Salaam, and Tanga.

Also at Calcutta, Bombay, Madras, Harrow, Lahore, Amritsar, Delhi, Calcutta, Colombo, Karachi, Newera Eliya, Tuticorin, Cochin, Cuttack, Bangalore, Madras, Aden, and Sumner Point, Aden.

AGENTS in New York and throughout U.S.A., Liverpool, Canada, South Africa and Australasia.

FIXED DEPOSITS—Deposits are received for fixed periods on terms which may be learned on application.

EXCHANGE—The Bank grants Drafts on the Head Office and Branches with the current rates of Exchange and warrants first copy of the Bill direct to the payee when required.

Every description of Banking Business transacted with all parts of the world. COLLIER, Manager, Nairobi Branch.

MAY & CO. LTD. S.M.I. FISHING TACKLE



A Fish out of water

EVEN that could be hardly more out of it almost than breadwinners grow in our land in Scotland.

No other one can give you the true Scottish flavour, or the rich taste of that wonderful which you get from Scott's Parage Oals.

There is no fisherman here who has not eaten it.

Every professional club in the country has been on the verge of bankruptcy as some time or other, with one exception they have had to find their own salvation—and more often than not, it has been the fish.

It is the history of football shows that every professional club in the country has been on the verge of bankruptcy as some time or other, with one exception they have had to find their own salvation—and more often than not, it has been the fish.

It is the history of football shows that every professional club in the country has been on the verge of bankruptcy as some time or other, with one exception they have had to find their own salvation—and more often than not, it has been the fish.

It is the history of football shows that every professional club in the country has been on the verge of bankruptcy as some time or other, with one exception they have had to find their own salvation—and more often than not, it has been the fish.

It is the history of football shows that every professional club in the country has been on the verge of bankruptcy as some time or other, with one exception they have had to find their own salvation—and more often than not, it has been the fish.

It is the history of football shows that every professional club in the country has been on the verge of bankruptcy as some time or other, with one exception they have had to find their own salvation—and more often than not, it has been the fish.

It is the history of football shows that every professional club in the country has been on the verge of bankruptcy as some time or other, with one exception they have had to find their own salvation—and more often than not, it has been the fish.

It is the history of football shows that every professional club in the country has been on the verge of bankruptcy as some time or other, with one exception they have had to find their own salvation—and more often than not, it has been the fish.

It is the history of football shows that every professional club in the country has been on the verge of bankruptcy as some time or other, with one exception they have had to find their own salvation—and more often than not, it has been the fish.

It is the history of football shows that every professional club in the country has been on the verge of bankruptcy as some time or other, with one exception they have had to find their own salvation—and more often than not, it has been the fish.

It is the history of football shows that every professional club in the country has been on the verge of bankruptcy as some time or other, with one exception they have had to find their own salvation—and more often than not, it has been the fish.

It is the history of football shows that every professional club in the country has been on the verge of bankruptcy as some time or other, with one exception they have had to find their own salvation—and more often than not, it has been the fish.

It is the history of football shows that every professional club in the country has been on the verge of bankruptcy as some time or other, with one exception they have had to find their own salvation—and more often than not, it has been the fish.

It is the history of football shows that every professional club in the country has been on the verge of bankruptcy as some time or other, with one exception they have had to find their own salvation—and more often than not, it has been the fish.

It is the history of football shows that every professional club in the country has been on the verge of bankruptcy as some time or other, with one exception they have had to find their own salvation—and more often than not, it has been the fish.

It is the history of football shows that every professional club in the country has been on the verge of bankruptcy as some time or other, with one exception they have had to find their own salvation—and more often than not, it has been the fish.

It is the history of football shows that every professional club in the country has been on the verge of bankruptcy as some time or other, with one exception they have had to find their own salvation—and more often than not, it has been the fish.

It is the history of football shows that every professional club in the country has been on the verge of bankruptcy as some time or other, with one exception they have had to find their own salvation—and more often than not, it has been the fish.

It is the history of football shows that every professional club in the country has been on the verge of bankruptcy as some time or other, with one exception they have had to find their own salvation—and more often than not, it has been the fish.

Lighting Glass Cleaner is a water which, without acid, cleans and restores the original lustre of all window glass. It is the modern quick way of cleaning glass. Absolutely best for removing stains and streaks in glass windows, mirrors, etc. It is the best for all household cleaning purposes. Sold by all leading stores.

WIKRAM'S Best and Cheapest HOUSE PAINT
Decorative, Durable, Economical, Water-Proof, Washable, and Long-Lasting. Try it. Value and Handmade.

JUSA TRADING CO.
Agents Shell Co. of S.A. Ltd.

MOMBASA TIMES
CAN BE OBTAINED AT THE Standard Stationery Store NAIROBI.

FIXED DEPOSITS—Deposits are received for fixed periods on terms which may be learned on application.

EXCHANGE—The Bank grants Drafts on the Head Office and Branches with the current rates of Exchange and warrants first copy of the Bill direct to the payee when required.

Every description of Banking Business transacted with all parts of the world. COLLIER, Manager, Nairobi Branch.

MAY & CO. LTD. S.M.I. FISHING TACKLE

WIKRAM'S Best and Cheapest HOUSE PAINT
Decorative, Durable, Economical, Water-Proof, Washable, and Long-Lasting. Try it. Value and Handmade.

JUSA TRADING CO.
Agents Shell Co. of S.A. Ltd.

MOMBASA TIMES
CAN BE OBTAINED AT THE Standard Stationery Store NAIROBI.

FIXED DEPOSITS—Deposits are received for fixed periods on terms which may be learned on application.

EXCHANGE—The Bank grants Drafts on the Head Office and Branches with the current rates of Exchange and warrants first copy of the Bill direct to the payee when required.

Every description of Banking Business transacted with all parts of the world. COLLIER, Manager, Nairobi Branch.

MAY & CO. LTD. S.M.I. FISHING TACKLE

WIKRAM'S Best and Cheapest HOUSE PAINT
Decorative, Durable, Economical, Water-Proof, Washable, and Long-Lasting. Try it. Value and Handmade.

JUSA TRADING CO.
Agents Shell Co. of S.A. Ltd.

MOMBASA TIMES
CAN BE OBTAINED AT THE Standard Stationery Store NAIROBI.

FIXED DEPOSITS—Deposits are received for fixed periods on terms which may be learned on application.

EXCHANGE—The Bank grants Drafts on the Head Office and Branches with the current rates of Exchange and warrants first copy of the Bill direct to the payee when required.

Every description of Banking Business transacted with all parts of the world. COLLIER, Manager, Nairobi Branch.

WIKRAM'S Best and Cheapest HOUSE PAINT
Decorative, Durable, Economical, Water-Proof, Washable, and Long-Lasting. Try it. Value and Handmade.

JUSA TRADING CO.
Agents Shell Co. of S.A. Ltd.

MOMBASA TIMES
CAN BE OBTAINED AT THE Standard Stationery Store NAIROBI.

FIXED DEPOSITS—Deposits are received for fixed periods on terms which may be learned on application.

EXCHANGE—The Bank grants Drafts on the Head Office and Branches with the current rates of Exchange and warrants first copy of the Bill direct to the payee when required.

Every description of Banking Business transacted with all parts of the world. COLLIER, Manager, Nairobi Branch.

MAY & CO. LTD. S.M.I. FISHING TACKLE

WIKRAM'S Best and Cheapest HOUSE PAINT
Decorative, Durable, Economical, Water-Proof, Washable, and Long-Lasting. Try it. Value and Handmade.

JUSA TRADING CO.
Agents Shell Co. of S.A. Ltd.

MOMBASA TIMES
CAN BE OBTAINED AT THE Standard Stationery Store NAIROBI.

FIXED DEPOSITS—Deposits are received for fixed periods on terms which may be learned on application.

EXCHANGE—The Bank grants Drafts on the Head Office and Branches with the current rates of Exchange and warrants first copy of the Bill direct to the payee when required.

Every description of Banking Business transacted with all parts of the world. COLLIER, Manager, Nairobi Branch.

MAY & CO. LTD. S.M.I. FISHING TACKLE

WIKRAM'S Best and Cheapest HOUSE PAINT
Decorative, Durable, Economical, Water-Proof, Washable, and Long-Lasting. Try it. Value and Handmade.

JUSA TRADING CO.
Agents Shell Co. of S.A. Ltd.

MOMBASA TIMES
CAN BE OBTAINED AT THE Standard Stationery Store NAIROBI.

FIXED DEPOSITS—Deposits are received for fixed periods on terms which may be learned on application.

EXCHANGE—The Bank grants Drafts on the Head Office and Branches with the current rates of Exchange and warrants first copy of the Bill direct to the payee when required.

Every description of Banking Business transacted with all parts of the world. COLLIER, Manager, Nairobi Branch.

WIKRAM'S Best and Cheapest HOUSE PAINT
Decorative, Durable, Economical, Water-Proof, Washable, and Long-Lasting. Try it. Value and Handmade.

Providing Greater Value at Lower Cost



Large production and Ford methods of manufacturing have made it possible to put more and more value into the Ford Car without extra cost to the purchaser.

That the public appreciates the substantial worth of the new Ford is shown by its widening use by people in all walks of life.

Throughout, the new Ford is an example of fine engineering and craftsmanship in volume production - a value far above the price you pay.

NAIROBI MOTORS

Box 460. NAIROBI. Tel. 2459.

It is Cruelty

you inflict on your kid every time you substitute quinine instead of Quinine Chocolates.

Quinine Chocolates instead of quinine not even the slightest suspicion that it is an unwholesome food—just a delicious sweet treat.

DELICIOUS SWEET TREAT but good quinine all the same.

Obtainable only at THE NAIROBI PHARMACY, P.O. Box 198, NAIROBI.

Doonholm Dairy FOR PURE MILK and CREAM FROM FARM TO CONSUMER. P.O. Box 11, NAIROBI.

MVULI TIMBER (Incorporated in Kenya) Head Office—Nairobi. Sole Agents—Nairobi. P.O. Box 11, NAIROBI.

GHANA FRUITS 1927 quality. R. B. SIRDRAW, P.O. Box 66, NAIROBI.

SOUTH AFRICAN Jams and Jellies ARE Of the Finest Quality AND Obtainable from all Leading Grocers

For full particulars apply to THE SOUTH AFRICAN OFFICE, Memorial Hall, Box 624, NAIROBI.

Remington KLEANBORE keeps your Rifle Barrel Clean

SPORTSMEN are excited and delighted over the wonderful new 2 Cal. Ammunition—made only by Remington.

RUST FITTING CORROSION CLEANING RUINED BARRELS

There is no other KLEANBORE—made in America.

Remington Arms Co. Inc. 50 WEST 42nd STREET, NEW YORK, N. Y. U.S.A.

Remington

THE FARMER'S AMMUNITION CULTURE

All Orders Executed under Own Personal Supervision.

JAMES REZIN Tailor & Breaches Maker

CHOICE SELECTION OF LATEST MATERIALS. LEADER BULLOCKS (40-jawing) 25-30-35-40-45-50-55-60-65-70-75-80-85-90-95-100-105-110-115-120-125-130-135-140-145-150-155-160-165-170-175-180-185-190-195-200-205-210-215-220-225-230-235-240-245-250-255-260-265-270-275-280-285-290-295-300-305-310-315-320-325-330-335-340-345-350-355-360-365-370-375-380-385-390-395-400-405-410-415-420-425-430-435-440-445-450-455-460-465-470-475-480-485-490-495-500-505-510-515-520-525-530-535-540-545-550-555-560-565-570-575-580-585-590-595-600-605-610-615-620-625-630-635-640-645-650-655-660-665-670-675-680-685-690-695-700-705-710-715-720-725-730-735-740-745-750-755-760-765-770-775-780-785-790-795-800-805-810-815-820-825-830-835-840-845-850-855-860-865-870-875-880-885-890-895-900-905-910-915-920-925-930-935-940-945-950-955-960-965-970-975-980-985-990-995-1000-1005-1010-1015-1020-1025-1030-1035-1040-1045-1050-1055-1060-1065-1070-1075-1080-1085-1090-1095-1100-1105-1110-1115-1120-1125-1130-1135-1140-1145-1150-1155-1160-1165-1170-1175-1180-1185-1190-1195-1200-1205-1210-1215-1220-1225-1230-1235-1240-1245-1250-1255-1260-1265-1270-1275-1280-1285-1290-1295-1300-1305-1310-1315-1320-1325-1330-1335-1340-1345-1350-1355-1360-1365-1370-1375-1380-1385-1390-1395-1400-1405-1410-1415-1420-1425-1430-1435-1440-1445-1450-1455-1460-1465-1470-1475-1480-1485-1490-1495-1500-1505-1510-1515-1520-1525-1530-1535-1540-1545-1550-1555-1560-1565-1570-1575-1580-1585-1590-1595-1600-1605-1610-1615-1620-1625-1630-1635-1640-1645-1650-1655-1660-1665-1670-1675-1680-1685-1690-1695-1700-1705-1710-1715-1720-1725-1730-1735-1740-1745-1750-1755-1760-1765-1770-1775-1780-1785-1790-1795-1800-1805-1810-1815-1820-1825-1830-1835-1840-1845-1850-1855-1860-1865-1870-1875-1880-1885-1890-1895-1900-1905-1910-1915-1920-1925-1930-1935-1940-1945-1950-1955-1960-1965-1970-1975-1980-1985-1990-1995-2000-2005-2010-2015-2020-2025-2030-2035-2040-2045-2050-2055-2060-2065-2070-2075-2080-2085-2090-2095-2100-2105-2110-2115-2120-2125-2130-2135-2140-2145-2150-2155-2160-2165-2170-2175-2180-2185-2190-2195-2200-2205-2210-2215-2220-2225-2230-2235-2240-2245-2250-2255-2260-2265-2270-2275-2280-2285-2290-2295-2300-2305-2310-2315-2320-2325-2330-2335-2340-2345-2350-2355-2360-2365-2370-2375-2380-2385-2390-2395-2400-2405-2410-2415-2420-2425-2430-2435-2440-2445-2450-2455-2460-2465-2470-2475-2480-2485-2490-2495-2500-2505-2510-2515-2520-2525-2530-2535-2540-2545-2550-2555-2560-2565-2570-2575-2580-2585-2590-2595-2600-2605-2610-2615-2620-2625-2630-2635-2640-2645-2650-2655-2660-2665-2670-2675-2680-2685-2690-2695-2700-2705-2710-2715-2720-2725-2730-2735-2740-2745-2750-2755-2760-2765-2770-2775-2780-2785-2790-2795-2800-2805-2810-2815-2820-2825-2830-2835-2840-2845-2850-2855-2860-2865-2870-2875-2880-2885-2890-2895-2900-2905-2910-2915-2920-2925-2930-2935-2940-2945-2950-2955-2960-2965-2970-2975-2980-2985-2990-2995-3000-3005-3010-3015-3020-3025-3030-3035-3040-3045-3050-3055-3060-3065-3070-3075-3080-3085-3090-3095-3100-3105-3110-3115-3120-3125-3130-3135-3140-3145-3150-3155-3160-3165-3170-3175-3180-3185-3190-3195-3200-3205-3210-3215-3220-3225-3230-3235-3240-3245-3250-3255-3260-3265-3270-3275-3280-3285-3290-3295-3300-3305-3310-3315-3320-3325-3330-3335-3340-3345-3350-3355-3360-3365-3370-3375-3380-3385-3390-3395-3400-3405-3410-3415-3420-3425-3430-3435-3440-3445-3450-3455-3460-3465-3470-3475-3480-3485-3490-3495-3500-3505-3510-3515-3520-3525-3530-3535-3540-3545-3550-3555-3560-3565-3570-3575-3580-3585-3590-3595-3600-3605-3610-3615-3620-3625-3630-3635-3640-3645-3650-3655-3660-3665-3670-3675-3680-3685-3690-3695-3700-3705-3710-3715-3720-3725-3730-3735-3740-3745-3750-3755-3760-3765-3770-3775-3780-3785-3790-3795-3800-3805-3810-3815-3820-3825-3830-3835-3840-3845-3850-3855-3860-3865-3870-3875-3880-3885-3890-3895-3900-3905-3910-3915-3920-3925-3930-3935-3940-3945-3950-3955-3960-3965-3970-3975-3980-3985-3990-3995-4000-4005-4010-4015-4020-4025-4030-4035-4040-4045-4050-4055-4060-4065-4070-4075-4080-4085-4090-4095-4100-4105-4110-4115-4120-4125-4130-4135-4140-4145-4150-4155-4160-4165-4170-4175-4180-4185-4190-4195-4200-4205-4210-4215-4220-4225-4230-4235-4240-4245-4250-4255-4260-4265-4270-4275-4280-4285-4290-4295-4300-4305-4310-4315-4320-4325-4330-4335-4340-4345-4350-4355-4360-4365-4370-4375-4380-438

THE SPORTS PAGE



DANGEROUS GAME
For a very dangerous beast encountered at some stage in scrub or jungle, the Kynoch cartridge, the reliable and proved weapon. Be alert to the chance or the danger of meeting something larger than the quarry you are seeking, or include in your equipment five loaded or Kynoch Dangerous cartridge. For instant use and stopping power these cartridges should always be carried by a man using a weapon in wild country.

ELEY OR KYNOCH
CARTRIDGES
A HOGG
MACKENZIE BUILDING, NAIROBI.
ENGLISH PRICES.
LINCOLN, 25-3-31. NATIONAL, 27-3-31.
DERBY, 3-5-31.
DEPOSIT ON CREDIT BUSINESS ONLY BY LETTER OR TELEGRAM.

CHICKEN
THE FINEST EGG PRODUCING
& BONE FORMING FOOD FOR
GRIT
FOWLS.
Tel. MARBLE. P.O. Box 484.
KARLE, KARLE MARBLE WORKS.

'Golf Championships'
THE BIG FOUR OF 1930.
British Open Championship,
American Amateur Championship,
American Open Championship,
British Amateur Championship.

'Spalding Ball' and
CRAIG'S SPORTS HOUSE LTD.
1/20th 2221, Government Road, Box 900.

ROLEX
HEAT PROOF
THE WONDER WATCH
A watch which has been tested in a furnace at 1000 degrees Centigrade and has emerged without any damage to its mechanism.

THE WONDER WATCH
A watch which has been tested in a furnace at 1000 degrees Centigrade and has emerged without any damage to its mechanism.

THE ROLEX OYSTER
DUST PROOF
For Catalogues apply to—
DOBBIES LTD.
Established 1908.
Watchmakers, Jewellers and Silversmiths.
Phone 2866. NAIROBI. P.O. Box 100.

Advertisement for 'The SHIRTS that LAUGH at the LAUNDRY' featuring 'Consultate SHIRTS' and 'CHARLES WARE'.

CHARLES WARE
TURTLE ACCOUNTANT.
Established 25 years. Tel. A.M. 2. Sportsman.
Box 170, Trust Chambers, Government Road, NAIROBI.

Imported Steel Windows
AND
Wooden Doors
Eliminate
Warping
Worries

Advertisement for 'J.H.S. Todd & Co. Ltd.' featuring 'Imported Steel Windows' and 'Wooden Doors'.

MAURICE ROSENSTON
P.O. Box 88. Tel. Address: 'Tobacco'.
NOKIA BUILDING, GOVERNMENT ROAD, NAIROBI.

Whatever Your Troubles Are
FANCIED OR OTHERWISE.
'KEEP IT'
THE BEST WAY TO KEEP FIT, MENTALLY
AND PHYSICALLY, IS TO
PLAY GAMES.

Advertisement for 'MAY & Co., Ltd.' featuring 'The Sports House NAIROBI' and 'Royal Agricultural & Horticultural Society of Kenya'.

GYMNASTIC RACE
MEETING.
Good Sport at Eldoret.

THE EXCELLENCE OF THE
SOFORAN ATHLETE.

STANDARD (CORRESPONDENT)
Eldoret, March 18.
The Race meeting held on March 17 was productive of some sport in Gymanstic form.

First Race.
SOMALI BOYBOUT 4 furlongs.
Messrs. Bickel and Wallis.

Second Race.
WELCHER RACE, 5 furlongs.
Messrs. Bickel and Wallis.

Third Race.
OPEN POINT TO POINT, 5 miles.
Mr. O. K. Richardson's BEL.

Fourth Race.
OPEN PROGRESS OF SOMALI
FAREHAY, Mr. O. K. Richardson's BEL.

Fifth Race.
SOMALI HANDICAP, 1/2 mile.
Mr. O. K. Richardson's BEL.

Sixth Race.
COUNTRY-BRED HANDICAP, 1 mile.
Mr. J. B. Siera's EMEALDA.

CIVIL SERVICE RIFLE
CLUB.
Shot For Handicap
Cup.

GUESTS' GUESTS'
GUESTS' GUESTS'.

The handicapping committee have allotted the following handicap for the Handicap Cup competition.

Class 1—Sergeant Major R. O. O'Brien.
Class 2—P. J. Furlong.

Class 3—Capt. Furlong, D. W. Noble.
Class 4—Mr. H. H. D. D. D.

Class 5—Mr. H. H. D. D. D.
Class 6—Mr. H. H. D. D. D.

Class 7—Mr. H. H. D. D. D.
Class 8—Mr. H. H. D. D. D.

Class 9—Mr. H. H. D. D. D.
Class 10—Mr. H. H. D. D. D.

Class 11—Mr. H. H. D. D. D.
Class 12—Mr. H. H. D. D. D.

Class 13—Mr. H. H. D. D. D.
Class 14—Mr. H. H. D. D. D.

Class 15—Mr. H. H. D. D. D.
Class 16—Mr. H. H. D. D. D.

Class 17—Mr. H. H. D. D. D.
Class 18—Mr. H. H. D. D. D.

Class 19—Mr. H. H. D. D. D.
Class 20—Mr. H. H. D. D. D.

Class 21—Mr. H. H. D. D. D.
Class 22—Mr. H. H. D. D. D.

Class 23—Mr. H. H. D. D. D.
Class 24—Mr. H. H. D. D. D.

Class 25—Mr. H. H. D. D. D.
Class 26—Mr. H. H. D. D. D.

Class 27—Mr. H. H. D. D. D.
Class 28—Mr. H. H. D. D. D.

EAST KING TENNIS
LEAGUE.
Parklands Road Premier
Section.

Malaga Open Tennis
Tournament.

THE MOTOR OF THE LOGS.

The following are results of matches played in connection with the East-King Tennis League during the week-end.

'A' Section.
Parklands beat Ruiru by 100 runs to 57.

'B' Section.
Parklands beat Civil Service by 90 runs to 48.

'C' Section.
Parklands beat Commercial by 100 runs to 57.

'D' Section.
Parklands beat Commercial by 100 runs to 57.

'E' Section.
Parklands beat Commercial by 100 runs to 57.

'F' Section.
Parklands beat Commercial by 100 runs to 57.

'G' Section.
Parklands beat Commercial by 100 runs to 57.

'H' Section.
Parklands beat Commercial by 100 runs to 57.

'I' Section.
Parklands beat Commercial by 100 runs to 57.

'J' Section.
Parklands beat Commercial by 100 runs to 57.

'K' Section.
Parklands beat Commercial by 100 runs to 57.

'L' Section.
Parklands beat Commercial by 100 runs to 57.

'M' Section.
Parklands beat Commercial by 100 runs to 57.

THE EAST KING TENNIS
LEAGUE.

Malaga Open Tennis
Tournament.

THE MOTOR OF THE LOGS.

The following are results of matches played in connection with the East-King Tennis League during the week-end.

'A' Section.
Parklands beat Ruiru by 100 runs to 57.

'B' Section.
Parklands beat Civil Service by 90 runs to 48.

'C' Section.
Parklands beat Commercial by 100 runs to 57.

'D' Section.
Parklands beat Commercial by 100 runs to 57.

'E' Section.
Parklands beat Commercial by 100 runs to 57.

'F' Section.
Parklands beat Commercial by 100 runs to 57.

'G' Section.
Parklands beat Commercial by 100 runs to 57.

'H' Section.
Parklands beat Commercial by 100 runs to 57.

'I' Section.
Parklands beat Commercial by 100 runs to 57.

'J' Section.
Parklands beat Commercial by 100 runs to 57.

'K' Section.
Parklands beat Commercial by 100 runs to 57.

'L' Section.
Parklands beat Commercial by 100 runs to 57.

'M' Section.
Parklands beat Commercial by 100 runs to 57.

CHICKEN
THE FINEST EGG PRODUCING
& BONE FORMING FOOD FOR
GRIT
FOWLS.

'Golf Championships'
THE BIG FOUR OF 1930.
British Open Championship,
American Amateur Championship,
American Open Championship,
British Amateur Championship.

'Spalding Ball' and
CRAIG'S SPORTS HOUSE LTD.
1/20th 2221, Government Road, Box 900.

ROLEX
HEAT PROOF
THE WONDER WATCH

THE WONDER WATCH
A watch which has been tested in a furnace at 1000 degrees Centigrade and has emerged without any damage to its mechanism.

THE ROLEX OYSTER
DUST PROOF
For Catalogues apply to—
DOBBIES LTD.

THE ROLEX OYSTER
DUST PROOF
For Catalogues apply to—
DOBBIES LTD.

THE ROLEX OYSTER
DUST PROOF
For Catalogues apply to—
DOBBIES LTD.

For Catalogues apply to—
DOBBIES LTD.
Established 1908.
Watchmakers, Jewellers and Silversmiths.
Phone 2866. NAIROBI. P.O. Box 100.

Royal Agricultural & Horticultural Society of Kenya.
MAIZE SEED COMPETITIONS.
Prizes Total £70.
Maize farmers are reminded that Entries for the Maize Seed Competitions close at the offices of the R.A. & H.S. of KENYA, Box 671, NAIROBI, on WEDNESDAY, MARCH 26th, 1931.

No Late Entries can be accepted.
If you have not got a copy of the conditions, write to The Secretary at once.

The Regent Portable



THE PERFECT TYPEWRITER AT AN ECONOMICAL PRICE.

Imperial Typewriter Co. Limited.

Sole Agents: DALGETY & COMPANY, LIMITED, NAIROBI.

The Ammunition of Quality

D.W.M. Always reliable, never varying. Surest killer in Africa. All recognized hunters use it...

SUKARI Ltd.

have pleasure in announcing that they are now producing the Finest Quality White Sugar.

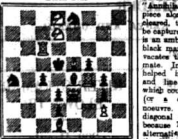
Sukari Superfine Unqualified in Sweetness, Whiteness and Purity.



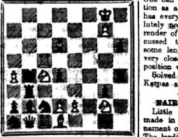
CHESS

(By W. A. Way) Note the new address for all Chess correspondence...

PROBLEM No. 1381 Author Unknown. 'L' takes on July 1929 Black Ten.



White mates in two moves. PROBLEM No. 1382 By G. F. Anderson. Black Seven.



White Eleven. Keys to problems No. 1381 and 1382 are B-B and B-B respectively.

SOLUTIONS Problem No. 1381, by G. G. Bell. Key 1, Q-Q2. If K is in file Q, Q-B mate. If K is in file B, Q-Q2 mate. If K is in file R, Q-Q2 mate.

Have views of human hair. Men's in match the women's cut, are the latest fashion.

AGRICULTURAL SHOW.

Complete List of Prize Winners.

Following is the complete prize list in connection with the Agricultural Show at Eldoret...

SECTION A—HORSES. 1. Best Stallion, three years and over (Mildred Cow). 2. Best Mare, three years and over (Mildred Cow).

Class 78—Horses. 1. Best 2-year-old gelding (Mildred Cow). 2. Best 3-year-old gelding (Mildred Cow).

Class 79—Horses. 1. Best 2-year-old colt (Mildred Cow). 2. Best 3-year-old colt (Mildred Cow).

Class 80—Horses. 1. Best 2-year-old mare (Mildred Cow). 2. Best 3-year-old mare (Mildred Cow).

SECTION B—CATTLE. 1. Best Friesian cow (Mildred Cow). 2. Best Friesian heifer (Mildred Cow).

Class 81—Cattle. 1. Best Friesian cow (Mildred Cow). 2. Best Friesian heifer (Mildred Cow).

Class 82—Cattle. 1. Best Friesian cow (Mildred Cow). 2. Best Friesian heifer (Mildred Cow).

Class 83—Cattle. 1. Best Friesian cow (Mildred Cow). 2. Best Friesian heifer (Mildred Cow).

Class 84—Cattle. 1. Best Friesian cow (Mildred Cow). 2. Best Friesian heifer (Mildred Cow).

Class 85—Cattle. 1. Best Friesian cow (Mildred Cow). 2. Best Friesian heifer (Mildred Cow).

Prizes awarded by the P.O. (Mildred Cow)...

Class 86—Cattle. 1. Best Friesian cow (Mildred Cow). 2. Best Friesian heifer (Mildred Cow).

Class 87—Cattle. 1. Best Friesian cow (Mildred Cow). 2. Best Friesian heifer (Mildred Cow).

Class 88—Cattle. 1. Best Friesian cow (Mildred Cow). 2. Best Friesian heifer (Mildred Cow).

Class 89—Cattle. 1. Best Friesian cow (Mildred Cow). 2. Best Friesian heifer (Mildred Cow).

Class 90—Cattle. 1. Best Friesian cow (Mildred Cow). 2. Best Friesian heifer (Mildred Cow).

Class 91—Cattle. 1. Best Friesian cow (Mildred Cow). 2. Best Friesian heifer (Mildred Cow).

Class 92—Cattle. 1. Best Friesian cow (Mildred Cow). 2. Best Friesian heifer (Mildred Cow).

Class 93—Cattle. 1. Best Friesian cow (Mildred Cow). 2. Best Friesian heifer (Mildred Cow).

Class 94—Cattle. 1. Best Friesian cow (Mildred Cow). 2. Best Friesian heifer (Mildred Cow).

Class 95—Cattle. 1. Best Friesian cow (Mildred Cow). 2. Best Friesian heifer (Mildred Cow).

Class 96—Cattle. 1. Best Friesian cow (Mildred Cow). 2. Best Friesian heifer (Mildred Cow).

Class 97—Cattle. 1. Best Friesian cow (Mildred Cow). 2. Best Friesian heifer (Mildred Cow).

Class 98—Cattle. 1. Best Friesian cow (Mildred Cow). 2. Best Friesian heifer (Mildred Cow).

Class 99—Cattle. 1. Best Friesian cow (Mildred Cow). 2. Best Friesian heifer (Mildred Cow).

Class 100—Cattle. 1. Best Friesian cow (Mildred Cow). 2. Best Friesian heifer (Mildred Cow).

Class 101—Cattle. 1. Best Friesian cow (Mildred Cow). 2. Best Friesian heifer (Mildred Cow).

Class 102—Cattle. 1. Best Friesian cow (Mildred Cow). 2. Best Friesian heifer (Mildred Cow).

Class 103—Cattle. 1. Best Friesian cow (Mildred Cow). 2. Best Friesian heifer (Mildred Cow).

Class 104—Cattle. 1. Best Friesian cow (Mildred Cow). 2. Best Friesian heifer (Mildred Cow).

Class 105—Cattle. 1. Best Friesian cow (Mildred Cow). 2. Best Friesian heifer (Mildred Cow).

Class 106—Cattle. 1. Best Friesian cow (Mildred Cow). 2. Best Friesian heifer (Mildred Cow).

Class 107—Cattle. 1. Best Friesian cow (Mildred Cow). 2. Best Friesian heifer (Mildred Cow).

Class 108—Cattle. 1. Best Friesian cow (Mildred Cow). 2. Best Friesian heifer (Mildred Cow).

Class 109—Cattle. 1. Best Friesian cow (Mildred Cow). 2. Best Friesian heifer (Mildred Cow).

Class 110—Cattle. 1. Best Friesian cow (Mildred Cow). 2. Best Friesian heifer (Mildred Cow).

Class 111—Cattle. 1. Best Friesian cow (Mildred Cow). 2. Best Friesian heifer (Mildred Cow).

Class 112—Cattle. 1. Best Friesian cow (Mildred Cow). 2. Best Friesian heifer (Mildred Cow).

Class 113—Cattle. 1. Best Friesian cow (Mildred Cow). 2. Best Friesian heifer (Mildred Cow).

Class 114—Cattle. 1. Best Friesian cow (Mildred Cow). 2. Best Friesian heifer (Mildred Cow).

Class 115—Cattle. 1. Best Friesian cow (Mildred Cow). 2. Best Friesian heifer (Mildred Cow).

Class 116—Cattle. 1. Best Friesian cow (Mildred Cow). 2. Best Friesian heifer (Mildred Cow).

Class 117—Cattle. 1. Best Friesian cow (Mildred Cow). 2. Best Friesian heifer (Mildred Cow).

Class 118—Cattle. 1. Best Friesian cow (Mildred Cow). 2. Best Friesian heifer (Mildred Cow).

Class 119—Cattle. 1. Best Friesian cow (Mildred Cow). 2. Best Friesian heifer (Mildred Cow).

Class 120—Cattle. 1. Best Friesian cow (Mildred Cow). 2. Best Friesian heifer (Mildred Cow).

Class 121—Cattle. 1. Best Friesian cow (Mildred Cow). 2. Best Friesian heifer (Mildred Cow).

Class 122—Cattle. 1. Best Friesian cow (Mildred Cow). 2. Best Friesian heifer (Mildred Cow).

Class 123—Cattle. 1. Best Friesian cow (Mildred Cow). 2. Best Friesian heifer (Mildred Cow).

Class 124—Cattle. 1. Best Friesian cow (Mildred Cow). 2. Best Friesian heifer (Mildred Cow).

Class 125—Cattle. 1. Best Friesian cow (Mildred Cow). 2. Best Friesian heifer (Mildred Cow).

Class 126—Cattle. 1. Best Friesian cow (Mildred Cow). 2. Best Friesian heifer (Mildred Cow).

COMPARISONS

ARE ODDIUM BUT THE ONLY WAY FOR THE LAYMAN TO UNDERSTAND IS TO COMPARE AND YOU ARE SURE TO CHOOSE

Geo. BLOWERS

AS YOUR BUILDER Quality WE GIVE TO ALL JOBS Big & Small CONSULTATIONS ARE FREE. CALL WITH US MAY AND ESTIMATES I SAVE YOU POUNDS.

Wood Block Floors

OURS HAVE NEVER YET BEEN SURPASSED. OUR BLOCKS FIT CLOSE AND A PERFECT FLOOR IS A BIG ASSET TO YOUR HOME.

Cut Out The Old Dull Paint

BY HAVING YOUR DOORS, WINDOWS, AND FINISHINGS IN OILED OR POLISHED MVU I

WE SPECIALIZE IN— CONCRETE OF ALL FORMS. JOINERY. FURNITURE— ONLY TO YOUR DESIGN. SANITARY PLUMBING. ARTISTIC SIGNS FOR ALL PURPOSES. PAINTING AND DECORATING.

WE SUPPLY CUT STONE—BALLAST—ANY SIZE AND ALL BUILDING MATERIALS. SEND FOR OUR ILLUSTRATED CATALOGUE.

MARCONI

THE WORLD'S FINEST RADIO PRODUCTIONS TWO VALVE "All Electric" RECEIVER COMPLETE SETS.

S. JACOBS Ltd.

Can be used with Gramophone pick-up. Just Unpacked. CREPE DE CHINEE, GORGOTTES

DAYARAM BROS.

(NEXT TO ELECTRA HOUSE) Govt. Road, NAIROBI. P.O. Box 169.

37/50 Permanent Waving 37/50 During this month we are giving a permanent wave worth of 37/50 per original hair.

37/50 Permanent Waving 37/50 SPECIALISTS. Supply House P.O. Box 1.

TAKE NOTICE

THEY ARE THE ONLY ONE WHO SELL RIFLES, SAIGY GUNS AND AMMUNITION ALSO AS REQUISITES FOR SAFARI

Shaw & Hunter Ltd.

PIRELLA'S SPECIALISTS. P.O. Box 70 NAIROBI. Hardware Dept.

Class 112—Cattle. 1. Best Friesian cow (Mildred Cow). 2. Best Friesian heifer (Mildred Cow).

Class 113—Cattle. 1. Best Friesian cow (Mildred Cow). 2. Best Friesian heifer (Mildred Cow).

Class 114—Cattle. 1. Best Friesian cow (Mildred Cow). 2. Best Friesian heifer (Mildred Cow).

Class 115—Cattle. 1. Best Friesian cow (Mildred Cow). 2. Best Friesian heifer (Mildred Cow).

Class 116—Cattle. 1. Best Friesian cow (Mildred Cow). 2. Best Friesian heifer (Mildred Cow).

Class 117—Cattle. 1. Best Friesian cow (Mildred Cow). 2. Best Friesian heifer (Mildred Cow).

Class 118—Cattle. 1. Best Friesian cow (Mildred Cow). 2. Best Friesian heifer (Mildred Cow).

Class 119—Cattle. 1. Best Friesian cow (Mildred Cow). 2. Best Friesian heifer (Mildred Cow).

Class 120—Cattle. 1. Best Friesian cow (Mildred Cow). 2. Best Friesian heifer (Mildred Cow).

Class 121—Cattle. 1. Best Friesian cow (Mildred Cow). 2. Best Friesian heifer (Mildred Cow).

Class 122—Cattle. 1. Best Friesian cow (Mildred Cow). 2. Best Friesian heifer (Mildred Cow).

Class 123—Cattle. 1. Best Friesian cow (Mildred Cow). 2. Best Friesian heifer (Mildred Cow).

Class 124—Cattle. 1. Best Friesian cow (Mildred Cow). 2. Best Friesian heifer (Mildred Cow).

Class 125—Cattle. 1. Best Friesian cow (Mildred Cow). 2. Best Friesian heifer (Mildred Cow).

Class 126—Cattle. 1. Best Friesian cow (Mildred Cow). 2. Best Friesian heifer (Mildred Cow).

The New Quaker Oats

SAVE time, labor and fuel with the new quick cooking Quaker Oats



YOU WILL BE amazed and delighted with the new quick-cooking Quaker Oats. 1. It cooks in 1/2 the time formerly required. 2. It is the same fine quality as the old.

Save time, labor and fuel with the new quick cooking Quaker Oats. The name "quick-cooking" is plainly printed on the tin under the name and the familiar Quaker figure.

Summit Tennis Shirts



These Tennis Trousers... MEAN PERFECT FIT, COMFORT, EASE and DURABILITY.

Ahamed Bros

THE HOUSE OF DISTINCTION. P.O. Box 864, Dar-es-Salaam - NAIROBI - PHOENIX.

PRODUCTS OF GREAT BRITAIN

West Africa's Best Customer BUY FROM THOSE WHO BUY FROM YOU.

Advertisement for Gillette products including 'Keeps your Teeth Sparkling White' and 'Soothes and comforts the skin'.

BRITISH from the raw material to the finished product. YOUR CHEMIST STOCKS THEM.

In your own interests support Local Industry

Table listing various goods and their prices, such as 'Milk 1/87 per lb. of milk', 'Sugar 3/10', etc.

M. S. Elliot & Co., LIMITED. P.O. Box 175. Phone 2060

Rainy Season HAS NOW SET IN

Have your Motor Car Hood with best strong and lasting Motor Hood Material.

M. S. Elliot & Co., Ltd. P.O. Box 212. Telegrams: Tarpallobi, NAIROBI.

CORRESPONDENCE.

The Editor does not accept responsibility for the views expressed by the correspondents in this column...

The Reality of God.

A WOMAN'S DREAM TO BECOME A STATESMAN.

To the Editor, "E.A. Standard." Sir—The article in your issue of March 10th entitled "Is Woman Favorable to Religion," quoting a paragraph from the Archbishop of York's address, must have caused great interest to the minds of a number of thinking people.

RODENTS OF GREAT BRITAIN

HOUSEHOLD ROODONY—DOMESTIC SERVANTS.

To the Editor, "E.A. Standard." Sir—I read in your issue of the 10th March a letter signed "Mammoth" on the subject of domestic servants.

RAILWAY FUEL COSTS.

"The Editor, "E.A. Standard." Sir—I gather from the various sources that the Railways are being badly hit owing to the increase in the cost of fuel.

THE TRAFFIC SQUAD.

"The Editor, "E.A. Standard." Sir—It is so unusual for the members of the Traffic Squad to apply the members of the Traffic Squad to the members of the Traffic Squad.

WHY BUILD TO BURN?

THE TRAFFIC SQUAD. Sir—It is so unusual for the members of the Traffic Squad to apply the members of the Traffic Squad to the members of the Traffic Squad.

COGNAC?

WHY BUILD TO BURN? Sir—It is so unusual for the members of the Traffic Squad to apply the members of the Traffic Squad to the members of the Traffic Squad.

COGNAC?

WHY BUILD TO BURN? Sir—It is so unusual for the members of the Traffic Squad to apply the members of the Traffic Squad to the members of the Traffic Squad.

COGNAC?

WHY BUILD TO BURN? Sir—It is so unusual for the members of the Traffic Squad to apply the members of the Traffic Squad to the members of the Traffic Squad.

COGNAC?

WHY BUILD TO BURN? Sir—It is so unusual for the members of the Traffic Squad to apply the members of the Traffic Squad to the members of the Traffic Squad.

WHY BUILD TO BURN? Sir—It is so unusual for the members of the Traffic Squad to apply the members of the Traffic Squad to the members of the Traffic Squad.

THE ELIZABETH SHOW.

To the Editor, "E.A. Standard." Sir—As a visitor to the Agricultural Show at Eldoret, I wish to express my regret, which is shared by many others at the time of the show, that the show should be held during the hot afternoon.

HOUSEHOLD ROODONY—DOMESTIC SERVANTS.

To the Editor, "E.A. Standard." Sir—I read in your issue of the 10th March a letter signed "Mammoth" on the subject of domestic servants.

RAILWAY FUEL COSTS.

"The Editor, "E.A. Standard." Sir—I gather from the various sources that the Railways are being badly hit owing to the increase in the cost of fuel.

THE TRAFFIC SQUAD.

"The Editor, "E.A. Standard." Sir—It is so unusual for the members of the Traffic Squad to apply the members of the Traffic Squad to the members of the Traffic Squad.

WHY BUILD TO BURN?

THE TRAFFIC SQUAD. Sir—It is so unusual for the members of the Traffic Squad to apply the members of the Traffic Squad to the members of the Traffic Squad.

COGNAC?

WHY BUILD TO BURN? Sir—It is so unusual for the members of the Traffic Squad to apply the members of the Traffic Squad to the members of the Traffic Squad.

COGNAC?

WHY BUILD TO BURN? Sir—It is so unusual for the members of the Traffic Squad to apply the members of the Traffic Squad to the members of the Traffic Squad.

COGNAC?

WHY BUILD TO BURN? Sir—It is so unusual for the members of the Traffic Squad to apply the members of the Traffic Squad to the members of the Traffic Squad.

COGNAC?

WHY BUILD TO BURN? Sir—It is so unusual for the members of the Traffic Squad to apply the members of the Traffic Squad to the members of the Traffic Squad.

COGNAC?

WHY BUILD TO BURN? Sir—It is so unusual for the members of the Traffic Squad to apply the members of the Traffic Squad to the members of the Traffic Squad.

COGNAC?

WHY BUILD TO BURN? Sir—It is so unusual for the members of the Traffic Squad to apply the members of the Traffic Squad to the members of the Traffic Squad.

Aertex is Healthiest



There are no other materials available in the world which are so healthy and so comfortable as Aertex.

Aertex is Healthiest. The healthiest fabric in the world. It is made of the finest cotton and is the most comfortable and healthiest fabric in the world.

AERTEX logo and text: 'The healthiest fabric in the world. It is made of the finest cotton and is the most comfortable and healthiest fabric in the world.'

The Romance of Scotland is interwoven in the distillation and fragrance of W. & A. GILBEY'S SPEY ROYAL BY ROYAL APPOINTMENT.



The Whisky of the age. Guaranteed by the proprietors.

WHISKY THE FINEST PROVABLE. Stocked by all High-Class Hotels and Wine and Spirit Merchants.

B. FLORENS FRENCH HAIR DRESSER. PERMANENT AND TINTING SPECIALIST.

LYTERLIFE The New Non-Liquid Petrol for all pocket or table lighters.

Eight reasons why LYTERLIFE is better than Light Petrol. 1. A squeeze of the tube sets your lighter in a jiffy.

On Sale at Messrs A. McGeorge & Co., Ltd., 11, Market Street, S.S. 1, Southend-on-Sea.

On Sale at Messrs A. McGeorge & Co., Ltd., 11, Market Street, S.S. 1, Southend-on-Sea.

On Sale at Messrs A. McGeorge & Co., Ltd., 11, Market Street, S.S. 1, Southend-on-Sea.

On Sale at Messrs A. McGeorge & Co., Ltd., 11, Market Street, S.S. 1, Southend-on-Sea.

AUCTION SALES.



MOTOR & OSWALD
CATALOGUE SALE OF FURNITURE AND EFFECTS.

Daily instructed, we shall sell by Public Auction, Without Reserve, unless stipulated, at Our Sale-rooms, Motor Building, Harding Street, Nairobi.

On Monday 16th, March at 10 a.m.

Chesterfield Suites, Easy Chairs, Morris Chairs, Dining Table, Suites of Dining Chairs, Coffee Stools, Army and Navy Stoves, Upright Grand Piano, Iron Frame, Oak Case (low reserve), Aeolian Vacuum Piano Player, Occasional Tables, Dressing Tables, Washstands, Wardrobes, bevelled mirrors, Hanging Wardrobes, Chest of Drawers, Double Bedstead, spring mattress, Mattresses, Fire Grate, Electric Lamp, in brass, Mosaic, Kitchen Tables, Chinese BUTER and OSWALD Ltd., Auctioneers, Etc., NAIROBI.



TO LET.
FURNISHED and UNFURNISHED HOUSES, at Moderate Rentals.

SUITE of OFFICES in PRINCE ROSE, Government Road; rooms in the Shell Co.

SUITE of OFFICES in MOTOS BUILDING, Harding Street, from 1st June.

For further particulars apply to:

MOTOR and OSWALD Ltd., Sole Agents, NAIROBI.

JAMAL PIRBHAI
SALE OF U.S.A. MOTOR CYCLE, FURNITURE, Etc.

Daily instructed, I shall sell, by Public Auction, at the Auction Mart, opposite Ziwang Garden, Nairobi, on **SUNDAY, the 18th MARCH, 1931, at 8 a.m., sharp.**

1 U.S.A. Motor Cycle of 7 H.P. with motor and in complete order, New stock, and all kinds of furniture.

JAMAL PIRBHAI,
AUCTIONEER AND OFFICIAL BROKER,
NAIROBI. P.O. Box No. 200.

SANDS & CO.
AT OUR SALEYARDS, NAIYASHA.

Monday, 16th March at 10-30 A.M.

30 Grade Cows in Calf to Pedigreed Ayshire Bulls.
5 Native Cows.
60 Grade Sheep.
60 Grade and Native Cows.
30 Grade Steers.

SANDS & CO., AUCTIONEERS

Butter Ghee

1/- per lb.

SANDS & CO., NAIROBI.

Concrete Blocks

STIRLING & SCOTT Ltd.
P.O. Box 245 Victoria Street. Phone 2192.

METROPOLITAN GARAGE.
(OFF. GODFREY CAR MART.)
Repairs all makes of Cars, Duo Spray Painting, Overhauls a Speciality, Vulcanizing & Retreading. **RECONDITORED CARS BOUGHT and SOLD.** Our Charges are the most moderate in the country. A personal interest taken in every car.

This Week's Bargain:
4 Cylinder Rugby Model, Body Body Fully equipped and guaranteed condition throughout. **£32/10/0**

D. J. LETHBRIDGE,
SOLE PROPRIETOR.

AUSTIN'S AUCTIONS

CATALOGUE SALE OF GOOD FURNITURE, CHESTERFIELD SUITES, TYPEWRITER, GRAMOPHONE, CHINA and GLASS WARE, BABY SCALES, BLANKETS, PLATEDWARE, BOXSPRING BEDS, BRASSWARE, ETC.

AUSTIN & CO.,
will sell Without Reserve unless stated, at The Mart, **TO-DAY, March 14th at 10 a.m.**

Chesterfield Suites in Bertine, Popin and Crezone. Teak Writing Bureau. Nests of 3 Teak Tables. Bedroom Wardrobe in Teak with Mirror. Teak Double Washstand. Good Single Iron Bed complete. New Boxspring Single Bed. Single Wood Beds complete with Querry. Small Stretcher Bed. Treasure Cot. Suite of Good Dining Chairs with Solid turned legs with Extending Rectangular Dining Table and Sideboard (res.). Hanging and Sashel Wardrobes with Mirrors. Several Dressing Tables. Coffee Stools and Bedside Tables. Office Desks and Teak Chest of Drawers. Morris Chairs, Tea Tables. Cork Matting. Bedroom Druggist. Baby's Enamel Bath Scales and Basket in new condition. Tennis Rackets. Suite of Dining Tables and Chairs. Several Sideboards. Large New Galv. Iron Bath. Scales with Weights. Good Tennis Rackets. Kitchen Utensils. Cutlery. Glassware. Bread Slicer. Kitchen Tins. Filter-Trouser Press. Jap. Trunks. Sets of Embroid Wares. Corona Portable Typewriter in New Condition (res.). Silver Plated Fruit and Cake stand. Assorted Glassware. Glass Flower Bowls. China Coffee Sets. Oak Solid Bowl. Records. Gloustone Powder Boxes. 54 piece Dinner Set. Photo Frames. Good Blankets and New Travelling Bags. Large Brass Plant Bowl. Pair of Hand Painted Water Colours framed. Columbia Portable Gramophone in New Condition (res.). And numerous other articles.

BUICK MASTER 6 BOXBODY CAR in excellent running order and condition. Aluminium Body. Tyres new. Just been decommissioned (res.).

MODEL T FORD BOXBODY CAR in good running order and condition with Spare parts.

AUSTIN & CO., AUCTIONEERS and ESTATE AGENTS.
Hardinge St., NAIROBI.

THACKRAH'S Ltd., NAIROBI.
(Established 1917.)

The Up-Country LAND and ESTATE AGENTS, AUCTIONEERS & APPROVED VALUERS, INSURANCE, SHIPPING and FINANCIAL AGENTS.

Shops, Offices, Godowns, Houses and Farms, TO LET or FOR SALE.

P. STEWART, C.A.S.S.E.D.
PAINTER and DECORATOR.

Victoria Street, opposite the Post Office.
P.O. Box 286 - NAIROBI.

Place yourself on the right side of the Danger Line!

INSURE

FOUR MOTOR CARS and MOTOR CYCLES

AFRICAN GUARANTEE and INDEMNITY Co., Ltd.
14 D. KAMPP, Chief Agent.

Doonholm Dairy

FOR PURE MILK and CREAM FROM FARM TO CONSUMER.

P.O. Box 11, NAIROBI.

MOMBASA TIMES
CAN BE OBTAINED AT THE Standard Stationery Store NAIROBI.

E. Hutchison & Co.

Favoured with instructions, we shall sell by Public Auction, Without Reserve (unless stated), at our Mart, Government Road, on **Tuesday-17th last, at 10 a.m.**

The following—
3 7/8cns Chesterfield Suite covered Shadow Tiansa. Chesterfield Suite covered figured Napoleon. 1 Club Easy. 2 Oval Dining Tables. 3 Sets of Six Dining Chairs. 2 Sideboards. Occasional Tables. Coffee Stools. 4 Writing Bureaux. 3 Single Wardrobes. Double Wardrobe. 4 Dressing Chests. Chests of Drawers. Morris Chair Cushions. Bevelled Mirror in Frame. Folding Card Table. Lot of Books. Gramophone Records. 12 Hammer. 2 Office Tables. Full Length Bath. Cheval Mirror. 4 Morris Chairs. Iron Bed. 2 Single Wooden Beds. Meat Safe. D.B. R.A. Shot Gun. 302 Rifle. Revolver. Wireless Loud Speaker. Chesterfield Cover in Japs. Cloth, new. Lot of Good Novels. And many other items too numerous to detail.

E. HUTCHISON & CO., AUCTIONEERS, Etc., NAIROBI!

E. Hutchison & Co.
FOR SALE.—Small Freehold Farm. Limuru. Ideally situated. 50 acres. £8 p.a.
FOR SALE.—Two good building Plots. Duke Street. 5440 sq. ft.
FOR SALE.—Good Stone House, Kikuyu Road. Two bedrooms. Inside sanitation. Nice garden. £1,000 terms, or to let £10 per month.
FOR SALE.—5 acres, Parklands, with three houses and room for three more.
FOR SALE.—Exceptionally attractive Residence Caledonian Road fitted with all up-to-date requirements. 4 bedrooms. Dining Room, Large Lounge, Guest House, Tennis Court, Garden and Lawns extending to 2.16 acres. A really attractive property.
MORTGAGE.—£5,000 to lend on first mortgage in amounts of £2,000 and £1,000 respectively.

Wood Preservative
Messrs. Parsons's Antiseptic Company Ltd. 10, Mark Lane, London, E.C.3.

"FALIM"—the cheapest yet most efficient preservative against white ants and other insects. It is also an antiseptic and disinfectant, and it forms an excellent wash stain.

DISINFECTANTS
"HYCOL" Nos. 1 and 2 "Municipal Food" "Casal Disinfectant".
Representatives for East Africa—**W. H. LEMBERT, P.O. Box 781, NAIROBI.**

Model 16 Shgs. 850-
Self Feeding **RONEO** **elt Inking**

Model 2 Shgs. 350-

MAY WE SHOW YOU THE MACHINE ITSELF

Model 2 Shgs. 350-

Standard Stationery Stores, NAIROBI.

THE PREMIER USED CAR SALESMAN.

Godfrey's Car Mart LIMITED.
Texaco House - Sadler Street.

50 USED CARS 50 TO SELECT FROM

First Light Delivery (Model A) Recently overhauled. Sweeping engine. Excellent and reliable. £65
Ford Box Body (Model A) Aluminium body. Tyres excellent. All new. £70
East Sabco (Super Six) This car is in remarkably good condition. £60
International Truck 1 Ton. Recently overhauled. New Tyres. Good and reliable. £88
Dodge Box Body. A second powerful and reliable vehicle. £88
Chevy 4 Box Body 1927. In very good running order and condition. £68
Chevy 4 Truck. In perfect condition. Well shod. £68
Chevy 4 Box Body. Fully equipped. Tyres new. A £65

First Truck Model A. Over 5,000 miles.
Fitted with new Body. Excellent. Small mileage. (New) 1927. £100
Chevy 4 Truck. Sedan body. Fitted with extra panel and water tanks. Well shod. An outstanding good truck. £110
Chevy 50. Touring car. For low running order. £100
Ford Box Body. recent model. Over only 5,000 miles. Excellent as new. £110
Whippet Box Body. Over only 10,000 miles. Tyres of new condition. £110
Chevy 4 Box Body 1927 Model. In good mechanical condition. £110
Ragley 4 Box Body. Bound and painted. £110
Oldsmobile Sedan. In excellent running order and condition. £110

Sole Agents:
Ariel Motorcycles
1931 Models Arriving Shortly.

MEALY BUG.
USE
Tree Tanglefoot
THE BEST PREVENTATIVE
Stocks on Hand

Sole Agents:
DEMNOVA & DIEBEL
VICTORIA STREET - NAIROBI.

A. L. SMITHSON.
F.A.L.P.A.
Estate Agent and Approved Valuer.
ALL KINDS OF INSURANCE EFFECTED.
MORTGAGES ARRANGED.
VALUATIONS FOR INSURANCE, MORTGAGE, ESTATE DUTY and PROBATE.

BOLUS HOUSE,
Telephone 2759. NAIROBI. P.O. Box 1138.

BRICKS
are universally recognized as the best building material
over 3,000,000
Invicta Bricks
have been used in Nairobi during the last twelve months.
INVICTA BRICK & TILE WORKS.
P.O. Box 723 — Tel. 2214.

LADIES HAIRDRESSING MAISON MARIÉ
Permanent Waving, Permanent Prices. No Fluctuations.
Kenya's Most Up-to-date and Luxurious Ladies' Saloons.
Theatre Royal Buildings, Sixth Avenue, NAIROBI. P.O. Box 108.

