





J. A. LANDMAN & Co. LAND, ESTATE AND MANAGING AGENTS. J. W. MILLIGAN & Co., ESTABLISHED 1912. Nairobi. P.O. Box 368.

FOR SALE: Large plots of land in the Highlands, suitable for building. Price: £100 per acre. Also, a large plot of 100 acres in the Highlands, suitable for a large estate. Price: £10,000.

FOR SALE: A large plot of land in the Highlands, suitable for building. Price: £100 per acre. Also, a large plot of 100 acres in the Highlands, suitable for a large estate. Price: £10,000.

FOR SALE: A large plot of land in the Highlands, suitable for building. Price: £100 per acre. Also, a large plot of 100 acres in the Highlands, suitable for a large estate. Price: £10,000.

FOR SALE: A large plot of land in the Highlands, suitable for building. Price: £100 per acre. Also, a large plot of 100 acres in the Highlands, suitable for a large estate. Price: £10,000.

FOR SALE: A large plot of land in the Highlands, suitable for building. Price: £100 per acre. Also, a large plot of 100 acres in the Highlands, suitable for a large estate. Price: £10,000.

FOR SALE: A large plot of land in the Highlands, suitable for building. Price: £100 per acre. Also, a large plot of 100 acres in the Highlands, suitable for a large estate. Price: £10,000.

FOR SALE: A large plot of land in the Highlands, suitable for building. Price: £100 per acre. Also, a large plot of 100 acres in the Highlands, suitable for a large estate. Price: £10,000.

FOR SALE: A large plot of land in the Highlands, suitable for building. Price: £100 per acre. Also, a large plot of 100 acres in the Highlands, suitable for a large estate. Price: £10,000.

FOR SALE: A large plot of land in the Highlands, suitable for building. Price: £100 per acre. Also, a large plot of 100 acres in the Highlands, suitable for a large estate. Price: £10,000.

"Kenya's Pride" Flour. Packed in 10 lb., 50 lb., and 200 lb. bags. MANUFACTURED BY KENYA GRAIN MILLS, LTD., NAIROBI.

AMSTEL SUPER STOUT. Try it for yourself. Sole Distributors: Twentieth Century Trading Co., Mombasa.

Kenya Horticultural Society. FLOWER SHOW IN THE MEMORIAL HALL ON Monday, 1st June, 12 noon. ADMISION 1/- SEND IN YOUR EXHIBITS AND MAKE THE SHOW A SUCCESS.

FOR SALE: A large plot of land in the Highlands, suitable for building. Price: £100 per acre. Also, a large plot of 100 acres in the Highlands, suitable for a large estate. Price: £10,000.

FOR SALE: A large plot of land in the Highlands, suitable for building. Price: £100 per acre. Also, a large plot of 100 acres in the Highlands, suitable for a large estate. Price: £10,000.

FOR SALE: A large plot of land in the Highlands, suitable for building. Price: £100 per acre. Also, a large plot of 100 acres in the Highlands, suitable for a large estate. Price: £10,000.

FOR SALE: A large plot of land in the Highlands, suitable for building. Price: £100 per acre. Also, a large plot of 100 acres in the Highlands, suitable for a large estate. Price: £10,000.

FOR SALE: A large plot of land in the Highlands, suitable for building. Price: £100 per acre. Also, a large plot of 100 acres in the Highlands, suitable for a large estate. Price: £10,000.

FOR SALE: A large plot of land in the Highlands, suitable for building. Price: £100 per acre. Also, a large plot of 100 acres in the Highlands, suitable for a large estate. Price: £10,000.

FOR SALE: A large plot of land in the Highlands, suitable for building. Price: £100 per acre. Also, a large plot of 100 acres in the Highlands, suitable for a large estate. Price: £10,000.

FOR SALE: A large plot of land in the Highlands, suitable for building. Price: £100 per acre. Also, a large plot of 100 acres in the Highlands, suitable for a large estate. Price: £10,000.

FOR SALE: A large plot of land in the Highlands, suitable for building. Price: £100 per acre. Also, a large plot of 100 acres in the Highlands, suitable for a large estate. Price: £10,000.

## British India Steam Navigation Company, Limited.

AND PENINSULAR AND ORIENTAL STEAM NAVIGATION CO.

**LONDON & EAST AFRICA LINE**

Steamers leaves the liberty to call at Malindi and/or Tangier.

Arrives from London at Malindi and/or Mombasa about:

Sails for London at Malindi and/or Mombasa about:

S.S. "MANELA"	6th June	6th June
S.S. "MATIANA"	8th June	4th July
S.S. "MANTOLA"	3rd July	1st Aug.
S.S. "MODASA"	31st July	29th Aug.
S.S. "MADURA"	29th Aug.	26th Sept.
S.S. "MATIANA"	29th Sept.	24th Oct.
S.S. "MANTOLA"	23rd Oct.	21st Nov.

**BOMBAY/DURBAN LINE**  
(Mail Contract.)  
TO BOMBAY.

S.S. "KEANDALLA"	29th May
S.S. "KENYA"	16th June
S.S. "KAROA"	30th June
S.S. "KARAGOLA"	8th July
S.S. "KEANDALLA"	24th July
S.S. "KENYA"	5th Aug.

TO DURBAN.

S.S. "KAROA"	21st May
S.S. "KARAGOLA"	18th June
S.S. "KEANDALLA"	30th June
S.S. "KENYA"	11th July
S.S. "KAROA"	29th July
S.S. "KARAGOLA"	8th Aug.

AGENCIES:  
PENINSULAR AND ORIENTAL STEAM NAVIGATION CO.  
NAIROBI  
Smith Brothers & Co.  
Clyde Brothers, Ltd.  
NAIROBI  
Emu Farmers' Association.  
HOBOKEN  
Ongi, Hooley & Co.  
BOT  
The Boy Stationers.  
KITALE  
Arthur Davis.  
KAMPALA  
Smith Mackenzie & Co.  
Freight and Passages:  
SMITH MACKENZIE & Co.  
Mombasa, Zanzibar, Dar es Salaam, Tangor, Lindi, Louren.

### Chivers' Custard Powder



combines highest quality ingredients and is put up into a nutritive Compound with Delicious with Chivers' Canned Fruit.

CHIVERS and SONS LTD., The Custard Powder Works, History, Cambridge, England.

Sole Agents for trade only—G. O. HAMILTON, Ltd., NAIROBI.

### Messageries Maritimes

(FRENCH MAIL SERVICE) FROM AND TO MARSEILLE.

Regular and fortnightly services from NAIROBI.

The Quickest Route to London.

Yacht Sailings to Marseilles:

S.S. "General Dubouché"	1st June
S.S. "L'Espresso de L'Inde"	15th June
S.S. "Le Capitaine de St. Pierre"	29th June
S.S. "Bismarck de St. Pierre"	13th July

Next Arrival from Marseilles:  
CHARENTAIS ON 21ST STRAITS.

Messageries Maritimes, P.O. Box 36, Mombasa.

Emile Jardin, P.O. Box 25, NAIROBI.

**HOMEWARD TO SUEZ**  
From Mombasa, via England

Landrovers Castle	13th June	8th July
Landrovers Castle	20th June	15th July
Landrovers Castle	27th June	22nd July
Landrovers Castle	4th July	29th July
Landrovers Castle	11th July	5th Aug.
Landrovers Castle	18th July	12th Aug.
Landrovers Castle	25th July	19th Aug.
Landrovers Castle	1st Aug.	26th Aug.
Landrovers Castle	8th Aug.	2nd Sept.
Landrovers Castle	15th Aug.	9th Sept.
Landrovers Castle	22nd Aug.	16th Sept.
Landrovers Castle	29th Aug.	23rd Sept.
Landrovers Castle	5th Sept.	29th Sept.
Landrovers Castle	12th Sept.	6th Oct.
Landrovers Castle	19th Sept.	13th Oct.
Landrovers Castle	26th Sept.	20th Oct.
Landrovers Castle	3rd Oct.	27th Oct.
Landrovers Castle	10th Oct.	3rd Nov.
Landrovers Castle	17th Oct.	10th Nov.
Landrovers Castle	24th Oct.	17th Nov.
Landrovers Castle	31st Oct.	24th Nov.
Landrovers Castle	7th Nov.	1st Dec.
Landrovers Castle	14th Nov.	8th Dec.
Landrovers Castle	21st Nov.	15th Dec.
Landrovers Castle	28th Nov.	22nd Dec.
Landrovers Castle	5th Dec.	29th Dec.
Landrovers Castle	12th Dec.	5th Jan.
Landrovers Castle	19th Dec.	12th Jan.
Landrovers Castle	26th Dec.	19th Jan.
Landrovers Castle	2nd Jan.	26th Jan.
Landrovers Castle	9th Jan.	2nd Feb.
Landrovers Castle	16th Jan.	9th Feb.
Landrovers Castle	23rd Jan.	16th Feb.
Landrovers Castle	30th Jan.	23rd Feb.
Landrovers Castle	6th Feb.	1st Mar.
Landrovers Castle	13th Feb.	8th Mar.
Landrovers Castle	20th Feb.	15th Mar.
Landrovers Castle	27th Feb.	22nd Mar.
Landrovers Castle	6th Mar.	30th Mar.
Landrovers Castle	13th Mar.	6th Apr.
Landrovers Castle	20th Mar.	13th Apr.
Landrovers Castle	27th Mar.	20th Apr.
Landrovers Castle	3rd Apr.	27th Apr.
Landrovers Castle	10th Apr.	4th May.
Landrovers Castle	17th Apr.	11th May.
Landrovers Castle	24th Apr.	18th May.
Landrovers Castle	1st May.	25th May.
Landrovers Castle	8th May.	1st June.
Landrovers Castle	15th May.	8th June.
Landrovers Castle	22nd May.	15th June.
Landrovers Castle	29th May.	22nd June.
Landrovers Castle	5th June.	29th June.
Landrovers Castle	12th June.	6th July.
Landrovers Castle	19th June.	13th July.
Landrovers Castle	26th June.	20th July.
Landrovers Castle	3rd July.	27th July.
Landrovers Castle	10th July.	3rd Aug.
Landrovers Castle	17th July.	10th Aug.
Landrovers Castle	24th July.	17th Aug.
Landrovers Castle	31st July.	24th Aug.
Landrovers Castle	7th Aug.	31st Aug.
Landrovers Castle	14th Aug.	7th Sept.
Landrovers Castle	21st Aug.	14th Sept.
Landrovers Castle	28th Aug.	21st Sept.
Landrovers Castle	4th Sept.	28th Sept.
Landrovers Castle	11th Sept.	4th Oct.
Landrovers Castle	18th Sept.	11th Oct.
Landrovers Castle	25th Sept.	18th Oct.
Landrovers Castle	2nd Oct.	25th Oct.
Landrovers Castle	9th Oct.	1st Nov.
Landrovers Castle	16th Oct.	8th Nov.
Landrovers Castle	23rd Oct.	15th Nov.
Landrovers Castle	30th Oct.	22nd Nov.
Landrovers Castle	6th Nov.	29th Nov.
Landrovers Castle	13th Nov.	6th Dec.
Landrovers Castle	20th Nov.	13th Dec.
Landrovers Castle	27th Nov.	20th Dec.
Landrovers Castle	4th Dec.	27th Dec.
Landrovers Castle	11th Dec.	3rd Jan.
Landrovers Castle	18th Dec.	10th Jan.
Landrovers Castle	25th Dec.	17th Jan.
Landrovers Castle	1st Jan.	24th Jan.
Landrovers Castle	8th Jan.	31st Jan.
Landrovers Castle	15th Jan.	7th Feb.
Landrovers Castle	22nd Jan.	14th Feb.
Landrovers Castle	29th Jan.	21st Feb.
Landrovers Castle	5th Feb.	28th Feb.
Landrovers Castle	12th Feb.	6th Mar.
Landrovers Castle	19th Feb.	13th Mar.
Landrovers Castle	26th Feb.	20th Mar.
Landrovers Castle	5th Mar.	27th Mar.
Landrovers Castle	12th Mar.	3rd Apr.
Landrovers Castle	19th Mar.	10th Apr.
Landrovers Castle	26th Mar.	17th Apr.
Landrovers Castle	2nd Apr.	24th Apr.
Landrovers Castle	9th Apr.	1st May.
Landrovers Castle	16th Apr.	8th May.
Landrovers Castle	23rd Apr.	15th May.
Landrovers Castle	30th Apr.	22nd May.
Landrovers Castle	7th May.	29th May.
Landrovers Castle	14th May.	5th June.
Landrovers Castle	21st May.	12th June.
Landrovers Castle	28th May.	19th June.
Landrovers Castle	4th June.	26th June.
Landrovers Castle	11th June.	3rd July.
Landrovers Castle	18th June.	10th July.
Landrovers Castle	25th June.	17th July.
Landrovers Castle	2nd July.	24th July.
Landrovers Castle	9th July.	31st July.
Landrovers Castle	16th July.	7th Aug.
Landrovers Castle	23rd July.	14th Aug.
Landrovers Castle	30th July.	21st Aug.
Landrovers Castle	6th Aug.	28th Aug.
Landrovers Castle	13th Aug.	4th Sept.
Landrovers Castle	20th Aug.	11th Sept.
Landrovers Castle	27th Aug.	18th Sept.
Landrovers Castle	3rd Sept.	25th Sept.
Landrovers Castle	10th Sept.	2nd Oct.
Landrovers Castle	17th Sept.	9th Oct.
Landrovers Castle	24th Sept.	16th Oct.
Landrovers Castle	1st Oct.	23rd Oct.
Landrovers Castle	8th Oct.	30th Oct.
Landrovers Castle	15th Oct.	6th Nov.
Landrovers Castle	22nd Oct.	13th Nov.
Landrovers Castle	29th Oct.	20th Nov.
Landrovers Castle	5th Nov.	27th Nov.
Landrovers Castle	12th Nov.	4th Dec.
Landrovers Castle	19th Nov.	11th Dec.
Landrovers Castle	26th Nov.	18th Dec.
Landrovers Castle	3rd Dec.	25th Dec.
Landrovers Castle	10th Dec.	1st Jan.
Landrovers Castle	17th Dec.	8th Jan.
Landrovers Castle	24th Dec.	15th Jan.
Landrovers Castle	31st Dec.	22nd Jan.
Landrovers Castle	7th Jan.	29th Jan.
Landrovers Castle	14th Jan.	5th Feb.
Landrovers Castle	21st Jan.	12th Feb.
Landrovers Castle	28th Jan.	19th Feb.
Landrovers Castle	4th Feb.	26th Feb.
Landrovers Castle	11th Feb.	5th Mar.
Landrovers Castle	18th Feb.	12th Mar.
Landrovers Castle	25th Feb.	19th Mar.
Landrovers Castle	3rd Mar.	26th Mar.
Landrovers Castle	10th Mar.	2nd Apr.
Landrovers Castle	17th Mar.	9th Apr.
Landrovers Castle	24th Mar.	16th Apr.
Landrovers Castle	31st Mar.	23rd Apr.
Landrovers Castle	7th Apr.	30th Apr.
Landrovers Castle	14th Apr.	7th May.
Landrovers Castle	21st Apr.	14th May.
Landrovers Castle	28th Apr.	21st May.
Landrovers Castle	5th May.	28th May.
Landrovers Castle	12th May.	4th June.
Landrovers Castle	19th May.	11th June.
Landrovers Castle	26th May.	18th June.
Landrovers Castle	2nd June.	25th June.
Landrovers Castle	9th June.	2nd July.
Landrovers Castle	16th June.	9th July.
Landrovers Castle	23rd June.	16th July.
Landrovers Castle	30th June.	23rd July.
Landrovers Castle	7th July.	30th July.
Landrovers Castle	14th July.	6th Aug.
Landrovers Castle	21st July.	13th Aug.
Landrovers Castle	28th July.	20th Aug.
Landrovers Castle	4th Aug.	27th Aug.
Landrovers Castle	11th Aug.	3rd Sept.
Landrovers Castle	18th Aug.	10th Sept.
Landrovers Castle	25th Aug.	17th Sept.
Landrovers Castle	1st Sept.	24th Sept.
Landrovers Castle	8th Sept.	1st Oct.
Landrovers Castle	15th Sept.	8th Oct.
Landrovers Castle	22nd Sept.	15th Oct.
Landrovers Castle	29th Sept.	22nd Oct.
Landrovers Castle	6th Oct.	29th Oct.
Landrovers Castle	13th Oct.	5th Nov.
Landrovers Castle	20th Oct.	12th Nov.
Landrovers Castle	27th Oct.	19th Nov.
Landrovers Castle	3rd Nov.	26th Nov.
Landrovers Castle	10th Nov.	3rd Dec.
Landrovers Castle	17th Nov.	10th Dec.
Landrovers Castle	24th Nov.	17th Dec.
Landrovers Castle	1st Dec.	24th Dec.
Landrovers Castle	8th Dec.	31st Dec.
Landrovers Castle	15th Dec.	7th Jan.
Landrovers Castle	22nd Dec.	14th Jan.
Landrovers Castle	29th Dec.	21st Jan.
Landrovers Castle	5th Jan.	28th Jan.
Landrovers Castle	12th Jan.	4th Feb.
Landrovers Castle	19th Jan.	11th Feb.
Landrovers Castle	26th Jan.	18th Feb.
Landrovers Castle	2nd Feb.	25th Feb.
Landrovers Castle	9th Feb.	3rd Mar.
Landrovers Castle	16th Feb.	10th Mar.
Landrovers Castle	23rd Feb.	17th Mar.
Landrovers Castle	1st Mar.	24th Mar.
Landrovers Castle	8th Mar.	31st Mar.
Landrovers Castle	15th Mar.	7th Apr.
Landrovers Castle	22nd Mar.	14th Apr.
Landrovers Castle	29th Mar.	21st Apr.
Landrovers Castle	5th Apr.	28th Apr.
Landrovers Castle	12th Apr.	5th May.
Landrovers Castle	19th Apr.	12th May.
Landrovers Castle	26th Apr.	19th May.
Landrovers Castle	3rd May.	26th May.
Landrovers Castle	10th May.	2nd June.
Landrovers Castle	17th May.	9th June.
Landrovers Castle	24th May.	16th June.
Landrovers Castle	31st May.	23rd June.
Landrovers Castle	7th June.	30th June.
Landrovers Castle	14th June.	7th July.
Landrovers Castle	21st June.	14th July.
Landrovers Castle	28th June.	21st July.
Landrovers Castle	5th July.	28th July.
Landrovers Castle	12th July.	4th Aug.
Landrovers Castle	19th July.	11th Aug.
Landrovers Castle	26th July.	18th Aug.
Landrovers Castle	2nd Aug.	25th Aug.
Landrovers Castle	9th Aug.	1st Sept.
Landrovers Castle	16th Aug.	8th Sept.
Landrovers Castle	23rd Aug.	15th Sept.
Landrovers Castle	30th Aug.	22nd Sept.
Landrovers Castle	6th Sept.	29th Sept.
Landrovers Castle	13th Sept.	6th Oct.
Landrovers Castle	20th Sept.	13th Oct.
Landrovers Castle	27th Sept.	20th Oct.
Landrovers Castle	4th Oct.	27th Oct.
Landrovers Castle	11th Oct.	3rd Nov.
Landrovers Castle	18th Oct.	10th Nov.
Landrovers Castle	25th Oct.	17th Nov.
Landrovers Castle	1st Nov.	24th Nov.
Landrovers Castle	8th Nov.	1st Dec.
Landrovers Castle	15th Nov.	8th Dec.
Landrovers Castle	22nd Nov.	15th Dec.
Landrovers Castle	29th Nov.	22nd Dec.
Landrovers Castle	6th Dec.	29th Dec.
Landrovers Castle	13th Dec.	5th Jan.
Landrovers Castle	20th Dec.	12th Jan.
Landrovers Castle	27th Dec.	19th Jan.
Landrovers Castle	3rd Jan.	26th Jan.
Landrovers Castle	10th Jan.	2nd Feb.
Landrovers Castle	17th Jan.	9th Feb.
Landrovers Castle	24th Jan.	16th Feb.
Landrovers Castle	31st Jan.	23rd Feb.
Landrovers Castle	7th Feb.	1st Mar.
Landrovers Castle	14th Feb.	8th Mar.
Landrovers Castle	21st Feb.	15th Mar.
Landrovers Castle	28th Feb.	22nd Mar.
Landrovers Castle	6th Mar.	29th Mar.
Landrovers Castle	13th Mar.	5th Apr.
Landrovers Castle	20th Mar.	12th Apr.
Landrovers Castle	27th Mar.	19th Apr.
Landrovers Castle	3rd Apr.	26th Apr.
Landrovers Castle	10th Apr.	3rd May.
Landrovers Castle	17th Apr.	10th May.
Landrovers Castle	24th Apr.	17th May.
Landrovers Castle	1st May.	24th May.
Landrovers Castle	8th May.	31st May.
Landrovers Castle	15th May.	7th June.
Landrovers Castle	22nd May.	14th June.
Landrovers Castle	29th May.	21st June.
Landrovers Castle	5th June.	28th June.
Landrovers Castle	12th June.	5th July.
Landrovers Castle	19th June.	12th July.
Landrovers Castle	26th June.	19th July.
Landrovers Castle	3rd July.	26th July.
Landrovers Castle	10th July.	2nd Aug.
Landrovers Castle	17th July.	9th Aug.
Landrovers Castle	24th July.	16th Aug.
Landrovers Castle	31st July.	23rd Aug.
Landrovers Castle	7th Aug.	30th Aug.
Landrovers Castle	14th Aug.	6th Sept.
Landrovers Castle	21st Aug.	13th Sept.
Landrovers Castle	28th Aug.	20th Sept.
Landrovers Castle	4th Sept.	27th Sept.
Landrovers Castle	11th Sept.	4th Oct.
Landrovers Castle	18th Sept.	11th Oct.
Landrovers Castle	25th Sept.	18th Oct.
Landrovers Castle	2nd Oct.	25th Oct.
Landrovers Castle	9th Oct.	1st Nov.
Landrovers Castle	16th Oct.	8th Nov.
Landrovers Castle	23rd Oct.	15th Nov.
Landrovers Castle	30th Oct.	22nd Nov.
Landrovers Castle	6th Nov.	29th Nov.
Landrovers Castle	13th Nov.	6th Dec.
Landrovers Castle	20th Nov.	13th Dec.
Landrovers Castle	27th Nov.	20th Dec.
Landrovers Castle	4th Dec.	27th Dec.
Landrovers Castle	11th Dec.	3rd Jan.
Landrovers Castle	18th Dec.	10th Jan.
Landrovers Castle	25th Dec.	17th Jan.
Landrovers Castle	1st Jan.	24th Jan.
Landrovers Castle	8th Jan.	31st Jan.
Landrovers Castle	15th Jan.	7th Feb.
Landrovers Castle	22nd Jan.	14th Feb.
Landrovers Castle	29th Jan.	21st Feb.
Landrovers Castle	5th Feb.	28th Feb.
Landrovers Castle	12th Feb.	6th Mar.
Landrovers Castle	19th Feb.	13th Mar.
Landrovers Castle	26th Feb.	20th Mar.
Landrovers Castle	5th Mar.	27th Mar.
Landrovers Castle	12th Mar.	3rd Apr.





MAKING BETTER HEALTH TO THE NATIVE.

Achievements of the Kyambu Hospital.

AFRICAN SELF-HELP.

Native Funds Provide Three Dispensaries and Ambulance.

It is known outside Kenya—and unfortunately to the Colony, too—of what is being done for the African that a special interest attaches to the story of the Kyambu Native Hospital.

constant stream of patients in like a pilgrimage to the hospital, and it is constantly to capacity and its 54 beds serve 150,000 people.

hospital is an interesting experiment. The staff, with the exception of two native nurses, is wholly European.

Dr. Kikuyu chief who is present in person, was operated on for appendicitis at the Kyambu before he left. His case was one of the many achievements of that well-known institution.

hospital has another interesting side to its story. It receives three dispensaries in the Reserve— all provided out of funds supplied by the Local Native Council. The same body provided the hospital ambulance.

Operation on a Chief.

["E. A. Standart" Special.]

Dr. Kikuyu, a native surgeon, has been operating on a chief at the Kyambu Hospital at Kericho. The patient is a chief of the Kikuyu tribe, and his name is Mr. Kikuyu.

the patient to be operated on for appendicitis at the Kyambu before he left. His case was one of the many achievements of that well-known institution.

the patient to be operated on for appendicitis at the Kyambu before he left. His case was one of the many achievements of that well-known institution.

the patient to be operated on for appendicitis at the Kyambu before he left. His case was one of the many achievements of that well-known institution.

the patient to be operated on for appendicitis at the Kyambu before he left. His case was one of the many achievements of that well-known institution.

the patient to be operated on for appendicitis at the Kyambu before he left. His case was one of the many achievements of that well-known institution.

the patient to be operated on for appendicitis at the Kyambu before he left. His case was one of the many achievements of that well-known institution.

the patient to be operated on for appendicitis at the Kyambu before he left. His case was one of the many achievements of that well-known institution.

the patient to be operated on for appendicitis at the Kyambu before he left. His case was one of the many achievements of that well-known institution.

the patient to be operated on for appendicitis at the Kyambu before he left. His case was one of the many achievements of that well-known institution.

the patient to be operated on for appendicitis at the Kyambu before he left. His case was one of the many achievements of that well-known institution.

the patient to be operated on for appendicitis at the Kyambu before he left. His case was one of the many achievements of that well-known institution.

the patient to be operated on for appendicitis at the Kyambu before he left. His case was one of the many achievements of that well-known institution.

the patient to be operated on for appendicitis at the Kyambu before he left. His case was one of the many achievements of that well-known institution.

M.P.'S VISIT TO WAR CEMETERIES.

Memorial Unveiled at Ypres Cathedral.

TO THE 100,000 DEAD.

Members of Parliament, May 20.

representative of all three parties, who spent Wednesday visiting the British War Cemeteries and Memorials in France and Belgium, were present at Ypres Cathedral yesterday when General Sir Charles Harrington, former Chief of Staff to Lord Ypres, unveiled a tablet to the memory of the 100,000 dead of the First World War who fell in the Great War. Underneath the tablet are the names of the United Kingdom and the Dominions fully constituted—British Official Wireless Service.

25 Cent Piece.

OLD SETTLERS DISGUST TO ITS INTRODUCTION.

In the absence of any good reason for the introduction of a 25 cent piece, this Association has no reason at present for its disapproval.

The motion, moved by Captain Standart, was seconded by Mr. Standart, and the discussion in the House followed.

the discussion in the House followed. The motion was seconded by Mr. Standart, and the discussion in the House followed.

the discussion in the House followed. The motion was seconded by Mr. Standart, and the discussion in the House followed.

the discussion in the House followed. The motion was seconded by Mr. Standart, and the discussion in the House followed.

the discussion in the House followed. The motion was seconded by Mr. Standart, and the discussion in the House followed.

the discussion in the House followed. The motion was seconded by Mr. Standart, and the discussion in the House followed.

the discussion in the House followed. The motion was seconded by Mr. Standart, and the discussion in the House followed.

the discussion in the House followed. The motion was seconded by Mr. Standart, and the discussion in the House followed.

the discussion in the House followed. The motion was seconded by Mr. Standart, and the discussion in the House followed.

the discussion in the House followed. The motion was seconded by Mr. Standart, and the discussion in the House followed.

the discussion in the House followed. The motion was seconded by Mr. Standart, and the discussion in the House followed.

the discussion in the House followed. The motion was seconded by Mr. Standart, and the discussion in the House followed.

the discussion in the House followed. The motion was seconded by Mr. Standart, and the discussion in the House followed.

the discussion in the House followed. The motion was seconded by Mr. Standart, and the discussion in the House followed.

the discussion in the House followed. The motion was seconded by Mr. Standart, and the discussion in the House followed.

EDUCATION PROBLEMS IN ULU DISTRICT.

Director's Address to Annual Meeting.

TEACHING IN THE HOME.

["Standart" Special Correspondent.]

At the annual meeting of the Ulu District Education Committee, the Director of Education, Mr. Standart, addressed the annual meeting of members of the Education Committee, which was held at the Ulu District Education Office, on Wednesday, May 20.

A Kenya "No Man's Land."

OLD SETTLERS DISGUST THE ONE MILE STRIP.

["Standart" Special Correspondent.]

At the annual meeting of the Ulu District Education Committee, the Director of Education, Mr. Standart, addressed the annual meeting of members of the Education Committee, which was held at the Ulu District Education Office, on Wednesday, May 20.

the discussion in the House followed. The motion was seconded by Mr. Standart, and the discussion in the House followed.

the discussion in the House followed. The motion was seconded by Mr. Standart, and the discussion in the House followed.

the discussion in the House followed. The motion was seconded by Mr. Standart, and the discussion in the House followed.

the discussion in the House followed. The motion was seconded by Mr. Standart, and the discussion in the House followed.

the discussion in the House followed. The motion was seconded by Mr. Standart, and the discussion in the House followed.

the discussion in the House followed. The motion was seconded by Mr. Standart, and the discussion in the House followed.

the discussion in the House followed. The motion was seconded by Mr. Standart, and the discussion in the House followed.

the discussion in the House followed. The motion was seconded by Mr. Standart, and the discussion in the House followed.

the discussion in the House followed. The motion was seconded by Mr. Standart, and the discussion in the House followed.

the discussion in the House followed. The motion was seconded by Mr. Standart, and the discussion in the House followed.

the discussion in the House followed. The motion was seconded by Mr. Standart, and the discussion in the House followed.

the discussion in the House followed. The motion was seconded by Mr. Standart, and the discussion in the House followed.

the discussion in the House followed. The motion was seconded by Mr. Standart, and the discussion in the House followed.

the discussion in the House followed. The motion was seconded by Mr. Standart, and the discussion in the House followed.

SUGAR CRISIS IN JAMAICA.

Efforts to Prevent Ruin of Estates.

An Expert Satisfy.

["Standart" Correspondent.]

By far the most important matter discussed at yesterday's meeting of the Jamaica Sugar Association was the absence of adequate medical facilities for the sugar workers, and the fact that the sugar workers are not being properly treated for their ailments.

LET ME HAVE NEED FOR A MEDICAL OFFICER.

ASSISTANCE FROM MANY COUNTRIES.

["Standart" Special Correspondent.]

At the annual meeting of the Ulu District Education Committee, the Director of Education, Mr. Standart, addressed the annual meeting of members of the Education Committee, which was held at the Ulu District Education Office, on Wednesday, May 20.

the discussion in the House followed. The motion was seconded by Mr. Standart, and the discussion in the House followed.

the discussion in the House followed. The motion was seconded by Mr. Standart, and the discussion in the House followed.

the discussion in the House followed. The motion was seconded by Mr. Standart, and the discussion in the House followed.

the discussion in the House followed. The motion was seconded by Mr. Standart, and the discussion in the House followed.

the discussion in the House followed. The motion was seconded by Mr. Standart, and the discussion in the House followed.

the discussion in the House followed. The motion was seconded by Mr. Standart, and the discussion in the House followed.

the discussion in the House followed. The motion was seconded by Mr. Standart, and the discussion in the House followed.

the discussion in the House followed. The motion was seconded by Mr. Standart, and the discussion in the House followed.

the discussion in the House followed. The motion was seconded by Mr. Standart, and the discussion in the House followed.

the discussion in the House followed. The motion was seconded by Mr. Standart, and the discussion in the House followed.

the discussion in the House followed. The motion was seconded by Mr. Standart, and the discussion in the House followed.

the discussion in the House followed. The motion was seconded by Mr. Standart, and the discussion in the House followed.

the discussion in the House followed. The motion was seconded by Mr. Standart, and the discussion in the House followed.

the discussion in the House followed. The motion was seconded by Mr. Standart, and the discussion in the House followed.

CATAPULTED INTO THE AIR.

Experiments With Huge Bombing Aeroplanes.

NEW MECHANISM.

Devices to be Shown at London Air Pageant.

["Standart" Special Correspondent.]

At the annual meeting of the Ulu District Education Committee, the Director of Education, Mr. Standart, addressed the annual meeting of members of the Education Committee, which was held at the Ulu District Education Office, on Wednesday, May 20.

the discussion in the House followed. The motion was seconded by Mr. Standart, and the discussion in the House followed.

the discussion in the House followed. The motion was seconded by Mr. Standart, and the discussion in the House followed.

the discussion in the House followed. The motion was seconded by Mr. Standart, and the discussion in the House followed.

the discussion in the House followed. The motion was seconded by Mr. Standart, and the discussion in the House followed.

the discussion in the House followed. The motion was seconded by Mr. Standart, and the discussion in the House followed.

the discussion in the House followed. The motion was seconded by Mr. Standart, and the discussion in the House followed.

the discussion in the House followed. The motion was seconded by Mr. Standart, and the discussion in the House followed.

the discussion in the House followed. The motion was seconded by Mr. Standart, and the discussion in the House followed.

the discussion in the House followed. The motion was seconded by Mr. Standart, and the discussion in the House followed.

the discussion in the House followed. The motion was seconded by Mr. Standart, and the discussion in the House followed.

the discussion in the House followed. The motion was seconded by Mr. Standart, and the discussion in the House followed.

the discussion in the House followed. The motion was seconded by Mr. Standart, and the discussion in the House followed.

the discussion in the House followed. The motion was seconded by Mr. Standart, and the discussion in the House followed.

the discussion in the House followed. The motion was seconded by Mr. Standart, and the discussion in the House followed.

the discussion in the House followed. The motion was seconded by Mr. Standart, and the discussion in the House followed.

the discussion in the House followed. The motion was seconded by Mr. Standart, and the discussion in the House followed.

the discussion in the House followed. The motion was seconded by Mr. Standart, and the discussion in the House followed.

the discussion in the House followed. The motion was seconded by Mr. Standart, and the discussion in the House followed.

25 Cent Piece.

OLD SETTLERS DISGUST TO ITS INTRODUCTION.

In the absence of any good reason for the introduction of a 25 cent piece, this Association has no reason at present for its disapproval.

The motion, moved by Captain Standart, was seconded by Mr. Standart, and the discussion in the House followed.

the discussion in the House followed. The motion was seconded by Mr. Standart, and the discussion in the House followed.

the discussion in the House followed. The motion was seconded by Mr. Standart, and the discussion in the House followed.

the discussion in the House followed. The motion was seconded by Mr. Standart, and the discussion in the House followed.

the discussion in the House followed. The motion was seconded by Mr. Standart, and the discussion in the House followed.

the discussion in the House followed. The motion was seconded by Mr. Standart, and the discussion in the House followed.

the discussion in the House followed. The motion was seconded by Mr. Standart, and the discussion in the House followed.

the discussion in the House followed. The motion was seconded by Mr. Standart, and the discussion in the House followed.

the discussion in the House followed. The motion was seconded by Mr. Standart, and the discussion in the House followed.

the discussion in the House followed. The motion was seconded by Mr. Standart, and the discussion in the House followed.

the discussion in the House followed. The motion was seconded by Mr. Standart, and the discussion in the House followed.

the discussion in the House followed. The motion was seconded by Mr. Standart, and the discussion in the House followed.

the discussion in the House followed. The motion was seconded by Mr. Standart, and the discussion in the House followed.

the discussion in the House followed. The motion was seconded by Mr. Standart, and the discussion in the House followed.

the discussion in the House followed. The motion was seconded by Mr. Standart, and the discussion in the House followed.

A Kenya "No Man's Land."

OLD SETTLERS DISGUST THE ONE MILE STRIP.

["Standart" Special Correspondent.]

At the annual meeting of the Ulu District Education Committee, the Director of Education, Mr. Standart, addressed the annual meeting of members of the Education Committee, which was held at the Ulu District Education Office, on Wednesday, May 20.

the discussion in the House followed. The motion was seconded by Mr. Standart, and the discussion in the House followed.

the discussion in the House followed. The motion was seconded by Mr. Standart, and the discussion in the House followed.

the discussion in the House followed. The motion was seconded by Mr. Standart, and the discussion in the House followed.

the discussion in the House followed. The motion was seconded by Mr. Standart, and the discussion in the House followed.

the discussion in the House followed. The motion was seconded by Mr. Standart, and the discussion in the House followed.

the discussion in the House followed. The motion was seconded by Mr. Standart, and the discussion in the House followed.

the discussion in the House followed. The motion was seconded by Mr. Standart, and the discussion in the House followed.

the discussion in the House followed. The motion was seconded by Mr. Standart, and the discussion in the House followed.

the discussion in the House followed. The motion was seconded by Mr. Standart, and the discussion in the House followed.

the discussion in the House followed. The motion was seconded by Mr. Standart, and the discussion in the House followed.

the discussion in the House followed. The motion was seconded by Mr. Standart, and the discussion in the House followed.

the discussion in the House followed. The motion was seconded by Mr. Standart, and the discussion in the House followed.

the discussion in the House followed. The motion was seconded by Mr. Standart, and the discussion in the House followed.

the discussion in the House followed. The motion was seconded by Mr. Standart, and the discussion in the House followed.

LET ME HAVE NEED FOR A MEDICAL OFFICER.

ASSISTANCE FROM MANY COUNTRIES.

["Standart" Special Correspondent.]

At the annual meeting of the Ulu District Education Committee, the Director of Education, Mr. Standart, addressed the annual meeting of members of the Education Committee, which was held at the Ulu District Education Office, on Wednesday, May 20.

the discussion in the House followed. The motion was seconded by Mr. Standart, and the discussion in the House followed.

the discussion in the House followed. The motion was seconded by Mr. Standart, and the discussion in the House followed.

the discussion in the House followed. The motion was seconded by Mr. Standart, and the discussion in the House followed.

the discussion in the House followed. The motion was seconded by Mr. Standart, and the discussion in the House followed.

the discussion in the House followed. The motion was seconded by Mr. Standart, and the discussion in the House followed.

the discussion in the House followed. The motion was seconded by Mr. Standart, and the discussion in the House followed.

the discussion in the House followed. The motion was seconded by Mr. Standart, and the discussion in the House followed.

the discussion in the House followed. The motion was seconded by Mr. Standart, and the discussion in the House followed.

the discussion in the House followed. The motion was seconded by Mr. Standart, and the discussion in the House followed.

the discussion in the House followed. The motion was seconded by Mr. Standart, and the discussion in the House followed.

the discussion in the House followed. The motion was seconded by Mr. Standart, and the discussion in the House followed.

the discussion in the House followed. The motion was seconded by Mr. Standart, and the discussion in the House followed.

the discussion in the House followed. The motion was seconded by Mr. Standart, and the discussion in the House followed.

the discussion in the House followed. The motion was seconded by Mr. Standart, and the discussion in the House followed.

CATAPULTED INTO THE AIR.

Experiments With Huge Bombing Aeroplanes.

Devices to be Shown at London Air Pageant.

["Standart" Special Correspondent.]

At the annual meeting of the Ulu District Education Committee, the Director of Education, Mr. Standart, addressed the annual meeting of members of the Education Committee, which was held at the Ulu District Education Office, on Wednesday, May 20.

the discussion in the House followed. The motion was seconded by Mr. Standart, and the discussion in the House followed.

the discussion in the House followed. The motion was seconded by Mr. Standart, and the discussion in the House followed.

the discussion in the House followed. The motion was seconded by Mr. Standart, and the discussion in the House followed.

the discussion in the House followed. The motion was seconded by Mr. Standart, and the discussion in the House followed.

the discussion in the House followed. The motion was seconded by Mr. Standart, and the discussion in the House followed.

the discussion in the House followed. The motion was seconded by Mr. Standart, and the discussion in the House followed.

the discussion in the House followed. The motion was seconded by Mr. Standart, and the discussion in the House followed.

the discussion in the House followed. The motion was seconded by Mr. Standart, and the discussion in the House followed.

the discussion in the House followed. The motion was seconded by Mr. Standart, and the discussion in the House followed.

the discussion in the House followed. The motion was seconded by Mr. Standart, and the discussion in the House followed.

the discussion in the House followed. The motion was seconded by Mr. Standart, and the discussion in the House followed.

the discussion in the House followed. The motion was seconded by Mr. Standart, and the discussion in the House followed.

the discussion in the House followed. The motion was seconded by Mr. Standart, and the discussion in the House followed.

NOTICE.

His Excellency the Governor will hold a Levée at Government House on Wednesday, June 3rd, at 11 a.m.

Gentlemen desiring to attend the Levée are requested to apply in writing to the Secretary of the Government House for a card of introduction.

Members of the General Public holding cards for the Levée should enter Government House grounds by the Anderson Road gate; other cards should enter by the traffic to the various car parks.

It will facilitate the work of the Police if ticket holders will bring their cards ready on arrival at the gates.

The Holiday Camp.

Improvements Made AT LILKOP.

(Continued.)

Rains have fallen at Mombasa recently, and the temperature has been falling, but it is not likely to be the best during the next few months, while at present the weather is so pleasant.

The holiday camp at Lilkop is a very attractive one, and it is well worth a visit. The camp is situated on a hillside, and the views are very beautiful.

The holiday camp at Lilkop is a very attractive one, and it is well worth a visit. The camp is situated on a hillside, and the views are very beautiful.

The holiday camp at Lilkop is a very attractive one, and it is well worth a visit. The camp is situated on a hillside, and the views are very beautiful.

The holiday camp at Lilkop is a very attractive one, and it is well worth a visit. The camp is situated on a hillside, and the views are very beautiful.

Old Officer Sentenced.

RUROBATI AT KARERE REFORMATORY.

A Kikuyu serving a three years term of imprisonment was sentenced to the Karere Reformatory for a further term of three months for a breach of discipline.

The officer was sentenced to the Karere Reformatory for a further term of three months for a breach of discipline.

The officer was sentenced to the Karere Reformatory for a further term of three months for a breach of discipline.

The officer was sentenced to the Karere Reformatory for a further term of three months for a breach of discipline.

The officer was sentenced to the Karere Reformatory for a further term of three months for a breach of discipline.

The officer was sentenced to the Karere Reformatory for a further term of three months for a breach of discipline.

The officer was sentenced to the Karere Reformatory for a further term of three months for a breach of discipline.

Keyns Demand.

The second session of Legislative Council debates (1930-19





STAY  
HOTEL  
P.O. Box 842  
mile from

Hotel

Hotel

Hotel

**Just Received**  
THE FAMOUS MORLEY'S  
**La Mode**  
PURE SILK ENGLISH STOCKINGS.

Also Other Well-known Makes.  
SNOUGET, KATSEY, ALLEN-A  
IN THE LATEST PARIS SHADES.

**Ahamed Bros**

THE HOUSE OF DISTINCTION.  
P.O. Box 264 Basar-Nairobi Phone 2391.

**KAYSER**

The Outstanding  
Stocking of the  
World.

ONE PAIR OF  
**KAYSER**  
gives just double the wear  
of the usual silk hose.

They are smartly fashioned,  
resistant to look upon, and  
are the choice of smart  
women everywhere.

**Tarzan  
Chocolates**  
This is a Special Line  
OF  
**CHOCOLATES**  
AT  
per 4- lb.

Sole Distributors:  
**M.S. Elliot & Co.,  
LIMITED.**  
P.O. Box 175. Phone 2060.

**ANNOUNCEMENT.**

Our Master-Tailor, who gave perfect  
satisfaction for so many years, in Cut,  
Style and Fittings—especially in Ladies'  
Gowns—has now returned from his  
home-leaves.

We solicit casual patronage of all our  
customers.

Trial Invited. Satisfaction Guaranteed.

**BON MARCHÉ**

Government Road NAIROBI.

THE EAST AFRICAN STANDARD.  
**CORRESPONDENCE.**

**The Railway Report.**  
ARE THE PROSPECTS  
WHOLLY BARE?

To the Editor, "E.A. Standard."  
The figures, illustrations,  
and conclusions of the Railway  
Report, as published by the  
"Problems of Railway" magazine,  
is very interesting reading to  
all those who are interested in  
public finance. The figures and  
conclusions generally are what  
they are, and according to the angle  
of view. "Things are not  
always as they seem," as Gilbert  
has said.

The report which has struck  
me most is that which seems  
to lead to much error in the  
conception of the Railway  
as it is presented. The  
you have it, the chief cause  
of the great increase in tonnage  
of specie commodities con-  
sisted with the falling off in  
other wares. The Railway  
Kerry can report more and  
would be a good thing to  
put in what the Railway  
only the export rate of specie  
with the import rate, the Rail-  
road is in a much im-  
proved position. It is that  
the loss. If it were so  
if there had been no diplo-  
macy, the world would be  
better off.

Now, I am afraid I regard the  
problem quite differently. It is  
the more, the more the price  
would have increased, and  
the Railway would have been  
a profit instead of a loss. Our  
depend upon our exports (pro-  
of production) if the world's price  
falls, then it follows that the  
price, then it follows that the  
going to enter. Further to raise  
the rate of carrying, the cost  
which do not pay the cost of  
production implies to my mind a  
further reduction in the rate of  
import. In other words, the two  
main streams of railway traffic run together. By

NAIROBI, MAY 23, 1921.

including reports you will never  
know the intention of industry  
which concerned are necessary  
to be holding it. Coffee was  
highest and the railway  
rate on and in a drop in the  
price of reduction in market  
price. But the great point  
which seems to be missed by  
the hand, would suggest that  
the railway is in a position to  
prima facie that the progress and  
benefit seems on an average  
higher industries than it does on  
any coffee, and finally on  
the Railway. Coffee last year  
61,422,880 yielded the Rail-  
road 110,008 cwts. of freight  
62,531,7 (about half the normal  
load) and the Railway, at an  
average, 2,222,208 cwts. of freight  
and the Railway, at an average,  
2,222,208 cwts. of freight  
and the Railway, at an average,  
2,222,208 cwts. of freight

**THE STATUS OF THE  
RAILROAD.**

To the Editor, "E.A. Standard."  
The Railway Report, as published by the  
"Problems of Railway" magazine,  
is very interesting reading to  
all those who are interested in  
public finance. The figures and  
conclusions generally are what  
they are, and according to the angle  
of view. "Things are not  
always as they seem," as Gilbert  
has said.

The report which has struck  
me most is that which seems  
to lead to much error in the  
conception of the Railway  
as it is presented. The  
you have it, the chief cause  
of the great increase in tonnage  
of specie commodities con-  
sisted with the falling off in  
other wares. The Railway  
Kerry can report more and  
would be a good thing to  
put in what the Railway  
only the export rate of specie  
with the import rate, the Rail-  
road is in a much im-  
proved position. It is that  
the loss. If it were so  
if there had been no diplo-  
macy, the world would be  
better off.

Now, I am afraid I regard the  
problem quite differently. It is  
the more, the more the price  
would have increased, and  
the Railway would have been  
a profit instead of a loss. Our  
depend upon our exports (pro-  
of production) if the world's price  
falls, then it follows that the  
price, then it follows that the  
going to enter. Further to raise  
the rate of carrying, the cost  
which do not pay the cost of  
production implies to my mind a  
further reduction in the rate of  
import. In other words, the two  
main streams of railway traffic run together. By

NAIROBI, MAY 23, 1921.

**NAIROBI NOTES.**  
MARBOROUGH ESTATE.

To the Editor, "E.A. Standard."  
The Railway Report, as published by the  
"Problems of Railway" magazine,  
is very interesting reading to  
all those who are interested in  
public finance. The figures and  
conclusions generally are what  
they are, and according to the angle  
of view. "Things are not  
always as they seem," as Gilbert  
has said.

The report which has struck  
me most is that which seems  
to lead to much error in the  
conception of the Railway  
as it is presented. The  
you have it, the chief cause  
of the great increase in tonnage  
of specie commodities con-  
sisted with the falling off in  
other wares. The Railway  
Kerry can report more and  
would be a good thing to  
put in what the Railway  
only the export rate of specie  
with the import rate, the Rail-  
road is in a much im-  
proved position. It is that  
the loss. If it were so  
if there had been no diplo-  
macy, the world would be  
better off.

Now, I am afraid I regard the  
problem quite differently. It is  
the more, the more the price  
would have increased, and  
the Railway would have been  
a profit instead of a loss. Our  
depend upon our exports (pro-  
of production) if the world's price  
falls, then it follows that the  
price, then it follows that the  
going to enter. Further to raise  
the rate of carrying, the cost  
which do not pay the cost of  
production implies to my mind a  
further reduction in the rate of  
import. In other words, the two  
main streams of railway traffic run together. By

NAIROBI, MAY 23, 1921.

promise to say they have been  
most successful in updating the pro-  
cess, such as a national meeting  
of the local municipalities, or  
throughly God to save us from  
"Our Friends."

To the Editor, "E.A. Standard."  
The Railway Report, as published by the  
"Problems of Railway" magazine,  
is very interesting reading to  
all those who are interested in  
public finance. The figures and  
conclusions generally are what  
they are, and according to the angle  
of view. "Things are not  
always as they seem," as Gilbert  
has said.

The report which has struck  
me most is that which seems  
to lead to much error in the  
conception of the Railway  
as it is presented. The  
you have it, the chief cause  
of the great increase in tonnage  
of specie commodities con-  
sisted with the falling off in  
other wares. The Railway  
Kerry can report more and  
would be a good thing to  
put in what the Railway  
only the export rate of specie  
with the import rate, the Rail-  
road is in a much im-  
proved position. It is that  
the loss. If it were so  
if there had been no diplo-  
macy, the world would be  
better off.

Now, I am afraid I regard the  
problem quite differently. It is  
the more, the more the price  
would have increased, and  
the Railway would have been  
a profit instead of a loss. Our  
depend upon our exports (pro-  
of production) if the world's price  
falls, then it follows that the  
price, then it follows that the  
going to enter. Further to raise  
the rate of carrying, the cost  
which do not pay the cost of  
production implies to my mind a  
further reduction in the rate of  
import. In other words, the two  
main streams of railway traffic run together. By

NAIROBI, MAY 23, 1921.

**Here at Last**

IS THE CELLULOSE FINISH THAT  
THE AMATEUR REALLY CAN APPLY WITH  
COMPLETE CERTAINTY OF GETTING  
**Perfect Results**  
FOR FURNITURE, FIXTURES, CYCLES  
AND MOTOR CARS.

**Brushing Robbaldiol**  
Stockists—  
**SMITH, MACKENZIE & CO.,**  
Box 390 — NAIROBI.

**TO LET.**

COTTAGES, 11 and 111 Avenue, Parklands—  
rentals to suitable tenants.  
SHOP, Victoria Street, Nairobi.  
SHOPS, 6th Avenue, Nairobi, ample accommoda-  
tion.  
SHOP, Government Road, Nairobi.  
OFFICES, 12th Building, Givoli Rd., Nairobi.  
FLATS, Capital Chambers, Corner V.I. AV. and  
Sadler St., Nairobi.  
STONE HOUSE, Bellfield Road, Hill V.I. and  
APPLY—  
**J. H. S. TODD & Co., Ltd.**

**Rolex Watches**

THE WORLD'S BEST  
BY EVERY TEST  
PRICES AS LOW  
AS IN ENGLAND.

23 World's  
Records.  
For Catalogue apply to  
**DOBBIES Ltd.**  
Watchmakers & Jewellers,  
50, Abchurch Lane, London, E.C. 4, ENGLAND.

**Shs. 19,000 Sold**  
BALANCE TO CLEAR  
**Shs. 11,000**

**Less 20% Discount**  
**CAMERON & Co.**

**Household Requisites**  
at prices you can afford to buy  
with VARIETY and SELECTION  
that makes shopping a pleasure

**Will you come in and try us?**  
NOTE THESE LOW PRICES—  
"UNIVERSAL" Bread Makers, Sh. 21/- each  
makes Four Loaves, in 3 minutes, Size No. 1—each  
"BEATHIC" Food Mixers, in all sizes.  
Size No. 0, Shs. 8/-, ea. Size No. 2, Shs. 10/6, ea.  
Size No. 3, Shs. 9/6, ea. Size No. 3, Shs. 17/6, ea.

"SPONGE" Coffee Grinders (London made)—  
Size No. 1, 11/6; No. 2, 14/6; No. 3, 18/6, each  
ENAMEL WASHSTANDS, Colnbrook 7-ton Frames,  
with towel rail attached, complete with Ever, Basin,  
Soapdish, and Toilet Pan.

**Sh. 37-50 complete.**

THE STORE THAT SERVES YOU BEST.  
**AHAMED & SHERIFF**  
P.O. Box 844  
Government Road (Near Waziria) NAIROBI.

**B. FLORENZ**  
FURNISHING  
FURNITURE AND LIVING ROOMS

**GOOD COFFEE FETCHES HIGH PRICES !!**  
KEEP YOUR TREES FREE OF PESTS.

By Using  
**PORTABLE DOUBLE-ACTION SPRAY PUMPS.**

Manufactured by  
**Drake & Fletcher Ltd., (ENGLAND.)**

Stockists—  
**SMITH, MACKENZIE & CO.,**  
Box 390, NAIROBI. Phone 2660.

**Cigarettes**  
SPECIAL VIRGINIANS  
EN FLETT No.

The success which has attended the introduction of these cigarettes is evidenced  
by the fact that within a week of our initial consignment we are enabled  
to cable for double the quantity.  
Samples can be obtained at our office—free of charge.

**Jardin, Phipson & Co., Ltd.**  
P.O. Box 28.

**THE INDIAN ELECTIONS.**

To the Editor, "E.A. Standard."  
The Railway Report, as published by the  
"Problems of Railway" magazine,  
is very interesting reading to  
all those who are interested in  
public finance. The figures and  
conclusions generally are what  
they are, and according to the angle  
of view. "Things are not  
always as they seem," as Gilbert  
has said.

The report which has struck  
me most is that which seems  
to lead to much error in the  
conception of the Railway  
as it is presented. The  
you have it, the chief cause  
of the great increase in tonnage  
of specie commodities con-  
sisted with the falling off in  
other wares. The Railway  
Kerry can report more and  
would be a good thing to  
put in what the Railway  
only the export rate of specie  
with the import rate, the Rail-  
road is in a much im-  
proved position. It is that  
the loss. If it were so  
if there had been no diplo-  
macy, the world would be  
better off.

Now, I am afraid I regard the  
problem quite differently. It is  
the more, the more the price  
would have increased, and  
the Railway would have been  
a profit instead of a loss. Our  
depend upon our exports (pro-  
of production) if the world's price  
falls, then it follows that the  
price, then it follows that the  
going to enter. Further to raise  
the rate of carrying, the cost  
which do not pay the cost of  
production implies to my mind a  
further reduction in the rate of  
import. In other words, the two  
main streams of railway traffic run together. By

NAIROBI, MAY 23, 1921.

**THE INDIAN ELECTIONS.**

To the Editor, "E.A. Standard."  
The Railway Report, as published by the  
"Problems of Railway" magazine,  
is very interesting reading to  
all those who are interested in  
public finance. The figures and  
conclusions generally are what  
they are, and according to the angle  
of view. "Things are not  
always as they seem," as Gilbert  
has said.

The report which has struck  
me most is that which seems  
to lead to much error in the  
conception of the Railway  
as it is presented. The  
you have it, the chief cause  
of the great increase in tonnage  
of specie commodities con-  
sisted with the falling off in  
other wares. The Railway  
Kerry can report more and  
would be a good thing to  
put in what the Railway  
only the export rate of specie  
with the import rate, the Rail-  
road is in a much im-  
proved position. It is that  
the loss. If it were so  
if there had been no diplo-  
macy, the world would be  
better off.

Now, I am afraid I regard the  
problem quite differently. It is  
the more, the more the price  
would have increased, and  
the Railway would have been  
a profit instead of a loss. Our  
depend upon our exports (pro-  
of production) if the world's price  
falls, then it follows that the  
price, then it follows that the  
going to enter. Further to raise  
the rate of carrying, the cost  
which do not pay the cost of  
production implies to my mind a  
further reduction in the rate of  
import. In other words, the two  
main streams of railway traffic run together. By

NAIROBI, MAY 23, 1921.

**THE INDIAN ELECTIONS.**

To the Editor, "E.A. Standard."  
The Railway Report, as published by the  
"Problems of Railway" magazine,  
is very interesting reading to  
all those who are interested in  
public finance. The figures and  
conclusions generally are what  
they are, and according to the angle  
of view. "Things are not  
always as they seem," as Gilbert  
has said.

The report which has struck  
me most is that which seems  
to lead to much error in the  
conception of the Railway  
as it is presented. The  
you have it, the chief cause  
of the great increase in tonnage  
of specie commodities con-  
sisted with the falling off in  
other wares. The Railway  
Kerry can report more and  
would be a good thing to  
put in what the Railway  
only the export rate of specie  
with the import rate, the Rail-  
road is in a much im-  
proved position. It is that  
the loss. If it were so  
if there had been no diplo-  
macy, the world would be  
better off.

Now, I am afraid I regard the  
problem quite differently. It is  
the more, the more the price  
would have increased, and  
the Railway would have been  
a profit instead of a loss. Our  
depend upon our exports (pro-  
of production) if the world's price  
falls, then it follows that the  
price, then it follows that the  
going to enter. Further to raise  
the rate of carrying, the cost  
which do not pay the cost of  
production implies to my mind a  
further reduction in the rate of  
import. In other words, the two  
main streams of railway traffic run together. By

NAIROBI, MAY 23, 1921.

MUTER & OSWALD
SALE OF VALUABLE UPPER PARCELS PROPERTY.

SALES OF GENTS SUIT LENGTHS. LADIES SILK DRESS LENGTHS. UNDERCLOTHING. HATS.

FOR SALE. To Chase & Trust, 6th Avenue Plot and also buyer.

10 Motor C

On Friday, 29th May at 2-30 p.m.
In the estate of the late M. L. Dunson, the Grant of 1807 acres or thereabouts, held on a 99 years lease...

AUSTIN & CO.
will sell Without Reserve, at The Mart,
To-day, May 28th. at 10 a.m.

FOR SALE. A bargain on which money can be doubled in short time. 100 acres 6 miles from Nairobi.

Trucks Motorcycles AT Godfreys Car Sadler Str

MUTER & OSWALD Ltd. Auctioneers, Etc. NAIROBI

THE ABOVE GOODS ARE ALL BRAND NEW. AUSTIN & CO. AUCTIONEERS AND ESTATE AGENTS.

FOR SALE. Double Stored Bed Brick-Built Residence with modern conveniences and refinements...

Sat. May At 10 a.m.

CATALOGUE SALE OF FURNITURE AND EFFECTS. Daily instructed, we shall sell by Public Auction, Without Reserve...

AUSTIN'S AUCTIONS
CATALOGUE SALE OF GOOD FURNITURE, CRYSTALLED SUITES, GLASS & FINE ORNAMENTAL, SEWING MACHINE, BOXING RING, BAKETS, CROCKERY, SHOTGUN, ETC.

A. L. SMITHSON. P.O. Box 1195. Boho House, Telephone 2750.

Instructed thereby by various owners as above, including BEAN TOURER - ARAMSTRONG BUICK BODY BODY - DODGE CITROEN (Clove Leaf) - ESSEX 500 - RUGBY TOURER - CHE ESSEX SALOON - FORD, Etc.

Monday 1st June at 10 a.m.
Chamberlain Suits, hose covers, Easy Chairs, Nursery Easy Chairs, Morris Chairs, cane seats and backs, Book-casters, Occasional and Tea Tables...

AUSTIN & CO. will sell WITHOUT RESERVE unless stated, at THE MART, on Saturday, May 30th at 10 a.m.

THACKRAK'S Ltd., NAIROBI. (Established 1917.) THE UP-COUNTRY LEAD AND ZINC AGENTS, AUCTIONEERS & APPROVED VALUERS, INSURANCE, SHIPPING AND FINANCIAL AGENTS.

For Sale By Private LANCIA LAMBDA WEYMAL Rount model. Single mangle, outward condition perfect, mechanically sound - A Superb Car - The Top-hole of £280 or near thereabout.

MUTER and OSWALD Ltd. Auctioneers, Etc. NAIROBI

Chamberlain Suits, hose covers, Easy Chairs, Nursery Easy Chairs, Morris Chairs, cane seats and backs, Book-casters, Occasional and Tea Tables...

Gethin & Hulett's East African Tours Ltd. are best Africa in Comfort, in Luxurious Touring Cars, with English Drivers.

FURTHER ENTRIES WILL BE FOR THIS SALE.

Godfreys Car Motor Auctioneers and Motor

JAMAL FIRBAH. SALE OF ONE WOODEN AND IRON BUILDING WITHOUT PLOTT AND FURNITURE.

AUSTIN and Co. AUCTIONEERS AND ESTATE AGENTS, Harding's Street, Nairobi.

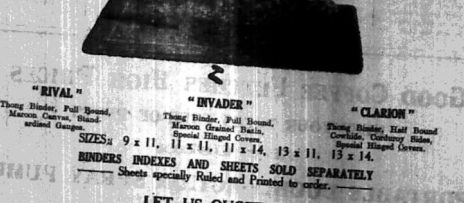
FOR SALE 1 1/2 h.p. Just a make. Perfect condition. £100.



Under the instruction of the Official Receiver, Re: Vedical Chahal, bankrupt, and several others, I shall sell by public auction, without reserve, at my auction room opposite Jwanji Garden, Nairobi, on

LOOSE LEAF LEDGERS

INSTANT REFERENCE PERPETUAL USE



LET US QUOTE YOU A COMPLETE RULING BINDER INDEX AND 250 STOCK RULED SHEETS. From Shs. 69/50 to Shs. 135/50 according to size and quality of Binder.

A LARGE STOCK KEPT OF BINDERS AND INDEXES STANDARD STATIONERY STORES, NAIROBI.

SUNDAY, May 28th at 6 a.m. sharp. One Wooden and Iron Building, plot situated in the farm of M. G. Kibitoni, near KALIAN, in the County of Nairobi.

JAMAL FIRBAH. NAIROBI. P.O. Box No. 259.

Butter Ghee 1/- per lb. SANDS & CO. MTRIBORI.

NEW NOVELS

by Stephen Mitford, The National Companion, The National Companion, The National Companion, The National Companion...

Hiding Dumpers CEMENT WATER... DENOVAN & DIBBET

Kenya Finance & Investment Company Limited.

At an Extraordinary general meeting of the Company, Nairobi, on the 28th day of May, 1921...

Kenya Finance & Investment Company Limited. (In voluntary liquidation.)

NOTICE is hereby given pursuant to Section 3 of the Companies Ordinance 1917...

REPAIRS ALL KINDS OF GARAGE (OFF GODFREY'S GARAGE) Repairs all makes of Cars, Daimler, Napier, Overhaul a Speciality...

D. J. LETHBRIDGE. Sole Proprietor.

**BOTTLE THAT ASSURARDS YOUR WHISKY**

The PERFECT WHISKY is now in the Perfect Bottle



**Crawford's LIQUEUR**  
SCOTCH WHISKY

ESTABLISHED IN 1860

J. A. CRAWFORD — LEITH — SCOTLAND.

**SMOOTH-ON Iron Cement**  
for Home Repairs

3-1/2 per 7-oz. tin



**The Tool House**  
Nairobi

GRANT & CO. LTD.

**High Class Stationery**  
AT LOW COST

**IN BLUE AND GREEN**  
PAPER (FOLDED) AND ENVELOPES BOXED 50 OF EACH.  
Shts. 1/10, 4/78 and 5/90

**PAPER (FLAT) AND ENVELOPES BOXED 50 OF EACH.**  
Shts. 5/- and 6/10.

**IN BLUE ONLY**  
WRITING PADS AND ENVELOPES 1/11 and 1/11.  
ENVELOPES TO MATCH, PACKETS Shts. 1/18.

Boxes 100 Shts. 4/00.

STANDARD STATIONERY STORES, NAIROBI.

**THE EAST AFRICAN STANDARD**

**WEATHER CONDITIONS DURING APRIL.**

**Usual Features of the Rainy Season.**

**OFFICIAL RECORD:**

The rainfall during the past year shows that the season was unusually early and that the total amount of rain which has fallen has far exceeded the normal amount. The months of March, April, and May, together with the beginning of June, together with the beginning of the following seasons, have all been unusually wet. The rainfall during the month of April was 1.72 inches, which is the highest amount recorded for any month since the beginning of the month of April, 1911. The rainfall during the month of May was 1.52 inches, which is the highest amount recorded for any month since the beginning of the month of May, 1911. The rainfall during the month of June was 1.52 inches, which is the highest amount recorded for any month since the beginning of the month of June, 1911.

**Agriculture in Kenya.**

**DEPARTMENT REVENUE SIX NEW BULLETINS.**

The six new bulletins have been issued by the Department of Agriculture and will be of great value to the farmers of Kenya. The bulletins are: 1. "On the Cultivation of the Cotton Tree." 2. "On the Cultivation of the Rubber Tree." 3. "On the Cultivation of the Coffee Tree." 4. "On the Cultivation of the Tea Tree." 5. "On the Cultivation of the Tobacco Tree." 6. "On the Cultivation of the Sugar Tree." The bulletins are written in simple and plain language and are suitable for use by the general public.

**Russia Timber.**

**PROMOTION USED BY NAIROBI CHAMBER.**

The Nairobi Chamber of Commerce has been successful in its efforts to secure the promotion of the Russian timber trade in Kenya. The Chamber has secured the appointment of a Russian representative to the Nairobi Chamber of Commerce. This representative will be able to advise the Chamber of the latest news of the Russian timber trade and to assist the Chamber in its efforts to secure the promotion of the trade.

**South Africa Delicious Orange and Lemon Beverages**

are Pure and Pleasant Drinks

Obtainable at all leading Grocers.

Full particulars available from The Office of the Union of South Africa, Memorial Hall, Box 626, NAIROBI.

**Denyo Sahn Prospects.**

**FAVORABLE CONDITIONS PROMISE GOOD CROPS.**

The prospects for the Denyo Sahn crop are very favorable. The conditions are ideal for the growth of the crop and the farmers are confident that they will be able to secure a good harvest. The rainfall during the month of April was 1.72 inches, which is the highest amount recorded for any month since the beginning of the month of April, 1911. The rainfall during the month of May was 1.52 inches, which is the highest amount recorded for any month since the beginning of the month of May, 1911. The rainfall during the month of June was 1.52 inches, which is the highest amount recorded for any month since the beginning of the month of June, 1911.

**The recent increase in the price of sugar in Kenya.**

The recent increase in the price of sugar in Kenya has caused much concern among the farmers. The price of sugar has risen from 10/- to 12/- per cwt. This increase is due to the fact that the supply of sugar is short. The farmers are confident that they will be able to secure a good harvest and that the price of sugar will fall again.

**BARCLAYS BANK (DOMINION, COLONIAL AND OVERSEAS)**

Capital Paid up ... £1,000,000  
Reserve Fund ... £1,000,000  
Total ... £2,000,000

OVER 600 BRANCHES IN THE Dominion of South Africa, West Indies, Egypt, Palestine and Aden, India, Malaya, Ceylon, Hong Kong, Shanghai, Peking, Hankow, etc.

THE BANK UNDERTAKES ALL CLASSES OF BANKING BUSINESS AND ALSO ACTS AS TRUSTEE AND EXECUTOR.

BRANCHES IN EAST AFRICA: Nairobi, Mombasa, Kisumu, Malindi, Lamu, Taita, Nakuru, Meru, Eldoret, Kericho, Nakuru, Nyeri, Thika, Machakos, Mombasa, Dar-es-Salaam, Zanzibar, Aden, Bombay, Calcutta, Madras, Rangoon, Singapore, Hong Kong, Shanghai, Peking, Hankow, etc.

A Branch of the Bank has been opened at Tabora, Tanganyika Territory.

HEAD OFFICE: 21, Lombard Street, London, E.C. 4.  
LONDON OFFICES: 21, Lombard Street, London, E.C. 4.  
Nairobi Office: 111, St. Martin's Lane, 7, Upper Bechof, P.O. Box 100.

OFFICES in Liverpool, Manchester, Birmingham, New York.

Correspondents in all the Principal Cities and Towns of the World.

**A Good Cup of Tea**

can always be got by using **"VOONIA"** or if blended with the **LEGAL PRODUCT** the result is really amazing.

**TRY IT** for yourself. We will forward a free tasting sample if desired.

**BLACKLAW & BROWN** (In Macdonald House) NAIROBI.  
Tel. No. 333. Telegrams: "BLACKLAW." Box No. 333.

**Geo. BLOWERS.**

**BUILDING CONTRACTOR, MANUFACTURER AND DECORATOR.**

SADLER STREET, NAIROBI.  
P.O. Box 252.  
GREATLY REDUCED PRICES.

No. 17, No. 18, No. 19

Made in Dublin, Ireland.

**THEO. SCHOUTEN**

**LADIES AND GENTLEMEN'S HAIRDRESSERS, FURNITURE WAVING EXPERTS.**

Our Customers' Salon is now entirely incorporated with a First Class Hairdressing and we offer an unequalled service to the discriminating gentleman.

Box 304 GOVERNMENT ROAD, Phone 2948

**WHY BUY AMERICAN DOORS**

AND SEND YOUR MONEY ABROAD

I can compete with them — and beat them!

Send for my **ILLUSTRATED CATALOGUE** and Price List.

**SOUND** quotations for **SOURED** work.

**CONCRETE** and **WOOD** work.

**ALL SIZES IN STOCK.**

**BEST KINA BRAD** (Machine finished and delivered by lorries to any S.S.) (Cars, Trucks or Trains Loaded).

**DELIVERIES BY LORRIES AT QUOTED RATES.**

**PLUMBING AND SANITARY WORK DONE UNDER THE SUPERVISION OF OUR OWN SUPERIOR SPECIALISTS.**

**UP-TO-DATE and ATTRACTIVE SIGNING.**

Latest London, Royal, Steel, Galvanne, Potable, Painted, Patent.

**TO COFFEE PLANTERS, ARRIVED.**

It's a special quality white non-absorbent cotton wool for Media. The prevention at considerably reduced price.

**A. J. ELY & Co., Ltd.**  
THE CHEMISTS, NAIROBI. P.O. Box 111.

**Geo. BLOWERS.**

**BUILDING CONTRACTOR, MANUFACTURER AND DECORATOR.**

SADLER STREET, NAIROBI.  
P.O. Box 252.  
GREATLY REDUCED PRICES.

No. 17, No. 18, No. 19

Made in Dublin, Ireland.



The SHIRTS that LAUGH at the LAUNDRY

**Consulate SHIRTS**

STOCKED BY THE LEADING OFFICIERS

**CHIEF CLERK**  
TUIP ACCOUNTANT,  
Established 25 years.  
Trust Companies Government Bonds  
MANAGER'S CUP, Sun May 20th, 1922. NAIROBI.  
DEBENTURE Sun May 20th, 1922, 11 o'clock.  
AS PRICES ARE SUBJECT TO MARKET FLUCTUATIONS,  
KINDLY ENQUIRE BY OFFICE.  
CREDIT LETTERS, WIRE BUSINESS ONLY.

TOPICS OF THE TURF

Nairobi Race Meeting of June 6.

A REVIEW OF THE CARD.

The entries for the race meeting to be held at Nairobi on Saturday, June 6, hold forth the promise of a most interesting and exciting day to be held at the old stand at the Nairobi Race Meeting which remained in a financial loss to the Nairobi Race Club.

The morning meeting was a most successful one, the first race being won by the 3-year-old colt "The Duke" who was ridden by Mr. J. H. Brown, and the second race by the 3-year-old colt "The Duke" who was ridden by Mr. J. H. Brown.

The afternoon meeting was also successful, the first race being won by the 3-year-old colt "The Duke" who was ridden by Mr. J. H. Brown, and the second race by the 3-year-old colt "The Duke" who was ridden by Mr. J. H. Brown.

The Open Handicap (11 miles) was won by the 3-year-old colt "The Duke" who was ridden by Mr. J. H. Brown, and the second race by the 3-year-old colt "The Duke" who was ridden by Mr. J. H. Brown.

The Handicap (11 miles) was won by the 3-year-old colt "The Duke" who was ridden by Mr. J. H. Brown, and the second race by the 3-year-old colt "The Duke" who was ridden by Mr. J. H. Brown.

THE SPORTS PAGE

UP-COUNTRY RUGBY TOUR.

Railway Club's Visit.

Eltham and Kitale MATCHES.

During the last week-end the Railway party took a day's excursion to Eltham and Kitale, playing at Eltham on Saturday and at Kitale on Sunday.

Kitale fielded a very strong team which overcame the Railway team and so had the local team on the defensive. The score was 17 to 0 in favour of Kitale.

At Eltham, the Railway team was again victorious, winning by a margin of 17 to 0. The local team was again on the defensive.

The Railway team was again victorious, winning by a margin of 17 to 0. The local team was again on the defensive.

The Railway team was again victorious, winning by a margin of 17 to 0. The local team was again on the defensive.

The Railway team was again victorious, winning by a margin of 17 to 0. The local team was again on the defensive.

The Railway team was again victorious, winning by a margin of 17 to 0. The local team was again on the defensive.

The Railway team was again victorious, winning by a margin of 17 to 0. The local team was again on the defensive.

The Railway team was again victorious, winning by a margin of 17 to 0. The local team was again on the defensive.

The Railway team was again victorious, winning by a margin of 17 to 0. The local team was again on the defensive.

Handicapped Special Game Series (Continued).

COUNTY CRICKET.

Handicapped Century in Benefit Match.

LANCASHIRE YORKSHIRE DUEL.

(STANDARD CORRESPONDENT.)

An incident seemed on Monday, Tuesday, and Wednesday of a match between the two counties in the Handicapped series, which took place at the Cricket Ground, Leeds, on Monday.

The Yorkshire batsmen were in excellent form, and the Lancashire bowlers were in excellent form. The match was a most interesting one.

The Yorkshire batsmen were in excellent form, and the Lancashire bowlers were in excellent form. The match was a most interesting one.

The Yorkshire batsmen were in excellent form, and the Lancashire bowlers were in excellent form. The match was a most interesting one.

The Yorkshire batsmen were in excellent form, and the Lancashire bowlers were in excellent form. The match was a most interesting one.

The Yorkshire batsmen were in excellent form, and the Lancashire bowlers were in excellent form. The match was a most interesting one.

The Yorkshire batsmen were in excellent form, and the Lancashire bowlers were in excellent form. The match was a most interesting one.

The Yorkshire batsmen were in excellent form, and the Lancashire bowlers were in excellent form. The match was a most interesting one.

The Yorkshire batsmen were in excellent form, and the Lancashire bowlers were in excellent form. The match was a most interesting one.

Handicapped Special Game Series (Continued).

COUNTY CRICKET.

Handicapped Century in Benefit Match.

LANCASHIRE YORKSHIRE DUEL.

(STANDARD CORRESPONDENT.)

An incident seemed on Monday, Tuesday, and Wednesday of a match between the two counties in the Handicapped series, which took place at the Cricket Ground, Leeds, on Monday.

The Yorkshire batsmen were in excellent form, and the Lancashire bowlers were in excellent form. The match was a most interesting one.

The Yorkshire batsmen were in excellent form, and the Lancashire bowlers were in excellent form. The match was a most interesting one.

The Yorkshire batsmen were in excellent form, and the Lancashire bowlers were in excellent form. The match was a most interesting one.

The Yorkshire batsmen were in excellent form, and the Lancashire bowlers were in excellent form. The match was a most interesting one.

The Yorkshire batsmen were in excellent form, and the Lancashire bowlers were in excellent form. The match was a most interesting one.

The Yorkshire batsmen were in excellent form, and the Lancashire bowlers were in excellent form. The match was a most interesting one.

The Yorkshire batsmen were in excellent form, and the Lancashire bowlers were in excellent form. The match was a most interesting one.

The Yorkshire batsmen were in excellent form, and the Lancashire bowlers were in excellent form. The match was a most interesting one.



Do not use inferior cartridges in your gun

ELEY GRAND PRIX

loaded with Smokeless Diamond powder

the most popular cartridge for all feathered game



ELEY GRAND PRIX

Eley cartridges are obtainable from all licensed dealers throughout East Africa

"A Good Gun deserves a Good Cartridge"

DOUBLE AND TRIPLE EVENTS

S.P. ANY RACE WAGER NO. ANY OTHER BETTING

CHICKEN

THE FINEST GUN PRODUCING & IRON FORMING FOOD FOR FOWLS.

GRIT

MADE BY MARELL MARBLE QUARRIES CO.

1st. NAIROBI. P.O. Box 604. KENYA MARBLE QUARRIES CO.

THE BALLS FOR FOOTBALL GOLF TENNIS

EXTRA PACE AND DURABILITY WILL SURELY GIVE BETTER RESULTS TO YOU

Craig's Sports House Ltd. (Government Issue)

The Kenya Hairdressing Saloons

High Class Ladies' and Gents' Hairdressing.

Messrs. COLLIER'S HALL (late of Thomas's).

Messrs. WELLS'S THOMSON (late of Robinson's).

Our motto is "Service" and with such an excellent staff we guarantee satisfaction.

Permanent Wave (non-toxic) Training and Chemistry are specialties.

P.O. Box 1180. DIAL 9071. (Opposite Station, Harbord Street, Nairobi.)

Kenya Loan & Discount Co., Ltd.

P.O. Box 446, NAIROBI. OFFICE—1st Floor, Court Chambers.

Financial Agents.

Bill Discounted—Short-term Loans Granted. Any Realisable Asset. Repaid by Cash. Call or Write. STRICTLY CONFIDENTIAL. ESTABLISHED 1921.

FISHING TACKLE

FRESH STOCKS OF RODS, REELS, LINES, CASTS, TRAPS, FLIES AND ALL ACCESSORIES FOR TROUT FISHING.

HAVE JUST ARRIVED A BEAUTIFUL SELECTION OF FISHING TACKLE. WELL WORTH A VISIT OF INSPECTION.

Chas. A. Hoyer & Co., Ltd. NAIROBI.

**KINGSWAY**  
The Plate for Presentations and Wedding Presents.

GUARANTEED FOR 20 YEARS' HARD WEAR.

IF YOU WISH THE BEST IN VALUE AND QUALITY—SEE OUR STORES.

**DOBBISS LTD.**  
Silvermiths, Watchmakers and Jewellers.  
Phone 2000 NAIROBI P.O. Box 100.

**MAURICE ROSENSTON,**  
P.O. Box 100, NAIROBI.

ALL PRICES SUBJECT TO MARKET FLUCTUATIONS.

DEPOSIT ACCOUNTS ACCEPTED.

CREDIT LETTERS—WIRE BUSINESS ONLY.

All Orders executed under Own Personal Supervision.

**JAMES REZIN**  
Tailor & Breaches Maker  
CHOICE SELECTION OF LAIN'S MATCHLESS LEADER BUILDINGS (Adjoining the Loan Shop).  
P.O. Box 1180.

ENTRIES FOR THE  
**GYMKHANA HANDICAP TOURNAMENT**

CLOSE ON JUNE 10th

REGISTER YOUR ENTRY and

**SELECT YOUR RACKETS**

AT  
**MAY & Co., Ltd.**  
THE SPORTS HOUSE  
NAIROBI.

DRINK

Tusker and Oatmeal STOUT

Made in East Africa from the finest ingredients.

Kenya Breweries, Ltd. NAIROBI.

GUARANTEED THE LARGEST CIRCULATION OF ANY NEWSPAPER IN KENYA, UGANDA, TANGANYIKA AND ZANZIBAR.

THE EAST 12 PAGES African Standard

The LOUNGE for Morning and Afternoon TEAS OPEN ON SUNDAYS TO Non-Residents. THE NEW STANLEY HOTEL

PRICE, 50 CENTS.

NATIVE CUSTOMS AND BELIEFS. Study as an Aid to Solution of State Problems. ANTHROPOLOGY'S HELP. Aesthetic Critic of White Settlement in Tanganyika.

On the course of his concluding evidence before the Select Committee, Mr. P. E. Mitchell of Tanganyika... Lord Lugard suggested that the power to legislate for these areas should be in the hands of the Governor.

Lugard pointed out that while Native Institutions were developing over a long period, the non-native residents in what was regarded as a Native area had no voice in public affairs.

Colonists Will Decrease.

Following the concluding of Mr. D. E. Mitchell's evidence before the Select Committee... Mr. D. E. Mitchell's evidence... The big June clearance at Whiteway's is a wonderful opportunity for economic buying.

SERIOUS RIOTS IN SPAIN. Communist Strike at San Sebastian. Troops Fire on Crowd.

NOB ADVANCES BARRIED SCHEMES OF WORKER. (THROUGH REUTERS AGENCY.) San Sebastian, May 27. Martial law has been proclaimed following a serious outbreak here by Communists and ricklers who disrupted the wireless and other public utilities.

Strikers Dispersed. San Sebastian, later. The proclamation of martial law followed rioting in which three strikers were killed and 20 were injured as a result of the Civil Guard firing on a crowd of dock strikers who were demanding higher wages.

The Olympic Tournament. THEIR MARSHES ATTEMPT OPENS PERFORMANCE. (BY WIRELESS.) Rugby, May 26. The thrashed school children constituted a very enthusiastic audience at the dress rehearsal at Twickenham stadium.

The Prince Broadcasts.

APRAL FOR THE BLESSED. (BY WIRELESS.) Rugby, May 26. The Prince of Wales made a broadcast appeal last night on behalf of the Prince of Wales for the blind. All the blind persons in the country are permitted to use sets without payment of an annual licence.

Competitive designs for a new set of postal postage stamps of 1/2 denomination... During the American fiscal year ended June 30, 1929, total \$200,000 compensation was paid to residents of the United States for residents caused by splinters.

UGANDA ARGUS THE LEADER THE OLDEST ESTABLISHED NEWSPAPER PUBLISHED IN KENYA AND UGANDA.

NAIROBI, FRIDAY, MAY 29, 1931.

OFFICIAL SALARIES IN JAPAN. To be Reduced as Part of Economy Campaign.

GOVERNMENT DECISION. (THROUGH REUTERS AGENCY.) Tokyo, May 27. The serious situation which threatened to develop throughout the country as a result of the Government's decision to cut official salaries of over £10 a month, has been averted.

M. Brand.

WITNESSES ABROGATION AS FOREIGN MINISTER. (THROUGH REUTERS AGENCY.) London, May 28. M. Brand has withdrawn his resignation as Foreign Minister.

London Streets Safer.

FAST TRAFFIC BEANS FEWER ACCIDENTS. (BY WIRELESS.) London, May 27. According to the statistics of the Metropolitan Police, London is becoming a safer place for motorists.

REPAIR DAMAGE CAUSED BY HERRING.

A Treasury Rugby, May 28. A Treasury statement is issued stating that a Government guarantee of £200,000 will be granted by the Treasury to guarantee the £200,000 to be raised by the Government of Mauritius for the repair and replacement of the Colony's property damaged in the recent hurricane amounting to £75,000.

During the American fiscal year ended June 30, 1929, total \$200,000 compensation was paid to residents of the United States for residents caused by splinters. The City is shown wholly dependent upon the sugar industry—British Official Wireless Service.

ANTI-CATHOLIC RIOTS IN ROME. Fascists Attack Church Property. Troops Protecting the Vatican.

CLUB RAIDED BY STUDENTS. (THROUGH REUTERS AGENCY.) Rome, May 27. Italian troops are guarding the Vatican against the attacks of Fascist groups.

Storms in Britain.

HEAVIER FOR MANY YEARS. (BY WIRELESS.) Rugby, May 28. England's heaviest rain was begun on Monday, when it poured in the north and particularly in Wales.

MR. JUSTICE VAN FITTER.

Obituary. (THE STANDARD'S Special Cable Service.) (Continued.)

Obituary.

Obituary.

Obituary.

Obituary.

Obituary.

Obituary.

Obituary.

Obituary.

Obituary.

Obituary.

Obituary.

Obituary.

Obituary.

Obituary.

INDIAN MURDERED AT MERU. Battered to Death While Taking a Walk. FOUR NATIVES ARRESTED.

Four African natives have been arrested at Meru on a charge of murder, and the case is now being investigated by the District Commissioner.

On the night of May 24 an Indian, after whose premises were in the main street of the bazaar, went for a walk around the town. Some hours later his body was found. The victim's skull had been fractured, evidently by a blunt instrument, and he had been dead for some time.

Obituary.

Obituary.

Obituary.

Obituary.

Obituary.

Obituary.

Obituary.

Obituary.

Obituary.

Obituary.

Obituary.

Obituary.

Obituary.

Obituary.

Obituary.

Obituary.

Obituary.

Obituary.

LIFE RISKED IN INTEREST OF SCIENCE. Professor Attempts to Reach Height of 10 Miles. ASCENT IN BALLOON.

To Study Rarefied Upper Atmosphere. His life in the interest of scientific investigation, a Belgian Professor and his assistants ascended in a balloon with a hermetically sealed gondola, from Augsburg in Bavaria, in an attempt to reach a height of 10 miles, in order to study the rarefied upper atmosphere.

An attempt was made last September, but this proved to be unsuccessful. In the present instance, however, latest reports indicate that the balloon had reached 38,000 feet.

Fears are expressed for the safety of the adventurers, as the gondola only contains oxygen for 10 hours.

Hermetically Sealed Gondola. (THROUGH REUTERS AGENCY.) Augsburg, May 27. The ascent was accompanied by the assistant.

The latest reports indicate that they have already passed the limits of clouds.

Fears for Safety. (Continued on page 8.)

SALE MONDAY NEXT JUNE 1st for Two Weeks Only JUNE 1st - 13th. SEE THE ARCADE WINDOWS Whiteaway Laidlaw & Co. Ltd. NAIROBI

A faultless dinner ends with

DE RESZKE

The Aristocrat of Cigarettes

Plato or Ivory tipped.

"VIRGINIAS"

Sole Distributors: DALGETY & Co., LIMITED



FROM SUNRISE TO SUNSET FROM POLE TO POLE

In the torrid tropics or in the frigid arctic, wherever shotguns, rifles and ammunition are used, men know they can depend upon any product stamped with the name—

Remington FIREARMS AMMUNITION CULTURE

LOOSE LEAF LEDGERS INSTANT REFERENCE PERPETUAL USE

"RIVAL" "INVADER" "CLARION" Three Binder, Full Bound, Maroon Covers, Hand-stamped Gilt Edges.

LET US QUOTE YOU A COMPLETE LEDGER BINDER INDEX AND 250 STOCK RULED SHEETS. From Shs. 6/6/50 to Shs. 135/00 according to size and quality of Binder.

LOOSE LEAF NOTE BOOKS

BINDERS AND INDEXES STANDARD STATIONERY STORES NAIROBI

Empire Day at Eldoret.

ASSOCIATION'S ANNUAL MEETING. CELEBRATION AT THE SCHOOL.

["STANDARD" Special Correspondent.] The annual meeting was held on Saturday at the British Empire Day celebration at Eldoret... The British Empire Day celebration at Eldoret took place at the Central School on Friday, May 21st...

Passenger Lists.

"ON THIS DAY" MAY 20TH.

["STANDARD" Special Correspondent.] The following passengers were booked for East African ports by the N.Y. "LANDOVY CASTLE" and "R. LANDOVY CASTLE"...

REVELATION

REVELATION I

Our revival program for October will not only be considered revolutionary... It is a revelation of the new era...

National Bank of India Limited

(Incorporated in India)

Branches: Calcutta, Bombay, Madras, Rangoon, etc. Capital: Rs. 100,000,000. Reserve: Rs. 25,000,000.

FOR SALE

Well seasoned Camphor Wood and other Hardwoods

Apply: THE WEST KENYA SAW MILLS Limited

Sodler Street - Nairobi

Venetian Art Works

Artificial marble works made up of all kinds of stones, Travertine, Carrara, etc.

Apply: Juja Trading Co. Agents S.O. of E.A. Ltd.

Think's Best and Cheapest House for:

Groceries, Provision, Wine and Spirits, etc.

Apply: P. STEWART PAINTER

DOONHOLM DAIRY

PURE MILK and CREAM

Apply: Ostrich Brand

KEYS INDUSTRIAL WORKS

Box 679, Nairobi.

W. POLMANN

Successor of Young, Quill-Combs and Co. Stationery and Printing.

FOR SALE:

418 acres beautiful farm in two, with house, suitable for dairying, wheat, stock, etc.

Apply: THAKORE BROTHERS

To-day's Trains

The following trains are due to leave Nairobi on Monday, Tuesday, Thursday and Friday at 4 p.m.

S. JACOBS LTD. GOVERNMENT ROAD, NAIROBI.

Offering the most comprehensive stocks of all HOUSEHOLD UTENSILS, CROCKERY AND GLASSWARE, CUTLERY AND ELECTROPLATE.

THEO. SCOUTEN LADIES AND GENTLEMEN'S HAIRDRESSERS, PERMANENT WAVING EXPERTS.

Our Gentleman's Salon is now entirely re-organized with a First Class Staff, and we offer an unequalled service to the discriminating patron.

Getthin & Hulett's East African Tours Ltd.

Our East Africa in Company, in Luxurious Touring Cars, with English Drivers.

TO COFFEE PLANTERS, ARRIVED.

Only special quality white non-absorbent cotton wool for Mangle Bag prevention at considerably reduced prices.

A. J. ELY & Co., Ltd. THE CHEMIST, NAIROBI, P.O. Box 161.

GOOD CHAIRS GOOD TABLES MAINTENANCE REPAIRS

Apply: BBB, ORLIK, LOEWE and DUNHILL PIPES May & Co. Ltd.

FOR SALE.—(Contd.)

ADVERTISEMENTS.—Advertisement rates... For sale... For hire... For lease...

ADVERTISEMENTS.—Advertisement rates... For sale... For hire... For lease...

ADVERTISEMENTS.—Advertisement rates... For sale... For hire... For lease...

ADVERTISEMENTS.—Advertisement rates... For sale... For hire... For lease...

ADVERTISEMENTS.—Advertisement rates... For sale... For hire... For lease...

ADVERTISEMENTS.—Advertisement rates... For sale... For hire... For lease...

ADVERTISEMENTS.—Advertisement rates... For sale... For hire... For lease...

ADVERTISEMENTS.—Advertisement rates... For sale... For hire... For lease...

ADVERTISEMENTS.—Advertisement rates... For sale... For hire... For lease...

ADVERTISEMENTS.—Advertisement rates... For sale... For hire... For lease...

ADVERTISEMENTS.—Advertisement rates... For sale... For hire... For lease...

ADVERTISEMENTS.—Advertisement rates... For sale... For hire... For lease...

TO LET.

PHILIPS Road, near Nairobi... To let... 2 rooms, bath, kitchen, and living room.

CALEDONIAN Road, Double... To let... 2 rooms, bath, kitchen, and living room.

CONCRETE House, situated... To let... 2 rooms, bath, kitchen, and living room.

FURNISHED stone house... To let... 2 rooms, bath, kitchen, and living room.

FURNISHED house, 1st... To let... 2 rooms, bath, kitchen, and living room.

NAIVASHA Small poultry farm... To let... 2 rooms, bath, kitchen, and living room.

W. J. MOYNAGH AGENCIES... To let... 2 rooms, bath, kitchen, and living room.

NAIYBI: Splendid farm... To let... 2 rooms, bath, kitchen, and living room.

MURRAY: Complete 2 room... To let... 2 rooms, bath, kitchen, and living room.

UJARI: Excellent 2 room... To let... 2 rooms, bath, kitchen, and living room.

MUTHANDA: Splendid 2... To let... 2 rooms, bath, kitchen, and living room.

STONE house, with two... To let... 2 rooms, bath, kitchen, and living room.

J. A. LANDMAN & Co. LAND, ESTATE AND MANAGING AGENTS.

Phone 551. NAIROBI. P.O. Box 988. For sale... For hire... For lease...

FOR SALE: Several business... For sale... For hire... For lease...

FOR SALE: Near Main... For sale... For hire... For lease...

FOR SALE: Second Avenue... For sale... For hire... For lease...

FOR SALE: Small Hotel... For sale... For hire... For lease...

FOR SALE: M'ungali 75 acres... For sale... For hire... For lease...

FOR SALE: Thomson's Place... For sale... For hire... For lease...

FOR SALE: Charming 2 room... For sale... For hire... For lease...

FOR SALE: The Hill: A small... For sale... For hire... For lease...

FOR SALE: Second Avenue... For sale... For hire... For lease...

TO LET: Kiliman: Nice stone... For sale... For hire... For lease...

TO LET: The Hill: Stone... For sale... For hire... For lease...

J. W. MILLIGAN & Co. Land & Estate Agents

Box 148 NAIROBI. Phone 3547. For sale... For hire... For lease...

FOR SALE: 200 acres... For sale... For hire... For lease...

FOR SALE: 100 acres... For sale... For hire... For lease...

FOR SALE: 50 acres... For sale... For hire... For lease...

FOR SALE: 25 acres... For sale... For hire... For lease...

FOR SALE: 10 acres... For sale... For hire... For lease...

FOR SALE: 5 acres... For sale... For hire... For lease...

FOR SALE: 2 acres... For sale... For hire... For lease...

FOR SALE: 1 acre... For sale... For hire... For lease...

FOR SALE: 1/2 acre... For sale... For hire... For lease...

FOR SALE: 1/4 acre... For sale... For hire... For lease...

FOR SALE: 1/8 acre... For sale... For hire... For lease...

MISCELLANEOUS.

BALABOND Dancing.—The... Miscellaneous notices and advertisements.

MISS Helen Beall opens her... Miscellaneous notices and advertisements.

NAIVASHA Show, Limited... Miscellaneous notices and advertisements.

Snow.—Two days later... Miscellaneous notices and advertisements.

THOMPSONS FALLS: 2450... Miscellaneous notices and advertisements.

Wanted.—A lady... Miscellaneous notices and advertisements.

MUTER and OSWALD, LTD.

Muter and Oswald, Ltd. Miscellaneous notices and advertisements.

KILIMANI, well built house... Miscellaneous notices and advertisements.

To let furnished, six... Miscellaneous notices and advertisements.

To let furnished, six... Miscellaneous notices and advertisements.

To let furnished, six... Miscellaneous notices and advertisements.

To let furnished, six... Miscellaneous notices and advertisements.

The MORRIS ISIS Six.



The Car for the Connoisseur. Built and designed for the Overseas Market.

Overseas Motor Transport Co. (E.A.) Ltd. Sixth Avenue, incorporating Hodge & Carter Ltd.

Just Unpacked ALL-WEATHER PROOF COATS



Kenya Horticultural Society. FLOWER SHOW IN THE MEMORIAL HALL.

BETTER THAN EVER. 'Kenya's Pride' Flour. Manufactured by Kenya Grain Mills, Ltd., Nairobi.

Wanted.—A lady... Fred Raper Saddlers. Hardings Street, P.O. Box 41, Nairobi.

Cash Sales Ltd. GLASS TANKARD JUGS 150 each. Government Road, Nairobi.

Kenya Horticultural Society. FLOWER SHOW IN THE MEMORIAL HALL. Monday, 1st June, 12 noon.

**HOMEROUND**  
EASTERN ROUTE WESTERN ROUTE

**HOMEROUND VIA SUEZ.**

London	1st Aug.	1st Aug.
Aden	10th Aug.	10th Aug.
Suez	18th Aug.	18th Aug.
Colombo	26th Aug.	26th Aug.
Calcutta	31st Aug.	31st Aug.
Rangoon	7th Sept.	7th Sept.
Yokohama	14th Sept.	14th Sept.
Manila	21st Sept.	21st Sept.
Cebu	28th Sept.	28th Sept.
London	5th Oct.	5th Oct.

**HOMEROUND VIA SOUTH AFRICA.**

London	1st Aug.	1st Aug.
Aden	10th Aug.	10th Aug.
Suez	18th Aug.	18th Aug.
Colombo	26th Aug.	26th Aug.
Calcutta	31st Aug.	31st Aug.
Rangoon	7th Sept.	7th Sept.
Yokohama	14th Sept.	14th Sept.
Manila	21st Sept.	21st Sept.
Cebu	28th Sept.	28th Sept.
London	5th Oct.	5th Oct.

For full particulars of routes and rates apply to the Agents.

**British India Steam Navigation Company, Limited.**  
& PENINSULAR AND ORIENTAL STEAM NAVIGATION CO.

**LONDON & EAST AFRICA LINE**

Steamers reserve the liberty to call at Malindi and/or Tanganyika.

Arrives from London at Malindi on Mombasa about:

S.S. "MANILA"	6th June	6th June
S.S. "MATIANA"	6th June	4th July
S.S. "MANTOLA"	3rd July	1st Aug.
S.S. "MODASA"	31st July	29th Aug.
S.S. "MADURA"	28th Aug.	26th Sept.
S.S. "MATIANA"	25th Sept.	24th Oct.
S.S. "MANTOLA"	22nd Oct.	21st Nov.

**AGENCIES**  
Passage Only: NAIROBI (Smith & MacKenzie Co.), ZEPHARUS, Ltd., ZEPHARUS, Ltd., ZEPHARUS, Ltd.

**BOMBAY/DURBAN LINE**  
(Mail Contract) TO BOMBAY.

S.S. "KHANDALLA"	26th May
S.S. "KINYA"	16th June
S.S. "KARAGA"	26th June
S.S. "KHANDALLA"	16th July
S.S. "KINYA"	6th Aug.

**COASTAL SERVICE:**  
Sails for Mombasa: 6th June, 21st June, 6th July, 21st July, 6th Aug., 21st Aug., 6th Sept., 21st Sept., 6th Oct., 21st Oct., 6th Nov., 21st Nov.

**Chivers' Custard Powder**

combines highest quality with greatest economy. It streams up into a luscious Custard of delicious taste.

*Delicious with*

Canned Fruits  
ORANGE and SOBE, LTD., The Orchard Factory, Hales, Glastonbury, Wiltshire.

**Messageries Maritimes**  
(FRENCH MAIL STEAMERS)  
Regular and fortnightly service from London to Mauritius.

The Quickest Route to London.  
Next Sailings to Marseilles:

S.S. "Gaston Dubouché"	1st June
S.S. "Gaston Dubouché"	15th June
S.S. "Bernardin de St. Pierre"	30th June
S.S. "Bernardin de St. Pierre"	15th July

**UNION-CASTLE LINE**

Compagnie Havraise Peninsulaire  
THE BEST ROUTE TO ENGLAND

S.S. G. "CRISTY"—1st June, 1st August, 1st October, 1st December.  
S.S. F. "MAZZINI"—1st July, 1st September, 1st November, 1st January.

For full particulars of routes and rates apply to the Agents.

**DEUTSCHE OST-AFRIKA-LINIE**

HOMEROUND VIA SUEZ CANAL, HOMEROUND VIA CAPE.

S.S. Nijne	1st June	S.S. Utopia	1st June
S.S. Adolph Weermann	15th June	S.S. Utopia	15th June
S.S. Waid	1st July	S.S. Utopia	1st July
S.S. Adolph Weermann	15th July	S.S. Utopia	15th July
S.S. Waid	1st Aug.	S.S. Utopia	1st Aug.
S.S. Adolph Weermann	15th Aug.	S.S. Utopia	15th Aug.
S.S. Waid	1st Sept.	S.S. Utopia	1st Sept.
S.S. Adolph Weermann	15th Sept.	S.S. Utopia	15th Sept.
S.S. Waid	1st Oct.	S.S. Utopia	1st Oct.
S.S. Adolph Weermann	15th Oct.	S.S. Utopia	15th Oct.
S.S. Waid	1st Nov.	S.S. Utopia	1st Nov.
S.S. Adolph Weermann	15th Nov.	S.S. Utopia	15th Nov.
S.S. Waid	1st Dec.	S.S. Utopia	1st Dec.
S.S. Adolph Weermann	15th Dec.	S.S. Utopia	15th Dec.
S.S. Waid	1st Jan.	S.S. Utopia	1st Jan.
S.S. Adolph Weermann	15th Jan.	S.S. Utopia	15th Jan.
S.S. Waid	1st Feb.	S.S. Utopia	1st Feb.

**EASTER EXCURSIONS TO SOUTH AFRICA—FEBRUARY TO JUNE, 1931.**

Visitors to D.O.A.L. Steamers are required to be in possession of permits obtainable at the Office. Ballings subject to alteration.

**Clan-Ellerman-Harrison Lines, (JOINT SERVICE)**

Liverpool—Glasgow—Aronmouth—Manchester.

Due to arrive	Due to sail
Kilindini	Kilindini
1st June	1st June
15th June	15th June
1st July	1st July
15th July	15th July

**Ellerman and Bucknall Line**  
NEW YORK—MOMBASA VIA SUEZ.

S.S. "Peking"	1st May	2nd June
S.S. "City of Baltimore"	15th June	16th June
S.S. "City of Charleston"	30th July	30th July

**Wire Waste Paper Baskets**

AND  
**Wire Desk Baskets**

Obtainable at:  
**STANDARD STATIONERY STORES**  
Sixth Avenue—NAIROBI

**BRICKS! BRICKS! BRICKS!!**  
**TILES!! TILES!!**

Specify Brick and Lateral Tiles, the best and safest building material.

Involve Brick & Tile Works, (SABOTHRI) LTD., P.O. Box 78, NAIROBI.

**NOTICE**

**MAISON MARIE**  
Begs to Announce

THAT owing to pressure of business Mrs. Barrow has deferred her leave for three weeks to enable the two assistants engaged from London to arrive before her departure.

**PERMANENT WAVING A SPECIALITY.**  
Box 1032, Theatre Royal Buildings, Phone 2236.

**B.M.C. HOUSE**  
Corner Government Road and Fifth Avenue.  
Opposite the new N.B.I. Bank.  
Phone 512. P.O. Box 810.

**6 Real Solid B.M.C. Bargains.**

<b>6 REAL SOLID B.M.C. BARGAINS.</b>	<b>HERBY POPPIN TENNIS BELLETS</b> One of our famous lines. Colors 3 Shades of Blue, Peach, Mauve, Turquoise and White.	<b>BARGAIN PRICE, 7/50 EACH</b>
<b>50 WELL TAILORED BOYS' GREY FLANNEL KNICKERS.</b> Single and Double Breasted styles.	<b>500 YARDS PURE DEERS' LINDEN.</b> 36" wide, in all the new shades.	<b>BARGAIN PRICE, 2/00 PER YARD</b>
<b>100 PAIRS PURE SILK LADIES' HOSE.</b> Embroidered Clas, in all the new shades.	<b>500 YARDS REVERSIBLES—GREY-TORNER.</b> Smart design.	<b>BARGAIN PRICE, 2/00 PER YARD</b>
<b>200 YARDS PURE SILK LADIES' HOSE.</b> Embroidered Clas, in all the new shades.		<b>BARGAIN PRICE, 5/00 PAIR</b>

**THE Bradford Manufacturing Co., Ltd.**  
INCORPORATED IN ENGLAND.

**With 'L' FAT LIME**  
**Lime Limited**

The Builder's Best Building Material.

17, Lincoln's Inn, London, E.C. 4.

**Kenya Mountain**  
By E. A. T. DUTTON.

With fifty-six full page illustrations Reproduced in Colotype.

"A book well worth sending to your friends at home."

PRICE 3s. 6d., posted 3s. 9d.

**STANDARD STATIONERY STORES, NAIROBI.**

**PIANOFOUR TUNING AND REPAIRING.**  
Ten years experience in Kenya Colony and five years with Messrs. Chappell and Co., London.

**F. A. HEAD,**  
Box 676, NAIROBI.

**OVERSEAS MAILS.**

Steamers	From	Due at Nairobi	Mails arrive at Nairobi
Kaoko	India	May 30	May 31
Palawan	Europe	June 1	June 2
D. de St. Pierre	Europe	" 1	" 2
MAIL	EUROPE and INDIA	" 4	" 6
Malacca	Europe	" 6	" 8
Keays	South Africa	" 6	" 10

**DEPARTURES.**

Steamers	To	Mails close at Nairobi	Date of Departure
Kaoko	South Europe	May 31	May 31
Palawan	South Europe	June 1	June 1
D. de St. Pierre	South Europe	June 1	June 1
MAIL	EUROPE and INDIA	June 2	June 2
Malacca	Europe	June 4	June 4
Keays	South Europe	June 6	June 6

**OH SHOOT!**

How well you can shoot depends on your skill. How well you do shoot depends on your equipment. Let us never shoot as well as you can unless you use our tested guns and other aid.

**Western AMMUNITION COMPANY**

**SHAW & HUNTER, Ltd.**

**ESMAIL & RAMJEE**

Just to announce the arrival of huge new stocks of CHINA GLASSWARE, CHINA LUMBERWARE, DINNER and TEA SETS in attractive designs. HOUSEHOLD UTENSILS, etc.

**INSPECTION CORDIALLY INVITED.**  
**PRICES TO SUIT ALL POCKETS.**

10 per cent. DISCOUNT ALLOWED FOR CASH.

**Uplands Tinned Goods.**

To spread knowledge of their merits  
**Free Sample Tins**  
OF  
PORK SAUSAGES  
SLICED HAM  
AND BEEF

will be posted to all applicants who send the cost of postage (3d. Centa. per tin) to

**Uplands Bacon Factory**  
UPLANDS, KENYA COLONY.

**SCOTCH**

**TYPE W RIBB**

**STANDARD**



NATIVE CUSTOMS AND BELIEFS

(Continued from Page 1)

step up liable to discuss as Arabic or other customary membership of the interests of a group.

Legislative Powers

Lord Lugard asked Mr. Mitchell if in the opinion of the members of the Council...

Mr. Mitchell thought that the most part of the collection...

Lord Lugard asked Mr. Mitchell if he had any objection to the proposal...

The Judicial System

Lord Lugard asked Mr. Mitchell if he had any objection to the proposal...

Mr. Mitchell thought that the most part of the collection...

Lord Lugard asked Mr. Mitchell if he had any objection to the proposal...

Native Wives

Lord Lugard asked Mr. Mitchell if he had any objection to the proposal...

Mr. Mitchell thought that the most part of the collection...

Lord Lugard asked Mr. Mitchell if he had any objection to the proposal...

ENTERTAINMENTS

Nightly at 8-45 Empire Theatre Nighly at 8-45

TO-NIGHT MATINEE, SATURDAY AT 3-15. THE ALL DIALOGUE-SINGING-DANCING-DRAMATIC SPECTACLE

"The GREAT GABBO" with a chorus of 500 accompanied by an orchestra of 125 symphonists

ERIC VON STROHELM AND BETTY COMPSON

MONDAY'S "TALKIE" COLLEEN MOORE

"Smiling Irish Eyes"

THEATRE ROYAL

TO-NIGHT LILLI DAMITA with a star cast

"The Butterfly on the Wheel"

MAYHEE SATURDAY AT 3-15 P.M. Douglas Fairbanks

"THE IRON MASK" PRICES: sh. 1/- and 7/6

Commencing Monday Next 1st June FOR A SHORT SEASON

THEATRE ROYAL WESTMINSTER GLEE SINGERS

Exquisite Boy Sopranos - Celebrated Men Soloists ALL NAIROBI MUST HEAR THEM!

Complete Change of Programme Nightly. MATINEE SATURDAY, 6th JUNE at 3-15

PICCADILLY RESTAURANT FISHING COOKING

HAVE YOUR TEA AND SUNDOWNER COMFORTABLY WITH MUSIC.

HOTEL AVENUE ENTERTAINMENT PROGRAMME

DAILY MORNING AND AFTERNOON TEA CONCERTS.

Grass "Avenue" Nairobi.

HOTEL AVENUE THE TWO MOST UP-TO-DATE AND LUXURIOUS HOTELS IN KENYA.

This is Worth Your Consideration

Barry Myers Physical Training and Boxing School

OUR PREMISES HAVE BEEN GREATLY ENLARGED.

H. MYERS City Square Mansions, Hours 9 p.m. to 7 a.m.

POLAND WATER A Pure Spring Water with Mineralized Tastes

MOTOR TOURS LTD. NAIROBI



Man with 40 Mothers in Law

Man with 40 Mothers in Law



Scott's Porage Oals

Scott's Porage Oals

Scott's Porage Oals

Scott's Porage Oals

Scott's Porage Oals

Scott's Porage Oals

Scott's Porage Oals

Scott's Porage Oals

Scott's Porage Oals

Scott's Porage Oals

Scott's Porage Oals

Scott's Porage Oals

Scott's Porage Oals

When You Are All Ready For Your Next Safari REMEMBER



That Extra Tin of Castrol The Quality Oil.

THE MOTOR MART and Exchange Ltd.

Mombasa, Tanga, Nakuru, Nairobi, Eldoret, Dar-es-Salaam



HOW AGEZABLE to define eyes in the advertisement of the ordinary corrective lenses...

THE LENS - Ltd. Ophthalmic Opticians

**WAKEN FILES PILINA** \$160 per box

**PROPRIETORS' CLAIMS.**

- Will effect a cure in the worst operation cases.
- In both films and Respirator films care is equally rapid.
- Guaranteed entirely harmless to the system.
- The sole proprietors of these powders are a firm of the highest standing, established in the City of London for over 150 years.

**MEDICAL AND FURNACE OWNERS.**

A Doctor (M.D.) says: "I used 'Pilina' Powder on a new hot case of lung disease, and in one week the case had entirely disappeared."

My dear friend, called from Johannesburg last week 'Pilina' Powder; have used 'Lax.' 'Coughing' pills—'The Tablets' powder I had from you have worked wonders."

Another writes: "I have applied your 'Pilina' Powder to some of the best Doctors, with no real profit from my business from Bath—'I have supplied myself on different cases. Reading Film and have spent pounds on different cases, but no really lasting relief—'Pilina' Powder for a wonderful cure, after being told by my doctor that nothing but powders would do, and was told by you."

SEND ORDER TO  
**Howes & McGee Ltd.**  
NAIROBI AND BRANCHES  
MILKING MACHINES  
PILINA 'A' TABLET 1/6 per bottle

### Better Than Ever! Cheaper Than Ever!



## Alfa-Laval Milking Machines.

**Some 1930 Awards.**

Silver Medal (Highest Award) Royal Show, Manchester.  
Bronze Medal (Highest Award) Dairy Show, London.  
Silver Medal (Highest Award) Highland Show, Dumfries.  
Silver Medal (Highest Award) Royal Winter, Carnarvon.

LET US SEND YOU FURTHER DETAILS.

## G. North & Son, Ltd.

Eldoret. Nairobi. Nakuru

## Visit Our Second-Hand Car Dept.

Take Your Choice of Over 50 Cars.

At Reasonable Prices.

ESSEX, Tourer	HB388	\$325
NASH, Saloon	TA1922	\$385
CHRYSLER 75, Saloon	B8300	\$310
WHIPPLEY, Box Body	BY281	\$270
DOWNEY, Tourer	DT53	\$85
STD. BUICK, Tourer	A1144	\$75
MORRIS OXFORD, 5 Seater	B4665	\$75
BUGBY 4, Box Body	BS359	\$75
DE SOTO, Touring	BD104	\$125
PLYMOUTH, Touring	BB183	\$125
ESSEX, Tourer	K3196	\$75
DE SOTO, Touring	H9667	\$175
PLYMOUTH, Tourer	BD529	\$90
CHRYSLER 75, Box Body	CH107	\$200
CHRYSLER 75, Box Body	BB183	\$160
PLYMOUTH, Box Body	BS240	\$110
OLDSMOBILE, Saloon	BD365	\$170
BUICK, Tourer	BD359	\$200
DE SOTO, Box Body	BB926	\$135
ESSEX, Tourer	BE929	\$100
PLYMOUTH, Box Body	BD444	\$100
BUICK, Box Body	BD777	75
BUGBY 4, Tourer	BD973	\$150

**Sales & Service.**  
**Carr, Lawson & Co., Ltd.**  
NAIROBI

### 50,000 Miles on Standard India Car Tyres Without auncture.

DELAPT, March 21st, 1931.

Dear Sirs,

I would like to draw your attention to the five 33 x 6 1/2 India Tyres which I purchased from you on the 23rd April, 1927, which I removed from my car on the 28th October, 1928. The mileage obtained from these tyres was most satisfactory, 50,000 miles were obtained before I had a single puncture.

As you know, in business I have to travel pretty well all over India. Some of the roads are the best, and some the worst, it is possible to go over. But notwithstanding this, not one of the tyres even showed a ret. although at times travelling over sharp stones.

I must congratulate you on having, in my opinion, produced a tyre far ahead of any other make at present on the market.

Yours faithfully,  
Sgd. W. McELENEN.

**THE "INDIA" Paper Tyre and guaranteed satisfaction.**  
British Made with Indian Capital by British Labour at Inchinnan, Renfrewshire, Scotland.

### THE YORKSHIRE INSURANCE COMPANY LIMITED.

Principal Representative:  
**R. O. HAMILTON, Ltd.,**  
Phone 2332 - NAIROBI P.O. Box 309.

### SMOOTH-ON Iron Cement for Home Repair

Shts. 3/- per 7-oz. tin

**Smooth-On No. 1** is a thoroughly prepared iron compound in a powder form and is mixed with water. It is recommended for repairing leaks of steam, water, gas, etc. It is strong and hard setting and does not crack with expansion and contraction as it sets, thus keeping the joints tight and permanent. It is also recommended for repairing cracked cement in basins, etc. It is in this solid form which is packed in the small tin, and is easily broken into small pieces. Smooth-On No. 1 may be applied to any metal—iron, steel, brass, lead, zinc, aluminium, etc.

**KEYSER** is a simple anybody can use it. It is simple and easy to use. That is why you can easily use it.

This is the best hydraulic, water-curing, setting type of cement mortar ever made. It sets in 15 minutes and is equal in strength to the best made of any kind.

Which you may or may not have seen used in the most important work. It is the best of its kind, but it is not a secret. It has been used in the most important work for many years.

Smooth-On No. 1, One Pound Tin, Cost 4/- Small Size, 7-oz. Tin, Cost 3/-

**The Tool HOUSE, INCORPORATED**

### This week end

You can bring over colour and design to your home with KENNEDY'S DYE



Obtainable from  
**GALLEY & ROBERTS, LTD.,**  
NAIROBI AND BRANCHES.

### The New No-Pressure Frame, A. H. Wards & Co., Ltd.

MAKING CERTAIN OF YOUR HOT BATH by installing the most up-to-date and effective boiler on the market.

**MADE CERTAIN OF YOUR HOT BATH**



**The 'Ideal' Domestic Boilers**  
Stocked in all sizes.  
**R. G. VERNON & Co.**  
Elliott Street, NAIROBI. Phone 2644. Phone 2644.

### SOFT THROAT

neglected may lead to serious complications.

## Rexall

**IODIZED TABLETS**  
will be found most effective and highly antiseptic. They are a certain cure for all minor affections of the throat.

**Obtainable only from the "REXALL CHEMISTS"**  
**A. H. WARDLE & Co., Ltd.**  
CHELSEA, NAIROBI  
Branches at Mombasa, Kisumu, Malindi, Eldoret, and Kampala

### Gravimetric

An exhibition of gravimetric methods was held at the Royal Society on Monday, 22nd, at 10.30 a.m., when the following papers were read: 'Gravimetric Methods in the Analysis of Solids' by the late Prof. A. R. Morgan; 'Gravimetric Methods in the Analysis of Liquids' by the late Prof. A. R. Morgan; 'Gravimetric Methods in the Analysis of Gases' by the late Prof. A. R. Morgan.

### Deaths

**GRAHAM**, on April 29th 1931 at Bedford, England. Mr. Leslie Cyril Graham, 46, Douglas Road, N. Nairobi, died of Marjorie Anne Graham.

### Deaths

**GRAHAM**, on April 29th 1931 at Bedford, England. Mr. Leslie Cyril Graham, 46, Douglas Road, N. Nairobi, died of Marjorie Anne Graham.

### Standard Diary

**Today:** Annual General Meeting, Kenya Agricultural Society, Kenyan Country Club, Kenyan Country Club, Kenyan Country Club.

### Standard Diary

**Today:** Annual General Meeting, Kenya Agricultural Society, Kenyan Country Club, Kenyan Country Club, Kenyan Country Club.

### Standard Diary

**Today:** Annual General Meeting, Kenya Agricultural Society, Kenyan Country Club, Kenyan Country Club, Kenyan Country Club.

### Standard Diary

**Today:** Annual General Meeting, Kenya Agricultural Society, Kenyan Country Club, Kenyan Country Club, Kenyan Country Club.

# GRAVITY OF THE LOCUST MENACE INCREASING.

## Situation Out of Control in Parts of Kenya.

### SERIOUS DAMAGE TO CROPS.

#### Food Shortage Anticipated in South Kavirondo.

The latest report issued by the Department of Agriculture on the locust position in that part of the districts of the past few weeks is increasing. Many of the border towns have now reached the flying stage. In some areas, such as the country in the neighbourhood of Lumbwa, Tinned and Port Torman, it is not anticipated that it will be possible to effect considerable damage to the bait which is available.

Considerable damage to crops is reported from several districts both to the west and east and in the Native Reserves. Importation of food stuffs will be required into the South Kavirondo country.

The locusts entering North Kavirondo over the Uganda border have now reached the flying stage, whilst it appears that swarms from Uganda are likely to invade Kenya shortly.

#### Smudge Fires.

News in this area are believed to have been delayed by the late heavy rain which was reported to have been seen out at many places in the area. The locusts are now believed to be present in the area and have been seen out at many places in the area. The locusts are now believed to be present in the area and have been seen out at many places in the area.

The locusts are now believed to be present in the area and have been seen out at many places in the area. The locusts are now believed to be present in the area and have been seen out at many places in the area.

# THE EAST AFRICAN STANDARD.

## MR. SHOWN'S LAND TAX PROPOSALS.

### Large Number of Exemptions. THE DOLL.

#### New Employment Proposals.

London, (By Mail). Mr. Snowden, Chancellor of the Exchequer, has introduced his proposals for the taxation of land. The resolution submitted by Mr. Snowden is a radical one, and a survey in the pound on the capital value of every acre of land, but, as expected, Mr. Snowden secured several amendments. The Liberal supporters of the tax were exempted.

Agreed until he was exempted as at his valuation value is unsecured, and will be taxed only the "gross" value of the property. Other land exempted is—State of the property, and other land for public works, churches, and hospitals and other land owned by the National Trust, land owned by hospitals and other land owned by railroads and other public bodies, land owned by the National Trust, land owned by hospitals and other land owned by railroads and other public bodies.

## NOTICE.

### His Excellency the Governor will hold a Levée at Government House, on Wednesday, June 23rd, at 11 a.m.

Persons desiring to attend the Levée are requested to apply to the District Commissioner, Nairobi, for cards for Members of the General Public holding cards for the Review and Levée should refer to the instructions by the Anderson General Office. Officers of the General Public holding cards for the Review and Levée should refer to the instructions by the Anderson General Office.

#### Workshop Class Meeting.

Another interesting transaction in that an owner will be exempt from the 10% duty on the total value of the land. The land is to be exempt from the 10% duty on the total value of the land.

#### Bus Tick.

These are between £2,000,000 and £3,000,000. The Government has proposed to raise £2,000,000 and £3,000,000. The Government has proposed to raise £2,000,000 and £3,000,000.

#### Rating Board.

An important passage, in Mr. Snowden's proposals, is the proposed increase in the rate of the rating. The rating is to be increased from 10% to 15%.

Conservative criticism was made by Mr. Snowden, who said that the proposals were a radical one, and a survey in the pound on the capital value of every acre of land.

## MYSTERY OF KABETE OBSERVATORY.

### Correcting Wrong Impressions of E.A. GERMAN STATESMEN TO VISIT BRITAIN.

#### Need for Representation in London. Frank and Personal Exchange of Views.

#### ARRANGEMENTS COMPLETE.

Activities of Unofficial Delegation Revealed. (By WALTER). The German statesmen who will visit Britain are expected to arrive in London in the next few days.

General Rovinsky has indicated that he will visit London in the next few days. The German statesmen will be accompanied by a large number of officials.

#### Arab Representation.

### RUSSIAN APPOINTED TO REPRESENT EWALI OF COAST.

The Russian Government has appointed a representative to the Ewali of the coast. The representative will be a member of the Russian Navy.

#### Motor Offices.

### CAREE BEFORE RESIGNING MAGISTRATE.

A European named P. J. M. has resigned his position as a magistrate. He has been in the position for several years.

#### Representative Healed.

A representative of the Government has been healed. He was suffering from a serious illness and has now recovered.

#### Metropolitan Police.

The Metropolitan Police has received reports of a serious incident. The incident occurred in the area of the observatory.

#### Foreign Office.

The Foreign Office has received reports of a serious incident. The incident occurred in the area of the observatory.

#### English Postmen.

The English Postmen have received reports of a serious incident. The incident occurred in the area of the observatory.

## THE HAWKES SOCIAL CASE.

### Appeal Court Reverses Decision.

The appeal court has reversed its decision in the Hawkes social case. The court has found in favor of the appellant.

#### Mr. C. Abbott.

Mr. C. Abbott, a prominent member of the legal profession, has been mentioned in the court proceedings.

#### Mr. G. B. M. G. D. O.

Mr. G. B. M. G. D. O. has been mentioned in the court proceedings. He is a member of the legal profession.

#### Mr. G. B. M. G. D. O.

Mr. G. B. M. G. D. O. has been mentioned in the court proceedings. He is a member of the legal profession.

#### Mr. G. B. M. G. D. O.

Mr. G. B. M. G. D. O. has been mentioned in the court proceedings. He is a member of the legal profession.

#### Mr. G. B. M. G. D. O.

Mr. G. B. M. G. D. O. has been mentioned in the court proceedings. He is a member of the legal profession.

#### Mr. G. B. M. G. D. O.

Mr. G. B. M. G. D. O. has been mentioned in the court proceedings. He is a member of the legal profession.

The 1931 Model - 1215 h.p.

Compare the Smartness of this Roadster with Other Similar Cars offered to-day.

Take a Trial Trip and you will soon become a Fiat Owner.

Price £205 0/0.

FIAT GARAGES

SOLE AGENTS:

SOCIETA COLONIALE ITALIANA

E.O. Box 992. Telephone: "COLONIALI".

Ladies Art Silk Pyjamas Jumper Style. CONTRASTING SHADES. EMBROIDERED ATTRACTIVE DESIGNS. 1 Shs. 16-50, per suit. Less 10% Discount FOR CASH. HUTCHINGS BIEMER & CO., LTD.

COLEMAN LAMPS AND LANTERNS. CAMP STOVES. WHITLAW, LATDAW & Co., Ltd. LAMBERT LIL, HEMALL & BANJEI, MADALLY, SULEMAN VEREE & SONS, ISRAHIM SAIBIBU, SOORALI DHANI, Etc., Etc.

Wholesale and Retail. WHITLAW, LATDAW & Co., Ltd. LAMBERT LIL, HEMALL & BANJEI, MADALLY, SULEMAN VEREE & SONS, ISRAHIM SAIBIBU, SOORALI DHANI, Etc., Etc.

Your Opportunity. WHIPPET FOUR DOOR. SEEMEN. £215. THE IDEAL CAR FOR THE RAINS.

LET US MAKE YOU AN OFFER FOR YOUR OLD CAR IN PART PAYMENT. THE Motor Service Coy. SIXTH AVENUE, FORMERLY ROULSON & MORRISON, LTD.

SAFARI... TRANSPORT. SHIPPING. STORAGE. MANURE. FUEL... Express Transport Co. CLINTON CONTRACTORS TO KENTIA AND DOANDA RAILWAYS AND HARBOURS.

Large Wireless PROGRAMMES FOR NEXT WEEK. The following are the B. E. A. 11. programmes for next week. Frequency 150 K.C. Wavelength 500 Metres. Programme 1000 K.C. Wavelength 60 Metres.

MONDAY, JUNE 1. 6.30 p.m.—Children's Concert. 7.00 Time Signal—British Official Wireless Program, Local News, weather report, and mail notice.

TUESDAY, JUNE 2. 10.30 to 11.00 a.m.—Democracy Program. 7.00 Time Signal—British Official Wireless Program, Local News, weather report, and mail notice.

WEDNESDAY, JUNE 3. 7.00 Time Signal—British Official Wireless Program, Local News, weather report, and mail notice.

THURSDAY, JUNE 4. 7.00 Time Signal—British Official Wireless Program, Local News, weather report, and mail notice.

FRIDAY, JUNE 5. 7.00 Time Signal—British Official Wireless Program, Local News, weather report, and mail notice.

SATURDAY, JUNE 6. 7.00 Time Signal—British Official Wireless Program, Local News, weather report, and mail notice.

SUNDAY, MAY 15. 6.30 p.m.—Bells of the Cathedral of the Highlands, Nairobi. 7.00 Time Signal—British Official Wireless Program, Local News, weather report, and mail notice.

NATIVE CUSTOMS AND BELIEFS. (Continued from page 5). increased prosperity. He thought the European population would reply to a certain extent but when he did not anticipate any very big increase in the population.

Attending further questions on the right to sell the land was not permissible to sell land which was not the title. He did not think the Council should be empowered to sell the land under the Ordinance. He agreed that the Ordinance was intended to sell the land was really very simple and it was important to the natives and it was important to the Government. He thought the Government should be empowered to sell the land under the Ordinance. He agreed that the Ordinance was intended to sell the land was really very simple and it was important to the natives and it was important to the Government.

Mineral Wealth. Lord Onslow (Conservative) questioned Mr. Mitchell as to whether any special speaking tour was likely to become a source of revenue to the Government.

Mr. Mitchell said that he had not had any special speaking tour since he had been in the Government. He thought it would be impossible to say so.

Mr. Mitchell said that he had not had any special speaking tour since he had been in the Government. He thought it would be impossible to say so.

Mr. Mitchell said that he had not had any special speaking tour since he had been in the Government. He thought it would be impossible to say so.

Mr. Mitchell said that he had not had any special speaking tour since he had been in the Government. He thought it would be impossible to say so.

Mr. Mitchell said that he had not had any special speaking tour since he had been in the Government. He thought it would be impossible to say so.

Mr. Mitchell said that he had not had any special speaking tour since he had been in the Government. He thought it would be impossible to say so.

MR. SNOWDEN'S TAX PROPOSALS. (Continued from page 7). The list of exemptions from the tax is already so large—and it is certain to grow larger still—since a few members of the House of Commons from the rest of the country will be larger than the list of exemptions from the tax.

THE GREAT TAX. The list of exemptions from the tax is already so large—and it is certain to grow larger still—since a few members of the House of Commons from the rest of the country will be larger than the list of exemptions from the tax.

THE GREAT TAX. The list of exemptions from the tax is already so large—and it is certain to grow larger still—since a few members of the House of Commons from the rest of the country will be larger than the list of exemptions from the tax.

THE GREAT TAX. The list of exemptions from the tax is already so large—and it is certain to grow larger still—since a few members of the House of Commons from the rest of the country will be larger than the list of exemptions from the tax.

THE GREAT TAX. The list of exemptions from the tax is already so large—and it is certain to grow larger still—since a few members of the House of Commons from the rest of the country will be larger than the list of exemptions from the tax.

THE GREAT TAX. The list of exemptions from the tax is already so large—and it is certain to grow larger still—since a few members of the House of Commons from the rest of the country will be larger than the list of exemptions from the tax.

THE GREAT TAX. The list of exemptions from the tax is already so large—and it is certain to grow larger still—since a few members of the House of Commons from the rest of the country will be larger than the list of exemptions from the tax.

THE GREAT TAX. The list of exemptions from the tax is already so large—and it is certain to grow larger still—since a few members of the House of Commons from the rest of the country will be larger than the list of exemptions from the tax.

THE GREAT TAX. The list of exemptions from the tax is already so large—and it is certain to grow larger still—since a few members of the House of Commons from the rest of the country will be larger than the list of exemptions from the tax.

THE GREAT TAX. The list of exemptions from the tax is already so large—and it is certain to grow larger still—since a few members of the House of Commons from the rest of the country will be larger than the list of exemptions from the tax.

LIFE RISKED IN INTEREST OF SCIENCE. (Continued from Page 1). ed at a great height over the American Territory all day long. He was accompanied by a pilot who was a member of the Royal Air Force. The pilot was a member of the Royal Air Force and was a member of the Royal Air Force.

LIFE RISKED IN INTEREST OF SCIENCE. (Continued from Page 1). ed at a great height over the American Territory all day long. He was accompanied by a pilot who was a member of the Royal Air Force. The pilot was a member of the Royal Air Force and was a member of the Royal Air Force.

LIFE RISKED IN INTEREST OF SCIENCE. (Continued from Page 1). ed at a great height over the American Territory all day long. He was accompanied by a pilot who was a member of the Royal Air Force. The pilot was a member of the Royal Air Force and was a member of the Royal Air Force.

LIFE RISKED IN INTEREST OF SCIENCE. (Continued from Page 1). ed at a great height over the American Territory all day long. He was accompanied by a pilot who was a member of the Royal Air Force. The pilot was a member of the Royal Air Force and was a member of the Royal Air Force.

LIFE RISKED IN INTEREST OF SCIENCE. (Continued from Page 1). ed at a great height over the American Territory all day long. He was accompanied by a pilot who was a member of the Royal Air Force. The pilot was a member of the Royal Air Force and was a member of the Royal Air Force.

LIFE RISKED IN INTEREST OF SCIENCE. (Continued from Page 1). ed at a great height over the American Territory all day long. He was accompanied by a pilot who was a member of the Royal Air Force. The pilot was a member of the Royal Air Force and was a member of the Royal Air Force.

LIFE RISKED IN INTEREST OF SCIENCE. (Continued from Page 1). ed at a great height over the American Territory all day long. He was accompanied by a pilot who was a member of the Royal Air Force. The pilot was a member of the Royal Air Force and was a member of the Royal Air Force.

LIFE RISKED IN INTEREST OF SCIENCE. (Continued from Page 1). ed at a great height over the American Territory all day long. He was accompanied by a pilot who was a member of the Royal Air Force. The pilot was a member of the Royal Air Force and was a member of the Royal Air Force.

LIFE RISKED IN INTEREST OF SCIENCE. (Continued from Page 1). ed at a great height over the American Territory all day long. He was accompanied by a pilot who was a member of the Royal Air Force. The pilot was a member of the Royal Air Force and was a member of the Royal Air Force.

LIFE RISKED IN INTEREST OF SCIENCE. (Continued from Page 1). ed at a great height over the American Territory all day long. He was accompanied by a pilot who was a member of the Royal Air Force. The pilot was a member of the Royal Air Force and was a member of the Royal Air Force.

WHERE TO STAY TOWN AND COUNTRY. The Norfolk Hotel NAIROBI. Every convenience, 25000 Coops, open Laundry 12 to 12.30, spacious parking ground for cars. Monthly boarders from 25/- per week. All meals new with extra. Day Rates (21. Gold in all rooms) 17/60 per day. Breakfast (21. Gold in all rooms) 17/60 per day. (Including 10/- for 10/-) 17/60 per day. Well furnished private rooms and breakfast by arrangement. Manager: C. A. HALLAN.

SAVOY HOTEL (CALABONIAN ROAD). Daily, Shs. 10/- Monthly £9 (inclusive of breakfast) P.O. Box 50 TENNIS (Phone 2596). A Perfect Situation with every convenience and modern appliances.

Salsbury Hotel. Can accommodate 100 Guests. GROSVENOR HOUSE GROUARD ROAD. Phone 2949 P.O. Box 1033 ONE MILE FROM POST OFFICE.

The Hill Private Hotel. 10000 NAIROBI. UNDER OWN PERSONAL SUPERVISION. J. J. DORRIS, (MAY) M. J. DORRIS, Sole Proprietors.

AVONDALE. OLD ITALIAN CONSULATE. OFF. PARLIAMENTARY DIVISION CL. 58 and 59 MONTHLY INCLUSIVE TENNIS. P.O. Box 153 NAIROBI. Phone 2574.

City Square Mansions. RESIDENTIAL ROOMS AND FLATS. PUBLIC RESTAURANT. DAILY from 10/60 inclusive—SINGLE MONTHLY from 25/00 inclusive—FAMILY MONTHLY from 50/00 inclusive. DOUBLE FOR SUITES WITH PRIVATE BATH ROOMS. TABLE BOARDERS SPECIALLY CATERED FOR.

THE Stag's Head Hotel NAIROBI. On Main Road to Kisumu, and to Eldoret, Uganda, and the Nile. Close to Post Office, Banks, Shops, Club and Public Buildings. Electric Light, Hot and Cold Water in all Apartments. Bathing and Dressing Rooms. Under the personal management of Mrs. J. FISHER, Proprietress.

FAIRVIEW PRIVATE HOTEL. BISHOP'S ROAD—THE HILL. Telephone No. 2829 P.O. Box 548 Within three quarters of a mile from the Post Office.

Nakuru War Memorial Hospital. Appointment of Senior Sister. Applications are invited for the appointment of Senior Sister. The salary is the rate of £120 per annum and all Board. Applicants must be fully qualified general and maternity and obstetrics and registered in charge position. Application closing on 26th May 1938. For particulars apply to the Medical Officer, Nakuru War Memorial Hospital, P.O. Box 12, Nakuru, before 4.30 p.m. of the date.

RAINS REPORTED FROM MOST PARTS. The British East Africa Meteorological Service reports the following weather for the following week to 26th May 1938. The conditions referred to in yesterday's weather report have been maintained in the East Africa Meteorological Service reports for the following week to 26th May 1938.

Car Burnt Out. 'MINAP OF THE MAGADI ROAD'. (WARRIOR) (CORRECTION). Many May 20. A party of Sikhs travelling to Magadi by road were the victims of an unfortunate accident last week on Thursday. The car became bogged when only 20 miles from Magadi, on the hills of the Magadi Range. The car was burnt out and the driver was killed. The car was burnt out and the driver was killed.

SAFETY. Wind Tyre Chains prevent dangerous skidding accidents. Protect your passengers, yourself and your car by carrying always Tyre Chains, ready to use on every road.

WEED TYRE CHAINS. EASTLIGHT FLAT FIELDS FOOLCAP SIZE. 80000 MARCH WITH PATENT TYRE CHAINS. Ocala 75 each. Price, 8/60 per pair.

WEED TYRE CHAINS. EASTLIGHT FLAT FIELDS FOOLCAP SIZE. 80000 MARCH WITH PATENT TYRE CHAINS. Ocala 75 each. Price, 8/60 per pair.

WEED TYRE CHAINS. EASTLIGHT FLAT FIELDS FOOLCAP SIZE. 80000 MARCH WITH PATENT TYRE CHAINS. Ocala 75 each. Price, 8/60 per pair.

WEED TYRE CHAINS. EASTLIGHT FLAT FIELDS FOOLCAP SIZE. 80000 MARCH WITH PATENT TYRE CHAINS. Ocala 75 each. Price, 8/60 per pair.

**Received**

THE FAMOUS MORLEY'S

**a Mode**

SILK ENGLISH STOCKINGS.

Other Well-known Makes.

W. KAYSER, ALLEN & CO.

THE LATEST PARIS SHADES.

**Named Bros**

HOUSE OF DESTINY.

A. BASMA - NAIROBI Phone 2091.

**WASER**

The Outstanding Stocking of the World.

ONE PAIR OF

**KAYSER**

gives just double the wear of the usual silk hose.

They are smartly fashioned, beautiful to look upon, and use the chignon of smart women everywhere.

**Orzanz**

**Chocolates**

is a Special Line OF

**CHOCOLATES**

AT

Per 4/- lb.

Sole Distributors:

**Elliot & Co.,**

LIMITED.

175. Phone 2060.

**ANNOUNCEMENT.**

Mr. Tallor, who gave perfect fits for so many years in Cut, Fittings—especially in Ladies'—has now returned from his usual patronage of all our fittings. Satisfaction Guaranteed.

**W. N. MARCHÉ**

175. NAIROBI.

**CORRESPONDENCE.**

The Editor does not accept responsibility for the contents of the letters published in this column. He reserves the right to edit any letter, and to omit any part of a letter which is not pertinent to the subject of the article.

**The Wheat Industry.**

**IMPORTS OF FOOD AND DRUGS.**

To the Editor, "E.A. Standard."—I wish to make a few observations on the report in your issue of the 15th inst. regarding the wheat industry in Kenya.

The report states that the wheat industry in Kenya is a very small one, and that the only wheat grown in the country is for home consumption. This is a very misleading statement, and one which does not do justice to the wheat industry in Kenya.

The wheat industry in Kenya is a very important one, and one which has been growing rapidly in recent years. It is a very profitable industry, and one which has the potential to become a major export for Kenya.

The wheat industry in Kenya is a very important one, and one which has been growing rapidly in recent years. It is a very profitable industry, and one which has the potential to become a major export for Kenya.

**LOBBYING—A SONGER COMPLAINT.**

To the Editor, "E.A. Standard."—I have just read your issue of the 15th inst. regarding the wheat industry in Kenya. I am sorry to hear that the wheat industry in Kenya is a very small one, and that the only wheat grown in the country is for home consumption.

The wheat industry in Kenya is a very important one, and one which has been growing rapidly in recent years. It is a very profitable industry, and one which has the potential to become a major export for Kenya.

The wheat industry in Kenya is a very important one, and one which has been growing rapidly in recent years. It is a very profitable industry, and one which has the potential to become a major export for Kenya.

**THE WORLD'S BEST National Employers' Mutual General Insurance Association Limited.**

(Incorporated in England.)

Notification is given that as from the 1st June the Association's local offices are removed from Miles Building, Harding Street to **REDDIE HOUSE, 6th AVENUE.**

**ROLEX WATCHES**

THE WORLD'S BEST BY EVERY TEST

MADE IN ENGLAND.

25 World's Records.

For complete reply to **DOBBIES Ltd.**

Watchmakers & Jewellers, Phone 2022

Sole Agents for East Africa in S. Africa.

**TO LET.**

COTTAGES, II and III Avenue, Parklands—low rent and suitable tenants.

SHOP, Victoria Street, Nairobi.

SHOPS, 6th Avenue, Nairobi, simple accommodation.

SHOP, Government Road, Nairobi.

OFFICES, Bute Buildings, Govt. Rd., Nairobi.

FLATS, Capital Chambers, Corner V.I. Av. and Sadler St., Nairobi.

STONE HOUSE, Bellfield Road, The Hill, Nairobi.

APPLY—

**J. H. S. TODD & Co., Ltd.**

**Shs. 19,000 Sold**

**HALLOW TO CLEAR**

**Shs. 11,000**

**Less 20% Discount**

**CAMERON & Co.**

**GOOD COFFEE FETCHES HIGH PRICES !!**

**KEEP YOUR TREES FREE OF PESTS.**

**By Using**

**PORTABLE DOUBLE-ACTION SPRAY PUMPS.**

Manufactured by

**DRAKE & FLETCHER Ltd., (ENGLAND)**

SMITH, MACKENZIE & CO.,

Box 360, NAIROBI. Phone 2065.

**SHS. 19,000 Sold**

**HALLOW TO CLEAR**

**Shs. 11,000**

**Less 20% Discount**

**CAMERON & Co.**

**Household Requisites**

at prices you can afford to buy

with VARIETY and SELECTION that makes shopping a pleasure

**Will you come in and try us?**

NOTE THESE LOW PRICES—

"UNIVERSAL" Bread Makers, Shs. 21/- each

4000 Four Loaves, in 8 minutes.

"BEATRICE" Food Mixers, in all sizes.

Size No. 0, Shs. 8/- each. Size No. 2, Shs. 14/6 each.

Size No. 1, Shs. 9/6 each. Size No. 3, Shs. 17/6 each.

"SPONGER" Coffee Grinders (London made)—

Size No. 1, 14/6; No. 2, 14/6; No. 3, 15/6 each.

ENAMEL WASHSTANDS, Collapsible Iron Frames, wash towel rack attached, complete with Ewer, Basin, Soapdish, and Toilet Roll.

**Shs. 37-50 complete.**

**THE STORE THAT SERVES YOU BEST.**

**AHAMED & SHERIFF**

P.O. Box 264.

Government Road (Near Wardles) NAIROBI.

**B. FLORENS**

FRUITS, BAKED BREADS, PRESERVED AND DRIED FRUITS, SPECIALS.

Phone 2022, York Bldg., P.O. Box 281, Govt. Road, Nairobi.

**ANNOUNCEMENT.**

Mr. Tallor, who gave perfect fits for so many years in Cut, Fittings—especially in Ladies'—has now returned from his usual patronage of all our fittings. Satisfaction Guaranteed.

**W. N. MARCHÉ**

175. NAIROBI.

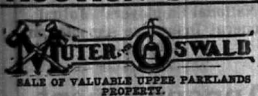
**ANNOUNCEMENT.**

Mr. Tallor, who gave perfect fits for so many years in Cut, Fittings—especially in Ladies'—has now returned from his usual patronage of all our fittings. Satisfaction Guaranteed.

**W. N. MARCHÉ**

175. NAIROBI.

# AUCTION SALES



**SALE OF VALUABLE UPPER PARLANDS PROPERTY.**  
Duly instructed, we shall offer for sale by Public Auction, at our Salerooms, Motos Building, Hardinge Street, Nairobi

**To-day, 29th May at 2-30 p.m. PRECISELY.**

In the estate of the late Mr. R. B. DUNNAN, the Grant of Plot No. 712, Section V. (L.O. No. 1870) comprising 1.607 acres of the above land, held on a 99 years lease from 1st April 1904 at an annual rental to Government of Shgs. 10/-, together with all buildings and improvements erected thereon, and also the land immediately behind "Dunnans" and from the existing building a good supply of material can be utilised.

MUTER and OSWALD Ltd., Auctioneers, Etc., NAIROBI.



**CATALOGUE SALE OF FURNITURE and EFFECTS.**  
Duly instructed, we shall offer for sale by Public Auction, under the supervision of the Auctioneer, at our Salerooms, Motos Building, Hardinge Street, Nairobi, on

**Monday 1st June at 10 a.m.**

Chesterfield Suites, loose covers. Easy Chairs. Nursery Easy Chairs. Morris Chairs, cane seats and backs. Book-shelves. Occasional and Tea Tables. Tray Tables on castors. Saltes of Dining Chairs, Dining Tables. Copper Trays. Brass Trays. Columbia Table Model Gramophone and Records. Columbia Portable Gramophone (Ree). Miraplex Carpet. Rugs. "Crown Derby" Coffee Service in case. Case of Five Tasters. Brass Vases. Plated Epergure. "Singer" Treadle Sewing Machine. Case of Silver and Enamel Coffee Spoons. Power Tea Set. Writing Machine. Sideboard. Drawers and cupboards. Dresser, with shelves, drawers. Pictures. Palm-stands. Dressing Tables, bevelled mirrors. Chival Mirror. Washstands. Hanging Wardrobes, bevelled mirrors. Wardrobe in Teak. Oval bevelled mirror, shelves and drawers. Pair Prismatic Glasses in case. No. 2 Folding Arm. Brown Camera. Akety Junior Case and Tripod. Algerin Rugs. Showcases. Deck Chairs. Dinner Wagons. Sandowner Stools. Single Iron Bedsteads and Mattresses. Card Table, bats top. Double Bedstead, spring mattress. Single Bed in Teak, spring mattress. Kitchen Tables. Mantelpiece. Wicker Chair. Subject to low reserve. Rugby & Sox Body. On behalf of the parties concerned: Four Porcelain Baths (damaged in transit) Porcelain Bids (damaged in transit). Etc. Etc. "Clifton" saloon Car, good tyres. Lights self-starter, etc. in running order (low reserve).

MUTER and OSWALD Ltd., Auctioneers, Etc., NAIROBI.

**METROPOLITAN GARAGE.**  
(LATE GODFREY'S CAR MART)  
Repair all makes of Cars, Bicycles, Motorcycles, and Overhauls a Speciality. Vulcanising & Retreading. **SECONDHAND CARS BOUGHT and SOLD.**  
Our Charges are the most moderate in the country. A personal interest taken in every car.  
This Week's Bargain:  
Dodge & Tourer, 3 brand new tyres in perfect running order. £50  
**D. J. F. ETHBRIDGE,**  
SOLE PROPRIETOR

**THACKRAH'S Ltd.,**  
NAIROBI.  
(Established 1917).  
The Up-to-date  
**LAND and ESTATE AGENTS,**  
**AUCTIONEERS and APPROVED VALUERS,**  
**INSURANCE, SURETY and FINANCIAL.**  
AGENTS.  
Shops, Offices, Goods, Houses and Farms.  
To Let. - See P. 10 SALE.

**MUNICIPAL COUNCIL OF NAIROBI.**  
HOUSE FOR THE SUPERINTENDENT OF THE CITY PARK, NAIROBI.  
TENDERS are invited for the construction of the above building. Plans, Specifications and Bills of Quantities will be issued on the week day which may be obtained on application to the Municipal Engineer, on a deposit of the sum of Shs. 50/- which will be returned on the receipt of the Contractor of a bank Note for the same with all documents hereto in hand.  
Tenders (to be presented form) endorsed "TENDER FOR THE SUPERINTENDENT'S HOUSE, CITY PARK, NAIROBI" must be forwarded so as to reach the undersigned not later than 2 p.m. on MONDAY, 10th Day of June, 1931, on which date it will be opened in the Council Chamber. Detailed Estimate at 2.15 p.m. tendering for this work may be present at the opening of tenders.  
The lowest or any bids will not necessarily be accepted.  
Dated this 29th day of May, 1931.  
F. S. BOKERLEY, Town Clerk.

# AUSTINS AUCTIONS

**CATALOGUE SALE OF GOOD FURNITURE, CHESTERFIELD SUITES, GRAM & PHONE, SEWING MACHINE, BOXSPRING BEDS, RACKETS, STOVES, SHROUDS, etc.**

**AUSTIN & CO.,**  
will sell WITHOUT RESERVE unless stated, at THE MART, on

**Saturday, May 30th at 10 a.m.**

Chesfield Suites upholstered in Cretonne. Seates and Club Easy with loose covers. Hanging and Bachelor Wardrobes. Oval Dining Tables 6 & 4. Suite of Dining Chairs. New Single Boxspring Beds. Single Wood Beds with Spring Mattresses and Overlays. Iron Beds complete. Kapok Pillows and Cushions. Good Linen Press. Large Dinner Wagon. Bookshelves. Several Assorted Dressing Chests. Double Washstands. Chests of Drawers. Tea Tables. New Metal Sates. Gramophone Cabinets. Office Desks. Bookcases. Cabinets and Tables. Trian Hand Sewing Machine in good order. Coffee Tables and Stools. Enamel Toilet Set. Enamel Washstand. Morris Chairs. New Footballs, Tennis Baskets and Hockey Sticks. Writing Bureau. Columbia Portable Gramophone and Records. 2 Burner Perfection Stove. Hot Water Boiler. Office Desks. Kitchen Tables. Sideboard with 6 drawers, 2 cupboards. Green Cycle. Hair Dressing Service. China Teaset. Salad Bowls and Servers. 12 born D/B Shotgun by C. Heyer and Co. (res).

Youths Cycle in good order. Wirwind Carpet Sweeper. New "Blow" Buffer Churn. Douglas Motor-cycle in perfect running order. Tyres Good.

**AUSTIN and Co.**  
AUCTIONEERS and ESTATE AGENTS.  
Hardinge Street, Nairobi.

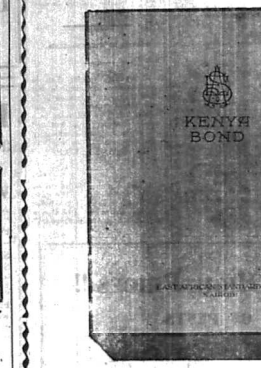
**FOR SALE.**  
**Double Storeyed Brick-Bull Residence**

with modern conveniences and refinements; situated on nearly 4 acres of FREEHOLD land, west of and over 500 feet higher than Nairobi, near French Mission

**A. L. SMITHSON.**  
P.O. Box 1125. Bolns House, Telephone 2769.

# High Class Stationery

AT LOW COST



**IN BLUE and CREAM**  
NOTE PAPER (FOLDED) and ENVELOPES BOXED 50 OF EACH. Shgs. 4/50, 4/75 and 5/50.  
NOTE PAPER (FLAT) and ENVELOPES BOXED 50 OF EACH. Shgs. 5/ and 5/50.  
IN BLUE ONLY.  
WRITING PADS 10 LEAVES Shgs. 2/ and 3/-.  
ENVELOPES TO MATCH, PACKETS Shgs. 1/25.  
Boxes 100 Shgs. 4/50.

**STANDARD STATIONERY STORES, NAIROBI.**

# E. Hutchison & Co.

**FOR SALE.** To Close a Trust, 6th Avenue Plot and Buildings. "Times" price and terms to suitable buyer.

**FOR SALE.** A bargain on which money can be doublet in short time. 100 acres 6 miles from Nairobi. ES p.a. Easy terms.

Furnished and Unfurnished houses to let.

**Butter Ghee**  
**1/- per lb.**

**SANDS & CO.**  
NAIROBI.

**Opening June 4th, 1931**

**KENYA MART**  
Auctioneers and Commission Agents  
— IN —  
**Stanley House**  
(opposite Empire Theatre).

A new venture to which will be prepared to buy or sell anything you cannot obtain or sell. A careful perusal of our future Advertisements will be worth your while. You are cordially invited to inspect our Showroom which will be open Daily between 8 a.m. and 5 p.m. on and after the 4th June.

**Kenya and Uganda Railways and Harbours.**  
**RAILINGS OF SS. "NAJARA"**  
ON TUESDAY, 27th Dec. 1931.  
In connection with the sailing of the above steamer, a special passenger train will run to Mombasa leaving Nairobi at 16-00 hours on Monday, the 1st June.  
G. D. RHODES, General Manager, 27-31.

**Kenya and Uganda Railways and Harbours.**  
**EXCURSION TICKETS.**  
1931  
JUNE, JULY, AUGUST, SEPTEMBER.  
Tickets at single fare for the double journey. Minimum Charge First Class Shs. 10/-, Minimum Charge Second Class Shs. 7/-. will be issued between any Kenya and Uganda Railway Stations or Ports during the above mentioned months.

The return journey may not be commenced until seven days from the date of issue and must be completed within three calendar months from date of issue. Motor Cars and Motor Cycles accompanying passengers travelling with these tickets are conveyed at Tariff Book rates less a discount of 50 per cent.  
G. D. RHODES, General Manager, Nairobi, Kenya, 27-31, May 2nd, 1931.

**MUSTER ROLLS FOR NATIVE LABOUR**  
For 50 Openings. Sh. 2/75, postage 45 cents. For 100 Openings. Sh. 4/75, postage 70 cents.  
At 7/5  
Standard Stationery Stores NAIROBI  
8th Avenue NAIROBI

# Sale by Public Auction

**10 Motor Cars 10**

Trucks Motorcycles Etc.  
AT  
**Godfreys Car Mart**  
Sadler Street  
ON  
**Sat. May 30th.**  
At 10 a.m.

Instructed thereto by various owners we will sell as above. Including:—  
BEAN TOURER — ARMSTRONG — SIDDLER 6 — BUICK BOX BODY — DODGE BOX BODY — CITROEN (Cover Low) — ESSEX TOURER — FIAT 500 — RUGBY TOURER — CHEV. 6 TRUCK — ESSEX SALOON — FORD, Etc.

**For Sale By Private Treaty**  
**LANGIA LAMEDA WEYMAN SALOON**  
Recent model. Small mileage. Interior and outward condition perfect. Guaranteed mechanically sound.  
A Superb Car — The Top-hole of Luxury and Power. £250 or near offer.

**FURTHER ENTRIES WILL BE ACCEPTED FOR THIS SALE.**

**Godfreys Car Mart Ltd.**  
Auctioneers and Motorcar Salesmen.



**Hiding Damppress BRAND**  
CEMENT WATERPROOF.  
Ask for a descriptive booklet free.  
**DENOVAN & DIEBEL**  
Victoria Buildings, Victoria Street, NAIROBI.

# To Let or For Sale

Well built Stone Residence standing in Two acres of ground in Third Avenue, Parklands.  
Well planned gardens and bearing orchard.

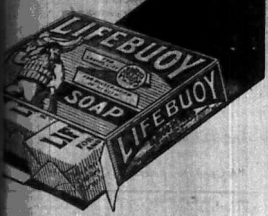
For further particulars apply:  
**BEALES & Co.**  
Avenue House NAIROBI. Sixth Avenue.

**MUNICIPAL COUNCIL OF NAIROBI.**  
NOTICE IS HEREBY GIVEN that the section of 10th STREET between the Southern Boundary of Fourth Avenue and the Northern Boundary of Third Avenue will be closed to all motor cars that necessarily for the reason of new Law Courts and other buildings, on the 1st day of June, 1931.  
Dated this 29th day of May, 1931.  
F. S. BOKERLEY, Town Clerk.

**The Kenya Hairdressing Saloons**  
High Class Ladies' and Gent's Hairdressing.  
Messrs. COLLINS & BALL (Late of Thomson's), Messrs. PHILLIPS & THOMSON (Late of Robinson's). Our motto is "Service" and with each an excellent staff we guarantee satisfaction.  
Personal Work (not industrial) Tinting and Shampooing specialties.  
P.O. Box 1386, Hardinge Street, (Opp. Town's Hotel), DIAL 8971, for an Appointment.

# LIFE BUOY SOAP

defies dirt and disease



Dirt and dirt and disease germs disappear before the safe, clean bubble of Lifebuoy lather. Make Lifebuoy your family soap. Make sure that all the corners of your home are cleaned of germs and dirt. Lifebuoy is doing that for millions of households in many different countries—robbing every nook and cranny of lurking danger—substituting health and cleanliness. Ask for a carton to-day!



## A Good Cup of Tea

can always be got by using "VOONIA" or if blended with the LOGAL PRODUCT the result is really amazing. **TRY IT** for yourself. We will forward a free tasting sample if desired. **BLACKLAW & BROWN** (Inn MacKinnon Bros.) Tel. No. NAIROBI. Box No. 5931. Telegrams: "BLACKLAW" 688.

### CHIEF KOMANGE'S "FRETWORK EARS"

Press Comments on the London Visit.

#### A TOUR OF THE COUNTRY.

(STANDARD CORRESPONDENT.)

London, (By Air Mail.)—A series of the East African visitors are leaving the country. Four of the chiefs from Uganda, who are interested in the growing of cotton, arrived in Manchester, arrived in Manchester yesterday in a short tour of the district seeing something of the manner in which the raw material is made into fabric by the mills of Lancashire. They were Chief Serwaa Kibira, Chief Kanda Bahwira, Chief Yohana Zirahwira and the Resident Protector.

Accompanied by Mr. C. J. Briton, (District Officer, Uganda), they returned from Manchester to Bolton in the morning, where they visited the Messers Mill, at Bolton. One of the other guests of the Film Cotton Spinners and Dyers' Association at the Messers Mill. In the afternoon, they drove to Oldham Mill, Dry-croft Street, where they spent about an hour.

#### Modern Machinery.

Spinning and weaving, as taught in modern practice, are now processes to them. On arriving they had a presentation of new spinning plant which they inspected at Messrs. Platt Press and Co. Ltd., Oldham, whose works they visited in the afternoon, appeared very vivaciously to them. The plant which they saw in operation was of the latest design manufactured by the firm. It consisted of a full blown presentation of the gin installation, used chiefly for dealing with American cotton, and a full and roller gin of the type used on Egyptian cotton. To the second machine a new device has been applied for collecting and carrying away of lint by air suction. Most interesting method is a battery of pipes, but only quite recently, it is claimed, have the technical processes involved been solved by the machines now manufactured by Platt Press and Co.

The chiefs were greeted on arrival at the works by the Messrs. of Oldham, by directors of the firm, and by representatives of the Oldham Chamber of Commerce.

Before the party left Manchester they took a trip on the Ship Canal as far as Boston Bridge. At Bolton.

bolton's curiosity was very evident during the visit of the four chiefs. The presence of re-

veral persons outside the Messers (Spinning Co.) mill gates was the chief cause of the visit in the morning. It was noted in the morning that the mill gates were closed and a number of men were seen to be waiting outside the mill gates. It was noted that the mill gates were closed and a number of men were seen to be waiting outside the mill gates. It was noted that the mill gates were closed and a number of men were seen to be waiting outside the mill gates.

#### Civil Service Kills Cok.

Will discontinue phone service to the Cok.

The Cok, a small town in the district of the Cok, has been notified that the phone service to the Cok will be discontinued. The reason for this is that the Cok is a small town and the phone service is not considered to be of sufficient importance to warrant the expense of maintaining it.

#### Competitions for Milk Morte.

Will discontinue phone service to the Milk Morte.

The Milk Morte, a small town in the district of the Milk Morte, has been notified that the phone service to the Milk Morte will be discontinued. The reason for this is that the Milk Morte is a small town and the phone service is not considered to be of sufficient importance to warrant the expense of maintaining it.

#### Down Sank Near Zaachar.

Passengers and crew saved.

A Zaachar show left Zaachar on the 15th inst. and on the 16th inst. it was reported that the show had sunk near Zaachar. The passengers and crew were saved and the show was raised.

#### Shipping Movement.

The monthly summary to the Shipping Movement shows that the monthly cargo tonnage for the month of May is 1,200,000 tons. This is a decrease of 100,000 tons compared with the same month of the previous year. The main reason for this is the decrease in the number of ships sailing to and from the East African ports.

### Withholding Wages.

Serious case in Media Province.

On May 8, the instance of the Native Affairs Department, the wages of native labourers were withheld for some time. The wages were withheld for some time because the labourers were not working for some time.

#### South Africa Delicious Orange and Lemon Beverages

Pure and Pleasant Drinks

Obtainable at all leading Grocers.

Particulars available from the Office of the Union of South Africa, Memorial Hall, Box 624, NAIROBI.

#### Kenya Loan & Discount Co., Ltd.

P.O. Box 844, NAIROBI. OFFICE—1st Floor, Court Chambers.

#### Financial Agents.

Bill Discounted—Short-term Loans Granted. Any Available Assets Negotiated for Cash. Call or Write ESTABLISHED 1911.

#### The Imperial Petrol & Service Station

(Opposite Post Office, 6th Avenue.) A NEW PETROL STATION, GIVING COURTEOUS EFFICIENT DAY AND NIGHT SERVICE. Add your name to our already numerous Clients.

#### Petrol Petrol Petrol

AND ALL ACCESSORIES, AT THE Imperial Petrol & Service Station. P.O. Box 624, NAIROBI.

#### Geo. BLOWERS.

BUILDING CONTRACTOR, MANUFACTURER AND DIRECT IMPORTER. SADDLER STREET, GREATLY REDUCED PRICES. Tel. Adm. "G" 5594. Phoenix-Works 824. House 5294.

#### THE "FILING CABINETS"

that will earn its "Long-Service Medal"

1931 will still be giving good service in 1971

#### RONEO

STEEL FILING CABINETS. "Woods Burn, Warp or Crack"

Full Filespace size Two Three and Four Drawers. Locking Device can be supplied with or without. In a beautiful Green Finish.

Standard Stationery Store, NAIROBI.

#### Ford COMMERCIAL CARS

Many different kinds of bodies are available, adapting the FORD commercial "A" chassis for use in a wide variety of businesses.

Among them are the light delivery with closed or open cab, the large canopy body, station wagon and many others.

Important features of Ford commercial cars are the 4 cylinder engine which develops 40 h.p. at 2,300 R.P.M.; the simplicity of the electrical, ignition, cooling, lubrication and steering mechanisms; the torque-tube drive, fully enclosed mechanical 4-wheel brakes and shatterless glass windshields.

Come in and let us show you these features and explain how value has been built into every part of the Ford chassis.

#### Nairobi Motors

Box 686, Tel. 2484.

### Withholding Wages.

Serious case in Media Province.

On May 8, the instance of the Native Affairs Department, the wages of native labourers were withheld for some time. The wages were withheld for some time because the labourers were not working for some time.

#### South Africa Delicious Orange and Lemon Beverages

Pure and Pleasant Drinks

Obtainable at all leading Grocers.

Particulars available from the Office of the Union of South Africa, Memorial Hall, Box 624, NAIROBI.

#### Kenya Loan & Discount Co., Ltd.

P.O. Box 844, NAIROBI. OFFICE—1st Floor, Court Chambers.

#### Financial Agents.

Bill Discounted—Short-term Loans Granted. Any Available Assets Negotiated for Cash. Call or Write ESTABLISHED 1911.

#### The Imperial Petrol & Service Station

(Opposite Post Office, 6th Avenue.) A NEW PETROL STATION, GIVING COURTEOUS EFFICIENT DAY AND NIGHT SERVICE. Add your name to our already numerous Clients.

#### Petrol Petrol Petrol

AND ALL ACCESSORIES, AT THE Imperial Petrol & Service Station. P.O. Box 624, NAIROBI.

#### Geo. BLOWERS.

BUILDING CONTRACTOR, MANUFACTURER AND DIRECT IMPORTER. SADDLER STREET, GREATLY REDUCED PRICES. Tel. Adm. "G" 5594. Phoenix-Works 824. House 5294.

#### THE "FILING CABINETS"

that will earn its "Long-Service Medal"

1931 will still be giving good service in 1971

#### RONEO

STEEL FILING CABINETS. "Woods Burn, Warp or Crack"

Full Filespace size Two Three and Four Drawers. Locking Device can be supplied with or without. In a beautiful Green Finish.

Standard Stationery Store, NAIROBI.

#### Ford COMMERCIAL CARS

Many different kinds of bodies are available, adapting the FORD commercial "A" chassis for use in a wide variety of businesses.

Among them are the light delivery with closed or open cab, the large canopy body, station wagon and many others.

Important features of Ford commercial cars are the 4 cylinder engine which develops 40 h.p. at 2,300 R.P.M.; the simplicity of the electrical, ignition, cooling, lubrication and steering mechanisms; the torque-tube drive, fully enclosed mechanical 4-wheel brakes and shatterless glass windshields.

Come in and let us show you these features and explain how value has been built into every part of the Ford chassis.

#### Nairobi Motors

Box 686, Tel. 2484.

South Africa Delicious Orange and Lemon Beverages are Pure and Pleasant Drinks Obtainable at all leading Grocers. Particulars available from the Office of the Union of South Africa, Memorial Hall, Box 624, NAIROBI.

Kenya Loan & Discount Co., Ltd. P.O. Box 844, NAIROBI. OFFICE—1st Floor, Court Chambers. Financial Agents. Bill Discounted—Short-term Loans Granted. Any Available Assets Negotiated for Cash. Call or Write ESTABLISHED 1911.

The Imperial Petrol & Service Station (Opposite Post Office, 6th Avenue.) A NEW PETROL STATION, GIVING COURTEOUS EFFICIENT DAY AND NIGHT SERVICE. Add your name to our already numerous Clients. Petrol Petrol Petrol AND ALL ACCESSORIES, AT THE Imperial Petrol & Service Station. P.O. Box 624, NAIROBI.

Geo. BLOWERS. BUILDING CONTRACTOR, MANUFACTURER AND DIRECT IMPORTER. SADDLER STREET, GREATLY REDUCED PRICES. Tel. Adm. "G" 5594. Phoenix-Works 824. House 5294.

WHY BUY AMERICAN DOORS AND NEED YOUR MONEY AHEAD? I can compete with them—and beat them! Send for my ILLUSTRATED CATALOGUE and Price List. SQUAD quotations for SPOILED wood. ALL SIZES IN STOCK. BLACK WALNUT BALANCE. BEST PRICES AND SERVICE. Rewritten to any Size. (Cart, Truck or Train Load) DELIVERED BY LORRIES AT QUOTED RATES. PLUMBING AND SANITARY WORK DONE UNDER THE SUPERVISION OF OUR OWN EUROPEAN SPECIALISTS. ESTABLISHED 1911. Latest London Styles, Ideas, Layouts, Fictorial Designs, Features.







A faultless dinner ends with DE RESZKE The Aristocrat of Cigarettes

Plain or Ivory tipped. "VIRGINIAS"

Sole Distributors: DALGETY & Co., LIMITED.

S. JACOBS Ltd. GOVERNMENT ROAD, NAIROBI. BEST COMPRESSIVE ROADS OF ALL HOUSEHOLD UTENSILS AND GLASSWARE.

Gethin & Hulett's East African Tours Ltd. 10, East Africa in Ombesi, in London Touring Cars, with English Drivers.

POB SALE. 6 1/2 p. 7 p. 8 p. 9 p. 10 p. 11 p. 12 p. 13 p. 14 p. 15 p. 16 p. 17 p. 18 p. 19 p. 20 p. 21 p. 22 p. 23 p. 24 p. 25 p. 26 p. 27 p. 28 p. 29 p. 30 p. 31 p. 32 p. 33 p. 34 p. 35 p. 36 p. 37 p. 38 p. 39 p. 40 p. 41 p. 42 p. 43 p. 44 p. 45 p. 46 p. 47 p. 48 p. 49 p. 50 p. 51 p. 52 p. 53 p. 54 p. 55 p. 56 p. 57 p. 58 p. 59 p. 60 p. 61 p. 62 p. 63 p. 64 p. 65 p. 66 p. 67 p. 68 p. 69 p. 70 p. 71 p. 72 p. 73 p. 74 p. 75 p. 76 p. 77 p. 78 p. 79 p. 80 p. 81 p. 82 p. 83 p. 84 p. 85 p. 86 p. 87 p. 88 p. 89 p. 90 p. 91 p. 92 p. 93 p. 94 p. 95 p. 96 p. 97 p. 98 p. 99 p. 100 p. 101 p. 102 p. 103 p. 104 p. 105 p. 106 p. 107 p. 108 p. 109 p. 110 p. 111 p. 112 p. 113 p. 114 p. 115 p. 116 p. 117 p. 118 p. 119 p. 120 p. 121 p. 122 p. 123 p. 124 p. 125 p. 126 p. 127 p. 128 p. 129 p. 130 p. 131 p. 132 p. 133 p. 134 p. 135 p. 136 p. 137 p. 138 p. 139 p. 140 p. 141 p. 142 p. 143 p. 144 p. 145 p. 146 p. 147 p. 148 p. 149 p. 150 p. 151 p. 152 p. 153 p. 154 p. 155 p. 156 p. 157 p. 158 p. 159 p. 160 p. 161 p. 162 p. 163 p. 164 p. 165 p. 166 p. 167 p. 168 p. 169 p. 170 p. 171 p. 172 p. 173 p. 174 p. 175 p. 176 p. 177 p. 178 p. 179 p. 180 p. 181 p. 182 p. 183 p. 184 p. 185 p. 186 p. 187 p. 188 p. 189 p. 190 p. 191 p. 192 p. 193 p. 194 p. 195 p. 196 p. 197 p. 198 p. 199 p. 200 p. 201 p. 202 p. 203 p. 204 p. 205 p. 206 p. 207 p. 208 p. 209 p. 210 p. 211 p. 212 p. 213 p. 214 p. 215 p. 216 p. 217 p. 218 p. 219 p. 220 p. 221 p. 222 p. 223 p. 224 p. 225 p. 226 p. 227 p. 228 p. 229 p. 230 p. 231 p. 232 p. 233 p. 234 p. 235 p. 236 p. 237 p. 238 p. 239 p. 240 p. 241 p. 242 p. 243 p. 244 p. 245 p. 246 p. 247 p. 248 p. 249 p. 250 p. 251 p. 252 p. 253 p. 254 p. 255 p. 256 p. 257 p. 258 p. 259 p. 260 p. 261 p. 262 p. 263 p. 264 p. 265 p. 266 p. 267 p. 268 p. 269 p. 270 p. 271 p. 272 p. 273 p. 274 p. 275 p. 276 p. 277 p. 278 p. 279 p. 280 p. 281 p. 282 p. 283 p. 284 p. 285 p. 286 p. 287 p. 288 p. 289 p. 290 p. 291 p. 292 p. 293 p. 294 p. 295 p. 296 p. 297 p. 298 p. 299 p. 300 p. 301 p. 302 p. 303 p. 304 p. 305 p. 306 p. 307 p. 308 p. 309 p. 310 p. 311 p. 312 p. 313 p. 314 p. 315 p. 316 p. 317 p. 318 p. 319 p. 320 p. 321 p. 322 p. 323 p. 324 p. 325 p. 326 p. 327 p. 328 p. 329 p. 330 p. 331 p. 332 p. 333 p. 334 p. 335 p. 336 p. 337 p. 338 p. 339 p. 340 p. 341 p. 342 p. 343 p. 344 p. 345 p. 346 p. 347 p. 348 p. 349 p. 350 p. 351 p. 352 p. 353 p. 354 p. 355 p. 356 p. 357 p. 358 p. 359 p. 360 p. 361 p. 362 p. 363 p. 364 p. 365 p. 366 p. 367 p. 368 p. 369 p. 370 p. 371 p. 372 p. 373 p. 374 p. 375 p. 376 p. 377 p. 378 p. 379 p. 380 p. 381 p. 382 p. 383 p. 384 p. 385 p. 386 p. 387 p. 388 p. 389 p. 390 p. 391 p. 392 p. 393 p. 394 p. 395 p. 396 p. 397 p. 398 p. 399 p. 400 p. 401 p. 402 p. 403 p. 404 p. 405 p. 406 p. 407 p. 408 p. 409 p. 410 p. 411 p. 412 p. 413 p. 414 p. 415 p. 416 p. 417 p. 418 p. 419 p. 420 p. 421 p. 422 p. 423 p. 424 p. 425 p. 426 p. 427 p. 428 p. 429 p. 430 p. 431 p. 432 p. 433 p. 434 p. 435 p. 436 p. 437 p. 438 p. 439 p. 440 p. 441 p. 442 p. 443 p. 444 p. 445 p. 446 p. 447 p. 448 p. 449 p. 450 p. 451 p. 452 p. 453 p. 454 p. 455 p. 456 p. 457 p. 458 p. 459 p. 460 p. 461 p. 462 p. 463 p. 464 p. 465 p. 466 p. 467 p. 468 p. 469 p. 470 p. 471 p. 472 p. 473 p. 474 p. 475 p. 476 p. 477 p. 478 p. 479 p. 480 p. 481 p. 482 p. 483 p. 484 p. 485 p. 486 p. 487 p. 488 p. 489 p. 490 p. 491 p. 492 p. 493 p. 494 p. 495 p. 496 p. 497 p. 498 p. 499 p. 500 p. 501 p. 502 p. 503 p. 504 p. 505 p. 506 p. 507 p. 508 p. 509 p. 510 p. 511 p. 512 p. 513 p. 514 p. 515 p. 516 p. 517 p. 518 p. 519 p. 520 p. 521 p. 522 p. 523 p. 524 p. 525 p. 526 p. 527 p. 528 p. 529 p. 530 p. 531 p. 532 p. 533 p. 534 p. 535 p. 536 p. 537 p. 538 p. 539 p. 540 p. 541 p. 542 p. 543 p. 544 p. 545 p. 546 p. 547 p. 548 p. 549 p. 550 p. 551 p. 552 p. 553 p. 554 p. 555 p. 556 p. 557 p. 558 p. 559 p. 560 p. 561 p. 562 p. 563 p. 564 p. 565 p. 566 p. 567 p. 568 p. 569 p. 570 p. 571 p. 572 p. 573 p. 574 p. 575 p. 576 p. 577 p. 578 p. 579 p. 580 p. 581 p. 582 p. 583 p. 584 p. 585 p. 586 p. 587 p. 588 p. 589 p. 590 p. 591 p. 592 p. 593 p. 594 p. 595 p. 596 p. 597 p. 598 p. 599 p. 600 p. 601 p. 602 p. 603 p. 604 p. 605 p. 606 p. 607 p. 608 p. 609 p. 610 p. 611 p. 612 p. 613 p. 614 p. 615 p. 616 p. 617 p. 618 p. 619 p. 620 p. 621 p. 622 p. 623 p. 624 p. 625 p. 626 p. 627 p. 628 p. 629 p. 630 p. 631 p. 632 p. 633 p. 634 p. 635 p. 636 p. 637 p. 638 p. 639 p. 640 p. 641 p. 642 p. 643 p. 644 p. 645 p. 646 p. 647 p. 648 p. 649 p. 650 p. 651 p. 652 p. 653 p. 654 p. 655 p. 656 p. 657 p. 658 p. 659 p. 660 p. 661 p. 662 p. 663 p. 664 p. 665 p. 666 p. 667 p. 668 p. 669 p. 670 p. 671 p. 672 p. 673 p. 674 p. 675 p. 676 p. 677 p. 678 p. 679 p. 680 p. 681 p. 682 p. 683 p. 684 p. 685 p. 686 p. 687 p. 688 p. 689 p. 690 p. 691 p. 692 p. 693 p. 694 p. 695 p. 696 p. 697 p. 698 p. 699 p. 700 p. 701 p. 702 p. 703 p. 704 p. 705 p. 706 p. 707 p. 708 p. 709 p. 710 p. 711 p. 712 p. 713 p. 714 p. 715 p. 716 p. 717 p. 718 p. 719 p. 720 p. 721 p. 722 p. 723 p. 724 p. 725 p. 726 p. 727 p. 728 p. 729 p. 730 p. 731 p. 732 p. 733 p. 734 p. 735 p. 736 p. 737 p. 738 p. 739 p. 740 p. 741 p. 742 p. 743 p. 744 p. 745 p. 746 p. 747 p. 748 p. 749 p. 750 p. 751 p. 752 p. 753 p. 754 p. 755 p. 756 p. 757 p. 758 p. 759 p. 760 p. 761 p. 762 p. 763 p. 764 p. 765 p. 766 p. 767 p. 768 p. 769 p. 770 p. 771 p. 772 p. 773 p. 774 p. 775 p. 776 p. 777 p. 778 p. 779 p. 780 p. 781 p. 782 p. 783 p. 784 p. 785 p. 786 p. 787 p. 788 p. 789 p. 790 p. 791 p. 792 p. 793 p. 794 p. 795 p. 796 p. 797 p. 798 p. 799 p. 800 p. 801 p. 802 p. 803 p. 804 p. 805 p. 806 p. 807 p. 808 p. 809 p. 810 p. 811 p. 812 p. 813 p. 814 p. 815 p. 816 p. 817 p. 818 p. 819 p. 820 p. 821 p. 822 p. 823 p. 824 p. 825 p. 826 p. 827 p. 828 p. 829 p. 830 p. 831 p. 832 p. 833 p. 834 p. 835 p. 836 p. 837 p. 838 p. 839 p. 840 p. 841 p. 842 p. 843 p. 844 p. 845 p. 846 p. 847 p. 848 p. 849 p. 850 p. 851 p. 852 p. 853 p. 854 p. 855 p. 856 p. 857 p. 858 p. 859 p. 860 p. 861 p. 862 p. 863 p. 864 p. 865 p. 866 p. 867 p. 868 p. 869 p. 870 p. 871 p. 872 p. 873 p. 874 p. 875 p. 876 p. 877 p. 878 p. 879 p. 880 p. 881 p. 882 p. 883 p. 884 p. 885 p. 886 p. 887 p. 888 p. 889 p. 890 p. 891 p. 892 p. 893 p. 894 p. 895 p. 896 p. 897 p. 898 p. 899 p. 900 p. 901 p. 902 p. 903 p. 904 p. 905 p. 906 p. 907 p. 908 p. 909 p. 910 p. 911 p. 912 p. 913 p. 914 p. 915 p. 916 p. 917 p. 918 p. 919 p. 920 p. 921 p. 922 p. 923 p. 924 p. 925 p. 926 p. 927 p. 928 p. 929 p. 930 p. 931 p. 932 p. 933 p. 934 p. 935 p. 936 p. 937 p. 938 p. 939 p. 940 p. 941 p. 942 p. 943 p. 944 p. 945 p. 946 p. 947 p. 948 p. 949 p. 950 p. 951 p. 952 p. 953 p. 954 p. 955 p. 956 p. 957 p. 958 p. 959 p. 960 p. 961 p. 962 p. 963 p. 964 p. 965 p. 966 p. 967 p. 968 p. 969 p. 970 p. 971 p. 972 p. 973 p. 974 p. 975 p. 976 p. 977 p. 978 p. 979 p. 980 p. 981 p. 982 p. 983 p. 984 p. 985 p. 986 p. 987 p. 988 p. 989 p. 990 p. 991 p. 992 p. 993 p. 994 p. 995 p. 996 p. 997 p. 998 p. 999 p. 1000

"ON THIS DAY" MAY 19TH. One of the best of the whole May 19, 1911. All civilized history books...



Chess. (By W. A. Wey) Note the new address for all Chess communications...



Problem No. 1187. White to move. White makes two moves.



Problem No. 1188. White to move. White makes two moves.

Solutions. Problem No. 1217 by Handwritten. Problem No. 1218 by Handwritten.

REVELATION National Bank of India Limited. (Incorporated in United Kingdom)

The National Pharmacy P.O. Box 100 NAIROBI.

FOR SALE Well seasoned Camphor Wood and other Hardwoods.

THE WEST KENYA SAW MILLS Limited. Sadler Street - Nairobi.

Venetian Art Works. Artificial marble work made in Vienna.

INSURE YOUR MOTOR CARS & MOTOR CYCLES.

Thaika's Best and Cheapest House for: Grasses, Peppercorns, Wines and Spirits.

Jaja Trading Co. Agents of C. H. A. Ltd.

Bhimji's Petrol Station. Pure Milk and Cream.

TO LET Large Furnished House on Hill (Cliff).

AIDS TO STOCKWOMEN. W. WALKER, Secy. M.C.S.A. Chief Veterinary Surgeon, Government Officer.

FOR SALE. Farm of 100 acres with 100 cows and 100 sheep.

THAKORE Trains. The following train are due to leave Nairobi today.

TO-day's Trains. The following train are due to arrive at Nairobi today.

SMOOTH-ON Iron Cement for Home Repairs. Shs. 5/- per 7-oz. tin.

SMOOTH-ON. This is a thoroughly prepared compound used in a powder form and used for mixing with water.

SMOOTH-ON. This is a thoroughly prepared compound used in a powder form and used for mixing with water.

SMOOTH-ON. This is a thoroughly prepared compound used in a powder form and used for mixing with water.

SMOOTH-ON. This is a thoroughly prepared compound used in a powder form and used for mixing with water.

SMOOTH-ON. This is a thoroughly prepared compound used in a powder form and used for mixing with water.

Reduce Your Labour Cost. Muster Rolls.

ON GOOD PAPER. PERFECTLY PRINTED AND BUILT. WELL BOUND IN STRONG BOARDS.

Standard Stationery Store, NAIROBI.

Standard Stationery Store, NAIROBI.

Just Unpacked ALLWEATHER PROOF COATS. Best of English Manufacturers. "Zambersons" and "Galmsons".

ALIBHAI & Co., RABAR NAIROBI. The House for Economy & Value.

Kenya Loan & Discount Co., Ltd. P.O. Box 566, NAIROBI.

Financial Agents. Bills Discounted - Short-term Loans Granted.

BLACKLAWS & BROWN [Late Maclean & Co.] Ltd. NAIROBI.

Crawford's Whisky Scotch Whisky. THE BOTTLE THAT SAFEGUARDS YOUR WHISKY. ESTABLISHED 1860.

A GOOD CUP OF Tea can always be got by using "VOONIA".

TRY IT for yourself. We will forward a free tasting sample if desired.

BLACKLAWS & BROWN [Late Maclean & Co.] Ltd. NAIROBI.

BBB, ORLIK LOEWE and DUNHILL PIPES. May & Co. Ltd.





Church Notices.

4:15-5:30 CATHEDRAL, NAIROBI.

SUNDAY, MAY 13. 7:15 a.m. Holy Communion. 7:30 a.m. Holy Communion. 8:15 a.m. Children's Service. 9:15 a.m. Morning Prayer. 10:30 a.m. Children's Service. 11:30 p.m. Evensong.

CATHEDRAL CHURCH

WEDNESDAY, JUNE 6. 7:30 a.m. Holy Communion. 8:15 a.m. Morning Prayer. 9:15 a.m. Children's Service. 10:30 a.m. Morning Prayer. 11:30 p.m. Evensong.

CHURCH OF ST. JOHN

SUNDAY, MAY 13. 7:15 a.m. Holy Communion. 8:15 a.m. Morning Prayer. 9:15 a.m. Children's Service. 10:30 a.m. Morning Prayer. 11:30 p.m. Evensong.

CHURCH OF ST. JOHN

SUNDAY, MAY 13. 7:15 a.m. Holy Communion. 8:15 a.m. Morning Prayer. 9:15 a.m. Children's Service. 10:30 a.m. Morning Prayer. 11:30 p.m. Evensong.

CHURCH OF ST. JOHN

SUNDAY, MAY 13. 7:15 a.m. Holy Communion. 8:15 a.m. Morning Prayer. 9:15 a.m. Children's Service. 10:30 a.m. Morning Prayer. 11:30 p.m. Evensong.

THE SAVATIAN CHURCH

SUNDAY, MAY 13. 7:15 a.m. Holy Communion. 8:15 a.m. Morning Prayer. 9:15 a.m. Children's Service. 10:30 a.m. Morning Prayer. 11:30 p.m. Evensong.

CHRISTIAN SERVICE

SUNDAY, MAY 13. 7:15 a.m. Holy Communion. 8:15 a.m. Morning Prayer. 9:15 a.m. Children's Service. 10:30 a.m. Morning Prayer. 11:30 p.m. Evensong.

SETTLERS' DELEGATES MEET THE PRESS.

(Continued from Page 1). Deputes before the Joint Parliamentary Commission on the question of Union between Kenya, Uganda and Tanganyika. The settlers' delegates met the press on the subject of the proposed Union. The delegates were asked to state whether they were in favour of the proposed Union. The delegates stated that they were in favour of the proposed Union, but they were not in favour of the proposed Union on the basis of the present proposals. They stated that they were in favour of the proposed Union on the basis of the proposed amendments to the present proposals.

MANDATORY SYSTEM EXPLAINED.

Lecture illustrated with Film of Tanganyika. ORGANIZED BY M.M.R. (STANDARD CORRESPONDENT). London (By Mail). Lecturer on "Mandatory System" at the Imperial Institute, London. The lecturer explained the mandatory system in detail. He stated that the mandatory system was a system of international law which was designed to ensure that the interests of the native peoples of the territories under the mandatory system were protected. He stated that the mandatory system was a system of international law which was designed to ensure that the interests of the native peoples of the territories under the mandatory system were protected.

ended the whole civilized world. This was the Permanent Mandates Commission of the League of Nations, comprising 11 members representing a wide variety of countries. The Commission was set up to deal with the territories which were placed under the mandatory system. The Commission was to be a permanent body which was to meet regularly to deal with the territories under the mandatory system. The Commission was to be a permanent body which was to meet regularly to deal with the territories under the mandatory system.

ENTERTAINMENT. Nightly at 8:45. Empire Theatre. Nightly at 8:45.

TO-NIGHT MATINEE. TO-DAY at 3:15. SHOWING SUNDAY at 2:00 and 8:30. THE ALL DIALOGUE-SINGING-DANCING-DRAMATIC-SPECTACLE. "The GREAT GABBO" with a cast of 500 accompanied by an orchestra of 120 instruments.

THEATRE ROYAL. Nightly at 8:45. TO-NIGHT. LILI DAMITA with a star cast. "The Butterfly on the Wheel". A strong drama of the Divorce Court.

Commencing Monday Next 1st June FOR A SHORT SEASON AT THE THEATRE ROYAL WESTMINSTER GLEE SINGERS. THE WORLD FAMOUS. "THE IRON MASK".

PICCADILLY RESTAURANT. THEATRE ROYAL BUILDING. FRENCH COOKERY. THE Best and Cheapest Lunch and Dinner served in Town.

HAVE YOUR TEA AND SUNDOWNER COMFORTABLY WITH MATINEE HOTEL AVENUE. ENTERTAINMENT PROGRAMME. SUNDOWNER DANCES Every Wednesday and Saturday.

THIS IS WORTH YOUR CONSIDERATION. The Palace Hotel, Members, proposing to Nairobi and staying to stay at the Hotel Avenue, Nairobi.

CITY SQUARE MANSIONS. SUNDOWNER Dance WILL BE HELD ON Sunday, 31st May, 8:30-11:30 p.m. ADMISSION FREE. Garry Cook & His Band.

"STRONGLITE" ALL-STEEL FOLDING CAMP FURNITURE. Motor Tours Ltd. 700-710, 710-720, 720-730, 730-740, 740-750, 750-760, 760-770, 770-780, 780-790, 790-800.

MARK GREEN & FRANK ROSA CHAPLAIN.

SUNDAY, JUNE 17. 8:30 p.m. Evensong and Sermon at 10:00 a.m. Mass and Sermon at 11:00 a.m. Holy Communion.

ST. MARK'S CHURCH, KARUNDA.

SUNDAY, MAY 13. 7:15 a.m. Holy Communion. 8:15 a.m. Morning Prayer. 9:15 a.m. Children's Service. 10:30 a.m. Morning Prayer. 11:30 p.m. Evensong.

MOUNT KEITH CHAPLAIN.

SUNDAY, MAY 13. 7:15 a.m. Holy Communion. 8:15 a.m. Morning Prayer. 9:15 a.m. Children's Service. 10:30 a.m. Morning Prayer. 11:30 p.m. Evensong.

KIKUYU CHAPLAIN.

SUNDAY, MAY 13. 7:15 a.m. Holy Communion. 8:15 a.m. Morning Prayer. 9:15 a.m. Children's Service. 10:30 a.m. Morning Prayer. 11:30 p.m. Evensong.

Under the mandate the Government had to look after the health and to see that he did not deprive himself of his rights.

The Governor had to give an account every year as to what he had done for the territory, and he had to give this account in a body which represented the whole civilized world.

The lecturer explained the mandatory system in detail. He stated that the mandatory system was a system of international law which was designed to ensure that the interests of the native peoples of the territories under the mandatory system were protected.

The lecturer explained the mandatory system in detail. He stated that the mandatory system was a system of international law which was designed to ensure that the interests of the native peoples of the territories under the mandatory system were protected.

The lecturer explained the mandatory system in detail. He stated that the mandatory system was a system of international law which was designed to ensure that the interests of the native peoples of the territories under the mandatory system were protected.

The lecturer explained the mandatory system in detail. He stated that the mandatory system was a system of international law which was designed to ensure that the interests of the native peoples of the territories under the mandatory system were protected.

The lecturer explained the mandatory system in detail. He stated that the mandatory system was a system of international law which was designed to ensure that the interests of the native peoples of the territories under the mandatory system were protected.

"Round the World on My Branch" AN EXHIBITION OF PAINTINGS IN QUARTER by Miss May Gordon.

To be opened by Lady BRENKIN at 8 a.m. on MONDAY, JUNE 18. Open until June 23. Avenue Hotel NAIROBI.

A public exhibition from the City of London, showing the history of the world on a globe.

A public exhibition from the City of London, showing the history of the world on a globe.

A public exhibition from the City of London, showing the history of the world on a globe.

A public exhibition from the City of London, showing the history of the world on a globe.

A public exhibition from the City of London, showing the history of the world on a globe.

THE GERALD & BANFIELD ACADEMY OF DANCING.

EMPIRE THEATRE BUILDING, NAIROBI. Apply for Prospectus to F.O. Box 1168. CHILDREN'S CLASSES ON TUESDAYS at 4:30 p.m.

Miss Eily Gerald, M.O.A.D. Miss Joan Banfield, M.O.A.D. Principal of Ballroom, Principal of Ball Room.

Miss Eily Gerald, M.O.A.D. Miss Joan Banfield, M.O.A.D. Principal of Ballroom, Principal of Ball Room.

Miss Eily Gerald, M.O.A.D. Miss Joan Banfield, M.O.A.D. Principal of Ballroom, Principal of Ball Room.

Miss Eily Gerald, M.O.A.D. Miss Joan Banfield, M.O.A.D. Principal of Ballroom, Principal of Ball Room.

Miss Eily Gerald, M.O.A.D. Miss Joan Banfield, M.O.A.D. Principal of Ballroom, Principal of Ball Room.

TORR'S HOTEL. Anniversary. Saturday, 30/5/34. TO-NIGHT MODERN DANCOES with a Sprinkling of good old Fashion Dancoes.

Miss Eily Gerald & Miss Joan Banfield (of the Gerald and Banfield Academy of Dancing) will act as Hostesses. Miss Eily Gerald will give a special demonstration of ballet dancing. BOOK YOUR TABLES EARLY.

EDWARD HOTEL. Free DANCE Free To-Night 30-5-31. 9 p.m. to 1 a.m. J. A. WHITWORTH, Vocalist. Admission Free.

Made by The Edward Dance Band. Book Early for Dinner.

HOW AGEABLE. to find eyes in the substitution of the ordinary corrective lenses by the modern ZEISS PUNKAL LENSES which preserve the eyes from damage of perfect clarity from all points to which the sight is directed. The wide field of the lens of the ZEISS PUNKAL LENSES provides the mobility of the eye and the freedom of inferiority which arises from the restriction of the old fashioned lenses.

"THE LENS" Ltd. Box 501. OPTHALMIC OPTICIANS. 200-201, Princes House, NAIROBI.



THE MOTOR MART and Exchange Ltd. NAIROBI. CHEVROLET TOURER 1928 - Engine perfect work body 470. CHEVROLET BOX BODY 1929-11,000 miles, completely overhauled. Reshined 490. CHEVROLET BOX BODY 1929-done only 9,600 miles-Engine reconditioned-Paint good 490. CHEVROLET BOX BODY in excellent condition throughout-Tyres good 495. CHEVROLET TOURER-A good sound and reliable car 495. DODGE TOURER-Tyres as new, appearance good 490.









**Just Received**  
 THE FAMOUS MORLEY'S  
**La Mode**  
 PURE SILK ENGLISH STOCKING.

Also Other Well-known Makes.  
**SMUGGI, KAYSER, ALLENA**  
 IN THE LATEST PARIS SHADES.

**Ahamed Bros**  
 THE HOUSE OF DISTINCTION.  
 P.O. Box 254 BAZAR—NAIROBI. Phone 2261.

**CORRESPONDENCE.**

**THE LOCAL FINANCIAL.**  
 CENSUREMENT OF THE GOVERNMENT MANAGER

**LETTERS TO THE EDITOR.**  
 THE HON. THE GOVERNMENT MANAGER

**LETTERS TO THE EDITOR.**  
 THE HON. THE GOVERNMENT MANAGER

**LETTERS TO THE EDITOR.**  
 THE HON. THE GOVERNMENT MANAGER

**KAYSER**  
 The Outstanding Stocking of the World.  
 ONE PAIR OF KAYSER gives just double the wear of the usual silk hose.

**Tarzan Chocolates**  
 This is a Special Line of CHOCOLATES  
 AT PER 4/- LB.  
 Sole Distributors: **M.S. Elliot & Co., LIMITED.**  
 P.O. Box 175. Phone 2060.

**ANNOUNCEMENT.**  
 Our Master-Tailor, who gave perfect satisfaction for so many years, in Cut, Style and Fittings—especially in Ladies' Gowns—has now returned from his home-leave.

**BON MARCHÉ**  
 Government Road — NAIROBI.

The Hon. the Government Manager is to be congratulated on the fact that he has been able to secure the services of a highly qualified and experienced manager to take charge of the Government Printing Office. The Hon. the Government Manager is to be congratulated on the fact that he has been able to secure the services of a highly qualified and experienced manager to take charge of the Government Printing Office.

The Hon. the Government Manager is to be congratulated on the fact that he has been able to secure the services of a highly qualified and experienced manager to take charge of the Government Printing Office. The Hon. the Government Manager is to be congratulated on the fact that he has been able to secure the services of a highly qualified and experienced manager to take charge of the Government Printing Office.

The Hon. the Government Manager is to be congratulated on the fact that he has been able to secure the services of a highly qualified and experienced manager to take charge of the Government Printing Office. The Hon. the Government Manager is to be congratulated on the fact that he has been able to secure the services of a highly qualified and experienced manager to take charge of the Government Printing Office.

The Hon. the Government Manager is to be congratulated on the fact that he has been able to secure the services of a highly qualified and experienced manager to take charge of the Government Printing Office. The Hon. the Government Manager is to be congratulated on the fact that he has been able to secure the services of a highly qualified and experienced manager to take charge of the Government Printing Office.

**Here at Last**  
 IS THE CELLULOSE FINISH THAT THE AMATEUR REALLY CAN APPLY WITH COMPLETE CERTAINTY OF GETTING  
**Perfect Results**  
 FOR FURNITURE, FIXTURES, CYCLES AND MOTOR CARS.  
**Brushing Robbaldol**  
 Stockists: SMITH, MACKENZIE & CO. Ltd. NAIROBI.

**Rolex Watches**  
 THE WORLD'S BEST BY EVERY TEST PRICES AS IN ENGLAND.  
 25 World's Records. For Cashless Trade to **DOBBIES LTD.** Watchmakers & Jewellers. Sole Agents for East Africa in S. Africa.

**TO LET.**  
 COTTAGES, II and III Avenue, Parklands—low rent to suitable tenants.  
 SHOP, Victoria Street, Nairobi.  
 SHOPS, 6th Avenue, Nairobi, ample accommodation.  
 SHOP, Government Road, Nairobi.  
 OFFICES, Rose Buildings, Govt. Rd., Nairobi.  
 FLATS, Capital Chambers, Corner V.I. and Sadler St., Nairobi.  
 STONE HOUSE, Bellfield Road, Hill, Nairobi.  
 APPLY—  
**J. H. S. TODD & Co., Ltd.**

**Shs. 19,000 Sold**  
 BALANCE TO CLEAR  
**Shs. 11,000**  
 Less 20% Discount  
**CAMERON & Co.**

**GOOD COFFEE FETCHES HIGH PRICES !!**  
 KEEP YOUR TREES FREE OF PESTS.  
 By Using **PORTABLE DOUBLE-ACTION SPRAY PUMPS.**  
 Manufactured by **DRONE & FLETCHER Ltd., (ENGLAND.)**  
 Stockists: SMITH, MACKENZIE & CO., Box 300, NAIROBI, Phone 3555.

**Gigarettes**  
 SPECIAL VIRGINIANS  
 EN FLUTE No. 1  
 The success which has attended the introduction of this cigarette is evidenced by the fact that within a week of the arrival of our initial consignment they had to be re-ordered to enable for double the quantity.  
 Samples can be obtained at our office—free of charge.  
**Jardin, Phipson & Co., Ltd.**  
 Tel. 2664. P.O. Box 24.

**Gigarettes**  
 SPECIAL VIRGINIANS  
 EN FLUTE No. 1  
 The success which has attended the introduction of this cigarette is evidenced by the fact that within a week of the arrival of our initial consignment they had to be re-ordered to enable for double the quantity.  
 Samples can be obtained at our office—free of charge.  
**Jardin, Phipson & Co., Ltd.**  
 Tel. 2664. P.O. Box 24.

**Gigarettes**  
 SPECIAL VIRGINIANS  
 EN FLUTE No. 1  
 The success which has attended the introduction of this cigarette is evidenced by the fact that within a week of the arrival of our initial consignment they had to be re-ordered to enable for double the quantity.  
 Samples can be obtained at our office—free of charge.  
**Jardin, Phipson & Co., Ltd.**  
 Tel. 2664. P.O. Box 24.

**Gigarettes**  
 SPECIAL VIRGINIANS  
 EN FLUTE No. 1  
 The success which has attended the introduction of this cigarette is evidenced by the fact that within a week of the arrival of our initial consignment they had to be re-ordered to enable for double the quantity.  
 Samples can be obtained at our office—free of charge.  
**Jardin, Phipson & Co., Ltd.**  
 Tel. 2664. P.O. Box 24.

**Household Requisites**  
 at prices you can afford to buy with VARIETY and SELECTION that makes shopping a pleasure  
**Will you come in and try us?**  
 NOTE THESE LOW PRICES—  
 "UNIVERSAL" Bread Makers, Shs. 21/- each  
 Make Four Loaves, in 3 minutes.  
 "BEATRICE" Food Mixers, in all sizes.  
 Size No. 0, Shs. 9/-; Size No. 2, Shs. 12/6 each  
 Size No. 1, Shs. 9/6 each; Size No. 3, Shs. 17/6 each  
 "SPONGE" Coffee Grinders (London make)  
 Size No. 1, 11/8; No. 2, 14/6; No. 3, 18/6 each  
 ENAMEL WASHBASINS, Collapsible Iron Frames, with towel rack attached—complete with Ewer, Basin, Soapdish, and Toilet Pail.  
**Sh. 37-50 complete.**  
 THE STORE THAT SERVES YOU BEST.  
**AHAMED & SHERIFF**  
 P.O. Box 284. Government Road (Near Warlike) NAIROBI.

**B. FLOREN'S**  
 FRENCH HAIR DRESSER.  
 FRIZZURE AND STYLING SPECIALIST.  
 Phone 285, York St., P.O. Box 285, Govt. Road, Nairobi.



**CATALOGUE SALE OF GOOD FURNITURE, CHESTBEDD SUITES, GRAM A P R O N. SEWING MACHINES, BOOKBINDING BEDS, RAGRITS, STOVES, SHOWPUM, etc.**

**E. Hutchison & Co.**  
Favoured with instructions we shall sell by Public Auction, without reserve, unless stated, at our Mart, Government Road, on

**Sale By Public Auction**  
10 Motor Cars 10  
Trucks Motorcycles Etc.

**CATALOGUE SALE OF FURNITURE AND EFFECTS.**  
Duly instructed, we shall sell by Public Auction, Without Reserve, unless stipulated, at Our Salerooms, Mutoto Building, Harding's Street, Nairobi, on

**Monday 1st June at 10 a.m.**

Chesterfield Suites, loose covers. Easy Chairs. Nursery Easy Chairs. Maras Chain and Lamps. Bookbinders. Occasional and Tea Tables. Tray Tables on Casters. Suites of Dining Chairs. Dining Tables. Copper Trays. Brass Trays. Columbia Table Machine. Brass and Records. Columbia Portable Gramophone (Hex.). Mirzapur Carpet. Rugs. "Crown Derby" Coffee Service in case. Gold Fish Trays. Brass Vase. Plated Silver and Enamel Coffee Service. Fewer Sets. Writing Egoirne. "Singer" Sewing Machine. Cast Iron Dresser. Sideboard, drawers and cupboards. Dressing Tables, drawers, etc. Pictures. Palm Wardrobes in Tank. Oval bevelled mirror, shelves and drawers. Pair Prismatic Glasses in case. No. 2 Folding Card Table. Showcases. Duck Chairs. Dinner Wagon. Auto. Brownie Cars. Aksey Junior Cycle. No. 2 Folding Bicycle. Single Trip. Dinner Wagon. Kitchen Dressing Table. Double Bedstead, spring mattress. Trusses. Single Bed in Tank, spring mattress. Kitchen Sinks. Menstrals. Wicker Chair. Sofa. Oval bevelled mirror, Ruby & Box Body. On behalf of the parties concerned—  
Ferdinand Haste (damaged in transit).  
Etc. Etc.

**AUSTIN & Co.**  
will sell WITHOUT RESERVE unless stated, at THE MART.

**To-day, May 30th at 10 a.m.**

Chesterfield Suites upholstered in Oretone. Suite and Club Easy with loose Covers. Hanging and Bachelor Wardrobe. Oval Dining Table 6 x 4. Single Wood chairs. New Mattress Boxspring 6 x 4. Single Bed complete. Kapok Pillows and Cushions From Several Sources. Large Dinner Wagon. Bookshelves. Chests of Drawers. Chests. Double Washstand. Grandmother Cabinets. Office Desk. Bedsteads. Cabinets and other Hand Sewing Machine in good order. Coffee Tables. Morris Chairs. New Style Ball. Tennis Backsets and Hockey Chairs. Writing and Dining Tables. Gramophones and Records. Boiler. 2 Burner Perfection Stove. Hot Water Boiler. 4 drawers, 2 cupboards. Sideboard. Servers. 12 top. China Teat. Salad Bowls. Half Dozen. Youth Cycle in good order. Running Carpet. Sewing. New "Blow" Butler Churn  
Duggan Austin & Co. in perfect running order. Tynes Good.

**Tuesday the 2nd June at 10 a.m.**  
A SELECTION OF HIGH CLASS FURNITURE AND EFFECTS including the following—  
Exceptionally good three piece Chesterfield Suite cases and Suits. Chesterfield Suite of Two tub. cases. Extending Dining Table with Set of Six Chairs to match, etc. Three handsome ivory tables. Wardrobe with Oval Mirror and handsome Hanging Double Single Wardrobe fitted. Large Hanging Double Pair very good Suite. Washstands. Chests Drawers. Bed with box Spring. Two Iron Beds with mattresses. Sofa. New Writing Bureau. Meat Scales. Bedstead. Cupboard, Bed. Large Trunk. Engine and Cart. No. 2 Bover Horse. Comfortable Club Easy. China Bureau. Perfection with Turn. Type Writer. Three Burner. Long Glass in Frame. Plate Rack almost new. New New York. Cabinet Gramophone. Writing Tables Three with 1000s single shipment. Tennis & Pool Table. Occasional Tables. Two New Pocket Watches. Four Dining Chairs. Two New Pocket Watches. Folding Chair. Novelty Suit Case.

**10 Motor Cars 10**  
Trucks Motorcycles Etc.  
AT  
**Godfreys Car Mart**  
Sadler Street  
ON 6/12  
**To-Day 30th.**  
At 10 a.m.

**AUSTIN and Co.**  
AUCTIONEERS and ESTATE AGENTS,  
Harding Street, Nairobi.

**E. HUTCHISON & Co.**  
AUCTIONEERS, Etc., NAIROBI.

**E. Hutchison & Co.**  
FOR SALE. To Close a Trust, 24 Avenue Plot and Buildings. "Times" price and terms to suit able buyer.

Instructed thereby by various owners we will sell as above. Including—  
BEAN TOURER - ARMSTRONG SIDLEY 6  
BUICK BODY - DODGE BODY  
600 - RUGBY TOURER - FIAT  
ESSEX SALOON - FORD Etc.  
FURTHER ENTRIES:  
TANOH Touring. Pneumatic Tyres. Perfect mechanical condition. 48 M.P.G., complete with spares value £25  
MORRIS 12 Ton Truck. 6 Wheeler. Reliable and economical.  
FIAT 500. Excellent appearance. Guaranteed mechanically sound. Guaranteed further ENTRIES WILL BE ACCEPTED FOR THIS SALE.

**JAMAL PIRBHAI.**  
SALE OF ONE WOODEN AND IRON BUILDING, WITH PROTECTIONS FROM THE OFFSHORE REEF, ON VEDDIA Channel, Backreef, and several other. I shall sell by public Auction, Nairobi, on

**SUNDAY, May 31st at 8 a.m. sharp.**  
One Wooden and Iron Building, without the stone in the farm of M. G. Kilsona, Esq., KAHAWA and furniture etc.

**SANDS & Co.**  
TAKE NOTE OUR LIVESTOCK SALE THIS WEEK  
WILL BE HELD AT OUR RAILWAY SALEROOM,  
NAIROBI, ON

**Thursday 4th June 1931.**

**Godfreys Car Mart Ltd.**  
Auctioneers and Motorcar Salesmen.

YOU may not damage your car if you buy a Denovan & Diebel. The surface of the car is treated with a special waterproofing which is a PUDLO and which will keep your car in perfect condition for many years.

Hiding Dampness CEMENT BRAND  
Denovan & Diebel  
Victoria Buildings, Cross Street, NAIROBI.

**JAMAL PIRBHAI.**  
P.O. Box No. 262.

**SANDS & Co.**  
Following are the entries—  
50 GOOD GRADE FAT STEERS  
100 LARGEST SHEEP  
200 GOATS,  
PIGS.  
Further entries invited.

**FOR SALE.**  
Double Storeyed  
Brick-Built Residence

with modern conveniences and refinements; situated on nearly 4 acres of FREEHOLD land, west of and over 500 feet higher than Nairobi, near French Mission

**SANDS & Co.**  
AUCTIONEERS.

**SANDS & Co.**  
GIGANTIC CLEARANCE SALE OF  
Livestock and Implements Hodgwood Ranch near

**METROPOLITAN GARAGE.**  
(OPP. GODFREY'S CAR MART)  
Repairs all makes of Cars, Daco Spray Painting, Overhaul a Specialty. Vulcanizing & Retreading. BROADHEAD CARB BODGET and SOLD.  
Our Charges are the most moderate in the country.  
A Personal Inspection is invited in every car.  
Dodge & Torner, 3 brand new tyre in perfect running order.  
**D. J. LETHBRIDGE,**  
SOLE PROPRIETOR.

**A. L. SMITHSON.**  
P.O. Box 1125. Balm House, Telephone 2769.

**SANDS & Co.**  
AUCTIONEERS.

**SANDS & Co.**  
GIGANTIC CLEARANCE SALE OF  
Livestock and Implements Hodgwood Ranch near

**Kenya & Uganda Railways & Harbour**

**DEMOLITION OF HOUSES AT MAKINDU.**

Tenders are invited for the demolition of 10 Wood 30, 31, 32 and 34 and a group of three small buildings (also in view of the map) belonging to this Administration at Makindu.

Tenders will be accepted for any number of the buildings, or for one building only, except in the case of the three small buildings, which will be treated as one.

The tender price is to include the complete demolition of the above and all essential outbuildings, including foundations (but excluding outbuildings) and the complete clearing of the sites. All materials resulting from the demolition will become the Contractor's property.

The successful tenders will be required to deposit the full tender price before commencing operations, together with a security deposit of 50 per cent returned on the completion of the work and completed within the time specified. In the event of the foregoing not being carried out the security deposit will be forfeited.

Tenders should be submitted on or before the 10th June, 1931, and the work of demolition must be completed by the 15th July, 1931.

For full particulars apply to the District Engineer, Kenya and Uganda Railways and Harbours, Nairobi.

Intending bidders can have the buildings pointed out to them by the Inspector of Works, Engineering Department, at Makindu.

Tenders should be submitted to the Tender Box, Chairman of the Tender Board, Kenya and Uganda Railways and Harbours, P.O. Box 27, Nairobi.

**G. D. RHODES,**  
General Manager,  
Kenya and Uganda Railways and Harbours.

**SANDS & Co.**  
AUCTIONEERS.

**THACKRAH'S Ltd.,**  
Nairobi.

The Up-Country LAND AND ESTATE AGENTS, AUCTIONEERS & ATTORNEYS, INSURANCE, SHIPPING AND FINANCIAL AGENTS.  
Shop, Offices, Godfrey's Buildings and Farms, 106 LEA - FOR SALE.

**Opening June 4th, 1931**

**KENYA MART**  
Auctioneers and Commission Agents

**Stanley House**  
(opposite Empire Theatre).

A new venture that will be prepared to buy or sell anything you cannot obtain or sell. A careful perusal of our future "advertisements" will be worth your while. You are cordially invited to inspect our Showroom which will be open daily between 8 a.m. and 5 p.m. on and after the 4th June.

**MUTER & OSWALD Ltd., Auctioneers, Etc., NAIROBI.**

**MISCELLANEOUS GOODS SALE.**  
Duly instructed, we shall sell by Public Auction, WITHOUT RESERVE, unless stipulated, at our Salerooms, Mutoto Building, Harding's Street, Nairobi, on

**Tuesday, 2nd June, at 10 a.m.**

Large Range of good Novels, Tennis Balls. Glassware. Crockery. Kitchen Utensils. Travelling Trunks. Dress Materials. Pictures. Linoleum. Carpeting. Rugs. Tennis Racquets. Biting Whips. Hockey Sticks. Footballs, etc.

Marley Davidson's Motorcycle, 7 1/2 h.p. Twin cylinder. Douglas Motorcycle. 5 h.p. Motor Cycle, etc., etc.

**MUTER & OSWALD Ltd., Auctioneers, Etc., NAIROBI.**

**SALE OF SURPLUS ELECTRICAL AND WIRELESS STOCKS, SPARES AND COMPONENTS.**  
Duly instructed by Messrs Lockhead, Moore and Co. Ltd., who are disposing of certain stocks, etc., and by Public Auction, without reserve, at their Sixth Street Premises on

**Thursday 25th June at 10 a.m.**

LARGE RANGE OF ELECTRIC EQUIPMENT, INCLUDING LAMP, HEADLAMP, FLASH LAMPS, ETC., WIRELESS COMPONENTS, BATTERIES, WIRELESS SETS AND BATTERIES, UNLAMPED BLOW GLASS BATTERIES AND SHELVING Etc., Etc.

**MUTER & OSWALD Ltd., Auctioneers, Etc., NAIROBI.**

**BUTTER GHEE**  
1/- per lb.

**SANDS & Co.**  
AUCTIONEERS.

**BBER STAMPS**  
AT THE  
ARD STATIONERY STORES  
NAIROBI.

**MUTER & OSWALD Ltd., Auctioneers, Etc., NAIROBI.**

**SALE OF SURPLUS ELECTRICAL AND WIRELESS STOCKS, SPARES AND COMPONENTS.**  
Duly instructed by Messrs Lockhead, Moore and Co. Ltd., who are disposing of certain stocks, etc., and by Public Auction, without reserve, at their Sixth Street Premises on

**Thursday 25th June at 10 a.m.**

LARGE RANGE OF ELECTRIC EQUIPMENT, INCLUDING LAMP, HEADLAMP, FLASH LAMPS, ETC., WIRELESS COMPONENTS, BATTERIES, WIRELESS SETS AND BATTERIES, UNLAMPED BLOW GLASS BATTERIES AND SHELVING Etc., Etc.

# WEED TYRE CHAINS



**SKIDDING endangers property and life. Tyre chains can be avoided by the use of Weed**

**They give firm, positive traction under all road conditions. Made for all passenger, truck or bus tyres in Weed regular and Weed "American" patterns.**

AMERICAN CHAIN CO., NEW YORK, U. S. A.

## PROTECT AGAINST S-K-I-D-D-I-N-G

### the Kenya Hairdressing Saloons

High Class Ladies' and Gent's Hairdressing. MISS COLLINS & HALL, (Late of Timaru). MISS PHILLIPS & THOMSON (Late of Johannesburg). MISS BARNES & with such an excellent and so genuine satisfaction.

1180, (New Hotel), DIAL 8071, for an Appointment.

# RONEO



## DUPLICATORS

MAY WE SHOW YOU THE MACHINE ITSELF



## Multi Plesco A Useful Roneo Flat Duplicator Shs. 120/-

Standard Stationery Stores. NAIROBI.

### BRIGHTER CRICKET CONTINUES

Parker and Dering of Wickets.

SEARCH FOR YOUNG TALENT.

(By Mr. Hall.)

Cricket season has started off with a bang and it continues in the way it has started the season will be up.

One does not get, and one would not expect, that sort of thing to obtain in a "five" batsman team. The batsman are fast and the bowlers are fast. The batsman are fast and the bowlers are fast.

Jack Arnold has made a very first, and the season was very first, and the season was very first.

Memorable, already, Glouc's Championship, and the present season has been a very interesting one.

the evolution of cricket; and that having so widely diffused, he had looked at the C. H. Falster and all the 19 and 21 batsmen on either side of the batting order. They had to play for a week. To do it was all back. To do it was all back.

One does not get, and one would not expect, that sort of thing to obtain in a "five" batsman team. The batsman are fast and the bowlers are fast.

Jack Arnold has made a very first, and the season was very first, and the season was very first.

Memorable, already, Glouc's Championship, and the present season has been a very interesting one.

the evolution of cricket; and that having so widely diffused, he had looked at the C. H. Falster and all the 19 and 21 batsmen on either side of the batting order. They had to play for a week. To do it was all back. To do it was all back.

One does not get, and one would not expect, that sort of thing to obtain in a "five" batsman team. The batsman are fast and the bowlers are fast.

Jack Arnold has made a very first, and the season was very first, and the season was very first.

Memorable, already, Glouc's Championship, and the present season has been a very interesting one.

the evolution of cricket; and that having so widely diffused, he had looked at the C. H. Falster and all the 19 and 21 batsmen on either side of the batting order. They had to play for a week. To do it was all back. To do it was all back.

One does not get, and one would not expect, that sort of thing to obtain in a "five" batsman team. The batsman are fast and the bowlers are fast.

Jack Arnold has made a very first, and the season was very first, and the season was very first.

Memorable, already, Glouc's Championship, and the present season has been a very interesting one.

### South Africa Delicious Orange and Lemon Beverages

are Pure and Pleasant Drinks

Obtainable at all leading Grocers.

Full particulars available from The Office of the Union of South Africa, Memorial Hall, Box 684, NAIROBI.

### TO COFFEE PLANTERS, ARRIVED.

ELY's special quality white non-absorbent cotton wool for Mangle Bug prevention at considerably REDUCED prices.

A. J. ELY & Co., Ltd. THE CHEMISTS, NAIROBI. P.O. Box 411.

### The Imperial Petrol & Service Station

(Opposite Post Office, 4th Avenue.) A NEW PETROL STATION, GIVING COURTEOUS EFFICIENT DAY AND NIGHT SERVICE.

Add your name to our already numerous Client list.

Petrol Petrol in Oil AND ALL ACCESSORIES, AT THE Imperial Petrol & Service Station. P.O. Box 488 - NAIROBI.

the evolution of cricket; and that having so widely diffused, he had looked at the C. H. Falster and all the 19 and 21 batsmen on either side of the batting order. They had to play for a week. To do it was all back. To do it was all back.

## Geo. BLOWERS.



### COMMERCIAL CARS

Many different kinds of bodies are available, adapting the FORD commercial "A" chassis for use in a wide variety of businesses.

Among them are the light delivery with closed or open cab, de luxe canopy body, station wagon and many others.

Important features of Ford commercial cars are the 4 cylinder engine which develops 40 h.p. at 2,500 R.P.M.; the simplicity of the electrical, ignition, cooling, lubrication and fuel systems; torque-tube drive; fully enclosed mechanical 4-wheel brakes and shatterless glass windshields.

## Nairobi Motors

Box 480 Tel. 2443.

the evolution of cricket; and that having so widely diffused, he had looked at the C. H. Falster and all the 19 and 21 batsmen on either side of the batting order. They had to play for a week. To do it was all back. To do it was all back.

## Geo. BLOWERS.



### COMMERCIAL CARS

Many different kinds of bodies are available, adapting the FORD commercial "A" chassis for use in a wide variety of businesses.

Among them are the light delivery with closed or open cab, de luxe canopy body, station wagon and many others.

Important features of Ford commercial cars are the 4 cylinder engine which develops 40 h.p. at 2,500 R.P.M.; the simplicity of the electrical, ignition, cooling, lubrication and fuel systems; torque-tube drive; fully enclosed mechanical 4-wheel brakes and shatterless glass windshields.

## Nairobi Motors

Box 480 Tel. 2443.

### Geo. BLOWERS.

BUILDING CONTRACTOR, MANUFACTURER AND DIRECT IMPORTER. SAULDER STREET, GREATLY REDUCED PRICES. P.O. Box 250, NAIROBI. Phone: 2444 House 2444

### Geo. BLOWERS.

BUILDING CONTRACTOR, MANUFACTURER AND DIRECT IMPORTER. SAULDER STREET, GREATLY REDUCED PRICES. P.O. Box 250, NAIROBI. Phone: 2444 House 2444

### WHY BUY AMERICAN DOORS

AND SEND YOU MONEY AHEAD?

I can compete with them and beat them!

Send for my ILLUSTRATED CATALOGUE and Price List.

CONCRETE BLOWERS' DOORS ALL SIZES IN STOCK. BLACK TRAY BAZILITE. BEST KIMA SAND. PLUMBER AND SANITARY WORK DONE UNDER THE SUPERVISION OF OUR OWN SUPERIOR SPECIALISTS. UP-TO-DATE AND ATTRACTIVE. LATEST LONDON STYLES, IDEAL, LAYERS, PRINCIPAL DESIGNERS, POSTERS.

THE SPORTS PAGE

Consulate SHIRTS LAUNDRY STOKED BY THE LEADING OUTFITTERS

THE DERBY. PROBABLE STARTERS AND JOCKEYS. RUGBY FOOTBALL. NAIROBI AND DISTRICT CHAMPIONSHIP.

THE DERBY. PROBABLE STARTERS AND JOCKEYS. RUGBY FOOTBALL. NAIROBI AND DISTRICT CHAMPIONSHIP.

THE DERBY. PROBABLE STARTERS AND JOCKEYS. RUGBY FOOTBALL. NAIROBI AND DISTRICT CHAMPIONSHIP.

SPORTING BRIEVES. Just before the famous horse race...



ELEY GRAND PRIZE. Smokes & Diamond powder. The most popular cartridge of all feathered game.

ICL. A Good Gun deserves a Good Cartridge. This will be the fourth meeting between the Nairobian and the Nairobian...

TRADE'S WARS. FURTHER ACCOUNTS. Established 25 years. Derby, 2000.

KINGSWAY. The Plate for Presentations and Wedding Presents.

GUARANTEED FOR 20 YEARS' HARD WEAR. DOBBIES, LTD. Silversmiths, Watchmakers and Jewellers.

MAURICE ROSESTON. BOMA BUILDINGS, GOVERNMENT ROAD, NAIROBI. DEBTRY, 2000.

MAURICE ROSESTON. BOMA BUILDINGS, GOVERNMENT ROAD, NAIROBI. DEBTRY, 2000.

JAMES REZIN. Tailor & Breeches Maker. CHOICE SELECTION OF LATEST MATERIALS.

ENTRIES FOR THE GYMKHANA HANDICAP TOURNAMENT. CLOSE ON JUNE 19th. REGISTER YOUR ENTRY.

SELECT YOUR RACKETS AT MAY & Co., Ltd. THE SPORTS HOUSE NAIROBI.

COUNTY CRICKET. Rain Holds Up Play. MIDDERLEY WITHIN SIGHT OF VICTORY.

STANDARD CORRESPONDENT. Whether conditions proved favorable...

SWIMMING GALA. MAGADI INITIAL VENTURE.

STANDARD CORRESPONDENT. On Sunday Magadi, May 20, 1909...

WARWICKSHIRE vs. YORKSHIRE. Worester-1st Inn. 176; 2nd Inn. 102.

WARWICKSHIRE vs. YORKSHIRE. Worester-1st Inn. 176; 2nd Inn. 102.

WARWICKSHIRE vs. YORKSHIRE. Worester-1st Inn. 176; 2nd Inn. 102.

WARWICKSHIRE vs. YORKSHIRE. Worester-1st Inn. 176; 2nd Inn. 102.

WARWICKSHIRE vs. YORKSHIRE. Worester-1st Inn. 176; 2nd Inn. 102.

WARWICKSHIRE vs. YORKSHIRE. Worester-1st Inn. 176; 2nd Inn. 102.

WARWICKSHIRE vs. YORKSHIRE. Worester-1st Inn. 176; 2nd Inn. 102.

STANDARD CORRESPONDENT. In a message to the Nairobian...

STANDARD CORRESPONDENT. In a message to the Nairobian...

STANDARD CORRESPONDENT. In a message to the Nairobian...

STANDARD CORRESPONDENT. In a message to the Nairobian...

STANDARD CORRESPONDENT. In a message to the Nairobian...

STANDARD CORRESPONDENT. In a message to the Nairobian...

STANDARD CORRESPONDENT. In a message to the Nairobian...

STANDARD CORRESPONDENT. In a message to the Nairobian...

STANDARD CORRESPONDENT. In a message to the Nairobian...

STANDARD CORRESPONDENT. In a message to the Nairobian...

STANDARD CORRESPONDENT. In a message to the Nairobian...

STANDARD CORRESPONDENT. In a message to the Nairobian...

STANDARD CORRESPONDENT. In a message to the Nairobian...

STANDARD CORRESPONDENT. In a message to the Nairobian...

STANDARD CORRESPONDENT. In a message to the Nairobian...

STANDARD CORRESPONDENT. In a message to the Nairobian...

STANDARD CORRESPONDENT. In a message to the Nairobian...

STANDARD CORRESPONDENT. In a message to the Nairobian...

STANDARD CORRESPONDENT. In a message to the Nairobian...

STANDARD CORRESPONDENT. In a message to the Nairobian...

STANDARD CORRESPONDENT. In a message to the Nairobian...

STANDARD CORRESPONDENT. In a message to the Nairobian...

STANDARD CORRESPONDENT. In a message to the Nairobian...

STANDARD CORRESPONDENT. In a message to the Nairobian...

STANDARD CORRESPONDENT. In a message to the Nairobian...

STANDARD CORRESPONDENT. In a message to the Nairobian...

STANDARD CORRESPONDENT. In a message to the Nairobian...

STANDARD CORRESPONDENT. In a message to the Nairobian...

STANDARD CORRESPONDENT. In a message to the Nairobian...

STANDARD CORRESPONDENT. In a message to the Nairobian...

STANDARD CORRESPONDENT. In a message to the Nairobian...

STANDARD CORRESPONDENT. In a message to the Nairobian...

STANDARD CORRESPONDENT. In a message to the Nairobian...

STANDARD CORRESPONDENT. In a message to the Nairobian...

STANDARD CORRESPONDENT. In a message to the Nairobian...

STANDARD CORRESPONDENT. In a message to the Nairobian...

Do not use inferior cartridges in your gun. Use ELEY-Belish and Pr...

ELEY GRAND PRIZE. Smokes & Diamond powder.

ICL. A Good Gun deserves a Good Cartridge.

MAURICE ROSESTON. BOMA BUILDINGS, GOVERNMENT ROAD, NAIROBI.

MAURICE ROSESTON. BOMA BUILDINGS, GOVERNMENT ROAD, NAIROBI.

CHICKEN. THE FINEST EGG PRODUCING & BONE FORMING FOOD FOR FOWLS.

"ACE". The Super Football. Craig's Sports House Ltd.

ESMAIL & FRANKEL. boy to announce the arrival of huge new stocks of CHINA, GLASSWARE, ALUMINIUMWARE...

PROSSER'S "PHENOMENON". Materials and workmanship guaranteed to be the finest procurable.

FISHING TACKLE. FRESH STOCKS OF RODS, REELS, LINES, CASTS, AND ALL ACCESSORIES FOR "TROUT FISHING".

THE WORLD'S MOST POPULAR RACKET. Your own racket should be a Prosser's.

THE WORLD'S MOST POPULAR RACKET. Your own racket should be a Prosser's.

THE WORLD'S MOST POPULAR RACKET. Your own racket should be a Prosser's.

THE WORLD'S MOST POPULAR RACKET. Your own racket should be a Prosser's.

**KENYA NATIONAL ARCHIVES**  
**PHOTOGRAPHIC SERVICE**

Description of Document..... **THE EAST AFRICAN STANDARD (MOMBASA TIMES & UGANDA ARGUS)**  
.....  
..... **(Daily Edition) 1st to 30th May, 1931,**.....

Reference No..... **From E.A.S Library.**.....

**END**