

African Standard

UGANDA ARGUS With which is incorporated THE LEADER.

The Oldest Established Newspaper Published in Kenya and Uganda. General Agents of the Kenya & A. Amicable Association, (Incorporated Society of Kenya, Ltd.)

No. 2908. PUBLISHED AT THE CENTRAL PRESS OFFICE IN A NAIROBI.

NAIROBI, SATURDAY, MARCH 14, 1931.

MISCELLANEOUS ADVERTISEMENTS.

THE EAST AFRICAN STANDARD WEEKLY EDITION

P.O. Box 200, NAIROBI. London Representatives: MOUNTBATTEN SPEED & Co., 63, Queen Victoria St., LONDON, E.C.4

Small Advertisements. Advertisements are accepted only subject to approval.

DOMESTIC ANNOUNCEMENTS Births, Marriages & Deaths, etc. a line per line of six words with a minimum of 10s.

MEMORANDUMS PREPAID ADVERTISEMENTS.

Such as small Wanted, To Let, For Sale and Situations Vacant and Wanted—1s. per line of six words or fraction of a line; minimum 4s.

No new advertisements are guaranteed insertion unless handed in before 11.30 a.m. on the Friday previous to publication.

THE SUBSCRIPTION RATES:

Yearly ... Shs. 20/-
Half yearly ... Shs. 14/-
Monthly ... Shs. 2/-

BIRTHS.

THE charges for advertisements in these columns is 1s. for a line of six words or a fraction of a line, with a minimum of 10s.

BREYTON—On 9th March at Nyiro, to Dorothy, wife of W. J. Breighton, Nyiro, a son.

COOPER—At Nairobi on 26th March, 1931, to Barbara Mary, wife of R. W. A. Cooper of Nairobi, a daughter.

L.B. BREYTON—In London, England, on March 1st, 1931, to Elizabeth, wife of Major F. H. L. Breighton of Kilindi Station, P.O. Box, a son.

ENGAGEMENT.

THE charges for advertisements in these columns is 1s. for a line of six words or a fraction of a line, with a minimum of 10s.

COLQUHOUN—HICHAIRSON—The engagement is announced between Captain Samuel Paul Colquhoun of Ripkong, and the late Mr. John Colquhoun of Muthangama, Campbell, N. Ireland and Andrew HicHAIRSON, daughter of the late Mr. William Richardson and Mrs. Richardson of Lanchester House, Lincoln.

BUDDIED and Graded Pears 3 1/2 Tons. A.O.S. Trees ready for planting. Right soil and situation. Price 10/- per tree. Apply: Mrs. Jack Leary, 1st Floor, Royal Hotel, George P.O. Box 600, Nairobi, Kenya.

DEATHS.

THE charges for advertisements in these columns is 1s. for a line of six words or a fraction of a line, with a minimum of 10s.

DMITRIEFF—On 23rd February at Kapteba, Estates, Turin, Eugenie Dmitrieff, dearly beloved wife of Commander Valentin Dmitrieff.

SIGH—Died at Posthousroom, South Africa, on 2nd Feb. Sarah Sigh, beloved mother of Mrs E. J. A. Grimlock, of Rumuruti, aged 85. The rests in peace.

THE charges for advertisements in these columns is 1s. for a line of six words or a fraction of a line, with a minimum of 10s.

ACCOUNT Books. Cash Books and Journals. 24 pages. 2nd Edition. Bound. Size of about 15 x 10 in. Containing approx. 500 pages; at Shs. 10/-; 700 pages, at Shs. 15/- each. Standard Stationery Store, Nairobi.

BREITERS Shoes. 18 across best steel, fine and burglar resisting 20 x 15 x 14-24 x 17 x 16 20 x 20 x 18-25 x 24 x 22 20 x 20 x 18-25. Lowest prices in country. Kettle-Boy, Ltd., Box 100, Nairobi.

BLOOD Meat, Bone Meal, Meat Meal, "Marrow" Brand. Standard Bone Meal for fertiliser 24 lb. 2/6; per ton 224 lb. 20/6; per ton 200 lb. 20/6; per ton 180 lb. 20/6; per ton 160 lb. 20/6; per ton 140 lb. 20/6; per ton 120 lb. 20/6; per ton 100 lb. 20/6; per ton 80 lb. 20/6; per ton 60 lb. 20/6; per ton 40 lb. 20/6; per ton 20 lb. 20/6. Prices per ton. I.O.C. your nearest station if required. Dalgity & Company, Ltd., Z.G.O. Box 98, Tyren Brothers Ltd. and J. G. Aronson, Ltd., Nairobi.

BRIGHTEN The New Year for your Coat, Shoes, Bags, Collar and Cuffs, separate articles and Apply HERR, Kilmuir, 7, The Fitzroy, High and Crown, D.R. 28/6. Lagoon and other a variety of other smaller sizes. Trimmings, etc., Canvas, etc., for sale all. All prices per yard and measured to suit part of the set and measured to suit part of the set. Apply: Mrs. Jack Leary, 1st Floor, Royal Hotel, George P.O. Box 600, Nairobi, Kenya.

COFFEE Plants, 3 years old, transplanted from specially selected seed, 20/- per 1,000. Kenney Harvey, Ltd., Nairobi.

COFFEE Transplants from selected seed, eighteen months old, unshaded ready now. Price 25/- per 1,000. Kenney Harvey, Ltd., Nairobi.

EASTLIGHT Flat Metallic Pipe. 8/- per doz. 20/- per doz. 30/- per doz. 40/- per doz. 50/- per doz. 60/- per doz. 70/- per doz. 80/- per doz. 90/- per doz. 100/- per doz. 110/- per doz. 120/- per doz. 130/- per doz. 140/- per doz. 150/- per doz. 160/- per doz. 170/- per doz. 180/- per doz. 190/- per doz. 200/- per doz. 210/- per doz. 220/- per doz. 230/- per doz. 240/- per doz. 250/- per doz. 260/- per doz. 270/- per doz. 280/- per doz. 290/- per doz. 300/- per doz. 310/- per doz. 320/- per doz. 330/- per doz. 340/- per doz. 350/- per doz. 360/- per doz. 370/- per doz. 380/- per doz. 390/- per doz. 400/- per doz. 410/- per doz. 420/- per doz. 430/- per doz. 440/- per doz. 450/- per doz. 460/- per doz. 470/- per doz. 480/- per doz. 490/- per doz. 500/- per doz. 510/- per doz. 520/- per doz. 530/- per doz. 540/- per doz. 550/- per doz. 560/- per doz. 570/- per doz. 580/- per doz. 590/- per doz. 600/- per doz. 610/- per doz. 620/- per doz. 630/- per doz. 640/- per doz. 650/- per doz. 660/- per doz. 670/- per doz. 680/- per doz. 690/- per doz. 700/- per doz. 710/- per doz. 720/- per doz. 730/- per doz. 740/- per doz. 750/- per doz. 760/- per doz. 770/- per doz. 780/- per doz. 790/- per doz. 800/- per doz. 810/- per doz. 820/- per doz. 830/- per doz. 840/- per doz. 850/- per doz. 860/- per doz. 870/- per doz. 880/- per doz. 890/- per doz. 900/- per doz. 910/- per doz. 920/- per doz. 930/- per doz. 940/- per doz. 950/- per doz. 960/- per doz. 970/- per doz. 980/- per doz. 990/- per doz. 1000/- per doz. 1010/- per doz. 1020/- per doz. 1030/- per doz. 1040/- per doz. 1050/- per doz. 1060/- per doz. 1070/- per doz. 1080/- per doz. 1090/- per doz. 1100/- per doz. 1110/- per doz. 1120/- per doz. 1130/- per doz. 1140/- per doz. 1150/- per doz. 1160/- per doz. 1170/- per doz. 1180/- per doz. 1190/- per doz. 1200/- per doz. 1210/- per doz. 1220/- per doz. 1230/- per doz. 1240/- per doz. 1250/- per doz. 1260/- per doz. 1270/- per doz. 1280/- per doz. 1290/- per doz. 1300/- per doz. 1310/- per doz. 1320/- per doz. 1330/- per doz. 1340/- per doz. 1350/- per doz. 1360/- per doz. 1370/- per doz. 1380/- per doz. 1390/- per doz. 1400/- per doz. 1410/- per doz. 1420/- per doz. 1430/- per doz. 1440/- per doz. 1450/- per doz. 1460/- per doz. 1470/- per doz. 1480/- per doz. 1490/- per doz. 1500/- per doz. 1510/- per doz. 1520/- per doz. 1530/- per doz. 1540/- per doz. 1550/- per doz. 1560/- per doz. 1570/- per doz. 1580/- per doz. 1590/- per doz. 1600/- per doz. 1610/- per doz. 1620/- per doz. 1630/- per doz. 1640/- per doz. 1650/- per doz. 1660/- per doz. 1670/- per doz. 1680/- per doz. 1690/- per doz. 1700/- per doz. 1710/- per doz. 1720/- per doz. 1730/- per doz. 1740/- per doz. 1750/- per doz. 1760/- per doz. 1770/- per doz. 1780/- per doz. 1790/- per doz. 1800/- per doz. 1810/- per doz. 1820/- per doz. 1830/- per doz. 1840/- per doz. 1850/- per doz. 1860/- per doz. 1870/- per doz. 1880/- per doz. 1890/- per doz. 1900/- per doz. 1910/- per doz. 1920/- per doz. 1930/- per doz. 1940/- per doz. 1950/- per doz. 1960/- per doz. 1970/- per doz. 1980/- per doz. 1990/- per doz. 2000/- per doz. 2010/- per doz. 2020/- per doz. 2030/- per doz. 2040/- per doz. 2050/- per doz. 2060/- per doz. 2070/- per doz. 2080/- per doz. 2090/- per doz. 2100/- per doz. 2110/- per doz. 2120/- per doz. 2130/- per doz. 2140/- per doz. 2150/- per doz. 2160/- per doz. 2170/- per doz. 2180/- per doz. 2190/- per doz. 2200/- per doz. 2210/- per doz. 2220/- per doz. 2230/- per doz. 2240/- per doz. 2250/- per doz. 2260/- per doz. 2270/- per doz. 2280/- per doz. 2290/- per doz. 2300/- per doz. 2310/- per doz. 2320/- per doz. 2330/- per doz. 2340/- per doz. 2350/- per doz. 2360/- per doz. 2370/- per doz. 2380/- per doz. 2390/- per doz. 2400/- per doz. 2410/- per doz. 2420/- per doz. 2430/- per doz. 2440/- per doz. 2450/- per doz. 2460/- per doz. 2470/- per doz. 2480/- per doz. 2490/- per doz. 2500/- per doz. 2510/- per doz. 2520/- per doz. 2530/- per doz. 2540/- per doz. 2550/- per doz. 2560/- per doz. 2570/- per doz. 2580/- per doz. 2590/- per doz. 2600/- per doz. 2610/- per doz. 2620/- per doz. 2630/- per doz. 2640/- per doz. 2650/- per doz. 2660/- per doz. 2670/- per doz. 2680/- per doz. 2690/- per doz. 2700/- per doz. 2710/- per doz. 2720/- per doz. 2730/- per doz. 2740/- per doz. 2750/- per doz. 2760/- per doz. 2770/- per doz. 2780/- per doz. 2790/- per doz. 2800/- per doz. 2810/- per doz. 2820/- per doz. 2830/- per doz. 2840/- per doz. 2850/- per doz. 2860/- per doz. 2870/- per doz. 2880/- per doz. 2890/- per doz. 2900/- per doz. 2910/- per doz. 2920/- per doz. 2930/- per doz. 2940/- per doz. 2950/- per doz. 2960/- per doz. 2970/- per doz. 2980/- per doz. 2990/- per doz. 3000/- per doz. 3010/- per doz. 3020/- per doz. 3030/- per doz. 3040/- per doz. 3050/- per doz. 3060/- per doz. 3070/- per doz. 3080/- per doz. 3090/- per doz. 3100/- per doz. 3110/- per doz. 3120/- per doz. 3130/- per doz. 3140/- per doz. 3150/- per doz. 3160/- per doz. 3170/- per doz. 3180/- per doz. 3190/- per doz. 3200/- per doz. 3210/- per doz. 3220/- per doz. 3230/- per doz. 3240/- per doz. 3250/- per doz. 3260/- per doz. 3270/- per doz. 3280/- per doz. 3290/- per doz. 3300/- per doz. 3310/- per doz. 3320/- per doz. 3330/- per doz. 3340/- per doz. 3350/- per doz. 3360/- per doz. 3370/- per doz. 3380/- per doz. 3390/- per doz. 3400/- per doz. 3410/- per doz. 3420/- per doz. 3430/- per doz. 3440/- per doz. 3450/- per doz. 3460/- per doz. 3470/- per doz. 3480/- per doz. 3490/- per doz. 3500/- per doz. 3510/- per doz. 3520/- per doz. 3530/- per doz. 3540/- per doz. 3550/- per doz. 3560/- per doz. 3570/- per doz. 3580/- per doz. 3590/- per doz. 3600/- per doz. 3610/- per doz. 3620/- per doz. 3630/- per doz. 3640/- per doz. 3650/- per doz. 3660/- per doz. 3670/- per doz. 3680/- per doz. 3690/- per doz. 3700/- per doz. 3710/- per doz. 3720/- per doz. 3730/- per doz. 3740/- per doz. 3750/- per doz. 3760/- per doz. 3770/- per doz. 3780/- per doz. 3790/- per doz. 3800/- per doz. 3810/- per doz. 3820/- per doz. 3830/- per doz. 3840/- per doz. 3850/- per doz. 3860/- per doz. 3870/- per doz. 3880/- per doz. 3890/- per doz. 3900/- per doz. 3910/- per doz. 3920/- per doz. 3930/- per doz. 3940/- per doz. 3950/- per doz. 3960/- per doz. 3970/- per doz. 3980/- per doz. 3990/- per doz. 4000/- per doz. 4010/- per doz. 4020/- per doz. 4030/- per doz. 4040/- per doz. 4050/- per doz. 4060/- per doz. 4070/- per doz. 4080/- per doz. 4090/- per doz. 4100/- per doz. 4110/- per doz. 4120/- per doz. 4130/- per doz. 4140/- per doz. 4150/- per doz. 4160/- per doz. 4170/- per doz. 4180/- per doz. 4190/- per doz. 4200/- per doz. 4210/- per doz. 4220/- per doz. 4230/- per doz. 4240/- per doz. 4250/- per doz. 4260/- per doz. 4270/- per doz. 4280/- per doz. 4290/- per doz. 4300/- per doz. 4310/- per doz. 4320/- per doz. 4330/- per doz. 4340/- per doz. 4350/- per doz. 4360/- per doz. 4370/- per doz. 4380/- per doz. 4390/- per doz. 4400/- per doz. 4410/- per doz. 4420/- per doz. 4430/- per doz. 4440/- per doz. 4450/- per doz. 4460/- per doz. 4470/- per doz. 4480/- per doz. 4490/- per doz. 4500/- per doz. 4510/- per doz. 4520/- per doz. 4530/- per doz. 4540/- per doz. 4550/- per doz. 4560/- per doz. 4570/- per doz. 4580/- per doz. 4590/- per doz. 4600/- per doz. 4610/- per doz. 4620/- per doz. 4630/- per doz. 4640/- per doz. 4650/- per doz. 4660/- per doz. 4670/- per doz. 4680/- per doz. 4690/- per doz. 4700/- per doz. 4710/- per doz. 4720/- per doz. 4730/- per doz. 4740/- per doz. 4750/- per doz. 4760/- per doz. 4770/- per doz. 4780/- per doz. 4790/- per doz. 4800/- per doz. 4810/- per doz. 4820/- per doz. 4830/- per doz. 4840/- per doz. 4850/- per doz. 4860/- per doz. 4870/- per doz. 4880/- per doz. 4890/- per doz. 4900/- per doz. 4910/- per doz. 4920/- per doz. 4930/- per doz. 4940/- per doz. 4950/- per doz. 4960/- per doz. 4970/- per doz. 4980/- per doz. 4990/- per doz. 5000/- per doz. 5010/- per doz. 5020/- per doz. 5030/- per doz. 5040/- per doz. 5050/- per doz. 5060/- per doz. 5070/- per doz. 5080/- per doz. 5090/- per doz. 5100/- per doz. 5110/- per doz. 5120/- per doz. 5130/- per doz. 5140/- per doz. 5150/- per doz. 5160/- per doz. 5170/- per doz. 5180/- per doz. 5190/- per doz. 5200/- per doz. 5210/- per doz. 5220/- per doz. 5230/- per doz. 5240/- per doz. 5250/- per doz. 5260/- per doz. 5270/- per doz. 5280/- per doz. 5290/- per doz. 5300/- per doz. 5310/- per doz. 5320/- per doz. 5330/- per doz. 5340/- per doz. 5350/- per doz. 5360/- per doz. 5370/- per doz. 5380/- per doz. 5390/- per doz. 5400/- per doz. 5410/- per doz. 5420/- per doz. 5430/- per doz. 5440/- per doz. 5450/- per doz. 5460/- per doz. 5470/- per doz. 5480/- per doz. 5490/- per doz. 5500/- per doz. 5510/- per doz. 5520/- per doz. 5530/- per doz. 5540/- per doz. 5550/- per doz. 5560/- per doz. 5570/- per doz. 5580/- per doz. 5590/- per doz. 5600/- per doz. 5610/- per doz. 5620/- per doz. 5630/- per doz. 5640/- per doz. 5650/- per doz. 5660/- per doz. 5670/- per doz. 5680/- per doz. 5690/- per doz. 5700/- per doz. 5710/- per doz. 5720/- per doz. 5730/- per doz. 5740/- per doz. 5750/- per doz. 5760/- per doz. 5770/- per doz. 5780/- per doz. 5790/- per doz. 5800/- per doz. 5810/- per doz. 5820/- per doz. 5830/- per doz. 5840/- per doz. 5850/- per doz. 5860/- per doz. 5870/- per doz. 5880/- per doz. 5890/- per doz. 5900/- per doz. 5910/- per doz. 5920/- per doz. 5930/- per doz. 5940/- per doz. 5950/- per doz. 5960/- per doz. 5970/- per doz. 5980/- per doz. 5990/- per doz. 6000/- per doz. 6010/- per doz. 6020/- per doz. 6030/- per doz. 6040/- per doz. 6050/- per doz. 6060/- per doz. 6070/- per doz. 6080/- per doz. 6090/- per doz. 6100/- per doz. 6110/- per doz. 6120/- per doz. 6130/- per doz. 6140/- per doz. 6150/- per doz. 6160/- per doz. 6170/- per doz. 6180/- per doz. 6190/- per doz. 6200/- per doz. 6210/- per doz. 6220/- per doz. 6230/- per doz. 6240/- per doz. 6250/- per doz. 6260/- per doz. 6270/- per doz. 6280/- per doz. 6290/- per doz. 6300/- per doz. 6310/- per doz. 6320/- per doz. 6330/- per doz. 6340/- per doz. 6350/- per doz. 6360/- per doz. 6370/- per doz. 6380/- per doz. 6390/- per doz. 6400/- per doz. 6410/- per doz. 6420/- per doz. 6430/- per doz. 6440/- per doz. 6450/- per doz. 6460/- per doz. 6470/- per doz. 6480/- per doz. 6490/- per doz. 6500/- per doz. 6510/- per doz. 6520/- per doz. 6530/- per doz. 6540/- per doz. 6550/- per doz. 6560/- per doz. 6570/- per doz. 6580/- per doz. 6590/- per doz. 6600/- per doz. 6610/- per doz. 6620/- per doz. 6630/- per doz. 6640/- per doz. 6650/- per doz. 6660/- per doz. 6670/- per doz. 6680/- per doz. 6690/- per doz. 6700/- per doz. 6710/- per doz. 6720/- per doz. 6730/- per doz. 6740/- per doz. 6750/- per doz. 6760/- per doz. 6770/- per doz. 6780/- per doz. 6790/- per doz. 6800/- per doz. 6810/- per doz. 6820/- per doz. 6830/- per doz. 6840/- per doz. 6850/- per doz. 6860/- per doz. 6870/- per doz. 6880/- per doz. 6890/- per doz. 6900/- per doz. 6910/- per doz. 6920/- per doz. 6930/- per doz. 6940/- per doz. 6950/- per doz. 6960/- per doz. 6970/- per doz. 6980/- per doz. 6990/- per doz. 7000/- per doz. 7010/- per doz. 7020/- per doz. 7030/- per doz. 7040/- per doz. 7050/- per doz. 7060/- per doz. 7070/- per doz. 7080/- per doz. 7090/- per doz. 7100/- per doz. 7110/- per doz. 7120/- per doz. 7130/- per doz. 7140/- per doz. 7150/- per doz. 7160/- per doz. 7170/- per doz. 7180/- per doz. 7190/- per doz. 7200/- per doz. 7210/- per doz. 7220/- per doz. 7230/- per doz. 7240/- per doz. 7250/- per doz. 7260/- per doz. 7270/- per doz. 7280/- per doz. 7290/- per doz. 7300/- per doz. 7310/- per doz. 7320/- per doz. 7330/- per doz. 7340/- per doz. 7350/- per doz. 7360/- per doz. 7370/- per doz. 7380/- per doz. 7390/- per doz. 7400/- per doz. 7410/- per doz. 7420/- per doz. 7430/- per doz. 7440/- per doz. 7450/- per doz. 7460/- per doz. 7470/- per doz. 7480/- per doz. 7490/- per doz. 7500/- per doz. 7510/- per doz. 7520/- per doz. 7530/- per doz. 7540/- per doz. 7550/- per doz. 7560/- per doz. 7570/- per doz. 7580/- per doz. 7590/- per doz. 7600/- per doz. 7610/- per doz. 7620/- per doz. 7630/- per doz. 7640/- per doz. 7650/- per doz. 7660/- per doz. 7670/- per doz. 7680/- per doz. 7690/- per doz. 7700/- per doz. 7710/- per doz. 7720/- per doz. 7730/- per doz. 7740/- per doz. 7750/- per doz. 7760/- per doz. 7770/- per doz. 7780/- per doz. 7790/- per doz. 7800/- per doz. 7810/- per doz. 7820/- per doz. 7830/- per doz. 7840/- per doz. 7850/- per doz. 7860/- per doz. 7870/- per doz. 7880/- per doz. 7890/- per doz. 7900/- per doz. 7910/- per doz. 7920/- per doz. 7930/- per doz. 7940/- per doz. 7950/- per doz. 7960/- per doz. 7970/- per doz. 7980/- per doz. 7990/- per doz. 8000/- per doz. 8010/- per doz. 8020/- per doz. 8030/- per doz. 8040/- per doz. 8050/- per doz. 8060/- per doz. 8070/- per doz. 8080/- per doz. 8090/- per doz. 8100/- per doz. 8110/- per doz. 8120/- per doz. 8130/- per doz. 8140/- per doz. 8150/- per doz. 8160/- per doz. 8170/- per doz. 8180/- per doz. 8190/- per doz. 8200/- per doz. 8210/- per doz. 8220/- per doz. 8230/- per doz. 8240/- per doz. 8250/- per doz. 8260/- per doz. 8270/- per doz. 8280/- per doz. 8290/- per doz. 8300/- per doz. 8310/- per doz. 8320/- per doz. 8330/- per doz. 8340/- per doz. 8350/- per doz. 8360/- per doz. 8370/- per doz. 8380/- per doz. 8390/- per doz. 8400/- per doz. 8410/- per doz. 8420/- per doz. 8430/- per doz. 8440/- per doz. 8450/- per doz. 8460/- per doz. 8470/- per doz. 8480/- per doz. 8490/- per doz. 8500/- per doz. 8510/- per doz. 8520/- per doz. 8530/- per doz. 8540/- per doz. 8550/- per doz. 8560/- per doz. 8570/- per doz. 8580/- per doz. 8590/- per doz. 8600/- per doz. 8610/- per doz. 8620/- per doz. 8630/- per doz. 8640/- per doz. 8650/- per doz. 8660/- per doz. 8670/- per doz. 8680/- per doz. 8690/- per doz. 8700/- per doz. 8710/- per doz. 8720/- per doz. 8730/- per doz. 8740/- per doz. 8750/- per doz. 8760/- per doz. 8770/- per doz. 8780/- per doz. 8790/- per doz. 8800/- per doz. 8810/- per doz. 8820/- per doz. 8830/- per doz. 8840/- per doz. 8850/- per doz. 8860/- per doz. 8870/- per doz. 8880/- per doz. 8890/- per doz. 8900/- per doz. 8910/- per doz. 8920/- per doz. 8930/- per doz. 8940/- per doz. 8950/- per doz. 8960/- per doz. 8970/- per doz. 8980/- per doz. 8990/- per doz. 9000/- per doz. 9010/- per doz. 9020/- per doz. 9030/- per doz. 9040/- per doz. 9050/- per doz. 9060/- per doz. 9070/- per doz. 9080/- per doz. 9090/- per doz. 9100/- per doz. 9110/- per doz. 9120/- per doz. 9130/- per doz. 9140/- per doz. 9150/- per doz. 9160/- per doz. 9170/- per doz. 9180/- per doz. 9190/- per doz. 9200/- per doz. 9210/- per doz. 9220/- per doz. 9230/- per doz. 9240/- per doz. 9250/- per doz. 9260/- per doz. 9270/- per doz. 9280/- per doz. 9290/- per doz. 9300/- per doz. 9310/- per doz. 9320/- per doz. 9330/- per doz. 9340/- per doz. 9350/- per doz. 9360/- per doz. 9370/- per doz. 9380/- per doz. 9390/- per doz. 9400/- per doz. 9410/- per doz. 9420/- per doz. 9430/- per doz. 9440/- per doz. 9450/- per doz. 9460/- per doz. 9470/- per doz. 9480/- per doz. 9490/- per doz. 9500/- per doz. 9510/- per doz. 9520/- per doz. 9530/- per doz. 9540/- per doz. 9550/- per doz. 9560/- per doz. 9570/- per doz. 9580/- per doz. 9590/- per doz. 9600/- per doz. 9610/- per doz. 9620/- per doz. 9630/- per doz. 9640/- per doz. 9650/- per doz. 9660/- per doz. 9670/- per doz. 9680/- per doz. 9690/- per doz. 9700/- per doz. 9710/- per doz. 9720/- per doz. 9730/- per doz. 9740/- per doz. 9750/- per doz. 9760/- per doz. 9770/- per doz. 9780/- per doz. 9790/- per doz. 9800/- per doz. 9810/- per doz. 9820/- per doz. 9830/- per doz. 9840/- per doz. 9850/- per doz. 9860/- per doz. 9870/- per doz. 9880/- per doz. 9890/- per doz. 9900/- per doz. 9910/- per doz. 9920/- per doz. 9930/- per doz. 9940/- per doz. 9950/- per doz. 9960/- per doz. 9970/- per doz. 9980/- per doz. 9990/- per doz. 10000/- per doz. 10010/- per doz. 10020/- per doz. 10030/- per doz. 10040/- per doz. 10050/- per doz. 10060/- per doz. 10070/- per doz. 10080/- per doz. 10090/- per doz. 10100/- per doz. 10110/- per doz. 10120/- per doz. 10130/- per doz. 10140/- per doz. 10150/- per doz. 10160/- per doz. 10170/- per doz. 10180/- per doz. 10190/- per doz. 10200/- per doz. 10210/- per doz. 10220/- per doz. 10230/- per doz. 10240/- per doz. 10250/- per doz. 10260/- per doz. 10270/- per doz. 10280/- per doz. 10290/- per doz. 10300/- per doz. 10310/- per doz. 10320/- per doz. 10330/- per doz. 10340/- per doz. 10350/- per doz. 10360/- per doz. 10370/- per doz. 10380/- per doz. 10390/- per doz. 10400/- per doz. 10410/- per doz. 10420/- per doz. 10430/- per doz. 10440/- per doz. 10450/- per doz. 10460/- per doz. 10470/- per doz. 10480/- per doz. 10490/- per doz. 10500/- per doz. 10510/- per doz. 10520/- per doz. 10530/- per doz. 10540/- per doz. 10550/- per doz. 10560/- per doz. 10570/- per doz. 10580/- per doz. 10590/- per doz. 10600/- per doz. 10610/- per doz. 10620/- per doz. 10630/- per doz. 10640/- per doz. 10650/- per doz. 10660/- per doz. 10670/- per











"It's that extra touch of quality that pleases me!"

Made Specially to Prevent Sore Throats CRAVEN'S

CALEDONIAN Insurance Company To America via the East.

Oldest Colonial Insurance Office, FOUNDED IN 1850. PRINCIPAL REPRESENTATIVES - R. O. KAMUKONJI, Ltd. NAIROBI. Phone 2882.

Wood Preservative Disinfectants. We have a large and comprehensive stock of cups in silver and E.P.

CHALLENGE CUPS at English Prices. WE HAVE A LARGE AND COMPREHENSIVE STOCK OF CUPS IN SILVER AND E.P.

Engraving OF THE HIGHEST STANDARD AT REASONABLE CHARGES. Watchmakers, Jewellers and Silversmiths. Phone 90 NAIROBI. P.O. Box 92.

The Air Mail. (Continued from page 1)

article story of seven years of faith... The Kenyan Government has been... The Kenyan Government has been...

WAGES PROBLEM IN THE RURU DISTRICT. A RELATED KENYA DISPATCH. Special to Dispatch White Paper.

Discussion by Farmers' Association. (Continued from page 1) A Special General Meeting of the... The Kenyan Government has been... The Kenyan Government has been...

Kenya Births Deaths of Journeys. 14,000 and 5,000. A. G. Jones... The Kenyan Government has been... The Kenyan Government has been...

Kenya Births Deaths of Journeys. 14,000 and 5,000. A. G. Jones... The Kenyan Government has been... The Kenyan Government has been...

Financial Equinox. The intention that the Government of Tanganyika has decided to appoint a Commission to... The Kenyan Government has been... The Kenyan Government has been...

Financial Equinox. The intention that the Government of Tanganyika has decided to appoint a Commission to... The Kenyan Government has been... The Kenyan Government has been...

Financial Equinox. The intention that the Government of Tanganyika has decided to appoint a Commission to... The Kenyan Government has been... The Kenyan Government has been...

Financial Equinox. The intention that the Government of Tanganyika has decided to appoint a Commission to... The Kenyan Government has been... The Kenyan Government has been...

KENYA SETTLER DELEGATES. To Give Evidence to Joint Committee.

It is announced that the following delegates representing Kenya, will proceed to London to give evidence before the Joint Parliamentary Committee on Africa... The Kenyan Government has been... The Kenyan Government has been...

Kodak International. Sh.400,000 COMPETITION. Strictly for Amateurs Sh.2,000 in Cash Prizes for East Africa. Easy to enter, subject interest alone will count Six Picture Classes. 115 Prizes for East Africa.

19 Prizes in Each Class. C. Green, P. Scott, P. O'Connell... The Kenyan Government has been... The Kenyan Government has been...

THE AFRICAN LIFE ASSURANCE SOCIETY, Ltd. Why You Should Buy with the African Life.

Why You Should Buy with the African Life. 1- Because it is the only African life... The Kenyan Government has been... The Kenyan Government has been...

M. D. KAMPP - Manager. NAIROBI. Court Chambers. Box 904.



Sutton's Seeds. The World's Best. STOCK YOUR GARDEN with Vegetables specially suited to East Africa.

Enter as many pictures as you wish. Get more entry blanks from your dealer, on form. The Kenyan Government has been... The Kenyan Government has been...









Sturdy Little Ones

Sturdy Little Ones... The most important thing to remember is that the baby should be kept healthy and happy...

Steedman's POWDERS

Steedman's Powders... During the coming months visitors on the links will see the new and improved Steedman's Powders...

Raytime

Raytime... During the coming months visitors on the links will see the new and improved Raytime...

BURBAN

Burban... During the coming months visitors on the links will see the new and improved Burban...

Up-to-Date Spraying Appliances

Up-to-Date Spraying Appliances... The most important thing to remember is that the farmer should use the best quality of spraying appliances...

Martham Sprayers

Martham Sprayers... The most important thing to remember is that the farmer should use the best quality of Martham sprayers...

MEMBERSHIP TIMES

MEMBERSHIP TIMES... The most important thing to remember is that the farmer should use the best quality of membership times...

not to them very much. As it is... The most important thing to remember is that the farmer should use the best quality of spraying appliances...

Mr. Graham-Fox said that he... The most important thing to remember is that the farmer should use the best quality of spraying appliances...

Mr. Graham-Fox asked what... The most important thing to remember is that the farmer should use the best quality of spraying appliances...

Mr. Graham-Fox said that he... The most important thing to remember is that the farmer should use the best quality of spraying appliances...

Mr. Graham-Fox said that he... The most important thing to remember is that the farmer should use the best quality of spraying appliances...

Mr. Graham-Fox said that he... The most important thing to remember is that the farmer should use the best quality of spraying appliances...

Mr. Graham-Fox said that he... The most important thing to remember is that the farmer should use the best quality of spraying appliances...

Mr. Graham-Fox said that he... The most important thing to remember is that the farmer should use the best quality of spraying appliances...

Mr. Graham-Fox said that he... The most important thing to remember is that the farmer should use the best quality of spraying appliances...

Mr. Graham-Fox said that he... The most important thing to remember is that the farmer should use the best quality of spraying appliances...

Mr. Graham-Fox said that he... The most important thing to remember is that the farmer should use the best quality of spraying appliances...

Mr. Graham-Fox said that he... The most important thing to remember is that the farmer should use the best quality of spraying appliances...

Mr. Graham-Fox said that he... The most important thing to remember is that the farmer should use the best quality of spraying appliances...

Mr. Graham-Fox said that he... The most important thing to remember is that the farmer should use the best quality of spraying appliances...

Mr. Graham-Fox said that he... The most important thing to remember is that the farmer should use the best quality of spraying appliances...

Mr. Graham-Fox said that he... The most important thing to remember is that the farmer should use the best quality of spraying appliances...

Mr. Graham-Fox said that he... The most important thing to remember is that the farmer should use the best quality of spraying appliances...

Mr. Graham-Fox said that he... The most important thing to remember is that the farmer should use the best quality of spraying appliances...

Mr. Graham-Fox said that he... The most important thing to remember is that the farmer should use the best quality of spraying appliances...

Mr. Graham-Fox said that he... The most important thing to remember is that the farmer should use the best quality of spraying appliances...

ELDOROT AGRICULTURAL SHOW.

Big Success Despite Difficult Times. BEST WHEAT EVER SHOWN.

["Eldorot" Special Correspondent.] After inspecting the Great Exhibition... The most important thing to remember is that the farmer should use the best quality of spraying appliances...

From an early hour this morning... The most important thing to remember is that the farmer should use the best quality of spraying appliances...

There are a great many improvements... The most important thing to remember is that the farmer should use the best quality of spraying appliances...

Mr. J. Balfour Allan said that he... The most important thing to remember is that the farmer should use the best quality of spraying appliances...

Mr. J. Balfour Allan said that he... The most important thing to remember is that the farmer should use the best quality of spraying appliances...

Mr. J. Balfour Allan said that he... The most important thing to remember is that the farmer should use the best quality of spraying appliances...

Mr. J. Balfour Allan said that he... The most important thing to remember is that the farmer should use the best quality of spraying appliances...

Mr. J. Balfour Allan said that he... The most important thing to remember is that the farmer should use the best quality of spraying appliances...

Mr. J. Balfour Allan said that he... The most important thing to remember is that the farmer should use the best quality of spraying appliances...

Mr. J. Balfour Allan said that he... The most important thing to remember is that the farmer should use the best quality of spraying appliances...

Mr. J. Balfour Allan said that he... The most important thing to remember is that the farmer should use the best quality of spraying appliances...

Mr. J. Balfour Allan said that he... The most important thing to remember is that the farmer should use the best quality of spraying appliances...

Mr. J. Balfour Allan said that he... The most important thing to remember is that the farmer should use the best quality of spraying appliances...

Mr. J. Balfour Allan said that he... The most important thing to remember is that the farmer should use the best quality of spraying appliances...

Mr. J. Balfour Allan said that he... The most important thing to remember is that the farmer should use the best quality of spraying appliances...

Mr. J. Balfour Allan said that he... The most important thing to remember is that the farmer should use the best quality of spraying appliances...

Mr. J. Balfour Allan said that he... The most important thing to remember is that the farmer should use the best quality of spraying appliances...

Mr. J. Balfour Allan said that he... The most important thing to remember is that the farmer should use the best quality of spraying appliances...

Mr. J. Balfour Allan said that he... The most important thing to remember is that the farmer should use the best quality of spraying appliances...



New! Quick cooking Quaker Oats

Are you grocer for the... Quaker Oats... One quart...

The New Quaker Oats



One quart... One quart... One quart...

Clear Wholesome and Refreshing



BOTTLED AND GLASSED... NAKHRE, NAIROBI AND... KAMPALA, UGANDA...

Wholesome and Refreshing... Clear Wholesome and Refreshing...

Wholesome and Refreshing... Clear Wholesome and Refreshing...

Wholesome and Refreshing... Clear Wholesome and Refreshing...

Wholesome and Refreshing... Clear Wholesome and Refreshing...

Wholesome and Refreshing... Clear Wholesome and Refreshing...

Wholesome and Refreshing... Clear Wholesome and Refreshing...

TRAIN SERVICES CUT DOWN

Passenger Facilities Restricted... From March 20, important changes will be made to the passenger services...

There will be no change in the mail services between the two few days a week only and the...

There will be no change in the mail services between the two few days a week only and the...

There will be no change in the mail services between the two few days a week only and the...

There will be no change in the mail services between the two few days a week only and the...

There will be no change in the mail services between the two few days a week only and the...

There will be no change in the mail services between the two few days a week only and the...

There will be no change in the mail services between the two few days a week only and the...

There will be no change in the mail services between the two few days a week only and the...

There will be no change in the mail services between the two few days a week only and the...

There will be no change in the mail services between the two few days a week only and the...

There will be no change in the mail services between the two few days a week only and the...

There will be no change in the mail services between the two few days a week only and the...

There will be no change in the mail services between the two few days a week only and the...

SCOTTISH OLD BOYS ASSOCIATION?

Proposed Formation in Kamp... A suggestion has been mooted recently that a Scottish Old Boys Association should be formed in Nairobi...

There will be no change in the mail services between the two few days a week only and the...

There will be no change in the mail services between the two few days a week only and the...

There will be no change in the mail services between the two few days a week only and the...

There will be no change in the mail services between the two few days a week only and the...

There will be no change in the mail services between the two few days a week only and the...

There will be no change in the mail services between the two few days a week only and the...

There will be no change in the mail services between the two few days a week only and the...

There will be no change in the mail services between the two few days a week only and the...

There will be no change in the mail services between the two few days a week only and the...

There will be no change in the mail services between the two few days a week only and the...

There will be no change in the mail services between the two few days a week only and the...

There will be no change in the mail services between the two few days a week only and the...

There will be no change in the mail services between the two few days a week only and the...

R.F. CARO-CAPE FLIGHT TO THE WEST COAST

Machines Leave Nairobi on Homeward Journey... Shortly before 9 o'clock Monday the two Aero Air Force flights, which arrived at Nairobi...

There will be no change in the mail services between the two few days a week only and the...

There will be no change in the mail services between the two few days a week only and the...

There will be no change in the mail services between the two few days a week only and the...

There will be no change in the mail services between the two few days a week only and the...

There will be no change in the mail services between the two few days a week only and the...

There will be no change in the mail services between the two few days a week only and the...

There will be no change in the mail services between the two few days a week only and the...

There will be no change in the mail services between the two few days a week only and the...

There will be no change in the mail services between the two few days a week only and the...

There will be no change in the mail services between the two few days a week only and the...

There will be no change in the mail services between the two few days a week only and the...

There will be no change in the mail services between the two few days a week only and the...

There will be no change in the mail services between the two few days a week only and the...

An Accident in the Congo

The flight from the west to the east... The flight from the west to the east... The flight from the west to the east...

There will be no change in the mail services between the two few days a week only and the...

There will be no change in the mail services between the two few days a week only and the...

There will be no change in the mail services between the two few days a week only and the...

There will be no change in the mail services between the two few days a week only and the...

There will be no change in the mail services between the two few days a week only and the...

There will be no change in the mail services between the two few days a week only and the...

There will be no change in the mail services between the two few days a week only and the...

There will be no change in the mail services between the two few days a week only and the...

There will be no change in the mail services between the two few days a week only and the...

There will be no change in the mail services between the two few days a week only and the...

There will be no change in the mail services between the two few days a week only and the...

There will be no change in the mail services between the two few days a week only and the...

There will be no change in the mail services between the two few days a week only and the...

HOME FOOTBALL TOPICS

Arctic Conditions Prevail at Week-end... The following are the results...

Table with 2 columns: Match, Result

Table with 2 columns: Match, Result

Table with 2 columns: Match, Result

Table with 2 columns: Match, Result

Table with 2 columns: Match, Result

Table with 2 columns: Match, Result

Table with 2 columns: Match, Result

Table with 2 columns: Match, Result

Table with 2 columns: Match, Result

Table with 2 columns: Match, Result

Table with 2 columns: Match, Result

Table with 2 columns: Match, Result

Table with 2 columns: Match, Result

CHAMPIONSHIP HOPES AND ASPIRATIONS

The following are the results... The following are the results...

Table with 2 columns: Match, Result

Table with 2 columns: Match, Result

Table with 2 columns: Match, Result

Table with 2 columns: Match, Result

Table with 2 columns: Match, Result

Table with 2 columns: Match, Result

Table with 2 columns: Match, Result

Table with 2 columns: Match, Result

Table with 2 columns: Match, Result

Table with 2 columns: Match, Result

Table with 2 columns: Match, Result

Table with 2 columns: Match, Result

Table with 2 columns: Match, Result

DISSEMINATION IN RUGBY CIRCLES

Franch Polo Action... (Through courtesy agents)...

Table with 2 columns: Match, Result

Table with 2 columns: Match, Result

Table with 2 columns: Match, Result

Table with 2 columns: Match, Result

Table with 2 columns: Match, Result

Table with 2 columns: Match, Result

Table with 2 columns: Match, Result

Table with 2 columns: Match, Result

Table with 2 columns: Match, Result

Table with 2 columns: Match, Result

Table with 2 columns: Match, Result

Table with 2 columns: Match, Result

Table with 2 columns: Match, Result

THROAT & CHEST TROUBLE

FOR relieving throat, bronchitis, dry cough, hoarseness, dry tickling, sore throat, etc....



THE ROYAL BREITENBURG TABLETS

SIMPLE & BRILLIANT AID TO BETTER GOLF

WHY NEW SPALDING KROFLITE GOLF BALLS?...

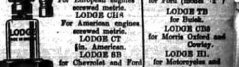


72 BALLS... THE SPALDING KROFLITE GOLF BALL

SOLE AGENTS: GUY'S SPORTS HOUSE, P.O. Box 997, NAIROBI.

FOUR - SIX - EIGHT

Whatever the number of cylinders in your engine, be sure that all are fitted with...



LODGE'S... For Engines engine covered with...

REPTILES-BOY, Limited, P.O. Box 100, Wairoa, N.Z.



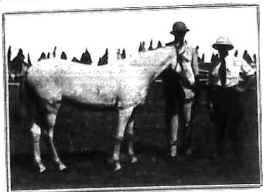


OUR PICTURE PAGE.

AT THE FIDJORET SHOW



The horse is a very fine specimen of the breed, and is being shown for the first time in the colony.



The horse is a very fine specimen of the breed, and is being shown for the first time in the colony.

IN THE TURKANA COUNTRY



The Turkana people are very fond of wrestling, and this is a very fine specimen of the breed.

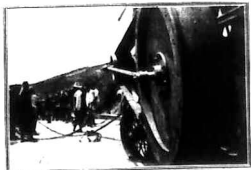


The Turkana people are very fond of wrestling, and this is a very fine specimen of the breed.

A LONG PULL



The Turkana people are very fond of wrestling, and this is a very fine specimen of the breed.



The Turkana people are very fond of wrestling, and this is a very fine specimen of the breed.

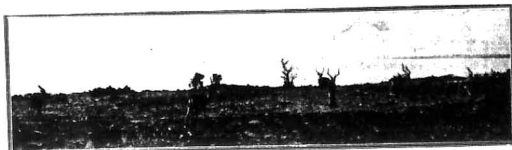
EAST AFRICAN GAME.



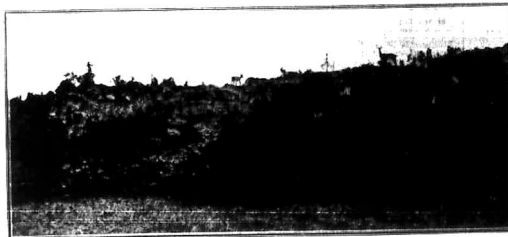
The Turkana people are very fond of wrestling, and this is a very fine specimen of the breed.



The Turkana people are very fond of wrestling, and this is a very fine specimen of the breed.



The Turkana people are very fond of wrestling, and this is a very fine specimen of the breed.



The Turkana people are very fond of wrestling, and this is a very fine specimen of the breed.

THE NEW CHURCH AT KIRUYU



The new church at Kiruyu is a very fine specimen of the breed.

THE VOI RIVER



The suspension bridge over the Voi River is a very fine specimen of the breed.

THE PROBLEMS OF THE DAIRY INDUSTRY.

Proving a New District for Stock.

A TEST OF SUCCESS.

Steps in Breeding-up of a Herd of Big Producers.

The Thomson Falls area is one of the new dairy districts in Kenya. Today, although dairying has not been long established, the progress made in the majority of the settlers is worth the establishment of a creamery for their own and the surrounding districts.

Their application for financial assistance received the approval of the Director of Agriculture and the Director of Agriculture, evidence of confidence in the existing foundation.

The information given in the special correspondence of the "East African Standard" is one in a plain story of the development of dairying in this new district—the story of a Soldier Settler without previous experience who tried most things and eventually settled in cattle. Here, he explains his methods and beliefs.

He has great confidence in the future of the Thomson Falls area. He says: "I have been in Kenya and Uganda for over 10 years. I have seen a lot of things and I have learned a few things."

No. 6: A Thomson's Falls Farm.

(By Capt. J. B. Thomson, Thomson's Falls, East Africa.)

The views on dairying in the Thomson Falls area are based on the experience of a Soldier Settler who has been in the Thomson Falls area for 10 years, during which he has been engaged in dairying for the past 10 years, during which he has been engaged in dairying for the past 10 years.

...the Thomson Falls area is one of the new dairy districts in Kenya. Today, although dairying has not been long established, the progress made in the majority of the settlers is worth the establishment of a creamery for their own and the surrounding districts.

...the Thomson Falls area is one of the new dairy districts in Kenya. Today, although dairying has not been long established, the progress made in the majority of the settlers is worth the establishment of a creamery for their own and the surrounding districts.

...the Thomson Falls area is one of the new dairy districts in Kenya. Today, although dairying has not been long established, the progress made in the majority of the settlers is worth the establishment of a creamery for their own and the surrounding districts.

...the Thomson Falls area is one of the new dairy districts in Kenya. Today, although dairying has not been long established, the progress made in the majority of the settlers is worth the establishment of a creamery for their own and the surrounding districts.

...the Thomson Falls area is one of the new dairy districts in Kenya. Today, although dairying has not been long established, the progress made in the majority of the settlers is worth the establishment of a creamery for their own and the surrounding districts.

...the Thomson Falls area is one of the new dairy districts in Kenya. Today, although dairying has not been long established, the progress made in the majority of the settlers is worth the establishment of a creamery for their own and the surrounding districts.

Milking

...the Thomson Falls area is one of the new dairy districts in Kenya. Today, although dairying has not been long established, the progress made in the majority of the settlers is worth the establishment of a creamery for their own and the surrounding districts.

Concentrates

...the Thomson Falls area is one of the new dairy districts in Kenya. Today, although dairying has not been long established, the progress made in the majority of the settlers is worth the establishment of a creamery for their own and the surrounding districts.

For the Register

...the Thomson Falls area is one of the new dairy districts in Kenya. Today, although dairying has not been long established, the progress made in the majority of the settlers is worth the establishment of a creamery for their own and the surrounding districts.

Breeding Tip

...the Thomson Falls area is one of the new dairy districts in Kenya. Today, although dairying has not been long established, the progress made in the majority of the settlers is worth the establishment of a creamery for their own and the surrounding districts.

The Whistler Way

...the Thomson Falls area is one of the new dairy districts in Kenya. Today, although dairying has not been long established, the progress made in the majority of the settlers is worth the establishment of a creamery for their own and the surrounding districts.

Watering and Grazing

...the Thomson Falls area is one of the new dairy districts in Kenya. Today, although dairying has not been long established, the progress made in the majority of the settlers is worth the establishment of a creamery for their own and the surrounding districts.

The Result

...the Thomson Falls area is one of the new dairy districts in Kenya. Today, although dairying has not been long established, the progress made in the majority of the settlers is worth the establishment of a creamery for their own and the surrounding districts.

For the Register

...the Thomson Falls area is one of the new dairy districts in Kenya. Today, although dairying has not been long established, the progress made in the majority of the settlers is worth the establishment of a creamery for their own and the surrounding districts.

Breeding Tip

...the Thomson Falls area is one of the new dairy districts in Kenya. Today, although dairying has not been long established, the progress made in the majority of the settlers is worth the establishment of a creamery for their own and the surrounding districts.

The Whistler Way

...the Thomson Falls area is one of the new dairy districts in Kenya. Today, although dairying has not been long established, the progress made in the majority of the settlers is worth the establishment of a creamery for their own and the surrounding districts.

Watering and Grazing

...the Thomson Falls area is one of the new dairy districts in Kenya. Today, although dairying has not been long established, the progress made in the majority of the settlers is worth the establishment of a creamery for their own and the surrounding districts.

(—K. A. Studied—Spout (Dole Verse.) (Continued.)

CALIFORNIA CUP RUGBY.

Scottish and English Teams.

On Saturday, March 21, the between Scotland and England was a grand match at the University of California.

The match was a grand one, and the result was a draw.

The match was a grand one, and the result was a draw.

The match was a grand one, and the result was a draw.

The match was a grand one, and the result was a draw.

The match was a grand one, and the result was a draw.

The match was a grand one, and the result was a draw.

The match was a grand one, and the result was a draw.

The match was a grand one, and the result was a draw.

The match was a grand one, and the result was a draw.

The match was a grand one, and the result was a draw.

The match was a grand one, and the result was a draw.

The match was a grand one, and the result was a draw.

The match was a grand one, and the result was a draw.

The match was a grand one, and the result was a draw.

The match was a grand one, and the result was a draw.

The match was a grand one, and the result was a draw.

The match was a grand one, and the result was a draw.

The match was a grand one, and the result was a draw.

The match was a grand one, and the result was a draw.

The match was a grand one, and the result was a draw.

The match was a grand one, and the result was a draw.

The match was a grand one, and the result was a draw.

The match was a grand one, and the result was a draw.

The match was a grand one, and the result was a draw.

The match was a grand one, and the result was a draw.

The match was a grand one, and the result was a draw.

The match was a grand one, and the result was a draw.

The match was a grand one, and the result was a draw.

The match was a grand one, and the result was a draw.

The match was a grand one, and the result was a draw.

The match was a grand one, and the result was a draw.

The match was a grand one, and the result was a draw.

The match was a grand one, and the result was a draw.

The match was a grand one, and the result was a draw.

The match was a grand one, and the result was a draw.

The match was a grand one, and the result was a draw.

The match was a grand one, and the result was a draw.

The match was a grand one, and the result was a draw.

The match was a grand one, and the result was a draw.

The match was a grand one, and the result was a draw.

The match was a grand one, and the result was a draw.

The match was a grand one, and the result was a draw.

The match was a grand one, and the result was a draw.

The match was a grand one, and the result was a draw.

(—P. A. Studied—Spout (Dole Verse.) (Continued.)

CALIFORNIA CUP RUGBY.

Scottish and English Teams.

On Saturday, March 21, the between Scotland and England was a grand match at the University of California.

The match was a grand one, and the result was a draw.

The match was a grand one, and the result was a draw.

The match was a grand one, and the result was a draw.

The match was a grand one, and the result was a draw.

The match was a grand one, and the result was a draw.

The match was a grand one, and the result was a draw.

The match was a grand one, and the result was a draw.

The match was a grand one, and the result was a draw.

The match was a grand one, and the result was a draw.

The match was a grand one, and the result was a draw.

The match was a grand one, and the result was a draw.

The match was a grand one, and the result was a draw.

The match was a grand one, and the result was a draw.

The match was a grand one, and the result was a draw.

The match was a grand one, and the result was a draw.

The match was a grand one, and the result was a draw.

The match was a grand one, and the result was a draw.

The match was a grand one, and the result was a draw.

The match was a grand one, and the result was a draw.

The match was a grand one, and the result was a draw.

The match was a grand one, and the result was a draw.

The match was a grand one, and the result was a draw.

The match was a grand one, and the result was a draw.

The match was a grand one, and the result was a draw.

The match was a grand one, and the result was a draw.

The match was a grand one, and the result was a draw.

The match was a grand one, and the result was a draw.

The match was a grand one, and the result was a draw.

The match was a grand one, and the result was a draw.

The match was a grand one, and the result was a draw.

The match was a grand one, and the result was a draw.

The match was a grand one, and the result was a draw.

The match was a grand one, and the result was a draw.

The match was a grand one, and the result was a draw.

The match was a grand one, and the result was a draw.

The match was a grand one, and the result was a draw.

The match was a grand one, and the result was a draw.

The match was a grand one, and the result was a draw.

The match was a grand one, and the result was a draw.

The match was a grand one, and the result was a draw.

The match was a grand one, and the result was a draw.

The match was a grand one, and the result was a draw.

The match was a grand one, and the result was a draw.

The match was a grand one, and the result was a draw.

SOUTH AFRICAN Jams and Jellies

Of the Finest Quality

Obtainable from all Leading Grocers

For full particulars apply to THE SOUTH AFRICAN OFFICE, Memorial Hall, (Box 68), NAIROBI.

...the Thomson Falls area is one of the new dairy districts in Kenya. Today, although dairying has not been long established, the progress made in the majority of the settlers is worth the establishment of a creamery for their own and the surrounding districts.

Every Morning Chivers' Old English Marmalade

...the Thomson Falls area is one of the new dairy districts in Kenya. Today, although dairying has not been long established, the progress made in the majority of the settlers is worth the establishment of a creamery for their own and the surrounding districts.

CHICKEN

...the Thomson Falls area is one of the new dairy districts in Kenya. Today, although dairying has not been long established, the progress made in the majority of the settlers is worth the establishment of a creamery for their own and the surrounding districts.

SHOOTING AND FISHING

BOTH ARE DELICIOUS PASTIMES, AFFORDING SPLENDID FACILITIES FOR SPORT AND OUTDOOR EXERCISE; AND BOTH HELP TO REDUCE THE COST OF LIVING

SHOOT YOUR MEAT AND POULTRY. ANGLE FOR YOUR FISH

AND BE SURE TO GET YOUR SHOOTING AND FISHING REQUISITES FROM

MAY & Co., Ltd.

NAIROBI. WHERE YOU CAN ALWAYS RELY ON GETTING THE RIGHT ARTICLE AT THE RIGHT PRICE.

THE PROBLEMS OF THE DAIRY INDUSTRY.

Proving a New District for Stock.

A TEST OF SUCCESS.

Steps in Breeding-up of a Herd of Big Producers.

The Thomson's Falls area is one of the new dairy districts in Kenya. To-day, dairying has not been fully mechanized, but the progress made has induced the majority of the settlers to seek the establishment of a creamery for their own and the surrounding districts. Any economy in the dairy industry is therefore a desideratum.

Their application for financial assistance received the approval of the Director of Agriculture and the Board of Agriculture—evidence of soundness of the existing foundation.

Their survey given to the special correspondent of the "East African Standard" on four in a plain story of the progress made in this new dairy district—the story of a Soldier Soldier without previous experience who tried most things and eventually settled in cattle. Here, he explains his methods and beliefs.

He has great confidence in the future of the industry in Kenya, and says: "He asks 'Does it Pay Now?' and answers: 'It does.'"

No. 6: A Thomson's Falls Farm. (By Capt. L. Ryan, Thomson's Falls as an Interview.)

The view now forward in the morning from the Thomson's Falls farm. The Thomson's Falls farm is situated on the Thomson's Falls river, and is one of the best of the Thomson's Falls farms. It is situated on the Thomson's Falls river, and is one of the best of the Thomson's Falls farms.

obviously influenced by each new breed and may now be showing some of the characteristics of the new breeds. It is the hope that some new cow will be introduced which will give a more suitable quality of milk to those already by strictly "local" milk.

Captain Ryan explained that for the first eight years of occupation, cattle breeding was the main part of the business, and was mainly a sideline line of problem. It was not until the year 1912 that the Thomson's Falls farm was established as a dairy farm.

It was a great experience at present of the Thomson's Falls farm, and it was a great experience at present of the Thomson's Falls farm, and it was a great experience at present of the Thomson's Falls farm.

It was a great experience at present of the Thomson's Falls farm, and it was a great experience at present of the Thomson's Falls farm, and it was a great experience at present of the Thomson's Falls farm.

It was a great experience at present of the Thomson's Falls farm, and it was a great experience at present of the Thomson's Falls farm, and it was a great experience at present of the Thomson's Falls farm.

It was a great experience at present of the Thomson's Falls farm, and it was a great experience at present of the Thomson's Falls farm, and it was a great experience at present of the Thomson's Falls farm.

It was a great experience at present of the Thomson's Falls farm, and it was a great experience at present of the Thomson's Falls farm, and it was a great experience at present of the Thomson's Falls farm.

was being allowed to graze about the middle of the day and finish in the evening. It was found that the driving of the whole herd into the stream was not necessary. Later on, when the weather was hot, the cattle were allowed to graze in the stream.

Later on, when the weather was hot, the cattle were allowed to graze in the stream. It was found that the driving of the whole herd into the stream was not necessary.

It was found that the driving of the whole herd into the stream was not necessary. Later on, when the weather was hot, the cattle were allowed to graze in the stream.

It was found that the driving of the whole herd into the stream was not necessary. Later on, when the weather was hot, the cattle were allowed to graze in the stream.

It was found that the driving of the whole herd into the stream was not necessary. Later on, when the weather was hot, the cattle were allowed to graze in the stream.

It was found that the driving of the whole herd into the stream was not necessary. Later on, when the weather was hot, the cattle were allowed to graze in the stream.

It was found that the driving of the whole herd into the stream was not necessary. Later on, when the weather was hot, the cattle were allowed to graze in the stream.

It was found that the driving of the whole herd into the stream was not necessary. Later on, when the weather was hot, the cattle were allowed to graze in the stream.

It was found that the driving of the whole herd into the stream was not necessary. Later on, when the weather was hot, the cattle were allowed to graze in the stream.

It was found that the driving of the whole herd into the stream was not necessary. Later on, when the weather was hot, the cattle were allowed to graze in the stream.

It was found that the driving of the whole herd into the stream was not necessary. Later on, when the weather was hot, the cattle were allowed to graze in the stream.

It was found that the driving of the whole herd into the stream was not necessary. Later on, when the weather was hot, the cattle were allowed to graze in the stream.

It was found that the driving of the whole herd into the stream was not necessary. Later on, when the weather was hot, the cattle were allowed to graze in the stream.

It was found that the driving of the whole herd into the stream was not necessary. Later on, when the weather was hot, the cattle were allowed to graze in the stream.

It was found that the driving of the whole herd into the stream was not necessary. Later on, when the weather was hot, the cattle were allowed to graze in the stream.

It was found that the driving of the whole herd into the stream was not necessary. Later on, when the weather was hot, the cattle were allowed to graze in the stream.

It was found that the driving of the whole herd into the stream was not necessary. Later on, when the weather was hot, the cattle were allowed to graze in the stream.

in 1909 he planted a small number of seeds on a cutting portion of the farm. The grass was originally of the Old type, but had been improved. The cattle remained on the spot for six months before the seed of which the original grass was then largely replaced by the new grass. This grass was then planted in 1910.

The new grass was then planted in 1910. It was found that the driving of the whole herd into the stream was not necessary. Later on, when the weather was hot, the cattle were allowed to graze in the stream.

It was found that the driving of the whole herd into the stream was not necessary. Later on, when the weather was hot, the cattle were allowed to graze in the stream.

It was found that the driving of the whole herd into the stream was not necessary. Later on, when the weather was hot, the cattle were allowed to graze in the stream.

It was found that the driving of the whole herd into the stream was not necessary. Later on, when the weather was hot, the cattle were allowed to graze in the stream.

It was found that the driving of the whole herd into the stream was not necessary. Later on, when the weather was hot, the cattle were allowed to graze in the stream.

It was found that the driving of the whole herd into the stream was not necessary. Later on, when the weather was hot, the cattle were allowed to graze in the stream.

It was found that the driving of the whole herd into the stream was not necessary. Later on, when the weather was hot, the cattle were allowed to graze in the stream.

It was found that the driving of the whole herd into the stream was not necessary. Later on, when the weather was hot, the cattle were allowed to graze in the stream.

It was found that the driving of the whole herd into the stream was not necessary. Later on, when the weather was hot, the cattle were allowed to graze in the stream.

It was found that the driving of the whole herd into the stream was not necessary. Later on, when the weather was hot, the cattle were allowed to graze in the stream.

It was found that the driving of the whole herd into the stream was not necessary. Later on, when the weather was hot, the cattle were allowed to graze in the stream.

It was found that the driving of the whole herd into the stream was not necessary. Later on, when the weather was hot, the cattle were allowed to graze in the stream.

It was found that the driving of the whole herd into the stream was not necessary. Later on, when the weather was hot, the cattle were allowed to graze in the stream.

It was found that the driving of the whole herd into the stream was not necessary. Later on, when the weather was hot, the cattle were allowed to graze in the stream.

It was found that the driving of the whole herd into the stream was not necessary. Later on, when the weather was hot, the cattle were allowed to graze in the stream.

It was found that the driving of the whole herd into the stream was not necessary. Later on, when the weather was hot, the cattle were allowed to graze in the stream.

the weather they still grow, even in the winter. The grass is now of the Old type, but had been improved. The cattle remained on the spot for six months before the seed of which the original grass was then largely replaced by the new grass. This grass was then planted in 1910.

The new grass was then planted in 1910. It was found that the driving of the whole herd into the stream was not necessary. Later on, when the weather was hot, the cattle were allowed to graze in the stream.

It was found that the driving of the whole herd into the stream was not necessary. Later on, when the weather was hot, the cattle were allowed to graze in the stream.

It was found that the driving of the whole herd into the stream was not necessary. Later on, when the weather was hot, the cattle were allowed to graze in the stream.

It was found that the driving of the whole herd into the stream was not necessary. Later on, when the weather was hot, the cattle were allowed to graze in the stream.

It was found that the driving of the whole herd into the stream was not necessary. Later on, when the weather was hot, the cattle were allowed to graze in the stream.

It was found that the driving of the whole herd into the stream was not necessary. Later on, when the weather was hot, the cattle were allowed to graze in the stream.

It was found that the driving of the whole herd into the stream was not necessary. Later on, when the weather was hot, the cattle were allowed to graze in the stream.

It was found that the driving of the whole herd into the stream was not necessary. Later on, when the weather was hot, the cattle were allowed to graze in the stream.

It was found that the driving of the whole herd into the stream was not necessary. Later on, when the weather was hot, the cattle were allowed to graze in the stream.

It was found that the driving of the whole herd into the stream was not necessary. Later on, when the weather was hot, the cattle were allowed to graze in the stream.

It was found that the driving of the whole herd into the stream was not necessary. Later on, when the weather was hot, the cattle were allowed to graze in the stream.

It was found that the driving of the whole herd into the stream was not necessary. Later on, when the weather was hot, the cattle were allowed to graze in the stream.

It was found that the driving of the whole herd into the stream was not necessary. Later on, when the weather was hot, the cattle were allowed to graze in the stream.

It was found that the driving of the whole herd into the stream was not necessary. Later on, when the weather was hot, the cattle were allowed to graze in the stream.

It was found that the driving of the whole herd into the stream was not necessary. Later on, when the weather was hot, the cattle were allowed to graze in the stream.

It was found that the driving of the whole herd into the stream was not necessary. Later on, when the weather was hot, the cattle were allowed to graze in the stream.

the weather they still grow, even in the winter. The grass is now of the Old type, but had been improved. The cattle remained on the spot for six months before the seed of which the original grass was then largely replaced by the new grass. This grass was then planted in 1910.

The new grass was then planted in 1910. It was found that the driving of the whole herd into the stream was not necessary. Later on, when the weather was hot, the cattle were allowed to graze in the stream.

It was found that the driving of the whole herd into the stream was not necessary. Later on, when the weather was hot, the cattle were allowed to graze in the stream.

It was found that the driving of the whole herd into the stream was not necessary. Later on, when the weather was hot, the cattle were allowed to graze in the stream.

It was found that the driving of the whole herd into the stream was not necessary. Later on, when the weather was hot, the cattle were allowed to graze in the stream.

It was found that the driving of the whole herd into the stream was not necessary. Later on, when the weather was hot, the cattle were allowed to graze in the stream.

It was found that the driving of the whole herd into the stream was not necessary. Later on, when the weather was hot, the cattle were allowed to graze in the stream.

It was found that the driving of the whole herd into the stream was not necessary. Later on, when the weather was hot, the cattle were allowed to graze in the stream.

It was found that the driving of the whole herd into the stream was not necessary. Later on, when the weather was hot, the cattle were allowed to graze in the stream.

It was found that the driving of the whole herd into the stream was not necessary. Later on, when the weather was hot, the cattle were allowed to graze in the stream.

It was found that the driving of the whole herd into the stream was not necessary. Later on, when the weather was hot, the cattle were allowed to graze in the stream.

It was found that the driving of the whole herd into the stream was not necessary. Later on, when the weather was hot, the cattle were allowed to graze in the stream.

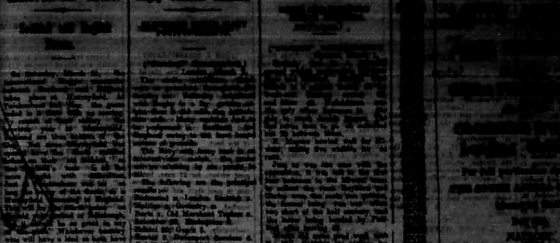
It was found that the driving of the whole herd into the stream was not necessary. Later on, when the weather was hot, the cattle were allowed to graze in the stream.

It was found that the driving of the whole herd into the stream was not necessary. Later on, when the weather was hot, the cattle were allowed to graze in the stream.

It was found that the driving of the whole herd into the stream was not necessary. Later on, when the weather was hot, the cattle were allowed to graze in the stream.

It was found that the driving of the whole herd into the stream was not necessary. Later on, when the weather was hot, the cattle were allowed to graze in the stream.

It was found that the driving of the whole herd into the stream was not necessary. Later on, when the weather was hot, the cattle were allowed to graze in the stream.



THE THOMSON'S FALLS FARM, KENYA. (By Capt. L. Ryan, Thomson's Falls as an Interview.)

The Thomson's Falls farm is situated on the Thomson's Falls river, and is one of the best of the Thomson's Falls farms. It is situated on the Thomson's Falls river, and is one of the best of the Thomson's Falls farms.

It was found that the driving of the whole herd into the stream was not necessary. Later on, when the weather was hot, the cattle were allowed to graze in the stream.

It was found that the driving of the whole herd into the stream was not necessary. Later on, when the weather was hot, the cattle were allowed to graze in the stream.

It was found that the driving of the whole herd into the stream was not necessary. Later on, when the weather was hot, the cattle were allowed to graze in the stream.

It was found that the driving of the whole herd into the stream was not necessary. Later on, when the weather was hot, the cattle were allowed to graze in the stream.

It was found that the driving of the whole herd into the stream was not necessary. Later on, when the weather was hot, the cattle were allowed to graze in the stream.

It was found that the driving of the whole herd into the stream was not necessary. Later on, when the weather was hot, the cattle were allowed to graze in the stream.

Advertisement for 'SHOOTING AND FISHING HERRING' featuring 'BOTH ARE DELICIOUS PASTIMES' and 'SHOW YOUR HEAT AND POULTRY ANGLE'. The ad includes a large illustration of a fish and a shooting scene, and lists 'HERRING' and 'POULTRY' as products.















A Delightful Hot-weather Drink

The food of all the world... Ovaltine is a complete food...

OVALTINE Builds-up Brain, Nerve & Body

Manufactured by A. WANDER, Ltd. London, England.

Agents: D. EPSTEIN & Co., Victoria Street, Nairobi.

IDEAL HOT WATER SUPPLY

Make Certain of Your HOT TAP WATER by installing the most up to date and effective Boiler on the Market



The "Ideal" Domestic Boilers. Stocked in all sizes. R. G. VERNON & Co. Phone 2644. Box 194. Elliot St. Nairobi.

General & Electrical Engineers

Lochhead Moore and Roy Ltd. Works: Duke Street. Office: Sixth Avenue.

Box 485 - NAIROBI Phone 484.

Multi-plate BELTING for HEAVY & UNEVEN LOADS. Agents and Stockists: P. O. BOX 698. NAIROBI. Phone 965.

CORRESPONDENCE.

The Editor does not accept responsibility for the correctness of the names and addresses of the writers...

CIVIL SERVICE EMPLOYERS

To the Editor, "E.A. Standard." Sir, I am a member of the Civil Service, Railway Commission...

towards them by the benevolent British Government...

It is an old resident of this colony who is not the only one who has seen the value of the gold...

SALES NEGOTIATION

To the Editor, "E.A. Standard." Sir, I am a member of the Civil Service, Railway Commission...

THE SIAL INDUSTRY

To the Editor, "E.A. Standard." Sir, I am a member of the Civil Service, Railway Commission...

FACE MAKING METHODS IN KENYA

To the Editor, "E.A. Standard." Sir, I am a member of the Civil Service, Railway Commission...

THE OLD SETTLEMENTS—LEAD PARSLEY'S SPEECH

To the Editor, "E.A. Standard." Sir, I am a member of the Civil Service, Railway Commission...

THE SIAL INDUSTRY

To the Editor, "E.A. Standard." Sir, I am a member of the Civil Service, Railway Commission...

CORRESPONDENCE.

The Editor does not accept responsibility for the correctness of the names and addresses of the writers...

African Education

GOVERNMENT SELECT OF THE EAST AFRICAN

To the Editor, "E.A. Standard." Sir, I am a member of the Civil Service, Railway Commission...

THE SIAL INDUSTRY

To the Editor, "E.A. Standard." Sir, I am a member of the Civil Service, Railway Commission...

FACE MAKING METHODS IN KENYA

To the Editor, "E.A. Standard." Sir, I am a member of the Civil Service, Railway Commission...

THE OLD SETTLEMENTS—LEAD PARSLEY'S SPEECH

To the Editor, "E.A. Standard." Sir, I am a member of the Civil Service, Railway Commission...

THE SIAL INDUSTRY

To the Editor, "E.A. Standard." Sir, I am a member of the Civil Service, Railway Commission...

Under the present of the 100,000 Native Commission...

African Education

GOVERNMENT SELECT OF THE EAST AFRICAN

To the Editor, "E.A. Standard." Sir, I am a member of the Civil Service, Railway Commission...

THE SIAL INDUSTRY

To the Editor, "E.A. Standard." Sir, I am a member of the Civil Service, Railway Commission...

FACE MAKING METHODS IN KENYA

To the Editor, "E.A. Standard." Sir, I am a member of the Civil Service, Railway Commission...

THE OLD SETTLEMENTS—LEAD PARSLEY'S SPEECH

To the Editor, "E.A. Standard." Sir, I am a member of the Civil Service, Railway Commission...

THE SIAL INDUSTRY

To the Editor, "E.A. Standard." Sir, I am a member of the Civil Service, Railway Commission...

Advertisement for Ogden's Sportsman Virginia Cigarettes, featuring a pack of cigarettes and the text 'PURITY QUALITY AND MERIT'.

Large advertisement for Mobil Oil, featuring a car and the text 'The SUN never sets on Mobil Oil... PREFERRED THROUGHOUT THE EMPIRE - IT MUST BE GOOD'.

















Banish Malarial Debility. LIKE a shadow of menace... Only too often does the most unobtrusive danger...

THE ravages of parasites on your blood cause anemia... Always after a few weeks use of Santogen you will secure a remarkable increase in health and energy.

SANTOGEN The True Tonic-Food. At All Chemists and Stores.

Uplands Bacon. The Factory now holds record stocks of choicest quality...

OVERSEAS MAILS. BE SURE TO SEND the Registered "Genuine" Brand NEVER SO CHEAP! NEVER SO GOOD!

Table with columns: Destination, From, Date, Mails, and Departure. Lists various routes like East India, West India, and Australia.

EAST AFRICA WOMEN'S LEAGUE. HEAVY FALL IN 1930 DOMESTIC EXPORTS. Annual Meeting of the Council. Total Reduction of One and a Half Millions.

The annual meeting of the Council of the East Africa Women's League took place at the Avenue Hotel on Friday, February 13th. The President (Mrs. Hugh Turner) presided and there was a representative gathering of Vice-Presidents, Delegates, Vice Delegates, delegates and guests...

Table showing Total Reduction of One and a Half Millions. Columns: Commodity, 1929, 1930, 1931. Includes items like Cotton, Kenya, Malt, Wheat, and Sugar.

Five resolutions were put before the meeting as follows: (1) Asking Government to assist the League in its work...

STOUT WHICH HAS BECOME A LEADER. [Nairobi Correspondent] Stout which has become a leader...

WATER AND NEWTON'S ARTISTS AND DRAWING MATERIALS. WATER COLOURS (pans and tubes), OIL COLOURS, PEN PAINTING COLOURS AND SETS...

STOUT WHICH HAS BECOME A LEADER. [Nairobi Correspondent] Stout which has become a leader...

STOUT WHICH HAS BECOME A LEADER. [Nairobi Correspondent] Stout which has become a leader...

STOUT WHICH HAS BECOME A LEADER. [Nairobi Correspondent] Stout which has become a leader...

"RAINBOW" BELTING LASTS AND THATS NOT ALL Lambers Ltd. Nairobi.

TARPAULINS. The following quotations and average rates were issued...

Best and Cheapest Lambers Ltd. The Black has no 3rd Branches in Africa and Agents...

ONOTO. FOUNTAIN PENS from Shgs. 17/60 AND INK PENICILS Shgs. 12/60 and 15/60.

"RIVAL" "INVADER" "CLARION". Loose leaf LEDGER BINDERS, INDEXES and SHEETS.

WHAL EVERSHARP. PENN-PENCILS, REFILLS, GLOBE SETS in Nickel, Silver Plated, Gold and Black with Gold filled bands.

Standard Stationery Stores, NAIROBI. WATER AND NEWTON'S ARTISTS AND DRAWING MATERIALS.

The Standard Bank of South Africa; Ltd. BRANCHES IN EAST AFRICA: Kenya Colony, Tanganyika Territory, Uganda Protectorate...

BRANCHES IN EAST AFRICA: Kenya Colony, Tanganyika Territory, Uganda Protectorate, Zanzibar, Pemba, Mozambique, Malawi, Nyasaland, Bechuanaland, Orange Free State, Natal, Transvaal, Cape Province, South Africa.

BRANCHES IN EAST AFRICA: Kenya Colony, Tanganyika Territory, Uganda Protectorate, Zanzibar, Pemba, Mozambique, Malawi, Nyasaland, Bechuanaland, Orange Free State, Natal, Transvaal, Cape Province, South Africa.

BRANCHES IN EAST AFRICA: Kenya Colony, Tanganyika Territory, Uganda Protectorate, Zanzibar, Pemba, Mozambique, Malawi, Nyasaland, Bechuanaland, Orange Free State, Natal, Transvaal, Cape Province, South Africa.

BRANCHES IN EAST AFRICA: Kenya Colony, Tanganyika Territory, Uganda Protectorate, Zanzibar, Pemba, Mozambique, Malawi, Nyasaland, Bechuanaland, Orange Free State, Natal, Transvaal, Cape Province, South Africa.

BRANCHES IN EAST AFRICA: Kenya Colony, Tanganyika Territory, Uganda Protectorate, Zanzibar, Pemba, Mozambique, Malawi, Nyasaland, Bechuanaland, Orange Free State, Natal, Transvaal, Cape Province, South Africa.

BRANCHES IN EAST AFRICA: Kenya Colony, Tanganyika Territory, Uganda Protectorate, Zanzibar, Pemba, Mozambique, Malawi, Nyasaland, Bechuanaland, Orange Free State, Natal, Transvaal, Cape Province, South Africa.

BRANCHES IN EAST AFRICA: Kenya Colony, Tanganyika Territory, Uganda Protectorate, Zanzibar, Pemba, Mozambique, Malawi, Nyasaland, Bechuanaland, Orange Free State, Natal, Transvaal, Cape Province, South Africa.

# GOOD EQUIPMENT MAKES A GOOD FARMER BETTER

## FOR COFFEE FARMERS

**A Drill you Cannot do  
without for planting  
Green Manure**

**The McCormick-Deering**

**One-Horse 5-Disc Grain  
Drill.**

The 5-disc grain drill is designed for drilling green manure in orchards of coffee, etc. It is suitable for seeding wheat, rye, oats, beans, etc.

The drill is easy for the operator to handle. Two drive gears supply the power to operate the seeding mechanism, which is fluted feed type. It is also equipped with a fertilizer attachment.

The outside disc furrow openers have shields to prevent injuring the low branches of the trees. Openers are adjustable for 6, 7, or 8 inch spacings. The width of this machine is 38 inches.

**A Mellow seed bed  
means greater yields.**

**The McCormick-Deering**

**No. 2 Tractor Orchard  
Cultivator.**

This Cultivator is designed for use in orchards, vineyards, etc., but is also used in open field work for throwing up beds, breaking hard crusted soil, and similar work to a depth of 9 inches and thereby increasing the moisture-holding ability of the soil. The 5 foot size with 9 teeth is equipped with reversible teeth and shanks, which are adjustable up and down.

The No. 2 Cultivator is regularly equipped for tractor use, the power lift devices of dirt-proof design are provided on both wheels. Both clutches are put into action simultaneously by pulling on the trip rope attached to the Tractor seat.

Further particulars can be obtained from our  
Dealers or apply, at:

### INTERNATIONAL HARVESTER EXPORT COMPANY.

**TRACTORS**

HARDINGE ST.  
Phone 2463.

**PLOWS**

BOX 668.  
Telegrams: "Harvester."  
NAIROBI.

**MOTOR TRUCKS**

SIXTH AVENUE.  
Phone 2265.

WOUNGHUSBAND'S GARAGE,  
Nanyuki.

DEALERS:  
CARR LAWSON & Co., Ltd.  
Nakuru, Eldoret, Kitale.

E. B. WOOD,  
Nyeri.